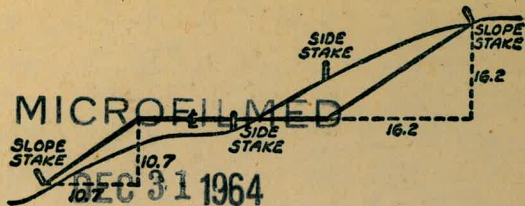


2088

THE NEW YORK PUBLIC LIBRARY
ASTOR LENOX TILDEN FOUNDATION
500 5TH AVENUE
NEW YORK 17, N. Y.



DISTANCES FROM SIDE STAKES FOR CROSS-SECTIONING
SLOPE 1 TO 1. ROADWAY OF ANY WIDTH

	0	.1	.2	.3	.4	.5	.6	.7	.8	.9	
0	0.00	0.10	0.20	0.30	0.40	0.50	0.60	0.70	0.80	0.90	0
1	1.00	1.10	1.20	1.30	1.40	1.50	1.60	1.70	1.80	1.90	1
2	2.00	2.10	2.20	2.30	2.40	2.50	2.60	2.70	2.80	2.90	2
3	3.00	3.10	3.20	3.30	3.40	3.50	3.60	3.70	3.80	3.90	3
4	4.00	4.10	4.20	4.30	4.40	4.50	4.60	4.70	4.80	4.90	4
5	5.00	5.10	5.20	5.30	5.40	5.50	5.60	5.70	5.80	5.90	5
6	6.00	6.10	6.20	6.30	6.40	6.50	6.60	6.70	6.80	6.90	6
7	7.00	7.10	7.20	7.30	7.40	7.50	7.60	7.70	7.80	7.90	7
8	8.00	8.10	8.20	8.30	8.40	8.50	8.60	8.70	8.80	8.90	8
9	9.00	9.10	9.20	9.30	9.40	9.50	9.60	9.70	9.80	9.90	9
10	10.00	10.10	10.20	10.30	10.40	10.50	10.60	10.70	10.80	10.90	10
11	11.00	11.10	11.20	11.30	11.40	11.50	11.60	11.70	11.80	11.90	11
12	12.00	12.10	12.20	12.30	12.40	12.50	12.60	12.70	12.80	12.90	12
13	13.00	13.10	13.20	13.30	13.40	13.50	13.60	13.70	13.80	13.90	13
14	14.00	14.10	14.20	14.30	14.40	14.50	14.60	14.70	14.80	14.90	14
15	15.00	15.10	15.20	15.30	15.40	15.50	15.60	15.70	15.80	15.90	15
16	16.00	16.10	16.20	16.30	16.40	16.50	16.60	16.70	16.80	16.90	16
17	17.00	17.10	17.20	17.30	17.40	17.50	17.60	17.70	17.80	17.90	17
18	18.00	18.10	18.20	18.30	18.40	18.50	18.60	18.70	18.80	18.90	18
19	19.00	19.10	19.20	19.30	19.40	19.50	19.60	19.70	19.80	19.90	19
20	20.00	20.10	20.20	20.30	20.40	20.50	20.60	20.70	20.80	20.90	20
21	21.00	21.10	21.20	21.30	21.40	21.50	21.60	21.70	21.80	21.90	21
22	22.00	22.10	22.20	22.30	22.40	22.50	22.60	22.70	22.80	22.90	22
23	23.00	23.10	23.20	23.30	23.40	23.50	23.60	23.70	23.80	23.90	23
24	24.00	24.10	24.20	24.30	24.40	24.50	24.60	24.70	24.80	24.90	24
25	25.00	25.10	25.20	25.30	25.40	25.50	25.60	25.70	25.80	25.90	25
26	26.00	26.10	26.20	26.30	26.40	26.50	26.60	26.70	26.80	26.90	26
27	27.00	27.10	27.20	27.30	27.40	27.50	27.60	27.70	27.80	27.90	27
28	28.00	28.10	28.20	28.30	28.40	28.50	28.60	28.70	28.80	28.90	28
29	29.00	29.10	29.20	29.30	29.40	29.50	29.60	29.70	29.80	29.90	29
30	30.00	30.10	30.20	30.30	30.40	30.50	30.60	30.70	30.80	30.90	30
31	31.00	31.10	31.20	31.30	31.40	31.50	31.60	31.70	31.80	31.90	31
32	32.00	32.10	32.20	32.30	32.40	32.50	32.60	32.70	32.80	32.90	32
33	33.00	33.10	33.20	33.30	33.40	33.50	33.60	33.70	33.80	33.90	33
34	34.00	34.10	34.20	34.30	34.40	34.50	34.60	34.70	34.80	34.90	34
35	35.00	35.10	35.20	35.30	35.40	35.50	35.60	35.70	35.80	35.90	35
36	36.00	36.10	36.20	36.30	36.40	36.50	36.60	36.70	36.80	36.90	36
37	37.00	37.10	37.20	37.30	37.40	37.50	37.60	37.70	37.80	37.90	37
38	38.00	38.10	38.20	38.30	38.40	38.50	38.60	38.70	38.80	38.90	38
39	39.00	39.10	39.20	39.30	39.40	39.50	39.60	39.70	39.80	39.90	39
40	40.00	40.10	40.20	40.30	40.40	40.50	40.60	40.70	40.80	40.90	40
41	41.00	41.10	41.20	41.30	41.40	41.50	41.60	41.70	41.80	41.90	41
42	42.00	42.10	42.20	42.30	42.40	42.50	42.60	42.70	42.80	42.90	42
43	43.00	43.10	43.20	43.30	43.40	43.50	43.60	43.70	43.80	43.90	43
44	44.00	44.10	44.20	44.30	44.40	44.50	44.60	44.70	44.80	44.90	44
45	45.00	45.10	45.20	45.30	45.40	45.50	45.60	45.70	45.80	45.90	45
46	46.00	46.10	46.20	46.30	46.40	46.50	46.60	46.70	46.80	46.90	46
47	47.00	47.10	47.20	47.30	47.40	47.50	47.60	47.70	47.80	47.90	47
48	48.00	48.10	48.20	48.30	48.40	48.50	48.60	48.70	48.80	48.90	48
49	49.00	49.10	49.20	49.30	49.40	49.50	49.60	49.70	49.80	49.90	49
50	50.00	50.10	50.20	50.30	50.40	50.50	50.60	50.70	50.80	50.90	50

Distance of slope stake from side or shoulder stake for any width roadway, slope 1 to 1. If ground is nearly level, the cut or fill at side stake is located by the double entry method in left column and top row. The number in body of table in same row and column gives distance from side stake to slope stake. If ground is not level estimate the difference in elevation between the side stake and slope stake, lower target by this amount if cut, elevate if fill. Add this amount to cut or fill and find distance in table. Set up rod at this point, and line of sight should cut target. If it does not make the slight adjustment necessary.

INDEXED
to page 4.5

TABLE XIII—CORRECTIONS FOR TANGENTS AND EXTERNALS

These corrections are to be added to the approximate values found by dividing the tangent, or external, for a 1° curve (Table VIII) by the degree of curve, in order to obtain the true tangents, or externals. Intermediate values may be obtained by interpolation.

FOR TANGENTS ADD

Central Angle	DEGREE OF CURVE													
	5°	10°	15°	20°	25°	30°	35°	40°	45°	50°	55°	60°	65°	70°
10°	.03	.06	.09	.13	.16	.19	.22	.25	.28	.31	.34	.38	.42	.46
15°	.04	.10	.14	.19	.24	.29	.34	.39	.45	.51	.53	.58	.63	.68
20°	.06	.13	.19	.26	.32	.39	.45	.51	.58	.65	.72	.79	.84	.90
25°	.08	.16	.24	.33	.40	.49	.58	.67	.75	.83	.90	.99	1.06	1.14
30°	.10	.19	.29	.39	.49	.59	.69	.79	.89	.99	1.09	1.20	1.29	1.39
35°	.11	.22	.34	.47	.58	.69	.79	.81	.92	1.04	1.29	1.42	1.54	1.66
40°	.13	.26	.40	.53	.67	.80	.93	1.06	1.20	1.34	1.49	1.64	1.79	1.94
45°	.15	.30	.44	.60	.76	.91	1.06	1.21	1.37	1.52	1.70	1.87	2.04	2.21
50°	.17	.34	.51	.68	.85	1.02	1.19	1.36	1.54	1.72	1.91	2.10	2.29	2.48
55°	.19	.38	.57	.76	.95	1.14	1.32	1.52	1.72	1.92	2.14	2.35	2.56	2.77
60°	.21	.42	.63	.84	1.05	1.27	1.49	1.71	1.94	2.17	2.38	2.60	2.83	3.07
65°	.23	.46	.69	.93	1.16	1.40	1.64	1.88	2.13	2.38	2.63	2.88	3.13	3.39
70°	.25	.51	.76	1.02	1.28	1.54	1.80	2.06	2.33	2.60	2.88	3.16	3.44	3.72
75°	.27	.56	.83	1.12	1.40	1.69	1.98	2.27	2.57	2.87	3.16	3.47	3.78	4.09
80°	.30	.61	.91	1.22	1.53	1.84	2.15	2.46	2.78	3.10	3.44	3.78	4.12	4.46
85°	.33	.66	1.00	1.33	1.68	2.02	2.36	2.70	3.05	3.40	3.77	4.14	4.55	4.89
90°	.36	.72	1.09	1.45	1.83	2.20	2.57	2.94	3.32	3.70	4.10	4.50	4.91	5.32
95°	.39	.79	1.19	1.55	2.00	2.40	2.80	3.20	3.61	4.02	4.40	4.98	5.38	5.83
100°	.43	.86	1.30	1.74	2.18	2.62	3.06	3.50	3.95	4.40	4.88	5.37	5.85	6.34
110°	.51	1.03	1.56	2.08	2.61	3.14	3.67	4.21	4.76	5.31	5.86	6.43	7.01	7.60
120°	.62	1.25	1.93	2.52	3.16	3.81	4.45	5.11	5.77	6.44	7.12	7.80	8.50	9.22

FOR EXTERNALS ADD

Central Angle	DEGREE OF CURVE													
	5°	10°	15°	20°	25°	30°	35°	40°	45°	50°	55°	60°	65°	70°
10°	.001	.003	.004	.006	.007	.008	.009	.011	.012	.014	.015	.017	.018	.020
15°	.003	.007	.010	.014	.018	.023	.027	.029	.032	.035	.039	.043	.047	.051
20°	.006	.011	.017	.022	.028	.034	.038	.045	.051	.057	.063	.070	.076	.083
25°	.009	.018	.027	.036	.046	.056	.065	.074	.083	.093	.106	.120	.127	.135
30°	.013	.025	.038	.051	.065	.078	.090	.103	.116	.129	.149	.170	.179	.188
35°	.018	.035	.054	.072	.086	.109	.131	.153	.175	.197	.213	.230	.247	.264
40°	.023	.046	.070	.093	.117	.141	.172	.203	.234	.265	.277	.290	.315	.341
45°	.030	.060	.093	.119	.153	.184	.216	.254	.289	.325	.351	.378	.411	.445
50°	.037	.075	.116	.151	.189	.227	.266	.305	.345	.384	.425	.467	.508	.550
55°	.046	.093	.142	.188	.236	.283	.332	.381	.420	.479	.530	.582	.641	.700
60°	.056	.112	.168	.225	.283	.340	.398	.457	.516	.575	.636	.697	.774	.851
65°	.067	.135	.204	.273	.343	.412	.483	.554	.625	.697	.771	.845	.922	1.01
70°	.080	.159	.240	.321	.403	.485	.568	.652	.735	.819	.906	.994	1.08	1.17
75°	.095	.182	.286	.383	.480	.578	.678	.777	.877	.977	1.07	1.18	1.29	1.39
80°	.110	.220	.332	.445	.558	.671	.787	.903	1.02	1.13	1.25	1.38	1.50	1.62
85°	.128	.259	.391	.524	.657	.790	.926	1.06	1.20	1.34	1.47	1.62	1.76	1.91
90°	.149	.299	.450	.603	.756	.910	1.07	1.22	1.38	1.54	1.70	1.87	2.03	2.20
95°	.174	.350	.522	.706	.885	1.06	1.25	1.43	1.62	1.80	1.99	2.18	2.38	2.58
100°	.200	.401	.604	.809	1.01	1.22	1.43	1.64	1.85	2.06	2.28	2.50	2.73	2.96
110°	.268	.536	.806	1.08	1.35	1.63	1.91	2.20	2.48	2.76	3.05	3.35	3.66	3.96
120°	.360	.721	1.08	1.45	1.82	2.19	2.57	2.95	3.33	3.72	4.11	4.50	4.91	5.32

Wabash Blvd Channel Change 1927-10 to 205+50 1-4
 Sewer Grader N.W.C. + Alley N. of Broadway 31st & 33rd St 5
 12" Water Line Wabash & Juniper 6
 Relocation 21" Sewer Wabash Blvd + Federal Interchange 7-11
 " " " " " 38th & Myrtle 12-13
 Grader Waterline 31st Broadway & P. Ch. Wick 14-15
 Grader Markets East of 33rd 16-20
 Grader Waterline Federal + 33rd Federal + 6th St. 21
 Sewer Grader Santa Margarita + 54th St 22
 Storm Drain N.W.C. 8+75-9+50 23
 Grader Market St. East of 33rd St 24-27
 Wabash Blvd + Wabash Kir. Park + Orange Line 28
 Montezuma Road Gutter-Grader 35th St East 29
 Alig. + Grader Markets by Federal Blvd Interchange 30-35
 40th + Landis St. Foot Bridge 36
 Grade Water Line Wabash Blvd + Dwight St 37
 Day Light Pipe North West Inner Loop + Wabash Blvd 38
 Sewer Grader S. Side Occa Victim Bot. 38th & 38th 39
 Wabash Blvd. 40th St Sec. Right man to 49+40-50
 X Sec S. Bernardino Terrace from W. by
 Euclid Manor to Valencia Pk. note 56-57

(over)

X-sec Ingraham, Lee Playa auto
Mowland Dr 58/68

Harbort Blvd. Section 7
Channel Change
198+10 to 205+50

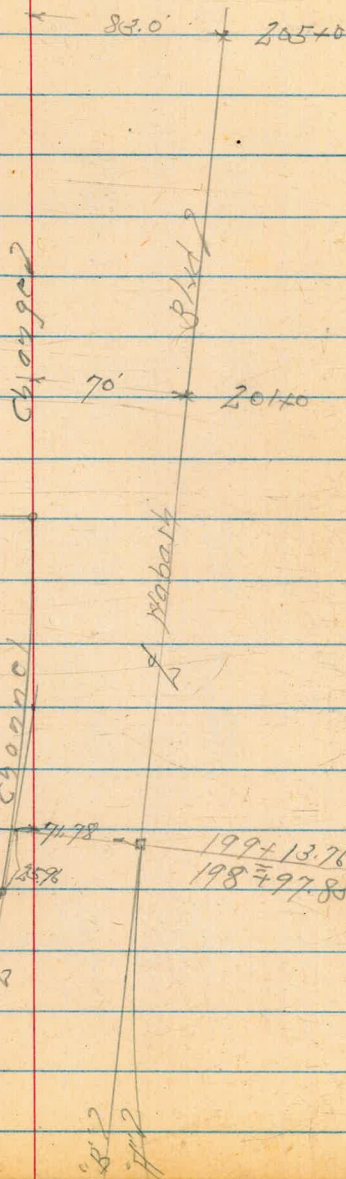
INDEXED
JUN 7 1950

200+21.88 FC

Δ 8'46"
R 1000'
T 76.65
L 1530'
D₁ 1.71887

198+71.87 BCLT

198+10
Begin Channel
Change



Yabash Blvd. Section "H"
Channel Change

Sta. 198+10 to 205+80

Lt. Lt.

May 26-50

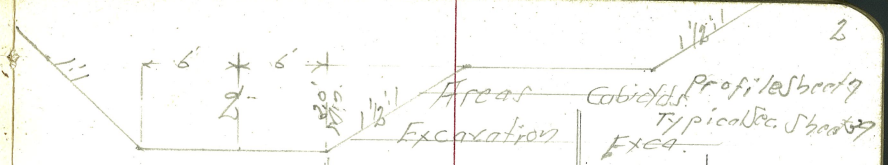
F. Sisson

Rorer

Chavez

Coto

Pt. No. 22029



					Excavation	Profile Sheet 9
25.12	6.8 6.8 0.0 12.1	7.9 6.8 0.1 7.1	7.9 6.8 0.1 0.0	224.87	12.80	9.02
200+0	5.3 4.1 4.0 14.2	8.5 5.3 0.2 9.2	8.5 5.7 2.8 0.0	226.25	39.04	23.85
+50	5.6 4.6 11.0 15.1	9.7 5.6 0.1 10.1	9.7 6.7 3.0 0.0	225.00	47.55	80.18
199+0	9.9 9.8 10.1 12.1	11.0 9.7 0.1 7.1	11.0 10.8 0.2 0.0	223.75	12.85	55.92
28.12						
+7187 B.C.	11.8 10.2 11.7	11.7 10.7 1.0	11.7 10.4 1.3 0.0	223.05	4.64	9.11
21.87						
+50	11.9 12.2 0.3 11.3	12.2 11.9 0.3 6.3	12.2 12.2 0.0	222.50	0.90	2.24
198+10 "H"	13.2 13.2 0.0 11.0	13.2 13.2 0.0 6.0	13.2 13.4 0.2 0.0	224.50	0.0	0.67
BM	12.63	224.74	222.11			

x 57 M.H.
28.47
197+80
2071-52

	Lt.	Z	Pt.	Area Exca.	Cubic Yds. Exca.	
B.M.		10.11	244.47	$\begin{array}{r} \times 0.7 \text{ MHRm} \\ 125.41 \\ 205.48 \\ \hline 244.82 \end{array}$		
+50	$\begin{array}{r} 13.7 \\ 13.2 \\ 6.0 \\ \hline 71.9 \end{array}$	$\begin{array}{r} 14.6 \\ 13.7 \\ 6.9 \\ \hline 69 \end{array}$	$\begin{array}{r} 14.6 \\ 13.6 \\ 6.0 \\ \hline 00 \end{array}$	240.00	$\begin{array}{r} 14.6 \\ 14.0 \\ 6.9 \\ \hline 69 \end{array}$	11.40.
+20	$\begin{array}{r} 6.0 \\ 3.9 \\ 7.1 \\ \hline 20.3 \end{array}$	$\begin{array}{r} 15.3 \\ 6.0 \\ 6.9 \\ \hline 15.3 \end{array}$	$\begin{array}{r} 15.3 \\ 13.3 \\ 6.0 \\ \hline 00 \end{array}$	239.25	$\begin{array}{r} 15.3 \\ 14.4 \\ 6.9 \\ \hline 7.3 \end{array}$	53.20.
205+0	$\begin{array}{r} 2.9 \\ 0.6 \\ 7.3 \\ \hline 33.9 \end{array}$	$\begin{array}{r} 15.8 \\ 2.9 \\ 6.9 \\ \hline 18.9 \end{array}$	$\begin{array}{r} 15.8 \\ 10.5 \\ 6.5 \\ \hline 00 \end{array}$	238.75	$\begin{array}{r} 15.8 \\ 13.7 \\ 6.9 \\ \hline 9.2 \end{array}$	63.95.
+50	$\begin{array}{r} 4.3 \\ 4.3 \\ 2.0 \\ \hline 33.8 \end{array}$	$\begin{array}{r} 17.1 \\ 4.3 \\ 6.9 \\ \hline 78.8 \end{array}$	$\begin{array}{r} 17.1 \\ 10.9 \\ 6.2 \\ \hline 00 \end{array}$	237.50	$\begin{array}{r} 17.1 \\ 12.8 \\ 6.9 \\ \hline 17.5 \end{array}$	148.33.
204+0	$\begin{array}{r} 5.0 \\ 2.9 \\ 7.1 \\ \hline 34.3 \end{array}$	$\begin{array}{r} 18.3 \\ 5.0 \\ 6.9 \\ \hline 19.3 \end{array}$	$\begin{array}{r} 18.3 \\ 12.6 \\ 6.5 \\ \hline 00 \end{array}$	236.25	$\begin{array}{r} 18.3 \\ 15.5 \\ 6.9 \\ \hline 10.2 \end{array}$	259.91.
		254.58				

Habash Blvd. Sec. 7
 Server Grader North West Outer Corner Road
 Alley North of Broadway Bot 34th + 35th St.
 Not on plan

May 23-50 5
 F. Sisson
 D. Smith
 R. Perez
 Cota

INDEXED
 MK

JUN 7 1950

BM		70.40	54.06	54.19	Mon 3/25 So. Broadway
TP	3.27	64.46	12.16	61.19	13.35 8.22
+80	Exist. C 7.9	65.5	58.00		6.93
+49	1.4	72.0	60.20		13.15 2.47 10.66
TP	0.36	73.35	12.27	72.99	23.86 7.22
1418	7.6	77.7	62.40		15.57
+87	9.8	75.5	64.60		20.66 10.20 10.46
+56	10.4	74.9	66.80		18.46 11.08 7.38 10.74
+25	M.H. #1 10.7	71.6	69.00		16.26 10.56 5.70 10.5
TP	0.72	85.26	12.55	84.54	8.29 3.74
0+0	Exist. MH 320' East of 34 th St		88.80		4.55
TP	0.04	97.09	11.68	97.05	
BM	9.84	108.73	98.89		Conc Mon NERP Broadway + 34 th St

Wabash Blvd. 500 ft
 Juniper St. 12" Water Line Grader

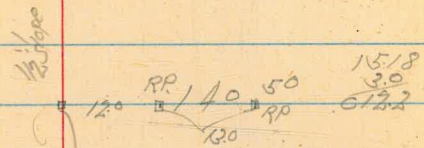
Sheet 17
 Stake offset 12' S. of E Ditch
 City Job

June 14. 50
 F.S. 5507
 Chavez
 Bunch

1+67.60

161.70

1+57.00



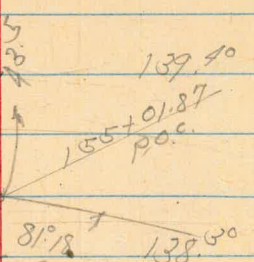
1+20.66

139.40

1518
 3.0
 613.2

of Wabash Blvd

0+81.00



0+48

137.20

18.48
 3.0
 615.3

+21

135.92

19.76
 6.0
 613.8

0+0

134.64

12.32
 12.32

TP 11.57 155.68 2.85 144.11

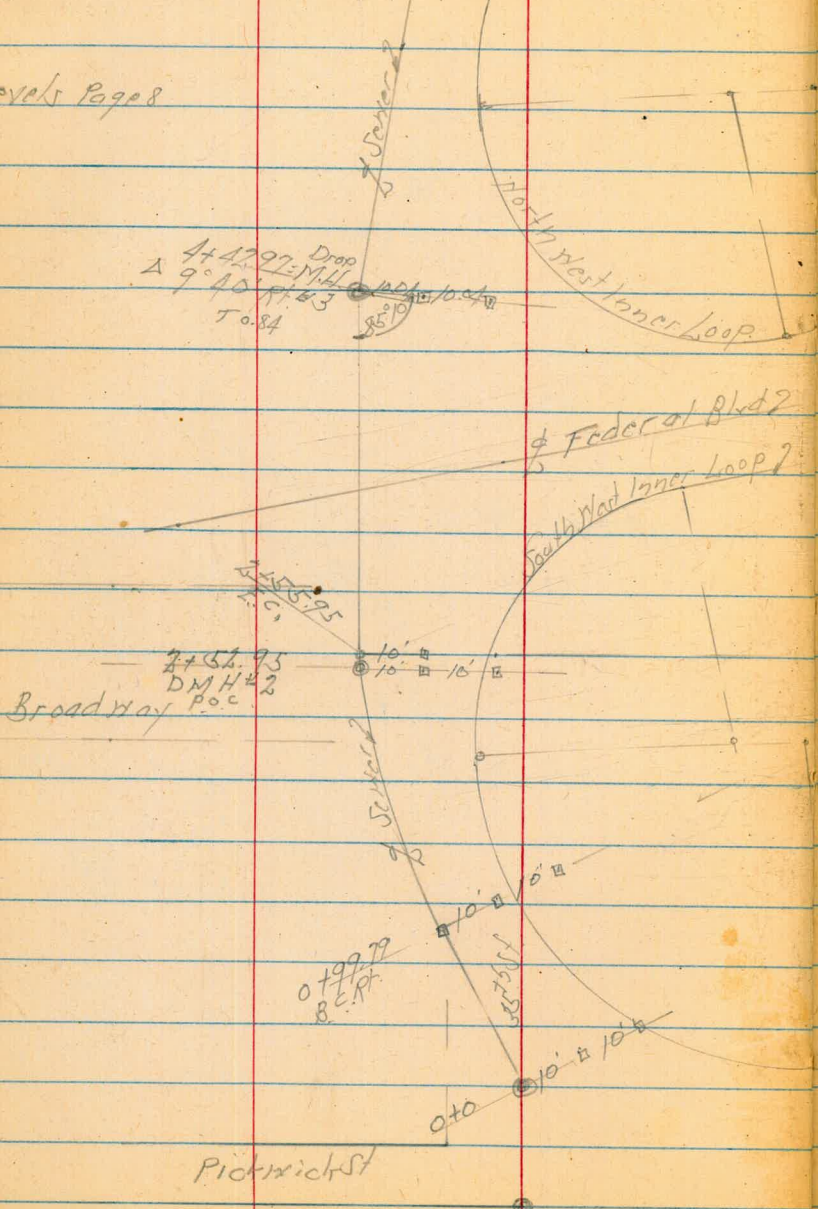
BM 10.76 146.96 136.20
 X 00 MH
 Wabash x
 Juniper

Front 12' of
 City Job

Relocation of Existing 31" Trunk Sewer

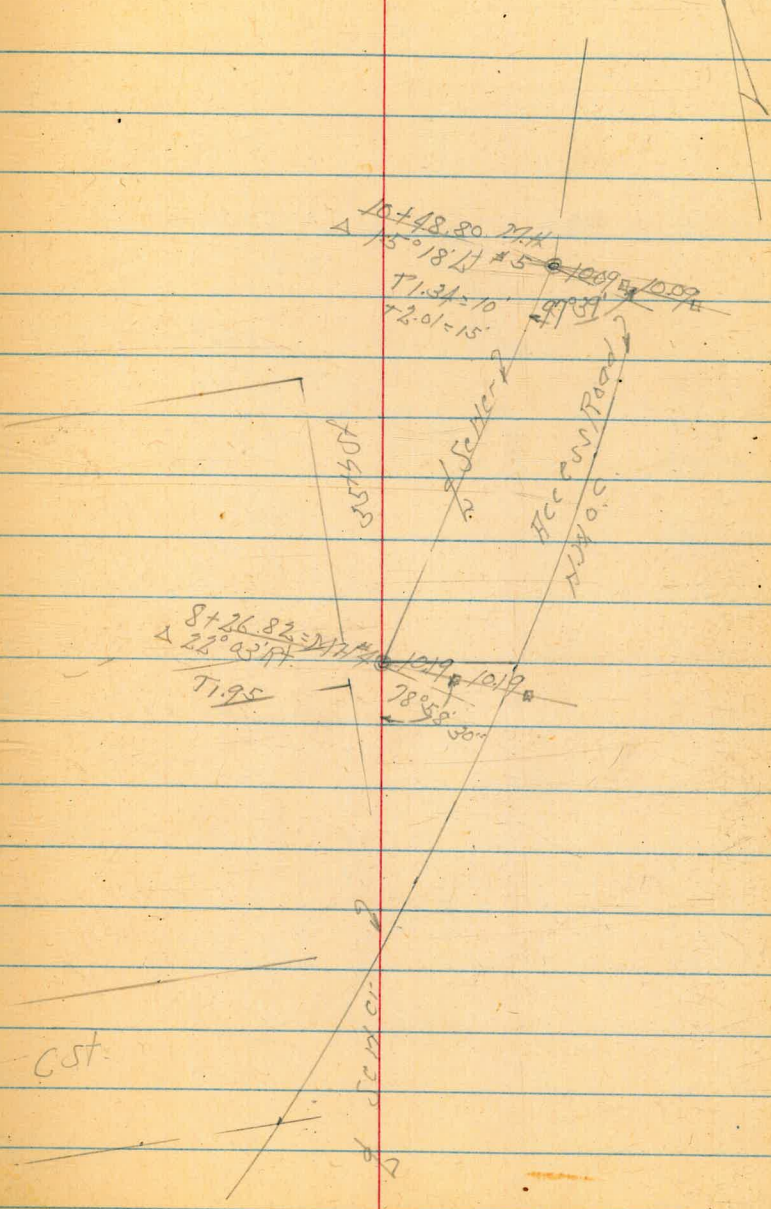
Nobara Blvd Within Federal Blvd Interchange
35th St. Pickwick to 17th St.

Levels Pages



Location # 2104.3

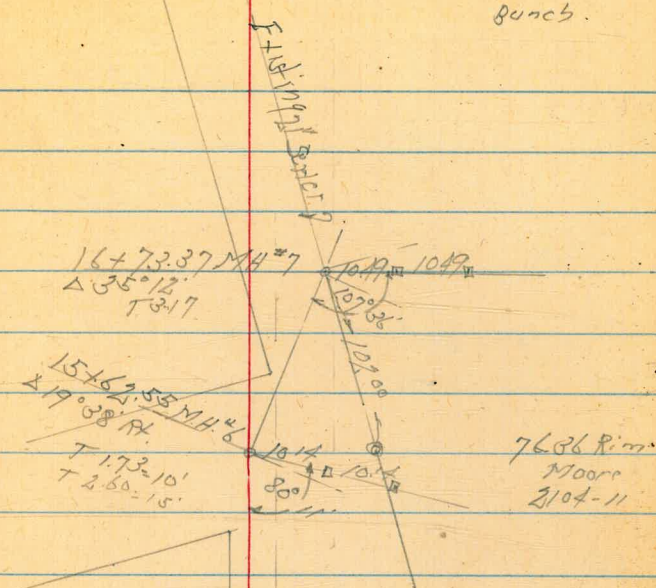
June 21-50
H. Sisson
Rorer
Bunch



Grader Relocation at Saxon
 35th St. Pick up to 4th St.
 Sketch Page 7

June 22.50 8
 ASINO
 Rorer
 Bunch.

2+22.72	11° 16'	46.13	16.11 3.64 c12.47
+93.48	8° 27'	45.94	16.20 3.62 c12.68
+62.25	5° 38'	45.75	16.99 4.81 c12.18
1+31.02	4° 49'	45.57	16.67 4.89 c11.78
51.23			
+99.79 BC Rt		45.38	16.86 5.21 c11.65
+75		45.23	17.01 5.12 c11.57
+50		45.08	17.16 5.09 c11.48
+25		44.93	17.31 5.06 c11.35
0+0		44.78	17.46 5.27 c11.19
BM	814	62.24	5410 Mo on 4435 So. Broadway



Grades Relocation 31" Sewer

June 28, 50
 H. S. Simon
 Roger
 Chavez
 8+26.82 to 16+73.57

+75				56.24	12.31 8.06 c4.95
+50				55.90	13.65 7.88 c1.73
+25				55.55	14.00 7.61 c6.39
9+0				55.21	14.24 8.27 c6.07
+77 = NY Egoor					
+75				54.86	14.69 8.12 c6.56
+50				54.52	15.03 7.12 c1.87
BM	7.37	19.55	8.51	62.18	07 504781 81283940 62.21
+26.82 MH #7				54.20	16.52 5.48 c11.84
8+0				53.82	16.90 8.05 c11.85
+75				53.48	17.04 7.78 c12.45
7+50				53.13	17.59 4.43 c13.11

70.72

+25				59.19	9.11 5.16 c4.09
12+0				59.31	9.49 5.85 c3.84
+75				59.00	9.83 5.87 c3.76
+50				58.65	10.18 6.53 c3.65
+25				58.31	10.52 6.87 c3.68
11+0				57.96	10.87 7.24 c3.63
+75				57.62	11.21 7.66 c3.55
TP	8.02	68.83	8.74	60.81	
+48.80 MH #5				57.26	12.39 8.74 c3.55
+75				56.93	12.73 9.08 c3.65
10+0				56.59	13.07 9.42 c3.65

11.51 + 1.50 = 13.01
 off set 10 ft.

69.55

Grades Relocation of Existing 12"

Trunk Sewer Wabash Blvd.
Near 38th St. + Myrtle Ave.

Location
#2104-31
8161-L

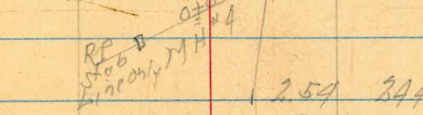
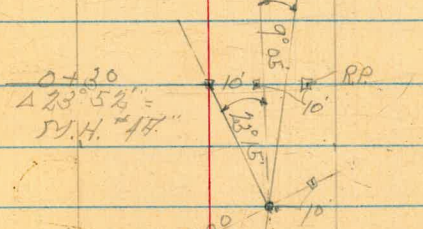
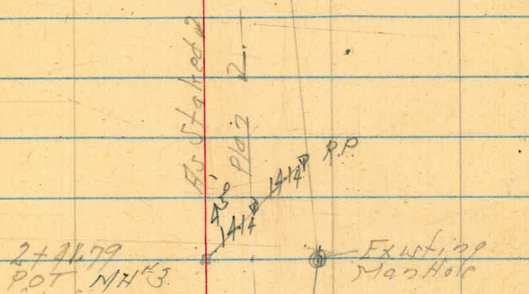
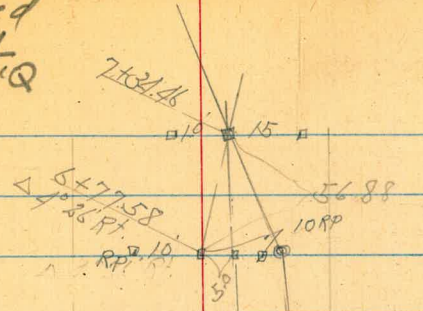
Stakes offset
10' East or Right
of ditch

Aug. 3-50
H. Sisson
Garber
Rorer

12

Station	Grade	Offset	Stake	Notes
	+50			226.16
+75	218.83	14.03 4.55 c 9.53		15.43 4.19 c 11.23
	+25			225.43
+50	218.35	14.56 4.27 c 10.27		16.15 5.48 c 10.67
	+10			224.71
+25	217.87	15.04 4.89 c 10.16		16.87 6.04 c 10.83
	+75			223.98
+10	217.39	15.52 4.73 c 10.73		17.60 4.89 c 12.71
	+50			223.26
+76	216.90	16.01 4.76 c 11.10		18.32 4.84 c 12.01
	+25			222.53
+50	216.42	16.49 6.30 c 10.19		19.05 16.77 c 12.26
	+40			221.87
MH #4 +30 Δ 23° 52' R.	215.04	16.87 7.14 c 9.73		19.77 7.52 c 12.75
	+70			220.94
0+0 = MH #4	215.46	17.45 2.42 c 15.03		20.64 9.07 c 11.57
	TP		9.01	241.58
	+41.79 MH #3		11.81 84 c 11.47	084 221.10
				232.57
				220.12
BM	10.80	232.91		219.31
		222.11		232.91
		75' Lt 197+80 #2104-31		219.31
				12.60 2.22 c 10.37

Plotted
8161-L
1-4-52-M'Q



+77.58 = M.H.#2				232.76	14.29 2.71 c11.58
+50				231.96	15.09 3.92 c11.16
+25				231.23	15.82 1.82 c11.00
+10 = N/4 Rock				230.51	16.51 6.24 c11.20
+75				229.78	17.27 6.18 c11.11
+50				229.06	17.99 4.13 c13.86
TP	7.47	247.05	2.00	229.58	13.25 2.00 c11.25
+25				228.33	13.25 2.00 c11.25
+50				227.61	13.97 3.40 c10.57
+75				226.88	14.70 3.92 c10.78

241.58

B.M.

+34.46 = M.H.#1

71.03.77

2.54 244.51
 234.21
 233.58
 13.47
 1.74
 c11.73
 10° Rt.

x on M.H.
 125.14
 205 + 80
 12.44
 4.07
 c8.57
 10° H.

Grades Water Line 34th St
Broadway to Federal Blvd.

Stakes offset
4' East of the Ditch

Aug. 28-50
H. Sisson
Garber
Rorer
Shepard

14

+50

76.12

11/1
5.8
65.3

+10 - Bk out
- sly cut.

78.70 out

+33 = N.L. Federal Blvd
to East

58.70

15.6
12.6
63.0
0.7
0.1

270.

79.15

8.1
5.1
63.0

570

60.70

13.6
8.8
64.8

+50

81.21

6.0
2.8
63.2

TP 0.88 87.24 13.17

86.36

+50

62.70

10.6
6.3
67.3

+07 - Bk Cut - Bk

83.00

16.5
13.7
63.3

110

66.70

7.5
0.9
67.2

+95 = 5' Top Cut

88.40

14.6
7.9
63.7

+50

69.70

17.5
12.1
67.7

+80 = SL Broadway

89.00

10.5
6.7
63.8

+50

91.80

Top Bonita
Por

TP

0.16

74.29

13.11

74.13

0.1
1.2
2.1
67.5

+40

90.60

8.9
63.7

+18.47 = Set

71.70

0+0 = N.L. Broadway

92.20

7.3
7.0
66.3

370

72.90

BM 0.64 99.53

98.89

Mo NT
Broadway
4.3713

14.3
9.8
67.1

87.34

Grades Market St. East of 8th St.
 North South Curb Stationing Also Curb Grade

Sept 5-50
 75.1107
 Garber
 Rorer
 Shepard

Curb Grade
 For South Side

BM 7.58 50.29 54 Top 45" Curb

10+10.28

59.04
 $\begin{matrix} -1.2 \\ 11.2 \\ \hline 10.0 \\ +0.9 \\ \hline 10.9 \\ 33.8 \end{matrix}$

+ 81.59 B.C.R.T.

60.71
 $\begin{matrix} -2.8 \\ 11.2 \\ \hline 8.4 \\ +2.6 \\ \hline 11.0 \\ 36.0 \end{matrix}$

Changed
 See Page 31

+ 61.59

61.89
 $\begin{matrix} -1.0 \\ 7.7 \\ \hline 6.7 \\ +1.5 \\ \hline 8.2 \\ 32.6 \end{matrix}$

TP 0.81 57.87 1302 57.06

+ 29.55 FC

63.55
 $\begin{matrix} 6.5 \\ 7.1 \\ \hline 13.6 \\ -0.2 \\ \hline 13.4 \\ 16.9 \end{matrix}$

9+06.68

64.51
 $\begin{matrix} 5.6 \\ 6.2 \\ \hline 11.8 \\ -0.2 \\ \hline 11.6 \\ 15.9 \end{matrix}$

8+ 83.81 B.C.R.T.

65.27

0.22 70.08 1322 69.86

BM 1.71 82.08 81.37
 S.W. RP Market
 432215

For West #2072-72

Curb Grade
For South Line

+89.30

50.63	19	86
	22	92
	16.9	-0.6
	201	251

+58.63 = W/L 33rd
+ on north

51.90	0.6	8.6
	8.0	9.0
	58.0	201
	22.0	270

+38.72

52.72	0.2	7.2
	7.2	7.8
	71.4	-0.3
	211	261

TP 2.50 52.52 7.85 50.02

11+18.81 A

53.54	2.3	2.4
	2.2	2.5
	61.2	-0.1
	11.9	7.9

+96.36 EC

54.59	3.3	1.7
	1.7	1.9
	61.8	-0.2
	11.6	16.8

+67.66

55.92	2.0	7.0
	2.0	2.0
	10.0	0.0
		15.0

10+38.97

57.43	4.4	8.0
	8.6	9.4
	7.6	+0.6
	21.4	26.4

57.87

Curb Grader
For South Line

B.M

NE 7417
2.58 4994 Market
133rd toll

13 + 02.55 F.C.

45.29
7.23
7.33
0.0 on cb

+ 81.47

16.48
6.0
6.0
9.8 on SH Conc
Wells

+ 60.40 B.C. RA

47.68
4.8
9.3
F 1.5
16.8
9.3
11.0
-1.7
31.8

12 + 19.97 = F.L. 33rd
to North 5

49.36
3.2
8.7
F 5.7
18.6
8.9
9.2
-6.3
38.6

52.52

Grades North Carolina Market St.
West of 33rd St to North
Carolina St.

Dec. 6-50 19
H. S. Brown
Sherman
R. C. C.
P. L. C.

		Cut	Gutter
c 19125			
1403.71	1° 34' 16"	57.91 2.59 3.86 51.37 3/11/50	57.24
c 19125			
+84.57 BC RT	0° 00'	56.80 3.70	56.13
+61.76		55.55 4.95	54.88
+38.95		54.38 6.13	53.71
+19.48		53.42 7.08	52.78
0+0 = W.L. 33rd St to North		52.50 8.00 79' 07" 06	51.92
B17	1042 60.50	50.08	

NE 7' 47"

Curb

Gutter

BM

2.81

62.67

8.P.H. Inlet
14 Federal
No. 101
62.65

2+24.25 P.R.C.

8° 53'

62.94

62.27

3.54
3.54
0.10

2+02.29

5° 55' 20"

62.47

61.80

4.01
4.89
F0.88

+80.33

2° 57' 40"

61.92

61.25

4.53
15.94
F1.38

c 22.05

+58.27 P.C.C.

0° 00'
33° 59' 54"

61.06

60.39

5.42
6.97
F1.49

c 17.54

TP

7.96 66.48 1.98

58.52

+40.56

11° 59' 57"

60.05

59.38

0.45
1.98
F1.53

c 17.54

1+22.86 P.C.C.

0° 00'
9° 08' 32" ✓

59.07

58.35

1.48
2.86
F1.38

60.50

Grades Water Line Federal Blvd.
East of 33rd St.

77.30 +1.50
14.87
100
c4.9

81.50 +1.25
10.67
7.86
c3.4

84.40 +.75
7.77
46.1
c3.2

Federal Blvd

86.00 +.75
6.17
32.5
c3.9

87.10 0.40
5.07
2.9
c4.8
4.0

45

25

5

FL 33rd St.

TP 3.52 92.17 2.26 88.65 NW 1/4
BM 4.84 90.91 86.07 E 422nd

Grades Water Line G St. Pt.
Federal Blvd. Harbor Blvd. Sec. 7

21
Sept. 1-50
P. Sisson
Garber
Korner
Shepard

67.00 10.6
7.2
c3.4 +1.75

66.80 10.80
7.8
c3.0 +1.40

~~Federal Blvd.~~
~~Harbor Blvd.~~
~~Sec. 7~~

66.00 11.6
5.3
c6.3 +1.05

65.10 12.5
5.0
c7.5 +.70

64.20 13.4
10.1
c3.3 +.35

63.30 14.3
11.1
c3.2 0.40
7 South

TP 3.95 77.63 13.00 73.68 NW 1/4
BM 0.39 86.68 86.29 E 423rd

Senior Grade Santa Margarita St

to 54th St. to 200'

Sept. 18. 50 26
H.S. Mason
Garber
Rorer
W.O.

8+0 158.40 ^{10.75}_{3.37} 07.38

+75 158.22 ^{10.93}_{3.28} 07.65

+50 158.05 ^{11.10}_{3.67} 07.38

+25 157.87 ^{11.28}_{3.98} 07.30

1+0 157.70 ^{11.45}_{3.99} 07.46

+25 157.52 ^{11.63}_{4.21} 07.31

+50 157.35 ^{11.80}_{4.78} 07.57

+25 157.17 ^{11.97}_{4.96} 07.21

0+0 = Fx WP M.H. 12.15 157.00
to 54th

791 169.15 098 161.29

BM 7.00 162.22 155.22
Paving to
1 mperial
+ 33 mpt
4 ft out

Grades Storm Drain North West Outer Conn.

8+75 - 9+50

Location Sheet 10+26

Profile " 17

Sept 28 - 80
Saturday
H.S. Wagon
Garber
Rorer

23

0+76

60.00
9.85
3.50
66.35
10/11/48

→ 28'

9+50 N.W. 100

0+50.66

62.34
7.56
3.33
67.23
10/11

0+25.33

64.67
5.18
3.38
61.88
10/11

0+0

67.00
2.85
2.98
60.17
10/11

→ 190' →
16.0

8+75

North West Outer Conn.
Roberts Blvd

10' 16' 26' 10' 17'

B.M.

272

69.85

66.13

H.H. B.P.
Hoodston
2-72 Storm
Drain
11+04 N.W. 100

Grades Market St East of 32nd St.
 New South Curb Stationing #150 Curb Grades

Nov. 8-50
 H.S. Wilson
 Garber
 Rorer
 Pullen

Gutter Curb Grade

Areas Cubic Yds
 Exca. Embank Exca. Embank

+81.59

61.85 ✓
 8.63 ✓

+1.1
 15.4
 F1.23
 31.5 Near NW

+61.59

62.85 ✓
 7.63 ✓

-0.1
 12.9
 F1.20
 29.5
 12.9
 15.3
 -2.4
 34.5

+29.55 FC

1° 33' 08"

64.03 ✓
 6.45 ✓

-1.1
 2.7
 F3.8
 15.7
 2.7
 2.5
 +0.2
 20.7

22.87

BM

13.87 62.95 50.08

N.E. 7' Lat
 Market + 33rd

9+06.68

3° 16' 34"

64.56 ✓
 5.93 ✓

22.87 c=22.85

8+82.81

BC Lt 0° 00'

65.19 ✓
 5.29 ✓

CS 470.487 Bt Ford 2072-72
 Bt Ford 2072-72

Curb Grad

Areas		Cubic Yds	
Exco	Embank	Exco	Embank

11+07.96 5°48.75' ✓

54.21 ✓
2.78 ✓
out.

+87.96 4°35'02" ✓

55.21 ✓
2.73 ✓
3.9
3.1
C 0.8
10.8
3.1
3.0
+0.1
16.8

TP 2.86 59.17 664 56.31

+67.96 3°26.26' ✓

58.37 ✓
1.62 ✓
6.6
5.0
1.0

TP Cb Stakes 0.42 57.99 1291 57.57

+47.96 ✓ 2°17.51' ✓

57.57 ✓
12.91 ✓
5.4
11.2
10.5
F 5.8
18.7
+0.7
23.7

+27.96 1°08.75' ✓ out.

58.84 ✓
11.64 ✓
4.1 out

10+07.96 BCR

70.487 Cb Stakes
62.95 60.17 ✓
10.31 ✓

2.8
15.7
F 12.9
29.4
15.7
12.5
7.0
3.4
near
BY

Areas		Cubic Yds	
Exca	Embank	Exca	Embank

Carb Grade

+31.56

48.85 ✓
9.14

20	9.1
9.1	8.2
18.2	-0.7
17.7	22.7

12+07.19

49.85 ✓
8.14

30	9.2
9.2	9.2
18.4	-0.1
19.3	24.3

.0408

+82.82

50.84 ✓
7.15

20	9.3
9.3	9.3
18.6	-0.1
17.3	22.0
21	

4-24.37

+58.15 = 1.13 29.09 11

51.84 ✓
6.15 ✓

10	8.5
8.5	8.5
17.5	-0.1
21.3	25.3

TP

1.91 52.85 8.23 50.94

+28 0.6
10

11+22.23 EC

6°34.53'
57.99 CB Station
59.17

53.50 ✓
4.49

5.7	3.1
3.1	3.9
6.0	-0.2
12.0	17.0

Area		Cubic Yds.	
Exca	Embank	Exca	Embank

BM 65745

790 50.09

N 27° 24' W
Mar 4th 1888
50.08

BM

2.76 50.09

N. 27° 44' W
Mar 4th
+ 33rd North
50.08

13 + 02.66 EC

6° 41.6'

Exca
45.44
12.55

+ 79.89

3° 20.8'

16.68
11.31

2-23-86

12 + 55.93 BCRI

4786
10.13

50	6.5
6.5	7.8
7.8	17.3
17.3	

5799 cu yds.
52.85

Proposed Storm Drain Wabash Blvd
 + Wabash Ave "C" Line

offset to East

80' 18" RCP

Dec. 8-50
 H. S. Wilson
 Popo
 Rarc
 Pulley

28

196.40 FL. 9' 10" P
~~11.87~~
~~9.25~~
~~12.20~~
 10' 11" offset
 197.00 0+8.0
 11.27
 9.25
 12.02

196.35 195.60 +60
 11.95 12.07
 6.27
 10' East
 196.40
 10' East

18' 00" P
 195.70 194.80 +40
 12.57 13.47
 4.87
 10' East
 195.70
 10' East

Wabash Blvd
 "C" Line

12+0
 195.05 194.00 0+20
 13.22 13.47
 6.17
 10' East
 195.05
 10' East

193.20 194.40 0+0
 15.97
 14.05
 12' South
 194.40 0+0
 13.87
 14.05
 10.18

SW-NW
 C. West
 187+50 R. Van
 2072-29

BM 6.37 208.27 201.90

Montezuma Road Gutter Grades
 North Curb
 55th St. East

Oct 6. 50 29
 H. Sisson
 Garber
 Porter
 Pullen
 140.20006

				NE 8 P Montezuma Rd & Collier
B.M.	2.15	451.98	449.83	
	11.06	453.59	9.45 447.53	
	7.49	458.35	2.73 450.86	
	5.05	460.18	5.12 455.13	
	4.89	461.16	3.91 456.27	
B.M.			7.51 453.65	NE 4 1/2 Montezuma + 55th St

9+91	453.64	453.07
+75		453.18
+50		453.36
+25		453.54
9+0	454.39	453.72
6+25	455.31	454.64
2+97	456.48	455.81
+77	456.53	455.86
+57	456.59	455.92
+37	456.59	455.95
+17	456.55	455.88
+97	456.42	455.75
+77	456.21	455.54
+57	455.94	455.27
+37	455.56	454.89
1+17	455.8	454.49
+97	454.61	453.94
+80	454.13	453.46
0+11.5 66.5	453.66	453.00

Montezuma Road

55th St.

Alignment & Grades W/ Side
 1st to 2d & 3 Market & Federal

offset 2' back
 of Normal Curb

		Curb	Gutter
+89.54 = 1'8"	23° 48.75'	66.88 ✓ 0.96. 1.22 Fo. 78.	65.58
+82.18	22° 53.27' ✓	65.90 ✓ 1.34. 1.78 Fo. 44.	65.20
+57.18	19° 44.82' ✓	64.73 ✓ 2.31. 2.12 Fo. 82.	64.25
+32.18	16° 36.37' ✓	64.09 ✓ 2.95. 4.32 Fo. 43.	63.59
1+07.18	13° 27.92' ✓	63.61 ✓ 3.13. 4.22 Fo. 50.	63.11
+82.18	10° 19.47' ✓	63.35 ✓ 3.79. 5.22 Fo. 53.	62.85
+57.18	7° 11.02' ✓	63.25 ✓ 3.79. 5.32 Fo. 52.	62.75
+32.18 C 24.98	4° 02.57' ✓	63.20 ✓ 3.74. 4.70 Fo. 96.	62.80
+07.18	0° 54.12' ✓	63.55 ✓ 3.49. 2.12 Fo. 13.	62.85
0+0 = PRC	0° 00'	63.66 ✓ 3.38. 3.47 Fo. 09.	63.16

6704

Alignment + Grader Fly + Sky Side
Island #3

offset 2' Back
of Normal Curb Line

31

Curb

Gutter

+ 44.17 P.C.C.

62.06.
3.28.
5.35
F1.37 on BN

62.56 -

+ 34.15 = mid. point

62.84.
4.30.
3.09
F1.90. F0.93

62.34 -

+ 24.12 B.C. 20R.

62.70.
4.34.
5.24
F1.40

62.20 -

+ 07.18

62.59.
4.45.
5.22
F0.79.

62.09 -

+ 97.18 Line only

+ 82.18

62.58.
4.46.
5.48
F1.02.

62.08 ✓

+ 57.18

62.71.
4.33.
5.23
F1.10.

62.21 ✓

+ 54.09 ^{Approach}
B.C. East.

+ 32.18

62.99.
4.06.
4.89
F0.79.

62.49 ✓

+ 07.18

62.42.
3.63.

62.92 ✓

0 + 0 = P.R.C.

62.57.
3.47.

62.07 ✓

BM

4.39

67.04

62.65

R.P.H. 1910
N.Y. Federal
Vermont

Carb

Gutter

2 + 18.17 = 19

26.64

+ 91.53

17.36

+ 74.17

15

17 59.17

15'

6704

66.14.
690.
1.44.
FO.64.

64.80.
2.24.
2.25.
FO.51.

64.07.
397.
366.
FO.88.7Pm

63.53.
525.
459.
FO.88.7Pm

65.64 ✓

64.20 ✓

63.57 ✓

63.03 ✓

Alignment + Grades Ely Island #4
Also Sly

Ely Island #4

	Gut	Curb			Gut	Curb	
	61.76	62.26	270 493 F 1.87				
	61.10	61.60	345 512 F 1.97				
+ IR	59.90	60.40	465 678 F 1.77	+53.09	61.78	62.28	277 499 F 1.66
+ 71.15 = IR	59.85	60.35	470 640 F 1.75 Pav	+43.09 = Sly Island	61.61	62.11	294 457 F 1.63
+ 52.40 = EC	60.50	61.00	405 621 F 2.16	+28.09		62.10	295 438 F 1.73
c 20.21					61.60	62.10	295 369 F 0.74
+ 83.09	61.08	61.58	347 400 F 0.56	+03.09	61.73	62.23	283 347 F 0.65
c 20.23							
+ 1 1/2	61.51	62.01	304 363 F 0.59	0+0 = 1/4 IR	61.76	62.26	279 372 F 0.35
c 11.97							
0+0 = BC 50 P	61.76	62.26	283 314 F 0.37				
240	65.05	62.65	BRH 1061 NY Federal NY of Market	65.05			

Alignment + Grader Nly Island #2

South Side Island #2

Jan 31-51 35

F. Simon
Garber
Rorot

	Gutter	Cur	Carb.		Gutter	Carb.	
+13.25 = 27.23	51.81	51.85	52.35	2703.11 = i Rely End	51.81	52.31	12.23 13.78 F0.55
10'							
+03.25 = B.C.P.	52.32	52.82	52.82	10'			
13.78				+93.11	52.89	52.99	13.14 13.80 F0.66
+89.47	53.02	53.52	53.52	13.78			
25				+79.33	52.94	53.44	30.4 in lot 14.49 14.61 F0.52
+64.47	54.35	54.85	54.85	25			27.5 Federal M 12.15 2.28 6.93
25				+54.33	54.27	54.77	10.16 11.11 F0.95
+39.47 F.C. 0.28	55.77	56.27	56.27	25			
20.71				+29.33 F.C. 4' 24"	55.69	56.19	8.71 9.74 F1.00
3+18.73	57.00	57.50	57.50	20.71			
20'				1+08.59	56.92	57.42	7.51 8.89 F1.22
+98.73	58.29	58.79	58.79	10.71			
25				+87.85	58.20	58.70	6.23 7.85 F1.62
+73.73	59.89	60.39	60.39	20.71			
22.43				+67.11	59.48	59.98	4.95 6.08 F2.01
+51.30	61.22	61.72	61.72	20.71			
22.44				+46.37 B.C.P.	60.72	61.22	5.71 5.91 F2.20
+28.86	62.05	62.55	62.55	20.37			
13.8'				+20 = F.C.	61.95	62.45	2.18 4.22 F2.16
2+15.06 = i.R.	62.31	62.29	62.79				
West End Island	62.31	62.29	62.79				
BM	121	63.86	62.65	0+0 = i.R. S. Nly	62.58	63.03 East	63.04 North

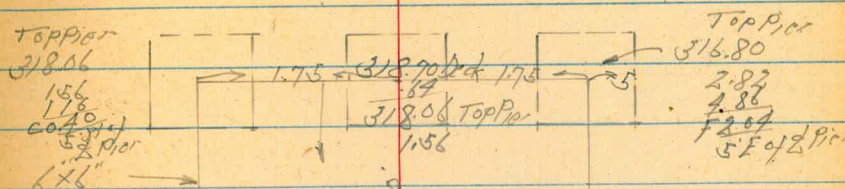
40th & Landis St. Foot Bridge

Batter 1 to 5'
Deck to Bottom Cap 1.90
Slope 11° 18'

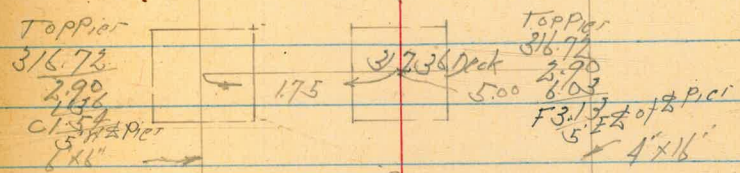
Sheet 50

Jan. 3-51 36
H. J. Wilson
Garber
Rorer

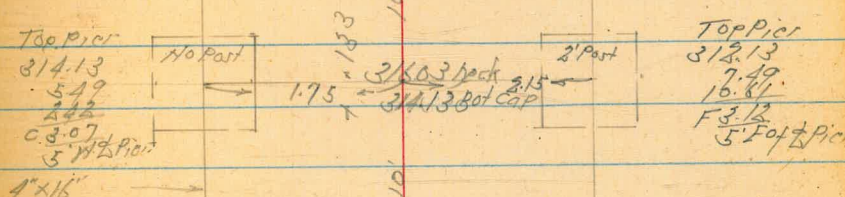
+50



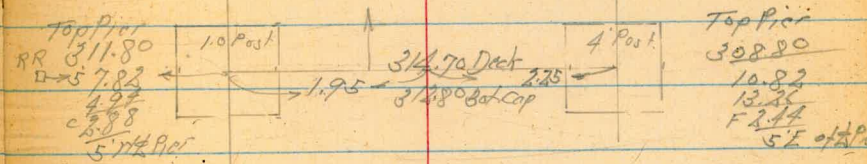
+40



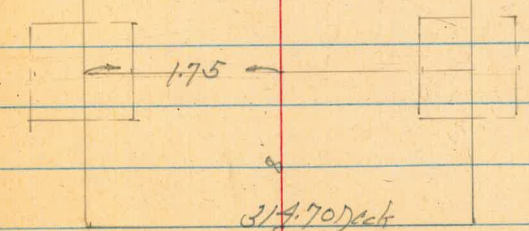
+30



+20



+08 = Bend #8



0+0

BM

9.17

31962

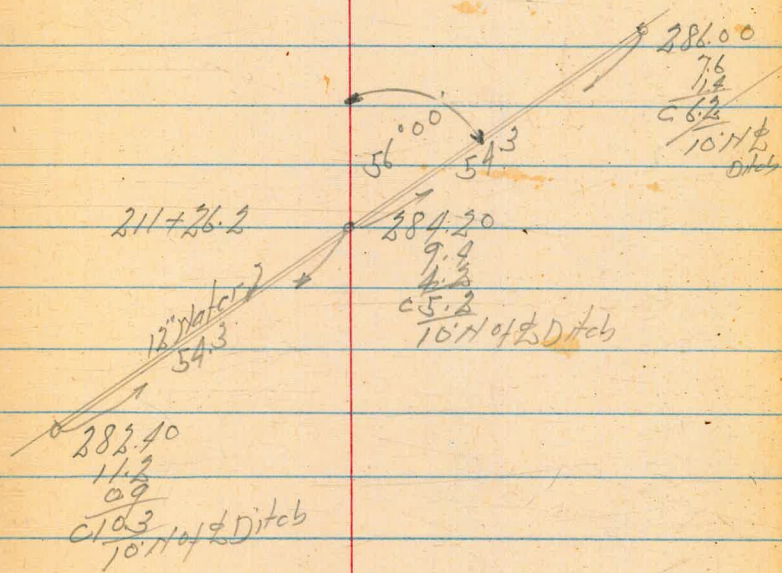
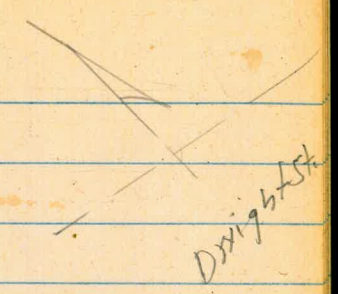
310.45

on 25th + 45
3154.50
2079-52

Sly Bridge 2

Grades 12" Water Line
 Nabark Blvd at Dwight St

Jan 3-51
 H. S. Mason
 Garber
 Rorer



Nabark Blvd

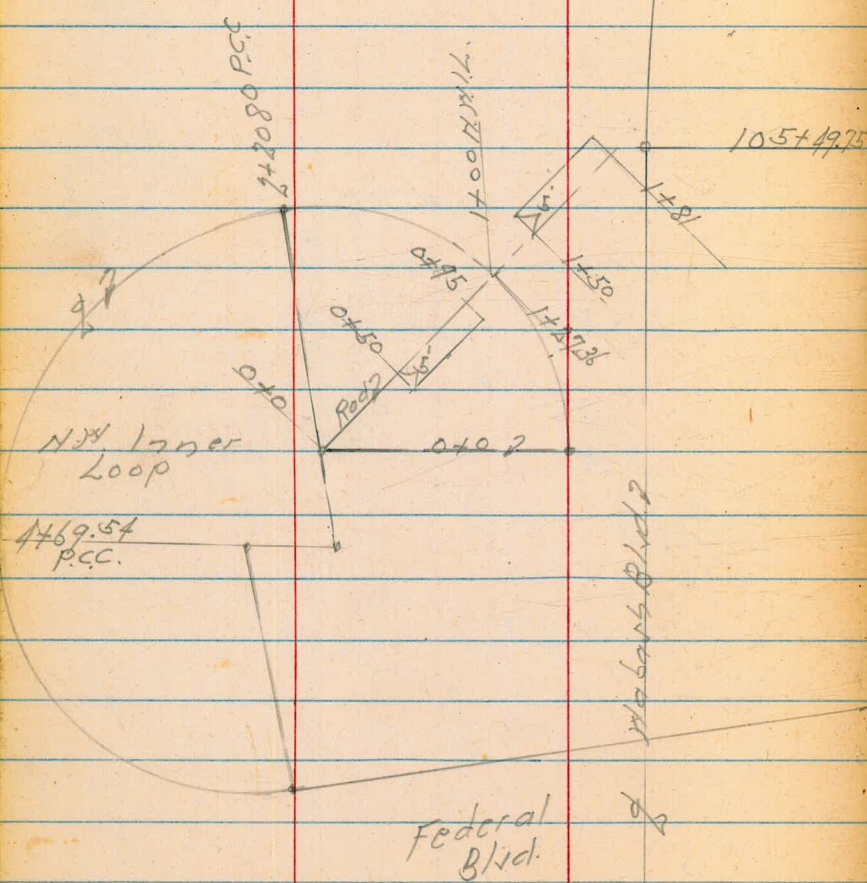
BM 2.42 293.60 0.7 25' 1/2
 291.18 211 + 81.27
 2099.50

Daylight Area North West Inner Loop
And Habash Blvd.

Jan 7. 3. 51
F. Sisson
Garber
Rorer

Sheet 29 38

Lt. Red 2 Rt.



Station	Station	Slope	Lt.	Red 2	Rt.
1+81	64.00	2:1	13.8 7.2 C13.4 29.8	13.8 0.0 C13.8 23 = Top Cut Habash Blvd.	
1+50	63.60	2:1.5 Slope	14.2 5.8 C8.4 31.8	14.2 2.9 C11.3 0.0	
105+19.75		B.C.P.T.			
795	58.60			19.2 8.2 C11.0 0.0	19.2 2:1 5.1 C12.1 33.2 = Slope Cut NW L.
+65	58.00			19.8 12.7 C7.1 0.0	19.8 2:1.5 Slope 5.2 C14.5 34
0+50	57.70			20.1 20.1 0.0	
BM	11.68		77.81	Red 2	66.13 NW BP NW Cor 2700 NWOC

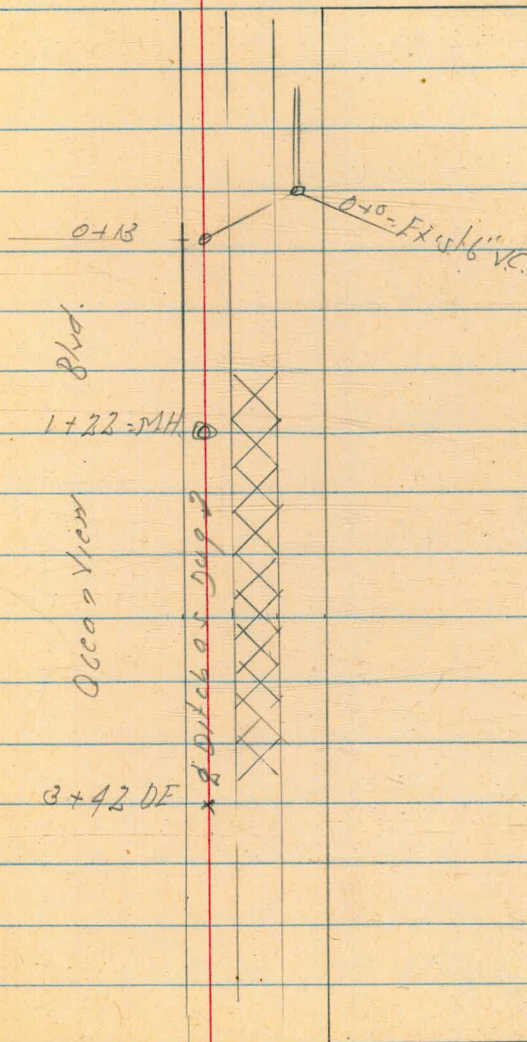
Setter Grader South Side Ocean View Blvd.
Between 35th + 36th St.

Note: Ditch dug
cuts set on South Side
of Ocean View Blvd

Jan 24-51 39
F. S. Simon
Garber
Rorer

36th

3+42		61.63	7.31 364 c3.67
+98		61.32	7.62 392 c3.70
+56		61.01	7.94 417 c3.77
+10		60.70	8.24 450 c3.74
+66		60.39	8.55 473 c3.82
1+22 = M.H		60.09	8.85 493 c3.92
+85.66	.007	59.83	9.11 514 c4.00
+49.33		59.58	9.36 533 c3.73
+13		59.33	9.61 556 c4.05
0+0 = Existing 6' VC.		9.70	59.24
BM	4.71	68.99	64.24 SET OFF Ocean View +36th St



35th St.

Wabash Blvd. 40th St. Sec.
Grades Storm Drain University Ave
38th St. to 40th St.

No. 22808

April 21-51
H.S. Mann
Garber
Parker
Bentley

40

		Flow Line		+50		338.96	12.32. 3.77 8.55.
2+0		338.18	1310. 5.36 c780.76 142 on Pav.				
				+25		338.88	12.20. 3.26 8.59.
+75		338.10	1318. 5.83 c785.				
				4+0		338.80	12.18. 3.62 8.87.
+50		338.03	1325. 5.45 c780.				
				+75		338.72	12.56. 4.10 8.46.
+25		337.95	1333. 5.52 c787.		+65.06 = 47.39 1/2 ft. to North		
				+50		338.65	12.63. 4.13 8.50.
1+0		337.87	1341. 5.60 c787.				
				+25		338.57	12.71. 4.26 8.7.
+75		337.79	1349. 5.73 c776.				
				3+0		338.49	12.79. 4.34 8.45. 142 on Pav.
+50		337.72	1356. 5.76 c780.				
				+75		338.41	12.87. 4.80 8.67. 142 on Pav.
+25		337.64	1364. 5.72 c8.52.				
				+50		338.34	12.94. 4.88 8.56. 142 on Pav.
0+0 =	Exist 24" RCP 38th St.	346.20	5.08 5.51 5.94 c707 142 on Pav.				
0		337.58	1372. 5.65 c8.21. 142 on Pav.				
				2+25		338.26	13.02. 5.15 c787. 142 on Pav.
BM	404	351.28	4728 P 47 North St + 397.58.			351.28	

The image shows an open notebook with two facing pages. The pages are cream-colored and feature blue horizontal ruling. Each page has a vertical red margin line on the left side. The notebook is bound in the center, and the pages are slightly aged. The right page has the number '48' written in the top right corner.

Wabash Blvd. 40th St. Section 2
Paving + Curb Grades

Staker off set 3' back
of face of Curb

May 10. 51
H.S. Brown
Porter
Berfolucci

45

	SM 342.81 4.85 + 20.75 347.66	SM 8P Wright 4.85 + 20.75 347.66	17.81 ft 14	17.81 ft 14	17.81 ft 14	17.81 ft 14	17.81 ft 14	17.81 ft 14	17.81 ft 14	East Curb SM 8P 4.25 347.07
	Curb	Gutter	Gutter	Curb	Gutter	Gutter	Curb	Gutter	Curb	
227+14	344.41 3.25 3.22 FO.35	343.74	344.16	344.24	344.74 4.19 3.27 FO.08	344.24	344.00	342.42	344.09 2.98 3.42 FO.45	
+94	344.63 3.53 3.83 FO.30	343.47	343.88	343.95	344.65 4.18 5.69 FO.21	343.95	343.69	343.10	343.77 3.30 3.50 FO.20	
+74	343.85 3.81 4.02 FO.37	343.18	343.58	343.65	344.15 4.78 3.72 FO.94	343.65	343.38	342.78	343.45 3.12 3.76 FO.14	
+54	343.56 4.10 4.27 FO.17	342.89	343.29	343.35	343.85 5.08 3.99 FO.81 0.91	343.35	343.08	342.47	343.14 3.93 4.09 FO.76	
+34	343.28 4.38 4.49 FO.11	342.61	343.03	343.08	343.58 5.35 2.20 FO.85	343.08	342.80	342.15	342.82 4.25 4.39 FO.14	
+20 - Cb EC RT + LT					343.43 5.50 6.31 FO.84					
226+14 - N.L. Wrightman	343.00 out	342.33	342.79	342.87	343.37 out	342.87	342.54	341.83	342.50 out	
226+12 = 2' Cb. Rad 8					343.76 5.57 6.53 FO.95					
Grader B.M.	6.15	348.93	342.81	SM 8P Wrightman 4.40 + 20.75						

Curb Grade
May 18.51

46

W Curb	Curb	Gutter	"4	Gutter	Curb	Gutter	"4	Gutter	Curb	East Curb
347.66X										347.07X
+54	346.33 1.44 1.86 F0.42	345.55	346.04	346.18	346.68 2.35 3.58 F1.31	346.18	346.01	345.49	346.16 0.91 1.14 F0.23	
+84	345.99 1.67 2.20 F0.53	345.32	345.80	345.91	346.44 2.47 3.72 F1.23	345.94	345.75	345.23	345.90 1.17 1.51 F0.34	
228+14	345.74 1.92 3.38 F0.43	345.07	345.54	345.67	346.17 2.76 4.00 F1.24	345.67	345.48	344.95	345.63 1.45 1.83 F0.38	
+94	345.49 2.17 3.65 F0.48	344.82	345.28	345.40	345.90 3.63 4.85 F1.22	345.40	345.20	344.66	345.33 1.74 2.16 F0.38	
+74	345.33 2.43 3.84 F0.41	344.56	345.01	345.12	345.62 3.31 4.49 F1.18	345.12	344.91	344.36	345.03 2.04 2.36 F0.31	
+54	344.97 2.69 3.07 F0.38	344.20	344.74	344.84	345.34 3.69 4.77 F1.18	344.84	344.62	344.06	344.73 2.34 2.57 F0.23	
227+34 - P.V.C.	344.69 2.97 3.30 F0.33	344.02	344.45	344.54	345.04 3.89 4.72 F1.24	344.54	344.31	343.74	344.41 2.57 3.01 F0.34	

	Curby	Carb.	Gutter	"4	Gutter	Carb	Gutter	"4	Gutter	Carb	
	34766 T 0.84										347.07 T 5.67
+94	34682 49.8 351.8	347.63 4.17 4.46 Fo.39	346.96		347.70	348.20 5.23 6.82 Fl.39	347.70		347.11	347.78 5.53 5.72 Fo.19	346.90 8.91 353.31
+74		347.46 4.34 2.65 Fo.31	346.79		347.51	348.01 5.12 6.75 Fl.33	347.51		346.91	347.58 5.73 5.89 Fo.16	
TP	690	353.43	2.40	346.53							
+54		347.22 4.53 4.83 Fo.30	346.60	347.12	347.31	347.81 1.12 2.48 Fl.28	347.31	347.18	346.70	347.37 5.94 6.11 Fo.17	
+34		347.08 0.58 0.84 Fo.26	346.41	346.93	347.10	347.60 1.33 2.70 Fl.37	347.10	346.95	346.47	347.14 6.17 6.33 Fo.15	
229+14		346.88 0.78 0.98 Fo.20	346.21	346.72	346.89	347.39 1.54 2.85 Fl.31	346.89	346.73	346.24	346.91 6.90 8.65 Fo.25	
+94		346.67 0.99 1.37 Fo.38	346.00	346.50	346.66	347.16 1.77 2.99 Fl.26	346.66	346.50	346.00	346.67 0.40 0.66 Fo.26	
228+74		346.45 1.31 1.67 Fo.16	345.78 348.93	346.27	346.42	346.92 2.01 3.24 Fl.23	346.42	346.25	345.74	346.41 0.66 0.92 Fo.28	

	Curb	Gutter	1/4	Gutter	1/4	Gutter	1/4	Gutter	Curb
+34 EVC	348.64 3.16 3.41 FO.25	347.97	348.55	348.77 E.O.66	349.29 4.14. 5.17 FI.13.	348.79	348.71	348.29	348.96 4.35 4.52 FO.17
251801									
231+14	348.53 3.37 3.58 FO.31	347.86	348.43	348.67	349.17 4.31. 5.17 FI.21.	348.67	348.58	348.15	348.82 4.19 4.63 FO.14
+94	348.39 3.41 3.77 FO.36	347.72	348.29	348.52	349.02 4.41. 5.73 FI.32.	348.52	348.43	348.00	348.67 4.64 4.77 FO.13
+74	348.26 3.54 3.86 FO.32	347.59	348.15	348.38	348.88 4.55. 5.88 FI.33.	348.38	348.38	347.84	348.51 4.80 4.89 FO.09
+54	348.12 3.68 3.87 FO.21	347.45	348.00	348.21	348.71 4.72. 5.11 FI.39.	348.21	348.11	347.67	348.34 4.97 5.12 FO.15
+34	347.97 3.83 3.95 FO.12	347.30	347.85	348.06	348.56 4.87. 5.29 FI.32 1.42	348.06	347.95	347.50	348.17 5.14 5.29 FO.15
2020+14	347.81 3.99 4.80 FO.21	347.14	347.68	347.89	348.39 5.04. 6.54 FI.50.	347.89	347.76	347.30	347.97 5.34 5.47 FO.12

Curb Gutter 1/4 Gutter 1/4 Gutter 1/4 Gutter Curb

W.Cb
351.80x
2.32
349.48
2.32
351.80x

Note 2 Grade 231.31 to 232+14.30
Changed For Curb Looker

351.74

353.317

350.22
331.
105
10.81

353.437
2.73
343.508
HERP
350.60

232+14.30

S.A. University

34910
out
Set 9c

348.43

349.33

c.107

34970

350.20
out

349.70

349.53

348.83

349.50
out

350.68
342.81
7.87

+94

348.99
2.81
2.88
10.07

348.32

349.14

c.096

34977

349.97
3.46
4.66
11.20

349.47

349.33

348.70

349.37
2.37
2.50
10.19

5.14 9.20
12.00 1.52
7.88

+94

348.87
2.92
3.03
10.15

348.20

348.94

c.0.86

34921

34974
3.46
5.68
11.39

349.24

349.12

348.56

349.22
2.51
2.81
10.30

231+54

348.76
3.04
2.20
10.16

348.09

348.75

c.0.96

34902

34952
3.91
5.22
11.81

349.02

348.92

348.43

349.10
2.21
4.38
10.17

2.70
2.91
10.21

353.43

Curb Grades East Side 40th St
North of Unit.

50

Top Curb

TP 480 255.77 390 350.97

+97.56 = B.C.H.
350.90
3.97

+72.56
350.58
4.29

+49.56 = B.C.H.
350.26
4.61

+39.56 = N.Y. 1st
350.12
4.75

+28.56 = S.Y. 1st
350.09
4.78

+17.67
350.06
4.81

+11.78
350.04
4.83
4.80
6.03
4.07 1st

+5.89
350.02
4.85

2010 = B.C. 15th
on driv
350.00
4.87
3.97 1st

BM 427 25487 350.60

+67.00 P.C. 6th Cb

351.84⁷⁹ - Exits Cb

+49.64

351.80⁵⁵
4.22

+37.28 = P.R.C.

351.37
4.70

1214.92

351.13

255.77

4.63
1.54
6.09
3.07 1st

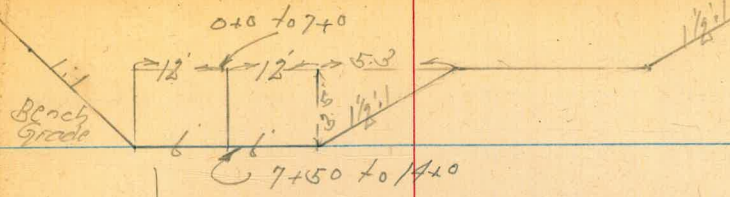
Wabash Blvd. Sec. H. Channel Change
 Ft. Wabash P.C.

Align. + Cross Sec. 2/14-67

July 16-51
 H.S. Smith
 Porter
 Bertalucci
 Fritz

51

		H	Z	Rt Channel Grade	Spine Grade	
+50		18.4 3.6 c7.4 19.4		188.12	10.4 3.5 c3.5 17.3	191.62 6.9 0.0 20.5
2+0		11.3 1.8 c9.5 21.5		187.28	11.3 2.8 c3.5 17.3	190.78 7.8 0.8 22.5
+50		12.2 2.6 c9.6 21.6		186.38	12.2 8.7 c3.5 17.3	189.88 8.7 0.0 3.8
TP	8.50	198.56	3.95	190.06		
1+0		8.5 8.6 c4.9 16.9	8.10	185.48	8.5 4.6 c3.7 17.9	188.98 5.0 out.
+50		9.4 5.2 c4.1 16.1		184.58	9.4 5.9 c3.5 17.3	188.08 5.9 0.0 3.8
0+0		10.3 7.8 c2.5 15.3		183.68	10.3 6.8 c3.5 17.3	Same stake 187.18 6.8 0.0 2.1
BM	5.74	194.01		188.27	07.5 stake 0+50 2/14-68	



	Lt.		RT.		
			Channel		
			Grade		
5+0	12.7 2.6 -8.3 20.3	192.68	12.9 2.4 -3.5 17.3	196.18	9.4 9.2 -0.0 87
+50	13.8 4.0 -9.8 21.8	191.78	13.8 10.3 -3.5 17.3	195.28	10.2 10.2 -0.0 27.2
1+0	14.7 6.8 -7.9 19.9	190.88	14.7 11.2 -3.5 17.3	194.58	11.2 11.2 -0.0 22.7
+67.98	BCRT	190.34		193.84	
TP	12.34	205.62	5.28	193.28	out
+50	8.6 2.3 -6.3 18.3	189.98	8.6 5.1 -3.5 17.3	193.48	5.1 5.1 -0.0 30.9
3+0	9.5 5.0 -4.5 16.5	189.08	9.5 5.0 -3.5 17.3	192.58	6.0 6.0 -0.0 17.3

198.56

+4515 BCRT.

It

Channel
Grade Rt.

Bank
Grade

10331 FC

199.29
out

202.79

8+0

10.5
6.4
6.1
10.1

199.20

10.5
6.2
6.2
12.3

202.70

7.0
out.

+150

111

11.9
8.5
9.6
9.6

197.79

11.1
11.9
8.1
9.8
11.7

201.29

8.4
out.

7+0

Set out
Habash Ave

13.3
13.3
0.0
20.0 Set

196.38

10.3
9.8
3.5
17.3

199.88

9.8
2.8
0.0
27.7

+90 RT

196.10
out

199.60

+50

14.3
9.9
6.4
16.4

195.38

14.3
10.8
3.5
17.3

198.88

10.8
10.8
0.0
12.0

TP

9.29

209.68

5.23

200.29

4+015
MH Set
Habash Ave
Victoria

6+0

11.1
4.4
6.7
18.7

194.48

11.6
7.5
3.5
17.3

197.98

7.6
10.0
11.0

5+50

12.0
3.4
6.7
19.6

192.58

12.0
8.5
3.5
17.3

197.08

8.5
8.0
0.0
41.3

205.67

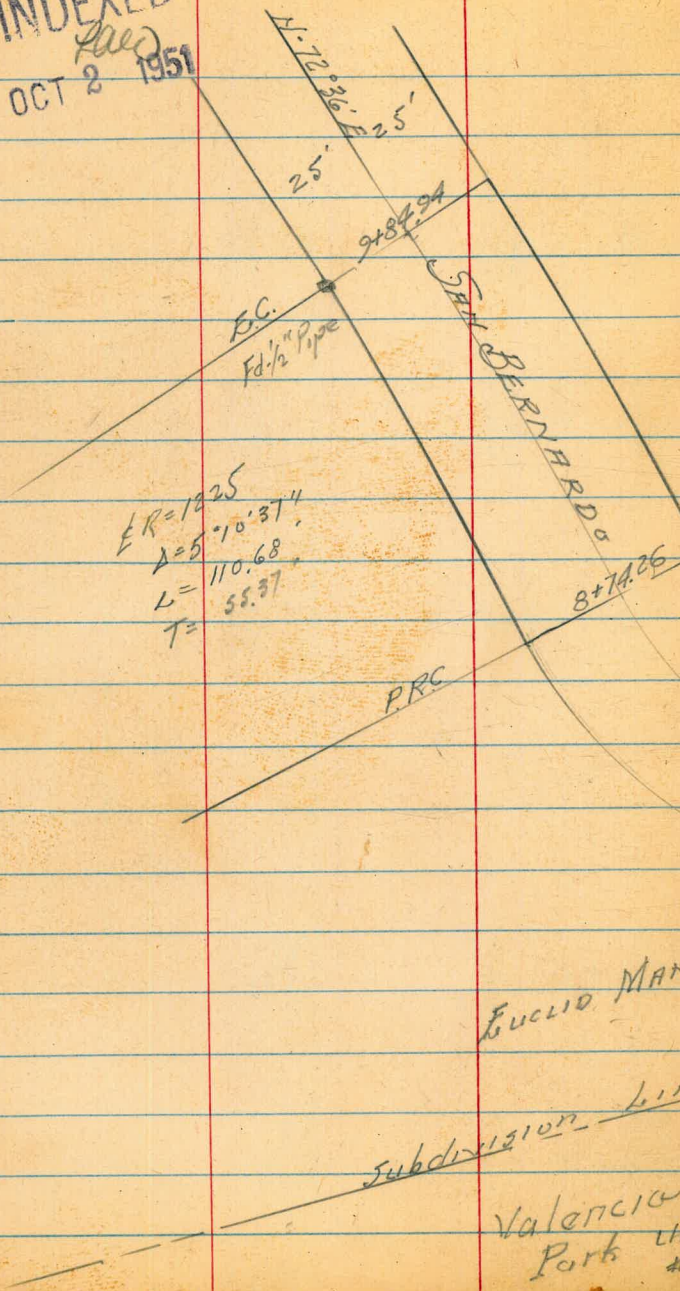
		Lt.		Channel Grade	Rt.	Bench Grade	
+50	4° 21.98	12.8 18.2 0179 7.9		209.07	12.8 7.3 03.5 11.3	212.57	9.3 9.0 0.0 242
11+0	3° 39.01	14.2 10.7 08.5 9.5		207.66	14.2 10.7 03.5 11.3	211.16	18.7 0.0 22.3
TP	8.44	221.90	0.86	212.46	0.11 15.1 11.19 212.47		
+50	2° 56.04	8.1 4.6 03.7 9.7		206.25	8.1 4.6 03.5 11.3	209.75	4.6 4.6 0.0 18.5
10+0	2° 13.07	9.5 6.1 03.4 7.4	0.85	204.84	9.5 6.0 03.5 11.3	208.34	6.0 6.0 0.0 16.2
+50	1° 30.10	10.9 7.4 03.5 9.5		203.43	10.9 7.4 03.5 11.3	206.93	7.4 7.4 0.0 15.5
9+0	0° 47.13	12.3 8.2 04.1 10.1		202.02	12.3 8.8 03.5 11.3	205.52	8.8 8.8 0.0 17.8
8+50	0° 04.16	13.7 9.8 03.9 9.9		200.61	13.7 9.8 03.5 11.3	204.11	10.2 10.0 0.0 15
TP	10.09	214.32	5.45	204.38			
		209.68					

	Δt	Chord	Rt	Bench Grade
14+0	$\begin{array}{r} 4.5 \\ 4.8 \\ \hline 9.0 \\ 6.0 \end{array}$	216.12	$\begin{array}{r} 5.8 \\ 2.2 \\ \hline 8.0 \\ 7.3 \end{array}$	$\begin{array}{r} 2.1 \\ 2.6 \\ \hline 4.7 \\ 3.0 \\ \hline 21.0 \end{array}$
+50	$\begin{array}{r} 7.2 \\ 6.6 \\ \hline 13.8 \\ 7.6 \end{array}$	214.71	$\begin{array}{r} 7.2 \\ 3.7 \\ \hline 10.9 \\ 11.3 \end{array}$	$\begin{array}{r} 3.7 \\ 3.4 \\ \hline 7.1 \\ 0.0 \\ \hline 23.0 \end{array}$
13+0	$\begin{array}{r} 8.6 \\ 6.8 \\ \hline 15.4 \\ 8.8 \end{array}$	215.30	$\begin{array}{r} 8.6 \\ 5.1 \\ \hline 13.7 \\ 11.3 \end{array}$	$\begin{array}{r} 5.1 \\ 5.1 \\ \hline 10.2 \\ 24.5 \end{array}$
+92.70 FF.	6° 25' 15"	out		
+50	5° 47' 92"	211.89	$\begin{array}{r} 10.0 \\ 1.5 \\ \hline 11.5 \\ 11.3 \end{array}$	$\begin{array}{r} 6.5 \\ 6.5 \\ \hline 13.0 \\ 28.5 \end{array}$
12+0	5° 04' 95"	210.48	$\begin{array}{r} 11.4 \\ 7.9 \\ \hline 19.3 \\ 11.3 \end{array}$	$\begin{array}{r} 7.9 \\ 7.9 \\ \hline 15.8 \\ 28.0 \end{array}$

221.90

INDEXED

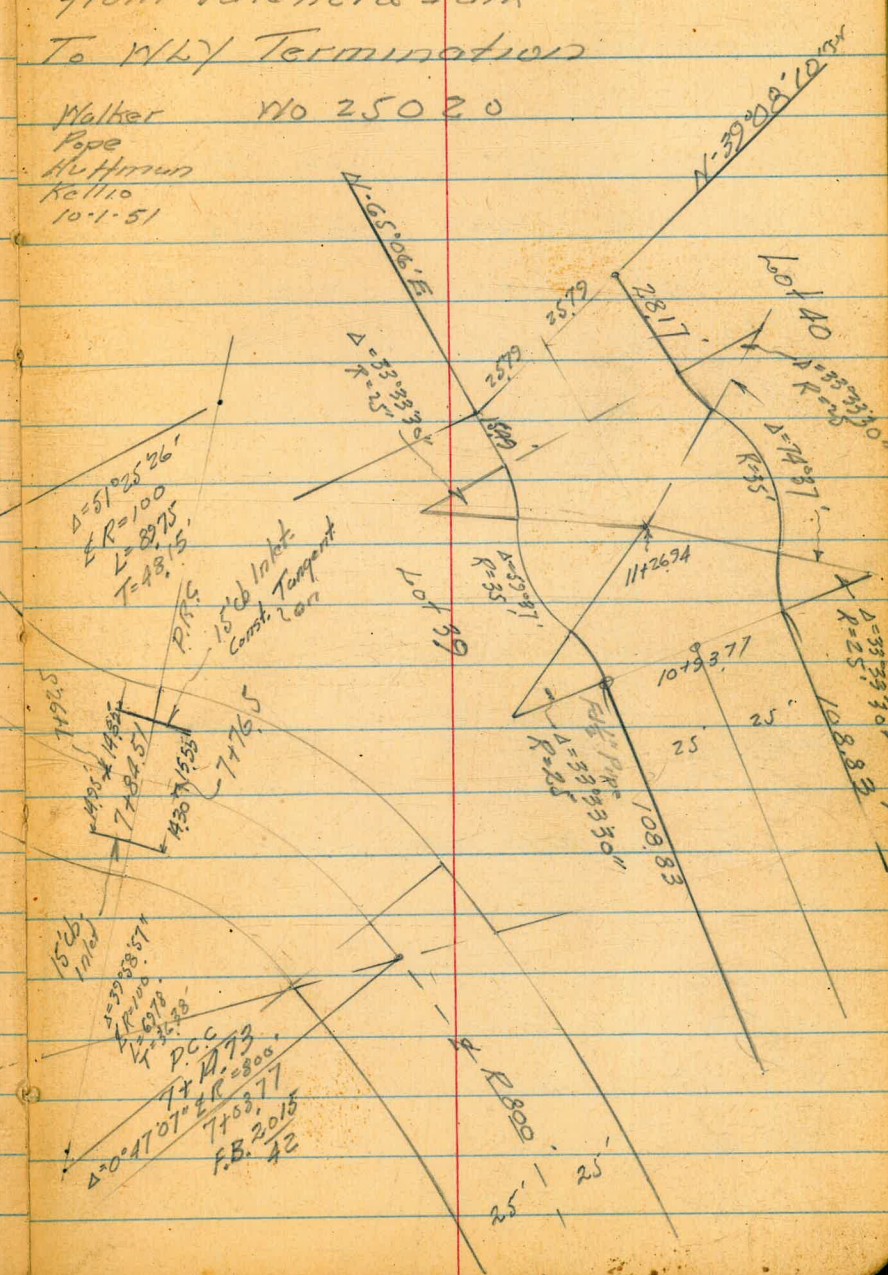
OCT 2 1951



$E.R = 1225$
 $\Delta = 5^\circ 10' 37''$
 $L = 110.68$
 $T = 55.37$

CROSS SECTIONS - SAN BERNARDO TERRACE⁵⁶
 from Valencia Park
 To W47 Termination

Walker
 Pope
 Hoffman
 Kellio
 10-1-51



$\Delta = 51^\circ 25' 26''$
 $E.R = 100$
 $L = 87.5$
 $T = 43.5$

$\Delta = 0^\circ 47' 07''$
 $E.R = 2800$
 $L = 715.77$
 $T = 2015$
 F.B. 42

San Bernardo Terrace

Stations

Chk Starting. 8.10. 122 183.40 ✓
 TP 10.98 184.62 0.55 174.14
 TP 13.27 174.62 0.24 161.42
 1104 161.66 150.62 = BM

7+84.51 1/2 Inlet

7+92.5 = West end Inlet (outside)

7+84.51 1/2 Inlet

7+76.5 - Sep. 16' cb Inlet - outside Meas.

486 155.48 150.62
 N.V. Cor cb Ref
 Set BM. Chisled Square 1104 150.62
 TP 0.39 161.66 12.91 161.27
 T.P. 0.10 174.18 10.27 174.08
 0.28 184.35 183.40

Lt.

L

Rt. 57

(Sections discontinued per last Barret)

672
 2

150.43 151.25 150.65 149.79
 490 500 423 483 569 555
 146 146 146 152 152 152
 Gut Grating cb. cb. Grating

150.25 151.10 150.62 149.77
 523 438 486 571
 1495 1495 1485 1485
 Gut Gut

150.63 151.46 150.69 149.80
 485 402 479 568
 143 1430 1555 1555
 Gut Gut Top cb Gut

155.48

N.V.B.P. San Jacinto = San Bernardo
 FB. 2015-43

CROSS SECTION INGRAHAM ST.
FROM NORTH LINE LA PLAYA AVE
TO MOORLAND DRIVE.

Walker 140 31974
Pope
Huffman 11-1-51

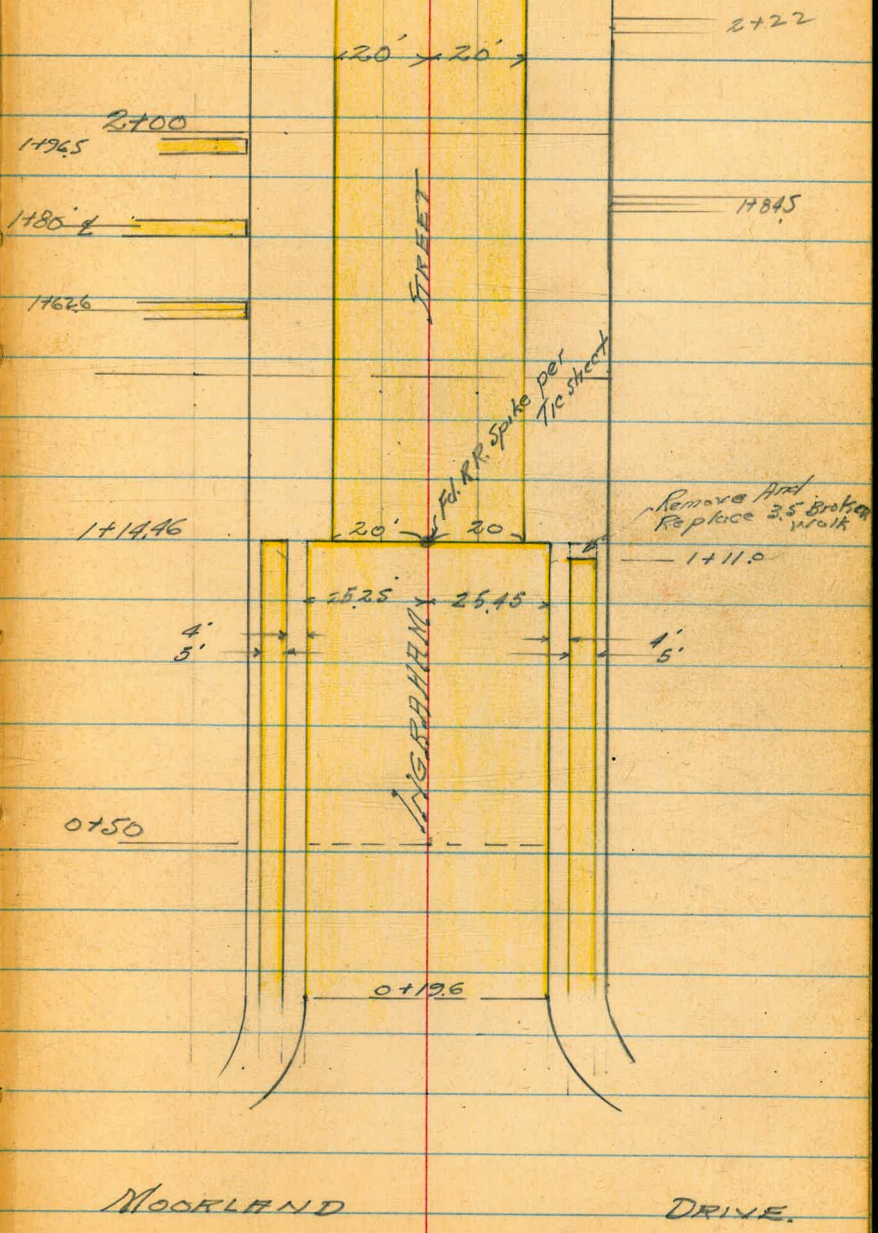
Soil Sample 21 1/4 3450

INDEXED
LAW
NOV 6 1951

Ingraham St - Cross Sections

2+50

59



Ingraham St

5100 - 17.5 x 20 x 20 x 17.5'

4183L

4150

4132

4122

4100

3127

3161

3150

3101

3100

21822

21805

2150

57

WIGGERS

4106

3187

3179

3138

3129

3123

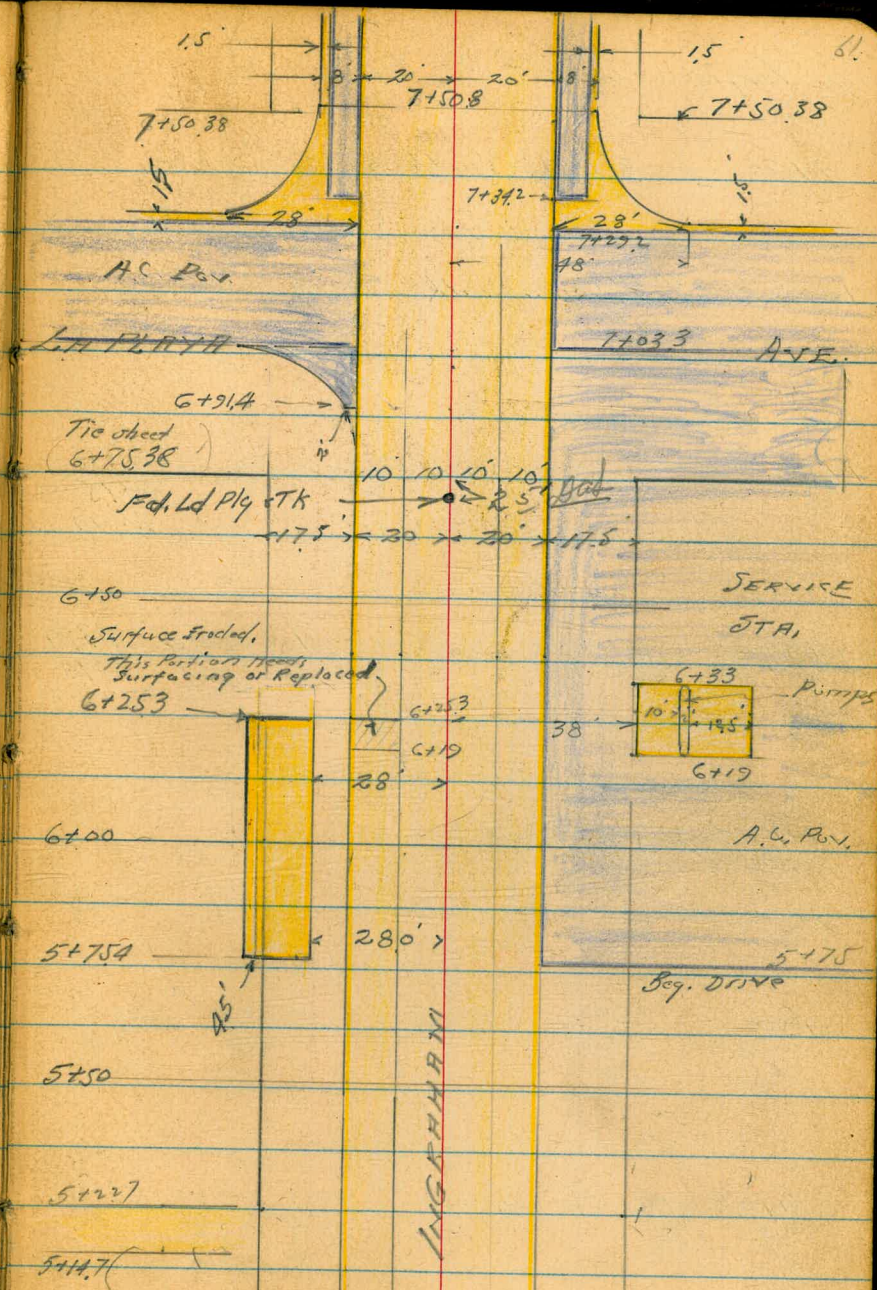
3125

21855

Ingraham St

INDEXED

NOV 6. 1951



Ingraham St

2

62

1480 f 3' Conc. Walk

3259 3232
50 176
Walk Walk

1462.6 = f 3' Conc. Walk

3279
376
Walk

1450

330 330 327 3217 3231 3241 3230 3210 320 328
375 35 34 20 10 10 20 25 37.5
Lamin

1446

337 3384 3389 3367 3300 3307 3299 3305 3299 3285 2263 3340 333
375 343 293 Walk 253 253 20 10 10 20 2545 2545 37.5
Gut Gut cb

1411 = ~~f 3' Conc. Walk~~

3349 3356
2945 3445
Walk Walk

0450

3379 3323 3357 3367 3311
253 253 255 255
cb Gut cb Gut

0 +19.6 = R.C. cb Ret.

3385 3399 3397 3379 3385
253 253 255 255
cb Gut cb cb

33.87

N.W. B.P. Ingraham & Moorland.

Direct Filan Rod

Ingraham St.

3+03 = 4' Conc. Walk

3+00 Cont.

3+00

2+89.2 = End Conc. Drive

2+85.5 = 2' Conc. Walk

2+80.5 = Beg. Conc. Drive

2+50

2+22 = 2.5' Conc. Walk

2+00

1+96.5 = 3' Conc. Walk

1+84.5 = " " "

Lt.

♀

Rt.

62

3093 3016
50 377
Walk Walk

302
43

304 30.4
375 43
Low 77 Low 77

302 293 2923 2945 2956 2993 2923 293 301
375 32 20 10 10 20 25 33

3073 3033
50 379
Drive Drive

(3036 3060) 2785
373 50
Walk Walk

3076 3045
50 379
Drive Drive

312 302 304 3013 3040 3048 3038 3019 302 312 315
43 375 31 20 10 10 20 26 31 375

3190 3225
325 50
Walk Walk

322 322 319 313 3111 3135 3144 3131 3115 314 320 325
40 375 34 31 20 10 10 20 26 28 375
Low 77 Low 77 Low 77

3241 3209
485 38
Walk

3232 3249
327 48
Walk Walk

Ingraham 571

4700

3+87 = End Drive

3+79 = Beg. "

3+69.7 = End Conc. Drive

3+61.5 = Beg. Conc. Drive

3+50

3+38 = End Drive

TR on Rock

28.75

3+29 = Beg. Conc. Drive

3+19.5 = End Ribbon Drive

3+12.5 = Beg. Conc. Ribbon Drive

Lt.

L

Rt

64

280	280	2769	2791	2802	2790	2768	280	280
43	375	20	10		10	20	375	43
							Lawn	Lawn

2771	2777
37.6	50
DRIVE	DRIVE

2772	2775
37.6	50
DRIVE	DRIVE

2919	2900
50	37.7
	DRIVE

2927	2925
50	37.7
DRIVE	DRIVE

291	291	286	2828	2845	2856	2844	2827	286	290	290
43	375	33	20	10		10	20	22	375	43
Lawn	Lawn								Lawn	Lawn

2849	2873	2909	2911
20	225	33	50

2868	2883	2906	2903
20	225	33	50
	8K		
	DRIVE		

2991	3026
37.6	50
DRIVE	DRIVE

3000	3027
37.6	50
DRIVE	DRIVE

Ingraham St.

Lt.

Rt.

Rt.

65

5+50 cont

27.0 268
375 43

5+50

260 262 270 2725 27.33 2716 2694 267 267 271
43 375 20 10 10 20 21 24 25

5+227 = End Conc. Drive

27.01 2716
50 377

5+147 = Beg. Conc. Drive

2699 2705
50 377
Drive Drive

5+00

27.2 272 2723 2749 27.55 2740 2713 272 262 263
43 375 20 10 10 20 30 375 38
Lavin Lavin

4+83 = 1/2 3' Conc. Walk

2739 2749
48 377
Walk Walk

4+50

276 276 2745 2767 27.79 2764 2744 275 271 264
43 375 20 10 10 20 34 375 50
Lavin Lavin

4+332 = End Drive

2772 2789
50 380
Drive Drive

4+252 Beg. "

2775 2792
50 380
Drive Drive

4+06 = 1/2 3' Conc. Walk

2795 2804
37.5 50
Walk Walk

Ingraham St.

Lt.

L

Rt.

86

C+50

27.0	26.7	26.38	26.64	26.72	26.57	26.35	26.43	26.96	27.19
40	375	20	10		10	20	25	375	50

C+25.3

27.43	27.05	26.41	26.62
375	280	280	20
Walk	cb.	Gut	

C+33 = End Conc. Slab + Pumps

27.30	27.39
38	50
conc. slab	conc. slab

C+19 Beg " " " "

27.24	27.4
38	50
conc. slab	conc. slab

C+00

27.41	27.06	26.45	27.77	26.99	27.07	26.94	26.70	26.74	27.01	27.17
375	280	280	20	10		10	20	25	375	50
	cb.	Gut								

5+75.4 = Beg. Exist. Combination Curb & Walk on lit.

27.45	27.25	26.55	26.89
375	280	28	20
Walk	cb.	Gut	

5+75 = Beg. Asphalt Drive to Service Station

26.85	27.19	27.08
20	375	50
		DINE

Ingraham St.

7+30.7 = N of line

7+29.2

7+12.88 = E La Playa Ave.

7+03.3

7+00

6+91.4

6+75.38 = SLY line La Playa Ave

Lt.

E

Nt.

67

2672	2722	2627	2619	2626	2606	2603	2598	2648
48	48	20	10		10	20	48	48
Out	Ch						Out	Ch

2674	2627	2621	2627		2610	2607	2603
48	20	10			10	20	48

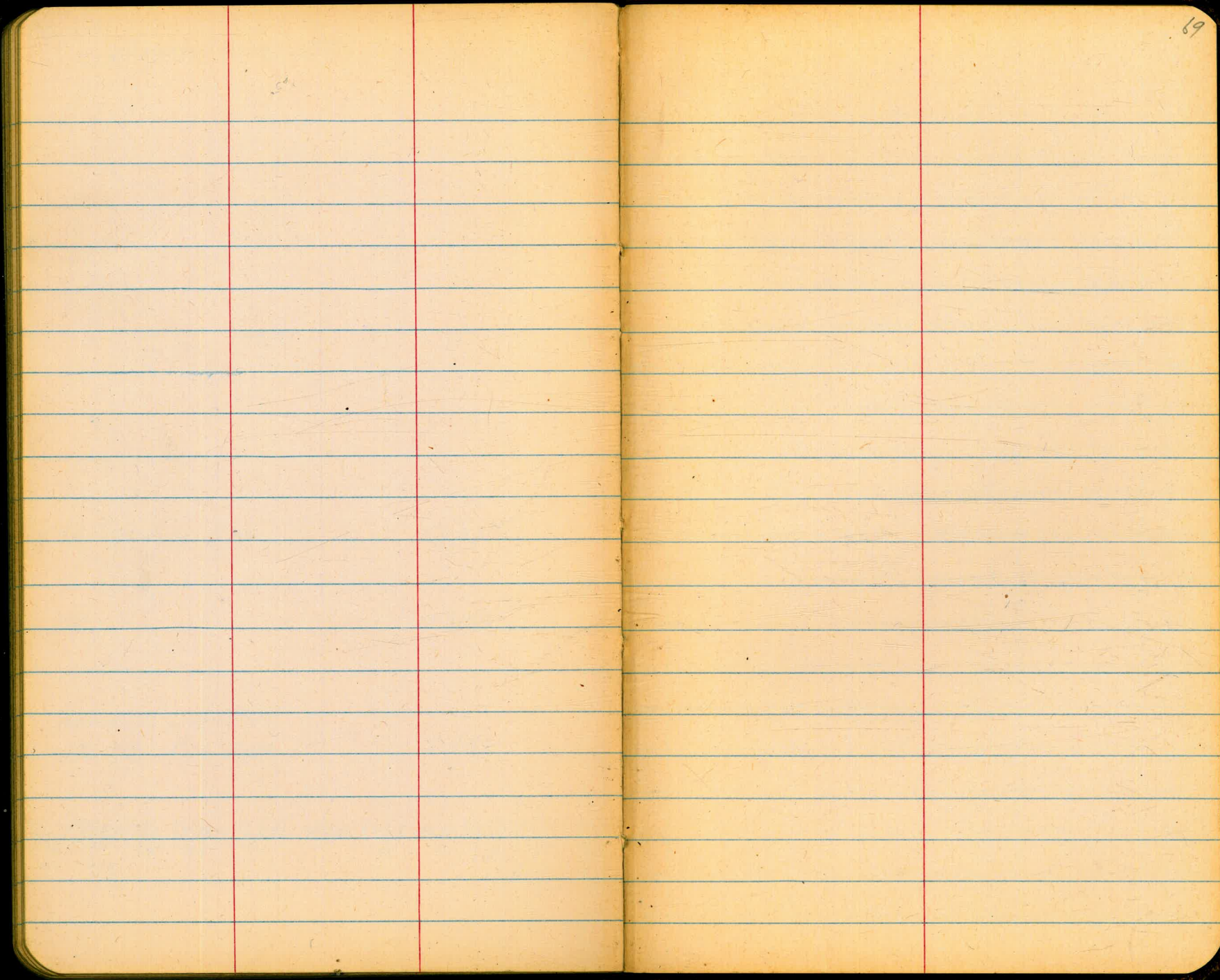
2691	2672	2632	2638	2647	2625	2598	2595	2607
50	375	20	10		10	20	375	55

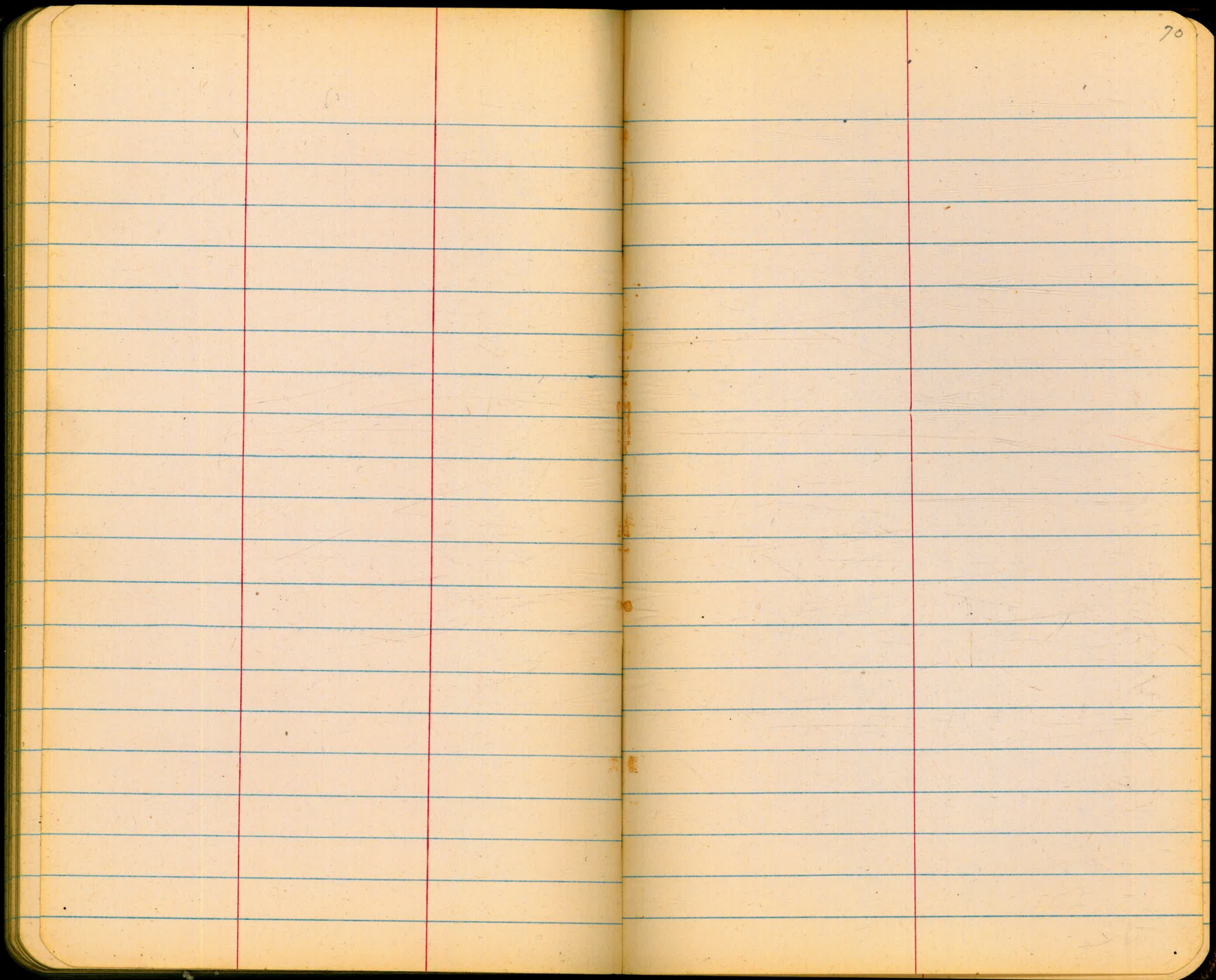
2678	2627	2634	2640	2612	2601	2595	2593	2594
42	20	10		10	20	375	55	65

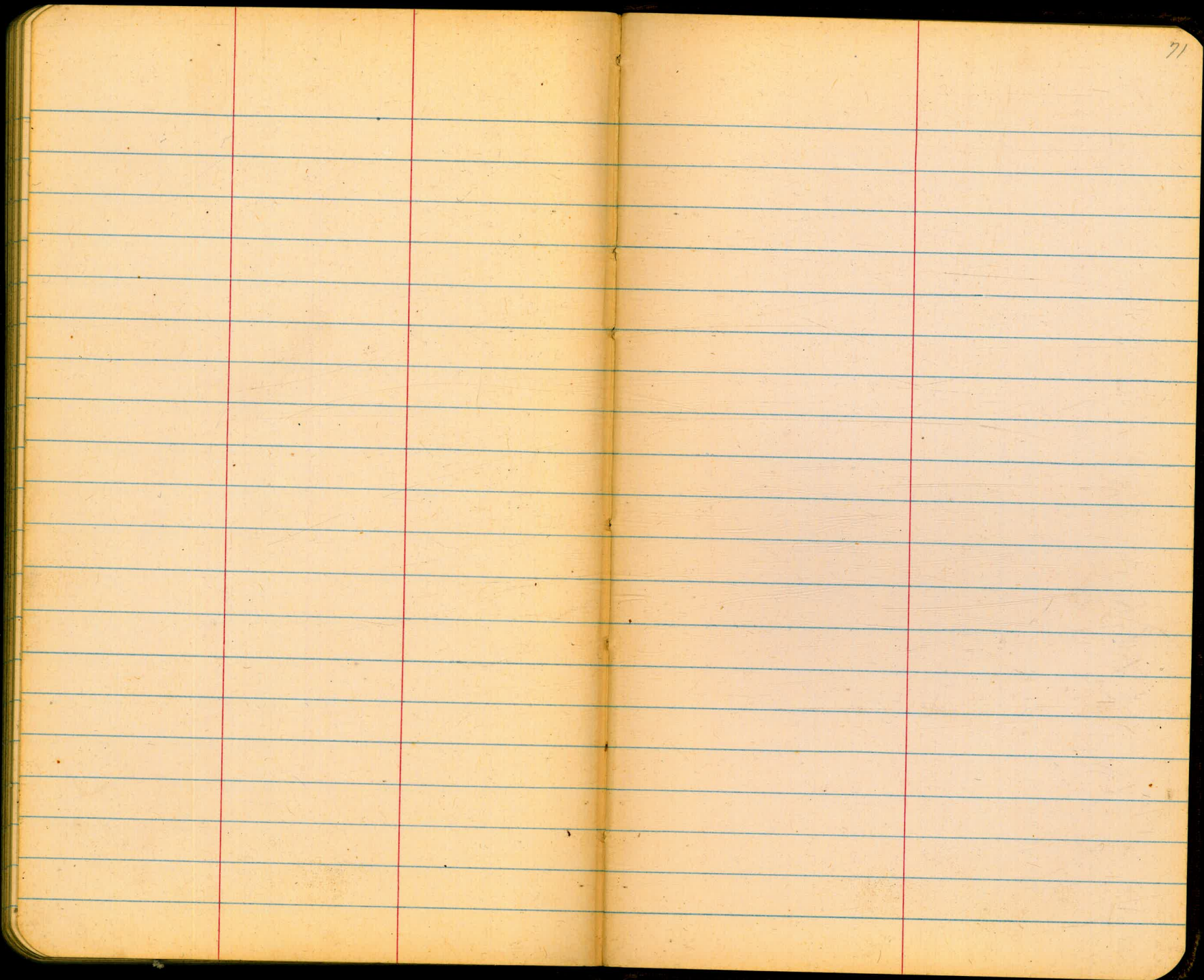
267	2656	2623	2628	2634	2615	2599	2584	2587	2582
375	295	20	10		10	20	375	55	65

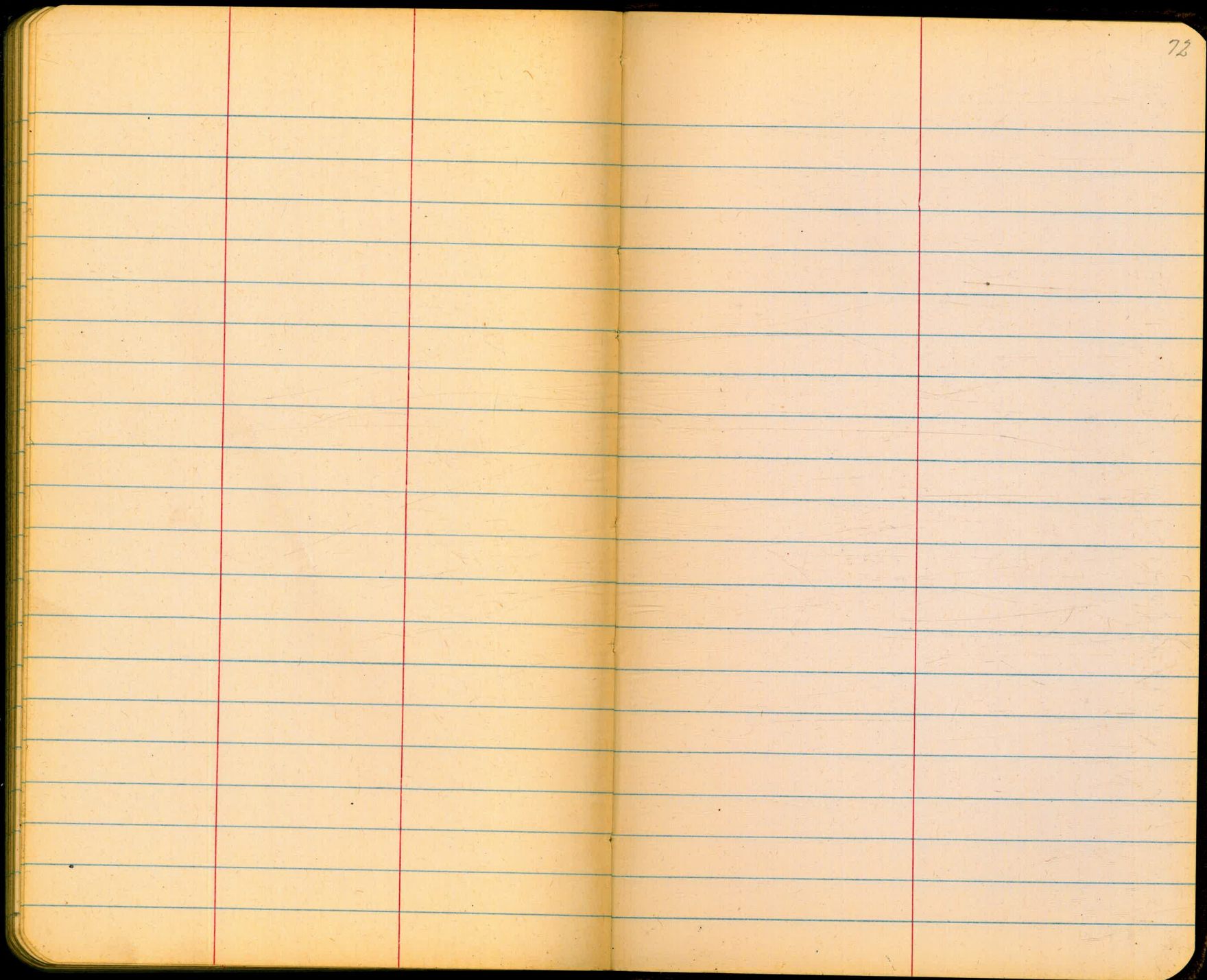
271	268	2619	2623	2617	2625	2608	2603	2615	2616
375	31	22	20	10		10	20	25	375

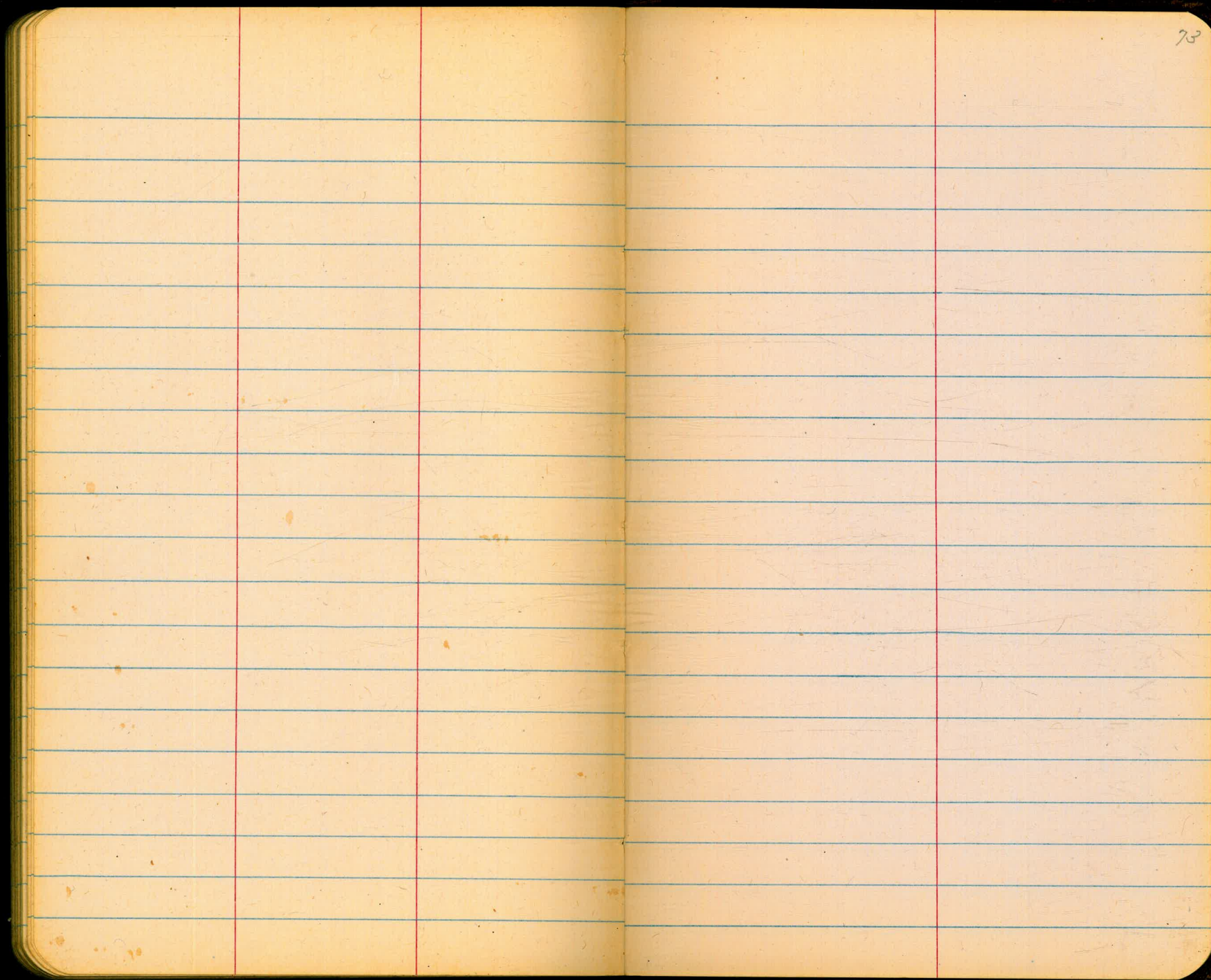
270	269	2629	2644	2653	2639	2612	2670
40	375	20	10		10	20	375

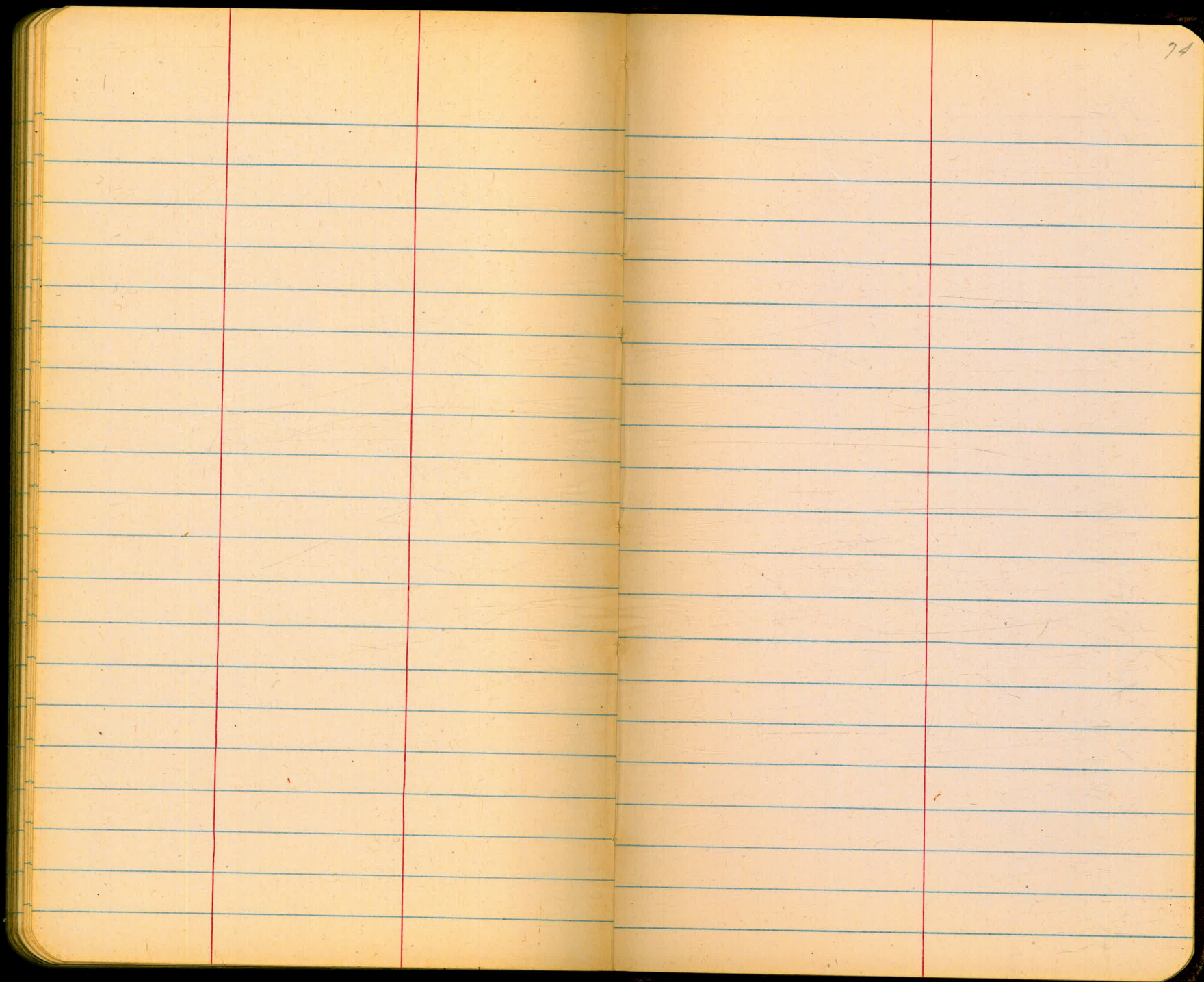


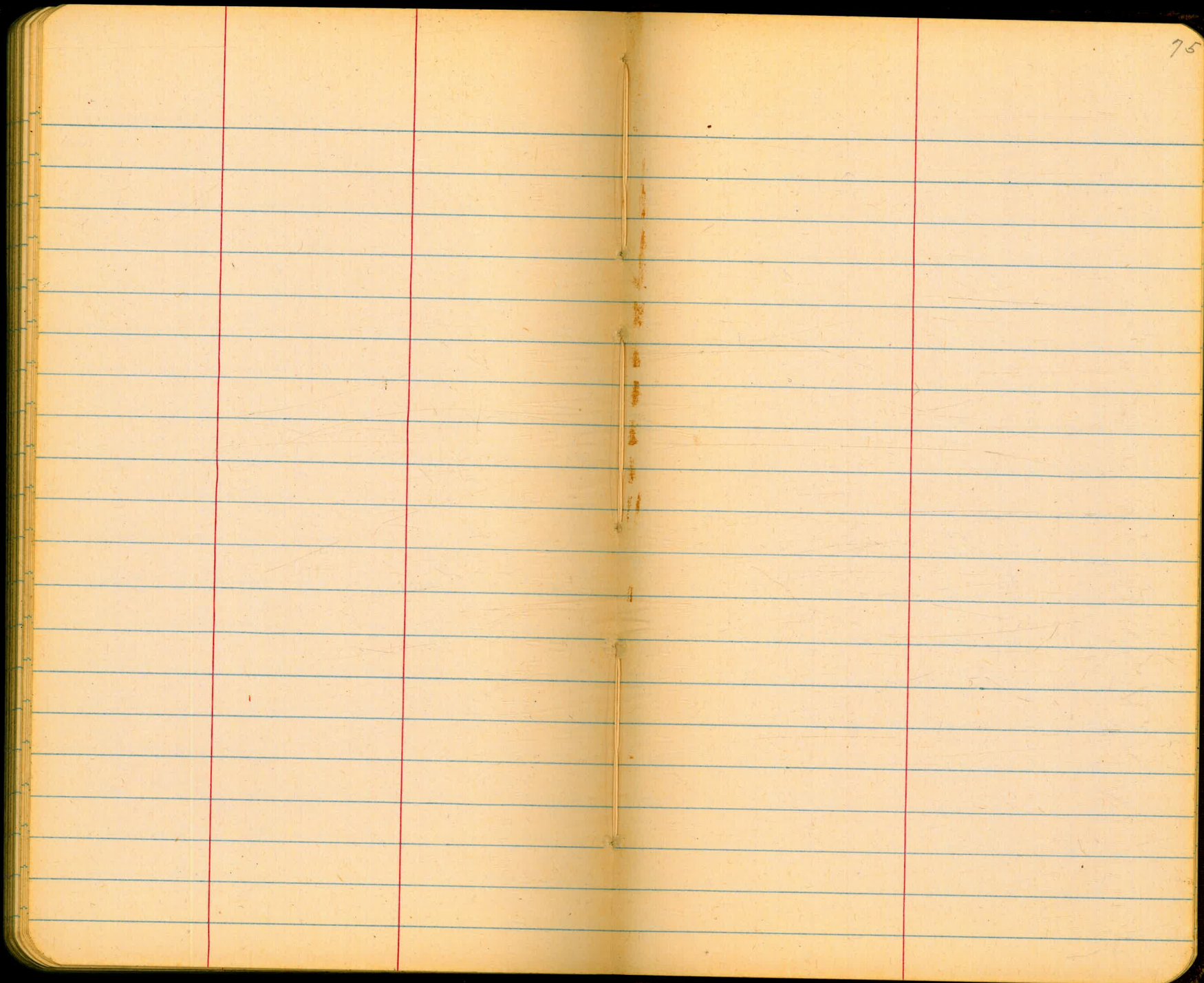


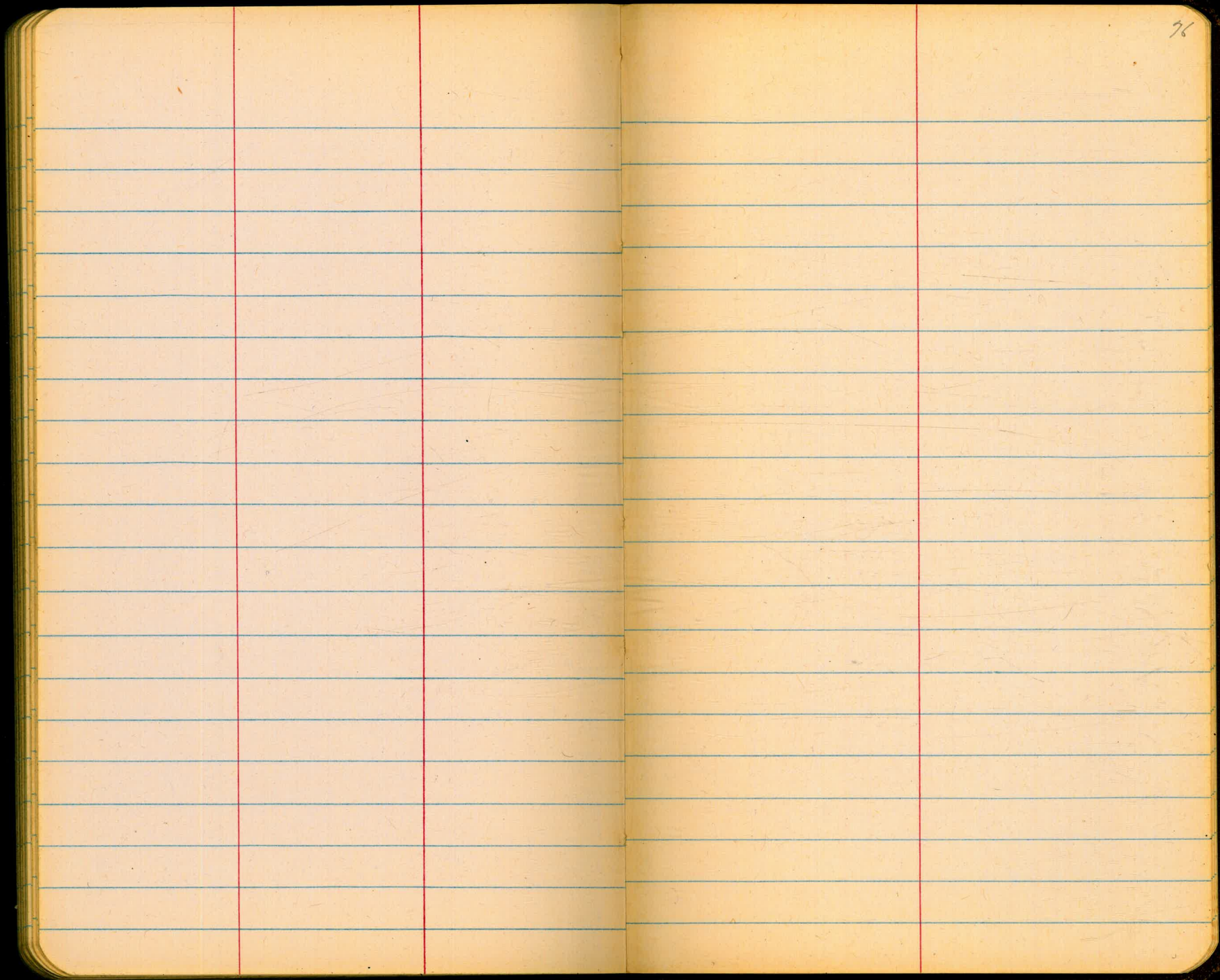


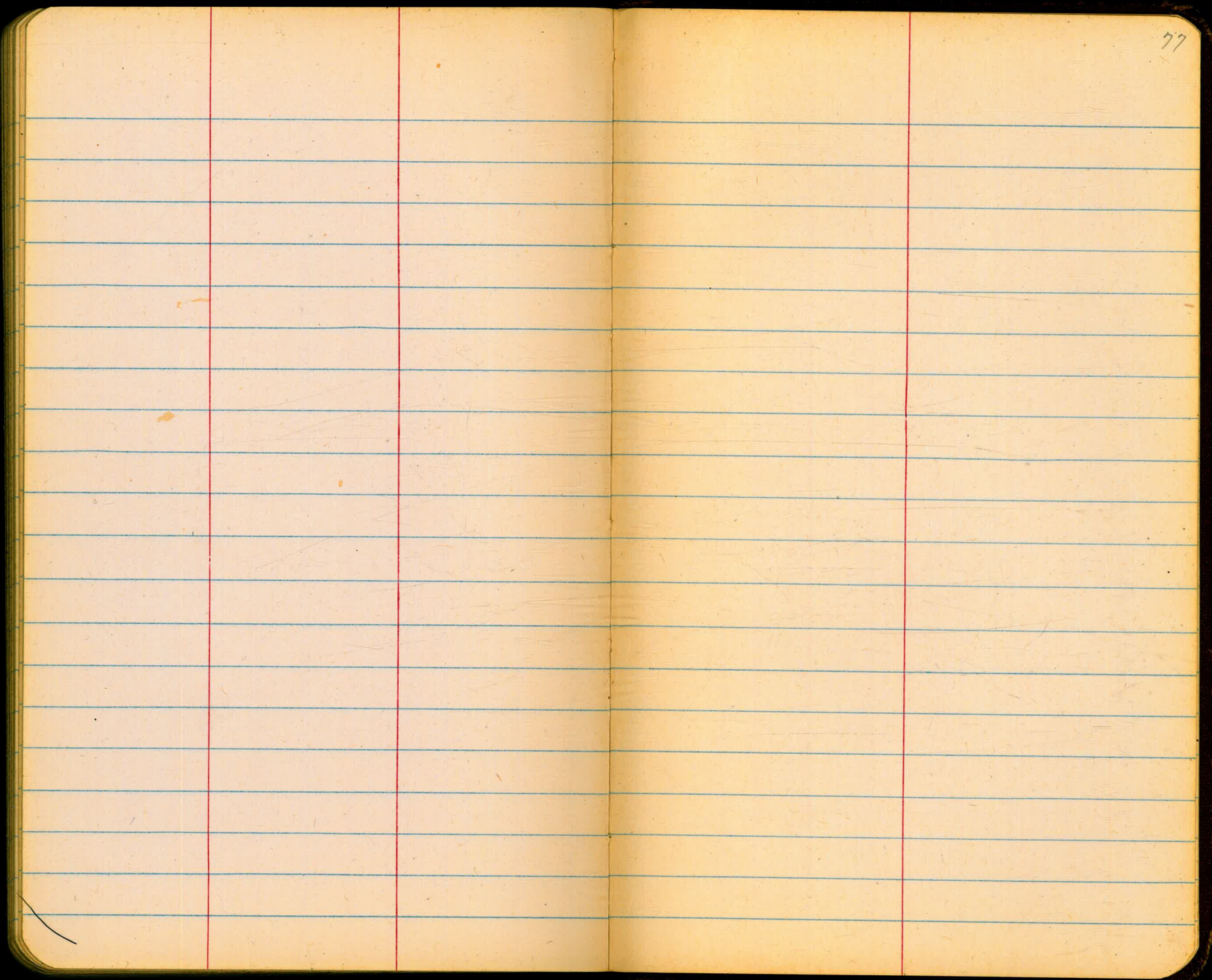


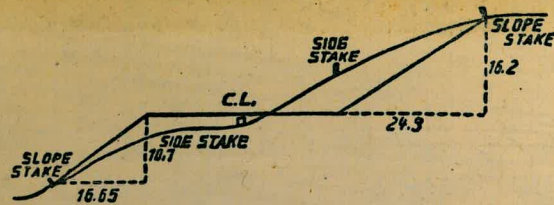












DISTANCES FROM SIDE STAKES FOR CROSS-SECTIONING.

SLOPE 1 1/2 TO 1. ROADWAY OF ANY WIDTH.

	0	.1	.2	.3	.4	.5	.6	.7	.8	.9	
0	0.00	0.15	0.30	0.45	0.60	0.75	0.90	1.05	1.20	1.35	0
1	1.50	1.65	1.80	1.95	2.10	2.25	2.40	2.55	2.70	2.85	1
2	3.00	3.15	3.30	3.45	3.60	3.75	3.90	4.05	4.20	4.35	2
3	4.50	4.65	4.80	4.95	5.10	5.25	5.40	5.55	5.70	5.85	3
4	6.00	6.15	6.30	6.45	6.60	6.75	6.90	7.05	7.20	7.35	4
5	7.50	7.65	7.80	7.95	8.10	8.25	8.40	8.55	8.70	8.85	5
6	9.00	9.15	9.30	9.45	9.60	9.75	9.90	10.05	10.20	10.35	6
7	10.50	10.65	10.80	10.95	11.10	11.25	11.40	11.55	11.70	11.85	7
8	12.00	12.15	12.30	12.45	12.60	12.75	12.90	13.05	13.20	13.35	8
9	13.50	13.65	13.80	13.95	14.10	14.25	14.40	14.55	14.70	14.85	9
10	15.00	15.15	15.30	15.45	15.60	15.75	15.90	16.05	16.20	16.35	10
11	16.50	16.65	16.80	16.95	17.10	17.25	17.40	17.55	17.70	17.85	11
12	18.00	18.15	18.30	18.45	18.60	18.75	18.90	19.05	19.20	19.35	12
13	19.50	19.65	19.80	19.95	20.10	20.25	20.40	20.55	20.70	20.85	13
14	21.00	21.15	21.30	21.45	21.60	21.75	21.90	22.05	22.20	22.35	14
15	22.50	22.65	22.80	22.95	23.10	23.25	23.40	23.55	23.70	23.85	15
16	24.00	24.15	24.30	24.45	24.60	24.75	24.90	25.05	25.20	25.35	16
17	25.50	25.65	25.80	25.95	26.10	26.25	26.40	26.55	26.70	26.85	17
18	27.00	27.15	27.30	27.45	27.60	27.75	27.90	28.05	28.20	28.35	18
19	28.50	28.65	28.80	28.95	29.10	29.25	29.40	29.55	29.70	29.85	19
20	30.00	30.15	30.30	30.45	30.60	30.75	30.90	31.05	31.20	31.35	20
21	31.50	31.65	31.80	31.95	32.10	32.25	32.40	32.55	32.70	32.85	21
22	33.00	33.15	33.30	33.45	33.60	33.75	33.90	34.05	34.20	34.35	22
23	34.50	34.65	34.80	34.95	35.10	35.25	35.40	35.55	35.70	35.85	23
24	36.00	36.15	36.30	36.45	36.60	36.75	36.90	37.05	37.20	37.35	24
25	37.50	37.65	37.80	37.95	38.10	38.25	38.40	38.55	38.70	38.85	25
26	39.00	39.15	39.30	39.45	39.60	39.75	39.90	40.05	40.20	40.35	26
27	40.50	40.65	40.80	40.95	41.10	41.25	41.40	41.55	41.70	41.85	27
28	42.00	42.15	42.30	42.45	42.60	42.75	42.90	43.05	43.20	43.35	28
29	43.50	43.65	43.80	43.95	44.10	44.25	44.40	44.55	44.70	44.85	29
30	45.00	45.15	45.30	45.45	45.60	45.75	45.90	46.05	46.20	46.35	30
31	46.50	46.65	46.80	46.95	47.10	47.25	47.40	47.55	47.70	47.85	31
32	48.00	48.15	48.30	48.45	48.60	48.75	48.90	49.05	49.20	49.35	32
33	49.50	49.65	49.80	49.95	50.10	50.25	50.40	50.55	50.70	50.85	33
34	51.00	51.15	51.30	51.45	51.60	51.75	51.90	52.05	52.20	52.35	34
35	52.50	52.65	52.80	52.95	53.10	53.25	53.40	53.55	53.70	53.85	35
36	54.00	54.15	54.30	54.45	54.60	54.75	54.90	55.05	55.20	55.35	36
37	55.50	55.65	55.80	55.95	56.10	56.25	56.40	56.55	56.70	56.85	37
38	57.00	57.15	57.30	57.45	57.60	57.75	57.90	58.05	58.20	58.35	38
39	58.50	58.65	58.80	58.95	59.10	59.25	59.40	59.55	59.70	59.85	39
40	60.00	60.15	60.30	60.45	60.60	60.75	60.90	61.05	61.20	61.35	40
41	61.50	61.65	61.80	61.95	62.10	62.25	62.40	62.55	62.70	62.85	41
42	63.00	63.15	63.30	63.45	63.60	63.75	63.90	64.05	64.20	64.35	42
43	64.50	64.65	64.80	64.95	65.10	65.25	65.40	65.55	65.70	65.85	43
44	66.00	66.15	66.30	66.45	66.60	66.75	66.90	67.05	67.20	67.35	44
45	67.50	67.65	67.80	67.95	68.10	68.25	68.40	68.55	68.70	68.85	45
46	69.00	69.15	69.30	69.45	69.60	69.75	69.90	70.05	70.20	70.35	46
47	70.50	70.65	70.80	70.95	71.10	71.25	71.40	71.55	71.70	71.85	47
48	72.00	72.15	72.30	72.45	72.60	72.75	72.90	73.05	73.20	73.35	48
49	73.50	73.65	73.80	73.95	74.10	74.25	74.40	74.55	74.70	74.85	49
50	75.00	75.15	75.30	75.45	75.60	75.75	75.90	76.05	76.20	76.35	50

75.35
37.5
72.28

THE NATIONAL BLANK BOOK COMPANY

HOLYOKE

MASSACHUSETTS

NEW YORK

CHICAGO

BOSTON

SAN FRANCISCO