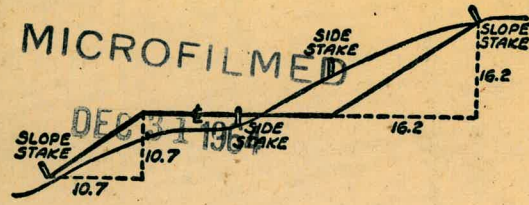


2094



15 + 00.57  
 2 68.43  
 17 + 69.00

DISTANCES FROM SIDE STAKES FOR CROSS-SECTIONING  
 SLOPE 1 TO 1. ROADWAY OF ANY WIDTH

	0	.1	.2	.3	.4	.5	.6	.7	.8	.9	
0	0.00	0.10	0.20	0.30	0.40	0.50	0.60	0.70	0.80	0.90	0
1	1.00	1.10	1.20	1.30	1.40	1.50	1.60	1.70	1.80	1.90	1
2	2.00	2.10	2.20	2.30	2.40	2.50	2.60	2.70	2.80	2.90	2
3	3.00	3.10	3.20	3.30	3.40	3.50	3.60	3.70	3.80	3.90	3
4	4.00	4.10	4.20	4.30	4.40	4.50	4.60	4.70	4.80	4.90	4
5	5.00	5.10	5.20	5.30	5.40	5.50	5.60	5.70	5.80	5.90	5
6	6.00	6.10	6.20	6.30	6.40	6.50	6.60	6.70	6.80	6.90	6
7	7.00	7.10	7.20	7.30	7.40	7.50	7.60	7.70	7.80	7.90	7
8	8.00	8.10	8.20	8.30	8.40	8.50	8.60	8.70	8.80	8.90	8
9	9.00	9.10	9.20	9.30	9.40	9.50	9.60	9.70	9.80	9.90	9
10	10.00	10.10	10.20	10.30	10.40	10.50	10.60	10.70	10.80	10.90	10
11	11.00	11.10	11.20	11.30	11.40	11.50	11.60	11.70	11.80	11.90	11
12	12.00	12.10	12.20	12.30	12.40	12.50	12.60	12.70	12.80	12.90	12
13	13.00	13.10	13.20	13.30	13.40	13.50	13.60	13.70	13.80	13.90	13
14	14.00	14.10	14.20	14.30	14.40	14.50	14.60	14.70	14.80	14.90	14
15	15.00	15.10	15.20	15.30	15.40	15.50	15.60	15.70	15.80	15.90	15
16	16.00	16.10	16.20	16.30	16.40	16.50	16.60	16.70	16.80	16.90	16
17	17.00	17.10	17.20	17.30	17.40	17.50	17.60	17.70	17.80	17.90	17
18	18.00	18.10	18.20	18.30	18.40	18.50	18.60	18.70	18.80	18.90	18
19	19.00	19.10	19.20	19.30	19.40	19.50	19.60	19.70	19.80	19.90	19
20	20.00	20.10	20.20	20.30	20.40	20.50	20.60	20.70	20.80	20.90	20
21	21.00	21.10	21.20	21.30	21.40	21.50	21.60	21.70	21.80	21.90	21
22	22.00	22.10	22.20	22.30	22.40	22.50	22.60	22.70	22.80	22.90	22
23	23.00	23.10	23.20	23.30	23.40	23.50	23.60	23.70	23.80	23.90	23
24	24.00	24.10	24.20	24.30	24.40	24.50	24.60	24.70	24.80	24.90	24
25	25.00	25.10	25.20	25.30	25.40	25.50	25.60	25.70	25.80	25.90	25
26	26.00	26.10	26.20	26.30	26.40	26.50	26.60	26.70	26.80	26.90	26
27	27.00	27.10	27.20	27.30	27.40	27.50	27.60	27.70	27.80	27.90	27
28	28.00	28.10	28.20	28.30	28.40	28.50	28.60	28.70	28.80	28.90	28
29	29.00	29.10	29.20	29.30	29.40	29.50	29.60	29.70	29.80	29.90	29
30	30.00	30.10	30.20	30.30	30.40	30.50	30.60	30.70	30.80	30.90	30
31	31.00	31.10	31.20	31.30	31.40	31.50	31.60	31.70	31.80	31.90	31
32	32.00	32.10	32.20	32.30	32.40	32.50	32.60	32.70	32.80	32.90	32
33	33.00	33.10	33.20	33.30	33.40	33.50	33.60	33.70	33.80	33.90	33
34	34.00	34.10	34.20	34.30	34.40	34.50	34.60	34.70	34.80	34.90	34
35	35.00	35.10	35.20	35.30	35.40	35.50	35.60	35.70	35.80	35.90	35
36	36.00	36.10	36.20	36.30	36.40	36.50	36.60	36.70	36.80	36.90	36
37	37.00	37.10	37.20	37.30	37.40	37.50	37.60	37.70	37.80	37.90	37
38	38.00	38.10	38.20	38.30	38.40	38.50	38.60	38.70	38.80	38.90	38
39	39.00	39.10	39.20	39.30	39.40	39.50	39.60	39.70	39.80	39.90	39
40	40.00	40.10	40.20	40.30	40.40	40.50	40.60	40.70	40.80	40.90	40
41	41.00	41.10	41.20	41.30	41.40	41.50	41.60	41.70	41.80	41.90	41
42	42.00	42.10	42.20	42.30	42.40	42.50	42.60	42.70	42.80	42.90	42
43	43.00	43.10	43.20	43.30	43.40	43.50	43.60	43.70	43.80	43.90	43
44	44.00	44.10	44.20	44.30	44.40	44.50	44.60	44.70	44.80	44.90	44
45	45.00	45.10	45.20	45.30	45.40	45.50	45.60	45.70	45.80	45.90	45
46	46.00	46.10	46.20	46.30	46.40	46.50	46.60	46.70	46.80	46.90	46
47	47.00	47.10	47.20	47.30	47.40	47.50	47.60	47.70	47.80	47.90	47
48	48.00	48.10	48.20	48.30	48.40	48.50	48.60	48.70	48.80	48.90	48
49	49.00	49.10	49.20	49.30	49.40	49.50	49.60	49.70	49.80	49.90	49
50	50.00	50.10	50.20	50.30	50.40	50.50	50.60	50.70	50.80	50.90	50

Distance of slope stake from side or shoulder stake for any width roadway, slope 1 to 1. If ground is nearly level, the cut or fill at side stake is located by the double entry method in left column and top row. The number in body of table in same row and column gives distance from side stake to slope stake. If ground is not level estimate the difference in elevation between the side stake and slope stake, lower target by this amount if cut, elevate if fill. Add this amount to cut or fill and find distance in table. Set up rod at this point, and line of sight should cut target. If it does not make the slight adjustment necessary.

INDEXED  
 to page 438

22041

TABLE XIII—CORRECTIONS FOR TANGENTS AND EXTERNALS

These corrections are to be added to the approximate values, found by dividing the tangent, or external, for a 1° curve (Table VIII) by the degree of curve, in order to obtain the true tangents, or externals. Intermediate values may be obtained by interpolation.

FOR TANGENTS ADD

Central Angle	DEGREE OF CURVE													
	5°	10°	15°	20°	25°	30°	35°	40°	45°	50°	55°	60°	65°	70°
10°	.03	.06	.09	.13	.16	.19	.22	.25	.28	.31	.34	.38	.42	.46
15°	.04	.10	.14	.19	.24	.29	.34	.39	.45	.51	.53	.58	.63	.68
20°	.06	.13	.19	.26	.32	.39	.45	.51	.58	.65	.72	.79	.84	.90
25°	.08	.16	.24	.33	.40	.49	.58	.67	.75	.83	.90	.99	1.06	1.14
30°	.10	.19	.29	.39	.49	.59	.69	.79	.89	.99	1.09	1.20	1.29	1.39
35°	.11	.22	.34	.47	.58	.69	.79	.81	.92	1.04	1.29	1.42	1.54	1.66
40°	.13	.26	.40	.53	.67	.80	.93	1.06	1.20	1.34	1.49	1.64	1.79	1.94
45°	.15	.30	.44	.60	.76	.91	1.06	1.21	1.37	1.52	1.70	1.87	2.04	2.21
50°	.17	.34	.51	.68	.85	1.02	1.19	1.36	1.54	1.72	1.91	2.10	2.29	2.48
55°	.19	.38	.57	.76	.95	1.14	1.32	1.52	1.72	1.92	2.14	2.35	2.56	2.77
60°	.21	.42	.63	.84	1.05	1.27	1.49	1.71	1.94	2.17	2.38	2.60	2.83	3.07
65°	.23	.46	.69	.93	1.16	1.40	1.64	1.88	2.13	2.38	2.63	2.88	3.13	3.39
70°	.25	.51	.76	1.02	1.28	1.54	1.80	2.06	2.33	2.60	2.88	3.16	3.44	3.72
75°	.27	.56	.83	1.12	1.40	1.69	1.98	2.27	2.57	2.87	3.16	3.47	3.78	4.09
80°	.30	.61	.91	1.22	1.53	1.84	2.15	2.46	2.78	3.10	3.44	3.78	4.12	4.46
85°	.33	.66	1.00	1.33	1.68	2.02	2.36	2.70	3.05	3.40	3.77	4.14	4.55	4.89
90°	.36	.72	1.09	1.45	1.83	2.20	2.57	2.94	3.32	3.70	4.10	4.50	4.91	5.32
95°	.39	.79	1.19	1.55	2.00	2.40	2.80	3.20	3.61	4.02	4.40	4.98	5.38	5.83
100°	.43	.86	1.30	1.74	2.18	2.62	3.06	3.50	3.95	4.40	4.88	5.37	5.85	6.34
110°	.51	1.03	1.56	2.08	2.61	3.14	3.67	4.21	4.76	5.31	5.86	6.43	7.01	7.60
120°	.62	1.25	1.93	2.52	3.16	3.81	4.45	5.11	5.77	6.44	7.12	7.80	8.50	9.22

FOR EXTERNALS ADD

Central Angle	DEGREE OF CURVE													
	5°	10°	15°	20°	25°	30°	35°	40°	45°	50°	55°	60°	65°	70°
10°	.001	.003	.004	.006	.007	.008	.009	.011	.012	.014	.015	.017	.018	.020
15°	.003	.007	.010	.014	.018	.023	.027	.029	.032	.035	.039	.043	.047	.051
20°	.006	.011	.017	.022	.028	.034	.038	.045	.051	.057	.063	.070	.076	.083
25°	.009	.018	.027	.036	.046	.056	.065	.074	.083	.093	.106	.120	.127	.135
30°	.013	.025	.038	.051	.065	.078	.090	.103	.116	.129	.149	.170	.179	.188
35°	.018	.035	.054	.072	.086	.109	.131	.153	.175	.197	.213	.230	.247	.264
40°	.023	.046	.070	.093	.117	.141	.172	.203	.234	.265	.277	.290	.315	.341
45°	.030	.060	.093	.119	.153	.184	.216	.254	.289	.325	.351	.378	.411	.445
50°	.037	.075	.116	.151	.189	.227	.266	.305	.345	.384	.425	.467	.508	.550
55°	.046	.093	.142	.188	.236	.283	.332	.381	.420	.479	.530	.582	.641	.700
60°	.056	.112	.168	.225	.283	.340	.398	.457	.516	.575	.636	.697	.774	.851
65°	.067	.135	.204	.273	.343	.412	.483	.554	.625	.697	.771	.845	.922	1.01
70°	.080	.159	.240	.321	.403	.485	.568	.652	.735	.819	.906	.994	1.08	1.17
75°	.095	.182	.286	.383	.480	.578	.678	.777	.877	.977	1.07	1.18	1.29	1.39
80°	.110	.220	.332	.445	.558	.671	.787	.903	1.02	1.13	1.25	1.38	1.50	1.62
85°	.128	.259	.391	.524	.657	.790	.926	1.06	1.20	1.34	1.47	1.62	1.76	1.91
90°	.149	.299	.450	.603	.756	.910	1.07	1.22	1.38	1.54	1.70	1.87	2.03	2.20
95°	.174	.350	.522	.706	.885	1.06	1.25	1.43	1.62	1.80	1.99	2.18	2.38	2.58
100°	.200	.401	.604	.809	1.01	1.22	1.43	1.64	1.85	2.06	2.28	2.50	2.73	2.96
110°	.268	.536	.806	1.08	1.35	1.63	1.91	2.20	2.48	2.76	3.05	3.35	3.66	3.96
120°	.360	.721	1.08	1.45	1.82	2.19	2.57	2.95	3.33	3.72	4.11	4.50	4.91	5.32

Index on P. I

INDEX.

V-sec. for Imp. Evergreen St, Whittier to Venetian

2-

TORREY PINES Road, Levels, Topo, Re-alignment

10

Elev. on Walks + Steps - H. of 12 + 00

Last Page

EVERGREEN ST.

Whittier to Xenophon  
X-sec. for Imp. N.O. # 31647

Sommermeier

4-24-50

Allen  
Sherman  
Bunch.

INDEXED

W.K.  
MAY 1 1950

● = Fd. City dist.

• = Fd. L.T.

X = cut cross in Conc. T.P. Book 15

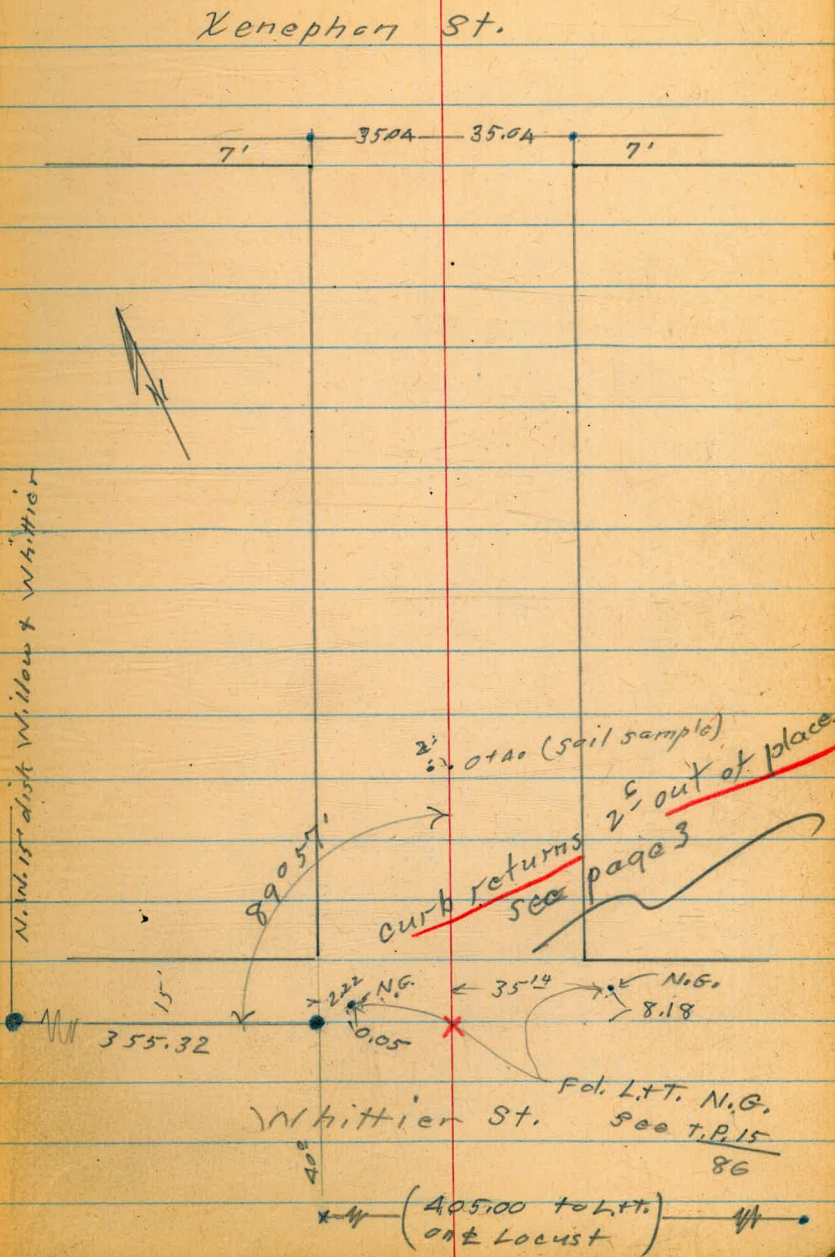
N.G. = no. good 76-86 & 96

Distances chained

Angles turned.

Soil sample from 2' ht of # at 0+40

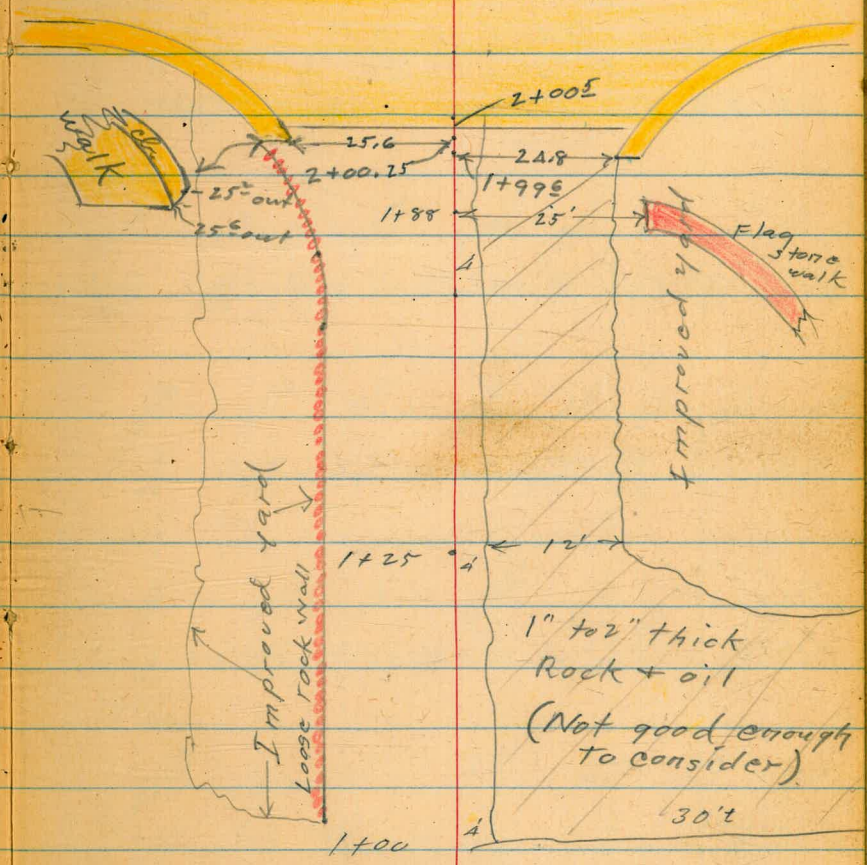
N. W. 15' dist Willow & Whittier



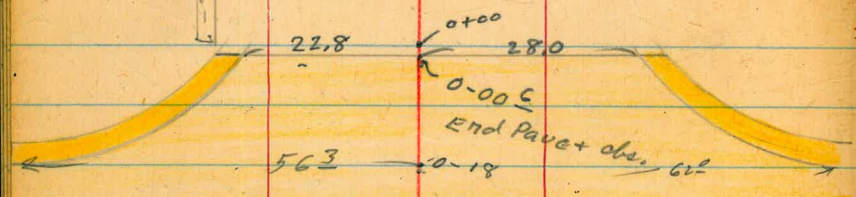
Evergreen

Conc. Pave.

2+35.25  $\frac{1}{2}$  Venaphon



±



Whittier St.

Conc. Pave.

0-52.2

Evergreen St.  
Whittier to Xenophon  
5/28/50

62' Rt. = Cl. B.C.  
56 3/4 Lt. = Cl. B.C.  
0-18<sup>01</sup> = Nly curb line Whittier

0-18 = Nly gutter Whittier.

0-35 = ♀ Whittier

0-52 = sly gutter line Whittier

0-52<sup>01</sup> = sly cl. line Whittier

4.61 150.00 8.65 145.39

0.06 154.04 12.73 153.98

Sw. B.R.

Willow

0.54 166.71 — 166.17

Whittier

152.67 +2.67 85	149.80 0.20 56 3/4 Cl. B.C.	139.78 10.22 62 Cl. B.C.	135.88 14.12 85
152.17 +2.17 85	149.32 2.49 35	147.51 3.70 17	146.30 4.76 17
145.24 5.85 17	144.15 7.29 35	142.71 8.24 44	141.76 10.82 62
136.48 13.58 85			
152.6 +2.6 85 Hand level	149.86 2.14 35	146.51 3.49 17	145.39 4.61 17
144.20 5.80 17	142.90 7.10 33	142.67 7.33 35	136.00 14.00 85
152.37 +2.37 85 Hand level	147.88 2.12 35	146.58 3.45 17	145.37 4.63 17
144.13 5.97 17	142.79 7.21 35	135.76 14.24 85	
152.75 +2.75 85 Hand level	148.41 1.59 35	147.00 3.00 17	145.84 4.16 17
150.00	144.59 5.41 17	143.39 6.67 35	136.26 13.74 85

Evergreen

T.P. 4.88 150.52 4.36 145.64

0+20

0+02 29<sup>3</sup>Lt = start picket fence  
32<sup>1</sup>Lt = start 5' wide flower bed.

0+00

= end of walk  
31<sup>3</sup> Lt = back edge of walk  
0-00<sup>6</sup> Cont

35<sup>5</sup> Rt = back edge + end of walk.  
22.8 Lt } - end existing obs.  
28<sup>1</sup> Rt }

0-00<sup>6</sup> = End paue.

0-08

35' Rt. = face of Ob. Ret.

0-12<sup>4</sup>

35' Lt. = face of Ob. Ret

151.4  
+1.4 150.0  
45 35  
2.8 147.2  
10 6  
3.6 146.4  
6  
4.5 145.5  
5.4 144.6  
25 35  
6.1 143.9  
35  
8.0 142.0  
50

150.0  
0.0 148.7  
45 35  
1.3 146.6  
17 12  
3.4 146.1  
12  
4.6 145.4  
26  
6.0 144.0  
27  
5.8 144.2  
35  
5.9 144.1  
50  
7.1 142.9

49.11  
2.89  
313

146.60  
23.40 146.09  
228 6  
3.91 145.98  
17  
4.02 145.85  
93  
4.15 145.57  
4.43  
5.39 144.61  
17  
6.28 143.72  
28 6  
5.85 144.15  
28 6  
6.10 143.90  
35

142.95  
7.05 143.46  
35 35  
6 6

147.74  
2.22 147.29  
35 35  
6 6

150.00



Evergreen

±

6

1+01 33' Lt. = start conc. apron to double bar,  
thickly with shrubs + trees,  
20' Lt. also = S. Ely. cor. of yard improved  
20' Lt. = start loose rock wall

1+00 30' Lt. = end picket fence  
25' Lt. = ctr. pole # 2260

0+97-23' Lt. = ± 2' wide conc. walk

0+95-30' Lt. = end 9' wide flower bed.

0+80

0+70 30' Lt. = start 8' wide flower bed  
32' Lt. = end 5' wide flower bed

0+50

139.67  
10.85  
362  
Gar floor

149.3	147.7	146.9	145.2	144.2	142.7	140.3	139.58	139.63
1.2	2.8	3.6	5.3	6.3	7.8	10.2	10.94	10.89
35	21	20	5		4	26	33.7	35
							Apron	

149.3	147.9	146.4	145.3	144.4	142.7	141.3	140.9	140.7
1.2	2.6	4.1	5.2	6.1	7.8	9.2	9.6	9.8
35	25	16	5		5	18	35	50

150.2	149.41	148.07
0.10	1.11	2.45
45	35	235

150.2	149.4	148.8	146.6	145.3	143.2	142.6	142.1	140.8
0.3	1.1	1.7	3.9	5.2	7.3	7.9	8.4	9.7
50	35	27	15		8	15	35	50

150.1	149.2	147.4	147.3	145.6	144.1	143.5	142.0
0.4	1.3	3.1	3.2	4.9	6.4	7.0	8.5
35	27	22	12		20	35	50

1501.52

Evergreen

£

7.

T.P. 7.30 146.16 11.66 138.86

1+41 Cont.

1+41 35' Lt. = end house  
 + 1 yard stand pipe.  
 24' Lt. = 3 sprinkler valves  
 20' Lt. = face of wall

147.8  
 2.7  
 35

147.8	145.5	144.5	143.1	142.3	140.8	140.4	139.2	138.5
2.7	5.0	6.0	7.4	7.2	9.7	10.1	11.3	12.0
30	21	20	9	5		2	16	35

1+32 - 20' Rt. = start improved yard

1+27 33' Lt. = £ 4' wide Conc. walk.

139.52  
 139.60  
 139.67  
 139.20  
 139.16

11.00	10.92	10.85	11.32	11.36
332	35	365	363	40

1+25 Cont.

1+25 35' Lt. = S. Ely. Cor house  
 20' Lt. = face loose rock wall  
 33' Rt. = end Conc. apron to double Gar,  
 at House

147.8  
 147.5  
 146.5  
 145.3  
 144.5  
 141.8  
 141.4  
 139.5  
 139.53  
 139.59

2.7	3.0	4.0	5.2	6.0	8.7	9.1	11.0	10.99	10.93
35	30	21	20	6		4	22	332	35
								Apron	

150.52

Evergreen

2+00<sup>25</sup> Cont.

2+00<sup>25</sup> = sly. line Xenophon  
 25<sup>c</sup> Lt. = start existing curb + walk  
 32<sup>c</sup> Lt. = face loose rock wall.  
 (= Back edge walk)

1+99<sup>c</sup> 24<sup>8</sup> Rt. = start exist Ob. Ret. + walk

T.P. 5.15 142.53 8.78 137.38

1+89 25' Rt. =  $\phi$  4<sup>5</sup> wide flag stone walk

1+82 22' Lt. = face loose rock wall

1+70 Cont.

18' Rt. = wly. edge improved yard

40<sup>c</sup> Lt. =  $\phi$  16' wide house wing wall

1+70 22' Lt. = face of loose rock

142.4

0.1  
40

140.5

2.0  
35

140.5

2.0  
34

136.4

6.1  
35

138.28  
4.25  
32<sup>c</sup>  
Back of walk

138.16  
4.37  
25<sup>c</sup>  
Top of

138.1  
4.4  
25

137.6  
4.9  
77

137.4  
5.1

136.8  
5.7  
17

136.7  
5.8  
24

137.09  
5.44  
24<sup>c</sup>  
Ob

137.1  
5.4  
25

137.10  
5.43

24<sup>8</sup>  
Top of

136.55  
5.98

32<sup>c</sup>  
Back of walk

142.53

137.53  
8.63

25'  
on walk

137.07  
9.09

35'

145.6  
0.5  
35

145.5  
0.6  
34

141.6  
4.5  
23

139.0  
7.1  
22

138.1  
8.0

137.6  
8.5  
19

137.1  
9.0  
35

145.9  
0.2  
35

145.8  
0.3  
32

142.4  
3.7  
23

140.4  
5.7  
22

139.4  
6.7  
5

138.7  
7.4

138.0  
8.1  
16

138.2  
7.9  
20

137.4  
8.7  
35

146.16

Evergreen

OK  
154.20

S.W. B.P. Willow + Xenophon 0.64 154.20

T.P. 12.63 154.84 0.132 142.21

2+35<sup>25</sup> =  $\phi$  Xenophon

2+18<sup>26</sup> Cont.

2+18<sup>26</sup> Wly gutter Xenophon.

2+18<sup>25</sup> Wly curb line Xenophon

2+10<sup>25</sup>  $\left. \begin{array}{l} 35' RT \\ 35' LT \end{array} \right\}$  Face curb Ret.

2+00<sup>5</sup> start Conc. Pavc.

$\phi$

9

Rod on lead - Plug is gone.

141.75	139.68	137.83	136.95	136.39	135.75	135.20	134.56	131.21	127.78
0.78	2.85	4.70	5.58	6.14	6.78	7.33	7.97	11.32	14.75
<u>85</u>	<u>60</u>	<u>35</u>	<u>17</u>		<u>17</u>	<u>30</u>	<u>35</u>	<u>60</u>	<u>85</u>

128.05  
14.48  
85  
 $\phi$

141.88	139.82	137.65	137.18	136.58	135.97	135.25	134.69	131.25
0.65	2.71	4.58	5.35	5.95	6.56	7.28	7.84	11.28
<u>85</u>	<u>60</u>	<u>35</u>	<u>17</u>		<u>17</u>	<u>30</u>	<u>35</u>	<u>60</u>

142.38  
0.15  
85

140.33  
2.20  
60  
Cb. Ec.

131.74  
10.79  
60  
Cb. Ec.

128.57  
13.96  
85

138.45  
2.08  
35  
Cb

137.87  
4.60  
35  
Cb

134.78  
7.75  
35  
Cb

135.23  
7.30  
35  
Cb

138.16	137.64	137.64	137.36	136.87	136.55	137.09
4.37	4.89	4.89	5.17	5.60	5.98	5.44
<u>252</u>	<u>252</u>	<u>17</u>		<u>17</u>	<u>242</u>	<u>242</u>
Cb	Cb				Cb	Cb

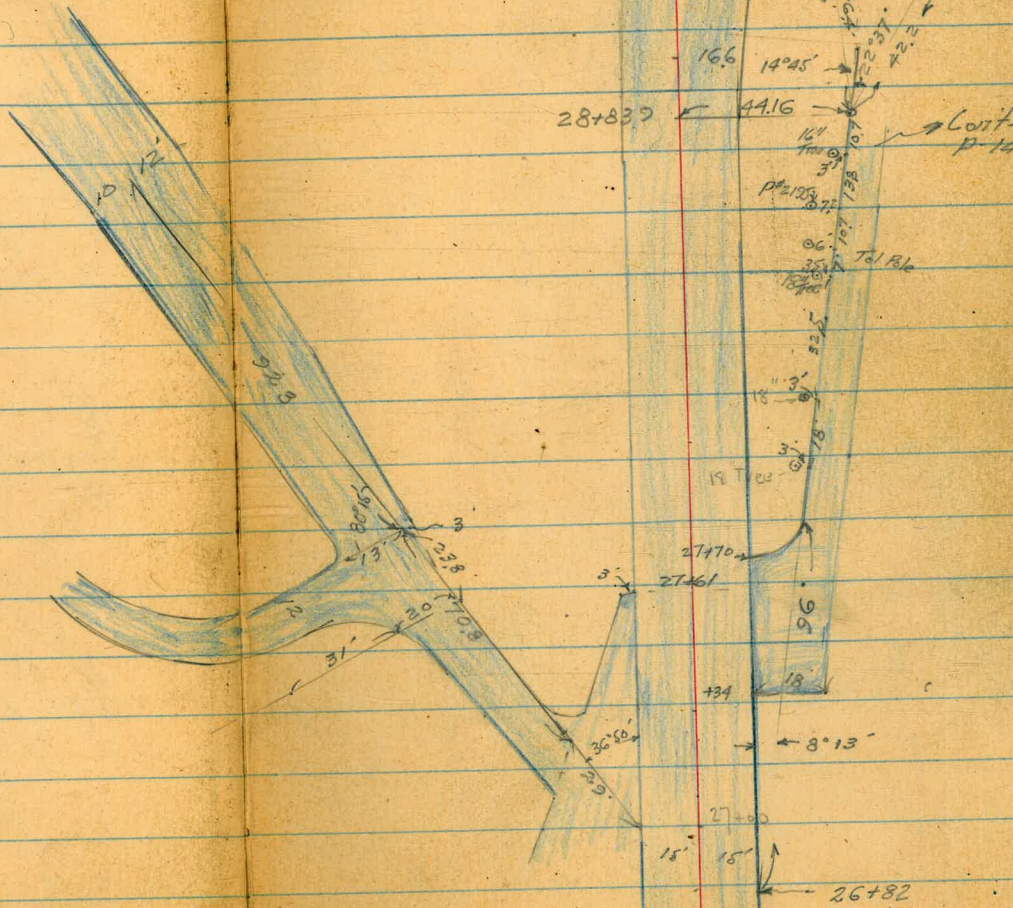
142.53

w.o. 22041

8-10-50  
7.0.

Cont. Levels + Topo. along E of Prop.  
Realignment of Torrey Pines Road.  
See Book 2042 for Beginning

INDEXED  
MK  
SEP 21 1950



Cont. P-14

10

29+45.57  
ART 11+26

28+839

Cont. P-14

T&R

27770

27461

134

27+50

15

15

26+82

Torrey Rd.

27+70 - Cont.

27+70

27+55 = 242 Lt. = Beg. Guard Rail

27+42 = 29 Lt. = 3" St. sign

27+36 = 32.2 Lt. = 3" St. sign

27+35 = 33.4 Lt. = 4x4 Post + Reflector Sign

27+32 = 34.5 Rt. = Tel. pole # 3082 35' H.

T.P. 2.20 92.30 2.41 90.10

27+30 - Cont.

27+30

27+21.5 - 29.5 Rt. = 14" Esc.

27+17 = 11.7 Rt. = Water Valve 8"

27+07.3 = 37.9 Lt. = Ang. in edge of Pavc

27+04 = 45 Rt. = 14" Esc.

B.M. 2.41 92.51 90.10 = B.P. in

REMOVED - SEPT 21, 1950  
Meban

Lt.

Rt.

Rt.

//

77.6

78.2

97.2

104.4

112.5

14.7

14.07

+4.9

+12.1

+20.2

100

88

64

78

100

edge (in C.L.

Drive)

80.2

80.8

80.1

81.1

81.4

81.6

81.5

81.3

86.9

88.0

89.3

96.8

12.09

11.5

14.2

4.6

4.87

4.71

4.78

4.95

5.36

4.3

3.0

+4.5

66

63

42

24

15

7

7

15

25

40

55

edge

edge

edge

edge

C.L. Dr.

92.30

83.6

84.2

85.1

104.2

111.8

89

8.3

7.36

+11.7

+19.3

100

75

54.7

edge

80

100

Pavc

86.0

87.4

88.1

88.5

88.7

88.7

88.5

88.2

88.4

83.8

95.8

6.49

5.06

4.37

4.02

3.79

3.77

3.96

4.26

4.1

2.7

+3.3

48

36

29

15

8

9

15

30

45

62

edge

edge

88.6

3.92

37.9 = Pavc

N. cb. - w. side Little st 92.51

Torrey Rd.

28+94.7 - 21.3 Lt. = Req. 10" Conc. Ret. wall (on Curve)

28+78 - 42 Rt. - end Picket fence

28+55 - Cont.

28+55

28+37 - 21.7 Rt. =  $\pm$  F.H.

28+36 - 36.5 Lt. = Req. Guard Rail

28+10 - Cont.

28+10

27+85.5 - 25.1 Lt. = end guard rail

27+82 - 41.6 Lt. =  $\pm$  P.pole # P 2190

27+82 - 57.8 Rt. =  $\pm$  P.pole # 2191

27+80 - 24.4 Rt. =  $\pm$  Bus Stop Sign

27+78 - 27.2 Rt. = Req. Picket fence

Lt.

$\pm$

Rt.

R

83.1	90.4
9.2	1.94
21.3	21.3 = Top
ground	wall

98.8	103.1	104.1	113.7
+6.5	+10.8	+11.8	+21.4
50	57	68	85
edge Dr.			

70.0	73.6	86.7	86.1	85.9	85.7	85.3	84.8	84.3	84.4	84.4	84.4	89.1
22.3	18.7	6.1	6.2	6.42	6.61	7.00	7.47	7.96	7.9	+6.1	+6.8	
100	68	42	30	15	8		8	15	18	28	40.5	
				edge				edge			edge Dr.	

12.9	14.4	93.2	98.8	100.4	112.7
19.40	17.85	+0.9	+6.5	+8.1	+20.4
109	87	44	51	62	86
edge	edge	edge	Dr.		
ave					

74.0	77.1	86.6	86.1	86.1	86.4	86.1	85.7	85.9	82.3	82.9
18.3	14.6	5.7	5.61	5.64	5.86	6.16	6.55	6.4	9.0	+0.6
78	47	33	15	8		8	15	20	26	34
			edge				edge			edge
										Dr.

92.30

Torrey Rd.

Cont on P. 18

T.P

445

86.53

10.22

82.08

Mail on Lt.  
30+00

100.5

101.3

29+80 - Cont.

+8.2

+9.0

33

+3.5

Top  
Rock

along  
House

29+80

62.9

17.3

84.5

83.6

82.8

82.5

82.1

81.4

80.8

80.9

82.7

29.4

20.0

7.8

8.7

9.54

9.78

10.24

10.86

11.46

11.4

+0.36

100

75

53

35

12.6

7

10

16.6

22.2

22.2

22.2

22.2

22.2

22.2

22.2

29+66.5 - 50.3' Lt. = ± 10" Euc.

29+57 - 29.8' Rt. = ± Tel. pole # 305 237-H

29+61 - 50.7' Lt. = end Guard Rail

29+45.67 - Cont.

100.8

102.4

106.5

108.3

+8.5

+10.1

+14.18

+16.00

33

42.1

floor

floor

Top of  
Rock

along  
House

House

Gar.

29+45.67 = Ang Pt. = Sect. on Bisector

29+34 - 58.8' Lt. = ± P. pole # P 2240

29+18 - 50.4' Lt. = Beg. Guard Rail

29+09 - 48.8' Lt. = ± 10" Euc.

29+00 - Cont.

wall to Gar. + House

+ Beg. Rock + Conc on slope from

29+00 - 48.3' Lt. = end Guard Rail

66.3

15.5

85.0

84.6

83.8

82.3

82.1

81.8

81.7

84.7

26.0

16.8

7.3

7.7

8.49

8.95

9.64

10.54

10.6

+2.41

100

71

53

35

8.9

edge

10

19.5

25.7

25.7

25.7

25.7

25.7

25.7

103.0

104.0

+10.7

+12.6

35

42.5

74

Top of  
Rock

edge  
Dr.

edge  
Dr.

61.1

11.4

85.8

85.4

85.0

84.7

84.3

83.7

83.0

82.9

80.8

25.2

20.9

6.5

6.9

7.32

7.60

8.01

8.60

9.26

9.4

1.53

100

78

51

35

13.4

7

8

16.6

21.5

21.5

21.5

21.5

21.5

21.5

92.30

+ Beg. Rock



15'  
30+00 → 153

30+54  
149' 154

30+117 ← 209

30+100 ← 21'

29+75 ← 228

29+45.57 ← 25.9

+297 ← 216

28+833

44.16

15' x 15'  
28+50

Cont'd from P. 10

Bisector

Conc. Ret. wall

Rock + conc Slope

House

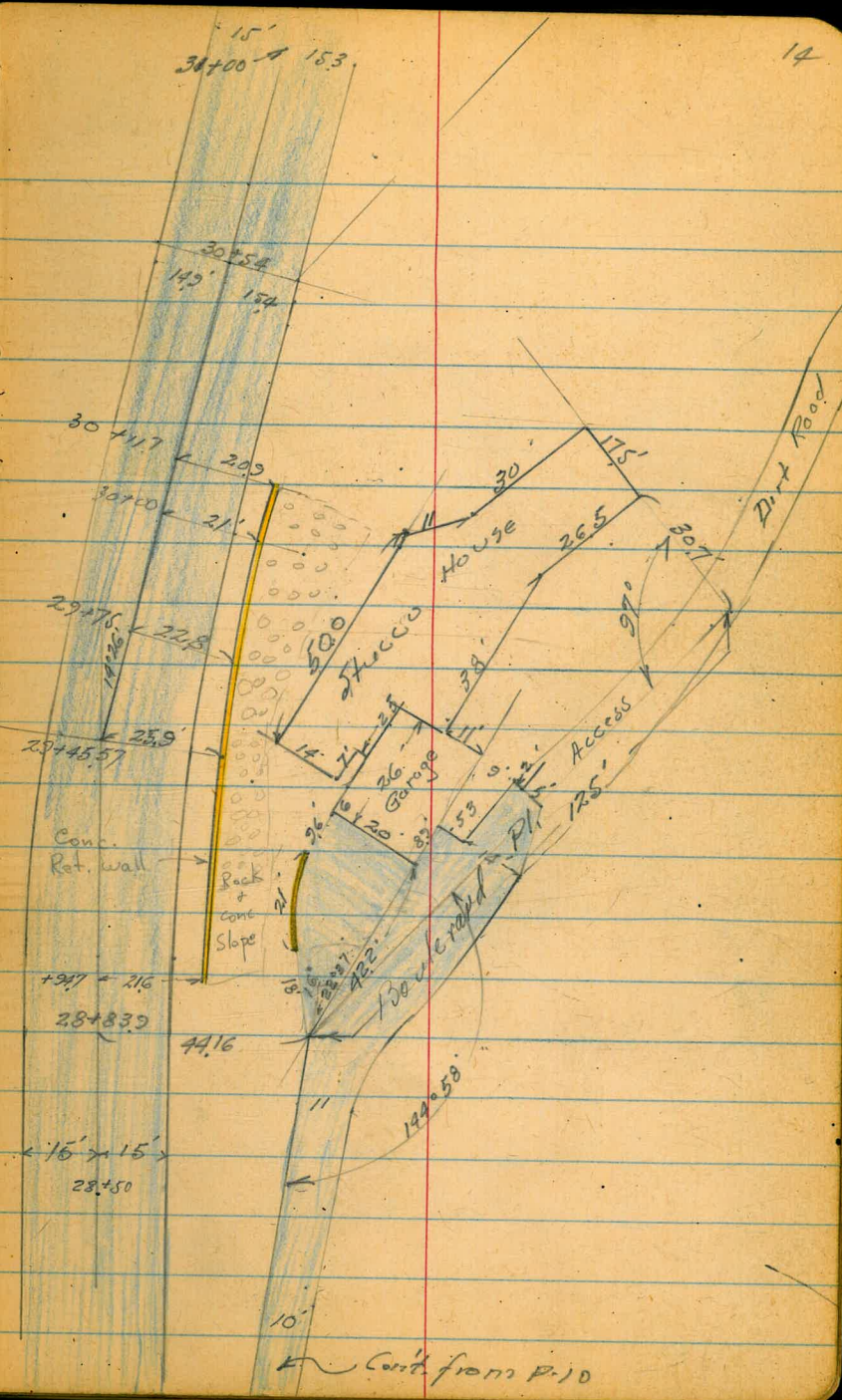
500  
Shed

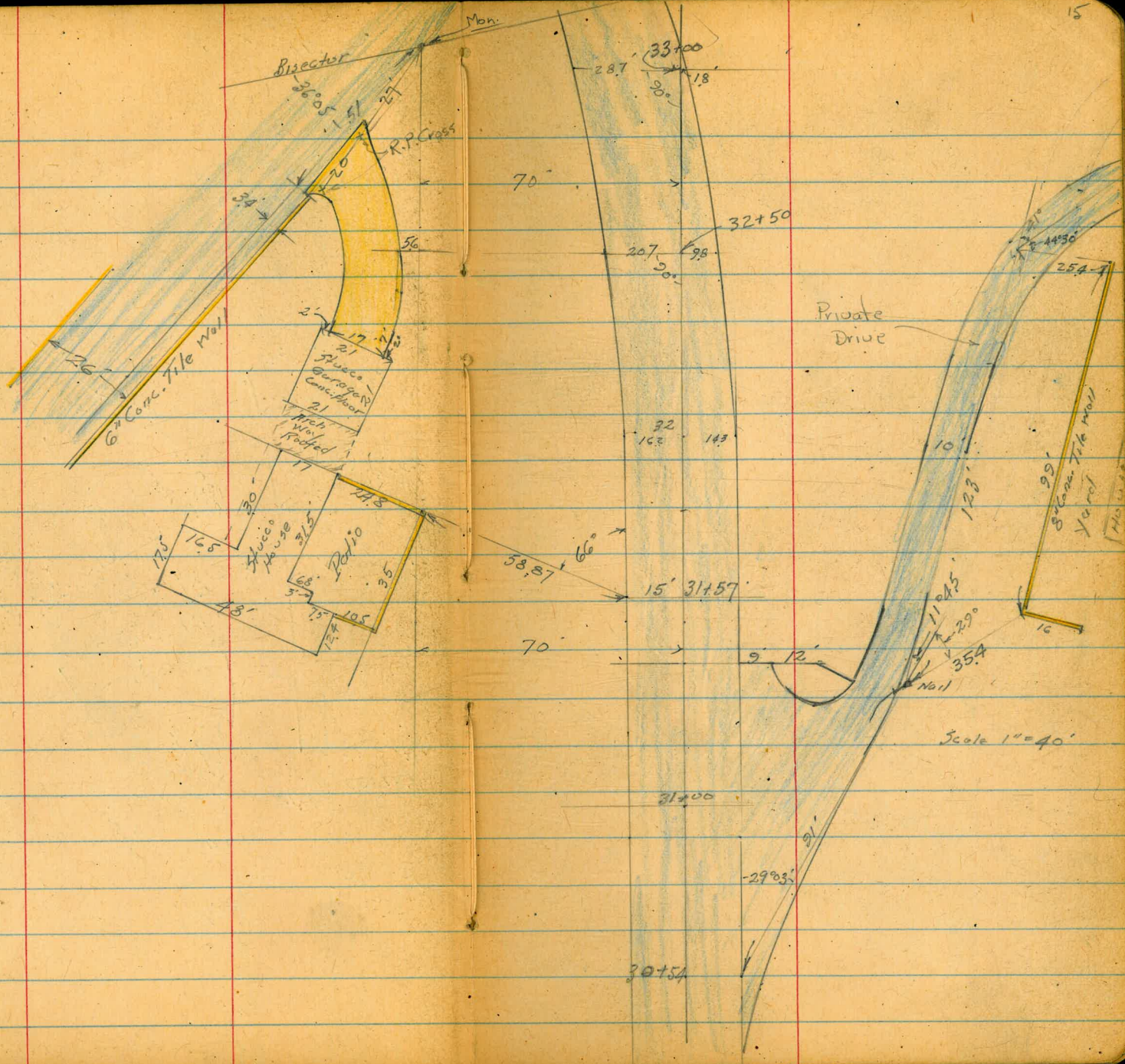
Garage

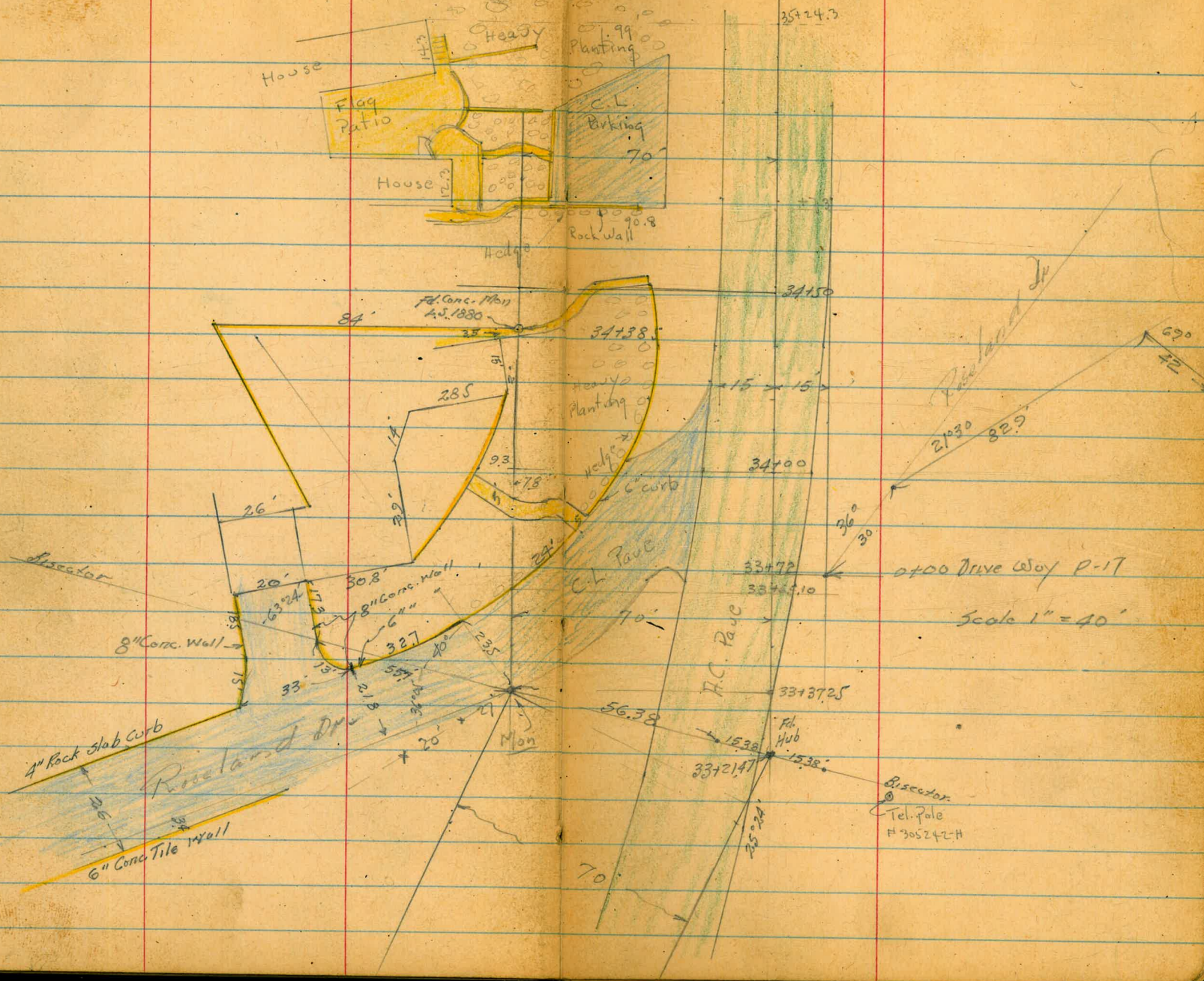
Access

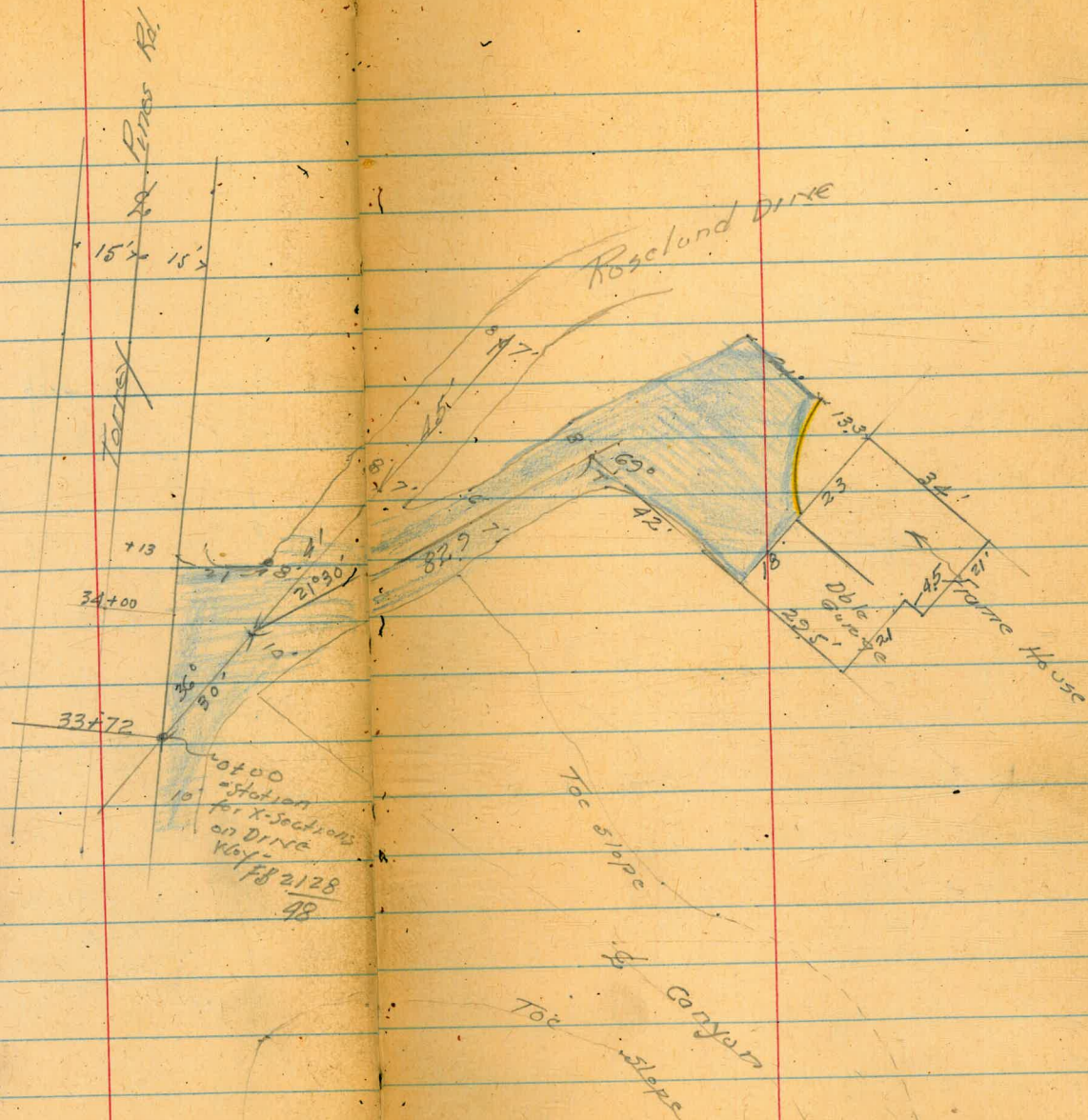
100' x 100'

Dirt Road









Torrey Rd

Cont. from P. 13

31+00 - Cont.

31+00

30+71 - 57.6 Rt. =  $\pm 24"$  Euc.

T.P. 3.54 82.68 739 79.14 = Wall in Pole

30+66 - 53' Lt. =  $\pm$  Pole # 2280

30+61 - 46.4 Rt. =  $\pm 4"$  Euc.

30+60 - Cont.

30+60

30+58 - 32' Rt. =  $\pm$  Tel. pole # 305240 H

30+47.5 - 39.8' Rt. =  $\pm 30"$  Euc.

30+20 - Cont.

30+20

30+11.7 - 20.9' Rt. = end Conc. Wall

Lt.

$\$ 94.5$   
 $+ 11.8$   

---

55

Rt 107A  
 $+ 24.7$   

---

100

18

50.0	63.0	18.8	18.4	18.6	18.7	18.6	18.3	18.3	80.8	81.2
31.9	19.7	3.9	4.27	4.05	3.96	4.13	4.42	4.4	19	1.5
100	50	25	15	8		8	15	22	41	44
			edge				edge		edge	CL. 2

82.68

110.5

+ 24.0  
100

52.7	65.4	80.4	80.0	80.0	79.7	79.4	79.0	79.2	80.8	104.8
32.8	21.1	6.1	6.47	6.53	6.78	7.10	7.47	7.3	+ 4.3	+ 18.3
97	60	34	14.8	8		8	15.2	24	34	70
			edge							

58.1

284  
100

104.4

+ 17.9  
67.4

along House

69.8	81.8	82.5	81.5	81.2	80.8	80.3	79.8	79.9	82.2	101.4
16.7	4.7	4.0	5.04	5.34	5.70	6.20	6.74	6.6	+ 5.7	+ 14.9
64	46	40	14.6	8		8	15.4	20	27	46
			edge				edge		edge	88.2

86.53

20.9  
ground

+ 1.65

20.9  
Top wall

Torrey Rd

Nail in Pole  
T.P

2.57 77.84 741 75.27

32+60

56.9 51.3  
25.80 25.40  
94.6 79.1  
edge  
cont.  
Dr.

59.3 12.3 12.5 13.9 72.6 15.2 14.6 16.8 16.3 101.3 101.1  
23.4 10.4 10.16 88.2 8.10 7.52 8.1 5.9 6.4 +18.6 +18.4  
51 29 22 9 8.5 20 50 63 91 100  
edge edge edge Dr.

32+70 - Cont.

53.1 54.0 94.7 94.6 94.9 10.23  
29.60 28.7 +12.0 +11.9 +12.2 +19.6  
80.6 66 71 75.5 87 100  
edge of Conc Dr. + Gar. floor

32+70

51.3 11.2 13.8 14.1 15.5 15.9 16.2 16.0 16.2 11.6  
25.4 8.5 8.92 7.95 7.24 6.77 6.54 6.7 6.5 5.1  
52 26 17.5 9 8 13.1 22 34 47  
edge edge

31+80 - Cont.

52.6 58.0 51.7 90.0 90.3 90.8 103.4  
30.1 24.70 31.0 +7.3 +7.6 +16.1 +20.7  
97.1 = floor 69.7 69.7 63 74.5 86 100  
House Top along Dr. along wall

31+80

56.0 15.1 15.2 10.1 16.5 16.9 11.0 16.1 11.8 89.1  
25.8 7.3 7.46 6.63 6.22 5.83 5.68 6.0 4.9 +7.0  
50 22 15.4 5 8 14.9 25 35 57  
edge edge

31+78 - 34.4' Rt. - ± W.M.

31+76 - 34 Rt. = ± Tel pole # 305241-H

31+40 - Cont

51.7 53.2 88.8 98.1 105.3  
31.0 29.5 +3.1 +15.4 +22.6  
100 75 61 75 100  
edge

31+40

51.3 16.8 16.6 11.1 11.6 11.7 11.6 11.6 84.2 85.4  
25.4 5.9 6.08 5.34 5.09 4.95 5.05 5.1 +1.5 +2.7  
53 22 15 6 82.68 9 15 27 38 49  
edge edge edge Dr.

Torrey Rd

T.P. 7.29 75.93 920 68.64 = <sup>Rad</sup> invd

33+83 - 50.4' Lt. = ± 5' flag stone walk - See sketch

33+70 - Cont.

33+70

33+66 - 33 Rt. = ± Bus Stop Sign

33+64 - 29.9' Lt. = ± St. Sign

33+21.47 Cont

33+21.47 = Ang. Pt. = Sect. on Bisector

33+00

32+86 - 32.4' Rt. = ± Guy Pole

32+78 - 52' Lt. = ± P. pole # 2296

59.9  
18.38 18.88  
103.2 103.2  
Top  
cb.

Lt.

±

Rt.

20

67.8  
12.02  
walk at  
wall

66.1  
11.74  
50.4  
walk

62.1  
15.7  
100

64.4  
13.41  
63  
Top  
cb.

74.0  
3.8  
75

75.1  
2.7  
90

77.4  
0.4  
100

63.5 65.2 67.6 69.8 70.7 71.7 71.9 72.0 72.3 74.0  
14.32 12.56 10.15 7.96 7.12 6.11 5.87 5.78 5.5 3.8  
63 50 35 23.9 15  
94. edge edge edge paved c.l.

59.9  
17.89  
87  
on Pave

60.9  
16.94  
71.8  
edge Pave

63.3 71.3 70.8 71.7 72.6 73.46 73.3 73.1 73.7 80.8 85.8  
14.5 6.5 6.96 6.12 5.23 4.38 4.5 4.7 4.1 +3.0 +8.0  
54 40 32.8 25 15 26  
edge edge edge 75. 100

9 65.8 71.4 71.3 72.4 73.3 74.0 73.6 73.8 80.8 98.1  
14 14.0 6.4 6.50 5.43 4.48 3.82 4.2 4.0 +3.0 +20.3  
13 50 37 28.8 18 8 18 17 46 56 100  
edge edge edge edge paved

77.84.

34+72.8 - 38.5 Lt. = Sly. of 10" Rock + Conc. wall

2' Conc. walk

34+51.4 = 35' Lt. = end curb. at edge of

34+44 - 48.5' Lt. = ± 30" Palm

34+44 - 37.2 Rt. = ± Tel. pole # 305243-H

34+42 - 43.2 Rt. = ± W.M.

34+38 - 53 Lt. = ± P. pole # 2320

34+35 - Cont

34+35

34+32 - 22.4 Lt. = ± W.M.

34+21 - 38' Rt. = ± W.M.

34+00 - Cont

34+00

33+88 - 40.1 Rt. = ± 3 W.M.

66.3	65.2	67.3	67.0	67.4
9.56	10.70	8.54	8.87	8.50
63	63	38.5	38.5	31 = Cor.
Top wall	end CL	Top	C.L.	C.L. Dr.
	67.9	68.4	67.9	
	7.96	7.48	7.96	
	50	35	35	walk
E. edge walk		Top end cb		

67.1	13.6	13.5	7AA	17.8	81.5
9.20	2.3	2.4	1.5	+1.9	+5.6
75.5	42	50	70	82	100
along curb wall		edge rd.	edge		Dr.
Cor. House					

68.1	69.0	68.5	68.2	69.0	69.5	69.7	69.9	70.0	70.7
7.8	6.85	7.4	7.73	6.91	6.44	6.17	5.99	5.9	5.2
50	32.4	32.4	16.4	7		6	13.5	30	30.6
	Top	gut.	edge				edge		
	cb.								

66.2

9.7

79 = along House

18.1

+2.2

100

68.3	67.1	69.0	10.2	10.68	11.1	11.6	12.6	15.4
7.56	8.15	6.94	5.71	5.25	4.79	4.3	3.3	0.5
41.3	41.3	19.3	7		10.5	24	44	80
Top	gut.	edge			edge	on	edge	
cb. (C.L.)						C.L.	C.L.	

75.93



Torrey Rd

Cont - P. 24

Lt.

Rt

Rt 22

35+40 - Cont.

10.7	14.6	16.0
+0.2	+4.1	+5.5
63	83	100

35+43.5 - 25' Lt. = 4" Pepper

54.4

35+40

16.1  
89.8  
along  
House

56.1	61.0	65.2	65.3	65.8	66.1	66.1	66.0	66.0	66.1	68.9
13.8	9.5	5.3	5.21	4.66	4.44	4.42	4.53	4.5	3.8	1.6
65	36	24	15	7		8	15	31	39	45
			edge				edge			

35+43 - 44' Lt. = 1" Avacado

35+36 - 23' Lt. = W.M.

35+33 - 51.3 Lt. = P. pole # 2042

35+26 - 21.5 Lt. = W.M.

35+15 - Cont.

56.1	56.3	57.6	11.3	14.5	16.5
14.4	14.2	12.91	+0.8	+4.0	+6.0
97.1	82	82	62	80	100
along House	ground	top-conc. wall			

35+15

59.3	64.9	66.0	66.0	66.6	66.8	67.0	67.0	66.6	67.8	69.1
11.2	5.6	4.5	4.54	3.86	3.65	3.52	3.54	3.9	2.7	0.8
67	43	25	15	6		8	15	30	39	42
			edge				edge			

34+90 - 83' Rt = P. pole # PC 2327

T.P. 1.89 70.53 7.29 68.64

70.53

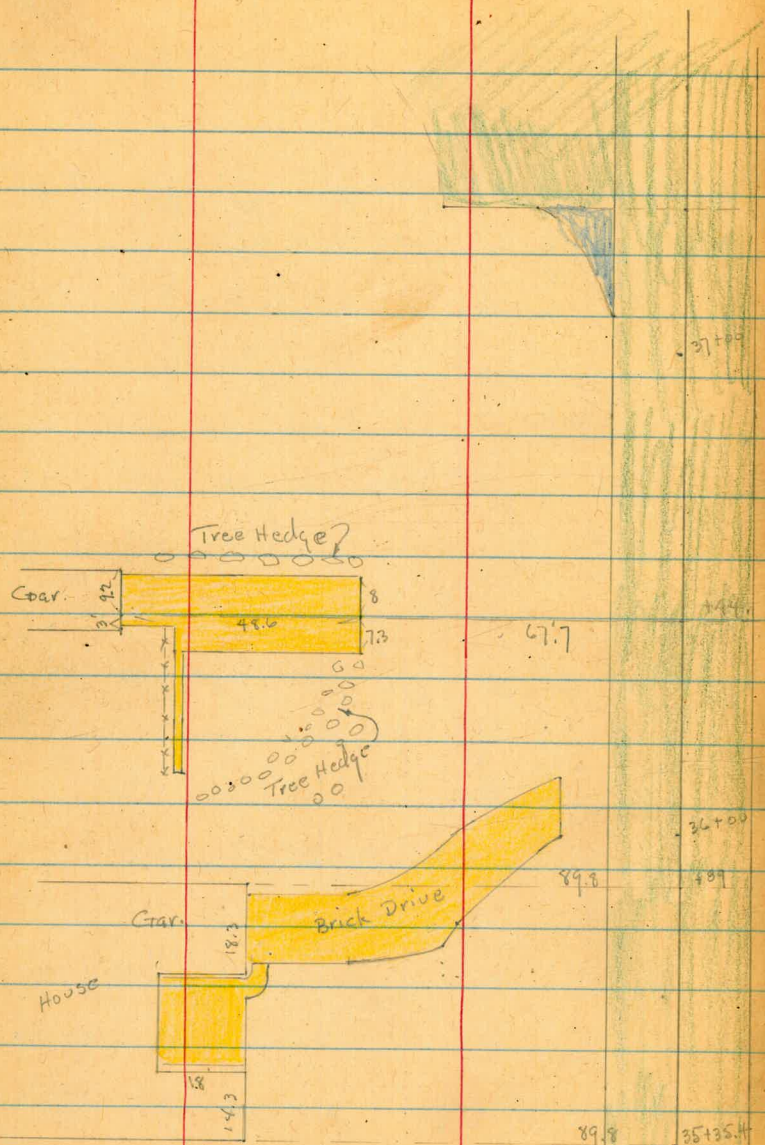
34+75 - Cont.

62.5	62.4	63.9	11.8	16.1	16.3
13.42	13.49	12.02	4.1	0.2	+0.4
91	82.5	82.5	45	78	100
walk at House	flag walk	Top Rock wall		edge	Rd.

34+75

65.0	65.2	67.3	67.2	67.8	68.1	68.4	68.5	68.3	69.4
10.09	10.72	8.57	8.74	8.10	7.75	7.51	7.37	7.6	6.5
62.5	62.5	31	15	7		8	15	30	40
Top wall	cl.	edge	edge				edge		

75.93



Torrey Rd

37+30- 40.5 Rt = ± Tel. pole # 305 666-H

37+25- 43 Rt = ± W.M.

T.P. 2.80 63.06 10.27 60.26 = Walk in Pole 63.06

37+00

36+60- 92.1 Lt. = ± P. pole # P 60666

36+54- 50.6 Lt. = ± P. pole # P 2350

36+50 = Cont.

55.4	56.3	58.1	60.3	60.5	60.7	64.6	59.3	59.7	59.1	65.6
15.1	14.2	12.4	10.20	9.97	9.80	9.88	10.16	10.8	10.8	4.9
100	75	40	15	8	8	8	15	35	65	100
			edge				edge			
				58.6		620		64.1		
				11.86		8.5		6.4		
				115.6		75		100		
				floor Gar.						

36+50

36+21- 51.8 Lt. = ± W.M.

36+43- 39.8 Rt. = ± Tel. pole # 305 245-H

36+15

35+80- 39 Rt. = ± Tel. pole # 305 244 H

35+75 = Cont.

59.1	60.2	61.3	62.0	62.3	62.5	62.4	62.0	61.8	61.4
11.38	10.27	9.2	8.51	8.15	8.00	8.11	8.52	8.7	9.1
100	67.7	40	15	7		8	15	32	50
	on Dr.	209 Conc Dr.	edge				edge		
59.1	59.7	61.2	63.0	63.1	63.5	63.6	63.5	63.1	63.0
11.41	10.8	9.3	7.5	7.39	7.00	6.85	6.99	7.38	7.5
104	80	50	26	15	7	8	15	31	60
edge			edge				edge		
walk				64.7		69.8		73.2	
				15.76		0.6		+2.7	
				89.8		65		100	
				floor Gar.					

35+75

35+73- 39.3 Lt. = ± 1" Avacado

35+58- 41.3 Lt. = ± 1" Avacado

56.8	60.4	63.9	64.3	64.8	64.9	64.8	64.6	64.7	65.6	67.8
13.65	10.1	6.6	6.22	5.72	5.57	5.65	5.89	5.8	4.9	2.7
59	33	21	15	7		8	15	31	39	44
edge			edge				edge			
Dr.										
						70.53				

T.P.

3.46

57.93

8.59

54.47

Plug in NE  
Calle De La Plata 49.1

Lt. ± Rt.

71.9

38+00 - Cont.

51.9 53.4  
13.4 11.18 9.70  
100 85.5 71  
edge Ret. Top. cb out Ret.

+8.8  
100

38+00

52.9 54.9 56.3 57. 57.3 57.6 57.1 57.6 57.0 65.9 68.7  
10.16 8.16 6.79 6.09 5.76 5.49 5.36 5.45 6.1 +2.8 +5.6  
71 50 30 15 8 8 15 35 55 77.1  
gut. edge at fence

La Plata

37+98 - 8.8.7 Lt. = P.C. of 34' Rad. Ret. on Calle De

A7.6 47.2 51.4 50.8  
15.44 15.94 11.70 12.30  
Top 28 gut. 88.7 88.7  
N along cb. Top gut.

37+83 - 40.4 Rt. = ± Tel. pole # 432 + 91-H

37+79 - 29.5 Lt. = ± Water M.H.

6.08  
29.5' Rim

37+66.7 - 8.2 Lt. = E.f. of Ret

49.2 48.6 53.0 52.4  
13.94 14.45 10.06 10.72  
Top 25 gut. 82 82  
N along cb. Top gut.

37+64 - 43.5 Rt. = ± W.M.

37+54 - 73.1 Rt. = Cor. Picket fence

37+50 - Cont.

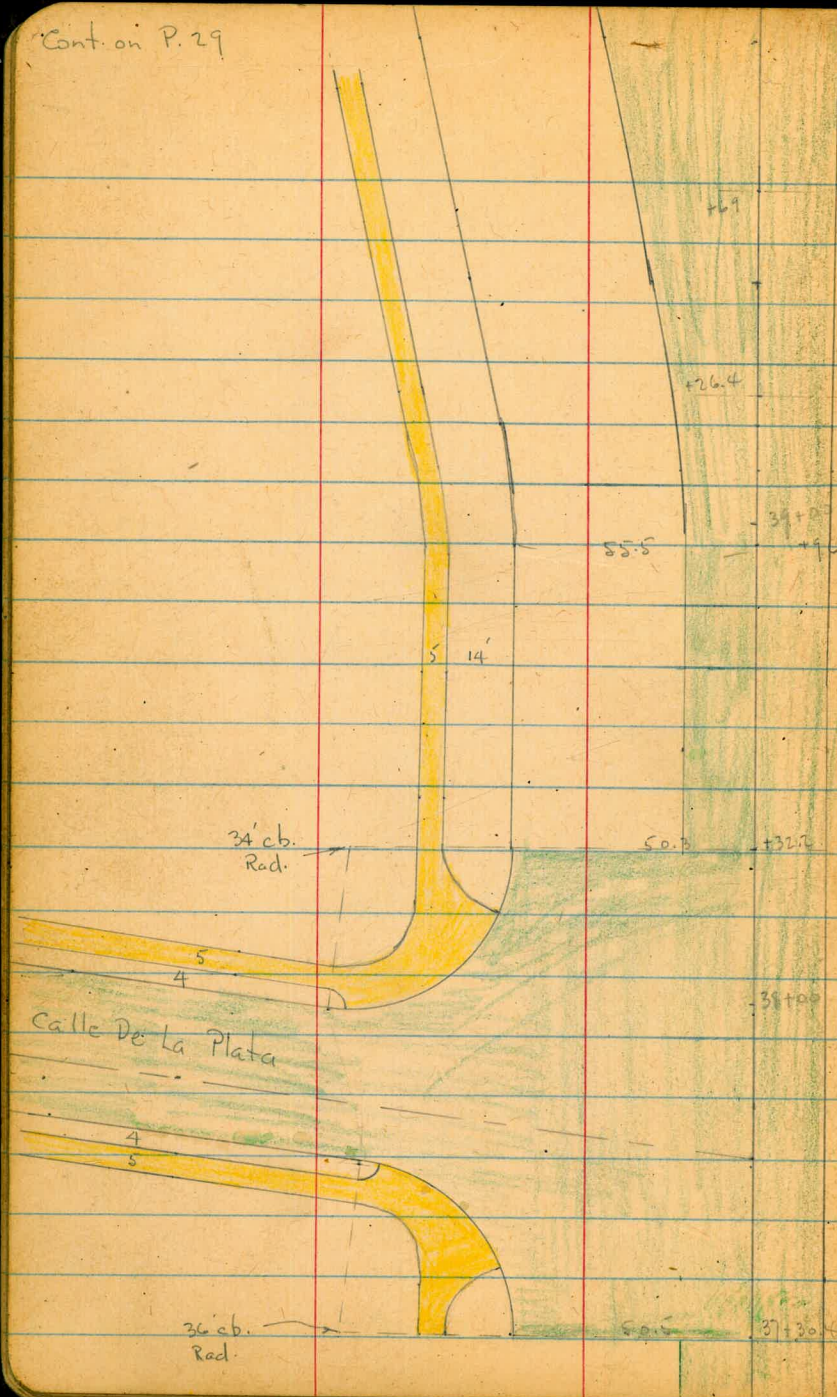
51.2 55.1 56.0 67.1 70.3  
11.9 7.97 7.12 +4.0 +7.2  
100 71.2 55.9 80 100  
edge Ret. Top. cb out Ret.

37+50

55.4 57.0 58.0 58.5 58.9 59.1 59.2 59.1 58.5 58.4 63.56  
7.68 6.09 5.06 4.57 4.20 3.96 3.86 4.02 4.6 4.7 +0.5  
58.9 40 25 15 8 8 15 30 40 55  
gut. edge

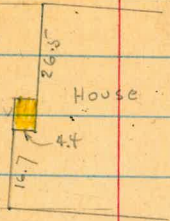
37+30.4 - 50.5 Lt. = Beg. cb. = P.C. of 36' Rad. Ret

57.2 56.1 50.2  
59.0 6.44 3.90  
50.5 50.5 15 63.06  
Top. gut.



99

922



Cont. from P. 23

Torrey Rd.

39+11 - 53.2

Lt. =  $\oplus$  P. pole # 2380

39+10 - Cont.

39+10

38+96 - 55.5' Lt. = PC of curve in curb

38+70 - Cont.

38+70

38+67.4 - 40' Rt. =  $\oplus$  Tel. pole # 305665 - H.

38+54.8 - 27.5' Rt. =  $\oplus$  4" x 4" Traffic Sign

38+44 - 28.7' Rt. =  $\oplus$  Bus Stop Sign

38+43 - 41' Rt. =  $\oplus$  w.M.

38+32.2 Cont.

38+30 - 52.7' Lt. =  $\oplus$  St. Sign

38+32.2 = PC of 24' Rad. Ret. on Lt.

38+30 - 79' Lt. = end fence

Lt.

$\oplus$

Rt.

27

51.7 51.7

6.18 6.22

10.5 65.5  
edge walk

51.5	50.6	51.5	52.6	52.2	53.5	53.6	53.4	53.3	56.2	59.8
6.40	7.3	6.4	5.27	4.69	4.37	4.34	4.47	4.6	1.7	+1.9
51.5	51.5	35	16.3	8		7	15	35	65	100
Top	got.		edge				edge			
52.0	51.1									
5.85	6.8									
58.6	55.8									
Top	got.									

53.0 53.0

4.85 4.86

69.4 4.4

edge walk

68.1

+6.8

100

53.0	52.0	52.8	54.2	54.8	55.1	56.2	55.1	54.8	58.8	60.6
4.85	5.9	5.1	3.69	3.14	2.81	2.70	2.83	3.1	+0.9	+2.7
50.6	50.6	35	15	7		8	14.9	27	42	55
Top	got.		edge				edge			

51.4

54.0

54.4

68.4

6.5

3.90

3.53

+10.5

70

69.4

64.4

100

edge walk

54.5	53.9	54.8	55.7	56.1	56.4	56.6	56.5	56.5	62.1	65.5
3.44	4.00	3.12	2.18	1.79	1.47	1.34	1.42	1.4	+4.2	+7.6
52.3	50.3	35	15	8		8	15	36	41	65
Top	got.		edge	edge			edge			

57.93

40+25 - 55.6 Rt. =  $\pm$  Guy Pole

40+09 - 73.2 Lt. = P.C. of cb.

40+00 - Cont.

40+00

39+96 - 67.7 Rt. =  $\pm$  P. pole # PC 2383

No outlet found - must be one length covered.

39+98 - 27.9 Rt. = Inlet of 24" Steel pipe

39+91 - 71 Lt. =  $\pm$  Light Std.

39+88 - 32 Rt. =  $\pm$  3 - W.M.'s

39+75 - 23' Rt. =  $\pm$  24" Sycamore tree

39+60 - 32.7 Rt. =  $\pm$  W.M.

39+50 - Cont.

39+69 - 79.1 Rt. = end Picket fence

39+50

39+27 - 30.5 Rt. =  $\pm$  Guy Pole

39+24 - 74.3 Rt. = Beg Picket fence

39+17 - 81.5 Rt. =  $\pm$  14" Euc.

39+20 - 53.3 Lt. = E.C. of cb.

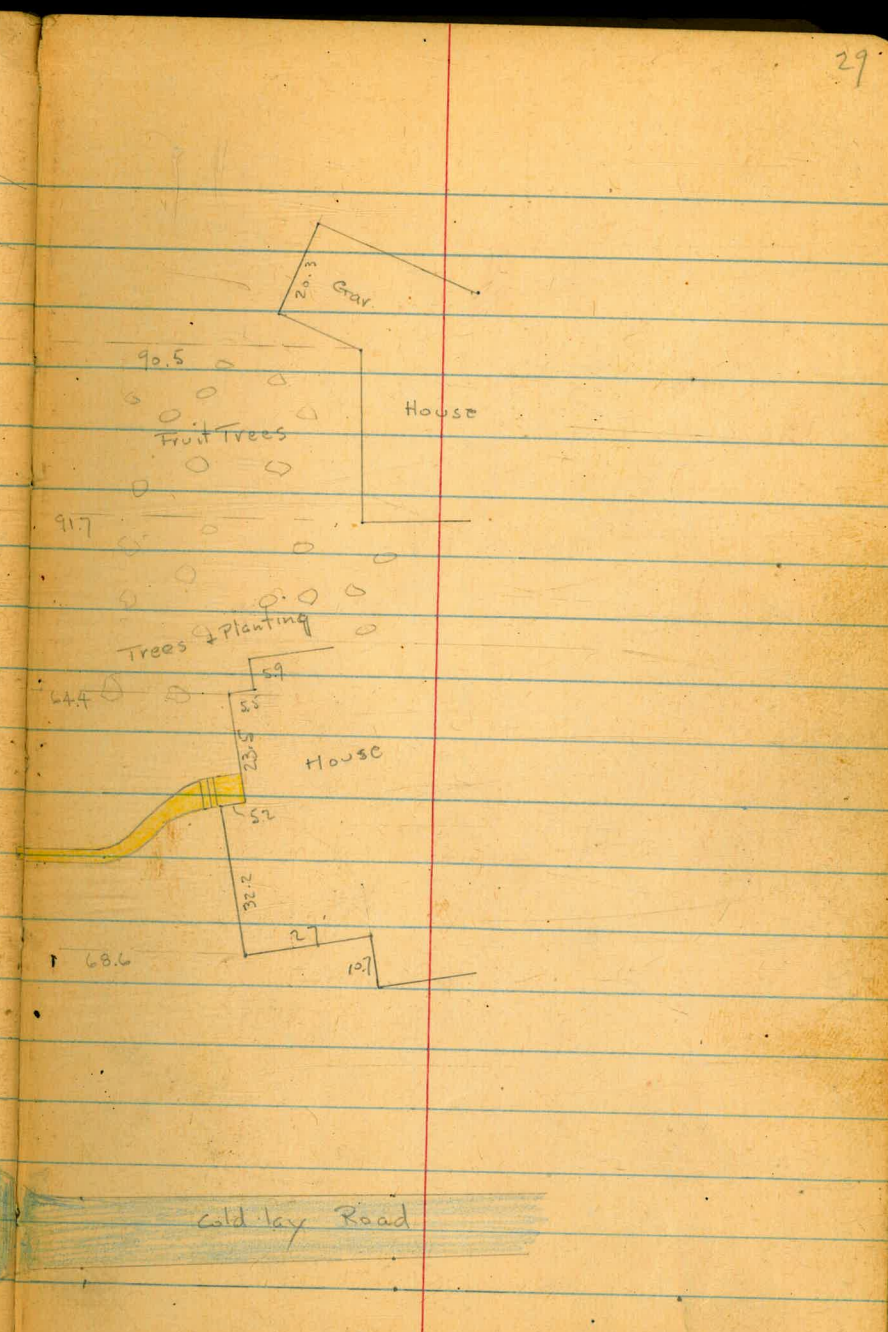
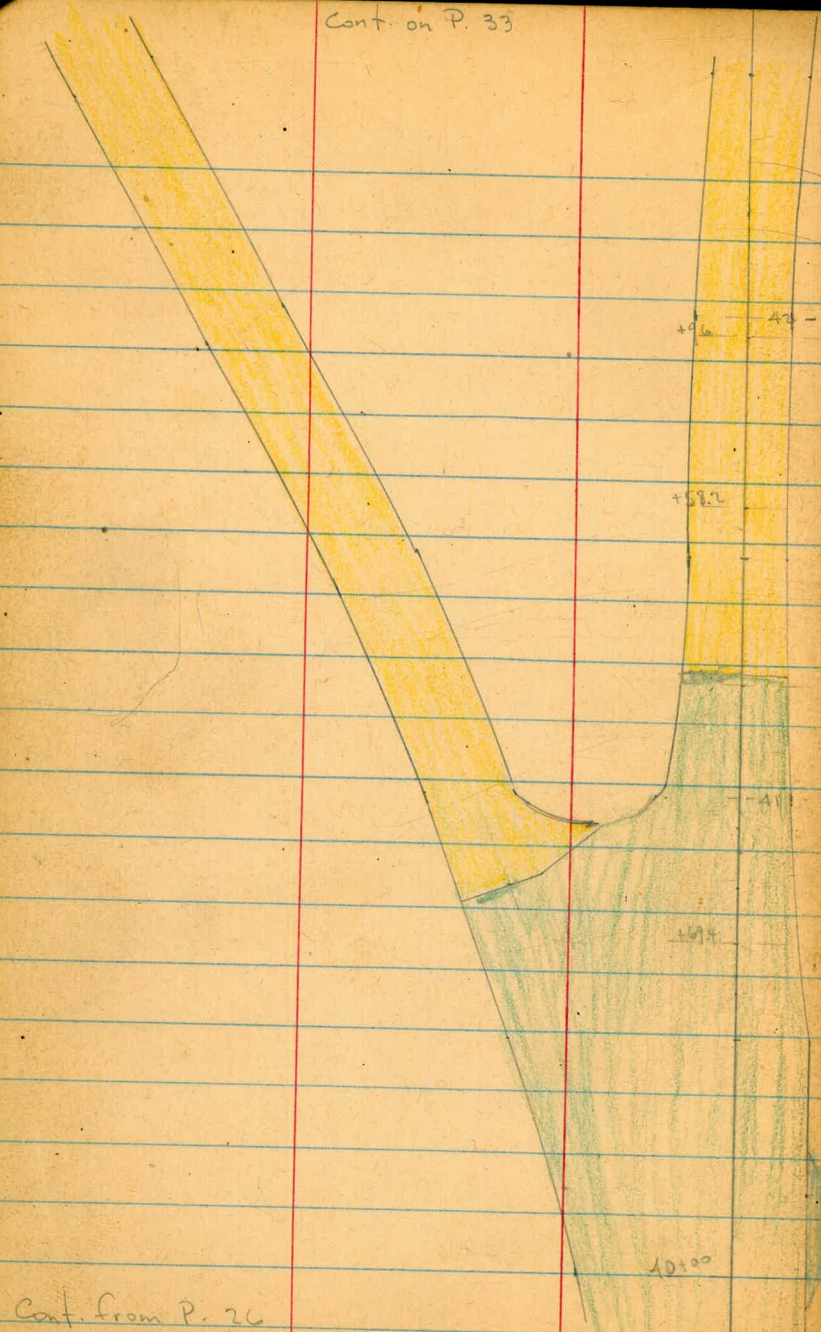
A8.0 A7.1 A7.8  
 9.93 10.17 10.08  
 90.3 85.2 71  
 walk 73P  
 26

A7.1	A8.1	A9.2	A9.9	50.4	50.7	50.8	51.0	52.4	53.9	55.7
10.8	9.8	8.67	7.95	7.45	7.7	7.08	6.90	5.5	4.0	2.2
71	55	32.5	21	9	7.7	7.7	15	35	65	100
gut.		edge					edge			

A8.3  
 7.61  
 27.9 - I.E. of  
 Pipe

60.0	59.9	59.8	57.5
7.90	7.94	8.06	0.4
79.3	74	59.9	93
	walk	Top	along House

46.8	49.9	50.9	51.2	51.8	51.9	51.9	51.8	52.1	53.1	55.3
9.1	8.0	6.95	6.70	6.14	5.97	5.97	6.06	5.8	4.8	2.6
59.9	40	22	18	8		8	15	29	40	65
gut.		edge					edge			
		(CL)								





Cont. from P. 28

Torrey Rd

40+89.2 - 21' Rt. = ± 2.9' Conc. Walk

40+82.5 - 75.2' Lt. = ± Gas Co. M.H.

40+82 - 24.6' Rt. = ± W.M.

40+80 = 104.1' Lt. = cb.

40+63 - 55.7' Rt. = ± 14" Tree

40+59 - 96.8' Lt. = ± P. pole # 60000

40+50 - Cont.

40+50

T.P. 5.89 56.59 7.23 50.70

40+42.5 - 22' Rt. = ± 4'x4' Traffic sign

40+40 - 31.9' Rt. = Beg. Rail fence

40+37 - 42' Rt. = ± Tel pole # 457250 - H

40+29 - 79.3' Lt. = E.C. of curb

40+27 - 28.6' Rt. = ± 6 - W.M.'s

40+25.5 - 80.2' Lt. = ± W.M.

30

Lt.

±

Rt.

51.6	52.4	53.6
4.97	4.21	2.99
21	39	60
walk	Beg	at steps
	Curve	

46.4

10.16

75.2 = Rim

44.9

44.0

11.70

12.6

704.1

104.1

Top

9.4

46.1

46.0

45.5

46.6

10.49

10.57

11.11

9.9

110.6

104.7

89.9

70

walk - cb in Drive

48.1

48.6

49.0

50.1

50.4

50.5

50.5

50.6

52.7

53.0

54.7

8.52

7.95

7.60

6.44

6.20

6.12

6.07

6.00

3.9

2.7

1.9

47.5

38

28

15

7

6

15

40

85

100

edge

56.59

edge

57.93

Torrey Rd.

42+52.5-27 Rt. = † Tel. pole -

42+50

+ 32.1 Pt. = end Rail fence

42+46-17 Lt. = † 4x4 Traffic Sign

42+31-18 Lt. = † St. sign

42+23-20.1 Rt. = † F.H. (BM)

42+18-46.4 Lt. = † P. pole # P 61389

42+12-22.1 Rt. = † Tel. pole # 447301-H

T.P. 3.20 55.27 4.52 52.07 - Top F.H.

42+00-30.7 Rt. = fence

41+84-55.6 Lt. = † 3 - W.M.'s

41+80-42.3 Lt. = † W.M.

41+71-40 Lt. = † W.M.

41+57-23 Rt. = † W.M.

41+50

41+39-29.5 Rt. = Ang. in fence

41+00

† A.B

11.8  
100

Lt.

†

Rt.

31

42.2	45.0	41.6	44.8	50.4	50.2	44.7	50.0	51.6	52.8	55.6
13.07	11.3	7.7	5.5	4.96	5.05	5.55	5.3	3.7	2.5	+0.3
125.1	100	60	25	8		12	23	28	50	100
edge				edge		edge				
Conc.										

44.1	47.3	50.3	50.5	50.3	49.9	49.2	51.1	52.9	54.8
12.52	9.3	6.3	6.09	6.31	6.69	7.4	5.5	3.7	1.8
96.4	50	15	10.8		9.1	18	22	50	75
edge			edge		edge				along
18' Conc. strip									House

46.0	46.0	46.1	50.0	50.6	50.5	50.3	50.1	52.1	53.9	56.2
11.61	10.60	10.5	6.6	5.96	6.10	6.33	6.5	4.5	2.7	0.4
88.2	68.1	60	20	11		9	16	30	65	100
edge	Conc.			edge		edge				

46.6	47.3	48.2	50.3	50.1	50.8	50.7	50.7	52.0	53.6	56.2
10.02	9.33	8.4	6.34	5.85	5.75	5.88	5.9	4.6	2.97	0.4
65.7	46.5	35	16.8	8		10.9	20	34	59.5	62.8
edge	Conc. Pav.		edge			edge			Bot.	Top
									Steps	ford
									on walk	

56.59

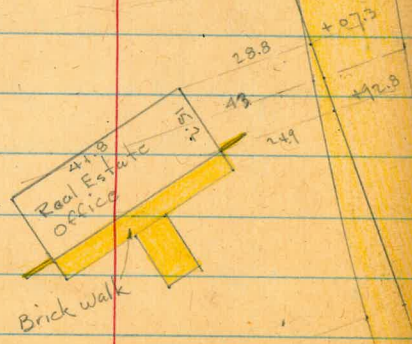


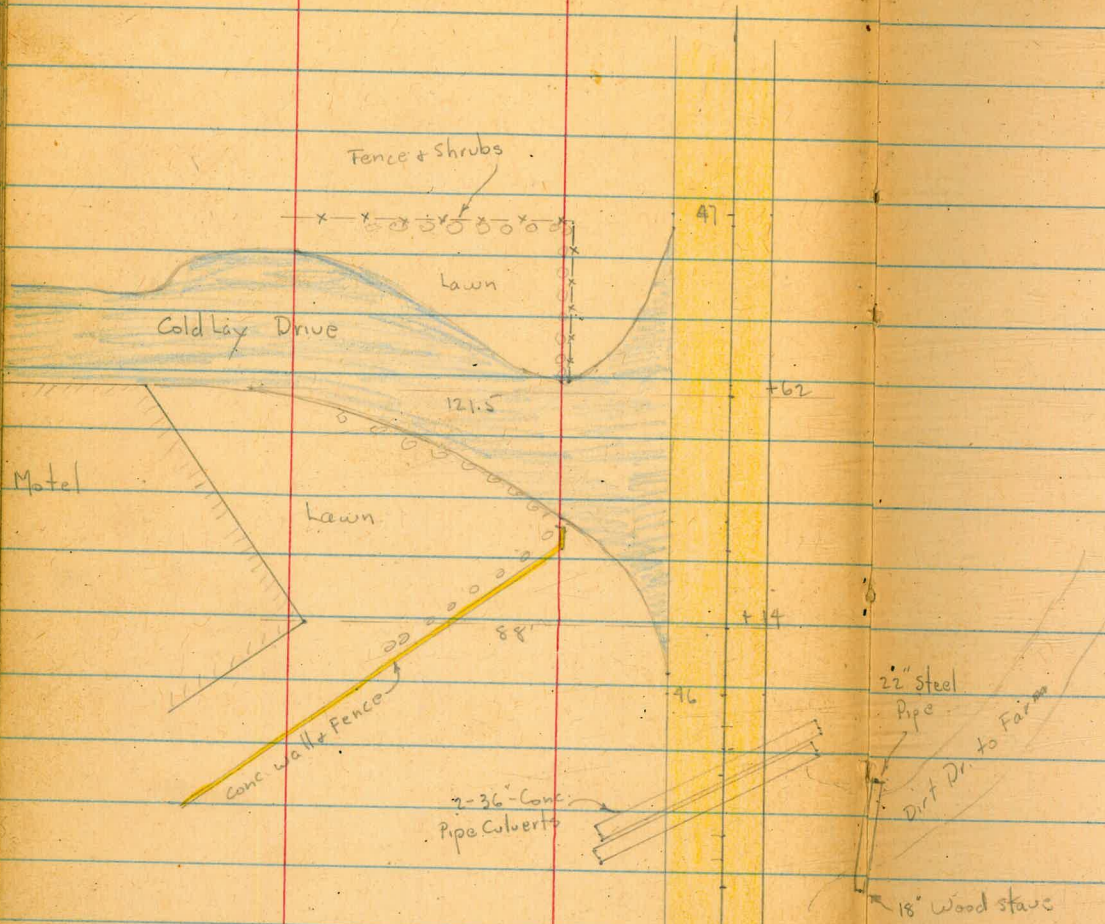
Cont. from P. 29

45

44

43 + 22.79 = Ang. Pt.





46+82 - 23.6 Lt. = E Pole # P60927

46+60.5 - 19.8 Rt = E Tel. pole # 447305-H

46+50

43.139	12.07	11.72	10.49	9.91	9.82	9.92	10.6	12.8	11.5	10.6	11.0
100	80	56.6	50	25	12.1	7.7	18	24	29	50	100
		edge-Dr.	on Dr.	edge		edge		Ditch			

E Id + et 46+ 97

62.94

T.P.

8.89

62.94

507

54.05

54.25 = Book 1812 - P. 58

for Aer Circuit

Note: Run Check levels back to starting B.M. - checked O.K.

46+00

48.4	48.3	47.7	47.8	48.7	51.7	52.3	52.3	52.2	51.7	48.3	51.1	51.6	52.7
10.7	10.83	11.4	11.3	10.4	7.4	6.83	6.90	6.89	7.4	10.8	8.0	7.5	6.4
100	76.2	76.2	50	32	20	11.9		8.1	20	27	34	60	100
	Top					edge		edge					E Dr.

conc. wall

45+92.6 - 19.8 Rt = inlet 36" Conc. Pipe

45+89 - 19.2 Rt = inlet of 36" Conc. Pipe  
Wood Pipe shown below

45+83 - 30.3 Rt = outlet 22" Steel Culvert - joins

45+70.3 - 25.2 Lt = outlet 36" Conc. Pipe

45+65.5 - 25.2 Lt = outlet of 36" Conc. Pipe

45+59.9 - 27.6 Rt = inlet of 18" wood stave culvert  
under Dirt Drive to Farm

46.8

12.27

19.2  
IE. pipe

46.9

12.17

19.8  
IE. pipe

48.5

10.63

30.3  
IE. Pipe

45.7

13.41

25.2  
IE. of  
Pipe

45.6

13.51

25.2  
IE. of  
Pipe

48.6

10.50

27.6 - IE. pipe

45+50

45.5	45.6	46.8	50.7	51.7	51.7	51.6	51.5	49.1	50.8	51.1	52.4
13.6	13.5	12.3	8.4	7.43	7.41	7.50	7.6	10.0	8.3	8.0	6.7
100	60	40	24	11.8		edge	19	27	40	60	100

59.62

50.6

8.50

13.2 on Rim

45+02 - 13.2 Rt = E Water M.H.

Torrey Rd

T.P. 5.94 67.68 1.20 Nail in Pole 61.74

Lt. 61.3 62.0 62.2 62.7 62. 57.2 62.3 62.1 62.1 50.2 50.8 60.4  
1.6 0.9 0.7 0.6 0.9 5.7 0.6 0.8 0.8 3.7 3.1 2.5  
100 75.8 65 54 41 30 22 5 17 50 100

49+76 - 33 Lt. = Tel. pole # 453620-H

49+71 - 40.4 Rt. = P. pole - # 61527

49+60 - 71.8 Lt. = P. pole # 6092-8 = B.M.

60.2 60.1 60.5 60.2 57.4 59.5 60.3 57.8 58.5 58.6  
2.7 2.8 2.1 2.1 2.3 2.7 5.5 3.4 2.6 5.1 4.4 4.3  
100 75 54.2 43.2 32.2 19 13 6 22 50 100  
edge edge + Ditch

49+50

49+00

57.3 57.1 50.5 59.2 59.2 59.2 59.0 58.4 56.9 58.3 56.6 57.2 57.3  
5.6 5.8 4.4 3.7 3.6 3.6 3.8 4.5 6.0 4.6 6.3 5.7 5.6  
100 69 61 50 31.8 21 10.2 9 16 40 70 100  
edge edge + Ditch

48+60.71 = Ang. Pt. - Sect. on Bisector

55.2 55.0 57.4 58.0 58.0 57.0 57.0 57.0 56.1 56.3 56.8  
7.7 7.9 5.5 4.9 4.8 4.5 5.0 5.9 6.8 6.6 6.1  
85 70 40 30 13.5 3.3 6.7 18 40 70 100  
edge edge

48+33 - 18.5 Rt. = Tel. pole # 447306-H

48+00

52.3 53.2 53.9 55.5 56.3 56.4 56.3 55.6 54.6 54.9 55.0 55.7  
10.4 9.7 9.0 7.1 6.5 6.5 6.6 7.3 8.3 8.0 7.9 7.2  
100 60 34 26 13 7 19 26 30 60 100  
edge edge

47+50

51.2 51.9 52.1 54.6 55.1 55.1 55.1 54.7 52.6 53.8 54.0 54.6  
11.7 11.0 10.2 8.3 7.8 7.7 7.8 8.2 10.3 9.1 8.9 8.3  
100 60 32 28 12.8 7.1 19 25 30 60 100  
edge edge + Ditch

47+00

50.3 50.9 51.8 53.5 54.0 54.0 54.0 53.2 51.9 52.9 53.4 53.5  
12.6 12.0 11.1 9.4 8.8 8.8 8.9 9.7 11.0 10.0 9.5 9.4  
100 70 38 27 12.5 6.2 7.5 19 25 30 50 100  
edge edge + Ditch

51 + 00 = end.

50 + 81 - 34 Rt. = ± 4 - w.M.s

50 + 69 - 27.5 Lt. = ± 4 - w.M.s

50 + 61 - 79.9 Rt. = ± P. pole # P 61076

50 + 55.5 - 66.4 Lt. = Tel. pole # 447307-11

50 + 50

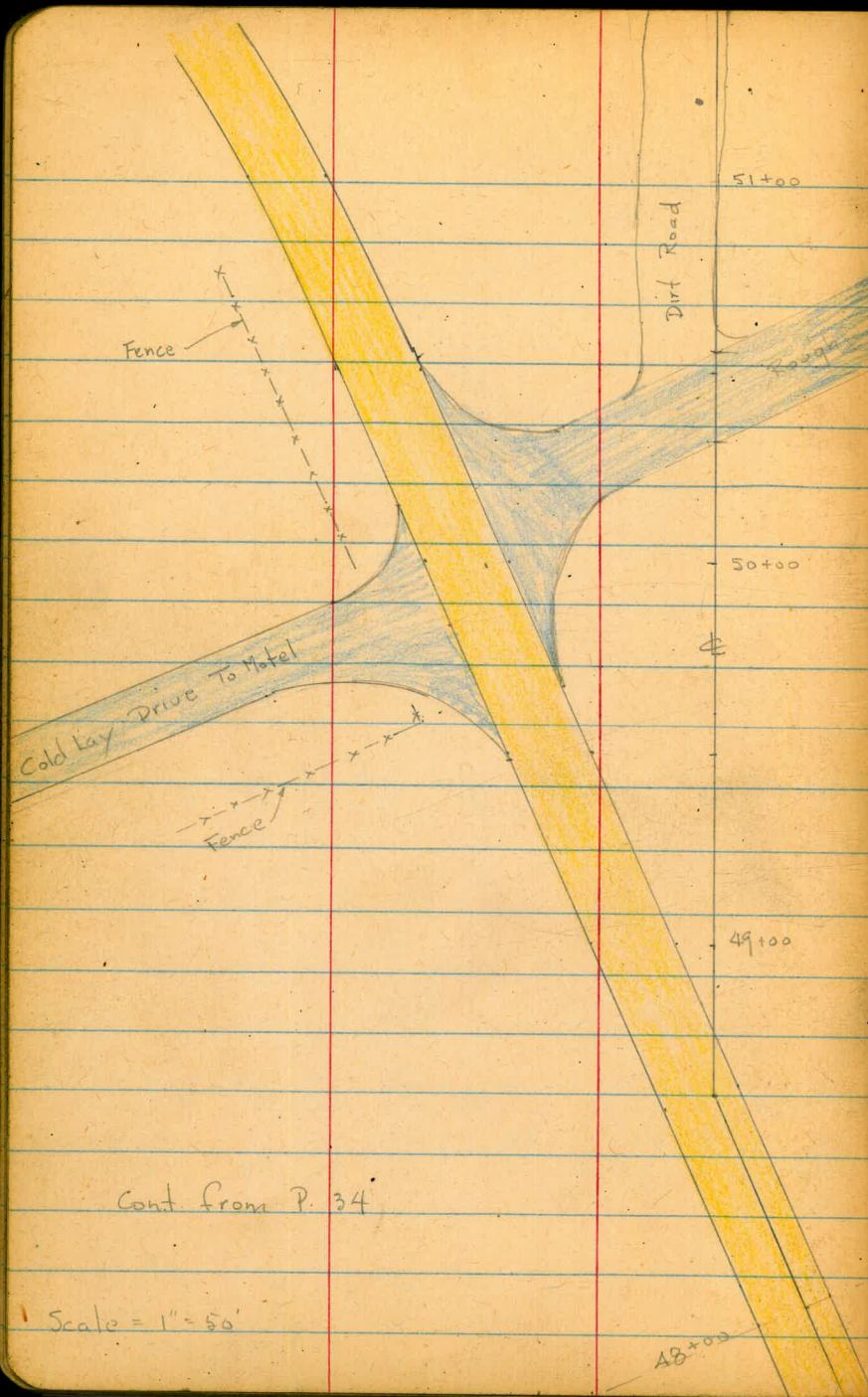
50 + 25

64.9	65.4	65.6	64.8	64.8	64.6	64.8	64.4	65.1	64.6	64.8	65.3	64.5	
2.82	2.31	2.08	2.9	2.9	3.1	2.9	3.3	2.6	3.1	2.9	2.4	3.2	
122.8	111.3	102.5	80	50	22	10		edge	6	50	91	113	141
edge		edge			edge			Rd.		edge		edge	
		cont.			dirt Rd.					edge		edge	

63.5	63.8	64.0	63.6	62.1	60.1	63.3	64.0	63.8	63.3	61.3	61.8
4.22	3.91	3.66	4.1	5.6	7.6	4.4	3.7	3.9	4.4	6.4	5.9
794	88.5	77.2	60	36	30	24		25	50	73	100
edge		edge			± Ditch						

62.6	62.7	63.1	63.2	63.0	63.2	62.6	63.6	63.6	60.1	60.1	60.6
5.1	5.01	4.64	4.48	4.7	4.5	5.1	4.1	4.1	7.6	7.6	7.1
100	86.9	76.1	65.1	50	32	10		67	32	50	100
	edge		edge					67.68			





See B. 1812 - P. 57 for location of  
Culverts.

P. 58 - for Sections on Curve.

Cont. from P. 34

Scale = 1" = 50'

48+00

Station 1  
 Time 5.7 / inc 2000 ft.  
 0.000 1000 ft.

0.00	P.C.	0' 00"	
1.00		0' 15"	4-25' 00"
2.00		0' 30"	4-35' 00"
3.00		0' 45"	
4.00		1' 00"	
5.00		1' 15"	
6.00		1' 30"	
7.00		1' 45"	
8.00		2' 00"	
9.00		2' 15"	
10.00		2' 30"	
11.00		2' 45"	
12.00		3' 00"	
13.00		3' 15"	
14.00		3' 30"	
15.00		3' 45"	
16.00		4' 00"	
17.00		4' 15"	
18.00		4' 30"	
19.00		4' 45"	
20.00		5' 00"	
21.00		5' 15"	
22.00		5' 30"	
23.00		5' 45"	
24.00		6' 00"	
25.00		6' 15"	
26.00		6' 30"	
27.00		6' 45"	
28.00		7' 00"	
29.00		7' 15"	
30.00		7' 30"	
31.00		7' 45"	
32.00		8' 00"	
33.00		8' 15"	
34.00		8' 30"	
35.00		8' 45"	
36.00		9' 00"	
37.00		9' 15"	
38.00		9' 30"	
39.00		9' 45"	
40.00		10' 00"	
41.00		10' 15"	
42.00		10' 30"	
43.00		10' 45"	
44.00		11' 00"	
45.00		11' 15"	
46.00		11' 30"	
47.00		11' 45"	
48.00		12' 00"	
49.00		12' 15"	
50.00		12' 30"	
51.00		12' 45"	
52.00		13' 00"	
53.00		13' 15"	
54.00		13' 30"	
55.00		13' 45"	
56.00		14' 00"	
57.00		14' 15"	
58.00		14' 30"	
59.00		14' 45"	
60.00		15' 00"	

+75 <sup>06</sup>/<sub>EC</sub>

16° 46' 16° 45'<sup>80</sup>

+50

15° 34' 15" 15° 34'<sup>49</sup>

+25

14° 22' 30" 14° 22'<sup>89</sup>

4-

13° 11' 13° 11'<sup>25</sup> Δ-33° 31' 35"  
R-600'

+75

11° 59' 30" 11° 59'<sup>43</sup> T-180.73'  
L-351.09'

+50

10° 48' 10° 48'<sup>4</sup> Δ-33° 32'

+25

9° 36' 9° 36'<sup>39</sup> R=600'  
T=180.77

3-

8° 24' 30" 8° 24'<sup>22</sup> L=351.16

+75

7° 13' 7° 13'<sup>15</sup>

+50

6° 01' 15" 6° 01'<sup>53</sup>

+25

4° 49' 45" 4° 49'<sup>91</sup>

2-

3° 38' 3° 38'<sup>20</sup>

+75

2° 26' 30" 2° 26'<sup>69</sup>

+50

1° 15' 1° 15'<sup>06</sup>

1+23 <sup>90</sup>/<sub>8.0</sub>

0° 00'<sup>00</sup>

N. 46° 38' 45" E.

0+00 <sup>00</sup>/<sub>P-line</sub>  
0+00 <sup>00</sup>/<sub>L-line</sub>

d= 16° 46'

ch= 16.0

16° 47' 15"

16 44 45

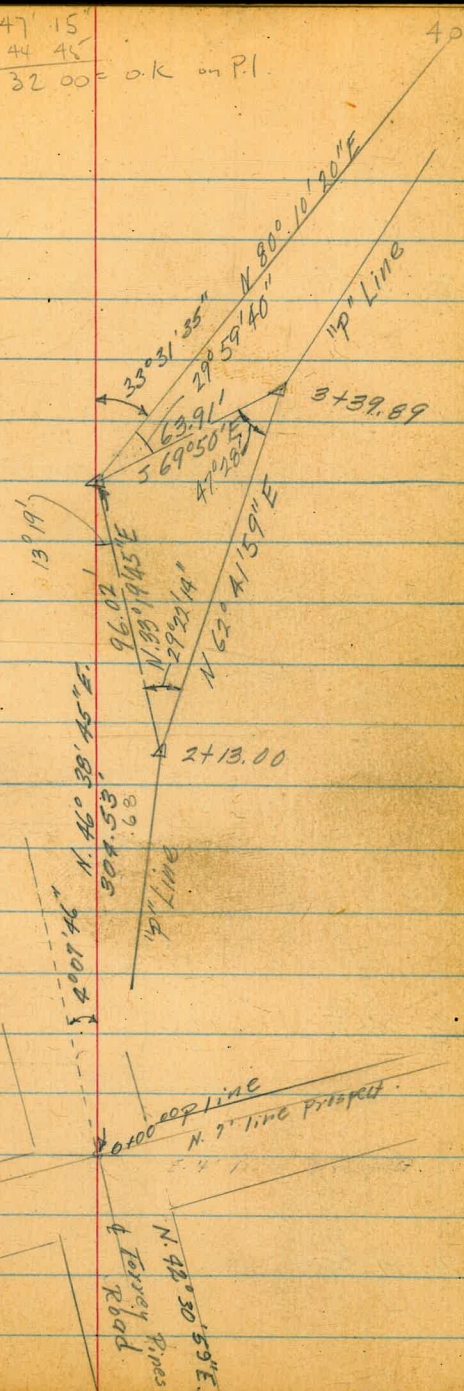
33 32 00 = o.k. on P.I.

4 49 45  
~~52 45~~

9 36

03

9 39



8+75.77  
8+75<sup>72</sup>  
E.C.

4° 59' 45"

N. 70° 10' 54" E.

8+50

4° 30' 15"

Δ - 9° 59' 26"

8+00

3° 33'

R - 1500  
T - 131.11'  
L - 261.55'

7+50

2° 35' 30" d - 1.1459

"M" for 50 ch = 0.8

7+00

1° 38' 15"

6+50

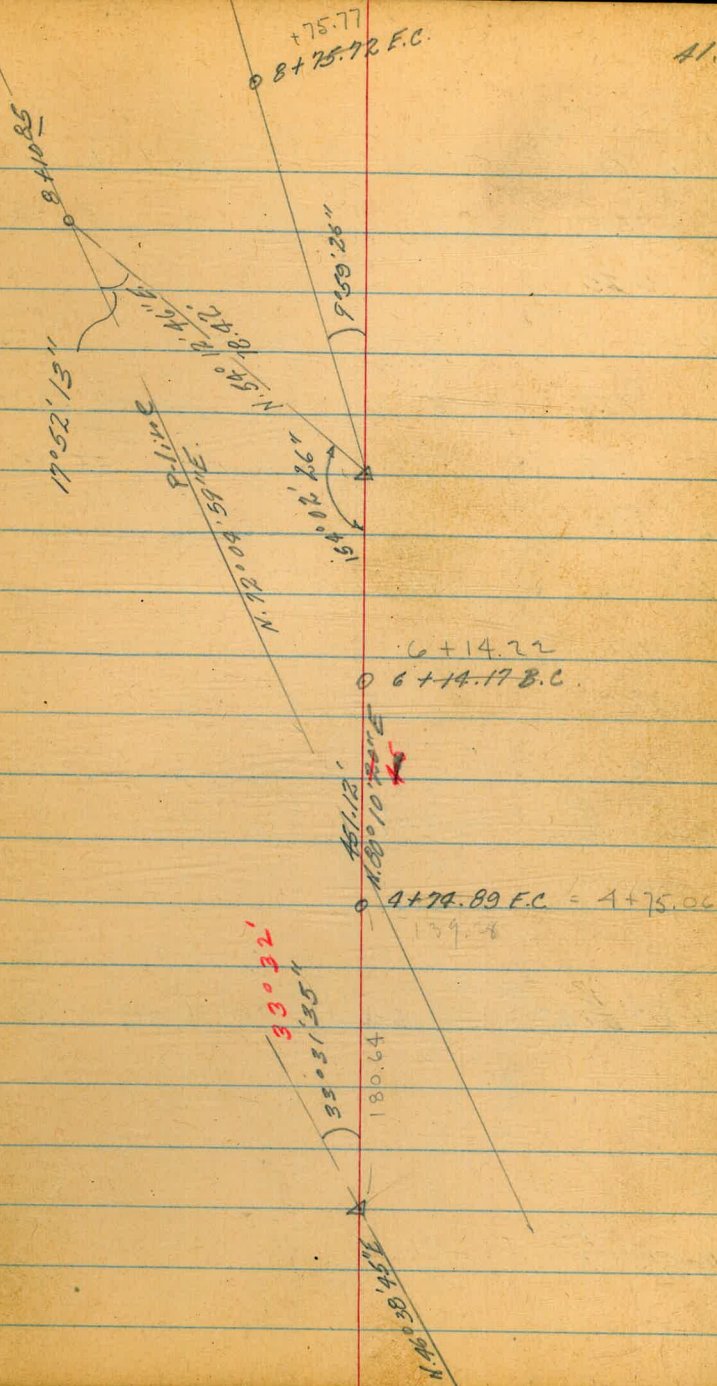
0° 41'

6+14.22  
6+14<sup>17</sup>  
B.C.

N. 80° 10' 20" E.  
45"

+75.06  
89  
4+74 E.C.

41.



17 +69.00  
17+ 68 E.C. 7° 41' 30" N. 54° 48' 06" E.

+35 +60  
+25 6° 14' 3"

17- 5° 42' 45"

+75 Δ - 15° 22' 48"  
+50 R - 1000'  
+25 T - 135.03'  
L - 268.43'

16- 2° 51'

+76 M - 50' = 0.31

+60 1° 25'

+25

~~15+00 B.C.~~ <sup>34</sup> see P. 49

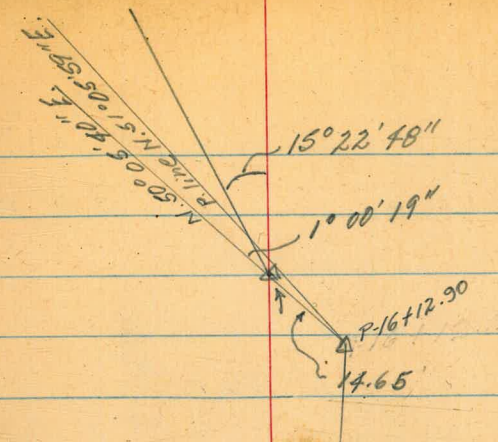
~~15+00.57~~

13+87<sup>56</sup> P.O.T. (Begin L. line) <sup>72</sup> see Page 49 N. 70° 10' 54" E.

624.6

8+75.77

8+75 E.C. <sup>72</sup>

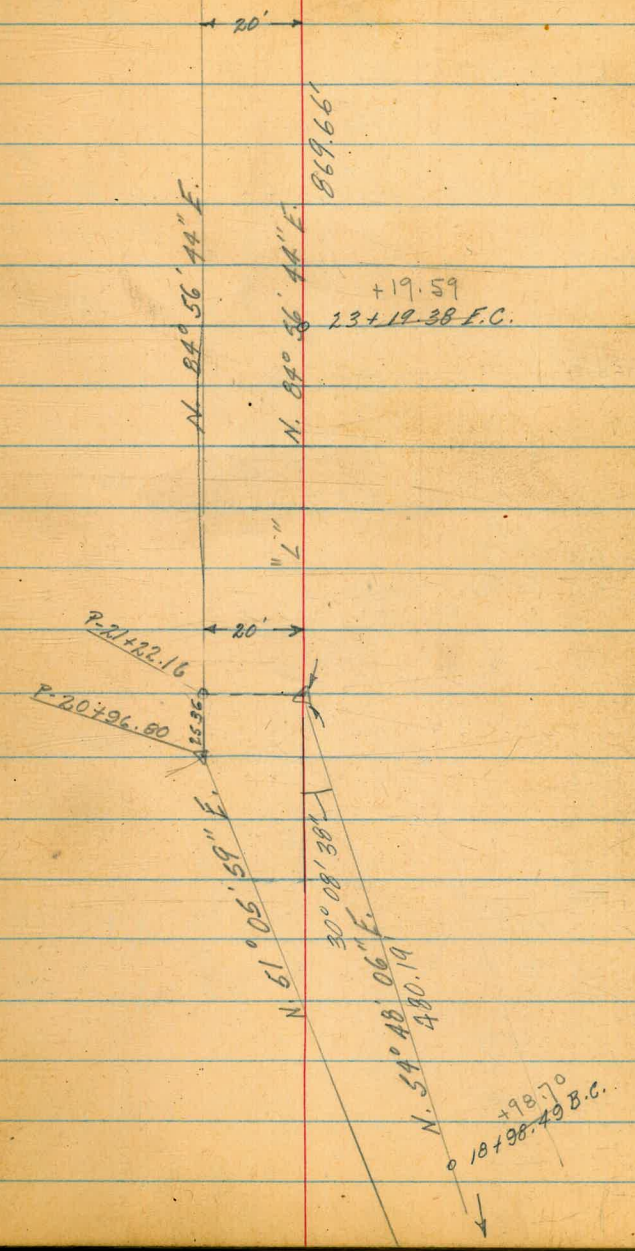


16+11.34 B.C. <sup>57</sup>

N. 70° 10' 54" E.  
890.76

8+75.77 E.C. <sup>75.77</sup>

22 -		10° 47' 15"	N. 84° 56' 44" E.
+50	x	8° 59' 45"	
	x		Δ-30° 08' 38"
21 -		7° 12' 15"	R-800' Rt. T-215.42' L-420.89'
+50	x	5° 24' 45"	F=28.49
	x		M-50 = 0.38
20 -		3° 37' 30"	R=760 = d. 2.2616
	x	ch=47.49	
+50	x	1° 50'	
	x	s.l. ch=48.62	
18+98.49 B.C.			
+98.70			
			N. 54° 48' 06" E.
17+68 <sup>77</sup> / <sub>E.C.</sub>			
17+69.00			



30+61.05  
30+60.68 F.C. 5° 00' 07" S. 85° 03' 01" E.

+30 x 4° 06' 45" A-10° 00' 15"  
30- 3° 15' 15" R-1000 ft.  
x T-87.53'  
L-174.61'

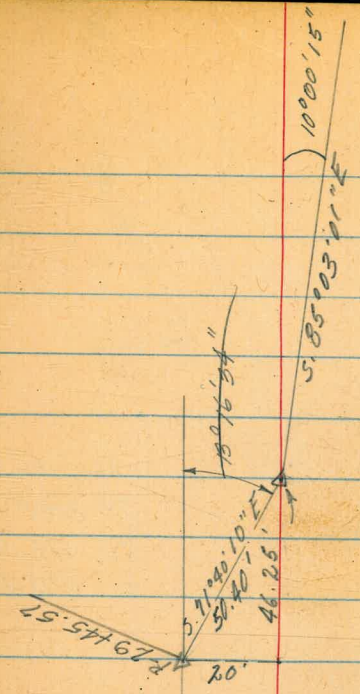
+50 x 1° 49' 15" M-50 = 0.31  
x F = 3.82

29- 0° 23' 15"  
28+86.07 B.C.  
+86.44

N. 84° 56' 44" E.

+19.59  
+19.30 F.C.  
23- SL. ch = 18.57 15° 04' 15"  
14° 22' 45"

+75  
+50 12° 34' 45"  
+25

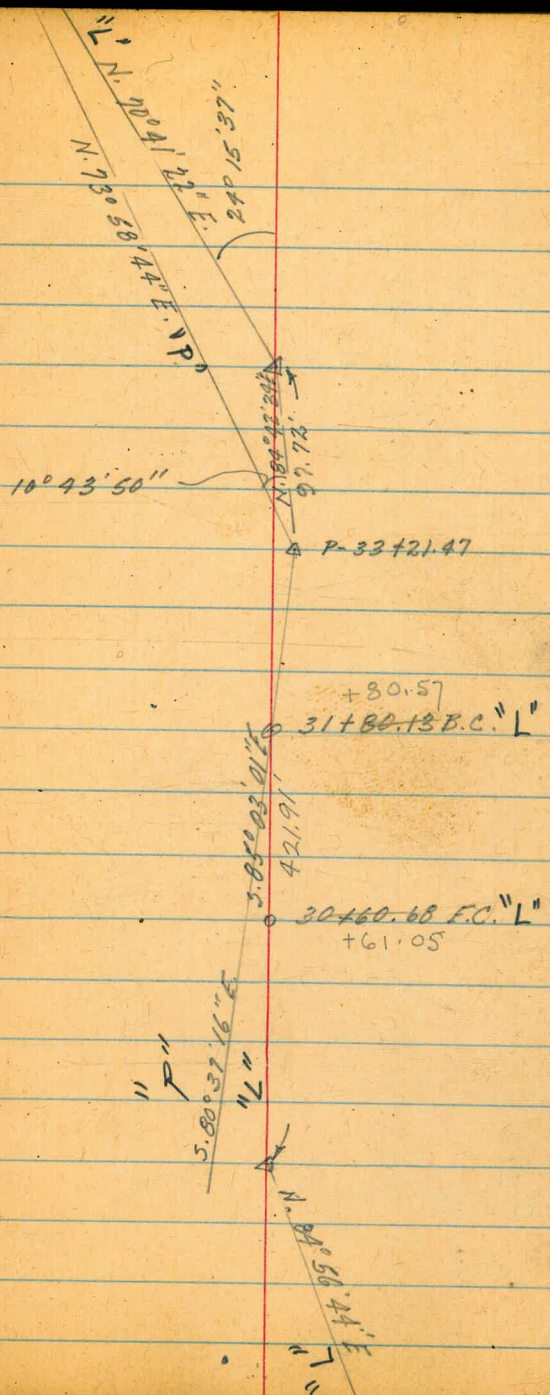


28+86.07 B.C.  
86.44

N. 84° 56' 44" E.  
869.66'



35-		9° 09'	
+50	x	7° 43' 15"	
	x		Δ - 24° 15' 37"
34-		6° 17' 15"	R - 1000' Lt.
	x		T - 214.93'
			L - 423.48'
+50	x	4° 51' 15"	
	x		
33-		3° 25' 15"	
	x		
+50	x	1° 59' 15"	
	x		
32-		0° 33' 30"	
31 + 80.13 B.C.			5.85° 03' 01" E.
80.57			
30 + 60.68 F.C.			
+61.05			





+50	x	3° 18'	A - 23° 08' 36"
	x		R - 1400' Rt.
40		2° 16' 30"	F - 286.66'
			L - 565.50'

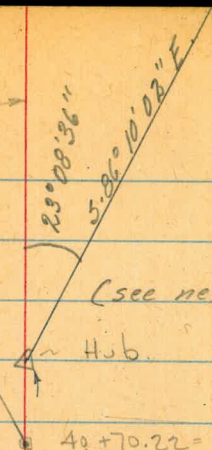
+50	x	1° 15'
	x	
39		0° 13' 45"
+88.80		
38 + 88.10 B.C.		

+03.99		
36 + 03.55 E.C.		12° 07' 45"
	x	
35 + 50		10° 35'

N. 70° 41' 22" E.

Lot Stakes  
 Percival Broyty  
 Osborne - 12-20-51

INDEXED  
 (law)  
 DEC 21 1951



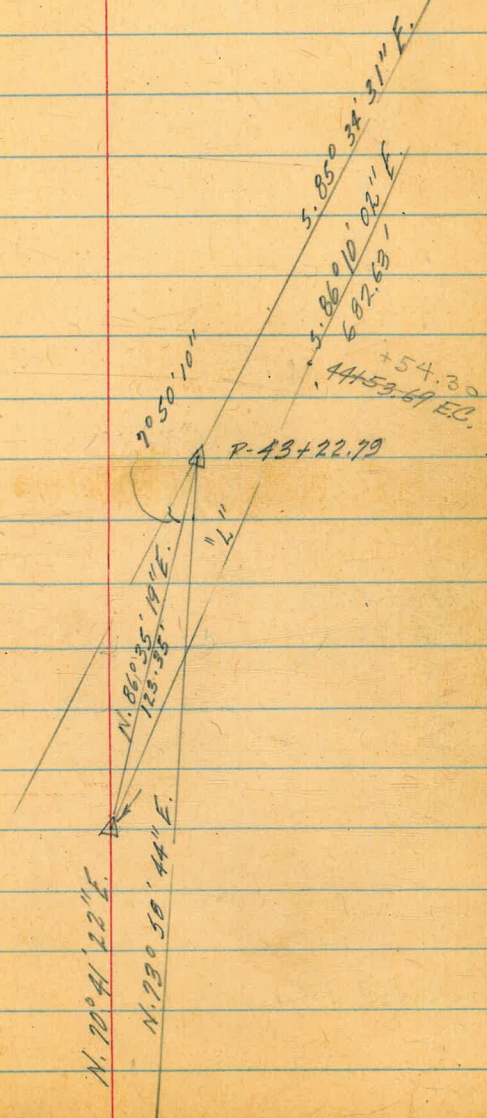
40 + 70.22 = Hub  
 +88.80  
 38 + 88.19 B.C.

N. 70° 41' 22" E.  
 786.23'

+03.99  
 36 + 03.55 E.C.

5.86° 10' 02" E.

+54.30	x		
44 + 53.69 F.B.		11° 34' 15"	
	x		
44-		10° 27' 45"	
	x		
+50	x	9° 26' 15"	
	x		
43-		8° 25'	
	x		
+50	x	7° 23' 30"	
	x		
42-		6° 22'	
	x		
+50	x	5° 20' 45"	
	x		
41-		4° 19' 15"	

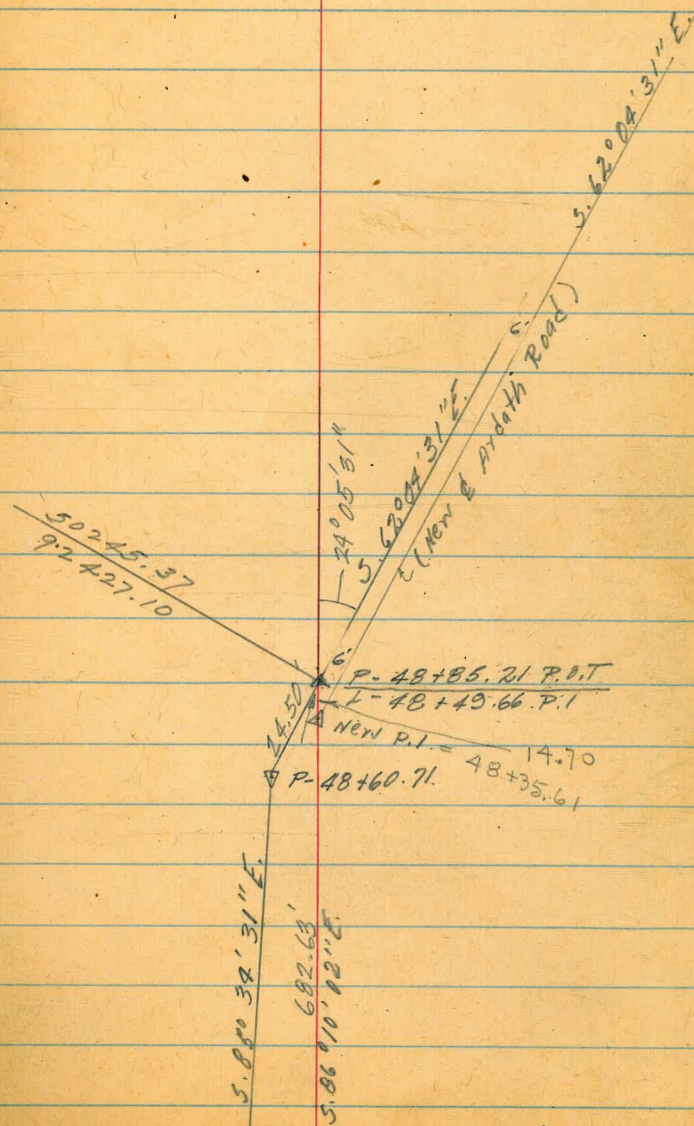


P- 48+85.21 P.O.T =  
L- 48+49.66 P.I.

New P.I. = L = 48+35.61 = Hub

44+53.69 E.C.

5.86° 10' 02" E.



Change in "L" Line  
L<sub>1</sub> Line

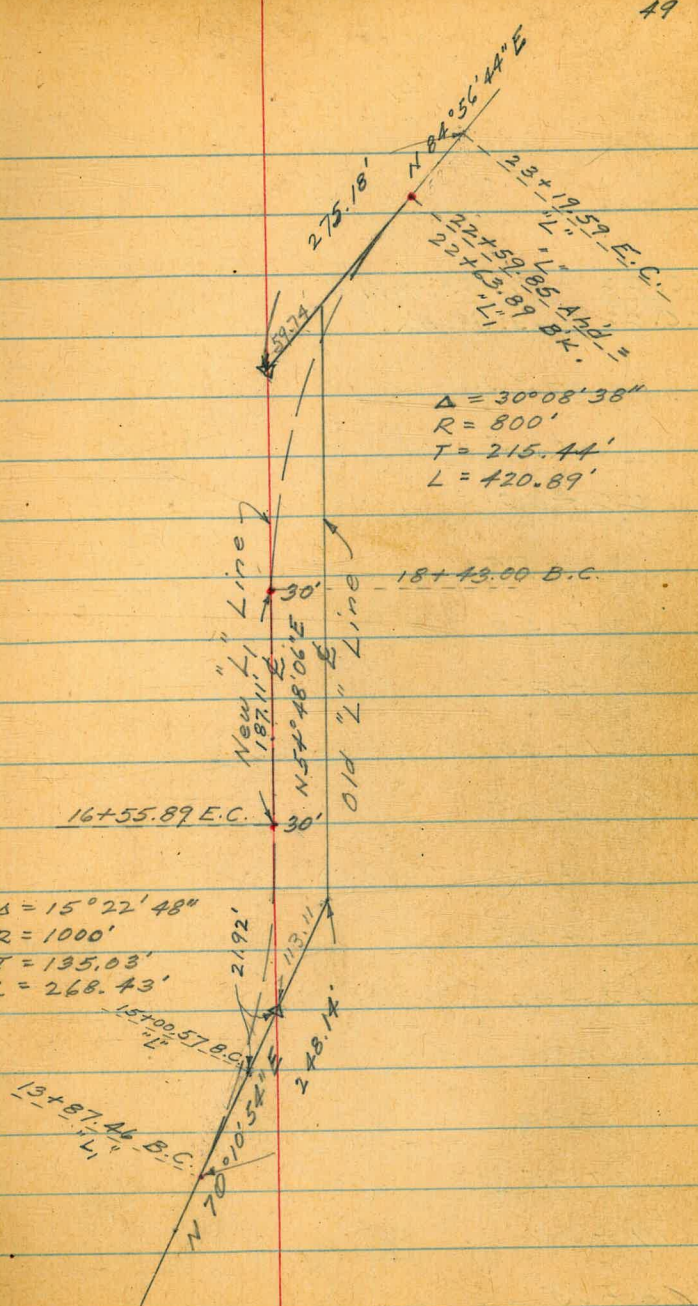
1-9-51 M.U.

49

+ 75		
+ 50	S.L. Ch. =	54.15'
18 + 43.00	B.C.	
16 + 55.89	E.C.	7° 41' 30"
+ 50		
+ 25		
16 + 00		6° 05' 18"
+ 75		
+ 50		4° 39' 15"
+ 25		
15 + 00		3° 13' 30"
+ 75		
+ 50		147' 30"
+ 25		
14 + 00		
13 + 87.46	P.O.T. "L"	
13 + 87.46	B.C. "L <sub>1</sub> "	

$\Delta = 15^{\circ} 22' 48''$   
 $R = 1000'$   
 $T = 135.03'$   
 $L = 268.43'$

$\Delta = 30^{\circ} 08' 38''$   
 $R = 800'$   
 $T = 215.44'$   
 $L = 420.89'$



## "L" Line

E.C. 22 + 59.85 Ahd =

F.C. 22 + 63.89 B'K. 15° 04' 15"

+ 50

sl. ch = 60.65

+ 25

22+00

12° 47'

+ 75

47.49

+ 50

10° 59' 45"

+ 25

"

21+00

9° 12' 15" P.O.C.

+ 75

"

+ 50

7° 24' 45"

+ 25

"

20+00

5° 37' 15"

+ 75

"

+ 50

3° 50'

+ 25

sl. ch = 47.49

19+00

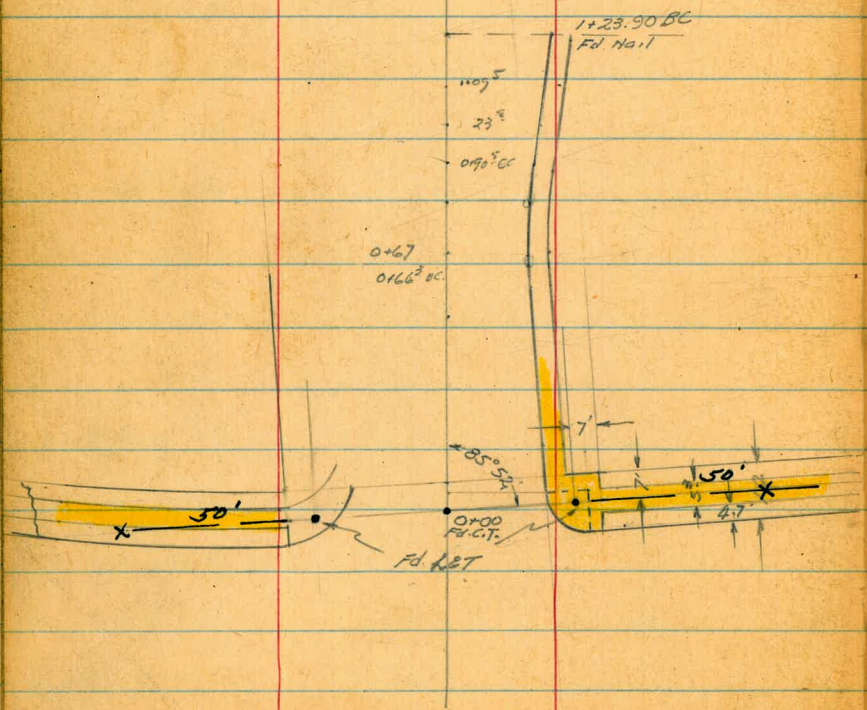
2° 02' 30"

18+75

March 1951  
 Hendricks  
 Allen  
 Shepard  
 Bruner  
 W.O.# 22041

X Sect. L & L Line for  
 Proposed Line Change &  
 Improvement Torrey Pines Road  
 See EB 2042 for  
 detail and Topog.

4+75<sup>06</sup>  
 EC  
 Fd. Nail 51



$R = 600'$   
 $\Delta = 33^\circ 32'$   
 $T = 180.77'$   
 $L = 351.16'$

1+23.90

0.9050

0.9

8+75<sup>71</sup>EC.

6+14<sup>22</sup>EC.

ER=1500  
Δ = 9°59'26"  
T = 131.11  
L = 261.55'

4+75<sup>06</sup>EC

6+14<sup>22</sup>EC.

145589 EG

R=1000'  
D=15°22'43"  
T=135°03'  
L=268.43'

13+87.46 BC "L"  
13+87.46 POT "L"



March 1951 Levels "L" Line  
 Hendricks Proposed Improvement  
 Allen  
 Shepard  
 Bruner  
 WO# 22041

£

54

Reduced by OBS  
 on 4/6 #9151  
 page 54 to  
 end of book

0+08

146.9  
 149.0  
 149.20  
 149.09  
 148.71  
 149.74  
 150.46  
 150.92  
 151.15  
 152.14  
 152.44  
 155.6

13.6 11.5 11.5 11.42 11.74 10.71 9.99 9.53 9.30 8.31 8.0 4.9

70 45 297 250 250 12 15 255 255 39.6 70

SW Cb G G Cb SW

0+05° EC Cb Ret. on Lt

149.20  
 148.80

256 256

Cb G

0+04.5 EC Cb Ret. on Rt.

151.28  
 152.12

9.07 8.33

254 254

G Cb

0+00 Rt. to Line

146.5  
 149.30  
 149.25  
 148.85  
 149.11  
 149.91  
 150.77  
 151.25  
 151.56  
 152.12  
 152.39  
 155.5

14.0 11.5 11.20 11.60 11.34 10.54 9.58 9.20 8.29 8.33 8.12 5.0

70 396 273 273 235 14 16 26.9 269 401 70

SW Cb G G Cb SW

Section Parallel to Prospect  
 0-07.02 114 Cb Line Prospect

142.37  
 145.88  
 149.24  
 149.19  
 149.17  
 150.06  
 150.93

14.08 14.57 11.21 11.66 11.28 10.37 9.52

70 70 393 393 28 16 15 25 35 35 40 40 80 80

Cb G Cb G Cb Cb G Cb G Cb G Cb

B.M. 8.14 160.45

152.31

SE. 7' LET. Prospect & Torrey Road.

160.45

"L" Line  
Torrey Pines Road contd

55

1400

142.5 143.1 143.17 143.18 142.92 143.36 149.36 149.05 142.92 143.17 143.22 144.30 144.17  
 +6.9 +4.7 +4.1 +0.6 +0.21  
 70 50 39 38 53.1  
 Wait Gr. Wait  
 60 54 53 53 56 55 53 52 57 53 53 44 38  
 70 35 16.3 11.7 11.7 7 18 23.7 23.7 25.5 25.5 33.1  
 SW. Cb G G Cb SW. Wall Gr

0+50

145.4 146.5 146.69 146.61 146.92 146.93 147.40 147.51 147.42 147.92 147.93 149.3 150.81 151.2  
 +6.8 +5.2 +4.3  
 75 50 41.3  
 (Wall)  
 31 23 19 19 23 16 14 10 12 0.6 0.1 +0.6 12.2 12.7  
 65 40 23.6 18.9 18.9 11 13 22.6 22.6 27.4 36.8 36.8 41.3  
 SW. Cb G G Cb SW Gr. Wall Gr.

TP 0.28 148.54 12.19 148.26

148.54

0+20

146.7 148.3 148.40 148.30 148.06 148.79 149.76 149.96 150.27 150.89 150.6 151.9 152.12  
 152.0 151.4 152.1  
 4.5 7.1 7.8  
 70 43 43  
 TOP  
 Wall  
 13 12 12.05 12.2 12.39 11.5 10 6.9 10.49 10.8 9.56 9.39 8.6 8.33  
 65 45 27.8 23.2 23.2 15 12 24.6 24.6 29.3 38.9 38.9  
 SW. Cb G 160.45 G Cb SW Wall

160.45  
 7

L<sup>1</sup> line  
 Torrey Pines Road Contd

56

1+23.90 B.C.

141.5	142.3	141.7	141.40	141.34	141.08	141.33	141.36	141.17	140.79	141.13	141.11	141.6	141.1	150.8	148.5
7°	6°	6°	7.4	7.0	7.4	7.21	7.8	7.37	7.5	7.4	7.3	6.9	6.4	12.3	0°
70	45	30	130	8.3	8.3		10	18	27	27	31.2	34.5	34.5	70	52
			Sw.	cb	G				G	cb	Sw	Gr	Top		

1+10 End. Conc. Walls on Rt.

141.7	142.0	142.5	142.16	142.45	142.13	142.52	142.52	142.34	142.01	142.30	142.30	142.56	142.56	142.56
6.8	6.3	6.0	6.0	6.09	6.41	6.02	6.02	6.23	6.53	6.24	6.22	6.37	6.37	6.37
70	45	30	149	10.3	10.2	8	16	25.0	25	29.7	29.7	29.7	29.7	29.7
			Sw.	cb	G			G	cb	Sw	Wall	Gr	Gr	Gr

1+06 End Ret Wall on Rt.

142.1	142.6	142.9	142.82	142.81	142.47	142.84	142.84	142.84	142.60	142.25	142.56	142.22	142.351	142.2
6.4	5.9	5.5	5.22	5.72	6.07	5.70	5.70	5.74	6.29	5.98	5.92	4.59	4.59	4.59
70	45	30	15.7	10.9	10.9	7	16	24.5	24.5	29.2	29.2	29.2	29.2	29.2
			Sw	cb	G			G	cb	Sw	Wall	Gr	Gr	Gr

148.54

"L" line  
Torrey Pines Road Contd

T.P. 0.74 136.68 12.60 135.94

1+85

21	22	23	24	25	26	27	28	29	30	31	32	33	34	35	36	37	38	39	40
121.16	122.11	123.07	124.01	125.02	126.02	127.01	128.01	129.00	130.00	131.00	132.00	133.00	134.00	135.00	136.00	137.00	138.00	139.00	140.00
10	20	32.5	32.5	37.1	37.1														

1+50

126.4  
80

17	18	19	20	21	22	23	24	25	26	27	28	29	30	31	32	33	34	35	36	37	38	39	40	
128.9	130.7	132.5	134.0	135.29	136.00	137.15	138.25	139.08	140.70	142.04	143.02	144.02	145.02	146.02	147.02	148.02	149.02	150.02	151.02	152.02	153.02	154.02	155.02	156.02
70	42	27	98	49	49	10	20	27.6	27.6	34.2	34.2	34.2	34.2	34.2	34.2	34.2	34.2	34.2	34.2	34.2	34.2	34.2	34.2	34.2
				SW	CB	G			G	CB	SW	Well												

1+35

148.54  
✓

7	8	9	10	11	12	13	14	15	16	17	18	19	20	21	22	23	24	25	26	27	28	29	30	31	32	33	34	35	36	37	38	39	40
141.3	141.3	141.1	140.5	140.47	140.21	140.39	140.49	140.26	139.92	140.26	140.24	141.19	142.02	143.02	144.02	145.02	146.02	147.02	148.02	149.02	150.02	151.02	152.02	153.02	154.02	155.02	156.02	157.02	158.02	159.02	160.02		
60	40	30	11.1	65	65	11	20	28.2	28.2	32.5	32.5	40	40	40	40	40	40	40	40	40	40	40	40	40	40	40	40	40	40	40	40	40	
				SW	CB	G				G	CB	SW	Well																				

148.54  
✓

Line  
Torrey Pines Road Cont'd

3+00

100.4  
80

102.0  
25.0  
106.5  
111.2  
112.9  
121.4  
127.7  
129.9  
127.91  
127.62  
127.98  
127.79  
128.15  
128.26

27<sup>4</sup> 24<sup>2</sup> 23<sup>1</sup> 18<sup>2</sup> 16<sup>5</sup> 20 17  
to 59 47 30 25 3

0.4 5 5 20 35.6 35.6 40.3  
SW CB G 6 CB SW

129.43

T.P. 3.65 129.43 1090 125.78  
(125.76-B2042-49)

Nail in Pole 6+ Lt 3+28+

133.6  
133.3  
133.7  
73 65 47  
0.1 35.8  
133.7  
133.4  
60 54 45

2+50

105.0  
80

105.8  
110.5  
114.0  
120.9  
131.06  
131.13  
131.20  
131.05  
131.57  
131.22  
131.32  
131.67

30<sup>9</sup> 26<sup>3</sup> 22<sup>7</sup> 5<sup>10</sup> 5<sup>62</sup> 5<sup>51</sup> 5<sup>33</sup> 5<sup>16</sup> 5<sup>11</sup> 5<sup>16</sup> 5<sup>16</sup> 5<sup>10</sup>  
75 54 31 4 1.3 5.5 3.5 19 24.2 24.2 38.7

SW CB G 6 CB SW

2+15

End. Nail on Rt.  
Int. Cb. on Lt

109.1  
80

110.8  
117.6  
122.0  
133.1  
133.58  
133.62  
134.20  
133.88  
134.30  
135.36  
138.4

25<sup>9</sup> 19<sup>1</sup> 14<sup>7</sup> 3<sup>6</sup> 3<sup>10</sup> 3<sup>6</sup> 2<sup>38</sup> 2<sup>38</sup> 2<sup>38</sup> 1<sup>32</sup> 1<sup>7</sup> 1<sup>19</sup>  
72 48 26 9 4.7 2.75 17 33 38 38 55 70

SW CB G SW Wall

2+00

112.2  
80

113.7  
124.3  
128.8  
134.5  
134.90  
135.25  
134.91  
134.99  
135.47  
135.04  
135.37  
135.36  
136.26  
141.7

23<sup>0</sup> 18 10 6 1 1.4 15 32.9 32.9 37.5 37.5 70  
SW CB G 6 CB SW Wall

136.68

136.68

L<sup>n</sup> Line  
Torrey Pines Road Cont'd

TP 2.99 119.78 12.64 116.79  
K

5+00

80 103.3

24.6 105.0  
20.9 108.5  
21.0 108.4  
15.9 109.5  
12.4 117.0  
11.2 118.12  
11.4 118.00  
11.5 117.62  
11 117.82  
11.96 117.97  
11.57 119.24  
11.58 117.85  
11.5 117.5  
11.5 121.2  
11.7 123.6  
11.7 131.1  
70 53 40 35 23 20.1 18.4 18.4 14.6 14.6 19.3 34 42 48 70  
S.W. Cb G G Cb S.W.

4+75.06 EC.

80 101.0

27.25 102.3  
24.3 104.3  
21.0 105.1  
11.0 107.6  
18.4 118.4  
10.5 118.91  
10.6 118.77  
10.9 118.44  
10.7 118.65  
11.22 118.21  
10.82 118.61  
10.76 118.67  
9.8 119.6  
8.7 123.7  
70 137 49 35 21 18.3 13.3 13.3 17 17 21.8 50 70  
S.W. Cb G G Cb S.W.

4+50

80 99.6

26.7 102.7  
22.2 102.3  
18.0 104.2  
11.2 119.2  
9.2 119.50  
9.4 119.49  
10.2 119.21  
10.1 119.36  
9.25 119.49  
10.4 119.03  
10.3 119.35  
10.1 119.42  
8.7 120.7  
70 52 36 18 15.0 10.3 10.3 5 20 20 24.7 65  
Dr. S.W. Cb G G Cb S.W.

4+00

80 97.6

30.6 98.8  
27.3 100.6  
25.7 101.6  
8.1 103.5  
8.1 121.3  
7.6 121.77  
7.8 121.75  
8.1 121.42  
7.8 121.55  
7.7 121.66  
8.0 121.98  
7.1 121.72  
7.5 121.89  
6.7 122.7  
4.4 125.0  
70 60 46 40 12 8.6 4 4 12 26.5 26.5 31.4 53 65  
S.W. Cb G G Cb S.W.

3+7.2 Int. Cb. Line

5.2 123.17  
5.2 122.91

3+50

80 94.6

29.2 100.2  
25.2 103.0  
26.0 103.4  
17.1 111.7  
4.2 124.5  
4.2 124.97  
4.6 124.83  
4.7 124.71  
5.2 124.31  
4.8 124.61  
6.4 124.49  
4.7 124.96  
4.5 125.08  
4.5 125.2  
4.1 125.4  
3.7 129.4  
70 62 50 24 6 7.1 2.6 2.6 17 33 33 37.9 48.6 53  
S.W. Cb G G Cb S.W.

See Elev  
Access Rd.

129.43  
K

129.42  
K



2" Line  
Torrey Pines Road

6+80

6+63

End SW on Rt

6+54 Beg Ch on Lt 213 Lt

6+50

T.P.

279

116.38

6+19

113.59

6+40

6+32

119.78

61

111.9 112.1 110.9 110.65 110.48 110.07 110.41 111.28 111.52 111.97 112.0 110.5 109.4  
4<sup>5</sup> 4<sup>3</sup> 5<sup>5</sup> 5<sup>7</sup> 5<sup>7</sup> 6<sup>3</sup> 5<sup>7</sup> 5<sup>10</sup> 4<sup>8</sup> 4<sup>4</sup> 4<sup>4</sup> 5<sup>9</sup> 7<sup>0</sup>  
65 40 24 9.9 52 52 8 24.9 24.9 29 48 65  
SW G G CB

112.4 112.4 112.0 111.17 111.10 110.82 111.49 111.99 112.10 112.49 112.57 113.4 113.8  
4<sup>0</sup> 4<sup>0</sup> 4<sup>4</sup> 5<sup>2</sup> 5<sup>2</sup> 5<sup>5</sup> 4<sup>8</sup> 4<sup>3</sup> 4<sup>3</sup> 3<sup>8</sup> 3<sup>8</sup> 3<sup>0</sup> 2<sup>6</sup>  
65 55 35 18.0 118 118 7 23.9 23.9 28.5 50 65  
SW CB G G CB SW

111.60 111.42  
4<sup>7</sup> 4<sup>8</sup>  
21.3 21.3  
CB G

112.0 112.1 111.65 111.54 112.21 112.50 112.52 112.88 113.5 114.0  
4<sup>4</sup> 4<sup>3</sup> 4<sup>7</sup> 4<sup>8</sup> 4<sup>7</sup> 3<sup>8</sup> 3<sup>8</sup> 3<sup>5</sup> 2<sup>9</sup> 2<sup>4</sup>  
65 50 22.4 12 6 22.5 27.2 46 65  
Pav G SW Dr

111.7 112.19 111.95 112.38 112.64 112.88 112.91 113.24 114.4 126.3 126.7  
8<sup>1</sup> 7<sup>9</sup> 7<sup>8</sup> 7<sup>4</sup> 6<sup>0</sup> 6<sup>7</sup> 6<sup>5</sup> 5<sup>4</sup> 4<sup>5</sup> 4<sup>6</sup> 4<sup>9</sup>  
65 24.9 12 6 21 25.7 37 52 65  
Pav G SW Dr

111.9 112.48 112.26 112.96 113.16 113.21 113.57 113.65 114.8 121.3 123.3  
7<sup>9</sup> 7<sup>0</sup> 7<sup>5</sup> 6<sup>8</sup> 6<sup>3</sup> 6<sup>3</sup> 6<sup>2</sup> 6<sup>3</sup> 5<sup>0</sup> 4<sup>1</sup> 4<sup>5</sup>  
70 27.5 13 5 20.2 20.2 24.9 40 54 65  
Pav G CB SW

119.78





10+00

8 <sup>2</sup>	7 <sup>2</sup>	8 <sup>26</sup>	7 <sup>8</sup>	8 <sup>36</sup>	8 <sup>05</sup>	8 <sup>05</sup>	8 <sup>08</sup>	8 <sup>08</sup>	8 <sup>08</sup>	8 <sup>08</sup>	8 <sup>08</sup>	8 <sup>08</sup>
SS	SS	SS	SS	SS	SS	SS	SS	SS	SS	SS	SS	SS
55	35	30	5	15	0.5	0.5	0.5	0.5	0.5	0.5	0.5	0.5
	SW	G		G	G	G	G	G	G	G	G	G

9+92

7 <sup>8</sup>	7 <sup>20</sup>	7 <sup>27</sup>	7 <sup>41</sup>	7 <sup>44</sup>	7 <sup>51</sup>	7 <sup>51</sup>	7 <sup>51</sup>	7 <sup>51</sup>	7 <sup>51</sup>	7 <sup>51</sup>	7 <sup>51</sup>	7 <sup>51</sup>
SS	SS	SS	SS	SS	SS	SS	SS	SS	SS	SS	SS	SS
55	35	30	15	0.5	0.5	0.5	0.5	0.5	0.5	0.5	0.5	0.5
	SW	G		G	G	G	G	G	G	G	G	G

9+75

6 <sup>57</sup>	6 <sup>10</sup>	6 <sup>49</sup>	6 <sup>23</sup>	6 <sup>72</sup>	6 <sup>37</sup>	6 <sup>37</sup>	6 <sup>37</sup>	6 <sup>37</sup>	6 <sup>37</sup>	6 <sup>37</sup>	6 <sup>37</sup>	6 <sup>37</sup>
SS	SS	SS	SS	SS	SS	SS	SS	SS	SS	SS	SS	SS
55	36	31	4	17	1.4	1.4	1.4	1.4	1.4	1.4	1.4	1.4
	SW	Dr.		G	G	G	G	G	G	G	G	G

9+50

6 <sup>56</sup>	6 <sup>29</sup>	6 <sup>45</sup>	6 <sup>27</sup>	6 <sup>25</sup>	6 <sup>25</sup>	6 <sup>25</sup>	6 <sup>25</sup>	6 <sup>25</sup>	6 <sup>25</sup>	6 <sup>25</sup>	6 <sup>25</sup>	6 <sup>25</sup>
SS	SS	SS	SS	SS	SS	SS	SS	SS	SS	SS	SS	SS
52	36	32	1	17	2.2	2.2	2.2	2.2	2.2	2.2	2.2	2.2
	SW	Dr.		G	G	G	G	G	G	G	G	G

8M 9.15 103.50 11.07 100.37 (10035)

Hail in Pole #1650 LL 9+101 FB2042 P. 50

9+00 ↓

9 <sup>56</sup>	9 <sup>22</sup>	9 <sup>25</sup>	9 <sup>25</sup>	9 <sup>25</sup>	9 <sup>25</sup>	9 <sup>25</sup>	9 <sup>25</sup>	9 <sup>25</sup>	9 <sup>25</sup>	9 <sup>25</sup>	9 <sup>25</sup>	9 <sup>25</sup>
SS	SS	SS	SS	SS	SS	SS	SS	SS	SS	SS	SS	SS
57	45	38	3	18	3.5	3.5	3.5	3.5	3.5	3.5	3.5	3.5
	SW	G		G	G	G	G	G	G	G	G	G

8+75<sup>27</sup> EL

7 <sup>87</sup>	7 <sup>22</sup>	7 <sup>46</sup>	7 <sup>53</sup>	7 <sup>50</sup>	7 <sup>84</sup>	7 <sup>47</sup>	7 <sup>46</sup>	7 <sup>46</sup>	7 <sup>46</sup>	7 <sup>46</sup>	7 <sup>46</sup>	7 <sup>46</sup>
SS	SS	SS	SS	SS	SS	SS	SS	SS	SS	SS	SS	SS
55	44	38	3	18	3.6	3.6	3.6	3.6	3.6	3.6	3.6	3.6
	FL	Dr.	SW	G		G	G	G	G	G	G	G

111.44

111.44

"L" Line Torrey Pines Road

\$

64

11+50

76.2 76.2 85.6 86.0 86.92 87.52 87.91 86.04 87.35  
 16 16 23 307 258 258 11 4.2 4.2 4.0 5.0 5.5 5.5  
 House SW CB G G CB

11+20

75.2 75.2 86.0 87.82 87.96 87.55 88.03 87.68 87.54 87.97 88.7 88.5  
 17 17 25 218 269 269 12 3.4 3.4 4.0 4.5 4.5 4.5  
 SW CB G G

11+00

88.4 88.44 88.56 88.96 88.53 88.36 89.0 89.3 89.0  
 6 34 275 13 2.9 8 38 50  
 G G

10+70

87.8 87.8 90.1 90.41 90.44 90.16 90.65 90.30 90.26 90.53 90.5 96.0 96.2  
 87 7 2.9 2.5 2.5 2.8 2.8 2.8 2.3 2.7 2.4 2.5 3.0 3.2 3.2  
 65 46 35 278 282 282 13 1.9 1.9 38 53 65  
 SW CB G G CB

T.P. 2.76 92.97 13.29 90.21

10+50

87.8 87.8 91.7 91.91 91.89 91.54 92.08 91.64 91.63 91.92 91.7 97.6 100.9  
 16 16 11 11 11 11 11 11 11 11 11 5 2 25  
 60 46 36 338 290 290 14 1.1 1.1 29 33 60  
 SW CB G G CB

10+30

92.928 93.41 93.04 93.45 93.13 93.16 93.3 100.2 103.3 105.7  
 9 10 10 10 10 10 10 3 0 3 3 3  
 55 342 295 14 0.6 17 23 50 70  
 SW CB G G

103.50

103.50

13+40

81.9 83.64 83.11 83.61 83.54 83.10 83.44 84.9 94.0 95.9 96.6  
 65 485 538 488 495 505 505 35 45 17 18  
 55 243 198 4 6 10 10 19 29 45 70  
 G Cb

13+25

78.4 77.9 82.3 82.66 83.45 83.44 83.53 83.45 82.39 83.36 84.1 92.1 95.8  
 10 10 5 4 5 4 5 4 5 5 4 4 3 17  
 60 47 29 24 20.1 20.1 5 10 10 19 26 70  
 Cb G Cb

13+00

11.8 12.5 83.0 83.45 83.29 82.85 82.35 82.23 82.82 83.18 83.5 82.1 92.3  
 16 15 5 5 5 5 5 5 5 5 5 5 4  
 75 44 29 25 20 20 6 7 9 21 27 60  
 3rd Cb G Cb

12+70

65.7 67.0 80.11 82.46 82.34 82.09 82.76 82.85 82.22 82.69 83.2 83.7  
 22 21 6 6 6 6 5 5 6 7 5 4 8  
 68 52 31 28 22 22 7 8 8 16 50  
 3rd Cb G Cb

12+27

78.3 79.9 81.4 82.38 82.40 81.87 82.85 82.80 82.37 82.84 84.4 85.1  
 20 24 7 6 6 6 5 6 6 7 5 4 2  
 78 60 35 27 23 23 8 7 7 25 50  
 1st Cb over Cb

TP

3.30 88.49

778 85.19

12+00

71.2 71.2 82.3 84.83 84.61 84.22 84.53 84.79 84.41 83.90 84.29 85.74 85.97  
 21 21 9 8 8 8 8 8 9 8 8 7 7 7  
 65 52 32 29 24 24 9 6 6 33 41 70  
 2nd Cb G Cb  
 Conc. Slab Pump House  
 Pump House

92.97

92.97

"Lig L" Torrey Pines Road

15+10

T.P. 6.20  $\frac{90.53}{x}$  7.24 84.33

88.6  
1 0<sup>2</sup> 3<sup>1</sup> 5<sup>2</sup> 6<sup>3</sup> 6<sup>20</sup> 6<sup>21</sup> 6<sup>22</sup> 6<sup>23</sup> 6<sup>24</sup> 6<sup>25</sup> 6<sup>26</sup> 6<sup>27</sup> 6<sup>28</sup> 6<sup>29</sup> 6<sup>30</sup> 6<sup>31</sup> 6<sup>32</sup>  
60 44 20 17 130 80 82 7 214 214 35 42 56 65  
SW CB G G

15+00

88.9  
1 2 7<sup>0</sup> 7<sup>1</sup> 7<sup>2</sup> 7<sup>3</sup> 7<sup>4</sup> 7<sup>5</sup> 7<sup>6</sup> 7<sup>7</sup> 7<sup>8</sup> 7<sup>9</sup> 7<sup>10</sup> 7<sup>11</sup> 7<sup>12</sup> 7<sup>13</sup> 7<sup>14</sup> 7<sup>15</sup> 7<sup>16</sup> 7<sup>17</sup> 7<sup>18</sup> 7<sup>19</sup> 7<sup>20</sup> 7<sup>21</sup> 7<sup>22</sup> 7<sup>23</sup> 7<sup>24</sup> 7<sup>25</sup> 7<sup>26</sup> 7<sup>27</sup> 7<sup>28</sup> 7<sup>29</sup> 7<sup>30</sup> 7<sup>31</sup> 7<sup>32</sup>  
60 22 17 139 92 92 5 208 208 53 37 42 51 70  
SW CB G G CB

14+90

91.1  
1 1<sup>2</sup> 2<sup>3</sup> 7<sup>3</sup> 7<sup>4</sup> 7<sup>5</sup> 7<sup>6</sup> 7<sup>7</sup> 7<sup>8</sup> 7<sup>9</sup> 7<sup>10</sup> 7<sup>11</sup> 7<sup>12</sup> 7<sup>13</sup> 7<sup>14</sup> 7<sup>15</sup> 7<sup>16</sup> 7<sup>17</sup> 7<sup>18</sup> 7<sup>19</sup> 7<sup>20</sup> 7<sup>21</sup> 7<sup>22</sup> 7<sup>23</sup> 7<sup>24</sup> 7<sup>25</sup> 7<sup>26</sup> 7<sup>27</sup> 7<sup>28</sup> 7<sup>29</sup> 7<sup>30</sup> 7<sup>31</sup> 7<sup>32</sup>  
60 36 23 19 146 10 10 4 197 197 27 40 78  
SW CB G G CB

14+50

91.8  
10<sup>2</sup> 2<sup>7</sup> 2<sup>8</sup> 7<sup>5</sup> 7<sup>6</sup> 7<sup>7</sup> 8<sup>0</sup> 7<sup>37</sup> 83.88 84.30 84.9 88.7 89.2  
64 39 28 23 185 138 138 16.1 41 23 36 75  
SW CB G G CB

14+00

B.M. 5.62  $\frac{91.57}{x}$  2.53 88.96 (88.95)

88.7 89.0 89.6 89.8 89.19 89.6 89.32 89.86 83.86 83.43 83.80 84.8 84.6 88.6 89.9  
2<sup>9</sup> 5<sup>6</sup> 6<sup>2</sup> 7<sup>8</sup> 7<sup>8</sup> 7<sup>12</sup> 8<sup>25</sup> 7<sup>21</sup> 7<sup>21</sup> 8<sup>4</sup> 7<sup>27</sup> 6<sup>8</sup> 4<sup>32</sup> 4<sup>7</sup> 4<sup>3</sup>  
66 42 31 27 230 175 175 3 91.57 12.5 12.5 22 32 46 75  
D in NE Cor Slak Pump Sta (FB 2042 - 255)  
SW CB G G CB

13+87.46 BC 21"

13+87.46 POT 2"

$\frac{58.49}{x}$

88.7 89.1 89.9 89.7 89.13 89.62 89.26 89.82 89.81 89.35 89.72 84.8 89.1 89.4 89.7  
1 3<sup>4</sup> 3<sup>5</sup> 4<sup>5</sup> 4<sup>7</sup> 4<sup>2</sup> 5<sup>23</sup> 4<sup>67</sup> 4<sup>68</sup> 5<sup>4</sup> 4<sup>27</sup> 3<sup>7</sup> 4<sup>6</sup> 4<sup>9</sup> 4<sup>10</sup>  
50 42 30 28 226 179 179 3 121 121 21 30 55 75  
SW CB G G CB

$\frac{58.49}{x}$

16+10

104 862 769 803 81.24 85.07 84.63 85.00 85.5 87.0 94.2  
 55 309 169 169 16 30 30 36 37 56  
 SW Cb G G Cb

16+00

190 142 80 694 687 7.8 650 84.96 84.53 84.92 85.1 86.8 93.6  
 68 46 28 125 79 79 14 293 29 37 39 60  
 SW Cb G 90.61 G Cb

TR

5.50  $\frac{90.61}{1}$  5.41 88.12 (8811)

15+90

LET & Princess 50 Cb Torrey Road (EB 2042 P. 58)  
 18-20-13-74 82.26 82.26 83.98 84.14 84.87 84.48 84.84 85.8 91.1 91.3  
 62 53 33 22 70 70 20 13 28.1 28.1 38 56 60

15+75

214 196 85 63 619 637 84.77 84.40 84.76 84.9 85.5 85.6 84.3 84.4  
 70 53 28 70 2.5 2.5 13 27.2 27.2 37 47 52.6 70  
 SW Cb G G Cb

15+60

190 153 116 72 612 615 637 84.68 84.36 84.82 84.6 84.5 84.6  
 60 55 31 23 14 8.5 3.9 3.9 11 25.8 25.8 35 39 50  
 SW Cb G G Cb

15+40

172 142 73 64 631 672 84.14 84.57 84.17 85.08 84.7 84.9 84.9 90.5  
 60 27 15 10.3 5.7 5.7 9 24 24 33 36 45 56  
 Cb G G Cb

$\frac{90.53}{1}$

9.53  
 $\frac{1}{1}$

TP 9.52 99.28 0.85 89.76

17+50

87.7 87.8 88.5 89.0 89.21 89.25 89.31 89.37 89.34 89.64 89.61 89.1 89.2 89.3  
 2.9 2.8 2.1 1.6 1.4 1.35 1.2 1.24 1.37 1.97 1.60 1.20 1.25  
 55 49 32.4 20 17 6.4 6.4 21 36.4 36.4 44 52 71  
 (Cont. slab) SW. Cb G G Cb.

17+30

85.8 86.2 87.1 88.11 88.13 88.12 87.61 88.3 87.77 88.11 88.1 85.0 84.8  
 4.8 3.2 2.9 2.2 2.48 2.49 3.20 2.3 2.84 2.50 2.3 5.5 5.3  
 55 42 23 21 6.8 6.9 21 36.7 36.7 46.6 72  
 SW. Cb G G Cb

17+00

84.8 85.9 86.61 86.42 86.48 86.05 86.9 86.31 86.76 84.8 84.8  
 5.5 4.7 4.0 4.9 4.3 4.55 3.7 4.20 3.8 4.3 5.0  
 50 25 1.2 5.9 5.9 21 36.36 48 60 71  
 SW. Cb G G Cb

16+77

88.0 84.1 86.21 86.16 86.06 85.61 86.20 86.03 84.1 84.9  
 7.6 6.2 4.40 4.45 4.55 5.00 4.4 4.3 4.2 3.7  
 50 29 0.4 4.9 4.9 20 35 35 41 55  
 SW. Cb G G Cb

16+55 89 EC.

84.2 82.7 84.61 84.92 84.52 84.68 85.74 85.51 85.87 86.0 88.3  
 9.4 7.9 6.00 5.67 6.07 5.73 4.87 5.10 4.74 4.6 2.3  
 48 35 9 2.7 2.7 19 33.7 33.7 37 54  
 SW Cb G G Cb

16+30

81.04 83.11 84.41 85.31 84.88 85.26 86.1 86.1  
 9.57 7.50 6.20 5.30 5.73 5.35 4.5 4.5  
 50 20 17 31.7 31.7 38 60  
 90.61 G Cb  
 T

9061  
 T

Torrey Pines Road L. Line Contd  
L. Line

19+52.5 End Ch on Rt.

19+25

19+00

BM: 7.11  $\frac{103.39}{\times}$  2.99 96.29 (96.28)

18+43.00 B.C.

18+00

17+75

$\frac{99.28}{\times}$

\$

69

97.71  
5.58  
172  
6  
5.9  
172  
6

93.38 94.51 97.42 97.71  
10.0 8.42 5.71 5.60  
65 50 14  
97.33 99.94 101.62  
6.06 4.45 1.77  
22 40 65

95.24 95.58 97.06 96.98 96.66 96.84 97.02 96.61 96.88  
10.7 7.6 6.33 6.4 6.73 6.55 6.37 6.78 6.51  
60 35 87 39 39 102.39 11 26.1 26.1 29 30 55  
SW. Ch. G G G G G G G G

FB 2042 265

N.E.B.P. Hillside Dr. & Torrey Pines Road

93.2 93.3 94.33 94.26 94.23 93.82 94.24 93.66 94.02 94.7 96.7 98.3  
7.6 6.0 4.95 5.02 5.05 5.16 5.04 5.62 5.26 4.6 2.6 1.0  
56 25 3 1.6 4 17 31.5 31.5 39 46 60  
SW. Ch. G G G G G G G G

89.9 91.1 92.10 92.11 92.07 91.51 92.06 91.49 91.67 92.6 91.6 98.9  
9.4 8.2 7.5 7.7 7.2 7.2 7.22 7.85 7.4 6.3 1.7 0.4  
55 31 06 4 2 20 34.4 34.4 41 47 56  
SW. Ch. G G G G G G G G

88.6 90.0 90.78 90.76 90.21 90.69 90.16 90.44 91.6 104.2 104.7  
10.7 9.3 8.5 8.5 9.0 8.5 9.3 8.4 7.3 4.7 4.5  
60 30 0.6 5.4 20 25.4 28.4 42 56 70  
SW. Ch. G G G G G G G G

$\frac{99.28}{\times}$



22+00

89.8	90.5	93.1	95.1	95.02	94.25	93.25	92.6	90.5	104.4	108.9	111.2	119.2	125.6	129.1	
11 <sup>2</sup>	10 <sup>5</sup>	7 <sup>3</sup>	5 <sup>3</sup>	5 <sup>2</sup>	6	7	6	7	2 <sup>9</sup>	+3 <sup>4</sup>	+7 <sup>2</sup>	+12 <sup>2</sup>	+18 <sup>2</sup>	+24 <sup>5</sup>	+28 <sup>1</sup>
65	58	51	44	39	22	6	3			3	13	33	46	67	90

21+50

95.70	96.33	95.38	94.06	94.1	93.85	104.1	108.9	116.0
5 <sup>25</sup>	4 <sup>22</sup>	5 <sup>57</sup>	6 <sup>87</sup>	6 <sup>9</sup>	2 <sup>1</sup>	+3 <sup>1</sup>	+7 <sup>2</sup>	+15 <sup>0</sup>
65	50	24	6	3		5	20	65

21+00

98.04	98.51	95.52	95.11	95.25	105.9	110.3	114.3
1 <sup>91</sup>	2 <sup>44</sup>	4 <sup>52</sup>	5 <sup>84</sup>	5 <sup>7</sup>	+4 <sup>1</sup>	+9 <sup>3</sup>	+13 <sup>3</sup>
62	50	19	3		6	40	65

T.P. 0.12 100.95 2.56 100.83 100.93

100.95  
Nail in Pole # P1960 at Sta 20+80.4

20+50

98.4	99.06	98.59	97.75	96.66	96.5	96.5	105.1	106.4	108.7	110.9
5 <sup>00</sup>	4 <sup>23</sup>	4 <sup>80</sup>	5 <sup>64</sup>	6 <sup>23</sup>	6 <sup>9</sup>	6 <sup>7</sup>	+12	+3 <sup>0</sup>	+5 <sup>3</sup>	+7 <sup>3</sup>
64	53	25	13		2	4	10	14	40	65

20+00 End Cb on Lt

97.5	98.14	98.23	98.37	98.12	98.52	98.19	97.61	97.4	100.9	104.4	108.3	104.1	108.0
5 <sup>6</sup>	5 <sup>25</sup>	4 <sup>55</sup>	5 <sup>02</sup>	4 <sup>77</sup>	4 <sup>87</sup>	5 <sup>20</sup>	5 <sup>28</sup>	6 <sup>0</sup>	2 <sup>5</sup>	2 <sup>0</sup>	0 <sup>1</sup>	10 <sup>7</sup>	4 <sup>6</sup>
65	48	42	42	21	6		8	13	15	20	23	30	65

19+56

92.25	95.8	97.9	99.23	99.20	98.55	98.43	97.75	99.3	99.0	104.3	102.9
6 <sup>5</sup>	5 <sup>5</sup>	4 <sup>1</sup>	4 <sup>1</sup>	4 <sup>1</sup>	4 <sup>1</sup>	4 <sup>96</sup>	5 <sup>4</sup>	5 <sup>1</sup>	4 <sup>4</sup>	2 <sup>1</sup>	0 <sup>5</sup>
65	50	30	19	3	14	5	17	21	23	50	65

103.39

103.39



27+00

86.7	88.38	88.71	89.10	88.48	88.5	88.2	89.0	90.1	90.7	90.8	90.8
65	48	44	43	43	47	50	42	31	28	28	108
70	55	35	20	5		6	11	27	36	45	60

BIM 9.13 93.23 7.02 90.13 90.10

BR N. Ch. Littlest. 93.23  
FB 2042 P. 79

26+50

89.6	90.07	90.41	89.96	89.55	89.7	90.1	90.1	100.3	100.7
75	70	67	72	76	75	65	35	45	115
67	35	20	5		8	10	39	51	65

26+00

90.1	91.07	91.38	90.94	90.55	90.2	91.4	92.6	95.1
75	68	57	62	66	70	53	45	25
70	35	20	5		9	10	28	53

25+50

87.9	88.5	89.0	91.53	91.94	91.37	91.15	91.1	92.1	94.0	94.7
92	87	53	52	52	57	62	61	51	33	25
70	50	40	34	20	5		9	10	50	55

25+00

85.3	85.8	91.2	91.53	92.08	91.69	91.55	91.6	91.9	92.8	94.9
11.9	11.4	60	52	50	52	55	56	53	34	23
70	50	40	34	20	55		10	12	50	61

24+50

83.0	83.3	91.1	91.76	92.18	91.81	91.75	91.7	92.4	92.9	94.2
11.3	13.9	55	53	47	53	54	55	48	33	20
70	52	40	34	19	6		6	8	50	65

97.15

97.15

29+00

85.2	84.58	83.72	82.45	82.4	83.0	82.5	81.3	80.5	79.7	
8°	8.5	9.5	10.78	10.8	10.2	0.7	+9.8	+11.1	+13.2	+15.5
60	32	17	2		3	3	14	22	23	70
Topwall										

28+86 44  
BC-L

85.4	84.92	84.13	82.92	82.8	83.5	81.08	80.6	79.4	78.5	78.2
7.8	8.1	9.0	10.31	10.4	9.7	2.5	+10.4	+14.2	+20.3	+25.5
68	33	20	3		2	3	15	59	65	80
Topwall										

28+60

85.9	85.17	84.70	83.70	83.7	86.1	85.3	84.0	82.5	81.4	80.2	
7.3	7.6	8.53	9.53	9.5	7.1	+8.7	+8.2	+12.0	+13.3	+18.0	+24.0
68	35	20	5	2		8	37	40	52	56	80

28+50

86.2	85.65	85.02	84.02	83.8	85.7	85.3	84.0	82.5	81.4	80.2		
7.9	7.8	8.21	9.21	9.4	7.5	+5.1	+7.4	+7.0	+11.3	+14.1	+17.9	
64	35	20	5	2		7	17	33	38	50	58	80

28+00

86.3	86.51	86.17	85.58	86.0	87.0	86.0	84.8	83.9	82.8	81.2	79.9	78.1
6.9	6.65	7.05	7.65	7.3	13	+0.8	+5.5	+7.1	+14.0	+18.2	+22.1	+25.9
55	35	20	6	7	6	26	32	44	55	65	71	77

27+50

86.9	86.1	85.4	84.48	83.53	83.07	87.4	89.2	90.8	91.1	105.1	111.4
12.3	13.1	5.8	5.75	5.64	6.15	5.8	4.0	+3.6	+3.9	+11.2	+18.2
70	57	45	35	20	5		22	35	45	60	75

93.33  
71

93.33  
71

"L" Line Torrey Pines Road

31+00

27<sup>4</sup> 25<sup>8</sup> 20<sup>5</sup> 3<sup>0</sup> 3<sup>6</sup> 3<sup>1</sup> 3<sup>4</sup> 3<sup>5</sup> 17<sup>1</sup> 17<sup>2</sup>  
 80 70 4720 13 16 23 47 58

T.P. 196  $\frac{81.13}{1}$  931 79.17

to Hall 30+61.05 EC

30+61 05 EC

59.8 63.3 19.8 81.13 71.14 78.14 19.9 92.1 99.7 104.0  
 28<sup>7</sup> 25<sup>2</sup> 8<sup>7</sup> 9<sup>5</sup> 9<sup>3</sup> 9<sup>8</sup> 8<sup>5</sup> +3<sup>5</sup> -11<sup>2</sup> +15<sup>3</sup>  
 70 57 30 15 14 36 45 68 80 111.1

30+30

12.0 80.8 80.42 80.02 79.81 19.22 19.6 88.1 92.5 96.2 103.5 106.5  
 15<sup>5</sup> 7<sup>7</sup> 8<sup>6</sup> 8<sup>4</sup> 8<sup>7</sup> 9<sup>2</sup> 8<sup>9</sup> 0<sup>5</sup> +4<sup>2</sup> +7<sup>7</sup> +15<sup>1</sup> +15<sup>9</sup>  
 55 43 19 4 11 20 27 33 44 60 75

30+00

5<sup>1</sup> 82.7 81.56 80.76 80.31 19.68 80.3 81.3 92.1 101.1 106.2  
 22 7 7 13 15 20 40 67  
 56

29+50

84.4 83.17 82.24 81.20 81.04 81.7 93.4 100.5 101.3  
 4<sup>1</sup> 5<sup>2</sup> 6<sup>2</sup> 7<sup>2</sup> 7<sup>4</sup> 6<sup>8</sup> +4<sup>9</sup> +12<sup>0</sup> +12<sup>8</sup>  
 60 27 13 1 7 7 16 26.5  
 top of wall House

T.P. 519  $\frac{88.48}{1}$  994 83.29

29+26

84.8 83.90 83.00 81.95 81.6 81.8 91.6 91.9 101.5 105.7 108.5 111.9  
 8<sup>4</sup> 9<sup>3</sup> 10<sup>3</sup> 11<sup>2</sup> 11<sup>5</sup> 11<sup>4</sup> 15 +4<sup>7</sup> +8<sup>3</sup> +12<sup>5</sup> +15<sup>3</sup> +18<sup>1</sup>  
 60 30 15 1 5 5 13 33 33 55 69.8  
 top of wall Chart

$\frac{93.23}{1}$

$\frac{93.23}{1}$

33+35

62.7 61.4 61.3 70.0 69.97 70.99 71.62 72.28 70.4 73.9  
 129 129 103 76 75 63 600 534 52 37  
 55 42 22 16 10 8 20 47 63

77.62

TP 2.35 77.62 5.82 75.31 75.27

Nail in Pole Rt. 32+55± (P-19 this BC)

33+00

60.4 69.1 71.1 70.95 71.77 72.44 73.39 73.1 73.7  
 207 180 100 103 936 869 774 80 74  
 63 30 16 8 7 22 46 60

32+50

57.8 59.6 61.9 70.1 72.28 73.01 73.77 74.78 73.9 73.8  
 223 215 193 90 875 812 742 635 73 73  
 65 39 30 15 7 8 23 45 63

32+00

53.8 53.9 56.3 59.0 74.4 73.84 74.63 75.28 76.11 75.3 76.6 76.8  
 27 27 24 22 67 727 650 575 502 52 45 43  
 78 66 57 35 15 7 9 23 41 47 57

31480.57 BC

3. 52.6 54.5 57.4 74.9 74.41 75.25 75.91 76.60 76.0 78.4  
 27 26 23 6 6 5 522 453 51 27  
 867 54 41 15 8 8 22 40 54

31+40

52.5 55.4 61 76.0 75.93 76.71 77.31 77.0 78.5 81.8 80.0  
 28 25 20 5 5 4 382 41 25 46 47  
 76 60 40 16 10 20 31 39 53 75

81.13  
 1

81.13  
 1

"L" Line Torrey Pines Road

76

35+50

57.6 61.7 65.0 64.19 64.77 64.77 64.57 64.1 65.7 67.4 68.8  
 96 55 23 29 24 21 26 31 15 10 45  
 58 34 26 22 12 7 24 32 36 54

35+00

60.6 60.8 65.4 66.6 65.61 66.32 66.52 66.50 66.0 67.2 69.1 70.8  
 65 64 18 0 6 12 8 0 0 1 0 1 3  
 60 41 31 24 21 10 8 25 32 36 54

T.P. 1.29 67.17 11.74 65.89

34+85

60.7 64.7 66.2 66.01 66.88 67.08 67.09 66.6 67.1 70.1 71.3  
 16 12 11 11 10 10 10 11 11 9 7 6  
 56 44 28 21 10 10 9 26 34 38 58

34+50

66.0 67.0 67.6 67.10 68.20 68.51 68.2 69.3 71.8 73.5  
 11 10 10 10 9 9 9 8 5 4  
 50 36 24 18 12 28 34 44 60

34+00

68.1 68.6 68.22 69.54 70.22 70.7 71.8 73.4 74.7 75.6  
 95 90 94 80 74 6 5 4 4 4  
 50 29 14 15 34 35 43 46 62

33+50

66.1 66.1 66.6 69.3 69.54 70.63 71.84 71.9 74.1  
 11 11 11 8 8 6 5 5 3  
 58 48 35 14 10 18 50 63

77.63  
 7

77.62  
 7

L' Line Torrey Pines Road.

T.P. 1.75 21.24 12.68 <sup>55</sup> 54.49 (54.47)  
 (54.47-9925)

38+00

37+50

37+00

36+50

36+00

35+75

67.17  
 1

BP 1141 Cor Calle de la Plata & Torrey Pines Rd.

54.1 54.6 54.2 55.89 56.42 56.54 55.6 56.1 59.1 64.9 65.6  
 13 12 13 11 10 10 11 5 4 2 1  
 60 44 44 10 21 38 46 54 57 70  
 66 6

54.3 55.8 57.65 58.17 58.18 57.4 57.2 57.8 56.2 56.6  
 12 11 9 9 8 9 8 8 5 4 1 0  
 62 47 13 17 37 46 52 59 65

52.2 56.9 58.1 59.29 59.76 59.57 58.6 58.5 60.0 62.2  
 11 10 9 7 7 7 8 8 7 7 5  
 65 49 30 15 14 32 41 54 60

58.3 60.3 60.96 61.49 61.04 60.1 59.9  
 8 6 6 5 6 7 7  
 54 29 19 11 29 65

61.1 62.0 62.71 63.18 62.82 62.2 63.1 62.5 62.0  
 6 5 4 3 4 5 5 4 4 5  
 65 50 21 8 25 30 46 60

59.2 61.0 61.6 63.49 63.91 63.95 62.62 63.2 64.2 64.5 65.8  
 8 6 5 5 5 3 3 4 3 2 1  
 68 50 30 22 12 7 24 28 43 63

67.17  
 1



Contd in FB 2128 P-25

TP

4.17 5207 (5207)

TOP F.H. Rt. 42+98 (P-31 THIS BK.)

40+00

46.7	46.7	46.0	46.51	50.00	51.44	51.0	52.5
95	95	103	773	624	580	52	37
78	66	66	28		22	32	50
Cb							

39+50

49.1	48.81	47.6	50.0	50.78	51.24	52.0	53.0	53.8
71	743	85	624	546	500	42	32	24
71	52	52	15		23	36	49	62
Cb								

39+00

51.0	50.93	49.9	51.96	52.46	52.85	52.70	52.9	53.8
52	52	63	428	378	339	354	32	24
72	43	43	7		12	26	43	65
Cb								

38+65

52.4	52.3	51.5	53.28	53.88	54.28	54.19	54.6	54.7	56.0
38	39	42	276	236	196	205	26	15	0
60	42	42	7		11	23	46	51	68
Cb									

38+35

52.4	52.48	52.2	54.63	55.04	55.41	55.32	54.5	54.5	59.9	61.0
23	276	40	121	120	083	072	17	43	43	48
62	43	43	8		9	22	43	52	58	61
Cb										

56.24

✓

56.24

✓

Line Torrey Pines Road

Elev. of Walks + Steps Near 12+00  
Elev. shown.

12+10

11+95.5 = opening in wall + Brick landing

11+88.5 = E. edge Brick walk + Tile steps

11+85.5 = W. edge of 3 Brick walk

11+81.5 = P.C. of Brick walk

Req. Brick walk to E.

11+73.9 = E. edge of Conc. porch along house

Lt.

70

Φ

65.6  
70

70.3  
55

76.7  
40

83.2  
30

Top  
bank

70.5  
65

71.3  
52

78.2  
40

81.3  
33

88.39  
32.7 = N.  
edge landing

ground

71.7  
65

73.1  
54

75.13  
51.3 = P.C.  
E. edge

75.22  
47 = Bottom  
of Steps + Beg.  
Brickwalk

83.09  
33.1 = Top  
step

74.97  
56.6

75.20  
51.3

P.C. W. edge

75.27  
47 = of Bottom  
of steps.

71.1  
70

72.7  
59  
ground.

74.98  
58 =  
N. edge

75.13  
54.3 = E. edge  
of P.C.

75.30  
58.1

W. edge walk to E.

75.36  
54.2  
edge walk to E.

75.68  
51  
edge walk

80.2  
40

32.2 - 50.3

16.

9	
1.35	0
2.85	1
4.35	2
5.85	3
7.35	4
8.85	5
10.35	6
11.85	7
13.35	8
14.85	9
16.35	10
17.85	11
19.35	12
20.85	13
22.35	14
23.85	15
25.35	16
26.85	17
28.35	18
29.85	19
31.35	20
32.85	21
34.35	22
35.85	23
37.35	24
38.85	25
40.35	26
41.85	27
43.35	28
44.85	29
46.35	30
47.85	31
49.35	32
50.85	33
52.35	34
53.85	35
55.35	36
56.85	37
58.35	38
59.85	39
61.35	40
62.85	41
64.35	42
65.85	43
67.35	44
68.85	45
70.35	46
71.85	47
73.35	48
74.85	49
76.35	50

115.6  
67  
48.6

43+22.79 = Ang. +9.57

24.70 94  
127  
221

242  
59  
73

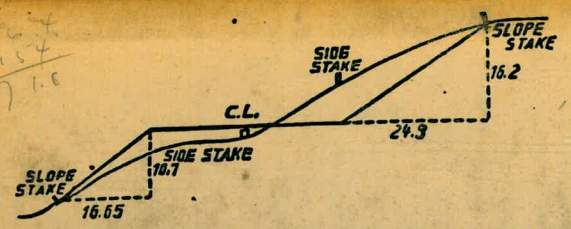
1128  
+194  
1480

+177  
89  
79

182  
109

130  
20.57  
1438.77

64  
23  
9  
49 45  
3 38  
10 11 45  
287  
71 75  
217 18-2  
175 3  
175 C  
80  
36



**DISTANCES FROM SIDE STAKES FOR CROSS-SECTIONING.**  
SLOPE 1 1/2 TO 1. ROADWAY OF ANY WIDTH.

	0	.1	.2	.3	.4	.5	.6	.7	.8	.9	
0	0.00	0.15	0.30	0.45	0.60	0.75	0.90	1.05	1.20	1.35	0
1	1.50	1.65	1.80	1.95	2.10	2.25	2.40	2.55	2.70	2.85	1
2	3.00	3.15	3.30	3.45	3.60	3.75	3.90	4.05	4.20	4.35	2
3	4.50	4.65	4.80	4.95	5.10	5.25	5.40	5.55	5.70	5.85	3
4	6.00	6.15	6.30	6.45	6.60	6.75	6.90	7.05	7.20	7.35	4
5	7.50	7.65	7.80	7.95	8.10	8.25	8.40	8.55	8.70	8.85	5
6	9.00	9.15	9.30	9.45	9.60	9.75	9.90	10.05	10.20	10.35	6
7	10.50	10.65	10.80	10.95	11.10	11.25	11.40	11.55	11.70	11.85	7
8	12.00	12.15	12.30	12.45	12.60	12.75	12.90	13.05	13.20	13.35	8
9	13.50	13.65	13.80	13.95	14.10	14.25	14.40	14.55	14.70	14.85	9
10	15.00	15.15	15.30	15.45	15.60	15.75	15.90	16.05	16.20	16.35	10
11	16.50	16.65	16.80	16.95	17.10	17.25	17.40	17.55	17.70	17.85	11
12	18.00	18.15	18.30	18.45	18.60	18.75	18.90	19.05	19.20	19.35	12
13	19.50	19.65	19.80	19.95	20.10	20.25	20.40	20.55	20.70	20.85	13
14	21.00	21.15	21.30	21.45	21.60	21.75	21.90	22.05	22.20	22.35	14
15	22.50	22.65	22.80	22.95	23.10	23.25	23.40	23.55	23.70	23.85	15
16	24.00	24.15	24.30	24.45	24.60	24.75	24.90	25.05	25.20	25.35	16
17	25.50	25.65	25.80	25.95	26.10	26.25	26.40	26.55	26.70	26.85	17
18	27.00	27.15	27.30	27.45	27.60	27.75	27.90	28.05	28.20	28.35	18
19	28.50	28.65	28.80	28.95	29.10	29.25	29.40	29.55	29.70	29.85	19
20	30.00	30.15	30.30	30.45	30.60	30.75	30.90	31.05	31.20	31.35	20
21	31.50	31.65	31.80	31.95	32.10	32.25	32.40	32.55	32.70	32.85	21
22	33.00	33.15	33.30	33.45	33.60	33.75	33.90	34.05	34.20	34.35	22
23	34.50	34.65	34.80	34.95	35.10	35.25	35.40	35.55	35.70	35.85	23
24	36.00	36.15	36.30	36.45	36.60	36.75	36.90	37.05	37.20	37.35	24
25	37.50	37.65	37.80	37.95	38.10	38.25	38.40	38.55	38.70	38.85	25
26	39.00	39.15	39.30	39.45	39.60	39.75	39.90	40.05	40.20	40.35	26
27	40.50	40.65	40.80	40.95	41.10	41.25	41.40	41.55	41.70	41.85	27
28	42.00	42.15	42.30	42.45	42.60	42.75	42.90	43.05	43.20	43.35	28
29	43.50	43.65	43.80	43.95	44.10	44.25	44.40	44.55	44.70	44.85	29
30	45.00	45.15	45.30	45.45	45.60	45.75	45.90	46.05	46.20	46.35	30
31	46.50	46.65	46.80	46.95	47.10	47.25	47.40	47.55	47.70	47.85	31
32	48.00	48.15	48.30	48.45	48.60	48.75	48.90	49.05	49.20	49.35	32
33	49.50	49.65	49.80	49.95	50.10	50.25	50.40	50.55	50.70	50.85	33
34	51.00	51.15	51.30	51.45	51.60	51.75	51.90	52.05	52.20	52.35	34
35	52.50	52.65	52.80	52.95	53.10	53.25	53.40	53.55	53.70	53.85	35
36	54.00	54.15	54.30	54.45	54.60	54.75	54.90	55.05	55.20	55.35	36
37	55.50	55.65	55.80	55.95	56.10	56.25	56.40	56.55	56.70	56.85	37
38	57.00	57.15	57.30	57.45	57.60	57.75	57.90	58.05	58.20	58.35	38
39	58.50	58.65	58.80	58.95	59.10	59.25	59.40	59.55	59.70	59.85	39
40	60.00	60.15	60.30	60.45	60.60	60.75	60.90	61.05	61.20	61.35	40
41	61.50	61.65	61.80	61.95	62.10	62.25	62.40	62.55	62.70	62.85	41
42	63.00	63.15	63.30	63.45	63.60	63.75	63.90	64.05	64.20	64.35	42
43	64.50	64.65	64.80	64.95	65.10	65.25	65.40	65.55	65.70	65.85	43
44	66.00	66.15	66.30	66.45	66.60	66.75	66.90	67.05	67.20	67.35	44
45	67.50	67.65	67.80	67.95	68.10	68.25	68.40	68.55	68.70	68.85	45
46	69.00	69.15	69.30	69.45	69.60	69.75	69.90	70.05	70.20	70.35	46
47	70.50	70.65	70.80	70.95	71.10	71.25	71.40	71.55	71.70	71.85	47
48	72.00	72.15	72.30	72.45	72.60	72.75	72.90	73.05	73.20	73.35	48
49	73.50	73.65	73.80	73.95	74.10	74.25	74.40	74.55	74.70	74.85	49
50	75.00	75.15	75.30	75.45	75.60	75.75	75.90	76.05	76.20	76.35	50

THE NATIONAL BLANK BOOK COMPANY  
HOLYOKE MASSACHUSETTS  
NEW YORK CHICAGO BOSTON SAN FRANCISCO

115.6  
67