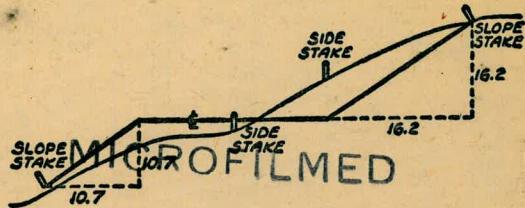


2095

FIELD BOOK



DEC 31 1964

DISTANCES FROM SIDE STAKES FOR CROSS-SECTIONING
SLOPE 1 TO 1. ROADWAY OF ANY WIDTH

	0	.1	.2	.3	.4	.5	.6	.7	.8	9	
0	0.00	0.10	0.20	0.30	0.40	0.50	0.60	0.70	0.80	0.90	0
1	1.00	1.10	1.20	1.30	1.40	1.50	1.60	1.70	1.80	1.90	1
2	2.00	2.10	2.20	2.30	2.40	2.50	2.60	2.70	2.80	2.90	2
3	3.00	3.10	3.20	3.30	3.40	3.50	3.60	3.70	3.80	3.90	3
4	4.00	4.10	4.20	4.30	4.40	4.50	4.60	4.70	4.80	4.90	4
5	5.00	5.10	5.20	5.30	5.40	5.50	5.60	5.70	5.80	5.90	5
6	6.00	6.10	6.20	6.30	6.40	6.50	6.60	6.70	6.80	6.90	6
7	7.00	7.10	7.20	7.30	7.40	7.50	7.60	7.70	7.80	7.90	7
8	8.00	8.10	8.20	8.30	8.40	8.50	8.60	8.70	8.80	8.90	8
9	9.00	9.10	9.20	9.30	9.40	9.50	9.60	9.70	9.80	9.90	9
10	10.00	10.10	10.20	10.30	10.40	10.50	10.60	10.70	10.80	10.90	10
11	11.00	11.10	11.20	11.30	11.40	11.50	11.60	11.70	11.80	11.90	11
12	12.00	12.10	12.20	12.30	12.40	12.50	12.60	12.70	12.80	12.90	12
13	13.00	13.10	13.20	13.30	13.40	13.50	13.60	13.70	13.80	13.90	13
14	14.00	14.10	14.20	14.30	14.40	14.50	14.60	14.70	14.80	14.90	14
15	15.00	15.10	15.20	15.30	15.40	15.50	15.60	15.70	15.80	15.90	15
16	16.00	16.10	16.20	16.30	16.40	16.50	16.60	16.70	16.80	16.90	16
17	17.00	17.10	17.20	17.30	17.40	17.50	17.60	17.70	17.80	17.90	17
18	18.00	18.10	18.20	18.30	18.40	18.50	18.60	18.70	18.80	18.90	18
19	19.00	19.10	19.20	19.30	19.40	19.50	19.60	19.70	19.80	19.90	19
20	20.00	20.10	20.20	20.30	20.40	20.50	20.60	20.70	20.80	20.90	20
21	21.00	21.10	21.20	21.30	21.40	21.50	21.60	21.70	21.80	21.90	21
22	22.00	22.10	22.20	22.30	22.40	22.50	22.60	22.70	22.80	22.90	22
23	23.00	23.10	23.20	23.30	23.40	23.50	23.60	23.70	23.80	23.90	23
24	24.00	24.10	24.20	24.30	24.40	24.50	24.60	24.70	24.80	24.90	24
25	25.00	25.10	25.20	25.30	25.40	25.50	25.60	25.70	25.80	25.90	25
26	26.00	26.10	26.20	26.30	26.40	26.50	26.60	26.70	26.80	26.90	26
27	27.00	27.10	27.20	27.30	27.40	27.50	27.60	27.70	27.80	27.90	27
28	28.00	28.10	28.20	28.30	28.40	28.50	28.60	28.70	28.80	28.90	28
29	29.00	29.10	29.20	29.30	29.40	29.50	29.60	29.70	29.80	29.90	29
30	30.00	30.10	30.20	30.30	30.40	30.50	30.60	30.70	30.80	30.90	30
31	31.00	31.10	31.20	31.30	31.40	31.50	31.60	31.70	31.80	31.90	31
32	32.00	32.10	32.20	32.30	32.40	32.50	32.60	32.70	32.80	32.90	32
33	33.00	33.10	33.20	33.30	33.40	33.50	33.60	33.70	33.80	33.90	33
34	34.00	34.10	34.20	34.30	34.40	34.50	34.60	34.70	34.80	34.90	34
35	35.00	35.10	35.20	35.30	35.40	35.50	35.60	35.70	35.80	35.90	35
36	36.00	36.10	36.20	36.30	36.40	36.50	36.60	36.70	36.80	36.90	36
37	37.00	37.10	37.20	37.30	37.40	37.50	37.60	37.70	37.80	37.90	37
38	38.00	38.10	38.20	38.30	38.40	38.50	38.60	38.70	38.80	38.90	38
39	39.00	39.10	39.20	39.30	39.40	39.50	39.60	39.70	39.80	39.90	39
40	40.00	40.10	40.20	40.30	40.40	40.50	40.60	40.70	40.80	40.90	40
41	41.00	41.10	41.20	41.30	41.40	41.50	41.60	41.70	41.80	41.90	41
42	42.00	42.10	42.20	42.30	42.40	42.50	42.60	42.70	42.80	42.90	42
43	43.00	43.10	43.20	43.30	43.40	43.50	43.60	43.70	43.80	43.90	43
44	44.00	44.10	44.20	44.30	44.40	44.50	44.60	44.70	44.80	44.90	44
45	45.00	45.10	45.20	45.30	45.40	45.50	45.60	45.70	45.80	45.90	45
46	46.00	46.10	46.20	46.30	46.40	46.50	46.60	46.70	46.80	46.90	46
47	47.00	47.10	47.20	47.30	47.40	47.50	47.60	47.70	47.80	47.90	47
48	48.00	48.10	48.20	48.30	48.40	48.50	48.60	48.70	48.80	48.90	48
49	49.00	49.10	49.20	49.30	49.40	49.50	49.60	49.70	49.80	49.90	49
50	50.00	50.10	50.20	50.30	50.40	50.50	50.60	50.70	50.80	50.90	50

Distance of slope stake from side or shoulder stake for any width roadway, slope 1 to 1. If ground is nearly level, the cut or fill at side stake is located by the double entry method in left column and top row. The number in body of table in same row and column gives distance from side stake to slope stake. If ground is not level estimate the difference in elevation between the side stake and slope stake, lower target by this amount if cut, elevate if fill. Add this amount to cut or fill and find distance in table. Set up rod at this point, and line of sight should cut target. If it does not make the slight adjustment necessary.

INDEXED
to page # 75

La Jolla Country Club Hqts. Sewer } Prelim } 2- ✓

Thru P.L. 1263 2-18 ✓

Country Club Dr. 13 + 19-22 ✓

Carrizo + Romero 23-25 and 29-38 ✓

BIK. E. lots (2 Lines) 6-8-9-10-11 + 12 ALSO P 67 26 + 39-42 ✓

BIKs C-D-E + F

Romero court } 27 + 29 ✓
Portion of Romero Dr. } and ✓

" " Country Club Dr. } 43-66 ✓

BIK. E. + Encella Dr. 28 + 57 & 67 ✓

BIK. B - To lot # 8 13 + 74 ✓

A-line

La Jolla Country Club Hqts.

Proposed Sewer

5182.26
Δ 28' 20" H.
changed 5/25/50
Now = P.O.T.

2

Sammermayer

5-29-50

Beeg

N.O. 31865

Allen

Sherman

● = Fd. L.A.T.

T.P. book #17

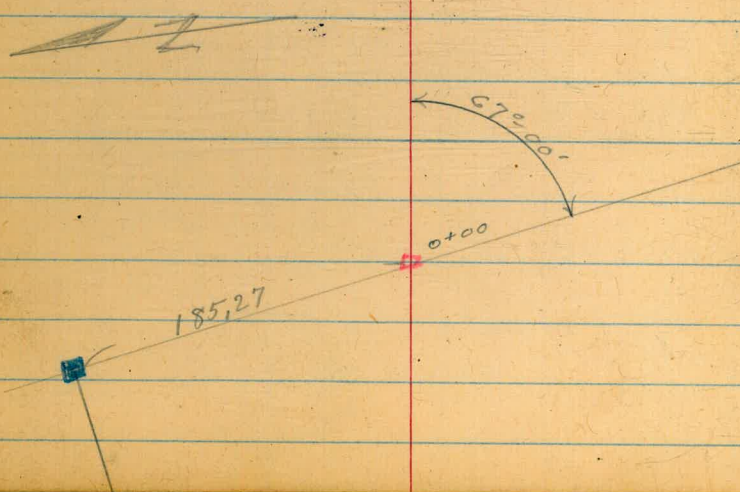
■ = Fd. Conc. Man.

Map. 1975

■ = set. 3/2 hub + disk

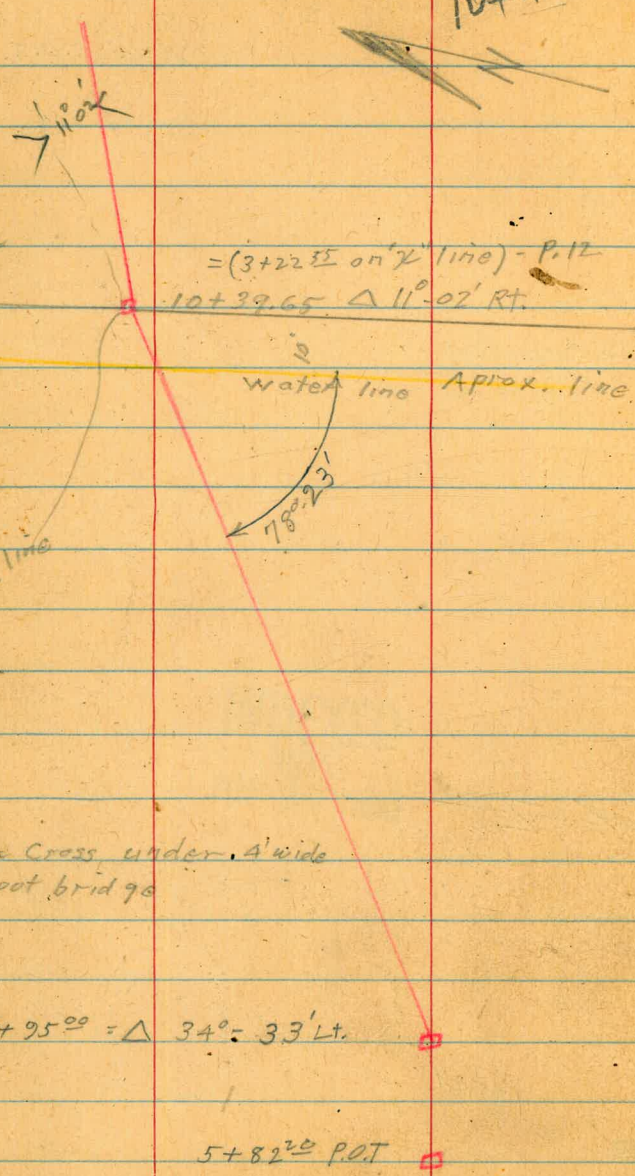
Levels P. 4

INDEXED
WK.
JUN 30 1950



A-line

$$\begin{array}{r} 10+39.65 \\ 1.50 \\ \hline 10+47.15 \end{array}$$



6+16 = Cross under A wide foot bridge

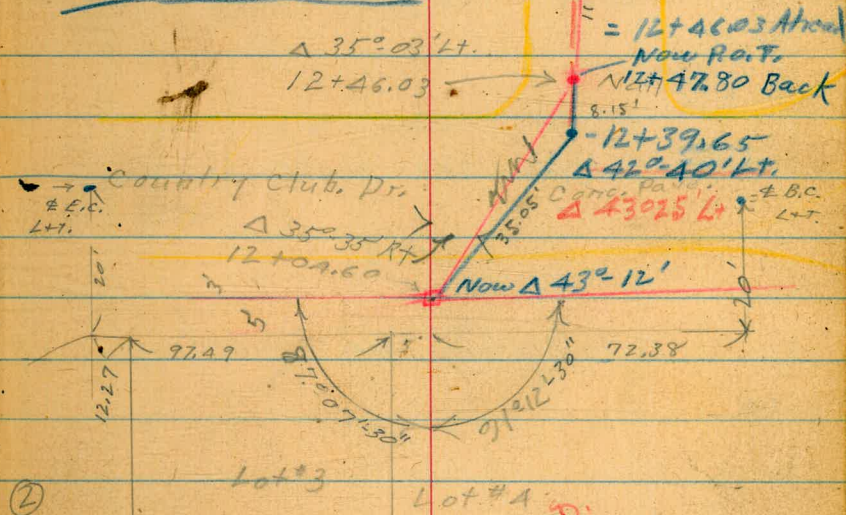
$$5+95^\circ = \Delta 34^\circ = 33' Lt.$$

5+82° P.O.T

13+65 = End of line Cont. 15 m.
 13+58.2
 13+50 Aprox. 15' Lt. = Prop.

Revised to this in office

Blue line = change made 7/14/50
Levels - Page 80



$$\begin{array}{r} \Delta 35^\circ-03' Lt. \\ 12+46.03 \end{array}$$

= 12+46.03 Ahead
 Now P.O.T.
 12+47.80 Back

Country Club Dr.

$$\begin{array}{r} \Delta 35^\circ-35' Rt. \\ 12+09.60 \end{array}$$

12+39.65
 $\Delta 42^\circ-40' Lt.$
 $\Delta 43^\circ 25' Lt.$

Now $\Delta 43^\circ-12'$

Lot #3

Lot #A

In Court
 My out according
 to drawing 1565-B-1566-D
 M.

T.P. Book 17/28

> < 4.27' Calc'n

A-line

Sketch - P-2.

6-13-50
Rel. at
3000
1/16/50

4 ✓

3+00

305.2 ✓
8.8
10

303.7 ✓
10.3

301.2 ✓
12.8
10

+ 85

305.1 ✓
8.9
10

302.9 ✓
11.1

299.3 ✓
14.7
10

+50

10' Ht. = Edge of Tee

307.9 ✓
6.1
35

308.0 ✓
6.0
10

305.5 ✓
8.5

303.7 ✓
10.3
10

ctr. of Tee

2~

302.5 ✓
11.5

T.P.

12.70 $\langle 314.00 \rangle$

0.28 $\langle 301.30 \rangle$

$\langle 314.00 \rangle$

1+50

301.2 ✓
0.4

1+00

299.9 ✓
1.7

0+50

297.6 ✓
4.0

0+00

(page 2)

295.67 ✓
5.91
Hub

Conc. Men
S.E. Cot.

5.46 $\langle 301.58 \rangle$

296.12

$\langle 301.58 \rangle$

Beverly Hgts.

Cont. on P. 7

5+82²⁰ A 28°-20'4".

5+62 = Cross 4" water line

+44

+11

5+00

+50

4+00

T.P.

12.89

326.63 ✓

0.26

313.74 ✓

3+50

323.1 ✓
3.5
10322.93 ✓
3.70
4.6322.9 ✓
3.7
3325.0 ✓
1.6
10320.8 ✓
5.8
5322.4 ✓
4.2
5322.4 ✓
4.25
top of
10' pipe322.1 ✓
4.5
10322.1 ✓
4.5322.1 ✓
4.5
10317.3 ✓
7.3319.2 ✓
7.4
10316.9 ✓
9.7315.9 ✓
10.7
10315.6 ✓
11.0
25316.2 ✓
10.4315.2 ✓
11.2
10314.5 ✓
12.1313.6 ✓
13.0
10

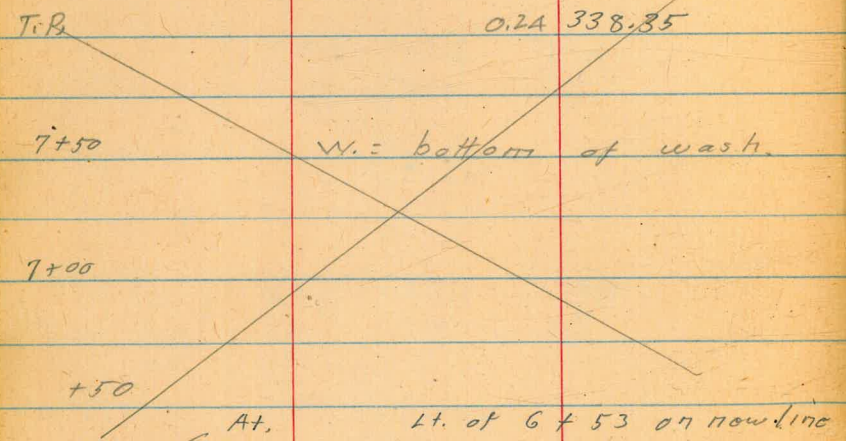
326.63 ✓

310.8 ✓
3.2
10309.7 ✓
4.3308.8 ✓
5.2
10

314.00 ✓

This line changed 5/25/50

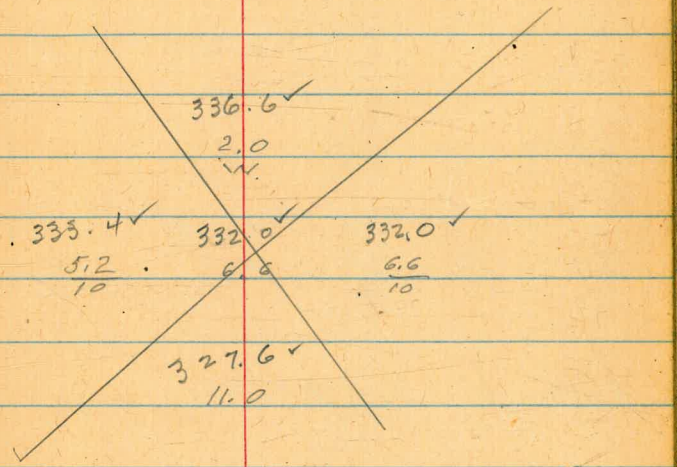
B.M. #2 is O.K.



Set B.M. in N.W. end of Bent.
 Plate 11' Lt. of 6+47 9.95 $\langle 328.64 \rangle$ B.M. #2

(4' wide.)
 6+45 - Cross under foot bridge

T.P. 12.04 $\langle 338.59 \rangle$ 0.08 $\langle 326.55 \rangle$
 6+00



327.2 335.4
 11.4 3.7 = Bottom of deck
 $\langle 338.59 \rangle$ Stringer

3.0/10 3.0 3.1/7 1.3/10

$\langle 326.63 \rangle$

A. line

8+50

8~

T.P.

12.04 $\langle 353.14 \rangle$ 0.42 $\langle 341.10 \rangle$

7+50

7~

6+53- 11' Lt. = B.M. #2.

6+46 Cross under foot bridge

5+95⁰⁰ Δ 34⁰-33' Lt.

B.M. #2-P.6 12.88 $\langle 341.52 \rangle$ - $\langle 328.64 \rangle$
Cont. from P. 5

4

7

348.1
5.0

344.4[✓] 341.5[✓] 340.9[✓] 344.5[✓]
 $\frac{8.7}{10}$ 11.6 12.2 8.6
8 18

$\langle 353.14 \rangle$

336.2[✓]
5.3

334.9[✓] 332.2[✓] 331.9[✓] 332.6[✓]
 $\frac{5.6}{10}$ 9.3 9.6 8.9
10 20

328.1[✓] 326.9[✓] 335.5[✓] 329.0[✓]
 $\frac{13.4}{11}$ 14.6 6.0 $\frac{12.5}{16}$
at bent Bottom of stringer at bent

323.1[✓] 323.3[✓] 327.5[✓]
18.3 18.2 14.0
10 10

$\langle 341.52 \rangle$

A line

±

81

See $\frac{2106}{19}$ for profile

± = Blow off value see water Dault Per
10+26 = Cross water line

376.9 ✓
7.0
10.5
±
TOP of valve

10+10

374.5 ✓
9.4
10
374.0 ✓
9.9
10
376.6 ✓
7.3
10

T.P.

11.37

383.90 ✓

0.34

372.53 ✓

383.90 ✓

10+05 - 5' Lt. = outlet 4" C.I. blow off pipe

370.80 ✓
2.07
5
T.E.
370.9 ✓
2.0

10 ~

370.9 ✓
2.0
10
368.9 ✓
4.0
10
370.3 ✓
2.6
372.87 ✓
373.9 ✓
11.0
10

T.P.

10.35

372.87 ✓

3.02

362.52 ✓

9+50

360.9 ✓
4.6

9 ~

353.8 ✓
11.7
10
354.1 ✓
11.4
357.3 ✓
8.2
10
365.54 ✓

T.P.

12.50

365.54 ✓
353.14 ✓

0.10

353.04 ✓

A-line

T.P. 12.89 $\langle 430.52 \rangle$ 0.29 $\langle 417.63 \rangle$
 T.P. 11.99 $\langle 417.92 \rangle$ 0.18 $\langle 405.93 \rangle$

+60

+50

T.P. 12.30 $\langle 406.11 \rangle$ 1.39 $\langle 393.81 \rangle$

11+00

+50

See 2106
19

10+45. top of loose rock wall

T.P. 11.90 $\langle 395.22 \rangle$ 0.60 $\langle 383.30 \rangle$

10+44= Base loose rock wall

10+39⁶⁵ = A 11°-02' RT. also = 3+22⁵⁵ on N. + S.

403.5 ✓ $\frac{2.6}{10}$ 404.8 ✓ $\frac{1.3}{10}$ 405.7 ✓ $\frac{0.4}{10}$

399.8 ✓ $\frac{6.3}{10}$ 399.4 ✓ $\frac{6.7}{10}$ 400.2 ✓ $\frac{5.9}{10}$
 $\langle 406.11 \rangle$

394.0 ✓ $\frac{1.2}{10}$ 393.8 ✓ $\frac{1.4}{10}$ 393.6 ✓ $\frac{1.6}{10}$

386.9 ✓ $\frac{8.3}{10}$ 387.1 ✓ $\frac{8.1}{10}$ 387.6 ✓ $\frac{7.6}{10}$

385.7 ✓ $\frac{9.5}{10}$ 385.2 ✓ $\frac{10.0}{10}$ 384.2 ✓ $\frac{11.0}{10}$

$\langle 395.20 \rangle$

380.3 ✓ $\frac{3.6}{10}$ 380.4 ✓ $\frac{3.5}{10}$ 381.6 ✓ $\frac{2.3}{10}$

379.51 ✓
4.39

$\langle 383.90 \rangle$

12+46⁰³ Δ 35°-03' Lt. (in drive way)

432.94 ✓ 4.56 3.7 0.	432.5 ✓ 5.00 3.7 0.	432.64 ✓ 4.86	433.20 ✓ 4.30 8.7 0.	433.80 ✓ 3.70 8.7 0.
-------------------------------	------------------------------	------------------	-------------------------------	-------------------------------

12+39² = Ely. Cl. line Country Club Dr. Rod along gutter line

431.71 ✓ 5.77 10 0.	432.38 ✓ 5.12 10 0.	432.32 ✓ 5.18	432.75 ✓ 4.75 10 gutter line
------------------------------	------------------------------	------------------	---------------------------------------

12+23⁷ = ± Country Club Dr.

431.70 ✓ 5.80

Return Sec 2095
3880

12+07⁶⁵ gutter

430.47 ✓ 7.03 10	430.92 ✓ 6.58	431.44 ✓ 6.08 10
------------------------	------------------	------------------------

12+07⁶ top of Cl. (outs on line of curb)

430.75 ✓ 6.75 10	431.26 ✓ 6.24	431.89 ✓ 5.61 10
------------------------	------------------	------------------------

12+04⁶⁰ Δ 35°-35' Rt. Also = 0100 Country Club Dr. To North " " " South

431.32 ✓ 6.18 Hub

11+95

429.9 ✓ 7.6 10	430.3 ✓ 7.2	430.9 ✓ 6.6 10
----------------------	----------------	----------------------

437.50 ✓

T.P. 9.32 (437.50) — 428.18
 Set B.M. - C Hiseled □
 Sign S. Ely. Cl. Rot.
 Romer Drive &
 Country Club Drive (430.52)

2.34 (428.18) B.M. #3

A - line

+65 End of line

+59 = top of rock wall

+58² = Base of rock wall

+57 3' Rt. shrub.

+55 1' Lt. = Guava tree

+52 - 2' Rt. = Guava tree
start improved yard

13+38⁴ ± = Cross brick edge of drive

13+50 15' Lt. = Approx prop
Cor.

13+28 }
10.5 Rt.
2.4 Lt } = brick edge of drive

T.P. 8.21 (444.77) 0.94 (436.50)

13+00 }
8.2 Rt.
2.0 Lt } = brick edge of drive

7' Rt. = }
3' Lt. = } start brick edge of drive
= start gravel drive
12+55 = End Conc. drive + curbs.

442.8¹
2.0

444.3¹
0.5

440.8¹
4.0

439.4¹
5.4

438.4¹
6.4

444.77¹

436.5¹
1.0

433.58
3.92
3
end

433.15
4.35
3
6

433.3¹
4.18

433.60
3.90
7
6

434.05¹
3.45
7
6, end

437.50¹

11

N+S. Thru P.L. 1263

= "X" line

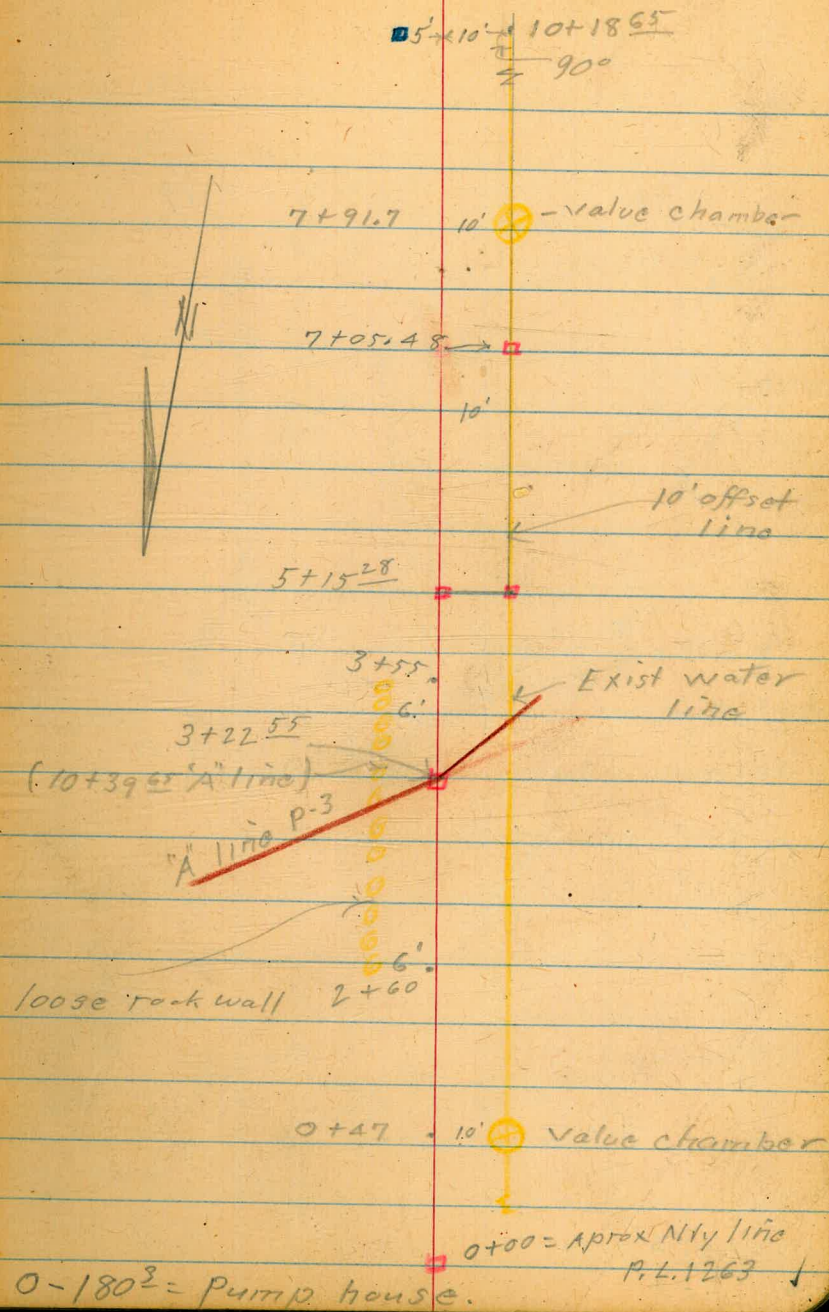
5-25-50

□ = Set 1/2 Hub + dist

■ = Fd. Conc. Moni

Levels - P. 14.

See hard copy
roll # 7512

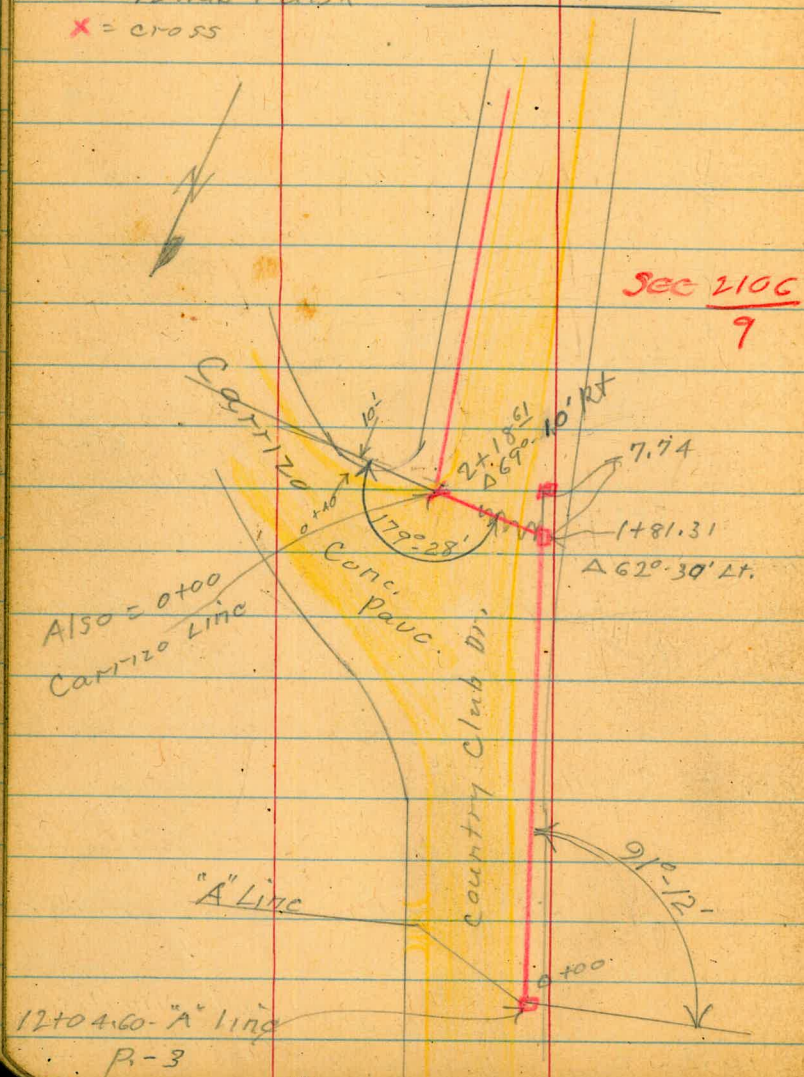


Country Club Drive
South of "A" Line

5/26/50

Levels - P. 19

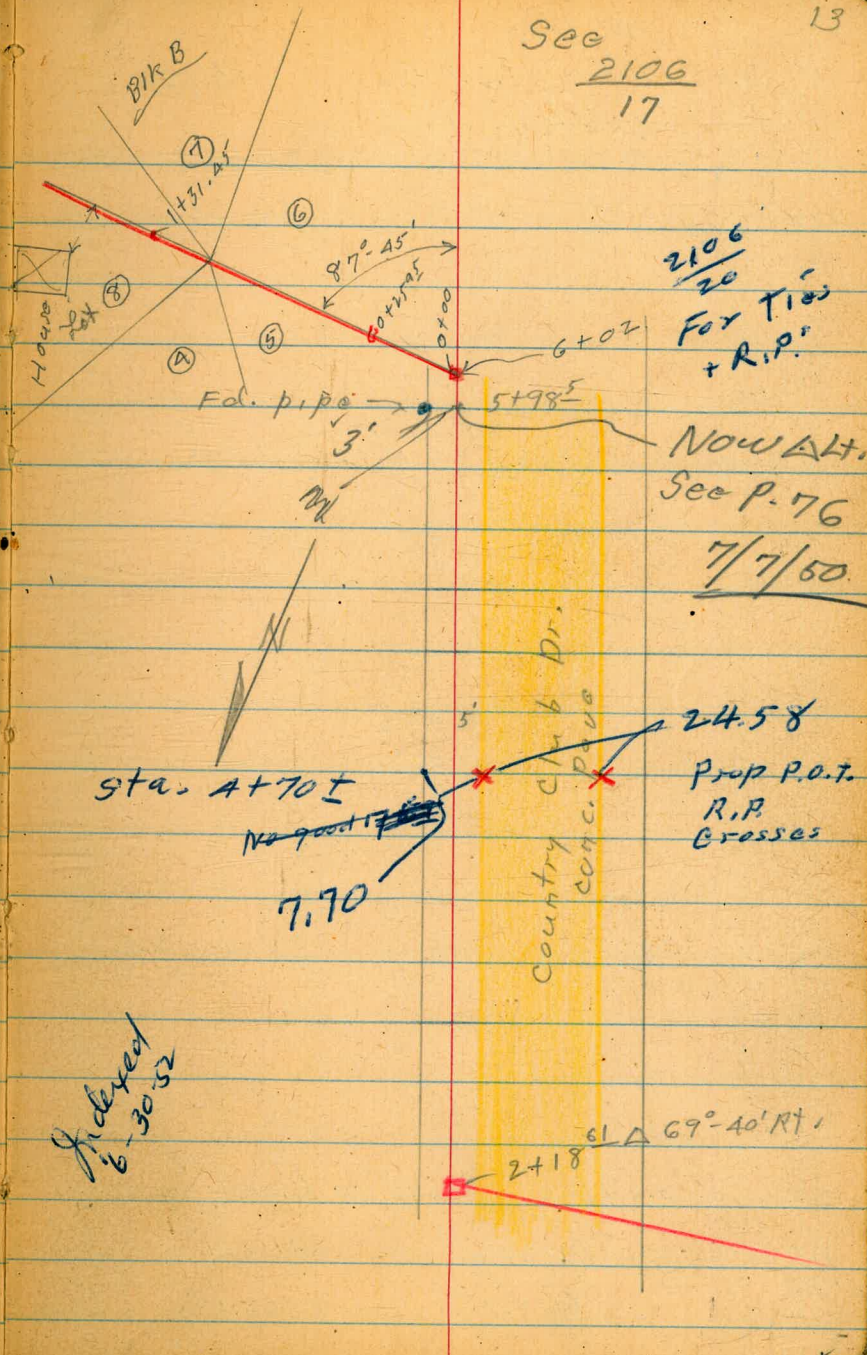
□ = 1/2 hub & disk
X = cross



Sec 2106
9

See
2106
17

13



2106
20
For Ties
+ R.P.

Now Alt.
See P. 76

7/7/50

24.58
Prop P.O.T.
R.P.
Crosses

Index
6-30-52

"V" line
N.+S. Thru P.L. # 1263
Sketch P-12

5/29/50

14'

2+00

388.5
4.9
10

387.0
6.4

385.0
8.4
10

+50

389.3
4.1

T.P.

1.72

393.36

12.97

391.64

393.36

1+00

397.3
7.3
10

396.1
8.5

394.9
9.7
10

0+65

400.4
1.2

0+47

10' Rt. = Ctr. water line M.H.

402.3
2.3
10

400.5
4.1

398.51
6.10
10
TOP. M.H.

0+00 - P.12

399.3
5.3
10

397.50
7.11
Stub.

395.2
9.4
10

T.P.

0.49

404.61

12.80

404.12

404.61

T.P.

121

416.92

12.99

415.71

BM #3

P-10

0.52

428.70

—

428.18

T.P. 11.06 $\langle 390.14 \rangle$ 0.04 $\langle 390.08 \rangle$

3+55 6' Lt = end loose rock wall

+38

3+22⁵ = P.O.T. also = (10+39⁶ A 11° 00' N. on A. line.)

3+12

T.P. 8.76 $\langle 390.12 \rangle$ 12.00 $\langle 386.36 \rangle$

3+00

2+60 6' Lt = start loose rock wall

2+40

390.1 ✓ 389.5 ✓ 387.4 ✓ 384.6 ✓
 $\frac{9.0}{10}$ 0.6 2.7 $\frac{5.5}{10}$
 wall

382.4 ✓
7.7

379.55 ✓
10.57

386.1 ✓ 385.1 ✓ 379.7 ✓ 379.4 ✓ 378.2 ✓
 $\frac{1.0}{10}$ $\frac{5.0}{5}$ 10.4 wall 10.7 $\frac{11.9}{10}$

$\langle 390.12 \rangle$

386.4 ✓ 385.5 ✓ 380.9 ✓ 380.1 ✓ 379.1 ✓
 $\frac{7.0}{10}$ $\frac{7.7}{7}$ $\frac{12.5}{6}$ 13.3 $\frac{14.3}{10}$

387.4 ✓ 387.3 ✓ 386.3 ✓ 385.7 ✓ 384.4 ✓
 $\frac{6.0}{10}$ $\frac{6.1}{7}$ $\frac{7.1}{6}$ 7.7 $\frac{9.0}{10}$

387.2 ✓
6.2

$\langle 393.36 \rangle$ ✓

Nit.S.ly. thru 1263.

6+20 6' Lt. = start line of 5' Cypress

6+00 6' Lt. = 8" Eucalyptus

also = edge of shrubs.

+57 3' Lt. = 10" Elder tree

+50

T.P. 12.21 <423.79> 0.41 <411.58>
+ small trees.

5+35 - 6' Lt. = start yard of shrubs

5+23 - 6' Lt. = 10" Eucalyptus

5+15²⁸ 1/2 P.O.T.

5+00

T.P. 12.31 <411.99> 1.46 <399.68>

+50

4+00

±

16'

421.4

2.4
10

419.9 ✓

3.9

417.6 ✓

6.2
10

414.4 ✓

7.4

<423.79> ✓

409.13 ✓

2.86

406.97 ✓

5.02

10
1/2 offset hub

409.1 ✓

2.9
10

407.0 ✓

5.0

404.7 ✓

7.3
10

<411.99> ✓

399.7 ✓

1.4

396.3 ✓

4.8
10

393.9 ✓

7.2

391.7 ✓

9.4
10

<401.14> ✓

N+S. line thru P.L. 1263

17 ✓

8+00

439.8
+0.4
10

437.1 ✓
2.3

434.7 ✓
4.7
10

7+91⁷ 10' At = Ctr. water line Man Hole

434.80 ✓
4.62
10
TOP. M.H.

7+50

435.7 ✓
3.7

T.P.

5.07

439.42 ✓

1.18

434.35 ✓

439.42 ✓

5' Lt. = prop. pipe

7+18 6' Lt. = 12" Cypress

7+16 6' Lt. = 6" Cypress

7+14 6' Lt. = 6" Cypress

7+12 6' Lt. = 6" Cypress

7+09 8' At = 18" Eucalyptus

3.96

7+05.48 = 1/2 P.O.T. on 10' offset line 431.52

7+00

436.0
+0.5
10

432.9 ✓
2.6

431.1 ✓
4.4
10

6+60

9' Lt. = end yard of shrubs

6+50

6' Lt. = end row of cypress

427.2 ✓
8.3

T.P.

12.44

435.48 ✓

0.75

423.04 ✓

435.48 ✓

423.79 ✓

423.79 ✓

10+50

424.1
 $\frac{15.3}{10}$

423.3
 $\frac{16.1}{10}$

422.3
 $\frac{17.1}{10}$

10+18⁶⁵

5' L₁ Mon.

Marked on L₁ EL = 426.97

Slope up to N, NE & E from this Con Mon.

434.2

5'

427.11
 $\frac{12.31}{5}$
Mon

10+00

430.5
 $\frac{8.9}{10}$

428.6
 $\frac{10.8}{10}$

427.2
 $\frac{12.2}{10}$

+50

432.9
 $\frac{6.5}{10}$

7+00

437.9
 $\frac{1.5}{10}$

435.3
 $\frac{4.1}{10}$

433.0
 $\frac{6.4}{10}$

8+50

436.9
 $\frac{2.5}{10}$

439.2

Country Club Drive
South of A. line

Sketch - P-13,

5/29/50

4 Indexed

19 ✓

1+85 Cross curb.

446.40 ✓
7.33

1+81 3/4 Δ 62°-30' Lt.

446.38 ✓
7.35 ✓
1/2

446.3 ✓

7.4

4 - 90° to back tang
T.B.

T.P. 10.64 <453.73> 0.135 <443.09> ✓

<453.73> ✓

1+50

442.5 ✓
0.90
4.6
cc

442.4 ✓
1.10

442.1 ✓

1.3

3

T.B.

1+00

437.67 ✓
5.77
5.3
cc

437.6 ✓
5.8

437.6 ✓

5.8

2

T.B.

T.B. = Top of bank

cc = face of N. + S. curb.

0+50

433.90 ✓
9.54
4.2
cc

434.0 ✓
9.4

433.9 ✓

9.5

3

T.B.

0+00 = 1/2 = (12 + 04.60 A. line) Base 10

431.32 ✓

12.12

12.12 <443.44> ✓

<431.32> ✓

<443.44> ✓

2+37^L cross curb

450.61 ✓
10.64
80.

2+37 end pave

450.05 ✓
11.20
8
461.25 ✓

T.P.
X-2+79.61

11.78 <461.25> 4.26 <449.47> ^{FR} #1

(also = 0700 on Corizzo line)

2+18^{el} Δ 69° 10' RT X-in pave.

449.47 ✓
4.26

^{FR}
Rec 2/10/6, sketch
9

2+10

448.28 ✓ 44883 ✓ 449.19 ✓
5.45 4.90 4.54
10 10

1+94^L 3^L Lt = ± Elec. M.H.

446.89 ✓ 447.20 ✓
6.84 6.53
3.2
CTR. M.H.

1+91 9^L Lt = ± Tel. M.H.

1+85^L gutter (start Conc. pave)

446.01 ✓
7.72
8

<453.73>

<453.73> ✓

Country Club Dr.

1100 Smith

\$

21. ✓

4+91 - 1⁵ RT. = 7" tree

T.P. 5.83 $\langle 477.74 \rangle$ 1.34 $\langle 471.91 \rangle$

4+53 - 1⁵ RT. = 5" tree

4+50

472.2 ✓
1.0

471.23 ✓
2.02
5
00

4+12 - 1⁵ RT. = 7" tree

4+00

471.8 ✓
1.4
6

467.8 ✓
5.4

466.65 ✓
6.60
5
00

3+68 1⁵ RT. = 4" tree

3+50

462.1 ✓
11.1

461.29 ✓
11.96
5
00

T.P. 12.33 $\langle 473.25 \rangle$ 0.33 $\langle 460.92 \rangle$

$\langle 473.25 \rangle$ ✓

3+00

463.2 ✓
+20
10

458.7 ✓
2.5
6

456.7 ✓
4.5

456.33 ✓
4.92
5
00

2+54 4⁵ RT. = Cl. Ret. E.C.

453.0
82
6

452.4 ✓
8.8

451.74 ✓
9.51
5
00

451.25 ✓
10.00
6
55

$\langle 461.25 \rangle$ ✓

Country Club Dr. South
 6+85-99' Lt. = top of sewer outlet at house
 (Lot 6)

set B.M. on prop pipe ^{con lot 6+} 9.20 ~~468.54~~ B.M.#1
 5+98^E 3' Lt. = Prop pipe (Aprox ab. B.C.H.)
 = ~~39.55' Lt. - P. 76~~ 7/7/50

5+790

5+50 4^E Lt. = 4' wide Cornc. steps.

5+31

5+09^E - 3^E Lt. = Ctr. Fire Hydr.

5+06^E End Cornc. drive

4+93^E start Cornc. drive

466.0
 99
 El. top
 of pipe

466.3	465.6	465.46
11.4	12.1	12.28
		35
		cl.

22 ✓

468.7	468.4	468.07
9.0	9.3	9.67
		5
		cl.

471.0	469.6	469.3	469.05
6.7	8.1	8.4	8.69
	3		5
			cl.

473.43	472.9	472.49
4.31	4.8	5.25
		5
AE		cl.
Bottom Tread		

477.7	474.0	473.32
0.0	3.7	4.42
		5
		cl.

474.61	474.04	472.99
3.13	3.70	4.75
		5
		cl.

475.40	474.42	472.94
2.34	3.32	4.80
		5
		cl.

~~477.74~~ gutter

CARRIZO - ROMERO LINE

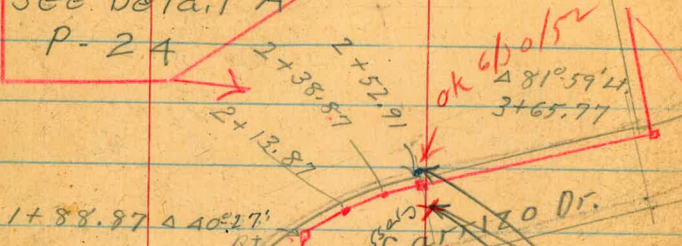
6/1/50

Tie Points set from map #1975-sheet #2

■ = set 1/2 hub & disk

Levels P. 29

See Detail "A"
P-24



1+88.97 Δ 40°27' RT

2+38.57
2+52.91
2+13.87

ok 6/1/50
Δ 81°59' Lt
3+65.77

Carrizo Dr.

E.C.

24.95

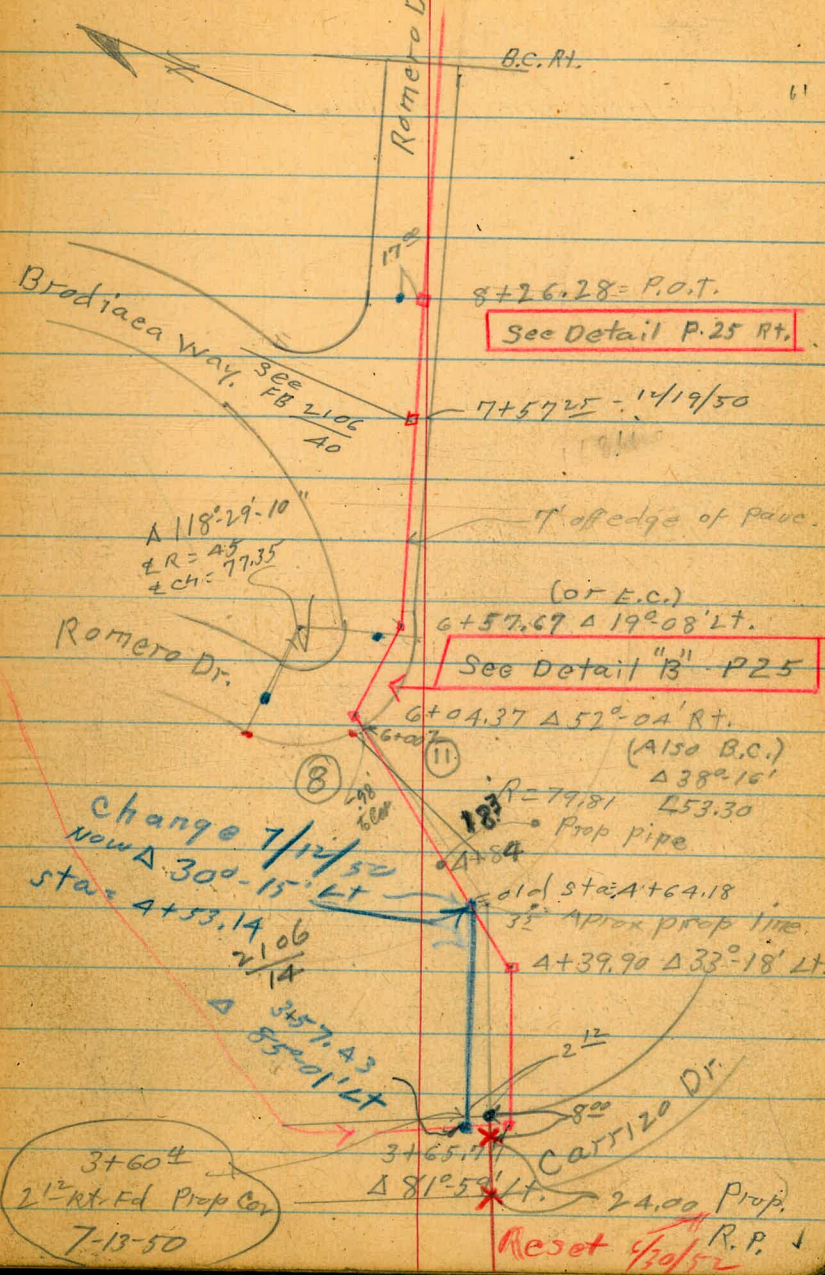
Δ-179°-28'

0+00
2+18.61 P-13

Country Club Dr.

Indexed

65.77 23
57.43
7.34



B.C. Pt.

8+26.28 = P.O.T.

See Detail P. 25 Rt.

7+57.25 - 14/19/50

Δ 118°29'10"
ER = 43
ch = 77.35

edge of pavc.

(or E.C.)

6+57.67 Δ 19°08' Lt.

See Detail "B" - P25

6+04.37 Δ 57°04' Rt.

(Also B.C.)

Δ 38°16'
453.30

Prop pipe

change 7/14/50
now Δ 30°-15' Lt
sta = 4+53.14, 06

old sta: A+64.18

3/2 approx prop line

4+39.90 Δ 33°-18' Lt.

Δ 35°14.43
Δ 55°01' Lt

2 1/2"

Carrizo Dr.

3+60 1/2
2 1/2" Rt. Ed Prop Cor
7-13-50

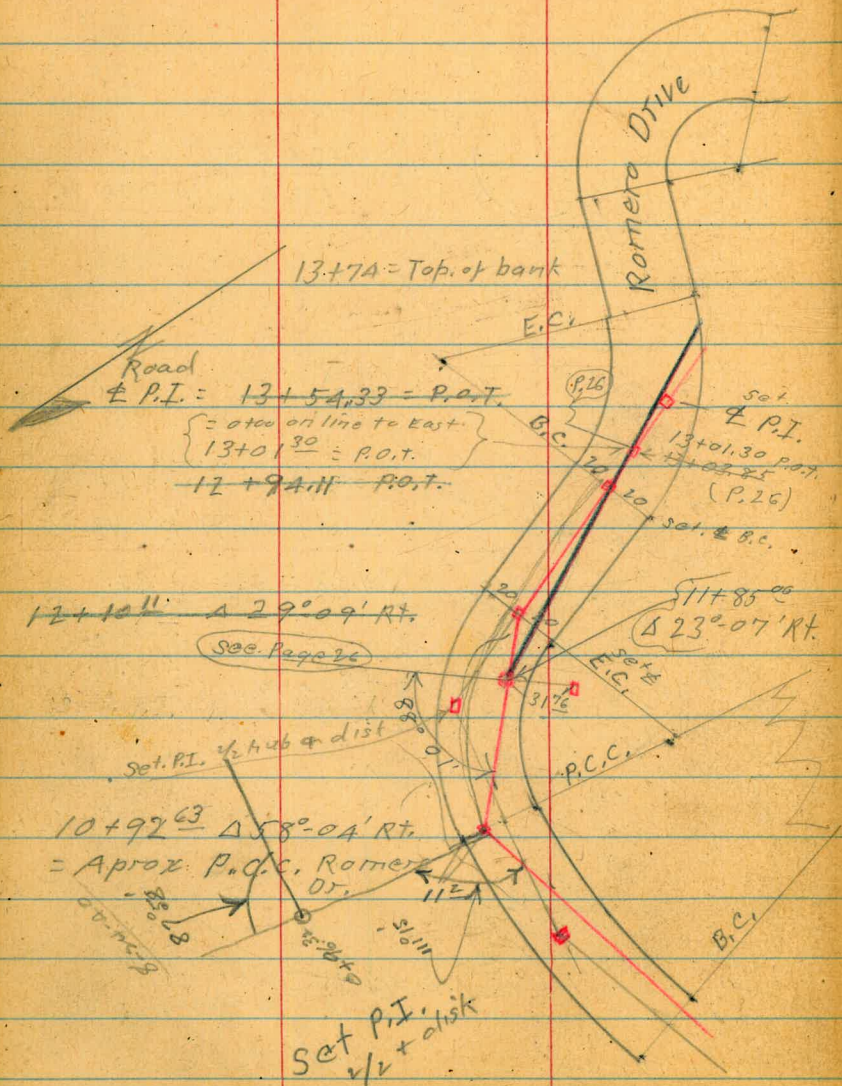
3+65.77
Δ 81°59' Lt.

24.00 Prop.

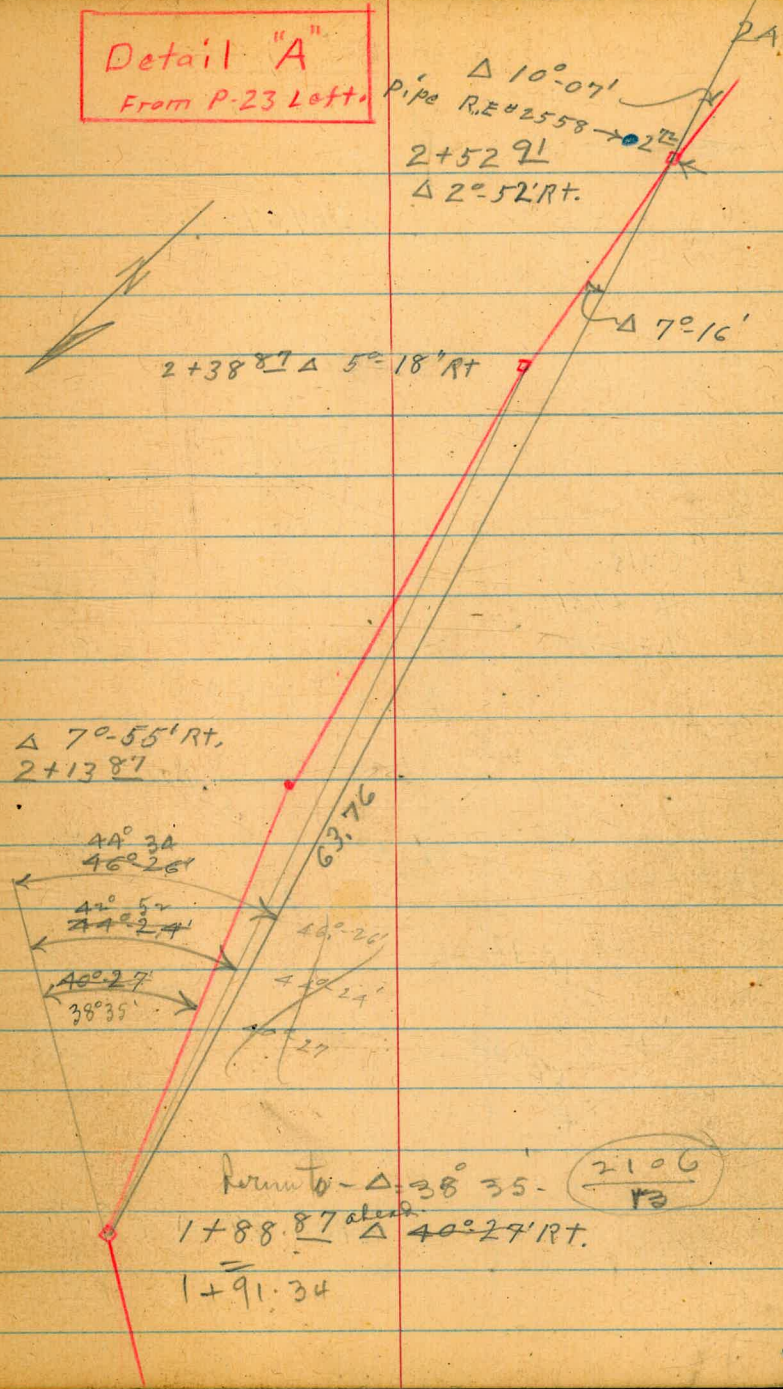
Reset 9/1/52 R.P. ↓

CARRIZO - ROMERO LINE

Changed 6/5/50 use green line from 11+85⁰⁰ on



Detail "A"
From P-23 Left.

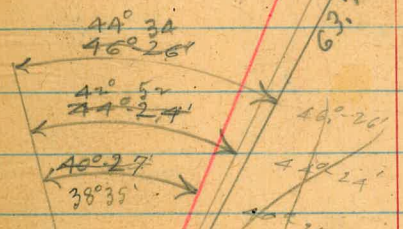


$\Delta 10^{\circ} 07'$
Pipe R.E. 2558 → 2+52.91
 $\Delta 2^{\circ} 52' \text{RT.}$

2+38.87 $\Delta 5^{\circ} 18' \text{RT}$

$\Delta 7^{\circ} 16'$

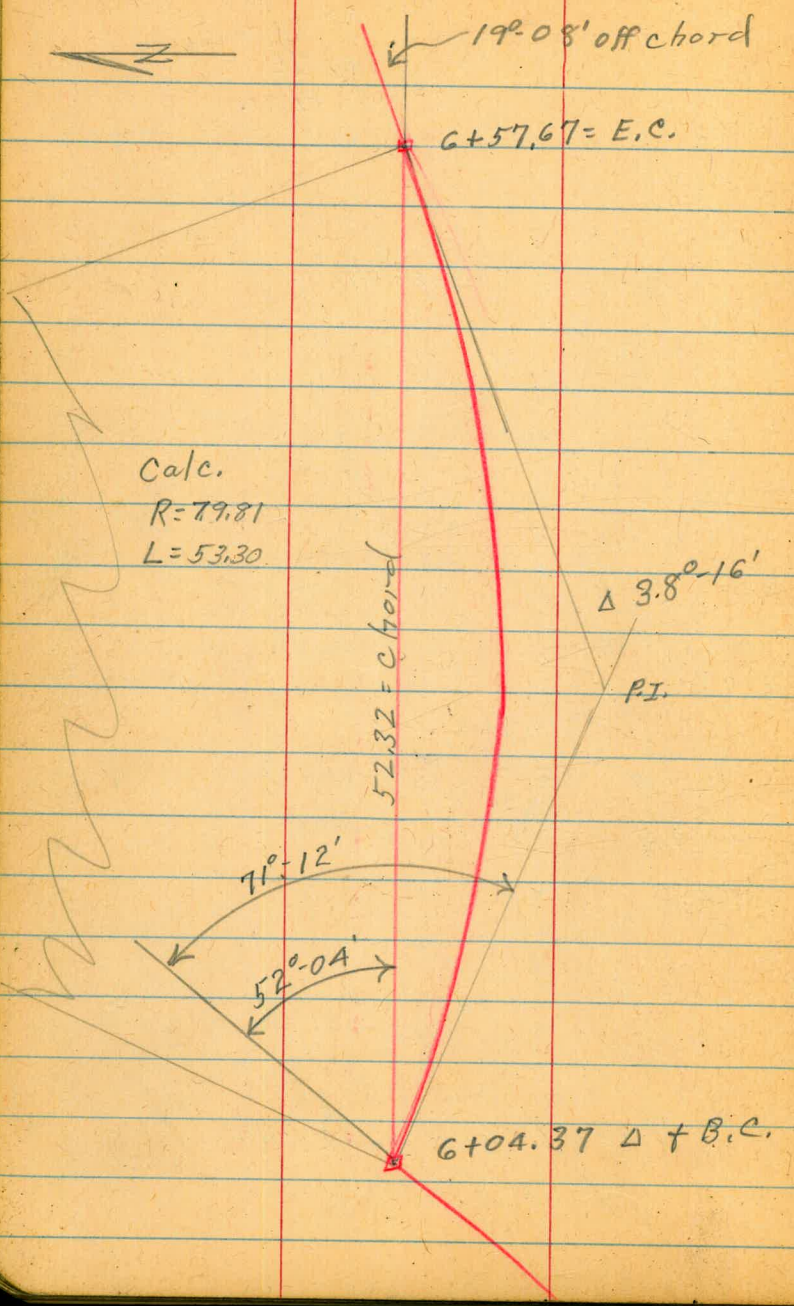
$\Delta 70^{\circ} 55' \text{RT.}$
2+13.87



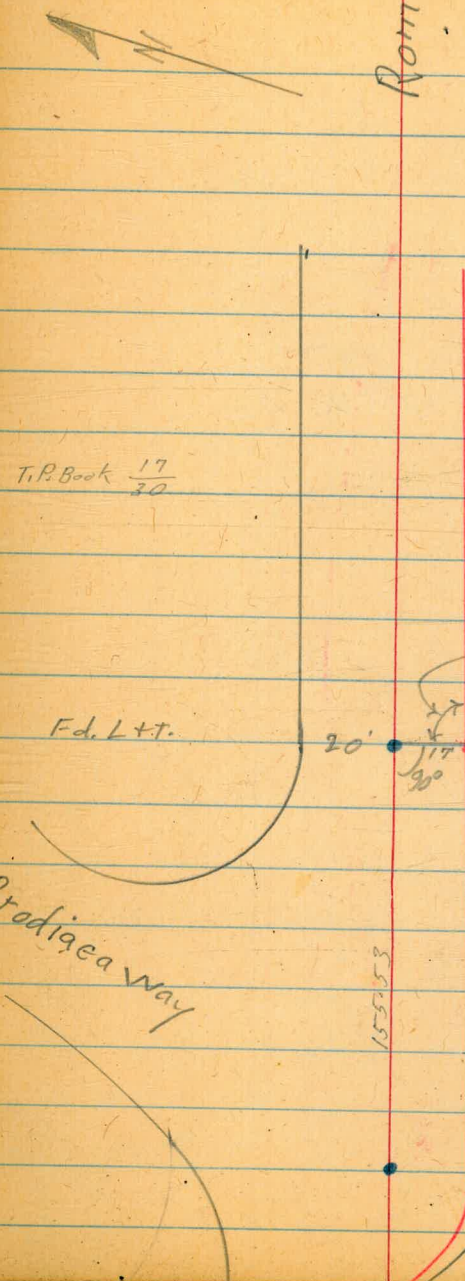
Return to - $\Delta 38^{\circ} 35'$ - $\frac{2106}{13}$
1+88.87 $\Delta 40^{\circ} 27' \text{RT.}$
1+91.34

Detail "B" From P-23 Right.

Detail of Ties From P 23-RT.

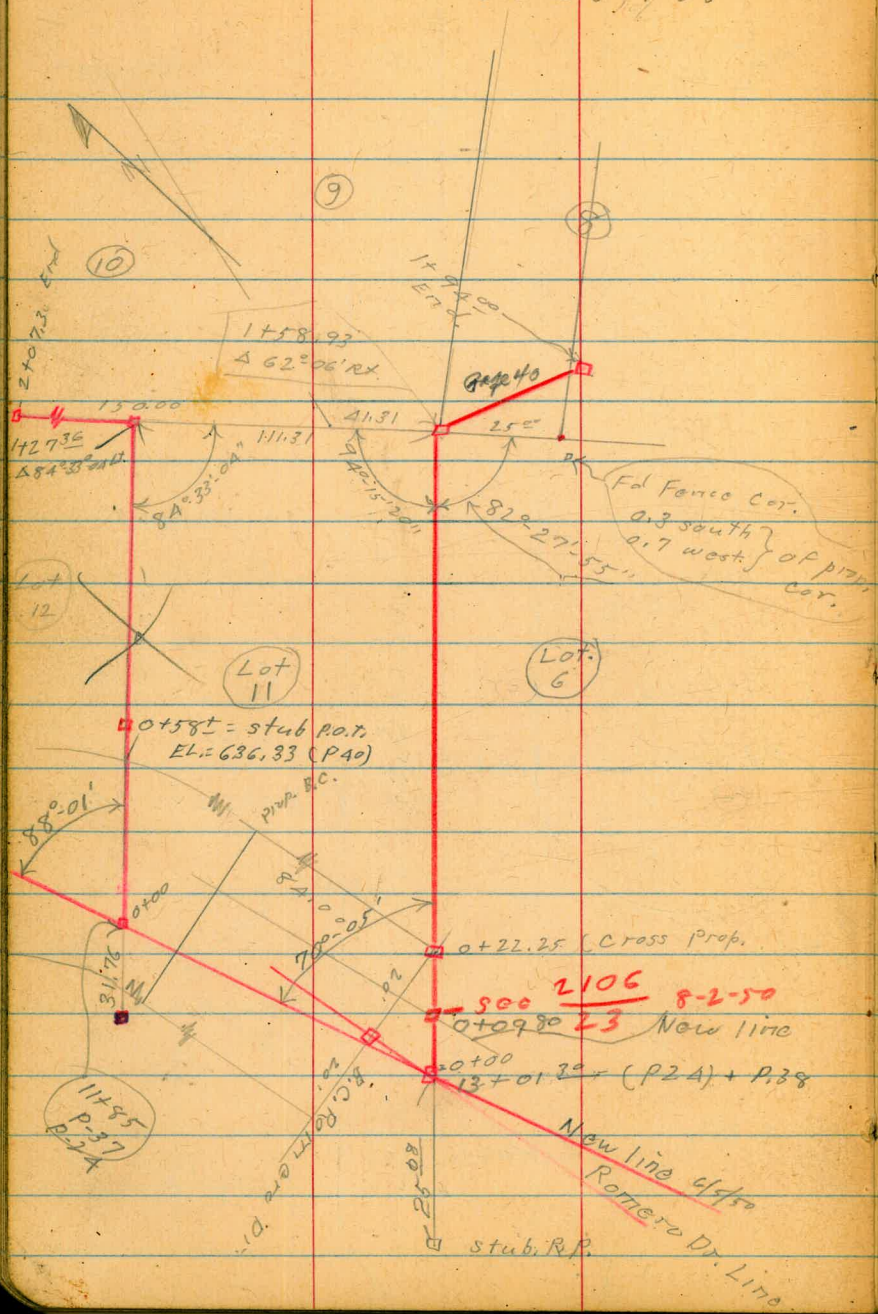


Calc.
 $R = 79.81$
 $L = 53.30$



T.P. Book $\frac{17}{30}$

Bradiqua way



Country Club Dr.
Romero Drive

● = Fd. L+T.

■ = set 1/2" disk.

T.P. Book #17

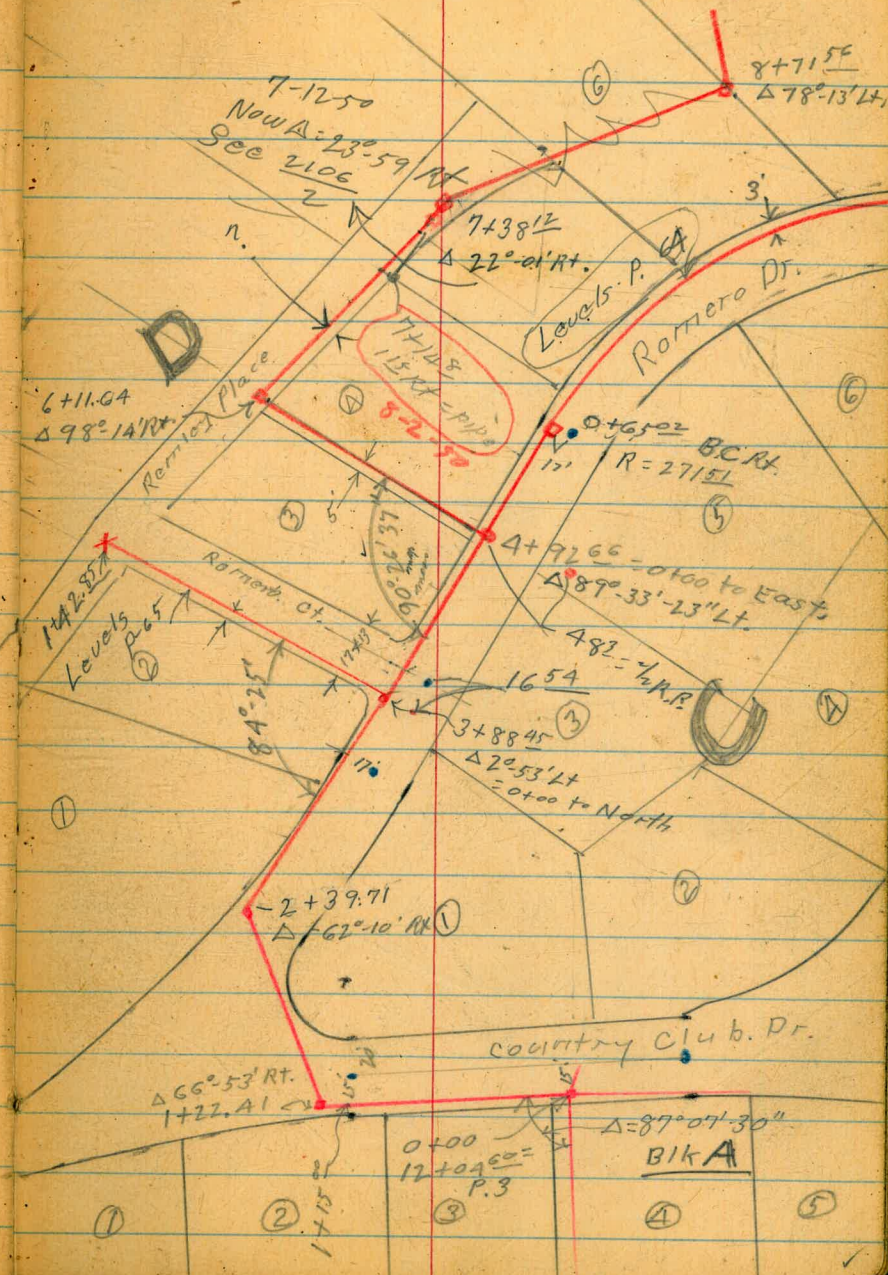
Map # 1975

sketch changed to ⑨
Conform to new data on
H. Newcombs work sheet.

Levels - P. A3

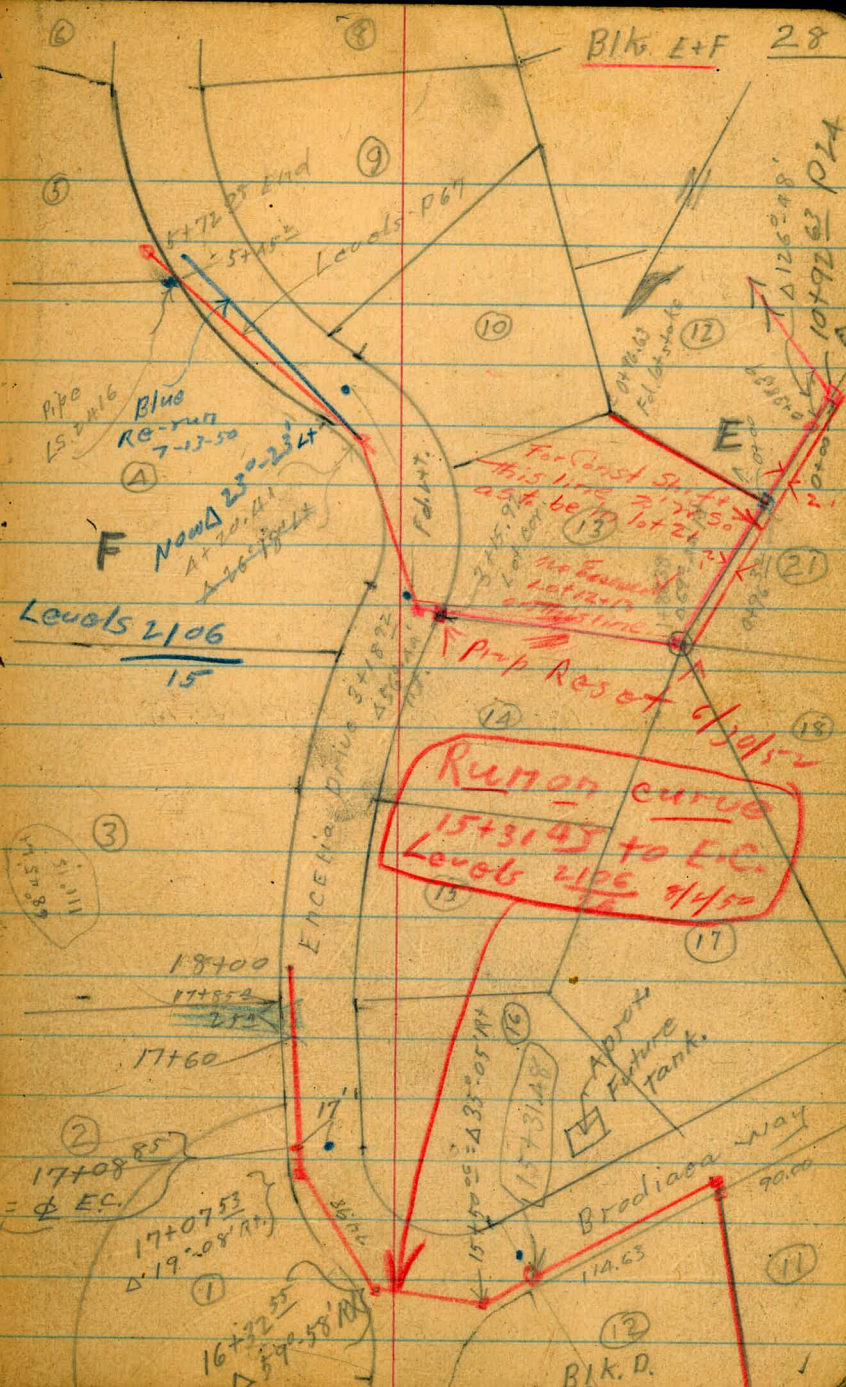
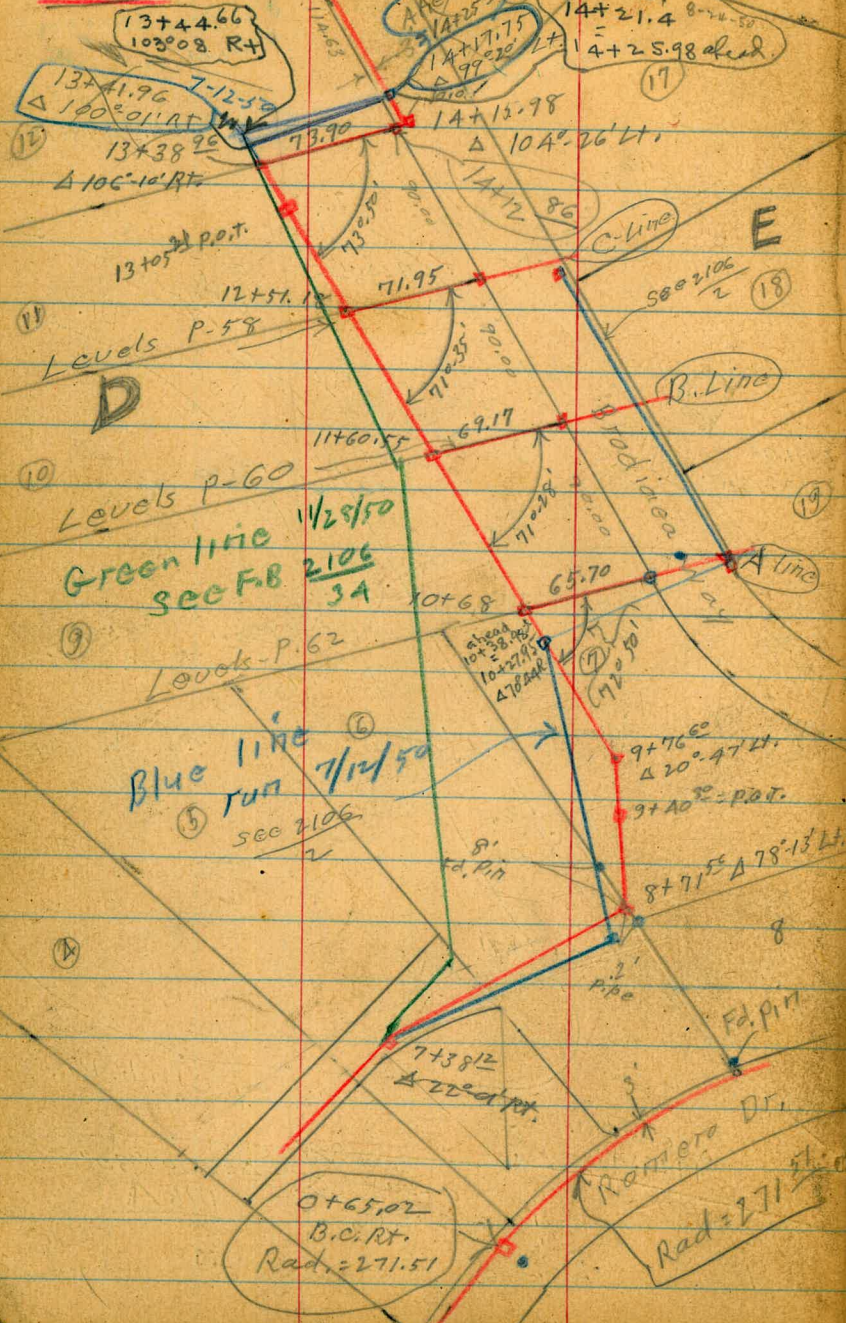


Blks C+D. 27



Blk D. + E

Blk E+F 28



Carrizo Romero line
Sketch P-23

29

1+23¹ Intersect cl.

466.22¹
7.68
cl

1+00

462.30 ¹	462.6 ¹	470.8 ¹	471.2 ¹
11.60	11.3	3.1	2.7
55		11	15
cl			

+85

461.9
12.0

T.P. 13.16 $\langle 473.90 \rangle$ 0.24 $\langle 460.74 \rangle$

$\langle 473.90 \rangle$

0+52

456.2¹
4.8

0+40
outs to curb = }
shots on curb = } back of curb

454.26 ¹	454.2 ¹	454.6 ¹	459.0 ¹
6.72	6.6	6.4	2.0
93		2	10
cl			

0+16 Cross curb + gutter

450.32¹
10.66
6
451.01
9.97
2
cl

0+00 = (2+18.61 - Page 13)

44.941¹
11.51

TP#1
P70

11.51 $\langle 460.98 \rangle$ - $\langle 449.47 \rangle$

$\langle 460.98 \rangle$

2+13⁸⁷ Δ 7° 55' Rt.

outs at 90. to Fwd. Tang.

1+88⁸⁷ (Δ 40° 27' Rt.) Sec $\frac{2106}{13}$ 1+82⁵ cross cl.1+80⁵ cross gutter

T.P.

12.17

 $\langle 486.00 \rangle$

0.07

 $\langle 473.83 \rangle$

1+60 approx to Carrizo Dr.

1+26 gutter

 $\langle 473.90 \rangle$

482.9 [✓]	479.8 [✓]	479.5 [✓]	478.88 [✓]
3.1	6.2	6.5	7.12
5	1		43
			cc

483.8 [✓]	476.2 [✓]	476.15 [✓]	475.51 [✓]
2.2	9.8	9.85	10.49
10	1	Hub.	42
			cc

474.92[✓]
11.08474.42[✓]
11.58 $\langle 486.00 \rangle$

471.68 [✓]	471.83 [✓]	471.93 [✓]
2.22	2.07	6.97
5		5

466.36[✓]
7.54 $\langle 473.90 \rangle$

Carrizo Romero Line

3+65⁷² Δ ~~8100'~~ Lt. (on Nly edge plant
 Mix Drive)
 2106
 14

3+57 end plant Mix drive

3+41⁴ start to
 S¹ Cross plant mix drive

3+10 103' At. cor. 90°

See 2106
 14

3+00

T.P. 10.54 \langle 495.46 \rangle 1.08 \langle 484.92 \rangle

2+52⁹¹ Δ 2°-52' RT.

2+38⁸⁷ Δ 5°-18' RT.

\langle 486.00 \rangle

494.36 ✓
 1.10
 Hub

493.91 ✓
 1.55
 4[±] 90° 40'
 cc - back tang

495.3 ✓
 0.2
 5
 Drive

494.1 ✓
 1.4
 Drive

493.71 ✓
 1.75
 4[±]
 cc

495.1 ✓
 0.4
 5
 Drive

494.1 ✓
 1.4
 Drive

493.20 ✓
 2.26
 4[±]
 cc

491.5 ✓
 4.0

490.3 ✓
 5.2
 103
 Carr. floor

494.2 ✓
 1.13
 5

490.7 ✓
 4.8

490.5 ✓
 5.0

490.06 ✓
 5.40
 4[±]
 cc

\langle 495.46 \rangle

486.5 ✓
 1.05
 5

484.9 ✓
 1.08
 Hub

484.34 ✓
 1.66
 4[±]
 cc

486.0 ✓
 0.0
 5

483.1 ✓
 2.9

482.37 ✓
 3.63
 4[±]
 cc

486.00 ✓

Carrizo - Romero Line

32

T.P. 11.45 $\langle 516.67 \rangle$ 0.38 $\langle 505.22 \rangle$
 4+59 7^e Lt. = S. Ely. Cor. Garage

also = end rock wall.
 4+56 4^e Rt. = NWly Cor. garage & house

4+6 Top. of wall

4+44⁸ base of wall

4+39⁹⁰ Δ 33° 18' Lt.

4+22 1st Lt. = start loose rock wall.

4+00

3+72

ϕ along Nly edge plant Mix drive

T.P. 11.24 $\langle 505.60 \rangle$ 1.10 $\langle 494.39 \rangle$
 $\langle 495.46 \rangle$

500.55 ✓
 $\frac{505}{8}$
 level of
 Gar. floor

505.5 ✓
 $\frac{0.1}{8}$
 End

506.1 ✓
 +0.5

506.1 ✓
 +0.5
 5

505.5 ✓
 $\frac{0.1}{8}$

505.6 ✓
 $\frac{0.0}{4}$

503.3 ✓
 2.3

503.7 ✓
 $\frac{1.9}{4.5}$
 Top wall

500.73 ✓
 $\frac{4.87}{5}$
 Gar. floor

502.4 ✓
 3.2

500.6 ✓
 5.0

503.9 ✓
 $\frac{1.9}{10}$

501.9 ✓
 $\frac{3.7}{3}$
 Top wall

500.5 ✓
 $\frac{5.1}{2}$

500.46 ✓
 $\frac{5.14}{Hub}$

500.5 ✓
 $\frac{5.1}{5}$

500.6 ✓
 $\frac{5.0}{5}$

499.0 ✓
 $\frac{6.6}{1}$

499.0 ✓
 $\frac{6.6}{5}$

499.2 ✓
 $\frac{6.4}{5}$

498.1 ✓
 $\frac{7.5}{5}$

495.1 ✓
 $\frac{10.5}{1}$

495.1 ✓
 $\frac{10.5}{5}$

495.2 ✓
 $\frac{10.4}{5}$

$\langle 505.60 \rangle$

5+67 0.7 RT = Edge Conc. + Flag stone
 2 = leave Conc.

5+53 2nd RT = edge Conc. + Flag stone
 1st Lt = edge conc.

5+43 2.9 RT = edge of flag stone
 cross conc.

5+33 - 2' Lt = ϕ 12" Eucalyptus

5+30 also Δ in flag stone
 5th RT = start Conc.

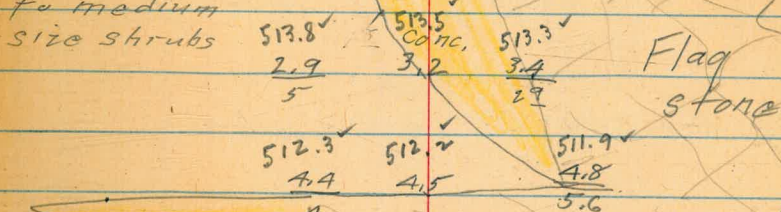
5+20 cross onto flag walk

5+14

4+95 cross ϕ 3' wide flag walk

4+85 1st RT = ϕ 3' flag walk runs || to ϕ

Yard to north
 of drive is
 improved
 with small
 to medium
 size shrubs



508.3 508.4 508.6 508.2 507.4
 8.4 8.3 8.1 8.5 7.3
 10 7 15

6+31 4th Lt. = edge gutter
6th Lt. = edge pave

524.9	525.4	525.2	524.9	522.7
10.40	9.9	10.1	10.4	12.6
6 th	4 th		2	10
E.P.	E.G.			

T.P. 10.23 $\langle 535.30 \rangle$ 0.77 $\langle 525.07 \rangle$

$\langle 535.30 \rangle$

6+19^{1/2} end flag stone drive

523.8
2.0

6+10 start flag stone drive

523.5
2.3

E.P. = edge pavement
E.G. = edge gutter

6+05 (shots on radial lines)

523.57	524.0	523.1
2.27	1.8	2.7
7	5	
E.P.	Edge gutter	

6+04³⁷ $\Delta = 38^{\circ} - 16'$
also = B.C. 7981 Rad. Curve
 $\Delta = 52^{\circ} - 04' RT$

523.1
2.7
Hub.

6+00⁷ 0.98 @ 90° to Φ = Cor. lots 8+11

5+99 6' RT. = Nly edge flag drive

522.2 522.4
3.6 3.4

5+90 9th Lt. = ctr. 8" eucalyptus.

6
Dr.

T.P. 9.37 $\langle 525.84 \rangle$ 0.20 $\langle 516.47 \rangle$
 $\langle 516.67 \rangle$

$\langle 525.84 \rangle$

Carrizo - Romero Line

See page 25 Rt.

8+26²⁸ { 17' Lt (@ 90°-05'-30" Lt) = L+T
7' Lt = end pavement

T.P. 12.80 <560.21> 0.07 <547.41>

8+00

7+50

7+30 1st Lt = Ctr. 1'x1' cap. on 6" stand pipe

T.P. 12.46 <547.48> 0.28 <535.02>

7+00

or. rim of canyon
Rim = edge of bank

6+73

5' Lt = E.G.
7' Lt = edge pave

6+57⁶⁷ = E.C. 3rd Lt = E.G.
54 Lt = E.P.

<535.30>

548.19 548.5 548.16 548.6
12.02 11.7 12.05 11.6
7 5 19
E.P. E.G. Hub Rim

<560.21>

544.45 544.9 545.4 544.8
3.03 2.6 2.3 2.7
7 5 18
E.P. E.G. Rim

537.87 538.3 538.8 538.8
9.61 7.2 8.7 8.7
7 5 10
E.P. E.G. <547.48> Rim

531.27 531.6 531.5 531.3 531.2
4.03 3.7 3.8 4.0 4.1
7 5 5 10
E.P. E.G.

527.75 528.2 528.5 528.3
7.55 7.1 6.8 7.0
7 5
E.P. E.G.

526.41 527.0 527.19 527.1
8.89 8.3 8.11 8.2
54 34 5
E.P. E.G. Hub

<535.30>

Carrizo Romero Line

10+57

581.5	579.9	581.7
2.8	4.4	2.6
<u>2</u>	W	<u>2</u>

T = toe of bank slope
 10+51 Edge of wash

580.4	580.7	579.1	581.0	581.6	
3.9	3.6	5.2	3.3	2.7	3.0
<u>10</u>	<u>4</u>	<u>2</u>		<u>10</u>	50
T		W			Rim

10+00 (W. = bottom of local wash)

572.0	573.6	574.1	574.5	
12.3	10.7	10.1	9.8	10.2
<u>27</u>	<u>10</u>		<u>10</u>	45
W.				Rim

T.P. 12.40 <584.25> 0.86 <571.80>

<584.25>

9+50

565.2	566.1	566.1	
7.5	6.6	6.6	6.5
<u>10</u>		<u>10</u>	39
	<572.66>		Rim

T.P. 13.05 <572.66> 0.60 <559.61>

9+00

558.2	558.4	558.9	
2.0	1.8	1.3	1.3
<u>10</u>		<u>10</u>	30
			Rim

8+50

550.5	551.2	551.6	
9.7	9.0	8.6	9.2
<u>10</u>		<u>10</u>	23
			Rim

Set B.M. on L+t. End of. Paoc.
 77' Lt. of 8+26 38

11.89 <548.37> B.M. #1

<560.21>

<560.21>

6/19/50

37

12+50

T.P.

7.93

 $\langle 605.26 \rangle$

0.02

 $\langle 597.33 \rangle$

598.9 ✓

6.4

 $\langle 605.26 \rangle$

12+00

595.7 ✓

1.6

(also = approx Page 26)

11+85 = $\Delta 23^{\circ} 07' RT.$ (Rods on split of Δ)

600.3 ✓

+3.0

20

595.3 ✓

2.0

7

594.13 ✓

2.62

5

594.5 ✓

2.8

5

595.3 ✓

2.0

8

594.4 ✓

2.9

20

591.4 ✓

5.9

50

Rim

11+50

591.7 ✓

5.6

11+00

589.8 ✓

7.5

10

586.5 ✓

10.8

 $\langle 597.33 \rangle$

586.0 ✓

11.3

10

583.2 ✓

14.1

60

Rim

6-30-50

Hub. 10+92⁰³

T.P.

10.63 $\langle 597.35 \rangle$

9.13

 $\langle 586.77 \rangle$

BM #2

8th RT = Approx. B.C. & Romero Dr.10+92⁶³ = $\Delta 58^{\circ} 04' RT.$ (Sec on split of Δ)

592.0 ✓

3.8

10

586.7 ✓

9.13

446

585.1 ✓

10.7

5

585.0 ✓

10.8

7

585.2 ✓

10.6

10

6-13-50

T.P.

12.19 $\langle 595.85 \rangle$

0.60

 $\langle 583.66 \rangle$ $\langle 595.85 \rangle$

10+70

584.3 ✓

0.0

10

583.2 ✓

1.1

5

583.0 ✓

1.3

T

582.7 ✓

1.6

3

583.2 ✓

1.1

5

583.5 ✓

0.8

10

583.5 ✓

0.3

59

Rim

 $\langle 584.26 \rangle$ $\langle 584.26 \rangle$

13+85

598.4	593.8	589.3
6.9	11.5	16.0
7		7
Rim		

13+75

597.5	599.9
7.8	5.4
32	Rim

13+50

605.3	598.8	598.6	599.5	599.7
0.0	6.5	6.7	5.8	5.6
35	23	15		30
				Rim

13+01²⁰ = P.O.T. = (0+00 Page 26)

606.3	600.0	599.9	600.0	600.5	600.8
+11.0	5.3	5.4	5.26	4.8	4.5
25	16	10	Hub	10	27
					Rim

605.26

BIK E.
Lots 6-8-9-11

May 1975

Lafolla Country Club Heights

0+73.16 = Nail P.O.T.

0+70

0+36

T.P.

12.12

$\langle 627.64 \rangle$

0.63

$\langle 615.52 \rangle$

0+32 = Top of bank

0+27

T.P.

11.31

$\langle 616.15 \rangle$

0.42

$\langle 604.84 \rangle$

0+22²⁵ (P 26)

0+17

= 0+00 (Page 26)

13+01.30 P.24 = 236 Pends

$\langle 605.26 \rangle$ X from P 38

620.8 ✓

$\frac{6.8}{10}$

617.0 ✓

$\frac{10.6}{10}$

619.6 ✓

8.0

615.6 ✓

12.0

619.5 ✓

$\frac{8.1}{10}$

615.3 ✓

$\frac{12.3}{10}$

$\langle 627.64 \rangle$

611.4 ✓

$\frac{4.7}{10}$

614.3 ✓

1.8

613.8 ✓

$\frac{2.3}{10}$

605.5 ✓

$\frac{10.6}{10}$

$\langle 616.15 \rangle$

602.8 ✓

2.5

600.4 ✓

$\frac{4.7}{5}$

600.6 ✓

4.7

601.1 ✓

$\frac{4.2}{5}$

600.00.

5.20

$\langle 605.26 \rangle$

Indexed

BIK, E.

Lots 6-8-9+11

Set. Temp. B.M. on stub

0+58± Page 26

12.37

Temp
BM#1
636.33

T.P.

5.67

648.70

6.61

643.03

1+94 end of line

643.6

6.0
10

641.68

7.96
Hub

638.3

11.3
10

1+76 - 2⁵ Lt. = 18" eucalyptus

1+58⁹³ Δ 62°-06' Rt. (Rods on split of Δ)

647.9

1.7
10

643.4

6.20

638.6

11.0
10

1+50 - 1' Rt. = 6" Eucalyptus

640.0

7.6

T.P.

11.95

649.64

1.19

637.69

649.64

1+35 - 1' Rt. = small eucalyptus (2" diam)

1+25

633.8

5.1
10

630.6

8.3

629.4

9.5
10

1+24 - 1' Rt. = small eucalyptus (2" diam)

T.P.

12.09

638.88

0.85

626.79

638.88

1+00

626.3

1.3
10

624.5

3.1

623.6

4.0
10

0+95 = 10" Tamarisk (Fallen over)

627.64

B/K.E

to Lot #10

T.P. 11.53 $\langle 656.75 \rangle$ 0.52 $\langle 645.22 \rangle$
 0+58± stub 9.41 636.33

0+50

9.41 $\langle 645.74 \rangle$ — 636.33
 B.M. = 0+58 P. 26

0+33

0+29.91

0+08

= 0+00

11+85 $\Delta 23^\circ 07' R$ P. 24+26

B.M. = $\frac{1}{2}$ 11+85

P-37

11.13

$\langle 605.86 \rangle$

$\langle 594.73 \rangle$

(41)

632.5 ✓ 633.1 ✓ 633.7 ✓
 $\frac{13.2}{10}$ 12.6 $\frac{12.0}{10}$
 $\langle 645.74 \rangle$ ✓

603.9 ✓ 608.5 ✓ 608.9 ✓
 $\frac{2.0}{10}$ +2.6 $\frac{+3.0}{10}$

605.86
0.0

594.4 ✓ 595.4 ✓ 596.5 ✓
 $\frac{11.5}{10}$ 10.5 $\frac{7.4}{10}$

594.73 ✓
11.13

$\langle 605.86 \rangle$ ✓

B/K, E.

To lot #10

Top of lot stake 4.43 $\langle 660.06 \rangle$
2+07³ = 1/2 lot stake cor. lots 10-12 & 13

1+75

1+70 2' RT = 4" Eucalyptus

1+57

1+45 2' RT = 4" Eucalyptus

1+30

on stake 5.88

1+27³⁶ Δ 84° 33' - 04" Lt. (Map.) = 1/2 lot stake + tack

8.05 $\langle 664.49 \rangle$ 0.31 $\langle 656.44 \rangle$

1+00

0+86

42

±

656.9[✓] 659.6[✓] 661.8[✓]
 $\frac{7.6}{10}$ 4.9 $\frac{2.7}{10}$

652.0[✓] 655.3[✓] 658.1[✓]
 $\frac{12.5}{10}$ 9.2 $\frac{6.9}{10}$

650.9[✓] 653.2[✓] 660.7[✓]
 $\frac{13.6}{10}$ 11.3 $\frac{3.8}{20}$

657.5[✓] 659.7[✓]
7.0 $\frac{4.8}{10}$

658.0[✓]
6.5

$\langle 664.49 \rangle$ [✓]

648.9[✓] 651.0[✓] 652.0[✓]
 $\frac{7.9}{10}$ 5.8 $\frac{4.8}{10}$

646.6
10.1

$\langle 656.75 \rangle$ [✓]

Country Club Dr.
 Romero Drive
 Also Bk D.
 Sketch Page 27

1+25.5 gutter
 1+25.4 Top curb

1+22.4 $\Delta 66^{\circ}53' RT$

1+12 North end of B-2 TYPE
 curb inlet

1+00

0+50

0+00 = 12+04.60 Page 3

Rim = edge of canyon
 cb. = top-face of curb

BM #3
 P-10 604 $\langle 434.22 \rangle$ — $\langle 428.18 \rangle$

Indexed 43 ✓

426.67	426.81	426.89
7.55	7.41	7.38
5.0	Gutter	8 5.0
427.11	427.27	Gutter
7.11	6.95	427.80
5.0	curb	5.0
curb		curb

427.0	427.51	427.31
7.2	6.71	6.91
4.0	Hub	2.8
Rim		curb
90° to back tangent		

427.67 ✓
 6.55
 2.6
 Top of curb
 over B-2 Curb inlet

427.5	427.9	427.86
6.7	6.3	6.36
3		2.6
Rim		curb

429.3	429.6	429.68
4.9	4.6	4.54
4.0		2.6
Rim		curb

430.4	431.3	431.1
3.8	2.90	3.10
10.0	Hub	2.4
Rim canyon		curb

$\langle 434.22 \rangle$

Rottiero Dr.

¢

44

2+21.5

intersection ¢ and ¢ PVT, Rottiero Dr

435.04

435.60

436.07

11.28
5.0 at 90°

10.72

10.25
3.0 at 90°

446.32

T.P.

12.94

446.32

-0.84

433.38

2+02.0

Gutter Rottiero Dr at ¢

433.37

0.85
gutter

2+01.5

intersection ¢ and curb Rottiero Dr

433.81

0.41
curb

1+80

430.67

431.1

431.5

3.55
6.5
curb

3.1

2.7
5.0

1+58.6

Top Face Curb

428.85

428.54

428.26

5.37
5.0 along curb line

5.68
curb

5.96
5.0 along curb line

1+58.5

Gutter

428.20

427.89

427.67

6.02
5.0 along gutter

6.33
Gutter

6.55
5.0 along gutter line

1+39.0

¢ Pavement Country Club Drive

427.07

7.15

434.22

Romero Dr.

T.P. 12.40 $\left\langle \begin{matrix} 458.43 \\ \downarrow \end{matrix} \right\rangle$ 0.29 $\left\langle \begin{matrix} 446.03 \\ \downarrow \end{matrix} \right\rangle$

3+07. end conventional curb
begin Rock curb and Gutter

444.97 ✓
1.35
8.3
curb

3+00 453.3
+ 7.0
10.

445.1 ✓
1.2

444.14 ✓
3.20
8.3
Top curb

2+50 438.8 ✓
7.5

2+39.71 $\Delta 62^\circ - 10' RT$

444.3 ✓ 2.0 10.0	437.7 ✓ 8.6 2.0 7.6	437.48 ✓ 8.44 4.6	436.88 ✓ 9.44 5.0 T.P curb 90° to Fwd Tangent
------------------------	------------------------------	-------------------------	---

2+34.2 intersection E and curb
Romero Drive

435.98 ✓ 10.34 5.0 along curb line	436.56 ✓ 9.76 curb	437.18 ✓ 9.14 5.0 along Curb line
---	--------------------------	--

2+34.1 intersection E and Northerly
Gutter Romero Drive

435.25 ✓ 11.07 5.0 along Gutter line	435.85 ✓ 10.47 gutter	436.50 ✓ 9.82 5.0 along Gutter line
---	-----------------------------	--

$\left\langle \begin{matrix} 446.32 \\ \downarrow \end{matrix} \right\rangle$

Romero Dr

4400

Q Pavement Romero Court

456.11
2.32
5.0

455.88
2.55

G
2.7

455.73
2.70
5.0

3492.0

Westerly Conc. pvt NO. on Romero CT

455.45
2.98
5.0

454.93
3.50

↓
G
2.7

454.70
3.73
5.0

3490.1

Gutter (Rock)

454.71
3.7
GUTTER

3490.

intensection Q + Back curb to No.

455.4
3.0
CURB

3488.5

Δ 2°53' LT also = 0400 to north

455.49
2.94
HUB

3485 = B.C. Rock curb to North - Romero CT.

454.5
3.9
5.0 = TOP CURB

(also 2° RT = Gas line Junction Box) Romero COURT
cross gas line going NORTH on

G - Junction Box.
2.8

3482 = 7' RT = E.P. (= B.C. Lt. Pav. into
Romero Ct.)

451.5
0.9
10.0

454.1
4.3
5.0

451.0
7.4

450.1
8.3
6.0
TOP ROCK CURB

449.5
8.9
8
E.P.

3450

EP = edge Conc. paving

3435

Gas line C' Right
G = gas line

ⓐ
6

458.43

T.P. 11.99 $\langle 480.13 \rangle$ 0.57 $\langle 468.14 \rangle$

4+92⁶⁶ Δ 89°-33'-23" Lt. 0.95 $\langle 467.76 \rangle$
 Δ Hub.

4+60

4+18⁵ 7' At. = E.C. Pavement from Romero Ct.

12.53 $\langle 468.71 \rangle$ 456.18
 L & T & Romero
 Drive & Romero
 COURT
 T.P. 2.25 $\langle 456.18 \rangle$ BM.#1

4+11.7 Rock curb (Northerly)

4+11.6 Gutter (Rock) Northerly

4+09.6 Westly edge 2' Rock gutter (N+S)

4+09.5 easterly edge concrete P&T
 Romero court

467.76[✓]
 0.95 G
 Hub 3 1.8
 45 2.33
 Rock 68
 cc E.P.

467.76[✓] 464.7[✓] 463.7[✓] 463.0[✓] 462.53[✓]
 $\frac{1.5}{5}$ 4.5 5.0 G 5.7 6.18
 3 1 48 7
 Rock cc E.P.

458.8[✓] 458.8[✓] 458.3[✓] 457.76[✓]
 9.9 7.9 10.4 10.25
 3 5 7
 Rock cc E.P.

$\langle 468.71 \rangle$

457.4[✓]
 1.0
 curb

456.8[✓]
 1.6
 gutter

456.59[✓] 456.65[✓] 456.67[✓]
 $\frac{1.84}{5.0}$ 1.78 G 1.76
 2.7 5.0

$\langle 458.43 \rangle$

B/K D.

48 ✓

6+05 - 5' Lt. = End wall.

✓ 490.7	✓ 492.6	✓ 492.2	✓ 492.2
10.9	9.0	9.4	9.4
55	55	5	

6+00

✓ 490.1	✓ 491.8	✓ 491.4	✓ 491.4
11.5	9.8	10.2	10.2
105	55	5	
	TOP		

T.P.

11.77 $\langle 501.63 \rangle$ 0.51 $\langle 489.86 \rangle$

$\langle 501.63 \rangle$

5+50

✓ 484.4	✓ 486.5	✓ 485.8	✓ 485.5
6.0	3.9	4.6	4.9
55	55	5	
	TOP		

(Top = top of wall)

(1' below ground to west of wall)
(Base of wall looks to be about

5+14

5' Lt. = start conc. Ret. wall

✓ 480.4	✓ 481.9	✓ 480.4	✓ 479.5
10.0	8.5	10.0	10.9
55	55	5	
	TOP		

5+07

✓ 477.9	✓ 478.1	✓ 479.4
12.5	12.3	11.0
5		5

T.P.

12.20 $\langle 490.37 \rangle$ 1.96 $\langle 478.17 \rangle$

$\langle 490.37 \rangle$

4+98

470.4 ✓
9.7

$\langle 480.13 \rangle$

$\langle 480.13 \rangle$

7+60



Cont $\frac{2106}{2}$ - Line changed 7-12-50

7+38¹² = Δ 22°-01' Rt.

7+20 42' Lt. = \pm Cars low deck of house

T.P. 12.29 $\langle 524.02 \rangle$ 0.38 $\langle 511.73 \rangle$

7+00 75' Lt. = End. at back of house

6+94 53' Lt. = B.C. Paving \pm

T.P. 12.98 $\langle 512.11 \rangle$ 2.50 $\langle 499.13 \rangle$

6+50

Dip sec. pave. + roll ch. Conn'b.

6+12 2' Lt. = Edge of paving (17' wide)

6+11⁶⁴ Δ 98°-14' Rt.

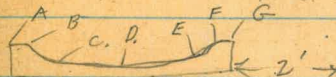
518.5^v 518.4^v 518.2^v 515.8^v
 5.50 5.6 5.8 8.2
 3.2 4 10
 Edge Pave.

515.5^v 515.7^v 515.6^v 513.0^v
 8.45 8.30 8.4 11.0
 17 4 10
 Edge Pave

411.5
 12.5
 42
 Garage Floor
 511.5
 17
 Hub
 4
 10
 Edge Pave
 $\langle 524.02 \rangle$

504.1^v 506.91^v 506.6^v 504.1^v
 8.0 5.20 5.5 8.0
 75 51 10
 End. Edge Pave
 $\langle 512.11 \rangle$

498.6^v 498.6^v 498.4^v 496.4^v
 3.01 3.0 3.2 5.2
 3.6 3 10
 Edge pave



492.80^v 492.78^v 492.43^v 492.17^v 492.12^v 492.48^v 492.49^v
 8.83 8.85 9.20 9.46 9.51 9.15 9.14
 A B C D E F G

492.66^v
 8.97
 Hub

$\langle 501.63 \rangle$

BIK. D

T.P. 12.55 $\langle 567.81 \rangle$ 0.93 $\langle 555.26 \rangle$
8+16 15' Rt. = 7" diam eucalyptus

T.P. 10.70 $\langle 556.19 \rangle$ 0.17 $\langle 545.49 \rangle$

9+00

8+71⁵⁵ Δ 78°-13' Lt. (Section on split.)

T.P. N.E. Cor. Lot #6 12.78 $\langle 545.66 \rangle$ 0.56 $\langle 532.88 \rangle$

8+40

~~Void 7/12/50~~

8+00

3/4" pipe N.W. Cor. Lot. 6.
T.P. 12.85 $\langle 533.44 \rangle$ 3.43 $\langle 520.59 \rangle$

7+84 - 3' Lt. = End pave.

Changed 7/12/50

50 ✓

548.1 548.1 548.7
 $\frac{8.1}{10}$ 8.0 $\frac{7.5}{10}$

$\langle 556.19 \rangle$

543.7 543.3 543.0
 $\frac{2.0}{10}$ 2.4 $\frac{2.7}{10}$

535.5 533.68 531.3
 $\frac{10.2}{10}$ 11.98 $\frac{14.4}{10}$
Hub.
 $\langle 545.66 \rangle$

531.6 528.8 525.9
 $\frac{1.8}{10}$ 4.6 $\frac{7.5}{10}$

525.7 522.8 520.4
 $\frac{7.7}{10}$ 10.6 $\frac{13.0}{10}$

$\langle 533.44 \rangle$

519.82 520.6 519.3
 $\frac{4.20}{3}$ 3.4 $\frac{4.7}{10}$
Edge
Pave.

$\langle 524.02 \rangle$

BIK. D.

10+47

(Rim = edge of canyon)

10+27 ⁹⁵ = No A FB2106 7/14/50

10+00

9+86

16' Pt. = Near cor. of house

under const.

9+76 ⁶⁰ = Δ 20°-47' Lt.

9+50

9+40 ³⁰ 1/2 P.O.T

9+36

51 ✓

563.2 ✓
4.6
18
Rim

563.6 ✓
4.2

563.8 ✓
4.0
5

563.0 ✓
4.8
20

562.8 ✓
5.0

562.8 ✓
5.0
10

562.4 ✓
5.4

16
top of
foundation

562.6 ✓
5.2
20

562.70 ✓
5.11
Hub

562.6 ✓
5.2
10

562.0 ✓
5.8
10

562.1 ✓
5.7

562.1 ✓
5.7
10

561.45 ✓
6.36
Hub

561.2 ✓
6.6
10

561.2 ✓
6.6

561.2 ✓
6.6
10

{567.81} ✓

BX D

11+68

+62

Temp. B.M.

8.31

578.96

11+60 (also = 0+00 - B. line P. 28)

11+40

T.P.

11.47

587.27

1.26

575.80

11+00 12' Rt. = House

10+68 = 0+00 "A" Line page 28

A' Rt. of 10+50

Set. B.M. on top of wall 9.22 567.84 Temp B.M. #2

10+50 A' Rt. = End N. + S. Wall

T.P.

13.23

577.06
567.81

3.98

563.83

52

576.9

10.4
12

581.1

6.2
6

581.1

6.2

582.6

4.7
8

583.3

4.0
10

579.2
8.1

578.96
8.31

571.3

16.0
15

572.5

14.8
5

578.0

9.3

578.9

8.4
10

587.27

567.8

9.3
15
Rim

568.6

8.5

576.5

0.6
6

576.7

0.4
11

578.1

+1.0
12
Floor

564.5

12.6
6
Rim

565.4

11.7

576.7

6.4
4

573.1

4.0
10

577.06

13+35

13+10

T.P.

10.69

 $\langle 607.86 \rangle$

1.16

 $\langle 597.17 \rangle$

12+75

Temp B.M. on Hub.

9.61

 $\langle 588.72 \rangle$ 12+51¹⁸ (also = 0+00 - "C" line - P. 28).

12+30

T.P.

11.78

 $\langle 598.33 \rangle$

0.72

 $\langle 586.55 \rangle$

12+00

603.4 ✓

 $\frac{4.5}{10}$

603.9 ✓

4.0

604.3 ✓

 $\frac{3.6}{10}$

587.9 ✓

 $\frac{20.0}{15}$

602.6 ✓

5.3

602.9 ✓

5.0

 $\frac{20}{20}$ $\langle 607.86 \rangle$

594.0 ✓

 $\frac{4.3}{6}$
Rim

596.9 ✓

1.4

599.8 ✓

 $\frac{+1.5}{8}$

600.3 ✓

 $\frac{+2.0}{20}$

588.72 ✓

9.61

Hub

583.9 ✓

 $\frac{14.4}{16}$
Rim

584.1 ✓

14.2

588.3 ✓

10.0

 $\frac{2}{2}$

593.5 ✓

4.8

 $\frac{10}{10}$

593.9 ✓

4.4

 $\frac{20}{20}$ $\langle 598.33 \rangle$

582.4 ✓

 $\frac{4.9}{15}$
Rim

582.6 ✓

4.7

586.4 ✓

0.9

591.4 ✓

 $\frac{+4.1}{9}$

591.7 ✓

 $\frac{+4.4}{20}$ $\langle 587.27 \rangle$

PRODIAEA WAY
~~Enclia Dr.~~

Indexed

54 ✓

T.P. on A 13.07 $\langle 633.59 \rangle$ 12.52 $\langle 620.52 \rangle$
 4³ Rt. = Back Cobble curb. = c. ch.
 1A+16 - 7' Rt. = Edge pave

620.5 ✓ 620.99 ✓
 12.5 12.05
 7
 E.P.

Set B.M. on A 12.52 $\langle 620.52 \rangle$
 1A+15⁹⁸ $\Delta 104^\circ$ 26' Rt. (Rods at 90 to Back tang
 See $\frac{2106}{8}$

620.5 ✓ 620.51 ✓
 12.52 12.53
 Hub
 1' at 90 to back tang.
 N.Ely Edge Conc. Dr.

T.P. 12.77 $\langle 633.04 \rangle$ 0.12 $\langle 620.27 \rangle$

$\langle 633.04 \rangle$

1A+02^E 4^E Rt. = near cor of house

617.8 ✓ 617.85 ✓
 2.6 2.54
 41 6
 Car. floor

1A+00

620.4 ✓ 618.0 ✓ 617.8 ✓
 0.0 2.4 2.6
 5 5

13+50

612.4 ✓ 608.4 ✓ 605.3 ✓ 605.1 ✓
 8.0 12.0 15.1 15.2
 10 5 10

T.P. on A 13.00 $\langle 620.39 \rangle$ 0.47 $\langle 607.39 \rangle$

$\langle 620.39 \rangle$

13+38⁹⁶ $\Delta 106^\circ$ 10' Rt. (Sec. on split)

610.86 607.39 604.9 ✓
 +3.0 0.47 3.6
 10 Hub 10

$\langle 607.86 \rangle$

$\langle 607.86 \rangle$

Encilia Dr.
~~PRODIACA WAY~~ JUNCTION

T.P. 12.52 $\langle 658.58 \rangle$ 0.31 $\langle 646.06 \rangle$

15
 16+86 1st Rt = nearest point to Paue.

648.2 ✓	645.0 ✓	645.2 ✓	644.7 ✓	644.71 ✓
+1.8	1.4	1.2	1.7	1.66
12	6	1.4	in gutter	1 st
		C. ob.		E.P.

15
 16+71 intersect back of cobble ch.

643.6 ✓
 2.8
 c. ch.

15+50 ⁰⁶ Δ 35° 05' RT. (Sec on split)

645.1 ✓	645.1 ✓	641.4 ✓	641.2 ✓	640.4 ✓	639.7 ✓
1.3	1.3	5.0	5.2	6.0	6.65
10	6	1		6.8	10
				C. ob.	E.P.

Set B.M. & L+T.
 Romero Dr. B.C. into Encilia 8.17 638.20 B.M. #4
~~Prodiaca way~~
 15+31 ⁴⁸ -17' RT = & B.C. ~~Romero Dr.~~

639.8 ✓	639.6 ✓	638.3 ✓	638.23 ✓	638.3 ✓	637.93 ✓
6.6	6.8	8.1	8.14	8.1	8.44
20	10	3	$\langle 646.37 \rangle$	4 ²	6.2
				C. ob.	E.P.

T.P. 12.88 $\langle 646.37 \rangle$ 0.10 $\langle 633.49 \rangle$

15+00

633.0 ✓	633.5 ✓	633.6 ✓	633.43 ✓
0.6	0.1	0.0	0.16
10		4.2	7
		C. ob.	E.P.

14+50

624.5 ✓	625.9 ✓	626.5 ✓	626.01 ✓
9.1	7.7	7.1	7.58
10		4.2	6.2
		Gobble	E.P.
		ob.	

$\langle 633.59 \rangle$ ✓

13.14 $\langle 666.71 \rangle$ - $\langle 653.57 \rangle$ B.M.#5

Set B.M. on tack 5.01 $\langle 653.57 \rangle$ B.M.#5

17+08^{SE} 17' RT. = \neq E.C. = L+T.

\downarrow
655.1
3.4
653.51
5.01
17

17+07^{SD} Δ 19° 08' RT.

\downarrow \downarrow \downarrow \downarrow \downarrow \downarrow
654.3 663.6 655.5 655.0 654.4 653.6
4.3 +5.0 3.1 3.56 4.2 5.00
20 13 3 Hub 35 62
C.O. E.P.

16+77 on back edge cobble cl.

659.1 659.1 651.8 651.6 650.9²
70.5 70.5 6.8 7.0 7.66
15 13 6 C.O. 25
E.P.

16+50

\downarrow \downarrow \downarrow \downarrow \downarrow \downarrow
654.9 654.8 649.8 649.7 649.3 648.53
3.7 3.8 8.8 8.9 9.3 10.05
10 7 1 45 75
C.O. E.P.

16+32^{SS} Δ 59°-58' RT. (Sec. on split)

\downarrow \downarrow \downarrow \downarrow \downarrow \downarrow
650.9 648.2 647.98 648.1 647.67
7.7 10.4 10.60 10.5 10.91
10 3 Hub 11 13.2
C.O. E.P.

16+98 - intersect cobble curb

646.4[✓]
12.2
C.O.

$\langle 658.58 \rangle$

Encelia Dr

2+073 P-AZ

660.25

660.25 } Dif.

Top of lot stake

11.25

660.06

.19

T.P.

4.46

671.50

12.75

667.04

Foot on Gar. floor.

18+00

64' RT. = N.W. Cor. House.

T.P.

13.18

679.79

0.10

666.61

~~End line here~~

17+90

1' RT. = 2" diam acaccia

17+85.4 = End oiled drive

17+63

17+60 = start oiled drive

17+56

17+23 = ~~at~~ acaccia tree (6" diam.)

Indexed

663.0

57

16.8

140 RT

on End, Back of house

675.4

668.1

667.3

665.5

665.04

663.9

4.4

11.7

12.5

14.3

14.75

15.9

10

3

4.5

7

64

C. ob.

E.P.

Gar. Floor

679.79

672.1

666.1

665.9

663.9

+ 6.0

0.6

0.8

2.79

10

3

7

E.P.

664.91

1.80

663.98

2.73

663.24

3.47

on edge of drive

78

E.P.

661.81

4.90

3

Edge of drive

669.1

+ 3.0

10

End

660.84

5.87

~~on drive~~

660.0

6.69

68

E.P.

668.2

+ 1.5

15

667.2

+ 0.5

10

660.8

5.9

1

660.7

6.0

659.44

7.27

68

E.P.

666.71

Levels Line "C" P. 28

0+49 8' Lt. = S.W. cor. brick chimney

0+42 11' Rt. = N.W. cor. brick chimney
 11' Rt. = N.E. cor. house

0+34 6' Lt. = N.W. cor. house

T.P. 11.97 $\langle 609.90 \rangle$ 0.02 $\langle 597.93 \rangle$

0+25

0+09

0+00

9.23 $\langle 597.95 \rangle$ - $\langle 588.72 \rangle$

0+00

12+51.18 Page 28 + 53 = EL = $\langle 588.72 \rangle$

	604.4 ✓	602.4 ✓	600.4 ✓	604.9 ✓
Cor. Chimney	5.5	7.7	9.5	5.0
6'	6		11	Approx. floor
				112

607.8 ✓	602.4 ✓	599.5 ✓
2.1	7.7	10.4
6'	6	
Floor level		$\langle 609.90 \rangle$ ✓

602.0 ✓	596.0 ✓	594.0 ✓
+ 4.0	2.0	4.0
10		10

595.9 ✓	593.8 ✓	593.0 ✓
2.0	4.1	4.9
10		10

588.72 ✓
 9.23

597.95 ✓

End of line

"C" Line Page 28

591

1+10

1+05I - Back edge cobble cl

1+09 - Sly edge Conc. Pave

0+93E approx & Pave

0+81A = Nly edge Conc. Pave.

0+79E = S.E. Cor. Conc. Dr. + also end of
Conc. wall + also back face Cobble str

0+71.95 = 1/2 P.O.T.

0+62 - 5' AT = S. Fly. Cor. house
also start conc. wall

0+54 - 11' Lt. = S.Wly. Cor. house

607.41 ✓
2.2
607.6 ✓
2.3

607.94 ✓
1.91
5

607.27 ✓
2.63

606.58 ✓
3.32
5

607.66 ✓
2.24

608.30 ✓
1.60
3

607.85 ✓
2.05

607.41 ✓
2.49
3

608.24 ✓
1.66

607.39 ✓
2.51
H46

606.8 ✓
3.1

606.2 ✓
3.7
5

604.7 ✓
52
5

5' Bar Floor
+ top of wall

607.8 ✓
2.1
112
Floor level

607.6 ✓
2.3
11

605.6 ✓
4.3

609.90 ✓

"B" Line - P. 28

0+69¹⁷ 1/2 P.O.T.

595.26
3.52
Hub

0+52 - 1st Lt. = N.Wly. Cor. Cenci Reti wall

597.8	592.1	594.0	594.0	588.8
1.0	6.7	4.8	4.8	10.0
1 st	1 st	1		6
Top	Approx			
	base			

0+39 6th Mt. = Near cor. (= S. Ely Cor.) House.

592.2	592.0	586.6	587.8
6.6	6.8	12.2	11.0
6		6	6 th
			Approx Floor level

0 T.P. 7.33 (598.78) 0.93 (589.45)

(598.78)

0+31 6th Lt. = Near cor. (= N.Wly. Cor.) House

593.4	591.2	590.4	586.9	586.5
+3.0	+0.8	0.0	3.5	3.9
6 th	6		3	5
Approx				
Floor Level				

0+07

582.8	579.5	578.8
7.6	10.9	11.6
10		10

= 0+00

578.96
11.42

11+60⁵² P. 28 + P. 52

Temp B.M. 11.42 (590.38) - (578.96)

(590.38)

11+60⁵² P. 52

1+10

595.3 ✓
3.5

1+03 - Back edge cobble ch

594.8 ✓
4.0

0+99^L - sly edge pave

595.06 ✓ 594.34 ✓ 593.66 ✓
 $\frac{3.72}{5}$ 4.44 $\frac{5.12}{5}$

0+89^E

Approx ±

Providence
Ravine

594.82 ✓
3.96

car. over it - Can not move
0+79^E = Nly edge of pave.

594.6 ✓
4.2
Approx
pave

0+76 = intersect cobble ch

595.2 ✓
3.6

0+74 7⁴ ft = sly. end Ret wall

596.5 ✓ 595.5 ✓ 596.3 ✓
 $\frac{2.3}{74}$ $\frac{3.3}{74}$ $\frac{2.5}{7}$
top Approx
base

598.78 ✓

0+73³ ctr.

581.09 ✓	575.7 ✓
3.61	9.0 ± Box full,
Grate	Bottom of box at dirt

0+73² cobble cb.

582.2 ✓
2.5

0+68 - Cross Elec. Cond. to house

580.7 ✓
4.0
conduit

0+65² = Prop. pipe

583.0 ✓	582.54 ✓	581.7 ✓
1.7	2.16	3.0
5.	pipe	5

0+50

583.6 ✓	582.6 ✓	572.7 ✓
1.1	2.1	12.0
5		10

0+47 - 2' RT. = 4" diam eucalyptus

T.P. 10.51 <584.70> 2.33 <574.19>

<584.70>

0+18

572.8 ✓	571.3 ✓	570.7 ✓
3.7	5.2	5.8
5		5

0+00

565.3 ✓
11.2

10+68 - P 28 +

8.68 <576.52> - <567.84>

<576.52>

Temp B.M.#2
P 52

1+05

Revised

582.2 ✓
2.5

1+00 - Back edge cobble gutter

581.8 ✓
2.9

0+97 ± S Edge Paue

581.75 ✓	581.20 ✓	580.48 ✓
2.95	3.50	4.22
5		5

0+86 Approx to ~~Revised~~ *Production May*

581.4 ✓
3.30

<584.70> ✓

Portion Romero Dr.

Along BIK. D.

6/27/50

sketch P.-27

64

2+40 = End of Line

2+00

T.P.

12.25 <504.03>

1.83 <491.78>

1+50

T.P.

13.20 <493.61>

0.12 <480.41>

1+00

Set B.M. on E. L.Y.

17' Rt. of 65°22'

6.32 <474.21> B.M. # 1

0+65°22' = B.C. RT. Rad 271°

0+50

Gas line = 3' RT of E. Prop. sewer

E.P. = edge pave

C. ob. = top. cobble curb

0+00

Hub 4+92.66

R=47

+P. 27

12.77 <480.53>

<467.76>

503.0	499.0	497.0	496.59
1.0	4.8	6.8	7.44
5		4.2	7
		C. ob.	E.P.
496.9	494.4	492.1	491.63
7.1	9.6	11.9	12.40
5		4.4	7
		C. ob.	E.P.
490.1	487.3	485.7	485.05
3.5	6.3	7.9	8.56
5		4.2	7
		C. ob.	E.P.
483.0	480.3	479.0	478.69
7.2	0.2	1.3	1.84
5		4.2	6.8
		C. ob.	E.P.
478.8	476.05	474.7	474.14
1.7	4.48	5.8	6.39
5		4.3	7.5
		Hub	E.P.
		C. ob.	Ord.
			Floor of House
477.0	473.5	472.8	472.2
3.5	7.0	7.7	8.31
5		4	6.8
		C. ob.	E.P.
467.76	466.9	466.43	
12.77	13.6	14.10	
Hub	4	6.8	
	C. ob.	E.P.	
(480.53)			

Romero Ct.
 sketch - P 27

±

65 ✓

0+90

✓ 473.6	✓ 474.3	✓ 471.6	✓ 471.57
7.0	6.3	9.0	9.05
10	4		2
			cc

T.P. 13.27 <480.62> 0.56 <467.35>

<480.62> ✓

0+60

✓ 470.9	✓ 470.9	✓ 466.3	✓ 465.80
+3.0	+3.0	1.6	2.11
10	4		2
			cc

0+34

✓ 466.4	✓ 466.4	✓ 461.4	✓ 460.97
1.5	1.5	6.5	6.94
10	4		2
			cc

0+18

✓ 457.0	✓ 457.8	✓ 457.83
10.9	12.1	12.08
10		2
		cc

Gas line 1' RT to 2' RT.

0+03

cb. = Top Conc. cb.
 2' = start roll cb. + paving
 2' = end cobble gutter

✓ 455.3	✓ 456.2	✓ 455.59
12.6	11.7	12.32
10		2
		cc

= 0+00

455.5 ✓
12.4

3+88.45 P. 27
 + P. 46

BM #1
 P 47

11.73 <467.91> - <456.18>

<467.91> ✓

Romero Ct.

66

1+70 17' Patio (Aprox location of tank) ^{8' Lt. of tank}

471.6 = Elev.

1+60 75' Lt. = S. W. Cor. House
15' Lt. = S. E. Cor. House

468.8	465.9	473.2
3.7	6.6	+0.7
75	60	50
Brk	Lower	General
	Floor	Floor level
	level	
Boiler room		

T.P.

2.21

472.52

10.31

470.31

+ 1+285 475.82
 + 6.23
 482.05 79
 Floor Patio - 57.4
 474.65
 " Road + .55
 475.20

1+42⁸⁵

X in Conc. Pavc.

475.32

475.82

476.37

5.30
5

4.80

4.25
5

1+29⁵

17 gutter

475.87

4.75

1+26²

intersect back of cb.

476.42

4.20

1+19

2' Rt. = B.C. Lt. of Pavc. + Roll cb.

476.9

476.9

476.3

476.12

3.7
70

3.7
4

4.3

4.50
2

480.62

BIKE. and Encolia Dr. 6/27/50

674

Sketch Page 28

0+96³² also = 0+00 on line to Lot #10

643.6 ✓
2.4

0+80

T.P. 12.33 <646.04> 0.25 <633.71>

640.5 ✓
5.5
<646.04> ✓

0+50

627.5 ✓
6.7

0+34 Top of bank

621.0 ✓
13.0

T.P. 12.03 <633.96> 0.24 <621.93> ^{on Hub} (0+38.89)

<633.96> ✓

T.P. 12.83 <622.17> 0.65 <609.34>

T.P. 13.10 <609.99> 1.20 <596.89>

0+14 - toe of bank

592.5 ✓ 592.8 ✓ 592.7 ✓
5.6 5.3 5.4
5 5
Page 27 586.74

0x00 = 10 + 9d.63 Page 27

B.M.#2

P.37 11.37 <598.09> - <586.72>

<598.09> ✓

BIK. E. \rightarrow Encelia Drs.

2700

T.P.

11.92

$\langle 668.43 \rangle$

1.68

$\langle 656.51 \rangle$

1486³⁸ Δ 69°-44' RT.

1465

1440

1420

1420

T.P.

12:46

$\langle 658.19 \rangle$

0.91

$\langle 645.73 \rangle$

1400

68.

657.1

11.3

$\langle 668.43 \rangle$

654.36

3.83

653.0

5.2

649.2

9.0

645.7

12.5

$\langle 658.19 \rangle$

644.5

1.5

646.04

Encelia

69

3+29¹ = intersect edge pave.

678.57
2.34

+26²

678.7
2.2

3+25^E Intersect ^{cobble} ~~rock~~ el.

678.9
2.0

set B.M. on L+7.

17' Lt. 3+00

2.16 678.75 B.M.
+6

3+18⁹² Δ 56°-44' Rt.

678.74
2.17

3+15.92 = Prop. Cor.

678.1
2.8

3+00

670.6
10.3

2+75

666.9
14.0

T.P.

12.73

680.91

0.25

668.18

680.91

2+50

665.0
3.4

2+25

662.0
6.4

668.43

A+37⁶ INTERSECT C. cb.

300 2106
15

A+20⁴¹ = Δ 26° 18' Lt.

A+10 2²⁵ Lt = Prop. corr. pipe
2⁸ Lt = start 8" conc. wall
wall 5' high at this point

A+06 8⁰ Rt. = E.P. E.P.
5² Rt. = c.cb. c.cb.

T.P. 6.35 <686.60> 0.66 <680.25>

E.P. = edge pave
c.cb. = cobble curb

3+75

3+66⁷ = back cobble curb

3+66

3+61³ = leave pave.

3+45 Aprax & pave.

681.3[✓] 680.79[✓]
5.3 5.81
E.P.
2⁸

681.3[✓] 681.13[✓] 681.0[✓] 680.45[✓]
5.3 5.47 5.6 6.15
6 Wall 7² 3⁷
6 Col. E.P.

681.5[✓] 681.5[✓]
5.1 5.1
2⁸

681.4[✓] 680.7[✓] 680.20[✓]
5.2 5.9 6.40
C.cb. 8
<686.60> E.P.

680.3[✓] 680.1[✓] 679.47[✓]
0.6 0.8 1.44
2⁵ 5³
c.cb.

679.9[✓]
1.0

679.2[✓]
1.7

679.21[✓]
1.70

679.09[✓]
1.82

<680.91>[✓]

5+54⁵ Leaoe^{conn} Pavc. start. A.C.

663.50 ✓
3.10

5+AG 29² Lt. = Prop. Pipe L.S. 2416

5+40 10' Lt. = wall

5+37 = cross service (Gas or Elec.?)

5+36 7² Lt. = Δ in wall

Wall 13⁵ high at this point

5+24³ = int. edge pavement

681.89 ✓
4.71

5+20 = 1 B.C. Lt. Pavc. gutter
0.7 RT = acobble ch. & gutter

682.6	682.5	681.9	681.90
4.0	4.1	4.7	4.70
Wall	2.4		0.7
9.4	C. ch		E.P.

5+17⁵ int. edge pavc.

681.85 ✓
4.75

5+00

	682.5	681.8	681.83
Wall	4.1	4.78	4.77
11.8	4.4	1.9	
	C. ch	E.P.	

4+75 2⁵ Lt. = E.P.

	682.0	681.47	681.46
Wall	4.6	5.13	5.14
12 ⁵	5 ⁵	2 ⁵	
	C. ch	E.P.	

4+53 int. edge Pavc.

	682.6	681.08
10	5.0	5.52
Wall	2 ⁵	
	C. ch	

686.60 ✓

Encelia Dr.

72

+ lot Ely of same
Showing end of Encelia Pavc

686.6

681.9

678.4

0.0

4.7

8.18

50' Lt

30' Lt

End of

Encelia

Encelia

pavc

5+72⁰⁸

1/2

684.83

1.77

Hub,

5+66⁶

Leave A. C. Pavc

684.38

2.22

5+60⁵

1/8

At = End. Conc. Pavc.

683.6

3.00

1/8

Conc. Pavc

686.60

To. Lot 10 - BIK E.
Sketch P-28

73 ✓

Top stake 8.49 $\langle 660.06 \rangle$ - P-42
 $\langle 659.94 \rangle$ ✓

$0+96^{53}$ = Cor. lot 10 (see page 28)

659.5 ✓
 8.9

$0+76$

655.8 ✓
 12.6

T.P. 11.92 $\langle 668.43 \rangle$ ✓ 1.68 $\langle 656.51 \rangle$ ✓

$0+50$

654.1 ✓
 4.1

T.P. 12.46 $\langle 658.19 \rangle$ ✓ 0.31 $\langle 645.73 \rangle$ ✓

4.1

$0+00$

$0+002$ $0+96^{32}$ on line of lot # 21 BIK E
(Page 28)

643.6 ✓
 2.4

X

646.04 From Page 67

$\langle 646.04 \rangle$ ✓

Blk. B. Line to Lot #8 6/29/50

#

741

0+78

485.4 ✓	484.2 ✓	480.4 ✓	480.0 ✓	478.0 ✓
2.5	3.7	7.5	7.9	7.9
<u>10</u>	<u>5</u>	<u>43</u>		<u>10</u>

T.P. 9.89 <487.87> 2.25 <477.98>

<487.87>

0+54 - 2nd Rt. = Nearest Cor. of House

487.2 ✓	481.4 ✓	476.8 ✓	476.8 ✓	476.8 ✓	478.8 ✓
+7.0	+1.2	3.4	3.4	3.4	1.4
<u>10</u>	<u>3</u>	<u>1</u>		<u>2.9</u>	<u>2.9</u>
				Cor.	Floor of house

0+31

485.2 ✓	480.9 ✓	476.4 ✓	476.4 ✓	476.2 ✓
+5.0	+0.7	3.8	3.8	4.0
<u>13</u>	<u>5</u>	<u>4</u>		<u>10</u>

0+14

477.5 ✓	475.2 ✓	475.0 ✓
2.7	5.0	5.2
<u>10</u>		<u>10</u>

0+05

469.4 ✓	468.4 ✓	467.1 ✓
10.8	11.8	13.1
<u>10</u>		<u>10</u>

= 0+00
5+98^E P.13 on Country Club Drive

467.91 ✓
12.32
Hub

11.69 <480.23> - 468.54 ✓

Pipe 54
5+98^E
P.12

<480.23>

B.K.B. line to Lot # 8

75 ✓

6-30-50
m.

2+05 11' Lt = Future sewer outlet from house

$$\begin{array}{r} \checkmark \\ A \ 82.8 \\ \underline{5.1} \\ 11 \\ \text{Floor level} \end{array}$$

$$\begin{array}{r} \checkmark \\ 479.7 \\ \underline{8.2} \\ 71' \\ \text{Grd.} \end{array}$$

$$\begin{array}{r} \checkmark \\ 479.7 \\ \underline{8.2} \end{array}$$

House under const.

1+80

$$\begin{array}{r} \checkmark \\ 480.0 \\ \underline{7.9} \\ 10 \end{array}$$

$$\begin{array}{r} \checkmark \\ 480.1 \\ \underline{7.8} \end{array}$$

$$\begin{array}{r} \checkmark \\ 480.4 \\ \underline{7.5} \\ 7 \end{array}$$

$$\begin{array}{r} \checkmark \\ 475.4 \\ \underline{12.5} \\ 15 \end{array}$$

1+47 - end of plant mix

$$\begin{array}{r} \checkmark \\ 484.4 \\ \underline{3.7} \\ 10 \end{array}$$

$$\begin{array}{r} \checkmark \\ 483.9 \\ \underline{4.0} \end{array}$$

$$\begin{array}{r} \checkmark \\ 483.8 \\ \underline{4.1} \\ 1 \end{array}$$

$$\begin{array}{r} \checkmark \\ 478.6 \\ \underline{9.3} \\ 10 \end{array}$$

1+31 ⁴⁺ 8' Lt = cor. lots 4-5-6-7+8

$$\begin{array}{r} \checkmark \\ 483.8 \\ \underline{4.1} \\ 10 \end{array}$$

$$\begin{array}{r} \checkmark \\ 483.8 \\ \underline{7.1} \\ 8 \\ \text{Lot Cor.} \end{array}$$

$$\begin{array}{r} \checkmark \\ 483.8 \\ \underline{4.1} \end{array}$$

$$\begin{array}{r} \checkmark \\ 483.7 \\ \underline{4.2} \\ 5.5 \\ \text{Edge oil} \end{array}$$

$$\begin{array}{r} \checkmark \\ 483.4 \\ \underline{4.5} \\ 8 \end{array}$$

$$\begin{array}{r} \checkmark \\ 477.4 \\ \underline{10.5} \\ 20 \end{array}$$

1+20 start plant mix

$$\begin{array}{r} \checkmark \\ 483.8 \\ \underline{4.1} \\ 10 \end{array}$$

$$\begin{array}{r} \checkmark \\ 483.7 \\ \underline{4.2} \end{array}$$

$$\begin{array}{r} \checkmark \\ 483.6 \\ \underline{4.3} \\ 5 \\ \text{Edge oil} \end{array}$$

$$\begin{array}{r} \checkmark \\ 483.1 \\ \underline{4.8} \\ 10 \end{array}$$

1+10

$$\begin{array}{r} \checkmark \\ 484.4 \\ \underline{3.5} \\ 10 \end{array}$$

$$\begin{array}{r} \checkmark \\ 483.4 \\ \underline{4.5} \end{array}$$

$$\begin{array}{r} \checkmark \\ 482.5 \\ \underline{5.1} \\ 10 \end{array}$$

0+86 82 Lt = Near Cor. Stucco Bar.

$$\begin{array}{r} \checkmark \\ 485.7 \\ \underline{2.2} \\ 82 \\ \text{Grd} \end{array}$$

$$\begin{array}{r} \checkmark \\ 485.5 \\ \underline{2.4} \\ 7 \end{array}$$

$$\begin{array}{r} \checkmark \\ 483.1 \\ \underline{4.8} \\ 5 \end{array}$$

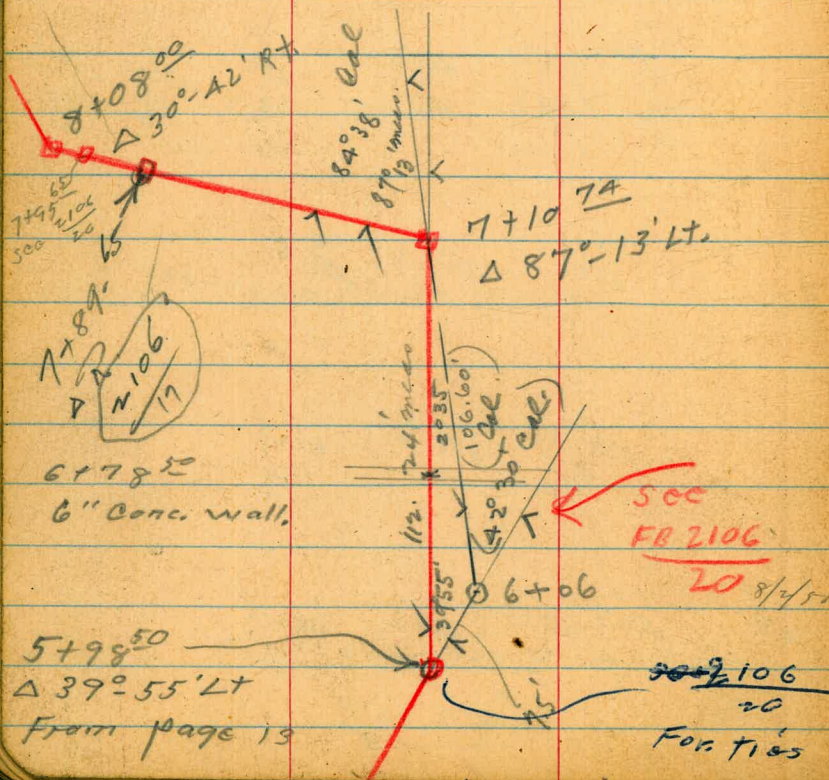
$$\begin{array}{r} \checkmark \\ 482.9 \\ \underline{5.0} \end{array}$$

$$\begin{array}{r} \checkmark \\ 480.2 \\ \underline{7.7} \\ 10 \end{array}$$

{ 487.87 }

Cont. from P. 22
(sketch from P. 13)

See $\frac{2106}{17}$ for levels



54.2

76

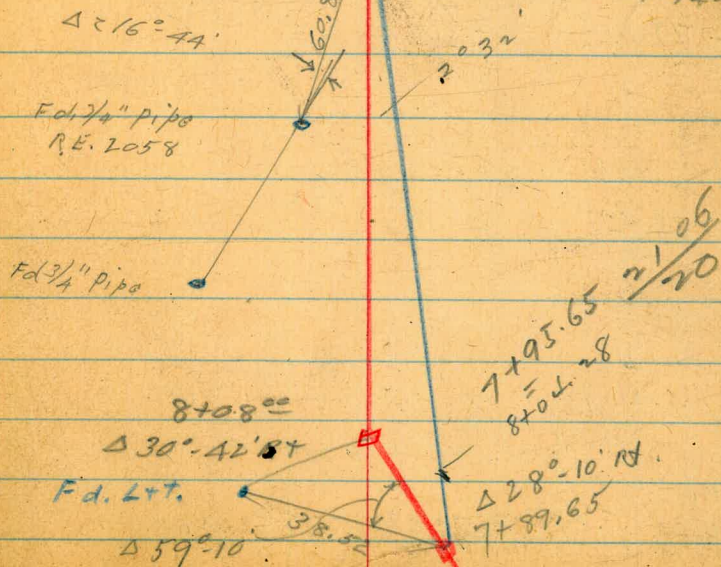
66

476

Cont. $\frac{2106}{17+28}$

10+54² spike End of line

Roll ab. \rightarrow 10+32² start pave.
 10+28² back of ab.
 10+06² prot. 10+04⁴⁵ End of
 Line on re-run
 7-14-50



7+44.5

7+34.7

sewer from house

T.P. on Hub 12.85 $\langle 475.53 \rangle$ 11.15 $\langle 462.68 \rangle$

7+10.74 L. lit $87^{\circ}13'$ at SE cor of house

6+78.50 ret wall

6+32.84 wall

5+98.5 Now = $\Delta 39^{\circ}55'$ Lt.

cont. from page 22

B.M. #1
P-22

5.29 $\langle 473.83 \rangle$ — $\langle 468.54 \rangle$

469.1 ✓

6.4

465.5 ✓

10.0

3.5

465.5 ✓

10.

465.38 ✓

101.5 top of sewer

3 pipe 4"

$\langle 475.53 \rangle$ ✓

$\langle 462.68 \rangle$

11.0
5.3 on split
Cor of house

11.15

462.4 ✓

11.4

5.3

469.4 ✓

4.4

7

469.1 ✓

4.7

468.6 ✓

5.2

7

474.3 ✓

+ 0.5

5

473.8 ✓

0.0

2

471.9 ✓

1.9

469.1 ✓

4.7

2

468.3 ✓

5.5

5

468.4 ✓

5.4

$\langle 473.83 \rangle$ ✓

9 + 00

479.4[✓]
5.4
10

479.4[✓]
5.4

478.6[✓]
6.2
7

8 + 65

480.4[✓]
4.4
10

479.7[✓]
5.1
Shoulder

470.8[✓]
14.0
14
Toe of Slope

8 + 38

480.8[✓]
4.0
Shoulder

475.3[✓]
9.5
Toe

473.3[✓]
11.5
8

8 + 08 L 30° 42 Rt

479.7[✓]
5.7
10

476.20[✓]
8.60
10

473.7[✓]
11.1
10

TP 9.49 $\left\langle \begin{matrix} 60 \\ 484.80 \end{matrix} \right\rangle 0.22 \left\langle 475.31 \right\rangle$

$\left\langle \begin{matrix} 60 \\ 484.60 \end{matrix} \right\rangle$

7 + 80

7 + 65 ne. cor of hood

$\left\langle \underline{475.53} \right\rangle$

473.4[✓]
2.1

3.5 left

$\left\langle \underline{475.53} \right\rangle$

10 + 54 ²/₂ Spike in paring end of line

10 + 33 ¹/₁ edge of gutter

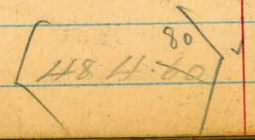
10 + 287 curb

10 + 06 ⁸⁰/_{city dir} POT = (10 + 04.45 ^{21.06}/₁₈)

10 + 00

9 + 80

9 + 16



477.83 ✓
6.97

479.33 ✓
5.5

479.78 ✓
5.02

481.9 ✓
2.9
9

481.85 ✓
2.95

474.8 ✓
10.0
14

481.1 ✓
3.7

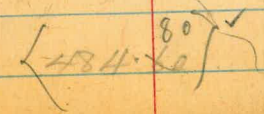
482.9 ✓
0.9
10
Shoulder

478.2 ✓
6.6
Tie

475.6 ✓
9.2
10

476.5 ✓
8.3
3.5 NE cor
no use

476.8 ✓
8.0



Levels on line change

12+04⁶⁰ to 12+47⁸⁰

7/13/50

10 +

see page 3

12+50
13+00

T.P.

8+25.98
14+21.40

0.65 <612.81>

-1.20

61.6

top of hole

5.35

607.46

13+00

13.12

612.18

13+00

10 +

14+09

T.P.

6.14 <625.30>

2.73

622.57

622.58

3.6

619.16

206

10 +

13+76

13+44.66 A.R.

1.52

613.6

ground

7.1

609.33

13+00

11.35

607.39

54

10 +

12+46.03 ahead of

2095
10

Now - Pot.

12+47.80

432.64

3.54

10 +

12+39⁶⁵

Δ 42° 40' 51"

432.52

3.66

9 +

aprox E. Pass

12+26^L

432.02

4.16

9 +

12+08^E

430.98

5.20

9 +

rep. ch.

12+08^L

431.28

4.90

Now Δ 45° 12' R.

4.86 <436.18>

<431.32>

12+04⁶⁰ P. 10

80

+ 1.18 588.43 - 5.82 582.61

0.41 <599.93>

12.68 <587.25>

side of hole 2.06 Ft <607.42>

2.07 599.52

12+50 2.07 601.59

1.2 600.3

612.81

13.29 599.52

sub 13+00 3.17 610.63

607.46

0+42 page 58

8.3 602.3

0.67 <600.74>

10.56 600.07

12+51.18

12.04 588.79

1.18 600.70

599.52

sub 11+25.80

1.8

5.82

587.25

1.18

588.43

5.82

582.61

11+49.98
 35
 11+84.98

4709.7

14142
 6

74852

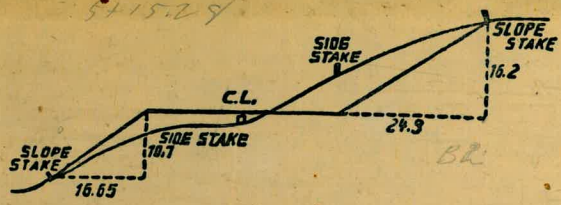
6+24 - 50° 24' Lt.

101° 19' Δ

75.07
 4.75
 70.72

370.80

65858
 10.59
 84
 648



DISTANCES FROM SIDE STAKES FOR CROSS-SECTIONING.
 SLOPE 1 1/2 TO 1. ROADWAY OF ANY WIDTH.

	0	.1	.2	.3	.4	.5	.6	.7	.8	.9	
0	0.00	0.15	0.30	0.45	0.60	0.75	0.90	1.05	1.20	1.35	0
1	1.50	1.65	1.80	1.95	2.10	2.25	2.40	2.55	2.70	2.85	1
2	3.00	3.15	3.30	3.45	3.60	3.75	3.90	4.05	4.20	4.35	2
3	4.50	4.65	4.80	4.95	5.10	5.25	5.40	5.55	5.70	5.85	3
4	6.00	6.15	6.30	6.45	6.60	6.75	6.90	7.05	7.20	7.35	4
5	7.50	7.65	7.80	7.95	8.10	8.25	8.40	8.55	8.70	8.85	5
6	9.00	9.15	9.30	9.45	9.60	9.75	9.90	10.05	10.20	10.35	6
7	10.50	10.65	10.80	10.95	11.10	11.25	11.40	11.55	11.70	11.85	7
8	12.00	12.15	12.30	12.45	12.60	12.75	12.90	13.05	13.20	13.35	8
9	13.50	13.65	13.80	13.95	14.10	14.25	14.40	14.55	14.70	14.85	9
10	15.00	15.15	15.30	15.45	15.60	15.75	15.90	16.05	16.20	16.35	10
11	16.50	16.65	16.80	16.95	17.10	17.25	17.40	17.55	17.70	17.85	11
12	18.00	18.15	18.30	18.45	18.60	18.75	18.90	19.05	19.20	19.35	12
13	19.50	19.65	19.80	19.95	20.10	20.25	20.40	20.55	20.70	20.85	13
14	21.00	21.15	21.30	21.45	21.60	21.75	21.90	22.05	22.20	22.35	14
15	22.50	22.65	22.80	22.95	23.10	23.25	23.40	23.55	23.70	23.85	15
16	24.00	24.15	24.30	24.45	24.60	24.75	24.90	25.05	25.20	25.35	16
17	25.50	25.65	25.80	25.95	26.10	26.25	26.40	26.55	26.70	26.85	17
18	27.00	27.15	27.30	27.45	27.60	27.75	27.90	28.05	28.20	28.35	18
19	28.50	28.65	28.80	28.95	29.10	29.25	29.40	29.55	29.70	29.85	19
20	30.00	30.15	30.30	30.45	30.60	30.75	30.90	31.05	31.20	31.35	20
21	31.50	31.65	31.80	31.95	32.10	32.25	32.40	32.55	32.70	32.85	21
22	33.00	33.15	33.30	33.45	33.60	33.75	33.90	34.05	34.20	34.35	22
23	34.50	34.65	34.80	34.95	35.10	35.25	35.40	35.55	35.70	35.85	23
24	36.00	36.15	36.30	36.45	36.60	36.75	36.90	37.05	37.20	37.35	24
25	37.50	37.65	37.80	37.95	38.10	38.25	38.40	38.55	38.70	38.85	25
26	39.00	39.15	39.30	39.45	39.60	39.75	39.90	40.05	40.20	40.35	26
27	40.50	40.65	40.80	40.95	41.10	41.25	41.40	41.55	41.70	41.85	27
28	42.00	42.15	42.30	42.45	42.60	42.75	42.90	43.05	43.20	43.35	28
29	43.50	43.65	43.80	43.95	44.10	44.25	44.40	44.55	44.70	44.85	29
30	45.00	45.15	45.30	45.45	45.60	45.75	45.90	46.05	46.20	46.35	30
31	46.50	46.65	46.80	46.95	47.10	47.25	47.40	47.55	47.70	47.85	31
32	48.00	48.15	48.30	48.45	48.60	48.75	48.90	49.05	49.20	49.35	32
33	49.50	49.65	49.80	49.95	50.10	50.25	50.40	50.55	50.70	50.85	33
34	51.00	51.15	51.30	51.45	51.60	51.75	51.90	52.05	52.20	52.35	34
35	52.50	52.65	52.80	52.95	53.10	53.25	53.40	53.55	53.70	53.85	35
36	54.00	54.15	54.30	54.45	54.60	54.75	54.90	55.05	55.20	55.35	36
37	55.50	55.65	55.80	55.95	56.10	56.25	56.40	56.55	56.70	56.85	37
38	57.00	57.15	57.30	57.45	57.60	57.75	57.90	58.05	58.20	58.35	38
39	58.50	58.65	58.80	58.95	59.10	59.25	59.40	59.55	59.70	59.85	39
40	60.00	60.15	60.30	60.45	60.60	60.75	60.90	61.05	61.20	61.35	40
41	61.50	61.65	61.80	61.95	62.10	62.25	62.40	62.55	62.70	62.85	41
42	63.00	63.15	63.30	63.45	63.60	63.75	63.90	64.05	64.20	64.35	42
43	64.50	64.65	64.80	64.95	65.10	65.25	65.40	65.55	65.70	65.85	43
44	66.00	66.15	66.30	66.45	66.60	66.75	66.90	67.05	67.20	67.35	44
45	67.50	67.65	67.80	67.95	68.10	68.25	68.40	68.55	68.70	68.85	45
46	69.00	69.15	69.30	69.45	69.60	69.75	69.90	70.05	70.20	70.35	46
47	70.50	70.65	70.80	70.95	71.10	71.25	71.40	71.55	71.70	71.85	47
48	72.00	72.15	72.30	72.45	72.60	72.75	72.90	73.05	73.20	73.35	48
49	73.50	73.65	73.80	73.95	74.10	74.25	74.40	74.55	74.70	74.85	49
50	75.00	75.15	75.30	75.45	75.60	75.75	75.90	76.05	76.20	76.35	50

THE NATIONAL BLANK BOOK COMPANY
 HOLYOKE MASSACHUSETTS
 NEW YORK CHICAGO BOSTON SAN FRANCISCO