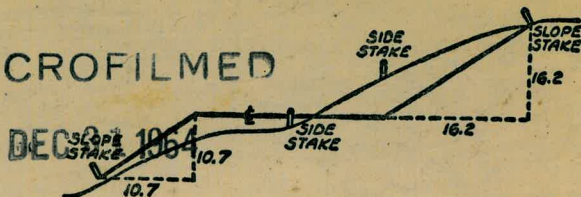


2102

PLANT BOOK

MICROFILMED



DISTANCES FROM SIDE STAKES FOR CROSS-SECTIONING
SLOPE 1 TO 1, ROADWAY OF ANY WIDTH

	0	.1	.2	.3	.4	.5	.6	.7	.8	.9	
0	0.00	0.10	0.20	0.30	0.40	0.50	0.60	0.70	0.80	0.90	0
1	1.00	1.10	1.20	1.30	1.40	1.50	1.60	1.70	1.80	1.90	1
2	2.00	2.10	2.20	2.30	2.40	2.50	2.60	2.70	2.80	2.90	2
3	3.00	3.10	3.20	3.30	3.40	3.50	3.60	3.70	3.80	3.90	3
4	4.00	4.10	4.20	4.30	4.40	4.50	4.60	4.70	4.80	4.90	4
5	5.00	5.10	5.20	5.30	5.40	5.50	5.60	5.70	5.80	5.90	5
6	6.00	6.10	6.20	6.30	6.40	6.50	6.60	6.70	6.80	6.90	6
7	7.00	7.10	7.20	7.30	7.40	7.50	7.60	7.70	7.80	7.90	7
8	8.00	8.10	8.20	8.30	8.40	8.50	8.60	8.70	8.80	8.90	8
9	9.00	9.10	9.20	9.30	9.40	9.50	9.60	9.70	9.80	9.90	9
10	10.00	10.10	10.20	10.30	10.40	10.50	10.60	10.70	10.80	10.90	10
11	11.00	11.10	11.20	11.30	11.40	11.50	11.60	11.70	11.80	11.90	11
12	12.00	12.10	12.20	12.30	12.40	12.50	12.60	12.70	12.80	12.90	12
13	13.00	13.10	13.20	13.30	13.40	13.50	13.60	13.70	13.80	13.90	13
14	14.00	14.10	14.20	14.30	14.40	14.50	14.60	14.70	14.80	14.90	14
15	15.00	15.10	15.20	15.30	15.40	15.50	15.60	15.70	15.80	15.90	15
16	16.00	16.10	16.20	16.30	16.40	16.50	16.60	16.70	16.80	16.90	16
17	17.00	17.10	17.20	17.30	17.40	17.50	17.60	17.70	17.80	17.90	17
18	18.00	18.10	18.20	18.30	18.40	18.50	18.60	18.70	18.80	18.90	18
19	19.00	19.10	19.20	19.30	19.40	19.50	19.60	19.70	19.80	19.90	19
20	20.00	20.10	20.20	20.30	20.40	20.50	20.60	20.70	20.80	20.90	20
21	21.00	21.10	21.20	21.30	21.40	21.50	21.60	21.70	21.80	21.90	21
22	22.00	22.10	22.20	22.30	22.40	22.50	22.60	22.70	22.80	22.90	22
23	23.00	23.10	23.20	23.30	23.40	23.50	23.60	23.70	23.80	23.90	23
24	24.00	24.10	24.20	24.30	24.40	24.50	24.60	24.70	24.80	24.90	24
25	25.00	25.10	25.20	25.30	25.40	25.50	25.60	25.70	25.80	25.90	25
26	26.00	26.10	26.20	26.30	26.40	26.50	26.60	26.70	26.80	26.90	26
27	27.00	27.10	27.20	27.30	27.40	27.50	27.60	27.70	27.80	27.90	27
28	28.00	28.10	28.20	28.30	28.40	28.50	28.60	28.70	28.80	28.90	28
29	29.00	29.10	29.20	29.30	29.40	29.50	29.60	29.70	29.80	29.90	29
30	30.00	30.10	30.20	30.30	30.40	30.50	30.60	30.70	30.80	30.90	30
31	31.00	31.10	31.20	31.30	31.40	31.50	31.60	31.70	31.80	31.90	31
32	32.00	32.10	32.20	32.30	32.40	32.50	32.60	32.70	32.80	32.90	32
33	33.00	33.10	33.20	33.30	33.40	33.50	33.60	33.70	33.80	33.90	33
34	34.00	34.10	34.20	34.30	34.40	34.50	34.60	34.70	34.80	34.90	34
35	35.00	35.10	35.20	35.30	35.40	35.50	35.60	35.70	35.80	35.90	35
36	36.00	36.10	36.20	36.30	36.40	36.50	36.60	36.70	36.80	36.90	36
37	37.00	37.10	37.20	37.30	37.40	37.50	37.60	37.70	37.80	37.90	37
38	38.00	38.10	38.20	38.30	38.40	38.50	38.60	38.70	38.80	38.90	38
39	39.00	39.10	39.20	39.30	39.40	39.50	39.60	39.70	39.80	39.90	39
40	40.00	40.10	40.20	40.30	40.40	40.50	40.60	40.70	40.80	40.90	40
41	41.00	41.10	41.20	41.30	41.40	41.50	41.60	41.70	41.80	41.90	41
42	42.00	42.10	42.20	42.30	42.40	42.50	42.60	42.70	42.80	42.90	42
43	43.00	43.10	43.20	43.30	43.40	43.50	43.60	43.70	43.80	43.90	43
44	44.00	44.10	44.20	44.30	44.40	44.50	44.60	44.70	44.80	44.90	44
45	45.00	45.10	45.20	45.30	45.40	45.50	45.60	45.70	45.80	45.90	45
46	46.00	46.10	46.20	46.30	46.40	46.50	46.60	46.70	46.80	46.90	46
47	47.00	47.10	47.20	47.30	47.40	47.50	47.60	47.70	47.80	47.90	47
48	48.00	48.10	48.20	48.30	48.40	48.50	48.60	48.70	48.80	48.90	48
49	49.00	49.10	49.20	49.30	49.40	49.50	49.60	49.70	49.80	49.90	49
50	50.00	50.10	50.20	50.30	50.40	50.50	50.60	50.70	50.80	50.90	50

Distance of slope stake from side or shoulder stake for any width roadway, slope 1 to 1. If ground is nearly level, the cut or fill at side stake is indicated by the double entry method in left column and top row. The number in body of table in same row and column gives distance from side stake to slope stake. If ground is not level estimate the difference in elevation between the side stake and slope stake, lower target by this amount if cut, elevate if fill. Add this amount to cut or fill and find distance in table. Set up rod at this point, and line of sight should cut target. If it does not make the slight adjustment necessary.

INDEXED

to page # 16

INDEX

①

Page

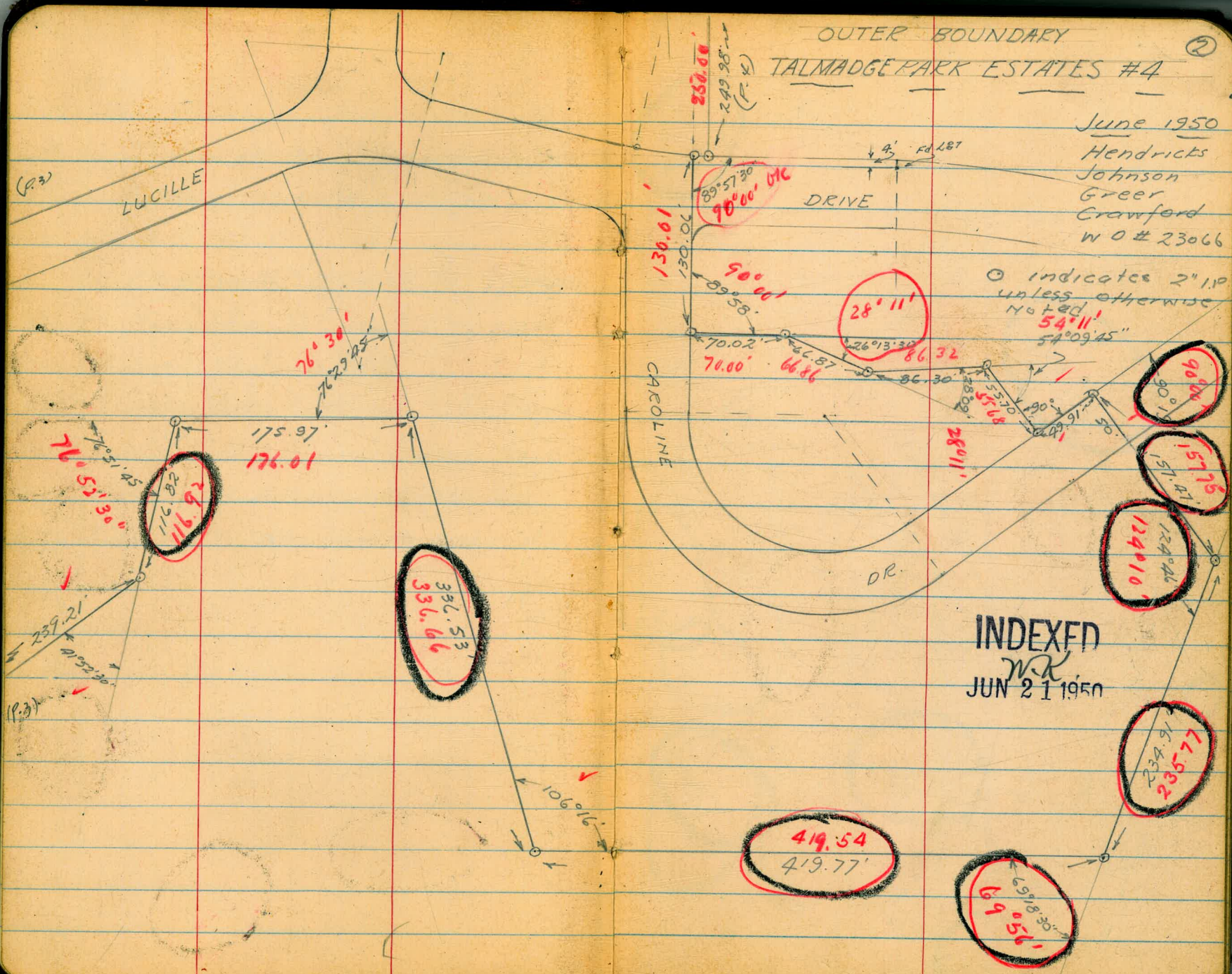
- 2-4 Check Outer Entry Talmadge Park Estates #4
- 5-11 X Section Puterbaugh Pringle to Mission
Hills Blvd.
- 11-17- Snowdrop St. - Pepper Dr. to Sycamore
- 17- X-sec Idaho - El Cajon to Howard
- 20 - X-sec Idaho & Polk,
- 21- X-Sec Idaho - Howard to El Cajon
- 25-27 X SECT PEPPER DR. across Hollywood PK.
- 28- X-SEC. DEL REY - GLENDORA TO ROSEWOOD ST'S.
- 33 X-Sec DEL REY - Glendora to Bunker Hill ST

OUTER BOUNDARY
 TALMADGE PARK ESTATES #4

(2)

June 1950
 Hendricks
 Johnson
 Greer
 Crawford
 W O # 23066

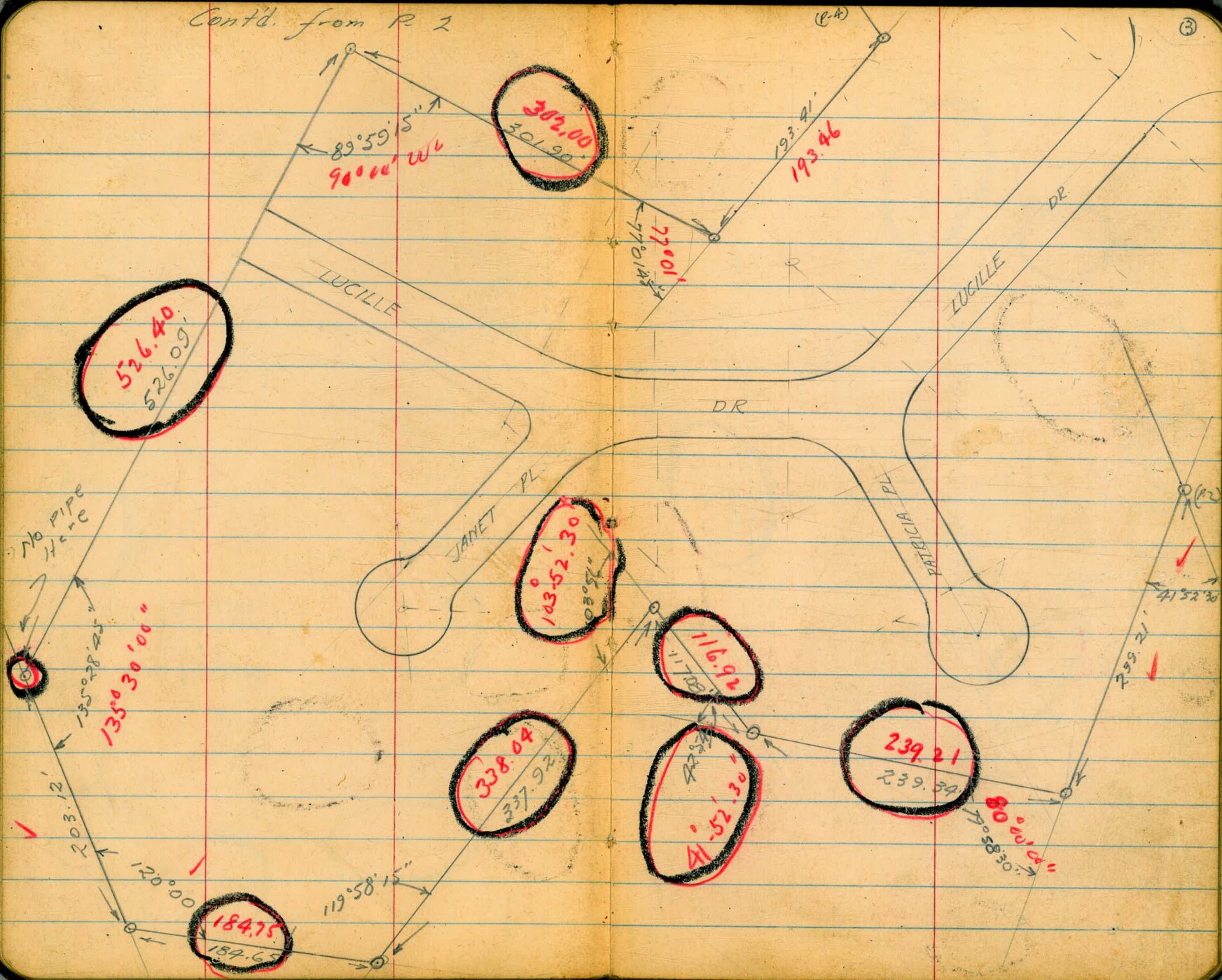
○ indicates 2" I.P.
 unless otherwise
 noted
 54°11'
 54°09'45"



INDEXED
 W.R.
 JUN 21 1950

Cont'd. from P 2

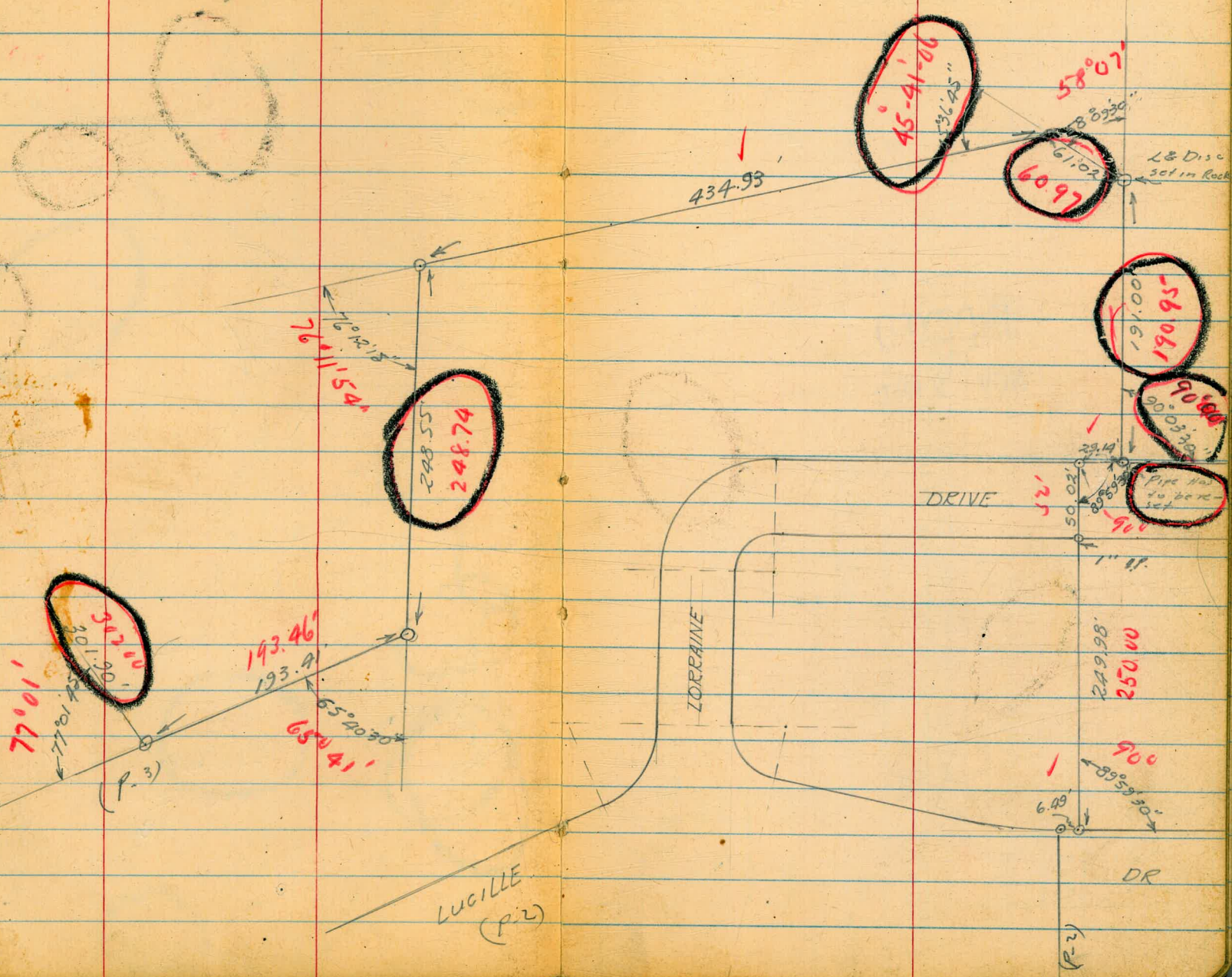
③



Tolmadge Part Estates #4

Cont'd. from P-2, & 3

(4)



11-6-50

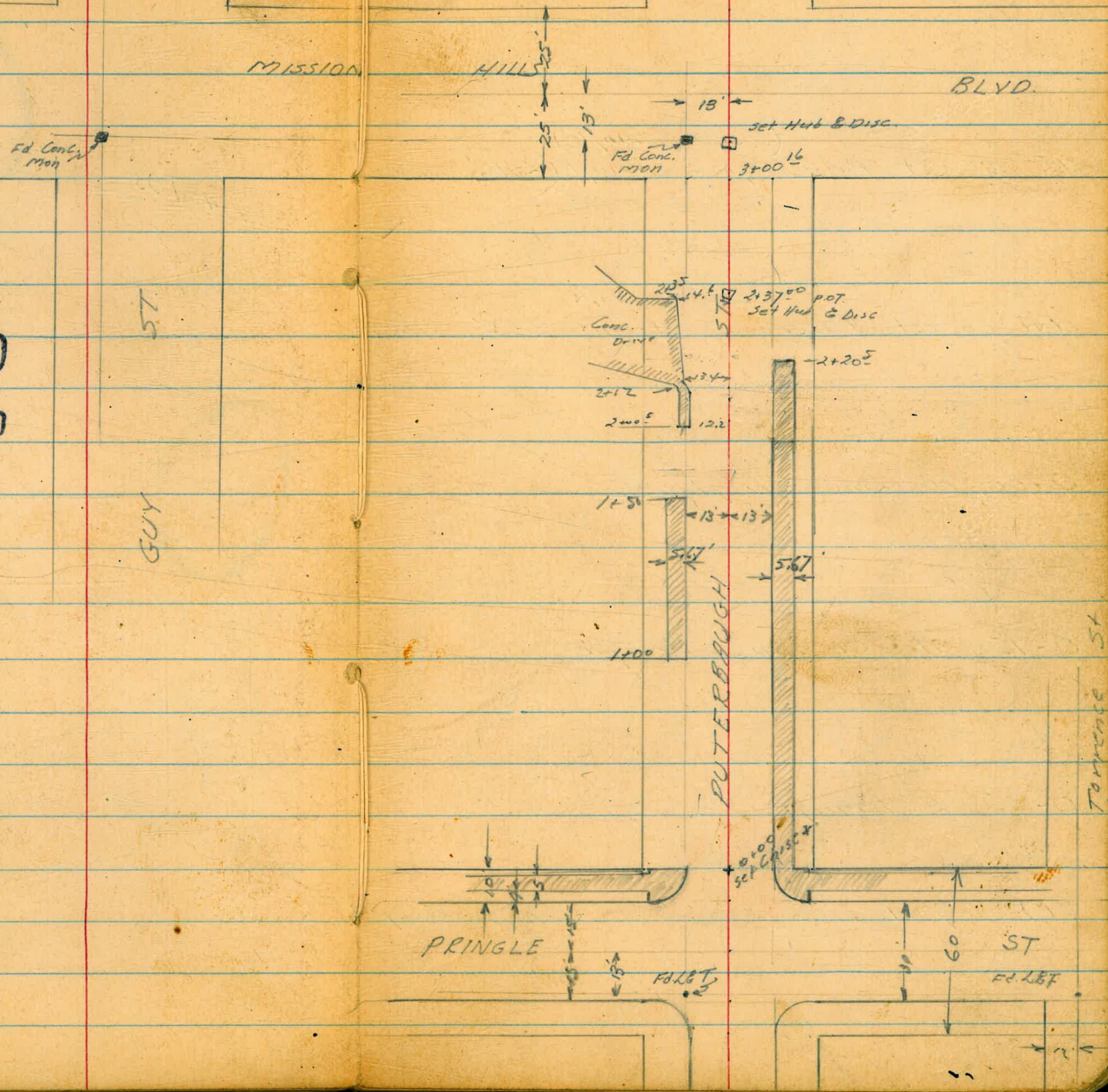
Hendricks
Sherman
Shepard
Crawford
WCH 31710

X Section Peterbaugh St.
Pringle to Mission Hills Blvd.

4+47.85 ^{SEWER} MH

(5)

INDEXED
NOV 9 1950
mk



237
5

Levels Puterbaugh St.
Pringle to Mission Hills Blvd.

Reduced by
Pitman
11-10-50

(BC on Pringle)
HE Cb Ret Puterbaugh & Pringle L=16' 2 parts

(BC on Pringle)
HY Cb Ret Puterbaugh & Pringle L=16' 2 parts

0+00 No Line Pringle

0-15 No Cb Line Pringle

0-25 & Pringle

BM 7.61 232.90
1

228.22	228.95	228.06	228.92	228.17	229.02
488	395	484	398	423	388
G	Cb	G	Cb	G	Cb
Pringle	BC	Pringle	BC	Puterbaugh	EC
225.46	226.36	225.02	226.30	225.75	226.30
744	654	728	660	715	660
G	Cb	G	Cb	G	Cb
BC	Pringle	BC	Pringle	EC	Puterbaugh
225.9	226.68	226.30	225.75	227.46	228.17
76	632	660	715	544	473
33	23	13	13	13	13
219.45	220.30	225.46	226.36	225.98	226.89
13	12	744	654	601	544
70	70	23	23	13	13
G	Cb	G	Cb	G	Cb
219.11	225.30	225.51	226.19	226.95	227.70
13	760	739	671	582	530
70	25	23	13	13	25
				232.90	
					228.22
					228.95
					229.95
					229.81
					228.42
					230.23
					267
					75

SW 13' L&T Puterbaugh & Pringle

Puterbaugh Cont'd

①

1+28 Box incl. Rt.

226.3
226.7
227.2
228.66
6- 6- 5- 4-
12 13 13
Cb B-calling
down
for Drive
Cb.

1+01 Power Pole # P-1821 14.3 Lt.

1+00 Beg. Cb. & S.W. on Lt.

227.6 227.9 228.18 228.05 227.60 228.0 228.5 229.39
5³ 5⁰ 4⁷² 4⁸⁵ 5³ 4⁹ 4⁴ 3⁵¹
35 25 18.67 13 13 13 13
5W Cb Cb

0+80

227.6 227.9 228.4 228.4 227.9 228.4 228.9 229.79
5³ 5⁰ 4⁵ 4⁵ 5⁰ 4⁵ 4⁰ 3¹¹
35 25 20 14 11 12 13
Cb Cb

0+59

226.9 227.9 228.5 228.3 227.9 228.4 229.0 229.81
6¹ 5⁰ 4⁵ 4⁵ 5⁰ 4⁵ 3⁹ 3⁰⁹
34 25 18 14 11 12 13
Cb

0+53⁵ & 9 Conc Drive on Rt.

229.10 229.78 229.83
3⁸ 3² 3⁰³
13 15 18.67
Drive Back cdy
W.

0+36 & 7 Conc Walk on Lt-25'

227.26 227.32 227.8 227.2 228.0 228.5 229.58
5^{6K} 5⁵⁸ 5¹ 5⁷ 4⁹ 4⁴ 3³⁸
(30 25) 15 12 13 13
Walk Cb

232.90
1

232.90
1

Puterbaugh Cont'd

£

(8)

TP. 0.65 221.13 12.42 220.48

2+09 6" Pine 19.541

2+01 Power Pole # 1841 14.441

2+00⁵ Beg 6" Conc. Ret Wall 15.2 Lt.
3' SW on Lt.

2+00

1+69 £ 10' Conc. Drive Rt

1+50 End. Ch. & SW. on Lt.

1+39⁵ £ 21.5 Conc. Drive

232.90

Wall in power pole # 1841 14.4 Lt. Sta. 2+01

220.09 220.39 220.10 220.10
12⁸² 12⁵¹ 12⁸⁰ 12⁸⁰
22.5 15.2 15.2 12.3
Endwall Wall SW SW

218.2 219.4 219.9 220.1 219.7 220.1 220.3 221.33
14.7 13.5 13.0 12.8 13.2 12.8 12.6 11.57
35 25 22 12 11 13 13
Ch. Ch.

223.84 224.51 224.59
9.06 8.39 8.31
13 15.5 18.67
SW

224.6 226.10 225.39 225.31 224.6 225.1 225.4
8.2 6.80 7.51 7.57 8.3 7.8 7.5 6.46
29 29 18.67 13 13 13 13
Gr. Dr. SW Ch. Ch. Ch.

226.43 226.29 225.80
6.47 6.61 7.10
18.67 15 13
SW Drive

232.90

Puter baugh Contd.

TP 0.58 197.73 1280 197.15

12" Euc 7' Rt.
2+75 12" Euc 2' Rt.
2+71 24" Euc. 14' Rt. 24" Euc. (onk)
2+69 24" Euc 12' Lt.

TP 112 209.95 1239 208.83

2+42

2+36 Anchor Pole 12.9 Lt.

2+35 End Conc. Drive on Lt.

2+20.5 End C6 & SW on Lt.

2+12

221.13

8

9

192.8 193.5 192.7 192.0 196.0 197.9 199.6
17³ 16^E 17³ 18⁰ 14⁰ 12¹ 10⁴
35 25 15 13 25 35

209.95
214.6 215.0 215.6 216.7 216.7 220.6 222.6 223.2
6^E 6^L 5^S 4^E 4^E 0^S 11^E 12^L
35 25 13 13 25 32 44

215.59 216.10
5^S 5⁰
37.5 184

214.98 216.76 217.98 217.75 218.3 218.5 219.17
6^S 4³ 3⁵ 3³ 2⁸ 2⁰ 1⁹
39 25 163 139 13 13 1867 25 35
C6 SW

216.3 217.1 218.67 219.50 219.0 219.3 220.09
4⁸ 4⁰ 2⁴ 2⁰ 2^L 1⁸ 1⁰
25 25 16 134 13 13
0^L C6

221.13

25
13
12

Peterbaugh Contd.

T.P. 0.68 $\frac{149.58}{\wedge}$ 12.95 148.90

3+80

$\frac{154.7}{72}$

T.P. 0.78 $\frac{161.85}{\wedge}$ 12.83 161.07

3+60

$\frac{161.85}{165.0}$
89

T.P. 1.24 $\frac{173.90}{\wedge}$ 12.87 172.66

$\frac{173.90}{\wedge}$

T.P. 5.70 179.83 ←

→ 5x113' mon. Peterbaugh & Mission Hills Blvd.

3+35

174	135	114	99	175.1	175.3
45	28	14		25	45

T.P. 0.81 $\frac{185.53}{\wedge}$ 13.01 184.72

3+00.16 So line Mission Hills Blvd

182.1	184.0	$\frac{185.53}{\wedge}$	187.8	188.4
12	13	12.6	9	9
35	35		35	35

$\frac{197.73}{\wedge}$

$\frac{197.73}{\wedge}$

Peterbaugh Cont'd

BM.			7.10	(225.00)	(225.29)
T.P.	10.74	222.36	0.50	221.62	
T.P.	11.92	222.12	0.93	210.19	
T.P.	12.31	211.12	0.03	198.81	
T.P.	12.66	198.84	0.47	186.18	
T.P.	12.76	186.85	0.09	174.09	
T.P.	12.60	174.18	0.65	161.58	
T.P.	13.34	162.22	1.63	148.89	
T.P.	12.69	150.52	0.78	137.83	

4+47.85

4+47.85 Ex. Sewer 174.

4+45

4+16

T.P. 1.70 $\frac{138.61}{\text{X}}$ 12.67 136.91

4+04

149.58

E

(11)

Swiss LET Peterbaugh & Pringle

123.13

15.48

Flow Line

121.91

10.70

Rim

121.9

10.2

Ground

129.6

9.0

129.6

$\frac{138.61}{\text{X}}$

138.0

11.6

149.58

Roberts
Cota
Moore
Chick
1-25-51
W-21514

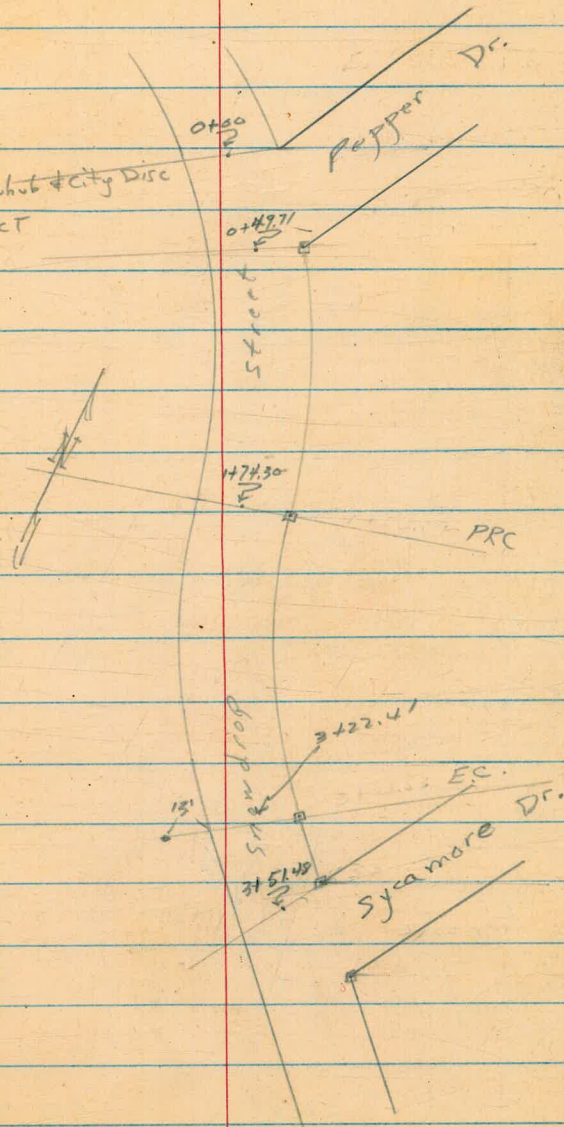
X-Section Snowdrop St.
Pepper to Sycamore
FB 1695 pg 30

INDEXED

JAN 24 1951

(12)

□ Fd 2x2 Rubub + City Disc
• Fd. Ld det



Cont'd From Page 12

1+50

285.6	285.1	284.9	284.3	283.9	283.2	283.4	283.2	283.2
6.4	6.9	7.1	7.7	8.1	8.8	8.6	8.8	8.8
35	25	13	11		13	16	25	35

1+34 24.2 Lt center 10" Pepper

1+18 24.8 Lt center 8" Pepper Tree

1+00

287.0	286.6	285.9	285.2	285.1	284.7	285.4	285.2	285.1
5.0	5.4	6.1	6.8	6.9	7.3	6.6	6.8	6.9
35	25	13	9		10	13	25	35

0+64 18.2 Rt to Deadman

287.8	287.5	287.1	286.5	286.6	285.9	286.5	286.7	286.4
4.2	4.5	4.9	5.5	5.4	6.1	5.4	5.3	5.6
35	25	15	12		10	13	25	35

0+49.71

{ 25' Lt Begin 5" Wire fence
Radial to SE Prop. Corner Pepper
17.2 Rt to Center P. Hole #P2698

0+25

Reduced
1-24-51
AMT.

288.2	287.7	287.3	286.5	287.1	287.0	286.9
3.8	4.3	4.7	5.5	4.9	5.0	5.1
50	25		12	15	25	35

0+00 = Radial from N.E. Prop. Cor of Pepper

288.7	289.2	288.1	287.6	287.4	287.0	287.3	287.24	286.87
3.3	3.8	3.9	4.4	4.6	5.0	4.7	4.8	5.12
50	25	15	12		12	15	25	35

BM 2.85 291.99
↑

Pipe SE Cor
Snowdrup + Taylor
289.14

291.99
↑

2
cont.
Drops
14

RE. (3)

Contd From Page 13

Lt

E

Rt

(14)

2710E 17' Lt. Center P. Pole # 2649

2708 25' Rt. E 3' Conc. Walk

1794 17' Rt center Guy Pole

1791 25' Rt E 3' conc. Walk.

T.P. 2.35 285.70 8.64 283.35

285.70

1774.30 P.R.C.

1764 26' Rt E 3' Conc. Walk

1756 23' Lt Center 8" Pepper

291.99

291.99

282.09

281.80

280.74

3.62
2.53
TOT
stop

3.90
2.62
walk

4.76
3.5
conc

282.39

282.00

280.25

3.31
2.53
conc
stop

3.70
2.61
conc.
walk

5.45
3.5
conc

284.9

284.8

284.5

283.6

283.3

282.9

283.2

283.1

7.1
3.5

7.2
2.5

7.5
1.4

8.4
1.1

8.7

9.1
1.5

8.8
2.5

8.9
3.5

283.34

283.19

8.65
2.65
conc.

8.80
4.15
conc

Cont'd From Page 14

14

15

16 (25)

3+10 25³ Rt & 3' Conc Walk

279.65
6.05
25³
conc 5.95
35

2+95 27³ Lt & 3' Conc Walk

283.05
2.65
37
conc 282.83
2.87
273
conc

2+90 27⁰ Rt & 9' Conc Drive (Bad Shape)

279.77
5.93
27⁰
conc 7.03
5.43
Fiber

2+75

283.3
2.4
35 282.9
2.8
25 282.4
3.3
15 281.7
4.4
8 281.4
4.3
12 280.9
4.8
25 280.4
5.3
35 280.1
5.6
35

2+31 25⁵ Rt & 3' Conc Walk

290.93
4.77
25⁵
conc 290.42
5.28
35
conc

2+25

283.8
1.7
35 283.7
2.0
25 283.1
2.6
14 282.4
3.5
10 282.4
3.3
16 281.6
4.1
25 281.6
4.1
35 281.3
4.4
35

285.70
↑

285.70
↑

Cont'd From Page 15

LT

R

RT

(16)

Check

5.65 280.05 = 280.05 Gal Spks in P. Pals SE Cor Sycamore & Sandtrap

3+51.48

Nly Line Sycamore

Levels 1 to 2

2820	2816	2814	2802	2803	2791	2789	2763
37	41	43	55	54	66	68	94
50	25	16	13		15	25	50

3+22.41

EC

2827	2820	2815	2804	2807	2797	2795	2791
30	37	42	51	50	60	62	66
35	25	15	7		15	25	35

28570

*

28570

*

X-Sect. Idaho St. Roadway from El Cajon to S.L. of Howard

5915 1-14-52- 7.0.

W.O. 60014

INDEXED
New
JAN 15 1952

0+50

80 N. = N.L. Howard = 0+50 ahead.

66 N. = N. cb.

53 N.

40 N. = ±

27 N.

14 N. = S. cb.

used E. cb. of Idaho - from Howard N. for back

0+00 = S.L. Howard.

B.M. = S.E. BP. - Idaho & Howard 373.01

Lt. # Rt.

73.59 73.15 73.57 73.73 73.51 73.05 73.40
Top 26 13 13 26 Top
gut.

74.17 72.81 73.16 73.34 73.13 72.76 73.16
C40 26 13 13 26 Top
conc. Dr. gut.

73.06 72.77 73.10 73.24 73.04 72.69 72.61 72.11 72.11 72.11
Top 23.7 10 13 28 40 Top 90 Top
gut. class gut. Top gut. Top

73.01 72.73 73.02 73.19 73.05 72.68 73.10
Top 214 10 13 28 40
gut. gut.

72.99 72.62 72.90 73.11 73.00 72.61 73.13
Top 19 10 13 28 40
gut. gut.

72.92 72.53 73.02 72.96 72.53 72.98
Top 16.6 13 30 40
gut. gut.

74.58 73.01 72.98 72.57 72.96 72.94 72.42 72.57 72.18 72.94 73.42
19.8 walk Top 14.4 13 30 40 Top 90 Top
Bill cross gut. gut. Top gut. Top

74.42 73.05 73.01 72.48 72.88 72.90 72.32 72.98
Top 16 Top 12 13 30 40
wall walk Top gut. 300 ft. Not noted gut. Top

Actual Elev. Shown.

25' slope - comml
 60' slope - comml
 25' Dr - comml



3+37.6 = S.L. of El Cajon = in Dr. on Rt.

75.85 75.33 75.68 75.55 75.29 74.77 75.46
 Top 26 13 13 26 30.6
 gut. Dr. walk

2+90

75.75 75.22 75.44 75.35 75.10 74.41 74.71
 Top 26 13 13 26 26
 gut. Top

2+40

75.18 74.58 75.05 75.02 74.78 74.09 74.41
 Top 26 13 13 26 26
 gut. Top

1+94.5 = N. cb of Alley

74.90 74.28 74.61 74.67 74.41 73.81 74.16 74.29 74.34
 Top 26 13 13 26 26 40 40
 gut. 2 Rad. gut. Top
 cb.

1+85.2 = E Alley

73.80 74.21
 26 40

1+74.8 = S. cb. of Alley

rem 12' palm
 new res
 Dr
 0+173 beg

74.59 74.12 74.51 74.56 74.26 73.72 74.22 74.43 74.63
 Top 26 13 13 26 26 40 40
 gut. 2 Rad. gut. Top

1+50

74.33 73.88 74.33 74.39 74.15 73.62 73.94
 Top 26 13 13 26 26
 gut. Top

1+00

73.94 73.53 73.89 74.08 73.80 73.24 73.62
 Top 26 13 13 26 26
 gut. Top

0+87.5 - 22.8 Lt. = NE Cor.

75.47 73.50
 22.8 - 22.8 = pave
 Top

0+73.8 - 22.8 Lt. = SE Cor. of Conc. Base
 Cor Pump

75.46 73.45
 22.8 - 22.8 = pave
 Top Conc.

Lt.

Rt.

(19)

Polk = 370.03 Book shows 369.96
 check from 373.01 at Howard to S.E. B.P. at

check B.M. = S.E. 7' ct. 375.40

375.43 = Book.

3+57.6 = S. cb. line of El Cajon.

75.26
Top

75.30
90
cut

75.86
Top
cut

75.40
40
cut

75.48
26

75.66
13

75.55

75.33
13

74.87
26

74.56
40
cut

74.98
Top

74.20
80
cut

74.71
Top

3+45.1 = Top of cb. at end of Drive

74.73
26
cut

75.18
Top

X- Sect. Intersection of Idaho + Polk
See P. 19 for Diff in B.M's.

80' N. = N.L.

66' N. = N.cb.

57' N. = 11.9' Lt. = Ang. pt. in cb. = Line of cb. to N.

53' N.

40' N. = E

27' N.

14' N. = S.cb.

0+00 = S.L. Polk

check NE B.P. at Polk + Utah

B.M. = S.E. B.P. - Idaho + Polk

71.58 70.28
Top 15.9
wall walk

368.48 = 368.47
Book

369.96 - used
Book
Elev.

INDEXED

PLW
JAN 15 1952

71.61 70.39 70.27 69.70 70.13 70.19 69.51 69.94
Top 15.9 Top 11.9 13 30 Top
wall walk gut.

70.22 69.63
Top 11.9
gut.

70.05 70.08 69.51 69.62 70.00 69.38 69.91
13 30. 40 Top 90 Top
gut.

70.25 69.67
Top 11.9
gut.

70.19 69.62 69.99 69.97 69.54 69.95
Top 12.9 13 29 40
gut.

70.04 69.53 69.93 69.87 69.54 70.07
Top 16.1 13 28 40
gut. cross gut.

70.09 69.54 69.81 69.91 69.80 69.35 69.83
Top 19.4 10 13 28 40
gut.

70.17 69.57 69.83 69.94 69.80 69.50 69.10 69.32 69.77
Top 22.5 13 13 26 40 Top 90 Top
gut. gut. gut.

70.20 69.47 69.85 69.89 69.75 69.38 69.98
Top 26 13 13 26 Top
gut. gut.

Actual Elev. Shown

Additional Sections - E. of E.cb. of Idaho
 from Howard to El Cajon. Used E. 7'
 Line as base to obtain true outs.

See P. 17 for Orig. Sections - 1-23-52 7.0.

0+54 - 28.6 Rt. = ± 4' Palm

0+50 - 27.5 Rt. = ± W.M.

0+36 - 27.7 Rt. = ± W.M.

0+20 = ± 4' Conc. walk - curb. to House

0+05

0+00 = N.L. Howard - 27.5 Rt. = ± W.M.

0-00.6 = edge of Ret. + Beg. lawn in parking

0-04 = P.C. of 10' Rad.

± of 10' Rad. of N.E. Ret.

B.M. - S.E. B.P. - Idaho + Howard. 373.01

INDEXED
[Signature]
 JAN 24 1952

72.42	72.35	73.56	73.66
26	27.5	30.5	35.5
72.42	Top	walk	
27.7	on		
Pipe	Pipe		

73.28	73.47	73.50	74.00
26	30.6	35.5	40
Top	walk		

73.14	73.39	73.53
26	30.6	35.6
Top	walk	

72.50
 27.5
 Pipe

73.19	73.53	73.64	73.63
26	30.5	35.6	40.1 = Cor.
Top	walk to N.		
cb.			

72.72	73.19	73.46	73.62	73.59
26	Top	30.5	35.6	40.1
gut.		Ret.		

72.69	73.11
gut.	Top

Elev. Shown.

±

Rt

1+74.8 = S. cb. Ret. of Alley

74.03 74.38 74.51
30.7 30.7 35.7
9 ft. (Top at walk)

1+68 = 27.6 Rt. = ± W.M.

73.27
27.6 = pipe

1+59.5 = ± 3' Conc. walk

74.04 74.27 74.39 74.77
26 30.5 35.5 40
Top walk

1+50

73.94 74.22 74.28
26 30.5 35.5
Top walk

1+26 = end Lawn in parking.

1+11 = ± of 4' Conc. walk

73.77 73.95 73.99 74.36
26 30.5 35.5 40
Top walk

1+00

73.62 73.83 73.90
26 30.6 35.6
Top walk

0+86 = 27.4 Rt. = ± W.M.

72.73
27.4 = pipe

0+83 = Nly. of low Sect. of Dr. - 1.5 S. of Reg. cb.

73.27 73.89 73.98 74.24
26 30.5 35.5 40 = walk
Dr. walk

} Note: This Drive is Needed full width - by Prop. owner.
Reg. curb end.

0+78 = Sly. of low Sect. of Conc. Dr. - 1.5 N. of end of

73.21 73.77 73.87 74.24
26 30.6 35.5 40
Dr. walk A.C. Dr.

0+70 = 28.7 Rt. = ± 12" Palm.

0+62 = ± 4' Conc. walk

73.49 73.59 73.65 73.98
26 30.6 35.5 40
Top walk

±

Rt.

23

E. of Reg. walk
 3+37.57 = S.L. of El. Cajon - end CL + Beg. Conc.

75.54
 35.6
 walk
 40 = C.L. end.
 + Beg. Conc.

3+17 = Sly. of Low sect. of Conc. Dr. - 1' N. of end of cb.

74.61
 26
 Dr.
 73.95
 28 = pipe
 75.10
 30.6
 walk
 75.15
 35.6
 75.46
 40 = C.L.

3+15.5 - 28' Rt. = ± w.M.

2+90

74.71
 26
 Top
 74.83
 30.5
 walk
 74.91
 35.5
 75.52
 40 = C.L.

2+80 = Nly. of Low Sect. of Dr. - 1.5' S. of end of cb.

74.37
 26
 Dr.
 74.85
 30.6
 walk
 74.94
 35.6
 75.60
 40 = C.L.

1' N. of end of cb.
 2+50 = Sly. of Low Sect. of Conc. Dr. to Car hot

74.28
 26
 Dr.
 74.72
 30.6
 walk
 74.78
 35.6
 75.48
 40 = C.L.

2+40

74.42
 26
 Top
 74.65
 30.6
 walk
 74.75
 35.6
 74.88
 40 = C.L.
 along wall

2+30 = ± 4' Conc. walk - cb. to walk

74.39
 26
 Top
 74.58
 30.6
 end at
 74.71
 35.6
 Reg. walk

2+00

74.15
 26
 Top
 74.33
 30.6
 walk
 74.42
 35.6
 74.71
 40 = C.L.
 along Bldg.

1+96 - 28.4 = Rt. = Deadman + 38' Rt. = Tel. pole # 461047-H
 of walk

1+94.2 = N. cb. of Alley. - Beg. Cold Lay Back

73.98
 30.6
 gut.
 74.23
 30.6
 Top
 at walk
 74.28
 35.6

Φ

Φ of 10' Rad.

74.75 gut.
75.20 Top

3+47.57 = P.C. of 10' Rad. of Ret.

74.72 75.20 75.29 75.35 75.27
25.8 gut. Top 30.5 35.5 40

3+45.2 = end Dr. Sect. = Sledge of walk to E.

74.73 75.19 75.40 75.47 75.40
25.9 gut. Top 30.5 35.5 40 = walk To E.

3+43.5 = Uly. of Low Sect. of Dr. - 15' S. of end of cb.

74.75 75.40 75.44 75.41
26 Dr. 30.6 walk 35.6 40 = Conc.

Clark
Shepherd
Bryson

X-SECT. PEPPER DR. across

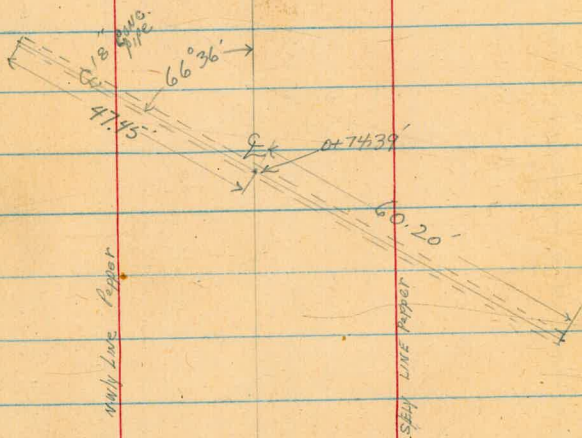
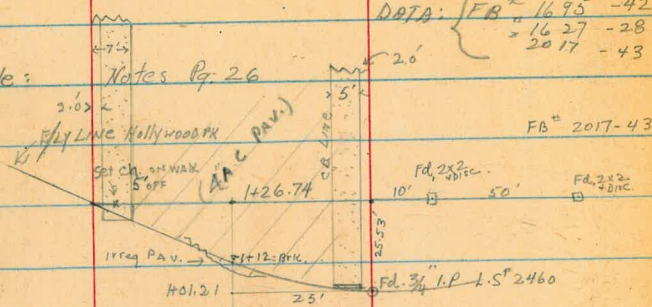
HOLLYWOOD PK.

8-8-52
WO-21003

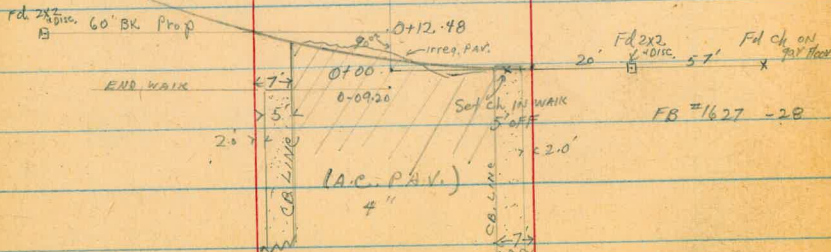
DATA: { FB # 1695 -42
 = 1627 -28
 2017 -43

INDEXED
AUG 11 1952

Not to scale:



WALK LINE HOLLYWOOD PK.



X-SECT. PEPPER DR.
ACROSS HOLLYWOOD PARK

LT.

RT.

0+50.55

opp. END-PIPE.

55.20 RT.

0+50

0+25

0+12.48

opp. Prop. LT.

+ END PAV &

(PAV. INV. here: Contractor
Apparently Carried PAV. Ahead to meet
old grade into Hollywood Pk, putting
in excess to avoid Break-up
of PAVING AT Prop. LINE-Holly-Pk
& Pepper by Future traffic.

0+09.89

END CB RT

0+01

END CB RT

0+00 = INTER. OF S&W Line Pepper & WLY Line Hollywood Park

0-25

0-50

Sections shown as aid in establishing
grade in Hollywood Pk.

T.P

3.96

286.62^v

9.41

282.66^v

BM

3.01

292.07^v

289.06 ch □ on C.C. RING AROUND Tree
N/E CORN. Pepper & SNOWDROP

279.2	277.2	281.5	281.7	281.8	281.9	281.3	280.8	278.7	25.53	55.20	261.09
74 50	9.4 39	5.1 27 Shoulder	4.9 25	4.8 18	4.7	5.3 18	5.8 21 Shoulder	8.3 25	24.0	26.0	262.6
		3.3 8.0	3.9 25	4.1 18	3.9	4.0 18	4.3 23	6.0 25	13.3	14.2	262.6
			2.3	3.1	3.06	3.6 18	3.0 20	3.3 25	38	50	262.6
284.1	284.4	284.20	285.73	287.22	287.22	287.58	287.58	287.2	287.2	287.2	282.4
2.5 50	2.2 25	2.42 18 TP CB	2.89 18	2.83 9	2.85	3.04 9	3.34 18 DIT	2.9 20	2.9 25	4.2 50	282.4
		284.1	284.05	284.26	284.18	284.05	283.60	283.2	283.2	283.2	282.4
		1.9 25	2.15 18 CB	2.36 9	2.44	2.57 9	3.02 18 G	2.60 18 CB	2.9 20	2.9 25	282.4
284.1	284.8	284.2	284.06	284.26	284.21	284.02	283.60	283.2	283.2	283.2	282.4
1.9 35	1.8 25 P.H.	2.15 18 TP CB	2.56 18 G	2.36 9	2.41	2.60 9	3.02 18 G	2.46 23 OR WALK	2.60 25	2.8 35	282.4
		0.80 23 BK WALK	0.97 18 TP CB	1.32 18 G	1.27	2.00	1.54 18 CO	1.36 23 WALK			282.4
		284.82	284.06	284.26	284.21	284.02	283.60	283.2	283.2	283.2	282.4
		0.27 23 BK WALK	0.22 18 TP CB	0.30 18 G	0.08	0.80 18 G	1.8 18 TPCB	0.24 23 BK WALK			282.4

286.62^v

X-SECT. Pepper Dr. (Cont.)

LT. E RT.

Check: 5.16 289.07 = 289.06 Chk. ^{Cont. Tree-RING.} N/E Cor Pepper + Snowdrop

T.P. 961 294.23 2.00 284.62

1475

1450

1422 44

1412

1406

1403.14

0+93.24

0+75

18' LT Bay CB + WALK (comb.)

Grade BRK Pav. ♀

PAV. Edge ♀ (irregular) edge

18' RT Bay CB + WALK (comb.)

opp. END Pipe.

43.59 LT

Sections shown as aid in establishing grade across Holly Wood PK.

CONTRACTOR HAS LAID AN EXCESS OF APPROX. 6' PAV AT E. Feathering off to meet old DIRT grade: INTO HOLLYWOOD PK.

285.02	284.55	284.67	284.63	284.46	284.05
160	207	195	1.99	2.16	2.57
18	18	9		18	18
CO				5	18
283.22	283.22	283.22	283.22	283.22	283.22
3.08	2.85	2.83	3.02	3.39	2.79
18	9	9	18	18	18
283.53	283.49	283.01	283.20	283.20	283.20
303	313	361	342	339	354
WALK	CO	C	9	18	23
272.5	282.4	282.4	282.7	282.5	282.5
14.6	14.1	4.2	4.2	3.9	3.9
50	76	25	18	9	9
	76	shoulder	(DIRT)	PAV. BRK.	PAV. BRK.
282.49	282.49	282.49	282.49	282.49	282.49
4.13	4.13	4.13	4.13	4.13	4.13
270.7	270.7	280.6	282.0	282.7	282.68
16.3	16.5	6.0	4.6	4.5	3.94
75	44	25	23	18	23
	76		shoulder	DIRT	BRK WALK
269.0	269.7	269.5	269.7	269.2	277.9
16.8	17.45	17.0	4.9	4.7	8.7
50	43.59	43	21	18	32
	Flowline Pipe	76	shoulder	shoulder	76
272.6	272.5	280.8	281.6	281.6	281.0
14.0	14.1	5.8	5.2	5.0	5.6
50	40	25	24	18	27
	76		shoulder		shoulder
272.7	272.7	272.7	272.7	272.7	272.7
14.3	14.3	14.3	14.3	14.3	14.3
40	40	40	40	40	40
76	76	76	76	76	76
271.4	271.4	271.4	271.4	271.4	271.4
50	50	50	50	50	50

286.62

CROSS SECTION DEL REY - GLENDORA TO
ROSEWOOD STREETS W.O. 32216

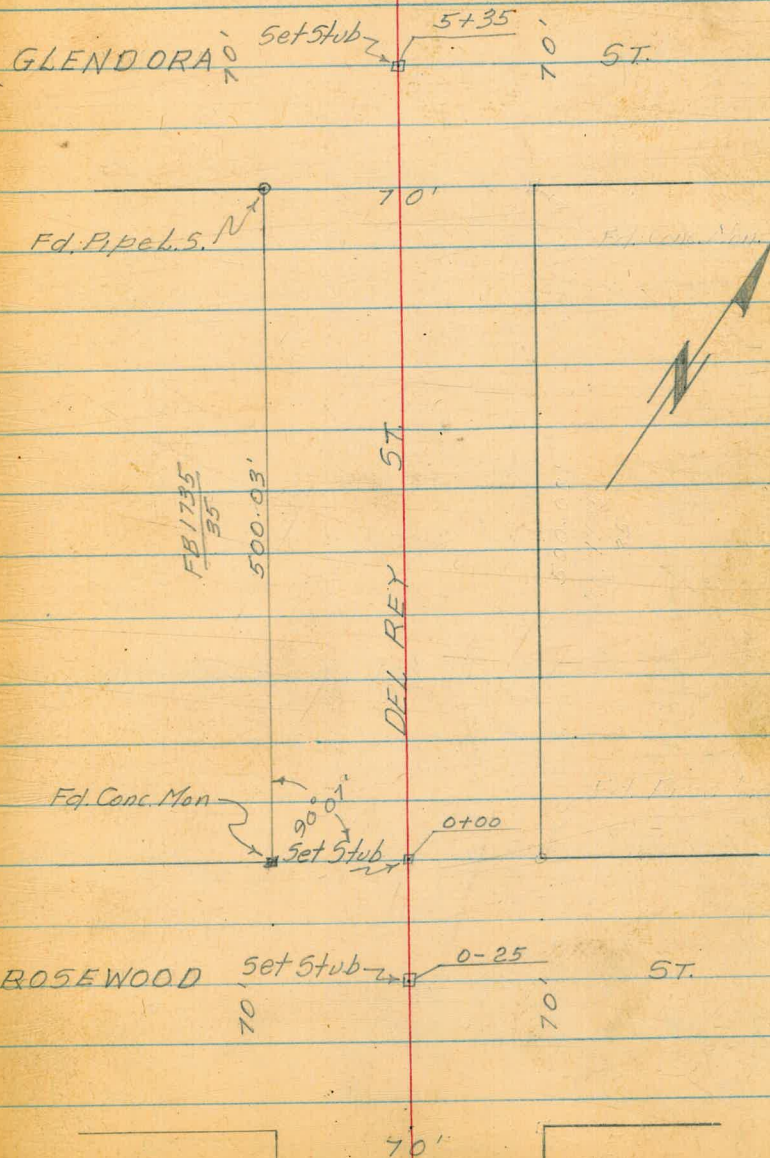
NOTE: Soil Sample Taken @ Sta 3+00
4 5' Wly. of $\frac{1}{2}$

INDEXED
MAY 1 1953

Ref. F. Books
1735
1749

Fd. Conc. Man

T. Stamper (28)



CROSS SECTIONS DEL REY ST. ROSEWOOD
TO GLENDORA STEPHENS ADDITION W.O. 32216

Raining @ 2:30 P.M.
4-29-53

T. Stamper
T. J. Huffman
R. Shorey
A. Sherry

Lt. & Con. Walk on Rt.

1+00

0+88 & 2.5' Conc. Walk

0+70 L Pt. in Picket Fence on Rt.

Lt. & Rt.
18.9 19.7 20.3 20.5 21.9 22.7
50 35 14 0 34.5 50

@ Picket
Fence

21.8 22.36
34.8 34.8
Ground TOP
Conc. Walk

34.4'
Picket Fence

0+65 End 2-Car Gar. on Rt.

21.28 22.26
26 4.9

Edge old Face Bldg
A.C. Ramp on Ramp
Floor

0+49 Begin 2-Car Gar on Rt.

18.6 19.7 19.5 20.2 20.0 20.4 20.1 20.1
50 35 29 22 20 8 7 0

21.23 22.15
25 50

Edge old A.C. Face Bldg
Ramp on Ramp
Floor

0+00

18.5 19.1 19.2 19.4 19.3 19.78 21.1 21.5
50 35 31 21 19 0 35 50

on stub

0-25

18.1 19.3 19.88 20.8 21.5
50 25 0 25 50

on stub flush

B.M.

17.89 $\frac{17.49}{32}$

Conc. Mon. Del Rey & Rosewood

4-30-53

CROSS SECTIONS DELREYST CONTD

Lt # Rt

2+50

19.4	19.9	20.5	20.7	21.1	21.4	21.8	22.4
50	35	14	0	14	15	35	50

2+126 & 2.5' Wide Conc. S. Walk on Lt.

19.81	19.7
35.0	35.8
Top Conc Walk	Ground

2+00

19.5	19.6	20.6	20.7	21.1	21.3	22.2	22.5
50	35	11	0	17	18	35	50

1+77.3 S. Face Stucco Bldg on Lt. 26' Wide. #3430

50	
20.38	20.1
35.1	35.1
Top Conc S. Walk	Ground

1+76 & 2.5' S. Walk on Lt.

1+70.2 End Sing Car Gar on Lt.

19.73	20.31
56	35.6
Top Conc Floor	Conc Ramp To Gar

1+58.7 Begin Ramp to Sing Car Gar on Lt.

19.72	20.29
56	35.4
Top Conc Floor	Conc Ramp to Sing Gar.

1+50

20.1	20.1	21.0	21.3	22.2	22.6
50	35	0	20	35	50

1+25.4 Cor Picket Fence

1+22.4 Begin Stucco Bldg N^o 3424 on Lt. 32.5' Wide

50
Face Bldg

34.0
Fence
Cor.

4-30-53

CROSS SECTIONS DEL REY ST. CONTD.

Lt. \$ Rt.

5+00

22.7 22.8 22.9 22.6 23.8 23.9 24.5 25.2 26.3
50 35 28 27 0 6 8 35 50

4+50

21.8 22.0 22.5 22.1 23.1 23.3 24.0 24.6 25.0
50 35 26 24 0 6 8 35 50

T.P.

23.14

4+00 End Woven Wire Fence on Rt

21.2 21.6 21.8 21.8 21.6 22.6 22.8 23.4 23.9 24.4
50 35 30 24 22 0 6 10 34.7 50
Fence Cor. Fence Cor.

3+50

20.5 20.9 21.4 21.2 21.9 22.2 22.7 23.3 23.6
50 35 23 20 0 8 14 35 50
@Fence

3+42⁷ N. Face Bldg #3450 & Picket Fence

54.3 35.2
Face Bldg Picket Fence

#3450
3+13 S. Face Bldg & Picket Fence

54 35.3
Face Bldg Picket Fence

3+00 Beg Woven Wire Fence On Rt.

19.9 20.3 21.0 20.8 21.2 21.6 22.7 22.9
50 35 18 16 0 12 34.8 50
Fence Cor. Fence Cor.

CROSS SECTIONS DEL REY ST. CONTD

4-30-53

Lt. Rt.

B.M.

22.59

Top 3/4" I.P. L.S. Sly Glendora & Wly Del Rey

B.M.

23.88m 23.92

1799 Nly Glendora & Wly Del Rey

30

Conc. Man. (Top Broken)

5+35 & GLENDORA

on stub Flush

20.6	21.5	22.3	22.9	23.1	24.19	25.1	25.5	26.2	27.3	
100	75	50	35	20	0	25	35	50	75	100

5+19 GUT SEC. SLY GLENDORA

21.1	21.8	22.3	22.7	24.0	24.3	24.9	25.1	25.8	26.9
75	50	35	20	0	6	9	35	50	75

5+18 TOP OF CUTBANK SLY GLENDORA

21.0	22.5	22.8	22.7	24.0	24.3	24.9	25.6	26.3	27.3
75	50	35	20	0	6	9	35	50	75

5+08.8 & 1' Dia Power Pole on Lt.

42 3

INDEXED
MER

33

X-sec Del Rey ST to Glendora ST to

Bunker Hill ST

2/1/55 - W.O. # 32448-

C. Allen, W. Garber, D. Sisson, C. Powell

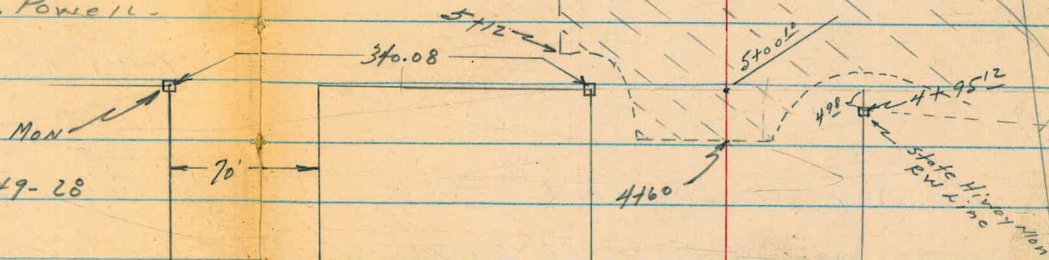
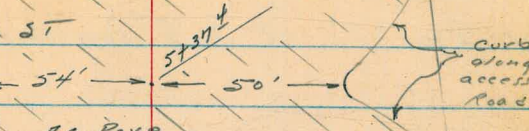
Ref Data: TP sheets 1515, 1514

Dwg 10807-L

FB 2102-28, 1422-64, 1749-28

1735-31-35

Bunker Hill ST



Block 2

Stephens Add

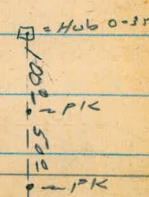
35' 35'

Blk 1
Stephens
Add.

REVERSE ST

DEL REY ST

Soil Sample
200' NLY of NLY
line Glendora



Glendora ST

Hub set from 20106 Rad p/s
SWLY of DEL REY ST
Set RW Hub + Disk
PROP PIPE SWLY COR Glendora at Del Rey

Levels for X-sec of Del Rey
 ST. Glendora ST to Bunker Hill ST
 See sketch page 33

LT=swly

Del Rey

RT=ELY- 34

-Rain-

0-15- 35[±] LT= 8" Power pole #JP3096

0-17

23 ⁵	23 ⁴	23 ⁶	23 ⁷	24 ⁴	24 ⁴	25 ⁰	25 ⁸
35	23	18	17		9	18	35
			E.P.		E.P.		

Note: Del Rey Paved with 1"± thick
 oil pave. each edge of oil shown in
 Notes as E.P.

0-35 = 8 Glendora

BM - ON 2"x2" RW Hub + Disk + Del Rey = 23.60

20 ⁵	22 ²	22 ⁷	23 ⁵	24 ²	24 ⁷	25 ⁴	26 ^L	28 ⁶
100	50	35	18		18	35	50	100
			E.P.			E.P.		

} Sly Line Glendora ST

0-70 = Nly edge A.C. Paving + Nly end curbs

0-73 = curb BC's.

22 ⁸	23 ⁰⁶	22 ⁵⁷	23 ⁰⁷	23 ³⁰	23 ³⁶	23 ¹⁵	23 ⁴⁵	24 ⁸
35	18 [±]	18 [±]	9	A.C.	9	18 [±]	18 [±]	35
	T.C.	9UT	A.C.		A.C.	9UT	T.C.	
	ONRET	ONRET				ONRET	ONRET	

Direct elev Rod used - True all elevations are

BM.

~~XXXXXXXXXX~~
 This bench OK 22.59

Page 32
 Top 3/4" pipe + disk Swly Glendora + Del Rey.

X-sec Del Rey cont

LT = wly

Del Rey

RT = ehy

35

0+62 - 35² LT = end Conc Block Wall

26 ⁸	23 ⁵	24 ²
35 ²	35 ²	35 ²
Top Wall	Foot	9 ^v

0+50

23 ⁵	23 ⁹	24 ⁵	24 ⁶	25 ⁴	25 ³	26 ¹	26 ²	27 ²	27 ⁸
50	35	22	18		8	15	18	35	50
		E.P.			E.P.				

opening in wall

0+45 - 38⁰ LT = 8' wide conc drive

23 ⁵¹	23 ⁵⁸	23 ⁹²
62 ²	48	38 ⁰
90 ^v	48	38 ⁰
floor	endrive	concdrive
conc		

0+25

23 ⁵	24 ¹	24 ³	25 ¹	24 ⁹	25 ⁷	25 ⁷	26 ⁴	27 ³
35	24	22		8	15	18	31	35
		E.P.		E.P.				

opening thru wall
35⁰ LT = 3⁵ wide conc walk
and walk

0+23 - 35⁰ RT = 2⁵ wide conc steps

23 ⁶⁰	23 ⁶²	27 ⁵⁰	27 ⁹⁷	27 ⁹⁴
45 ⁰	35 ⁰	35 ⁰	36 ⁵	46 ⁵
walk	walk	Bottom	Top	on walk
		stop	stop	
			+walk	

35² LT = begin Conc Block Wall

0+00 = Nly line Glendora st

23 ⁰	26 ³⁰	23 ⁰	23 ⁶	23 ⁶	24 ⁰	24 ⁰	24 ⁵	24 ⁵	25 ⁵	26 ¹	26 ⁹	27 ²
50	35 ²	35 ²	35 ²	35	24	20 ⁵		8	16	31	35	50
	Top	Foot	grat	Wall		E.P.		E.P.				
	Wall											

True elevations

X-sec Del Rey cont

1701- 38° LT = ϕ 2⁵ Conc Walk

1700

0+89- 38° LT = ϕ 2⁵ Wide Conc Walk

0+82- 28° RT = ϕ 2' Wide Conc Walk

0+77- 38° LT = ϕ 3⁵ Wide Conc Walk

0+75

LT = wly

ϕ
Del Rey

RT = eley

36

24⁶⁰ 24⁷⁸
48° 38°
Walk Walk

24² 24⁶ 25⁰ 25² 25⁸ 25⁷ 26⁵ 26⁷ 27⁷ 28²
30 35 23 18 8 14 18 35 50
E.P. E.P.

24⁴⁸ 24⁶⁴
48° 38°
Walk Walk

27¹⁰ 27³⁸ 27⁶³
28° 35 38°
Walk Walk Walk

24²⁰ 24⁴¹
48° 38°
Walk Walk

24³ 24⁷ 24⁸ 25⁵ 25⁶ 26² 26³ 26⁸ 27¹
35 22 18 8 14 18 25 35
E.P. E.P.

True eley

X-sec Del Rey cont

2+20-25⁴ RT = end conc drive

2+04 - 25⁴ RT = begin conc drive

2+00-35² LT = begin 3' high cyclone fence

1+75

1+50

1+25

1+23-38² LT = 2⁵ wide conc walk

LT = W14

2
Del Rey

RT = e14

37

29 ²⁴	29 ⁵⁶
25 ⁴	45 ⁴
WALK	ON DRIVE
CONC DRIVE	

29 ²⁶	29 ⁶⁰
25 ⁴	45 ⁴
ON DRIVE	ON DRIVE
SWYCK	

25 ⁸	26 ⁰	26 ²	26 ⁵	27 ⁰	26 ⁹	27 ⁵	27 ⁷	29 ²	29 ⁷
50	35	22	18		7	14	18	35	50
		E.P.			E.P.				

25 ⁶	26 ²	26 ⁴	26 ⁷	26 ⁷	27 ³	27 ⁵	29 ⁰
35	22	18		8	13	18	35
	E.P.			E.P.			

25 ⁰	25 ⁵	26 ⁰	26 ¹	26 ⁵	26 ⁶	27 ²	27 ²	28 ¹	29 ⁰
50	35	22	18		8	14	18	35	50
		E.P.			E.P.				

25 ¹	25 ⁵	25 ⁶	26 ²	26 ¹	26 ⁸	27 ⁰	27 ⁹
35	22	18		8	13	18	35
	E.P.			E.P.			

24 ⁹⁰	25 ¹⁶
48 ²	38 ²
WALK	WALK

True elevations.

X-sec Del Rey Cont

LT=WHY

Del Rey

RT=ely

38

3+50

26 ⁸	27 ⁴	28 ²	28 ²	28 ⁵	29 ²	29 ¹	29 ²	30 ¹	31 ⁰	31 ⁴
50	35	29	21	18	6	6	10	18	35	50
			E.P.			E.P.				

3+25

27 ²	27 ⁶	27 ⁸	28 ⁶	28 ⁶	29 ⁰	29 ⁵	30 ⁴
35	21	18	6	6	13	18	35
	E.P.			E.P.			

3+00

26 ⁴	26 ⁸	27 ³	27 ⁴	28 ²	28 ²	29 ⁴	29 ⁴	29 ²	30 ⁴
50	35	20 ⁵	18	7	7	15	18	35	50
		E.P.			E.P.				

2+75 - 35⁰ LT = end 3' high cyclone fence

26 ⁹	27 ²	27 ²	27 ⁸	27 ⁹	28 ⁸	29 ⁶
35	22	18	7	18	35	
	E.P.			E.P.		

2+50

26 ⁹	26 ⁹	26 ⁸	27 ⁰	27 ⁵	27 ⁶	28 ⁴	29 ²	29 ⁶
50	35	22	18	7	18	35	50	
		E.P.			E.P.			

2+41 - 35⁵ LT = 2' wide conc walk

26 ⁶⁹	26 ⁶⁶
45 ⁵	35 ⁵
WALK	WALK

2+25

26 ⁵	26 ⁷	26 ⁸	27 ¹	27 ¹	27 ⁶	28 ⁰	29 ²
35	21 ⁵	18	7	18	22	35	
	E.P.			E.P.			

True elev.

X-sec Del Rey
cont

LT=WHY

Del Rey

RT=ely- 39

4+75

32 ⁶	33 ²	32 ⁰⁰	32 ⁴⁶	32 ⁶⁴	32 ⁶²	32 ³⁴	32 ⁹³	34 ⁶	35 ²
35	23	19 ⁵	9	A.C.	13	14 ⁵	16	22	35
		E.P.							
		A.C.					A.C. 90T		

31⁷
50

34⁶
35

35²
50

access Road to Balboa Ave Bypass
4+60 = Sledge of A.C. Paving - State Hiway

31 ⁹	32 ⁴	31 ⁸²	31 ⁹⁶	32 ²²	32 ²⁵	31 ⁹⁷	32 ⁶⁹	33 ⁸	33 ⁸
38	23	20	18	A.C.	7	8 ⁵	10 ⁵	17	18
		Wedge			A.C.				
		A.C.					A.C. GUTTER		

4+25

30 ⁶	30 ⁷	31 ⁰	31 ⁶	31 ⁴	32 ⁷	33 ¹	34 ⁴
35	22	18		5	14	18	35
	E.P.			E.P.			

4+00

28 ⁰	29 ³	30 ⁰	30 ³	31 ¹	31 ⁰	31 ⁹	32 ⁴	33 ²	33 ⁶
50	35	22	18		6	13	18	35	50
		E.P.			E.P.				

3+75

28 ⁶	29 ¹	29 ²	29 ⁵	30 ²	30 ⁰	31 ⁴	31 ⁶	32 ⁴
35	28	22	18		5	13	18	35
		E.P.			E.P.			

True elev.

LT = WLY -

RT = ELY 40

5716 - 36° LT = 2 12" Power pole # 3049

33²
35

35²
35

5400' - = sly line Bunker Hill to Wly -

33 ⁶	320 ⁶	328 ⁰	33 ²⁵	33 ⁶¹	33 ⁸⁷	33 ⁶⁴	34 ³¹
27	22	10		16	30	31 ⁵	33 ⁵
	E.P. Ac.				A.C. 90T		

33⁴
35

36⁰
35

35° RT = Wly end E+W Chain Link Fence
R/W access Road + Ely Line - Del Rey

4495¹² - 35° RT = State Hiway Monument

33 ⁶	320 ⁶	327 ⁶	33 ¹⁴	33 ³⁵	33 ⁵⁵	33 ²⁰	33 ⁹⁷
27	21	11		13	25 ⁵	27 ⁴	29 ⁰
					A.C. 90T		

32⁹
35

33⁵ 35⁴ 35⁵
26 30 35

4485

33 ¹	31 ⁸⁸	326 ³	328 ⁸	330 ²	330 ⁶	326 ⁷	33 ³²
24	20	9		9	19 ⁵	21 ⁵	23 ⁰
	E.P.				A.C. 90T		
	A.C.						

True elevation

5+155²

X-sec Del Rey cont

LT = Wly

Del Rey

RT = eLy AL

TBM.

36.71

ON state Hiway Mon- SETY cor Del Rey + Bunker Hill St

502 RT = face curv 1' Radius Returns.
5+37⁴ ± = A.C. Paving on access Road

30 ⁸²	32 ⁰⁰	32 ⁹³	33 ⁸¹	34 ⁸⁰	35 ⁸⁰	36 ⁷³	37 ²³
54	35	18	18	35	50 ⁰	50 ⁰	
Wly of					90T	Tic.	
A.C. Pave							

5+12

30 ²³	31 ⁶⁴	32 ⁹³	33 ⁵⁴	34 ²⁵	34 ⁸⁰	35 ¹²
54 ⁰	35	14	A.C. 19	35	45	
Swly cor	Sl y edge				A.C.	
A.C. Pave	A.C. access				Access	
access Rd	Road		True	elevation	Road	

3-17-55

T.A. Stamper #3

CROSS SECTION REVERE ST.; GLENDORA
TO BUNKER HILL W.O. 32448

Ref. F.B. 1735

Map No 964

T.P. Sheet 1515

INDEXED
JER
MAR 18 1955

BUNKER HILL

ST.

295'
295'

20' 06" Rad. Pts
Set good for ties

Fd. Conc. Mon.

35'

5+00

Set "2x2" Hub & Tr

ST.

3+65

ALLEY

10' 10"

(35.5')

REVERE

Fd. 3/4" Pipe

RE. 2201

35'

35'

Fd. Conc. Mon. 1735
(87.45')

M. 87.62'

M. 70.0'

M. 35.02'

0+00

Set "2x2" Hub
Fd. 3/4" Pipe
No 1 illegible

GLENDORA

ST.

35'
35'

PAC. HI-WAY



CROSS SECTION REVERE ST.; GLENDORA
TO BUNKER HILL W.O. 32448

NOTE Direct Elev Rod Usel

3-17-55

- Stampers
- Huffman
- Whipple
- Elmore

Lt.

±

Rt.

0+28-33³ Rt ± 8" Cluster Oleander Trees

0+34⁵ - 35³ Rt. End 8" Conc blk Wall

15.5	14.99	17.49
16.3	15.78	18.28
35.3	35.3	35.3
Ground	ftg	Top 8" Wall

35° H. Begin Ac. Fault
35° Rt. Begin 8" Conc blk Wall

0+00 = Nty Line Glendora

12.04	12.51	12.4	13.4	14.1	14.6	14.19	17.48	15.4
12.83	13.30	13.2	14.2	14.9	15.4	14.98	18.27	16.2
50	35°	22	0	15	35	35	35	50
Ac Fault	A.C. Fault.					ftg. Top Wall		

0-14⁵ 35³ Rt. ± Tel P.N.° 426084-H

0-35 - ± Glendora St.

10.2	11.1	11.7	12.5	13.5	14.2	15.0
11.0	11.9	12.5	13.3	14.3	15.0	15.8
75	50	25	0	25	50	75

NOTE: All Elev's Shown are 0.79 Too High from Level Check (see Pg. 47)

B.M.

10.09

Top N.E. Conc. Mon. Revere & Pacific Hi-Way

1735
31.

REVERE ST. X-SEC

1+50

1+38-35⁵ RT ϕ 4" Shrub

1+33-35² RT ϕ 4" Shrub

1+24⁵ 35¹ Lt. End AC Part (serv. Sta)

1+22-35⁰ RT ϕ 4" Shrub

1+17-35⁰ RT ϕ 4" Shrub

1+13-35² RT ϕ 4" Shrub

1+00

0+98-35⁴ RT ϕ 4" Shrub

0+93-35 RT ϕ 4" Shrub

0+81-35² RT ϕ 3" Shrub

0+50

lt ϕ RT 44
3-17-55

13.5	13.9	14.2	15.4	15.7	16.3	17.1
14.3	14.7	15.0	16.2	16.5	17.1	17.9
50	35	20	0	18	35	50

13.89	14.50
14.67	15.29
50 ²	35 ¹
A.C.	A.C.

13.61	14.15	14.0	14.8	15.5	16.5	17.1
14.40	14.94	14.8	15.6	16.3	17.3	17.9
50	35	20	0	17	35	50
AC	AC					

12.40	13.24	13.4	14.3	14.9	15.8	16.8
13.19	14.03	14.2	15.1	15.7	16.6	17.6
50	35 ²	20	0	17	35	50
AC	AC					@bldg

REVERT ST. X- SEC'S

3+55 = Sly Line Alley Wly

3+55 - 34² Lt. End 6' Board fence

LT.	¢	RT.	#5
3-17-55			
16.1	17.3	17.9	18.5
17.3	18.1	18.7	19.3
50	35	15	0
			2
			27
			35
			50

TR.

16.82

3+00

2+79 - 35² Lt. Begin 6⁵-board fence

14.5	14.8	15.2	16.0	15.6	16.1	17.2	18.0
15.3	15.6	16.0	16.8	16.4	16.9	18.0	18.8
50	35	17	5	0	20	35	50

2+51 - 31² Pl. & 4' Conc. Landing

16.83	16.97
17.62	17.78
312	364
to walk	bk. Conc Landing

2+50

14.3	14.5	15.0	15.4	16.3	16.9	17.5
15.1	15.3	15.8	16.2	17.1	17.7	18.3
50	35	16	0	28	35	50

2+00

14.0	14.3	14.8	15.6	16.4	16.9	17.4
14.8	15.1	15.6	16.4	17.2	17.7	18.2
50	35	15	0	25	35	50

REVERE ST. X-SEC'S

4+50

4+00

3+75 = N1/4 line W1/4 Alley

3+65 \notin Alley W1/4

LT \notin RT. #6
3-17-55

#15.0	15.5	16.1	#16.7	17.0	17.4	17.6
15.8	16.3	16.9	17.5	17.8	18.2	18.4
50	35	15	0	6	35	50

16.4	17.0	17.4	18.2	18.1	18.6	19.7	20.2
17.2	17.8	18.2	19.0	18.9	19.4	20.5	21.0
50	35	15	0	4	23	35	50

16.6	17.4	18.1	18.8	18.6	19.2	19.5	20.0 ✓
17.4	18.2	18.9	19.6	19.4	20.0	20.3	20.8
50	35	15	0	4	28	35	50

16.3	17.2	17.8	18.8	18.5	19.0	19.4	20.0
17.1	18.0	18.6	19.6	19.3	19.8	20.2	20.8
50	35	15	0	3	28	35	50

REVERSE ST. X-SEC'S

B.M.

23.38 ~

22.59 (see Pg. 34) 0.79 diff

TP

18.58

B.M.

10.09 ~

10.09 (Starting Bench See Pg 43)

TP

16.82

17.35

48

0.79 diff.

B.M.

17.09 ~

16.30 Top S.W. Ly Coric Mon Bunker Hill & Reverse

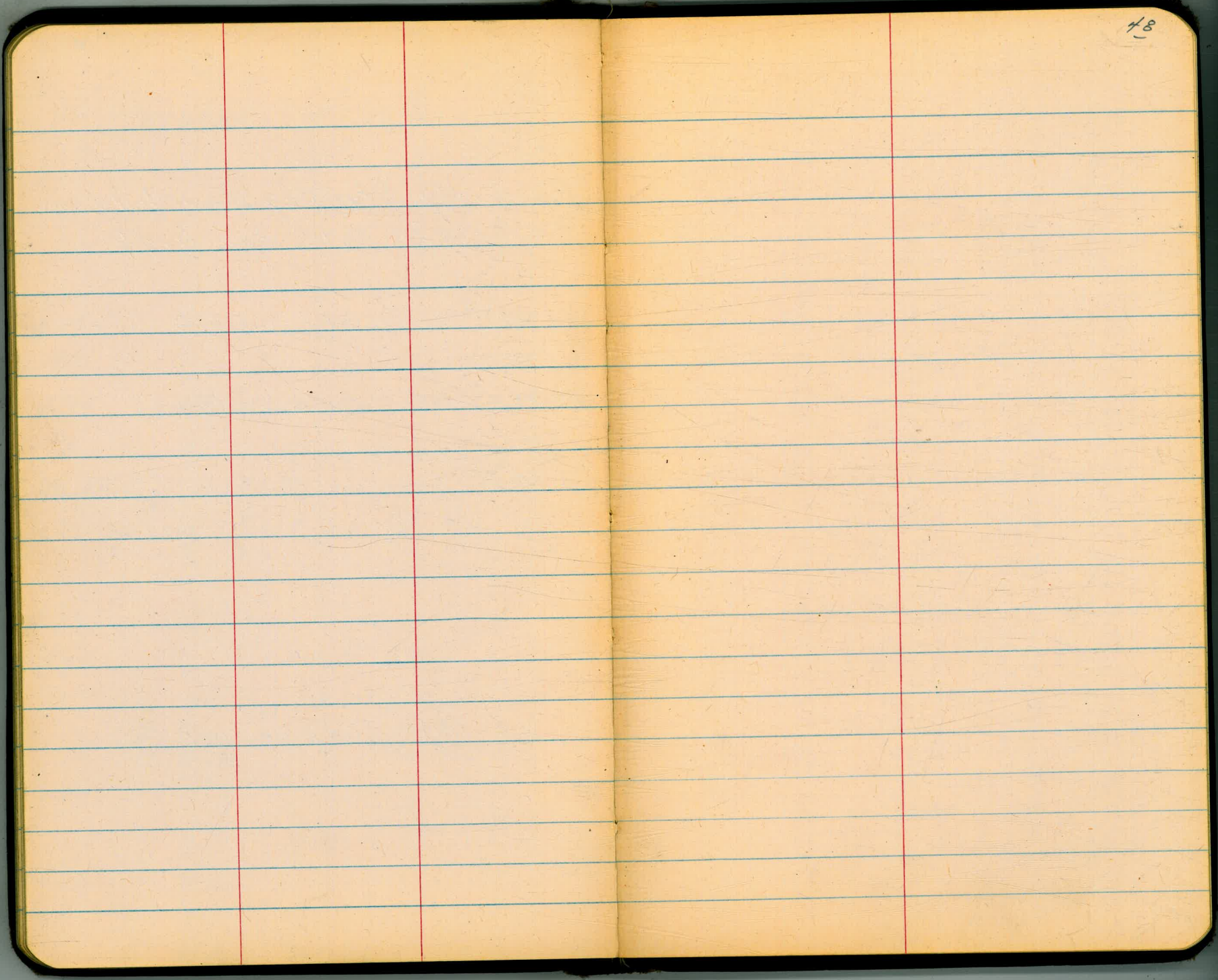
5+29⁵ = & Bunker Hill St.

15.6	16.4	17.2	17.9	18.7	19.5	20.1	20.9
16.4	17.2	18.0	18.7	19.5	20.1	20.9	
75	50	25	0	25	50	75	

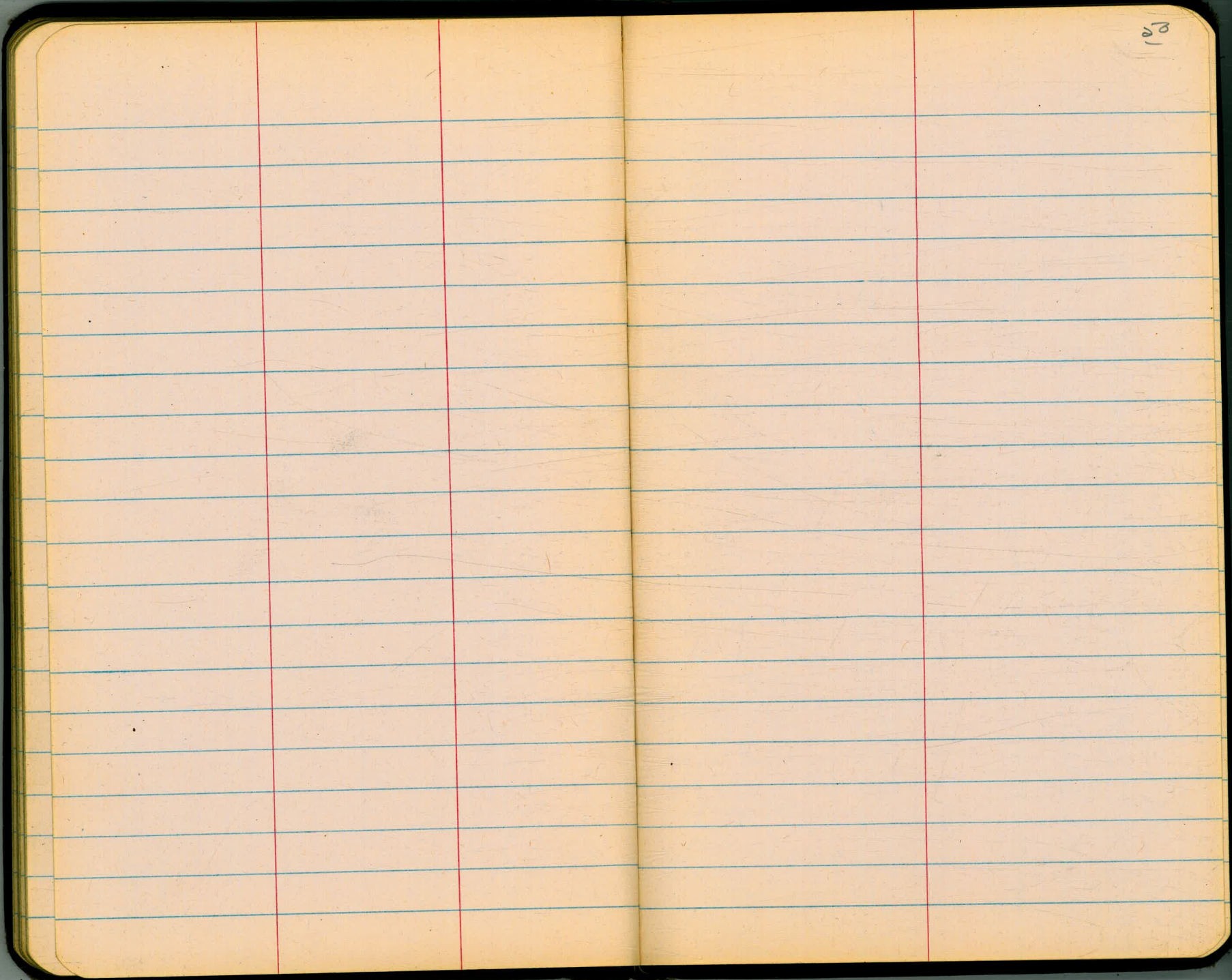
5+10 - 35⁷ Lt. & P.P. N^o 2999

5+00 - Skyline Bunker Hill St.

15.6	16.3	16.7	17.1	17.3	17.9	18.5
16.4	17.1	17.5	18.0	18.1	18.7	19.3
50	35	15	0	10	35	50



The image shows an open notebook with two facing pages. The pages are cream-colored and feature a grid of horizontal blue lines. Each page has a vertical red margin line on the left side. The notebook is bound in the center, and the pages are otherwise blank. The number '49' is written in the top right corner of the right page.



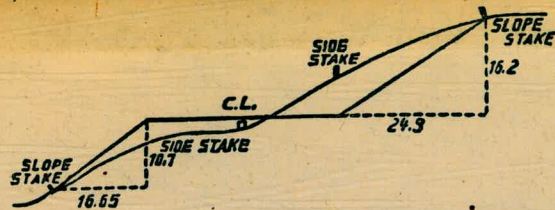
554
 5.09
 45
 503

239
 165
 74

75 = 8.5
 $\frac{75}{85} = \frac{x}{13.5}$

3 + 37.58 = 81

2685
 7



DISTANCES FROM SIDE STAKES FOR CROSS-SECTIONING.

SLOPE 1 1/2 TO 1. ROADWAY OF ANY WIDTH.

	0	.1	.2	.3	.4	.5	.6	.7	.8	.9	
0	0.00	0.15	0.30	0.45	0.60	0.75	0.90	1.05	1.20	1.35	0
1	1.50	1.65	1.80	1.95	2.10	2.25	2.40	2.55	2.70	2.85	1
2	3.00	3.15	3.30	3.45	3.60	3.75	3.90	4.05	4.20	4.35	2
3	4.50	4.65	4.80	4.95	5.10	5.25	5.40	5.55	5.70	5.85	3
4	6.00	6.15	6.30	6.45	6.60	6.75	6.90	7.05	7.20	7.35	4
5	7.50	7.65	7.80	7.95	8.10	8.25	8.40	8.55	8.70	8.85	5
6	9.00	9.15	9.30	9.45	9.60	9.75	9.90	10.05	10.20	10.35	6
7	10.50	10.65	10.80	10.95	11.10	11.25	11.40	11.55	11.70	11.85	7
8	12.00	12.15	12.30	12.45	12.60	12.75	12.90	13.05	13.20	13.35	8
9	13.50	13.65	13.80	13.95	14.10	14.25	14.40	14.55	14.70	14.85	9
10	15.00	15.15	15.30	15.45	15.60	15.75	15.90	16.05	16.20	16.35	10
11	16.50	16.65	16.80	16.95	17.10	17.25	17.40	17.55	17.70	17.85	11
12	18.00	18.15	18.30	18.45	18.60	18.75	18.90	19.05	19.20	19.35	12
13	19.50	19.65	19.80	19.95	20.10	20.25	20.40	20.55	20.70	20.85	13
14	21.00	21.15	21.30	21.45	21.60	21.75	21.90	22.05	22.20	22.35	14
15	22.50	22.65	22.80	22.95	23.10	23.25	23.40	23.55	23.70	23.85	15
16	24.00	24.15	24.30	24.45	24.60	24.75	24.90	25.05	25.20	25.35	16
17	25.50	25.65	25.80	25.95	26.10	26.25	26.40	26.55	26.70	26.85	17
18	27.00	27.15	27.30	27.45	27.60	27.75	27.90	28.05	28.20	28.35	18
19	28.50	28.65	28.80	28.95	29.10	29.25	29.40	29.55	29.70	29.85	19
20	30.00	30.15	30.30	30.45	30.60	30.75	30.90	31.05	31.20	31.35	20
21	31.50	31.65	31.80	31.95	32.10	32.25	32.40	32.55	32.70	32.85	21
22	33.00	33.15	33.30	33.45	33.60	33.75	33.90	34.05	34.20	34.35	22
23	34.50	34.65	34.80	34.95	35.10	35.25	35.40	35.55	35.70	35.85	23
24	36.00	36.15	36.30	36.45	36.60	36.75	36.90	37.05	37.20	37.35	24
25	37.50	37.65	37.80	37.95	38.10	38.25	38.40	38.55	38.70	38.85	25
26	39.00	39.15	39.30	39.45	39.60	39.75	39.90	40.05	40.20	40.35	26
27	40.50	40.65	40.80	40.95	41.10	41.25	41.40	41.55	41.70	41.85	27
28	42.00	42.15	42.30	42.45	42.60	42.75	42.90	43.05	43.20	43.35	28
29	43.50	43.65	43.80	43.95	44.10	44.25	44.40	44.55	44.70	44.85	29
30	45.00	45.15	45.30	45.45	45.60	45.75	45.90	46.05	46.20	46.35	30
31	46.50	46.65	46.80	46.95	47.10	47.25	47.40	47.55	47.70	47.85	31
32	48.00	48.15	48.30	48.45	48.60	48.75	48.90	49.05	49.20	49.35	32
33	49.50	49.65	49.80	49.95	50.10	50.25	50.40	50.55	50.70	50.85	33
34	51.00	51.15	51.30	51.45	51.60	51.75	51.90	52.05	52.20	52.35	34
35	52.50	52.65	52.80	52.95	53.10	53.25	53.40	53.55	53.70	53.85	35
36	54.00	54.15	54.30	54.45	54.60	54.75	54.90	55.05	55.20	55.35	36
37	55.50	55.65	55.80	55.95	56.10	56.25	56.40	56.55	56.70	56.85	37
38	57.00	57.15	57.30	57.45	57.60	57.75	57.90	58.05	58.20	58.35	38
39	58.50	58.65	58.80	58.95	59.10	59.25	59.40	59.55	59.70	59.85	39
40	60.00	60.15	60.30	60.45	60.60	60.75	60.90	61.05	61.20	61.35	40
41	61.50	61.65	61.80	61.95	62.10	62.25	62.40	62.55	62.70	62.85	41
42	63.00	63.15	63.30	63.45	63.60	63.75	63.90	64.05	64.20	64.35	42
43	64.50	64.65	64.80	64.95	65.10	65.25	65.40	65.55	65.70	65.85	43
44	66.00	66.15	66.30	66.45	66.60	66.75	66.90	67.05	67.20	67.35	44
45	67.50	67.65	67.80	67.95	68.10	68.25	68.40	68.55	68.70	68.85	45
46	69.00	69.15	69.30	69.45	69.60	69.75	69.90	70.05	70.20	70.35	46
47	70.50	70.65	70.80	70.95	71.10	71.25	71.40	71.55	71.70	71.85	47
48	72.00	72.15	72.30	72.45	72.60	72.75	72.90	73.05	73.20	73.35	48
49	73.50	73.65	73.80	73.95	74.10	74.25	74.40	74.55	74.70	74.85	49
50	75.00	75.15	75.30	75.45	75.60	75.75	75.90	76.05	76.20	76.35	50

THE NATIONAL BLANK BOOK COMPANY
 HOLYOKE MASSACHUSETTS
 NEW YORK CHICAGO BOSTON SAN FRANCISCO