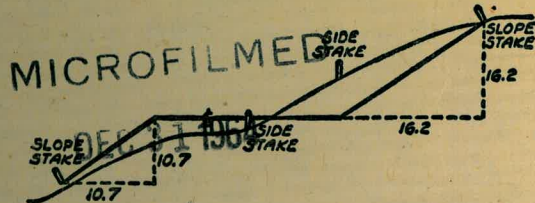


2103

LEANT BOOK





DISTANCES FROM SIDE STAKES FOR CROSS-SECTIONING  
SLOPE 1 TO 1. ROADWAY OF ANY WIDTH

	0	.1	.2	.3	.4	.5	.6	.7	.8	.9	
0	0.00	0.10	0.20	0.30	0.40	0.50	0.60	0.70	0.80	0.90	0
1	1.00	1.10	1.20	1.30	1.40	1.50	1.60	1.70	1.80	1.90	1
2	2.00	2.10	2.20	2.30	2.40	2.50	2.60	2.70	2.80	2.90	2
3	3.00	3.10	3.20	3.30	3.40	3.50	3.60	3.70	3.80	3.90	3
4	4.00	4.10	4.20	4.30	4.40	4.50	4.60	4.70	4.80	4.90	4
5	5.00	5.10	5.20	5.30	5.40	5.50	5.60	5.70	5.80	5.90	5
6	6.00	6.10	6.20	6.30	6.40	6.50	6.60	6.70	6.80	6.90	6
7	7.00	7.10	7.20	7.30	7.40	7.50	7.60	7.70	7.80	7.90	7
8	8.00	8.10	8.20	8.30	8.40	8.50	8.60	8.70	8.80	8.90	8
9	9.00	9.10	9.20	9.30	9.40	9.50	9.60	9.70	9.80	9.90	9
10	10.00	10.10	10.20	10.30	10.40	10.50	10.60	10.70	10.80	10.90	10
11	11.00	11.10	11.20	11.30	11.40	11.50	11.60	11.70	11.80	11.90	11
12	12.00	12.10	12.20	12.30	12.40	12.50	12.60	12.70	12.80	12.90	12
13	13.00	13.10	13.20	13.30	13.40	13.50	13.60	13.70	13.80	13.90	13
14	14.00	14.10	14.20	14.30	14.40	14.50	14.60	14.70	14.80	14.90	14
15	15.00	15.10	15.20	15.30	15.40	15.50	15.60	15.70	15.80	15.90	15
16	16.00	16.10	16.20	16.30	16.40	16.50	16.60	16.70	16.80	16.90	16
17	17.00	17.10	17.20	17.30	17.40	17.50	17.60	17.70	17.80	17.90	17
18	18.00	18.10	18.20	18.30	18.40	18.50	18.60	18.70	18.80	18.90	18
19	19.00	19.10	19.20	19.30	19.40	19.50	19.60	19.70	19.80	19.90	19
20	20.00	20.10	20.20	20.30	20.40	20.50	20.60	20.70	20.80	20.90	20
21	21.00	21.10	21.20	21.30	21.40	21.50	21.60	21.70	21.80	21.90	21
22	22.00	22.10	22.20	22.30	22.40	22.50	22.60	22.70	22.80	22.90	22
23	23.00	23.10	23.20	23.30	23.40	23.50	23.60	23.70	23.80	23.90	23
24	24.00	24.10	24.20	24.30	24.40	24.50	24.60	24.70	24.80	24.90	24
25	25.00	25.10	25.20	25.30	25.40	25.50	25.60	25.70	25.80	25.90	25
26	26.00	26.10	26.20	26.30	26.40	26.50	26.60	26.70	26.80	26.90	26
27	27.00	27.10	27.20	27.30	27.40	27.50	27.60	27.70	27.80	27.90	27
28	28.00	28.10	28.20	28.30	28.40	28.50	28.60	28.70	28.80	28.90	28
29	29.00	29.10	29.20	29.30	29.40	29.50	29.60	29.70	29.80	29.90	29
30	30.00	30.10	30.20	30.30	30.40	30.50	30.60	30.70	30.80	30.90	30
31	31.00	31.10	31.20	31.30	31.40	31.50	31.60	31.70	31.80	31.90	31
32	32.00	32.10	32.20	32.30	32.40	32.50	32.60	32.70	32.80	32.90	32
33	33.00	33.10	33.20	33.30	33.40	33.50	33.60	33.70	33.80	33.90	33
34	34.00	34.10	34.20	34.30	34.40	34.50	34.60	34.70	34.80	34.90	34
35	35.00	35.10	35.20	35.30	35.40	35.50	35.60	35.70	35.80	35.90	35
36	36.00	36.10	36.20	36.30	36.40	36.50	36.60	36.70	36.80	36.90	36
37	37.00	37.10	37.20	37.30	37.40	37.50	37.60	37.70	37.80	37.90	37
38	38.00	38.10	38.20	38.30	38.40	38.50	38.60	38.70	38.80	38.90	38
39	39.00	39.10	39.20	39.30	39.40	39.50	39.60	39.70	39.80	39.90	39
40	40.00	40.10	40.20	40.30	40.40	40.50	40.60	40.70	40.80	40.90	40
41	41.00	41.10	41.20	41.30	41.40	41.50	41.60	41.70	41.80	41.90	41
42	42.00	42.10	42.20	42.30	42.40	42.50	42.60	42.70	42.80	42.90	42
43	43.00	43.10	43.20	43.30	43.40	43.50	43.60	43.70	43.80	43.90	43
44	44.00	44.10	44.20	44.30	44.40	44.50	44.60	44.70	44.80	44.90	44
45	45.00	45.10	45.20	45.30	45.40	45.50	45.60	45.70	45.80	45.90	45
46	46.00	46.10	46.20	46.30	46.40	46.50	46.60	46.70	46.80	46.90	46
47	47.00	47.10	47.20	47.30	47.40	47.50	47.60	47.70	47.80	47.90	47
48	48.00	48.10	48.20	48.30	48.40	48.50	48.60	48.70	48.80	48.90	48
49	49.00	49.10	49.20	49.30	49.40	49.50	49.60	49.70	49.80	49.90	49
50	50.00	50.10	50.20	50.30	50.40	50.50	50.60	50.70	50.80	50.90	50

Distance of slope stake from side or shoulder stake for any width roadway, slope 1 to 1. If ground is nearly level, the cut or fill at side stake is located by the double entry method in left column and top row. The number in body of table in same row and column gives distance from side stake to slope stake. If ground is not level estimate the difference in elevation between the side stake and slope stake, lower target by this amount if cut, elevate if fill. Add this amount to cut or fill and find distance in table. Set up rod at this point, and line of sight should cut target. If it does not make the slight adjustment necessary.

INDEXED  
to page # 29



TABLE XIII—CORRECTIONS FOR TANGENTS AND EXTERNALS

These corrections are to be added to the approximate values, found by dividing the tangent, or external, for a 1° curve (Table VIII) by the degree of curve, in order to obtain the true tangents, or externals. Intermediate values may be obtained by interpolation.

FOR TANGENTS ADD

Central Angle	DEGREE OF CURVE													
	5°	10°	15°	20°	25°	30°	35°	40°	45°	50°	55°	60°	65°	70°
10°	.03	.06	.09	.13	.16	.19	.22	.25	.28	.31	.34	.38	.42	.46
15°	.04	.10	.14	.19	.24	.29	.34	.39	.45	.51	.53	.58	.63	.68
20°	.06	.13	.19	.26	.32	.39	.45	.51	.58	.65	.72	.79	.84	.90
25°	.08	.16	.24	.33	.40	.49	.58	.67	.75	.83	.90	.99	1.06	1.14
30°	.10	.19	.29	.39	.49	.59	.69	.79	.89	.99	1.09	1.20	1.29	1.39
35°	.11	.22	.34	.47	.58	.69	.79	.81	.92	1.04	1.29	1.42	1.54	1.66
40°	.13	.26	.40	.53	.67	.80	.93	1.06	1.20	1.34	1.49	1.64	1.79	1.94
45°	.15	.30	.44	.60	.76	.91	1.06	1.21	1.37	1.52	1.70	1.87	2.04	2.21
50°	.17	.34	.51	.68	.85	1.02	1.19	1.36	1.54	1.72	1.91	2.10	2.29	2.48
55°	.19	.38	.57	.76	.95	1.14	1.32	1.52	1.72	1.92	2.14	2.35	2.56	2.77
60°	.21	.42	.63	.84	1.05	1.27	1.49	1.71	1.94	2.17	2.38	2.60	2.83	3.07
65°	.23	.46	.69	.93	1.16	1.40	1.64	1.88	2.13	2.38	2.63	2.88	3.13	3.39
70°	.25	.51	.76	1.02	1.28	1.54	1.80	2.06	2.33	2.60	2.88	3.16	3.44	3.72
75°	.27	.56	.83	1.12	1.40	1.69	1.98	2.27	2.57	2.87	3.16	3.47	3.78	4.09
80°	.30	.61	.91	1.22	1.53	1.84	2.15	2.46	2.78	3.10	3.44	3.78	4.12	4.46
85°	.33	.66	1.00	1.33	1.68	2.02	2.36	2.70	3.05	3.40	3.77	4.14	4.55	4.89
90°	.36	.72	1.09	1.45	1.83	2.20	2.57	2.94	3.32	3.70	4.10	4.50	4.91	5.32
95°	.39	.79	1.19	1.55	2.00	2.40	2.80	3.20	3.61	4.02	4.40	4.98	5.38	5.83
100°	.43	.86	1.30	1.74	2.18	2.62	3.06	3.50	3.95	4.40	4.88	5.37	5.85	6.34
110°	.51	1.03	1.56	2.08	2.61	3.14	3.67	4.21	4.76	5.31	5.86	6.43	7.01	7.60
120°	.62	1.25	1.93	2.52	3.16	3.81	4.45	5.11	5.77	6.44	7.12	7.80	8.50	9.22

FOR EXTERNALS ADD

Central Angle	DEGREE OF CURVE													
	5°	10°	15°	20°	25°	30°	35°	40°	45°	50°	55°	60°	65°	70°
10°	.001	.003	.004	.006	.007	.008	.009	.011	.012	.014	.015	.017	.018	.020
15°	.003	.007	.010	.014	.018	.023	.027	.029	.032	.035	.039	.043	.047	.051
20°	.006	.011	.017	.022	.028	.034	.038	.045	.051	.057	.063	.070	.076	.083
25°	.009	.018	.027	.036	.046	.056	.065	.074	.083	.093	.106	.120	.127	.135
30°	.013	.025	.038	.051	.065	.078	.090	.103	.116	.129	.149	.170	.179	.188
35°	.018	.035	.054	.072	.086	.109	.131	.153	.175	.197	.213	.230	.247	.264
40°	.023	.046	.070	.093	.117	.141	.172	.203	.234	.265	.277	.290	.315	.341
45°	.030	.060	.093	.119	.153	.184	.216	.254	.289	.325	.351	.378	.411	.445
50°	.037	.075	.116	.151	.189	.227	.266	.305	.345	.384	.425	.467	.508	.550
55°	.046	.093	.142	.188	.236	.283	.332	.381	.420	.479	.530	.582	.641	.700
60°	.056	.112	.168	.225	.283	.340	.398	.457	.516	.575	.636	.697	.774	.851
65°	.067	.135	.204	.273	.343	.412	.483	.554	.625	.697	.771	.845	.922	1.01
70°	.080	.159	.240	.321	.403	.485	.568	.652	.735	.819	.906	.994	1.08	1.17
75°	.095	.182	.266	.353	.440	.528	.618	.707	.797	.887	.977	1.07	1.18	1.29
80°	.110	.220	.332	.445	.558	.671	.787	.903	1.02	1.13	1.25	1.38	1.50	1.62
85°	.128	.259	.391	.524	.657	.790	.926	1.06	1.20	1.34	1.47	1.62	1.76	1.91
90°	.149	.299	.450	.603	.756	.910	1.07	1.22	1.38	1.54	1.70	1.87	2.03	2.20
95°	.174	.350	.522	.706	.885	1.06	1.25	1.43	1.62	1.80	1.99	2.18	2.38	2.58
100°	.200	.401	.604	.809	1.01	1.22	1.43	1.64	1.85	2.06	2.28	2.50	2.73	2.96
110°	.268	.536	.806	1.08	1.35	1.63	1.91	2.20	2.48	2.76	3.05	3.35	3.66	3.96
120°	.360	.721	1.08	1.45	1.82	2.19	2.57	2.95	3.33	3.72	4.11	4.50	4.91	5.32

Page

- X-Sec. Randall St. 1
- X-Sec La Marque St. 6
- X-Sec Aster St 11
- X-Sec Beryl .. 14
- X-Sec Poinsetta - (Geranium St.) 19
- X-Sec. 9th Av. - Johnson to North 24
- Levels, Lot 35- Rancho Mission of SD 31
- X-Sec. Ocean View Blvd 37
- X-Sec. C St. Boundary to 41st. 40-53
- Survey - Partition Rancho Mission For Sanitary, Fill 54
- " Encroachment, Alley Blk 267 S. Chollas 55
- X-Sec. Savannah - Marena Blv to Knoxville 56



Roberts  
Moore  
Clark  
6-29-50  
N.O. 25020

X-Sept Randall St.  
For Establishing Grade  
(Beryl to Loring) Sect. B. 2081

See Map 1635

1+58.15 / (B.C.) Rt. 40' ROW  
T.P. 12.75 ✓ 150.08 X 0.09 137.33

1+25 Se. Line Pansetta

INDEXED

mk  
AUG 4 1950

T.P. 12.76 ✓ 137.42 X 0.09 124.46

0+50

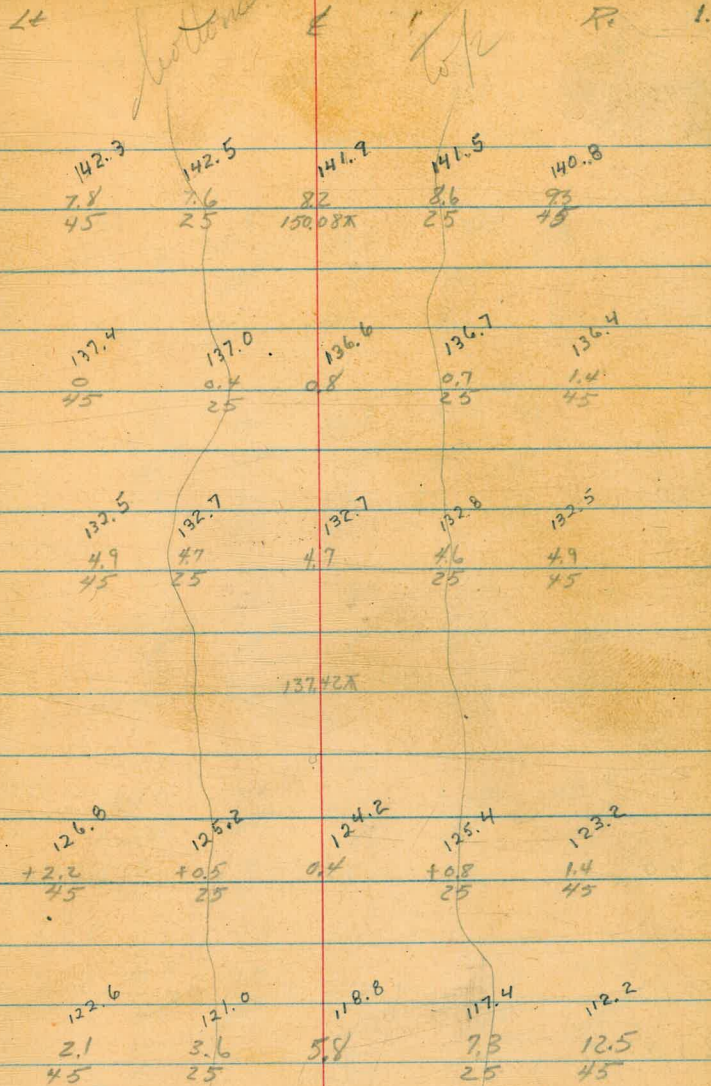
0+0 L Randall & North Line Beryl (50' ROW)

T.P. 13.07 ✓ 124.65 X 0.24 ✓ 111.58

T.P. 13.20 ✓ 111.82 ✓ 0.33 ✓ 98.62

BM 13.62 ✓ 98.95 ✓ 85.93

SW 7 Mon Chocodang & Randall





Randall Cont'd

4±95.62 E.C.  $\Delta$  Lt. 30' Row ✓  
 T.P. 1257 174.76X 0.41 162.19

4+50

4+0

3+50 In Aster

3+0

•2±47.65 PRC

T.P. 1312 162.60X ✓ 0.60 149.48 ✓

2+0

150.08X

Lt 167.6 165.1 162.8 160.3 Re 156.8 Z.  
 $\frac{7.2}{40}$   $\frac{9.7}{20}$  12.0  $\frac{14.5}{20}$   $\frac{18.0}{40}$   
 174.76X

165.1 162.5 159.8 157.1 159.3  
~~162.6~~ ~~150.0~~ ~~147.3~~ ~~144.6~~ ~~141.8~~  
 $\frac{+2.5}{40}$   $\frac{-0.1}{20}$  2.8 5.5 8.3  
 20 20 20 20 40

161.4 159.5 156.8 153.8 151.3  
~~149.2~~ ~~147.0~~ ~~144.3~~ ~~141.3~~ ~~138.8~~  
 0.8 3.1 5.8 8.8 11.3  
 20 20 20 20 20

148.5 156.1 154.2 151.9 149.7  
~~145.0~~ ~~143.6~~ ~~141.7~~ ~~139.4~~ ~~137.2~~  
 4.1 6.5 8.4 10.7 12.9  
 40 20 20 20 40

155.3 153.9 152.1 150.4 148.3  
~~142.8~~ ~~141.4~~ ~~139.6~~ ~~137.9~~ ~~135.6~~  
 7.3 8.7 10.5 12.2 14.3  
 40 20 20 20 40

154.5 153.0 150.9 148.2 145.5  
~~142.0~~ ~~140.5~~ ~~137.9~~ ~~135.7~~ ~~133.0~~  
 8.1 9.6 12.2 14.4 17.1  
 40 20 20 20 40  
 162.20X

150.7 149.2 147.1 144.7 143.1  
 $\frac{+0.6}{40}$   $\frac{9.9}{20}$  3.0 5.4 7.0  
 40 20 20 20 40

150.08X



Randall Cont'd

7+50

T.P. 12.94 ✓ 21 2.50 X ✓ 0.20 199.56

7+0

6+50

T.P. 12.67 ✓ 199.76 X ✓ 0.17 187.07

6+0

T.P. 13.09 ✓ 187.24 X ✓ 0.61 174.15

5+50

174.76 X

2+

213.1  
+10.6  
35

210.8  
17  
15

209.2  
33

206.8  
5.7  
15

204.5  
8.0  
35

212.50 X

203.3  
+3.5  
35

202.2  
+2.4  
15

200.1  
+4.3

196.8  
3.0  
15

194.7  
5.1  
35

191.4  
8.4  
35

189.0  
10.8  
15

188.4  
11.4

187.0  
12.8  
15

185.2  
14.6  
35

199.76 X

183.8

181.0

179.1

176.6

174.8

~~171.4~~  
3.4  
35

~~168.6~~  
6.2  
15

~~166.7~~  
8.1

~~164.2~~  
10.6  
15

~~162.4~~  
12.4  
35

187.24 X

172.8  
2.0  
35

171.7  
3.1  
15

169.8  
5.0

168.9  
5.9  
15

167.8  
7.0  
35

174.76 X

3



Randall Cont'd

Lt

♀

R

4

10+0

250.2  
+1.0  
40

246.7  
+1.5  
20

243.2  
6.0

9+50

246.1  
3.1  
30

242.4  
6.8  
20

237.8  
11.4

233.0  
16.2  
20

228.2  
21.0  
40

T.P.

11.40

249.16A

0.10

237.76

249.16A

8+95.83

4 Lt

40' ROW

240.0  
+2.1  
40

238.0  
+9.1  
20

232.1  
5.1

226.1  
11.8  
20

220.7  
17.2  
40

8+50

238.9  
+1.0  
35

232.9  
5.0  
15

228.4  
9.5

223.1  
14.1  
15

219.2  
18.7  
35

T.P.

12.84

237.86A

0.31

225.02

237.86A

8+0

226.73  
+1.4  
35

222.8  
2.5  
15

218.6  
6.7

215.4  
9.9  
15

213.1  
12.2  
35

T.P.

12.95

225.33A

0.12

212.38

225.33A

217.50A



Set TEM

9.88

263.45 ✓

T.P.

12.59

273.33 ✓

0.11

260.74 ✓

on hub R. Line La Marque & S. Line Loring

11+25

Sa. Line Loring

263.2	257.8	253.6	247.2	239.8
+2.4	1.1	7.3	13.7	21.0
40	20		20	40

11+0

261.4	258.0	253.0	246.8	242.4
+0.5	2.9	7.8	14.1	18.5
40	20		20	40

T.P.

12.62

260.85X ✓

0.93

248.23 ✓

260.85X

10+50

256.0	251.8	247.9	244.3	238.8
+6.8	+2.6	1.8	7.9	10.4
40	20		20	40

249.16X

249.16X



Roberts  
6-30-50

X. Sect: La. Marque St.  
For Establishing Grade  
(oring to Randall)

T.P. 4.80 258.64 12.29 253.84

2+0

1+50

1+0

0+50

0+0 So. Line Loring Ave. BC 40' ROW

TBM 2.68

266.13 X

263.45 50' 99.5'

Lt.

R

Rt.

G

top

bottom

261.2 259.6 256.6 252.8 249.4  
1.9 6.5 9.5 13.3 16.7  
40 20 20 20 20

263.9 262.0 258.2 254.1 249.9  
2.2 1.1 7.9 12.0 16.2  
40 20 20 20 40

264.2 260.9 258.5 255.3 251.3  
1.9 5.2 7.6 10.8 14.8  
40 20 20 20 40

264.4 261.5 259.8 257.1 254.2  
1.7 4.6 6.3 9.0 11.9  
40 20 20 20 40

265.8 263.4 261.8 260.7 260.4  
0.3 2.7 4.3 5.4 5.7  
40 20 20 20 40 Canyon Box

266.13 X







Roberts  
6-30-50

X- Sect La Franco  
For Establishing Grade  
(From Alley to Randall)

←

£

↑

8

T.P. 313 233.39 468 230.26

2+00

INDEXED  
YRK.  
AUG 4 1950

234.9 231.8 228.9 225.7 222.3  
40 20 60 20 20

1+50

234.9 231.7 227.2 222.3 216.7  
40 20 77 20 20

1+0

233.9 228.9 223.7 217.7 211.9  
40 20 112 20 20

0+50

233.8 228.7 223.1 216.9 207.1  
40 20 118 20 20

0+0 Approx. £ of 40' Row from La Marque

235.3 229.3 221.94 213.9 209.4  
40 20 130 20 20 Canyon

234.94 X

234.94 X



100  
After  
TBM

La France Cont'd

		0.47	170.12 ✓
TP	0.29	170.59 ✓	12.65 170.31 ✓
TP	0.41	182.90 ✓	12.86 182.55 ✓
T.P.	0.09	195.41 ✓	12.92 195.32 ✓
T.P.*	0.28	208.24 ✓	13.09 207.96 ✓

4445.28 Opp. Prop. BC on Rt at Randall

4+0

T.P. 0.60 221.05 ✓ 12.94 220.45 ✓

3+50

3+0

2±66.04 PCC

233.39 ✓

LT

Q

Rt

9

top

bottom

214.4 210.8 205.6 200.2 195.6  
 6.6 10.2 15.4 20.8 25.4  
 40 20 20 20 40

222.2 219.8 215.0 210.2 204.8  
 4.2 1.3 6.1 10.9 16.2  
 40 20 40 20 40

221.05 ✓

228.0 224.2 220.4 216.3 211.2  
 5.4 2.2 13.0 17.1 22.2  
 40 20 20 20 40

230.4 226.1 222.9 219.2 215.7  
 3.0 2.3 10.5 14.2 17.7  
 40 20 20 20 40

233.4 230.5 227.0 223.8 220.0  
 0 2.9 6.4 9.6 13.4  
 40 20 20 20 40

233.39 ✓



check			1240	✓ start. BM 8588 = 85.93
T.P.	0.01	✓ 98.28	12.40	✓ 99.27
T.P.	0.98	✓ 110.67	12.94	✓ 109.69
T.P.	0.92	✓ 122.63	13.14	✓ 121.71
T.P.	0.28	✓ 134.85	12.19	✓ 134.57
T.P.	1.24	✓ 146.94	12.82	✓ 145.50
T.P.	0.37	✓ 158.32	12.64	✓ 157.95

170.598



Roberts  
7-13-50

X-Sect Aster St.  
For Establishing Grade

Lt

Q

R# 11

check #

0.9

163.4 = 163.1 TP

176.3

165.3

156.3

138.8

136.1

126.3 134.8

1+55

INDEXED

mk.  
AUG 4 1950

+12.0

+1.0

8.0

25.5

28.2

38 29.5

40

20

Rim

15  
Toe

20

40 50

173.3

163.3

158.3

143.8

133.5

130.3

133.3

1+20

+7.0

1.0

6.0

20.5

20.8

34.0

31.0

40

20

10

Toe

20

30

40

TP

13.0

164.3 TP

0

151.3

164.3 TP

163.3

161.8

146.3

149.3

131.6

131.0

1+0

+12.0

+10.5

5.0

7.0

19.7

14.3

20

14

6  
Toe

20

20

50  
Toe

137.3

150.1

140.2

135.8

138.8

139.3

0+50

+14

1.2

11.1

15.5

12.5

12.0

25

20

Toe

10

20

40  
Toe

143.3

150.5

146.3

138.9

141.1

142.9

143.9

0+0

Begin Aster So. Line Wilbur

+8.0

+0.8

5.0

12.4

10.2

9.4

7.4

31

29

20

6

20

20

28  
Toe

TP

8.3

151.3 TP

8.3

143.0

151.3 TP

Hand Level Used in Canyon

TP

0.0

151.25

161.25



Aster Cont'd

T.P. 2.08 170.95X 12.90 168.87

4+0

179.6 170.9 167.8 165.8 163.1

7.2 10.9 14.0 16.0 18.7  
48 20 20 40

3+60

177.8 174.9 170.9 167.7 165.3

4.4 7.1 10.9 14.1 16.5  
40 20 20 40

3+25.5 PCC

181.8 176.8 173.2 170.4 167.3

0 5.3 8.6 11.4 14.5  
40 20 20 40

Check 1165 181.77X 577 170.09 = 170.12

181.77X

2+50

181.1 177.6 173.3 169.6 166.4

+5.2 +1.7 3.6 6.3 9.5  
40 20 20 40

1+95.5 PCC

175.4 169.6 159.3 154.4 150.4

0.5 11.3 16.6 21.8 25.5  
40 20 20 33  
Rim

T.P. 12.77 175.88X 163.11

175.88X

Lt

Q

R 12



Aster Cont'd.

Lt

£

Rt 13

check 0.85 170.12

Reduced  
J. T. Lawrence

161.7 158.9 156.7

6+0 In Randall

93 12.1 14.6  
20 20

167.6 164.2 160.7 158.3 156.1

5+50

34 6.8 10.3 12.7 14.9  
40 20 20 40

168.8 166.2 163.3 160.5 158.1

5+0

22 4.8 7.7 10.5 12.9  
40 20 40

170.1 168.2 165.5 162.4 160.0

4+50

+0.9 2.8 5.5 8.6 11.0  
40 20 20 40

170.95X

170.95X



Roberts  
7-17-50

X-Section Beryl St.  
(Pendleton to Randall)  
For Establishing Grade

44

Q

Re. 14

1+0

155.6	153.6	151.9	149.6	148.1	149.8
1.4	3.4	5.6	7.4	8.9	12.2
50	30		30	40	50

0+60

INDEXED

AUG 4 1950

156.0	154.4	152.4	151.3	148.9
1.0	2.6	4.6	5.7	11.1
50	30		30	50

0+35

156.9	153.2	151.5	145.7	136.5
0.2	3.8	5.3	11.3	20.5
50	30		30	50

0+0

Rt Angles to N.L. Beryl & Sub. Line

149.7	144.7	136.4	130.6	126.5
7.3	12.3	20.6	26.4	30.5
50	30		30	50

TP 9.20 157.05A 0.31 147.85

157.05A

TP 12.37 148.16 0.64 135.79

TP 13.28 136.43 0.53 123.15

Set TBM 4.12 119.56

TP 13.04 123.68 0.12 110.64

TP 12.77 110.76 0.04 97.79

BM 11.90 97.83 85.93

SW Cor. Quincy & Beryl 2x2 Rwhub with City Disc

SW7. Min Chalcedony & Randall



Beryl Cont'd

21

Q

R<sub>L</sub> 15

133.2	131.4	129.5	128.3	127.6
8.1	9.9	11.8	13.0	13.7
50	30		30	50

4+0

138.4	136.8	134.9	133.9	133.7
-------	-------	-------	-------	-------

3+50

2.9	4.5	6.9	7.4	7.6
50	30		30	50

143.4	140.8	139.1	137.6	136.7
-------	-------	-------	-------	-------

3+0

12.1	0.5	2.2	3.7	4.6
50	30		30	50

T.P.	0.50	141.29 X	4.09	140.79	Stub 3+0	141.29 X
------	------	----------	------	--------	----------	----------

T.P.	0.36	144.88	12.53	144.52
------	------	--------	-------	--------

147.0	145.3	143.5	142.5	142.0
-------	-------	-------	-------	-------

2+50

10.0	11.7	13.5	14.5	15.0
50	30		30	50

150.5	149.0	146.0	144.9	141.5
-------	-------	-------	-------	-------

2+0

6.5	8.0	10.0	12.1	15.5
30	30		30	50

153.4	151.8	149.5	147.3	145.6	140.8
-------	-------	-------	-------	-------	-------

1+50

3.6	5.5	7.5	9.7	14	16.2
50	30		25	30	50

157.05 X

157.05 X



## Beryl Cont'd

6+90 L.H.

T.P. 0.69 116.11 T 13.12 115.42

6+50

6+0

5+50

5+0

4+50

T.P. 0.33 128.54 T 13.08 128.21

14129 T

L+

♀

R+

16

110.5	113.3	112.8	111.5	108.2	107.0
5.6	2.8	3.3	4.6	7.9	9.1
50	30		15	30	50

116.11 T

116.9	116.4	115.3	112.9	108.7
11.6	12.1	13.2	15.6	19.8
50	30		30	50

121.5	120.3	119.3	119.5	117.6
7.0	8.2	9.2	9.0	10.9
50	30		30	50

123.5	123.2	122.0	121.4	120.0
5.0	5.3	6.5	7.1	8.5
50	30		30	50

125.2	124.6	123.8	122.2	119.7
3.3	3.9	4.7	6.3	8.9
50	30		30	50

127.5	126.8	125.4	123.7	122.1
1.0	1.7	3.1	4.8	6.4
50	30		30	50

128.54 T



Beryl Cont'd

L+

Q

R 17

9+35

116.1	105.5	104.4	93.1	91.9	90.1
0	10.6	11.7	23.0	24.2	26.0
50	30		20	30	50

9+25

109.7	104.8	104.2	91.1	89.1	87.8
11.4	11.3	11.9	25.0	27.0	28.3
50	30		20	30	50

9+0

109.0	103.9	103.4	89.9	87.8	84.8
12.1	12.2	12.7	26.7	28.3	31.3
50	30		20	30	50

8+65

99.7	98.7	103.2	102.8	95.6	98.6	98.1
16.4	17.4	12.9	13.3	20.5	17.5	18.0
50	30	20		15	30	50

8+35

107.1	105.2	104.4	103.9	102.8	109.3	112.6
9.0	10.9	11.7	12.3	11.3	6.8	4.1
50	30	25		15	30	50

8+0

107.0	105.9	106.3	107.8	116.1	117.3	118.2
9.1	10.2	9.8	8.3	0	11.2	12.1
50	30		15	25	30	50

7+50

109.1	108.6	108.6	111.1	110.4	110.9	117.1	116.6
7.0	7.5	7.5	8.0	5.7	5.2	11.0	10.5
50	30	25	20		20	30	50

116.11X

116.11X



Beryl Cont'd

Lt

£

Re

18

Check		13.51	85.90 = 85.93
T.P.	0.27	99.41	12.78 99.14
T.S.	0.74	116.88	12.27 111.14

Reduced  
H.T. Samwise

11+50	IN	Randall	121.6	120.3	118.8	117.1	115.3
			2.8 50	4.1 30	5.6	7.3 30	9.1 50

11+0			126.3	124.2	123.9	119.2	118.6	118.2	121.2	120.6	119.4
			+1.9 50	0.2 30	0.5 25	5.2 15	5.8	6.2 10	3.2 20	5.1 30	5.0 50

10+50			121.6	119.5	116.2	115.8	118.6	119.1	118.3
			2.8 50	4.9 30	8.2 25	8.6	5.8 10	5.8 30	6.1 50

T.P.	8.60	124.41 X	0.30	115.81	124.41 X
------	------	----------	------	--------	----------

10+0			120.1	116.6	112.4	111.0	107.6	108.3
			+4.0 50	+0.5 35	3.7 30	5.1	8.5 30	7.8 50

9+90			118.1	115.1	109.0	107.9	99.6	100.6
			+2.0 50	+1.0 35	7.1 30	8.2	16.5 30	15.5 50

116.11X

116.11X



Roberts  
7-25-50

X-Section (Poinsettia) **Geranium**  
(Pendleton to Randall)  
For Establishing Grade

St. 24

19

1450

INDEXED  
MK.  
AUG 4 1950

176.5 172.7 171.2 169.4 167.9 166.2 162.3

2.8 6.6 8.1 9.9 11.4 13.1 17.0  
40 20 15 15 20 40

140

180.3 178.1 176.2 174.1 172.4 170.0 163.4

4.0 1.2 3.1 5.2 6.9 9.3 15.9  
40 20 15 15 20 40

0+70

184.5 181.8 176.6 174.9 172.8 170.4 165.9

4.2 2.5 2.7 4.4 6.5 8.9 13.4  
40 20 12 15 20 40

0+40

183.0 177.7 174.8 171.5 167.7 160.9

4.3 1.6 4.5 7.8 11.6 18.4  
40 20 13 20 40

0+0

Rt. 45 to NE. Cor. Pendleton & Poinsettia

178.4 173.0 167.2 160.1 154.8

0.9 6.3 12.1 19.2 24.5  
40 20 20 40

TP 0.49 179.32  $\nabla$  13.13 178.83

179.32  $\nabla$

TP 0.25 191.96 12.89 191.71

TP 0.05 204.60 12.96 204.55

TBU 0.94 217.51 216.57 Hub NE Cor. Wilbur & Quincey



## Poinsettia Contd

24

E

K

20

4+0

151.9	149.0	147.3	145.7	144.5
2.1	5.0	6.7	8.3	9.5
40	20		20	40

TP

0.34

153.95  $\pi$  13.19 153.61153.95  $\pi$ 

3+50

156.1	153.6	152.2	150.7	149.1
10.7	13.2	14.6	16.4	17.7
40	20		20	40

3+0

163.6	161.3	159.1	158.1	157.0	156.0	153.7
3.2	5.5	7.7	8.7	9.8	10.8	13.1
40	25	20		15	20	40

2+50

168.8	166.0	163.6	162.4	162.0	160.7	157.6
4.2	0.8	3.2	4.4	4.8	6.4	9.2
40	20	15		15	20	40

T.P.

0.54

166.80  $\pi$  13.06 166.26166.80  $\pi$ 

2+0

172.3	168.8	167.0	165.5	163.5	162.9	159.7
7.0	10.5	12.3	13.8	15.8	16.9	19.6
40	20	15		15	20	40

179.32  $\pi$ 179.32  $\pi$



## Poinsettia Cont'd

lt.

Q

R 21

131.2	129.1	127.3	126.0	124.5
$\frac{1.6}{40}$	$\frac{37}{20}$	55	$\frac{6.8}{20}$	$\frac{8.3}{40}$

6+50

check 13.26 132.82X 924 119.54 = 119.56

132.82X

TP 0.16 128.78 1294 128.62

134.6	132.4	129.7	128.4	128.3	125.9
$\frac{7.0}{40}$	$\frac{9.2}{20}$	$\frac{11.9}{15}$	13.2	$\frac{13.3}{20}$	$\frac{15.7}{40}$

6+0

137.1	135.1	132.1	130.5	128.8
$\frac{4.5}{40}$	$\frac{6.5}{20}$	9.5	$\frac{11.1}{20}$	$\frac{12.8}{40}$

5+50

141.6	138.0	135.8	133.6	131.7
0	$\frac{3.6}{20}$	5.8	$\frac{8.0}{20}$	$\frac{9.9}{40}$

5+0

TP 0.17 141.56X 12.56 141.39

141.56X

147.1	144.0	142.0	140.2	138.3
$\frac{6.9}{40}$	$\frac{10.0}{20}$	12.0	$\frac{13.8}{20}$	$\frac{15.7}{40}$

4+50

153.95X

153.95X



Voinsatka Contd

12

8

8

22

9+20

134.3	132.3	128.4	124.7	125.4
+1.5	0.5	7.4	8.1	7.4
40	20		20	40

9+0

108.4	107.2	106.8	105.6	105.3
24.4	25.6	26.0	27.6	27.5
40	20		20	40

8+60

110.5	107.4	106.0	105.5	104.0
22.3	25.4	26.8	27.3	28.8
40	20		20	40

8+15

122.4	125.9	122.4	121.2	121.6
5.4	7.4	10.4	11.6	11.2
40	20		20	40

7+85

131.6	130.7	129.6	127.6	126.6
1.2	2.1	3.2	5.2	6.2
40	20		20	40

7+50

135.0	133.0	131.2	129.8	128.4
+2.2	1.2	1.6	3.0	4.4
40	20		20	40

7+0

Set 4 pt

134.5	131.1	128.7	127.2	125.5
+1.7	1.7	4.1	5.6	7.3
40	20		20	40

132.82X

134.82X



Jan TRM

12.80 130.64

11+50 Into Randall

197.2 192.4 139.5 136.9 132.2  
 +3.7 1.1 4.0 6.6 11.3  
 40 20 40 20 40

11+0

199.0 192.0 139.6 136.0 132.9  
 +0.5 1.5 3.9 7.5 10.6  
 40 20 20 20 40

10+50

193.8 190.8 138.2 135.6 133.3  
 +0.3 2.7 5.3 7.9 10.2  
 40 20 20 20 40

10+0

139.5 137.1 135.4 133.3 130.6  
 4.0 6.4 8.1 10.2 12.9  
 40 20 20 20 40

9+50

139.2 137.1 136.3 134.1 132.6  
 4.3 6.4 7.2 9.4 10.9  
 40 20 20 20 40

TR 11.44 143.50X 076 132.06

143.50X

132.92X

Reduced  
 A. T. Janney

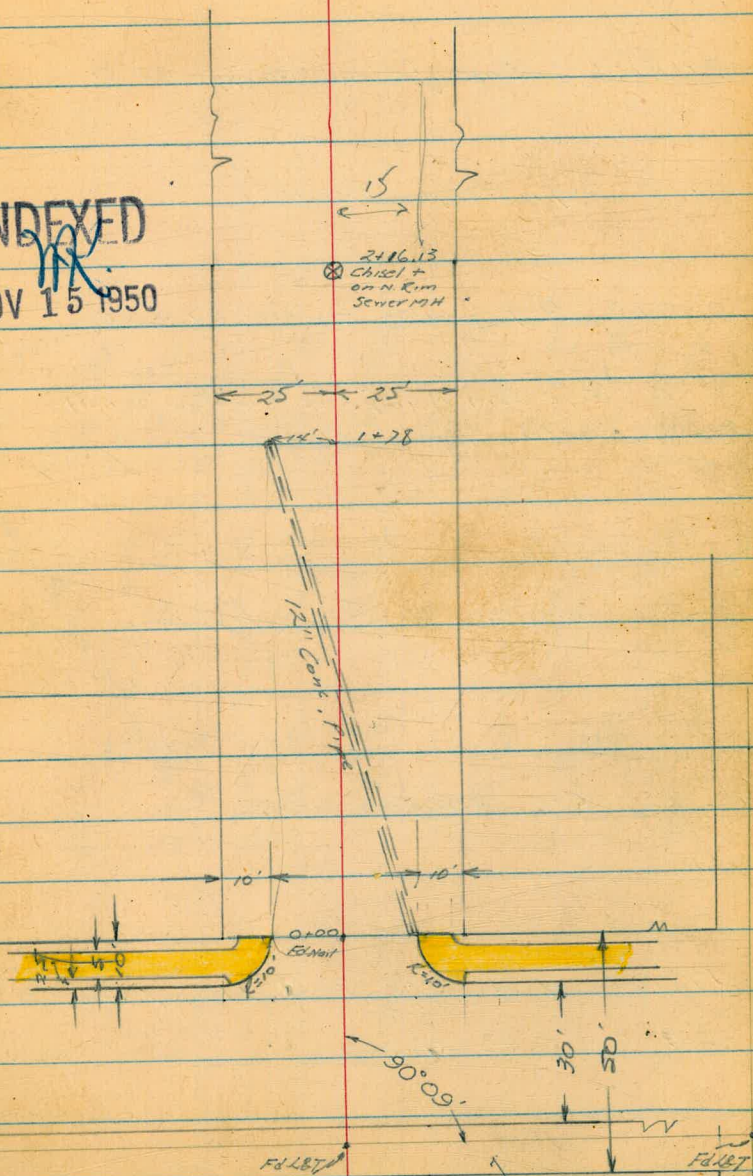


11-14-50  
Hendricks  
Sherman  
Shepard  
Gravford  
NO# 31620

X Sect 9th Ave  
Johnson to North  
(See Also 1651 P. 47)

INDEXED  
NOV 15 1950

INDEXED  
NOV 15 1950





0+20.5 End frame Garage 25' Lt.

0+12 Beg. Hedge 23' Lt.

0+04.5 Beg. frame Garage 24.4' Lt.

(Edge Dsph. Paving End Cbs & Sidewalks)

0+00 North Line Johnson

0-10 North Cb line Johnson

0-25 E Johnson Ave

TP 4.31 277.27 9.71 272.91

BM 0.23 282.67 282.44

273.2	272.9	272.59	272.51	271.93	271.92	270.99	271.04	271.98	272.25	272.67
4' 35	4' 25	4' 25	4' 15	5' 34	5' 35	6' 28	6' 23	5' 29	5' 02	4' 4'
		S.W. Cb	G			FL	G	Cb	S.W.	
272.69	272.19	272.50	271.98	271.90	271.75	271.47	271.58	272.09	272.47	273.02
4' 58	5' 08	4' 27	5' 29	5' 37	5' 52	5' 00	5' 09	5' 18	4' 80	4' 25
43	43	25	25	15	15	25	25	50	50	
Cb	C	Cb	G			G	Cb	G	Cb	
272.61	272.40	272.25	272.01		271.81	272.03	273.00			
4' 56	4' 87	5' 02	5' 26		5' 26	5' 24	4' 27			
50	25	15			15	25	50			

Reduced by P. Horn  
11-17-50

277.27 ✓

LET E. 9th Ave South 7' line Johnson Ave  
N.W. B.P. Johnson & 10th Ave



9th. Ave Contd

12"  
Beg. Stone wall  
0+92 End 6" Conc Wall 24.6 Lt.

0+91 Power Pole # P4210 15.5 Lt.

0+75

0+56.5 Beg. 6" Conc. Ret. Wall 24.9 Lt.

0+53 & 7" Conc Drive 24.2' Lt.

0+49 End Hedge 24' Lt.

0+30

277.27  
—  
11

275.15  
2.12 252  
246 246  
Wall Wall

272.7 272.5 272.8  
x<sup>6</sup> x<sup>8</sup> x<sup>5</sup> x<sup>1</sup>  
35 25 15 8  
273.2 273.1 273.5  
x<sup>2</sup> x<sup>8</sup> x<sup>8</sup>  
8 10 25 35

273.20  
x<sup>07</sup>  
249

273.35 273.21  
392 x<sup>06</sup>  
34 24.2'

273.9 273.5 273.0 272.7 272.8 272.1 273.0 273.2 273.8 274.8  
34 38 43 46 x<sup>5</sup> x<sup>6</sup> x<sup>3</sup> x<sup>1</sup> 35 25  
35 25 15 13 8 10 20 25 35

277.27  
—  
11



9th Ave Cont'd

1+35

1+22 & 3' Conc Walk 25.5 RT

1+15 & 2' Conc Ribbon Drive RT

1+10.5 & 2' Conc Ribbon Drive (RT)

1+01 & 3.5 Stone & Mortar Walk 27.3 LT

TP 4.97  $\frac{278.16}{\pi}$  4.08 273.19

1+00

$\frac{277.27}{\pi}$

271.5  
67  
35

272.2  
60  
25

272.6  
55  
15

273.6  
45  
3

273.6  
45  
3

273.9  
43  
14

274.5  
37  
20

276.8  
15  
25

277.6  
05  
30

277.13  
103  
255

277.58  
058  
30

271.5  
67  
35

272.2  
60  
25

272.6  
57  
15

273.6  
45  
3

273.9  
43  
14

274.5  
37  
20

276.8  
15  
25

277.6  
05  
30

276.43  
173  
273

277.08  
108  
256

277.89  
037  
35

272.02  
614  
273

272.2  
55  
35

272.0  
55  
25

272.6  
42  
15

273.4  
37  
3

273.9  
35  
8

274.2  
31  
12

276.2  
11  
25

277.3  
05  
35

$\frac{277.27}{\pi}$



9th Ave Contd

2+31 Beg 10" Conc Ret wall 25.6 ft.

2+18

2+15 E Sewer 17.4 on E

2+17 E 23' Conc Drive 25.6 ft.

2+00

1+78 End 12" Conc Pipe 14' 1/2

1+75

1+47 End Stone & Mortar wall 23.9 ft

278.16  
/

♀

272.270.45

28

159.4 260.4 261.5 268.9 25.6  
18 17 16 9 8 8 8  
35 25 17 269.12 15.25 40

8  
8

Rim

269.35 270.12  
8 21 8 0 4  
25.6 40

265.9 269.3 269.1 266.6 269.3 269.7 269.9 270.6 270.2  
12 8 9 11 8 8 8 7 2 30  
35 26 23 19 15 12 25 26 35

269.5 270.1 270.7 269.18 270.8 271.5 271.7 272.9 276.1 276.5  
8 8 7 8 7 6 6 5 2 12  
35 25 17 14 12 10 22 27 35

269.6 270.4 272.3 271.7 271.9 272.8 276.2 276.6  
8 7 6 6 6 5 2 16  
35 25 14 10 22 27 35

272.2  
14  
272.9  
8

278.16  
/



TP.

8.44 269.72 (249.73)

Rim MH Sta 2+18 (FB 1651 P-49)

2+55 End Conc Ret Wall 256 ft

2+50

2+37

278.16  
/

270.45  
7.71  
25.6

242.2	248.2	239.2	241.3	250.0	251.0	261.1	264.6	270.45
30°	30°	39°	30°	28°	27°	13°	13°	7°
35	26	23	17		3	21	25	256 Wall

241.1    262.1    256.1    258.8    268.5    268.3    270.45

31°	26°	22°	19°	9°	9°	7°
35	25	8	15	20	25	256 Wall

278.16  
/



Roberts Additional Notes 9<sup>th</sup> Ave.  
 Cota Sta. 2+30 to 3+00  
 Moore  
 Clark  
 1-10-57  
 WP. 31628  
 3+00

See pg 24 this FB

INDEXED

2+80

MAY 1954

2337  
 36.6  
 10  
 2335  
 36.9  
 15  
 2354  
 35.1  
 20

2476  
 22.9  
 10  
 2490  
 21.5  
 15  
 2502  
 19.6  
 20

2+60

2571  
 13.4  
 10  
 2595  
 11.0  
 15  
 2620  
 8.5  
 20

2+50

2592  
 11.3  
 10  
 2614  
 9.3  
 15  
 2643  
 6.0  
 20

2+36

2496  
 1.7  
 15  
 2613  
 1.2  
 20

2+30

2499  
 1.2  
 15  
 2614  
 1.0  
 20

BM

0.82 270.54

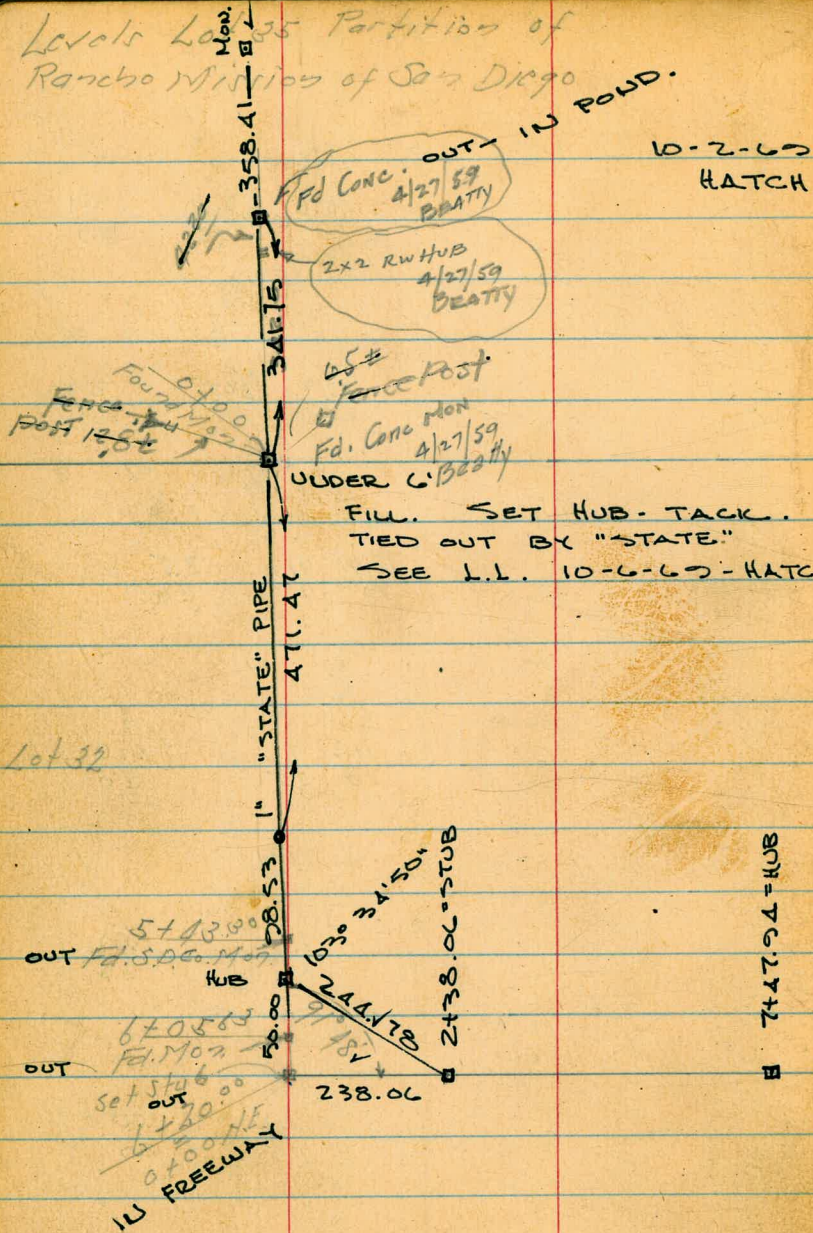
↑

269.72 Rim M H Sta 2+15 See pg 28 this FB

270.54 ↑



Levels Log of Partition of  
Rancho Mission of San Diego



10-2-65  
HATCH

See # 1020-49

SEE PAGE 54 THIS F.B.

Oct. 4-51  
H. Sisson  
Clark  
Rorer

N.O. 20006

31.

575 W

780 E

INDEXED  
Law  
OCT. 10 1951

Lot 35

E 7447.94 = HUB

Set Hub at 35 95 80 ft  
94 41 90  
137 0 98  
10-7-51

1451.75

17400.04

17400.84  
FEL Mon.

10-7-51



Cross Section Lot 35 Partition of  
Rancho Mission of San Diego

L.C.H. = N.M.

Notes reduced by W. Holbeck  
Oct 11, 1951

32

Baseline →

TP 1460 58.07 ✓ 10.06 43.97 ✓

210

45.1	45.5	45.1	44.5	45.1	45.0	43.9	41.0
84 150	80 100	84 150	90 100	84 100	85 100	96 100	125 0.0

110

44.7	44.5	44.2	44.3	44.6	41.4	41.6
88 100	90 150	93 100	92 100	89 100	121 100	119 0.0

TP 2.27 53.53 ✓ 305 50.26 ✓

710

Taken 90° to Baseline

45.3	44.8	44.2	44.5	44.5	42.2	42.8
80 100	85 100	91 100	88 100	88 100	111 100	105 0.0

53.53 ✓  
50.00  
100%

070

Taken on Diag. or Lot Line

44.9	44.7	45.3	44.3	44.4	46.0	50.3
87 100	86 100	80 100	90 100	89 100	22 100	0.0 0.0

50.00  
100%

BM

305 50.26 ✓

Corner 1107  
10' lot of  
0+30

456 53.31 ✓ 8.80 48.75 ✓

BM

#455 corner

317 57.55 ✓

54.38

B.P. Corner  
Spillway  
Wall  
90' R. 28110  
Corner  
1226.52

50.00 ✓



Oct. 8. 51

33

LCH = NY

58

TP 6.86 51.48 ✓ 1122 4462 ✓

740

76.6	76.0	76.6	76.8	71.0	74.6	74.0	74.7	73.8	75.3	74.6
9.2	9.8	9.2	9.0	8.8	11.2	11.8	11.1	10.0	10.5	11.2
750	770	800	800	700	800	800	700	700	32	88

640

76.8	76.8	76.7	76.4	77.1	75.9	74.9	73.9	74.1
9.0	9.0	9.1	9.4	8.7	9.9	10.9	11.9	11.2
750	700	800	500	700	800	200	100	66

540

76.4	76.7	76.3	76.8	76.0	74.8	73.4	73.2
9.4	9.1	9.5	9.0	9.8	11.0	12.4	12.6
700	800	500	700	300	200	100	00

440

76.2	76.3	75.8	76.5	76.2	75.2	74.4	71.9	72.9
9.6	9.5	10.0	9.3	9.6	10.6	11.4	13.9	12.9
700	800	500	400	300	200	100	75	50

TP 12.37 55.84 ✓ 1460 43.47 ✓

55.84 ✓

340

76.8	76.5	76.2	76.8	76.2	75.8	75.0	72.6
11.2	11.6	11.9	11.2	11.9	12.2	12.1	15.5
700	800	500	400	300	800	100	00

5807 ✓

5807 ✓



Loff-N.Y.

TP 509 52.79<sup>↓</sup> 540 47.76<sup>↓</sup>

12+0

48.2	47.8	48.9	49.4	49.6	44.8	47.1	48.1	47.9	47.8	45.3
49	43	42	47	8.5	8.2	60	52	52	52	28
800.	700.	600.	545.	545.	500.	700.	700.	200.	100.	0.0

TP 671 52.10<sup>↓</sup> 635 46.34<sup>↓</sup>

11+0

48.4	48.3	46.9	49.4	44.6	44.8	46.2	47.7	47.8	46.2	46.4	44.5
43	41	58	43	8.1	7.9	65	50	49	65	60	8.2
800.	700.	600.	530.	545.	500.	700.	600.	300.	100.	500.	0.0

TP 524 52.69<sup>↓</sup> 443 47.45<sup>↓</sup>

10+0

48.3	47.8	46.4	48.0	43.3	43.9	45.6	46.8	46.4	46.5	44.2
46	41	55	59	86	80	60	51	55	51	7.7
800.	700.	600.	600.	440.	630.	685.	300.	700.	100.	0.0

TP 665 51.88<sup>↓</sup> 521 45.23<sup>↓</sup> <sup>0.288</sup> 9+4.90<sup>↓</sup> <sub>607</sub>

9+0

47.8	47.4	46.4	47.5	47.8	47.4	43.7	44.6	46.0	46.2	44.8
46	40	29	36	30	57	58	44	42	42	16
770.	900.	600.	570.	500.	415.	590.	300.	200.	100.	0.0

TP 486 50.44<sup>↓</sup> 590 45.58<sup>↓</sup>

8+0

46.9	47.5	46.8	47.7	47.4	43.9	45.5	45.8	45.5	46.0
46	40	47	28	41	26	50	5.7	60	5.5
750.	700.	600.	500.	400.	300.	200.	100.	50.	0.0

51.48<sup>↓</sup>51.48<sup>↓</sup>







Lt. N.Y.

36  
2000

B.M. #485011

0.57

69.11 ✓  
59.11  
1629.8

TP

14.45

69.70 ✓

1.08

55.25 ✓

19+0

49.7  
66  
800  
47.3  
9.0  
700  
44.2  
12.1  
635  
46.1  
10.2  
575  
37.6  
18.7  
535  
40.1  
11.9  
495  
49.8  
6.5  
470

49.7  
66  
435  
37.3  
19.0  
115  
390  
36.8  
19.5  
390  
40.0  
16.3  
380  
39.7  
11.6  
350  
40.6  
15.7  
380  
39.5  
16.8  
300  
36.8  
19.5  
100  
39.2  
18.1  
85  
47.4  
8.9  
80  
52.1  
1.0  
100

18+0

49.8  
6.5  
800  
46.8  
9.5  
735  
45.1  
11.2  
670  
44.6  
11.7  
615  
47.5  
8.8  
610

46.6  
9.7  
535  
48.7  
7.6  
470  
49.2  
7.1  
400  
50.0  
6.3  
370  
38.2  
18.1  
355  
39.2  
17.1  
380  
40.2  
16.1  
300  
38.8  
17.5  
100  
38.7  
17.6  
85  
48.4  
7.9  
75  
51.6  
1.0  
100

TP

5.10

56.33 ✓

4.82

51.25 ✓

17+00.34 = 707 P.O.T.

49.8  
6.5  
800  
47.0  
9.1  
700  
44.9  
11.2  
668  
47.0  
9.1  
640  
48.0  
8.1  
800

48.4  
7.9  
580  
49.3  
6.8  
420  
49.3  
6.8  
390  
49.2  
6.9  
340  
37.1  
19.0  
300  
39.9  
16.2  
235  
39.8  
16.3  
140  
37.5  
18.1  
60  
45.9  
19.2  
78  
49.6  
6.5  
85  
51.3  
1.0  
100

16+50

49.5  
6.1  
800  
47.4  
8.7  
700  
47.3  
8.8  
800

47.9  
8.2  
500  
49.8  
6.3  
400  
48.8  
7.2  
300  
49.0  
7.1  
260  
38.4  
17.7  
170  
39.1  
17.0  
190  
37.8  
18.2  
110  
36.4  
19.7  
80  
46.8  
9.3  
60  
46.3  
9.2  
85  
50.6  
1.0  
100

56.05 ✓

56.53 ✓

56.05 ✓



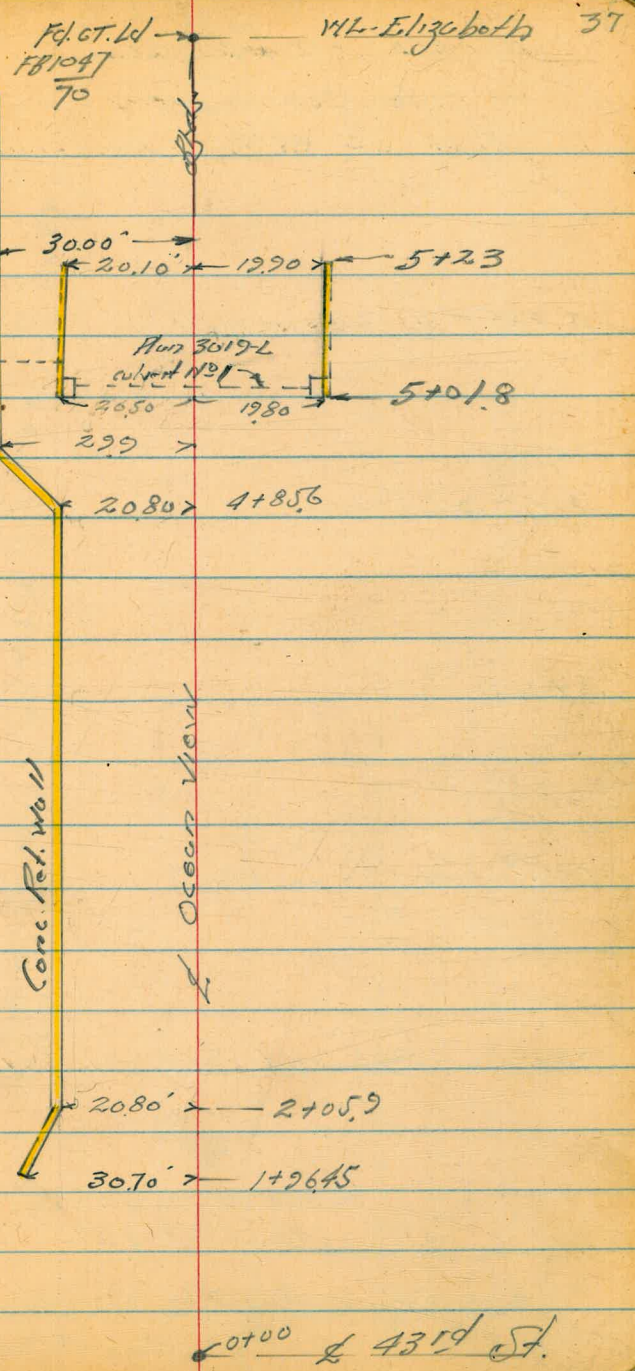
OCEAN VIEW BLVD.

Locations and Elevations  
Existing Concrete Retaining Wall  
on N. Side of East of 43rd

Walker  
Pape  
Huffman 10-22-51

NO 23625

INDEXED  
OCT 23 1951





Levels on Ret Wall  
N. Side Ocean View  
East of 43rd. Location P-37

4  
Ocean  
View  
B.M.

4 + 85.60 = A in Wall

42.89  
3.18  
20.80

4 + 00

42.22  
3.55  
20.80

3 + 00

41.54  
4.53  
20.80

2 + 05.9 = opp A in Wall

40.71  
5.36  
20.80

1 + 96.45 = West end Conc. Ret Wall

40.65  
5.42  
20.70

46.07'



on E Disk 43rd to Ocean View

T.P. 7.31 46.07 421 38.76

0.54 42.97 42.43 ✓

B.M.  
BP Hd Wall N Side Ocean View, 100' E.  
San Miguel  
FB 1047-75



21+19.6 181097-14  
 Chk Edge Per. 3.71 0.03  
 42.37  
 42.36 ✓

5+23 = End cb Inlets  
 43.30  
 2.77  
 30.00  
 Face Wall

5+06.3 = Toe Grating

5+01.8 = West end cb Inlet  
 North Side  
 And South Side

4+25.20 & in Wall

4+24

46.07  
*im*

43.00 41.96  
 3.07 4.11  
 20.10 20.10  
 cb. Gut

41.78 42.87  
 4.29 3.20  
 20.41 20.41  
 Gut. cb

42.43 42.87  
 3.64 3.20  
 20.50 20.50  
 Grating. cb

42.82  
 3.25  
 29.9

42.41  
 3.66  
 15.0  
 Rim MH 46.07 ✓

43.37 42.33  
 2.70 3.74  
 19.90 19.90  
 Top cb. Gut

43.03 42.00  
 3.04 4.07  
 19.80 19.80  
 Top cb. Gut

42.96 42.62  
 3.11 3.45  
 19.80 19.80  
 cb. Gut

REDUCED 11-2-57 KUTAJA



11-23-51

X-SECT "C" ST.

CLARK  
SHEPARD  
BRUNER  
BYSON

BOUNDARY TO 41<sup>ST</sup> ST.

W.O# 25020.

SHORT AVE.

9+3326

Set 2x2 E 2" + SHORT

(Quail St)

(CONT. P. 41)

INDEXED  
*Law*  
DEC 1 1951

60'

ALMA AVE  
QUAIL

Ed. old 2x2 knocked over.

PENN AVE  
(39 TH)

1164

Alley  
Ed. 2x2  
ICE

38-TH VISTA

2-19-57 Set  
2x2  
20.3

Ed. 2x2 Pipe

49.63  
Rec. 187.00

Roomba Line

106  
0700 → 31.27  
Set 2x2

Ed. Cone Met  
Appox. 2000

C ST.

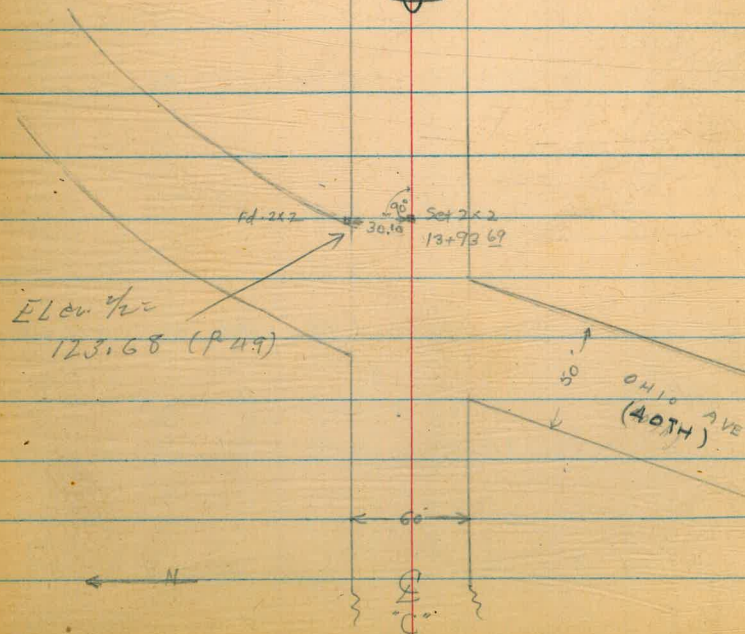
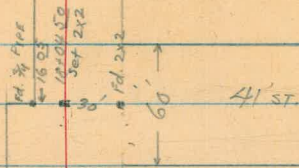


X-sect "C" ST.

(CONT.) Pg. 42

41

See P. 40 F.B. 599





X-SECT. "C" ST. (CONT.)  
 BOUNDARY to 41<sup>st</sup>.  
 SKETCH R. 40

T.P.	0.22	147.71	11.74	147.49
T.P.	0.12	159.23	11.95	159.11
T.P.	1.07	171.06	10.11	169.99
T.P.	11.09	180.10	4.48	169.01
T.P.	0.52	173.49	11.87	172.97
T.P.	11.94	184.84	0.65	172.90
T.P.	12.26	173.55	0.71	161.27
T.P.	12.30	162.00	1.49	149.70
T.P.	11.92	151.19	0.41	139.27
B.M.	11.44	137.68		128.24

N.W.B.P. 4041 + F

N.E.B.P. MARKET + 4041

checked



X-sect. C ST. (CONT.)  
 Boundary to 41st  
 Sketch Pg 40

2+00

1+50

1+00

0+85

T. P. 12.07 170.27 0.62 158.18

0+57

T. P. 12.16 158.80 1.07 146.64

0+00 Pueblo Line (TAKEN ALONG LINE) 12631.70

T.B. 01 ON 2x2 Hub 917.46 135.25

0-30

LT

R

RT

	153.5	156.3	140.0	162.3	163.9	166.9	169.5
	16.8	14.0	10.3	8.0	6.4	3.6	0.8
	50	30	18	80	15	30	40
	151.8	154.5	156.8	158.8	164.4	164.2	168.1
	18.5	13.8	13.5	11.5	5.9	4.1	2.2
	40	30	23	14	23	30	40
	151.6	155.9	156.3	159.0	160.2	163.6	165.2
	18.7	14.4	14.0	11.3	10.1	6.7	5.1
	50	40	30	18	10	30	40
	150.0	154.7	157.0	156.7	158.6	160.7	161.8
	20.7	15.6	13.6	11.7	9.6	8.5	6.5
	50	30	30	10	20	30	40

	1438	146.8	154.1	158.	157.7
	15.0	12.0	4.7	0.8	1.10
	40	30	18	30	40

	123.2	125.9	132.9	143.8	148.1
	24.5	21.8	14.8	1.9	1.04
	40	30	15	30	40
	134.6	135.9	134.9	139.9	148.1
	23.7	22.8	17.8	17.8	17.8
	30	30	30	30	30

147.71







X-SECT. C ST. (CONT.)

Boundary to #1 st.  
Sketch Pg 40

5450

LT

C

RT

119.9	120.2	122.8	125.8	129.9	132.8
10.7	10.4	7.8	4.8	0.7	+2.2
40	30		20	30	40
TOP BANK			TOP CUT BANK		

T.P. 0.79 130.56 10.72 129.84

130.56

5427

32' LEFT to Pole P17434

5425

129.0	127.7	125.9	129.4	130.2
11.6	12.9	14.7	11.2	10.4
40	30	TOP CUT	30	40
	TOP CUT BANK			
140.2	138.0	132.9	128.5	130.6
0.4	2.6	8.6	12.1	10.0
40	30	TOP CUT BANK	20	30
			40	40

5415

5400

144.6	142.8	137.5	135.5	135.0
+4.0	+2.2	3.1	5.1	5.6
40	30		30	40
			TOP CUT BANK	

T.P. 0.33 140.56 11.78 140.23

140.56

T.P. 0.16 152.01 11.36 151.85

4466

156.2	154.8	151.4	147.3	146.0
7.6	9.0	12.4	16.5	17.8
40	30		30	40

T.P. 0.95 163.81 12.23 162.86

163.81



X- Sect, "C" ST. (cont.)  
 Boundary to #1 at.  
 Sketch Pg 40

E

LT

RT

7+10

153.7 155.1 161.0 164.0 164.2  
 9.7 7.7 1.8 +1.2 +1.4  
 40 30 30 40

7+00

149.3 153.3 159.6 161.8 162.8 164.9  
 13.5 9.5 3.2 1.0 0.0 +2.1  
 40 30 12 30 40

T.P. 11.52 162.77 0.26 151.25

162.77  
 ↑

6+50

137.0 139.8 150.8 157.7 160.0  
 14.5 11.7 0.7 +6.2 +8.5  
 40 30 30 40

T.P. 11.88 151.51 0.53 139.63

151.51  
 ↑

6+00

126.9 129.4 131.8 135.0 144.4 147.9  
 13.3 10.8 8.4 5.2 +4.2 +7.7  
 40 30 20 30 40

T.P. 9.97 140.16 0.37 130.19

140.16  
 ↑

5+77

117.6 120.7 129.1 136.9 121.7  
 13.0 9.9 1.5 +6.3 8.9  
 40 30 30 40  
 TP BANK

5+62

129.3 118.7 122.9 132.5 135.9  
 13.0 11.9 7.7 +1.9 +5.3  
 40 30 700 OUT 30 40

130.56  
 ↑



X-SECT. "C" ST. (cont.)  
Boundary to 41 st.  
Sketch Pg. 40

10+84

rim canyon

10+50

10+00

9+50

9+33.26  
T.B.M.

2x2 Hub of "C" + Short.

5.62 167.50

9+00

8+50

8+00

7+50

T.P

10.55

173.12

0.20

162.57

169.8  
4.3  
40

167.8  
5.3  
30

167.2  
5.9

167.6  
5.5  
30

168.5  
4.8  
40

168.9  
4.2  
40

168.9  
4.2  
30

168.1  
5.0

168.3  
4.8  
30

168.2  
4.9  
40

167.2  
5.9  
40

168.4  
4.7  
30

169.1  
4.0

168.4  
4.7  
30

168.6  
4.5  
40

167.5  
5.6  
40

168.  
5.1  
30

167.7  
5.4

168.5  
4.6  
30

167.8  
5.3  
40

161.1  
12.0  
125

164.9  
8.2  
100

167.0  
6.1  
50

167.8  
5.3  
30

167.50  
5.62

167.2  
5.9  
30

168.0  
5.1  
50

165.8  
7.3  
40

165.7  
7.4  
30

167.5  
5.6

167.4  
5.7  
30

169.2  
3.9  
30

164.1  
9.0  
40

164.6  
8.5  
30

166.0  
7.1

166.9  
6.2  
30

167.9  
5.2  
40

159.5  
13.6  
40

162.4  
10.7  
30

164.3  
8.8  
24

165.3  
7.8

165.2  
7.9  
20

166.6  
6.5  
30

167.6  
5.5  
40

158.3  
14.8  
40

159.8  
13.3  
30

162.3  
10.8  
23

163.8  
7.3

165.3  
7.8  
30

165.4  
7.7  
40

173.18  
↑



X-SECT. "C" ST. (CONT)  
Boundary to 41st  
Sketch P. 40

T.P. 0.67 149.64 11.53 148.97

13+00

12+75

12+50

12+15

T.P. 1.10 160.50 11.58 159.40

12+00

11+50

11+00

T.P. 2.67 170.98 4.81 168.31

L.T.                      ♀                      R.T.

138.9	140.2	142.7	145.2	145.3
21.6	20.3	17.8	15.3	15.2
40	30		30	40
145.9	147.8	151.3	152.9	153.2
14.6	12.7	9.2	7.6	7.3
40	30		30	40
148.4	151.1	154.8	157.5	158.2
12.1	9.4	5.7	3.0	2.3
40	30		30	40
149.1	152.5	160.9	164.3	164.5
11.4	8.0	10.4	13.8	14.0
40	30		30	40

			160.32			
			↑			
149.0	151.5	162.2	167.2	169.1		
22	19.5	8.8	3.8	2.7		
40	30		30	40		
149.0	149.7	169.2	161.5	167.4	169.4	168.5
22.0	21.3	18	9.5	3.6	2.6	2.5
40	30	20		19	30	40
				Rim		
				CANYON		
167.9	163.6	162.2	162.6	164.4	167.7	168.6
3.1	7.4	8.8	8.4	6.6	3.3	2.4
75	40	30		12	30	40
				Rim		
				CANYON		

170.78  
↑







X-sect. "C" ST. (CONT.)  
Boundary to 41 at  
Sketch P 40

LT.

E

RT

16+00

176.1	175.2	174.5	173.5	173.5	175.7	169.3	168.6
8.7	8.6	9.3	10.3	10.3	10.1	14.5	15.2
40	30	7	6	6	16	30	40

T.P.

10.12

183.80

3.39

173.68

183.80

15+69.5

49.7 to East edge House

173.8	173.9	172.9	171.1	171.0	169.0	169.0
3.3	3.2	4.2	6.0	6.1	8.1	8.1
40	30	7	6	6	30	49.7

15+50

50.5 ft. West edge House

170.9	170.6	170.8	169.1	169.1	168.7	168.46	159.96
6.2	6.5	6.3	8.0	8.0	8.4	8.61	17.11
40	30	7	6	6	30	50.5	55.

15+39

168.8	168.4	167.3	163.8	160.1
8.3	8.7	9.0	13.3	17.0
40	30	30	30	57

TOP  
FOUNDATIONFloor  
garage, dirt

EAST edge dirt drive

T.P.

12.02

177.07

0.64

165.05

177.07

164.6	164.3	163.7	162.8	160.4	159.1
1.1	1.4	2.0	2.9	5.3	6.6
40	30	30	30	45	78

West edge of terraced drive, dirt.

15+13

163.0	162.4	161.5	156.1	153.9
2.7	3.3	4.2	9.6	11.8
40	30	30	30	40

15+00

T.P.

12.26

165.69

0.50

153.43

165.69



X- Sect "C" st. (CONT.)  
Boundary to 41st  
Sketch 040

17+24 20.2 LT. 6" CONC. RT. WALL RT. 1 to "C"

T.P. 685 190.52 0.13 183.67

17+16 45' LT. EAST END HOUSE

17+00

45' LT. West End House  
30' RT. Begin 3' Steel Wire Fence

16+94

16+92 20.7 LT. Brick Wall RT. 1 to "C"

16+90 20.7 LT. 4" CONC. WALL

16+75

16+45

16+44 27' RT. Pole #P278505

16+27 25.7 RT. anchor

16+22 25.7 RT. anchor

183.96  
6.56  
20.2 TP. WALL  
190.52  
↑

183.9 183.4 183.4 182.4 182.9 184.0 184.4  
+0.1 0.4 0.4 1.4 0.9 +0.2 +0.6  
33 30 20 19.8 30 40

182.86  
0.94  
45  
Floor level House  
181.34 181.76 182.19  
2.46 2.04 1.61  
40 30 20.7

180.4 180.9 181.6 181.9 182.5  
3.4 2.9 2.2 1.9 1.3  
40 30 30 40

178.8 178.6 178.9 178.3 178.3 178.8 177.6 177.3  
5.0 5.2 4.9 5.5 5.5 5.0 6.2 6.5  
40 30 7 6 20 30 40

183.80  
↑



X-SECT 'C' ST. (CONT.)  
Boundary to 41st  
Sketch p. 40

T.P. 0.27 168.57 1175 168.28

T.P. 0.11 180.03 1160 179.92

18+04.50 22.3 LT. end garage  
1/2" x 1/2" 5' FOOT STEEL WIRE FENCE

T.B.M. 2x2 HUB & 'C' 41st  
5.19 185.33

17+98 22.3 LT. to 41st garage

17+86 18' LT. garage  
18' LT. END 4' WOOD FENCE, Beg Single garage  
DIRT FLOOR

17+75 25.5 RT. Pole #P370212

17+74.50 Approx. west LINE 41st

17+74 30ft RT. END 3' Steel wire fence

17+50

17+27 29.7 RT. to 3' CONC WALK

17+25 17.9 LT. Beg 4' Wood Fence

185.5	185.6	185.33	185.5	185.4	184.3	179.0
5.0	4.9	5.19	5.0	5.1	6.2	11.5
20.5	16.5	2x2 HUB	30	50	100	160

185.3

5.2  
18' DIRT  
Floor

184.2	184.5	185.1	185.0	185.1
6.3	6.0	5.4	5.5	5.4
40	30		30	40

183.1	183.5	184.7	184.7	185.12
7.4	7.0	5.8	5.8	5.4
40	30		30	40

184.48	184.82
6.04	5.70
29.7	40

190.52  
↑



X- Sect. "C" ST. (CONT.)  
 Boundary to 41st  
 Sketch P. 40

Check. N.E. P. 40th Market 10.18 128.24 = 128.24

Starting 8 AM

T.P. 1.28 138.42 11.65 137.14

T.P. 0.27 148.79 7.02 148.52

T.P. 11.53 155.54 1.91 144.01

T.P. 0.65 145.92 11.84 145.27

T.P. 0.32 151.11 11.78 156.79

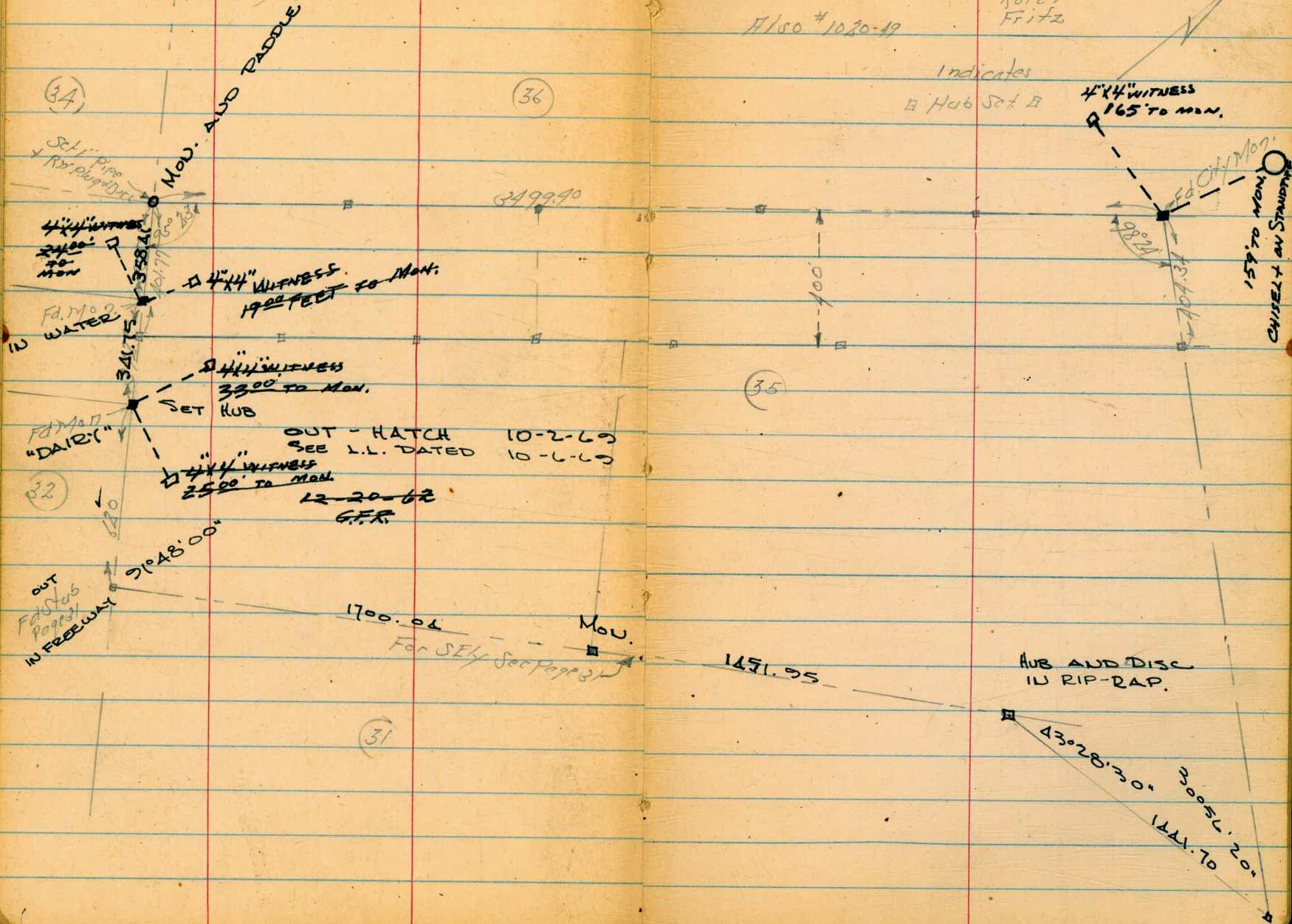


Survey North Westerly 400' Lot 35  
 Partition of Rancho Mission of San Diego  
 For Sanitary Fill

Feb. 21-52  
 H. Sisson  
 Garber  
 Rorer  
 Fritz

#1020-49

Indicates  
 Hub Set



54

CHISEL on STRAP

HUB AND DISC  
 IN RIP-RAP.

OUT-HATCH 10-2-69  
 SEE L.L. DATED 10-6-69  
 12-20-62  
 G.F.R.

OUT  
 Fd. Stab  
 Paved  
 IN FREEWAY

Set Pipe  
 in Rip-rap

Fd. No. 2  
 WATER

Fd. No. 17  
 "DAIRY"

34

36

35

31

3499.90

1700.06

1451.95

43°28'30"

3005.20

01.771

MOV. AND PADDLE

4"X4" WITNESS  
 1900 FEET TO MON.

4"X4" WITNESS  
 3300 TO MON.

4"X4" WITNESS  
 2500 TO MON.

4"X4" WITNESS  
 165' TO MON.

Fd. City Mon.

159' TO MON.

CHISEL on STRAP

100'

98°28'

1310.62

1310.62

358.4

341.75

620

91°48'00"

MOV.

For SEE Sec Page 31



Location of Existing Improvements along  
Bryant St. + Alley in Block 267 - Map. 579

Ties in Books 2078 - P. 5-A

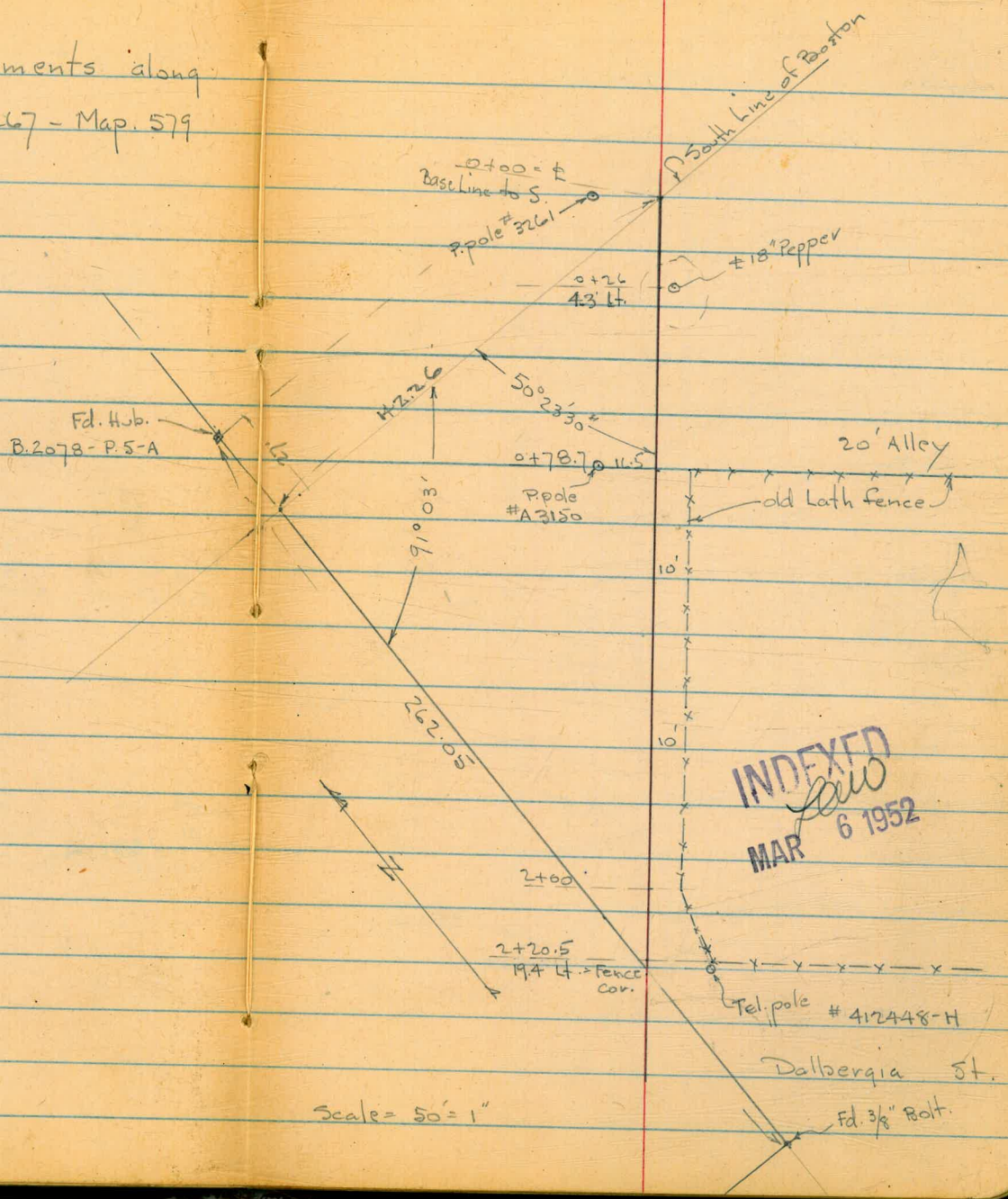
# 6062

W.O. 20006

3-5-52 7.0.

See opening sheet # 2-61

Fd. Hjb.  
B. 2078 - P. 5-A



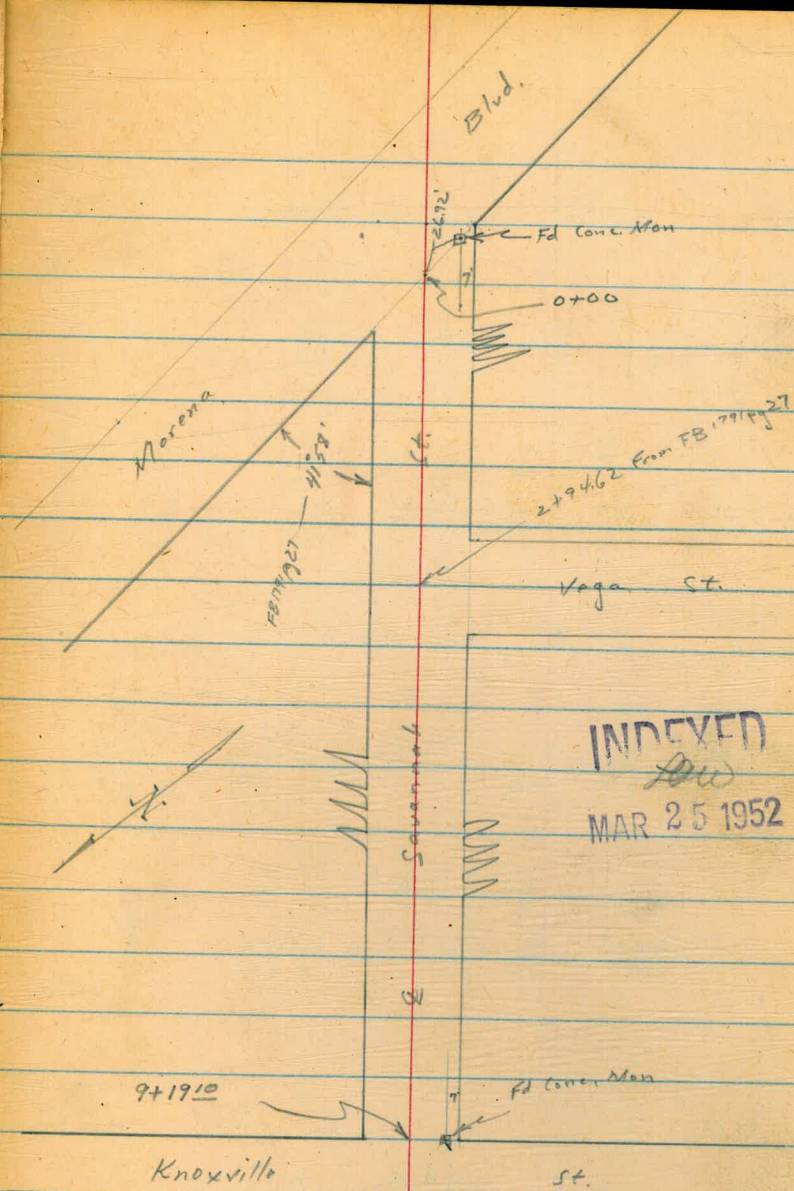


Roberts  
Cota  
Moore  
Fullen  
3-21-52  
W.O. 25020

X-Section Savannah Street  
Morena Blvd. to Knoxville St.

FB 1791 pg 27

56





Cont'd From Page 56

Lt

R

# 57

1+18 24<sup>±</sup> RT END LATH FENCE

1+00

17.2	18.0	18.7	17.8	18.4	18.3	18.1	19.1
7.5	6.7	6.0	6.9	6.3	6.4	5.6	5.6
40	25	20	16		13	25	35

0+50

19.0	19.3	19.3	18.4	19.3	19.2	20.4	20.7
5.7	5.4	5.4	6.3	5.4	5.5	4.3	4.0
40	25	22	18		14	18	25

0+34 25' RT Begin lath fence.

0+00 Wly Line Morena Blvd

↑  
X-Sections  
Parallel to Morena

18.2	19.2	19.2	19.3	20.4	20.8
5.5	5.5	5.5	5.4	4.3	3.9
50	37.5		25	33	50

0-30± Wly Edge Pavc. Morena

19.7	19.8	20.0	20.3	20.7
5.0	4.9	4.7	4.4	4.0
100	50		50	100

Set BM

6.08 18.61

Conc. Mon.  
SW. cor.  
Morena & Savannah

TP 8.09 24.69A 1.91 16.60

24.69A

TP 11.32 18.51 0.15 7.19

BM 5.28 7.34 206

Conc. Mon.  
Knoxville & Naples



Cont'd From Page 57

2+51<sup>E</sup> 25 Lt & 3' Conc Walk

Lt  
1476  
3.28  
39  
conc

Rt  
1503  
3.01  
25  
conc

2+50

147	149	146	141	148	147	154	147	140
33	3.1	3.4	3.9	3.2	3.3	2.6	3.3	4.0
40	25	19	14		14	15	25	40

2+00

151	155	161	153	160	160	165	166	166
2.9	2.4	1.9	2.5	2.0	2.0	1.5	1.4	1.4
40	25	16	14		15	16	25	35

1+64 173' Lt to Center P. Pole #4726

1+60<sup>E</sup> 234' Rt to Diering Back Knife Co.

1745  
0.59  
15  
conc  
Walk

1787  
0.17  
234  
Floor

T.P. 123 18.04X 7.88 16.81

18.04X

1+50

169	168	172	168	173	177	182
7.8	7.9	7.5	7.9	7.4	7.0	6.5
40	25	16	15		25	40

1+25 27' Rt to Garage

24.69X

24.69X

184  
6.3  
27  
Dirt  
Floor



Cont'd From Page 58

7.P. 2.54 8.03A 12.55 5.49

5+00

6.6	6.8	6.3	5.5	5.6	5.9
11.4	11.2	11.7	12.5	12.4	12.1
40	25	15	13		25 25

4+86 25 Lt & 3' Conc Walk

7.94	7.15
10.70	10.89
38 conc	25 conc

4+70 17' Lt to Center P. Pole #4666

4+50 (Fill on Right still being made)

8.2	8.6	8.5	7.3	7.3	6.8	7.4	6.4	6.2
9.8	9.4	9.5	10.1	10.7	11.2	10.6	11.6	11.8
40	25	17	13		12	14	25	40

4+00

9.6	14.1	14.4	9.4	9.8	9.4	9.8	9.4	7.9
8.4	7.9	7.6	8.6	8.2	8.6	8.2	8.6	10.1
40	25	19	12		13	15	25	40

3+50

12.5	12.3	12.3	11.8	12.4	11.5	12.2	14.8	9.4
5.5	5.7	5.7	6.2	5.6	6.5	5.8	7.2	8.6
40	25	17	13		13	15	25	40

3+15

{ 22.8' Rt to Deadman  
18.8' Rt to Center Guy Pole  
16.6' Lt to Center P. Pole # P2198

2+94.62 E Vega

12.3	13.0	13.7	14.3	13.9	14.7	14.3	13.0
5.7	5.0	4.3	3.7	4.1	3.3	3.7	5.0
100	50	25	MM	13	15	25	40

18.04A

18.04A

Rt 59



Cont'd From Page 59

7+50

3.1	3.2	3.8	3.6	3.4
4.9	4.8	4.2	4.4	2.6
40	25		20	2.5
				ON
				Fill

7+20 17' to Center P. Pole # 4640

7+00

3.5	3.4	3.8	3.6	3.0
4.5	4.6	4.2	4.4	3.0
40	25		20	2.5
				ON
				Fill

6+96 25' to 4' Conc Walk

3.70	3.68			
4.33	4.35			
38	25			
conc	conc			

6+50

3.9	3.1	3.9	4.7	
5.1	4.9	4.1	3.3	
40	25		20	
			ON	
			Fill	

6+00

3.1	3.5	3.2	3.8	3.9	4.7
2.9	4.5	4.8	4.2	4.1	3.3
40	25	17		13	2.5
					ON
					Fill

5+50

4.7	4.8	5.1	4.3	4.6	4.5	4.0
3.3	3.2	2.9	3.1	3.4	3.5	3.0
40	25	17	24		16	2.5
						ON
						Fill

8.03A

8.03A

Lt

Q

R 60



Cont'd From Page 60

check 5.98 2.07 = 2.06

Set BM

5.23

2.80

Conc  
S.W. Cor.

Mon

Knoxville & Savannah

Q Knoxville

4.9	3.5	4.2	4.1	4.6
5.1	4.5	3.8	3.9	3.2
200	100	114	100	175

9+19.10 Sly Line Knoxville

3.6	3.9	4.4
4.2	4.1	3.6
25		25
		ON
		FILL

8+50

3.5	3.7	4.0	3.6	3.0
4.5	4.3	4.0	4.4	3.0
40	25		23	25
				ON
				FILL

8+20 173' Lt to Center Guy Pole # 4850

8+00

4.8	4.0	3.9	3.7	3.0
3.2	4.0	4.1	4.3	3.0
40	25		22	25
				ON
				FILL

8.03A

8.03A







2t=South

♀

Rt=North

63

1700

162 103 93 86 80 74  
30 18 10 8 10 20  
/ 172.3 180.0 179.0 179.7 180.3 181.2

0475

185 112 105 93 86 72 62  
36 24 20 10 10 20  
169.8 177.1 178.8 179.0 179.7 180.6 181.6

0450

103 93 86 75 61  
20 10 10 20  
178.0 179.0 179.7 180.8 182.1

0425

93 82 82 74 61  
20 10 10 20  
179.1 179.4 180.1 181.2 182.2

0400 Wly Reynard Way taken on line

104 96 82 74 53  
305 105 8 105 305  
174.9 179.2 180.1 181.2 183.0

0-1063 Wly cb line Reynard Way taken along cb

1123 1056 965 908 814 880 731 725 559 629  
306 305 105 105 top 304 105 105 306 305  
944 top 944 top 180.15 179.49 180.95 180.34 182.10 182.0

TP

512 188<sup>29</sup> 1866 183<sup>17</sup>

BM

100 195<sup>83</sup> 194<sup>83</sup>

Chisel "X"  
♀ Reynard way  
"S line" Terrace

T 188<sup>29</sup>



H=South

2

H=North

64

2150

192.2	189.2	185.4	184.4	179.6	179.5
50	80	118	128	176	177
20	10	4	10	20	

TP<sub>2</sub>

903 19716

016

18813

π 19715

2125

188.0	183.2	178.5	175.4	174.4	179.3
03	51	88	82	82	90
20	10	4	10	20	

2100

173.1	178.9	178.5	179.4	179.6	179.9
52	94	98	82	87	84
30	22	10	10	20	

1775

178.9	179.1	179.3	179.4	179.6	180.1
92	92	90	82	82	82
30	20	10	10	20	

1750

174.5	178.7	179.2	179.5	179.8	180.3
138	96	96	88	85	80
30	22	10	10	20	

1725

171.1	178.3	178.9	179.3	179.8	180.5
172	102	94	90	85	78
30	18	10	10	20	

18829



Lt = North      &      Rt = South

Starting BM

053 194<sup>84</sup>

TP3

3<sup>32</sup> 195<sup>37</sup>

5<sup>11</sup> 192<sup>05</sup>

3+14

199.3	194.9	192.2	187.2	184.4	178.9
+2L	23	70	100	128	183
20	10		10	20	30

3+00

200.4	194.8	190.0	186.6	183.3	179.9
+3R	24	72	106	139	173
20	10		10	20	28

2+75

157.0	194.0	188.8	184.9	179.2	179.3
0R	32	84	123	182	173
20	10		9	16	26

π 197<sup>16</sup>



Levels Re Cross Section Lot 35  
 Portion Rancho Mission of San Diego  
 (Daley Corp. Lease)

See Sketch Page 31

INDEXED  
 APR 29 1954

Reductions checked by W.W.  
 May 5, 1954

April 28 54 66

H.S. 1700  
 Barber  
 Chipman  
 Parks  
 Valley

Left: N.W.

N.O. 20006 Baseline

9+0

45.7 ✓	36.2 ✓	36.3 ✓	37.7 ✓	37.8 ✓	38.3 ✓	46.1 ✓
5.4	14.9	14.8	13.4	13.3	13.8	5.0
293.44	280	220	200	148	86	79.5
TOP						TOP

+90

45.6 ✓	36.5 ✓	36.9 ✓	37.4 ✓	39.3 ✓	38.3 ✓	46.1 ✓
5.5	14.6	14.2	13.7	11.8	12.8	5.8
285	275	220	175	125	88	80
TOP						TOP

+75

44.5 ✓	37.9 ✓	36.5 ✓	36.6 ✓	37.8 ✓	46.3 ✓	46.3 ✓	46.0 ✓
6.3	13.2	14.6	14.5	13.3	1.8	4.8	5.1
280	270	222	186	147	137	100	78
TOP							TOP

+58

44.6 ✓	45.5 ✓	46.0 ✓	37.3 ✓	37.1 ✓	46.2 ✓	46.4 ✓
5.5	5.6	5.1	12.8	14.0	1.9	4.7
300	280	200	195	145	110	100
		TOP			TOP	

8+40

45.8 ✓	45.7 ✓	46.5 ✓
5.0	5.4	4.6
200	160	100
	TOP	

BM 5.82 57.05 45.23 97.41.90  
 Page 34

STATION ON REVISION



TP 4.99 51.81 ✓ 423 46.82

1140

150

1040

175

9450

51.05

Left = NW

476 ✓	355 ✓	355 ✓	352 ✓	394	47.2 w.H.	160 ✓
39	156	156	159	168	39	50
320 = NW TOP	305	255	203	168	145	100
SP					80 TOP	

471 ✓	352 ✓	355 ✓	361 ✓	381 ✓	165 ✓
110	159	151	150	130	46
320 = NW TOP	308	260	215	143	130
SP					80 TOP

474 ✓	371 ✓	368 ✓	381 ✓	371 ✓	165 ✓	167 ✓
37	116	143	130	140	46	44
312 = NW TOP	300	245	190	150	140	100
SP					80 TOP	

473 ✓	375 ✓	365 ✓	381 ✓	381 ✓	386 ✓	168 ✓
38	134	146	120	120	125	42
312 = NW TOP	301	250	200	150	96	95
SP						

474 ✓	371 ✓	365 ✓	379 ✓	393 ✓	393 ✓	161 ✓
47	140	146	132	148	118	50
311 = NW TOP	300	236	180	134	80	73
SP						80 TOP

5105 ✓



Left: NYM

S

+50

48.7 ✓	36.6 ✓	35.3 ✓	35.4 ✓	38.1 ✓	39.5 ✓	48.4 ✓
31	15.6	16.5	16.4	13.7	12.3	3.4
361-NY Top	343	330	235	174	111	9.5-Top
Bottom						51.8P

13+0

48.6 ✓	35.4 ✓	35.4 ✓	38.8 ✓	39.8 ✓	47.9 ✓
32	16.4	14.4	13.0	12.0	3.9
371-NYBP	323	230	202	123	11.5-Top
					51.8P

+50

48.4 ✓	36.2 ✓	36.8 ✓	38.0 ✓	39.7 ✓	48.1 ✓
34	15.6	15.0	12.8	12.1	2.7
321-NYBP	302	240	178	154	14.3-Top
					51.8P

12+0

48.5 ✓	36.2 ✓	37.1 ✓	39.0 ✓	39.3 ✓	47.9 ✓
33	15.6	14.7	12.8	12.5	3.9
322-NY	305	222	165	128	11.7
80.4					

11+50

47.6 ✓	35.3 ✓	35.0 ✓	35.1 ✓	39.8 ✓	40.0 ✓	47.3 ✓
4.2	16.5	16.8	16.7	12.0	11.8	4.5
327-NY	308	270	220	170	136	11.7-51.8P
81.5-NY						51.8P

51.81

51.81 ✓



Lt. = 1121

16+0

497 ✓	588 ✓	375 ✓	375 ✓	374 ✓	379 ✓	388 ✓	465 ✓
3.1 385	130 365	14.3 330	14.3 360	14.1 190	13.9 130	130 65	5.3 54. Top 377

+50

502 ✓	373 ✓	367 ✓	368 ✓	378 ✓	385 ✓	391 ✓	462 ✓
1.6 385	14.5 360	15.1 300	15.0 245	14.0 190	13.3 130	12.7 85	5.6 58

15+0

494 ✓	363 ✓	364 ✓	361 ✓	368 ✓	398 ✓	392 ✓	463 ✓
2.1 385-Top	15.5 365	15.4 280	15.7 220	15.0 165	12.0 120	12.6 63	5.5 55-Top

+50

498 ✓	366 ✓	363 ✓	362 ✓	370 ✓	390 ✓	396 ✓	487 ✓
2.0 380-Top	15.7 360	15.5 325	15.6 280	15.6 220	14.8 163	12.8 120	12.2 83
							3.1 71-Top

14+0

491 ✓	361 ✓	360 ✓	360 ✓	388 ✓	390 ✓	479 ✓
2.7 371-Top	15.7 353	15.8 305	15.8 215	13.0 160	12.8 100	8.9 85-Top
						8.5-Top

51.81

51.81 ✓



Left - NY.

B

B.M.

0.76

✓  
51.310.7 P.L.  
17.07  
17.00.3  
(51.23)  
Page 35

17+0

199 ✓	373 ✓	387 ✓	394 ✓	394 ✓	388 ✓	377 ✓	458 ✓
22	148	134	127	127	133	144	63
345	330	280	210	160	110	80	47
5. TOP NY							80. NY

JP

6.02

52.07 ✓

576

46.05

52.07 ✓

+50

191 ✓	399 ✓	371 ✓	372 ✓	382 ✓	384 ✓	384 ✓	38 ✓	172
27	119	147	146	136	134	134	150	46
365	345	325	285	220	170	120	77	85

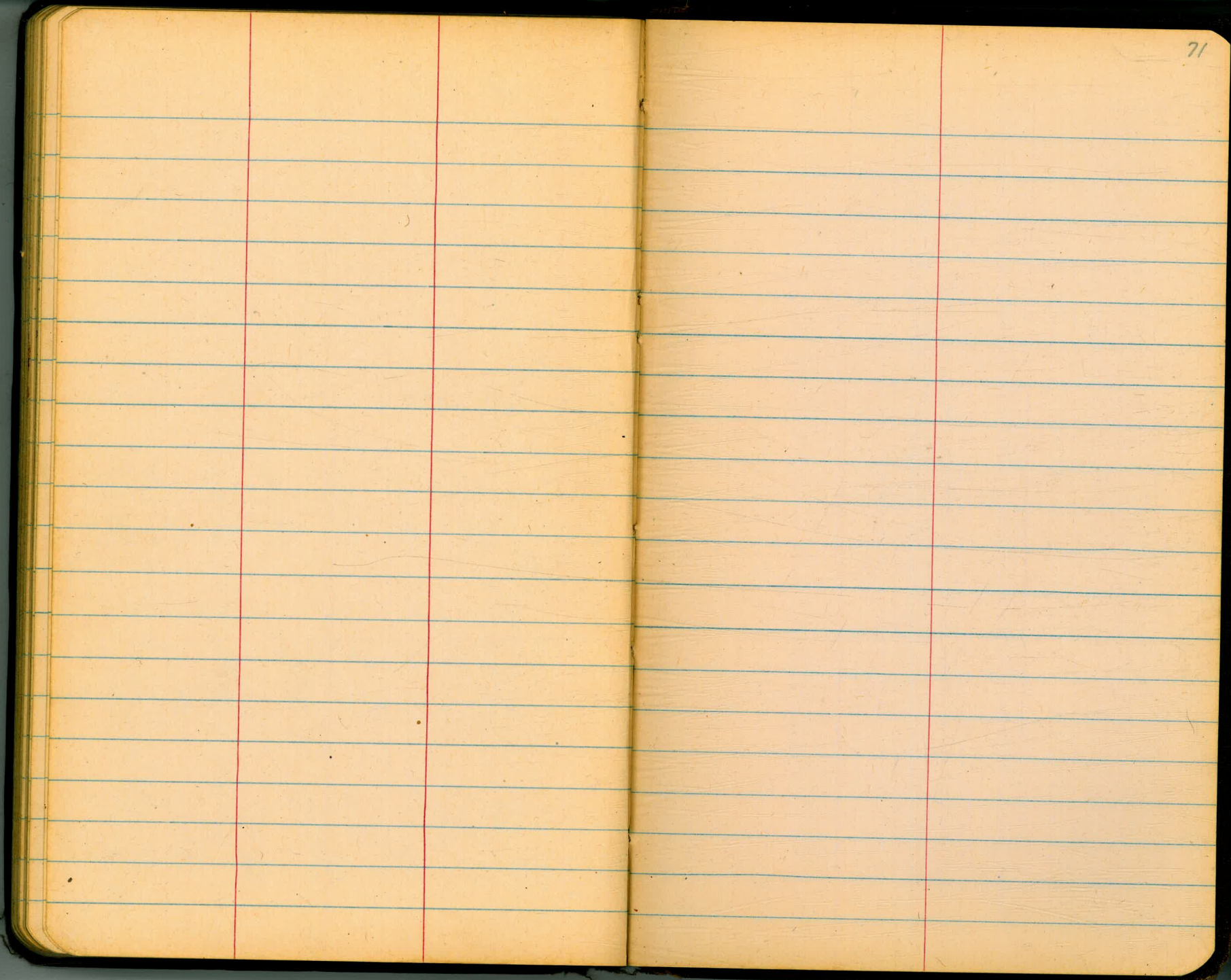
16+25

49.5 ✓	394 ✓	370 ✓	375 ✓	377 ✓	382 ✓	377 ✓	461 ✓
23	134	148	143	141	136	146	57
385	340	308	280	195	150	160	77
5. TOP NY							80. NY

57.81

57.81 ✓

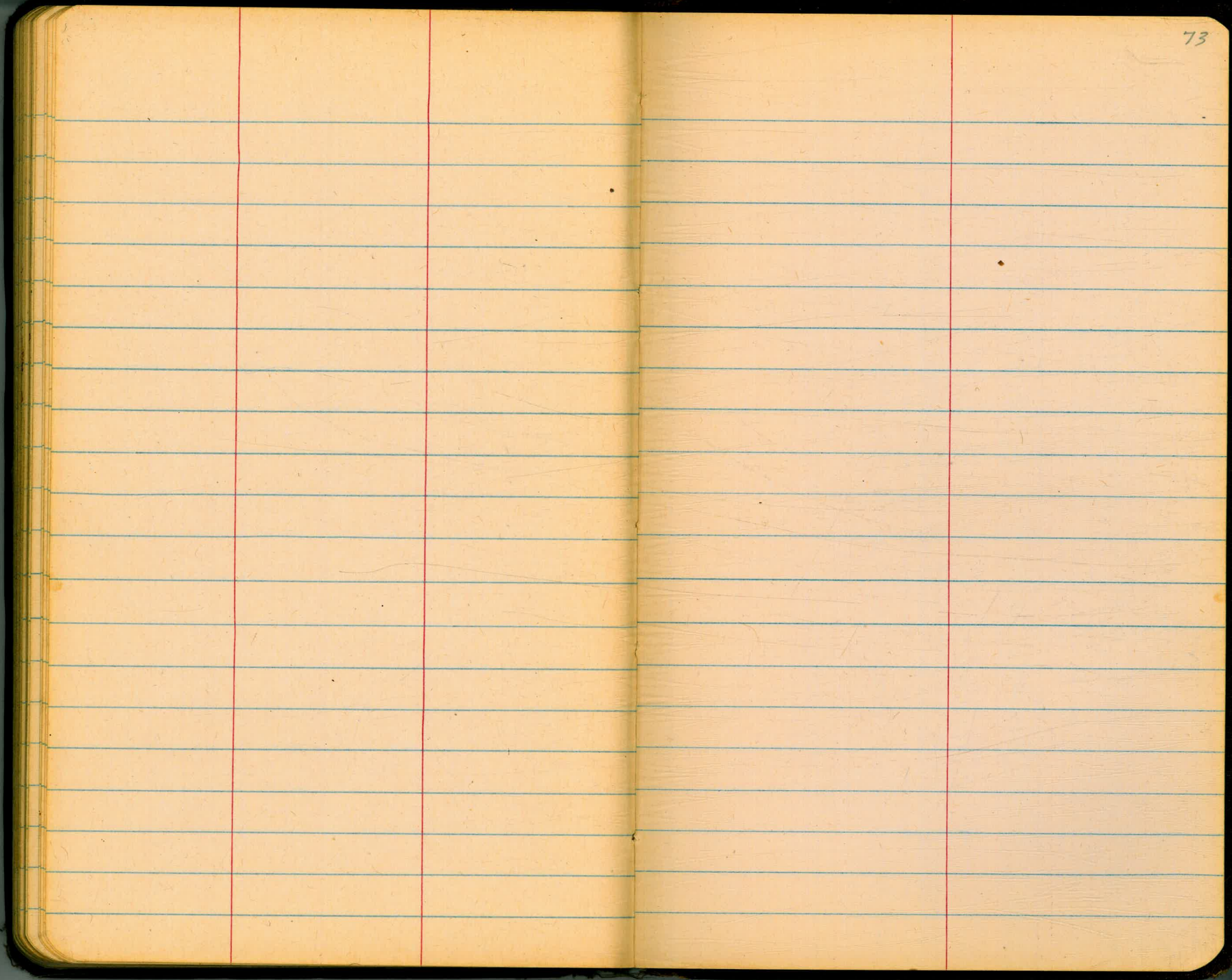




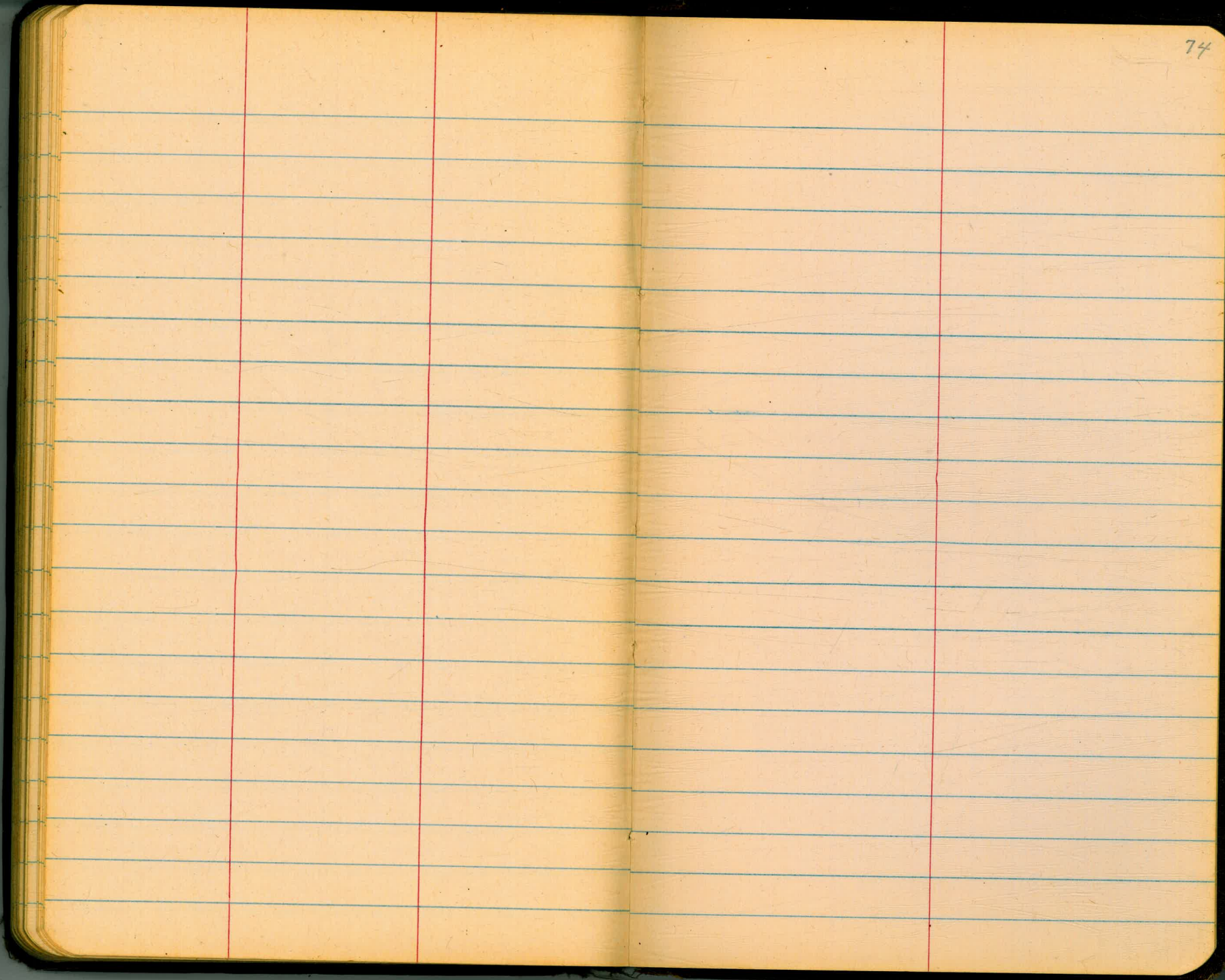




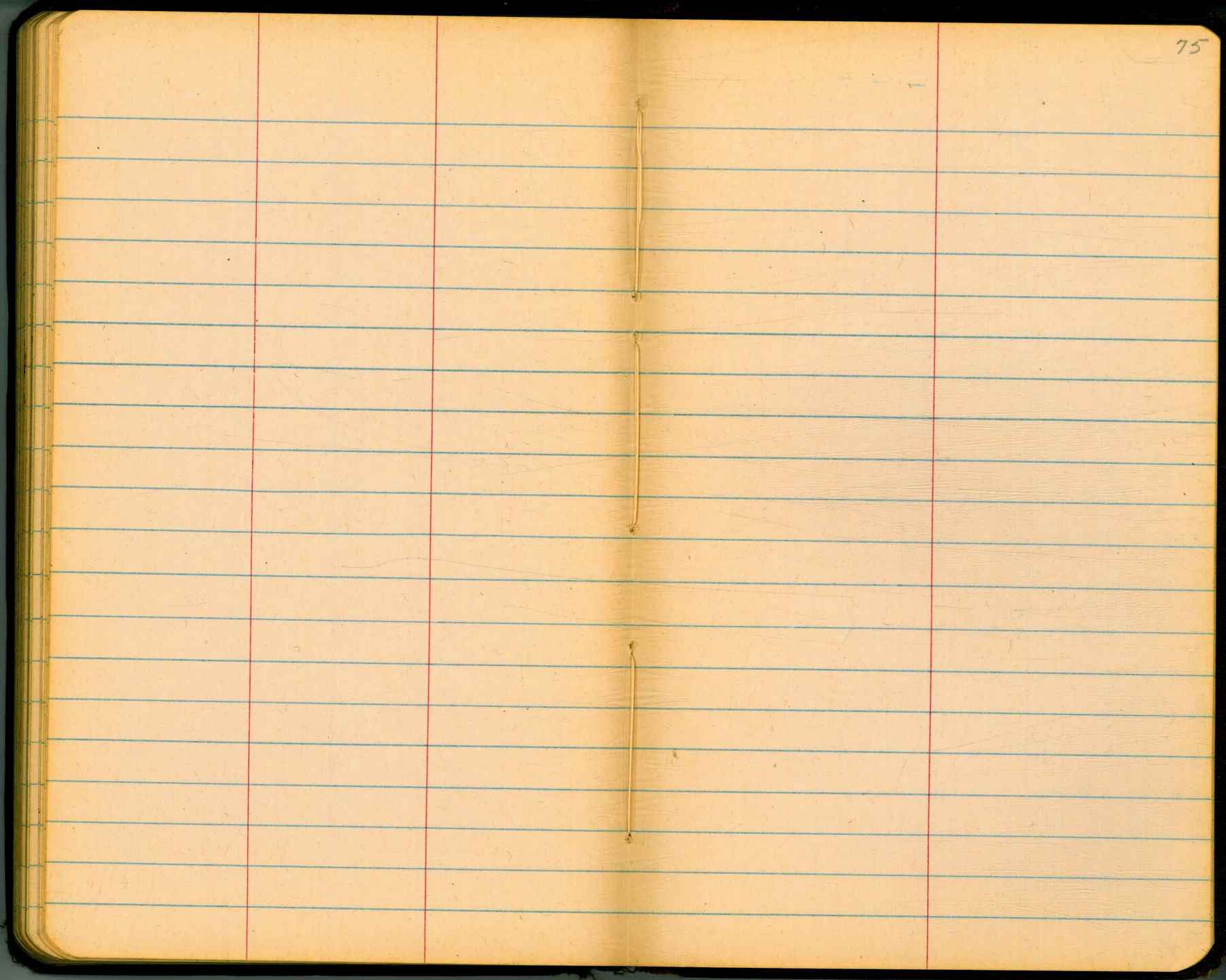




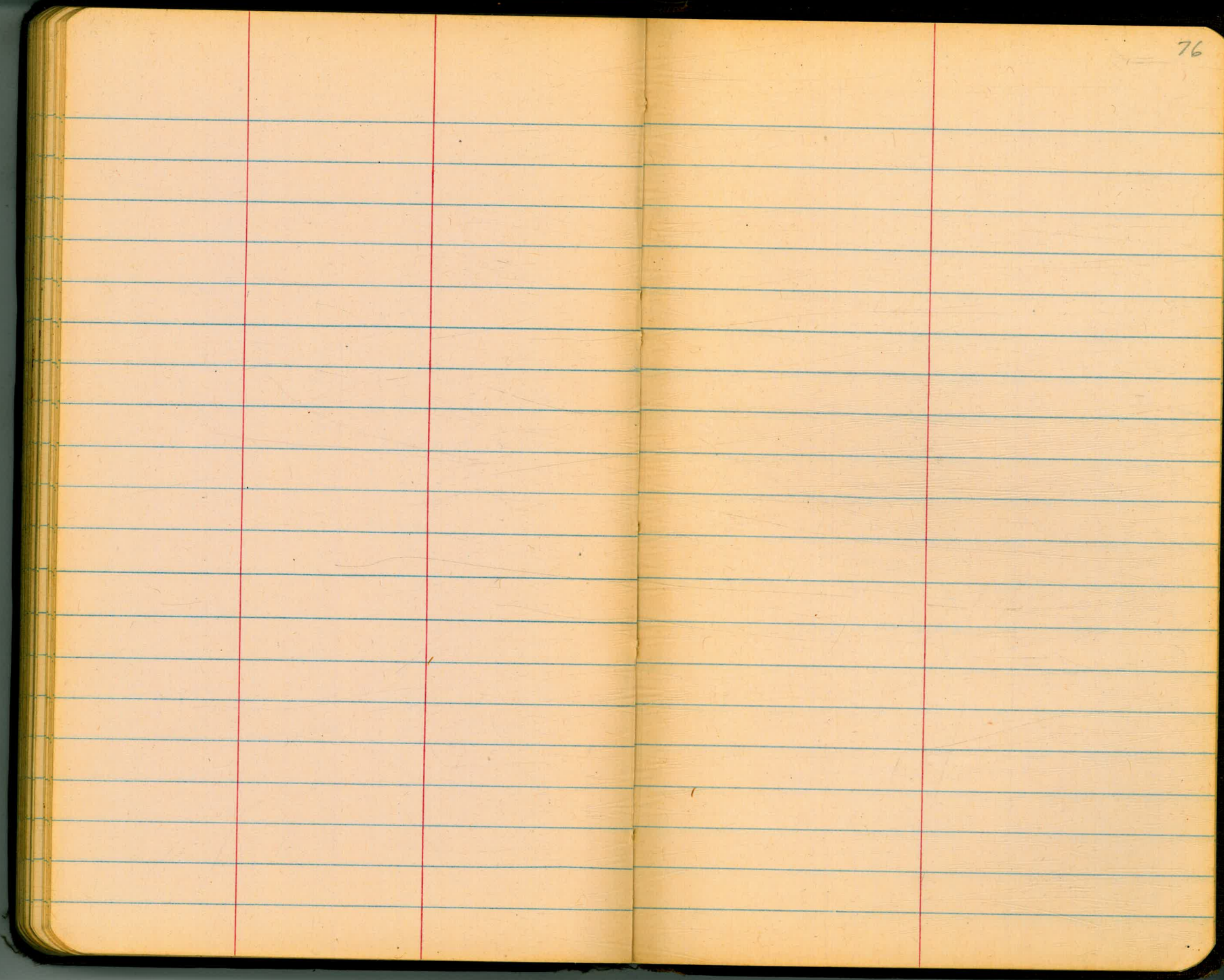




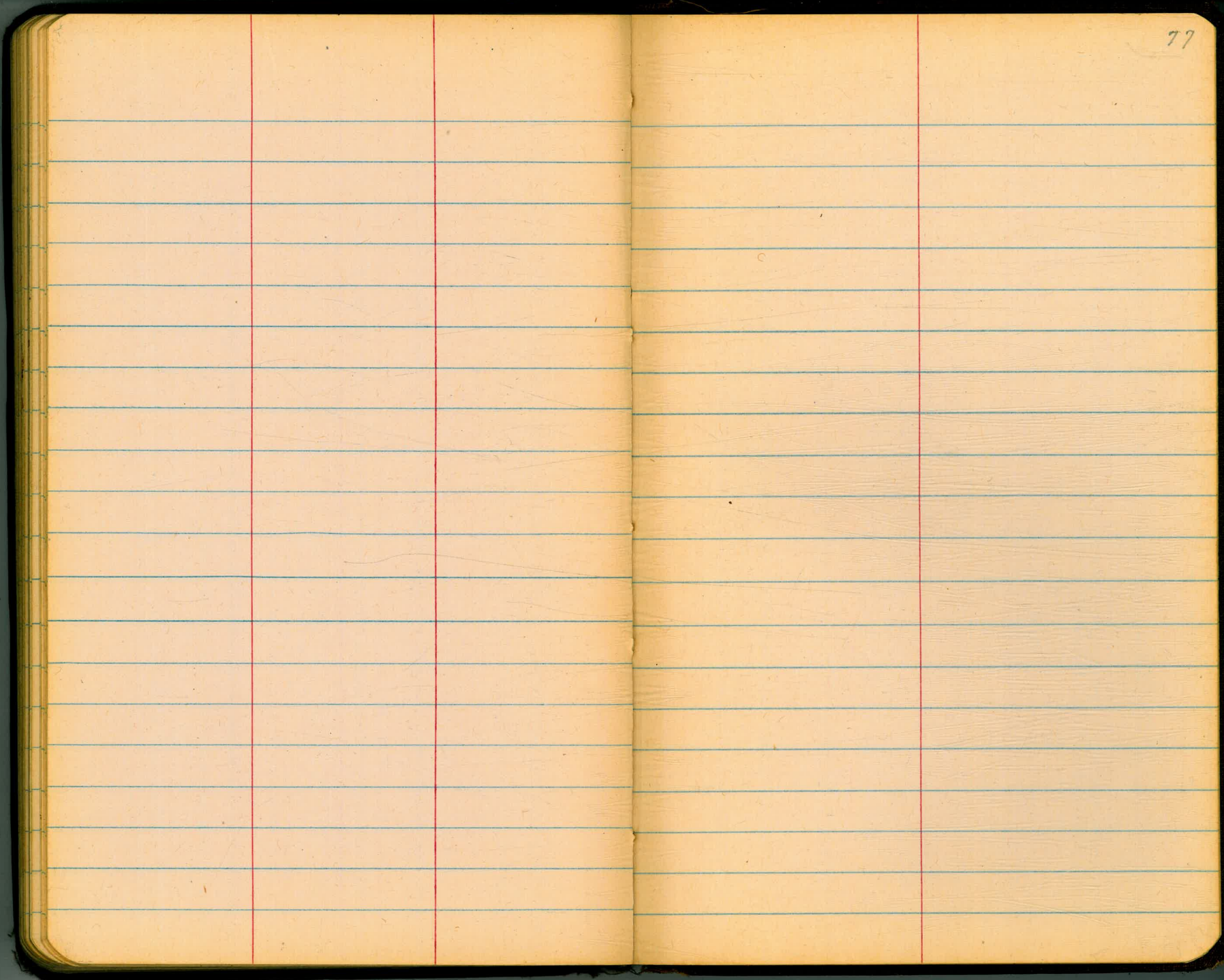




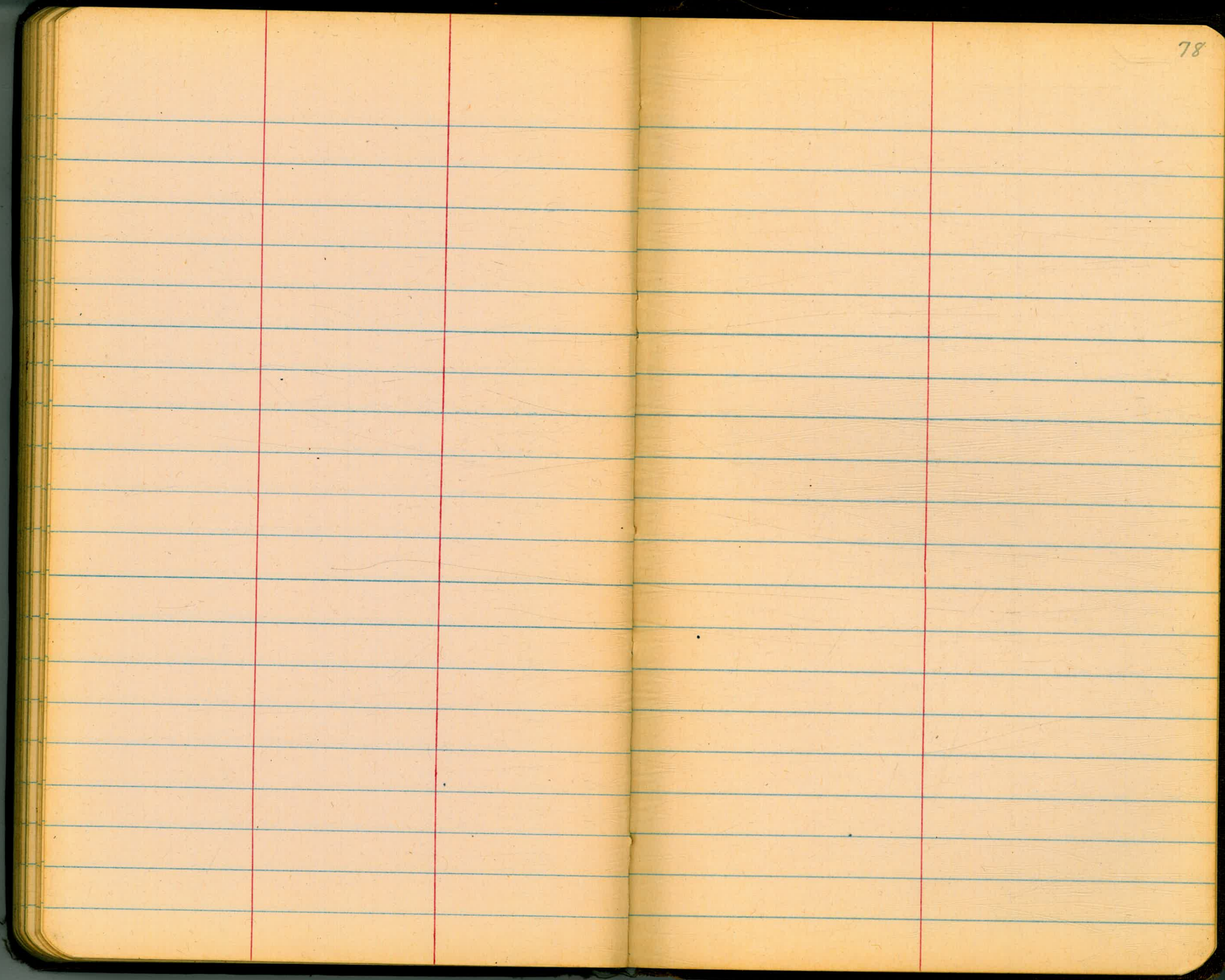




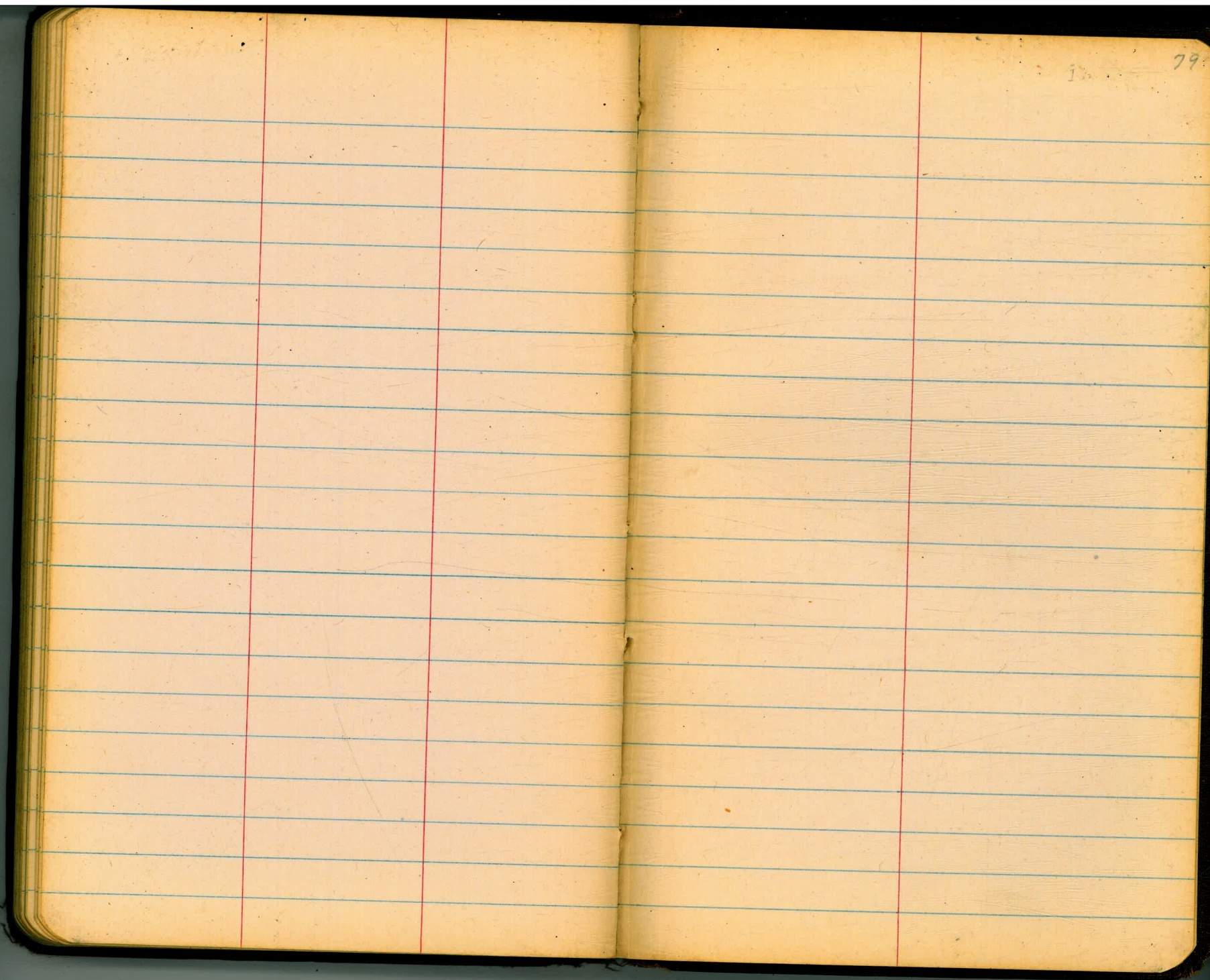




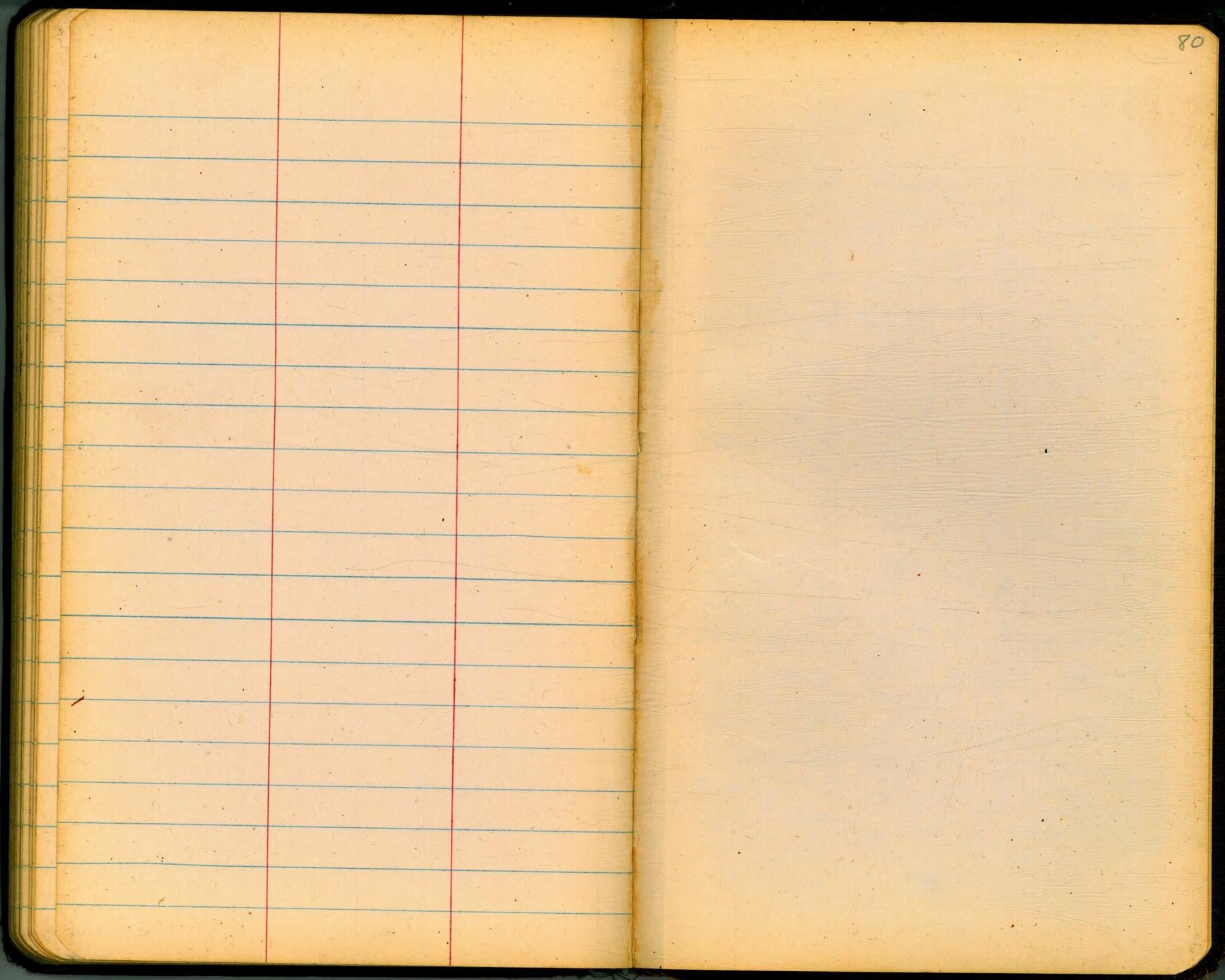














1084  
267  
1351

1256  
498  
1953  
40027

340  
724

45.41

574.63

40.86

1154  
11956  
8.98

37.26

666.97

430

17.97

119474

158.00

29.50

277.65

297.97

498.60

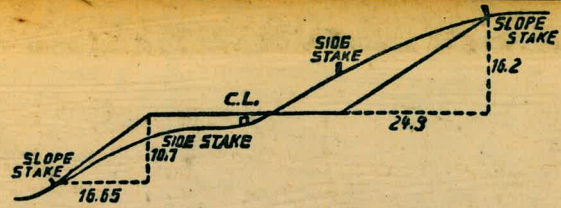
400.21

895.73

177.24

206.04

443.28



**DISTANCES FROM SIDE STAKES FOR CROSS-SECTIONING.**  
SLOPE 1 1/2 TO 1. ROADWAY OF ANY WIDTH.

	0	.1	.2	.3	.4	.5	.6	.7	.8	.9	
0	0.00	0.15	0.30	0.45	0.60	0.75	0.90	1.05	1.20	1.35	0
1	1.50	1.65	1.80	1.95	2.10	2.25	2.40	2.55	2.70	2.85	1
2	3.00	3.15	3.30	3.45	3.60	3.75	3.90	4.05	4.20	4.35	2
3	4.50	4.65	4.80	4.95	5.10	5.25	5.40	5.55	5.70	5.85	3
4	6.00	6.15	6.30	6.45	6.60	6.75	6.90	7.05	7.20	7.35	4
5	7.50	7.65	7.80	7.95	8.10	8.25	8.40	8.55	8.70	8.85	5
6	9.00	9.15	9.30	9.45	9.60	9.75	9.90	10.05	10.20	10.35	6
7	10.50	10.65	10.80	10.95	11.10	11.25	11.40	11.55	11.70	11.85	7
8	12.00	12.15	12.30	12.45	12.60	12.75	12.90	13.05	13.20	13.35	8
9	13.50	13.65	13.80	13.95	14.10	14.25	14.40	14.55	14.70	14.85	9
10	15.00	15.15	15.30	15.45	15.60	15.75	15.90	16.05	16.20	16.35	10
11	16.50	16.65	16.80	16.95	17.10	17.25	17.40	17.55	17.70	17.85	11
12	18.00	18.15	18.30	18.45	18.60	18.75	18.90	19.05	19.20	19.35	12
13	19.50	19.65	19.80	19.95	20.10	20.25	20.40	20.55	20.70	20.85	13
14	21.00	21.15	21.30	21.45	21.60	21.75	21.90	22.05	22.20	22.35	14
15	22.50	22.65	22.80	22.95	23.10	23.25	23.40	23.55	23.70	23.85	15
16	24.00	24.15	24.30	24.45	24.60	24.75	24.90	25.05	25.20	25.35	16
17	25.50	25.65	25.80	25.95	26.10	26.25	26.40	26.55	26.70	26.85	17
18	27.00	27.15	27.30	27.45	27.60	27.75	27.90	28.05	28.20	28.35	18
19	28.50	28.65	28.80	28.95	29.10	29.25	29.40	29.55	29.70	29.85	19
20	30.00	30.15	30.30	30.45	30.60	30.75	30.90	31.05	31.20	31.35	20
21	31.50	31.65	31.80	31.95	32.10	32.25	32.40	32.55	32.70	32.85	21
22	33.00	33.15	33.30	33.45	33.60	33.75	33.90	34.05	34.20	34.35	22
23	34.50	34.65	34.80	34.95	35.10	35.25	35.40	35.55	35.70	35.85	23
24	36.00	36.15	36.30	36.45	36.60	36.75	36.90	37.05	37.20	37.35	24
25	37.50	37.65	37.80	37.95	38.10	38.25	38.40	38.55	38.70	38.85	25
26	39.00	39.15	39.30	39.45	39.60	39.75	39.90	40.05	40.20	40.35	26
27	40.50	40.65	40.80	40.95	41.10	41.25	41.40	41.55	41.70	41.85	27
28	42.00	42.15	42.30	42.45	42.60	42.75	42.90	43.05	43.20	43.35	28
29	43.50	43.65	43.80	43.95	44.10	44.25	44.40	44.55	44.70	44.85	29
30	45.00	45.15	45.30	45.45	45.60	45.75	45.90	46.05	46.20	46.35	30
31	46.50	46.65	46.80	46.95	47.10	47.25	47.40	47.55	47.70	47.85	31
32	48.00	48.15	48.30	48.45	48.60	48.75	48.90	49.05	49.20	49.35	32
33	49.50	49.65	49.80	49.95	50.10	50.25	50.40	50.55	50.70	50.85	33
34	51.00	51.15	51.30	51.45	51.60	51.75	51.90	52.05	52.20	52.35	34
35	52.50	52.65	52.80	52.95	53.10	53.25	53.40	53.55	53.70	53.85	35
36	54.00	54.15	54.30	54.45	54.60	54.75	54.90	55.05	55.20	55.35	36
37	55.50	55.65	55.80	55.95	56.10	56.25	56.40	56.55	56.70	56.85	37
38	57.00	57.15	57.30	57.45	57.60	57.75	57.90	58.05	58.20	58.35	38
39	58.50	58.65	58.80	58.95	59.10	59.25	59.40	59.55	59.70	59.85	39
40	60.00	60.15	60.30	60.45	60.60	60.75	60.90	61.05	61.20	61.35	40
41	61.50	61.65	61.80	61.95	62.10	62.25	62.40	62.55	62.70	62.85	41
42	63.00	63.15	63.30	63.45	63.60	63.75	63.90	64.05	64.20	64.35	42
43	64.50	64.65	64.80	64.95	65.10	65.25	65.40	65.55	65.70	65.85	43
44	66.00	66.15	66.30	66.45	66.60	66.75	66.90	67.05	67.20	67.35	44
45	67.50	67.65	67.80	67.95	68.10	68.25	68.40	68.55	68.70	68.85	45
46	69.00	69.15	69.30	69.45	69.60	69.75	69.90	70.05	70.20	70.35	46
47	70.50	70.65	70.80	70.95	71.10	71.25	71.40	71.55	71.70	71.85	47
48	72.00	72.15	72.30	72.45	72.60	72.75	72.90	73.05	73.20	73.35	48
49	73.50	73.65	73.80	73.95	74.10	74.25	74.40	74.55	74.70	74.85	49
50	75.00	75.15	75.30	75.45	75.60	75.75	75.90	76.05	76.20	76.35	50

THE NATIONAL BLANK BOOK COMPANY  
HOLYOKE MASSACHUSETTS  
NEW YORK CHICAGO BOSTON SAN FRANCISCO