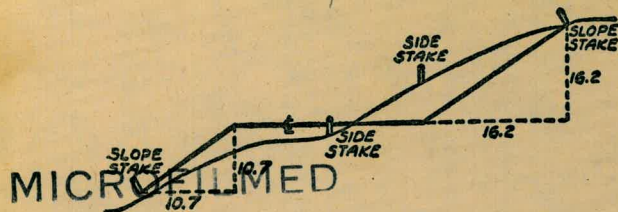


2107

TRANSIT BOOK



DEC 31 1964

DISTANCES FROM SIDE STAKES FOR CROSS-SECTIONING
SLOPE 1 TO 1. ROADWAY OF ANY WIDTH

	0	.1	.2	.3	.4	.5	.6	.7	.8	.9	
0	0.00	0.10	0.20	0.30	0.40	0.50	0.60	0.70	0.80	0.90	0
1	1.00	1.10	1.20	1.30	1.40	1.50	1.60	1.70	1.80	1.90	1
2	2.00	2.10	2.20	2.30	2.40	2.50	2.60	2.70	2.80	2.90	2
3	3.00	3.10	3.20	3.30	3.40	3.50	3.60	3.70	3.80	3.90	3
4	4.00	4.10	4.20	4.30	4.40	4.50	4.60	4.70	4.80	4.90	4
5	5.00	5.10	5.20	5.30	5.40	5.50	5.60	5.70	5.80	5.90	5
6	6.00	6.10	6.20	6.30	6.40	6.50	6.60	6.70	6.80	6.90	6
7	7.00	7.10	7.20	7.30	7.40	7.50	7.60	7.70	7.80	7.90	7
8	8.00	8.10	8.20	8.30	8.40	8.50	8.60	8.70	8.80	8.90	8
9	9.00	9.10	9.20	9.30	9.40	9.50	9.60	9.70	9.80	9.90	9
10	10.00	10.10	10.20	10.30	10.40	10.50	10.60	10.70	10.80	10.90	10
11	11.00	11.10	11.20	11.30	11.40	11.50	11.60	11.70	11.80	11.90	11
12	12.00	12.10	12.20	12.30	12.40	12.50	12.60	12.70	12.80	12.90	12
13	13.00	13.10	13.20	13.30	13.40	13.50	13.60	13.70	13.80	13.90	13
14	14.00	14.10	14.20	14.30	14.40	14.50	14.60	14.70	14.80	14.90	14
15	15.00	15.10	15.20	15.30	15.40	15.50	15.60	15.70	15.80	15.90	15
16	16.00	16.10	16.20	16.30	16.40	16.50	16.60	16.70	16.80	16.90	16
17	17.00	17.10	17.20	17.30	17.40	17.50	17.60	17.70	17.80	17.90	17
18	18.00	18.10	18.20	18.30	18.40	18.50	18.60	18.70	18.80	18.90	18
19	19.00	19.10	19.20	19.30	19.40	19.50	19.60	19.70	19.80	19.90	19
20	20.00	20.10	20.20	20.30	20.40	20.50	20.60	20.70	20.80	20.90	20
21	21.00	21.10	21.20	21.30	21.40	21.50	21.60	21.70	21.80	21.90	21
22	22.00	22.10	22.20	22.30	22.40	22.50	22.60	22.70	22.80	22.90	22
23	23.00	23.10	23.20	23.30	23.40	23.50	23.60	23.70	23.80	23.90	23
24	24.00	24.10	24.20	24.30	24.40	24.50	24.60	24.70	24.80	24.90	24
25	25.00	25.10	25.20	25.30	25.40	25.50	25.60	25.70	25.80	25.90	25
26	26.00	26.10	26.20	26.30	26.40	26.50	26.60	26.70	26.80	26.90	26
27	27.00	27.10	27.20	27.30	27.40	27.50	27.60	27.70	27.80	27.90	27
28	28.00	28.10	28.20	28.30	28.40	28.50	28.60	28.70	28.80	28.90	28
29	29.00	29.10	29.20	29.30	29.40	29.50	29.60	29.70	29.80	29.90	29
30	30.00	30.10	30.20	30.30	30.40	30.50	30.60	30.70	30.80	30.90	30
31	31.00	31.10	31.20	31.30	31.40	31.50	31.60	31.70	31.80	31.90	31
32	32.00	32.10	32.20	32.30	32.40	32.50	32.60	32.70	32.80	32.90	32
33	33.00	33.10	33.20	33.30	33.40	33.50	33.60	33.70	33.80	33.90	33
34	34.00	34.10	34.20	34.30	34.40	34.50	34.60	34.70	34.80	34.90	34
35	35.00	35.10	35.20	35.30	35.40	35.50	35.60	35.70	35.80	35.90	35
36	36.00	36.10	36.20	36.30	36.40	36.50	36.60	36.70	36.80	36.90	36
37	37.00	37.10	37.20	37.30	37.40	37.50	37.60	37.70	37.80	37.90	37
38	38.00	38.10	38.20	38.30	38.40	38.50	38.60	38.70	38.80	38.90	38
39	39.00	39.10	39.20	39.30	39.40	39.50	39.60	39.70	39.80	39.90	39
40	40.00	40.10	40.20	40.30	40.40	40.50	40.60	40.70	40.80	40.90	40
41	41.00	41.10	41.20	41.30	41.40	41.50	41.60	41.70	41.80	41.90	41
42	42.00	42.10	42.20	42.30	42.40	42.50	42.60	42.70	42.80	42.90	42
43	43.00	43.10	43.20	43.30	43.40	43.50	43.60	43.70	43.80	43.90	43
44	44.00	44.10	44.20	44.30	44.40	44.50	44.60	44.70	44.80	44.90	44
45	45.00	45.10	45.20	45.30	45.40	45.50	45.60	45.70	45.80	45.90	45
46	46.00	46.10	46.20	46.30	46.40	46.50	46.60	46.70	46.80	46.90	46
47	47.00	47.10	47.20	47.30	47.40	47.50	47.60	47.70	47.80	47.90	47
48	48.00	48.10	48.20	48.30	48.40	48.50	48.60	48.70	48.80	48.90	48
49	49.00	49.10	49.20	49.30	49.40	49.50	49.60	49.70	49.80	49.90	49
50	50.00	50.10	50.20	50.30	50.40	50.50	50.60	50.70	50.80	50.90	50

Distance of slope stake from side or shoulder stake for any width roadway, slope 1 to 1. If ground is nearly level, the cut or fill at side stake is located by the double entry method in left column and top row. The number in body of table in same row and column gives distance from side stake to slope stake. If ground is not level estimate the difference in elevation between the side stake and slope stake, lower target by this amount if cut, elevate if fill. Add this amount to cut or fill and find distance in table. Set up rod at this point, and line of sight should cut target. If it does not make the slight adjustment necessary.

INDEXED

to page #18

TABLE XIII—CORRECTIONS FOR TANGENTS AND EXTERNALS

These corrections are to be added to the approximate values, found by dividing the tangent, or external, for a 1° curve (Table VIII) by the degree of curve, in order to obtain the true tangents, or externals. Intermediate values may be obtained by interpolation.

FOR TANGENTS ADD

Central Angle	DEGREE OF CURVE													
	5°	10°	15°	20°	25°	30°	35°	40°	45°	50°	55°	60°	65°	70°
10°	.03	.06	.09	.13	.16	.19	.22	.25	.28	.31	.34	.38	.42	.46
15°	.04	.10	.14	.19	.24	.29	.34	.39	.45	.51	.53	.58	.63	.68
20°	.06	.13	.19	.26	.32	.39	.45	.51	.58	.65	.72	.79	.84	.90
25°	.08	.16	.24	.33	.40	.49	.58	.67	.75	.83	.90	.99	1.06	1.14
30°	.10	.19	.29	.39	.49	.59	.69	.79	.89	.99	1.09	1.20	1.29	1.39
35°	.11	.22	.34	.47	.58	.69	.79	.81	.92	1.04	1.29	1.42	1.54	1.66
40°	.13	.26	.40	.53	.67	.80	.93	1.06	1.20	1.34	1.49	1.64	1.79	1.94
45°	.15	.30	.44	.60	.76	.91	1.06	1.21	1.37	1.52	1.70	1.87	2.04	2.21
50°	.17	.34	.51	.68	.85	1.02	1.19	1.36	1.54	1.72	1.91	2.10	2.29	2.48
55°	.19	.38	.57	.76	.95	1.14	1.32	1.52	1.72	1.92	2.14	2.35	2.56	2.77
60°	.21	.42	.63	.84	1.05	1.27	1.49	1.71	1.94	2.17	2.38	2.60	2.83	3.07
65°	.23	.46	.69	.93	1.16	1.40	1.64	1.88	2.13	2.38	2.63	2.88	3.13	3.39
70°	.25	.51	.76	1.02	1.28	1.54	1.80	2.06	2.33	2.60	2.88	3.16	3.44	3.72
75°	.27	.56	.83	1.12	1.40	1.69	1.98	2.27	2.57	2.87	3.16	3.47	3.78	4.09
80°	.30	.61	.91	1.22	1.53	1.84	2.15	2.46	2.78	3.10	3.44	3.78	4.12	4.46
85°	.33	.66	1.00	1.33	1.68	2.02	2.36	2.70	3.05	3.40	3.77	4.14	4.55	4.89
90°	.36	.72	1.09	1.45	1.83	2.20	2.57	2.94	3.32	3.70	4.10	4.50	4.91	5.32
95°	.39	.79	1.19	1.55	2.00	2.40	2.80	3.20	3.61	4.02	4.40	4.98	5.38	5.83
100°	.43	.86	1.30	1.74	2.18	2.62	3.06	3.50	3.95	4.40	4.88	5.37	5.85	6.34
110°	.51	1.03	1.56	2.08	2.61	3.14	3.67	4.21	4.76	5.31	5.86	6.43	7.01	7.60
120°	.62	1.25	1.93	2.52	3.16	3.81	4.45	5.11	5.77	6.44	7.12	7.80	8.50	9.22

FOR EXTERNALS ADD

Central Angle	DEGREE OF CURVE													
	5°	10°	15°	20°	25°	30°	35°	40°	45°	50°	55°	60°	65°	70°
10°	.001	.003	.004	.006	.007	.008	.009	.011	.012	.014	.015	.017	.018	.020
15°	.003	.007	.010	.014	.018	.023	.027	.029	.032	.035	.039	.043	.047	.051
20°	.006	.011	.017	.022	.028	.034	.038	.045	.051	.057	.063	.070	.076	.083
25°	.009	.018	.027	.036	.046	.056	.065	.074	.083	.093	.106	.120	.127	.135
30°	.013	.025	.038	.051	.065	.078	.090	.103	.116	.129	.149	.170	.179	.188
35°	.018	.035	.054	.072	.086	.109	.131	.153	.175	.197	.213	.230	.247	.264
40°	.023	.046	.070	.093	.117	.141	.172	.203	.234	.265	.277	.290	.315	.341
45°	.030	.060	.093	.119	.153	.184	.216	.254	.289	.325	.351	.378	.411	.445
50°	.037	.075	.116	.151	.189	.227	.266	.305	.345	.384	.425	.467	.508	.550
55°	.046	.093	.142	.188	.236	.283	.332	.381	.420	.479	.530	.582	.641	.700
60°	.056	.112	.168	.225	.283	.340	.398	.457	.516	.575	.636	.697	.774	.851
65°	.067	.135	.204	.273	.343	.412	.483	.554	.625	.697	.711	.845	.922	1.01
70°	.080	.159	.240	.321	.403	.485	.568	.652	.735	.819	.906	.994	1.08	1.17
75°	.095	.182	.286	.383	.480	.578	.678	.777	.877	.977	1.07	1.18	1.29	1.39
80°	.110	.220	.332	.445	.558	.671	.787	.903	1.02	1.13	1.25	1.38	1.50	1.62
85°	.128	.259	.391	.524	.657	.790	.926	1.06	1.20	1.34	1.47	1.62	1.76	1.91
90°	.149	.299	.450	.603	.756	.910	1.07	1.22	1.38	1.54	1.70	1.87	2.03	2.20
95°	.174	.350	.522	.706	.885	1.06	1.25	1.43	1.62	1.80	1.99	2.18	2.38	2.58
100°	.200	.401	.604	.809	1.01	1.22	1.43	1.64	1.85	2.06	2.28	2.50	2.73	2.96
110°	.268	.536	.806	1.08	1.35	1.63	1.91	2.20	2.48	2.76	3.05	3.35	3.66	3.96
120°	.360	.721	1.08	1.45	1.82	2.19	2.57	2.95	3.33	3.72	4.11	4.50	4.91	5.32

X-Sec Calle Pintaresca fr. Tres Lomas

Page

2

X-Sec " Trepodora

11

X-Sec " Volver fr. Tres Lomas

16

X-Sec " Aguadulce fr. Pintaresca

19

X-Sec. Olive St Kottner to India

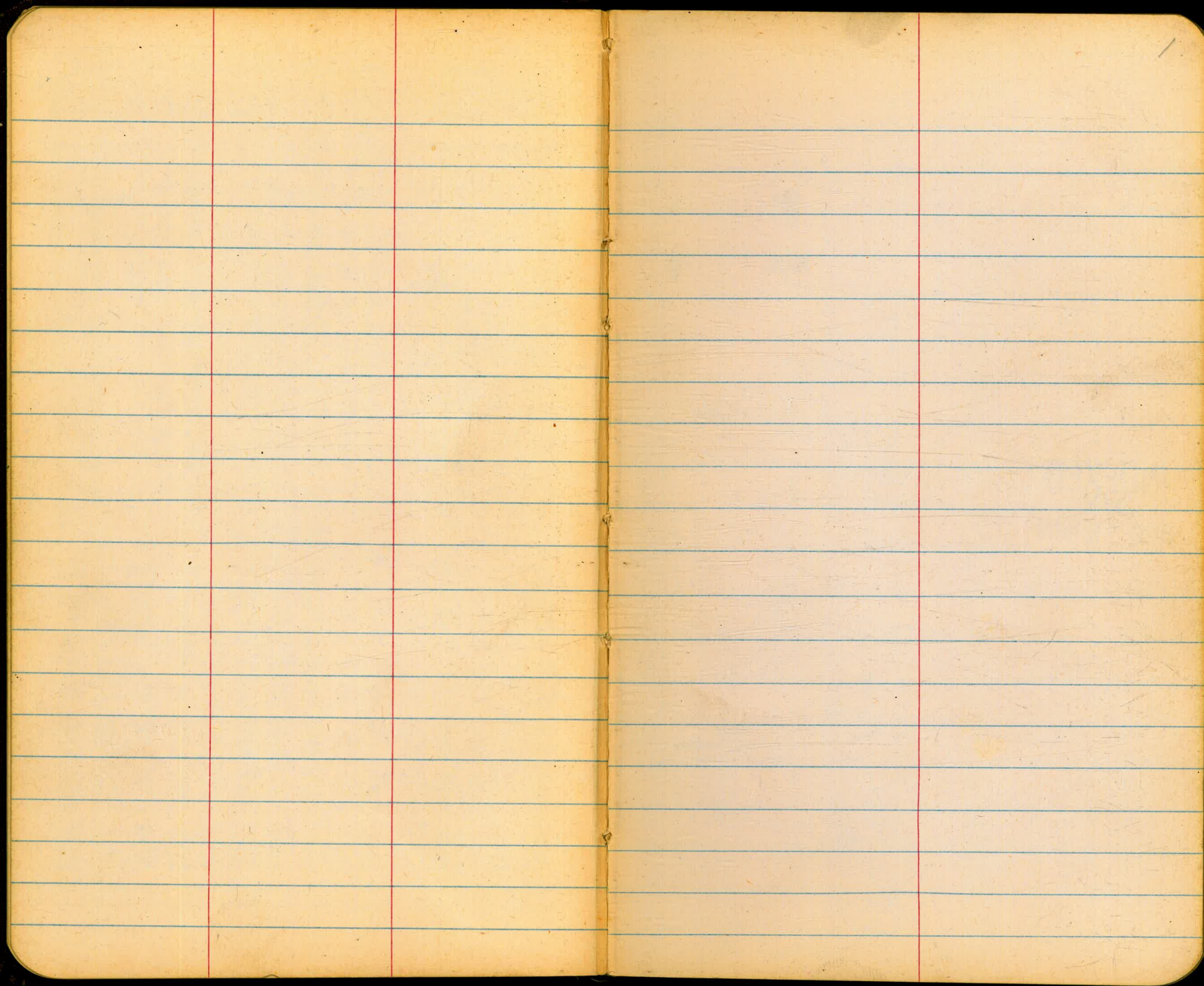
25

water & Serena
Saver line Winchester, Cumberland

30

X-Sec. Roanoke - Reo to C. gairata

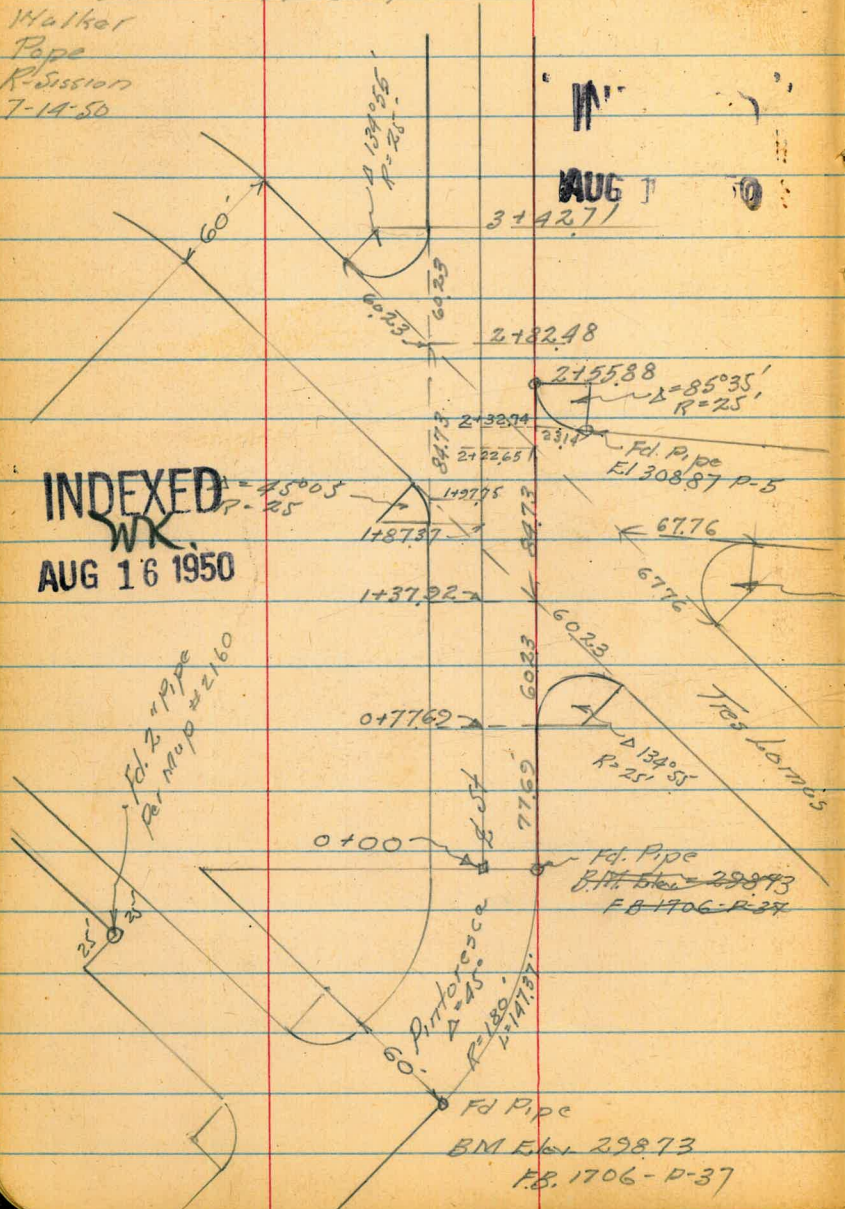
52



CROSS SECTION 13 - CALLE PINTORRESCH

From TRES LOMAS
To East end

Walker
Pope
R. Sission
7-14-50



INDEXED
WK
AUG 16 1950

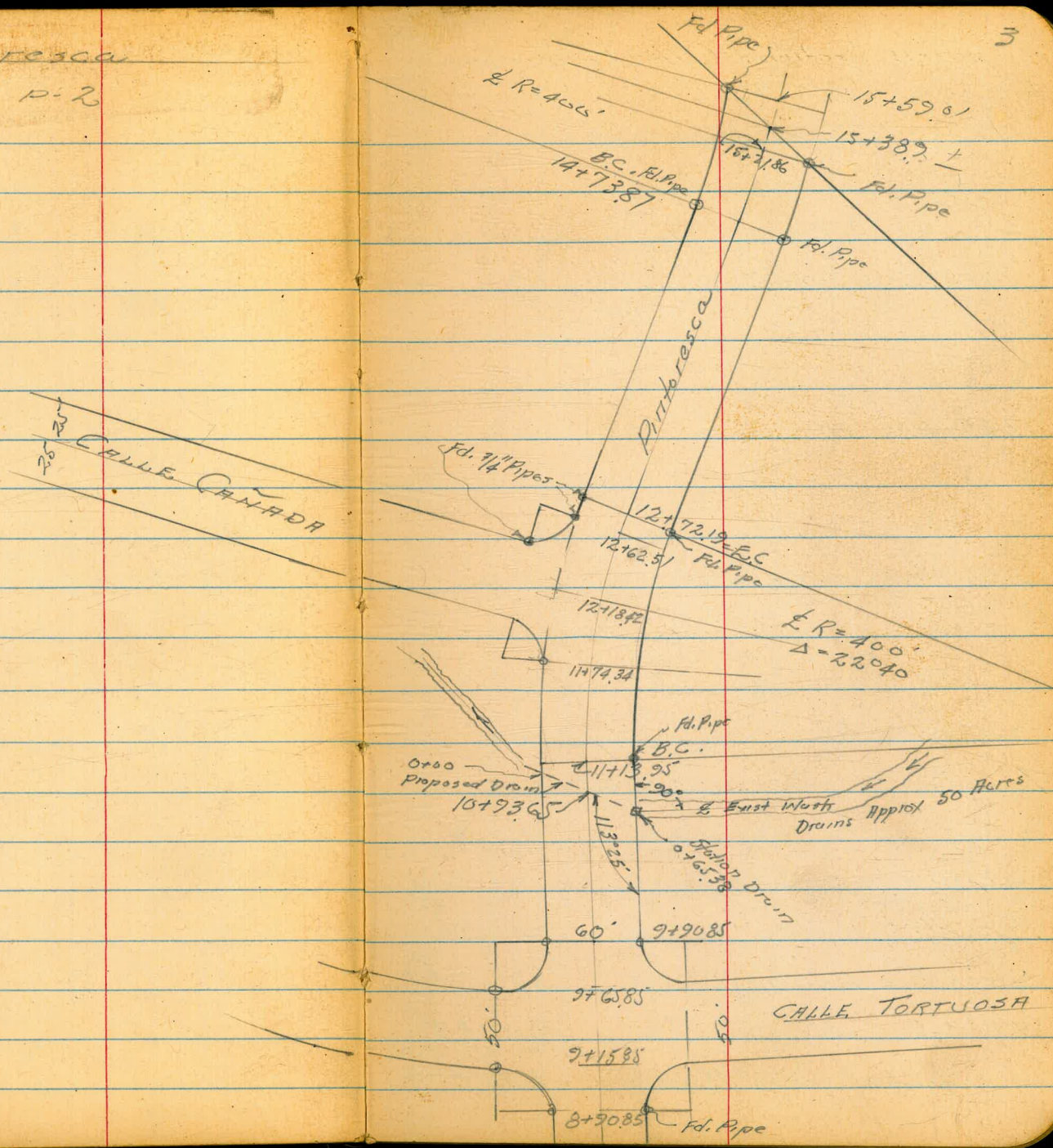
Calle Quebrada

$\Delta = 139^{\circ}30'$
 $R = 25'$

AUG 1

Calle - Pintoresca
Cont. from P-2

3



Cross Sections - Calle Pintoresca

Sketch P-2-3

1+87.37 opp BG. Return on Lt

1+37.22 opp Pt. on Rt. See sketch

1+00

0+77.62 BG. Return on Rt.

0+50

0+00 = E.C. P-2

#2 = Pipe

TP 11.44 310.17 6.59 298.73

FB 1706-37

Check Pipe 30' Rt 7+12.55 6.59 298.73

#1 TP 10.45 305.32 2.68 294.87

12.52 297.55 285.03

Lt

304.2
6.0
50

304.6
5.6
30

305.2
5.0
50

305.9
4.3
15

Rt 306.2
4.0
30

306.4
3.8
50

302.1
8.1
50

302.5
7.7
30

303.2
7.0
50

303.7
6.5
17

303.2
7.0
30

302.4
7.6
50

299.7
2.5
50

301.2
2.0
30

301.6
8.6
50

301.8
8.4
14

301.0
2.2
30

300.9
2.9
50

300.0
10.2
50

300.5
2.7
30

301.0
2.2
14

301.0
2.2
14

300.2
10.0
30

299.6
10.6
50

299.4
10.8
50

299.8
10.4
30

300.5
2.7
13

300.5
2.7
13

299.6
10.6
30

298.7
11.5
50

298.5
11.7
50

298.8
11.4
35

299.0
10.3
30

299.5
10.7
19

299.9
10.3
10

299.6
10.6
20

300.0
10.2
70

299.3
10.9
35

298.7
11.5
50

310.17

B.M. on Pipe

30' Rt of 2 11+39.98 FB 1706-34

Pintoresca

Lt.

R

Rt.

5

Cross Sections

4+50

313.0	313.0	313.9	314.3	315.3	316.6	318.4
8.3	8.3	7.4	7.0	6.0	4.7	2.9
50	30		7	12	30	50

4+00

311.7	312.0	313.3	313.2	314.2	315.5	317.5
9.6	2.3	8.0	8.1	7.1	5.8	3.8
50	30		7	10	30	50

3+42.78 opp. E.C. Ret. on Lt.

310.3	310.4	311.4	311.6	312.6	313.6	315.0
11.0	10.9	9.9	9.7	8.7	7.7	6.3
50	30		9	11	30	50

2+82.48

308.4	308.7	309.6	310.2	311.8	312.9	312.5
12.9	12.6	11.7	11.1	9.5	8.9	8.8
50	30		11	14	30	50

on Pipe 53.14 Rt
213274 P-2

TR 3 12.47 321.34 130 308.87

321.34

2+55.88 opp E.C. Ret. on Rt.

307.3	307.7	308.2	308.4	310.0	210.8	311.0
2.9	2.5	2.0	1.8	0.8	10.6	10.8
50	30		7	13	30	50

2+22.65

310.17

305.9	306.1	306.9	306.6	308.0	308.1	308.4
4.5	4.1	3.3	2.6	2.2	2.1	1.8
50	30		7	13	30	50

310.17

Colle Pintoresca - Cross Sections

8+00

307.5
2.2
50

305.5
5.2
30

304.0
6.7
9

303.4
7.3
11

303.8
5.9
30

304.6
6.1
50

305.9
4.8
50

7+50

309.0
1.7
50

307.2
2.5
30

306.1
4.6
11

305.4
5.3
13

306.0
4.7
30

306.7
4.0
50

309.7
1.7
50

TR. 2.00

310.70 12.64 308.70

310.70

7+00

310.3
11.0
50

309.1
12.2
30

307.7
13.6
8

306.9
14.4
13

308.0
13.3
30

309.2
12.1
50

311.0
10.3
50

6+50

311.4
2.9
50

310.2
11.1
30

309.4
11.9
6

308.3
12.0
13

311.2
10.1
30

311.6
9.7
50

313.6
7.7
50

6+00

312.4
8.9
50

311.2
10.1
30

311.1
10.2
7

311.0
10.3
12

311.9
9.4
30

313.3
8.0
50

316.2
5.1
50

5+50

312.9
8.4
50

312.3
9.0
30

312.7
8.6
7

312.8
8.5
12

314.0
7.3
30

316.0
5.3
50

318.6
3.7
50

5+00

321.34

313.4
7.9
50

313.0
8.3
30

313.5
7.5
7

314.2
7.1
12

315.2
6.1
30

317.1
4.2
50

319.7
1.6
50

Calle - Pintoresca - X-Sections

10+50

292.8	291.2	291.5	291.8	292.4
66	80	89	76	70
50	30		30	50

9+90.85

297.0	295.8	293.6	294.60	295.6
2.4	3.6	5.8	4.83	3.8
50	30		30 on Pipe	50

9+65.85

297.1	295.1	295.0	296.1	296.7
2.3	4.3	4.9	2.3	2.7
30		9	30	55

9+40.85

301.8	299.4	296.8	296.0	297.7	298.1
2.4	0.0	2.6	3.9	2.3	1.3
55	30		8	30	55

T.P. 173

299.43 1300 297.70

299.43

9+15.85

292.6	300.8	299.8	297.9	297.2	298.1
8.1	9.9	10.2	12.8	13.5	12.6
50	30	15		18	30

8+90.85 = BC. Ret. Rt + Lt

10.66

300.04

304.1	302.0	300.9	298.9	298.7	300.0	301.4
6.6	8.7	9.8	11.8	12.0	10.66	2.3
50	30	15		11	30 on Pipe	50

8+50

310.70

306.4	304.1	301.9	301.2	302.0	302.5
4.3	6.6	8.8	9.5	8.7	7.2
50	30		10	30	50

310 70

Calle Pintoresca - Cross Sections

Lt.

R.

Rt.

8

12+62.51 = opp PRC Ret. on Lt.

on Pipe 12+62.51-30 4'

T.P. 12.72 310.05 ✓ 210 297.33

12+18.92

11+74.34 = opp PRC on Lt. Return

11+13.95 = B.C. Rt.

10+80.66 Sec. Rt. Δ

10+93.65 = diag Sec. on R. Proposed Culvert.

229.43

296.3	297.33	298.7	298.2	299.7	299.8	300.9
12.8	12.72	11.4	11.9	10.9	10.3	9.2
30	30		11	20	30	50

on Pipe 310.05 ✓

291.7	293.8	295.3	295.8	296.3	298.1
7.7	5.6	4.1	3.6	3.1	1.3
55	30		15	30	50

288.5	290.33	291.2	292.1	293.2	293.3	294.8
10.9	8.90	8.2	7.3	6.2	6.1	4.6
50	30	15		14	30	50

on Pipe

286.6	287.5	287.8	289.2	290.0	290.9	291.7
12.8	11.9	11.6	10.2	9.9	8.5	7.7
50	30	21		18	30	50

in wash

289.9	289.1	288.9	289.2	289.4	290.20	290.7
9.5	10.3	10.5	10.2	10.0	9.23	8.7
50	30	20		13	30	50

on Hub

286.8	287.0	287.9	289.3	289.7	290.20	290.7	291.1
12.6	12.4	11.5	10.1	10.2	9.23	8.7	8.3
47.7	32.65	8	20732.69	10	32.69	53	83

on Hub

in wash

St. Line
Pintoresca

229.43

Calle Pintoresca - X-Sections

Lt.

R

Rt. 9

14+73.87 RC. Lt. 400.2 R

305.9	307.7	310.1	312.5	314.1
11.8	10.0	7.6	5.2	3.6
	30		30	50

14+50

304.6	306.2	305.8	312.1	312.5
13.1	11.5	8.9	5.6	5.2
50	30		30	50

317.70 ✓

#8
TR 9.88 317.70 207 307.82

14+00

301.8	303.8	306.2	307.7	309.3
8.1	6.1	3.7	2.2	0.6
50	30		30	50

13+50

300.3	301.8	303.4	305.0	307.0
2.6	8.1	6.5	4.9	2.9
50	30		30	50

13+00

298.1	299.4	300.7	300.2	301.5	302.0	302.7
11.8	10.5	9.2	9.7	8.4	7.9	6.2
50	30		7	17	30	50

309.89 ✓

#7
TR 12.56 309.89 1372 297.33

12+72.19 = E.C.

310.05

296.9	297.88	299.4	298.9	300.2	300.15	301.7
13.2	12.07	10.7	11.2	9.9	9.60	8.4
50	30		10	18	30	50

on Pipe 310.05 on Pipe

Pintarõesca - Cross Sections

H.

L.

Rt.

10

003
 298.73
 Chk BM TP#2 P-4 6.31 298.76
 TP#11 211 305.07 11.59 304.96
 Chk Pipe 2+5588 5.91

Chk TP#4 P6 ✓ 308.70 P-4
 TP#10 783 316.55 160 308.72
 TP#9 526 310.32 ✓ 12.64 305.06

16+00 on Curve Cont.

15+59.01

15+38.9

15+21.86

15+00

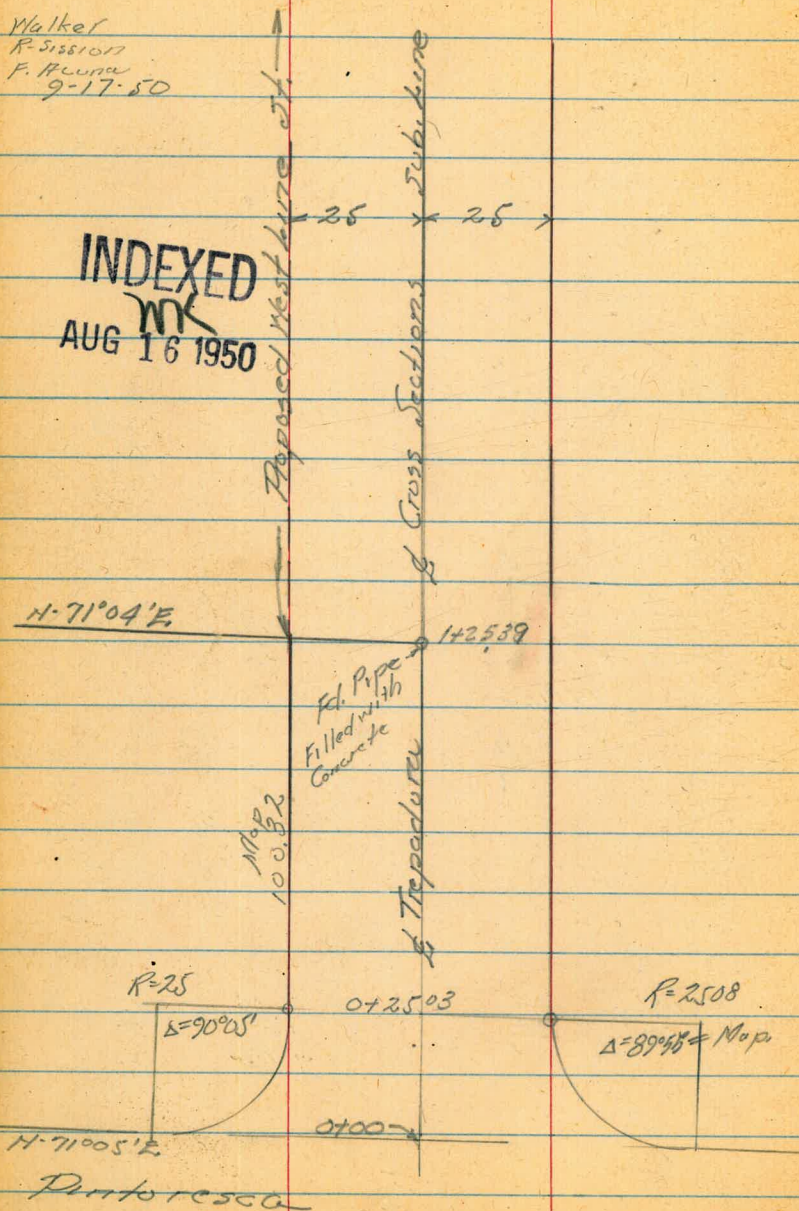
317.70

308.9 8.8 50	310.3 7.4 30	310.2 7.5 27	314.7 3.0	316.9 0.8 30	319.5 +1.8
305.5 12.2 50	307.7 10.0 47	309.95 7.75 30 on Pipe	313.1 4.6	316.1 1.6 30	319.0 +1.3 50
307.5 10.2 50	310.2 7.5 30	312.8 4.9	315.4 2.3 30	317.1 0.3 50	
307.6 10.1 50	310.1 7.6 30	312.6 5.1	314.86 2.84 30 on Pipe	318.1 1.0 50	
306.8 10.9 50	308.6 9.1 30	311.2 6.5 317.70	314.6 3.1 30	315.6 2.1 50	

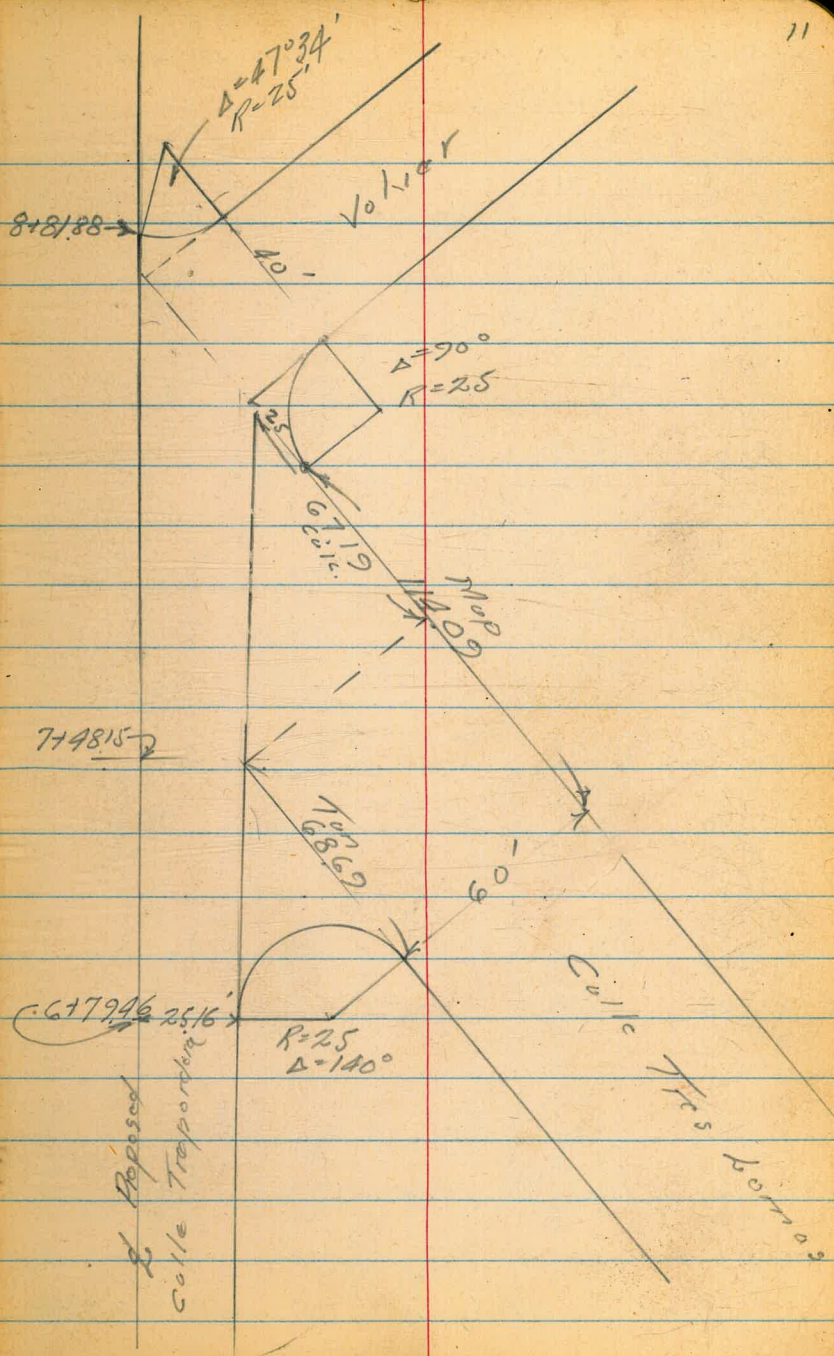
CROSS SECTION - CALLE TREPADORIA

Walker
R. Sisson
F. H. Lunn
9-17-50

INDEXED
MK
AUG 16 1950



Pintoressca



Proposed
Calle Trepadora

Calle Trepadora

CROSS SECTIONS - TREPODORA

Sketch P-11

L. stations

Lt.

L

Rt.

12

1+00

291.1	292.5	293.8	294.9	295.4
10.3	8.9	7.6	6.5	6.0
50	25		25	50

0+50

290.0	292.0	293.8	294.7	295.7
11.4	9.4	7.6	6.7	5.7
50	25		25	50

0+25

290.6	291.95	294.0	294.9	296.51
10.80	9.42	7.4	6.51	4.86
50 on R. Hub	25 on Pipe		25 on Pipe	50 on Hub

0+05

291.6	292.7	294.4	295.4	296.5
9.8	8.7	7.0	6.0	4.9
50	25		25	50

0+03

293.5	294.2	295.0	295.9	296.9
7.9	7.2	6.4	5.5	4.7
50	25		25	

0+00 = N. Lima Antaresca

293.3	294.1	295.0	295.8	296.7
8.1	7.3	6.4	5.6	4.7
50	25		25	50

301.37

2.64

301, 37

298.73

BM on Pipe P-4

Colle Traperdura

4+00

302.5	303.5	304.9	306.9	308.5
10.3	7.3	7.9	5.9	4.3
50	25		25	

3+50

299.5	300.9	302.1	303.1	304.7
13.2	11.9	10.7	9.7	8.1
50	25		25	50

312.79 ✓

TP 11.85 312.79 0.43 300.94

3+00

297.2	298.5	299.5	300.7	302.2
4.2	2.9	1.9	0.7	+0.8
50	25		25	50

2+50

294.9	295.9	296.9	298.0	299.0
6.5	5.5	4.5	3.4	2.4
50	25		25	50

2+00

292.6	293.8	295.2	296.1	296.9
8.8	7.6	6.2	5.3	4.5
50	25		25	50

1+50

292.0	292.7	294.0	295.2	296.0
9.4	8.7	7.4	6.2	5.4
50	25		25	50

1+25.39

301.37

291.5	292.8	294.06	295.0	295.7
9.9	8.6	7.31	6.4	5.7
50	25	on Pipe	25	50

301.37

Colle Trepardora

7100

G+79.46 BC. Return on Pt.

TP 11.97 335.88 0.03 323.91

8+56

~~TP~~

G+00

5+50

5+00

TP 11.17 323.04 0.02 312.77

4+50

312.79

322.4 Lt. 324.0 R. 325.2 325.4 327.0 327.4
 13.5 11.9 10.7 10.5 8.9 8.5
 50 25 11 15 25

321.1 322.4 323.9 323.9 325.5 325.8
 14.8 13.5 12.0 12.0 10.4 10.4
 50 25 25 10 18 25
 335.88 80 50
 00 Ppc

319.1 320.3 322.0 322.2 323.9 324.2
 4.8 3.6 1.9 1.7 0.0 10.3
 50 25 10 19 25 50

316.1 317.4 319.1 318.9 320.7 321.4
 7.8 6.5 4.8 5.0 3.2 3.5
 50 25 9 18 25 50

313.4 313.8 315.4 315.3 317.4 317.8
 11.5 10.1 8.5 8.6 6.5 6.1
 50 25 10 18 25 50

309.3 310.6 312.2 313.9 315.4
 14.6 13.3 11.7 10.0 8.5
 50 25 25 25 50
 323.04 ✓

305.1 306.6 308.0 310.5 312.3
 7.7 6.2 4.8 2.3 0.5
 50 25 25 25 50

312.79

Calle Tripurdura - Cross Sections

for check out
Cont. P. 17

on Pipe or 25 on Rt. Volver
Call
T.P. 10.36 346.58 869 336.22
9+50

8+81.88

8+50

8+32

on Valve Stem 2" Pipe
3104 Lt.
T.P. 11.66 344.91 263 333.25
8+00

7+48.15 - RT. on RT

335.88

Lt. L Ft. 15

327.5 329.8 332.2 334.5 334.8 336.0 337.9
17.4 18.1 12.7 10.4 10.1 8.9 7.0
50 25 15 25 32 50

326.6 328.9 331.2 333.5 334.2
18.3 16.0 13.7 11.4 10.7
50 25 13 25

326.7 329.1 331.2 332.8 333.7
18.2 15.8 13.7 12.1 11.2
50 25 11 25

326.2 328.2 330.6 332.2 333.2
18.7 16.7 14.3 12.7 11.7
50 25 10 25

326.1 328.0 329.7 332.3
9.8 7.9 6.2 5.6
50 25 25

325.2 326.3 328.0 330.1
10.7 9.6 7.9 5.8
50 25 25

335.88

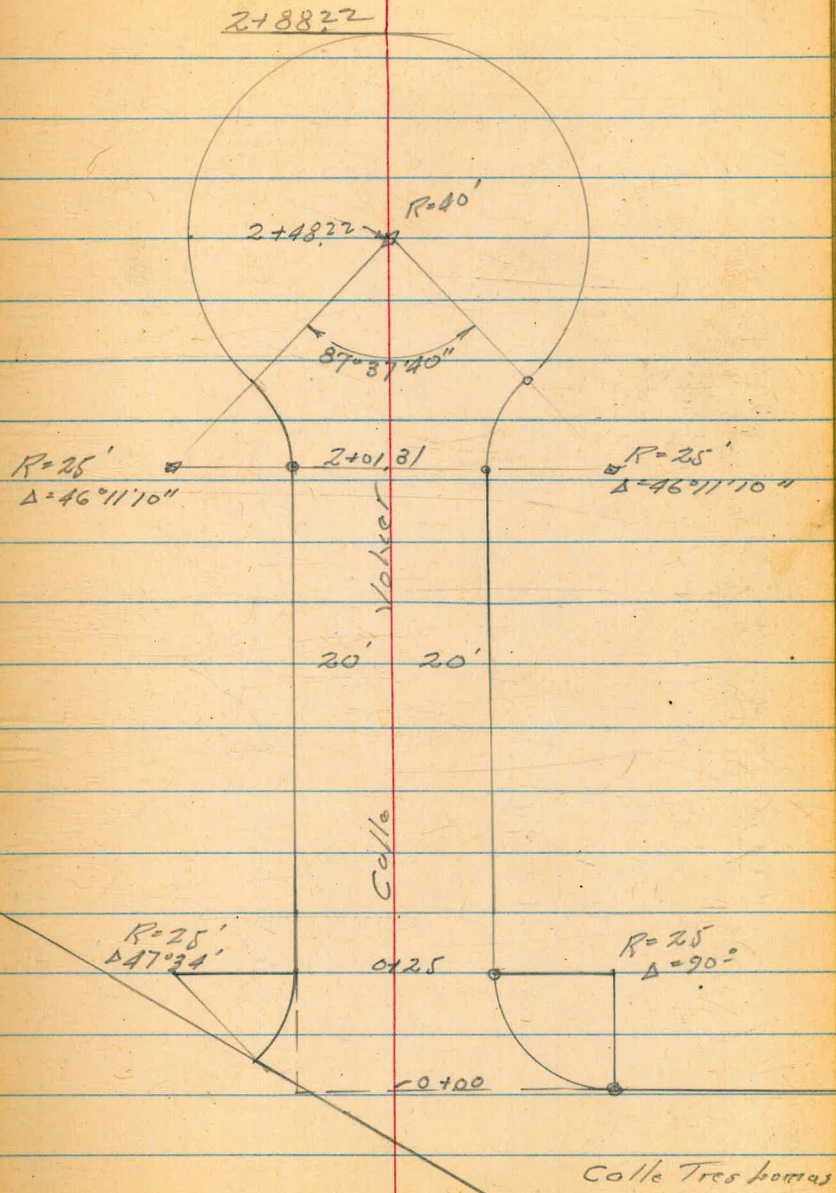
Cross Section - Calle Volker

from Tres Lomas
to end

40 25020

Walker
Popo
R. Sisson
7-31-50

INDEXED
AUG 16 1950



Calle Volcan - Cross Sections

2

2+0.31

348.8	349.1	349.9	350.84	352.2
8.3	8.0	7.2	6.22	4.9
40	20		20	40
			on Pipe	

T.P. 11.33 357.06 0.85 345.73

1+50

343.6	344.4	357.06	346.8	348.1
3.0	2.2	1.1	+ 2.2	+ 1.5
40	20		20	40

1+00

338.6	339.8	341.1	342.8	343.6
8.0	6.8	5.5	3.8	3.0
40	20		20	40

0+50

334.7	335.3	336.4	337.0	338.3	339.5
11.2	11.3	10.2	9.6	8.3	7.1
40	28	20		20	40

0+25

331.5	333.7	334.7	336.22	337.8
15.1	12.9	11.9	10.36	8.8
40	20		20	40
			on Pipe	

0+00 = E. by Line Tres Hermanos

329.6	330.8	332.8	333.6	335.0	335.6
17.0	15.8	13.8	13.0	11.6	11.0
40	20		20	25	40

346.58
H.Z. Cont. from
P-15

346.58

Calle Valner Cross Sections

003

TR #3 Page 5
 Check Pipe 1367 308.87
 308.84
 TR 039 322.51 12.73 322.12
 TR 122 334.85 12.75 333.56
 TR 202 346.31 12.77 344.29

3+15

2+88.22

2+75

2+48.22

2+25

357.06

REDUCED BY
 8-21-50
 2100

350.0 346.2 346.3 345.1 345.0
 7.1 8.9 10.8 12.0 12.1
 20 20 40

353.1 351.1 350.0 349.5 348.4
 4.0 6.0 7.1 7.6 8.7
 40 20 20 40

354.7 353.1 351.8 351.4 350.7 350.3
 2.4 4.2 5.3 5.7 6.4 6.8
 49 29 29 20 29 49

353.9 353.3 352.7 352.65 352.5 353.0 354.0
 3.2 3.8 4.4 4.41 4.6 4.1 3.1
 60 40 20 20 20 20 60
 on 11/6
 8 DISC.

351.0 351.0 351.6 352.4 353.7
 6.1 6.1 5.5 4.7 3.4
 50 20 20 20 50

357.06

INDEXED
DEC 10 1951

Walker
G. Pope
Re-survey
10-20-50

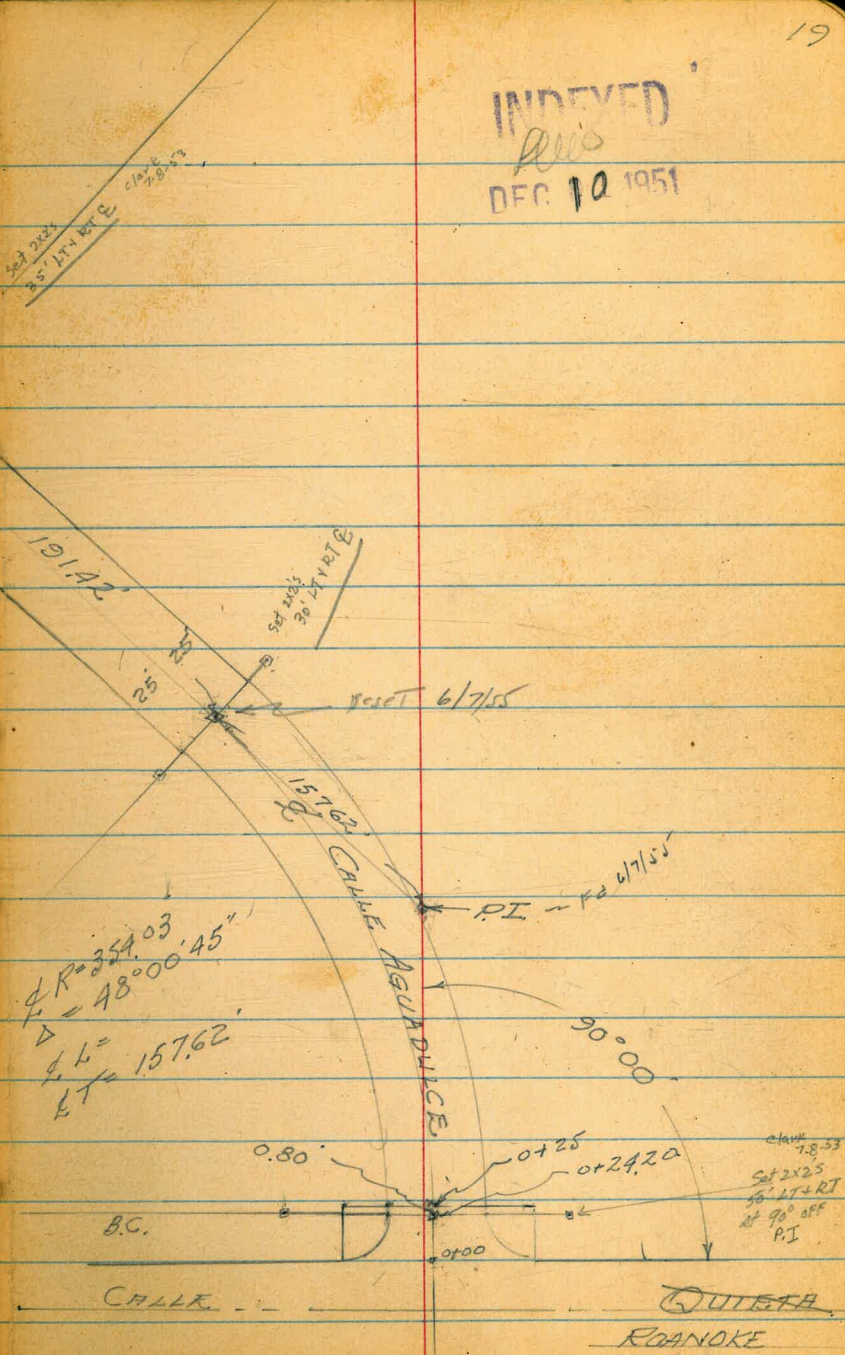
Reset in
Lawn 4/7/55

$\Delta = 47^{\circ}57'30''$
 $\&R = 517.70'$
 $\&T = 230.27'$

CROSS SECTION CALLE AGUADULCE,
from Calle Quieta
To Calle Pintoresca
MO 25020

■ = Set 2" x 2" Redwood Hubs & Disc

$\&R = 354.03'$
 $\Delta = 48^{\circ}00'45''$
 $\&L = 157.62'$



191.42'
25' 25"
Set 2x25
56' LT+RT
at 90' off
P.I.

Reset 6/7/55

157.62'
CALLE AGUADULCE

PI - Pa 4/7/55

90°00'

BC.

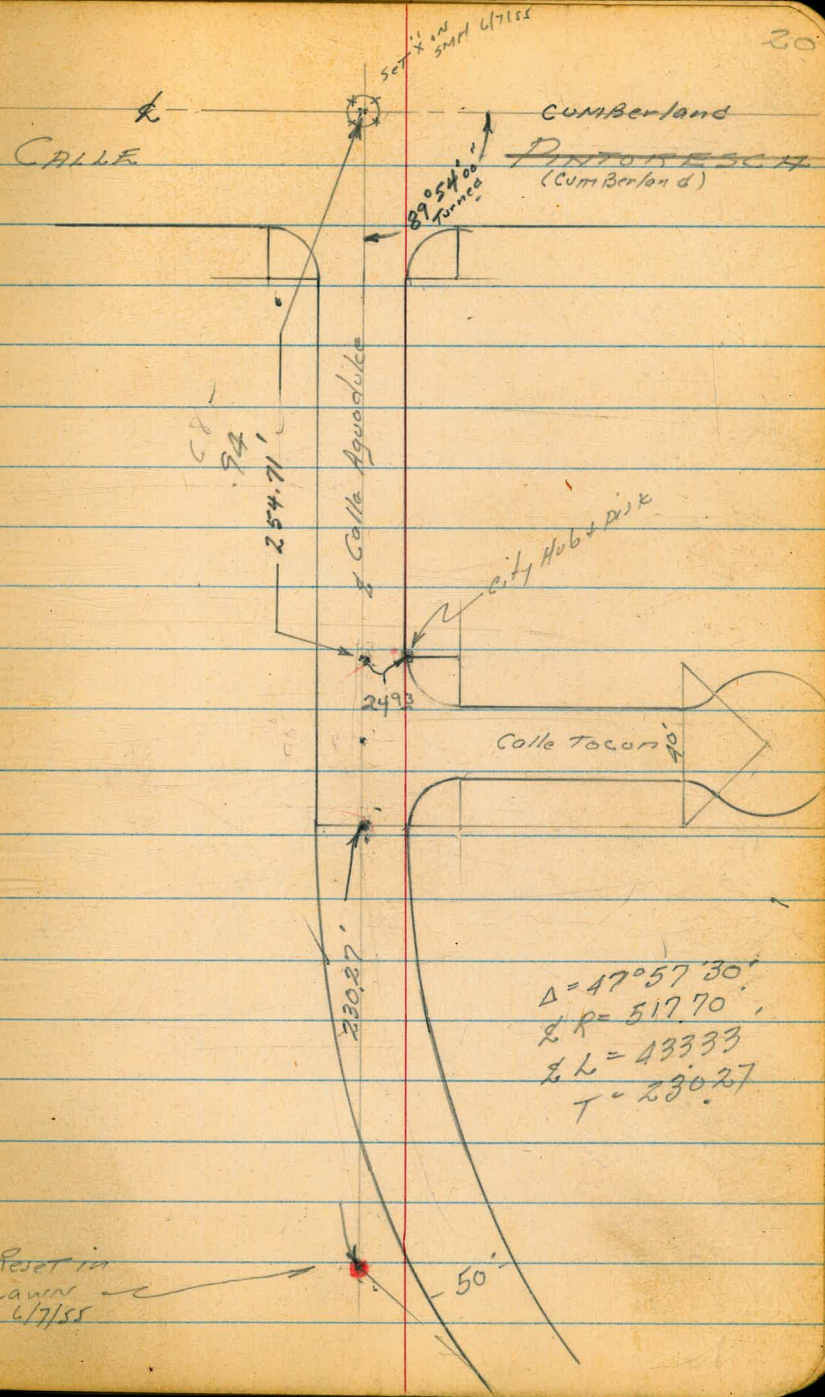
CHALK

QUIETA
ROANOKE

change 7.8.53
Set 2x25
56' LT+RT
at 90' off
P.I.

Cross sections -

Calle Aguadulce



Roberts
Co. to
Moore
Clark
1-26-51
W.O. 31564

X-sect Pav. Concr. Hains

(Oliver to Roosevelt)

Quantities

21

	outside Wk.	inside Wk.	curb		out. Walk	In. Wk	cb.
				2+50	47.80	47.58	46.83
1+76 Pac. B.H. Dr.	51.35	51.13	50.76				
				2+00	49.10	48.80	48.04
1+56 BRK Wk.	51.29	51.05	50.28				
				1+53	50.26	49.98	49.20
1+35	50.75	50.50	49.76				
				1+00	51.47	51.24	50.41
0+95	49.73	49.46	48.72				
				T.P.	50.81		
0+60	48.85	48.61	47.85				
				0+50	52.19	51.97	51.17
0+16 BRK Wk.	47.69	47.46	46.74				
				0+15 BRK Wk.	52.48	52.22	51.43
0+00 Alloy BR 303 S. Lim E.C. Kit.	46.69	46.58	46.38	EC cb.	52.15	51.95	51.49
	5'5"10'			0+00 Rpt. S. Side Pac. B.H. Dr.			

BM

Direct Elev. Rod

46.38 Alloy EC

on East
small Pit.

55 7.5'

Cont'd From Page 21

22

	o.t. Wk	In. Wk	cb.	out Wk	In. Wk	cb.	G. tr.	£	
				5196 ^{END} PAY.	36.65	36.63	36.53	35.90	35.84
				BRK Wk 573	37.64	37.42	36.66	36.04	36.21
5723 ^{BC} Fortuna	40.69	40.40	40.12						
				5400	38.04	37.82	37.01	36.39	36.54
4495 BRK Wk	41.76	41.52	40.68						
				4400	38.49	38.24	37.44	36.82	36.99
4450	42.79	42.55	41.78						
				3400	38.76	38.74	Drive	37.28	37.48
TP	42.63								
				2400	39.43	39.20	38.39	37.75	37.96
4406	44.03	43.82	43.03						
				1400	39.89	39.68	38.82	38.17	38.40
3450	45.33	45.04	44.30	BRK Wk 0420	40.22	39.90	39.20	38.56	38.79
3400	46.57	46.31	45.51	BC 0400 SE Fortuna	39.74	39.57	39.28	38.68	38.86
					5'5'	7.5'			

Roberts
Cota
Moore
2-9-51
W031568

X-sect Dawes St.

Grand Co.
(For Quantities)

23

1+19	12.64 cb	12.98 2 BKcb	13.34 17	2+50	3.90 cb	4.5 3 BKcb	4.5 PL
0+60	13.58 cb	14.21 2 BKcb	14.32 17	2+00	4.78 cb	5.5 2 BKcb	5.8 PL
0+10 BC	14.38 cb	15.07 2 BKcb	15.31 17 wall	1+51 EC Alley Ret S. Side Alley	5.91 cb	6.4 3 BKcb	6.5 PL
0+00 S.L. Thomas	14.52 cb	15.33 6.81 Cb. Line	15.38 16.2	0+00 S.L. Reed			
T.P.	14.38			T.P.	9.00		
2+62 EC at Thomas	15.97 cb	16.9 10 BKcb	17.1 PL	2+73	16.24 cb S. Side Line	16.05 9 BKcb Line	16.24 17
2+00	17.10 cb	18.2 10 BKcb	18.3 PL	2+50	10.6 cb	11.10 2 BKcb	11.44 16.5
1+51 EC on Dawes S. Side Alley Ret.	18.03 cb	18.7 4 BKcb Curb	19.0 PL	2+00	11.37 cb	11.77 2 BKcb	12.16 16.5
0+00 S.L. Grand	West Side			1+49	12.19 cb	12.60 2 BKcb	12.58 16.5
B.V.			20.60 Top Curb				

Direct Elev. Rod

EC on Dawes

SW. Co. Dawes #Grand

1460

0.79
cb1.5
3
BKcb1.4
PL

1437 Alley BC 50

1.01
cb1.3
3
BKcb1.6
PL

1413 Alley BC No

1.28
cb2.1
3
BKcb2.1
PL

1400

1.38
cb2.3
3
BKcb2.4
PL

0450

1.84
cb2.5
3
BKcb2.8
PL

0710

2.20
cb2.9
3
BKcb3.3
PL

0400 SL. Oliver

T.R.

2.20

2474

3.27
cb
2.5 BK
cb LHP4.0
6
BK cb
LHP4.0
PL2442 BC
Peb. BK LHP0.13
cb0.7
3
BKcb1.2
PL

2463

3.92
cb4.5
3
BKcb4.4
PL

2410

0.34
cb0.7
3
BKcb1.2
PL

OLIVE ST.

Kettner to India C.H.S.

12-12-51
W.O. 25020

Begg
R Sisson
W. Oitman

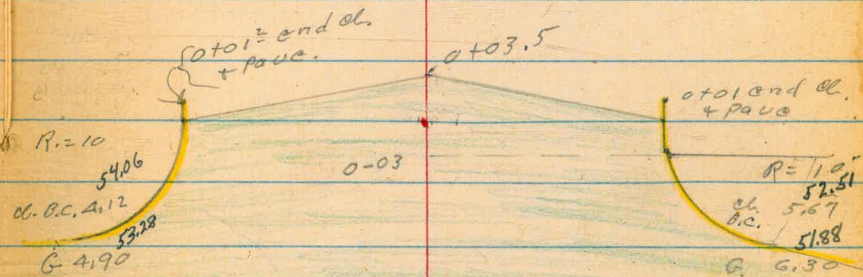
S.E.
0+00 = 90° to Prop. (see P. 26.)

T.P. sheets # 8 + # 18

Plotted
1/29/52
H. Mills

INDEXED
LUD
DEC. 14 1951
Reduced 12-20-51
R.M. Dandy

0+00



Kettner Blvd

58.18

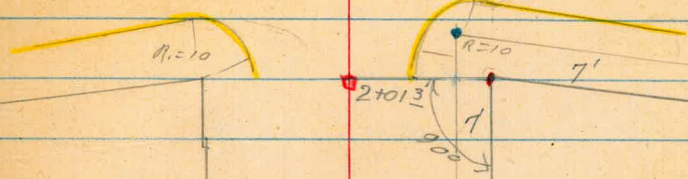
Set B.M. 5.42 58.18 7.51 52.76

S.E. 7' L+T. Kettner + Olive

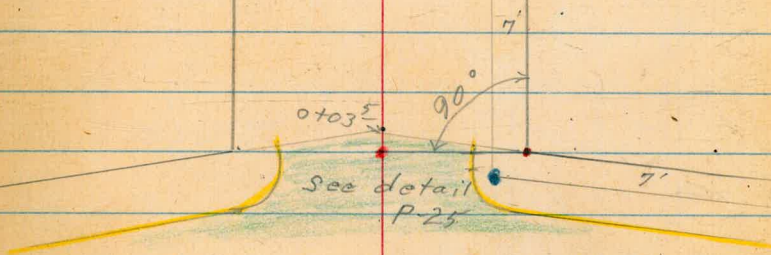
2.78 60.27 - 57.49

S.E. B.P. Kettner + Palm.

← India Street →



← 1+30⁰⁰ →



← Kettner Blvd →
A.C. Pave.

T.P. 10.66 73.13 3.42 62.47

0+09 Lt. = end wall about 3' high

T.P. 7.95 65.89 0.24 57.94

0+03^E = end pave. on \perp

0+01^E 26' Lt. = end cl. + pave

0+01 - 26' Rt. = end cl. + pave.

39' Lt. = start conc. wall (5' High)

0+00 26' Lt. = E.C. 10' cl. Ret.

0-03 - 26' Rt. = cl. E.C. 10' Rad Ret.

(0+00 = 90° to S.E. Prop. Cor.)

61.2
4.7
40

61.2
4.7
37
Top

60.6
5.3
37
Cul.

55.89
10.0
22

54.4
11.5
65.89

53.0
10.9
40

54.0
11.9
43
Face of Bldg.

53.33
4.85

54.38
3.80
26
cl

53.60
4.58
26
cl

52.29
5.94
26
cl

52.84
5.34
26
cl

59.18
+1.0
40
Top of wall.

54.4
3.8
39

54.31
3.87
26
cl
E.C.

53.62
4.56
26
cl

53.10
5.08

52.21
5.97
26
cl

52.81
5.37
26
cl. Broken

53.0
5.7
40

52.15
6.03
26
cl

52.76
5.42
26
cl E.C.

58.18

* From P25

Olive

T.P. 8.38 99.01 2.53 90.631+50 45⁵ Lt. = ♀ porch to house

8.0	8.8	8.8	5.0	5.0	5.4	6.9
45 ⁵	45	40	30	40	40	60
83.2	84.4	84.4	88.2	88.2	87.8	86.3

1+35

11.5	10.9	6.7	8.5	9.0
60	40	40	40	60
81.7	82.9	86.5	84.7	84.2

T.P. 10.09 93.16 1.27 83.07

Pole P 1175

1+14 41⁵ Lt. = ♀ porch to house.

4.5	4.8
41.5	41
porch	end.
79.8	79.5

1+00 43' Lt. = ♀ 3' wide walk.

8.13	8.4	6.4	5.7	5.9
43	40	40	40	50
76.21	75.9	77.9	78.6	78.4

T.P. 11.99 84.34 0.78 72.35

0+72 39' Lt. = ♀ 3' wide walk

10.8	10.82	0.0	3.0	2.5	1.9	2.1	18.0	18.1
40	39	39	25	40	40	45	50	60
73.9	73.95	73.13	70.1	70.6	71.2	71.0	55.1	55.0

0+50

6.1	6.1	8.9	9.3	10.0	18.5	18.6
45	40	20	73.13	37	40	50
67.0	67.0	64.2	63.8	63.1	54.6	54.5

Olive

3.48 100.99 (100.96)

S.I.E.B.P. Olive + Kettner

2+15± } 36' RT } = Approx. E.C. 10' Rad. Cl. Ret.
36' LT }

2+05 } 26' RT } = B.C. 10' Rad. Cl. Ret.
26' LT }

2+03³ = start A.C. Pave

2+03 } 26' RT = start cl. + A.C. Pave
25± LT = start cl. + A.C. pave

2+01³ } 39± LT = end Bldg.
40' RT = Prop. Cor. (see sketch)
also sly. edge walk
40' RT = sly. edge walk

T.P. 5.97 104.47 0.51 98.50

1+85 38± LT = start frame Bldg

1+75 45± LT = # porch to house

99.10 98.82 99.24 98.84 99.15
5.37 5.65 5.23 5.63 5.32
36 36 36 36 36
Cl. G G G Cl.

98.79 98.10 98.65 98.50 98.98
5.68 6.07 5.82 5.97 5.49
26 26 26 26 26
Cl. G G G Cl.

98.52
5.95

98.80 98.23 98.5 98.34 98.29
5.67 6.24 6.0 6.13 5.48
25.9 25.9 26 26
Cl. G G Cl.

99.17 99.17 98.1 99.32
5.30 5.30 6.4 5.15
40 on walk a # Bldg. 40 walk

104.47

91.7 90.9 91.0 93.9 91.8 92.7
7.3 8.1 8.0 5.1 4.2 6.3
45± 45 40 25 40
Porch

99.01

Roberts
Cota
Moore
Fullen
3-5-52
W.O. 32137

Preliminary Sewer Survey Tres Lomas
Winchester - Gaviota to Roanoke
Calle Serena - Winchester to Cumberland
Cumberland - Calle Serena to Calle Tres Lomas

Map 2160 FB1832 pg 54

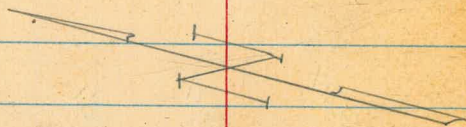
Curbs in Tres Lomas are Type
"B" see Drawing 3015B 12-28-45

Set Spike
P.O.T. 6+00

Set Spike
P.O.T. 4+00

Set Spike
P.O.T. 4+00

Calle



Soil Mix Paving in
Tres Lomas Subdivision.

Set BM B.P. Elev = 269.84

Serena

Set Hub & Disc
2+35.32

Set Spike
4+80

Winchester

Subd

Line

INDEXED
MAR 7 1952

Calle

FD Pipe

TP 2746

30

35° 28.0'

5 feet

$\Delta = R \cdot 32.0'$

Set Hub & Disc
2+85.35

0+00
to North
& South

25' 25"

FD pipe

FD pipe 2' Deep.

Set Hub & Disc over pipe

90° 00.0'

Pipes found
on both sides of
St. on subd. line
Set Hub & disc
on E.

Edge Soil Mix

30' 30'

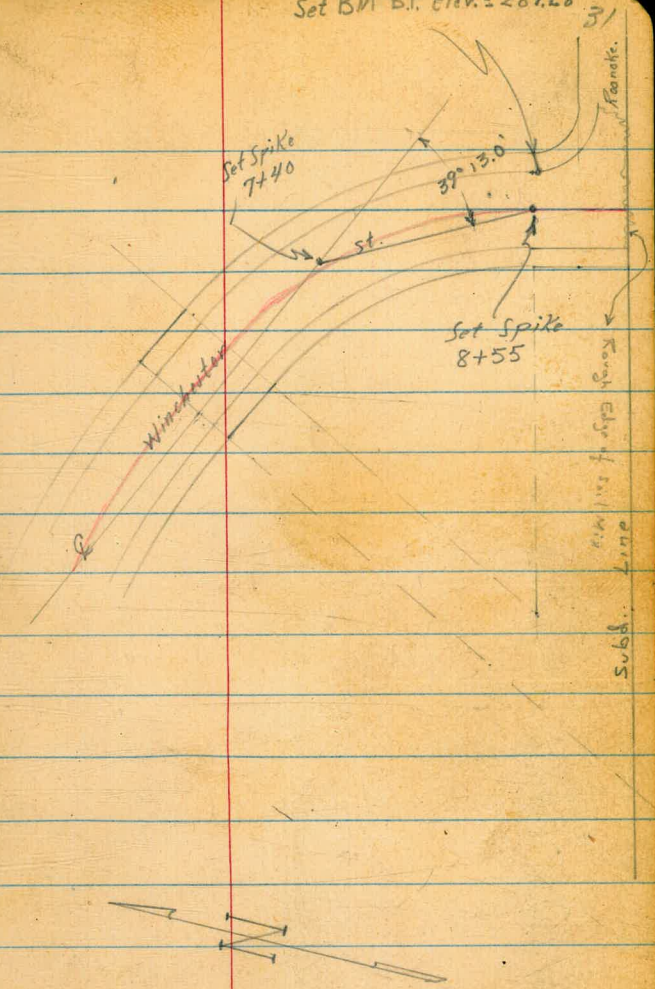
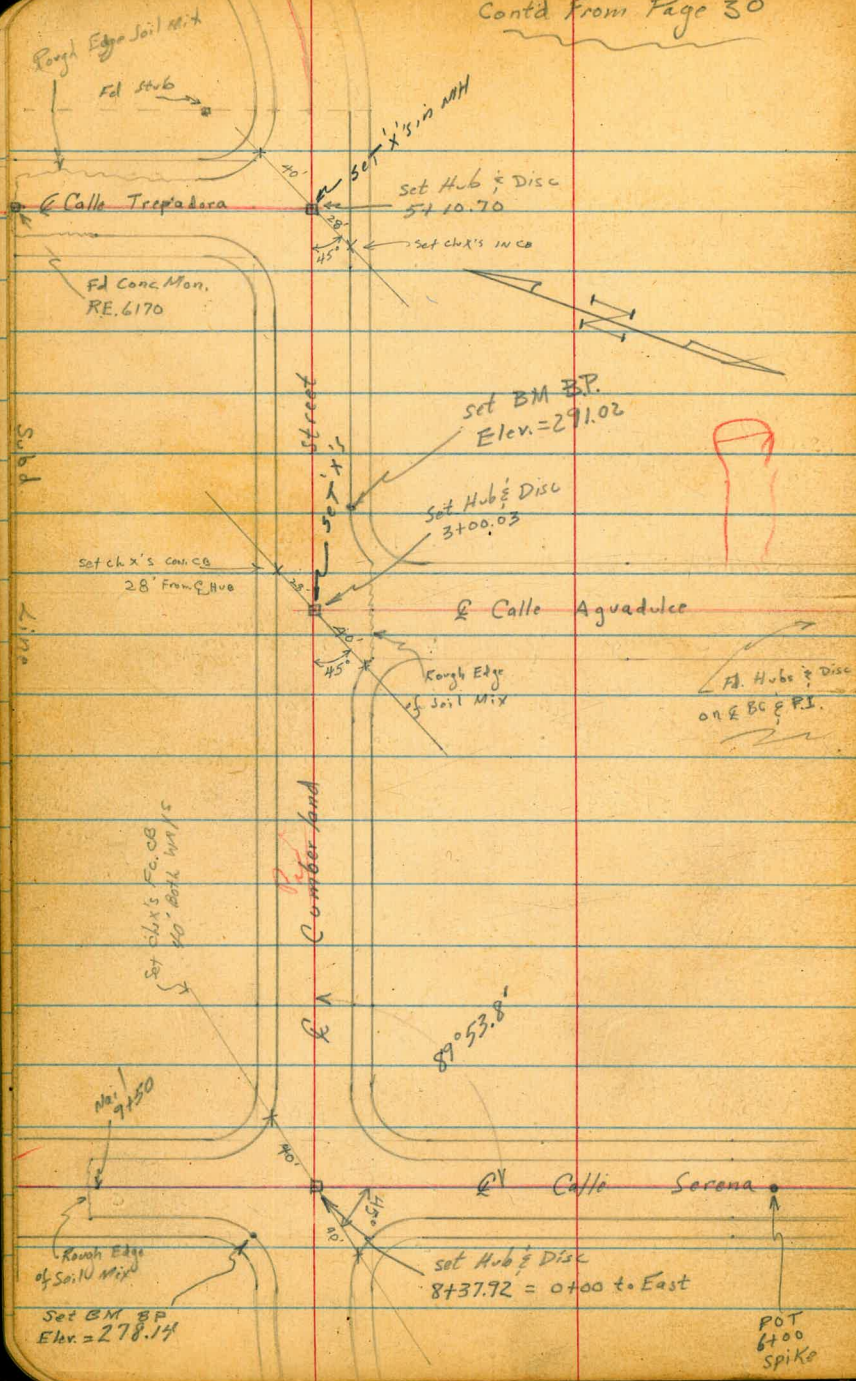
0+00

FD Hub no C.T. 125' So. of @
Gaviota

Cont'd From Page 30

Set BM B.P. Elev. = 287.28

31



Cont'd From Page 32
(Winchester Street)

Lt.

£

Rt. 33

3+50

272.4

3+00

300 to 400' So. of Winchester

269.2

2+85.35

£

A House So. of Traskomas Subd. on Calle Serena

(see page 40)

will be a problem!

Calle Serena

267.6

2+50

267.5

2+00

266.6

1+50

265.9

1+00

265.4

0+50

264.9

0+00

East Line Gaviota
& Winchester

263.8

BM

Direct Elevation Rod!

269.84

NWBP

Winchester & Calle Serena

Cont'd From Page 33

Lt

Rt

Rt 34

7+50

293.9

7+40 L. Rt

294.3

7+00

295.5

6+50

295.3

6+00

293.6

5+50

290.3

5+00

285.7

4+80 L. Rt

283.9

4+50

281.4

4+00

276.8

Cont'd From Page 34
(Calle Serena) No. of Winchester

26

£

27 35

2+00

281.3

1+50

277.5

1+00

273.3

0+50

269.4

0+23

268.3

0+00 = 2+85.35 £ Winchester £ Calle Serena

268.6

8+55 DE

287.4

288.6

286.9

Floor
House
48

Gravel at Foot
of House
48

8+50

287.7

↑ Owner is
planning on a
one room basement.

8+00

291.1

Future

Cont'd From Page 35

Lt

£

Rt 36

7+00

285.6

6+50

287.0

6+00

287.8

5+50

288.3

5+00

288.6

4+50

289.0

4+00

288.9

3+50

288.2

3+00

286.8

2+50

284.5

Contd From Page 36
(Cumberland)

Lt.

£

R7 37

1400

281.2 282.6 282.6
GRD Floor
50

0750

280.0 281.0 281.1
GRD Floor
50

0700 = 8737.92 £ Cumberland
£ Cello Serena

279.7

9750 DE

271.5 272.8 271.4
45 45
Ground at House Floor

9700

276.2

8765

278.9

8737.92 £ Cumberland

279.7

8700

280.4

7750

282.4

Cont'd From Page 37

Lt.

Q

Rt

38

5+50

296.2

5+10.70 Q Calle Trepadora L: Lt.

295.7

5+00

295.2

4+50

292.6 294.0 293.7
GRD Floor
512

4+00

291.4 292.8 292.2
GRD Floor
50

3+50

290.7

3+00.03 Q Calle Aguadulce

287.6 288.9 289.1
GRD Floor
50

2+50

286.6 287.8 287.5
GRD Floor
50

2+00

285.8

1+50

284.2

Cont'd From Page 38

Lt

E

Rt

39

See Page 48

Better check Profile of Cumberland beyond Calle Tres Lomas for future sewer!

8+81.59 E Calle Tres Lomas

304.9

8+50

304.0

8+00

302.6

7+50

301.4

7+00

300.1

6+50

298.8

6+30 L. Lt.

298.3

6+00

297.4

Cont'd From Page 39

Calle Serena (So. of Winchester)

Lt

E

R

40

4+00

263.3

3+50

265.2

Set Hub & Disc

3+31.13

♀ Calle Serena & So. Line Trees Lomas Subd.

3+00

266.8

263.5
50

2+50

268.1

2+00

268.8

264.1
60

1+50

268.8

1+00

268.2

0+50

267.8

0+00

{ See Page 30
2+85.35 } ♀ Calle Serena & Winchester

268.6

BM

Calle Serena & Winchester
269.84 - NWBP

5750

House on Left (2605 Coll. Serena)

259.2
78.3
Floor
Garage

255.5

252.6
50

5700

258.7

4750

House on Rt. Unfinished (Said to be condemned)

260.6

248.0
10.8
Floor
unfinished
house

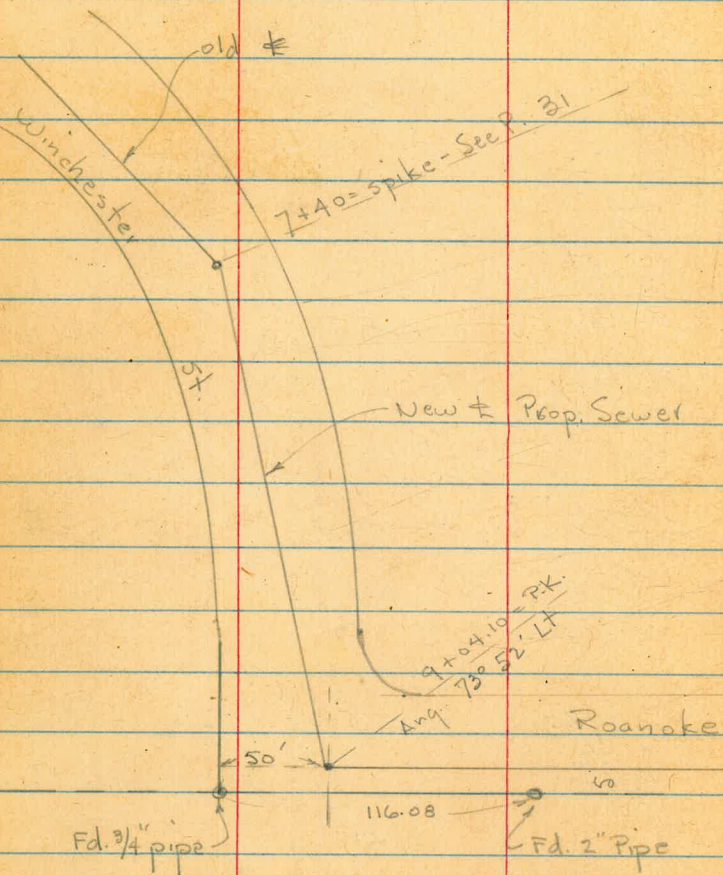
Survey for Prop. Sewer - Winchester +
Roanoke + Calle Aquadulce - in Tres Lomas

5773-

S-26+52

7.0.

W.O. 32137



See Map. 2160 - Sheet 3

Fd. City Hub.
See P. 19

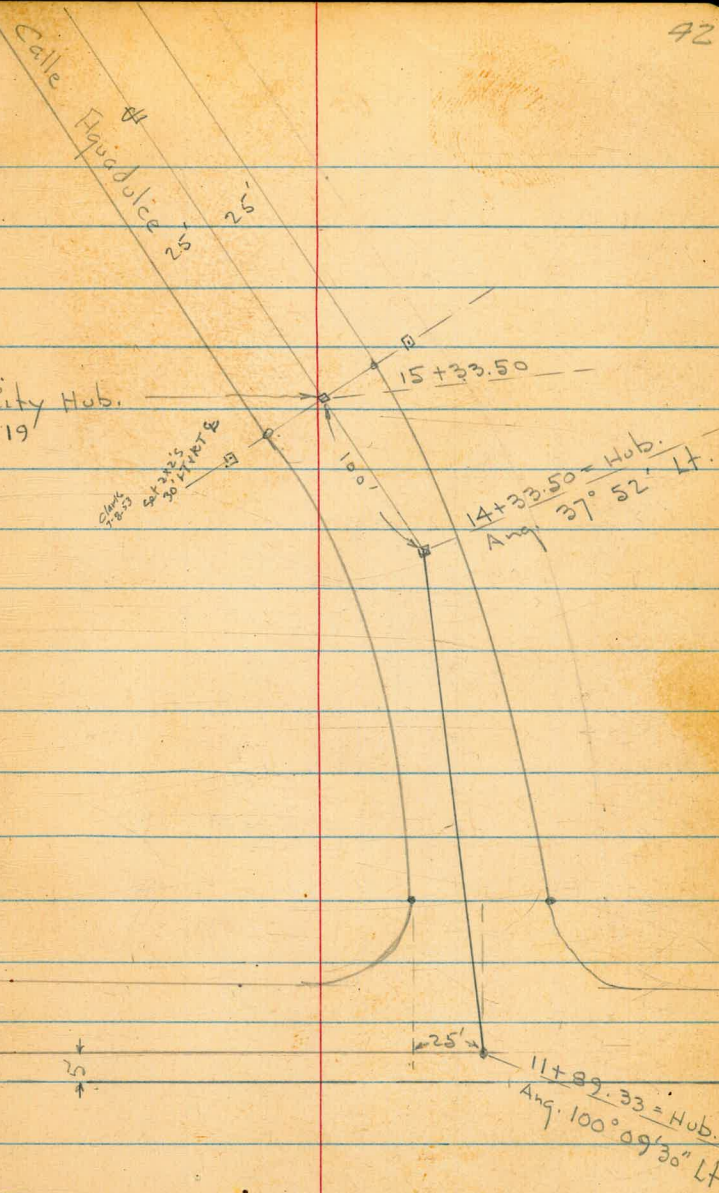
Chalk
1/2" x 3/4"
54 x 33 1/2
30 x 14 1/2

st.

20'

INDEXED

MAY 28 1952



Cumberland

E →

P. 31
Hub. = 3+00.03
0+00 to 5+31
89° 54' 30"

Hub

25' 25'

2+99.65 Hub.
Ang. 7° 15' Lt

Calle Tocan

2+12 = end = Hub.

City Hub = PC.

90°

40'

45'

35'

40'

40'

40'

40'

40'

40'

40'

40'

40'

40'

40'

40'

40'

40'

40'

40'

40'

40'

40'

40'

40'

40'

40'

40'

40'

40'

40'

40'

40'

40'

40'

40'

40'

40'

40'

40'

40'

40'

40'

40'

40'

40'

40'

40'

40'

40'

40'

40'

40'

40'

40'

40'

40'

40'

40'

40'

40'

40'

40'

40'

40'

40'

40'

40'

40'

40'

40'

40'

40'

40'

40'

40'

40'

40'

40'

40'

40'

40'

40'

40'

40'

40'

40'

40'

40'

40'

40'

40'

40'

40'

40'

40'

40'

40'

40'

40'

40'

40'

40'

40'

40'

40'

40'

40'

40'

40'

40'

40'

40'

40'

40'

40'

40'

40'

40'

40'

40'

40'

40'

40'

40'

40'

40'

40'

40'

40'

40'

40'

40'

40'

40'

40'

40'

40'

40'

40'

40'

40'

40'

40'

40'

40'

40'

40'

40'

40'

40'

40'

40'

40'

40'

40'

40'

40'

40'

40'

40'

40'

40'

40'

40'

40'

40'

40'

40'

40'

40'

40'

40'

40'

40'

40'

40'

40'

40'

40'

40'

40'

40'

40'

40'

40'

40'

40'

40'

40'

40'

40'

40'

40'

40'

40'

40'

40'

40'

40'

40'

40'

40'

40'

40'

40'

40'

40'

40'

40'

40'

40'

40'

40'

40'

40'

40'

40'

40'

40'

40'

40'

40'

40'

40'

40'

40'

40'

40'

40'

40'

40'

40'

40'

40'

40'

40'

40'

40'

40'

40'

40'

40'

40'

40'

40'

40'

40'

40'

40'

40'

40'

40'

40'

40'

40'

40'

40'

40'

40'

40'

40'

40'

40'

40'

40'

40'

40'

40'

40'

40'

40'

40'

40'

40'

40'

40'

40'

40'

40'

40'

40'

40'

40'

40'

40'

40'

40'

40'

40'

40'

40'

40'

40'

40'

40'

40'

40'

40'

40'

40'

40'

40'

40'

40'

40'

40'

40'

40'

40'

40'

40'

40'

40'

40'

40

Levels along $\#$ of Prop. Sewer in Treskomas
 See Sketch - P. 42 + 43

44

Lt. $\#$ Rt.

14 + 33.50 = Ang. Pt.

09.94 = on Hub.

14 + 00

04.0

06.4

06.9
75

13 + 50

201.9

13 + 00

297.7

Set B.M. on Prop Pipe 12 + 38 - 25' Lt. 292.71

12 + 50

91.4
75

93.8

93.4
75

11 + 89.33 = Ang. Pt.

89.08 = Hub.

11 + 50

87.7

81.7
75

11 + 00

86.8

Here on.

10 + 50 - Unimproved Prop. - Both Sides from

86.2

10 + 00 - Vac. lot on Rt.

85.7

80.9
75

9 + 50

9 + 35 = end Pave.

84.6

84.4 = Pave

9 + 04.10 = Ang. Pt.

83.95 = on P.K.

8 + 70 - 11.1 Lt. = Nearest - low pt. of Conc. Curb.

86.26

86.4

8 + 50

11.1
= gut

87.7

8 + 00

91.1

7 + 40 = Ang. Pt.

94.24

200' Elev. Not shown

B.M. = N.E. B.P.

287.28

Winchester + Roanoke - P. 51

Actual Elev. shown.

Lt.

±

Rt.

45

set Elev. on S+58

317.71

18+63 = End.

07.7
75

17.13

18+00

16.0

B.M. on Pipe - PC = 17+24.85

314.28

17+37 = Ang Pt.

08.7
75

16.31 = on Hub.

17+00

90° to back Tang.

16.8

16+50

16.4

16+00

08.8
75

15.4

Rt. High

15+50

14.5

15+00

12.7

Beq. Levels along \pm of Prop Sewer
in Aquadulce - sketch - P. 43

46

Lt.

\pm

Rt.

P. 45

5+58 = End.

217.71 = checks line from South

5+00

19.0

$\frac{11.7}{75}$

4+50

19.4

4+00

17.7

3+50

13.6

$\frac{08.8}{75}$

2+99.65' = Ang. Pt. = 0+00 to E.

208.43 = on Hub.

2+50

04.9

2+00 - Left is High

200.0

298.1

50 = low point

1+50

95.9

1+00

93.0

0+60

91.7

0+30 = Sly. of Pavc

89.2

\pm Cumberland Aquadulce

0+00 = \pm Hub. = 3+00.03 - P. 38 + 31

89.0

= S.F. B.P. Cumberland

291.02

+ Aquadulce - P. 31

Bcg. Levels along Φ of Prop. Sewer
in Calle Tocan - sketch - P. 43.

Lt.

Φ

Rt.

47

2+12 = End

1+55

1+00

0+50

0+00 = Hub.

B.M. = 2+99.65 Hub.

P. 46

Rt. is High

308.43

09.5
75

08.7
50

314.18 = on Hub.

14.2

13.2

11.7

08.43

Cont'd From Page 48

H

E

Rt 49

2750

3125
4.2

2400

3096
5.1

1750

3085
6.2

higher

1400

3001
7.6

higher

Reduced & Plotted
H. Mills
10-22-52

0750

~~3027~~
8.9

Ground is

0700 @ Cumberland & Calle Tres Lomas

3049 ✓
9.8

BM

10.53

314.68 N

304.15 NW B.P.

See Page 32

314.68 N

Cumberland & Calle Tres Lomas

Contd From Page 49

Lt

£

R 50

5+50

304.6
46

5+00

311.2
+8.0
100

306.8

24

316.0
+6.8
100

T.P.

0.30

309.15 π

5.83

308.95

309.15 π

4+50

308.6

6.1

4+00

310.2

4.5

3+50

311.1

3.6

3+00

316.7

+2.0
100

311.3

3.4

324.7

+10.0
100

314.68 π

314.68 π

Cont'd From Page 50

check

11.11 304.14 = 304.15

T.P.

6.72 315.25 0.62 309.53

Set TBM



7.20 301.95 ←

Top fire hydrant S.W. Corner Cumberland & Calle Tortuosa

7+31.07 & Cumberland & Calle Tortuosa

see profile Tortuosa

297.1

12.1

See Profile Tortuosa

7+00

310.2

+1.0

100

298.1

11.1

305.0

+1.2

100

6+50

300.4

8.8

6+00

313.8

+4.6

100

302.4

6.8

314.0

+0.8

100

309.15

309.15

Lt £ Ft 51

Scobee
S 18° 58' 30" E
25
25

Paradise Hill Unit #2
Map 2068

180° 03' 15"
N 71° 04' E
FC Con Mon
0700

"X" Sec Road to St
Reo to Calle Gaviota
Now (4) crosses on this side

6460²⁶ → Fd 1/2" G.I. Pipe
with tack
D. Smith
C.A. 1/64
R. Taylor
C. Abbott

wo # 62312 52
2/13/53

28 25

R 9900000 E
N 99° 00' 00" E
Map

Calle Gaviota

INDEXED
FEB 4 1953

3487³⁶
Fd POT Hub + Disk
022 North of Line
3462³⁴
Set POT Hub + Tack

Reduced + Plotted
2-4-53
H. Mills
La Huerta
Map 2161

ROADS -

Fd Hub + Tack
Pot good Line
0799¹⁵

Please Note
tie sheet seems
to be 25' off
sd.

CON. PAV. STR.
Reo Dr.
P.A. 1000

570457
572045

P.C. 245-255
Map

Lt=South

Rt=North

Lt=South

Rt=North

1725

242.4	242.5	240.7	239.8	238.8	238.7	239.1	239.3	239.3	240.7
0 ¹	0 ¹⁰	1 ⁰	2 ¹	3 ¹	3 ⁵	3 ⁴	3 ³	3 ³	1 ⁵
75	50	25	3	18	25	50	60	75	

3750

216.8	215.5	215.4	216.4	216.1	216.6	217.7	215.9	216.1
2 ⁶	3 ²	4 ⁰	3 ⁰	3 ³	2 ²	1 ²	3 ¹⁵	2 ³
75	50	25	7	20	25	50	75	

TP₁

0³⁹ 242⁴⁵ 12⁴³ 242⁰⁶

244.8	244.8	244.2	243.1	242.8	241.7	241.8	242.0	241.6	242.0	241.7
9 ²	9 ²	10 ³	11 ⁴	11 ²	12 ⁸	12 ⁷	12 ⁵	12 ⁵	12 ⁵	12 ⁵
75	50	25	10	3	18	20	25	50	75	

1700

3700

TP₂ 1¹⁸ 219³⁷ 12²⁸ 218¹⁹

218.5	218.8	218.3	219.0	219.1	219.5	220.4	219.8	219.5
12 ⁵	12 ⁵	11 ⁷	12 ⁰	11 ⁹	11 ⁵	10 ⁶	11 ²	11 ⁵
75	50	25	3	18	25	50	75	

0775

246.9	246.2	245.3	244.9	244.1	244.4	244.6	243.7	243.8
7 ⁶	8 ³	9 ²	9 ⁶	10 ²	10 ¹	9 ⁹	10 ⁸	10 ²
75	50	25	2	18	25	50	75	

2750

222.9	222.6	222.2	224.3	223.6	223.4	223.7	225.9	225.0
8 ¹	8 ⁴	7 ⁸	6 ²	7 ⁴	7 ⁶	7 ¹	5 ¹	6 ⁰
75	50	25	4	18	25	50	75	

0750

247.5	247.5	248.3	247.5	247.2	246.4	246.5	246.8	246.6	247.0	246.1	245.4
7 ⁰	7 ⁰	6 ³	7 ⁰	7 ³	8 ¹	8 ⁰	7 ²	7 ²	7 ⁵	8 ¹	8 ¹
75	50	25	16	7	2	18	20	25	50	55	75

2700

TP₂ 0²³ 230²⁷ 12⁴¹ 230²⁴

230.3	228.6	226.1	225.9	227.9	229.5	230.0	230.0	229.5
12 ⁸	11 ⁹	12 ⁴	12 ⁶	13 ⁶	13 ⁰	12 ⁵	12 ⁵	13 ⁰
75	50	25	2	18	25	50	75	

0725

248.4	248.7	248.7	248.4	248.7	249.2	249.6	249.3	248.2	248.1
6 ¹	5 ⁸	5 ⁸	5 ¹	5 ⁶	5 ³	4 ²	5 ²	6 ³	7 ²
75	50	25	2	17	20	25	50	75	

1775

235.5	232.7	232.4	231.9	232.2	232.2	232.4	233.5	233.4
7 ⁰	9 ⁵	10 ¹	10 ⁶	10 ³	10 ³	10 ¹	9 ⁰	9 ¹
75	50	25	5	2	18	25	50	

0700 wly
E Seabreeze

251.4	251.8	252.5	252.3	251.8	252.1	251.8	250.2	249.3
9 ¹	8 ²	8 ⁰	8 ²	8 ²	8 ⁴	8 ²	4 ³	5 ³
75	50	25	1	2	19	25	50	75

1750 75° Rt & House

238.4	238.1	237.2	236.2	235.4	235.4	236.5	236.88
4 ¹	4 ¹	5 ³	6 ³	3	7 ¹	6 ⁰	5 ⁵⁷
75	50	25	6	2	18	25	450 Floor

BM₁

10³⁷

254⁴⁹

244¹²

NW Le Ping
Seabreeze
Winchester

242⁴⁵

Lt = South

Lt = North

	246.49	246.82	247.26	247.70	248.36
5720 45° E crosses why? Ely copper strip Rec. taken along par edge	12 ⁰⁸ 50	12 ⁵⁵ 25	12 ⁴⁴ 25	11 ⁶⁷ 25	11 ⁰¹ 50
5704 44° E crosses Ely par. cov. taken along par.			206.68 12 ⁶⁹		
	246.2	246.5	247.4	247.6	248.3
5700	13 ² 50	12 ² 25	12 ⁰ 25	11 ⁸ 25	11 ¹ 25
	246.9	246.2	249.6	248.1	248.2
4790	8 ⁵ 75	8 ¹² 50	9 ⁵ 25	10 ⁴ 1	11 ³ 20
	212.0	211.6	212.1	212.4	212.4
4750	7 ⁴ 75	7 ⁸ 50	7 ³ 25	7 ⁵ 4	8 ⁶ 19
	213.8	213.0	213.6	214.2	213.6
4700 48° E House	5 ⁶ 75	6 ⁴ 50	5 ⁸ 25	5 ³ 4	5 ⁸ 20
	213.7	213.7	213.7	213.7	213.60

219³⁷

Lt = North

Lt = South

54

2750	261.8 2 ² 65	261.3 2 ⁶ 50	259.7 4 ² 25	259.0 4 ² 20	258.2 5 ¹ 2
			262.12	278.6	259.0
2700			173	4 ³	4 ²
53° Lt & House	53 Floor	27	25	5 ⁹	5 ⁹
			266.94	257.3	257.6
1750	7 ⁴¹ 84 ² Floor	6 ⁶ 50	6 ³³ 25	5 ⁷	5 ⁵
84° Lt & House			258.2	258.4	256.8
			259.9	259.9	259.3
1700	9 ⁰ 75	8 ⁴ 50	6 ³ 25	5 ³ 16	5 ³ 2
			254.12	258.6	258.5
0778 58° Lt & House			973 58 Floor	259.9	259.3
	265.6	265.6	267.1	268.2	268.2
0775	8 ³ 50	8 ³ 25	6 ⁸ 24	5 ² 18	5 ² 16
			258.8	258.2	259.7
			254.3	254.5	258.8
0750	9 ⁶ 50	9 ⁴ 25	7 ⁸ 24	6 ⁸ 19	6 ² 16
			257.1	257.2	257.0
			258.1	258.1	258.1
			257.5	254.3	254.6
0725 Ely Sabrecoz	11 ⁴ 50	10 ⁸ 25	9 ⁶ 18	9 ³ 3	8 ⁴
			255.5	255.5	255.5
			258.8	258.1	258.8
			255.5	255.5	255.1

BM

1157 263⁸⁵252²⁸p 53
5 Mon Int
Sabrecoz & Hande

Lto North

Rt=South

TP2

129	256 ²⁸	12 ²⁶	254 ²⁹
258.5	257.6	256.1	254.2
82	90	105	124
75	50	25	25
		22	50
		7	75

4150

4125

4100

3175

3150

TP1

3100

420	266 ⁵⁵	220	261 ⁶⁵
268.5	267.5	263.3	258.1
74	81	95	114
75	50	25	25
		20	50
		7	75

263⁸⁵

41-North
vMH 456 clarks stak

TP3

6160²⁶

116 ⁵	229	229	229
252.9	252.2	251.2	251.2
64	51	62	75
75	50	25	75
		25	50
		7	75

6130

6100

5165

5150

5100

255.8	253.9	252.5	252.7	251.9	251.9	250.9
05	24	38	46	44	44	54
75	50	25	25	25	25	75

Rt=South

263⁰³
263⁰²
55

421	255 ⁶⁴	247.9	247.9
69	80	84	84
5	10	25	50

247.5	248.4	247.7	246.5
68	72	86	98
75	50	25	25
		25	50
		112	108
		245.1	245.5

247.7	247.4	245.5	244.5
66	82	108	118
75	50	25	25
		25	50
		125	125
		243.8	244.1

248.9	247.9	247.6	246.0	244.3
74	84	82	103	120
75	50	25	5	13
		25	25	50
		135	122	128
		242.8	243.6	243.5

248.1	248.7	248.9	248.0	248.4	242.5	243.5	243.1	242.7
73	76	74	83	72	138	128	132	136
75	50	25	5	5	16	25	50	60

257.7	257.0	256.6	249.9	246.7	245.4	244.4	243.7
46	53	52	64	96	102	112	126
75	50	25	75	70	25	50	75

249.9	250.0	249.0
64	63	73
25	50	75

256²⁸

D. Smith
S. Rorer
R. Taylor

SMH Shaw

to Int. S. Roanoke

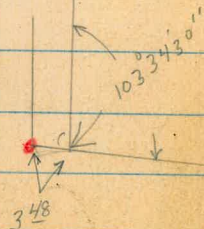
SMH
Winchester

line of S. M.H. extended to 219.5

219.5

P.O.T. stub

117.47



56
"X" Sec Roanoke St Rachel to Reo Dr
no # 32283
5/13/53

INDEXED
Law
MAY 15 1953

see tie BK 31 for sketch & ties
to Roanoke etc.

S. Roanoke St

3+37 Base line int & Roanoke St.

3+00

2+97 33° RT & 2° cow walk

2+70

2+35

Reduced by
H. Mills
5-20-53.

2+00

1+86 34° RT & 11° cow drive

1+60 38° RT & 2° cow walk

1+50

Lt=East.

Base
Line
15
3
G.L.

Rt=West

58.

14.5	16.52	16.54	16.48	16.42	16.37	16.34	16.3.5
32	32	30	31	42	45	50	42
50	30	10	16	1	20	33	50

165.3	165.2	165.8	165.3	164.8	164.6	164.0	163.4	163.4	163.43
31	28	26	31	36	38	44	50	50	50.3
50	25	4	2	20	20	32	35	50	332

166.1	165.7	165.7	165.7	164.5	164.0	163.7	163.0	162.6
20	22	22	22	32	44	42	54	58
50	35	25	16	2	20	20	30	56

165.2	164.9	164.0	163.8	162.2	161.8	160.7	160.0
32	35	42	46	62	66	72	82
50	25	4	3	22	35	50	50

877
344

159.69
444

980
444

169.3	169.9	163.0	162.0	160.7	159.6	157.8	156.8	158.19	157.60
41	40	54	4	82	88	106	116	382	482
50	16	8	3	24	33	50	50	382	482

168.43

"X" Sec Roanoke

St Rachel to Res Dr

59

2700

Lt = North

Lt = South

MAY 15 1953

JP₂

12¹²

177⁷⁴

28¹

165⁶²

1750

1679	1689	1662	1652	1630	1606
78	80	115	125	142	171
50	25	25	25	50	100

177⁷⁴

1676	1663	1632	1618	1601	1559
0 ⁸	2 ¹	2 ²	6 ¹⁶	8 ³	11 ⁵
50	25	25	25	50	100

1700

1654	1623	1615	1577	1578	1552
30	51	69	85	106	132
50	25	25	25	50	100

0750

1641	1631	1609	1577	1575	1546
35	53	75	82	109	138
50	25	25	25	50	100

0700 Ely Rachel taken along Rachel

1652	1646	1645	1618	1576	1563
32	38	32	66	88	101
50	30	20	20	30	50

0-30⁸³

taken along Body Line

City Body Line on West

1647	1641	1623	1573	1580
37	43	61	91	108
50	30	30	30	50

168⁴³

5400 4° 19.189'

4450 3° 22.647'

TP3 12⁸⁹ 189 44 19 176⁵⁵

4100 2° 26.105'

A = 33° 26' 30"
EA = 1520
T = 456 62
d = 1.13084'
Ea = 674

3450 1° 29.563'

3100 0° 33.021'

No cut in chords

2470⁸⁰ BC LA 0° 00.00'

2435

Lt-North

Rt-South

60

192.5	180.0	187.4	186.2	184.8	183.1
+3 ^L	+0 ^E	2 ⁰	3 ^R	4 ^E	6 ^L
50	25	25	25	50	100

187.3	184.7	181.0	177.5	178.2	177.9
2 ^L	4 ^L	8 ^L	9 ^R	11 ^R	11 ^S
50	25	25	25	50	100

183.9	180.2	178.4	177.2	175.3	173.3
+5 ^L	+2 ^E	+0 ^L	0 ^S	0 ^R	2 ^L
50	25	10	7	25	50

189 44

180.3	177.3	174.6	172.8	171.3	162.8
+2 ^E	0 ^L	3 ^L	4 ^R	6 ^L	9 ^R
50	25	25	25	50	100

177.7	174.2	172.0	170.2	168.5	164.9
0 ^R	3 ^S	5 ^L	7 ^L	9 ^R	12 ^R
50	25	25	25	50	100

174.4	172.7	169.6	167.9	166.9	163.7
3 ^L	5 ⁰	8 ^L	9 ^R	10 ^R	14 ^R
50	25	25	25	50	100

172.7	170.4	162.8	161.3	164.7	163.1
5 ⁰	7 ³	9 ^R	11 ^L	12 ^R	14 ^E
50	25	25	25	50	100

177 44

TP₄ 1⁸⁸ 192⁶² 13²¹ 190²⁴

7450 9° 01.899'

7400 8° 05.357'

TP₅ 7⁰⁹ 203⁹⁵ 5⁴⁵ 196⁸⁶ ON Hub
744³⁸
Mid Pt.

6450 7° 08.815'

6435⁸⁴ 6° 52.757' E Hopkins St

6400 6° 12.273'

5450 5° 15.731'

TP₄ 13¹³ 202³¹ 0²⁶ 189¹⁸

At = North

At = South

61

195.8	194.8	194.2	192.5	192.4	193.5	193.5	192.0	196.2
8 ²⁰	9 ²⁰	9 ¹⁸	11 ⁵	11 ⁶	10 ⁵	10 ⁵	12 ⁰	17 ⁸
50	25	15		10	15	25	50	100

201.6	200.8	200.5	199.4	198.8	198.4	200.2	200.1	199.6	194.4
24	32	35	46	52	56	38	32	44	96
50	25	14	10		10	14	25	50	100

π 203⁹⁵

202.8	202.9	202.0	201.9	200.5	197.0
+0.5	+0.6	0	0.3	1.8	5.3
50	25		25	50	100

202.2	201.5	201.0	201.0	199.9	195.8
0.1	0.8	1.3	1.3	2.4	6.5
25	94	ON Hub	25	50	100

200.7	200.1	198.6	198.6	198.4	195.1
1.6	2.0	3.2	3.2	3.2	7.3
50	25		25	50	100

197.4	195.3	192.6	192.3	192.3	189.7
4.2	7.0	8.7	9.0	10.0	12.6
50	25		25	50	100

π 202³¹

9450 12° 48.067'

TP7 128 204⁰² 141 191²¹

9400 11° 51.525'

8475 11° 23.254'

8450 10° 54.983'

8425 10° 26.711'

8400 9° 58.441'

Lt = North

♀

Rt = South

62

192.7	192.9	194.1	195.4	195.8	196.6
11 ³	11 ²	9 ²	8 ⁶	8 ²	7 ⁴
50	25		25	50	100

187.9	188.3	188.1	188.7	189.2	190.6
4 ²	4 ³	4 ⁵	3 ⁹	3 ⁴	2 ⁰
50	25		25	50	100

184.6	184.9	184.3	185.3	186.0	186.3
8 ⁰	7 ²	8 ³	7 ³	6 ⁶	6 ³
50	25		25	50	100

178.0	176.7	175.9	174.8	172.4	171.1	170.2
14 ²	15 ²	16 ²	10 ⁸	10 ²	11 ⁵	13 ⁴
50	25	20	8		25	50

176.1	173.7	172.5	172.1	170.9	169.2	167.9
6 ⁵	8 ²	10 ⁴	10 ⁵	16 ²	25 ⁴	30 ²
50	25		8	25	50	100

180.3	180.3	181.0	181.7	183.6	184.6	184.3
5 ³	6 ⁵	8 ⁶	7 ²	9 ⁰	14 ⁰	18 ³
50	25		10	25	50	100

192.62

12700

11457⁹⁷ EC. 16° 43.25'

11750 16° 34.235'

11700 15° 37.693'

10750 14° 41.151'

10700 13° 44.609'

9770⁸¹ & Deuverux St 13° 11.588'

Lt = North

Rt = South

198.1	198.0	198.0	198.3	198.5	202.7
52	60	60	57	51	72
50	25		25	50	100

195.4	195.2	195.5	196.0	198.7	201.8
80	88	80	80	53	20
50	25	10	25	50	100

193.3	193.7	195.0	196.8	197.3	202.4
107	106	90	72	62	16
50	25	10	25	50	100

194.2	194.0	196.0	197.8	198.6	204.0
90	100	80	62	44	00
50	25	10	25	50	100

193.3	196.0	198.0	199.8	201.0	202.6
102	80	60	42	20	04
50	25		25	50	100

193.5	195.0	196.3	196.0	197.7	198.3	200.8
105	90	72	80	63	57	32
50	25	30	10	25	50	100

x 204⁰²

15750

15700

14750

TP₉

796

22460

081

21464

14700

13750

13700

TP₈

13¹⁵

21485

232

20120

12750

Lt = North

RT = South

64

2188	2192	2195	2197	2199	2196
52	54	51	42	47	51
50	25	100	25	50	100

2166	2170	2179	2183	2179	2183
80	76	67	63	67	63
50	25	25	25	50	100

2150	2148	2152	2154	2151	2149
96	98	94	92	95	97
50	25	25	25	50	100

2127	2126	2120	2129	2127	2114
210	210	210	210	210	210
50	25	25	25	50	100

2103	2099	2094	2091	2090	2081
46	50	55	58	59	58
50	25	25	25	50	100

2026	2057	2058	2063	2053	2051
80	92	91	86	96	98
50	25	25	25	50	100

2016	2016	2014	2014	2023	2047
24	24	26	26	17	102
50	25	25	25	50	100

20402

18+43

18+17⁸⁸ E Morningside St

17+83

TP₁₀

256 274.79

12³⁷ 212.23

17+50

17+00

16+50

16+00

Lt = North

Rt = South

65

210.0	208.6	208.6	208.5	209.4	208.5	208.1	207.8
48	52	62	63	54	53	52	70
50	25		12	15	25	50	100

214.4	210.2	210.1	209.5	210.4	210.2	208.5
44	46	42	55	44	46	6 ¹³
50	25	9d	104d	25	50	100

210.8	210.8	211.9	211.7	212.5	210.6
40	40	29	31	23	43
50	25		25	50	100

212.5	214.79				
12 ³⁷	212.0	212.7	214.1	214.0	212.4
50	25	102	25	50	100

215.7	216.5	216.8	216.3	216.5	216.6
89	81	70	83	81	80
50	25		25	50	100

217.2	218.7	218.4	218.2	218.3	217.8
74	59	62	64	63	60
50	25		25	50	100

218.1	218.1	218.3	220.1	219.4	218.8
50	57	53	45	52	50
50	25		25	50	100

224.60

20400 4° 42.98

19480 54° Rt & 24" RCP outlet

TP 11 7° 06 20868 13' 17 20162

19475 3° 31.52'

19470 20° Rt & P 10/2 # 88568

19450 2° 20.06'

19445 21° Rt & deadman

19425 1° 08.60'

no cut and 20' chords

19401⁰⁵ BC

18470

Lt = North

Rt = South

66

2058	202.6	200.8	199.6	196.7	188.5
50	61	79	91	120	102
	25		25	50	100

208.6	207.3	202.8	200.4	195.2	190.6
62	75	120	144	196	243
50	25		25	50	100

209.3	208.1	206.0	204.1	203.3	201.7	199.3
55	67	88	107	115	131	153
50	25		8 25	50	100	

204.5	203.8	202.0	205.3	205.5	204.8	201.6
43	60	78	95	93	100	132
50	25		10 25	50	100	

210.6	209.7	207.6	216.5	215.3	203.8
42	56	72	83	95	110
50	25		25 50	100	

210.0	209.1	208.2	208.1	208.7	207.9	207.6	207.8
48	57	65	67	64	62	73	70
50	25		14 16	25	50	100	

21429

21422² Wly edge cow pad taken along Neo

21417⁴³ Wly Proj Neo taken along Neo

21408⁴⁵ EC. 9°52.87

21400 9°28.82

20475 8°17.36

20450 7°05.90

20425 5°54.44

ht=North

ht=South

20813	20737	20675	20633	20613
0 ⁵⁶	1 ²⁹	1 ⁹³	2 ³⁰	2 ⁵⁵
50	25	25	25	50

20810	20668	20663	20664	20662
0 ⁷	1 ²	2 ⁴	2 ³³	2 ⁵
50	25	25	25	50

20667	20661	20663	20765	2077
1 ⁸	2 ⁶	2 ⁴	1 ²	1 ⁰
25	25	12	25	50

20669	20663	2057	2056	2074	2072
1 ⁸	2 ⁴	2 ⁸	3 ¹	1 ³	1 ⁵
35	25	25	12	25	50

2048	2045	2045	2055	2071	2066
3 ⁹	4 ²	4 ²	3 ²	1 ⁶	2 ¹
50	25	25	15	25	50

2030	2010	2026	2036	2039	2040
5 ⁷	7 ⁷	6 ¹	5 ¹	4 ⁸	4 ⁷
50	25	25	10	25	50

2030	2012	2013	2008	2037	2025
5 ⁷	7 ⁵	7 ⁴	7 ⁹	4 ⁸	5 ³
50	25	25	10	25	50

20868

BM 11. 218⁰⁴ ✓
 +08
 FE209
 NW 1/4
 Reor
 Winchester

TP12 11⁵⁷ 219¹⁵ 1¹⁰ 207⁵⁸
 E Hub
 Reo
 Roanoke

21491⁸¹ Fly Reo taken along Reo

21485³ Fly edge cow pen taken along Reo

21454⁶² Reo taken along Reo

207.97	207.30	206.77	206.34	205.17
0 ⁷¹	1 ³⁸	1 ⁸⁹	2 ³²	2 ⁵⁷
50	25		25	50
209.0	208.4	207.8	207.28	206.7
10 ¹³	0 ¹³	0 ¹	1 ¹⁰	1 ⁸
50	25	50	ON Hub	25
				206.5
				20
				50

∑ 20868

"X" Sec. Hopkins

2+74 17° L+E 10" pole #88645
2+50

2+14 25° L+E 8" cond riv

2+00

1+50

1+35 17° L+E 10" Power Pole #88562

1+17 17° L+E dead man

1+00

0+50

0+00 Nly Roanoke St.

Note: Used E Hub at Roanoke + Hopkins and split of
cbs on Hopkins Nly of Winchester.

BM #Hub

294 20412

2018 #61

St. Roanoke to Winchester

69

Lt-Wes K
1973 68 80 89 108 113 120 116 125
40 25 20 10 15 25 30

1975 59 69
333 258

1978 43 60 63 75 73 90 116
50 25 18 12 25 50

2014 27 32 44 45 42 54 62 86
50 25 10 6 15 25 50

2017 24 20 20 25 25 23 39 50
50 25 12 10 25 6 25 50

2011 40 22 1 17 30
50 25 25 50

1987 54 35 12 13 29
50 25 25 50

X 20412

INDEXED
MAY 15 1953

BM 11¹² 196⁸⁹ ✓ MIDPT Hub
 TP₂ 6²⁸ 208⁰⁸ 0³⁹ 201³⁰
 BM TP₂ 12⁴⁶ 201⁵⁷ 9⁰⁵ 187⁴³ NEBP Hopkins + Winchester

3423⁴ Nly ch line Winchester

194.10	187.51	187.55	187.54	188.84	188.28	188.51	188.41	188.13	188.55	188.25
6 ⁰⁸	6 ⁶⁷	6 ⁶⁹	7 ²²	7 ³⁴	7 ⁴⁰	7 ⁶⁷	7 ⁷¹	7 ⁰⁵	7 ⁵³	6 ⁹³
50	50	25	25	15		15	25	25	50	50
CS	out	EC	out				out	EC	out	EC

3403⁴ sly edge con pav.

191.26	187.55	187.20	187.58	187.48	188.47	187.41
5 ⁹³	6 ³³	6 ⁴⁸	6 ⁶⁰	6 ⁷⁰	6 ⁷¹	6 ⁷⁷
50	25	15	6	15	25	50

2473⁴ approx sly Winchester

144.2	142.3	141.2	142.2	141.8	141.1
2 ⁰	3 ⁹	5 ⁰	5 ⁰	4 ¹	5 ¹
50	25	10	5	25	50

TP 369 196¹⁸ 1163 192⁴⁹

T 196¹⁸

X Sec Morningside

2750 25° Lt & 3' cov walk

2715 Lt & 8' cov drive

2700

1750

1700

0750

0700 My Roanoke St.

Note: For live used: map L. off Roanoke St & Int Hub

BM 11⁸⁸ 221⁵²

MAY 15 1953

20964 Int Hub
Roanoke
Morningside

Roanoke to Winchester

71

Lt West

194 - East

215.64	215.60	216.57	217.24	218.4	219.5
5 ⁸⁸	5 ⁹²	4 ⁸³	3	22	20
35	25	10	25	40	

215.64	215.60	216.57	217.24	218.4	219.5
5 ⁸⁸	5 ⁹²	4 ⁸³	3	22	20
125	345	245	215.5	217.0	218.5
60	45	25	10	18	23
50	25	10	25	50	

216.5	217.5	218.0	217.9	217.2
50	40	35	36	43
50	25	25	25	50

213.4	213.9	213.8	213.3	213.4
81	76	77	82	81
50	25	25	25	50

211.7	211.2	210.9	210.3	210.6
98	103	106	112	109
50	25	25	25	50

212.9	210.7	210.2	209.5	208.9
85	108	113	120	126
50	25	25	25	50

T 221⁵²

"X" Sec Deauville St
Roanoke to Sea Breeze

Sea Breeze
Roanoke to Deauville

73

Roanoke St

(4) "X's" in M.H. rim

Ref: Tie BK 31 p 19

File map Paradise Hills 3 #2101
Sheet 2 of 4

INDEXED
Law
MAY 15 1953

1/4 Pl
L.M.C.
E.R.S.

Deauville

90°
North

set Hub
02
E.R.S.

'X' Sec Sea Breeze

Roanoke to Deauville
Lt. East

5/19/50 W of 25020 74
At West

TP2 0¹⁹ 248²¹ 11³⁸ 248⁰²

1450 20° RT & Deadman

1435 19° RT & 10" P Pole #88464

1400

0470

0455 35° LT & New House

0435

0430 28° RT & New House

20° RT & 8" P Pole #88463

0400 S by Roanoke

0-25 E Roanoke St

TP1 7¹⁶ 259¹⁰ 2¹⁰ 251⁶⁴

BM 9²² 254⁰⁴ 244¹²

NW Lead Plug
Winchester
Sea Breeze

247.0	246.5	245.3	244.5	243.3
12 ⁴	12 ²	14 ²	14 ²	16 ¹
50	25		20	50
249.8	250.6	250.6	250.8	249.5
9 ⁶	8 ⁸	8 ⁸	8 ⁶	9 ²
50	40	25	17	25
247.4	254.1	253.6	250.7	247.2
5 ⁰	5 ³	5 ⁸	8 ⁷	11 ⁵
35	25	18	8	25
259.5	206.2	254.7	251.4	246.7
10 ¹⁵	3 ²	4 ⁵	8 ⁰	10 ⁵
35 ²	35	20	25	25
257.9	256.1	255.5	251.8	245.8
15	33	32	7 ⁵	10 ⁶
38	31	25	20	50
257.2	254.7	251.8	248.1	246.8
2 ²	4 ⁵	7 ⁴²	10 ³	12 ⁶
5	25	11 ¹¹	25	50

T. 259¹⁰

BM starting

998 244^{or}

TP₃

640

254.06

055

247.66

3700

208.7	205.9	204.9	206.2	202.5
39 ⁵ ₅₀	42 ³ ₂₅	43 ³ ₂₅	42 ⁰ ₂₅	40 ⁶ ₅₀

2775

224.4	217.6	218.6	240.2	218.3	217.9	218.6	218.6
27 ⁵ ₅₀	30 ⁶ ₃₀	29 ⁴ ₂₅	28 ⁰ ₂₀	28 ² ₂₅	30 ⁸ ₂₃	29 ⁶ ₂₅	29 ⁶ ₅₀

2750

226.0	224.4	222.0	223.8	223.2	224.4	224.2
22 ² ₅₀	23 ⁸ ₂₅	21 ² ₂₅	24 ⁴ ₂₅	25 ⁰ ₃₁	23 ⁸ ₂₅	24 ⁰ ₅₀

2725

231.0	230.8	230.0	230.2	230.7
17 ² ₅₀	17 ⁴ ₂₅	18 ² ₂₅	18 ⁰ ₂₅	17 ³ ₅₀

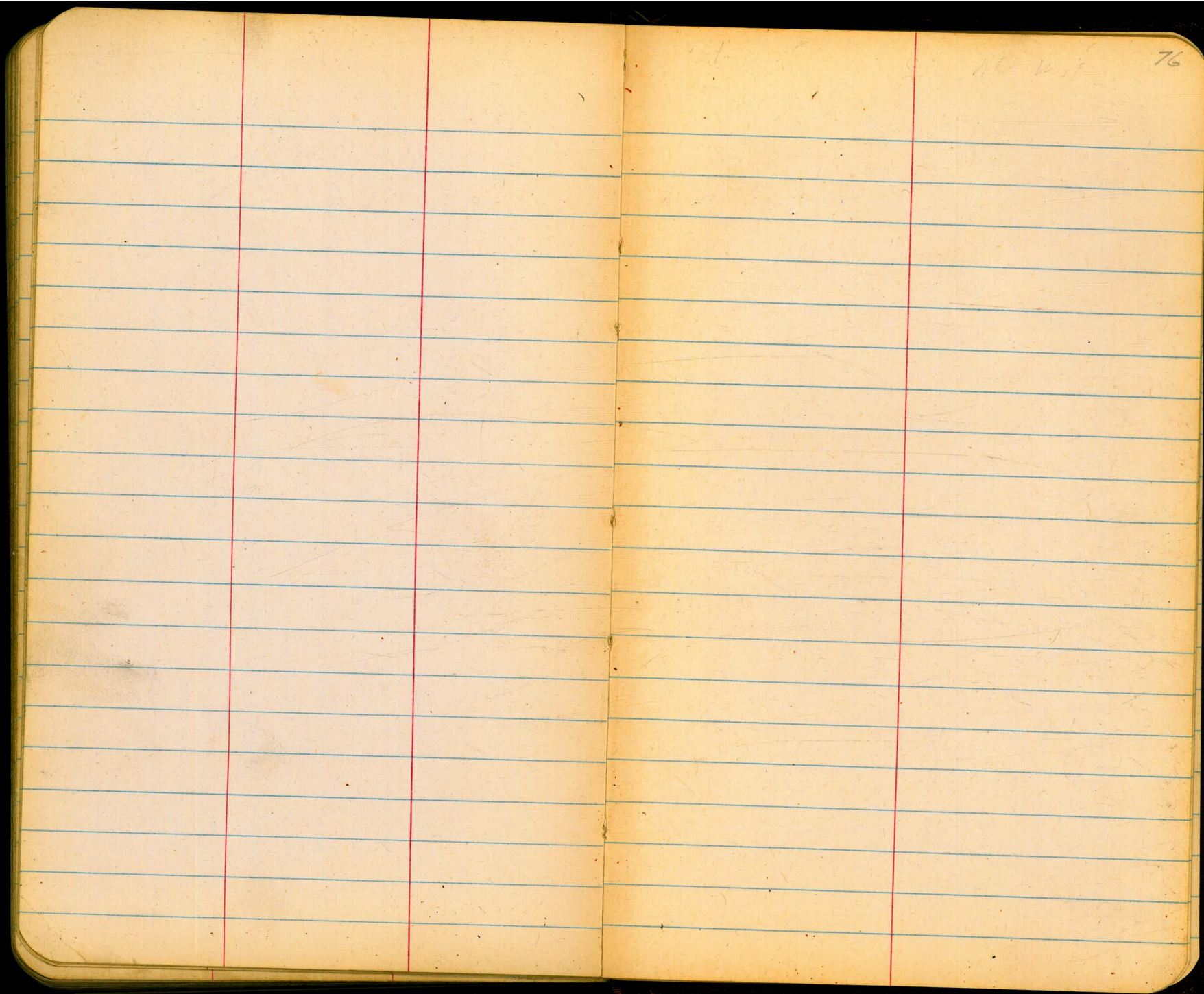
2700

236.6	235.1	235.6	236.2	235.8
11 ⁶ ₅₀	13 ² ₂₅	12 ⁶ ₂₅	12 ⁰ ₂₅	12 ⁴ ₅₀

1765

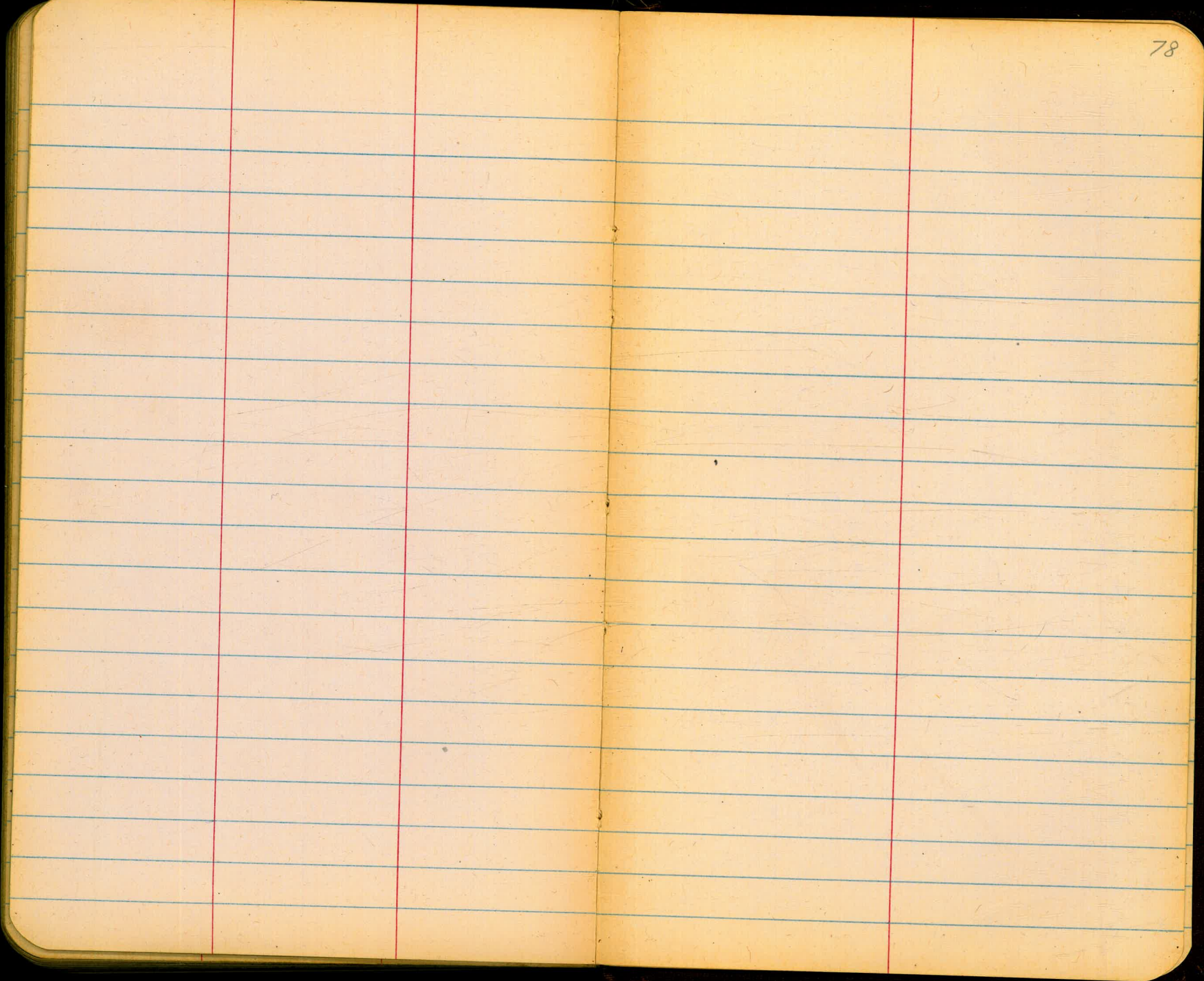
243.3	242.6	242.9	242.4	240.9	240.8	240.6
41 ⁵ ₅₀	5 ² ₄₀	5 ² ₂₅	5 ⁸ ₂₅	7 ² ₂₅	7 ² ₄₁	7 ⁶ ₅₀

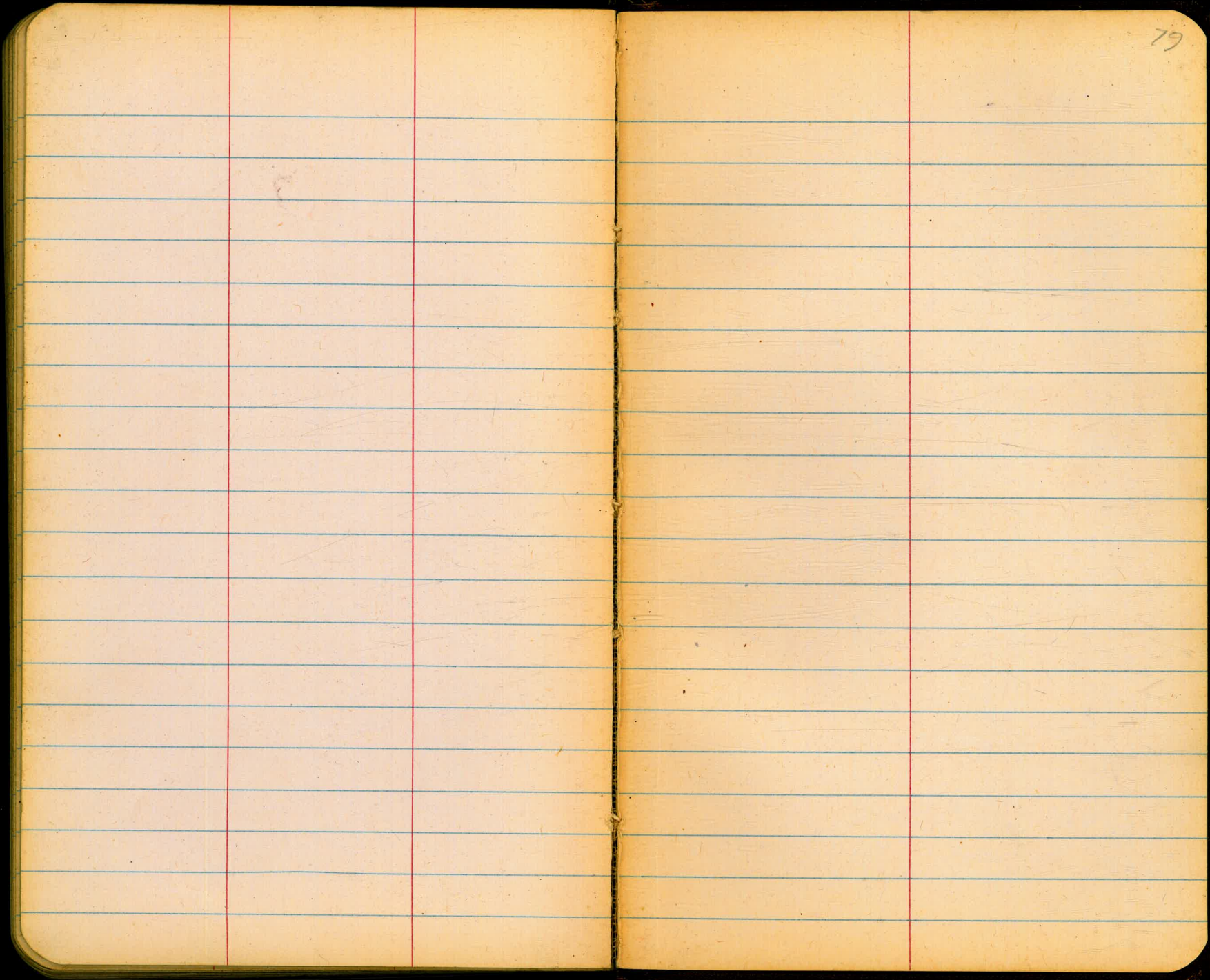
* 248²



76

The image shows an open notebook with two facing pages. The pages are cream-colored and feature light blue horizontal ruling. Each page is divided into three vertical columns by two red margin lines. The right page has the number '77' written in the top right corner. The notebook is bound in the center, and the pages are otherwise blank.





1572186

14 7387

48

65

~~1572186~~

157

1077387

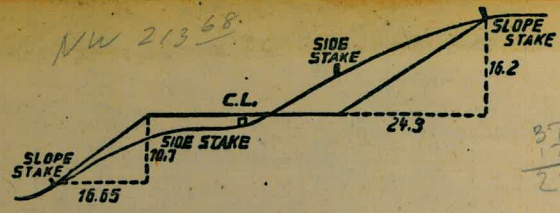
65

10 3887

15759

7387

8513



DISTANCES FROM SIDE STAKES FOR CROSS-SECTIONING.

SLOPE 1 1/2 TO 1. ROADWAY OF ANY WIDTH.

	0	.1	.2	.3	.4	.5	.6	.7	.8	.9	
0	0.00	0.15	0.30	0.45	0.60	0.75	0.90	1.05	1.20	1.35	0
1	1.50	1.65	1.80	1.95	2.10	2.25	2.40	2.55	2.70	2.85	1
2	3.00	3.15	3.30	3.45	3.60	3.75	3.90	4.05	4.20	4.35	2
3	4.50	4.65	4.80	4.95	5.10	5.25	5.40	5.55	5.70	5.85	3
4	6.00	6.15	6.30	6.45	6.60	6.75	6.90	7.05	7.20	7.35	4
5	7.50	7.65	7.80	7.95	8.10	8.25	8.40	8.55	8.70	8.85	5
6	9.00	9.15	9.30	9.45	9.60	9.75	9.90	10.05	10.20	10.35	6
7	10.50	10.65	10.80	10.95	11.10	11.25	11.40	11.55	11.70	11.85	7
8	12.00	12.15	12.30	12.45	12.60	12.75	12.90	13.05	13.20	13.35	8
9	13.50	13.65	13.80	13.95	14.10	14.25	14.40	14.55	14.70	14.85	9
10	15.00	15.15	15.30	15.45	15.60	15.75	15.90	16.05	16.20	16.35	10
11	16.50	16.65	16.80	16.95	17.10	17.25	17.40	17.55	17.70	17.85	11
12	18.00	18.15	18.30	18.45	18.60	18.75	18.90	19.05	19.20	19.35	12
13	19.50	19.65	19.80	19.95	20.10	20.25	20.40	20.55	20.70	20.85	13
14	21.00	21.15	21.30	21.45	21.60	21.75	21.90	22.05	22.20	22.35	14
15	22.50	22.65	22.80	22.95	23.10	23.25	23.40	23.55	23.70	23.85	15
16	24.00	24.15	24.30	24.45	24.60	24.75	24.90	25.05	25.20	25.35	16
17	25.50	25.65	25.80	25.95	26.10	26.25	26.40	26.55	26.70	26.85	17
18	27.00	27.15	27.30	27.45	27.60	27.75	27.90	28.05	28.20	28.35	18
19	28.50	28.65	28.80	28.95	29.10	29.25	29.40	29.55	29.70	29.85	19
20	30.00	30.15	30.30	30.45	30.60	30.75	30.90	31.05	31.20	31.35	20
21	31.50	31.65	31.80	31.95	32.10	32.25	32.40	32.55	32.70	32.85	21
22	33.00	33.15	33.30	33.45	33.60	33.75	33.90	34.05	34.20	34.35	22
23	34.50	34.65	34.80	34.95	35.10	35.25	35.40	35.55	35.70	35.85	23
24	36.00	36.15	36.30	36.45	36.60	36.75	36.90	37.05	37.20	37.35	24
25	37.50	37.65	37.80	37.95	38.10	38.25	38.40	38.55	38.70	38.85	25
26	39.00	39.15	39.30	39.45	39.60	39.75	39.90	40.05	40.20	40.35	26
27	40.50	40.65	40.80	40.95	41.10	41.25	41.40	41.55	41.70	41.85	27
28	42.00	42.15	42.30	42.45	42.60	42.75	42.90	43.05	43.20	43.35	28
29	43.50	43.65	43.80	43.95	44.10	44.25	44.40	44.55	44.70	44.85	29
30	45.00	45.15	45.30	45.45	45.60	45.75	45.90	46.05	46.20	46.35	30
31	46.50	46.65	46.80	46.95	47.10	47.25	47.40	47.55	47.70	47.85	31
32	48.00	48.15	48.30	48.45	48.60	48.75	48.90	49.05	49.20	49.35	32
33	49.50	49.65	49.80	49.95	50.10	50.25	50.40	50.55	50.70	50.85	33
34	51.00	51.15	51.30	51.45	51.60	51.75	51.90	52.05	52.20	52.35	34
35	52.50	52.65	52.80	52.95	53.10	53.25	53.40	53.55	53.70	53.85	35
36	54.00	54.15	54.30	54.45	54.60	54.75	54.90	55.05	55.20	55.35	36
37	55.50	55.65	55.80	55.95	56.10	56.25	56.40	56.55	56.70	56.85	37
38	57.00	57.15	57.30	57.45	57.60	57.75	57.90	58.05	58.20	58.35	38
39	58.50	58.65	58.80	58.95	59.10	59.25	59.40	59.55	59.70	59.85	39
40	60.00	60.15	60.30	60.45	60.60	60.75	60.90	61.05	61.20	61.35	40
41	61.50	61.65	61.80	61.95	62.10	62.25	62.40	62.55	62.70	62.85	41
42	63.00	63.15	63.30	63.45	63.60	63.75	63.90	64.05	64.20	64.35	42
43	64.50	64.65	64.80	64.95	65.10	65.25	65.40	65.55	65.70	65.85	43
44	66.00	66.15	66.30	66.45	66.60	66.75	66.90	67.05	67.20	67.35	44
45	67.50	67.65	67.80	67.95	68.10	68.25	68.40	68.55	68.70	68.85	45
46	69.00	69.15	69.30	69.45	69.60	69.75	69.90	70.05	70.20	70.35	46
47	70.50	70.65	70.80	70.95	71.10	71.25	71.40	71.55	71.70	71.85	47
48	72.00	72.15	72.30	72.45	72.60	72.75	72.90	73.05	73.20	73.35	48
49	73.50	73.65	73.80	73.95	74.10	74.25	74.40	74.55	74.70	74.85	49
50	75.00	75.15	75.30	75.45	75.60	75.75	75.90	76.05	76.20	76.35	50

THE NATIONAL BLANK BOOK COMPANY
 HOLYOKE MASSACHUSETTS
 NEW YORK CHICAGO BOSTON SAN FRANCISCO