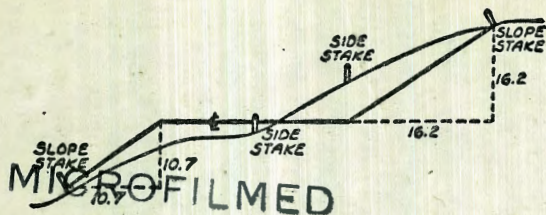


2118



DEC 31 1964
 DISTANCES FROM SIDE STAKES FOR CROSS-SECTIONING
 SLOPE 1 TO 1. ROADWAY OF ANY WIDTH

| | 0 | .1 | .2 | .3 | .4 | .5 | .6 | .7 | .8 | .9 | |
|----|-------|-------|-------|-------|-------|-------|-------|-------|-------|-------|----|
| 0 | 0.00 | 0.10 | 0.20 | 0.30 | 0.40 | 0.50 | 0.60 | 0.70 | 0.80 | 0.90 | 0 |
| 1 | 1.00 | 1.10 | 1.20 | 1.30 | 1.40 | 1.50 | 1.60 | 1.70 | 1.80 | 1.90 | 1 |
| 2 | 2.00 | 2.10 | 2.20 | 2.30 | 2.40 | 2.50 | 2.60 | 2.70 | 2.80 | 2.90 | 2 |
| 3 | 3.00 | 3.10 | 3.20 | 3.30 | 3.40 | 3.50 | 3.60 | 3.70 | 3.80 | 3.90 | 3 |
| 4 | 4.00 | 4.10 | 4.20 | 4.30 | 4.40 | 4.50 | 4.60 | 4.70 | 4.80 | 4.90 | 4 |
| 5 | 5.00 | 5.10 | 5.20 | 5.30 | 5.40 | 5.50 | 5.60 | 5.70 | 5.80 | 5.90 | 5 |
| 6 | 6.00 | 6.10 | 6.20 | 6.30 | 6.40 | 6.50 | 6.60 | 6.70 | 6.80 | 6.90 | 6 |
| 7 | 7.00 | 7.10 | 7.20 | 7.30 | 7.40 | 7.50 | 7.60 | 7.70 | 7.80 | 7.90 | 7 |
| 8 | 8.00 | 8.10 | 8.20 | 8.30 | 8.40 | 8.50 | 8.60 | 8.70 | 8.80 | 8.90 | 8 |
| 9 | 9.00 | 9.10 | 9.20 | 9.30 | 9.40 | 9.50 | 9.60 | 9.70 | 9.80 | 9.90 | 9 |
| 10 | 10.00 | 10.10 | 10.20 | 10.30 | 10.40 | 10.50 | 10.60 | 10.70 | 10.80 | 10.90 | 10 |
| 11 | 11.00 | 11.10 | 11.20 | 11.30 | 11.40 | 11.50 | 11.60 | 11.70 | 11.80 | 11.90 | 11 |
| 12 | 12.00 | 12.10 | 12.20 | 12.30 | 12.40 | 12.50 | 12.60 | 12.70 | 12.80 | 12.90 | 12 |
| 13 | 13.00 | 13.10 | 13.20 | 13.30 | 13.40 | 13.50 | 13.60 | 13.70 | 13.80 | 13.90 | 13 |
| 14 | 14.00 | 14.10 | 14.20 | 14.30 | 14.40 | 14.50 | 14.60 | 14.70 | 14.80 | 14.90 | 14 |
| 15 | 15.00 | 15.10 | 15.20 | 15.30 | 15.40 | 15.50 | 15.60 | 15.70 | 15.80 | 15.90 | 15 |
| 16 | 16.00 | 16.10 | 16.20 | 16.30 | 16.40 | 16.50 | 16.60 | 16.70 | 16.80 | 16.90 | 16 |
| 17 | 17.00 | 17.10 | 17.20 | 17.30 | 17.40 | 17.50 | 17.60 | 17.70 | 17.80 | 17.90 | 17 |
| 18 | 18.00 | 18.10 | 18.20 | 18.30 | 18.40 | 18.50 | 18.60 | 18.70 | 18.80 | 18.90 | 18 |
| 19 | 19.00 | 19.10 | 19.20 | 19.30 | 19.40 | 19.50 | 19.60 | 19.70 | 19.80 | 19.90 | 19 |
| 20 | 20.00 | 20.10 | 20.20 | 20.30 | 20.40 | 20.50 | 20.60 | 20.70 | 20.80 | 20.90 | 20 |
| 21 | 21.00 | 21.10 | 21.20 | 21.30 | 21.40 | 21.50 | 21.60 | 21.70 | 21.80 | 21.90 | 21 |
| 22 | 22.00 | 22.10 | 22.20 | 22.30 | 22.40 | 22.50 | 22.60 | 22.70 | 22.80 | 22.90 | 22 |
| 23 | 23.00 | 23.10 | 23.20 | 23.30 | 23.40 | 23.50 | 23.60 | 23.70 | 23.80 | 23.90 | 23 |
| 24 | 24.00 | 24.10 | 24.20 | 24.30 | 24.40 | 24.50 | 24.60 | 24.70 | 24.80 | 24.90 | 24 |
| 25 | 25.00 | 25.10 | 25.20 | 25.30 | 25.40 | 25.50 | 25.60 | 25.70 | 25.80 | 25.90 | 25 |
| 26 | 26.00 | 26.10 | 26.20 | 26.30 | 26.40 | 26.50 | 26.60 | 26.70 | 26.80 | 26.90 | 26 |
| 27 | 27.00 | 27.10 | 27.20 | 27.30 | 27.40 | 27.50 | 27.60 | 27.70 | 27.80 | 27.90 | 27 |
| 28 | 28.00 | 28.10 | 28.20 | 28.30 | 28.40 | 28.50 | 28.60 | 28.70 | 28.80 | 28.90 | 28 |
| 29 | 29.00 | 29.10 | 29.20 | 29.30 | 29.40 | 29.50 | 29.60 | 29.70 | 29.80 | 29.90 | 29 |
| 30 | 30.00 | 30.10 | 30.20 | 30.30 | 30.40 | 30.50 | 30.60 | 30.70 | 30.80 | 30.90 | 30 |
| 31 | 31.00 | 31.10 | 31.20 | 31.30 | 31.40 | 31.50 | 31.60 | 31.70 | 31.80 | 31.90 | 31 |
| 32 | 32.00 | 32.10 | 32.20 | 32.30 | 32.40 | 32.50 | 32.60 | 32.70 | 32.80 | 32.90 | 32 |
| 33 | 33.00 | 33.10 | 33.20 | 33.30 | 33.40 | 33.50 | 33.60 | 33.70 | 33.80 | 33.90 | 33 |
| 34 | 34.00 | 34.10 | 34.20 | 34.30 | 34.40 | 34.50 | 34.60 | 34.70 | 34.80 | 34.90 | 34 |
| 35 | 35.00 | 35.10 | 35.20 | 35.30 | 35.40 | 35.50 | 35.60 | 35.70 | 35.80 | 35.90 | 35 |
| 36 | 36.00 | 36.10 | 36.20 | 36.30 | 36.40 | 36.50 | 36.60 | 36.70 | 36.80 | 36.90 | 36 |
| 37 | 37.00 | 37.10 | 37.20 | 37.30 | 37.40 | 37.50 | 37.60 | 37.70 | 37.80 | 37.90 | 37 |
| 38 | 38.00 | 38.10 | 38.20 | 38.30 | 38.40 | 38.50 | 38.60 | 38.70 | 38.80 | 38.90 | 38 |
| 39 | 39.00 | 39.10 | 39.20 | 39.30 | 39.40 | 39.50 | 39.60 | 39.70 | 39.80 | 39.90 | 39 |
| 40 | 40.00 | 40.10 | 40.20 | 40.30 | 40.40 | 40.50 | 40.60 | 40.70 | 40.80 | 40.90 | 40 |
| 41 | 41.00 | 41.10 | 41.20 | 41.30 | 41.40 | 41.50 | 41.60 | 41.70 | 41.80 | 41.90 | 41 |
| 42 | 42.00 | 42.10 | 42.20 | 42.30 | 42.40 | 42.50 | 42.60 | 42.70 | 42.80 | 42.90 | 42 |
| 43 | 43.00 | 43.10 | 43.20 | 43.30 | 43.40 | 43.50 | 43.60 | 43.70 | 43.80 | 43.90 | 43 |
| 44 | 44.00 | 44.10 | 44.20 | 44.30 | 44.40 | 44.50 | 44.60 | 44.70 | 44.80 | 44.90 | 44 |
| 45 | 45.00 | 45.10 | 45.20 | 45.30 | 45.40 | 45.50 | 45.60 | 45.70 | 45.80 | 45.90 | 45 |
| 46 | 46.00 | 46.10 | 46.20 | 46.30 | 46.40 | 46.50 | 46.60 | 46.70 | 46.80 | 46.90 | 46 |
| 47 | 47.00 | 47.10 | 47.20 | 47.30 | 47.40 | 47.50 | 47.60 | 47.70 | 47.80 | 47.90 | 47 |
| 48 | 48.00 | 48.10 | 48.20 | 48.30 | 48.40 | 48.50 | 48.60 | 48.70 | 48.80 | 48.90 | 48 |
| 49 | 49.00 | 49.10 | 49.20 | 49.30 | 49.40 | 49.50 | 49.60 | 49.70 | 49.80 | 49.90 | 49 |
| 50 | 50.00 | 50.10 | 50.20 | 50.30 | 50.40 | 50.50 | 50.60 | 50.70 | 50.80 | 50.90 | 50 |

Distance of slope stake from side or shoulder stake for any width roadway, slope 1 to 1. If ground is nearly level, the cut or fill at side stake is located by the double entry method in left column and top row. The number in body of table in same row and column gives distance from side stake to slope stake. If ground is not level estimate the difference in elevation between the side stake and slope stake, lower target by this amount if cut, elevate if fill. Add this amount to cut or fill and find distance in table. Set up rod at this point, and line of sight should cut target. If it does not make the slight adjustment necessary.

INDEXED

to page #13

TABLE XIII—CORRECTIONS FOR TANGENTS AND EXTERNALS

These corrections are to be added to the approximate values, found by dividing the tangent, or external, for a 1° curve (Table VIII) by the degree of curve, in order to obtain the true tangents, or externals. Intermediate values may be obtained by interpolation.

FOR TANGENTS ADD

| Central Angle | DEGREE OF CURVE | | | | | | | | | | | | | |
|---------------|-----------------|------|------|------|------|------|------|------|------|------|------|------|------|------|
| | 5° | 10° | 15° | 20° | 25° | 30° | 35° | 40° | 45° | 50° | 55° | 60° | 65° | 70° |
| 10° | .03 | .06 | .09 | .13 | .16 | .19 | .22 | .25 | .28 | .31 | .34 | .38 | .42 | .46 |
| 15° | .04 | .10 | .14 | .19 | .24 | .29 | .34 | .39 | .45 | .51 | .53 | .58 | .63 | .68 |
| 20° | .06 | .13 | .19 | .26 | .32 | .39 | .45 | .51 | .58 | .65 | .72 | .79 | .84 | .90 |
| 25° | .08 | .16 | .24 | .33 | .40 | .49 | .58 | .67 | .75 | .83 | .90 | .99 | 1.06 | 1.14 |
| 30° | .10 | .19 | .29 | .39 | .49 | .59 | .69 | .79 | .89 | .99 | 1.09 | 1.20 | 1.29 | 1.39 |
| 35° | .11 | .22 | .34 | .47 | .58 | .69 | .79 | .81 | .92 | 1.04 | 1.29 | 1.42 | 1.54 | 1.66 |
| 40° | .13 | .26 | .40 | .53 | .67 | .80 | .93 | 1.06 | 1.20 | 1.34 | 1.49 | 1.64 | 1.79 | 1.94 |
| 45° | .15 | .30 | .44 | .60 | .76 | .91 | 1.06 | 1.21 | 1.37 | 1.52 | 1.70 | 1.87 | 2.04 | 2.21 |
| 50° | .17 | .34 | .51 | .68 | .85 | 1.02 | 1.19 | 1.36 | 1.54 | 1.72 | 1.91 | 2.10 | 2.29 | 2.48 |
| 55° | .19 | .38 | .57 | .76 | .95 | 1.14 | 1.32 | 1.52 | 1.72 | 1.92 | 2.14 | 2.35 | 2.56 | 2.77 |
| 60° | .21 | .42 | .63 | .84 | 1.05 | 1.27 | 1.49 | 1.71 | 1.94 | 2.17 | 2.38 | 2.60 | 2.83 | 3.07 |
| 65° | .23 | .46 | .69 | .93 | 1.16 | 1.40 | 1.64 | 1.88 | 2.13 | 2.38 | 2.63 | 2.88 | 3.13 | 3.39 |
| 70° | .25 | .51 | .76 | 1.02 | 1.28 | 1.54 | 1.80 | 2.06 | 2.33 | 2.60 | 2.88 | 3.16 | 3.44 | 3.72 |
| 75° | .27 | .56 | .83 | 1.12 | 1.40 | 1.69 | 1.98 | 2.27 | 2.57 | 2.87 | 3.16 | 3.47 | 3.78 | 4.09 |
| 80° | .30 | .61 | .91 | 1.22 | 1.53 | 1.84 | 2.15 | 2.46 | 2.78 | 3.10 | 3.44 | 3.78 | 4.12 | 4.46 |
| 85° | .33 | .66 | 1.00 | 1.33 | 1.68 | 2.02 | 2.36 | 2.70 | 3.05 | 3.40 | 3.77 | 4.14 | 4.55 | 4.89 |
| 90° | .36 | .72 | 1.09 | 1.45 | 1.83 | 2.20 | 2.57 | 2.94 | 3.32 | 3.70 | 4.10 | 4.50 | 4.91 | 5.32 |
| 95° | .39 | .79 | 1.19 | 1.55 | 2.00 | 2.40 | 2.80 | 3.20 | 3.61 | 4.02 | 4.40 | 4.98 | 5.38 | 5.83 |
| 100° | .43 | .86 | 1.30 | 1.74 | 2.18 | 2.62 | 3.06 | 3.50 | 3.95 | 4.40 | 4.88 | 5.37 | 5.85 | 6.34 |
| 110° | .51 | 1.03 | 1.56 | 2.08 | 2.61 | 3.14 | 3.67 | 4.21 | 4.76 | 5.31 | 5.86 | 6.43 | 7.01 | 7.60 |
| 120° | .62 | 1.25 | 1.93 | 2.52 | 3.16 | 3.81 | 4.45 | 5.11 | 5.77 | 6.44 | 7.12 | 7.80 | 8.50 | 9.22 |

FOR EXTERNALS ADD

| Central Angle | DEGREE OF CURVE | | | | | | | | | | | | | |
|---------------|-----------------|------|------|------|------|------|------|------|------|------|------|------|------|------|
| | 5° | 10° | 15° | 20° | 25° | 30° | 35° | 40° | 45° | 50° | 55° | 60° | 65° | 70° |
| 10° | .001 | .003 | .004 | .006 | .007 | .008 | .009 | .011 | .012 | .014 | .015 | .017 | .018 | .020 |
| 15° | .003 | .007 | .010 | .014 | .018 | .023 | .027 | .032 | .035 | .039 | .043 | .047 | .051 | |
| 20° | .006 | .011 | .017 | .022 | .028 | .034 | .038 | .045 | .051 | .057 | .063 | .070 | .076 | .083 |
| 25° | .009 | .018 | .027 | .036 | .046 | .056 | .065 | .074 | .083 | .093 | .106 | .120 | .127 | .135 |
| 30° | .013 | .025 | .038 | .051 | .065 | .078 | .090 | .103 | .116 | .129 | .149 | .170 | .179 | .188 |
| 35° | .018 | .035 | .054 | .072 | .096 | .109 | .131 | .153 | .175 | .197 | .213 | .230 | .247 | .264 |
| 40° | .023 | .046 | .070 | .093 | .117 | .141 | .172 | .203 | .234 | .265 | .277 | .290 | .315 | .341 |
| 45° | .030 | .060 | .093 | .119 | .153 | .184 | .216 | .254 | .289 | .325 | .351 | .378 | .411 | .445 |
| 50° | .037 | .075 | .116 | .151 | .189 | .227 | .266 | .305 | .345 | .384 | .425 | .467 | .508 | .550 |
| 55° | .046 | .093 | .142 | .188 | .236 | .283 | .332 | .381 | .420 | .479 | .530 | .582 | .641 | .700 |
| 60° | .056 | .112 | .168 | .225 | .283 | .340 | .398 | .457 | .516 | .575 | .636 | .697 | .774 | .851 |
| 65° | .067 | .135 | .204 | .273 | .343 | .412 | .483 | .554 | .625 | .697 | .771 | .845 | .922 | 1.01 |
| 70° | .080 | .159 | .240 | .321 | .403 | .485 | .568 | .652 | .735 | .819 | .906 | .994 | 1.08 | 1.17 |
| 75° | .095 | .182 | .286 | .383 | .480 | .578 | .678 | .777 | .877 | .977 | 1.07 | 1.18 | 1.29 | 1.39 |
| 80° | .110 | .220 | .332 | .445 | .558 | .671 | .787 | .903 | 1.02 | 1.13 | 1.25 | 1.38 | 1.50 | 1.62 |
| 85° | .128 | .259 | .391 | .524 | .657 | .790 | .926 | 1.06 | 1.20 | 1.34 | 1.47 | 1.62 | 1.76 | 1.91 |
| 90° | .149 | .299 | .450 | .603 | .756 | .910 | 1.07 | 1.22 | 1.38 | 1.54 | 1.70 | 1.87 | 2.03 | 2.20 |
| 95° | .174 | .350 | .522 | .706 | .985 | 1.06 | 1.25 | 1.43 | 1.62 | 1.80 | 1.99 | 2.18 | 2.38 | 2.58 |
| 100° | .200 | .401 | .604 | .809 | 1.01 | 1.22 | 1.43 | 1.64 | 1.85 | 2.06 | 2.28 | 2.50 | 2.73 | 2.96 |
| 110° | .268 | .536 | .806 | 1.08 | 1.35 | 1.63 | 1.91 | 2.20 | 2.48 | 2.76 | 3.05 | 3.35 | 3.66 | 3.96 |
| 120° | .360 | .721 | 1.08 | 1.45 | 1.82 | 2.19 | 2.57 | 2.95 | 3.33 | 3.72 | 4.11 | 4.50 | 4.91 | 5.32 |

index on page 1

Index

Pages

Alley BIK 55 La Jolla Park 2-8

X- Sec. Intersection of Agul & La Jolla Shores Dr. 9-13

Topog Lot 4 BIK L. Altadena 19-21

El. on Carolina Drive 22-

Alley BIK. 128, City Heights, level notes 23

X- Sec Lemona Ave 29

X- Sec - Newell - Rosecrans to Evergreen 34-51

X- Sec ~~Alphank~~ Locust - Evergreen 48-51

Tecolote Creek Morona to Knoxville 52

N. 15. of Knoxville
Cross Sec. on Morona BIK. 73-76

ALLEY Bk 55 LA JOLLA PARK.

Sommerhoff

Begg
Allen
Bunch

NO 25020
Dec. 15, 1950

INDEXED

DEC 12 1950

Line established from data

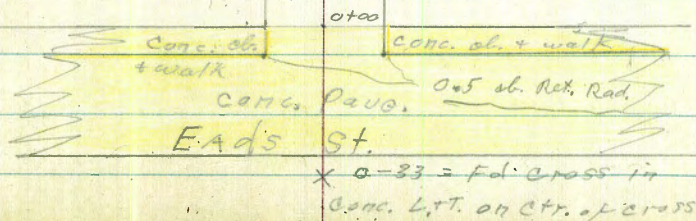
In F.B. 1371 - Page 68.

B.W. = base of wall

T.W. = Top of wall

Coast Blvd

Prospect.



Alley BIK. 55 La Jolla Park

8.52 74119 2.05 65.62

0+23 - 13' Rt. = start house on conc. blocks

0+15 9⁵Lt. = face of wall

| | | | | | | | |
|-------------------------|------|------|------|------|------|------|------|
| 61.1 | 65.4 | 64.5 | 64.8 | 65.9 | 65.4 | 68.7 | 69.7 |
| 6.0 | 2.3 | 2.9 | 2.9 | 1.8 | 2.3 | +10 | +2.0 |
| 10 | 95 | 93 | | 10 | 10 | 11 | 15 |
| on walk back of wall | | T.W. | | B.W. | | | |

0+03 10² = end Conc. wall also
= start Rubble Conc. wall.

64.9 64.1
2.8 3.6
10² 10²
Cnd. B.Walls

9⁴Lt. = start Conc. wall. 15 high
10³Rt. = start 4' high Conc. wall.
9⁵Lt. = end of
10³Rt.

0+00 = N¹/₄ line Eads = end Conc. pass.

| | | | | | | | |
|------|------|-----------|-------|-------|-----------------|-----------------|-----------------|
| 61.7 | 61.5 | 61.91 | 61.84 | 62.99 | 64.40 | 64.48 | 64.1 |
| 6.0 | 6.2 | 5.76 | 5.83 | 4.68 | 3.27 | 3.19 | 3.6 |
| 10 | 93 | 91 | 91 | | 10 ² | 10 ² | 10 ² |
| | B.W. | of end | G | | G | end | B.W. |

0-06 = N¹/₄ of line Eads

Reduced by Pitman
10-12-50

| | | | | | | | | |
|-------|-------|-------|-------|-------|-----------------|-------|-------|-------|
| 58.23 | 57.15 | 61.62 | 61.62 | 61.94 | 63.29 | 64.32 | 66.00 | 67.58 |
| 7.44 | 10.52 | 6.05 | 7.05 | 5.73 | 4.38 | 3.35 | 1.07 | 0.09 |
| 35 | 35 | 06 | 93 | | 10 ² | 06 | 35 | 35 |
| 06 | G | | G | | G | | G | 06 |

0-18 = 4 Eads.

| | | | | |
|-------|-------|-------|-------|-------|
| 56.73 | 60.39 | 61.67 | 63.05 | 66.48 |
| 10.94 | 7.28 | 6.00 | 4.62 | 1.17 |
| 35 | 10 | | 10 | 35 |

3.23 67.67 12.86 69.44

0.63 77.30 12.69 90.67

1.45 89.36 — 87.91

67.67 ✓

S.E.B.P. Prospect + Eads.

Blk 55

4

1+22 13⁴ Lt. = start frame house

9.5
13²
End

1+14- 11⁵ Rt. = start brick wall

64.6 69.5 64.0 64.4 71.5 71.7 71.6 73.1
9.5 4.6 5.0 4.7 2.6 2.4 2.5 0.4
10 9⁸ 9⁵ 10 11⁵ 11⁵ 11⁵
End T.W. Face of wall End B.W. T.W.

1+13- 15⁴ Rt. = End of House

71.4
2.7
15⁴
at house

1+07 15⁴ Rt. } = Jog in House
12³ Rt. }

1+00 9⁵ Lt. = face of wall

62.5 64.8 69.2 68.9 69.0 70.2 70.2
10.6 9.3 4.9 5.2 5.0 3.9 3.9
20 10 9⁵ 9⁵ 10 12³
End T.W. End at house

0+96-12³ Rt. } = Jog in House
on conc. blocks

0+76- 15⁴ Rt. = start frame house

Step fastener on Pals. P.A. 807

0+66- 7' Lt.

4.33

69.81

Temp.
B.M.

15² Rt. = end house on conc. blocks

0+63 9⁴ Rt. = end conc. rubble wall

69.1 69.1 70.3 70.6
5.0 5.4 3.8 3.5
9⁴ B.W. 10 15²
End 9⁴ End at house

15² Rt. } = Jog in house
13' Rt. }

0+50 9³ Rt. = Face rubble wall

9⁵ = Face of wall

61.7 62.4 60.3 61.7 61.9 68.2 67.7 69.4 70.1
12.4 11.7 5.8 6.4 6.2 5.9 6.1 4.5 4.0
15 10² 9⁸ 9⁵ 9² 9² 10 13
End End T.W. End End B.W. T.W. at house

74.14

1+58¹ 11' Rt. = Frame house on mud sills.

71.6
2.5
11
Ond.

1+58 11² Rt. = end brick wall

70.2 70.1 72.6
3.9 4.0 1.5
71 11 11
Ond B.W T.W.

1+53- 13⁴ Lt. = end house

1+50

64.3 70.1 69.3 69.9 70.3
9.8 4.0 4.8 4.2 3.8
10 9.2 9.5 10
Ond T.W Ond
+ B.W.

1+42 10^E Rt. = end shed + start brick wall

71.2 70.1 72.6
2.9 4.0 1.5
10.5 10.5 10.5
Ond B.W. T.W.

1+27- 11¹ Rt. = start shingled shed
on mud sills

71.6
2.5
11
Ond

1+25- 11² Rt. = 3' wide brick walk

71.6
2.5
11
walk

1+23 11² Rt. = end brick wall

71.6 71.3 73.8
2.5 2.8 0.3
11.2 11.2 11.3
Ond. B.W T.W.

74.14

Bik, 55

#

6

5.89 76.46 3.57 70.57

2+14- 10⁹ Rt = start stucco wall

| | | |
|------|------|------|
| 70.1 | 70.0 | 81.1 |
| 3.4 | 4.1 | +7.0 |
| 102 | 102 | 102 |
| End | B.W. | T.W. |

2+07 10⁸ Rt = ± 3' wide conc. walk

| | |
|------|------|
| 71.3 | 72.1 |
| 3.01 | 2.0 |
| 108 | 25 |
| walk | walk |

2+00

| | | | | | |
|---------------|------|------|------|------|------|
| 69.1 | 66.2 | 69.4 | 69.5 | 69.5 | 71.0 |
| 11.0 | 7.7 | 4.7 | 4.6 | 4.6 | 3.1 |
| 172 | 10 | 4 | | 6 | 10 |
| End. at house | | | | | |

1+70

| | | | | |
|------|------|------|------|------|
| 66.5 | 69.8 | 69.8 | 69.8 | 71.4 |
| 7.6 | 4.3 | 4.3 | 4.3 | 2.5 |
| 10 | 7 | 6 | 10 | |

1+67- 10⁵ = ± 4' long brick wall

| | | |
|------|------|------|
| 71.5 | 70.5 | 73.4 |
| 2.6 | 3.6 | 0.7 |
| 105 | 105 | 105 |
| End | B.W. | T.W. |

1+64 9⁴ Lt = end conc. wall

| | | | | | |
|------|------|------|------|------|------|
| 64.3 | 64.8 | 70.4 | 69.1 | 69.7 | 71.3 |
| 2.8 | 9.3 | 3.7 | 5.0 | 4.7 | 2.8 |
| 15 | 10 | 94 | 94 | 10 | 10 |
| | End. | T.W. | End | | |

71.14.1

Alley BIK55
LaJolla Park

±

7

3+05 17^{ft} RT. = ± Sing Bar. level conc. floor

72.41
4.05
17
Floor

3+00 8^{ft} Lt. = line of plank retaining wall.

66.4
70.9
71.4
71.9
71.9
10.1 5.6 5.1 4.7 4.6
10 10 15
Bd.
+T.W.
8^{ft}

2+97 15^{ft} RT. = ± 5' wide Conc. chimney

72.0
4.5
15
Bd.

2+90 16^{ft} RT. = ± Sing Bar. level Conc. floor.

72.38
4.08
16
Floor

2+63 10^{ft} RT. = end brick wall
9' Lt. = start plank retaining wall

66.9 67.0 71.1 71.1 71.8 70.5 81.8
11.6 9.5 5.4 5.4 4.7 6.0 5.3
15 10 9 10 10 10 10
B.W. T.W.

2+50

58.5 67.0 70.2 70.5 70.6 71.8
18 8.9 6.3 6.0 5.9 4.7
50 10 3 6 10

76.46 ✓

Alley BIK 55
La Jolla Park

8

| | | | |
|---------------------------|-------|-------|--------------|
| S.E.B.P. Prospect + Eads. | 1.80 | 87.93 | <u>87.91</u> |
| T.P. | 19.18 | 89.73 | 0.91 |
| T.P. | 12.80 | 80.46 | 3.79 |
| Set B.M. on L+T. | | | |
| 0-33 Page 2 | | 9.56 | 61.89 = L+T. |
| T.P. | 1.72 | 71.45 | 6.73 |
| | | | 69.73 |

3+64 end of alley.

| | | | | | |
|------|------|------|------|------|------|
| 61.3 | 69.2 | 71.8 | 71.8 | 74.8 | 75.9 |
| | 15 | 1 | 1 | 10 | 15 |
| | 7.3 | 7.7 | 4.7 | 1.7 | 0.6 |
| | 10 | | | | |

3+51 - 15' Lt. = double door into house

| | |
|----------|------|
| 62.8 | 61.4 |
| 7.7 | 9.1 |
| 15 | 15 |
| 2 door | end. |
| on floor | |

3+40 15' Lt. = double french doors into house

| | | | | | | | |
|----------|------|------|------|------|------|------|------|
| 68.6 | 67.4 | 68.5 | 71.4 | 71.4 | 71.5 | 72.5 | 74.0 |
| 7.9 | 9.1 | 8.0 | 5.1 | 5.1 | 5.0 | 1.0 | 2.5 |
| 15 | 15 | 10 | 1 | 1 | 9 | 10 | 15 |
| 2 door | | | | | | | |
| on floor | | | | | | | |

3+17 Lt. = 2' wide steps to porch

| | | | |
|----------|--------|------|------|
| 68.3 | 66.3 | 67.3 | 70.1 |
| 8.2 | 10.2 | 9.2 | 5.8 |
| 17 | 15 | 10 | |
| on porch | Bottom | | |
| | step | | |

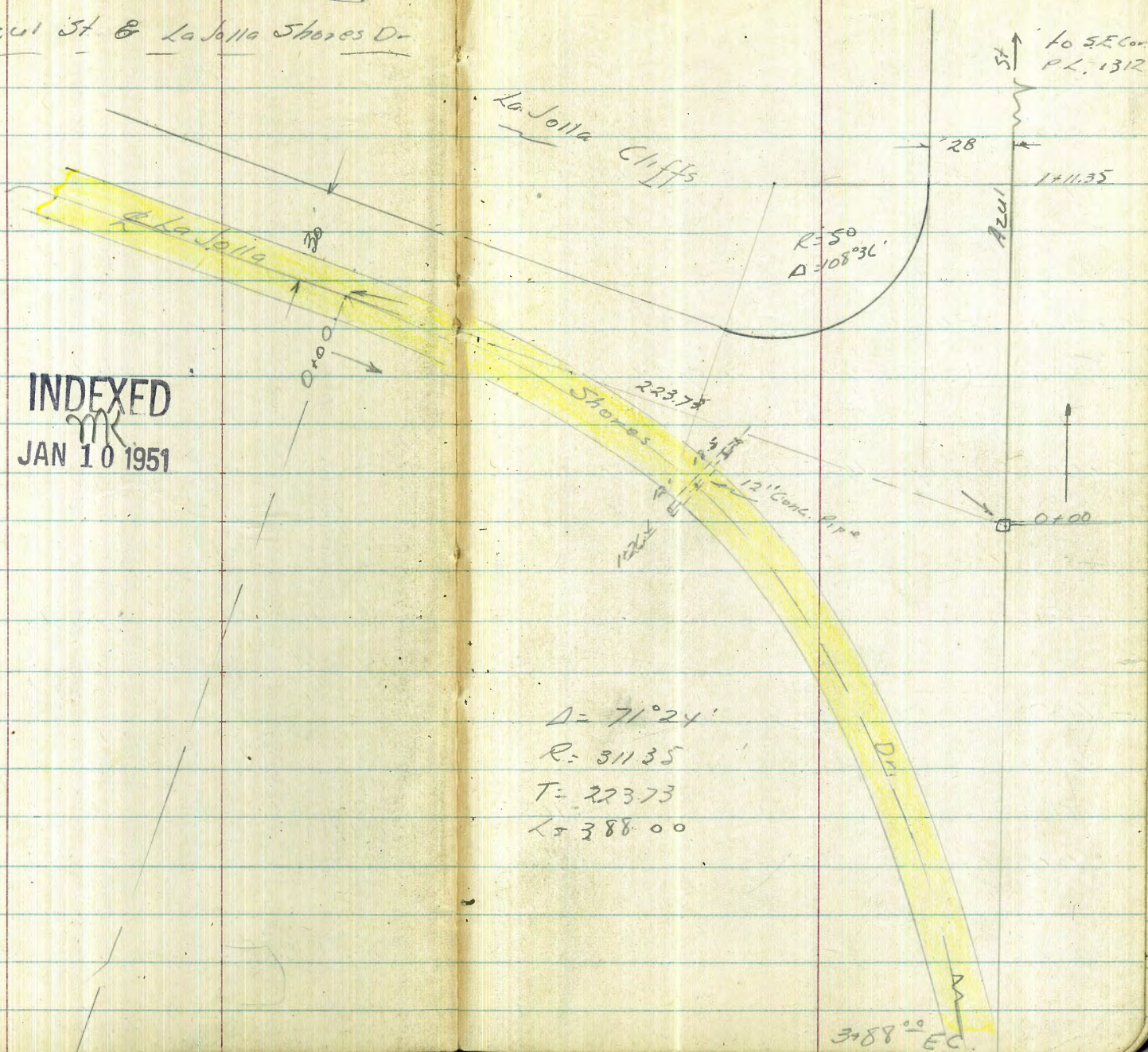
3+14 8' Lt. = end 2" plank Ret. wall

| | | | | | |
|------|------|-------|-------|------|------|
| 66.5 | 67.8 | 71.0 | 71.1 | 71.6 | 72.5 |
| 10.0 | 8.7 | 5.5 | 5.4 | 4.9 | 4.0 |
| 15 | 10 | 8.2 | | 10 | 15 |
| | | end | | | |
| | | + 7.0 | | | |
| | | | 76.46 | | |

1-9-50
Hendricks
Shepard
Crawford
NO# 25020

X Sect. Intersection of
Azul St. & La Jolla Shores Dr.

9



INDEXED
MK
JAN 10 1951

Levels on La Jolla Shores On

10

0+77.6 #2

373³ 375¹ 374⁷ 374⁵ 376¹⁷ 375⁷¹ 375²³ 374⁹ 376⁹ 377³
 50 45 40 19 9 8 18 44 50
on top

0+38.8 #1

(Divided into 10 equal parts)

374⁶ 374⁴ 373⁹ 375² 374⁸ 376¹³ 375⁶⁶ 375²⁰ 375⁰ 376⁹
 50 44 41 36 15 9 7.5 17 50
on top

0+00 BC of 311.35 Radius curve

375³ 374⁶ 376⁰ 375⁸ 376⁰⁴ 375⁶⁴ 375³⁴ 377⁰
 50 39 37 32 19 9.5 7.5 50
on top

0-50

376⁰ 376² 375⁴ 376⁴ 376⁷ 376⁰⁸ 376⁰⁹ 376¹⁰ 375⁹⁴ 375⁸ 377⁴
 50 35 33 28 16 14 9.5 7.5 39 50
on top

-100'

376³ 376⁴ 377⁹ 376⁶ 376⁵⁸ 376⁷² 376⁵ 376⁹ 377⁷
 50 28 19 13 9.5 6.5 31 42

TP

371.85

on stub 501 Cor La Jolla Cliffs

BTZ

389.65

on 1st stub C.P. #2 10' East of SE Cor. PL

FB 2007 P. 8 and 20

1312

2+71.6 #7

374⁴ 374⁶ 375⁵ 376⁵ 376⁰⁷ 375⁶⁷ 375⁶ 376⁵ 377¹
 50 31 15 95 9 14 29 50

2+32.8 #6

372⁸ 372⁸ 373⁸ 374⁰ 376⁴⁰ 375⁹⁵ 375⁵ 376⁰ 376⁵
 50 30 28 22 95 8.5 32 50

1+94.0 #5

372⁴ 373⁵ 376⁴ 375⁹⁷ 375⁵³ 376¹ 376⁴
 50 19 95 8.5 30 50

1+55.2 #4

372⁹ 373⁹ 376³³ 375⁶⁴ 375⁵ 376⁰ 377⁵
 50 20 95 7.5 30 50

1+26.4 12" Conc. Pipe

373⁷¹
 18.5
 Invert

374⁰²
 12
 Invert

1+16.4 #3

372⁴ 373⁹ 376⁴ 375⁶⁸ 375²⁷ 374⁶ 375⁸ 377⁹
 50 20 9.5 8.0 15 21 47

3+88.00 EC

| | | | | | | |
|------------------|------------------|-------------------|-------------------|-------------------|------------------|------------------|
| 378 ⁵ | 376 ⁴ | 376 ²⁹ | 376 ³² | 376 ³⁵ | 376 ⁰ | 377 ¹ |
| 23 | 18 | 9 | | 8 | 17 | 24 |

3+49.2 #9

| | | | | | | |
|------------------|-------------------|-------------------|-------------------|------------------|------------------|------------------|
| 377 ⁵ | 376 ⁶⁰ | 376 ³⁰ | 376 ¹⁰ | 376 ⁰ | 377 ³ | 376 ⁸ |
| 23 | 85 | | 8 | 16 | 25 | 40 |

3+10.4 #8

| | | | | | |
|------------------|-------------------|-------------------|-------------------|------------------|------------------|
| 376 ⁴ | 376 ⁶⁹ | 376 ¹⁵ | 375 ⁹² | 377 ² | 377 ³ |
| 30 | 78 | | 9 | 23 | 35 |

2+00

$$375^8 \quad 376^3 \quad 375^1 \quad 375^6 \quad 375^2 \quad 376^0 \quad 375^8 \quad 375^2$$

$$50 \quad 18 \quad 11 \quad \quad \quad 9 \quad 11 \quad 25 \quad 50$$

1+50

$$374^6 \quad 374^9 \quad 374^1 \quad 374^2 \quad 373^8 \quad 375^0 \quad 374^2 \quad 373^6$$

$$50 \quad 17 \quad 12 \quad \quad \quad 10 \quad 13 \quad 25 \quad 50$$

1+11.35 EC, Prop line on Lt

$$374^0 \quad 374^1 \quad 373^3 \quad 373^2 \quad 373^0 \quad 373^3 \quad 373^1 \quad 372^6$$

$$50 \quad 16 \quad 11 \quad \quad \quad 13 \quad 15 \quad 25 \quad 50$$

0+50

$$373^3 \quad 372^8 \quad 372^3 \quad 372^1 \quad 371^8$$

$$50 \quad 11 \quad \quad \quad 23 \quad 50$$

0+00

$$372^1 \quad 372^5 \quad 372^0 \quad 372^0 \quad 371^7$$

$$50 \quad 30 \quad \quad \quad 23 \quad 50$$

0-50

$$373^1 \quad 373^7 \quad 372^5 \quad 372^5 \quad 372^2 \quad 372^1$$

$$29 \quad 12 \quad 10 \quad \quad \quad 20 \quad 50$$

Roberts
Moore
Pike
3-13-58
M.O. 20800

Survey for Storm Drain From
Culvert at Crespo & Castellano across
Lot 7 to Kearsarge.

INDEXED
MAR 14 1951

14

See Osborn's Notes in Correspondence Folder. W.O. 20800
C.O.

1+63.6
0.47' to 2d. & Nail

1790.51 Headwall
Pipe continues to Salsada

KEARSARGE

10" Headwall 5' wide
L.L. = 2° 15' 00"
1+58.04 Headwall of Culvert
chisel cross 12" Conc. Pipe

Lot 7

Lot 6

Ed. Iron Pin

93° 12' 46"

0+00 chisel cross Headwall
12" Concrete Pipe
0-12.6 Edge Pav.
0-0-14.37, 1.02' RE to 2d. & Nail

CRESPO

0-36.25 Headwall Culvert
chisel cross

Cont'd From Page 14

24

25

26

15

Did not attempt to locate the many Shrubs

0+10



| | | | | | |
|-------|-------|-------|-------|-------|-------|
| 266.3 | 266.3 | 261.2 | 261.2 | 265.3 | 264.6 |
| 2.3 | 2.3 | 7.4 | 7.4 | 3.3 | 4.8 |
| 15 | 9 | 8 | 7 | 7 | 10 |

T.P.

0.42

268.57[✓] π

12.40

268.15[✓]

268.57[✓]

0+05

END of SLOPPY Conc. Grout.

| | | |
|-------|-------|-------|
| 271.0 | 268.1 | 269.2 |
| 9.6 | 12.5 | 11.4 |
| 10 | conc. | 10 |

0+00

OUTLET Culvert

| | |
|----------|--------|
| 272.71 | 270.98 |
| 7.84 | 10.07 |
| Top | INVERT |
| Headwall | |

0-36.25

INTAKE CULVERT

| |
|--------|
| 274.80 |
| 5.75 |
| INVERT |

TBM

3.91

276.64[✓] (chise) + headwall 0-36.25

TP

13.16

280.55[✓] π

0.11

267.39[✓]

280.55 π

TP

13.13

267.50[✓]

0.02

254.37[✓]

TP

13.17

254.39[✓]

0.01

241.20[✓]

TP

12.95

241.21[✓]

0.48

228.26[✓]

BM

13.16

228.74[✓]

215.58

NW Firehydrant Hillside of Salcedo

T.P. 0.89 233.02 \checkmark 12.40 232.93 \checkmark

0+90

2390
2388
2391
6.3 6.5 6.2
1.0 1.0

T.P. 0.14 245.33 \checkmark 12.12 245.19 \checkmark

0+61.3 { 0' Rt to Walk & Steps
10' Rt to House
75' Rt to Retaining Wall

245.33 \checkmark
246.1
246.5
247.0
247.5
249.4
11.2 10.8 11.3 9.8 12.9
10 Dit Walk 7.2 7.5
Top Bottom

0+41.5 { 11' Rt to House
8' Rt to Retaining wall (9")

252.1
253.1
253.9
249.5
5.2 4.2 3.4 12.8
10 8.4 8.4
Top Bottom

T.P. 0.89 257.31 \checkmark 12.15 256.42 \checkmark

0+36 2' Rt Walk & Steps Conc. 5' Wld

257.31 \checkmark
257.4
257.8
257.3
13.7 13.8 14.3
1.0 1.0

268.57 \checkmark

268.57 \checkmark

Cont'd from Page 16

Lt

R

Rc

17

check

12.47 215.44 = 215.58

Start, E.M.

216.78

218.94

TP

6.04 227.91 2.19 224.87

7.28

5.12

1458.04

Conc. Culvert headwall

INVERT TOP
Headwall

1455

{ Rough }
Conc Catch basin for Culvert
{ Cobblestone

217.6

6.5

218.3

221.6

221.8

222.0

1453

5.8

2.5

2.3

2.1

4

3

10

TP

4.13 224.06 13.09 219.93

224.06

222.8

222.4

222.7

1447

35' Rt to Garage

10.2

10.6

10.3

10

35

5d

227.7

227.1

228.2

229.1

1427

35' Rt to Garage

5.3

5.9

4.8

3.9

10

35

35

Grd.

TOP

Garage

233.02

233.02

Roberts
Cota
Moore
Pollen
6-6-51
W. 025020

X-Section Alley Block 128 City Heights

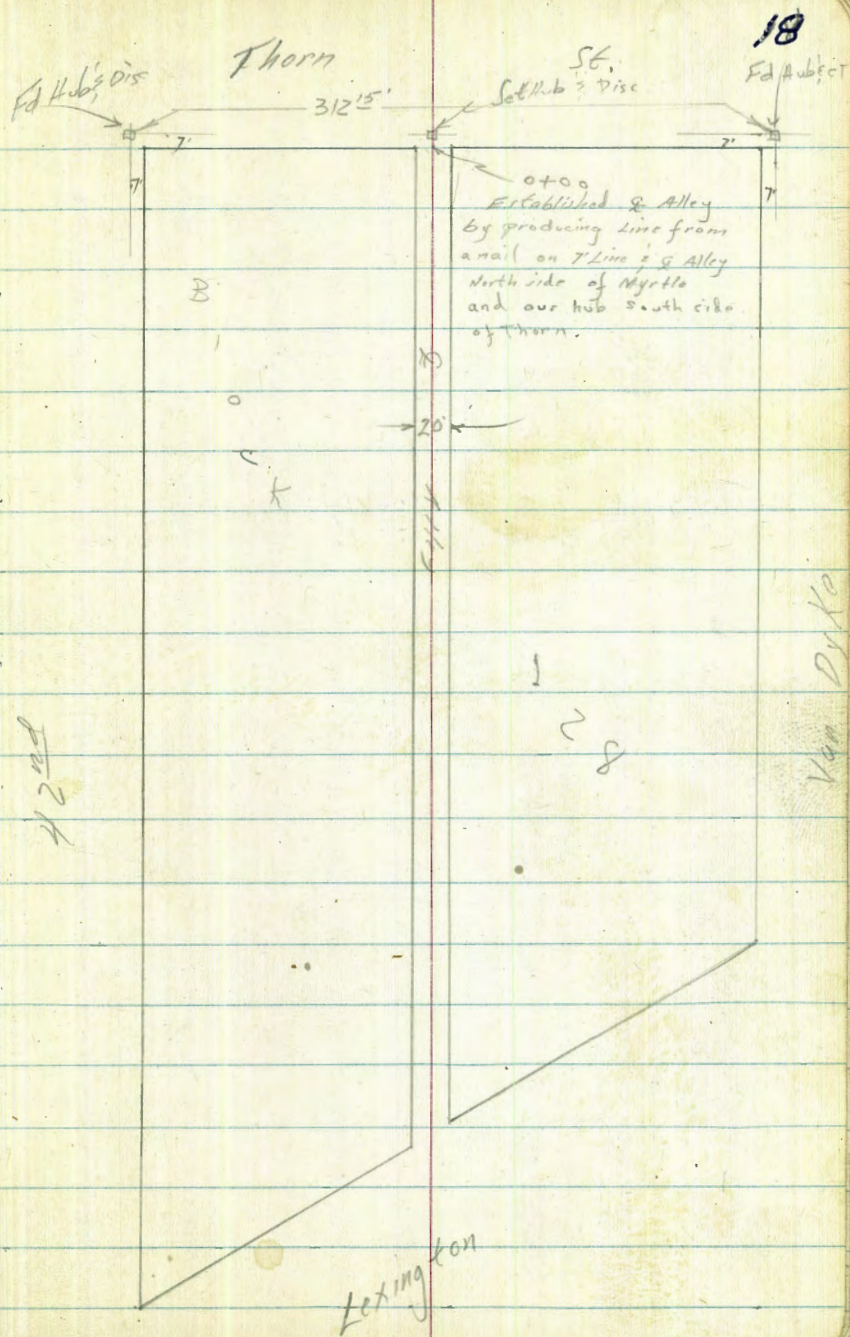
Thorn. to Lexington
Between 42nd & Van Dyke

T.P. 3521

INDEXED

JUN 6 1951

See page 23 for
level notes.



Topog. Lot #4 BIKL. Altadena
 (39.9' x 117°)

Sommerneyer
 Boag
 R. Sisson
 Fleming

19-Apr. 1951
 W/O 20817
 0+50

Nly line (N) = Base line 0+40

Wly line = 0+00

sly line lot #4 = Approx. Nly face
 of 10" wide E. & W Conc. wall 0+30

See P. 21 for location of trees 0+20

B.M. = top west ab. alley
 $5198\frac{1}{2} \frac{1692}{32}$

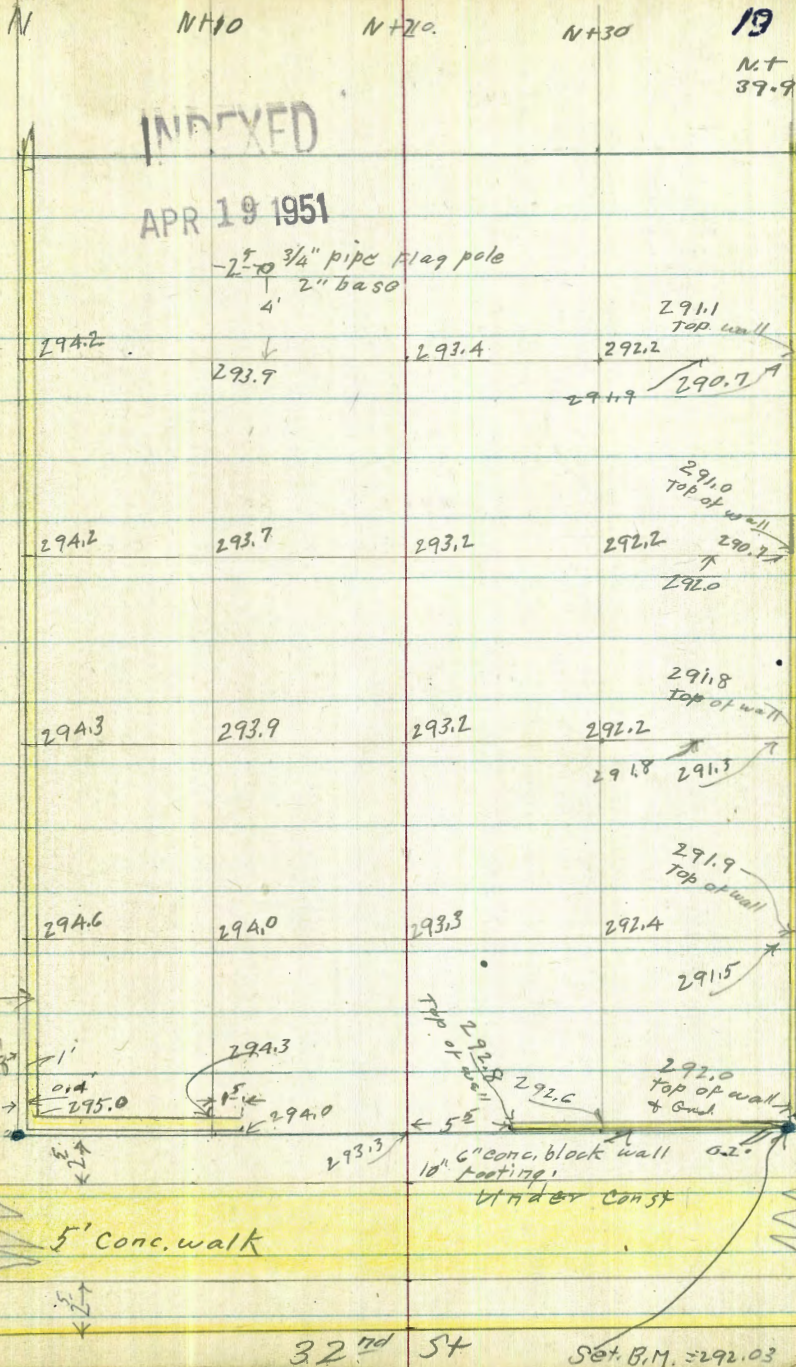
EL. = 303.71 0+10

Direct Elev. Rod. vis of

6" Conc. wall 10" footing
 under const.

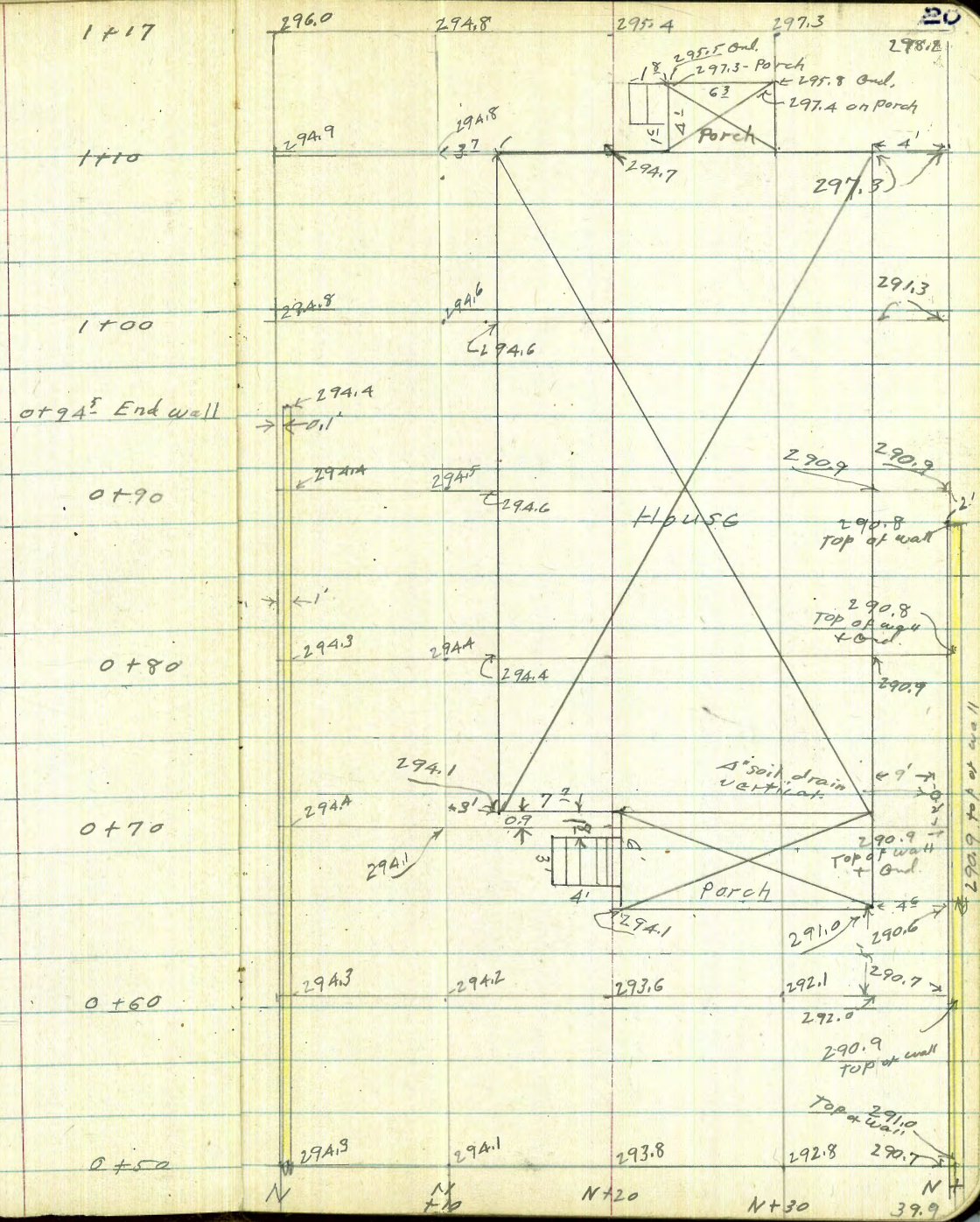
0+00

0-10



32nd St

Set. B.M. = 292.03



B,
E,
D,

| | | |
|------|---|---------------------|
| 0+90 | ↑ | 0.1 high |
| 0+80 | ↑ | 3.8 high |
| 0+70 | ↑ | 5.4 high |
| 0+60 | ↑ | 6.2 High |
| 0+50 | ↑ | 6.5 high |
| 0+40 | ↑ | 6.4 high |
| 0+30 | ↑ | 5.0 high |
| 0+20 | ↑ | 5.6 high |
| 0+10 | ↑ | 2 ⁸ high |

0+00 Sly Face Sly. E+W. Ret. wall = 1⁵ high

Topped 8' above ground

1+17 N+2' = 10" diam pepper tree

N+34' = 5' high Fig tree

N+27⁵ = 7' high Fig tree

N+21⁵ = 10' high Apricot tree

0+44⁵ } N+14' = 6' high Avacado tree

0+34⁵ N+22' = 14' high Apricot tree

0+34⁵ N+34' = 10' high peach tree

0+27⁵ N+34' = 8' high peach tree

0+23⁵ N+22 = 5' High Apricot tree

0+16- N+34² = 8' high Peach tree

FL. ON CAROLINE DR.

D. SMITH
G. POPE
R. SISKONY

38' BROWN BARKED
OF ROLLED CURBS, 2'
ROLL CURB + CUTTERS
0400 AT NORTH CB END
ON CAROLINE DR.

1-8-51

NORTH RET. 20' RAD.
LENGTH = 40' - 4 PARTS 10' - each.

| | GUT | CRB |
|--------------------------|--------|--------|
| B.C. | 389.42 | 389.73 |
| 1/4 | 389.76 | 390.06 |
| 1/2 | 390.02 | 390.32 |
| 3/4 | 390.13 | 390.42 |
| PRC | 390.16 | 390.38 |
| + 50 NORTH ON LUCILLE | 389.89 | 390.19 |

1+08 5

B.C. RET. SOUTH

0+80

B.C. RET. NORTH

0+49 91

END OF OLD CURB

0+40

0+25

0+20

0+00

B.M. SEBP. 49TH + MADISON

380 37

INDEXED

22

MAY 10 1951

NORTH CRB

NORTH GUT

SOUTH GUT

SOUTH CRB

SOUTH RET. 20' RAD.
LENGTH = 24' - 3 PARTS
8 EACH

| | GUT | CRB |
|--------------------------|--------|--------|
| B.C. | 390.30 | 390.58 |
| 1/3 | 390.36 | 390.71 |
| 2/3 | 390.51 | 390.81 |
| PRC | 390.58 | 390.94 |
| + 50 SOUTH ON LUCILLE | 390.92 | 391.21 |

390.30

390.58

389.73

389.42

389.51

389.26

389.57

388.54

388.23

388.57

388.19

388.50

388.35

388.04

387.92

387.62

387.78

387.48

387.20
END

386.88
END.

SET B.M SW. 147 CAROLINE DR. + LUCILLE
NOTE SOUTHERLY PRC 147 390.92

Roberts
Cota
Moore
P. Hill
6-5-51

Level Notes Alley BIK. 128 City Hts

See page 18
~~18~~
~~18~~

lt.

Reduced
6-8-51
R.E. Ryan

Q

Rt. 23

T.P. 0.80 297.25A 13.08 296.45

1+03 84 RR to Center P. Pole # JPA3235

1+00

INDEXED
301.2
8.3
25
300.0
7.5
10
299.3
10.2
10
299.2
10.3
10
297.5
12.0
25

0+50

303.6
5.9
25
303.3
6.2
10
302.9
6.6
10
302.6
6.9
10
301.5
8.0
25

0+05

305.5
7.0
50
304.8
7.6
10
304.3
5.2
10
305.0
7.5
10
302.7
6.8
50

0+00

South Line Thorn

304.8
7.7
50
304.5
5.0
10
303.7
5.8
10
303.3
6.2
10
302.0
7.5
50

0-40

Q Thorn

306A
3.1
100
306A
4.1
50
304.0
5.5
302.6
6.9
50
300.9
8.6
100

BM

271 309.53A

301.82 NW BP

Marlborough & Thorn

309.53A

Cont'd From Page 23

L

R

R

2A

2+73

21' R & 3' Steps & Walk

284.0
133
23
TOP

280.6
16.7
112
Bottom

2+70

{ 65' R to Parch like Entrance
28' R & 51' Landing at Entrance

284.2
13.1
23
conc

284.1
13.2
62
conc.

2+51

8 1/2' R to Center P. Pole JPA 3215

2+50

290.6
6.7
25

288.6
8.7
15

286.8
10.5
10

286.3
11.0
10

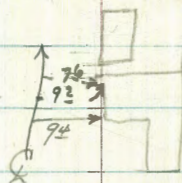
286.5
10.8
3

284.5
12.8
4

284.4
12.9
9 1/2

2+46

9 1/2' R to Cor. House



R+44 1/2

26' R & 4' landing & steps

286.89
10.36
26
TOP
conc.

285.11
12.14
8
Bottom
Steps

284.77
12.44
18 1/2
Floor
House

2+00

293.9
3.4
25

293.3
4.0
14

292.1
5.2
10

291.7
5.6
10

290.4
6.9
10

288.2
9.1
25

1+50

297.7
+0.4
25

296.4
0.9
10

295.7
1.6
10

295.7
1.6
10

293.7
3.6
25

297.25 X

297.25 X

TP 0.47 272.70X 12.67 272.23

3+60

280.8 279.2 278.4 276.2 274.3 266.2
 41 5.7 6.5 8.7 10.6 18.7
 26 20 10 10 30

3+30

282.3 279.9 279.5 279.4 279.3 274.3 276.3 276.2 274.2
 2.6 5.0 5.4 5.5 5.6 8.6 8.6 8.7 10.7
 25 19 10 4 8 10 16 26

3+06

284.4 281.6 281.0 279.7 279.0 278.9 276.5
 0.5 3.3 3.9 5.2 5.9 6.0 8.4
 26 21 10 10 20 21

3+00

2+98 14.6 Rt & Opening Garage to Se.

284.6 281.9 281.3 281.9 281.4 279.0 279.1 279.2
 0.3 3.0 3.6 3.0 3.5 5.9 5.8 5.1
 26 19 10 9 10 14.6 20
 Floor

2+99

93 Rt to Center 12" Pepper

TP

0.74 284.90X 13.09 284.16

284.90X

2+98

94 Rt to SE Cor. Bldg

Garage

2+74.5

90 Rt to NE Cor. Bldg.

297.25X

297.25X

Cont'd From Page 25

24

25

26

5720

| | | | | | |
|-------|-------|-------|-------|-------|-------|
| 266.9 | 265.1 | 263.7 | 261.6 | 255.0 | 248.4 |
| 5.8 | 7.6 | 9.0 | 11.1 | 17.7 | 29.3 |
| 20 | 10 | | 10 | 28 | 35 |

5706

5³/₄ PA SE Corner House

| | | | | |
|-------|-------|-------|-------|-------|
| 267.9 | 267.4 | 267.3 | 264.5 | 264.4 |
| 4.8 | 5.3 | 5.4 | 8.2 | 8.3 |
| 20 | 10 | 7 | | 5.3 |

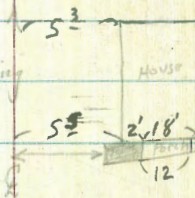
5700

4790

5³/₄ PA NE Corner House

4788

2⁶/₄ PA Q 415 Conc Landing



| | |
|--------|-----------------|
| 264.83 | 265.09 |
| 7.87 | 7.61 |
| 2.6 | 7.6 |
| conc | conc |
| | also Flag Elev. |

4750

7²/₄ PA to Flag Pole

| | | | | | | | |
|-------|-------|-------|-------|-------|--------|-------|-------|
| 271.8 | 270.8 | 270.3 | 266.4 | 265.5 | 265.00 | 261.4 | 247.1 |
| 0.9 | 1.9 | 2.4 | 6.3 | 7.2 | 7.7 | 11.3 | 25.6 |
| 25 | 10 | 6 | | 10 | 16 | 19 | 33 |

4729

Fence across alley (Bad shape)

4701

7²/₄ PA to Center P. Pole ≠ PA 3165

| | | | | | |
|-------|-------|-------|-------|-------|--------|
| 276.6 | 274.5 | 274.5 | 270.5 | 266.1 | 254.00 |
| + 3.9 | + 1.8 | + 1.8 | 2.2 | 6.6 | 18.7 |
| 25 | 20 | 10 | | 10 | 35 |

4700

27270X

27270X

Cont'd From Page 26

44

♀

27 27

| | | | |
|-------|-------|--------|-----------------|
| Check | | 6.38 | 301.79 = 301.82 |
| T.P. | 10.83 | 308.17 | 0.01 297.34 |
| T.P. | 12.64 | 297.41 | 0.25 284.17 |
| T.P. | 12.13 | 285.02 | 0.15 272.89 |
| T.P. | 12.63 | 273.04 | 0.61 260.41 |

5+84

Bottom Canyon

| | | | | |
|-------|-------|-------|-------|-------|
| 242.7 | 242.8 | 242.5 | 242.3 | 242.9 |
| 18.3 | 18.2 | 18.5 | 18.7 | 18.1 |
| 25 | 10 | 10 | 10 | 23 |

5+55

| | | | | | | |
|-------|-------|-------|-------|-------|-------|-------|
| 255.7 | 259.2 | 259.5 | 257.7 | 249.4 | 247.9 | 243.3 |
| 5.3 | 1.8 | 1.5 | 3.3 | 11.6 | 13.1 | 17.7 |
| 30 | 10 | 10 | 10 | 20 | 27 | 30 |

5+44

4' Lt to Center 3" Pepper

| | | | | | | | | |
|-------|-------|-------|-------|-------|-------|-------|-------|-------|
| 262.7 | 262.7 | 263.0 | 262.0 | 259.1 | 258.7 | 250.5 | 249.2 | 248.7 |
| +1.7 | +1.7 | +2.0 | +1.0 | 1.9 | 2.3 | 10.5 | 12.8 | 17.3 |
| 20 | 10 | 4 | 6 | 10 | 21 | 29 | 30 | |

5+34

on & 6" Pepper

5+25

3' Lt to center 6" Pepper Tree

| | | | | |
|------|------|--------|-------|--------|
| T.P. | 1.05 | 261.02 | 12.73 | 259.97 |
|------|------|--------|-------|--------|

261.02

5+25

| | | | |
|-------|-------|-------|-------|
| 263.5 | 263.8 | 263.1 | 260.8 |
| 9.2 | 8.9 | 9.6 | 11.9 |
| 20 | 10 | 10 | 10 |

272.70

272.70

Roberts
Moore
Pollen
July 27, 1951
W.O. 20749

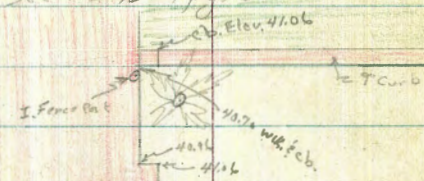
Survey S.W. Corner Hortens Plaza For location of Information Bldg

Elev. 50' N. of Ch. 20.
Curb - 40.03
Gutter - 39.91

Secret Light

See FB 1517 p. 76

Tile walk



GRD at Top of Cb.

Walk - 41.21
Curb - 41.53
Plaster - 42.22

Disc Hwy Marker

Walk - 41.60
Curb - 41.97
Plaster - 42.60

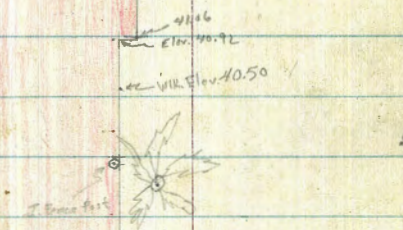
Base of Drinking Fountain

INDEXED

JUL 7 5 1951

(See 1517 page 16 also)

Lawn 41.3

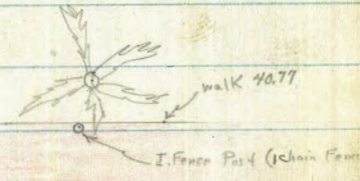


Elev. Walk 40.26

Walk Elev. 40.27

Walk 40.52

Walk 40.77



Conc. Walk

Vent

Curb - 39.81
Gutter - 39.03

Curb - 39.70
Gutter - 39.11

Curb - 39.67
Gutter - 38.77

Curb - 40.33
Gutter - 39.58

A.C. Pav.

Plaza

One Way Sign

Bus Stop Sign

Ely T-Line Srd.

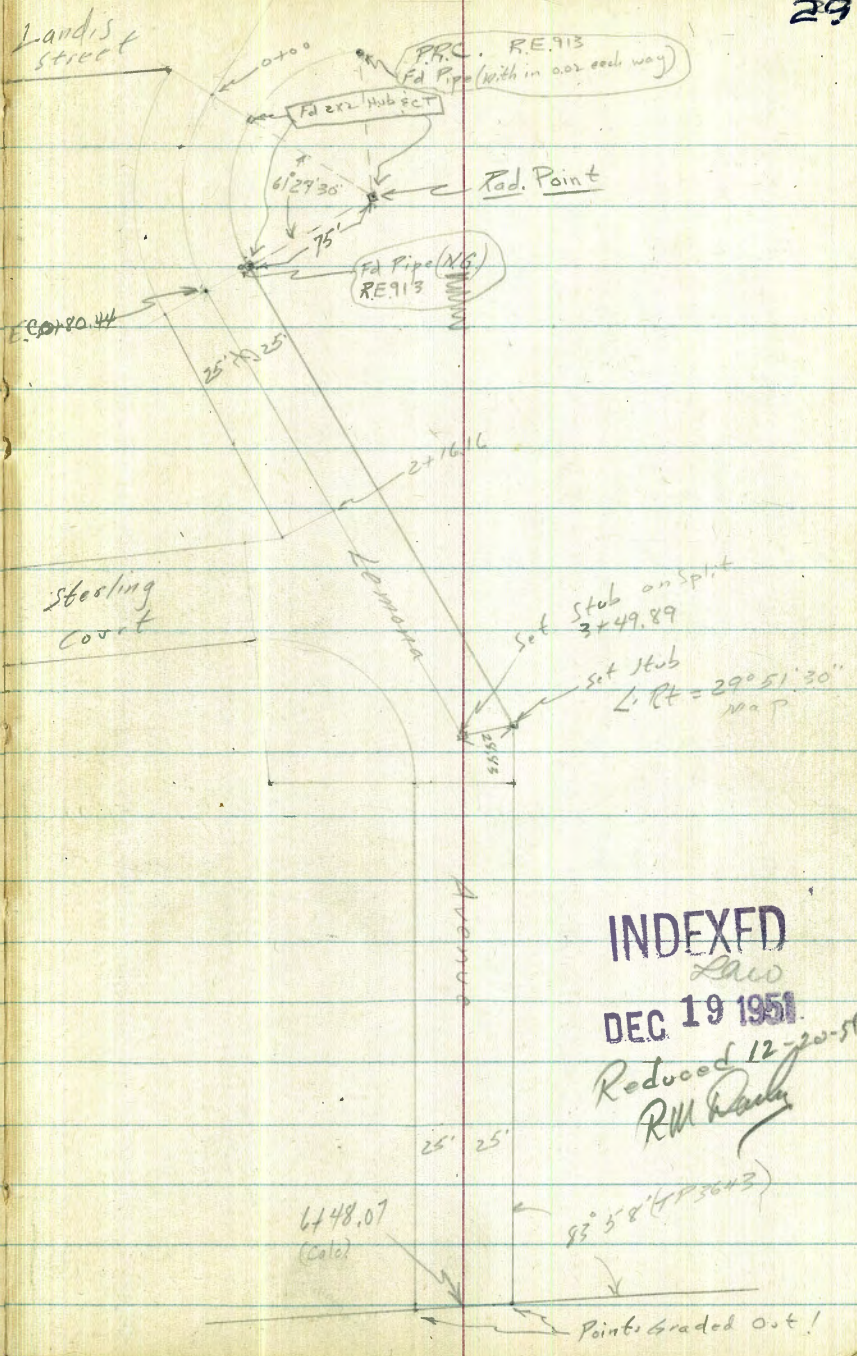
BM = 39.45 SWBP 3rd & Broadway

Scale 1" = 10'

Roberts
Cota
Moore
Pollen
12-18-51
W. 25020

X-Section Lemona Avenue Landis sly to Termination

T.P. 3643



INDEXED

LAW

DEC. 19 1951

Reduced 12-20-51

R.M. [Signature]

83° 58' (113643)

Points Graded Out!

Cont'd From Page 29

L

C

Rt

30

0+40.22

| | | | | | | |
|-------|-------|-------|-------|-------|-------|-------|
| 321.4 | 320.1 | 319.5 | 317.2 | 318.4 | 319.0 | 319.1 |
| 6.6 | 7.9 | 8.5 | 10.8 | 9.6 | 7.0 | 8.9 |
| 50 | 25 | 19 | 15 | 25 | 25 | 50 |

0+36 24' Rt C 4' Conc Walk

| | | | | |
|-------|-------|--------|--------|--------|
| 319.5 | 319.1 | 322.26 | 319.63 | 319.55 |
| 8.5 | 8.9 | 5.76 | 8.41 | 8.49 |
| 24 | 24 | 24 | 24 | 34 |
| GRD | Foot | Top | conc | conc |

0+35 24' Rt End Wall

0+02 27' Rt Begin Brick Wall

| | | | | | | | | |
|-------|--------|-------|-------|-------|-------|-------|-------|--------|
| 324.6 | 323.72 | 323.3 | 320.8 | 321.7 | 320.7 | 324.6 | 320.5 | 322.81 |
| 3.4 | 4.32 | 4.7 | 7.2 | 6.3 | 7.3 | 7.4 | 7.5 | 5.23 |
| 50 | 25 | 18 | 13 | 25 | 25 | 27 | 27 | 27 |
| | ON HUB | | | | | GRD | Foot | Top |

0+00 RADIAL - S.W. Corner LANDIS C. LENOVA

| | | | | | |
|-------|-------|-------|-------|-------|-------|
| 327.2 | 325.5 | 323.0 | 322.8 | 321.0 | 319.4 |
| 0.8 | 2.5 | 5.0 | 5.6 | 7.0 | 8.6 |
| 50 | 28 | 21 | 25 | 25 | 50 |

0-30 ON LINE TANGENT TO 0+00

0-60 ON LINE TANGENT TO 0+00

| | | | | |
|-------|-------|-------|-------|-------|
| 326.1 | 324.8 | 323.5 | 322.8 | 320.9 |
| 1.9 | 3.2 | 4.5 | 5.2 | 7.1 |
| 50 | 25 | 25 | 25 | 50 |

BM

8.47 328.04 T

319.57 H.v.b

T.N. M.H. Sta = 4+69.77 See GB229 pg 36

328.04 T

Cont'd From Page 30

T.P. 0.68 304.70 π 12.88 304.02

2+84 24' Lt to Center P.Pole # 3645

2+75

| | | | | | | |
|-------|-------|-------|-------|-------|-------|-------|
| 308.5 | 307.9 | 306.5 | 305.3 | 303.5 | 302.5 | 301.9 |
| 8.4 | 9.0 | 10.4 | 11.6 | 13.4 | 14.4 | 15.0 |
| 50 | 30 | 25 | 21 | | 25 | 50 |

2+66.16 Opp NW Corner, Sterling & Lamona

| | | | | | |
|-------|-------|-------|-------|-------|-------|
| 310.5 | 307.7 | 306.2 | 305.6 | 304.1 | 304.0 |
| 16.4 | 9.2 | 10.7 | 11.3 | 12.8 | 12.9 |
| 50 | 25 | 14 | | 25 | 50 |

1+59 24' Lt to Center P.Pole # P3677

1+50

| | | | | | | |
|-------|-------|-------|-------|-------|-------|-------|
| 317.1 | 312.8 | 311.3 | 309.4 | 309.3 | 308.8 | 307.6 |
| 10.2 | 11 | 5.6 | 7.5 | 7.6 | 8.1 | 9.3 |
| 50 | 25 | 17 | 14 | | 25 | 50 |

T.P. 0.74 316.90 π 11.88 316.16 Hub EPK line

316.90 π

0+80.44 EC

| | | | | | | |
|-------|-------|-------|-------|-------|-------|-------|
| 312.4 | 311.1 | 310.5 | 313.6 | 314.2 | 313.7 | 313.3 |
| 8.6 | 11.6 | 12.5 | 14.4 | 13.8 | 14.3 | 14.7 |
| 50 | 25 | 17 | 9 | | 25 | 50 |

328.04 π

328.04 π

Lt

♀

Rt

31

Cont'd From Page 31

5+50

T.P. 0.56 285.77 π 12.45 285.21

5+00

4+50

T.P. 0.75 297.66 π 7.79 296.91

4+00

3+49.89

L. RT Levels on Split

304.70 π

24

284.4
1.4
40

279.2
6.6
25

275.9
9.9
5

273.5
12.3

276.0
9.8
5

282.5
3.3
25

286.8
11.0
40

285.77 π

283.7
14.0
25

282.7
15.0
12

278.2
19.5

284.2
13.5
15

285.8
11.9
25

291.0
6.7
45

287.3
10.4
35

289.6
8.1
25

287.8
9.9

282.8
14.9
10

288.3
9.4
25

291.3
6.4
35

297.66 π

293.4
11.3
25

291.1
13.6

288.0
16.7
25

307.2
12.5
50

306.2
11.5
28

301.9
28
23

298.4
6.3

296.2
8.5
28

294.7
10.0
50

304.70 π

32

check 5.69 319.57 = 319.57

T.P. 12.11 325.26 0.10 313.15

T.P. 12.21 313.25 0.76 301.04

T.P. 16.13 301.80 0.10 285.67

6+48.07 Subd. Line

| | | | | | |
|-------|-------|-------|-------|-------|-------|
| 282.8 | 280.0 | 270.3 | 266.7 | 269.5 | 277.9 |
| 3.0 | 5.8 | 15.5 | 19.1 | 16.3 | 7.9 |
| 50 | 25 | | 12 | 25 | 50 |

6+00

| | | | | |
|-------|-------|-------|-------|-------|
| 284.4 | 277.0 | 270.8 | 277.9 | 284.2 |
| 1.4 | 8.8 | 15.0 | 7.9 | 1.6 |
| 45 | 25 | | 25 | 45 |

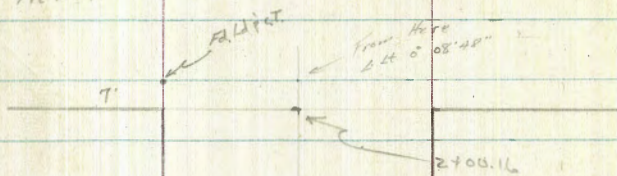
285.77 A

285.77 A

Roberts
Cota
Moore
Pollen
1-8-52
W.D. 32046

X-Section Locust Street
Macaulay to Oliphant

Newell



2700.16

Locust

8

0x00

1870

Macaulay

AC

Basement

15'

Allyon Disc

34

Oliphant

Allyon Disc

2700.05

INDEXED
JAN 17 1952

Locust

8

114

0x00

0x00

1" = 50'

Conc. gutter

6' conc. Sidewalk

Newell

Dirt Grates

1890

1892

51/1

Cont'd From Page 34

44

45

R

35

| T.P. | 0.73 | 20.00 | 275 | 19.27 | | | | | | | | | |
|------------|---------------------------|-------|-----|-------|-----|-------|------|-----|-------|-----|-------|-----|-------|
| 0+10 | | | | | 17 | 20.1 | 19.7 | 30 | 12.0 | 40 | 18.0 | 44 | 18.6 |
| | | | | | 50 | | | | | 55 | | 50 | |
| 0+00 | Nly Line Macaulay | | | | 10 | 21.0 | 20.0 | 20 | 16.6 | 38 | 14.2 | 35 | 14.5 |
| | | | | | 100 | | 50 | 5.4 | 14.2 | 75 | 14.5 | 50 | 14.7 |
| | | | | | | | | | | | | | |
| 0-09 | Center of Ditch | | | | 91 | 12.9 | 12.3 | 100 | 12.0 | 109 | 11.1 | 100 | 10.3 |
| | | | | | 100 | | 50 | | | 50 | | 100 | |
| 0-24 | | | | | 102 | 12.2 | 19.1 | 33 | 18.7 | 46 | 17.4 | 50 | 16.3 |
| | | | | | 100 | | 50 | 2.7 | | 50 | | 100 | |
| 0-31 | | | | | 13 | 20.7 | 19.5 | 31 | 18.9 | 46 | 17.4 | 50 | 18.9 |
| | | | | | 100 | | 50 | 2.5 | | 50 | | 100 | 6.1 |
| Q Macaulay | Roughly Edge of A.C. Pav. | | | | 170 | 20.52 | 18.4 | 446 | 17.86 | 579 | 16.23 | 50 | 15.15 |
| | | | | | 100 | | 50 | | | 50 | | 100 | 6.86 |

BM 5.40 22.02 X 16.62 S.W. Corner Lowell & Locust 22.02 X
 Conc. Man on 7' & PL.

Cont'd From Page 35

Lt

Rt

Rt 36

0+88 49⁵ Rt & Single Garage

16.2
3.8
49.3
Floor
Dirt

0+71 34² Lt Wall Begins

19.3
0.7
34¹
Top

18.5
1.5
34²
G.D.

18.0
2.0
34²
Foot

0+61 34¹ Lt begin paved yard

1.1
34²
conc

0+56 44' Lt & Single garage

19.6
0.4
44
Floor
conc

17.2
0.8
36
10' Apron
conc

0+50

19.9
0.1
50

17.6
0.4
35

17.3
1.7
24

17.5
2.5

17.4
2.6
35

17.00
3.0
50

0+41 34¹ Lt End back wall

0+30 34' Lt & 3' Brick Walk

19.9
0.1
44
walk

19.8
0.2
34
walk

0+22 34² Lt Begin small brick wall
(2 brick high)

20.00 T

20.00 T

Cont'd From Page 36

Lt.

Q

Rt

37

1476 35' Lt Q 3' Conc Walk

1812
184
47
conc
234
35'
walk

1450 35' Lt End Paved Yard

18.55
145
50
conc
18104
196
35
conc
17.8
35
2.2
3.7
4.4
15.6
15.8
4.2
16
5.0
35
14.3
5.7
50

1438 35' Lt End Conc Apron

19.78
0.22
349
Floor
178
352
conc

1432 29' Rt Q 4' Conc Walk

15.92
458
29'
conc
15.40
460
35'
conc
15.46
458
435
conc

1422 35' Lt Begin Conc Apron

19.80
0.20
549
Floor
18.21
1.79
352
conc

1406 62' Rt to Single Garage

15.90
4.10
62'
conc
Floor

1400

35' Lt Begin Paved yard
35' Lt END wall + Paved yard
30' Lt to Center P.P. # 1774

128/18.72
111 18.89
0.55/19.45
2.0 18.0
1.4 18.6
2.4 17.6
35
Rt
35
Rt
30
Top
35
Foot
35
GRD
25
3.5
16.5
1.5
191
3.9
35
14.00
4.0
5.0

20.00 T

20.00 T

Contd From Page 37

0-21.5

Edge Conc. Gutter Strip

17.27
273
80

15.14
486
35

14.22
578

13.13
687
35

12.11
789
80

Q Newell

17.2
2.8
80

15.4
46
35

14.5
55
40

13.3
67
35

12.2
7.8
80

2+21.66

Edge Gutter Strip

17.13
287
80

15.15
485
35

14.25
575

13.27
681
35

12.16
784
80

2+18.16

Curb Line

17.99
251
80
cb

16.96
304
80
gutt

16.47
353
60
cb

15.97
403
60
gutt

14.99
501
35

14.08
592

13.09
691
35
gutt

12.49
751
60
cb

12.96
804
60
cb

11.98
804
80
gutt

12.49
851
80
cb

2+15.5

West Edge Conc Gutter Strip

15.89
411
452
cb

15.46
454
452
gutt

15.02
498
35

14.15
585

13.12
684
35

12.86
714
452
gutt

13.23
677
452
cb

2+00.16

West Line Newell
End Curb & walk

15.23
477
322
walk

15.00
500
252
cd

14.9
51
252
gutt

14.2
58

13.6
64
16

14.2
58
21

13.92
608
242
cb

14.1
59
242
gutt
walk

13.85
615
322
walk

1495

18.3
1.7
50

17.2
2.8
35

17.2
2.8
32

14.9
51
21

14.3
5.7

13.9
6.1
12

14.4
5.6
20

14.4
5.6
35

14.0
6.0
50

20.00K

20.00K

38

0+55 35' 4" 25' Conc Walk

18.20
0.21 0.76
45' 35' 4"
conc conc

T.P. 1.35 18.41A 2.94 17.06

18.41A

0+5.0

18.2 17.6 16.9 16.9 16.5 16.5
1.8 2.4 3.1 3.1 3.4 3.5
50 36 35 25 22 35
45 5.0
35 30

0+10

1.6 1.7 17.0 16.8 15.4 15.2 16.4 15.5 15.0
50 2.3 3.0 3.2 4.6 4.8 3.6 4.5 5.4
36 35 30 22 5 35 50

0+00

End Curb & walk
East Line Newell

15.15 14.90 15.6 14.4 15.1 14.3 13.78 13.80
4.85 5.16 4.6 5.6 4.9 5.7 6.22 6.20
32' 25' 6" 25' 6" 25' 6" 25' 6" 32'
Walk cb Gutt Walk

0-15.5

Edge Gutter Strip

15.79 15.35 15.01 14.10 15.08 12.80 12.34
4.21 4.65 4.44 5.90 6.92 7.20 6.66
45' 45' 35' 35' 35' 45' 45'
cb Gutt Gutt cb

0+8 Curb Line

17.63 17.14 16.47 15.97 14.98 14.03 14.98 14.47 12.95 12.98 12.47
2.31 2.86 3.53 4.13 5.02 5.97 7.02 7.53 7.15 8.02 7.53
30 80 59' 59' 35' 35' 35' 60' 60' 80' 30'
cb Gutt cb Gutt cb Gutt cb

Cont'd From Page 39

2+00.05 End Pav. Furbs. & walk
West Line Oliphant

1+95

1+70

1+50

1+00 30⁵' Lt to Center P. Palo # 1824

0+95 32⁴ Lt Conc Walk

0+73 30 Lt 63⁵ Conc Walk

18.41X

| | 15.5 | 15.3 | 13.34 | 12.82 | 12.60 | 12.08 | 12.57 | 12.56 |
|--|-------|-------------------------------------|-------------------------|------------|-------|-------------------------|---------|------------|
| | 29 | 31 | 5.07 | 5.59 | 5.81 | 6.33 | 5.84 | 5.85 |
| | 35 | 30 | 25 Cb | 25 Gutt | | 25 ² Gutt | 25 a | 32 Walk |
| | 15.9 | 15.6 | 15.2 | 13.3 | 12.8 | 12.7 | 14.3 | 13.6 |
| | 2.5 | 2.8 | 3.2 | 5.1 | 5.6 | 5.7 | 5.1 | 4.8 |
| | 50 | 35 | 27 | 22 | | 18 | 25 | 35 |
| | 18.3 | 15.8 | 14.7 | 14.7 | 14.7 | 14.1 | 14.1 | 13.9 |
| | 2.1 | 2.6 | 3.4 | 3.7 | 3.7 | 4.3 | 4.3 | 4.5 |
| | 50 | 35 | 24 | | | 35 | 40 | 50 |
| | 14.8 | 16.3 | 15.3 | 15.4 | 15.4 | 14.2 | 14.2 | |
| | 16 | 2.1 | 3.1 | 3.0 | 3.0 | 4.2 | 4.2 | |
| | 50 | 35 | 27 | | | 35 | 50 | |
| | 14.9 | 14.7 | 14.1 | 14.0 | 14.0 | 15.0 | 14.8 | |
| | 15 | 1.7 | 2.3 | 2.4 | 2.4 | 3.4 | 3.6 | |
| | 50 | 35 | 23 | | | 35 | 50 | |
| | | 17.23 | 17.13 | | | | | |
| | | 1.11 | 1.28 | | | | | |
| | | 35 ² conc. (House) | 32 ² conc | | | | | |
| | 17.11 | 17.04 | 17.04 | | | | | |
| | 1.30 | 1.30 | 1.37 | | | | | |
| | 40 | 35 | 38 | | | | | |
| | conc | conc | conc | | | | | |

18.41X

40

Cont'd From Page 40

| | | | | |
|-------|------|-------|------|---------------|
| check | | | 6.71 | 16.61 = 16.62 |
| T.P. | 9.55 | 23.32 | 4.64 | 13.77 |

| | | | | |
|--------|--|--|------|-------|
| Bot BM | | | 5.72 | 12.69 |
|--------|--|--|------|-------|

| | |
|---------|-----------|
| Z+18.05 | Curb Line |
|---------|-----------|

| | |
|--------|---------------|
| Z+09.5 | End Cb on Lt. |
|--------|---------------|

18.41/T

Lt

Rt

Rt

41

City Disc NE Cor Locust & Oliphant

| | | | | | | |
|--|-------|-------|-------|-------|-------|-------|
| | 13.15 | 12.27 | 12.12 | 11.97 | 11.45 | 11.95 |
| | 5.26 | 6.14 | 6.29 | 6.44 | 6.96 | 6.46 |
| | 35 | 12 | | 25 | 59 | 57 |
| | | | | | Gutt | cb |
| | 13.51 | 13.02 | | | | |
| | 490 | 5.39 | | | | |
| | 35 | 35 | | | | |
| | cb | Gutt | | | | |

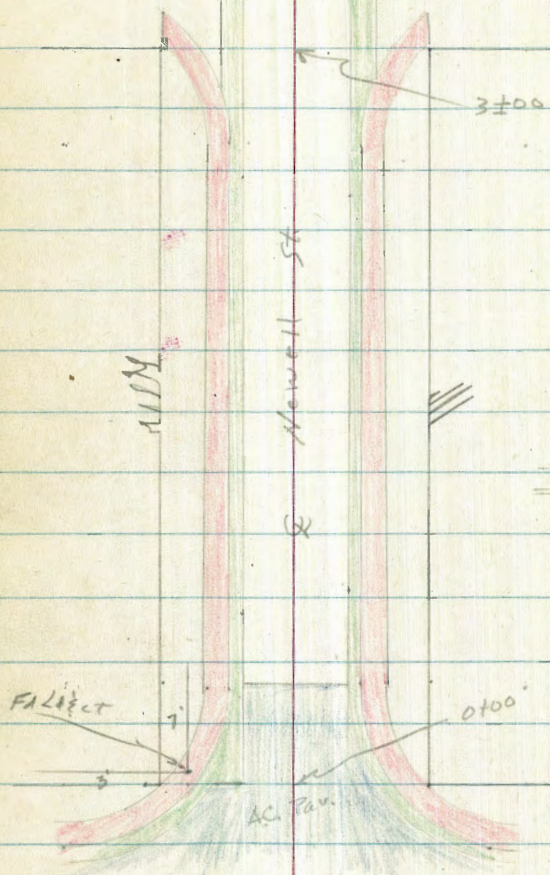
18.41/R

Roberts
Cota
Moore
Pullen
1-14-52
W.D. 32046

X-Section Newell Street

Rosecrans to Evergreen

Locust St.



Rosecrans

Evergreen

st. 42



Locust

6' St.

INDEXED
Law
JAN 17 1952

Cont'd From Page #2.

Lt

Rt 43

14.00

| | |
|------|------|
| 3.89 | 9.71 |
| 17 | 4.37 |
| cb | gutt |
| 4.24 | 9.21 |
| 13E | |
| Lip | |
| 4.2 | 9.36 |
| | |
| | |
| | 9.4 |

| | |
|------|------|
| 4.49 | 9.11 |
| 13E | |
| Lip | |
| 4.73 | 8.87 |
| 17 | |
| gutt | |
| 4.23 | 9.37 |
| 17 | |
| cb | |

0+50

| | |
|------|------|
| 4.20 | 9.40 |
| 17 | 8.94 |
| cb | gutt |
| 4.61 | 8.99 |
| 13E | |
| Lip | |
| 4.7 | 8.9 |
| | |
| | |
| | |

| | |
|------|------|
| 5.04 | 8.56 |
| 13E | |
| Lip | |
| 5.21 | 8.37 |
| 17 | |
| gutt | |
| 4.80 | 8.80 |
| 17 | |
| cb | |

0+27 cb BC & End AC Paving

| | |
|------|------|
| 4.26 | 9.34 |
| 17 | 8.83 |
| cb | gutt |
| 4.75 | 8.85 |
| 13E | |
| Lip | |
| 4.84 | 8.76 |
| | |
| | |
| | |

| | |
|------|------|
| 5.26 | 8.34 |
| 13E | |
| Lip | |
| 5.43 | 8.17 |
| 17 | |
| gutt | |
| 5.0 | 8.60 |
| 17 | |
| cb | |

0+00 Nly Line Rosecrans

| | |
|------|------|
| 4.34 | 9.22 |
| 26E | 8.65 |
| cb | gutt |
| 4.94 | 8.62 |
| 13E | |
| 5.07 | 8.53 |
| | |
| | |
| | |

| | |
|------|------|
| 5.65 | 7.95 |
| 22E | |
| 5.87 | 7.73 |
| 32E | |
| gutt | |
| 5.37 | 8.28 |
| 26E | |
| cb | |

0-16 Nly Curb Line Rosecrans

| | |
|------|------|
| 3.88 | 9.12 |
| 120 | 9.14 |
| cb | gutt |
| 4.37 | 8.83 |
| 60 | 8.63 |
| cb | gutt |
| 5.04 | 8.56 |
| 30 | |
| 5.10 | 8.50 |
| 17 | |
| 5.24 | 8.36 |
| | |
| | |
| | |

| | |
|------|-------|
| 5.34 | 6.22 |
| 17 | |
| 5.56 | 6.04 |
| 30 | |
| 6.07 | 7.53 |
| 60 | 8.24 |
| 60 | |
| gutt | |
| 6.49 | 7.11 |
| 120 | |
| 120 | |
| cb | |
| 5.89 | 17.71 |

check

5.26 8.34 = 8.39

NW BP Rosecrans & Newell

T.P. 0.98 13.60A 6.94 12.62

13.60A

T.P. 0.29 19.56

19.27

See pg. 35

Contd From Page 43

44

♀ Locust

See P38 For Intersection

3+00 sly line Locust

2+75 Cb BC

2+50

T.P

9.76 22.44A 0.92 12.68

2+00

1+50

13.60X

LT

♀

R2

P38

820
135
Lip

13.26
9.11
135
Lip

9.12.96
17
Cb

12.49
17
Gutt

12.55
17
135
Lip

12.38
17
Cb

11.86
17
Gutt

12.02
10.42
17
135
Lip

11.20
2.40
17
Cb

10.76
2.84
17
Gutt

11.00
2.60
17
135
Lip

10.21
3.79
17
Cb

9.74
3.86
17
Gutt

9.93
3.67
17
135
Lip

145
8.1

17.3
9.1

13.6
9.8

11.9
10.5

22.44A

11.0
2.6

10.2
3.4

13.60X

823
135
Lip

13.11
9.33
135
Lip

9.80
17
135
Lip

9.94
17
Gutt

9.47
17
Cb

12.02
10.42
17
135
Lip

11.85
10.59
17
Gutt

12.36
10.08
17
Cb

2.77
17
135
Lip

2.92
17
Gutt

2.41
17
Cb

3.79
17
135
Lip

3.84
17
Gutt

3.49
17
Cb

13.60X

Cont'd From Page 44

Lt

R

R+ 45

1740

| | | | | |
|-------|-------|------|-------|-------|
| 11.26 | 11.09 | 10.4 | 10.74 | 10.77 |
| 17 | 13.2 | 16.4 | 13.5 | 17 |
| Gutt | Lip | | Lip | Gutt |
| 22.71 | 21.88 | 23.6 | 23.23 | 23.20 |

1720

| | | | | | | |
|-------|-------|-------|-------|-------|-------|-------|
| 22.12 | 21.61 | 21.74 | 21.97 | 21.40 | 21.74 | 21.77 |
| 11.85 | 12.36 | 12.23 | 12.0 | 12.57 | 12.73 | 12.20 |
| 17 | 17 | 13.5 | | 13.5 | 17 | 17 |
| Cb | Gutt | Lip | | Lip | Gutt | Cb |

T.P.

11.90 33.97 0.37 22.07

Right

33.97

No Comments!

1700

| | | | | | | |
|-------|-------|-------|-------|-------|-------|-------|
| 20.52 | 19.91 | 20.08 | 20.44 | 20.44 | 20.34 | 20.82 |
| 17 | 17 | 13.5 | 2.0 | 2.0 | 2.0 | 1.62 |
| Cb | Gutt | Lip | | 13.5 | 17 | 17 |
| | | | | | Gutt | Cb |

0+75

| | | | | | | |
|-------|-------|-------|------|-------|-------|-------|
| 19.10 | 18.61 | 18.77 | 18.8 | 18.96 | 18.85 | 19.36 |
| 3.34 | 3.83 | 3.67 | 3.6 | 3.48 | 3.57 | 3.18 |
| 17 | 17 | 13.5 | | 13.5 | 17 | 17 |
| Cb | Gutt | Lip | | Lip | Gutt | Cb |

0+25 Cb BC

| | | | | | | |
|-------|-------|-------|------|-------|-------|-------|
| 16.48 | 15.99 | 16.14 | 16.3 | 16.16 | 14.01 | 16.51 |
| 5.96 | 6.45 | 6.30 | 6.1 | 6.28 | 6.43 | 5.93 |
| 17 | 17 | 13.5 | | 13.5 | 17 | 17 |
| Cb | Gutt | Lip | | Lip | Gutt | Cb |

0+00 Nly Line Locust

| | |
|-------|-------|
| 15.15 | 15.15 |
| 7.29 | 7.29 |
| 13.5 | 13.5 |
| Lip | Lip |

22.44

22.44

Cont'd From Page 45

3±00 Sky Line Evergreen

2775 cb BC

2450

T.P. 12.65 + 6.50 + 0.12 = 33.85

2400

1780

1460

33.97

Lt

R

Rt

46

40.3

| | | | | | | | | | | | | | | |
|------|------|-----|------|------|------|------|-------|------|-------|-------|-------|-------|------|------|
| 12.5 | 11.9 | 6.2 | 5.88 | 5.96 | 6.54 | 6.55 | 40.17 | 41.5 | 42.17 | 42.24 | 42.72 | 43.47 | 43.6 | 40.3 |
| 60 | 49 | 35 | 322 | 251 | 251 | 201 | 40.17 | 41.5 | 133 | 426 | 379 | 303 | 29 | |
| | | | milk | cb | gutt | tip | | | tip | gutt | cb | milk | | |

| | | | | | | | |
|------|------|------|-------|----|------|------|------|
| 8.16 | 8.65 | 8.42 | 58.08 | 75 | 7.55 | 7.68 | 7.17 |
| 17 | 17 | 13 | 17 | 15 | 13 | 17 | 17 |
| cb | gutt | tip | | | tip | gutt | cb |

| | | | | | | | |
|-------|-------|-------|------|------|-------|-------|-------|
| 35.16 | 34.67 | 34.91 | 35.8 | 35.8 | 35.80 | 35.71 | 36.22 |
| 11.34 | 11.83 | 11.59 | 10.7 | 10.7 | 10.70 | 10.79 | 10.28 |
| 17 | 17 | 13 | 17 | 17 | 13 | 17 | 17 |
| cb | gutt | tip | | | tip | gutt | cb |

46.50

| | | | | | | |
|------|------|------|-----|------|------|------|
| 4.71 | 5.30 | 5.03 | 4.6 | 4.39 | 4.48 | 3.98 |
| 17 | 17 | 13 | 4.6 | 13 | 17 | 17 |
| cb | gutt | tip | | tip | gutt | cb |

| | | | | | | |
|------|------|------|-----|-----|------|------|
| 7.00 | 7.48 | 7.26 | 6.7 | 6.8 | 6.85 | 6.35 |
| 17 | 17 | 13 | 6.7 | 13 | 17 | 17 |
| cb | gutt | tip | | tip | gutt | cb |

| | | | | | | |
|------|------|------|-----|------|------|------|
| 8.98 | 9.49 | 9.30 | 8.7 | 8.90 | 8.98 | 8.46 |
| 17 | 17 | 13 | 8.7 | 13 | 17 | 17 |
| cb | gutt | tip | | tip | gutt | cb |

33.97

Cont'd From Page 46

Lt

♀

Rt 47

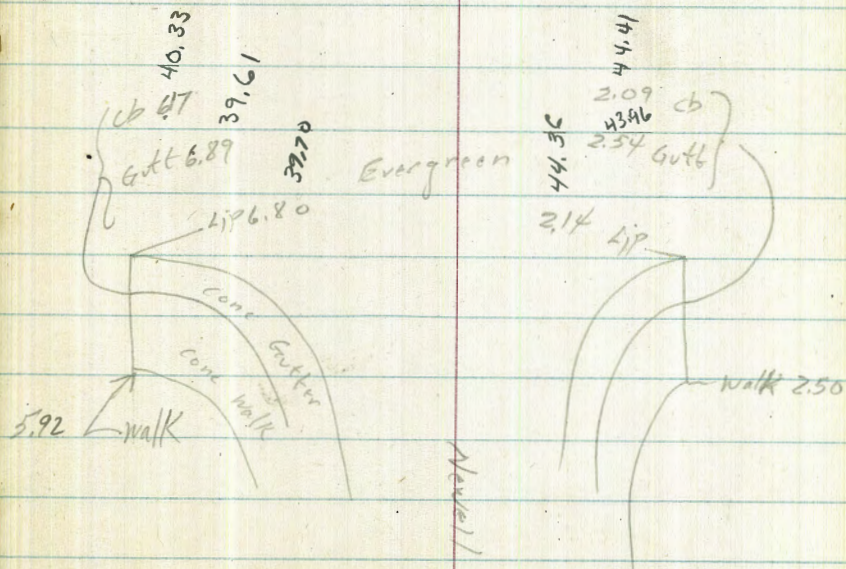
Check 3.36 19.24 = 19.27

T.P. 165 22.60 13.04 20.95

T.P. 0.16 34.01 12.65 33.85

♀ Evergreen

| | | | | | | | |
|------|------|------|------|------|------|------|------|
| 34.7 | 35.7 | 40.9 | 43.7 | 44.3 | 45.4 | 46.7 | 54.8 |
| 11.8 | 10.8 | 5.6 | 2.8 | 2.2 | 1.1 | +0.2 | +8.3 |
| 100 | 70 | 35 | 18 | | 35 | 50 | 100 |



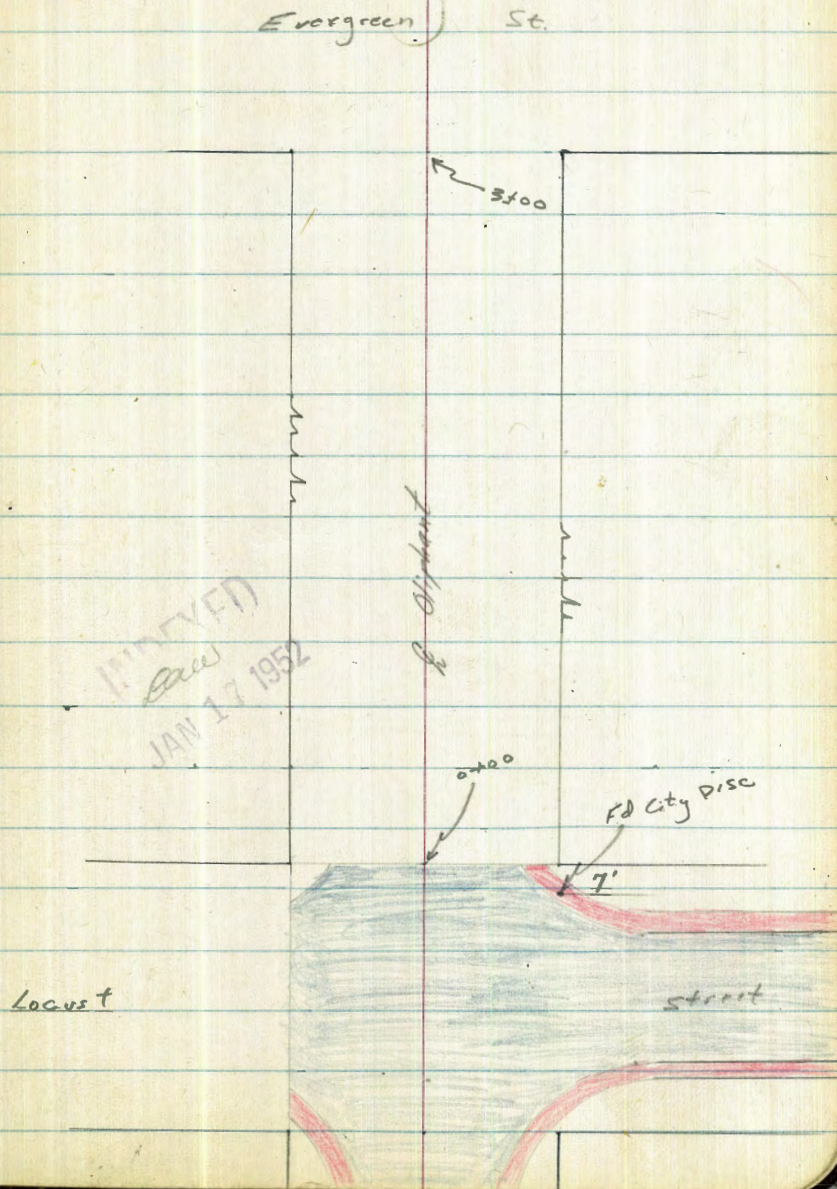
46.50A

46.50A

Roberts
Cota
Moore
Piller
1-17-52
W.O. 32046

X-Section. Oliphant St.
Locust to Evergreen

Case No. ~~48~~
GONE 48



Contd From Page 41

Lt

Q

Rt

49

0+60 35th Lt Begin Brick wall

2.1 8.5
35th Top
41 17.1
35th Foot
3.9 17.3
35th GRD

0+55 35th Lt 35th Rt begin Conc. Block wall
Q 10' Conc Drive

3.59 17.57 3.90 17.26 3.9 17.3 4.9 16.3 4.7 16.5
45 Conc 35th Conc 35th 21 7.7
5.0 16.2 5.2 16.0 5.5 15.7 6.9 14.3 7.1 14.1 7.5 13.7 6.4 14.8 6.3 14.9 6.5 14.7

16.2 16.3
5.0 5.5 2.8 4.9
35th GRD 35th Foot 35th Top 50

0+15

5.0 16.2 5.2 16.0 5.5 15.7 6.9 14.3 7.1 14.1 7.5 13.7 6.4 14.8 6.3 14.9 6.5 14.7

20 24 35 50

0+00 END PAVING
Nly Line Locust

15.5 15.6 13.50 13.01 12.92 12.44 12.92 12.88 14.3
5.7 5.6 7.6 8.15 8.24 8.72 8.24 8.28 6.9
35 29 25.9 25.9 24.7 24.7 32 35

12.44 12.92 12.88 14.3

0-18 Nly Curb Line Locust

12.82 12.35 12.21 11.91 11.85 12.37 12.10 12.57
8.34 8.81 8.95 9.24 9.31 8.79 9.06 8.59
35 17 17 60 60 60 110 110

12.21 11.91 11.85 12.37 12.10 12.57

Q Locust

12.55 12.10 12.04 11.63 11.79 12.04 11.63 11.79
8.61 9.06 9.12 9.53 9.37
35 17 17 35

12.04 11.63 11.79 12.04 11.63 11.79

NEW COR

21.16 K

BM 8.47 21.16 K 12.69 City Disc NE Corner Locust & Oliphant See pg. 41

Cont'd From Page 49

Lt

Q

Rt 50

T.P. 12.63 + 5.44A 0.52 3281

1450

1421 275' Lt to Dead man

T.P. 12.76 33.33A 0.59 20.57

33.33A

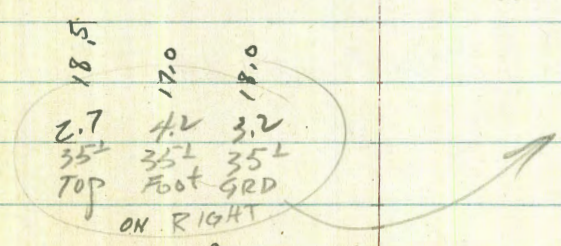
1+00 { 26' Lt to Center P. Pole # JP 3133
35' Lt End brick wall

| | | | | | | | |
|------|------------------------|-------------------------|------------------------|------|------|------|------|
| 2.3 | 3.1 | 3.0 | 2.5 | 1.7 | 2.5 | 2.1 | 2.0 |
| 50 | 35 ^L Top | 35 ^L Foot | 35 ^L GRD | | 18 | 35 | 50 |
| 2.3 | 3.1 | 3.0 | 2.5 | 1.7 | 2.5 | 2.1 | 2.0 |
| 18.9 | 18.1 | 18.2 | 18.7 | 19.5 | 18.7 | 19.1 | 19.2 |

0493 345' Rt Q 12' conc Drive

| | | |
|-------------|------------|-----|
| 2.43 | 2.1 | 2.0 |
| 345 conc | 43 conc | 50 |
| 18.73 | 19.75 | |

0487 35' Rt END conc Block wall



0475 35' Lt Q 3' conc walk

306
35^L
conc

21.16A

21.16A

Cont'd From Page 50

Check 9.94 12.68 = 12.69

T.P. 0.91 22.62 12.05 21.71

T.P. 0.48 33.76 12.57 33.28

T.P. 0.40 45.65 12.68 45.25

3±00 Sly Line Evergreen

T.P. 12.68 59.93A 0.19 45.25

2±00

45.44A

26

£

pt 51

46.7
+8.8
35

68.5
+10.6

79.6
+11.7
35

59.93A

37.2
8.2
35

38.4
7.0

39.6
5.9
35

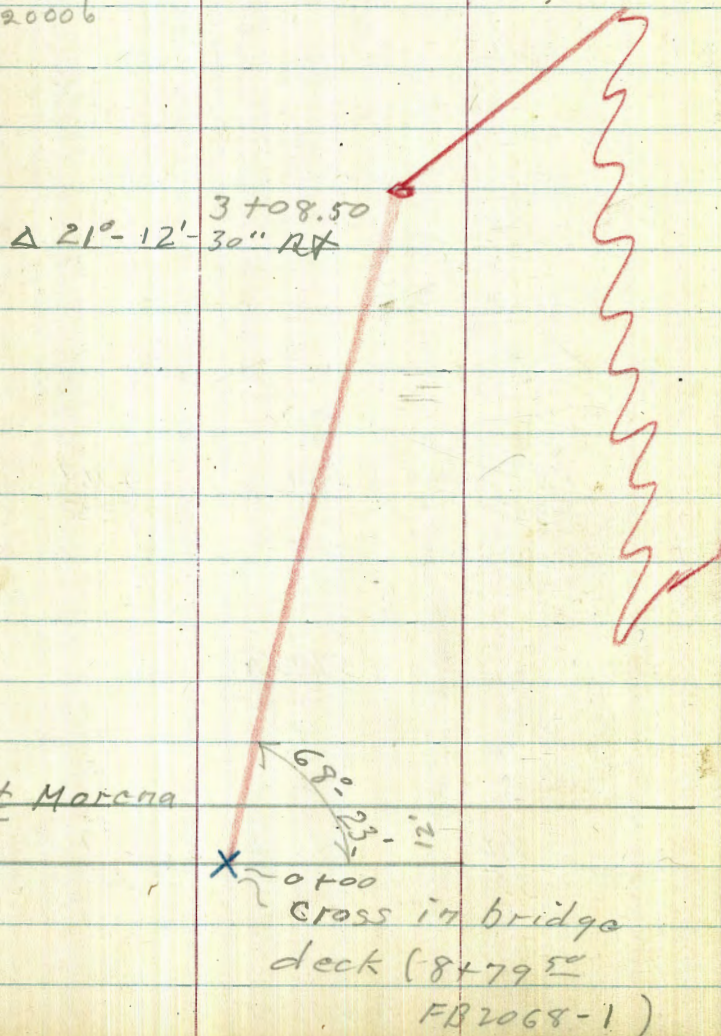
45.44A

Alignment
Tecalote creek channel
Morena to Knoxville

C.H.S.
Bey
Oltman
Johns
W.O. 20006

5-13-52

F.B. 2068-PI.

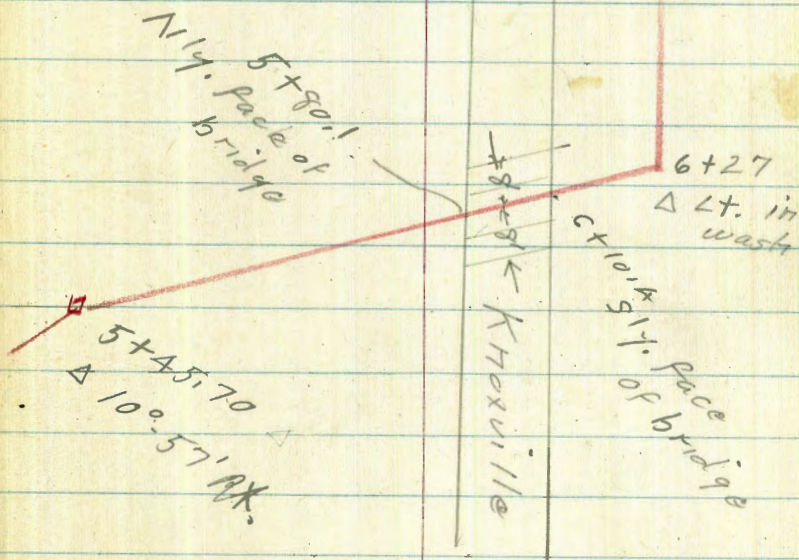


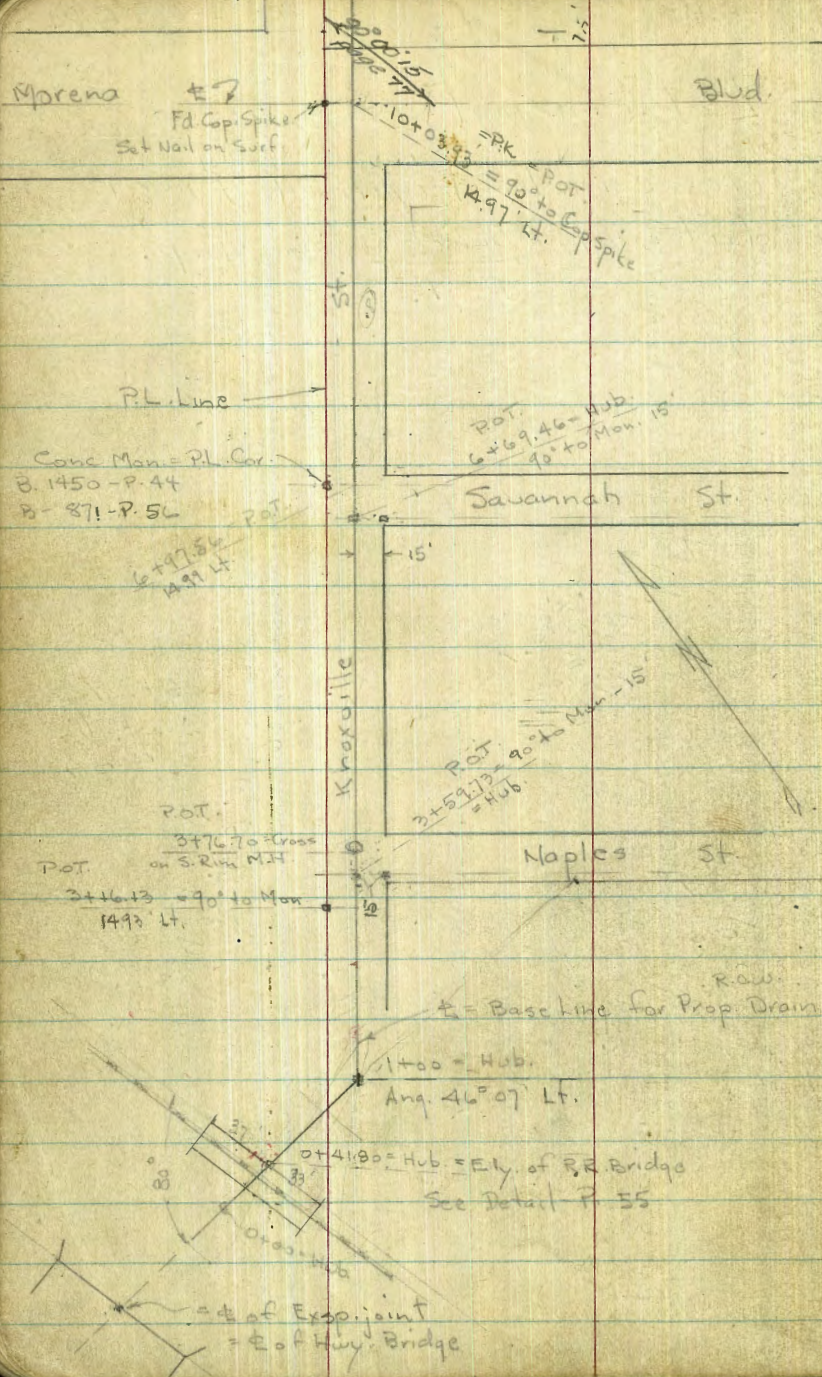
of channel as exists.
Ties can be figured from
data in F.B. 2068 & Map.

P. 1.

INDEXED
LOW

MAY 14 1952

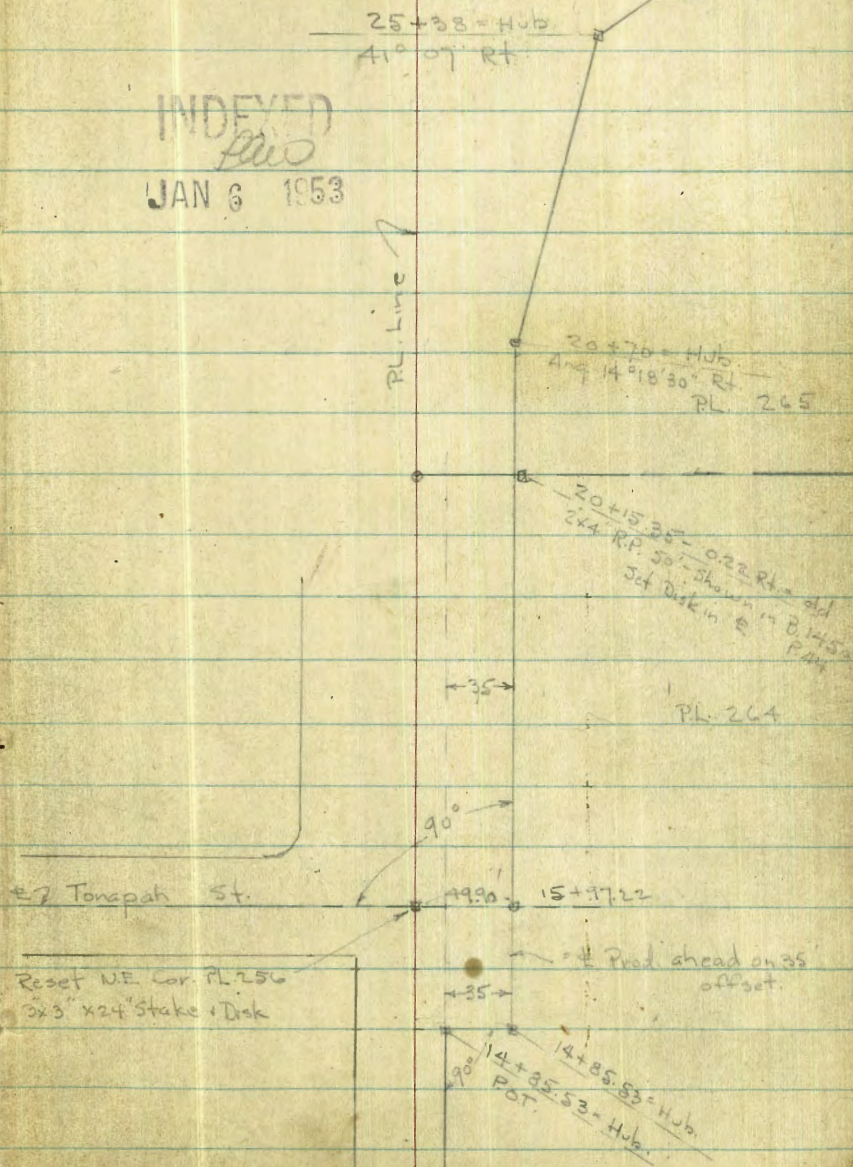




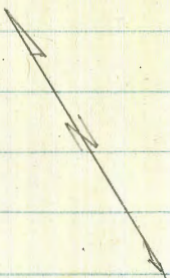
Survey for Prop. Drain - Tecolote Creek - 12-20-52 7.0.
6758 - w.o. 21061

53

INDEXED
JAN 6 1953



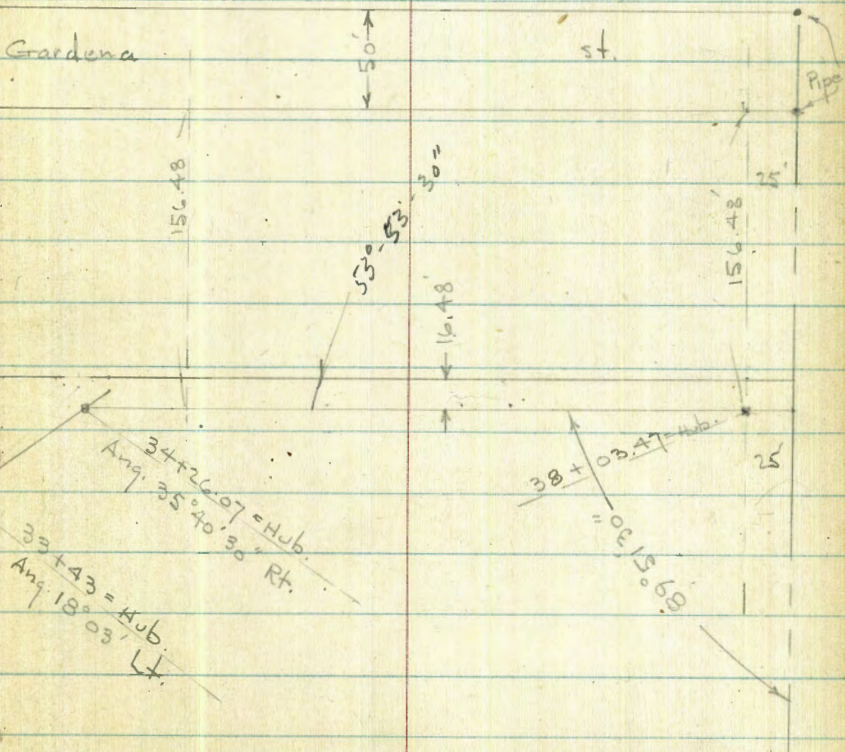
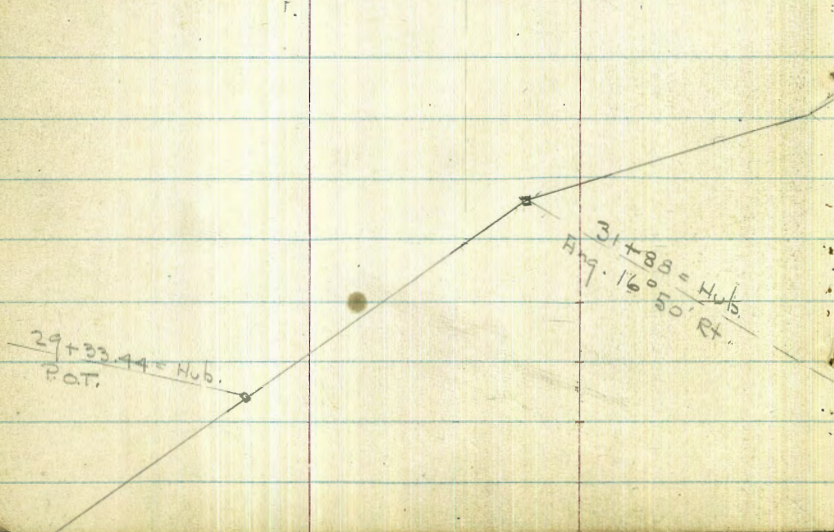
35 40-30
 18-03
 15-57



Ed. pipe - sec B. 15 45
 P. 36

Map 1248

S.L. Gardena Home tract.

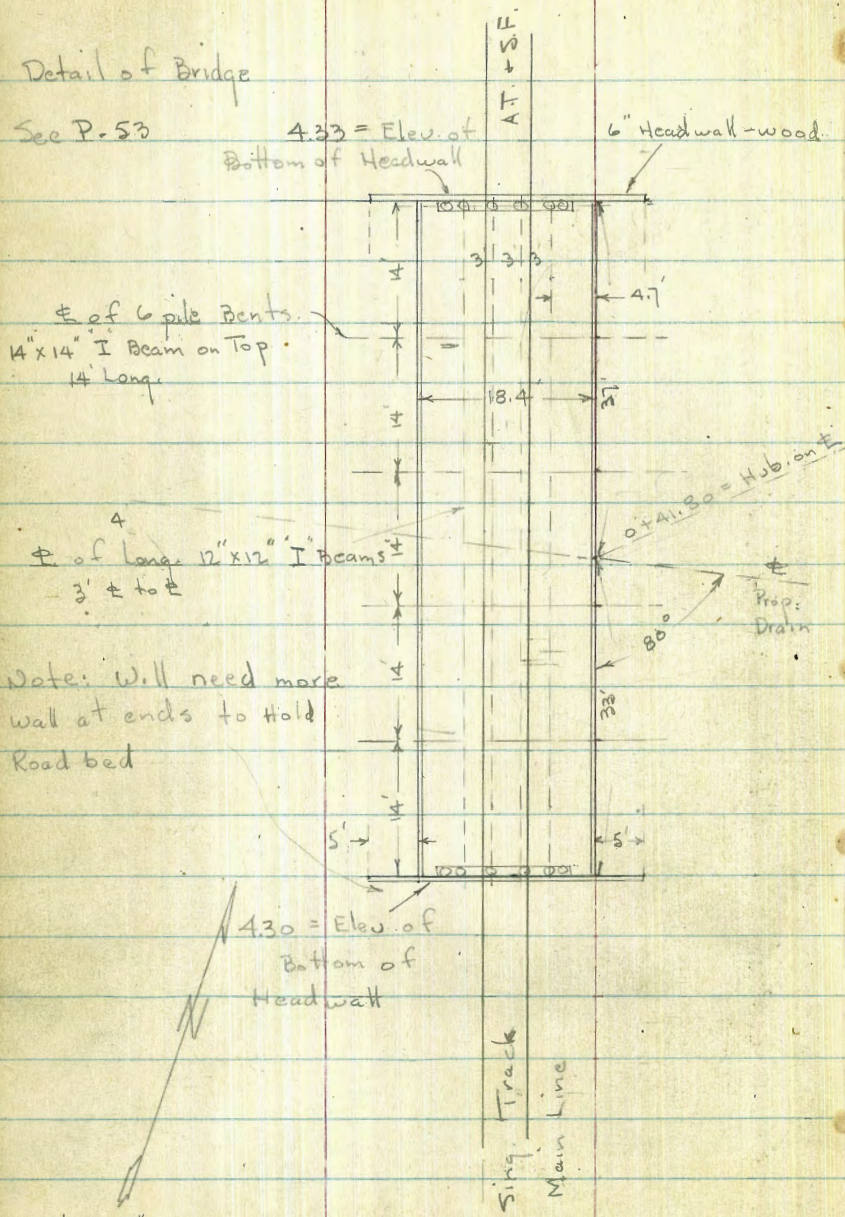


See Map 2421

Cont. Mon.

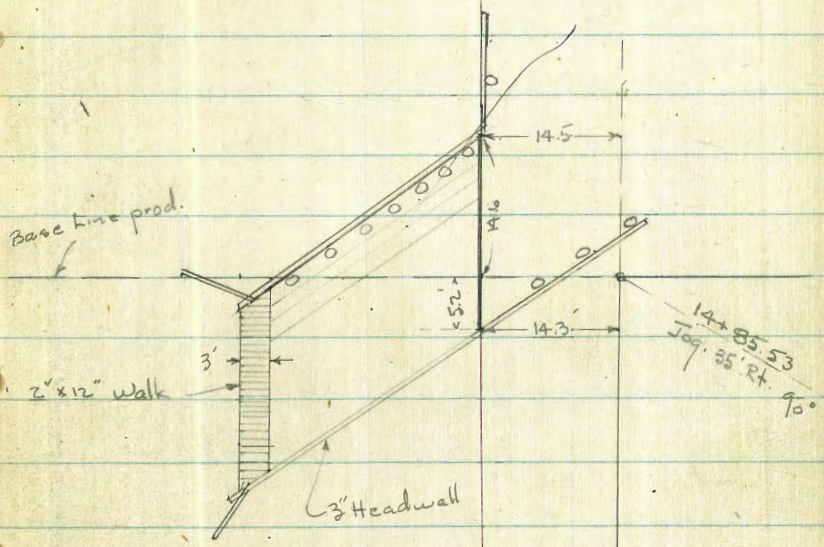
Detail of Bridge

See P. 53

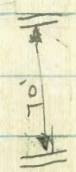


Detail of Bridge - See Sketch - P. 53

22' wide Bridge + 3' walk - 7-pile bents at head wall - 12" x 12" Caps. 8" x 18" Stringers
Use scale for dimensions



Scale - 1" = 20'



Req. Levels along \pm of Prop. Drain

See sketch - P. 53

2+00 = Nly. of Petes Yard - (filled)

1+66.9 - 27' Rt. = NW. Cor. office

1+46.5 - 27' Rt. = S.W. Cor. H.H. Peterson Office

1+31.6 - 47' Rt. = Nly. Cor. of Gar. - Cold Lay floor

1+00 - Sect. 90° to forward tang.

1+00 = Ang Pt. - Sect. 90° to Back Tang.

0+96 - 25.8 Lt. = MH #2 1.74 = Rim

0+75 - 29.4 Rt. = Tel. pole *

outs. along Line of Bridge

0+41.80 = Ely. of Bridge - See sketch - P. 55

0+00

B.M. = Top MH. #2

1.74

Book 2133 - P. 19

Lt.

\pm

Rt.

2.3 1.8 3.0 3.0 3.0
20 8 50 120 = yard.
3.5
27 = gr.

1.1 1.2 3.1 3.4 6.09 3.6 2.7
20 10. 27' floor 55.4 120
cor. cor. yard.

3.5
47 = floor

0.6 00.50 3.0 3.1 = 136 N. of
50 30 46.9 = wly S. end.
floor of R.W. of Gar.
45.2 long - 18 wide

0.5 00.50 0.4 - 0.4
50 on Hub. 50 100

99.6 = Top rail

9.96 = Top Rail

| | | | | | | | | |
|--------------------------|---------------------|-----|-----|---------|-----|--------|------------------------|---------------------------------------|
| 6.67 | 8.05 | 4.6 | 1.4 | 00.23 | 0.4 | 4.2 | 7.99 | 6.63 |
| Bottom of Long I Beam | Top Head wall | 3.7 | 27 | on Hub. | 15 | 33 | 33 | Bottom of wall |
| | | gr. | | | | ground | Top Head of wall | Long I Beam = Eff. water way |
| | | 1.6 | | 00.27 | | 0.9 | | |
| | | 30 | | on Hub | | 36 | | |

Actual Elev. Shown.

6+70 ✓

6+65.5 - 12' Lt. = Reg. Cold Lay - Slab. ✓

6+60 = end - Top of Fill ✓

6+00 ✓

5+40 = Top of New fill on Rt. ✓

5+30 ✓

5+00 ✓

4+40 ✓

4+00.5 - 15.3' Lt. = Reg. Cyclone fence

3+76.70 = Cross. on Sly. of Sewer M.H. ✓
= BM spike = Elev. 342

3+57 - 18.7' Rt. = Tel pole # 574078 - H

3+00 ✓

2+10

2+08 - 12.7' Rt. = Tel pole # 574079 - H

4.1
15

3.8

3.6 3.5
60 1204.08
12
C.L.3.9
15

3.8

4.1
125.4
185.2
605.0
1203.4
15.3

3.3

3.3
104.7
154.9
604.8
1203.2
15

3.1

3.2
134.7
164.9
604.4
120

ledge

3.2
15

3.1

4.4
203.0
352.5
602.1
1203.3
15.4
By fence

3.0

2.1
502.6
751.9
1202.9
15

2.7

2.9
601.5
1202.7
202.48
on Cross2.3
201.6
501.5
120graded Rd. - water
stand2.3
20

1.8

2.3
601.3
1202.3
20

1.7

2.9
201.4
501.4
120

9+30

| Lt. | | | | ± | Rt. | | | |
|-----|-----|-----|-----|-----|-----|-----|-----|--|
| 5.7 | 5.7 | 4.4 | 5.0 | 5.1 | 5.6 | 5.4 | 5.2 | |
| 30 | 14 | 11 | | 15 | 30 | 75 | 120 | |

9+18 - 19.4' Rt = Nly. Cor. of 4' units

| | | |
|------|-------|----------------|
| 5.5 | 6.79 | 5.5 |
| 19.4 | floor | 35.4 = E. Cor. |
| 9' | | |

9+15 - 13.5' Lt = ± P. pole

8+85 - Sec. Bet. units

Row of 4 units to N.

| | | | | | | |
|-----|-----|-----|-----|-------------|-----|-----|
| 5.3 | 5.3 | 4.7 | 4.7 | 4.8 | 5.3 | 5.1 |
| 30 | 15 | 11 | | 19.6 = line | 60 | 120 |

8+49 - 19.6' Rt = Sly of Row of Small Courts. to E.

| | | |
|--------------|-----|-----------------|
| 5.0 | 6.7 | 143.8 = E. Cor. |
| 19.6 = floor | | |
| 9' | | |

8+45

| | | | | | | |
|-----|-----|-----|-----|-----|-----|-----|
| 5.0 | 5.4 | 4.6 | 4.5 | 4.7 | 5.0 | 4.8 |
| 30 | 15 | 11 | | 20 | 60 | 120 |

8+35 = Nly Top of fill

| | | | | | | | |
|-----|-----|-----|-----|-----|-----|-----|-----|
| 5.0 | 5.5 | 4.3 | 4.4 | 4.6 | 6.5 | 6.6 | 6.7 |
| 30 | 15 | 12 | | 12 | 22 | 75 | 120 |

8+00

| | | | | | | |
|-----|-----|-----|-----|-----|-----|-----|
| 4.8 | 5.3 | 4.2 | 4.0 | 4.7 | 5.7 | 5.8 |
| 30 | 15 | 12 | | 20 | 60 | 120 |

7+17 = Sly of Top of New fill on Rt.

| | | | | | |
|-----|-----|-----|-----|-----|-----|
| 4.5 | 4.1 | 4.0 | 5.3 | 6.0 | 6.5 |
| 15 | | 12 | 20 | 60 | 120 |

7+15 - 14.1' Lt = ± P. pole - B.M. = spike 5.05

7+13 - 15.2' Lt = end fence

7+07 = Nly. of graded rd.

| | | | | |
|-----|-----|-----|-----|-----|
| 4.4 | 4.2 | 3.6 | 3.2 | 3.2 |
| 15 | | 25 | 75 | 120 |

6+95 - 11.7' Lt = end C.L.

4.22
11.7 =
C.L.

6+87.5 = ± Sewer M.H.

4.50 = Rim

10+50

10+36 38.5 BT Begin 3' wire fence

10+35 35' LT = 4.5 x 4.5 concrete
gas & electric manhole

10+30 12' RT = Telephone pole #415060H

10+25

10+18 = NORTH EDGE PAVEMENT ALONG MORENO

10+03.93 = P.K. 4 MORENO

9+90 SOUTH EDGE PAVE ALONG MORENO BLVD.

9+75

Set P.M. = spike in N.E. Pole-Moreno 9.56

9+53 = 64.2 Rt. = Nly. of Row of Cts

9+39 = 64.2 Rt. = Sly. of Row of Courts to E. (not)

Lt.

Lt.

Rt.

59

| | | | | | | | | |
|-----|-----|-----|-----|-----|-----|-----|-----|-----|
| 9.0 | 9.5 | 8.9 | 8.7 | 8.4 | 8.4 | 8.9 | 9.0 | 9.1 |
| 100 | 50 | 35 | 17 | | 25 | 50 | 70 | 100 |

8.94
Dim Manhole

| | | | | | | | | | | | | | |
|-----|-----|-----|-----|-----|-----|-----|-----|-----|-----|-----|-----|-----|-----|
| 9.2 | 8.8 | 8.8 | 8.9 | 8.3 | 8.5 | 8.3 | 8.0 | 7.9 | 7.7 | 7.7 | 7.7 | 8.7 | 9.8 |
| 300 | 250 | 200 | 150 | 100 | 45 | | 20 | 70 | 100 | 150 | 200 | 250 | 300 |

| | | | | | | | | | | | | | |
|-------|------|------|------|------|------|------|------|------|------|------|------|------|-------|
| 10.18 | 9.46 | 9.26 | 9.19 | 8.87 | 8.75 | 8.68 | 8.55 | 8.40 | 8.30 | 8.31 | 8.31 | 8.99 | 10.88 |
| 300 | 250 | 200 | 150 | 100 | 45 | | 20 | 70 | 100 | 150 | 200 | 250 | 300 |

| | | | | | | | | | | | | | |
|-------|------|------|------|------|------|------|------|------|------|------|------|------|-------|
| 10.17 | 9.98 | 9.86 | 9.60 | 9.43 | 9.23 | 9.10 | 9.06 | 8.95 | 8.86 | 8.61 | 8.75 | 9.38 | 10.52 |
| 300 | 250 | 200 | 150 | 100 | 45 | P.K. | 20 | 50 | 70 | 150 | 200 | 250 | 300 |

| | | | | | | | | | | | | | | |
|------|------|------|------|------|------|------|------|------|------|------|------|------|------|-------|
| 9.96 | 9.78 | 9.64 | 9.35 | 9.03 | 8.79 | 8.67 | 8.60 | 8.62 | 8.51 | 8.40 | 8.28 | 8.37 | 8.99 | 10.02 |
| 300 | 250 | 200 | 150 | 100 | 45 | 15 | | 20 | 50 | 70 | 150 | 200 | 250 | 300 |

| | | | | | | | |
|-----|-----|-----|-----|-----|-----|-----|-----|
| 6.4 | 7.4 | 6.8 | 6.8 | 6.6 | 7.5 | 6.5 | 5.9 |
| 50 | 20 | 15 | | 23 | 30 | 60 | 120 |

| | | | | | | | |
|-----|-----|-----|-----|-----|--------------|-----------------|-----|
| 5.9 | 5.9 | 5.3 | 5.6 | 6.2 | 5.3 | 5.8 | 5.5 |
| 30 | 15 | 11 | | 30 | 64.2 -Car | 90 along ct. | 120 |

5.4 6.70
64.2 floor
9'

13+50

9.6 10.1 10.3 9.2 9.5 9.7 9.7
15 27 15 8 35 70

13+30 80' Rt. = E 30" Euc. tree

13+00

9.4 9.7 9.8 8.6 8.7 9.1 9.2 8.7 8.6
15 36 16 8 20 50 70 120
edge road edge road

12+71-545 Rt end 6' Board Fence

12+50

8.7 9.4 9.4 8.5 8.5 9.0 9.1 8.9
15 35 15 10 15 35 70
w. edge road edge road

12+42 - 39' Lt = E Power Pole # 2292

12+00 14' Lt SPLIT POLE FENCE 3 BRDS W.

9.1 9.5 9.2 8.3 8.2 8.6 9.0 8.4
15 30 17 10 15 40 70
edge dirt road

11+85 71' Rt. = E OF 2A" EUC. TREE

11+65

8.4 9.1 9.2 8.6 8.0 8.4 8.3
15 35 15 20 10 70
edge road

11+63 10.5 Lt. runs parallel to E
CROSS FOUR STRAND BRD FENCE - ends
AT BOARD FENCE

11+59 - 53' Rt. Begin 6' Board Fence

11+15

8.4 9.1 9.0 8.0 8.0 8.5 8.2
15 35 15 20 40 80
west edge road east edge dirt road

11+13 - 39' Lt = E Power Pole # 2220

11+12.2 - 38.4 Rt NORTH WEST COR OF HOUSE

9.2 9.1
54.6 38.4
east cor along house
house

11+12 14.3 Lt = E Guide pole

10+89 38.4 Lt. SOUTH WESTLY COR FRAME HOUSE
ALSO END OF WIRE FENCE

9.44 9.1
38.4 38.4
Flase of Dirt along house
House

10+76 14.1 Lt = E Telephone Pole # 50.588H

10+71 40.2 Rt = E OF 16" EUC. TREE

12.97 T.B.M.

16+00

15+77-15.5' Rt. = E Guy Pole # 559506-H

15+72.5-43' Lt. = E P. pole # P4598

15+67.5-13.7' Lt. = E P.H.

15+50-63.7' Lt. = 72 S. of Nly. of 22.1' small frame
House - 23.4' Long.

15+13.1 = opp. Nly end of wing wall

E is prod. - actual Line 35' Rt.

15+00.1 = Sect. at NEly Cor. of Bridge

edges of Bridge

Sect along t of channel - outs along channel from

14+80.3 = SE Cor Bridge at Head wall

Set B.M. SPIKE IN POLE S.W. COR. TONNANT & KNOXVILLE 13.16

14+55-12' Lt. = end fence

14+00

13+75 40.4 Lt. = E Power Pole # P2260

Lt.

E

Rt.

61

15' ± E. of P.H. Line

| | | | | | | | | |
|------|------|------|------|-----|-------|------|------|------|
| 11.8 | 12.0 | 11.8 | 13.7 | 6.7 | 6.7 | 14.8 | 11.9 | 11.8 |
| 70 | 41 | 23 | 17 | 6 | 4 | 17 | 24 | 70 |
| | | Rd. | | | chan. | | | |

| | | | | | | | | |
|----------|------|------|------|-------|-----|------|------|------|
| 10.5 | 10.9 | 12.7 | 13.5 | 6.5 | 6.5 | 17.6 | 11.9 | 10.5 |
| 63.7 | 45 | 39 | 15 | 5 | 6 | 24 | 35 | 70 |
| at House | | Rd. | Top | chan. | | Top | | |

| | | | | | | | | | |
|-----|-----------|--------|-------|------|-----|---------|------|------|------|
| 9.8 | 10.4 | 14.2 | 14.58 | 12.7 | 6.3 | 6.3 | 15.6 | 10.7 | 10.4 |
| 70 | 47 | 36 | 13.8 | 13.8 | 5 | 8 | 22 | 35 | 70 |
| | edge | Top of | end. | | | Bot. of | Top | | |
| | Head wall | | | | | channel | | | |

| | | | | | | | | |
|------|------|---------|--------|---------|-----|--------|------|------|
| 10.1 | 11.2 | 14.5 | 14.86 | 6.5 | 6.1 | 15.4 | 10.8 | 10.4 |
| 70 | 49 | 36 | 14.5 | 14.5 | | 17 | 35 | 70 |
| | Toe | edge of | Top of | channel | | Top of | | |
| | | old key | Bridge | | | Bank | | |

| | | | |
|-----------------------|--------------|----------------|-------------------------------------|
| 6.1 | 6.2 | 6.2 | 6.1 |
| 50' S.Wly. in channel | wly. of walk | Ely. of Bridge | 19' N.Ely. - Int. of E. of channels |

| | | | | | | | | | |
|-----|--------|---------|-------|---------------|--------|--------|------|------|------|
| 9.6 | 14.3 | 7.1 | 15.40 | 14.86 | 14.90 | 14.8 | 14.4 | 10.7 | 10.3 |
| 75 | 60 | 39.6 | 36.3 | 36.3 | 14.3 | 11 | 25 | 70 | |
| | Top of | channel | Top | wly. - Bridge | Top of | Bridge | | | |
| | Bank | at edge | walk | | | | | | |

| | | | | | | | | |
|-----|---------|----------|------------|------|------|------|------|------|
| 6.5 | 7.0 | 14.4 | 14.3 | 10.3 | 10.1 | 10.3 | 10.1 | 10.3 |
| 70 | 40 | 15 | 7 | 35 | 70 | 120 | | |
| | E of | Top of | edge, edge | | | | | |
| | channel | existing | road road | | | | | |
| | | channel | | | | | | |

| | | | | | | | |
|-----|------|------|-----|-----|-----|-----|-----|
| 9.5 | 11.8 | 11.7 | 9.5 | 9.6 | 9.8 | 9.8 | 9.7 |
| 45 | 38 | 15 | 8 | 35 | 70 | 120 | |

85.5
17.6
100.1

Lt.

± = 15' ±
E. of P.L. Line
To 20+70

T.P. = Nail in post. 3' ± 23+01

15.50

22+00

15.00

98

edge

AC.

14.3 14.8 10.7 10.7 15.7 14.7
84 50 35 22 10

14.2

35

21+00

50' Row. for Drain

Beginning at 21+00 - ± is req. ± as Run = Ely. of

14.47 14.8 9.9 9.9 15.2 13.5
72 60 41 29 15
edge AC. chan.

13.8

35

20+70 = Ang. Pt. - Sect. 90° to back tang.

14.68 14.29 14.62 14.20 11.2 9.8 9.8 15.8 13.5 13.7
Top 62.9 45 27 19 15 11 23 30 70
gut. edge chan.

20+25 = opp. P.C. of Ret. - NW. Cor. Nashville

14.45

14.09 14.36 13.94 15.2 8.2 9.5 15.1 13.6 13.2
Top 62.85 45 27 22 6 7 15 25 70
gut. edge chan.

20+19.5 = Cross Barb wire fence

19+60

13.80 14.07 13.81 15.7 8.3 8.3 14.8 12.3 13.4
63 45 27 20 4 9 22 28 70
edge chan.

T.P. = Nail in Post - 4' ± 19+15

13.50

18+95 = opp. P.C. of Ret. - SW Cor. Nashville + Knoxville

13.76 13.39 13.65 13.27 16.1 7.8 7.8 15.4 12.8 12.7
Top 63 45 26.5 20 4 10 21 26 70
gut. edge chan.

19+00

13.23

Top

12.86 13.13 12.72 15.0 7.1 7.1 14.8 11.6 11.8
63 45 27 21 9 5 17 23 70
gut. edge chan.

17+00

12.79 12.37 12.69 12.37 13.6 7.0 7.0 14.5 10.7 11.5
Top 62.9 45 27 23 9 5 15 22 70
gut. edge chan.

16+70 - 233' Lt. = ± Guy Pole - # 559 500 H

16+42.22 = P.C. of 27' cb. Rd. on Lt.

12.41

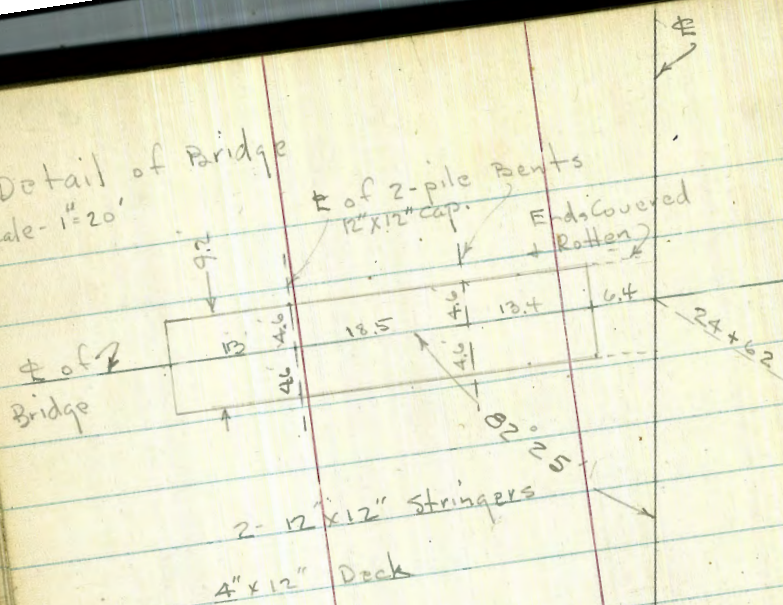
62.9

Top cb.

11.96 12.35 11.87 13.4 6.4 6.4 15.2 10.9 11.1
gut. 45 27 21 8 4 16 24 70
edge AC. chan.

See plans + Rec. X-Sections
of Knoxville

Detail of Bridge
Scale - 1" = 20'



= Ely. of 50 Row. 63 Rt.

24+85

24+62 = Int. of Φ + Φ of Rough wooden Bridge
Sect. Thru Φ of Bridge - See sketch above

24+00 - Big row of willows - 10' Lt. also along w. bank

23+31 - 39.5' Lt. = Outlet of 18" RC pipe
culvert from Knoxville - end piece broken off

23+00

| | | | | | | | |
|------|------|-------|------------------|-------------|------|---------|-------|
| | 17.6 | 17.1 | 11.9 | 11.9 | 16.5 | 17.3 | 17.7 |
| | 90 | 52 | 40 | 25 | 17 | | 35 |
| | | | | Chan. | | | |
| | 18.2 | 17.59 | 11.7 | 19.23 | 12.0 | 19.44 | 17.60 |
| Dirt | 51.3 | Chan. | 38.3 | Chan. | 19.8 | Deck | 6.4 |
| Deck | | | Deck | Deck | Deck | Covered | Dirt. |
| end | | | | | | | |
| | 17.0 | 16.6 | 11.6 | 11.6 | 16.3 | 15.9 | 16.0 |
| | 90 | 55 | 40 | 25 | 15 | | 35 |
| | | | | Chan. | | | |
| | | | 11.10 | 10.46 | | | |
| | | | 47.5 = I.E. | 39.5 = I.E. | | | |
| | | | end of last pipe | at End | | | |
| | | | in place | | | | |
| | 16.0 | 15.9 | 11.1 | 11.1 | 15.3 | 15.4 | 15.2 |
| | 90 | 53 | 40 | 28 | 20 | | 35 |
| | | | | Chan. | | | |

| | | | | Lt | | Rt. | | |
|-------------------------------------------------------------------------------------------------------------|-----------------|-----------------|------|-------|---------------------|-------------|------|------|
| 28+00 - end fence on Lt. | 20.9 | 19.8 | 18.2 | 13.2 | 13.2 | 19.6 | 20.2 | 22.2 |
| | 90 | 60 | 39 | 30 | 16 | 13 | | 35 |
| 27+82.5 47.6 Lt. = S.E. Cor. of Shed | | | | chan. | | | | |
| 27+57 - 52' Lt. = Sw. Cor. of Wooden Shed | | | | | | | | |
| 27+50 | 20.0 | 18.9 | 13.2 | 13.2 | 19.8 | 20.2 | | 20.9 |
| | 90 | 40 | 30 | 16 | 11 | | | 35 |
| | | | | chan. | | | | |
| 27+21 - Φ of 5.6' Diam. Well - 4" Conc. walls at least 10' Deep. 45' Lt. = Beg. rough wire fence | | | | | 19.85 = Top of well | | | |
| 27+37 - 51.2 Lt. = S.E. Cor. of House | | 18.6 | | | 20.83 | | | |
| | | 51.2 = By House | | | floor | | | |
| 27+11 - 57.6 Lt. = Sw. Cor. of Small House | 18.2 | | | | | | | |
| | 57.6 = By House | | | | | | | |
| 27+09 - 11.5 Lt. = Φ 6"x6" Elec. post. | | | | | | | | |
| 27+00 | 18.8 | 19.2 | 13.0 | 13.0 | 19.2 | 19.2 | | 19.9 |
| | 90 | 49 | 36 | 18 | 15 | | | 35 |
| 26+90 - 76' Lt. = end fence - goes S. to bank of chan. | | | | chan. | | | | |
| - 44' Lt. = Φ M.H. 7 - No Top | | | | | | | | |
| 26+50 - 96 Lt. = Barbwire fence - sky. of Dirt Drive | 18.6 | 17.9 | 12.8 | 12.8 | 19.5 | 19.49 | 18.7 | 19.4 |
| | 90 | 52 | 39 | 26 | 22 | 4.4 | | 35 |
| | | | | chan. | | Top ring | | |
| 26+00 - end willows on S. bank | | | | | | | | |
| 25+80 | 18.2 | 17.4 | 12.2 | 12.4 | 17.7 | 17.8 | | 17.7 |
| | 90 | 48 | 36 | 24 | 19 | | | 35 |
| | | | | chan. | | | | |
| 25+38 - Ang. Pt. = Sect. 90' to Forward Tang. | 18.1 | 17.7 | 12.3 | 12.3 | 17.9 | 17.49 | | 17.5 |
| | 90 | 43 | 29 | 15 | 8 | on Hub. | | 35 |
| | | | | chan. | | | | |
| 25+13 - 14.8 Lt. = Φ Tel. pole # 427369 - H B.M. 18.92 spike | | | | | | | | |
| 25+10 | 17.9 | 17.0 | 12.0 | 12.2 | 17.9 | 17.3 | | 17.3 |
| | 90 | 55 | 44 | 25 | 16 | | | 35 |
| | | | | chan. | | | | |

| | | | | | | Lt. | R | Rt. | | | | | | |
|-------------------------------------------------------------|--|--|--|--|--|------------|------------|------------|------------|------------|------------|------------------|-----------------------------|-------------|
| 32+20 | | | | | | 23.9 85 | 22.0 54 | 24.1 44 | 17.0 31 | 17.0 13 | 23.4 7 | 23.3 | 23.8 50 | 24.2 100 |
| 31+88 = Ang. Pt. - Sect. on split | | | | | | 23.3 85 | 21.0 54 | 23.5 42 | 17.0 29 | 17.0 12 | 23.4 5 | 23.23 on hub. | 23.6 40 | 24.0 80 |
| 31+45 | | | | | | 21.6 85 | 20.5 55 | 22.6 46 | 16.6 40 | 16.6 20 | 22.3 13 | 23.4 | 23.4 40 | 23.5 80 |
| 31+00 | | | | | | 21.2 85 | 21.9 51 | 16.2 34 | 16.2 19 | 21.2 14 | 22.3 | 22.9 50 | | |
| 30+50 | | | | | | 20.7 85 | 19.6 60 | 21.2 46 | 16.1 29 | 16.1 16 | 22.7 10 | 22.2 | 23.1 50 | |
| 30+00 | | | | | | 20.0 85 | 19.6 60 | 21.0 42 | 15.6 30 | 15.6 16 | 22.2 9 | 21.9 | 22.7 35 | |
| 29+54 - 21.6' Rt. = S.E. Cor. Barn | | | | | | 19.1 90 | 19.1 55 | 20.2 43 | 15.4 30 | 15.3 15 | 21.5 11 | 21.7 | 22.4 35 | |
| 29+50 - ± Thru barn | | | | | | | | | | | | | | |
| 29+35 - 2.5' Rt. = S.W. Cor. old Cow Barn | | | | | | | | | | | | | | |
| 29+23.6 - 2.5' Rt. = ± 3.5' Diam. - 4" Wall - Conc. Trough. | | | | | | | | | | | | | 23.28 2.5 Top Cor. | 21.7 9' |
| 29+22 - Cross old wood corral fence - 15' long. | | | | | | | | | | | | | | |
| 29+00 old Doub. Gar. - Dirt floor | | | | | | 20.3 85 | 18.7 62 | 19.8 40 | 14.9 32 | 15.2 16 | 21.2 8 | 21.7 | 22.5 35 | |
| 28+73 - 64' Lt. = Near Cor. of old shed behind | | | | | | | | | | | | | | |
| 28+50 | | | | | | 21.1 85 | 18.6 55 | 19.2 35 | 13.2 28 | 13.2 18 | 20.3 10 | 20.7 | 22.6 35 | |

| | Lt. | ☉ | Rt. |
|--------------------------------------------------|--------------|------------|-------------|
| 37+00 | 25.7 80 | 25.5 60 | 28.5 50 |
| | 20.5 30 | 20.5 18 | 27.4 11 |
| | chan. | | 25.2 30 |
| | | | 26.6 60 |
| | | | 22.9 60 |
| 36+50 | 25.1 80 | 25.1 56 | 27.4 47 |
| | 20.3 34 | 20.3 18 | 27.1 11 |
| | chan. | | 25.2 30 |
| | | | 27.2 60 |
| | | | 22.8 60 |
| 36+00 | 25.0 80 | 24.6 57 | 27.6 48 |
| | 19.8 28 | 19.8 13 | 24.3 |
| | chan. | | 23.1 50 |
| | | | 25.6 85 |
| 35+55 | 24.7 80 | 24.9 54 | 25.5 44 |
| | 19.4 28 | 19.4 14 | 25.4 7 |
| | chan. | | 24.6 20 |
| | | | 24.8 65 |
| | | | 22.7 100 |
| 35+10 | 24.6 85 | 25.5 43 | 19.2 30 |
| | 19.0 15 | 19.0 9 | 24.3 |
| | chan. | | 24.5 50 |
| | | | 22.6 75 |
| 34+60 | 24.4 85 | 25.0 41 | 19.0 28 |
| | 19.0 12 | 19.0 7 | 24.1 7 |
| | chan. | | 24.4 50 |
| | | | 23.8 100 |
| | | | 24.8 100 |
| - 41.8 Lt. = end wire fence | | | |
| 34+26.07 = Ang. Pt. - Sect. 90° to forward tang. | 24.9 60 | 24.2 39 | 18.3 30 |
| | 18.3 11 | 18.3 4 | 23.6 4 |
| | chan. | | 24.05 50 |
| | | | 24.7 50 |
| 34+25-52.3 Lt. = end board + Beg. Wire fence | | | |
| 34+00 - 56.8 = fence | 26.0 85 | 25.2 60 | 23.0 46 |
| | 18.1 43 | 18.1 28 | 24.8 15 |
| | chan. | | 24.4 50 |
| | | | 24.7 100 |
| 67.5 Lt. = fence | | | |
| 33+43 = Ang. Pt. - Sect. 90° to back tang. | 25.2 67.5 | 24.9 60 | 17.8 51 |
| | 17.8 34 | 17.8 22 | 24.4 22 |
| | chan. | | 23.9 50 |
| | | | 24.8 100 |
| 25.6 25.6 | | | |
| 32+85 - 87.2 Lt. = Board fence | 24.6 85 | 23.4 60 | 25.6 50 |
| | 17.7 38 | 17.7 21 | 23.9 14 |
| | chan. | | 23.3 50 |
| | | | 24.4 100 |
| | | | 25.1 100 |

Lt.

E

Sct. B.M. = spike in Pole on Sub. Line 29.79

38 + 28.47 = end at Sub. Line

| | | | | | | | | |
|------|------|--------|------|------|------|------|------|------|
| 28.6 | 28.9 | 21.8 | 21.8 | 24.5 | 24.0 | 29.1 | 27.9 | 29.3 |
| 90 | 70 | 60 | 45 | 37 | 19 | 12 | 9 | 15 |
| | | (chan) | | | | | | |

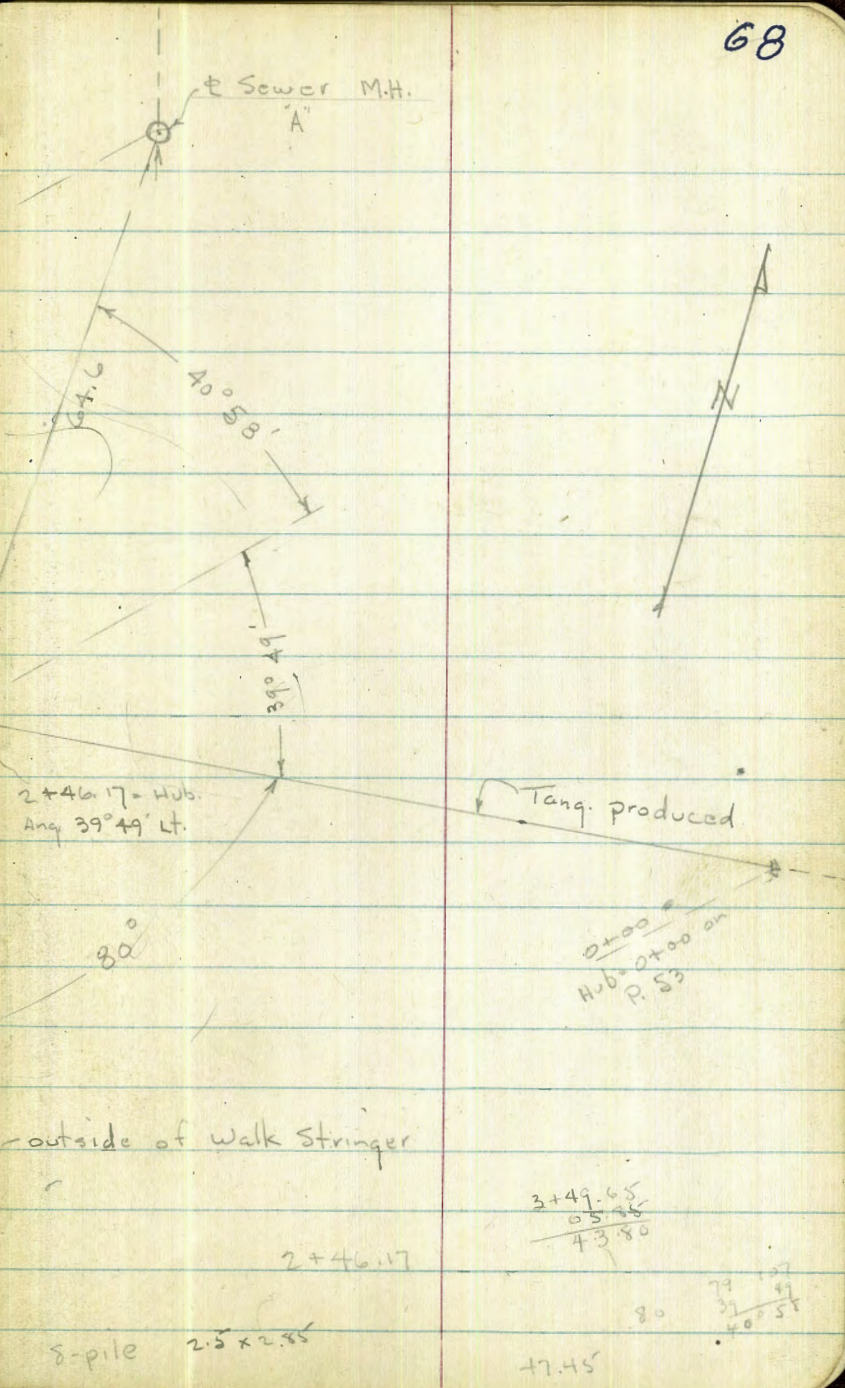
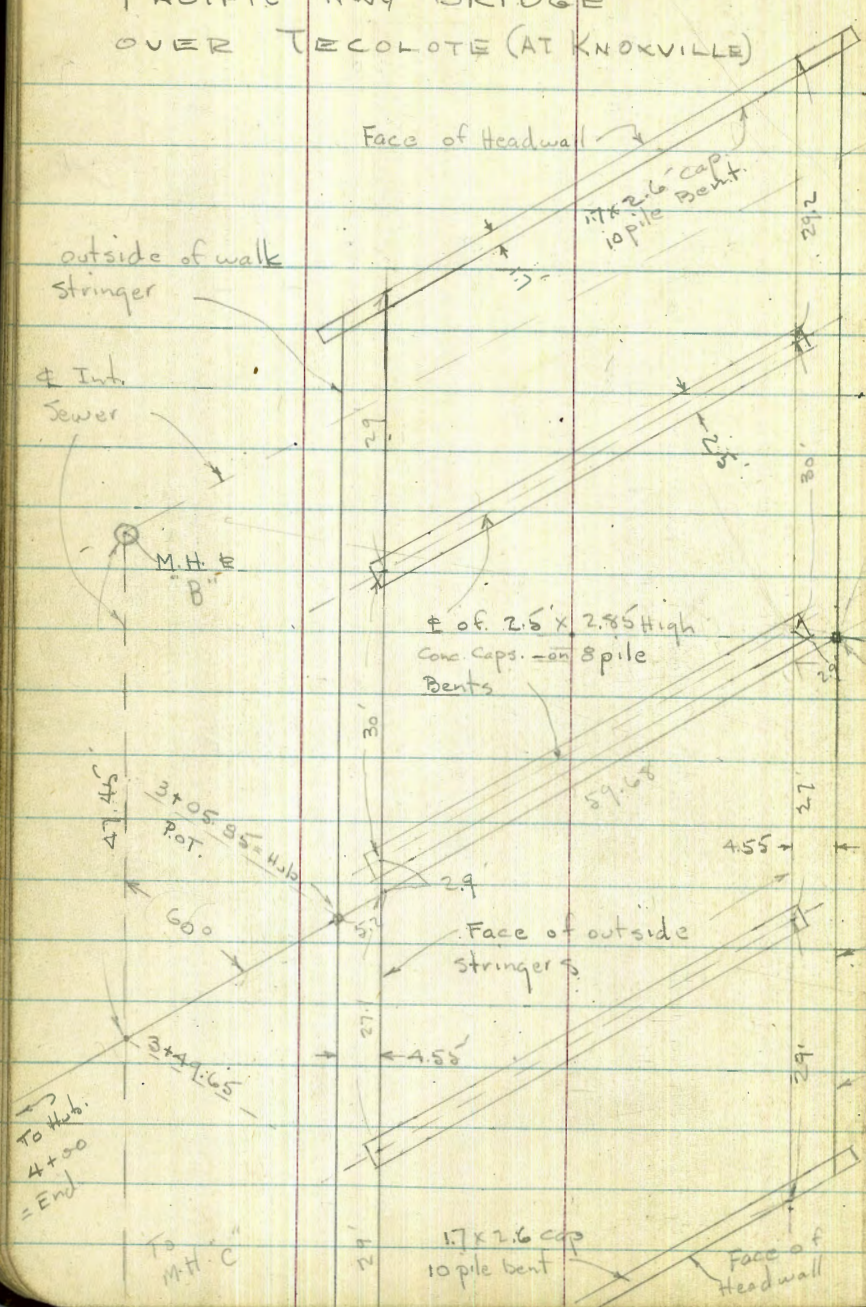
38 + 13 = 16.7 Lt. = Φ 24" Diam. Well Casing

28.86
16.7 = Top

37 + 65

| | | | | | | | |
|------|------|------|--------|------|------|------|------|
| 25.7 | 26.0 | 29.5 | 21.4 | 21.4 | 28.2 | 26.0 | 23.5 |
| 80 | 61 | 54 | 35 | 22 | 11 | | 50 |
| | | | (chan) | | | | |

See Pg. 53
 PACIFIC HWY BRIDGE
 OVER TECOLOTE (AT KNOXVILLE)



Tecalote Creek Drain
 Ry Bridge to Pac. Hwy Bridge

Survey for Extension of St. Drain

Wly. from Beginning Shown on p. 53 - Sketch - P. 68

W.O. 32289 - # 6847 - 4-3-53 - 7.0

Bottom of Stringers - W. side

E. side

Bottom of Main Stringers = Efec. Waterway

Elev. M.H. "A" - 4.63 = I.E. 10" - 5.43 = I.E. Main line
 1.69 = W. Rim

Sect. along Line of Bridge

2+46.17 = Ang. Pt. - Line of outside of walk stringer

2+00

1+50

1+00

0+50

0+00

B.M. = 0+00 Hub.

00.27

Lt. # Rt.

INDEXED
 APR 3 1953

4.30 = Ave. Elev.
 of Bottom

4.30 = Bot.

4.30 = Elev. of
 Bottom

4.29 = Bot.

| | | | | | | | | | |
|---------|--------|--------|---------|-----|------------|------|---------|-----|--------|
| 1.8 | -0.8 | 0.5 | 0.3 | 0.2 | 00.51 | 0.6 | 0.6 | 0.7 | 2.5 |
| 54.4 | 41 | 37 | 28 | 15 | on Hub. 15 | 33.5 | 45 | 60 | |
| at cap. | + wash | | ± Pent. | | | | ± Pent. | | at Cap |
| 2.4 | 0.4 | -0.9 | 1.1 | 0.8 | | 0.8 | | 0.9 | |
| 50 | 25 | 21 | 16 | | | 25 | | 60 | |
| | | ± wash | | | | | | | |
| 4.6 | 1.4 | 0.6 | -1.0 | 0.7 | 0.9 | 0.7 | | 0.7 | |
| 60 | 45 | 30 | 25 | 20 | | 25 | | 60 | |
| | | | ± wash | | | | | | |
| -2.3 | -2.4 | -0.8 | 0.2 | | 0.9 | 1.0 | | 1.5 | |
| 70 | 50 | 25 | 21 | | | 25 | | 60 | |
| 0.4 | 0.1 | -0.8 | 0.4 | | | 1.2 | | 1.2 | |
| 50 | 15 | 12 | | | | 25 | | 50 | |
| | | ± wash | | | | | | | |

Top
 old 22.
 Fill

00.27

= Hub. - See P. 56.
 for outg.

Actual Elev. shown

Cont in Book 2116 - P. 60

4+00 = end.

M.H. "C"

Top = 2.90

I.E. = -6.19

I.E. = -5.57

Ely. Rim +3.10

M.H. "B" = 47.45' N. along Sewer

3+49.65 = Int. of Main Sewer Line

3+05.85 = Line of outside of Walk Stringers

2.0 1.9 -0.8 0.9 0.77 1.5 -1.3 1.0
50 25 18 13 on Hub. 25 50 75
Ewash

5.7 0.6 -1.0 -0.1 0.9 1.4 1.9 1.6
50 35 29 25 25 50 75
Ewash

1.5 -1.1 0.2 0.1 0.023 0.5 0.9 1.2 1.0
54.2 35 27.5 15 on Hub. 15 32.5 45 60.1
at Cap. Ewash & Bent. at Cap.

X-Sect. of R.R. Fill + Road bed
 ajac. to Bridge at +41.80 on Tecolote
 Drain Survey - See P. 55
 w.o. 32289 - 4-23-53 7.0

Lt. = W.



Rt. = E.

INDEXED
Law
 JUN 8 1953

0+77 = # Wash

-0.8 -0.5 -1.2
 50 25 9.1
 in wash wash

-0.8 0.3 0.2
 9.3 25 50

0+65 - Show Stream bed

0.6 0.9 0.8
 50 25 9.1
 edge

0.8 0.2 -0.8 -0.1 0.3
 9.3 25 27.30 50
 at edge wash

0+53 Gnt.

0.0

0.2 0.3
 34 50

0+50 = inside face of Headwall

11.0 0.2 3.5 4.1 8.1 8.1 9.1 9.3 9.6
 50 28 20 9.1 9.1 Bot. 6.9 4. 23.6
 Toe ground edge Top Tie Rail

9.97 9.3 9.1 8.2 8.2 4.2 3.9 -0.9
 23.6 4 7 Bot. 9.3 9.3 18.29
 Rail Top Top edge v. wash

0+37 = # Hand Car platform

2.6 2.6 9.95 9.96
 47 43 27.5 14.7 23.6
 Toe c.l. Toe edge Tie Rail
 c.l. on c.l. platform

9.95 9.3 8.0 7.8 -0.7 1.2 0.4
 23.6 4 9 11 28 32 50
 Rail Tie rock wash
 Toe

Main Line

0+28 = 37.3 Lt. = # of Gas Co. M.H.

0.6 2.6 22.3 25.9 2.4 7.5 7.8 9.2 9.4
 53 48 Top 37.3 24 13 9.6 4 23.6
 Toe of Top Top Top Top Top Toe Tie
 c.l. c.l. of pipe m.H. add. Lay

0+00 = 50' South of inside face of 6" wood Headwall of Bridge

0+0.3 7.3 7.6 9.3 9.1
 50 25 11 9 4 23.6
 Toe Top Toe Top - Rail
 hrt Rock end of Ties

9.90 9.2 7.7 7.5 0.1 -0.8
 23.6 4 9 11 26 38 50
 Rail end Toe Toe Toe wash
 Tie Rock

B.M. = 1400 Lub. - P. 56

00.50

Lt. # Rt.

of o+oo Hub = - 1.67 - Top pipe

Note. Elev. of Top of Gas Main at 5.6 west

1+70 = end

| | | | | | | | | | | | |
|-----|------|-----|------|-----|------|------|-----|------|------|-----|-----|
| 0.9 | 1.4 | 7.4 | 7.5 | 9.2 | 9.91 | 9.91 | 9.2 | 7.8 | 7.7 | 1.5 | 1.2 |
| 50 | 23 | 11 | 9 | 4 | 236 | 236 | 4 | 9 | 11 | 23 | 50 |
| | Toe | Top | Toe | Tie | Rail | Rail | Tie | Toe | Top | Toe | |
| | fill | | Rock | | | | | Rock | fill | | |

1+30

| | | | | | | | | | | | |
|-----|-----|-----|------|-----|------|------|-----|------|------|------|-----|
| 1.3 | 1.8 | 7.4 | 9.1 | 9.3 | 9.93 | 9.94 | 9.3 | 9.1 | 7.9 | 1.0 | 0.5 |
| 50 | 22 | 11 | 7 | 4 | 236 | 236 | 4 | 6.5 | 10 | 24 | 50 |
| | Toe | Top | Rock | Tie | Rail | Rail | Tie | Rock | Toe | Toe | |
| | | | Rock | | | | | | Rock | fill | |

1+20 - Cont.

| | | | |
|-----|-----|-----|-----|
| 1.2 | 2.0 | 0.8 | 0.5 |
| 50 | 21 | 26 | 50 |
| | Toe | Toe | |

1+20 = inside face of headwall

| | | | | | | | | | | | | | |
|-----|----------|-----|------|-----|-----|------|------|-----|------|------|-----|-----|-----|
| 3.8 | 4.5 | 8.2 | 8.2 | 9.0 | 9.3 | 9.96 | 9.95 | 9.2 | 9.1 | 8.1 | 8.1 | 4.4 | 4.6 |
| 16 | 9.2 | 9.2 | 8.1 | 7 | 4 | 236 | 236 | 4 | 7 | 8.1 | 9.2 | 9.2 | 17 |
| | gr. edge | | Bot. | Top | Tie | Rail | Tie | Top | Bot. | edge | gr. | | |
| | | | ch | | | | | ch | | | | | |

1+07 - stream bed

| | | | | | |
|-----|-----|-----|-----|-----|-----|
| 0.9 | 1.2 | 1.2 | 1.4 | 0.7 | 0.2 |
| 50 | 25 | 9.1 | 9.3 | 25 | 50 |

Cross Sec. Moreno Blvd

North of Knoxville +
South " "

NO 32289

6-5-53

Sommermeier

73

Base line = \neq Moreno Blvd (P. 53)

Produced thru disk on \neq Moreno

+ \neq Nashville + Nail \neq Moreno +

\neq Knoxville. (See page 53)

B.M. = B.P. Toccole Creek Bridge + Moreno ^{EL = 1004}

0+00 = 500 sly. from 10+03.93 page 53.

INDEXED
JUN 8 1953

2+62 33' RT. = wly end 25' long sign board.

305 RT. = start post + wire fence,
2+84 { 25 RT. = pole # =

2+00

| | | | | | | | | |
|-----|-----|------|------|-------|-------|-----|-----|-----|
| 6.1 | 6.2 | 10.3 | 9.85 | 10.60 | 10.03 | 9.9 | 8.3 | 7.2 |
| 50 | 32 | 25 | 142 | | 142 | 22 | 37 | 50 |
| | | | E.P. | | E.P. | | | |

1+58 - 39' Lt. = 20" diam eucalyptus

1+45

| | | | | | | | | | | |
|------|------|------|------|------|-------|-------|-------|------|-----|-----|
| 8.13 | 8.05 | 11.6 | 11.6 | 11.1 | 11.72 | 12.38 | 11.85 | 11.7 | 8.7 | 7.6 |
| 50 | 37 | 34 | 20 | 19 | 142 | | 142 | 31 | 37 | 50 |
| | | | | | E.P. | | E.P. | | | |

1+34 31' Lt. = end wire fence

1+25

| | | | | | | | | | |
|------|------|------|-------|-------|-------|------|------|------|------|
| 12.7 | 12.7 | 11.8 | 12.60 | 13.13 | 12.65 | 12.6 | 12.4 | 14.2 | 14.0 |
| 37 | 20 | 19 | 142 | | 142 | 20 | 25 | 37 | 50 |
| | | | E.P. | | E.P. | | | | |

1+05 245' RT. = pole # J.P. 4653

1+02 23' Lt. = pole # 4654

0+50

| | | | | | | | | |
|------|------|-------|-------|-------|------|------|------|------|
| 13.7 | 15.1 | 15.11 | 15.85 | 15.55 | 15.8 | 16.9 | 17.1 | 17.0 |
| 37 | 23 | 142 | | 142 | 18 | 23 | 37 | 50 |
| | | E.P. | | E.P. | | | | |

0+18 23' RT. = pole # J.P. 4659

31' Lt. = line of wire fence.

0+00 - E.P. denotes edge of pave.

| | | | | | | | |
|------|------|------|-------|-------|-------|------|------|
| 14.5 | 16.5 | 16.0 | 16.88 | 17.70 | 17.33 | 18.3 | 18.3 |
| 37 | 31 | 20 | 142 | | 142 | 37 | 50 |
| | | | E.P. | | E.P. | | |

Moreno Blvd

5+82 275' Lt }
5+77 275' Lt } = deadman

5+00 26' Rt = pole # 4150594

5+45 { 29' Lt = pole # 45198
31' Rt = stop sign

5+25

5+20 36' Lt = 3" pipe } 15' high Nursery
24' Lt = 3" pipe } sign

5+00 = (10+031.93 nail - Page 53)

4+89 26⁵' Rt = pole # J.P. 4611

4+70

4+61 32⁵' Rt = end fence.

4+37 50⁵' Lt = end Motel.

4+14 31⁵' Rt = start post + wire fence.

4+06 23⁴' Lt = 9" diam acacia

4+02 25⁵' Rt = pole # 110 #

4+00 31⁵' Rt = end fence

3+46 26' Lt = pole # 4624

3+25

2+77 - 50' Lt = start Motel

2+70

| | | | | | | |
|-----|-----|-----------------|------|-----------------|-----|-----|
| 6.0 | 8.5 | 8.63 | 9.21 | 8.77 | 8.7 | 9.0 |
| 50 | 19 | 14 ² | | 15 ⁸ | 30 | 50 |
| | | E.P. | | E.P. | | |

| | | | | | | |
|-----|-----|-----------------|------|------|-----|-----|
| 5.5 | 6.3 | 8.49 | 9.14 | 8.63 | 8.4 | 8.4 |
| 50 | 36 | 14 ² | | 14 | 37 | 50 |
| | | E.P. | | E.P. | | |

| | | | | | | | | |
|-----|-----|-----|-----|-----------------|------|-----------------|-----|-----|
| 6.1 | 7.6 | 8.6 | 7.7 | 8.39 | 9.07 | 8.44 | 8.4 | 8.5 |
| 50 | 29 | 24 | 21 | 14 ² | | 14 ³ | 30 | 50 |
| | | | | E.P. | | E.P. | | |

| | | | | | | | | | |
|-----|-----|-----|-----|-----------------|------|-----------------|-----|-----|-----|
| 5.7 | 6.3 | 9.3 | 8.2 | 8.04 | 8.74 | 8.22 | 8.1 | 9.0 | 7.7 |
| 50 | 27 | 18 | 16 | 14 ² | | 13 ⁵ | 22 | 23 | 50 |
| | | | | E.P. | | E.P. | | | |

| | | | | | | | | | |
|-----|-----|-----|-----|-----|-----------------|------|-----------------|-----|-----|
| 5.6 | 6.9 | 9.2 | 9.1 | 8.3 | 8.01 | 8.68 | 8.28 | 8.0 | 7.2 |
| 50 | 30 | 24 | 18 | 17 | 14 ² | | 13 ⁵ | 21 | 50 |
| | | | | | E.P. | | E.P. | | |

| | | | | | | | | | | |
|-----|-----|-----|-----|-----|-----------------|------|-----------------|-----|-----|-----|
| 5.3 | 6.2 | 7.4 | 9.4 | 8.8 | 8.50 | 9.11 | 8.52 | 8.2 | 7.6 | 6.4 |
| 50 | 18 | 23 | 18 | 16 | 14 ² | | 14 ⁵ | 24 | 27 | 50 |
| | | | | | E.P. | | | | | |

Moreno

G+74 23' Lt. = pole # 5430
 G+73 2A² = 2' wide E+W. Hedge

6.1 6.3 8.05
 40 26 25E
 End wall
 T.W.

G+65 } 21⁵ Lt. = 4' long E+W. brick wall
 = 4' long brick wall

7.6 6.2 9.22 8.2 9.11 9.69 9.18 9.0 9.12
 22 22 21E 21 1A 148 30 50
 End End T.W. E.P. E.P.
 To No. To Sa

G+63 34' Lt. = 1' diam tree
 Thru wall

G+54 - 18⁴ Lt. = 3' wide steps

6.12 9.01
 24 18⁴
 bottom top of steps
 of steps

G+42 20' Lt. = 1' diam palm

G+36 34' Lt. = 4' diam palm

G+30 - 18' Lt. = start picket fence

45' Lt. = end E+W. wall

6.1 7.4
 45 45
 End T.W.
 N4+50

T.W. = top of wall
 = start N+S. brick wall.

G+27 - 21² Lt. = 4" E+W. brick wall 4" thick

6.4 8.2 8.2 8.95 9.54 8.74 8.6 9.0 9.2
 22 22 21Z 1A 15L 22 28 50
 End End End+ End+ E.P.
 To No. To Sa T.W.

G+00

5.9 6.4 8.73 9.46 8.74 8.8 7.3
 50 24 15 15 30 50
 E.P. E.P.

Moreno Blvd

±

76

8+00

8.6 9.1 9.90 10.06 10.04 9.5
40 20 13 14 25
E.P. E.P.

20' Lt. = end hedge
7+97 315 Lt. = 3' diam palm

check plans.
Looks like water line vault.
7+87 - 17' Lt. = Ctr. 4' x 15' conc. box

9.68
17
Ctr. box

7+57 - 22' Lt. = start hedge

7+56

6.0 6.9 7.1 9.70 10.05 9.50 8.8
40 23 18 13 13 50
E.P. E.P.

7+55 17' Lt. = ± chain link fence.

8.1 9.1 9.70 10.05 9.50 8.8
40 18 13 13 50
E.P. E.P.

7+14 27' Rt. = pole # 569096H

6+83 14' Lt. = 16' rock + oil drive

7.35 9.35
40 143
+ drive

6+75 18' Lt. = ± chain link wire fence

7.3 9.32 9.75 9.30 9.2
40 143 145 50
E.P. E.P.

o- Set Pipe & Disk

Survey

of Prop. Trailer Lot.

77

w.O. 21220

2-8-54 - 7.0.

INDEXED

FEB 8 1954

P.L. 265
P.L. 264

Books 1450-P. 44
2133-P. 68
871-P. 31-48
Plan - 10655-L

Replaced Cor. - Nail
in Lawn - from Map 1829
sheet 2

44.47
Lot 5
Block 12



Line
Nail
Line
Hub
Overbook
Hts

Ties - to Morena Blvd. + Prop. Tecolote Creek
Channel -

W.O. 22054 - 3-28-55 7.0.

See Roll - Field Sketch
Book 2229 - P. 65-66

INDEXED
HER
APP 12 105

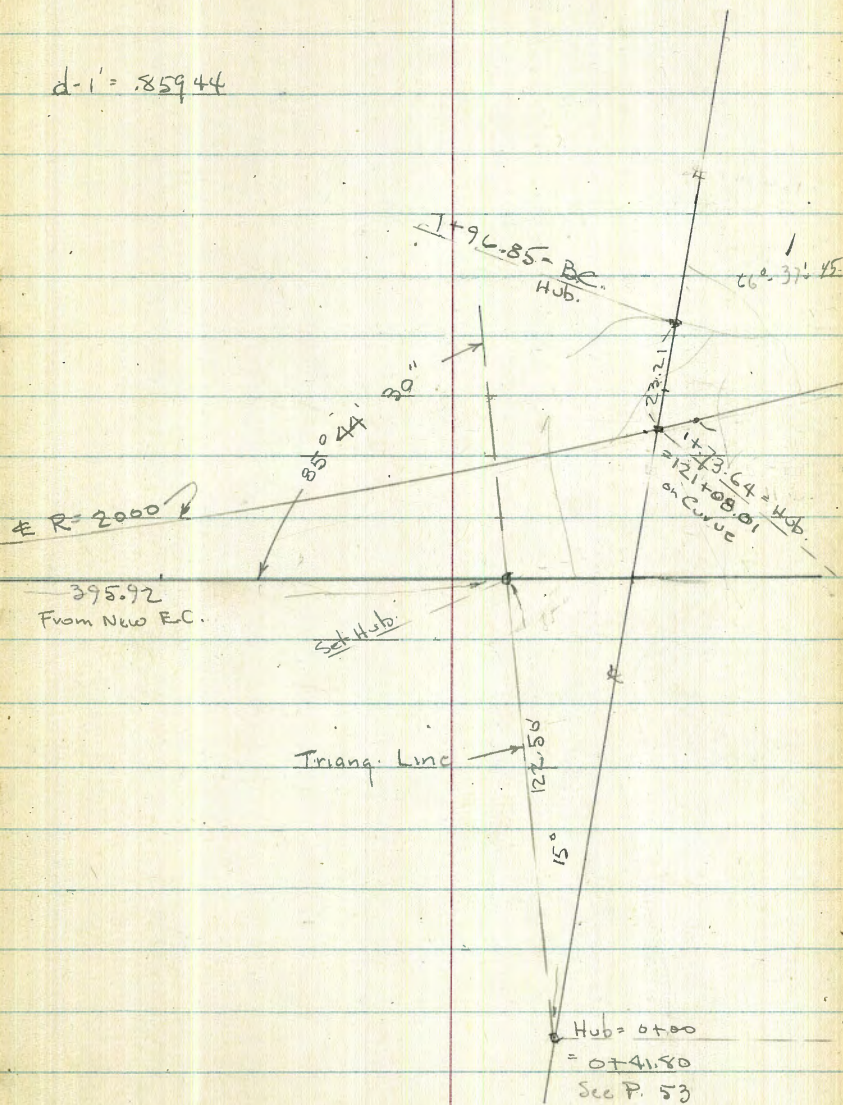
Line from Pict. 1
128+48.60

New F.C.
Sta. 125+48.85
6.91'

| | |
|---------|------------|
| 125 ~ | 0° 42' |
| +50 | 1° 25' |
| 124 ~ | 2° 08' |
| +50 | 2° 51' |
| 123 ~ | 3° 34' |
| +50 | 4° 16' 45" |
| 122 ~ | 4° 59' 45" |
| +50 | 5° 42' 45" |
| 121 +10 | 6° 17' 15" |
| 121 ~ | 6° 25' 45" |

78

$$d-i = .85944$$



388
 776
 388
 1164
 388
 15524
 388
 149405
 388
 323286
 388
 47167
 388
 341044
 388
 344929
 388
 3588010

32289 2154

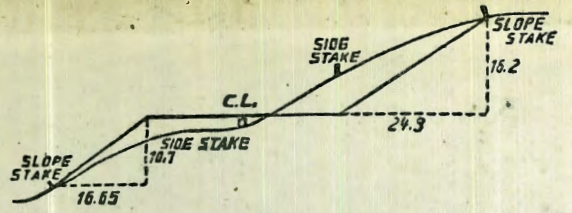
303.71
296.81

10.44
 7.00
 18.46
 319.57
 + 847
 328.04

B-2133

4+00 - 74° 40' Rt.
 14+70 = P.O.T. Hub
 15+30 - ± channel Ang. 12° 12' Lt. to ± Channel

20.81
 13.57
 05.21
 1.07



DISTANCES FROM SIDE STAKES FOR CROSS-SECTIONING.
SLOPE 1 1/2 TO 1. ROADWAY OF ANY WIDTH.

| | 0 | .1 | .2 | .3 | .4 | .5 | .6 | .7 | .8 | .9 | |
|----|-------|-------|-------|-------|-------|-------|-------|-------|-------|-------|----|
| 0 | 0.00 | 0.15 | 0.30 | 0.45 | 0.60 | 0.75 | 0.90 | 1.05 | 1.20 | 1.35 | 0 |
| 1 | 1.50 | 1.65 | 1.80 | 1.95 | 2.10 | 2.25 | 2.40 | 2.55 | 2.70 | 2.85 | 1 |
| 2 | 3.00 | 3.15 | 3.30 | 3.45 | 3.60 | 3.75 | 3.90 | 4.05 | 4.20 | 4.35 | 2 |
| 3 | 4.50 | 4.65 | 4.80 | 4.95 | 5.10 | 5.25 | 5.40 | 5.55 | 5.70 | 5.85 | 3 |
| 4 | 6.00 | 6.15 | 6.30 | 6.45 | 6.60 | 6.75 | 6.90 | 7.05 | 7.20 | 7.35 | 4 |
| 5 | 7.50 | 7.65 | 7.80 | 7.95 | 8.10 | 8.25 | 8.40 | 8.55 | 8.70 | 8.85 | 5 |
| 6 | 9.00 | 9.15 | 9.30 | 9.45 | 9.60 | 9.75 | 9.90 | 10.05 | 10.20 | 10.35 | 6 |
| 7 | 10.50 | 10.65 | 10.80 | 10.95 | 11.10 | 11.25 | 11.40 | 11.55 | 11.70 | 11.85 | 7 |
| 8 | 12.00 | 12.15 | 12.30 | 12.45 | 12.60 | 12.75 | 12.90 | 13.05 | 13.20 | 13.35 | 8 |
| 9 | 13.50 | 13.65 | 13.80 | 13.95 | 14.10 | 14.25 | 14.40 | 14.55 | 14.70 | 14.85 | 9 |
| 10 | 15.00 | 15.15 | 15.30 | 15.45 | 15.60 | 15.75 | 15.90 | 16.05 | 16.20 | 16.35 | 10 |
| 11 | 16.50 | 16.65 | 16.80 | 16.95 | 17.10 | 17.25 | 17.40 | 17.55 | 17.70 | 17.85 | 11 |
| 12 | 18.00 | 18.15 | 18.30 | 18.45 | 18.60 | 18.75 | 18.90 | 19.05 | 19.20 | 19.35 | 12 |
| 13 | 19.50 | 19.65 | 19.80 | 19.95 | 20.10 | 20.25 | 20.40 | 20.55 | 20.70 | 20.85 | 13 |
| 14 | 21.00 | 21.15 | 21.30 | 21.45 | 21.60 | 21.75 | 21.90 | 22.05 | 22.20 | 22.35 | 14 |
| 15 | 22.50 | 22.65 | 22.80 | 22.95 | 23.10 | 23.25 | 23.40 | 23.55 | 23.70 | 23.85 | 15 |
| 16 | 24.00 | 24.15 | 24.30 | 24.45 | 24.60 | 24.75 | 24.90 | 25.05 | 25.20 | 25.35 | 16 |
| 17 | 25.50 | 25.65 | 25.80 | 25.95 | 26.10 | 26.25 | 26.40 | 26.55 | 26.70 | 26.85 | 17 |
| 18 | 27.00 | 27.15 | 27.30 | 27.45 | 27.60 | 27.75 | 27.90 | 28.05 | 28.20 | 28.35 | 18 |
| 19 | 28.50 | 28.65 | 28.80 | 28.95 | 29.10 | 29.25 | 29.40 | 29.55 | 29.70 | 29.85 | 19 |
| 20 | 30.00 | 30.15 | 30.30 | 30.45 | 30.60 | 30.75 | 30.90 | 31.05 | 31.20 | 31.35 | 20 |
| 21 | 31.50 | 31.65 | 31.80 | 31.95 | 32.10 | 32.25 | 32.40 | 32.55 | 32.70 | 32.85 | 21 |
| 22 | 33.00 | 33.15 | 33.30 | 33.45 | 33.60 | 33.75 | 33.90 | 34.05 | 34.20 | 34.35 | 22 |
| 23 | 34.50 | 34.65 | 34.80 | 34.95 | 35.10 | 35.25 | 35.40 | 35.55 | 35.70 | 35.85 | 23 |
| 24 | 36.00 | 36.15 | 36.30 | 36.45 | 36.60 | 36.75 | 36.90 | 37.05 | 37.20 | 37.35 | 24 |
| 25 | 37.50 | 37.65 | 37.80 | 37.95 | 38.10 | 38.25 | 38.40 | 38.55 | 38.70 | 38.85 | 25 |
| 26 | 39.00 | 39.15 | 39.30 | 39.45 | 39.60 | 39.75 | 39.90 | 40.05 | 40.20 | 40.35 | 26 |
| 27 | 40.50 | 40.65 | 40.80 | 40.95 | 41.10 | 41.25 | 41.40 | 41.55 | 41.70 | 41.85 | 27 |
| 28 | 42.00 | 42.15 | 42.30 | 42.45 | 42.60 | 42.75 | 42.90 | 43.05 | 43.20 | 43.35 | 28 |
| 29 | 43.50 | 43.65 | 43.80 | 43.95 | 44.10 | 44.25 | 44.40 | 44.55 | 44.70 | 44.85 | 29 |
| 30 | 45.00 | 45.15 | 45.30 | 45.45 | 45.60 | 45.75 | 45.90 | 46.05 | 46.20 | 46.35 | 30 |
| 31 | 46.50 | 46.65 | 46.80 | 46.95 | 47.10 | 47.25 | 47.40 | 47.55 | 47.70 | 47.85 | 31 |
| 32 | 48.00 | 48.15 | 48.30 | 48.45 | 48.60 | 48.75 | 48.90 | 49.05 | 49.20 | 49.35 | 32 |
| 33 | 49.50 | 49.65 | 49.80 | 49.95 | 50.10 | 50.25 | 50.40 | 50.55 | 50.70 | 50.85 | 33 |
| 34 | 51.00 | 51.15 | 51.30 | 51.45 | 51.60 | 51.75 | 51.90 | 52.05 | 52.20 | 52.35 | 34 |
| 35 | 52.50 | 52.65 | 52.80 | 52.95 | 53.10 | 53.25 | 53.40 | 53.55 | 53.70 | 53.85 | 35 |
| 36 | 54.00 | 54.15 | 54.30 | 54.45 | 54.60 | 54.75 | 54.90 | 55.05 | 55.20 | 55.35 | 36 |
| 37 | 55.50 | 55.65 | 55.80 | 55.95 | 56.10 | 56.25 | 56.40 | 56.55 | 56.70 | 56.85 | 37 |
| 38 | 57.00 | 57.15 | 57.30 | 57.45 | 57.60 | 57.75 | 57.90 | 58.05 | 58.20 | 58.35 | 38 |
| 39 | 58.50 | 58.65 | 58.80 | 58.95 | 59.10 | 59.25 | 59.40 | 59.55 | 59.70 | 59.85 | 39 |
| 40 | 60.00 | 60.15 | 60.30 | 60.45 | 60.60 | 60.75 | 60.90 | 61.05 | 61.20 | 61.35 | 40 |
| 41 | 61.50 | 61.65 | 61.80 | 61.95 | 62.10 | 62.25 | 62.40 | 62.55 | 62.70 | 62.85 | 41 |
| 42 | 63.00 | 63.15 | 63.30 | 63.45 | 63.60 | 63.75 | 63.90 | 64.05 | 64.20 | 64.35 | 42 |
| 43 | 64.50 | 64.65 | 64.80 | 64.95 | 65.10 | 65.25 | 65.40 | 65.55 | 65.70 | 65.85 | 43 |
| 44 | 66.00 | 66.15 | 66.30 | 66.45 | 66.60 | 66.75 | 66.90 | 67.05 | 67.20 | 67.35 | 44 |
| 45 | 67.50 | 67.65 | 67.80 | 67.95 | 68.10 | 68.25 | 68.40 | 68.55 | 68.70 | 68.85 | 45 |
| 46 | 69.00 | 69.15 | 69.30 | 69.45 | 69.60 | 69.75 | 69.90 | 70.05 | 70.20 | 70.35 | 46 |
| 47 | 70.50 | 70.65 | 70.80 | 70.95 | 71.10 | 71.20 | 71.40 | 71.55 | 71.70 | 71.85 | 47 |
| 48 | 72.00 | 72.15 | 72.30 | 72.45 | 72.60 | 72.75 | 72.90 | 73.05 | 73.20 | 73.35 | 48 |
| 49 | 73.50 | 73.65 | 73.80 | 73.95 | 74.10 | 74.25 | 74.40 | 74.55 | 74.70 | 74.85 | 49 |
| 50 | 75.00 | 75.15 | 75.30 | 75.45 | 75.60 | 75.75 | 75.90 | 76.05 | 76.20 | 76.35 | 50 |

THE NATIONAL BLANK BOOK COMPANY
 HOLYOKE MASSACHUSETTS
 NEW YORK CHICAGO BOSTON SAN FRANCISCO

388
 388
 776
 388
 1464
 388
 145524
 388
 149405
 388
 343286
 388
 247767
 388
 341049
 388
 344929
 388
 3488010

32289 2154

3

303.71
 296.81

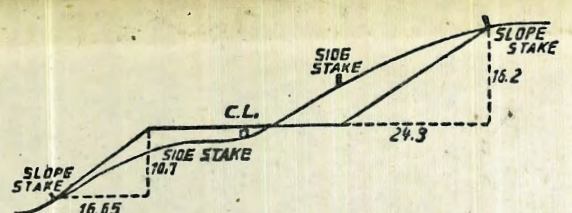
10.44
 7.50
 18.26

319.57
 + 849
 328.04

B-2133

4+00 - 74° 40' Rt.
 14+70 = P.O.T. Hub
 15+30 = ± channel Ang. 12° 12' Lt. to ± channel

13.57
 05.21
 10.5



DISTANCES FROM SIDE STAKES FOR CROSS-SECTIONING.
 SLOPE 1 1/2 TO 1. ROADWAY OF ANY WIDTH.

| | 0 | .1 | .2 | .3 | .4 | .5 | .6 | .7 | .8 | .9 | |
|----|-------|-------|-------|-------|-------|-------|-------|-------|-------|-------|----|
| 0 | 0.00 | 0.15 | 0.30 | 0.45 | 0.60 | 0.75 | 0.90 | 1.05 | 1.20 | 1.35 | 0 |
| 1 | 1.50 | 1.65 | 1.80 | 1.95 | 2.10 | 2.25 | 2.40 | 2.55 | 2.70 | 2.85 | 1 |
| 2 | 3.00 | 3.15 | 3.30 | 3.45 | 3.60 | 3.75 | 3.90 | 4.05 | 4.20 | 4.35 | 2 |
| 3 | 4.50 | 4.65 | 4.80 | 4.95 | 5.10 | 5.25 | 5.40 | 5.55 | 5.70 | 5.85 | 3 |
| 4 | 6.00 | 6.15 | 6.30 | 6.45 | 6.60 | 6.75 | 6.90 | 7.05 | 7.20 | 7.35 | 4 |
| 5 | 7.50 | 7.65 | 7.80 | 7.95 | 8.10 | 8.25 | 8.40 | 8.55 | 8.70 | 8.85 | 5 |
| 6 | 9.00 | 9.15 | 9.30 | 9.45 | 9.60 | 9.75 | 9.90 | 10.05 | 10.20 | 10.35 | 6 |
| 7 | 10.50 | 10.65 | 10.80 | 10.95 | 11.10 | 11.25 | 11.40 | 11.55 | 11.70 | 11.85 | 7 |
| 8 | 12.00 | 12.15 | 12.30 | 12.45 | 12.60 | 12.75 | 12.90 | 13.05 | 13.20 | 13.35 | 8 |
| 9 | 13.50 | 13.65 | 13.80 | 13.95 | 14.10 | 14.25 | 14.40 | 14.55 | 14.70 | 14.85 | 9 |
| 10 | 15.00 | 15.15 | 15.30 | 15.45 | 15.60 | 15.75 | 15.90 | 16.05 | 16.20 | 16.35 | 10 |
| 11 | 16.50 | 16.65 | 16.80 | 16.95 | 17.10 | 17.25 | 17.40 | 17.55 | 17.70 | 17.85 | 11 |
| 12 | 18.00 | 18.15 | 18.30 | 18.45 | 18.60 | 18.75 | 18.90 | 19.05 | 19.20 | 19.35 | 12 |
| 13 | 19.50 | 19.65 | 19.80 | 19.95 | 20.10 | 20.25 | 20.40 | 20.55 | 20.70 | 20.85 | 13 |
| 14 | 21.00 | 21.15 | 21.30 | 21.45 | 21.60 | 21.75 | 21.90 | 22.05 | 22.20 | 22.35 | 14 |
| 15 | 22.50 | 22.65 | 22.80 | 22.95 | 23.10 | 23.25 | 23.40 | 23.55 | 23.70 | 23.85 | 15 |
| 16 | 24.00 | 24.15 | 24.30 | 24.45 | 24.60 | 24.75 | 24.90 | 25.05 | 25.20 | 25.35 | 16 |
| 17 | 25.50 | 25.65 | 25.80 | 25.95 | 26.10 | 26.25 | 26.40 | 26.55 | 26.70 | 26.85 | 17 |
| 18 | 27.00 | 27.15 | 27.30 | 27.45 | 27.60 | 27.75 | 27.90 | 28.05 | 28.20 | 28.35 | 18 |
| 19 | 28.50 | 28.65 | 28.80 | 28.95 | 29.10 | 29.25 | 29.40 | 29.55 | 29.70 | 29.85 | 19 |
| 20 | 30.00 | 30.15 | 30.30 | 30.45 | 30.60 | 30.75 | 30.90 | 31.05 | 31.20 | 31.35 | 20 |
| 21 | 31.50 | 31.65 | 31.80 | 31.95 | 32.10 | 32.25 | 32.40 | 32.55 | 32.70 | 32.85 | 21 |
| 22 | 33.00 | 33.15 | 33.30 | 33.45 | 33.60 | 33.75 | 33.90 | 34.05 | 34.20 | 34.35 | 22 |
| 23 | 34.50 | 34.65 | 34.80 | 34.95 | 35.10 | 35.25 | 35.40 | 35.55 | 35.70 | 35.85 | 23 |
| 24 | 36.00 | 36.15 | 36.30 | 36.45 | 36.60 | 36.75 | 36.90 | 37.05 | 37.20 | 37.35 | 24 |
| 25 | 37.50 | 37.65 | 37.80 | 37.95 | 38.10 | 38.25 | 38.40 | 38.55 | 38.70 | 38.85 | 25 |
| 26 | 39.00 | 39.15 | 39.30 | 39.45 | 39.60 | 39.75 | 39.90 | 40.05 | 40.20 | 40.35 | 26 |
| 27 | 40.50 | 40.65 | 40.80 | 40.95 | 41.10 | 41.25 | 41.40 | 41.55 | 41.70 | 41.85 | 27 |
| 28 | 42.00 | 42.15 | 42.30 | 42.45 | 42.60 | 42.75 | 42.90 | 43.05 | 43.20 | 43.35 | 28 |
| 29 | 43.50 | 43.65 | 43.80 | 43.95 | 44.10 | 44.25 | 44.40 | 44.55 | 44.70 | 44.85 | 29 |
| 30 | 45.00 | 45.15 | 45.30 | 45.45 | 45.60 | 45.75 | 45.90 | 46.05 | 46.20 | 46.35 | 30 |
| 31 | 46.50 | 46.65 | 46.80 | 46.95 | 47.10 | 47.25 | 47.40 | 47.55 | 47.70 | 47.85 | 31 |
| 32 | 48.00 | 48.15 | 48.30 | 48.45 | 48.60 | 48.75 | 48.90 | 49.05 | 49.20 | 49.35 | 32 |
| 33 | 49.50 | 49.65 | 49.80 | 49.95 | 50.10 | 50.25 | 50.40 | 50.55 | 50.70 | 50.85 | 33 |
| 34 | 51.00 | 51.15 | 51.30 | 51.45 | 51.60 | 51.75 | 51.90 | 52.05 | 52.20 | 52.35 | 34 |
| 35 | 52.50 | 52.65 | 52.80 | 52.95 | 53.10 | 53.25 | 53.40 | 53.55 | 53.70 | 53.85 | 35 |
| 36 | 54.00 | 54.15 | 54.30 | 54.45 | 54.60 | 54.75 | 54.90 | 55.05 | 55.20 | 55.35 | 36 |
| 37 | 55.50 | 55.65 | 55.80 | 55.95 | 56.10 | 56.25 | 56.40 | 56.55 | 56.70 | 56.85 | 37 |
| 38 | 57.00 | 57.15 | 57.30 | 57.45 | 57.60 | 57.75 | 57.90 | 58.05 | 58.20 | 58.35 | 38 |
| 39 | 58.50 | 58.65 | 58.80 | 58.95 | 59.10 | 59.25 | 59.40 | 59.55 | 59.70 | 59.85 | 39 |
| 40 | 60.00 | 60.15 | 60.30 | 60.45 | 60.60 | 60.75 | 60.90 | 61.05 | 61.20 | 61.35 | 40 |
| 41 | 61.50 | 61.65 | 61.80 | 61.95 | 62.10 | 62.25 | 62.40 | 62.55 | 62.70 | 62.85 | 41 |
| 42 | 63.00 | 63.15 | 63.30 | 63.45 | 63.60 | 63.75 | 63.90 | 64.05 | 64.20 | 64.35 | 42 |
| 43 | 64.50 | 64.65 | 64.80 | 64.95 | 65.10 | 65.25 | 65.40 | 65.55 | 65.70 | 65.85 | 43 |
| 44 | 66.00 | 66.15 | 66.30 | 66.45 | 66.60 | 66.75 | 66.90 | 67.05 | 67.20 | 67.35 | 44 |
| 45 | 67.50 | 67.65 | 67.80 | 67.95 | 68.10 | 68.25 | 68.40 | 68.55 | 68.70 | 68.85 | 45 |
| 46 | 69.00 | 69.15 | 69.30 | 69.45 | 69.60 | 69.75 | 69.90 | 70.05 | 70.20 | 70.35 | 46 |
| 47 | 70.50 | 70.65 | 70.80 | 70.95 | 71.10 | 71.25 | 71.40 | 71.55 | 71.70 | 71.85 | 47 |
| 48 | 72.00 | 72.15 | 72.30 | 72.45 | 72.60 | 72.75 | 72.90 | 73.05 | 73.20 | 73.35 | 48 |
| 49 | 73.50 | 73.65 | 73.80 | 73.95 | 74.10 | 74.25 | 74.40 | 74.55 | 74.70 | 74.85 | 49 |
| 50 | 75.00 | 75.15 | 75.30 | 75.45 | 75.60 | 75.75 | 75.90 | 76.05 | 76.20 | 76.35 | 50 |

THE NATIONAL BLANK BOOK COMPANY
 HOLYOKE MASSACHUSETTS
 NEW YORK CHICAGO BOSTON SAN FRANCISCO