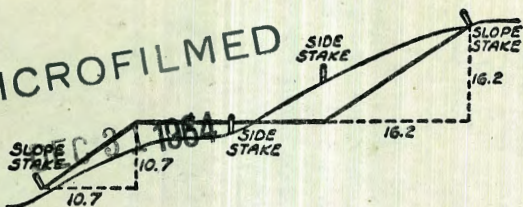


2119

FRANK BONE

MICROFILMED



DISTANCES FROM SIDE STAKES FOR CROSS-SECTIONING
SLOPE 1 TO 1. ROADWAY OF ANY WIDTH

	0	.1	.2	.3	.4	.5	.6	.7	.8	9	
0	0.00	0.10	0.20	0.30	0.40	0.50	0.60	0.70	0.80	0.90	0
1	1.00	1.10	1.20	1.30	1.40	1.50	1.60	1.70	1.80	1.90	1
2	2.00	2.10	2.20	2.30	2.40	2.50	2.60	2.70	2.80	2.90	2
3	3.00	3.10	3.20	3.30	3.40	3.50	3.60	3.70	3.80	3.90	3
4	4.00	4.10	4.20	4.30	4.40	4.50	4.60	4.70	4.80	4.90	4
5	5.00	5.10	5.20	5.30	5.40	5.50	5.60	5.70	5.80	5.90	5
6	6.00	6.10	6.20	6.30	6.40	6.50	6.60	6.70	6.80	6.90	6
7	7.00	7.10	7.20	7.30	7.40	7.50	7.60	7.70	7.80	7.90	7
8	8.00	8.10	8.20	8.30	8.40	8.50	8.60	8.70	8.80	8.90	8
9	9.00	9.10	9.20	9.30	9.40	9.50	9.60	9.70	9.80	9.90	9
10	10.00	10.10	10.20	10.30	10.40	10.50	10.60	10.70	10.80	10.90	10
11	11.00	11.10	11.20	11.30	11.40	11.50	11.60	11.70	11.80	11.90	11
12	12.00	12.10	12.20	12.30	12.40	12.50	12.60	12.70	12.80	12.90	12
13	13.00	13.10	13.20	13.30	13.40	13.50	13.60	13.70	13.80	13.90	13
14	14.00	14.10	14.20	14.30	14.40	14.50	14.60	14.70	14.80	14.90	14
15	15.00	15.10	15.20	15.30	15.40	15.50	15.60	15.70	15.80	15.90	15
16	16.00	16.10	16.20	16.30	16.40	16.50	16.60	16.70	16.80	16.90	16
17	17.00	17.10	17.20	17.30	17.40	17.50	17.60	17.70	17.80	17.90	17
18	18.00	18.10	18.20	18.30	18.40	18.50	18.60	18.70	18.80	18.90	18
19	19.00	19.10	19.20	19.30	19.40	19.50	19.60	19.70	19.80	19.90	19
20	20.00	20.10	20.20	20.30	20.40	20.50	20.60	20.70	20.80	20.90	20
21	21.00	21.10	21.20	21.30	21.40	21.50	21.60	21.70	21.80	21.90	21
22	22.00	22.10	22.20	22.30	22.40	22.50	22.60	22.70	22.80	22.90	22
23	23.00	23.10	23.20	23.30	23.40	23.50	23.60	23.70	23.80	23.90	23
24	24.00	24.10	24.20	24.30	24.40	24.50	24.60	24.70	24.80	24.90	24
25	25.00	25.10	25.20	25.30	25.40	25.50	25.60	25.70	25.80	25.90	25
26	26.00	26.10	26.20	26.30	26.40	26.50	26.60	26.70	26.80	26.90	26
27	27.00	27.10	27.20	27.30	27.40	27.50	27.60	27.70	27.80	27.90	27
28	28.00	28.10	28.20	28.30	28.40	28.50	28.60	28.70	28.80	28.90	28
29	29.00	29.10	29.20	29.30	29.40	29.50	29.60	29.70	29.80	29.90	29
30	30.00	30.10	30.20	30.30	30.40	30.50	30.60	30.70	30.80	30.90	30
31	31.00	31.10	31.20	31.30	31.40	31.50	31.60	31.70	31.80	31.90	31
32	32.00	32.10	32.20	32.30	32.40	32.50	32.60	32.70	32.80	32.90	32
33	33.00	33.10	33.20	33.30	33.40	33.50	33.60	33.70	33.80	33.90	33
34	34.00	34.10	34.20	34.30	34.40	34.50	34.60	34.70	34.80	34.90	34
35	35.00	35.10	35.20	35.30	35.40	35.50	35.60	35.70	35.80	35.90	35
36	36.00	36.10	36.20	36.30	36.40	36.50	36.60	36.70	36.80	36.90	36
37	37.00	37.10	37.20	37.30	37.40	37.50	37.60	37.70	37.80	37.90	37
38	38.00	38.10	38.20	38.30	38.40	38.50	38.60	38.70	38.80	38.90	38
39	39.00	39.10	39.20	39.30	39.40	39.50	39.60	39.70	39.80	39.90	39
40	40.00	40.10	40.20	40.30	40.40	40.50	40.60	40.70	40.80	40.90	40
41	41.00	41.10	41.20	41.30	41.40	41.50	41.60	41.70	41.80	41.90	41
42	42.00	42.10	42.20	42.30	42.40	42.50	42.60	42.70	42.80	42.90	42
43	43.00	43.10	43.20	43.30	43.40	43.50	43.60	43.70	43.80	43.90	43
44	44.00	44.10	44.20	44.30	44.40	44.50	44.60	44.70	44.80	44.90	44
45	45.00	45.10	45.20	45.30	45.40	45.50	45.60	45.70	45.80	45.90	45
46	46.00	46.10	46.20	46.30	46.40	46.50	46.60	46.70	46.80	46.90	46
47	47.00	47.10	47.20	47.30	47.40	47.50	47.60	47.70	47.80	47.90	47
48	48.00	48.10	48.20	48.30	48.40	48.50	48.60	48.70	48.80	48.90	48
49	49.00	49.10	49.20	49.30	49.40	49.50	49.60	49.70	49.80	49.90	49
50	50.00	50.10	50.20	50.30	50.40	50.50	50.60	50.70	50.80	50.90	50

Distance of slope stake from side or shoulder stake for any width roadway, slope 1 to 1. If ground is nearly level, the cut or fill at side stake is located by the double entry method in left column and top row. The number in body of table in same row and column gives distance from side stake to slope stake. If ground is not level estimate the difference in elevation between the side stake and slope stake, lower target by this amount if cut, elevate if fill. Add this amount to cut or fill and find distance in table. Set up rod at this point, and line of sight should cut target. If it does not make the slight adjustment necessary.

INDEXED

Handwritten note: 23

32523

INDEX

Cross Section Filley Block 54 Point Loma Hts 2-5

" " La Jolla Mesa Drive Van Nuys St 6-15

" " 29th 16-23

X-Section La Jolla Mesa Dr. ^{Turquoise} to Van Nuys. 24-34

Storm Drain Addison St. 35-42

" " " " 43-46

X-Section Alley BIK 45 Sunset to Cable 47-54

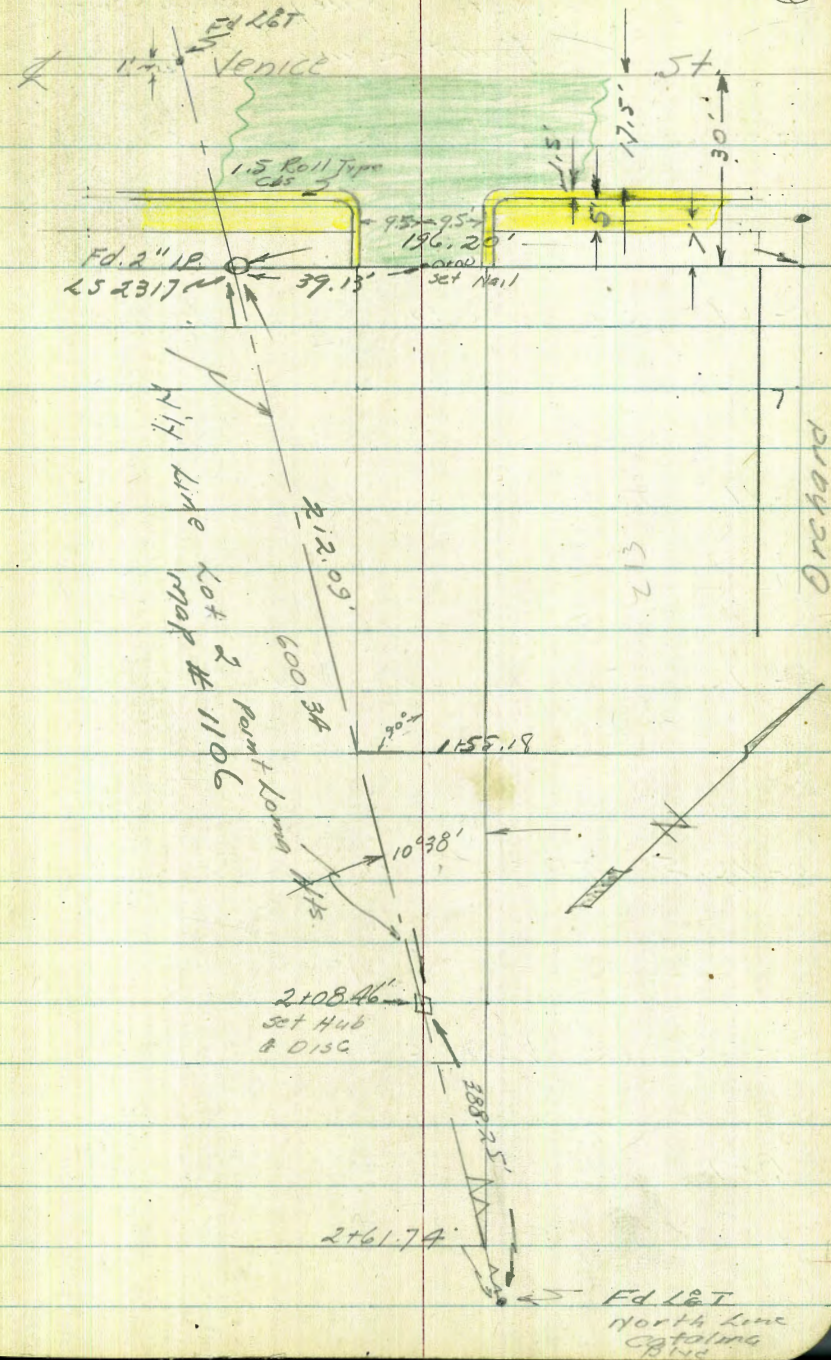
Drain - BIK 45 - Ocean Beach - 55

X-SECTION LA JOLLA MESA DRIVE 60

12-11-50
 Hendricks X Sect Alley
 Shepard Block 54 Point Loma Hts
 Crawford
 V.O. # 25020

INDEXED

DEC 12 1950



Levels Alley Block 54
Point Loma Hts.

(3)

0+00 E. Line Venice End Cb & Asph. Pav

218 ⁰	218 ⁸⁰	218 ⁵⁵	218 ⁵⁵	218 ⁷¹	218 ⁸⁷	218 ⁸⁰	219 ¹²	218 ⁹
30	11	10	9.5		9.5	10	11	30
		6	Top		Top	6	Top	cb

0-09 EC Cl. Reto

218 ⁷²	218 ⁴⁴	218 ⁴⁶	218 ⁸⁴	218 ⁸⁰	219 ⁰⁷
11	10	9.5	9.5	10	11
Top					Top

0-11 Top Rail type Cb

218 ²¹	218 ⁷⁰	219 ¹¹	219 ⁴⁶
50	13	13	50

0-12 East Cb Line Venice

217 ⁹⁵	218 ⁴⁰	218 ⁴³	218 ⁶⁰	218 ⁸¹	218 ⁸⁴	219 ¹⁹
50	13	10		10	13	50

0-12.5 Toe of Rail Type Cb

217 ⁹⁵	218 ⁴⁰	218 ⁸⁵	219 ³¹
50	13	13	50

0-30 E Venice

218 ⁵¹	219 ⁰⁰	219 ¹⁸	219 ²¹	219 ⁸²
50	10		10	50

B.M.

216.36

L & Disc. 11.7' Line Orchard & E. Line Venice

Levels Alley Block 54

Cont'd

Q

(4)

1+03

210² 210¹ 210² 211⁴ 211⁴ 211³ 210⁹ 211³ 211⁰
25 15 7 4 5 7 10 25

1+00 Tel Pole H 519036 H 9.7' Lt

212² 212³ 211⁵ 211⁵ 211⁰ 211⁴ 211¹
25 10 5 7 10 25

0+75

213² 213⁰ 213¹ 212⁸ 213³ 213⁶ 213⁸
25 10 3 5 10 20

TP

213.83

Half in Tel Pole = 519036 Lt 1+00

0+37

215² 215¹ 214⁹ 214⁹ 214⁷
25 10 10 25

0+08

216² 216⁴ 217³ 217⁶ 217⁸ 217⁷ 217³ 216² 215⁶
27 12 10 6 7 10 15 33

0+01.5 Tel Pole H 519037 H 10' Lt

Alley Block 59 cont'd

(5)

B17

216.35 216.36

CK starting B.M.

3+00

206⁸ 206⁷ 207² 207⁴ 208³ 207⁵
16 10 3 12 25

2+61.74

Int. Wly. line Lot 2 on Lt

206⁷ 206⁸ 207³ 207⁴ 208¹ 208²
20 12 10 10 25

2+50

tel pole # 519038 H 9' Lt

2+15

Double Garage 24.5' Lt

207⁵⁵
24.5
floor

2+08.46

Int. Wly. line Lot 2

207² 208¹ 208³³ 208⁷ 208⁶
22 10 Hub 10 25

1+55.18

Int. Wly. line Lot 2 on Rt

208³ 208⁴ 209⁴ 209⁶ 209⁵ 209⁸
25 10 4 10 25

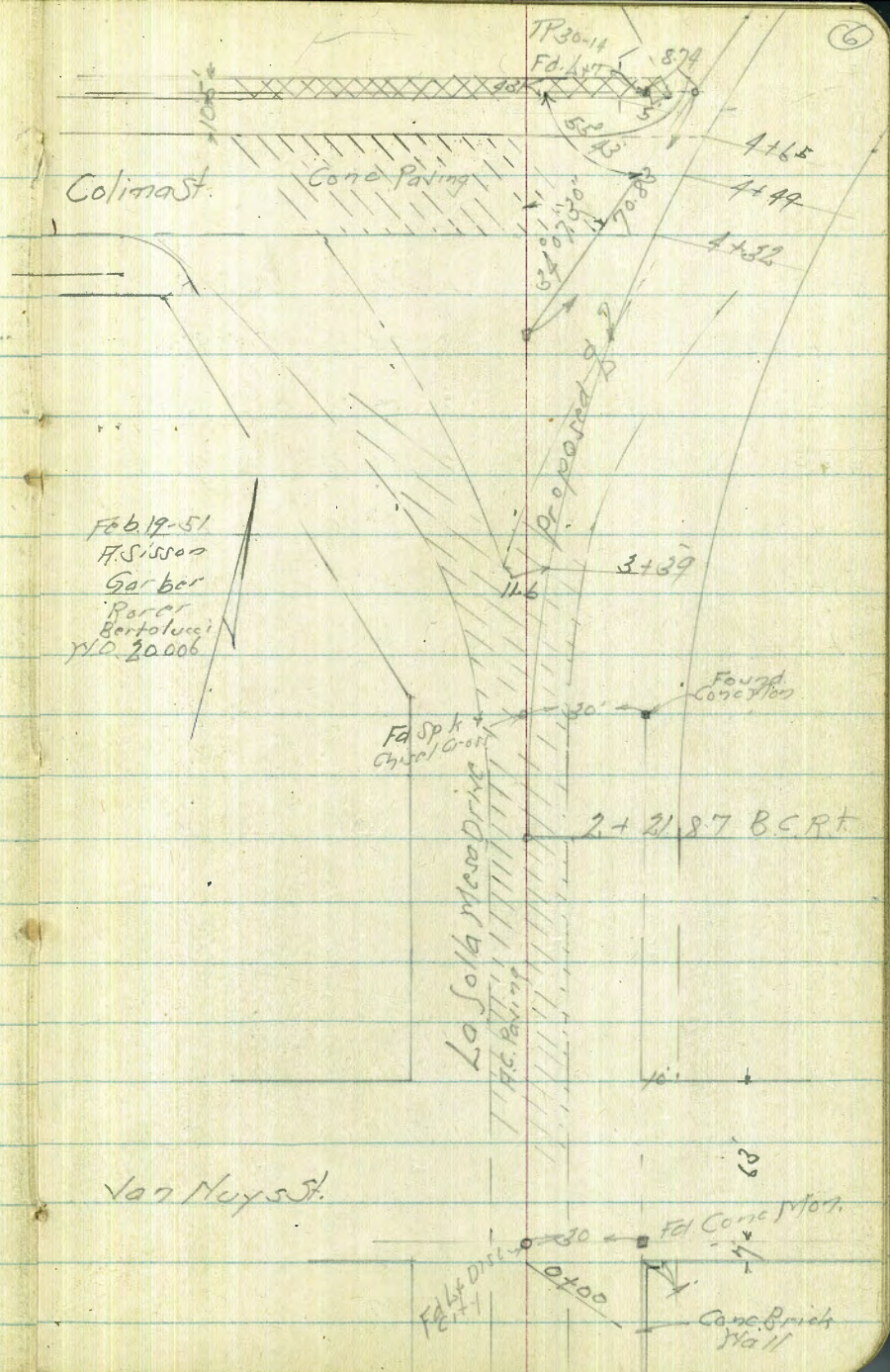
Alignment + Cross Section
 La Solla Mesa Drive
 Van Nuys St North

INTERVEN

+50	10° 37.58'	
+25	9° 27.71'	A 34° 07' 30"
1+0	8° 17.84'	ZR 615.00
+75	7° 07.97'	T 188.76
+50	5° 58.10'	L 366.29
+25	4° 48.23'	D1 2.7946
3+0	3° 38.36'	
+75	2° 28.49'	
+50	1° 18.62'	

2+21.87 BC RT

0+00 = South line Van Nuys St.



Van Nuys St.

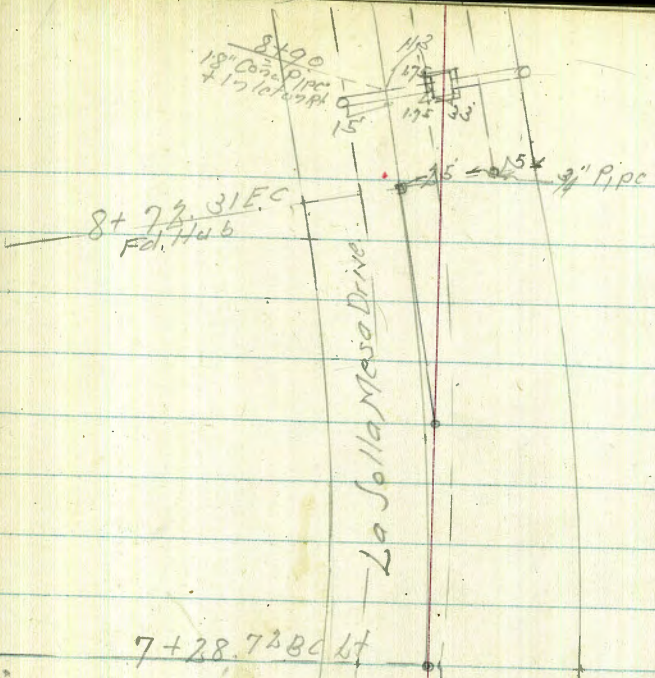
Fol Sp k + Chisel Cross

Fol Conc Mon

Cone Brick Wall

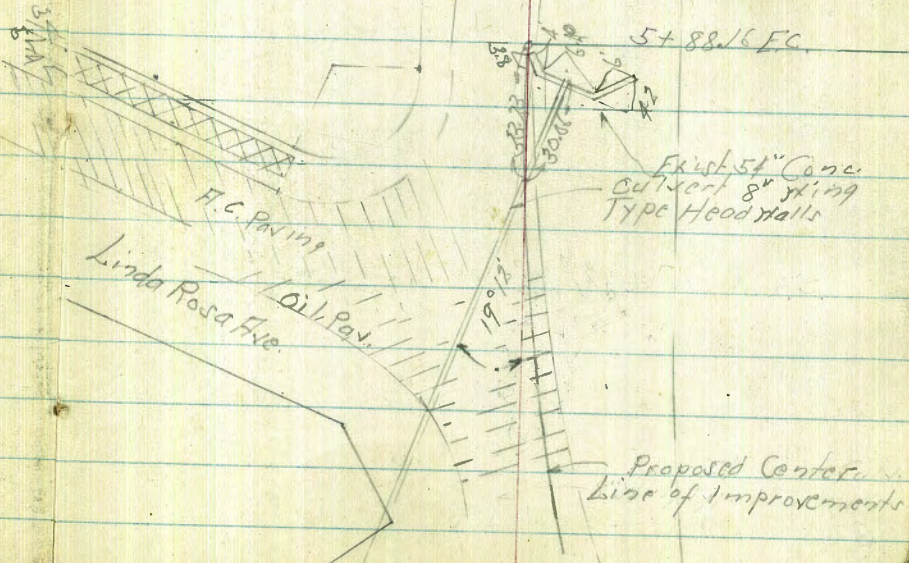
8+72.31 EC	4° 14.12'	A 8° 28' 15"
+50	3° 34.62'	R 971.25
+25	2° 50.38'	T 71.23
8+0	2° 06.14'	L 143.59
+75	1° 21.90'	D 1.7696
+50	0° 27.66'	

7+28.72 BC Lt



7+28.72 BC Lt

5+88.16 EC	17° 03.75'
+50	15° 17.06'
+25	14° 07.19'
5+0	12° 57.22'
4+75	11° 47.45'



Proposed Center Line of Improvements

Cross Section - La Solla Mesa Drive
Van Nuys St. North

Lt: West

Rt: East

(8)

+70

145.4 144.2 143.0 142.66 144.13 143.69 144.8 148.4
5.7 6.8 8.0 8.39 6.92 7.31 6.3 2.6
40 38 20 16 22 28 40
1/2 FIRE HYDRANT

+70

143.0 142.8 141.39 142.64 142.11 142.6 143.0 146.2
8.0 8.0 9.66 8.41 8.94 8.4 8.1 4.9
40 38 11 11 28 30 40
1/2 FIRE HYDRANT

+35

140.0 140.0 139.97 141.02 140.69 140.8 141.4
11.0 11.1 11.08 10.03 10.36 10.3 9.6
40 38 15.5 11 28 40
1/2 FIRE HYDRANT

+13

36.0 ft of 1/2 = 1/2 FIRE HYD.

0+00

= South Line Van Nuys St

139.6 140.0 138.11 139.28 139.01 139.6 139.6 141.0
11.4 11.1 12.94 11.77 12.04 11.5 11.5 8.1 10.0
40 38 16 10.5 28 30 30 40
1/2 FIRE HYDRANT

BM

11.87

151.05

139.68

Lt Dist
La Solla Mesa
S of Van Nuys
1801-4

151.05

BM

11.87

139.48

139.68
Lt Dist La Solla
Mesa Dr
S of Van Nuys
1/2 Cor. Handing

2.61

150.85

8.63

148.24

N.E. Side
Column
75 ft

BM

9.35

156.87

147.52

+75

158.35
12.02
75
75
75
159.17
11.20
55
159.48
10.89
40
159.48
10.89
36
159.57
10.89
36
159.81
10.56
28
159.81
10.47
28
159.90
10.73
23.3
159.64
10.5
28
159.9
10.1
32
160.3
9.2
35
163.2
7.1
40
163.2
7.1
40

+50

157.82
12.55
70
70
158.08
12.29
40
158.15
12.22
37
158.21
12.16
36
158.21
12.17
36
158.34
12.58
20
157.79
11.7
28
158.7
8.6
40
161.8
8.6
40

+39 116 Lt of L - P1 H C Pav

+35.5 210 Rt of L - L Anchor Pole *

+25

+07 290 Lt of L - L Power Pole # 5398

TP 12.20 170.37 1.46 158.17

157.0
13.4
40
156.7
12.7
35
155.51
12.86
30
156.20
14.17
17
156.66
13.71
6.5
156.74
13.63
170.37
157.14
12.23
16.7
157.6
12.8
28
160.2
10.2
33
160.5
9.9
40

+0

156.4
3.2
40
155.6
4.0
28
154.2
5.4
25
154.13
5.50
21
155.07
4.56
9
155.22
4.41
11
154.44
5.19
12
155.4
4.2
28
158.4
1.2
33
158.6
1.0
40

+75

155.0
4.6
40
154.0
5.6
28
153.8
5.8
23
152.2
7.4
21
152.55
7.08
16.8
153.81
5.82
13
153.22
6.41
13
154.2
5.9
26
155.0
4.6
28
158.5
1.6
40
159.63

LT

2

RT

11

166.0
1.1
50

450

Taken Radial

163.98 164.37 164.96 165.38 164.9 165.1
6.39 6.00 5.41 4.99 5.55 5.52
Conc 6-2-1948 14-2-1948 20-2-1948 38 40

419 = 2 Conc Pav

Taken on Diag

158.08 159.29 160.78 162.32 163.92
12.29 11.08 9.59 8.05 6.15
100 75 58 35 20 Conc Pav

432 = 54 Conc Pav. Colima St Taken on Diag

157.77 158.60 159.69 161.44 163.0
12.60 11.27 10.68 8.93 7.1
100 75 50 35 20 Conc Pav

425

161.47 162.62 163.59 163.72 163.9 166.9
8.90 7.75 6.78 6.65 6.5 5.5
20-5-1948 16-5-1948 29-5-1948 40 44

410

159.04 160.8 161.0 161.42 161.70 161.49 161.8 164.5 165.0
11.33 9.6 9.4 8.95 8.67 8.88 8.6 5.9 5.4
15-5-1948 40 38 Ground 27-5-1948 33 37 40

170.37

170.37

La Solla Mesa Drive

BT

2

PA

12

+ 62

163.39
1622
835
Gut
100-50

163.01
165.86
167.76
168.71
168.89
168.43
168.7

171.7
171.9
172.0
8.0
7.8
7.7
28
40
50

+ 25

164.64
165.23
166.48
166.83
167.07
167.15
167.06
167.1
170.8
169.4

1507
585
40
28
21
5
12.60
12.6
8.7
8.9
10.3
11.6
10
10

179.66

TP.

1167

179.66

2.38

167.99

5+0

164.6
58
40
29.5
164.97
5.40
29.5
165.82
4.55
11
166.18
4.19
3
166.32
4.05
3
166.64
2.72
19
166.6
3.8
28
169.7
2.7
32
169.7
2.7
40

4+75

164.6
58
40
29.5
165.1
5.3
28
164.48
5.89
13
165.15
5.22
11
165.78
4.59
11
166.16
4.21
26.4
165.8
4.6
35
166.2
4.2
40
167.2
4.2
50

158.88
11.49
100-53
158.25
12.12
100-50

4+ 65

= North Carb Line Colima Tables on Day

162.07
830
50-56
161.37
900
50-51
163.55
682
25-56
162.87
750
25-50
164.34
602
137
163.63
674
137
164.66
5.91
0.0 on HC
170.37

170.37

#15 32° 41' 0" of $\frac{1}{2}$ of Parvor Pole *5420

Lt. Lt. Rt. 13

173.7
18.5
10
175.6
16.6
50

7+0

184.9
7.5
50
185.4
68
58
179.4
34
179.29
1225
179.94
1245
179.74
125
111
181.1
10.8
181.4
13
177.7
14.5
18
169.3
22.9
22.5
169.6
22
26
173.8
184
50
192.19
192.19
192.19
192.19

+99

4.5 Rt of $\frac{1}{2}$ of $\frac{1}{2}$ of Hinder Pole

TP 12.98 192.19 0.45 179.21

+50

177.9
50
177.1
26
43
174.9
48
38
174.92
174
33.7
428
20.5
175.38
154
77
175.12
46
5
175.1
36
176.1
21
5
176.6
130
15
166.7
12.8
19
166.9
8.0
19
171.7
6.7
28
173.8
40
40.50
175.7
40
177.5
40

6+0

173.4
63
44
170.87
879
367
830
21
171.36
875
8.7
170.91
89
7
170.8
77
172.0
75
5
172.2
156
12
164.1
15.2
17
163.5
12.3
17
167.4
5.4
28
174.3
40
43
176.2
43

+88.16 F.C

172.1
76
50
169.6
90
170.08
958
365
170.42
924
28
170.55
911
21
170.20
946
7.5
171.1
86
171.1
169.28
1038
166
163.1
171
13
162.6
171
18
166.8
129
28
173.1
46
46
175.5
46

5+78

170.5
92
50
168.4
113
45
168.83
10.82
10
169.70
996
28
169.89
977
10
169.48
1013
5
170.7
90
170.7
968
12.5
169.98
1828
17.5
161.38
97
38
170.0
73
40
172.4
70
172.7
70
50

1796

Lt

Lt

Rt

Lt

TP

10.25

20217 0.27

19192

+25

210.0
 +178
 60

209.7
 +175
 40

207.0
 +148
 28

191.3
 09
 22

191.53
 0.6
 17
 FLY

192.33
 +0.4
 5

192.39
 +0.2
 5

192.45
 +0.7
 8:FL
 FLY

190.9
 1.3
 11

192.7
 +0.5
 15

193.2
 +10
 28

192.8
 +0.6
 34

190.1
 21
 40

184.4
 28
 50

202.2
 100
 70

8+0

204.2
 +120
 50

204.5
 +123
 40

202.2
 +100
 28

188.6
 26
 25

188.80
 2.89
 19:WHH

189.69
 2.50
 6

189.87
 2.32
 6:EL
 FLY

189.91
 2.28
 9

188.5
 2.1
 14

190.1
 1.2
 28

191.0
 1.7
 38

190.5
 1.7
 50

184.5
 77
 70

179.7
 125
 70

+75

198.2
 +60
 10

197.7
 +55
 40

197.2
 +50
 28

186.5
 57
 25

186.11
 6.08
 24

187.19
 5.90
 8

187.43
 4.76
 15:EL
 FLY

187.32
 4.87
 10

186.5
 5.7
 13

188.0
 4.3
 26

188.7
 3.5
 41

180.9
 1.8
 61

177.7
 1.45
 83:WH
 25%

175.2
 1.2
 25%

+18

270 Lt of Lt = Cable Dead Man

176.7
 15.5
 50

7+2872 BC Lt

189.7
 25
 50

189.6
 26
 40

189.6
 26
 35

182.5
 97
 27

181.82
 10.37
 26.5 = WHH

182.72
 9.47
 15

182.63
 9.56
 15

182.50
 9.8
 11:EL
 FLY

182.4
 8.4
 10

183.8
 8.2
 16

184.0
 8.2
 23:WH
 25%

171.5
 207
 33

171.5
 207
 33:FLY
 25%

174.8
 174
 38

19219

19219

La Solla Mesa Drive

Lt.

Rt.

15

BM

10.72

139.66

140.56
La Solla
Mesa +
57
139.68

0.93

150.38

13.33

149.45

0.16

162.78

13.30

162.62

0.11

175.92

13.19

175.81

TP

0.14

189.00

13.31

188.86

BM

3.61

198.56

Chrisl
S.H.M.
171st Rt
8490

199.3
185.4
184.9
183.9
29
27
168
173
44
53
138
141
142
143
144
145
146
147
148
149
150
151
152
153
154
155
156
157
158
159
160
161
162
163
164
165
166
167
168
169
170
171
172
173
174
175
176
177
178
179
180
181
182
183
184
185
186
187
188
189
190

+90

213.4
210.2
196.7
195.25
198.07
199.02
198.99
198.45
194.06
199.6
2162
40
180
25
55
18
692
15
110
112
114
116
118
120
122
124
126
128
130
132
134
136
138
140
142
144
146
148
150
152
154
156
158
160
162
164
166
168
170
172
174
176
178
180
182
184
186
188
190
192
194
196
198
200
202
204
206
208
210
212
214
216
218
220
222
224
226
228
230
232
234
236
238
240
242
244
246
248
250
252
254
256
258
260
262
264
266
268
270
272
274
276
278
280
282
284
286
288
290
292
294
296
298
300
302
304
306
308
310
312
314
316
318
320
322
324
326
328
330
332
334
336
338
340
342
344
346
348
350
352
354
356
358
360
362
364
366
368
370
372
374
376
378
380
382
384
386
388
390
392
394
396
398
400
402
404
406
408
410
412
414
416
418
420
422
424
426
428
430
432
434
436
438
440
442
444
446
448
450
452
454
456
458
460
462
464
466
468
470
472
474
476
478
480
482
484
486
488
490
492
494
496
498
500
502
504
506
508
510
512
514
516
518
520
522
524
526
528
530
532
534
536
538
540
542
544
546
548
550
552
554
556
558
560
562
564
566
568
570
572
574
576
578
580
582
584
586
588
590
592
594
596
598
600
602
604
606
608
610
612
614
616
618
620
622
624
626
628
630
632
634
636
638
640
642
644
646
648
650
652
654
656
658
660
662
664
666
668
670
672
674
676
678
680
682
684
686
688
690
692
694
696
698
700
702
704
706
708
710
712
714
716
718
720
722
724
726
728
730
732
734
736
738
740
742
744
746
748
750
752
754
756
758
760
762
764
766
768
770
772
774
776
778
780
782
784
786
788
790
792
794
796
798
800
802
804
806
808
810
812
814
816
818
820
822
824
826
828
830
832
834
836
838
840
842
844
846
848
850
852
854
856
858
860
862
864
866
868
870
872
874
876
878
880
882
884
886
888
890
892
894
896
898
900
902
904
906
908
910
912
914
916
918
920
922
924
926
928
930
932
934
936
938
940
942
944
946
948
950
952
954
956
958
960
962
964
966
968
970
972
974
976
978
980
982
984
986
988
990
992
994
996
998
1000

847231 : F.C.

20217

20217

214.2
208.4
196.5
196.42
197.21
197.25
197.30
196.5
197.7
197.9
184.9
183.9
182.9
181.9
180.9
179.9
178.9
177.9
176.9
175.9
174.9
173.9
172.9
171.9
170.9
169.9
168.9
167.9
166.9
165.9
164.9
163.9
162.9
161.9
160.9
159.9
158.9
157.9
156.9
155.9
154.9
153.9
152.9
151.9
150.9
149.9
148.9
147.9
146.9
145.9
144.9
143.9
142.9
141.9
140.9
139.9
138.9
137.9
136.9
135.9
134.9
133.9
132.9
131.9
130.9
129.9
128.9
127.9
126.9
125.9
124.9
123.9
122.9
121.9
120.9
119.9
118.9
117.9
116.9
115.9
114.9
113.9
112.9
111.9
110.9
109.9
108.9
107.9
106.9
105.9
104.9
103.9
102.9
101.9
100.9
99.9
98.9
97.9
96.9
95.9
94.9
93.9
92.9
91.9
90.9
89.9
88.9
87.9
86.9
85.9
84.9
83.9
82.9
81.9
80.9
79.9
78.9
77.9
76.9
75.9
74.9
73.9
72.9
71.9
70.9
69.9
68.9
67.9
66.9
65.9
64.9
63.9
62.9
61.9
60.9
59.9
58.9
57.9
56.9
55.9
54.9
53.9
52.9
51.9
50.9
49.9
48.9
47.9
46.9
45.9
44.9
43.9
42.9
41.9
40.9
39.9
38.9
37.9
36.9
35.9
34.9
33.9
32.9
31.9
30.9
29.9
28.9
27.9
26.9
25.9
24.9
23.9
22.9
21.9
20.9
19.9
18.9
17.9
16.9
15.9
14.9
13.9
12.9
11.9
10.9
9.9
8.9
7.9
6.9
5.9
4.9
3.9
2.9
1.9
0.9
0.8
0.7
0.6
0.5
0.4
0.3
0.2
0.1
0.0
-0.1
-0.2
-0.3
-0.4
-0.5
-0.6
-0.7
-0.8
-0.9
-1.0
-1.1
-1.2
-1.3
-1.4
-1.5
-1.6
-1.7
-1.8
-1.9
-2.0
-2.1
-2.2
-2.3
-2.4
-2.5
-2.6
-2.7
-2.8
-2.9
-3.0
-3.1
-3.2
-3.3
-3.4
-3.5
-3.6
-3.7
-3.8
-3.9
-4.0
-4.1
-4.2
-4.3
-4.4
-4.5
-4.6
-4.7
-4.8
-4.9
-5.0
-5.1
-5.2
-5.3
-5.4
-5.5
-5.6
-5.7
-5.8
-5.9
-6.0
-6.1
-6.2
-6.3
-6.4
-6.5
-6.6
-6.7
-6.8
-6.9
-7.0
-7.1
-7.2
-7.3
-7.4
-7.5
-7.6
-7.7
-7.8
-7.9
-8.0
-8.1
-8.2
-8.3
-8.4
-8.5
-8.6
-8.7
-8.8
-8.9
-9.0
-9.1
-9.2
-9.3
-9.4
-9.5
-9.6
-9.7
-9.8
-9.9
-10.0

INDEXED
MAY 1 1954

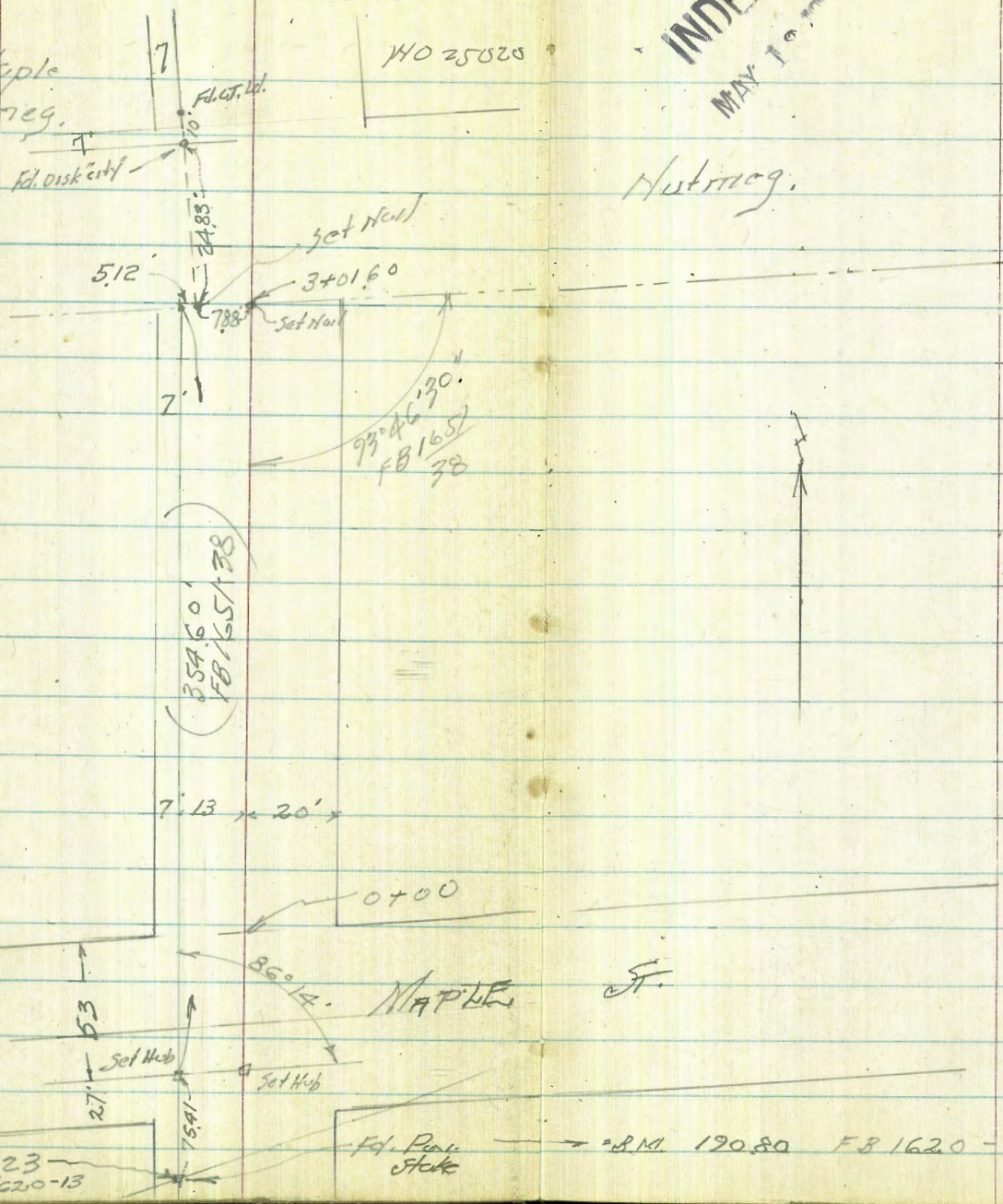
CROSS SECTION - 29TH ST.

from Maple
to Nutmeg.

4025020

Nutmeg.

Reduced
by
V.R.W. M. Shaw
5-25-51



TP 13.15 238.01 076 224.86

0+00 - N. Maple St.

	229.6	229.6	229.6	221.8	216.8	216.3	216.7	209.3
+4.0	+4.0	+2.0	3.8	8.8	9.3	8.9	16.3	
40	28	20		12	20	25	50	

0-10

	226.6	228.6	222.3	216.7	215.9	214.5	207.3
+1.0	+3.0	3.3	8.9	9.7	11.1	18.3	
50	38	20		17	20	43	

0-28

	225.5	216.5	216.2	216.4	210.2	207.9	203.9
9.1	9.1	9.4	9.2	14.8	17.7	21.7	
50	28	20	225.62	20	37	45	

TP 12.30 225.62 079 213.32

0-53

	215.1	216.0	211.3	206.4	205.5	201.0	196.7
+1.0	+1.9	2.8	7.0	8.6	13.1	17.4	
60	40	20	13 on Hub		20	40	

214.11

TP 11.04 214.11 075 203.07

0-72

	206.4	200.4	197.7	195.9	193.3
+3.1	2.9	5.6	7.4	10.0	
40	20		20	40	

0-80 = S. Maple

All sections in Int.
Parallel to Maple

	199.6	198.2	195.82	193.8	191.3
3.7	5.1	7.5	9.5	11.0	
40	20	203.32	20	40	

12.52

203.32

120.80

B.M. on stake P-16

27th St. Cross Section

1+53.0 = Beg 6" Conc. Tile Wall 255' Pt.

ht. 276.8 276.9 274.2 273.0 270.7 Pt. 18
 113 40 113 20 13 142 at Fence 2.5 4.8 255 255 on Wall 0.09 4.0
 276.9 266.9 266.2 264.5 262.2 258.4
 8.6 40 8.6 20 9.3 275.50 11.0 20 15.3 40 19.1 60
 Bottom Conc. Footing
 R. 177 Canyon

1+25

275.50 0.55 262.39

TP 1311 275.50 0.55 262.39

1+07

264.5 260.5 255.9 252.1 255.0
 2.4 40 2.4 20 4.0 58 20 7.7 46

0+85

254.1 252.7 251.7 249.6 244.9
 8.8 40 10.2 20 11.2 262.94 13.3 20 21.0 40

TP 1307 262.94 0.12 250.87

0+50 Cont

244.6 244.1 247.3
 6.4 40 6.9 20 8.6 250.99

TP 1316 250.99 0.18 237.83

0+50

234.1 222.0
 3.9 20 16.0 50

0+14

233.4 233.3 230.8 220.5 219.5 217.7 217.0
 4.6 40 4.7 20 7.2 17.8 20 18.5 26 20.3 27 21.0 40

23801

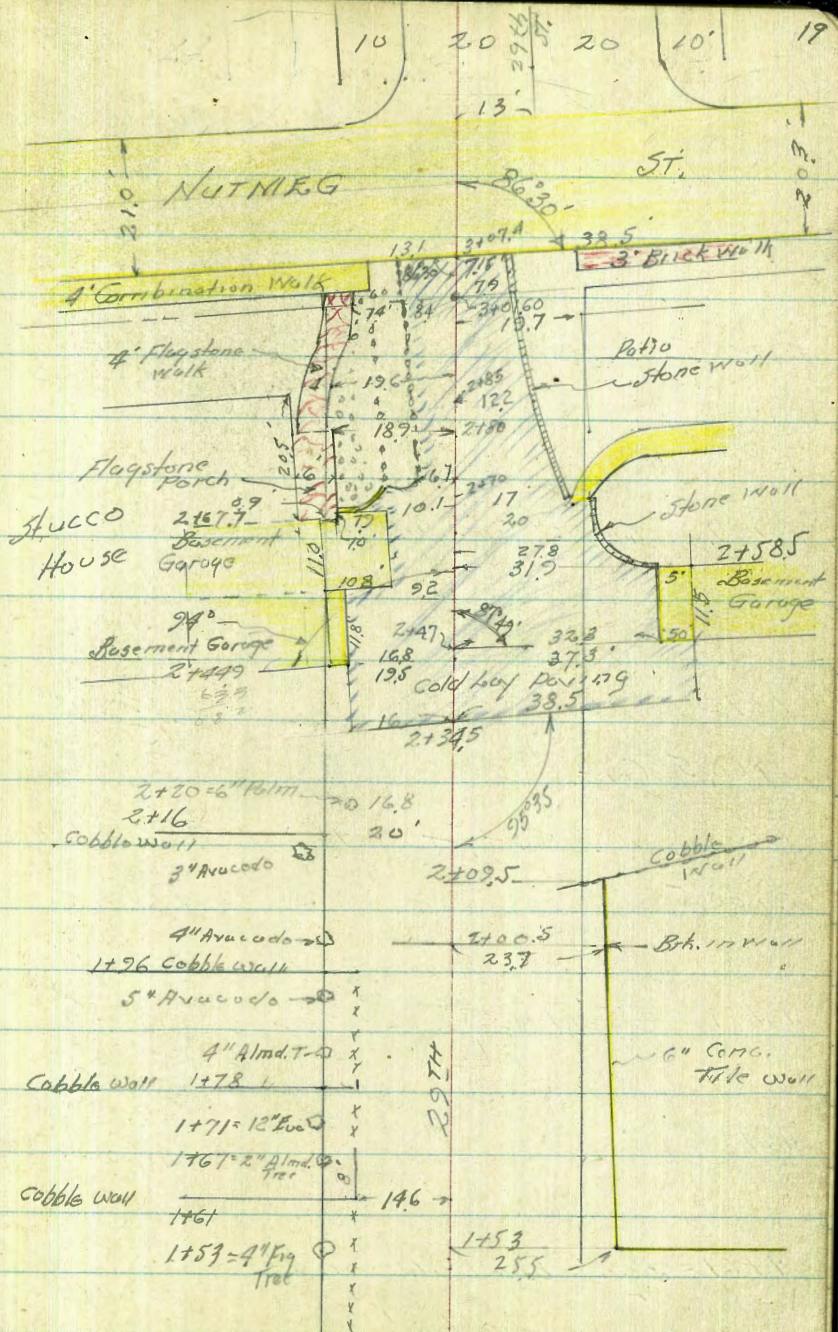
338 01

29TH ST. Cross Section 1075

Sketch Scale 1" = 30'



TP 1240 28781 009 27541
27550



29TH

1767 = 2" Almd. Tree

1753 = 4" Fig Tree

29TH ST - CROSS SECTIONS

2+44.9

2+34.5 = Int. Pav. Diag. Section on Poring

2+09.5 = End 6" Conc. Tile Wall

(1+96) on Wall

2+00.5 Cont.

T.P. 803 294.24 16.0 286.21

2+00.5

1+89 2.5' H = 6" Pepper Tree

1+81

1+78

1+61 = Beg. Cobble wall on Lt.

287.81

Lt.
290.25
399
195

290.20
404
168
Apico

290.04
420
168
Pav.

289.99
425
Pav.

289.46
478
20
Pav.

288.89
535
38
Pav.

286.4
78
30

288.4
78
20

288.2
60
12

288.4
58

288.4
58
20

286.26
798
233
6" Wall
Conc. Tile

291.33
521
233
Cobble Wall

285.64
863
15

285.7
85
40

285.7
85
20

287.3
69
294.24
16

287.8
64
16

284.5
13
20

286.21
160
23.7
on Wall

283.1
47
25
Ground

279.0
88
27

279.8
70
20

283.7
41
16

281.4
64

279.2
86
20

278.6
92
24.5
Top Wall

282.57
524
26
Ground
Inside

276.2
26

276.46
1135
146
Footing

279.75
806
146
Top Wall

287.81

29th Oct - Cross Sections

T.P. 293 303.38 0.79 293.45

2+68.8

291.49	291.15	291.62	291.79	292.44	293.66
275	309	262	225	180	4.58
18	10.1		10	298	21
Apron	Toe Apron				Stone Wall

2+67.7

291.69
2.55
20.8
Floor

2+58.5

291.67	290.56	290.67	290.45	288.96	290.72	289.12
2.57	368	357	379	528	352	5.12
20	9.2	0	20	31.9	10	
Floor	Toe Apron				Not taken in order	

2+56.7

291.64
260
20
Floor Garage

290.47
377
9.2
Apron

2+56.5

290.39
385
20
Floor Garage

290.39
385
18.9
Apron

2+47

290.13	289.99	289.68	288.95	289.11
4.11	4.25	4.56	5.29	5.13
	10	20	32.3	37.3
			Conc. Apron	Floor Garage

294.24

294.24

3+07.4 Cont

295.19	294.78	297.90	298.32	297.54	297.96
819	860	548	506	584	542
90	90	26.5	26.5	45.5	45.5
cb.	Gut	Gut.	cb	Gut	cb

3+07.4

296.18	295.71	296.07	290.60	297.95	297.96	296.26	297.94	298.36
720	767	531	5.78	543	542	502	544	502
66	66	131	13.1	17	715	72	20	20
cb.	Gut.	cb	Gut.	DRIVE	in DINE	cb.	Gut.	cb.

Int. = Sections Parallel to S.L.

3+01.6 = S.L. Hutmeg

297.92	298.04	296.8	297.1	297.8	297.27	297.37	299.56	298.13	298.2
546	530	66	63	56	611	601	582	525	52
20	15.8	13	10	8.7	8.5		7.9	8.0	20
Walk	Walk			Stone Wall	Gut		Gut	Top	
								Stone wall	

2+80

299.70

295.33	294.0	294.4	293.78	292.64	294.17	295.27	295.5	297.8
505	94	90	960	974	921	811	79	56
20	12	7.5	7		13	13.1	20	21 on
		Stone Wall	Gut		Por.	Wall		Patio Level

368
20
Porch

2+71.8

291.24	294.18
1210	920
10.1	10.1
Por.	Dir. Wall

2+68.8 on G. Conc. Wall

294.24	291.49
914	1189
18	18
Top Wall	Por.

2+70

292.63	291.88
10.75	11.50
6.7	6.7
Stone Wall	Por.

295.13	292.78
825	1060
17	17
Top Wall	Por.

303.38

313.38

CROSS SECTION - LAJOLLA MESA DRIVE
from Turquoise to Von Nuys

Walker
Faye
Huffman
Allen
11-6-51

NO 20884

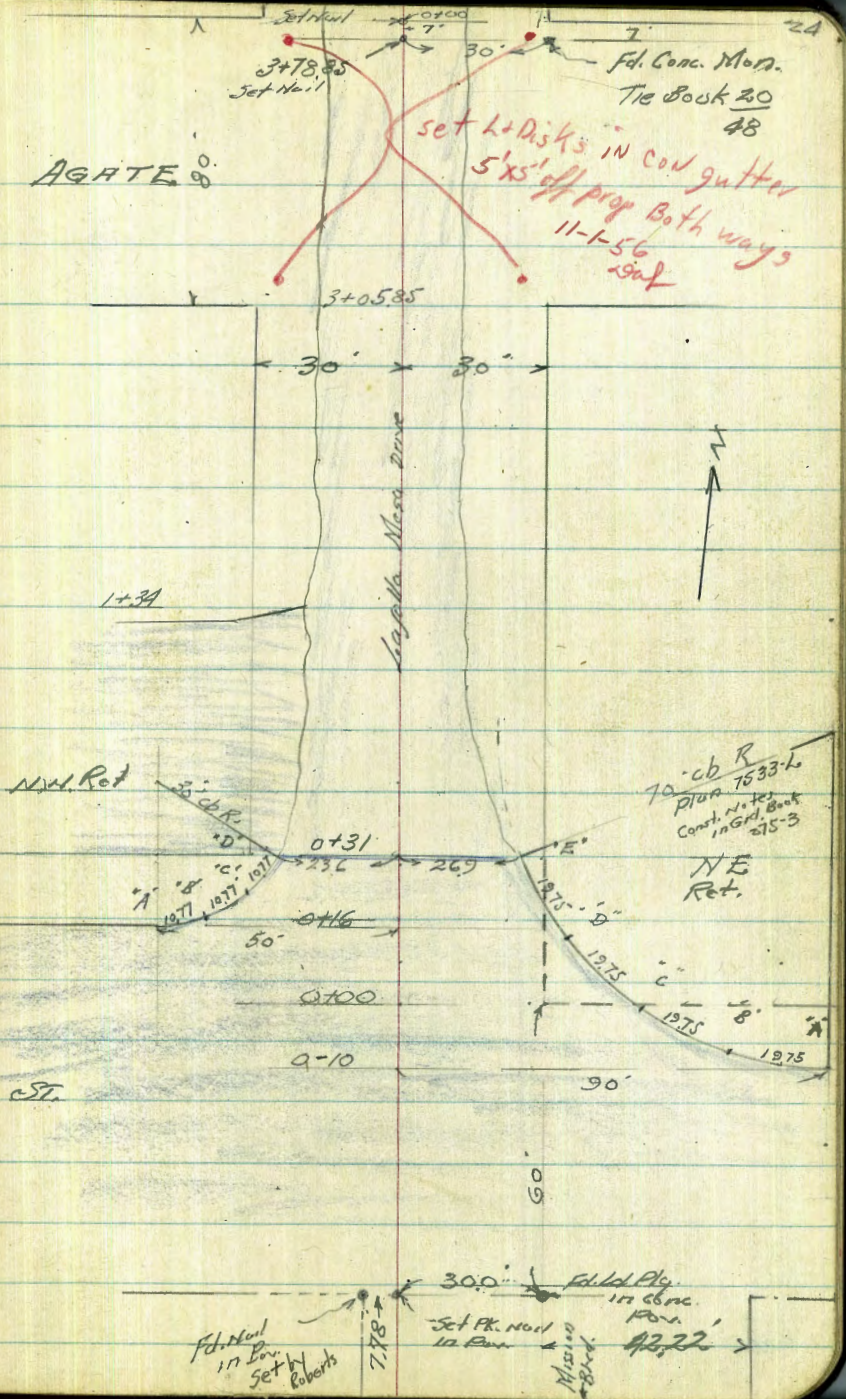
Soil Sample

INDEXED
Law
NOV 8 1951

See T.B. 2344 pg 65 for
additional notes.

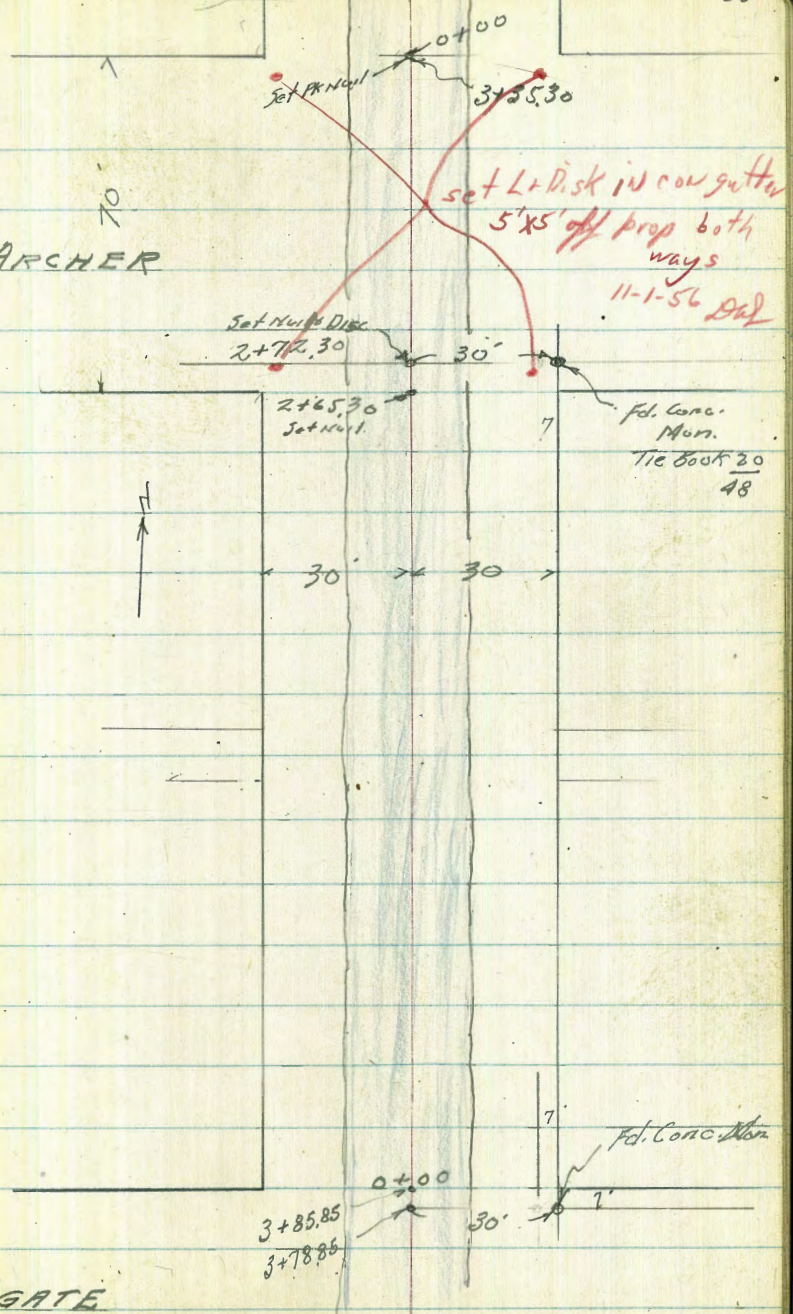
TURQUOISE ST.

AGATE ST.



ARCHER

AGATE



Set Nail 0+00 3+25.30

set L+Disk in cou gutter
5'x5' off prop both
ways
11-1-56 Dal

Set Nail + Disc
2+78.30

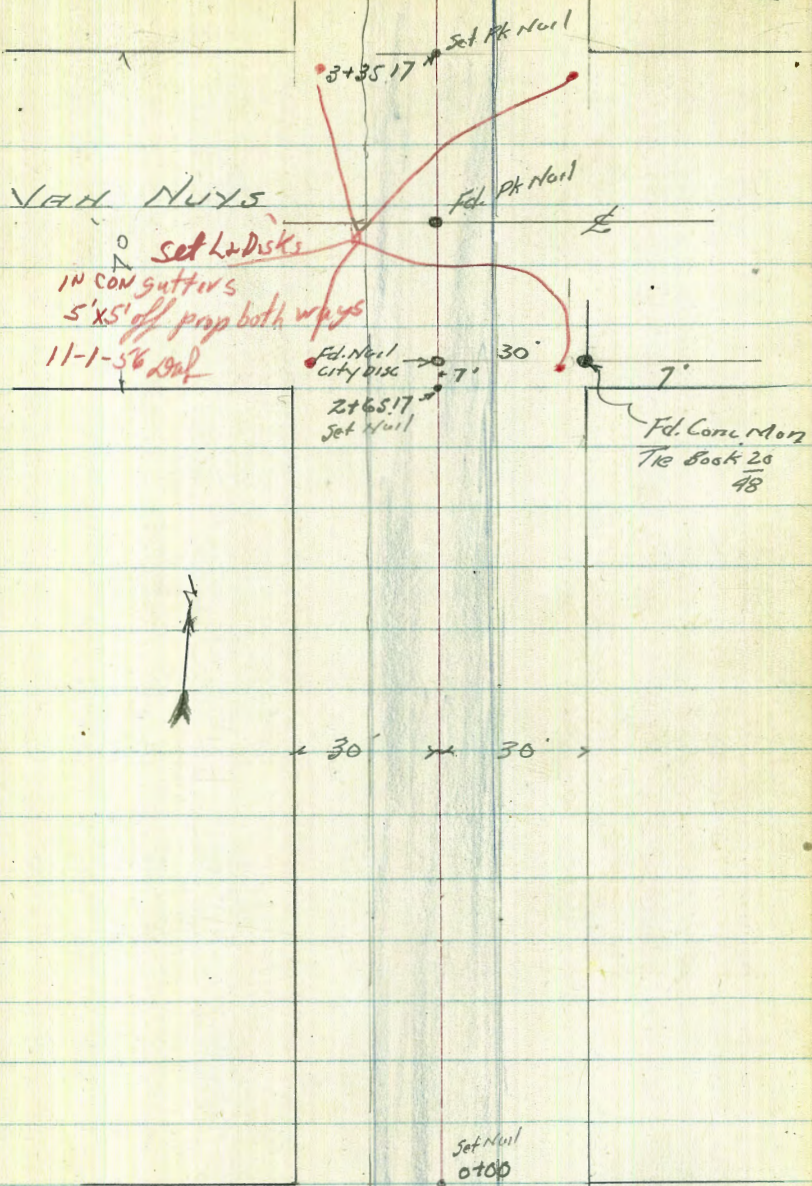
2+65.30
Set Nail

fd. Conc.
Mon.
Tie Book 20
48

3+85.85
3+78.85

0+00

fd. Conc Mon



ARCHER

Lapolla Mesa Drive

ft.

ft.

ft. 27

27

0+31 Cont.

⁶⁴ 105~~27~~⁹⁶
50
Per

⁹⁶ 106~~62~~
47
Per.

0+31

⁶⁴ ⁴⁵ ⁷¹ ^{4.08} ²⁷ ⁴⁰ ⁷⁴ ^{5.01} ^{5.00} ⁸⁷ ⁷⁷ ⁴⁵

~~10357~~ ~~10478~~ ~~10444~~ ~~10507~~ ~~10400~~ ~~10413~~ ~~10477~~ ~~10474~~ ~~10472~~ ~~10450~~ ~~10457~~ ~~10472~~

56 30 296 236 22 20 10 10 20 269 269

Per. Per. cb Gvt. Lp. Gvt. Gvt. Gvt. Gvt. cb

0+16

⁷² ⁷² ^{4.19} ⁵⁷ ⁹⁵ ⁹⁷ ⁹⁴ ⁷⁵ ⁵⁷ ⁴³

~~10275~~ ~~10328~~ ~~10372~~ ~~10429~~ ~~10472~~ ~~10472~~ ~~10457~~ ~~10478~~ ~~10430~~ ~~10472~~

50 30 20 10 10 20 30 357 357

Gvt. Gvt. Gvt. Gvt. Gvt. Gvt. Gvt. Gvt. Gvt. cb

0+00 = N.W. Turquoise

³⁶ ⁹¹ ^{4.15} ⁷³ ^{5.11} ^{5.15} ^{5.11}

~~10308~~ ~~10354~~ ~~10388~~ ~~10472~~ ~~10484~~ ~~10488~~ ~~10484~~

50 30 20 20 30 30

0-10

⁴¹ ⁹¹ ^{4.08} ⁷⁰ ^{5.13} ^{5.24} ³⁷ ^{6.12}

~~10372~~ ~~10384~~ ~~10381~~ ~~10472~~ ~~10486~~ ~~10497~~ ~~10572~~ ~~10585~~

50 30 20 20 30 30 50 90

N.E. Ret.

⁴⁵ ⁷⁷ ⁴³ ⁴¹ ⁸⁴ ^{5.09} ⁷⁴ ⁷³ ⁸⁹ ^{6.12}

~~10578~~ ~~10450~~ ~~10576~~ ~~10432~~ ~~10557~~ ~~10488~~ ~~10677~~ ~~10576~~ ~~10622~~ ~~10585~~

"E" "E" "D" "D" "C" "C" "B" "B" "A" "A"

cb Gvt. cb Gvt. cb Gvt. cb Gvt. cb Gvt.

N.W. Return

⁷² ³⁷ ⁷¹ ^{3.08} ^{4.18} ⁵⁴ ⁷² ^{4.08}

~~10275~~ ~~10570~~ ~~10372~~ ~~10282~~ ~~10372~~ ~~10327~~ ~~10472~~ ~~10384~~

"A" "A" "B" "B" "C" "C" "D" "D"

Gvt. cb cb Gvt. cb Gvt. cb Gvt.

NOTE: ALL ELEVATIONS RAISED 0.27' TO AGREE WITH B.M. AT ANOTHER AND LAPOLLA MESA WHICH WERE USED AS BASIS OF LEVELS ON CROSS STREETS.

N.W. B.P.
Turquoise & Lapolla Mesa Dr
Grade Book 275-3

103.29
56

NR

Lapolla Mesa Drive

1+50 Cont.

	4	6	4	8
	108X	108X	112X	113X
	100	48	63	75
	in	in	in	in
	Alley	Alley	Alley	Alley

1+50

	7	3	7.05	.93	8.19	8.14	8.5	8.2	9.1
	107X	107X	106.78	107.66	107.32	107.84	107.32	107.7	108.2
	30	20	16	6	6	12.5	20	30	
			Edge			Edge			
			Par.			Par.			

T.P. Rock

107.96

1+44 = Elec. Pole # 5224 22.4 Lt.

22.3 Lt
= Pole
Anchor

1+34 = Hedge Par. Parking Lot

	8.1	.89	.6	.43	.73
	107.8	106.62	106.7X	107.16	107.76
	30	22	18	6	
		West	Yulley		
		edge	Gutter		

1+11.8 = Conc. Slab Traffic Tread Signal

	.46	7.01
	106.72	106.74
	11.9	2.9
	West	East
	end.	end.

1+00

	.95	.29	.68	.38	.73	.70	.34	.9	.6	.4
	106.88	106.62	105.7X	106.7X	106.76	106.73	106.87	106.8	107.3	108.4
	40	30	21	8	6	6	12.8	20	30	40
	Par.	Par.	Yulley	Par.	Par.	Par.	Edge			
			Gutter				Par.			

0+79

.69
105.72
15
Edge
Par.

0+50

	.51	5.02	.60	5.05	.39	.33	5.25	6.1	7.1
	105.64	104.75	104.38	104.78	105.78	105.06	104.88	105.2	105.8
	40	30	20	10	10	10	23	30	40
	Par.	Par.	Par.	Par.	Par.	Par.	Edge		
							Par.		

Lafolla Mesa Drive

Lt

77 29

3+10 = Elec. Pole #P-5248 23.6 Lt

3+05.85 = S.H. Apron

Nail Pole S.H. Lafolla Mesa Drive & Apron

T.P. 111.91

4 12 11 61 125 56 63 35 6 2.1 7 3
~~112X~~ ~~110X~~ ~~110X~~ ~~110X~~ 11098 1120 11130 11120 1113 1113 113X 115X
 35 30 20 13.5 6 5 12.5 20 28 30 35
 Edge Pav. Edge Pav.

2+50

7
~~112X~~
 35

7 3 7 44 10.65 31 37 10.14 7 11 117.2
~~111X~~ ~~110X~~ ~~109X~~ ~~109X~~ 10978 11004 110X0 10991 1104 1104 112X
 32 30 20 13.4 6 3 7.2 20 30 36
 Edge Pav. Edge Pav.

2+20.8 = End Conc. Apron

1.07 .61 74
~~11080~~ ~~11034~~ ~~10974~~
 451 35 39.2
 Floor S.H. in Drive Toe Apron

2+64.3 = Seg. Conc. Apron to Dble. Garage

1.07 48 37
~~11075~~ ~~11021~~ ~~10970~~
 451 35.0 29.2
 Conc. Floor S.H. in Drive Toe Apron

2+00

3
~~111X~~
 42

10.1 9.2 3 37 9.06 30 29 9.05 4 9 115.2
~~10978~~ ~~10892~~ ~~10880~~ ~~10870~~ ~~10870~~ ~~10902~~ ~~10902~~ ~~10878~~ ~~109X~~ ~~109X~~ ~~115X~~
 32 30 20 14 6 6 7.2 20 30 36
 Edge Pav. Edge Pav.

1+62 Cont

4
~~110X~~
 50

7
~~109X~~
 32

77 44 4.16
~~11252~~ ~~1137X~~ ~~11382~~
 50 59.2 77
 Toe Apron S.H. Apron
 Conc. Apron

1+62

3 6 42 8.12 48 48 8.23 6 9.0 8
~~108X~~ ~~107X~~ ~~10715~~ ~~10785~~ ~~10821~~ ~~10821~~ ~~1079X~~ ~~108X~~ ~~108X~~ ~~113X~~
 30 20 15 6 6 6 7.8 20 30 37
 Edge Pav. Edge Pav.

TR 117.68

1+27 = 2 Elec Pole #P-5274 227' Lt

1+00 115.1 115.8 115.8 116.00 116.57 116.74 116.77 116.79 116.8 116.8 116.8 116.8 116.8
 45 30 20 14 7 6 11.9 20 26 30 35
 4 6.1 6.1 27 9.4 7.21 7.04 .66 .3 5 9.2 20.1
 Edge Pole Edge Pole

0+62 = 4 3' Brick Walk + Steps

116.08 119.25
 278 35.8
 Top Bottom step Top step

0+50 114.9 115.2 114.9 114.1 114.72 115.20 115.22 114.73 114.8 114.8 116.5 118.8
 50 30 20 15 6 5 11.3 20 27 30 41
 5.2 3 4 .8 5.05 7.7 3.0 5.60 9 5.2 8 9.0
 Edge Pole Edge Pole

0+00 Mead
 3+85.85 = Back = N.W. AGATE ST.

114.8 114.8 113.8 112.5 112.5 113.2 113.47 113.74 113.22 113.8 113.8 113.8 113.8 113.8 113.8
 43 34 50 20 15.3 6 5 12.2 20 27 30 35 45
 7 7 4.2 8 6.2 5.1 7.4 6.8 3.5 6 8 3 6 9
 Edge Pole Edge Pole

3+70 114.8 113.5 112.5 111.8 112.7 112.22 112.22 112.7 112.8 113.2 114.8
 43 30 30 15 6 5 12.5 20 30 50
 6 9 3 2.09 3.01 3.25 3.25 9.8 3.1 5 5
 Edge Pole Edge Pole

3+45.85 = L. Agate 112.8 112.3 111.8 111.26 112.7 112.32 112.35 112.70 112.8 112.8 114.8
 50 30 20 14.5 2 5 12.5 20 30 50
 7 3 6 5.3 7.7 5.5 6.2 4.7 6 3.1 3
 Edge Pole Edge Pole

Leafalla Mesa Drive

3+25

3
125.0
38

3+00.30 - L. Archer

2+66 = E. Elec Pole #P-5298 244 Lt

2+65.30 = S. Archer

T.P. Rock

121.61

2+12.8

2+00

1+98 - Beg. Dble garage Conc. Apron & Floor

1+50

6
118.3
40

1+40 = South Conc. Apron

1+32.5 = Approx of E. + W. Alley

41

42

43

31

7 4.1 4.2 35 5.18 43 39 84 50 3 7
~~124X~~ ~~123X~~ ~~1239~~ ~~129X~~ ~~124X~~ ~~125X~~ ~~125X~~ ~~1245X~~ ~~124X~~ ~~125X~~ ~~125X~~
 30 26 20 15 6 6 6 11.5 20 30 30
 Edge
 Pav.

8 5 5 30 4.17 39 4.19 81 4.0 4.0 4
~~123X~~ ~~123X~~ ~~123X~~ ~~12302~~ ~~1239X~~ ~~124X~~ ~~12392~~ ~~12304~~ ~~123X~~ ~~123X~~ ~~124X~~
 50 30 20 15.6 6 6 6 11.8 20 30 50
 Edge
 Pav.

3.2 3.1 6 5.6 7.8 3.01 9.1 4.8 5 6 4 4.1
~~122X~~ ~~122X~~ ~~122X~~ ~~121.02~~ ~~122.01~~ ~~122X~~ ~~122X~~ ~~122X~~ ~~122X~~ ~~122X~~ ~~122X~~
 40 30 20 14.7 6 5 11.8 20 25 30 50
 Edge
 Pav.

65 50
 120.34 120.53
 33.3 29.5
 Floor. Toe Apron

120.26 8 44 120.18 65 58 27 3 4 20 3
~~119.99~~ ~~119X~~ ~~119.72~~ ~~119.21~~ ~~120~~ ~~120.34~~ ~~120.00~~ ~~120.00~~ ~~120.12~~ ~~121X~~ ~~121X~~
 30 20 14.4 7 6 6 11.8 20 27 30 35
 Edge
 Pav.

65 120.24
 120.38 119.97
 33.5 29.3
 Floor Toe Conc
 Apron

6 118.0 77 65 97 86 45 6 8 121.0 121.0
~~118X~~ ~~117.7~~ ~~117.80~~ ~~118.78~~ ~~118~~ ~~118X~~ ~~118X~~ ~~118X~~ ~~118X~~ ~~117~~ ~~120.7~~
 30 20 14.2 6 6 12 20 26 30 34
 Edge
 Pav. Garage

120.11 124
 119.84 120.77
 31 55
 SW Cor S.E. Cor
 Conc. Apron Apron

8.0 8.0 7 7.19 8.0 36 8.23 8.4 8.0 9 7 6 2.0
~~117X~~ ~~117X~~ ~~117X~~ ~~116.92~~ ~~117.83~~ ~~118X~~ ~~117.76~~ ~~117X~~ ~~117X~~ ~~117X~~ ~~118X~~ ~~120.3~~ ~~121X~~
 50 30 20 14.5 6 5 11 20 25 30 50 30
 Edge
 Pav.

Lafolla Mesa Drive

(139.54)

Chk. Man. Eline Lafolla Mesa
7' N. S.W. Van Nuys

139.27

3+35.17 = N.W. Van Nuys St.

5 5 2.2 47 33 66 58 2.21 1 9 4
 1438 1438 1479 1418.80 142.06 142.39 142.31 141.51 142.1 142.1 142.1 145.1
 30 27 20 15.3 7 5 5 20 30 40
 Edge Fall Edge Fall

3+15.17

7 3 3 55 47 72 67 35 1.2 6 2.0
 140.1 140.1 120.1 140.28 141.20 141.75 141.72 141.28 140.2 141.3 141.7
 40 30 26 15.5 7 5 10.8 20 30 40
 Edge Fall Edge Fall

3+00.17 = Van Nuys

140.2 9 140.1 4000 2 1.03 97 66 7 1.0 3
 1379 139.6 1378 139.78 140.58 140.76 140.78 140.39 140.1 140.7 142.1
 50 30 20 14.9 2 on 5 10.6 20 30 50
 Edge Fall on well Edge Fall

2+65.17 = S.W. Van Nuys - End 8" Conc. Tile No. 11

9 9 179.1 5 28 9.01 30 9.18 96 9.0 7 1.5 9.2
 1388 1388 1388 1388 138.74 137.83 138.91 138.62 138.1 137.1 142.38 138.9
 40 30 25 20 16 7 5 10.3 20 30.2 30.2 30.2
 Edge Fall Top Well Base Footing

2+57 = E. Elec Pole #P-5348 29.2' Lt

TR 136.88

2+400

9 5 5.1 31 .61 93 85 59 53 6.2 7
 136.8 135.2 138.8 134.84 135.24 135.26 135.28 135.22 135.2 135.2 135.2
 30 25 20 14.7 7 6 11.5 17 20 30.4
 Edge Fall Edge Fall at well

1+83.5 = End Apron

6.07 39
 135.20 137.18
 30.7 39.5
 Toe

1+68.3 = Beg. Conc. Apron

14 .84
 135.22 136.58
 30.7 39.5
 Toe Apron

Lafolla Mesa Drive

0.02

chk starting B.M. P-27

103.29
103.27

TP

109.54

TP

118.60

TP

126.85

TP

135.90

Storm Drain ("A" line) Addison St.

12-14-51

- = Fd. City Man
- = Fd pipe L.S. 2201
- = 1/2 disk set.
- = nail

C.H.S.
Begg.
R. Sisson
W. Olman

Also see P-43

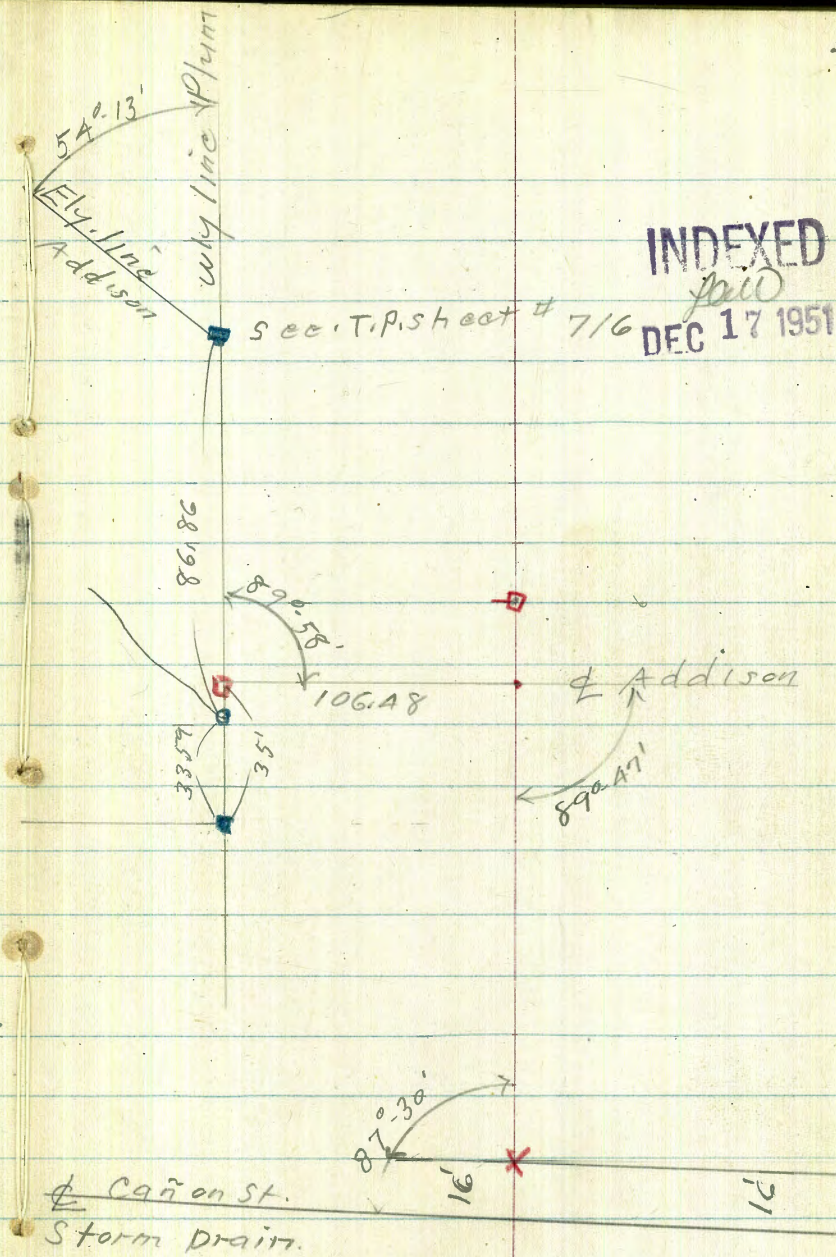
1+60.09 = Δ 89° 47' Lt.

1+45.09 = Δ Addison

Note. Have contacted
owners of Prop. from Sta.
0+25 to Sta. 1+10.09.

Easement will be given.
CH

0+16 = cross in walk

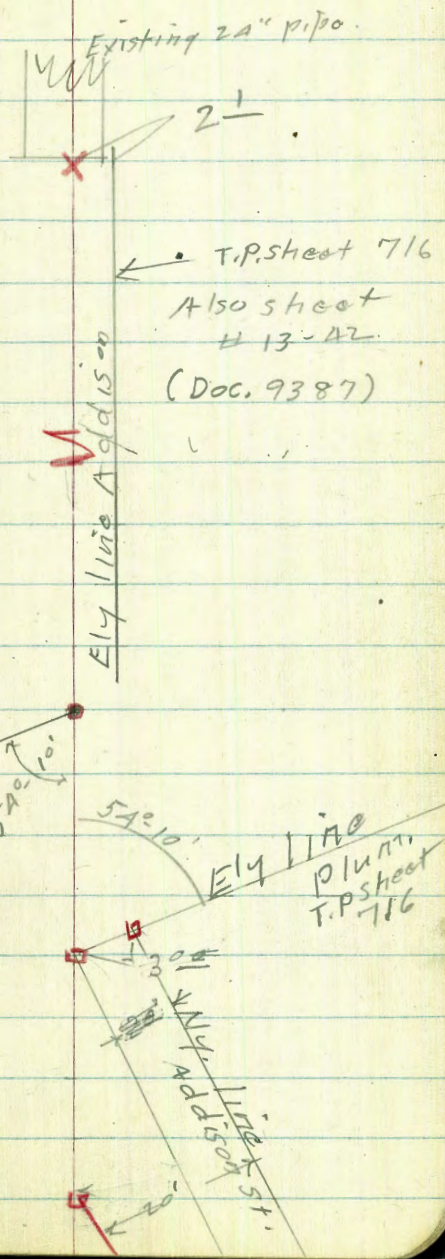


2^LRT = Ely line Addison produced.
 6+44 = Cross in Head well

2+93.99 = 1/2 See page 43 (1/3/52)

2+87.82 = intersect Ely line Plum produced.
 2+58.83 = 1/2 = Δ 35°-52' RT

2+58.83 = 1/2 = Δ 35°-52' RT
 1+60.09 = Δ 89°-17' RT



T.u. denotes top of wall
B.W. denotes base of wall

0+24 - 3 rd Lt = start conc. wall.	4.92	45.6	66.6	66.5	
	1.13	5.0	3.9	4.0	
	3 rd	3 rd	3		
	T.W.	B.W.			
0+20 ¹ = leave walk.			66.90	66.15	65.87
			4.10	4.35	4.63
			10		10
0+15 ² = edge of walk			66.27	66.02	65.77
			4.23	4.48	4.73
			10		10
0+15 ¹ = top of curb			66.29	66.10	65.89
			4.21	4.40	4.66
			10		10
0+15 = 10 gutter			66.80	65.57	65.36
			4.70	4.91	5.15
			10		10
± Cañon Storm Drain Sta. 14+08			65.45	65.19	64.90
0+00 = ± Cañon Road way =			5.05	5.31	5.60
			10	70.50 ✓	10

9.30 70.50 ✓ - 61.20

N.W.B.P. Cañon + Willow

T.P. 11.71 8637 3.35 74.66

1+92

1+10 6' Rt. = 5" fig tree.
3rd Lt. = end garage.

74.9 74.7
3.1 3.3 3.7
75 3
± doors

1+01 4th Rt. = 10" Diam Apricot tree

0+95 3' Lt. = end conc. wall

74.6 74.0 74.6 73.5
3.4 5.0 4.4 4.5
3 3 3
T.W B.W

0+92 3rd Lt. = start single Garage.

0+89 3rd Rt. = 4" Diam lognat.

0+70- 3' Rt. = 1" Diam peach

0+61 3rd Rt. = 1" Diam apricot

0+51 2nd Rt. = 3" Diam peach

0+50

73.5
4.5
69.9
8.1

T.P. 8.43 78.01 0.92 69.58
(This is thru wall)

0+46 3rd Lt. = 6" Diam Apricot tree

0+43 - 2nd Lt. = 8" Diam orange.

0+34 - 3' Rt. = 4" diam orange

78.01

90.50

2+58⁸³ = 1/2 = Δ 38^{8.52} pt
(Section on split of Δ)

2+45

T.P. 10.29 96.12↓ 0.54 85.83↓

2+25

2+00

1+85

1+60⁰⁹ = Δ

1+45⁰⁹ = Δ Addison

91.9
4.2
5
Hub
4.76
5.4
5

87.8
8.3
15
88.9
7.7
96.12↓
89.4
6.7
15

86.2
0.2
83.9
2.5
87.6
3.8
81.97
4.40
Hub
81.0
5.4

86.37↓

T.P. 10.91 109.29 ↓ 4.20 98.33 ✓

4+10

95.8
57
10
93.0
9.5
92.7
9.8
24
96.3
6.2
35

3+60

99.2
3.3
10
94.7
7.8
89.8
12.7
15
89.6
12.9
40
97.9
10.1
50

3+25

99.8
2.7
10
95.2
7.3
89.5
13.0
14
89.5
15.0
20
87.5
15.0
35
94.5
12.0
50

3+05

97.9
4.6
10
95.0
7.5
90.0
12.5
14
89.7
12.8
30

3+00

94.0
6.5
10
92.9
9.6
90.0
12.5
14
89.6
12.9
30

T.P. 9.93 102.53 ↓ 3.52 92.60 ↓

102.53⁺

line Plum.

2+87.82 : intersect production of Ely

95.8
0.3
10
92.60
3.52
H46
90.0
6.1
14
89.0
7.1
30

96.12⁺

6+43 ⁶⁵ = outlet existing 24" Conc. drain

6+43

6+20

6+00

5+50

5+00

4+50

4

41

104.10

5.14

I, E.

108.1

1.1

10

104.3

4.9

106.9

2.3

10

104.6

4.6

109.2

0.0

16

107.7

1.5

13

104.7

4.5

12

106.8

7.4

103.8

5.4

8

108.2

1.0

18

106.8

2.4

20

105.8

3.4

14

101.0

8.2

13

100.7

8.5

101.4

7.8

7

105.4

3.8

17

103.8

5.4

20

98.5

10.7

10

97.9

11.3

98.1

11.1

8

102.1

7.1

18

94.7

14.5

109.24

Reduced By C.R.L. 12-19-51

Orig. B.M. P 37		10.15	61.19 [✓] (61.20)	N.W. B.P. Cañon + Willow.	
T.P.	1.10	71.34 [✓]	12.18	70.24 [✓]	S.E. 7' Prop. L+T Willow + Addison
T.P.	0.45	82.42 [✓]	6.52	81.97 [✓]	1160 ⁰³ - P-39
T.P.	0.70	88.49 [✓]	11.79	87.79 [✓]	
T.P.	2.99	99.58 [✓]	12.65	96.59 [✓]	

in head wall
 G+44 = cross foot 1.64 107.60

↓ in top of wall
 8' 107.9
 G+44 = Face { 10" thick } head wall

107.60
 1.64
 T.W.
 4'

107.60
 1.64
 T.W.
 4'

107.60
 1.64
 T.W.
 4'

109.24[✓]

Addison St. storm drain
"B" line along Plum St.
12/4/52

= Sta. 2+93.99 - original line - Page 36
1+75.55 = Δ 5A-10' Lt.

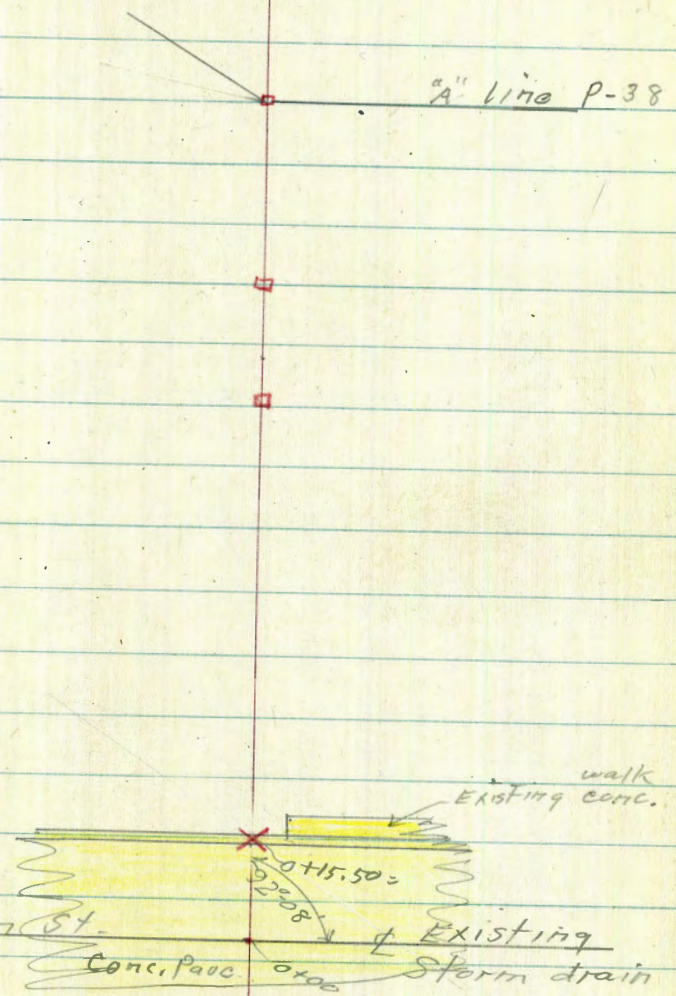
1+09.60 = 1/2 P.O.T.

0+94.10 = 1/2 P.O.T.

0+15.50 = Cross in curb

0+00 = Existing storm drain

Canyon St. storm drain Sta. 15+36.12 =



0+40 1' Lt. = 3" diam. peach tree

0+32

77.8	77.4	75.4
7.7	7.7	7.7
5		5

T.P. 11.72
 4.77 85.15 0.49 73.43

85.15

0+30 improved with shrubs + trees.

also 5' Rt. = start yard

0+24 5' Rt. = 1" wide E. + W. conc. wall

77.7	77.7	73.4
11.2	1.2	9.5
5		5
7.3		69.5
2.6	7.4	73.8
5	5	0.6
and.	B.W.	T.W.

0+23 - 15' Lt. = 1" diam. peach tree

0+20 4' Rt. = N.Y. cov. walk = end of walk

0+15 top of curb

0+15 Button

0+00 on pavement

70.31	70.1	69.97
3.61	2.8	3.95
5	0.1	7.3
69.82	70.3	69.94
4.10	3.79	3.98
5		5
69.72	69.63	69.41
	4.29	4.51
		5
	69.72	
	4.60	
	<u>73.92</u>	

7.82 73.92 66.10

0+15 Page 37

1+10
 1+09.60 = 1/2 P.O.T. 4.12 97.16
 T.P. 5.26 101.28 1.14 96.02

1+05 shrubs + trees.
 5' Lt. = end yard improved with

0+90
 0+83 10' Lt. = 5" diam. Logquat tree

0+70

0+64
 0+63- 5' Lt. = 4" diam. Logquat tree.

T.P. 12.27 97.16 0.26 84.18 9

0+56- 1' Lt. = 2" diam apricot tree

0+49

97.8	97.2	95.9	92.8	
3.5	4.1	5.4	8.5	
5		5	20	
				101.28 ✓
97.2	97.1	94.9	84.5	84.6
0.0	0.1	2.3	10.7	10.6
5		3	8	20
94.2	92.9	92.9	84.8	83.8
3.0	3.3	4.3	10.4	10.4
5		4	6	20
88.8	88.4	87.1	84.5	
8.4	8.8	10.1	10.7	
5		5	7	
84.8	85.3	83.9		
10.8	11.9	13.3		
5		5		
				97.16 ✓
74.8	78.1	78.8		
6.3	6.3	6.3		
5		5		
				85.15 ✓

8.66 92.62 ↓ 92.60

check $\frac{1}{2}$ 2487²⁵ Page 40

Reduced By CPL 2-21-52

1+75.55 = $\frac{1}{2}$ = Δ 54° 10' Lt.

72.80

81.48

1+71

97.6

71.7

1+66

75.9

5.4

97.5

5.8

94.6

6.7

1+40 5^E Lt = Ctr. M.H.

80.8

140.12

99.2

94.2

74.4

20.51

1.16

2.1

3.1

6.9

55

4^E

4

15

I.E.

Ritt

sewer

101.28

Clark 4-16-52
 Shephard W.O. 25020
 Bruner
 Bryson

INDEXED

47

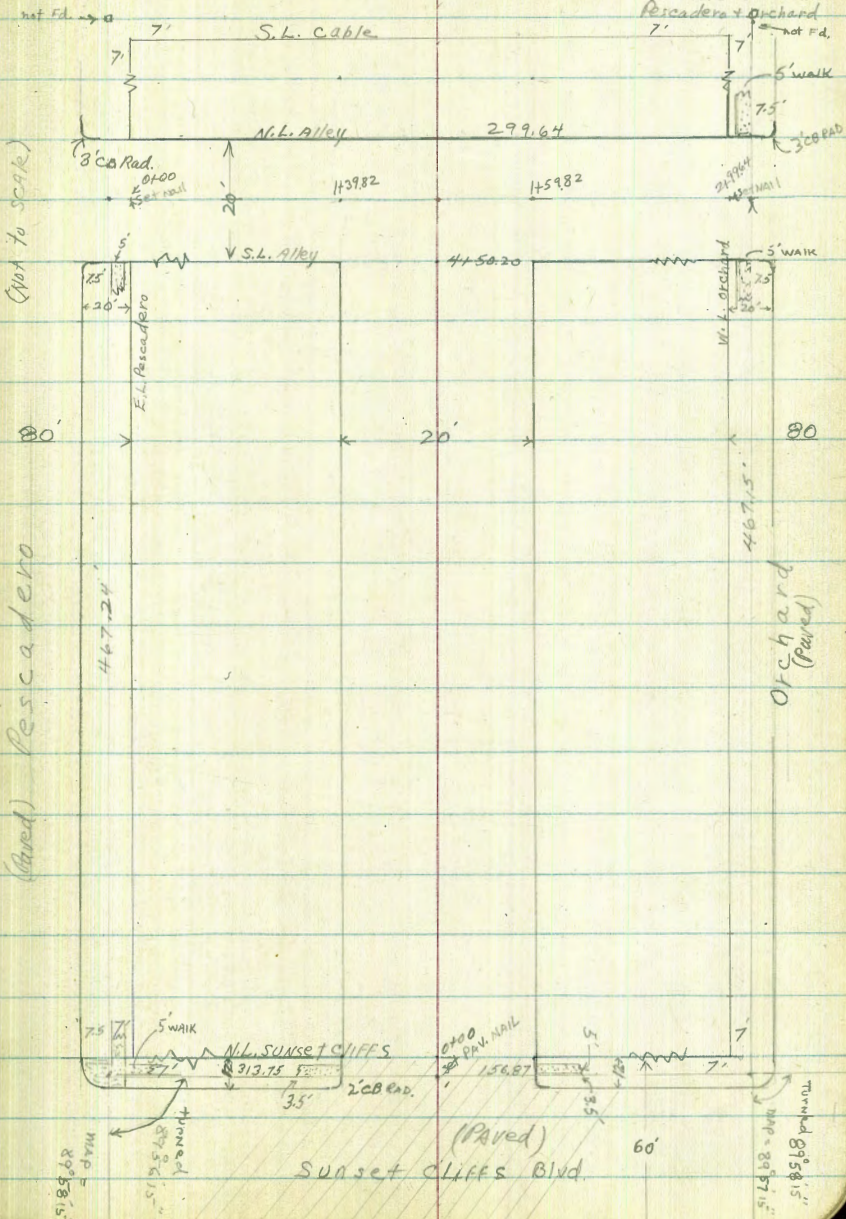
APR 21 1952

X-SECT ALLEY BIK 45

Sunset Cliffs Blvd
 to Cable - between
 Pescadero + Orchard

Note: Angles & distances do not check those shown on the sheet #784. - nor do they match EXIST. Returns at Alleys. To expedite establishing of grade in alleys, the sheet distances were used. A RESURVEY OF this area is necessary to determine error in BIK 45 & properly apportion said error.

Reduced & Platted
 4-23-52
 H. Miller



2+45 END 8-CAR GAR 14.9 RT CONC FLOOR
 2+31 21.6 LT Floor 1-car gar 18.8 CONC APRON
 2+20 END 4-CAR GAR 15 LT CONC FLOOR
 2+15 M.H. E
 2+00

1+79 Beg 4-CAR GAR 14.9 LT CONC FLOOR
 1+72 END 4-CAR GAR 14.9 LT CONC FLOOR
 1+56 Beg 8-CAR GAR 14.9 RT to CONC FLOOR
 1+52 10' RT & 2' CONC WALK
 1+50 10' LT to CLEAROUT VALVE
 1+28 Beg 4-CAR GAR DEPT. 15.2 LT to CONC FLOOR
 1+25 10.1' LT & Pole #PA4816
 1+17 18.9 into E Single GAR CONC FLOOR
 1+01 END 3-CAR GAR 19.5 LT to CONC FLOOR
 T.P. 6.30 36.12 371 29.82
 1+00 END CONC BIK WALL 11.5 RT

32.02
 4.10
 21.6
 31.56
 4.56
 18.8
 32.27
 3.85
 15
 32.27
 3.85
 14.9
 CONC FLOOR
 31.7
 4.4
 10
 4.75
 31.3
 4.8
 31.5
 4.6
 10
 4.59
 15.2
 CONC FLOOR
 32.22
 3.90
 14.9
 4.36
 14.9
 31.55
 4.57
 14.9
 31.10
 5.02
 10
 30.9
 31.7
 31.5
 31.43
 30.7
 20.9
 5.4
 5.2
 5.2
 10
 10
 31.77
 4.35
 15.2
 30.8
 30.4
 30.4
 30.4
 5.0
 31.1
 5.3
 5.7
 5.7
 5.7
 10
 20
 30.37
 5.25
 18.9
 5.82
 36.12
 30.1
 29.1
 29.67
 29.4
 3.5
 2.7
 3.4
 10
 4.4
 11.5
 B.Fdn.
 3.86
 11.5
 T.Fdn.
 4.1
 20
 33.53

3+80 16.2 LT Bay 2 car gar 12.7 to CONC APRON
 7.8 RT & 3.5' CONC WALK
 12.10 LT 2.5 WALK

3+75 7.9 LT & Pole # 42739/H

3+72 END 16.4 LT 2-car gar 12.10 to CONC APRON

3+53 Bay 16.2 LT 2-car gar 11.7 to CONC APRON

3+52 10.05 RT & 2' CONC WALK
 2' CONC WALK 13.0 LT

3+50 9.95 RT Bay 4' conc wall

3+47 15.7 LT END 4-car gar 12.7 CONC APR

3+28

3+27

3+04 15.6' LT Bay 4-car gar apt 12.7 to CONC APRON

3+00 END Cyp. Hedge 11.6 RT

2+72 Bay 11.1 RT & Cypress tree Hedge

2+54 8.6 RT to 1.5' CONC WALK
 9.5 LT & Pole # 487206 H

2+50 17.5' RT & Pole # 487207 H

2+47 10' RT & 2' CONC WALK

29.19
 6.93 7.11
 16.2 12.7

29.15 29.9 29.6 7.46
 7.07 7.2 7.5 7.5 7.4
 12.1 10 10 15
 29.56 29.14 29.8 24.7
 6.56 6.98
 16.4 12.10
 29.5 29.91
 6.54 6.81
 16.2 11.7

29.99 29.8 29.0 6.75 6.65
 6.75 6.8 7.1 10.05 20.04
 13. Conc 10 7.58 7.95 8.54 6.8 7.93
 9.95 ground 8.54 15

30.01 29.84 29.4 29.1 29.7
 6.11 6.20 6.7 7.0 6.9 6.4
 15.7 12.7 10 10 15
 6.14 6.25 6.2 6.7 6.6 6.10 30.1
 15.6 12.7 10 10 15

30.36 29.85 29.9 29.4 30.1
 5.76 6.1 6.2 6.7 6.5 6.0
 15.6 12.7 10 10 15
 30.32 30.21
 5.80 5.85
 15.6 12.7

30.4 29.2 29.9 30.0 30.2
 5.7 5.9 6.2 6.1 5.9
 20 10 10 20

31.4 31.2 31.4 31.4 31.1
 4.9 4.9 5.3 5.0 5.0
 25 10 10 20

31.22 31.1 31.30
 4.90 4.82
 10 20

36.12
 *

X Sect Alley BIK 45, Sunset to Cable (cont)

51

(Cont. P. 52.)

T.P. 10.22 37.96 8.38 27.74

4450.20 S. LINE Alley

4450 9.7 RT. END 45 Conc Wall

4444 10.2 LT of Pole # PA 4877

4414 9.8 RT. of Conc Drive 16' wide

A+00

3+99 16.2 LT END 2-Car gar 12.6 to Conc Apron

3+85 9.8 RT of 2.5 Conc Walk

27.8	27.7	27.6	27.6	27.7
8.3	8.4	8.5	8.5	8.4
20	10		10	15

28.5	28.2	28.1	28.4	28.5
7.6	7.9	8.0	7.7	7.87
15	10		10	9.8
				28.6

28.6	28.4
6.96	7.14
16.2	12.6

28.69
7.43
9.8

36/2

X-SECT Alley BIK 45 Pescadero to Orchard

0+93 153 LTR WALL OF 2-CAR GAR. UNDER CONST.
East Edge Terraced Driveway LT.

0+82 West Edge of Terraced Drive
10.8 LTR END CONC APRON

0+56 148 LTR 2-CAR GAR 10.7 TO CONTINUOUS APRON

0+52 143 RT 2-CAR GAR 9.2 CONC APRON & SIDE

0+47 148 LTR END 2-CAR GAR 10.6 LTR CONC APRON (CONTINUOUS)
10.5 RT END CONC BIK WALL 3.5 HIGH

0+40

0+37 89 RT 2-CAR GAR 1509 ✓
14.8 LTR BEG 2-CAR GAR 10.6 LTR CONC APRON

0+27 10.4 LTR END CONC BIK WALL 3.5 HIGH

0+12

0+03 10.4 LTR BEG CONC BIK WALL 3.5 HIGH

0+00 E.L. Pescadero

0-07 10.9 RT BEG CONC BIK WALL 2' HIGH

0-20 E.C.B.LINE

0+0 E. Pescadero (Paved)

29.9 29.9 29.0 28.4 28.4 28.4

8.1 8.1 10.96 9.6 9.4 9.1

23 15.3 15 10 10 20

TP Edge TERRACE 7.87 8.22 9.0 9.1 8.6 9.0

14.8 10.8 10 10 20

30.49 30.26

7.47 7.70

14.8 10.7

30.4 30.4

7.49 7.52

30.82 30.85 30.5 30.4 30.4

7.44 7.4 7.5 7.6 7.5 7.6

14.8 10.6 10 10 10 14

30.87 30.79

7.09 7.17

14.8 10.6 30.13

6.70 7.03

30.6 10.4 10.4 30.0 30.0

3.4 4.3 5.0 4.7 4.6

12 10 10 10 15

30.53 30.48

3.48 3.68 4.07 3.79 3.75

9.8 9.8 Edge Pav 10.5 10.3

7.08 7.08

30.45 30.40 30.40 30.40 30.40 30.40

3.11 3.66 3.56 4.04 4.16 4.43 4.47 4.52 4.01 4.93 4.56 5.57 5.04

5.0 5.0 13 13 10 10 13 13 13 4.5 4.5 7.5 7.5

7.08 7.08 7.08 7.08 7.08 7.08 7.08 7.08 7.08 7.08 7.08 7.08 7.08

30.49 30.49 30.49 30.49 30.49 30.49 30.49 30.49 30.49 30.49 30.49 30.49 30.49

3.67 4.17 4.98 5.39

5.0 4.5 4.5 7.5

37.96

X-SECT Alley BIK 45, Pascadero to Orchard (Cont)

2163 Beg. Con. Retain Wall 13' RT. (2.8 BK of 5' prop wall)

2161 10.2 RT & 2.5 CONC. WALK

2150

2137 10.4 RT Beg 5' CONC. WALL

2129 10.2 & CONC DRIVE 10' Wide

2125 10.5 RT END 5' CONC WALL

2120

2105 10.5 RT Beg 5' CONC WALL

2100

1195 10.4 RT END 5' CONC WALL

1188 10.5 RT & 2.5 CONC WALK

1159.82 10.7 RT Beg 5' CONC WALL

E.L. N+S Alley RT.

1150 Beg. Broken + Pitted oiled Pav. Mid E

1139.82 18.2 LT Pole No #

W.L. N+S Alley ON RT

1125 10' LT to E. Wall gas meter const.

1100

34.9 34.7 34.8
7.1 7.3 7.2
2.5 10 15
33.5 31.3
4.5 6.7
TR WALL 13 Bottom
32.24 32.0
5.72 6.10
10.2 13
30.12 29.6

27.1 27.2 27.3
7.03 9.24
20 Conc 10' CONC
9.9 9.9 9.7
2.5 10 15
28.4 28.6
9.6 9.4
10 15

27.1 27.5 27.7
9.9 10.5 10.3
2.5 10 15
28.1 28.3
9.9 9.7
10 15

27.1 27.5
10.11 10.5

27.7 27.7 27.6 27.6 27.6 27.0
10.3 10.3 10.4 10.4 10.4 11.0
4.0 2.5 10 10 10 10.7
8 Fdn

27.4 27.6 27.5 27.12 27.8 27.8
10.6 10.4 10.5 10.3 10.2 10.2
3.5 2.5 10 10 10 20

27.5 27.8 27.7
10.0 10.1 10.5 10.2 10.3
20 10 10 20

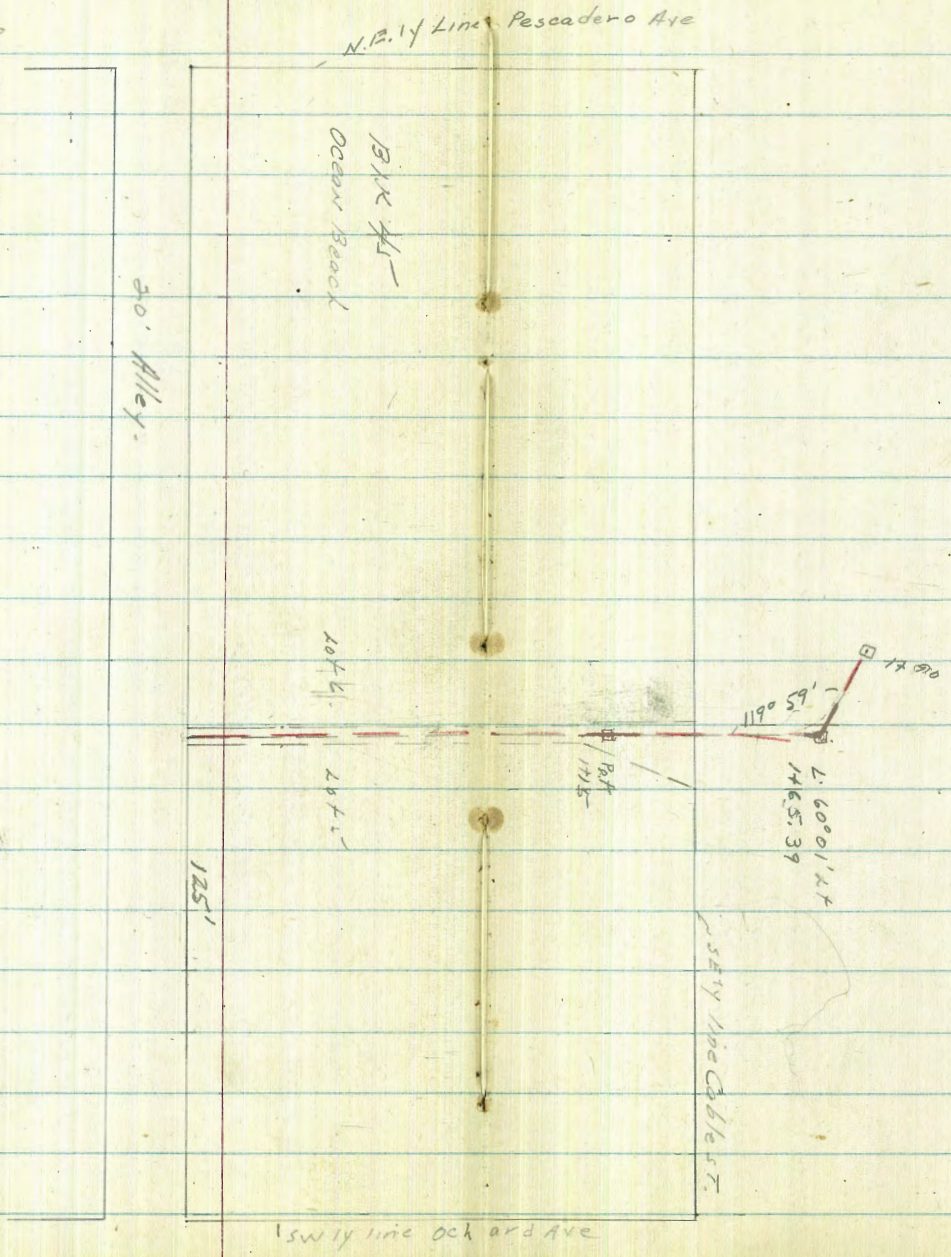
27.0 27.0 27.1 27.3 27.5
10.0 10.0 9.9 9.7 9.5
20 10 10 10 20

37.96

Allen Survey to extend Storm Drain into Bable Street
Park BIK 45, Ocean Beach
Taylor
Perkins
11-13-52 W.O.# 20998

Ref: Sub Div Map
4894-B

INDEXED
Law
NOV 14 1952



LT = 514

2

RT = N14 56

0+50 = end Conc 3/4 b. end 18" Conc pipe

27.38
525
10'
conc

27.18
545
conc

27.28
535
10
conc

0+46⁵ - 2^l Lt + 2^l Rt end apt. Bldgs.

2 Apt Bldgs. 2^l Lt = Apt - 2^l Rt = Net

28.13
510
2^l
conc

27.06
557
conc

28.13
530
2^l
conc

0+08⁵ begin 5^l wide Conc slab between

0+02 - Begin 18" pipe - I.E. deep see 4894B

27.8
58

0+00 = w/y line Alley

27.4
62

TP₂ 6.15 33.63 7.53 27.48

TP₁ 0.78 35.01 2.30 34.23

B.M. 8.40 36.53

NW BP - Pasadero 75W -
Set 01/14

28.13

33 63

Notes in Red added 11/12/53.
 all elevations in Red are True Elev.

Lt = 514

Rt = 514

57

1755

1755

1745

1740 approx bottom of cliff + R

approx BOTTOM of cliff

1735 - 50 Rt = ϕ 18" EXIST REP

Last Joint Pipe on 20% Grade.

1725

1708 - 11' Rt. top of Canyon to ocean

1700 - Begin widening of easement bank

0775

75
21
Toe
cliff

37
15

40

46
270
Tie
cliff

29.1	3.0	3.8	5.3	32.4
45	292	298	283	12
40	25		25	50

29.2	4.4	4.6	5.1	31.5
44	292	290	285	21
20	2010		10	40

28.7	29.2	23.3	21.0	30.1
49	44	103	120	35
15	5		10	30

Top Bank

28.8

48
11

28.1	28.0	27.5
55	56	51
10		10

28.0	27.9	27.9
56	57	51
10		10

33.63

Sections in Red added 11/12/53

Lt = 54

Rt = N14

58

2725

INDEXED

NOV 13 1953

2700

See page 59 addtl section 1790

1790 - opening to cove

elevations in Red are True elevs.

1765.39 = 4' section on split

TP4 3.55 35.76 5.32 32.21

TP3 10.05 37.53 6.15 27.48

1790 out from toe 30' high ±

1765.39 L.

32
23
Toe cliff

26

30
23
Toe cliff

93
20
Toe cliff

33
11

32

31
80
Toe cliff

72
18
Toe cliff

30
12

31
on Sand

-24 36 64
82 -130
Solid ground To Toe cliff

75
24
Toe cliff

37
18

39

49
190
Toe cliff

start BM
765 28.11 (28.13)

3.6 4.0 4.1
30' 296 295
10
Toe cliff 10

3.7 4.1 5.2 32.9
299 295 294 07
20' 20 50
Toe cliff

3363

See 1490 - page 58

LT

RT

58

13' LT = Nly face Rock wall

13' LT = toe Rock strata

8' RT = toe Rock strata

1490 = $\frac{1}{2}$ opening to cave

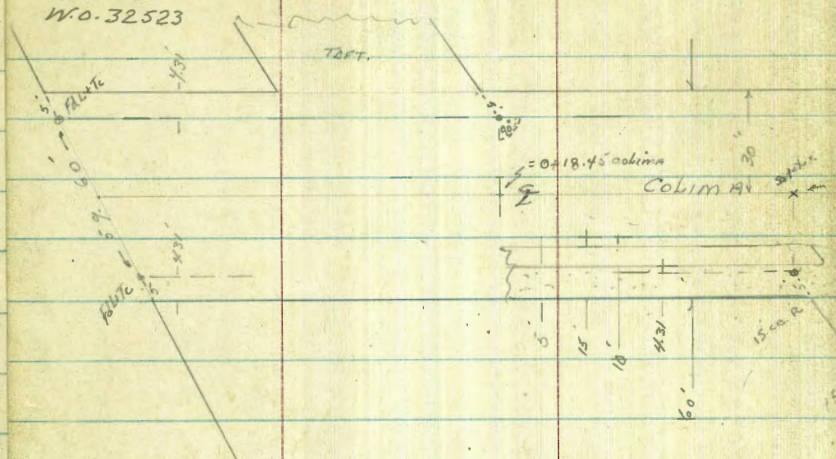
3⁶
8⁰
sand
Nly face Bedrock

3 ⁰	17 ¹	0.5	3 ¹	3 ³	-1 ⁵	3 ³	-2 ⁴
10	8	5 ²	5 ⁰	2	2	3	3
Bed	nr	Bed	Sand	sand	Bed	sand	Bed
Rock		Rock		Rock		Rock	Rock
13 ⁰		Rock					
Toe							
Rock							

True Elevations

Clark
Shepherd
Brown
Owner
6-8-55
W.O. 32523

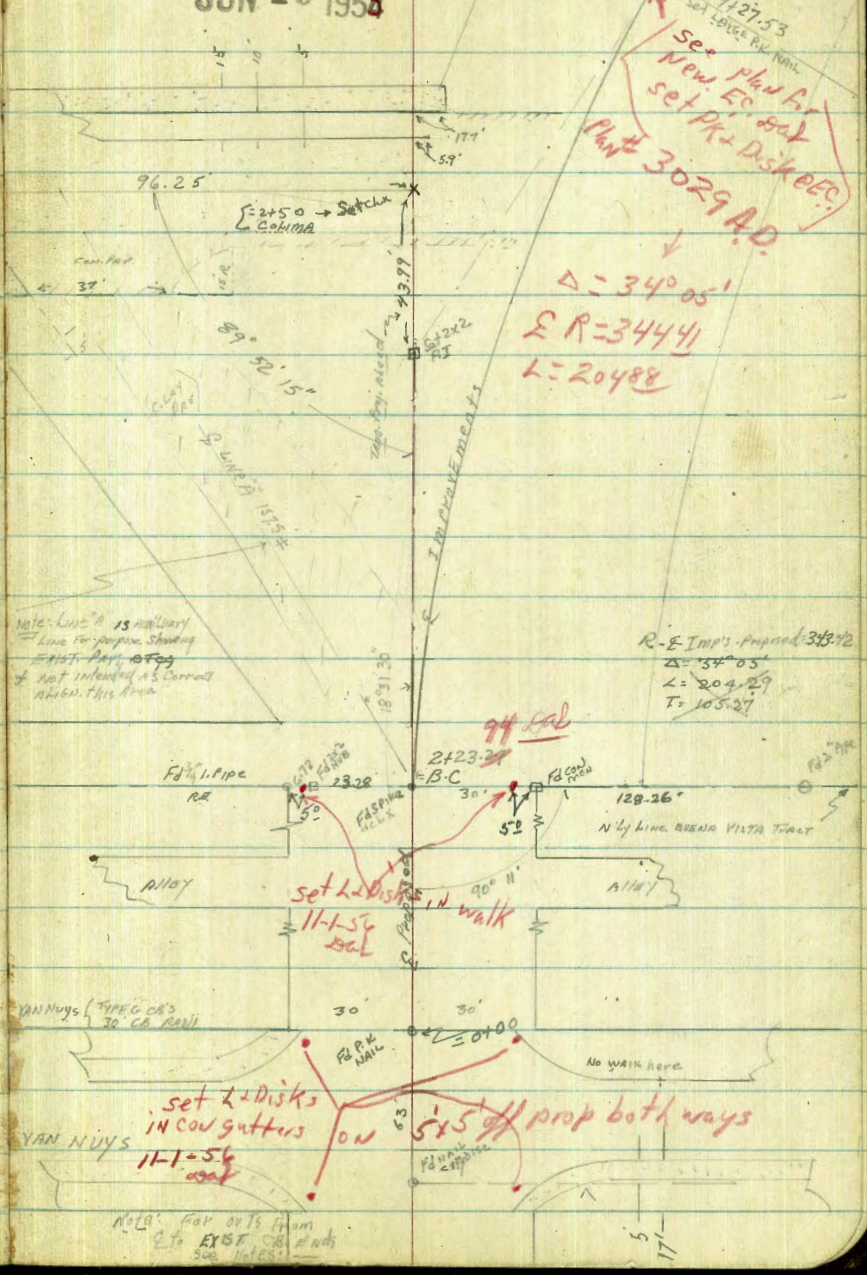
ALIGNMENT & X-SECT'S - LA JOLLA
MESA DRIVE AT COLIMA &
LINDA ROSA



Ref. FB 2119
F.B. 2122
T.P.S. 1705
MAP 2798

INDEXED
JER
JUN 15 1956

± 250
LINDA ROSA
60
153
65° 42' 29.06



Set Linda Rosa
New Plan by
set PK - Disk etc.
Plan # 3029 A.D.
Δ = 34° 05'
E R = 34441
L = 20488

Note: Line A is auxiliary
Line for purpose showing
± 115' Prop. 10' 50'
& not intended as correct
above this area

R-E Imp's. Appx. 348.42
Δ = 34° 05'
L = 204.29
T = 105.27

Note: CB Radius etc. at N.W. & N.E. by La Jolla Mesa Dr. & Van Nuys
Ref 58' From E! CLK: Const. plans.

VAN NUYS (TYPE C) 30' CB RADIUS

VAN NUYS

Note: For out's from
E to EXIST. CB ends
see notes

La Jolla MESA DY - (CONT)

LT.

♀

RT

63

2+00

154.77
3.0
50
41/30
4.2
24
5.9
20
5.33
ECLAY
153.46
4.35
4.68
ECLAY
153.13
4.1
24
3.5
30
+1.0
40
158.77
+0.3
50
158.07
+1.5
60
159.31
+1.5
60

1+53

E 28.9' RT 3' CON. WALK V STEPS (7 Steps: 5.0' rise 1.0' depth)

151.96
5.85
28.9
4.7
3.0 landing
151.60
152.03
3.78
30.6
on Landing
AT FT
155.84
1.97
1.40
156.41
1.40
47.0
157.81
1.37
158.57
1.37
159.31
1.37

1+50

1+18 ± = ♀ 15' All ♀

150.31
7.5
75
5.6
50
7.3
30
148.17
147.9
24
147.47
147.2
19
147.95
147.6
19
148.88
148.6
19
150.28
150.1
10
150.68
2.53
12
ECLAY
151.57
6.2
24
151.77
6.3
30
152.67
5.1
4.2
153.57
5.1
4.2
154.42
9.39
11
149.57
149.3
24
149.6
30
152.47
50
153.57
5.1
4.2
154.42
9.39
11
ECLAY

1+08

30' LT END CON. WALK
24.2' LT ♀ Pile = P-6374
30.6' RT END LOOSE T.L. WALK

147.51
147.24
10.3
50
147.21
146.94
10.6
30
147.07
146.8
10.7
24
146.57
146.5
11.2
19
146.97
146.70
10.84
44.0
147.86
147.59
9.5
1.5
ECLAY
147.83
147.6
9.8
147.24
10.47
24
ECLAY
147.24
147.07
9.6
24
148.21
147.94
9.6
30
148.81
148.6
8.5
30
152.41
152.14
5.4
40
152.51
152.24
5.3
50

1+00

1+91 E 27.2' RT 3' CON WALK V STEPS (7 Steps: 5.0' rise 1.0' Depth)

148.76
148.19
9.35
27.2
4.7 of
3'x3' CONC
LANDING
148.56
148.29
9.25
30.2
on Landing
Bottom
Step
152.15
151.86
5.68
37.0
on WALK
77 Step
152.98
5.33
47.0
on WALK

1+84

24.4' LT 4' E Deadman

146.31
146.04
11.5
29.6
FTG

0+70.5

29.6' Bg 5' CON. BIL. MAN 8" wide

1+70

28' LT END RON SHRUBS

157.81
157.54

LA JOLLA MESA Dr. (CONT.)
LINE "A"

LT.

♀

RT.

64

exp. notes - Line "A"

1+226 + (Sect. along line of Column)

157.5 157.47 157.1 157.76 159.18 159.62 160.4
8.3 8.33 8.70 8.94 6.62 6.48 5.4
50 36.6 36.6 27 21E 30
77 on 90k clay

1+226 + = 54 Line Column (Sect 90° Line "A")

158.3 158.6 158.18 159.18 159.36 160.3
7.5 7.2 7.62 6.62 6.44 5.5
50 34 25 25 24E 25
w/ly clay

1+00

158.4 159.0 157.9 158.29 159.28 159.72 160.3
7.4 6.8 7.9 7.51 6.52 6.08 5.3
50 28 23 19 10 24E 30
w/ly clay

Note: Line "A" not E. of Post

0+46

17.5 RT = 17' int edge C.L. Post & edge Line "A"
(at w/ly edge La Jolla Mesa)

156.6 157.7 157.8 157.1 156.36 159.0 157.83
7.2 8.1 8.0 9.7 9.44 8.80 7.97
50 30 15 11 14 17.5
w/ly clay

Notes [Revol] (Revol) Notes here For AUX-LINE "A" - Cont. LA JOLLA MESA Dr. Pg. 65

(= 0+100 AUX-LINE "A" (see sketch))

2+23.24 = B.C. RT. - LA JOLLA MESA Dr.

153.77 153.77 153.77 155.17 154.67 153.87 153.62 154.27 154.27 154.17 154.67 155.17 155.57 154.57
10.0 10.0 10.0 10.6 11.1 12.4 12.09 11.02 11.55 11.1 10.6 7.2 8.2
60 50 20 24 22 20 14 15 17 24 30 50 65
w/ly clay

T.P.

11.02

165.80
~~165.53~~

3.03

154.78
~~154.57~~

Cont. 1021 30' RT & Deep Imp'ss
at 2+23.24 B.C. RT

~~165.53~~

165.80

2+16

9 31'

9' CLAY Dr.

RT F. 99k

157.81
~~157.54~~

156.05
2.49
31
LP

159.39
+1.85
60
Rim
Drive

159.59
+2.05
67
F/99k

LA JOLLA MESA DR. (CONT.)

LT.

E

RT.

65

3+51.5 60.6 RT E Deadman

3+50

160.16 160.9 161.5 161.9 162.09 162.01 162.67 161.16 162.94 165.0

9.78 9.0 8.4 8.0 7.85 7.93 8.27 8.28 7.0 4.3 3.2

33 24 15 3 3 24 24 50 58 70

S. Edge
cap. PAS
Colima
(See Notes
Colima)

W. Edge
clay
clay
clay

13+40 39.3 RTE Pole # 5399

3+00

158.38 158.72 159.1 159.16 159.3 159.32 159.41 159.07 158.69 158.5

11.57 11.22 10.80 10.78 10.6 10.62 10.87 11.25 11.4 10.6 9.99 4.0

6.0 5.0 2.4 2.1 2.7 12.8 24 28 80 45 35.7 30

W. Edge
clay
clay

W. Edge
clay
clay

W. Edge
clay
clay

W. Edge
clay
clay

W. Edge
clay
clay

159.8 163.70 167.29

10.08 6.24 2.66

4.57 6.82 36 BK Lip

40 on
Lip on
Drive

19 on
Lip on
Drive

2+47 E 45.4 RT 8.5' Can. Drive (AVILT // to Lot Line) 36' BK Lip Dr To E. Fl. 90W

2+73.5 2.2 LT = Pt. int. of W. Edge Clay to Jolla Mesa (E. Edge Clay along Line 74)

2+73 E 41.6 RT 7' Can. Drive (AVILT // to Lot Line) 32' BK of Lip Drive To E. Fl. 90W

157.79

12.15
2.2

158.63 161.97 164.04

11.31 8.17 5.90

7.6 13' 32' BK Lip on

Lip on
Lip on
Drive

8L
Lip on
Drive

1+153 23.8 LT E Deadman

T.P

9.40 169.94 5.26 160.54 160.27 = P.I. HUB

2+50

157.3 156.9 156.9 155.2 155.48 169.94

8.5 8.9 8.7 10.6 10.32 156.4 156.3 156.91 156.2 156.5 157.4 158.6 162.3

8.0 3.0 2.4 2.2 1.9 10 10 21 24 30 41 47 65

W. Edge
clay

W. Edge
clay

W. Edge
clay

2+39 23.4 LT E Pole # P5398

1+130 34.4 RTE Pole # 5397 - 44 RT E Deadman
(All Sects. on Curve - Radial)
↓ outs

Note: Cont LA JOLLA MESA DR. (See Pg 64)

165.80
165.53

LA JOLLA MESA DR. (CONT.)

4150

4129.06 = PT INT E LINDA ROSA

41275.3 = E.C

4122 E 40 RT 8' CON. DR. (BUILT // to LOT LINE) 40.4' BK LIP along E DRIVE to FL. gate

4100

3194.84 = PT INT N Edge Pav. Colima (cuts along edge Pav.)

3189 18.1 RT E water gate

3184 20.3 RT E water m.H

3179 12.8 RT E water gate

3178.1 = E Colima

3177 17.6 RT E water gate

3174 11.1 RT E water gate

31616 = SLY Edge Cen. Pav. Colima (Sect along edge Pav.)

3156 E 45.8 RT 8' CON. DRIVE (BUILT // to LOT LINE) 38' BK LIP to F1.94R

LT.

E

RT

66

165.50 166.50 166.57 166.80 165.93 166.1 166.2 170.9 171.1
 4.44 3.44 3.37 3.14 4.01 3.8 3.7 +1.0 +1.2
 35± 24 21 23 24 33 50 60
 E Ely E. Clay
 Lip to F1.94R

164.9 164.40 165.28 166.06 166.0 164.68 164.5 165.5 170.3
 5.07 5.34 4.66 3.88 (See Linda Rosa)
 43 42 24 5.26 5.4 4.4 +1.4
 70 90T 24 24 30 38 70
 BK Lip to F1.94R Ely E. Clay

165.1 164.6 163.73 163.73 163.37 163.51 164.53 165.15 169.51 171.82
 4.8 5.3 6.21 6.21 6.57 6.40 5.41 4.79 4.43 +1.88
 50 35 34 29 28.3 24 5.45 6.24 6.53 6.5 5.8 1.4
 BK Lip to F1.94R Ely E. Clay

162.22 162.88 164.28 164.56 162.77
 7.72 7.26 5.66 5.38 6.17
 30 20 14 28.7
 (See Colima) Ely E. Clay

163.38
 6.56
 20.3
 BK Lip to F1.94R

163.49
 6.45
 (See Notes Colima)

160.52 161.12 162.39 162.55 162.97 162.32
 9.42 8.82 7.55 7.39 6.97 7.62
 30 20 2 17 32
 Ely E. Clay Ely E. Clay

169.94 162.41 166.98 169.6
 16.9 6.7 7.33 2.96 0.30
 Lip to F1.94R 19 BK Lip to F1.94R = F1.94R

LA JOLLA MESA DR. (CONT.)

5427 E 45' LT 15' Clay Drive (for shown) enters st. on curve - N 44' ahead

173.00
4.46
85
171.48
5.98
65
170.40
7.06
45
AT INT Drive + EAST W 44' N. E. lay out

5427 37' RT E 6" Eucalyptus Tree

5403 24.25' RT END CB INLET

170.36
7.1
70
167.56
9.9
55
166.86
10.6
52.5
167.86
9.72
50
167.74
8.52
37
168.94
8.20
24
169.26
148.77
8.69

167.94
9.52
24.25
7.1
168.83
8.63
24.25
167.78
9.68
24.3
7.1
168.64
8.82
24.3
170.16
7.3
34
173.16
3.9
50
174.96
10.10
7.1
(500 above)

4489.2 E 2' x 44' Box, 21.85' RT

167.13
10.33
21.85
4.1
164.01
13.45
24.85
F. Line

4487 24.85' RT Bay CB INLET

166.94
10.52
24.85
G
167.74
9.70
24.85
7.1
CB

T.P. 8.63 177.46 177.19 1.11 ~~168.56~~ 168.83 TA CB W 44' end 15' CB INLET 5403 - RT

177.46
~~177.19~~

4478 E 31.5' RT 8' Con Drive (BUILT // to Lot Line) 46' BK Lip to FL 90'

167.88
2.06
3.5
Lip
31.5
172.34
2.40
20'
BK Lip
to E
Dr.
173.51
+5.57
46' BK Lip
= FL 90'

4473 40.5' RT E Deadman

4464 26.9' RT E Pole # 5407

4454 E 30.1' RT 3' conc walk 1 Step (4 Steps, irreg depth + rise) (BUILT // to Lot Line)

167.34
2.60
36.1
Lip
walk
1.55
6.5' on BK Lip (walk)
Beg. 1st Step
171.4
+1.20
12.6' BK TP Lip
Step - on walk
171.24
+1.30
20'
BK Lip on walk

169.94
~~157.67~~

LA JOLLA MESA DR. (CONT.)

T.P. 12.17 ~~201.33~~ 201.26 0.47 ~~189.16~~ 189.89

7+20 7' RT. END CLAY HILL SITT

7+00

6+76.5 30.6 LT & Deadman

6+50 36.2 LT & Pole P5420

Water This is an area where Fill is being made at present time in canyon on RT - may alter contours, etc.

6+39 30' RT & 42" Cop. Pipe (WLY END NO HEADRILL) [CHK: CONST. PLANS FOR ABANDONMENT]

6+25 38.1 LT & Deadman

6+21 23.4 RT & Anchor Pole

6+17 28.2 RT & Deadman

6+00

T.P. 13.00 ~~189.63~~ 189.96 0.83 ~~176.36~~ 176.63

5780.57 = B.C. LT

5+50

LT

RT

RT

68

196.8 196.6 196.1 187.1 185.4 186.4 186.63 186.56 187.12 190.1 178.3 178.7
 +7.2 +7.0 +6.5 2.5 4.22 3.17 3.00 3.07 2.51 +0.5 11.3 10.9
 60 50 32 30 23 8 7 8.5 24 4.5 6.8
 TP toe WLY E. CLAY Bank CUT-BANK E. CLAY GOT TP - Roll - Shoulder toe toe

186.8 186.5 180.74 181.28 181.46 181.63 181.51 181.47 182.29 182.3 170.0 182.3 182.4
 2.8 3.1 8.39 8.35 8.17 8.00 8.12 8.16 7.34 7.3 19.6 7.3 7.2
 60 40 20 24 19 11 9 9 11 30 56 70
 TP toe WLY E. CLAY Bank CUT-BANK GOT TP - Roll - Fishpond canyon

168.2
 21.41
 30
 Fl
 Line

176.0 172.8 174.0 176.5 176.09 176.80 176.98 176.60 176.25 176.99 177.9 178.6 179.6
 13.6 16.8 10.6 12.1 13.54 12.83 12.65 13.03 13.38 12.64 11.7 11.0 10.0
 62 54 48.43 37 26 24 12.5 14 24 50 60
 WLY E. CLAY GOT TP (Roll)

175.16 176.96 177.16 175.06 174.88 175.18 175.19 174.80 174.51 175.20 176.06 177.36 177.66
 2.3 0.5 0.3 2.4 2.58 2.28 2.27 2.66 2.95 2.26 1.4 0.1 +0.2
 60 55 49 43 39 27 24 14 16 24 50 60
 WLY E. CLAY GOT TP - Roll -

173.46 173.86 172.36 172.24 172.71 172.69 172.13 171.62 172.24 172.66 173.16 174.56 175.06
 4.0 3.6 5.1 5.22 4.75 4.77 5.33 5.84 5.42 4.8 4.3 2.9 2.4
 60 48 44 41 27 24 17.3 18.8 20 24 30 60
 WLY E. CLAY GOT TP (CL-rolled)

177.46 177.19

LA JOLLA MESA DR. (CONT.)

LT

Q

RT

69

T.P. 0.11 ~~207.16~~ 207.05
~~206.89~~ 12.60 ~~206.78~~

10+00

232.2 224.9 216.0 206.51 216.91 216.88 216.27 217.0 215.9 208.6 201.7 196.2
+12.5 +5.2 3.7 3.14 2.74 2.77 3.38 2.7 3.8 11.1 17.0 23.5
50 24 20 14 2 11 22 24 37 56 70
76 Toe wly E. Clay
BANK E. Clay

7+50

225.8 221.5 216.8 210.8 211.3 211.76 211.27 211.20 211.65 210.5 201.7 191.7
+6.1 +1.8 2.9 8.9 8.36 7.99 7.98 8.45 8.0 9.2 18.0 28.0
50 35 24 20 14 2 10 21 24 37 75
TP Toe wly E. Clay
BANK BANK E. Clay

T.P. 9.92 ~~219.65~~ 209.73
~~217.38~~ 12.29 ~~209.46~~

7+00

221.7 213.8 206.0 206.02 206.49 206.52 206.21 207.0 205.6 200.5 197.1 190.7
+10.7 +2.8 5.0 5.00 2.53 4.50 4.81 4.0 5.4 10.5 13.9 20.3
50 23 20 14 2 10 21 24 33 50 63
TP Toe wly E. Clay
BANK BANK E. Clay

8+50

218.7 211.0 201.9 201.1 201.58 201.65 201.4 202.1 198.4 197.4 188.9
+7.7 0.0 9.1 7.92 7.44 7.37 9.62 8.9 12.6 23.1 22.1
60 23.5 20 14.5 2.5 9.5 21 24 48 60
TP Toe wly E. Clay
BANK BANK E. Clay

T.P. 12.50 ~~211.02~~ 198.52
~~210.45~~ 281 ~~198.25~~

211.02
~~210.75~~
K

8+22.5 15.5 LT = wly end 10" pipe
(outlet in canyon on RT. covered fill)

195.39
5.94
1.55
Klime

8+21.5 8129' RT to G. 3.5x3.5 Box inlet = 18" pipe

198.52 194.03
2.81 7.30
12.9 12.9
TP E. Clay
Box Box

8+04 72 = E.C

216.1 208.5 197.0 196.62 197.21 197.77 197.01 197.2 198.3 198.3 186.5
+14.8 +7.2 4.3 4.71 4.12 4.16 7.32 4.1 3.0 3.0 15.0
60 24.2 20 15 3 7.9 13 24 30 51
Out wly E. Clay
E. Clay Shoulder Toe

7+50

206.9 201.1 205.3 191.3 190.7 191.52 191.62 191.44 192.1 193.7 193.7 183.2 179.0
+5.6 +7.8 4.0 10.0 10.59 7.81 9.71 9.89 9.2 7.6 7.6 18.1 22.3
60 40 27 23 19 5 7 13 24 35 57 101
Out wly E. Clay
BANK E. Clay Shoulder Toe Toe

7 CLK 10.06 ~~147.70~~ = 147.79
~~147.43~~ - 147.52
 = SIG BM
 1962

8 T.P. 0.02 157.76 12.35 157.74
~~157.49~~ ~~157.17~~

T.P. 0.60 170.09 12.99 169.49
~~169.82~~ ~~169.22~~

T.P. 0.71 182.48 13.17 181.77
~~182.21~~ ~~181.50~~

7 T.P. 194.94 12.78 194.387
~~194.07~~ ~~194.11~~
 27

X-SECT. COLIMA ST.

1+00

0+50

CH E.C

NELY Pt: 15' CB Rad
C.B.L=15.5

mid pt

0+16.15

15' LT = CB. A.C

0-01

30.1 LT = CB END } 19' TANK CB
beyond E.C

0-01.5 ± = E Colima & E TAFT N'LY (outs along E TAFT)

[0+00 Colima = PT 250' W'ly OF PT. INT. E Colima & E TANG. Prop. Imp's
La Jolla Mesa - See sketch
Pg 60

B.M.

10.06

157.85
~~157.58~~

see pg 62.

147.79

~~147.52~~ = NELY S. L+TC (4.31' attr.)
TAFT + Colima

157.85
~~157.58~~

(N4) LT.

E

RT

71

153.16
4.69
30
BK
WALK

152.83
5.02
15
CB

152.15
5.70
15
G

152.97
4.88

153.17
4.68
15
G

153.87
3.73
30
BK
WALK

154.12
3.73
30
BK
WALK

149.61
8.24
15
CB

148.92
8.90
15
G

149.86
7.99

150.07
7.78
15
G

150.73
7.12
15
CB

147.01
10.84
CB
EC

146.34
11.53
G

147.12
10.73
CB

146.52
11.33
G

147.73
10.12
30
BK
WALK

147.72
10.79
15
CB

146.86
10.99
15
G

147.82
10.03

147.97
9.88
15
G

148.14
9.21
15
CB

149.03
8.82
30
BK
WALK

146.92
10.93
30.1
CB
WALK

146.27
11.58
30.1
G

146.0
11.9
100

146.2
11.7
50

146.09
11.71
34.4
24.4
CB
WALK

146.05
11.80
17
C.B. LINE

146.92
10.93

147.59
10.46
16.8
9.1
CB

148.11
9.74
9.1
CB

COLIMA ST. (CONT.)

LT.

£

RT.

72

Alley CB Ret. Rad. = 5'
CB L = 5'

152.98
9.48
EC
1/4" G

152.40
9.23
15
CB G

1+70 = 15' LT Alley B.C.

1+60 20.3' RT & Pole # P 799

152.16
10.23
30
FT
Wall

152.18
10.28
30
G

152.64
9.82
30
CB
End

1+58.3 { 30' LT = CB END
30' LT Beg 2.5' Wall - cong. - 1' wide

CB E.C.

157.06
9.40
G

157.66
8.80
CB EC

CB Ret RT { 15' CB Rad
CB L = 15.6'

mid pt.

152.90
9.36
G

157.37
9.09
CB

1+56.2 15' RT = CB B.C. RT

152.58
9.88
15
G

157.21
9.25
15
CB

1+51 16.5 RT & F.Hyd

E.C. (Wall)
mid pt.

155.71
10.75
CB
G

157.22
11.24
G

Alley Ret. 5' Rad.
CB L = 10.4'

152.40
10.86
CB

155.0
11.46
G

1+71 { 21.5' RT & Deadman
15' LT = CB B.C. Alley N/4 (Alley // to TAFT)
5' Radius

157.19
10.87
30
CB
End
1/4" Wall

155.55
10.91
30
G

157.30
11.16
15
CB
1/4" Wall

157.66
11.80
15
G

155.48
10.98

155.63
10.83
15
G

152.32
10.14
15
CB

1+24 22 RT & Pole # 791

T.P

11.15

166.46

166.79 2.54

155.31

155.04

166.46

166.19

COLIMA ST. (CONT.)

LT.

E

RT

T.P. 1.81 ~~167.51~~ 0.76 ~~165.70~~ ~~165.73~~

2+84.8+ (SECTION 90°) = E Colima & E Prop. Jimpila Talla Mesa Dr

2+79.6 8.5' RT - PT INT S/Ly edge Conc. Pav
4 W/Ly Edge Clay La Talla Mesa

2+67.7 2.5' LT END 5' CON. WALL

2+63.3 30' LT END CONC. WALL

Note: Clay Berm. Begins here on bastard Radius
Curbs N/W - EXTENDS to meet crs.
end on Luisa Rosa (Temporary)

2+55.9 15' LT = END CB

2+50

2+37 30' LT END Pav.

2+26.4+ 15' RT C/C CURVE CONC. Pav.

2+19 30' LT Prop 2-lax gap

2+10 30' RT = END CONC. Pav here - CURVE IN TO GUT. LINE
See Sketch

2+00

1+74 30' RT = CB END (9' TANG. beyond CB. EC.)
(CB RT Buckled & Broken)

164.40 163.88 163.58 163.02 162.22

2.06 2.58 2.88 3.44 4.24

30 15 30 15 30

163.0
3.5
30
PTG
WALL

163.62 163.58
28.4 2.88
30 2.5
BK WALK WALK

162.58 161.85
3.88 4.61
15 15
CB C

162.22 161.51 161.33 160.76 161.3 161.2

4.24 4.95 5.13 5.70 5.2 5.3

15 15 15 15 20 30

Edge
Conc. Pav.
12' RC

161.45
5.10
30
15
4' BK

5.57
30
Pl. gap
(below walk)

159.36

7.10
30
BK
WALK

159.00

7.46
15
CB

158.37

8.07
15
C

158.15
7.91

158.26

8.20
15
GUT
LINE

158.68

7.78
30
Edge
old
conc
curb

159.26

7.20
30
Clay

157.15

9.31
30
G
Edge
Conc. Pav.

157.52

8.44
30
CB
TP WALK
Also

LINDA ROSA

LT.

Q

RT (WLY)

74

2+50 = 9 Imps Prop La Jolla Mesa Dr

166.15
1.36

2+18.9 27 RT End Walk - BK edge

164.92
2.59
27
BK
WALK

2+12.5 22 RT = END WALK (Front edge)

167.89
+0.38
30
1.31
18
166.2
165.91
2.92
18
2.60
22
2.55
27
WALK
FR
edge
W

2+06.5 20.4 RT & Pole # (Anchor - Pole)

2+04.2 18 RT = END CB

164.18
3.33
18
6
164.69
2.82
18
CB
END

1+75 = approx RT where edge Par. Curve meets
WLY edge C. Lay La Jolla
Mesa Dr.
of WLY edge
DRIVEWAY
(See notes
La Jolla Mesa Dr.)

168.4
+1.1
50
166.6
0.91
30
165.52
1.89
18
164.48
3.03
163.46
4.05
18
C
163.92
3.59
18
CB

1+61 27 LT = Approx. mid-pt. curve edge Par

2.6
29
7.4
2.54
27
edge
PAR.

Notes: Edge Par Curves LT have an increase curve

1+43.05 18 LT End CB, WALK 22 LT

172.0
+4.5
54
172.91
75.4
93
174.01
30
3.83
27
173.68
22
3.86
18
F. CO
WALK
END
173.65
3.79
18
C
173.52
4.53
18
C
172.98
4.36
173.15
172.60
4.91
18
C
173.01
4.46
18
CB
173.23
4.28
27
BK
WALK

1+00

162.42
5.09
27
BK
WALK
162.29
5.22
18
CO
161.80
5.71
18
C
161.91
5.60
161.40
6.11
18
C
161.87
5.64
18
CB
162.08
5.73
27
BK
WALK

0+50

(A.C. Par.)

0+00 = PT 250' NW 1/4 of PT Int. of LINDA ROSA
& Prop. Imps LA Jolla Mesa Dr.

160.99
6.52
18
CB
160.50
7.01
18
C
160.56
6.35
160.03
7.48
18
C
160.49
7.02
18
CB
159.81
7.70
27
BK
WALK
159.67
7.84
18
CB
159.17
8.34
18
C
159.24
8.27
158.70
8.81
18
C
DRIVE
CR
159.36
8.15
27
BK
WALK

167.51
167.24

LINDA ROSA (CONT.)

CLK:

14.94

 $147.80 = 147.79$
~~147.53~~ = 147.52
 = STG. AM

T.P.

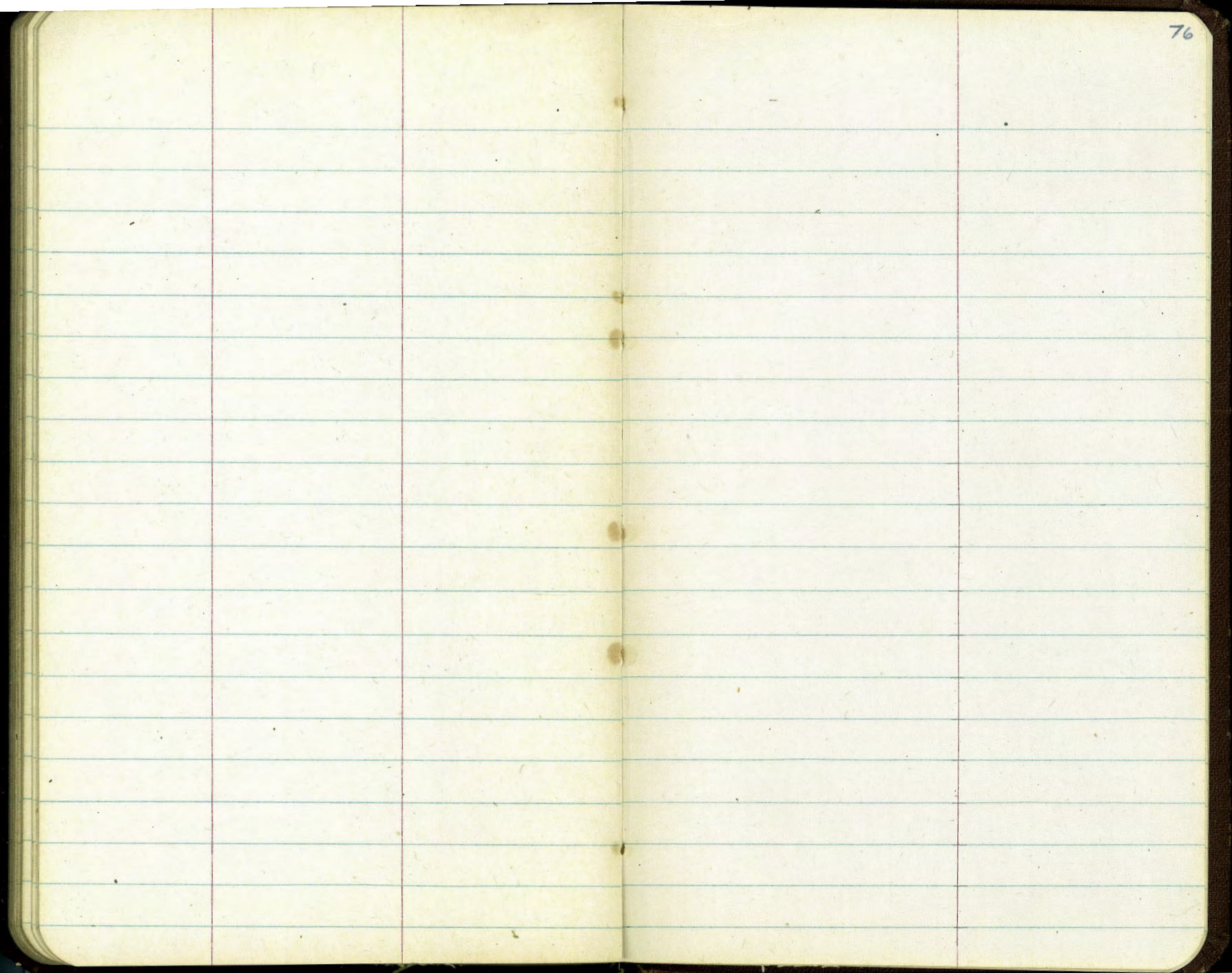
0.29

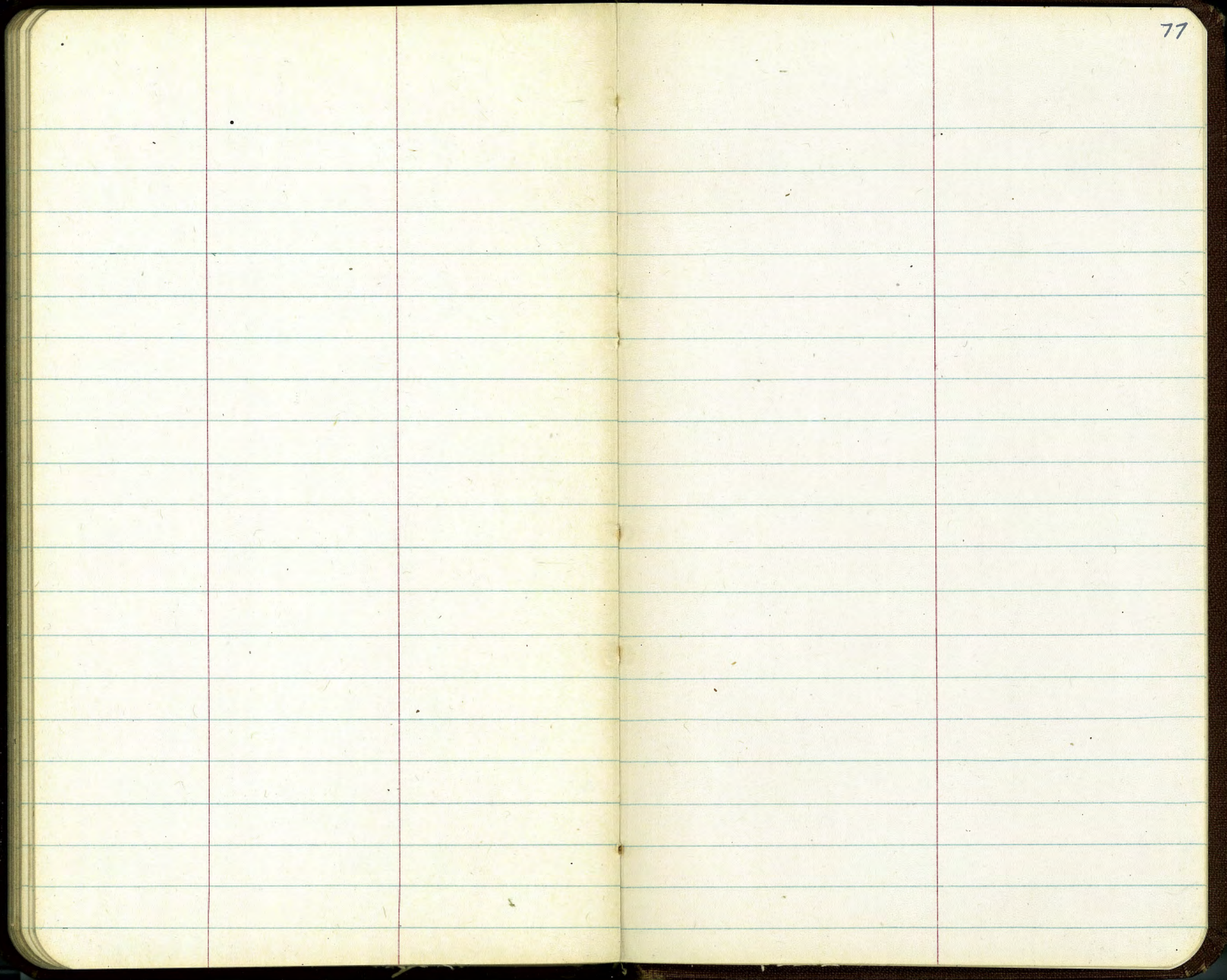
~~162.77~~
 162.74

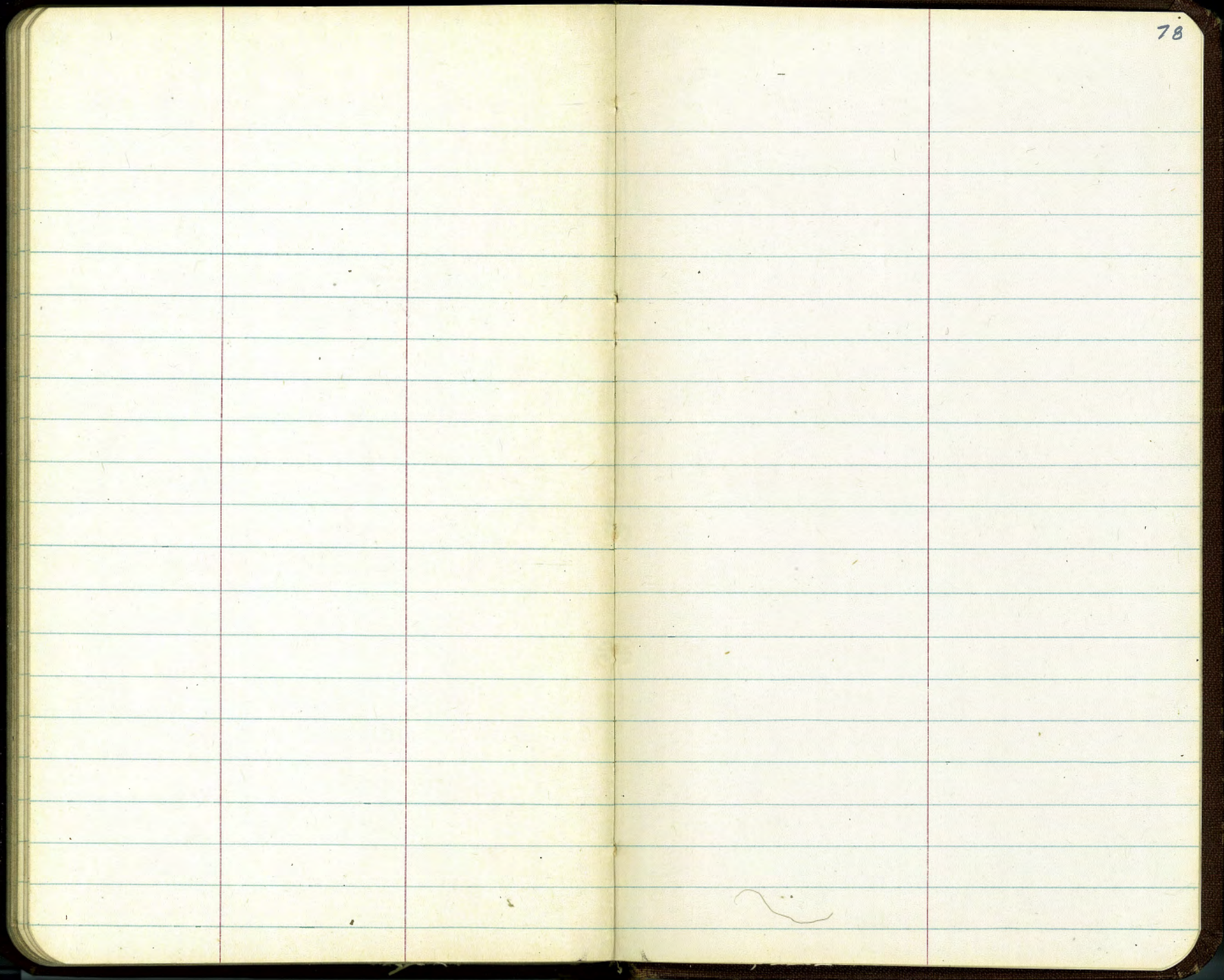
5.06

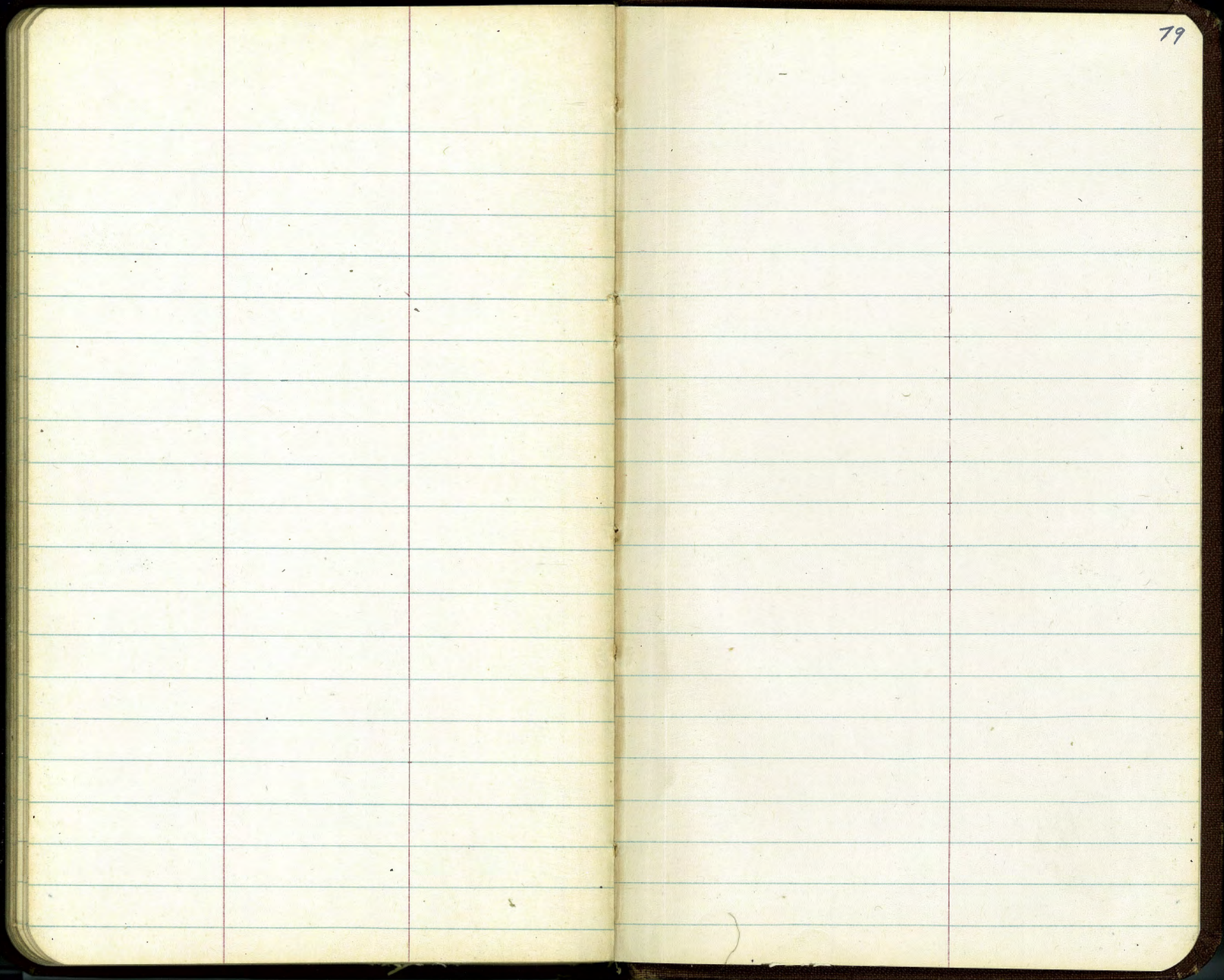
~~162.18~~
 162.45

8







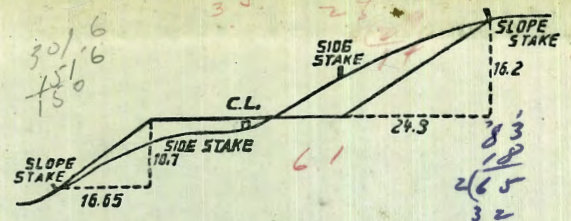


28
65
17

1.1

2209 -1
-33

48.88
55.8
31.26
32



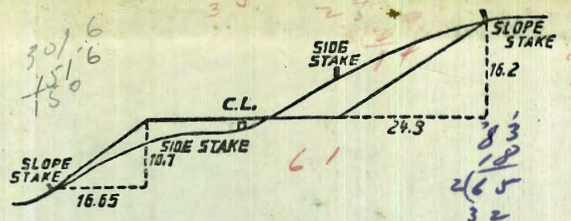
DISTANCES FROM SIDE STAKES FOR CROSS-SECTIONING.
SLOPE 1 1/2 TO 1. ROADWAY OF ANY WIDTH.

	0	.1	.2	.3	.4	.5	.6	.7	.8	.9	
0	0.00	0.15	0.30	0.45	0.60	0.75	0.90	1.05	1.20	1.35	0
1	1.50	1.65	1.80	1.95	2.10	2.25	2.40	2.55	2.70	2.85	1
2	3.00	3.15	3.30	3.45	3.60	3.75	3.90	4.05	4.20	4.35	2
3	4.50	4.65	4.80	4.95	5.10	5.25	5.40	5.55	5.70	5.85	3
4	6.00	6.15	6.30	6.45	6.60	6.75	6.90	7.05	7.20	7.35	4
5	7.50	7.65	7.80	7.95	8.10	8.25	8.40	8.55	8.70	8.85	5
6	9.00	9.15	9.30	9.45	9.60	9.75	9.90	10.05	10.20	10.35	6
7	10.50	10.65	10.80	10.95	11.10	11.25	11.40	11.55	11.70	11.85	7
8	12.00	12.15	12.30	12.45	12.60	12.75	12.90	13.05	13.20	13.35	8
9	13.50	13.65	13.80	13.95	14.10	14.25	14.40	14.55	14.70	14.85	9
10	15.00	15.15	15.30	15.45	15.60	15.75	15.90	16.05	16.20	16.35	10
11	16.50	16.65	16.80	16.95	17.10	17.25	17.40	17.55	17.70	17.85	11
12	18.00	18.15	18.30	18.45	18.60	18.75	18.90	19.05	19.20	19.35	12
13	19.50	19.65	19.80	19.95	20.10	20.25	20.40	20.55	20.70	20.85	13
14	21.00	21.15	21.30	21.45	21.60	21.75	21.90	22.05	22.20	22.35	14
15	22.50	22.65	22.80	22.95	23.10	23.25	23.40	23.55	23.70	23.85	15
16	24.00	24.15	24.30	24.45	24.60	24.75	24.90	25.05	25.20	25.35	16
17	25.50	25.65	25.80	25.95	26.10	26.25	26.40	26.55	26.70	26.85	17
18	27.00	27.15	27.30	27.45	27.60	27.75	27.90	28.05	28.20	28.35	18
19	28.50	28.65	28.80	28.95	29.10	29.25	29.40	29.55	29.70	29.85	19
20	30.00	30.15	30.30	30.45	30.60	30.75	30.90	31.05	31.20	31.35	20
21	31.50	31.65	31.80	31.95	32.10	32.25	32.40	32.55	32.70	32.85	21
22	33.00	33.15	33.30	33.45	33.60	33.75	33.90	34.05	34.20	34.35	22
23	34.50	34.65	34.80	34.95	35.10	35.25	35.40	35.55	35.70	35.85	23
24	36.00	36.15	36.30	36.45	36.60	36.75	36.90	37.05	37.20	37.35	24
25	37.50	37.65	37.80	37.95	38.10	38.25	38.40	38.55	38.70	38.85	25
26	39.00	39.15	39.30	39.45	39.60	39.75	39.90	40.05	40.20	40.35	26
27	40.50	40.65	40.80	40.95	41.10	41.25	41.40	41.55	41.70	41.85	27
28	42.00	42.15	42.30	42.45	42.60	42.75	42.90	43.05	43.20	43.35	28
29	43.50	43.65	43.80	43.95	44.10	44.25	44.40	44.55	44.70	44.85	29
30	45.00	45.15	45.30	45.45	45.60	45.75	45.90	46.05	46.20	46.35	30
31	46.50	46.65	46.80	46.95	47.10	47.25	47.40	47.55	47.70	47.85	31
32	48.00	48.15	48.30	48.45	48.60	48.75	48.90	49.05	49.20	49.35	32
33	49.50	49.65	49.80	49.95	50.10	50.25	50.40	50.55	50.70	50.85	33
34	51.00	51.15	51.30	51.45	51.60	51.75	51.90	52.05	52.20	52.35	34
35	52.50	52.65	52.80	52.95	53.10	53.25	53.40	53.55	53.70	53.85	35
36	54.00	54.15	54.30	54.45	54.60	54.75	54.90	55.05	55.20	55.35	36
37	55.50	55.65	55.80	55.95	56.10	56.25	56.40	56.55	56.70	56.85	37
38	57.00	57.15	57.30	57.45	57.60	57.75	57.90	58.05	58.20	58.35	38
39	58.50	58.65	58.80	58.95	59.10	59.25	59.40	59.55	59.70	59.85	39
40	60.00	60.15	60.30	60.45	60.60	60.75	60.90	61.05	61.20	61.35	40
41	61.50	61.65	61.80	61.95	62.10	62.25	62.40	62.55	62.70	62.85	41
42	63.00	63.15	63.30	63.45	63.60	63.75	63.90	64.05	64.20	64.35	42
43	64.50	64.65	64.80	64.95	65.10	65.25	65.40	65.55	65.70	65.85	43
44	66.00	66.15	66.30	66.45	66.60	66.75	66.90	67.05	67.20	67.35	44
45	67.50	67.65	67.80	67.95	68.10	68.25	68.40	68.55	68.70	68.85	45
46	69.00	69.15	69.30	69.45	69.60	69.75	69.90	70.05	70.20	70.35	46
47	70.50	70.65	70.80	70.95	71.10	71.25	71.40	71.55	71.70	71.85	47
48	72.00	72.15	72.30	72.45	72.60	72.75	72.90	73.05	73.20	73.35	48
49	73.50	73.65	73.80	73.95	74.10	74.25	74.40	74.55	74.70	74.85	49
50	75.00	75.15	75.30	75.45	75.60	75.75	75.90	76.05	76.20	76.35	50

THE NATIONAL BLANK BOOK COMPANY
 HOLYOKE MASSACHUSETTS
 NEW YORK CHICAGO BOSTON SAN FRANCISCO

2209 -1
-33

48
58
30.6
30



DISTANCES FROM SIDE STAKES FOR CROSS-SECTIONING.
SLOPE 1 1/2 TO 1. ROADWAY OF ANY WIDTH.

	0	.1	.2	.3	.4	.5	.6	.7	.8	.9	
0	0.00	0.15	0.30	0.45	0.60	0.75	0.90	1.05	1.20	1.35	0
1	1.50	1.65	1.80	1.95	2.10	2.25	2.40	2.55	2.70	2.85	1
2	3.00	3.15	3.30	3.45	3.60	3.75	3.90	4.05	4.20	4.35	2
3	4.50	4.65	4.80	4.95	5.10	5.25	5.40	5.55	5.70	5.85	3
4	6.00	6.15	6.30	6.45	6.60	6.75	6.90	7.05	7.20	7.35	4
5	7.50	7.65	7.80	7.95	8.10	8.25	8.40	8.55	8.70	8.85	5
6	9.00	9.15	9.30	9.45	9.60	9.75	9.90	10.05	10.20	10.35	6
7	10.50	10.65	10.80	10.95	11.10	11.25	11.40	11.55	11.70	11.85	7
8	12.00	12.15	12.30	12.45	12.60	12.75	12.90	13.05	13.20	13.35	8
9	13.50	13.65	13.80	13.95	14.10	14.25	14.40	14.55	14.70	14.85	9
10	15.00	15.15	15.30	15.45	15.60	15.75	15.90	16.05	16.20	16.35	10
11	16.50	16.65	16.80	16.95	17.10	17.25	17.40	17.55	17.70	17.85	11
12	18.00	18.15	18.30	18.45	18.60	18.75	18.90	19.05	19.20	19.35	12
13	19.50	19.65	19.80	19.95	20.10	20.25	20.40	20.55	20.70	20.85	13
14	21.00	21.15	21.30	21.45	21.60	21.75	21.90	22.05	22.20	22.35	14
15	22.50	22.65	22.80	22.95	23.10	23.25	23.40	23.55	23.70	23.85	15
16	24.00	24.15	24.30	24.45	24.60	24.75	24.90	25.05	25.20	25.35	16
17	25.50	25.65	25.80	25.95	26.10	26.25	26.40	26.55	26.70	26.85	17
18	27.00	27.15	27.30	27.45	27.60	27.75	27.90	28.05	28.20	28.35	18
19	28.50	28.65	28.80	28.95	29.10	29.25	29.40	29.55	29.70	29.85	19
20	30.00	30.15	30.30	30.45	30.60	30.75	30.90	31.05	31.20	31.35	20
21	31.50	31.65	31.80	31.95	32.10	32.25	32.40	32.55	32.70	32.85	21
22	33.00	33.15	33.30	33.45	33.60	33.75	33.90	34.05	34.20	34.35	22
23	34.50	34.65	34.80	34.95	35.10	35.25	35.40	35.55	35.70	35.85	23
24	36.00	36.15	36.30	36.45	36.60	36.75	36.90	37.05	37.20	37.35	24
25	37.50	37.65	37.80	37.95	38.10	38.25	38.40	38.55	38.70	38.85	25
26	39.00	39.15	39.30	39.45	39.60	39.75	39.90	40.05	40.20	40.35	26
27	40.50	40.65	40.80	40.95	41.10	41.25	41.40	41.55	41.70	41.85	27
28	42.00	42.15	42.30	42.45	42.60	42.75	42.90	43.05	43.20	43.35	28
29	43.50	43.65	43.80	43.95	44.10	44.25	44.40	44.55	44.70	44.85	29
30	45.00	45.15	45.30	45.45	45.60	45.75	45.90	46.05	46.20	46.35	30
31	46.50	46.65	46.80	46.95	47.10	47.25	47.40	47.55	47.70	47.85	31
32	48.00	48.15	48.30	48.45	48.60	48.75	48.90	49.05	49.20	49.35	32
33	49.50	49.65	49.80	49.95	50.10	50.25	50.40	50.55	50.70	50.85	33
34	51.00	51.15	51.30	51.45	51.60	51.75	51.90	52.05	52.20	52.35	34
35	52.50	52.65	52.80	52.95	53.10	53.25	53.40	53.55	53.70	53.85	35
36	54.00	54.15	54.30	54.45	54.60	54.75	54.90	55.05	55.20	55.35	36
37	55.50	55.65	55.80	55.95	56.10	56.25	56.40	56.55	56.70	56.85	37
38	57.00	57.15	57.30	57.45	57.60	57.75	57.90	58.05	58.20	58.35	38
39	58.50	58.65	58.80	58.95	59.10	59.25	59.40	59.55	59.70	59.85	39
40	60.00	60.15	60.30	60.45	60.60	60.75	60.90	61.05	61.20	61.35	40
41	61.50	61.65	61.80	61.95	62.10	62.25	62.40	62.55	62.70	62.85	41
42	63.00	63.15	63.30	63.45	63.60	63.75	63.90	64.05	64.20	64.35	42
43	64.50	64.65	64.80	64.95	65.10	65.25	65.40	65.55	65.70	65.85	43
44	66.00	66.15	66.30	66.45	66.60	66.75	66.90	67.05	67.20	67.35	44
45	67.50	67.65	67.80	67.95	68.10	68.25	68.40	68.55	68.70	68.85	45
46	69.00	69.15	69.30	69.45	69.60	69.75	69.90	70.05	70.20	70.35	46
47	70.50	70.65	70.80	70.95	71.10	71.25	71.40	71.55	71.70	71.85	47
48	72.00	72.15	72.30	72.45	72.60	72.75	72.90	73.05	73.20	73.35	48
49	73.50	73.65	73.80	73.95	74.10	74.25	74.40	74.55	74.70	74.85	49
50	75.00	75.15	75.30	75.45	75.60	75.75	75.90	76.05	76.20	76.35	50

THE NATIONAL BLANK BOOK COMPANY
HOLYOKE MASSACHUSETTS
NEW YORK CHICAGO BOSTON SAN FRANCISCO