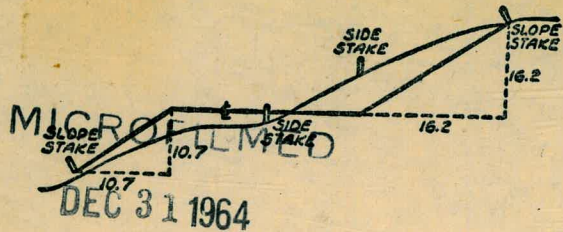


2121

X-SECTIONS-

BRISTOL



DISTANCES FROM SIDE STAKES FOR CROSS-SECTIONING
SLOPE 1 TO 1. ROADWAY OF ANY WIDTH

	0	.1	.2	.3	.4	.5	.6	.7	.8	.9	
0	0.00	0.10	0.20	0.30	0.40	0.50	0.60	0.70	0.80	0.90	0
1	1.00	1.10	1.20	1.30	1.40	1.50	1.60	1.70	1.80	1.90	1
2	2.00	2.10	2.20	2.30	2.40	2.50	2.60	2.70	2.80	2.90	2
3	3.00	3.10	3.20	3.30	3.40	3.50	3.60	3.70	3.80	3.90	3
4	4.00	4.10	4.20	4.30	4.40	4.50	4.60	4.70	4.80	4.90	4
5	5.00	5.10	5.20	5.30	5.40	5.50	5.60	5.70	5.80	5.90	5
6	6.00	6.10	6.20	6.30	6.40	6.50	6.60	6.70	6.80	6.90	6
7	7.00	7.10	7.20	7.30	7.40	7.50	7.60	7.70	7.80	7.90	7
8	8.00	8.10	8.20	8.30	8.40	8.50	8.60	8.70	8.80	8.90	8
9	9.00	9.10	9.20	9.30	9.40	9.50	9.60	9.70	9.80	9.90	9
10	10.00	10.10	10.20	10.30	10.40	10.50	10.60	10.70	10.80	10.90	10
11	11.00	11.10	11.20	11.30	11.40	11.50	11.60	11.70	11.80	11.90	11
12	12.00	12.10	12.20	12.30	12.40	12.50	12.60	12.70	12.80	12.90	12
13	13.00	13.10	13.20	13.30	13.40	13.50	13.60	13.70	13.80	13.90	13
14	14.00	14.10	14.20	14.30	14.40	14.50	14.60	14.70	14.80	14.90	14
15	15.00	15.10	15.20	15.30	15.40	15.50	15.60	15.70	15.80	15.90	15
16	16.00	16.10	16.20	16.30	16.40	16.50	16.60	16.70	16.80	16.90	16
17	17.00	17.10	17.20	17.30	17.40	17.50	17.60	17.70	17.80	17.90	17
18	18.00	18.10	18.20	18.30	18.40	18.50	18.60	18.70	18.80	18.90	18
19	19.00	19.10	19.20	19.30	19.40	19.50	19.60	19.70	19.80	19.90	19
20	20.00	20.10	20.20	20.30	20.40	20.50	20.60	20.70	20.80	20.90	20
21	21.00	21.10	21.20	21.30	21.40	21.50	21.60	21.70	21.80	21.90	21
22	22.00	22.10	22.20	22.30	22.40	22.50	22.60	22.70	22.80	22.90	22
23	23.00	23.10	23.20	23.30	23.40	23.50	23.60	23.70	23.80	23.90	23
24	24.00	24.10	24.20	24.30	24.40	24.50	24.60	24.70	24.80	24.90	24
25	25.00	25.10	25.20	25.30	25.40	25.50	25.60	25.70	25.80	25.90	25
26	26.00	26.10	26.20	26.30	26.40	26.50	26.60	26.70	26.80	26.90	26
27	27.00	27.10	27.20	27.30	27.40	27.50	27.60	27.70	27.80	27.90	27
28	28.00	28.10	28.20	28.30	28.40	28.50	28.60	28.70	28.80	28.90	28
29	29.00	29.10	29.20	29.30	29.40	29.50	29.60	29.70	29.80	29.90	29
30	30.00	30.10	30.20	30.30	30.40	30.50	30.60	30.70	30.80	30.90	30
31	31.00	31.10	31.20	31.30	31.40	31.50	31.60	31.70	31.80	31.90	31
32	32.00	32.10	32.20	32.30	32.40	32.50	32.60	32.70	32.80	32.90	32
33	33.00	33.10	33.20	33.30	33.40	33.50	33.60	33.70	33.80	33.90	33
34	34.00	34.10	34.20	34.30	34.40	34.50	34.60	34.70	34.80	34.90	34
35	35.00	35.10	35.20	35.30	35.40	35.50	35.60	35.70	35.80	35.90	35
36	36.00	36.10	36.20	36.30	36.40	36.50	36.60	36.70	36.80	36.90	36
37	37.00	37.10	37.20	37.30	37.40	37.50	37.60	37.70	37.80	37.90	37
38	38.00	38.10	38.20	38.30	38.40	38.50	38.60	38.70	38.80	38.90	38
39	39.00	39.10	39.20	39.30	39.40	39.50	39.60	39.70	39.80	39.90	39
40	40.00	40.10	40.20	40.30	40.40	40.50	40.60	40.70	40.80	40.90	40
41	41.00	41.10	41.20	41.30	41.40	41.50	41.60	41.70	41.80	41.90	41
42	42.00	42.10	42.20	42.30	42.40	42.50	42.60	42.70	42.80	42.90	42
43	43.00	43.10	43.20	43.30	43.40	43.50	43.60	43.70	43.80	43.90	43
44	44.00	44.10	44.20	44.30	44.40	44.50	44.60	44.70	44.80	44.90	44
45	45.00	45.10	45.20	45.30	45.40	45.50	45.60	45.70	45.80	45.90	45
46	46.00	46.10	46.20	46.30	46.40	46.50	46.60	46.70	46.80	46.90	46
47	47.00	47.10	47.20	47.30	47.40	47.50	47.60	47.70	47.80	47.90	47
48	48.00	48.10	48.20	48.30	48.40	48.50	48.60	48.70	48.80	48.90	48
49	49.00	49.10	49.20	49.30	49.40	49.50	49.60	49.70	49.80	49.90	49
50	50.00	50.10	50.20	50.30	50.40	50.50	50.60	50.70	50.80	50.90	50

Distance of slope stake from side or shoulder stake for any width roadway, slope 1 to 1. If ground is nearly level, the cut or fill at side stake is located by the double entry method in left column and top row. The number in body of table in same row and column gives distance from side stake to slope stake. If ground is not level estimate the difference in elevation between the cut or fill and find distance in table. Set up rod at this point, and line of sight should cut target. If it does not make the slight adjustment necessary.

INDEXED
to page # 12

90-0-230
895730

Page

X Sect. Boardway & 22nd - Kearney to Com'l.	2-12
X-Sect. Columbia - Sassafras to Upas	13-18
X-Sect Hendricks - 10th to Vermont	19-23
X-Sect. Blk. 67 EW Norse (Alley)	24-33
^{Locations} Levels - Sewer W. of California bet Sassafras & Nutmeg	34-39
X-Sec Alley - Blk. 40 ^{Re-Sub} Teralta	40
X-Sec Alley, Blk 29 Fortuna Plk	47-51
Profile for RipRap - Wabash Blvd	52
X-Sec - Alley 77 - P. B. to Bayard ^{mission Blv}	59
Loc. survey SAN DIEGO ST, Near Alice ST. & BOWMAN LANE	64
X-Sec Alley - Blk 38. City Hts.	68

Levels Beardsley St

4

4

0+50

45⁷¹ 45⁷¹ 45⁷⁴ 45⁷⁴ 45⁷⁴
 20 20 20 20
 Cb. Cb.

0+00 Edge Asph. Paving
 North Line Kearney

45⁹⁹ 45³⁶ 45⁷⁰ 45²⁴ 45⁹¹
 20 20 20 20
 G Cb

0-04 E.C. Cb. Ret.

46⁰⁰ 45⁴⁵ 45²⁴ 45⁹⁵
 20 20 20 20
 Cb G G Cb

0-14 North Cb Line Kearney

45⁴⁰ 44⁷⁵ 45⁹⁷ 45⁷⁸ 45⁴⁸ 45⁷⁸ 45⁵⁵ 45⁴⁴ 45⁹⁷ 45⁹⁹ 46⁰²
 55 55 30 30 20 20 30 30 50 50
 Cb G Cb G G Cb G Cb

0-40 E Kearney

45³⁵ 45⁶⁵ 45⁷⁵ 45⁸⁵ 45⁸⁸ 45⁹² 45⁹⁹
 50 30 20 20 30 50

✓ B17

46.0x

SEBP Kearney & Beardsley

Beardsley St. Contd.

5

2100

44^{9/16} 44⁴ 44⁹ 44⁷ 45³¹
 20 20 20 20
 Cb Cb

1160 No line Alley

46⁵⁵ 45⁴¹ 45³⁸ 45²⁵ 44⁸ 45⁰ 45⁰ 45⁴ 45⁶⁸ 45⁸² 47²²
 65 29.5 28 22 20 20 20 28 30.6 65
 SW Gr. B. Cb SW

1150 & Alley

46^{2x} 45²⁵ 45⁰ 45⁰ 45⁰ 45⁵² 46⁷⁷
 65 29.5 20 20 30.6 65

1140 50 line Alley

46⁵⁷ 45⁴¹ 45⁵⁸ 45³⁰ 44⁹ 45⁰ 45¹ 45⁵⁵ 45⁸⁵ 45²⁰ 47²¹
 65 29.5 28 21.3 20 20 21 28 30.6 65
 SW Cb SW
 Ground

1138.5 48" palm 22' Rt.

TP

4490

1100

45⁴⁷ 44⁸ 45³ 45⁰ 45⁵⁸
 20 20 20 20
 Cb

Beardsley St Contd.

3+40.99 & Julian

43³⁵ 44³⁰ 44⁵⁰ 44⁶⁰ 44⁹⁰ 44⁹⁹ 45¹⁹
 50 30 20 20 30 50

3+14.99 & Julian

43³⁸ 42⁷² 44⁴² 43⁸⁰ 43⁸⁶ 44⁰⁷ 44²² 44³⁵ 44⁸⁹ 45⁵⁰
 50 50 30 30 20 20 30 30 50 50
 Cb G Cb G G Cb Cb Cb Cb
 H.E. 7' L&T Julian

T.P.

44.88 ←

& Beardsley

3+04.99 BC Cb Ret's

44⁴¹ 43⁹⁰ 44³⁷ 44⁹³
 20 20 20 20
 Cb G Cb Cb

3+00.99 Beg. Asph. Paving.
 30-line Julian

44⁴⁰ 43⁸² 44²² 44³² 44⁹⁵
 20 20 20 20
 Cb G Cb Cb

2+50

44⁷⁰ 44⁸ 44⁴ 45¹⁷
 20 20 20 20
 Cb Cb Cb Cb

Beardsley St. Cont'd

4

7

4+50

44⁶⁸ - 44² - 44⁸ 44⁷ - 45⁴⁴
 20 20 20 20
 Cb Cb

4+25 ^{conc.} 4B Drive on Lt.

44⁷² - 44⁰²
 236 20
 Drive

4+00

44⁵⁰ - 43⁸ - 44⁶ 44⁴ - 44⁹⁷
 20 20 20 20
 Cb Cb

3+80.99 Edge Asph. Paving
 do Line Julian

44³⁷ - 43⁸³ - 44²⁷ 44³⁰ - 44⁷³
 20 20 20 20
 Cb G G Cb

3+76.99 EC Cb Rets

44⁴⁵ - 43⁹³ 44³⁷ - 44⁷⁹
 20 20 20 20
 Cb G G Cb

3+66.99 No. Cb Line Julian

43¹² - 42⁴⁵ - 44⁵¹ - 43⁸⁴ - 43⁹⁵ 44⁰⁷ - 44²⁸ - 44²⁸ - 44⁹⁵ - 44²⁷
 50 50 30 30 20 20 30 30 50 50
 Cb G Cb G G Cb G Cb

Beardsley St. Contd.

5+12 BC of Cb on Lt.

45²⁵
20
Cb

T.P.

4578

on Hub
5+44⁸¹

5+00

45²⁵ 44⁸ 44⁹ 45² 45⁷⁶
20 20 20 20
Cb Cb

4+93 & 14' Conc Drive on Lt.

45¹⁷ 44⁴⁹
23.7 20
Drive

4+90 Beg. Bad sidewalk on Rt.

4+75 Crk in Cb on Lt.

44⁴⁹ 44² 44⁷ 44⁹ 45⁶⁸
20 20 20 20
Cb Cb

4+74 Beg. Bad Cb on Rt.

4+65 & 20' Conc Drive on Rt.

44⁹⁵ 45⁶⁶
20 22.5
Drive

Beardsley St Contd

E 22nd St

5+58.5 End of Cb. on Lt.

45²⁵
26.5
Cb

5+51.5 Reg. frame Bldg. 39.5' Lt

5+44.87 L. (Section taken at
Rt. Angles to Back tangent)

46¹ 45¹ 46¹⁰ 45⁶ 45⁶ 45¹² 45⁵
50 26 10 20 20 30
Cb.

5+41.35 No line Alley

46¹ 45² 45⁸ 46¹⁰ 45⁷ 44⁹⁰ 45⁸
47 30 24 20 22.7 35
Cb.

5+21.35 So. line Alley on Rt.

45² 45¹² 44⁸ 45⁴ 45⁶ 45⁵ 45³⁴ 45^{6.5} 44⁵
30 21 16 7 20 21.5 27.5 50
Cb.

5+18 End of sidewalk on Lt.

45¹² 45⁶
30 20.6
50.1 Cb.

22nd St Cont'd

4.

10

6+11.5 Beg ASPH. Paving on Lt
Beg. Conc. Ramp on Lt.

47⁰⁵ 46⁷³ 46⁵⁷
40 38 32
pav.

6+06 Beg Conc Paving on Lt. 38'

46⁸⁵ 46⁶⁸
40 38

6+00

46⁶¹ 46⁶ 46⁵ 45⁵ 46⁴ 46⁷ 46² 47¹ 47³
40 40 31 20 9 20 27 40
Wall

5+88 Beg. 6" Conc. Ret. Wall 40' Lt.
End Asph. paving to frame Bldg.
39.6 22

46⁴⁹ 46²¹ 46⁸
40 39.6 33.6
top floor Pav
Wall

47⁸
40

5+80.5 End C&G Sidewalk on Rt

46¹⁷ 46⁰⁶ 45³³ 46² 46⁶ 46¹ 46² 47⁴⁰ 47¹²
39.6 33.6 20 9 19 26 26 35.5
floor Pav. C&G Pav

5+61.5 Beg Asph. Paving on Lt.

45⁹⁰ 45⁵⁷
39.5 34
floor pav.

22nd St. Cont'd.

H'

7+05 Beg. Asph. Paving
Beg. Cb & Sidewalk on Lt.

47¹/₄₀

47 ¹⁵	47 ⁰⁰	47 ⁰⁰	46 ⁴⁴	47 ¹⁴	47 ⁴⁸	47 ⁵⁰	47 ²¹
35.5	30.5	26	26	12		10	26
		Cb					

6+97 BC Cb Ret on Rt.

48⁰²
26

offset in Asph. Paving on Lt
6+88 Cb Beg. Cb & Sidewalk on Rt.

46 ⁵²	46 ⁸⁷	46 ⁷⁷
40	30.5	27

48 ⁰⁰	49 ⁰⁰	48 ²⁰
26	30.5	35.5
Cb	5-11	

6+50 & Drive.

45 ¹⁵	46 ⁵⁰	46 ⁷¹	46 ⁶²	46 ¹	46 ⁷	46 ⁹	46 ⁷	47 ⁸	48 ¹
52	40	30	30	23		13	23	29	40
			Asph.						

6+48 Power Pole # FA9 28.2 Rt.

6+44 End. Conc. Ramp on Lt.

47 ⁰⁰	46 ⁰⁸
40	38

B17

56.45 56.44

(HWBP Imperial Co 22nd)

T.P.

50.45

L = 23' ~ 3 parts BC on 22nd.
 SE. Cb. Ret. Irving Co 22nd.

47 ³	48 ⁰²	47 ²¹	48 ⁰⁰	47 ³⁰	48 ⁰⁰	47 ³⁴	48 ⁰²	47 ²³	48 ⁰¹
G	Cb	G	Cb	G	Cb	G	Cb	G	Cb
	BC		0	(2)		EC			+20'
	22nd								East on Irving

7+46.08 & Com'l.

46 ⁶	46 ⁹²	47 ¹⁷	47 ⁵⁰	47 ²¹	47 ⁸¹	47 ⁸⁷
50	40	26		26	40	50
	Asph					

7+20.08 514. Cb. Line Com'l

46 ⁵	46 ⁸⁰	47 ⁰⁹	47 ⁵²	47 ⁵⁸	47 ⁵²	47 ⁵⁵
50	40	26		26	40	50
	Asph					

Rasch
Cota
Moore
Pollen
5-9-51
W.O. 26020

X-Section Columbia Street
(Sassafras to Upas)

INDEXED

MAY 7 1951

Upas

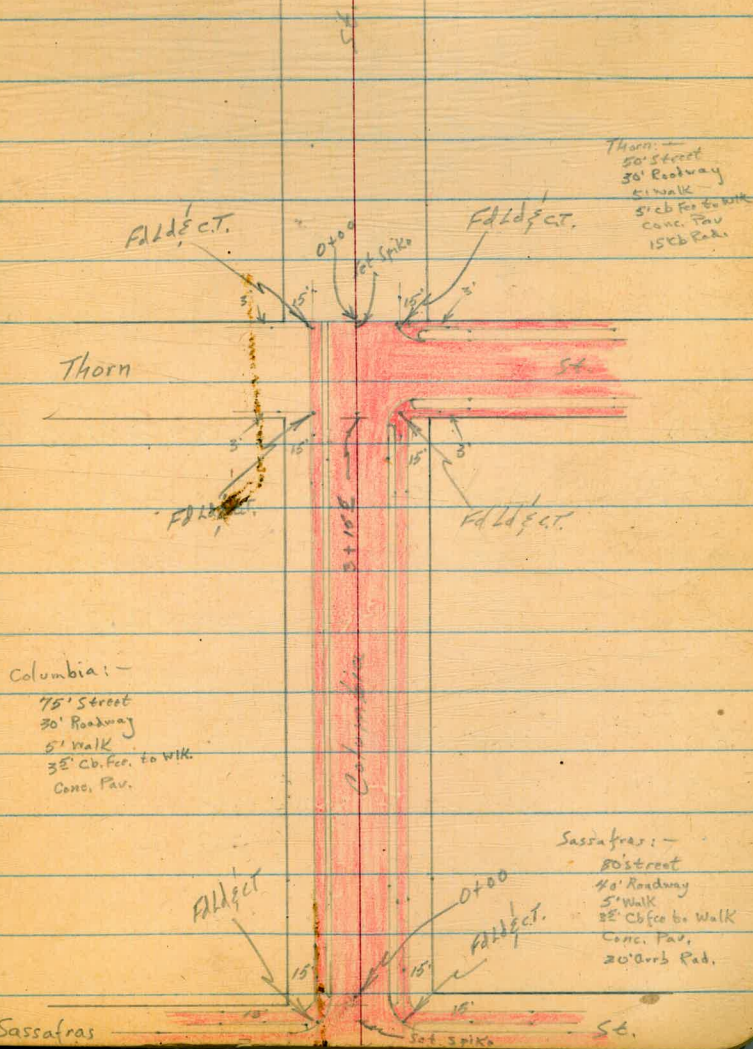
St

13

Upas: -
50' Street
Us improved
7-1/2 Ken AC.

St 156

Fd 6d 1/2 cts on North
side Upas - 3' to back in
Upas & 17' pts. in Columbia
Set Chisel Cross on c.t.
line in 8 Columbia



Thorn: -
50' Street
30' Roadway
5' Walk
5' ch. for 6" water
Conc. Pav.
15' ch. Pav.

Columbia: -
75' Street
30' Roadway
5' Walk
3' ch. for. to W.K.
Conc. Pav.

Sassafras: -
30' Street
30' Roadway
5' Walk
2' ch. for. to Walk
Conc. Pav.
20' Arr'd Pav.

Sassafras

St.

Cont'd From Page 13

Lt.

£

Rt.

14

1400

Reduced by
R.W. Nottam
5-8-51133.96
10.52
15
cb
133.60
10.88
15
cut134.37
10.11134.30
10.18
15
cut134.82
9.66
15
cb

T.P.

12.60

144.48 π 0.26 131.88144.48 π

0+00

No. Prop. Line Sassafras on East

6.51
15
cb
125.636.88
15
cut
125.266.14
126.005.85
15
cut
126.295.38
15
cb
126.76

0-20

N. Cb. Line Sassafras

119.69
12.45
50
cb119.16
12.38
50
cut122.61
7.53
35
cb122.00
10.4
35
cut124.39
7.75
15
cb125.33
6.81
15
cut126.42
5.72
15
cut128.58
3.56
37.5
cut128.96
3.18
37.5
cb131.06
1.08
52.5
cut131.53
0.61
52.5
cb

Check

6.53 125.61 = ? NWBP Columbia & Sassafras

T.P.

1.09

132.14 π 11.74 131.05132.14 π

T.P.

0.77

142.99 12.61 142.22

Check

0.57

154.83 4.21 154.24 = ?

SEBP Columbia & Thorn

T.P.

10.81

158.45 0.14 147.64

T.P.

13.08

147.78 0.08 134.70

T.P.

12.95

134.78 0.06 121.83

T.P.

12.63

121.89 0.20 109.26

T.P.

12.88

109.46 0.08 76.58

B.M.

12.73

9.66 83.93 SEBP

Upas & India

0+00 No. Line Thorn End Paving.

143.2	149.3	152.3	152.07	152.03	151.94	151.25	151.89	152.00	151.45	151.73
15.7	9.6	4.6	4.82	4.86	4.85	5.64	5.00	4.89	4.44	0.96
16	372	31	233	182	15	13	158	158	158	378
			NAIK	NAIK	cb	cut	cut	cut	cb	NAIK

0-10 No. Curb Line Thorn

157.81	157.18	151.84	157.40	154.14	154.56	156.46	156.89
5.08	5.71	5.05	4.49	2.75	2.33	0.43	0.0
15	15	15	15	30	30	44	49
cb	cut	cut	cut	cb	cut	cb	cb

3+41 £ Thorn

151.63	151.00	151.75	152.31	151.60	156.89
5.26	5.89	5.14	4.58	1.29	0.0
15	15	15	15	373	16
cb	cut	cut	cut	cut	cb

3+25 £ So. Curb Line Thorn

151.53	150.89	151.67	152.23	153.77	154.14	156.46	156.89
5.36	6.00	5.22	4.66	3.12	2.75	0.43	0.0
15	15	15	15	30	30	41	41
cb	cut	cut	cut	cut	cb	cut	cb

3+11 Curb BC Rt

150.53	151.21	151.15	151.56
Drive	6.26	5.68	5.74
15	15	15	15
cb	cut	cut	cb

T.P. 12.62 156.89x 0.21 144.27

156.89x

2+00

142.08	141.63	142.38	142.35
2.40	2.85	2.10	2.13
15	15	15	15
cb	cut	cut	cb

144.48x

144.48x

2702 56 Rt @ Double Garage

1796 176 Lt to Center P. Pole # 407214H

1750

1700

T.P. 0.54 152.79X 464 152.25

0799 16^{1/2} Lt to Center P. Pole # 407248H

0750

0703

156.89X

144.8	133.8	133.8	135.3	139.6	140.0	139.6	140.3	141.5	143.2	145.4	144.9
280	170	190	175	132	128	132	12.5	113	98	704	570
46	41	37 ^{1/2}	31	24	18	16		15	24	37 ^{1/2}	56
Bench									Apron conc.		Floor

124.4	137.4	139.8	140.4	145.4	146.3	146.6	149.8	150.4	153.9	156.8	
28.4	184	13.6	7.4	7.4	6.5	62	50	24	41.1	40	
47	46	37 ^{1/2}	27	16		14	22	26	37 ^{1/2}	60	
Bench											

126.2	142.2	144.9	146.1	151.6	151.4	152.1	152.9	152.8	152.9	160.1	161.9	166.1
26.6	10.6	7.9	6.7	12	14	0.1	0.3	105	10.7	173	181	133
51	50	37 ^{1/2}	30	21	14		15	17	24	29	37 ^{1/2}	60
Bench												

152.79X

124.6	132.6	140.6	146.3	152.8	153.3	152.8	153.4	153.4	154.3	154.8	163.0	165.0	170.0
30.3	24.3	14.3	10.6	4.1	3.6	4.1	3.5	3.3	2.6	2.1	4.1	48.1	43.1
62	52	50	37 ^{1/2}	27	17	15		17	19	24	29	37 ^{1/2}	60
Bench													

142.8	146.8	152.3	157.3	157.5	151.9	152.4	153.5	153.4	160.7	162.4	166.9
14.1	8.1	4.6	4.6	8.4	5.0	4.9	3.4	1.5	3.3	4.5	49.4
47	37 ^{1/2}	32	17	15		15	16	25	30	37 ^{1/2}	60

156.89X

Cont'd From Page 16

3+25

28' Lt to Center Pole # P/601

T.P.

0.14 127.11K 13.02 126.97

3+156

San Line Upas

3+08

2+865

53' Rt. @ Double Garage

2+57

T.P.

0.12 139.99K 12.92 139.87

Rt 295

56' Rt @ Double Garage

152.79K

2+

109.4
177
60

111.3
158
375

115.0
121
15

116.5
106

117.2
99
15

119.1
8.0
375

120.4
6.7
50

127.11K

121.3
18.7
50

123.2
16.1
375

126.5
8.5
20

119.0
21.0
15

119.7
20.3
7

120.5
19.5
7

120.4
19.6
23

121.7
18.5
375

122.5
17.5
50

122.4
17.6
48

124.2
15.8
375

127.4
12.6
19

121.4
18.6
17

121.7
18.3
7

124.1
15.9
10

131.3
8.7
16

134.0
6.0
375

136.3
3.7
53

123.5
16.5
50

125.0
12.0
375

129.8
10.2
27

130.1
9.9
18

127.7
12.3
16

126.5
11.5
7

129.8
10.2
11

131.6
5.4
21

136.2
3.3
362

136.7
22.4
530

Apron
conc

Floor

121.8
18.2
65

122.6
17.4
45

129.1
10.9
375

129.7
10.3
33

134.1
5.9
22

135.5
4.5
7

136.1
3.7
16

138.6
1.4
22

142.0
4.0
375

144.0
+4.0
50

137.99K

143.2
9.6
375
Apron
conc

144.4
8.4
56
Floor

152.79K

Check			7.35	83.92 = 83.93	Starting BM
T.P.	1.76	91.27	12.53	89.51	
TP	0.12	102.04	12.94	101.92	
T.P.	0.72	114.86	12.97	114.14	

100' North of N.L. Upas

North Line Upas (Edge Conc. Pav.)

127.11 π

114.2
12.91

114.9	114.3	115.2	115.2	115.9
12.24	12.80	11.96	11.88	11.23
15	15	15	15	15
cut	cut	cut	cut	cut

127.11 π

09

X Sec 10th St.

Lt = West

Rt = East

20

1400

284.17	283.52	283.65	283.51	284.14	284.23
5 ⁴⁶	6 ¹¹	5 ⁹⁸	6 ¹²	5 ⁴⁹	5 ⁴⁰
12	12	12	12	12	17 ⁶⁵
cb	94t	94t	cb	walk	

0750

284.28	283.64	283.84	283.70	284.34	284.45
5 ³⁵	5 ⁹⁹	5 ⁷⁹	5 ²³	5 ²⁹	5 ¹⁸
12	12	12	12	12	17 ⁶⁵
cb	94t	94t	cb	walk	

0723 EC cb on Lt

284.25	283.71	283.91	283.80	284.43	284.55
5 ³⁸	5 ²²	5 ²²	5 ⁵³	5 ²⁰	5 ⁰⁸
12	12	12	12	12	17 ⁶⁵
94t	94t	94t	cb	walk	

0712 EC 2nd Rt on Rt

284.29	283.76	283.74	283.70	284.46	284.46
5 ³⁴	5 ⁸⁷	5 ⁶⁹	5 ²³	5 ¹⁷	5 ¹⁷
11 ⁵	11 ⁵	12	12	17 ⁶⁵	17 ⁶⁵
cb	94t	94t	cb	walk	walk

0700

284.23	283.81	283.98	284.03
5 ⁴⁰	5 ⁸³	5 ⁶⁵	5 ⁶⁰
9 ⁵	9 ⁶	18 ⁰	18 ⁰
cb	94t	Propo	

0-05 End old cb on Lt, begin new cb (joint)

284.23	283.83	283.94	284.04
5 ⁴⁰	5 ⁸⁰	5 ⁶⁹	5 ⁵⁹
7 ³	7 ⁵	19 ²	19 ²
cb	94t	Propo	

BM

7.61 28963

28202

SWBP
10th St
University

28963

2429⁵⁷ = 4180⁸³ Hendricks
int & 10th st opening 2 Hendricks St

2415

2405⁵ BC cbs

TP, 5³¹ 286⁹⁹ 795 281⁶⁸

1475

1450

283.12
3⁵⁷ 4⁵⁸ 4⁴⁷ 4⁵³
7⁰ 7⁰ 12
cb 9ut

283.22 282.54 282.74 282.55 283.19 283.25
3²⁷ 4⁴⁴ 4²⁵ 4⁴⁴ 3⁸⁰ 3²⁴
11³ 11³ 13⁰ 13⁰ 17⁶⁵
cb 9ut 9ut cb walk

283.32 282.71 282.90 282.73 283.39 283.50
3⁶⁷ 4²⁸ 4⁰⁹ 4³⁶ 3⁶⁰ 3⁴⁹
12 10 12 12 17⁶⁵
cb 9ut 9ut cb walk

286 99

283.74 283.10 283.27 283.08 283.74 283.83
5⁸⁹ 6⁵³ 6³⁶ 6⁵⁵ 5⁸⁹ 5⁸⁰
12 12 12 12 17⁶⁵
cb 9ut 9ut cb walk

283.94 283.32 283.48 283.31 283.93 284.03
5⁰⁹ 6³¹ 6¹⁵ 6³² 5²⁰ 5⁶⁰
12 12 12 12 17⁶⁵
cb 9ut 9ut cb walk

289 63

X Sec Hendricks St

Lt South

Rt North 21

3708 21⁶ Lt E water meter

(Nothing on it.) #

3707 22² Rt E power pole 415329H

3704 22³ Rt E water meter

3700

2774 21⁶ Lt E water meter

2765 27³ Lt end North South fence

2742

2725

281.12
587
21⁶
valve

280.87
613
22²
valve

285.8	285.1	282.6	281.7	281.5	281.5	281.3	282.0	283.0	283.2
12	12	44	53	55	55	52	50	40	38
50	37	30	22	15		15	30	34	50

280.9
615
21⁶
valve

282.3	281.5	280.8	280.8	281.0	277.3	272.6
47	55	63	62	60	97	144
50	30	15		15	30	50

266.7	270.0	274.0	274.1	272.4	270.0	268.5
203	170	130	123	146	170	185
50	30	15		15	30	50

262.0	260.7	259.7	260.9	258.4	258.0	257.8
250	263	273	261	286	290	290
50	30	15		15	30	50

28699

Lt = South

Rt = North 22

282.09
420

4446 Edge AC.

4445 21° Lt & dead man

4426 21° Lt & 12" power pole #1017

4410 21° Lt & water meter

4410 38° Lt & 4° con walk

283.49
350
385
walk

281.63
536
21
valve

4400

283.7
33
30

283.7
33
41

282.7
43
30

282.2
48
27

281.9
51
15

282.0
50

281.8
52
15

282.7
43
30

283.4
36
50

3450

284.6
24
50

283.5
35
33

282.3
42
30

281.7
53
18

281.7
3

281.5
55
15

281.6
54
19

282.8
43
30

283.6
34
50

3442 21° Lt & water meter

281.45
54
21
valve

3419 31° Lt & 3° con steps

282.62
437
31
bit step

3423 22° Lt & 12" power pole #1033

28699

Lt = South

Rt = North

23

Starting BM

762

282.03

✓ 282.03 SWBP 10th & University

TP₂

5⁴³

289.65

277

284.22

= 2129.57 10th st

4480⁸²

Int E Hendricks + 10th St. opening

282.62

437

15

282.52

447

282.40

459

7.5

94

282.07

392

7.5

06

4465

282.85

414

14.5

06

282.23

476

14.5

94

282.36

463

282.29

420

13.8

94

282.85

414

13.5

06

4456 20" Lt E water meter

281.68

531

21"

valve

281.69

530

20"

valve

4455 21" Lt E water meter

4448⁴ 14" Lt cb end South

283.6

34

50

283.3

32

35

282.9

41

30

282.4

46

26

282.62

437

14.2

281.92

507

14.2

282.16

483

06

282.22

427

15.8

282.82

427

15.8

282.6

48

30

4447⁵ 15" Rt end cb north

282.22

427

15.9

282.82

427

15.9

282.82

427

15.9

286.99

Cont'd From Page 24

No. 2 So. Alley

24

Q

25

1400

Reduced & Plotted
3/24/52
H. Mills

158.5	161.0	153.9	164.8	164.9	165.3	166.5	164.2	169.7
13.3	10.9	8.0	7.1	7.0	6.6	5.4	3.7	2.2
50	30	10	7		8	10	25	50

0+50

154.3	158.6	161.2	162.1	162.2	162.5	163.9	166.3	168.3
17.6	13.3	10.7	9.8	9.7	9.4	8.0	5.6	3.6
50	35	10	6		8	10	25	50

0+115

71' RA to Center T. Pole # 412589H

0+00

North Line "G"

150.8	152.1	152.2	161.0	160.8	162.8	161.9	164.2	166.2
21.1	14.8	12.7	10.9	11.1	11.1	10.0	7.7	5.7
50	25	10	5		10	12	25	50

0-30

Q "Gen" Street

149.6	153.6	152.6	162.0	165.5
22.3	16.3	12.3	9.9	6.4
50	25		25	50

T.P. 11.08 171.94 A 10.96 160.86

171.94 A

T.P. 10.65 171.82 0.46 161.17

T.P. 11.14 161.63 5.59 150.49

T.P. 1.41 156.08 12.81 154.60

T.P. 1.34 167.71 11.17 166.07

T.P. 0.53 177.24 11.58 176.71

B.M. 0.66 188.29 187.63 NW B P

"E" St. & 30th St.

Cont'd From Page 25

2+50

2+25

2+10

12° Lt & 36 Conc Walk

1+985

12° Lt & 25 Conc Walk

1+75

High Point

1+59.66 @ N&S Alley intersects @ E&W Alley

1+51

10° Rt to center T. Pole # PA734

1+50

17194X

Lt

162.6

9.3

33

163.8

8.1

10

163.3

8.6

6

163.5

8.4

4

Rt

163.5

8.4

7

165.1

6.8

10

166.6

5.3

13

26

170.6

1.3

46

164.2

7.7

25

165.2

6.7

10

165.3

6.4

4

165.4

6.5

8

167.1

4.1

10

167.8

4.1

12

172.3

1.6

36

165.83

6.11

26

House

Floor

165.57

6.43

23

conc

165.79

6.15

12

conc

164.81

7.13

25

conc

166.17

5.77

12

conc

161.8

10.1

50

166.7

5.2

10

167.4

4.5

10

168.1

3.8

10

166.74

5.20

on 26.6

161.3

10.6

50

166.9

5.0

10

167.1

4.8

8

167.4

4.5

8

168.6

3.3

10

171.94X

Cont'd From Page 26

T.P. 11.28 178.02 π 3.77 166.74

T.P. 10.62 170.51 0.08 159.89

3+49.32

3+32

3+13

Toe

3+09.32 So. Line "F" St.

3+04

2+89 92 Rt to Center T.Pole #76396H

T.P. 0.88 159.97 π 12.85 159.09

2+85

171.94 π

2+

2

Rt 27

141.5	147.7	154.1	159.9	165.2
18.5	12.3	5.9	0.1	+5.2
100	50		50	100

140.4	146.9	153.8	159.1	164.7
19.6	13.1	6.2	0.9	+4.7
100	50		50	100

149.1	155.2	154.7	155.1	155.6	156.6	158.7
10.9	4.8	5.3	4.9	4.4	3.4	1.3
50	10	7		8	10	30

159.1	160.0	157.4	156.2	156.2	156.3	160.0	161.6	164.7
0.9	0.0	2.6	3.8	3.8	3.7	0.0	+1.6	+4.7
30	16	10	8		8	10	14	30

157.3	159.5	142.6	160.2	159.3	158.9	159.5	162.8	165.3	169.6
14.6	12.4	9.3	11.7	12.6	13.0	12.4	9.1	6.6	2.3
45	29	17	10	8		7	10	13	5.0

171.94

Contd From Page 27

E. & W. Alley

1+195 15' Lt & Car Port

1+09 15' Lt & Single Garage

1+08 7' Rt to Deadman

1+00

0+70

0+35

0+00 { 90' Rt to T. Pole #PA 734 = Pole Sta. 1451 N.E.S. Alley
(E. & W. Alley (East Line of N.E.S. Alley))

178.02x

Lt

Rt

Rt 28

173.0
5.0
15.6
Dirt

173.29
473
152
conc
Floor

173.4
4.6
15

173.1
4.9
10

173.0
5.0

173.0
5.0
10

171.7
6.3
30

172.6
5.4
25

172.7
5.3
10

172.5
5.5

172.9
5.1
10

171.8
6.2
30

170.9
7.1
15

171.0
7.0
10

170.6
7.4

170.5
7.5
10

170.2
7.8
30

168.1
9.9
10

168.1
9.9

168.7
9.3
10

178.02x

Contd From Page 28

R 29

1793^E 10^E Lt Begin Conc. Block Wall

1793.9
4.1
10^E
Top

H
170.0
8.0
10^E
GRD.

169.5
8.5
10^E
Foot

1791^E 8^E Lt End Conc. Apron

170.71
7.31
10^E
conc
Floor

7.52
8^E
conc

1781 10^E Rt Begin Conc. Apron Double Garage

170.71

168.62
9.40
10^E
conc.

168.81
9.21
13^E
conc.
Floor

1780.5 8^E Lt to W. Cor. Conc. Apron. Single Gate

170.61
7.41
10^E
Floor
conc
Apron

168.3
8.7
9^E
Foot

168.8
8.2
9^E
GRD

171.19
6.83
9^E
Top

1775 } The N^ES Fence is on a Conc. Foundation.
9^E Rt End Board Fence

1770

170.9
7.1
10

170.3
7.7
8

170.8
7.4
10

170.8
7.2
10

170.8
7.2
20

1751^E 8^E Rt Begin Board Fence

1738 19^E Rt S Double Garage

172.4
5.6
10

171.9
6.1
10

171.7
6.3
10

171.73
6.29
19^E
Floor
conc

1723^E 7^E Rt to Center P. Pde #PA 2850

178.027

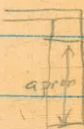
178.027

Cont'd From Page 29.

2+48 98' Rt End Board Fence

This 2' walk widens to the Conc. Apron

2+47 10' Lt & 2' Conc Walk



2+30

T.P. 0.87 165.84 π 13.05 164.97

2+135 91' Rt End Picket Begin Board Fence

2+13 79' Rt to Center P. Pole # A2864

2+105 10' Lt End Conc Block Wall

2+02 10' Rt Begin Picket Fence

2+00 10' Rt & 3' Conc Walk

1+98 10' Rt End Conc. Apron

178.02 π

Lt

Rt

30

165.2

0.6
20

165.2

0.6
10

164.4

1.4
8

164.4

1.4
20

164.4

1.4
10

164.1

1.7
20

161.08

4.76
10' Conc

161.13

4.71
15' Conc

165.74 π

173.28

4.24
10' Top

148.6

9.4
10' GRD

168.4

9.6
10' Foot

149.7

8.3
10

168.3

9.7
7

168.3

9.7
10

168.2

9.8
10 GRD

168.42

9.60
10 CONC

168.15

9.87
20 CONC

168.44

9.58
10' CONC

168.81

9.21
13' Floor

178.02 π

Cont'd From Page 30

T.P. 0.72 154.47 π 12.09 153.75

3+25

3+13^E 7^E Rt to Center P. Pole # A2884

3+11^E 10⁺ Lt End Conc. Apron

2+92^E 10^E Lt Begin Conc. Apron

2+75

2+71 10^E Rt End Conc Apron

2+51 10^E Rt Begin Conc. Apron Double Garage

165.84 π

LT

R

Rt

31

156.3
9.5
20
155.8
10.0
10
154.8
11.0
10
153.9
11.9
10
152.6
14.2
35

158.3
7.5
20
157.44
6.40
18
Floor
158.39
7.45
10
158.0
7.8
10
156.64
9.20
10
156.0
9.8
10
154.9
10.9
13
153.8
12.0
30

159.44
6.40
18
Floor
159.09
6.75
10
conc

160.8
5.0
20
160.2
5.6
10
159.4
6.4
10
159.2
6.6
10
158.2
7.6
13
157.1
8.7
30

160.40
5.44
10
conc
161.0
4.74
14
Floor

162.4
3.4
20
162.4
3.4
10
161.7
4.1
10
160.8
5.0
10
160.2
4.96
10
conc.
161.24
4.60
14
Floor

165.84 π

Cont'd From Page 31

4+00.54 West Line 29th St.

T.P. 150 143.60 \times 12.37 142.10

3+91

3+80

3+77 10' \pm End Conc. Ret. Wall?

3+58 10' \pm ^{Retain. wall?} Begin Conc. Foundation?

3+50

154.47 \times

ht.

♀

32

1474	1433	1406	1410	1416	1420	1409	1402	1380	1312
+38	0.3	3.0	2.6	2.0	1.6	2.7	3.4	5.6	12.4
50	16	17	10		8	10	14	36	60

143.60 \times

1479	1461	1426	1430	1440	1439	1328
6.6	8.4	11.9	11.5	10.5	10.6	21.7
30	10	5		10	14	60

1485	1478	1471	1467	1453	1458	1459	1410
6.0	6.7	7.4	7.8	9.2	8.7	8.6	13.5
20	10		1	2	10	20	40

1508	1486	1486
3.7	5.9	5.9
10' Top	10' GRD	10' Foot

15250	1522	1519
4.7	2.3	2.6
10' Top	10' GRD	10' Foot

1544	1535	1522	1520	1496	1460
0.1	1.0	1.8	2.5	4.9	8.5
20	10		10	37	50
				Top	

154.47 \times

Check			3.55	187.63 = 187.63	WOW!
T.P.	6.16	191.18	1.23	185.02	
T.P.	12.49	186.25	0.54	173.76	
T.P.	7.90	174.30	0.34	166.40	
T.P.	12.29	166.74	0.62	154.45	
T.P.	12.04	155.07	0.57	143.03	

4467	Toe		1270	1243	1210	1198	1193
			166	193	22.3	238	243
			85	50		50	100

4425			1398	1356	1272	1272	1272
			38	80	164	164	164
			50		50	50	50

4417			1449	1397	1360	1278	1226
			+1.3	3.9	7.6	15.8	21.0
			100	50		50	100

4416 11584 to Center P.P. # 750

143.60X

143.60X

Location Existing 14" Sewer west
of California St. Nutmeg St. to Sassafras St.

H.O. 20006

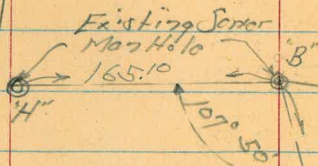
Oct. 20. 51
H.S. Mason
Clark
Rorer
Fritz

34

INDEXED
LOW
OCT 23 1951

⊙ Denotes Sewer
Man Hole Friend. ⊙

Pacific Highway



Existing 14" Sewer

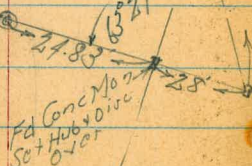
California St.

Santa Fe RR

Olive St.

Kettner Blvd.

Existing Sewer Man Hole
4"

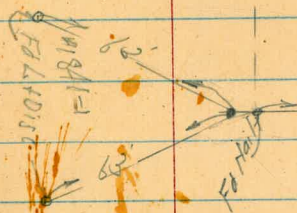


Nutmeg St.

50'

50'

ELLET



Palm
275.41

SE FAL
+ D JTC

207.46

Palm St

FAL

2298

FAL

Pacific Highway

Existing Sewer

California St
Santa Fe R.R.

Ketcher Blvd.

Existing
Sewer Main
Page 34 3"

Olive St

Pacific Highway

25322

89° 35'

Set Nail

117.06

69088

89° 35'

Facing
Set or
Man Hold
C.

119.63

75'

Set Hub
+ Disc.

Redwood St.

Felt T

Set Nail

Felt T

California St
Sawbuck RR.Set Hub
+ Disc.

Quince St.

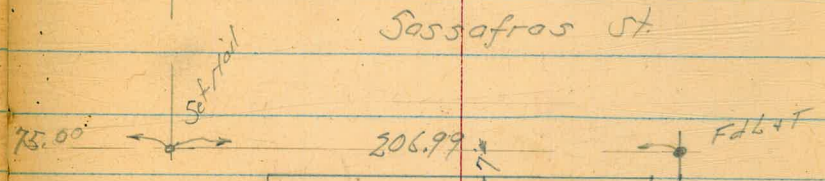
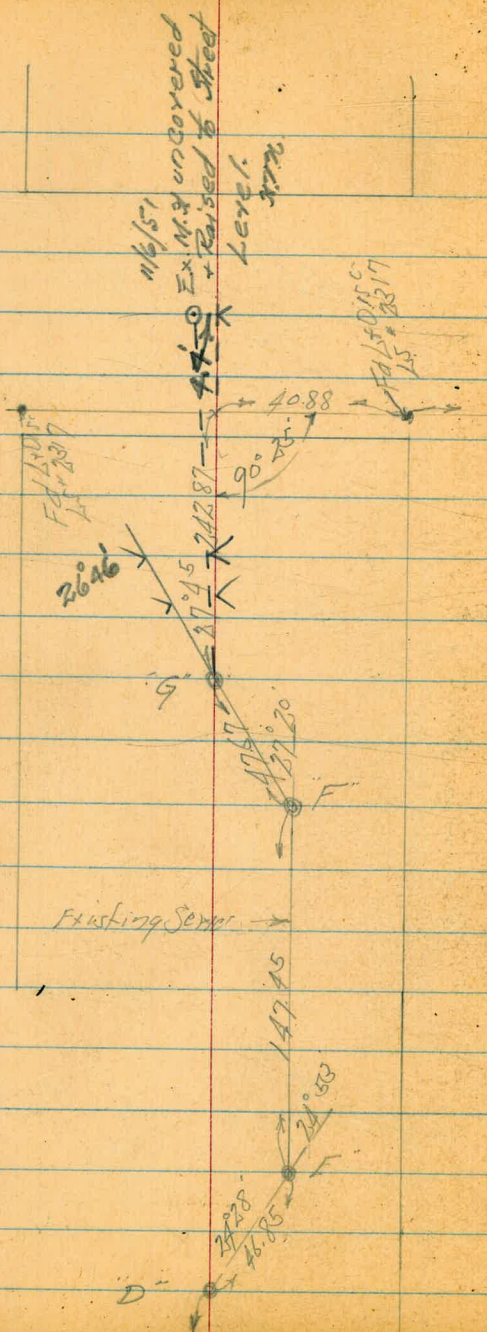
Felt T

Felt Copper
Tack

Felt T

Kettner Blvd

Pacific Highway



California St
Santa Fe R.R.

Spruce St.

Kettner Blvd.

Levels Existing Survey West of California
 Hot m⁹ to Sassafras

Sketch Page 34-38

BM	560	51.09	45.49	SE BP Hot m ⁹ + Kettner
	0.67	40.26	11.50	39.59
	0.55	29.57	11.24	29.02
Man Hole A		8.59	20.98	on Rim
" " "		29.19	0.38	Invert
109	(2548)	8.18	21.39	
Man Hole B		3.24	22.24	on Rim
" " "		25.89	-0.36	Invert
Man Hole H		9.52	15.96	on Rim
" " "		31.89	-6.41	Invert
305	(2014)	8.39	(17.09)	
578	(1848)	7.44	(12.70)	
Man Hole C		5.18	13.30	on Rim
" " "		16.38	2.10	Invert
7.10	(1932)	6.22	(2.26)	
Man Hole D		8.62	10.74	on Rim
		14.62	4.74	Invert

Oct 28. 51
 R. S. Gray
 Clark
 Porter
 Fritz

39

(1936)	874	10.62	on Rim
" " "	1434	5.02	Invert
TP Profile 488	865	(10.7)	
Man Hole E	4.88	10.71	on Rim
" " "	9.98	5.61	Invert
Man Hole G	4.81	10.78	on Rim
" " "	9.91	5.68	Invert
12.22	(2591)	1.90	(12.69)
10.88	(36.77)	0.08	(25.83)
11.28	(47.73)	0.26	(36.45)
4.90	(52.52)	0.11	(47.62)
BM	3.56	(48.96)	SE BP Sassafras + Kettner 49.01

INDEVER
also
NOV 21 1951

X-Sect. 15' Alley in Block 40

Re Sub. Ternalta (H+I)

See Books 1497-P.26 + 1536 -P.25

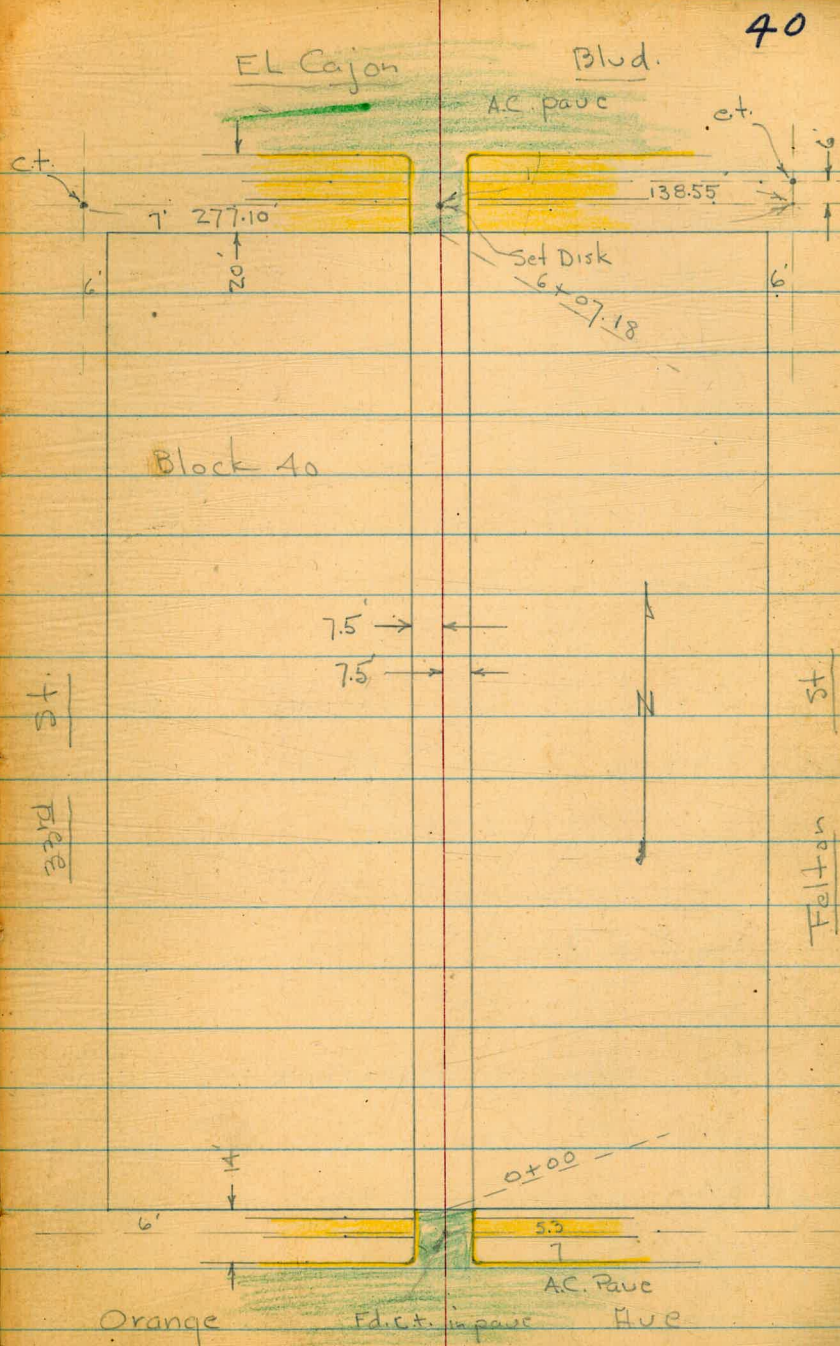
for Orig. Notes.

5818

11-20-51

7.0.

W.O. 32024



X-Sect. Blk. 40 - See Sketch - P. 40

0+91- 8.8' Rt. = ± 12" Acacia
Conc. floor
0+83- 9.5' Rt. = S.W. Cor. Gar- -Prive to Orange

0+75- 6.5' Lt. = ± W.M.

0+50

0+49- 8' Lt. = Beg. Solid board fence - Conc. slab.
behind.

0+47- 7.4' Lt. = ± W.M.

0+39- 6.6' Rt. = ± W.M.

0+37- 6.7' Lt. = ± W.M. = Elev. given is top of pipe

0+25- 6.7' Lt. = ± P. pole # PA. 4225

0+18

0+07- 7' Lt. = ± Deadman

0+01- 4.6' Lt. = ± 15" Dia. Gas Valve cap.

0+00 = N.L. Orange - edge AC. pave - end Returns.

0-14 = N. curb line of Orange

B.M. = N.W. B.P. - 33rd + Orange 366.66

Lt. ± Rt

70.36
6.5
on pipe 71.25 70.7 70.9 70.9 71.8
8 7.5 4 7.5
Conc. slab.

72.65
9.5 = floor

69.87
7.4 pipe

69.83
6.6 = pipe

69.68
6.9
Top pipe

69.9 69.9 69.9 71.0
7.5 4 7.5

69.25
4.6
± Top cap

Note Diff. in Benches

69.44 69.39 69.29 69.57 69.65
7.6 7.6 7.3 7.3
Top-end gut. Top-end
cb. gut. cb.

68.55 68.06 69.27 68.70 68.67 68.78 69.23 69.33 69.87
Top 50 Top 7.5 7.5 Top 50 Top
gut 2' Rad. gut. gut. 2' Rad. gut. Top

300' figure - not shown

Actual Elev. shown - Elev. Rod used.
Note: See P. 46 - for Diff. in Benches - Before plotting.

2+45-7.4' Rt. = Beg. picket fence

2+46-6' Lt. = \pm w.M.

2+25-6.5' Rt. = \pm w.M.

2+06-12.9' Lt. = Beg. Conc. apron to 7 Car. Gar.
incinerator

2+05-7.5' Lt. = \pm + Ely. of 2x2 Conc. base for

2+00

1+75-6.5' Rt. = \pm w.M.

1+71-6.8' Lt. = \pm w.M.

1+66-7.3' Lt. = end. fence + shed.

1+50

1+49-6.5' Lt. = \pm w.M.

1+45-7.4' Lt. = Beg. Board fence - old shed Behind.

1+40-13.8' Lt. = \pm Sing. Gar. - Dirt floor.

T.P. = Nail in Pole - 1+32

373.74

1+32-6.8' Rt. = \pm w.M.

1+32-6.2' Lt. = \pm P. pole # J.P.A. 4229

1+20-8.3' Rt. = end Conc. found.

1+08-15.6' Lt. = \pm Sing. Gar. - Dirt floor

8.6' Rt. = Beg. Conc. found to Block wall

1+00-7.2' Lt. = end fence - 7.3 = Conc.

Lt.

 \pm

Rt.

72.55

6
pipe

72.72

6.5

pipe

73.40

73.31

16.3
floor12.9 = Conc
apron

73.47

7.5

Conc.
base

73.2

15

73.2

7.5

73.2

73.3

7.5

74.1

15

71.97

6.8

pipe

71.94

6.8

pipe

72.8

15

72.6

7.5

72.7

72.8

5

73.5

7.5

73.6

15

71.73

6.5

pipe

Bet.
sheds.

72.7

13.8

floor

71.80

6.8

pipe

72.80

8.3

Bottom

73.68

Top
wall

72.3

15.6

floor

71.96

7.3 = Conc.
slab.

71.9

71.9

4

73.2

7.5

72.40

8.6

Bottom

73.81

Top
wall

3+97- 8.1' Lt. = end Conc. apron

73.90
8.1
apron

3+82- 6.9' Rt. = E W.M.

73.02
6.9
pipe

3+76- 8.4' Lt. = Beg. Conc. apron to 2 Car Gar.

74.00
15.1
floor73.90
8.4
apron73.55
7.4 = Conc
apron

3+73- 7.4' Lt. = end Conc. apron

3+55- 7.5' Lt. = Beg. Conc. apron to 2 Car Gar.

73.79
15.1
floor73.54
7.5 = apron

3+50

73.5 73.6 73.5 73.5 73.8
15 7.5 7.5 15

3+46- 7' Lt. = E W.M.

72.71
7'
pipe

3+45- 7' Rt. = E W.M.

72.93
7
pipe

3+25- 7.5' Rt. = end fence

3+07- 6.8' Rt. = E W.M.

72.95
6.8
pipe

3+00- 5.8' Lt. = E W.M.

73.0 73.6 72.13 73.7 73.9 74.2
15 7.5 5.8 7.5 15
pipe

2+85- 2' Rt. = E W.M.

72.72
7 = pipe

2+84- 7.2' Rt. = end Picket + Beg. board fence

2+76- 6.4' Lt. = E P. pole # P.A. 4241

2+75- 13' Lt. = end Conc. apron

73.15
13 = Conc.

2+71- 7.3' Rt. = end shed. + beg. picket fence

74.1
7.3
ground.

2+51- 7.3' Rt. = End fence + Beg. shed- wood floor

74.1
7.3 = ground.

2+50

73.31 73.4 73.5 73.7 74.3
13' 7.5 7.5 15
edge Conc. apron

	Lt.	±	Rt.
5+07- 7.1' Lt. = Beg. Ely. of 2' Conc. walk	74.33		
5+04- 12.8' Rt. = Beg. Conc. apron - to Repairshop	7.1 Cor. walk	74.48 12.8 apron	74.70 17 floor 73.23
5+03- 7' Rt. = ± w.M.			7 Pipe
5+00	73.9 15	74.1 7.5	74.1 7.5 74.2 15
4+96- 6.2' Lt. = ± P. pole # PA. 42.85			
4+94- 7' Rt. = ± w.M.			72.82 7=pipe
4+76- 6.8' Lt. = ± w.M.	72.88 6.8 pipe		
4+50	73.7 15	73.8 7.5	73.8 7.5 74.0 15
4+46- 11.2' Lt. = end Conc. apron		73.79 11.2 apron	
4+36- 5.9' Lt. = ± w.M.	72.68 5.9 pipe		
4+29- 11.2' Lt. = Beg Conc. apron to Doub. Gar.		74.04 15.1 floor	73.90 11.2 apron
4+24- 8.3' Lt. = end Conc. apron	73.38 8.3 apron		
4+21- 6.2' Rt. = ± w.M.			72.92 6.2 pipe
4+05- 8.7' Lt. = Beg Conc. apron to 1' Car Gar.		73.55 26.2 floor	73.41 8.7 apron
4+03- 6.8' Lt. = ± w.M.	72.24 6.8 pipe		
T.P. = Nail in Pole below	374.45		
4+02- 6.5' Lt. = ± P. pole # PA. 42.71			
4+00	73.6 15	73.6 7.5	73.7 7.5 74.2 15
3+99- 6.7' Lt. = ± w.M.	72.10 6.7=pipe		

Lt. ± Rt.

checked Back to Starting B.M. - our levels are O.K.

check - S.W. B.P. 33rd + El Cajon 374.27 - 374.25 = Book 1497

6+27.18 = S. curb line

74.86	74.49	74.83	74.61	74.63	74.73	75.07	75.09	75.44
Top	50 gut.	Top 2' Rad.	7.5 gut.		7.5 gut.	Top 2' Rad.	50 gut.	Top

6+17.18 = profile

75.03	74.92	74.65	75.00	75.19
Top cb.	7.4 gut.		7.3 gut.	Top

pave - poor Cond. - Req. Returns

6+07.18 = S.L. El Cajon Blvd. = edge of A.C.

75.05	74.92	74.69	75.11	75.25
Top cb.	7.4 gut.		7.3 gut.	Top cb.

6+06.6 - 6.7' Rt. = end Conc. slab.

75.04	75.24
6.7 Conc.	7.3 = Conc.

6+06.6 = 7.5' Lt. = end Bldg.

6+06 = 5' Lt. = ± 1.7' Conc. slab. under 4" Drain outlet

75.26	74.94	74.86
I.E. 4" pipe	7.5 Conc.	5' Conc.

Cont'd From Page 47

Lt

℄

Rt

48

0+80.5 6.5' Lt to Center P. Pole # 83857

0+57 6.5' Lt to Deadman

0+50

0+00 North Proj. Line Crown Pt. Dr.

0-23 No. Edge Pav.

0-34.5 ℄ Pav

0-46 So. Edge. AC Pav.

Y-Sect. Parallel to No. Pl. of Crown Pt. Dr.

20.8	24.5	20.0	20.1	19.5
6.7	7.0	7.5	7.4	8.0
30	75		75	30

20.1	17.8	17.4	17.3	18.4
7.4	7.7	8.1	8.2	8.1
50	10		10	50

17.70	14.35	18.93	18.45	17.94
7.78	8.13	8.55	9.03	9.54
100	50		50	100

20.08	17.72	19.28	18.83	18.39
7.40	7.76	8.20	8.65	9.09
100	50		50	100

19.84	19.39	18.93	18.42	17.91
7.64	8.09	8.55	9.06	9.57
100	50		50	100

Set BM 5.14 27.48 π 6.64 22.34 7' x 7' Ldg City Disc N.E. Corner Sequoia & Roosevelt 27.48 π

BM 3.28 28.98 25.70 Conc. Mon. @ Roosevelt & West 7' Lane Kendall

Cont'd From Page 48

2+19 17² Lt End Garage

2400	2386	2343
3.48	3.62	4.05
17 ²	14 ²	8 ²
Floor	Brk	conc

2+00

22.99	22.8	21.9	21.9	21.8
4.49	4.7	5.6	5.6	5.7
7 ²		6 ²	7 ²	30

1+90 17² Lt Begin Garage

2388	2362	2297
3.60	3.86	4.51
17 ²	14 ²	8 ²
Floor	Brk	conc

1+793 6² Rt Begin Board Fence

22.5	22.5	21.5	21.5	21.6
5.0	5.0	6.0	6.0	5.9
7 ²		6 ²	7 ²	30

1+68 8² Lt Begin Conc Apron

2320	2254
4.28	4.94
15	8 ²
conc	conc

1+50

22.5	22.0	21.8	21.7	21.3
5.0	5.5	5.7	5.8	6.2
30	7 ²		7 ²	30

7+00

21.6	21.3	21.0	20.9	20.3
5.9	6.2	6.5	6.6	7.2
30	7 ²		7 ²	30

27.48x

27.48x

Lt

Rt

Rt 49

Cont'd from Page 49

Lt

R

Rt 50

T.P. 248 26.65' 3.31 24.17

2+787^E 16¹/₂' Rt Begin Garage

2+80^E 10¹/₂' Lt to Center P. Pole (Temporary)

2+76 16⁶/₁₆' Rt End Garage

2+37^E 16⁵/₁₆' Rt begin Garage

2+30 7⁰/₁₆' Lt. to Center P. Pole # A3883

2+29^E 6²/₁₆' Rt End Board Fence

2+27 8³/₁₆' Lt End Conc Apron

27.48' Lt

24.2

3.3

15

24.1

3.4

7⁵/₁₆

23.6

3.7

23.4

4.1

7⁵/₁₆

23.56

3.92

16²/₁₆

Floor

23.61

3.87

16⁶/₁₆

Floor

23.8

3.7

15

23.4

4.1

7⁵/₁₆

23.0

4.5

23.0

4.5

7⁵/₁₆

23.63

3.85

16³/₁₆

Floor

23.6

3.9

15

23.4

4.1

7⁵/₁₆

23.1

4.4

21.9

5.6

7⁵/₁₆

21.9

5.6

20

23.82

3.66

14³/₁₆

conc

23.33

4.15

8³/₁₆

conc

27.48' Lt

Cont'd From Page 50

check

4.30 22.85 = 22.34

3+67.5

3+48

3+46

3+41

3+38

3+30.07 So. Prop. Line Roosevelt

3+23

16^{1/2} Ft End Garage

26.65 π

22

219
4.8
100

219
4.8
50

214
5.3
25

214
5.3
25

216
5.1
25

243
2.4
25

242
2.5
30

245
2.2
75

218
4.9
100

214
5.3

214
5.3

224
4.3

244
2.3

243
2.4

26.65 π

22 51

216
5.1
50

214
5.3
25

240
2.7
25

245
2.2
3

238
2.9
25

235
3.2
30

23.60
305
165
Floor

D. Smith
C. Allen
R. Taylor
R. Parks

Profile for Proposed Rip Rap. Indexed
7-8-52
Wabash Blvd.

wo # 22008
4-25-52

52

0700
#5
142447⁵⁹ Set Hub \square --- 66' --- 142447⁵⁹ BC
kt.

Proposed Line of Rip Rap

Wabash Blvd.

125450 Set Hub \square --- 66' --- 125450
9 12" storm drain
Bank 30' \downarrow 40'

Set Hub \square
10101⁶³
7134.63

$A = 18^{\circ}24'$
 $R = 2287.75$
 $L = 734.63$
 $D = 7513$
 $C = 73150$

98'

150+00

INDEXED
Law
DEC 18 1952

R=3200

Proposed Line of Rip Rap

Wabash Blvd.

0400
#5
142447⁵⁹ \square --- 66' --- 142447⁵⁹ BC
142447⁵⁹ \square --- 66' --- 142447⁵⁹ BC

REDUCED BY
MEEHAN
29 APRIL 1952

129+50

129+0

+50

128+0

+50

127+0

126+50

126+0

125+50

125+10

BM

261

107 45

98 87

BM in Inlet west
125+50

FB 2070-13

71

101 45

Lt. 8
 94.0 95.1 96.2 97.9
 75 64 53 36
 35 15 11
 Low Creek
 93.7 94.0 95.6 97.4
 78 75 59 42
 25 17 10
 Low Creek
 93.1 95.8 95.9 91.5
 84 92 56 41
 25 16 12
 Low Creek
 92.3 95.2 96.3
 92 63 52
 27 14
 Low Creek
 92.3 94.5 96.1
 92 70 54
 35 14
 Low Creek
 91.1 95.5
 102 60
 35
 Low Creek
 91.3 94.0
 102 75
 35
 Low Creek
 91.9 91.9 92.8
 105 96 87
 32 12
 Low Creek
 88.9 91.0
 126 105
 47
 Low Creek
 888
 127
 30

13440

750 draw

13340

750

13240

750

13140 draw

130450

TP

8¹⁵108²⁷1³³100¹²

130400

100A 47
 72 75 43 20
 38 28 20
 Low

99.6 99.6 101.9 102.3
 82 82 64 60
 40 21 14
 Low

98.8 99.8 101.3 103.9
 95 85 70 44
 40 24 21
 Low

97.5 99.3 99.9 103.4
 108 90 84 42
 40 26 23
 Low

97.1 97.8 99.0 102.9
 112 105 93 54
 40 34 28
 Low

96.4 100.0 102.9
 112 83 54
 29 24
 Low

95.5 97.8 98.4
 128 105 99
 33 21
 Low

94.5 95.3 97.5 100.1
 138 130 108 82
 35 27 22
 Low Creek

π 108²⁷

94.3 96.3 99.1
 72 52 18
 42 21
 Low Creek

π 101⁴⁵

13940

750

13840

750

13740

750

13640

750

13540

TP₂

134450

11³⁶119¹⁷

046

107⁸¹

27
 107.2 110.1 112.2 113.0
 12° 9° 7° 6°
 75 53 45 42
 Low
 106.8 108.9 110.8 111.5
 124 103 84 73
 78 54 45 42
 Low

105.9 108.0 110.7 112.1
 133 112 85 74
 80 50 40 40
 Low

105.7 107.3 108.0 111.6
 135 112 112 76
 86 75 50 40
 Low

104.6 105.7 110.9
 146 135 83
 85 74 40
 Low

103.9 105.7 110.4
 153 135 83
 80 65 40
 Low

103.1 104.8 104.1 109.7
 161 144 142 95
 75 60 50 40
 Low

101.9 102.5 105.8 107.5
 173 162 134 113
 50 38 30 30
 Low

119¹⁷
 100.6 101.0 104.2 106.9
 72 73 41 41
 50 38 30 30
 Low

108²⁷

L+

R

0750

0° 37.565'

$\Delta = 18^{\circ} 29'$
 $R = 2287$
 $L = 734$
 $D = 7573$

C-5005

0700 1

142147⁵² 2

14210

750

14110

140150

T₃10⁸⁵125⁹⁶

406

115¹¹

14010

139150

1145 1175 1204
 115 85 56
 22 17
 Low

114.1 116A 119.3
 112 96 62
 22 17
 Low

1130 115.1 118.5

132 102 75
 26 19
 Low

112.1 113.1 116.9

133 112 81
 26 20
 Low

112.1 112.8 116.3

132 132 92
 28 25
 Low

114.1 114 113.1 115.5

142 146 122 105
 45 32 29
 Low

T 125-26

109.8 1125 115.8

94 62 34
 40 37
 Low

108.3 1125 113.8

109 67 54
 58 44
 Low

T 11912

5400

6°15.650'

4750

5°38.085'

TP4

7⁸³133¹⁰

069

125²⁷

4100

5°00.520'

750

4°22.955'

3400

3°45.390'

750

3°07.825'

2400

2°30.260'

750

1°52.695'

1400

1°15.130'

47

8

119.6 122.4 124.6
 13⁵ 102 8⁵
 17 12
 low
 120.0 121.3 124.7
 13⁴ 11⁸ 8⁴
 24 19
 low

T 133¹⁰

120.2 121.0 125.8
 5² 5⁰ 0³
 24 18
 low
 118.9 120.3 124.5
 7⁴ 5² 1⁵
 32 24
 low

118.3 120.8 123.7
 7² 5² 2³
 34 29
 low

117.0 119.7 123.5
 9⁰ 6³ 2⁵
 36 29
 low

116.6 119.2 123.1
 9⁴ 6⁸ 2²
 31 25
 low

116.2 119.0 122.1
 9⁸ 7⁰ 3²
 25 20
 low

115.4 118.3 121.5
 10⁶ 7² 4⁵
 23 19
 low
 T 125.96

BM Pin inlet 195471
FB2070 P.16

5-18

127⁹²127⁸⁸

69
7734⁵³ End
C.3455

9° 12'
9° 11.986

7+00

8° 45.910'

6+50

8° 08.345'

6+00

7° 30.780'

5+50

6° 53.215'

Lt

♀

H.

126.A	12A.7	12A.A	127.9
6Z	8Z	8Z	5Z
18	7		3
12A.2	126.1	127.4	
8Z	7Z	5Z	
13	9		
12A.3	125.1	125.7	
8Z	8Z	7Z	
15	10		
Low			
	122.9	125.0	
	10Z	8Z	
	27		
121.3	123.3	121.6	
11Z	9Z	8Z	
15	11		

TT 13310

Alley Blk 77 Pacific Beach

C.H.S.
B999
oltman
Johns

7-3-52

INDEXED

59

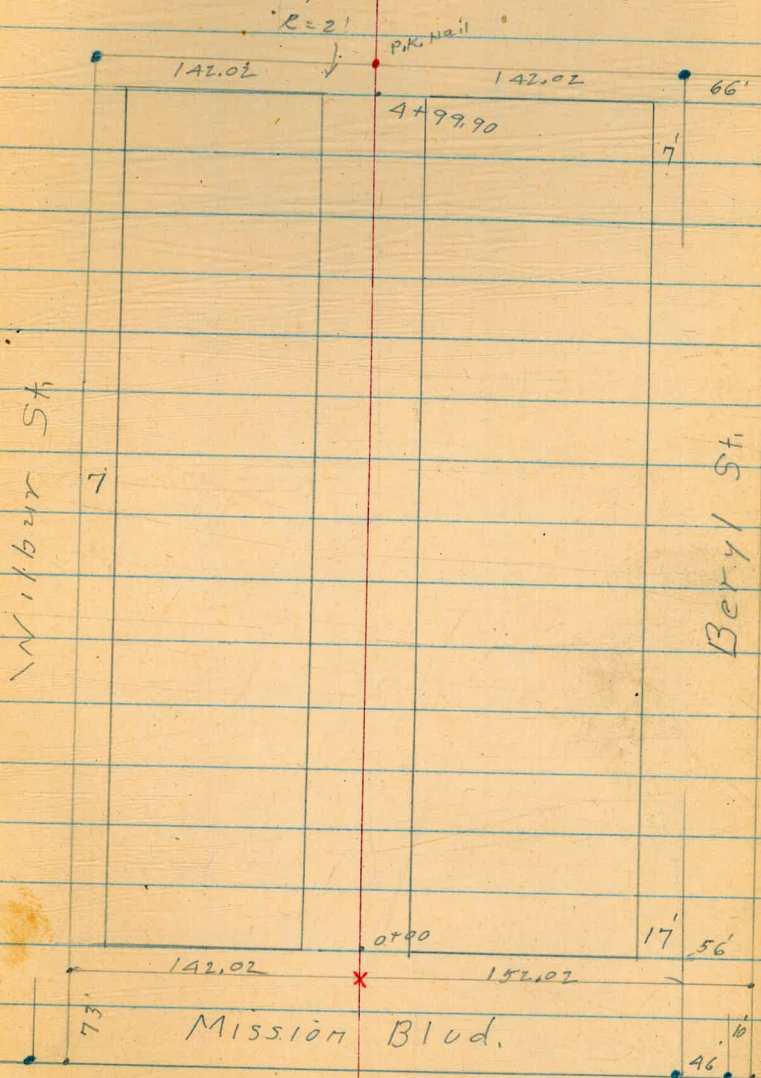
Law
JUL 8 1952

Bayard St.

- = Ed. L+T.
- X = cut cross in Conc.
- = P.K. Nail

B.W. = base of wall

T.W. = Top of wall



Alley Bk. 77 Pac. Beach.

0+45

65.8 64.8 64.7 63.6 62.0
30 10 10 30

0+18 13⁵ Rt. = ~~E~~ Sing. ^{No apron} Conc. floor

64.5 64.3 63.4 63.4 63.5 63.70
13 10 10 13⁵ 13⁵
At Bldg. Floor

0+12 - 10³ Lt. = end of wall

64.7 63.0 63.8
10³ 10³ 10
T.W. B.W.

0+00¹ 10' Lt. = start 6" Conc. wall

63.30 62.8 63.0
10 10 Grad
T.W. B.W.

10' Rt } end Alley obs.
10' Lt }

0+00 = end Conc. Pav. = Ely. line Mission Blvd.

63.23 63.00 62.55 62.67 62.80
10 10 10 10
C C C C

0-07 10' Rt } = E.C. 3' Rad. cb. Rot.
10' Lt }

63.19 62.67 62.35 62.30 62.81
10 10 10 10
C C C C

64.46 63.90 63.58 62.14 60.77 61.36
100 100 50 50 100 100
C C C C C C

13' Rt } B.C. 3' Rad. cb. Rot.
13' Lt }

0-10 = Ely. cb. line Mission Blvd.

63.14 63.21 62.57 62.30 62.13 62.78 61.57
50 13 13 13 13 50
C C C C C C

B.P. gone. used top of ab. over B.P. Hole.

66.25

Mark this "Gate" in office

B. M. book
60.82

N. Ely. B.P. Wilbur + Mission Blvd

N. Ely. B.P. Beryl + Mission Blvd

used to be driveway
2+83 10' Lt. = 8' wide Conc. walk

68.7
10
walk

2+79 10⁰ Lt. = end wall

73.3 68.2
10 10
T.W. B.W.

2+50 { ⁴
99⁰ Lt. = start Conc. block wall
10¹ Lt. = end Conc. block wall

73.3 67.4
99 99
T.W. B.W.
to East. to east 67.1
10

72.9 66.6 67.4 67.0
10¹ 10¹ 10
T.W. B.W.
to west to west

2+00 { 10¹ Rt. = End Conc. wall
10' Lt. = start Conc. block wall
10² Lt. = End Conc. block wall

72.8 72.5
T.W. T.W.
to east to west

65.5 65.8 66.3 65.8 65.7 65.5 65.9
10 10² 10
B.W. B.W. 10¹ 10¹
to east. to west B.W. T.W.

1+81 - 10² Lt. = 6' wide walk thru wall

66.80
10²
walk

1+50 { 10' Rt. = start Conc. wall
10² Lt. = start Conc. block wall
10³ Lt. = End Conc. block wall

71.7 66.5
10⁵ 10⁵
T.W. T.W.
to east. to west

65.3 65.0 65.4 64.7 64.9 64.8 65.7
10⁵ B.W. 10 10 10 10
B.W. to east to west 10⁵ B.W. T.W.

board fence on top
1+00 10³ Lt. = start Conc. block wall

66.3 65.1 65.5 65.0 64.7 63.9
10⁴ 10⁴ 10 10 30
T.W. B.W.

A+47 25' Lt. = end apron

73.78	73.16
28	25
Floor	Apron

A+31 25' Lt. = start Conc. apron to
T.R. 7234

double bar.

73.78	73.05
28	25
Con. floor	Apron

A+26 10 Lt. = \pm 2' wide Conc. walk

72.84	72.66
20	10

A+00

71.4	70.8	70.6
10		10

3+50

70.5	69.6	69.7
10		10

3+46 10⁷ Rt. = end apron

69.47
10 ⁷
Apron

3+28 10⁷ Rt. = start Conc. apron to

double bar.

T.P. 6950

69.23	69.65
10 ⁷	13 ²
Apron	Bar. floor

3+00

70.1	69.9	69.0	68.0	68.7
25	11	10		10

2+95⁵ 10² Lt. = \pm of 9' long Conc.
block walls (Runs E+W)

74.1	68.4	68.9
10 ²	10 ²	10
T.W.	B.W.	

2+89 9⁸ Lt. = \pm 3⁵' x 4' brick
trash burrion

74.3	68.7	68.2
98	98	98
top	Grd.	Base

67.07 (67.03)

N.W. L+T. Beryl & Bayard

T.P. 74.32

12⁵ Rt. } P.C. 2⁵ Rad. Cl. Rot.
 12⁵ Lt. }
 5+13² = wly Cl. Bayard

73.10	72.63	71.85	69.38	67.67	68.12
100	100	50	50	100	100
cl	G	cl	cl	G	cl

71.42	71.00	70.49	70.17	69.85	70.35	68.91
50	125	125	125	125	125	50
G	cl	G	G	cl	cl	G

10' Rt. } B.C. 2⁵ Rad. Cl. Rot.
 10' Lt. }
 5+11⁴

70.93	70.43	70.15	69.94	70.41
10	10		10	10
cl	G		G	cl

10⁰ Rt. } = start alley curbs
 9² Lt. } = start A.C. pave.
 4+99⁹⁰ wly. line Bayard.

71.08	70.64	70.33	70.39	70.53
99	99	pave.	10	10
cl	G		G	cl

Rt
 4+70 10⁸ Lt. = 3' wide Conc. walk

73.6	73.0	72.6	72.10	71.80
10		10	108	20
			walk	

4+50

73.2	72.8	72.7	72.1	71.6
10		10	11	20

73.2 72.8

10

4+48 10⁴ Rt. = 3' wide Conc. walk

71.92	71.78
10 ³	20
walk	

LOG. SURVEY - SAN DIEGO ST.
 & BOWMAN-LANE

65

E

0+147 14.6' RT END Drive

0+35 14.6' RT Beg Conc Ribbon Drive
 END LAWN 17.0' RT

0+34 34.9' RT END house

0+24 28.0' RT END Porch (conc. FATH)

0+19 15.7 RT & 2.5' Conc walk; 26.0' to Conc Steps (4.7' wide)

0+07.9 28.0' RT to ^{Porch} Beg house, 34.8' RT to house (Frame) (26' x 38')

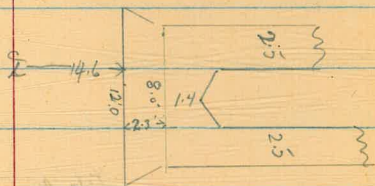
0+02 18.4 RT Beg Lawn
 16 FT & 1" WALNUT Tree

0+00 17' RT Beg Row Shrubs ⊥ to E ST.

0-02 13.3 LT Beg Woven-Wire & Wood-Post Fence 4' high
 19.3 LT Beg LAWN

0-02.33 Ed old 2x2's 12.5 LT & 12.5 RT. No DISC, No RE or L.S. (seems to indicate error in Lot 32 thrown south of San Diego St.)

(0+00 = S. Line SAN DIEGO ST.)
 (Sketch Pg 64)
 USING LINE 30' Bowman Lane as case



BOWMAN - LANE (CONT)

66

- 0+88 13. RT END LAWN
- 0+86 28.2 RT END House
- 0+82 20.1 RT & 2" oleander
- 0+79 21.3 LT & 2" Oak Tree
- 0+73 13.8 LT END Wire Fence
13.5 LT end LAWN
- 0+72 15.7 RT & 4' conc WALK; 24.0 RT to conc steps 4' wide; 25.7 to conc porch 6.0' wide
- 0+71 15.2 LT & 1" tree
- 0+67 21.6 LT END conc porch & house
- 0+62 19.4 RT & 2 1/2" oleander
- 0+57 28.1 RT. Bag house (stucco) (29' x 22')
- 0+55.5 13.4 LT & 3.0 conc WALK; 19.4 LT conc steps 2 steps - 3' wide
- 0+54 21.8 Jog in house - Bag porch - conc
- 0+50 13.5 RT Bag lawn
- 0+43 21.6 LT Bag house (stucco) (24' x 47' deep)

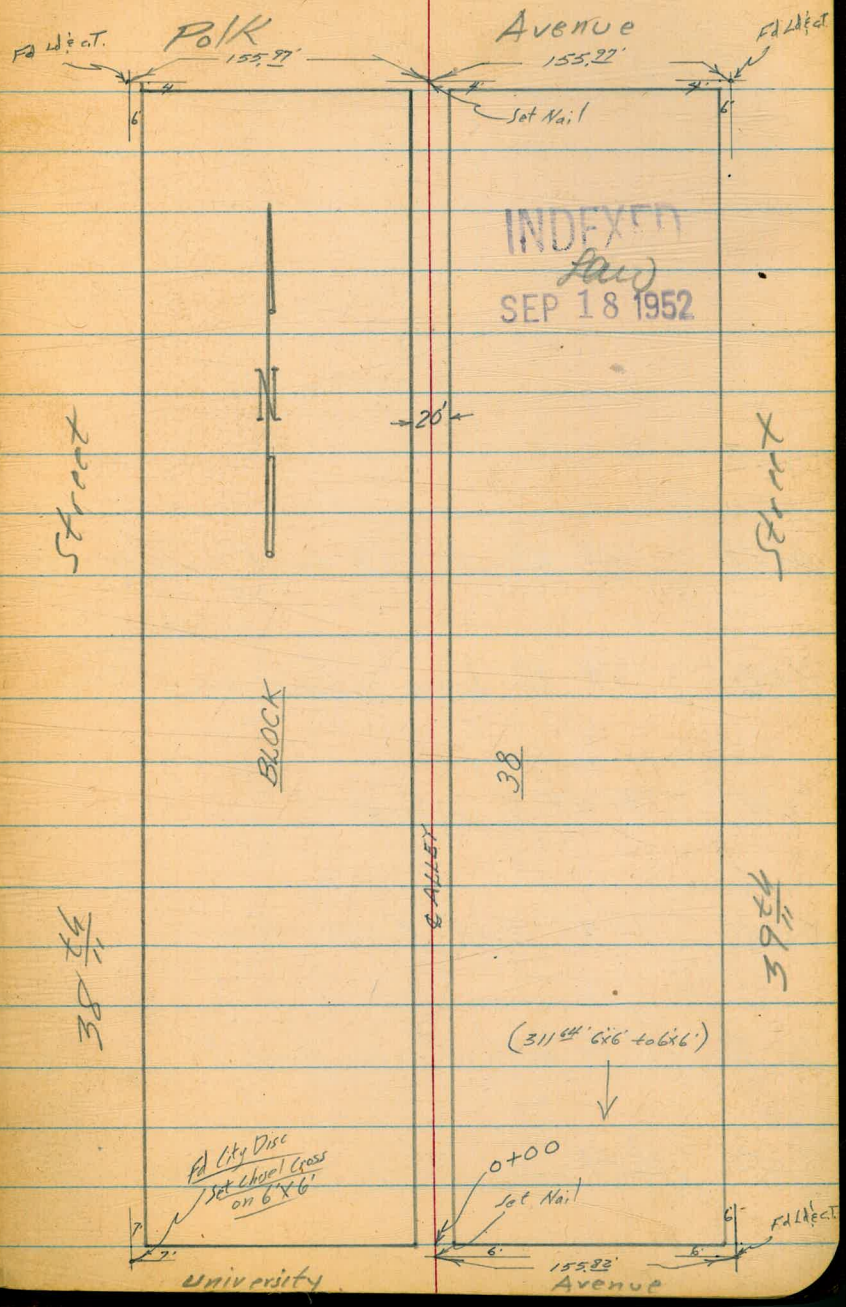
BAMMAN - Lane (cont.)

- 1+48 13.7' LT END Lawn + Shrubs
13.0 RT END LAWN + Flowers
- 1+43 17.7 RT & 1" Shrub
- 1+38 28.1 RT END house
- 1+37 45.3 LT END house
- 1+26 23.8 RT ^{to EAST EDGE} END 2.5' CONC. WALK // to & ST.
- 1+17 28.4 RT Beg house (Frame) (21' x 32.4' deep)
- 1+11 15.9 LT & 2.5' CONC WALK, 37.8' LT CONC. STEPS 3.5' wide, 4.8' LT CONC PORCH 8.8' wide
- 1+08 ^(to EAST edge)
24.1 RT Beg 2.5' CONC. WALK // to & ST.
13' RT. Beg LAWN + Flowers
- 1+05 17.0 RT & 7' CONC Drive
- 1+00 44.5 LT Beg house (Frame) (37' x 21' deep)
- 0+98.5 10.5 RT & Pole # P27835
- 0+91.5 { 15.9 RT & 6.5' Ribbon-Drive 1.5' wide Ribbons
16.0' LT Beg LAWN + Flowers

Robert
Cota
Moore
V.V.O. 20008
9-16-52

Survey Alley Block 38,
City Heights for Encroachments

68



Cont'd From Page 68

69

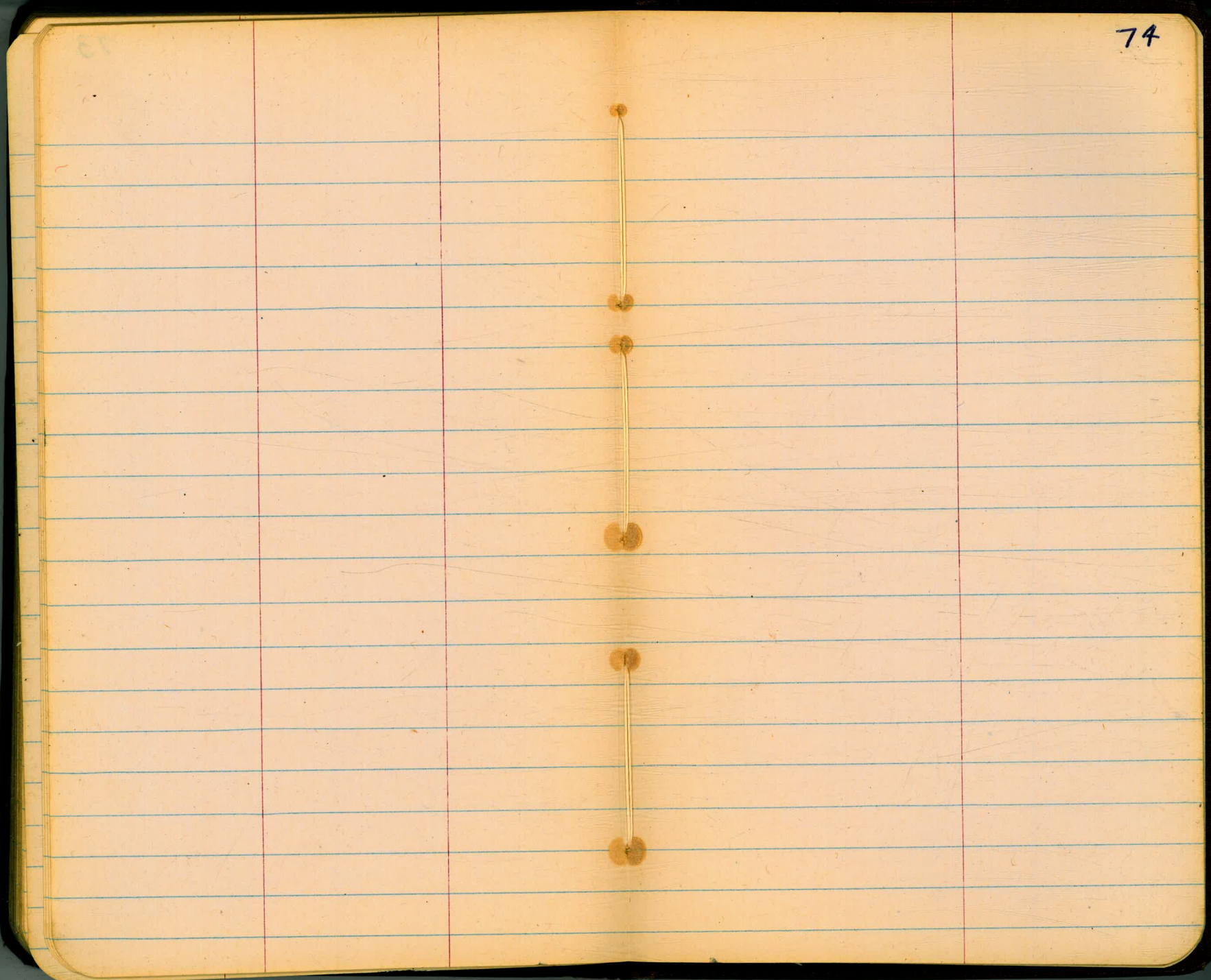
5728 9th Rt End 3' board fence } Question
5700 9th Rt begin 3' board fence } is
on
this
fence.

1741 9th Rt & Single Garage

0+80 9th Rt End Frame House }
0+18 9th Rt begin Frame House }

0+00 North Line of University Ave.

The image shows an open notebook with two facing pages. The pages are cream-colored and feature light blue horizontal ruling. Each page is divided into three vertical columns by two red margin lines. The right page has the number '72' written in the top right corner. The notebook is bound in the center, and the pages are otherwise blank.



75

78

