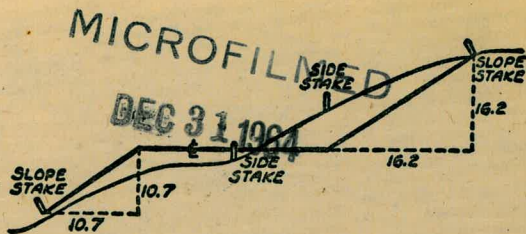


2122

907

TRANSIT BOOK



14

DISTANCES FROM SIDE STAKES FOR CROSS-SECTIONING
SLOPE 1 TO 1. ROADWAY OF ANY WIDTH

| | 0 | .1 | .2 | .3 | .4 | .5 | .6 | .7 | .8 | .9 | |
|----|-------|-------|-------|-------|-------|-------|-------|-------|-------|-------|----|
| 0 | 0.00 | 0.10 | 0.20 | 0.30 | 0.40 | 0.50 | 0.60 | 0.70 | 0.80 | 0.90 | 0 |
| 1 | 1.00 | 1.10 | 1.20 | 1.30 | 1.40 | 1.50 | 1.60 | 1.70 | 1.80 | 1.90 | 1 |
| 2 | 2.00 | 2.10 | 2.20 | 2.30 | 2.40 | 2.50 | 2.60 | 2.70 | 2.80 | 2.90 | 2 |
| 3 | 3.00 | 3.10 | 3.20 | 3.30 | 3.40 | 3.50 | 3.60 | 3.70 | 3.80 | 3.90 | 3 |
| 4 | 4.00 | 4.10 | 4.20 | 4.30 | 4.40 | 4.50 | 4.60 | 4.70 | 4.80 | 4.90 | 4 |
| 5 | 5.00 | 5.10 | 5.20 | 5.30 | 5.40 | 5.50 | 5.60 | 5.70 | 5.80 | 5.90 | 5 |
| 6 | 6.00 | 6.10 | 6.20 | 6.30 | 6.40 | 6.50 | 6.60 | 6.70 | 6.80 | 6.90 | 6 |
| 7 | 7.00 | 7.10 | 7.20 | 7.30 | 7.40 | 7.50 | 7.60 | 7.70 | 7.80 | 7.90 | 7 |
| 8 | 8.00 | 8.10 | 8.20 | 8.30 | 8.40 | 8.50 | 8.60 | 8.70 | 8.80 | 8.90 | 8 |
| 9 | 9.00 | 9.10 | 9.20 | 9.30 | 9.40 | 9.50 | 9.60 | 9.70 | 9.80 | 9.90 | 9 |
| 10 | 10.00 | 10.10 | 10.20 | 10.30 | 10.40 | 10.50 | 10.60 | 10.70 | 10.80 | 10.90 | 10 |
| 11 | 11.00 | 11.10 | 11.20 | 11.30 | 11.40 | 11.50 | 11.60 | 11.70 | 11.80 | 11.90 | 11 |
| 12 | 12.00 | 12.10 | 12.20 | 12.30 | 12.40 | 12.50 | 12.60 | 12.70 | 12.80 | 12.90 | 12 |
| 13 | 13.00 | 13.10 | 13.20 | 13.30 | 13.40 | 13.50 | 13.60 | 13.70 | 13.80 | 13.90 | 13 |
| 14 | 14.00 | 14.10 | 14.20 | 14.30 | 14.40 | 14.50 | 14.60 | 14.70 | 14.80 | 14.90 | 14 |
| 15 | 15.00 | 15.10 | 15.20 | 15.30 | 15.40 | 15.50 | 15.60 | 15.70 | 15.80 | 15.90 | 15 |
| 16 | 16.00 | 16.10 | 16.20 | 16.30 | 16.40 | 16.50 | 16.60 | 16.70 | 16.80 | 16.90 | 16 |
| 17 | 17.00 | 17.10 | 17.20 | 17.30 | 17.40 | 17.50 | 17.60 | 17.70 | 17.80 | 17.90 | 17 |
| 18 | 18.00 | 18.10 | 18.20 | 18.30 | 18.40 | 18.50 | 18.60 | 18.70 | 18.80 | 18.90 | 18 |
| 19 | 19.00 | 19.10 | 19.20 | 19.30 | 19.40 | 19.50 | 19.60 | 19.70 | 19.80 | 19.90 | 19 |
| 20 | 20.00 | 20.10 | 20.20 | 20.30 | 20.40 | 20.50 | 20.60 | 20.70 | 20.80 | 20.90 | 20 |
| 21 | 21.00 | 21.10 | 21.20 | 21.30 | 21.40 | 21.50 | 21.60 | 21.70 | 21.80 | 21.90 | 21 |
| 22 | 22.00 | 22.10 | 22.20 | 22.30 | 22.40 | 22.50 | 22.60 | 22.70 | 22.80 | 22.90 | 22 |
| 23 | 23.00 | 23.10 | 23.20 | 23.30 | 23.40 | 23.50 | 23.60 | 23.70 | 23.80 | 23.90 | 23 |
| 24 | 24.00 | 24.10 | 24.20 | 24.30 | 24.40 | 24.50 | 24.60 | 24.70 | 24.80 | 24.90 | 24 |
| 25 | 25.00 | 25.10 | 25.20 | 25.30 | 25.40 | 25.50 | 25.60 | 25.70 | 25.80 | 25.90 | 25 |
| 26 | 26.00 | 26.10 | 26.20 | 26.30 | 26.40 | 26.50 | 26.60 | 26.70 | 26.80 | 26.90 | 26 |
| 27 | 27.00 | 27.10 | 27.20 | 27.30 | 27.40 | 27.50 | 27.60 | 27.70 | 27.80 | 27.90 | 27 |
| 28 | 28.00 | 28.10 | 28.20 | 28.30 | 28.40 | 28.50 | 28.60 | 28.70 | 28.80 | 28.90 | 28 |
| 29 | 29.00 | 29.10 | 29.20 | 29.30 | 29.40 | 29.50 | 29.60 | 29.70 | 29.80 | 29.90 | 29 |
| 30 | 30.00 | 30.10 | 30.20 | 30.30 | 30.40 | 30.50 | 30.60 | 30.70 | 30.80 | 30.90 | 30 |
| 31 | 31.00 | 31.10 | 31.20 | 31.30 | 31.40 | 31.50 | 31.60 | 31.70 | 31.80 | 31.90 | 31 |
| 32 | 32.00 | 32.10 | 32.20 | 32.30 | 32.40 | 32.50 | 32.60 | 32.70 | 32.80 | 32.90 | 32 |
| 33 | 33.00 | 33.10 | 33.20 | 33.30 | 33.40 | 33.50 | 33.60 | 33.70 | 33.80 | 33.90 | 33 |
| 34 | 34.00 | 34.10 | 34.20 | 34.30 | 34.40 | 34.50 | 34.60 | 34.70 | 34.80 | 34.90 | 34 |
| 35 | 35.00 | 35.10 | 35.20 | 35.30 | 35.40 | 35.50 | 35.60 | 35.70 | 35.80 | 35.90 | 35 |
| 36 | 36.00 | 36.10 | 36.20 | 36.30 | 36.40 | 36.50 | 36.60 | 36.70 | 36.80 | 36.90 | 36 |
| 37 | 37.00 | 37.10 | 37.20 | 37.30 | 37.40 | 37.50 | 37.60 | 37.70 | 37.80 | 37.90 | 37 |
| 38 | 38.00 | 38.10 | 38.20 | 38.30 | 38.40 | 38.50 | 38.60 | 38.70 | 38.80 | 38.90 | 38 |
| 39 | 39.00 | 39.10 | 39.20 | 39.30 | 39.40 | 39.50 | 39.60 | 39.70 | 39.80 | 39.90 | 39 |
| 40 | 40.00 | 40.10 | 40.20 | 40.30 | 40.40 | 40.50 | 40.60 | 40.70 | 40.80 | 40.90 | 40 |
| 41 | 41.00 | 41.10 | 41.20 | 41.30 | 41.40 | 41.50 | 41.60 | 41.70 | 41.80 | 41.90 | 41 |
| 42 | 42.00 | 42.10 | 42.20 | 42.30 | 42.40 | 42.50 | 42.60 | 42.70 | 42.80 | 42.90 | 42 |
| 43 | 43.00 | 43.10 | 43.20 | 43.30 | 43.40 | 43.50 | 43.60 | 43.70 | 43.80 | 43.90 | 43 |
| 44 | 44.00 | 44.10 | 44.20 | 44.30 | 44.40 | 44.50 | 44.60 | 44.70 | 44.80 | 44.90 | 44 |
| 45 | 45.00 | 45.10 | 45.20 | 45.30 | 45.40 | 45.50 | 45.60 | 45.70 | 45.80 | 45.90 | 45 |
| 46 | 46.00 | 46.10 | 46.20 | 46.30 | 46.40 | 46.50 | 46.60 | 46.70 | 46.80 | 46.90 | 46 |
| 47 | 47.00 | 47.10 | 47.20 | 47.30 | 47.40 | 47.50 | 47.60 | 47.70 | 47.80 | 47.90 | 47 |
| 48 | 48.00 | 48.10 | 48.20 | 48.30 | 48.40 | 48.50 | 48.60 | 48.70 | 48.80 | 48.90 | 48 |
| 49 | 49.00 | 49.10 | 49.20 | 49.30 | 49.40 | 49.50 | 49.60 | 49.70 | 49.80 | 49.90 | 49 |
| 50 | 50.00 | 50.10 | 50.20 | 50.30 | 50.40 | 50.50 | 50.60 | 50.70 | 50.80 | 50.90 | 50 |

INDEXED
to page # 8

Distance of slope stake from side or shoulder stake for any width roadway, slope 1 to 1. If ground is nearly level, the cut or fill at side stake is located by the double entry method in left column and top row. The number in body of table in same row and column gives distance from side stake to slope stake. If ground is not level estimate the difference in elevation between the side stake and slope stake, lower target by this amount if cut, elevate if fill. Add this amount to cut or fill and find distance in table. Set up rod at this point, and line of sight should cut target. If it does not make the slight adjustment necessary.

MICROFILMED
DIRECTIONS FOR USE OF TABLES

DEC 31 1964

TABLE No. XIV

Distance of slope stake from side or shoulder stake for any width roadway, slope $1\frac{1}{2}$ to 1. If ground is nearly level, the cut or fill at side stake is located by the double entry method in left column and top row. The number in body of table in same row and column gives distance from side stake to slope stake. If ground is not level estimate the difference in elevation between the side stake and slope stake, lower target by this amount if cut, elevate if fill. Add this amount to cut or fill and find distance in table. Set up rod at this point, and line of sight should cut target. If it does not make the slight adjustment necessary.

TABLE No. VIII

To find Tangent and External for curve of any other degree, divide by degree of curve and add correction found in column of corrections. Degree of curve with a given I may be found by dividing tangent, (or external), opposite I by given tangent, (or external).

The distance from a point on the tangent to the curve is very nearly the square of the tangent length divided by twice the radius.

16808
 166.98
 1.10

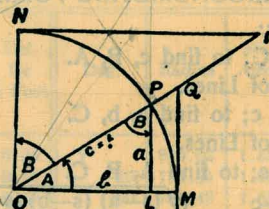


TABLE II
 TRIGONOMETRIC FORMULÆ.

$$\begin{aligned} \angle A &= \angle MOP & \angle B &= \angle PON = \angle OPL \\ R &= OB = c = 1 \\ \sin A &= \frac{a}{c} = \frac{a}{1} = a = \text{cos } B = LP \\ \text{cos } A &= \frac{b}{c} = \frac{b}{1} = b = \text{sin } B = OL \\ \tan A &= \frac{a}{b} = \frac{MQ}{OM} = \frac{MQ}{1} = MQ = \text{cot } B = MQ \\ \text{cot } A &= \frac{NT}{ON} = \frac{NT}{1} = NT = \text{tan } B = NT \\ \text{sec } A &= \frac{OQ}{OM} = \frac{OQ}{1} = OQ = \text{csc } B = OQ \\ \text{csc } A &= \frac{OT}{ON} = \frac{OT}{1} = OT = \text{sec } B = OT \\ \text{vers } A &= \frac{LM}{OP} = LM = \text{covers } B = \text{---} \\ \text{covers } A &= \frac{OP-LP}{OP} = OP-LP = \text{vers } B \\ \text{exsec } A &= PQ = \text{coexsec } B \\ \text{coexsec } A &= PT = \text{exsec } B \\ \sin \frac{1}{2} A &= \sqrt{\frac{1-\text{Cos } A}{2}} & \cos \frac{1}{2} A &= \sqrt{\frac{1+\text{Cos } A}{2}} \\ \sin 2 A &= 2 \sin A \cos A & \cos 2 A &= \cos^2 A - \sin^2 A \\ \text{Law of Lines} & \frac{\sin A}{a} = \frac{\sin B}{B} = \frac{\sin C}{C} \\ \text{Law of Cosines} & c^2 = a^2 + b^2 - 2 ab \cos C \\ \text{Law of Tangents} & \frac{a+b}{a-b} = \frac{\tan \frac{1}{2} (A+B)}{\tan \frac{1}{2} (A-B)} \end{aligned}$$

TABLE XIII—CORRECTIONS FOR TANGENTS AND EXTERNALS

These corrections are to be added to the approximate values, found by the degree of curve, in order to obtain the true tangents, or externals. Intermediate values may be obtained by interpolation.

FOR TANGENTS ADD

| Central Angle | DEGREE OF CURVE | | | | | | | | | | | | | |
|---------------|-----------------|------|------|------|------|------|------|------|------|------|------|------|------|------|
| | 5° | 10° | 15° | 20° | 25° | 30° | 35° | 40° | 45° | 50° | 55° | 60° | 65° | 70° |
| 10° | .03 | .06 | .09 | .13 | .16 | .19 | .22 | .25 | .28 | .31 | .34 | .38 | .42 | .46 |
| 15° | .04 | .10 | .14 | .19 | .24 | .29 | .34 | .39 | .45 | .51 | .53 | .58 | .63 | .68 |
| 20° | .06 | .13 | .19 | .26 | .32 | .39 | .45 | .51 | .58 | .65 | .72 | .79 | .84 | .90 |
| 25° | .08 | .16 | .24 | .33 | .40 | .49 | .58 | .67 | .75 | .83 | .90 | .99 | 1.06 | 1.14 |
| 30° | .10 | .19 | .29 | .39 | .49 | .59 | .69 | .79 | .89 | .99 | 1.09 | 1.20 | 1.29 | 1.39 |
| 35° | .11 | .22 | .34 | .47 | .58 | .69 | .79 | .81 | .92 | 1.04 | 1.29 | 1.42 | 1.54 | 1.66 |
| 40° | .13 | .26 | .40 | .53 | .67 | .80 | .93 | 1.06 | 1.20 | 1.34 | 1.49 | 1.64 | 1.79 | 1.94 |
| 45° | .15 | .30 | .44 | .60 | .76 | .91 | 1.06 | 1.21 | 1.37 | 1.52 | 1.70 | 1.87 | 2.04 | 2.21 |
| 50° | .17 | .34 | .51 | .68 | .85 | 1.02 | 1.19 | 1.36 | 1.54 | 1.72 | 1.91 | 2.10 | 2.29 | 2.48 |
| 55° | .19 | .38 | .57 | .76 | .95 | 1.14 | 1.32 | 1.52 | 1.72 | 1.92 | 2.14 | 2.35 | 2.56 | 2.77 |
| 60° | .21 | .42 | .63 | .84 | 1.05 | 1.27 | 1.49 | 1.71 | 1.94 | 2.17 | 2.38 | 2.60 | 2.83 | 3.07 |
| 65° | .23 | .46 | .69 | .93 | 1.16 | 1.40 | 1.64 | 1.88 | 2.13 | 2.38 | 2.63 | 2.88 | 3.13 | 3.39 |
| 70° | .25 | .51 | .76 | 1.02 | 1.28 | 1.54 | 1.80 | 2.06 | 2.33 | 2.60 | 2.88 | 3.16 | 3.44 | 3.72 |
| 75° | .27 | .56 | .83 | 1.12 | 1.40 | 1.69 | 1.98 | 2.27 | 2.57 | 2.87 | 3.16 | 3.47 | 3.78 | 4.09 |
| 80° | .30 | .61 | .91 | 1.22 | 1.53 | 1.84 | 2.15 | 2.46 | 2.78 | 3.10 | 3.44 | 3.78 | 4.12 | 4.46 |
| 85° | .33 | .66 | 1.00 | 1.33 | 1.68 | 2.02 | 2.36 | 2.70 | 3.05 | 3.40 | 3.77 | 4.14 | 4.55 | 4.89 |
| 90° | .36 | .72 | 1.09 | 1.45 | 1.83 | 2.20 | 2.57 | 2.94 | 3.32 | 3.70 | 4.10 | 4.50 | 4.91 | 5.32 |
| 95° | .39 | .79 | 1.19 | 1.55 | 1.92 | 2.30 | 2.68 | 3.06 | 3.44 | 3.82 | 4.24 | 4.64 | 5.05 | 5.46 |
| 100° | .43 | .86 | 1.30 | 1.74 | 2.18 | 2.62 | 3.06 | 3.50 | 3.95 | 4.40 | 4.88 | 5.37 | 5.85 | 6.34 |
| 110° | .51 | 1.03 | 1.56 | 2.08 | 2.61 | 3.14 | 3.67 | 4.21 | 4.76 | 5.31 | 5.86 | 6.43 | 7.01 | 7.60 |
| 120° | .62 | 1.25 | 1.93 | 2.52 | 3.16 | 3.81 | 4.45 | 5.11 | 5.77 | 6.44 | 7.12 | 7.80 | 8.50 | 9.22 |

FOR EXTERNALS ADD

| Central Angle | DEGREE OF CURVE | | | | | | | | | | | | | |
|---------------|-----------------|------|------|------|------|------|------|------|------|------|------|------|------|------|
| | 5° | 10° | 15° | 20° | 25° | 30° | 35° | 40° | 45° | 50° | 55° | 60° | 65° | 70° |
| 10° | .001 | .003 | .004 | .006 | .007 | .008 | .009 | .011 | .012 | .014 | .015 | .017 | .018 | .020 |
| 15° | .003 | .007 | .010 | .014 | .018 | .023 | .027 | .032 | .035 | .039 | .043 | .047 | .051 | .055 |
| 20° | .006 | .011 | .017 | .022 | .028 | .034 | .038 | .045 | .051 | .057 | .063 | .070 | .076 | .083 |
| 25° | .009 | .018 | .027 | .036 | .046 | .056 | .065 | .074 | .083 | .093 | .106 | .120 | .127 | .135 |
| 30° | .013 | .025 | .038 | .051 | .065 | .078 | .090 | .103 | .116 | .129 | .149 | .170 | .179 | .188 |
| 35° | .018 | .035 | .054 | .072 | .086 | .109 | .131 | .153 | .175 | .197 | .213 | .230 | .247 | .264 |
| 40° | .023 | .046 | .070 | .093 | .117 | .141 | .172 | .203 | .234 | .265 | .277 | .290 | .315 | .341 |
| 45° | .030 | .060 | .093 | .119 | .153 | .184 | .216 | .254 | .289 | .325 | .351 | .378 | .411 | .445 |
| 50° | .037 | .075 | .116 | .151 | .189 | .227 | .266 | .305 | .345 | .384 | .425 | .467 | .508 | .550 |
| 55° | .046 | .093 | .142 | .188 | .236 | .283 | .332 | .381 | .420 | .479 | .530 | .582 | .641 | .700 |
| 60° | .056 | .112 | .168 | .225 | .283 | .340 | .398 | .457 | .516 | .575 | .636 | .697 | .774 | .851 |
| 65° | .067 | .135 | .204 | .273 | .343 | .412 | .483 | .554 | .625 | .697 | .711 | .845 | .922 | 1.01 |
| 70° | .080 | .159 | .240 | .321 | .403 | .485 | .568 | .652 | .735 | .819 | .906 | .994 | 1.08 | 1.17 |
| 75° | .095 | .182 | .286 | .383 | .480 | .578 | .678 | .777 | .877 | .977 | 1.07 | 1.18 | 1.29 | 1.39 |
| 80° | .110 | .220 | .332 | .445 | .558 | .671 | .787 | .903 | 1.02 | 1.13 | 1.25 | 1.38 | 1.50 | 1.62 |
| 85° | .128 | .259 | .391 | .524 | .657 | .790 | .926 | 1.06 | 1.20 | 1.34 | 1.47 | 1.62 | 1.76 | 1.91 |
| 90° | .149 | .299 | .450 | .603 | .756 | .910 | 1.07 | 1.22 | 1.38 | 1.54 | 1.70 | 1.87 | 2.03 | 2.20 |
| 95° | .174 | .350 | .522 | .706 | .895 | 1.06 | 1.25 | 1.43 | 1.62 | 1.80 | 1.99 | 2.18 | 2.38 | 2.58 |
| 100° | .200 | .401 | .604 | .809 | 1.01 | 1.22 | 1.43 | 1.64 | 1.85 | 2.06 | 2.28 | 2.50 | 2.73 | 2.96 |
| 110° | .268 | .536 | .806 | 1.08 | 1.35 | 1.63 | 1.91 | 2.20 | 2.48 | 2.76 | 3.05 | 3.35 | 3.66 | 3.96 |
| 120° | .360 | .721 | 1.08 | 1.45 | 1.82 | 2.19 | 2.57 | 2.95 | 3.33 | 3.72 | 4.11 | 4.50 | 4.91 | 5.32 |

Pg
1-8

X-sec Thorn - 45th to Chamaine
 X-sec Thorn - Chamaine to alley
 X-sec Detroit 58 - 65th St
 X-sec 59th - Detroit to Balmoral
 59th from Detroit St only
 X-sec Linda Rosa W 1/2 forward
 BENSON PLACE SEE PAGE 60
 52
 71

Roberts
Cota
Moore
Clark
12-29-50
W.O. 31751

X-Section Thorn Street
(45th to Chamouné)
X-Section 45th Street
(Thorn south to canyon)

T.P. 21 pg 76

INDEXED

TAX
JAN 2 1951

45th Street:

95' Street
55' Roadway
20' Curb to Prop. Line
13' Curb to Walk
5³³' Walk
60' Street
36' Roadway
12' Curb to Prop. Line
6' Curb to Walk
4³³' Walk

All Curb Rad. = 10'
Alley Cb. Rad. = 2'

Thorn Street:

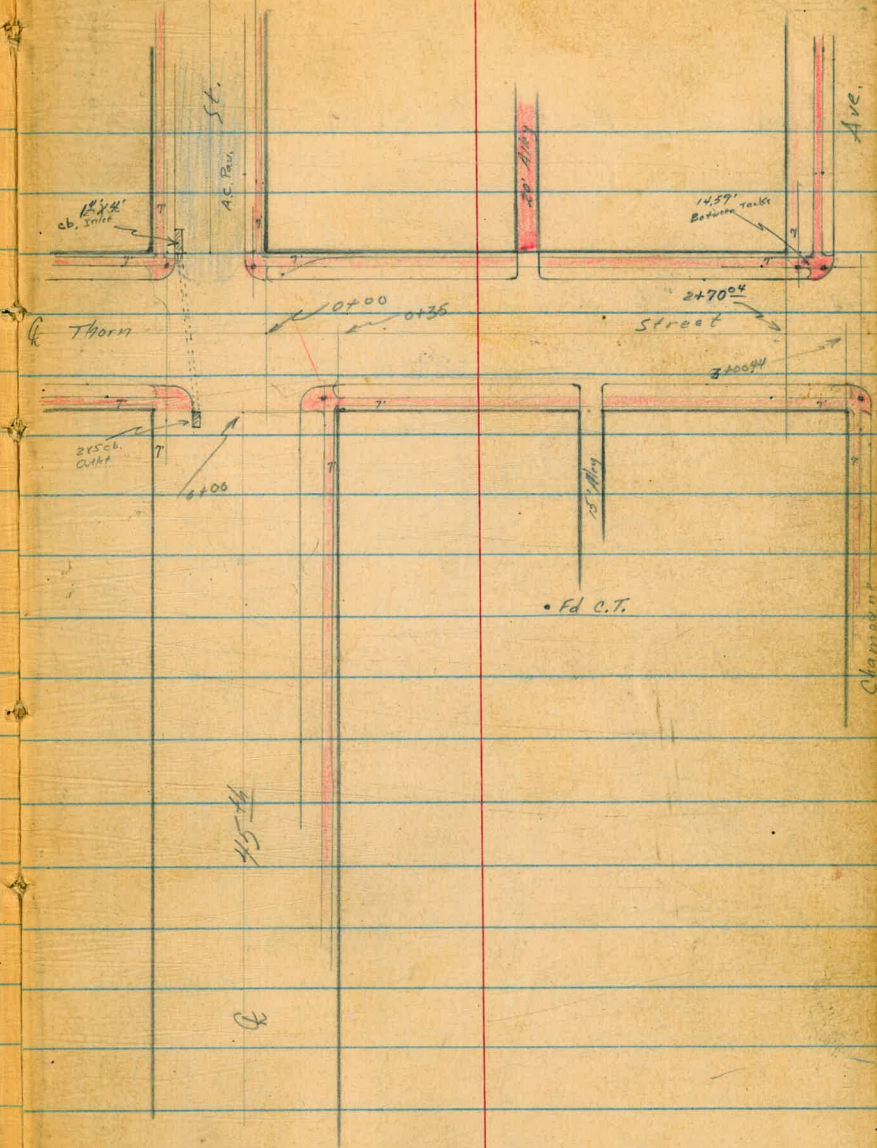
80' Street
52' Roadway
14' Curb to Prop. Line
7' Curb to Walk
5³³' Walk

Chamouné Avenue: — to South

60' Street
36' Roadway
12' Curb to Prop. Line
6' Curb to Walk
4³³' Walk

to North

36' Roadway
6' Curb to Walk
4³³' Walk



1+45.02 W. L. Alley on North

| | | | | | | | | |
|-----|------|----------|-------|--------|------|-----|------|------|
| 328 | 3.72 | 38 | 3.65? | 4.2 | 3.63 | 4.1 | 5.3 | 4.75 |
| 40 | 40 | 28 | 28 | 26 | 26 | 26 | 26 | 26 |
| cb | Gutt | Gutt | cb | Gutt | cb | cb | Gutt | cb |
| | | Alley EC | | St. BC | | | | |

1+35.02 E Alley on North

| | | | | |
|------|-----|------|------|------|
| 4.26 | 4.1 | 4.06 | 5.5 | 5.03 |
| 40 | 26 | MH | 26 | 26 |
| | | | Gutt | cb |

1+25.02 E. Alley Line on No.

| | | | | | | | | |
|-----|------|----------|------|--------|------|-----|------|------|
| 392 | 4.15 | 4.18 | 4.3 | 4.1 | 4.8 | 4.5 | 5.8 | 5.26 |
| 40 | 40 | 28 | 28 | 26 | 26 | 26 | 26 | 26 |
| cb | Gutt | cb | Gutt | cb | Gutt | cb | Gutt | cb |
| | | Alley EC | | St. BC | | | | |

1+00

| | | | | |
|------|------|-----|------|------|
| 4.74 | 5.5 | 5.3 | 6.3 | 5.75 |
| 26 | 26 | 26 | 26 | 26 |
| cb | Gutt | cb | Gutt | cb |

0+65

| | | | | |
|------|------|-----|------|------|
| 5.60 | 6.4 | 6.1 | 7.0 | 6.56 |
| 26 | 26 | 26 | 26 | 26 |
| cb | Gutt | cb | Gutt | cb |

0+35 E. P. L. to South 45th

| | | | | |
|------|------|-----|------|------|
| 6.25 | 7.2 | 7.1 | 7.9 | 7.31 |
| 26 | 26 | 26 | 26 | 26 |
| cb | Gutt | cb | Gutt | cb |

333.83



333.83



X⁹

2+84⁰⁴ W.L. Chamounc on North

| | | | | |
|--------|-------|-------|-------|--------|
| 332.85 | 332.8 | 332.1 | 331.5 | 332.01 |
| 1.00 | 1.5 | 1.7 | 2.3 | 1.82 |
| 26 | 26 | | 26 | 26 |
| G.H | cb | | G.H | cb |

2+50

| | | | | |
|--------|--------|-------|-------|--------|
| 332.39 | 331.81 | 331.5 | 330.8 | 331.56 |
| 1.44 | 2.02 | 2.3 | 3.0 | 2.48 |
| 26 | 26 | | 26 | 26 |
| cb | G.H | | G.H | cb |

2+12 & 20' Driveway Opening

331.11
2.92
26
G.H

2+60

| | | | | |
|-------|-------|-------|-------|--------|
| 331.3 | 330.7 | 330.4 | 329.7 | 330.18 |
| 2.5 | 3.1 | 3.4 | 4.1 | 3.65 |
| 26 | 26 | | 26 | 26 |
| cb | G.H | | G.H | cb |

1+75⁴⁴ E.L. Alley on South

| | | | | | | | | |
|--------|-------|-------|-------|--------|-------|--------|-------|--------|
| 330.73 | 330.1 | 330.0 | 329.2 | 329.73 | 329.4 | 329.75 | 330.4 | 329.90 |
| 3.10 | 3.7 | 3.8 | 4.6 | 4.0 | 4.4 | 4.08 | 3.4 | 3.93 |
| 26 | 26 | | 26 | 26 | 26 | 26 | 40 | 40 |
| cb | G.H | | G.H | cb | G.H | cb | G.H | cb |

1+60⁴⁴ W.L. Alley on South

| | | | | | | | | |
|--------|-------|-------|-------|--------|-------|-------|-------|--------|
| 330.34 | 329.8 | 329.8 | 329.8 | 329.55 | 329.0 | 329.1 | 329.7 | 329.70 |
| 3.49 | 4.0 | 4.0 | 5.0 | 4.48 | 4.8 | 4.52 | 4.1 | 4.13 |
| 26 | 26 | | 26 | 26 | 28 | 28 | 40 | 40 |
| cb | G.H | | G.H | cb | G.H | cb | G.H | cb |

333.83

↑

333.83

↑

Cont'd From Page 4

Lt

R

Rt

5

Check

7.38

326.45 = 326.45

Starting BM

3+14.04 Chamoune on North

3+00.44 w.L. Chamoune on South

| | | | | |
|-------|-------|-------|-------|-------|
| 332.5 | 332.5 | 332.4 | 331.9 | 331.7 |
| 1.3 | 1.3 | 1.4 | 1.9 | 2.1 |
| 40 | 26 | | 26 | 40 |

332.3

1.5
26

332.4

1.4

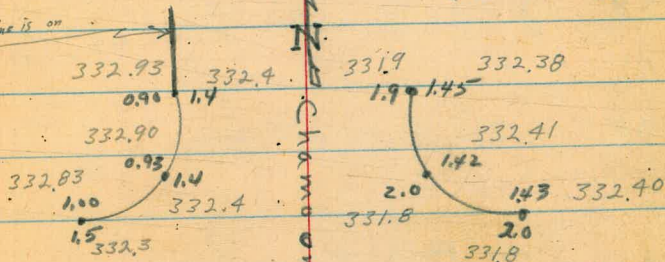
331.7

2.1
26
G.H.

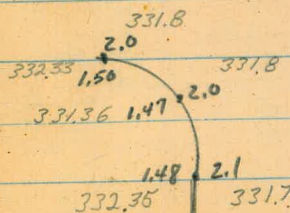
332.33

1.50
26
cb

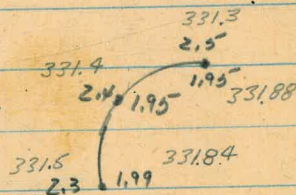
This curb line is on Sta. 2+96.5



Thorn



St.



333.83

333.93

Cont'd From Page 6

Lt

Q

Rt

7

2+59 49' Rt & Ribbon Drive ^{15' Ribbons} ^{65' Overall}

311.71
8.72 6.59
49 59
No. No.

2+36 Curb From here on is N.G.

| | | | | | | | | | | |
|---------------------|-------------------|--------------------|-----------|-------|-----------|-----------|-----------|------------|-----------|-----------|
| 314.25 | 313.90 | 314.0 | 313.8 | 313.6 | 313.4 | 313.3 | 312.6 | 312.6 | 312.7 | 314.2 |
| 6.20 482 walk | 6.53 275 cb | 6.4 275 cutt | 6.6 10 | 6.8 | 7.0 12 | 7.1 27 | 7.8 35 | 7.8 475 | 7.7 58 | 6.2 70 |

2+00

| | | | | | | | | | | |
|-------------------|--------------------|-----------|-------|-----------|-----------|-----------|------------|-----------|-------|-------|
| 315.99 | 315.3 | 315.6 | 315.6 | 315.0 | 314.3 | 314.4 | 314.6 | 314.4 | 316.6 | 316.6 |
| 4.44 275 cb | 5.1 275 cutt | 4.8 10 | 4.8 | 5.4 10 | 6.1 25 | 6.0 30 | 5.8 475 | 6.0 60 | | |

1+50

| | | | | | | | | |
|------------------|--------------------|-----------|-------|-----------|-----------|-----------|------------|-----------|
| 318.5 | 318.0 | 318.1 | 317.8 | 317.1 | 316.1 | 316.8 | 317.3 | 318.0 |
| 1.9 275 cb | 2.4 275 cutt | 2.3 10 | 2.6 | 3.3 10 | 4.3 25 | 3.6 35 | 3.1 475 | 2.4 60 |

1+41 342' Rt to 16" Pepper

1+22 47' Rt & 2' Conc. Walk

319.31
1.12 0.62
41 5K
conc. conc

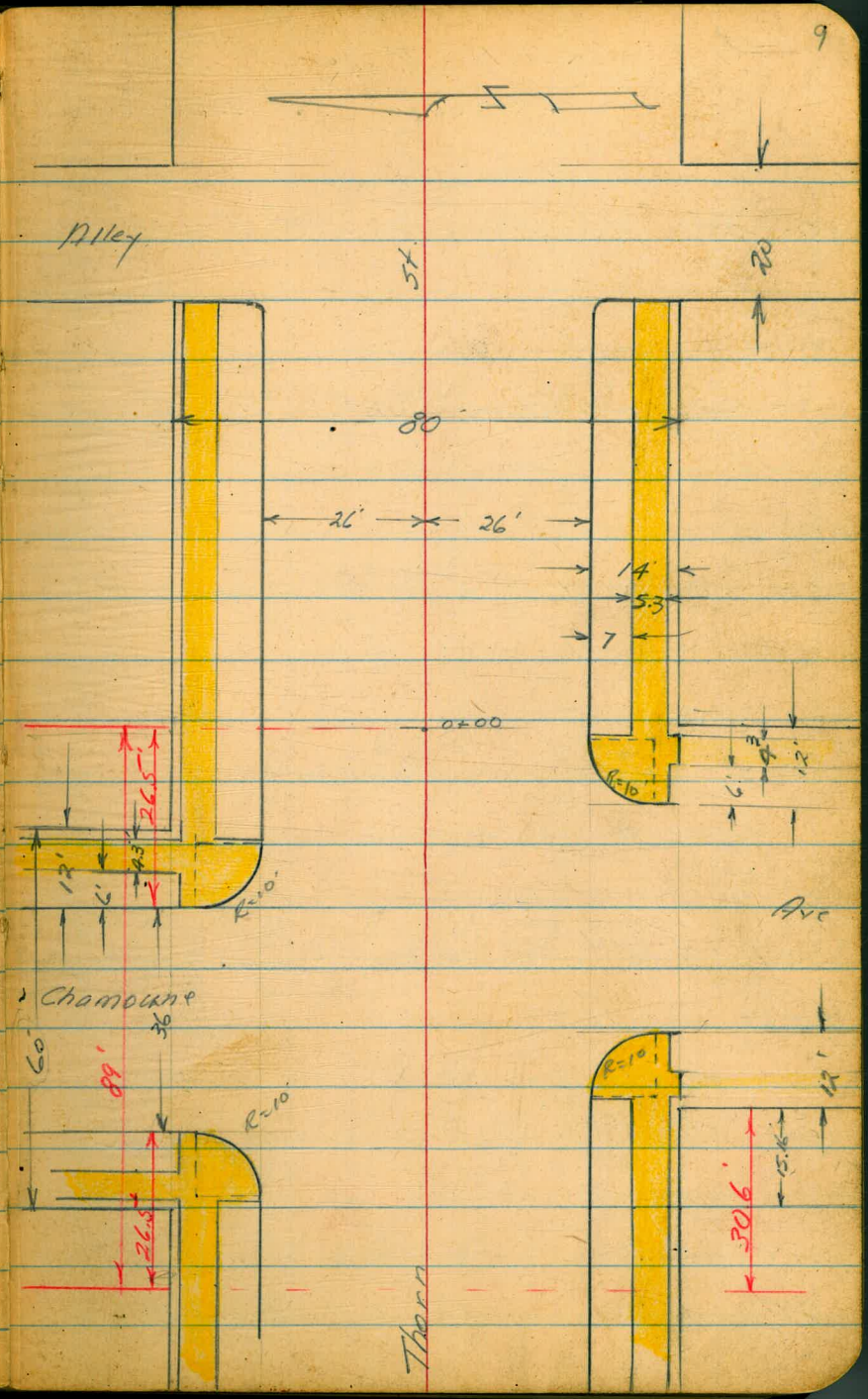
1+17 335' Rt to 20" Pepper

T.P. 352 320.43^v 11.69 316.91^v
↑
328.60^v
↑

320.43^v
K

2-2-51 X Sec. Thorn St.
 Hendricks Chamoune Easterly to Alley
 Allen
 Shepard
 W # 31751

INDEXED
 Law
 SEP 27 1951



Corrected
 CRT.
 2-5-51

Thorn St. Contd.

Note: Subtract .05 from
all readings

SW Cb Ret. L= 16.2 2 parts

NW Cb Ret. L= 16.2 2 parts

0+00 East line Chamaine on Rt.

0-12 East Cb line Chamaine on Rt.

0-15.16 East line Chamaine on H.

0-27.16 East Cb line Chamaine to H

332⁵ 332³⁹ 331² 332⁴² 331⁸ 332⁴¹
G Cb G Cb G Cb
BC
Thorn
EC
Chamaine

332⁴ 332⁸⁹ 332⁶ 332⁹⁸ 332⁶ 333⁰⁰
G Cb G Cb G EC Cb
BC
Thorn
Chamaine

332⁴² 331² 331⁸ 331³ 331⁹¹
26 26 26 26
Cb G G Cb

332⁴⁵ 331⁸ 332¹ 331⁴ 331⁵ 331⁹¹ 331⁵ 331⁸⁸ 331²
26 26 26 26 36 40 40 90
Cb G G Cb G Cb

332⁴⁷ 331⁹ 332¹ 331⁷ 332⁰
26 26 26 40 90
Cb G

332¹ 332⁹ 332⁴⁵ 332⁰ 332⁰ 332⁰ 332¹ 332² 332⁰
90 90 40 40 36 36 26 26 40
Cb G Cb G Cb G Cb

Thorn St. Contd.

Note: Subtract .05 from
all readings.

1+35 & Alley

1+28 West Line Alley

1+00

0+50 & Conc. Dr. on Lt.

S.E. Ch Ret L=16.2 2 parts

N.E. Ch Ret L=18.7 2 parts

| | | | | | | | |
|------|------------------|------------------|------------------|------------------|------------------|------------------|------------------|
| 332° | 331 ² | 330 ¹ | 329 ⁴ | 329 ⁶ | 329 ⁶ | 330 ¹ | 330 ⁶ |
| 90 | 54 | 40 | 26 | | 26 | 40 | 90 |

| | | | | | | | | |
|------------------|-------------------|------------------|------------------|------------------|------------------|-------------------|-------------------|------------------|
| 331 ¹ | 330 ¹⁶ | 329 ⁷ | 329 ⁶ | 329 ⁷ | 329 ⁷ | 330 ¹⁶ | 330 ³⁶ | 330 ⁴ |
| 90 | 83 | 40 | 28 | 28 | 26 | 26 | 28 | 40 |
| | Gr. B | Ch | G | | | Gr. B | Ch | Gr. B |
| | | | | | | | | Ch |

| | | | | |
|-------------------|------------------|------------------|------------------|-------------------|
| 330 ⁵⁸ | 329 ⁹ | 330 ⁰ | 329 ⁹ | 330 ⁵⁰ |
| 26 | 26 | | 26 | 26 |
| Ch | G | | G | Ch |

| | | | | | | |
|-------------------|-------------------|-------------------|------------------|------------------|------------------|-------------------|
| 331 ⁷³ | 330 ⁷⁰ | 330 ⁸⁸ | 330 ⁹ | 331 ⁰ | 330 ⁷ | 331 ²⁶ |
| 39.3 | 33 | 26 | 26 | | 26 | 26 |
| svt | svt | Dr. | G | | G | Ch |

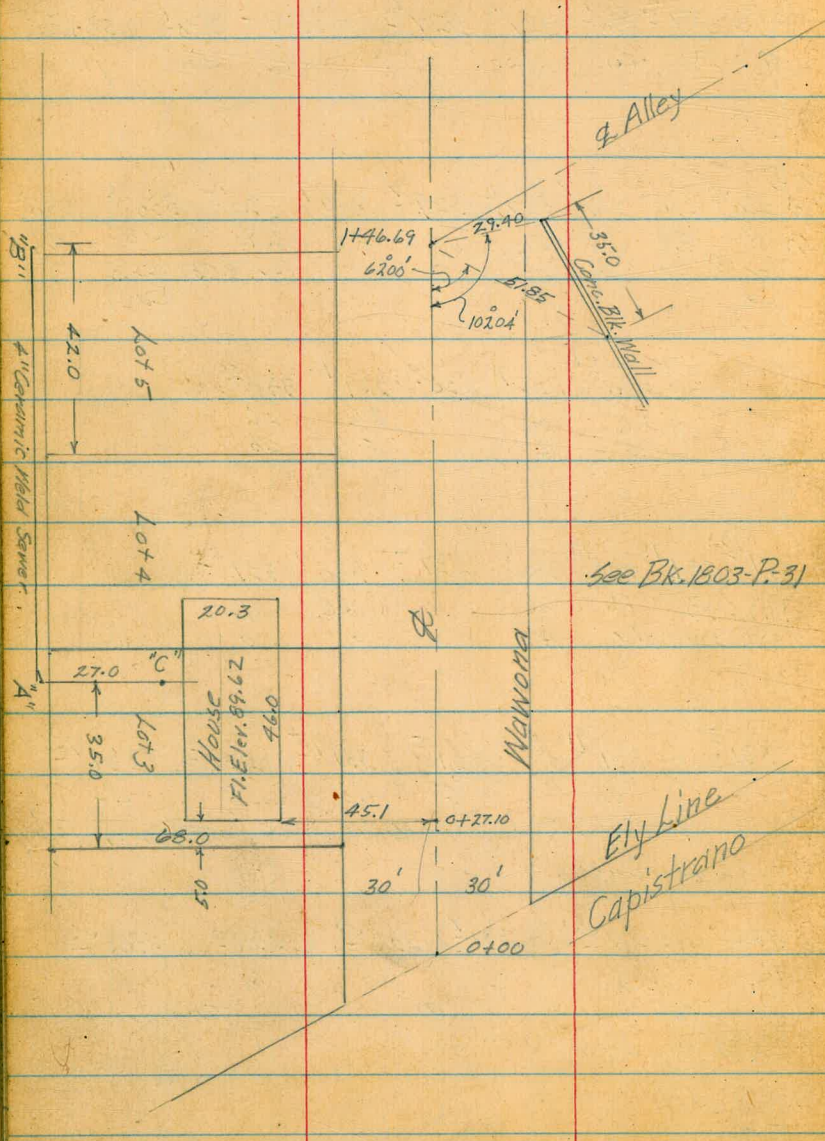
| | | | | | |
|------------------|-------------------|------------------|-------------------|------------------|-------------------|
| 331 ⁵ | 331 ⁹¹ | 331 ⁵ | 331 ⁹⁵ | 331 ⁵ | 331 ⁹² |
| G | Ch | G | Ch | G | Ch |
| | BC | | ① | | Thorn |
| Chamoane | | | | | |

| | | | | | |
|------------------|-------------------|------------------|-------------------|------------------|-------------------|
| 332 ⁰ | 332 ⁴⁴ | 331 ⁹ | 332 ⁴⁸ | 332 ⁰ | 332 ⁴⁶ |
| G | Ch | G | Ch | G | Ch |
| | BC | | ① | | Thorn |
| Chamoane | | | | | |

Garber W.O. 25020
 Shepard & Windy-Cool
 Bruener 10/18/51
 Bryson

Reduced & Plotted
 H. Mills
 10-22-51

INDEXED
 Law
 OCT 19 1951



Top Wall
 Wall Footing

See Bk. 1803-P. 31

12.19 106.20

Floor Elev.

11.89 94.47

Pt. "C" Note - Flers. on top
 of pipe.

Pt. "B"

Pt. "A"

11.63 83.33

10.573
 0.47
 3.3

0.46 94.01
 4.85

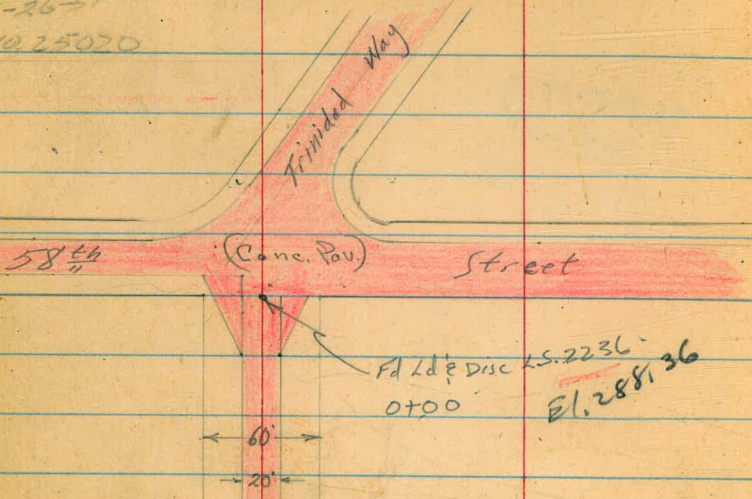
0.75 82.58

3.00
 12.21
 9.09

71.70 NWBP
 Capistrano
 & Poe

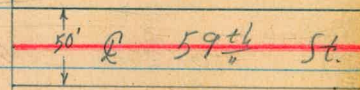
Roberts
Cote
Moore
Pallen
12-26-51
WG 25070

X-Section Detroit 58th to 65th

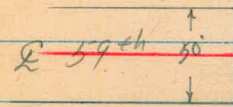


Openings have been
made on both sides of
Detroit.

14
Fd Ld & Disc RESL
6+88.70



INDEXED
MAR 14 1952



Patten St. 25'

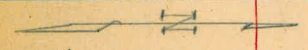
Fd Ld & Disc RE498
38+10.63

Fd Ld & Disc
19+62.33

Street

61 ⁵⁶/₁₇

50'



Fd Ld & Disc RE498
45+60.37

70' R

Fd Ld & Disc RE498

Street

65 ¹⁴/₁₁

50'

46+85.89

| | | | | |
|---------|-------|--------|--------|---------------|
| T.P. | 0.54 | 237.12 | 13.00 | 236.58 |
| T.P. | 0.69 | 249.58 | 12.68 | 248.89 |
| T.P. | 0.86 | 261.57 | 12.56 | 260.71 |
| T.P. | 0.60 | 273.27 | 13.03 | 272.67 |
| T.P. | 0.82 | 285.70 | 7.24 | 284.88 |
| Set TBM | 3.76 | 292.12 | 5.28 | <u>289.36</u> |
| T.P. | 3.65 | 293.64 | 6.67 | 289.99 |
| T.P. | 3.10 | 296.66 | 7.48 | 293.56 |
| T.P. | 4.22 | 301.04 | 2.69 | <u>296.82</u> |
| T.P. | 10.06 | 299.51 | 0.45 | 289.45 |
| T.P. | 12.16 | 289.90 | 0.17 | 277.74 |
| T.P. | 12.73 | 277.91 | 0.41 | 265.18 |
| T.P. | 12.37 | 265.59 | 0.14 | 253.22 |
| T.P. | 12.53 | 253.36 | 0.45 | 240.83 |
| T.P. | 12.81 | 241.28 | 0.62 | 228.47 |
| T.P. | 6.92 | 229.09 | 1.35 | 222.17 |
| T.P. | 12.87 | 223.52 | 0.15 | 210.65 |
| T.P. | 12.62 | 210.80 | 0.09 | 198.18 |
| T.P. | 12.56 | 198.27 | 0.07 | 185.71 |
| BM | 9.66 | 185.78 | 176.12 | City Disc |

2d + Disc

LS 2236 @ Detroit @ East PL 58th = 0+00

2d + Disc

KE 1534 @ 58th @ Churchward?

SW corner Manzaneros @ San Jacinto

0+30

0+00 East line 58th

0-10 ← 60' St.

← 58th Street 40' St. 0-20

TBM 472 293.08 ↑ 288.36

Check 5.42 176.12 = 176.12

T.P. 5.68 181.54 12.97 175.86

T.P. 0.54 187.93 12.59 187.39

T.P. 1.27 199.78 12.51 198.71

T.P. 0.33 211.22 12.75 210.89

T.P. 1.05 223.64 6.10 222.59

T.P. 3.57 228.69 12.02 225.10

237.12 x

26
 284.4 284.1 286.8 287.0 286.92 287.21 287.02 287.4 285.3 285.0 285.7
 8.7 9.0 6.3 6.1 6.6 5.87 6.06 5.7 7.2 8.1 7.4
 50 42 35 25 10 10 18 25 35 50

289.02 288.20 287.20 288.19 288.36 289.55 288.85 289.4 290.1
 4.06 4.44 5.18 4.77 4.72 4.53 4.23 3.7 2.4
 100 50 30 10 10 10 31 30 100

289.18 288.38 288.08 288.58 289.59 290.82
 3.70 4.70 5.00 4.50 3.67 2.26
 100 50 30 50 37.2 100

289.08 288.35 287.28 288.78 289.45 290.52
 4.00 4.75 5.70 4.52 3.63 2.56
 100 50 30 50 50 100

293.08 ↑

Reduced 3-18-52
Plotted RWD
3-31-52
H. Mills

Cont'd From Page 17

2+13

| | | | | | | | | | | |
|--------|-------|-------|--------|--------|---------|-------|-------|--------|-------|-------|
| 270.5- | 277.2 | 277.9 | 278.32 | 278.64 | 278.55- | 278.7 | 277.3 | 277.5- | 278.3 | 279.3 |
| 5.1 | 3.4 | 2.7 | 2.28 | 1.96 | 2.05 | 1.9 | 3.3 | 3.1 | 2.3 | 1.3 |
| 50 | 35 | 25 | 10 | 10 | 10 | 16 | 20 | 25 | 35 | 50 |

2+00

| | | | | | | | | | |
|-------|-------|-------|--------|--------|-------|-------|--------|-------|--------|
| 275.7 | 277.1 | 278.1 | 278.89 | 279.17 | 279.6 | 278.1 | 278.5- | 278.6 | 279.5- |
| 4.9 | 3.5 | 2.5 | 1.71 | 1.36 | 1.43 | 1.0 | 2.5 | 2.0 | 1.1 |
| 50 | 35 | 25 | 10 | disc | 10 | 17 | 20 | 25 | 30 |

2+00.02 Fd Ld E Disc on Q 252334

| | | | | | | | | | | | | |
|-------|-------|-------|-------|-------|--------|--------|--------|--------|-------|-------|-------|-------|
| 273.1 | 274.6 | 274.8 | 274.9 | 278.9 | 279.12 | 279.47 | 279.41 | 279.5- | 278.0 | 278.6 | 278.7 | 279.6 |
| 7.5 | 6.0 | 5.8 | 5.7 | 1.7 | 1.48 | 1.13 | 1.7 | 1.1 | 2.6 | 2.0 | 1.9 | 1.0 |
| 50 | 35 | 25 | 22 | 17 | 10 | 10 | 17 | 17 | 20 | 25 | 35 | 50 |

1+95

T.P. 0.52 280.60T 13.00 280.08

280.60T

1+84.13 Fd Ld E Disc on Q PE 32

| | | | | | | | | | | | |
|--------|-------|-------|-------|--------|--------|--------|--------|-------|-------|-------|--------|
| 276.5- | 275.9 | 274.2 | 281.1 | 281.23 | 281.60 | 281.38 | 281.5- | 274.9 | 279.1 | 279.3 | 278.5- |
| 16.6 | 17.2 | 16.9 | 12.0 | 11.35 | 11.48 | 11.70 | 11.6 | 14.2 | 14.0 | 13.8 | 14.6 |
| 50 | 35 | 25 | 16 | 10 | 10 | 10 | 16 | 20 | 25 | 35 | 50 |

1+50

1+00

| | | | | | | | | | | | | |
|------|-------|-------|-------|-------|--------|--------|--------|-------|-------|-------|-------|-------|
| 278A | 279.0 | 280.3 | 280.6 | 283.6 | 283.74 | 283.98 | 283.76 | 284.0 | 281.7 | 282.2 | 282.6 | 283.2 |
| 4.7 | 14.1 | 12.8 | 12.5 | 7.5 | 7.34 | 9.1 | 9.32 | 9.1 | 11.4 | 10.7 | 10.5 | 9.7 |
| 50 | 35 | 25 | 23 | 17 | 10 | 10 | 10 | 16 | 20 | 25 | 35 | 50 |

0+70

| | | | | | | | | | | | |
|-------|-------|-------|-------|--------|--------|--------|-------|-------|-------|-------|-------|
| 281.4 | 281.1 | 281.4 | 284.9 | 285.07 | 285.37 | 285.16 | 285.6 | 283.9 | 285.9 | 283.8 | 284.7 |
| 11.7 | 12.0 | 11.7 | 8.2 | 8.0 | 7.71 | 7.72 | 7.5 | 7.2 | 7.2 | 7.3 | 8.4 |
| 50 | 35 | 25 | 20 | 10 | 10 | 10 | 15 | 21 | 25 | 35 | 50 |

293.08T

293.08T

4+00

3+50

3+00

T.R.

0.62 279.86 A

279.24

2+00.02 E

279.86 A

2+50

2+42.5 16" RT to E 18" Storm Drain with headwall
could not locate outlet!

2+25

280.60 A

| | | | | | | | | | | |
|-------|-------|-------|-------|--------|--------|--------|-------|-------|-------|-------|
| 264.8 | 269.8 | 270.1 | 269.7 | 268.96 | 269.01 | 268.88 | 268.4 | 272.6 | 272.7 | 273.5 |
| 15.1 | 10.1 | 7.8 | 10.2 | 10.70 | 10.85 | 10.78 | 11.5 | 7.3 | 7.2 | 6.4 |
| 78 | 40 | 35 | 25 | 10 | 10 | 10 | 20 | 25 | 35 | 50 |

| | | | | | | | | | |
|-------|-------|-------|--------|--------|--------|-------|-------|-------|-------|
| 264.8 | 271.5 | 271.4 | 271.53 | 271.59 | 271.47 | 271.1 | 272.6 | 272.7 | 273.5 |
| 15.1 | 8.4 | 8.5 | 8.33 | 8.27 | 8.37 | 8.9 | 4.3 | 4.2 | 3.4 |
| 50 | 35 | 25 | 10 | 10 | 10 | 22 | 25 | 35 | 50 |

| | | | | | | | | | | | |
|-------|-------|-------|-------|-------|-------|--------|--------|-------|-------|-------|-------|
| 265.0 | 272.7 | 272.9 | 273.0 | 274.3 | 274.4 | 274.37 | 274.25 | 274.4 | 275.2 | 276.2 | 278.0 |
| 14.7 | 7.2 | 7.0 | 6.7 | 5.6 | 5.70 | 5.49 | 5.61 | 5.5 | 4.7 | 3.7 | 1.7 |
| 50 | 35 | 25 | 16 | 15 | 10 | 10 | 10 | 20 | 25 | 35 | 50 |

| | | | | | | | | | | | | |
|-------|-------|-------|-------|-------|-------|--------|--------|--------|-------|-------|-------|-------|
| 265.2 | 271.6 | 271.9 | 272.6 | 272.6 | 276.3 | 276.66 | 276.86 | 276.77 | 276.7 | 275.6 | 276.4 | 278.1 |
| 15.1 | 9.0 | 8.7 | 8.0 | 8.0 | 4.3 | 3.74 | 3.74 | 3.83 | 3.9 | 5.0 | 4.2 | 2.5 |
| 50 | 41 | 35 | 25 | 22 | 16 | 10 | 10 | 10 | 17 | 25 | 35 | 50 |

273.15
7.45
Invert
16"

| | | | | | | | | | | | |
|-------|-------|-------|-------|--------|--------|--------|-------|-------|-------|-------|-------|
| 266.1 | 272.4 | 273.3 | 277.8 | 277.78 | 278.04 | 277.25 | 278.1 | 276.5 | 277.2 | 277.9 | 279.1 |
| 14.5 | 8.2 | 7.3 | 2.8 | 2.92 | 2.56 | 2.65 | 2.5 | 4.1 | 3.4 | 2.1 | 1.5 |
| 50 | 35 | 25 | 18 | 10 | 10 | 10 | 15 | 20 | 25 | 35 | 50 |

280.60 A

Cont'd From Page 19

7+50

T.P.

0.68 254.62 π 13.02 253.94

7+01.62

Fd Disc RE1534 on π

7+00

6+88.70

Fd Disc RE32 on π

T.

6+00

5+00

T.P.

0.14 266.96 π 13.04 266.82

4+50

279.86 π

| | | | | | | | | |
|------|------|------|--------|--------|--------|------|------|------|
| 2527 | 2523 | 2519 | 2521.2 | 2523.6 | 2519.6 | 2494 | 2493 | 2492 |
| 1.9 | 2.3 | 2.7 | 2.50 | 2.26 | 2.66 | 5.2 | 5.3 | 5.4 |
| 50 | 35 | 25 | 10 | 20 | 10 | 25 | 35 | 50 |

254.62 π

| | | | | | | | | | | | |
|--------|------|------|------|--------|-------|--------|--------|------|------|------|-------|
| 2541.4 | 2540 | 2539 | 2534 | 2542.6 | 2542 | 2542.8 | 2541.5 | 2531 | 2531 | 2531 | 253.8 |
| 12.6 | 13.0 | 13.1 | 13.6 | 12.70 | 12.44 | 12.68 | 12.5 | 13.9 | 13.7 | 13.5 | 13.2 |
| 50 | 35 | 25 | 20 | 10 | 10 | 10 | 13 | 20 | 25 | 35 | 50 |

| | | | | | | | | | | |
|------|------|------|--------|--------|--------|--------|-------|-------|--------|------|
| 2602 | 2599 | 2595 | 2592.9 | 2592.3 | 2590.5 | 2588.8 | 259.9 | 259.9 | 2600.0 | 2603 |
| 6.8 | 7.1 | 7.5 | 7.67 | 7.73 | 7.91 | 8.2 | 7.1 | 7.1 | 7.0 | 6.7 |
| 50 | 35 | 25 | 10 | 10 | 10 | 15 | 20 | 25 | 35 | 50 |

| | | | | | | | | | | | |
|------|------|------|------|--------|--------|--------|-------|-------|-------|-------|-------|
| 2640 | 2653 | 2647 | 2642 | 2639.6 | 2641.0 | 2640.1 | 263.9 | 265.4 | 265.4 | 265.1 | 265.2 |
| 3.0 | 1.7 | 2.3 | 2.8 | 3.00 | 2.86 | 2.95 | 3.1 | 1.6 | 1.6 | 1.9 | 1.8 |
| 46 | 42 | 35 | 25 | 10 | 10 | 10 | 15 | 20 | 25 | 35 | 50 |

266.96 π

| | | | | | | | | | | |
|------|------|------|------|--------|--------|--------|-------|-------|-------|-------|
| 2644 | 2673 | 2673 | 2670 | 2667.5 | 2667.5 | 265.57 | 266.5 | 269.3 | 269.3 | 269.4 |
| 15.5 | 12.6 | 12.6 | 12.9 | 13.1 | 13.1 | 14.27 | 13.6 | 10.6 | 10.6 | 10.5 |
| 47 | 42 | 35 | 25 | 10 | 10 | 10 | 21 | 25 | 35 | 50 |

279.86 π

Cont'd From Page 20

10+58 28' Lt Inlet 30" Culvert

9" thick
conc.
with 10' Headwall

| | | | | | | | | | | | |
|-------|-------|--------------|-------|-------|--------|--------|--------|--------|-------|-------|-------|
| 244.1 | 242.9 | 241.74 | 245.1 | 249.4 | 249.53 | 249.80 | 249.53 | 249.51 | 243.3 | 240.3 | 240.3 |
| 10.5 | 11.7 | 12.88 | 9.5 | 5.2 | 5.07 | 4.82 | 5.07 | 5.11 | 11.3 | 14.3 | 14.3 |
| 50 | 35 | 28 INVERT | 25 | 16 | 10 | | 10 | 16 | 25 | 35 | 50 |

10+34 34' Rt Outlet 30" Corr. Steel Culvert

no Headwall

237.79
16.83
34'
INVERT

10+00

(9+80⁹⁸ = E 59+65 St. South)

| | | | | | | | | | | |
|-------|-------|-------|-------|--------|--------|--------|-------|-------|-------|-------|
| 249.1 | 247.4 | 247.2 | 249.3 | 249.23 | 249.33 | 249.05 | 249.1 | 243.2 | 240.6 | 238.8 |
| 5.5 | 7.2 | 7.4 | 5.3 | 5.37 | 5.29 | 5.57 | 5.5 | 11.4 | 14.0 | 15.8 |
| 50 | 35 | 25 | 16 | 10 | | 10 | 16 | 25 | 35 | 50 |

9+50

| | | | | | | | | | | |
|-------|-------|-------|--------|--------|--------|-------|-------|-------|-------|-------|
| 252.4 | 251.1 | 249.1 | 249.27 | 249.41 | 249.21 | 248.9 | 246.7 | 245.9 | 244.0 | 242.5 |
| 2.2 | 3.5 | 5.5 | 5.35 | 5.21 | 5.41 | 5.7 | 7.7 | 8.7 | 10.6 | 12.1 |
| 50 | 35 | 25 | 10 | | 10 | 16 | 21 | 25 | 35 | 50 |

9+00

| | | | | | | | | |
|-------|-------|-------|--------|--------|--------|-------|-------|-------|
| 256.7 | 255.3 | 249.1 | 249.31 | 249.58 | 249.25 | 247.1 | 246.0 | 244.3 |
| 12.1 | 10.7 | 5.5 | 5.31 | 5.23 | 5.37 | 7.5 | 8.6 | 10.3 |
| 50 | 35 | 25 | 10 | | 10 | 25 | 35 | 50 |

8+50

| | | | | | | | | | |
|-------|-------|-------|--------|--------|--------|-------|-------|-------|-------|
| 257.2 | 255.3 | 249.6 | 249.19 | 249.83 | 249.57 | 248.7 | 247.0 | 245.6 | 244.2 |
| 12.6 | 10.7 | 5.0 | 4.83 | 4.77 | 5.05 | 5.7 | 7.6 | 9.0 | 10.4 |
| 50 | 35 | 25 | 10 | | 10 | 18 | 25 | 35 | 50 |

8+00

| | | | | | | | | |
|-------|-------|-------|--------|--------|--------|-------|-------|-------|
| 254.4 | 252.7 | 250.9 | 250.47 | 250.64 | 250.38 | 247.4 | 246.3 | 245.3 |
| 0.2 | 1.9 | 4.2 | 4.15 | 3.93 | 4.24 | 7.2 | 8.3 | 9.3 |
| 50 | 35 | 25 | 10 | | 10 | 25 | 35 | 50 |

254.62X

254.62X

Contd From Page 21

14.

8

14.

22

13+50

| | | | | | | | | | | |
|-------|-------|-------|-------|--------|--------|--------|-------|-------|-------|-------|
| 266.8 | 267.2 | 267.0 | 264.5 | 264.57 | 264.62 | 264.49 | 264.4 | 269.9 | 269.9 | 270.5 |
| 7.7 | 7.5 | 7.7 | 10.2 | 10.18 | 10.07 | 10.20 | 10.3 | 4.8 | 4.8 | 4.4 |
| 50 | 35 | 25 | 16 | 10 | | 10 | 18 | 25 | 35 | 50 |

T.P. 12.41 274.69 π 0.88 262.28

274.69 π

13+00

| | | | | | | | | | | |
|-------|-------|-------|-------|--------|--------|--------|-------|-------|-------|-------|
| 264.4 | 264.8 | 265.0 | 264.3 | 264.21 | 261.37 | 261.29 | 261.6 | 267.3 | 267.2 | 268.2 |
| +1.2 | +1.6 | +1.8 | 1.9 | 1.95 | 1.79 | 1.72 | 1.6 | +4.1 | +4.0 | +5.0 |
| 50 | 35 | 25 | 15 | 10 | | 10 | 15 | 25 | 35 | 50 |

12+00

| | | | | | | | | | | |
|-------|-------|-------|--------|--------|--------|-------|-------|-------|-------|-------|
| 253.2 | 254.2 | 255.9 | 254.43 | 254.56 | 254.47 | 254.8 | 260.8 | 261.3 | 262.5 | 263.2 |
| 10.0 | 9.0 | 7.3 | 8.73 | 8.60 | 8.69 | 8.4 | 2.4 | 1.9 | 0.7 | 0 |
| 50 | 35 | 25 | 10 | | 10 | 14 | 22 | 25 | 35 | 50 |

11+50

| | | | | | | | | | | |
|-------|-------|-------|-------|--------|--------|--------|-------|-------|-------|-------|
| 246.6 | 247.1 | 249.7 | 254.1 | 251.91 | 252.08 | 252.04 | 251.9 | 253.2 | 255.7 | 257.2 |
| 16.6 | 16.1 | 13.5 | 11.1 | 11.25 | 11.08 | 11.12 | 11.3 | 10.0 | 7.5 | 6.0 |
| 50 | 35 | 25 | 16 | 10 | | 10 | 17 | 25 | 35 | 50 |

11+00

| | | | | | | | | | | |
|-------|-------|-------|-------|--------|--------|--------|-------|-------|-------|-------|
| 242.6 | 245.1 | 245.9 | 250.5 | 250.42 | 250.61 | 250.41 | 250.3 | 245.2 | 245.2 | 247.2 |
| 20.6 | 18.1 | 17.3 | 12.7 | 12.74 | 12.55 | 12.75 | 12.9 | 18.0 | 18.0 | 16.0 |
| 50 | 35 | 25 | 16 | 10 | | 10 | 16 | 25 | 35 | 50 |

T.P. 11.99 263.16 π 3.45 251.17

263.16 π

254.62 π

Cont'd From Page 22

17+50

T.P. 7.21 293.53K 0.53 286.32

17+00

16+50

16+00

T.P. 12.44 286.65K 0.44 274.21

15+00

14+84.50 Fd Disc 252236 on Q

14+00

274.69K

285.3
82 74 70 69 74 691 684 698 8.0 8.9 10.2
50 35 25 18 16 10 10 10 25 35 50

286.1 286.5
286.6 286.1
286.62 286.69
286.55 285.5
284.6 283.3

23

281.3 281.6 282.5 284.0 284.29 284.52 284.42 283.8 283.3 282.5
5.4 5.1 4.2 3.1 2.36 2.13 2.23 2.7 3.4 1.2
50 35 25 17 10 35 10 25 35 50

278.4 278.8 279.5 281.57 281.87 281.65 281.4 281.6 281.2
8.3 7.9 7.2 5.08 4.72 5.00 5.3 5.1 5.5
50 35 25 10 10 10 25 35 50

276.1 276.5 277.4 278.78 278.97 278.76 278.5 280.5 281.5 281.7
10.6 10.2 9.3 7.87 7.68 7.89 8.2 6.2 5.2 5.0
50 35 25 10 10 18 25 35 50

286.65K

271.6 271.9 272.6 272.5 272.84 273.10 272.94 272.7 273.1 276.0 276.5
3.1 2.8 2.1 2.2 1.85 1.59 1.75 2.0 1.4 1.3 1.8
50 35 25 18 10 10 16 25 35 50

269.3 269.5 269.5 269.4 267.4 267.29 267.44 267.34 267.2 271.7 271.7 272.1
5.4 5.2 5.2 5.3 7.3 7.40 7.25 7.35 7.5 3.0 3.0 2.6
50 35 25 20 14 10 10 17 17 25 35 50

274.69K

Cont'd From Page 23

19+72.3 East Edge of Conc Strip to South

| | | | | | | | | |
|-------|-------|-------|--------|--------|--------|--------|--------|--------|
| 290.7 | 289.7 | 288.6 | 287.46 | 287.63 | 287.70 | 286.85 | 286.28 | 285.22 |
| 2.0 | 3.8 | 4.9 | 6.07 | 5.70 | 5.83 | 6.68 | 7.25 | 13.31 |
| 50 | 35 | 25 | 10 | | 10 | 25 | 35 | 100 |

19+62.33 Ed. DIRECTION of 61st Street as a 58' R.O.W.

19+52.3 West Edge Conc. Strip in 61st to Sog.

| | | | | | | | | | |
|-------|-------|-------|-------|--------|--------|--------|--------|--------|--------|
| 293.2 | 291.7 | 288.3 | 288.0 | 287.70 | 287.89 | 287.91 | 287.21 | 286.59 | 285.18 |
| 0.3 | 1.2 | 5.2 | 5.5 | 5.83 | 5.69 | 5.62 | 6.32 | 6.74 | 13.05 |
| 50 | 35 | 30 | 25 | 10 | | 10 | 25 | 35 | 100 |

19+00

| | | | | | | | | | |
|-------|-------|-------|-------|--------|--------|--------|-------|-------|-------|
| 295.0 | 294.5 | 292.4 | 289.0 | 288.34 | 288.41 | 288.40 | 288.3 | 288.2 | 287.9 |
| 1.5 | 1.0 | 1.1 | 4.5 | 5.19 | 5.12 | 5.13 | 5.2 | 5.3 | 5.6 |
| 60 | 43 | 35 | 25 | 10 | | 10 | 25 | 35 | 50 |

18+63 23' Lt of 11' Conc Drive

| | |
|-------|--------|
| 292.7 | 289.20 |
| 1.36 | 4.33 |
| 43 | 23 |
| conc | conc |

18+50

| | | | | | | | | |
|-------|-------|-------|--------|--------|--------|-------|-------|-------|
| 293.5 | 291.7 | 289.0 | 288.43 | 288.49 | 288.37 | 288.1 | 287.9 | 287.6 |
| 0 | 1.8 | 4.5 | 5.10 | 5.04 | 5.20 | 5.4 | 5.6 | 5.9 |
| 50 | 35 | 25 | 10 | | 10 | 25 | 35 | 50 |

18+00

| | | | | | | | | | |
|-------|-------|-------|-------|--------|--------|--------|-------|-------|-------|
| 289.4 | 290.1 | 290.1 | 287.8 | 288.00 | 288.12 | 288.01 | 287.5 | 287.0 | 285.7 |
| 4.1 | 3.4 | 3.4 | 5.7 | 5.53 | 5.41 | 5.52 | 6.0 | 6.5 | 8.4 |
| 50 | 35 | 30 | 25 | 10 | | 10 | 25 | 35 | 50 |

293.53A

293.53A

Contd From Page 24

23+58 18" Corr. Culvert.

4-25-58

269.48

16 Lt. Headwall
Invert Inlet

267.27

243R
Invert outlet

23+00

22+00

T.P.

0.97 282.99 $\bar{\pi}$ 11.51 282.02

282.97 $\bar{\pi}$

21+00

20+50

19+95

19+81

293.53 $\bar{\pi}$

293.53 $\bar{\pi}$

| | | | | | | | | | | | | |
|-------|-------|--------|--------|--------|--------|--------|--------|--------|-------|-------|-------|------|
| 2832 | 2750 | 279.6 | 279.6 | 279.5 | 274.88 | 274.88 | 274.88 | 274.4 | 270.9 | 270.4 | 270.0 | |
| +0.2 | 80 | 0.5 | 84 | 0.7 | 85 | 8.11 | 7.81 | 8.11 | 8.6 | 12.1 | 12.6 | 13.0 |
| 50 | 50 | 35 | 25 | 25 | 10 | + | 10 | 10 | 17 | 25 | 35 | 50 |
| 282.6 | 282.1 | 282.1 | 282.1 | 279.4 | 279.20 | 279.62 | 279.39 | 279.0 | 278.3 | 277.2 | 276.9 | |
| 10.2 | 0.5 | 0.7 | 0.7 | 3.6 | 3.79 | 3.37 | 3.60 | 4.0 | 4.7 | 5.8 | 6.1 | |
| 50 | 35 | 25 | 22 | 17 | 10 | 10 | 10 | 22 | 25 | 35 | 50 | |
| 282.2 | 282.5 | 282.5 | 284.5 | 284.23 | 284.37 | 284.05 | 283.2 | 280.8 | 279.1 | 277.6 | | |
| 13 | 3.0 | 4.0 | 7.0 | 7.30 | 7.16 | 9.48 | 10.3 | 12.7 | 14.4 | 15.9 | | |
| 50 | 35 | 25 | 19 | 10 | 10 | 10 | 20 | 25 | 35 | 50 | | |
| 282.3 | 282.0 | 282.3 | 289.1 | 286.0 | 286.65 | 286.94 | 285.90 | 285.14 | 279.7 | 278.2 | 277.2 | |
| 1.2 | 3.5 | 4.2 | 4.4 | 7.5 | 7.8 | 7.59 | 7.63 | 8.37 | 12.1 | 12.3 | 16.3 | |
| 50 | 35 | 25 | 23 | 20 | 10 | 10 | 10 | 25 | 35 | 38 | 50 | |
| 291.6 | 289.7 | 288.3 | 287.01 | 287.14 | 287.13 | 286.9 | 280.4 | 278.9 | | | | |
| 1.9 | 3.8 | 5.2 | 6.2 | 6.39 | 6.40 | 6.6 | 13.1 | 15.1 | | | | |
| 50 | 35 | 25 | 10 | 10 | 10 | 25 | 35 | 50 | | | | |
| 291.5 | 289.5 | 288.42 | 287.22 | 287.43 | 287.14 | 287.2 | 286.6 | 285.6 | | | | |
| 2.0 | 4.0 | 5.1 | 6.2 | 6.10 | 6.09 | 6.3 | 6.9 | 7.9 | | | | |
| 50 | 35 | 25 | 10 | 10 | 10 | 25 | 35 | 50 | | | | |

Cont'd From Page 25

28+00

27+66.3 24" Corr. Culvert inlet.
4-25-58

27+50

T.P. 6.81 273.82 T 9.02

27+49 24" Corr. Culvert outlet.
4-25-58

27+00

26+00

25+00

24

24+00

T.P. 0.85 276.03 T

262.70
17 Lt. Headwall
Invert

260.58
255 R.
Invert

267.01 27+00

275.18 24+00

28

| | | | | | | | | |
|-----|-----|-----|------|------|------|-----|-----|-----|
| 7.0 | 7.0 | 7.0 | 6.16 | 6.70 | 6.95 | 7.2 | 7.4 | 7.7 |
| 50 | 35 | 25 | 10 | 10 | 10 | 25 | 35 | 50 |

| | | | | | | | | | | |
|-------|-------|-------|-------|--------|--------|--------|-------|-------|-------|-------|
| 270.9 | 268.8 | 268.0 | 267.0 | 266.69 | 266.97 | 266.58 | 266.3 | 263.9 | 263.0 | 264.2 |
| 29 | 5.0 | 5.8 | 6.8 | 7.13 | 6.85 | 7.24 | 7.5 | 10.4 | 10.8 | 7.6 |
| 50 | 35 | 25 | 21 | 10 | 10 | 10 | 19 | 25 | 35 | 50 |

273.82 T

| | | | | | | | | | | | |
|-------|-------|-------|-------|-------|--------|--------|--------|-------|-------|-------|-------|
| 271.5 | 270.2 | 269.6 | 269.3 | 267.0 | 266.85 | 267.01 | 266.74 | 266.7 | 265.8 | 263.7 | 262.6 |
| 45 | 5.9 | 6.4 | 6.7 | 7.0 | 7.18 | 7.02 | 7.29 | 7.3 | 10.2 | 12.3 | 13.4 |
| 50 | 35 | 25 | 20 | 15 | 10 | 10 | 10 | 15 | 25 | 35 | 50 |

| | | | | | | | | | | |
|-------|-------|-------|-------|-------|--------|--------|--------|-------|-------|-------|
| 274.9 | 273.3 | 272.5 | 272.2 | 268.9 | 268.41 | 268.61 | 268.41 | 266.6 | 263.8 | 263.1 |
| 1.1 | 2.7 | 3.5 | 3.7 | 7.1 | 7.62 | 7.42 | 7.62 | 7.4 | 10.2 | 10.7 |
| 50 | 35 | 25 | 20 | 15 | 10 | 10 | 10 | 25 | 35 | 15 |

| | | | | | | | | | | |
|-------|-------|-------|-------|-------|--------|--------|--------|-------|-------|-------|
| 271.8 | 272.9 | 272.5 | 272.3 | 270.3 | 270.29 | 270.95 | 270.23 | 269.5 | 269.1 | 268.4 |
| 2.2 | 3.1 | 3.5 | 3.7 | 5.7 | 5.79 | 5.88 | 5.70 | 6.5 | 6.9 | 7.6 |
| 50 | 35 | 25 | 20 | 15 | 10 | 10 | 10 | 25 | 35 | 50 |

| | | | | | | | | | | |
|-------|-------|-------|-------|-------|--------|--------|--------|-------|-------|-------|
| 271.3 | 274.9 | 273.7 | 273.5 | 272.4 | 272.14 | 272.37 | 272.20 | 270.5 | 269.2 | 268.1 |
| 7.03 | 1.1 | 2.3 | 2.5 | 3.6 | 3.89 | 3.6 | 3.83 | 3.5 | 6.8 | 7.7 |
| 50 | 35 | 25 | 20 | 15 | 10 | 10 | 10 | 25 | 35 | 50 |

276.03 T

32+00

| | | | | | | | | | |
|-------|-------|-------|-------|--------|-------|--------|-------|-------|-------|
| 283.5 | 282.8 | 279.7 | 279.7 | 279.57 | 279.5 | 279.21 | 279.1 | 269.7 | 263.5 |
| 72.0 | 0.7 | 3.8 | 3.8 | 3.9 | 3.9 | 4.25 | 3.9 | 2.8 | 0 |
| 50 | 35 | 28 | 25 | 10 | | 10 | 25 | 35 | 50 |

31+60Z

10' Lt to R 9' Long Drive

| | | | |
|--------|--------|--------|--------|
| 279.45 | 277.93 | 277.55 | 277.63 |
| 70.1 | 55.3 | 59.1 | 58.3 |
| 35 | 25 | 20 | 10 |

31+00

| | | | | | | | | |
|-------|-------|-------|--------|--------|--------|-------|-------|-------|
| 279.1 | 277.2 | 276.9 | 274.92 | 274.91 | 274.77 | 275.4 | 275.3 | 275.8 |
| 7.7 | 6.3 | 7.6 | 8.34 | 8.47 | 8.67 | 8.1 | 8.2 | 7.7 |
| 50 | 35 | 25 | 10 | | 10 | 25 | 35 | 50 |

30+00

| | | | | | | | | |
|-------|-------|-------|--------|--------|--------|-------|-------|-------|
| 271.9 | 271.8 | 271.5 | 271.68 | 271.69 | 271.55 | 271.9 | 271.9 | 271.7 |
| 7.6 | 8.7 | 10.0 | 11.78 | 11.77 | 11.91 | 11.6 | 11.6 | 11.8 |
| 50 | 35 | 25 | 10 | | 10 | 25 | 35 | 50 |

TR

11.77 28346 X 2.13 271.69

28346

28346 X

29+00

| | | | | | | | | |
|-------|-------|-------|--------|--------|--------|-------|-------|-------|
| 271.1 | 270.4 | 269.8 | 268.79 | 268.83 | 268.64 | 268.8 | 268.5 | 268.6 |
| 2.7 | 3.4 | 4.0 | 5.03 | 4.99 | 5.8 | 5.0 | 5.3 | 5.2 |
| 80 | 35 | 25 | 10 | | 10 | 25 | 35 | 50 |

28+50

| | | | | | | | | |
|-------|-------|-------|--------|--------|--------|-------|-------|-------|
| 268.8 | 268.6 | 268.4 | 267.54 | 267.62 | 267.44 | 267.8 | 267.4 | 266.9 |
| 5.0 | 5.2 | 5.4 | 6.28 | 6.20 | 6.31 | 6.0 | 6.4 | 6.9 |
| 50 | 35 | 25 | 10 | | 10 | 25 | 35 | 50 |

273.82 X

273.82 X

Cont'd From Page 27

24

£

27

28

36+00

| | | | | | | | | | | |
|------|------|-------|-------|--------|--------|--------|-------|-------|-------|-------|
| 3099 | 3079 | 303.7 | 302.0 | 301.67 | 301.90 | 301.74 | 301.8 | 298.0 | 296.2 | 294.6 |
| +3.2 | +1.2 | 3.0 | 4.7 | 5.0 | 4.79 | 1.95 | 4.9 | 8.7 | 10.5 | 12.1 |
| 50 | 35 | 25 | 23 | 10 | | 10 | 16 | 25 | 35 | 50 |

35+77

10' Lt & 11⁵ Conc Drive

| | | | |
|--------|--------|--------|--------|
| 302.77 | 301.01 | 300.82 | 300.44 |
| 3.72 | 5.68 | 5.87 | 6.25 |
| 35 | 25 | 23 | 10 |

35+00

| | | | | | | | | | |
|-------|-------|-------|--------|--------|--------|-------|-------|-------|-------|
| 299.3 | 298.1 | 296.8 | 296.15 | 296.30 | 296.03 | 294.1 | 290.6 | 289.3 | 288.9 |
| 7.4 | 8.6 | 9.9 | 10.54 | 10.39 | 10.66 | 10.6 | 16.1 | 17.4 | 17.8 |
| 50 | 35 | 25 | 10 | | 10 | 15 | 25 | 35 | 50 |

T.P.

12.03 306.69X 0.17 294.66

306.69X

34+00

| | | | | | | | | | | | |
|-------|-------|-------|-------|--------|--------|--------|-------|-------|-------|-------|-------|
| 297.3 | 292.9 | 291.4 | 290.8 | 290.64 | 290.77 | 290.59 | 290.8 | 286.8 | 285.7 | 285.5 | 285.4 |
| +2.5 | 1.9 | 3.4 | 4.0 | 4.7 | 4.06 | 4.24 | 4.0 | 8.0 | 9.4 | 9.3 | 9.4 |
| 50 | 35 | 32 | 25 | 10 | | 10 | 15 | 25 | 30 | 35 | 50 |

33+00

| | | | | | | | | | | |
|-------|-------|-------|-------|--------|--------|--------|--------|-------|-------|-------|
| 294.2 | 291.5 | 288.2 | 287.2 | 285.05 | 285.14 | 284.88 | 284.84 | 282.8 | 282.3 | 282.0 |
| 0.6 | 3.3 | 6.6 | 7.6 | 9.78 | 9.7 | 9.95 | 10.0 | 12.0 | 12.5 | 9.8 |
| 50 | 35 | 25 | 18 | 10 | | 10 | 15 | 25 | 35 | 50 |

T.P.

11.72 294.83X 0.35 283.11

294.83X

283.46X

Cont'd From Page 28

24

25

26

29

39+00

| | | | | | | | | | | | |
|--------|-------|-------|-------|-------|--------|--------|--------|-------|-------|-------|-------|
| 326.7 | 323.3 | 322.4 | 321.7 | 318.0 | 318.24 | 318.30 | 318.11 | 318.3 | 315.8 | 314.5 | 312.9 |
| +24+20 | +4.1 | +1.4 | 0.3 | 0.10 | 0.04 | 0.23 | 0 | 2.5 | 3.8 | 5.4 | |
| 50 | 35 | 31 | 25 | 23 | 10 | 10 | 17 | 25 | 35 | 50 | |

38+35.68

Fd Disc LS2201 on G

38+10.63

West Line Patton (Not Even Enough Guard)
Fd Disc RE498 (City Engineer) on G

38+00

| | | | | | | | | | | |
|-------|-------|-------|-------|--------|--------|--------|-------|-------|-------|-------|
| 318.1 | 315.4 | 314.3 | 312.1 | 312.76 | 313.04 | 312.87 | 313.3 | 310.9 | 309.1 | 307.6 |
| 0.2 | 2.9 | 4.0 | 6.2 | 5.58 | 5.50 | 5.47 | 5.0 | 7.4 | 8.6 | 10.7 |
| 50 | 35 | 30 | 25 | 10 | | 10 | 16 | 25 | 35 | 50 |

37+09.33

Fd RE469 Disc on G

37+06

12" Corr. Steel
Crosses Culvert

305.09
172.5
15.6
INLET
INLET

300.79
17.0
2.3
INLET
OUTLET

37+00

| | | | | | | | | | |
|-------|-------|-------|--------|--------|--------|-------|-------|-------|-------|
| 311.2 | 309.0 | 307.8 | 307.22 | 307.99 | 307.03 | 307.3 | 301.7 | 301.0 | 299.8 |
| 7.1 | 9.3 | 12.5 | 11.2 | 10.40 | 11.31 | 11.0 | 16.6 | 17.3 | 18.5 |
| 50 | 35 | 25 | 10 | | 10 | 16 | 25 | 35 | 50 |

T.P.

11.83 318.34 T 0.18 306.51

318.34 T ✓

36+44.33

Fd RE469 Disc on G

306.69 T

Cont'd From Page 29

TP 9.40 338.63 0.34 329.23 ⁽⁴²⁺⁰⁰⁾

41+50

41+00

40+50

40+00

39+89.75 Fd Disc 45220.1 on Q

39+50

TP 11.27 329.57 π 0.04 318.30

318.34 π

LT

Q

R 30

333.9
+13 50
332.8
+42 35
333.6
+40 25
328.3
13 16
1.68 10
327.89
1.01
327.26
176 10
327.81
1.9 20
327.8
0.2 25
329.4
+13 28
330.9
+12 35
330.8
2.9 50
326.7

324.3
5.3 50
324.9
4.7 35
325.8
3.8 25
326.22
3.25 10
326.34
3.23
326.24
3.33 10
326.3
3.3 16
327.1
2.3 25
326.4
3.2 35
321.9
7.7 50

325.3
4.3 50
324.0
5.0 43
323.6
6.0 35
324.0
5.6 25
324.42
5.15 10
324.65
4.72
324.29
5.18 10
320.7
4.9 16
320.6
9.0 25
317.2
12.4 35
315.9
13.7 50

321.8
+2.2 50
327.8
1.8 35
325.1
4.5 25
323.2
6.4 22
322.56
7.0 10
322.73
6.24
322.52
7.8 10
322.7
6.9 16
317.6
12.0 25
315.3
16.3 35
312.2
17.4 50

329.6
0 50
326.5
3.1 35
323.8
5.8 25
320.7
8.7 20
320.45
9.12 10
320.66
6.91
320.44
9.13 10
320.8
8.8 16
317.9
11.7 25
313.7
15.9 35
313.2
16.4 50

329.57 π

Contd From Page 30

45+60.37 BC of Paving Fd {RE488 City Disc

45+51 30' Lt to SE Cor House

45+23 30' Lt to SW Cor. House

44+70 20 Lt of Conc Drive

T.P. 10.38 247.59T 1.42 337.21

44+00

43+04.13 Fd Disc 252236 on Q

43+00

42+00

338.63T

339.2 Lt
 8.4 8.4 8.5 8.85 8.34 8.339.34 8.338.8 9.338.3 9.338.4
 50 35 25 10 10 25 35 50
 City Disc
 TBM

340.04
 7.55 8.82 10.4 11.26 11.60 11.43 11.63 11.8 12.5 12.8
 50 35 25 20 conc 10 10 25 35 50

347.59T

347.5
 1.1 2.8 3.7 4.37 4.37 4.66 4.6 6.1 8.5 8.1
 50 35 25 10 10 18 25 35 50

328.2
 0.4 2.0 3.5 6.6 6.72 6.76 6.77 6.7 7.5 7.8 12.0
 50 35 25 18 10 10 20 25 35 50

339.6
 4.0 0 338.6 338.1 337.0 338.9 339.11 339.23 339.18 339.7 339.9 339.7 339.7 339.9 339.7 339.9 339.9
 50 35 30 25 15 10 10 22 25 30 35 50

338.63T

Cont'd From Page 31

Lt

Q

Rt

32

1700

13.0

0750

3.0

46+85.89 ^{2000 for Profile} E.L. 65th

2.1

46+60.89

Q 65th

340.3
+2.7
150

348.00
+0.41
100.52
DISC

346.25
1.34
55
CONC

344.2
3.4

343.3
1.3
50

344.2
3.4
100

46+35.89

Wly Line 65th

343.69
3.90
49
CONC

343.19
1.40
196
CONC

343.0
4.6

342.4
3.2
25

342.4
5.2
35

342.3
5.3
50

46+06.1

Q Leaves Paving

342.8
1.8
50

341.22
6.37
223

341.1
6.12

341.7
5.9
25

341.0
6.6
35

340.7
6.9
50

34759A

34759A

Cont'd From Page 32

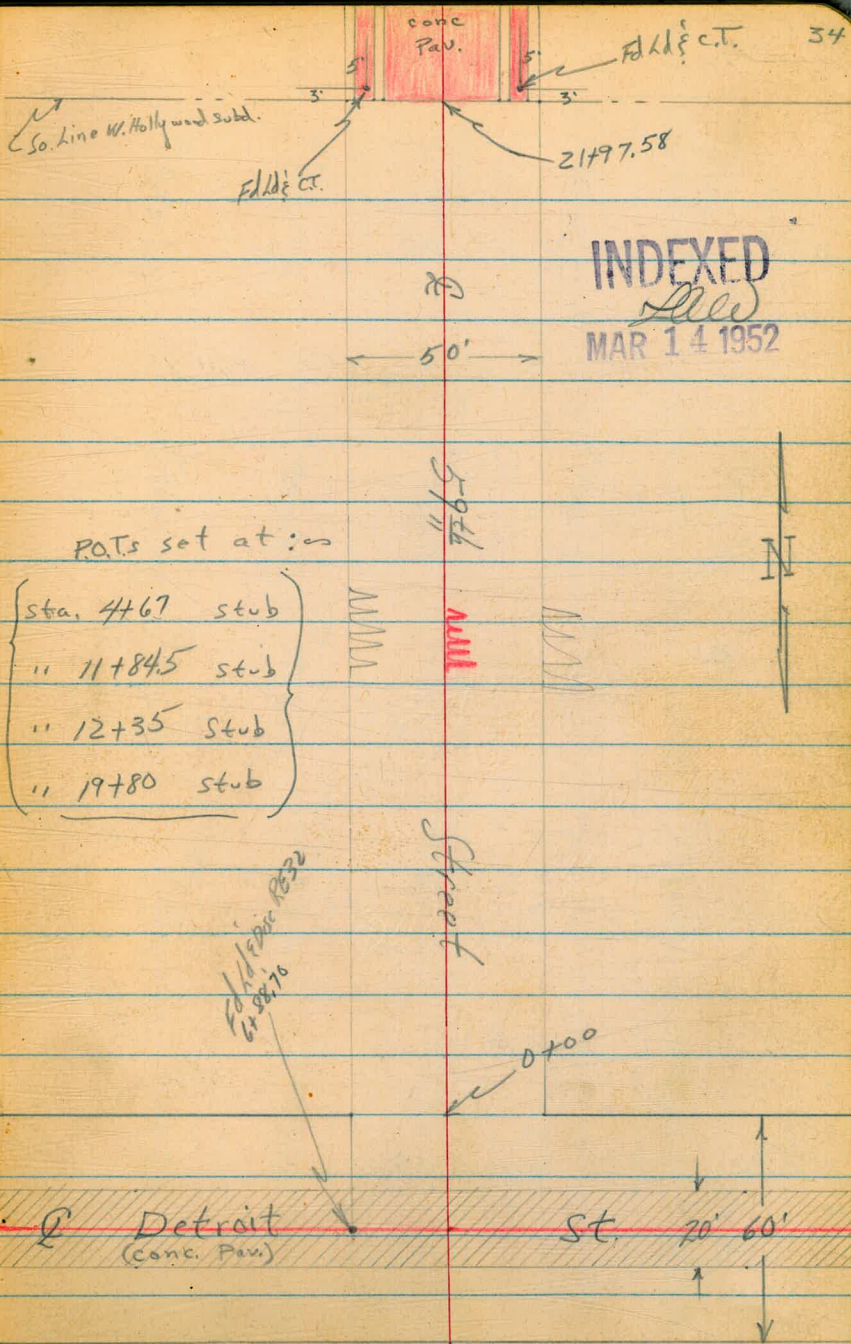
33

| | | | | | |
|-------|-------|--------|------------------------------|-----------------|---------|
| Check | | | 4.18 | 288.27 | =288.36 |
| T.P. | 6.04 | 292.45 | 1.44 | 286.41 | |
| T.P. | 11.73 | 287.85 | 0.33 | 276.12 | |
| T.P. | 12.19 | 276.25 | ^{long shot} 1.85 | 264.06 | |
| T.P. | 0.48 | 265.91 | 12.46 | 265.43 | |
| TP | 0.60 | 277.89 | 12.36 | 277.29 | |
| TP | 1.91 | 289.65 | ^{long shot} 4.41 | 287.74 | =287.79 |
| T.P. | 0.69 | 292.15 | 12.78 | 291.46 | |
| T.P. | 0.73 | 304.44 | 12.93 | 303.71 | |
| T.P. | 0.13 | 316.64 | 13.00 | 316.51 | |
| T.P. | 0.35 | 329.51 | 10.21 | 329.16 | |
| T.P. | 0.12 | 339.37 | 33.25 | Disc & Stan 454 | 60.37 |

Roberts
Cota
Whore
Pollen
3-12-52
WA 25020

X-Section 59th Street
Detroit to Balmoral

Map 1551, 159



2+00

263.0
10.3
40

262.7
10.6
25

262.9
10.4

263.0
10.3
25

263.8
9.5
40

T.P. 1145 273.30 \uparrow 0.55 261.85

273.30 \uparrow

1+50

261.2
1.2
40

260.7
1.7
25

260.4
2.0

260.8
1.6
25

261.2
1.2
40

1+00

259.2
3.2
40

258.2
4.2
25

257.6
4.8

257.1
4.7
25

258.3
4.1
40

0+50

256.9
5.5
40

255.7
6.7
25

254.7
7.7

254.3
8.1
25

254.8
7.6
40

0+15

25" Lt to 3/4" pipe RE 32

255.3
7.1
40

254.4
8.0
25

253.1
9.3

252.3
10.1
25

251.9
10.5
40

0+00

25' No. of ϵ Paving Detroit

TBM

7.88 262.40 \uparrow

254.52 Chisel cross Sta 7+00
See page 20

262.40 \uparrow

Revised 3-18-52
Plotted 4-2-52
H. Mills

Cont'd From Page 35

5+00

END PLAYGROUND

T.P.

1.75 27413T 092 272.38

4+67

POT SET STUB

4+50

4+00

(Fence back of 25' to Here)
24' RT to Fence

3+50

3+00

2+50

273.30T

L

R

R

36

264.1

10.0

68

O.P.G.

271.0

3.1

56

271.6

2.5

25

272.1

2.0

272.5

1.6

25

273.5

0.6

40

27413T

264.2

9.1

66

O.P.G.

271.3

2.0

50

271.5

1.8

25

272.9

0.9

272.5

0.8

25

272.8

0.5

40

264.2

9.1

62

O.P.G.

269.5

3.8

54

271.1

2.2

25

271.9

1.4

271.9

1.4

25

272.1

1.2

40

264.5

8.8

57

O.P.G.

269.2

4.1

50

269.5

3.8

25

270.3

3.0

270.4

2.9

25

270.4

2.9

40

264.3

7.0

56

O.P.G.

267.8

5.5

50

268.3

5.0

25

268.2

5.1

268.6

4.7

25

268.8

4.5

40

264.2

9.1

57

O.P.G.

265.1

8.2

55

265.5

7.8

25

265.5

7.9

265.5

7.8

25

266.0

7.3

40

ON
PLAYGROUND

273.30T

Cont'd From Page 36

T.P. 3.41 264.50 2.86 261.09

TOP
Street Post

7+50

T.P. 2.52 263.95 + 12.70 261.43

7+00

6+50

6+00

163' Lt to Fence
18' Rt to Fence

5+50

5+26

{ + 15' Lt. to 1 1/2" pipe RE 32
16' Lt Begin Fence

274.13 +

Lt

Rt

Rt

37

253.9
10.1
40

255.1
8.9
25

256.2
7.8

258.2
5.8
25

259.3
4.7
40

263.95

258.9
15.2
40

259.7
14.4
25

262.0
12.1

264.0
10.1
25

264.9
9.2
40

263.1
10.7
40

264.4
9.7
25

266.2
7.9

268.5
5.6
25

269.7
4.4
40

266.8
7.3
40

267.8
6.3
25

269.8
4.3

271.3
2.8
25

272.1
2.0
40

269.4
4.7
40

270.1
4.0
25

271.5
2.6

271.8
2.3
25

272.8
1.3
40

274.13 +

Contd From Page 37

10+50 21' Rt to Fence
19' Lt to Fence

T.P. 6.27 2662.1A 456 259.94

9+75

9+50

9+00

8+50

8+00

22 Rt to Fence
18' Lt to Fence

26450A

Lt

Rt

Rt

38

| | | | | |
|-------|-------|-------|-------|-------|
| 271.1 | 257.4 | 257.1 | 260.3 | 261.9 |
| 15.1 | 12.8 | 9.1 | 5.9 | 4.5 |
| 40 | 25 | | 25 | 40 |

266.21A

| | | | | |
|-------|-------|-------|-------|-------|
| 258.5 | 259.3 | 262.9 | 263.3 | 264.1 |
| 6.0 | 5.2 | 2.1 | 1.2 | 0.4 |
| 40 | 25 | | 25 | 40 |

| | | | | |
|-------|-------|-------|-------|-------|
| 258.7 | 259.6 | 262.2 | 263.8 | 264.7 |
| 5.8 | 4.9 | 2.3 | 0.7 | +0.2 |
| 40 | 25 | | 25 | 40 |

| | | | | |
|-------|-------|-------|-------|-------|
| 254.7 | 256.3 | 258.5 | 260.1 | 261.9 |
| 9.8 | 8.2 | 6.0 | 3.8 | 2.6 |
| 40 | 25 | | 25 | 40 |

| | | | | |
|-------|-------|-------|-------|-------|
| 249.2 | 251.1 | 253.9 | 256.6 | 257.2 |
| 15.3 | 13.4 | 10.6 | 7.9 | 7.3 |
| 40 | 25 | | 25 | 40 |

| | | | | |
|-------|-------|-------|-------|-------|
| 248.0 | 249.2 | 253.0 | 254.4 | 255.8 |
| 16.5 | 15.3 | 11.5 | 10.1 | 8.7 |
| 40 | 25 | | 25 | 40 |

26450A

Contd From Page 38

T.P. 0.50 243.42 12.53 242.92

13+00

T.P. 0.46 255.45 π 11.22 254.99

12+35 POT Stub Set

12+00

11+84.5 Pot Stub Set

11+50

11+00

266.21 π

Lt

Q

Rt

39

243.42

245.1
10.4
40

246.7
8.8
25

249.8
5.7

252.3
3.2
25

252.9
2.6
40

255.45 π

256.21
10.0
40

258.0
8.2
25

260.6
5.6

262.1
4.1
25

262.5
3.7
Four 0

257.8
8.4
40

260.1
6.1
25

262.4
3.7

264.3
1.9
25

265.2
1.0
Forty

257.8
8.4
40

259.9
6.3
25

262.7
3.5

264.9
1.3
25

265.3
0.9
40

257.8
10.7
40

257.0
9.2
25

260.1
6.1

262.2
4.0
25

263.6
2.6
40

266.21 π

Cont'd From Page 39

15+40

T.P.

010 206.35 \times 12.95 206.25

15+00

T.P.

1.06 219.20 \times 13.00 218.14

14+50

14+00

T.P.

0.49 231.14 \times 12.77 230.65

13+50

243.42 \times

Lt
191.1
15.3
40

192.9
14.0
25

F
193.3
13.1

194.8
11.6
25

Re
195.3
11.1
40

40

206.35 \times

204.2
15.0
40

204.2
15.0
25

206.3
12.9

207.9
11.8
25

208.4
10.8
40

219.20 \times

216.0
15.1
40

216.2
14.9
25

218.4
12.7

219.4
11.7
25

220.4
10.7
40

223.3
7.8
40

225.1
6.0
25

227.5
3.6

229.2
1.9
25

230.9
0.7
40

231.14 \times

233.3
10.1
40

234.6
8.8
25

238.0
5.4

240.2
3.2
25

241.7
1.7
40

243.42 \times

Cont'd From Page 40

17+50

17+00

16+60

T.P. 11.48 229.77A 0.13 218.49

16+20

T.P. 12.37 218.62A 0.10 206.25

15+70

Keller Coaster!

206.35A

26

28

27

41

216.6
13.4
40

218.3
11.7
25

221.3
8.7

223.6
6.4
25

224.0
6.0
40

217.1
12.6
40

218.5
11.5
25

220.6
9.4

222.0
8.0
25

222.7
7.3
40

215.1
14.9
40

216.8
13.2
25

218.6
11.4

219.1
10.9
25

219.6
10.4
40

229.97A

209.9
8.7
40

211.3
7.3
25

213.1
5.5

214.3
4.3
25

215.0
3.6
40

218.62A

200.1
6.2
40

200.4
6.0
25

203.1
3.3

204.3
2.1
25

204.4
2.0
40

206.35A

Cont'd from Page 41

20+50

20+00

19+80 POT Stub Set

19+50

19+00

T.P. 9.55 23.894K 0.58 229.39

18+50

18+00

229.97K

L2

231.3
7.6
40

231.7
7.2
25

F
231.8
7.1

R2
231.9
7.0
25

42
232.1
6.8
40

233.3
5.6
40

233.8
5.1
25

233.9
5.0

234.5
4.4
25

234.8
4.1
40

231.2
7.7
40

232.4
6.5
25

234.2
4.7

235.4
3.5
25

236.4
2.5
40

227.0
11.9
40

227.8
11.1
25

229.7
9.2

232.7
6.2
25

234.2
4.7
40

238.94K

223.5
6.5
40

224.3
5.7
25

226.2
3.8

229.0
1.0
25

230.5
1.05
40

219.6
10.4
40

221.0
9.0
25

224.1
5.9

226.6
3.4
25

227.8
2.2
40

229.97K

Cont'd. From Page 42

22+97^E

Lt

| | | | | |
|----------|------------|--------|------------|----------|
| 210.98 | 210.47 | 210.72 | 210.93 | 210.94 |
| 5.37 | 5.88 | 5.63 | 5.92 | 5.41 |
| 15 cb | 15 gutt | | 15 gutt | 15 cb |

43

T.P.

1.09 216.35 π 12.74 215.26

216.35 π

22+47^E

| | | | | |
|----------|------------|--------|------------|----------|
| 215.19 | 215.36 | 215.63 | 215.25 | 215.80 |
| 12.10 | 12.64 | 12.37 | 12.75 | 12.20 |
| 15 cb | 15 gutt | | 15 gutt | 15 cb |

22+00.58

Fd 2lect. Both sides 7 Lines

Set TBM on Easterly 5' 24' of = 7.19 - 220.81 Elev. \leftarrow

21+97^E

Begin Paving

| | | | | | | | | |
|-------------|-------------|----------|------------|--------|------------|----------|-------------|--------------|
| 220.99 | 220.79 | 220.89 | 220.41 | 220.64 | 220.31 | 220.23 | 221.03 | 221.21 |
| 7.01 | 7.21 | 7.11 | 7.59 | 7.36 | 7.63 | 7.07 | 6.97 | 6.79 |
| 225 walk | 175 walk | 15 cb | 15 gutt | | 15 gutt | 15 cb | 175 walk | 22.5 walk |

21+50

| | | | | |
|-------|-------|-------|-------|-------|
| 224.4 | 225.2 | 224.6 | 226.2 | 227.2 |
| 3.6 | 2.8 | 3.4 | 1.8 | 0.8 |
| 40 | 25 | | 25 | 40 |

T.P.

1.37 228.00 π 12.31 226.63

228.00 π

21+00

| | | | | |
|-------|-------|-------|-------|-------|
| 228.1 | 228.7 | 228.8 | 229.4 | 230.0 |
| 10.8 | 10.2 | 10.1 | 9.5 | 8.9 |
| 40 | 25 | | 25 | 40 |

238.94 π

238.94 π

Contd From Page X3

44

| | | | | | |
|-------|------|--------|-------|--------|----------|
| Check | | | 787 | 161.33 | = 161.28 |
| T.P. | 1.80 | 169.20 | 12.72 | 167.40 | |
| T.P. | 0.40 | 180.12 | 12.39 | 177.72 | |
| T.P. | 0.73 | 192.11 | 12.85 | 191.38 | |
| TP | 0.93 | 204.23 | 13.05 | 203.30 | |

B.P. East Curb of Bridge in Merlin between ^{Imperial} and Market

21635A

SURVEY East Line Lot 15 RANCHO MISSION

Mo 2006

E Survey

Stations cont P. 46

• = Set Hd + DISC.
in Conc. Paving

$23 + 18.05 = P.O.T.$ Fd. Ld + Disc. 15 = 2236 = 1687'14"

See P-51 For Final Adjusted Ties

$13 + 24.28 = P.O.T.$ Fd. Disc. RE 1534 0.79' Lt

$11 + 54.70 = P.O.T.$ Set Hub & Disc

$6 + 23.59 = P.O.T.$ Set Hub & Disc
119' Lt. RE 1534

$6 + 11.40 = P.O.T.$ Fd. 2" Iron Pipe = NE Cor. Churchward Hb

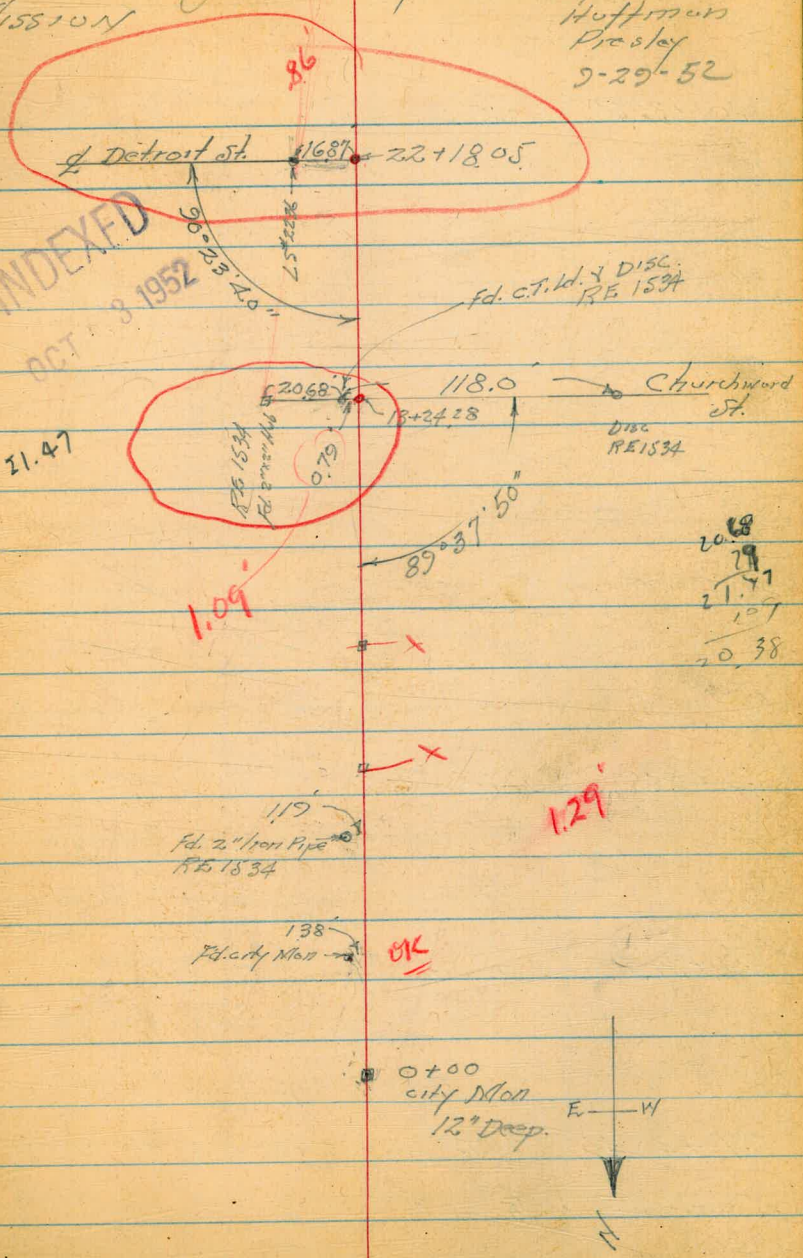
$2 + 64.72 = P.O.T.$ Fd. city Man 138' Lt

Adm'n 264'

0 + 60 Fd. Conc. Man City Engr. Fd. Pipe RE 1534 0.42' Lt

Survey

Walker 45
Pope
Huffman
Presley
9-29-52



INDEXED
OCT 8 1952

20.38
79
21.47
107
20.38

1.29'

OK



East line lot 15 RANCHO MISSION
Cont. from P-45

40 + 34.51 = P.O.T. Set Hub

(See P-51 For Final Adjusted
Tics)

29 + 87.75 = P.O.T. Set Hub

29 + 21.69 = P.O.T. Set Spike

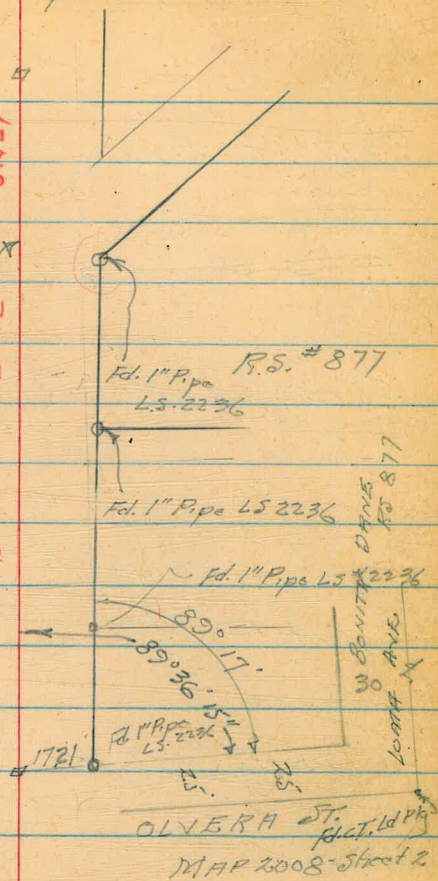
27 + 40.46 = P.O.T. Set ~~Hub~~ ^{Disc}

Cont. from P-45

Survey

46

ONLY
LINE
BASE



P.O.T.

27 + 40.46

E - W



Survey of Trash Line Lot 15 Rancho Mission
 (See P-51 For Final Adjusted Ties)

53+70.34 = Fd. C.T. Ld. Plg. at E. Cor. Lot 15 Rancho Mission

53+48.82 = P.O.T. Fd. ^{RE 46} 3/4" Pipe 39.77 ft.

51+42.84 = P.O.T. Set Hub

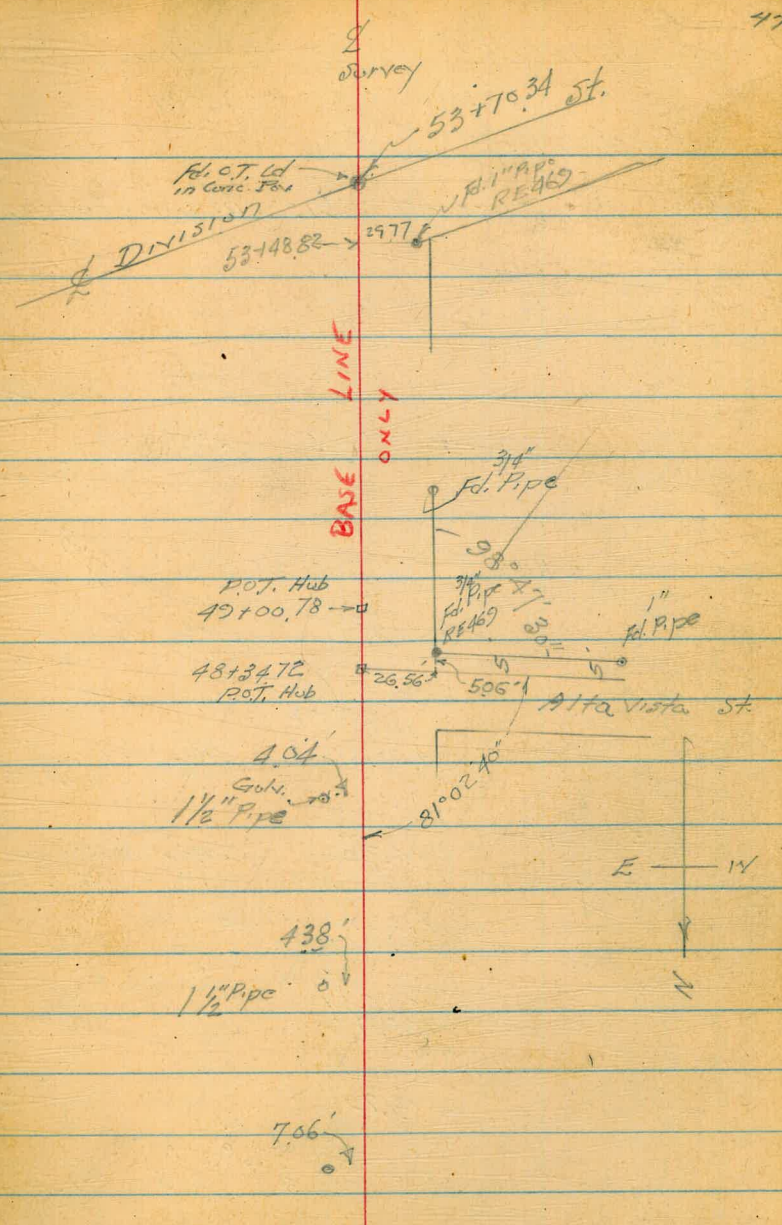
49+00.78 = P.O.T. Set Hub

48+34.72 = P.O.T. " "

46+18.46 = P.O.T. Fd. ²⁷ 1/4" Gully Pipe 4.04 ft.
~~3.94 ft.~~

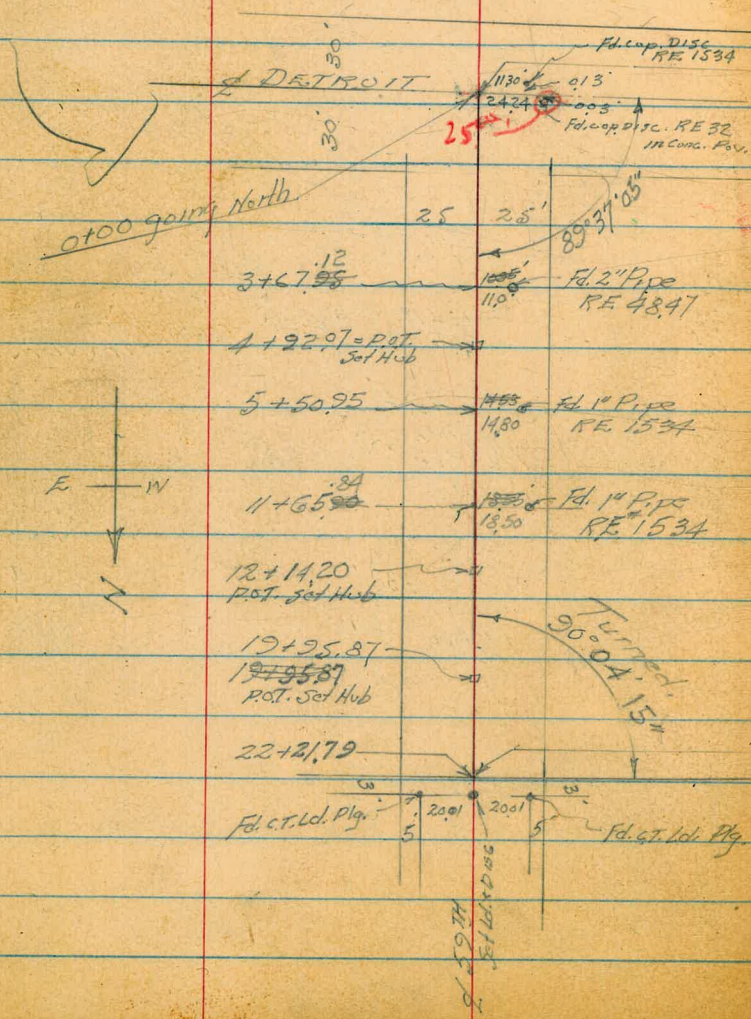
45+14.58 = P.O.T. Fd. ¹³⁹⁵ 1/2" Pipe 4.38 ft. ^{filled with concrete}

40+48.38 = P.O.T. Fd. ³¹ 1" Pipe 7.06 ft. ^{RE 32}



SURVEY TO DETERMINE LINE
OF 59TH FROM DETROIT ST
North

• Set Ld & Disc. in Conc. Paving
(see Page 51 For Final Adjusted
Ties)



INDEXED

OCT 3 1952

DIVISION

Fd. Ct. Ld. Pkg. in Conc. Pavt.
57

53+70.34
P-47

East Line Lot 15
RANCHO MISSION
SURVEY Page 45-47

Meas.
730.65
729.60
Meas.

22+18.95 P-45

LINE ONLY
BASE

Churchward
13+24.28
P-45

CHARMOLEE

Turned
89°55'00"

Meas.
729.76

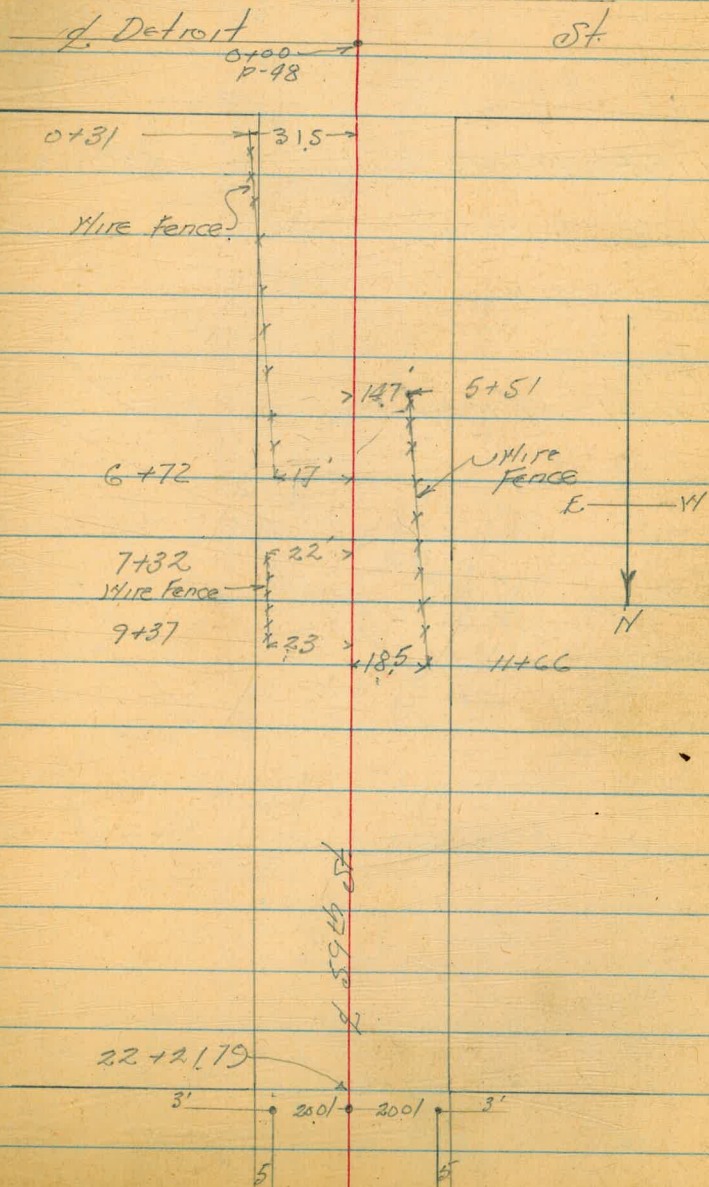
Fd. Conc. Mon

116.60
Meas Copied
from TP 12
74

0+00 P-45

Fd. city Mon
12" Deep
T.P. Book 12
74

Location Existing Fences
on 59th St. as per Survey
on Page 48



Final Ties ~ East Line Lot 15
Rancho Mission

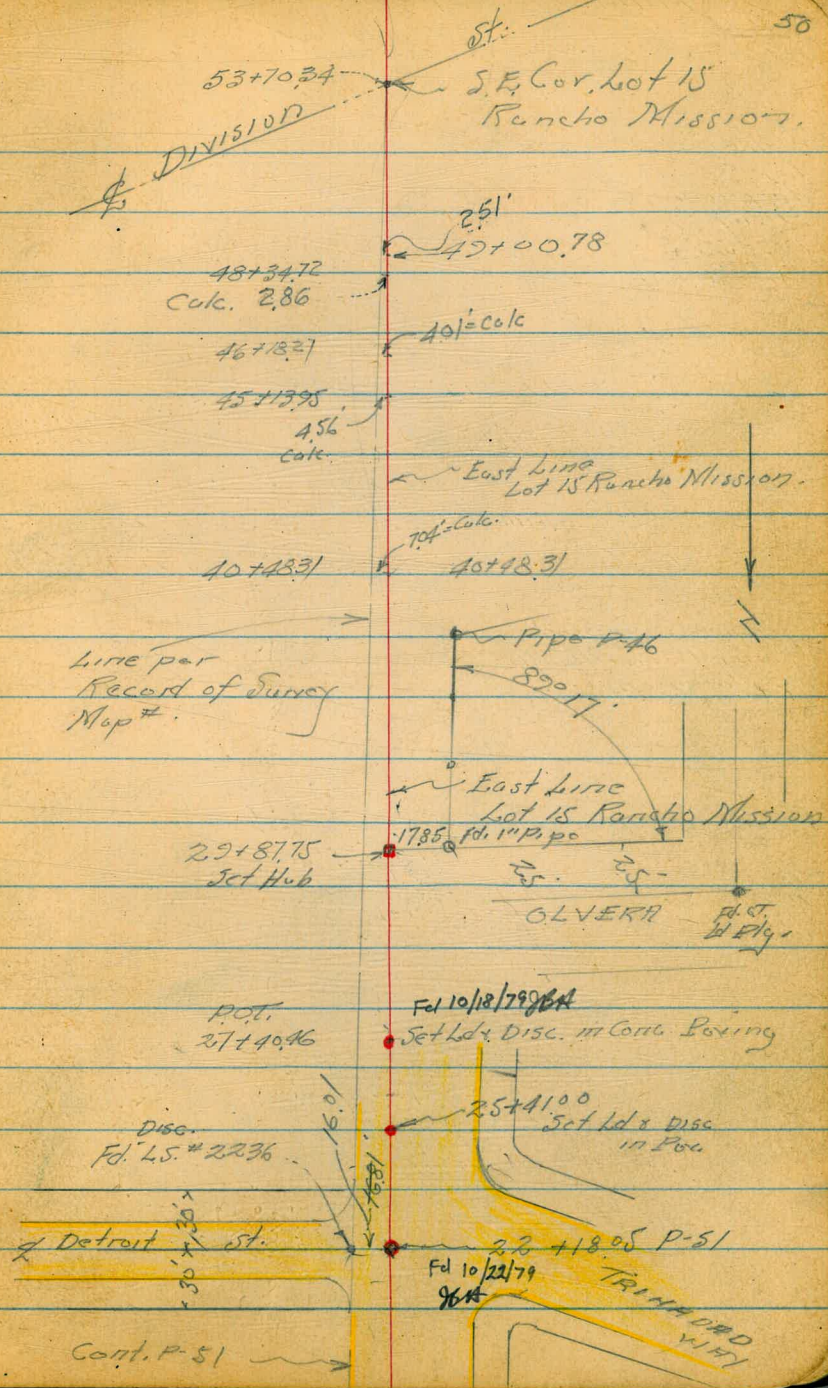
Walker
Pape
Huffman
Presley
10-9-52

46+18.27 = POT. = Fd. 1 1/2" Galv. Pipe 384 ft.

45+13.95 = POT. Fd. 1 1/2" Pipe 415 ft.

POT.
40+48.31 Fd. 1" Pipe RE. 32 670 ft.

Indexed
see pg 45



Line per
Record of Survey
Map #.

East Line
Lot 15 Rancho Mission.

East Line
Lot 15 Rancho Mission

OLVERA
P.O.
W.P.L.

Detroit St.

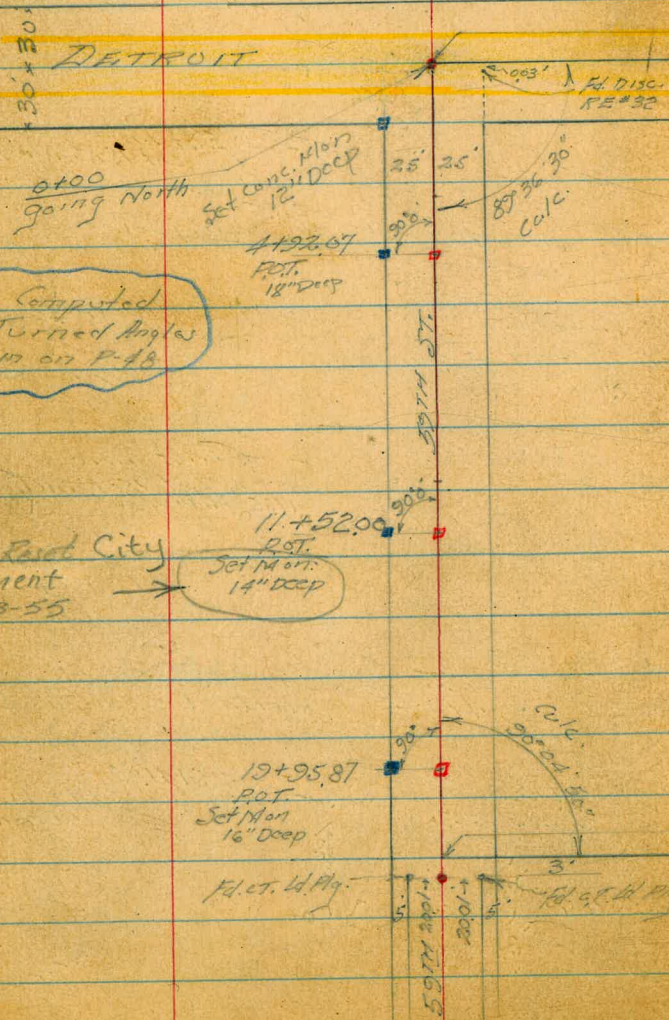
Cont. P-51

TRINIDAD
W.P.L.

FINAL Adjusted
Ties 59th, 58th,
And Detroit St.

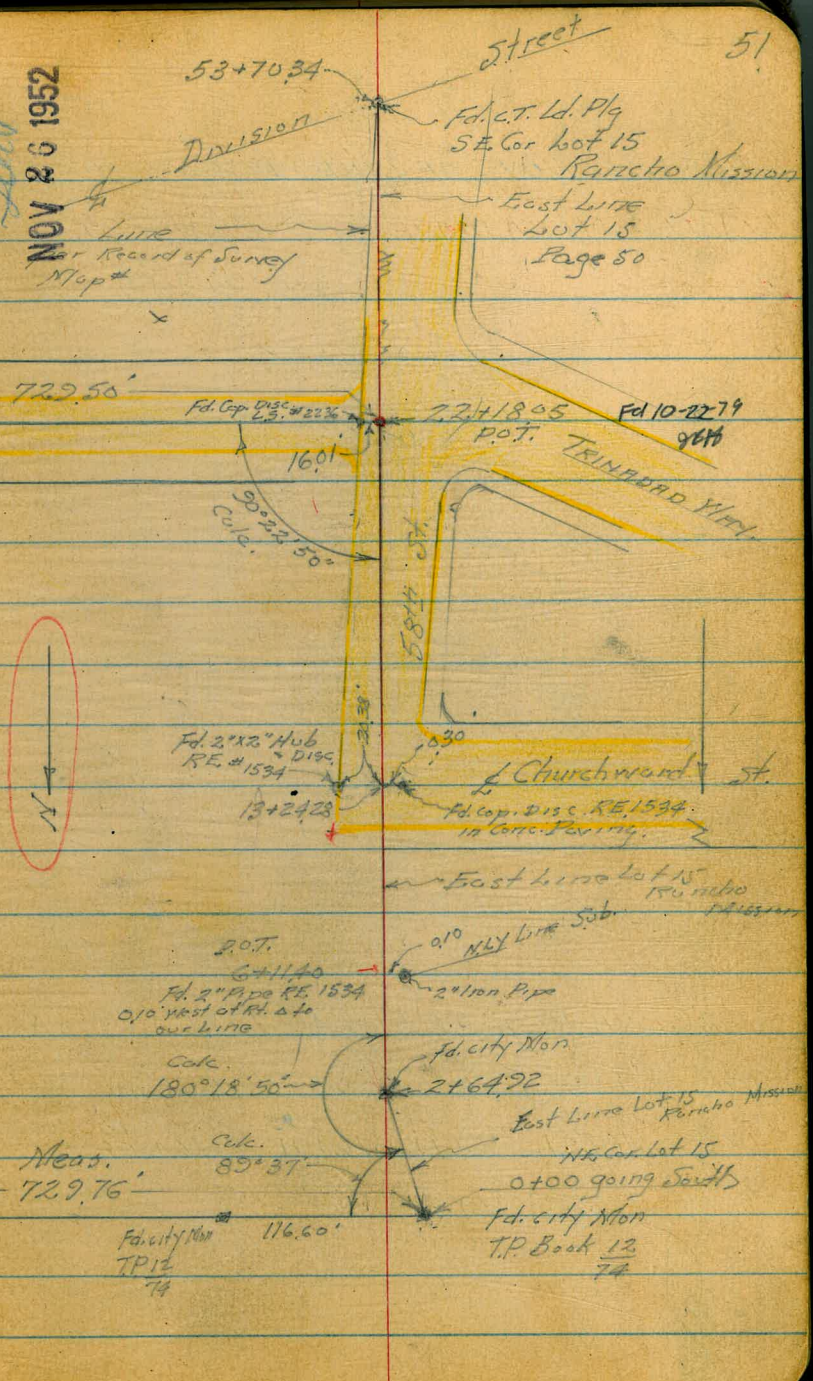
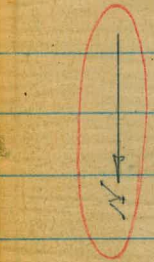
Walker
Pope
Huffman
Fresley
10-9-52
NO 20006

■ = Set Conc. Mon
● = Set Cop Disc. in Conc. Paving
○ = " 2"x2" Hub & Disc.



gone! Road City
Monument
GFR 6-33-55

NOV 26 1952



CROSS SECTIONS OF LINDA ROSA AVE
LAJOLLA MESA DRIVE TO FORWARD ST.

W.O. 31849

Soil Sample Taken @ Sta 5+50 Lt. 10'

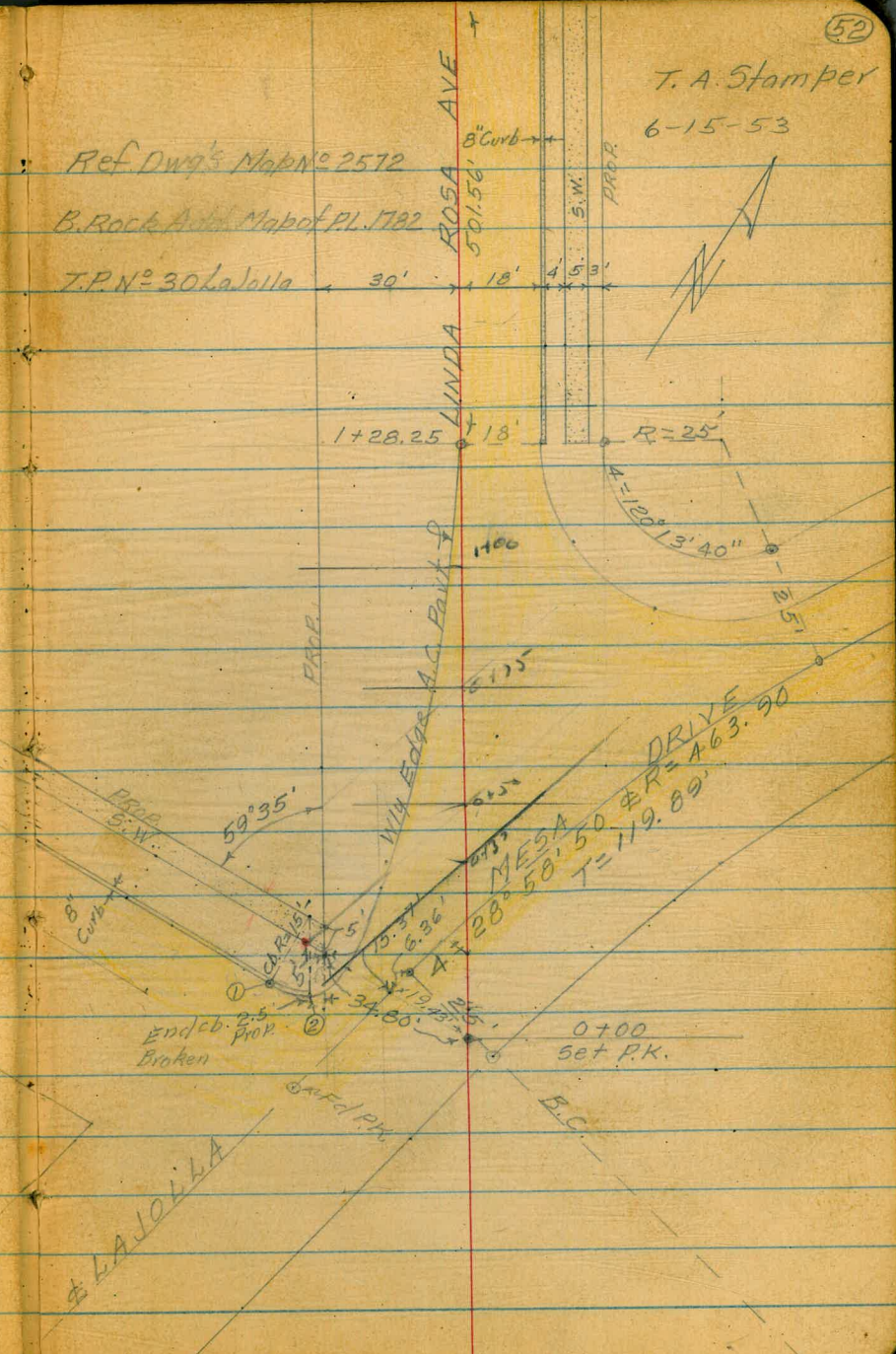
IMPROVED
Law
JUN 17 1953

NOTE!

CURB RET. COLIMA & LINDA ROSA

| Sta. | Gut | Top Cb. | Front S.W. | Back S.W. |
|------|--------|---------|------------|-----------|
| | 45 | 14 | 33 | 40 |
| ① | 163.27 | 164.11 | 164.11 | 164.06 |
| ② | 163.83 | 164.31 | | |

Ref DWG's Map No 2572
B. Rock Aerial Map of Pl. 1782
T.P.N. = 30 Lajolla



T. A. Stamper
6-15-53

X-5 SEC. B. L. LINDA ROSA AVE CONT'D.

6-15-53

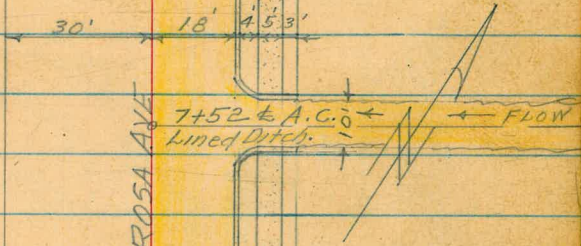
(53)

T.A. Stamper

10+47.60

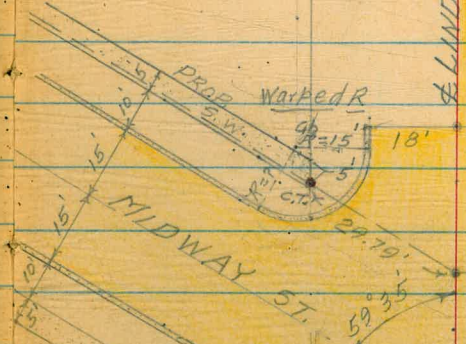


10+02



LINDA ROSA AVE

6+90



Set P.K. 6+59.60

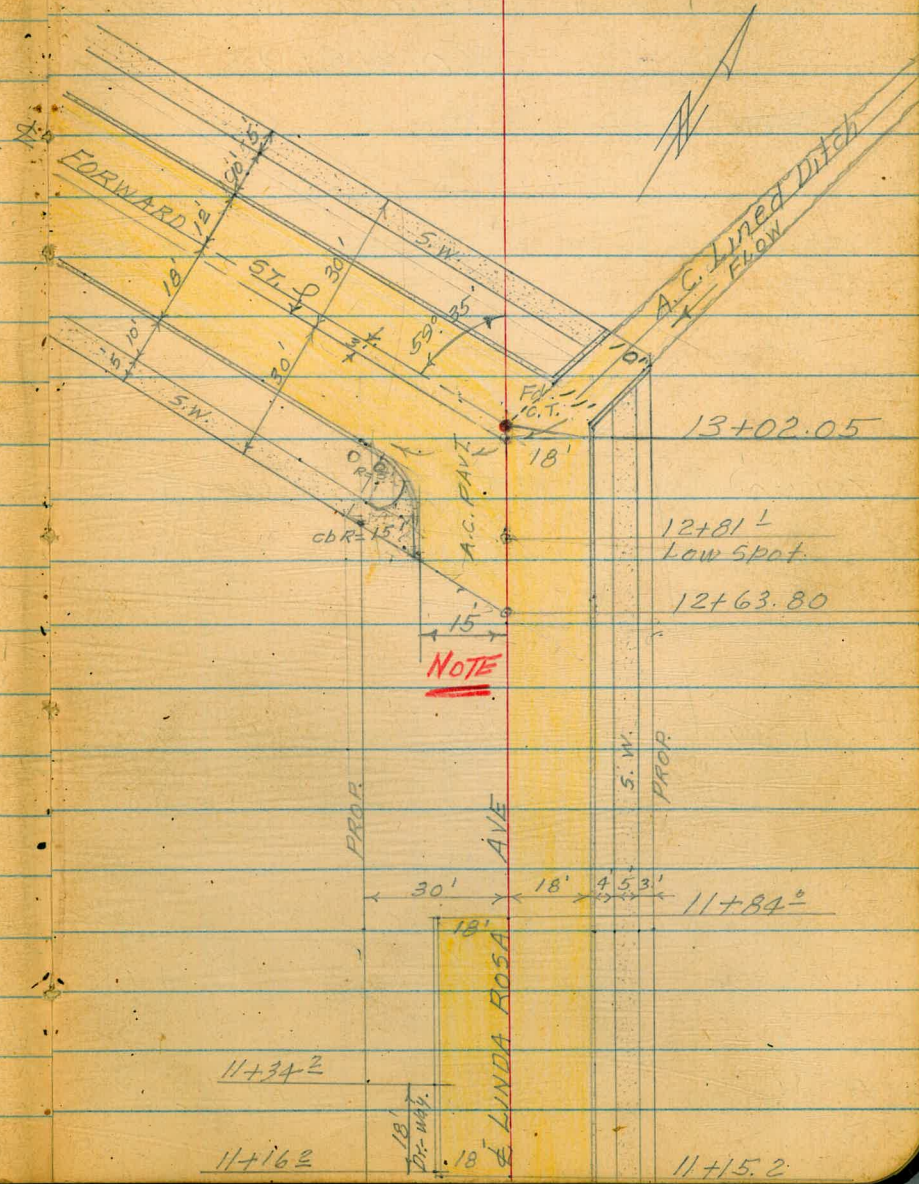
6+29.81

5+80.40

18'

X-SEC. LINDA ROSA AVE CONTD.

6-15-53



CROSS SECTIONS OF LINDA ROSA AVE
LA JOLLA MESA DRIVE TO FORWARD ST.

6-15-53

Stampert
Huffman
Shorey
Sherry

W.O. 31849

Lt. & Rt.

Sta.

Elev.

NOTE: Secs. Taken With direct Reading Rod

0+75

166.7 164.8 164.1 164.78 165.22 166.43 168.00 169.23
30 26 22 8.5 0 18 35 56

166.2
50

0+50 Begin Sec's Normal To Linda Rosa

165.9 165.6 164.4 164.83 165.73 166.80 167.48 168.05
45 30 26 15 0 16 31 55

fence Cor
@ End Wire
Begin Board fence
EP.

on point

0+37.5 Sec Normal to La Jolla Mesa Dr.

163.76 164.31 163.83 165.83 168.03 170.85
50 43.5 43.5 50 100
cb Gut
Erid

on point

0+21 Sec Normal To La Jolla Mesa Dr.

163.40 165.88 167.77 170.03
50 50 90

B.M.

147.52

N.E. C.T. Colima & Taft.

6-15-53

X-SEC'S LINDA ROSA AVE CONTD.

Lt ± Pt.

2+67 Back Line Conc. Slab
Sing-Cor Gar on Lt

158.68
36 ±

2+63 Cor Board fence + Beg. Conc. Slab To

159.32 Conc Slab
298
Top Conc Slab

2+55 ± 2.5' Conc Walk on Lt.

159.22
30 ±
Conc Walk

2+50

158.8 159.7 159.5 158.9 159.53 159.51 159.97 160.05 160.11
50 30 22 17 0 18 18 22 27
Gut cb S.W. BR.S.W.

2+36 Cor Board fence 2.5' High on Lt.

30 ±
fence cor

2+16 End Redwood fence on Lt. @ Cor.

30 ±
fence cor

2+00

161.9 161.3 161.1 160.35 160.86 160.75 161.28 161.24 161.35
30 ± 27 21 17 0 18 18 22 27
@ fence
161.3
50

6-15-53

X-SEC'S LINDA ROSA AVE CONTD.

Lt E Rt.

3+42 End Terra Cotta Tile 1' High

157.39
304 291
concr. ftg. concr. ftg.
@ Wall

3+30 E Sewer M.H. on E

157.50
Top M.H.

3+00 E 3' Stone Walk

158.37 158.1 157.5 158.13 158.07 158.59 158.65 158.68
298 20 16 0 18 18 22 27
Concr. Walk Gut ch SW BR SW
155.9 156.99
50 33
Stone Walk

R=5' Concrete Slab
2+86 E.C. Terra Cotta Tile Wall on Lt 2' High

158.70 158.69
304 292
@ Wall Concr. ftg. for
2' High Tile Wall
E.C.

2+80 B.C. Terra Cotta Tile Wall

363
B.C.

2+80 N/4 line Conc. Slab To Sing Con. Garment

158.05 158.81
363 292
Conc. Slab Conc. Slab
N/4 Edge

6-15-53

X-SECS. LINDA ROSA AVE CONTD.

Lt. C Rt.

4+00

| | | | | | | | | |
|--------|--------|--------|--------|--------|--------|--------|--------|--------|
| 155.00 | 155.95 | 156.11 | 155.84 | 155.91 | 155.82 | 156.31 | 156.36 | 156.43 |
| 35 | 298 | 17 | 14 | 0 | 18 | 18 | 22 | 27 |
| | A.C. | A.C. | A.C. | | Gut | cb | S.W. | B.S.W. |

152.35
42

3+97 Break on Ramp @ High Pt. ^{To-2-Car} Gar.

156.04
298
A.C. @ Broken Ramp
To Garage

3+91 Begin A.C. Ramp To 2-Car Gar. on Lt.

156.00
16²
Top of A.C. @
Begin Ramp

3+75 4' Conc. Walk on Lt.

153.31 156.50
343 297
Top Conc. Walk Top Conc.
@ End Conc. Slab
Steps

3+50

| | | | | | | | |
|----------|-------|-------|--------|--------|--------|---------|-------------|
| 156.82 | 157.1 | 157.1 | 156.55 | 156.92 | 156.74 | 157.34 | 157.39 |
| 30 | 295 | 20 | 16 | 0 | 18 | 18 | 22 |
| Top Wall | | | | | Gut | Dr. Way | S.W. B.S.W. |

153.0 153.6
50 30

3+42
Beginning of 6" Conc Ret. Wall on Lt

157.39
297
Top Conc Ret
Wall

6-16-53

CROSS SEC'S LINDA ROSA AVE CONT'D

H. E RT.

4+62 SWly Car Ramp @ Garage

153.25
513
conc floor
level

4+57 Nly Coy Conc Ramp To Sing Car Gar

155.23
306
Conc Ramp

4+50 Begin Conc Ramp To Sing Car Gar ^{on Lt.}

155.27 155.3 155.2 155.42 155.16 155.68 155.78 155.80
3/4 17 15 0 18 18 22 27
Conc Ramp Gut cb S.W. S.W

153.9
50

4+23 End Conc Ret. Wall on Lt. ^{6"}

155.63
299
Top Conc Wall

High pt.
4+20 Back Line A.C. To 2-Car Gar on Lt.

155.67
299
A.C. Ramp

4+16 Nly End A.C. Ramp To 2-Car Gar on Lt.

155.67
159
A.C. Ramp

T.B.M.

156.23

TOP E. cb. opp sta. 4+05 ±

6-16-53

X-SEC'S LINDA ROSA AVE CONT'D.

Lt. C Rt.

5+00 SWLY Cor 3.7' Conc Ribbon @ Gwy.

| | | | | | | | | | |
|------------------|-------------|-------|----------------------|------------------|--------|--------|--------|--------|--------|
| 151.3 | 151.6 | 151.8 | 155.10 | 154.9 | 155.12 | 154.61 | 155.15 | 155.18 | 155.16 |
| 44 | 38 | 30 | 29 1/2 | 17 | 0 | 18 | 18 | 22 | 27 |
| 150.00 | 152.02 | | Top 6" Conc Ret Wall | 152.64 | | Gut | Ch. | S.W. | S.W. |
| 75 | 44 1/8 | | | 44 1/2 | | | | | |
| Conc Floor Level | Conc Ribbon | | | Top 6" Conc Wall | | | | | |

4+92 NEly Cor 3.7' Conc Ribbon 2-Car Gar

155.17
29 1/2
Conc Ribbon

4+83 E 3.7' Conc Ribbon To 2-Car Gar

155.20
29 1/2
Conc Ribbon

@ 90°
4+74 SELY Cor 3.7' Conc Ribbon To 2-Car Gar

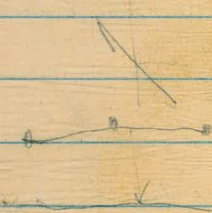
155.25
29 1/2
Conc Ribbon

4+69 NWly Cor Ramp @ Gwy.

153.19
47 3/4
Conc Floor Level

4+64 Begin 6" Conc Ret Wall on Lt.

155.31
29 1/2
Conc Wall



6-16-53

X-SEC'S LINDA ROSA AVE CONTD

LT C RT

(see sketch)
5+80.4 Sec on A.C. & Begin Cur on Lt.

155.3 154.9 154.62 154.17 154.79
31 28 18 18 0
cb. Gut

5+50

155.02 154.17 155.0 154.7 154.91 154.40 154.20 154.94 155.00
42 41 20 17 0 18 18 22 27
Top @ Conc Wall Bldg Wall C Ground 57 42 @ Bldg Ground
Gut cb S.W. S.W.

Ret.
5+46 Conc Block Lateral Wall

151.9 155.08
30 29.4
Ground Conc Wall
Flush on Rd. side.

5+44 End 6" Conc Ret Wall on Lt.

154.95
29.6
Top Conc Wall.

To 2-Car
5+12 N.W. 1/4 Cor Conc Ribbon @ Flood Gw

150.29
67.0
Conc Floor Level

5+04 ± 6.3' Conc Slab To Walk on Lt

155.08 155.14
29.3 23
Top Conc Walk Top Conc

6-16-53

X-SEC'S LINDA ROSA AVE CONTD.

Lt. & Rt.

6+50 Normal To Linda Rosa

| | | | | | | | | |
|--------|--------|-----------------------|--------|--------|--------|--------|--------|--------|
| 151.83 | 151.34 | 153.96 | 154.03 | 154.25 | 154.39 | 154.89 | 155.00 | 155.02 |
| 72° | 72° | 29° | 10 | 0 | 18 | 18 | 22 | 27 |
| cb | Gut | A.C. & conc joint. | | | Gut | cb | S.W. | S.W. |

6+47 2/3 Nly Line Midway Curb Line
Sec Normal To Midway

| | | | | | |
|--------|--------|--------|--------|-----------|------------|
| 150.74 | 150.12 | 153.09 | 152.50 | 153.20 | 154.28 |
| 73° | 75° | 43° | 43° | 34° | 0 |
| cb | Gut | cb | Gut | Edge A.C. | Begin Conc |
| | | B.C | B.C. | | |

6+29 8/1 Sec. @ P.I. Normal To Midway Wly
(see sketch)

| | | |
|--------|------------|--------|
| 151.11 | 153.95 | 154.46 |
| 75° | 34° | 0 |
| conc | Edge A.C. | M.H. |
| | Begin Conc | |

Sta 5+80.9
To E.W. Ch.

T.P.

154.62

6+13 Sec on Sly Curb Line Normal To Midway
(see sketch)

| | | | | | |
|--------|--------|--------|--------|--------|--------------------------|
| 151.05 | 150.50 | 153.02 | 152.51 | 153.79 | 154.58 |
| 85° | 85° | 60° | 60° | 34° | 0 |
| cb | Gut | cb | B.C | Gut | Edge A.C. & conc. Wly |
| | | B.C. | | | |

6+00

| | | | | | | | | |
|-------|-------|--------|--------|--------|--------|--------|--------|------|
| 155.0 | 155.0 | 154.51 | 154.02 | 154.60 | 154.93 | 155.00 | 154.99 | |
| 50 | 25 | 20° | 20° | 0 | 18 | 18 | 22 | 27 |
| | | cb | Gut | | Gut | cb | S.W. | S.W. |

6-16-53

X-SEC'S LINDA ROSA AVE CONTD.

7+62 Begin Conn Blk Wall 1.5' High

Lt. & Rt.

29 5

7+62 End 2.5 High Picket fence on Lt

29 3
fence

7+59 & Sewer Manhole on &

155.13
0
M.H

7+50

| | | | | | | | |
|-------|-------|-------|-------|--------|--------|--------------|-----------|
| 155.1 | 155.4 | 155.2 | 154.8 | 155.07 | 155.00 | 155.48 | 158.93 |
| 50 | 30 | 19 | 17 | 0 | 18 | 30 | 50 |
| | | | | | Gut | AC-Ditch | & A.C. |
| | | | | | | (see sketch) | Ditch |
| | | | | | | | 3' Deep ± |

7+00

| | | | | | | | | |
|-------|-------|-------|-------|--------|--------|--------|--------|--------|
| 154.8 | 155.0 | 155.1 | 154.5 | 154.56 | 154.57 | 155.10 | 153.14 | 155.16 |
| 40 | 31 | 19 | 16 | 0 | 18 | 18 | 22 | 27 |
| | | | | | Gut | cb | S.W. | S.W. |

6+90 Edge Curb & Part Wly Side L. Rosa (see sketch)

| | | | |
|-------|--------|--------|--------|
| 154.8 | 154.98 | 154.44 | 154.35 |
| 30 | 18 | 18 | 0 |
| cb | | | |

6+79 B.C. Curb Sec

| | | | |
|--------|--------|--------|---|
| 153.54 | 154.89 | 154.35 | 0 |
| 30 | 18 | 18 | 0 |
| cb Gut | | | |

6+80 Begin Picket fence 2.5' High on Lt

31 1/2
fence

6-16-53

X-SEC'S LINDA ROSA AVE CONTD.

Lt. & Rt.

8+02 & 4' Conc Walk on Lt

154.38 155.41
31' 29'
Conc Walk Conc Ret
Wall

8+00 NWly End Ramp 2-Car Gar @ ^{floor} Level

154.61 154.9 155.39 155.1 155.39 155.36 155.85 155.90 155.95
50' 30' 29' 15' 0' 18' 18' 22' 27'
Conc Ground Conc Wall Gut cb S.W S.W.
Floor
Level

Begin 6" Conc Ret Wall
7+88 NWly Car Conc Ramp 2-Car Gar on Lt

155.325 155.35
30' 29'
Conc Ramp Conc Ret
Wall

7+86 Conc Ramp @ floor Level

154.60
58'
Conc Floor
Level

7+75 Begin Conc Ramp To 2-Car Gar on Lt

155.16
37'
Conc Ramp

7+71 End Conc Blk Wall on Lt. 1.5 Hrb

29.6
Conc Blk
Wall

6-16-53

X-SEC'S LINDA ROSA AVE CONTD.

T.P.

157.96

TOP E. CB

9+50

| | | | | | | | | |
|-------|-------|-------|-------|--------|--------|--------|--------|--------|
| 155.9 | 156.7 | 157.1 | 156.7 | 157.20 | 157.10 | 157.60 | 157.67 | 157.71 |
| 50 | 33 | 20 | 18 | 0 | 18 | 18 | 22 | 27 |
| | | | | | Gut | cb | S.W. | S.W. |

9+00

| | | | | | | | | |
|-------|-------|--------|--------|--------|--------|--------|--------|------|
| 155.5 | 156.2 | 156.00 | 156.28 | 156.22 | 156.70 | 156.83 | 156.86 | |
| 46 | 20 | 18 | 0 | 18 | 18 | 22 | 27 | |
| | | | | | Gut | cb | S.W. | S.W. |

8+80 End Stone Walk on Lt ^{1" High} of M.H. on Rt St.

155.99
30"
End Rock
Wall M.H.

8+75 of 3' Conc Walk on Lt

155.82
27"
of Conc Walk

8+50

| | | | | | | | | |
|-------|--------|-------|-------|--------|--------|--------|--------|--------|
| 154.7 | 156.35 | 155.6 | 155.5 | 155.70 | 155.66 | 156.17 | 156.26 | 156.29 |
| 30.5 | 30 | 29 | 18 | 0 | 18 | 18 | 22 | 27 |
| | | | | | Gut | cb | S.W. | S.W. |

159.7
45

8+41 End Conc Ret Wall of Beg Stone Wall

154.4 155.79 156.45
30 29.5 Top Rock
Ground Top Conc Wall
Wall

6-16-53

X-SEC'S LINDA ROSA AVE CONTD.

10+70 & 2' Conc Walk on Lt.

Lt. & Rt.

159.17
29.8
& Conc Walk

10+50

158.4 159.1 159.3 158.6 159.17 159.11 159.63 159.71 159.77
50 30 20 18 0 18 18 22 27
Gut cb S.W. S.W.

10+97⁶ End

158.9 159.15 158.60 159.11
30 18° 18° 0
cb Gut

10+33 & 3' Conc Walk on Lt.

158.74
30
& Conc Walk

10+02 Begin Pavt on Wly Rd Sec

158.2 158.20 157.66 158.22
30 18° 18° 0
cb Gut

10+00

157.4 158.2 157.9 157.6 158.21 158.12 158.62 158.66 158.73
50 30 19 18 0 18 18 22 27
Gut cb S.W. S.W.

6-16-53

X-SEC'S LINDA ROSA AVE CONTD.

Lt. & Rt.

11+32 Nly floor level @ Sing Car Gar.

160.17
52.0
conc floor
level.

± 18' Driveway top Ct. 14' Gutter

11+25 5/4 floor level @ Sing Car Gar

160.08 161.55 161.51
56.3 18.18
conc floor on Drive Gut
level

11+15 ± Begin Part. Sec on Wly side st.

160.5 161.2 161.44 161.03 161.53
30 23 18 18 0
cb Gut.

Goes Back Parallel To Lot Lines

11+14 & Nly 2' Ribbon (Ramp) Sing Car Gar

160.38
30.0

11+08 & 5/42' conc Ribbon (Ramp) Sing Car Gar.

160.38
30.0
CONC RAMP

11+00

152.8 160.5 160.8 160.5 160.78 160.72 161.24 161.30 161.35
44 25 18 14 0 18 18 22 27
Gut cb S.W. S.W.

6-16-53

X-5EC'S LINDA ROSA AVE CONTD.

Lt. & Rt.

12+32 Break in grade

| | | | | | | | | |
|-------|-------|-------|-------|--------|--------|--------|--------|--------|
| 166.0 | 166.7 | 166.8 | 166.4 | 166.88 | 166.70 | 167.26 | 167.34 | 167.45 |
| 50 | 30 | 20 | 16 | 0 | 18 | 18 | 22 | 27 |
| | | | | | Gut | cb | S.W. | S.W. |

12+00

| | | | | | | | | |
|-------|-------|-------|-------|--------|--------|--------|--------|--------|
| 165.0 | 166.1 | 165.8 | 165.4 | 166.17 | 165.97 | 166.51 | 166.60 | 166.62 |
| 50 | 30 | 21 | 17 | 0 | 18 | 18 | 22 | 27 |

11+84 End Pavt Sec on Wly Side st

| | | | |
|-------|--------|--------|--------|
| 165.0 | 165.24 | 164.73 | 165.38 |
| 30 | 18 | 18 | 0 |
| | cb | Gut | |

T.P. 164.94

11+81 & 3' Conc Walk on Lt

164.94
29 =
& Conc Walk

Top S.W. Stall 11+81 on Wly Side Linda Rosa.

11+50

| | | | | | | | |
|-------|-------|--------|--------|--------|--------|--------|--------|
| 162.6 | 163.5 | 163.41 | 162.94 | 163.39 | 163.38 | 163.90 | 163.96 |
| 47 | 29 | 18 | 18 | 0 | 18 | 22 | 27 |
| | | cb | Gut | | Gut | S.W. | S.W. |

@
Driveway

X-SEC'S LINDA ROSA AVE CONTD

| Sta. | + | H.I. | - | Elev. |
|------|-------|---------------|--------|-----------------|
| B.M. | +0.46 | 144.96 | -7.52 | 137.44 = 137.49 |
| T.P. | + | | -10.86 | 144.50 |
| T.P. | +0.28 | 155.36 | -12.10 | 155.08 |
| | +1.18 | <u>167.18</u> | | |
| B.M. | | | | 166.00 |

Sec Normal to Forward St.
 12+81 - 5/4 Curb Line Forward St

T.A.S.
 Curb & S.W. should be changed
 NOTE: @ 5/4 Cor. Forward & Linda Rosa
 sts to Match Existing Improvements

Sec. Normal to Forward St. (see sketch)
 12+63⁰ Begin Pavt Sec on Wly Side St.

12+50

6-16-53

It € Rt.

Top S.E. Hyd. Forward & Belleview

C.T. 3' Nly € Forward St. & Linda Rosa Drive

| | | | | | |
|--------|--------|--------|--------|--------|--------|
| 163.95 | 166.09 | 165.45 | 165.68 | 166.12 | 166.67 |
| 50° | 26° | 26° | 17° | 0 | 20° |
| gut | cb | gut | gut | | gut |
| | | EC. | PI. | | |
| | | | | 164.55 | |
| | | | | 50° | |
| | | | | cb | |

| | | | | | |
|----------|--------|--------|--------|--------|--------|
| 166.38 | 166.61 | 166.14 | 166.64 | 166.98 | 167.48 |
| 37° | 17° | 17° | 0 | 21° | 21° |
| TOP S.W. | cb | gut | | gut | cb |

| | | | | | | | | |
|-------|-------|-------|-------|--------|--------|--------|--------|--------|
| 166.7 | 167.2 | 166.9 | 166.4 | 166.78 | 167.00 | 167.45 | 167.65 | 167.60 |
| 50 | 30 | 20 | 17 | 0 | 18 | 18 | 22 | 27 |
| | | | | | gut | cb | S.W. | S.W. |

INDEXED

JUN 17 1953

Roberts
Riser
Moore
Morales
6-25-55
W.D.#

Ties - Benson Place

59th to 61st

Map 159
R05 3419

All pipes found were 1" and marked RE #47 Jagger

(See pg. 51 for 59th St. Ties)

25' 25'

11+22.00
Reset Mon

10+66.95
Set Conc. Mon

12+26.70

89° 35' 30"

7+11.12
Pipe 0.12
West of Line

4+62.07
Fd City Mon

3+34.77
Pipe on Line

25' 25'

0+00
City Mon

Fd. City Disc

Lot

18

7+00 POT
Set Mon

6+13.31
Pipe on Line

Lot

17

Lot

15

Lot

14

Detroit

1248.62

See page 14 & 15

Street

3320 3320A 3330-3330A
INDEXED
JUN 29 1955
7-7-55 M.C.Q.

(70)

Sec 2093
P. 60
Fd. City

11+50

24/44

13+52.29

0+00

1250
Set. Mon.

90° 45'

25'

11+41.07
Pipe 0.03
West of Line

3+25.95
Pipe 0.12
West of Line

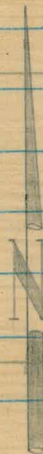
0+30
Pipe 0.05 West
of Line

0+00

Fd. City Disc

W.D.

W.D.

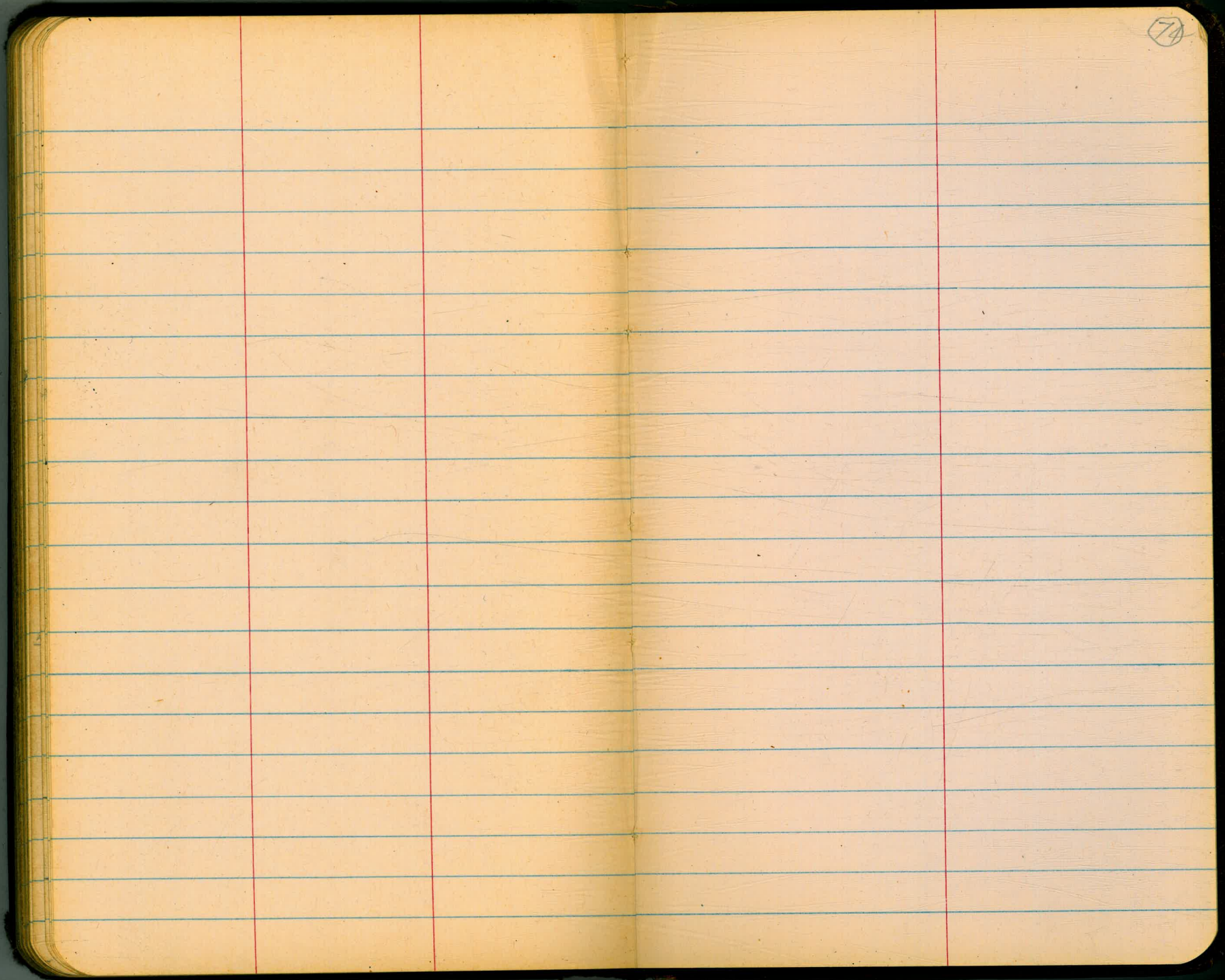


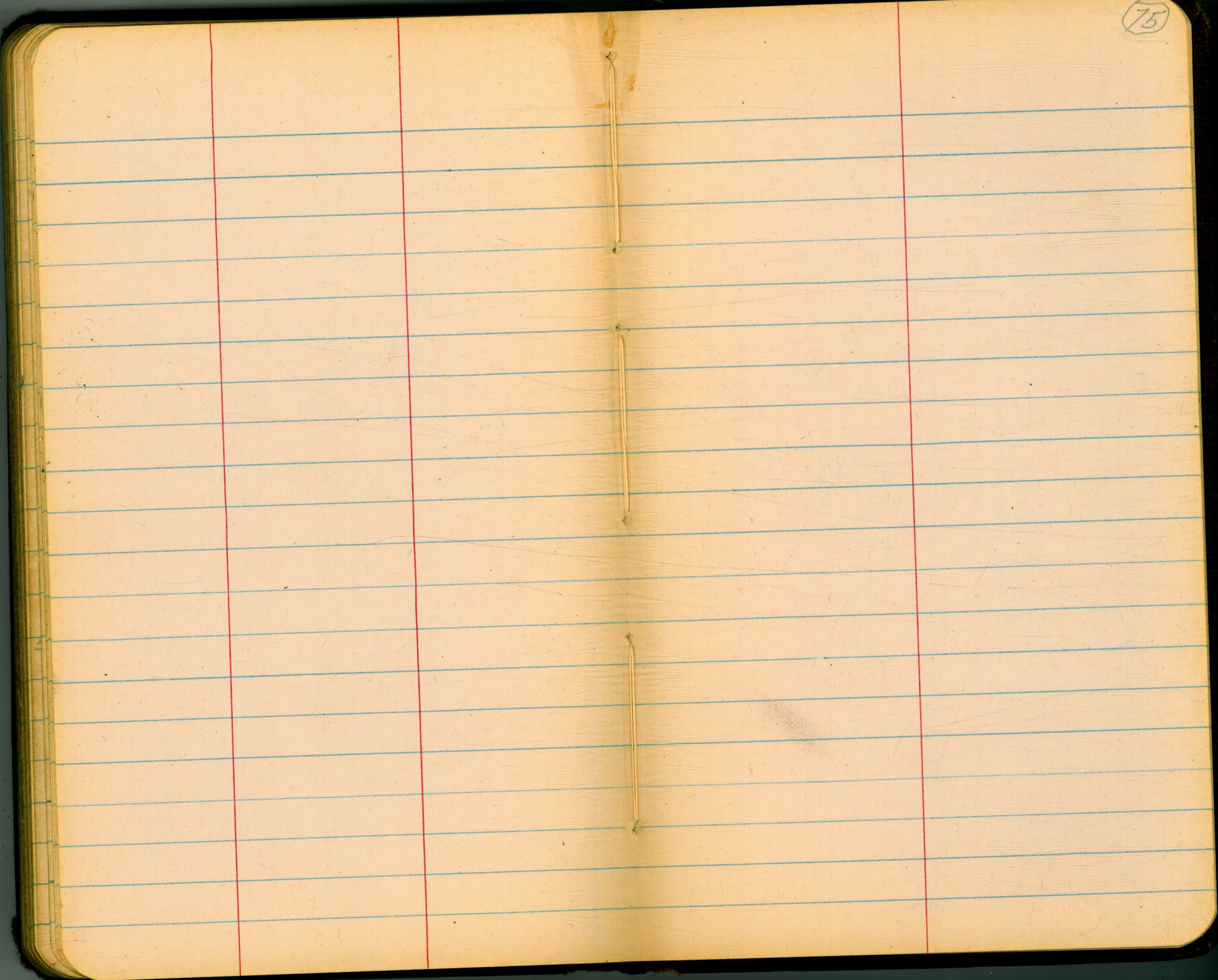
6th Street

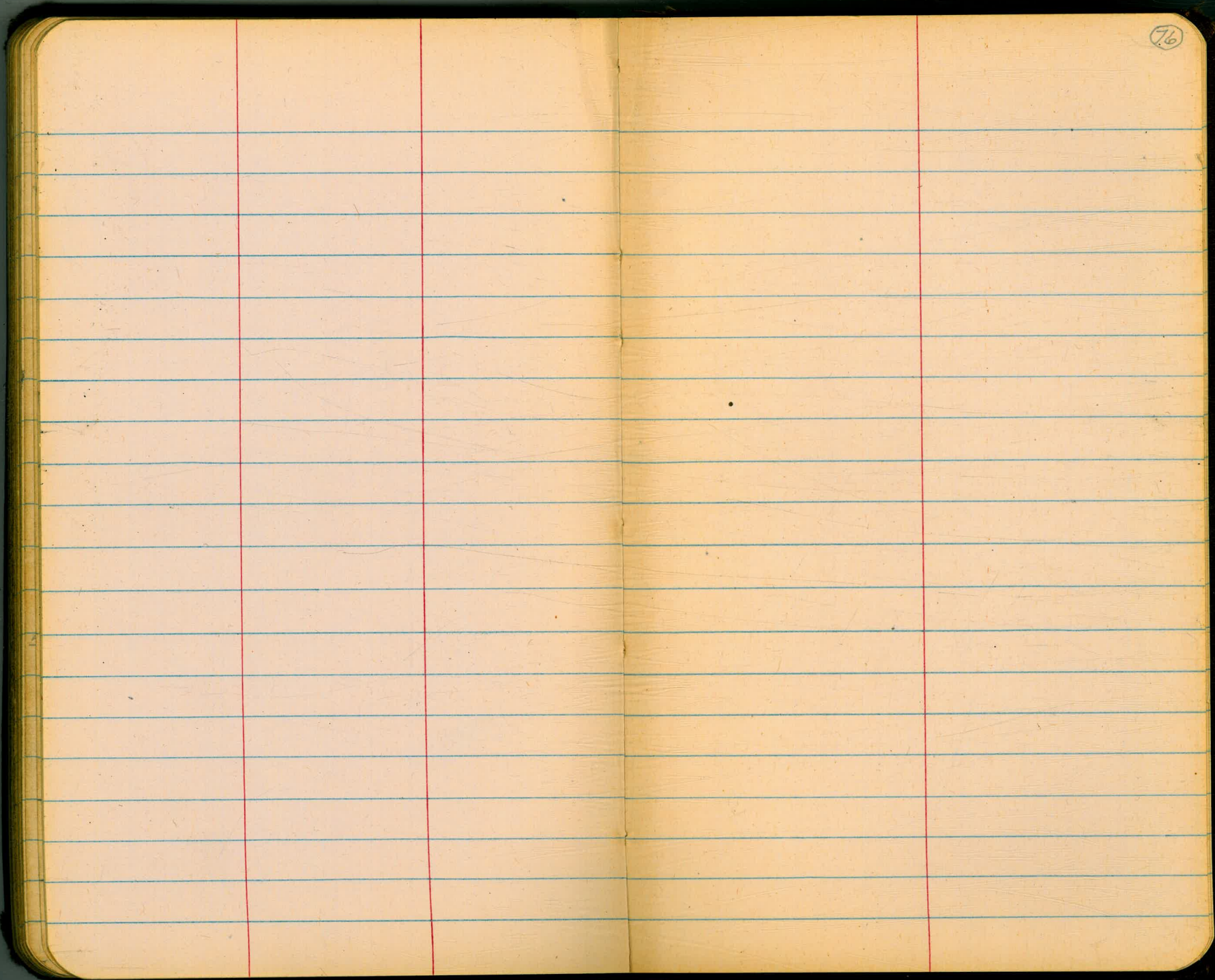
24/44

72

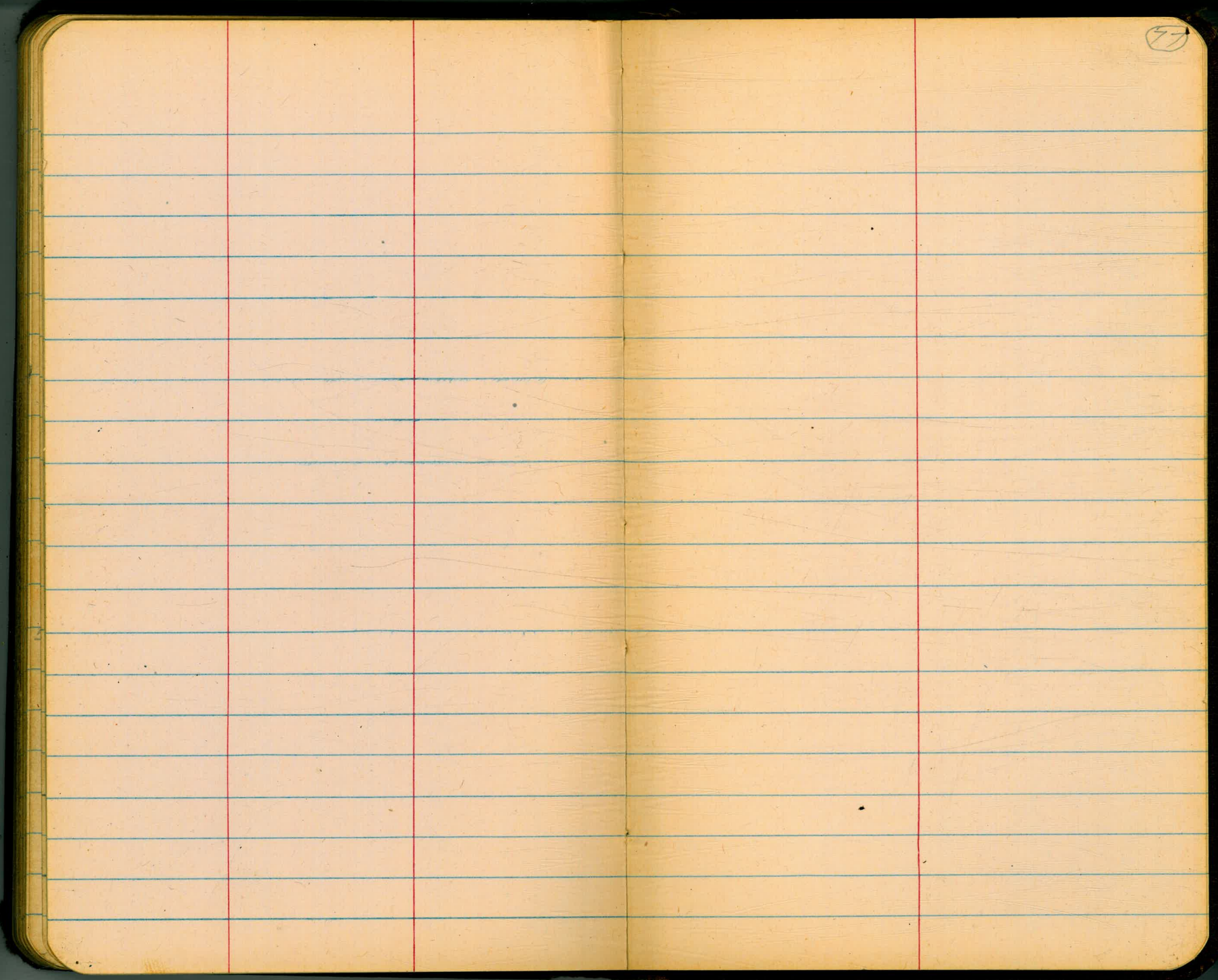
73







57



79

W.L. Patton
 179 59 60
 120 25 40
 59 34 20

N 75° 34' 10" E
 N 44 51 30 W
 120 25 40

5.12
 5.05
 4.90
 4.92

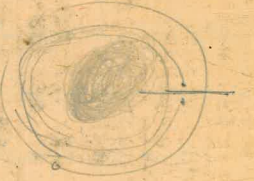
327.62
 1.08
 54

[Handwritten scribbles]

48+34.72
 46.1827
 216.45

70000
 61331
 8669

Durden
 Barbara

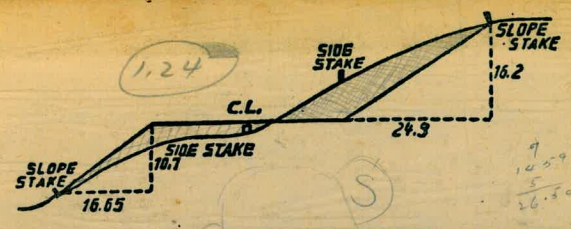


688.70
 16.87
 24.28
 72.81
 12.1428
 11+65.90
 48.30

265.44
 35
 200

613
 150
 463

7+2493 Mon = 7+25
 12+51 57 = 12+5170
 13+01 57



DISTANCES FROM SIDE STAKES FOR CROSS-SECTIONING.
 SLOPE 1 1/2 TO 1. ROADWAY OF ANY WIDTH.

| | 0 | .1 | .2 | .3 | .4 | .5 | .6 | .7 | .8 | .9 | |
|----|-------|-------|-------|-------|-------|-------|-------|-------|-------|-------|----|
| 0 | 0.00 | 0.15 | 0.30 | 0.45 | 0.60 | 0.75 | 0.90 | 1.05 | 1.20 | 1.35 | 0 |
| 1 | 1.50 | 1.65 | 1.80 | 1.95 | 2.10 | 2.25 | 2.40 | 2.55 | 2.70 | 2.85 | 1 |
| 2 | 3.00 | 3.15 | 3.30 | 3.45 | 3.60 | 3.75 | 3.90 | 4.05 | 4.20 | 4.35 | 2 |
| 3 | 4.50 | 4.65 | 4.80 | 4.95 | 5.10 | 5.25 | 5.40 | 5.55 | 5.70 | 5.85 | 3 |
| 4 | 6.00 | 6.15 | 6.30 | 6.45 | 6.60 | 6.75 | 6.90 | 7.05 | 7.20 | 7.35 | 4 |
| 5 | 7.50 | 7.65 | 7.80 | 7.95 | 8.10 | 8.25 | 8.40 | 8.55 | 8.70 | 8.85 | 5 |
| 6 | 9.00 | 9.15 | 9.30 | 9.45 | 9.60 | 9.75 | 9.90 | 10.05 | 10.20 | 10.35 | 6 |
| 7 | 10.50 | 10.65 | 10.80 | 10.95 | 11.10 | 11.25 | 11.40 | 11.55 | 11.70 | 11.85 | 7 |
| 8 | 12.00 | 12.15 | 12.30 | 12.45 | 12.60 | 12.75 | 12.90 | 13.05 | 13.20 | 13.35 | 8 |
| 9 | 13.50 | 13.65 | 13.80 | 13.95 | 14.10 | 14.25 | 14.40 | 14.55 | 14.70 | 14.85 | 9 |
| 10 | 15.00 | 15.15 | 15.30 | 15.45 | 15.60 | 15.75 | 15.90 | 16.05 | 16.20 | 16.35 | 10 |
| 11 | 16.50 | 16.65 | 16.80 | 16.95 | 17.10 | 17.25 | 17.40 | 17.55 | 17.70 | 17.85 | 11 |
| 12 | 18.00 | 18.15 | 18.30 | 18.45 | 18.60 | 18.75 | 18.90 | 19.05 | 19.20 | 19.35 | 12 |
| 13 | 19.50 | 19.65 | 19.80 | 19.95 | 20.10 | 20.25 | 20.40 | 20.55 | 20.70 | 20.85 | 13 |
| 14 | 21.00 | 21.15 | 21.30 | 21.45 | 21.60 | 21.75 | 21.90 | 22.05 | 22.20 | 22.35 | 14 |
| 15 | 22.50 | 22.65 | 22.80 | 22.95 | 23.10 | 23.25 | 23.40 | 23.55 | 23.70 | 23.85 | 15 |
| 16 | 24.00 | 24.15 | 24.30 | 24.45 | 24.60 | 24.75 | 24.90 | 25.05 | 25.20 | 25.35 | 16 |
| 17 | 25.50 | 25.65 | 25.80 | 25.95 | 26.10 | 26.25 | 26.40 | 26.55 | 26.70 | 26.85 | 17 |
| 18 | 27.00 | 27.15 | 27.30 | 27.45 | 27.60 | 27.75 | 27.90 | 28.05 | 28.20 | 28.35 | 18 |
| 19 | 28.50 | 28.65 | 28.80 | 28.95 | 29.10 | 29.25 | 29.40 | 29.55 | 29.70 | 29.85 | 19 |
| 20 | 30.00 | 30.15 | 30.30 | 30.45 | 30.60 | 30.75 | 30.90 | 31.05 | 31.20 | 31.35 | 20 |
| 21 | 31.50 | 31.65 | 31.80 | 31.95 | 32.10 | 32.25 | 32.40 | 32.55 | 32.70 | 32.85 | 21 |
| 22 | 33.00 | 33.15 | 33.30 | 33.45 | 33.60 | 33.75 | 33.90 | 34.05 | 34.20 | 34.35 | 22 |
| 23 | 34.50 | 34.65 | 34.80 | 34.95 | 35.10 | 35.25 | 35.40 | 35.55 | 35.70 | 35.85 | 23 |
| 24 | 36.00 | 36.15 | 36.30 | 36.45 | 36.60 | 36.75 | 36.90 | 37.05 | 37.20 | 37.35 | 24 |
| 25 | 37.50 | 37.65 | 37.80 | 37.95 | 38.10 | 38.25 | 38.40 | 38.55 | 38.70 | 38.85 | 25 |
| 26 | 39.00 | 39.15 | 39.30 | 39.45 | 39.60 | 39.75 | 39.90 | 40.05 | 40.20 | 40.35 | 26 |
| 27 | 40.50 | 40.65 | 40.80 | 40.95 | 41.10 | 41.25 | 41.40 | 41.55 | 41.70 | 41.85 | 27 |
| 28 | 42.00 | 42.15 | 42.30 | 42.45 | 42.60 | 42.75 | 42.90 | 43.05 | 43.20 | 43.35 | 28 |
| 29 | 43.50 | 43.65 | 43.80 | 43.95 | 44.10 | 44.25 | 44.40 | 44.55 | 44.70 | 44.85 | 29 |
| 30 | 45.00 | 45.15 | 45.30 | 45.45 | 45.60 | 45.75 | 45.90 | 46.05 | 46.20 | 46.35 | 30 |
| 31 | 46.50 | 46.65 | 46.80 | 46.95 | 47.10 | 47.25 | 47.40 | 47.55 | 47.70 | 47.85 | 31 |
| 32 | 48.00 | 48.15 | 48.30 | 48.45 | 48.60 | 48.75 | 48.90 | 49.05 | 49.20 | 49.35 | 32 |
| 33 | 49.50 | 49.65 | 49.80 | 49.95 | 50.10 | 50.25 | 50.40 | 50.55 | 50.70 | 50.85 | 33 |
| 34 | 51.00 | 51.15 | 51.30 | 51.45 | 51.60 | 51.75 | 51.90 | 52.05 | 52.20 | 52.35 | 34 |
| 35 | 52.50 | 52.65 | 52.80 | 52.95 | 53.10 | 53.25 | 53.40 | 53.55 | 53.70 | 53.85 | 35 |
| 36 | 54.00 | 54.15 | 54.30 | 54.45 | 54.60 | 54.75 | 54.90 | 55.05 | 55.20 | 55.35 | 36 |
| 37 | 55.50 | 55.65 | 55.80 | 55.95 | 56.10 | 56.25 | 56.40 | 56.55 | 56.70 | 56.85 | 37 |
| 38 | 57.00 | 57.15 | 57.30 | 57.45 | 57.60 | 57.75 | 57.90 | 58.05 | 58.20 | 58.35 | 38 |
| 39 | 58.50 | 58.65 | 58.80 | 58.95 | 59.10 | 59.25 | 59.40 | 59.55 | 59.70 | 59.85 | 39 |
| 40 | 60.00 | 60.15 | 60.30 | 60.45 | 60.60 | 60.75 | 60.90 | 61.05 | 61.20 | 61.35 | 40 |
| 41 | 61.50 | 61.65 | 61.80 | 61.95 | 62.10 | 62.25 | 62.40 | 62.55 | 62.70 | 62.85 | 41 |
| 42 | 63.00 | 63.15 | 63.30 | 63.45 | 63.60 | 63.75 | 63.90 | 64.05 | 64.20 | 64.35 | 42 |
| 43 | 64.50 | 64.65 | 64.80 | 64.95 | 65.10 | 65.25 | 65.40 | 65.55 | 65.70 | 65.85 | 43 |
| 44 | 66.00 | 66.15 | 66.30 | 66.45 | 66.60 | 66.75 | 66.90 | 67.05 | 67.20 | 67.35 | 44 |
| 45 | 67.50 | 67.65 | 67.80 | 67.95 | 68.10 | 68.25 | 68.40 | 68.55 | 68.70 | 68.85 | 45 |
| 46 | 69.00 | 69.15 | 69.30 | 69.45 | 69.60 | 69.75 | 69.90 | 70.05 | 70.20 | 70.35 | 46 |
| 47 | 70.50 | 70.65 | 70.80 | 70.95 | 71.10 | 71.20 | 71.40 | 71.55 | 71.70 | 71.85 | 47 |
| 48 | 72.00 | 72.15 | 72.30 | 72.45 | 72.60 | 72.75 | 72.90 | 73.05 | 73.20 | 73.35 | 48 |
| 49 | 73.50 | 73.65 | 73.80 | 73.95 | 74.10 | 74.25 | 74.40 | 74.55 | 74.70 | 74.85 | 49 |
| 50 | 75.00 | 75.15 | 75.30 | 75.45 | 75.60 | 75.75 | 75.90 | 76.05 | 76.20 | 76.35 | 50 |

THE NATIONAL BLANK BOOK COMPANY
 HOLYOKE MASSACHUSETTS
 NEW YORK CHICAGO BOSTON SAN FRANCISCO