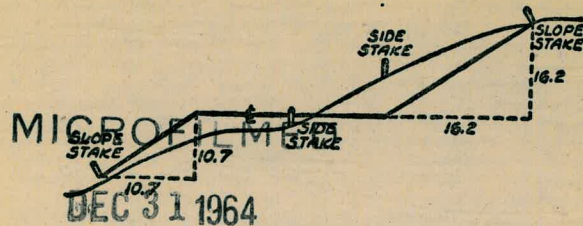


2123

2123



DISTANCES FROM SIDE STAKES FOR CROSS-SECTIONING  
SLOPE 1 TO 1. ROADWAY OF ANY WIDTH

	0	.1	.2	.3	.4	.5	.6	.7	.8	9	
0	0.00	0.10	0.20	0.30	0.40	0.50	0.60	0.70	0.80	0.90	0
1	1.00	1.10	1.20	1.30	1.40	1.50	1.60	1.70	1.80	1.90	1
2	2.00	2.10	2.20	2.30	2.40	2.50	2.60	2.70	2.80	2.90	2
3	3.00	3.10	3.20	3.30	3.40	3.50	3.60	3.70	3.80	3.90	3
4	4.00	4.10	4.20	4.30	4.40	4.50	4.60	4.70	4.80	4.90	4
5	5.00	5.10	5.20	5.30	5.40	5.50	5.60	5.70	5.80	5.90	5
6	6.00	6.10	6.20	6.30	6.40	6.50	6.60	6.70	6.80	6.90	6
7	7.00	7.10	7.20	7.30	7.40	7.50	7.60	7.70	7.80	7.90	7
8	8.00	8.10	8.20	8.30	8.40	8.50	8.60	8.70	8.80	8.90	8
9	9.00	9.10	9.20	9.30	9.40	9.50	9.60	9.70	9.80	9.90	9
10	10.00	10.10	10.20	10.30	10.40	10.50	10.60	10.70	10.80	10.90	10
11	11.00	11.10	11.20	11.30	11.40	11.50	11.60	11.70	11.80	11.90	11
12	12.00	12.10	12.20	12.30	12.40	12.50	12.60	12.70	12.80	12.90	12
13	13.00	13.10	13.20	13.30	13.40	13.50	13.60	13.70	13.80	13.90	13
14	14.00	14.10	14.20	14.30	14.40	14.50	14.60	14.70	14.80	14.90	14
15	15.00	15.10	15.20	15.30	15.40	15.50	15.60	15.70	15.80	15.90	15
16	16.00	16.10	16.20	16.30	16.40	16.50	16.60	16.70	16.80	16.90	16
17	17.00	17.10	17.20	17.30	17.40	17.50	17.60	17.70	17.80	17.90	17
18	18.00	18.10	18.20	18.30	18.40	18.50	18.60	18.70	18.80	18.90	18
19	19.00	19.10	19.20	19.30	19.40	19.50	19.60	19.70	19.80	19.90	19
20	20.00	20.10	20.20	20.30	20.40	20.50	20.60	20.70	20.80	20.90	20
21	21.00	21.10	21.20	21.30	21.40	21.50	21.60	21.70	21.80	21.90	21
22	22.00	22.10	22.20	22.30	22.40	22.50	22.60	22.70	22.80	22.90	22
23	23.00	23.10	23.20	23.30	23.40	23.50	23.60	23.70	23.80	23.90	23
24	24.00	24.10	24.20	24.30	24.40	24.50	24.60	24.70	24.80	24.90	24
25	25.00	25.10	25.20	25.30	25.40	25.50	25.60	25.70	25.80	25.90	25
26	26.00	26.10	26.20	26.30	26.40	26.50	26.60	26.70	26.80	26.90	26
27	27.00	27.10	27.20	27.30	27.40	27.50	27.60	27.70	27.80	27.90	27
28	28.00	28.10	28.20	28.30	28.40	28.50	28.60	28.70	28.80	28.90	28
29	29.00	29.10	29.20	29.30	29.40	29.50	29.60	29.70	29.80	29.90	29
30	30.00	30.10	30.20	30.30	30.40	30.50	30.60	30.70	30.80	30.90	30
31	31.00	31.10	31.20	31.30	31.40	31.50	31.60	31.70	31.80	31.90	31
32	32.00	32.10	32.20	32.30	32.40	32.50	32.60	32.70	32.80	32.90	32
33	33.00	33.10	33.20	33.30	33.40	33.50	33.60	33.70	33.80	33.90	33
34	34.00	34.10	34.20	34.30	34.40	34.50	34.60	34.70	34.80	34.90	34
35	35.00	35.10	35.20	35.30	35.40	35.50	35.60	35.70	35.80	35.90	35
36	36.00	36.10	36.20	36.30	36.40	36.50	36.60	36.70	36.80	36.90	36
37	37.00	37.10	37.20	37.30	37.40	37.50	37.60	37.70	37.80	37.90	37
38	38.00	38.10	38.20	38.30	38.40	38.50	38.60	38.70	38.80	38.90	38
39	39.00	39.10	39.20	39.30	39.40	39.50	39.60	39.70	39.80	39.90	39
40	40.00	40.10	40.20	40.30	40.40	40.50	40.60	40.70	40.80	40.90	40
41	41.00	41.10	41.20	41.30	41.40	41.50	41.60	41.70	41.80	41.90	41
42	42.00	42.10	42.20	42.30	42.40	42.50	42.60	42.70	42.80	42.90	42
43	43.00	43.10	43.20	43.30	43.40	43.50	43.60	43.70	43.80	43.90	43
44	44.00	44.10	44.20	44.30	44.40	44.50	44.60	44.70	44.80	44.90	44
45	45.00	45.10	45.20	45.30	45.40	45.50	45.60	45.70	45.80	45.90	45
46	46.00	46.10	46.20	46.30	46.40	46.50	46.60	46.70	46.80	46.90	46
47	47.00	47.10	47.20	47.30	47.40	47.50	47.60	47.70	47.80	47.90	47
48	48.00	48.10	48.20	48.30	48.40	48.50	48.60	48.70	48.80	48.90	48
49	49.00	49.10	49.20	49.30	49.40	49.50	49.60	49.70	49.80	49.90	49
50	50.00	50.10	50.20	50.30	50.40	50.50	50.60	50.70	50.80	50.90	50

Distance of slope stake from side or shoulder stake for any width roadway, slope 1 to 1. If ground is nearly level, the cut or fill at side stake is located by the double entry method in left column and top row. The number in body of table in same row and column gives distance from side stake to slope stake. If ground is not level estimate the difference in elevation between the side stake and slope stake, lower target by this amount if cut, elevate if fill. Add this amount to cut or fill and find distance in table. Set up rod at this point, and line of sight should cut target. If it does not make the slight adjustment necessary.

TABLE XIII—CORRECTIONS FOR TANGENTS AND EXTERNALS

These corrections are to be added to the approximate values, found by dividing the tangent, or external, for a 1° curve (Table VIII) by the degree of curve, in order to obtain the true tangents, or externals. Intermediate values may be obtained by interpolation.

FOR TANGENTS ADD

Central Angle	DEGREE OF CURVE													
	5°	10°	15°	20°	25°	30°	35°	40°	45°	50°	55°	60°	65°	70°
10°	.03	.06	.09	.13	.16	.19	.22	.25	.28	.31	.34	.38	.42	.46
15°	.04	.10	.14	.19	.24	.29	.34	.39	.45	.51	.53	.58	.63	.68
20°	.06	.13	.19	.26	.32	.39	.45	.51	.58	.65	.72	.79	.84	.90
25°	.08	.16	.24	.33	.40	.49	.58	.67	.75	.83	.90	.99	1.06	1.14
30°	.10	.19	.29	.39	.49	.59	.69	.79	.89	.99	1.09	1.20	1.29	1.39
35°	.11	.22	.34	.47	.58	.69	.79	.81	.92	1.04	1.29	1.42	1.54	1.66
40°	.13	.26	.40	.53	.67	.80	.93	1.06	1.20	1.34	1.49	1.64	1.79	1.94
45°	.15	.30	.44	.60	.76	.91	1.06	1.21	1.37	1.52	1.70	1.87	2.04	2.21
50°	.17	.34	.51	.68	.85	1.02	1.19	1.36	1.54	1.72	1.91	2.10	2.29	2.48
55°	.19	.38	.57	.76	.95	1.14	1.32	1.52	1.72	1.92	2.14	2.35	2.56	2.77
60°	.21	.42	.63	.84	1.05	1.27	1.49	1.71	1.94	2.17	2.38	2.60	2.83	3.07
65°	.23	.46	.69	.93	1.16	1.40	1.64	1.88	2.13	2.38	2.63	2.88	3.13	3.39
70°	.25	.51	.76	1.02	1.28	1.54	1.80	2.06	2.33	2.60	2.88	3.16	3.44	3.72
75°	.27	.56	.83	1.12	1.40	1.69	1.98	2.27	2.57	2.87	3.16	3.47	3.78	4.09
80°	.30	.61	.91	1.22	1.53	1.84	2.15	2.46	2.78	3.10	3.44	3.78	4.12	4.46
85°	.33	.66	1.00	1.33	1.68	2.02	2.36	2.70	3.05	3.40	3.77	4.14	4.55	4.89
90°	.36	.72	1.09	1.45	1.83	2.20	2.57	2.94	3.32	3.70	4.10	4.50	4.91	5.32
95°	.39	.79	1.19	1.55	2.00	2.40	2.80	3.20	3.61	4.02	4.40	4.98	5.38	5.83
100°	.43	.86	1.30	1.74	2.18	2.62	3.06	3.50	3.95	4.40	4.88	5.37	5.85	6.34
110°	.51	1.03	1.56	2.08	2.61	3.14	3.67	4.21	4.76	5.31	5.86	6.43	7.01	7.60
120°	.62	1.25	1.93	2.52	3.16	3.81	4.45	5.11	5.77	6.44	7.12	7.80	8.50	9.22

FOR EXTERNALS ADD

Central Angle	DEGREE OF CURVE													
	5°	10°	15°	20°	25°	30°	35°	40°	45°	50°	55°	60°	65°	70°
10°	.001	.003	.004	.006	.007	.008	.009	.011	.012	.014	.015	.017	.018	.020
15°	.003	.007	.010	.014	.018	.023	.027	.029	.032	.035	.039	.043	.047	.051
20°	.006	.011	.017	.022	.028	.034	.038	.045	.051	.057	.063	.070	.076	.083
25°	.009	.018	.027	.036	.046	.056	.065	.074	.083	.093	.106	.120	.127	.135
30°	.013	.025	.038	.051	.065	.078	.090	.103	.116	.129	.149	.170	.179	.188
35°	.018	.035	.054	.072	.086	.109	.131	.153	.175	.197	.213	.230	.247	.264
40°	.023	.046	.070	.093	.117	.141	.172	.203	.234	.265	.277	.290	.315	.341
45°	.030	.060	.093	.119	.153	.184	.216	.254	.289	.325	.351	.378	.411	.445
50°	.037	.075	.116	.151	.189	.227	.266	.305	.345	.384	.425	.467	.508	.550
55°	.046	.093	.142	.188	.236	.283	.332	.381	.420	.479	.530	.582	.641	.700
60°	.056	.112	.168	.225	.283	.340	.398	.457	.516	.575	.636	.697	.774	.851
65°	.067	.135	.204	.273	.343	.412	.483	.554	.625	.697	.771	.845	.922	1.01
70°	.080	.159	.240	.321	.403	.485	.568	.652	.735	.819	.906	.994	1.08	1.17
75°	.095	.182	.286	.383	.480	.578	.678	.777	.877	.977	1.07	1.18	1.29	1.39
80°	.110	.220	.332	.445	.558	.671	.787	.903	1.02	1.13	1.25	1.38	1.50	1.62
85°	.128	.259	.391	.524	.657	.790	.926	1.06	1.20	1.34	1.47	1.62	1.76	1.91
90°	.149	.299	.450	.603	.756	.910	1.07	1.22	1.38	1.54	1.70	1.87	2.03	2.20
95°	.174	.350	.522	.706	.885	1.06	1.25	1.43	1.62	1.80	1.99	2.18	2.38	2.58
100°	.200	.401	.604	.809	1.01	1.22	1.43	1.64	1.85	2.06	2.28	2.50	2.73	2.96
110°	.268	.536	.806	1.08	1.35	1.63	1.91	2.20	2.48	2.76	3.05	3.35	3.66	3.96
120°	.360	.721	1.08	1.45	1.82	2.19	2.57	2.95	3.33	3.72	4.11	4.50	4.91	5.32

Index

X-sect. Amalfi St.	2-12
X-sect. Proposed Connection from Ridgeview Rd. to Torrey Pines Rd.	13-15
X-sect. Torrey Pines Rd. from Ardath Rd. easterly.	16-18
X-sect. Calle de la Plata from Torrey Pines Rd. to Paseo del Ocaso	19-21
X-sect. La Jolla Shores Dr. from Torrey Pines Rd. to Paseo Dorado Frontage Road.	22-25
X-sec Access to Torrey Pines Road	28-39
Additional X-sec - Torrey Pines Rd	37
X-sec Alley BK 4 Frary Hts	41
X-sec " " " "	37

X-Sect. Amalfi St. from  $\Phi$   
 Prelim. shown in B. 2055 - P. 70  
 W.O. 22041 12-29-50 - 7.0.

T.P. 5.25 97.38 12.97 92.13

2+00

1+72.5+ 124 - Cor. Dr.

1+62.5 - 5' Rt. = Cor. end of C.L. Drive

1+67 - 15.5' Rt. =  $\Phi$  W.M.

1+50

1+10 - 24' - Rt. =  $\Phi$  P. pole # J.P. 1673

Begin at 0+74.99 = Int. with "h" Line

B.M. 4.75 105.10 100.38

Lt.

$\Phi$

Rt.

INDEXED  
 Law  
 JUN 19 1952

89.02	87.55	88.6	88.3	88.6	95.17	97.64	104.13	104.77
18.08	17.77	16.6	16.8	16.5	9.93	7.46	0.97	0.33
9ft.	55.4	20		6	19.8	33.2	58	68.6
	Top cb.				"C.L. Dr."	edge at	cl. brick	wall

89.82  
 15.28  
 1 - Con  
 Dr.  
 90.02  
 15.08  
 5' on Cor. Dr.

89.66	89.90	90.6	90.1	90.8	95.8	105.0	109.6
15.44	15.20	14.6	14.4	14.3	9.3	0.1	+4.5
9ft.	34	15		3	9	50	75
	Top cb.						

92.66	92.80	93.4	94.2	100.4	106.4	112.6
12.44	12.30	11.7	10.9	4.7	+1.3	+7.5
±	16	10	10	10	50	75
	9ft. in Dr.					

95.15	95.28	95.60	95.6	97.6	105.6	112.7
9.95	9.82	9.50	9.5	7.5	+0.5	+8.6
17.5	9ft.	0.8		11	37	75
$\Phi$ Rd.	Top cb.					

Nail in Pole

105.10

Lt.

Rt.

3

4+85-29 Rt. =  $\Phi$  P. pole + J.P. 1725

4+50

95.6	92.1	89.2	86.3	82.5	92.1	110.8	110.9
1.8	4.3	8.2	9.1	8.9	5.3	+13.4	+13.5
60	35	28	17	Rd.	29 Toe	55 Top	75

4+22-19 Rt. =  $\Phi$  12" Acacia

4+00

95.0	92.6	85.3	84.7	84	87.1	102.7	102.8
2.4	4.8	12.1	12.7	12.8	10.3	+5.3	+5.4
60	35	15	Rd.	3	30 Toe	57 Top	75

3+60

87.4	84.2	83.4	83.3	81.9	82.5	100.5
10.0	13.2	14.0	14.1	15.5	14.9	+3.1
50	16	Rd.	5	25	47 100	80=Top Bank

3+20 - Cont.

83.6	92.5
13.8	4.9
45	75 = on new fill

2+20-32.2 Rt. =  $\Phi$  Inlet = cb. face - 3.5' x 22" Grate.

2+93-27.5' Rt. =  $\Phi$  P. pole + J.P. 1699

95.4	85.2	82.9	82.0	82.4	82.49	82.25	82.36
12.0	12.2	13.6	14.4	15.0	14.89	15.13	14.02
50	25	15	15	29.6 = Conc. outside of Grate	32.2	32.2	32.2 Top cb.

2+80

95.6	84.5	84.4	84.2	84.2	95.2
11.8	12.9	13.0	13.2	8.2	2.2
40.9	15	8	40	75	

along  
Ramp House

2+40

86.6	87.3	86.8	86.4	84.0	85.8	104.34
10.8	10.1	10.6	11.0	3.4	1.6	+6.96
50	27	97.38	8	17	35	55.3 = edge D.A.

6+70

Goes to Inlet on S. side of Torrey Rd.

6+62-21.5 Lt. = inlet of 24" R.C. Culvert

6+62-18 Lt. = outlet of 20" Steel pipe (transversed)

6+52-32.6 Rt. = inlet of 16" wood stave Culvert

T.P. 3.17 112.74 796 109.57 =

6+35.15

T.P. 12.85 117.53 556 104.68

6+14-28.5 Rt. = P. pole # P 1751

6+00

5+57.95 = Ang. 28° 26' Lt. = Sect on split.

T.P. 13.19 110.24 0.33 97.05

5+00

Lt.

Rt.

Rt.

4

96.7	98.1	105.1	106.4	106.7	107.8	107.8	109.0
16.0	14.6	6.8	6.3	6.0	4.9	4.9	3.7
50	16	3	4	2.2	40	75	

96.33

17.41

21.5 = I.E.

Conc. Pipe

96.66

16.08  
18" I.E. steel Pipe

103.87

8.87  
32.6 = I.E. of Pipe

Nail in Pole P-1751 112.74

99.6	103.7	104.6	104.7	105.4	106.5	112.3	116.5
17.9	13.8	12.9	12.8	12.1	11.0	5.2	1.0
50	25	3	rd.	15	30	50	75

on Mon. 6+35.15 117.53

98.8	100.2	100.7	101.4	111.6	110.0	121.9	126.9
11.4	10.0	9.5	8.8	8.6	0.2	+11.7	+16.7
75	50	30	16	rd.	12	50	75

96.5	96.9	97.4	97.8	97.4	98.1	105.11	113.4	122.9
11.7	11.3	12.4	12.4	12.8	12.1	5.13	+3.2	+12.7
75	50	42	32	13	8	on Hub.	30	60

98.6	97.0	93.5	93.2	92.9	92.2	93.7	101.3	111.3	111.6
+1.2	+0.4	+3.9	4.2	4.5	4.2	3.7	+3.9	+13.9	+14.2
65	45	35	24	5	rd.	6	27	45	75

97.38

8+00  
Beg. Rough Rock + oil Pavement in Rd. way.

15.5 Lt. = end wall at Gar.

7+94 - 12.3 Lt. = Beg. Conc. Apron

7+88 - 14' Lt. =  $\pm$  8" Acacia

7+78 - 11.6 Lt. =  $\pm$  12" Euc.

7+65

7+64 - 11.4 Lt. =  $\pm$  4" Cypress

7+62 - 10.5' Lt. = end Conc. Slab.

15.7 Lt. = end fence + Beg. 6" Conc. wall .6 high

7+50.4 - 10.6 Lt. = Beg. Conc. Slab.

7+25

T.P. 12.73 125.07 040 112.34

7+05.5 - 7' Lt. =  $\pm$  2" Acacia

7+01 - 15.2' Lt. = Beg. Lattice fence

7+00

6+75.5 - 35.2 Rt. =  $\pm$  P. pole # P 1757

Lt.

Rt.

Rt.

5

Lt.	Rt.	Rt.	5
120.34	120.03	120.3	119.9
4.73	5.04	4.8	5.2
16.4	12.2	12	22
floor	edge	Rd.	40
Gar.	apron		75
(door)	5.25	12.3 = Cor.	
	15.5	apron	
	119.82		
	120.83		
	119.7	118.2	117.7
	112.9	123.61	126.5
	1.46	7.4	6.9
	16.1	15.6 = Top	7.4
	on Patio	wall	14
	Conc. Slab.	at wall	28
	117.32		50
	7.75		75
	15.6		
	Slab at		
	wall		
	117.14		
	10.5 = Cor.		
	Slab.		
	7.93		
	15.7		
	Slab at		
	wall		
	117.04		
	8.03		
	10.6 = Cor.		
	Slab.		
	111.5		
	113.0		
	113.0		
	112.9		
	123.8		
	131.8		
	13.6		
	12.1		
	12.1		
	12.2		
	13		
	25		
	15.7		
	fence		
	125.07		
	119.9		
	123.8		
	131.8		
	112.24		
	97.9		
	103.0		
	109.5		
	110.2		
	110.0		
	110.3		
	110.7		
	119.9		
	122.2		
	14.8		
	9.7		
	3.2		
	2.5		
	2.7		
	2.4		
	2.0		
	7.2		
	50		
	30		
	15		
	5		
	Rd.		
	23		
	32		
	50		
	75		

9+55-18.5 Rt. = ± Sing. Gar. Conc floor

118.0	120.6	121.4	122.0	121.9	123.6	126.54	130.32
13.1	5.5	4.7	4.1	4.2	2.5	+0.41	4.19
50	20	10	Rd.	8	17.4	17.4	18.5 floor
					Top	30	132.7
					124.8	126.53	
					1.3	+0.40	
					17.5	17.5	
					ground		

9+50

9+49 - 11.8 Rt. = ± P. pole #P1891

17.5 Rt. = Beg. 6" Conc wall - ends at Gar.

9+46 - 14.5 Rt. = ± 6" Tree

T.P.

3.18 .126.13 2.12 122.95 = val in pole #P1891

9+15.19 = Ang. 22° 33' 30" Lt. Sect. on split

107.4	110.6	120.6	121.9	122.10	131.5	134.4
17.7	14.5	4.5	3.2	2.97	+6.4	+9.3
60	45	24	15	Rd. on Hub.	20	35

8+85

118.0	116.5	121.2	121.7	122.1	122.4	127.6	135.2
12.1	8.6	3.9	3.4	3.0	2.7	+2.5	+10.1
50	30	20	10	Rd.	10	20	50

8+50

8+27 - 13.6 Lt. = ± 1/2 prop. pipe - RE 1534

8+20.5 = 15.6 Lt = Cor. Gar. + wly. of 3' Conc. walk

2' of planting at end of apron

8+17.5 = 12.8 Lt = end Conc. apron

110.1	114.0	120.4	121.0	121.4	121.4	126.2	132.5	139.0
15.0	11.1	4.7	4.1	3.7	3.7	+1.1	+7.4	+13.9
50	30	16	10	Rd.	12	25	50	75
					120.21	4.86		
					120.32	15.6 = on walk at Cor.		
					4.75	4.68		
					Floor 15.7 =	12.8 = apron	125.07	



10 + 47.2 =  $\Phi$  10' Conc. walk + steps Thru wall

10 + 39 - 14.1' Lt. = end apron

10 + 34 - 11.2 Rt. = end apron

10 + 31 - 15.6 Rt. = Beg. 6" Conc. wall - 3.8 planting bed along wall

10 + 19 - 13.5 Lt. = Beg. Conc. apron to Doub. Gar.

+ Beg. apron  
10 + 16.5 = end of cb. + end wall at Gar.

10 + 01 - 24.3 - Lt. =  $\Phi$  6" Acacia

10 + 00 - 20.5 Lt. =  $\Phi$  6" Acacia

9 + 91.5 - 16.5' Lt. =  $\Phi$  3' Conc. slab + steps

9 + 79.5 =  $\Phi$  6" Conc. walk + steps Thru wall

9 + 63 - 10.9 Rt. = Ang. in cb. (normal to Rd. from Here)

9 + 61 - 15.2 Rt. = Beg. 6" cb.

9 + 60.2 - 16.6 Rt. = Beg. 6" Conc. wall - Bottom of Series of Terrace walls

Lt.  $\Phi$  Rt.  $\Phi$

120.41  
5.72  
11  
walk  
120.91  
5.22  
14.9  
Bottom  
+ steps  
123.79  
2.34  
20  
on steps

119.94  
6.19  
17.2  
floor  
119.96  
6.17  
14.1 = Cor.  
apron

120.38

5.75

121.19  
4.94  
15.6 = Cor. wall  
on apron  
11.2 = Cor.  
127.29  
+1.16  
15.6  
Top Wall  
120.23  
4.60  
18.5  
at Cor.  
Gar.

119.94  
6.19  
17.8  
floor Gar.  
120.62  
5.51  
13.8 = Cor.  
apron

5.03  
11.3  
Top end  
cb.  
5.52  
11.3  
conc.  
apron  
4.64  
15.4  
Cor. =  
Gar.  
floor.  
18.3  
end  
wall

115.6  
10.5  
40  
118.0  
8.1  
25  
120.4  
5.7  
17  
120.8  
5.3  
11  
121.2  
4.9  
Rd  
120.8  
5.3  
11  
got.  
121.96  
4.77  
Top  
cb.  
121.7  
4.4  
17.7  
Top  
Wall  
126.58  
+0.45  
17.7

118.97  
7.16  
22.6  
end  
steps  
120.51  
5.32  
16.5 =  
Top

121.20  
4.93  
11. = walk  
in Dr.  
121.68  
4.45  
15.8 =  
Bot. of  
steps  
123.17  
2.96  
17.7 = Top  
steps =  
Landing

121.91  
4.22  
10.9  
Top  
cb.  
122.06  
4.07 = Top cb.  
15.2

121.8  
4.3  
16.6  
ground  
126.63  
+0.50  
16.6  
Top  
wall

126.13

Lt.

E

Rt.

8

11+60

117.75

7.81

Top  
Top

117.11

8.45

28.3  
9.4

119.57

5.99

15

121.39

4.17

121.55

4.01

10.2  
9.4

122.08

3.48

Top

11 + 48.5 - 14.8 Rt. = Beg. cb. on Rt.

116.05

9.51

35.9  
Top

115.62

9.94

35.9  
9.4

116.39

7.17

20

119.92

5.64

10

120.88

4.68

121.26

4.30

14.8  
9.4

121.53

4.03

14.8  
Top

125.6

0.0

5.0  
Ely. of  
Dr.

11+22 - 15' Rt. = wly of Cold bay Dr. up Sierra Madre

116.53

9.03

30

118.01

7.55

20

119.20

6.36

10

120.16

5.40

120.63

4.93

15'  
edge

122.5

3.1

30

124.9

0.7

50

Back Tang. Produced ahead - for following sections

11+07 - in Cross gutter

116.7

8.9

30

117.12

8.44

20

118.43

7.13

10

119.36

6.20

120.00

5.56

11.0  
edge

122.1

3.5

25

124.3

1.3

50

10+98 - 11.8' Rt. = Pole # P7825

16' Rt. = end wall

10+96 - 14' Rt. = 48" Palm

112.4

13.2

50

115.6

10.0

30

118.4

7.2

20

119.28

6.28

10

119.97

5.59

edge

119.87

5.69

11.7  
edge

120.1

5.5

15.8

126.48

+0.92

15.8  
Top  
wall

T.P.

1.42

125.56

1.99

124.14 = spike

in Pole - S.E. Cor.

125.56

118.5

12.6

40

115.2

10.9

25

119.7

6.4

14

120.1

6.0

10

120.4

5.7

10

120.39

5.74

11 =  
edge Conc.

120.7

5.4

15.9

126.87

+0.74 = Top  
wall

at wall

10+50

12.6

10.9

6.4

6.0

5.7

5.74

5.4

+0.74 = Top  
wall

at wall

12+10

107.77	107.09	107.78	108.30	108.24	108.90
5.22	5.90	5.21	4.69	4.75	4.09
Top	14.4	7		15.7	Top
	gut.			gut.	

11+85 = P.C. Ret. on Rt

110.84	109.73	110.63	111.20	111.23	111.79
2.65	3.26	2.36	1.79	1.76	1.20
Top	14.4	6		15.6	Top-PC
	gut.			gut.	

T.P. 0.44 112.99 13.01 112.55

113.51	111.98	113.65	112.99	114.44	114.85	114.94	115.47
12.05	13.58	11.91	12.57	11.12	10.71	10.62	10.09
14.5	13.6	11.8	11.8		10	26.2	Top
top-end	I.E	Top	Pave			gut.	
cb.	pipe	Head wall					

6" Conc. Headwall - inlet Covererd. + Beg. cb.  
 11+58.5 - 13.6 Lt. = outlet of 18" R.C. Pipe in

11+35

116.4	117.08	116.59	117.58	118.19	118.76
9.2	8.48	8.97	7.98	7.37	6.80
30	10.6	8.5	15	30	
	edge	CL gutter			
	C.L.				

11+12.97 = Ang. 79° 30' Lt.  
 Begin Sections along E of Hillside Dr.

11+05 = end. of Sections on This tang.

123.92	123.27	124.68	125.61	125.66	126.23
1.64	2.29	0.88	+0.05	+0.10	+0.67
Top	9.8		10	22.2	Top
	gut.			gut.	

11+75

119.81	119.22	121.20	122.35	122.51	123.12
5.75	6.34	4.36	3.21	3.05	2.44
Top	22.1	10		11.4	Top
	gut.			gut.	

125.56

13+02.5 = 9.6 Lt. ctr of 2.2x2.2 GAS grate

12+98

15.0 Lt.

12+96.5 = west end of CURB Inlet

= 15.4 Rt.

12+93.5 ctr of 2.2x2.4 grate also 18" corr. pipe To opposite Inlet

= 14.7 Lt.

12+93 East end of 2.2x3.5 Iron grate break in also P.C. CURB.

= 14.6 Lt.

12+82.5 EAST end of CURB Inlet

12+75

7.53 96.28

T.P. 3.81 103.81 12.99 100.00

12+50

Lt

Rt

Rt 10

97.33

6.48

9.6

98.25

98.03

97.90

98.09

98.11

98.10

98.66

5.56 5.78 5.91 5.72 5.70 5.71 5.15  
Top curb 15.3 8 8 15.4 top curb  
gut. gut.

98.59

98.11

5.12 5.70

top 15.0  
gut.

98.20

99.04

96.41

5.53 4.77 7.40  
15.4 Top flow  
gut. 18" corr. pipe

97.88

98.16

97.60

10.93 5.05 6.13  
flow line of top 14.7  
box gut.

98.82

98.82

3.99 4.99

top 14.6  
gut.

100.68

99.93

100.42

100.70

100.41

101.06

3.13 3.88 3.39 3.11 3.40 2.75  
Top 14.5 8 15.7 TOP  
gut.

103.81

= N.W B.P VIKING WAY & TORREY PINES Rd. ✓

= Nail in Pole

N.W. Cor.

102.29

102.80

103.29

103.62

103.42

104.06

9.70 10.19 9.70 9.37 9.57 8.93  
Top 14.4 7 15.8 TOP  
gut.

112.99

14+70 = 14.9 Rt. E of 26.0 conc. drive

87.71 88.47  
5.53 4.87  
14.9 19.7  
gut. curb edge of walk

14+40

91.11 89.64 89.85 90.32  
3.19 3.66 3.45 2.98 3.53 3.65 3.02  
Top Curb 15.0 12.0 12.2 15.2 Top  
gut. conc. st. gut

T.P. 1.24 93.30 11.75 92.06

13+96.8 = End concrete - begin cold lay with 3' conc. strip along curb.

92.98 92.50 92.68 93.30 93.15 92.89 92.79 93.58  
10.83 11.31 11.13 10.66 10.92 11.02 10.43  
Top Curb 15.0 12.0 12.2 15.2 Top  
gut. 3' conc. strip gut curb

13+75

94.21 93.81 94.70 94.56 95.16  
9.60 10.00 9.11 9.25 8.63  
Top Curb 15.1 15.2 Top  
gut. curb

13+48 15.2 Rt. P.C. of Return

95.82 95.59 96.86 97.02 97.87  
7.99 8.22 6.95 6.79 6.34  
Top Curb 15.1 15.2 Top  
gut. curb

13+44 = 15.0 Lt. P.C. of return

96.71 95.97 97.23 97.43 97.88  
7.60 7.84 6.58 6.38 5.93  
Top Curb 15.0 16.0 Top Curb  
gut. curb

13+36 = West curb line of Torrey Pines Rd.

97.08 96.75 97.02 97.55 97.87 96.33 96.82  
6.73 7.06 6.79 6.26 5.94 5.48 4.99  
Top Curb 24.2 12 12 26.2 Top  
gut. P.C. gut P.C.

13+21 = E of Torrey Pines Rd.

97.08 97.47 97.79 98.11 98.33  
6.73 6.34 6.02 5.70 5.48  
25 12 12 25

13+17 along east gutter line of Torrey Pines Rd.

96.99 96.69 97.09 97.36 97.49 97.71 98.21  
6.82 7.12 6.72 6.45 6.32 6.10 5.60  
Top Curb 26 12 12 25.4 Top  
Curb Gut. curb return gut.

103.81

Lt.

E

Rt. 12

Reduced by H. Horn  
1-16-51

changed H.H.  
1-16-51

2.25 96.28 =

n.w.B.P. VIKING WAY & Torrey Pines Rd.

T.P. 6.47 98.53 1.24 92.06

15  
14+48 - 15.0 P.C. on Lt. in drive  
2.0 West of E VIKING WAY TO NTH.

83.36 83.43 83.66 83.53 82.82 82.13  
9.94 9.87 9.64 9.77 10.48 11.17  
15.0 12.1 15.0 35.0 30.0  
gut. 3' conc. st. curb line

15  
14+46 E of Sewerage manhole

83.86 9.44  
Rim manhole

15  
14+45 - 15.0 Lt. E of 19.0 drive

84.01 83.94 83.44  
9.29 9.36 9.86  
20.0 18.0 15.0  
back edge Break gut.  
walk 84.31 83.83 84.03

15  
14+35 - 21.8 Rt. P.C. of Curb return &  
EAST line of gutter.  
VIKING WAY

84.57 83.70 83.56 84.15 82.26  
8.99 9.47 9.27 8.93 9.60 9.76 9.15 11.04  
Top 15.1 12.1 16.1 21.8 Top 50.0  
gut. conc. gut. edge conc. gutter P.C. Top 50.0  
84.74 84.30 84.50 84.83 84.12 83.99 84.62

15  
14+24.3 = P.C. on Rt.  
14.8 Rt.

8.56 9.00 8.80 8.17 9.18 9.31 8.62  
Top 15.2 12.2 11.7 14.8 Top  
Curb gut. conc. st. conc. st. gut. Top  
87.79 87.29 87.44 87.12 87.28 87.43 86.12

14+75 SECTION - ALSO E of 20.0  
driveway on left.

5.51 6.51 5.86 5.58 6.02 5.87 5.18  
19.8 13.0 12.0 12.0 14.9 19.7  
back edge gut. edge  
of walk conc. strip conc. st. gut. edge  
drive walk

93.30

Ridge View Road - Tarry Pines

INDEXED  
 JUN 19 1952

X-Section Prop. 40' R.O.W. - N. of Ardath  
 Road - from  $\pm$  Sta. 7+80.04 - for location  
 See Plan - 8560-L  
 w.O. 22041

(Note:  $\pm$  subsequently shifted to  
 right angles to Sta. 8+01.23 Ardath Rd.)

1-25-51 - 7.0.

1+00

5.7 5.2 4.5 3.5 3.1  
 30 20 20 30

0+55

6.2 6.0 4.8 3.9 3.7  
 30 20 20 30

0+40 - 23' H = Beg. Rail fence

7.6 7.1 6.5 5.5 4.7  
 30 20 20 30  
 in  $\pm$  of wash

0+00 =  $\pm$  Sta. 7+80.04

6.1

5.75 87.39 5.39 81.64 = Nail in Pole 87.39

T.P. 12.99 87.03 0.27 74.04

B.M. 12.57 74.31 6.174 = Nail in Pole - B. 2094 - P. 36

Lt. † Rt.

3+90  
3+74 = Cross Rail fence  
3+58.5 - 16' Lt = end fence = Cor.

14.1 7.4 5.9 3.0 2.2  
30 20 = Top bank 20 30

3+50

8.6 7.5 3.8 0.9 +0.5  
30 20 20 30

2+00

7.8 7.2 6.0 5.7 3.3 2.1  
30 20 8 20 30

2+50

8.1 7.5 6.2 5.3 4.7  
30 20 20 30

2+43 - 2.6 Rt =  $\frac{1}{2}$  of wLy. of 8x6 shed (movable)

T.P. 6.86 90.43 3.82 83.57 90.43

2+18 - 20.3 Lt = end Rail fence

2+17.3 - 15' Rt = Beg. Rail fence for Corral

2+00

5.2 4.8 3.8 2.7 2.2  
30 20 20 30

1+50 - 19.6 Lt = fence

5.4 4.9 4.0 3.1 2.6  
30 20 20 30  
87.39



Lt.

←

Rt.

T.P. =

12.14

78.29 Nail.

in Pole

along Torrey Pines Rd. for Rdwy.

4+33 = Top of Bank at 20' Rt. - See Next Sect.

7.1  
20

5.5  
20.

4+10

13.2  
20

13.7  
10  
Toe

7.2  
Top bank

4.5  
20

2.5  
30

90.43

2'ly from Ardath

Lt.

± = Base Line  
(Long. chord)

Rt.

X-Sect. from Base Line - (shown as ± on opp. page) along Torrey Pines Rd. - See Plan  
8560-L 1-25-51-70.  
w.o. 22041

INDEXED  
Law  
JUN 19 1952

1+81- 98.4' Rt. = Cor. Gar. - Conc. floor = end of Dr.  
1+75- 36.8' Rt. = ± P. pole ± J.P. 61264  
1+69- 7.9' Lt. = ± P. pole ± P-61018  
1+50

0.91  
98.4 = floor  
Gar.

1+39- 63' Rt. = Bed. Rail fence

1+00

9.0 6.9 6.6 6.8 6.5 6.09 5.57 5.20 5.7 3.8 3.7  
25 20 13 3 3.5 13.4 23.6 40 60 77  
fence Conc. edge Dr.

10.0 7.5 7.8 8.2 7.41 6.84 6.47 6.7 5.9 5.7  
32 26 17 8 0.4 Conc. 10 20 28 40 65  
fence Conc. edge Dr.

0+50

9.7 9.4 9.6 8.84 8.50 7.88 8.3 8.2  
30 23 15 6.4 Conc. 14.1 30 50  
fence

0+00 = PC. of Row. Curve

11.4 11.0 10.7 10.25 9.60 9.34  
40 32 20 15.5 Conc. Pave 5.2  
at Rail fence

B.M. 10.98 72.72

6174

72.72

B.M. on Ld. + ct. = Ang. Pt. 9.33 73.85

4+00

3+90.07 = Ang. 11° 04' Lt. - 16.5' Rt. on split = Pole

3+70 - 18.5' Rt. =  $\neq$  Guy. pole #

3+78.5 25.4 Lt. =  $\neq$  P. pole # 61397

3+50

3+14 - 32.5 Rt. =  $\neq$  Tel. pole # 447 309-H

3+00

2+90 - 63.5' Rt. = end fence

T.P. 12.70 83.18 224 70.48

2+50

2+36 - 13' Lt. = Cor. of 17x17 Pillar - Beg. fence

2+30 = Sec. Thru Drive (Cold Bay)

edge of Dr.

2+10 - 11.4 Lt. = Cor. 17x17 Brick Pillar = end fence

2+00

Lt.

$\neq$

Rt.

17

9.0	8.9	10.2	9.74	9.10	8.95	8.1	4.5	3.5
50	32.3	22	15.2		4.9	30	40	60
	fence			conc.				
			15.4					

10.1	10.6	11.7	10.99	10.59	10.20	9.2	7.8	6.3
40	24	15	8.2		12	35	45	60
	fence			conc.				

12.5	11.9	12.9	12.44	12.38	11.94	11.58	11.3	8.0
30	18	8	1.5		8.6	18.8	30	65
	fence			conc.				

83.18

3.9	3.7	3.8	3.65	3.40	2.83	2.46	2.0	0.1	+1.4
25	13.7	3		2.7	12.8	22.7	45	60	75
	fence				conc.				

6.24	4.10	4.20	4.09
40	10	3	

5.3	4.8	4.95	4.78	4.24	3.80	3.6	2.1	1.3
25	12	c.l. gutter	4.5	14.4	24.4	45	60	75
	fence			conc.				

72.72

Lt. # Rt. 18

7+00 = end

6+66 = 28' Lt = # P. pole # 61398

6+59 = 16.5' Rt = # Tel. pole # 447311 - H

6+50

6.0	2.0	2.66	2.43	2.44	3.1	+2.9
35	25	16.1	conc.	4	15	25 = Top

6.3	4.2	3.74	3.68	3.78	4.3	+1.3
35	25	16	conc.	4	13	20 = Top

6+00

8.8	4.8	5.3	4.82	4.6	4.85	5.4	+0.6
50	40	25	15.6	conc.	4.5	13	20 = Top

5+50

8.1	5.4	6.2	5.90	5.86	5.89	6.6	0.5
50	35	24	15.4	conc.	4.7	13	20 = Top Bank

5+42 = 34' Lt = end fence

5+00

8.8	6.8	7.4	6.98	6.97	7.03	7.4	3.9	0.5
50	32.6	23	15.4	conc.	4.6	13	20	50

fence

check T.P. - P. 15

4.89

78.29

4+84 = 17' Rt = # Tel. pole # 447310 - H = T.P. nail

4+50

8.9	8.3	8.8	8.24	8.07	8.06	8.2	5.0	3.6	2.5
50	32.6	23	15.4	conc.	4.6	15	20	40	60

fence

83.18

Paseo Del Ocaso

244593

= c.t.

Ac. Pavé

Calle De La Plata

5' 4"

4' 5"

See B 2055 - pp. 64



See B. 2094 - P 26  
for Returns.

Torrey Pines Rd.

0+00 = Id. + c.t.  
Tied to Brrey Rd.

X-Sect. Calle De La Plata - from N.L.  
of Torrey Pines Road to Paseo Del Ocaso  
W.O. 22041 1-31-51 - 7.0.

T.P. 0.69 43.10 13.36 42.41

0+89.5 = E 13' Conc. Dr. on Lt.

0+50

0+24 - 17.3 Rt = E Tel. pole # 432492 - H

0+20.5 - P.C. of Ret. on Rt.

0+20 - 17.4 Rt = E St. Light Meter box

0+13 - 17' Lt. = E Light Std.

0+10 - P.C. of Ret. on Lt.

0+00 = N.L. Torrey

B.M. 130

55.77

54.47 = N.E. BR Calle De La Plata + Torrey  
B. 2094 - P. 25

Lt.

E

Rt.

Reduced 5-3-51  
H.H.

INDEXED  
Law  
JUN 19 1952

43.25 42.64  
12.52 13.13  
19 walk 15 = gut. Dr.

47.25 47.05 47.01 46.46 46.97 46.42 46.87 47.09 47.02  
8.52 8.72 8.76 9.31 8.80 9.35 8.90 8.68 8.75  
24 19 Top 15.2 15.2 Top 19 24  
walk gut. Top walk

51.77 51.47 51.37 50.86 51.17 50.99 50.76 51.24 51.29 51.28  
4.00 4.30 4.40 4.91 4.60 4.78 5.01 4.43 4.48 4.49  
24 19 Top 15.1 8 15 Top 19 24  
walk gut. Top walk

53.19 53.02 52.98 52.33 52.51 52.30 52.11 52.46  
2.58 2.75 2.79 3.44 3.26 3.47 3.66 3.31  
24 19 Top 15 8 16.4 Top  
walk gut. Top

54.06 53.57 53.67 53.64 53.46 53.09 53.57  
1.71 2.20 2.10 2.13 2.31 2.68 2.20  
Top 16.6 9 10 20.9 Top  
gut.

55.77

Lt. # Rt.

2+45.93 = # Paseo Del Ocaso

S.E. Return

B.M. on Chisel Cross in cb. - # of 2.16 30.18

T.P. 1.81 32.34 12.57 30.53

2+13.7 = P.C. of Ret. on Rt.

2+00

1+50

1+22.5 - 14.9 Lt. = # 13' Conc. Dr.

1+13-17 Rt. = # Guy Pole # 432493-H

1+00

28.81	28.23	28.19	28.59	28.23	28.34	28.58
3.47	4.11	3.55	3.75	4.11	4.00	3.76
Top	14.9 gut.	on Sewer M.H.	8	18 Cross gut.	25	50

32.34

30.17	30.65
12.93	12.45
15 gut.	Top-PC..

32.00	31.46	31.78	31.94	31.77	31.48	32.06
11.40	11.64	11.32	11.16	11.33	11.62	11.04
Top	15 gut.	8		8	15 gut.	Top

36.63	36.52	36.40	35.83	36.33	35.89	36.43	36.53	36.63
6.47	6.58	6.70	7.27	6.77	7.21	6.67	6.57	6.47
24 walk	19	Top	15 gut.		15 gut.	Top	19	24 walk

38.92	38.37	14.9 - Dr.								
4.18	4.73									
19 walk										
41.18	40.94	40.84	40.22	40.75	40.91	40.77	40.44	40.92	40.88	40.98
1.92	2.16	2.26	2.88	2.35	2.19	2.33	2.66	2.18	2.22	2.12
24 walk	19	Top	15.2 gut.	8		8	15.2 gut.	Top	19	24 walk

43.10

35' Rad.

22.

Paseo Dorado N 87° 05' W

4+d.

75'

18° 05'

2+04.51  
at 100' x"

75'

La Jolla Shores Drive

S 140° 00' W

6+00

S 14° 05' W

5+00

4+00

21° 19'

3+64 = Cross

Ang. 21° 19' Lt.

S 35° 09' W

(Started in F.B. 2128-1)



Cont. x-sections of La Jolla Shores Dr.

2-1-51- 7.0.

6+15 - 30.5' Lt. = P. pole # 60003

6+08 - 79.5 = Rt. = E Guy Pole

6+00

5+56.6 - 35.4' Lt. = Light std.

5+50

5+00

4+55 - 45' Lt. = P. pole # 60002

4+50

4+37 - 58' Rt. = E Guy Pole

4+11 - 14.8 Rt. = E w.M.

4+00 = P.C. of cb. on Lt.

3+64 - Ang. Pt. (sect. in other Book)

B.M. 3.28 40.80

37.52 = Cross at

Lt.

Base Line

Rt.

23

from Torrey Pines Rd to Paseo Dorado

INDEXED  
law  
JUN 19 1952

33.28	33.06	32.23	32.6	32.2	35.1	35.64	35.1	34.8	34.1	34.0	34.9	34.6
7.52	7.74	8.57	7.4	6.6	5.69	5.16	5.1	3.0	6.7	6.8	3.9	3.3
48.3	43.3	29.2	15		11.7	29.8	34	37	43	55	60	100
	walk					conc.						ditch

33.85	32.9	34.3	35.0	35.5	35.94	34.6	35.1	35.6	36.0			
6.95	7.9	6.5	5.8	5.24	4.86	3.3	5.4	5.7	3.2	2.8		
	Top	33.8	15		9.6	27.7	34	39	52	60	100	
	gut				conc.							ditch

34.89	34.26	34.73	33.6	35.0	35.1	35.81	36.09	36.3	36.7	35.8	37.1	36.3
5.91	6.04	6.07	7.0	5.8	5.1	4.99	4.71	2.5	5.1	5.0	3.7	2.5
57.5	52.4	Top	38.5	20		3.9	22.3	28	33	47	52	90
	walk		gut.				conc.					ditch

35.28	34.6	35.8	36.16	36.31	36.40	36.6	36.4	36.7	39.0	38.8		
5.52	6.2	5.0	4.64	4.49	4.40	2.2	4.4	4.1	1.8	2.0		
	Top	43	25	4		15	20	26	42	47	80	
	gut.					conc.						ditch

35.80	35.2	36.4	36.59	36.97	36.99	36.6	36.9	36.5	36.9	36.6		
5.00	5.6	4.4	4.21	3.83	3.81	1.2	3.9	4.3	1.5	1.2		
	Top	47.8	30	12.2		7.1	12	18	28	33	75	
	P.C.	gut.				conc.						ditch

3+64 = Ang. Pt.

40.80

7+50 - 3.1' Lt. = edge A.C. at Conc. Pavc

7+42 - 4.3' Lt. = edge of A.C. Pavc at ib.

7+40.3 - 42.7' Lt. = P.C. of 35' Rad. Ret.

T.P. 6.86 36.69 10.97 29.83

7+00

6+63 - 26.5' Lt. = E.C. of curb

6+50 - Cont.

6+38.5 - 10.1' Lt. = E. Sewer M.H. 8.20 on Rim

16' wide

6+50 - Sect. Thru Wood Bridge over Ditch on Rt.

6+40.8 - 25.6' Lt. = P.C. of curb.

Base. Line 24

Lt. Rt.

30.45 29.87 31.43 32.44 32.56 32.93 32.9 35.6 36.1 37.4 38.6 39.9

6.24 6.82 5.26 4.25 4.13 3.76 3.8 4.1 8.6 7.3 32 2.8

Top 45.7 25 3.1 = Conc. 15.4 21 24 30 47 50 100

got. + A.C. Conc. Ditch

30.74 30.71 30.14

5.95 6.55

Top 43

got.

30.4 36.69

5.95 6.3

Top 42.7

got.

31.03 31.01 31.02 30.6 31.7 32.8 32.9 33.9 34.7 35.6 36.5 37.4 38.3 39.2 40.1 41.0 42.0 43.0 44.0 45.0 46.0 47.0

9.77 9.79 9.78 10.2 9.1 8.0 7.51 6.84 7.1 4.1 10.3 10.4 5.8 5.5

53.7 48.7 34.2 20 53 23.5 29 32 38 52 60 100

walk Top got. Conc. Ditch

31.44 31.1

9.36 9.7

Top 26.5

got.

31.0 3.8 100

31.68 31.3 32.3 32.35 32.94 36.58 31.7 31.13

9.12 9.5 7.5 6.45 5.88 4.22 9.1 3.67

Top 24.8 10.5 28.5 41.8 50 58

got. Conc. end bridge in ditch 9.6

+ from N. edge from bridge

31.81 31.6

8.99 9.2

Top 25.6 got. 40.80

Base Line 25

Lt.

Rt.

31.40

8+04.57 = ± Paseo Dorado + La Jolla Shores Dr. = Cross

5.29  
on Cross

+ w. La Jolla Shores

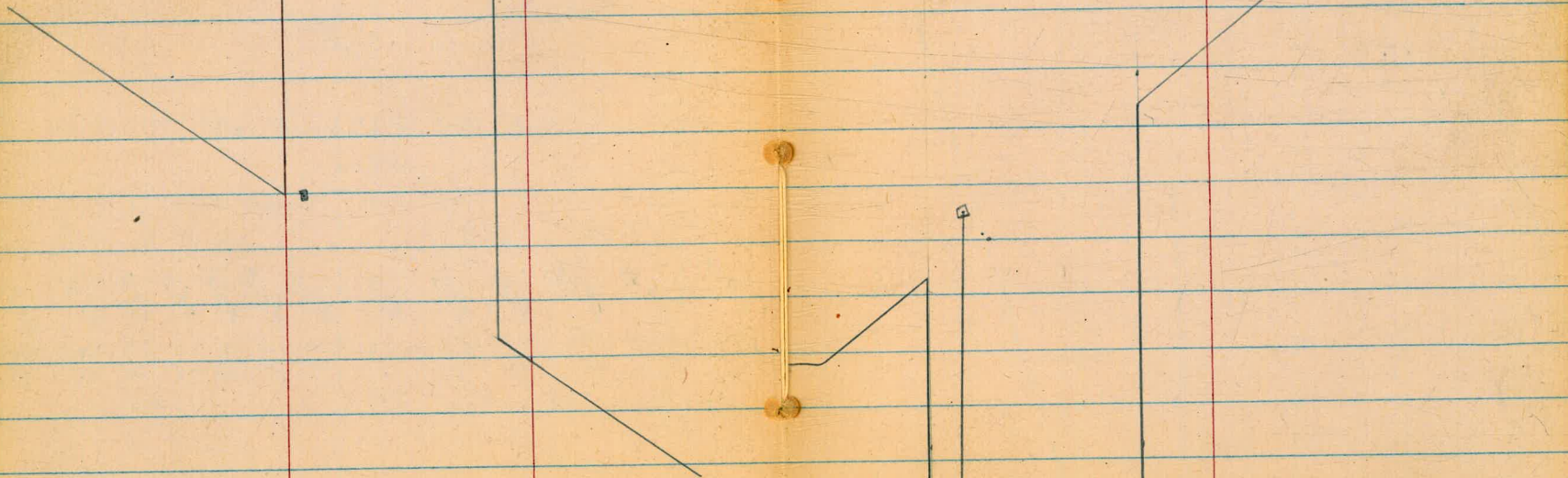
Set. B.M. on ± ct. 8.13 28.56

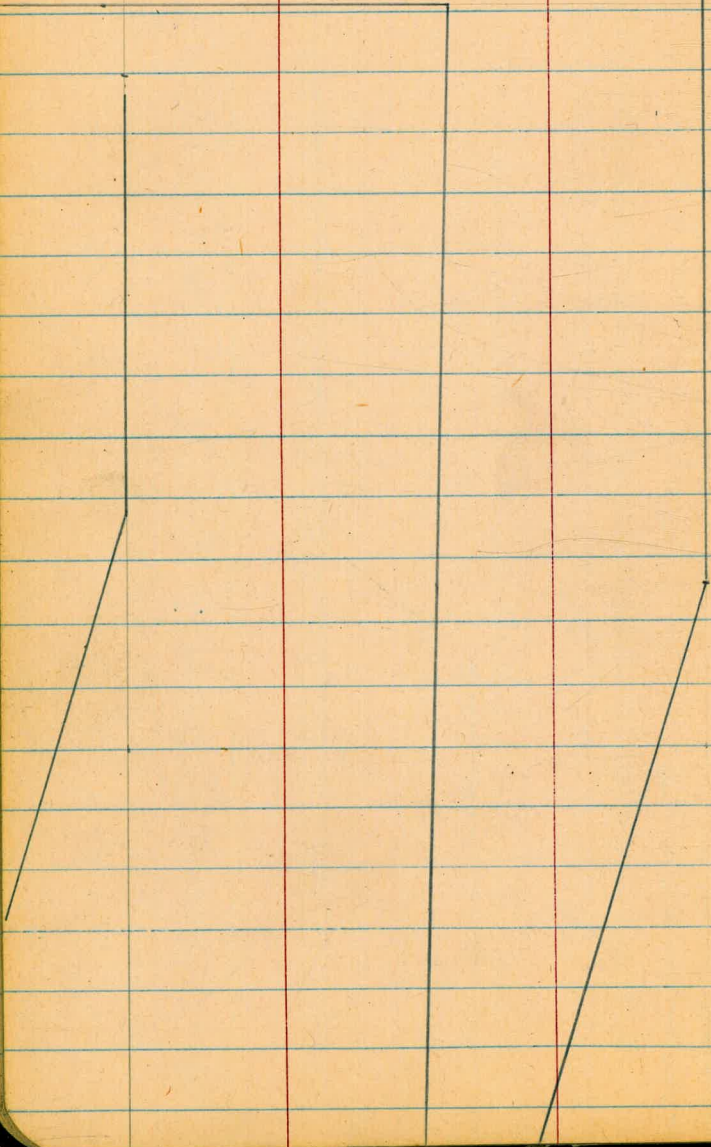
7+70

28.95	28.40	29.88	30.74	31.90	32.20	32.41	32.33	32.8	28.0	28.9	32.5	32.3
7.74	8.29	6.81	5.95	4.79	4.49	4.28	4.4	1.9	8.7	7.8	4.8	3.4
Top	72.2	45	30	72	conc.	11.2	17	20	25	42	45	80
on Ret.	94	A.C.								'Ditch'		

7+58 = 67.5' Rt. = ± Guy Pole

36.69

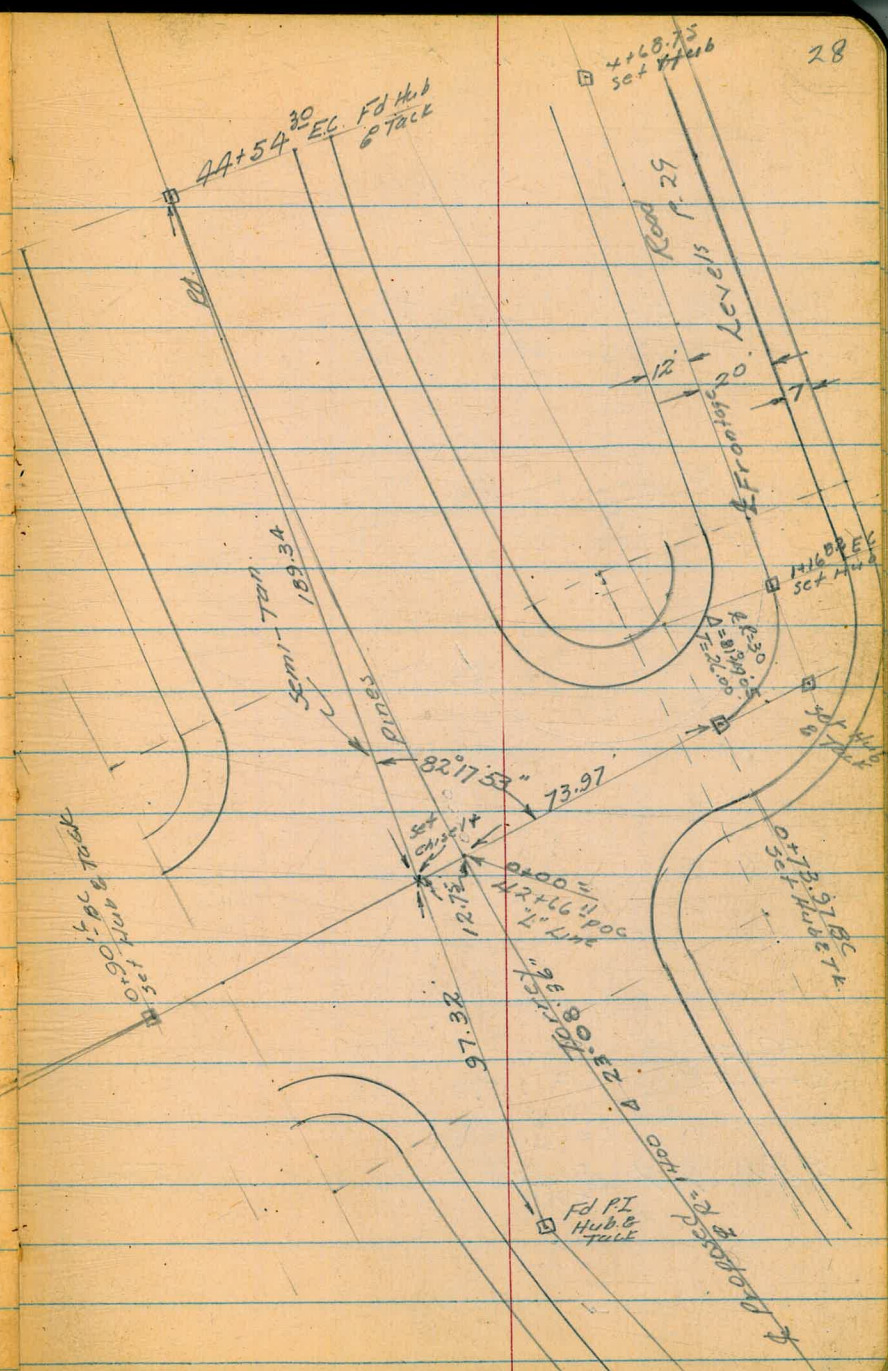




5-29-51  
Hendricks Locate & X Section  
Allen Frontage Road  
Telpelgoff Access to Torrey Pines Road  
Bruner  
W.O. # 22041 Ref. Draw. 1749-D.

INDEXED  
Law  
JUN 19 1952

28



Levels Frontage Road

⊕

1+1682 EC

5<sup>6</sup> 2<sup>3</sup> 2<sup>2</sup> 0<sup>2</sup> + 0<sup>2</sup>  
35 24 28 35

0+73 97 BC

5<sup>4</sup> 4<sup>8</sup> 4<sup>8</sup> 5<sup>0</sup>  
35 20 35

0+12

8<sup>1</sup> 7<sup>0</sup> 7<sup>2</sup> 7<sup>9</sup> 9<sup>8</sup> 9<sup>6</sup>  
40 28 6 13 37

0+08

7<sup>8</sup> 7<sup>8</sup> 10<sup>1</sup> 10<sup>0</sup> 9<sup>7</sup>  
45 35 12 27

0+00 =  
42+66.11 POC: 2" Line

9<sup>8</sup> 9<sup>75</sup> 9<sup>50</sup> 9<sup>49</sup>  
35 Hub 20 35  
Pav. Pav.

59.24

BM 7.17 59.24  
/

52.07

Top Fine Hydt 30 51.9 42+23 "2" Line

Frontage Road Contd.

\$

30

4+00

7<sup>3</sup> 5<sup>3</sup> 4<sup>8</sup> 3<sup>4</sup> 3<sup>8</sup>  
35 22 30 35

3+50

7<sup>0</sup> 5<sup>4</sup> 4<sup>3</sup> 3<sup>0</sup> 3<sup>1</sup>  
35 23 29 35

3+00

7<sup>0</sup> 4<sup>9</sup> 3<sup>8</sup> 2<sup>7</sup> 2<sup>1</sup>  
35 23 30 35

2+50

6<sup>4</sup> 4<sup>4</sup> 3<sup>4</sup> 2<sup>0</sup> 1<sup>9</sup>  
35 22 29 35

2+00

6<sup>2</sup> 3<sup>7</sup> 3<sup>2</sup> 1<sup>0</sup> 0<sup>8</sup>  
35 21 28 35

1+35.12 C6 EC 4.

5<sup>8</sup> 3<sup>6</sup> 2<sup>5</sup> 0<sup>4</sup> + 0<sup>3</sup>  
35 23 30 37

59.24  
/

59.24  
/



5.11 54.13

on Hub 4+68.75

5100

4 <sup>9</sup>	4 <sup>6</sup>	4 <sup>3</sup>	3 <sup>3</sup>	2 <sup>4</sup>
35		24	22	35

4150

6 <sup>3</sup>	6 <sup>6</sup>	5 <sup>8</sup>	3 <sup>8</sup>	4 <sup>3</sup>
35	17		22	35

59.24  
/

59.24  
-

Access Road Between  
Torrey Pines & La Jolla Shores  
(Sketch R28)

(La Jolla Shores Drive Realignment)

4

32

0+35

49.8  
94  
50  
92  
87  
35  
50.0  
92  
87  
35  
50.6

0+21.7 Edge Paving

892

0+11.7 & Paving

911

0+01.9 Edge Conc. Pav.

955

0+00 =  
42+66.11 P.O.C. 2" Line

949 950 975 98  
35 20 Hub 35

BM 7.17 59.24  
T

52.07

59.24  
T

Access Road Contd.

1+53 24" Sycamore 12' Lt.

1+50

41.8	41.2	43.3	49.9	49.9	40.3	49.2	43.6	42.8	40.1	40.6
7.9	7.2	5.1	8.5	8.5	7.9	5.2	4.9	5.6	7.7	7.3
52	49	46	39	30	23		10	23	28	50

Paving

1+25

40.7	48.0	41.1	41.7	44.9	44.0	42.2	41.9
7.7	5.4	4.3	3.7	3.5	4.4	6.3	6.5
50	40	19		22	41	48	60

1+00

45.2	45.9	45.7
3.2	2.5	2.7
50		50

0+85

47.1	47.7	49.4	47.0	42.7	42.7
1.3	0.7	1.0	1.4	1.7	1.7
50	38	29	28	12	

T.P. 208 48.37 1295 46.29

on H46 0+90.16 AC  $\frac{48.37}{\wedge}$

0+50

42.6	49.5	48.3	48.1	48.4	48.9	50.0
9.6	9.7	10.9	11.1	10.8	10.3	9.3
50	8	7		10	17	50

$\frac{59.24}{\wedge}$

$\frac{59.24}{\wedge}$

2+52

2+50

37.71  
 10 6.5 10 10 10 10 10 10 10 10  
 21.6 3.1 1 11 11 10 10 10 10 10  
 (Paving) 10 18 25 50

2+25

38.43 38.80 39.0 40.2 37.8 38.0 40.0 40.1  
 9 9 9 8 10 10 8 8  
 (30.2 111) 8 7 8 16 50  
 (Paving)

2+01 Anchor Pole 18.6 Kt

2+00

39.27 39.58 39.6 40.1 38.5 38.6 40.4 40.2  
 9 8 8 6 9 9 8 8  
 (41.4 21.4) 19 16 9 4 50  
 Pav.

1+95 Bone

8'

1+75

40.10 40.27 40.2 40.6 39.2 39.3 41.0 40.9 39.9 40.3  
 8 8 8 8 9 9 7 7 8 8  
 55 34.7 22 30 25 16 10 24 50  
 Pav. Pav.

48.37  
/

48.37

CL Starting BM. 2.48 52.09 (5207) (Fire Plug)

T.P. 8.04 54.57 1.84 46.53

3+75

3+50

3+25

3+00

2+75

2+63.5 Intersection Paving

48.37  
—  
x

36.16 36.44 36.42  
12.21 11.92 11.95  
(12.7 Paving) 5.4  
36.41 36.72 36.71  
11.96 11.65 11.66  
(11.2 6.9) 10 13 19 31 37  
(Paving)  
36.43 36.95 36.96 37.1 39.3 36.8 36.7 36.4 39.1  
11.74 11.72 11.41 11.3 9.1 11.5 11.2 10.9  
10.8 7.2 10 12 19 26 32 50  
(Paving)  
36.84 37.20 37.20 37.3 39.1 37.1 36.9 39.4 39.3  
11.53 11.17 11.17 11.1 9.3 11.3 11.5 9.9  
(12.5 5.7) 8 11 17 29 35 50  
(Paving)  
37.17 37.68 37.67 37.7 39.8 37.4 37.2 39.4 39.6  
11.20 10.69 10.70 10.7 10.7 8.5 11.1 11.2 9.8 8.8  
(14.2 2.3) 4 8 15 24 33 50  
(Paving)  
11.00 10.45  
(18.2 Paving)

48.37

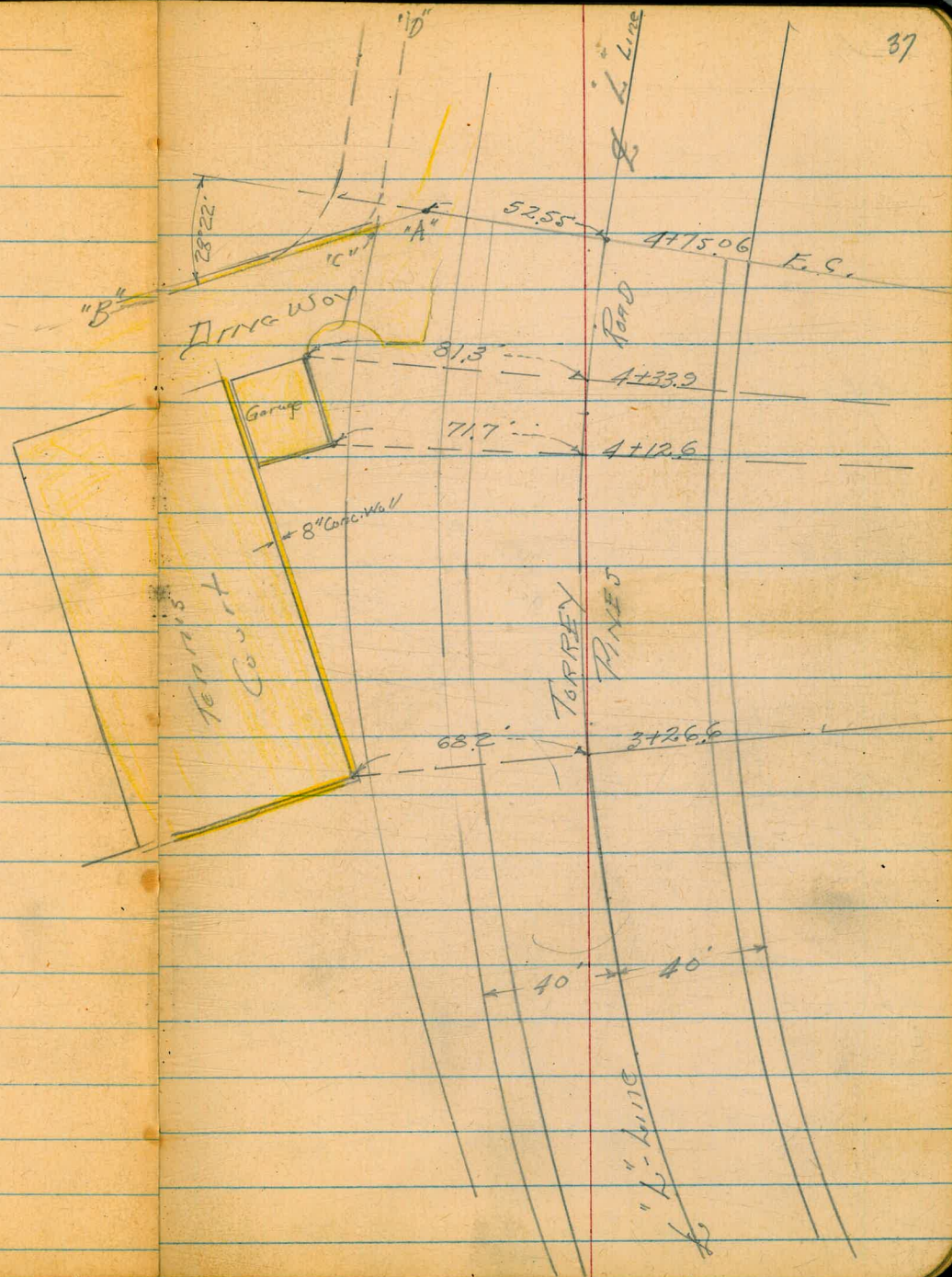
Access Road Contd.

4

36

TORREY PINES ROAD  
Additional Cross Sections

INDEXED  
JUN 19 1952



Reduced  
Meakan 26 July 1951

4+13.6 Cont.

122.1 123.9  
5.6 3.8  
55 65

4+12.6

98.0 98.30 100A  
297 294 273  
71.7 71.7 57  
Dirt Calc. Wall Garage  
99.5 101.1 103.3  
282 26.6 244  
60 46 38

chk  
4+00

93.87 96.05 98.4  
33.87 31.67 29.3  
92 92 70  
Tennis Court Inside Wall Tennis Court

102.5 120.3 121.12 121.08 120.78  
25.2 7.4 6.62 6.66 6.96  
38 14 10.35 5.7 5.7  
Edge Walk Ch. Gut  
93.26 99.83 101.2 102.6 106.5  
3348 2791 265 251 212  
74.6 74.5 62 50 31  
Tennis Court Top Wall Inside Edge Toe

3+50

94.35 100.53  
3339 27.21  
68.3 68.34  
Tennis Court Inside Cor Wall To Tennis Court

126.51 128.5 131.9  
117 10.8 142  
39.2 52 65  
Walk

3+26.6 Cont.

104.0 101.8 125.6 126.37 126.25  
23.7 19.9 2.2 14.7 14.9  
47. 30 4 0.3  
Edge Walk  
126.07 125.76 126.10 125.97 126.28  
167 198 164 177 136  
4.3 4.4 1.9 34.7 31.5  
Ch Gut Pav. Gut Ch

3+26.6

FB. 2094 P-59

0.01  
124.83  
292 124.82

127.74

chk. S. Cross in Walk 3+50

1.96 127.74

125.78

BM Nail in Pole 6 1/4 3+28 FB. 2094  
58



Torrey Pines Rd.

Lt.

L

Rt.

39

Marked on Ground by Stakes  
"C" "D" Rt. of Way line Dist from "C"

106.8	104A	104.2	102.35	102.22
209	233	235	2539	252
70	49	34	7	"C"

West edge  
3' Cont. walk

"A" "B" Line Cont.

96.98	96.34	98.18	97.58
3086	3140	2956	3016
63	63	50	50
cb.	Gut.	cb.	Gut.

on line "A" "B" Dist from "A"

98.99	98.44	102.51	102.22	103.42	104.52
2375	2930	2523	2552	2544	2432
42	42	17	17	15.5	8.8
cb.	Gut.	cb.	Gut.		A

4133.9

97.15	98.40	100.5	102.2	1230
3059	2934	272	255	47
813	813	67	47	70

Floor. at Garage

4133.9

119.5	120.04	120.03	119.77	120.08	120.10	119.57	119.89	120.03
82	770	771	797	766	764	817	785	771
17	13	84	84	7	7	22.1	22.1	26.8
Edge	cb.	Gut.	Gut.	Gut.	Gut.	cb.	cb.	Edge
Walk								Walk.

127.74

Check Sections on Lt.  
 2" Line-Torrey Pines Road  
 Orig. Sections in FB 2094-59-60

6+14.22=EC.

6+00

chk starting B.M.

TP 3.51 117.21 780 113.70 113.69

5+70

TP 12.46 121.49 1246 109.03

5+35

TP 12.46 121.49 125 109.03

5+00

4+75

3+26.6 P-38

chk. Top Ref Wall Tennis Court 974 100.53 100.54

TP 1.25 110.28 12.41 109.03

774 121.44 11370

Lt.

£

40

110.9 112.2 112.8 112.9  
 63 50 44 43  
 100 80 60 32

110.4  
 6.8  
 100

112.0 114.1 116.1 116.9 116.2  
 52 31 11 5.3 10  
 80 60 50 40 33 117.21

108.5 109.7 112.8 114.5 116.5  
 130 118 87 70 50  
 100 80 60 50 38

121.49

107.0 107.6 109.4 112.3 112.9 113.1  
 14.5 13.9 12.1 9.2 8.6 7.8  
 80 70 60 47 36 32

121.49

106.3 106.5 107.9 107.9 109.6  
 40 38 24 24 0.7  
 70 57 53 40 35

101.3 102.5 104.3 105.0 107.6  
 90 78 60 53 27  
 80 70 59 49 35

Drive Drive 110.28

B.M. 2 Nail 6+14.22=EC FB 2094  
 60

Roberts  
Cota  
Moore  
Pollen  
1-31-53  
W.D. # 31908

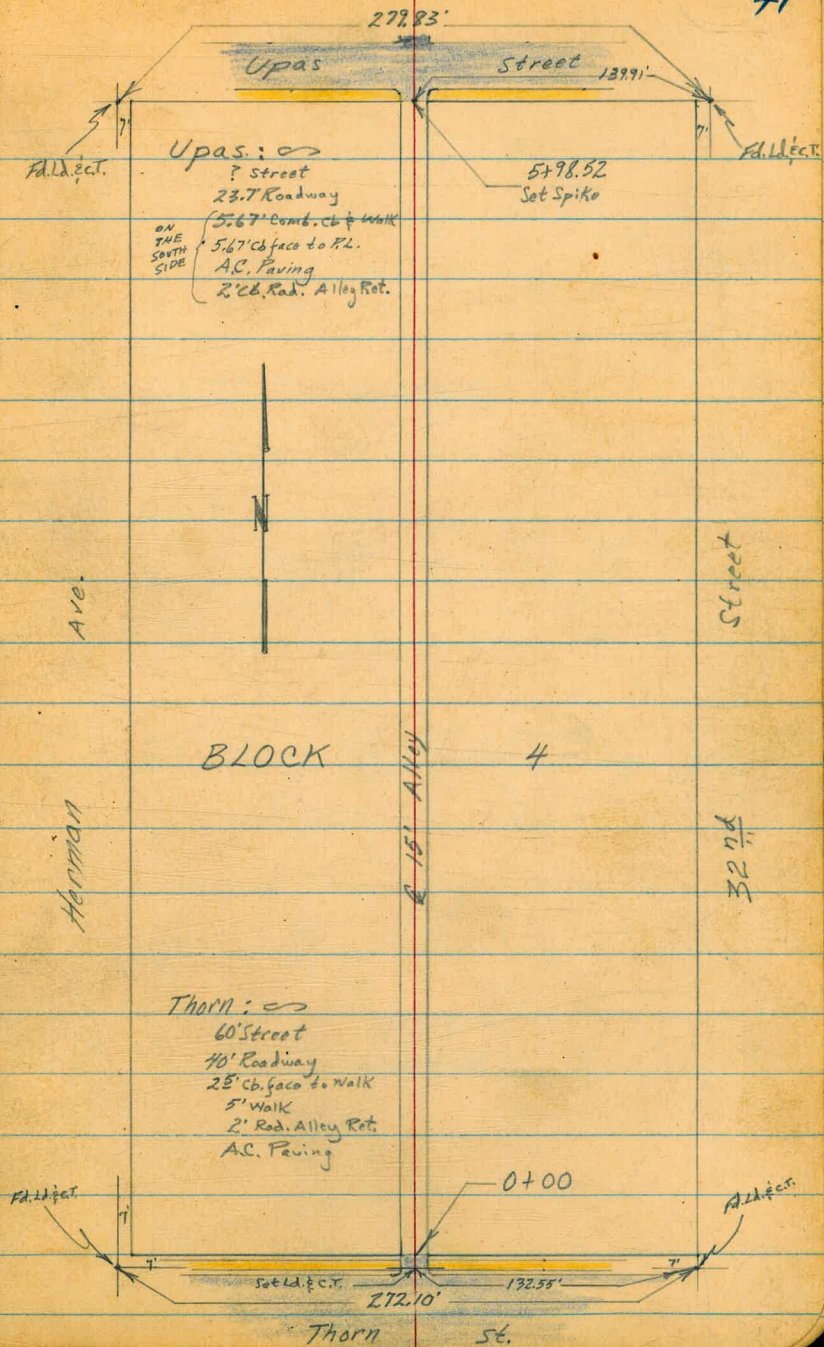
X-Section Alley BIK. #, Frary Hts.

Thorn to Upas

Between Herman & 32<sup>nd</sup>

INDEXED  
Law

FB. 1363 pg. 60 FEB 6 1953



0+25<sup>E</sup> 6' Rt & 10' Acacia Tree

0+20<sup>E</sup> 70' Lt End Conc. Ret Wall begin cobblestone wall.

316.1	314.9	315.1	314.9	315.7	314.5
51	6.3	61	6.3	6.0	6.7
Top	Foot	GD		7 <sup>2</sup>	25

T.P. 8.65 321.17 R 6.17 325.27

321.17 R

~~325.27 R~~

0+18 7<sup>6</sup> Lt to & 5' wide brick chimney

(7<sup>2</sup> Lt begin Conc. Ret Wall

0+00 North Line Thorn

315.84	312.5	317.82	317.47	317.11	317.06	317.23
2.85	6.2	5.87	6.27	6.58	6.61	6.46
7 <sup>2</sup>	7 <sup>2</sup>	7 <sup>2</sup>	7 <sup>2</sup>		7 <sup>2</sup>	7 <sup>2</sup>
Top	Foot	cb	Gutt		Gutt	cb

North Curb Line Thorn - 10

316.46	315.88	314.29	313.74	312.64	312.03	311.87	311.52	311.22	311.19	311.78	309.40	309.48	307.71	307.55
2.23	2.81	4.40	4.95	6.05	6.66	6.82	7.17	7.47	7.50	6.91	9.29	8.71	11.00	10.25
100	100	50	50	95	95	7 <sup>2</sup>		7 <sup>2</sup>	95	95	50	50	100	100
cb	Gutt	cb	Gutt	cb	Gutt			Gutt	Gutt	cb	Gutt	cb	Gutt	cb

Arc of Alley Curb Return on west needs to be replaced.

Return on East from 0+00 to 3c curb return needs to be replaced.

Thorn Street - 30

316.40	314.23	312.09	309.88	307.69
2.29	4.43	6.60	8.81	11.00
100	50		50	100

T.P. 9.05 318.69 R 1.70 309.64

318.69 R

~~321.44 R~~

T.P. 6.44 311.34 11.42 304.90 317.65

B.M. 1.58 316.32 314.80 S.W.B.P. Thorn @ 33<sup>rd</sup>

329.07

327.55

0+66 75' Rt to center 12" Acacia Tree

0+59 74' Rt to center 2" Acacia Tree

0+54E 128' Lt begin double Garage

0+53 10E' Lt & 3' Conc. Walk

0+50

0+49 6E' Lt End Cobble wall

0+42E 68' Lt & 2E' Conc Steps

0+27 67' Rt to center 4" Acacia Tree

321.17  
~~333.92~~

317.54  
363  
12E  
Floor  
317.19  
3.98  
10E  
conc.  
Apron  
316.74  
4.43  
10E  
conc

316.4  
4.8  
15  
316.4  
4.8  
7E  
315.7  
5.5  
315.4  
5.8  
7E  
315.0  
6.2  
15

316.9  
4.3  
6E  
Top  
316.0  
5.2  
6E  
Foot  
315.9  
5.3  
6E  
ORD

315.94  
5.23  
6E  
Top  
1st  
step

3  
321.17  
~~333.92~~

1713 6<sup>5</sup> Lt begin conc Rpt. Wall - 9" wide

318.2  
3.1  
6.3  
Top

315.8  
5.4  
6.3  
Foot

316.3  
4.9  
6.3  
GRD

1710 35<sup>5</sup> Rt & Single Garage (Not Used)

315.9  
5.3  
7.3

315.7  
5.5  
7.3

314.3  
6.9  
3.2

311.7  
9.5  
35.3  
At Door

Approx. for floor

1708 13<sup>2</sup> Lt & Single Garage

316.96  
4.21  
13.2  
conc. floor

1400

317.7  
4.0  
1.5

316.7  
4.5  
7.3

316.0  
5.2  
7.5

315.6  
5.6  
7.5

314.7  
6.5  
2.5

0797 10<sup>6</sup> Lt near edge 2" Walk (END)

317.14  
4.03  
10.6  
conc

0782 16<sup>3</sup> Rt & Single Garage

315.6  
5.7  
16.3  
Dirt

0795 6<sup>0</sup> Lt to center P.Pole # A3311

0774 13' Lt End Double Garage }  
walk comes into Apron parallel to & of Alley. Shuts on Apron good for walk.

317.50  
3.67  
1.3  
Floor

317.19  
3.98  
10.6  
conc Apron

0772 7<sup>0</sup> Rt to center 12" Acacia Tree

321.17  
~~333.92~~

321.17  
~~333.92~~

Cont'd From Page 44

Lt

R

Rt

75

2+40

315.7	315.1	315.1	314.3	312.5	311.9
5.5	6.1	6.1	6.9	8.7	9.3
15	75		75	8	35

2+00

8<sup>3</sup>' Lt. end fence

315.5	315.5	315.0	312.4	311.9
5.7	5.7	6.2	8.8	9.3
75		75	85	35

1+995

7<sup>2</sup>' Lt to center P. Pole # A3329

1+87

315.3	315.3	315.2	312.5	311.7
5.9	5.9	6.0	8.7	9.5
75		75	95	35

1+85

315.3	315.3	315.2	315.2	311.7
5.9	5.9	6.0	6.0	9.5
75		75	95	32

1+82

7' Lt begin 6' board fence

1+61

7<sup>5</sup>' Lt @ Single Garage

315.8
5.4
75
Dirt

1+50

7<sup>3</sup>' Lt End conc. Ret Wall

316.1	316.0	316.1	315.5	315.0	311.4
3.1	5.2	5.1	5.7	6.2	9.8
75	75	75		75	35
Top	Foot	ORD			

321.17A  
~~333.92A~~

321.17A  
~~333.92A~~

3+00

7<sup>3</sup>' Rt begin 6' board fence

315.1	312.9	311.6	311.3	310.4	310.6
4.6	6.8	8.1	8.4	9.3	9.1
30	15	7 <sup>2</sup>		7 <sup>2</sup>	30

2+92

315.7	312.7	309.1	308.4	306.7	310.4	310.6
4.0	7.0	10.6	11.3	11.0	9.3	9.1
32	18	7 <sup>2</sup>		7 <sup>2</sup>	12	30

2+80

315.5	312.7	312.7	309.6	308.9	308.6	309.5	310.6
4.2	7.0	7.5	10.1	10.8	11.1	9.9	9.2
27	20	15	7 <sup>2</sup>		7 <sup>2</sup>	8	30

2+68

315.1	312.7	312.5	312.8	312.3	308.3	310.2
4.6	7.0	7.2	6.9	7.4	11.4	9.5
25	20	7 <sup>2</sup>		7 <sup>2</sup>	12	30

T.P.

8.03

319.69 ~~X~~~~332.44~~ ~~X~~

9.51

311.66

~~321.41~~ ~~X~~

on 11/11

319.69 ~~X~~~~332.44~~ ~~X~~

2+51

316.4	313.0	313.7	312.7	308.9	309.7
4.8	8.2	7.5	8.5	12.3	11.5
20	7 <sup>2</sup>		7 <sup>2</sup>	14	35

2+50

316.4	314.7	313.7	312.7	312.0	311.6
4.8	7.0	7.5	8.5	9.2	9.6
20	7 <sup>2</sup>		7 <sup>2</sup>	14	35

321.17 ~~X~~~~332.92~~ ~~X~~321.17 ~~X~~~~332.92~~ ~~X~~



Cont'd From Page 46

Lt

£

Rt 47

3+65 75' wide  
12" Lt & Garage opening to the north

315.1  
46  
122  
Dir

3+50 72' Rt End fence on foundation

Bldg. 313.3 313.2 313.0 311.9 313.0 313.4  
6.4 6.5 6.7 7.8 6.7 6.5  
75 75 75 75 75 30  
GRD. Foot Top

3+49 75' Lt to 10" pepper stump }  
3+45 34' Lt to 10" pepper stump }  
Both lay in  
alley and alive.

3+30

Bldg. 311.6 311.8 311.4 311.6  
8.1 7.9 8.3 8.1  
75 70 20  
estimated

3+27 82' Lt to center P. Pole # 7

3+12 7' Rt End shed begin 6' Board fence on conc. fdn.

3+10

313.0 313.0 312.4 311.3 310.9 310.7 8.1 9.1 7.7  
7.2 7.2 7.2  
GRD Foot Top Fdn.  
6.7 6.7 7.3 8.4 8.8 9.0  
20 92 75 4 70

3+03 { 75' Rt End fence begin shed.  
48' Rt to center 12" Pepper Tree

319.697  
~~332.447~~

319.697  
~~332.447~~

Cont'd From Page 47

4450

4447 11<sup>3</sup>' Lt End Triple Garage

4426 7<sup>2</sup>' Rt to center 15" pepper Tree

4417 { 11<sup>2</sup>' Lt begin Triple garage  
8' Rt to fence

4414 7<sup>2</sup>' Rt End picket begin 6' board fence

4400

3498 7<sup>2</sup>' Rt begin 4' picket fence

3497 13<sup>8</sup>' Lt End Triple Garage

3472 14<sup>2</sup>' Lt begin Triple garage

319.69X  
~~322.44X~~

Lt

Q

Rt #8

318.2	317.8	317.6	318.1	318.6
1.5	1.9	2.1	1.6	1.1
20	75		75	20 estimated

317.71	317.62
1.98	2.07
113	84
Floor	conc
	Apron

317.69	317.18
2.00	2.51
116	83
Floor	conc
	Apron

316.0	315.7	315.6	315.8	317.1	316.8
3.7	4.0	4.1	3.9	2.6	2.9
14	75		75	80	15

315.88
3.81
138
Floor

315.42	315.0	314.9	314.5	314.1	314.7
4.27	4.7	4.8	5.2	5.6	5.0
142	75		75	13	25
conc					
Floor			319.69X		
			<del>322.44X</del>		

Cont'd From Page 48

Lt

Q

Rt

49

5+00

	319.6	319.5	319.5	319.6	320.0
8.3	8.4	8.4	8.3	7.9	
15	75		75	15	

4+97 17' Lt End double garage

319.54  
8.32  
17'  
Floor

4+80<sup>E</sup> 17' Lt begin double garage

319.51  
8.35  
17'  
Conc.  
Floor

4+79<sup>E</sup> 12' Rt Q garage opening to north

319.2  
8.7  
12'  
Dirt

T.P. 9.29 ~~327.86~~ 110 ~~331.34~~ 318.59

~~327.86~~  
~~331.34~~

4+79<sup>E</sup> 7' Rt End shed

Garage

4+61 { 7' Rt begin shed  
7' Rt End shed

4+60 65' Lt to center P. Pole # A3375

4+53<sup>E</sup> 7' Rt begin shed

319.69  
~~332.##~~

319.69  
~~332.##~~

Check 3.95 ~~326.66~~ = 323.91 = 323.90

S.M.B.P. Upas, 322.11

Q Upas Roadway

+17.5±

321.45 322.31 322.78 323.35 323.93  
6.21 5.55 5.08 4.51 3.93  
100 50 50 50 100

South Curb Line Upas +5.67

321.90 321.52 322.37 321.99 322.01 322.27 322.17 322.36 322.74 322.78  
5.96 6.30 5.49 5.87 5.85 5.79 5.69 < 5.50 5.12 5.02 4.72  
50 50 25 25 25 75 75 DRIVE 20 20 60 60  
cb gutt cb gutt cb gutt cb gutt cb

5798.52 South Line Upas

322.57 322.26 322.24 322.55 322.63  
5.34 5.60 5.62 5.31 5.23  
6.25 6.25 7.25 7.25  
cb gutt gutt cb

5796.5 79' Lt to center P.Pole #PA 3399

5753 73' Rt to center 4" Ornamental Tree

5750

321.1 321.3 321.3 321.6 321.6  
6.9 6.6 6.6 6.3 6.3  
20 7.2 7.2 20

5748 73' Lt End picket fence

5705.5 73' Lt begin 35' picket fence

327.867  
~~340.617~~

327.867  
~~340.617~~

Roberts  
Cota  
Moore  
Fullen  
2-2-53  
W.O. 31908

X-Section Alley Blk. 5, Frary, Hts.

Redwood to Thorn  
Between Herman & 32<sup>nd</sup>

FB 1576 pg. 55

INDEXED

LOW  
FEB 6 1953

Thorn

Street

51

Thorn: ~  
60' Street  
40' Roadway  
AC. Paving  
28' Ch. face to walk  
5' Walk  
2' Rad. at Alley Int.

Fd. C.T. on 7' Line

5498.22

Avenue

BLOCK

5

Street

Herman

15' Alley

32<sup>nd</sup>

Redwood: ~  
60' Street  
40' Roadway  
AC. Paving  
4' Ch. face to walk  
5' Walk  
No opening at alley

Fd. C.T.

Set Hub & Disc  
on 7' Line

0+00

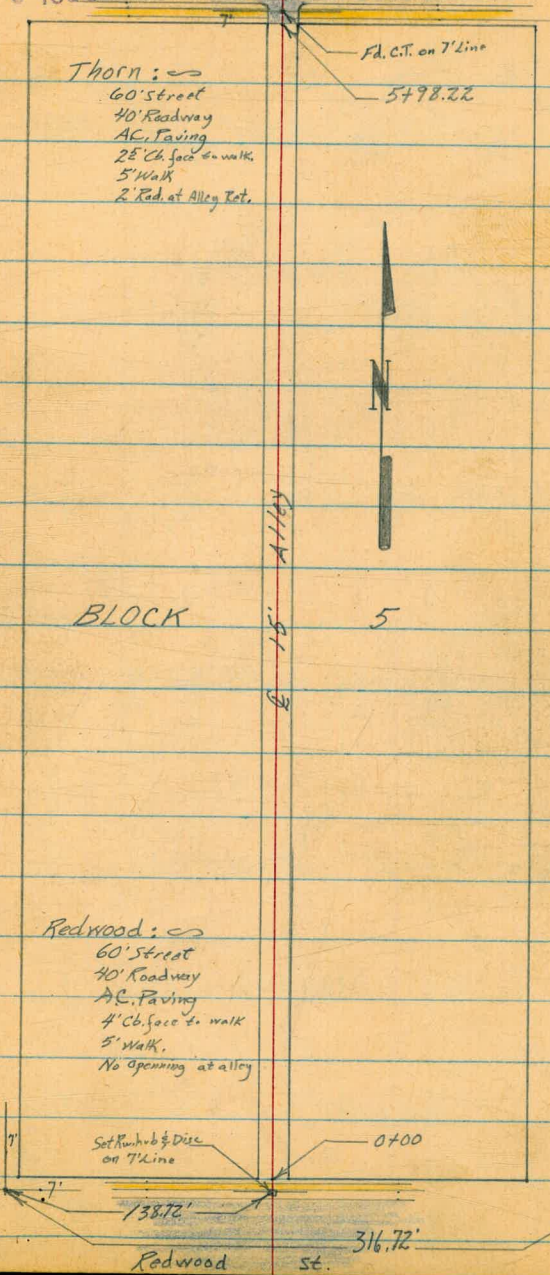
138.72'

Redwood

St.

316.72'

Fd. C.T.



Contd From Page 51

0+00 North Line Redwood

North Edge Walk -1

South Edge Walk -6

North Curb Line Redwood -10

Redwood Street -90

T.P. 5.57 299.17  $\uparrow$  13.07 293.60 on R. Hub & Alley  
and N. Line Redwood

T.P. 0.45 306.67 12.26 306.22

B.M. 6.87 318.48 NNBP  
311.61 Redwood  $\uparrow$  33rd

24

25

26

52

	293.8			
54	293.9	293.9	293.8	294.1
30	75	53	54	51
		75	75	50

	293.89		293.91	293.94
528		526	523	
75			75	

	293.86		293.84	293.88
531		533	529	
75			75	

	294.25		293.58	293.85	293.17		293.78	293.38	294.01	293.62	294.21
492	559	532	605	600	5.39	5.77	5.16	5.55	496		
92	92	42	42								
cb	Gutt.	cb	Gutt	Gutt	cb	Gutt	cb	Gutt	cb	Gutt	cb
			EWCB Inlt								

	294.33		293.64	293.57	293.80	294.04
484		553		560	537	513
100		50			50	100

299.17  $\uparrow$

Cont'd From Page 5R

Lt

Q

R 53

1+00

284.1	282.6	276.5	273.6	272.4	266.9	267.1	266.2
+6.3	+4.8	1.3	4.2	5.4	10.9	1.7	11.6
25	18	75	75	75	16	22	24

0+55

282.2	280.7	276.7	271.7	271.7	271.9	268.6	265.5
+4.4	+2.9	1.1	6.1	5.9	9.2	12.3	
18	16	75	3	4	75	30	

0+45

284.8	277.7	272.9	271.0	269.3	267.2
+7.0	0.1	5.0	6.8	8.5	10.6
28	15	75	75	75	35

T.P.

3.78 277.83X

12.66 274.11

277.83X

0+43

172 Lt to center P.P. # JFA3169

0+30

284.7	276.2	275.5	274.4	273.3	272.8
2.1	10.6	11.3	12.4	13.5	14.0
25	15	75	75	75	30

T.P.

0.43 286.77X

12.83 286.34

286.77X

0+10

289.7	288.5	287.9	287.7	288.5	289.8
9.5	10.7	11.3	11.5	10.7	9.4
35	22	75	75	75	30

299.17X

299.17X

Cont'd From Page 53

Lt.

♀

Rt. 54

2+43

296.4 295.0 289.8 289.6 288.6 289.4 296.6  
 30 44 95 97 10.7 10.0 12.7  
 30 14 10 75 75 75 35  
 ON NEW  
 F11

T.P. 12.19 299.35A 0.33 287.16

299.35A

2+25

296.0 294.5 289.2 287.7 285.2 281.9 271.0  
 +8.5 +7.0 +1.7 +0.2 2.3 5.6 16.5  
 33 18 17 75 75 75 30

2+00

289.2 286.2 283.5 278.2 279.2 270.7 270.0  
 +1.7 1.3 4.0 9.3 13.3 16.8 17.5  
 27 12 75 75 75 15 35

T.P. 11.39 287.49A 1.73 276.10

287.49A

1+70

286.3 284.8 277.3 275.3 270.0 269.3 267.8 269.2  
 +8.5 +7.0 0.5 2.5 7.8 8.5 10.0 8.6  
 30 18 75 75 75 17 22 28

1+50 16<sup>3</sup> Lt to center P. Pale \* JPA 3147

1+25

285.5 284.3 277.4 273.3 269.9 267.5 266.5 267.6  
 +7.7 +6.5 0.4 4.5 7.9 10.3 11.3 10.2  
 30 20 75 75 75 20 22 26

277.83A

277.83A



3+47 7<sup>th</sup> Rt End bldg.

299.38 299.37

3+41 7<sup>th</sup> Rt £ Single Garage Opening

4/6 4/7  
6<sup>th</sup> Conc. Apron 7<sup>th</sup> Conc. Floor

3+24<sup>5</sup> 6<sup>th</sup> Rt Begin Bldg. { Rooms under this bldg., 1<sup>st</sup> floor } elevation approx. same as bottom of steps Sta. 3+23 } 301.07 300.17

3+24 11<sup>th</sup> Lt £ 2<sup>nd</sup> Conc Steps in Opening of Wall

2.47 3.37  
13<sup>th</sup> 11<sup>th</sup>  
Top Bottom  
Steps Step

299.44 292.46

3+23 7<sup>th</sup> Rt £ 3 Conc. Steps

11.0 11.08  
7<sup>th</sup> 2<sup>nd</sup>  
Top Bottom  
Steps Steps

3+02 11<sup>th</sup> Lt to center P. Pole #43199

2+90

300.3 298.4 297.4 297.1 290.5 290.2  
3.2 5.1 6.1 6.3 13.0 13.3  
25 75 75 75 21 40

2+68 (Sta. is Right!) 26' 36" E 4<sup>th</sup> Lt to Three Garages opening on the North. Outs are to center of openings.

302.1 300.7 300.28  
1.4 2.8 3.26  
46 36 26<sup>0</sup>  
Dirt Dirt conc.  
Floor Floor Floor

T.P. 5.74 303.54  $\nabla$  1.55 297.80

303.54  $\nabla$

2+70

300.9 300.0 294.6 291.6 290.8 290.2 289.2  
+13 +0.7 4.8 7.8 8.5 9.2 10.1  
25 15 75 # 75 55  
Edr Edr Edr

299.35  $\nabla$

299.35  $\nabla$

Cont'd From Page 55

RE 56

3+99 { 7<sup>2</sup> Lt to center P. Pole # PA3233  
7<sup>5</sup> Lt End Conc. Ret Wall

Lt  
305.6  
304.8  
305.2  
7.7 8.5 8.1  
7<sup>5</sup> 7<sup>5</sup> 7<sup>5</sup>  
Top Foot GRD

T.P. 10.76 313.31A 0.99 302.55

313.31A

3+72<sup>E</sup> 6<sup>0</sup> Rt to Conc. Wall perpendicular to  $\xi$

303.49

3+66 (Sta. is Right) 9<sup>5</sup> Lt  $\xi$  opening in wall

0.05  
8<sup>5</sup>  
conc

301.96

3+70 4<sup>5</sup> Rt End Conc. Drive (Abandoned)

Garage being converted to Apt.

1.58  
4<sup>5</sup>  
conc

3+63 23<sup>5</sup> Rt  $\xi$  Conc. Drive only 8" wide at back

299.44

3+56<sup>E</sup> 4<sup>5</sup> Rt begin Conc. Drive (Abandoned)

300.66

2.88  
4<sup>5</sup>  
conc

3+50

303.4 301.1 301.1 300.6 300.4 298.5  
0.1 2.4 2.4 2.9 3.1 5.0  
8 8 7<sup>5</sup> 7<sup>5</sup> 7<sup>5</sup> 20

3+49 8<sup>0</sup> Lt begin 8" Conc. Ret. Wall

303.4 300.7 301.0  
0.1 3.3 2.5  
8 8 8  
Top Foot GRD

303.54A

303.54A

Cont'd From Page 56

Lt

Q

Rt 57

4760 14<sup>3</sup>' Lt Q Single Garage

308.35  
4.96  
14<sup>3</sup>  
conc  
Floor  
5.02  
8<sup>3</sup>  
conc  
Apron

4755 26<sup>2</sup>' Rt Q Single Garage

307.5  
5.8  
26<sup>2</sup>  
conc  
Floor

4750

308.7 307.8 307.3 307.4 307.5  
5.1 5.5 6.0 5.9 5.8  
15 7<sup>5</sup> 7<sup>5</sup> 22

4743 9<sup>0</sup>' Lt Q Single Garage (Almost Down)

307.41  
5.70  
9<sup>0</sup>  
conc  
Floor

sheds - not used

4734<sup>5</sup> (Starts Right) 9<sup>0</sup>' Lt Q Single Garage (Almost down)

307.13  
6.18  
9<sup>0</sup>  
conc  
Floor

4736 26<sup>5</sup>' Rt Q Double Garage

306.97 307.59  
6.34 5.92  
23<sup>2</sup>  
conc  
Apron Floor

4729 8<sup>3</sup>' Lt Q 2<sup>5</sup>' Conc Walk

307.40 307.23  
5.91 6.08  
18<sup>3</sup>  
conc conc

4700

306.8 306.4 305.5 305.0 305.4 305.8  
6.5 6.9 7.8 8.3 7.9 7.5  
20 9 7<sup>5</sup> 7<sup>5</sup> 20

313.31A

313.31A

5750

3/3.0 3/2.4 3/1.8 3/1.6 3/1.9 3/2.3  
 0.3 0.9 1.5 1.7 1.4 1.0  
 15 75 4 75 115

5735

6' RT End Lattice fence

5733

17' E Lt Q Single Garage

3/1.63 3/1.52  
 1.68 1.75  
 175 162  
 Conc Floor Conc Apron

5700

3/0.4 3/1.0 3/0.7 3/0.9 3/0.7 3/0.8  
 2.9 3.3 4.1 4.4 4.1 3.5  
 20 10 75 75 75 20

4497

7° Lt to center P. Pole # PA3267

4489

6' RT begin Lattice fence

4482

15' RT Q Single Garage

4481

7' Lt Q Single Garage (Not in use)

4464

40' RT Q Single Garage

3/0.80  
 4.51  
 76  
 Conc Floor

3/0.54 3/0.71  
 4.77 4.40  
 135 155  
 Conc Conc  
 Apron Floor

3/0.57  
 5.44  
 40  
 Conc Floor

South Curb Line Thorn Street +10

313.85	313.31	312.08	311.55	311.50	311.14	310.88	310.77	311.30	308.97	309.48
255	309	432	425	490	522	552	563	510	743	692
50	50	92	92	72		72	92	92	50	50
Cb	Gutt	Cb	Gutt				Gutt	Cb	Gutt	Cb

5798.22 South Line Thorn } 62' Lt End Ret. Wall  
 Curb Returns in bad shape

314.1	312.1	312.20	311.91	311.43	311.54	311.65
2.3	43	420	459	497	486	475
68	68	68	68	72	72	75
Top	Foot Wall	Cb	Gutt		Gutt	Cb

5791 62' Lt begin 6" conc. Ret. Wall

314.2	313.7	313.3
2.2	3.2	3.1
62	62	62
Top	Foot	GRD

T.P. 469 31640A 160 311.71

31640A

5785

314.0	313.5	313.0	312.9	312.5
+0.7	+0.2	0.3	0.4	0.8
15	72		72	15

5782 10' Lt End Three Car Garage

313.4  
 +0.1  
 10'  
 Dirt Floor

5755 99' Lt begin Three Car Garage

313.0  
 0.3  
 99  
 Dirt Floor

31331A

31331A

Cont'd From Page 59

60

check

0.91 314.84 = 314.80

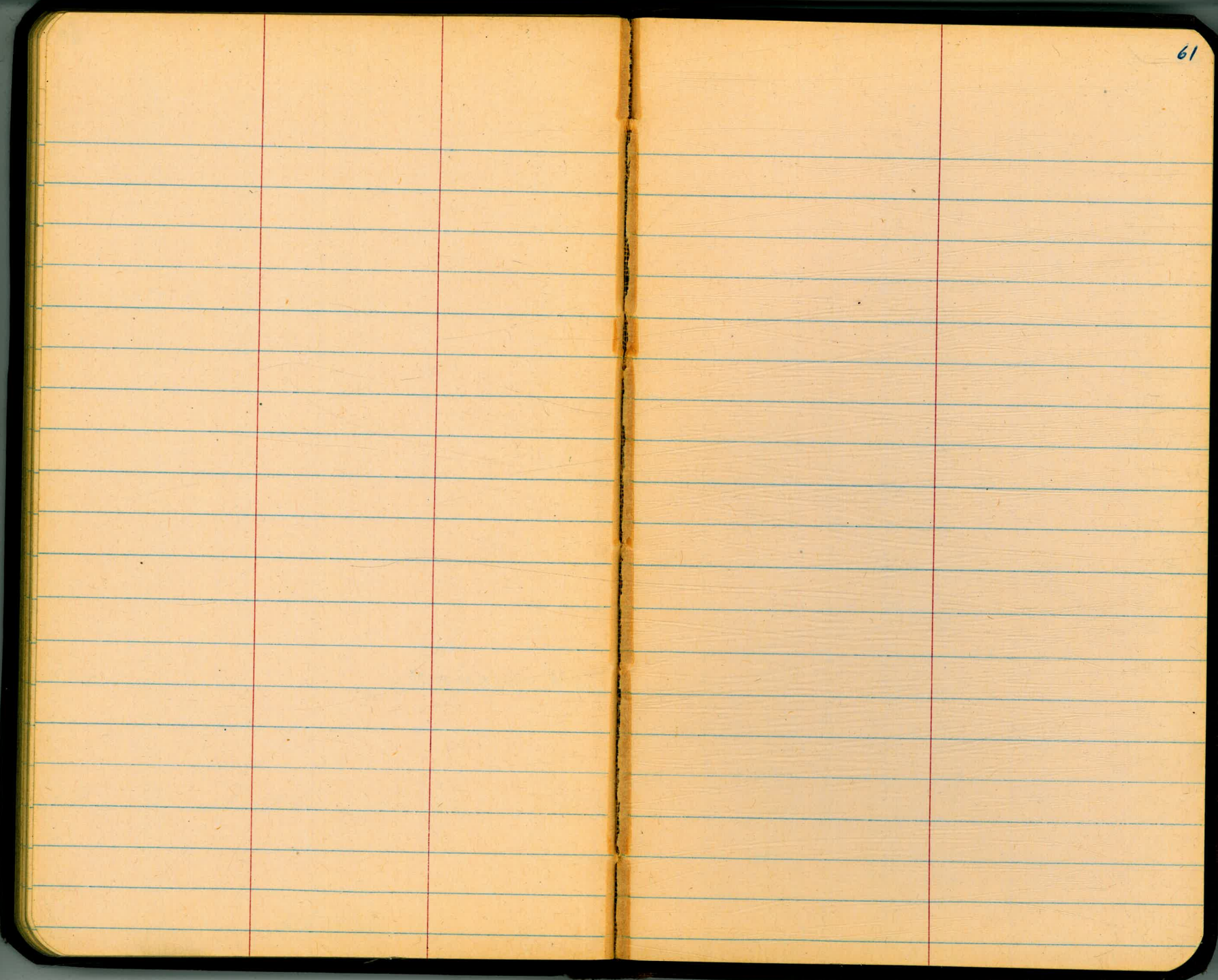
SWBP Thorn & 33<sup>rd</sup>

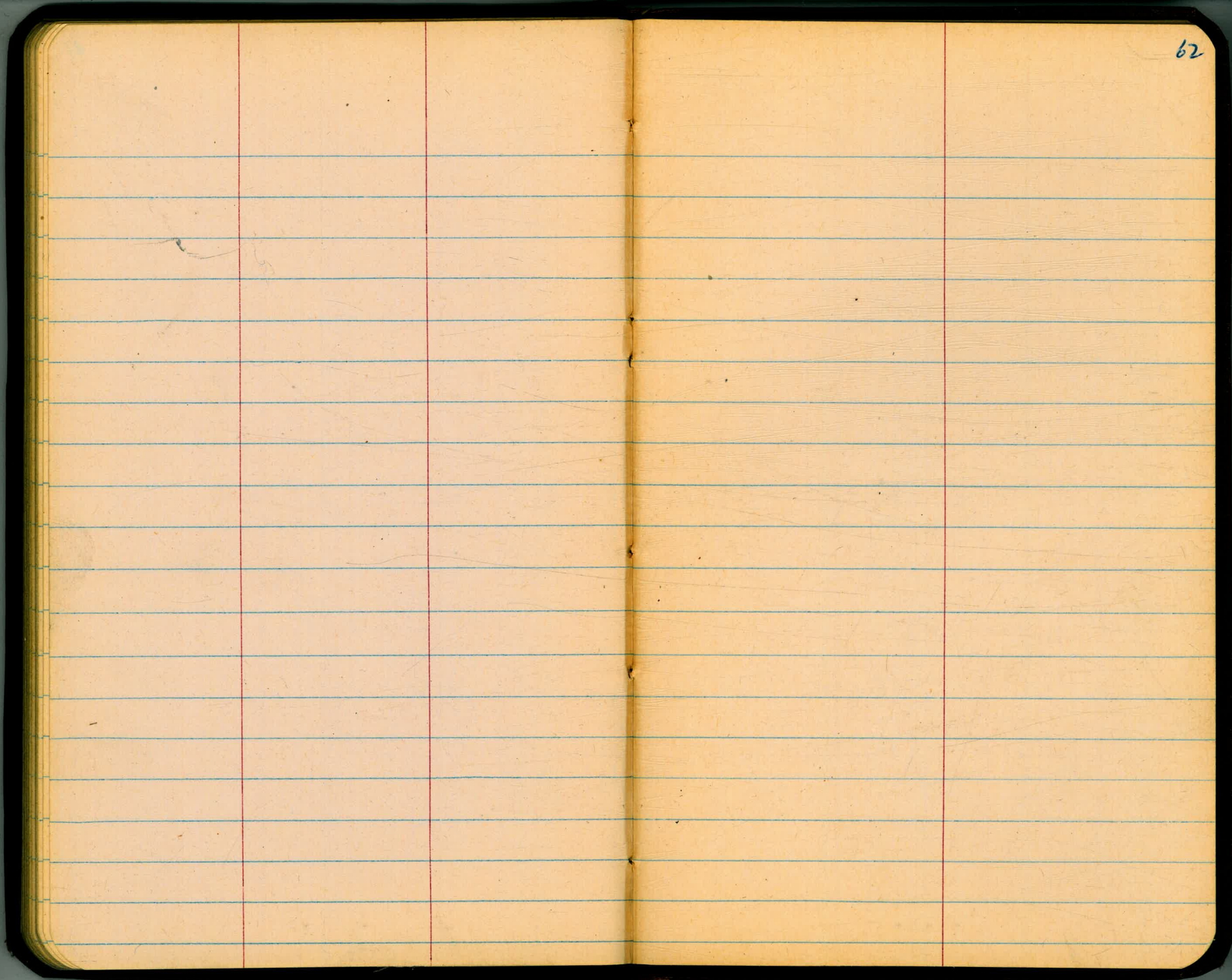
T.P.

11.15 315.75

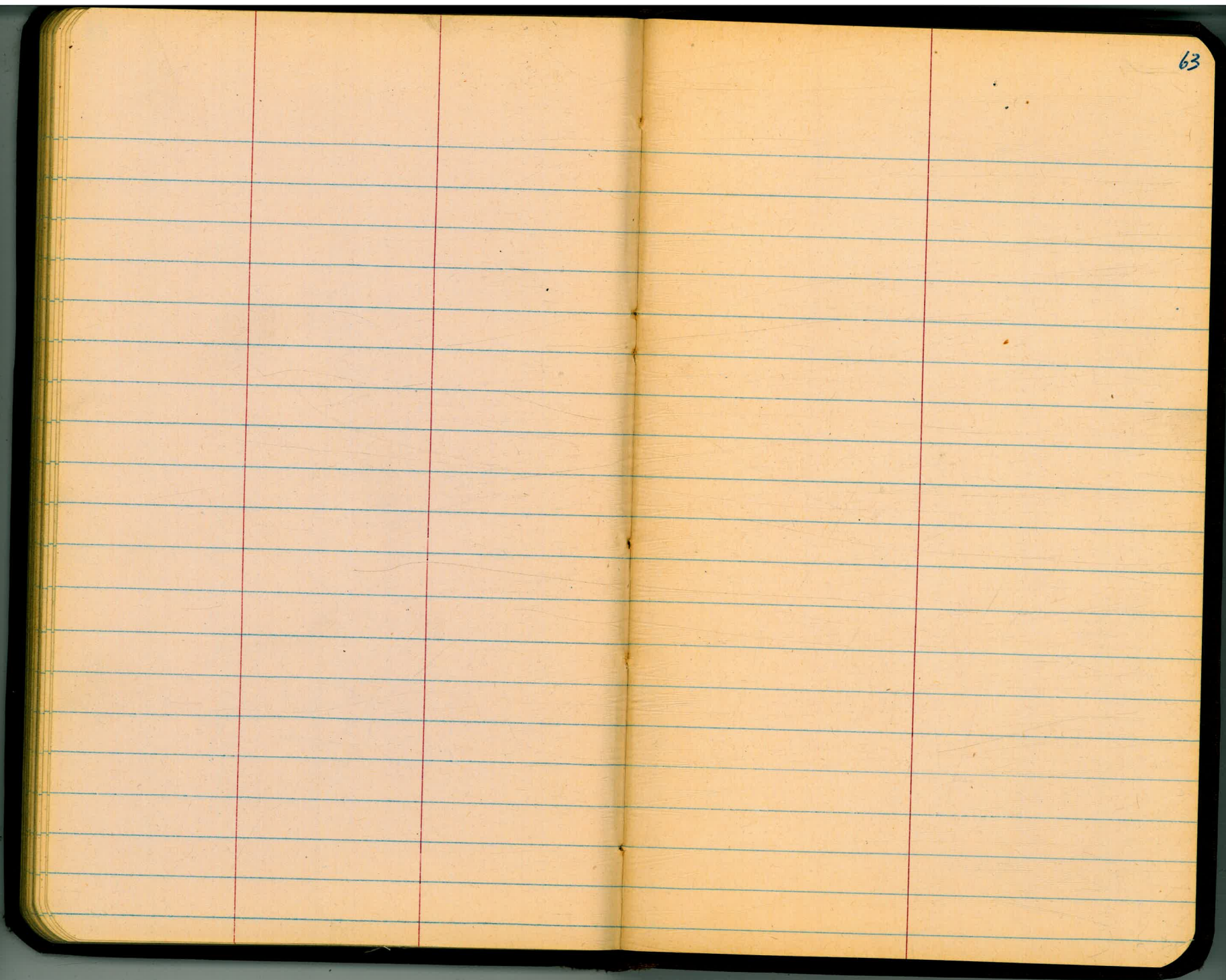
11.80 304.60

316.40  $\pi$

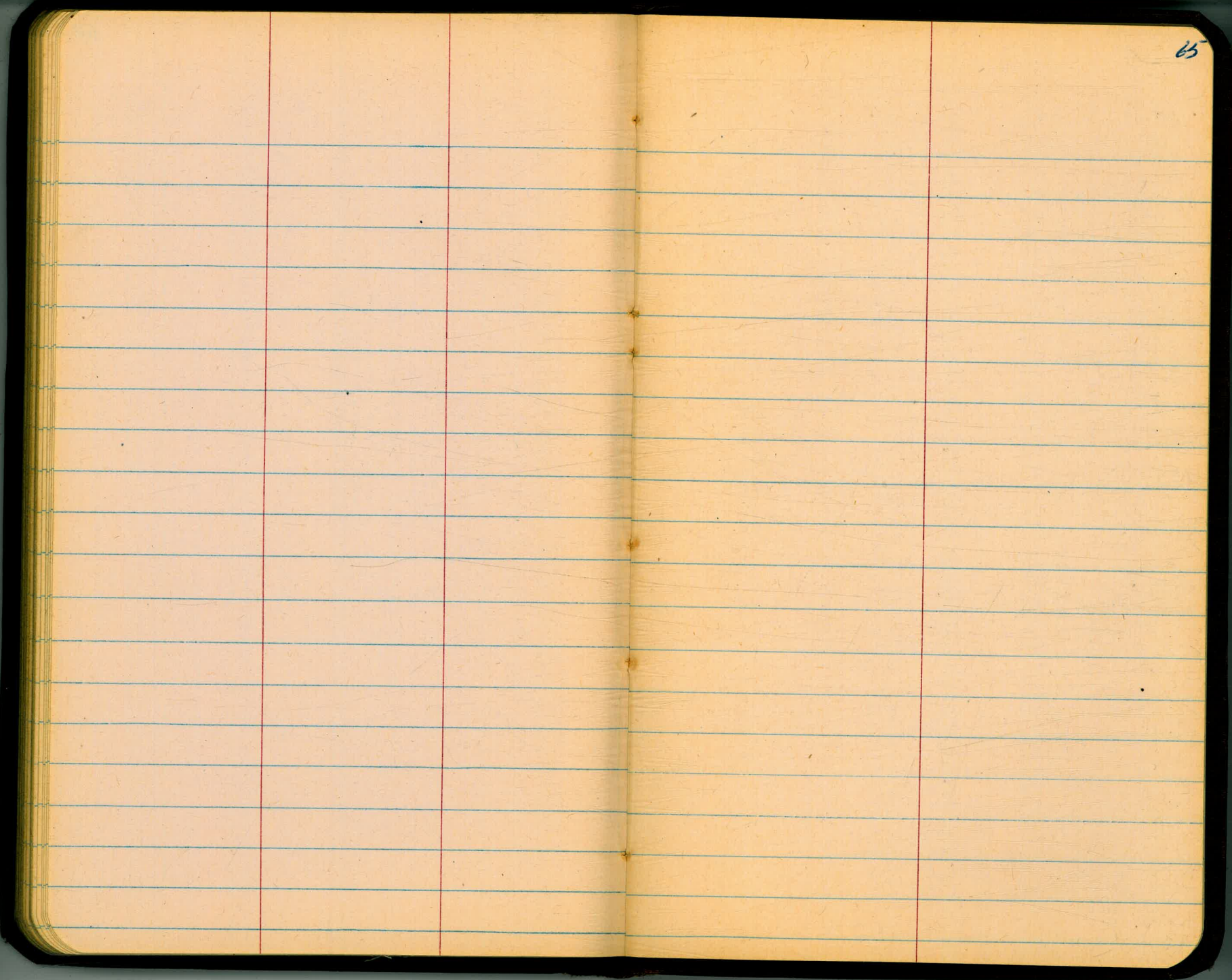








The image shows an open notebook with two facing pages. The pages are cream-colored and feature light blue horizontal ruling. Each page is divided into three vertical columns by two red margin lines. The notebook is bound in the center, and the dark cover is visible at the edges. The page number '64' is handwritten in the top right corner of the right page.



20 + 75 = approx. Cesspool

$x = 19 - y$

$$\begin{cases} x + y = 19 \\ x + 2y = 49.3 \end{cases}$$

$(19 - y)^2 + y^2 = 193$

$361 - 38y + y^2 + y^2 = 193$

$2y^2 - 38y + 168 = 0$

$y^2 - 19y + 84 = 0$

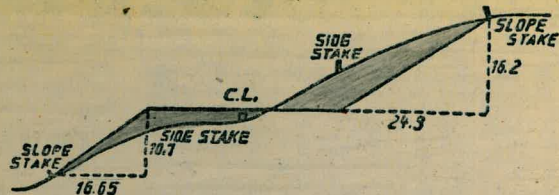
$23.7 (y - 12)(y - 7) = 0$   
 $xy = 7, 12$

$$\begin{cases} x + y = 19 \\ x = 12 \\ x + 12 = 19 \\ x = 7 \end{cases}$$

When  $xy = 7, x = 12$   
 and when  $xy = 12, x = 7$

check me.

Roberts



**DISTANCES FROM SIDE STAKES FOR CROSS-SECTIONING.**

SLOPE 1 1/2 TO 1. ROADWAY OF ANY WIDTH.

	0	.1	.2	.3	.4	.5	.6	.7	.8	.9	
0	0.00	0.15	0.30	0.45	0.60	0.75	0.90	1.05	1.20	1.35	0
1	1.50	1.65	1.80	1.95	2.10	2.25	2.40	2.55	2.70	2.85	1
2	3.00	3.15	3.30	3.45	3.60	3.75	3.90	4.05	4.20	4.35	2
3	4.50	4.65	4.80	4.95	5.10	5.25	5.40	5.55	5.70	5.85	3
4	6.00	6.15	6.30	6.45	6.60	6.75	6.90	7.05	7.20	7.35	4
5	7.50	7.65	7.80	7.95	8.10	8.25	8.40	8.55	8.70	8.85	5
6	9.00	9.15	9.30	9.45	9.60	9.75	9.90	10.05	10.20	10.35	6
7	10.50	10.65	10.80	10.95	11.10	11.25	11.40	11.55	11.70	11.85	7
8	12.00	12.15	12.30	12.45	12.60	12.75	12.90	13.05	13.20	13.35	8
9	13.50	13.65	13.80	13.95	14.10	14.25	14.40	14.55	14.70	14.85	9
10	15.00	15.15	15.30	15.45	15.60	15.75	15.90	16.05	16.20	16.35	10
11	16.50	16.65	16.80	16.95	17.10	17.25	17.40	17.55	17.70	17.85	11
12	18.00	18.15	18.30	18.45	18.60	18.75	18.90	19.05	19.20	19.35	12
13	19.50	19.65	19.80	19.95	20.10	20.25	20.40	20.55	20.70	20.85	13
14	21.00	21.15	21.30	21.45	21.60	21.75	21.90	22.05	22.20	22.35	14
15	22.50	22.65	22.80	22.95	23.10	23.25	23.40	23.55	23.70	23.85	15
16	24.00	24.15	24.30	24.45	24.60	24.75	24.90	25.05	25.20	25.35	16
17	25.50	25.65	25.80	25.95	26.10	26.25	26.40	26.55	26.70	26.85	17
18	27.00	27.15	27.30	27.45	27.60	27.75	27.90	28.05	28.20	28.35	18
19	28.50	28.65	28.80	28.95	29.10	29.25	29.40	29.55	29.70	29.85	19
20	30.00	30.15	30.30	30.45	30.60	30.75	30.90	31.05	31.20	31.35	20
21	31.50	31.65	31.80	31.95	32.10	32.25	32.40	32.55	32.70	32.85	21
22	33.00	33.15	33.30	33.45	33.60	33.75	33.90	34.05	34.20	34.35	22
23	34.50	34.65	34.80	34.95	35.10	35.25	35.40	35.55	35.70	35.85	23
24	36.00	36.15	36.30	36.45	36.60	36.75	36.90	37.05	37.20	37.35	24
25	37.50	37.65	37.80	37.95	38.10	38.25	38.40	38.55	38.70	38.85	25
26	39.00	39.15	39.30	39.45	39.60	39.75	39.90	40.05	40.20	40.35	26
27	40.50	40.65	40.80	40.95	41.10	41.25	41.40	41.55	41.70	41.85	27
28	42.00	42.15	42.30	42.45	42.60	42.75	42.90	43.05	43.20	43.35	28
29	43.50	43.65	43.80	43.95	44.10	44.25	44.40	44.55	44.70	44.85	29
30	45.00	45.15	45.30	45.45	45.60	45.75	45.90	46.05	46.20	46.35	30
31	46.50	46.65	46.80	46.95	47.10	47.25	47.40	47.55	47.70	47.85	31
32	48.00	48.15	48.30	48.45	48.60	48.75	48.90	49.05	49.20	49.35	32
33	49.50	49.65	49.80	49.95	50.10	50.25	50.40	50.55	50.70	50.85	33
34	51.00	51.15	51.30	51.45	51.60	51.75	51.90	52.05	52.20	52.35	34
35	52.50	52.65	52.80	52.95	53.10	53.25	53.40	53.55	53.70	53.85	35
36	54.00	54.15	54.30	54.45	54.60	54.75	54.90	55.05	55.20	55.35	36
37	55.50	55.65	55.80	55.95	56.10	56.25	56.40	56.55	56.70	56.85	37
38	57.00	57.15	57.30	57.45	57.60	57.75	57.90	58.05	58.20	58.35	38
39	58.50	58.65	58.80	58.95	59.10	59.25	59.40	59.55	59.70	59.85	39
40	60.00	60.15	60.30	60.45	60.60	60.75	60.90	61.05	61.20	61.35	40
41	61.50	61.65	61.80	61.95	62.10	62.25	62.40	62.55	62.70	62.85	41
42	63.00	63.15	63.30	63.45	63.60	63.75	63.90	64.05	64.20	64.35	42
43	64.50	64.65	64.80	64.95	65.10	65.25	65.40	65.55	65.70	65.85	43
44	66.00	66.15	66.30	66.45	66.60	66.75	66.90	67.05	67.20	67.35	44
45	67.50	67.65	67.80	67.95	68.10	68.25	68.40	68.55	68.70	68.85	45
46	69.00	69.15	69.30	69.45	69.60	69.75	69.90	70.05	70.20	70.35	46
47	70.50	70.65	70.80	70.95	71.10	71.25	71.40	71.55	71.70	71.85	47
48	72.00	72.15	72.30	72.45	72.60	72.75	72.90	73.05	73.20	73.35	48
49	73.50	73.65	73.80	73.95	74.10	74.25	74.40	74.55	74.70	74.85	49
50	75.00	75.15	75.30	75.45	75.60	75.75	75.90	76.05	76.20	76.35	50

THE NATIONAL BLANK BOOK COMPANY

HOLYOKE

MASSACHUSETTS

NEW YORK

CHICAGO

BOSTON

SAN FRANCISCO