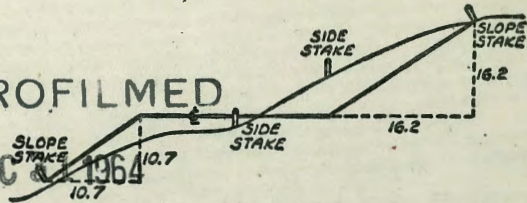


2126

MICROFILMED

DEC 2 1964  
10.7  
10.7



DISTANCES FROM SIDE STAKES FOR CROSS-SECTIONING  
SLOPE 1 TO 1. ROADWAY OF ANY WIDTH

	0	.1	.2	.3	.4	.5	.6	.7	.8	.9	0
0	0.00	0.10	0.20	0.30	0.40	0.50	0.60	0.70	0.80	0.90	0
1	1.00	1.10	1.20	1.30	1.40	1.50	1.60	1.70	1.80	1.90	1
2	2.00	2.10	2.20	2.30	2.40	2.50	2.60	2.70	2.80	2.90	2
3	3.00	3.10	3.20	3.30	3.40	3.50	3.60	3.70	3.80	3.90	3
4	4.00	4.10	4.20	4.30	4.40	4.50	4.60	4.70	4.80	4.90	4
5	5.00	5.10	5.20	5.30	5.40	5.50	5.60	5.70	5.80	5.90	5
6	6.00	6.10	6.20	6.30	6.40	6.50	6.60	6.70	6.80	6.90	6
7	7.00	7.10	7.20	7.30	7.40	7.50	7.60	7.70	7.80	7.90	7
8	8.00	8.10	8.20	8.30	8.40	8.50	8.60	8.70	8.80	8.90	8
9	9.00	9.10	9.20	9.30	9.40	9.50	9.60	9.70	9.80	9.90	9
10	10.00	10.10	10.20	10.30	10.40	10.50	10.60	10.70	10.80	10.90	10
11	11.00	11.10	11.20	11.30	11.40	11.50	11.60	11.70	11.80	11.90	11
12	12.00	12.10	12.20	12.30	12.40	12.50	12.60	12.70	12.80	12.90	12
13	13.00	13.10	13.20	13.30	13.40	13.50	13.60	13.70	13.80	13.90	13
14	14.00	14.10	14.20	14.30	14.40	14.50	14.60	14.70	14.80	14.90	14
15	15.00	15.10	15.20	15.30	15.40	15.50	15.60	15.70	15.80	15.90	15
16	16.00	16.10	16.20	16.30	16.40	16.50	16.60	16.70	16.80	16.90	16
17	17.00	17.10	17.20	17.30	17.40	17.50	17.60	17.70	17.80	17.90	17
18	18.00	18.10	18.20	18.30	18.40	18.50	18.60	18.70	18.80	18.90	18
19	19.00	19.10	19.20	19.30	19.40	19.50	19.60	19.70	19.80	19.90	19
20	20.00	20.10	20.20	20.30	20.40	20.50	20.60	20.70	20.80	20.90	20
21	21.00	21.10	21.20	21.30	21.40	21.50	21.60	21.70	21.80	21.90	21
22	22.00	22.10	22.20	22.30	22.40	22.50	22.60	22.70	22.80	22.90	22
23	23.00	23.10	23.20	23.30	23.40	23.50	23.60	23.70	23.80	23.90	23
24	24.00	24.10	24.20	24.30	24.40	24.50	24.60	24.70	24.80	24.90	24
25	25.00	25.10	25.20	25.30	25.40	25.50	25.60	25.70	25.80	25.90	25
26	26.00	26.10	26.20	26.30	26.40	26.50	26.60	26.70	26.80	26.90	26
27	27.00	27.10	27.20	27.30	27.40	27.50	27.60	27.70	27.80	27.90	27
28	28.00	28.10	28.20	28.30	28.40	28.50	28.60	28.70	28.80	28.90	28
29	29.00	29.10	29.20	29.30	29.40	29.50	29.60	29.70	29.80	29.90	29
30	30.00	30.10	30.20	30.30	30.40	30.50	30.60	30.70	30.80	30.90	30
31	31.00	31.10	31.20	31.30	31.40	31.50	31.60	31.70	31.80	31.90	31
32	32.00	32.10	32.20	32.30	32.40	32.50	32.60	32.70	32.80	32.90	32
33	33.00	33.10	33.20	33.30	33.40	33.50	33.60	33.70	33.80	33.90	33
34	34.00	34.10	34.20	34.30	34.40	34.50	34.60	34.70	34.80	34.90	34
35	35.00	35.10	35.20	35.30	35.40	35.50	35.60	35.70	35.80	35.90	35
36	36.00	36.10	36.20	36.30	36.40	36.50	36.60	36.70	36.80	36.90	36
37	37.00	37.10	37.20	37.30	37.40	37.50	37.60	37.70	37.80	37.90	37
38	38.00	38.10	38.20	38.30	38.40	38.50	38.60	38.70	38.80	38.90	38
39	39.00	39.10	39.20	39.30	39.40	39.50	39.60	39.70	39.80	39.90	39
40	40.00	40.10	40.20	40.30	40.40	40.50	40.60	40.70	40.80	40.90	40
41	41.00	41.10	41.20	41.30	41.40	41.50	41.60	41.70	41.80	41.90	41
42	42.00	42.10	42.20	42.30	42.40	42.50	42.60	42.70	42.80	42.90	42
43	43.00	43.10	43.20	43.30	43.40	43.50	43.60	43.70	43.80	43.90	43
44	44.00	44.10	44.20	44.30	44.40	44.50	44.60	44.70	44.80	44.90	44
45	45.00	45.10	45.20	45.30	45.40	45.50	45.60	45.70	45.80	45.90	45
46	46.00	46.10	46.20	46.30	46.40	46.50	46.60	46.70	46.80	46.90	46
47	47.00	47.10	47.20	47.30	47.40	47.50	47.60	47.70	47.80	47.90	47
48	48.00	48.10	48.20	48.30	48.40	48.50	48.60	48.70	48.80	48.90	48
49	49.00	49.10	49.20	49.30	49.40	49.50	49.60	49.70	49.80	49.90	49
50	50.00	50.10	50.20	50.30	50.40	50.50	50.60	50.70	50.80	50.90	50

Distance of slope stake from side or shoulder stake for any width roadway, slope 1 to 1. If ground is nearly level, the cut or fill at side stake is located by the double entry method in left column and top row. The number in body of table in same row and column gives distance from side stake to slope stake. If ground is not level estimate the difference in elevation between the side stake and slope stake, lower target by this amount if cut, elevate if fill. Add this amount to cut or fill and find distance in table. Set up rod at this point, and line of sight should cut target. If it does not make the slight adjustment necessary.

INDEXED

MAR 20 1951

through page 11

TABLE XIII—CORRECTIONS FOR TANGENTS AND EXTERNALS

These corrections are to be added to the approximate values, found by dividing the tangent, or external, for a 1° curve (Table VIII) by the degree of curve, in order to obtain the true tangents, or externals. Intermediate values may be obtained by interpolation.

FOR TANGENTS ADD

Central Angle	DEGREE OF CURVE															
	5°	10°	15°	20°	25°	30°	35°	40°	45°	50°	55°	60°	65°	70°		
10°	.03	.06	.09	.13	.16	.19	.22	.25	.28	.31	.34	.38	.42	.46		
15°	.04	.10	.14	.19	.24	.29	.34	.39	.45	.51	.55	.58	.63	.68		
20°	.06	.13	.19	.26	.32	.39	.45	.51	.58	.65	.72	.79	.84	.90		
25°	.08	.16	.24	.33	.40	.49	.58	.67	.75	.83	.90	.99	1.06	1.14		
30°	.10	.19	.29	.39	.49	.59	.69	.79	.89	.99	1.09	1.20	1.29	1.39		
35°	.11	.22	.34	.47	.58	.69	.79	.81	.92	1.04	1.29	1.42	1.54	1.66		
40°	.13	.26	.40	.53	.67	.80	.93	1.06	1.20	1.34	1.49	1.64	1.79	1.94		
45°	.15	.30	.44	.60	.76	.91	1.06	1.21	1.37	1.52	1.70	1.87	2.04	2.21		
50°	.17	.34	.51	.68	.85	1.02	1.19	1.36	1.54	1.72	1.91	2.10	2.29	2.48		
55°	.19	.38	.57	.76	.95	1.14	1.32	1.52	1.72	1.92	2.14	2.35	2.56	2.77		
60°	.21	.42	.63	.84	1.05	1.27	1.49	1.71	1.94	2.17	2.38	2.60	2.83	3.07		
65°	.23	.46	.69	.93	1.16	1.40	1.64	1.88	2.13	2.38	2.63	2.88	3.13	3.39		
70°	.25	.51	.76	1.02	1.28	1.54	1.80	2.06	2.33	2.60	2.88	3.16	3.44	3.72		
75°	.27	.56	.83	1.12	1.40	1.69	1.98	2.27	2.57	2.87	3.16	3.47	3.78	4.09		
80°	.30	.61	.91	1.22	1.53	1.84	2.15	2.46	2.78	3.10	3.44	3.78	4.12	4.46		
85°	.33	.66	1.00	1.33	1.68	2.02	2.36	2.70	3.05	3.40	3.77	4.14	4.55	4.89		
90°	.36	.72	1.09	1.45	1.83	2.20	2.57	2.94	3.32	3.70	4.10	4.50	4.91	5.32		
95°	.39	.79	1.19	1.55	1.94	2.32	2.70	3.08	3.46	3.84	4.24	4.65	5.06	5.48		
100°	.43	.86	1.30	1.74	2.18	2.62	3.06	3.50	3.95	4.40	4.88	5.37	5.85	6.34		
110°	.51	1.03	1.56	2.08	2.61	3.14	3.67	4.21	4.76	5.31	5.86	6.43	7.01	7.60		
120°	.62	1.25	1.93	2.52	3.16	3.81	4.45	5.11	5.77	6.44	7.12	7.80	8.50	9.22		

FOR EXTERNALS ADD

Central Angle	DEGREE OF CURVE															
	5°	10°	15°	20°	25°	30°	35°	40°	45°	50°	55°	60°	65°	70°		
10°	.001	.003	.004	.006	.007	.008	.009	.011	.012	.014	.015	.017	.018	.020		
15°	.003	.007	.010	.014	.018	.023	.027	.029	.032	.035	.039	.043	.047	.051		
20°	.006	.011	.017	.022	.028	.034	.038	.045	.051	.057	.063	.070	.076	.083		
25°	.009	.018	.027	.036	.046	.056	.065	.074	.083	.093	.106	.120	.127	.135		
30°	.013	.025	.038	.051	.065	.078	.090	.103	.116	.129	.149	.170	.179	.188		
35°	.018	.035	.054	.072	.086	.109	.131	.153	.175	.197	.213	.230	.247	.264		
40°	.023	.046	.070	.093	.117	.141	.172	.203	.234	.265	.277	.290	.315	.341		
45°	.030	.060	.093	.119	.153	.184	.216	.254	.289	.325	.351	.378	.411	.445		
50°	.037	.075	.116	.151	.189	.227	.266	.305	.345	.384	.425	.467	.508	.550		
55°	.046	.093	.142	.188	.236	.283	.332	.381	.420	.479	.530	.582	.641	.700		
60°	.056	.112	.168	.225	.283	.340	.398	.457	.516	.575	.636	.697	.774	.851		
65°	.067	.135	.204	.273	.343	.412	.483	.554	.625	.697	.771	.845	.922	1.01		
70°	.080	.159	.240	.321	.403	.485	.568	.652	.735	.819	.906	.994	1.08	1.17		
75°	.095	.182	.286	.383	.480	.578	.678	.777	.877	.977	1.07	1.18	1.29	1.39		
80°	.110	.220	.332	.445	.558	.671	.787	.903	1.02	1.13	1.25	1.38	1.50	1.62		
85°	.128	.259	.391	.524	.657	.790	.926	1.06	1.20	1.34	1.47	1.62	1.76	1.91		
90°	.149	.299	.450	.603	.756	.910	1.07	1.22	1.38	1.54	1.70	1.87	2.03	2.20		
95°	.174	.350	.522	.706	.885	1.06	1.25	1.43	1.62	1.80	1.99	2.18	2.38	2.58		
100°	.200	.401	.604	.809	1.01	1.22	1.43	1.64	1.85	2.06	2.28	2.50	2.73	2.96		
110°	.268	.536	.806	1.08	1.35	1.63	1.91	2.20	2.48	2.76	3.05	3.35	3.66	3.96		
120°	.360	.721	1.08	1.45	1.82	2.19	2.57	2.95	3.33	3.72	4.11	4.50	4.91	5.32		

X Sec Riley Congress to Jefferson 1-5

X-Sec. National Ave for yardage 6-11  
41<sup>ST</sup> to 43<sup>RD</sup>

X-Sec. Republic for grade establishment 12-28

Topo Survey street & houses Druckers Sub. 2942

Stake Drain - Blk 6 - Valencia Park - 43

Ext. Drain Under San Jacinto to Euclid Manor 46

Survey for Drain - San Onofre & Olvera Sts 50

Loca Drain - Blk 9 Valencia PK. 56

Broad Ave & 34th Elevations at intersec. 66-68

INTERSECTION - SAPPHIRE & BAYARD 69

SEWERS - DRUCKER'S SUBDN. - OLIVE ST et al 71

D. Smith  
G. Papp  
R. Sission

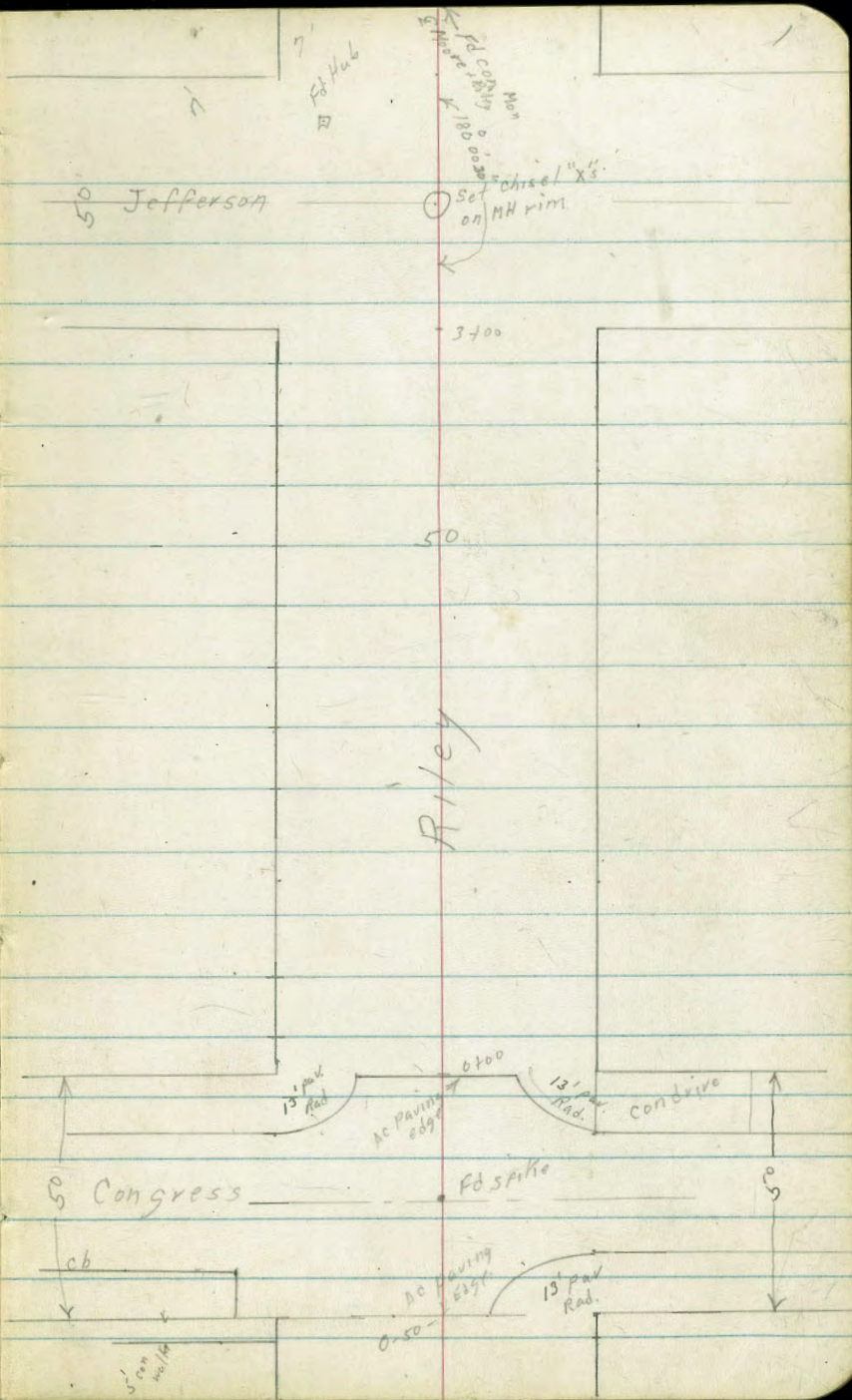
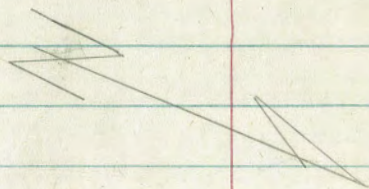
W/O # 31867

1-10-51

Cross Section Riley St.  
Congress to Jefferson

INDEXED

JAN 11 1951



13<sup>th</sup> Ad  
D. Smith  
B. Papp  
H. Sisson

X Sec Riley St Congress to Jefferson

Lt=South

£

W 0 #31867 (2)  
Rt=North 1-10-51

0+00 West Prop Congress <sup>edge</sup> A.P. paving

4<sup>00</sup> 4<sup>02</sup> 4<sup>05</sup> 4<sup>07</sup> 3<sup>92</sup> 4<sup>06</sup> 4<sup>13</sup> 4<sup>16</sup> 4<sup>68</sup> 4<sup>61</sup> 4<sup>98</sup>  
100 50 25 17 12 12 14 25 50 100  
10 edge 10 edge 25 AC

0-08 27° RH £ 14" power pole # P3201

0-13 Wly edge paving Congress

3<sup>82</sup> 4<sup>06</sup> 4<sup>01</sup> 4<sup>19</sup> 4<sup>32</sup> 4<sup>42</sup> 4<sup>56</sup>  
100 50 25 25 50 100

0-25 £ Congress

4<sup>07</sup> 4<sup>31</sup> 4<sup>26</sup> 4<sup>39</sup> 4<sup>53</sup> 4<sup>63</sup> 4<sup>78</sup>  
100 50 25 25 50 100

0-37 Fly edge paving on Congress to North

4<sup>01</sup> 4<sup>04</sup> 4<sup>36</sup> 4<sup>26</sup> 4<sup>33</sup> 4<sup>56</sup>  
50 25 25 50 100

0-40 East of line Congress to the South

4<sup>03</sup> 3<sup>55</sup> 4<sup>13</sup> 3<sup>77</sup> 4<sup>23</sup> 3<sup>84</sup> 3<sup>59</sup> 4<sup>06</sup> 4<sup>28</sup> 4<sup>29</sup> 4<sup>16</sup> 4<sup>31</sup> 4<sup>46</sup>  
100 100 50 50 33 33 25 15 15 25 50 100 AC walk  
06 gut 06 gut 06 gut 25 15

0-50 East Prop Congress St. edge paving

4<sup>31</sup> 4<sup>27</sup> 4<sup>39</sup> 4<sup>13</sup> 3<sup>20</sup> 4<sup>08</sup> 4<sup>17</sup> 4<sup>2</sup> 4<sup>3</sup> 4<sup>73</sup>  
100 50 25 23 12 12 25 50 100 AC walk  
West walk end Pav edge

BM,

4.39

£ Spoke in Pav  
Riley Congress  
ER 1629-85

Note: all notes are elevations used tape rod.

Lt = South

E

Rt = North

TP,

526

2700

45	46	44	42	42	48	49
35	25	15		8	25	35

1779 14<sup>5</sup> at E 3' con walk

422	432
145	25
walk	

1757 16<sup>0</sup> at E 4' wide Hedge 6' High at 90<sup>0</sup> to st. line

1750

50	48	44	44	44	46	42
35	25	18		6	25	35

1700

50	47	42	42	42	41	48	474
35	25	19	18		5	25	50 40

0750

51	42	50	48	45	46	42	486
35	25	15	14		12	25	50 40

0725

48	46	48	45	44	45	48	476
50	25	15	14		12	25	50 40

0704 21<sup>5</sup> at E 1" Oleander

3+39

Lt = South

Σ

Rt = North

4

$\frac{31}{50}$   $\frac{35}{25}$

$\frac{38}{25}$

$\frac{38}{25}$

$\frac{32}{50}$

3+25 E Jefferson

$\frac{35}{50}$   $\frac{35}{25}$   $\frac{36}{100}$

$\frac{36}{25}$

$\frac{35}{50}$

3+11

$\frac{34}{50}$   $\frac{22}{25}$

$\frac{33}{25}$

$\frac{31}{25}$

$\frac{32}{50}$

3+09 26° RT 24" Power Pole # 505569 H

$\frac{44}{50}$

$\frac{36}{25}$

$\frac{34}{18}$

$\frac{33}{13}$

$\frac{30}{13}$

$\frac{36}{25}$

$\frac{32}{50}$

3+00 East Prop Jefferson

$\frac{43}{50}$

$\frac{32}{25}$

$\frac{32}{16}$

$\frac{33}{8}$

$\frac{32}{8}$

$\frac{32}{25}$

$\frac{38}{50}$

2+67 23° RT 25" con walk

$\frac{435}{238}$

$\frac{434}{25}$

$\frac{436}{25}$

walk

walk

walk

2+50

$\frac{42}{35}$

$\frac{42}{25}$

$\frac{32}{16}$

$\frac{38}{10}$

$\frac{32}{25}$

$\frac{45}{25}$

$\frac{44}{35}$

2+16 17° RT E 15" Power Pole # P3910

BM Starting

439 ✓

3+50

44 41 36  
50 25 15

39 38 45 42 43  
8 10 25 50

3+41

40 37  
50 25

38 43 42  
25 50



Roberts  
cata  
Moore  
Sabertoe  
3-21-51  
WD 20811

X-sect National Ave For  
Yardage.

41<sup>st</sup> to 43<sup>rd</sup>  
See T.P. 24 pg 42, 47 & 25

Lt. 6  
INDEXED  
MAR 20 1951

T.P. 481 33.74  $\checkmark$  2.43 28.73  
R+00  
1796E 286 ft to Center T. Pole #4151  
1450  
1400  
0+74 271' Lt to Center T. Pole  
0+50  
0+00 East line 41<sup>st</sup>  
0-30 E 41<sup>st</sup>  
0-43 Fd City Disc  
BM 1.11 36.36  $\checkmark$  35.25 NWBP Nat'l #41<sup>st</sup>

26.1	26.7	28.9	29.0	28.38	28.39	28.40	28.26	28.21	27.9	28.4	27.4	27.0	27.7	26.4
113 65	107 50	75 40	74 28	798 77	797 103	7.96	8.10 92	8.15 17	8.5 23	8.0 27	9.0 38	9.4 40	127 60	150 70
25.6	25.4	26.1	27.2	28.01	28.07	28.16	28.83	28.66	28.4	28.6	28.3	28.0	28.9	28.9
108 60	10.5 40	10.3 34	9.2 25	7.27 18	7.29 112	7.40	7.53 83	7.70 76	8.0 22	7.8 25	8.1 34	8.4 40	10.5 46	11.1 60
26.4	26.6	26.7	27.8	27.74	27.77	27.69	28.41	28.29	28.9	28.2	26.7	26.7	26.1	26.1
10.0 60	9.8 40	9.7 34	6.6 25	6.2 17	6.59 112	6.72	6.95 82	7.07 15	7.5 21	7.2 25	9.7 36	9.7 40	10.3 60	10.3 60
27.4	27.3	27.3	27.1	28.76	28.66	28.95	29.30	29.14	29.8	29.4	28.1	27.0	26.5	26.5
9.0 60	9.1 40	9.1 32	5.3 26	5.60 17	5.70 128	5.71	6.06 72	6.22 74	6.6 19	6.0 22	9.3 38	9.4 40	9.9 60	9.9 60
28.1	28.2	28.4	28.7	28.26	28.39	28.27	28.07	27.93	27.2	27.1	27.8	27.6	26.7	26.7
8.5 60	8.2 70	8.0 36	5.7 29	4.10 19	3.97 13	4.09	4.29 7	4.43 12	5.2 20	4.3 24	8.6 37	8.8 40	9.7 60	9.7 60
29.8	29.8	29.7	29.9	29.86	29.60	29.40	28.06	27.41	27.9	27.5	28.7	27.7	27.7	27.7
6.6 65	6.6 55	2.7 48	2.5 40	2.50 24 80 ft K	2.76 132	2.96	3.30 68	3.95 78 80 ft K	4.5 24	5.9 26	7.7 40	8.7 60	8.7 60	8.7 60

and from the Edge  
all corners from Edge



3+97<sup>E</sup> 27<sup>th</sup> Rt to Center Guy Pole #4171

3+86<sup>E</sup> END Rail on Left

3+75<sup>E</sup> END Conc. Deck, Curb & Walk on Lt

3+59<sup>E</sup> End Conc Deck & National

3+51 End Rail on Right

3+43<sup>E</sup> End Conc Deck, Curb & Walk on Rt.

3+09

2+73<sup>#</sup> Begin Conc. Deck, Curb & Walk on Left

2835	2834	2767	2798	2825	2824	2832	2830	281	285	287	280
5.37	5.40	6.07	5.76	5.42	5.40	5.52	5.44	5.6	5.2	5.0	5.7
31 walk	26 cb	26 gut	18	95		9	18	25	27	40	60

2831	2831	2765	2808	2828	2819	2804	279	282	283	277
5.43	5.43	6.07	5.66	5.46	5.55	5.70	5.8	5.5	5.4	6.0
31 walk	26 cb	26 gut	13		7	18	24	28	40	60

Edge Deck  
1/4 Shot out → 5.69

Edge Deck  
1/4 Shot on right → 5.65

2825	2823	2751	2802	2816	2806	2754	2822	2827
5.49	5.57	6.23	5.72	5.58	5.68	6.18	5.52	5.47
31 walk	26 cb	26 gut	13		13	26 gut	26 cb	31 walk

2814	2813	2744	2796	2810	2794	2743	2812	2814
5.60	5.61	6.30	5.78	5.64	5.80	6.31	5.62	5.60
31 walk	26 cb	26 gut	13		13	26 gut	26 cb	31 walk

2799	2799	2729	2783	2801	2784	2774	2803	2806
5.75	5.75	6.45	5.91	5.73	5.90	6.40	5.71	5.69
31 walk	26 cb	26 gut	13		13	26 gut	26 cb	31 walk

Cont'd From Page 8

6+50

43	41.3	2.4	3.0	3.4	3.15	3.16	3.16	3.16	3.3	2.8	1.8	1.8
60	41.7	3.1	2.9	2.7	1.3	7.2	9	14	19	23	40	60

6+00

71	38.5	6.7	6.7	5.9	6.3	6.42	6.36	6.24	6.37	6.32	6.5	5.9	5.1	4.9
60	38.9	40	29	28	27	14	9.2	9.2	9.2	17	19	22	40	60

5+75

32 Lt. to Center T. Pole #4089984

9.5	36.1	9.8	9.0	9.40	9.30	9.25	9.41	9.31	8.8	8.4	8.6	8.6
60	35.8	40	30	14	9.2	9	9	18	24	40	60	60

5+50

5+00

13.8	31.8	13.9	12.6	12.56	12.30	12.24	12.41	12.39	12.5	11.8	11.9	12.5
60	31.1	40	24	17	9.2	9	9	15	22	28	40	60

T.P.

12.24 45.59 0.39 33.35 540:5100

4559

4+50

7.4	29.3	7.5	29.4	3.1	30.6	3.08	30.71	2.99	30.75	3.10	30.64	3.19	30.55	3.43	30.31	3.0	30.1	3.2	30.5	3.1	30.6
60	29.3	40	27	15	9	9	9	9	9	9	9	17	25	25	30	40	40	40	40	60	60

4+17

292 Lt. to Center T. Pole #

11.8	21.9	4.7	29.0	5.4	28.3	5.0	28.7	5.28	28.46	5.04	28.70	5.01	28.13	4.86	28.79	4.95	28.79	4.96	28.78	5.3	28.4	4.7	29.0	4.5	29.2	4.8	28.9	
60	21.9	40	33	24	21	16	9	9	9	9	9	9	9	9	9	9	9	9	9	9	9	9	9	9	9	9	9	9

4+00

33.74

33.74

9+28

52.0	52.9	52.8	53.0	53.1	53.0	53.1	54.0	55.0
1/2	33	34	32	31	31	31	2.2	1.2
60	40	36	92	90	9	25	40	60

9+00

51.3	51.5	52.3	52.1	52.2	52.4	52.4	52.5	52.8	53.2
49	47	3.9	4.1	3.94	3.80	3.80	3.7	3.4	3.0
60	40	34	26	92	92	9	20	40	60

8+83

37' Lt to Center T. Pole # 409000H

45.8	47.9	50.7	50.8	51.1	51.2	51.5	51.5	52.0	52.1	52.2
10.4	83	5.5	5.25	5.12	5.03	5.08	5.08	4.2	4.1	4.0
60	40	27	15	91		9	14	27	40	60

8+50

44.6	47.5	48.8	49.5	49.6	49.7	49.7	49.7	50.2	50.5	50.7
11.6	87	7.4	11.8	6.60	6.48	6.48	6.52	6.0	5.7	5.5
60	40	27	15	91		9	14	25	40	60

8+00

44.8	46.8	46.8	47.6	47.8	47.8	47.9	47.9	48.6	48.9
11.4	94	9.4	8.57	8.38	8.35	8.32	8.39	7.6	7.3
60	40	25	15	91		9	14	40	60

7+50

7+36

34' Lt to Center T. Pole # 408999H

43.6	44.7	45.6	44.9	45.0	45.3	45.4	45.3	45.1	44.5	45.5	46.0	46.2
12.6	115	10.6	11.3	10.33	10.84	10.81	10.92	11.12	11.7	10.7	10.2	10.0
60	40	30	27	15	91		9	14	19	22	40	60

7+00

T.P.

10.81 56.23 0.17 45.42

Sta 7+00

45.59

56.23

check

4.91 57.27 = 57.24

NWBP National #43rd

10+96<sup>50</sup> to Nail #43rd 13.25 Rt to City Disc

10+68<sup>5</sup> West Curb Line 43rd

56.96	56.88	56.81	57.01	57.12	57.38	58.13
5.22	5.20	5.37	5.19	5.06	4.00	4.05
58	58	28		28	58	58
lip	cut				cut	cb

10+39<sup>2</sup> Curb R.C.s L + R

56.26	56.18	56.91	56.50	56.44	56.20	56.78	56.65	57.60
5.92	6.10	5.77	5.67	5.74	5.78	5.49	5.53	4.58
28	28	14		14	28	28	40	50
lip	cut				cut	cb		

10+27<sup>2</sup> Begin Curb on Right

55.99	55.89	56.05	56.22	56.10	55.89	55.90	56.73	58.24
6.19	6.29	6.13	5.96	6.08	6.29	6.20	5.45	3.94
28	28	14		14	28	28	40	60
lip	cut				lip	cut	cb	lip
cut	lip				cut	lip	cut	cut

10+00

55.67	54.96	56.78	55.41	56.27	55.81	56.70	58.13
6.51	7.22	7.00	6.71	6.91	6.37	5.48	4.05
28	28	14		15	30	40	60
lip	cut						

T.P.

7.96 62.18X 2.01 54.22

54.78	54.67	54.54	53.94	56.07	54.23	54.09	53.9	54.1	55.8
14.5	13.6	10.9	2.29	2.16	2.00	2.14	2.3	1.5	0.4
34	34	28	28	9		9	27	40	60
walk	walk	cb	cut						

9+57 Begin Full Width Pav, Curb & walk on Left

56.23X

56.23X

Roberts  
Cata  
Moore  
Sattler  
4-24-51  
4-51

X-section Republic  
for Grade Establishment

See = T.P. 24 pg 32 1/2

0+91 18° Rt to Center P.P. #P170769

0+75 15° Lt & 10" Conc. Drive

0+74 18° Rt to Deadman

0+50

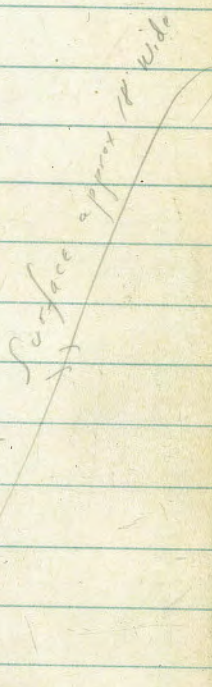
0+43 9° Lt & 2" Conc. Walk

0+20

0+00 ~~5.~~ Line Trolley Beginning of Republic

0-30 Found Conc. Man.

BM 12.75 455.62 442.87 Conc.



lt. R 12  
Reduced  
4-24-51  
Ryan  
**INDEXED**  
MAY 17 1951

451.52	451.24	450.39
4.10	4.38	5.23
30 conc	20 BRK	15 conc

450.8	449.9	448.8	448.2	448.2	447.2	449.9
4.8	5.7	6.8	7.2	7.2	6.4	5.7
40	20	11		16	20	40

450.25	450.08	448.58	448.35
5.37	5.54	7.04	7.27
30 conc	19 T.P. Stop (3 Run)	15 System	9 Conc.

449.4	448.2	446.3	446.4	446.0	447.2	449.1
6.7	7.4	9.3	9.2	9.6	8.4	7.5
40	20	12		16	20	40

445.8	445.2	445.4	445.2	445.0	444.6	445.7
9.8	10.4	10.2	10.4	10.6	11.0	9.7
30	20	10		10	20	30

Abn. Q Trolley of Republic FB2041 page 44

Cont'd From Page 12

Lt

Q

RT

13

2726 21' Lt Q 15" Conc Drive  
(247.64 20' RT 3/4" Pipe L.S. 2528)  
← (J.C. 9-59)

455.72 455.27  
5.00 5.45  
35' 21'  
conc conc

2700

455.1 454.7 453.9 454.1 454.0 454.3 454.5  
5.6 6.0 6.8 6.6 6.7 6.4 7.2  
40 20 9 9 20 40

T.P. 6.65 460.72 X 155 454.07

460.72 X

= (1484.39 Sew. Survey by Roberts FB # 2272  
STA 1454.39 = 35' FT (to NELY on diag) to chx set by F.O.  
At time he staked sewer - nebulous - tie  
(J.C. 9-59) NO ALIGNMENT ←  
No chimney & X on drive  
rather than walk  
(See FB # 2272)

455.0 454.5 453.1 453.2 452.9 453.5 452.5  
0.6 1.1 2.5 2.4 2.7 2.1 3.1  
40 20 9 9 20 40

1432

Lt Q 12' Conc. Drive

454.47 454.27 453.22  
1.15 1.35 2.40  
30 21 15  
conc conc conc

1409

Lt Q 12' Light AC Drive

453.2 452.9 451.7 451.8  
2.4 2.8 3.9 3.8  
30 20 9

1405 20' RT = 3/4" Pipe L.S. 2528

453.4 452.7 451.4 451.5 451.0 451.2 451.2  
2.2 2.9 4.2 4.1 4.6 4.4 4.4  
40 20 9 14 20 40

1400

455.62 X

455.62 X



3+89

Rt Light AC Drive

456.8	455.7	455.9	455.6	455.3
49	5.0	48	5.1	5.4
	8	11	20	40

3+50

457.1	456.8	455.4	455.6	455.4	455.8	455.7	455.6
3.6	3.9	5.3	5.1	5.3	4.9	5.0	5.1
40	20	11		8	10	20	40

3+34

173' Lt & 23' Curving Conc Drive

456.62	455.82	455.68
410	490	5.04
262 TOP WALL	262 CONC	172 CONC

3+17

183' Rt to Center P. Pole #P170470

3+13

L. Pt in Rt Wall

456.36	455.72
436	5.0
172 TOP	172 GRID

3+00

179' Lt. Begin 4" Conc. Ret. Wall

456.6	456.2	455.17	455.2	454.8	454.7	454.1	453.9
41	4.5	4.3	5.5	5.9	5.7	6.0	6.9
40	20	172 TOP	172 GRID	10	12	20	40

2+50

456.0	455.1	454.3	454.5	454.3	453.8	453.2
47	5.6	6.4	6.2	6.4	6.9	7.5
40	20	10		10	20	40

460.72 X

460.72 X

5718 18° Rt to Center P.Pole # P178471

T.P. 5.79 461.287 5.23 455.49

461.287

5700

455.1	455.4	455.3	455.6	455.4	456.1	455.4	455.3
5.6	5.3	5.4	5.1	5.3	4.6	5.3	5.4
40	20	11		9	13	20	40

4768

17° Lt & 8' Conc Drive

456.27	456.03
4.45	4.69
35 conc	173 conc

4750

456.2	455.8	455.7	455.7	455.6	456.0	456.0	456.0
4.5	4.9	5.0	5.0	5.1	4.7	4.7	4.7
40	20	11		10	12	20	40

4710

18° Lt & 8' Conc Drive

456.47	456.28
4.25	4.44
40 conc	18 conc

4700

456.6	456.5	455.6	455.8	455.7	455.6	455.5
4.1	4.2	5.1	4.9	5.0	5.1	5.2
40	20	11		7	20	40

460.727

460.727

Cont'd From Page 15

7+37

457.1	457.1	456.8	456.5	456.1	456.4	456.4	456.9
42	42	45	48	52	49	49	44
35	20	10		10	12	20	40

7+00

453.9	454.5	456.3	456.4	456.3	456.5	456.9
74	48	50	49	50	41	44
40	20	6		10	20	40

6+50

456.0	456.0	455.9	456.0	456.0	456.5	456.4
53	53	54	53	53	48	49
40	20	10		8	20	40

6+23

19' RE & 3' Conc Walk

456.18	456.00
5.10	5.28
19' conc	30' conc

6+00

455.2	455.3	455.5	455.6	455.6	455.9	455.9
6.1	6.0	5.8	5.7	5.7	5.4	5.4
40	20	10		8	20	40

5+50

454.1	455.1	455.2	455.6	455.4	456.0	456.2
7.2	6.2	6.1	5.7	5.9	5.3	5.1
40	20	10		8	20	40

5+31

19' RE & Single Garage

455.73	455.94
5.55	5.34
16 Apron	19 Floor

461.28A

461.28A

Cont'd From Page 16

Lt

R

R 17

8+85 ±14<sup>2</sup> Rt to Center 30" Pepper

8+60 ±31<sup>2</sup> Lt Begin Wire Fence on Conc. Wall

8+57 ±29' Lt to Deadman

8+52 ±17<sup>2</sup> Lt to Center P. Pole # P170473

8+50

454.9	454.8	454.9	454.8	454.5	455.0	454.5
2.8	2.9	2.8	2.9	3.2	2.7	3.2
40	20	11		10	20	40

8+00

456.7	456.7	456.5	456.2	455.5	455.8	455.1
1.0	1.0	1.2	1.5	2.2	1.9	2.6
40	20	10		14	20	40

T.P. 1.78 457.72X 5.54 455.74

Hub on  
westerly P.L.

457.72X

7+75 <sup>TP 24 Distance</sup> Ed Hub & set Hub & Disc on Prop. Lines

456.8	457.0	456.8	456.4	455.9	456.1	455.5
4.5	4.3	4.5	4.9	5.4	5.2	5.8
40	20	10		12	20	40

7+71 18' Rt to Deadman

7+43 18' Rt to Center P. Pole # 170472

461.28X

461.28X

10+41 47<sup>th</sup> Rt. Single Garage Conc. floor

457.06 ✓  
4.66  
47  
Conc.

T.P. 505 451.457 11.32 476.40

10+00

430.6	436.3	441.1	446.3	446.5	446.7	449.5	449.7	450.4
27.1	21.4	16.6	11.4	11.2	11.0	8.2	8.0	7.3
50	35	20	6		7	16	20	30

9+68<sup>64</sup> EC. Set Hub & Disc on Prop. Lines

436.32	442.1	445.1	447.0	447.2	447.5	450.2	450.7	452.4
21.4	15.6	12.6	10.7	10.5	10.2	7.5	7.0	5.3
35	20	10	5		9	16	20	40

9+45 ±13<sup>5</sup> Lt to Center P Pole # 371117

449.9	449.0	449.4	450.2	449.9	449.4	451.8	452.7
8.1	8.7	8.3	7.5	7.8	8.3	5.9	5.0
40	20	12	5		12	20	40

9+41<sup>5</sup> ±18 Lt END WIRE Fence & Wall

9+39 ±14 Lt to Deadman

9+00 ±8 Lt to Fence & wall

453.11	452.8	452.3	452.1	451.7	452.7	453.0	453.3	453.9
4.6	4.9	5.4	5.6	6.0	5.0	4.7	4.4	3.8
20	8	4		7	10	20	40	70

457.72 X

457.72 X

BC.  
11+80<sup>6A</sup> Found @ Hud, Set Hubs East Pl. of 70° East of G. 13<sup>5</sup> Rt. Lath Woodbrake

436.7 442.3 445.3 445.6 445.8 447.0 448.1 449.1  
14<sup>8</sup> 9<sup>2</sup> 6<sup>2</sup> 5<sup>2</sup> 5<sup>2</sup> 4<sup>5</sup> 3<sup>4</sup> 2<sup>4</sup>  
35 20 14 7 7 20 40

11+40

437.5 442.4 445.8 446.1 446.4 448.9  
14<sup>0</sup> 9<sup>1</sup> 5<sup>2</sup> 5<sup>1</sup> 5<sup>1</sup> 2<sup>5</sup> 4<sup>4</sup> 8<sup>9</sup>  
35 20 10 7 20

11+36 19° Rt. 36" Pepper Tree

11+80

424.6 444.0 438.9 441.2 445.3 445.6 445.8 449.4 449.4 450.7  
2<sup>2</sup> 1<sup>5</sup> 1<sup>2</sup> 1<sup>0</sup> 6<sup>2</sup> 5<sup>2</sup> 5<sup>2</sup> 2<sup>1</sup> 2<sup>1</sup> 0<sup>8</sup>  
20 40 20 15 9 7 17 20 40

10+80 16° Rt. 24" Pepper Tree

10+50

435.5 439.6 445.5 445.7 445.7 446.8 446.4 450.2  
1<sup>6</sup> 1<sup>2</sup> 1<sup>0</sup> 5<sup>2</sup> 5<sup>2</sup> 4<sup>2</sup> 3<sup>1</sup> 1<sup>3</sup>  
31 20 70 6 10 20 37

10+48 11° Rt. 18" Pepper Tree

451.45 T

451.45 T

Cont'd From Page 19

16 17 20

13156

430.4	437.2	440.6	440.7	440.6	441.0	443.3	444.1
16 <sup>2</sup>	9 <sup>2</sup>	6 <sup>5</sup>	6 <sup>1</sup>	6 <sup>5</sup>	6 <sup>1</sup>	38	30
40	20	8		10	20	23	40

13150

430.1	436.9	441.0	441.1	441.1	444.1	444.9
17 <sup>2</sup>	10 <sup>2</sup>	6 <sup>1</sup>	6 <sup>0</sup>	6 <sup>0</sup>	30	22
40	20	8		10	20	35

13100

431.7	438.9	442.7	443.1	443.5	445.4	446.1
15 <sup>2</sup>	8 <sup>2</sup>	4 <sup>2</sup>	4 <sup>0</sup>	38	17	12
40	20	7		10	20	45

12+68 21° EL PALE # 891118

11 12+55 20° EL END LATH WINDBRAKE

10 12+50 15° EL 14" TREE

434.4	439.8	441.3	443.7	444.4	442.5	446.5	448.1	448.7	
12 <sup>2</sup>	7 <sup>2</sup>	5 <sup>8</sup>	3 <sup>2</sup>	2 <sup>9</sup>	2 <sup>5</sup>	0 <sup>5</sup>	+1 <sup>2</sup>	+1 <sup>5</sup>	
35 <sup>2</sup>	20	15	11		7	18 <sup>2</sup>	Windbrake	30	40

10 12+44 11° EL 10" TREE

12+33 12° EL 14" TREE

12+00

438.9	442.3	444.4	444.7	445.3	445.4	446.3	447.1	448.1	448.9	
8 <sup>2</sup>	4 <sup>8</sup>	2 <sup>7</sup>	2 <sup>4</sup>	1 <sup>8</sup>	1 <sup>7</sup>	0 <sup>8</sup>	0 <sup>2</sup>	+1 <sup>2</sup>	+1 <sup>8</sup>	
30	20	15	11		5	5	11 <sup>2</sup>	Windbrake	20	40

T.P

157 447.10X 5.87 445.58

447.10X  
7

Cont'd From Page 20

21

22

23

24

15+00

429.5	435.7	439.0	440.8	440.9	441.4	444.1	446.0
16.2	10.0	6.7	7.9	7.3	1.6	7.0.3	
40	20	10	6	12	20	40	

14+59

20<sup>2</sup> Rt to Center P. Pile # 3711.19

14+50

429.0	434.6	437.0	439.2	439.6	440.0	442.4	444.9
16.7	11.1	8.7	6.5	6.1	5.7	3.3	0.8
40	20	14	8	9	20	40	

14+00

411.3	426.8	433.8	436.5	438.7	438.9	439.1	442.4	448.4
34.4	18.7	11.9	9.4	7.0	6.8	6.6	3.3	2.3
100	50	20	12	7	9	20	40	

TP Hub 20° Rt 13+81 1/4 P.C.C. #09 445.677 552 441.58

445.677

13+81 1/4 P.C.C. Found at Hub, Set Hubs on Prop. Lines

428.8	435.3	439.2	439.5	439.6	442.1	443.6	443.9
18.3	11.8	7.9	7.6	7.5	5.8	3.5	3.2
10	20	8	10	20	30	40	

13+70

428.5	435.4	439.9	440.0	439.9	442.0	443.5	443.9
18.5	11.7	7.2	7.1	7.2	5.1	3.5	3.2
10	20	8	10	20	22	40	

13+61 22<sup>2</sup> Ft. Center Single Garage, Dirt Floor

440.9  
6.2  
23.3  
Floor

447.10T

447.10T



Cont'd From Page 21

ht

R 22

18+00

390.3	407.3	419.3	422.5	425.2	424.8	428.2	428.7	433.3	
43.0	26.0	14.0	10.8	8.1	8.1	8.5	5.1	4.6	0.0
100	50	20	10	4		13	15	20	40

17+50

416.9	422.6	426.2	428.7	428.7	428.8	430.9	433.6	438.0
17.4	10.7	7.1	4.6	4.6	4.5	2.4	10.3	7.4
40	20	7	3		11	12	20	40

T.P.

0.69 433.30A 13.06 432.61

433.30A

17+00

417.7	425.0	430.0	432.8	432.7	432.8	435.8	437.0	440.7	441.1
28.0	20.7	15.7	12.9	13.0	12.9	9.9	8.7	5.0	4.6
40	20	7	3		13	15	20	30	40

16+50

420.7	428.1	432.1	435.2	435.2	435.6	439.0	439.5	443.2
25.1	17.6	13.6	10.5	10.5	10.1	6.7	6.2	2.5
40	20	7	1		14	16	20	40

16+00

426.1	431.0	435.5	437.4	437.5	437.7	440.2	442.5
19.6	14.7	12.2	8.3	8.2	8.0	5.5	3.2
40	20	13	6		12	20	40

15+66

16' RT to Center P.Pale # 871120

15+63<sup>57</sup> E.C.

END 5022 MIX SURFACE

Hub gone Reset also set Hubs on East Prop. 110 and 50' East of R.

427.6	434.1	438.8	439.3	439.5	441.7	444.2
18.1	11.6	6.9	6.4	6.2	4.0	1.5
40	20	8		12	20	40

445.67A

445.67A

19490<sup>74</sup> EC } Q Hub Gone Reset w/ Hub & Disc also  
 set Hubs on Prop. Lines

398.9	406.5	409.1	413.0	413.1	413.1	416.0	419.0	426.6
22.2	14.6	12.0	8.1	8.0	8.0	5.1	2.1	+5.5
40	20	12	6		9	10	20	40

19450

403.3	409.7	415.5	415.3	414.8	417.1	417.6	417.8
17.8	11.4	5.6	5.8	6.3	4.0	3.5	3.3
40	20	6	12	16	20	40	

19400

410.8	415.8	418.4	418.2	417.4	419.6	419.1
10.3	5.3	2.7	2.9	3.7	1.5	2.0
40	20	6		15	20	40

18477

19' RA to Center T.Pole # 541184H

T.P.

0.42 421.07π 12.65 420.65

421.07π

Spike in T.Pole # 541184H 18R & at EC

18474<sup>27</sup>

B.C. Found Q Hub on Surface. Reset Lower also  
 (set Hubs on Prop. Lines)

408.7	415.5	418.5	419.9	419.1	420.1	420.7	422.1
24.6	17.8	14.8	13.4	14.2	13.2	12.6	11.2
40	20	10		16	18	20	40

18437

412.8	415.3	419.9	422.2	422.2	422.0	420.6	420.9	427.3
24.5	18.0	13.4	11.1	11.1	11.3	8.7	8.4	6.1
40	20	7	2		15	17	20	40

433.30π

433.30π

22+80 #4

BC

Fd Hub on side reset w/ hub & Disc  
also set hubs on Prop Lines  
Fd old old hub on West PL. & Replaced

383.8	390.3	393.5	399.6	399.6	399.5	402.7	405.7	415.4
24.9	12.4	15.2	9.1	9.1	9.2	6.0	3.0	+6.7
40	20	10	4		14	15	20	40

22+79

12<sup>E</sup> 14 to center T. Pole # 541182H

22+40

383.4	391.2	394.9	399.8	400.1	400.1	402.9	408.0	415.9
25.3	17.5	13.8	8.7	8.6	8.6	5.8	0.7	+7.2
40	20	10	4		12	13	20	40

22+00

383.7	392.7	396.4	400.4	400.9	400.9	405.8	409.4	418.7
25.0	16.0	12.3	8.3	7.7	7.8	4.9	+0.7	+10.0
40	20	10	4		11	12	20	40

21+50

384.1	391.6	397.3	402.8	403.0	402.7	406.3	410.8	418.8
24.6	17.1	11.4	5.9	5.7	6.0	2.4	+2.1	+10.1
40	20	10	4		11	12	20	40

21+00

377.7	385.5	393.2	399.1	404.4	404.6	404.8	408.7	412.7	421.4
31.0	23.2	15.5	9.6	4.3	4.1	3.9	0	+4.0	+12.7
40	40	20	13	5		10	10	20	40

T.P.

0.60 408.74  $\pi$  12.93 408.14

408.74  $\pi$

20+76

12<sup>E</sup> 14 to center T. Pole # 541182H

20+50

390.5	399.5	403.5	407.3	407.2	407.1	411.3	414.8	417.3	422.8
30.6	21.6	17.6	13.8	13.7	14.0	9.8	6.3	3.8	+1.7
40	20	10	5		8	8	13	20	40

421.47  $\pi$

421.47  $\pi$

T.P. 0.26 389.36A 11.22 389.10

25+50

366.7	374.7	381.8	382.6	388.0	389.0	389.0	392.9	397.1	402.4
33.6	25.6	18.5	17.7	12.3	11.3	11.3	7.4	3.2	+2.1
160	70	20	16	7		10	11	20	40

25+00

376.8	384.8	390.2	390.4	390.0	393.5	398.2	406.1
23.5	15.5	10.1	9.9	10.3	6.8	2.1	+5.8
40	20	11		8	9	20	40

24+50

381.3	387.0	389.4	393.8	393.6	393.1	396.8	401.3	407.6
20.0	13.3	10.9	6.5	6.7	7.2	3.5	+1.0	+7.3
40	20	13	6		10	11	20	40

24+00

381.0	388.5	392.7	396.4	396.5	396.3	399.7	403.1	410.6
18.3	11.8	7.4	3.7	3.8	4.0	0.6	+2.2	+10.3
40	20	10	5		13	14	20	40

23+50

381.4	390.6	398.6	398.5	397.9	400.6	403.1	412.3
16.7	9.7	4.7	1.8	2.4	+0.3	+2.8	+12.0
40	20	4		13	14	20	40

23+00

380.9	390.3	395.5	399.2	399.5	399.2	403.3	406.5	414.6
17.4	10.0	4.8	1.1	0.8	1.1	+3.0	+6.2	+14.3
40	20	7	3		14	15	20	40

TP 1.32 400.32A 9.74 399.00

Hub BC.2218044

400.32A

408.74A

T.P. 0.27 372.14  $\pi$  12.49 376.87

28+50

368.9 368.8 371.3 374.3 374.3 373.6 378.2 379.4 383.9  
 25.5 24.6 18.1 15.1 15.1 15.8 11.2 10.0 5.5  
 40 20 11 6 14 15 20 48

28+00

377.8 373.5 375.9 378.4 378.5 378.0 382.5 383.6 390.0  
 21.6 15.9 13.5 11.0 10.9 11.4 6.9 5.8 +0.6  
 40 20 11 7 14 15 20 40

27+50

370.0 376.3 378.6 382.1 382.1 381.6 385.5 386.5 391.8  
 17.4 13.1 10.8 7.3 7.3 7.8 3.9 2.9 +2.4  
 40 20 12 5 15 16 20 40

27+00

372.9 379.1 381.6 385.6 385.6 384.7 390.4 390.7 396.3  
 16.5 10.3 7.8 3.8 3.8 4.7 +1.0 +1.3 +6.9  
 40 20 12 5 15 17 20 40

26+50

374.5 381.1 381.6 387.1 387.1 386.6 390.9 391.6 397.4  
 14.7 8.3 7.8 2.3 2.3 2.8 +1.5 +2.2 +8.0  
 40 20 15 5 15 16 20 40

26+00

374.5 381.4 382.0 388.4 388.2 387.7 392.2 393.7 399.7  
 14.9 8.0 7.4 1.0 1.2 1.7 +2.8 +1.3 +10.3  
 40 20 18 6 14 15 20 40

389.36  $\pi$

389.36  $\pi$

31+00

348.3 350.8 351.9 354.0 357.9 363.9  
 16.9 14.4 13.3 11.2 7.3 13  
 50 20 1 20 50

30+67.87

Fd Hub & CT on SE. Cor.  
 Opposite SF. Car Republic & Weaver  
END OF REPUBLIC

345.6 351.6 353.8 355.3 361.1 358.6 359.0 361.5 363.0 365.2 371.6  
 19.6 13.6 11.4 9.9 9.1 6.6 6.2 3.7 2.2 0.0 +6.4  
 90 40 26 24 20 8 12 20 35 50

30+50

355.6 356.7 355.0 356.4 358.7 361.0 361.0 360.9 363.6 364.5 371.5  
 9.6 8.5 11.2 8.8 6.5 4.2 4.2 4.3 1.6 0.7 +6.3  
 40 30 25 20 4 2 4 12 20 40

T.P.

0.75 365.19 T 12.70 364.44

365.19 T

30+00

356.7 360.7 365.9 365.3 365.3 365.9 369.6 369.8 372.1  
 20.4 16.4 11.2 11.8 11.8 11.2 9.5 7.3 5.0  
 40 20 5 1 13 15 20 40

29+72.60 E.C. Found old 2x2 & CT 20' W. or S.

29+50

360.3 362.5 365.1 368.1 368.5 372.0 377.2  
 14.8 14.6 12.0 9.0 8.6 5.7 +0.1  
 40 20 5 17 20 40

29+00

359.7 364.6 369.1 370.6 370.7 370.5 374.8 375.8 379.8  
 17.4 12.5 9.0 6.5 6.4 6.6 2.3 1.3 +2.7  
 40 20 9 5 14 15 20 40

377.14 T

377.14 T

Contd From Page 27

Lt

£

R 28

check		5.96	391.46 =
T.P.	6.67	397.42	434 390.75
T.P.	12.88	395.09	0.44 382.21
T.P.	12.23	382.85	4.88 370.62
T.P.	11.34	375.50	10.3 364.16

391.49 See F.B.2041 page 38 NE conc. Man {Weaver & Tooley

set TP 9.02 356.17

212 Rubub S.E. Corner Weaver & Republic

365.19x

Topo Survey - of Streets + Houses  
in Druckers Sub.

#

W.O.

Elev. Rod used - Actual Elev. shown

2+70 - 119' Lt =  $\pm$  16' x 20' Gar. - Conc. floor

2+75 - 117' Rt =  $\pm$  12' x 18' Gar. " "

2+18 - 41.5 Rt =  $\pm$  22.5' x 28' Frame House

2+00

1+38.5 =  $\pm$  Top tier st.

1+00

0+93 - 24.1' Rt =  $\pm$  20' x 20' - frame House

0+33 - 65.8 Lt =  $\pm$  24' x 30' - Drivem Houses

Note: first figure will always be front of

0+25 - 25.4 Rt =  $\pm$  50' x 50' Brick Bldg.

0+06 = P.C. Returns

0+00 = N.L. Midway

Beg.  $\pm$  Nashville - Consider - N. + S -  
Nashville + Midway (Const. B.M.)

B.M. = Chisel  $\square$  in end of walk - S.W. Cor.

2.33 ✓

Correct = 2.64

~~3.40~~ <sup>wrong</sup> Nail in wall of Drive in Theatre - S.E. Cor. 611c + Midway

B.M. =

Correct. 1.95

~~1.71~~ Prop. pipe - S.W. Cor. Mission Bay Boat Works.

~~1.01~~  
~~0.72~~ = U.S. Eng. date - U.S. + G.S.

Lt = W.

Rt = E.

29

INDEXED

JUN 5 1951

1.04

~~0.50~~

119 = floor

1.64

~~1.4~~

50

Lots are High

0.5

~~0.3~~

0.52

~~0.2~~

0.59

~~0.35~~

3.49

~~3.25~~

41.6

floor

House

1.94

~~1.70~~

117 = floor

Gar.

1.54

~~1.3~~

50

1.80

~~1.56~~

24.1 = floor.

1.76

~~1.52~~

65.8 = floor

.84

0.29

~~2.55~~

15

Top Neweb.

2.31

~~2.07~~

25.4

floor

.99

~~.97~~ ✓

~~0.73~~

15

Top Neweb.

Raise all elev. .24 - To 6+00 - P. 30



Raise elev. 0.24 to Here

Set B.M. on Pole - S.E.

0.63

~~0.39~~

6 + 38.5 =  $\pm$  Western St.

6 + 00

5 + 86 = 45' Lt. =  $\pm$  18' x 33' Stucco House

5 + 48 = 40' Rt. =  $\pm$  14' x 39' Frame House

5 + 40 = 117' Rt. =  $\pm$  18' x 20' Frame House

5 + 18 = 39' Rt. =  $\pm$  24' x 16' Frame House

5 + 18 = 43' Lt. =  $\pm$  28' x 38' Frame House

5 + 00

4 + 85 = 90' Lt. =  $\pm$  10' x 20' Gar. - Dirt floor

4 + 75 = 40' Rt. =  $\pm$  26' x 28' frame House

4 + 68 = 47' Lt. =  $\pm$  21' x 20' frame House

4 + 60 = 83' Rt. =  $\pm$  12' x 30' Gar. - Dirt floor

4 + 00 - end A.C. pave

3 + 88 =  $\pm$  La Salle St.

Set B.M. - S.E. Pole

0.22 = 0.46 corrected

3 + 50 = 39.7' Lt. =  $\pm$  19' x 31' Stucco House

3 + 43 = 39.5' Rt. =  $\pm$  28.5' x 24' Frame House

3 + 12 = 102' Lt. =  $\pm$  18' x 24' Gar. - Conc. floor

3 + 00 = 54' Lt. =  $\pm$  27' x 26' Frame House

Nashville - Cont.

Lt.

$\pm$

Rt.

30

- .4

~~- .06~~

- .86

~~- .11~~

3.53

~~3.19~~

45' floor.

1.2

~~+ .0~~

50 = High Lot

2.61

~~2.27~~

40 = floor

2.30

~~2.06~~

117

floor

3.14

~~2.90~~

39 = floor.

2.20

~~+ .16~~

43 = floor.

- 0.5

~~- .17~~

0.8

~~0.6~~

2.91

~~2.67~~

40 = floor

2.58

~~2.24~~

47 = floor

1.14

~~0.9~~

83 = floor

0.0

~~- 0.3~~

0.46

~~0.22~~

2.00

~~+ .76~~

39.7

floor

2.50

~~3.26~~

39.5 = floor

1.34

~~+ .10~~

102 = floor 3.46

~~3.22~~

54

floor.

0.34

~~0.1~~

1.44

~~1.2~~

50

	Lt.	±	Rt.	
2+00		0.7		
1+41- 49' Rt. = ± 20' x 23' frame House				3.30
1+26- 24' Rt. = ± 10' x 14' Sing Gar. Conc. floor.				49' = floor
1+06- 70' Rt. = ± 23' x 12' frame House				1.06
1+00				24' = floor
0+90- 40' Rt. = ± 18' x 18' frame House		0.5		1.24
0+37- 24' Rt. = ± Sing Gar. - Dirt floor 10' x 18'				70 floor.
Beq ± of Lapwai - 0+00 = E.L. Nashville				2.74
				40 floor
				0.7
				24 = floor
		0.1		
Set B.M. = Nail in NE Pole 156				
8+85 = Toe of Dike = end		0.6		
8+64 = about S.L. of Lapwai st.		0.0		
8+43- 40' Rt. = ± 26' x 34' frame House				2.64
8+04- 40' Rt. = ± 24' x 24' frame House				40 floor.
8+00				2.72
				40 = floor.
		1.0	-0.8	
		50		
		Lat.		2.95
7+63- 40' Rt. = ± 27' x 24' frame House				40 = floor
7+20- 45' Lt. = ± 26' x 41' frame House		2.12		
		45		
		floor.		
7+00			-0.6	
6+77- 42.5 Rt. = ± 22' x 34' frame House				3.08
				42.5 = floor

Elevations are Correct From Here on.

Lt.      ⊕      Rt.

7+50-167' Lt. = 42' x 105' <sup>↓ other small Bldgs.</sup> Stucco Manf. Plant. (Plastics)

3.97  
167 = floor - Conc.

7+25-2' Rt. = ⊕ 22' x 12' frame shed.

2.3  
2  
floor

7+00

1.5  
100

6+90-112' Rt. = ⊕ 40' x 20' frame shed - Conc. shed

2.64  
floor

6+00 - ⊕ Produced on - P.L. line

1.1  
100

5+80-65' Rt. = ⊕ 12' x 20' frame shed - Conc. floor

1.76  
65  
floor

5+25-52' Rt. = ⊕ 20' x 12' frame shed - Conc. floor

1.56  
52 = floor

5+00

0.9  
100

4+40-102' Rt. = ⊕ 8' x 12' Brick shed - Conc. floor

0.84  
102 = floor

4+05 - Req. st. only on N. side  
4+00

1.2  
50

3.1  
1.9  
50

B.M. = Nail in Pole - Lt. 4+00

5.10

3+75-43' Rt. = ⊕ 10' x 36' frame house

2.64  
43 = floor

3+00.

8.8  
50

1.4  
0.2  
50

2+60-49' Rt. = ⊕ 20' x 32' frame house

High  
To Bl.

1.17  
49

2+15-48' Rt. = ⊕ 30' x 34' frame house

2.07  
48 = floor

	Lt.	±	Rt.
Deq Western St.			
5+15 47' Rt. = ± 24' x 24' frame House			1.3 3.57 47 47 = floor ground.
5+00	0.3	-0.7	
4+67 Rt. = ± 20' x 26' frame House	50 Vac. Lot.		2.72 41 floor Lt. 59 = floor
4+21- 59' Rt. = ± 10' x 16' Sing. Gar - Dirt floor			
4+01- 39' Lt. = ± 18' x 34' frame House	2.29 39 floor		
4+00		-0.4	
3+93- 46' Rt. = ± 22' x 32' frame House			3.34 46 floor
3+80 - 64' Lt. = ± 11' x 38' - Sing Gar. - Dirt floor	0.6 64 floor		
3+66 - 41' Lt. = ± Sing Gar - 17' x 19' - Dirt floor	0.6 41 = floor		
3+00		-0.7	
2+30.2 = ± Nashville		-0.6	
2+00		-0.7	
1+14- 50' Rt. = ± 12' x 12' frame Shed - Dirt floor			.14 50 = floor
1+00		-0.9	
0+91 - 26' Lt. = ± 10' x 18' Sing. Gard - Dirt floor	0.0. 26 = floor		
0+25- 77' Rt. = ± 22' x 36' = frame House			0.0
0+15- 39' Rt. = ± 20' x 26' frame House			floor. 1.97 39 = floor
0+00 - Top of Dike		-1.3	

## Western - Cont.

34

	Lt.	±	Rt.
9+20- 10' Rt. = ± 16' x 11' - shed.			2.92 = floor 10
9+05- 60' Lt. = ± 38' x 16' = shed. - Conc. floor	1.70 60 = floor		
9+00		1.9	
8+30- 44' Rt. = ± 30' x 9' shed.			2.72 = 44 floor
8+10- 18' Lt. = ± 40' x 20' Cabinet Shop - Conc. floor	2.20 floor		
8+00		1.4	
7+98- 34' Rt. = ± 36' x 16' Boat Bldg.			2.70 34 = floor
7+04- 53' Rt. = ± 90' x 16' Lumber Shed - Dirt			0.9 53 = floor
7+00		0.4	
6+55.5 = End. of sub. - end obs. + walk		-0.1	
6+42- 38' Lt. = ± 18' x 32' frame House	3.42 38 floor	1.8 ground.	
6+40- 52' Rt. = ± 18' x 32' - frame House			1.4 3.33 52 = floor
6+21- 64' Lt. = ± 10' x 20' Sing. Gar - Dirt floor	1.7 64 floor		ground
6+02- 38' Lt. = ± 18' x 34' frame House	3.43 38 = floor, 38 = ground.	1.5	
6+00		-0.5	
5+94- 53' Rt. = ± 21' x 34' frame House			1.6 4.10 53 ground 53 floor
5+82- 64' Lt. = ± 10' x 26' Sing. Gar. - Dirt floor		1.2 floor	
5+57- 49' Rt. = ± 24' x 25' stucco House			1.4 3.35 49 49 floor ground
5+20- 115' Lt. = ± 20' x 11' frame House - Conc. floor	1.10 115 = floor		

Beq. La Salle St.

	LT.	±	RT.
5+92- 43' Rt. = ± 22' x 18' frame House			1.4 9v. 43=floor
5+99- 35' Lt = ± 38' x 23' frame House	3.25 35=floor		
5+05 = end Pavc		-0.33	
5+00		0.12	
4+92.8 = ± Nashville		0.36	
4+05 31' Rt = ± 19' x 31' Stucco House			1.2 ground 19.5=floor 31
4+00	0.9 50	0.13	
3+25- 40' Lt = ± 26' x 28' Stucco House			2.98 40=floor
3+00	0.5 50	0.18	0.5 50
2+45- 39' Rt = ± 32' x 26' Stucco House			2.34 39=floor
2+07- 39' Rt = 24' x 18' frame House			0.9 9v. 2.61 39=floor
2+00	0.1 50	0.23	
1+70- 39' Rt = ± 18' x 12' frame House			2.68 39 floor
1+30- 40' Lt = ± 22' x 36' frame House			0.4 ground 2.91 40=floor
1+00		0.06	
0+00 = Toe of Dike - A.C pave		-0.13	

Lt.

±

Rt.

End

9+23 = Back of Lumber Sheds - Dirt floor

1.3  
30 = floor  
at end.

2.1  
132 = end.  
floor.

9+19 = end Sub. - end cbs. + walk

0.6

9+00

2.0  
50 0.1

1.8  
50

8+11 - 42' Lt. = ± 20' x 20' frame House

3.92  
42 floor 1.7  
gr.

8+00

-0.2

1.8  
50

7+22 - 50' Rt. = ± 24' x 36' frame House

2.15

7+06 - 97' Rt. = 16' x 20' Sing. Gar. Conc.

50 floor 2.03

7+00

1.5  
50 0.6

9.7  
floor

6+91 - 45' Rt. = ± 20' x 39' frame House

1.6  
gr. 4.09  
45

6+55 - 37' Lt. = ± 23' x 36' Stucco House

2.88  
37 floor 1.1  
gr.

6+00

-0.4

			Lt.	E	Rt.
Beg Jupiter St					
8+45- 100' Lt. = ± 16' x 20' Sing Gar- Conc. floor			2.28 100 floor		
8+00			2.2 50	-0.2	1.6 50
7+07- 29' Rt. = ± 12' x 17' Quanset Ht.					1.65 29 = floor
7+00			2.0 50	-0.2	
6+57- 44' Rt. = ± 20' x 28' frame House					1.6 9v. 2.08 44 = floor
6+00				-0.2	
5+28.8 = ± Nashville				0.52	
5+00				-0.5	
4+00			1.1 50	0.0	0.7 50 = Cove. Drive in
3+00			0.6 50	-0.1	0.7 50
2+35- 28' Rt. = ± 27' x 20' stucco House					1.20 28 = floor
2+00			0.4 50	-0.1	0.4 50
1+00			0.4 50	-0.1	
0+80- 28' Rt. = ± 26' x 26' frame House			Vac. Lot.		2.90 28 = floor
0+00 = wire fence				-0.6	
0-62 = ± = E. end of 38' x 14' Shed					0.60 = floor



Jupiter  
Cont.

38

Lt.

±

Rt.

End.

9+54.5 = Sub Line = end obs. + walks

0.4

9+00-100' Lt. = ± 14' x 20' Sing. Grav- Conc. floor.

1.90  
100  
floor

2.0 - 0.3

0.7  
50

8+87-48' Lt. = ± 20' x 28' frame House

4.24  
48 = floor

8+59-40' Lt. = ± 20' x 32' frame House

2.1  
gr.

4.44  
40 = floor

Beq Ollie St. - Midway - South

7+00 = end - all flat Marshland on Rt.  
 6+00  
 5+00  
 B.M. = N.W. Pipe 0.15  
 4+68 = E Venus St.  
 4+00  
 3+00  
 2+18.3 = E Liberty  
 2+00  
 1+00  
 0+58 - 27' Lt. = end of Stucco Wall to Theatre  
 0+25 - 30' Rt. = E 17' Post. Gar. Conn to House  
 0+05 = edge of A.C. pave  
 0+00 = S.L. Midway

	Lt.	±	Rt.	
			0.1	0.2
				100
5.0			-0.1	
34				0.0
along fence	4.0	0.7	0.4	100 flat Marsh Land.
	27		50	
	along fence			
			0.2	
	39	0.2	0.2	
	27		50	
	along fence			
	3.6	0.2	0.5	
	27		50	
	along fence			
			0.37	
			0.5	
	3.6	0.3	0.7	
	27 = at fence		50	
4.10				
27 = Top of Base				
			1.27	30' Conc. floor.
		1.08		

Beq. Venus St.

5+00 = end - all flat Here

4+00

3+00

2+80 = 48' Rt. =  $\pm$  30' x 32' Frame House

2+05 = 45' Rt. =  $\pm$  20' x 24' - frame House

2+00

1+56 = 53' Rt. =  $\pm$  24' x 32' - Studio House

1+00

0+00 = w.l. Ollie St.

Lt.

$\pm$

Rt.

40

-2.0

-1.5

-1.3

1.60  
48 = floor

-0.2  
90  
45 = floor

-0.7

-1.4

1.80  
53 = floor.

-0.6  
50

-0.7

-0.3  
50

0.1

Bcg Liberty St.

	Lt.	Rt.	
3+00			-0.8
2+91-120'	Lt. = $\Phi$ 35' x 6'	shed - Conc. floor	0.30 120 = floor
2+90-116'	Rt. = $\Phi$ 14' x 20'	Sing Gar. - Conc. floor	0.31 116 floor.
2+75-44'	Rt. = $\Phi$ 28' x 36'	Stucco House	0.2 qr. 2.68 44 = floor
2+43-117'	Lt. = $\Phi$ 33' x 10'	Shed - Dirt floor.	0.4
2+35-37'	Lt. = $\Phi$ 40' x 24'	frame House	2.55 37 = floor
2+00			-0.2
1+93-47'	Rt. = $\Phi$ 22' x 38'	frame House	-0.1 qr. 2.10 47 = floor
1+80-78'	Lt. = $\Phi$ 16' x 20'	Sing Gar. - Conc. floor	0.43 78 = floor
1+64-34'	Lt. = $\Phi$ 24' x 30'	Stucco House	0.60 34 floor.
1+59-55'	Rt. = $\Phi$ 21' x 34'	frame House	1.38 55 = floor
1+25-33'	Lt. = $\Phi$ 36' x 28'	frame House	2.56 33 = floor
1+00			-0.2
0+85-34'	Lt. = $\Phi$ 24' x 19'	Doub. Gar. - Conc. floor	1.70 34 = floor
0+68-25'	Rt. = $\Phi$ 24' x 24'	Doub. Gar. - Conc. floor	0.88 25 = floor
0+43-35'	Lt. = $\Phi$ 55' x 22'	Stucco House	1.3 qr. 4.60 35 = floor
0+32-34'	Rt. = $\Phi$ 40' x 22'	frame House	1.20 34 = floor
0+00 = W.L. Dille			-0.2

Liberty - Cont.

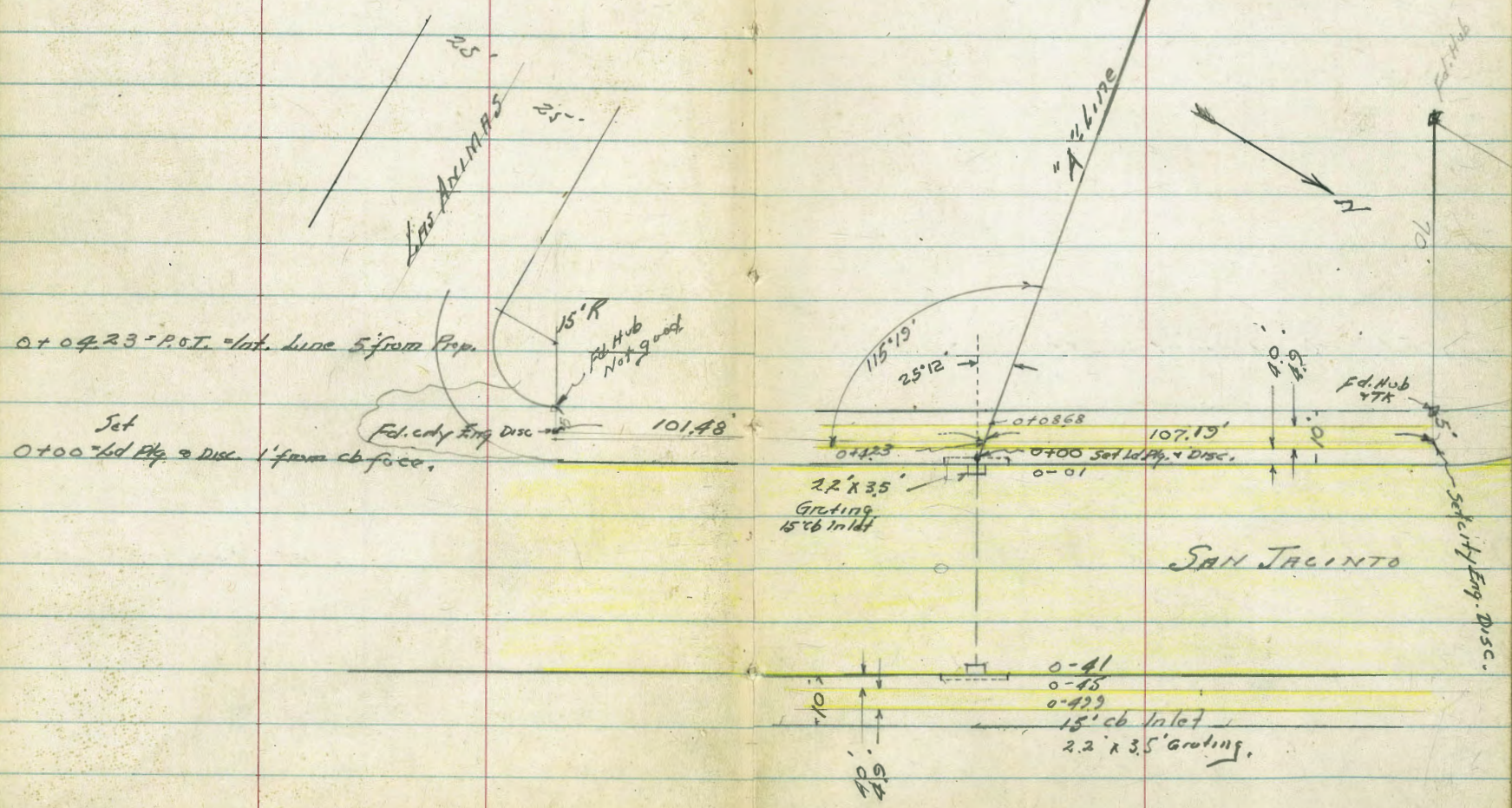
	Lt.	#	Rt.
9+75 = Toe of Dike - end.		- 12	
9+00		- 17	
8+00	- 2.1 100	- 15	
7+00		- 12	
6+35 = # Camulos	- 1.1 100	- 1.6	- 0.9 50
6+00		- 1.2	
5+62 - 81' Lt. = # 41 x 20' - frame House (faces Camulos)	2.25 81 floor.		
5+30 - 70' Lt. = # 19 x 10' - Sing Gar - Conc. floor.	0.34 70 - floor		
5+00		- 1.1	- 1.2 50
TP	0.47		
4+78 - 50' Lt. = # 28 x 28' - Stucco House	1.57 50 - floor.		
4+00	- 0.4 50	- 0.6	- 0.6 50
3+31 - 75' Rt. = # 12 x 18' - Sing Gar - Conc. floor			- 0.10 75 floor
3+15 - 45' Rt. = # 22 x 18' - frame House			1.63 45

SURVEY - PROPOSED DRAIN  
 BLK. 6 VALENCIA PARK  
 UNIT #1 Map 2008  
 from San Jacinto  
 To Euclid Manor.

INDEXED  
 DEC 11 1951

Walker  
 Pope  
 Huffman

NO 20895



Proposed Drain BIK6 Cont.

8+07.1 Int. 27" Steel Water Main

Not Now  
in Use

8+00.74 Conc. Volute Box Water Dept.

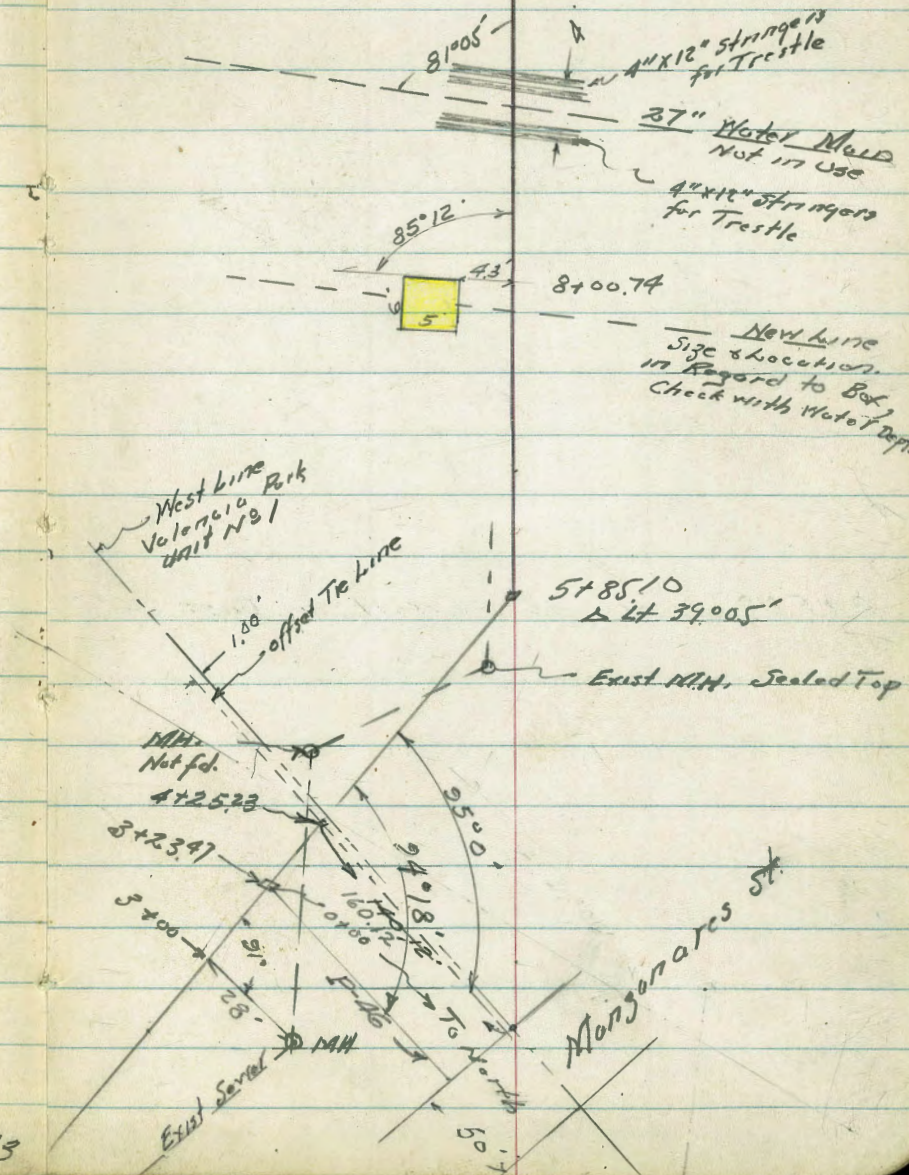
5+85.10 = A 39°05' Lt. Set Hub + Disc.

4+25.23 Int. To Line 100' East of Sub Line

3+23.47 = Int. Proposed Drain to North

3+00

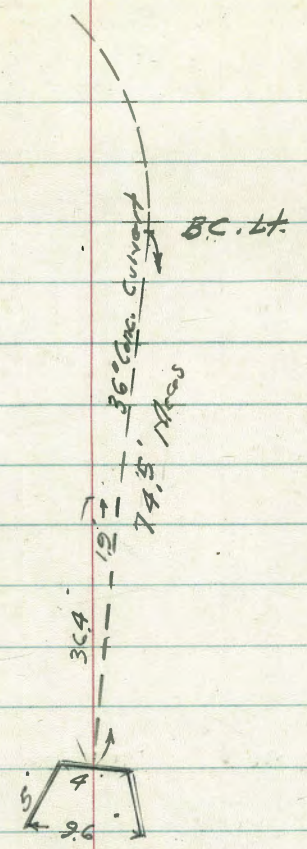
Cont  
P. 45



Cont. P. 43

Proposed Drain - Cont. from P-44

8 + 58.07 = Face of Hd. Wall = Req. Exst. 36" Pipe



cont. P-44



Location Proposed Drain

Blk 6 - Valencia Park

Unit No 1

Walker, Pope,  
Huffman,  
10-18-51

WA 20895

cb. Line

Manzanaras

St.

cb. Line

1+61.6

100.63'

1+51.6

90°29'

INDEXED  
P.O.  
OCT 22 1951

Fd. 1" Iron Pipe

West Sub. Line Valencia St. ward w/1  
14012-16012  
P-44

518510  
P-44

590651

offset line

100

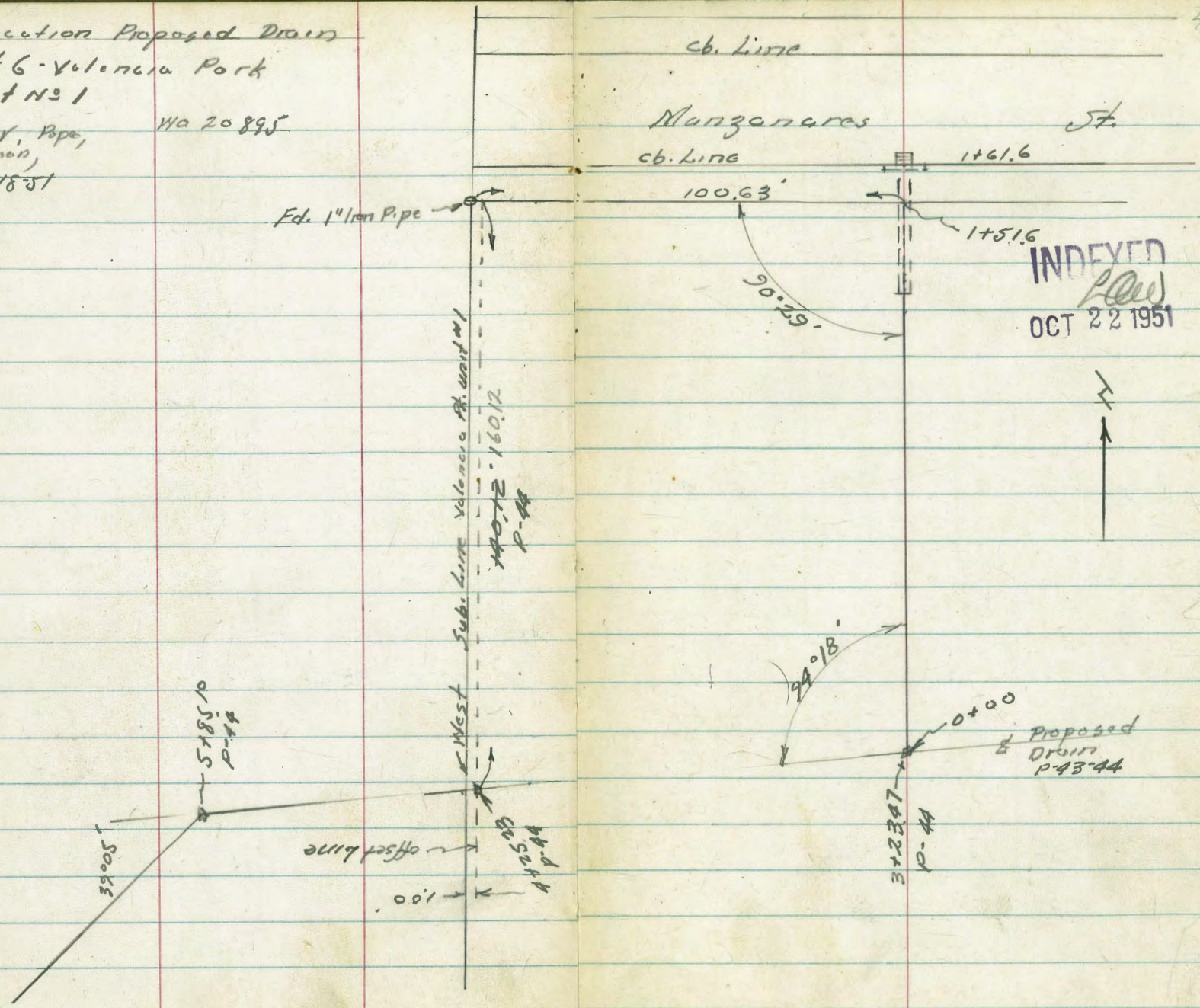
412518  
P-44

94°18'

0+00

Proposed  
Drain  
P-43-44

312247  
P-44



Levels Proposed Drain Stk 3

"A"-Line

0-45 W side Walk

173.50	172.70	171.31	170.04	170.01	170.24	171.01	172.11
461	521	660	787	790	767	690	580
50	438	272	45		9	27	50

0-49.9 - East Edge Side Walk E side San Jacinto

172.81	172.70	171.54	170.27	170.23	170.33	171.27	172.30
463	521	637	764	768	758	664	561
50	433	274	55		9	27	50

S side Drive      N side Drive

177.91 ✓

1.79'      177.91' ✓      176.12

B.M. Cap Disk SW San Jacinto & Mangunaras

chk starting B.M.      426      183.40 ✓

T.P. 4.86      187.66 ✓      8.40      182.80 ✓

T.P. 13.10      191.20 ✓      13.19      178.10 ✓

diff = 0.21

F.B. 1725-50 Churchward      189.45

chk E. Sid & TK. San Jacinto      163      189.66 ✓

T.P. 13.19      191.29 ✓      0.60      178.10 ✓

T.P. 2.58      178.70 ✓      0.72      176.12 ✓

Set B.M. E.C. to Prop R SW Mangunaras

FF      770      169.14 ✓

T.P. 0.03      176.84 ✓      12.71      176.81 ✓

T.P. 2.33      189.52 ✓      0.34      187.19 ✓

T.P. 10.67      189.53 ✓      8.50      176.86 ✓

1.96      185.36 ✓      183.40

B.M. NW. San Jacinto & San Bernardo

Levels Proposed Drain

"A" Line

0-01 Cont.

0-01' = 14' cb

0-11

0-21

0-24 = 2' MH

0-31

0-41 Cont.

0-41 = E. cb. San Tucurto

17465  
17517  
17531  
326  
725  
725  
274  
725  
cb.  
433  
635  
cb.  
8 gutter  
Some

17258  
17310  
17220  
533  
50  
Gut  
481  
50  
cb  
571  
46  
Gut

16930	17028	Lt. 17035	16932	17035	16910	16311	17025	Rt. 16911	17012
86 81 out	763 81 cb	756 8 cb	859 76 Gut.	756 76 cb.	875 0 Gut.	1480 0 invert box.	766 0 cb	880 76 Gut.	779 8 cb.
	17423	17438	16992	17491	16999	16409	16936	16984	17151
	568 50 Gut.	553 50 cb	799 18 Gut.	750 18 cb.	842 81 cb.	882 8 Gut.	855 15 Gut.	807 15 cb.	640 50 Gut
			settled		14980	11096		17213	17215
					8.11	7.45 20.5		5.78 50	
	17324		17105	17034			17081	17294	
	465 50		686 22	757			710 15	550 50	
	17304	750 H Rim MH	17077	16988			17046	17210	
	487 50		714 226	802			745 15.5	581 50	
	17276	17092	17099	17002			17201	17159	
	515 46 cb	749 25 Gut	692 25 cb	759 81 cb.			584 50 cb	632 50 Gut	
	16929	17417	16920	17417	17050	16927	17033	16925	17027
	866 8 Gut.	774 8 cb.	871 76 cb.	774 76 cb.	761 cb	864 0 Gut.	758 76 cb.	856 76 Gut.	764 8 cb.
					17791				16536

Levels Proposed Drain

"A" Line

0+65

158.7  
7.2  
20  
Ditch  
63  
5  
58  
166.63 ✓  
161.1  
5.5  
10

TP 113 166.63 ✓ 1241 165.50 ✓

143.7  
142  
22  
162.19  
15.72  
9.5  
Invert  
36" Corrug.  
culvert.  
164.1  
13.8  
166.7  
11.7  
8

0+21

169.6  
8.9  
10  
170.0  
7.9  
7.9

0+10

0+0868 - W side of Walk

172.72  
519  
50  
172.23  
5.68  
44  
171.34  
6.57  
29  
170.96  
6.25  
24  
170.20  
7.71  
170.06  
7.85  
66  
170.91  
7.50  
15.7  
171.70  
6.21  
35.7  
172.78  
5.13  
51.7  
172.97  
4.94  
55.7  
41.8  
70

0+0323

171.54  
6.37  
38.1  
171.70  
5.21  
58  
172.74  
5.17  
58  
173.35  
4.56  
70

0+03123 - E side Walk

172.69  
5.22  
50  
172.11  
5.81  
41.5  
170.80  
7.11  
4.7  
170.10  
7.81  
169.88  
8.03  
9  
170.11  
7.80  
13  
170.22  
7.69  
18.9  
170.29  
7.62  
18.4  
171.60  
6.31  
38

177.91

177.91 ✓

Levels Proposed Drain

"A" Line

Lt.

R.

50

2+50			158.8	157.6	153.7	
			7.8	9.0	12.9	
			10		22	
					L Ditch	
2+00			161.8	160.3	157.3	155.3
			4.8	6.3	7.8	11.3
			10		7	44
						L Ditch
1+60			160.5	160.0	156.5	158.3
			6.1	6.6	10.1	8.3
			10		14	24
					L Ditch	
1+20			162.2	160.7	160.4	157.1
			4.4	5.9	6.2	9.5
			10		4	11
						L Ditch
0+87			161.4	160.2	158.0	159.5
			5.2	6.7	8.6	7.1
			10		7	13
					L Ditch	
0+76 L Ditch			160.5	158.2	158.8	140.0
			6.1	8.4	7.8	6.6
			8		8	11
			158.5			5.3
						20

166.63

Levels Proposed Drains

"A" Line

4+45

4+00

3+60

3+23.47 = lat. 28" line to north

3+00

Rim MH 28" RT 3+00

T.P. 0.86 157.09<sup>v</sup> 1040 156.33<sup>v</sup>

2+85 - 2" Ditch.

166.63

152.9  
4.2  
26

Lt.  
147.6  
25  
17  
2" Ditch

150.8

6.3  
22  
2" Ditch

152.4

4.7  
10  
2" Ditch

152.9

4.2  
10

152.72<sup>v</sup>  
4.37  
on Hub.  
2" Ditch

156.23

0.86  
28"  
on Rim  
MH

147.28

2.81  
28"  
invert  
MH.

157.09<sup>v</sup>

153.8

12.8  
10

153.5

13.1

153.5

13.1  
8

156.5

10.1  
17

166.63<sup>v</sup>

Levels Proposed Drains

"A"-2.170

8+07 of 27" steel pipe

8+00.74

7+00

5+85.10 = ΔL 39°05

Section on Bisector

TP

2.22

147.97

11.84

145.25

5+60

5+40

5+00

157.09

	143.36	145.75	142.88	
	4.11	1.72	4.57	
	4.3	0	0	
	Top Valve Box	Top 27" pipe	Top 12" stringer	
	142.6	141.6	141.6	140.8
	4.9	5.9	5.9	6.7
	18	4.2	10	
	Edge Ditch			
	142.8	142.8	142.8	
	4.9	4.7	4.7	
	Ditch	Ditch	Ditch	
	142.6	142.6	142.6	
	3.2	3.7	2.22	1.5
	14	7	on Hub	1.4
	Ditch	E Ditch		10
	149.3	145.8	145.25	146.0
	147.47	147.47	147.47	
	147.4	147.4	147.4	
	7.9	9.7	9.89	13.0
	10	10	5.2	8
	149.8	148.2	147.0	144.1
	7.3	8.9	12.0	9.6
	10	4	Ditch	14
	146.6	145.1	145.1	147.5
	146.7	146.7	146.7	
	10.9	10.9	10.9	
	7	7	7	
	Top Fill			
	148.5	146.6	146.6	148.8
	8.6	10.5	10.5	8.3
	10	10	10	10
	157.09	157.09	157.09	

Levels Proposed Drain

"A" Line

see cont. 54  
x chk out

0.02

TR 1293	165.65 <sup>v</sup>		152.72 <sup>v</sup>
chk L Hub P-51	463		152.70 <sup>v</sup>

TP 1208	157.33 <sup>v</sup>	322	145.25 <sup>v</sup>
---------	---------------------	-----	---------------------

8+58.07 = Beg 36" Conc. Culvert

142.47

Reduced by C.R.L. 10-27-51

139.48

143.49

7.99	3.98
Invert	Top Hd.
	Wall

147.47<sup>v</sup>



LEVELS PROPOSED DRAIN

8" LINE  
LOCATION P-46

Lt. / Rt. 54

1+52.6 = Edge Walk

172.91	172.76	173.12
3.32	3.47	3.11
10		10
Walk		Walk

1+42 = End East 18" Corrug. Iron Culvert

9.0	166.30	167.3
10	9.93	8.9
	invert	10
	176.23 ✓	

TP. 1226 176.23<sup>1</sup> 168 163.97<sup>1</sup>

163.8	163.4	163.8
1.8	2.3	1.9
10		10

0+60

160.0	154.2	159.0
5.7	6.4	9.1
10		10

0+20

156.4	156.2	155.8
9.2	9.4	9.8
10		10

0+00

152.72  
12.93  
on sub.

165.65<sup>1</sup> from P-53

165.65 ✓



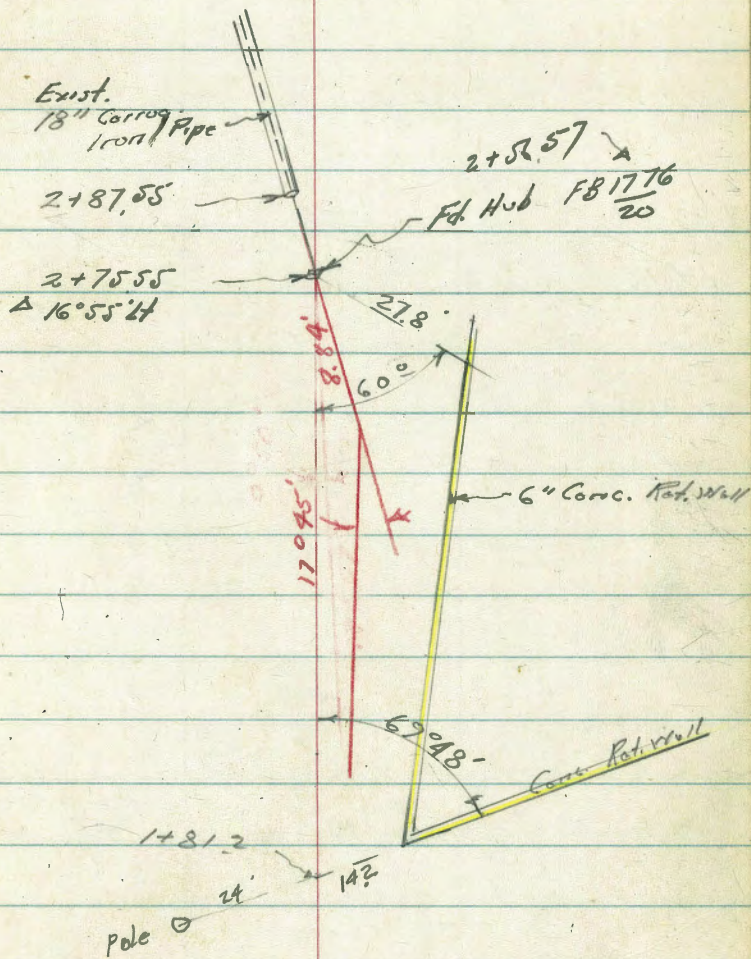


Drain Blk 9

2+75.55 =  $\Delta$  4 16° 55'

1+81.2

15' 14" = Pole Anchor



Drain Blk 9

1+52 = End of Pipe Row Ditch

1+15

0+90.2 Δ Rt.

0+07

0+00 = N.H. Santa Maria Sec. on N Edge Walk

0-05 = N of Sant Maria

12.06

164.95

152.89

Lt.

Rt

58

152.67	152.70	152.60	152.80	152.22	152.96
17.28	12.25	12.35	12.15	11.82	12.49
10	7.7	7.6	10	10	8.5
152.10	152.51	152.87	152.22	157.1	152.96
12.85	12.38	12.08	12.73	11.84	12.49
10	10	8	8	8.5	8.5
Gut.	cb.	cb.	Gut.	cb.	Gut.
164.95		164.95			
152.67	152.70	152.60	152.80	152.22	152.96
17.28	12.25	12.35	12.15	11.82	12.49
10	7.7	7.6	10	10	8.5
152.10	152.51	152.87	152.22	157.1	152.96
12.85	12.38	12.08	12.73	11.84	12.49
10	10	8	8	8.5	8.5
Gut.	cb.	cb.	Gut.	cb.	Gut.
164.95		164.95			
152.67	152.70	152.60	152.80	152.22	152.96
17.28	12.25	12.35	12.15	11.82	12.49
10	7.7	7.6	10	10	8.5
152.10	152.51	152.87	152.22	157.1	152.96
12.85	12.38	12.08	12.73	11.84	12.49
10	10	8	8	8.5	8.5
Gut.	cb.	cb.	Gut.	cb.	Gut.
164.95		164.95			

154.4  
6.5  
10

159.8  
5.1  
13

157.2  
7.7  
8.5

157.6  
7.3  
7.1

157.8  
7.1  
10

160.2  
10

159.2  
5.08  
5

152.74  
8.21  
Hub.

150.2  
5.00

153.8  
11.1  
5

152.98  
12.47  
Flow  
Ditch

154.4  
10.5  
5

152.67  
17.28  
10

152.70  
12.25  
7.7

152.60  
12.35  
7.6

152.80  
12.15  
10

152.22  
11.82  
10

152.96  
12.49  
8.5

B.M. on Walk 3/8' Lt. of E 0+00 FB 1776-25

Levels - Drain

BK. 9

Valencia Park

2+87.55

2+75.55

TP 5.56

2+50

2+00

168.72<sup>✓</sup>

179

163.16<sup>✓</sup>

164.95<sup>✓</sup>

16638 = FB 1776-27

166.41<sup>✓</sup>

2.31

invert

16571

5.37

168.72

2.9<sup>✓</sup>  
10

2.9<sup>✓</sup>  
7

3.1<sup>✓</sup>

2.9<sup>✓</sup>  
10

3.8<sup>✓</sup>  
10

3.9<sup>✓</sup>  
6

5.1<sup>✓</sup>

2.9<sup>✓</sup>  
10

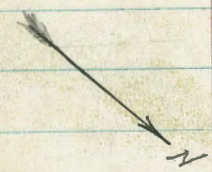
LOCATION - PROPOSED DRAIN

Blk 23, Unit #2 Valencia Park

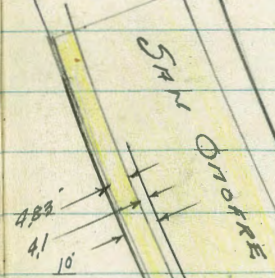
INDEXED  
Law  
OCT 22 1951

Walker  
Pope  
Huffman  
10-19-51

No 20866

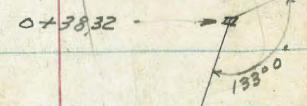


Lot 16



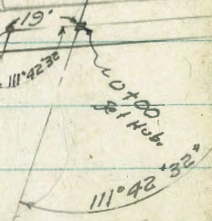
OLVERA AVE

Lot 15



Lot 14

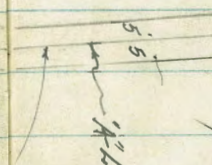
Fd. Pipe & Disc  
LS 2201



1405.35  
95.48 ft.

Lot 14

Fd. Pipe  
RB 1534



5' Tach. Line

1+35.07 = 4" Line

chisler Crass in curb  
Sta. 1+6.79

488'  
41'  
10'

Levels Proposed Drain

Blk. 23 - Valencia Park Unit #2

"A" Line Levels

Location P-60

	Lt.	L	Rt.	61
0+15	5.0 10	202.7 203.1	4.6	203.0 203.0
0+00	5.3 10	202.4 202.7	5.45 20	202.7 203.1
0-08 = Pole Anchor 6' Blk	210.8 11	203.6 8	4.7	203.9 20
0-50	3.1 11	203.6 8	4.7	203.9 20
0-100'	3.4 2	203.6 207.72	4.1	203.7 20

		3.03		209.69
TP	1199	207.72	0.13	195.73
T.P.	1308	195.86	1.10	182.78
T.P.	1310	183.88	12.95	170.78
	0.33	183.73		183.90

Spk. in Arc Lamp Pole.  
Set Temp BM S.W. Olvera Ave & San Onofre

B.M.  
N.W. San Jacinto & San Bernardo



Blk 23 Volensia Pk  
Unit #2

"A" Line

1+05.35 = A H 25'48" Chisled Cross

5.29

Sec Cont.

199.61	200.16	200.22	200.89	201.87	203.64
8.11	7.56	7.50	6.83	3.45	4.08
3.11	3.11	2.2	2.2	2.8	2.8
Gut	cb	Gut.	cb	cb	Gut.

Sec. Along curb line

1+10.35 on Buck Top produced = Int. curb Rot at "C" sec  
from 0+00 thru 1+05.35

Sketch

200.90	201.60	202.82	201.80	203.65	203.01
6.82	6.12	5.30	5.92	4.07	4.71
1.8	1.2	cb	Gut	9	19
st.	cb	cb	cb	19	19
			9	cb	Gut.
			1' from cb		

Sec. on Wedge Side Walk

1+07.10 on Buck Top produced = Wedge Side Walk  
from 0+00 thru 1+05.35

199.61	199.41	200.57	201.97	202.87	202.90	204.05
8.36	8.39	7.13	5.75	5.29	4.82	3.67
4.45	4.44	2.6			7.5	2.4
						End
						First Side Walk

Section Along Edge Walk

1+01.4 = E. edge Walk

199.07	198.61	200.57	201.87	202.87	203.31	204.10
8.65	8.57	7.15	6.25	5.25	4.91	3.62
4.26	4.25	2.27	1.8		11.6	2.23
						End East
						Side Walk

0+50

201.5	201.9	202.3	204.1
6.2	5.8	5.4	3.6
10		10	40

207.72

"A" Line

1+85.07 - 10th East Curb Line  
Sec Along cb.

1956	1991.2	1996.1	200.16
911	8.60	811	7.56
	20 cb	0 cut	cb
			207.72

Levels "B" Line Drain  
 Valencia Park  
 Unit # 2 Location P-60

Lt. L Rt. GA

	1972	1979	1972	1978	1977	1976	1980	1975	1980	1981	1981	1980
1+16.79 = Int. E cb line	1176 528 Gut	1053 528 cb outlet Not in use	1093 45 cb	1094 15 Gut	9.28 22 cb	1056 22 Gut	971 10 cb	1918 60 Gut	942 0 cb at cross	991 0 Gut	876 20 cb	202 20 Gut
1+12.9 = Wedge Walk		See Along Edge Walk			14793 10.29 36.5	19791 9.81 16.9	19797 9.75 9	19820 9.37	19844 22.8 2.6	19861 21.9 2.7	19870 20.1 12.8	19936 8.36 22.5
1+08.1 = E Edge Side Walk		Sec. Along Edge Walk			19799 10.23 34	19782 9.90 17.1	19785 9.87 9.8	19821 9.51	19844 9.28 1.9 Walk settled	19907 8.65 2.3 50' from H. at 42.5' L. on 17.1' "A" Line		
0+83				2027 0.0 2.5	2027 0.0 1.7	2000 7.7 8 Top Fill	2001 7.6			2012 6.25 3.0		
0+38.32 = R Pt.				2027 +20 2.5	2027 +20 1.9	2011 6.6 5.5 Top Fill	2010 6.7			2018 5.9 2.0		
0+00 = Same Point as 0+00 "A" Line												

307.72

Drain 18" line Cont.

				0.01
NV/San Jacinto + San Bernabe			183.40	
Chk starting BM	0.71		183.39	
TR	1306	184.10	1255	171.04
TR	0.34	183.59	1295	183.25
TR	0.97	196.20	1199	195.73

Reduced by CRK 10-23-51

1+24.8 Sec on Pav. Parallel to curb.

19704	19752	19846	19909	19911
1068	1020	947	863	779
45	20		20	37

207.72

207.72



Lt.      E      Rt.

Location + Levels for Prop. Sewer in  
Broad Ave - W. of 34<sup>th</sup> - Sketch - P. 66

Indexed

# 5761

W.O. 20959 - 3-6-52 - F.O.

3+00

5.8

2+50

4.5

2+00

3.8

1+75 = Ang Pt

3.92 = on Hub

1+49 = approx. Crossing of Lat. from Rug Cleaners

3.9

1+33 = 20' Lt. =  $\pm$  Sewer M.H.

0.93  
20' = I.E.

3.0

1+00

0+75 = 20' Lt. = C.I. pipe at bank

1.05  
20' = Top  
Pipe

2.5

0+64 = Top of bank

1.19  
20' = Top  
Pipe - Note - the High

0.8

0+63 = edge

0.8

0+40 = sand bar in channel

1.04 = Top of pipe - 20' Lt.

0+16 = 20' Lt. =  $\pm$  of 6" C.I. Sewer at bank

-0.9

0+16 = edge of water

0+00 = Hub on Top of W. bank of Creek Channel

6.60  
on Hub

B.M. - S.E. RP Nat. + 34<sup>th</sup>

6.82

Actual Elev. shown.

Lt.      #      Rt.

I.E. of M.H. on E of Alley to E. - (see sketch)

7.66 = Rim      1.65 = I.E. M.H.

4+30.15 = E Sewer M.H. on Trunk Line

7.21 = Rim      -1.32 = I.E. of 6' stub. to w.      -2.67 = I.E. of Main Line

4+00

6.8

3+50

7.3  
10

6.6

7.0  
10









LEVELS FOR PROPOSED SEWER

IN OLIVE ST

2+25.96 = A H 11°16'50"

1+88

1+57.81 = A R<sub>4</sub> 11°06'15"

1+52.81

1+38.81 = ALY (LIVE MIDWAY DR)

T.P.

1.28

1+00

0+50

0+15

0+14

0+00

to دفتر

T.P.

S.E. Westell & Nashville

Check Nail in Pole

0.22

P.30

0.63 - 5X

0.46

Direct Elev. Rod Used.

Lt.

E

R<sub>4</sub>

72

1.16  
Disc.

1.74  
Pole

1.26  
or  
Pole Nail on

1.58 0.98  
Gut  
Pole

0.8

0.7

0.3

-0.2

-0.7

-8.54 0.22

Inset MH  
- E Nashville

-0.44  
on Hub

-0.1  
Ground

S.E.

S.M. = La Salle & Nashville

Large Nail in Pole

PAGE 30 this book

OLLIE ST

Lt

L

Rt

73

750

-0.8

6+00

-1.1

04

10

opp Plumbing

5+50

-0.7

5+00

-0.7

SWLY Ollie + Liberty  
chk BM

0.74 = 18 572

0.76 49

4+57.72 = POT

-0.1 -0.37

0 on  
Ground Hub

4+00

-0.3

04

43  
on Ground  
at Back of House  
= opp. Plumbing

3+50

-0.1

3+00

0.0

Midway + Ollie

TR SE Cor Guttering Run

0.76

3+46 = Edge Box

0.82 0.77 -465

0.7  
Gutting invert  
Culvert

2+31

-5.80 1.32 1.20

10  
invert  
Culvert

10  
Rip MH  
Storm Drain

OLLIE ST.

L. R. 74

9 + 5772

-046 Hub.

-02  
Ground

-046  
0  
Hub

9 + 00

-03

150

-04

8 + 00

-03

7 + 56

-06

on Hub  
TR 7+0772

-072

7+0772 = POT.

-03  
Ground

-072  
0  
Hub

LEVELS - FOR SEWER  
IN LIBERTY ST.

2

Nail file 3452 on Lt.

TR 0.71

3+40 -0.5 -0.2  
63 opp Plumbing

3+04 -0.5 -0.2  
65 opp Plumbing

2+70 0.0 -0.4 -0.2  
60 opp Plumbing 60 opp Plumbing

2+50 -0.4

1+95 -0.4 0.3

1+75 0.5 65 Ground at Plumbing

1+60 -0.3 +0.5  
Cor. House 90 Cor. House Ground

1+00 0.1 -0.1  
60 Back of House

0+50 0.8 60 Ground 0.0  
Back of

0+00 -0.37

51st on Hub -0.37

LIBERTY ST.

76

on Hub 6+4806 Venus St.  
TP

-2.39

Hub Replaced With Conc. Man  
-2.45 = Elvy Man P. 80

6+47.7A

-0.2  
8

6+00

-0.7

5+50

0.0 -0.6

TO  
opp Plumbing

5+04

-0.5 -0.6 -0.1

TO  
opp Plumbing

4+50

-0.5

4+00

-0.5

LEVELS PROPOSED SEWER

Lt.

Rt.

Rt.

77

VENUS ST. 2.45

6+48.06 on <sup>Mon</sup> Hub - 2.77 - P-76 - Elev. - 2.45 P-80 on Mon

6+00 - 1.8

5+50 - 2.2

5+00 - 1.7

4+50 - 1.5

4+00 - 1.4

3+50 - 1.3

2+75 - 1.5

-0.6

75 opp Plumbing

2+30 - 1.5

-0.2

65 opp Plumbing

1+82 - 1.2

-0.5

80 opp Plumbing

1+50 - 0.9

-0.9

1+00 - 0.7

-0.7

0+50 - 0.6

-0.6

0+00 = 13' WY & Ollie

-0.72 - 0.3

B.M.

on Hub

0

on Hub 7+07.72 P-74 - 0.72



LEVELS - PROPOSED SEWER

MARS ST.

14.

8

KA

78

4+50

-02

4+00

00

3+50

01

3+00

01

2+50

04

2+00

02

1+50

02

1+00

+03

+50

+07

0+00

-046

BMH-b 9+5772 P-74

-046

~ MARS ST u

79

CHK 2 Hub 674806 R77 -239 ✓

674823 - 2 Comulus

-0.9

6700

-0.5

5750

-0.5

5700

-0.5

Walker  
Pipe  
Patten  
Olney  
10-7-53

Levels - PROPOSED SEWER ON

CAMULOS ST.

Between - Midway Drive <sup>And</sup> VENUS  
NO 32348

For location see P-71.

Stations

Elev. Profile

Cont. on Pt Page

(3+10) to 4.

-08

3+10

-14

2+50

-13

2+00

-14

1+67 = P.O.T. on Men

-1.74

1+67 = P.O.T. & Liberty

-12

1+00

-0.9

0+45

-1.2

0+30

0.8

0+13

0.7

9 - 8"x8" POSTS 56 Long Approx.

0+05.5 = Guard Rail

-0.9

0+00

-1.2

0-05 = SWLY Toe Channel

-4.4

0-18 = NELY Toe Channel

-4.4

B.M.

P-75

Nail in Pole on H 5452

0.71

Direct Elev. Rod used

INDEXED  
OCT 8 1953

80

4+17 ± on E. Venus  
& Conc. Men

-2.45

4+17 ± = Venus st

-1.8

3+50

-1.7

11°12'45"  
11°16'50" 11'4"

68.20  
157.81  
226.96

300  
500

245  
174  
71

1195  
800

5

3000  
515,000  
9000

3507  
2599  
6176  
3088

175  
165  
3884  
20384  
163.84  
123.84

11679

223  
216  
D/11

1000  
81.3 gal  
12,500

167  
200  
11

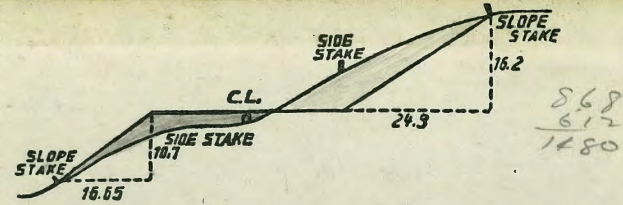
167  
13  
833  
12,500  
5.01

086  
895  
981

535  
39  
0145

876  
854

2499



**DISTANCES FROM SIDE STAKES FOR CROSS-SECTIONING.**  
**SLOPE 1 1/2 TO 1. ROADWAY OF ANY WIDTH.**

	0	.1	.2	.3	.4	.5	.6	.7	.8	.9	
0	0.00	0.15	0.30	0.45	0.60	0.75	0.90	1.05	1.20	1.35	0
1	1.50	1.65	1.80	1.95	2.10	2.25	2.40	2.55	2.70	2.85	1
2	3.00	3.15	3.30	3.45	3.60	3.75	3.90	4.05	4.20	4.35	2
3	4.50	4.65	4.80	4.95	5.10	5.25	5.40	5.55	5.70	5.85	3
4	6.00	6.15	6.30	6.45	6.60	6.75	6.90	7.05	7.20	7.35	4
5	7.50	7.65	7.80	7.95	8.10	8.25	8.40	8.55	8.70	8.85	5
6	9.00	9.15	9.30	9.45	9.60	9.75	9.90	10.05	10.20	10.35	6
7	10.50	10.65	10.80	10.95	11.10	11.25	11.40	11.55	11.70	11.85	7
8	12.00	12.15	12.30	12.45	12.60	12.75	12.90	13.05	13.20	13.35	8
9	13.50	13.65	13.80	13.95	14.10	14.25	14.40	14.55	14.70	14.85	9
10	15.00	15.15	15.30	15.45	15.60	15.75	15.90	16.05	16.20	16.35	10
11	16.50	16.65	16.80	16.95	17.10	17.25	17.40	17.55	17.70	17.85	11
12	18.00	18.15	18.30	18.45	18.60	18.75	18.90	19.05	19.20	19.35	12
13	19.50	19.65	19.80	19.95	20.10	20.25	20.40	20.55	20.70	20.85	13
14	21.00	21.15	21.30	21.45	21.60	21.75	21.90	22.05	22.20	22.35	14
15	22.50	22.65	22.80	22.95	23.10	23.25	23.40	23.55	23.70	23.85	15
16	24.00	24.15	24.30	24.45	24.60	24.75	24.90	25.05	25.20	25.35	16
17	25.50	25.65	25.80	25.95	26.10	26.25	26.40	26.55	26.70	26.85	17
18	27.00	27.15	27.30	27.45	27.60	27.75	27.90	28.05	28.20	28.35	18
19	28.50	28.65	28.80	28.95	29.10	29.25	29.40	29.55	29.70	29.85	19
20	30.00	30.15	30.30	30.45	30.60	30.75	30.90	31.05	31.20	31.35	20
21	31.50	31.65	31.80	31.95	32.10	32.25	32.40	32.55	32.70	32.85	21
22	33.00	33.15	33.30	33.45	33.60	33.75	33.90	34.05	34.20	34.35	22
23	34.50	34.65	34.80	34.95	35.10	35.25	35.40	35.55	35.70	35.85	23
24	36.00	36.15	36.30	36.45	36.60	36.75	36.90	37.05	37.20	37.35	24
25	37.50	37.65	37.80	37.95	38.10	38.25	38.40	38.55	38.70	38.85	25
26	39.00	39.15	39.30	39.45	39.60	39.75	39.90	40.05	40.20	40.35	26
27	40.50	40.65	40.80	40.95	41.10	41.25	41.40	41.55	41.70	41.85	27
28	42.00	42.15	42.30	42.45	42.60	42.75	42.90	43.05	43.20	43.35	28
29	43.50	43.65	43.80	43.95	44.10	44.25	44.40	44.55	44.70	44.85	29
30	45.00	45.15	45.30	45.45	45.60	45.75	45.90	46.05	46.20	46.35	30
31	46.50	46.65	46.80	46.95	47.10	47.25	47.40	47.55	47.70	47.85	31
32	48.00	48.15	48.30	48.45	48.60	48.75	48.90	49.05	49.20	49.35	32
33	49.50	49.65	49.80	49.95	50.10	50.25	50.40	50.55	50.70	50.85	33
34	51.00	51.15	51.30	51.45	51.60	51.75	51.90	52.05	52.20	52.35	34
35	52.50	52.65	52.80	52.95	53.10	53.25	53.40	53.55	53.70	53.85	35
36	54.00	54.15	54.30	54.45	54.60	54.75	54.90	55.05	55.20	55.35	36
37	55.50	55.65	55.80	55.95	56.10	56.25	56.40	56.55	56.70	56.85	37
38	57.00	57.15	57.30	57.45	57.60	57.75	57.90	58.05	58.20	58.35	38
39	58.50	58.65	58.80	58.95	59.10	59.25	59.40	59.55	59.70	59.85	39
40	60.00	60.15	60.30	60.45	60.60	60.75	60.90	61.05	61.20	61.35	40
41	61.50	61.65	61.80	61.95	62.10	62.25	62.40	62.55	62.70	62.85	41
42	63.00	63.15	63.30	63.45	63.60	63.75	63.90	64.05	64.20	64.35	42
43	64.50	64.65	64.80	64.95	65.10	65.25	65.40	65.55	65.70	65.85	43
44	66.00	66.15	66.30	66.45	66.60	66.75	66.90	67.05	67.20	67.35	44
45	67.50	67.65	67.80	67.95	68.10	68.25	68.40	68.55	68.70	68.85	45
46	69.00	69.15	69.30	69.45	69.60	69.75	69.90	70.05	70.20	70.35	46
47	70.50	70.65	70.80	70.95	71.10	71.20	71.40	71.55	71.70	71.85	47
48	72.00	72.15	72.30	72.45	72.60	72.75	72.90	73.05	73.20	73.35	48
49	73.50	73.65	73.80	73.95	74.10	74.25	74.40	74.55	74.70	74.85	49
50	75.00	75.15	75.30	75.45	75.60	75.75	75.90	76.05	76.20	76.35	50

THE NATIONAL BLANK BOOK COMPANY  
HOLYOKE MASSACHUSETTS  
NEW YORK CHICAGO BOSTON SAN FRANCISCO