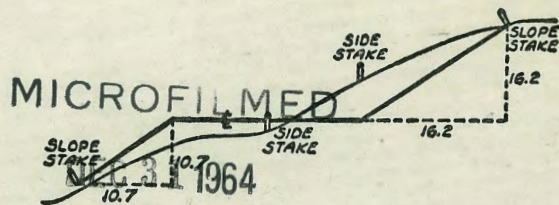


2128



DISTANCES FROM SIDE STAKES FOR CROSS-SECTIONING
SLOPE 1 TO 1. ROADWAY OF ANY WIDTH

	0	.1	.2	.3	.4	.5	.6	.7	.8	9	
0	0.00	0.10	0.20	0.30	0.40	0.50	0.60	0.70	0.80	0.90	0
1	1.00	1.10	1.20	1.30	1.40	1.50	1.60	1.70	1.80	1.90	1
2	2.00	2.10	2.20	2.30	2.40	2.50	2.60	2.70	2.80	2.90	2
3	3.00	3.10	3.20	3.30	3.40	3.50	3.60	3.70	3.80	3.90	3
4	4.00	4.10	4.20	4.30	4.40	4.50	4.60	4.70	4.80	4.90	4
5	5.00	5.10	5.20	5.30	5.40	5.50	5.60	5.70	5.80	5.90	5
6	6.00	6.10	6.20	6.30	6.40	6.50	6.60	6.70	6.80	6.90	6
7	7.00	7.10	7.20	7.30	7.40	7.50	7.60	7.70	7.80	7.90	7
8	8.00	8.10	8.20	8.30	8.40	8.50	8.60	8.70	8.80	8.90	8
9	9.00	9.10	9.20	9.30	9.40	9.50	9.60	9.70	9.80	9.90	9
10	10.00	10.10	10.20	10.30	10.40	10.50	10.60	10.70	10.80	10.90	10
11	11.00	11.10	11.20	11.30	11.40	11.50	11.60	11.70	11.80	11.90	11
12	12.00	12.10	12.20	12.30	12.40	12.50	12.60	12.70	12.80	12.90	12
13	13.00	13.10	13.20	13.30	13.40	13.50	13.60	13.70	13.80	13.90	13
14	14.00	14.10	14.20	14.30	14.40	14.50	14.60	14.70	14.80	14.90	14
15	15.00	15.10	15.20	15.30	15.40	15.50	15.60	15.70	15.80	15.90	15
16	16.00	16.10	16.20	16.30	16.40	16.50	16.60	16.70	16.80	16.90	16
17	17.00	17.10	17.20	17.30	17.40	17.50	17.60	17.70	17.80	17.90	17
18	18.00	18.10	18.20	18.30	18.40	18.50	18.60	18.70	18.80	18.90	18
19	19.00	19.10	19.20	19.30	19.40	19.50	19.60	19.70	19.80	19.90	19
20	20.00	20.10	20.20	20.30	20.40	20.50	20.60	20.70	20.80	20.90	20
21	21.00	21.10	21.20	21.30	21.40	21.50	21.60	21.70	21.80	21.90	21
22	22.00	22.10	22.20	22.30	22.40	22.50	22.60	22.70	22.80	22.90	22
23	23.00	23.10	23.20	23.30	23.40	23.50	23.60	23.70	23.80	23.90	23
24	24.00	24.10	24.20	24.30	24.40	24.50	24.60	24.70	24.80	24.90	24
25	25.00	25.10	25.20	25.30	25.40	25.50	25.60	25.70	25.80	25.90	25
26	26.00	26.10	26.20	26.30	26.40	26.50	26.60	26.70	26.80	26.90	26
27	27.00	27.10	27.20	27.30	27.40	27.50	27.60	27.70	27.80	27.90	27
28	28.00	28.10	28.20	28.30	28.40	28.50	28.60	28.70	28.80	28.90	28
29	29.00	29.10	29.20	29.30	29.40	29.50	29.60	29.70	29.80	29.90	29
30	30.00	30.10	30.20	30.30	30.40	30.50	30.60	30.70	30.80	30.90	30
31	31.00	31.10	31.20	31.30	31.40	31.50	31.60	31.70	31.80	31.90	31
32	32.00	32.10	32.20	32.30	32.40	32.50	32.60	32.70	32.80	32.90	32
33	33.00	33.10	33.20	33.30	33.40	33.50	33.60	33.70	33.80	33.90	33
34	34.00	34.10	34.20	34.30	34.40	34.50	34.60	34.70	34.80	34.90	34
35	35.00	35.10	35.20	35.30	35.40	35.50	35.60	35.70	35.80	35.90	35
36	36.00	36.10	36.20	36.30	36.40	36.50	36.60	36.70	36.80	36.90	36
37	37.00	37.10	37.20	37.30	37.40	37.50	37.60	37.70	37.80	37.90	37
38	38.00	38.10	38.20	38.30	38.40	38.50	38.60	38.70	38.80	38.90	38
39	39.00	39.10	39.20	39.30	39.40	39.50	39.60	39.70	39.80	39.90	39
40	40.00	40.10	40.20	40.30	40.40	40.50	40.60	40.70	40.80	40.90	40
41	41.00	41.10	41.20	41.30	41.40	41.50	41.60	41.70	41.80	41.90	41
42	42.00	42.10	42.20	42.30	42.40	42.50	42.60	42.70	42.80	42.90	42
43	43.00	43.10	43.20	43.30	43.40	43.50	43.60	43.70	43.80	43.90	43
44	44.00	44.10	44.20	44.30	44.40	44.50	44.60	44.70	44.80	44.90	44
45	45.00	45.10	45.20	45.30	45.40	45.50	45.60	45.70	45.80	45.90	45
46	46.00	46.10	46.20	46.30	46.40	46.50	46.60	46.70	46.80	46.90	46
47	47.00	47.10	47.20	47.30	47.40	47.50	47.60	47.70	47.80	47.90	47
48	48.00	48.10	48.20	48.30	48.40	48.50	48.60	48.70	48.80	48.90	48
49	49.00	49.10	49.20	49.30	49.40	49.50	49.60	49.70	49.80	49.90	49
50	50.00	50.10	50.20	50.30	50.40	50.50	50.60	50.70	50.80	50.90	50

Distance of slope stake from side or shoulder stake for any width roadway, slope 1 to 1. If ground is nearly level, the cut or fill at side stake is located by the double entry method in left column and top row. The number in body of table in same row and column gives distance from side stake to slope stake. If ground is not level estimate the difference in elevation between the side stake and slope stake, lower target by this amount if cut, elevate if fill. Add this amount to cut or fill and find distance in table. Set up rod at this point, and line of sight should cut target. If it does not make the slight adjustment necessary.

Index
(continued)

Ties & X-secs on Unnamed Street 37-40
in P.L. 1286.

TABLE XIII—CORRECTIONS FOR TANGENTS AND EXTERNALS

These corrections are to be added to the approximate values, found by dividing the tangent, or external, for a 1° curve (Table VIII) by the degree of curve, in order to obtain the true tangents, or externals. Intermediate values may be obtained by interpolation.

FOR TANGENTS ADD

Central Angle	DEGREE OF CURVE															
	5°	10°	15°	20°	25°	30°	35°	40°	45°	50°	55°	60°	65°	70°		
10°	.03	.06	.09	.13	.16	.19	.22	.25	.28	.31	.34	.38	.42	.46		
15°	.04	.10	.14	.19	.24	.29	.34	.39	.45	.51	.53	.58	.63	.68		
20°	.06	.13	.19	.26	.32	.39	.45	.51	.58	.65	.72	.79	.84	.90		
25°	.08	.16	.24	.33	.40	.49	.58	.67	.75	.83	.90	.99	1.06	1.14		
30°	.10	.19	.29	.39	.49	.59	.69	.79	.89	.99	1.09	1.20	1.29	1.39		
35°	.11	.22	.34	.47	.58	.69	.79	.81	.92	1.04	1.29	1.42	1.54	1.66		
40°	.13	.26	.40	.53	.67	.80	.93	1.06	1.20	1.34	1.49	1.64	1.79	1.94		
45°	.15	.30	.44	.60	.76	.91	1.06	1.21	1.37	1.52	1.70	1.87	2.04	2.21		
50°	.17	.34	.51	.68	.85	1.02	1.19	1.36	1.54	1.72	1.91	2.10	2.29	2.48		
55°	.19	.38	.57	.76	.95	1.14	1.32	1.52	1.72	1.92	2.14	2.35	2.56	2.77		
60°	.21	.42	.63	.84	1.05	1.27	1.49	1.71	1.94	2.17	2.38	2.60	2.83	3.07		
65°	.23	.46	.69	.93	1.16	1.40	1.64	1.88	2.13	2.38	2.63	2.88	3.13	3.39		
70°	.25	.51	.76	1.02	1.28	1.54	1.80	2.06	2.33	2.60	2.88	3.16	3.44	3.72		
75°	.27	.56	.83	1.12	1.40	1.69	1.98	2.27	2.57	2.87	3.16	3.47	3.78	4.09		
80°	.30	.61	.91	1.22	1.53	1.84	2.15	2.46	2.78	3.10	3.44	3.78	4.12	4.46		
85°	.33	.66	1.00	1.33	1.68	2.02	2.36	2.70	3.05	3.40	3.77	4.14	4.55	4.89		
90°	.36	.72	1.09	1.45	1.83	2.20	2.57	2.94	3.32	3.70	4.10	4.50	4.91	5.32		
95°	.39	.79	1.19	1.55	2.00	2.40	2.80	3.20	3.61	4.02	4.40	4.98	5.38	5.83		
100°	.43	.86	1.30	1.74	2.18	2.62	3.06	3.50	3.95	4.40	4.88	5.37	5.85	6.34		
110°	.51	1.03	1.66	2.08	2.61	3.14	3.67	4.21	4.76	5.31	5.86	6.43	7.01	7.60		
120°	.62	1.25	1.93	2.52	3.16	3.81	4.45	5.11	5.77	6.44	7.12	7.80	8.50	9.22		

FOR EXTERNALS ADD

Central Angle	DEGREE OF CURVE															
	5°	10°	15°	20°	25°	30°	35°	40°	45°	50°	55°	60°	65°	70°		
10°	.001	.003	.004	.006	.007	.008	.009	.011	.012	.014	.015	.017	.018	.020		
15°	.003	.007	.010	.014	.018	.023	.027	.029	.032	.035	.039	.043	.047	.051		
20°	.006	.011	.017	.022	.028	.034	.038	.045	.051	.057	.063	.070	.076	.083		
25°	.009	.018	.027	.036	.046	.056	.065	.074	.083	.093	.106	.120	.127	.135		
30°	.013	.025	.038	.051	.065	.078	.090	.103	.116	.129	.149	.170	.179	.188		
35°	.018	.035	.054	.072	.086	.109	.131	.153	.175	.197	.213	.230	.247	.264		
40°	.023	.046	.070	.093	.117	.141	.172	.203	.234	.265	.277	.290	.315	.341		
45°	.030	.060	.093	.119	.153	.184	.216	.254	.289	.325	.351	.378	.411	.445		
50°	.037	.075	.116	.151	.189	.227	.266	.305	.345	.384	.425	.467	.508	.550		
55°	.046	.093	.142	.188	.236	.283	.332	.381	.420	.479	.530	.582	.641	.700		
60°	.056	.112	.168	.225	.283	.340	.398	.457	.516	.575	.636	.697	.774	.851		
65°	.067	.135	.204	.273	.343	.412	.483	.554	.625	.697	.771	.845	.922	1.01		
70°	.080	.159	.240	.321	.403	.485	.568	.652	.735	.819	.906	.994	1.08	1.17		
75°	.095	.182	.266	.353	.440	.528	.617	.707	.797	.887	.977	1.07	1.18	1.29		
80°	.110	.220	.332	.445	.558	.671	.787	.903	1.02	1.13	1.25	1.38	1.50	1.62		
85°	.128	.259	.391	.524	.657	.790	.926	1.06	1.20	1.34	1.47	1.62	1.76	1.91		
90°	.149	.299	.450	.603	.756	.910	1.07	1.22	1.38	1.54	1.70	1.87	2.03	2.20		
95°	.174	.350	.522	.706	.885	1.06	1.25	1.43	1.62	1.80	1.99	2.18	2.38	2.58		
100°	.200	.401	.604	.809	1.01	1.22	1.43	1.64	1.85	2.06	2.28	2.50	2.73	2.96		
110°	.268	.536	.806	1.08	1.35	1.63	1.91	2.20	2.48	2.76	3.05	3.35	3.66	3.96		
120°	.360	.721	1.08	1.45	1.82	2.19	2.57	2.95	3.33	3.72	4.11	4.50	4.91	5.32		

Index

Tie from Torrey Pines Rd. "L" Line to
 La Jolla Shores Drive 1-2
 Cross sections along preceding tie 3-6
 Tie from Torrey Pines Rd. to Roseland Dr. 7
 Cross sections along Roseland Dr. 8-10
 Tie from Torrey Pines Rd. to Little St. 11
 Cross sections along Little St. 12-14
 Tie from Torrey Pines Rd. to Princess St. 15
 Cross sections along Princess St. 16-17
 Tie from Torrey Pines Rd. to Coast Blvd 18
 Cross sections along Coast Blvd. 19-20
 Cross sections along Torrey Pines Rd.
 at Prospect Place 21-22
 Cross sections along Prospect Place
 at Torrey Pines Rd. 23-24
 Cross sections on "L" Torrey Pines Rd. 25-27
 Cross Sections on Roseland Dr. - Torrey East 28
 Cross Sections on Access Dr. in Blk 461 J. Park 30
 (continued on flyleaf)

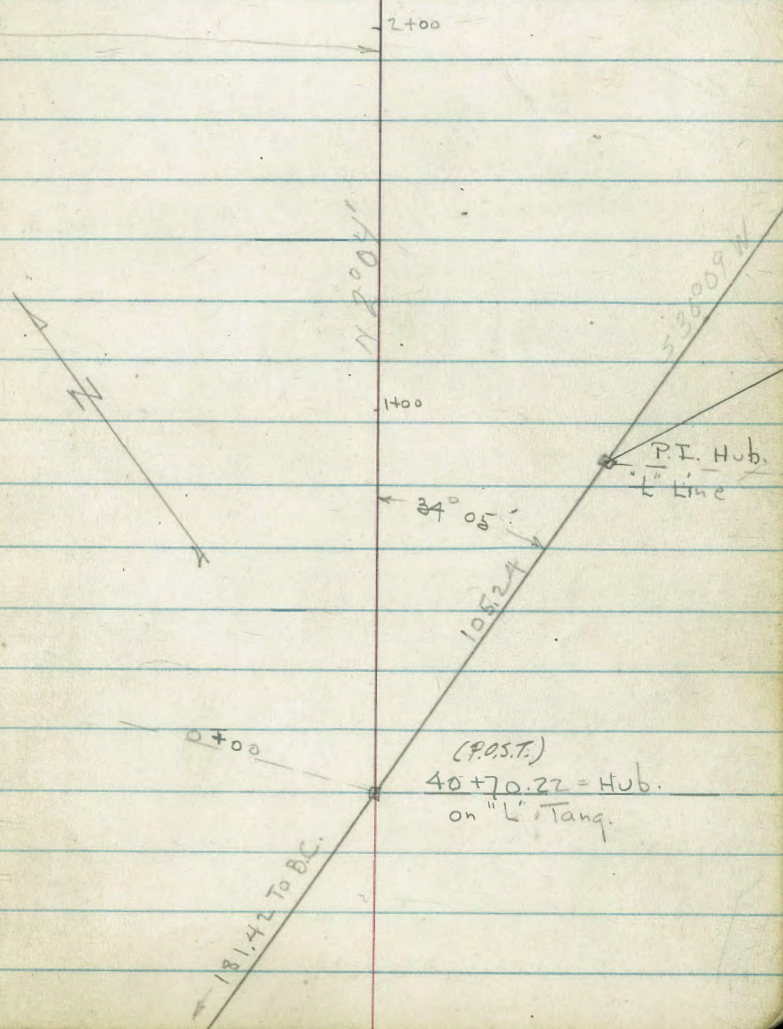
Jan. '51

Tie from Tarrey Pines Rd "L" Line to La Jolla Shores Drive

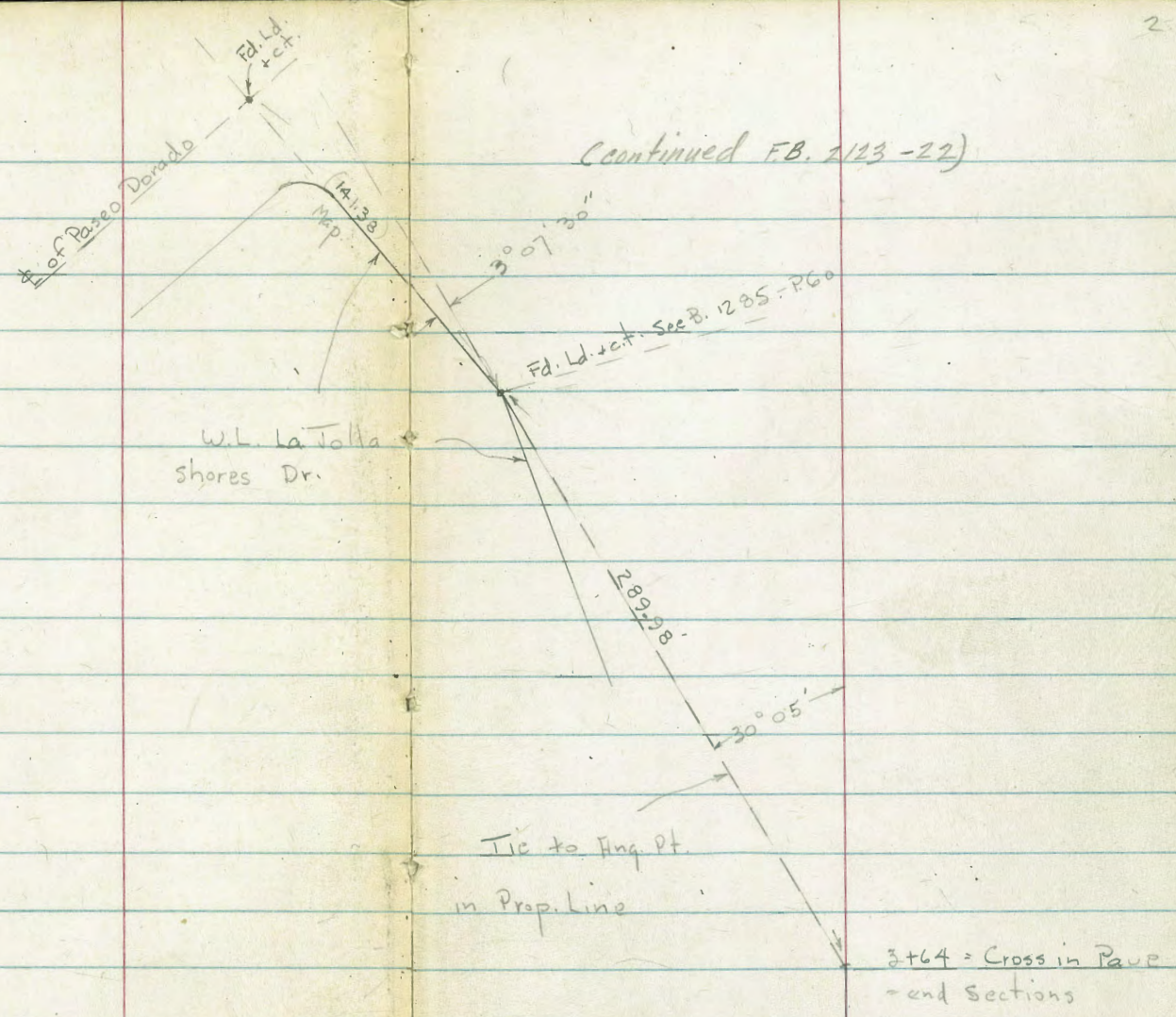
INDEXED

JUN 8 1951

Base Line - \pm —
parallel
to w.c.
of La Jolla Shores Dr. along
lots 17-18-19 in Block 4



(continued FB. 2123-22)



3+00

Lt. ☉ = Base line Rt.
INDEXED
JUN 8 1951

Beq. X-Sept. along Base Line
Thru LaTalla Shores Dr. - from Sta 40+70.22
on L Line Tang. - See sketch - P. 1
W.O. 22041 1-17-51 7.0

0+90 - 66.3' Lt. = Beq Conc Drive - Reg. cb. buried
0+78 - 68.1 Lt. = Brk. in cb.
0+65.5 - 71.3' Lt. = Brk. in cb. - Curb broken Down

42.88
9.53
68.1-Top
+gut.
44.06
8.35
Top
43.19
42.8
9.22
9.6
TOP
Dr.
66.3=gut.
43.5
8.9
71.3
gut.

0+50
44.71
7.70
88.5
edge
well
44.52
7.89
Top
cb.
43.9
8.5
74.3
gut.
45.1
7.3
50
46.04
6.37
29.1
46.40
6.01
19.7
46.47
5.94
10.5
46.6
5.8
48.5
3.9
20
50.60
1.81
50-edge
Conc.

0+70.5 - 52.5 Lt. = 4x4 Gas M.H. 597
on Rim
0+15
45.54
6.87
Top
cb.
45.3
7.1
81.6
60
gut.
46.3
6.1
60
46.91
5.50
38.9
47.24
5.17
29.5
47.31
5.10
19.6
48.8
3.6
49.4
17
50.61
1.80
24-edge
Conc. Pav.

0+00 = 40+70.22 on L Tang.
47.73
2.68 on Hub.
52.41

B.M. 0.34 52.41 52.07 = Top Hy d. - Rt. 42+23 - B. 2094 - P. 31

1+68- 55.1 Lt. = Brk in cb. - about E.C.

1+60 - 54.5' Lt. = Brk in cb.

1+50

1+48- 11' Rt. = 6x6 Conc. Water Valve M.H.

T.P. 6.59 45.77 13.23 39.18

1+46 - 33.5' Lt. = Sewer M.H. 10.31

1+45.5 - 57.7 Lt. = P. pole # 60767

1+38 - 59' Lt. = Light std. - 2x2 Base

1+34.5 - 57.2 Lt. = P.C. of cb.

1+08 - 62.8' Lt. = end Conc. Drive - over Rpg cb.

1+00

4

Lt. Rt.

40.89 40.4

4.88 5.4

Top 55.1

cb. got. 40.54 40.4

523 5.4

Top 54.5

got.

41.79 40.43 40.5 42.1 42.82 43.29 43.36 43.24 43.42 46.7

3.98 4.94 5.3 3.7 2.95 2.48 2.41 2.43 2.35 +0.9

69.9 Top 55 35 11 conc. 6.7 7.4 14.1 50

walk got.

edge M.H.

2.33

11 = top

M.H.

45.77

41.36 40.9

11.05 11.5

Top 57.2

got.

42.73 42.10 41.7

9.68 10.31 10.7

Top Top 62.8 = got.

Drive cb.

43.21 42.51 43.8 44.47 44.88 44.98 45.0 46.3 47.9

9.20 9.90 8.6 7.94 7.53 7.43 7.4 6.1 4.5

78.8 64.1 40 19.5 9 0.1 20 50

walk Conc. Conc. Conc. Conc. Conc. Conc. Conc.

Drive

52.41

3+35.5 - 57' Lt. = Φ Light std.

3+30

36.81	36.64	36.3	37.3	37.56	38.14	38.17	40.2	39.5	39.9	39.1	40.3
8.96	9.13	9.5	8.5	8.21	7.63	7.60	5.6	8.3	7.9	6.1	5.5
69	Top	55	35	12.7	Conc.	5.5	9	18	26	30	75
walk		gut.							Ditch		

3+00 - 45' Rt. = Φ Guy Pole

37.58	37.41	36.7	38.1	38.34	38.85	38.95	41.1	38.1	38.5	40.0	40.1
8.19	8.36	9.1	7.7	7.43	6.92	6.82	4.7	7.7	7.3	5.8	5.7
69.1	TOP	55.1	30	9.6	Conc.	8.5	13	19	27	31	75
walk		gut.							Ditch		

2+88.5 - 56.8 Lt. = Φ P. pole # 60001

2+60 - 55.1 Lt. = Top cb. at end Drive

38.54	38.06
7.23	7.71
55.1	55.1 - Dr. 1 back
Top	
pcb.	

2+50

38.88	38.25	39.3	39.80	40.10	40.23	42.6	39.1	39.5	41.4	43.4	43.9
6.89	7.52	6.5	5.97	5.67	5.54	3.2	6.7	6.3	4.4	2.4	1.9
69.2	55	30	7.8	Conc.	11.3	16	22	29	33	55	75
walk	Dr.								Ditch		

2+42 - 42' Rt. = Φ 24" Cottonwood

2+38 - 55.1 Lt. = Top cb. at edge of Conc. Dr.

39.11	38.47
6.66	7.30
55.1	55.1 on Dr. 1 ahead.
Top	pcb.

2+00

1+77 - 40' Rt. = Φ 24" Cottonwood Tree

40.15	39.83	39.3	40.5	41.13	41.49	41.69	41.8	40.1	40.1	42.9	45.8
5.62	5.94	6.5	5.3	4.64	4.28	4.08	2.0	5.7	5.3	2.9	0.0
69.1	Top	55.2	30	7.5	Conc.	10.5	15	23	32	36	75
walk		gut.							Ditch		
(Swide)											

45.77

Lt. \$ Rt. 6

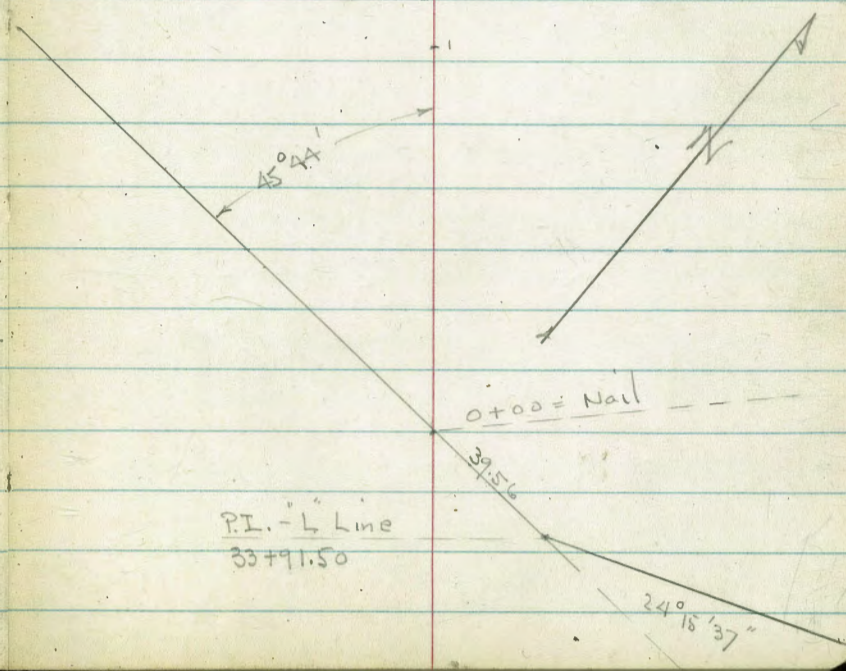
= P.C. of cb.
3+64 = end. - 38.7 Lt. = \$ Sewer M.H.

36.25	36.04	35.4	36.57	36.7	36.86	37.34	37.52	39.9	36.9	37.1	39.4	40.3
9.52	9.75	10.4	9.20	9.1	8.91	8.43	8.25	5.9	8.9	8.7	6.4	5.5
69.2	Top	54.9	38.7	35	17.9	Conc.	5.77	0.5	6	15.23	29	75
walk		9.7	Rim M.H.							Ditch		

Tie from Torrey Pines Rd "L" Line to Roseland Drive

2+58.90 = Nail

2



X-Sections along Base Line = Φ as shown.

Thru Roseland Drive - Showing Improvements

W.O. 22041 1-18-51 7.0.

Lt.

Φ = Base line

Rt.

8

INDEXED

JUN 8 1951

T.P. 1.49 63.72 13.15 62.23

0+49 = edge C & L Lay Pave

10.83	71.2	66.10	66.07	65.88	66.17
4.55	4.2	9.28	9.31	9.50	9.21
29.6	7	c	12	23.8	23.8 = Top walk
edge Pave		c	c.L.		

0+36

70.3

5.1

See sketch - 2094 - P. 15 & 16

0+30.7 = edge Pave on Φ

69.95

5.43

0+11

71.08

4.30

71.60

3.8 = on Nail

0+00 = Nail on Back Tang. of "L" Line (see sketch)

B.M. 0.11 75.38 75.27 = Nail in Pole - B.2094 - P. 19

75.38

sides

1+56 - 11.8' Rt = end wall + Beg. Rock curb.

1+49 - 21.3' Rt = Bend in wall

1+44 - 42.6' Rt = Beg. 6" Conc. wall at Cor. of Gar

14.1' Lt = Beg. 6" Conc. curb.

1+36 - 13.3' Lt = end Conc. Drive

1+30 - 24' Rt = Most Nly. of Conc. Ret. wall

1+23

1+12 - 12.6' Lt = Beg. Conc. Dr.

0+90 - acacia Hedge Behind curb on Rt

	LT	±	Rt	9
			55.54	55.98
			8.18	7.74
			11.8 = gut on C.L.	11.8 Top cb + wall
			56.08	56.79
			7.64	6.93
			21.3	21.3
			Dr.	Top
			57.22	57.13
			6.50	4.59
			42.6 on Dr.	42.6 = Top wall
	55.89			
	56.63	57.56	57.88	57.17
	56.92			
	8.33	7.09	6.16	5.84
	48.7	28	16	4.1
	edge Conc. Dr.			Top Cor. Conc. C.L. gut.
				6.52
				6.80
				13.3 =
				6.79
				6.93
				6.35
				10
				41.5 = ± Dist. Grav. Conc. floor
			57.19	57.44
			6.53	4.28
			24 on Dr.	24 Top wall
	57.1	58.00	58.43	58.04
	57.85			
	6.0	5.72	5.29	5.64
	40	30	17	12.8
	edge Conc.			12.8 Conc. Dr. C.L.
				5.83
				5.65
				11.3 C.L. gut
				4.96 Top cb.
				36
				39.1 = along House
			58.82	
			4.90	
			12.6 = Cor. Conc.	
	61.0	60.47	60.71	60.84
	2.7	3.25	3.01	2.84
	30	12.8		2.02
	Toe	edge	63.72	12.5 Top cb.
				30

2+58.90 = end cb. on Lt.

50.5
4.3
50

2+50'-34 Rt. = ± 6" Star Pine

2+51.5-18.8 Rt. = P.C. in Rock cb.

2+36-21 Rt. = ± 5" Cypress

2+33-17.3 Rt. = ± 3' Flag. walk on cb. - See sect. Below for end.

2+30

2+27.5-21 Rt. = ± 5" Cypress

I.P. 3.02 54.81 11.93 51.79

2+03-13 Lt. = ± 3.2' Brick walk - Thru cb.

2+00

52.4
11.3
50.5
along House

1+60-42.3 Lt. = N. end Door + end of Dr.

N. end of Door

Lt. ± Rt.

48.0 47.2 47.69 47.29 46.92 47.46 48.00 48.96 49.1 51.5
6.0 7.6 7.12 7.52 7.89 7.35 6.81 5.85 5.1 4.3
30 15 Top 14.1 12 20.5 Top 30 4.3
end cb. gut.

48.77 49.44
6.04 5.37
18.8 Top
gut. 50.31 50.91
450 390
17.3 17.3
gut. Top cb + walk

52.2 51.2 49.8 50.45 49.85 49.28 49.91 50.51 51.11 52.49 52.14
2.6 3.6 5.0 4.36 4.96 5.53 4.90 4.30 3.70 2.32 0.67
46 30 15 Top 14 12 16.9 Top 30 48.5
along House cb. gut. gut. Top sly. of walk edge walk

54.81

51.95 51.98
11.77 11.74
26 13. = walk
edge

52.0 52.0 52.86 52.25 51.68 52.41 52.83 53.64 55.1
11.7 11.4 10.86 11.47 12.04 11.31 10.89 10.08 8.6
30 15 14.1 14.1 11 14.8 Top 45 = along
cb. gut. gut. cb. House

53.15 55.5 56.03 55.42 55.02 55.31 55.34 55.91 56.3
10.57 8.2 7.69 8.30 8.70 8.41 8.38 7.81 7.4
42.3 15 14.1 14.1 12.5 63.72 12.3 Top 31 = along
= floor Top cb. gut. gut. Top cyclone fence

X-Sections along Base Line = \pm Thru
Little St.

INDEXED
JUN 8 1951

2+50 \pm
2x2" Hub-Prop Cor. 27.76

3/4" Prop
Pipe

28.43 1+51 \pm

P.O.T. Nail - 0+84.70

35° 45' 15"

0+65.27
= 1d + ct. = Prop. Cor. 29.60

0+00 = Hub.
= 26 + 20 on "L" Line

X-Sections along Base Line = Φ Thru
Little St. - N. of Torrey Rd.

w.o. 22041 1-19-51- 7.0.

INDEXED

JUN 8 1951

T.P. 3.60 81.71 13.21 78.11

Box inlet

1+46.5-18.3 Lt. = inlet of -12" Tile conduit 1x2 Conc.

1+45-25' Lt. = Φ Sewer M.H. 10.81 ^{20.51} on Rim

1+30

1+10

0+84.70 = P.O.T. Has broken Rock db. edge of Cold Lay Pave on Lt.

0+00 = 26+20 on "L" Line

B.M. 1.22 91.32

90.10 = N.W. B.P. Little + Torrey - B. 2094 - P. 11

81.71

76.80 78.65

14.52 12.67
18.3 = Top Grate
I.E. pipe Box

83.8 82.5 81.89 82.35 82.41 78.8 87.6
7.5 8.8 9.43 8.97 8.91 12.5 3.7
42.2 25 10 - c.L. - 8 25 48
along Gar.

81.1 86.0 84.86 85.20 85.36 86.9 88.3
2.21 5.3 6.46 6.12 5.96 4.4 3.0
39.8 = 23 7.5 c.L. - 9 20 32
Floor - edge of Door of Gar. + edge Dr.

88.81 88.6 88.16 88.46 88.50
2.51 2.7 3.16 2.86 2.82
28.8 = 20 6.4 on Nail
edge Conc. edge C.L. 25.3 = edge A.C. Pave
Dr.

91.32

2+75

Drive

2+57.5 - 18' Rt. = end 6" Conc. wall along edge of Brick

T.P. 0.25 68.75 1321 68.50

2+54 - 18.2 Rt. = 4" Pipe # P2155

2+52 - 22.3 Lt. = 4" Guy Pole

2+50 - 28' Lt. = end wall

2+25

1+85

1+76 - 16.7 Lt. = outlet of 12" pipe

1+60

Lt.

±

Rt.

13

72.6	66.4	66.5	65.48	65.75	66.04	66.12	66.44	65.49
+3.9	2.4	2.3	3.27	3.00	2.71	2.63	2.31	3.26
32.	23	9	6	10	18.4	22	41.6 = edge of Dr.	41.6 = edge of Dr. + Top wall
Top Bank						67.94	68.52	
						0.81	0.23	
						18 = Dr.	18 = Top wall	
					68.75			

72.35	70.2
9.36	11.5
28	27.5
Top wall	

15.9	14.39	10.9	11.1	20.38	10.68	10.69	10.6	11.0
5.8	8.82	10.8	10.6	11.33	11.03	11.02	11.2	10.7
40	29	28	10	7	CL	16	35	50
Top wall								

18.1	16.66	15.2	14.3	14.51	14.88	14.77	14.1	15.4
3.6	5.05	6.5	7.4	7.20	6.83	6.94	7.6	6.3
40	29	28	17	8	CL	14	25	40
Top Rock wall								

14.43
7.28
16.7 = I.E. Pipe

18.79	18.68	18.26	18.29	18.04	18.1	15.5	16.6
2.92	3.03	3.45	3.42	3.67	3.6	6.2	5.1
43	28	8	CL	11	18	24	41 = Top
edge Drive							
81.71							

4

#

Rt.

3+50 = end.

60.3	58.7	58.4	57.67	58.39	58.65	58.49	59.3	55.96	55.96
5.5	10.1	10.4	11.08	10.36	10.10	10.26	9.5	12.79	14.79
29	24	17	14	on	12	19	23	40.5	40.5 =
Top				C.L.				Top	Brick
								walk	walk
								along	along
								House	House

3+15

61.8	62.4	62.2	61.53	61.58	62.03	61.94	62.7	61.13	60.13
+1.0	6.4	6.6	7.42	7.17	6.72	6.81	6.1	7.62	8.02
29	21	8	6		12	19	21	33 = Top	33.6 =
Top				C.L.				Conc. wall	Brick
Bank									walk

3+14 - 38.7 Rt. = Near Cor. Gar. = end of Brick Dr.

61.19
7.56
38.7 = floor

Brick Drive

2+87.5 - 18.5 Rt. = end 6" Conc. wall + edge

68.5

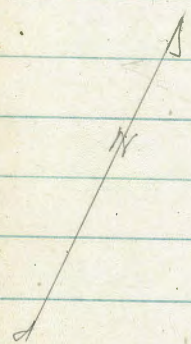
65.18
3.57
18.5
on Dr.

65.88
2.87
18.5 = Top
wall

- Hub. = # Princess 15
shown in Tie
B. 2055 - P. 57

Tie from Torrey Pines Rd. "P" Line to Princess St.

2+50 = Nail



Princess

16+12.90 = Hub. = 0+00
Ang in "P" Line

INDEXED Lt. Rt

JUN 8 1951

x-Sect. Princess - N. of Torrey

w.o. 22041 1-19-51- 7.0

1+30 = Brk.

1+22.5 = Brk in cb. on Lt

1+00

0+99- 0.3' Rt. = Sewer MH. 6.38

0+96- 21.5' Rt. = P. pod # J.P. 7811

0+69.5

0+58.5 - 15' Lt. = P.C. of Rt

0+50

0+00 = Hub. = ang Pt. on "P" line

B.M. 7.46 86.58

85.12 = ct. in cb. = Princess 86.58

11.58	11.41	11.15	10.02	10.36	10.32	10.00	10.31	10.40
9.00	9.17	9.45	8.56	8.22	8.26	8.58	8.27	8.18
19.9	Top	15.2	8	8	8	15.2	Top	19.8
walk		9.4				9.4		walk

10.31	11.74
8.27	8.84
Top	15.2
	9.4

61.7	79.6	79.62	79.62	79.15	79.83	80.19	80.03	79.74	80.13	80.14
19.9	7.0	6.96	6.96	7.43	6.75	6.39	6.55	6.94	6.45	6.44
44	25	20	Top	15.3	8	10	15.1	Top	19.8	walk
Top	walk		9.4							

81.2	81.31	81.15	80.88	81.48	82.00	81.98	81.67	82.00	82.13
5.4	5.27	5.45	5.70	5.10	4.58	4.60	4.91	4.58	4.45
25	19.8	Top	15.1	8	10	15.1	Top	19.8	walk
walk		9.4					9.4		

82.01	81.65
4.57	4.93
Top	15.2
P.C.	9.4

82.11	82.67	82.52	83.25	83.56	83.77	84.10	84.52
3.81	3.91	4.26	3.33	3.02	2.81	2.48	2.06
29.5	Top	15.7	10	22.5	Top	29	Back of walk
Back walk	9.4						

Lt. # Rt.

2+50 = end.

11.41	11.83	11.94	11.54	11.91	11.84	11.41	11.83	11.94
5.03	5.11	5.50	4.90	4.53	4.60	4.97	4.61	4.50
19.7	Top	15.1 gut.	8		8	15.1 gut.	Top	19.8 walk

T.P. 2.57 76.44 12.71 73.87

76.44

2+00

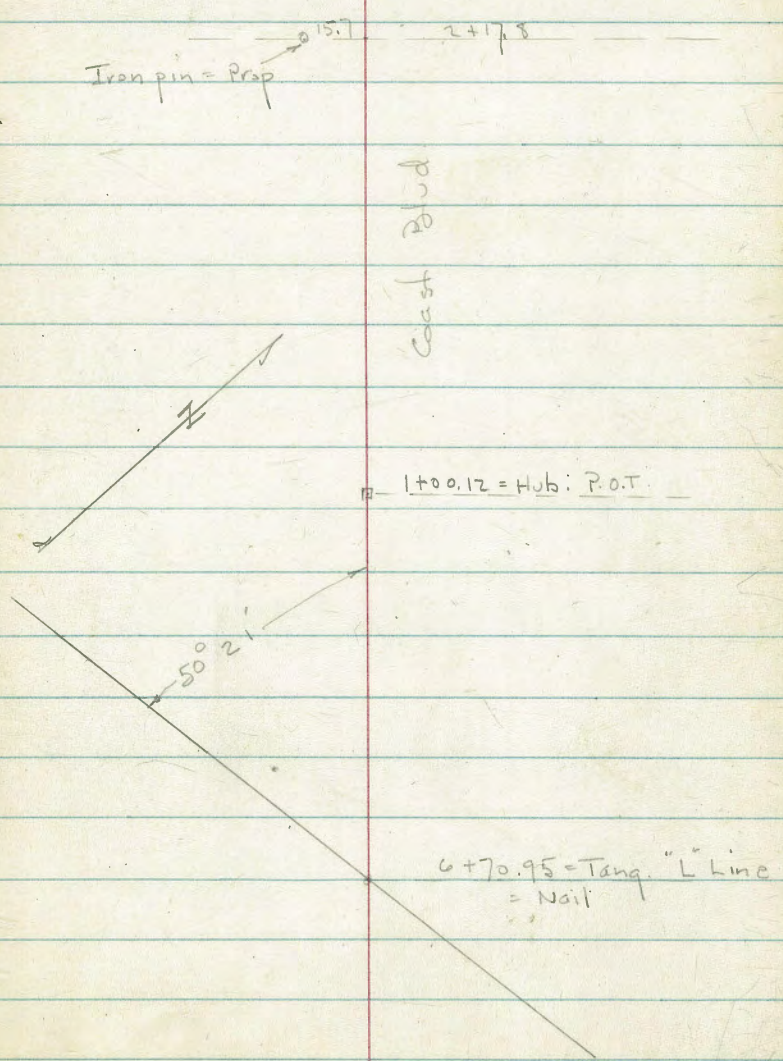
73.9	74.21	74.10	73.73	74.23	74.54	74.50	74.21	74.62	74.73
12.7	12.31	12.48	12.85	12.35	12.04	12.08	12.37	11.96	11.85
30	19.7 walk	Top	15.1 gut.	8		8	15.1 gut.	Top	19.7 walk

1+50 = Brk. in. cb.

66.6	76.1	76.92	76.89	76.44	77.06	77.36	77.30	77.05	77.41	77.52
20.1	9.9	9.66	9.69	10.14	9.52	9.22	9.25	9.53	9.11	9.06
40	22	19.9	Top	15.2	8		8	15.1	Top	19.7 walk
Toe	walk			gut.				gut.		

86.58

Tie from Tarrey Pines Rd "L" line to Coast Blvd.



X-Sect. along Base Line = shown as
 ± - Thru Coast Blvd.

W.O. 22041 1-22-51 -7.0

1+50

1+20

0+90 - Heavy shrub planting on Lt.

0+50

0+00 = 6+70.95 on Tang. of "L" Line

√ B.M. 2.43 115.98 113.55 = B.P.

19

Lt.

± = Base Line Rt.

INDEX

JUN 8 1951

107.8	107.3	107.6	107.4	107.3
8.2	8.7	8.4	8.6	8.7
30	edge Planting		26	50 Top
			edge Rd.	

110.3	110.8	110.8	110.7	110.2	108.0	105.3
5.7	5.2	5.2	5.3	5.8	8.0	10.7
20	12		15	40	100	130
	edge Planting					Top

116.5	114.4	113.2	112.7	111.7	111.6	112.0
+0.5	1.6	2.8	3.3	4.3	4.4	4.0
30	20	15		15	40	86 = Top
	Edge of Planting					

112.6	112.0	112.3	112.2
3.36	4.0	3.7	3.8
16.2		30	55 = Top
edge Pav			bank

4.94 on Nail - ±

115.98
 S.W. Coast Blvd. + Torrey

Lt.

Rt.

3+00 = end

92.0	91.7	90.8	91.6	90.5	90.7
11.5	11.8	12.7	12.9	13.0	12.8
30	20	4		Rd. 11	35 = Top

2+60 - 21.4 11' = ± 8' Conc. Dr.

93.71	95.04	95.38
9.79	8.46	8.12
42.5	34	21.4 = Dr.
Gar. floor	Dr.	

2+50

96.2	96.7	96.4	96.9	96.4	96.0	96.2	96.5
7.3	6.8	7.1	7.2	7.1	7.5	7.3	7.0
30	24	17	Rd. 5		10	Rd. 24	30 = Top
edge planting							

T.P. 0.83 103.50 13.31 102.67

2+00

102.6	102.5	102.4	101.2	101.3	101.0
13.4	13.5	13.6	14.4	14.7	15.0
30	14	Rd. 31	16	31	48 = Top
edge planting					

X-Sect. Torrey Pines Rd. - Int. of
Prospect Pl. + 100' S. of S.L.

1-24-51-70.

1+27

1+14 = S. cb

1+00 = S.L. Prospect. - (Returns Solid - 10' rad.)

0+50

0+00 = 100' S. of S.L. of Prospect

B.M. 398

156.29

152.31

Lt.

Rt.

INDEXED
JUN 8 1951

149.67 150.22 150.69 151.21 151.63 151.94 152.56
6.62 6.07 5.60 5.08 4.66 4.35 3.73
40 26 13 13 26 40

150.15 149.57 149.94 150.72 151.28 151.70 151.74 151.83 152.14
6.14 6.72 6.35 5.57 5.01 4.59 4.55 4.46 4.15
Top 40 26 13 13 26 40 Top
gut.

150.38 150.26 150.13 149.85 150.80 151.45 151.85 151.86 152.15 152.36 152.50
5.91 6.03 6.16 6.44 5.99 4.84 4.44 4.43 4.14 3.93 3.79
40 30.5 Top 26 13 13 26 Top 31 40
cor. Ret. walk gut. cor. Ret.

151.62 151.51 151.47 151.07 151.99 152.84 153.08 152.95 153.53 153.59 153.79
4.67 4.78 4.82 5.22 4.30 3.45 3.21 3.34 2.76 2.70 2.50
35.5 30.5 Top 26 13 13 26 Top 31 36
walk gut. walk

156.26 152.43 153.44 154.22 154.48 154.30 154.93
3.43 3.86 2.85 2.07 1.81 1.99 1.36
Top 26 13 13 26 Top
gut.

156.29
= S.E. 7' ct. - check Book 2042 - see if its right.
O.K. by F.B. 2042 pg. 36

Lt. ± Rt.

T.P. 7.24 150.36 13.17 143.12

1+66 = N. cb.

149.14	148.62	149.25	150.23	150.98	151.33	151.56	151.78	152.22
7.15	7.67	7.04	6.06	5.36	4.96	4.73	4.51	4.07
Top	40	26	13		13	26	40	Top
	gut.						gut.	

1+53

149.08	149.91	150.52	151.08	151.47	151.76	152.50
7.21	6.38	5.77	5.21	4.82	4.53	3.79
40	26	13		13	26	40

1+40 = ± Sewer M.H.

149.51	150.18	150.70	151.14	151.56	151.93	152.71
6.78	6.11	5.59	5.15	4.73	4.36	3.58
40	26	13	Rim	13	26	40

156.29

Lt. - S. ⚡

Rt. - N.

x-Sect. Prospect Place - 100' Both
Sides of Torrey Rd
Consider Torrey Rd. as Running N.+S.

INDEXED

JUN 8 1951

100' W.

141.67	141.07	141.19	141.06	140.44	139.58	140.14
8.69	9.29	9.17	9.30	9.92	10.78	10.22
Top	26 9.t.	13		13	25.6 9.t.	Top

50' W.

146.17	146.07	145.95	145.35	145.55	145.35	144.84	144.07	144.65	144.80	144.95
4.19	4.29	4.41	5.01	4.81	5.01	5.52	6.29	5.71	5.56	5.41
36.1 walk	30.7	Top	26 9.t.	13		13	24.4 9.t.	Top	29	34.5 walk

25' West. of W.L. Torrey

148.26	148.15	148.01	147.50	147.72	147.54	147.08	146.33	146.84	146.97	147.08
2.10	2.21	2.35	2.86	2.64	2.82	3.28	4.03	3.52	3.39	3.24
36 walk	30.7	Top	26 9.t.	13		13	25.1 9.t.	Top	29.7	35 walk

150.36 - P. 22

x-Sect. Prospect - 100' E. of E.L. Torrey

Reduced by
Jan 25, 1951
H. Hrm

Lt. = N.

Jan. '51 24

Rt. = S

100' E.

163.01	162.53	163.50	164.18	164.59	164.46	164.98
2.25	2.73	1.76	1.08	0.67	0.80	0.28
Top	26 gut.	13		13	26 gut.	Top

50' E.

157.76	157.75	157.60	157.02	157.82	158.23	158.28	158.00	158.58	158.66	158.76
7.50	7.81	7.66	8.24	7.44	7.03	6.98	7.26	6.68	6.60	6.48
36 walk	30.7	Top	26 gut.	13		13	26 gut.	Top	30.7	36 walk

25' E. of E.L. of Torrey

155.11	155.04	155.08	154.41	155.05	155.28	155.16	154.82	155.36	155.49	155.61
10.15	10.22	10.18	10.85	10.21	9.98	10.10	10.44	9.90	9.77	9.65
36 walk	30.7	Top	26 gut.	13		13	26 gut.	Top	30.7	36 walk

12.95

165.26

152.31 = B.M.

165.26

Levels 2" Line Torrey Pines Rd
Cont'd from FB2094

INDEXED
JUN 8 1951

Reduced by O.F.S.
4-5-51
Pages 25-27

42+50

42.1	42.3	42.31	42.73	42.6	42.0	42.0	42.1	42.2
5.3	4.7	4.4	5.3	5.4	6.0	3.0	2.7	0.8
54	31	21	0.7		10	14	25	60

42+00

44.5	42.5	42.44	50.03	49.90	49.5	51.1	52.2	52.4
7.5	5.5	4.59	5.00	5.13	5.5	3.9	2.8	2.4
63	35	16		3	14	16	35	55

41+50

46.5	48.1	50.0	50.58	50.38	50.0	49.7	51.6	52.2	53.4
8.5	6.3	5.0	4.5	4.65	5.02	5.3	3.4	2.8	1.6
65	38	19	10		10	19	22	30	55

41+00

45.2	46.4	47.1	50.3	50.63	50.64	50.49	50.0	51.6	51.8	52.6
9.8	8.6	7.2	4.7	4.40	4.39	4.54	4.8	3.4	3.3	2.4
80	55	40	10	4		15	25	28	37	50

40+50

45.7	48.03	47.99	50.50	50.71	50.7	51.7	52.5	52.9
9.3	8.0	7.04	4.53	4.33	4.3	3.3	2.5	2.2
75	48	28		21	31	35	48	58

BM 296 5503
A

(52.07) TOP F.H. Pt. Sta. 41+98 (FB2094 p. 31)

"L" Line Torrey Pines Road

45+00

^{46.1} 10.2	^{47.4} 8.9	^{49.1} 5.6	^{51.49} 4.9	^{51.43} 4.8	^{51.0} 5.3	^{51.0} 7.3	^{49.0} 5.5	^{50.8} 5.0
70	47	38	25	5	5	11	16	50

44+54.30 EC.

^{45.6} 10.8	^{46.8} 9.5	^{50.9} 5.4	^{51.10} 5.1	^{50.85} 5.4	^{50.33} 5.9	^{48.8} 7.5	^{51.3} 5.0	^{50.8} 5.5	^{51.5} 4.8
65	45	36	25	51	40	10	15	21	50

44+00

^{44.5} 11.8	^{45.6} 10.7	^{51.1} 5.3	^{50.93} 5.3	^{50.29} 6.0	^{49.8} 6.5	^{48.8} 7.5	^{51.4} 4.9	^{50.9} 5.4	^{51.1} 4.2
75	47	36	26	5.7		9	16	22	60

TP

595	<u>56.29</u>	464	50.34
	<u>56.34</u>	4.64	5039
	<u>1</u>		

50.29

50.29

1

43+65

^{44.4} 10.6	^{46.4} 8.6	^{49.0} 4.2	^{50.83} 4.2	^{50.20} 4.8	^{49.5} 5.5	^{48.8} 6.2	^{51.5} 3.5	^{50.8} 4.2	^{50.2} 2.8
70	45	36	25	5.6		9	15	18	60

43+50

^{44.4} 10.6	^{49.5} 5.5	^{50.8} 4.2	^{50.74} 4.2	^{50.13} 4.9	^{50.5} 5.5	^{48.8} 6.2	^{51.0} 4.0	^{50.3} 2.7
70	47	37	25	5.5		8	14	60

43+00

^{48.3} 6.7	^{50.6} 4.4	^{50.48} 4.4	^{49.87} 5.6	^{49.4} 5.4	^{48.8} 6.2	^{51.1} 3.3	^{51.0} 4.0	^{51.9} 3.1	^{52.9} 2.1
55	32	24	4			4	11	15	43

5503
1

5503
1

1" Line Torrey Pines Road

2

BM

2.23 54.06
~~54.11~~ 54.05

L&T Left Sta. 46+66 (FB 2094 P. 35)

46+00

6 ²	4 ³	3 ⁵	3 ⁶	4 ⁰	4 ¹	7 ¹	7 ¹	6 ¹	5 ²	4 ⁶
72	42	24	5		6	10	13	17	26	50

45+50

9 ⁰	8 ²	4 ²	4 ⁵	4 ²⁵	4 ⁴	4 ³	8 ⁵	8 ³	4 ⁷	4 ⁵	5 ⁰
63	47	36	25	46		6	9	19	22	40	50

56.29
56.34
✓

56.29
56.34
✓

5-4-51
Hendricks
Allen
Shepard
Bruner

X Sect. Roseland Dr. from
Torrey Pines Road to East

(See p. 35 for levels)

Torrey Pines Road 1/2 Mile

Fd. Nail P.I.

61000
1-27-53

17° 37' 55"

0+00 =
53+01.494

0+23.28

0+56.07
C.R. 100

143.28

101.81 + 80.57 B.C.
Fd. Nail

INDEXED

JUN 8 1951

C.R. 25

5'

15'

15'

5'

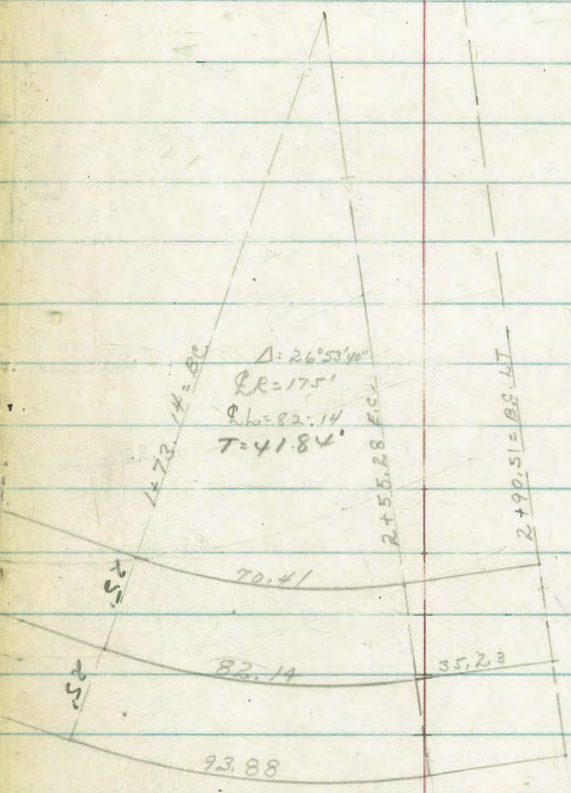
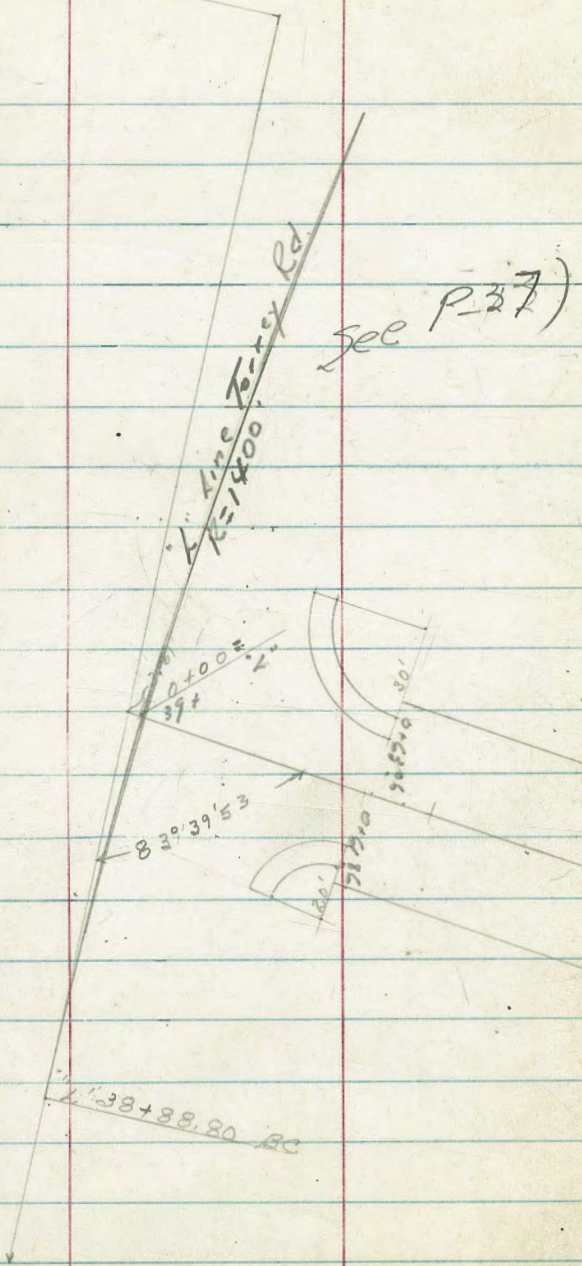
Proposed C.R. Curve

B.C.

3+04.73 E

R=200'
Δ=87°22'
T=48.69'
L=95.53'

"L" PI X Sect Roseland Dr



X-Sect. Prop. 12' Row. along Torrey
Road - N. side - in Black 46

Reduced 5-9-51
H. Horn

1+12.3 - 5.1' Rt. = ± 6" Exc. Tree

0+91.04

T.P. 0.27 117.21 133.32 116.94

0+60.52 - Sect. Radial on Curve

0+30 = P.C.

T.P. 0.88 130.26 12.65 129.38

0+00 = at base of Conc wall

B.M. 5.51 142.03 136.52 = Nail in Pole

Lt.

±

Rt.

30

INDEXED

JUN 8 1951

106.2	108.9	110.2	112.1	115.0
11.0	8.3	7.0	5.1	2.2
20	6		6	20

112.4	116.2	118.2	120.6	123.3
17.9	14.1	12.1	9.7	7.0
20	6		6	20

119.8	122.4	124.1	125.3	128.9
10.5	7.9	6.2	5.0	1.4
20	6		6	20

127.1	129.9	131.8	132.6	136.9
14.9	12.1	10.7	9.4	5.2
20	6		6	20
along wall				
Not quite 90°				

142.03

37.8 Lt = Con. wall along court.
2+89-35.7 Lt = N.W. Cor. of Gar.

93.83
12.20
on
Court

2+60 - Brush on Lt.

2+52-4' Lt = \pm Tel. pole # D 19986F

T.P. 3.05 106.03 4.87 102.98 on Cr

2+13.14 = E.C

Wall = 8"
2+00.9-6.2 Lt = Cor. of Tennis Court Ret.

1+99.4-6.2 Lt = $\frac{3}{4}$ " Water Tap

1+82.60 - Thru Heavy Brush to Here

1+59.5-27' Rt = \pm 3" Pine

T.P. 3.73 107.85 13.09 104.12

1+52.08

1+42.6 1.8' Rt = \pm 6" Euc.

1+41-5' Lt = \pm $\frac{3}{4}$ " Water Tap

1+28.3 = \pm 1" pine - 3' High

1+21=56

96.05
99.8
37.9

Top
wall

Lt.
95.9
10.1
35.7 = at Cor. Gar.

Rt.

98.2 100.0 100.8 104.7 104.7
7.8 6.0 5.2 4.3 1.3
20 6 6 20

95-3+57.91

106.03

100.64

7.21
10.4
Top
wall

99.6 100.5 102.45 103.0 105.7
8.2 7.3 5.40 4.8 2.1
10.4 6 on Hub. 6 20

94.33

100.53

43.52
Tennis
Court.

7.32
6.2 = outside Cor. wall

99.4 101.4 102.8 104.7 107.6
8.4 6.4 5.0 3.1 0.2
20 6 6 20

107.85

100.1 102.6 106.6 104.7 107.8
17.1 14.7 13.6 12.5 9.4
20 6 6 20

102.1 104.4 106.8 107.4 110.2
15.1 12.8 11.4 9.8 7.0
20 6 6 20

117.21

3+57.91 = Ang. 3° 46' Lt. Sect. on split

3+47 = end Brush on Rt

3+35

3+30 - 19.3 Lt. = 14" Cypress

3+27.5 = edge Conc Drive

T.P. 495 106.64 4.34 101.69

3+21.3 - 23.7 Lt. = S.E. Cor. Gar

3+00 = Beg. Brush on Rt.

2+96.5 - 14.9 Lt. = S.W. Cor. Gar.

	Lt.	±	Rt.	
	100.46	102.01	102.98	104.35
	6.18	4.63	3.66	2.29
	20.2	7.7		11.9
edge		edge		edge Conc.
3' Conc. walk	97.89	101.32	102.07	103.12
	8.75	5.32	4.57	3.52
	34.4	6		9.4 = edge
edge Conc.		edge Conc.		Conc.
	97.62	98.76	100.33	101.84
	12.02	7.90	6.31	4.80
	60	25	14 = edge	4.22
edge		Dr.	on Curve of Dr.	8.2
Conc. Dr.				edge Conc.
		101.51	101.69	102.08
		5.13	4.95	4.56
		27		7.5 = Cor.
		Cor. Conc.		Conc.
			106.64	
	97.13	96.65		
	8.90	7.62		
floor		23.7 =		Top Ret. wall
Gar.				
	97.9	99.6	100.4	101.1
	8.1	6.4	5.6	4.9
	16	6	6	12
98.2		101.5	101.5	103.9
doug				2.1
Gar.				20
	7.8			
14.9				
at Cor.			106.03	

4+45 - 16' Lt. = \pm 18" Torrey Pine
 4+42 - 5' Lt. = \pm Trunk of large shrub.
 4+30 - Acacia Trees on Rt. - along Conc. Strip
 4+28.5 - 4.2' Rt. = \pm 3/4" Tap
 4+25 - 17.4' Lt. = \pm 3" Tree
 4+20.5 - 0.5' Lt. = \pm Large shrub.
 4+12 - 18' Lt. = \pm 12" Torrey Pine
 4+00

105.2
 7.9
 20
 107.0
 6.1
 6
 107.5
 5.6
 109.2
 3.9
 10
 113.52
 +0.40
 30.5 = edge
 Conc.

3+86.5 = Cross Wire fence (begins at Rock Column)
 3+87.5 - 4.6' Lt. = \pm 36" Cypress
 T.P. 9.76 113.12 3.28 103.36

102.9
 10.2
 20
 104.4
 8.7
 6
 105.8
 7.3
 106.3
 6.8
 10
 109.58
 3.54
 18.9 = edge
 Conc.

3+80 - Beg. Heavy planting - shrubs - etc.

101.6
 5.0
 20
 103.4
 3.2
 6
 104.4
 2.2
 113.12
 106.12
 +0.08
 10.5 = edge
 Conc.
 107.24
 +6.60
 21.1

3+67 - 6.9' Lt. = \pm 18" Rock Column
 3+64 - 7.4' Lt. = \pm end. 3' Conc. Wall
 3+61.5 = edge Conc.

102.34
 4.30
 2.4
 walk
 103.40
 3.24
 Conc.
 104.62
 2.02
 4.9 = edge Conc.

3+61 - 8.5' Lt. = \pm 18" Rock gate Column

106.64

Lt.

±

Rt.

A+53 - 10.5 Lt. = ± Trunk of Large shrub.

Levels Roseland Dr.
(Sketch on p-28)

25

1+20

69.9 10.2 10.6 10.1 10.6 10.7 10.6 10.1 10.4 10.6
 10⁷ 7⁴ 7⁰ 7⁵ 7⁰ 6⁹ 5¹ 4⁵ 5³ 5⁰
 30 17 8 7 8 11 25 30 35

1+00

70.5 71.0 72.1 72.3 72.1 72.8 73.0 73.4 73.2
 10¹ 9⁶ 8⁵ 8³ 8⁵ 7⁸ 7⁶ 7² 7⁴
 30 14 13 9 8 8 18 30

0+78.02 So. Eb. Line Torrey Pines Rd.
Edge on Rt

10.07 11.03 11.9 12.3 12.3 14.0
 10⁵² 9⁵⁶ 8⁷ 8³ 7³ 6⁶
 36 19 5 9 17 30

0+45 Edge Pav. Torrey Road

Edge Pav.
 69.43 71.04 72.09 72.6
 11¹⁶ 9⁵⁵ 8⁵⁰ 8⁰
 33 17 30

0+00 = 33+01 49' 2" Line Torrey Road

64.1 41.1 70.4 70.66 71.68 72.55 73.70 73.7
 16⁵ 9⁵ 10³ 9⁹² 8⁹¹ 8⁰⁴ 6⁸⁷ 6⁹
 29 16 11 9.2 10 26 30
 Edge Pav.

B.M. 5.32 80.59
 ^

75.27

80.59
 ^
 Nail in Pole Rt 1" 32+55 (P-19 FB2094)

CLR 1101 L 34400

1104 6953 ✓

6954

FB 2094

3+04.73 EC

Power Pole # R.2337 16.5 RL

15.6	17.2	20.1	19.6	19.6	19.7	21.4	22.2	29.4
7°	3°	0°	10	1°	0°	+10°	+1°	+8°
30	18	11	7		9	10	19	24

2+56.96 Center of Curve

15.6	17.1	19.6	18.6	18.6	19.2	19.4	22.8	20.8
5°	3°	2°	2°	2°	2°	1°	+2°	+10°
30	17	12	6		11	12	17	35

2+109.20 BC

15.0	17.6	17.5	17.4	17.4	22.1	26.0	20.9	21.2
5°	3°	3°	3°	3°	+1°	+5°	+10°	+10°
30	12	10		10	16	23	36	46

2+00

14.6	17.9	17.1	17.1	17.3	21.6	20.9	21.2
6°	3°	3°	3°	3°	+1°	+10°	+10°
30	12	10		10	14	30	43

1+88

Power Pole # EC.2327 16 Lt

12.4	12.9	16.3	15.2	16.6	16.7	24.8	26.5
8°	7°	4°	5°	5°	4°	+4°	+5°
30	24	12	10		7	20	33

1+60

1+25 Power Pole # 305242H 23.5 Lt

80.59
1

80.59
1

5-851

Hendricks
Allen
Shepard
Bremer

X sect Roseland Dr

Torrey Pines Road to 5E14

Reference: Ref 5. 638

INDEXED
JUN 8 1951

$R = 175'$
 $\Delta = 26^\circ 53' 40''$
 $T = 41.84' \text{ Rec.}$
 $L = 82.14'$

1101.42 24.50
BC

Rd 4" IP
LS 2341

101.42
Rec

75.65

83° 41' 30"

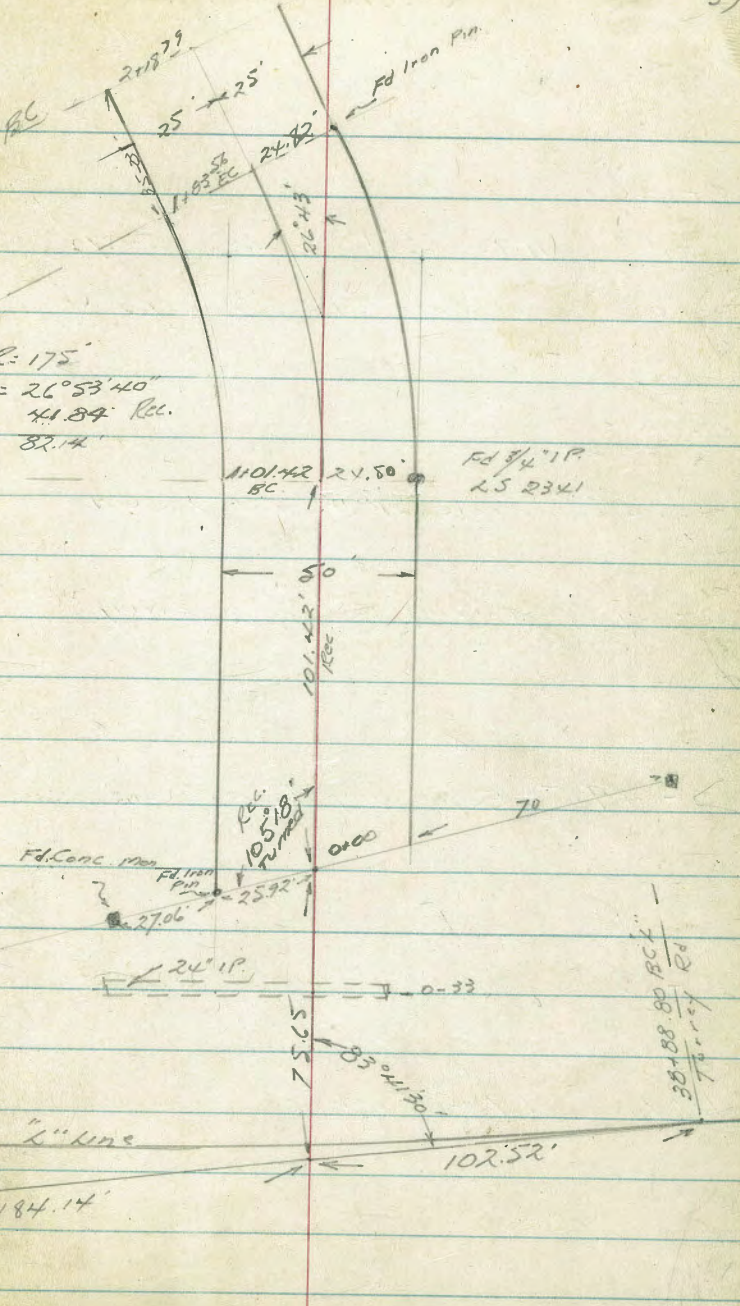
102.52'

30-88-80 BCL
Torrey Rd

a Torrey
R = 1400'

Rd "L" line

184.14'



Levels Roseland D.

Reduced 5-9-51
H. Horn

0+30

TP 11.78 66.51 1.48 54.73

0+08 Power Pole # PC2383 19.5 Rt

0+00

0-28 Power Pole 21' Rt # 457250 H.

0-59 & Paving. (see 1107 up & Paving)

0-49.5 Edge Paving Torrey Road

0-33 & 24" I.P. Inlet 19.5 Rt.

0-30

B17 1.74 56.21

54.47

NW BP Call De la Plata & Torrey Road

56.21

7

54.6 55.0 54.9 55.0 54.2 57.5
11.9 11.5 11.5 11.5 9.3 9.0
35 25 12 22 35

66.51

7

63.8 63.6 63.3 63.5 64.2 64.2
24 25 29 27 20 20
35 25 13 25 35

50.62 50.35 50.36 50.84 51.36
5.59 5.35 5.50 5.37 4.85
50 25 26 50

50.63 50.45 50.56 50.99 51.41
5.58 5.76 5.65 5.22 4.80
50 25 25 50

48.24

51.9 51.9 51.5 52.4 52.5 52.6
42 43 47 38 36
50 25 21 35

1+28-80 ①

60.5	60.1	60.3	60.7	61.5	61.2
6 ⁰	6 ⁴	6 ²	5 ⁸	5 ⁰	5 ³
35	25		15	22	35

1+33 & Conc. Dr. 23 Rt.

61.49	61.95
5 ⁰²	5 ⁵
23	35

1+01.42 BC.

69.4	69.0	68.9	68.9	68.9
7 ¹	7 ⁵	7 ⁶	7 ⁶	7 ⁶
35	25		19	35

0+78 & Conc. Dr. on Rt. 18.3'

58.53	58.22
7 ⁹⁵	8 ²⁹
30	18.3 →

0+65

56.4	56.1	56.2	56.6	57.1	57.7	58.2
10 ¹	9 ⁸	10 ³	9 ²	9 ⁴	8 ⁸	8 ³
35	25	10		12	16	35

0+57 & Conc. Dr. on Lt.

56.00	55.94	55.73
10 ⁵¹	10 ⁵⁷	10 ⁷⁸
30	20	12

66.51
/

66.51

BM		1.79	54.48 (54.47)
T.P.	1.50	56.27	11.78 54.73

NW1/4 Calle De La Plata & Torrey Road

2+18.79 RL

66.5	66.0	66.9	66.5	66.8
0°	0°	0°	0°	10°
35	23		25	35

1+83.56 FC

66.1	63.8	62.8	66.0	64.0
1°	2°	2°	2°	2°
35	25		25	36

1+56.18 @

62.0	61.9	62.0	62.6	62.3
4°	4°	4°	3°	4°
35	25		20	35

66.51
1

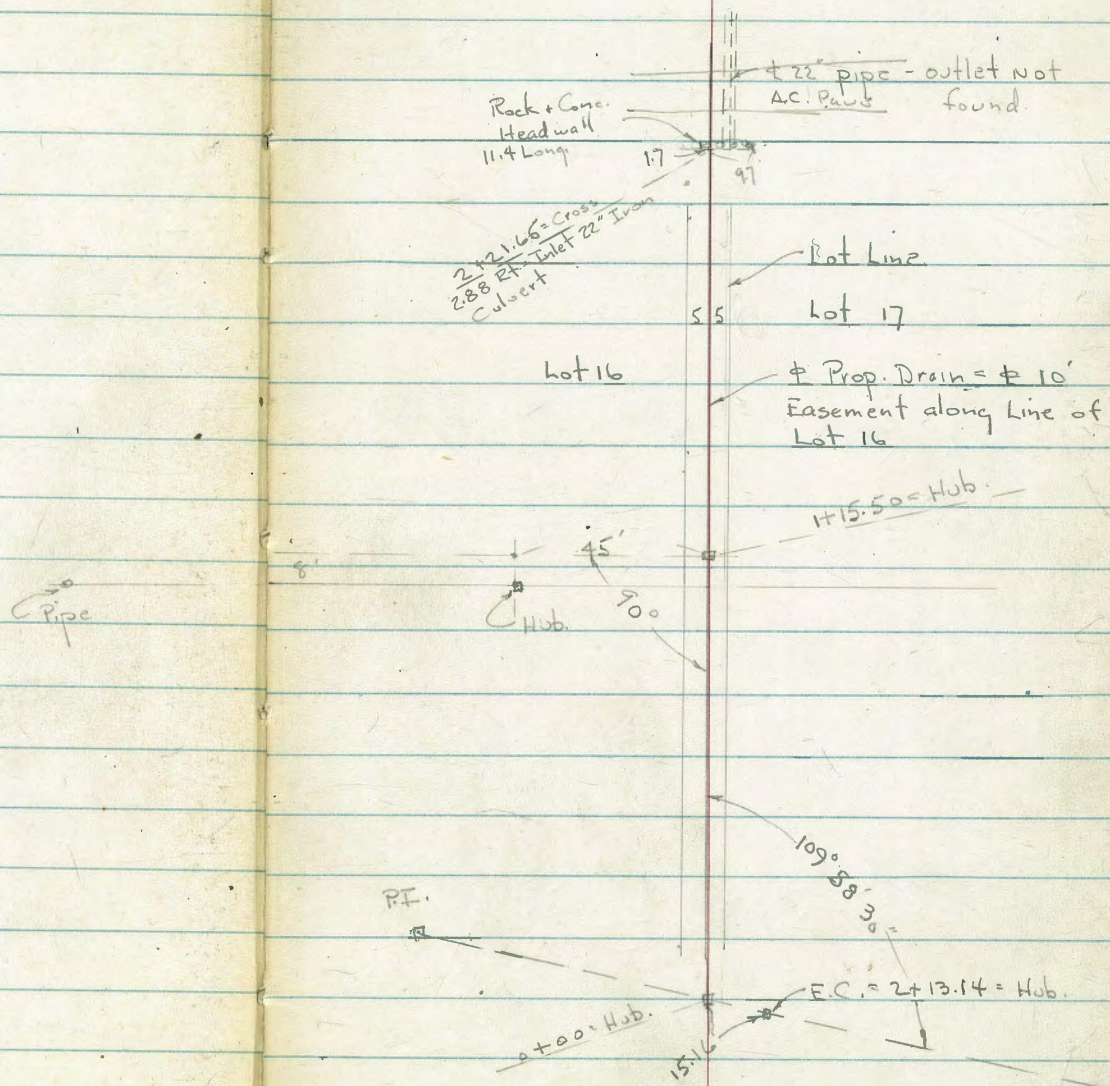
66.51
1

INDEXED

JUN 8 1951

41

Prop. Drain along line of Lot 16 - Block 46
La Tolle Park.



Levels along \pm of Prop. Drain Thru Block

46 - La Jolla Park - sketch - P. 41

W.O. 22041 6-5-51 70

REDUCED
MECHAN 6/6/51

INDEVERN

JUN 8 1951

1+07 - 4' Rt. = \pm 14" Pine

1+00

0+94 - 7' Rt. = \pm 5" Pine

0+90 - 8.5' Lt. = \pm 10" Pine

0+81 - 4.2' Rt. = \pm 3" Pine

0+72 - 6' Rt. = \pm 14" Pine

0+69 - 5.6' Rt. = \pm 3" Pine

T.P. 0.38 92.66 12.81 92.28

0+64.7 5' - Rt. = Cor. Wall to court. - 5' Lt. = Brush

0+35

0+04.8 - 4.6' Rt. = outside Cor. of Conc. wall around Tennis Court.

0+00 = Hub. 15.16' Back of E.C. Hub.

B.M. 2.64 105.09 102.45 = E.C. Hub 2+13.14 - P. 31

Lt. \pm Rt.

88.6

88.2

87.9

4.1

4.5

4.8

10

10

92.66

94.7

93.2

931

94.60

94.29

11.4

11.9

12.0

19.49

10.80

10

ground

5' Top wall

on court

97.03

96.5

96.85

94.24

0+35

8.1

8.5

8.24

4.8 wall

100.52

94.22

0+04.8 - 4.6' Rt. = outside Cor. of Conc. wall around Tennis Court.

0+00 = Hub. 15.16' Back of E.C. Hub.

B.M. 2.64 105.09 102.45 = E.C. Hub 2+13.14 - P. 31

101.63

4.57

10.77

3.46

4.6 Top wall

Tennis ct

on Hub.

105.09

T.P. on Nail
in Base

5.51 75.50 10.44 99.99

2+16

2+00

1+80- 8.5' Rt. = E 12" Pine - Grows over E Line

1+76

T.P. 0.58 80.43 12.81 79.85

1+70- 5' Lt. = Beg. Heavy Brush

1+52- 4' Lt. = E 1" Pine

1+51- 4.5' Rt. = E 2" Oleander

1+50

1+48- 7' Rt. = E 8" Cypress

6.5' Rt. = E 16" Cypress

1+45- 4.5' Rt. = E 3" Oleander

1+43- 7' Rt. = E 12" Cypress

1+41- 7' Rt. = E 10" Cypress

1+35- 4.5' Rt. = E 7" Pine

1+24- 5.5' Rt. = E 3" Shrub. (Dingle Berry)

1+23- 10.5' Rt. = E 8" Pine

1+15.50 - P.O.T. Hub.

1+13- 1' Rt. = E Cackleberry shrub

Lt.

E

Rt.

23

68.0

12.4

10

12.0

8.4

10

88.9

1.5

10

68.1

12.3

11.3

9.1

17.6

2.8

80.43

68.6

11.8

10

10.1

9.7

10

11.2

3.2

10

82.9

9.8

10

82.36

10.3

81.9

10.8

10

86.44

6.22

on Hub.

92.66

Lt. ± Rt. 44

2+90 = Approx - Bank to Ocean

2+52.5 = edge of 5' Wood Foot Bridge

13
end
Bridge

64.50
11.00
Deck

61
14.4
ground

" = end
Bridge

2+40 = Top bank

10.2
5.3

2+35.6 = edge Pave

69.74
5.76

64.59
5.91
10

2+27.6 = edge A.C. pave strip

be paralell to ± Produced.

Culvert - Couldn't find the outlet - seems to
2.88 Rt. = inlet 22" Iron Dredge pipe

2+21.65 = face of Rock Headwall

70.66
4.84
10

10.0
5.5

64.68
5.82
10

2+14 = Bottom of Ditch to Rt.

67.3
8.2
10
in Bottom

68.72
6.78
Top wall

64.5
11.00
2.88 = I.E.
22" pipe

65.3
10.2

64.9
10.6
5

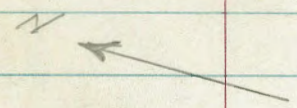
75.50

Location ~ Drive Way
Torrey Pines Road & Amalfi St.

Walker
Clark
Huffman
Telpeogoff
-6-7-51

Scale 1" = 30'

INDEXED
JUN 8 1951

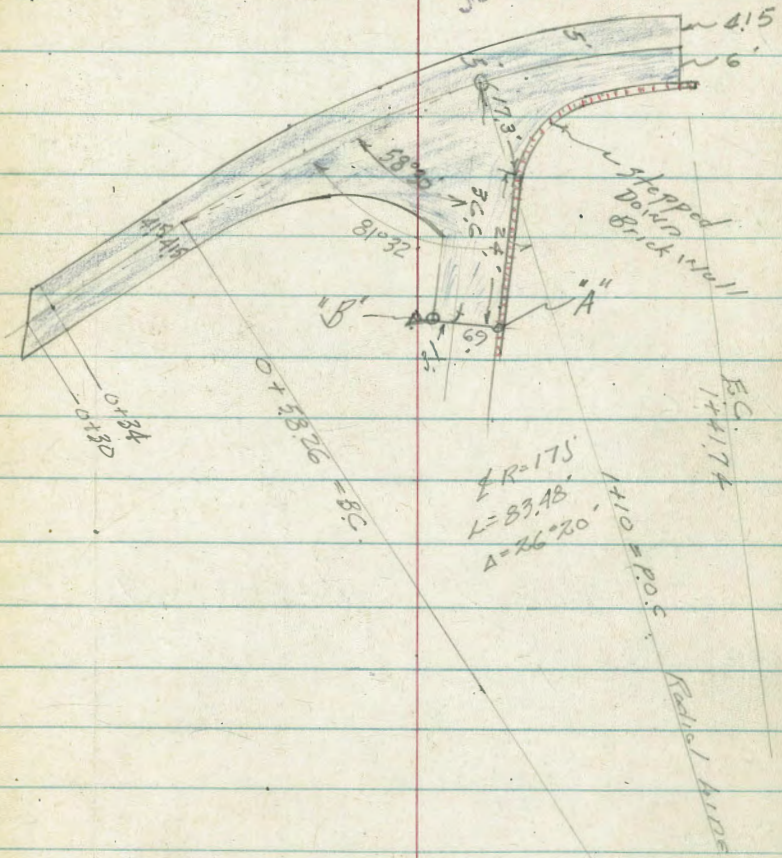


11+00 • Fd. Nail in Pav.

10+51

10+00 • Fd. Nail in Pav.

56° 49'



Drive Way. R. Side
 Torrey Pines Rd.
 Next station 10+57

0+95

101.12
 5.26
 4.55
 101.19
 5.20 4.62 3.82 1.96
 5 10 22.3

0+80

98.15
 8.24
 4.35
 98.21
 8.18
 99.26
 7.13
 7.25

0+65

95.34
 11.05
 4.15
 95.44
 10.95
 96.05
 10.34
 5

0+58.26

94.19
 12.20
 4.15
 94.33
 12.06
 106.39
 94.89
 11.50
 4.30

TR 12.32

106.39

0.64

94.07

0+34

92.57
 4.14
 4.15
 Edge
 Rd.
 92.72
 3.99
 3.3
 92.93
 3.78
 91.29
 3.42
 4.15
 Edge Pav

0+30

92.52
 4.19
 94.71

9.06

94.71

85.65

Torrey Pines Rd.
 BN Cop Tack & Princess Shik curb.

Drive way ~ Torrey Pines Rd
Cont from P 46

			003
			85.61
chk starting BM	13.95		85.62

TR 0.13 99.57 12.66 99.44

			105.15
			6.95
			"B"
			Por.
			105.35
			6.75
			"A"
			Por.
			108.56
			3.54
			4.15
			Edge
			108.41
			3.63
			107.28
			3.82
			Edge
			at wall
			107.36
			0.74
			6.1
			Top Brick Wall
			Steps DOWN

TR 6.42 112.10 0.71 105.68

1425

			106.01
			0.38
			5
			Edge
			105.70
			0.69
			105.75
			0.64
			5.8
			Por.
			at Wall

1410

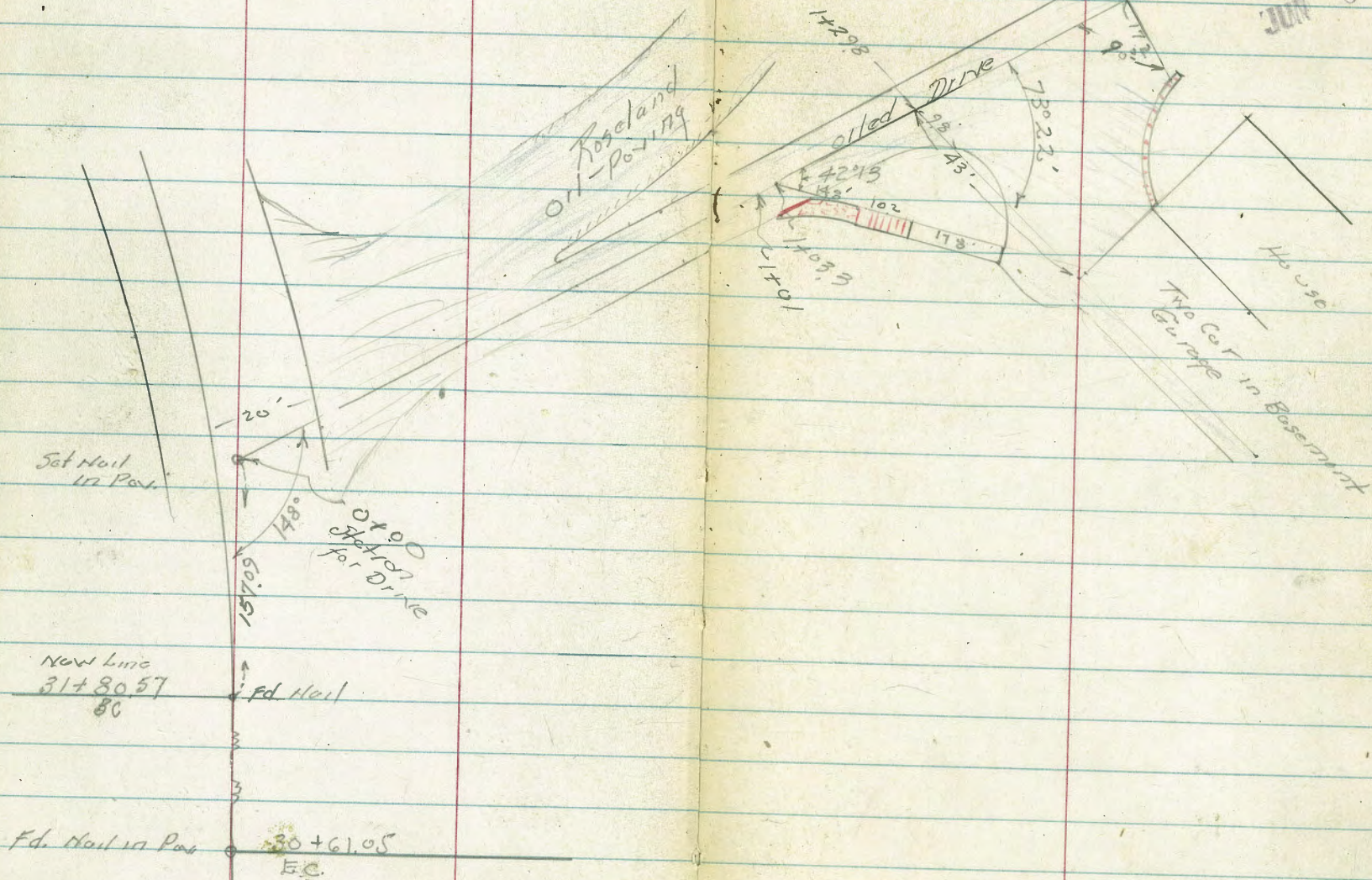
106.39

			103.67
			2.72
			5.0
			Edge
			103.59
			2.80
			103.79
			2.60
			5
			104.46
			1.93
			17.3
			Por.
			at Wall
			103.29
			17.4
			Top
			Brick
			Wall

TORREY PINES ROAD

Levels on Private Drive Way
Walker

INDEXED 48
JUN 8 1951



Drive Wof

49

1+29.8 = diag. section

1+29.3

TP 12.21 9462 0.85 82.41

1+03.3

0+71

0+42

FB 2094-20

chk Per 2'14 33+2147 980 73.46 ✓

12.58 83.26 70.68

84	7.8	6.3	3.1	2.6	0.18
48		28	22.4	32.6	43
Edge Per		Edge Per	Edge Per	Bit	Cyrc. Floor Garage

95	95	94	10.3	16.8
48		67		
Edge Drive	94.62			Top Brick Walk = Big. Conc. Steps

38	38	39	362	343
46		56	6	77
Edge			Brick walk	Brick walk

99	96	94
5		3
177		
Per. edge Road and Drive		

11.3	11.29	10.95	9.3
10		3	7

83.26

B.M. L. Nail 34+00 old line FB. 2094-21

Drive Way

Lt.

\$

Rt

50

30+00 FB2094-13
chk mail on Lt. 12.60

0.06 ~ gloomy street
82.08
82.02

1+76.4

35
2
Edge Drive

34

3.2
172
Drive

40.5
173
Top
Brick Wall

1+46

9462

46
47

94.62

37
14

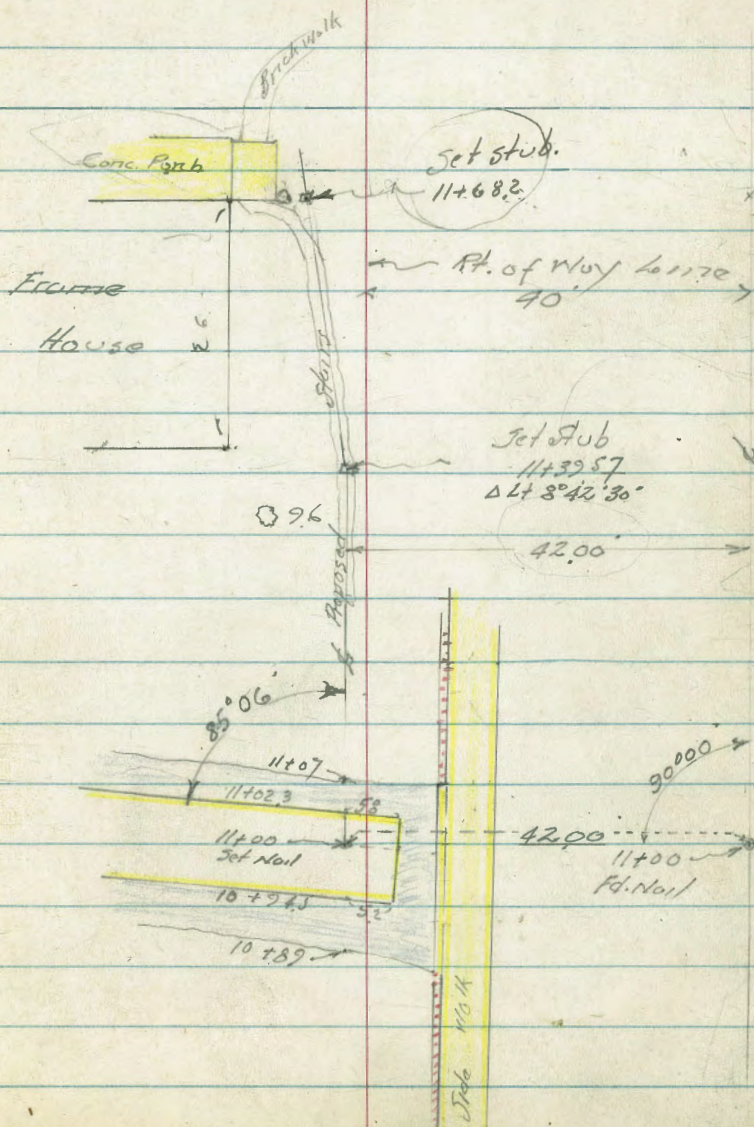
2.3
294
8th.

TORREY PINES RD.
LEVELS FOR PROPOSED STAIRS

Walker
Pope
Clark
Huffman
7-6-51

12+00
Fd. Nail

- 11+55 6' Lt 16" cypress
- 11+47.6 6.5' Lt 30" cypress
- 11+34.6 7.6' Lt 18" cypress tree



11+17

75.37	78.27	82.37	86.17	86.87
124	154	114	7.6	6.9
11	8		7	10

Tile walk

11+12 2' Lt = Century Plumb 6" diam.

11+09

81.37	81.97	85.17	85.47	86.77	87.57
124	118	8.6	8.3	7.0	6.2
15	9		3	4	8

11+06.5 = 2' Rubble Wall

89.24
4.3

11+06.2 = Gut at Rubble wall

84.40	87.48	88.67	89.06
2.37	6.29	5.10	4.71
15		6	10

Walk

11+03.3

84.40	87.44	87.69	88.95
2.37	6.33	5.08	4.82
15		5.8	10

End
conc.
Par.
Blk
Par.

10+945 * Edge Conc. Pav.

84.49	87.65	88.87	89.15
2.31	6.12	4.90	4.62
15	Par.	5.2	8.7

Par.
33.77
End
conc.
Pav.

812

23.77

8565

S.M. C.T. in Curb E Princess & S.E. Curb Torrey Pines Rd.

001

85.68

85.64

chk Starting B.N.

562

TR 11.86

91.26

47.0

79.40

opp:

11+68.2 = Edge House

3.7 Lt = 2.16" G/press

75.96

76.16

76.23

77.8

80.1

8.1

8

4.5

6.3

3.9

Conc. Porch

Walk
at House

Conc. Walk

11+60

76.5

76.5

78.1

78.1

78.1

79.3

81.3

7.5

7.5

6.0

6.0

6.0

4.7

2.8

10

3

1

1

2.50

5

Tile
walk

11+32.57 = A.H.

~~76.70~~

80.2

80.60

80.0

82.1

82.30

7.4

3.9

4.07

4.1

2.6

1.7

5.4

2

on
St. 6

1

2.5

4.5

Tile
walk

84.10

TR 0.93

84.10

10.60

83.17

11+2.5 = Beg dirt Walk

74.87

78.37

81.37

81.37

81.87

84.07

86.17

18.9

15.4

12.4

12.4

11.9

9.7

7.6

9

6

2

3

4

10

Tile Walk

83.77

83.77

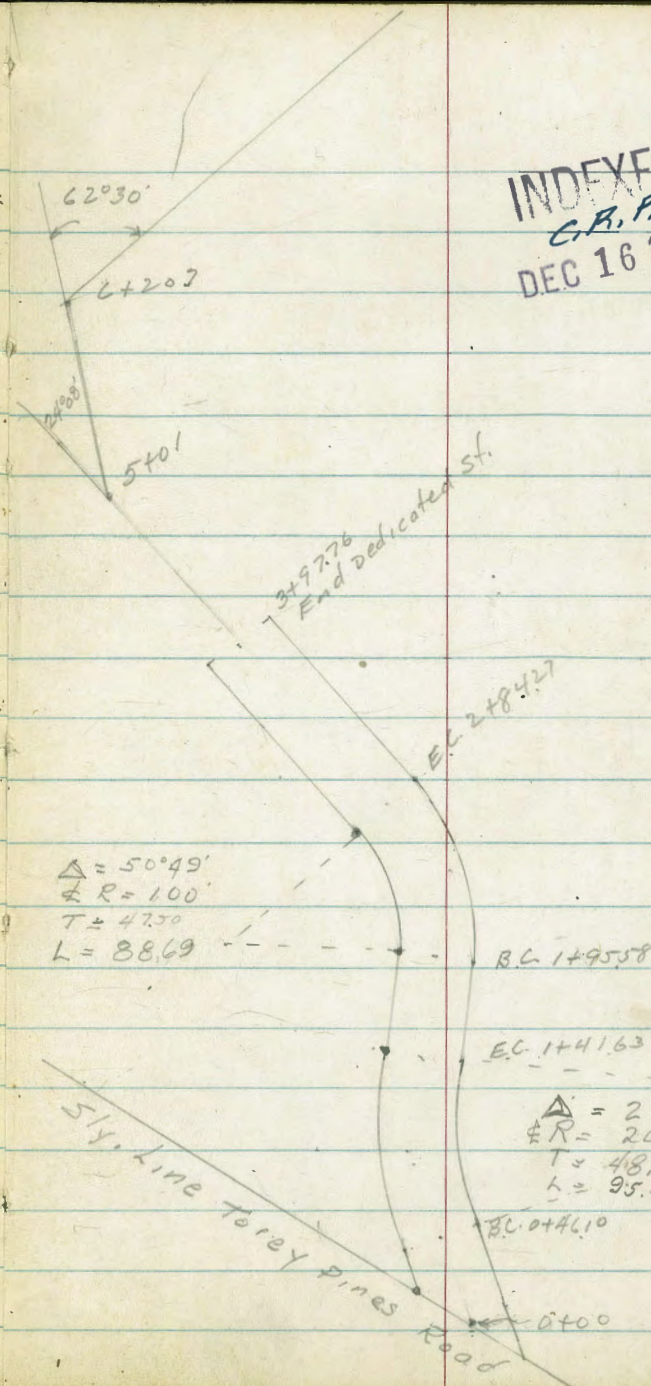
X-section Roseland Drive
 Sly. From Torey Pines Road

W.O. 25020

Pope
 Huttman
 Priestley

12-15-52

INDEXED
 C.R.P.
 DEC 16 1952



1+95.58 B.C.

	L.					R.				
	77.4	79.0	81.4	81.8	82.1	82.2	84.9	89.1	89.8	94.0
	139	123	8.9	9.5	9.2	9.1	6.4	2.2	15	+2.7
	30	20	17	11		7	12	18	20	30

1+41.63 EC

Power Pole 164 Rt # P2337

	74.4	76.7	79.9	79.6	77.7	79.7	82.4	87.5
	16.9	14.6	11.4	11.7	11.6	11.6	8.9	3.8
	30	20	12	7		10	20	30

0+93.86 center of curve

	75.6	77.0	77.0	78.3	78.7	78.6	78.5	83.4	88.3
	15.7	14.3	14.3	13.0	12.6	12.7	13.0	7.9	3.0
	30	20	16	11	5		13	20	30

TP

12.71

91.32

0.73

78.61

0+46.10 B.C.

	77.47	76.4	77.4	77.5	77.4	77.5	84.2	89.7
	4.6	2.9	1.9	1.8	1.9	1.8	+4.9	+11.4
	30	20	14	8		11	20	30

0+00

& Roseland Dr. & sly line Torey Pines Rd.

	72.2	73.5	75.9	75.3	75.8	75.9	81.0	87.2
	7.1	5.8	3.4	4.0	3.5	3.4	+6.7	+7.9
	30	20	15	10		6	20	30

0-24.79

Wly. line Roseland Dr. & sly line Torey Pines Rd.

	74.9	73.5	74.1	74.5	74.7	79.7	79.7	79.7	80.3
	1.4	5.8	5.2	4.8	4.6	+0.4	+0.4	+1.0	
	25	20	10		6	15	20	30	

BM

407

79.34

75.27

Nail in Pole Rt "L" Page 35

79.34

X sect Roseland Dr.

56

Lt Rt

3+62 wly. Edge Asphalt Dr.

91.9
5.9
165
Gutter
92.7
5.1
18
Top Burm

3+50

86.6
11.2
30
87.7
10.1
20
90.1
7.7
13
94.6
7.2
6
90.7
7.1
69
12
90.9
6.9
20
91.3
6.5
20
92.6
5.2
30

TP 7.15 97.78 0.69 90.63

97.78

3+20 Fly. Edge Asphalt Drive

82.5
8.9
30
84.4
6.9
20
84.5
6.8
18
88.1
3.2
11
88.0
3.3
5
88.5
2.8
9
89.0
2.3
11
88.7
2.4
11
89.6
1.7
14
90.0
1.3
20
91.5
0.2
30
91.6
0.2
33
53
wly
edge Dr.

2+94 Wly. Edge Asphalt Drive

81.6
9.7
30
83.1
8.2
20
84.4
6.9
14
84.6
4.7
9
86.7
4.6
6
87.1
4.2
7
87.4
3.9
12
87.2
4.1
14
87.6
3.7
14
88.5
2.8
20
91.1
0.2
30

2+84.27 EC.

81.4
10.1
30
82.3
9.0
20
82.1
8.2
17
85.8
5.5
12
84.1
5.2
7
86.7
4.6
4
87.0
4.3
9
84.5
4.8
11
88.6
2.7
20
91.0
0.3
30

2+64 Power Pole 17.5 Rt # Sta. LJ 4-36

2+39.92 Center of Curve

80.3
11.0
30
82.2
9.1
20
83.4
7.9
16
83.8
7.5
11
84.8
6.5
5
85.0
6.3
6
84.5
6.8
14
85.9
5.1
14
87.0
2.3
20
93.8
+ 2.5
30

91.32

91.32

X sect. Roseland Dr.

5+01	Angle Point	24°08' Rt.	Guy Pole 131 Lt. on Bisector sec. Taken on B 1 sector	86.1 Lt.	90.9	91.9	91.7 Rt.	94.9	96.2
4+97	Power Pole	14.4 Rt.	# c 2347	11.7 30	6.9 15	5.9	6.1 14	2.9 21	1.6 30
4+50				92.4 5.4 25	92.6 5.2 15	92.9 4.9	94.7 5.1 11	94.9 2.9 15	97.8 0.0 20
4+20	Guy wire	16' Rt.		91.28	92.99				99.3
4+19	£ 11' Conc. Dr.	13.6 Lt.		6.50	4.79				
TP	4.93	98.47	4.24	93.54					
4+05	East Edge Conc. Drive	2 car garage		90.65 7.13	90.58 7.20	93.08 4.70	92.11 5.7	95.5 2.3	96.0 1.8
4+01	Power Pole	15.4 Rt.	# 2345	26.4 Garage Floor	23.8 Edge Dr.	15.9	10	15	20
3+97.76	End Dedicated St.					93.2 4.6	93.3 4.5	94.6 3.2	98.3 +0.5 40
3+89	wly. Edge Conc. Drive	2 Car Garage		90.55 7.23	90.45 7.33	94.93 4.85			
3+87	£ Dr.			25.8 Garage Floor	23.2 Edge Dr.	15.3	93.8 4.8	93.4 4.4	97.8 0.0
				97.78			10.5	15.5	40
							97.78		

X sect. Roseland Dr.

0.01

Lt. \$ Rt.

Check starting B.M.	7.99	75.27							
TP	0.03	83.25	1295	83.22					
TP	143	9617	624	9474					
6+85 & Single car Garage	20' Lt.				95.96	95.72	96.1	96.2	101.5
					506	526	49	4.8	+0.5
6+30 Guy Pole	7.5 Lt.				20	175	15	23	+15
					Garage Floor	Edge Apron			30
6+20.7 Angle Point	62°30' Rt. (sec. on Bisector)				85.4	84.6	84.6	90.2	93.6
					15.6	15.4	11.4	10.8	7.3
TP	678	100.98	3.01	9420	30	20	20	16	7
					Bottom Wall	Top Wall			100.98
6+04 Power Pole	16.6 Rt. # C2349				85.6	85.6	84.8	93.3	92.9
6+00 Guy Pole	7.9 Lt.				11.6	10.6	7.4	3.9	4.3
					30	17	16	8	15
					Bottom Wall	Top Wall			17
5+77 Begin Conc. Ret. wall	11.5 Lt.				84.6	83.8	82.7	90.0	92.1
5+50					8.6	12	8.5	7.2	11.5
					30	15	4.5	5.1	5.1
					Both Wall	Top Wall			
5+09 & 2 car Garage	31' Lt.						89.16	89.05	
							31	Garage Floor	
TP	247	97.21	373	94.74					97.21
		98.47							

INDEXED
C.A.P.
DEC 16 1952

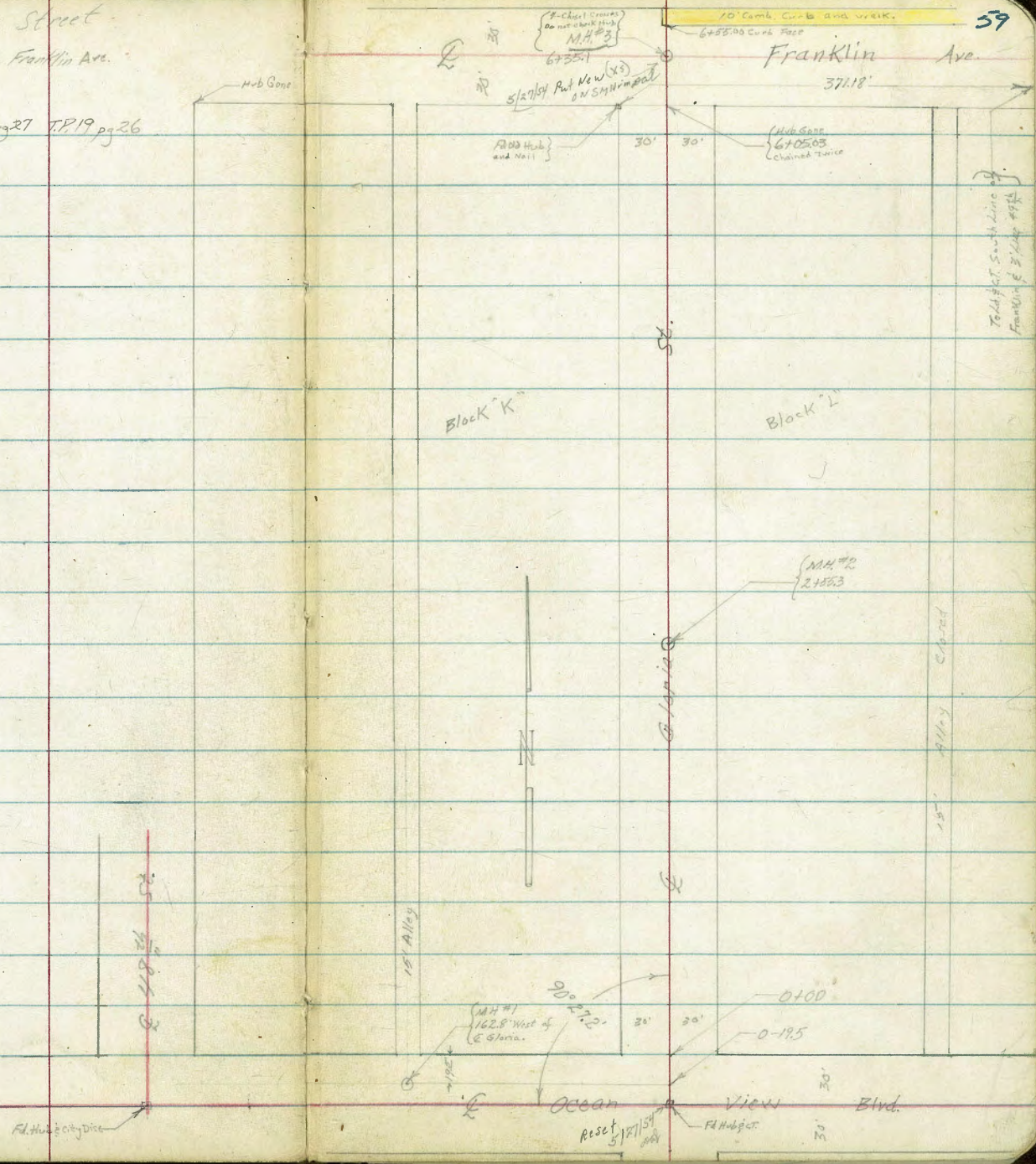
Roberts
Cota
Moore
Pillar
4-20-53

W.O.# 31731

Section Gloria Street
Ocean View Blvd. to Franklin Ave.
Alta Vista Subd. #2

Map 1029 FB 1527 pg 27 T.P. 19 pg 26

INDEXED
MAY 1 1953



Reduced 5/4/53
E. Exdahl

0+00 North Line Ocean View Blvd.

139.3	139.7	139.5	138.8	137.2	137.1	136.9	135.4	134.1	121.6
26	42	44	51	6.7	6.8	7.0	8.5	9.8	22.3
100	50	30	6	4		15	30	45	110 Bottom

0-10

138.6	138.1	136.9	134.3	122.2
5.3	5.8	7.0	9.6	21.7
100	50		45	110 Bottom

0-19.5 162.9 Lt to M.H.#1

Elev.	Elev.	136.8
130.68	138.75	71
162.8	162.8	
INVERT	Rim MH	

Q Ocean View Boulevard - 30

139.0	138.4	136.5	134.6	122.6
4.9	5.5	7.4	9.3	21.9
100	50		40	110 Bottom

T.P. 570 143.86 T 531 138.16

143.86 T

T.P. 926 143.47 112 134.21

T.P. 867 135.33 1.93 126.66

B.M. 11.70 128.19 116.49 Ocean View SWBP 547

1+73.5 31² Lt End conc Retaining Wall

1+50

1+30 31⁰ Lt begin conc Retaining wall (4") EE

1+00

0+56 30⁵ Lt Q 10' Conc Drive

0+50

0+32 30⁸ Lt Q 3' Conc Walk

143.86 X

Lt

Q

Rt

61

142.3
141.5
141.8

16 24 21
3 1/2 3 1/2 3 1/2
Top Foot GFD

141.9 142.0 141.4 141.4 139.6 139.2 138.8
20 19 25 25 43 47 51 47 57 6.6 104
40 31 30 24 11 12 14 26 30 50

142.0 141.2 141.2
1.9 2.7 37
31 31 31
Top Foot GFD

141.9 140.9 139.7 139.3 139.1 138.1 138.7 137.3 136.4 127.0
2.0 3.0 4.2 4.6 4.8 5.8 5.2 6.6 7.5 11.7
40 30 22 10 14 15 30 46 75

140.6 140.4
3.31 3.45
50 30⁸
conc conc

140.7 140.5 138.2 138.1 137.0 136.2 132.9
3.2 3.4 5.7 5.8 6.9 7.7 11.0
40 30 5 30 45 55

140.8 140.6
309 331
48 30⁸
conc conc

143.86 X

2+56

143.3 143.0 142.9 141.6 141.5 141.2 141.9 140.50 139.3 137.6
 73 76 82 90 91 94 92 10.1 113 13.0
 40 30 18 12 11 13 27 36 50

2+38

31° 16 ♀ 3' Conc walk

143.2 143.1
 7.39 7.55
 41 31
 conc conc

2+22

31° 16 ♀ 3' Conc walk

142.8 142.6
 7.81 7.96
 41 31
 conc conc

2+00

142.4 142.0 141.7 140.5 140.1 139.8 140.1 139.3 138.0 134.3
 8.2 8.6 8.9 10.1 10.5 10.8 10.5 11.3 12.6 16.3
 40 30 28 11 11 15 24 30 50

1+82

31° 14 ♀ 2.5' Conc. walk

142.3 142.2
 8.31 8.40
 41 31
 conc conc

T.P.

10.44 150.60 T 3.70 140.16

150.60 T

1+75

31° 16 ♀ 3' Conc. walk

142.3 142.2
 1.55 1.65
 41 31
 conc conc

143.86 T

143.86 T

3+70 30° Lt Q 8' Conc Drive (No Garage)

146.2 146.2
4.42 4.42
40 30
conc conc

3+52 30° Lt Q 3' Conc walk

145.8 145.7
4.80 4.90
40 30
conc conc

3+50

145.7 145.6 145.3 144.9 144.4 144.1 143.8
4.9 5.0 5.3 6.2 6.2 6.5 6.8
40 30 14 8 30 40

3+15 26° Rt Q 10' Conc Drive

143.1 143.0
7.47 7.64
26° 44.3
conc floor

3+00

144.4 144.1 142.8 142.8 142.5 141.6
6.2 6.5 7.8 7.8 8.1 7.0
40 30 10 30 40

2+79 30° Lt Q 3' Conc walk

144.3 143.9
6.27 6.70
40 30
conc conc

2+55.3 MH #2 on Q

Elev. Elev.
139.33 141.57
INVERT Kirt

150.60 X

150.60 X

4+50

147.7	147.8	146.7	146.2	146.0	145.9	145.2	145.1
2.9	2.8	3.9	4.4	4.6	4.7	5.4	5.5
40	30	11	9		12	30	40

4+38^E 25^E Rt ♀ 3^E Conc. Walk

145.2	145.2	145.2
5.41	5.45	5.43
25 ^E	30	40
conc.	conc	conc

4+16 14^E Lt to center DPole = 777264+14 25^E Rt ♀ 10^E Conc. Drive

145.1	145.0	144.6
5.54	5.59	5.98
25 ^E	30	40
conc	conc	conc

4+00

146.9	146.7	146.5	145.9	145.6	145.8	144.9	144.5
2.7	3.9	4.1	4.7	5.0	4.8	5.7	6.1
40	30	14	9		13	30	40

3+99 30^E Lt ♀ 3' Conc. Walk

147.0	146.9
3.63	3.66
38 ^E	30 ^E
conc	conc

3+77 30^E Lt ♀ 6' Conc. Walk

146.3	146.3
4.31	4.28
40 ^E	30 ^E
conc	conc

Cont'd From Page 64

Lt

Rt

Rt

65

6+12

147.2	147.3	146.8	144.5	144.5	144.3	145.0	144.8
19	18	23	46	46	48	41	43
50	30	18	13		10	14	50

6+05.03 South Line Franklin Avenue

147.3	147.1	146.9	144.8	144.8	144.8	145.5	145.2	145.0
18	20	22	43	43	43	36	39	41
50	30	16	11		9	14	30	50

5+56 20⁵ Rt End Picket Fence

T.P. 3.57 149.05 T 5.12 145.48

149.05 T

5+50

147.6	147.5	146.9	145.5	145.9	145.3	144.8	144.6
30	31	37	51	52	53	58	60
40	30	18	10		10	30	40

5+18 20⁵ Rt begin Picket Fence

5+13 16³ Lt to center P. Pole # 77725

5+12 15² Rt. E 7⁵ Conc Drive

145.0	144.9	144.6
5.63	5.75	6.03
15 ²	30	40
conc	conc	conc

5+00

147.4	147.5	147.3	145.7	145.6	144.4	144.2
32	31	33	49	50	62	64
40	30	20	9		30	40

150.60 T

150.60 T

check

0.80 148.25 = 148.23

S.W. Corner 49th & Franklin Top of Fire Hydrant

6+55.00 North Curb Line Franklin

144.32	143.65	143.65	144.32	143.8	144.72
4.73	5.4	5.4	4.73	5.2	4.33
15	15	Gutt	cb	75	75
cb	Gut			Gut	cb

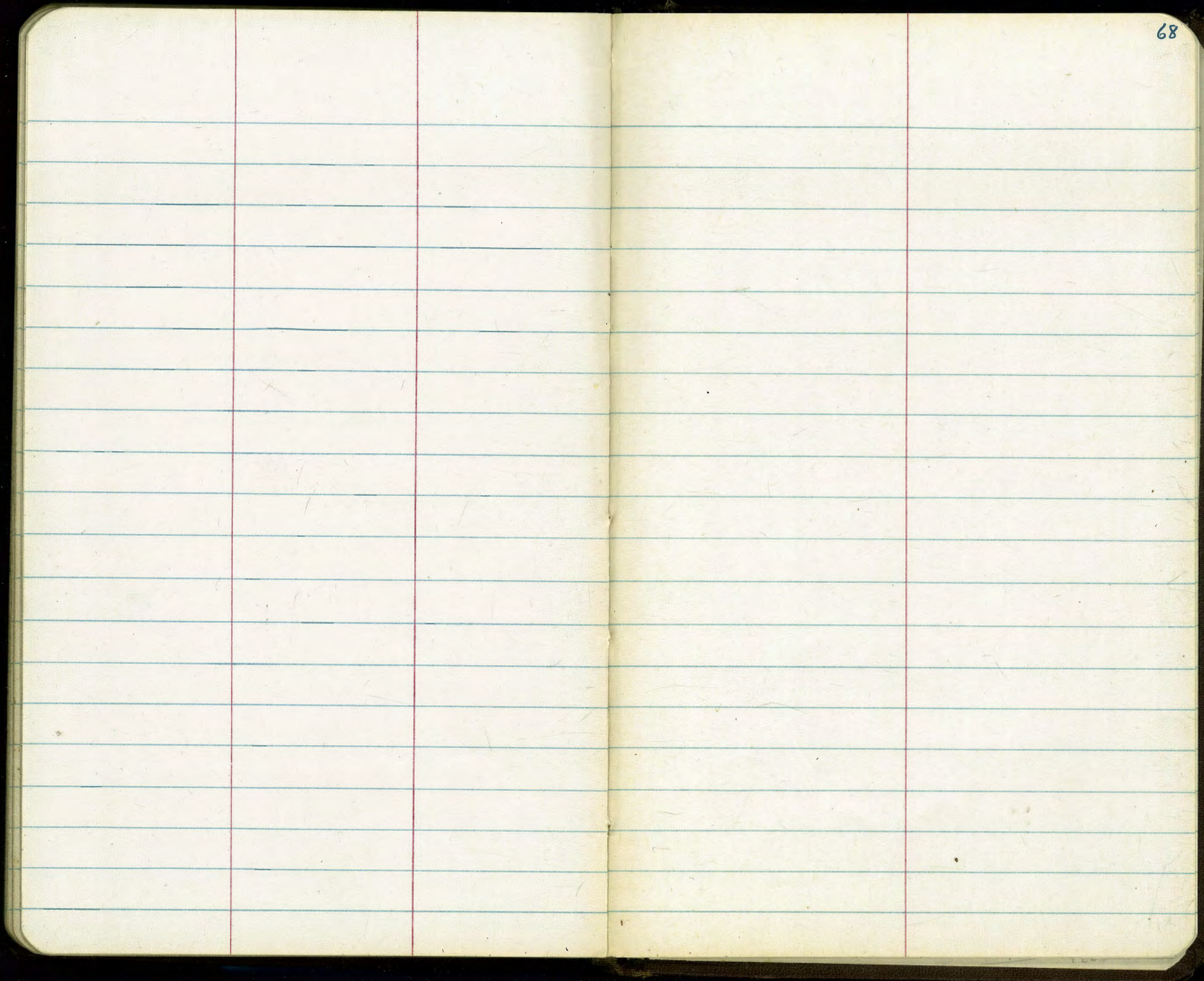
6+35
Franklin Avenue (MH#3 on R)

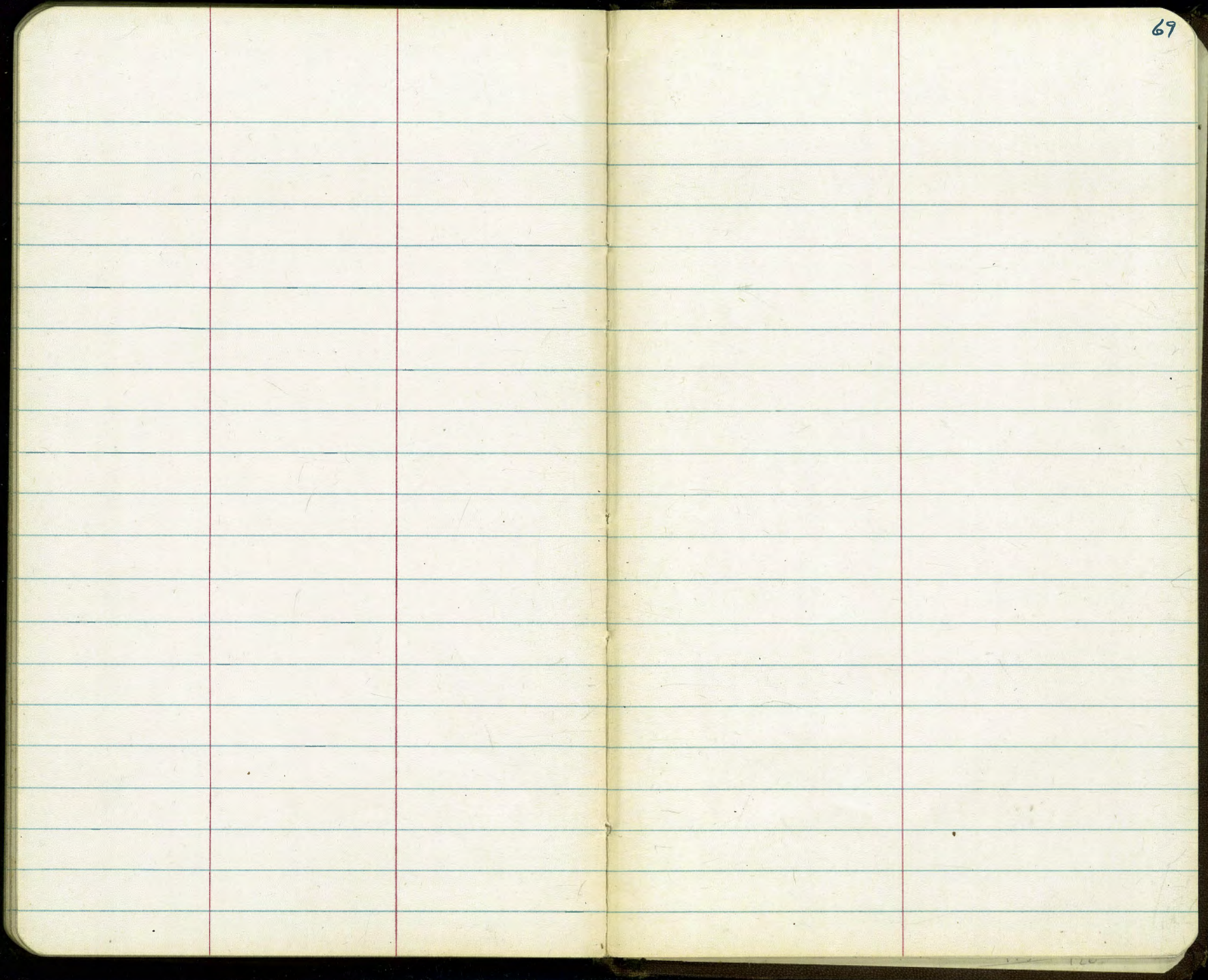
143.5	143.9		144.0	144.5
5.6	5.2	Elev. 136.42	Elev. 144.43	5.1
100	50	Invert	R.M.	50

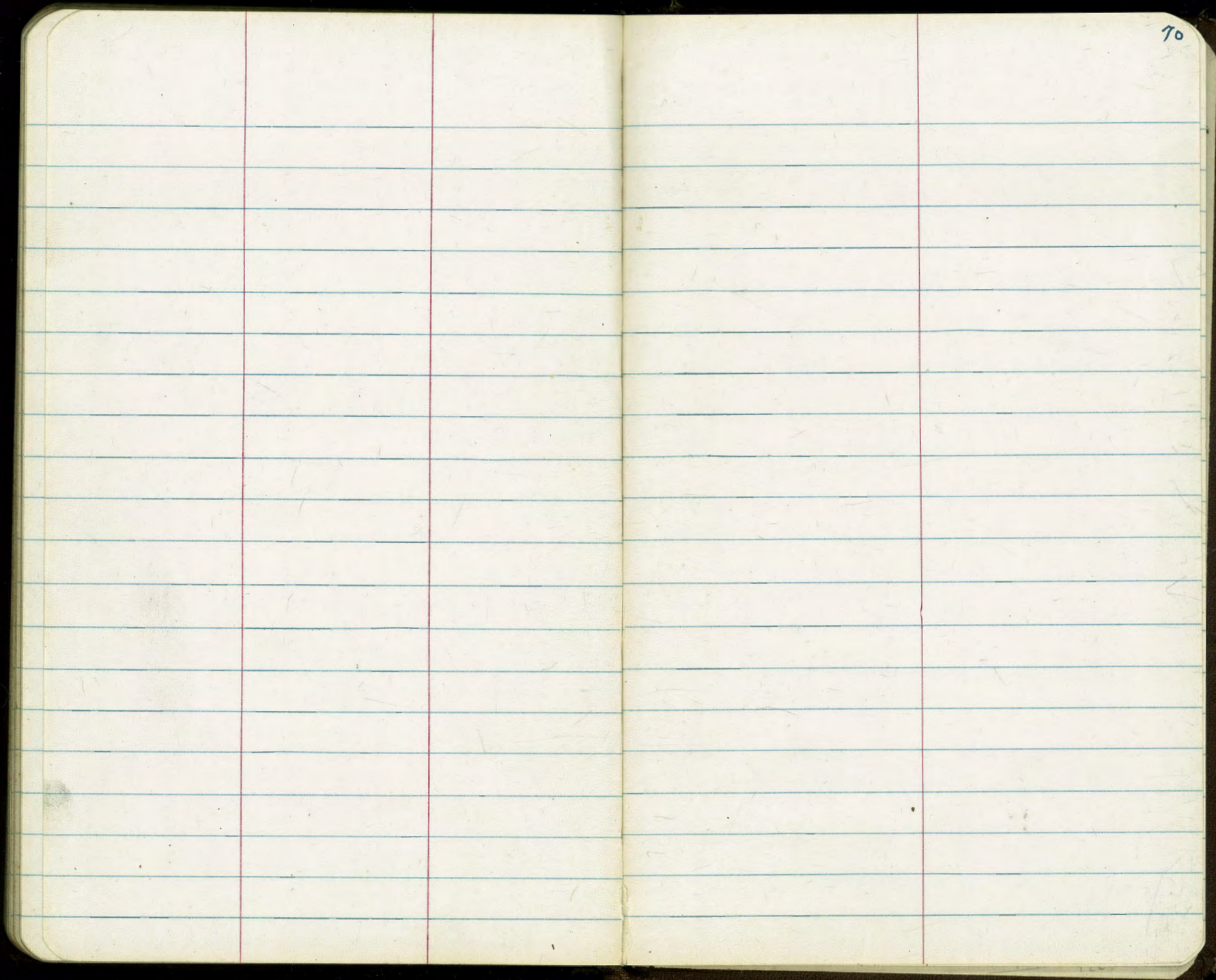
144.1	144.1	144.5	143.9
5.0	5.0	4.6	5.2
50	30		50

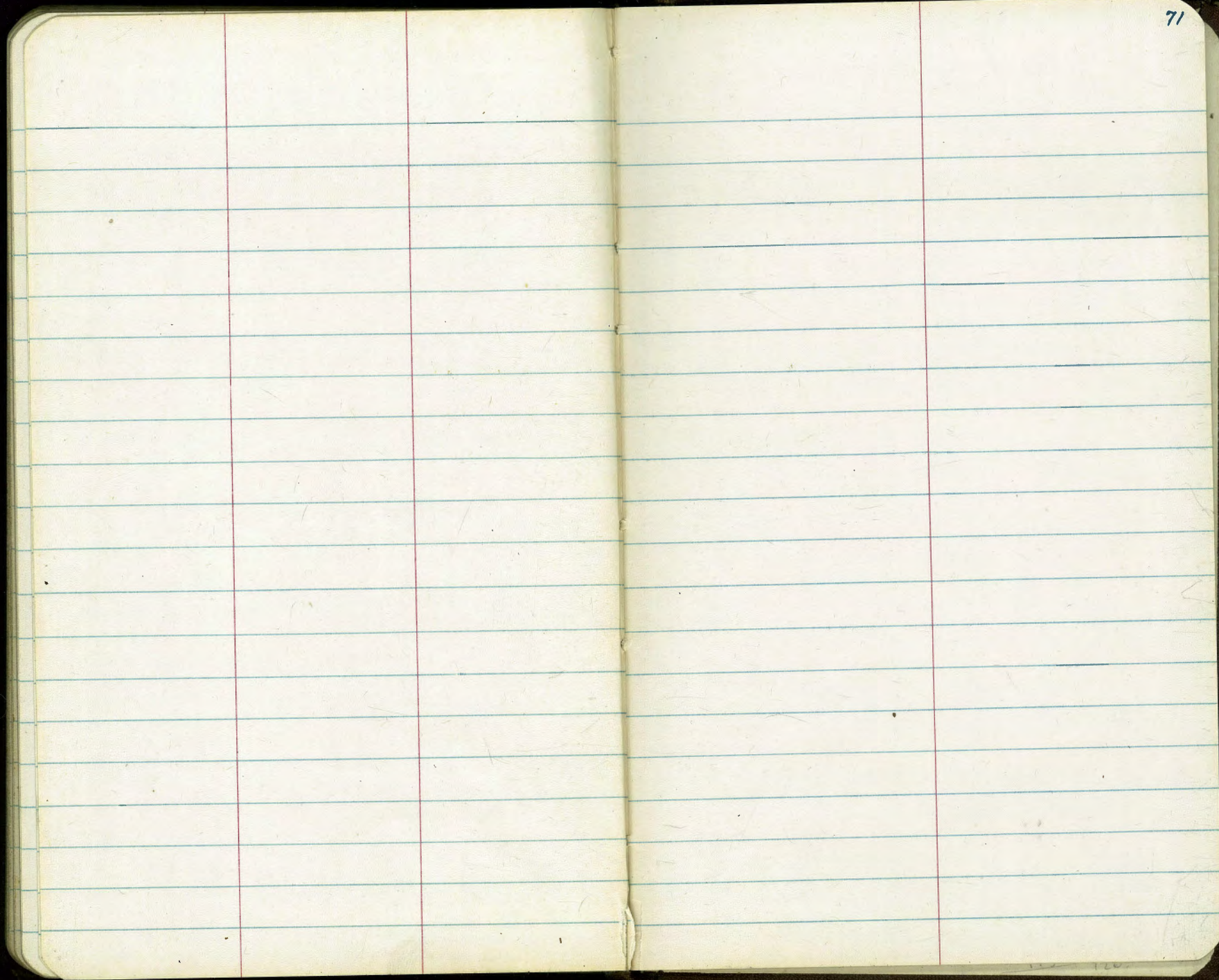
149.05 X

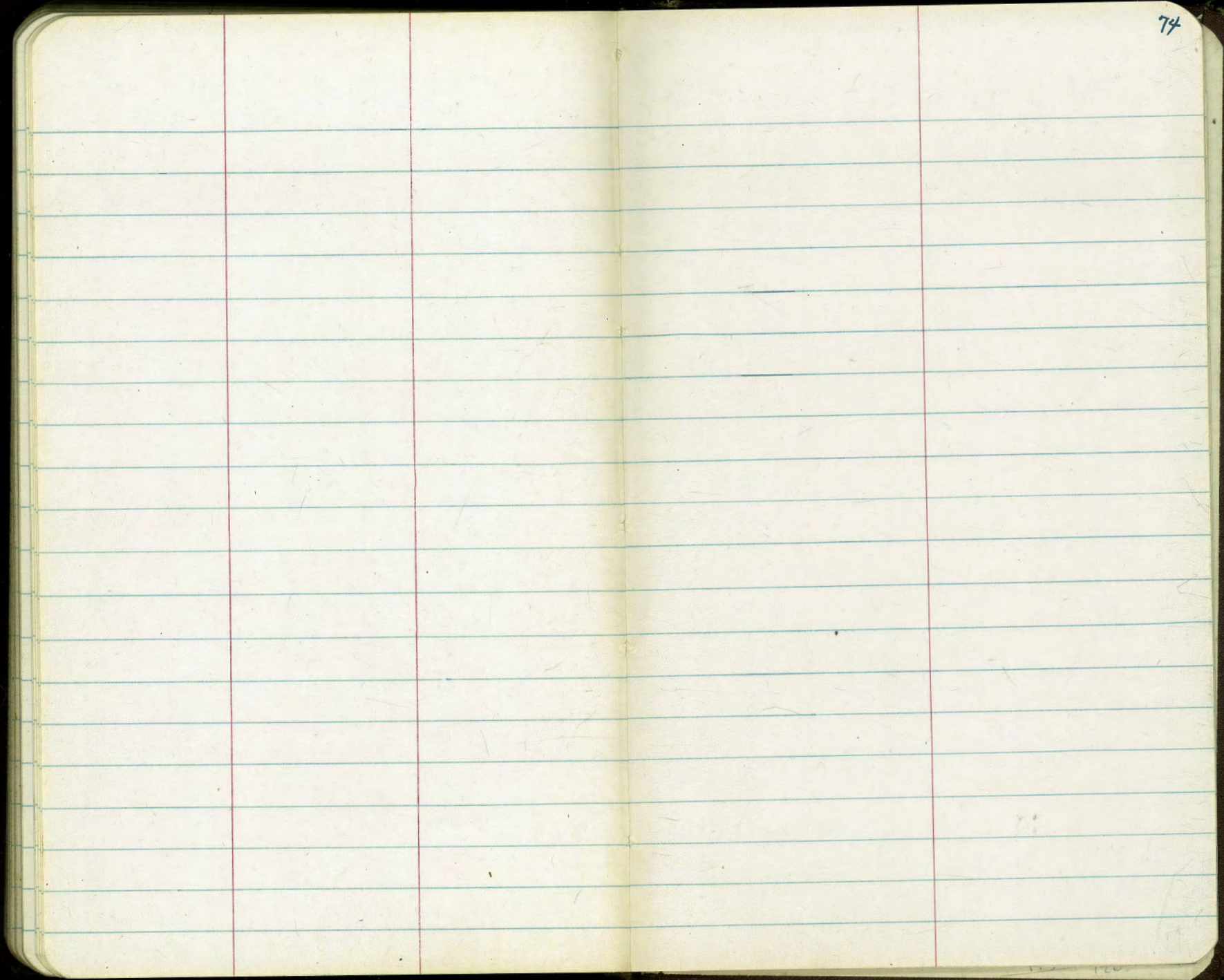
149.05 X

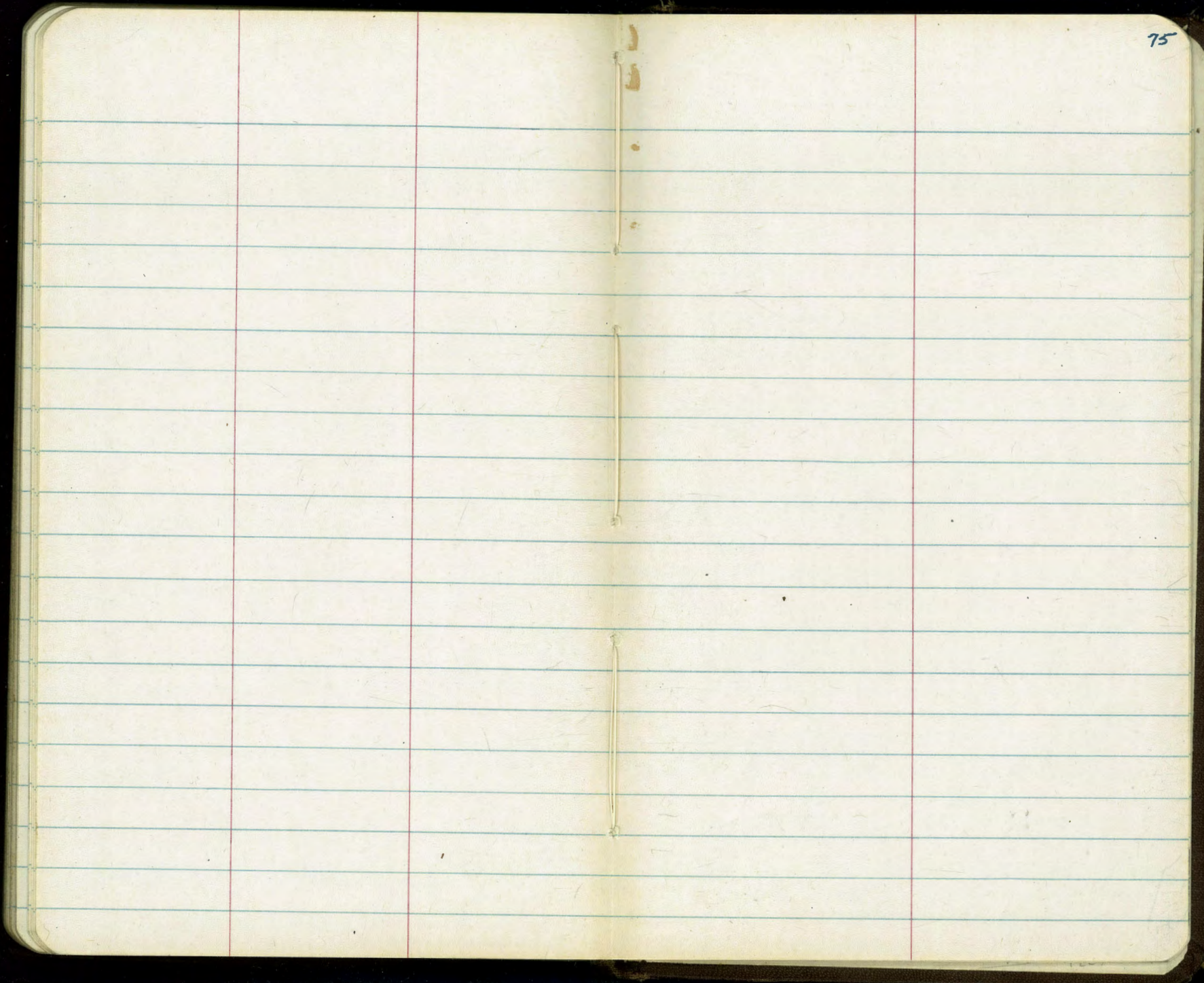


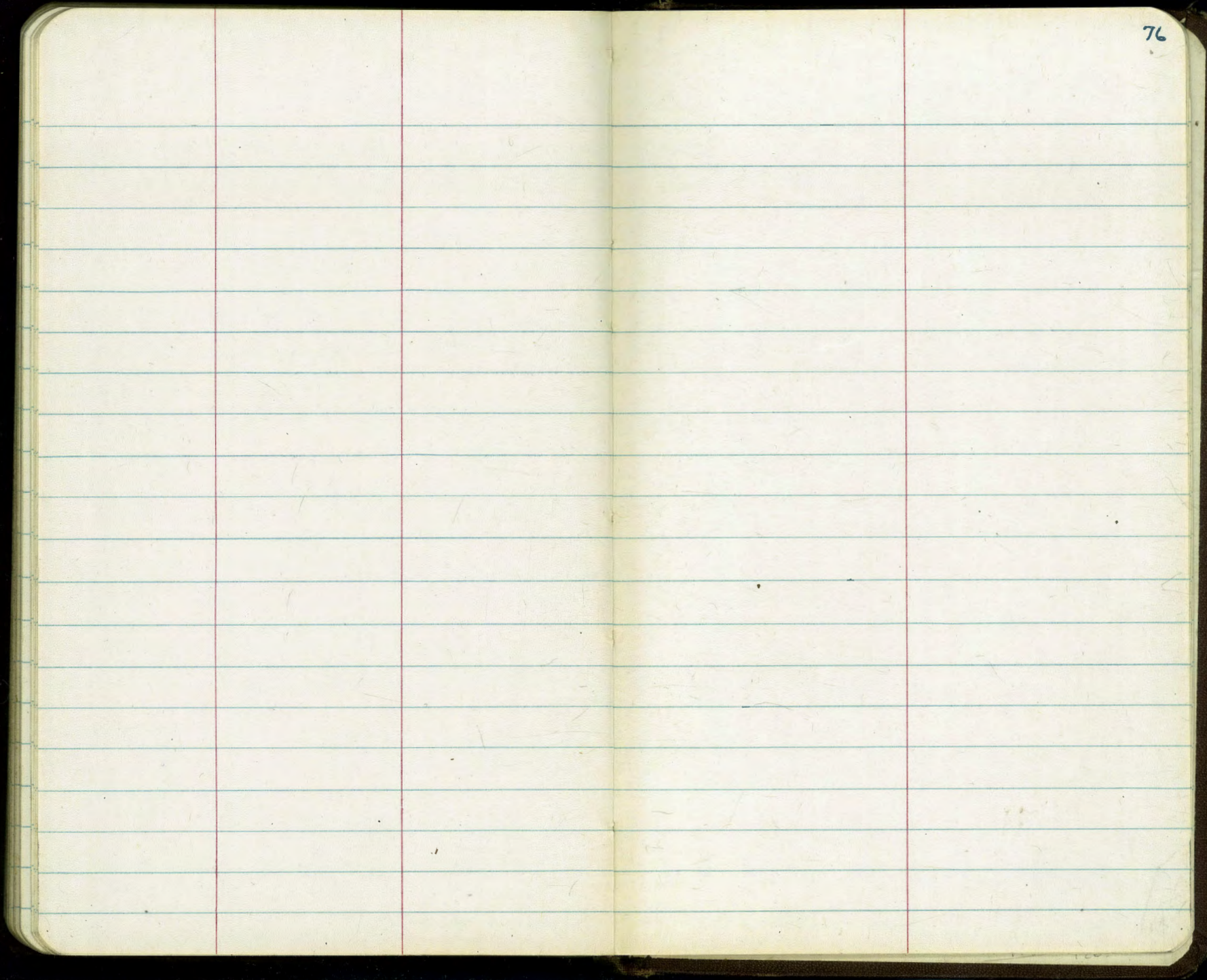












80
115
5.11
3.5
18.6

52.07
 376
 58.83
 550
 50.33
 55.03
 35.34
 18

149.05
 80
 149.25

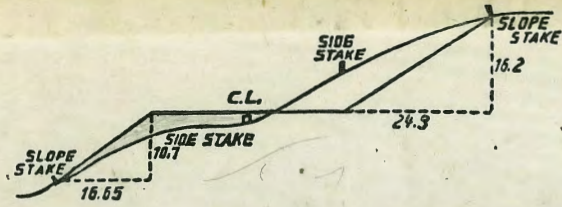
1101.22
 8214
 18336
 3523
 21879

Rim 143.47
 143.47
 472
 130.68

Rim 150.60
 150.60
 903
 141.57

Invert 150.60
 150.60
 1129
 139.33
 Invert 149.05
 149.05
 21.83
 156.42

Rim 149.05
 149.05
 462
 144.43



DISTANCES FROM SIDE STAKES FOR CROSS-SECTIONING.
 SLOPE 1 1/2 TO 1. ROADWAY OF ANY WIDTH.

	0	.1	.2	.3	.4	.5	.6	.7	.8	.9	
0	0.00	0.15	0.30	0.45	0.60	0.75	0.90	1.05	1.20	1.35	0
1	1.50	1.65	1.80	1.95	2.10	2.25	2.40	2.55	2.70	2.85	1
2	3.00	3.15	3.30	3.45	3.60	3.75	3.90	4.05	4.20	4.35	2
3	4.50	4.65	4.80	4.95	5.10	5.25	5.40	5.55	5.70	5.85	3
4	6.00	6.15	6.30	6.45	6.60	6.75	6.90	7.05	7.20	7.35	4
5	7.50	7.65	7.80	7.95	8.10	8.25	8.40	8.55	8.70	8.85	5
6	9.00	9.15	9.30	9.45	9.60	9.75	9.90	10.05	10.20	10.35	6
7	10.50	10.65	10.80	10.95	11.10	11.25	11.40	11.55	11.70	11.85	7
8	12.00	12.15	12.30	12.45	12.60	12.75	12.90	13.05	13.20	13.35	8
9	13.50	13.65	13.80	13.95	14.10	14.25	14.40	14.55	14.70	14.85	9
10	15.00	15.15	15.30	15.45	15.60	15.75	15.90	16.05	16.20	16.35	10
11	16.50	16.65	16.80	16.95	17.10	17.25	17.40	17.55	17.70	17.85	11
12	18.00	18.15	18.30	18.45	18.60	18.75	18.90	19.05	19.20	19.35	12
13	19.50	19.65	19.80	19.95	20.10	20.25	20.40	20.55	20.70	20.85	13
14	21.00	21.15	21.30	21.45	21.60	21.75	21.90	22.05	22.20	22.35	14
15	22.50	22.65	22.80	22.95	23.10	23.25	23.40	23.55	23.70	23.85	15
16	24.00	24.15	24.30	24.45	24.60	24.75	24.90	25.05	25.20	25.35	16
17	25.50	25.65	25.80	25.95	26.10	26.25	26.40	26.55	26.70	26.85	17
18	27.00	27.15	27.30	27.45	27.60	27.75	27.90	28.05	28.20	28.35	18
19	28.50	28.65	28.80	28.95	29.10	29.25	29.40	29.55	29.70	29.85	19
20	30.00	30.15	30.30	30.45	30.60	30.75	30.90	31.05	31.20	31.35	20
21	31.50	31.65	31.80	31.95	32.10	32.25	32.40	32.55	32.70	32.85	21
22	33.00	33.15	33.30	33.45	33.60	33.75	33.90	34.05	34.20	34.35	22
23	34.50	34.65	34.80	34.95	35.10	35.25	35.40	35.55	35.70	35.85	23
24	36.00	36.15	36.30	36.45	36.60	36.75	36.90	37.05	37.20	37.35	24
25	37.50	37.65	37.80	37.95	38.10	38.25	38.40	38.55	38.70	38.85	25
26	39.00	39.15	39.30	39.45	39.60	39.75	39.90	40.05	40.20	40.35	26
27	40.50	40.65	40.80	40.95	41.10	41.25	41.40	41.55	41.70	41.85	27
28	42.00	42.15	42.30	42.45	42.60	42.75	42.90	43.05	43.20	43.35	28
29	43.50	43.65	43.80	43.95	44.10	44.25	44.40	44.55	44.70	44.85	29
30	45.00	45.15	45.30	45.45	45.60	45.75	45.90	46.05	46.20	46.35	30
31	46.50	46.65	46.80	46.95	47.10	47.25	47.40	47.55	47.70	47.85	31
32	48.00	48.15	48.30	48.45	48.60	48.75	48.90	49.05	49.20	49.35	32
33	49.50	49.65	49.80	49.95	50.10	50.25	50.40	50.55	50.70	50.85	33
34	51.00	51.15	51.30	51.45	51.60	51.75	51.90	52.05	52.20	52.35	34
35	52.50	52.65	52.80	52.95	53.10	53.25	53.40	53.55	53.70	53.85	35
36	54.00	54.15	54.30	54.45	54.60	54.75	54.90	55.05	55.20	55.35	36
37	55.50	55.65	55.80	55.95	56.10	56.25	56.40	56.55	56.70	56.85	37
38	57.00	57.15	57.30	57.45	57.60	57.75	57.90	58.05	58.20	58.35	38
39	58.50	58.65	58.80	58.95	59.10	59.25	59.40	59.55	59.70	59.85	39
40	60.00	60.15	60.30	60.45	60.60	60.75	60.90	61.05	61.20	61.35	40
41	61.50	61.65	61.80	61.95	62.10	62.25	62.40	62.55	62.70	62.85	41
42	63.00	63.15	63.30	63.45	63.60	63.75	63.90	64.05	64.20	64.35	42
43	64.50	64.65	64.80	64.95	65.10	65.25	65.40	65.55	65.70	65.85	43
44	66.00	66.15	66.30	66.45	66.60	66.75	66.90	67.05	67.20	67.35	44
45	67.50	67.65	67.80	67.95	68.10	68.25	68.40	68.55	68.70	68.85	45
46	69.00	69.15	69.30	69.45	69.60	69.75	69.90	70.05	70.20	70.35	46
47	70.50	70.65	70.80	70.95	71.10	71.25	71.40	71.55	71.70	71.85	47
48	72.00	72.15	72.30	72.45	72.60	72.75	72.90	73.05	73.20	73.35	48
49	73.50	73.65	73.80	73.95	74.10	74.25	74.40	74.55	74.70	74.85	49
50	75.00	75.15	75.30	75.45	75.60	75.75	75.90	76.05	76.20	76.35	50

THE NATIONAL BLANK BOOK COMPANY
 HOLYOKE MASSACHUSETTS
 NEW YORK CHICAGO BOSTON SAN FRANCISCO

1060
 530

21.6
 4.3 123