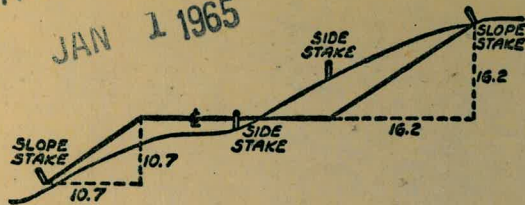


2131

DATE 1902

MICROFILMED

JAN 1 1965



DISTANCES FROM SIDE STAKES FOR CROSS-SECTIONING  
SLOPE 1 TO 1. ROADWAY OF ANY WIDTH

	0	.1	.2	.3	.4	.5	.6	.7	.8	.9	
0	0.00	0.10	0.20	0.30	0.40	0.50	0.60	0.70	0.80	0.90	0
1	1.00	1.10	1.20	1.30	1.40	1.50	1.60	1.70	1.80	1.90	1
2	2.00	2.10	2.20	2.30	2.40	2.50	2.60	2.70	2.80	2.90	2
3	3.00	3.10	3.20	3.30	3.40	3.50	3.60	3.70	3.80	3.90	3
4	4.00	4.10	4.20	4.30	4.40	4.50	4.60	4.70	4.80	4.90	4
5	5.00	5.10	5.20	5.30	5.40	5.50	5.60	5.70	5.80	5.90	5
6	6.00	6.10	6.20	6.30	6.40	6.50	6.60	6.70	6.80	6.90	6
7	7.00	7.10	7.20	7.30	7.40	7.50	7.60	7.70	7.80	7.90	7
8	8.00	8.10	8.20	8.30	8.40	8.50	8.60	8.70	8.80	8.90	8
9	9.00	9.10	9.20	9.30	9.40	9.50	9.60	9.70	9.80	9.90	9
10	10.00	10.10	10.20	10.30	10.40	10.50	10.60	10.70	10.80	10.90	10
11	11.00	11.10	11.20	11.30	11.40	11.50	11.60	11.70	11.80	11.90	11
12	12.00	12.10	12.20	12.30	12.40	12.50	12.60	12.70	12.80	12.90	12
13	13.00	13.10	13.20	13.30	13.40	13.50	13.60	13.70	13.80	13.90	13
14	14.00	14.10	14.20	14.30	14.40	14.50	14.60	14.70	14.80	14.90	14
15	15.00	15.10	15.20	15.30	15.40	15.50	15.60	15.70	15.80	15.90	15
16	16.00	16.10	16.20	16.30	16.40	16.50	16.60	16.70	16.80	16.90	16
17	17.00	17.10	17.20	17.30	17.40	17.50	17.60	17.70	17.80	17.90	17
18	18.00	18.10	18.20	18.30	18.40	18.50	18.60	18.70	18.80	18.90	18
19	19.00	19.10	19.20	19.30	19.40	19.50	19.60	19.70	19.80	19.90	19
20	20.00	20.10	20.20	20.30	20.40	20.50	20.60	20.70	20.80	20.90	20
21	21.00	21.10	21.20	21.30	21.40	21.50	21.60	21.70	21.80	21.90	21
22	22.00	22.10	22.20	22.30	22.40	22.50	22.60	22.70	22.80	22.90	22
23	23.00	23.10	23.20	23.30	23.40	23.50	23.60	23.70	23.80	23.90	23
24	24.00	24.10	24.20	24.30	24.40	24.50	24.60	24.70	24.80	24.90	24
25	25.00	25.10	25.20	25.30	25.40	25.50	25.60	25.70	25.80	25.90	25
26	26.00	26.10	26.20	26.30	26.40	26.50	26.60	26.70	26.80	26.90	26
27	27.00	27.10	27.20	27.30	27.40	27.50	27.60	27.70	27.80	27.90	27
28	28.00	28.10	28.20	28.30	28.40	28.50	28.60	28.70	28.80	28.90	28
29	29.00	29.10	29.20	29.30	29.40	29.50	29.60	29.70	29.80	29.90	29
30	30.00	30.10	30.20	30.30	30.40	30.50	30.60	30.70	30.80	30.90	30
31	31.00	31.10	31.20	31.30	31.40	31.50	31.60	31.70	31.80	31.90	31
32	32.00	32.10	32.20	32.30	32.40	32.50	32.60	32.70	32.80	32.90	32
33	33.00	33.10	33.20	33.30	33.40	33.50	33.60	33.70	33.80	33.90	33
34	34.00	34.10	34.20	34.30	34.40	34.50	34.60	34.70	34.80	34.90	34
35	35.00	35.10	35.20	35.30	35.40	35.50	35.60	35.70	35.80	35.90	35
36	36.00	36.10	36.20	36.30	36.40	36.50	36.60	36.70	36.80	36.90	36
37	37.00	37.10	37.20	37.30	37.40	37.50	37.60	37.70	37.80	37.90	37
38	38.00	38.10	38.20	38.30	38.40	38.50	38.60	38.70	38.80	38.90	38
39	39.00	39.10	39.20	39.30	39.40	39.50	39.60	39.70	39.80	39.90	39
40	40.00	40.10	40.20	40.30	40.40	40.50	40.60	40.70	40.80	40.90	40
41	41.00	41.10	41.20	41.30	41.40	41.50	41.60	41.70	41.80	41.90	41
42	42.00	42.10	42.20	42.30	42.40	42.50	42.60	42.70	42.80	42.90	42
43	43.00	43.10	43.20	43.30	43.40	43.50	43.60	43.70	43.80	43.90	43
44	44.00	44.10	44.20	44.30	44.40	44.50	44.60	44.70	44.80	44.90	44
45	45.00	45.10	45.20	45.30	45.40	45.50	45.60	45.70	45.80	45.90	45
46	46.00	46.10	46.20	46.30	46.40	46.50	46.60	46.70	46.80	46.90	46
47	47.00	47.10	47.20	47.30	47.40	47.50	47.60	47.70	47.80	47.90	47
48	48.00	48.10	48.20	48.30	48.40	48.50	48.60	48.70	48.80	48.90	48
49	49.00	49.10	49.20	49.30	49.40	49.50	49.60	49.70	49.80	49.90	49
50	50.00	50.10	50.20	50.30	50.40	50.50	50.60	50.70	50.80	50.90	50

Distance of slope stake from side or shoulder stake for any width roadway, slope 1 to 1. If ground is nearly level, the out or fill at side stake is located by the double entry method in left column and top row. The number in body of table in same row and column gives distance from side stake to slope stake. If ground is not level estimate the difference in elevation between the side stake and slope stake, lower target by this amount if cut, elevate if fill. Add this amount to cut or fill and find distance in table. Set up rod at this point, and line of sight should cut target. If it does not make the slight adjustment necessary.

TABLE XIII—CORRECTIONS FOR TANGENTS AND EXTERNALS

These corrections are to be added to the approximate values, found by dividing the tangent, or external, for a 1° curve (Table VIII) by the degree of curve, in order to obtain the true tangents, or externals. Intermediate values may be obtained by interpolation.

FOR TANGENTS ADD

Central Angle	DEGREE OF CURVE													
	5°	10°	15°	20°	25°	30°	35°	40°	45°	50°	55°	60°	65°	70°
10°	.03	.06	.09	.13	.16	.19	.22	.25	.28	.31	.34	.38	.42	.46
15°	.04	.10	.14	.19	.24	.29	.34	.39	.45	.51	.53	.58	.63	.68
20°	.06	.13	.19	.26	.32	.39	.45	.51	.58	.65	.72	.79	.84	.90
25°	.08	.16	.24	.33	.40	.49	.58	.67	.75	.83	.90	.99	1.06	1.14
30°	.10	.19	.29	.39	.49	.59	.69	.79	.89	.99	1.09	1.20	1.29	1.39
35°	.11	.22	.34	.47	.58	.69	.79	.89	.99	1.09	1.20	1.31	1.42	1.54
40°	.13	.26	.40	.53	.67	.80	.93	1.06	1.20	1.34	1.49	1.64	1.79	1.94
45°	.15	.30	.44	.60	.76	.91	1.06	1.21	1.37	1.52	1.70	1.87	2.04	2.21
50°	.17	.34	.51	.68	.85	1.02	1.19	1.36	1.54	1.72	1.91	2.10	2.29	2.48
55°	.19	.38	.57	.76	.95	1.14	1.32	1.52	1.72	1.92	2.14	2.35	2.56	2.77
60°	.21	.42	.63	.84	1.05	1.27	1.49	1.71	1.94	2.17	2.38	2.60	2.83	3.07
65°	.23	.46	.69	.93	1.16	1.40	1.64	1.88	2.13	2.38	2.63	2.88	3.13	3.39
70°	.25	.51	.76	1.02	1.28	1.54	1.80	2.06	2.33	2.60	2.88	3.16	3.44	3.72
75°	.27	.56	.83	1.12	1.40	1.69	1.98	2.27	2.57	2.87	3.16	3.47	3.78	4.09
80°	.30	.61	.91	1.22	1.53	1.84	2.15	2.46	2.78	3.10	3.44	3.78	4.12	4.46
85°	.33	.66	1.00	1.33	1.68	2.02	2.36	2.70	3.05	3.40	3.77	4.14	4.55	4.89
90°	.36	.72	1.09	1.45	1.83	2.20	2.57	2.94	3.32	3.70	4.10	4.50	4.91	5.32
95°	.39	.79	1.19	1.55	2.00	2.40	2.80	3.20	3.61	4.02	4.40	4.98	5.38	5.83
100°	.43	.86	1.30	1.74	2.18	2.62	3.06	3.50	3.95	4.40	4.88	5.37	5.85	6.34
110°	.51	1.03	1.56	2.08	2.61	3.14	3.67	4.21	4.76	5.31	5.86	6.43	7.01	7.60
120°	.62	1.25	1.93	2.52	3.16	3.81	4.45	5.11	5.77	6.44	7.12	7.80	8.50	9.22

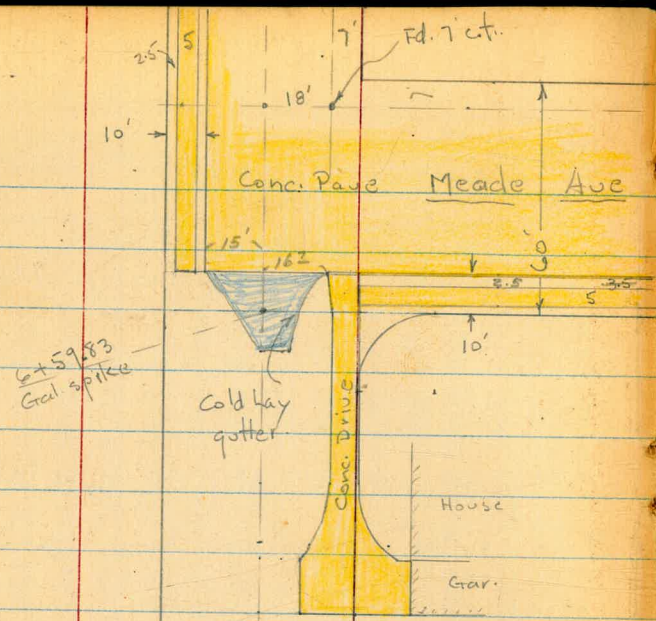
FOR EXTERNALS ADD

Central Angle	DEGREE OF CURVE													
	5°	10°	15°	20°	25°	30°	35°	40°	45°	50°	55°	60°	65°	70°
10°	.001	.003	.004	.006	.007	.008	.009	.011	.012	.014	.015	.017	.018	.020
15°	.003	.007	.010	.014	.018	.023	.027	.032	.037	.042	.047	.053	.058	.063
20°	.006	.011	.017	.022	.028	.034	.038	.045	.051	.057	.063	.070	.076	.083
25°	.009	.018	.027	.036	.046	.056	.065	.074	.083	.093	.106	.120	.127	.135
30°	.013	.025	.038	.051	.065	.078	.090	.103	.116	.129	.149	.170	.179	.188
35°	.018	.035	.054	.072	.086	.109	.131	.153	.175	.197	.213	.230	.247	.264
40°	.023	.046	.070	.093	.117	.141	.172	.203	.234	.265	.277	.290	.315	.341
45°	.030	.060	.093	.119	.153	.184	.216	.254	.289	.325	.351	.378	.411	.445
50°	.037	.075	.116	.151	.189	.227	.266	.305	.345	.384	.425	.467	.508	.550
55°	.046	.093	.142	.188	.236	.283	.332	.381	.420	.479	.530	.582	.641	.700
60°	.056	.112	.168	.225	.283	.340	.398	.457	.516	.575	.636	.697	.774	.851
65°	.067	.135	.204	.273	.343	.412	.483	.554	.625	.697	.771	.845	.922	1.01
70°	.080	.159	.240	.321	.403	.485	.568	.652	.735	.819	.906	.994	1.08	1.17
75°	.095	.182	.286	.383	.480	.578	.678	.777	.877	.977	1.07	1.18	1.29	1.39
80°	.110	.220	.332	.445	.558	.671	.787	.903	1.02	1.13	1.25	1.38	1.50	1.62
85°	.128	.259	.391	.524	.657	.790	.926	1.06	1.20	1.34	1.47	1.62	1.76	1.91
90°	.149	.299	.450	.603	.756	.910	1.07	1.22	1.38	1.54	1.70	1.87	2.03	2.20
95°	.174	.350	.522	.706	.885	1.06	1.25	1.43	1.62	1.80	1.99	2.18	2.38	2.58
100°	.200	.401	.604	.809	1.01	1.22	1.43	1.64	1.85	2.06	2.28	2.50	2.73	2.96
110°	.268	.536	.806	1.08	1.35	1.63	1.91	2.20	2.48	2.76	3.05	3.35	3.66	3.96
120°	.360	.721	1.08	1.45	1.82	2.19	2.57	2.95	3.33	3.72	4.11	4.50	4.91	5.32

INDEX

56<sup>th</sup>, Trojan to Meade 1  
X-Sec. + Sewer profile

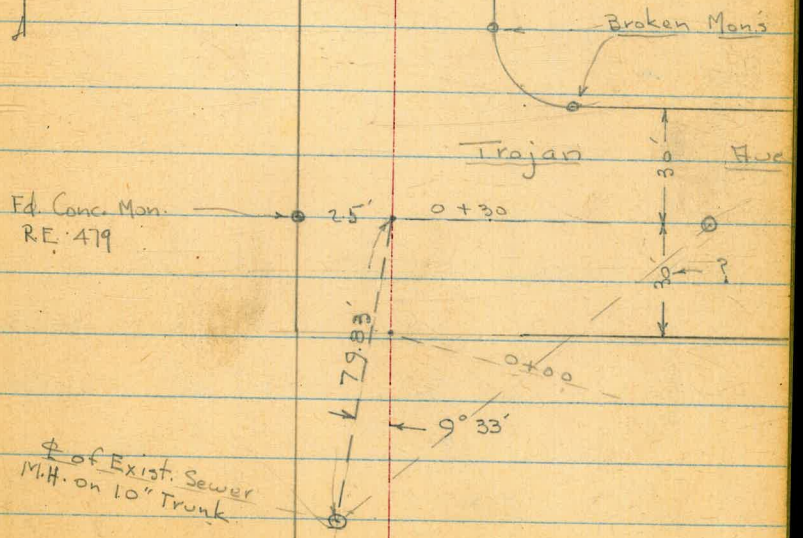
Montezuma Rd. - Cross Sections 7-33  
Chollas Sanitary Fill 34  
Montezuma Road - Burrow Pit 41  
Add. notes Chollas San. Fill 44



st  
 25' 25'  
 56 1/2



st  
 25' 25'  
 56 1/2



φ of Exist. Sewer  
 M.H. on 10" Trunk

REDUCED - P. RYAN  
2-2-50

2

X-Sect. + Sewer Profile of 56<sup>th</sup> St.  
from Trojan to Meade

# 5204 7.0 - 1-30-51  
W.O. 25020

0+30 = E Trojan

0+07 - 17' Rt =  $\pm$  Tel. pole # 547996-H

0+05 - 16.5' Rt =  $\pm$  Guy Pole # 427405-H

0+00 =

0-30

0 - 48.5 = approx opp. MH

6.13 383.57 3.81 377.44 = Mon -

11.92 381.25 0.41 369.33

11.81 369.74 0.47 357.93

B.M. 6.73 358.40 351.67 =

Lt.  $\pm$  Rt.

INDEXED  
JUN 1 1951

578.0	377.5	376.2	375.1	374.4
5.6	6.1	7.4	8.5	9.2
35	25		25	35

373.5	373.3	372.6	372.5	371.6	380.5
10.1	10.3	11.0	11.1	12.0	3.1
35	25		20	25	35

$\pm$  Creek

370.3	369.37	369.5	369.7	378.9	381.7
13.3	14.3	14.1	13.9	4.7	1.9
25	16	12		10	25

$\pm$  Creek

363.04 374.57 370.97 379.1

20.53	9.05	12.6	4.5
13.6	13.6	13.6	
I.E. M.H.	TOP M.H.	ground	383.57

$\pm$  Trojan + W.L. 56<sup>th</sup>

$\pm$  Hd. + ct. - 54<sup>th</sup> + Trojan

T.P. 11.92 402.70 3.04 390.78 =

Prop Pipe - Lt. - 2+44

2+35

390.5	390.2	390.8	388.8	391.3	391.1
3.3	3.6	3.0	5.0	2.5	2.7
35	25		10	25	35
± 4' ditch					

2+70 = ± Ditch - angles across Rd.

389.0	389.3	388.8	387.4	387.5	390.1	390.3	390.2
4.8	4.5	5.0	6.4	6.3	3.7	3.5	3.6
35	25	10	± Ditch	7	10	25	35

2+03 - 16.5 Rt. = ± Tel. pole # 427404 - H

2+00

387.8	385.4	388.2	388.9	388.8	389.1
6.0	8.4	5.6	4.9	5.0	4.7
35	25	15		25	35
± Ditch					

1+50

385.0	385.6	386.0	385.6	386.0
8.8	8.2	7.8	8.2	7.8
35	25		25	35

T.P. 10.80 393.82 0.55 383.02

393.82

1+00

382.6	382.6	382.6	381.9	381.9
1.0	1.0	1.0	1.7	1.7
35	25		25	35

0+60

380.2	380.0	379.0	378.1	377.7
3.4	3.6	4.6	5.5	5.9
35	25		25	35

0+55 - 17' Rt. = ± Tel. pole # 503240 - H

383.57

T.P. 12.62 426.57 0.57 413.95

4+50

409.9	410.3	410.3	410.0	411.3	411.8	412.1
4.6	4.2	4.2	4.5	3.2	2.7	2.4
35	25		6	16	25	35

4+22 - 50.2 Lt. = E + Ely. of House

409.47	408.8	408.3
5.03	5.7	6.2
50.2	50.2 ground	
floor		
House		

4+00

3+97 - 16.8' Rt. = E P. pole # 77536

406.3	406.5	406.3	405.9	408.1	408.0	407.1
8.2	8.0	8.2	8.6	6.4	6.5	6.6
35	25		9	16	25	35

T.P. 11.93 414.52 0.11 402.59

414.52

3+50

401.8	401.9	401.6	401.3	402.0	402.1
0.9	0.9	1.1	1.4	0.7	0.6
35	25		9	25	35

3+27 - 100' Lt. = Point of outlet of Plumbing from  
Temp. Dwelling in Gar. + New House under Const.  
Will run Lateral to st. from Here.

397.23	399.4
5.47 = approx pipe elev.	3.3
100	

3+00

397.2	396.9	396.8	396.5	397.1	397.0
5.5	5.8	5.9	6.2	5.6	5.7
35	25		9	25	35

2+65

393.2	393.3	393.5	393.1	393.4	393.5
9.5	9.4	9.2	9.6	9.3	9.2
35	25		9	25	35

402.70  
wly. of  
2' ditch  
1' deep

6+50 = sly. of Cold Lay Gutter.

6+14.5 - 17.5 Rt. = Ang. in edge of Dr.

6+02 - 22' Lt. = ± 3.5 Conc. walk  
C9

6+00

5+96.5 - 10.5 Rt. = Ang. in edge of Dr.

5+84 - 22.2 Lt. = end 8" Conc. Tile wall

5+81.5 - 10.8 Rt. = Beg. Conc. Drive

5+50

5+41 - 17.5 Rt. = ± P. pole # P77535

is connected to sewer

5+00 = opp. Last Vac. lot on Lt. - Next House

423.7	423.5	421.3	420.71	420.64	421.12	424.0	423.50	423.84
2.9	3.1	5.3	5.86	5.93	5.45	2.6	2.77	2.73
35	25	15	on CL.	5	6	9	17.4	24.9
				9-t	Top CL ball		edge Dr.	edge Dr.

424.51	424.64
2.06	1.93
17.5	25.5 = edge Dr.
Dr.	

421.66	421.56
4.91	5.01
46.1 at porch	22 = walk

421.7	421.6	421.4	419.9	419.5	419.5	422.7	423.61	424.39	424.65
4.9	5.0	5.2	6.7	7.1	7.1	3.9	2.96	2.18	1.92
35	25	22	15	7	5	8	12.4	25	33
							edge Dr.	Dr.	edge Dr.

423.33	424.35
3.24	2.22
10.5 = Cor.	25 Dr.

421.25	419.67
5.32	6.9
Top wall	22.2 ground.

423.28	424.07	424.51
3.29	2.50	1.76
10.8	35	39
Cor. Conc.	Brk.	floor Crav.

415.8	417.0	416.8	416.7	421.9	422.4	422.5
10.8	9.6	9.8	9.9	4.7	4.2	4.1
35	25		5	20	25	30.4
						along fence

ditch ends.

410.9	412.8	413.5	413.9	413.9	415.8	417.2	418.2
15.7	13.8	13.1	12.7	12.7	10.8	9.4	9.4
75 Vac. Lot	35	25	426.57	4	13	25	35
				uly. Ditch			





MONTEZUMA ROAD

CROSS SECTIONS for Borrow Pit

Stations And Alignment as per-

- Plan 5388-89-L. No 22031

Rt. of Way = 5403-L - 2944-B - 8246-L.

Ties by County Surveyor - Road Survey - 702 (FB-749-237-7)

Existing Line of Montezuma <sup>Recent Subdivision</sup> at 55th <sup>by 15'</sup> does Not check with Above book (per County.)

Walker  
Pope  
Clark  
Huffman  
6-5-51

INDEXED

JUN 7 1951

TP #7	0.55	392.16	12.99	391.61
TP #8	0.36	404.60	12.94	404.24
62+72.81 = B.C. 4.				
L Nail Post			2.96	414.32
TP #7	0.47	417.18	12.37	416.71
TP #6	0.59	429.08	13.62	428.49
TP #5	0.61	441.14	12.52	440.50
TP #4	0.45	453.02	8.65	452.57
TP #3	5.22	461.22	4.21	456.00
TP #2	6.51	460.21	3.34	453.70
TP #1	8.83	457.04	4.37	448.21
	2.75	452.58		449.83

Checked Mark N.E. cb Ret. Montezuma + 55th

B.M. N.E. B.P. Montezuma + College Ave.

Montezuma Rd. - Cross Sections

Lt.

187. 8

59+00

408.04 - TP. Direct Rod

408.0	406.2	407.5	404.4	391.0	391.6
40	37	31	27	20	06

58+50

407.0	406.5	405.0
45	42	40

407.3	406.2	404.0	388.0	388.5
38 Ditch	36	29	20	37

58+00

405.0	403.6	403.0
45	42	40

405.1	402.5	400.5	384.9	385.3
38 Ditch	35	29	20	69

399.8 - TP. Direct Rod.

57+50

398.0	399.0	397.0
47	42	40

395.6	397.6	395.9	381.6	382.2
38 Ditch	36	28	20	100

57+00

399.0	392.4	387.8
45	40	36 Ditch

391.8	391.8	390.6	378.6	379.1
34	31	26	20	131

56+50

384.8	74	40
-------	----	----

384.8	379.1	382.9	376.0	376.2
38	30 Ditch	25	20	160

56+00

378.7	378.7
13.5	13.5
20	38

375.4	377.8	376.6	372.7
16.8	14.4	15.5	12.5
36	32	21	23.0
Ditch,			

392.16

392.16

Montezuma Rd. - Cross Sections

Lt.

Rt. 9

61+50

431.6	429.5	430.1	428.2	405.7	405.7	406.7	427.6	425.6	425.0
40	43 Ditch	40	39	80 19	7.0	7.0	37	60	60

61+00

427.0	426.1	424.5	423.6	423.0	408.7	403.7	403.8	416.2	416.5	416.2
48	43	40 Ditch	38	32	20	10.0	21	29	60	65

424.90 T.R. Direct Rod.

60+60

401.3	401.3	404.7
12.4	12.4	9.0
413.69	21	60

TP 11 1177 413.69 0.18 401.92

60+50

(415.99 - T.R. Direct Rod.)

422.8	419.6	422.2	420.0	400.1
45	40 Ditch	37	37	20

60+00

417.8	416.7	418.7	413.7	413.1	415.7	414.7	397.1	397.7
48	43	40	39	36 Ditch	31	30	50 20	44

59+50

411.4	410.4	408.7	409.9	407.9	394.0	394.6
45	40	37 Ditch	34	29	20	7.5

on Rock out.

TP 10 10.34 402.10 0.40 391.76  
392.16

Montezuma Rd. Cross Sections

TP#13 12.74 438.72 0.29 425.98

64+50

4437	4442	4442	423.1	424.6	426.2
45	40	32	3.2	1.7	0.1
			21		2.2
					32
					60
					65

64+00

4436	4441	4450	419.7	421.6	423.4
45	40	34	6.6	4.7	2.9
			21		22
					37
					60
					65

445.3 = TP Direct Rod

63+50

4438	4448	4448	417.2	418.8	420.6
45	40	35	2.1	7.5	5.7
			21		21
					35
					60
					65

63+00

4445	4446	4442	414.6	415.8	416.9
45	40	31	11.7	10.5	9.4
			21		21
					34
					60
					65

426.27

62+72.81

414.22  
414.21

TP#12 12.97 426.27 0.39 413.30

62+50

4443	4453	4427	411.9	412.8	413.5
45	40	37	1.8	0.9	0.2
			20		2.2
					36
					60
					65

440.11 = TP Direct Rod

437.86 = TP Direct Rod

62+00

413.65

432.10  
TP Direct Rod

4433	4441	4391	408.5	409.8	409.6
45	40	46	5.2	3.9	4.1
			20		2.2
					35
					60
					65

413.69

430.87 = TP Direct Rod

Montezuma Ref. Cross Sections

Lt. Lt. Rt. 11

68+30

4.5 447.3  
4.5 447.3  
22 455.3  
28 455.6

68+00

444.3  
75 444.3  
40 6.9 444.3  
17 64 445.4  
66 445.2  
22 450.2  
28 455.6  
60 455.6  
65 455.6

67+00

443.6  
45 40 443.6  
28 443.6  
26 6.7 445.1  
16 135 443.3  
125 443.3  
11.5 440.3  
23 453.8  
28 454.1  
60 454.1  
65 454.1

F 451.79

452.94 = 7.75  
Direct Red.

TR 14 13.18 F 451.79 011 438.61

66+00

443.9  
45 40 443.9  
28 444.6  
22 2.5 446.3  
14 6.1 442.6  
51 443.6  
42 434.5  
31 451.5  
60 451.5  
65 451.4

65+50

444.2  
45 40 444.2  
29 444.3  
21 6.7 442.0  
15 9.7 442.0  
82 430.5  
7.0 431.7  
31 450.4  
60 450.3  
65 450.1

65+00

443.8  
45 40 443.8  
31 444.5  
22 10.7 448.0  
18 12.5 442.2  
11 442.6  
2.5 442.2  
22 448.6  
32 449.2  
60 449.2  
65 449.2

F 438.72

F 438.72

Montezuma Rd. - Cross Sections

Lt.

Rt.

Rt.

12

				<u>0.03</u>
CHK BM.		274		449.83
				449.80
TP#18	4.36	452.54	845	448.18
TP#17	3.15	456.63	628	453.48
TP#16	4.61	459.76	607	455.15
NE Cor. 55th & Montezuma				<u>0.04</u>
Chk. Christed Cross mch.		869		452.57
				452.53
TP#15	9.86	461.22	043	451.36

68+70

68+67

68+50

451.79

449.6

2.2

448.5

3.9

451.79

450.3

1.5

448.6

3.2

3.5

450.6

4.5

4.0

450.6

4.5

4.0

Montezuma Road

Copy of Ties to  
 as per County Road Survey  
 #702 Book 749-237-7

3+53.02 - P.C.

$\Delta 50^{\circ}34$

$R=400$

$T=188.94$

$A=353.02$

$1+88.94 = P.I.$

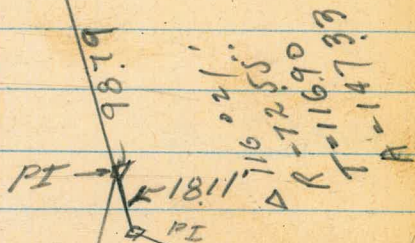
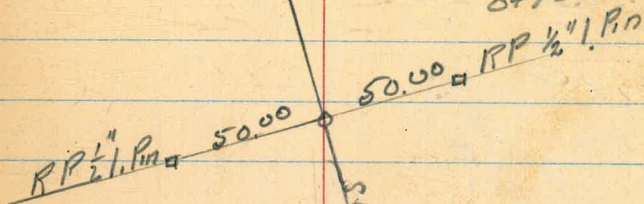
6+00

Beginning on Fairmount  
 and Running Easterly to College Way

Mulker  
 6-6-51

KS 702  
 May 1938

Judson  
 Peterson  
 Otton





Copy of Ties - Montezuma Rd  
 Copied from County Books

$13 + 38.09 = E.C.$

$\Delta = 23024' R$

$R = 1500$

$T = 31064$

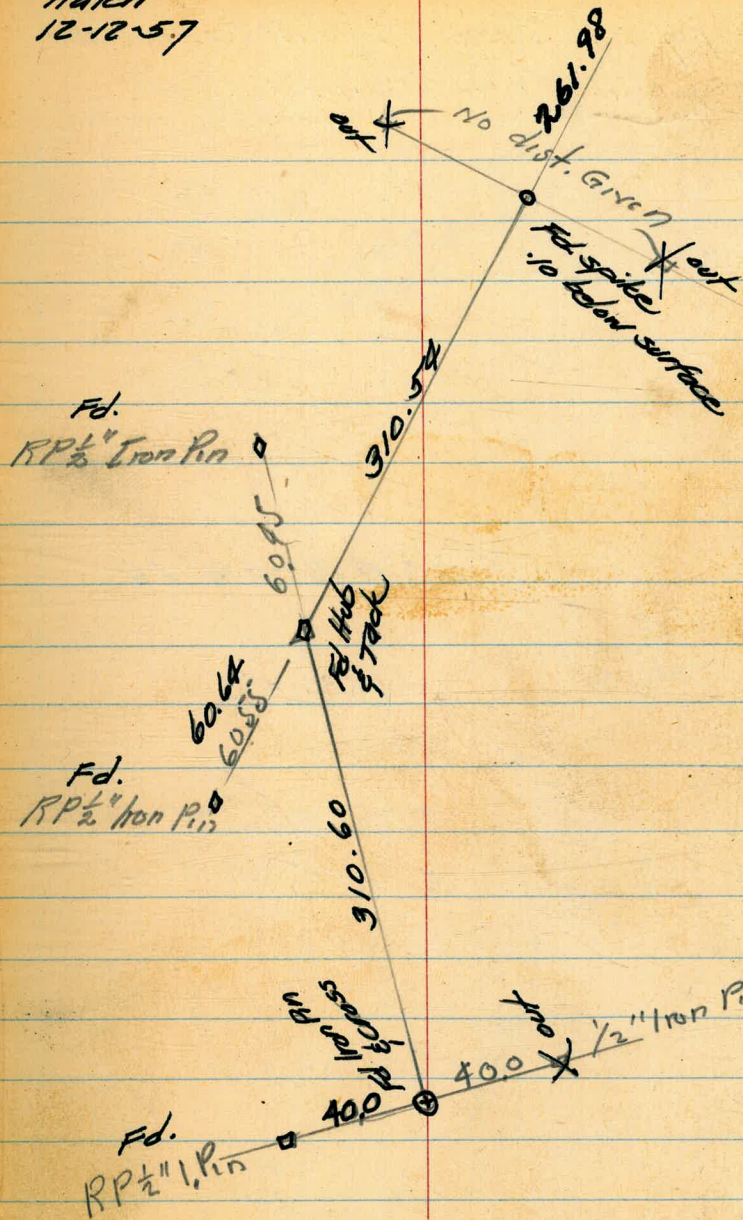
$10 + 36.12 = P.I$

$A = 612.61$

$E_x = 318.3$

$7 + 25.48 = B.C.$

Hatch  
 12-12-57



Copy of Ties - Montezuma Rd.  
 Copied from County Books

$N-85^{\circ}16'10''E$

27+25.91-EC.

295.68  
 121.00  
 124.00  
 -----  
 537.68

341985  
 272591  
 -----  
 69394

$\Delta = 42^{\circ}56'10''$

590.86  
 693.94  
 363.06  
 -----  
 1647.86  
 84.33  
 -----  
 1563.53

$\Delta = 43^{\circ}00' L$

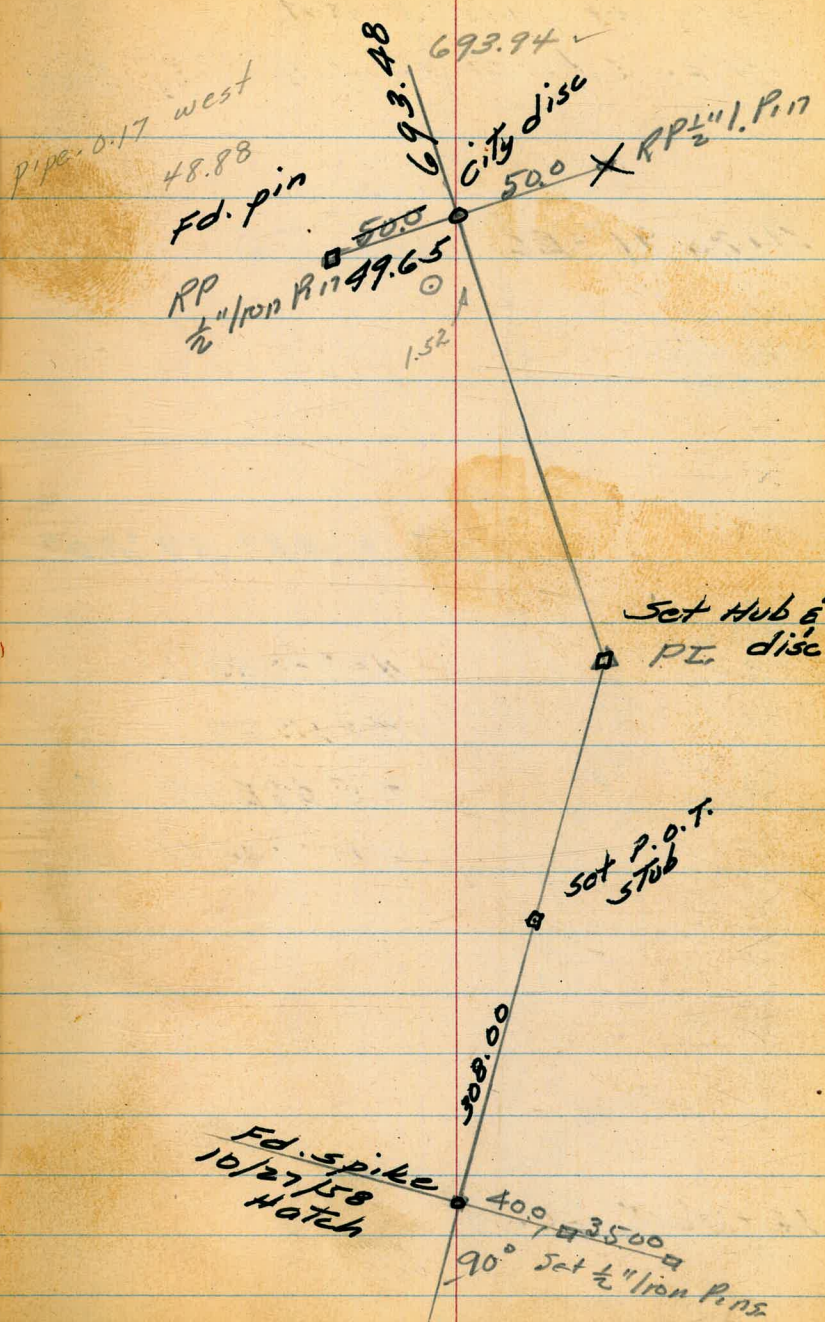
$R = 1500$

$T = 590.86 \checkmark$

$A = 1125.74$

16+00.17=BC.

$S-51^{\circ}43'56''E$



Montezuma Rd  
 Ties Copied from County Book

41+24.96 = E.C.

$$\Delta = 33^{\circ} 39' 20''$$

37+82.91

$$\Delta = 33^{\circ} 40' L$$

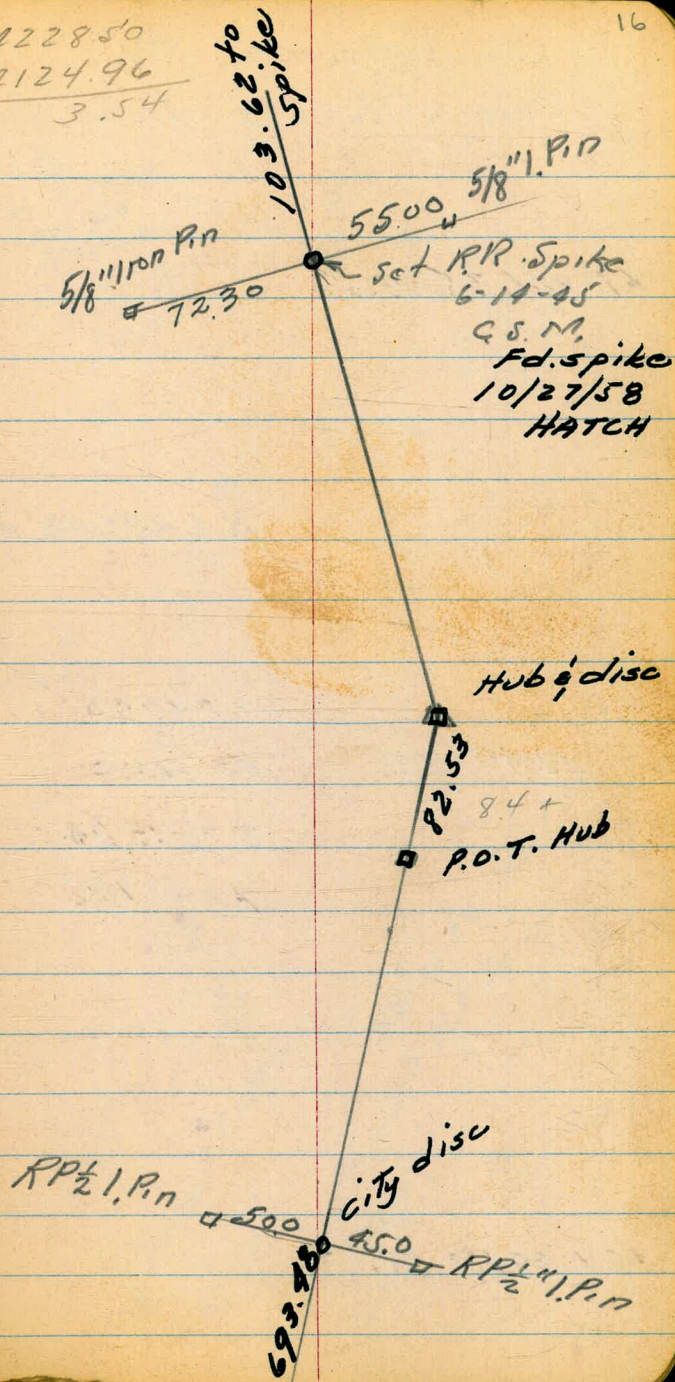
$$R = 1200'$$

$$T = 363.06 \checkmark$$

$$A = 705.11$$

3A + 19.85 = B.C. Lt.

4228.50  
 4124.96  
 3.54



Montezuma Rd.  
 Copied Ties - from County  
 Book

48+46.35 = EC.

$$\Delta = 29^{\circ} 32' 00''$$

$$\Delta = 29^{\circ} 30'$$

45+44.44 = PI.

$$R = 1200$$

$$T = 315.94'$$

$$A = 617.85$$

42+28.50 = BC.

Set Hub at  
 Intersection

Fd. spike  
 10/27/58  
 HATCH

Set RR Spike  
 6-14-45  
 C.S.M.

208.08 To  
 P.K.

Fd. spike  
 10/27/58  
 HATCH

5/8" Iron Pin

5/8" Iron Pin

80

316.34

2" Pipe R.E. 11/34

39.55  
 40.19

Fd. spike  
 10/27/58  
 HATCH

Set RR Spike  
 6-14-45  
 C.S.M.

5/8" Iron Pin

103.66  
 48.90

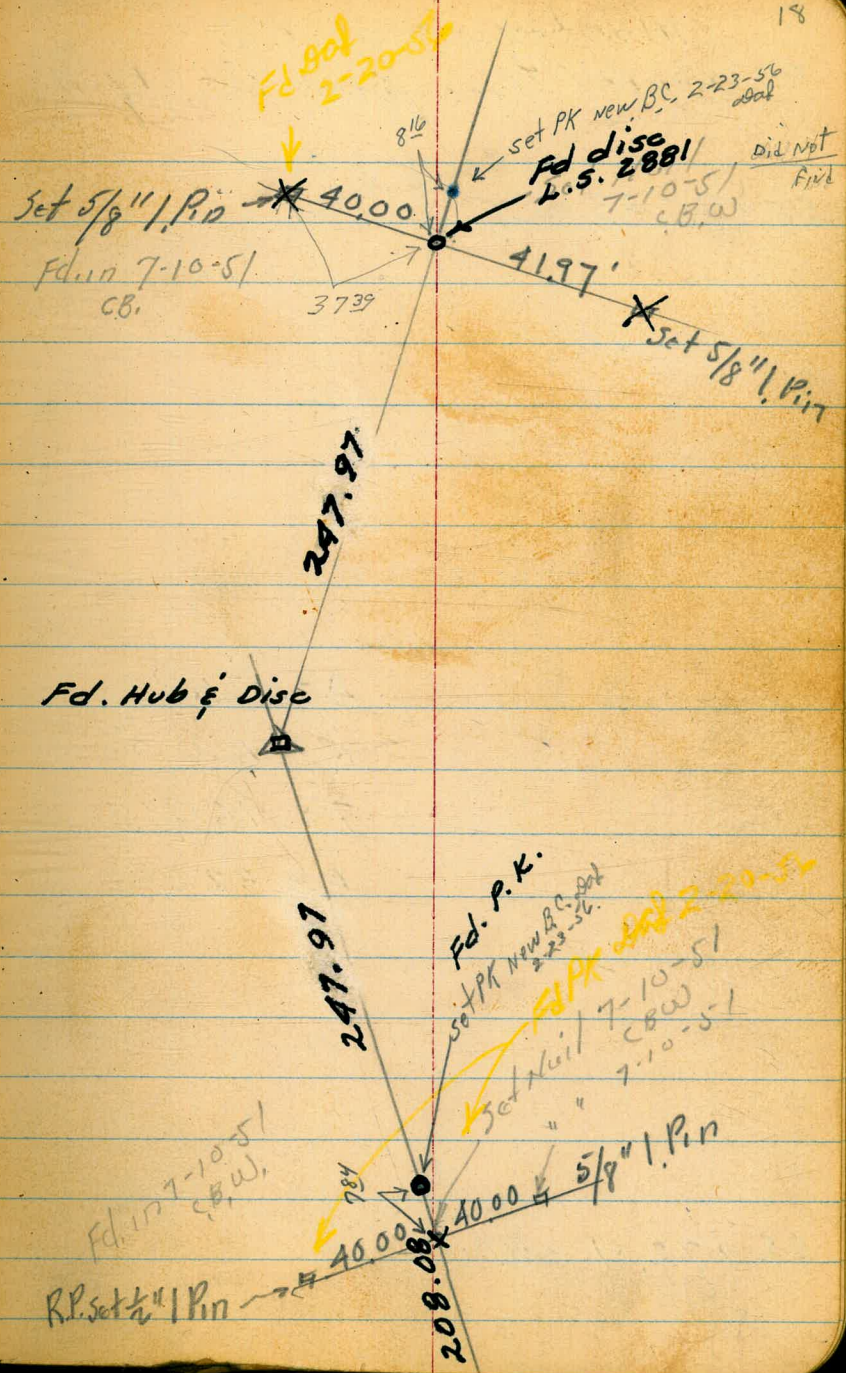
Montezuma Rd.  
 Copied Ties - from County  
 Books

55+35.04 = E.C.

23°21'30"  
 23°21' } new data  
 ER=1200 } by intersection  
 T=247.96 } 2-23-56  
 L=488.4 } gsd

$\Delta = 23^\circ 20' R$   
 52+94.13 = P.I.  $R = 1200'$   
 $T = 247.78'$   
 $A = 488.69$

50+46.35 = B.C.

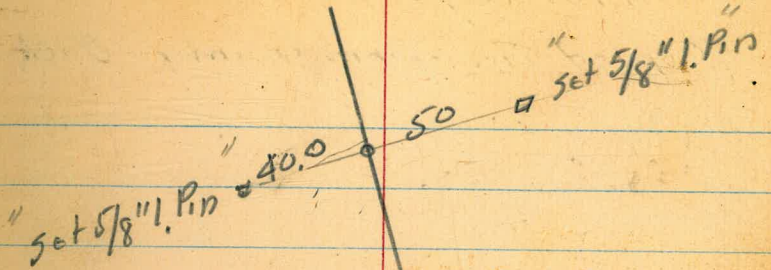


Montezuma Rd.  
Copied Ties - from County Book

65 + 95.43 = E.C.

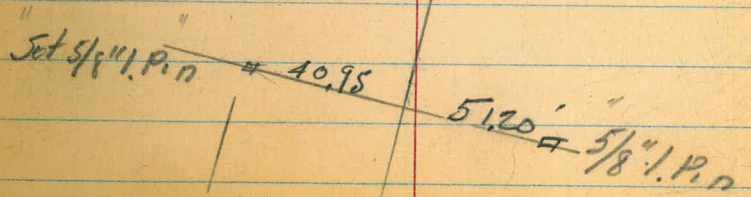
$\Delta = 15^{\circ} 24' 30''$   
 $R = 1200'$   
 $T = 162.35$   
 $A = 322.62$

62 + 72.81 = B.C.



Notes Copied

Note: see pg 33A  
this Book also



Montezuma Rd.  
Copied Ties - from County Book

66 + 89.52 POT }  
= }  
66 + 27.30 POT. }

△

MONTEZUMA ROAD

Slope stakes for BOTTOM  
Material.

21

43+75

43+50

43+00

42+75

42+50

42+28.5<sup>0</sup>=BC.



Montezuma Rd.  
Slope Stokes for Borrow

45+50

45+25

45+00

44+75

44+50

44+25

44+00

Mortezuma Rd.  
Slope stakes for borrow

23

47+25

47+00

46+75

46+50

46+25

46+00

45+75

Martinez Rd.  
 Slope stakes for borrow

Lt.

L  
 Base  
 Line

Rt.

24

49+50

349.20	350.8	336.1	334.9	334.2	357.1	355.60
40	29	23	3.6	2.0	32	60

49+00

333.51	336.8	332.6	331.7	330.9	344.1	345.82
500	17	59	68	7.6	27	60
40	23	21		19		

48+46.5 = F.C.

328.09	326.9	331.0	337.0
10.42	11.6	7.5	14.2
on Spike	19.0	23	60

48+25

48+00

324.7	323.3	325.0	328.0	330.97
	15	40	10.5	7.4
	For		47	60
338.51	P-33			

47+75

Levels for H.I. on P-33

47+50

Moritzville Rd.  
Slope Stakes for Borrow

Base  
Line

25

51+75

37094=stab	369.4	349.7	348.5	347.0	357.6	347.0
40	30	0.2 20	1.4	2.9 20	26	60 on stab

51+50

37597=stab	373.6	348.0	346.9	345.6	357.2	350.0 2=stab
40	33	1.9 20	3.0	4.3 20	27	60

51+50

51+25

37784=stab	375.7	346.7	345.5	344.4	358.9	352.25=stab
40	34	3.7	4.4	5.5 20	28	60

51+00

37809=stab	376.7	345.3	344.0	342.7	359.9	353.25=stab
40	37	4.6 21	5.9	7.2 20	29	60

50+75

37576=stab	374.8	343.9	342.5	341.2	360.2	354.03=stab
40	36	6.0 21	7.4	8.7 21	31	60

50+46.35=BC, R.L.

37369=stab	373.0	342.1	340.9	339.9	360.9	355.75=stab
40	37	7.8 20	9.0	10.0 21	32	

37959 p-33

50+00

36491=stab	364.9	339.6	338.11	336.8	361.0	356.70=stab
40	35	10.3 20		13.1 20	33	60

349.89 K-P-99

Montgomery Rd.  
 Slope Stakes for borrow

53+50

53+25

53+00

52+75

358.67=Stub	357.9	356.0	354.4
219	30	4.9	6.5
40	23	20	
Stub			

52+50

	3593	354.5	
362.12=Stub	24	6.7	353.0
40		20	7.9

52+25

		352.9	351.5	350.3	348.5	347.3
365.59=Stub	363.4	8.0	9.4	10.6	7.4	8.6
40	27	20		17	20	25

52+00

368.37=Stub	365.4	351.2	350.0	348.6	346.1	344.9
40	27	9.7	10.9	12.3	4.8	11.0
		20		20	23	40

360.86 P-33

Montezuma Rd.  
Slope Stakes for Borrow

27

56+50

C 9.1  $\frac{1}{2}:1$

385.11 = sub

039

385.5 out

56+00

C 6.0  $\frac{1}{2}:1$

378.87 = sub.

663

37 out

385.50 R P-33

55+35.04 = F.C.

55+00

54+50

54+00

53+75

Montezuma Rd.  
Slope Stakes for Borrow

60+00

$\frac{3}{16}$  : 1  $\frac{C166}{337}$

59+50

59+00

58+50

58+00

57+50

57+00

Prop. wire 40'  $\frac{1}{2}$  60'  $\frac{1}{2}$  28'  $\frac{1}{2}$  Prop. wire

C165  $\frac{1}{2}$  : 1  
413.32 = stub  
881  
40

C159  $\frac{1}{2}$  : 1  
409.60 = stub  
1253  
320

C174  $\frac{1}{2}$  : 1  
407.99 = stub  
191  
313 out

C 17.1  $\frac{1}{2}$  : 1  
407.71 = stub  
519  
315 out

C 15.9  $\frac{1}{2}$  : 1  
401.59 = stub  
831  
318 out

C15.1  $\frac{1}{2}$  : 1  
396.38 = stub  
120  
326 out

C13.0  $\frac{1}{2}$  : 1  
391.20 = stub  
628  
335 out

422.13

409.90 P-33

397.58 P-33

Montgomery Rd.  
Stops Stakes for Borrowal

Dot A  
63+00 0°45.25  
A=15°18'45"  
BR=1200'  
T=161.32'  
L=320.70

62+68.41-80.41  
C 324 437 out.  
411.8  
444.2

62+50  
C 341 43 out.  
411.0  
445.1

62+00  
C 37.6 412 out.  
407.0  
444.60

61+73  
C 33.9 43.0 out.  
406.00  
437.90 = stub

61+50

61+00

60+50  
60+40  
C 201 32.4 3/8:1

C 29.2 1/2:1 C 30.7 438 out  
414.4 413.3  
444.32 444.0  
2.16

443.87 stub 1/2:1  
312  
40

C 31.5  
411.5  
443.65 stub  
343  
40

C 34.3 1/2:1  
408.21  
439.53  
6.25  
40

C 25.5 1/2:1 C 25.1 31.0 3/8:1  
405.1  
439.5 = stub  
337  
40

C 22.4 1/2:1 C 22.6 3/8:1  
405.1  
424.6  
422.65 stub  
9.28  
40

C 19.9 1/2:1  
419.57 stub  
256  
40

C 23.0 48.3 out  
441.41  
5.07

439.17  
731  
60

C 24.0 48.4  
438.15  
833

C 23.7 48.4  
432.97 stub  
1351  
60

44C 48 TP-33

C 18.6 50.8  
425.58 stub  
835  
60

C 12.6 54.0  
416.67 stub  
54.6  
54.0 out.

433.93

432.13

399.58 stub  
60



Montezuma Rd  
Slope stakes for Barron

64+75: 4°55.92' 442.4<sup>out</sup> C20.9  
423.0  
443.9

~~446.4~~  
~~472~~

447.78'  
1063

64+50 4°20.11

43.1  
C22.6  
421.6  
444.2

~~C21.8~~ 'in 1  
421.3  
441.14  
472  
40

C18.4  
51.1  
446.69'  
1172

64+25 3°44.30'

43.1 out  
C23.6  
420.0  
443.6

~~444.18~~  
~~488~~  
40

445.84'  
1257.  
60

64+00 3°08.49'

41.8 out  
C25.9  
417.7  
443.6

~~C25.7~~ 447.06  
419.0  
444.66  
182

C19.1  
56.9  
444.90'  
1351  
60

63+86.6

41.7 out  
C26.4  
417.0  
443.4

458.41  
60

63+75 2°32.68

42.0 out  
C26.8  
416.6  
443.4

~~444.32~~  
~~476~~  
40

443.02'  
346

63+50 1°56.87

out, 43.2  
C27.7  
415.3  
443.2

~~C27.27~~ 'in 1  
417.7  
444.97 'in 1  
151  
40

C20.3  
50.2 out  
443.28'  
300  
60

63+25 1°21.06

out, 43.7  
C29.5  
413.7  
443.2

~~444.19~~ 'in 1  
170.5  
40

441.18'  
530

446.48

Montezuma Rd.  
Slope stakes for borrow

43.7 out - C 2.7  
434.3  
444.0

66+50

Lt. 5  
~~C 11.2~~  
434.1 = Grade  
445.3 Stake

77 31  
453.89  
482  
60

66+25

66+00

47.8 out.  
C 14.4

C 18.6

433.60

52.0 out  
C 15.8

65+89.11 = E.C. 7'39.37'

436.4  
444.4

430.8  
444.45 -  
4.61

432.72

435.8  
451.63  
6.78

65+75

65+50

6°43.35'

45.8  
C 17.9  
426.5  
444.4

C 14.8  
~~427.6 = Grade~~  
444.36 = Stake  
4.70

430.50

C 16.9  
51.7  
450.25  
816  
60

65+25

6°07.54'

45.2  
C 19.4  
425.0  
444.4

~~444.76 = Stake~~  
4.70

449.42  
899  
60

65+00

5°31.72'

44.6 out.  
C 20.1  
424.0  
444.1

C 19.3 1/2:1  
425.1  
444.43  
4.63

427.6

C 17.9  
51.2  
449.24  
917  
60

10 ~~449.06~~

458.41

Montgomery Rd.  
Slope stakes for Burrows

32

68+50

C 8.2  
56.0  
456.57  
184  
60

68+00

C 11.1  
54.6  
455.69  
277  
60

67+50

37.7 out.  
C 4.3  
439.3  
443.6

455.19  
322  
60

67+28.5

67+00

37.7 out.  
C 6.8  
437.0  
443.8

C 6.4 1/2 : 1  
443.0 - stake  
437.2 - grade

C 12.4  
53.9  
454.08  
433  
60

66+75

458.41

MONTEZUMA RD.

Sub Cor  
Fd. Pipe

Fd. Pipe

33  
A

55+15

Fd. Pipe & Old Plg.

307.21

65+89.11 = E.C. Set Nail

40' 60'

Turned  
 $\Delta = 15^{\circ} 18' 45''$

New Pt of Way  
to 1770

161.32

R-1200.0

161.32

1/2" Fd. Pipe RE 2719

Approx 11" And  
4" E

62+68.41 = B.C. Set Nail

114° 05' 30"

B.C. 62+68.41

RP 39.06  
RP 41.43

40'

RE 2718  
2" Pipe

60'

55+35.04 = E.C.

Fd. Iron Pin  
P-18

Used Data P-18 to Establish Tangent  
from 55+35.04 to 62+68.41

40'

55+35.04  
P-18

RP 39.06  
RP 41.43

E.C.

Martezuma Rd.

NE. Ret 55th & Martezuma P-12				0.05
chk Christed Cross incb	589	452.57		452.52
TP #35	12.35	458.41	3.00	446.06
TP #34	4.40	449.06	1.82	444.66
TP #33	13.00	446.98	0.45	433.48
TP #32	12.23	433.93	0.43	421.70
TP #31	12.55	422.13	0.32	409.58
TP #30	12.55	409.90	0.23	397.35
chk TP #10	5.82	397.58	5.82	391.76
				391.68
TP #29	12.39	397.50	0.39	385.11
TP #27	12.81	385.50	0.33	372.69
TP #26	12.62	373.02	0.46	360.40
TP #25	11.59	360.86	0.62	349.27
TP #24	11.78	349.89	0.40	338.11
TP #23	0.39	338.51	13.00	338.12
TP #22	1.60	351.12	13.01	349.52
TP #21	1.28	362.53	13.14	361.25
TP #20	0.70	374.39	5.90	373.69
TP #19	-0.08	372.59	13.24	379.64
chk 1/2 Nail 57+50 P-8	10.7	382.2		
	1.12	392.88		391.76

on Iron Pin 40'ht 50+46.35<sup>8c.</sup>

on Rock TP #10 P-9

CHOLLAS SANITARY FILL

Cross Sections by Stadia.

Walker  
Pope  
Huffman 10-10-51

Baseline

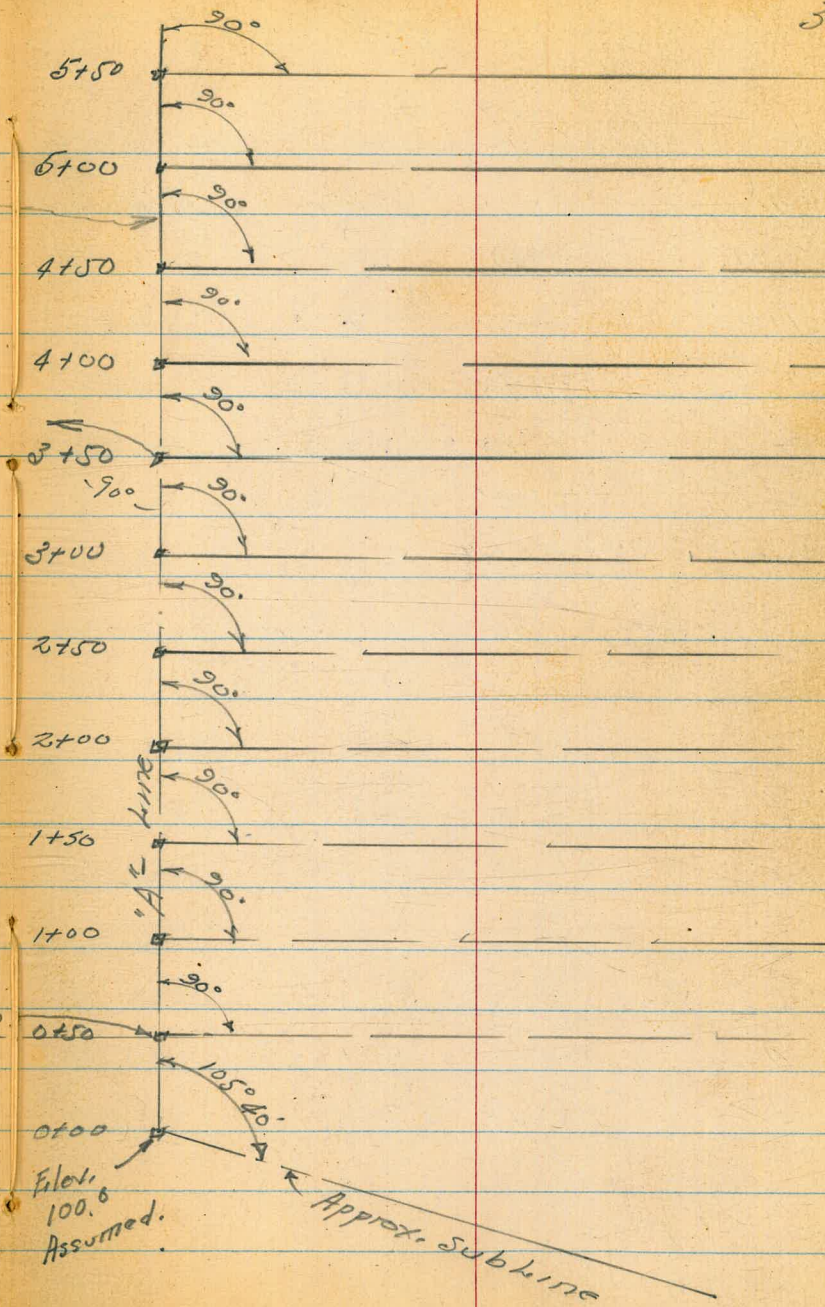
110 20006

INDEXED  
LOW

NOV 7 1951

Spike 2130  
RP. 145.00  
P-44

5150				
T.P. 5.23	138.00	2.88	132.77	
5100				
T.P. 5.30	135.65	2.69	130.35	
4150				
T.P. 5.30	133.04	2.73	127.74	
4100				
T.P. 5.20	130.47	1.74	125.27	
3150				
T.P. 5.16	127.01	1.77	121.85	
3100				
T.P. 5.33	123.62	2.51	118.29	
2150				
T.P. 5.12	120.84	1.76	115.68	
2100				
T.P. 5.31	117.44	2.66	112.13	145.00
1150				
T.P. 5.20	114.79	1.82	109.59	
5.08				
T.P. 1100	111.41	0.97	106.36	
0150		5.2	102.1	
7.33	107.33		100.0	



Chollus - Sanitary Fill Sections

$$H = KS \cos^2 \alpha$$

$$V = \frac{1}{2} KS \sin 2\alpha$$

HI 54

Reading from 0100 Elev. 100.0

Stadia	VA	Diff.	Elev.	Horiz.
97'	-5°39'	-9.5	90.5	96.06
110'	-6°55'	-13.20	86.8	108.46
173'	-4°30'	-13.50	86.5	171.94
206'	-2°40'	-9.5	90.5	205.56
266'	-2°08'	-9.86	90.1	265.63
390'	-2°14'	-15.20	84.8	389.43

Reading from 0150 Elev = 102.1 HI = 5.3

6'	0°		101.8	6'
53'	-3°22'	-3.11	99.0	52.82
75'	-5°28'	-9.1°	93.0	94.14
100'	-7°23'	-12.80	89.3	98.34
156'	-4°40'	-12.60	89.5	154.97
215'	-2°57'	-11.1	91.0	214.51
257'	-0°29'	-2.17	99.9	257.00
354'	+0°50'	+5.17	107.3	354.00

Reading from 1400  
Elev = 106.36 HI = 5.1

Stadia	VA	diff	Elev	Horiz
347	+1°19'	+7.86'	114.3	347
275'	+0°21'	+1.68	108.1	275'
204'	-2°36'	-9.3	97.1	203.58
185'	-4°10'	-13.4	93.0	184.02
100'	-8°49'	-15.2	91.2	97.64
94'	-6°55'	-11.2	95.2	92.64
55'	-5°34'	-5.3	101.1	54.48

Reading from 1450 Elev 109.6 HI = 5.2

56'	-7°08'	-6.9	99.5	55.14
90'	-8°04'	-12.5	97.1	88.22
97'	-9°29'	-15.8	93.8	94.36
147'	-6°20'	-16.1	93.5	145.21
173'	-3°46'	-11.3	98.3	172.25
195'	-2°24'	-8.2	101.4	194.66
260	+0°31'	+2.3	111.9	260
343'	+2°04'	+12.4	122.0	342.55

Reading from 2400 Elev 112.1 HI = 5.3

336	+3°04'	+18.0	130.1	335.2
250	+1°09'	+5.0	117.1	250



Reading from 2+00 Cont.

Elev. 112.1 HI = 53

37

Stadia	VA	Diff	Elev.	Horiz.
187	-1°57'	-6.3	105.8	186.8
150	-5°50'	-15.2	96.9	148.5
92'	-9°48'	-15.4	96.7	89.3
83	-8°16'	-11.8	100.3	81.3
61	-6°43'	-5.9	106.2	50.3

Reading from 2+50 Elev. 115.7 HI = 51

36	0° 50' 10"		110.7	36'
74'	-9°53'	-12.3	99.8	71.8
87	-15°55'	-16.4	95.7	83.9
143'	-6°09'	-15.2	96.9	141.4
186	-1°59'	-6.2	105.9	179.8
276	+2°41'	+12.6	124.7	269.4
331	+4°0'	+23.0	135.1	329.4

Reading from 3+00 Elev. 118.3 HI = 53

328'	+5°02'	+28.8	140.9	325.5
260	+3°17'	+14.8	126.9	259.1
175'	-2°03'	-6.3	105.8	175
140'	-5°32'	-13.4	98.7	138.7
88	-10°13'	-15.4	96.7	85.2

# Chollas Sanitary Fill

Reading Cont. from 3+00 Elev. 118.3 HI = 53

Stadia	V. A	Diff	Elev	Horiz
54'	-8°33'	-7.9	110.4	52.8

Reading from 3+50 Elev. 121.9 HI = 52

55'	-8°39'	-8.1	110.2	53.8
83'	-10°35'	-15.0	103.3	80.2
153'	-5°09'	-13.0	104.6	151.8
169'	-2°15'	+11.6	106.7	168.7
256'	+3°56'	+18.4	136.7	254.9
324'	+5°32'	+31.1	149.4	321.0

INDEXED  
NOV 7 1951

Reading from 4+00 Elev. 125.3 HI = 52

318'	+5°39'	+31.2	156.5	314.9
247'	+4°31'	+19.4	144.7	245.5
160'	-2°33'	-7.1	118.2	159.7
147'	-6°04'	-15.4	109.9	145.4
76'	-11°20'	-14.6	110.7	73.1
53'	-9°29'	-8.6	116.7	51.6

Reading from 4+50 Elev. 127.7 HI = 53

47'	-10°28'	-8.4	119.3	45.5
74'	-11°25'	-14.4	113.3	71.1
137'	-6°15'	-14.8	112.9	135.4

## Chollas Sanitary Well

Cont. Reading from 4+50 Elev. 127.7 HI = 53

Stadia	VA	Diff	Elev	Horiz.
157	-2°29'	-6.8	120.9	156.7
246'	+4°43'	+20.2	147.9	244.3
317'	+5°42'	+31.3	159.0	313.9

Reading from 5+00 Elev. 130.4 HI = 53

315'	+5°36'	+30.5	160.9	312
243'	+4°47'	+20.2	150.6	241.3
127'	-6°34'	-14.4	116.0	125.3
87'	-11°	-16.3	114.1	84

Reading from 5+50 Elev. 132.8 HI = 52

107	-9°56'	-9.0 on 10.2	118.8	106.4
170	-0°07'	-.3	132.5	170
220'	+3°25'	+13.1	145.9	219.2
307'	+5°13'	+27.8	180.6	304.4

Check on 0+00

550	-3°25'	-32.7	100.1	
			100.0	
			0.1	

Chollas - Secretary Hill

MONTEZUMA ROAD

~ BORROW PIT ~

Final Cross Sections

Walker  
Pope  
Huffman

NO 22031

10-26-51

Direct Elev. Reduced

64+00

4439  
65

4434  
55

418.5  
44✓

420.1  
16

4217

4231  
22

436.4  
72

4358  
56

4449  
60

4225 424.1 427.5 4292 4484  
224 325 53 60

63+75

NO change at of. S.

4434  
65

4434  
55

416.9  
43

4188  
16

4202

4215  
21

4439  
33

4430  
60

63+00

4440  
65

4440  
59

4140  
42

4140  
27

4158

63+00

4448  
70

444.6  
60

413.6  
45

4129  
22

4087  
19

4078  
0

61+73

439.9  
60

4350  
54

413.6  
44

413.6  
23

4076  
17

4084

61+60

4350  
55

4330  
49

4130  
44

4125  
24

4063  
19

4073

61+50

NO change from orig. per page 9

4067

409.8

62+00

ENT. 2. Horiz P. 10

Lt

L

RT

41

INDEXED

law

OCT 29 1951

64+15

Montezuma Road  
 Fossil Cross Sections  
 Borron P.T.

Lt.

Q

Rt. 42

67+00 = 0

67+50

444.2 441.0 441.6 442.3 443.8 455.2  
~~38~~ 53 18 ~~57.5~~ 54.5 ok 60  
 39.8

67+00

443.9 443.8 437.0 439.3 441.6 454.1  
 50 ~~49~~ 38 54 60  
 44.4

66+00

444.5 444.4 429.8 432.1 433.6 436.2 451.6  
 63 53 ~~47.5~~ 20 53 60  
 47.5

65+50

444.3 442.7 426.8 428.9 430.8 432.4 433.4 451.7  
 61.5 50.5 40 17 38 52 59

65+00

444.1 444.1 429.0 427.6 429.2 430.6 449.7  
 60 56 ~~47~~ 22 52 60  
 49

64+50

444.2 444.2 421.2 423.0 424.6 425.6 428.8 446.7  
 60 54 ~~47~~ 16.5 15 51 60  
 40.0 52.0

64+25

443.7 443.6 420.0 421.4 423.1 424.2 425.4 427.8 445.8  
 65 54 ~~48~~ 16.3 16 29 51 60  
 44 52.0

Lt.

L

Rt.

43

68+70

449.6

450.8  
66

68+67

449.5

450.0  
56

455.6  
60

68+50

448.5

448.7  
56 ✓

456.6  
60

68+00

445.4

445.7  
55 ✓

455.6  
60

Chollas - Sanitary Fill

All Azimuths are 270° from line A-Line

Reading from 0+50 "A" Line Elev 102.1

Station	Stadia	V.A.	Horiz	Diff.	Elev.
0+50 "B"	146	+5°58'		+15.1	117.2
	24'	0° 07' 1.0			

Reading 0+50 "A" Line Elev. 100.0 HI=5.0

43'	+7°
162'	+6°10'

Reading from 1+00 "A" Line Elev. 106.4 HI=4.8

167	+8°15'
	on 11.8
60	+6°22'

Reading from 1+50 "A" Line Elev. 109.6 HI=5.0

27'	0°07' 2.2
92'	+6°26'
153	6°37'

Reading from 2+00 "A" Line Elev. 112.1 HI=5.1

150	+6°44'
63'	+7°01'

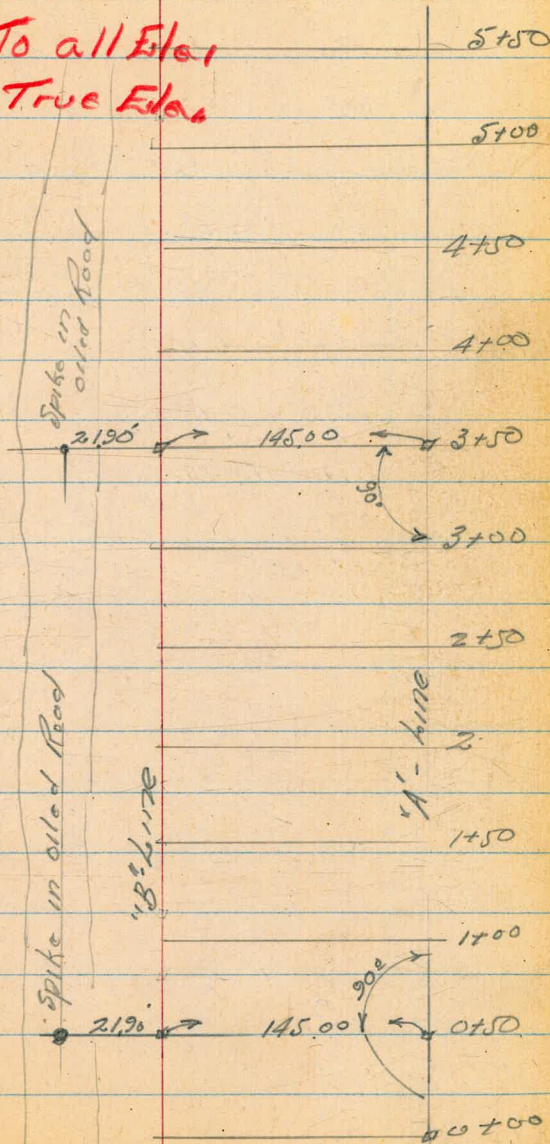
Cont. p-45

Walker  
Pope  
Huffman  
11-20-51  
from East.

Add 234.1 To all Elev.  
To obtain True Elev.



INDEXED  
saw  
JUN 9 1952





Chalco - Sanitary Fill

Reading from 2450 Elev. 1157

"A" Line  
HI 5.2

Ag circ. 270° from East on "A" line

Unless noted otherwise

Station	Stadia	V.A.	Horiz	Diff.	Elev
---------	--------	------	-------	-------	------

48' +7°08'

150 7°33'

Reading from 3400 "A" line Elev 1183 HI 5.4

146' 8°38'

Reading from 5400 "A" line Elev = 1304 HI = 5.3

A3

3450 "B" 209' +4°14' +15.4 145.8

224°07'

+12°49'

143' 07.3

270°

98' 12°33'

270°

CHOLLAS SANITARY FILL

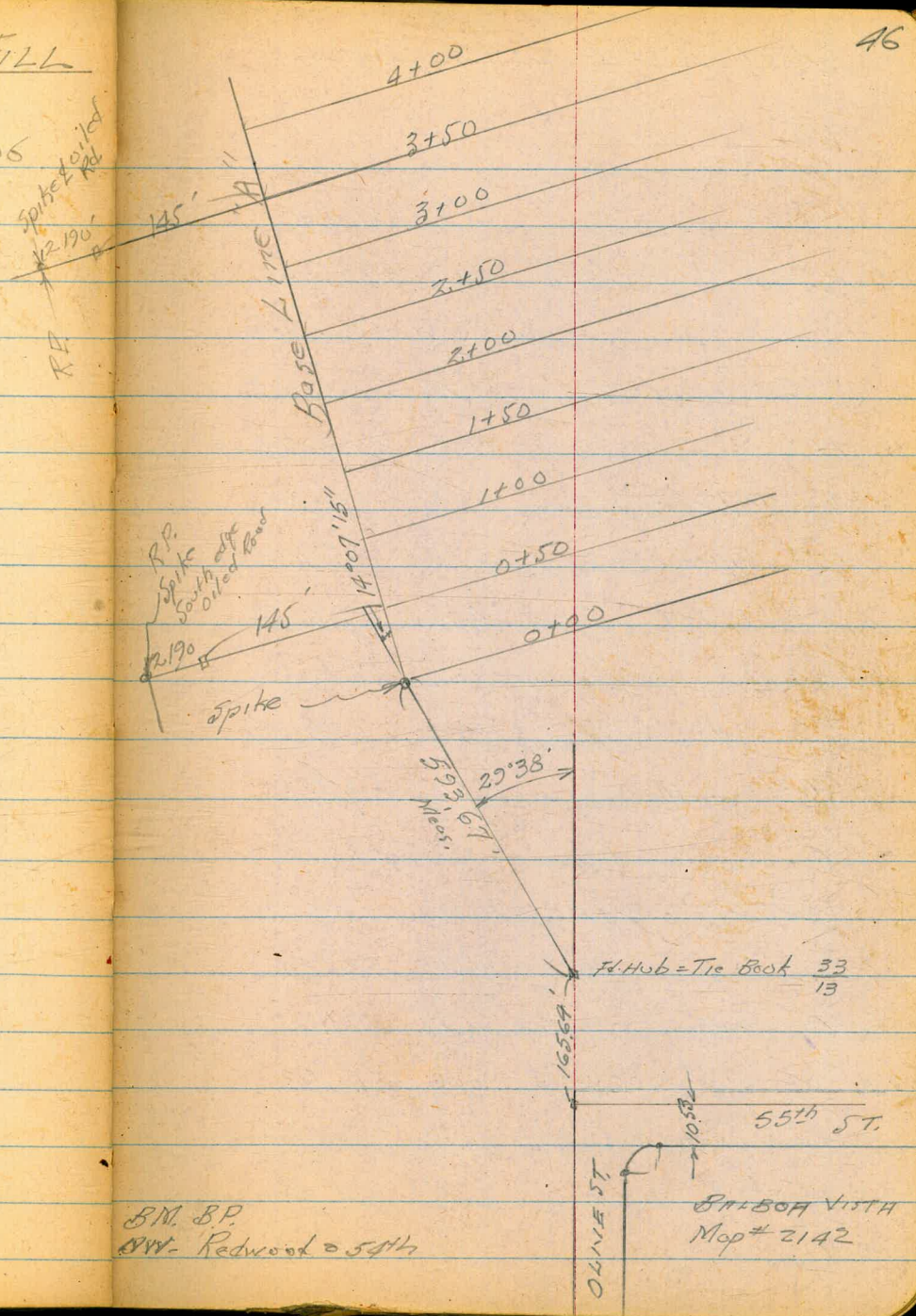
Walker  
Pope  
Hoffman  
6-5-82

140.20006

spiked  
12.190  
RR

4+50 Spike	8.69	362.54	
4+00 Spike	10.54	360.69	
TR #7 10.44	371.23	0.00	360.79
3+50 Spike	11.4	359.65	
3+00 Spike	8.18	352.61	
2+50 Spike	10.60	350.19	
TR #6 12.23	360.79	0.00	347.86
2+00 Spike	0.99	346.87	
1+50 Spike	4.68	343.18	
1+00 Spike	6.65	341.21	
0+50 Spike	2.85	338.01	
TR #5 12.63	347.86	0.00	335.23
0+00 on spike	1.07	334.16	
TR #4 11.95	335.23	0.00	323.28
TR #3 12.45	323.28	0.00	310.83
TR #2 12.46	310.83	0.00	298.37
TR #1 12.52	298.37	0.11	285.25
	2.61	285.96	283.35

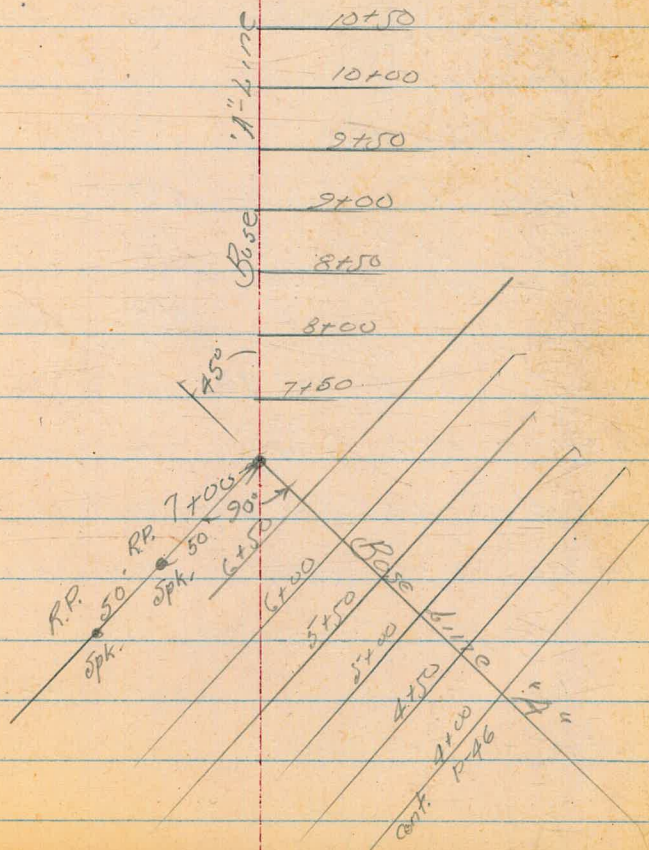
BM BP  
NW - Redwood 0.54H



Chattanooga Sanitary Hill

11+50		3.92	416.31
#1			
TR 11.98	420.23	0.00	408.25
11+00		2.05	406.20
10+50 Spike		8.92	397.33
10+00		12.62	395.63
TR 410	12.72 408.25	0.00	395.46
9+50 Spike		3.69	391.77
9+00		6.32	389.14
8+50		2.31	386.15
TR #9	12.42 395.46	0.00	383.04
8+00 Spike		7.76	375.28
7+50		9.32	373.72
(7+00) 50 lb. spike	RP 491		378.13
7+00		10.00	383.04
6+50 Spike		11.23	371.11
TR #8	11.81 383.04	0.00	371.23
6+00 Spike		1.99	369.24
5+50		6.87	364.36
5+00		7.72	363.51

371.23



Challenger Sanitary Fill

				002
Chk. Starting B.M.			440	283.35
TP # 25	6.17	287.73	10.50	282.33
TP # 24	5.40	292.04	12.99	286.64
TP # 23	0.88	299.63	13.22	298.75
TP # 22	0.61	311.27	12.90	311.36
TP # 21	0.34	324.32	13.00	323.98
TP # 20	0.43	336.98	12.68	336.55
TP # 19	0.68	349.23	12.35	348.55
166.9' Lt. 0750				
on Spike in oiled Road			663	354.27
on R.R. 145' Lt. 0750			927	351.63
TP # 18	2.16	360.90	12.64	358.74
TP # 17	0.74	371.38	13.12	370.64
145' Lt. 3+50 = 5' 1/100			3.65	380.11
on R.R. Spike 166.96' Lt. 13+50 P-45				
TP # 16	0.29	383.76	11.54	383.47
TP # 15	0.54	395.81	12.90	394.47
TP # 14	0.73	407.37	13.81	406.64
TP # 13	2.33	418.25	11.96	416.62
Nail in 3" Log 50' Lt. 13+00			0.85	427.73
12+00			7.95	420.63
TP # 12	8.66	428.58	0.31	419.92
		420.23		

= 145.8 Assumed Elev. P-45

## Chollas - Sanitary Fill

49

Azimuths clockwise from Forward  
Tangent, Base Line "A"

Station Pz.	Stadia	Vert. Δ	Horiz.	Diff. Elev.	True Elev.
-------------	--------	---------	--------	-------------	------------

READING FROM 3+50 Elev. = 2526.5 HI = 5.1

142° 10' 535' -3° 56'

138° 04' 415' -3° 30'

139° 07' 415' -4° 56'

130° 14' 469' -2° 14'

137° 05' 363' -4° 10'

131° 55' 265' -5° 0'

121° 27' 335' -8° 55'

115° 12' 365' +0° 45'

115° 50' 213' -3° 55'

105° 08' 250' +2° 40'

107° 04' 297' +1° 25'

96° 40' 185' -2° 44'

90° 35' 333' +5° 0'

20° 15' 193' -0° 55'

60° 50' 270' +5° 11'

64° 29' 226' +0° 36'

68° 02' 433' +6° 51'

# Chollas Sanitary Hill

Station A2. Stadia Vert. A Horiz. Diff.

True  
Elev.

Cont. from P. 49

Reading from 3150 Elev. 3526' HI = 5.1

44° 38' 348 +1° 36'

61° 15' 455' +6° 15'

40° 57' 410' +3° 20'

46° 41' 415' +4° 35'

49° 34' 337' +4° 43'

45° 27' 536' +4° 0'

55° 53' 550' +5° 35'

39° 58' 530' +3° 28'

46° 37' 630' +4° 47'

46° 0' 630' +4° 25'  
on 10.1

54° 0' 654' +5° 23'  
on 10.1

45° 34' 684' +4° 20'

44° 55' 725' +4° 06'

36° 0' 724' +4° 13'

27° 06' 810' +4° 20'

34° 56' 675' +4° 19'

22° 0' 730' +4° 35'

## Cholles - Sanitary Fill

51

Station	Az.	Stadia	Vert. D	Horiz.	Diff.	True Elev.
---------	-----	--------	---------	--------	-------	---------------

Cont. from P-50

Reading from 3+10 Elev 359.65 H.I. = 51

34° 0' 650' +3° 40'

26° 54' 815' +4° 20'

24° 35' 697' +3° 35'

12° 18' 753' +4° 50'

20° 25' 595' +3° 24'

11° 26' 630' +3° 51'

13° 10' 470' +3° 14'

6° 20' 635' +3° 42'

27° 20' 405' +3° 05'

26° 12' 383' +2° 05'

0° 430' +2° 21'

9° 15' 420' +2° 04'

354° 15' 440' on 11.0  
+3° 04'

0° 350' +2° 12'

357° 55' 350' +2° 40'

25° 0' 215' +1° 04'

344° 24' 350' on 11.0  
+4° 50'

## Chollas - Sanitary Hill

52

Station	Az.	Stadia	Vert. & Horiz	Diff.	True Elev.
Cont. from P-51					
Reading from 3+50, Elev. = 359.65 H.I. = 5.1					
	330° 0'	273'	+8° 0'		
	82° 45'	107'	-0° 34'		
	344° 27'	223'	+4° 37'		
	99° 30'	115'	-5° 0'		
	350° 15'	215'	+4° 55'		
	147° 33'	215'	-6° 06'		
	268° 10'	47'	+2° 20'		
	156°	347'	-4° 49'		
	156° 35'	355'	-5° 34'		
	160° 15'	440'	-4° 57'		
	169° 25'	433'	-4° 51'		
	173° 03'	415'	-4° 51'		
	169° 15'	335'	-5° 46'		
	171° 05'	325'	-4° 55'		
	173° 28'	280'	-5° 23'		
	172° 05'	195'	-5° 40'		
	343° 50'	225'	+5° 20'		



## Cholles ~ Sanitary Fill

53

Station	Azimuth	Stadia	VA	Horiz	Diff.	True Elev.
Cont. from P-52						
Reading from 3+00 Elev. 359.65 H.I. = 5.1						
	308°40'	325'	+9°54'			
			on 12.0			
	306°21'	188'	+10°20'			
	282°0'	305'	+9°37'			
			on 8.0			
	286°28'	162'	+9°53'			
	262°10'	295'	+8°25'			
			on 11.0			
	258°0'	160'	+7°05'			
	246°09'	318'	+5°43'			
			on 13.1			
	229°40'	207'	+2°28'			
	231°43'	360'	+2°35'			
			on 16.1			
	216°40'	265'	+0°12'			
	207°33'	360'	-1°06'			
	181°54'	348'	-4°10'			
	264°48'	255'	+8°13'			
	256°35'	267'	+7°35'			
	240°03'	277'	+4°02'			
			on 7.1			

Roberts  
Cota  
Moore  
Morales  
9-14-53  
W.O.# 32320

X-Section '17" Street  
Commercial to Imperial

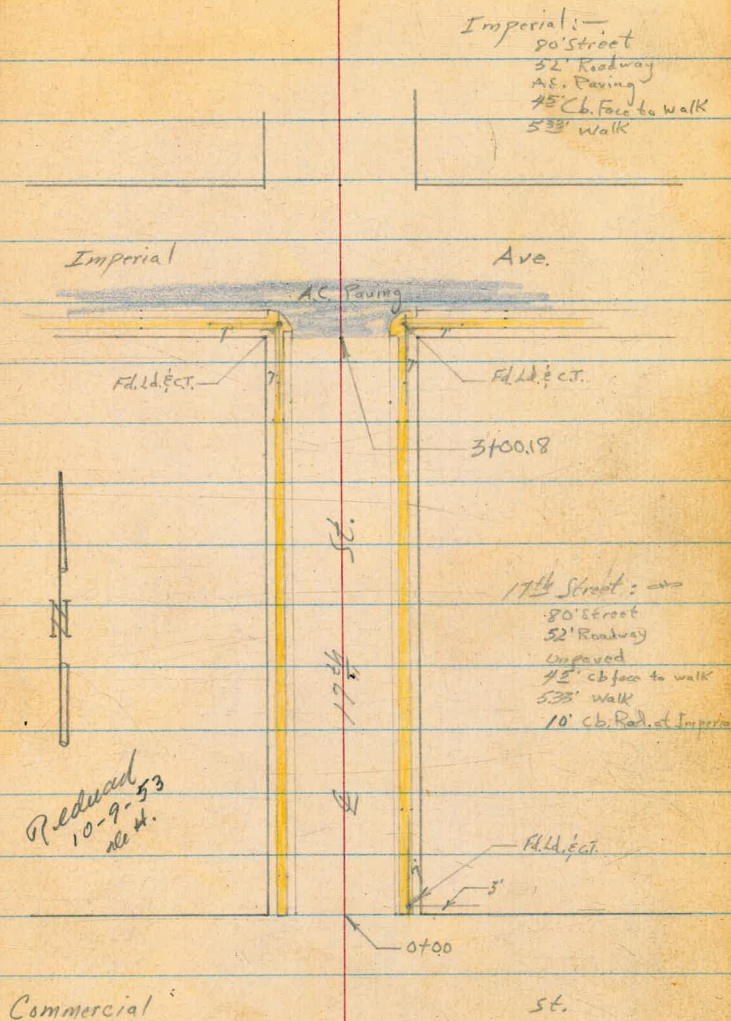
54

INDEXED

SEP 15 1953

NOTE: 

Make Field check to determine  
amount of Curbing and walk to be  
replaced.



0+81 ON Right 9' Drive Opening

24.93  
2.51  
26  
21P

0+50

21.53 20.6 21.2 21.6 21.8 21.7 22.66  
5.91 6.8 6.2 5.8 5.6 5.7 4.78  
26 26 13 13 26 26 26  
cb cb cb

0+20

18.79 16.2 18.6 19.1 19.2 19.1 20.10  
8.65 9.2 8.8 8.3 8.2 8.3 7.34  
26 26 13 13 26 26 26  
cb cb cb

0+00

(walk on left needs dirt removed for 50')

North Line Commercial St.

14.7 17.16 17.09 17.05 17.1 17.8 18.2 18.44 18.42 18.56  
8.7 10.28 10.55 10.39 10.3 9.6 9.2 9.06 9.02 8.88  
40 35.83 30.5 26 26 26 26 30.5 35.83  
walk covered with dirt walk

0-17

14.8 15.8 17.0 17.9 18.8  
12.6 11.6 10.4 9.5 8.6  
90 50 50 50 100

0-29.8

Northerly Rail

15.44 16.57 17.66 18.82 19.91  
12.00 10.87 9.78 8.64 7.53  
100 50 50 50 100  
← Rail →

T.P.

3.75 27.44 13.07 23.69

27.44

BN

0.76 36.76

NEBP  
36.00 17th & Imperial

Cont'd From Page 55

Lt

Rt

Rt 56

1453E On Left 9' Drive Opening

27.71  
7.29  
26  
LIP

1449

26.17 27.6 26.1  
6.83 7.4 6.9 6.4 26.6 26.5 26.3 26.89  
26 26 13 13 13 26 26  
cb cb

1425

27.17 26.8 27.1  
7.83 8.2 7.9 7.6 27.4 27.6 27.3 27.90  
26 26 13 13 13 26 26  
cb cb

1412 On Right 9' Drive Opening

26.82  
8.18  
26  
LIP

1400 Vertical Angle in curb on Left.

26.23 25.6 25.5  
8.77 9.4 9.5 9.2 25.8 26.0 25.9 26.97  
26 26 13 13 13 26 26  
cb cb

0+95 Vertical Angle in curb on Right.

25.86 25.3 25.2  
9.14 9.7 9.8 9.6 25.4 25.7 25.6 26.75  
26 26 13 13 26 26  
cb cb

T.P. 905 35.00 X 149 25.95

35.00 X

27.44 X

T.P. 496 38.23  $\nabla$  173 33.27

2+50

2+41 to 2+59 walk bad on left

(2+15 to 2+29) Curb bad on left  $\rightarrow$  cause palm tree

2+00

Walk in bad condition on left  $\rightarrow$  Field Check!

1+88 to 1+97 Curb bad on left

1+91 to 2+00 Curb bad on right

1+76 to 1+84 Curb &amp; walk bad on right

1+57 to 1+64 Curb bad on right.

35.00  $\nabla$ 

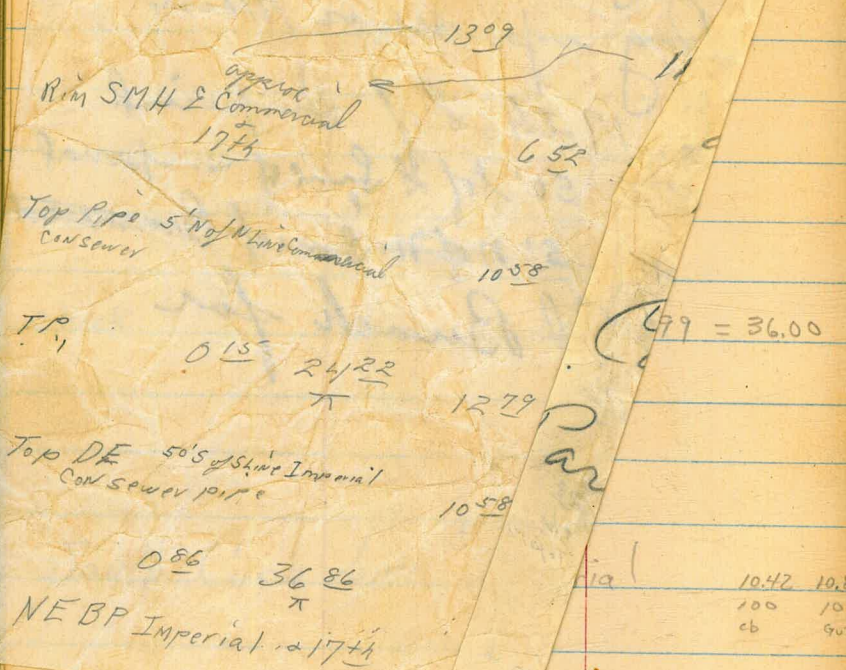
31.41	30.9	31.5	32.2	32.4	32.2	32.90
3.59	4.1	3.5	2.8	2.6	2.8	2.10
26	26	13	13	13	26	26
8						cb

29.57	29.1	29.9	30.4	30.8	30.5	30.96
5.43	5.9	5.1	4.6	4.2	4.5	4.04
26	26	13	13	13	26	26
cb						cb

35.00  $\nabla$

NWBP Commercial & 17th

2310



Additional notes on 6" sewer in 17th between Imperial & Commercial by D. Smith 10-23-53

11.13  
1.e.

M.H. approx. E 17th + Commercial - rim M.H. - 1770

5' N/N/L Commercial top 6" sewer pipe - 1364

DE 6" sewer - 50' s/s/l Imperial 26.28  
0.86 36.86 TOP OF PIPE E.I.

E.M.N.EBP 17th & Imperial 3600

Midpoint of Return

3+00.18 South Line Imperial Ave.

	32.91	32.42	32.92	32.58	32.95	34.17	34.52	34.54	34.90	34.61	34.91
	5.32	5.81	5.31	5.15	5.28	4.06	3.71	3.67	3.38	3.62	3.32
	40	40	36	36	26	26	36	36	36	40	40
	cb	cut	cb	cut			cut	cb	cut	cb	
	33.04	32.68				34.28	34.89				
	5.19	5.55				3.85	3.34				
	cb	cut				cut	cb				
	32.89	32.58	33.37	33.95	34.17	34.18	34.90				
	5.34	5.65	4.86	4.28	4.06	4.05	3.33				
	26	26	13	13	13	26	26				
	cb	cut				cut	cb				

38.23

38.23

77. 10

Additional notes on 6" sewer in 17<sup>th</sup> between Imperial & Commercial by D. Smith 10-23-53

11.13  
i.e.

M.H. approx. E 17<sup>th</sup> + Commercial - rim M.H. - 17.0

5' N/W/2 Commercial top 6" sewer pipe <sup>conc.</sup> - 13.64

DE. 6" sewer - 50' S/S/2 Imperial 26.28  
0.86 36.86 TOP OF PIPE EI.

B.M. N.E.B.P. 17<sup>th</sup> Imperial 36.00

check

2.24 35.99 = 36.00

36.64  
1.59 12.0  
100 100  
Gut cb

South Curb Line Imperial

10.42 10.82  
cb Gut

32.91	32.42	32.92	32.58	32.95	34.17	34.52	34.54	34.90	34.61	34.91
5.32	5.81	5.35	5.15	5.28	4.06	3.71	3.69	3.33	3.62	3.32
cb	Gut	cb	Gut	cb	cb	Gut	cb	Gut	cb	cb

Midpoint of Return

33.04	32.68	34.28	34.89
5.19	5.55	3.85	3.34
cb	Gut	Gut	cb

3+00.18 South Line Imperial Ave.

32.89	32.58	33.37	33.95	34.17	34.18	34.90
5.34	5.65	4.06	4.28	4.06	4.05	3.33
cb	Gut	cb	cb	cb	Gut	cb

38237

38237

R

Top  
CONS

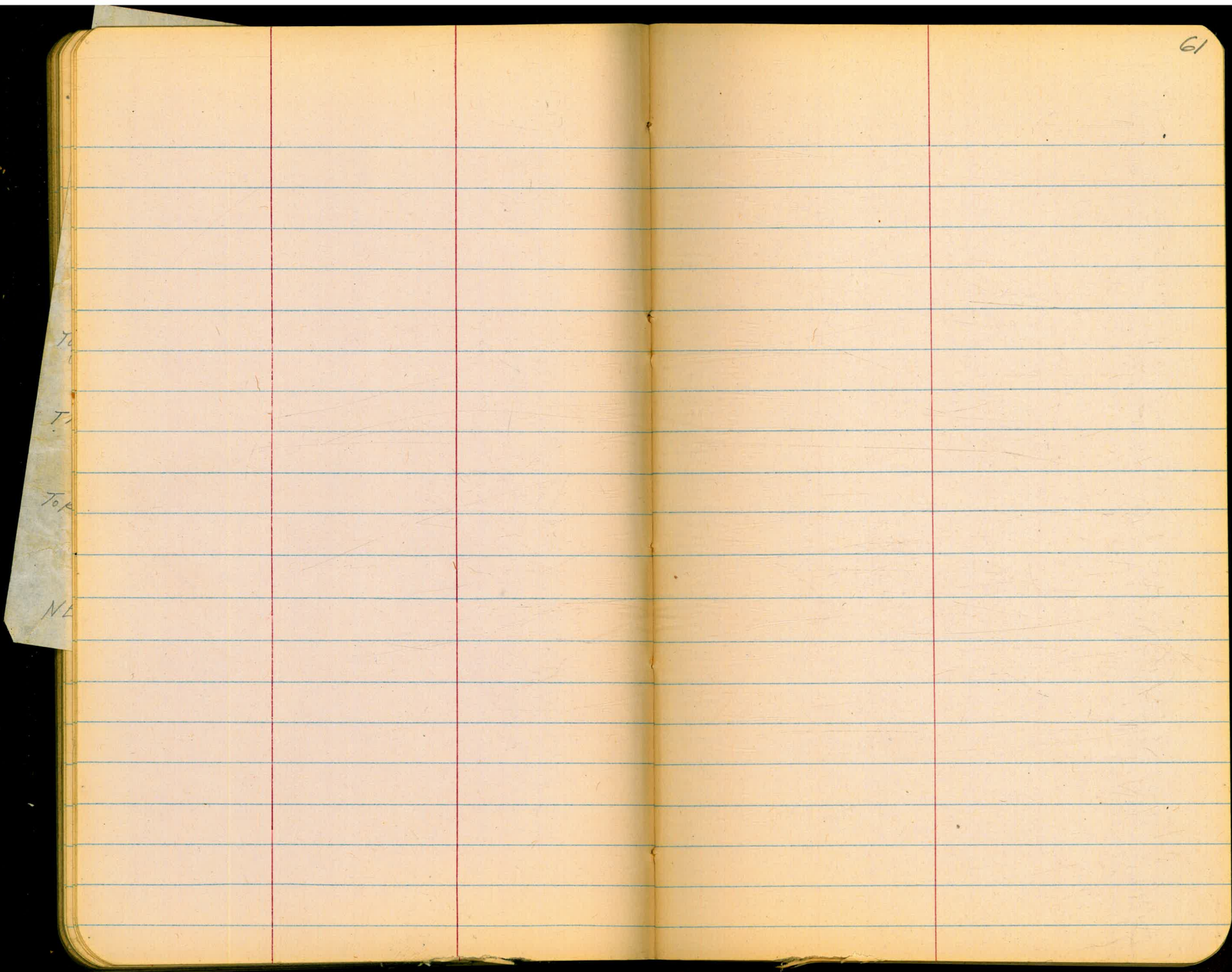
TP

Top DE  
CONS

NEBP



Top  
T  
Top  
NE

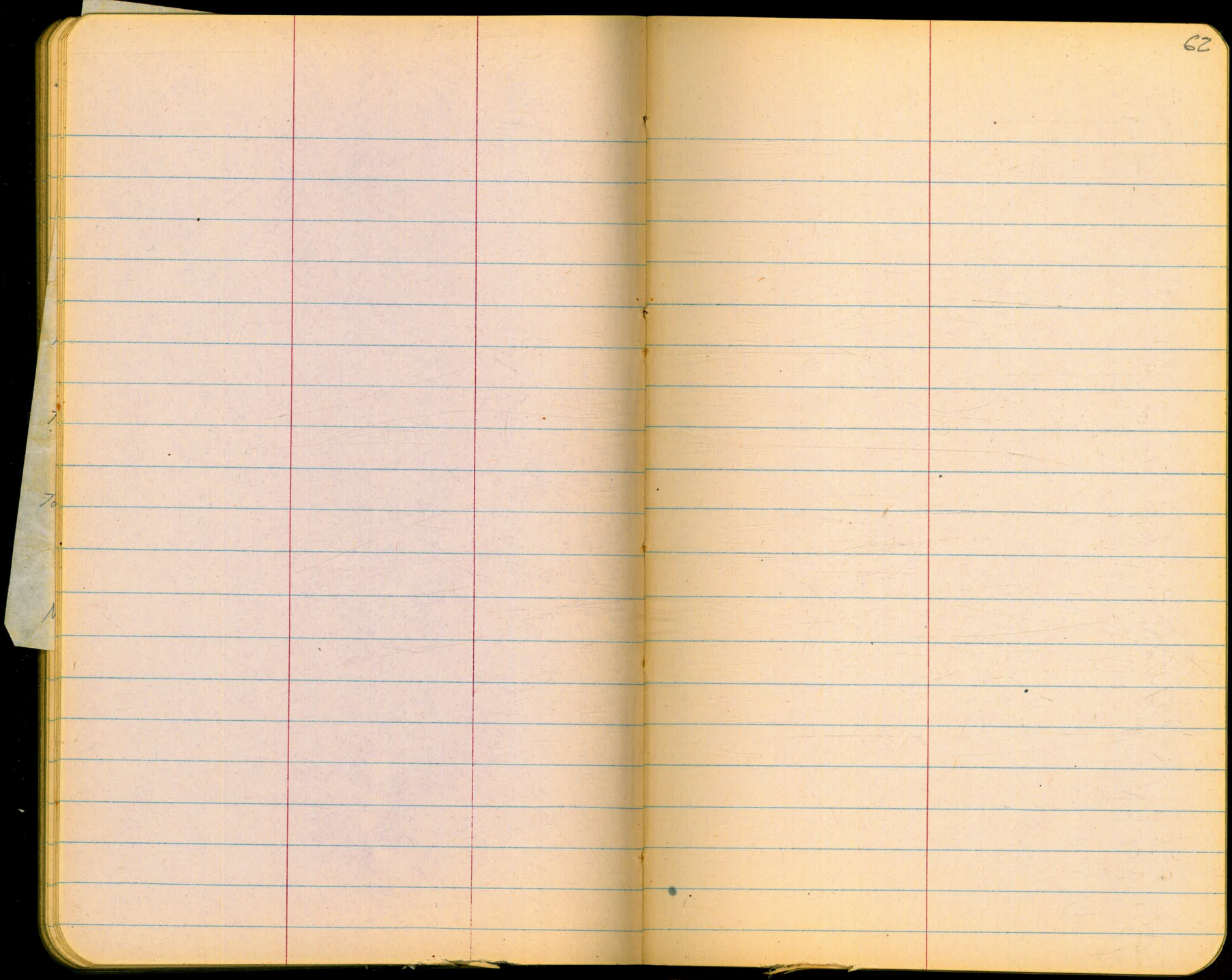


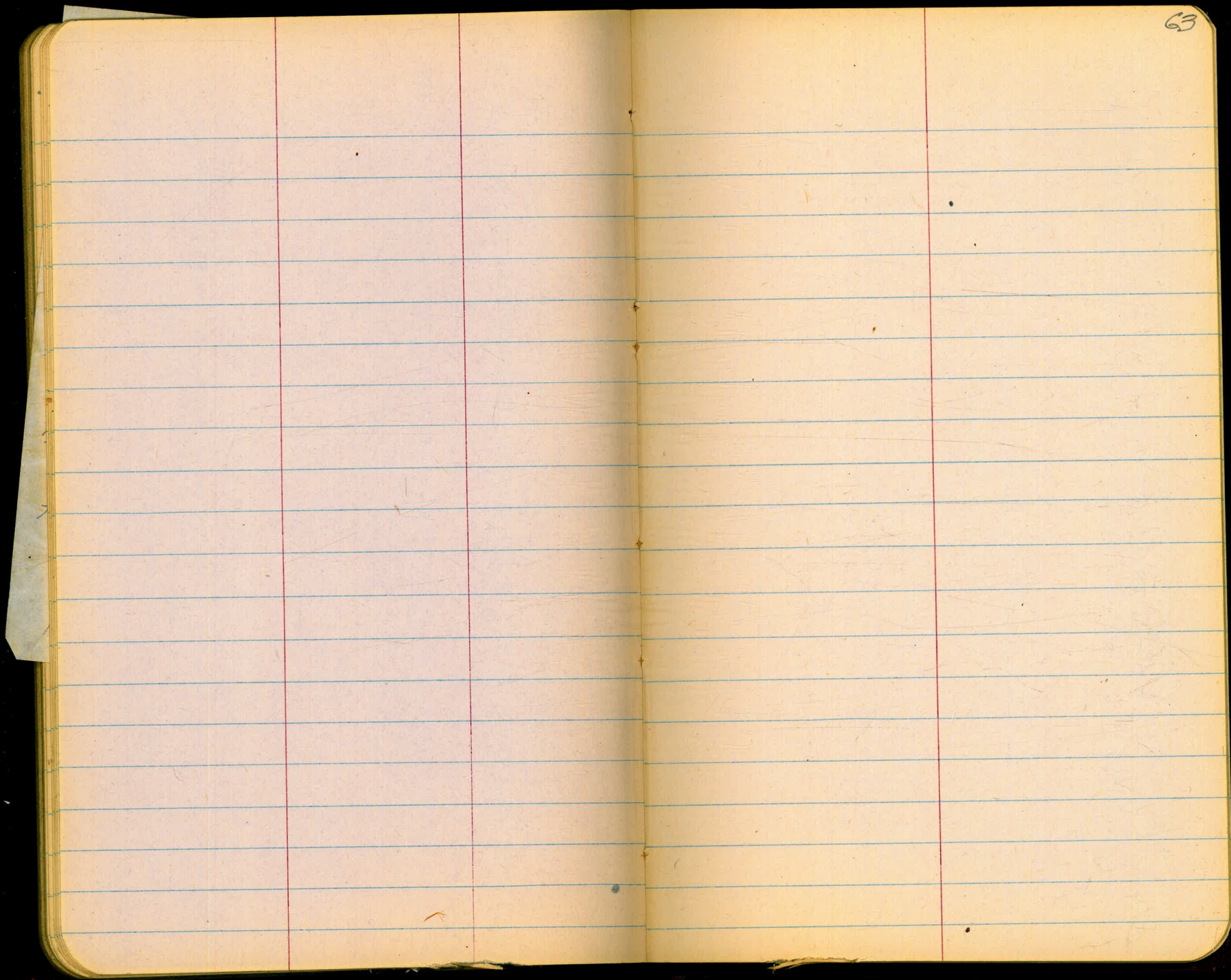
To

To

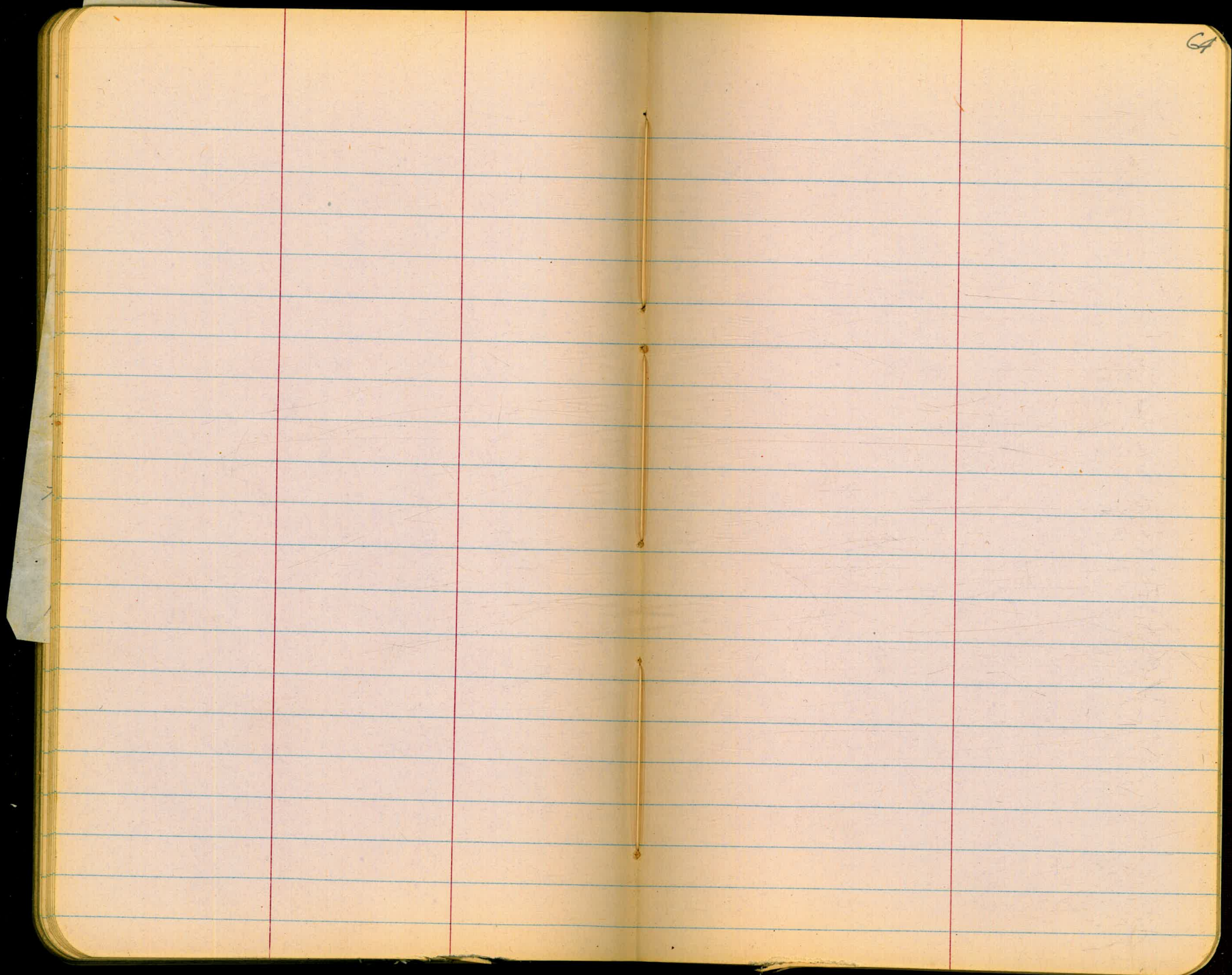
To

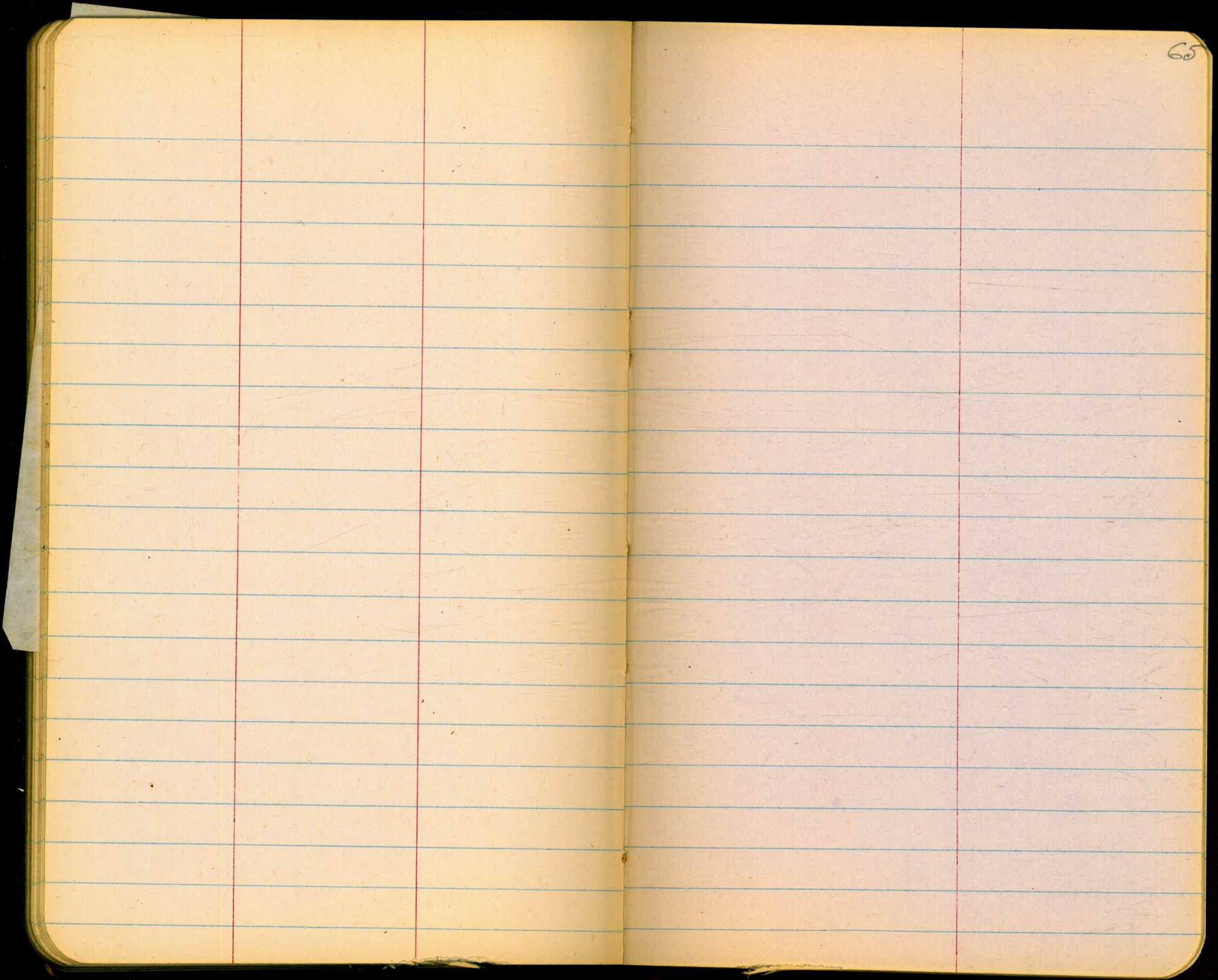
NA

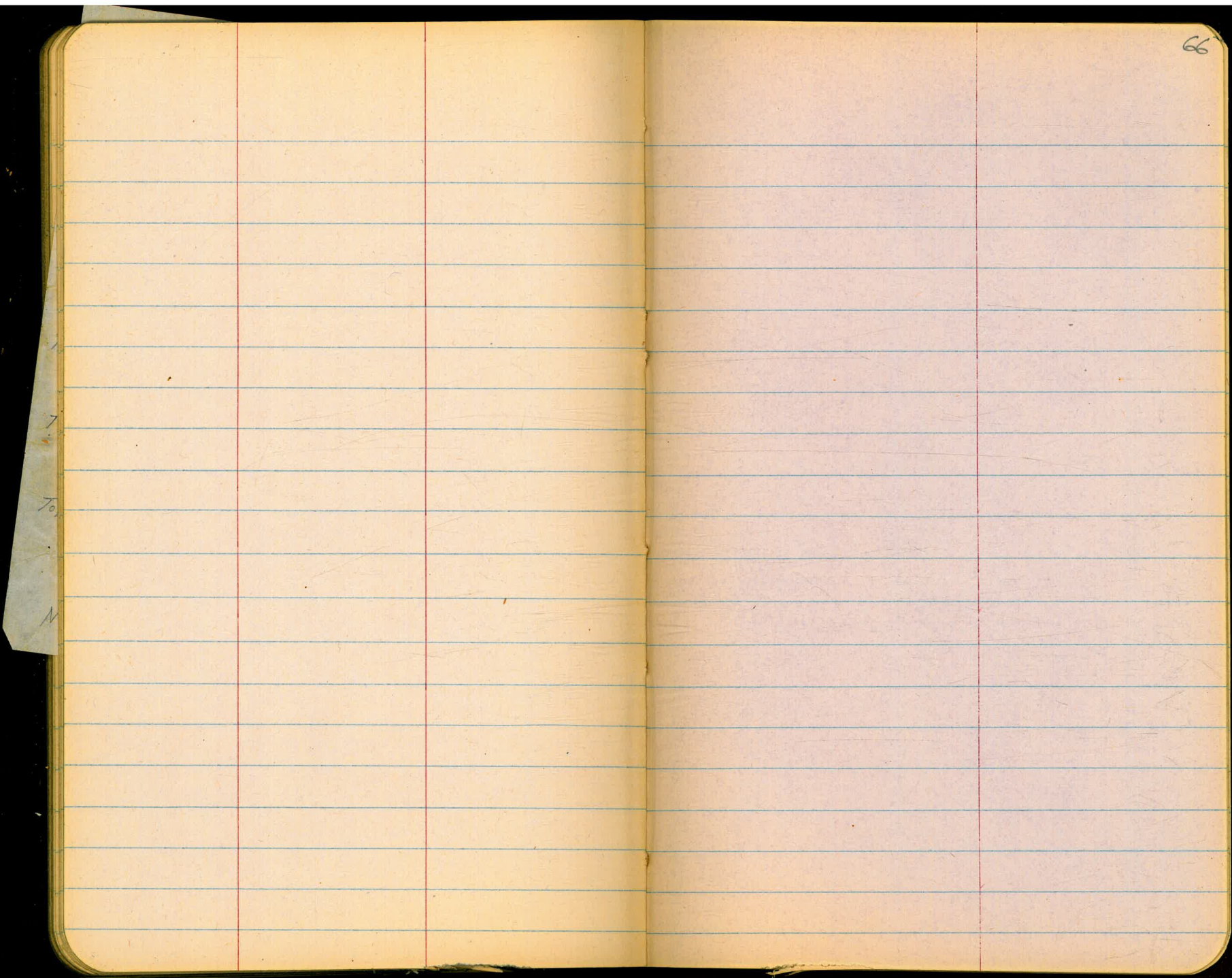


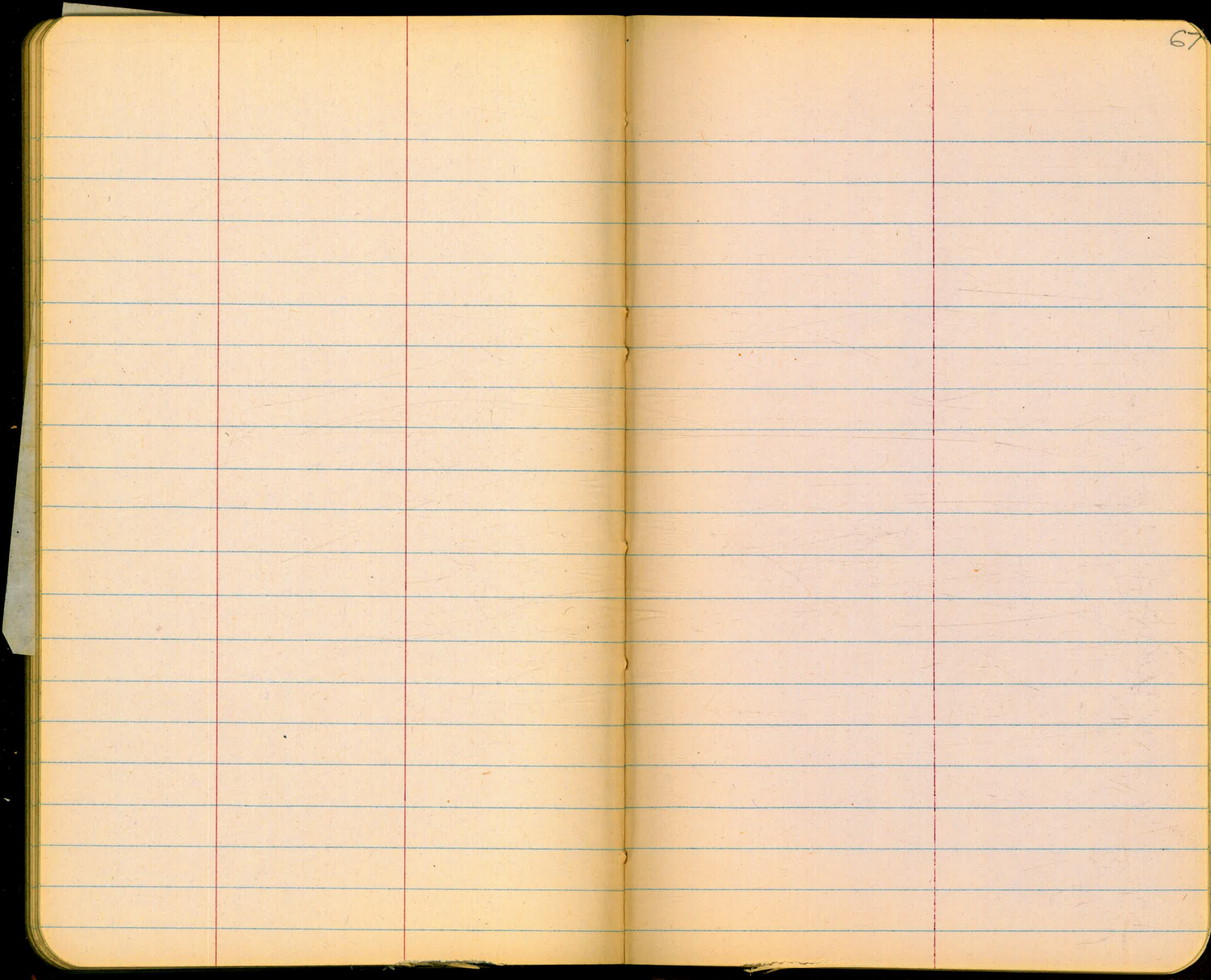


GA

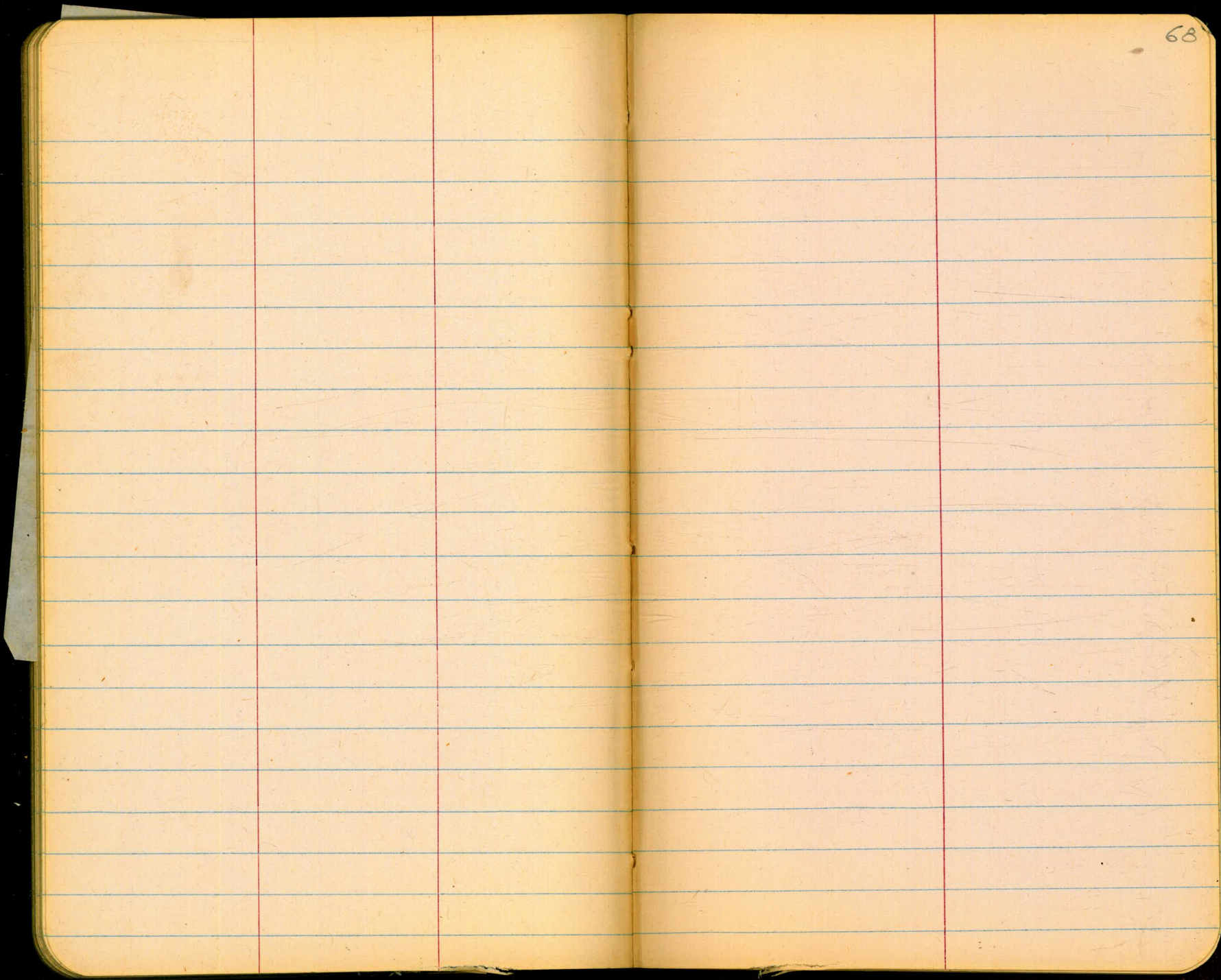


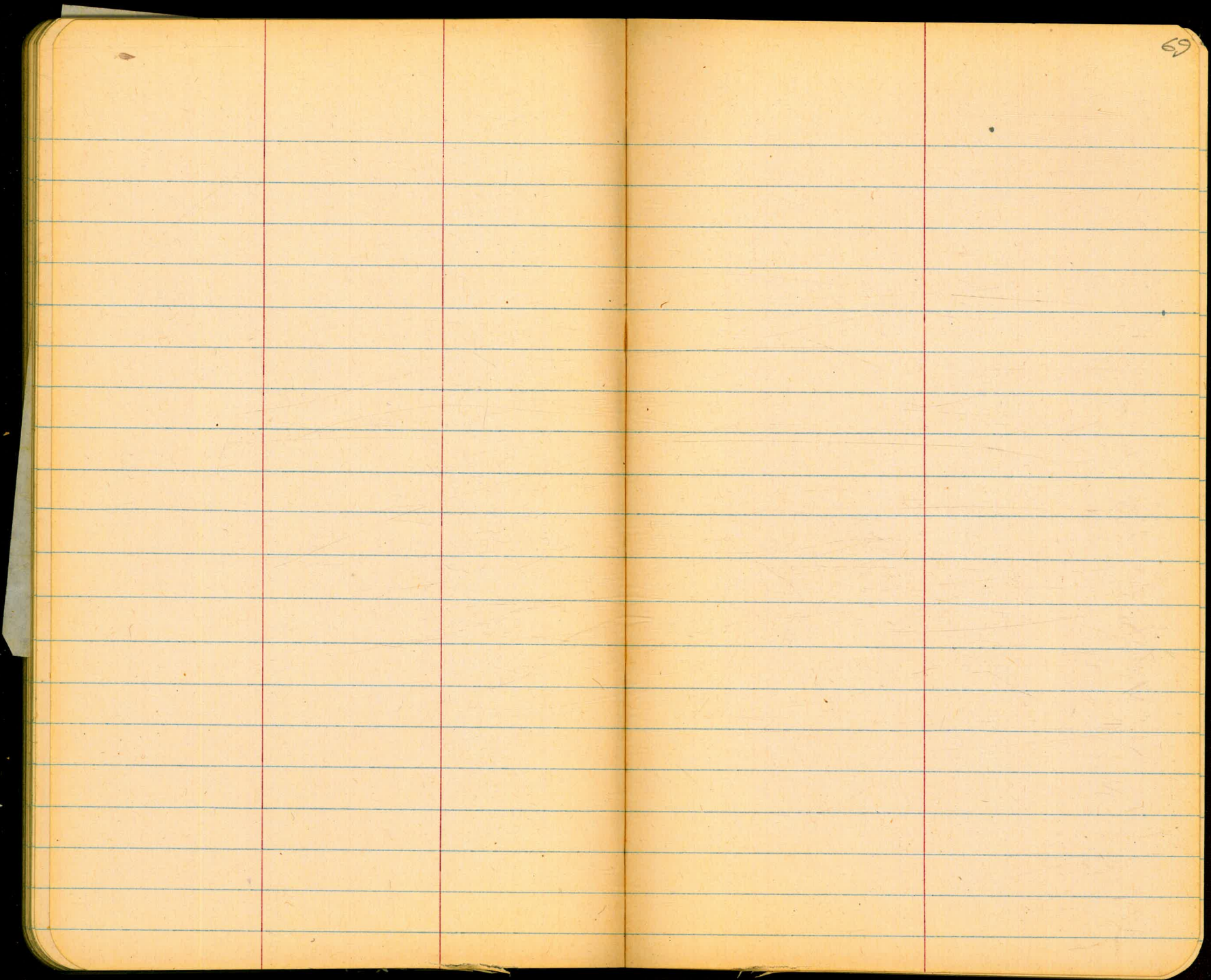


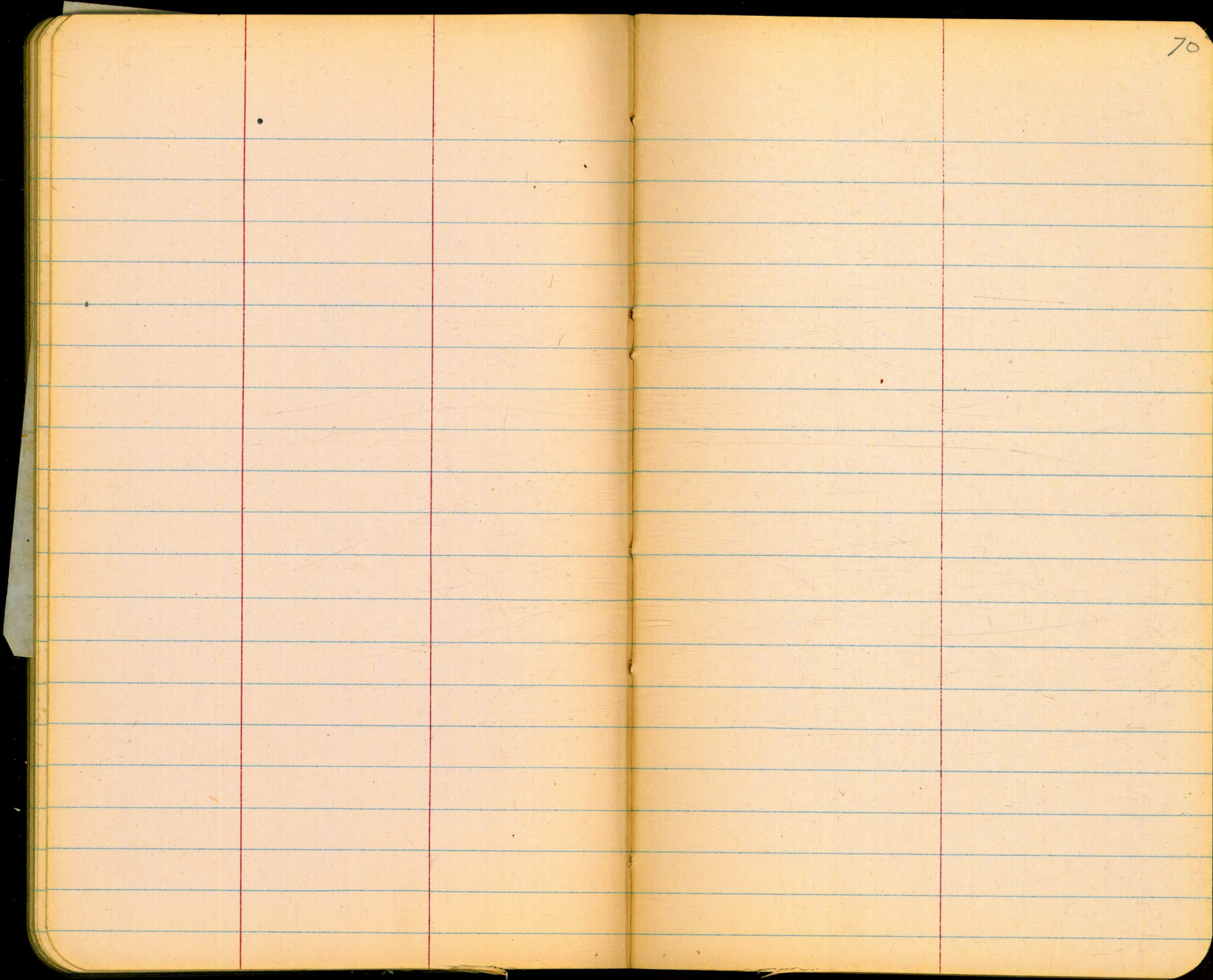


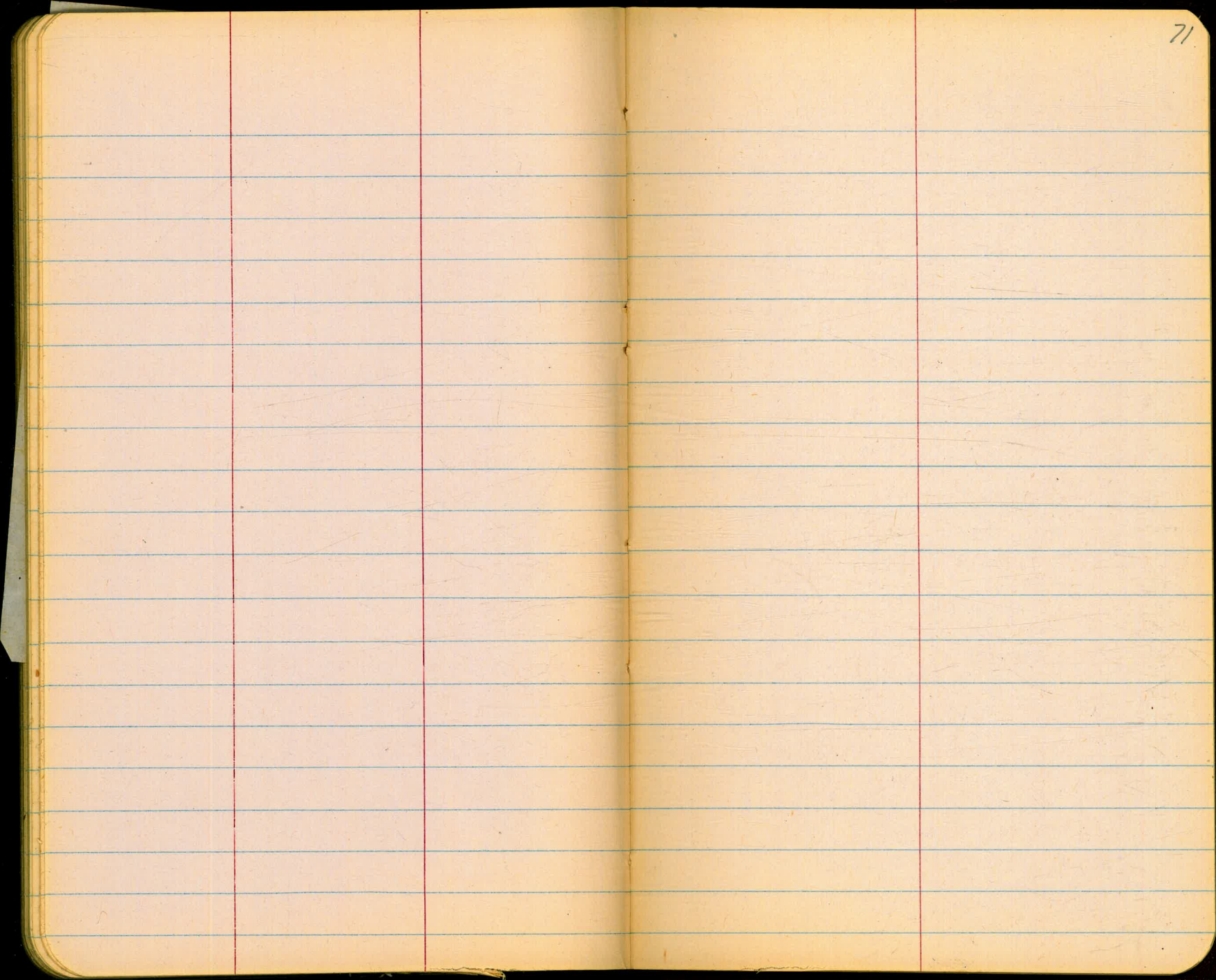




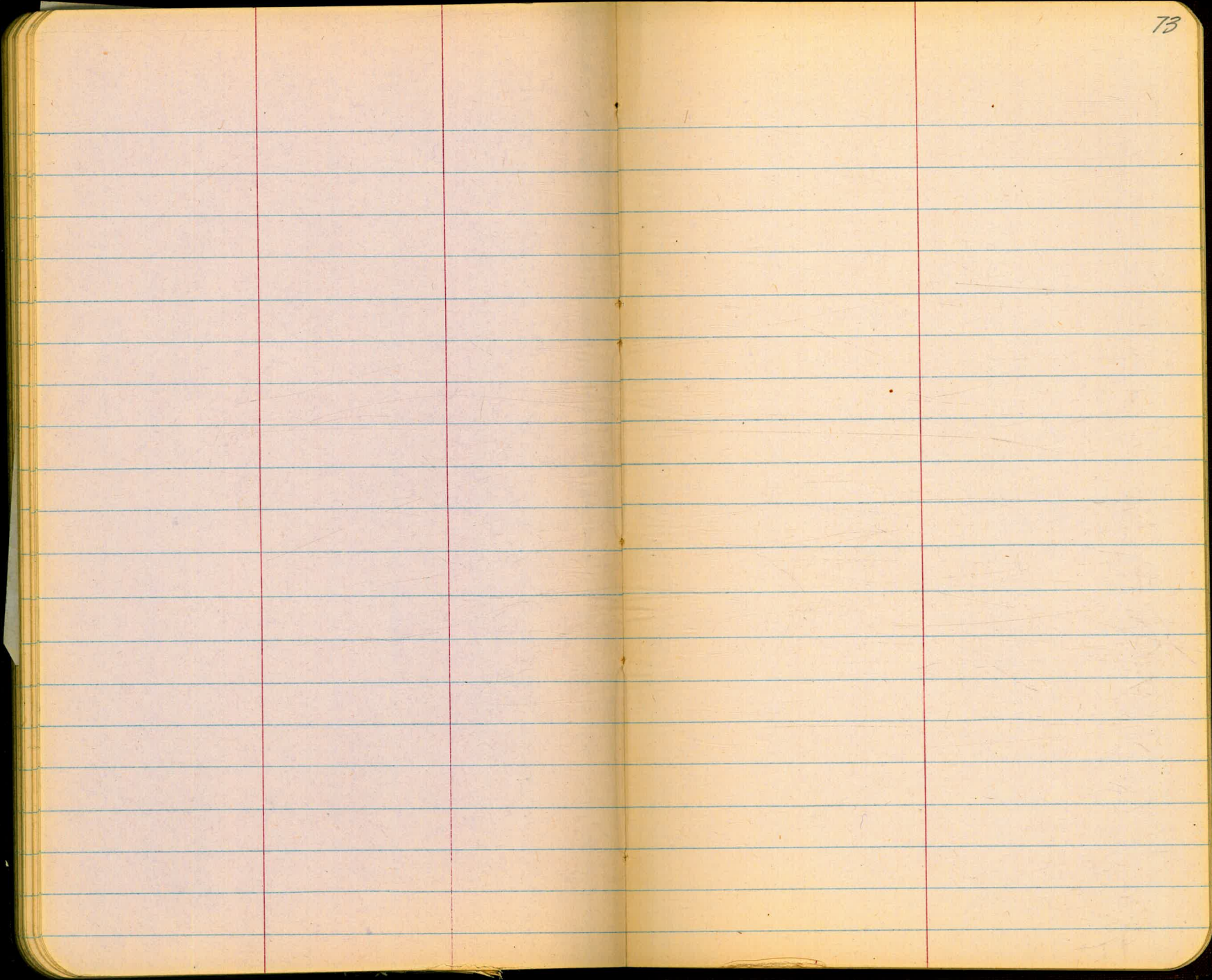


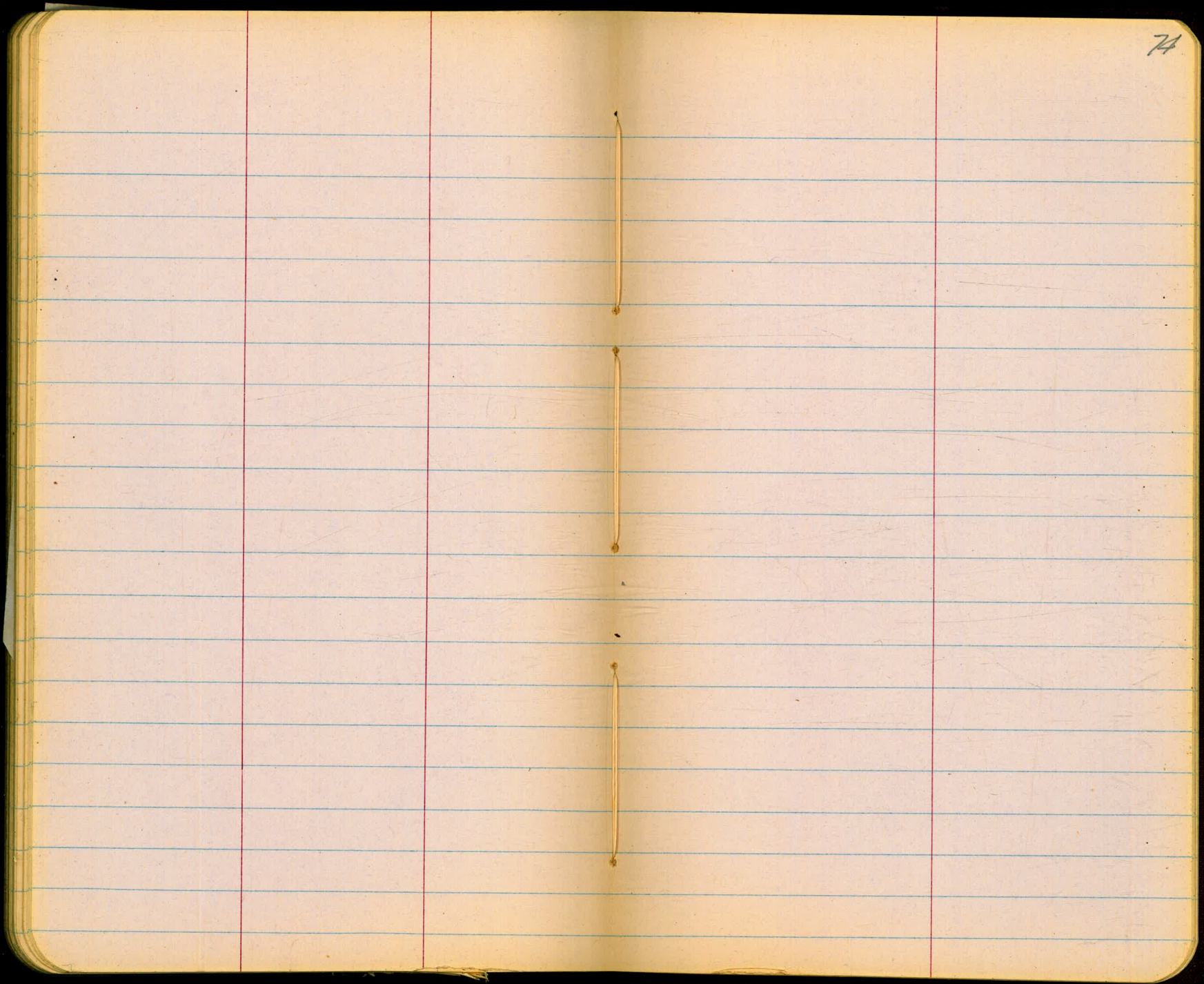


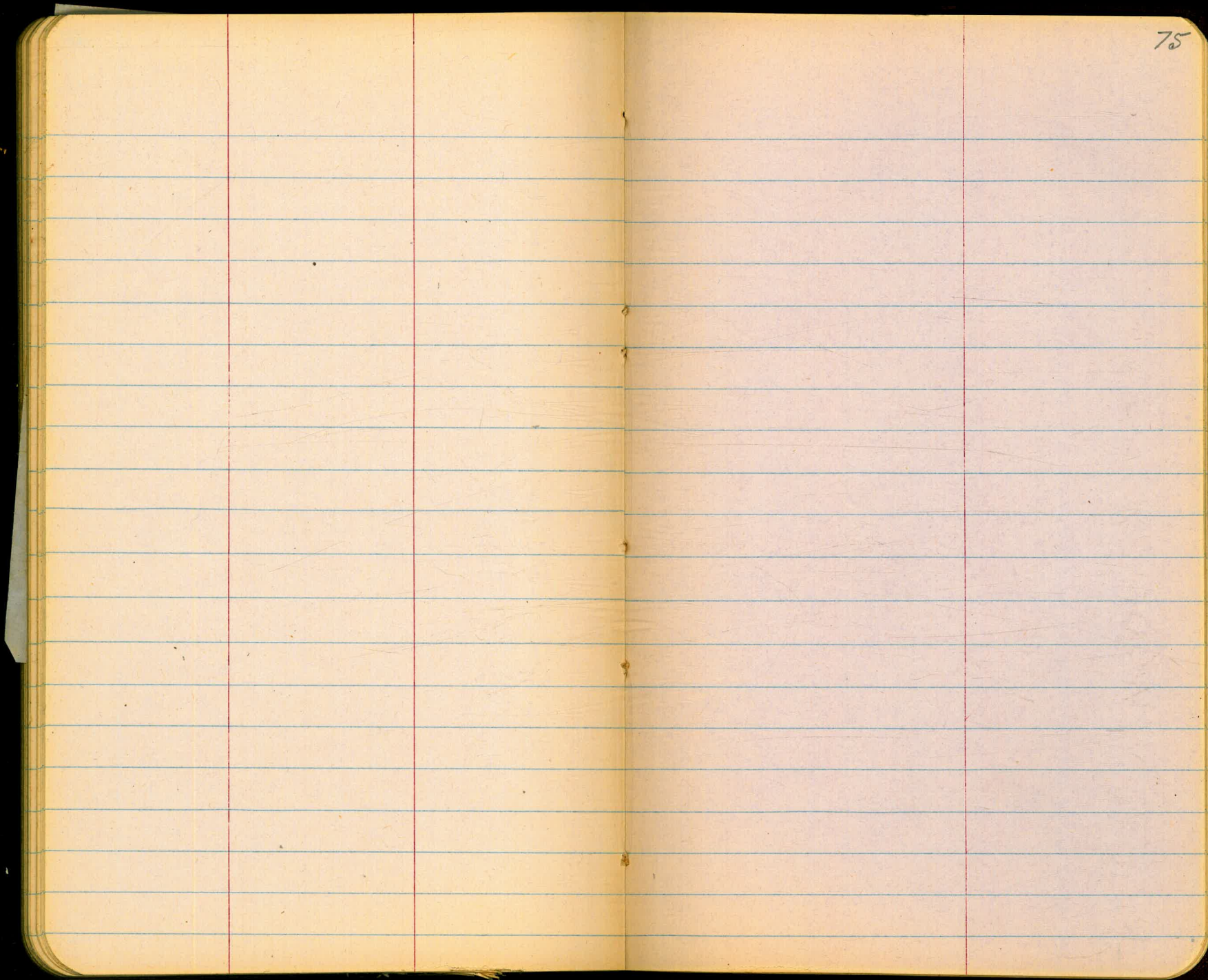




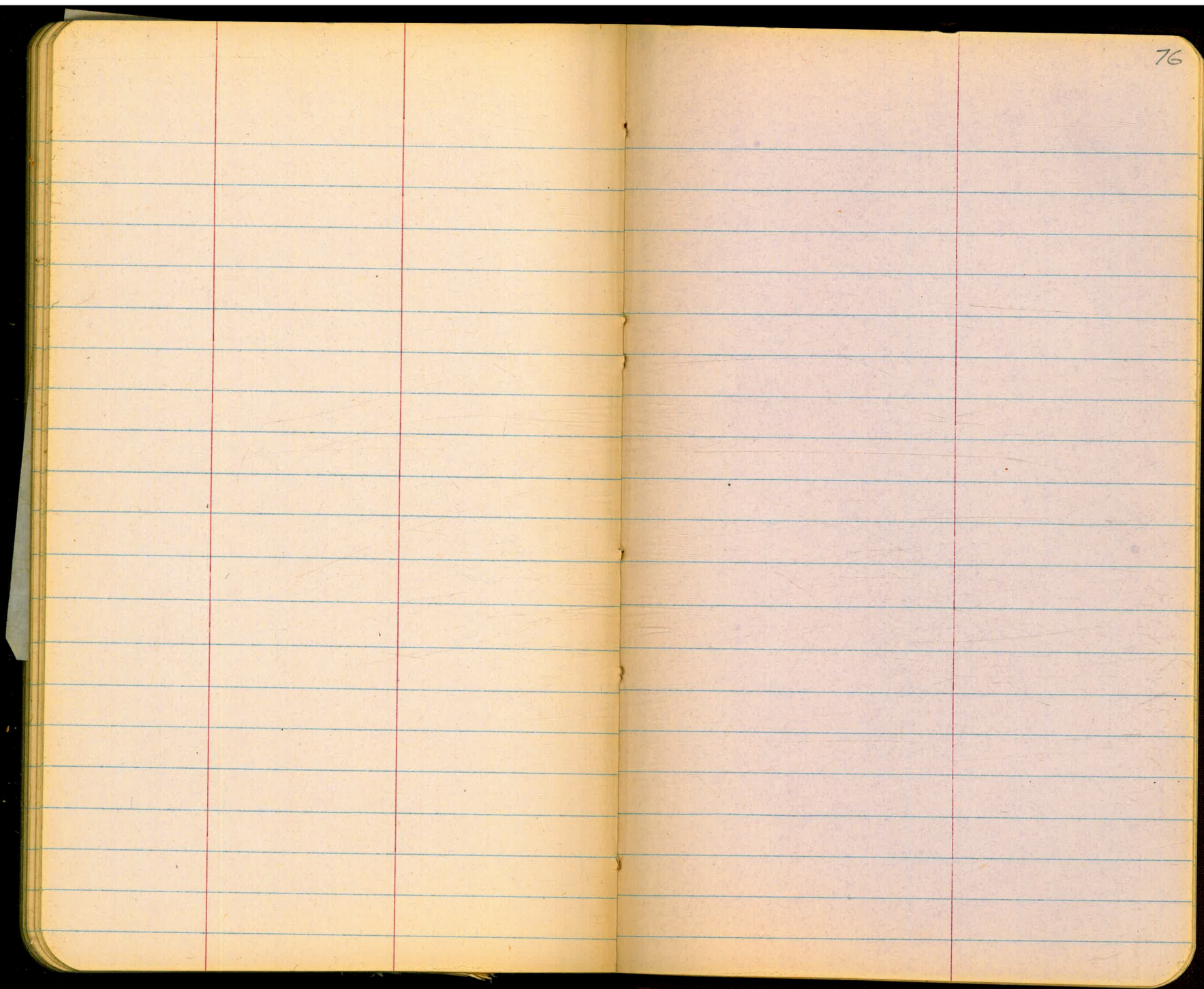
The image shows an open notebook with two facing pages. The pages are cream-colored and feature horizontal blue ruling lines. Each page is divided into three vertical sections by two red margin lines, one on each side of the central gutter. The pages are blank, with no handwriting or printed text. The notebook is bound in the center, and the pages show some signs of age and wear, such as slight discoloration and small dark spots. The number '72' is handwritten in the top right corner of the right page.

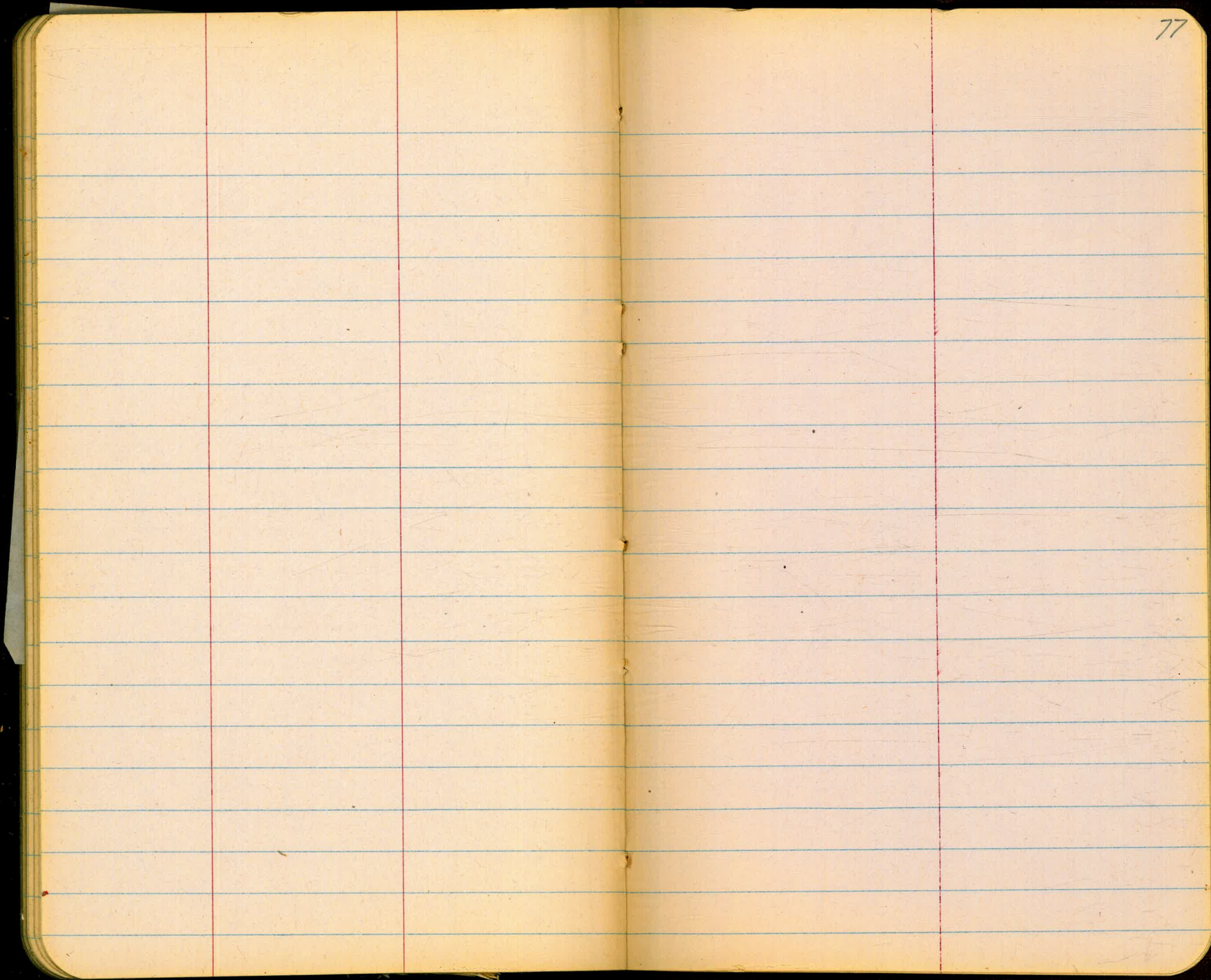


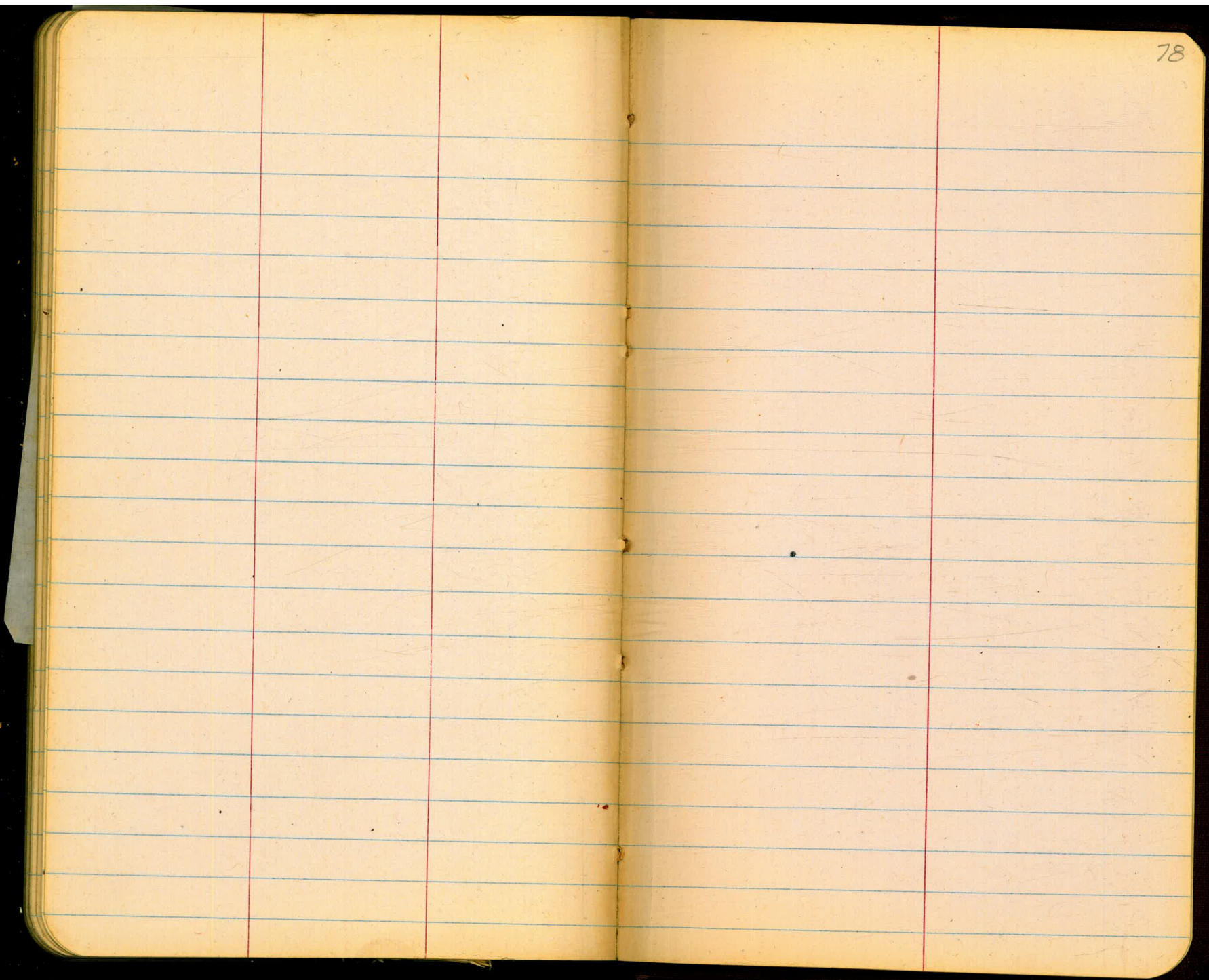




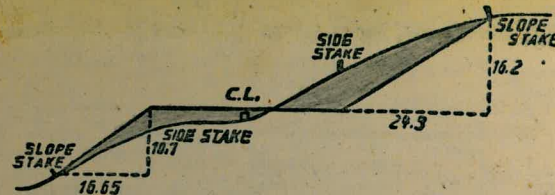








88178  
 5543  
 264534  
 352712  
 440890  
 440890  
 48.8770654



**DISTANCES FROM SIDE STAKES FOR CROSS-SECTIONING.**  
 SLOPE 1 1/2 TO 1. ROADWAY OF ANY WIDTH.

	0	.1	.2	.3	.4	.5	.6	.7	.8	.9	
0	0.00	0.15	0.30	0.45	0.60	0.75	0.90	1.05	1.20	1.35	0
1	1.50	1.65	1.80	1.95	2.10	2.25	2.40	2.55	2.70	2.85	1
2	3.00	3.15	3.30	3.45	3.60	3.75	3.90	4.05	4.20	4.35	2
3	4.50	4.65	4.80	4.95	5.10	5.25	5.40	5.55	5.70	5.85	3
4	6.00	6.15	6.30	6.45	6.60	6.75	6.90	7.05	7.20	7.35	4
5	7.50	7.65	7.80	7.95	8.10	8.25	8.40	8.55	8.70	8.85	5
6	9.00	9.15	9.30	9.45	9.60	9.75	9.90	10.05	10.20	10.35	6
7	10.50	10.65	10.80	10.95	11.10	11.25	11.40	11.55	11.70	11.85	7
8	12.00	12.15	12.30	12.45	12.60	12.75	12.90	13.05	13.20	13.35	8
9	13.50	13.65	13.80	13.95	14.10	14.25	14.40	14.55	14.70	14.85	9
10	15.00	15.15	15.30	15.45	15.60	15.75	15.90	16.05	16.20	16.35	10
11	16.50	16.65	16.80	16.95	17.10	17.25	17.40	17.55	17.70	17.85	11
12	18.00	18.15	18.30	18.45	18.60	18.75	18.90	19.05	19.20	19.35	12
13	19.50	19.65	19.80	19.95	20.10	20.25	20.40	20.55	20.70	20.85	13
14	21.00	21.15	21.30	21.45	21.60	21.75	21.90	22.05	22.20	22.35	14
15	22.50	22.65	22.80	22.95	23.10	23.25	23.40	23.55	23.70	23.85	15
16	24.00	24.15	24.30	24.45	24.60	24.75	24.90	25.05	25.20	25.35	16
17	25.50	25.65	25.80	25.95	26.10	26.25	26.40	26.55	26.70	26.85	17
18	27.00	27.15	27.30	27.45	27.60	27.75	27.90	28.05	28.20	28.35	18
19	28.50	28.65	28.80	28.95	29.10	29.25	29.40	29.55	29.70	29.85	19
20	30.00	30.15	30.30	30.45	30.60	30.75	30.90	31.05	31.20	31.35	20
21	31.50	31.65	31.80	31.95	32.10	32.25	32.40	32.55	32.70	32.85	21
22	33.00	33.15	33.30	33.45	33.60	33.75	33.90	34.05	34.20	34.35	22
23	34.50	34.65	34.80	34.95	35.10	35.25	35.40	35.55	35.70	35.85	23
24	36.00	36.15	36.30	36.45	36.60	36.75	36.90	37.05	37.20	37.35	24
25	37.50	37.65	37.80	37.95	38.10	38.25	38.40	38.55	38.70	38.85	25
26	39.00	39.15	39.30	39.45	39.60	39.75	39.90	40.05	40.20	40.35	26
27	40.50	40.65	40.80	40.95	41.10	41.25	41.40	41.55	41.70	41.85	27
28	42.00	42.15	42.30	42.45	42.60	42.75	42.90	43.05	43.20	43.35	28
29	43.50	43.65	43.80	43.95	44.10	44.25	44.40	44.55	44.70	44.85	29
30	45.00	45.15	45.30	45.45	45.60	45.75	45.90	46.05	46.20	46.35	30
31	46.50	46.65	46.80	46.95	47.10	47.25	47.40	47.55	47.70	47.85	31
32	48.00	48.15	48.30	48.45	48.60	48.75	48.90	49.05	49.20	49.35	32
33	49.50	49.65	49.80	49.95	50.10	50.25	50.40	50.55	50.70	50.85	33
34	51.00	51.15	51.30	51.45	51.60	51.75	51.90	52.05	52.20	52.35	34
35	52.50	52.65	52.80	52.95	53.10	53.25	53.40	53.55	53.70	53.85	35
36	54.00	54.15	54.30	54.45	54.60	54.75	54.90	55.05	55.20	55.35	36
37	55.50	55.65	55.80	55.95	56.10	56.25	56.40	56.55	56.70	56.85	37
38	57.00	57.15	57.30	57.45	57.60	57.75	57.90	58.05	58.20	58.35	38
39	58.50	58.65	58.80	58.95	59.10	59.25	59.40	59.55	59.70	59.85	39
40	60.00	60.15	60.30	60.45	60.60	60.75	60.90	61.05	61.20	61.35	40
41	61.50	61.65	61.80	61.95	62.10	62.25	62.40	62.55	62.70	62.85	41
42	63.00	63.15	63.30	63.45	63.60	63.75	63.90	64.05	64.20	64.35	42
43	64.50	64.65	64.80	64.95	65.10	65.25	65.40	65.55	65.70	65.85	43
44	66.00	66.15	66.30	66.45	66.60	66.75	66.90	67.05	67.20	67.35	44
45	67.50	67.65	67.80	67.95	68.10	68.25	68.40	68.55	68.70	68.85	45
46	69.00	69.15	69.30	69.45	69.60	69.75	69.90	70.05	70.20	70.35	46
47	70.50	70.65	70.80	70.95	71.10	71.25	71.40	71.55	71.70	71.85	47
48	72.00	72.15	72.30	72.45	72.60	72.75	72.90	73.05	73.20	73.35	48
49	73.50	73.65	73.80	73.95	74.10	74.25	74.40	74.55	74.70	74.85	49
50	75.00	75.15	75.30	75.45	75.60	75.75	75.90	76.05	76.20	76.35	50

THE NATIONAL BLANK BOOK COMPANY  
 HOLYOKE MASSACHUSETTS  
 NEW YORK CHICAGO BOSTON SAN FRANCISCO