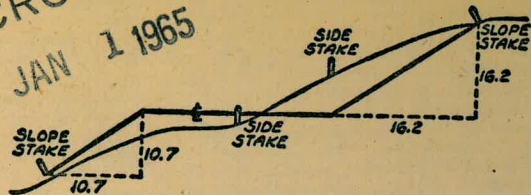


2133

TECOLOTE SEWER —

TRASH BOOK

MICROFILMED  
 JAN 1 1965



DISTANCES FROM SIDE STAKES FOR CROSS-SECTIONING  
 SLOPE 1 TO 1. ROADWAY OF ANY WIDTH

|    | 0     | .1    | .2    | .3    | .4    | .5    | .6    | .7    | .8    | 9     |    |
|----|-------|-------|-------|-------|-------|-------|-------|-------|-------|-------|----|
| 0  | 0.00  | 0.10  | 0.20  | 0.30  | 0.40  | 0.50  | 0.60  | 0.70  | 0.80  | 0.90  | 0  |
| 1  | 1.00  | 1.10  | 1.20  | 1.30  | 1.40  | 1.50  | 1.60  | 1.70  | 1.80  | 1.90  | 1  |
| 2  | 2.00  | 2.10  | 2.20  | 2.30  | 2.40  | 2.50  | 2.60  | 2.70  | 2.80  | 2.90  | 2  |
| 3  | 3.00  | 3.10  | 3.20  | 3.30  | 3.40  | 3.50  | 3.60  | 3.70  | 3.80  | 3.90  | 3  |
| 4  | 4.00  | 4.10  | 4.20  | 4.30  | 4.40  | 4.50  | 4.60  | 4.70  | 4.80  | 4.90  | 4  |
| 5  | 5.00  | 5.10  | 5.20  | 5.30  | 5.40  | 5.50  | 5.60  | 5.70  | 5.80  | 5.90  | 5  |
| 6  | 6.00  | 6.10  | 6.20  | 6.30  | 6.40  | 6.50  | 6.60  | 6.70  | 6.80  | 6.90  | 6  |
| 7  | 7.00  | 7.10  | 7.20  | 7.30  | 7.40  | 7.50  | 7.60  | 7.70  | 7.80  | 7.90  | 7  |
| 8  | 8.00  | 8.10  | 8.20  | 8.30  | 8.40  | 8.50  | 8.60  | 8.70  | 8.80  | 8.90  | 8  |
| 9  | 9.00  | 9.10  | 9.20  | 9.30  | 9.40  | 9.50  | 9.60  | 9.70  | 9.80  | 9.90  | 9  |
| 10 | 10.00 | 10.10 | 10.20 | 10.30 | 10.40 | 10.50 | 10.60 | 10.70 | 10.80 | 10.90 | 10 |
| 11 | 11.00 | 11.10 | 11.20 | 11.30 | 11.40 | 11.50 | 11.60 | 11.70 | 11.80 | 11.90 | 11 |
| 12 | 12.00 | 12.10 | 12.20 | 12.30 | 12.40 | 12.50 | 12.60 | 12.70 | 12.80 | 12.90 | 12 |
| 13 | 13.00 | 13.10 | 13.20 | 13.30 | 13.40 | 13.50 | 13.60 | 13.70 | 13.80 | 13.90 | 13 |
| 14 | 14.00 | 14.10 | 14.20 | 14.30 | 14.40 | 14.50 | 14.60 | 14.70 | 14.80 | 14.90 | 14 |
| 15 | 15.00 | 15.10 | 15.20 | 15.30 | 15.40 | 15.50 | 15.60 | 15.70 | 15.80 | 15.90 | 15 |
| 16 | 16.00 | 16.10 | 16.20 | 16.30 | 16.40 | 16.50 | 16.60 | 16.70 | 16.80 | 16.90 | 16 |
| 17 | 17.00 | 17.10 | 17.20 | 17.30 | 17.40 | 17.50 | 17.60 | 17.70 | 17.80 | 17.90 | 17 |
| 18 | 18.00 | 18.10 | 18.20 | 18.30 | 18.40 | 18.50 | 18.60 | 18.70 | 18.80 | 18.90 | 18 |
| 19 | 19.00 | 19.10 | 19.20 | 19.30 | 19.40 | 19.50 | 19.60 | 19.70 | 19.80 | 19.90 | 19 |
| 20 | 20.00 | 20.10 | 20.20 | 20.30 | 20.40 | 20.50 | 20.60 | 20.70 | 20.80 | 20.90 | 20 |
| 21 | 21.00 | 21.10 | 21.20 | 21.30 | 21.40 | 21.50 | 21.60 | 21.70 | 21.80 | 21.90 | 21 |
| 22 | 22.00 | 22.10 | 22.20 | 22.30 | 22.40 | 22.50 | 22.60 | 22.70 | 22.80 | 22.90 | 22 |
| 23 | 23.00 | 23.10 | 23.20 | 23.30 | 23.40 | 23.50 | 23.60 | 23.70 | 23.80 | 23.90 | 23 |
| 24 | 24.00 | 24.10 | 24.20 | 24.30 | 24.40 | 24.50 | 24.60 | 24.70 | 24.80 | 24.90 | 24 |
| 25 | 25.00 | 25.10 | 25.20 | 25.30 | 25.40 | 25.50 | 25.60 | 25.70 | 25.80 | 25.90 | 25 |
| 26 | 26.00 | 26.10 | 26.20 | 26.30 | 26.40 | 26.50 | 26.60 | 26.70 | 26.80 | 26.90 | 26 |
| 27 | 27.00 | 27.10 | 27.20 | 27.30 | 27.40 | 27.50 | 27.60 | 27.70 | 27.80 | 27.90 | 27 |
| 28 | 28.00 | 28.10 | 28.20 | 28.30 | 28.40 | 28.50 | 28.60 | 28.70 | 28.80 | 28.90 | 28 |
| 29 | 29.00 | 29.10 | 29.20 | 29.30 | 29.40 | 29.50 | 29.60 | 29.70 | 29.80 | 29.90 | 29 |
| 30 | 30.00 | 30.10 | 30.20 | 30.30 | 30.40 | 30.50 | 30.60 | 30.70 | 30.80 | 30.90 | 30 |
| 31 | 31.00 | 31.10 | 31.20 | 31.30 | 31.40 | 31.50 | 31.60 | 31.70 | 31.80 | 31.90 | 31 |
| 32 | 32.00 | 32.10 | 32.20 | 32.30 | 32.40 | 32.50 | 32.60 | 32.70 | 32.80 | 32.90 | 32 |
| 33 | 33.00 | 33.10 | 33.20 | 33.30 | 33.40 | 33.50 | 33.60 | 33.70 | 33.80 | 33.90 | 33 |
| 34 | 34.00 | 34.10 | 34.20 | 34.30 | 34.40 | 34.50 | 34.60 | 34.70 | 34.80 | 34.90 | 34 |
| 35 | 35.00 | 35.10 | 35.20 | 35.30 | 35.40 | 35.50 | 35.60 | 35.70 | 35.80 | 35.90 | 35 |
| 36 | 36.00 | 36.10 | 36.20 | 36.30 | 36.40 | 36.50 | 36.60 | 36.70 | 36.80 | 36.90 | 36 |
| 37 | 37.00 | 37.10 | 37.20 | 37.30 | 37.40 | 37.50 | 37.60 | 37.70 | 37.80 | 37.90 | 37 |
| 38 | 38.00 | 38.10 | 38.20 | 38.30 | 38.40 | 38.50 | 38.60 | 38.70 | 38.80 | 38.90 | 38 |
| 39 | 39.00 | 39.10 | 39.20 | 39.30 | 39.40 | 39.50 | 39.60 | 39.70 | 39.80 | 39.90 | 39 |
| 40 | 40.00 | 40.10 | 40.20 | 40.30 | 40.40 | 40.50 | 40.60 | 40.70 | 40.80 | 40.90 | 40 |
| 41 | 41.00 | 41.10 | 41.20 | 41.30 | 41.40 | 41.50 | 41.60 | 41.70 | 41.80 | 41.90 | 41 |
| 42 | 42.00 | 42.10 | 42.20 | 42.30 | 42.40 | 42.50 | 42.60 | 42.70 | 42.80 | 42.90 | 42 |
| 43 | 43.00 | 43.10 | 43.20 | 43.30 | 43.40 | 43.50 | 43.60 | 43.70 | 43.80 | 43.90 | 43 |
| 44 | 44.00 | 44.10 | 44.20 | 44.30 | 44.40 | 44.50 | 44.60 | 44.70 | 44.80 | 44.90 | 44 |
| 45 | 45.00 | 45.10 | 45.20 | 45.30 | 45.40 | 45.50 | 45.60 | 45.70 | 45.80 | 45.90 | 45 |
| 46 | 46.00 | 46.10 | 46.20 | 46.30 | 46.40 | 46.50 | 46.60 | 46.70 | 46.80 | 46.90 | 46 |
| 47 | 47.00 | 47.10 | 47.20 | 47.30 | 47.40 | 47.50 | 47.60 | 47.70 | 47.80 | 47.90 | 47 |
| 48 | 48.00 | 48.10 | 48.20 | 48.30 | 48.40 | 48.50 | 48.60 | 48.70 | 48.80 | 48.90 | 48 |
| 49 | 49.00 | 49.10 | 49.20 | 49.30 | 49.40 | 49.50 | 49.60 | 49.70 | 49.80 | 49.90 | 49 |
| 50 | 50.00 | 50.10 | 50.20 | 50.30 | 50.40 | 50.50 | 50.60 | 50.70 | 50.80 | 50.90 | 50 |

Distance of slope stake from side or shoulder stake for any width roadway, slope 1 to 1. If ground is nearly level, the cut or fill at side stake is located by the double entry method in left column and top row. The number in body of table in same row and column gives distance from side stake to slope stake. If ground is not level estimate the difference in elevation between the side stake and slope stake, lower target by this amount if cut, elevate if fill. Add this amount to cut or fill and find distance in table. Set up rod at this point, and line of sight should cut target. If it does not make the slight adjustment necessary.

TABLE XIII—CORRECTIONS FOR TANGENTS AND EXTERNALS

These corrections are to be added to the approximate values, found by dividing the tangent, or external, for a 1° curve (Table VIII) by the degree of curve, in order to obtain the true tangents, or externals. Intermediate values may be obtained by interpolation.

FOR TANGENTS ADD

| Central Angle | DEGREE OF CURVE |      |      |      |      |      |      |      |      |      |      |      |      |      |
|---------------|-----------------|------|------|------|------|------|------|------|------|------|------|------|------|------|
|               | 5°              | 10°  | 15°  | 20°  | 25°  | 30°  | 35°  | 40°  | 45°  | 50°  | 55°  | 60°  | 65°  | 70°  |
| 10°           | .03             | .06  | .09  | .13  | .16  | .19  | .22  | .25  | .28  | .31  | .34  | .38  | .42  | .46  |
| 15°           | .04             | .10  | .14  | .19  | .24  | .29  | .34  | .39  | .45  | .51  | .53  | .58  | .63  | .68  |
| 20°           | .06             | .13  | .19  | .26  | .32  | .39  | .45  | .51  | .58  | .65  | .72  | .79  | .84  | .90  |
| 25°           | .08             | .16  | .24  | .33  | .40  | .49  | .58  | .67  | .75  | .83  | .90  | .99  | 1.06 | 1.14 |
| 30°           | .10             | .19  | .29  | .39  | .49  | .59  | .69  | .79  | .89  | .99  | 1.09 | 1.20 | 1.29 | 1.39 |
| 35°           | .11             | .22  | .34  | .47  | .58  | .69  | .79  | .81  | .92  | 1.04 | 1.29 | 1.42 | 1.54 | 1.66 |
| 40°           | .13             | .26  | .40  | .53  | .67  | .80  | .93  | 1.06 | 1.20 | 1.34 | 1.49 | 1.64 | 1.79 | 1.94 |
| 45°           | .15             | .30  | .44  | .60  | .76  | .91  | 1.06 | 1.21 | 1.37 | 1.52 | 1.70 | 1.87 | 2.04 | 2.21 |
| 50°           | .17             | .34  | .51  | .68  | .85  | 1.02 | 1.19 | 1.36 | 1.54 | 1.72 | 1.91 | 2.10 | 2.29 | 2.48 |
| 55°           | .19             | .38  | .57  | .76  | .95  | 1.14 | 1.32 | 1.52 | 1.72 | 1.92 | 2.14 | 2.35 | 2.56 | 2.77 |
| 60°           | .21             | .42  | .63  | .84  | 1.05 | 1.27 | 1.49 | 1.71 | 1.94 | 2.17 | 2.38 | 2.60 | 2.83 | 3.07 |
| 65°           | .23             | .46  | .69  | .93  | 1.16 | 1.40 | 1.64 | 1.88 | 2.13 | 2.38 | 2.63 | 2.88 | 3.13 | 3.39 |
| 70°           | .25             | .51  | .76  | 1.02 | 1.28 | 1.54 | 1.80 | 2.06 | 2.33 | 2.60 | 2.88 | 3.16 | 3.44 | 3.72 |
| 75°           | .27             | .56  | .83  | 1.12 | 1.40 | 1.69 | 1.98 | 2.27 | 2.57 | 2.87 | 3.16 | 3.47 | 3.78 | 4.09 |
| 80°           | .30             | .61  | .91  | 1.22 | 1.53 | 1.84 | 2.15 | 2.46 | 2.78 | 3.10 | 3.44 | 3.78 | 4.12 | 4.46 |
| 85°           | .33             | .66  | 1.00 | 1.33 | 1.68 | 2.02 | 2.36 | 2.70 | 3.05 | 3.40 | 3.77 | 4.14 | 4.55 | 4.89 |
| 90°           | .36             | .72  | 1.09 | 1.45 | 1.83 | 2.20 | 2.57 | 2.94 | 3.32 | 3.70 | 4.10 | 4.50 | 4.91 | 5.32 |
| 95°           | .39             | .79  | 1.19 | 1.55 | 2.00 | 2.40 | 2.80 | 3.20 | 3.61 | 4.02 | 4.40 | 4.85 | 5.38 | 5.83 |
| 100°          | .43             | .86  | 1.30 | 1.74 | 2.18 | 2.62 | 3.06 | 3.50 | 3.95 | 4.40 | 4.88 | 5.37 | 5.85 | 6.34 |
| 110°          | .51             | 1.03 | 1.56 | 2.08 | 2.61 | 3.14 | 3.67 | 4.21 | 4.76 | 5.31 | 5.86 | 6.43 | 7.01 | 7.60 |
| 120°          | .62             | 1.25 | 1.93 | 2.52 | 3.16 | 3.81 | 4.45 | 5.11 | 5.77 | 6.44 | 7.12 | 7.80 | 8.50 | 9.22 |

FOR EXTERNALS ADD

| Central Angle | DEGREE OF CURVE |      |      |      |      |      |      |      |      |      |      |      |      |      |
|---------------|-----------------|------|------|------|------|------|------|------|------|------|------|------|------|------|
|               | 5°              | 10°  | 15°  | 20°  | 25°  | 30°  | 35°  | 40°  | 45°  | 50°  | 55°  | 60°  | 65°  | 70°  |
| 10°           | .001            | .003 | .004 | .006 | .007 | .008 | .009 | .011 | .012 | .014 | .015 | .017 | .018 | .020 |
| 15°           | .003            | .007 | .010 | .014 | .018 | .023 | .027 | .029 | .032 | .035 | .039 | .043 | .047 | .051 |
| 20°           | .006            | .011 | .017 | .022 | .028 | .034 | .038 | .045 | .051 | .057 | .063 | .070 | .076 | .083 |
| 25°           | .009            | .018 | .027 | .036 | .046 | .056 | .065 | .074 | .083 | .093 | .106 | .120 | .127 | .135 |
| 30°           | .013            | .025 | .038 | .051 | .065 | .078 | .090 | .103 | .116 | .129 | .149 | .170 | .179 | .188 |
| 35°           | .018            | .035 | .054 | .072 | .086 | .109 | .131 | .153 | .175 | .197 | .213 | .230 | .247 | .264 |
| 40°           | .023            | .046 | .070 | .093 | .117 | .141 | .172 | .203 | .234 | .265 | .277 | .290 | .315 | .341 |
| 45°           | .030            | .060 | .093 | .119 | .153 | .184 | .216 | .254 | .289 | .325 | .351 | .378 | .411 | .445 |
| 50°           | .037            | .075 | .116 | .151 | .189 | .227 | .266 | .305 | .345 | .384 | .425 | .467 | .508 | .550 |
| 55°           | .046            | .093 | .142 | .188 | .236 | .283 | .332 | .381 | .420 | .479 | .530 | .582 | .641 | .700 |
| 60°           | .056            | .112 | .168 | .225 | .283 | .340 | .398 | .457 | .516 | .575 | .636 | .697 | .774 | .851 |
| 65°           | .067            | .135 | .204 | .273 | .343 | .412 | .483 | .554 | .625 | .697 | .711 | .845 | .922 | 1.01 |
| 70°           | .080            | .159 | .240 | .321 | .403 | .485 | .568 | .652 | .735 | .819 | .906 | .994 | 1.08 | 1.17 |
| 75°           | .095            | .182 | .286 | .383 | .480 | .578 | .678 | .777 | .877 | .977 | 1.07 | 1.18 | 1.29 | 1.39 |
| 80°           | .110            | .220 | .332 | .445 | .558 | .671 | .787 | .903 | 1.02 | 1.13 | 1.25 | 1.38 | 1.50 | 1.62 |
| 85°           | .128            | .259 | .391 | .524 | .657 | .790 | .926 | 1.06 | 1.20 | 1.34 | 1.47 | 1.62 | 1.76 | 1.91 |
| 90°           | .149            | .299 | .450 | .603 | .756 | .910 | 1.07 | 1.22 | 1.38 | 1.54 | 1.70 | 1.87 | 2.03 | 2.20 |
| 95°           | .174            | .350 | .522 | .706 | .885 | 1.06 | 1.25 | 1.43 | 1.62 | 1.80 | 1.99 | 2.18 | 2.38 | 2.58 |
| 100°          | .200            | .401 | .604 | .809 | 1.01 | 1.22 | 1.43 | 1.64 | 1.85 | 2.06 | 2.28 | 2.50 | 2.73 | 2.96 |
| 110°          | .268            | .536 | .806 | 1.08 | 1.35 | 1.63 | 1.91 | 2.20 | 2.48 | 2.76 | 3.05 | 3.35 | 3.66 | 3.96 |
| 120°          | .360            | .721 | 1.08 | 1.45 | 1.82 | 2.19 | 2.57 | 2.95 | 3.33 | 3.72 | 4.11 | 4.50 | 4.91 | 5.32 |

Pg  
Survey Sewer Tecolote Cañon Linda Vista - 1 -  
Whole Book

Flag Sewer - Tecolote Valley Pg 18

Survey for Prop. Trunk Sewer  
 To New Development N. of Linda  
 Vista. Thru Tecolote Canyon

w.o. 20790

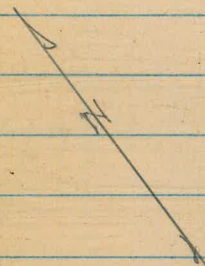
Osborne 2-5-51  
 Hardin  
 Hatch  
 Pullen

call 1<sup>st</sup> Line - "P" Line

INDEXED

JUL 19 1951

Morena Blvd.



10'

7'

<15'

St.

Savannah St.

± of Prop. Sewer  
 "P" Line

Knoxville

10'

Exist. Sewer

2+62.55 = Hub.  
 Ang. 2° 23' Lt

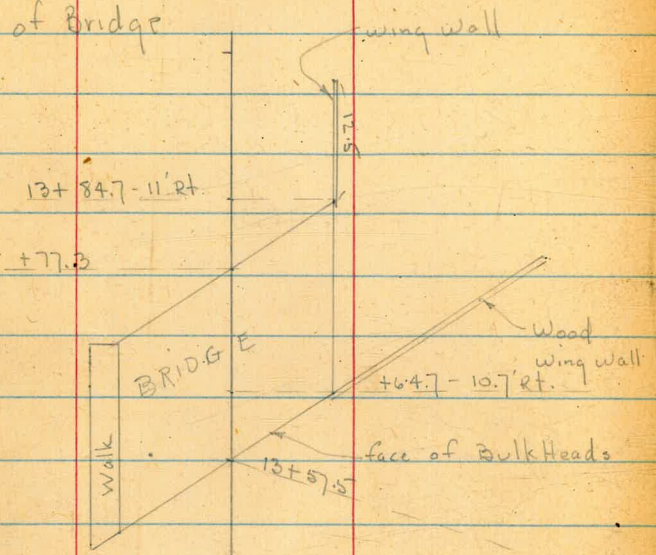
Naples St.

0+01.08 = Cross.  
 0+00 = ± M.H. #2

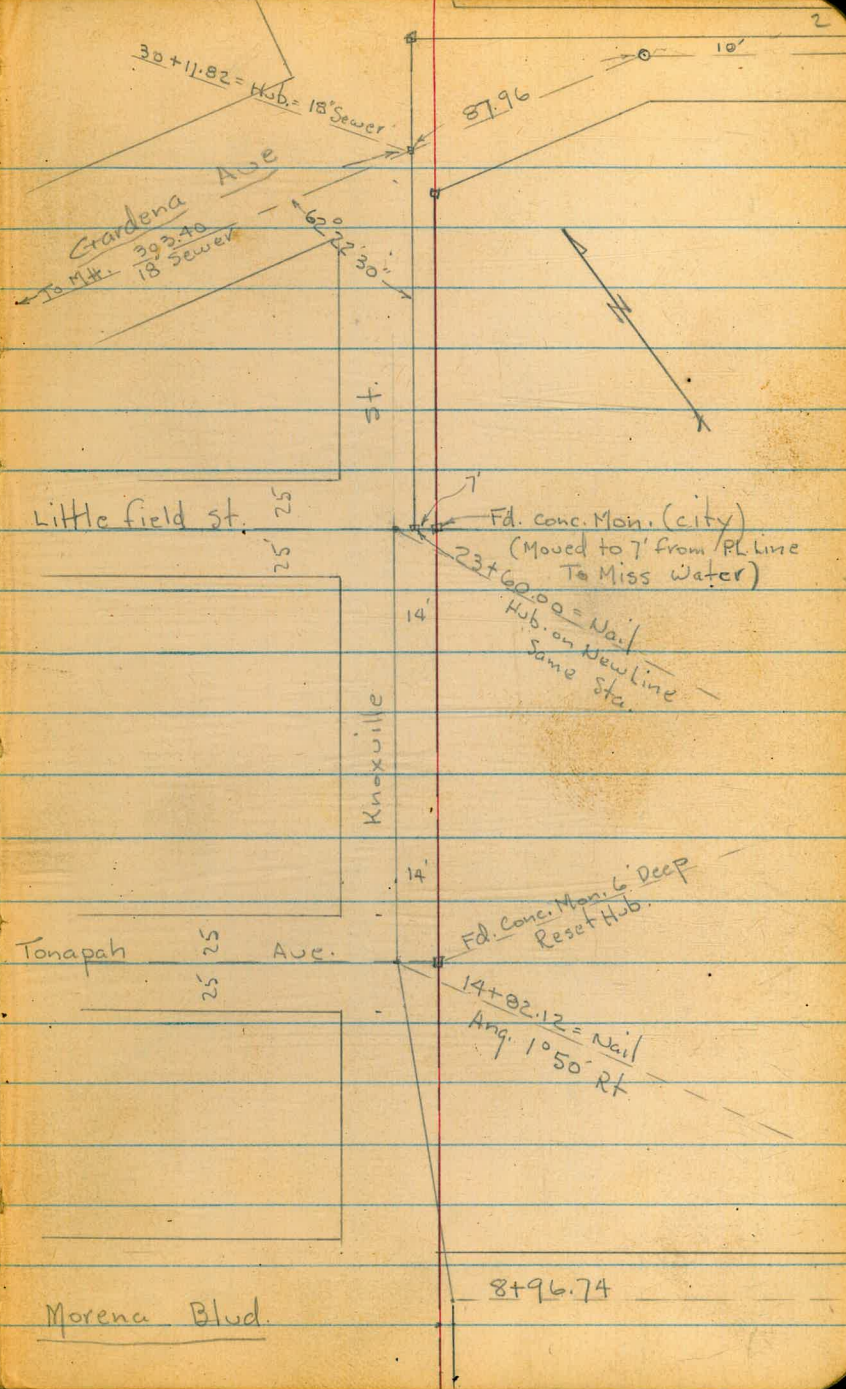
8+96.74 = Wall = Ang 104° 15' Lt.  
 M.H.  
 8+88.62 = 4.80 Lt. = Cap. spike

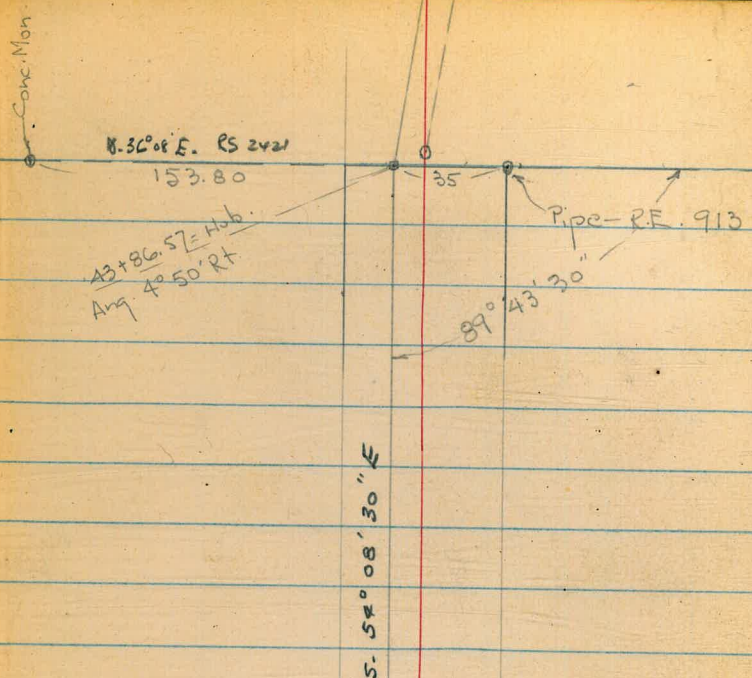
30'  
 30'

Detail of Bridge



\$ as shown on  
 opp. page  
 To be Moved East.

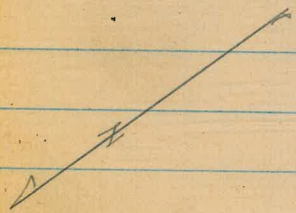




43 + 86.57 = Hub.  
Ang. 4° 50' Rt.

S. 54° 08' 30" E

Gardena Ave



30 + 62.10 = Hub.  
Ang. 89° 52' 30" Rt.

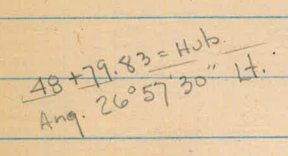
29 + 87.54 = C. 83 Rt. = Mon.

30 + 27.10 = 3.76 Lt.  
= Mon.

Knoxville St.

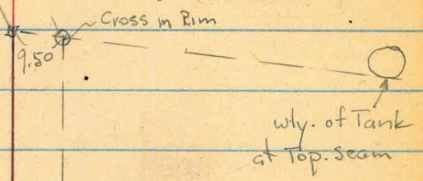
14 21  
6 53  
7 13  
5 39

$48 + 79.83 = \text{Hub.}$   
Ang.  $26^{\circ} 57' 30''$  Lt.



$43 + 86.57$

$60 + 61.80 = \text{Hub.}$   
Ang.  $37^{\circ} 09' 45''$  Lt.





?  
Conc. Mon. →

$68 + 24.56 = \text{Hub.}$

381.00

? (Map)

$59^{\circ}20'45''$

85.65

?  
Conc. Mon.

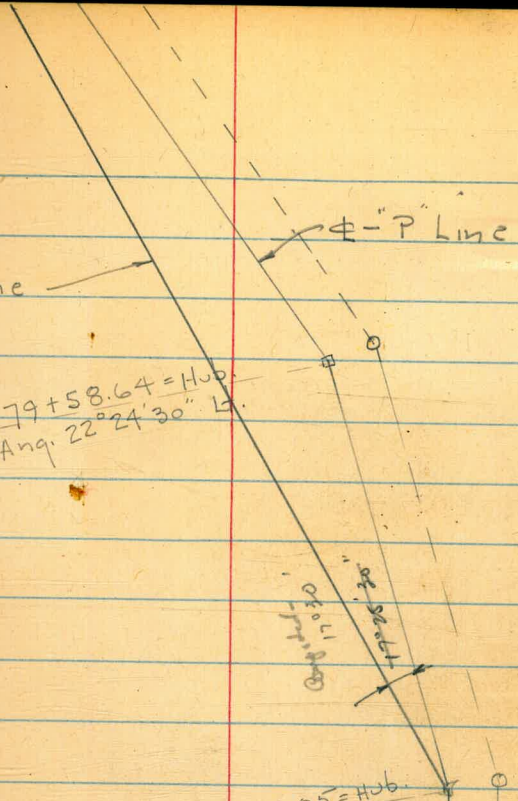
M.H. No. 15  
 77+61.05  
SOC 9402D 1672-D  
 OLD Position  
 New M.H. No. 15 at  
 77+78.83 R  
 -FB 2216 P1

77+78.83 - 22° 05' Lt.

"B" Line  
 (New)

79+58.64 = Hub  
 Ang. 22° 24' 30" Lt.

77+61.05 = Hub  
 Ang. 16° 01' 30" Lt.  
 New Ang. = 33° 27' Lt.  
 (33° 31' 30")  
 Computed.



86+59.70 - 36° 53' = P.L. Line

"B" Line →

"P" Line

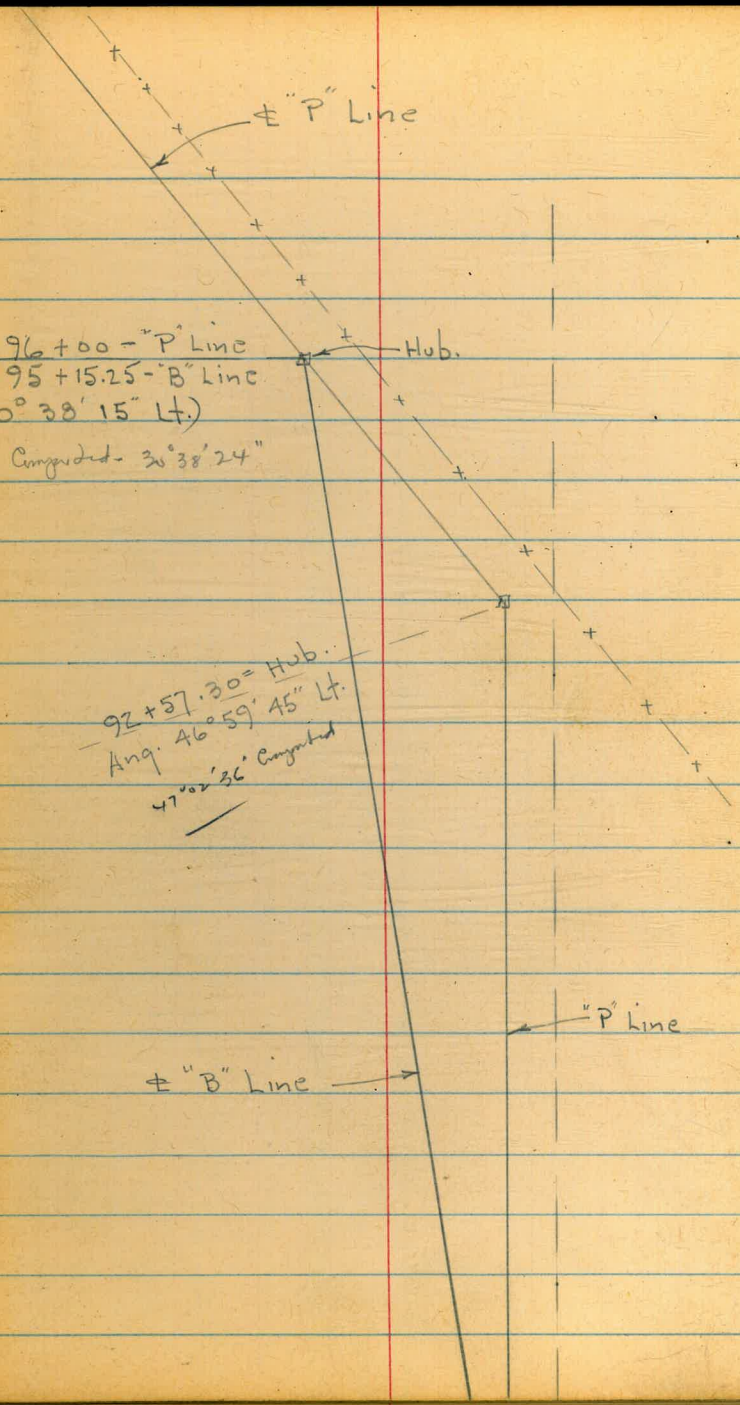
86+27.10 = "B" Sta.  
86+38.83 = Hub. = "P" Sta.  
Ang. 9° 25' RT  
New Ang. = (11° 55' 45") Lt.  
Angles - 11° 23' 31" Lt.

⊥ "B" Line →

Equation =  
New Ang. =

96 + 00 = "P" Line  
95 + 15.25 = "B" Line  
(30° 38' 15" Lt.)  
Computed - 30° 38' 24"

92 + 57.30 = Hub.  
Ang. 46° 59' 45" Lt.  
47° 02' 36" Computed



$105 + 100.00 = \text{Hub.}$   
Ang.  $130^{\circ} 45'$  Lt.

$100 + 67.81 = \text{Pot.}$

Hub.

$117 + 46.58 = \text{Hub.}$   
 Ang.  $11^{\circ} 04' 30''$  Lt.

50'      50'  
 90°

$113 + 41.96 = \text{P.O.T. Hub.}$

1191 Disk in Pole  
 15 0  
 1190  
 1.13  
 Ed. 1 1/4" Pipe - R.E. 32  
 NE. Cor. PL. 1178

279  
 255'

$23^{\circ} 53'$   
 1179  
 long 2x4" tct.  
 $108 + 47.09$

See New Tie B. 2216 - P. 4

$126 + 64.29 = \text{Hub.}$   
 Ang.  $21^{\circ}17'30''$  Rt.

$124 + 28.72 = \text{Hub.}$

Disk in oak  
 $54.66$

$60'$

$124 + 00 = \text{M.H. 24}$

223+33.46 = Ld. plug in top of M.H.

145+95.76 = P.O.T. Hub.

Ed. spike = P.I.

144+21.21 = Hub.

43+96.10 = Hub.  
Ang. 60° 11' 15" Rt.

80° 45'

212  
96  
2511

± of water line as  
Per W.D. 950 - Sheet 17

40'

Prop. Sewer

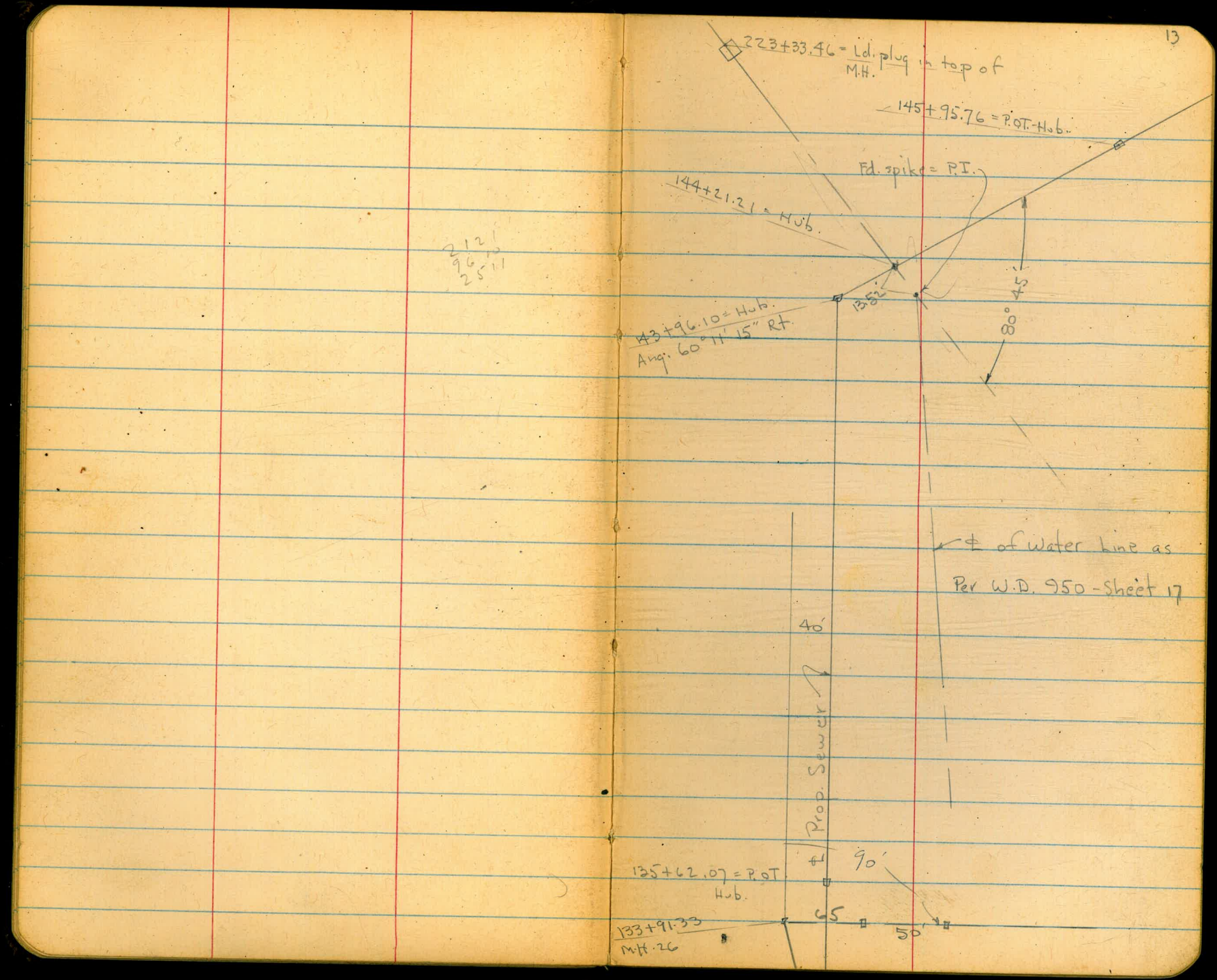
135+62.07 = P.O.T. Hub.

± 90'

133+91.33  
M.H. 26

65'

50'





$166 + 80.50 = \text{Hub.}$   
Ang.  $22^{\circ} 11' \text{ Rt.}$

$164 + 48.46 = \text{Pot. Hub.}$

$155 + 49.94 = \text{Pot. Hub.}$

$$174 + 99.86 = \text{Hjb.}$$

$$\text{Ang. } 17^{\circ} 46' 30'' \text{ Lt.}$$

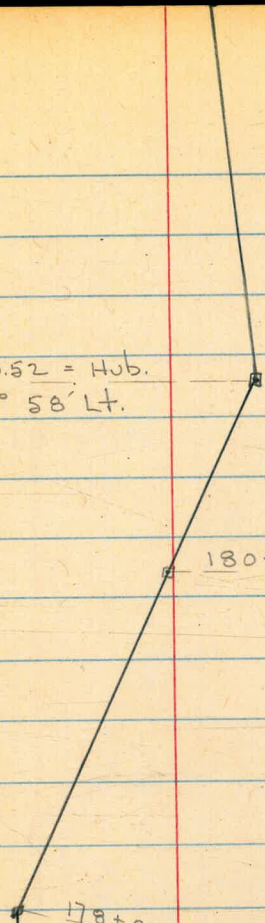
$$172 + 35.74 = \text{P.O.T. Hjb.}$$

$$169 + 37.31 = \text{P.O.T. Hjb.}$$

181+80.52 = Hub.  
Ang. 30° 58' Lt.

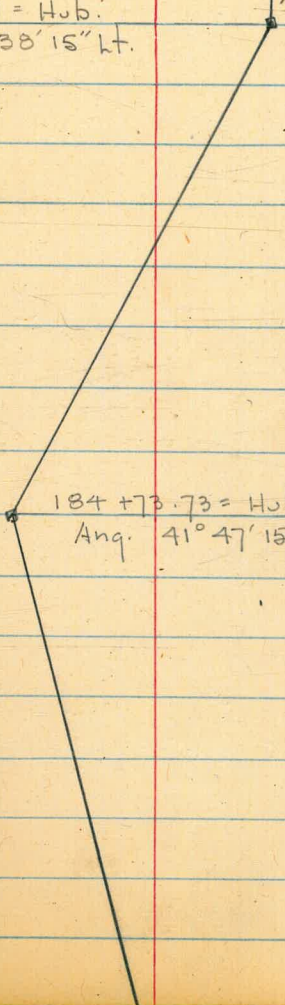
180+78.51 = P.O.T. Hub.

178+00.93 = Hub.  
Ang. 24° 44' 45" Rt.



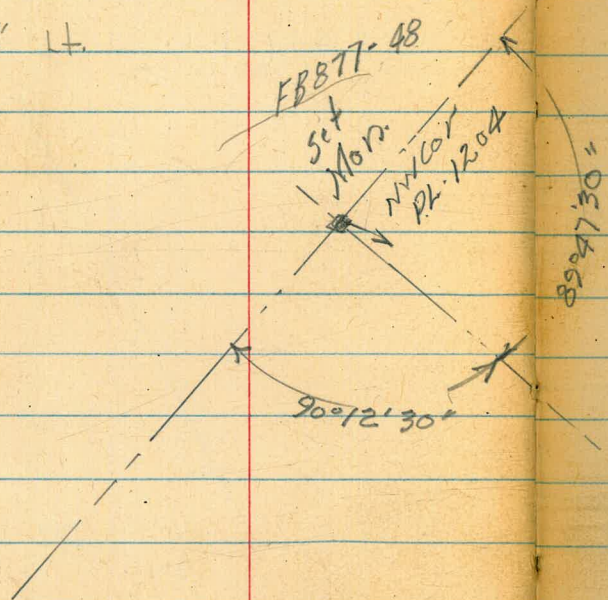
188 + 15.27 = Hub.  
Ang. 26° 38' 15" Lt.

184 + 73.73 = Hub.  
Ang. 41° 47' 15" Rt.



196+77.89 = Hub = 0+00 New extension to N.

Ang. 41° 05' 30" Lt.



West Line  
191+31.83 = P.O.T. - Int. Pueblo Gate 1204

Ext. to N.  
Sec. F.B. 2152 PI

197+90.00 = End.  
Hub.

196+77.89 = Hub  
0+00 to N.

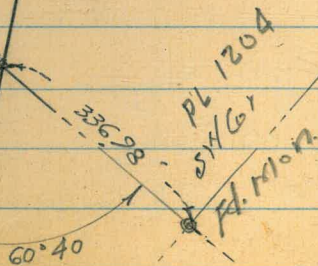
INDEXED  
MAR 6 1952

193+74.96 = Hub.  
Ang. 11° 08' 30" Lt.

2302.88

192+41.45 = P.O.T. Hub.

191+31.83  
P.O.T.



Begin Levels along  $\Phi$  of Prop. Trunk  
Sewer Thru Tecolote Canyon.

W.O. 20790                      7.0.      2-10-51

3+00

2+85 - 5' Lt. - Beg. Cyclone fence

2+62.55 = Ang. 2° 23' Lt.

2+00

1+50

1+00

if no outs shown - ground is flat.

0+50

Plan 1341-D

0+00 = M.H. #2

5.80      7.54<sup>✓</sup>      12.41      1.74

B.M.

6.30      14.15<sup>✓</sup>      7.85<sup>✓</sup> = B.P.

Lt.                       $\Phi$                       Rt.

4.9<sup>2.6</sup>

4.87<sup>2.67</sup>  
on Hub.

4.90<sup>2.64</sup>  
10 = Top MH.

5.2<sup>2.3</sup>  
10

5.3<sup>2.2</sup>

5.8<sup>1.7</sup>  
10

5.4<sup>2.1</sup>

5.4<sup>2.1</sup>

5.8<sup>1.7</sup>

5.80<sup>1.74</sup>  
Top MH.

11.26<sup>3.72</sup>  
I.E.  
MH.

6.8<sup>0.7</sup>  
Ground

7.54<sup>✓</sup>

in E.cb. Bridge - Pac. Hwy.

7+00

6+50

6+00 - 4' Lt. =  $\pm$  P. pole -5+98 - 5.1' Lt.  $\rightarrow$  end fence5+73 - 1.5' Lt. =  $\pm$  14' Cold Lay Dr. to Nursery5+72 - 10' Rt. =  $\pm$  M.H.

T.P. 9.88 13.31 4.11 3.43

5+50

5+00

4+50

4+00

3+50

Lt.

 $\pm$ 

Rt.

5.2  
8.1  
104.4  
8.94.0  
9.3  
10

4.6

8.7

4.4  
8.9

4.2

9.10  
20  
Dr.4.35  
8.96  
1.5 = Dr.4.43  
8.88  
10 =  
Top M.H.

13.31 ✓

4.1

3.4

3.4

4.1

3.5

4.0

3.3

4.2

5

fence

5.2

4.3

3.2

4.3

10

3.3

4.2

7.54

10+00 = on Wire fence

9+61 - 18 Lt. =  $\pm$  Guy Pole # 505888 - H

9+50

9+35 = Cross wire fence

on Morena Blvd.

Check B.M. - B.P. in Tecolote Bridge 3.26 10.05 10.04

8+98.7 = Edge A.C.

8+96.74 - 10° 49' 15" Lt

8+88.6 =  $\pm$  Pavc

8+78.5 = Edge AC. Pavc

8+40

8+00 - 33 Lt. =  $\pm$  P. pole -

7+50

Lt

8.9  
4.4

8.0  
5.3  
10

6.9  
4.4

8.93  
4.38  
30  
edge

8.83  
4.48

8.76  
4.55  
30 = edge

8.89  
4.42  
on Nail

8.83  
4.48  
10 = Top  
MH.

9.07  
4.24

8.95  
4.36  
30  
edge AC.

8.79  
4.52  
7.4  
5.9

8.74  
4.57  
30 = edge  
A.C.

5.5  
7.8

4.9  
8.4  
13.31 ✓



14+00

13+90 = Beg. Rough oil pave

13+77.3 = edge Bridge

See Detail - P. 2

13+57.5 = edge Bridge

13+50

13+00 - 70.5 Rt. = fence

12+50

T.P. 9.68 18.47 ✓ 3.52 9.79

12+00 - 7 Rt. = fence

11+50

11+00 - 3.4 Rt. = fence

10+50

10+49.8 - 0.1 Rt. = Sewer M.H. 4.00 9.31 on Rm

Lt.

#

Rt.

14.2 14.6 14.3  
 4.3 3.9 4.2  
 14.70 edge 8 12 = Top bank  
 3.77 7.3  
 11.2 = stream bed.

14.79  
3.68

14.5 14.8  
4.0 3.7  
.15

11.9 12.4 10.0  
6.6 6.1 8.5  
10.5 14

10.6 11.0 9.3  
7.9 7.5 9.2  
18.47 ✓ 8.5 12

9.8 10.5 8.5  
3.5 2.8 4.9  
7 12

9.7 10.1 8.6  
3.6 3.2 4.7  
4 10

9.4 9.6 8.3 8.1  
3.9 3.7 5.0 5.1  
10 edge Rd. 5 10

9.3 8.1  
4.0 5.2  
13.31 10

Lt.

±

Rt.

23

18+00

|  |       |       |      |      |       |      |
|--|-------|-------|------|------|-------|------|
|  | 13.49 | 13.43 | 13.9 | 13.1 | 8.9   | 8.8  |
|  | 6.59  | 6.65  | 6.2  | 6.4  | 11.2  | 11.3 |
|  |       | 2     | 7    | 12   | 23    | 35   |
|  |       | edge  |      |      | Ditch |      |

17+50

T.P. 6.33 20.08 472 13.75

|  |       |       |      |      |
|--|-------|-------|------|------|
|  | 13.17 | 13.11 | 13.4 | 13.1 |
|  | 6.91  | 6.96  | 6.7  | 7.0  |
|  | 20.08 | 2     | 7    | 12   |
|  |       | edge  |      |      |

17+00

|  |       |       |      |      |
|--|-------|-------|------|------|
|  | 12.87 | 12.80 | 12.9 | 12.7 |
|  | 5.60  | 5.67  | 5.6  | 5.8  |
|  |       | 2     | 7    | 12   |
|  |       | edge  |      |      |

16+50

|  |       |       |      |          |
|--|-------|-------|------|----------|
|  | 12.75 | 12.69 | 13.1 | 12.4     |
|  | 5.72  | 5.78  | 5.4  | 5.3      |
|  |       | 2     | 7    | 12 = Top |
|  |       | edge  |      |          |

16+00

|  |       |       |      |      |
|--|-------|-------|------|------|
|  | 12.51 | 12.47 | 13.1 | 12.7 |
|  | 5.96  | 6.00  | 5.4  | 5.8  |
|  |       | 2     | 7    | 12   |
|  |       | edge  |      |      |

15+54.5 - 5.5 Rt. = ± Guy Pole

15+50

|  |       |       |      |      |              |      |
|--|-------|-------|------|------|--------------|------|
|  | 12.11 | 12.05 | 12.7 | 12.6 | 9.5          | 8.3  |
|  | 6.36  | 6.42  | 5.8  | 5.9  | 10.0         | 10.2 |
|  |       | 2     | 7    | 12   | 20           | 35   |
|  |       | edge  |      |      | Bottom Ditch |      |

will Take a rod at that location

Note: Line will move 7' East from Here on

14+82.12 = Ang. 1°50' Rt. = ± Tonapah = Beg AC. pvc

13' Rt. = Barb wire fence

14+52 - 13.5' Rt. = ± F.H.

14+50

|  |         |       |      |          |
|--|---------|-------|------|----------|
|  | 12.13   | 12.11 | 12.3 | 12.11    |
|  | 6.34    | 6.36  | 6.3  | 6.4      |
|  | on nail | 2.5   | 7    | 17 = Top |
|  |         | edge  |      |          |
|  |         | ACI   |      |          |

|  |       |          |          |       |
|--|-------|----------|----------|-------|
|  | 12.7  | 13.0     | 13.1     | 1.9   |
|  | 5.8   | 5.5      | 5.4      | 10.6  |
|  | 18.47 | 9        | 11 = Top | 22 =  |
|  |       | edge Pvc |          | Ditch |

Lt.

±

Rt.

24

23+00

|       |        |      |      |
|-------|--------|------|------|
| 16.42 | 16.38  | 16.3 | 17.6 |
| 3.66  | 3.71   | 3.8  | 2.5  |
|       | 2 edge | 7    | 15   |

22+50

|       |        |      |      |
|-------|--------|------|------|
| 15.93 | 15.85  | 15.7 | 16.7 |
| 4.15  | 4.25   | 4.4  | 3.2  |
|       | 2 edge | 7    | 15   |

22+00

|       |        |      |      |
|-------|--------|------|------|
| 15.73 | 15.7   | 16.0 | 16.6 |
| 4.35  | 4.41   | 4.1  | 3.5  |
|       | 2 edge | 7    | 15   |

21+50

|       |        |      |      |
|-------|--------|------|------|
| 15.30 | 15.22  | 15.1 | 16.7 |
| 4.78  | 4.86   | 5.0  | 3.7  |
|       | 2 edge | 7    | 15   |

21+00

|       |        |      |      |        |
|-------|--------|------|------|--------|
| 15.02 | 14.94  | 14.7 | 14.5 | 15.0   |
| 5.06  | 5.14   | 5.4  | 5.6  | 5.1    |
|       | 2 edge | 7    | 15   | 53-Top |

20+50

|       |        |      |      |
|-------|--------|------|------|
| 14.73 | 14.65  | 14.1 | 12.8 |
| 5.35  | 5.43   | 6.0  | 6.3  |
|       | 2 edge | 7    | 15   |

20+00

|       |        |      |      |       |      |
|-------|--------|------|------|-------|------|
| 14.55 | 14.48  | 14.1 | 14.8 | 10.6  | 10.0 |
| 5.53  | 5.60   | 6.0  | 5.3  | 7.8   | 10.1 |
|       | 2 edge | 7    | 20   | 30    | 45   |
|       |        |      | Top  | Ditch |      |

19+50

|       |        |      |      |
|-------|--------|------|------|
| 14.25 | 14.15  | 14.4 | 14.8 |
| 5.85  | 5.93   | 5.7  | 5.3  |
|       | 2 edge | 7    | 12   |

19+00

|       |        |      |      |
|-------|--------|------|------|
| 14.00 | 13.93  | 13.7 | 13.5 |
| 6.08  | 6.15   | 6.4  | 6.6  |
|       | 2 edge | 7    | 12   |

18+50

|         |        |      |      |
|---------|--------|------|------|
| 13.87   | 13.84  | 14.1 | 13.9 |
| 6.19    | 6.24   | 6.0  | 6.2  |
|         | 2 edge | 7    | 12   |
| 20.08 ✓ |        |      |      |

Lt.      #      Rt.

26.00

25+57 - 5.3' Rt. = end fence

25+50

25+00

24+50

24+00

T.P.

5.02

23.98

1.12

18.96

Nail in N.E. Pole - N.E. Littlefield

23.98 ✓

$\begin{matrix} 18.5 \\ 5.5 \\ 10 \end{matrix}$        $\begin{matrix} 19.3 \\ 5.7 \\ 10 \end{matrix}$        $\begin{matrix} 18.4 \\ 5.6 \\ 10 \end{matrix}$

$\begin{matrix} 17.5 \\ 6.1 \\ 10 \end{matrix}$

$\begin{matrix} 17.7 \\ 6.3 \\ 10 \end{matrix}$

$\begin{matrix} 17.5 \\ 6.5 \\ 10 \end{matrix}$

$\begin{matrix} 17.4 \\ 6.6 \\ 10 \end{matrix}$        $\begin{matrix} 17.3 \\ 6.7 \\ 10 \end{matrix}$        $\begin{matrix} 17.1 \\ 6.9 \\ 10 \end{matrix}$

23+87.5 - 8.5' Rt. = Tel. pole # 327368 - H

14' Rt. = Beg. wire fence - on PL Line

23+60 = end A.C. pave - Line jogs 7' East. - Now 7' from

23+30 - 14' Rt. = end wire fence

23+30 - 18' Rt. = Tel. pole # 2491

23+24 - 15.5' Rt. = Tel. F.H.

23+12 - 13' Rt. = Tel. w.M.

$\begin{matrix} 17.07 \\ 2.01 \\ \text{on Nail} \\ 14' \text{ W. of} \\ \text{PL line} \end{matrix}$        $\begin{matrix} 16.98 \\ 3.10 \\ 3 \\ \text{edge} \\ \text{A.C.} \end{matrix}$        $\begin{matrix} 16.92 \\ 3.16 \\ 7 \\ \text{on} \\ \text{Hub} \end{matrix}$        $\begin{matrix} 17.08 \\ 3.0 \\ 15 \\ \text{ahead} \end{matrix}$

20.08 ✓

Lt.

#

Rt.

30+11.82 = Cross 18" Sewer

11.45  
15.57  
303.40 =  
I.E.M.H.

21.23  
5.79  
on 4 1/2 b.

14.07  
12.95  
87.96 =  
I.E.M.H.

T.P. 5.79 27.02 ✓ 2.75 21.23 = 4b. = 30+11.82

27.02 ✓

30+00

20.9  
2.1

29+87 - 11 Rt. = ang. in fence

29+50

20.4  
3.6

29+00

4.2 19.8

28+87 - 7.2 Rt. = Beg. wire fence

28+50

4.4 19.6

28+00

19.3  
4.7  
10

19.2  
4.8

19.4  
4.6  
10

27+50

4.9 19.1

27+00

5.1 18.9

26+50

5.2 18.8

23.98 ✓

34+50

34+00

33+96.4 - 10' Rt. = ± Sewer M.H. 3.93 23.09 on Rim

33+50

33+32 - 9' Lt. = ± Guy Pole

33+00

32+50

32+00

31+50

31+00

30+75

30+62.10 - Ang 89° 52' 30" Rt.

Lt.

±

Rt.

27

4.1 <sup>22.9</sup>

4.3 <sup>22.7</sup>

4.9 <sup>22.1</sup>

4.3 <sup>22.7</sup>  
10

5.2 <sup>21.8</sup>

5.3 <sup>21.7</sup>  
10

5.4 <sup>21.6</sup>

5.4 <sup>21.6</sup>

5.4 <sup>21.6</sup>

4.1 <sup>22.9</sup>  
12

4.9 <sup>22.1</sup>

6.2 <sup>22.8</sup>  
30

3.7 <sup>23.3</sup>

1.99 <sup>25.03</sup>

27:02 on Hub. ✓

Lt

T

Rt

38+50

5.3 <sup>25.7</sup>

38+00

5.6 <sup>25.4</sup>

37+50

6.0 <sup>25.0</sup>

37+23.5 - 10.3 Rt. 4 of Manhole <sup>25.30</sup> 5.67 Rim

37+00

5.8 <sup>25.2</sup>  
10

6.3 <sup>24.7</sup>

6.2 <sup>24.8</sup>  
10

36+50

6.7 <sup>24.3</sup>

6.39 <sup>↓</sup> 30.97

30.97 ✓

T.P.

24.4 24.58 - Nail in Pole Rt 35+97

36+00

3.2 <sup>23.8</sup>

35+50

3.4 <sup>23.6</sup>

35+00

3.3 <sup>23.7</sup>  
10

3.8 <sup>23.2</sup>

3.9 <sup>23.1</sup>  
10

27.02 ✓

43+50  
 T.P.                      7.05                      36.35                      1.67                      29.30

43+00

42+50

42+00

41+50

41+00

40+55 - 10.1 Rt = E manhole                      27.58  
 3.43 Rim

40+50

40+00

39+50

39+00

30.0  
 6.4  
36.35 ✓

29.4  
 1.6                      1.9                      29.1                      1.7                      29.3  
 10                      10

2.2                      28.8

2.4                      28.6

3.0                      28.0

3.3                      27.7                      3.2                      27.5                      3.3                      27.7  
 10                      10

3.8                      27.2

4.1                      26.9

4.6                      26.4

4.6                      26.4                      4.8                      26.2                      4.9                      26.1  
 10                      30.97 ✓                      10



T.P. 9.17 39.83 569 30.66

47+00 = Begin plowed field

46+68.7 - 10.5 Rt = E manhole

46+50

46+00

45+80 = E of Tecolote creek

45+55 = Edge Tecolote creek bank

45+13.5 - 11.3 Rt = E manhole

45+00

44+50

44+00

43+89.3 = 10.3 Rt = E of Manhole 6.49 rim

43+86.57 Begin fence at Isham's property  
Ang. 4° 50' Rt.

30.7  
5.7 10  
30.7 6.1 10  
30.0 6.4  
rim ground  
2.99 6.4  
10.5

28.0 30.6 29.7  
8.3 5.8 6.7 6.9 29.4  
50 40  
creek bot. Bank 10

30.4  
9.4 27.0  
5.9 30.5

33.26 31.1  
rim ground  
3.09 5.3  
11.3 11.3

31.2 31.2 30.8  
5.1 5.2 5.6  
10 10

5.8 30.6

5.6 30.8

30.36

5.99 on hub.

36.35 1

Lt.

E

Rt.

31

53+00

36.1  
3.7  
1036.1  
3.736.7  
3.6  
1039.07  
rim  
1.76  
10.636.3  
gd.  
3.5  
10.6

52+76.5 = 10.6 Rt E of manhole

52+50

4.4  
35.7

52+00

4.4  
35.4

51+50

4.9  
34.9

51+00

34.1  
5.7  
105.4  
34.734.6  
5.2  
10

50+50

6.7  
33.1

50+00

7.6  
32.2

49+50

8.2  
31.6

49+00

31.1  
8.7  
108.6  
31.231.5  
8.3  
10

34.88

31.5

48+79.83 - Angle 26° 57' 30" E manhole

10.4 Rt.

8.87  
30.96

8.87 on hub

rim

4.95

8.3

10.4

48+40

9.1  
30.7

48+00

9.1  
30.7

47+50

9.2  
30.6

39.83 ✓

58+10.5 - 18.6 Rt = ♀ manhole

58+00

57+50

57+00

56+71 - 10.3 Rt = ♀ manhole also 18.2 Rt = ♀ manhole

56+50

56+00

55+50

T.P. 7.33 46.28 0.88 38.95

55+00

54+50

54+00

53+50

Lt. ♀

Rt. 32

42.24 41.7  
rim gd.  
4.04 4.6  
18.6 18.6

41.3  
5.0

41.3

5.0

40.7

40.7  
5.6

5.6

40.6

5.7

10

41.45 41.1

rim gd.

4.83 5.2

10.3 10.3

41.29

40.8

rim gd.

4.99 5.4

18.2 18.2

40.4  
5.9

39.7  
6.6

7.4 38.9

46.28 ✓

38.3  
1.5  
10

38.3  
1.5

38.3  
1.5  
10

37.4  
2.4

2.8 37.0

36.5  
3.3  
39.83 ✓

Lt.                      E                      Rt.

62+50

10.3 <sup>41.3</sup>

51.60 |

T.P.                      9.78   51.60   446   41.82

62+00

5.1 <sup>41.2</sup>

61+50

5.5 <sup>40.8</sup>

61+00

40.5  
5.8  
10

5.4 <sup>40.9</sup>

4.7 <sup>41.6</sup>  
10

also 10.5 Rt. = Q manhole

43.83    42.3  
rim    gd.  
2.45    4.0  
10.5    10.5

60+61.80 - Angle 37° 09' 45" Lt.

41.15  
5.13 on hub

60+30

5.7 <sup>40.6</sup>

60+00

5.9 <sup>40.4</sup>

59+50

5.9 <sup>40.4</sup>

59+14 - 22.0 Lt. - Q of 30" poplar tree

also 26.0 Lt. E of 24" poplar

59+07 - 22.0 Lt. - E of 20" cottonwood tree

59+00

40.3  
6.0  
10

40.6  
5.7

41.1  
5.2  
10

58+50

41.0  
5.3  
46.28 |

L+

E

R+

To pueblo mon.

68+24.56 - Angle 59°20'45" stn. west

68+00

2.67 on hub.  
<sup>48.93</sup>

67+50

2.7 <sup>48.9</sup>

67+42.5 ~ 10.3 R+ = E manhole

3.0 <sup>48.6</sup><sup>49.49</sup>  
rim. <sup>48.9</sup> gd.  
2.11 2.7  
10.3 10.3

67+00

<sup>48.1</sup>  
3.5  
103.7 <sup>47.9</sup><sup>48.1</sup>  
3.5  
10

66+50

4.1 <sup>47.5</sup>

66+00

4.5 <sup>47.1</sup>

65+50

5.0 <sup>46.6</sup>

65+00

<sup>46.8</sup>  
4.8  
105.2 <sup>46.4</sup><sup>46.5</sup>  
5.1  
10

64+50

5.4 <sup>46.2</sup>

64+03 ~ 10.6 R+ = E manhole

<sup>46.92</sup>  
rim. <sup>46.2</sup> gd.  
4.68 5.4  
10.6 10.6

64+00

6.0 <sup>45.6</sup>

63+50

7.5 <sup>44.1</sup>

63+00

<sup>44.2</sup>  
9.4  
109.1 <sup>42.5</sup><sup>42.9</sup>  
8.7  
1051.60 |

74+00

73+50

73+00

72+50

72+00

71+50

71+00

70+83.5 ~ 10.1 Rt. = 9 manhole

70+50

70+00

69+50

69+00

68+50

T.P. 6.96 55.89 2.67 48.93 = Hub 68+24.56

2.3 53.6

2.6 53.3

52.5  
3.4 3.3 52.6 3.1 52.8  
10 10

3.8 52.1

4.3 51.6

4.5 51.4

51.0  
4.9 4.8 51.1 4.6 51.3  
10 10

52.09 51.4  
rim 9d.  
3.80 4.5  
10.1 10.1

5.1 50.5

6.1 49.8

6.4 49.5

49.7  
6.2 6.1 49.8 6.2 49.7  
10 10

6.4 49.5

55.89 ↓

51.60 ↓

Lt.

♀

Rt.

79+00

T.P. 7.23 68.53 0.34 61.30

78+50

78+00

also 10.0 Rt-♀ manhole 5.10 rim

77+61.05 ~ Angle 16° 01' 30" Lt.

77+30

77+00 = Edge plowed field

76+50

76+00

75+50

75+00

74+50

T.P. 7.06 61.64 1.31 54.58 =

74+23.5 10' Rt-♀ manhole

60.4 61.5 63.4  
8.1 7.0 5.1  
10 68.53 10

45.8 59.0  
15.8 6.1 5.3 56.3  
60 12 Break  
Tealote creek

6.6 55.0 6.69 54.95  
10 edge field Hub

6.8 54.8  
8.5 53.1 7.4 54.2 7.1 54.5  
15 break 10

52.5 54.1  
9.1 53.2 7.5  
8.4 7.2 54.4  
edge 18.0 plowed field  
30 bank creek 6.9 54.7

9.4 52.2 7.0 54.6 7.0 54.6  
45 10

7.4 54.2

61.64 ✓

Rim manhole at 74+23.5

55.89 1

54.58  
rim 1.31 2.9 54.0  
10.0 10.0

84+75 ~ Set bench 80' Rt & Power pole

0.68 69.03 =

# 11279521  
SPIKE IN POLE

84+50

T.P. 524 69.71 4.06 64.47

84+00

83+50

83+00

82+88.5 10.0 Rt = £ manhole

82+50

82+00

81+50

81+00

80+50

80+00

also 10.2 Rt = £ manhole

79+58.64 ~ Angle 22° 24' 30 Lt.

end of plowed field

79+46 = Fence at pueblo line also

5.7 <sup>64.0</sup>

69.71 1

4.3 <sup>64.7</sup>

4.6 <sup>63.9</sup>

<sup>62.7</sup>  
6.3

5.7 <sup>62.8</sup>

<sup>62.9</sup>  
5.6 <sup>63.76</sup>

10

10

rjm <sup>62.2</sup>  
4.77 5.3  
10.0 10.0

7.3 <sup>61.2</sup>

8.4 <sup>60.1</sup>

9.2 <sup>59.3</sup>

<sup>58.6</sup>  
9.9

8.3 <sup>60.2</sup>

<sup>61.6</sup>  
6.9  
10

10

5.9 <sup>62.6</sup>

5.3 <sup>63.2</sup>

<sup>65.72</sup>  
rjm <sup>64.5</sup>  
2.81 4.0  
10.2 10.2

<sup>63.98</sup>  
4.55  
HUB

<sup>63.8</sup>  
4.7  
68.53 1



89+00

88+50

88+00

87+50

87+25 EAST BANK OF WASH

87+20 = ♀ OF 10' WASH

87+15 WEST EDGE OF WASH

87+00 - 275' Lt. = ♀ 15' creek

86+70

10.1 Rt. ♀ of manhole

86+38.83 Angle ~ 9° 25' Rt. also

86+00

85+87 = ♀ OF small wash

85+76

85+50

85+00

Lt.

♀

Rt.

|      |      |       |
|------|------|-------|
| 69.0 | 69.6 | 69.9  |
| 0.7  | 0.1  | + 0.2 |
| 10   | 2.6  | 10    |

67.1

5.0 64.7

6.4 63.3

7.5 62.2

10.4 59.3

7.5 62.2

|      |      |      |
|------|------|------|
| 61.5 | 62.0 | 62.7 |
| 8.4  | 7.7  | 7.0  |
| 10   |      | 10   |

7.0 62.7

|           |      |
|-----------|------|
| 64.79     | 63.9 |
| rim grad. |      |
| 4.92      | 5.8  |
| 10.1      | 10.1 |

6.88 62.83  
4.6

|       |
|-------|
| 69.71 |
| 6.88  |
| 62.83 |

6.9 62.8

9.7 60.0

7.2 62.5

6.3 63.4

|      |      |
|------|------|
| 63.3 | 63.7 |
| 6.4  | 6.0  |
| 10   |      |

|      |
|------|
| 64.2 |
| 5.5  |
| 10   |

69.71 ✓

L+

E

R+

39

also 10.0 Rt = 8' STORM FENCE

92+57.30 = Angle  $46^{\circ} 59' 45''$  Lt.

74.36

4.68

HUB

92+00 - 320 Lt. =  $\pm$  20' Creek

7.7 71.3

91+63 ~ 12.0 Lt = Q OF 30" PEPPER TREE

91+50

8.7 70.3

91+42 ~ 9.0 Rt. Q OF 12" PEPPER TREE

91+33 ~ 27.0 Rt = Q OF 30" PEPPER TREE

91+23 ~ 5.0 Lt = Q OF 30" PEPPER TREE

91+00

69.6  
9.4  
1070.1  
8.970.7  
8.3  
10

90+50

7.8 71.2

90+41 ~ 9.9 Rt = E Manhole

72.89 71.9  
rim ground  
6.15 7.1  
9.9 9.9

90+00

71.8  
7.2

89+58 2.0 Rt = Q OF 30" EUC. TREE

89+50

71.0  
8.0

89+40 ~ 25.0 Lt = Q OF 20" EUC. (2) Tree

T.P. 9.94 79.04 0.61 69.10

79.04 ✓

69.71 ✓

Lt.                      E                      Rt.

99+00

|        |      |      |             |
|--------|------|------|-------------|
| 66.7   | 69.9 |      |             |
| bottom | TOP  | 69.9 | 70.3        |
| SLOPE  | BANK | 5.8  |             |
| 9.4    | 6.2  | 6.2  | 10.5        |
| 10     | 4    |      | along fence |

98+50

begin 4x4 and barb wire fence

98+49 105 ft. End cyclone fence and

98+00

97+50

97+00 - 80' Lt. &amp; 15' Creek

|      |       |      |             |
|------|-------|------|-------------|
| 67.4 | 68.9  | 71   |             |
|      | BREAK | 69.1 | 69.7        |
| 8.7  | 7.2   | 7.0  | 6.4         |
| 10   | 5     |      | 10.5        |
|      |       |      | along fence |

96+50

96+00

95+50

T.P.                      3.78                      76.09                      6.73                      72.31

95+00

76.09 ✓

94+50

94+00

93+50

93+00

|      |       |       |             |
|------|-------|-------|-------------|
|      | 71.3  |       | 72.5        |
|      | 7.7   | 6.97m | 6.5         |
|      | 10    |       | 10.4        |
|      |       |       | along fence |
|      |       | 72.7  |             |
|      |       | 6.3   |             |
|      |       | 5.8   | 73.2        |
|      |       | 5.7   | 73.3        |
| 73.3 |       |       |             |
| 5.7  | 5.1   | 73.9  | 74.7        |
| 10   | 79.04 |       | 4.3         |
|      |       |       | 10          |

+50

105+00 ~ Angle 13° 45' Lt.

+50

104 ~ - 160' Lt. ± 20' Creek

+50

103 ~

+50

102 ~

T.P. 6.98 77.63 5.44 70.65

+50

+15

101+00

100+67.81 P.O.T.

+50

100+00

99+71 10.8 Rt. = End Barb wire fence

99+50

Lt.

R

Rt.

41

72.2

5.1

70.1

7.5

50

72.40

5.23

Hub

73.9

3.7

35

71.9

5.7

50

74.8

2.8

60

Dir  
road

69.8

7.8

50

71.2

6.4

70.0

7.6

50

72.7

4.9

50

70.5

7.1

50

70.2

7.4

70.7

6.9

50

72.2

5.4

50

70.4

7.2

50

71.3

6.3

71.5

6.1

50

72.1

5.4

50

77.63 ✓

70.3

5.8

50

70.7

5.4

4.4

71.7

4.0

40

74.7

1.4

50

69.5

6.6

50

71.7

4.4

10

72.1

4.0

40

71.8

4.3

10

74.8

1.3

50

73.34

2.75

Hub

4.1

72.0

4.6

71.5

4.6

70.3

5.8

76.09 ✓

Lt.

E

Rt.

42

110 + 00

9.3 <sup>79.4</sup>

110 + 50

9.0 <sup>79.5</sup>  
88.54 ✓

110 ~

8.28

88.54

4/12

80.26 = 50' IN POLE

77.5  
6.9  
504.3 <sup>80.1</sup>3.0 <sup>81.4</sup>  
50

SET SPIKE FOR BENCH

109 + 49 15.5 At E OF POWER POLE = 279.527

109 + 50

75.7  
8.7  
5078.4  
6.079.4  
5.077.1  
7.376.5  
7.8  
50

109 ~

9.9 <sup>74.5</sup>  
5010.2 <sup>74.2</sup>8.7 <sup>75.7</sup>  
50

+ 50

108 ~ - 115 14 = ± 20' Creek

12.2 <sup>72.2</sup>  
5011.3 <sup>73.1</sup>11.6 <sup>72.8</sup>10.7 <sup>73.7</sup>  
50

107 + 50

12.4 <sup>72.0</sup>

T.P. 12 71 84.38 5.96 71.67

84.38 ✓

107 ~

6.7 <sup>70.9</sup>  
506.1 <sup>71.5</sup>6.5 <sup>71.1</sup>  
50

+ 50

7.1 <sup>70.5</sup>

106 ~

7.1 <sup>70.5</sup>  
507.0 <sup>70.6</sup>6.0 <sup>71.6</sup>  
50

71.63 ✓

115+50

9.0 79.5

115+00

73.7  
14.8  
35  
± 20'  
creek

77.7  
10.8  
21

9.3 79.2

9.0 79.5  
10

114+50

9.4 79.1

114+00

71.9  
16.6  
70  
± 20'  
creek

74.9  
13.6  
46

78.3  
10.2  
35  
Bank

77.7  
10.8  
10

9.8 78.7

83.4  
4.7  
30

113+60

77.3  
11.2  
40

79.8  
8.7  
15

4.4 84.1

84.9  
3.6  
10

86.8  
1.7  
15

88.0  
0.5  
40

113+41.86 = P.O.T.

85.65  
2.89  
on Hub.

113+00

3.7 84.8

112+50

71.5  
17.0  
170  
±  
20 creek

76.3  
12.2  
150  
Bank

78.7  
9.8  
50

5.6 82.9

112+00

8.6 79.9  
10

8.3 80.2

7.7 80.8  
10

111+50

9.7 78.8  
88.54 ✓

120+50

120+00

119+50

119+00

118+50

118+00

117+46.58 - Ang. 11° 04' 30" Lt.

117+00

116+50

T.P. 12.42 93.18 77.8 80.76

116+00

Lt.

±

Rt.

83.9  
9.3

77.5 83.3 83.7 85.4  
15.7 9.9 9.5 7.8  
30 10 50  
± Creek Bank

9.7 83.5

91.8  
11.4 10.1 83.1  
85.0  
Bank

10.6 82.6

75.7 82.3 82.3 82.2  
17.5 10.9 10.9 11.0  
50 35 30  
± Creek Bank

81.94  
11.24  
on Hub.

74.9 81.4 81.5 80.9  
18.3 11.8 11.7 12.3  
42 25 50  
± 20' creek Bank

12.3 80.9

93.18 ✓

84 80.1

88.54 ✓

Lt. Rt.

124 + 28.72 = P.O.T.

124 + 00

123 + 50

T.P. 4.7 ✓ 95.61 233 90.85

123 + 00

122 + 50

122 + 00

121 + 80

121 + 50

121 + 00

3.83 91.78  
on Hub

8m<sup>4</sup>  
11.2  
160  
= Bank

3.7 91.9  
2.7 92.9  
10

4.6 91.0

95.61 ✓

8m<sup>4</sup>  
6.8  
50  
Bank

90.4 93.7  
2.8 + 0.5  
40

4.4 88.5

5.2 88.0

78.9  
14.3 8m<sup>3</sup>  
30 20  
Creek Bank

6.0 87.2

7.7 85.5  
15  
Bank

5.6 87.6

83.6  
9.6  
15  
Bank

8.1 85.1  
93.18 ✓  
7.0 86.7  
20



Lt.

±

Rt.

129+00

1.5 94"  
76  
± Road.

49 90.7

3.8 91.5  
100

5.0 90.6  
181  
Bank

206  
± Creek

128+50

6.1 89.5

128+00

6.5 89.1

127+50

6.6 89.0

127+00

6.6 89.0

90.3  
5.3  
110

6.3 89.5  
160  
Bank

175  
± Creek

126+64.29 = Ang. 21° 17' 30" Rt

6.87 88.74  
on Hub.

126+00

7.4 88.2  
98  
± Road

7.0 88.6

6.5 89.1  
50

125+35

7.4 88.2

125+00 = ± Creek

12.7 82.9

124+80

6.2 89.4

95.61 ✓

Lt.

E

Rt.

47

132+50

10.2 97.5

132+00

|         |      |      |      |
|---------|------|------|------|
|         | 92.8 |      | 97.0 |
|         | 15.1 | 12.1 | 10.9 |
| 120     | 90   |      | 3.0  |
| ± Creek | Bank |      |      |

T.P. 13.21 107.95 0.87 94.74

107.95 ✓

131+70 - 15' H. ± 24" Cottonwood

131+50

2.4 93.2

131+05 = Bank

3.0 92.6

130+85 = ± Creek

7.1 89.5

130+70 = Bank

4.0 91.6

130+50

2.9 92.7

130+00

3.1 92.5

129+50

4.2 91.4

95.61 ✓

137+00

|         |      |      |           |
|---------|------|------|-----------|
|         | 97.7 | 99.5 |           |
|         | 17.4 | 15.6 | 0.0 115.1 |
| 90      | 67   |      | 55        |
| ± Creek | Bank |      |           |

136+50

14.5 100.6

136+00

|      |      |      |       |       |
|------|------|------|-------|-------|
|      | 97.7 | 97.1 | 102.5 |       |
| 17.7 | 18.0 | 12.6 | 6.0   | 109.1 |
| 40   | 7    |      | 25    |       |

T.P.

7.98

115.06 ✓

0.87

107.08

P.O.T. Hub

115.06 ✓

135+62.07 = P.O.T.

|      |      |      |         |        |
|------|------|------|---------|--------|
|      | 95.6 | 94.4 | 104.4   |        |
| 12.3 | 11.5 | 3.5  | 0.87    | 107.08 |
| 50   | 26   | 13   | on Hub: |        |

135+00

1.4 106.6

134+50

1.1 106.8

134+00

|         |      |       |       |       |
|---------|------|-------|-------|-------|
|         | 91.6 | 100.4 | 105.6 | 109.4 |
| 16.3    | 7.6  | 2.3   | +1.4  |       |
| 95      | 72   |       | 50    |       |
| ± Creek | Bank |       |       |       |

133+50

5.6 102.4

133+00

7.7 100.2  
107.95 ✓

T.P. 6.31 118.92 245 112.61

142+00

141+50

141+00

140+50

140+00

139+50

139+00

138+50

138+00

137+50

Lt.

€

Rt.

49

11.9 <sup>103.2</sup> 10.5 <sup>104.6</sup> 4.2 <sup>110.9</sup> 3.0 <sup>112.1</sup> +0.5 <sup>115.6</sup>  
107 47 22 50

3.6 <sup>111.5</sup>

12.5 <sup>102.6</sup> 11.5 <sup>103.6</sup> 5.7 <sup>109.4</sup> 5.2 <sup>109.9</sup> 0.0 <sup>115.1</sup>  
110. 35 10 40  
Bank

7.1 <sup>108.0</sup>

8.2 <sup>106.9</sup>

9.8 <sup>105.2</sup>

19.3 <sup>95.8</sup> 15.8 <sup>99.3</sup> 11.7 <sup>103.4</sup> 6.4 <sup>108.7</sup>  
138 100 50  
Creek Bank

11.9 <sup>103.2</sup>

13.0 <sup>102.1</sup>

15.3 <sup>99.8</sup>

115.06 ✓

145+95.76 = P. o.T.

T.P. 6.57 125.42 0.07 118.95

145+50

145+00

144+50

144+21.21 = Tang. of Water Line

143+96.10 = Ang. 60° 11' 15" Rt.

143+40

143+00

142+50

check B.M. on Water Line M.H. 1.55 117.37 ✓

117.7  
10.7  
20  
120.1  
528 on Hub.  
123.6  
1.8  
25 ✓

125.42 ✓

1.8 117.1

6.2 117.7  
47 =  
Bank

43 114.6

117.7  
1.2  
30 = Dirt Rd.

5.7 113.2

111.28  
7.64  
on Hub.

9.08 109.84  
on Hub.

6.5 112.4

|         |       |       |       |       |       |
|---------|-------|-------|-------|-------|-------|
| 98.6    | 102.4 | 105.2 | 112.3 | 112.4 | 115.9 |
| 20.3    | 16.5  | 13.1  | 6.6   | 6.5   | 3.0   |
| 189     | 147   | 36    | 12    |       | 35    |
| ± Creek | Bank  |       |       |       |       |

6.2 112.7

117.32 = B.M. on M.H. = 141+87 our Sta. on Rt.  
219+96.46 on Water Line

118.92 ✓

Back  
Begin levels along Tang. Produced ahead  
from 143+96.10 - To show profile of Valley to  
North.

2+00

T.R. 8.12 117.11 ✓ 9.93 108.99

1+75 - Bank

1+60 =  $\Phi$  Creek

1+25 - Bank

1+00

0+50

0+00 = 143+96.10 - Back Tang. produced ahead

Lt.

$\Phi$

Rt.

51

106.3  
10.8

117.11 ✓

13.3 105.6

16.0 102.9

12.9 106.0

12.5 106.4

11.1 107.8

9.08 109.8  
118.92 - P. 50 ✓

6+75 =  $\Phi$  Creek = end.

6+60 = Bank

6+00

5+50

5+00

4+50

4+00

3+50

3+00

2+50

| Lt. |      | $\Phi$ | Rt.  |     |
|-----|------|--------|------|-----|
| 1.2 | 4.8  | 12     | 55   | 4.9 |
| 87  | 25   | 20     | 18   | 90  |
| Rd. | Bank |        | Bank |     |

7.5 <sup>109.6</sup>6.3 <sup>110.8</sup>5.0 <sup>112.1</sup>

|              |      |     |     |
|--------------|------|-----|-----|
| 12.8         | 6.9  | 6.5 | 3.6 |
| 66           | 48   |     | 50  |
| $\Phi$ Creek | Bank |     |     |

2.1 <sup>110.0</sup>7.7 <sup>109.4</sup>7.9 <sup>109.2</sup>9.5 <sup>107.6</sup>

|              |      |     |               |
|--------------|------|-----|---------------|
| 14.6         | 12.1 | 9.9 | 9.2           |
| 60           | 45   |     | 50 = in field |
| $\Phi$ Creek | Bank |     |               |

9.9 <sup>107.2</sup>

117-11 ✓

T.P. 12.21 129.40 ✓ 823 117.19

151+00

150+50

150+00

149+50

149+00

148+50

148+45 - 37' Lt. = ± 36" Cycamore

148+00

147+50

147+00

146+50

Cont. from P. 50

Lt. ± Rt.  
 117.7 115.1 114.7 120.5  
 10.7 10.3 8.7 7.9  
 167 147 50 30  
 ±Creek Bank

8.8 116.6

114.9  
10.5  
208.4 117.0 122.8  
2.6  
30

8.8 116.6

111.7  
13.7  
509.3 116.1 122.4  
3.0  
30

11.3 114.7

108.7  
16.7 11.8 113.6 120.5  
50 41 7.9  
±Creek Bank 20

10.3 115.7

109.3  
16.1 13.8 111.6 114.8  
30 5 20.0 125.4  
20

104.1 106.7 110.0 115.4 123.7  
21.3 18.7 15.4 10.9 10.2 10.0 1.7  
58 50 15 8 4 15  
±Creek Bank 125.42 ✓



Lt.

±

Rt.

154 + 50

4.7 <sup>124.7</sup>

154 + 00

4.5 <sup>124.9</sup>  
407.9 <sup>121.5</sup>9.4 <sup>120.0</sup>  
40

153 + 50

10.3 <sup>119.1</sup>

153 + 00

11.3 <sup>118.1</sup>  
5011.8 <sup>117.6</sup>11.2 <sup>118.2</sup>  
5011.8 <sup>117.6</sup>  
97110  
± Creek

152 + 85 = Bank

12.1 <sup>117.3</sup>

152 + 80 = ± Creek - E. branch

15.5 <sup>113.9</sup>

152 + 50

13.3 <sup>116.1</sup>

152 + 30 = ± Creek - w. branch

15.0 <sup>114.4</sup>

152 + 00

14.0 <sup>115.4</sup>  
50  
Bank12.6 <sup>116.8</sup>10.4 <sup>119.0</sup>  
40

151 + 50

13.1 <sup>116.3</sup>

129.40 ✓

Lt.

±

Rt.

158+70

158+35 = ± Creek

158+00 - Beg. Light Brush

157+50

157+00

156+50

156+00

155+ 49.94 = P.O.T.

T.P.      5.48      133.68      120      128.20

155+00

10.9 122.8

13.2 120.5

0.3 133.4  
35

11.5 122.2

13.2 120.5  
15 ± Creek

9.0 124.7

0.1 133.6  
35

9.6 124.1

11.0 122.7  
17 = Bank

9.3 124.4

4.4 129.3  
25

7.8 125.9

10.1 123.6  
25

3.97 129.71  
on Hub.

133.68

+1.3 130.7  
30

1.5 127.9  
129.40 ✓

8.7 120.7  
43

10.1 119.3  
Bank

12.2 117.2  
98 ± Creek

163+50

163+00

162+50

162+00

161+50

161+23 - 34 Lt = Nearest of Group of Trees

161+00

T.P. 12.63 144.37 ✓ 1.94 131.74

160+50

160+00

159+50 - end brush

159+00

|  |        |     |       |       |       |     |
|--|--------|-----|-------|-------|-------|-----|
|  | 126.6  | Lt. | 130.1 | 132.7 | 137.0 | Rt. |
|  | 17.8   |     | 14.3  | 11.7  | 7.4   |     |
|  | 150    |     | 129   | 50    |       |     |
|  | ±Creek |     | Bank  |       |       |     |

|  |       |       |
|--|-------|-------|
|  | 131.4 | 143.4 |
|  | 13.0  | 8.9   |
|  | 50    | 135.5 |
|  |       | 1.0   |
|  |       | 35    |

6.6 137.8

|  |       |
|--|-------|
|  | 130.4 |
|  | 14.0  |
|  | 70    |

5.6 138.8

|  |       |              |
|--|-------|--------------|
|  | 143.5 | - Same Slope |
|  | 0.9   |              |
|  | 15    |              |

127.8

|  |        |
|--|--------|
|  | 16.6   |
|  | 126    |
|  | 140    |
|  | ±Creek |
|  | Bank   |

|  |       |
|--|-------|
|  | 129.3 |
|  | 15.1  |
|  | 35    |

7.7 136.7

|  |       |
|--|-------|
|  | 142.8 |
|  | 1.6   |
|  | 20    |

|  |       |
|--|-------|
|  | 128.4 |
|  | 16.0  |
|  | 35    |

11.3 133.1

|  |       |
|--|-------|
|  | 142.5 |
|  | 1.9   |
|  | 30    |

160+55  
Rt.

144.37 ✓

|  |       |
|--|-------|
|  | 129.4 |
|  | 4.5   |

11.5 122.2

|  |        |
|--|--------|
|  | 58     |
|  | ±Creek |

|  |       |
|--|-------|
|  | 122.2 |
|  | 9.5   |
|  | 48    |
|  | Bank  |

8.0 125.7

|  |       |
|--|-------|
|  | 128.3 |
|  | 5.4   |
|  | 30    |

8.5 125.2

120.6

|  |        |
|--|--------|
|  | 13.1   |
|  | 35     |
|  | ±Creek |

|  |       |
|--|-------|
|  | 122.9 |
|  | 10.8  |
|  | 20    |
|  | Bank  |

9.6 124.1

133.68

|  |       |
|--|-------|
|  | 124.7 |
|  | 9.0   |
|  | 30    |

167+50

166+80.50 = Ang. 22° 11' Rt.

166+25

165+95 = ± Creek

165+75

T.P. 8.69 142.06 ✓ 11.00 133.37

165+50

165+47 = 6' Lt. = ± 15" Oak

165+38 = 8' Rt. = ± 24" Oak

165+21 = 8' Lt. = ± 24" Doub. Oak

165+00 = enter Oak Grove

164+65 = Cross Wire fence

164+48.46 = P.O.T

164+00

57

|           |       |           |                                  |
|-----------|-------|-----------|----------------------------------|
| Lt.       | ±     | Rt.       |                                  |
| 0.0<br>30 | 142.1 | 3.8<br>15 | 138.3<br>137.3<br>136.4<br>133.2 |
|           |       | 5.7<br>80 | Bank                             |
|           |       | 8.9<br>90 | ± Creek                          |

137.05  
5.01  
on Hub.

2.4  
35

139.7  
5.8  
136.3

12.4  
139.7

9.9  
Bn. ✓

142.06 ✓

10.9  
133.5

133.6  
10.8  
35

|            |            |       |           |
|------------|------------|-------|-----------|
| 128.0      | 132.3      | 135.7 | 140.4     |
| 16.4<br>45 | 12.1<br>28 | 8.7   | 4.0<br>35 |
| ± Creek    | Bank       |       |           |

4.92  
139.45  
on Hub.

134.3  
10.1  
40

5.2  
139.2  
144.37 ✓

143.7  
0.7  
35

T.P. 8.37 160.14 ✓ 0.17 151.77

171+00

170+50

170+00

169+50

T.P. 1275 151.94 ✓ 2.87 139.19 = on Hub

169+37.31 = P.O.T.

169+10

168+90 = ± Creek

168+70 - 12' Lt = ± 30" Oak

Large Oaks - on Both Sides

168+50

168+00 - 10' Rt. = Uly. of Scrub Oak clump.  
50' Dian.

Lt.

±

Rt.

58

144.7  
7.2  
35  
149.4  
2.5  
150.8  
1.1  
15

9.8  
142.1

140.4  
11.5  
35  
140.4  
11.5  
141.4  
10.5  
35

12.4  
139.5

151.94 ✓

2.87 139.19  
on Hub.

137.5  
4.6  
15  
Bank  
3.8  
138.3  
3.3  
30  
138.8

6.8  
135.3

4.7  
137.4

142.2  
+0.1  
30  
3.4  
138.7  
4.7  
25  
Bank  
137.4

3.1  
139.0  
142.06 ✓

174+70 - 13' Lt. = sly. Tree of Group of Oaks

174+50

174+25 = Bank

174+15 = edge Creek

173+70 = in Creek - wide Bend.

173+40 = edge Creek

173+35 = Bank

173+00

172+80 - 15 Lt. = Nly. of Heavy Brush

172+50

172+00

171+50 - 235 Lt. =  $\pm$  Creek

Lt.

$\pm$

Rt.

59

10.3 149.5

10.8 149.3

14.1 146.0

144.2  
15.9  
35  
edge Creek  
= Nly. of Brush

15.6 144.5

15.5 144.6

12.6 147.5

10.2 149.9  
30  
Nly. of Brush

8.3 151.8

4.3 155.8

153.7  
6.4  
35

3.4 156.2

146.9  
13.2  
75

6.1 154.0

160.14 ✓

151.4  
8.7  
40

145.8  
14.3  
15  
edge  
Creek

155.8  
4.3  
50

159.5  
0.6  
20

Lt.

±

Rt.

178+50

155.9  
1.8  
30

154.0  
3.7

155.5  
4.2  
40 = Nly. Brush

178+00.93 = Ang 24° 44' 45" Rt.

153.05  
4.68  
on Hub.

177+20

151.5  
6.2  
30

151.7  
6.0

149.3  
8.4  
45  
± Creek

Heavy Brush + Trees on Rt.

177+12 - 12' Lt. = ± 5' oak

177+05 - 16' Lt. = ± 20" oak

176+77

150.2  
7.5  
30

151.1  
6.6

176+56 - 11' Rt. = ± 20" Oak

176+50 = ± Creek

148.3  
9.4

176+20 - Grove of Oaks - N. of Creek

150.3  
7.4

152.3  
5.4  
20

175+80 - 25' Rt = Nly. of Brush

150.4  
7.3  
23  
Bank

150.0  
7.7

175+55 - 10' Lt. = sly. of Overhang of Grove

175+30 - 85' Lt. = ± Creek in Grove of oaks

149.8  
7.9  
35

149.8  
7.9

155.5  
2.2  
32

T.P. 7.98 157.73 ✓ 10.39 149.75 = on

Hub

85  
± Creek

157.73 ✓

174+99.86 = Ang 17° 46' 30" Lt.

160.14 ✓

182+13

182+05 = ± 30" Oak - 3 trunks

181+95 - 5' Rt. = ± 48" 3 Trunks - oak

T.P. 7.31 167.75 ✓ 9.57 160.44 on Hub

181+80.52 = Ang. 30° 58' Lt.  
also on Rt.

181+70 - 5' Lt. = Overhang of Oak Cove

181+50 - 160' Rt. = ± Creek

181+00

180+78.51 = P.O.T.

180+50

180+00

179+50

T.P. 13.30 170.01 ✓ 1.02 156.71

179+00

Lt:

±

Rt.

61

5.2 <sup>162.6</sup>  
40

9.4 <sup>158.4</sup>

1.67 <sup>167.75</sup> ✓

9.57 <sup>160.44</sup>  
on Hub.

8.3 <sup>161.7</sup>

9.1  
30

167.3  
2.7  
50

163.9  
6.1

9.1 <sup>160.9</sup>  
45

165.60  
4.41  
on Hub.

165.8  
4.2

3.9 <sup>166.1</sup>  
50

163.8  
6.2

165.1  
4.9

160.8  
9.2

155.0  
150

20 50 65 140  
±  
Creek

9.5 <sup>160.5</sup>

170.01 ✓

1.4 <sup>156.3</sup>

157.73 ✓

3.1 <sup>157.6</sup>  
50

105  
± Creek



186+00 = Bank

185+80 - clump of Trees on Lt.

185+50

185+30 =  $\Phi$  Creek

185+00 - 10' Rt = Brush

T.P. 6.86 171.27  $\checkmark$  3.34 164.41 on Hub

184+73.73 = Ang. 41° 47' 15" Rt.

184+00

183+80 - 125' Lt. =  $\Phi$  Creek

183+50

Oak Trees on Lt.

183+00

182+65 - Beg. Heavy Brush - 4' Both Sides

182+50

182+30 =  $\Phi$  Creek

Lt.

$\Phi$

Rt.

5.6 <sup>165.7</sup>

7.1 <sup>164.2</sup>  
30

7.1 <sup>164.2</sup>

9.3 <sup>162.0</sup>

7.2 <sup>164.1</sup>

3.7 <sup>167.6</sup>  
30

171.27  $\checkmark$

3.34 <sup>164.41</sup>  
on Hub.

3.5 <sup>164.1</sup>  
30

6  
Brush

4.1 <sup>163.6</sup> = Brush

1.6 <sup>165.2</sup>  
30

5.5 <sup>162.2</sup>  
15  
Brush

5.4 <sup>162.4</sup>

3.1 <sup>164.6</sup>  
30

7.4 <sup>163.4</sup>

7.9 <sup>159.9</sup>

7.7 <sup>160.0</sup>  
40

12.0 <sup>155.8</sup>

167.75  $\checkmark$

189+80

189+45 - 6 ft. = ± cluster of 8" Oak Trunks

189+25

189+00 = Beg Line Thru Heavy Brush

188+75

Trunks 8" App.

188+50 - 2' Rt. = edge of clump of Oak

188+25

T.P. 6.61 174.65 ✓ 3.23 168.04

188+15.27 - Ang. 26° 38' 15" Lt.

188+00 - 5' Lt. = Beg. Heavy Brush

187+50

187+00

Heavy Brush S. of creek - continuous

186+55 = bank

186+40 = edge Creek

186+10 = Creek - edge

Lt. +1.2 30 175.8 3.8 15 170.8 3.8 170.8 8.4 15 166.2 Rt. ± Creek

1730 1.7 25 1690 5.7 15 Brush 5.9 168.8

1720 2.7 30 15 Brush 6.1 168.6 9.7 20 165.0 ± Creek

3.23 168.04 on Hob.

+2.2 50 173.5 2.9 168.4 5.6 26 165.7 Bank 6.6 40 164.7 ± Creek

0.0 30 171.3 4.4 166.9

5.5 165.8

clear slope 1.5 30 149.8 4.9 166.4 7.2 164.1 6.8 30 = edge Brush 164.5

7.6 163.7 171.27 ✓

192 + 41.45 = P.O.T.

192 + 00

191 + 60 - 70 Lt. = ± Creek - 20' Bank to N. of Creek + Rising ground.

191 + 35

T.P. 10.10 182.77 1.98 172.67

190 + 90

H

190 + 85

Heavy brush - Both sides from Here on

190 + 55 = edge Creek

190 + 41 - 8 Rt. = ± 12" Oak

190 + 10 = in Creek

190 + 06 - 3' Lt. = ± 14" Oak

190 + 05 = ± 12" Oak - 2 trunks

190 + 00

Lt. ± Rt.

176.51  
6.26 2.3  
on Hub 20

6.0 176.8

70 174.0  
8.8 7.7 175.1  
50 6.2 176.6  
25

8.6 174.2

182.77 ✓

2.4 172.2

5.4 169.2

172.0 169.4 168.4 170.6 172.0  
2.6 5.2 6.3 4.0 1.7  
30 10 Bank 10 Bank 40

6.7 165.0

3.6 171.0  
174.65 ✓

Lt.

+

Rt.

195+87 =  $\Phi$  Creek

13.7 176.9

195+70 = Bank

5.9 184.7  
30

10.9 179.7

195+35

10.0 180.6

T.P. 10.39 190.58 ✓ 2.58 180.19

190.58 ✓

195+00

184.7  
+1.9  
50

180.6  
2.2  
20

2.9 179.9

179.8  
3.0  
30

194+55

4.0 178.8

193+90

178.3  
4.5

176.4  
6.4  
60  
Bank

174.4  
10.4  
67  
 $\Phi$  creek

193+74.96 = Ang 11° 08' 30" Lt.

4.9 177.86  
on Hub.

193+40

5.2 177.6  
50

5.7 177.1

193+00

6.6 176.2  
30

7.2 175.5

192+80 =  $\Phi$  Creek

11.5 171.3  
182.77 ✓

Lt.

E

Rt.

197+90.00 = End. = Hub.

197+82 - 3.5' Lt. = B.M. =  $\square$  on Rock 4.55  
186.03 = B.M.197+61 - 18' Rt. =  $\oplus$  clump of 8" oak Trunks

197+30

196+70

196+45

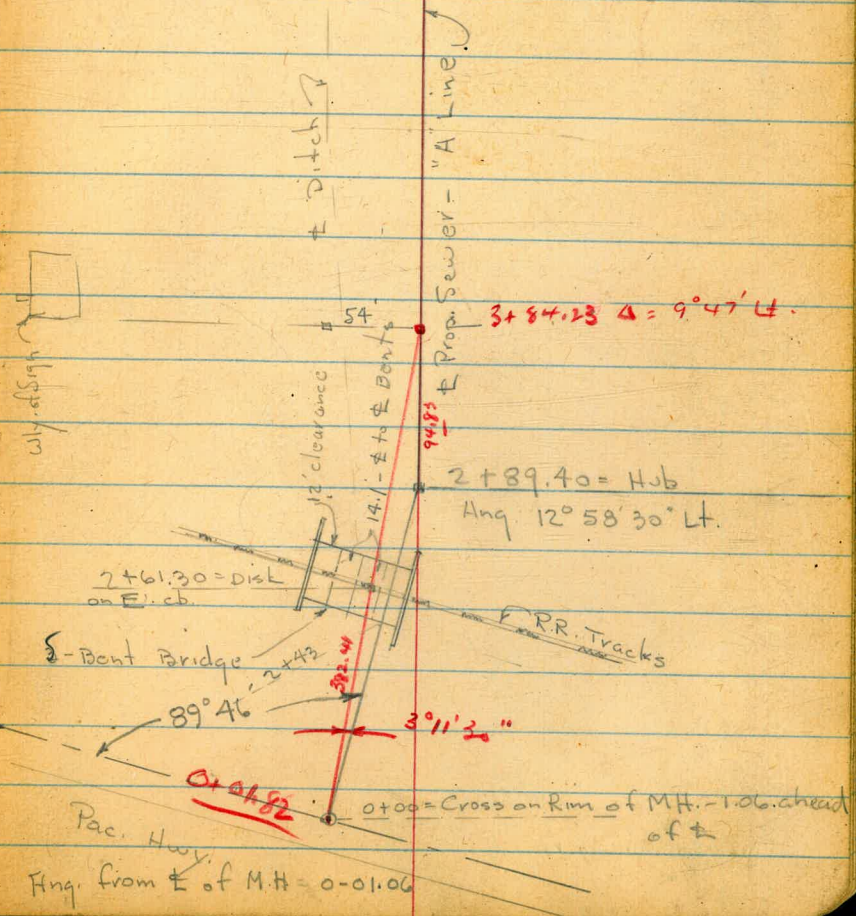
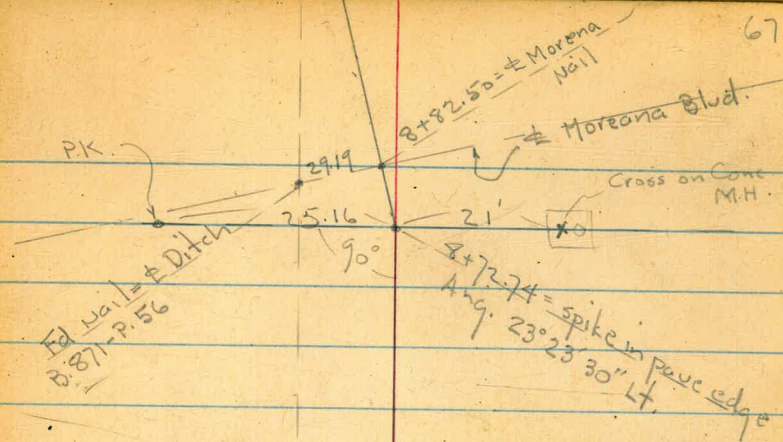
196+20 - 15' Lt. = E Creek

196+00 = Bank

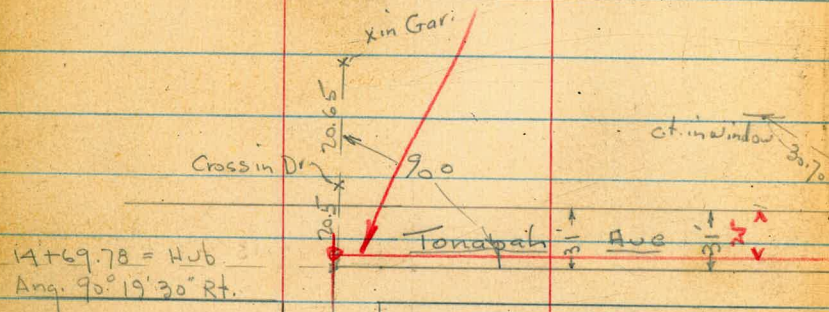
186.04  
4.54  
on Hub.60  
 $\oplus$  creek  
177.5  
13.1  
58  
 $\oplus$  creek  
6.9  
54  
Bank  
183.7  
9.1  
181.5  
50  
6.1  
182.5  
5.0  
25  
185.6177.9  
12.7  
20  
 $\oplus$  Creek  
9.0  
181.6  
182.2  
8.4  
30176.8  
13.8  
15  
10.3  
180.311.2  
179.4  
190.58 ✓  
11.2  
30  
179.4

Notes Reduced. 2-16-51.

Alternate Line from Trunk Sewer  
to 48 + 79.83 on "P" Line  
Cell - "A" Line



Move Sewer to Street

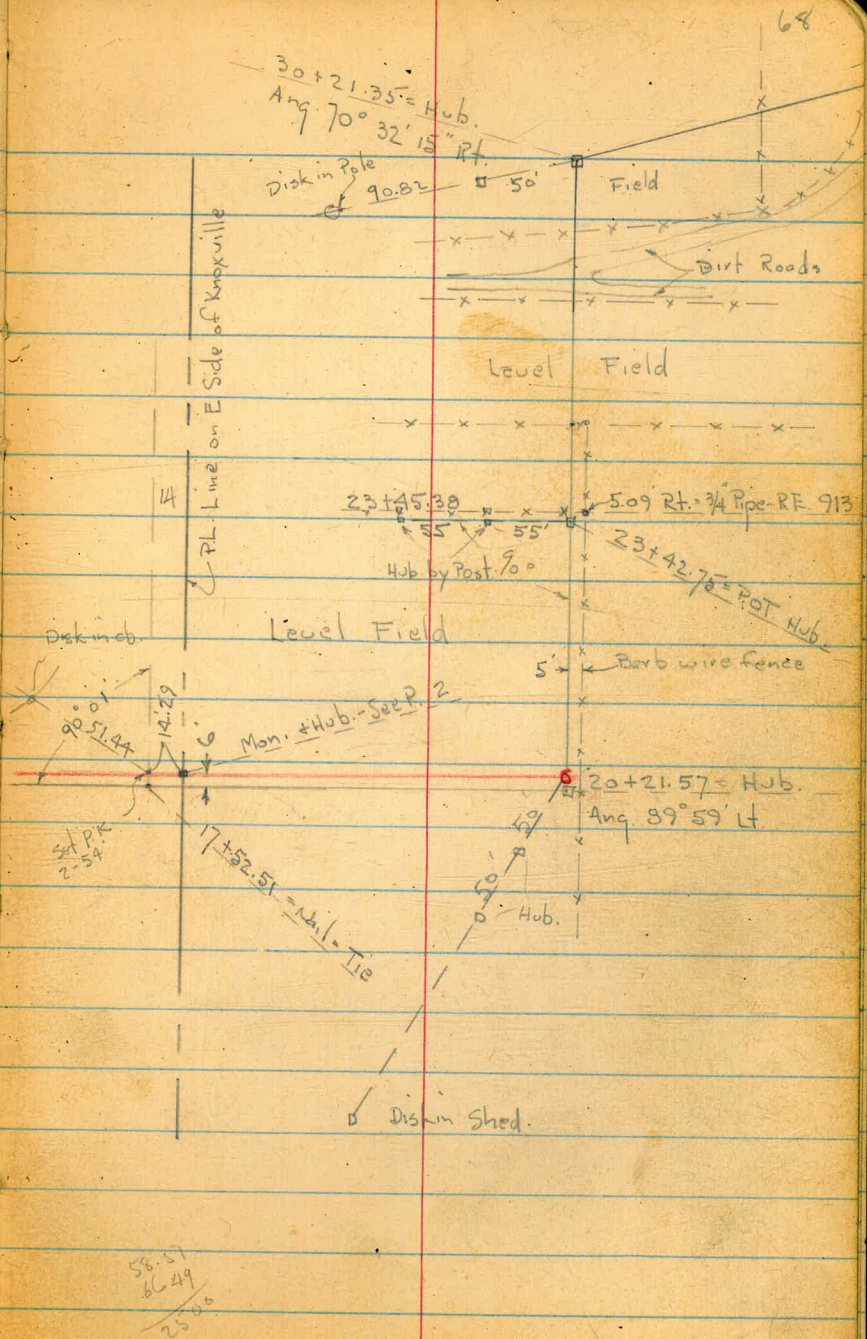


± Morena Blvd. 2

8+82.50

Lehigh St.  
25'

PL. Line on E Side of Knoxville



30+21.35 = Hub.  
Ang. 70° 32' 15" Rt.

23+45.38  
55' 55'  
Hub by Post 90°  
23+42.78 = POT Hub.  
5.09 Rt. 3/4 Pipe RF 913

20+21.57 = Hub.  
Ang. 89° 59' Lt.

Mon. + Hub. - See P. 2

17+52.51 = 141' Tie

58.51  
60.49  
25.00

68

To sta. 60+61.80  
on "P" Line 69

Eq. P. 4  
1st Line  
 $46 + 69.76 = \text{Hjb.} = 48 + 79.83$   
Ang.  $2^{\circ} 47'$  Lt.  
~~9.50~~

Cross on  
Rim Hjb.  $2'$   
2nd From  
Post.

E. Prop. Sewer - "A" Line



Begin Levels along Prop. Sewer from Trunk  
 Line along Pac Hwy. - by Drain Ditch to Join  
 Line shown on P. 4 in Lot 267 = 48+79.83

W.O. 20790 Osborns 2-26-51

Hardin  
 Hatch  
 Pullen

6.2 Lt. = Near side of Bent

5.8 Rt. = Near Side of Bent - along Bulkhead.

2+43 = edge of R.R. - 3 Bent Bridge

2+00

1+72 - 1' Lt. = ± 12" Cottonwood

1+50

1+35 - 4" Rt. = ± 12" Cottonwood

1+00

0+50

"A" Line

0+00 = Cross on Rim of Trunk Sewer M.H.

6.66 11.88 ✓ 6.09 5.22 = Cross on Rim =

B.M. 3.46 11.31 ✓ 7.85 = B.P. in Bridge  
 ✓

19.1 = Top of Rail (w.)  
 9.97

|                       |                       |  |                |                            |             |                      |
|-----------------------|-----------------------|--|----------------|----------------------------|-------------|----------------------|
| 10.7<br>15<br>± Ditch | 8.2<br>10             | 5.20<br>Bottom of steel<br>I Beams under Rails | 7.6<br>ground. | 4.3<br>Bottom of Stringers | 7.1<br>4.77 | 5.8<br>along<br>Bent |
|                       | 11.7<br>20<br>± Ditch | 7.9<br>15                                      | 6.8<br>5.2     | 6.8<br>15                  |             |                      |

|                       |           |            |           |
|-----------------------|-----------|------------|-----------|
| 12.6<br>25<br>± Ditch | 7.5<br>15 | 7.9<br>4.3 | 7.6<br>15 |
|-----------------------|-----------|------------|-----------|

8.4  
35

8.6  
ground.  
16.80 = I.E. of M.H.  
-4.92

11.88 ✓

0+00  
 P. 19

6+00

5+96 = 4.5 Rt. = Cor. Wood Rack

5+79.5 = 8.6 Rt. = Cor. Wood Rack

5+50

5+00

T.P. 7.50 12.91 6.47 5.41

4+50

4+00

3+50

3+00

2+89.40 = Ang. 12° 58' 30" Lt.

2+61.3 = Edge of RR. Bridge

5.8 - Rt. = Near Side of Bent

6.2 Lt. = " " "

|         |                |                |                |                |                |                |
|---------|----------------|----------------|----------------|----------------|----------------|----------------|
|         | <sup>4.5</sup> | <sup>4.5</sup> | <sup>9.2</sup> | <sup>5.5</sup> | <sup>5.5</sup> | <sup>4.2</sup> |
|         | 8.3            | 8.3            | 3.2            | 2.4            | 7.7            | 8.2            |
| ± Ditch | 31             | 23             | 13             | 3              |                | 15             |
|         |                |                | Top<br>Mound   |                |                |                |

7.8<sup>5.2</sup>

7.9<sup>5.2</sup>

12.91 ✓

6.7<sup>5.2</sup>

|         |                |                |                |                |                |                |
|---------|----------------|----------------|----------------|----------------|----------------|----------------|
|         | <sup>3.5</sup> | <sup>3.9</sup> | <sup>8.4</sup> | <sup>5.5</sup> | <sup>5.5</sup> | <sup>4.9</sup> |
|         | 8.7            | 8.0            | 3.7            | 6.4            | 6.6            | 7.0            |
| ± Ditch | 30             | 20             | 10             | 4              |                | 15             |
|         |                |                | Top<br>Mound   |                |                |                |

6.5<sup>5.4</sup>

|                         |                |                |                |                |                |                |
|-------------------------|----------------|----------------|----------------|----------------|----------------|----------------|
|                         | <sup>1.2</sup> | <sup>5.3</sup> | <sup>5.2</sup> | <sup>5.2</sup> | <sup>5.2</sup> | <sup>4.9</sup> |
|                         | 10.7           | 6.6            | 6.7            | 6.7            | 6.7            | 7.0            |
| ± Ditch<br>(as flagged) | 27             | 15             |                |                | 15             | 50             |

5.67<sup>6.21</sup>  
on Hub

|         |                |                |                      |                |                        |                |
|---------|----------------|----------------|----------------------|----------------|------------------------|----------------|
|         | <sup>1.2</sup> | <sup>3.3</sup> | <sup>6.1</sup>       | <sup>4.5</sup> | <sup>7.11</sup>        | <sup>4.1</sup> |
|         | 10.7           | 8.6            | 5.20                 | 7.3            | 4.77                   | 7.2            |
| ± Ditch | 18             | 9              | Bottom of<br>I-Beams |                | Bottom<br>of Stringers | 5.8 = ground   |

11.88 ✓

+T.P. ✓  
 check B.M. 299 13.03 287 10.04 = B.P. in

Book Lt. ± Rt.

8+72.74 = Ang. 23° 23' 30" Lt.

3.08  
 onspike

8+72.5 = edge A.C. pave

9.9 3.10 9.1  
 2.92  
 6.6 = Top Conc. cb.

8+64.5 - 6.6 Lt. = Cor. of 9" Conc. Bridge curb.

8+63.5 - 4.8' Lt. =  $\phi$  w.M.

8+62.5 - 5.9' Lt. =  $\phi$  P. pole # 4498.

8+61.5 - 5.8' Lt. = end  $\phi$  of Hedge

8+50

4.7

8+35.5 - 5.8' Rt. = Near Cor. of 2' Conc. walk

8.2  
 4.69  
 5.8  
 Cor. walk

8+32.2 - 9.6 Rt. = Near Cor. of House

8+00

|              |     |     |     |     |     |
|--------------|-----|-----|-----|-----|-----|
| 5.3          | 5.2 | 6.7 | 7.2 | 7.0 | 6.5 |
| 7.6          | 7.9 | 4.0 | 5.2 | 5.9 | 6.4 |
| 30.5         | 20  | 12  | 8   |     | 15  |
| $\phi$ Ditch |     | Top |     |     |     |

7+90 - 5.5 Lt. =  $\phi$  of 3' Hedge - 3.5 High

7+50

6.8

7+14.5 - 12.6 Rt. =  $\phi$  Sewer. M.H.

6.09  
 6.91  
 12.6 =  
 Rim 11.23  
 12.6  
 I.E.  
 M.H.

7+09.3 = Cross 8' U.C. Sewer

7+00

|              |     |     |     |     |     |
|--------------|-----|-----|-----|-----|-----|
| 4.9          | 5.3 | 9.1 | 6.1 | 5.5 | 5.5 |
| 8.0          | 7.6 | 3.8 | 6.8 | 7.3 | 7.4 |
| 30.5         | 20  | 12  | 5   |     | 15  |
| $\phi$ Ditch |     | Top |     |     |     |

6+50

7.4

12.91 ✓

11+50

5.5<sup>2.4</sup>

11+00 = Thru  $\Phi$  of Graded st.

5.4<sup>7.6</sup>

10+50

<sup>7.8</sup> 5.2 15  
<sup>7.8</sup> 5.2 13 Toe  
<sup>8.5</sup> 4.5  
<sup>10.9</sup> 2.1 21 = Top Mound.

10+32 - 42 Lt. end Picket fence to w.

10+22

<sup>7.8</sup> 5.2  
<sup>11.7</sup> 1.3 9 = Top

10+00 = Top Mound along Ditch

<sup>7.4</sup> 5.8 20  
<sup>7.5</sup> 5.5 10  
2.7 2.1 7.1  
10 31 Ditch

9+65 = edge Ditch

<sup>7.5</sup> 5.5 20  
<sup>9.4</sup> 3.6 8  
7.5 7.2 4.5  
edge 14 21 Top

9+20 = edge of Ditch

<sup>5.7</sup> 7.3 18  
7.5 2.6 4.5  
edge Ditch 6 = Top 12

9+00

2 x 10.6

8+96.9 - 7.6 H. = Cor. 9" Conc. Bridge cb.

3.03  
7.6  
Top cb 3.14 9.89

8+93.4 = edge AC

8+82.5 =  $\Phi$  Morena

<sup>10.08</sup> 2.94 45  
8.87 4.16 ? +  
13.03  $\checkmark$  3.02 50  
<sup>10.01</sup>

Lt. Lt. Rt.  
 10.98  
 6.49 7.4  
 5.8  
 edge  
 A.C.

16+00

15+50

15+00

T.P.

8.29

17.47

3.85

9.18 = Hub.

10.40 9.97 10.26  
 7.07 7.50 7.21  
 Top 24 6.1  
 ch! gut. edge A.C. 8.0 8.4  
 17.47 ✓ 9.1  
 10

14+69.78 = Ang. 90° 19' 30" Rt.

14+50

14+00

13+50

13+00

12+50

12+00

9.18  
 3.85  
 on Hub.  
 7.8  
 5.2  
 7.5  
 5.4  
 7.4  
 5.6  
 7.1  
 5.9  
 6.8  
 6.2  
 7.0  
 6.0  
 13.03

18+50

18+12 = Toe = edge of field

18+02 = Top Mound

17+90 = edge

17+74 = edge Ditch

17+68 = Top bank

17+55 = edge oil pave

17+38.5 - 19' Rt =  $\pm$  P. pole # P-4598

17+22 = edge oil pave

17+00

16+50

16+03.5 = 15.5' Rt. =  $\pm$  P. pole # 4581

Lt.  $\pm$  Rt.

10.6  
6.9

10.8  
6.7  
30

11.3  
6.2

10.6  
6.9  
30

14.5  
3.0

7.8  
9.7

8.3  
9.2  
40

7.9  
9.6  
Ditch

7.8  
9.7  
40

12.4  
5.1

12.11  
5.36  
6  
Cor. A.C.

12.2  
5.3

12.6  
4.9  
15' on oil pave

12.11  
5.36  
6  
edge  
A.C.

12.1  
5.4

11.86  
5.61  
6.5  
edge  
A.C.

11.1  
6.4

10.0  
7.5  
12

10.4  
7.1

17.47 ✓

Lt.

C.

Rt.

22+50

22+00

21+50

21+00

20+50

5' Rt. on forward Tang. = wire fence

20+21.57 = Ang. 89° 59' Lt.

20+18

20+00

19+50

19+00

5.0 12.5

5.5 12.0  
15

5.1 12.4

5.0 12.5  
56.1 11.4  
86.6 10.9  
25

5.4 12.1

5.8 11.7

6.2 11.3

8.44 9.03  
on Hub

10.4 1.1

8.5 9.0  
25

90° To forward Tang.

6.9 10.6

7.0 10.5  
15

7.0 10.5

7.0 10.5  
15

7.1 10.4

6.8 10.7

17.47 ✓

Lt. ± Rt.

26+50

9.2 <sup>14.9</sup>

26+00

9.6 <sup>14.5</sup>

25+50

9.9 <sup>14.2</sup>

25+00

13.9  
10.2 10.2 13.9  
20 20

24+50

13.7  
10.4

24+45 - Cross wire fence - 5' Rt. = end N+S fence

24+00

11.7 10.6  
12.4 12.5 11.9 12.4 12.8 11.6  
40 15 10 30  
± wash ± wash

23+90 = E of Cross Wash

13.7 <sup>10.4</sup>

23+50

12.7 12.6 13.1 10.4 10.1  
11.4 11.5 11.0 13.7 13.4  
20 5 10 30

23+45.4 = Cross wire fence - 5' Rt. = N+S fence

T.P. on Hub. 1081 24.09 ✓ 4.19 13.28

24.09 ✓

23+42.75 = P.O.T.

4.19 <sup>13.28</sup>  
on Hub.

23+00

4.6 <sup>12.9</sup>  
17.47 ✓



30+21.35 - Ang 70° 32' 15" Rt

29+80

29+26.5 - Cross wire fence - Begin level field

29+07 - edge Dirt Road

28+75 - edge Dirt Road

28+70 - Cross wire fence - end field

28+65

28+50

28+00

27+50

27+00

Lt.

±

Rt.

$13^{\circ}$        $13.4$        $19.4$        $18.50$   
 11.1      10.7      4.7      5.59  
 34 ditch 22      20      on Hub.  
 sets  $90^{\circ}$  to forward Tang.

6.0 18.1

6.4 17.7

$17.8$        $18.6$        $19.3$   
 6.3      5.5      4.8  
 30      30

6.1 18.0

7.4 16.7

7.2 16.9

8.1 16.0

8.5 15.6

9.8 15.3

24.09 ✓

Cont. in Book 1450 - P. 64

Lt

±

Rt.

79

34+50

34+08 = Cross Poor wire fence

34+00

33+50

33+10 = edge of Rd

33+00

32+50

32+05 = edge Dirt Road

T.P. 10.81 34.21 0.69 23.40

32+00

31+92 = Cross wire fence (on angle)

31+50

31+00

30+90 = 6' Rt. = E old 12" Dia. Gin Pole

30+84.5 = Cross wire fence - end field

30+60

23.6  
10.6  
20

24.1  
10.1

31.7  
2.5  
20 = on Ridge

24.3  
9.9

24.2  
10.0

22.6  
11.6  
25  
edge of Rd.  
Turn

23.0  
11.2

23.3  
10.9  
25 = in Rd. - South

23.5  
10.7

34.21 ✓

1.4 22.7

2.6 21.5

19.5  
4.6  
34  
Top bank  
of Ditch

19.9  
4.2

20.6  
3.5  
30

19.0  
5.1

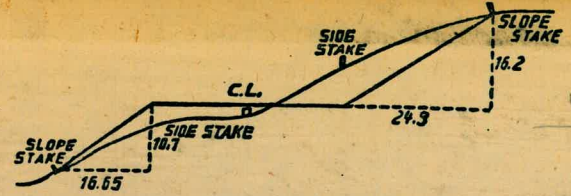
24.09 ✓

Notes Reduced - 2-25-51

19.6 + 77.89 = Ang.  $41^{\circ} 05' 30''$  Lt.

*[Handwritten signature]*

W.O. 20790  
 29 87.54  
 23+60  
 -----  
 6 27.54'



**DISTANCES FROM SIDE STAKES FOR CROSS-SECTIONING.**  
 SLOPE 1 1/2 TO 1. ROADWAY OF ANY WIDTH.

|    | 0     | .1    | .2    | .3    | .4    | .5    | .6    | .7    | .8    | .9    |    |
|----|-------|-------|-------|-------|-------|-------|-------|-------|-------|-------|----|
| 0  | 0.00  | 0.15  | 0.30  | 0.45  | 0.60  | 0.75  | 0.90  | 1.05  | 1.20  | 1.35  | 0  |
| 1  | 1.50  | 1.65  | 1.80  | 1.95  | 2.10  | 2.25  | 2.40  | 2.55  | 2.70  | 2.85  | 1  |
| 2  | 3.00  | 3.15  | 3.30  | 3.45  | 3.60  | 3.75  | 3.90  | 4.05  | 4.20  | 4.35  | 2  |
| 3  | 4.50  | 4.65  | 4.80  | 4.95  | 5.10  | 5.25  | 5.40  | 5.55  | 5.70  | 5.85  | 3  |
| 4  | 6.00  | 6.15  | 6.30  | 6.45  | 6.60  | 6.75  | 6.90  | 7.05  | 7.20  | 7.35  | 4  |
| 5  | 7.50  | 7.65  | 7.80  | 7.95  | 8.10  | 8.25  | 8.40  | 8.55  | 8.70  | 8.85  | 5  |
| 6  | 9.00  | 9.15  | 9.30  | 9.45  | 9.60  | 9.75  | 9.90  | 10.05 | 10.20 | 10.35 | 6  |
| 7  | 10.50 | 10.65 | 10.80 | 10.95 | 11.10 | 11.25 | 11.40 | 11.55 | 11.70 | 11.85 | 7  |
| 8  | 12.00 | 12.15 | 12.30 | 12.45 | 12.60 | 12.75 | 12.90 | 13.05 | 13.20 | 13.35 | 8  |
| 9  | 13.50 | 13.65 | 13.80 | 13.95 | 14.10 | 14.25 | 14.40 | 14.55 | 14.70 | 14.85 | 9  |
| 10 | 15.00 | 15.15 | 15.30 | 15.45 | 15.60 | 15.75 | 15.90 | 16.05 | 16.20 | 16.35 | 10 |
| 11 | 16.50 | 16.65 | 16.80 | 16.95 | 17.10 | 17.25 | 17.40 | 17.55 | 17.70 | 17.85 | 11 |
| 12 | 18.00 | 18.15 | 18.30 | 18.45 | 18.60 | 18.75 | 18.90 | 19.05 | 19.20 | 19.35 | 12 |
| 13 | 19.50 | 19.65 | 19.80 | 19.95 | 20.10 | 20.25 | 20.40 | 20.55 | 20.70 | 20.85 | 13 |
| 14 | 21.00 | 21.15 | 21.30 | 21.45 | 21.60 | 21.75 | 21.90 | 22.05 | 22.20 | 22.35 | 14 |
| 15 | 22.50 | 22.65 | 22.80 | 22.95 | 23.10 | 23.25 | 23.40 | 23.55 | 23.70 | 23.85 | 15 |
| 16 | 24.00 | 24.15 | 24.30 | 24.45 | 24.60 | 24.75 | 24.90 | 25.05 | 25.20 | 25.35 | 16 |
| 17 | 25.50 | 25.65 | 25.80 | 25.95 | 26.10 | 26.25 | 26.40 | 26.55 | 26.70 | 26.85 | 17 |
| 18 | 27.00 | 27.15 | 27.30 | 27.45 | 27.60 | 27.75 | 27.90 | 28.05 | 28.20 | 28.35 | 18 |
| 19 | 28.50 | 28.65 | 28.80 | 28.95 | 29.10 | 29.25 | 29.40 | 29.55 | 29.70 | 29.85 | 19 |
| 20 | 30.00 | 30.15 | 30.30 | 30.45 | 30.60 | 30.75 | 30.90 | 31.05 | 31.20 | 31.35 | 20 |
| 21 | 31.50 | 31.65 | 31.80 | 31.95 | 32.10 | 32.25 | 32.40 | 32.55 | 32.70 | 32.85 | 21 |
| 22 | 33.00 | 33.15 | 33.30 | 33.45 | 33.60 | 33.75 | 33.90 | 34.05 | 34.20 | 34.35 | 22 |
| 23 | 34.50 | 34.65 | 34.80 | 34.95 | 35.10 | 35.25 | 35.40 | 35.55 | 35.70 | 35.85 | 23 |
| 24 | 36.00 | 36.15 | 36.30 | 36.45 | 36.60 | 36.75 | 36.90 | 37.05 | 37.20 | 37.35 | 24 |
| 25 | 37.50 | 37.65 | 37.80 | 37.95 | 38.10 | 38.25 | 38.40 | 38.55 | 38.70 | 38.85 | 25 |
| 26 | 39.00 | 39.15 | 39.30 | 39.45 | 39.60 | 39.75 | 39.90 | 40.05 | 40.20 | 40.35 | 26 |
| 27 | 40.50 | 40.65 | 40.80 | 40.95 | 41.10 | 41.25 | 41.40 | 41.55 | 41.70 | 41.85 | 27 |
| 28 | 42.00 | 42.15 | 42.30 | 42.45 | 42.60 | 42.75 | 42.90 | 43.05 | 43.20 | 43.35 | 28 |
| 29 | 43.50 | 43.65 | 43.80 | 43.95 | 44.10 | 44.25 | 44.40 | 44.55 | 44.70 | 44.85 | 29 |
| 30 | 45.00 | 45.15 | 45.30 | 45.45 | 45.60 | 45.75 | 45.90 | 46.05 | 46.20 | 46.35 | 30 |
| 31 | 46.50 | 46.65 | 46.80 | 46.95 | 47.10 | 47.25 | 47.40 | 47.55 | 47.70 | 47.85 | 31 |
| 32 | 48.00 | 48.15 | 48.30 | 48.45 | 48.60 | 48.75 | 48.90 | 49.05 | 49.20 | 49.35 | 32 |
| 33 | 49.50 | 49.65 | 49.80 | 49.95 | 50.10 | 50.25 | 50.40 | 50.55 | 50.70 | 50.85 | 33 |
| 34 | 51.00 | 51.15 | 51.30 | 51.45 | 51.60 | 51.75 | 51.90 | 52.05 | 52.20 | 52.35 | 34 |
| 35 | 52.50 | 52.65 | 52.80 | 52.95 | 53.10 | 53.25 | 53.40 | 53.55 | 53.70 | 53.85 | 35 |
| 36 | 54.00 | 54.15 | 54.30 | 54.45 | 54.60 | 54.75 | 54.90 | 55.05 | 55.20 | 55.35 | 36 |
| 37 | 55.50 | 55.65 | 55.80 | 55.95 | 56.10 | 56.25 | 56.40 | 56.55 | 56.70 | 56.85 | 37 |
| 38 | 57.00 | 57.15 | 57.30 | 57.45 | 57.60 | 57.75 | 57.90 | 58.05 | 58.20 | 58.35 | 38 |
| 39 | 58.50 | 58.65 | 58.80 | 58.95 | 59.10 | 59.25 | 59.40 | 59.55 | 59.70 | 59.85 | 39 |
| 40 | 60.00 | 60.15 | 60.30 | 60.45 | 60.60 | 60.75 | 60.90 | 61.05 | 61.20 | 61.35 | 40 |
| 41 | 61.50 | 61.65 | 61.80 | 61.95 | 62.10 | 62.25 | 62.40 | 62.55 | 62.70 | 62.85 | 41 |
| 42 | 63.00 | 63.15 | 63.30 | 63.45 | 63.60 | 63.75 | 63.90 | 64.05 | 64.20 | 64.35 | 42 |
| 43 | 64.50 | 64.65 | 64.80 | 64.95 | 65.10 | 65.25 | 65.40 | 65.55 | 65.70 | 65.85 | 43 |
| 44 | 66.00 | 66.15 | 66.30 | 66.45 | 66.60 | 66.75 | 66.90 | 67.05 | 67.20 | 67.35 | 44 |
| 45 | 67.50 | 67.65 | 67.80 | 67.95 | 68.10 | 68.25 | 68.40 | 68.55 | 68.70 | 68.85 | 45 |
| 46 | 69.00 | 69.15 | 69.30 | 69.45 | 69.60 | 69.75 | 69.90 | 70.05 | 70.20 | 70.35 | 46 |
| 47 | 70.50 | 70.65 | 70.80 | 70.95 | 71.10 | 71.25 | 71.40 | 71.55 | 71.70 | 71.85 | 47 |
| 48 | 72.00 | 72.15 | 72.30 | 72.45 | 72.60 | 72.75 | 72.90 | 73.05 | 73.20 | 73.35 | 48 |
| 49 | 73.50 | 73.65 | 73.80 | 73.95 | 74.10 | 74.25 | 74.40 | 74.55 | 74.70 | 74.85 | 49 |
| 50 | 75.00 | 75.15 | 75.30 | 75.45 | 75.60 | 75.75 | 75.90 | 76.05 | 76.20 | 76.35 | 50 |

THE NATIONAL BLANK BOOK COMPANY  
 HOLYOKE MASSACHUSETTS  
 NEW YORK CHICAGO BOSTON SAN FRANCISCO