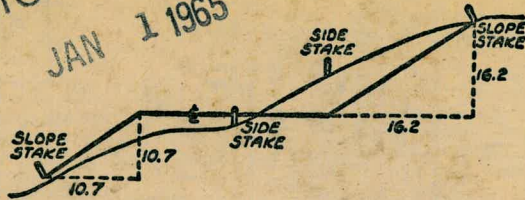


2135

PLATE 101

MICROFILMED

JAN 1 1965



DISTANCES FROM SIDE STAKES FOR CROSS-SECTIONING
SLOPE 1 TO 1. ROADWAY OF ANY WIDTH

	0	.1	.2	.3	.4	.5	.6	.7	.8	.9	
0	0.00	0.10	0.20	0.30	0.40	0.50	0.60	0.70	0.80	0.90	0
1	1.00	1.10	1.20	1.30	1.40	1.50	1.60	1.70	1.80	1.90	1
2	2.00	2.10	2.20	2.30	2.40	2.50	2.60	2.70	2.80	2.90	2
3	3.00	3.10	3.20	3.30	3.40	3.50	3.60	3.70	3.80	3.90	3
4	4.00	4.10	4.20	4.30	4.40	4.50	4.60	4.70	4.80	4.90	4
5	5.00	5.10	5.20	5.30	5.40	5.50	5.60	5.70	5.80	5.90	5
6	6.00	6.10	6.20	6.30	6.40	6.50	6.60	6.70	6.80	6.90	6
7	7.00	7.10	7.20	7.30	7.40	7.50	7.60	7.70	7.80	7.90	7
8	8.00	8.10	8.20	8.30	8.40	8.50	8.60	8.70	8.80	8.90	8
9	9.00	9.10	9.20	9.30	9.40	9.50	9.60	9.70	9.80	9.90	9
10	10.00	10.10	10.20	10.30	10.40	10.50	10.60	10.70	10.80	10.90	10
11	11.00	11.10	11.20	11.30	11.40	11.50	11.60	11.70	11.80	11.90	11
12	12.00	12.10	12.20	12.30	12.40	12.50	12.60	12.70	12.80	12.90	12
13	13.00	13.10	13.20	13.30	13.40	13.50	13.60	13.70	13.80	13.90	13
14	14.00	14.10	14.20	14.30	14.40	14.50	14.60	14.70	14.80	14.90	14
15	15.00	15.10	15.20	15.30	15.40	15.50	15.60	15.70	15.80	15.90	15
16	16.00	16.10	16.20	16.30	16.40	16.50	16.60	16.70	16.80	16.90	16
17	17.00	17.10	17.20	17.30	17.40	17.50	17.60	17.70	17.80	17.90	17
18	18.00	18.10	18.20	18.30	18.40	18.50	18.60	18.70	18.80	18.90	18
19	19.00	19.10	19.20	19.30	19.40	19.50	19.60	19.70	19.80	19.90	19
20	20.00	20.10	20.20	20.30	20.40	20.50	20.60	20.70	20.80	20.90	20
21	21.00	21.10	21.20	21.30	21.40	21.50	21.60	21.70	21.80	21.90	21
22	22.00	22.10	22.20	22.30	22.40	22.50	22.60	22.70	22.80	22.90	22
23	23.00	23.10	23.20	23.30	23.40	23.50	23.60	23.70	23.80	23.90	23
24	24.00	24.10	24.20	24.30	24.40	24.50	24.60	24.70	24.80	24.90	24
25	25.00	25.10	25.20	25.30	25.40	25.50	25.60	25.70	25.80	25.90	25
26	26.00	26.10	26.20	26.30	26.40	26.50	26.60	26.70	26.80	26.90	26
27	27.00	27.10	27.20	27.30	27.40	27.50	27.60	27.70	27.80	27.90	27
28	28.00	28.10	28.20	28.30	28.40	28.50	28.60	28.70	28.80	28.90	28
29	29.00	29.10	29.20	29.30	29.40	29.50	29.60	29.70	29.80	29.90	29
30	30.00	30.10	30.20	30.30	30.40	30.50	30.60	30.70	30.80	30.90	30
31	31.00	31.10	31.20	31.30	31.40	31.50	31.60	31.70	31.80	31.90	31
32	32.00	32.10	32.20	32.30	32.40	32.50	32.60	32.70	32.80	32.90	32
33	33.00	33.10	33.20	33.30	33.40	33.50	33.60	33.70	33.80	33.90	33
34	34.00	34.10	34.20	34.30	34.40	34.50	34.60	34.70	34.80	34.90	34
35	35.00	35.10	35.20	35.30	35.40	35.50	35.60	35.70	35.80	35.90	35
36	36.00	36.10	36.20	36.30	36.40	36.50	36.60	36.70	36.80	36.90	36
37	37.00	37.10	37.20	37.30	37.40	37.50	37.60	37.70	37.80	37.90	37
38	38.00	38.10	38.20	38.30	38.40	38.50	38.60	38.70	38.80	38.90	38
39	39.00	39.10	39.20	39.30	39.40	39.50	39.60	39.70	39.80	39.90	39
40	40.00	40.10	40.20	40.30	40.40	40.50	40.60	40.70	40.80	40.90	40
41	41.00	41.10	41.20	41.30	41.40	41.50	41.60	41.70	41.80	41.90	41
42	42.00	42.10	42.20	42.30	42.40	42.50	42.60	42.70	42.80	42.90	42
43	43.00	43.10	43.20	43.30	43.40	43.50	43.60	43.70	43.80	43.90	43
44	44.00	44.10	44.20	44.30	44.40	44.50	44.60	44.70	44.80	44.90	44
45	45.00	45.10	45.20	45.30	45.40	45.50	45.60	45.70	45.80	45.90	45
46	46.00	46.10	46.20	46.30	46.40	46.50	46.60	46.70	46.80	46.90	46
47	47.00	47.10	47.20	47.30	47.40	47.50	47.60	47.70	47.80	47.90	47
48	48.00	48.10	48.20	48.30	48.40	48.50	48.60	48.70	48.80	48.90	48
49	49.00	49.10	49.20	49.30	49.40	49.50	49.60	49.70	49.80	49.90	49
50	50.00	50.10	50.20	50.30	50.40	50.50	50.60	50.70	50.80	50.90	50

Distance of slope stake from side or shoulder stake for any width roadway, slope 1 to 1. If ground is nearly level, the cut or fill at side stake is located by the double entry method in left column and top row. The number in body of table in same row and column gives distance from side stake to slope stake. If ground is not level estimate the difference in elevation between the side stake and slope stake, lower target by this amount if cut, elevate if fill. Add this amount to cut or fill and find distance in table. Set up rod at this point, and line of sight should cut target. If it does not make the slight adjustment necessary.

1911

INDEX.

Macaulay - Evergreen to Rosecrans } 1-14
Evergreen - Macaulay to Newell }

Alley BIK. 19 - Ocean Beach, X- Sec. p. 15-24

X Sec 46th St Logan to Ocean View p 25-40

X-SEC EVERGREEN NEWELL TO POE; POE 200' NWLY FROM LOCUST ^{P41-54}

Cross Section

Macaulay - Evergreen + Rosecrans

Evergreen - Macaulay to Newell

Sommermeier

Begg. A

R. Sisson

D Fleming

16-Apr. 1951

w.o.# 20819

- = Fd. Conc. Mon.
- = Fd. 1/2" Tack or disk
- = Fd. 1" disk
- = Fd. Lt.

Note: Error in 1st line of
levels. Re-run & A corrected.
See pages 9 + 10.

ST

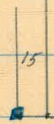


NEWELL

INT-YFD
APR 18 1951

← Locust St →

Macaulay St



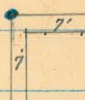
Evergreen



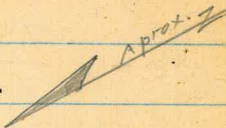
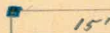
Newell st

← Rosecrans →

Evergreen st

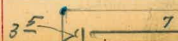


Macaulay st.



Macaulay st
Line produced from N. West.

Lowell st.



Locust st.



Macaulay

Nail Pole # P.3157 29.32 24.43
 T.P. #1 4.89 29.35 ~~24.43~~ 24.46 ✓

⊙ = Rods on ground under bridge

0-35 = ~~±~~ Evergreen

0-70 Cont.

0-70 = ^{Little} Wly. Evergreen

0-72 27' Rt = Pole # P 3207

0-120 Cont.

0-120

0-170 Cont.

0-170 E.P. = edge of Pauc.

T.P. on rock 5.49 ^{33.45} 37.46 ~~27.96~~ ^{P-9} 27.97 27.96

3

~~5.95~~ 25.30 (25.33)

BM #1 2.18 31.25 — 29.07

2.80	19.5	19.5	2.80	27.97	28.34	28.27	2.78
5.5	14.0	14.0	5.5	5.48	5.11	5.18	5.7
35	28	23	14	E.P.	14	20	35
29.5	29.2	26.8	23.5			E.P.	
4.0	4.3	6.7	10.0				
50	38	35	30				
20.6	21.4	30.2	28.2	28.93	29.41	29.28	27.7
12.9	12.1	3.3	4.53	4.52	4.04	4.17	5.8
21	17	5	E.P.		13	19	35
	31.8	30.7	28.9			E.P.	
	1.7	2.8	4.6				
	50	38	3.5				
23.2	22.7	31.1	30.4	30.10	30.56	30.39	28.5
10.3	10.8	2.4	3.31	3.15	2.90	3.06	5.0
25	19	6	3		9	17	35
			E.P.		E.P.		
		32.3	31.7				
		1.2	1.8				
		50	38				
29.5	29.7	24.9	31.5	31.58	31.52	32.0	29.3
4.0	8.8	8.6	2.40	1.87	4.93	1.5	4.2
35	25	20	13		10	14	35
			E.P.		E.P.		
				33.45			
				<u>33.46</u>			

S.E.B.P. Lowell + Evergreen Book shows El. = 25.33
 S.W.B.P. Lowell + Evergreen

2

Macaulay

2+00[±] Cont.2+00[±] Wly. line Locust.

Pole # 1748

23.56

T.P. #2 3.19

~~23.60~~~~8.94~~20.41

20.37

P. 9

2+50 Cont.

2+50

2+43-34[±] RT = ± 8' wide Conc. Dr.

2+00 Cont.

2+00

1+72-34[±] RT = ± 2' wide Conc. walk

12.1	17.8	15.2	19.3	19.3	18.42	18.54	18.09	18.9	19.5
11.5	9.8	8.4	4.3	4.3	5.14	5.02	5.47	4.7	4.1
25	24	16	9	3	E.P.	10	20	23	35
							E.P.		

~~23.60~~

23.56

21.9

19.7

20.3

7.49.69.0

40

35

35

16.4	16.0	20.7	21.3	20.7	19.87	20.02	19.85	20.3
12.9	13.3	8.6	8.0	8.6	9.45	9.30	9.47	9.0
33	18	16	10	2	E.P.	10	20	22
							E.P.	
						20.71	20.72	20.74
						8.61	8.60	8.58
						34E	35	45

21.6

21.6

7.77.7

50

47

16.7	16.3	19.3	21.6	22.0	21.71	21.41	21.29	21.7	21.9
12.6	13.0	10.0	7.7	7.3	8.01	7.91	8.03	7.6	7.4
35	25	22	13	2	E.P.	10	20	22	35
							E.P.		

22.99

23.11

6.33

6.21

35

45

29.32

29.35

0+32- 34' Rt. = ~~±~~ 3' wide conc. walk.

0+26- 51' Lt. = ~~±~~ 3' wide conc. walk

0+02 27' Rt. = Pole # P3099

= 0+00
2+70 Cont.

= 0+00
2+70 = Ely line Locust.

2+35 Cont.

2+35 = ~~±~~ Locust.

2+05 - 31' Rt. = Pole # 1748

17.53
6.03
5.46
at stop.

17.51
6.05
5.15
walk

17.9
5.7
50

18.1
5.5
40

14.6
9.0
35

12.2
11.4
30

12.2
11.4
28

17.0
6.6
35

14.1
9.5
25

14.1
9.5
18

17.5
6.1
16

18.4
5.2
10

17.9
5.7
3

16.57
6.99
1
E.P.

16.60
6.96

16.65
6.91
8

16.15
7.41
19
E.P.

16.6
7.0
22

16.6
7.0
135

18.9
4.7
46

14.5
7.1
40

14.0
7.6
35

13.9
9.7
33

17.9
5.7
135

12.2
11.4
29

14.3
9.3
25

14.3
9.3
21

18.8
4.8
12

18.9
4.7
4

17.55
6.01
E.P.
on M.H.
Rim

17.63
5.93
9

17.33
6.23
20

17.6
6.0
35

23.56

~~23.60~~

16.31
7.25
3.47
walk

Macaulay

1+45 - 32⁴ Rt. = 8' wide Conc. Drive

1+37 - 36' Lt. = end conc. block wall

1+20 32³ Rt. = 3' wide Conc. walk

T.P. #3 452 18.19 ~~9.77~~ 13.73 13.67
P-10

1+00 Cont

wall 1' to 18" high
1+00 36' Lt. = start conc. block

0+70 - 45' Lt. = 3' wide Conc. walk.

0+50 Cont.

0+50

	15.0	14.2	14.12	14.09	14.09
	3.2	4.0	4.07	4.10	4.10
	36	36	324	35	45
	top of wall	Gr.	14.35	14.39	14.50
			3.84	3.80	3.69
			323	35	45
			18.25		
			18.19		
	15.6	15.0	13.7	13.7	13.7
	8.0	8.6	9.9	9.9	11.0
	36	35	29	27	22
	top of wall				
	11.9	13.8	15.3	15.0	14.46
	11.7	9.8	8.3	8.6	9.10
	13	11	9	6	2
					E.P.
		16.66	15.3	15.0	14.51
		6.90	6.96	6.96	14.51
		55	45	45	14.51
	16.6	13.7	13.9	11.3	11.0
	7.0	9.9	9.7	11.3	11.0
	50	45	35	33	28
					24
	16.6	17.1	16.5	15.49	15.76
	7.1	6.5	7.1	8.07	8.10
	16	9	5	2	8
				E.P.	E.P.
				23.56	15.50
				15.60	15.14
				8.06	8.42
				8	17
				E.P.	E.P.
				7.9	7.9
				35	21

Macaulay

(See recent X-sec. of this)

under Rose crass.

2+44 = 19' Lt. = start throat to culver

2+A3 = 19' Lt. 16" Pile Cap.

2+42 Cont

12.7	12.3	11.7	10.5	10.2
5.5	5.9	6.5	7.7	8.0
40	35	32	31	24

2+A2

10.4	11.7	13.3	12.8	11.71	11.76	11.71	11.19	11.6	12.1
7.8	4.5	4.9	5.4	6.48	6.43	6.48	7.00	6.6	6.1
21	19	14	12	6	EA	5	16	20	35
				EA			EA		

2+00 Cont.

12.6	11.6	10.3	10.6	11.7
5.6	6.6	7.9	7.6	6.5
35	30	29	25	23

2+00

11.2	12.6	12.0	12.39	12.62	12.4
7.0	4.7	5.2	5.80	5.57	5.53
17	14	8	5	5	10
			EA		

1+66 43 19' Lt. = 5' wide Conc steps.

12.66	12.13	12.4
5.8	6.06	5.8
35	17	20
	EA	
15.4	15.8	
4.7	4.63	
43	43	
and	bottom step.	

1+50 Cont.

13.2	13.2	13.2	11.3
5.0	5.0	5.0	6.9
40	35	31	19

1+50 27 Rt. = Pole # P. 3055

11.9	13.4	13.6	13.37	13.53	13.52	13.20	13.7	13.7
6.3	4.8	4.6	4.82	4.66	4.67	4.99	4.5	4.5
15	10	6	4	18.19	7	17	25	35
			EA			EA		

18.25

Macaulay

	5.04	20.37	20.41
0.98 <u>25.41</u>	7.43	24.43	24.46
T.P.#5 (P-9)	5.10	26.76	26.82
T.P. on rock (P-3)	3.90	27.96	27.97
T.P.	5.01	31.86	4.89
	2.67	31.74	—
			26.85 (26.91)
			29.07

T.P.#2 (P-5) 20.41 on 1st run.
 T.P.#1 (P-3) 24.46 on 1st run.
 26.82 on 1st run.
 T.P.#6 (P-9) 26.91 on 1st run.

Re-run turns.

Check B.M.#1 - P.3	2.67	29.13	29.07
Pole #31.95			
T.P.#6	4.89	31.80	6.24
T.P.#5	6.33	33.15	0.63
T.P.#4	2.99	27.45	0.79
Set B.M.#1	7.27	10.98	

see re-run of turns.
 should be 10.92 Sta 2+72
 chisel x ctr. head wall 25' Lt. of

Rt = face cb. on Ret.
 Lt = face cb. on Ret.

Lt = start cb.
 Rt = start cb. } = B.C. 43' ab. Rad.

2+49 - 27² Rt. = Pole # P 3021

10.47	9.91	10.00	10.24	10.09	9.80	9.91
7.72	8.28	8.19	7.95	8.10	8.39	8.28
272	272	17		17	272	272
	G				G	17 Dt.
11.3	10.93	10.23	10.66	10.71	10.54	10.41
6.9	7.26	7.96	7.53	7.48	7.65	7.78
35	17	17		4	17	17
	ab	G			G	ab

18.19
 18.25
 That's right.

7.99 10.92 (10.98)

5.24 13.67 (13.73)

1.50 18.91 8.00 17.41 (17.46)
25.41

B.M. # 2. - P. 9 10.92 = O.K

T.P. # 3 - P. 7

T.P. # 4 - P. 9

Evergreen.

0+85 - 35² RT = ± 2⁵ Conc. walk

0+58 57' RT = ± 3' wide Conc. walk

0+51- 21² RT = Pole # A50930 H

0+50

0+23 24' RT = Ctr. Tel. Co. M.H. - 2 1/2' diam. Cover
0+00 Cont.

24² RT = end exist. cb.
0+00-25' Lt. = end exist cb.

0-18 { 60' Lt + } = B.C. Cb. Ret. 43' Radl.
60' RT }
also Nly. Edge A.C. Pav. on Lowel
- 19 Nly. cb. like Lowel

26.12
5.17
35²
walk
25.95
5.34
57
walk
5.31
45²
25.67
5.62
68

27.5
3.8
35
26.7
4.6
14
26.9
4.4
26.3
5.0
12
26.5
4.8
13
26.1
5.2
35

28.0
3.3
35

27.12	27.9	27.6	27.0	26.7	26.3	26.6	26.02	25.9
4.17	3.4	3.7	4.13	4.6	5.0	4.7	5.27	5.4
25	25	18	17		12	14	24.8	35
cb.	cb.						cb.	
							+ end.	
28.76	28.34	27.57	26.96	26.45	25.89	25.34	24.56	25.29
2.53	2.95	3.78	4.33	4.84	5.40	5.95	6.73	6.00
60	60	35	18		18	35	60	60
cb.	G						G	cb
				31.29				

2.22 31.29 29.07

S.W.B.P. Evergreen + Lowel.

Evergreen

T.P. 8.15 36.12 3.32 27.97

2+00+ = sly. Macaulay st.

1+76 - 25' Lt. = Pole (Guy pole to Pole # P3207)

1+70 - 25' Lt. = Ctr. dead man

1+50

1+44 - 50' Rt. = 3' wide Conc. walk.

1+32 54' Lt. = Sing Gar. dirt floor

1+19 - 35' Rt. = 2' wide conc. walk

1+00

27.8
3.5
35

27.8
3.5
35

26.9
4.4
35

27.0
4.3
35

26.8
4.5
35

27.0
4.3
35

26.6
4.7
35

26.9
4.4
35

26.5
4.8
35

25.88
5.41
504
walk

25.75
5.54
604
walk

27.2
4.1
54

26.34
4.95
352

26.51
4.78
452

26.8
4.5
35

26.7
4.6
35

26.7
4.4
35

26.4
4.7
35

26.7
4.6
35

26.1
5.2
35

31.29
81

Evergreen

T.P. 7.49 42.71 2.90 33.22

1+10 33' Lt. = start rubble wall

1+03 28' Lt. = 10" diam pepper tree
board dwelling (10⁵' Along Evergreen)

1+00 32' Lt. = ± 10⁵' x 26⁵' Calif. type

0+92 32⁵ Lt. = ± 1⁶' wide Conc. walk

0+86 33' Lt. = 1A" Cypress

0+83 35' Lt. = 10" Cypress

0+50

0+05

0+00 = Nly line Macaulay

36.12

~~36~~

34.2	34.2	34.1	31.9	32.0	30.4
<u>1.9</u>	<u>1.9</u>	<u>2.0</u>	4.2	<u>4.1</u>	<u>5.7</u>
45	35	33		8	35

33.7
2.4
32
Out

34.2	34.8	31.0	33.1	31.2	31.4	29.7
<u>1.90</u>	<u>1.94</u>	<u>2.1</u>	<u>3.0</u>	4.9	<u>4.7</u>	<u>6.4</u>
35	32.5	31	30		10	35
walk	walk					

31.8	30.2	29.5	28.8
<u>4.3</u>	<u>5.9</u>	6.6	<u>7.3</u>
35	20		35

29.2	28.1	28.1
<u>6.9</u>	8.0	<u>8.0</u>
35		35

26.6	28.0	25.3
<u>9.5</u>	8.1	<u>10.8</u>
35	36.12	35

Evergreen

T.P. 2.37 35.59 7.63 27.96
 33.22
 30.22
 Set. B.M. 2.12 40.59

*T.P. on rock. Page 3

S.E. 7' disk Newell & Evergreen

see Newell st. x sec. for intersection

32⁹ Ntz. start back edge of walk
 2+00 25² Rt. = start 5⁵ Comb. walk + dl.

Reduced By
 C.R. Lockhead
 4-18-51

1+85

	42.5	42.5	40.5	41.0	39.9	40.33	40.58	40.4
	0.2	0.2	2.2	1.7	2.8	2.38	2.13	2.3
	35	6		10	25	25	32.9	35
	42.9	41.6	37.6	37.4	37.0	37.2	33.3	33.5
	+ 0.2	1.1	5.1	5.3	5.7	8.5	9.4	9.2
	50	35	9		10	25	35	60

1+50 39' Lt. = Conc. trash burner
 ctr. 4' x 4' x 5' high.

	38.5	38.2	34.5	34.0	32.6	33.6	33.3	32.7
	4.2	4.5	8.2	8.7	10.1	9.1	9.4	10.0
	45	35	7		25	30	35	60

1+13

	37.8	37.9	34.8	34.1	32.2	32.1	30.7	30.5
	4.9	4.8	7.9	8.6	10.5	10.6	12.0	12.2
	45	35	33	22	5		10	35

42.71

D. Smith
C. Allen
Mick
H. Bruner

INDEXED
JUN 29 1951

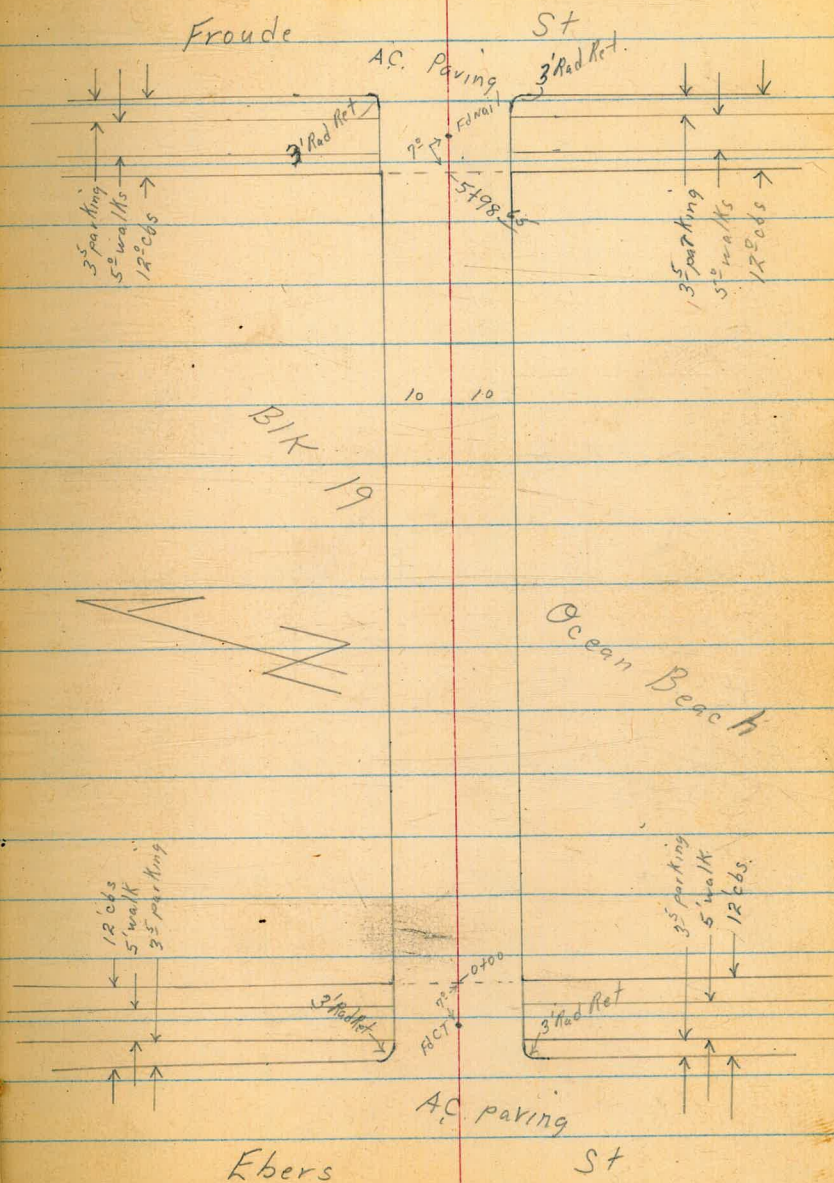
Cross Sec Alley BIK 19 Ocean Beach

Note: Rec. FB 1562-59

Note: the Bench Mark we used
differs with the one Sisson used

Reduced by
R.W.H.
7-6-51

15
No# 31953
6-25-51



0+20

0+18 - 9.7 LT = \$ old Garage wood floor unused

TP₆

0+03 Top Bank

0+00 East Prop end obs & Ac paving

0-12 East of line Ebers

TP ₅	8 ⁰⁵	102 ⁰⁵	11	94 ⁰⁰
TP ₄ BM	13 ⁰⁰	95 ¹¹	4 ⁵³	82 ¹¹
TP ₃	13 ³⁶	86 ⁹⁴	6 ⁴²	73 ⁵⁸
TP ₂	13 ¹⁷	74 ⁰⁰	6 ²¹	60 ⁸³
TP ₁	13 ¹⁹	61 ⁰⁴	0 ²⁷	47 ⁵⁵
BM	12 ⁰⁹	48 ¹²	36 ⁰³	

SE 7¹² 27
Del Mar
Ebers

NWBP
Sunset Chaps
Del Mar

LT = North

RT = South

109.7	108.6	108.2
4.5	5.6	6.0
20.0	10.0	8.0

107.6	106.8	105.7
6.6	7.0	9.5
10.0	10.0	20.0

107.26
6.94
Fluor
9.7-

114.20 = T

12.53

114.20

0.38

101.67

107.0	106.6	94.4	98.7	97.3	96.8	97.0	102.9	103.8	103.4
+4.9	+3.5	3.7	3.9	4.8	5.3	5.1	+0.8	+1.7	+1.3
20.0	15.0	10.0	9.0	7.0	6.0	10.0	15.0	25.0	25.0

95.90	95.24	94.39	94.44	94.45
6.15	6.81	7.66	7.61	7.60
cb	10.0	GUT	GUT	cb

98.29	97.99	95.24	95.30	94.22	93.41	94.00	92.19	91.4
3.46	4.06	6.11	6.75	7.83	8.64	8.05	11.26	10.6
10.0	10.0	cb	12.0	GUT	13.0	13.0	GUT	cb
cb	GUT	cb	GUT		GUT	cb	GUT	cb

102⁰⁵

LT = NORTH

⊕

RT = SOUTH

17

1471 - 10.0 RT ⊕ 2' wide Conc Walk.

TP₈

1456 - 9.8 RT end fence.

1450 - 9.7 RT begin 3.5' board fence

1430 - 26.5 RT = ⊕ Double Garage conc. floor + Apron

1401 - 9.8 RT = ⊕ 14" Power Pole # PA 4684

1400 - 11.9 RT end Conc Block Wall.

TP₇

0472 - 11.4 RT begin conc Block Wall

0450

137.59 π

11.55 137.59 1.00 126.04

126.04
11.55
10.0
WK

125.2	124.8	124.6	123.9	123.8	124.2	122.8
1.8	2.2	2.4	3.1	3.2	2.8	4.2
20.0	10.0	4.0	3.0		10.0	20.0

119.87
7.17
26.5
Apron

120.01
7.03
29.6
Floor

119.2	119.3	119.3	118.0	117.6	117.7	116.9	116.71	114.1
7.8	7.7	7.2	9.0	9.4	9.3	10.1	10.32	12.9
20.0	10.0	7.0	4.0		8.0	10.0	11.6	11.6

127.04 π

12.88 127.04 0.04 114.16

113.5
0.7
11.4
Footing

116.62
+2.42
Top Wall
11.4

112.3	112.3	111.7	111.4	110.4
1.9	1.9	2.5	2.8	3.8
20.0	10.0		10.0	20.0

114.20 π

LT = NORTH

RT = SOUTH

18

2+49-11.3^{RT} End Fence on Bricks

135.0
2.6
11.3
FOOTING

135.11
2.48
11.3
TOP
BRICKS

2+40-9.8 LT & single garage dirt floor - opens
TO NORTH

2+34-9.8 LT S.E. COR. shed

2+23-9.5 LT S.W. CORNER shed Wood Floor

132.30
4.29
7.5
FLOOR

2+20-11.0 RT Begin 5' board fence ON
Cone Brick Foundation

132.4
5.2
11.0
FOOTING

132.58
5.01
11.0
TOP
BRICK

2+18-9.7 LT & 3' wide brick wall

132.03
5.56
9.7
WK

2+14-8.5 LT End Floral Hedge

2+10-24.5 RT & single Garage Conc Floor

130.41
7.15
24.5
FLOOR

129.7
7.8
129.8
102

129.3
8.3
202

2+00

130.6
7.0
302

130.7
6.9
102

130.1
7.5
52

129.4
8.2
40

129.7
7.9

1+75-8.5 LT & begin Floral Hedge

128.1
9.5
202

128.0
9.6
102

127.3
10.3
52

126.8
10.2
42

126.6
11.0

126.4
11.2
102

126.1
11.5
152

137.59 T

LT=North E RT=South

2785 E SMH

139.69
1035
rim

2773 11' RT Begin con brick wall

140.43
9'61
11'3
Top Footing

2768 10' LT Begin 12' con wall

137.2
12E 11'51
10' Footing 10' Top wall

2768 9' LT SE cor wood shed

2764 11' RT E double garage con floor & apron

137.84
12'30
11'4
apron 16'4
137.79
12'25
Floor

1260 15004 0'15 13744

15004

T.P. Nail in pole 9.2 RT 2750.

2750 9.84 T= SW. cor. shed. Wood floor

136.84
0.75
9.8
Floor

2750 - 9.2 RT E 10" power pole - PA 4660-

135.6
2.0
102
135.7
1.9
70
136.1
1.5
70
136.4
1.2
102
136.8
0.8
20

137.59 T

Lt=North Rt=South

3750 9² Lt Begin 6' high Board fence

147.6	147.4	147.4	147.7	148.2	148.4
24	25	25	23	18	16
10	4		5	6	10

3745 9⁵ Lt end E eugenia hedge

3732 9⁰ Lt+E 2⁵ wide eugenia hedge Begins

3731 9⁶ Lt South end 6" con wall

143.7	145.72
63	432
9 ⁶	9 ⁶
Footing	Top

3717 27⁰ Lt E 3 car garage con floor + apron

141.82	141.72
822	832
315	270
Floor	Apron

3700

141.3	141.6	141.2	141.6	142.0
87	84	88	84	80
25	10	10	20	

2799 10² Lt end 12" con wall.

140.1	142.14
92	720
10 ²	10 ²
Footing	Top

2798 11² Rt end con brick wall

141.82	140.9
822	91
112	112
Top	Footing

150.04

TP₁₁ 13³⁶ 175⁹⁰ 0¹² 162⁵⁴

4462 9° RT & 12" power pole # JPA 4620

4450 9⁵ Lt to fence

4433 9² RT & 13' con drive

4400 9⁵ Lt to fence

3499 10⁴ RT North end loop con block wall

3486 10⁴ RT & 7 con ribbon drive & ea

TP₁₀ 12⁷⁹ 162⁷¹ 0¹² 149⁹²

3463 10⁴ RT & 12" power pole # PA 4636.

Lt = North

♀

RT = South

21

163.5	163.3	162.3	161.9	162.0	162.3	162.3
70 ^E	70 ^E	0 ^E	0 ^E	0 ^E	0 ^E	0 ^E
15	9 ⁵	7		6	10	20

160.00	159.28	157.79
2 ⁷¹	3 ⁸³	4 ⁹²
9 ²	19 ²	33
drive	drive	drive

156.2	155.9	154.7	154.5	154.7	155.6	156.5	156.6
6 ⁵	6 ^E	8 ⁰	8 ⁵	8 ⁰	7 ¹	6 ²	6 ³
15	9 ⁵	7		6	10	12	20

154.71	157.88
8 ⁰	4 ⁸³
10 ⁴	10 ⁴
Footing	Top

→ RC.

154.22	152.86
8 ⁴⁹	9 ⁸⁵
10 ⁴	30 ⁴
drive	drive

162⁷¹

150⁰⁴

Lt=North

Q

Rt=South

22

54495 11² RT Easterly apron or drive con

TP₁₂

10⁹⁷

186³⁴

0⁵³

175³⁷

176.30

10⁰⁴

112

apron

186³⁴

173.30

2⁶⁰

12²

apron

brk

172.45

2⁸⁰

12²

floor

5427 12² RT to con apron Break

5424 12² NE cor garage con floor & drive opening Easterly

5700

172.6

33

20

170.7

52

10

169.5

64

6

169.5

64

7

169.9

60

10

169.9

60

20

169.9

60

20

4484 92 RT North end con block wall & long

167.86

804

98

top

166.0

92

92

footing

4475 92 Lt end 6' high Board fence

165.96

924

76

apron

165.92

928

153

floor

4474 72 RT & single garage con floor & apron

175.20

6410⁶⁵ West Cb Line Froude

5498⁶⁵ West Prop Froude edge AC paving 2 Cbs end

5498⁶⁵ 94 Lt end wooden shed

5480

5476 9^o Lt End fence begin shed wooden dirt floor

5467 9^o Lt Begin 5' Board fence

5465 1^o Lt E SMH

5450

Lt = North

E

Rt = South

23

182.95	182.52	182.97	182.46	182.37	181.96	181.12	180.02	180.46	176.25	175.84
3 ²⁹	3 ³²	3 ³⁷	3 ³⁸	3 ³⁷	4 ²⁸	5 ²²	6 ³²	5 ³⁸	10 ²²	10 ⁵⁰
50	50	30	30	13	13	13	13	13	50	50
cb	cut	cb	cut	cb	cut		cut	cb	cut	cb

182.29	181.98	181.17	180.71	180.86
4 ⁰⁵	4 ³⁶	5 ¹⁷	5 ⁶³	5 ⁴⁸
10 ²	10 ²	10 ²	10 ²	10 ²
cb	cut		cut	cb

181.7	181.4	180.2	180.1	180.2	179.9
4 ⁸	4 ²	6 ¹	6 ²	6 ¹	6 ⁴
9 ⁸	8	6		9	10

181.8
 Lt ← 4⁵
 7⁵
 floor

179.7	179.5	178.7	178.85	178.8	178.7	178.2
6 ⁸	6 ⁸	7 ⁶	7 ⁴⁹	7 ⁵	7 ⁵	8 ¹
10	8	7	11m	10	9	10

178.4	177.5	176.9	176.7	176.5	175.9
7 ²	8 ⁸	9 ⁴	9 ⁵	9 ⁸	10 ⁴
20	10	8		10	20

186.34

BM starting			12 ⁵⁷	36 ⁰⁶	NWBP Sunset Cl. 189 36 ⁰³ Del Mar
TP ₂₃	0 ⁵⁰	48 ⁷³	13 ²⁷	48 ²³	
TP ₂₂	0 ⁶⁰	61 ⁵⁰	13 ¹⁹	60 ²⁰	
TP ₂₁	0 ⁹³	74 ⁰⁹	13 ⁰²	73 ¹⁶	
TP ₂₀	0 ³⁵	86 ¹⁸	12 ²³	85 ⁸³	
TP ₁₉	0 ¹¹	98 ⁶⁶	12 ¹²	98 ⁵⁵	
TP ₁₈	0 ¹⁴	111 ²⁷	13 ¹²	111 ¹³	
TP ₁₇	0 ²⁸	124 ²⁵	13 ¹⁸	123 ⁹⁷	
TP ₁₆	0 ⁴²	137 ¹⁵	12 ⁷⁵	136 ⁷³	
TP ₁₅	0 ²⁷	149 ⁴⁸	13 ²⁵	149 ²¹	
Side Shot			0 ⁹⁴	161 ⁵²	NW 9 ¹⁰⁷ Froude Del Mar
TP ₁₄	0 ²⁷	162 ⁴⁶	12 ⁸²	161 ⁶⁹	
TP ₁₃	0 ⁷⁰	174 ⁵¹	12 ⁵³	173 ⁸¹	

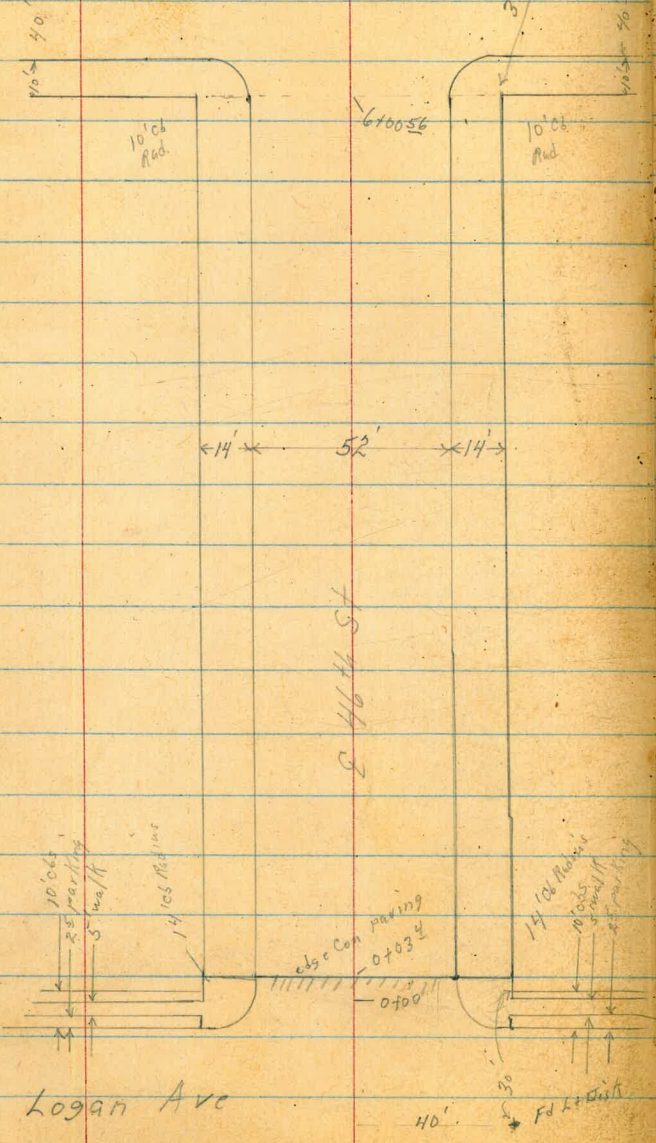
D. Smith
C. Allen
R. Shepherd
Wm. Ertman

Cross Sec 46th St

Logan to Ocean View

W^o# 31808 25
8-13-51

"T" St



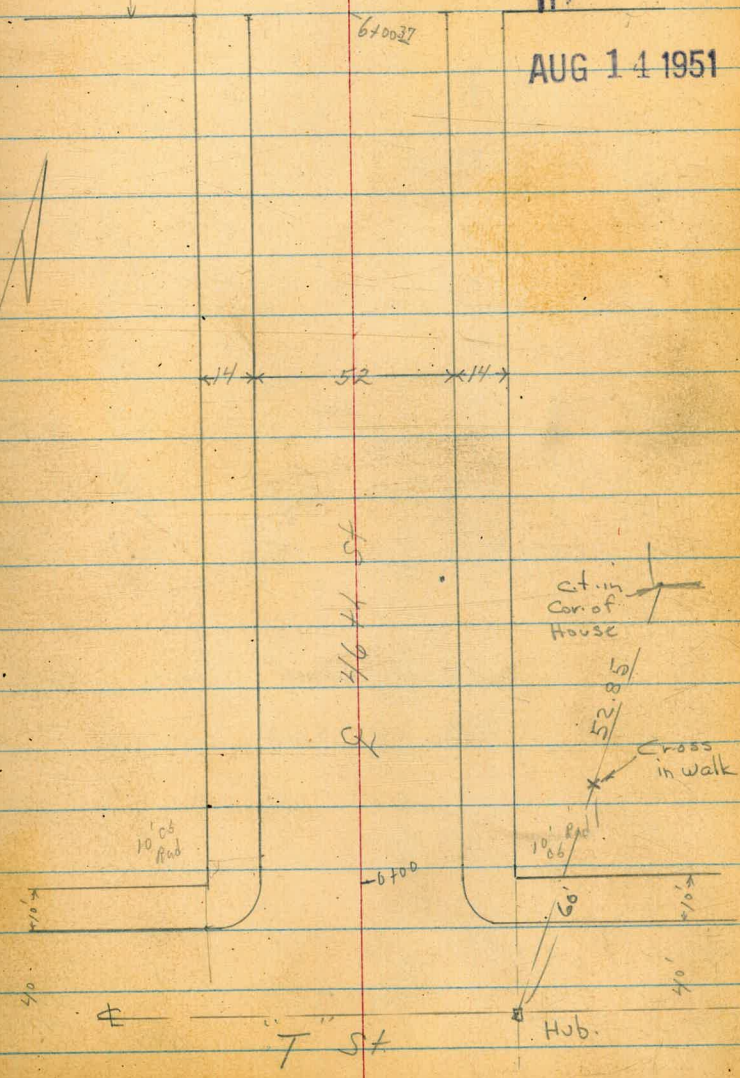
Logan Ave

46th St

Preparing Ocean View

INDEXED

AUG 14 1951



"T" St

at in
Cor. of
House

Cross
in walk

X Sec 46th St

Logan to Ocean View

Reduced B.L.C.
9/17/51

EC 46th

105.03
647
54+
105.01
649
57
105.68
105.68

2/3

1/3

BC Logan

104.87
663
104.94
666
54+
105.60
520
105.45
665
06

NE Return Logan + 46th
14' Rad 21.5 Length 3 parts 7.5 ea

TP, 3⁵⁴ 111⁵⁰ 11⁸⁷ 107⁶⁶
BM +020 119⁵³ 118⁸³ NWBP 47' Logan

EC 46th

104.11
739
54+
104.00
750
104.73
677
06
104.62
688

2/3

1/3

BC Logan

103.85
765
103.80
720
94+
104.51
629
104.45
705
06

NW Return Logan + 46th
14' Rad 21.5 Length 3 parts 7.5 ea

111⁵⁰

3+18 26² RT E 3' con walk

TP₂ 2³² 103⁸⁴ 998 101⁵²

3+00

2+92 26¹ RT E 13° con drive opening

2+76 RT E 5° Broken out C6

2+69 26³ RT E 3° con walk

2+59 RT E 4° Broken out C6

2+57 LT E 14° Broken out C6 for dirt drive

2+50

LT=East E RT=East 30.

101.66
101.86
102.71
218 198 113
26² 33 40
walk walk walk

101.3 101.7 100.9 101.4 101.7 101.7 101.5 101.87 103.2
102 9.22 106 102 98 98 102 963 833
40 26 26 13 13 26 26 40
C6 gut gut C6

101.46 101.17 103.19
10.04 9.33 8.31
26¹ 33 40
gut. drive drive

102.26 101.48 103.55
9.24 9.02 7.95
26² 33⁰ 40
walk walk

101.50 102.52 101.9 102.1 102.3 102.9 102.0 102.52 104.1
10° 8.98 96 94 92 92 95 8.98 94
40 26 26 13 13 26 26 40
C6 gut C6

111 50

4750 Lt & 13' cb broken out for dirt drive

4745 26° Rt & 10° con drive opening

4715 36° Lt & 35° con walk

4700

3761 26° Rt & 14° con drive opening

3750

3742 Lt & 12° cb broken out for dirt drive

3742 26° Rt & 13° con drive opening

Lt - West

99.5	99.0	99.6	99.6	99.0
53	48	52	50	48
40	27	26	13	13
		gut		

99.55	99.45
429	436
40	365
walk	walk

99.3	99.83	99.1	99.6	99.9
45	401	42	42	39
40	262	262	13	13
	of	gut		

100.64	100.85	99.9	101.5	100.5
32	296	39	39	30
40	26	26	13	13
	cb	gut		

101.14	101.05
220	229
40	345
	drive
	con end

Rt - East

99.0	99.7	99.2	100.6
48	51	46	32
13	262	262	40
	gut	cb	

99.07	99.67	100.02
427	427	388
262	33	40
gut		
drive		

99.9	99.4	100.28	101.6
32	44	356	22
13	26	26	40
	gut	cb	

101.41	101.34	101.99
343	250	185
26	33	40
gut		drive

100.54	100.5	101.25	102.1
32	303	259	12
40	26	26	40
	gut	cb	

100.87	101.65	102.45
297	216	139
262	33	40
gut		

103 84

5459 25° RT E 13° con drive opening

5450

5443 4 E 12 con drive opening

5409 25° RT E 14° con drive opening

5400

4494 RT E 13° con drive opening

4476 20° RT E 3° con walk

4460 RT E 7° Broken out C6

Lt. West

E

RT = East

32

97.4	97.96	97.3	97.9	98.3	98.2	98.0	98.85	100.79
64	588	65	52	55	56	58	499	22
40	26	26	13	13	26	26	40	
	C6	9ut			5ut	06		

97.57	97.66
629	618
40	252
drive	

98.29	98.65	100.36
545	519	348
202	31	40
9ut	drive	drive

98.0	98.58	97.9	98.3	98.6	98.4	98.91	98.4	100.5
68	526	52	55	52	53	493	42	33
40	26	26	13	13	26	26	33	40
	C6	5ut			9ut	06		

98.35	100.42
549	342
26	40
9ut	drive

99.17	100.29
467	355
26	40

10384

Lt = West

Σ

Rt = East

33

0+00 North Prop "T" St

96.3
96.63
96.3
96.5
97.3
97.6
97.6
97.90
98.6

75 72 75 70 65 62 62 59 52
40 26 26 13 13 26 26 40
cb gut cb gut

95.10
94.2
96.42
95.9
96.45
96.0
96.3
96.5
97.3
97.6
98.0
98.3
98.44
98.5
99.73
101.2
101.71

82 96 74 72 72 72 70 65 62 58 55 50 53 54 29 213
90 90 40 40 36 36 26 13 13 26 36 36 40 40 80 80
cb gut cb gut cb gut cb gut cb gut cb

6+50⁵⁶ North Cb "T" St

97.9
96.0
96.4
96.8
97.3
97.8
98.4
99.0
101.7

52 78 74 70 65 60 54 48 12
90 40 26 13 13 26 40 90

6+30⁵⁶ E "T" St

95.06

6+10⁵⁶ South Cb "T" St

828

90
cb

94.1
94.2
95.5
96.44
95.6
95.9
96.5
97.3
97.7
97.9
98.5
98.83
98.7
99.13
101.84
102.69

92 74 82 72 82 72 70 65 62 59 53 50 54 42 20 15
90 40 40 36 36 26 13 26 36 36 40 40 90 90
gut cb gut cb gut cb gut cb gut cb

6+00⁵⁶ South Prop "T" St

96.8
96.94
95.0
96.9
97.3
97.6
97.8
98.4
100.7

70 62 75 62 65 62 60 54 31
40 26 26 13 13 26 27 40
cb gut

5794 252 At Begin broken cb thru 2/3 of return
SE Net.

10384

T St & 46th

Intersection

EC T St.

98.3

98.4

55

54.2

9at

cb

98.0

98.2

58

56.3

97.5

98.0

60

57.7

97.5

97.9

63

59.4

9at

cb

BC 46th

10' Rad 16' Length 3 parts 5³ ea
NE Return

96.0

96.5

78

73.9

9at

cb

ECT St

98.2

98.7

56

50

9at

cb

10' Rad 16' Length
SE Return
Mid pt only
due to condition
of cb.

95.6

96.6

82

72.3

9at

cb

ECT St

96.1

96.85

72

69.7

2/3

96.3

96.92

75

69.2

1/3

96.3

96.92

75

69.2

BC 46th

9at

cb

SW Return
10' Rad 16' Length 3 parts 5³ ea

T 103⁸⁴

BC 46th

76

73 Broken

96.5

96.1

75

72 Broken

96.2

96.64

76

720

9at

cb

NW Return
10' Rad 16' Length 3 parts 5³ ea
poor condition

T 103⁸⁴

1765 26² Lt E condrive

1750

1747 26² Lt Begin Broken cb

1735 25² Rt E 3⁵ con walk

1705 26² Lt E 3' con walk

1700

0757 25² Rt E 13² con drive opening

0750

0734 Lt E 12² Broken out cb

0722 Rt E 3² con walk

TP₂ 4²⁶ 100⁵⁵ 7²⁵ 96⁵⁹

Lt = West

Rt = East

35

9.11
424
262
cb

9.12
464
40
walk

9.7
51
40

96.03
422
40

95.17
424
40

95.64
521
265
out

48
40

48
27

52
26

48
13

43
13

46
40

46
26²
cb

51
26²
out

46
13

46
13

43
252
out

41
252
out

41
252
out

41
252
out

41
252
out

96.5
96.4
96.4
97.09
97.15

42
13

44
252
out

32
252
cb

32
40

32
40

32
26
out

32
26
cb

32
26
cb

32
26
cb

32
26
cb

32
26
cb

32
26
cb

32
26
cb

32
26
cb

32
26
cb

97.13
322
252
walk

97.47
338
40
walk

96.67
97.40
97.50
98.18

417
252
drive
out

345
27

300
36
40
drive

97.76
98.68
309
212
26
walk

100⁸⁵

3711 26² Lt & 13° condrive opening

3700

2756 Rt & 13° Broken out C6 for dirt Drive

2750

2746 Lt & 8° Broken out C6

2718 Lt & 10° Broken out C6

2700

1771 26⁶ Lt End Broken C6 Begin C6 again

Lt = West

Rt = East 34

	95.70	95.62	95.01					
	515	523	579					
	40	31	262					
			drive sut					
95.4	95.55	95.2	95.5	95.7	95.7	95.1	96.39	96.4
54	530	56	53	51	52	52	4/46	4/4
40	262 C6	262 sut	13		13	26 sut	26 C6	40

	95.0	95.52	95.1	95.5	95.8	95.9	96.1	96.66	96.0
	58	533	57	53	50	42	42	418	4/2
	40	266 C6	266 sut	13		13	259 sut	259 C6	40

	95.2	95.65	95.3	95.7	96.0	96.2	96.2	96.59	97.2
	56	511	55	51	48	46	46	396	36
	40	265 C6	265 sut	13		13	259 sut	259 C6	40

95.92
493
266
C6

100 85

4411 25² RT & 13² con drive opening

4407 26⁶ LT & 13² con drive opening

4400

3470 26⁶ LT & 2⁵ con walk

3455 26⁶ LT & 11' con drive opening

3452 RT & 5² Broken out cb

3450

3436 25² RT & 3⁵ con walk

LT = West RT = East 37

	96.04	96.00	95.41	96.10	97.02	97.38
	481	485	544	475	383	347
	40 drive	30	26 ⁶ sat drive	252 sat drive	34	50 drive
	96.0	95.95	95.3	96.0	95.8	96.57
	48	420	55	52	42	48
	40	26 ⁶ cb	26 ⁶ sat	13	13	26 sat
			95.97			
		488	513			
		40	26 ⁶ walk			
	95.89	95.88	95.70			
	496	477	545			
	40 drive	302	26 ⁶ sat drive			
	95.8	95.78	95.3	95.8	95.5	95.7
	50	507	55	52	50	51
	40	26 ⁶ cb	26 ⁶ sat	13	13	26 sat
						437
						43
						96.45
						96.5
						96.68
						96.4
						439
						262 walk
						40
						100.85

96.5
944
24

5109 26° RT & 14° con drive opening

TP3 3⁵⁶ 9924 467 96¹⁸

5100

4480 26° RT & 25° con walk

4480 26° LT & 3° con walk

4461 26° RT & 16° con drive opening

4450

4427 27° LT & 3° con walk

4427 LT & 25° Broken out + C6

LT = West

RT = East

38

96.41 97.09 97.21

3³³ 2⁶⁵ 2⁵³
26 33 40
out drive drive

9924

96.3 96.12 95.2 95.7 96.1 96.2 96.2 97.05 97.2

45 43 56 51 42 46 46 3³⁰ 36
40 26 26 13 13 26 26 40
ob out ob

96.86 97.20 97.44

96.30 96.03 399 365 341
26 28 40
walk

455 482
40 26
walk

96.50 97.39
435 346
26 40
drive drive

96.3 95.92 95.3 95.7 96.0 96.1 96.2 96.63 97.1

45 43 55 51 48 43 46 4²² 32
40 26 26 13 13 26 26 40
ob out ob

96.07 95.97

438 488
40 27
walk

100 85

6+30³⁷ F Paving

6+20³⁷ South Paving Edge

6+00³⁷ South Prop Ocean View
End cbs

5+79 26° Lt E 3° con walk

5+72 26° Rt E 3° con walk

5+50

5+30 26° Lt E 3° con walk

5+30 26° Rt E 3° con walk

Lt-West			Rt-East		
93.53	93.79	93.91	94.27	94.58	94.79
6 ²¹	5 ²⁵	5 ²³	5 ⁴⁷	5 ¹⁶	4 ²⁵
90	40	26	26	40	90

93.45	93.68	93.83	94.13	94.41	94.67
6 ²⁹	6 ⁰⁶	5 ²¹	5 ⁶¹	5 ³³	5 ⁰⁷
90	40	26	26	40	90

94.6	94.89	93.9	94.2	94.4	94.5
5 ¹	4 ²⁵	5 ⁸	5 ⁵	5 ³	5 ²
40	26	26	13	13	26
	cb	sat			sat

95.45	95.41		
4 ²⁶	4 ³³		
40	26		
walk	walk		

96.0	95.97	94.8	95.5	95.9	95.9
3 ²	3 ²⁷	4 ²	4 ²	3 ⁸	3 ⁸
40	26	26	13	13	26
	cb	sat			cb

96.22	96.11	96.04	
3 ⁵²	3 ⁶³	3 ²⁰	
40	26	26	

99.74

Note: check Field Book with notes for Lynchoust
for Bench relations. ~~and~~.

BM

105

116⁴²

SW BP Ocean View
116⁴² 47⁴⁵ ST

TP₅

106⁷

117⁴⁷

106⁴

106⁸⁰

TP₄

9³²

107⁴⁴

102

98¹²

6+60³⁷

North Prop Ocean View

6+40³⁷

North paving edge

Lt. West

Rt. East

40

93.6

93.9

93.9

93.9

93.5

92.7

92.5

94.4

94.9

96.1

62

58

58

58

72

73

72

53

48

36

90

40

26

10

4

19

26

40

90

93.45

93.71

93.85

94.18

94.49

94.76

95.58

603

589

556

525

498

406

96

40

26

26

40

90

99.74

46 - 9

BASELINE LAYOUT FOR CROSS SECTIONS OF
EVERGREEN STREET FROM NEWELL TO POE ST

W.032239

INDEXED
Paw
MAY 8 1953

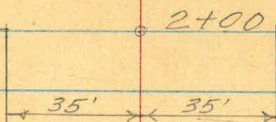
Fd Men. With Top
Broken off. ✓

2+70

T. Stamper (41)

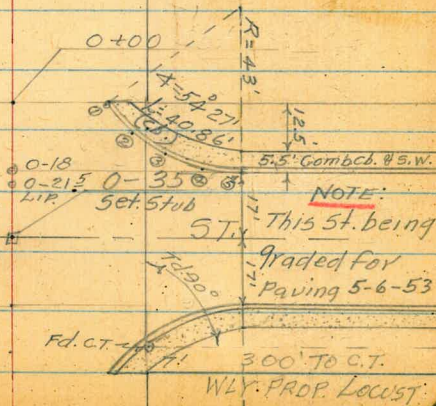
OLYPHANT

2+35 1/2 ST.



EVERGREEN ST.

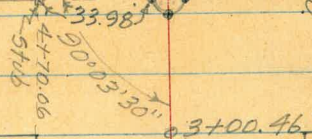
NEWELL



BASELINE SKETCH FOR CROSS
SECTIONS OF POE ST. FROM LOCUST
ST. 200' N. W. L. Y. W.O. 32239

EVERGREEN

Set chis in N.H. Rim on
four corners ST.

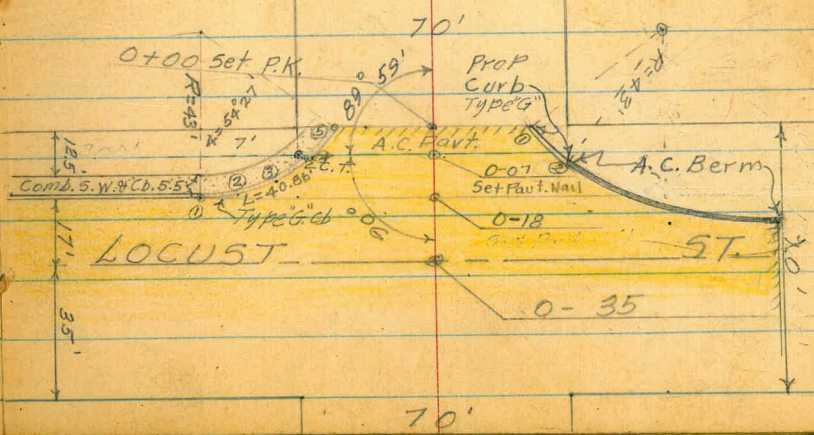


OLYPHANT

POE
ST.



Edge Pavt. = 0+00.55



LOCUST

ST.

ST

70'

Stampers (74)

5-6-53

Huffman
 & Shorey
 & Sherry

Lt. Wily

±

Rt. Ely

CROSS SECTIONS EVERGREEN ST.
 BETWEEN NEWELL & POE STS

Sta.

Elev.

46-10

0-18 NLY C.B. LINE NEWELL

49.1 47.4 46.0 44.5 43.8 40.9 41.32 38.91 39.47
 50 35 20 0 17 42 42 60 60
 HIP Gut cb

0-21.5 LIP NLY NEWELL ST.

Redwood
 Alligator
 5-21-53

44.4 43.8 38.7 39.05
 0 14 60 60
 HIP

0-35 ± NEWELL ST.

49.4 48.0 45.94 44.4 43.1 41.4 39.0
 50 40 20 0 18 35 56
 old AC

(See Sketch)
 N.E. RET. NEWELL & EVERGREEN

NOTE: These Sec's taken with direct
 reading Rod

	Gut	LIP	cb.Gut	Top cb	B.S. Walk
R.O.C. Prop 1	44.0	44.42	44.02	44.48	44.08
4-5 pcs @ 10' 2	42.7	43.06	42.81	43.32	43.41
3	41.3	41.70	41.52	42.03	42.15
4	40.0	40.34	40.20	40.70	40.86
B.C. 5	38.7	39.05	38.91	39.47	39.64
B.M.				40.67	

INDEXED
 MAY 8 1953

S.E. L. & T. Newell & Evergreen

5-6-53

W/ly Lt.

±

Rt. Ely

X-SEC'S EVERGREEN ST. CONT'D

Sta

Elev

0+75

15.8	69.1	65.0	64.2	56.9	57.1	58.2	50.4	43.6
(-13.2)	(-6.5)	(-2.9)	(-1.6)	5.7	5.5	4.4	12.2	19.0
42	27	21	17	14	0	19	32	60

0+50

15.9	64.0	62.8	59.1	52.2	52.4	52.8	46.3	40.6
(-13.3)	(-1.4)	(-0.2)	2.9	10.4	10.2	9.8	16.3	22.0
56	31	22	16	13	0	20	31	60

12.18 62.61

↗ 62.61 ↖

TP

0.34

50.43

0+25

62.5	61.2	56.3	54.3	48.2	48.1	47.9	42.5	38.1
(-11.7)	(-10.4)	(-5.5)	(-3.5)	2.6	2.7	2.9	8.3	12.7
35	28	23	15	10	0	23	35	59

0+05 Top Bank To West Toe Sec. To East

62.2	60.3	56.3	65	47	45.8	44.6	40.1	36.7
(-11.4)	(-9.5)	(-5.5)	0.8	4.5	5.0	6.2	10.7	14.1
40	32	27	11	9	0	31	42	62

0+00 Top Bank Sec. East Toe Sec. To West

52.7	50.1	54	47.5	46.0	45.5	44.1	44.1	44.01	44.5	44.1
(-1.9)	0.7	3.5	4.8	5.3	6.7	6.36	6.76	6.30	6.70	
56	35	12	8	0	20	20.6	25	25	32.7	

50.77

↗ 50.77 ↖

B.M.

+10.11

40.67

S.E. Lt. Newell & Evergreen

7.1	10.7
35	59

5-6-53

X-SEC'S EVERGREEN ST. CONTD.

Sta

Elev

2+00 SLY. LINE OLYPHANT ST.

12.16 87.01

T.P.

0.03

74.85

1+75

1+50

1+25

12.49

74.88

T.P.

0.22

62.39

1+00

62.61

Wly

Lt.

±

Rt. Ely

91.6	88.6	86.2	18.0	18.3	18.5	68.5	66.8	56.0
(4.6)	(-1.6)	0.8	9.0	8.7	8.5	18.5	20.2	31.0
55	41	21	16	0	10	26	35	60
		Top	Toe					

87.01

87.4	83.4	82.4	80.4	74.9	74.9	75.2	65.4	54.4
(-12.5)	(-8.5)	(-7.5)	0.0	0.0	(-0.3)	9.5	20.5	
46	35	21	16	0	12	28	60	
		Top	Toe					

84.1	80.2	19.1	17.6	10.3	10.7	11.3	62.0	52.8
(-9.2)	(-5.3)	(-4.8)	(-2.7)	4.6	4.2	3.6	12.9	22.1
40	33	24	19	15	0	13	29	60
			Top	Toe				

80.1	15.1	16.1	13.6	55.8	66.3	66.7	58.4	50.1
(-5.2)	(-0.8)	(-1.2)	1.3	9.1	8.6	8.2	16.5	24.8
40	32	24	19	16	0	17	29	60
			Top	Toe		Top	Toe	

74.88

71.0	17.2	10.1	61.8	61.6	62.5	54.5	46.2	3.7
(-14.4)	(-14.6)	(-7.5)	0.8	1.0	0.1	8.1	16.4	8.2
61	36	23	15	0	16	30	60	
					Top			

62.61

5-6-53

X-SEC'S EVERGREEN ST. CONTD.

Sta.	Elev.
T.B.M. 1.58	98.29
1.76	96.71

4+00

3+50

11.80 98.47

T.P.	0.34	86.67
------	------	-------

3+00

2+70 NLY LINE OLYPHANT ST.

2+35 ϕ OLYPHANT ST.
87.01

Wly Lt. ϕ Rt. Fly

Top Chis (S. END) M.H. ϕ POE ϕ EVERGREEN STS.

105.2	101.5	99.9	99.9	99.0	90.3	82.9	74.4
(-6.7)	(-3.0)	2.6	8.6	8.5	8.2	15.6	24.1
57	37	18	13	0	12	26	52
Top Toe				Top Toe			

102.5	99.2	93.1	87.3	81.8	88.0	81.0	73.2
(-4.0)	(-0.7)	5.4	11.2	10.7	10.5	17.5	25.3
61	45	18	12	0	9	21	43
Top Toe				Top Toe			

Δ 98.47

96.6	93.0	89.1	85.1	85.5	85.6	75.2	65.9
(-9.6)	(-6.0)	(-2.1)	1.9	1.5	1.4	11.8	21.1
55	36	18	14	0	7	23	56
Top Toe				Top Toe			

94.3	90.4	87.2	83.0	84.0	84.4	73.9	64.0
(-7.3)	(-3.4)	(-0.2)	3.2	3.0	2.6	13.1	23.0
55	35	30	15	0	7	24	55
Top Toe				Top Toe			

91.4	86.6	83.3	82.3	82.4	82.2	71.9	70.2
(-4.4)	0.4	3.7	4.7	4.6	4.8	15.1	16.8
46	27	15	14	0	9	25	30
Top Toe				Top Toe			

Δ 87.01

Southern H.

X- SEC'S. EVERGREEN ST. CONTD

Sta	Elev.
T.B.M.	11.80 27.17

030 38.97
 Vert. on 14' 21' 32" 172.40 slope
 Vert. 2' Above 20' 55" 171.68 slope } 63.28 38.67
 +5.24 101.95

T.B.M.	1.76	96.71
5+05.06	POE ST.	

4+80 END CUT BANK SEC.

4+70.06 SIX LINE POE ST.

4+50

98.29

5-2-53

Lt. & Rt.

Contd. Pg 49

S.W. Cor Top Conc. Ramp to Sing. Car gar @
 House N° 3120 on North Side Poe St.
 Top R/H. 1+75 Poe St.

110.3	102.0	91.6	80.2
(-12.0)	(-4.7)	96.71	6.7 18.1
45	18	0	17 49
Top M.H.			

110.8	102.5	95.0	93.7	87.2	80.0
(-12.5)	(-4.2)	5.3	4.6	11.1	18.3
54	22	0	16	27	50

111.3	108.1	101.4	95.0	93.0	93.1	86.0	77.3	87
(-13.0)	(-9.8)	(-3.1)	5.3	5.3	5.2	12.3	21.0	
50	48	21	12	0	16	29	52	

110.0	106.9	103.4	91.6	91.8	92.3	85.8	74.0
(-11.7)	(-8.6)	(-1.5)	6.7	6.5	6.0	12.5	19.3
57	48	22	12	0	14	25	47

98.29

5-7-53

CHECK LEVELS FOR X-SEC. 5 ON
EVERGREEN ST. FOR CLOSURE

Lt. E Rt.

Sta Elev

SWLY CURB RETURN LOCUST + POE

	L.I.P.	GUT	TOP CB	B. S. WALK
--	--------	-----	--------	---------------

1.	12.75	12.67	Dr. WY	13.25
----	-------	-------	--------	-------

2	12.90	12.80	13.28	13.42
---	-------	-------	-------	-------

3	13.18	13.05	13.54	13.67
---	-------	-------	-------	-------

4	13.65	13.50	14.01	14.07
---	-------	-------	-------	-------

5	14.13	13.96	14.45	14.36
---	-------	-------	-------	-------

B.M.			9.56	6.09 in 6.03
------	--	--	------	--------------

	0.94	15	65	
--	------	----	----	--

T.B.M.			12.69	14.71
--------	--	--	-------	-------

	0.23	27.40		
--	------	-------	--	--

NOTE: This Ret. Taken With a
Σ direct Reading Rod

7' L. & DISK Poe & Rosecrans S.W. Cor.

Top P.K. & PoenWly Line Locust

Cont'd From Pg 48

INDEXED

MAY 8 1953

CROSS SECTIONS POE STREET FROM
LOCUST ST. 200' N.W.L.Y. W.D. 32239

0+25

0+00 ⁵⁵ WLY LINE

0-10 END CB PROP NLY POE

0-18 WLY GUT LOCUST SLY

0-26 WLY EDGE PAVT. LOCUST ST. N.

0-35 & LOCUST ST.

J.B.M. 6.76 21.47 14.71

Reduced
J.B. Cotton
5-10-53

5-7-53

SLY Lt. & RT. NLY

15.6	15.8	16.7	17.1	17.0	17.1	18.0	19.5
5.9	5.7	4.8	4.4	4.5	3.8	2.7	2.0
50	33	18	0	13	18	35	47

14.8	14.36	14.45	13.95	14.10	14.71	14.76	15.28	15.6	17.7
6.7	7.1	7.02	7.52	7.37	6.76	6.71	6.19	5.9	3.8
49	31.7	24.7	24.7	23.3	0	24.2	24.2	27	32
	B.S.W.	cb	Gut						

17.0
25
49

Gut cb.

14.66	15.09
6.81	6.38
35	35

Gut cb.

12.88	12.41	12.67	12.85	13.21	13.80
8.59	9.06	8.80	8.62	8.26	7.67
100	100	60	60	50	17
					0

cb Gut cb@ Guts LIP
B.C. B.C.
Dr-Wy

13.51	14.42	18.46	18.35	19.05	19.6
7.96	7.05	3.01	3.12	2.92	1.9
	35	73	73	96	100

Gut To P.A.C. Edge
Berm AC

12.57	12.80	12.63	12.92	12.28	13.39	14.20	18.40	19.04	19.7
8.90	8.67	8.64	8.55	8.19	8.08	7.27	3.07	2.93	1.8
100	60	35	17	0	17	35	76	88	100

See Pg. 49

21.47

Edge
A.C.

(59)

5-7-53

X-SEC'S POE ST. CONTD.

Sta. Elev

0+75
10.16 31.06

T.P. 0.57 20.90

0+59 END CONC. RAMP SING. CAR GAR ON RT

0+58⁵ END CONC. RAMP SING. CAR GAR ON LT

0+52 BEGIN CONC. RAMP SING. CAR GAR ON RT
7' WIDE

0+50⁵ BEGIN SING. CAR GAR. RAMP ON LT
8'

0+50 CONC. BLK RET. WALL LAT TO PROP
21.47

SLY LT. RT. NLY

18.9 18.9 19.6 20.7 20.9 20.6 21.5 22.4 22.5
12.2 12.2 11.5 10.4 10.2 10.5 9.6 8.7 8.6
48 35 18 9 0 13 23 34 42

31.06

20.61 21.42
0.86 0.05
34.5 50
CONC. RAMP ON CONC. RAMP

18.35 18.45
3.12 3.02
50 35.4
ON CONC. RAMP CONC. RAMP

20.26 21.19
1.21 0.28
34.5 50
CONC. RAMP ON CONC. RAMP

18.32 18.45
3.15 3.02
50 35.3
ON CONC. RAMP CONC. RAMP

16.1 18.50 18.44 18.3 18.3 19.0 18.8 20.0 20.9
5.4 2.97 3.03 3.2 3.2 2.5 2.7 1.5 0.6
50 50 35 35 19 0 14 35 50
Ground Top Conc Top Conc Ret.
Wall Wall
21.47

5-7-53

X-SEC'S POE ST. CONTD

ELY HT. & RT NLY

12.42 43.32

T.P. 0.16 30.90

✓ 1+25 END CONG. RET WALL BEG. CONG. STEPS TO PORCH STOOP.

26.0	27.2	28.1	28.9	29.3	29.4	29.0	28.41	28.42
5.1	3.9	3.0	2.2	1.8	1.7	2.1	2.65	2.64
50	26	25	20	0	14	24	34.7	43.

TOP CONC. WALL FLOWEY BOX TOP CONC. WALL TO

✓ 1+19 W/ EDGE SING CAR RAMP. FLY LINE 6" CONG. RET WALL

27.0	27.15	28.40	27.18	28.46
4.1	3.91	2.66	3.88	2.60
34.7	34.7	34.7	49.8	49.8

Ground Top Conc Ramp TOP CONC. RET WALL TOP CONC. FLOOR

15' W/ DRWY

✓ 1+04 ELY EDGE CONG. RAMP SING CAR GAR

24.6	26.19	27.14
6.5	4.87	3.92
35.5	35.5	50

Ground Top Conc Ramp TOP CONC. FLOOR

1+00 & TOP SEWER M.H. & 1' DIA. P.P.

19.7	20.9	22.4	23.3	23.8	24.21	23.9	24.2	24.2	
11.4	10.2	8.7	7.8	7.3	6.80	7.2	6.9	6.9	
27.3	53	34	27	21	13	0	23	35	47

P.P. 3109 1' DIA. & TOP SEWER M.H.

✓ 0+83 & CONG. WALK 3.5' WIDE TO HOUSE NO. 3112

23.04	23.53
8.02	7.73
35	50

TOP CONC. WALK TOP CONC. WALK @ BLDG

✓ 0+78 & CONG. WALK 4.5' WIDE TO HOUSE #3111 ON LT.

31.06

18.92	18.92
12.14	12.14
49.5	35.1
CONG. WALK @ Bldg	TOP CONC. WALK @ Bldg
31.06	

5-7-53

X-SEC'S POE ST. CONT'D.

TP
1+75

1+72 TOP CUT BANK ON NORTH.

TOE CUT BANK TO NORTH.
1+70 BEGIN CONC. PATIO & DR-WY COMB. 25' W.

1+55 TOP CUT BANK SEC.

1+50 TOE SLOPE SEC.

1+35 & CONC. STOOP 3.25' WIDE TO HOUSE NO. 3120

43.32
3.65

SLY Lt E RT NLY

39.78	39.47	39.3	38.6	38.9	40.9	41.9	42.1	42.3
3.54	3.85	4.0	4.7	4.4	2.4	1.9	1.2	1.0
47	25	25	0	9	14	23	37	50
ON CONC PATIO	TOP CONC PATIO			TOE	TOP			
				38.4	38.2	40.9	41.1	41.1
				4.9	5.1	2.4	2.2	2.2
				0	18	23	36	49

39.47	39.32	39.1	38.3	38.1	38.3
3.85	4.00	4.2	5.0	5.2	5.0
47	35	35	0	23	51
TOP CONC	TOP CONC	TOP CONC	GROUND		

38.8	38.1	37.3	37.3	36.7	37.5	38.2
4.5	5.2	6.0	6.0	6.6	5.8	5.1
59	35	22	0	18	37	50

31.9	36.3	35.9	35.2	35.3	34.0	34.1
11.4	7.0	7.4	8.1	8.0	9.3	9.2
50	29	19	0	15	30	50

31.1	32.20	32.20
12.2	11.12	11.12
40	40	50
GROUND	TOP CONC STOOP	TOP CONC @ BLDG

43.32

MAY 8 1953

57 7-53

X-SEC'S POE ST. CONTD.

SLY Lt.

±

RT. WLY

T.B.M

16.77 38.66 = 38.67 (see Pg. 48)

2+25 ON SLOPE TO EVERGREEN ST

54.4	54.4	54.1	54.4	55.4
61.0	1.0	0.7	1.0	0.0
60	34	0	27	50

2+15 TOP CUT BANK SEC.

53.2	52.3	51.2	52.3	54.2
2.2	3.1	4.2	3.1	1.2
60	31	0	28	50

2+10 TOE SEC.

47.6	47.9	48.1	48.4	48.2	48.9	49.7
7.8	7.5	7.3	7.0	6.6	6.5	5.7
61	37	22	0	20	35	50

2+00 TOPOF CUT BANK SEC.

46.5	46.8	46.9	47.6	48.2	48.5
8.9	8.6	8.5	7.8	7.2	6.9
60	34	0	16	36	50

1+95 WLY. LINE CONC. PATID & GAR COMB

40.09	40.15	39.97	40.5	43.3	46.9	48.1	48.3
15.34	15.28	15.46	15.1	12.1	8.5	7.3	7.1
602	471	342	25	0	30	36	50

Top Conc Patid
@ 844 @ Break

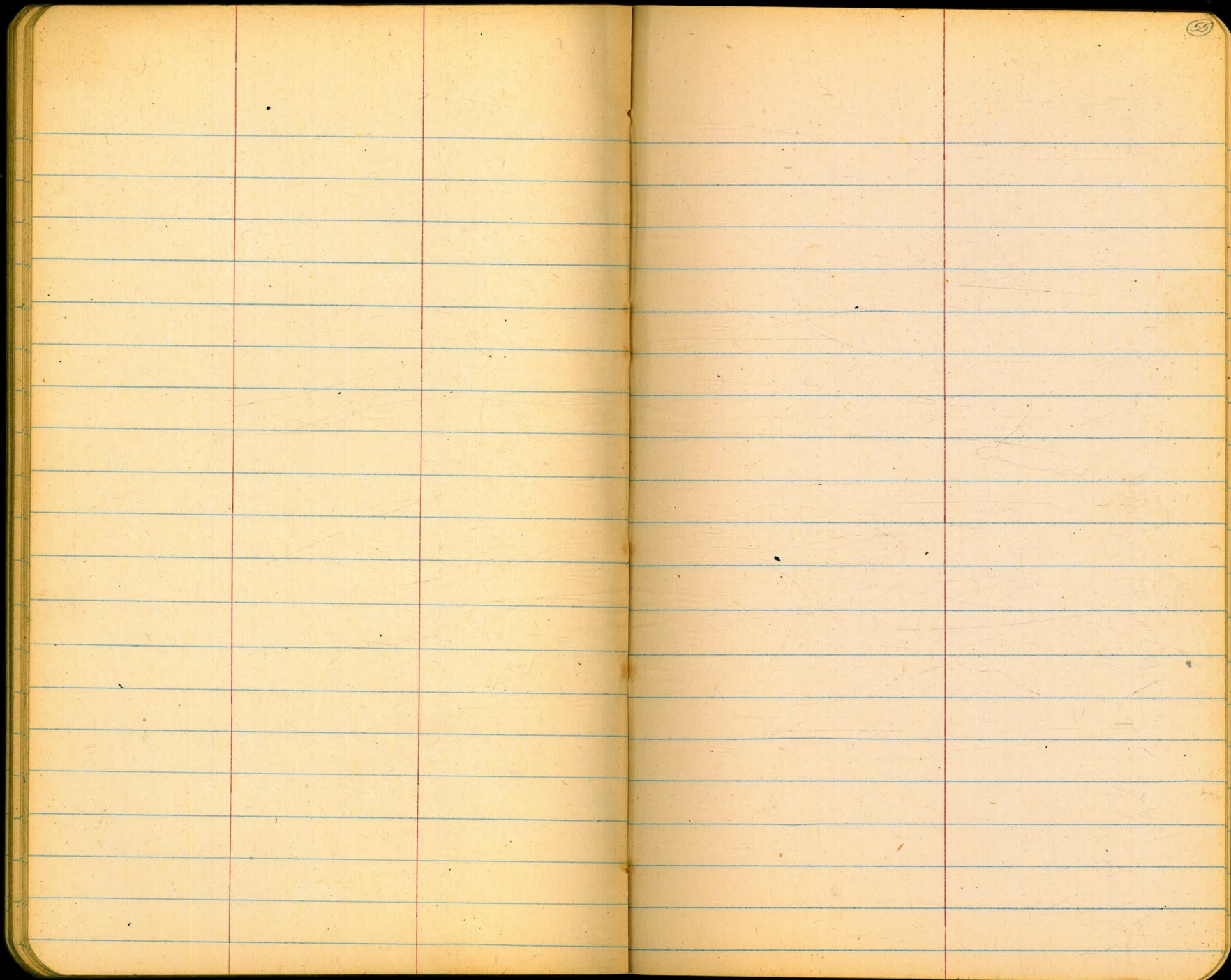
1+86 WHERE ± MEETS TOE OF SLOPE

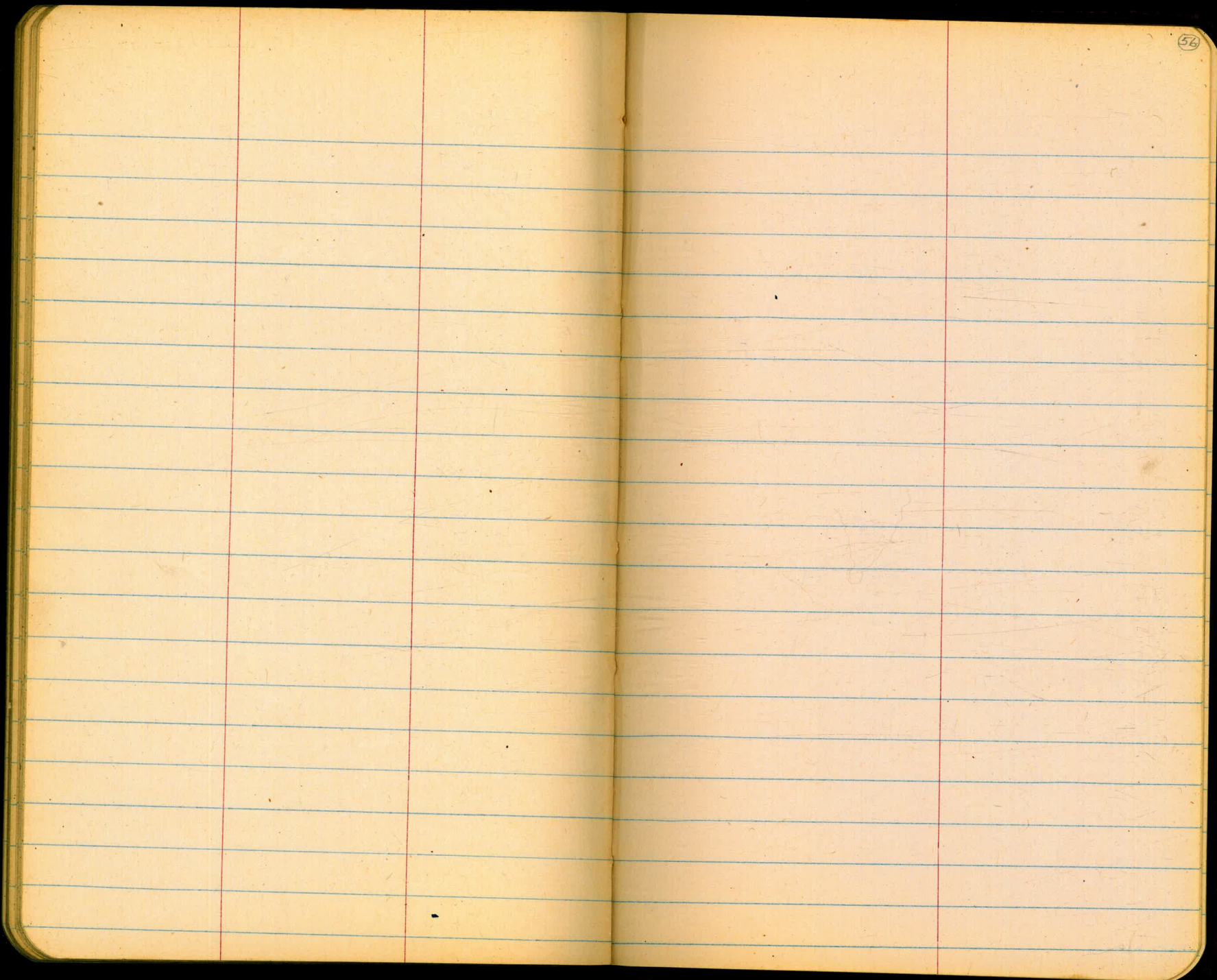
TP 12.39 55.43 0.28 43.04

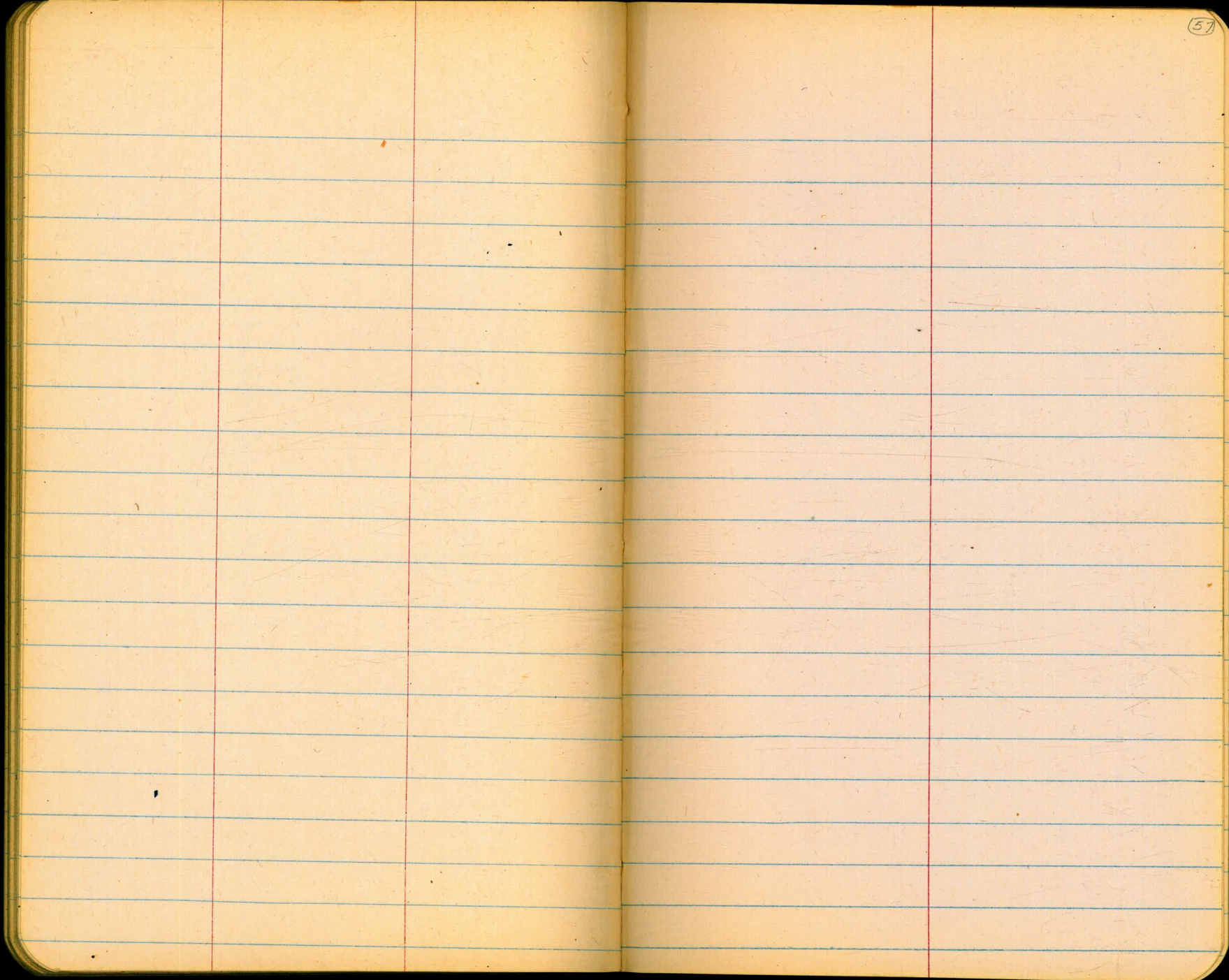
43.32

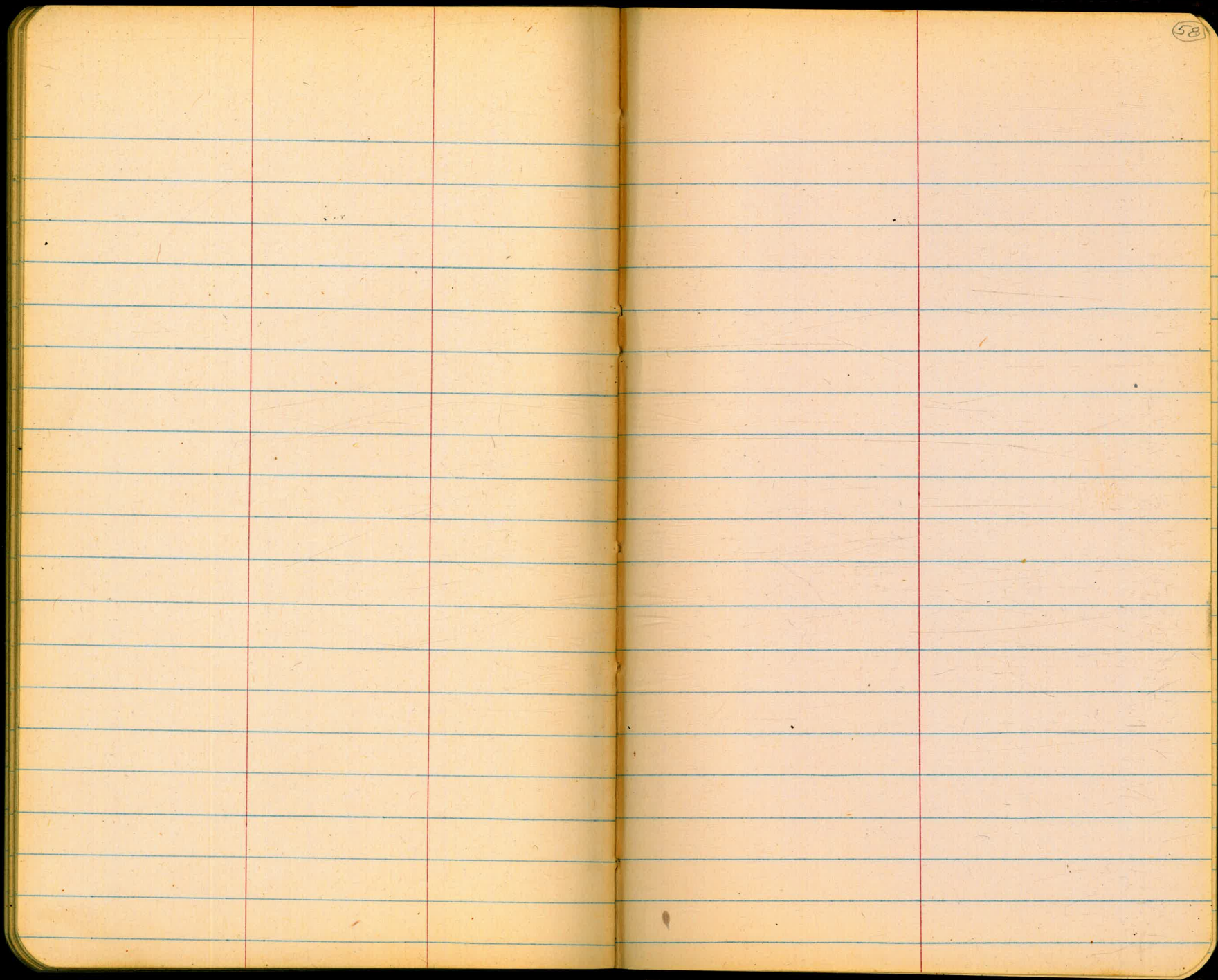
39.6	45.1	46.0	46.8
15.8	10.3	9.4	8.6
0	20	35	50

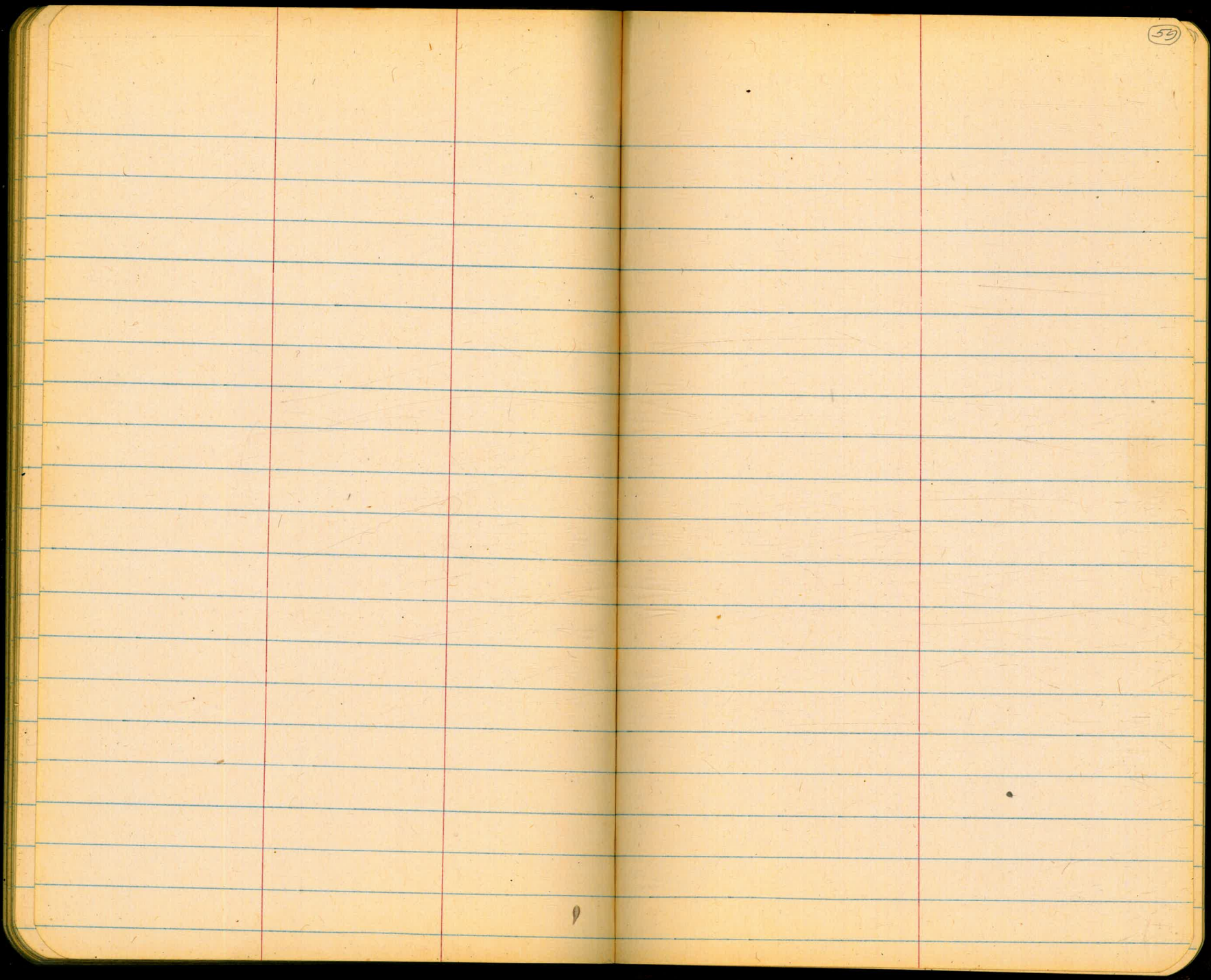
↑ 55.43

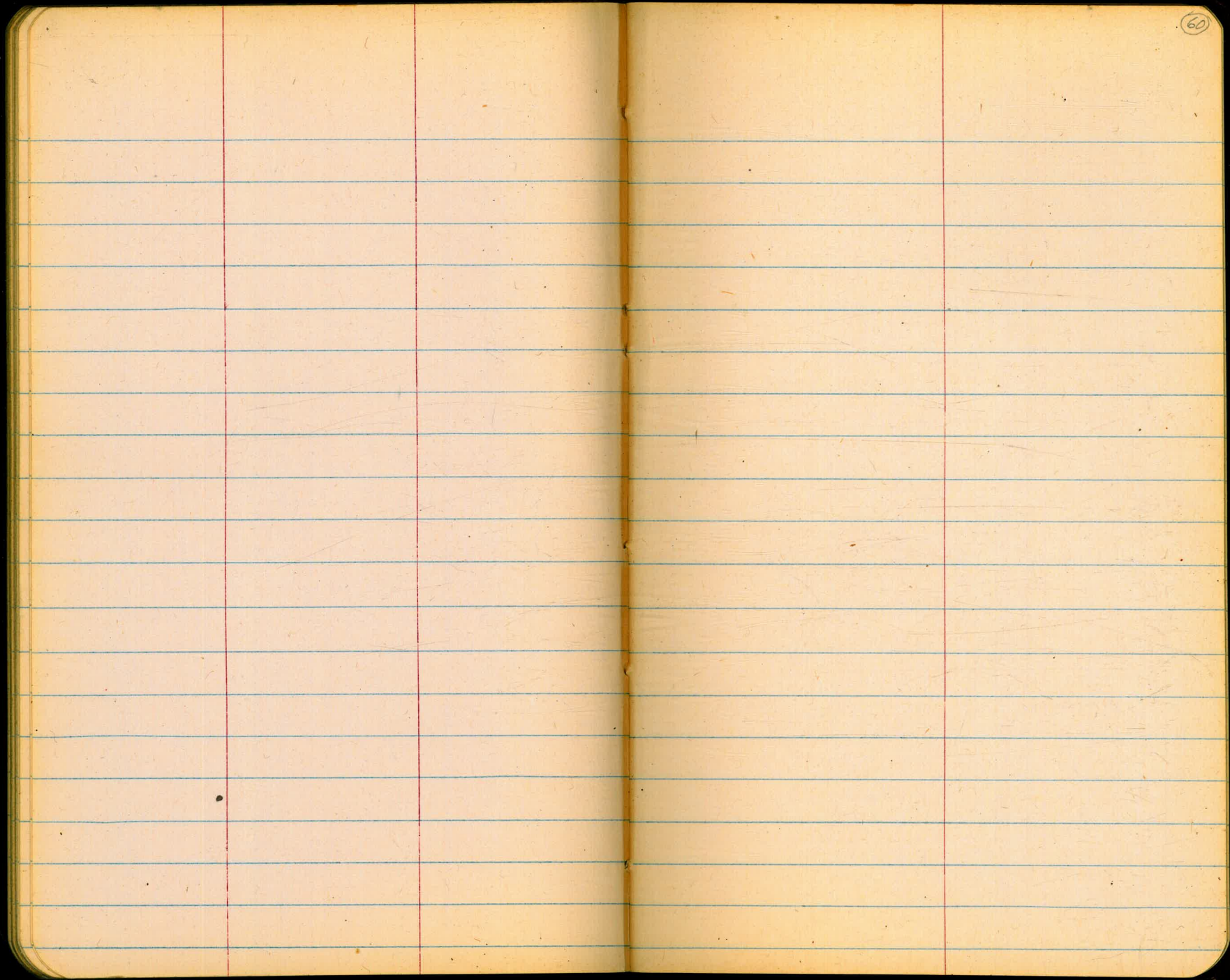












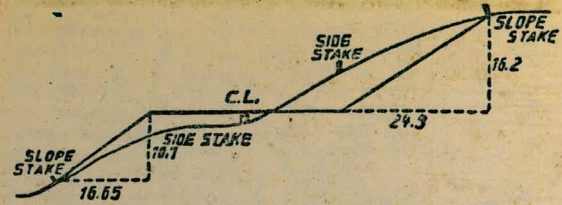
26 - X

855
2,85
75.70

740
9426 ←

R=4.3

30' C.B.S.



DISTANCES FROM SIDE STAKES FOR CROSS-SECTIONING.
SLOPE 1/2 TO 1. ROADWAY OF ANY WIDTH.

	.0	.1	.2	.3	.4	.5	.6	.7	.8	.9	
0	0.00	0.15	0.30	0.45	0.60	0.75	0.90	1.05	1.20	1.35	0
1	1.50	1.65	1.80	1.95	2.10	2.25	2.40	2.55	2.70	2.85	1
2	3.00	3.15	3.30	3.45	3.60	3.75	3.90	4.05	4.20	4.35	2
3	4.50	4.65	4.80	4.95	5.10	5.25	5.40	5.55	5.70	5.85	3
4	6.00	6.15	6.30	6.45	6.60	6.75	6.90	7.05	7.20	7.35	4
5	7.50	7.65	7.80	7.95	8.10	8.25	8.40	8.55	8.70	8.85	5
6	9.00	9.15	9.30	9.45	9.60	9.75	9.90	10.05	10.20	10.35	6
7	10.50	10.65	10.80	10.95	11.10	11.25	11.40	11.55	11.70	11.85	7
8	12.00	12.15	12.30	12.45	12.60	12.75	12.90	13.05	13.20	13.35	8
9	13.50	13.65	13.80	13.95	14.10	14.25	14.40	14.55	14.70	14.85	9
10	15.00	15.15	15.30	15.45	15.60	15.75	15.90	16.05	16.20	16.35	10
11	16.50	16.65	16.80	16.95	17.10	17.25	17.40	17.55	17.70	17.85	11
12	18.00	18.15	18.30	18.45	18.60	18.75	18.90	19.05	19.20	19.35	12
13	19.50	19.65	19.80	19.95	20.10	20.25	20.40	20.55	20.70	20.85	13
14	21.00	21.15	21.30	21.45	21.60	21.75	21.90	22.05	22.20	22.35	14
15	22.50	22.65	22.80	22.95	23.10	23.25	23.40	23.55	23.70	23.85	15
16	24.00	24.15	24.30	24.45	24.60	24.75	24.90	25.05	25.20	25.35	16
17	25.50	25.65	25.80	25.95	26.10	26.25	26.40	26.55	26.70	26.85	17
18	27.00	27.15	27.30	27.45	27.60	27.75	27.90	28.05	28.20	28.35	18
19	28.50	28.65	28.80	28.95	29.10	29.25	29.40	29.55	29.70	29.85	19
20	30.00	30.15	30.30	30.45	30.60	30.75	30.90	31.05	31.20	31.35	20
21	31.50	31.65	31.80	31.95	32.10	32.25	32.40	32.55	32.70	32.85	21
22	33.00	33.15	33.30	33.45	33.60	33.75	33.90	34.05	34.20	34.35	22
23	34.50	34.65	34.80	34.95	35.10	35.25	35.40	35.55	35.70	35.85	23
24	36.00	36.15	36.30	36.45	36.60	36.75	36.90	37.05	37.20	37.35	24
25	37.50	37.65	37.80	37.95	38.10	38.25	38.40	38.55	38.70	38.85	25
26	39.00	39.15	39.30	39.45	39.60	39.75	39.90	40.05	40.20	40.35	26
27	40.50	40.65	40.80	40.95	41.10	41.25	41.40	41.55	41.70	41.85	27
28	42.00	42.15	42.30	42.45	42.60	42.75	42.90	43.05	43.20	43.35	28
29	43.50	43.65	43.80	43.95	44.10	44.25	44.40	44.55	44.70	44.85	29
30	45.00	45.15	45.30	45.45	45.60	45.75	45.90	46.05	46.20	46.35	30
31	46.50	46.65	46.80	46.95	47.10	47.25	47.40	47.55	47.70	47.85	31
32	48.00	48.15	48.30	48.45	48.60	48.75	48.90	49.05	49.20	49.35	32
33	49.50	49.65	49.80	49.95	50.10	50.25	50.40	50.55	50.70	50.85	33
34	51.00	51.15	51.30	51.45	51.60	51.75	51.90	52.05	52.20	52.35	34
35	52.50	52.65	52.80	52.95	53.10	53.25	53.40	53.55	53.70	53.85	35
36	54.00	54.15	54.30	54.45	54.60	54.75	54.90	55.05	55.20	55.35	36
37	55.50	55.65	55.80	55.95	56.10	56.25	56.40	56.55	56.70	56.85	37
38	57.00	57.15	57.30	57.45	57.60	57.75	57.90	58.05	58.20	58.35	38
39	58.50	58.65	58.80	58.95	59.10	59.25	59.40	59.55	59.70	59.85	39
40	60.00	60.15	60.30	60.45	60.60	60.75	60.90	61.05	61.20	61.35	40
41	61.50	61.65	61.80	61.95	62.10	62.25	62.40	62.55	62.70	62.85	41
42	63.00	63.15	63.30	63.45	63.60	63.75	63.90	64.05	64.20	64.35	42
43	64.50	64.65	64.80	64.95	65.10	65.25	65.40	65.55	65.70	65.85	43
44	66.00	66.15	66.30	66.45	66.60	66.75	66.90	67.05	67.20	67.35	44
45	67.50	67.65	67.80	67.95	68.10	68.25	68.40	68.55	68.70	68.85	45
46	69.00	69.15	69.30	69.45	69.60	69.75	69.90	70.05	70.20	70.35	46
47	70.50	70.65	70.80	70.95	71.10	71.25	71.40	71.55	71.70	71.85	47
48	72.00	72.15	72.30	72.45	72.60	72.75	72.90	73.05	73.20	73.35	48
49	73.50	73.65	73.80	73.95	74.10	74.25	74.40	74.55	74.70	74.85	49
50	75.00	75.15	75.30	75.45	75.60	75.75	75.90	76.05	76.20	76.35	50

THE NATIONAL BLANK BOOK COMPANY
HOLYOKE MASSACHUSETTS
NEW YORK CHICAGO BOSTON SAN FRANCISCO