

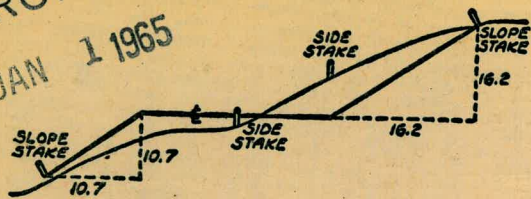
2139

X-SECTIONS

TRAVEL BOOK

MICROFILMED

JAN 1 1965



DISTANCES FROM SIDE STAKES FOR CROSS-SECTIONING
SLOPE 1 TO 1. ROADWAY OF ANY WIDTH

	0	.1	.2	.3	.4	.5	.6	.7	.8	.9	
0	0.00	0.10	0.20	0.30	0.40	0.50	0.60	0.70	0.80	0.90	0
1	1.00	1.10	1.20	1.30	1.40	1.50	1.60	1.70	1.80	1.90	1
2	2.00	2.10	2.20	2.30	2.40	2.50	2.60	2.70	2.80	2.90	2
3	3.00	3.10	3.20	3.30	3.40	3.50	3.60	3.70	3.80	3.90	3
4	4.00	4.10	4.20	4.30	4.40	4.50	4.60	4.70	4.80	4.90	4
5	5.00	5.10	5.20	5.30	5.40	5.50	5.60	5.70	5.80	5.90	5
6	6.00	6.10	6.20	6.30	6.40	6.50	6.60	6.70	6.80	6.90	6
7	7.00	7.10	7.20	7.30	7.40	7.50	7.60	7.70	7.80	7.90	7
8	8.00	8.10	8.20	8.30	8.40	8.50	8.60	8.70	8.80	8.90	8
9	9.00	9.10	9.20	9.30	9.40	9.50	9.60	9.70	9.80	9.90	9
10	10.00	10.10	10.20	10.30	10.40	10.50	10.60	10.70	10.80	10.90	10
11	11.00	11.10	11.20	11.30	11.40	11.50	11.60	11.70	11.80	11.90	11
12	12.00	12.10	12.20	12.30	12.40	12.50	12.60	12.70	12.80	12.90	12
13	13.00	13.10	13.20	13.30	13.40	13.50	13.60	13.70	13.80	13.90	13
14	14.00	14.10	14.20	14.30	14.40	14.50	14.60	14.70	14.80	14.90	14
15	15.00	15.10	15.20	15.30	15.40	15.50	15.60	15.70	15.80	15.90	15
16	16.00	16.10	16.20	16.30	16.40	16.50	16.60	16.70	16.80	16.90	16
17	17.00	17.10	17.20	17.30	17.40	17.50	17.60	17.70	17.80	17.90	17
18	18.00	18.10	18.20	18.30	18.40	18.50	18.60	18.70	18.80	18.90	18
19	19.00	19.10	19.20	19.30	19.40	19.50	19.60	19.70	19.80	19.90	19
20	20.00	20.10	20.20	20.30	20.40	20.50	20.60	20.70	20.80	20.90	20
21	21.00	21.10	21.20	21.30	21.40	21.50	21.60	21.70	21.80	21.90	21
22	22.00	22.10	22.20	22.30	22.40	22.50	22.60	22.70	22.80	22.90	22
23	23.00	23.10	23.20	23.30	23.40	23.50	23.60	23.70	23.80	23.90	23
24	24.00	24.10	24.20	24.30	24.40	24.50	24.60	24.70	24.80	24.90	24
25	25.00	25.10	25.20	25.30	25.40	25.50	25.60	25.70	25.80	25.90	25
26	26.00	26.10	26.20	26.30	26.40	26.50	26.60	26.70	26.80	26.90	26
27	27.00	27.10	27.20	27.30	27.40	27.50	27.60	27.70	27.80	27.90	27
28	28.00	28.10	28.20	28.30	28.40	28.50	28.60	28.70	28.80	28.90	28
29	29.00	29.10	29.20	29.30	29.40	29.50	29.60	29.70	29.80	29.90	29
30	30.00	30.10	30.20	30.30	30.40	30.50	30.60	30.70	30.80	30.90	30
31	31.00	31.10	31.20	31.30	31.40	31.50	31.60	31.70	31.80	31.90	31
32	32.00	32.10	32.20	32.30	32.40	32.50	32.60	32.70	32.80	32.90	32
33	33.00	33.10	33.20	33.30	33.40	33.50	33.60	33.70	33.80	33.90	33
34	34.00	34.10	34.20	34.30	34.40	34.50	34.60	34.70	34.80	34.90	34
35	35.00	35.10	35.20	35.30	35.40	35.50	35.60	35.70	35.80	35.90	35
36	36.00	36.10	36.20	36.30	36.40	36.50	36.60	36.70	36.80	36.90	36
37	37.00	37.10	37.20	37.30	37.40	37.50	37.60	37.70	37.80	37.90	37
38	38.00	38.10	38.20	38.30	38.40	38.50	38.60	38.70	38.80	38.90	38
39	39.00	39.10	39.20	39.30	39.40	39.50	39.60	39.70	39.80	39.90	39
40	40.00	40.10	40.20	40.30	40.40	40.50	40.60	40.70	40.80	40.90	40
41	41.00	41.10	41.20	41.30	41.40	41.50	41.60	41.70	41.80	41.90	41
42	42.00	42.10	42.20	42.30	42.40	42.50	42.60	42.70	42.80	42.90	42
43	43.00	43.10	43.20	43.30	43.40	43.50	43.60	43.70	43.80	43.90	43
44	44.00	44.10	44.20	44.30	44.40	44.50	44.60	44.70	44.80	44.90	44
45	45.00	45.10	45.20	45.30	45.40	45.50	45.60	45.70	45.80	45.90	45
46	46.00	46.10	46.20	46.30	46.40	46.50	46.60	46.70	46.80	46.90	46
47	47.00	47.10	47.20	47.30	47.40	47.50	47.60	47.70	47.80	47.90	47
48	48.00	48.10	48.20	48.30	48.40	48.50	48.60	48.70	48.80	48.90	48
49	49.00	49.10	49.20	49.30	49.40	49.50	49.60	49.70	49.80	49.90	49
50	50.00	50.10	50.20	50.30	50.40	50.50	50.60	50.70	50.80	50.90	50

Distance of slope stake from side or shoulder stake for any width roadway, slope 1 to 1. If ground is nearly level, the out or fill at side stake is located by the double entry method in left column and top row. The number in body of table in same row and column gives distance from side stake to slope stake. If ground is not level estimate the difference in elevation between the side stake and slope stake, lower target by this amount if cut, elevate if fill. Add this amount to cut or fill and find distance in table. Set up rod at this point, and line of sight should cut target. If it does not make the slight adjustment necessary.

X-Sections

TABLE XIII—CORRECTIONS FOR TANGENTS AND EXTERNALS

These corrections are to be added to the approximate values, found by dividing the tangent, or external, for a 1° curve (Table VIII) by the degree of curve, in order to obtain the true tangents, or externals. Intermediate values may be obtained by interpolation.

FOR TANGENTS ADD

Central Angle	DEGREE OF CURVE													
	5°	10°	15°	20°	25°	30°	35°	40°	45°	50°	55°	60°	65°	70°
10°	.03	.06	.09	.13	.16	.19	.22	.25	.28	.31	.34	.38	.42	.46
15°	.04	.10	.14	.19	.24	.29	.34	.39	.45	.51	.53	.58	.63	.68
20°	.06	.13	.19	.26	.32	.39	.45	.51	.58	.65	.72	.79	.84	.90
25°	.08	.16	.24	.33	.40	.49	.58	.67	.75	.83	.90	.99	1.06	1.14
30°	.10	.19	.29	.39	.49	.59	.69	.79	.89	.99	1.09	1.20	1.29	1.39
35°	.11	.22	.34	.47	.58	.69	.79	.81	.92	1.04	1.29	1.42	1.54	1.66
40°	.13	.26	.40	.53	.67	.80	.93	1.06	1.20	1.34	1.49	1.64	1.79	1.94
45°	.15	.30	.44	.60	.76	.91	1.06	1.21	1.37	1.52	1.70	1.87	2.04	2.21
50°	.17	.34	.51	.68	.85	1.02	1.19	1.36	1.54	1.72	1.91	2.10	2.29	2.48
55°	.19	.38	.57	.76	.95	1.14	1.32	1.52	1.72	1.92	2.14	2.35	2.56	2.77
60°	.21	.42	.63	.84	1.05	1.27	1.49	1.71	1.94	2.17	2.38	2.60	2.83	3.07
65°	.23	.46	.69	.93	1.16	1.40	1.64	1.88	2.13	2.38	2.63	2.88	3.13	3.39
70°	.25	.51	.76	1.02	1.28	1.54	1.80	2.06	2.33	2.60	2.88	3.16	3.44	3.72
75°	.27	.56	.83	1.12	1.40	1.69	1.98	2.27	2.57	2.87	3.16	3.47	3.78	4.09
80°	.30	.61	.91	1.22	1.53	1.84	2.15	2.46	2.78	3.10	3.44	3.78	4.12	4.46
85°	.33	.66	1.00	1.33	1.68	2.02	2.36	2.70	3.05	3.40	3.77	4.14	4.55	4.89
90°	.36	.72	1.09	1.45	1.83	2.20	2.57	2.94	3.32	3.70	4.10	4.50	4.91	5.32
95°	.39	.79	1.19	1.55	2.00	2.40	2.80	3.20	3.61	4.02	4.40	4.98	5.38	5.83
100°	.43	.86	1.30	1.74	2.18	2.62	3.06	3.50	3.95	4.40	4.88	5.37	5.85	6.34
110°	.51	1.03	1.56	2.08	2.61	3.14	3.67	4.21	4.76	5.31	5.86	6.43	7.01	7.60
120°	.62	1.25	1.93	2.52	3.16	3.81	4.46	5.11	5.77	6.44	7.12	7.80	8.50	9.22

FOR EXTERNALS ADD

Central Angle	DEGREE OF CURVE													
	5°	10°	15°	20°	25°	30°	35°	40°	45°	50°	55°	60°	65°	70°
10°	.001	.003	.004	.006	.007	.008	.009	.011	.012	.014	.015	.017	.018	.020
15°	.003	.007	.010	.014	.018	.023	.027	.029	.032	.035	.039	.043	.047	.051
20°	.006	.011	.017	.022	.028	.034	.038	.045	.051	.057	.063	.070	.076	.083
25°	.009	.018	.027	.036	.046	.056	.065	.074	.083	.093	.106	.120	.127	.135
30°	.013	.025	.038	.051	.065	.078	.090	.103	.116	.129	.149	.170	.179	.188
35°	.018	.035	.054	.072	.086	.109	.131	.153	.175	.197	.213	.230	.247	.264
40°	.023	.046	.070	.093	.117	.141	.172	.203	.234	.265	.277	.290	.315	.341
45°	.030	.060	.093	.119	.153	.184	.216	.254	.289	.325	.351	.378	.411	.445
50°	.037	.075	.116	.151	.189	.227	.266	.305	.345	.384	.425	.467	.508	.550
55°	.046	.093	.142	.188	.236	.283	.332	.381	.420	.479	.530	.582	.641	.700
60°	.056	.112	.168	.225	.283	.340	.398	.457	.516	.575	.636	.697	.774	.851
65°	.067	.135	.204	.273	.343	.412	.483	.554	.625	.697	.771	.845	.922	1.01
70°	.080	.159	.240	.321	.403	.485	.568	.652	.735	.819	.906	.994	1.08	1.17
75°	.095	.182	.266	.353	.440	.528	.617	.707	.797	.887	.977	1.07	1.18	1.29
80°	.110	.220	.332	.445	.558	.671	.787	.903	1.02	1.13	1.25	1.38	1.50	1.62
85°	.128	.259	.391	.524	.657	.790	.926	1.06	1.20	1.34	1.47	1.62	1.76	1.91
90°	.149	.299	.450	.603	.756	.910	1.07	1.22	1.38	1.54	1.70	1.87	2.03	2.20
95°	.174	.350	.522	.706	.885	1.06	1.25	1.43	1.62	1.80	1.99	2.18	2.38	2.58
100°	.200	.401	.604	.809	1.01	1.22	1.43	1.64	1.85	2.06	2.28	2.50	2.73	2.96
110°	.268	.536	.806	1.08	1.35	1.63	1.91	2.20	2.48	2.76	3.05	3.35	3.66	3.96
120°	.360	.721	1.08	1.45	1.82	2.19	2.57	2.95	3.33	3.72	4.11	4.50	4.91	5.32

Index

Alley Blk 4, Cullen Westland Terrace, X-sec 1-4
 Proposed Storm Drain Congress Witherby to Trial 5-7
 Proposed Storm Drain Blk 488 Old Town 8-12
 X-sec Madrone, ^{from} Woodman E'ly 113-25
 X-sec Unnamed Sk. - Ph 1202 26-35
 X-SECT. Ext. of Hughes - Thru School Grounds 36
 Yardage " " " 39
 Alley- Blk 22- Univ. Hts. 41
 Russell St. Locust to Rosecrans 42
 Drain Jefferson Near Condo 51
 X-SECT. Hughes thru School Prop 54

D. Smith
C. Allen
Mick
D. Shepard

Cross Sec Alley BIK 4
Cullens Westland Ter.

WO# 25020
7-2-51

INDEXED

JUL 3 1951

Note:
Disk is new since
cb has been knocked
out and replaced.

Westland

BIK 4

Cullens Westland Ter.

Commonwealth

Ed used ties
to prop

215 27 Map

222 78
Made chain &
suit

15 08
15 23 28
Set Hub

Ivy St.

276 28 Map

Ed ties
to prop

Ed Disk
77 20

5' pan King
5' walk
4' brods

disk to track
336 69 chain

Juniper St

con paving

Section Nail

169 56

5' walk
5' pan King
4' brods

Ed L&T
77 77

76

153 52

map

15 Rad net.

190

15 23

0 10 0

220

15 Rad Net

155 map

77

75 x 75

X Sec Alley BIK 4 Cullens Westland Ter.
H. East

At West

0+73 5⁸ RT E dead man

0+65

TP

0²⁶

254³⁴

12⁸⁷

254⁰⁸

260⁸²
254.7

260³²
254.2

260⁴²
254.3

70²

0¹

0⁰

7⁵

7⁵

260⁴⁶
254³⁴

0+49 8² Lt begin con block wall

261⁰²
254.9

266⁶⁴
260.52

268¹²
262.0

268⁰²
261.9

264⁵²
258.4

264²²
258.1

264⁰²
257.9

262⁸²
256.7

12²

6⁴³

5⁰

5¹

8⁶

8²

9¹

10³

8²

8⁰

7⁵

5

3

7⁵

1⁵

Footing

Top

wall

268⁷¹

267⁵⁹

268²²

267⁷²

266⁶²

266⁶²

4³⁶

4²

5⁸

6⁵

6⁵

6¹

9⁸

7⁵

3

1

7⁵

1⁵

Floor

0+29 9² Lt NW cor single garage con floor opens North

268⁹⁴

262⁸¹

268⁴⁹

268³²

268¹⁶

268⁵²

4⁴

4⁵⁸

4⁷⁵

4⁷¹

4⁵⁰

8²

8²

9⁴

7⁰

7⁰

0⁶

9⁴

0⁶

0+00 South Prop Juniper along prop - edge Pav.

269⁸²

263⁷⁰

269²⁰

268⁷⁹

268¹⁹

267⁹⁴

267⁷²

268⁵⁹

266⁶⁹

267²³

3²⁵

3⁰⁷

4²⁸

4⁸⁸

5¹³

5³⁵

4⁶⁸

6³⁸

5⁸¹

5⁰

5⁰

8⁸

8⁸

9³

9³

5⁰

6⁵⁰

0⁶

9⁴

0⁶

9⁴

0⁶

0⁶

9⁴

0⁶

0-10 South C6 Line Juniper

BM

0⁵²

266⁹⁵

266⁴³

SW.B.P.
Common weath
Juniper

27307 M.S.L.

266⁹⁵

RED. 7-0-85
& ADJUSTED (K.M.M.S.)
F.B. FINNEY

t.M.S.L.
Converted 5-24-66
Javalanzuela

3150

Lt = East					Rt = West	
<u>222⁸²</u>	<u>220³²</u>	<u>220⁸²</u>	<u>226²²</u>	<u>231⁴²</u>	<u>235⁷²</u>	<u>238⁵²</u>
216.7	214.7	214.7	220.1	225.5	229.6	232.4
26 ²	28 ²	28 ²	22 ²	17 ⁴	13 ²	10 ⁵
25	19	15	7 ⁵		7 ⁵	15

3100

<u>2300²</u>	<u>2265²</u>	<u>2267²</u>	<u>2317²</u>	<u>2372²</u>	<u>2393²</u>	<u>2415²</u>
223.9	220.4	220.6	225.6	231.1	233.2	235.4
19 ²	22 ⁵	22 ²	17 ³	11 ⁸	9 ²	7 ⁵
25	20	15	7 ⁵		7 ⁵	15

2157 7° Rt. E 18" Power Pole #A2255

2150

<u>2340²</u>	<u>2310²</u>	<u>2326²</u>	<u>238²</u>	<u>2417²</u>	<u>2434²</u>
227.9	225.0	226.5	232.7	235.6	237.3
15 ²	17 ²	16 ⁴	10 ²	7 ³	5 ⁶
18	13	7 ⁵		7 ⁵	15

2100

<u>2454²</u>	<u>2440²</u>	<u>2433²</u>	<u>2454²</u>	<u>2466²</u>
239.3	237.9	237.2	239.3	240.5
3 ⁶	5 ⁰	5 ²	3 ⁶	2 ⁴
15	7 ⁵		7 ⁵	15

TP₂

146 242⁵⁰ 12⁹⁵ 241³⁹

1750

<u>2516²</u>	<u>2500²</u>	<u>2428²</u>
245.5	244.0	243.1
8 ⁸	10 ³	11 ²
15	7 ⁵	

1701 6⁴ Rt. E 18" Power Pole #A2275

1700 8⁵ Lt. End. con. block wall

<u>2567²</u>	<u>2556²</u>	<u>2615²</u>	<u>2562²</u>	<u>2555²</u>	<u>2559²</u>	<u>2559²</u>
250.6	249.5	255.45	250.1	249.4	249.8	249.8
3 ³	4 ⁸	+1 ¹¹	4 ²	4 ³	4 ⁵	4 ⁵
15	8 ⁵	8 ⁵	7 ⁵		7 ⁵	15

Footings Top wall
26042
254734

BM starting
 TP₆ 8¹⁹ 267⁴⁴ 369 266⁴⁵ ^{Sw B.P.} ^{Summer 1944} ^{Junior}
 TP₇ 13⁴ 262⁹⁴ 0⁰ 249⁸³
 TP₆ 13⁴ 249⁸⁴ 0⁴⁶ 236⁶²
 TP₅ 12⁵¹ 237¹⁴ 0³⁴ 224⁶³

East West

5773⁴⁸ North Prop Ivy

222¹² 217¹² 212⁹² 208⁵² 204⁷² 200³²
 216.0 211.0 206.8 202.4 198.6 194.2
 9² 14⁰ 18² 22⁵ 26⁴ 30²
 15 7⁵ 7⁵ 15 15 25

5720

219⁹² 215¹² 211²² 205³² 205³²
 213.8 209.0 205.1 199.2 199.2
 11² 16⁰ 19² 25⁸ 25⁸
 7⁵ 7⁵ 7⁵ 20 25

4476

212⁴² 209³² 213⁰²
 206.3 203.2 206.9
 18² 21⁸ 18²
 7⁵ 7⁵

4450

214⁹² 211⁹² 214⁰² 217⁹² 219²² 222²²
 208.8 205.8 207.9 211.3 213.1 216.1
 16² 19² 17⁴ 13² 11² 8²
 20 13 7⁵ 7⁵ 15

TP₄ 5³⁷ 224⁹⁷ 12⁹⁵ 219⁶⁰

231⁰⁹
 224⁹⁷

4401 9² RT & 12" Power Pole A 2227

219⁵² 216³² 218⁰² 222¹² 226²² 230⁷² 233⁵²
 213.4 210.2 211.9 216.0 220.1 224.6 227.4
 19² 22⁴ 20⁷ 16⁶ 12⁵ 8⁰ 5⁸
 30 21 15 7⁵ 7⁵ 7⁵ 15

4400

TP₃ 2²⁴ 232⁵⁵ 12⁵⁴ 230³¹

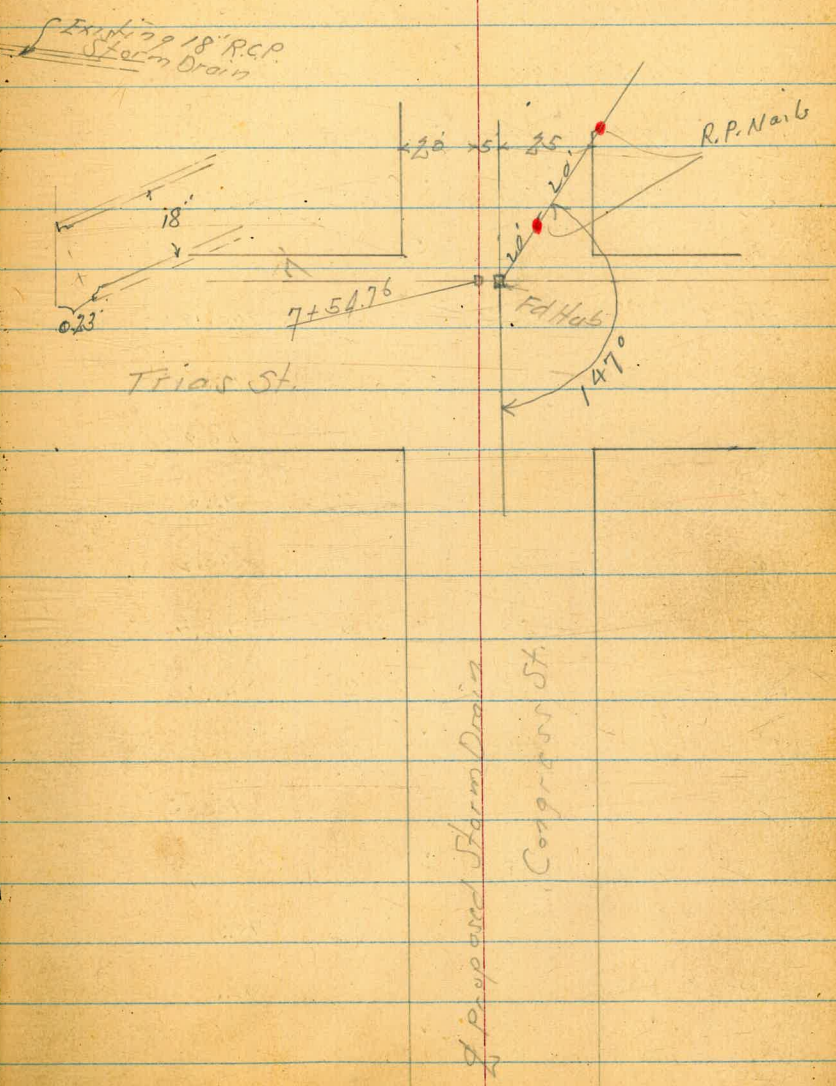
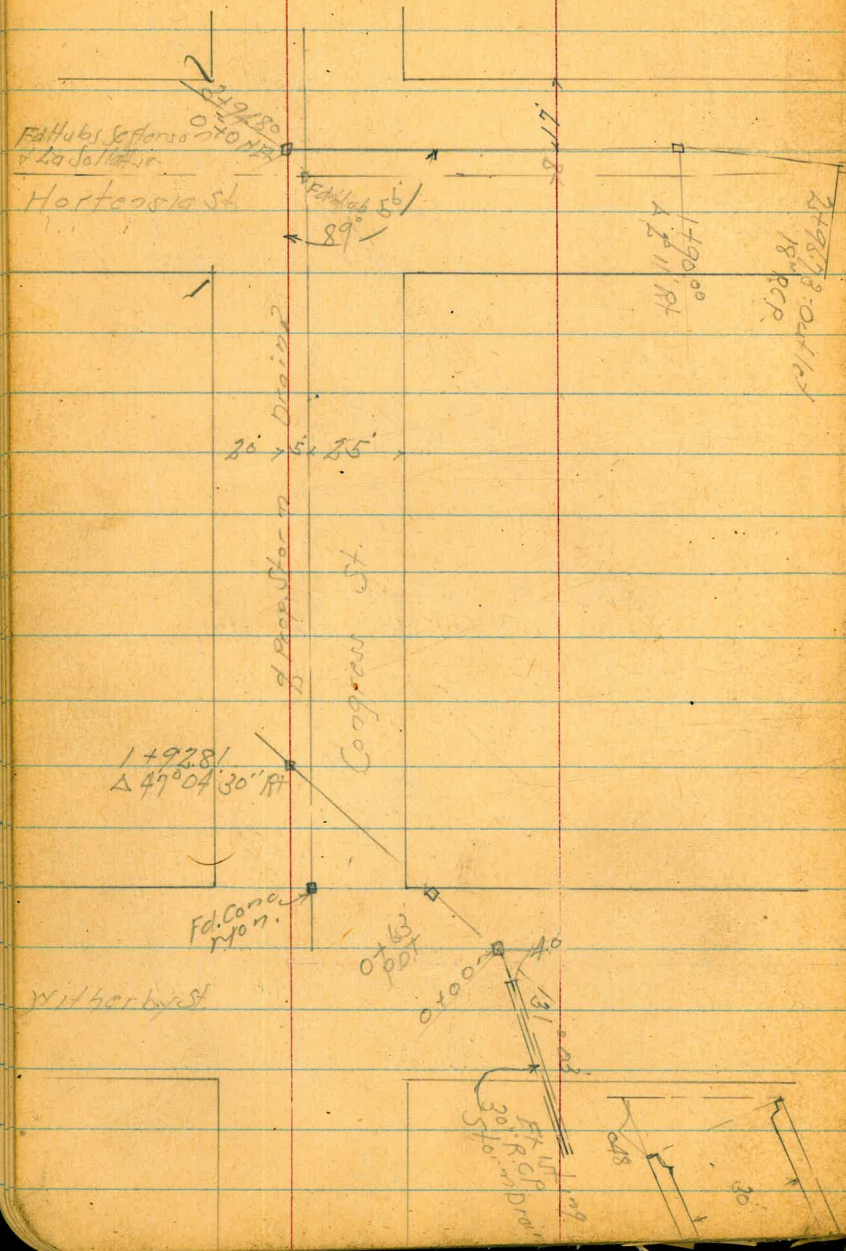
238⁶⁷
 232⁵⁵

Proposed Storm Drain
 Congress St Witherby to Trias St.

July 10. 51
 H. Simon
 Roger
 Bartoluccia
 Fitz
 W.O. 20747

INDEXED

JUL 13 1951



Levels Proposed Storm Drain
Congress St. Milberby to Trias

BM	1198	55.73 ✓	43.75 ✓	SEBR Hampden +20.00 H.C.	1+25	80	80.6	
	1105	66.68 ✓	0.10	55.63	+50	85	80.1	
	1142	77.81 ✓	0.29	66.39	07 Hub 7+54.76	111	77.5	
	1185	85.62 ✓	4.04	73.77	07 Hub 3+74.80	1111	77.59	
	1221	97.15 ✓	0.68	84.91	2150	41	76.2	
	1208	109.08 ✓	0.15	97.00	240	47	75.6	
	1162	120.20 ✓	0.50	108.58	+50	57	79.6	
0-04	= outlet of 30' RCP		10.06	110.12	Invert	+94.80	65.5	73.77 ✓
0+0			10.82	109.37	07 Hub	4+50	79	72.9
+11			11.8	108.9		5+0	90	71.3
+27			7.2	113.0		+50	93	71.0
+51			20	118.2		6+0	99	70.9
+63			+0.5	120.7		+50	112	69.1
+68			7.1	113.1		7+0	127	67.6
TP	148	110.06 ✓	11.62	108.58	+54.76	1395	66.37 ✓	
+90			46	105.5			66.39 ✓	
	106	98.87 ✓	12.25	97.81			07 Hub 07.00 P.P.P.	
1+06			46	99.3				
+31			66	92.3				
	124	88.61 ✓	11.60	87.27				

88.61 ✓

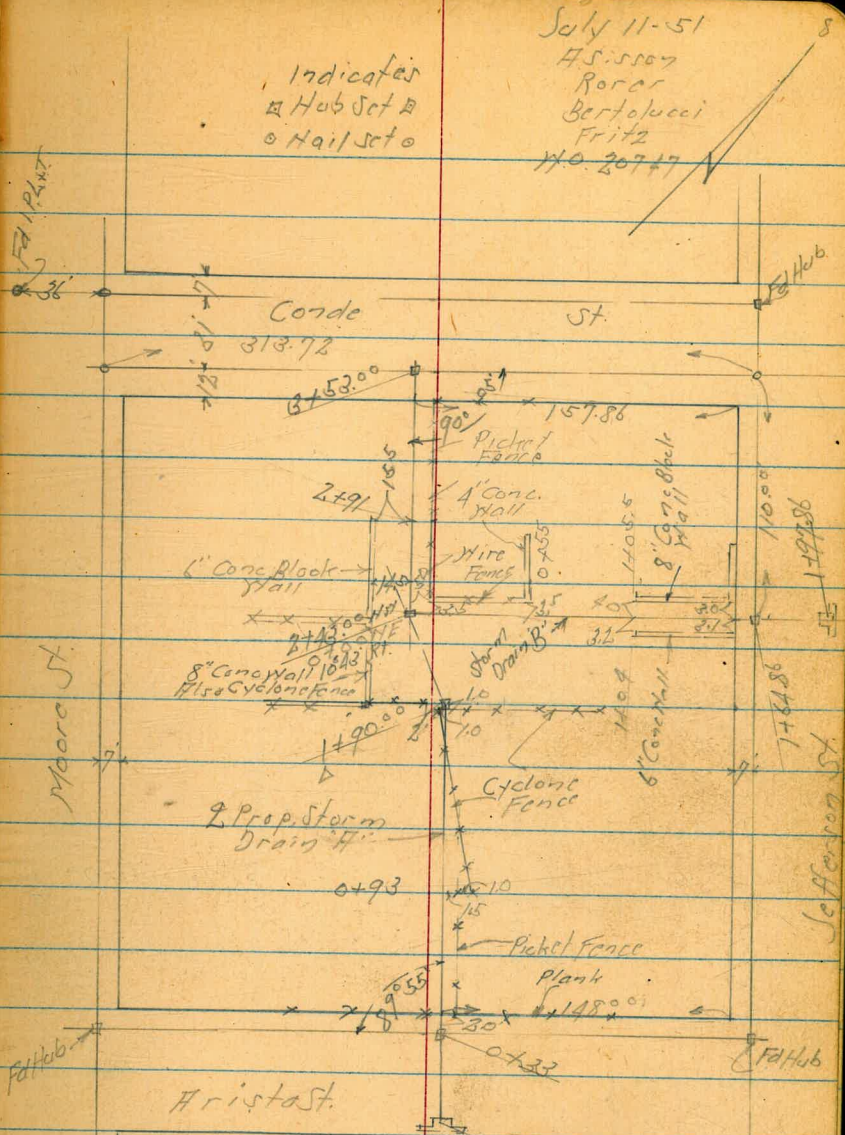
Levels Proposed Storm Drain
Hortensia St. North East of Congress St.

B.M.	12.12	85.89	73.77	on Hub 2+94.80 Congress	2+80	117.55		
0+0	=3+94.80				+96.73		5.2	112.4
+50			12.2	73.7	"		2.0	115.6 Ground
+85			11.5	74.2			0.46	117.09 Invert
+1+10			7.1	78.8				
+1.5			0.5	85.4				
TP	7.85	93.36	0.38	85.51				
+35			3.9	89.5				
+50			3.2	90.2				
+60			10.9	82.5				
+69			11.0	82.36				
+80			5.1	88.0				
+89	80 Rto 1/2 Section MH		4.3	89.33	on R.M.			
+90	Δ		3.9	89.5				
TP	12.24	105.40	0.30	93.06				
2+0			12.4	93.0				
+42			1.0	104.9				
TP	12.26	117.55	0.11	105.29				
+60			10.5	107.1				

Proposed Storm Drain Block 488
Old Town

) Levels next page

INDEXED
law
OCT 11 1951



INDEXED
law
OCT 11 1951

Levels Prop. Storm Drain "H"
Block 488 Old Town

Lt. 1111

2

Rt. 55

9

140 5.6 Rt of $\frac{1}{2}$ = NW Cor. Garage House

 +76 6' Lt of $\frac{1}{2}$ = $\frac{1}{2}$ 6" H. Cecoda
 +65 5' Lt of $\frac{1}{2}$ = $\frac{1}{2}$ 4" Fruit Tree
 +61 10.0 Lt of $\frac{1}{2}$ = $\frac{1}{2}$ 12" Fruit Tree
 +57 2' Lt of $\frac{1}{2}$ = $\frac{1}{2}$ 5" Peach
 1' Lt of $\frac{1}{2}$ = $\frac{1}{2}$ 3" Peach
 +55 5.7 Rt of $\frac{1}{2}$ = SW Corner House
 +52 12.0 Lt of $\frac{1}{2}$ = $\frac{1}{2}$ 8" Apricot Tree
 +50 $\frac{1}{2}$ = $\frac{1}{2}$ 4" Shrub

10.1
8.0
10
10.2
8.2
10
10.6
7.6
10

12.4
6.0
15
12.1
6.3
15
12.5
5.9
15

11.3
4.1
15
13.8
4.6
15
13.4
5.0
15

+35 10' Rt of $\frac{1}{2}$ = $\frac{1}{2}$ Power + Tel Pole #SP2880

15.2
3.9
15
15.0
3.4
15
14.8
2.6
15

040

15.4
3.0
15
15.1
3.3
15
15.2
3.4
15

TP 2.96 18.36 ✓ 12.32 15.40
 TP 1.94 27.71 ✓ 10.34 25.78 ✓
 BM 0.64 36.12 ✓ 35.48 5.78 P
 29.71 11.70

18.36 ✓

For check

JP 3.47 7.54 6.34 4.07

+16

+25 10.0 Rtoft = NY Car Stecco House

3+04 10.0 Rtoft = NY Car Stecco House

+91

2+43.00 Δ 10° 43' Rt

2+15

+90

1+50

JP 2.52 10.41 10.47 7.89
1836

1894-7
35+73.16
37R.3 10min
MH
078 Hub
3+53

Lt. 2 Rt.

3.9 4.4 5.2
6.5 6.2 5.2
1.5 1.5

7.7 6.1 4.9 5.0 5.6 6.3
2.6 4.2 5.4 5.4 1.80 4.1
1.55 TOP 1.53 3.5 1.5 TOP Hall

7.5 6.1 6.0 6.1
2.89 4.2 4.34 4.2
1.43 1.43 1.07 Hub 1.5

4.6 5.8 5.7 6.0
1.5 4.7 1.5

8.06 6.5 6.6 6.4 6.7
2.45 3.9 3.8 1.0 3.7
2.35 2.5 1.5 1.5

7.8 7.9 8.9
2.6 2.5 1.5
1.5 1.5

10.41

Levels Proposed Storm Drain B
 Block 488 Old Town
 sketch pages

+97.86

1-67-86

+67

1.5870/2 = 9 Power Pole # 1433

+58

+50

+38

8.5 Rt of 1/2 N.W. Cor House

+19

8.5 Rt of 1/2 S.W. Cor House

1-0-55

+50

0-0-5

B.M.

6-90

13.97

6.07

07405
 8-43

15. 2. 11

8.7
 $\frac{18}{15}$ 2' $\frac{47}{15}$ 8.3

7.7
 $\frac{52}{15}$ 8.3 $\frac{45}{15}$ 8.5

9.80 7.5 10.9 9.6 6.7 6.6 6.26 8.0
 317 55 288 34 6.3 6.4 47 55
 20' Top Wall 10' Ground 3' Top Wall 3' Concrete Plaster 3' Top Wall 15'

7.9 7.9 10.01 8.8 7.12 6.7 7.99 7.1
 51 51 291 42 58 6.3 498 52
 15 4 3' Top Wall 3' Concrete Plaster 3' Top Wall 15'

7.6 9.42 7.1 7.0 6.0 7.24 7.4
 52 365 52 60 70 573 56
 15 14' Top Gate 8.5 80 32' Top Wall 15'

6.1 9.32 7.3 6.5 7.2 6.5
 69 365 57 65 58 65
 15 3.5 Top Wall 7 15'

8.23 6.3
 574 67
 3' Top Gate 3.5
 20'

13.97

Notes Reduced. 7-13-51

25

2

RT

12

2-150

12.97

15⁶⁷

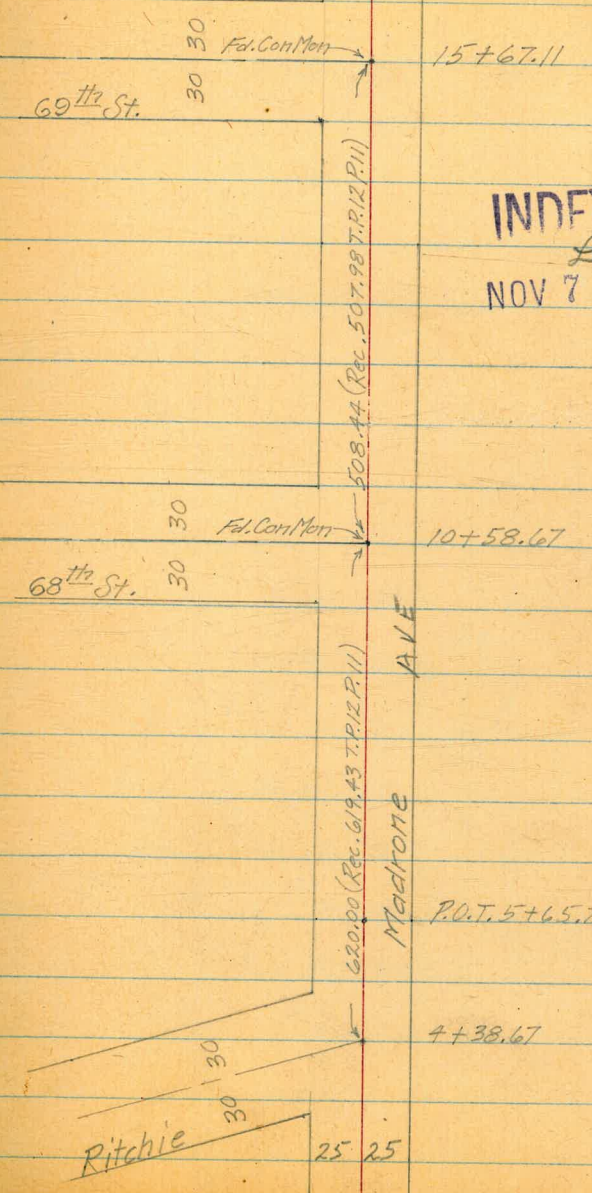
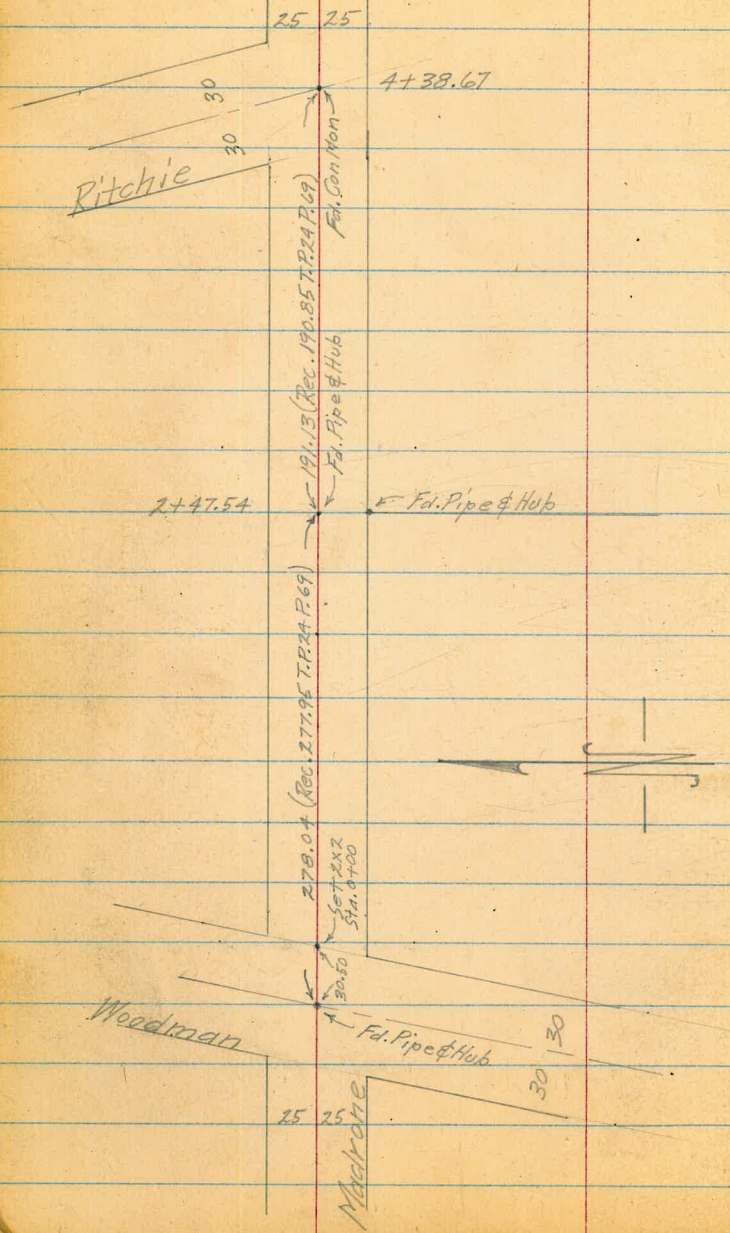
43⁶⁷

15⁹⁰

12.97

Garber
Shepard-T
Bruener
Bryson

Oct. 25 51
Cold Showers W.O. 25020

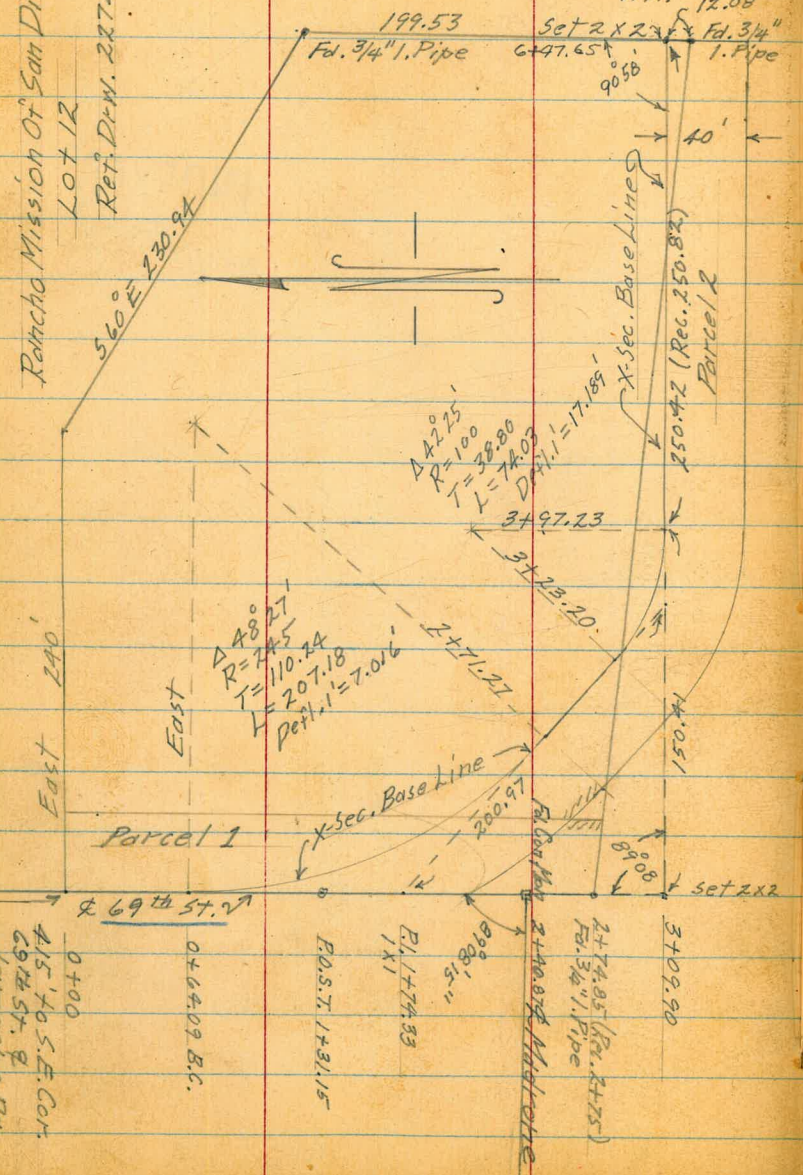


INDEXED
Law
NOV 7 1951

INDEXED
Law
JAN 16 1952

Rancho Mission Of San Diego
LOT 12
Ref. D.W. 2274-B

Note - Pipe has been
Hit. 12.08



E.C. +97.23	21° 12.500
+75	14° 50.390
+50	7° 40.665
B.C. 3+23.20	

E.C. +71.27	24° 13.500
+50	21° 44.344
+25	18° 48.944
2+00	15° 53.544
+75	12° 58.144
+50	10° 02.744
+25	7° 07.344
1+00	4° 11.944
+75	1° 16.544
B.C. 0+64.09	

0+00
15 to S.E. Cor.
69th St. B
Carmichael Rd

0+64.09 B.C.
POST 1+31.15
E.I. 1+74.33
1X

2+00.91
2+09.90
2+23.20
2+71.21
2+74.95 (Rec. 2+75)
Fd. 3/4" Pipe

3+09.90
3+23.20
3+47.65
3+97.23
4+05.1

East 240'

East

Parcel 1

X-Sec. Base Lines
Parcel 2

Δ 22° 25'
R=100
L=38.80
D.Pch. 1=17.189

Δ 48° 27'
R=74.5
L=110.24
Pch. 1=7.016

Δ 27° 12' 21''

89° 08' 15''

89° 08'

14° 05.1

14° 05.1

3+97.23

3+23.20

150.42 (Rec. 250.82)

199.53

90° 58'

40'

6+47.65

12.08

12.08

12.08

X-Sec. Madrone - Woodman to 69th
 Reduced 11-13-51 R. Bailey

+96 15⁴ Rt. 6" Shade Tree
 11.77 290.49 0.16 278.72

+50

+65 End tile wall 18" Lt.

+45 Begin tile wall 18" Lt. - 2" W. Pipe 13" Lt.

+20

0+00 2x2 Hub &

0-10 30° Rt. Fire Hy.

0-18

0-32.5 Sec. taken on E of Woodman at L

1.15 278.88 11.85 277.73

0.68 289.58 11.84 288.90

0.27 300.74 11.91 300.47

0.09 312.38 11.79 312.29

0.87 324.08 323.21 & Men
 Madrone & Ritchie

N
 Lt.

INDEXED
 JAN 16 1952

S
 Lt.

15

273.0 273.7 274.2 274.8 274.8 275.4 276.34 278.0 279.6 279.9
 5.9 5.2 4.7 4.1 4.1 3.5 2.54 0.9 +0.7 +1.0
 35 25 18 10 13 13 16 25 35
 Top 4" W.P.

272.7 273.68 272.82
 6.2 5.20 6.06
 18.1 18.1 13
 Bottom Top Wall W. Pipe
 268.2 268.6 269.4 270.1 270.2 271.4 273.1
 10.7 10.3 9.5 8.8 8.7 7.5 5.8
 35 25 15 12 25 35

267.9 268.3 268.63 269.28
 11.0 10.6 10.25 9.60 269.9 270.6
 35 25 14.4 25 35
 Top 4" W. Pipe

266.88 267.18 267.48 267.88 268.18 268.98 269.7
 12.0 11.7 11.4 11.0 10.7 9.9 9.2
 35 25 15 12 25 35

(Pave Width = 22") 264.33 266.91 268.10 270.82 273.73
 14.55 12.57 10.78 8.06 5.15
 100 50 50 100

272.88
 ↑

Lt.

Rt.

4+00

11.02 330.78 2.15 319.76

322.0	322.3	322.6	322.8	323.0	324.2	325.2
8.8	8.5	8.2	8.0	7.8	6.6	5.6
35	25	12	330.78	5	25	35
T						

+50

317.9	318.0	318.9	319.1	319.3	320.8	321.9	322.3
4.0	3.9	3.0	2.8	2.6	1.1	0.0	+0.4
35	25	10		7	20	25	35

3+00

10.70 321.91 1.30 311.21

312.1	312.8	313.4	313.7	313.7	315.9	316.4
9.8	9.1	8.5	8.2	8.2	6.0	5.5
35	25	10	321.91	10	25	35
T						

+50

305.0	306.3	307.1	308.2	308.4	308.9	311.2	312.5
7.5	6.2	4.8	4.3	4.1	3.6	1.3	0.0
35	25	15	10		12	25	35

2+00

11.68 312.51 0.54 300.83

297.5	300.2	302.0	302.3	302.3	302.3	305.2	306.2	307.2
15.0	12.3	10.5	10.2	10.2	10.2	7.2	6.3	5.3
35	25	13	8	312.51	10	15	25	35
T								

+90

Power Pole # P-7090 15⁵ Rt.

294.7	291.6	298.9	300.8	300.5	300.1	303.5	305.0	305.9
6.7	3.8	2.5	0.6	0.9	1.3	+2.1	+3.6	+4.5
35	25	15	8		10	18	25	35

+50

Dirt Drive Lt.

291.0	291.5	292.3	293.4	293.5	293.7	296.9	298.2	299.3
16.7	9.9	9.1	8.0	7.9	7.7	4.5	3.2	2.1
35	25	15	10		13	16	25	35

+25

286.3	287.2	288.4	289.4	289.1	288.8	293.3	293.9	294.6
15.1	14.2	13.0	12.0	12.3	11.6	8.1	7.5	6.8
35	25	15	10		15	18	25	35

+15

Dirt Driveway Rt.

12.23 301.37

277.4	285.2	285.9	287.3	287.4	287.0	289.0	290.7	292.4
14.0	16.2	15.5	14.1	14.0	14.4	12.4	10.7	9.0
35	25	15	8	301.37	6	13	25	35
T								

1+00

290.49 1.35 289.14

296.6	296.4	282.5	284.1	284.7	284.7	285.3	288.7	290.0	291.1
13.9	14.1	8.0	6.4	5.8	5.8	5.2	1.8	0.5	+0.6
35	25	22	10	8	290.49	13	15	25	35
T									

	0.27	295.78	11.38	295.51
7+00				
+50	0.30	306.89	11.28	306.59
	8.68	317.87		
<u>1X1</u> T.B.M. (6+40) &			11.99	309.19
6+00				
	0.35	321.18	9.78	320.83
+55		"Pepper Tree 10 ^c Lt.		
+50				
5+00				
+97		Cor. Garage 36.2 Lt.		
+74		Power Pole # R74012 14.0 Rt.		
+67		Cor. Garage 28.8 Lt (32.1 X 16.2)		
+50				
4+38.67		Readings down & Ritchie & Ritchie 7.60 323.18 (Rev. 323.21) 330.81 Corrected 330.78 X		Con. Mon.

	287.2	292.1	291.5	305.8	308.1
	19.7	14.8	9.4	1.1	1.2
	50	25	306.89	25	35
			X		
	298.1	301.9	301.4	314.4	316.1
	19.8	16.0	10.5	3.5	1.8
	40	25		25	35
			317.87		
			X		
	311.2	312.2	316.9	319.1	320.0
	10.0	2.0	5.3	2.1	1.2
	35	25		25	35
			321.18		
			X		
	317.2	318.1	319.5	321.0	322.8
	12.6	12.7	11.3	9.8	8.0
	35	25	15		25
				322.8	323.3
				25	35
	320.6	321.2	323.0	324.7	325.5
	10.2	2.6	7.8	6.1	5.3
	35	25		25	35
	322.20				
	8.61				
	28.8				
	Gov. Fl.				
	322.2	322.5	323.7	325.4	326.1
	8.6	8.3	7.1	5.4	4.7
	35	25		25	35
	317.91	321.85	323.6		
	13.40	8.96	7.2		
	100.	50			
			330.81		
			X		

+50

+46

9+00

Cor. of shed 25° Lt.

12.29 298.49

0.29 286.20

+50

+34

+18.5

Center of Draw & of Draw
Readings taken on

8+00

0.87 286.49

10.16 285.62

+50

295.78

N
Lt.

S
Rt.

18

295.3	294.5	294.3	294.3
3.2	4.0	4.2	4.2
25		25	40

287.9	288.5	286.9	286.2	287.3
10.6	10.0	11.6	12.3	11.2
40	25	298.49	25	40

278.2	279.2	278.9	279.6	279.5
8.3	7.3	7.6	6.9	7.0
50	25		25	50

Bot. Ditch

277.2	276.7	276.7	277.2	276.8	281.0
9.3	10.3	9.8	9.3	9.7	5.5
75	50	25		25	50

267.6	271.7	274.7	278.0	281.2
18.9	14.8	11.6	8.5	5.3
100	50		50	100

273.3	271.7	274.7	278.0	285.0	288.5
13.2	14.8	11.8	8.5	1.5	7.0
75	50	25		25	40

Bot. Ditch

286.49
T

279.0	283.0	289.8	296.2	299.1
22.8	12.8	6.0	4.4	3.3
75	25		25	35

295.78
T

+05

17^o Rt. Tel. Pole # 540754 H

12+00

0.49 282.58 11.35 282.09

+50

0.04 293.44 12.18 293.40

11+00

+88.67

3.90 305.58

Mon. 68th
& Madrone

5.24 323.18 (Rec. 323.21)

7.63 328.42 0.37 320.79

12.00 321.16 0.25 309.16
Madrone
& Mon. & 68th

7.73 301.68 (Rec. 302.06)

+58.67

to 68th St.

+33

17 Rt. Tel. Pole 540753 H

+28.67

10+00

11.56 309.41 0.64 297.85

9+65

Cor. of shed 25th Lt.

N
Lt.

S
Rt.

19

215.6 276.4 278.8 278.7 281.1 282.1 282.5
7.0 6.2 3.8 3.9 1.5 0.5 0.1
35 25 20 13 18 25 35

284.2 285.2 287.6 281.5 289.4 290.6 292.1
7.2 8.2 5.8 3.9 4.0 2.8 1.7
35 25 293.44 10 15 25 35

293.1 293.7 296.9 297.8 299.5 301.4 302.6
12.5 11.9 8.7 7.8 6.1 4.2 3.0
35 25 10 15 25 35

294.3 295.5 298.6 300.0 302.3 302.8 304.4
11.3 10.1 7.0 5.6 3.3 2.8 1.2
35 25 8 17 25 35

305.58
↑

290.25 296.30 299.55 302.2 302.8 307.5 307.7 308.2
19.16 13.11 9.86 7.2 6.6 1.9 1.7 1.2
100 50 25 6 16 25 35

300.9 301.9 302.3 302.5 303.5 307.1 307.4 307.7
8.5 7.5 7.1 6.9 5.9 2.3 2.0 1.7
35 25 20 10 18 25 35

301.4 302.1 302.4 302.6 302.3
8.0 7.3 7.0 6.8 7.1
35 25 25 35

309.41
↑

Lt.

Rt.

+50

11.12 268.05 2.17 256.93

+25

14+00

+85

+80 Tel. Pole # 540755 H 17.2 Rt

+60

+50

2.30 259.10 9.15 256.80

+30

Fl 0.41 265.95 5.80 265.54 1. Pin in Conc. 25 Lt. 574. 14+60

+14

13+00

0.84 271.34 12.08 270.50

+50

282.58

262.2 262.3 261.0 260.5 261.4
5.9 5.8 7.1 7.6 6.7
40 25 268.05 25 40

257.2 257.5 257.3 256.8 256.9
1.9 1.6 1.8 2.3 2.2
40 25 25 40

253.3 253.0 253.4 253.6 253.1
5.8 6.0 5.7 5.5 6.0
45 25 25 45

249.6 249.9 250.2 250.6 251.0
9.5 9.2 8.9 8.5 8.1
50 25 25 50

249.6 250.1 250.3 250.7 251.6
9.5 9.0 8.8 8.7 7.5
50 25 25 50

252.3 252.7 252.1 255.0 256.6
6.8 6.4 7.0 4.1 2.5
45 25 259.10 25 45

257.5 258.6 259.8 260.3 261.3
8.5 7.4 6.2 5.7 4.7
40 25 265.95 25 40

261.3 261.6 263.7 263.9 263.8
10.0 9.7 7.6 7.4 7.5
35 25 25 35

264.3 264.3 264.4 266.1 266.5
7.0 7.0 6.9 5.2 4.8
35 25 271.34 25 35

268.2 269.2 271.3 273.0 273.1 274.3
14.4 13.4 11.3 9.6 9.5 8.3
35 25 282.58 18 25 35

(301.68 P.19)

1.44 301.70 (Rec. 302.06)

11.26 303.14 0.07 291.88

5.16 291.95 0.17 286.79

8.95 278.01 (Rec. 278.13)
Com Mon & 69th
& Madrona

+97.11

+67.11

9.18 286.96 0.39 277.78

+37.11

+38

Power Pole # 370474 24⁷ Lt.

15+00

11.90 278.17

268.05 1.78 266.27

284.83	285.36	285.2	283.5	283.4	282.1	281.5
2.13	1.60	1.8	3.5	3.6	4.9	5.5
59	35	23	12		25	35
Pave	Pave					

283.76	283.96	283.8	281.9	280.4	278.4	277.4	287.6
3.20	3.00	3.2	5.1	6.6	8.6	9.6	9.4
100	70	60	50	25	286.96	25	35
	Pave						

277.5	276.6	274.4	272.7	272.1
0.7	1.6	3.8	5.5	6.1
	25		25	35

270.9	270.5	268.8	268.4	268.4
7.3	7.7	9.4	9.8	9.8
35	25	278.17	25	35

X-Sec. 69th - 250 No. at 69th to Rt.
400± East of 69th & Madrone.

Lt.

Rt.

22

INDEXED
Law
JAN 16 1952

+14

M. Meter Box 4.0 Rt.

+10

Tel. Pole #540757-H 12.0 Lt.

+00

293.0 291.8 290.8 289.0 281.7 281.85 282.10 281.70 281.8 281.3
+10.0 +8.8 +7.8 0.0 1.3 1.11 0.86 1.26 1.2 1.7
40 30 25 15 4 11 19 30 40
Edge P & Drive Edge P & Drive Edge P

+75

293.4 293.3 282.6 280.9 280.1 280.13 280.11 279.66 279.3 279.1
+10.4 +10.3 0.4 2.1 2.9 2.83 2.85 3.30 3.7 3.9
40 30 20 5 1 9 15 30 40
Edge P & Drive Edge P

B.C. + 69.09

292.4 291.9 281.2 279.8 278.9 278.80 279.09 278.44 278.7 277.5 277.1 276.7
+7.4 +8.9 1.8 3.2 4.1 4.16 3.87 4.47 4.3 5.5 5.9 6.3
40 30 22 5 2 Edge P & Drive Edge P

+18

Power Pole # 370475 28.6 Rt.

279.0 279.8 275.0 273.12 273.19 273.33 273.35 276.5 276.1
+4.0 +3.2 8.0 9.84 9.77 9.63 9.61 6.5 6.9
40 30 17 Edge P & Drive Edge P

+15

280.2 281.2 273.8 272.50 272.43 272.86 272.91 272.8 272.8
+2.8 +1.8 9.2 10.46 10.53 10.10 10.05 10.2 10.2
40 30 17 Edge P & Drive Edge P

10.45

282.96

0.17 272.51

262.5 269.6 271.1 270.38 270.54 271.06 272.28 272.43 272.48
+10.2 +9.1 1.6 2.30 2.14 1.62 0.40 0.25 0.20
40 30 20 Edge P & Drive Edge P

0+00

& Surfaced Drive to Rt.

-2

Power Pole 540758-H 18.6 Lt.

-50

Center surfaced Road

262.52
9.16

-100

Center surfaced Road

255.28
17.40
272.68

0.30

272.68

11.87

272.38

6.24

284.25

(Rel. 278.13) Con. Mon.
Madrone
278.01 & 69th

+25

+14

Power Pole 540759-H 21 Rt

3+00

10.22 299.35 0.23 289.13

+75

+50

+25

surfaced Drive Lt.

2+00

+75

+50

+25

+19

Cement walk & steps

7.12 289.36 0.72 287.24

293.6 292.6 290.8 290.53 290.62 290.73 290.2 287.8 284.5
 5.8 6.8 8.6 8.82 8.73 8.62 9.2 11.6 14.9
 10 3 3 9 16 23 30 50
 Edge P & Pave Edge P

292.8 291.8 290.2 289.69 289.65 289.52 288.7 286.8 289.6
 4.6 7.6 7.2 9.66 9.70 9.83 10.7 12.6 15.8
 10 3 6 12 16 25 30 50
 299.35 299.35
 1 6 12 16 25 30 50
 Edge P & Pave Edge P

292.6 291.5 289.3 288.76 288.73 288.66 287.8 286.2 282.9
 +3.2 +2.1 0.1 0.60 0.63 0.70 1.6 3.2 6.5
 10 3 6 13 18 25 30 50
 Edge P & Pave Edge P

290.8 290.4 287.9 287.82 287.87 287.72 287.0 286.5 284.5 281.7
 +1.4 +1.0 1.5 1.57 1.77 1.64 2.4 2.9 4.9 7.7
 10 3 7 12 17 25 30 55 50
 Edge P & Pave Edge P

289.22 287.66 286.76 286.74 286.56 286.6 285.9 280.6
 0.14 1.70 2.40 2.62 2.80 3.8 5.5 8.8
 10 13 20 26 30 50
 Edge P & Pave Edge P

289.9 287.9 285.9 285. 285.11 285.36 284.8 282.4 279.8
 +0.5 1.5 3.5 3.65 3.65 4.00 4.6 7.0 9.6
 10 5 11 17 20 26 30 50
 Edge P & Pave Edge P

289.2 288.2 285.1 284.69 284.56 284.37 283.9 282.2
 0.2 1.2 4.3 4.67 4.80 4.99 5.5 7.2
 10 6 12 17 23 27 30
 Edge P & Pave Edge P

289.01 286.89 284.00 283.92 283.75 283.2
 0.35 2.56 5.36 5.44 5.51 6.2 8.2
 12.3 13 19 23 30 40
 Base Wall Drive Edge Drive Edge P & Pave Edge P

1+53.8
 1+36.6

289.5 289.2 284.1 283.17 283.27 283.17 282.5 281.7 28.2
 +0.1 0.2 5.3 6.19 6.09 6.19 6.9 7.7 9.2
 22 12 22 28 30 40
 R. Drive Edge P & Pave Edge P

0.24 5.40 283.96

289.36
 1

Lt.

Rt.

+91 W. Meter Box 16 Rt.
12.33 339.48 0.51 322.15

+50 Fly edge Dr. to Rt.

5+00
12.21 322.66 0.88 310.45

+79 Power Pole # 590760-H 40' Rt

+66

+61 W. Meter Box 3.3 Lt.

+42 & Surfaced Drive Lt.

+18 Begin surfaced Drive to Lt.

12.27 311.33 0.29 299.06

+01 W. Meter Box 24.6 Rt.

4+00

+80 & Road to Rt.

+75

+73 12" Pepper Tree 45' Rt.

+50

320.1
2.6
10
320.04
2.62
2
Edge P
320.16
2.50
7
& Pave
320.72
1.94
7
Edge P
320.89
1.77
12
Edge P
321.6
1.1
20
Edge P
321.7
0.0
30
Edge P
322.1
10.9
38
Edge P
325.3
22.6
50

312.3
10.4
10
311.7
11.0
3
Edge P
311.56
11.10
10
& Pave
312.0
10.7
10
Edge P
311.9
10.8
22
Edge P
311.8
10.9
22
Edge P
320.4
2.5
35
Edge P
319.6
3.1
50

308.9
2.4
20
301.8
3.5
16
306.4
4.9
9
& Pave
306.61
4.72
15
Edge P
306.59
4.74
30
Edge P
307.1
4.2
30
Edge P
310.0
1.3
50

306.3
5.01
35
304.72
4.61
17
305.23
8.10
10
& Pave
302.65
8.68
15
Edge P
302.68
8.65
38
Edge P
302.0
9.3
40
Edge P
306.6
4.7
50
306.8
4.5
50

301.6
9.7
10
300.0
11.3
311.33
299.38
11.95
9
& Pave
299.46
11.87
14
Edge P
299.5
11.8
21
Edge P
299.7
11.6
34
Edge P
300.7
10.6
50

299.4
0.0
10
289.0
1.0
4
296.5
2.9
2
Edge P
296.29
3.06
2
Edge P
296.48
2.87
16
Edge P
296.07
3.28
30
Edge P
295.1
4.3
25
On Rd
294.9
4.5
30
On Rd
294.5
4.9
50

296.5
2.9
10
296.1
3.3
5
293.7
5.75
1
Edge P
293.71
5.27
8
& Pave
294.08
5.13
13
Edge P
294.22
5.4
30
Edge P
294.0
287.0
43
Edge P
286.0
13.0
50

294.9
4.5
10
294.2
5.2
5
291.8
7.6
1
Edge P
291.64
7.71
9
& Pave
291.94
7.41
14
Edge P
292.05
7.30
20
Edge P
291.6
7.8
30
Edge P
292.4
10.0
30
Edge P
286.9
12.5
50

299.35
↑

Lt.

Rt.

3.93 278.00 (278.01)

0.56 281.93 10.88 281.37

0.03 292.25 11.96 292.22

0.24 304.18 11.76 303.94

0.05 315.70 11.81 315.65

0.59 327.44 11.51 326.87

+47.80 0.60 338.38 5.38 337.78 2x2 Disc.

9.28 343.16 0.60 333.88

6+00

337.6	337.78
5.38	337.9
5.6 2x2	5.3 0.4 0.2
10 343.16	20 34 50
↑	

329.02	328.5	328.3	329.3	328.1	338.8	339.2
5.46	6.0	6.2	5.2	5.8	+4.3	+4.7
30	10	5	334.48	23	44	50
			↑			

slly End of Con Drive.

D. Smith
S. Allen
R. Taylor
R. Parks.

CON. Paving edge

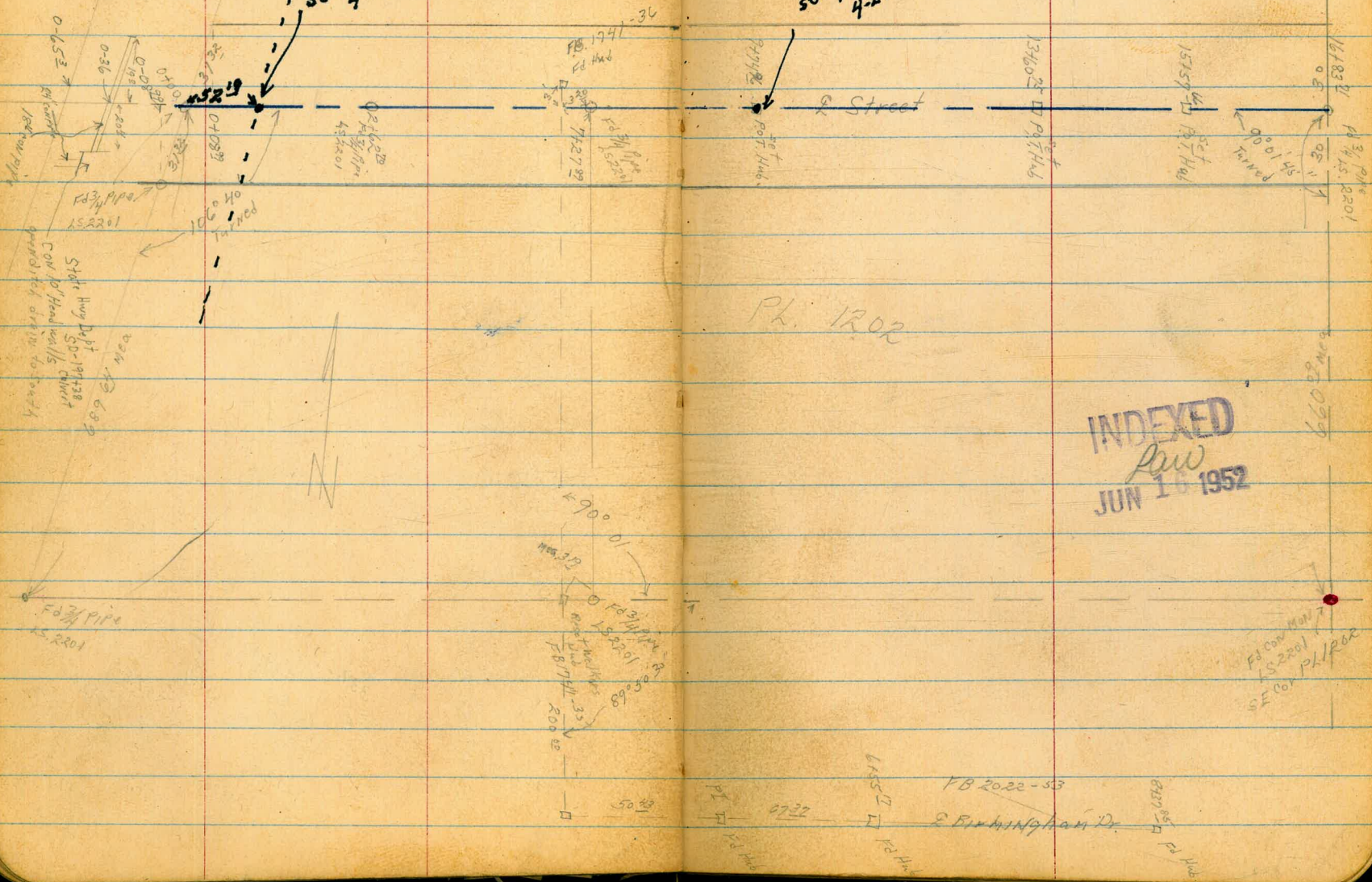
New Access Rd P.D.W.
set Disk
4-24-56

Locate and Cross
Through PL. 1202
Frost St

set pot
Disk
4-24-56

W0# 20994 26
6-12-52

Ref: FB 1741-35-36
FB 2022-53
Roll # 6277



INDEXED
JUN 16 1952

set pot
Disk
4-24-56

FB 2022-53
2 BUNNINGHAM Dr.

0708²²

0700

0-8⁹⁹ 70° to 2

0-36 taken // to paving Hwy

0-65³ Fly paving Hwy taken along edge

TP₂ 622 393¹⁶ 554 386³⁷

TP₁ 523 391²¹ 540 385²⁸

BM 719 391³⁸ 384²

EC Hub
6455 W
& Birmingham Dr
18 2022
57

Lt North
384.0 384.0 383.7
92 92 95 93
50 30 13 11

383.7 383.7 383.2 383.7 383.64
93 95 10 95 95
50 30 14 5 10

383.2 382.7 383.3 383.4 383.1 382.9 382.2
10 10.5 92 98 10 10.3 11
30 10 6 11 30 50

382.5 381.8 380.51 382.18 382.6 382.7 382.2 382.13 380.6 380.3
102 112 12.5 10.8 10.6 10.5 11.0 11.03 12.6 12.2
50 31.2 18" pipe 19 8 10 10 20 18 24" pipe
18" pipe 18" pipe 18" pipe 18" pipe 24" pipe
384.09 383.05 382.51 382.00 381.26
9.07 10.4 10.65 11.6 11.20
81.22 31.22 31.22 81.22

π 393¹⁶

3+00

397.0	396.3	395.8	395.1	394.9	395.0	394.9	394.8	394.0
8°	82	92	92	102	10°	102	102	11°
50	30	8	6		10	20	30	50

2+50

395.2	394.8	393.9	393.4	393.4	393.3	393.4	393.0	392.8
9°	102	11°	116	116	112	116	12°	126
50	30	7	4		9	16	30	50

TP3

12⁶⁸
405⁰²
0⁸²
392³⁴
546
2440 10/44

2+00

393.6	393.4	392.8	392.4	391.7	391.7	391.5	391.3	391.1	390.6
102	102	02	02	15	15	12	12	21	26
50	30	20	10	5		10	20	30	50

1+50

391.2	391.2	390.6	388.9	390.1	390.1	390.0	390.0	389.7	389.1
2°	2°	26	42	31	36	32	32	35	41
50	30	12	5	2		10	20	30	50

1+00

389.7	389.2	388.8	387.1	388.1	388.1	387.6	388.3	387.9	387.2
4°	4°	42	62	51	51	56	42	53	60
50	30	13	7	2		12	18	30	50

0+50

385.0	385.1	386.4	385.5	385.7	385.5	386.1	386.1	385.7
82	75	68	72	75	72	71	72	75
50	30	15	9		14	25	30	50

↑ 393.6

5750

Lt = North
 402.4
 2⁵ 3¹ 2² 2³ 2¹ 2² 2⁷ 3² 4³
 50 30 20 8 7 13 30 50
 401.9 402.1 402.7 402.9 402.8 402.3 401.3 400.7
 29

5725

401.4 401.0 401.4 402.5 402.5 402.5 401.1 400.6 399.8
 3⁵ 4² 3⁵ 2⁵ 2⁵ 2⁵ 3² 4² 5²
 50 30 14 8 9 20 30 50

5700

401.3 400.6 401.2 402.2 402.3 402.2 402.3 400.5 400.1 399.8
 3⁷ 4⁴ 3⁸ 2⁸ 2⁷ 2⁸ 2² 4⁵ 4² 5²
 50 30 12 6 5 7 16 30 50

4775

402.8 401.2 400.8 400.9 402.3 402.6 402.2 401.9 402.2 401.2 411.3
 2² 3² 4² 4¹ 2⁷ 2⁴ 2⁸ 3¹ 2² 3² 3²
 50 30 30 22 15 7 7 10 30 50

4750

402.7 401.5 400.6 401.1 401.1 400.7 401.0 401.0 399.8
 2² 3⁵ 4⁴ 3² 3² 4² 4² 4² 5²
 50 30 20 10 7 10 30 50

4700

400.0 399.9 399.8 399.1 398.8 399.0 398.3
 5² 5¹ 5² 5² 6² 6² 6²
 50 30 14 15 30 50

3750

398.9 398.8 398.8 396.9 396.6 396.3 396.5 395.9
 6¹ 6³ 7² 8¹ 8⁴ 8² 8⁵ 9¹
 50 30 10 6 8 30 50

405⁰²

TP₆ 13²⁹ 430⁴² 0⁵² 417¹³

7+15 11³ Rt Begin bark wire fence

7400

6775

6450

6725

6400

TP₄ 13⁰⁵ 417⁶⁵ 0⁴² 404⁶⁰

5775

Lt = North 30. Rt = South

~~414.6 414.0 413.7 413.4 412.7 412.7 412.5 412.1~~
3² 3² 4⁰ 4³ 5⁰ 5⁰ 5² 5⁶
50 30 20 11 10 30 50

~~412.5 412.0 411.8 410.8 410.1 410.5 410.3 410.2~~
5² 5² 5² 6² 7⁶ 7² 7⁴ 7⁵
50 30 12 6 10 30 50

~~410.5 409.9 409.7 408.3 408.2 408.2 408.4 408.2 407.3~~
7² 7² 8⁰ 9⁴ 9⁵ 9⁵ 9³ 9⁵ 10²
50 30 11 7 10 20 30 50

~~407.1 406.8 406.8 406.6 405.9 406.0 405.4 404.9~~
10⁶ 10² 10² 11² 11² 11² 12² 12²
50 30 20 7 10 30 50

~~404.7 404.2 404.5 404.7 404.7 404.1 403.9 403.1~~
13⁰ 13⁵ 13² 13⁰ 13⁰ 13⁶ 13⁰ 14⁶
50 30 8 7 15 30 50

~~404.0 403.5 403.1 403.6 403.6 402.1 402.1 401.9 402.0~~
1⁰ 1⁵ 1² 1² 1² 2² 2² 3² 3⁰
50 30 9 7 13 20 30 50

405⁰²

9125

~~433.0 432.4 432.1 431.5 431.1 430.4 430.3 430.2 429.4~~
~~6° 6° 6° 7° 7° 8° 8° 8° 9°~~
~~50 30 20 5 12 20 30 50~~

9104 27° RT 4" Apricot tree

~~431.7 431.2 430.9 430.5 429.9 429.0 429.0 428.2 427.3~~
~~7° 7° 8° 8° 9° 10° 10° 10° 11°~~
~~50 30 25 20 4 12 30 50~~

9100

8191 11° RT end barb wire fence

8190 0° RT Begin barb wire fence

8162 27° RT & 2" Peach tree

TP₆ 917 438²⁹ 0⁶⁰ 429⁸²

8150 27° RT & 8" Power Pole

~~427.6 426.3 425.6 425.1 424.8 423.9 422.8~~
~~2° 4° 4° 5° 5° 6° 7°~~
~~50 30 10 10 30 50~~

8127 28° RT & 3" Lemon tree

~~422.3 421.6 421.3 420.7 420.6 419.7 419.1~~
~~8° 8° 9° 9° 9° 10° 11°~~
~~50 30 15 8 30 50~~

8100

7163 28° RT & 6" Avocado tree

~~418.4 417.6 417.2 416.8 416.7 416.0 415.4~~
~~12° 12° 13° 13° 13° 14° 15°~~
~~50 30 15 9 30 50~~

7150

27° RT & 8" Power Pole

7132 19° RT & Dead man

430⁴²

11700

10775

TP7

2¹³

428⁰⁴

13⁰⁸

425⁹¹

10750

10725

10700

9774²⁶ P.O.T. Hub

9750

At = North

At = South

32

425.5	424.8	424.2	423.4	422.6	422.2	422.0
2 ⁵	3 ²	3 ⁸	4 ⁶	5 ⁴	5 ⁸	6 ⁰
50	30	15		15	30	50

427.5	426.9	426.0	425.2	424.6	424.3	424.4
6 ⁵	1 ⁴	2 ⁰	2 ⁸	3 ²	3 ⁷	3 ⁶
50	30	15	15	30	50	

429.1	428.5	428.0	427.4	427.2	427.0	427.2
9 ²	10 ⁵	11 ⁰	11 ⁶	11 ⁸	12 ⁰	11 ⁸
50	30	15	15	30	50	

431.3	430.5	430.5	430.1	430.0	429.9	430.3
7 ⁷	8 ⁵	8 ⁵	8 ²	9 ⁰	9 ¹	8 ²
50	30	15	15	30	50	

433.9	433.3	433.3	432.7	432.6	433.1	433.4
5 ¹	5 ⁷	5 ⁷	6 ³	6 ⁴	5 ⁸	5 ⁶
50	30	15	15	30	50	

435.4	435.0	434.8	434.06	434.2	434.0	433.1	432.9
3 ⁶	4 ⁰	4 ²	4 ²³	4 ⁸	5 ⁰	5 ⁹	6 ¹
50	30	15	Hub	9d	15	30	50

434.8	434.2	433.9	433.7	433.1	432.2	432.6	431.9
4 ²	4 ⁸	5 ¹	5 ³	5 ²	6 ⁸	6 ⁴	6 ³
50	30	15		10	18	25	30

T 438⁹²

Lt North

2

Rt = South

33

TP₁₀ 1⁵² 394¹⁴ 12⁷¹ 392⁶²

14700

394.1 394.4 394.2 394.6 394.4 394.3 394.0
11³ 11⁰ 11² 10⁸ 11⁰ 11¹ 11²
50 30 15 15 30 50

13750

400.3 399.9 399.1 399.2 398.8 398.5 398.7
51 55 63 62 66 62 72
50 30 15 15 30 30

TP₉ 0⁷⁷ 405³⁹ 12⁸⁴ 404⁶²

13700

~~405.8 405.4 404.8 404.6 404.1 403.7 403.0
11² 12¹ 12² 12² 13⁴ 13⁸ 14⁵
50 30 15 15 30 50~~

12750

~~410.7 410.4 409.8 409.5 408.9 408.2 407.4
6⁸ 7¹ 7² 8⁰ 8⁶ 9³ 10¹
50 30 15 15 30 50~~

12700

~~416.0 415.4 414.9 414.8 413.9 413.2 412.4
15 21 26 27 36 43 51
50 30 15 15 30 50~~

TP₈ 2³⁹ 417⁴⁶ 12⁹⁷ 415⁰⁷

11750

421.5 420.8 420.0 419.7 418.4 417.6 416.8
6⁵ 7² 8⁰ 8³ 9⁶ 10⁴ 11²
50 30 15 15 30 50
428.04

Lt=North

Rt=South

34

TP12

7²⁰393⁰³0⁴²385²⁸

Canyon of Murray Sewer

15475

366.5	365.10	368.4	372.5	375.4	376.4	377.11
19 ²	20 ⁶	17 ³	13 ²	10 ³	9 ³	8 ⁶
50	30	15		15	30	50

15457⁶⁶ POT Hub at end of Barb wire fence

378.85

6⁸⁵
Hub

15450

378.1	377.4	377.1	380.6	382.2	383.3	383.2
7 ²	8 ²	8 ²	5 ¹	3 ⁵	2 ⁴	2 ⁵
50	30	15		15	30	50

TP11

2²⁹385⁷⁰10⁷³383⁴¹T 385²⁰

15425

383.4	383.5	383.8	384.6	385.1	385.6	385.6
10 ²	10 ⁶	10 ²	9 ⁵	9 ²	8 ⁵	8 ⁵
50	30	15		15	30	50

15400

386.0	386.0	386.0	386.8	386.7	387.0	387.2
8 ¹	8 ¹	8 ¹	7 ³	7 ²	7 ¹	6 ²
50	30	15		15	30	50

14450

390.0	390.3	390.1	390.8	390.3	390.4	390.4
4 ¹	3 ⁸	4 ²	3 ³	3 ⁸	3 ²	3 ²
50	30	15		15	30	50

T 394¹⁴

BM Starting		7 ³⁹	384 ²⁰	384 ¹⁹
TP ₁₅	3 ³⁰	391 ⁵⁹	12 ⁸⁶	388 ²⁹
TP ₁₄	3 ²⁵	401 ¹⁵	0 ⁵²	397 ²⁰
TP ₁₃	10 ⁰²	397 ⁷²	5 ³³	387 ²⁰

Survey + X-Sept. for Prop. Road Thru.
Darnell Elem. School Grounds

6513

9-22-52

7.0.

W.O. 25020

N.L. = $R = 220$
 $d = 3^{\circ} 30'$ - 10 parts
 $ch = 26.86$

$\Delta = 70^{\circ}$
 $R = 250$
 $L = 3 + 05.43$
 $T = 175.05$

4+10-end
Hub.

5+00.38 = E.C.
Hub.

3+70 = Hub.
Ang. 70° Rt.

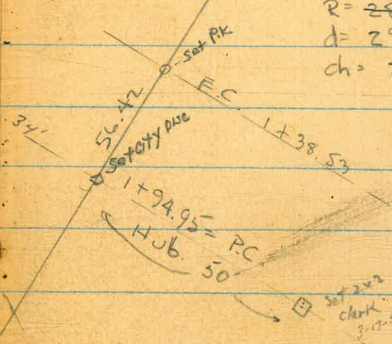
Fd. Disk RE. 1534
9.75 offset

0+00
= P.K.

0+50 = Hub.
Ang. 39° Lt.

ch = 59.63
set disk
3-22-52

N.L. = $\Delta = 39^{\circ}$
 $R = 260$ 250
 $d = 2^{\circ} 26' 15''$ 10 parts
 $ch = 23.82$



INDEXED
Law
SEP 24 1952

94.95
56.42
38.53

Lt.

#

Rt.

6+10 = end.

39.3	43.0	447.87	56.0	58.0
50	30	on Hub.	30	43 = Toe

5+55

42.5	45.7	56.2	63.8	68.5	68.9
50	30		30	45	60
			Toe	Top	

5+00.38 = E.C.

43.7	47.8	57.53	65.1	66.1	68.6	69.1
50	30	on Hub.	28	30	35	50
			Toe		Top	

4+50

45.0	49.0	60.1	64.6	68.7	69.1	69.5
50	30		19	27	30	50
			Toe	Top		

4+00

48.8	53.8	62.4	64.6	69.3	69.6	70.1
50	30		16	23	30	50
			Toe	Top		

3+50

49.6	54.8	62.4	66.3	69.5	70.0	70.7
50	30		20	24	30	50
			Toe	Top		

3+00

49.2	55.1	70.2	70.9	71.1
50	27	Top	30	50
	Toe			

Sect. are Radial

2+50

63.6	69.1	70.0	71.0	71.4	71.7
50	40 = Top	30	30	30	50
on slope	Bank				

X-Sect. of Hughes ^{St.} for yardage.
 Comp - See p. 36 1-31-53 - 70
 Sec 10306-L

Part # 1 - Sect. Radial
 d = 3° 30'

B.C. of 250' Rad. Curve Δ = 70° - 10 parts

Middle of 52.42 Tang.

Part 4 = E.C. = 1+38.53 - P. 34

Part # 3

Part. # 2

Start on 1st Part - Sect. Radial

See P. 37 - for obs. at end.

(you figure length of sta)

250' R. curve - Δ = 39° in 4 parts.

B.M. 470.64

Lt. Rt.

INDEXED
 POW
 FEB 2 1953

67.8 60	70.1 30	70.7 20	71.3	71.8 20	72.0 30	72.0 50
------------	------------	------------	------	------------	------------	------------

68.4 50	69.8 30	70.6 20	71.7	72.2 20	72.4 30	72.5 50
------------	------------	------------	------	------------	------------	------------

68.6 50	69.7 30	70.6 20	71.8	72.5 20	72.7 30	73.0 50
------------	------------	------------	------	------------	------------	------------

69.2 50	69.7 30	70.4 20	71.8	72.5 20	72.9 30	73.1 50
------------	------------	------------	------	------------	------------	------------

70.1 50	70.2 30	70.2 20	71.0	72.0 20	72.3 30	73.0 50
------------	------------	------------	------	------------	------------	------------

70.6 50	70.8 30	70.8 20	70.8	71.3 20	71.6 30	72.3 50
------------	------------	------------	------	------------	------------	------------

69.24 16.8 gt. in Dr.	69.57 1.8 edge A.C.	69.6	70.1 20	70.6 30	71.8 50
--------------------------------	------------------------------	------	------------	------------	------------

64	65	40
13	18.4	
<u>50.2</u>	<u>46.6</u>	
63.0	Rt.	
13		
<u>50</u>		

Lt. ⊕

Part # 5 = end.

50.0	55.0	58.2	62.5	65.4	69.7	70.1	70.8
50	30	20		17	25	30	50
				Toe	Top		

Part # 4

50.2	55.0	58.3	64.1	70.0	70.4	70.7	71.1
50	30	20		13	20	30	50
	Toe			Top			

Part # 3

46.6
65

49.9	57.3	63.1	70.1	70.6	70.8	71.0	71.3
44	30	20	8		20	30	50
Toe			Top				

Part # 2

25.1
120

28.3	58.7	69.7	70.4	70.9	71.1	71.3	71.6
105	50	30	20		20	30	50
Toe		Top					

w.o. 20982

univ. Hts
W. Florida, So. of Adams

41

Profile of Alley - BK. 22 For
Water from Pauc job. on Adams
Plan - 9995-L 2-17-53 70

LT = RT
Roll at NL.
Drains well to gut. in Madison except. Cold lay

3+00

32.98
10

32.66

33.01
10

INDEXED
FEB 18 1953

2+50

33.98
10

33.50

33.93
10

2+00

34.69
10

34.52

34.79
10

1+50

35.32
10

35.06

35.30
10

1+39

35.21

1+00

35.35
10

35.25

35.37
10

0+60

36.00
10

35.75

36.00
10

0+31 = edge of Broken pave

36.56
10

36.44

36.77
10

0+00 = S.L. Adams.

edge pave

B.M. = SE 7 c.t.
Florida + Adams

338.95

Total Elev. Shown

300' Eq. Not Noted.

RUSSELL ST.

Locust to Rosecrans

C.H.S.
Begg
Altman

3-4-53
W.O. 31599

Tie point from F.B. 1346

E - denotes roadway edge of
conc. gutter

G - denotes gutter at curb

el - " top of conc. curb.

B.W. " base of wall

T.W. " top of wall

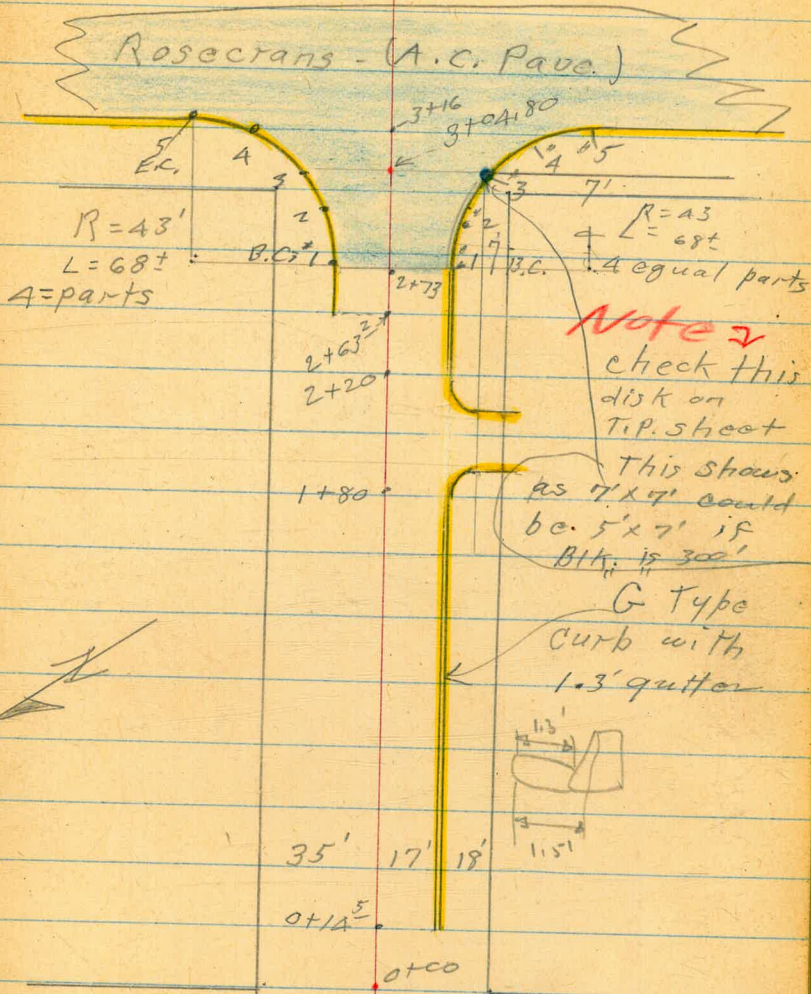
Levels shown only on returns +
gutters on Rosecrans in as much as
existing improvements should
be met.

INDEXED

MAR 9 1953

RUSSEL ST

112



Locust st (unimproved)

35
90°

0-70
35.03

RUSSELL ST.

3/4/53

£

43

0+31^A 17^S RT = ~~start~~ £ 2¹/₂ wide conc. walk

31.80
2.30
17
cc

32.40
1.70
31

T.P. 1.41 34.10 12.97 32.69

34.10

walk Δ₃
west at
this point

"C" type with 13' gutter

0+14^S - 17' RT = start conc. curb

33.07
12.59
E

32.80
12.86
G
17

33.44
12.22
cc

0+00 = Ely line Locust.

34.5
11.2
35

35.6
10.1
20

35.3
10.4
13

9.8
35.9

34.9
10.8
16

32.5
9.2
20

35.6
10.1
35

0-35 = £ Locust

37.5
8.2
45

37.9
7.8
35

40.2
5.5
20

38.8
5.6
15

39.6
6.1

39.9
5.8
35

0-70 = Wly Locust

41.0
1.7
35

43.4
2.3
45.66

43.2
2.5
35

1.52 45.66 2.79 44.14 spike

Pole #1998 - s.wly. Cor. Russell & Locust

5.48 46.93 - 41.45

N.Wly. Prop Mon. Russell & Locust F.B. 1580
42

0+85 35² Lt. = start Conc. drive

26.67
7.43
52
Gar. floor

26.55
7.55
35²

0+75 17⁵ Lt. = ϕ 2⁵ wide Conc. walk

27.56
6.54
17
 ϕ walk

27.66
6.44
35

0+49-36' Lt. = ϕ 6" wide lateral Conc. wall

30.4
3.7
36
T.W.

28.7
5.4
36
B.W.

29.2
4.9
36
Grd

0+50 { 29¹ Lt. = pole # 582358H

30.1
4.0
35

30.7
3.4

29.52
4.58
E

29.30
4.80
17
G

29.99
4.11
86

0+43-35³ Lt. = end drive

30.95
3.15
35³

0+36-35³ Lt. = start conc. drive

31.28
2.82
51
Gar. floor

31.20
2.90
35³

34.10

Russell St.

±

45

1+12 - 19' Lt. = deadman

1+02

11.0	9.1	9.7	8.8	9.82	9.94	9.25
35	20	14	25.3	E	17	CC
23.1	25.0	24.4	24.28		24.16	24.85

8.3	25.8	24.12
20	35	

1+01 - 36' Lt. & 6" conc. wall.

9.2	11.0	10.1
36	36	36
T.W	B.W.	Grd
24.9	23.1	24.0

0+99 19' Lt. = pole # 3097

7.4	26.7	6.8	27.3
20		35	

0+98

8.1	8.7	8.4	9.32	9.39	8.72
35	13	25.7	L	17	CC
26.1	25.4	24.78		24.71	25.38

0+95 - 35' Lt. and drive

7.75	26.35
35.8	

34.10

1+63- 35' Lt. = end drive

18.06
4.18
35

1+56- 35' Lt. = start conc. drive

17.64
4.60
57
Car. Floor
17.9
4.3
40
21.5
0.7
35.4
T.W
18.24
4.00
35

1+50 } 35' Lt. = 6" conc. wall.

17.6
4.6
35.4
B.W.
18.5
3.7
35
19.7
2.5
30
19.6
2.6
13
1.7
20.5
19.64
2.60
F
19.58
2.66
17
G
20.24
2.00
06

1+49⁵ 35' Lt. = end drive

21.0
1.20
4.5
drive
20.64
1.60
35
20.2
2.0
35
19.6
2.6
13
30.6
1.6
17

1+39 35' Lt. = start conc. drive

21.19
1.05
35
21.7
1.6
13
21.7
0.5
17
21.34
0.90
17
22.2
0.0
20
23.4
1.2
35

T.P. 0.84 22.24 12.70 21.40

22.24

1+19 17' RA = 2⁵ wide walk

23.20
10.90
17
23.56
10.54
31.5
23.41
10.69
35

34.10

t.p. 4.83 19.63 7.44 14.80

374 RT = end gutter

1+913 - 27' RT = E.C. edge of gutter

374 RT = end of cl.

1+90 - 27' RT = E.C. cl. Ret.

1+80 - 17' RT = B.C. 10' Rad. alley cl. Ret.

1+79 - 34[±] 4[±] = 3[±] Conc. walk

1+72 - 17' RT = 3' wide Conc. walk

Sly end. Ely cl. of alley

15.57	15.93
6.67	6.31
27	374
Eastly edge of gutter	

15.81	16.48	18.4
6.43	5.76	3.8
374	374	374
C	cl	End

15.59	16.16	17.6
6.65	6.08	4.6
27	27	27
C	cl	End.

16.79	16.88	17.34
5.45	5.56	4.90
E	17	cl.

17.28	17.28
4.96	4.96
35	344

18.01	19.02
4.23	3.22
17	35

T.P. 3.49 11.79 11.33 8.30
 also = wly edge conc. drive
 2+63² 16⁵ Lt. = start cl., (no gutter) and

2+59 - 21² Rx = $\frac{1}{2}$ 3' wide conc. walk
 21² Rx = $\frac{1}{2}$ 3' wide steps

2+32

2+20 - 17' Rx = E.C. 10' Rad. alley Ret.

2+11 - 26' Rx = pole #30.11

37² Rx = End of curb.

2+10 - 27' Rx = B.C. curb.

2+08⁷ 27' Rx = B.C. Edge of gutter

2+00

9.31	9.84	10.33	10.9	10.5	11.16	11.26	10.60	9.10	8.8
35	24	16 ²	16 ²		E	G	cl	22	35
4	End.								

11.2	11.3	13.3	12.6	12.4	11.52	11.40	11.98	12.2
8.4	8.3	6.3	7.0	7.2	8.11	8.23	7.65	7.4
40	35	20	15		E	17	cl	35
					G			

4.6	5.9	5.6	6.86	7.00	6.30	5.1	4.7
35	17		F	G	cl	27	35

5.80	5.26	5.16	4.82
27	27	37 ⁴	37 ⁴
G	cl	G	cl
	4		4
	End.		End.

5.72	5.17
27	37 ⁴
on Edge of gutter	

3.4	4.1	3.7	4.5	4.95
35	17		17	35

19.63

S.W. Ret. (see sketch)

4122	3.63	5.63	5.05	6.60	5.95
G.	cl	G.	cl	G.	cl
#1 = R.C.		#2		#3	

N.W. Ret. (see sketch)

3.81	3.69	5.41	4.81	6.65	6.00
G.	cl	G.	cl	G.	cl
#1		#2		#3	

- 16² Lt. = start cl.
- 13² Lt. = start conc. gutter
- 27' Rt. = pole # 3001
- 15² Rt. = end conc. gutter
- 14^e Rt. = start conc. gutter
- 2+73 = start A.C. pave.

1003	9.07	8.16	9.8	10.5		
1.77	2.72	3.63	2.0	1.3		
35	23.8	cl	25	35		
an drive						
8.10	7.98	7.98	7.99	7.62	7.59	7.57
3.69	3.81	3.81	3.80	4.17	4.20	4.22
cl	16 ²	13 ²	14	15 ²	17	
in drive	G	E	E	E	E	G
		+ pave.		+ pave		

2+72- 19' Lt. = pole # F.A. 140

Russell

4.64 6.00 (6.03)

S.W. B.P. Rosecrans + Russell
5.18 10.64 6.33 5.46

6.64 5.15

3+16 = wly gutter Rosecrans

3+00 (for yardage back of cbs.)

Curbs
2+90 (for yardage back of

2+86 - 28' Rt. = deadman

drive
2+76 - 16' Lt. = Ely line corner

S.W. 7' disk Poe + Rosecrans - F.B. 2036
60

S.W.B.P. Rosecrans + Russell

S.W. ' Disk Rosecrans + Russell

4.57	4.71	4.72	4.86	4.84
7.22	7.08	7.07	6.93	6.95
60	35		35	60

6.4	6.3	6.1	5.9	6.1	6.1
5.4	5.5	5.7	5.9	5.7	5.7
40	35	29	29	35	50

9.3	8.8	6.8	6.7	7.0	9.0	10.1	
2.5	3.0	5.0	5.1	4.8	2.8	1.7	1.7
40	35	22	22	30	35	40	50

7.85	8.91	7.90	7.74
1.74	2.88	3.89	4.05
35	24	165	165
Drive			6

11.79

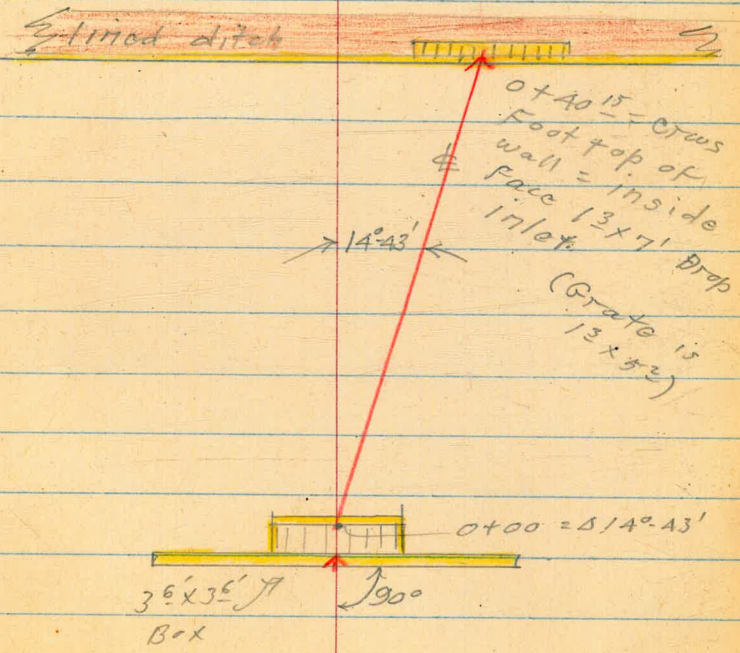
Storm Drain Jefferson
Near Conde St

C.H.S.
Boggs
Schelin

9-27-53
W.O.# 21168

INDEXED
DEC 28 1953

0-0186 = Face of curb
= Crows foot. on curb.



Drain Jefferson St.
Near Conde. 8/27/53

52

0 + 26

8.5

8.7

0 + 00 = Nly. face inside of 3⁵ x 3⁶ box

1.3	7.22	-0.18
9.9	9.94	17.34
Grd.		I.E Box

0 - 01⁸⁶ = top of cb.

8.02

9.14

17.16

Set B.M.^{#4} 9.14 8.02

T.P. 4.25 17.16 6.50 12.91

Set B.M.^{#3} 1.59 19.41 6.16 17.82

T.P. 2.29 23.98 10.98 21.69

Set B.M.^{#2} 0.76 32.67 4.39 31.91

Set B.M.^{#1} 5.77 36.30 4.22 30.53

6.07 34.75 — 28.68

0 - 01⁸⁶ = Crows foot - top of cub.

Chiseled square
wly end. S.W. cb. Rot. Conde + Congress

S.W. 7' Prop Disk San Diego + Conde

S.W. 7' L+T. San Diego & Harney

S.W. 7' L+T. San Diego Ave. + Twiggs

4

0+40⁵

5.83

11.33

I.E. Box Also = I.E. 12" stub
To south.

0+40² on Gate

10.71

10.71

10.72

6.45

6.45

6.44

I.E. Grate

I.E. Grate

0+40¹⁵ top of wall (Nly. face)

11.71

5.45

0+40

10.7

6.5

0+35

10.6

6.6

17.16

Clark
BRUNER
FLORA

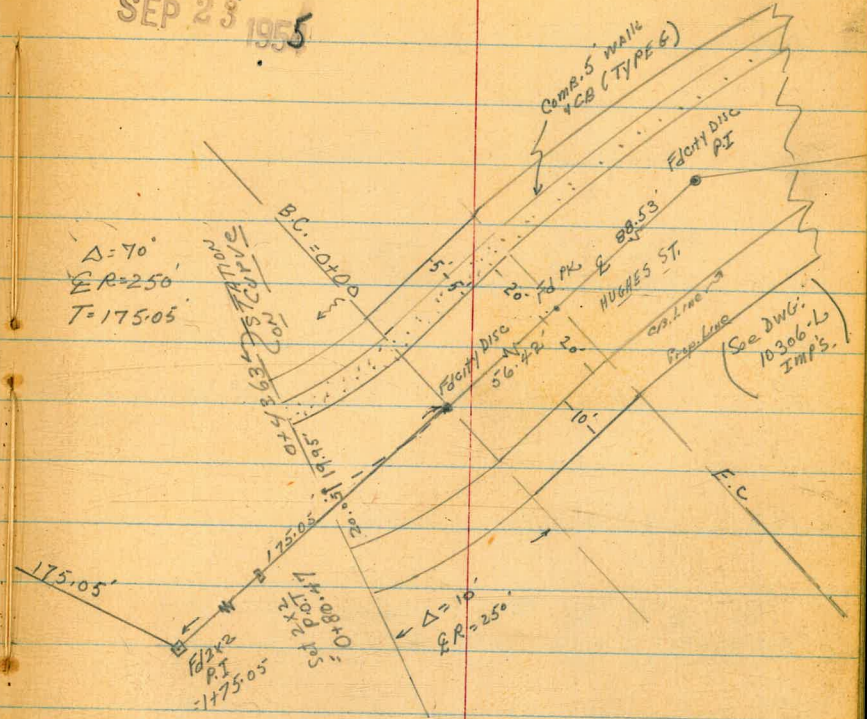
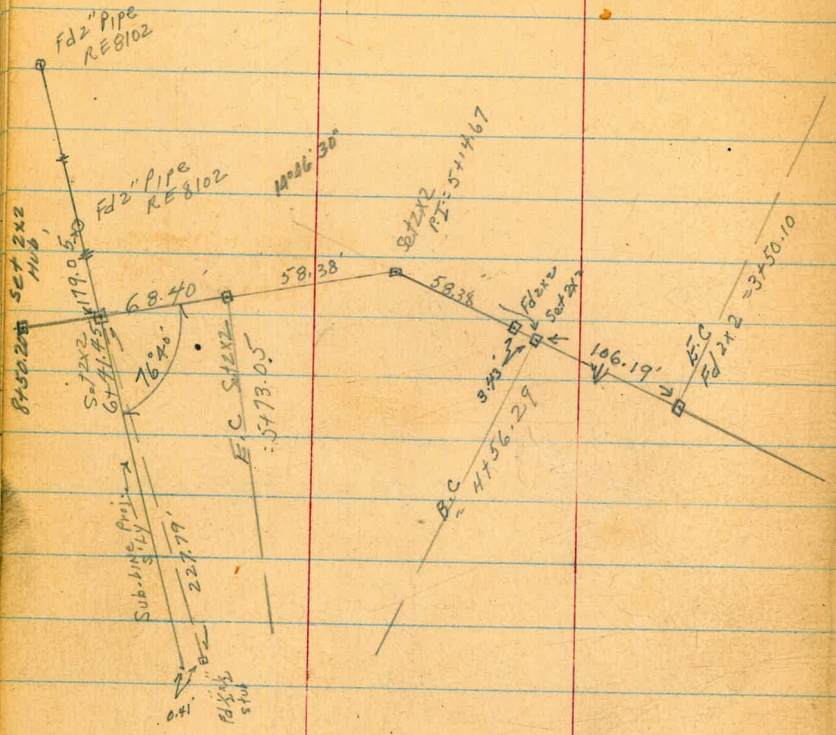
9-21-55
W.O. 25020

X-SECT. HUGHES ST. 3
END OF EXIST IMP'S to WLY LINE
SCHOOL Prop.

REF: P9.36
DWG: 10306-L
" 4724-B

INDEXED
JEN
SEP 23 1955

P954
(See P936)



X-SECT. HUGHES ST.

L.T. ♀ RT. 55

T.P. 2.46 463.65 12.79 461.19

112.51 60.8± RT = Fence Corn. A.W.Ly

0+88 = Draw Canyon, E-Tang-

466.0	435.0	448.0	471.0	471.0	471.8
48	39	26	3.0	3.0	2.2
114	86	57		50	100
Hagl. Can Ely		Top Sly slope			

T.P. 482 473.98 7.17 469.16 = Ch II End, Wly CB - HUGHES - 473.98

0+53.5 41.8 RT = L. Wly, in Fence

to RT to School Fence - 10' steel wire

0+46.7 = Sta outang. (outs 90° Tang.)

430.7	468.9	468.6	469.24	468.9	469.6	471.8	472.1
45.6	7.4	7.7	7.09	7.4	6.7	4.5	4.2
135	49	16	Edge	24	29	34	40
- Top Canyon Ely		Brow		Edge		Level Schoolyd	

(= STA. on Curve - see sketch)

0+43.63 = END EXIST. CB'S WALK (on RT. only)
(Sect. Radial)

469.21	468.97	469.35	468.01	469.15
7.12	7.56	6.98	7.62	7.18
20.05	20.05		19.95	19.95
CB		G	G	CB
				24.95 BK. walk

0+00 = B.C OF 70° Curve to RT.

469.0	469.0	470.3	470.31	469.85	470.40	469.88	470.37	470.46	472.43
7.3	7.3	6.0	6.02	6.48	5.93	6.45	5.96	5.87	3.70
85	30	25	28	20		20	20	25	30
Brow Canyon		2nd				CB		BK. walk	

0-56.42 = E.C HUGHES

Note: All sections on
EXIST. IMPS. ON CURVES
Are taken Radial

(HUGHES
ST.)

471.03	470.56	471.03	470.54	471.01
5.30	5.77	5.30	5.79	5.32
20	20		20	20
CB		G		CB

All other outs From TANK

476.33

B.M. 5.69 476.33

470.64 SPIKE IN

(# 376869)
Nly Pole - Int. HUGHES & Ely Bdry
School

HUGHES ST. (CONT.)

400

426.7 34 130	435.7 25 80	440.2 20.5 60	448.3 12.4 20	456.5 4.2	468.7 +8.0 70 Brow	470.2 +9.5 78	471.0 +10.3 130	F/AT
--------------------	-------------------	---------------------	---------------------	--------------	-----------------------------	---------------------	-----------------------	------

3+50.10 = F.C

427.0 338 130	442.7 18.0 60	444.0 16.8 50	452.2 10.5 20	459.5 3.2	460.4 0.3 10	468.7 +8 35 Brow	469.7 +9 78	470.5 +9.8 130	F/AT
---------------------	---------------------	---------------------	---------------------	--------------	--------------------	---------------------------	-------------------	----------------------	------

T.P. 3.24 460.75 6.14 457.51 = 2x2 HUB
F.C

460.75
↑

3100

432.2 31.4 110	438.7 24.9 80	450.2 13.4 20	458.2 5.4	464.6 +1.0 22	468.6 +5.0 32	470.6 +7.0 80	471.4 +7.8 140	F/AT
----------------------	---------------------	---------------------	--------------	---------------------	---------------------	---------------------	----------------------	------

2150

429.1 36.5 145	437.6 26 100	442.1 21.5 62	445.4 18.2 40	454.8 6.8	460.7 2.9 20	466.6 +3.0 27	469.6 +6.0 80 Brow	470.6 +7.0 82	471.6 +8.0 130	F/AT
----------------------	--------------------	---------------------	---------------------	--------------	--------------------	---------------------	-----------------------------	---------------------	----------------------	------

2100

436.3 27.3 90	442.3 21.3 58	451.3 12.3	457.8 5.8 2.5 Toe	468.6 +5.0 75 Brow	470.6 +7.0 80	F/AT
---------------------	---------------------	---------------	----------------------------	-----------------------------	---------------------	------

1+75.05 (outs 90° For TANG)

430.6 33 127	443.1 20.5 50	448.7 14.9	457.2 6.7 3.8 Toe
--------------------	---------------------	---------------	----------------------------

1+75.05 (outs on bisector $\frac{1}{2}$)

430.6 33 100	440.6 23 50	448.7 14.9	459.2 4.4 3.8 Toe
--------------------	-------------------	---------------	----------------------------

1+75.05 = P.I. & TANG. (outs 90° BK TANG)
 $\Delta = 70^\circ$ RT.

432.3 31.3 100	435.6 28 85	442.3 21.3 50	448.7 14.9	458.8 4.8 4.7 Toe	464.9 +1.3 57	469.9 +6.3 73	466.9 +3.3 74	465 +5.2 100	471.3 +7.7 125
	444.6 39 120	443.3 20.3 65 Brow	458.6 8.0	470.0 +6.4 26 Brow	470.1 +6.5 76	471.1 +7.5 100	F/AT		

1+22 = Toe sly slope & TANG

463.65
↑

HUGHES ST (CONT.)

6+15

393.7 59.6 140	396.3 48 125	406.7 37.6 90	419.7 24.6 62 - BROW DRAW	433.5 10.8	437.5 6.8 50
----------------------	--------------------	---------------------	---------------------------------------	---------------	--------------------

5+75 = Ely Rim of Draw, S'ly

411.7 32.6 150	421.0 23.4 75	429.6 14.7 45	437.0 7.3	442.2 2.1 50
----------------------	---------------------	---------------------	--------------	--------------------

T.P. 1.19 444.35 4.67 443.16 = 2x2
P.I. &
= 514.67

HUB
TANG 444.35

5+60

414.5 33.3 140 Brow (S.N'ly Brow Canyon)	421.8 26 80	432.8 15.0 35	438.5 9.4	446.2 1.6 68	451.8 + 4 145 RIM CANYON N'ly
---	-------------------	---------------------	--------------	--------------------	--

5+27 = Approx. Line w/ly Toe - school y.d. Fill

433.7 14.1 50	442.2 5.6	447.3 0.5 38 - S.N'ly Toe Fill	452.3 7.5 100	455.3 7.5 100	458.9 10.5 120
---------------------	--------------	--	---------------------	---------------------	----------------------

5+14.67 (OUTS 90° Fr. TANG.)

435.7 12.1 50	443.1 4.7	448.3 +0.5 33 Toe	456.7 +8.4 58 on w/ly slope Fill
---------------------	--------------	----------------------------	---

5+14.67 = { P.I. - E TANG - (outs 90° BK. TANG.)
60' RT = L Brow to N'ly
Δ = 14° 47' LT.

421.0 26.8 130 Brow Canyon S'ly	430.6 17.2 80	439.8 13.0 50	435.9 11.9 40	443.17 4.7 29 Toe Fill	448.9 +1.1 60 Brow Fill	468.8 +2.1 120 - FLAT	468.8
--	---------------------	---------------------	---------------------	------------------------------------	-------------------------------------	-----------------------------	-------

5+03± 74.4' RT = L N'ly in Fence

T.P. 0.16 447.83 13.08 447.67

447.83

4+85 BK - E TANG -

436.7 2.4 50	441.7 19.0 35	447.2 13.5	454.4 6.3 38 Toe
--------------------	---------------------	---------------	---------------------------

4+50

429.2 36.5 130	439.7 26 70	442.2 18.5 38	445.0 15.7 20	448.6 12.1 20	453.3 7.4 42	459.7 1.0 42	465.5 +7.8 60	469.5 +8.8 76	470.3 +9.6 130 - FLAT - Brow
----------------------	-------------------	---------------------	---------------------	---------------------	--------------------	--------------------	---------------------	---------------------	---------------------------------------

460.75

CHK:

~~F.P.~~

6.35 470.59 = 470.64 = STG B.M

T.P. 9.95 476.94 1.94 466.99

T.P. 11.84 468.93 0.09 457.09

T.P. 13.17 457.18 0.34 444.01

7+42 Sect. 100' ahead PT. I.N.T.

916.1	921.6	924.3	926.5	926.0
28.2	22.7	20.0	17.8	18.4
100	50		20	65
Rim			Rim	

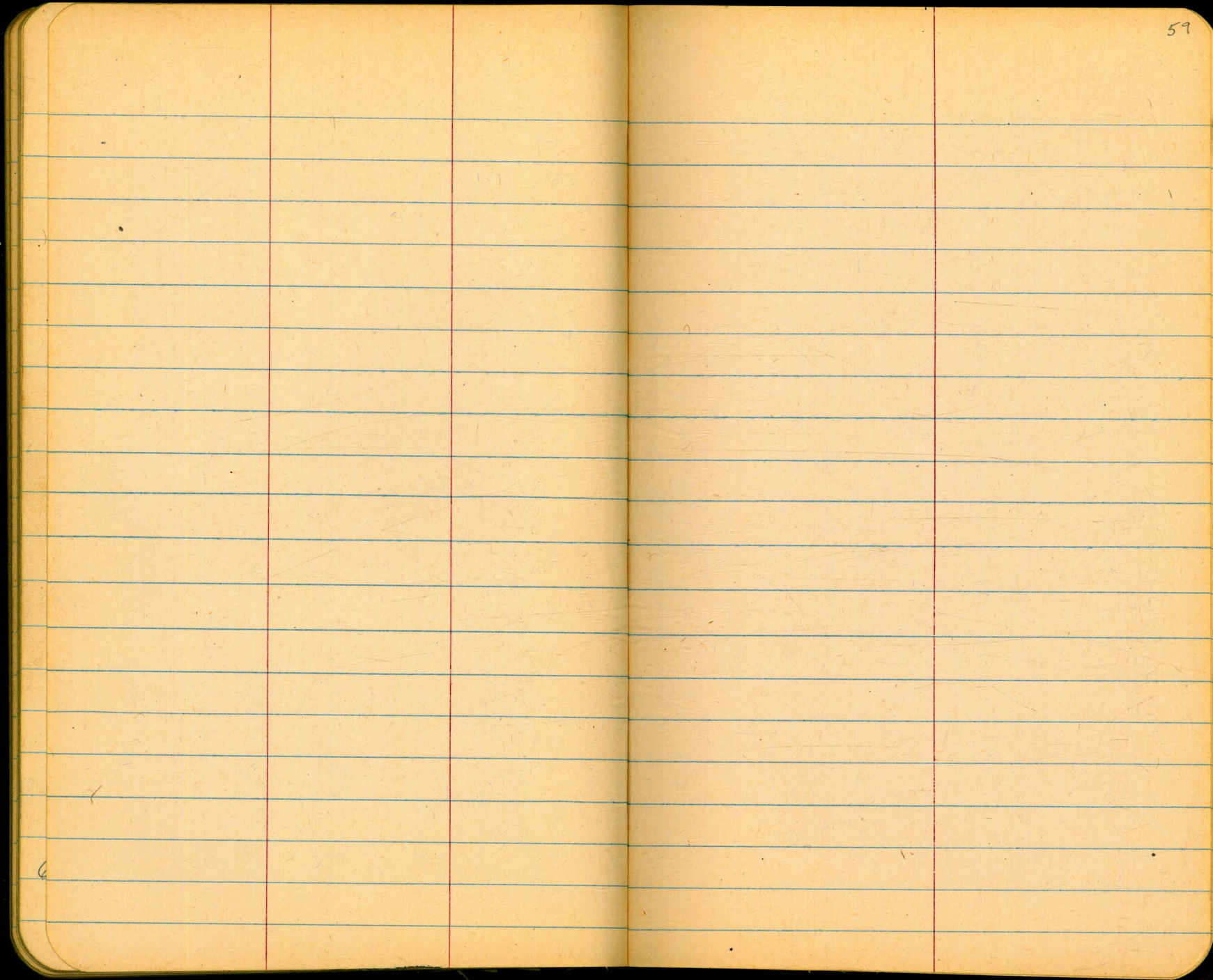
51.70

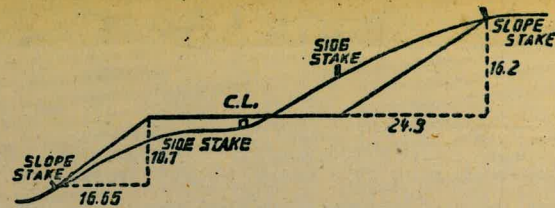
916.2	922.7	928.3	931.8
28.1	21.6	16.0	12.5
110	50		33
Rim			
CAN/ON sky			

6+41.45 = PT. I.N.T. } HUGHES ST. + Sky proj. of.
Sub-line

392.4	402.9	417.6	423.1	429.8	435.0	437.0	431.0
51.9	41.9	26.7	21.2	14.5	9.3	7.3	13.3
155	126	85	50		50	105	146
		Rim				61K	Rim
		DRAW					NLY
							exposed

444.35





DISTANCES FROM SIDE STAKES FOR CROSS-SECTIONING.

SLOPE $1\frac{1}{2}$ TO 1. ROADWAY OF ANY WIDTH.

	0	.1	.2	.3	.4	.5	.6	.7	.8	.9	
0	0.00	0.15	0.30	0.45	0.60	0.75	0.90	1.05	1.20	1.35	0
1	1.50	1.65	1.80	1.95	2.10	2.25	2.40	2.55	2.70	2.85	1
2	3.00	3.15	3.30	3.45	3.60	3.75	3.90	4.05	4.20	4.35	2
3	4.50	4.65	4.80	4.95	5.10	5.25	5.40	5.55	5.70	5.85	3
4	6.00	6.15	6.30	6.45	6.60	6.75	6.90	7.05	7.20	7.35	4
5	7.50	7.65	7.80	7.95	8.10	8.25	8.40	8.55	8.70	8.85	5
6	9.00	9.15	9.30	9.45	9.60	9.75	9.90	10.05	10.20	10.35	6
7	10.50	10.65	10.80	10.95	11.10	11.25	11.40	11.55	11.70	11.85	7
8	12.00	12.15	12.30	12.45	12.60	12.75	12.90	13.05	13.20	13.35	8
9	13.50	13.65	13.80	13.95	14.10	14.25	14.40	14.55	14.70	14.85	9
10	15.00	15.15	15.30	15.45	15.60	15.75	15.90	16.05	16.20	16.35	10
11	16.50	16.65	16.80	16.95	17.10	17.25	17.40	17.55	17.70	17.85	11
12	18.00	18.15	18.30	18.45	18.60	18.75	18.90	19.05	19.20	19.35	12
13	19.50	19.65	19.80	19.95	20.10	20.25	20.40	20.55	20.70	20.85	13
14	21.00	21.15	21.30	21.45	21.60	21.75	21.90	22.05	22.20	22.35	14
15	22.50	22.65	22.80	22.95	23.10	23.25	23.40	23.55	23.70	23.85	15
16	24.00	24.15	24.30	24.45	24.60	24.75	24.90	25.05	25.20	25.35	16
17	25.50	25.65	25.80	25.95	26.10	26.25	26.40	26.55	26.70	26.85	17
18	27.00	27.15	27.30	27.45	27.60	27.75	27.90	28.05	28.20	28.35	18
19	28.50	28.65	28.80	28.95	29.10	29.25	29.40	29.55	29.70	29.85	19
20	30.00	30.15	30.30	30.45	30.60	30.75	30.90	31.05	31.20	31.35	20
21	31.50	31.65	31.80	31.95	32.10	32.25	32.40	32.55	32.70	32.85	21
22	33.00	33.15	33.30	33.45	33.60	33.75	33.90	34.05	34.20	34.35	22
23	34.50	34.65	34.80	34.95	35.10	35.25	35.40	35.55	35.70	35.85	23
24	36.00	36.15	36.30	36.45	36.60	36.75	36.90	37.05	37.20	37.35	24
25	37.50	37.65	37.80	37.95	38.10	38.25	38.40	38.55	38.70	38.85	25
26	39.00	39.15	39.30	39.45	39.60	39.75	39.90	40.05	40.20	40.35	26
27	40.50	40.65	40.80	40.95	41.10	41.25	41.40	41.55	41.70	41.85	27
28	42.00	42.15	42.30	42.45	42.60	42.75	42.90	43.05	43.20	43.35	28
29	43.50	43.65	43.80	43.95	44.10	44.25	44.40	44.55	44.70	44.85	29
30	45.00	45.15	45.30	45.45	45.60	45.75	45.90	46.05	46.20	46.35	30
31	46.50	46.65	46.80	46.95	47.10	47.25	47.40	47.55	47.70	47.85	31
32	48.00	48.15	48.30	48.45	48.60	48.75	48.90	49.05	49.20	49.35	32
33	49.50	49.65	49.80	49.95	50.10	50.25	50.40	50.55	50.70	50.85	33
34	51.00	51.15	51.30	51.45	51.60	51.75	51.90	52.05	52.20	52.35	34
35	52.50	52.65	52.80	52.95	53.10	53.25	53.40	53.55	53.70	53.85	35
36	54.00	54.15	54.30	54.45	54.60	54.75	54.90	55.05	55.20	55.35	36
37	55.50	55.65	55.80	55.95	56.10	56.25	56.40	56.55	56.70	56.85	37
38	57.00	57.15	57.30	57.45	57.60	57.75	57.90	58.05	58.20	58.35	38
39	58.50	58.65	58.80	58.95	59.10	59.25	59.40	59.55	59.70	59.85	39
40	60.00	60.15	60.30	60.45	60.60	60.75	60.90	61.05	61.20	61.35	40
41	61.50	61.65	61.80	61.95	62.10	62.25	62.40	62.55	62.70	62.85	41
42	63.00	63.15	63.30	63.45	63.60	63.75	63.90	64.05	64.20	64.35	42
43	64.50	64.65	64.80	64.95	65.10	65.25	65.40	65.55	65.70	65.85	43
44	66.00	66.15	66.30	66.45	66.60	66.75	66.90	67.05	67.20	67.35	44
45	67.50	67.65	67.80	67.95	68.10	68.25	68.40	68.55	68.70	68.85	45
46	69.00	69.15	69.30	69.45	69.60	69.75	69.90	70.05	70.20	70.35	46
47	70.50	70.65	70.80	70.95	71.10	71.25	71.40	71.55	71.70	71.85	47
48	72.00	72.15	72.30	72.45	72.60	72.75	72.90	73.05	73.20	73.35	48
49	73.50	73.65	73.80	73.95	74.10	74.25	74.40	74.55	74.70	74.85	49
50	75.00	75.15	75.30	75.45	75.60	75.75	75.90	76.05	76.20	76.35	50

THE NATIONAL BLANK BOOK COMPANY
 HOLYOKE MASSACHUSETTS
 NEW YORK CHICAGO BOSTON SAN FRANCISCO