

2140

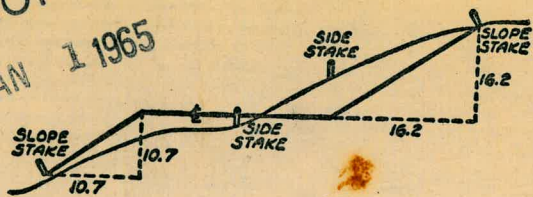
X-SECT.

GRADE ESTABLISHED

TRUST CO.

MICROFILMED

JAN 1 1965



50.35  
18

DISTANCES FROM SIDE STAKES FOR CROSS-SECTIONING  
SLOPE 1 TO 1. ROADWAY OF ANY WIDTH

	0	.1	.2	.3	.4	.5	.6	.7	.8	.9	
0	0.00	0.10	0.20	0.30	0.40	0.50	0.60	0.70	0.80	0.90	0
1	1.00	1.10	1.20	1.30	1.40	1.50	1.60	1.70	1.80	1.90	1
2	2.00	2.10	2.20	2.30	2.40	2.50	2.60	2.70	2.80	2.90	2
3	3.00	3.10	3.20	3.30	3.40	3.50	3.60	3.70	3.80	3.90	3
4	4.00	4.10	4.20	4.30	4.40	4.50	4.60	4.70	4.80	4.90	4
5	5.00	5.10	5.20	5.30	5.40	5.50	5.60	5.70	5.80	5.90	5
6	6.00	6.10	6.20	6.30	6.40	6.50	6.60	6.70	6.80	6.90	6
7	7.00	7.10	7.20	7.30	7.40	7.50	7.60	7.70	7.80	7.90	7
8	8.00	8.10	8.20	8.30	8.40	8.50	8.60	8.70	8.80	8.90	8
9	9.00	9.10	9.20	9.30	9.40	9.50	9.60	9.70	9.80	9.90	9
10	10.00	10.10	10.20	10.30	10.40	10.50	10.60	10.70	10.80	10.90	10
11	11.00	11.10	11.20	11.30	11.40	11.50	11.60	11.70	11.80	11.90	11
12	12.00	12.10	12.20	12.30	12.40	12.50	12.60	12.70	12.80	12.90	12
13	13.00	13.10	13.20	13.30	13.40	13.50	13.60	13.70	13.80	13.90	13
14	14.00	14.10	14.20	14.30	14.40	14.50	14.60	14.70	14.80	14.90	14
15	15.00	15.10	15.20	15.30	15.40	15.50	15.60	15.70	15.80	15.90	15
16	16.00	16.10	16.20	16.30	16.40	16.50	16.60	16.70	16.80	16.90	16
17	17.00	17.10	17.20	17.30	17.40	17.50	17.60	17.70	17.80	17.90	17
18	18.00	18.10	18.20	18.30	18.40	18.50	18.60	18.70	18.80	18.90	18
19	19.00	19.10	19.20	19.30	19.40	19.50	19.60	19.70	19.80	19.90	19
20	20.00	20.10	20.20	20.30	20.40	20.50	20.60	20.70	20.80	20.90	20
21	21.00	21.10	21.20	21.30	21.40	21.50	21.60	21.70	21.80	21.90	21
22	22.00	22.10	22.20	22.30	22.40	22.50	22.60	22.70	22.80	22.90	22
23	23.00	23.10	23.20	23.30	23.40	23.50	23.60	23.70	23.80	23.90	23
24	24.00	24.10	24.20	24.30	24.40	24.50	24.60	24.70	24.80	24.90	24
25	25.00	25.10	25.20	25.30	25.40	25.50	25.60	25.70	25.80	25.90	25
26	26.00	26.10	26.20	26.30	26.40	26.50	26.60	26.70	26.80	26.90	26
27	27.00	27.10	27.20	27.30	27.40	27.50	27.60	27.70	27.80	27.90	27
28	28.00	28.10	28.20	28.30	28.40	28.50	28.60	28.70	28.80	28.90	28
29	29.00	29.10	29.20	29.30	29.40	29.50	29.60	29.70	29.80	29.90	29
30	30.00	30.10	30.20	30.30	30.40	30.50	30.60	30.70	30.80	30.90	30
31	31.00	31.10	31.20	31.30	31.40	31.50	31.60	31.70	31.80	31.90	31
32	32.00	32.10	32.20	32.30	32.40	32.50	32.60	32.70	32.80	32.90	32
33	33.00	33.10	33.20	33.30	33.40	33.50	33.60	33.70	33.80	33.90	33
34	34.00	34.10	34.20	34.30	34.40	34.50	34.60	34.70	34.80	34.90	34
35	35.00	35.10	35.20	35.30	35.40	35.50	35.60	35.70	35.80	35.90	35
36	36.00	36.10	36.20	36.30	36.40	36.50	36.60	36.70	36.80	36.90	36
37	37.00	37.10	37.20	37.30	37.40	37.50	37.60	37.70	37.80	37.90	37
38	38.00	38.10	38.20	38.30	38.40	38.50	38.60	38.70	38.80	38.90	38
39	39.00	39.10	39.20	39.30	39.40	39.50	39.60	39.70	39.80	39.90	39
40	40.00	40.10	40.20	40.30	40.40	40.50	40.60	40.70	40.80	40.90	40
41	41.00	41.10	41.20	41.30	41.40	41.50	41.60	41.70	41.80	41.90	41
42	42.00	42.10	42.20	42.30	42.40	42.50	42.60	42.70	42.80	42.90	42
43	43.00	43.10	43.20	43.30	43.40	43.50	43.60	43.70	43.80	43.90	43
44	44.00	44.10	44.20	44.30	44.40	44.50	44.60	44.70	44.80	44.90	44
45	45.00	45.10	45.20	45.30	45.40	45.50	45.60	45.70	45.80	45.90	45
46	46.00	46.10	46.20	46.30	46.40	46.50	46.60	46.70	46.80	46.90	46
47	47.00	47.10	47.20	47.30	47.40	47.50	47.60	47.70	47.80	47.90	47
48	48.00	48.10	48.20	48.30	48.40	48.50	48.60	48.70	48.80	48.90	48
49	49.00	49.10	49.20	49.30	49.40	49.50	49.60	49.70	49.80	49.90	49
50	50.00	50.10	50.20	50.30	50.40	50.50	50.60	50.70	50.80	50.90	50

Distance of slope stake from side or shoulder stake for any width roadway, slope 1 to 1. If ground is nearly level, the cut or fill at side stake is located by the double entry method in left column and top row. The number in body of table in same row and column gives distance from side stake to slope stake. If ground is not level estimate the difference in elevation between the side stake and slope stake, lower target by this amount if cut, elevate if fill. Add this amount to the cut or fill and find distance in table. Set up rod at this point, and line of sight should cut target. If it does not make the slight adjustment necessary.

29 58

TABLE XIII—CORRECTIONS FOR TANGENTS AND EXTERNALS

These corrections are to be added to the approximate values, found by dividing the tangent, or external, for a 1° curve (Table VIII) by the degree of curve, in order to obtain the true tangents, or externals. Intermediate values may be obtained by interpolation.

FOR TANGENTS ADD

Central Angle	DEGREE OF CURVE													
	5°	10°	15°	20°	25°	30°	35°	40°	45°	50°	55°	60°	65°	70°
10°	.03	.06	.09	.13	.16	.19	.22	.25	.28	.31	.34	.38	.42	.46
15°	.04	.10	.14	.19	.24	.29	.34	.39	.45	.51	.53	.58	.63	.68
20°	.06	.13	.19	.26	.32	.39	.45	.51	.58	.65	.72	.79	.84	.90
25°	.08	.16	.24	.33	.40	.49	.58	.67	.75	.83	.90	.99	1.06	1.14
30°	.10	.19	.29	.39	.49	.59	.69	.79	.89	.99	1.09	1.20	1.29	1.39
35°	.11	.22	.34	.47	.58	.69	.79	.81	.92	1.04	1.29	1.42	1.54	1.66
40°	.13	.26	.40	.53	.67	.80	.93	1.06	1.20	1.34	1.49	1.64	1.79	1.94
45°	.15	.30	.44	.60	.76	.91	1.06	1.21	1.37	1.52	1.70	1.87	2.04	2.21
50°	.17	.34	.51	.68	.85	1.02	1.19	1.36	1.54	1.72	1.91	2.10	2.29	2.48
55°	.19	.38	.57	.76	.95	1.14	1.32	1.52	1.72	1.92	2.14	2.35	2.56	2.77
60°	.21	.42	.63	.84	1.05	1.27	1.49	1.71	1.94	2.17	2.38	2.60	2.83	3.07
65°	.23	.46	.69	.93	1.16	1.40	1.64	1.88	2.13	2.38	2.63	2.88	3.13	3.39
70°	.25	.51	.76	1.02	1.28	1.54	1.80	2.06	2.33	2.60	2.88	3.16	3.44	3.72
75°	.27	.56	.83	1.12	1.40	1.69	1.98	2.27	2.57	2.87	3.16	3.47	3.78	4.09
80°	.30	.61	.91	1.22	1.53	1.84	2.15	2.46	2.78	3.10	3.44	3.78	4.12	4.46
85°	.33	.66	1.00	1.33	1.68	2.02	2.36	2.70	3.05	3.40	3.77	4.14	4.55	4.89
90°	.36	.72	1.09	1.45	1.83	2.20	2.57	2.94	3.32	3.70	4.10	4.50	4.91	5.32
95°	.39	.79	1.19	1.55	2.00	2.40	2.80	3.20	3.61	4.02	4.40	4.98	5.38	5.83
100°	.43	.86	1.30	1.74	2.18	2.62	3.06	3.50	3.95	4.40	4.88	5.37	5.85	6.34
110°	.51	1.03	1.56	2.08	2.61	3.14	3.67	4.21	4.76	5.31	5.86	6.43	7.01	7.60
120°	.62	1.25	1.93	2.52	3.16	3.81	4.45	5.11	5.77	6.44	7.12	7.80	8.50	9.22

FOR EXTERNALS ADD

Central Angle	DEGREE OF CURVE													
	5°	10°	15°	20°	25°	30°	35°	40°	45°	50°	55°	60°	65°	70°
10°	.001	.003	.004	.006	.007	.008	.009	.011	.012	.014	.015	.017	.018	.020
15°	.003	.007	.010	.014	.018	.023	.027	.029	.032	.035	.039	.043	.047	.051
20°	.006	.011	.017	.022	.028	.034	.038	.045	.051	.057	.063	.070	.076	.083
25°	.009	.018	.027	.036	.046	.056	.065	.074	.083	.093	.106	120	127	135
30°	.013	.025	.038	.051	.065	.078	.090	.103	.116	.129	.149	.170	.179	.188
35°	.018	.035	.054	.072	.086	.109	.131	.153	.175	.197	.213	.230	.247	.264
40°	.023	.046	.070	.093	.117	.141	.172	.203	.234	.265	.277	.290	.315	.341
45°	.030	.060	.093	.119	.153	.184	.216	.254	.289	.325	.351	.378	.411	.445
50°	.037	.075	.116	.151	.189	.227	.266	.305	.345	.384	.425	.467	.508	.550
55°	.046	.093	.142	.188	.236	.283	.332	.381	.420	.479	.530	.582	.641	.700
60°	.056	.112	.168	.225	.283	.340	.398	.457	.516	.575	.636	.697	.774	.851
65°	.067	.135	.204	.273	.343	.412	.483	.554	.625	.697	.771	.845	.922	1.01
70°	.080	.159	.240	.321	.403	.485	.568	.652	.735	.819	.906	.994	1.08	1.17
75°	.095	.182	.286	.383	.480	.578	.678	.777	.877	.977	1.07	1.18	1.29	1.39
80°	.110	.220	.332	.445	.558	.671	.787	.903	1.02	1.13	1.25	1.38	1.50	1.62
85°	.128	.259	.391	.524	.657	.790	.926	1.06	1.20	1.34	1.47	1.62	1.76	1.91
90°	.149	.299	.450	.603	.756	.910	1.07	1.22	1.38	1.54	1.70	1.87	2.03	2.20
95°	.174	.350	.522	.706	.885	1.06	1.25	1.43	1.62	1.80	1.99	2.18	2.38	2.58
100°	.200	.401	.604	.809	1.01	1.22	1.43	1.64	1.85	2.06	2.28	2.50	2.73	2.96
110°	.268	.536	.806	1.08	1.35	1.63	1.91	2.20	2.48	2.76	3.05	3.35	3.66	3.96
120°	.360	.721	1.08	1.45	1.82	2.19	2.57	2.95	3.33	3.72	4.11	4.50	4.91	5.32

Index

- X-sec. Roanoke - Winchester to Calle Tres Lomas 1
- X-sec Calle Bancho - Full length 5
- X-sec Conde - Pine St SW'lly to term. 8
- X-sec 51st St. El Cajon to Trejan 13-26
- X-sec Central - Thorn to Redwood 27-36
- Cross Section Barron St 11th to Woodman 42-46
- Alley BIK 22. O.B. Park 47-54
- Alley BIK 4 Golden Park. Barron St. to Golden Pk. 55
- X-sec Adams - El Cerrito to Esby 62
- X-sec. Shafter + Carlton 67

Roberts  
Cota  
Moore  
PAllen  
6-14-51  
W. 25020

X-Section Roanoke St.  
Winchester to Calle Tres Lomas

#Map 2160

Reduced by  
R. No. 4244  
6-18-51

Map distances used!

So. Subd. Line Tres Lomas our E.

0+51.5 Back Edge 18" Roll Curb (Top Curb)

0+50 Front of 18" Roll Curb (Gutter)

0+30 E Winchester (Soil mix Paving)

0+10 Front of 18" Roll Curb (Gutter)



Curbs are in wrong.  
They used this as curb face



Actual Cb. Face

0+08.5 Back of 18" Roll Curb (Top Curb)

Levels on line of Winchester  
0+00 West Line Winchester

BM 7.91 291.60X

28369 Chisel Squ are NW Cor. Winchester & Roanoke 10' No. of End of West Curb

Lt

R

Lt

1

INDEXED

JUN 15 1951

287.02				
4.58				
50				
BC				
CB				
Ret.				
286.73	285.3	283.6	281.8	280.3
4.07	6.3	8.0	9.8	11.3
50	25	25	25	50
BC				
CB				
Ret.				
287.3	285.5	283.6	281.8	280.1
4.3	6.1	8.0	9.8	11.5
50	25	25	25	50
BC				
CB				
Ret.				
286.26	284.48	282.74	281.3	279.5
5.34	7.12	8.86	10.6	12.4
50	25	25	25	50
BC				
CB				
Ret.				
286.54	284.76	283.02	281.3	279.5
5.06	6.84	8.58	10.3	12.1
50	25	25	25	50
BC				
CB				
Ret.				
286.5	285.8	284.0	281.2	279.2
5.1	5.8	7.6	9.4	11.2
50	25	25	25	50
BC				
CB				
Ret.				

Cont'd From Page 1

2+50

Lt.					
291.1	288.7	286.9	284.8	282.8	2
0.5	2.9	4.7	6.8	8.8	
50	25		25	50	

2+00

289.3	287.9	286.1	284.6	283.1	280.5
2.3	3.7	5.5	7.0	8.5	11.1
50	25		25	50	100

1+86

27<sup>1</sup>/<sub>2</sub> Lt END FENCE

1+50

289.0	287.6	286.7	285.7	284.5	282.0
2.6	4.0	4.9	5.9	7.1	9.6
50	25	22		25	50

1+19<sup>3</sup>

21<sup>3</sup>/<sub>2</sub> Lt Begin cyclone Wire Fence

1+16.08 42" Pipe

0+86<sup>5</sup> Opposite Curb End on Left

289.0	287.1	286.7	284.81	284.50	284.1	282.4	280.6
2.6	4.5	4.9	6.79	7.0	7.5	9.2	11.0
50	25	21	2/63	2/48		25	50
			Back Edge	Front Edge			
			Full Curb				

Center N.E. Curb Return (35' cb. Rad.)

285.73	285.44
5.87	6.16
Curb	outer

0+60 East Line Winchester

287.5	285.2	283.6	281.9	280.1
4.1	6.4	8.0	9.7	11.5
50	25		25	50

29160X

29160X

Cont'd From Page 2

24

R

R

3

5+50

276.1	274.6	273.0	273.5	272.9
52	6.7	8.3	7.8	8.4
50	25		25	50

T.P.

0.31 281.28K 12.32 280.97

281.28K

5+00

283.8	282.2	280.3	279.1	278.4
9.5	11.1	13.0	14.2	14.9
50	25		25	50

4+50

288.9	286.9	284.5	282.2	280.7
4.4	6.4	8.8	11.1	12.6
50	25		25	50

4+00

291.3	289.3	286.9	284.3	282.4	279.1
2.0	4.0	6.4	9.0	10.9	14.2
50	25		25	50	100

3+3/8

& Aguadulce

290.6	288.2	285.5	283.3
2.7	5.1	7.8	10.0
25		25	50

3+00

292.3	289.9	287.6	285.4	283.3
1.0	3.4	5.7	7.9	10.0
50	25		25	50

T.P.

5.87 293.29K 4.18 287.42

293.29K

291.60K

Cont'd from Page 3

44

E

R

4

check

188

268,10 = 268.11

3/4" I. Pipe

See FB 2050 pg 48-56

EC W. Pt. on Calle Tres Lomas

NW cor. Tres Lomas E

Roadside

7+20

253.7  
16.3

6±70° East Line Tres Lomas Fd 3/4" Iron Pipe

257.8  
10.2  
25

259.0  
11.0  
25

258.2  
11.8  
25

257.8  
12.2  
50

257.2  
12.8  
100

6±40° E Calle Tres Lomas

263.9  
6.1  
25

262.6  
7.4  
25

260.8  
9.2  
25

260.8  
9.2  
50

T.P.

0.18

269.98X

11.48

269.80

on Pipe  
Fd. 3/4"

Approx. Sta = 5+85  
Iron Pipe NW cor Roadside of Calle Tres Lomas BC N. Pt. on Roadside

269.98X

6+00

269.8  
11.5  
50

268.0  
13.3  
25

266.7  
14.6  
25

266.2  
15.1  
25

265.9  
15.4  
50

28128X

28128X

Roberts  
Cota  
Pollen  
6-20-51  
no 25120

X-Section Calle Banco  
From Pavana to East Tres Lomas Sub-Line  
(Full Length)  
Map #2160

44

INDEXED

JUN 21 1951

R2

5



T.P. 12.84 350.84 ± 0.84 338.00

2+00

343.7	340.2	335.2	335	335	335	330.1	325.2
+6.8	+1.7	0.3	3.5	3.5	3.5	7.8	13.3
50	25	10	5	5	9	25	50

1+50

Notes Referred By  
F. Alvarez 6-21-51

339.9	334.7	332.8	330.5	329.4	330.1	326.4	321.4
+1.4	2.8	5.7	8.0	8.1	8.4	12.1	16.7
50	25	10	7	7	8	25	50

1+00

327.7	322.3	330	329	328.7	325.5	322.2	315.9
2.8	6.2	8.5	9.5	9.8	13.0	16.3	22.6
50	25	7	7	7	25	50	100

0+50

333	330.2	328.1	325.4	322.9
5.5	8.3	10.4	13.1	15.6
50	25	25	25	50

0+25

Set 3/4" Iron Pipes on E & W P.L.  
Set Stub on E

331.3	330.2	328.1	326.2	323.9
7.2	8.3	10.4	12.3	14.6
50	25	25	25	50

0+00

So. Line Pavana

338.54 ±

Ⓢ This is it!

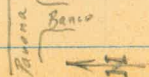
BM

7.17 338.54 ±

331.37

3/4" Iron Pipe S.E. Cor Pavana & Banco

E.C. East P.L. of Banco on Pavana



FB 205099 58



Cont'd From Page 5

T.P. 288 348.37A 5.35 345.49

5+00

363.4	354	350.2	347.3	346.5	346.2	340.1	333
+12.6	+3.2	0.6	3.5	4.0	4.6	10.7	17.8
50	25	12	7	7	7	25	50

4+50

363.5	356	351.8	348.2	347.9	347.2	341.1	334.9
+12.7	+5.2	+1.0	2.6	2.9	3.6	9.7	16.0
50	25	11	7	7	6	25	50

4+00

363.5	354.6	349	347.1	346.4	346.1	339.6	333.5
+12.7	+3.8	1.0	3.7	4.4	4.7	11.2	17.3
50	25	10	7	7	6	25	50

3+50

359	351.9	347.6	344.6	344.2	343.2	341.3	338.5	333
+8.2	+1.1	3.2	6.2	6.6	6.9	9.5	12.3	17.8
50	25	12	8	7	5	11	25	50

2+87.84 BC

Fd 3/4" I. Pipes on EPW 12.  
Get Stub on E

334	347	344.7	341.4	341.5	341.2	338.6	335.6	330.2
+3.2	3.8	6.1	9.4	9.8	9.6	12.2	15.0	20.6
50	25	14	9	9	4	10	25	50

2+50

350.3	344.3	341.4	338.8	338.9	338.9	334.3	328.8	318.6
0.5	6.5	9.4	12.0	11.9	11.9	16.5	22.0	32.2
50	25	11	7	7	7	25	50	100

350.87A

350.84A





+61.5

Center of Garage Fl.

+52.4

No. line 2 Car Garage 29<sup>Z</sup> Rt.

+50.4

40<sup>e</sup> Lt. SW Cor. Attached Garage

+40.5

£ Garage Floor

+31.5

+30.5

40<sup>Z</sup> Lt. = NW Cor. Attached Garage

+29.4

Conc. Wall 14.6 Lt. Rt L to St.

+27.6

Nly Cb. on curve.

+14.7

49<sup>o</sup> Lt. = NW Cor. House

0+00

0-03

27.5 Lt. P.P. # P-2447

0-10

0-25

£ Pine & Conde

6.03

250.92

City Dis.  
50.7 Pine  
E-7 Aristo



242.7	242.1	241.5	243.57	239.42	236.94	239.39	239.44
8.7	8.8	9.4	7.35	11.50	11.98	11.53	11.48
40	25	15	4.7		15.2	15.2	29.7
			Edge Pave		G	Cb	

242.71							
8.21	244.3	242.9	242.56	242.51	240.11	239.55	240.02
40.1			8.36				
	6.6	7.0	1.0	8.41	10.81	11.37	10.90
	25	15	Edg. Pave		30	42	42
				242.10		G	Cb.
				8.82			

247.6	246.6	244.84	244.63	242.25	240.59	239.44	239.96
3.3	4.3	6.08	6.29	8.67	10.33	11.48	10.96
50	25	3		25	50	69	69
			Edg. Pave			G	Cb.

248.1	247.69	247.34	245.29	243.15	241.08	240.53	240.90
2.8	3.23	3.58	5.63	7.77	9.84	10.39	10.02
75	50	25		25	50	58	58
						G	Cb.

248.27	248.21	247.80	246.46	244.31	241.58	241.96
2.65	2.71	3.12	4.46	6.61	9.34	8.96
75	50	25		25	50	50
					G	Cb.

250.92





2

244.89 Rec.  
3.52 244.94

7 Disc

7 9.68 248.46 0.33 238.78

7 12.78 239.11 0.30 226.33

7 12.47 226.63 0.28 214.16

7 12.63 214.44 1.00 201.81

+87

Bottom of Cañon

152.2  
50.6

+66

164.4  
38.4

3+45

202.81

172.4  
25.4  
202.81





X-Sept. 51<sup>st</sup> for Paving - from  
 Trojan to El Cajon  
 # 5722 9-19-51 - 7.0.  
 W.O. 31390

Note: See Book 1297-P. 72 for loc.  
 of old Doub. Culvert from N.W. Cor. Trojan  
 + 51<sup>st</sup> - Not operating, end Covered.

0+10

2.7	3.5	4.8	4.9	4.8	4.8	6.1	6.5
40	30	25	18	18	18	30	40
355.4	352.6	356.3	356.2	356.3	356.3	355	359.6

0+00 = N.L. Trojan

6.4	6.1	7.2	5.9	6.8	6.4	6.5	7.6	8.5
50	30	26	24	18	18	18	30	40
354.7	355	353.9	355.2	354.3	354.7	354.6	353.5	352.6

By inlet of pipes

0-04- 15.1 Rt = ± Wly. of 4 W.M.

7.1	8.3	8.5	8	9.3	13.0	18.9 = ±
80	30	20	8	30	80	6-M
354.0	352.4	352.6	352.6	351.4	348.1	353.25

15.1 pipe  
 7.34 =  
 361.05

0-20 = approx. ± of Graded Road.  
 Blk. 42 + N. 7<sup>th</sup> Line Trojan  
 Set B.M. on Hub. & Alley 5.23 355.82  
 B.M. 12.32 361.05 348.73 = S.E.

7 Hub. - 51<sup>st</sup> + Trojan  
 Book - 2021 - P. 67

Lt. # Rt.

1+51- 21.3 Lt. = Ely. of 2' Hedge - 4' High

1+49- 18.3 Rt. = Beg. Rough Curb. (Home made)

1+41- 18' Lt. = # 10' Conc. Dr.

4.44	5.09	6.08	8.31	7.378.9	7.02
50	36	30	18 = Dr.	18.3	18.3
Dr.	Brk.	Dr.		9ft	Top cb.

1+30

1+25 = Beg. Cold lay Pavc - Poor Cond.

1+23- 18.1 Lt. = # 3' Conc. walk

5.4	6.63	8.0	9.9	9.6	10.3	8.8	8.2	8.1
40	30.7	30	18		15	18	30	40
380.9	379.69	378.43	376.8	374.2	376.0	377.5	378.1	378.2
386.32	Top wall	377.25	376.09					
5.65	6.47	8.44	10.23					
48.2	33.8	30.6	18.1 - walk					
at Porch.	Top steps	at Steps						
378.5	377.25	374.7	372.5	371.2	372.1	371.9	375	376.4
7.8	8.57	11.6	13.8	14.5	14.2	14.4	11.3	9.9
40	31	30	18	11	14	18	30	40
	Top wall				386.32			

1+05

T.P. 12.69 386.32 0.29 373.63

1+02- 30.4' Lt. = Beg. Rock + Conc. wall

378.5	377.25	374.7	372.5	371.2	372.1	371.9	375	376.4
7.8	8.57	11.6	13.8	14.5	14.2	14.4	11.3	9.9
40	31	30	18	11	14	18	30	40
	Top wall				386.32			
		+3.93	+0.7					
		Top wall	30.4 = ground					

0+75- 30.2' Lt. = Ely. of 6" Conc. Ret wall

T.P. 13.06 373.92 0.19 360.86

370.3	375.2	379.9	386.5	386.0	386.9	386.8	389.5	389.4	373.4
3.6	+1.30	4.1	7.4	7.9	7.0	7.1	4.4	4.1	0.5
40	30.2	30	18	12	16	18	30	40	
	Top wall				373.92				

0+40

384.2	382.2	380.1	380.9	380.1	381.2	382.7	386.4
+3.1	+2.1	1.0	0.2	1.0	+0.3	1.1	+1.6
40	30	18	15	18	24	30	40
			361.05				

51 st

2+40

(A)

2+36-17.8 Lt. = end cb. - Broken for Dr.

2+10

1+93- 18.1 Rt. = Ply. of Dr.

1+91- 17.9 Lt. = ± 10' Conc Dr.

1+85

1+79- 20 Lt. = ± 12" Palm

1+77- 18.2 Rt. = sly. of Conc. Dr.

1+73- 21.5' Rt. = ± 12" Cottonwood

1+69- 18.1 Lt. = ± 3' Conc. Walk to cb.

1+64- 17.9 Lt. = Beg. curb.

1+60- 20.8 Lt. = ± 10" Palm

382.6  
3.7  
40

0.3255	0.9345.4	1.3	0.9	0.8	1.1	1.30	0.64	16
30	18	9	9	9	9	18.1	24	385.67
Dirt Dr. 21								40
Conc. Dr.								40

0.33012  
0.80

344.4  
1.5

Top  
17.8  
9.4

1.344.5	1.8	1.8	2.6	2.2	2.3	2.6	2.9	2.18	1.8
30	Top	17.9	9	9	9	18.1	9.4	Top	30
9.4									

383.91	2.35	2.82	3.59	3.42	4.0	3.42	18.1	Top
50	22.8	17.9	Dr.	17.9	Dr.	9.4	Top	9.4

383.2	3.1	3.38	4.3	3.8	4.0	4.61	4.08	3.98	3.48
30	Top	18	9	9	9	18.2	23.2	28.2	48
in Dr. walk Gar.									

383.53

2.19  
47.3  
at Porch

382.109

4.24  
30 = walk

381.56

4.76 =  
18 cb + walk

4.8	5.6	5.23	6.379.7	6.380.2	6.2	6.6	6.7	6.21	5.8
30	21	18	18	9	9	9	18.2	Top	30
386.32									

(2)

3+17 = Beg. cb. on Lt.

3+06 - 18.3 Rt. = ± 2' Conc walk

3+04 - 17.9 Lt. = end cb. - Broken for Dr.

2+91 = ± 10' Conc. Dr. on Rt.

2+85

2+82 - 18.4 Lt. = ± 2' Conc walk

2+70 - 18.2 Rt. = ± 3' Conc walk

2+64 - 17.8 Lt. = ± 10' Conc. Dr.

2+60

T.P. 6.95 393.16 . 0.11 386.21

(2)

2+46 - 17.8 Lt. = Beg. cb.

2+45 - 18.2 Rt. = Brk. - Nly. of Dr.

5.387.6  
30  
5.387.89 Lt.  
Top  
6.0  
9.0  
5.387.6  
9  
5.387.8  
5.387.5  
6.3  
18.4  
9.4  
5.79  
Top  
5.8  
30  
387.4  
17

5.55  
Top  
6.1  
17.9  
9.4  
6.387.16  
9  
6.98  
18.3  
6.82  
18.2  
Dr.  
6.387.13  
6.27  
21.5  
387.10  
30 walk  
6.06  
30  
6.15  
30

5.387.4  
30  
5.9  
Top  
6.5  
17.7  
9.4  
6.387.9  
9  
6.1  
387.1  
6.6  
9  
6.9  
18.2  
9.4  
6.39  
Top  
6.2  
30  
387.3  
387.77  
387.397

6.42  
30  
6.47  
20.6  
Dr.  
5.387.23  
9.3  
30  
walk  
5.387.19  
5.98  
15.4  
Dr. + walk  
386.46  
6.71  
18.2  
Top cb.  
+ walk  
387.42  
6.74  
30  
walk

6.387.7  
30  
6.84  
Top  
7.3  
17.9  
9.4  
386.2  
9  
6.387.3  
9  
7.3  
9  
7.6  
18.2  
9.4  
6.94  
Top  
6.9  
30

393.16

0.46  
Top  
1.1  
17.8  
9.4  
385.9  
385.2  
385.1  
1.2  
18.2  
9.4  
385.9  
0.47  
Top  
386.32



5+40

5+24- 27' Rt. = Beg.  $\pm$  2 Hedge - 3.5 High

5+14- 17.9 Lt. = Beg. cb.

5+07- 27.8 Lt. =  $\pm$  8' Conc. Dr. - 2-2' Conc. Strips

5+02- 17.9 Lt. = end cb. - (broken for Dr.)

T.P. 5.19 393.61 4.74 388.42

5+00

4+80-  $\pm$  10' Conc. Dr. on Rt.

4+63- 17.9 Lt. = Beg. cb.

4+62- 21.3 Rt. =  $\pm$  8" Acacia

4+50

4+40- 21.1' Rt. =  $\pm$  4" Acacia

17.8 Lt. = end cb.

4+35- 18.2 Rt. = Beg. cb.

4+24- 18.3 Rt. = end cb. (broken for Dr.)

4.5 30	4.92 Top	5.3 17.8 9.4	5.3 9	4.9 388.2	5.1 388.2	6.0 18.2 9.4	5.74 Top	387.27	19 388.2 30
5.05 Top	388.53	5.3 17.9 = 9.4	388.45	4.78 30.6 Dr.	5.16 27.8 = Dr.				
388.47	5.14 Top	5.4 17.9 =							
388.4	388.41	388.2	388.3	393.61	388.2				
4.4 30	4.75 Top	5.0 17.9 9.4	4.9 9	4.7 388.1	5.0 388.2	5.5 18.4 9.4	5.30 Top	387.56	5.1 30
388.28	4.88 Top	5.2 17.9 = 9.4	388.0			5.35240 18.2 Dr.	5.14 21.8 =	388.05	388.11
4.6 30	5.1 18	4.9 9	4.8	5.2 388.1	5.4 388.2	5.4 18.3 9.4	5.22 Top	387.9	5.2 30
388.31	388.1	388.3							
4.85 Top	5.2 17.8 9.4					5.3526 18.2	5.32 Top	387.84	387.85
				393.16		5.35277 18.3 9.4	5.30 Top		



7+37.4 = S. cb. - = Sect. along S. curb - in cross  
gutter.

4.21	4.91	4.40	5.01	5.01	5.18	5.44	5.63	5.00	6.33	5.71
Top	75	Top	28.9	18		18	26.9	Top	50	Top
	gut.	= P.C.	gut.				gut.	P.C.	gut.	

check B.M. 4.42 391.23 6.80 386.81

= edge of A.C. pave

7+21.20 = E at SL. El Cajon - Sect. on S.L.

391.23

386.82 = Peak = S.W.B.P. 51<sup>st</sup> + El Cajon

6.66	6.65	6.67	7.31	7.25	7.31	7.54	7.88	7.35	7.26	7.18
26.6	21.6	Top	18.1	9	7.31	9	18.3	Top	21.8	30
cor	walk		gut.				gut.		walk	

7+18.8 - 19.7 Rt. = E F.H.

7+17 - 21.2 Lt. = Beg. Ely. of S walk

7+16 - W.M. on Rt. Behind cb.

7+14 - 2 W.M. on Rt. Behind cb.

6+96 - Beg. Conc. walk on Rt. - Solid

6+90

6.4	6.35	7.1	7.0	6.9	7.1	7.4	6.91	6.5
30	Top	17.7	9	19	9	18.1	Top	30
		gut.				gut.		

6+78 - 18.2' Rt. = Nly. of Dr.

7.3	6.64	6.57
18.2	Top	23.3
gut.		end.



Lt.      †      Rt.

X-Sept 20' Alley in Block 42 - Track No. 1368  
for paving

W.O. 31390      9-19-51      7.0.

0+52 - 10' Lt. = † P. pole # J.P.A. 4309

T.P.      12.75      380.86      0.74      368.11

0+40

0+10

0+00 = N.L. Trojan

0-10

0-20 = in Graded Road.

B.M.      13.03      368.85      355.82 = 7' 4.6.  
P. 14

$\begin{array}{r} 368.2 \\ 20 \\ \hline 356.4 \end{array}$	$\begin{array}{r} 367.4 \\ 1.5 \\ \hline 365.9 \end{array}$	$\begin{array}{r} 367.1 \\ 1.5 \\ \hline 365.6 \end{array}$	$\begin{array}{r} 367.0 \\ 1.9 \\ \hline 365.1 \end{array}$	$\begin{array}{r} 367.3 \\ 1.6 \\ \hline 365.7 \end{array}$
$\begin{array}{r} 367.3 \\ 10 \\ \hline 357.3 \end{array}$	$\begin{array}{r} 359.1 \\ 5 \\ \hline 354.6 \end{array}$	$\begin{array}{r} 359.2 \\ 7 \\ \hline 352.5 \end{array}$	$\begin{array}{r} 359.2 \\ 10 \\ \hline 349.2 \end{array}$	$\begin{array}{r} 360.0 \\ 8 \\ \hline 352.0 \end{array}$
$\begin{array}{r} 357.3 \\ 20 \\ \hline 337.3 \end{array}$	$\begin{array}{r} 357.6 \\ 10 \\ \hline 347.6 \end{array}$	$\begin{array}{r} 357.3 \\ 6 \\ \hline 351.3 \end{array}$	$\begin{array}{r} 356.9 \\ 10 \\ \hline 346.9 \end{array}$	$\begin{array}{r} 356.3 \\ 20 \\ \hline 336.3 \end{array}$
$\begin{array}{r} 357.3 \\ 20 \\ \hline 337.3 \end{array}$	$\begin{array}{r} 357.2 \\ 10 \\ \hline 347.2 \end{array}$	$\begin{array}{r} 356 \\ 12 \\ \hline 344 \end{array}$	$\begin{array}{r} 355.6 \\ 10 \\ \hline 345.6 \end{array}$	$\begin{array}{r} 355. \\ 20 \\ \hline 335. \end{array}$
$\begin{array}{r} 357.6 \\ 50 \\ \hline 307.6 \end{array}$	$\begin{array}{r} 356.2 \\ 10 \\ \hline 346.2 \end{array}$	$\begin{array}{r} 355.7 \\ 132 \\ \hline 342.7 \end{array}$	$\begin{array}{r} 355.4 \\ 10 \\ \hline 345.4 \end{array}$	$\begin{array}{r} 354.4 \\ 50 \\ \hline 304.4 \end{array}$

380.86

368.85

2+49- 9.6 Lt. = ± P. pole # P.A. 4321

2+28- 9.3 Rt. = end wire fence

2+20

2+01- 9.4 Rt. = Beg. wire fence - poor Cond.

1+99- 9.9 Rt. = ± end hedge

1+80

1+51- 11' Rt. = ± of 4' Hedge - 6' High

T.P. 11.60 - 391.59 0.87 379.99

1+50- 9.8 Lt. = ± P. pole # J.P.A. 4317

1+40- 10' Rt. = end Conc. apron + Beg. Picket fence

1+25- 12.1 Lt. = S. y. of 3' Conc. Walk

1+05

1+00

Set B.M. on 11' Rt. R.P. Cross 2.09 378.77

0+88- 10.4 Rt. = Beg. Conc. apron to 4 Car Gar.

0+85

0+70

Lt. Rt.

8.0	8.1	7.8	7.6	7.5
20	10	10	10	20

9.6	9.6	9.7	9.7	9.4
20	10	10	10	20

379.85	379.9	391.59	380.27	380.12
1.01	1.0	1.0	0.59	0.34
11.7	10		10	20
walk				on Conc.

0.61	1.2			
2.1	12.1 = ground			
Top Conc.				
378.8	378.4	378.5	378.9	378.90
2.1	2.5	2.4	2.0	1.96
20	10		10	10.4

376.4	376.7	377.1	378.40	379.14
4.5	4.2	3.8	2.46	1.72
20	10		10.4	18.1
			Cor. apron	Floor Gar.

375.4	375.1	374.6	377.9	375.5
5.5	5.8	5.2	3.0	5
20	10		18.2	20
			along House	

380.86

4+87 - 16.9' Lt. = Beg. Conc. floor - 4 Car Gar.

4+87 - 9.2 Rt. = Beg. Shed - Conc. floor.

4+50

T.P. 5.20 393.87 - 2.92 388.67 = spike in Pole - 3+91.

4+00 - 9.2 Rt. = End. fence

3+97 - 10.7 Lt. = ± P. pole # J.P.A. 4341

3+91 - 10.2 Lt. = ± P. pole

3+50 - 9.3 Rt. = Beg. wire fence

3+45 - 9' Rt. = end shed.

3+16.5 - 9.5' Rt. = Beg. Shed - Conc. floor

3+00 - 10' Rt. = end fence

2+60

2+51 - 10.5' Rt. = Beg. Picket fence

	LT.	±	RT.	24
	388.67	388.67	388.67	
	4.89	16.9	9.2	5.13
	5.8	5.9	5.7	6.0
	20	10	10	20
	393.87	393.87	393.87	
	3.8	3.6	3.6	2.8
	20	10	10	20
	397.3	397.3	397.3	
	4.3	4.1	4.1	4.0
	20	10	10	20
	397.1	397.1	397.1	
	4.5	4.6	4.4	4.4
	20	10	10	20
	397.1	397.1	397.1	
	5.0	5.6	5.6	5.7
	20	10	10	20
	391.59	391.59	391.59	

6+00

5+94 - 15.5 Rt. = Sing. Gar - Dirt floor

5+85 - 9.6 Rt. = end fence

5+71.5 - 11.1 Lt. = end House

5+55 = 10.7 Lt. = end slab + Beg. Stucco House

5+51 - 9.4 Rt. = Beg. Wire fence

5+50

5+45 - 10.7 Lt. = Beg. Conc. slab

5+48 - 9.5 Lt. = P. pole P.A. 4361

5+31 - 9.1 Rt. = Cor. House ok

5+28 - 7 Rt. = end Conc. apron

5+22 - 16.8 Lt. = end Conc. Gar.

Rough edge - Can be Removed

5+03 - 7.8 Rt. = Beg. Conc. apron along House - Conc. floor

5+00

4+99 - 9.3 Rt. = end shed.

388.2	388.5	388.8	388.7	388.4
5.7	5.4	5.1	5.2	4.9
20	10		10	20
				15.5
				floor.
4.6	389.55			
11.1	432			
ground	10.7 = Conc.			
389.43	389.9	389.1	389.3	389.5
4.44	5.0	4.8	4.6	4.4
10.7	10		10	20
Conc.				
4.36				
10.7 = Conc.				
			389.3	
			4.6	
			9.1	
			ground	
			4.60	
			7 = apron	
389.07				389.43
4.80				4.44
16.8				9.1 = floor
			389.19	
			4.68	
			7.8	
				4.48
				9.3 = Cor House floor.
389	388.7	388.5	388.4	389.1
4.87	5.2	5.3	5.1	4.8
16.9	10		10	20
Conc.				
				388.8
				5.1
				9.3 = ground.
			389.87	

Soil Sample taken Sta. 4+00 in Alley

Lt.

±

Rt.

26

INDEXED  
*llw*  
 SEP 25 1951

7.07 386.80

Note Poor drainage along gutter

7+08.55' = S. curb Line - Sect. along curb.

Sect. along S.L. - Rods on edge of pave.

6+92.35' = S.L. El Cajon - edge A.C. is 0.3 North curbs end on S.L.

6+70

6+40

386.82 = S.W. B.P. 51<sup>st</sup> + El Cajon

386.54	387.30	386.62	387.22	386.71	386.73	386.65	387.25	386.47	387.13
6.93	6.57	7.19	6.59	7.16	7.14	7.22	6.62	7.40	6.74
95	Top	30	Top	10		10	Top	30	Top
gut.		gut.	2 Rods	gut.		gut.	2 Rods	gut.	
			387.50	387.09	386.93	387.12	387.45		
			6.42	6.78	6.94	6.75	6.42		
			Top	10.2		9.9	Top		
			end Rod.	gut.		gut.	end cb.		
			387.4	387.3	387.3	387.2	387.7		
			5.6	5.6	5.6	6.1	6.2		
			20	10	10	10	20		
			387.1	387.6	387.7	387.2	387.2		
			5.8	5.3	5.2	5.7	5.7		
			20	10		10	20		

393.87

X-Sec. Central Ave.

600' South of Redwood - to Thorn

11-26-51

W.O. 31907

Sommermejer

Begg

R. Sisson

W. Oltman

■ = Fd. Conc. Mon

□ = Fd 3/2 Hub

● = Fd L+T.

■ = Set 1x2 or 1x1 Post + Jack

F.B. 1739-P3A

T.P. 21-P54 + 32

Notes Reduced 11-29-51

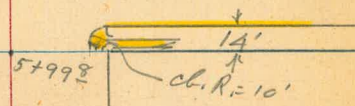
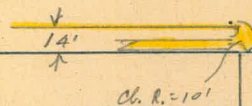
R. Barley

A.C. Pav.



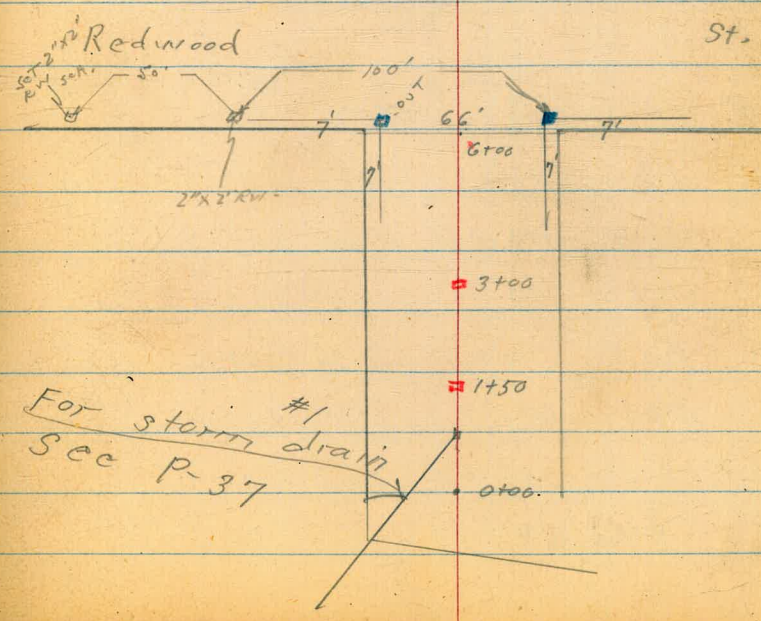
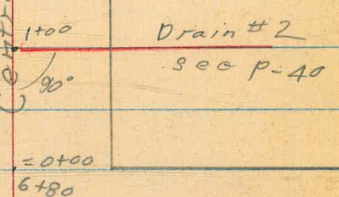
Thorn

St.



INDEXED  
Law  
NOV 27 1951

Central Ave.



# Central Ave

	T	HI	-	Elev
0+35				
	7.85	270.71	0.80	262.86
0+30	-38'	RT	= start 2' high	rock + Conc. wall
0+10	-37'	RT	= 8" wide E+W. Conc. wall.	3' high
0+00	= 600'	Sly	from Redwood St.	
T.P. #7	0.80	263.66	<del>4.86</del>	<del>262.86</del>
#6	1.61	267.67	12.88	266.06
#5	1.13	278.94	11.95	277.81
#4	2.03	289.76	12.19	287.73
#3	2.17	299.92	9.36	297.75
#2	4.68	307.11	1.96	307.43
T.P. #1	3.63	304.39	6.67	300.76
	2.31	307.43	-	305.12

L+

R+

28

240.5	242.2	255.1	257.7	259.1	259.4	262.2	264.2	264.5	266.5	266.5
30.2	28.5	15.6	13.0	11.0	11.3	8.5	6.5	6.2	4.2	4.2
50	40	9	7		13	24	30	38	39	40
270.71										Base + Grd.

241.6	242.9	252.9	257.5	258.4	259.7	264.7	264.5	266.4	266.4
22.1	20.8	10.8	6.2	5.3	4.0	1.0	10.8	2.7	2.7
50	40	35	20	15	29	37	38	40	40

229.7	240.3	241.6	244.7	244.6	248.2	252.7	253.6	259.7	
34.0	23.4	22.1	17.0	19.1	15.5	11.0	10.1	4.0	
60	54	40	25		25	40	50	37	
263.66									Base wall

on bent over pipe in conc. wall  
~~Conc. Base of Pipe opposite 0+10~~

1+50 POT

3+00 1x1 stub POT

5E7<sup>BM</sup> Redwood Mon. S.E. 7' Redwood + Central

N.W. 7' L+T Thorn + Central

F.B. 1739  
36

Central

T.P. 12.14 292.05 0.87 279.91  
 Check, P.O.T. 1+50 E. 277.81 2.97 277.81 ✓  
 1+45

276.6 277.3 278.5 278.1 278.6 278.6 278.7  
 4.2 3.5 2.3 2.7 2.2 2.2 2.1  
 50 40 23 15 40 50

1+15  
 T.P. 10.61 280.78 0.54 270.17

270.4 271.3 272.3 273.5 279.1 274.3 274.3  
 10.4 9.5 8.5 7.3 6.7 6.5 6.5  
 50 40 25 280.78 10 40 50

0+85 -38' RT. = E. & W. 3' high cobble wall

266.2 266.7 268.1 267.7 267.9 267.9 269.6 269.6 270.0  
 4.5 4.0 2.6 3.0 2.8 2.8 1.1 1.1 0.7  
 50 40 18 15 15 38 39 40 50  
 B.W. T.W.

0+65 -38' RT. = Cid 2' high rock & conc. wall

261.8 262.7 263.9 264.1 262.9 262.6 265.1 265.3 267.2 267.2  
 8.9 8.0 6.8 6.6 7.8 7.1 5.6 5.4 3.5 3.5  
 50 40 30 4 28 30 38 39 40  
 B.W. B.W. B.W.

0+50

256.0 257.4 259.9 260.4 258.3 261.5 259.0 259.3 260.9 261.4 264.5 266.5 266.5 266.5  
 14.7 13.3 10.8 10.3 12.4 7.2 11.7 11.4 7.8 7.5 6.2 4.2 4.2 4.2  
 50 40 32 16 13 7 5 7 23 38 39 40 50  
 B.W. B.W. +0.6

0+40

243.0 245.4 254.4 258.8 257.2 260.3 260.7 264.5 266.6 266.6 266.6  
 27.7 25.3 16.3 11.9 13.5 10.4 10.0 6.2 4.1 4.1 4.1  
 50 40 17 13 7 12 38 39 40 50  
 B.W. B.W. +0.6

270.71



Central

T.R. 6.72 307.43 2.03 300.71

4+00 40<sup>±</sup> Lt. = E + w. fence

3+50 39<sup>5</sup> Mt. = start post + wire fence.

3+00 = 1/4 P.O.T. C. tack 5.00 297.74 (297.75)

2+70

2+50

T.R. 11.28 302.74 0.59 291.46

2+00

1+60

301.6 301.1 300.7 300.3 300.7 300.7

1.1 1.6 2.0 2.4 2.0 2.0

40 20 20 24 24 40

300.2 299.7 299.4 298.7 298.7

2.5 3.0 3.3 4.0 4.0

40 20 20 20 40

298.5 298.1 297.8 297.2 296.0 295.7 295.8 294.8

4.2 4.6 4.9 5.5 6.7 7.5 6.9 7.9

40 20 10 12 18 30 40

296.7 296.4 294.6 293.1 292.4 291.5 292.1 291.4

6.0 6.3 8.1 9.6 10.3 11.2 10.6 11.3

40 15 14 15 32 33 40

294.9 294.4 291.8 291.3 290.7 289.9 289.4 289.9 289.8

7.8 8.3 10.9 11.4 12.0 12.8 13.3 12.8 13.4

40 25 10 302.74 16 17 34 36 40

285.8 285.7 283.8 283.9 284.5 283.8 283.4 284.3 283.9

6.3 6.4 8.3 8.2 7.6 8.3 8.7 7.8 8.2

40 20 10 20 21 39 40 50

279.4 280.2 280.8 280.7 279.8 280.3 280.0 280.0

12.7 11.9 11.3 11.4 12.3 11.8 12.1 12.1

50 40 10 6 20 40 50

292.05

Central

T.P. 1.98 306.14 3.27 304.16

5+90

5+79 41<sup>2</sup> Rt. = £ 3' wide conc. walk

5+50 40<sup>8</sup> Rt. = end post & wire fence

5+00 39<sup>1</sup> Lt. = end picket fence

4+95 38' Lt. = £ wide conc. walk

4+94 40<sup>3</sup> Rt. = £ 3' wide conc. walk

40<sup>3</sup> Rt. = line of fence

4+50 39<sup>5</sup> Lt. = start 3' high picket fence

4+40 40<sup>5</sup> Lt. = £ 11' wide conc. drive

£

304.4 304.4 304.0 304.1 303.2 303.4 302.9  
 3.0 3.0 3.4 3.3 4.2 4.0 4.5  
 40 18 17 25 26 40

303.16 302.78  
 4.27 4.65  
 41<sup>2</sup> 51<sup>2</sup>  
 walk

304.5 304.1 303.4 303.8 303.2 303.5 303.4  
 2.9 3.3 4.0 3.6 4.2 3.7 4.0  
 40 21 19 25 26 40

303.7 303.2 303.0 303.0 302.7 302.9 303.2  
 3.7 4.1 4.4 4.4 4.7 4.5 4.2  
 40 20 19 24 25 40

303.85 303.68 303.68  
 3.58 3.75 3.75  
 50 40 38

302.89 302.79  
 4.54 4.64  
 40<sup>3</sup> 50<sup>3</sup>  
 walk

302.7 302.2 302.0 301.7 302.1 302.3  
 4.7 5.2 5.4 5.7 5.3 5.1  
 40 20 23 24 40

303.10 302.68  
 4.33 4.75  
 65 40<sup>5</sup>  
 Gar. drive  
 floor

307.43

Central

T.P. 3.18 305.54 3.78 302.36  
 Rods on E of drive  
 1+20 4 1/2 Lt = E 1 1/2 wide conc. drive

1+00

0+50

Top - denotes top edge of fill.

0+10 Rt. = start fill

Also = 0+00 ahead.

6+80 = Nly fine Redwood

6+70

6+55

6+40

6+00 = sly. fine Redwood

LT  
W

RT  
E

32

302.69	302.39	302.49	300.33							
2.45	2.75	3.65	5.81							
91	71	56	415							
303.4	302.8	300.2	299.7	299.2	299.1	298.5	299.6	299.1	298.8	296.4
2.7	3.3	5.9	6.4	6.9	7.0	7.6	6.5	7.0	7.3	9.7
60	45	40	21	20		23	25	38	40	45
									TOP.	
303.9	303.5	300.9	299.9	299.7	299.3	299.3	298.7	299.4	298.7	296.8
2.2	2.6	5.2	6.2	6.4	6.8	6.8	7.4	6.7	7.4	9.3
60	45	40	38	19	18		24	28	40	45
									TOP	
302.2	301.5	299.7	299.7	299.5	299.7	299.2	299.5	299.1	297.5	
1.9	4.6	6.4	6.4	6.6	6.4	5.9	6.6	7.0	5.6	
60	40	36	18	15		25	26	40	45	
								TOP		
304.6	303.7	301.4	299.5	300.0	299.8	300.0	300.1	299.7	298.7	298.0
1.5	2.4	4.7	6.6	6.1	6.3	6.1	6.0	6.4	7.4	8.1
50	40	39	31	17	16		15	25	37	40
										50
304.5	304.0	301.6	300.5	300.3	300.4	300.8	300.4	299.5	296.4	
1.6	2.1	4.5	5.6	5.8	5.7	5.3	5.7	6.6	9.7	
50	40	36	17	15		15	26	40	50	
304.5	303.9	302.6	301.7	301.4	301.4	301.8	301.5	300.7	297.7	
1.6	2.2	3.5	4.4	4.7	4.7	4.3	4.6	5.4	8.4	
40	27	17	15			17	27	40	50	
304.9	304.4	302.9	302.4	302.4	302.7	302.3	302.0	298.5		
1.2	1.7	3.2	3.7	3.7	3.4	3.8	4.1	7.6		
60	40	15			16	29	40	60		
304.6	304.2	304.1	304.1	303.0	303.3	302.7	302.1	302.1		
1.5	1.9	2.0	2.0	3.1	2.8	3.4	3.4	4.0		
40	24	22		25	27	40	40	50		

306.14

Central

2+79 - 25<sup>3</sup> Lt. = end cb. inlet

2+73 21<sup>5</sup> Lt. = catch basin (see P-34)

2+67 25<sup>3</sup> Lt. = st. cb. inlet

289.8	289.8	298.5	300.4	300.51	299.48	300.4	299.5	300.5	300.5	297.9
15.7	15.7	7.0	5.1	5.83	6.06	5.1	6.0	5.0	5.0	7.6
60	56	40	36	25.2	25.2	23	23	25	40	45
				cc.					Top	

2+50

291.5	298.9	300.2	300.2	299.4	299.9	299.2	300.2	299.8	297.5
14.0	6.6	5.3	5.3	6.1	5.6	6.3	5.3	5.7	8.0
60	40	37	26	24	24	24	26	40	45
		Top						Top	

2+45

299.6	299.9	300.3	299.3	299.8	299.1	299.7	299.6	299.2	297.9
5.9	5.6	5.2	6.2	5.7	6.4	5.8	5.9	6.3	7.6
50	40	24	22	24	24	26	39	40	45
							Top		

Remove this pipe.  
corr. iron drain pipe thru burm.

2+02 - 27' Lt. = wly end of 33' long - 15" diam.

2+00 40' Lt. = start fill

300.3	299.9	299.5	299.6	298.5	300.0	299.3	297.1	295.6
5.2	5.6	6.0	5.9	7.0	5.5	6.2	8.4	7.9
40	25	22	24	26	37	40	45	
					Top			

1+78 40<sup>1</sup> Lt. = 3' wide conc. walk

300.62	300.26
4.92	5.28
50?	40?
← walk →	

1+50 41' Lt. = end granite block wall

300.1	302.2	300.2	300.0	299.6	299.4	298.8	299.9	299.5	298.1	295.8
5.4	3.3	5.3	5.5	5.9	6.1	6.7	5.6	6.0	7.4	7.7
41	41	40	25	22	23	25	37	40	45	
Base of wall	Top of wall						Top			

1+27 41' Lt. = start granite block wall

300.0	302.1	300.4
5.5	3.4	5.1
41	41	End
Base of wall	Top of wall	41

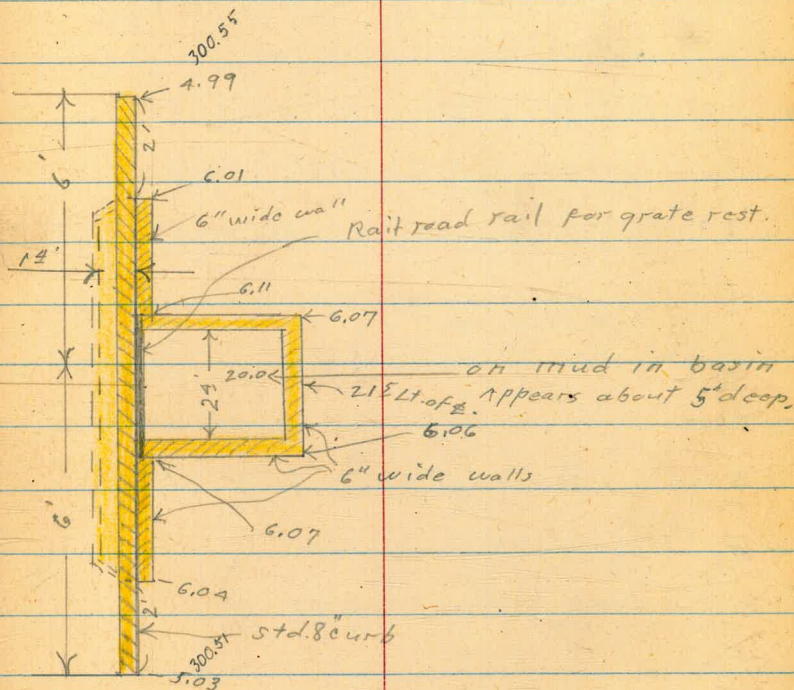
305.54

curb & under curb portion of  
box are settled & broken loose  
from main box. This portion  
should be rebuilt.

Main box is usable  
am unable to locate inlet  
or outlet.

± Sta = 2+73

If pipe data is wanted I  
suggest we have street dept.  
uncover pipe & clean on  
catch basin.



± 305.54

Central

4+88 39<sup>2</sup> Lt. = ± 3' wide conc. walk.  
 4+74 40<sup>8</sup> Rt. = end picket fence.  
 4+61 37<sup>2</sup> Lt. = end picket fence  
 4+50  
 4+42 37<sup>8</sup> Lt. = start picket fence  
 4+29 40<sup>7</sup> Rt. = start picket fence  
 4+09 38<sup>5</sup> Rt. = ± 3' wide conc. walk.

304.00  
 4.30 50  
 303.76  
 4.54 40  
 303.76  
 4.54 39.2

303.5  
 4.8 40  
 302.9  
 5.1 26  
 302.2  
 6.1 25  
 302.1  
 5.6 15  
 302.4  
 5.9 24  
 301.9  
 6.4 25  
 302.7  
 5.6 25  
 303.3  
 5.0 40

302.55  
 5.75 38.5  
 302.50  
 5.80 40  
 302.55  
 5.75 50

4+00

301.7  
 6.6 50  
 302.1  
 6.2 40  
 302.1  
 5.2 26  
 301.4  
 6.9 24  
 302.0  
 6.3 23  
 301.2  
 7.1 25  
 302.3  
 6.0 25  
 302.5  
 5.5 40  
 302.6  
 5.7 30

308.30

T.P. 6.35 308.30 3.59 301.95

3+50 = Approx. end of fill

300.5  
 5.0 50  
 301.4  
 4.1 40  
 301.9  
 3.6 25  
 300.8  
 4.7 23  
 301.6  
 3.9 23  
 300.5  
 5.0 23  
 301.9  
 3.6 24  
 302.1  
 3.4 40  
 300.3  
 5.2 45  
 Top

3+00

298.6  
 6.9 50  
 300.8  
 4.7 Top  
 301.0  
 4.5 25  
 299.8  
 5.7 24  
 301.0  
 4.5 23  
 299.8  
 5.7 25  
 301.0  
 4.5 25  
 301.0  
 4.5 40  
 298.6  
 6.9 45  
 Top

2+85

298.4  
 15.1 57  
 298.7  
 6.8 40  
 300.9  
 4.6 35  
 300.9  
 4.6 26  
 299.6  
 5.9 24  
 300.7  
 4.8 23  
 299.6  
 5.9 23  
 300.6  
 4.9 25  
 300.8  
 4.7 40  
 298.7  
 6.8 45  
 Top

305.54

Central

check starting B.M. 3.15 305.15 305.12  
 6+80± = start pave.

6+39± =  $\phi$  Thorn.

6+13± = sly. ob. line Thorn.

6+03±  $\left. \begin{matrix} 259 \text{ Lt.} \\ 253 \text{ Rt.} \end{matrix} \right\} = \text{Curb. B.C. (10' Rad.)}$

259 Rt. = start conc. ob.

5+99± = sly. line Thorn.

5+50

5+48 = Ad H. end same

5+42 Ad<sup>2</sup> Lt = start 3' high 18" wide

5+00

304.99 3.81 26 cl.	304.40 3.90 26 G.	304.76 3.54 17	305.06 3.24	304.99 3.31 17	304.80 3.50 26 G.	305.36 2.92 26 cl.
303.6 4.7 100	304.3 4.0 40	304.7 3.6 26	304.8 3.5	304.5 3.8 26	305.1 3.2 40	306.2 2.1 100
303.58 4.72 90 cl.	304.34 3.96 40 cl.	303.1 4.7 40 Gnd.	304.39 3.91 36 W.E.R.	303.9 4.4 26	304.5 3.8	304.0 4.3 26 cl.
					304.86 3.44 36 cl.	304.3 4.0 40 Gnd.
					304.84 3.46 40 cl.	305.10 2.60 90 cl.

304.44  
3.96  
252  
cl. B.C.

304.78  
3.52  
252  
cl. B.C.

305.04  
3.46  
383  
S.E. cor  
walk

304.9 3.4 40	304.61 3.69 382 S.W. cor. walk	304.50 3.80 33 S.E. cor walk	304.32 3.98 252 cl.	303.7 4.6 258	304.4 3.9	303.9 4.4 15	304.83 3.47 252 cl.	304.94 3.36 33 S.W. cor walk
--------------------	--	--	------------------------------	---------------------	--------------	--------------------	------------------------------	--

304.1 4.2 40	303.8 4.5 25	303.2 5.1 24	304.0 4.3	304.7 3.6 15	303.1 5.2 25	304.0 4.3 26	304.6 3.7 37	305.5 2.8 40
--------------------	--------------------	--------------------	--------------	--------------------	--------------------	--------------------	--------------------	--------------------

303.8 4.5 40	303.4 4.9 26	302.8 5.5 25	302.5 4.8	303.1 5.2 15	302.4 5.9 25	303.3 5.1 26	304.5 3.8 40
--------------------	--------------------	--------------------	--------------	--------------------	--------------------	--------------------	--------------------

308.30

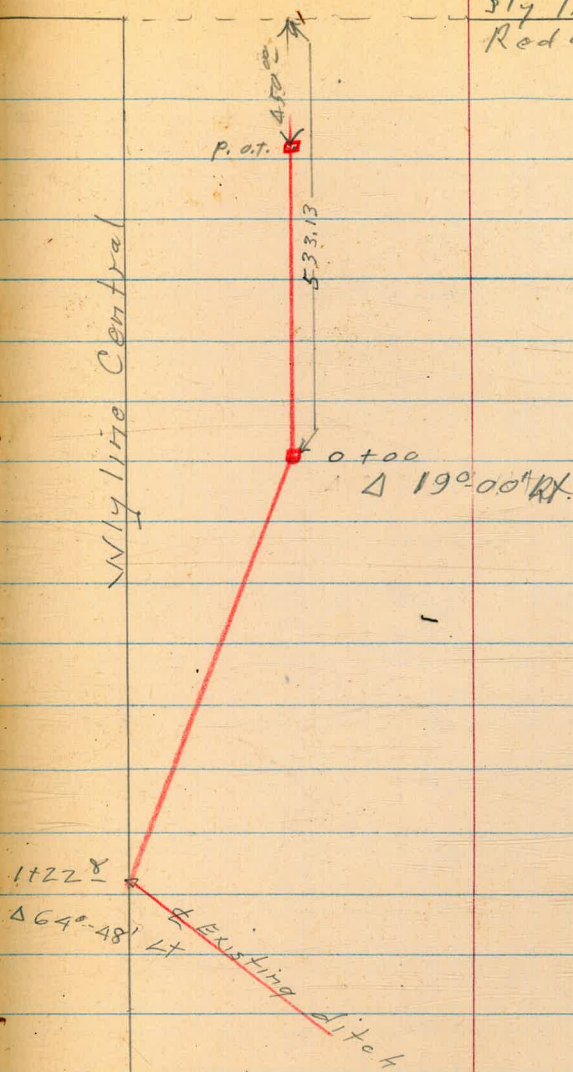
Central Ave.  
Prop. Storm drain #1

Also see P 27

12/28/57

37

slightly  
Redwood.





Central Ave.  
 Drain profile  
 sketch - P37

T.P. 0.64 239.11 12.54 238.77

0+65

T.P. 0.07 251.31 13.07 251.24

0+50

0+35

0+30

0+25

0+06

0+00 =  $\pm$  Central 533' south of Sly. line  
 Redwood

1.45 264.31 — 262.86

243.7

7.6

251.31

252.1

12.2

257.9

6.4

255.2

9.1

257.2

7.1

257.8

4.5

263.07

1.24

264.31

T.P. #7 - P-28

2+50

2+25

1+65

T.P. 1.11 215.65 13.10 214.54

1+50

1+25

existing ditch  
1+22<sup>8</sup> = Δ 64° 48' Lt. = start

1+20

1+00

T.P. 0.22 227.64 11.99 227.42

0+75

205.9  
7.8

207.7  
8.0

212.2  
3.5

215.65

214.5  
13.1

218.4 216.1 218.2  
9.2 11.5 9.4  
5 5

216.3  
11.3

217.7  
9.9

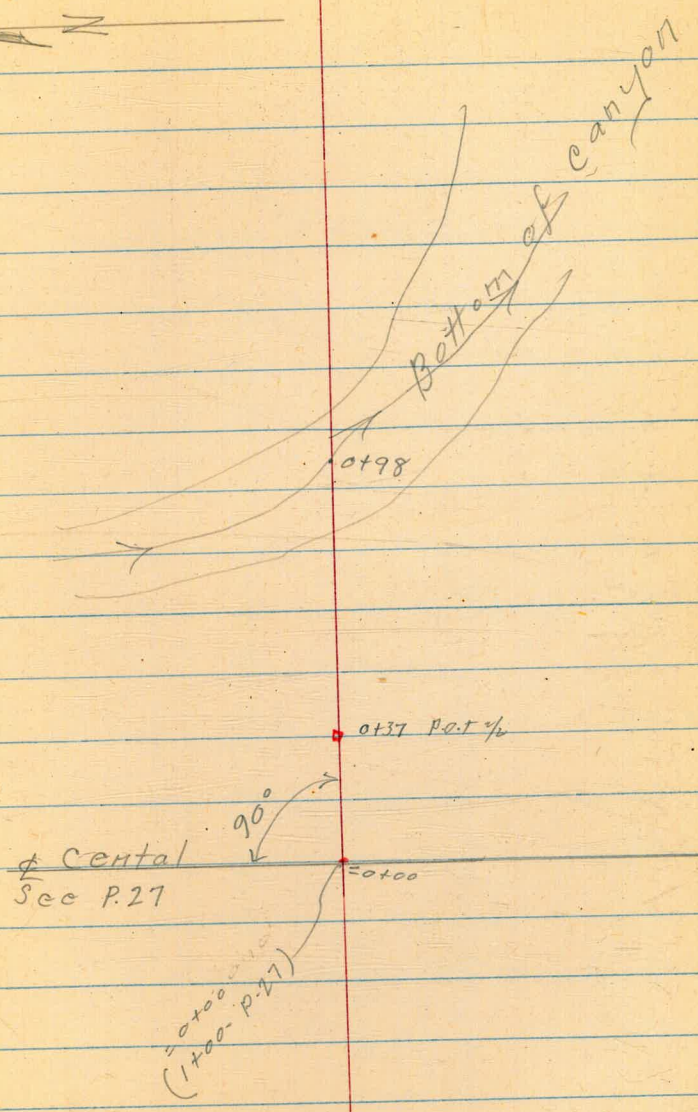
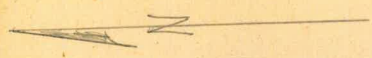
225.8  
11.8

227.64

231.3  
2.1

239.41

Central Ave  
Proposed Drain #2  
See P-27



Drain #2

0+60

285.8  
7.9

T.R

2.16 293.74 12.45 296.58

293.74

0+50

293.2  
10.8

0+40

299.0  
5.0

0+37 = 1/2 p.o.t.

299.13  
4.90

0+24

299.5  
4.5

0+23

298.5  
5.5

0+00 = ± Central

299.1  
4.9

0-20

299.4  
4.6  
304.03

1.60 304.03

302.43

T.P. #2 - P 28

Drain #2

±

42

1+15

273.30  
10.0

1+05

271.7  
12.0

1+02

269.2  
14.1

0+98 = cross wash

269.7  
14.1

0+90

272.30  
11.0

0+80

277.8  
5.5  
283.30

T.P. 2.14 283.30 / 12.58 281.16 /

282.14  
11.6

0+70

293.74

Cross Section Benson Ave  
66th St to Woodman St.

Encanto

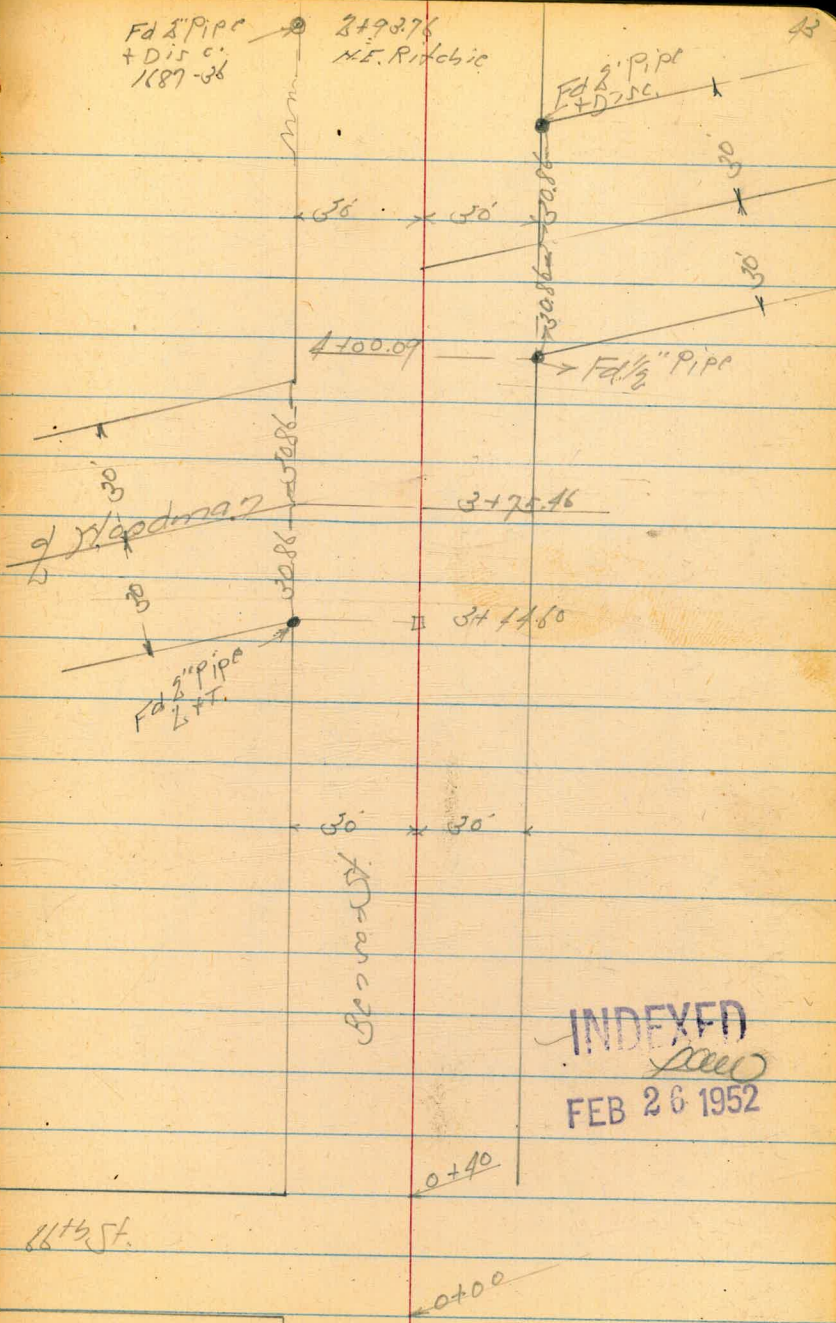
Feb. 25 52  
H. Simon  
Garber  
Rorer  
Fritz

No 25020

Ref. 1687-35

Fd 2" Pipe  
+ Dis c.  
1687-36

2+9376  
H.E. Ritchie



INDEXED  
FEB 26 1952

66th St.

0+40

0+00

Levels Benson St.

Lt. North

Rt. South 44

+50

3717  
50  
3718  
50  
3719  
50  
3715  
50  
370.9  
50  
370.3  
50  
370.3  
50

+10

217 Rt of L = 2 Post & Calc Pole # P172210

3729  
50  
3732  
50  
3731  
50  
3736  
50  
3739  
50  
3738  
50  
3739  
50

+70

3698  
86  
100  
3730  
50  
3726  
50  
3740  
50  
3744  
50  
3749  
50  
3749  
50  
3753  
50

+40

3677  
107  
130  
3708  
100  
3735  
50  
3741  
50  
3747  
50  
3749  
50  
3753  
50  
3757  
50  
3765  
50

0+0 = 146.66' to North

North  
at  
15' up  
3720  
50  
3727  
50  
3749  
50  
3753  
50  
3756  
50  
3759  
50  
3718  
50  
3771  
50  
3779  
50

	1287	378.36	0.99	365.77	.49
BM			9.80	356.68	SW 1/4 P. 1 L. 1 Benson & Woodman
	0.64	366.48	11.96	365.84	
	0.23	377.80	13.03	377.57	
BM	1.48	390.60		389.18	NE 1/4 P. 1 Benson & Ritchie 1887-86

37836

Benson St.

45

+40 223 Pt of 2 - 2 Post. + Tel/Pole # 412529 H

240

56	58	57	52	57	50	50
352.9	352.5	352.5	353.3	354.8	352.5	362.4
120	120	110	112	117	110	119
18	30	15	15	15	30	50
358.57						

TP 320 358.51 1219 355.21

+75

55	55	55	55	55	55	55
355.5	355.2	355.9	355.8	356.3	359.4	352.6
120	120	111	117	112	110	119
18	30	15	15	15	30	50

+58

55	55	55	55	55	55	55
357	356.4	357.5	358.3	358.0	359.3	362.6
120	120	110	117	112	110	119
18	30	15	15	30	50	50

+35

55	55	55	55	55	55	55
357.4	364.2	363.3	361.6	362.0	362.5	363.8
120	120	111	117	112	110	119
18	30	15	15	30	50	50

TP 201 367.50 12.87 365.49

367.50

240

55	55	55	55	55	55	55
368.3	368.1	367.5	366.5	365.1	364.7	365.3
120	120	111	117	112	110	119
18	30	15	15	30	50	50

+75

55	55	55	55	55	55	55
370.2	370.4	369.8	369.2	367.9	367.8	367.9
120	120	111	117	112	110	119
18	30	15	15	30	50	50

378.56

378.56



Benson St

lt

st

pt

18

For Check  
0+0 + 2  
2.61 251.90 1697.37  
25484

4+00.09 = 1/2 Woodman to South  
BM 184 256.67 5 1/2" Pipe  
Benson +  
Woodman

+75.46 = 1/2 Woodman to North

+64

+48

24 ft of 1/2" Tel. Pole # 420829 H

3+44.60

24 ft of 1/2" 12" Pepper Tree

358.51

350.85  
7.61  
40-11/16"  
HC

351.87  
6.64  
30-7/8"  
HC

353.36  
5.15  
15-7/8"  
HC

354.36  
4.15  
4-5/16"  
HC

357.67  
6.84  
7/8"  
HC

355.16  
7.79  
15"  
HC

356.1  
6.38  
30"  
HC

356.3  
2.2  
30"  
HC

360.7  
+22.26  
38"  
30"

361.1  
+22.26  
38"  
30"

346.11  
12.10  
100-7/8"  
HC

348.04  
10.47  
75-7/8"  
HC

350.25  
8.26  
15-5/16"  
HC

351.5  
7.30  
30"  
HC

352.8  
5.17  
15"  
HC

353.1  
6.31  
30"  
HC

354.1  
7.14  
15"  
HC

355.6  
7.29  
38"  
HC

356.3  
2.2  
30"  
HC

360.7  
+22.26  
38"  
30"

361.1  
+22.26  
38"  
30"

346.62  
11.89  
100-7/8"  
HC

348.31  
10.20  
75-7/8"  
HC

349.7  
8.88  
50"  
HC

351.2  
7.30  
30"  
HC

352.2  
5.17  
15"  
HC

352.7  
6.31  
30"  
HC

353.8  
4.7  
15"  
HC

355.7  
7.29  
38"  
HC

357  
30"  
HC

358.3  
+22.26  
38"  
30"

361.1  
+22.26  
38"  
30"

350.25  
8.26  
15-5/16"  
HC

351.6  
7.30  
30"  
HC

352.2  
5.17  
15"  
HC

352.1  
6.31  
30"  
HC

353.7  
7.14  
15"  
HC

354.9  
+0.4  
30"  
HC

353.0  
+1.5  
30"  
HC

358.51

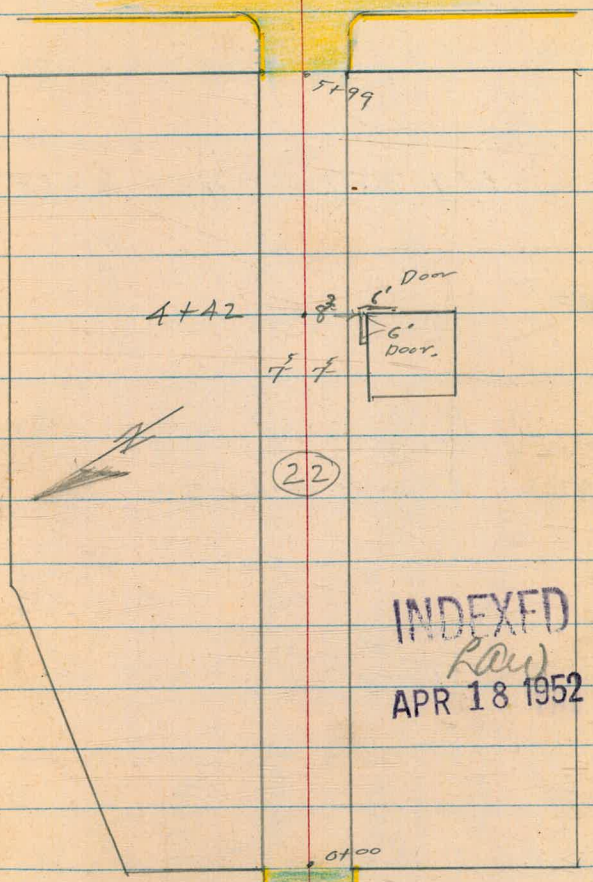
Alley BIK. 22. Ocean Beach Park.

A-17-52  
Sommermayor  
Begg &  
oltman

Grade Est't 25020

Ebers (Cone. Pavement.)

Rush job. No tie points available  
so split alley returns for line.  
Grade Est't, only there is  
no petition for improvement.



INDEXED  
RAW  
APR 18 1952

Alley BIK 22 O. B. Park.

0+87 10' Lt. = 3' wide Conc. walk

+ Apron.  
0+70 12' Rt. = Sing. Car. Conc. floor

T.P. 5.39 31.77 4.39 26.38

0+50

75 Rt } end alley curbs  
75 Lt }  
0+00 = End. A.C. Pavc.

0-07 75 Rt } E.C. 3' Rad. Cl. Ret.  
75 Lt }

0-10 = Ely. line Sunset Cliff Blvd

T.P. 5.67 30.77 5.84 25.10

5.32 30.94 — 25.62

2732  
A.45  
21  
walk

2716  
4.61  
11

2702

4.75  
94  
Apron

2712

4.65  
125  
Car.  
floor.

31.77

26.8

4.0  
75

26.4

4.4

26.8

4.0  
75

2579

5.48  
75  
06

2525

5.52  
75  
0

2497

5.80

2534

5.43  
75  
0

2554

5.43  
75  
06

2513

5.64  
75  
06

2473

6.04  
75  
0

2462

6.15

2481

5.96  
0

2522

5.55  
06  
75

2507

5.70  
22  
06 BC  
PA to W. Pt.  
Cuma Blvd.

2434

6.43  
22  
0

2411

6.7  
105  
06  
BC

2446

6.31  
105  
0

2448

6.29

2456

6.21  
105  
0

2523

5.54  
105  
06  
B.C.

2479

5.98  
0  
50

2545

5.32  
06  
50

30.77

S.W. B.P. Voltaire & Sunset Cliff Blvd

BIK22

1+45 16<sup>E</sup> Rt. =  $\pm$  sing. Cor. Conc. floor

1+36 16<sup>E</sup> Rt. =  $\pm$  sing. Cor. Conc. floor

1+29 15' Rt. =  $\pm$  3' wide Conc. walk

1+07 11<sup>8</sup> Lt. =  $\pm$  sing. Cor. Conc. floor

1+00

0+99 9<sup>8</sup> Rt. =  $\pm$  3' wide Conc. walk

0+94 - 9<sup>5</sup> Lt. =  $\pm$  sing. Cor. Conc. floor

$\pm$

49

2767

4.10

16<sup>E</sup>

Floor

2767

4.10

16<sup>E</sup>

Floor

2723

4.54

15'

2732

4.45

20

2719

4.58

11<sup>8</sup>

Floor

271

4.7

75

269

4.9

272

4.6

75

2731

4.46

98

walk

2737

4.40

12

2722

4.55

95

Floor

31.77

18' Lt.  
2+47: ~~±~~ double Gar. Conc. floor East

Entrance

2+44- 11<sup>5</sup> Rt. ~~±~~ Conc. Apron to Sing. Gar

Conc. Floor

T.P. 4.180 33.26 4.112 28.46

2+05 36' Rt. = ~~±~~ Sing. Gar. Dirt Floor

2+00

1+84 7<sup>5</sup> Lt. = ~~±~~ Conc. apron to Sing. Gar

Conc. floor

1+84

T.P. 5.119 32.58 4.38 27.39

1+50

28.85  
4.141  
18  
Floor

28.29  
4.97  
11<sup>5</sup>  
Apron  
28.60  
4.66  
13<sup>5</sup>  
Floor

33.26

27.9  
4.7  
36  
Floor

27.0  
4.6  
7<sup>5</sup>  
27.6  
5.0  
27.7  
4.9  
7<sup>5</sup>  
27.9  
4.7  
35

28.15  
4.40  
21  
Gar  
Floor  
27.73  
4.86  
7<sup>5</sup>  
Apron

32.58

27.6  
4.2  
7<sup>5</sup>  
27.3  
4.6  
27.5  
4.3  
7<sup>5</sup>

31.77

3+08- 11<sup>1</sup>/<sub>2</sub> Nt. =  $\pm$  Sing. Car dirt floor

290  
4.3  
114  
Floor

3+0A 8<sup>2</sup> Lt. = start Conc. apron to  
3 car. Car. Conc. floor

2952  
2900  
3.74  
123  
Floor  
4.26  
82  
Apron

3+00 8<sup>2</sup> Lt. =  $\pm$  10' wide Conc. walk

2936  
2896  
2888  
2877  
3.90  
25  
walk  
4.30  
82  
walk  
4.5  
75  
4.6  
4.3  
75

2+92- 12' Nt. =  $\pm$  Sing Car. Conc. floor

2896  
4.30  
12  
Floor

2+84 8<sup>2</sup> Lt. =  $\pm$  2' wide door into  
Ex. Garage

2886  
4.38  
82  
doorway

2+58 8<sup>2</sup> Nt. =  $\pm$  2' door into frame Bldg.

2877  
4.6  
82  
doorway

2+50

286  
4.7  
72  
283  
5.0  
284  
4.9  
75

33.26

3+71- 8<sup>2</sup> Lt. = end conc. apron to double Car.

3+65 - 13<sup>5</sup> Rt. = & sing. Car dirt floor

3+57 - 13<sup>5</sup> Rt. = & sing. Car. conc. floor

3+53 8<sup>1</sup> Lt. = conc. apron to double Car. end conc. patio + start

3+50

3+35 8<sup>2</sup> Lt. = start conc. patio

3+32 8<sup>2</sup> Lt. = end conc. apron to 3 Car

TIP 5.53 34.53 4.26 29.00  
33.26

2765 2752  
4.88 5.01  
15 83  
Car. floor Apron

2783  
5.12  
135  
Floor

2751  
5.02  
135  
Floor

2732 2725  
5.21 5.28  
15 87  
Car. floor

271 269  
5.14 5.6  
75 75  
272  
272  
5.3  
75

2723 2708  
5.30 5.45  
15 87

2757 2713  
4.96 5.40  
12 87  
Car. floor Apron

34.53

T.P. 5.46 36.20 3.79 30.74  
 A+71 16<sup>E</sup> Lt. = End A Car. Gar. + Apt. Bldg.

30.91  
 3.62  
 16<sup>E</sup>  
 Floor

A+60 12<sup>4</sup> Rt. = 4 Sing. Gar. dirt floor

24.7  
 3.8  
 12<sup>4</sup>  
 Floor

A+50

34.2  
 4.3  
 7<sup>E</sup>

34.3  
 4.2

34.3  
 4.2  
 7<sup>E</sup>

A+42 - 8<sup>3</sup> Rt. = door on corner - see P48  
 N.E. Cor. Sing. Gar. dirt floor

34.2  
 4.3  
 8<sup>3</sup>  
 Floor

A+29 - 16<sup>E</sup> Lt. = under Const.  
 A Car. Gar. + Apt. Bldg.

30.91  
 3.62  
 16<sup>E</sup>  
 Floor

A+00

29.8  
 4.7  
 7<sup>E</sup>

29.9  
 5.1

29.7  
 4.8  
 7<sup>E</sup>

3+95 - 17' Lt. = doors East Front  
 Sing. Gar.

29.1  
 4.8  
 17  
 dirt

34.53





Clark  
Shephard  
Bruner  
Bryson

5-20-52  
W.O. 25020

X-SECT.  
ALLEY B'K 4 Golden Park  
Bangor St. to Golden Park



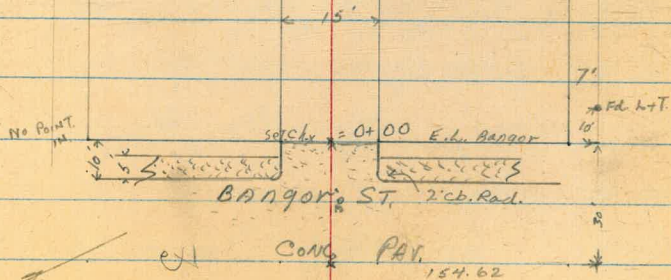
55

Reduced  
for  
5-29-52

Harbor View

Lucinda

INDEXED  
llw  
MAY 28 1952



0+50

0+49

7.0 RT. & pole #PA 3288

0+36

9.3 RT. END gar.

0+26

7.5 RT. & Deadman

0+18

9.2 RT. Beg gar. Faces Bangor ST.  
10.4 RT to Floor

0+10

0+00

0-10 F.C.B. LINE

0-30 = & Bangor

T.P. 4.10 270.66 7.60 266.56

4.68 274.16 269.48 N/E 10.7' L+T Lucinda + Bangor

LT. 265.1 265.3 265.6 265.8 RT. 266.7  
5.6 5.4 5.1 4.9 4.0  
1.5 7.5 7.5 7.5 1.5

268.35

2.31  
10.4  
Floor

266.6 266.7 266.7 267.0 267.6 267.6  
4.1 4.0 4.0 3.7 3.1 3.1  
1.5 7.5 7.5 3 7.5 1.0

266.05 265.76 265.72 266.08 266.55

4.61 4.90 4.74 4.58 4.11  
7.50 7.50 Edge 7.60 7.60  
CB G P.V. G CB

260.08 263.64 263.13 265.44 264.93 265.03 265.19 266.57 266.10 266.14 266.77 267.26 267.94  
10.58 7.62 7.53 6.22 5.73 5.63 5.47 5.09 4.96 4.52 3.89 3.40 2.72 2.22  
100 50 50 9.50 9.50 7.50 7.50 9.50 9.50 5.0 5.0 100 100  
C. Drive CB G CB G P.I. G CB G CB G CB

260.62 263.47 265.59 267.48 268.23  
10.04 7.19 5.07 3.18 2.43  
100 50 CONC. Pav. 50 100

270.66



Alley BIK 4

2+60

2+50

T.P. 0.45 255.58 11.63 255.13

2+04 7.5 LT & 3' BRICK WALK

2+00

1+76 8.5 RT & Pole; PA 3240

1+55 8.5 RT & Deadman

1+50 7.1 LT Beg 3' Steel wire Fence

1+48 7.1 LT. END CON. DRIVE 55' LT apr

1+32 6.9 LT Beg CONC DR. 55' LT 2-Seg apr.

58

LT.

RT

25-1.1 250.1 250.1 249.9 249.9

4.5 5.5 5.5 5.7 5.7  
20 7.5 7.5 7.5 20

249.9 251.1 251.3 251.5 257.3  
5.7 4.5 4.3 4.1 4.3  
30 7.5 7.5 7.5 30

255.58

254.06

254.40

12.70  
40  
WALK

12.36  
7.5  
BRICK  
WALK

254.7 255.0 255.1 255.1 255.8  
12.1 11.8 11.7 11.7 11.0  
40 7.5 7.5 7.5 30

256.8 258.8 258.5 258.7 260.2  
10.0 8.0 8.3 8.1 6.6  
50 7.5 7.5 7.5 50

257.72 257.62 259.01  
9.04 7.14 7.75  
55 Floor 47.5 BIK 7.1 apron

257.72 257.65 259.75  
9.04 9.11 7.01  
55 Floor 47.5 6.9 apron

266.76

Alley. BIK 4

3430

3418

3401

3400

219950

2199

T.P.

2798

2795

2780

88 RT Beg CONC curb 8" wide

88 RT END CONC. DRIVE

8.9' Beg. CONC. DRIVE

7.9 RT END CONC Gutter + CB Ret.

7.6 RT 3' STONE WALL  $\perp$  to Alley

7.6 LT. END 5 FT. Steel Fence

0.19 244.20 11.57 244.01

7.5 RT  $\phi$  Pole # PA 32 30

4.80 RT. Beg Conc. CB Ret + gutter  
(8" curb) 9" gutter

Beg. Cold-Lay (AR. width 9')

LT.  $\phi$  RT

289.9 239.0 237.10 236.96 236.71 236.41 236.17 236.6 236.12 236.1

5.3 5.2 7.10 7.24 7.77 7.77 7.43 7.6 7.48 9.5

20 7.5 4 3.5 4.3 4.3 7.5 12.3 12.5

241.1 241.7 241.7 239.59 239.65 240.05 240.36 240.17 240.97

3.1 2.5 2.5 4.61 4.55 4.15 3.84 3.23

3.0 7.5 6.5 4.0 6.5 7.5 8.8 28.8

Edge Cold-Lay Edge Cold-Lay Edge CONC. Floor

244.60 243.70 242.77 242.49 242.49 243.11 243.10 244.70

+0.40 0.5 1.43 1.71 1.71 1.09 1.10 +0.30 3.04

3.0 7.5 4 5.7 6.7 7.5 1.5 15 0.7 WALL

Edge Cold-Lay G TRCB TRCB TR.WAN OR.WALL

241.74 244.40 241.86 242.49 241.36 241.01

2.34 1.71 2.84 3.17

7.9 7.9 8.9 28.3

G.9 CB CONC Floor

Drive Drive RT.

241.74 244.40 2.46 +.20 7.6 7.6 TR.WAN

248.1 247.1 246.98 246.70 246.88 246.88 246.88 246.88 246.88 246.88

7.5 8.5 8.60 8.88 9.10 9.2 8.5 8.7

20 7.5 4.0 Edge 5. 7.5 10 20

255.58

Alley BIK 4

3+88

T.P. 0.84 223.39 10.76 222.55

3+75

T.P. 1.27 233.31 12.16 232.04

3+50

3+49

4.8 RT Bay Rock Wall (Loose Rock + Rubble)  
6.20 RT & 8" Tree

3+45

4.5 RT & 6.5' Conc. Walk 3.5 RT. to 1st Step (Stone)

3+42

4.50 RT end 8" Curb + Wall  
(misc)

10

229.9  
230.1  
223.33  
223.34  
223.21  
230.3  
231.4

46.5  
20

46.7  
7.5

-0.06  
edge C. lay

-0.05

-0.18  
5.5  
edge C. LAY  
+ 8" WALK (Rubble + Rock)

16.7  
7.5  
TP WALL

+8.0  
20

223.39

231.8  
231.7  
226.94  
226.74  
226.67  
232.41  
232.2

1.5  
20

1.6  
7.5

6.37  
4  
Edge  
Cold Lay

6.57

6.64  
4.5  
Edge  
Cold Lay  
TP WALL

0.90  
7.5  
TP WALL

1.1  
20

235.6  
235.8  
233.31  
232.81  
232.66  
231.89  
234.1  
234.1  
234.15

8.6  
20

8.4  
7.5

11.39  
4.0  
Edge  
Cold Lay

11.54

12.31  
4.5  
Edge Cold-lay  
RT. Rock Wall

10.1  
5.0  
TP WALL

10.1  
7.5

10.05  
9.25  
Edge 1.5  
CONC. WALK  
#1000

233.86  
234.32  
234.34  
234.40

10.34  
3.5  
Stone  
Step.

9.88  
4.5  
CONC.  
WALK

9.80  
7.5  
CONC.  
WALK

12.7

233.98  
233.98

10.32  
4.5  
B. WALL

8.22  
4.5  
TP WALL

244.20

T.P. 11.12 191.18 = 191.19

N/E L. Light C.T. MARTINEZ + Harbor View Dr.

T.P. 0.48 202.30 10.36 201.82

T.P. 0.55 212.18 11.76 211.63

4+29.79 E Golden Park

4+14.79 W.Cb L. Golden Park

4+08.79 9' RT END Rubble wall

4+04.75 Edge Conc. Pav. + cb. Ret. Golden Park

4+03.75 S.D. GAS M.H. 1.5' Diam. 4.5' LT.

3+99.79 W.L. Golden Park

218.47 217.82 217.94 218.21 217.09 219.02

5.57 5.45 5.18 6.30 7.37

100 50 Conc Pav. 50 100

4.92 5.40 7.77 5.26 7.76 5.20 5.19 5.11 5.05 5.07 4.54 6.55 5.80 9.30 8.77

100 100 50 50 9.5 9.5 7.5 Conc 7.5 7.5 7.5 50 50 100 100

CB G CB G CB G R1 CB G CB G CB G CB G

218.54 218.78 219.07 219.04 218.72 219.04 218.97 219.03

4.55 4.61 4.32 4.35 4.67 4.35 4.42 4.36

7.5 7.5 7.5 Cold Conc. Pav. 7.7 7.5 7.5

CB G Cold Lay 4.01 Cold Lay G CB

228.19 228.69 220.72 220.57 220.47 220.7 225.4

+ 4.8 + 5.3 2.67 2.82 2.92 2.7 + 2.0 2.17

20 7.5 3 Edg 6.4 7.0 7.3 20

Cilag 223.39 Edge 57. Wall (Rubble) C. Lay

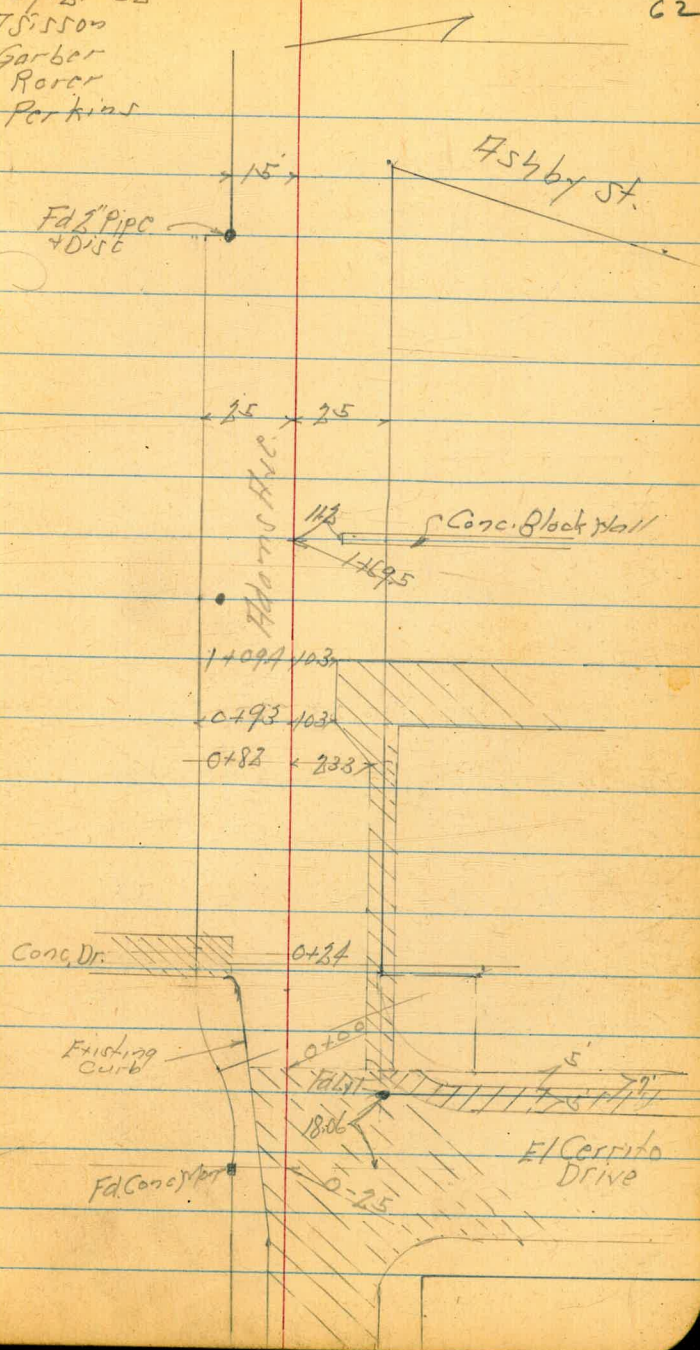


Cross Section Adams Ave.  
 El Cerrito Drive to Abbey St.  
 Levels next page

INDEXED  
 Subm  
 AUG 22 1952

Aug. 21-52  
 H. Sisson  
 Garber  
 Rorer  
 Perkins

62



Lt=North

L

Rt=South

+35 145 Lt of  $\frac{1}{2}$  -  $\frac{1}{2}$  Top Pole #5628164

+24 =  $\frac{1}{2}$  10' Conc Drive on Lt.

+17

+02 = Grade Break Conc Walk on Rt.

+08 205 Rt of  $\frac{1}{2}$  Hwy 8 Poplar Tree 3" Dia

0+0 = East Line of El Cerrito to South

0-10 = East Curb Line El Cerrito Drive

0-25 =  $\frac{1}{2}$  El Cerrito to South

F&B.P.

BM

0.97 459.87

347 456.40

458.90 SFTOP F&B Adams El Cerrito

SFTOP CB

459.87

454.97	454.66	454.80	455.39	454.78	455.5	456.4	456.76	456.74	456.93
190	521	507	449	509	47	3.5	3.21	3.12	2.91
378	29	25	16	11.5	18	22.6	25.7	29.5	31.1
SFTOP Conc Floor					SFTOP Conc Walk				
455.48					455.0				
4.39					4.9				
11.7					11.6				
SFTOP Conc Drive					SFTOP Conc Walk				
455.0					455.6				
4.9					4.30				
2.5					10.2				
455.5					455.9				
4.0					3.57				
2.2					2.34				
SFTOP Conc Walk					SFTOP Conc Walk				
456.0					455.5				
4.7					4.31				
2.6					10.5				
SFTOP Conc Walk					SFTOP Conc Walk				
456.0					455.5				
4.7					4.31				
2.6					10.5				
SFTOP Conc Walk					SFTOP Conc Walk				
455.0					455.6				
4.9					4.26				
2.5					1.87				
SFTOP Conc Walk					SFTOP Conc Walk				
455.0					455.39				
4.9					4.06				
2.5					3.98				
SFTOP Conc Walk					SFTOP Conc Walk				
455.3					455.81				
4.6					3.90				
2.5					2.18				
SFTOP Conc Walk					SFTOP Conc Walk				

Adams Ave

+69.5

+50

+25

1+09.4

+93

+82

+81

213 Rt 01/7-F4 8" Poplar TRCC

0+50

459.87

LT

RT

LT

445.4  
100  
50  
112  
25  
448.7  
100  
50  
449.9  
100  
50

446.9  
100  
50  
451.0  
82  
25  
451.7  
82  
15  
70

447.9  
100  
50  
452.0  
79  
25  
452.2  
77  
20  
453.5  
6.4

449.6  
100  
50  
452.6  
73  
25  
453.6  
63  
18  
453.4  
65  
12  
454.2  
57

451.9  
80  
50  
453.3  
66  
25  
454.4  
55  
15  
454.3  
56  
9  
455.2  
47

450.65 RT  
922  
1120  
7/16  
112  
8.7  
25  
8.7  
25  
451.2  
452.71  
451.2  
452.71

451.4  
81  
452.5  
74  
15  
453.2  
67  
25  
453.4  
69  
15  
453.4  
69  
15

452.9  
70  
453.5  
64  
15  
454.3  
56  
25  
455.22  
41.4  
2+1/2  
1/4  
Bldr  
plank

454.29  
5.50  
103  
454.91  
1.96  
15  
455.51  
136  
333  
2+1/2  
1/4  
Garden  
Floor

454.84  
5.02  
10.3  
455.09  
1.78  
25  
455.53  
134  
333  
2+1/2  
1/4  
Garden  
Floor

455.4  
1.5  
12  
455.59  
4.28  
233  
455.59  
4.28  
25  
455.61  
4.26  
29.8  
2+1/2  
1/4  
Garden  
Floor

456.0  
3.9  
17  
456.38  
3.49  
228  
456.42  
3.45  
25  
456.50  
3.37  
29.8  
2+1/2  
1/4  
Garden  
Floor

459.87

Adams H.C.

4

5

6

65

TP 0.25 427.44 12.90 427.19

340

421.5 423.11 423.6 424.4 426.4 427.5 428.6 429.6 428.7

186 170 165 157 157 146 115 105 119

45 38 25 15 15 15 25 32 40

NEW TOP

+75

426.8 428.5 429.1 429.8 431.3 431.0 431.5

132 116 110 103 88 91 86

50 25 15 15 15 25 40

+50

431.8 433.1 433.5 434.5 434.0 434.0 433.9

82 70 66 56 51 51 52

50 25 15 15 25 25 40

TP 0.22 440.09 12.62 439.87

440.09

+25

436.1 438.6 439.1 439.5 440.8 440.2 441.9 441.6

164 139 134 130 117 123 107 109

50 25 15 15 15 25 33 40

240

438.7 442.6 443.3 444.5 445.3 446.9 446.2

130 99 92 80 72 56 63

50 25 15 15 25 25 40

+75

442.6 445.7 447.0 448.8 449.8 450.3 450.7

99 68 55 57 27 22 18

50 25 15 15 15 25 40

TP 563 452.49 12.01 446.86

452.49

459.87

INDEXED

AUG 22 1952

LA

Z

PA

66

430

24 12

427.44

409.4	416.7	416.0	413.77	412.0	412.6	412.1
180	10.7	11.4	13.67	15.1	14.8	15.2
70 XEN	50 XEN	25 XEN	15.23 XEN	15.1 XEN	14.8 XEN	15.2 XEN

417.2	422.9	423.6	425.7	423.0	419.9	420.3
82	45	82	17	14	26	26
60	25	15	17	25	25	10
			17 XEN	25 XEN	25 XEN	26 XEN

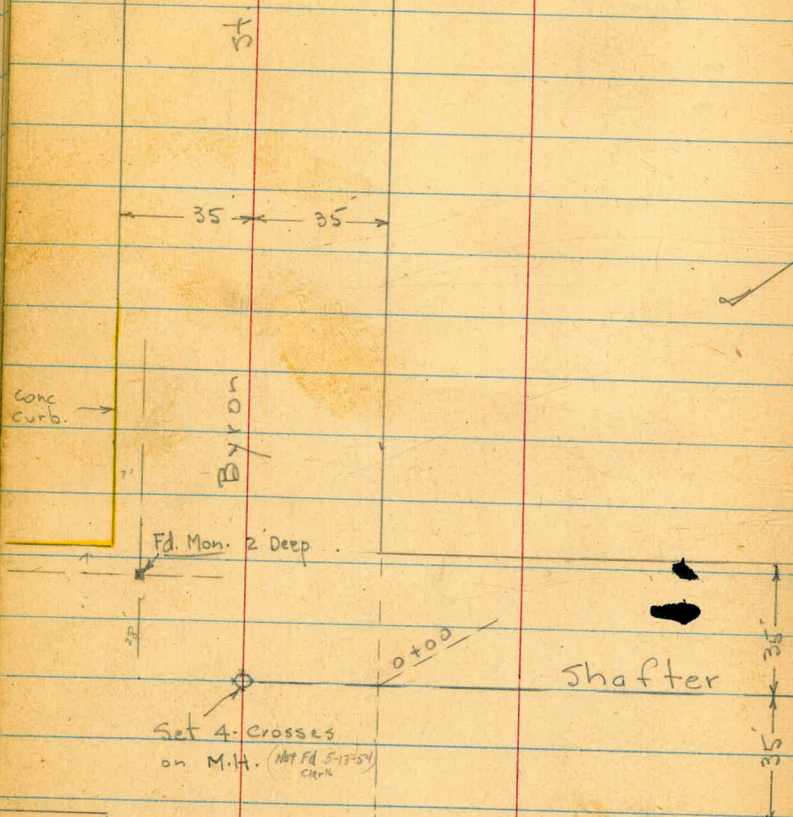
427.44

X-Sect. Carleton - Scott to E. of Shafter  
 X-Sect. Shafter - Byron to Carleton

#6511

9-10-52 - 700.

W.O. 25020



**Note**  
 Green added  
 to sketch  
 6/1/53  
 C.H.S.

w.l. Scott. 7

28'

Fd. Id. ct. 67  
 = B.M.

Scott

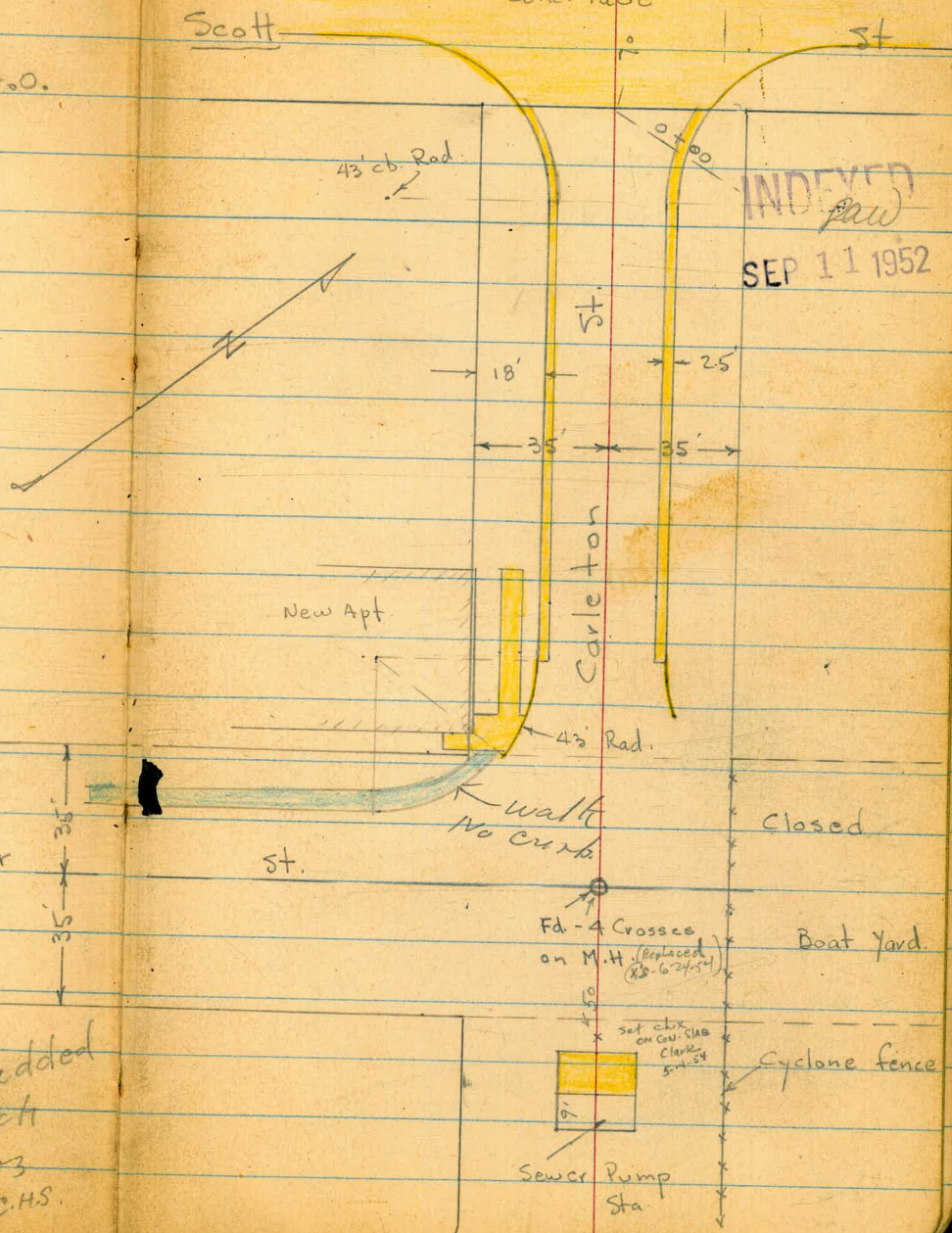
Conc. Pavc

st

4 1/2' cb. Rad.

INDEXED  
*raw*

SEP 11 1952



X-Section Shafter - Byron to Carleton.

See Sketch - P. 67

Set. B.M. =  $\square$  in S.W. Cor. Conc. Slab of Sewer Pump Sta. 0.54

1+99.97 = S.L. Carleton

1+50

39.6 Lt. = Cor. of Conc. slab to New Apt. Bldg.

1+38 - 37 Lt. = Ely. of 3' conc. slab = Bot. of Steps

1+00

Note  
Addition levels p-73

0+50

0+00 = N.L. Byron

0-35 =  $\pm$

0-70 = S.L. Byron

on N.E. Cor.

Set. B.M. on 2" Harbor Dept. pipe 1.38

B.M. = S.W. B.P. 2.57

Canyon + Shafter

Lt.  $\pm$  Rt.

1.68 1.3  
36 = 35  
Ely. of Conc. Well at Bot. of steps 1.0 1.1  
35

2.0 1.9  
40 = By Apt. 35 1.2 1.1  
35

2.54 2.60 2.50 = Top Conc. 40 39.6 37' 5 steps.  
Edge of slab. Cor.

1.6 1.3 1.5  
35 35

1.8 1.3 1.4  
35 35

1.6 1.0 1.3  
35 35

1.8 1.5 1.06 0.9 0.8  
100 35 on M.H. 35 100  
E. Cross

2.75 2.25 1.2 1.4  
70 35 = Top of Conc. curb along paved yard. 35

Actual Elev. shown

x-Sect. Carleton. Scott to E. of Shafter.  
sketch. - P. 67.

2+75 = P.C. of 43' Rad. Ret. - end Conc. gut.

2+53 = 34.5' Rt. = Cor. of New Bldg. + Beg. New walk.

2+50

2+10

1+60

Note  
Additional Levels P-75

1+00

0+50

0+25 = P.C. of 43' Rad. Returns.

0+00 = E.L. of Scott. = edge of Conc. pave

Set B.M. = N.W. 7 ct. Scott & Carleton

6.33

1.28	0.43	0.69	1.1	0.67	0.61	1.40
Top	gut.	14.5		14.3	16.9	Top

1.70	0.89	1.02	1.4	1.72	1.81	2.0
Top	16.9	14.3		22.5 walk	27.5	34.5 = by App.
	gut.	edge		1.09	0.89	1.67
				14.5	17	Top
				edge	gut.	

2.21	1.41	1.60	2.1	1.68	1.46	2.28
Top	17	14.4		14.4	17	Top
	gut.				gut.	

2.89	2.10	2.32	3.0	2.47	2.27	3.08
Top	17	14.5		14.5	17	Top
	gut.				gut.	

3.72	2.94	3.12	3.7	3.41	3.24	4.04
Top	16.9	14.4		14.5	17	Top
	gut.				gut.	

4.43	3.72	3.84	4.3	4.21	3.86	4.77
Top	17	14.5		14.4	17	Top
	gut.				gut.	

4.71	4.16	4.32	4.5	4.54	4.13	5.16
Top	16.9	14.5		14.5	17	Top
	gut.	edge		edge of Conc. gut.	gut.	

5.07	4.36	4.63	5.03	5.14	5.13	5.54
Top	24.6	17		17	24.8	Top
	gut.				gut.	

Actual Elev. shown.



to Refrig. + Elect. shop.  
Dirt Drive Cont. on N. side of sta.

0 + 19.7 = wly. of Bldg.

0 + 08.8 = wly. of Conc. Slab = to Sewer Pump  
sta.

70' E. = E.L. = 0 + 100

35' E. =  $\pm$  = on Sewer M.H.

2 + 99.82 = w.L. shafter. = end cb. on Rt.

2 + 94.9 - 34.5' Rt. = end. Bldg.

2 + 90.3 19.6' Lt. = end curb - No Conc. gut

Lt.

$\leftarrow$

Rt.

70

0.55	0.56	0.56
10.4 = Cor. on Conc. Bldg.		10.4 = Cor. Bldg on Conc.

0.53	0.57	0.54
10.3 = Cor.		10.4 = Cor. = B.M.

0.4	0.6	1.2
35		35

-0.7	0.3	1.41	1.0
45	35	E. Cross	35
in Boat yard.			

0.8	1.1	1.1	1.04	1.3
35	17		25	35
			Top = end cb.	

1.06	1.41	2.66
22.1	28 =	34.5
Top cb.	Brk in walk	floor. at Cor.

1.08  
Top cb.





Shafter St.  
Additional levels

W.O.# 32254

6-1-53  
C.H.S.  
Begg  
parts  
no curb  
B.C.L.T. walk

sketch - P. 67.  
= start 43' of Rad  
= end of 1 1/2' curve

1488E 19' RT?

1487 21' RT? in walk.  
= B.C. RT. of 1 3/4' Rad

1475

1450

1400 21' Lt. = start conc walk

0450

0400 Nly. Byron

See also

INDEXED

JUN 4 1953

1106  
197  
walk

1114  
21

1132 1121 113  
26 21  
on walk

2A 1127 114 112 112 111 117 111  
35 21 21 13 20 25 35  
walk

116 1151 1143 114 114 112 116 115  
35 26 21 20 18 20 35  
walk

118 114 113 112 114  
35 25 15 35

- 4.2± 1.3 1.3  
248 30 35  
I.E.  
Box

1.4 1.2 1.0 1.6 1.4 0.84  
35 14 15 20 248  
On site

Shafter

74

box Cutvent runs to East  
& box.

2+04<sup>4</sup> 24<sup>6</sup> RT. = ctr. 4' x 5' Grate

0.05	-4.6 t
24 <sup>6</sup>	24 <sup>6</sup>
Grate	I.E. Box

1799<sup>97</sup> = Sly. Carlton

1.07	0.6	0.4	0.2	1.4	1.6
26	26		25	30	35
on walk	Grid				

Carlton St.  
Additional Levels  
Sketch - Page 67

INDEXED  
LOW  
JUN 4 1958

1+22 17' RT = 35' wide conc. Drive

2.74 3.75 3.83  
17 22 35

1+00 17<sup>2</sup> RT = start conc. slab.

3.8 3.8 2.9 3.7 3.6  
35 18 17 10

0+79 18<sup>5</sup> RT = 16" pole # P2867

3.5 3.4 4.05 4.05  
10 17 17 35  
on slab

0+86 17<sup>2</sup> Lt = end driveway ramp

3.88 3.21  
21 17  
on drive

0+75 17<sup>2</sup> RT = end walk & slab

4.50 4.81  
17 35  
on slab

21<sup>3</sup> Lt. = Nly. edge ramp.  
0+64 17' Lt. = start drive way ramp

3.77 3.44  
21 17  
Ramp

0+50 { 17<sup>2</sup> Lt. = end 6' wide comb. walk + curb.  
17<sup>2</sup> RT = start conc. walk & slab

5.0  
35

4.70 4.47 3.7 4.2 4.3 4.3 4.0 4.83 5.14  
23 17 17 10 10 17 17 35  
walk on slab

0+25

4.2 4.5 4.5 4.7 4.5  
17 10 10 17

= Ely line Scott.  
0+00 = end conc. pave.

4.5 4.6 5.0 5.1 5.1  
24 17 17 24 8

Also see P. 69-70

Carlton

⊕

76

1.77 1.84 2.12  
22.3 27.3 35  
walk oval.

2+51 22<sup>3</sup> Rt = start 5' wide conc. walk

1.1 1.5 1.4 1.3 1.0 1.7  
17 10 10 17. 18

2+01 19<sup>5</sup> Rt. = 12" pole # J.P. 2841

2.1 2.89  
35 35  
end to slab  
east

2+00 { 17<sup>2</sup> Rt. = end conc. slab

1.7 2.2 2.2 2.2 1.8 2.52  
17 9 9 17 17.2  
slab +  
end  
to east

1+95 17<sup>2</sup> Lt. = start 5' wide conc walk

2.2 2.54 2.44 1.7 2.3 2.3 2.0  
35 23 17.2 9 17  
walk  
end.

1+80 17 Lt. = 30' wide conc. drive

1.24 2.30 1.95  
35 23 17  
on drive

1+76 17 Rt. = 35' wide conc. drive

2.09 2.92 3.05  
17 22 35  
on drive

1+65

2.0 2.7 2.8 2.0 2.6 2.7 2.8 2.2  
35 30 18 17 9 15 17

1+50

2.7 3.1 2.4 3.0 3.0 2.9 2.4  
35 18 17 9 8 17

Carlton

wly  
Fly)

0+29 = E Fly. line Bldg. (see P 70 for

<sup>3</sup>2+69<sup>82</sup> } = Fly. line Shafter

<sup>3</sup>2+69- 19<sup>2</sup> RT = ctr. Fire Hydr.

<sup>3</sup>2+50

<sup>3</sup>2+34<sup>82</sup> ≠ Shafter

25<sup>2</sup> RT = N.E. 1/4 edge - 5' walk

2+99<sup>82</sup> = wly shafter.

2+90<sup>2</sup> 19<sup>2</sup> Lt. = end cl. (Page 70)

2+85 = 18<sup>5</sup> Lt. = end conc walk

14<sup>5</sup> RT = start 3' of gutter to come out.  
14<sup>5</sup> Lt. = start A' gutter to come out.  
gutter  
14<sup>5</sup> RT } = end of good conc.  
14<sup>5</sup> Lt. }

2+75 } 17<sup>1</sup> RT } = cl. B.C.  
17<sup>1</sup> Lt. }

±

0.4 0.5 1.4 1.6  
35 25 35

0.3 0.7 0.8 0.2  
35 20 35

0.2 1.4 0.2 0.4  
35 25 35

0.6 1.1 1.0 0.6 1.08  
35 9 25 25<sup>7</sup>  
walk

1.27 1.14  
23 18<sup>5</sup>  
on walk

1.33 0.53 0.75 1.1 1.4 0.9 0.75 0.60 1.10  
17 17 14<sup>5</sup> 10 10 14<sup>5</sup> 17 17  
CG gutter gutter cl



Carlton St.

19

78

19' x 31' E+W. - Conc. floor

N+S

1+40<sup>e</sup> 23' Rt. =  $\Phi$  wly face steel Bldg.

1+35

1+00

0+50

M.H. in Ctr. of box.  
box for Pump house.  
0+32 } 15' Lt. = Ctr. 6' x 6' conc

0.50  
23  
Floor

0.0 0.0 -0.3 0.1  
50 35 12

0.2  
35

-0.5 0.0 0.3 0.0 0.2  
50 35 34 20

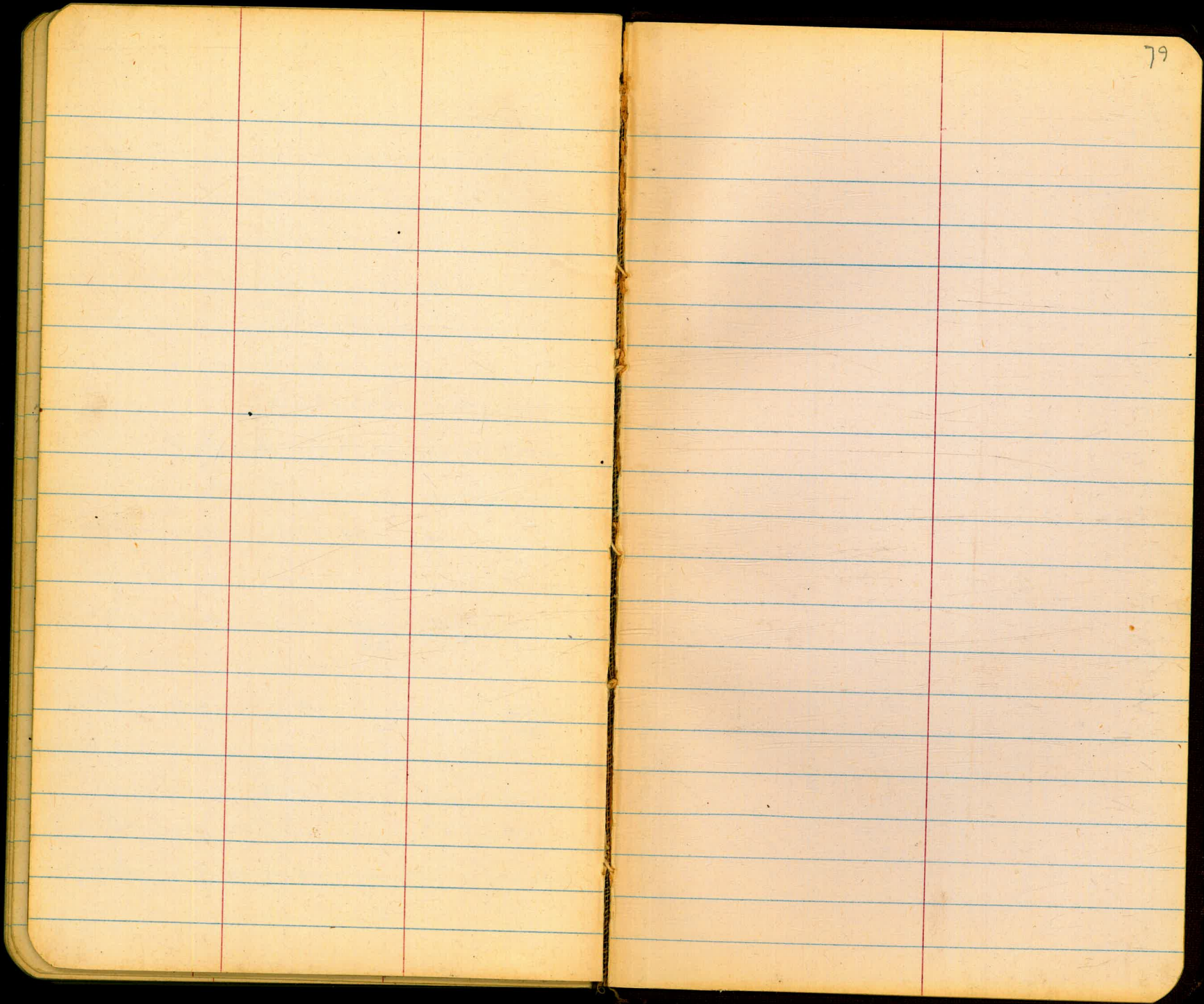
0.3  
35

-0.5 0.0 0.3 0.2  
50 35 34

0.5  
35

-0.5 0.5 0.24 0.4 0.4 1.5  
50 35 Top of box 15'

18 35



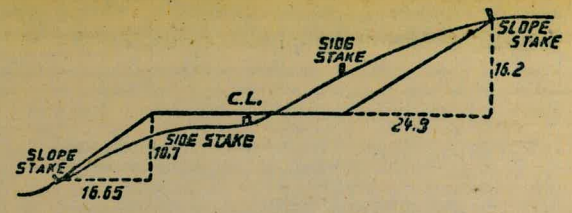
244.89  
 6.03  
 850.92  
 11.49  
 239.43  
 9.1  
 8450  
 152  
 585

33 26  
 13 92  
 29 34

10  
 1.62  
 36  
 1.20  
 5.62  
 2

13+52.80  
 6+82  
 6+7 21.80  
 73  
 5+99.8

149/18  
 25  
 24 15



**DISTANCES FROM SIDE STAKES FOR CROSS-SECTIONING.**  
 SLOPE 1 1/2 TO 1. ROADWAY OF ANY WIDTH.

	0	.1	.2	.3	.4	.5	.6	.7	.8	.9	
0	0.00	0.15	0.30	0.45	0.60	0.75	0.90	1.05	1.20	1.35	0
1	1.50	1.65	1.80	1.95	2.10	2.25	2.40	2.55	2.70	2.85	1
2	3.00	3.15	3.30	3.45	3.60	3.75	3.90	4.05	4.20	4.35	2
3	4.50	4.65	4.80	4.95	5.10	5.25	5.40	5.55	5.70	5.85	3
4	6.00	6.15	6.30	6.45	6.60	6.75	6.90	7.05	7.20	7.35	4
5	7.50	7.65	7.80	7.95	8.10	8.25	8.40	8.55	8.70	8.85	5
6	9.00	9.15	9.30	9.45	9.60	9.75	9.90	10.05	10.20	10.35	6
7	10.50	10.65	10.80	10.95	11.10	11.25	11.40	11.55	11.70	11.85	7
8	12.00	12.15	12.30	12.45	12.60	12.75	12.90	13.05	13.20	13.35	8
9	13.50	13.65	13.80	13.95	14.10	14.25	14.40	14.55	14.70	14.85	9
10	15.00	15.15	15.30	15.45	15.60	15.75	15.90	16.05	16.20	16.35	10
11	16.50	16.65	16.80	16.95	17.10	17.25	17.40	17.55	17.70	17.85	11
12	18.00	18.15	18.30	18.45	18.60	18.75	18.90	19.05	19.20	19.35	12
13	19.50	19.65	19.80	19.95	20.10	20.25	20.40	20.55	20.70	20.85	13
14	21.00	21.15	21.30	21.45	21.60	21.75	21.90	22.05	22.20	22.35	14
15	22.50	22.65	22.80	22.95	23.10	23.25	23.40	23.55	23.70	23.85	15
16	24.00	24.15	24.30	24.45	24.60	24.75	24.90	25.05	25.20	25.35	16
17	25.50	25.65	25.80	25.95	26.10	26.25	26.40	26.55	26.70	26.85	17
18	27.00	27.15	27.30	27.45	27.60	27.75	27.90	28.05	28.20	28.35	18
19	28.50	28.65	28.80	28.95	29.10	29.25	29.40	29.55	29.70	29.85	19
20	30.00	30.15	30.30	30.45	30.60	30.75	30.90	31.05	31.20	31.35	20
21	31.50	31.65	31.80	31.95	32.10	32.25	32.40	32.55	32.70	32.85	21
22	33.00	33.15	33.30	33.45	33.60	33.75	33.90	34.05	34.20	34.35	22
23	34.50	34.65	34.80	34.95	35.10	35.25	35.40	35.55	35.70	35.85	23
24	36.00	36.15	36.30	36.45	36.60	36.75	36.90	37.05	37.20	37.35	24
25	37.50	37.65	37.80	37.95	38.10	38.25	38.40	38.55	38.70	38.85	25
26	39.00	39.15	39.30	39.45	39.60	39.75	39.90	40.05	40.20	40.35	26
27	40.50	40.65	40.80	40.95	41.10	41.25	41.40	41.55	41.70	41.85	27
28	42.00	42.15	42.30	42.45	42.60	42.75	42.90	43.05	43.20	43.35	28
29	43.50	43.65	43.80	43.95	44.10	44.25	44.40	44.55	44.70	44.85	29
30	45.00	45.15	45.30	45.45	45.60	45.75	45.90	46.05	46.20	46.35	30
31	46.50	46.65	46.80	46.95	47.10	47.25	47.40	47.55	47.70	47.85	31
32	48.00	48.15	48.30	48.45	48.60	48.75	48.90	49.05	49.20	49.35	32
33	49.50	49.65	49.80	49.95	50.10	50.25	50.40	50.55	50.70	50.85	33
34	51.00	51.15	51.30	51.45	51.60	51.75	51.90	52.05	52.20	52.35	34
35	52.50	52.65	52.80	52.95	53.10	53.25	53.40	53.55	53.70	53.85	35
36	54.00	54.15	54.30	54.45	54.60	54.75	54.90	55.05	55.20	55.35	36
37	55.50	55.65	55.80	55.95	56.10	56.25	56.40	56.55	56.70	56.85	37
38	57.00	57.15	57.30	57.45	57.60	57.75	57.90	58.05	58.20	58.35	38
39	58.50	58.65	58.80	58.95	59.10	59.25	59.40	59.55	59.70	59.85	39
40	60.00	60.15	60.30	60.45	60.60	60.75	60.90	61.05	61.20	61.35	40
41	61.50	61.65	61.80	61.95	62.10	62.25	62.40	62.55	62.70	62.85	41
42	63.00	63.15	63.30	63.45	63.60	63.75	63.90	64.05	64.20	64.35	42
43	64.50	64.65	64.80	64.95	65.10	65.25	65.40	65.55	65.70	65.85	43
44	66.00	66.15	66.30	66.45	66.60	66.75	66.90	67.05	67.20	67.35	44
45	67.50	67.65	67.80	67.95	68.10	68.25	68.40	68.55	68.70	68.85	45
46	69.00	69.15	69.30	69.45	69.60	69.75	69.90	70.05	70.20	70.35	46
47	70.50	70.65	70.80	70.95	71.10	71.25	71.40	71.55	71.70	71.85	47
48	72.00	72.15	72.30	72.45	72.60	72.75	72.90	73.05	73.20	73.35	48
49	73.50	73.65	73.80	73.95	74.10	74.25	74.40	74.55	74.70	74.85	49
50	75.00	75.15	75.30	75.45	75.60	75.75	75.90	76.05	76.20	76.35	50

THE NATIONAL BLANK BOOK COMPANY  
 HOLYOKE MASSACHUSETTS  
 NEW YORK CHICAGO BOSTON SAN FRANCISCO