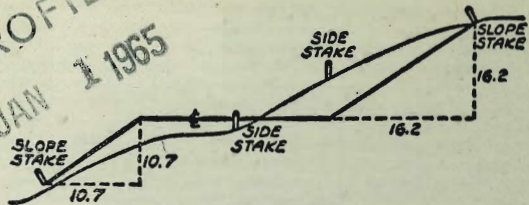






MICROFILMED  
 JAN 1 1965



DISTANCES FROM SIDE STAKES FOR CROSS-SECTIONING  
 SLOPE 1 TO 1. ROADWAY OF ANY WIDTH

	0	.1	.2	.3	.4	.5	.6	.7	.8	.9	
0	0.00	0.10	0.20	0.30	0.40	0.50	0.60	0.70	0.80	0.90	0
1	1.00	1.10	1.20	1.30	1.40	1.50	1.60	1.70	1.80	1.90	1
2	2.00	2.10	2.20	2.30	2.40	2.50	2.60	2.70	2.80	2.90	2
3	3.00	3.10	3.20	3.30	3.40	3.50	3.60	3.70	3.80	3.90	3
4	4.00	4.10	4.20	4.30	4.40	4.50	4.60	4.70	4.80	4.90	4
5	5.00	5.10	5.20	5.30	5.40	5.50	5.60	5.70	5.80	5.90	5
6	6.00	6.10	6.20	6.30	6.40	6.50	6.60	6.70	6.80	6.90	6
7	7.00	7.10	7.20	7.30	7.40	7.50	7.60	7.70	7.80	7.90	7
8	8.00	8.10	8.20	8.30	8.40	8.50	8.60	8.70	8.80	8.90	8
9	9.00	9.10	9.20	9.30	9.40	9.50	9.60	9.70	9.80	9.90	9
10	10.00	10.10	10.20	10.30	10.40	10.50	10.60	10.70	10.80	10.90	10
11	11.00	11.10	11.20	11.30	11.40	11.50	11.60	11.70	11.80	11.90	11
12	12.00	12.10	12.20	12.30	12.40	12.50	12.60	12.70	12.80	12.90	12
13	13.00	13.10	13.20	13.30	13.40	13.50	13.60	13.70	13.80	13.90	13
14	14.00	14.10	14.20	14.30	14.40	14.50	14.60	14.70	14.80	14.90	14
15	15.00	15.10	15.20	15.30	15.40	15.50	15.60	15.70	15.80	15.90	15
16	16.00	16.10	16.20	16.30	16.40	16.50	16.60	16.70	16.80	16.90	16
17	17.00	17.10	17.20	17.30	17.40	17.50	17.60	17.70	17.80	17.90	17
18	18.00	18.10	18.20	18.30	18.40	18.50	18.60	18.70	18.80	18.90	18
19	19.00	19.10	19.20	19.30	19.40	19.50	19.60	19.70	19.80	19.90	19
20	20.00	20.10	20.20	20.30	20.40	20.50	20.60	20.70	20.80	20.90	20
21	21.00	21.10	21.20	21.30	21.40	21.50	21.60	21.70	21.80	21.90	21
22	22.00	22.10	22.20	22.30	22.40	22.50	22.60	22.70	22.80	22.90	22
23	23.00	23.10	23.20	23.30	23.40	23.50	23.60	23.70	23.80	23.90	23
24	24.00	24.10	24.20	24.30	24.40	24.50	24.60	24.70	24.80	24.90	24
25	25.00	25.10	25.20	25.30	25.40	25.50	25.60	25.70	25.80	25.90	25
26	26.00	26.10	26.20	26.30	26.40	26.50	26.60	26.70	26.80	26.90	26
27	27.00	27.10	27.20	27.30	27.40	27.50	27.60	27.70	27.80	27.90	27
28	28.00	28.10	28.20	28.30	28.40	28.50	28.60	28.70	28.80	28.90	28
29	29.00	29.10	29.20	29.30	29.40	29.50	29.60	29.70	29.80	29.90	29
30	30.00	30.10	30.20	30.30	30.40	30.50	30.60	30.70	30.80	30.90	30
31	31.00	31.10	31.20	31.30	31.40	31.50	31.60	31.70	31.80	31.90	31
32	32.00	32.10	32.20	32.30	32.40	32.50	32.60	32.70	32.80	32.90	32
33	33.00	33.10	33.20	33.30	33.40	33.50	33.60	33.70	33.80	33.90	33
34	34.00	34.10	34.20	34.30	34.40	34.50	34.60	34.70	34.80	34.90	34
35	35.00	35.10	35.20	35.30	35.40	35.50	35.60	35.70	35.80	35.90	35
36	36.00	36.10	36.20	36.30	36.40	36.50	36.60	36.70	36.80	36.90	36
37	37.00	37.10	37.20	37.30	37.40	37.50	37.60	37.70	37.80	37.90	37
38	38.00	38.10	38.20	38.30	38.40	38.50	38.60	38.70	38.80	38.90	38
39	39.00	39.10	39.20	39.30	39.40	39.50	39.60	39.70	39.80	39.90	39
40	40.00	40.10	40.20	40.30	40.40	40.50	40.60	40.70	40.80	40.90	40
41	41.00	41.10	41.20	41.30	41.40	41.50	41.60	41.70	41.80	41.90	41
42	42.00	42.10	42.20	42.30	42.40	42.50	42.60	42.70	42.80	42.90	42
43	43.00	43.10	43.20	43.30	43.40	43.50	43.60	43.70	43.80	43.90	43
44	44.00	44.10	44.20	44.30	44.40	44.50	44.60	44.70	44.80	44.90	44
45	45.00	45.10	45.20	45.30	45.40	45.50	45.60	45.70	45.80	45.90	45
46	46.00	46.10	46.20	46.30	46.40	46.50	46.60	46.70	46.80	46.90	46
47	47.00	47.10	47.20	47.30	47.40	47.50	47.60	47.70	47.80	47.90	47
48	48.00	48.10	48.20	48.30	48.40	48.50	48.60	48.70	48.80	48.90	48
49	49.00	49.10	49.20	49.30	49.40	49.50	49.60	49.70	49.80	49.90	49
50	50.00	50.10	50.20	50.30	50.40	50.50	50.60	50.70	50.80	50.90	50

Distance of slope stake from side or shoulder stake for any width roadway, slope 1 to 1. If ground is nearly level, the out or fill at side stake is located by the double entry method in left column and top row. The number in body of table in same row and column gives distance from side stake to slope stake. If ground is not level estimate the difference in elevation between the side stake and slope stake, lower target by this amount if cut, elevate if fill. Add this amount to cut or fill and find distance in table. Set up rod at this point, and line of sight should cut target. If it does not make the slight adjustment necessary.



TABLE XIII—CORRECTIONS FOR TANGENTS AND EXTERNALS

These corrections are to be added to the approximate values, found by dividing the tangent, or external, for a 1° curve (Table VIII) by the degree of curve, in order to obtain the true tangents, or externals. Intermediate values may be obtained by interpolation.

FOR TANGENTS ADD

Central Angle	DEGREE OF CURVE													
	5°	10°	15°	20°	25°	30°	35°	40°	45°	50°	55°	60°	65°	70°
10°	.03	.06	.09	.13	.16	.19	.22	.25	.28	.31	.34	.38	.42	.46
15°	.04	.10	.14	.19	.24	.29	.34	.39	.45	.51	.53	.58	.63	.68
20°	.06	.13	.19	.26	.32	.39	.45	.51	.58	.65	.72	.79	.84	.90
25°	.08	.16	.24	.33	.40	.49	.58	.67	.75	.83	.90	.99	1.06	1.14
30°	.10	.19	.29	.39	.49	.59	.69	.79	.89	.99	1.09	1.20	1.29	1.39
35°	.11	.22	.34	.47	.58	.69	.79	.81	.92	1.04	1.29	1.42	1.54	1.66
40°	.13	.26	.40	.53	.67	.80	.93	1.06	1.20	1.34	1.49	1.64	1.79	1.94
45°	.15	.30	.44	.60	.76	.91	1.06	1.21	1.37	1.52	1.70	1.87	2.04	2.21
50°	.17	.34	.51	.68	.85	1.02	1.19	1.36	1.54	1.72	1.91	2.10	2.29	2.48
55°	.19	.38	.57	.76	.95	1.14	1.32	1.52	1.72	1.92	2.14	2.35	2.56	2.77
60°	.21	.42	.63	.84	1.05	1.27	1.49	1.71	1.94	2.17	2.38	2.60	2.83	3.07
65°	.23	.46	.69	.93	1.16	1.40	1.64	1.88	2.13	2.38	2.63	2.88	3.13	3.39
70°	.25	.51	.76	1.02	1.28	1.54	1.80	2.06	2.33	2.60	2.88	3.16	3.44	3.72
75°	.27	.56	.83	1.12	1.40	1.69	1.98	2.27	2.57	2.87	3.16	3.47	3.78	4.09
80°	.30	.61	.91	1.22	1.53	1.84	2.15	2.46	2.78	3.10	3.44	3.78	4.12	4.46
85°	.33	.66	1.00	1.33	1.68	2.02	2.36	2.70	3.05	3.40	3.77	4.14	4.55	4.89
90°	.36	.72	1.09	1.45	1.83	2.20	2.57	2.94	3.32	3.70	4.10	4.50	4.91	5.32
95°	.39	.79	1.19	1.55	2.00	2.40	2.80	3.20	3.61	4.02	4.40	4.98	5.38	5.83
100°	.43	.86	1.30	1.74	2.18	2.62	3.06	3.50	3.95	4.40	4.88	5.37	5.85	6.34
110°	.51	1.03	1.56	2.08	2.61	3.14	3.67	4.21	4.76	5.31	5.86	6.43	7.01	7.60
120°	.62	1.25	1.93	2.52	3.16	3.81	4.45	5.11	5.77	6.44	7.12	7.80	8.50	9.22

FOR EXTERNALS ADD

Central Angle	DEGREE OF CURVE													
	5°	10°	15°	20°	25°	30°	35°	40°	45°	50°	55°	60°	65°	70°
10°	.001	.003	.004	.006	.007	.008	.009	.011	.012	.014	.015	.017	.018	.020
15°	.003	.007	.010	.014	.018	.023	.027	.029	.032	.035	.039	.043	.047	.051
20°	.006	.011	.017	.022	.028	.034	.038	.045	.051	.057	.063	.070	.076	.083
25°	.009	.018	.027	.036	.046	.056	.065	.074	.083	.093	.106	.120	.127	.135
30°	.013	.025	.038	.051	.065	.078	.090	.103	.116	.129	.149	.170	.179	.188
35°	.018	.035	.054	.072	.086	.109	.131	.153	.175	.197	.213	.230	.247	.264
40°	.023	.046	.070	.093	.117	.141	.172	.203	.234	.265	.277	.290	.315	.341
45°	.030	.060	.093	.119	.153	.184	.216	.254	.289	.325	.351	.378	.411	.445
50°	.037	.075	.116	.151	.189	.227	.266	.305	.345	.384	.425	.467	.508	.550
55°	.046	.093	.142	.188	.236	.283	.332	.381	.420	.479	.530	.582	.641	.700
60°	.056	.112	.168	.225	.283	.340	.398	.457	.516	.575	.636	.697	.774	.851
65°	.067	.135	.204	.273	.343	.412	.483	.554	.625	.697	.771	.845	.922	1.01
70°	.080	.159	.240	.321	.403	.485	.568	.652	.735	.819	.906	.994	1.08	1.17
75°	.095	.182	.266	.353	.440	.528	.617	.707	.797	.887	1.07	1.18	1.29	1.39
80°	.110	.220	.332	.445	.558	.671	.787	.903	1.02	1.13	1.25	1.38	1.50	1.62
85°	.128	.259	.391	.524	.657	.790	.926	1.06	1.20	1.34	1.47	1.62	1.78	1.91
90°	.149	.299	.450	.603	.756	.910	1.07	1.22	1.38	1.54	1.70	1.87	2.03	2.20
95°	.174	.350	.522	.706	.885	1.06	1.25	1.43	1.62	1.80	1.99	2.18	2.38	2.58
100°	.200	.401	.604	.809	1.01	1.22	1.43	1.64	1.85	2.06	2.28	2.50	2.73	2.96
110°	.268	.536	.806	1.08	1.35	1.63	1.91	2.20	2.48	2.76	3.05	3.35	3.66	3.96
120°	.360	.721	1.08	1.45	1.82	2.19	2.57	2.95	3.33	3.72	4.11	4.50	4.91	5.32

INDEX

FB. 2141

Station	PAGE
Cowles USC & GS	
Paradise RM 3 USC & GS	
Paradise Valley MT USC & GS	
Chollas Heights E Radio T USC & GS	
7F 836	31
7F 838	
7F 849 ✓	11
7F 850 ✓	12
7F 851	
7F 852 ✓	5
7F 853-B	
7F 853-C	
7F 854 ✓	30
7F 855 "Mission"	32
7F 856 ✓	29
7F 857 ✓	28
7F 859 ✓	37, 33
7F 860 ✓	26
7F 861 ✓	10
7F 862	
7F 863 ✓	9



## INDEX

Station	Page	Station	Page
7F 864 ✓	8	7F 883 ✓	20
7F 865 ✓	7	7F 884 A ✓	21
7F 866 A ✓	35	7F 885 A ✓	22
<b>F Project</b>		7F 886 ✓	23
<del>7F 868 A</del>	44	7F 887 ✓	24
7F 869 A ✓	50	7F 888 ✓	25
7F 870 A		7F 889	
7F 871 —	5-A		
7F 871 A M.F.P.			
7F 872 ✓	5	7F 890	
7F 873 ✓	5	7F 891	
7F 874 A		7F 892	
<sup>Reset</sup>			
7F 875 ✓	13		
<sup>New Fl.</sup>	47 ✓		
7F 876 ✓	37	7F 900	
7F 877	15	7F 908	
7F 878		7F 909	
7F 878 A ✓	45	7F 910	
7F 879 ✓	16	East Tower	31
7F 880 A ✓	40	West Tower	
7F 881 ✓	18	Tower No 1	
7F 882 ✓	19	" No 2	
		" No 3	

## INDEX

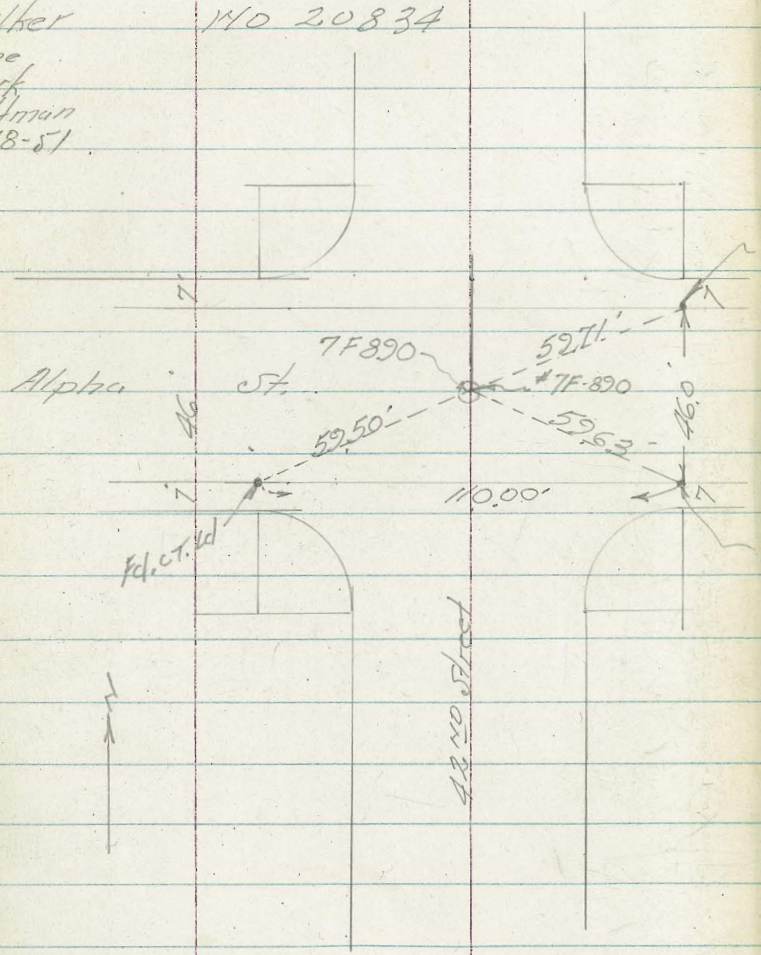
Station	Page	Station	Page
F Chimney			
<del>F Charlie</del>	36 ✓		
F Project	44		
F Brown	46 ✓		
F Burrows	43		



TIES TO PLANE COORDINATE  
POSITIONS As per Aerial Photographs

Negative # T-150 - 1-56

Walker 140 20834  
Pope  
Clark  
Huffman  
6-18-51



fd. ct. 1d. Plg.

Station 7F.890 - 2. N.H. Cover in 2. Int.

fd. ct. 1d. Plg.







Ties - To Plane Coordinate Station

Walker.

Pipe

chuck

Hoffman.

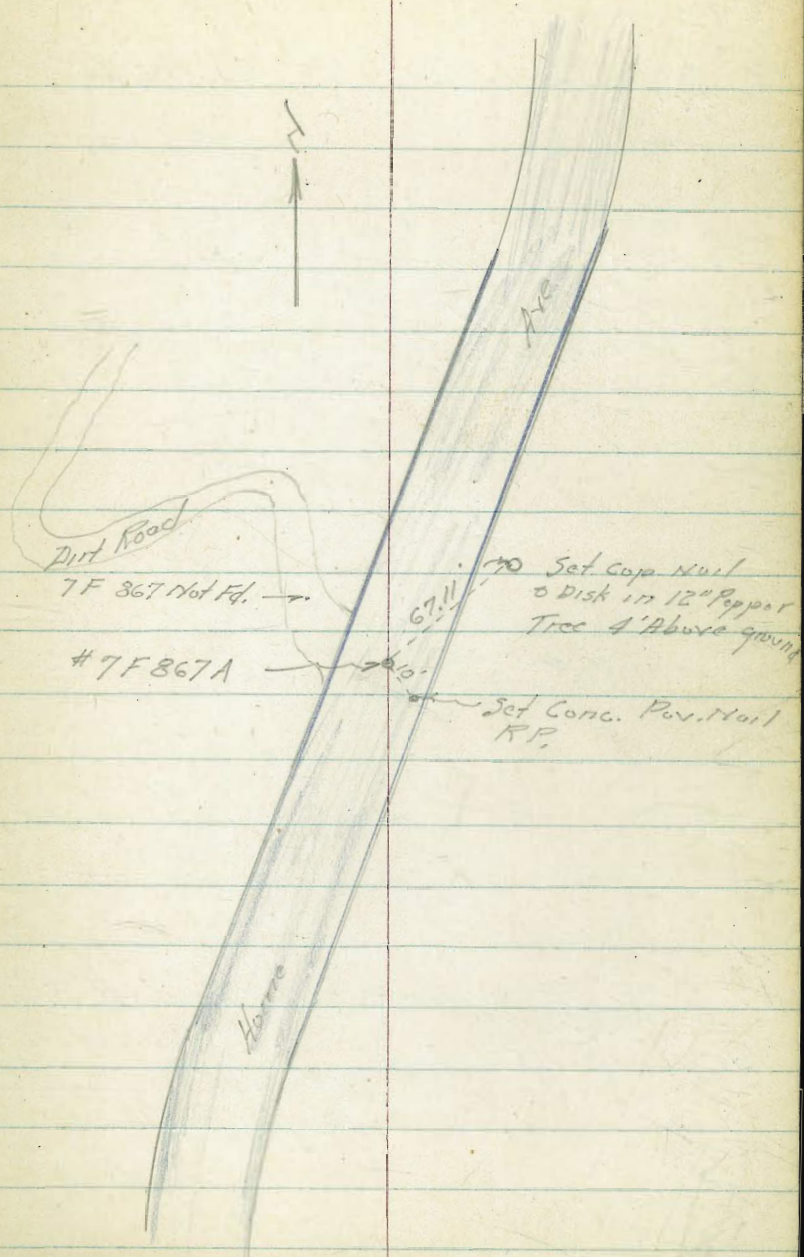
6-19-51

Negative T-1-5D-1-55

Station

7F867 Not fd.

7-F-867A Fd. Nail. Set Hd & Disk  
Approx. in Black Paving.





Ties - To Plane Coordinate Stations

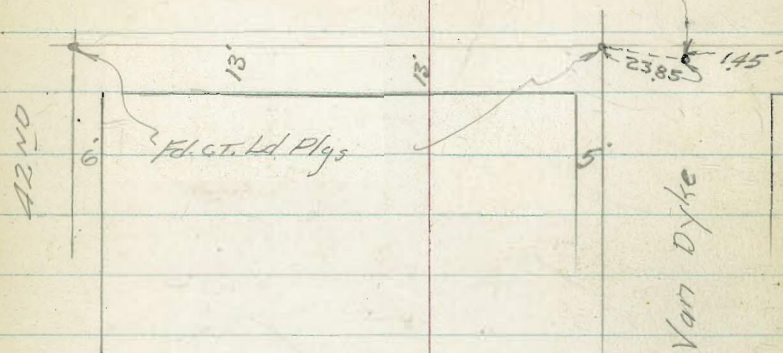
Walker  
Pope  
Clark  
Huffman Negative # T-1-SD-1-41  
(6-19-51)

Station

7-F 873 Fd. Shiner & Noel in Black Post

215111.05 N  
1,738 023.31 E

El Capon Blvd.



42 NO

Van Dyke

7F 872 Fd. Shiner & Noel in Black Post

213,123.94 N  
1,737,922.09 E

Univ. Ave.

7F 872 - Fd. 5 ST





## Ties to Plane Coordinate Position

Walker

Pope

Clark

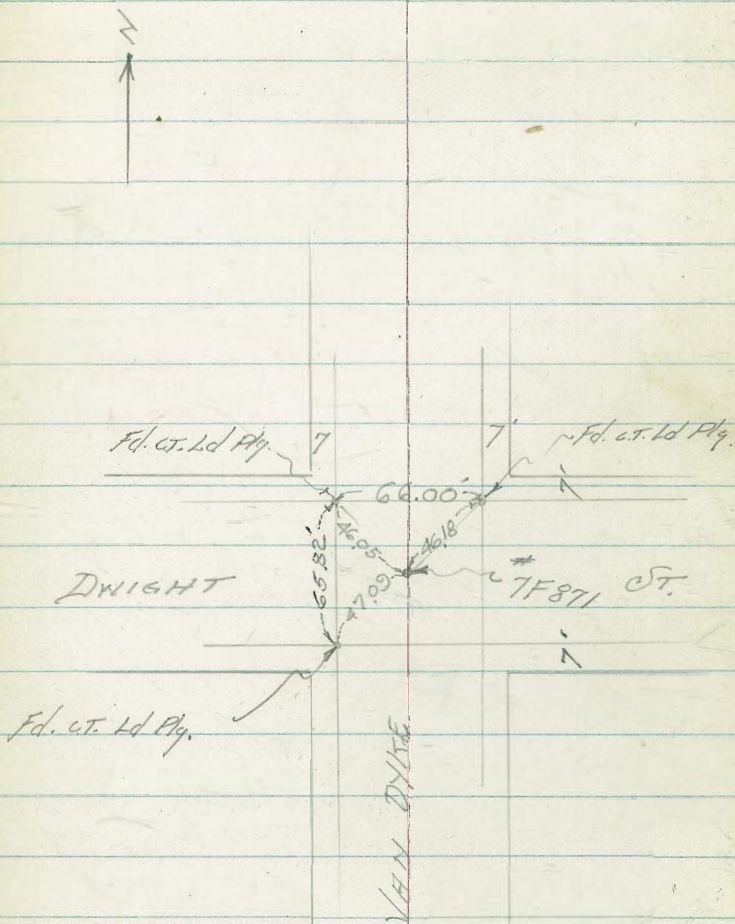
Huffman

6-19-51

Negative # T-1-5D-1-40

Station

TF 871 Ed. Stumer &amp; Nail





Ties - To Plane Coordinate Position

6

Walker - Negative T-150-1-39

Pope  
check  
Kuffman 6-19-51

Station

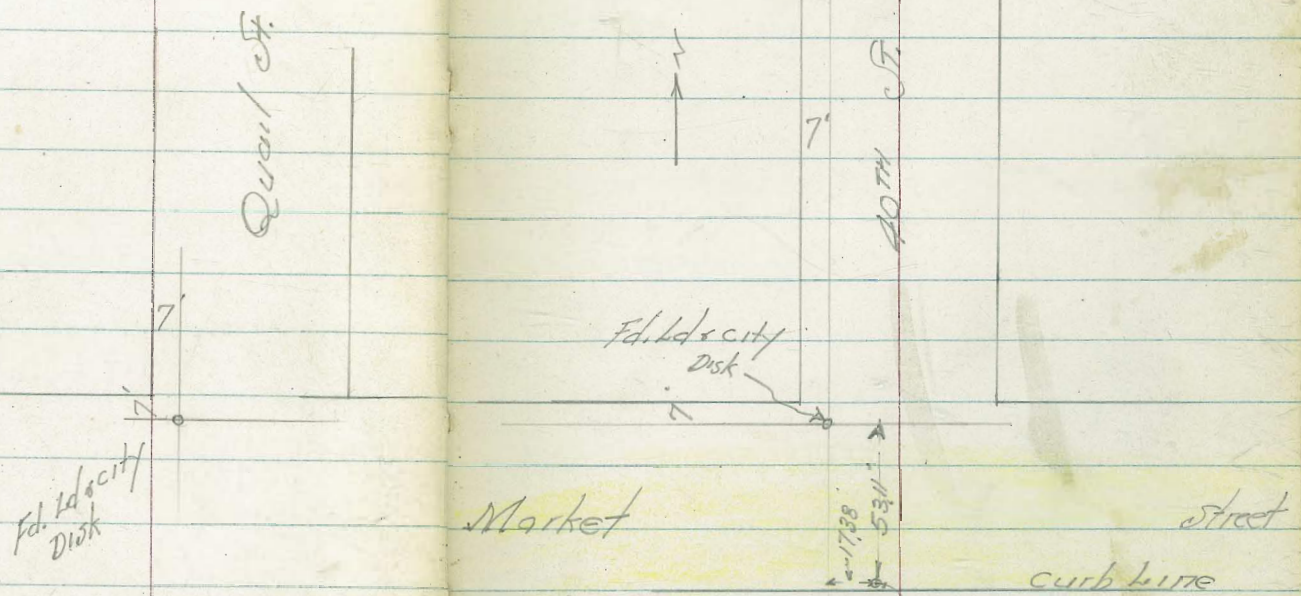
TF 868 Ed. Striner & Nail. set Conc. Mon  
With Bronze Disk

Destroyed  
by subdividers



Ties ~ Plane Coordinate Positions

Negative # 37-7-180-1



7F 865 F.d. Shiner And Hail

199 277.70 N  
1736 130, 10 E

7F 865





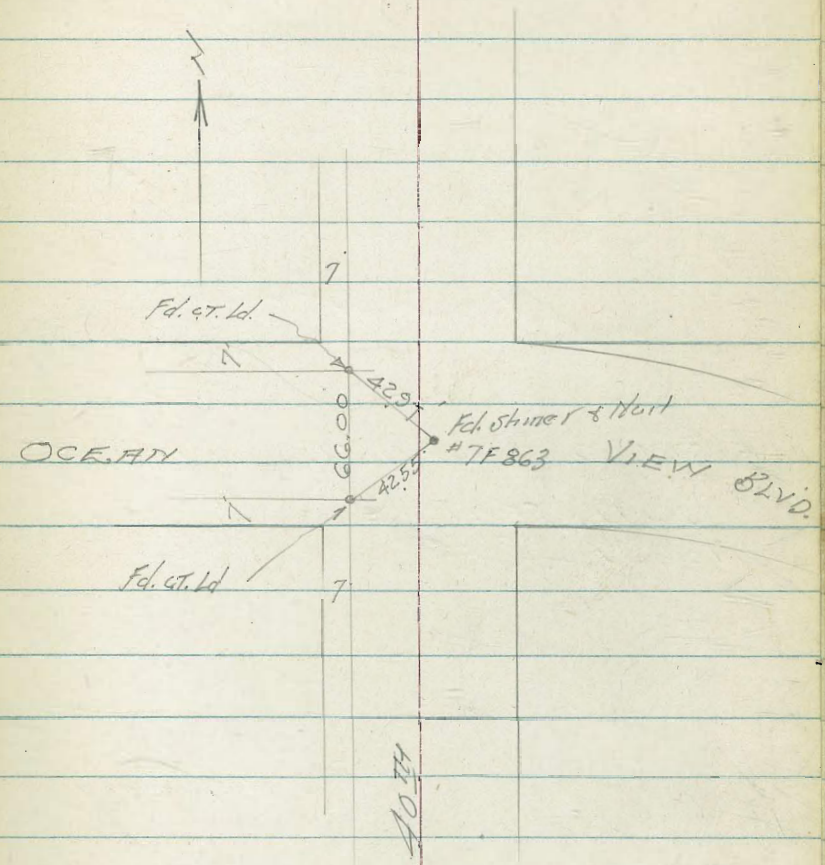


Ties ~ To Plane Coordinate Positions

Negative # T-180-1-37

Station

7F 863 Fd. Shiner & Nail  
 125 584.13 N  
 1,736 297.48 E

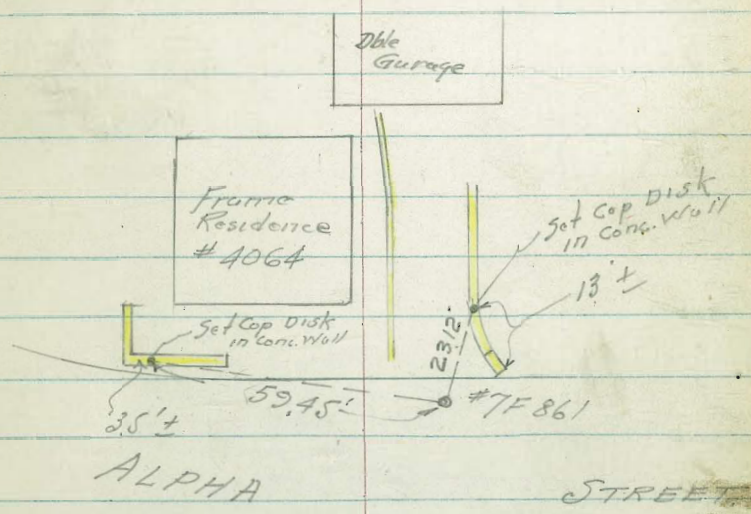




Ties to Plane Coordinate Positions

Negative # F-1-SD-1-37

7F 861 Fd. Shiner & Nail. Set References  
 192 178.53 N  
 1.736 772.25 E





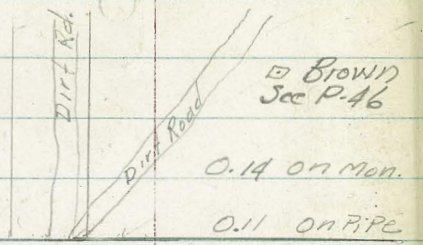




Ties To Plane Coordinate Positions

Negative T-1-50-1-8

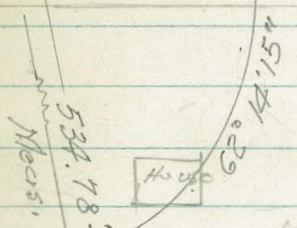
Fd 1/2" Pipe set conc. Mon.



West Tower KFSD

Set city Disc. Paving in Conc. Paving. Meas.

7068 499.94



Walker  
Pope  
Huffman  
Presley  
8-21-52

Fd. city Disc. Id. & Tack in Conc. Pav.

61 DISCS  
#2201  
7068

61st St.

7F850

SEE FB 2375 - p37

7 F 850 Fd 1/2" Pipe. Set Conc. Mon on Highest Hill

195,000.34 N  
1,751,309.24 E  
Elev. 414.91

Destroyed



Ties To Plane Coordinate Positions

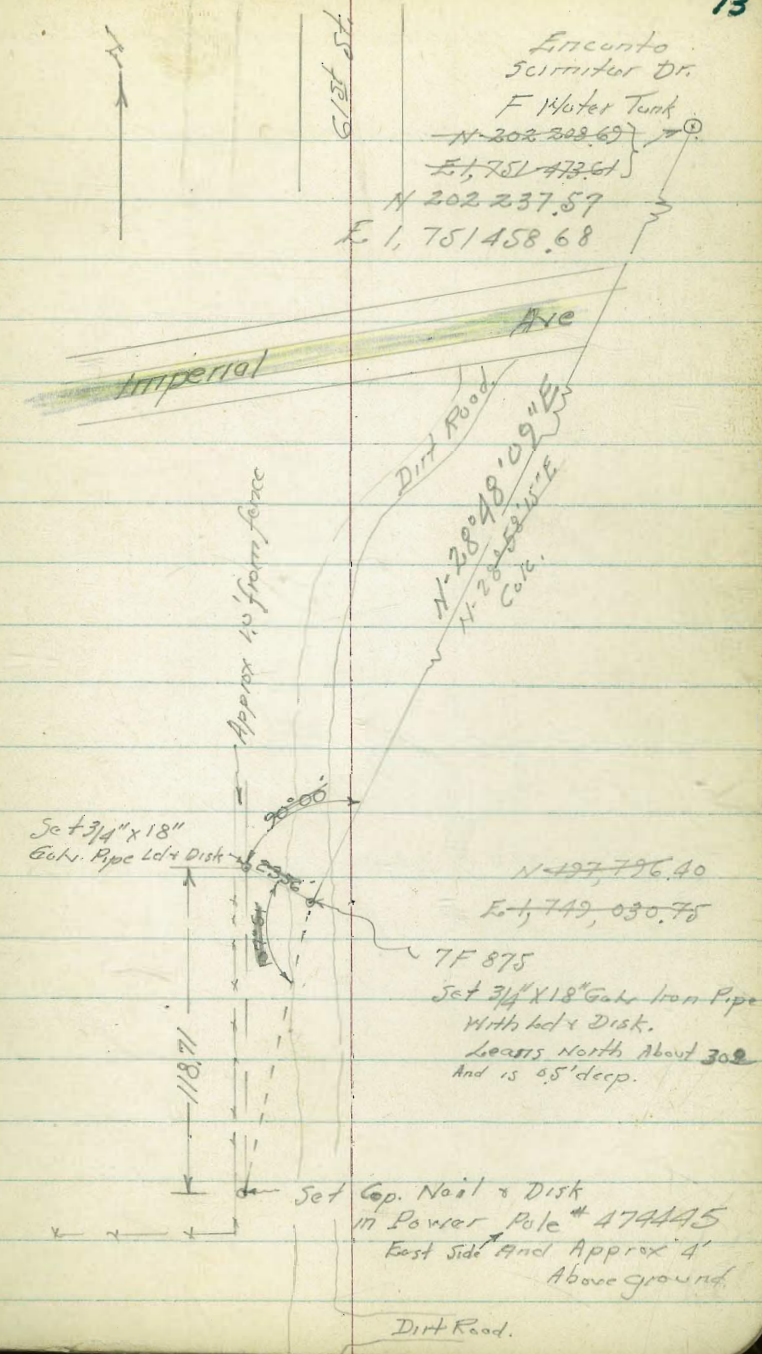
Walker  
 Pope  
 Clark  
 Huffman  
 6-20-51

Negative T-1-50-1-9

7F 875 Fd. Shiner & Nail. Set  $3/4$ " x 18" Galv. Pipe  
 Ld. & Disk.

197805.58 N } Rset  
 1.749021.96 E }

Encanto  
 Scimitar Dr.  
 F Water Tank  
 N-202-222.67  
 E-1,751,473.61  
 N 202-237.57  
 E 1,751,458.68



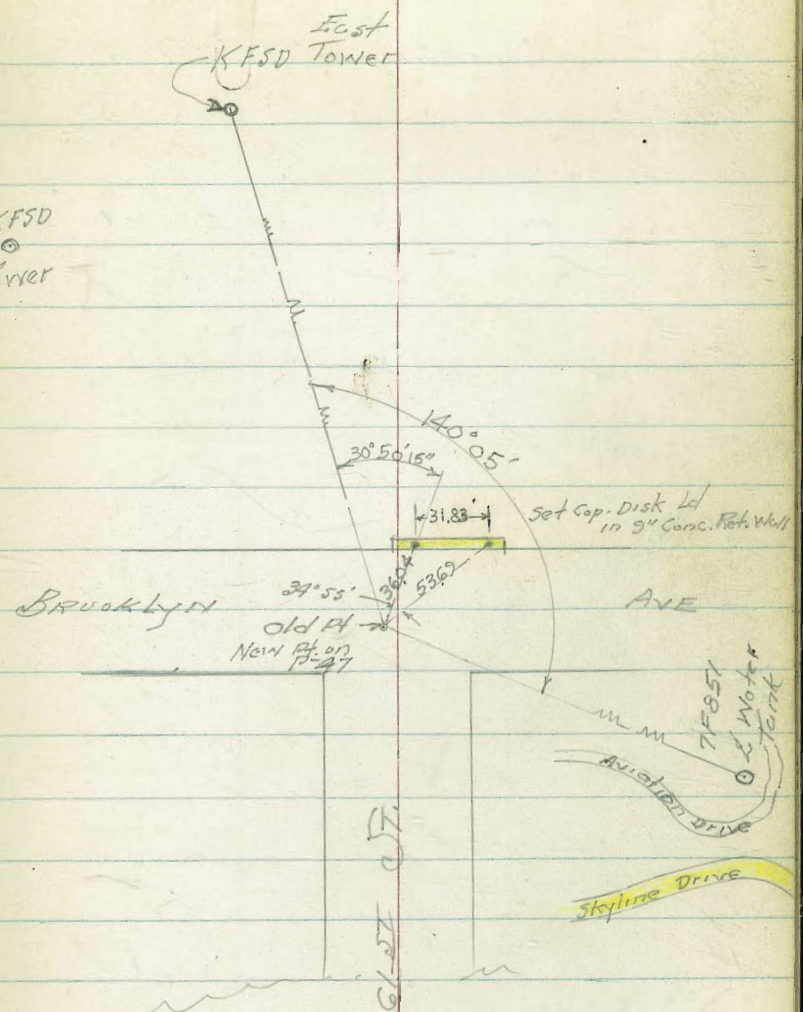
Set Cop. Nail & Disk  
 in Power Pole # 474445  
 East Side and Approx 4'  
 Above ground.

Dirt Road.



Ties to Plane Coordinate Positions

Negative T-150-1-2



7F 876 Ed Shiner & Neil.  
Set Copper Disks Ref.  
in Conc. Wall

7F 876 Next see P-37



Ties ~ To Plane Coordinate Positions

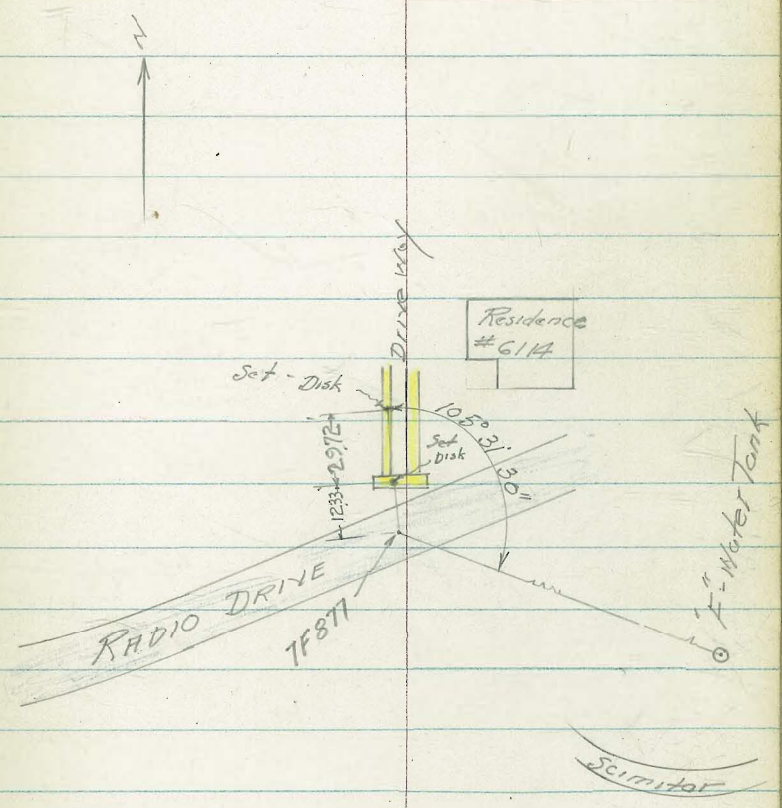
Walker  
 Pope  
 Clark  
 Huffman  
 6-21-51

Negative T-1-50-1-10

7 F. 877 Fd. Shiner & Nail.

201495.06 N  
 1,749,260.04 E

Set Ld + Cop. Disks  
 17 Conc. Drive Way.



Water Tank

Scimitar



Ties ~ To Plane Coordinates Positions

Negative # T-1-50-1-11

TF 879 Ed. Shiner & Husk

204 032.08 N

1,749 898.68 E

East Tower

KFSO

West Tower

KFSO

TOOLEY

TF879

ST.

6923'

Set Cap. Disk  
177 Conc. 140/11

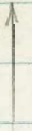
#1835

4235'

Set Cap. Disk Conc. Drive

REPUBLIC OF

86°03'

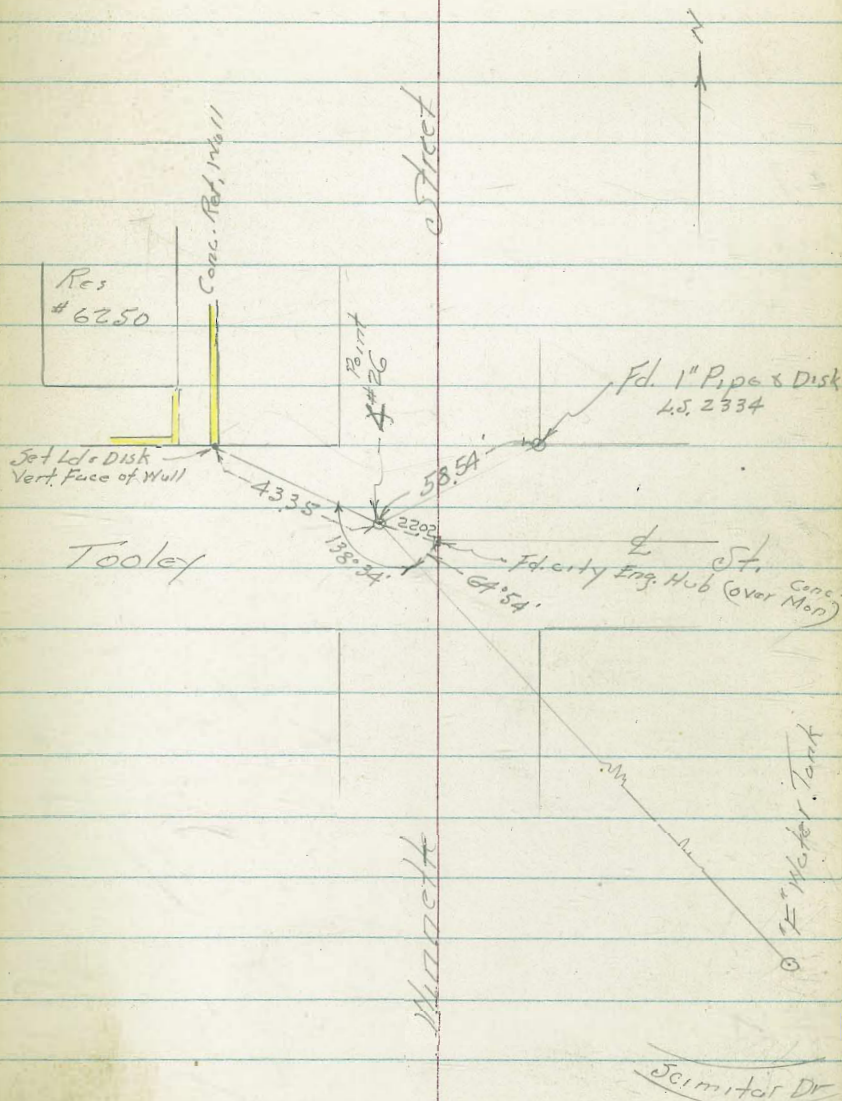




Ties - To Plane Coordinate Positions

Walker  
Pope  
Clark  
Huffman  
6-21-51

Negative T-1-50-1-10



Pl. #26 Fd. Sturvers Nail. Set 3/4" x 18" Galv. Pipe With Lds Disk



~Ties ~ To Plane Coordinate Positions

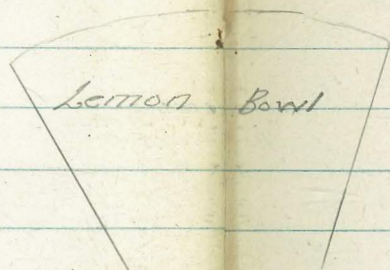
Walker  
Pope  
Clark  
Huffman  
6-21-51

Negative T-1-SD-1-12

TF 881 Fd. Shiner & Nail.  
208,388.24 N  
1753,022.77 E

Set Ref. Pts.  
Per sketch

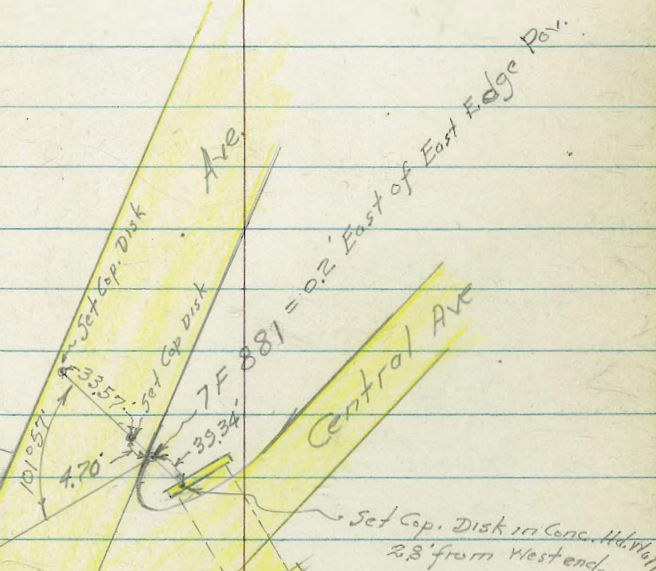
East Tower  
KFSD



Broadway

Ave

Central Ave



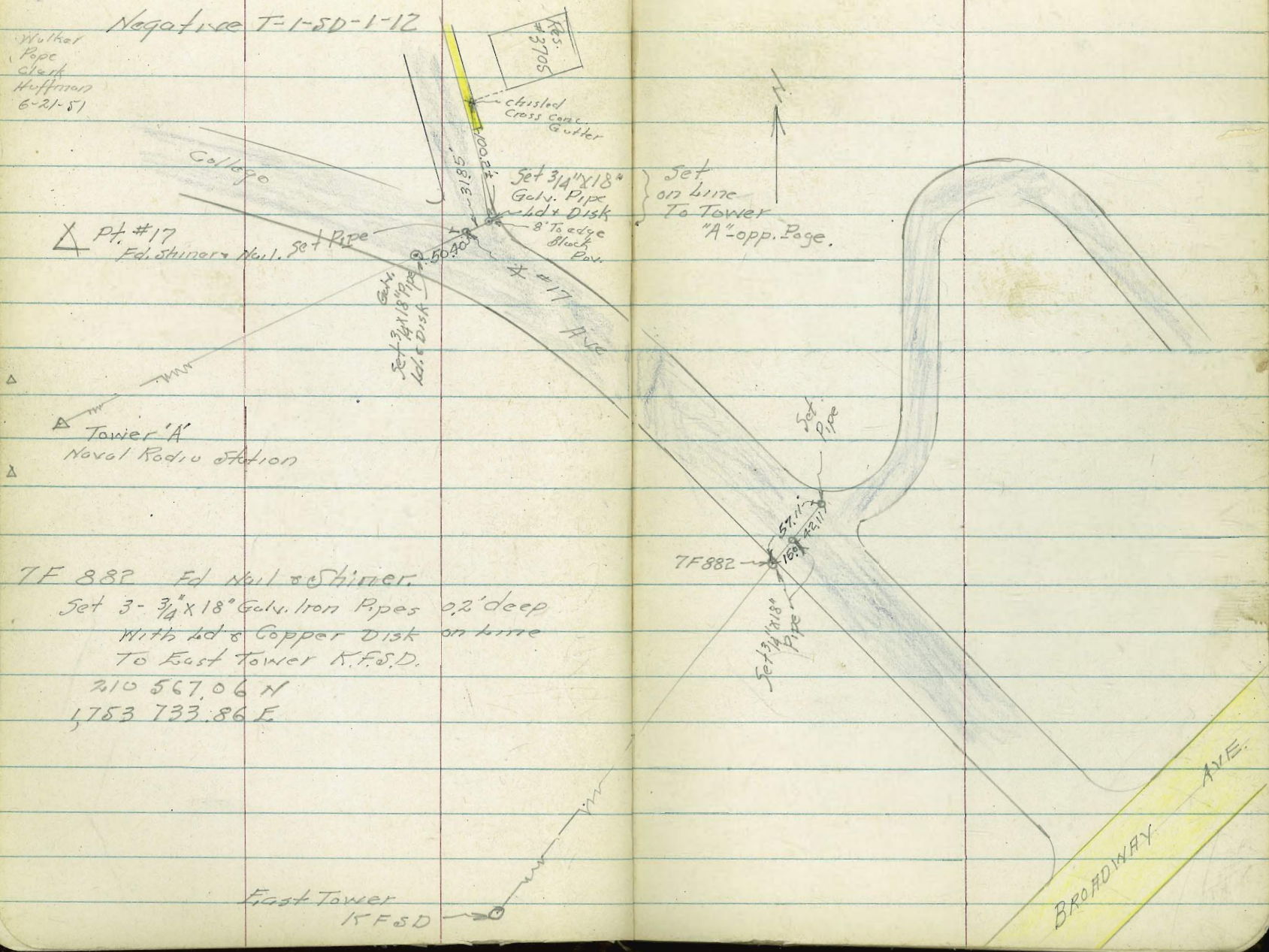
Set Cap. Disk in Conc. Sidewalk  
2.8' from West end.



Ties to Plane Coordinate Positions

Negative T-1-SD-1-12

Walker  
Pope  
Clark  
Huffman  
6-21-51



△ Pt. #17  
Ed. Shiner & Nail. set Pipe

△ Tower 'A'  
Naval Radio Station

TF 882 Ed Nail & Shiner.  
Set 3 - 3/4" x 18" Galv. Iron Pipes 0.2' deep  
With lead & Copper Disk on time  
To East Tower K.F.S.D.  
210 567.06 N  
1753 733.86 E

Set on Line  
To Tower  
"A" opp. Page.

TF882

East Tower  
KFSD

BROADWAY  
AVE.



Ties To Plane Coordinate Positions

Walker Negative T-1-50-1-13  
Pope  
Clark  
Huffman  
6-21-51

7F 883 Ed. Stiner & Nail

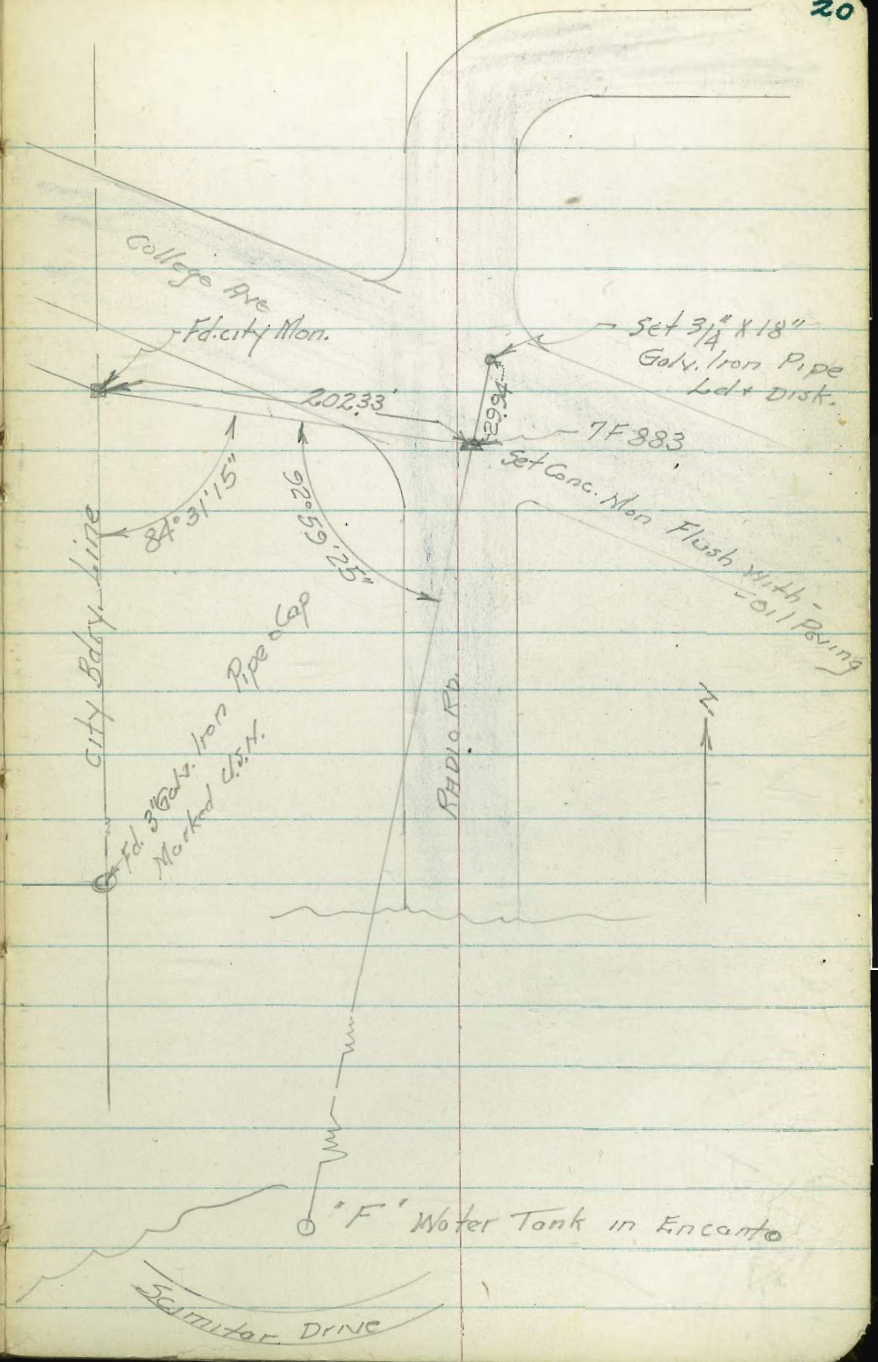
211,471.93 N  
1,752,027.82 E

Set Conc. Mon  
Bross Disk

Redwood  
Village  
Subdivision

city Bdry line

U.S.N. RADIO STA.



College Ave  
Ed. city Mon.

Set 3/4" x 18"  
Galv. Iron Pipe  
Leds Disk.

7F 883

Set Conc. Mon Flush With  
Top of Spring

city Bdry line

Galv. Iron Pipe a Cap  
Marked U.S.N.

RADIO STA.

N

'F' Water Tank in Encanto

Scimitar Drive



Ties To Plane Coordinate Positions

Walker  
Rope  
Clark  
Huffman  
6-22-51

Negative # T-SD-1-13

(Ties to Traverse on p-41)

Reset

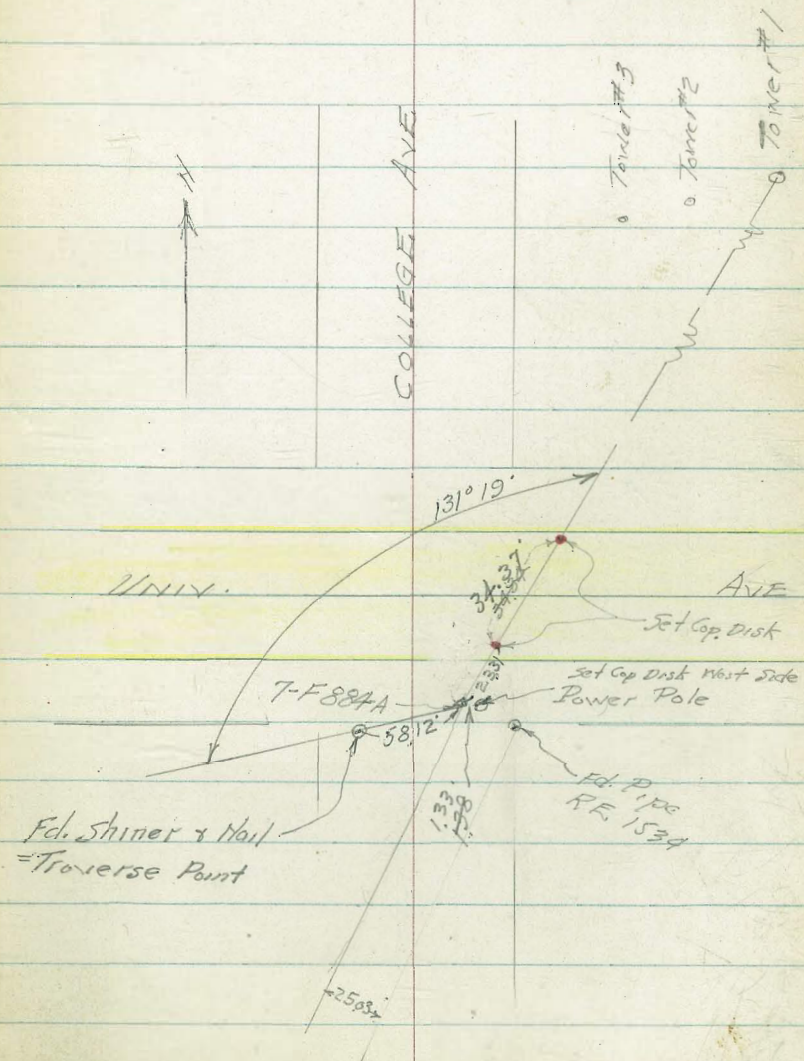
Pipe = New Point  
by Fairchild

Set References

7 F 884-A Fd. Shiner & Nail

214,226.40 N  
1,749,885.95 E

Fd. Shiner & Nail  
= Traverse Point





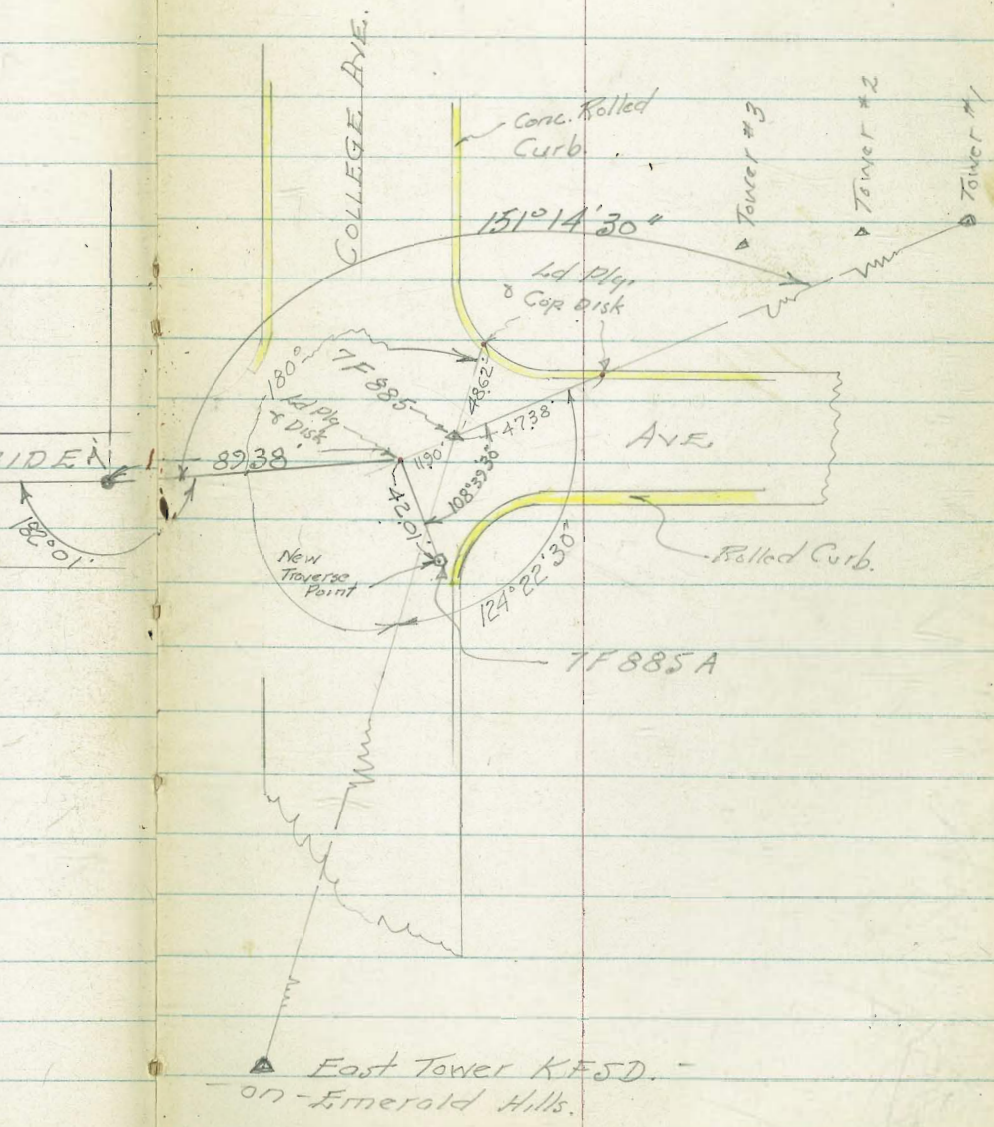
Ties To Plane Coordinate Positions

Negative # 7-1-50-1-13

TF 885 Fd. Shiner & Neil  
Set Ld. Ply. & Copper Disk Ref. Points

TF 885A  
Fd. Neil & Shiner = New Traverse Point  
March 4-1952 C.S.W.

2,159.63.43 N } TF 885-A  
1,749,310.59 E }







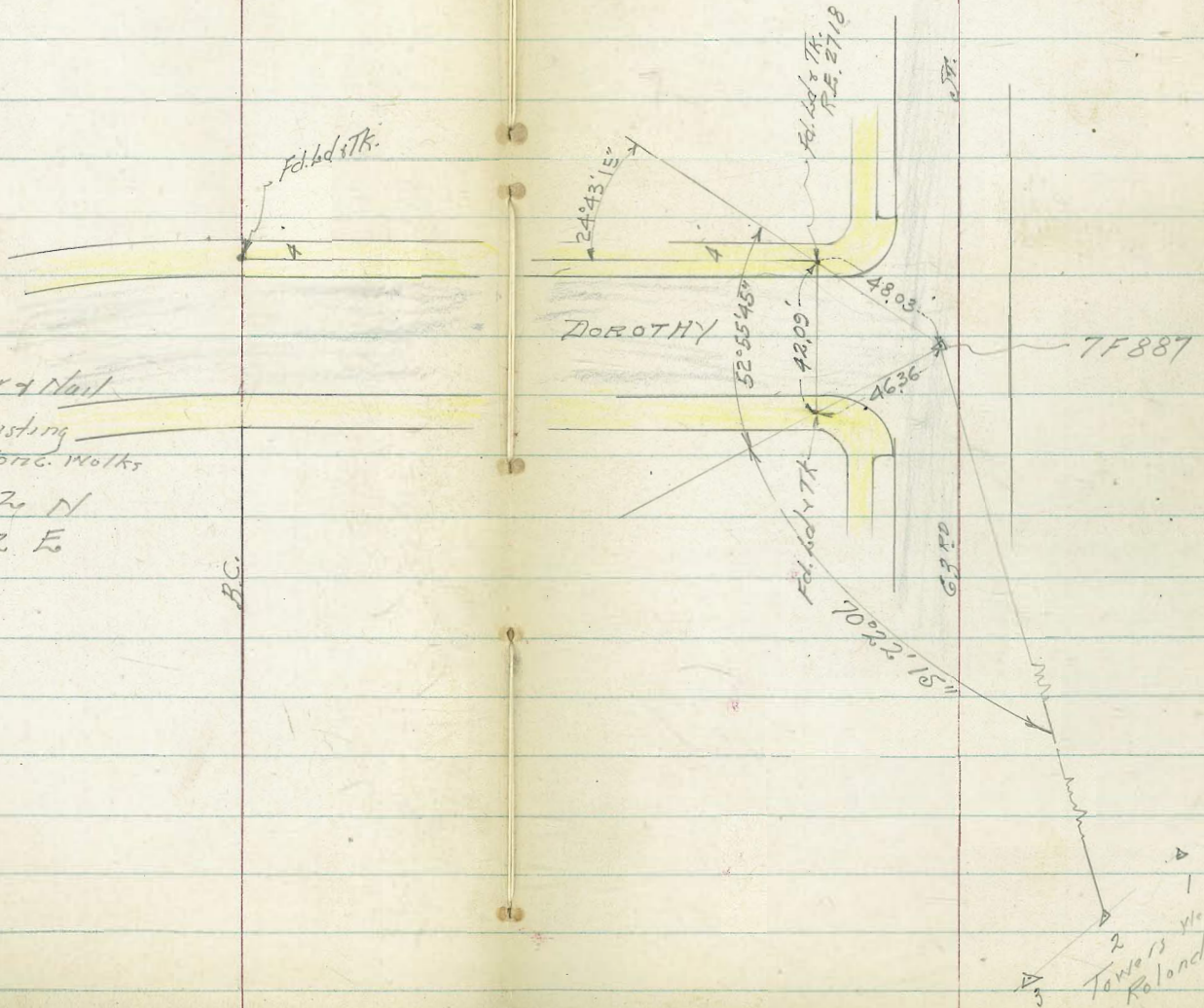


Ties ~ To Plane Coordinate Positions

Walker  
Pope  
Clark  
Hoffman  
6-22-51

Negative T-1-SD-1-15 ✓

7F 887 Fd. Shovel & Nail  
Tied To Existing  
Ld Plys. in Conc. Walks  
220,196.02 N  
1,749,816.72 E









Ties ~ Plane Coordinate Positions

Walker  
Pope  
Clark  
Huffman  
6-27-51

Negative T-1-SD-1-15 ✓

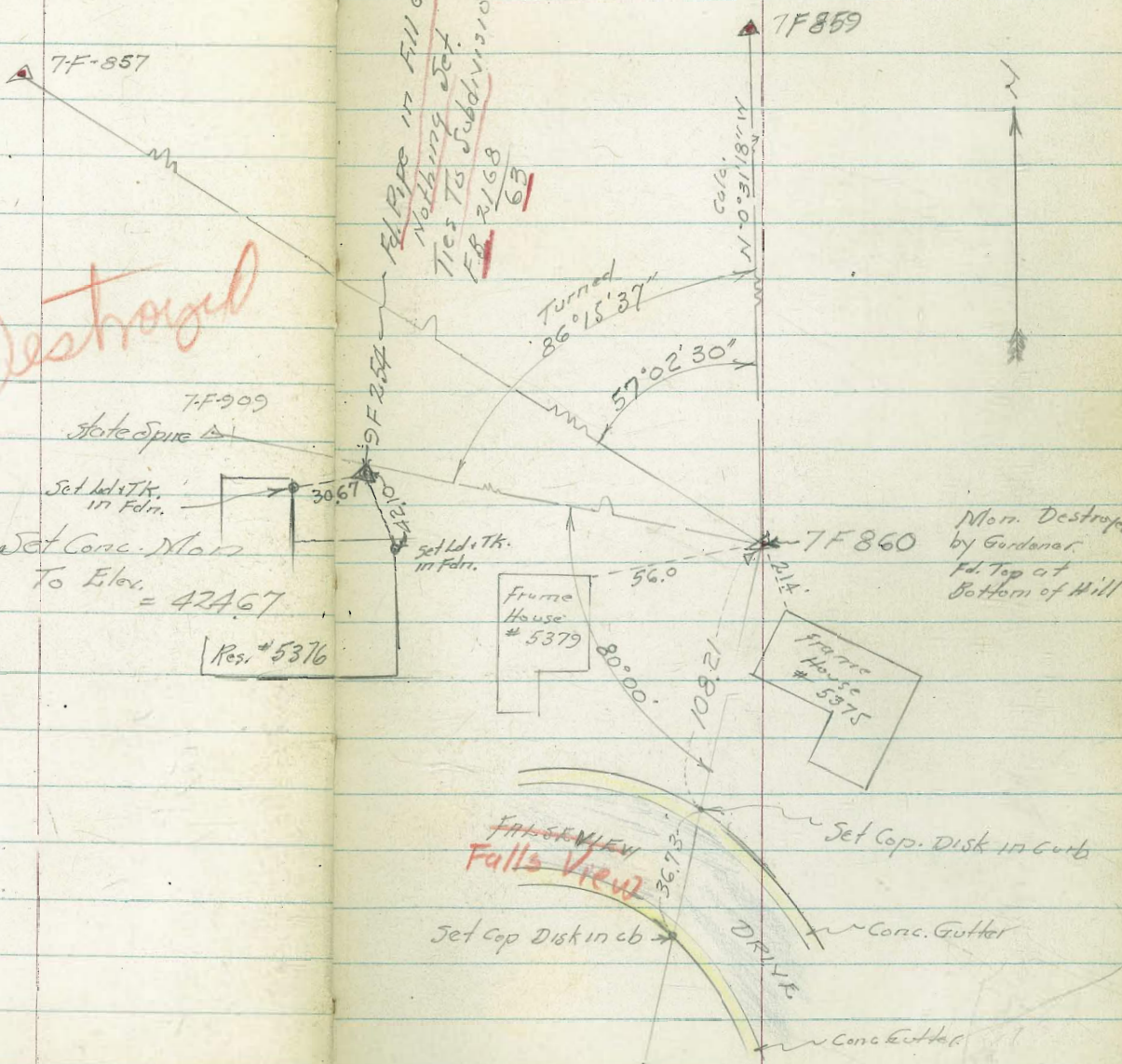
*Destroyed*

7-F-860 Fd. 3/4" Pipe,  
Record Elev. = 424.36  
222,972.14 N  
1,749,599.17 E  
Elev. 424.36

Set Conc. Mark  
To Elev. = 424.67

Res. # 5376

*FL PIPE in Hill Ground.  
Nothing Set.  
Ties to Subdivisions  
FB 2168  
63*



*Falls View*

Set Cop. Disk in cb

Set Cop. Disk in curb

Conc. Gutter

Conc. Gutter

Mark Destroyed  
by Gardner.  
Fd. Top at  
Bottom of Hill

Frame  
House  
# 5379

Frame  
House  
# 5375



Ties to Plane Coordinate Positions

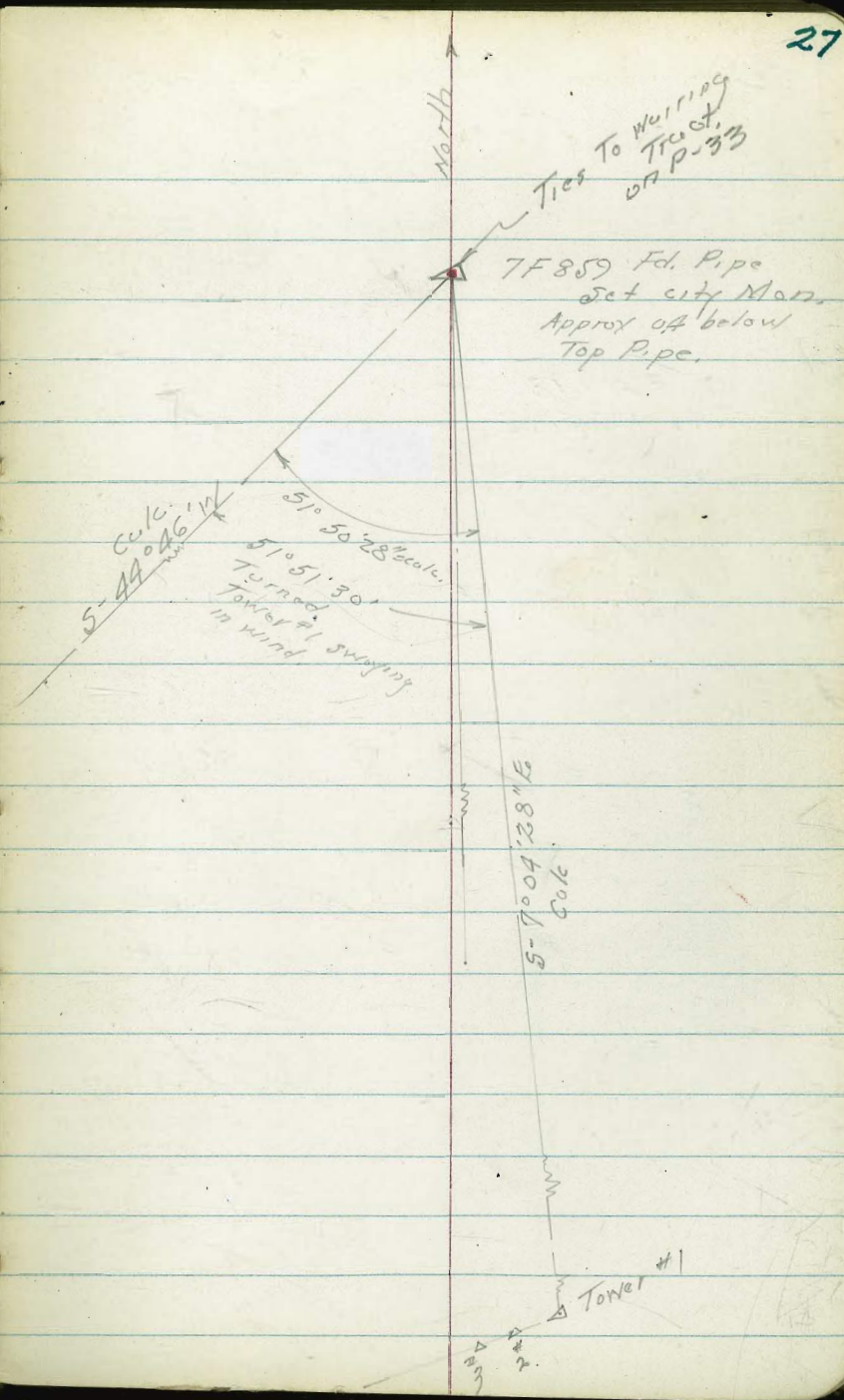
Walker  
Pope  
Clark  
Huffman  
Negative T-1-SD-1-21  
6-22-51

7-F 859 Fd. 3/4" Pipe. Set Conc. Man.

225,123.92 N  
1,749,579.17 E

Elev. 468.99 = Pipe  
- 40  
468.59 ± = Man.

7-F-909  
Spire State College





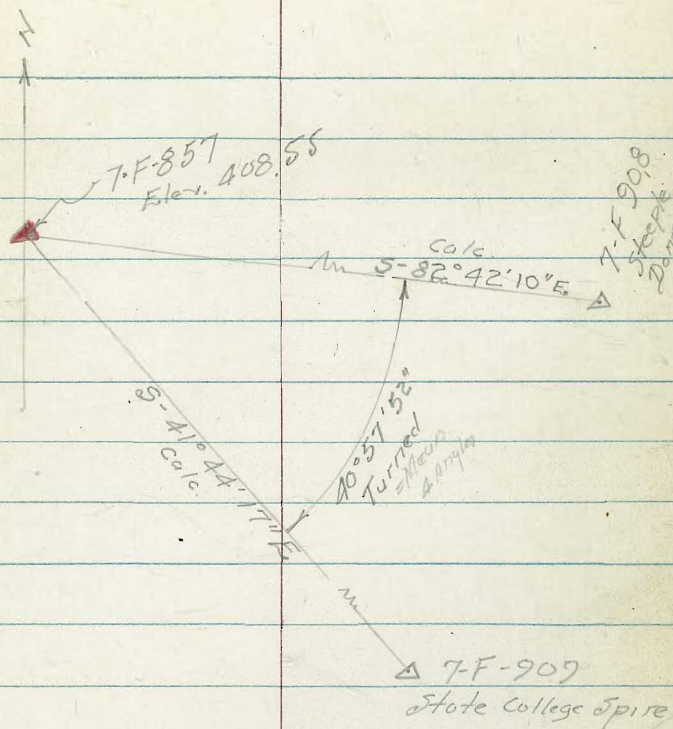
## Ties to Plane Coordinate Positions

Walker  
Pope  
Clark  
Huffman  
6-22-51

Negative T-1-SD-1-21

7-F-857 Fd 1/2" Iron Pipe, Set Conc. Mon  
225 817.73 N  
1,745 125.52 E

Set B.M. on Conc. Mon 439 408.55 - New Elev.  
B.M.  
445 412.94 408.49 - Pipe





Ties To Plane Coordinate Positions

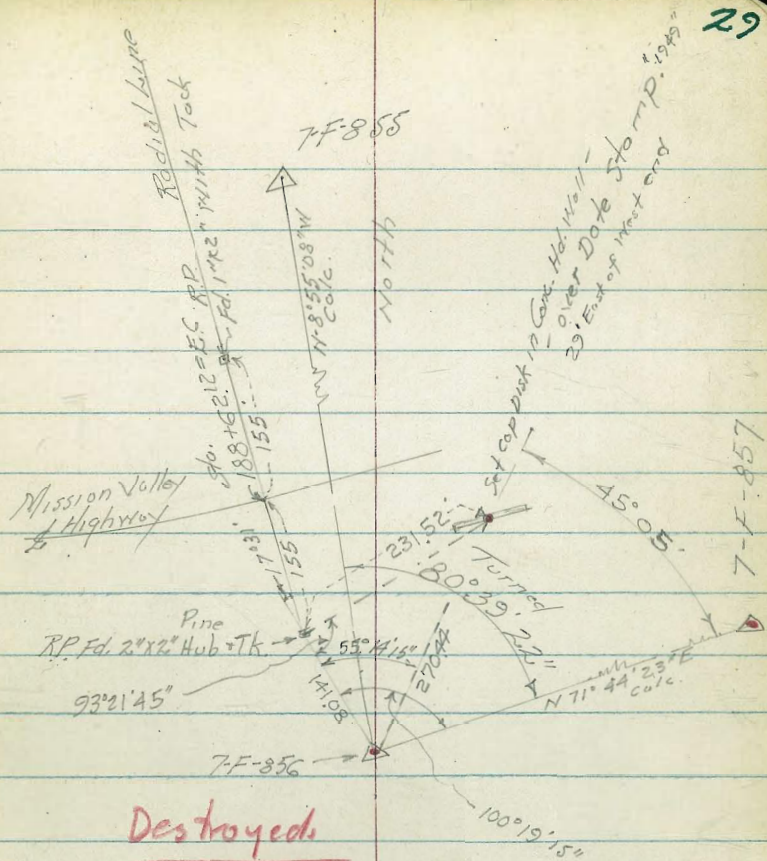
Walker  
 Popo  
 Clark  
 Hoffmann  
 6-27-51

Negative T-150-1-44 -

T-F-856 Fd. 1/2" Iron Pipe.  
 Record Elev. Pipe = 92.18  
 Mon = 0.20 Above Pipe =

223461.33 N  
 1737966.28 E

Set Conc. Mon  
 To Elev = 92.38



Destroyed



Ties - Plane Coordinate Positions

Negative T-1-SD-1-4

Walker  
Pape  
Clark  
Hoffman  
6-26-51

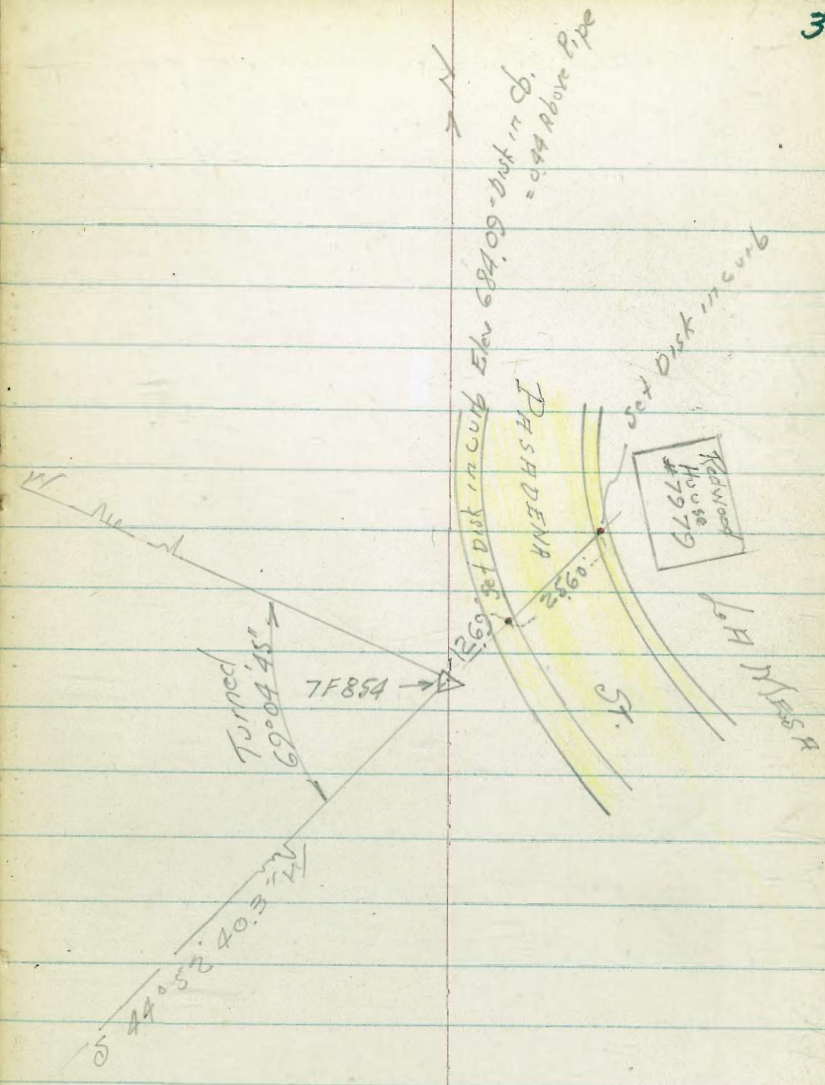
State Spire  
7F909

N-66°02'21" W  
Calc. 216

7F854 Fd 1/2" Iron Pipe Elev. 683.62

216,713.29 N  
1,761,886.60 E

East Tower  
KFSD





Ties to Plane Coordinates -  
- Positions.

Negative T-1-SD-1-29

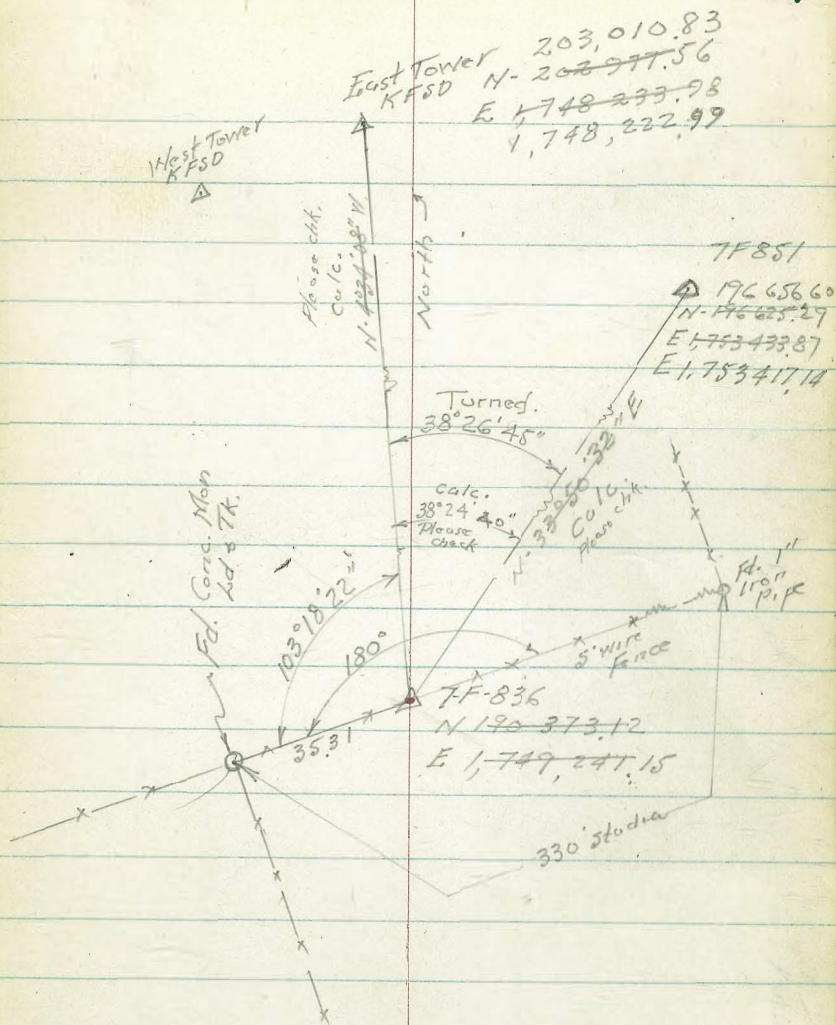
Better " T-1-SD-1-30-or 31

Walker  
Pope  
Clark  
Huffman  
6-26-51.

7 F 836 Ed 1/2" Pipe. Set Conc. Mon.  
Follow Pipe 307.88

Set B.M. on Mon = 308.04

Large Home on Hill  
Approx 600'





Ties ~ To Plane Coordinate Positions

Walker  
 Popo  
 Clark  
 Huffman  
 6-26-51

Negative # T-1-50-1-45

= MISSION

7-F-855 1/2" Pipe set Cor. Mon  
 Record Ed. 26076 To Ed 26114

227,353.65 N  
 1,737,358.35 E

on 8-25-52

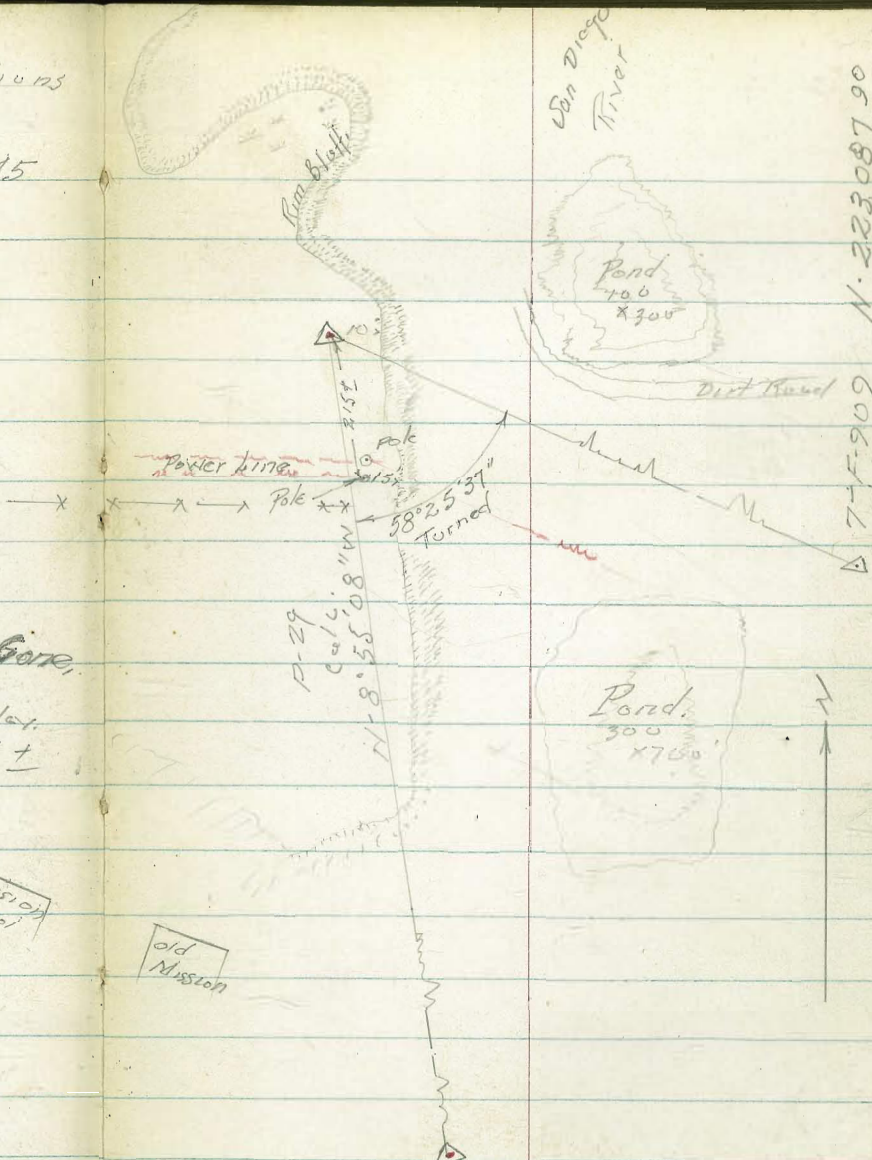
→ Note: Fel. this Mon with Top  
 Beaten off And Broze Dix Core,  
 We Set Copper Disc in Mon  
 Approx 0.3' Below 019. Elev.  
 which is now About 260.84 ±

Walker  
 Hardin  
 Huffman 8-25-52  
 Presley

Mission  
 School

old  
 Mission

7F856  
 Page 29



7F909 N. 223,087.90  
 1904 Spire E 1,747,558.72



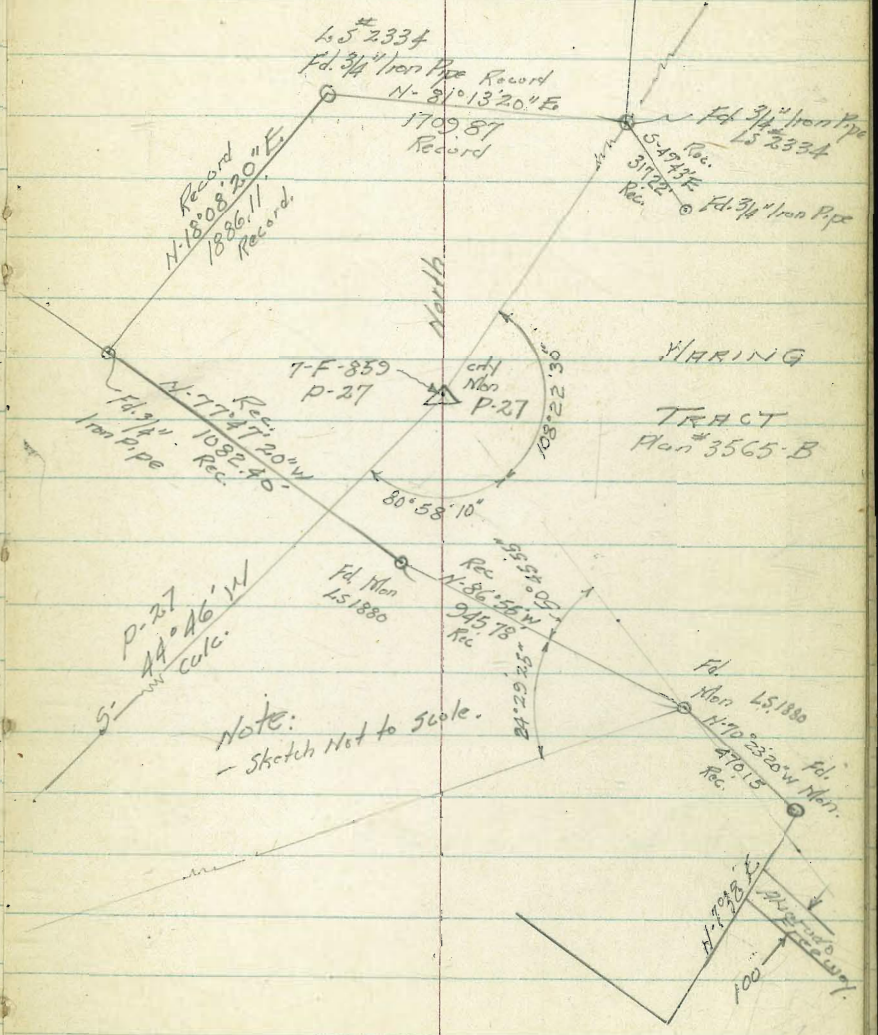
Ties ~ Plane Coordinate Positions

Walker  
Pope  
Huffman  
Dishop  
12-20-51

Tie to Haring Tract

7.F.859 Coordinates P-27

7.F.909  
State College  
Spire P.27



Note:  
- Sketch Not to Scale.

HARING  
TRACT  
Plan #3565-B



AERIAL SURVEY PLANE COORDINATE POSITIONS

REF.

TRANSVERSE CONTROL POINTS

Walker on Fairmount Ave

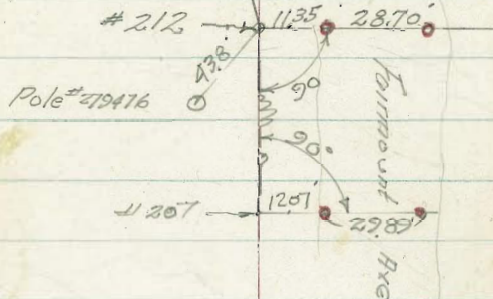
Pope

Huffman

Bishop

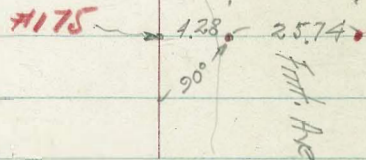
2-29-52

• = Set "P" Nail in Asphalt Paving  
With City Eng. Disc.

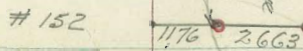
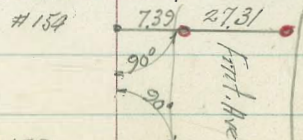
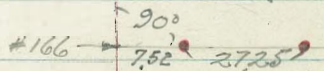


ALDINE

ROAD



About Midway and  
opposite last two  
Guard Rail Post.





AERIAL SURVEY PLANE COORDINATE POSITIONS

TIES  
2-29-57

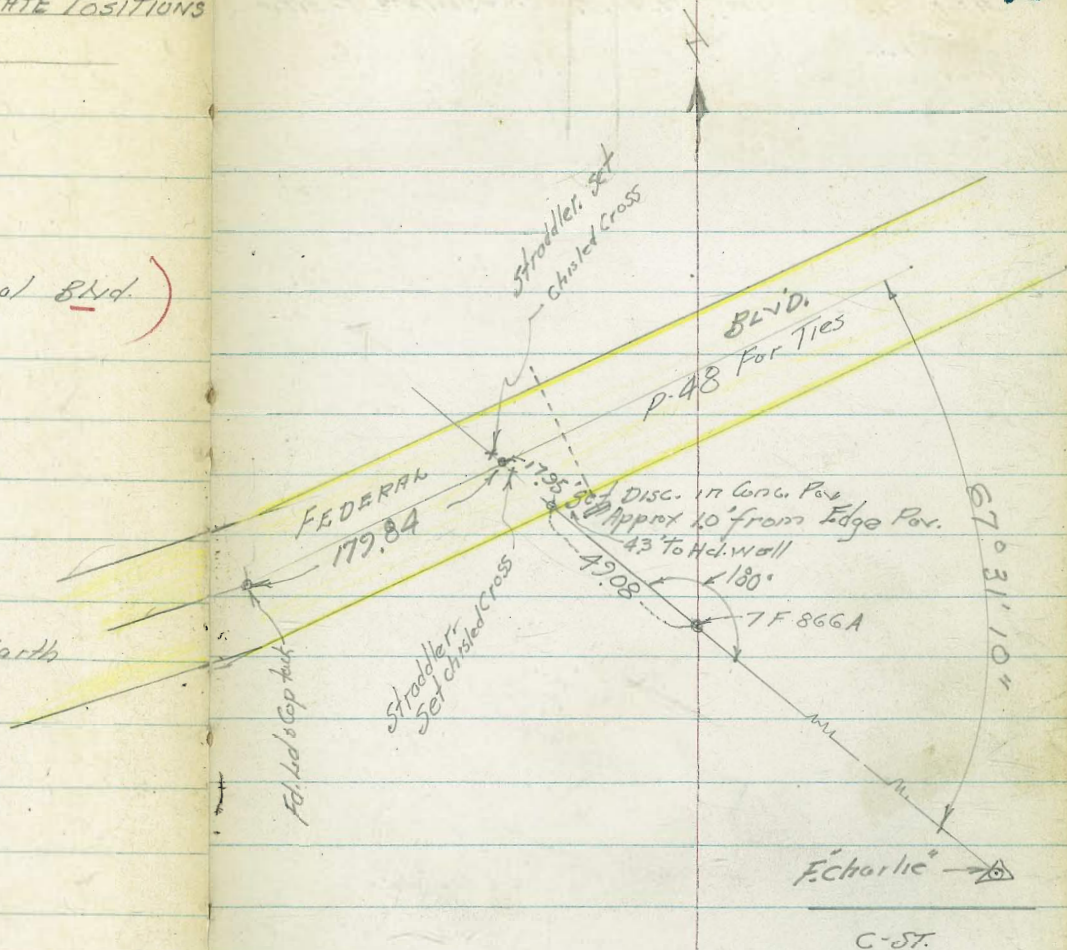
(For Additional Ties Along Federal Blvd.)  
See P. 48

7 F 866 A Fed. Shiner in Mid Earth

201,939.78 N  
1,737,035.10 E

7.81

3.55



on Ref. Disc. 1.0' from Edge Pav.  
on Shiner



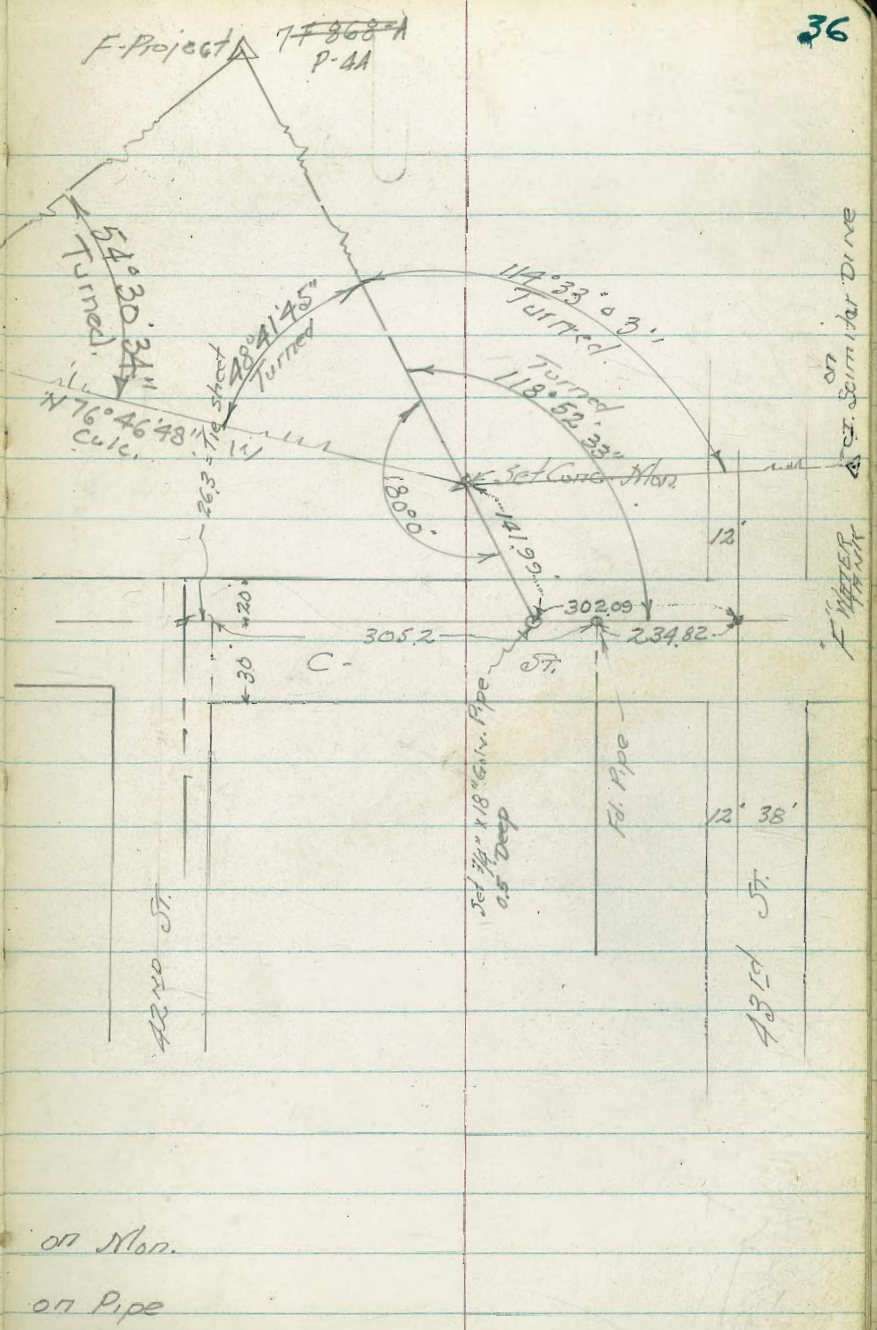
AERIAL SURVEY PLANE COORDINATE POSITIONS

TIES  
 Walker  
 Pope  
 Hoffman  
 Bishop 2-29-52

# "Charlie"  
 Fd. Pipe.  
 Set Conc. Mon  
 201,385.83 N  
 1,737,674.37 E

Destroyed

02A  
 022



on Mon.  
 on Pipe

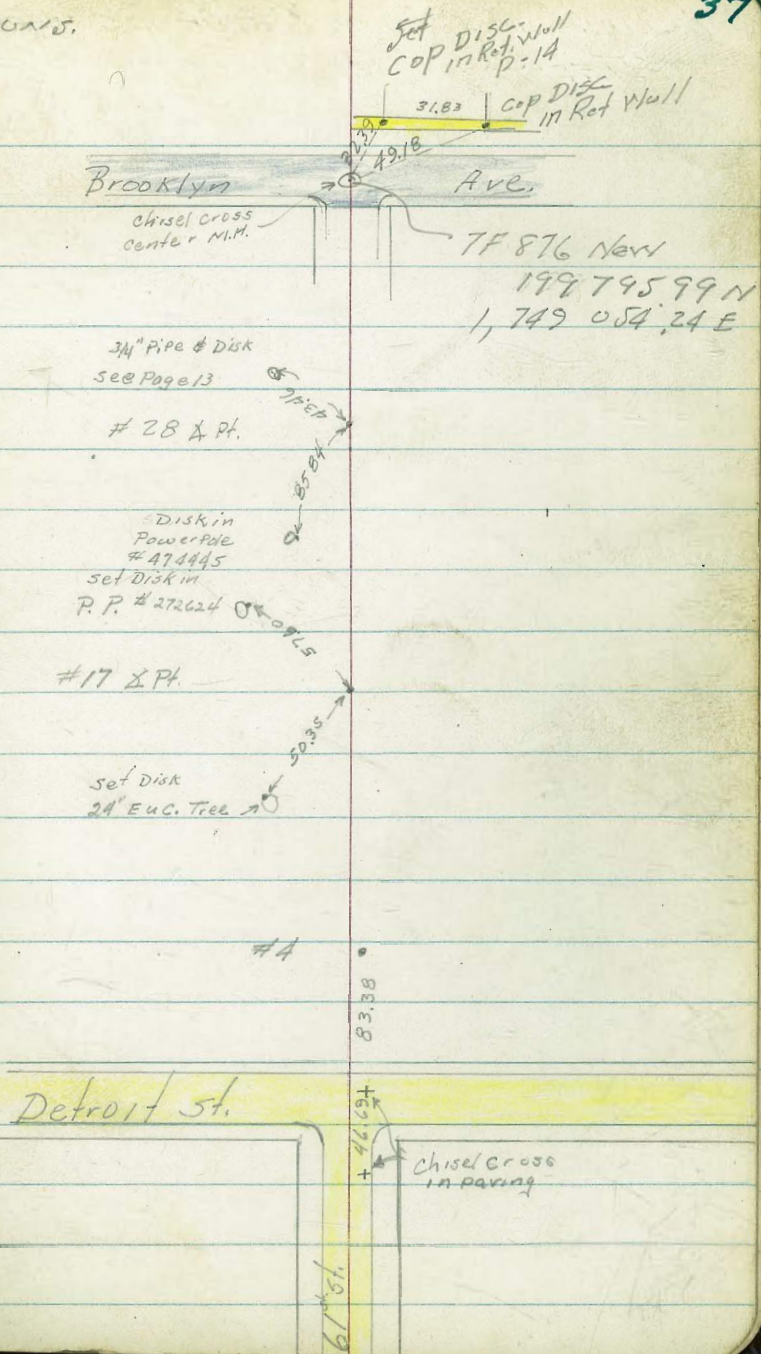
on  
 of  
 F. W. PETER



AERIAL SURVEY PLANE COORDINATE -  
 REL. TIES - Traverse Control Points

Pope  
 Huffman  
 Bishop 3-3-52  
 New For See  
 TF 876 Tie Detail, P-47

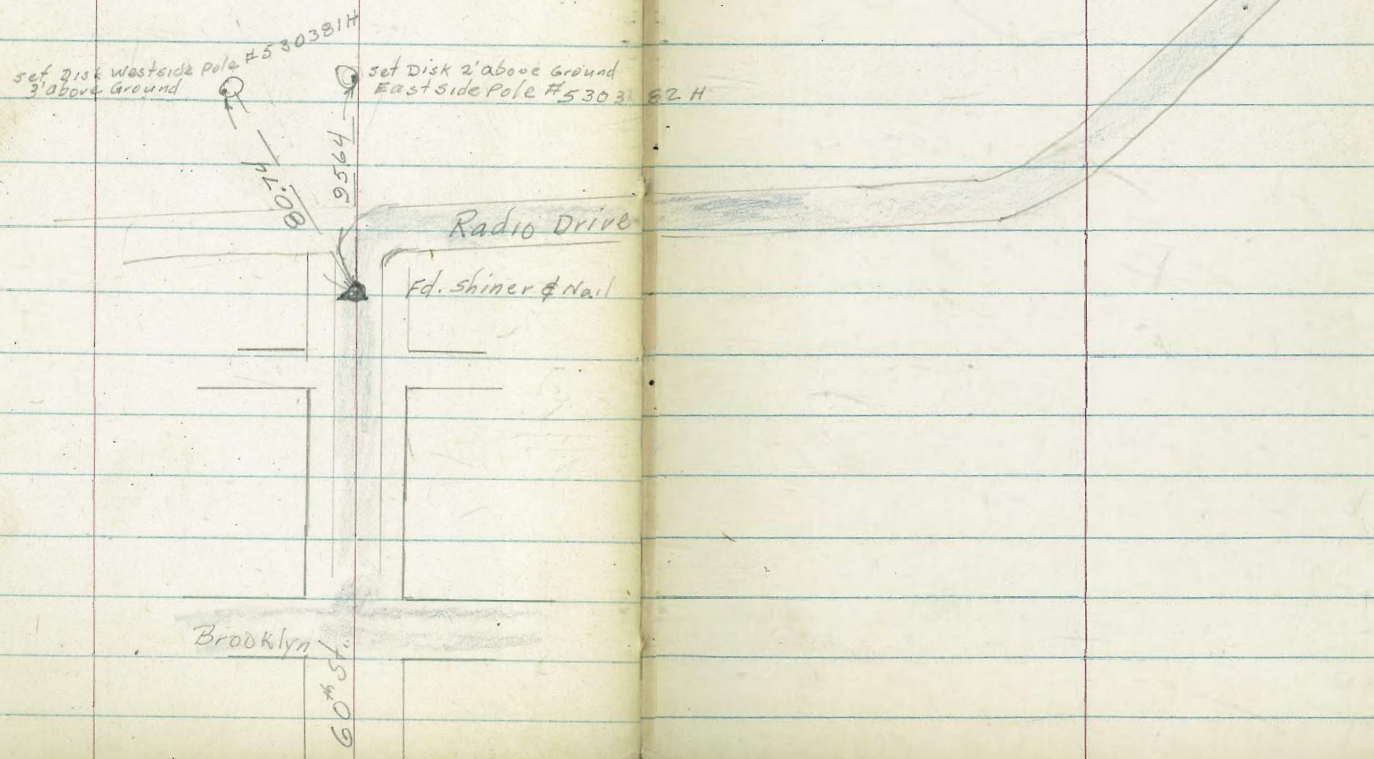
POSITIONS.





AERIAL SURVEY PLANE COORDINATE POSITIONS  
REF. TIES - Traverse Control Points

Pape





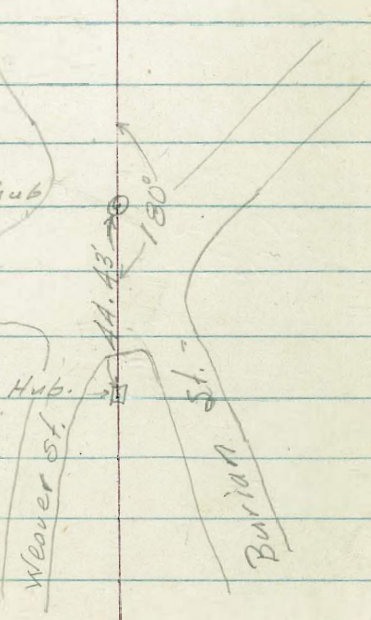
AERIAL SURVEY PLANE COORDINATE POSITIONS  
Ref. TIES ~ Traverse Control Points

# 7F 878A  
Fd. 1/2" pipe  
set Mon.  
To same Elev.  
as pipe

see P. 45  
For Ties TO Subd.

# 87 X Pt.  
Fd. shmerdhub

set 2" X 2" RW. Hub.  
City Engr. Disk.





AERIAL SURVEY PLANE COORDINATE POSITIONS

TIES

Walker 7-F 880 A Photo - 11  
 Pope  
 Huffman  
 Estrop  
 3-4-52

• = city disc. in Conc. Pav.

7 F 880 A Fed. Stiner.  
 Elev. 286.20  
 205,798.25 N  
 1,750,515.24 E

4th  
 Conc.  
 Mon.

Fed. Pt.  
 TP Book #33

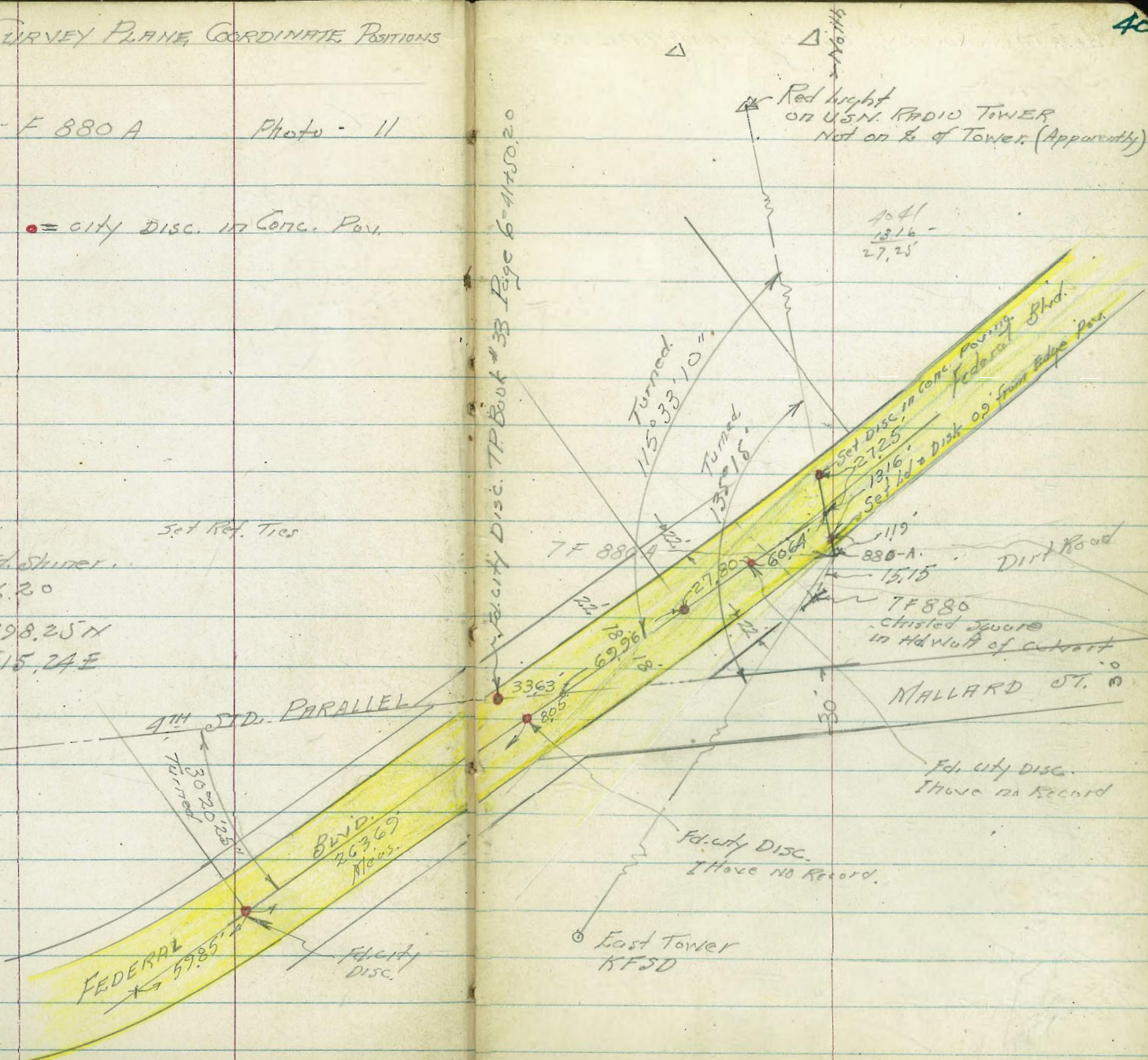
4th STD. PARALLEL

FEDERAL  
 5985'

Fed. City Disc.

Set Ref. Ties

Fed. City Disc. TP Book #33 Page 6-41750.20



Red light  
 on U.S.N. RADIO TOWER  
 Not on E. of Tower. (Apparently)

1041  
 1316 -  
 27.25

7 F 880 A

880-A

7 F 880

Christed Square  
 in Hd W/pt of Culvert

MALLARD ST.

Fed. City Disc.  
 I have no Record.

Fed. City Disc.  
 I have no Record.

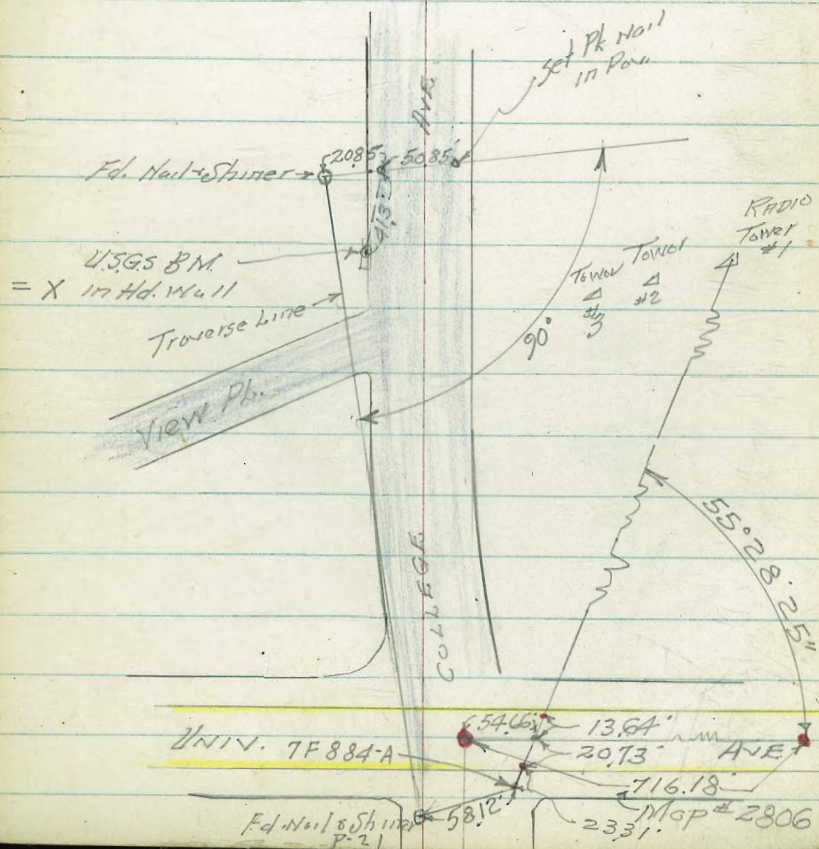
East Tower  
 KFSD



AERIAL SURVEY PLANE COORDINATE POSITIONS

TIES

Walker  
 Pope  
 Huffman  
 Bishop  
 3-4-52



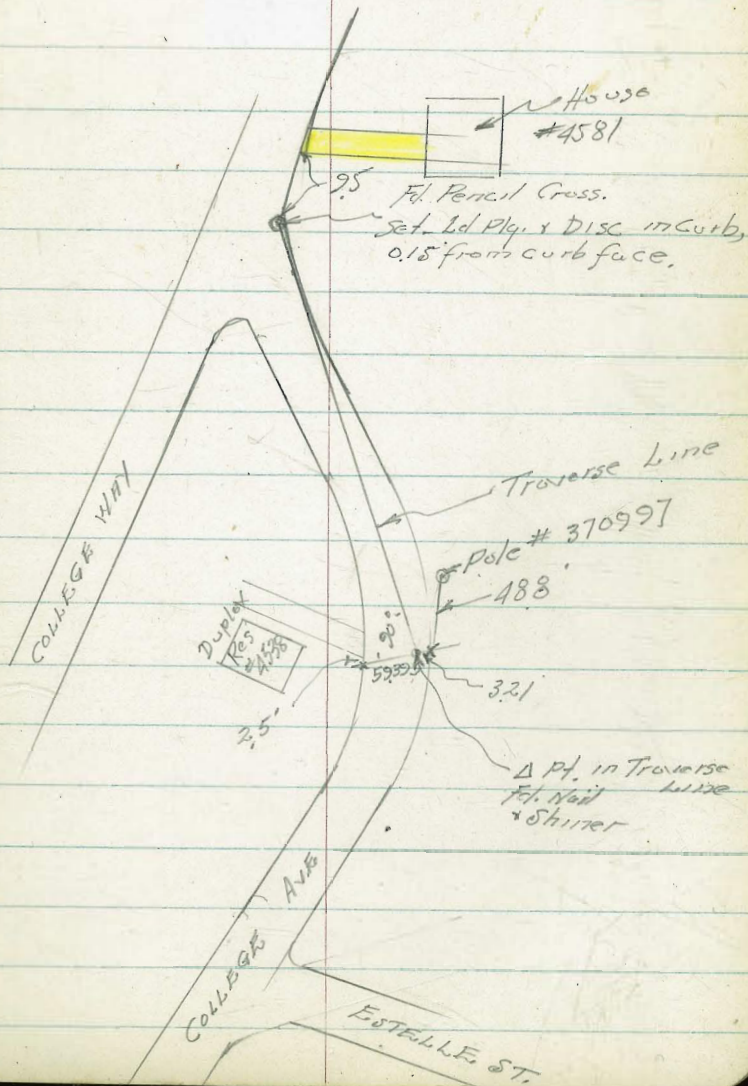
7F884-A Ed. 1/2" Pipe



AERIAL SURVEY PLANE COORDINATE POSITIONS

TIES

Set chisled cross 5939 Lt.  
 " " " 3.21 Rt.  
 Fd. Nail & Shiner.





AERIAL SURVEY PLANE COORDINATE POSITIONS

TIES -

Walker	} "Barracks" Mon Set.	Walker	} Ties 10 S-b. 8-28-52
Pope		Hardin	
Huffman		Huffman	
Bishop		Preble	
3-4-52			

Fd. Pipe  
AF "Barracks" Set Conc. Mon.

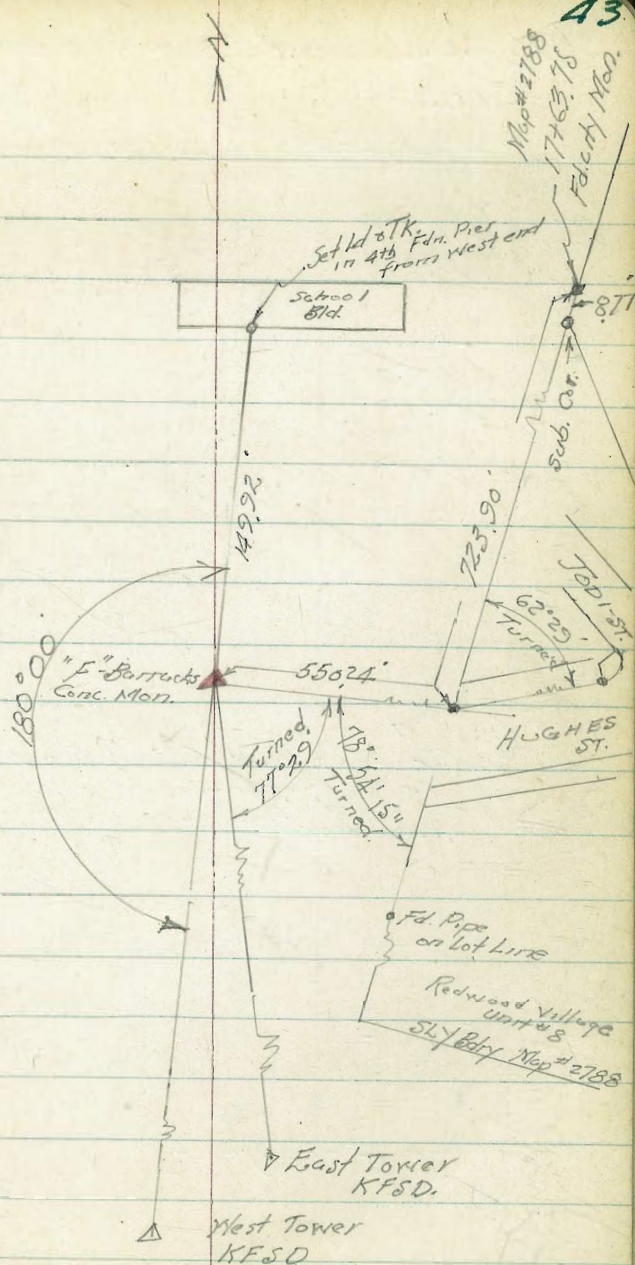
211 939.24 N  
1748 622.63 E

0.00

0.00

on Mon

on Pipe





AERIAL SURVEY PLANE COORDINATE POSITIONS

TIES W

Photo # 1-53

7F868A

205,458.01 N

1,735,636.70 E

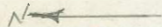
Walker  
Pope = Ties  
Huffman  
Bishop 3-4-52

7F878A - Page 45

203,387.52 N  
1,749,358.13 E

Fd. 1/2" Pipe  
RE 2718

TULIP



MARIGOLD

JUNIPER

Destroyed

Mon at

Note: S.W. Cor. Front Park was graded  
8 ft. We replaced same as  
per sketch 8-19-52  
CB Walker

Fd. Pipe  
LS

30° 180°

Turned  
20° 51' 25"

96° 04' 53"

Map # 2874

Fairmount  
Park

Meas.  
662.77'

West Bdry Line

Set Conc. Mon

7F868A  
"F. Project"

Meas.  
327.73'

Fd. 2" Iron Pipe  
& Disk NE 3560

(Guard  
Stake) Marked Bdry. Cor.

7F868A F-Project

Mon.

Pipe

A96

645

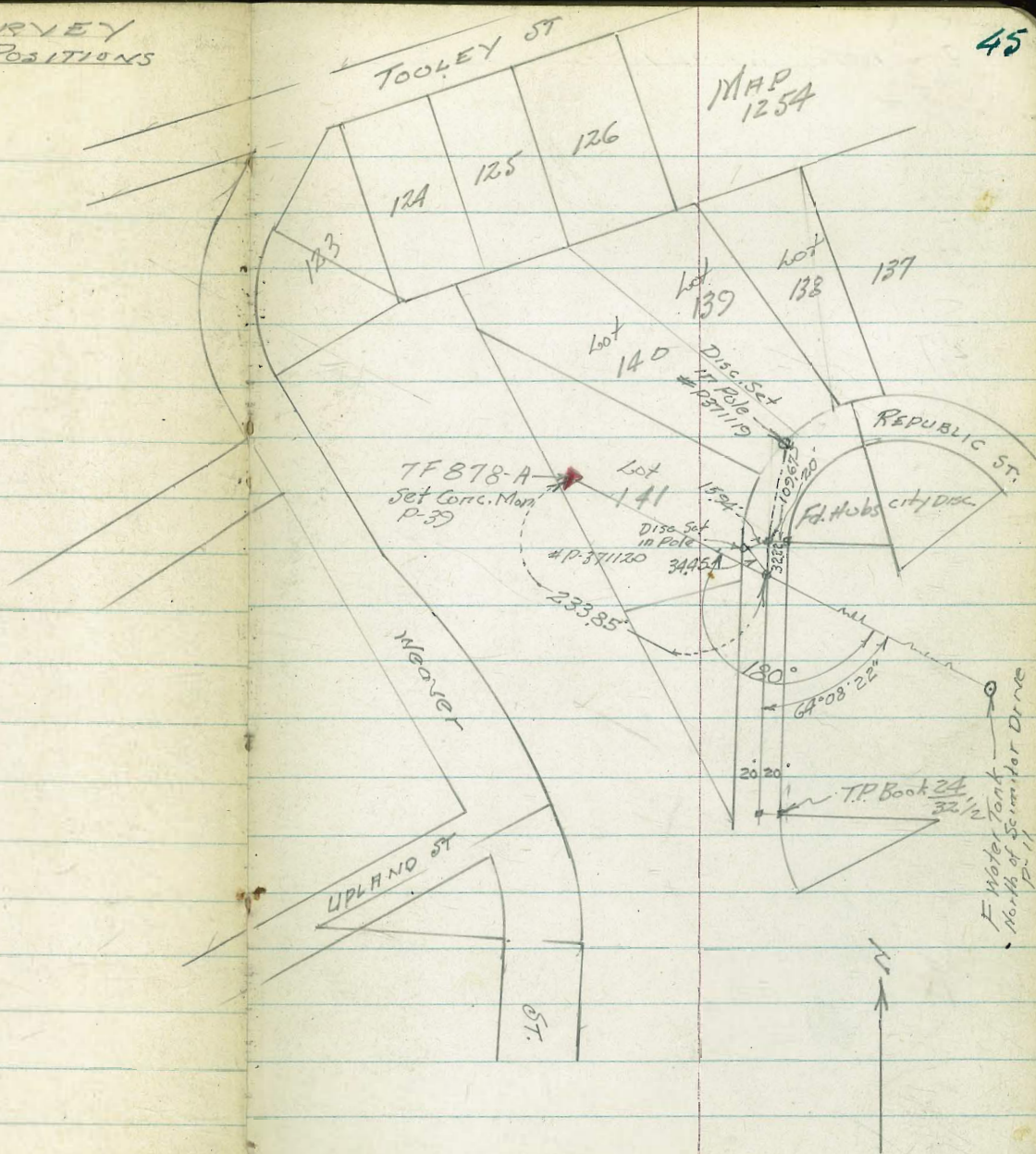
5830



AERIAL SURVEY  
 PLANE COORDINATE POSITIONS  
 TIES

Walker  
 Pope  
 H. H. Hiram  
 Bishop  
 4-3-52

2F878-A 203,387.52 N  
 1749,358.13 E





AERIAL SURVEY  
PLANE COORDINATE POSITIONS

TIES

Wulker  
Pope  
Hoffman  
Bishop 3-3-32 Mon Set

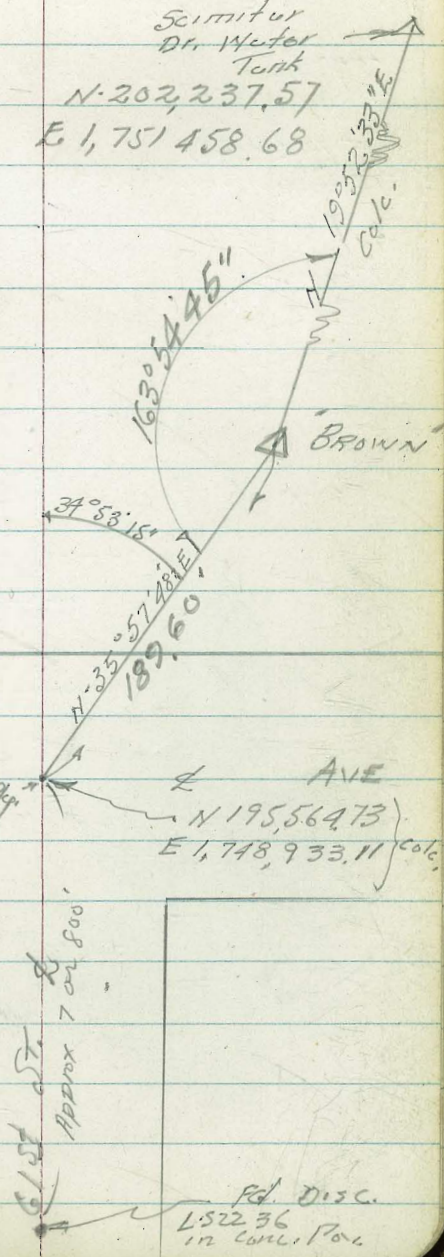
Ties Made by  
Wulker  
Pope  
Hoffman  
6-19-52

Id. Pipe.  
F "BROWN" Set Conc. Mon. Stamped "BROWN"  
(Pope says tie set Mon.  
To Same Elev. as Pipe)

N = 195676.08 } "BROWN"  
E = 1749086.57 }

Scimitar  
Dr. Water  
Tank  
N-202,237.57  
E, 1,751,458.68

DETROIT  
Pd. Ct. Lcd. Pkg.  
in Conc. Pav.  
AVE  
N 195,564.73 }  
E 1,748,933.11 } Calc.





AERIAL SURVEY  
 PLANE COORDINATE POSITIONS

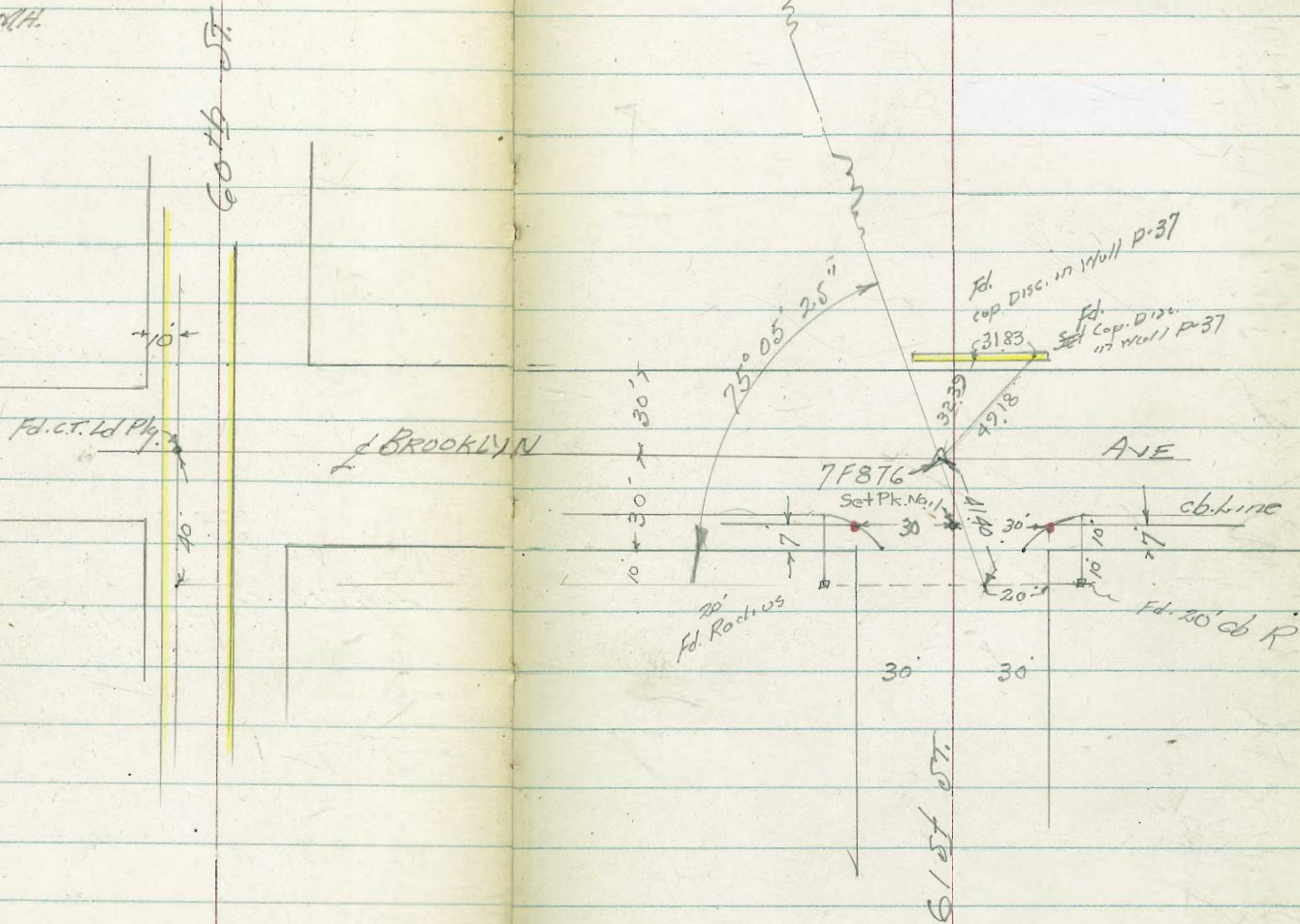
~ TIES ~

Walker  
 Pops  
 Hoffman  
 Presley 8-21-52

• = set Id. Plg. & Disc.  
 in Curb.

7F876 = New  
 Fd. cross on Lid. of M.H.

old  
 (7F876) P-14





AERIAL SURVEY

TIES TO L. Federal Blvd.

see Opening Streets for width of Federal Blvd.

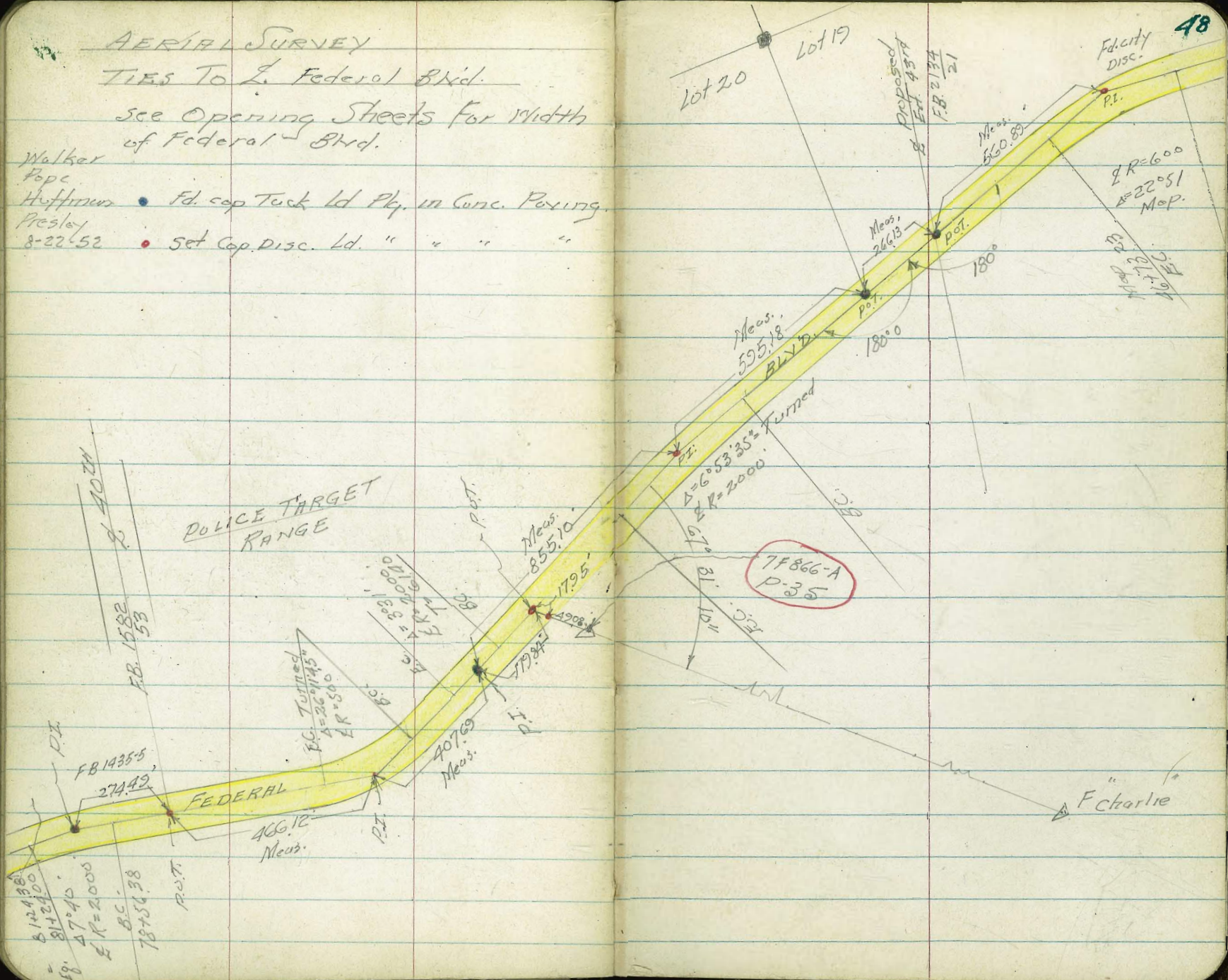
Walker

Pope

Huffman • Fd. cap Truck Ld Ply. in Conc. Paving.

Presley

8-22-52 • Set Cap. Disc. Ld. " " " "





11  
12  
13

14  
15  
16



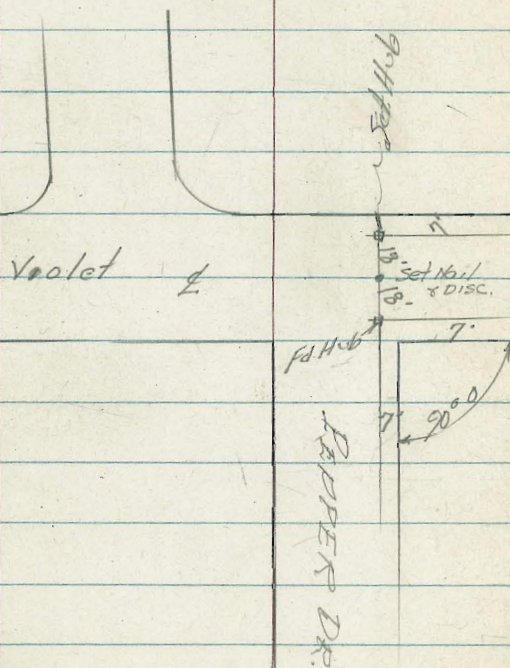
# AERIAL SURVEY

## PLANE COORDINATE POSITIONS

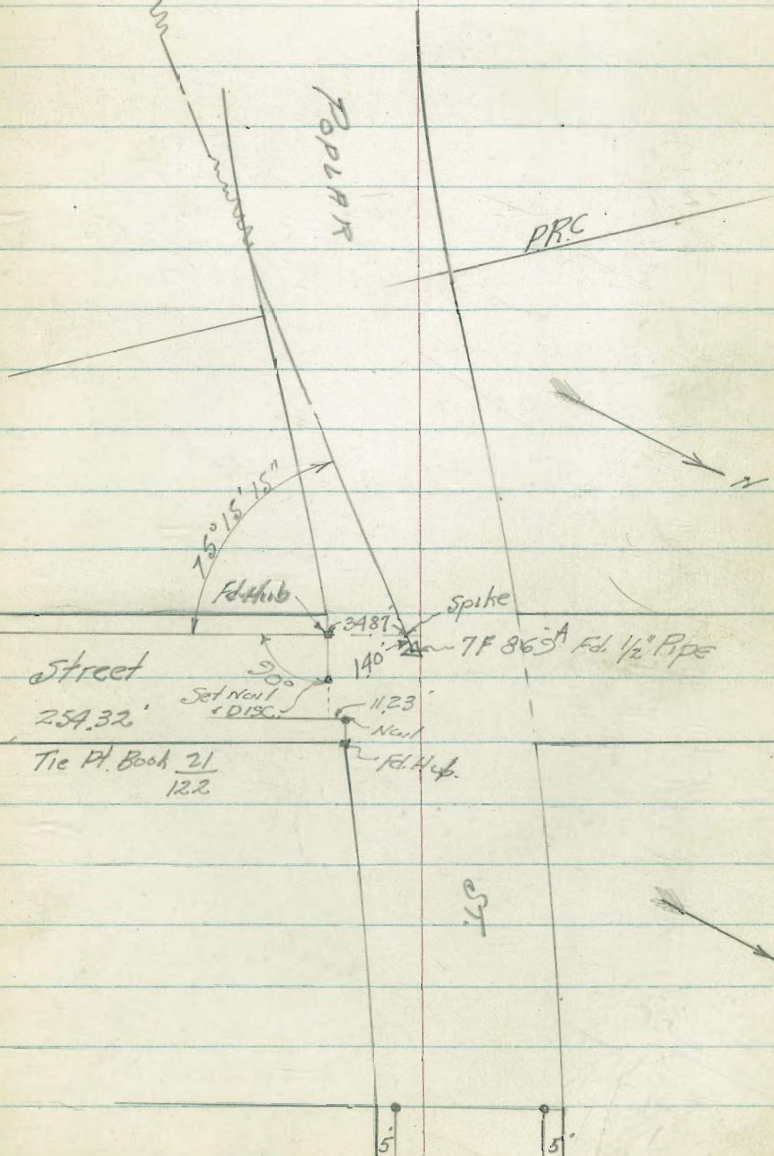
TIES

Walker  
Pope  
Huffman  
Presley  
8-19-52

7F 862-A



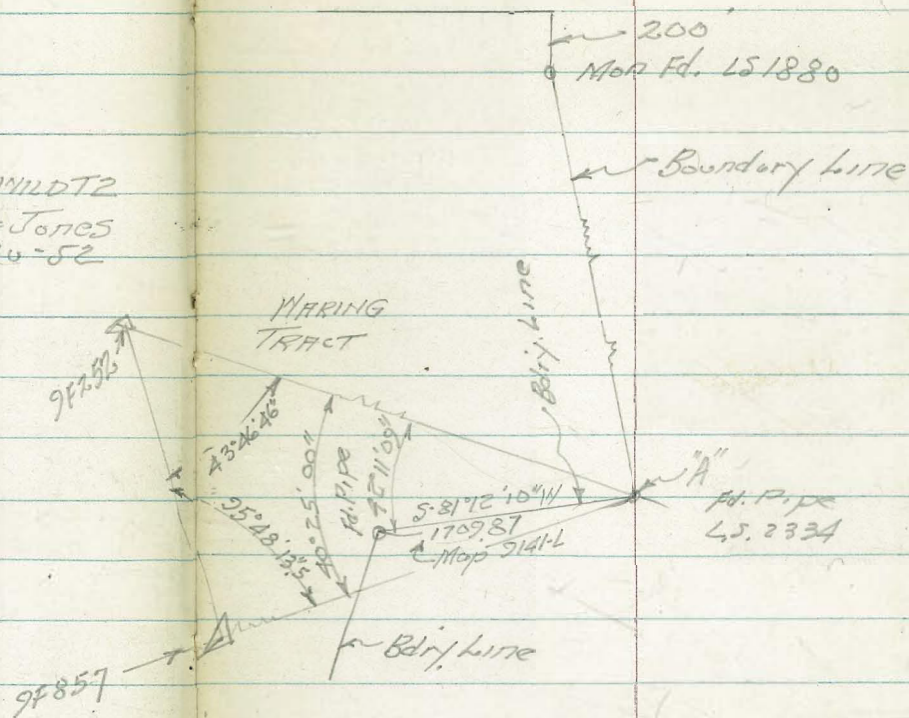
"F-Project"  
~~7F 862-A~~  
P-44





AERIAL SURVEY  
TIES IN WARING TRACT

Station	Occupied = "A"	
Sta. obs	Mean Angle	
7F 859	0° 00' 00"	Inst. = WILD T2
7F 857	47° 27' 19.5"	obs. = Jones
7F 855	58° 17' 00.5"	1-30-52
9F 252	87° 52' 19.0"	

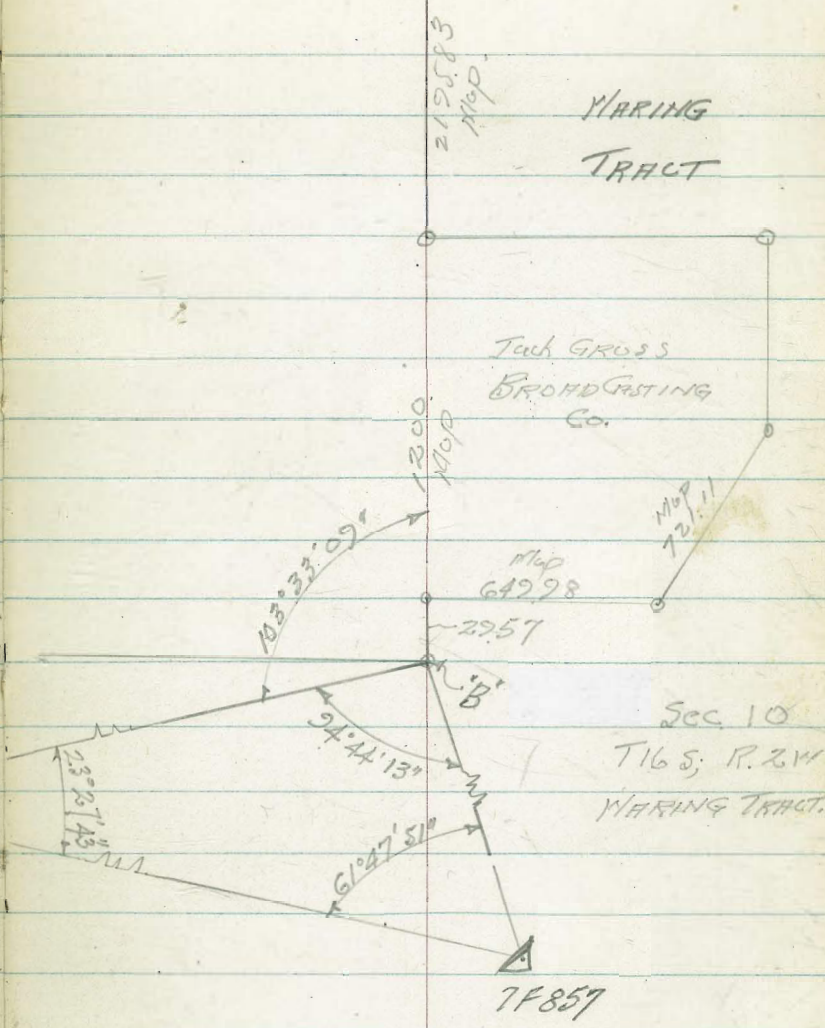
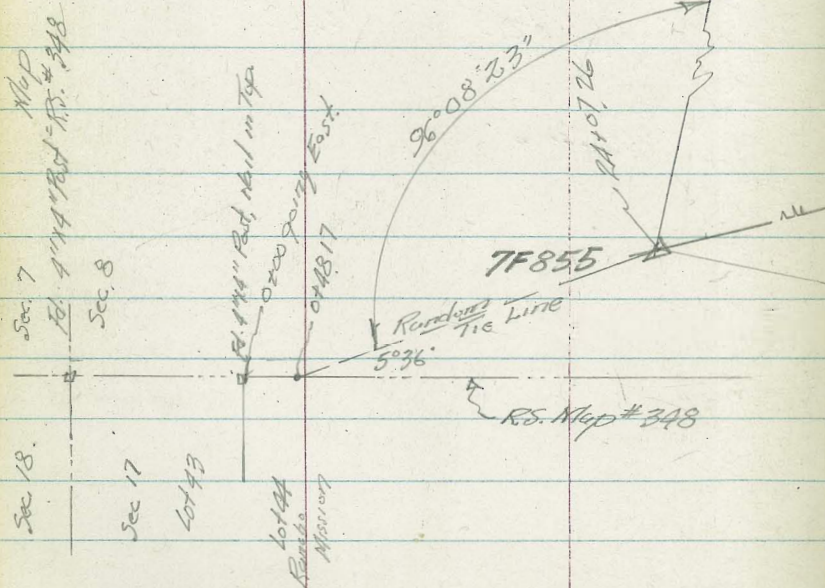




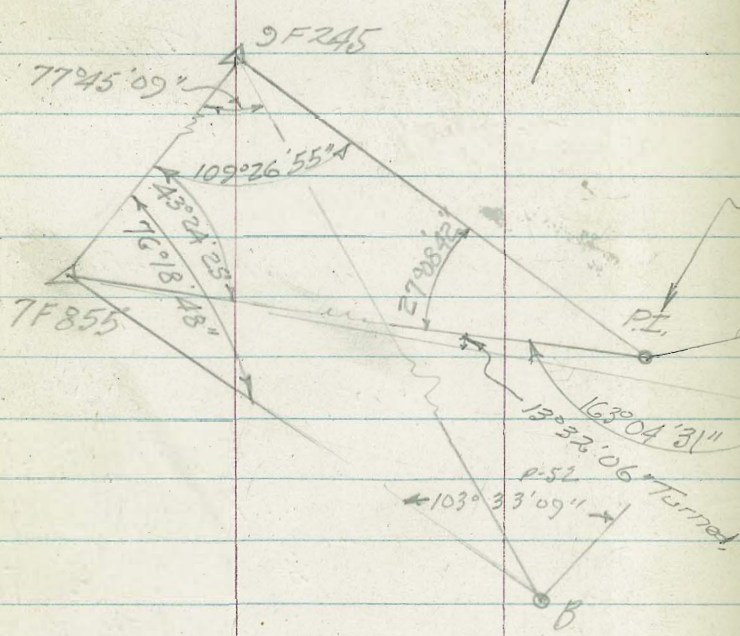
AERIAL SURVEY  
TIE- IN MERING TRACT.

Station occupied = "B"

Station Obs.	Mean Angle	Inst = WILD T2 Obs. = Jones 1-30-52
9F 258	0° 00' 00"	
9F 909	56° 24' 38.5"	
9F 248	103° 00' 09.0"	
9F 247	139° 19' 49.0"	
7F-855	164° 23' 59.0"	



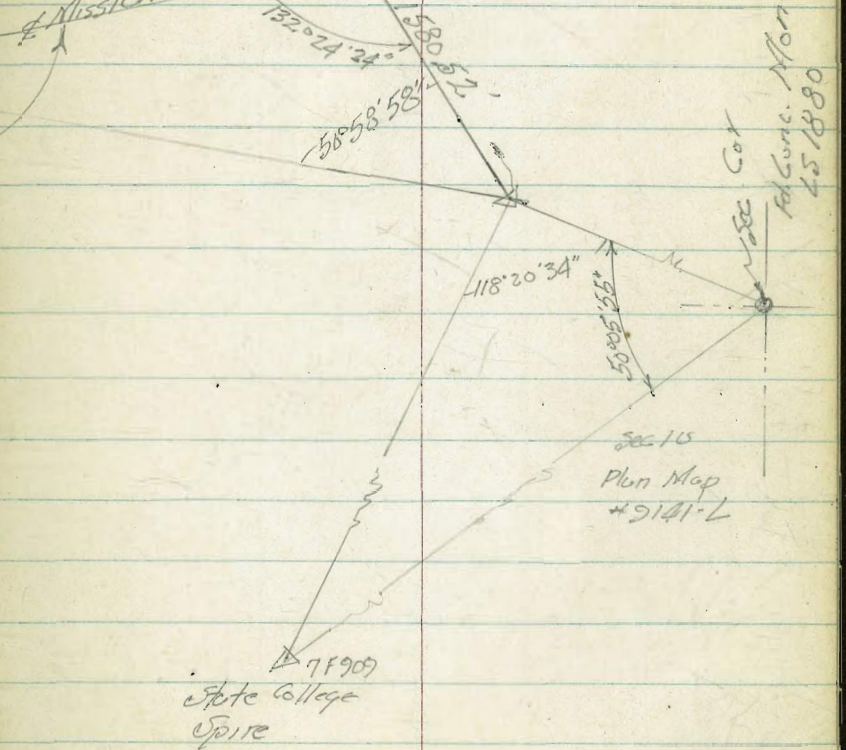




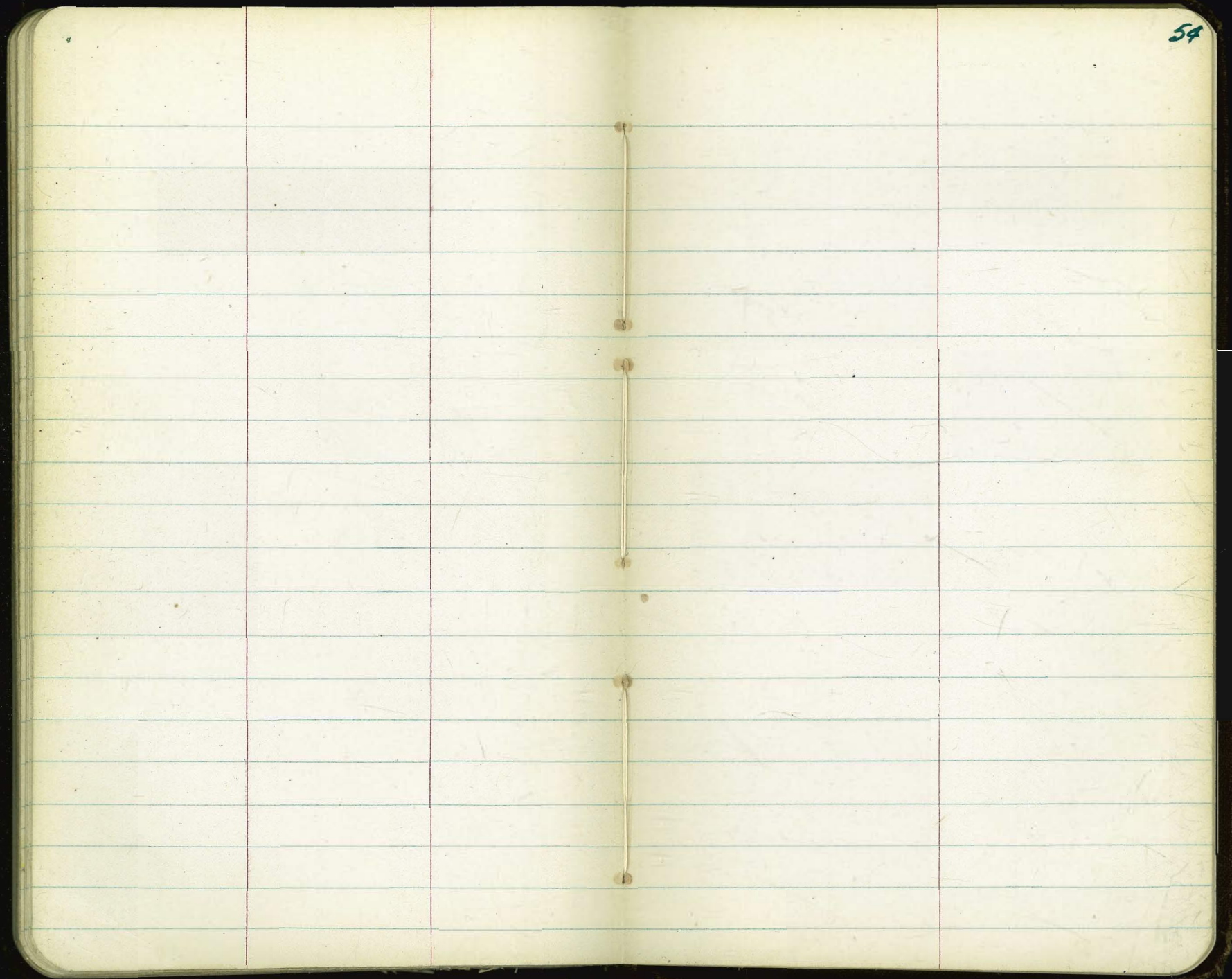
Sketch Not Drawn Right,  
but Angle shown is assumed.

R.S. Map #637  
172°54'67"

Road Survey #627  
Mission Gorge ROAD













































64





























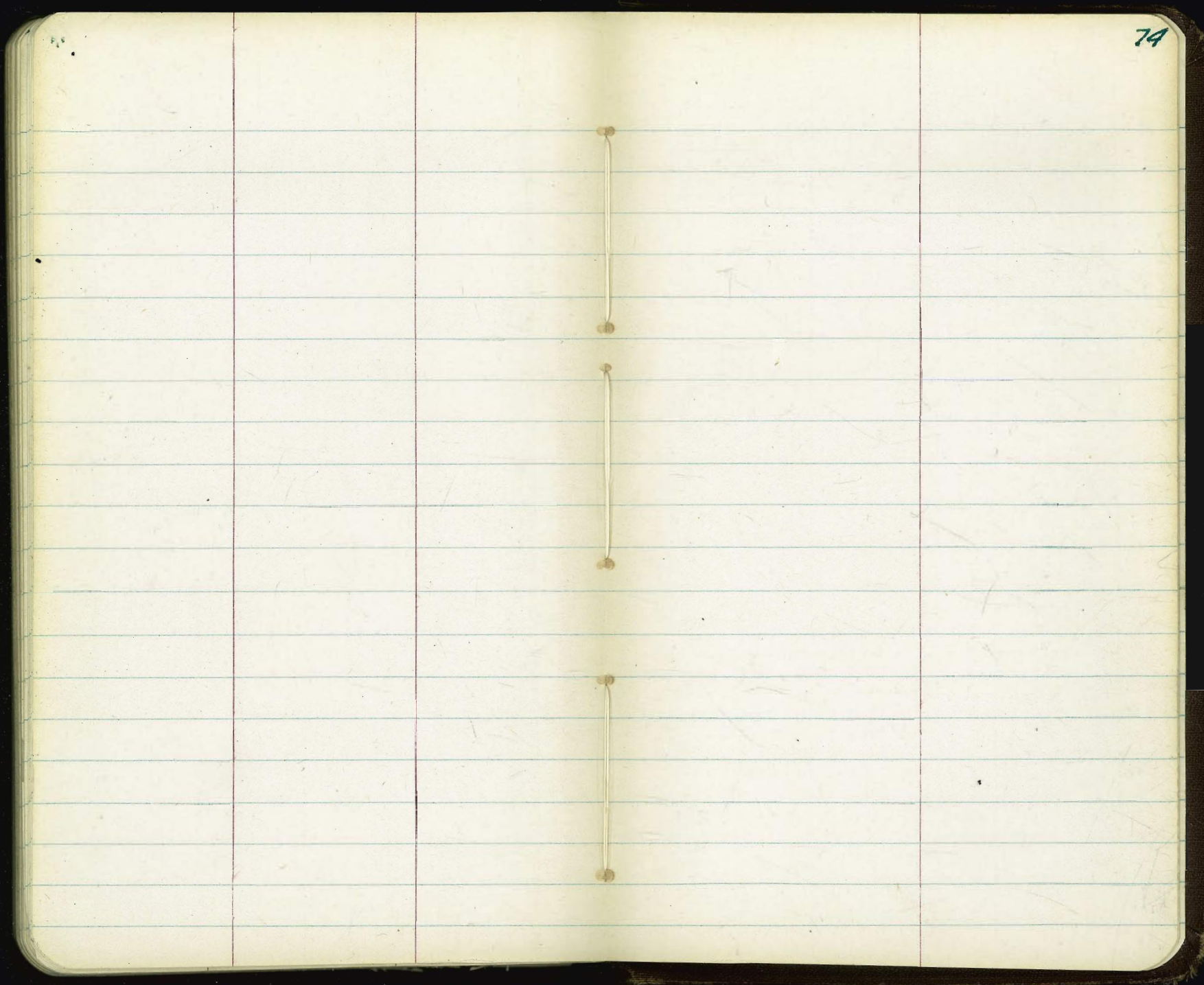


The image shows an open notebook with two facing pages. Both pages are cream-colored and feature light blue horizontal ruling. The notebook is bound in the center, and the dark cover is visible at the edges. The pages are blank, with no text or markings. The number '72' is printed in the top right corner of the right page.

















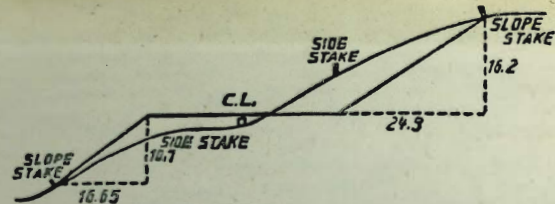












**DISTANCES FROM SIDE STAKES FOR CROSS-SECTIONING.**  
**SLOPE 1 1/2 TO 1. ROADWAY OF ANY WIDTH.**

	0	.1	.2	.3	.4	.5	.6	.7	.8	.9	
0	0.00	0.15	0.30	0.45	0.60	0.75	0.90	1.05	1.20	1.35	0
1	1.50	1.65	1.80	1.95	2.10	2.25	2.40	2.55	2.70	2.85	1
2	3.00	3.15	3.30	3.45	3.60	3.75	3.90	4.05	4.20	4.35	2
3	4.50	4.65	4.80	4.95	5.10	5.25	5.40	5.55	5.70	5.85	3
4	6.00	6.15	6.30	6.45	6.60	6.75	6.90	7.05	7.20	7.35	4
5	7.50	7.65	7.80	7.95	8.10	8.25	8.40	8.55	8.70	8.85	5
6	9.00	9.15	9.30	9.45	9.60	9.75	9.90	10.05	10.20	10.35	6
7	10.50	10.65	10.80	10.95	11.10	11.25	11.40	11.55	11.70	11.85	7
8	12.00	12.15	12.30	12.45	12.60	12.75	12.90	13.05	13.20	13.35	8
9	13.50	13.65	13.80	13.95	14.10	14.25	14.40	14.55	14.70	14.85	9
10	15.00	15.15	15.30	15.45	15.60	15.75	15.90	16.05	16.20	16.35	10
11	16.50	16.65	16.80	16.95	17.10	17.25	17.40	17.55	17.70	17.85	11
12	18.00	18.15	18.30	18.45	18.60	18.75	18.90	19.05	19.20	19.35	12
13	19.50	19.65	19.80	19.95	20.10	20.25	20.40	20.55	20.70	20.85	13
14	21.00	21.15	21.30	21.45	21.60	21.75	21.90	22.05	22.20	22.35	14
15	22.50	22.65	22.80	22.95	23.10	23.25	23.40	23.55	23.70	23.85	15
16	24.00	24.15	24.30	24.45	24.60	24.75	24.90	25.05	25.20	25.35	16
17	25.50	25.65	25.80	25.95	26.10	26.25	26.40	26.55	26.70	26.85	17
18	27.00	27.15	27.30	27.45	27.60	27.75	27.90	28.05	28.20	28.35	18
19	28.50	28.65	28.80	28.95	29.10	29.25	29.40	29.55	29.70	29.85	19
20	30.00	30.15	30.30	30.45	30.60	30.75	30.90	31.05	31.20	31.35	20
21	31.50	31.65	31.80	31.95	32.10	32.25	32.40	32.55	32.70	32.85	21
22	33.00	33.15	33.30	33.45	33.60	33.75	33.90	34.05	34.20	34.35	22
23	34.50	34.65	34.80	34.95	35.10	35.25	35.40	35.55	35.70	35.85	23
24	36.00	36.15	36.30	36.45	36.60	36.75	36.90	37.05	37.20	37.35	24
25	37.50	37.65	37.80	37.95	38.10	38.25	38.40	38.55	38.70	38.85	25
26	39.00	39.15	39.30	39.45	39.60	39.75	39.90	40.05	40.20	40.35	26
27	40.50	40.65	40.80	40.95	41.10	41.25	41.40	41.55	41.70	41.85	27
28	42.00	42.15	42.30	42.45	42.60	42.75	42.90	43.05	43.20	43.35	28
29	43.50	43.65	43.80	43.95	44.10	44.25	44.40	44.55	44.70	44.85	29
30	45.00	45.15	45.30	45.45	45.60	45.75	45.90	46.05	46.20	46.35	30
31	46.50	46.65	46.80	46.95	47.10	47.25	47.40	47.55	47.70	47.85	31
32	48.00	48.15	48.30	48.45	48.60	48.75	48.90	49.05	49.20	49.35	32
33	49.50	49.65	49.80	49.95	50.10	50.25	50.40	50.55	50.70	50.85	33
34	51.00	51.15	51.30	51.45	51.60	51.75	51.90	52.05	52.20	52.35	34
35	52.50	52.65	52.80	52.95	53.10	53.25	53.40	53.55	53.70	53.85	35
36	54.00	54.15	54.30	54.45	54.60	54.75	54.90	55.05	55.20	55.35	36
37	55.50	55.65	55.80	55.95	56.10	56.25	56.40	56.55	56.70	56.85	37
38	57.00	57.15	57.30	57.45	57.60	57.75	57.90	58.05	58.20	58.35	38
39	58.50	58.65	58.80	58.95	59.10	59.25	59.40	59.55	59.70	59.85	39
40	60.00	60.15	60.30	60.45	60.60	60.75	60.90	61.05	61.20	61.35	40
41	61.50	61.65	61.80	61.95	62.10	62.25	62.40	62.55	62.70	62.85	41
42	63.00	63.15	63.30	63.45	63.60	63.75	63.90	64.05	64.20	64.35	42
43	64.50	64.65	64.80	64.95	65.10	65.25	65.40	65.55	65.70	65.85	43
44	66.00	66.15	66.30	66.45	66.60	66.75	66.90	67.05	67.20	67.35	44
45	67.50	67.65	67.80	67.95	68.10	68.25	68.40	68.55	68.70	68.85	45
46	69.00	69.15	69.30	69.45	69.60	69.75	69.90	70.05	70.20	70.35	46
47	70.50	70.65	70.80	70.95	71.10	71.25	71.40	71.55	71.70	71.85	47
48	72.00	72.15	72.30	72.45	72.60	72.75	72.90	73.05	73.20	73.35	48
49	73.50	73.65	73.80	73.95	74.10	74.25	74.40	74.55	74.70	74.85	49
50	75.00	75.15	75.30	75.45	75.60	75.75	75.90	76.05	76.20	76.35	50

THE NATIONAL BLANK BOOK COMPANY  
 HOLYOKE MASSACHUSETTS  
 NEW YORK CHICAGO BOSTON SAN FRANCISCO

56029

956