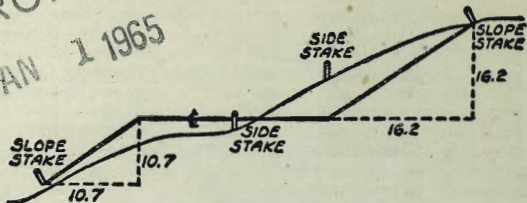






MICROFILMED

JAN 1 1965



DISTANCES FROM SIDE STAKES FOR CROSS-SECTIONING  
SLOPE 1 TO 1. ROADWAY OF ANY WIDTH

	0	.1	.2	.3	.4	.5	.6	.7	.8	.9	
0	0.00	0.10	0.20	0.30	0.40	0.50	0.60	0.70	0.80	0.90	0
1	1.00	1.10	1.20	1.30	1.40	1.50	1.60	1.70	1.80	1.90	1
2	2.00	2.10	2.20	2.30	2.40	2.50	2.60	2.70	2.80	2.90	2
3	3.00	3.10	3.20	3.30	3.40	3.50	3.60	3.70	3.80	3.90	3
4	4.00	4.10	4.20	4.30	4.40	4.50	4.60	4.70	4.80	4.90	4
5	5.00	5.10	5.20	5.30	5.40	5.50	5.60	5.70	5.80	5.90	5
6	6.00	6.10	6.20	6.30	6.40	6.50	6.60	6.70	6.80	6.90	6
7	7.00	7.10	7.20	7.30	7.40	7.50	7.60	7.70	7.80	7.90	7
8	8.00	8.10	8.20	8.30	8.40	8.50	8.60	8.70	8.80	8.90	8
9	9.00	9.10	9.20	9.30	9.40	9.50	9.60	9.70	9.80	9.90	9
10	10.00	10.10	10.20	10.30	10.40	10.50	10.60	10.70	10.80	10.90	10
11	11.00	11.10	11.20	11.30	11.40	11.50	11.60	11.70	11.80	11.90	11
12	12.00	12.10	12.20	12.30	12.40	12.50	12.60	12.70	12.80	12.90	12
13	13.00	13.10	13.20	13.30	13.40	13.50	13.60	13.70	13.80	13.90	13
14	14.00	14.10	14.20	14.30	14.40	14.50	14.60	14.70	14.80	14.90	14
15	15.00	15.10	15.20	15.30	15.40	15.50	15.60	15.70	15.80	15.90	15
16	16.00	16.10	16.20	16.30	16.40	16.50	16.60	16.70	16.80	16.90	16
17	17.00	17.10	17.20	17.30	17.40	17.50	17.60	17.70	17.80	17.90	17
18	18.00	18.10	18.20	18.30	18.40	18.50	18.60	18.70	18.80	18.90	18
19	19.00	19.10	19.20	19.30	19.40	19.50	19.60	19.70	19.80	19.90	19
20	20.00	20.10	20.20	20.30	20.40	20.50	20.60	20.70	20.80	20.90	20
21	21.00	21.10	21.20	21.30	21.40	21.50	21.60	21.70	21.80	21.90	21
22	22.00	22.10	22.20	22.30	22.40	22.50	22.60	22.70	22.80	22.90	22
23	23.00	23.10	23.20	23.30	23.40	23.50	23.60	23.70	23.80	23.90	23
24	24.00	24.10	24.20	24.30	24.40	24.50	24.60	24.70	24.80	24.90	24
25	25.00	25.10	25.20	25.30	25.40	25.50	25.60	25.70	25.80	25.90	25
26	26.00	26.10	26.20	26.30	26.40	26.50	26.60	26.70	26.80	26.90	26
27	27.00	27.10	27.20	27.30	27.40	27.50	27.60	27.70	27.80	27.90	27
28	28.00	28.10	28.20	28.30	28.40	28.50	28.60	28.70	28.80	28.90	28
29	29.00	29.10	29.20	29.30	29.40	29.50	29.60	29.70	29.80	29.90	29
30	30.00	30.10	30.20	30.30	30.40	30.50	30.60	30.70	30.80	30.90	30
31	31.00	31.10	31.20	31.30	31.40	31.50	31.60	31.70	31.80	31.90	31
32	32.00	32.10	32.20	32.30	32.40	32.50	32.60	32.70	32.80	32.90	32
33	33.00	33.10	33.20	33.30	33.40	33.50	33.60	33.70	33.80	33.90	33
34	34.00	34.10	34.20	34.30	34.40	34.50	34.60	34.70	34.80	34.90	34
35	35.00	35.10	35.20	35.30	35.40	35.50	35.60	35.70	35.80	35.90	35
36	36.00	36.10	36.20	36.30	36.40	36.50	36.60	36.70	36.80	36.90	36
37	37.00	37.10	37.20	37.30	37.40	37.50	37.60	37.70	37.80	37.90	37
38	38.00	38.10	38.20	38.30	38.40	38.50	38.60	38.70	38.80	38.90	38
39	39.00	39.10	39.20	39.30	39.40	39.50	39.60	39.70	39.80	39.90	39
40	40.00	40.10	40.20	40.30	40.40	40.50	40.60	40.70	40.80	40.90	40
41	41.00	41.10	41.20	41.30	41.40	41.50	41.60	41.70	41.80	41.90	41
42	42.00	42.10	42.20	42.30	42.40	42.50	42.60	42.70	42.80	42.90	42
43	43.00	43.10	43.20	43.30	43.40	43.50	43.60	43.70	43.80	43.90	43
44	44.00	44.10	44.20	44.30	44.40	44.50	44.60	44.70	44.80	44.90	44
45	45.00	45.10	45.20	45.30	45.40	45.50	45.60	45.70	45.80	45.90	45
46	46.00	46.10	46.20	46.30	46.40	46.50	46.60	46.70	46.80	46.90	46
47	47.00	47.10	47.20	47.30	47.40	47.50	47.60	47.70	47.80	47.90	47
48	48.00	48.10	48.20	48.30	48.40	48.50	48.60	48.70	48.80	48.90	48
49	49.00	49.10	49.20	49.30	49.40	49.50	49.60	49.70	49.80	49.90	49
50	50.00	50.10	50.20	50.30	50.40	50.50	50.60	50.70	50.80	50.90	50

Distance of slope stake from side or shoulder stake for any width roadway, slope 1 to 1. If ground is nearly level, the cut or fill at side stake is located by the double entry method in left column and top row. The number in body of table in same row and column gives distance from side stake to slope stake. If ground is not level estimate the difference in elevation between the side stake and slope stake, lower target by this amount if cut, elevate if fill. Add this amount to cut or fill and find distance in table. Set up rod at this point, and line of sight should cut target. If it does not make the slight adjustment necessary.



TABLE XIII—CORRECTIONS FOR TANGENTS AND EXTERNALS

These corrections are to be added to the approximate values, found by dividing the tangent, or external, for a 1° curve (Table VIII) by the degree of curve, in order to obtain the true tangents, or externals. Intermediate values may be obtained by interpolation.

FOR TANGENTS ADD

Central Angle	DEGREE OF CURVE															
	5°	10°	15°	20°	25°	30°	35°	40°	45°	50°	55°	60°	65°	70°		
10°	.03	.06	.09	.13	.16	.19	.22	.25	.28	.31	.34	.38	.42	.46		
15°	.04	.10	.14	.19	.24	.29	.34	.39	.45	.51	.53	.58	.63	.68		
20°	.06	.13	.19	.26	.32	.39	.45	.51	.58	.65	.72	.79	.84	.90		
25°	.08	.16	.24	.33	.40	.49	.58	.67	.75	.83	.90	.99	1.06	1.14		
30°	.10	.19	.29	.39	.49	.59	.69	.79	.89	.99	1.09	1.20	1.29	1.39		
35°	.11	.22	.34	.47	.58	.69	.79	.81	.92	1.04	1.29	1.42	1.54	1.66		
40°	.13	.26	.40	.53	.67	.80	.93	1.06	1.20	1.34	1.49	1.64	1.79	1.94		
45°	.15	.30	.44	.60	.76	.91	1.06	1.21	1.37	1.52	1.70	1.87	2.04	2.21		
50°	.17	.34	.51	.68	.85	1.02	1.19	1.36	1.54	1.72	1.91	2.10	2.29	2.48		
55°	.19	.38	.57	.76	.95	1.14	1.32	1.52	1.72	1.92	2.14	2.35	2.56	2.77		
60°	.21	.42	.63	.84	1.05	1.27	1.49	1.71	1.94	2.17	2.38	2.60	2.83	3.07		
65°	.23	.46	.69	.93	1.16	1.40	1.64	1.88	2.13	2.38	2.63	2.88	3.13	3.39		
70°	.25	.51	.76	1.02	1.28	1.54	1.80	2.06	2.33	2.60	2.88	3.16	3.44	3.72		
75°	.27	.56	.83	1.12	1.40	1.69	1.98	2.27	2.57	2.87	3.16	3.47	3.78	4.09		
80°	.30	.61	.91	1.22	1.53	1.84	2.15	2.46	2.78	3.10	3.44	3.78	4.12	4.46		
85°	.33	.66	1.00	1.33	1.68	2.02	2.36	2.70	3.05	3.40	3.77	4.14	4.55	4.89		
90°	.36	.72	1.09	1.45	1.83	2.20	2.57	2.94	3.32	3.70	4.10	4.50	4.91	5.32		
95°	.39	.79	1.19	1.55	2.00	2.40	2.80	3.20	3.61	4.02	4.40	4.98	5.38	5.83		
100°	.43	.86	1.30	1.74	2.18	2.62	3.06	3.50	3.95	4.40	4.88	5.37	5.85	6.34		
110°	.51	1.03	1.56	2.08	2.61	3.14	3.67	4.21	4.76	5.31	5.86	6.43	7.01	7.60		
120°	.62	1.25	1.93	2.52	3.16	3.81	4.45	5.11	5.77	6.44	7.12	7.80	8.50	9.22		

FOR EXTERNALS ADD

Central Angle	DEGREE OF CURVE															
	5°	10°	15°	20°	25°	30°	35°	40°	45°	50°	55°	60°	65°	70°		
10°	.001	.003	.004	.006	.007	.008	.009	.011	.012	.014	.015	.017	.018	.020		
15°	.003	.007	.010	.014	.018	.023	.027	.032	.035	.039	.043	.047	.051	.051		
20°	.006	.011	.017	.022	.028	.034	.038	.045	.051	.057	.063	.070	.076	.083		
25°	.009	.018	.027	.036	.046	.056	.065	.074	.083	.093	.106	.120	.127	.135		
30°	.013	.025	.038	.051	.065	.078	.090	.103	.116	.129	.149	.170	.179	.188		
35°	.018	.035	.054	.072	.086	.109	.131	.153	.175	.197	.213	.230	.247	.264		
40°	.023	.046	.070	.093	.117	.141	.172	.203	.234	.265	.277	.290	.315	.341		
45°	.030	.060	.093	.119	.153	.184	.216	.254	.289	.325	.351	.378	.411	.445		
50°	.037	.075	.116	.151	.189	.227	.266	.305	.345	.384	.425	.467	.508	.550		
55°	.046	.093	.142	.188	.236	.283	.332	.381	.420	.479	.530	.582	.641	.700		
60°	.056	.112	.168	.225	.283	.340	.398	.457	.516	.575	.636	.697	.774	.851		
65°	.067	.135	.204	.273	.343	.412	.483	.554	.625	.697	.711	.845	.922	1.01		
70°	.080	.159	.240	.321	.403	.485	.568	.652	.735	.819	.906	.994	1.08	1.17		
75°	.095	.182	.266	.353	.440	.528	.617	.707	.797	.877	1.07	1.18	1.29	1.39		
80°	.110	.220	.332	.445	.558	.671	.787	.903	1.02	1.13	1.25	1.38	1.50	1.62		
85°	.128	.259	.391	.524	.657	.790	.926	1.06	1.20	1.34	1.47	1.62	1.76	1.91		
90°	.149	.299	.450	.603	.756	.910	1.07	1.22	1.38	1.54	1.70	1.87	2.03	2.20		
95°	.174	.350	.522	.706	.885	1.06	1.25	1.43	1.62	1.80	1.99	2.18	2.38	2.58		
100°	.200	.401	.604	.809	1.01	1.22	1.43	1.64	1.85	2.06	2.28	2.50	2.73	2.96		
110°	.268	.536	.806	1.08	1.35	1.63	1.91	2.20	2.48	2.76	3.05	3.35	3.66	3.96		
120°	.360	.721	1.08	1.45	1.82	2.19	2.57	2.95	3.33	3.72	4.11	4.50	4.91	5.32		

Index

Calle Aqua Dulce, X-Sec. full length	1
Calle Tocon, X-Sec.	2
X Sec Alley Blk 63 Ocean Beach	8-15
Block A, Balboa Vista, X-Sec.	16-20
X-Sec Jolspar St	21
X-Sec. Alley Blk I - Balboa Vista	28
X-Sec Missouri - Jewell to Lamont	31
X-Sec Alley. Blk K, Univ. Hts	41
X-Sec culvert YL73- Univ. Hts	48



Roberts  
Lota  
Moore  
Pollen  
6-12-51  
4925000

X-Section Calle Agua dulce  
Cumberland to Roanoke  
(Full length)  
Map # R/60

Reduced by  
R. W. Hall  
6-15-51

Lt.

\$

R

1

INDEXED

JUN 14 1951

0+50

294.9	294.8	294.1	293.5	294.8	294.8
33	34	41	47	34	34
50E	25	11	25	40	
MOOSE					

0+15

294.5	292.3	291.8	291.1	293.2	293.3
37	59	67	71	50	49
40	25	16	25	40	

0+04E 25' R to Center P. Pole # 180892

0+00 So. line Cumberland Set Hub & Disc on

292.5	290.4	290.0	289.3	290.7	289.1
57	78	82	89	75	85
40	25	20	25	50	

0-10 So. Curb Line 18" Roll Curb

292.45	292.10	290.96	290.64	288.9	287.32	287.66	285.74	286.03
57.9	6.4	7.28	7.60	9.3	11.92	10.58	12.50	12.21
106	106	52	52	52	52	52	152	152
cb	cut	cb	cut	cut	cut	cb	cut	cb

0-30 E Cumberland

292.0	290.6	289.1	287.2	285.5
62	76	9.1	11.0	12.7
100	50	50	100	

Set TBM 7.25 298.24 X 0.26 290.99 Chisel

298.24 X  
Square 1'E. of End of So. Curb of SE Cor. Cumberland & Agua dulce

BM 13.10 291.25 278.15 Chisel

278.15  
Square N.W. Corner Cumberland & Calle Serena FB2050  
Pogok



Contd from Page. 1

T.P. 10.33 320.22X 0.09 309.89

2+69.64 E of Calle Tocon on left

2+50

2+24.64 Fd 212 Rwhub & City Disc on left E.P.L. BC.

2+00

1+50

T.P. 12.20 309.98X 0.46 297.78

1+00

0+68 35' Rk E 85' Conc. Drive (Single Garage)

298.24X

lt

Q INTERVEN R 2

JUN 14 1951

Show X-sect. of Tocon next.

209.2	207.2	206.4	203.8	199.4
0.8	2.8	3.6	6.2	10.6
25		25	50	100

305.0	304.0	303.0	301.2	300.3
5.0	6.0	7.0	8.8	9.7
70	25		25	70

301.2	300.2	299.5	298.2	297.6
8.8	9.8	10.5	11.8	12.3
70	25		25	70

309.98X

297.8	297.3	296.8	296.5	297.4	297.3	297.3
0.4	0.9	1.4	1.7	0.8	0.9	0.9
40	25		10	15	25	40

295.75	295.78
2.49	2.46
35' Conc.	48' E.P.L.

298.24X



Cont'd from Page 2  
x-sect Tacon

T.P. 1142 323.897 775 312.47 2B. C. Hub

2+35 Last section on Tacon

307.4	309.6	310.4	312.7	314.1	314.6
12.8	10.6	9.8	8.0	6.1	5.6
100	50	40		40	50

1+90

310.8	311.3	314.1	316.9	317.8
9.4	8.9	6.1	3.3	2.4
50	40		40	50

1+38.85 { Fd 3/4" I.P. B.C. Banja N.P.L.  
Fd 3/4" I.P. B.C. Banja S.P.L.

308.3	310.1	312.5	314.4	315.8	316.8
12.9	14.1	7.7	5.8	4.4	3.4
100	50	20		20	35

1+00

310.9	311.8	313.9	316.1	317.1
9.3	8.4	6.3	4.1	3.1
35	20		20	35

0+50

309.2	310.5	312.7	315.5	315.9
11.0	9.7	7.5	4.7	4.3
35	20		20	35

0+25 Fd 3/4" I.P. N.P.L. EC

0+00 East line of Aquadulce

307.7	309.2	310.6	312.5	313.8
12.5	11.0	9.6	7.7	6.4
35	20		20	35

320.227

320.227



Cont'd From Page 3

6+00

323.0	320.4	317.5	314.6	311.4
0.9	3.5	6.4	9.3	12.5
50	25		25	50

5+50

322.7	321.1	318.3	315.5	313.0	306.0
0.2	2.8	5.6	8.4	10.9	17.9
50	25		25	50	100

5+00

323.6	321.3	318.9	316.4	314.0
0.8	2.6	5.0	7.5	9.9
50	25		25	50

4+50

322.8	321.1	318.9	316.8	314.2
1.1	2.8	5.0	7.1	9.7
50	25		25	50

4+00

322.0	320.3	318.0	316.3	314.1	309.5
1.9	3.6	5.9	7.6	9.8	14.4
50	25		25	50	100

3+50

318.7	317.8	315.2	313.9	311.9
5.2	6.1	8.7	10.0	12.0
50	25		25	50

3+14.65BC { Fd 3/4 I. Pipe on E.P.L.  
Fd 2x2 Rub. & Gty Disc on R & W.P.L.

Back to X-Sept on Aquadulca

323.89 X

lt R 4

315.3	314.5	312.7	311.4	309.7
2.6	9.4	11.2	12.5	14.2
50	25		25	50

323.89 X



Cont'd From Page 4

LT

Q

RT

5

9+00

319.5  
2.5  
50

317.4  
1.6  
25

314.8  
7.2

312.8  
9.2  
25

310.0  
12.0  
50

8+50

320.2  
1.8  
50

318.0  
1.0  
25

315.9  
6.1

313.8  
8.2  
25

311.7  
10.3  
50

8+00

320.9  
1.1  
50

318.7  
3.3  
25

316.7  
5.3

314.7  
7.3  
25

312.6  
9.4  
50

7+47<sup>98</sup> E.C.

(Fd #4 I. Pipe on W.P.L

Fd 202 Rwhv & city disc on Q

321.4  
0.6  
50

319.5  
3.5  
25

316.2  
5.8

314.2  
7.8  
25

311.7  
10.3  
50

307.1  
14.9  
100

7+00

321.7  
0.3  
50

319.8  
3.2  
25

315.7  
6.3

312.9  
9.1  
25

310.2  
11.8  
50

T.P.

7.73 321.99 X

9.63 314.26

EC I. Pipe West Line

321.99 X

6+50

322.0  
1.9  
50

318.9  
5.0  
25

316.0  
7.9

313.1  
10.8  
25

310.1  
13.8  
50

323.89 X

323.89 X



Cont'd From Page 5

T.P. 0.71 298.68X 12.65 297.97

11+50

11+00

10+50

T.P. 0.86 310.62X 12.23 309.76

10+00

9+39.32

FD 3/4" J. Pipe on WPA. of E.P.L  
FD. 2x2 P. hub & city disc on R.

321.99X

24

8

R 5

301.4  
9.2  
50

300.6  
10.0  
25

299.4  
11.2

298.4  
12.2  
25

297.2  
13.4  
50

306.0  
4.6  
50

304.9  
5.7  
25

303.3  
7.3

302.5  
8.1  
25

300.1  
10.5  
50

297.5  
13.1  
100

310.9  
4.3  
50

309.8  
0.8  
25

309.7  
2.9

306.0  
4.6  
25

304.2  
6.4  
50

310.62X

315.7  
6.3  
50

313.6  
8.4  
25

311.1  
10.9

309.0  
13.0  
25

306.7  
15.3  
50

318.9  
3.1  
50

316.5  
5.5  
25

313.9  
8.1

311.8  
10.2  
25

309.0  
13.0  
50

304.5  
17.5  
100

321.99X



check

696 283.71 = 283.69

chisel Square NW Cor. Roanoke & Winchester 10' No. of End of West Curb.

Sec FB 2650 7946

T.P.

293 290.67 10.94 287.74

13+35

283.5  
15 2

12+85.20

So. Sub. Line Trees Lomas

287.2 287.7 288.0 289.7 287.6  
11.5 11.0 10.7 11.0 11.1  
50 25 25 25 50

12+60.27

Fd 2 1/2" Hub on W. P.L. EC on Roanoke  
Fd 3/4" I.P. pipe E, P.L. EC on Roanoke  
No. Line Roanoke Fd 1 1/2" Stub & Tack on Q

289.5 290.0 290.5 290.1 290.0  
7.2 8.7 8.2 8.6 8.7  
50 25 25 25 50

12+35.27 EC

Fd 3/4" I.P. pipe on East & West P.L. EC  
Fd 1 1/2" Stub & Tack on Q

295.7 295.5 295.5 295.1 294.6  
3.0 3.2 3.2 3.6 4.1  
50 25 25 25 50

12+00

298.68 X

298.68 X







Alley X Sec BIK 63 Ocean Beach

Lt = North

Rt = South

9

0791 10° RT & 5' Long projection of frame House

0779 9° RT & 24" Eucalyptus tree

0765 8° RT & 4 con steps & walk

0750

0725

0705 15° Lt Begin 8 car garage con floor & apron

0700 East prop Bacon edge AC paving + Cbs

0712 East C6 Bacon

BM

280

2684

2404 NWBB Bacon - DelMonte

INDEXED

SEP 17 1951

21.6  
5.2

100  
footing  
Foundation

22.03

22.99

4.81

3.85

8.2  
600 step

11.2  
walk  
edge

21.77 21.8 21.7 22.0 22.9 23.2

5.07 5.0 5.1 4.8 3.2 3.6

15 apron 10 10 15 25

21.7 21.8 21.6 22.0 22.3 22.7 23.1

5.10 5.0 5.2 4.8 4.5 4.1 3.2

15 apron 10 8 10 15 25

22.07

21.76

4.77 5.08

15 floor 15 apron

21.65

21.48

21.25

21.65

21.92

5.19

5.36

5.59

5.19

4.92

100 C6 end

100 94T

100 94T

100 C5 end

20.67 20.19 21.35 20.76 20.99 21.55 21.83 21.87 22.43

6.17 6.65 5.49 6.08 5.85 5.49 5.01 4.97 4.44

50 C6 50 94T 12 12 94T 12 12 50 50 94T 94T

2684



Lt = North

RT = South

10

1448 16<sup>2</sup> Lt End 4 car garage con floor + apron

21.96  
4<sup>58</sup>  
16<sup>2</sup>  
apron

21.99  
4<sup>55</sup>  
18<sup>2</sup>  
floor

1446 9<sup>2</sup> Lt E 2<sup>5</sup> con walk

21.73  
5<sup>11</sup>  
9<sup>2</sup>  
walk

1437 10<sup>2</sup> Lt end 4 car garage con floor + apron

21.75  
4<sup>52</sup>  
13<sup>2</sup>  
floor

5<sup>09</sup>  
10<sup>2</sup>  
apron

21.98

22.01

1408 15<sup>5</sup> RT Begin 4 car garage con floor + apron

4<sup>56</sup>  
13<sup>2</sup>  
apron

4<sup>53</sup>  
17<sup>2</sup>  
floor

1404 8<sup>4</sup> RT E 12 Power Pole # P4980

1401 9<sup>2</sup> Lt Begin 4 car garage con floor + apron

22.20  
4<sup>64</sup>  
12<sup>5</sup>  
floor

22.01  
4<sup>53</sup>  
9<sup>2</sup>  
apron

1400 10<sup>2</sup> Lt end con slab

21.72  
5<sup>13</sup>  
18

21.77  
5<sup>07</sup>  
10<sup>2</sup>  
slab

21.8  
5<sup>0</sup>  
16

21.9  
4<sup>3</sup>  
16

22.3  
4<sup>5</sup>  
20

1400 8<sup>5</sup> RT E 24" Eucalyptus tree

22.49

0497 11<sup>2</sup> RT E 3' con walk

4<sup>35</sup>  
11<sup>2</sup>  
walk

0491 10<sup>2</sup> Lt Begin con slab

22.09  
4<sup>25</sup>  
15<sup>2</sup>  
E floor

21.72  
5<sup>12</sup>  
15<sup>2</sup>  
apron

21.63  
5<sup>21</sup>  
10<sup>3</sup>  
con

0491 15<sup>2</sup> Lt end 8 car garage con floor + apron

- 26 84



2+30 8<sup>2</sup> RT Begin 4 car garage con floor & apron

2+25 8<sup>2</sup> LT & 2' con walk

2+25 10<sup>3</sup> RT & 12" Pepper tree

2+14 9<sup>5</sup> RT & 12" Pepper tree

2+10 8<sup>2</sup> RT & 10" Power Pole # A 4960

2+00

TP, 6<sup>3</sup> 27<sup>87</sup> 509 21<sup>25</sup>

1+95 10<sup>2</sup> RT & 14" pepper tree

1+92 11<sup>2</sup> LT & single garage con floor

1+85 10<sup>2</sup> RT & 10" Pepper tree

1+75 9<sup>5</sup> RT & 12" Pepper tree

1+56 11<sup>5</sup> LT & single garage dirt floor (not used)

1+55 9<sup>8</sup> RT & 10" Pepper tree

1+50.

LT-North

RT-South

22.40 23.53  
547 434  
87 147  
apron floor

21.32

6<sup>55</sup>  
8<sup>5</sup>  
walk

22.0 21.6 24.9 22.3 23.1 23.4  
52 63 60 56 48 45  
10 10 10 10 20

↑ 27<sup>87</sup>

21.59  
525  
115  
floor

21.1

52  
115  
floor

21.4 21.4 21.5 21.7 22.1  
54 54 53 51 42  
20 10 10 20  
26 84



Lt = North

Rt = South

12

3446 9<sup>6</sup> Lt end Board fence

3403 9<sup>4</sup> Lt Begin 6<sup>0</sup> Board fence

3403 6<sup>9</sup> Rt End 3<sup>0</sup> wire fence

3400

22.7	22.6	22.3	22.4	23.6	23.6
<u>52</u>	<u>53</u>	<u>56</u>	<u>55</u>	<u>43</u>	<u>43</u>
15	10		4	6	10

2493 13<sup>3</sup> Lt E double garage con floor

22.69  
518  
 153  
 floor

2477 7<sup>3</sup> Rt Begin 3' wire fence

2471 8<sup>6</sup> Rt End 4 car garage con floor + apron

22.92	23.50
<u>495</u>	<u>437</u>
85 apron	146 floor

2450 8<sup>3</sup> Lt E 2' con walk

21.68	21.69	21.9	22.61	22.83
<u>619</u>	<u>618</u>	<u>60</u>	<u>526</u>	<u>504</u>
10 walk	83 walk		85 apron	10 apron

2438 10<sup>2</sup> Lt E double garage dirt floor

21.6  
63  
 102

27<sup>87</sup>



4431 11<sup>2</sup> RT E single garage con floor & apron

4427 9<sup>2</sup> RT E 2' con walk

4425 10<sup>2</sup> RT end 5' wire fence

4400

3497 10<sup>2</sup> RT Begin 5<sup>2</sup> wire fence

3485 11<sup>2</sup> RT E single garage dirt floor

3474 9<sup>2</sup> LT Begin 6' Board fence

3467 9<sup>2</sup> RT End 5' wire fence

3461 12<sup>3</sup> LT E double garage con floor

3450

3449 10<sup>2</sup> RT Begin 5<sup>2</sup> wire fence

3449 9<sup>2</sup> RT E 12" power pole JPA 4940

Lt. North E

RT = South

13

25.54	25.83
2 <sup>33</sup>	2 <sup>04</sup>
112	138
apron	floor

25.54

2<sup>33</sup>

98

walk

24.5	24.3	24.3	24.7	24.9	25.2
3 <sup>4</sup>	3 <sup>6</sup>	3 <sup>6</sup>	3 <sup>2</sup>	3 <sup>0</sup>	2 <sup>2</sup>
10	6		6	10	20

25.0

2<sup>2</sup>

112

floor

23.64

4<sup>23</sup>

122

floor

22.9	22.9	23.1	23.0	24.7	24.8
5 <sup>2</sup>	5 <sup>2</sup>	4 <sup>8</sup>	4 <sup>2</sup>	3 <sup>2</sup>	3 <sup>1</sup>
15	10		6	10	20

27<sup>87</sup>



5745 13<sup>2</sup> RT end 4 car garage con floor & apron

5732 13<sup>2</sup> LT & Single garage con floor

5709 13<sup>2</sup> RT Begin 4 car garage con floor & apron

5701 9<sup>2</sup> RT & 10' Power Pole # PA 4920

5700 9<sup>2</sup> LT End 5' Lath fence

TP<sub>2</sub> 25<sup>9</sup> 28<sup>44</sup> 20<sup>2</sup> 25<sup>85</sup>

4189 14<sup>2</sup> RT & double garage con floor

4177 9<sup>2</sup> RT End 4' Board fence

4157 13<sup>2</sup> RT & 2<sup>5</sup> con walk

4150 9<sup>2</sup> LT end 6' Board fence begin 5' Lath fence

4141 9<sup>2</sup> RT Begin 4' Board fence

26.02

24<sup>3</sup>

13<sup>2</sup>

floor

26.45

199

13<sup>1</sup>

apron

26.69

180

15<sup>1</sup>

floor

26.72

202

132

apron

26.57

187

153

floor

25.8 25.7 25.3 25.3 25.5 26.2 26.3

2<sup>6</sup> 22 3<sup>1</sup> 3<sup>1</sup> 22 2<sup>2</sup> 2<sup>1</sup>

15 10 8 4 10 15

28<sup>44</sup>

25.92

195

14<sup>2</sup>

floor

25.99

248

132

walk

25.0 24.8 24.7 24.9 25.2 25.3

22 3<sup>1</sup> 3<sup>2</sup> 3<sup>0</sup> 22 2<sup>5</sup>

20 10 6 10 15

27<sup>87</sup>



Lt = North

E

St = South

15

BM

332

SEOP Cable  
25 12 25 12  
DeMonte

23.57	22.91	23.70	23.05	23.14	23.25	23.82	23.46	24.01
487	553	474	539	520	519	462	498	413
50	50	13	13		13	13	50	50
cs	cut	cb	cut		cut	cb	cut	cb

6+11<sup>89</sup> West cb Cable

23.92	23.69	23.35	23.73	24.10
452	425	509	471	434
92	92		102	102
cb	cut		cut	cb

5499<sup>89</sup> West Prop Cable edge AC paving

25.2	25.2	24.6	24.8	26.0	26.0
32	32	38	36	22	24
12	10	7		7	10

5475

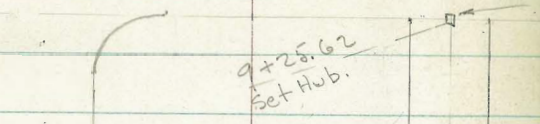
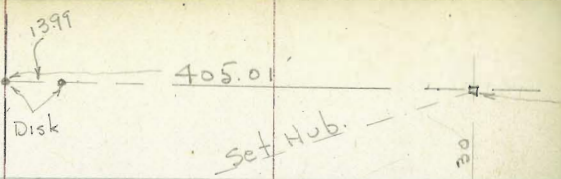
25.9	25.8	25.4	25.5	25.7	26.1	26.4
25	26	32	29	27	22	20
15	10	8		6	10	15

5450

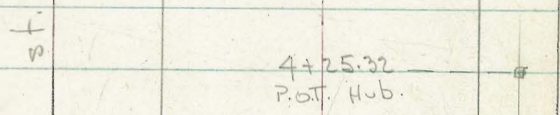
28 44.



OSBORNE  
9/10/51



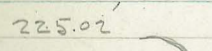
40' Block (A)  
Balboa Vista  
Map. 2142 10 10



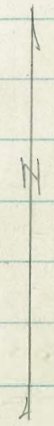
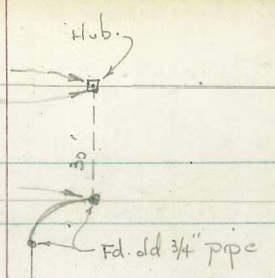
st.  
54 1/2  
st.

See P. 17 for Blackton Dr.

T.P. 33-P. 13  
224.92 (Meas.)  
olive st.



Blackton Dr.









Lt.

±

st. 18

X-Sect. 20' Alley in Block (A)  
Balboa Vista - Map. 2142 - for Grade Est.  
# 5711

INDEXED

SEP 17 1951

W.O. 25020 9-12-51 - 7.0.

Sketch + T.P. - P. 16+17

2+50 = Thru Prop. Dirt Dr. on Lt.

82.1  
50  
Dr.84.1  
10  
Dr.

85.1

85.9  
10

2+00

82.0  
3083.4  
10

84.0

84.7  
1086.6  
30

1+50

Plotted  
R.W.D.  
9-14-51

616A

Profile No. 4488

82.3  
10

82.6

83.6  
10

1+00

80.8  
3081.1  
10

81.7

82.3  
1084.1  
40

0+50

80.8  
10

81.5

81.5  
10

0+00 = ± Alley on N.H. Blackton - on Curve

80.4  
4081.0  
11.27

81.86

81.6  
11.2782.1  
40

along Curve

on Hub.

along Curve

0-30 = Rods on Graded Roadway

80.2  
5081.2  
10

81.4

81.6  
1082.6  
50

along Rd.

200 Elev. Not shown.

along Rd.

B.M.

277.89 = B.P. in

E. of Conc. - S.L. Blackton at 54<sup>th</sup>



Lt.

E

Rt.

7+50

89.8  
10

90.7

91.5  
10

7+00

87.3  
4090.1  
10

90.9

91.7  
1093.6  
30

6+50

90.1  
10

90.5

91.5  
10

6+00

87.7  
3089.4  
10

89.8

90.8  
1092.8  
30

5+50

90.2  
10

90.8

91.5  
10

5+00

88.9  
3090.9  
10

91.6

92.4  
1094.3  
30

4+50

90.2  
10

91.1

92.3  
10

4+25.32 = P.O.T. Hub.

289.99

4+00

88.0  
10

88.6

89.4  
1091.0  
30

3+50

86.0  
10

86.5

87.3  
10

3+00

83.3  
3084.6  
10

85.4

86.4  
1088.5  
30



Lt.

♀

Rt.

20

check B.M. = spike in S.E. Pole - Olive + 54<sup>15</sup>

278.50 - 278.52

9+45 = + Cold Lay Pauc strip

83.6  
3085.4  
10

86.3

87.2  
1090.1  
50

9+25.62 = S.L. Olive

84.6  
3086.2  
1086.87  
an Hub.87.7  
1089.4  
30

8+90

86.5  
10

87.3

88.2  
1089.7  
30

8+50

87.7  
10

88.2

89.0  
10

8+00

87.3  
3089.2  
10

90.1

90.6  
1092.1  
30

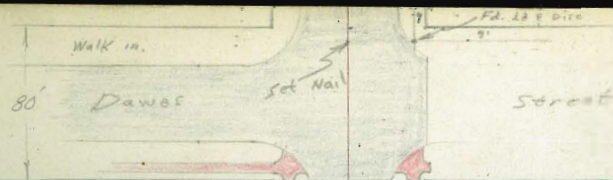


Roberts  
Cota  
Moore  
Pollen  
11-7-51  
No. 32037

# X-Section Felspar St.

Dawes to Everts

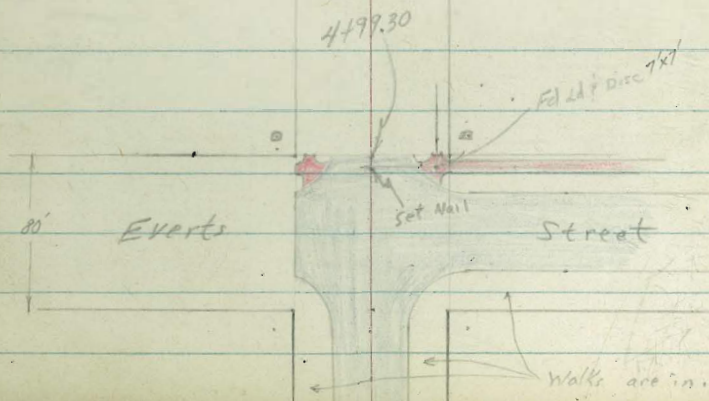
{ 80' Streets  
40' Roadways  
30' Curb Radii }



21

INDEXED

NOV 8 1951





Cont'd From Page 21

22

0+50

411	40.8	40.3	39.5	39.4	38.7	40.0	39.5	39.4
1.5	1.1	2.3	3.1	3.2	3.9	2.6	3.1	3.2
50	40	28	20		18	24	40	50

0+28 38' Lt to center 8" Palm Tree

0+25 22' Lt to water meter

3.4								
229								
ON								
value								
447	445	445	398	386	384	3804	393	388
1.9	2.1	2.1	2.8	4.0	4.2	4.6	3.3	3.8
50	40	30	22	22		18	24	40

0+05 21' Rt to center Fire Hydrant

0+01 37' Lt to center 15" Palm Tree

0+00 East line Dawes (Edge AC Pav. only MINUS one foot. cb's walk ok)

40.5	39.6	39.23	39.11	38.44	38.20	38.43	38.07	38.03	38.01	38.7
2.1	3.38	3.41	3.53	4.16	4.44	5.21	4.57	4.61	4.63	3.9
40	36	31	22	22		21	21	21	36	40
	walk	walk	cb	gutt		gutt	cb	walk	walk	

Ely. Curb Line

39.7	39.13	38.50	38.60	38.25	38.91	38.52	38.40	38.66	38.11	38.68
2.9	3.51	4.14	4.04	4.37	4.73	5.12	5.24	4.78	4.53	5.26
100	40	40	40	20		20	50	50	100	100
	cb	gutt	cb	gutt		gutt	cb	cb	gutt	cb

Dawes

Reduced & plotted  
W. Mills  
11-9-51

40.2	38.68	38.05	38.13	38.36
2.4	3.76	4.59	5.51	6.28
100	40		50	100
	Edge AC			

BM

10.10 42.64T

32.54 NWBP

Garnet & Dawes

42.64T



Cont'd From Page 22

Lt

R

Rt 23

1444 39<sup>2</sup> Rt @ 3' Conc walk

447  
829  
392  
conc

406  
832  
50  
conc

1434<sup>5</sup> 27<sup>2</sup> Rt to water meter

406  
8.4  
27<sup>2</sup>  
value

1433 38<sup>2</sup> Lt @ 2<sup>3</sup> Conc walk

4244  
6.51  
45  
conc

4230  
6.65  
38<sup>2</sup>  
conc

1421 22<sup>2</sup> Lt to water meter

4067  
8.28  
22<sup>2</sup>  
value

1402 37<sup>2</sup> Rt @ 2<sup>5</sup> Conc walk

4444  
8.51  
39<sup>2</sup>  
conc

4036  
8.59  
50  
conc

1400

4118  
7.2  
60

4116  
7.4  
40

4114  
7.5  
29

4110  
8.0  
21

4035  
8.5  
30

402  
8.8  
40

397  
9.3  
40

403  
8.7  
26

404  
8.6  
40

401  
8.9  
50

T.P. 8.69 48.95<sup>T</sup> 2.38 40.26

48.95<sup>T</sup>

0+90 30<sup>2</sup> Lt @ 3' Conc Walk

4161  
1.03  
46  
conc

4146  
1.18  
40  
conc

4136  
1.28  
30<sup>2</sup>  
conc

0+73 23<sup>2</sup> Lt to water meter

394  
2.2  
23  
value

42.64<sup>T</sup>

42.64<sup>T</sup>



2719 22' Lt to water meter

2709 40' Rt Q 8' Conc Drive

2700

1797 39' Rt Q 2' Conc Walk

1774 27' Rt to water meter

1767 22' Lt to water meter

1756 40' Rt Q 3' Conc. Walk

1750

48.95A

41.70

7.25

222  
ON  
VALVE

42.00

42.17

6.95

6.78

40  
conc

59  
Floor

42.7

42.6

42.6

41.8

41.7

41.1

41.6

41.6

41.5

6.3

6.4

6.4

7.2

7.3

7.9

7.7

7.4

7.5

50

40

20

20

21

24

40

50

41.85

41.66

7.40

7.29

39' conc.

50 conc.

40.83

8.12

27' ON VALVE

41.4

7.6

22' ON VALVE

41.00

7.95

40 conc

41.99

7.96

50 conc

42.5

42.4

41.9

41.6

41.0

40.9

40.4

40.8

40.6

40.7

6.5

6.6

7.1

7.4

8.0

8.1

8.6

8.2

8.4

8.3

50

40

25

22

20

20

20

24

40

50

48.95A



Cont'd From Page 24

Lt R 25

3+00		44.6	44.2	43.8	43.2	43.1	42.3	43.3	42.7	42.5
		4.4	4.8	5.2	5.8	5.9	6.7	5.7	6.3	6.5
		50	40	20	18		20	23	40	50

2+91 <sup>E</sup>	25 <sup>8</sup> Lt to water meter			43.17						
				5.78						
				2.58						
				2.11						
								41.55		

2+87 <sup>E</sup>	22 <sup>E</sup> Rt to water meter								7.40	
									2.21	
									2.10	
									2.10	
		44.63								

2+74 <sup>E</sup>	39 <sup>8</sup> Lt Q 4' Conc walk	43.2	44.43							
		50	39 <sup>8</sup>							
		CONC	CONC.							
									42.64	

2+59	40 <sup>6</sup> Rt Q 8' Conc drive								6.31	6.40
									4.06	5.0
									CONC	CONC.

2+51	23 Lt to water meter									

2+50		44.0	43.9	43.3	42.5	42.5	41.4	42.7	42.4	42.2
		5.0	5.1	5.7	6.5	6.5	7.6	6.3	6.6	6.8
		50	40	20	18		21	25	40	50

2+29	33 <sup>8</sup> Lt Q 3 <sup>5</sup> Conc Walk	43.82	43.49	43.34						
		5.13	5.46	5.61						
		52	40	33 <sup>8</sup>						
		CONC	CONC	CONC						

2+24	29 <sup>2</sup> Rt to water meter									

48.95 A

48.95 A



Cont'd From Page 25

(Pav. Ely.)

4499.30 West Line Events

4488 21 Lt to water meter

T.P. 5.39 49.74X 460 4425

4450

4400

3750

3447 22<sup>3</sup> Lt to water meter

3405

50' Lt & 2 strip conc. Drive } 2'-strips  
} 7'-overall

4895X

26

4443	4431	46.01	45.28	45.36	4426	45.00	45.14	45.17
331	3.43	3.73	4.46	4.38	5.38	4.74	4.60	4.57
36	31	21 <sup>2</sup>	21 <sup>2</sup>		21 <sup>2</sup>	21 <sup>2</sup>	31	36
walk	walk	cb	cutt		cutt	cb	walk	

4497  
4.77  
21  
on  
valve

49.74X

46.4	45.8	45.3	44.8	44.6	43.8	44.7	43.9	43.8
2.6	3.2	3.7	4.2	4.4	5.2	4.3	5.1	5.2
50	40	18	16		20	23	40	50

45.6	45.3	44.9	44.3	44.1	43.3	44.2	43.5	43.2
3.4	3.7	4.1	4.7	4.9	5.7	4.8	5.5	5.8
50	40	18	16		21	23	40	50

45.3	44.8	44.5	43.8	43.6	42.6	43.6	43.1	42.9
3.7	4.2	4.5	5.2	5.4	6.1	5.4	5.9	6.1
50	40	18	17		20	22	40	50

43.24  
5.71  
22<sup>3</sup>  
walk

44.79	44.50
All	44.5
50	40
conc	conc

48.95X

R 26



Cont'd From Page 26

Lt

Q

Rt 27

check

10.21

39.53-39.53

NWBP Garnet & Everts

Q Everts

West Curb Line

49.747

47.57

2.17

100

46.47

3.27

50

45.64

4.10

45.09

4.65

392

Edge

Pay

44.0

5.7

100

47.23

2.01

100

cb

47.15

2.59

100

get

46.70

3.04

50

cb

46.06

3.68

50

get

45.76

3.98

20

45.42

4.32

44.75

4.77

20

44.49

5.25

40

Edy

Pay

44.35

5.37

40

get

45.01

4.73

40

cb

43.4

6.3

100

1.75 check  
of 54.

49.747



D. Smith  
C. Allen  
R. Taylor  
Wm Ferguson

X Sec Alley BIK "I" Balboa Vista

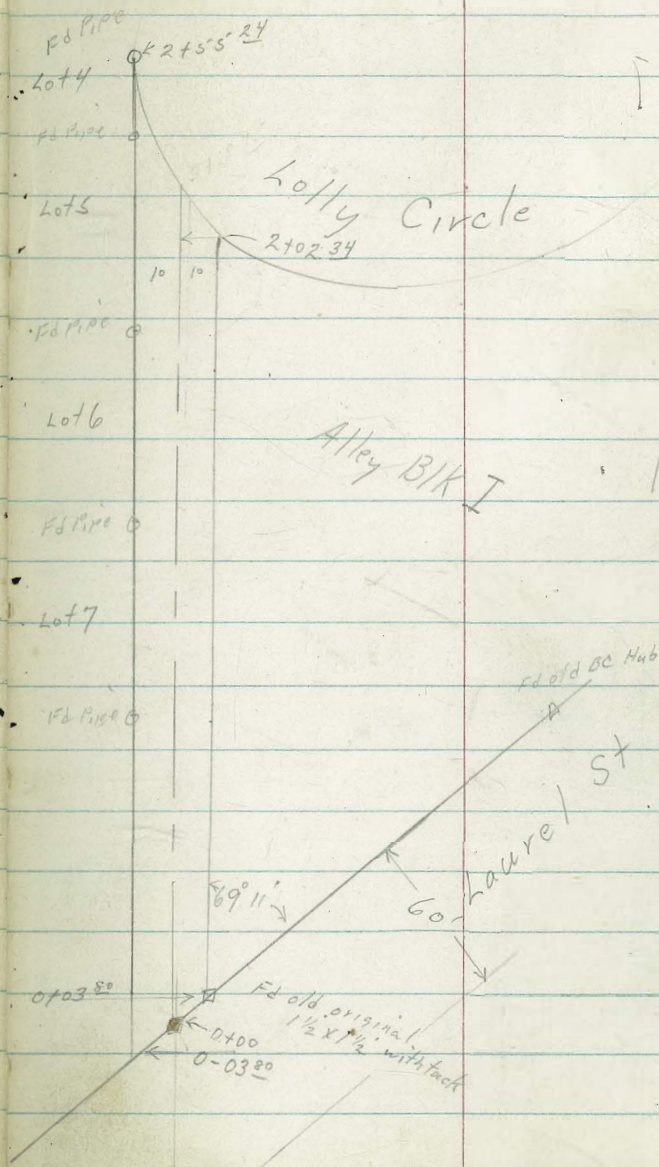
W0# 25020  
1-24-52

28

Ref File Map # 2142

set 2XR Hub + Disk

all RE  
4847  
Jaeger's





TP<sub>2</sub> - 12<sup>08</sup> 291<sup>07</sup> 090 279<sup>28</sup>

0750

6733 9<sup>2</sup> Lt End picket fence

073<sup>80</sup>

Reduced & Plotted  
2/11/52  
H. Mills

0700

0-3<sup>00</sup> 9<sup>8</sup> Lt Begin 25' picket fence

0-20

TP<sub>1</sub> 8<sup>77</sup> 280<sup>68</sup> 10<sup>32</sup> 271<sup>71</sup>

BM 4<sup>14</sup> 282<sup>03</sup> 277<sup>89</sup> B.P. E<sub>1</sub> con  
S Line Blacton  
5445 St

Lt=West

RT=East 29

2793  
1<sup>4</sup>  
30  
2795  
1<sup>2</sup>  
10  
2795  
2  
10  
2801  
0<sup>6</sup>  
10  
2802  
+0<sup>5</sup>  
30

27488  
5<sup>8</sup>  
30  
2752  
5<sup>5</sup>  
10  
2750  
5<sup>7</sup>  
27426  
30  
2755  
5<sup>2</sup>  
10  
2755  
5<sup>2</sup>  
30

6<sup>42</sup>  
67 Hub

2741  
6<sup>6</sup>  
30  
2743  
6<sup>4</sup>  
10  
2741  
6  
10  
2741  
6<sup>6</sup>  
10  
2740  
6<sup>2</sup>  
30

2726  
8<sup>1</sup>  
30  
2727  
8<sup>0</sup>  
10  
2731  
7<sup>6</sup>  
10  
2733  
7<sup>4</sup>  
10  
2737  
7<sup>0</sup>  
30

T 280<sup>68</sup>



BM starting  
 TP4 1<sup>00</sup> 289<sup>77</sup> 13<sup>14</sup> 288<sup>71</sup> 277<sup>89</sup> ✓  
 277<sup>87</sup> ✓

2155<sup>24</sup>

2128

2102<sup>34</sup>

1775

1750

TP3 10<sup>03</sup> 301<sup>85</sup> 0<sup>05</sup> 291<sup>82</sup>

1700

2906	273.4	296.0	296.6	296.8	297.0
11 <sup>3</sup>	8 <sup>5</sup>	5 <sup>2</sup>	5 <sup>2</sup>	5 <sup>1</sup>	4 <sup>2</sup>
30	10		2	10	17
288.8	284.2	286.2	288.2	288.4	288.1
11 <sup>4</sup>	7 <sup>2</sup>	5 <sup>7</sup>	3 <sup>2</sup>	3 <sup>5</sup>	3 <sup>8</sup>
30	10		4	10	20
282.3	283.1	285.0	282.3	301.9	
11 <sup>6</sup>	8 <sup>8</sup>	6 <sup>9</sup>	4 <sup>6</sup>	0 <sup>0</sup>	
30	10		10	25	
288.1	281.2	282.7	285.5	288.6	
13 <sup>8</sup>	10 <sup>7</sup>	8 <sup>2</sup>	6 <sup>4</sup>	5 <sup>14</sup>	
30	10		10	30	
286.7	289.9	287.7	282.2	285.2	
15 <sup>2</sup>	12 <sup>0</sup>	10 <sup>2</sup>	8 <sup>2</sup>	6 <sup>7</sup>	
30	10		10	20	
2830	2854	2864	2873	2889	
8 <sup>2</sup>	6 <sup>14</sup>	5 <sup>5</sup>	4 <sup>6</sup>	3 <sup>0</sup>	
30	10		10	30	
291					



Pope X-Sections Missouri St.  
 Huffman Jewell To E.L. LaMont  
 Bishop  
 2-21-52 - W.D. 31584

0+91 = 8' Drive 46 Rt.

0+68 = 25' Walk 399 Rt.

0+50

Plotted  
 2-25-52  
 R.W.D.

0+36 = 3' Walk 36.5 Lt.

0+05 = Fire Hyd. 22.7 Rt.

0+00 East Line Jewell

0-3 = Power Pole 24.7 Lt #P4751

0-20

0-23

0-40 = 6 Jewell

TP Nail in Pole NE Jewell & Miss. 105.22

T.P. 114.42

T.P. 123.57

B.M. 132.33 = NE.B.P.

Note - Direct Elev. Rod used

Lt.

£

Rt.

INDEXED  
 FEB 25 1952

102.10 101.93  
 40 67.3 Floor

101.82 101.73  
 39.9 50

103.8 103.7 103.0 102.4/102.2 101.6 101.8 101.6 101.2  
 50 40 21 20 14 17 40 50

103.72 103.56  
 45 36.5

103.4 103.3 102.2 101.4 100.8 100.3 100.8 101.13 100.8  
 50 40 20 19 15 18 40 50

103.2 102.7 101.5 99.8 100.0 99.6 100.4 99.7 99.4  
 60 40 22 18 15 20 40 60

101.9 101.3 100 100.0 99.1 98.9 98.4  
 60 40 22 40 60

102.6 102.0 100.8 99.7 99.3  
 60 40 40 60

Jewell & Law

Discrepancy in B.M. see P 40



X-Sections Missouri St.

Jewell TO E.L. Lamont

32

2+00

Lt.		Rt.	
1071	1068	1053	1046
50	40	22	20
		1037	1035
		40	50

1+90 = 4' 8' Drive 39.2 Rt.

10332	10355
39.2	54.7
	Garage Floor

1+61 = 4' 1" Palm 26' Lt.

1+54 = 4' East Ribbon Drive 38.4 Lt.

10658	10622
50	38.4

1+48 = 4' West Ribbon Drive 38.4 Lt.

10649	10609
50	38.4

1+50

1065	1061	1042	1037
50	40	20	

1+28 = 4' 3' Walk 39.9 Rt.

10263	10268
39.9	50

1+24 = 4' 3' Walk 35.5 Lt.

10583	10547
50	35.5

1+08 = 4' 8' Drive 40' Rt.

10215	10245
40	66 Floor
	Garage

1+00

1059	1048	1037	1033	1032	1027	1023	1021
50	40	22	19		12	40	50

0+93 = 4' 8' Drive Lt.

10582	10532	10455
62	55	31.6



## X-sections Missouri St.

Jewell to E.L. LaMont

	Lt.	£	Rt.
3+10 = 4' 3' walk 39.9 Rt.			107.35 39.9
			107.47 50
3+07 = 4' 4' walk 37.5 Lt.		108.64 50	108.20 37.5
3+01 = 4' 8' Drive 39.5 Rt.			106.98 39.5
TP		106.94	106.95 55
3+00 = 4' 3' Palm 39.5 Lt.	108.2 50	108.0 40	107.9 37.2
			106.4 19
2+91 Begin cham link fence 37.2 Lt.			
2+70 4' 3' walk 39.9 Rt. Also End 6" con. wall	37.4 Lt.		105.18 39.9
			105.10 50
2+54 4' 2' walk 40.2 Rt.			104.76 40.2
			104.67 50
2+50		106.9 50	106.7 40
2+40. Begin 6" conc. Blk. Wall 37.4 Lt.		106.1 24	105.2 19
			105.3 12
			104.7 40
			104.6 50
2+45 = 4' 3' walk 41.5 Rt.			104.50 41.5
			104.40 50



X-sections Missouri St.

Jewell To E.L. LaMont

34

	Lt.	£	Rt.
4+54 End chain link fence 37.2 Lt.			
4+50	115.1 50	114.7 40	112.0 19
			111.7 12
			111.2 13
			112.0 40
			111.4 50
4+47.5 East Edge 8' Drive 30.5' Lt.		114.03	
4+41 = £ 3" Tree 29' Rt.			113.32 30.5
4+39.5 West Edge 8' Drive 30.5' Lt.		114.06	
4+27 = £ 6" Tree? 29' Rt.			113.28 30.5
4+21 = £ 3' Walk 36' Lt.		114.05	
4+10 = £ 4" Tree? 29' Rt.			113.32 36
4+00			
3+90 Begin chain link fence 37.2 Lt.	113.6 50	113.4 40	113.3 38
			111.9 32
			110.0 12
			109.4 14
			110.0 40
			110.0 50
3+89 East Edge 9' Drive 40.2' Lt.		112.41	
			112.06 40.2
3+80 West Edge 9' Drive 40.2' Lt.		112.29	
			111.98 40.2
3+50			
3+40 End chain link fence 37.5 Lt.	109.9 50	109.7 40	109.5 36
			108.1 19
			107.9 11
			107.5 13
			108.0 40
			108.5 50
3+25 = £ 3' Walk 37.5 Lt.		109.05	
			108.72 37.5



X-Sections Missouri St.

Jewell To E.L. LaMont

Lt.                      ♀                      Rt.

6+235 East Edge 8.5' Drive 41' Lt.

119.97                      119.53  
50                              41

6+15 West Edge 8.5' Drive 41' Lt.

119.91                      119.45  
50                              41

6+195 East Edge 9' Drive 36.5 Rt.

115.26                      114.64  
36.5                              50

6+10.5 West Edge 9' Drive 36.5 Rt.

115.21                      114.66  
36.5                              50

6+00

119.2    118.8    117.2    116.5    115.9    116.2    115.2    115.7  
50            40            19            12            13            40            50

5+81 = Fire Hyd. 22.2 Rt

5+50

118.2    117.8    117.2    115.4    114.8    114.4    114.8    113.6    113.4  
50            40            30            19            12            13            40            50

5+00

116.4    116.2    115.8    114.6    113.6    113.4    112.8    113.4    112.6    112.5  
50            40            30            24            19            11            14            40            50

4+74 East Edge 9' Brick Drive

111.77  
40.2

4+65 West Edg 9' Brick Drive

111.77  
40.2

T P

115.14



X-sections Missouri St.

Jewell to E.L. LaMont.

36

	Lt.	£	Rt.
7473 - £ 3' walk			118.42 40
7450	122.5 50	121.8 40	120.1 19
7449 East Edge 8' Drive			119.5 14 27 40 50 117.83 39.6 117.69 50
7441 West Edge 8' Drive			117.89 39.6 117.71 50
7424 East Edge 8' Drive	122.17 50	121.54 40	
7416 West Edge 8' Drive	122.13 50	121.53 40	
7400	121.8 50	121.2 40	120.4 23 119.5 19 119.0 12 118.6 14 118.4 40 117.2 40 116.8 50
6480 £ 3' walk 39.9 Rt. TP			118.27 116.95 39.9 116.60 50
6474 East Edge 8' Drive			121.25 50 120.86 40.1
6466 West Edge 8' Drive			121.27 50 120.89 40.1
6450	120.2 50	120.2 40	118.7 19 117.9 12 117.4 16 117.6 40 116.0 40 115.9 50



X-sections Missouri St.

Jewell to E.L. LaMont

37

9+21  $\perp$  3' walk

118.40  
49.9

118.25  
50

9+16 = West Edge 8' Drive

121.89 121.65  
50 39.9

9+03 East Edge 8' Drive

118.84 118.47  
39.3 50

9+00

122.2 121.8 121.1 120.2 119.6 119.4 118.7 118.4  
50 40 22 19 12 40 50

8+95 West Edge 8' Drive

118.80 118.37  
39.3 50

8+64 End 2' Picket Fence 22.7H

8+50

122.8 122.2 121.5 120.3 119.6 119.5 119.7 118.70 118.26  
50 40 23 20 10 13 40 50

8+53 = East Edge 8' Drive

118.70 118.36  
38.5 50

8+45 = West Edge 8' Drive

118.64 118.26  
38.5 50

8+41 =  $\perp$  4' walk 38.5 Rt.

118.66 118.27  
38.5 50

8+29 Begin 2' Picket Fence 23' Lt.

8+00

122.8 122.0 120.2 119.5 119.2 119.5 118.2 117.8  
50 40 19 10 12 40 50



X- Sections Missouri St.

Jewell To E.L. Lamont

38

Lt.

¢

Rt.

10422 = ¢ 1' Pepper Tree 23' Lt.

TP 11957

10411 East Edge Conc. Apron

121.86 121.35  
55.7 40.2  
Garage Floor

10400

121.3 120.2 119.6 119.0 119.2 118.5 118.3  
40 17 12 16 40 50

9496 West Edge Conc. Apron

121.91 121.36  
55.7 40.2  
Garage Floor

9487 = ¢ 1' Pepper Tree 23' Lt.

9475 East Edge

121.80 121.45  
50 40.3

9467 West Edge 8' Drive

121.86 121.43  
50 40.3

9461 ¢ 3' walk

118.28 118.18  
40.8 50

9450

122.0 121.4 120.0 119.6 119.0 119.4 118.2 117.9  
50 40 17 11 14 40 50

9438 ¢ 3' walk

118.37 118.14  
40.5 50

9424 East Edge 8' Drive

121.95 121.65  
50 39.9



X-sections Missouri St.

Jewell To E.L. LaMont

11+39.52 East Curbline LaMont

11680	11626	11653	11589	11571	11571	11408	11482
40	40	13	13	3	39	65	65
T.C.	Gut	T.C.	P.C. Gutter	P.Crb.	T.C.	Gut	T.C.
					11567	11521	11510
					12	29	39
					£ East	P.Crb	E.C. Gut

11+19.52 & LaMont

11745	11706	11683	11610	11550	11468
65	50	40		40	65

10+99.52 West Curbline LaMont

11710	11651	11675	11513	11580	11435	11500
TOP	50	30	40	40	65	65
Crb.	Gutter	TOP Crb.	Gutter	TOP Crb.	Gutter	TOP Crb.

TP S.W. Tack

116.01

11682	11624	11617	11602	11587	11546	11530	11587
TOP Crb.	40	30	20	20	20	30	30
	Gutter					Gutter	T.C.

10+79.52 W.L. LaMont

11705	11706	11681	11618	11610	11554	11592	11612	11645
36	31	20	20		20	20	31	36
Endwalk	Endwalk	T.C.	Gutter		Gutter	T.C.	Endwalk	Endwalk

10+76

1202	1198	1173	1164	1164	1160	1181	1183	1181
50	40	18	16		13	23	40	50

10+67 = & 4" Pepper Tree 23' Lt.

10+56 = & 9" Pepper Tree 23' Lt.

10+50

1214	1211	1195	1183	1180	1174	1187	1184	1183
50	40	17	14		13	15	40	50

10+43 = & 1" Pepper Tree 23' Lt.

10+32 = & 1" Pepper Tree 23' Lt.

10+25

1216	1213	1202	1197	1191	1182	1192	1186	1185
50	40	17	13		121	14	40	50



X-Sections Missouri St.  
Jewell To E.L. Lamont

Lt.                    £                    Rt.

chk. starting B.M.                    0.01  
   132.33  
   132.32

NE B.P. Jewell & Law

T.P.    130.20

T.P.    121.36

chk. NE B.P. Jewell & Chalcedony 113.24

T.P.    113.16

T.P. chk. Nail in Pole NE. Jewell & Miss. 105.22  
   105.21

T.P.    111.87

T.P.    119.71

   -0.33  
   106.03 & 105.95

same Bench Book

chk. S.W. B.P. Diamond & Lamont 105.70

T.P.    111.57

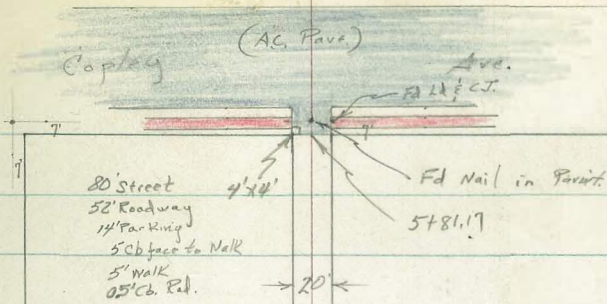
1145952 East Line

11656	11593	11592	11591	11539	11599
3	3		12	29	29
TC	cut		£ East	cut	TC



Roberts  
Moore  
Pullen  
3-28-52  
W.D.# 31885

X-Section Alley BK. K, U. H.  
(Sub PL. 1113)  
Suncrest to Copley  
East of Kansas  
EB. 1519 pg 65



St.

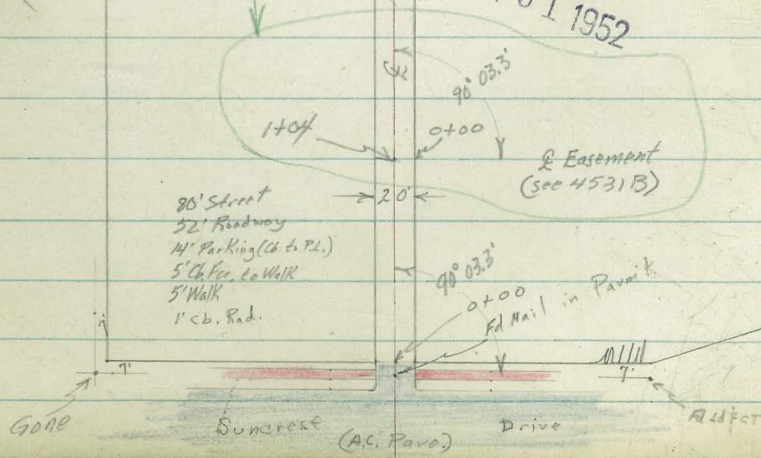
Alley

Nly.

Kansas

(See Page 48)

INDEXED  
MAR 31 1952





0+81 8<sup>9</sup> Rt End Fence

0+50

387.5	387.3	386.9	386.9	387.3
3.1	3.3	3.7	3.7	3.3
15	10		10	15

0+41 8<sup>5</sup> Rt begin lattice fence.

0+20 9<sup>3</sup> Rt to near edge 9" Tree

T.P. 3.58 390.63  $\pi$  5.36 387.05 <sup>N. to in Rd. #PA 49 55</sup> 390.63  $\pi$

0+00 No. line Suncrest (Edge Pavmt)

388.01	387.95	387.68	388.06	388.14
4.40	4.46	4.73	4.35	4.27
10.15	10.15		9.15	9.15
cb.	cut		cut	cb

Nly Curb Line Suncrest

388.08	387.51	387.85	387.38	387.38	387.22	387.19	387.24	387.88	386.93	387.61
4.33	4.90	4.56	5.03	5.03	5.19	5.22	5.17	4.53	5.48	4.80
5.0	5.0	11.15	11.15	10.15		9.15	10.15	10.15	5.0	5.0
cb	cut	cb	cut	cut		cut	cut	cb	cut	cb

€ Suncrest

388.38	388.25	387.94	387.86	387.79
4.03	4.16	4.47	4.55	4.62
100	50		50	100

T.P. 4.41 392.41  $\pi$  5.29 388.00

392.41  $\pi$

BM 4.25 393.29 389.04 SEBP

30<sup>th</sup> E Adams



Cont'd From Page 42

Lt

E

Rt 43

2+50

387.3	386.9	386.5	386.1	386.2	385.7
33	37	41	45	44	49
20	10	<del>2</del>		10	25

2+00

95' Lt to Center P. Pole # PA 4775

387.0	386.5	385.9	385.8	385.1
3.6	4.1	4.7	4.8	5.5
15	10		10	20

1+85

22' Rt to E House 22' long

385.3  
5.3  
22  
Floor

1+50

386.7	386.2	386.0	385.4	385.1
3.9	4.4	4.6	5.2	5.5
20	10		10	25

1+06 10' Lt to Center P. Pole # PA 4755

386.9	386.7	386.0	385.6	384.8
3.7	3.9	4.6	5.0	5.8
20	10		10	25

1+00

0+94

132' Rt & Single Garage

385.7  
4.9  
132  
Wood  
Floor

0+93

235' Lt & Single Garage

387.02	386.99	386.69
361	364	394
235	181	141
Floor	BRK	conc.

390.63A

390.63A



Cont'd From Page 43

Lt

♀

Rt 44

4+00

388.6	388.6	388.4	388.3	388.8	388.1
4.4	4.4	4.6	4.7	4.2	4.9
15	10	5		10	25

3+50

388.7	388.6	388.1	388.0	388.0	387.4
4.3	4.4	4.9	5.0	5.0	5.6
20	10	8		10	25

3+35

18' Lt & Single Garage

389.8 <sup>2</sup>	389.09
326	399
18 <sup>2</sup>	12
Floor	conc

3+20

10' Rt to near Edge Stump 14"

3+04

9' Lt to center P.Pole # PA 4795

3+02

10' Rt to near Edge Stump 4"

3+00

388.5	388.1	387.4	387.2	387.2	387.0
4.5	4.9	5.6	5.8	5.8	6.0
20	10	5		10	25

2+79

9' Lt to near Edge Tree Stump 24"

T.P.

6.82 393.08X 4.37 386.26  
390.63X

393.08X



T.P. 4.29 393.38 3.79 389.09

5700

389.4 389.2 388.8 388.9  
 3.6 3.8 4.2 4.1  
 15 10 10 10

4784 14' Lt & Single Garage

393.1 388.6 389.0 389.6  
 10.1 4.4 4.0 3.4  
 10 10 10 14  
 Top Foot GRD Floor

4775 10' Lt End Conc Block Wall

388.7 388.1 394.5  
 4.3 4.9 4.5  
 10.6 10.6 10.6  
 GRD Foot Top

4769.5 10.5 Rt End Conc BK Wall

4750

388.8 389.1 388.5 388.5 388.3  
 4.2 3.9 4.5 4.5 4.7  
 15 10 7 10 10

4741 10.5 Rt Begin Conc Block wall

393.1 388.1 388.9 388.5 387.6 394.5  
 10.1 4.9 4.1 4.5 5.4 4.5  
 10.6 10.6 10.6 10.6 10.6 10.6  
 Top Foot GRD Foot Top

4725 { 10.5 Lt Begin Conc Block wall  
 { 8.5 Lt to Center P.Pole # JPA 4826

10.1 4.9 4.1  
 10.6 10.6 10.6  
 Top Foot GRD



Cont'd From Page 45

Lt.

℄

Rt 46

5785.17

End Cb on Rt.

389.30	388.90	388.67	388.35	388.58	388.98
4.8	4.48	4.71	5.03	4.80	4.40
10 Cb	10 AC Gutt	6 AC		7.85 AC Gutt	9.85 Cb

5781.17

Sly. Line Copley (Edge Pav.)

389.41	389.2	388.78	388.45	388.69	
3.7	4.1	4.60	4.93	4.71	
10 Cb	10 dirt Gutt	6 AC		7.2 AC Gutt	No Cb

5770

10<sup>3</sup> to House on Lt

389.6	389.6	389.2	389.1	389.0
3.7	3.7	4.1	4.2	4.3
10	5		10	15

5757

7<sup>3</sup> Lt to E of Conc Slab porch 7'x3'

391.11	390.99
2.27	2.61
10 <sup>3</sup> Floor	7 <sup>3</sup> conc

5745

7<sup>3</sup> Lt to Deadman  
10<sup>3</sup> Lt to House

389.8	389.6	389.1	389.4	389.0
3.5	3.7	3.6	3.9	4.3
10		7	10	13

5742<sup>5</sup>

7<sup>3</sup> Lt to near Edge Stamp 12"

389.6
3.7
10 <sup>3</sup> Dirt Floor

5730

10<sup>3</sup> Lt & Single Garage

5724

7<sup>5</sup> Lt to Center P.P. # JPA 4845

393.38 X

393.38 X



Cont'd From Page #6

4

E

Rt 47

Check 4.38 389.03 = 389.04

T.P. 5.32 393.41 4.86 388.09

T.P. 4.64 392.89 5.13 388.25

Set TBN 4.41 488.97 Detect on T'Line (sly) Copley & East curb of Alley.

L Copley

389.60	389.19	388.68	388.35	388.03
3.78	4.19	4.70	5.03	5.25
100	50		50	100

Sly Curb Line Copley

389.47	388.80	388.93	388.40	388.38	388.16	388.25	388.22	388.89	387.66	388.35
3.91	4.58	4.45	4.98	5.00	5.22	5.13	5.16	4.49	5.72	5.03
50	50	100	100	10		10	100	100	50	50
cb	6.44	cb	6.44				6.44	cb	6.44	cb

393.38A

393.38A



Roberts  
Cota  
Moore  
Follen  
5-1-52  
W.O. # 31885

X-Section Easement for Drain  
Villa Lot 73 University Heights

Lt

C

Rt 48

See page 41 This F.B. 4531-B

1+70

366.6  
247  
10  
372.3  
190  
375.8  
15.5  
10

1+00

X 2' Rt to Center 24" Palm

0+93

373.5  
178

0+98

4<sup>5</sup> Rt End Lath House

0+84

4 Rt Begin Lath House

INDEXED

Law

MAY 2 1952

0+79

3<sup>1</sup> Rt to Center 36" Palm Tree

383.7  
7.6  
10  
383.7  
7.6  
10  
378.1  
13.2  
4  
378.1  
13.2  
10

0+54

3<sup>1</sup> Rt center of 7' shed

0+50

2<sup>3</sup> Rt End Pickott Fence

New Fill made  
Recently

384.3  
7.0  
10  
384.3  
7.0  
10  
383.3  
8.0  
1  
382.6  
7.7  
10

0+21

3<sup>2</sup> Rt { Begin Pickott Fence  
End Garage

0+03

3<sup>2</sup> Rt Begin Garage

0+00

East Line Alley opposite Alley Sta. 1+04

385.4  
6.9

BM

3.19 391.337

388.14

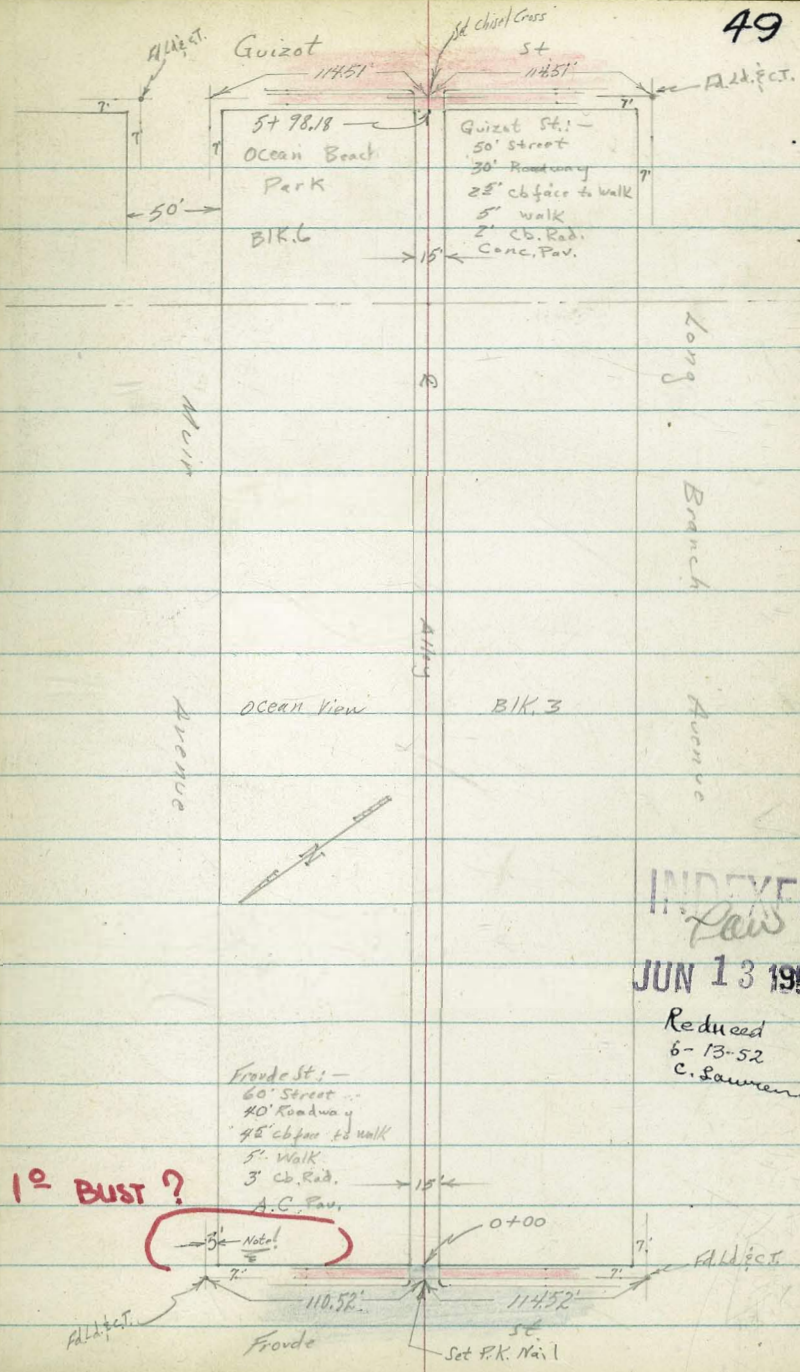
Top Curb East  
Line Alley at 0+00 see page 42

391.337



Roberts  
Cota  
Moore  
Riley  
6-11-52  
MO. 32050

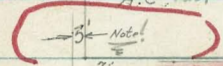
X-Section Alley Bk. 6, Ocean Beach Park and  
Bk. 3 Oceanview  
Froude to Guizot  
Between Long Branch & Muir



49

INDEXED  
Law  
JUN 13 1952  
Reduced  
6-13-52  
C. Lawrence

1<sup>o</sup> BUST ?





Cont'd From Page 49

ht

Q

50

T.P. 10.56 62.90A 1.30 52.24

51.2 50.9 50.9 51.2 51.7  
2.3 2.6 2.6 2.3 1.8  
15 7.5 7.5 7.5 15

0+50

0+43

7<sup>1</sup>/<sub>2</sub>' Rt Q 3' Conc Walk

51.49 51.54  
2.05 2.00  
7.5 7.5  
conc conc

0+41

7<sup>1</sup>/<sub>2</sub>' Rt begin board fence

7<sup>1</sup>/<sub>2</sub>' Rt End lattice fence

0+00

{ 7<sup>1</sup>/<sub>2</sub>' Rt begin lattice fence  
Property Line Froude (Pav. Edge)

49.56 49.40 49.23 49.42 49.70  
3.98 4.14 4.31 4.12 3.84  
7.5 7.5 7.5 7.5  
cb Gutt Gutt cb

Curb Line Froude

48.25 47.60 48.93 48.26 49.39 48.70 48.80 48.92 49.63 49.41 50.09 50.00 50.66  
5.29 5.94 4.61 5.28 4.15 4.84 4.74 4.62 3.91 4.12 3.85 3.54 2.88  
100 100 45 45 100 100 100 100 100 50 50 97 97  
cb Gutt cb Gutt cb Gutt Gutt cb Gutt cb Gutt cb

Q

Froude St. (AC Paving)

47.58 48.11 48.70 49.30 49.72  
5.86 5.43 4.84 4.24 3.82  
100 50 47 50 100

T.P.

2.46 53.54A 10.90 51.08

53.54A

BM

2.36 61.88

NW 5P  
59.52 Froude & Brighton



Cont'd From Page 50

1739 { 7<sup>8</sup> Lt Begin wire fence  
6<sup>8</sup> Rt begin conc Apron (Garage opening not on Alley)

1402 7<sup>3</sup> Lt center Single Garage

1400

0+95 6<sup>2</sup> Rt to center P Pole # PA 4580

0+93<sup>5</sup> 7<sup>2</sup> Rt End Apron

0+91<sup>2</sup> 11<sup>2</sup> Rt End Garage

0+80<sup>2</sup> 11<sup>2</sup> Rt begin Garage

0+75<sup>5</sup> 7<sup>5</sup> Rt begin conc Apron Single garage

0+74<sup>5</sup> 7<sup>3</sup> Rt End board fence

62.80  $\pi$

Lt

Rt

Rt 51

54.49

8.31

6<sup>2</sup>

conc

52.6

10.2

7<sup>3</sup>

Dirt

52.6

52.5

52.6

53.2

53.9

54.1

10.2

10.3

10.2

9.6

8.9

8.7

7<sup>5</sup>

4

7<sup>2</sup>

10

20

52.78

10.02

7<sup>2</sup>

conc

52.85

9.95

11<sup>2</sup>

Floor.

52.80

10.00

12

Floor

52.44

10.36

7<sup>5</sup>

conc

62.80  $\pi$



Cont'd From Page 51

Lt

Σ

Rt 52

1795<sup>E</sup> 12<sup>1</sup> Lt to ♀ single Garage

55.69	55.60
7.11	7.20
122	113
Floor	conc
	Apron

1781 6<sup>4</sup> Rt End Board Fence

1780 7<sup>6</sup> Lt End wire fence

1767 6<sup>4</sup> Rt ♀ 3' Conc Walk

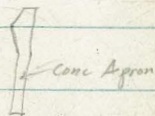
1757 6<sup>5</sup> Rt Begin Board Fence.  
6<sup>3</sup> Rt End Conc. Apron

55.11  
7.67  
6<sup>3</sup>  
conc  
54.90  
7.90  
6<sup>3</sup>  
conc

1754<sup>E</sup> 5<sup>2</sup> Rt Lpt in Apron

54.81  
7.99  
5<sup>2</sup>  
conc

1750 { 7<sup>5</sup> Lt to fence  
6<sup>2</sup> Rt to Lpt in Apron



53.8	54.1	54.1	54.5	54.79
9.0	8.7	8.7	8.3	8.01
15	7.2		6 <sup>2</sup>	6 <sup>2</sup>
			Dirt	conc

1743<sup>E</sup> 8<sup>5</sup> Rt ♀ doorway (30")

54.77  
8.03  
8<sup>5</sup>  
Floor

62.80 $\pi$

62.80 $\pi$



Cont'd From Page 52

Z+66 6<sup>2</sup> Lt to Step 3<sup>2</sup> wide

Z+64<sup>5</sup> 7<sup>2</sup> Rt Begin conc Blk wall  
7<sup>6</sup> Lt End Picket fence & begin conc wall  
Plastered conc. Blk

Z+50

Z+28 ? Neighbor says to be destroyed?  
7<sup>8</sup> Rt & conc Slab (10')

Z+21 6<sup>8</sup> Rt to center P.Pole # PA4554

Z+14<sup>5</sup> 6<sup>2</sup> Rt & 1<sup>3</sup> Walk & 1 step

Z+04 7<sup>4</sup> Lt Picket fence

Z+00

62.80A

Zt

E

Rt 53

60.18 59.53  
2.62 3.27  
7<sup>2</sup> 6<sup>2</sup>  
conc conc

64.2 56.9 58.5  
4.4 5.9 4.3  
7<sup>6</sup> 7<sup>6</sup> 7<sup>6</sup>  
Top Foot GRD

57.6 57.4 57.9 57.8  
5.2 5.4 4.9 5.0  
18 8 7<sup>5</sup>

58.5 57.9 65.0  
4.3 4.9 4.2  
7<sup>2</sup> 7<sup>2</sup> 7<sup>2</sup>  
GRD Foot Top

58.0 58.4  
4.8 4.4  
7<sup>5</sup> 17<sup>5</sup>

57.8<sup>3</sup>  
4.97  
7<sup>8</sup>  
conc

56.90 57.23 57.48  
5.90 5.57 5.32  
6<sup>8</sup> 7<sup>5</sup> 17<sup>5</sup>  
conc conc conc

55.6 55.9 55.8 56.2 56.4  
7.0 6.9 7.0 6.6 6.4  
12 7<sup>5</sup> 7<sup>5</sup> 7<sup>5</sup> 7<sup>5</sup>

62.80A



Cont'd From Page 53

3+50

3+495

8<sup>E</sup> Lt. Begin <sup>Double</sup> Single Garage

T.P.

13.02 75.50K 0.32 62.48

3+48

7<sup>E</sup> Rt End Lattice begin Picket fence

3+056

{ 7<sup>E</sup> Rt End wall  $\approx$  Begin Lattice fence  
7<sup>E</sup> Lt End wall  
6<sup>E</sup> Lt to Footing

3+00

2+95

7<sup>E</sup> Rt  $\approx$  3' walk

2+68

Lt to Edge Footing

62.80K

Lt

R

R 54

63.2  
12.3  
75

62.9  
12.6

63.6  
11.9  
75

64.6  
10.9  
175

63.51  
11.93  
82  
Floor

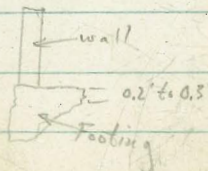
75.50K

64.6 59.7 60.8  
+1.8 36 20  
75 75 75  
Top Foot GRD

61.2 60.1 66.4  
1.6 2.7+3.6  
72 72 72  
SRD Foot Top

60.6 60.4H 60.5 61.2  
2.2 23C 23 1.6  
75 NH 3 75

62.01  
0.75  
72  
conc



Forms were not used on this footing. Tapers thus:

62.80K



Cont'd From Page 54

Lt

E

R# 55

4750 7<sup>2</sup> Rt to Deadman

69.7	69.8	69.5	69.8	71.3	71.4
5.8	5.7	6.0	5.7	4.2	4.1
175	75		75	9	175

4740 10' Rt E garage

70.3  
5.2  
10  
Dirt

4732 8' Rt End fence

4730<sup>1</sup> 7<sup>2</sup> Lt End shed begin board fence

4723 7<sup>2</sup> Lt End Fence begin shed

4700

65.5	65.9	65.9	66.3	67.3	67.3
100	96	96	9.2	8.2	8.2
175	75		75	8	175

3790 7' Rt End Picket begin wire fence

3766 7<sup>2</sup> Lt begin board fence

63.68

3761.2 8<sup>5</sup> Lt End garage

11.82  
85  
Floor

3758 6<sup>5</sup> Rt to center P. Pole # PA4532

75.50X

75.50X



Cont'd From Page 55

5+145 8' Rt End Conc B/K Wall <sup>Retaining wall</sup>

5+083 7' Lt End fence begin Bldg.?

T.P. 12.25 87.31  $\pi$  0.44 75.06

5+00

4+99E 8' Rt End drive begin Conc B/K wall

4+96 7' Lt End board begin Picket fence

4+91E 23' Rt Lt  $\frac{1}{2}$  Break in Drive

4+83 15' Rt Lt  $\frac{1}{2}$  Break in Drive



4+81 9' Rt begin Conc Drive

4+74 8' Rt to center P Pole # PA 44518

75.50  $\pi$

Lt

E

Rt 56

76.5	76.4	80.48
10.8	10.9	6.83
81	82	81
GED	Foot	Top

87.31  $\pi$

74.7	74.4	74.3	75.2	71.5	78.2
0.8	1.1	1.2	0.3	12.0	+2.7
175	75		75	8	175
(175)					

75.06	75.1	75.3	77.4
0.44	0.4	0.2	+1.9
8	8	8	8
conc	GED	Foot	Top
Drive			

76.35  
+0.85  
233  
conc  
75.65  
-0.15  
75.1  
conc

73.95  
1.55  
83  
conc

75.50  $\pi$



Cont'd From Page 56

Lt

E

R 57

(Cypress Hedge from House to walk is back but needs Trimming)

5756 7<sup>L</sup> Lt End House

5750

79.5

79.4

80.2

80.3

80.4

7.8

7.9

7.1

7.0

3.9

7.2

7.5

9.2

9.2

5737<sup>L</sup> 7<sup>L</sup> Lt begin House

5736<sup>L</sup> 9<sup>E</sup> Rtg Steps in Ret Wall

79.01

8.30

9.2

bottom

step

5736 7<sup>9</sup> Lt & 2<sup>E</sup> Conc Walk

77.94

9.37

7.0

conc

5732<sup>E</sup> 7<sup>E</sup> Lt End Bldg.

5729 9<sup>E</sup> Rt begin Rock mortar Ret Wall

78.1

77.1

82.6

9.2

10.2

4.7

9.2

9.2

9.2

6RD

Foot

TOP

5726<sup>E</sup> 13<sup>E</sup> Rt End garage

78.54

8.77

13<sup>E</sup>

Floor

5719<sup>E</sup> 13<sup>E</sup> Rt begin Single Garage

78.54

8.77

13<sup>E</sup>

Floor

87.31  $\nabla$

87.31  $\nabla$



Contd From Page 57

Lt

£

Rt 58

T.P. 0.10 62.01 13.04 61.41  
 T.P. 0.68 74.45 12.70 73.77  
 T.P. 0.37 86.47 5.72 86.10  
 check 0.38 91.64 = 91.43

check 3.45 59.53 = 59.52  
 T.P. 10.11 62.98 9.14 52.87

SE T'ld of CT Long Branch & Guizot

£ Guizot

81.76 84.55 87.32  
 10.26 7.47 4.70  
 50 MH 50

Curb Line Guizot

80.82 81.37 83.64 83.11 83.76 84.23 84.90 86.40 86.98  
 11.20 10.65 8.38 8.91 8.26 7.79 7.32 5.62 5.04  
 50 50 12 12 12 12 50 50  
 gutt cb cb gutt gutt cb gutt cb

T.P. 7.81 92.02  $\pi$  3.10 84.21

92.02  $\pi$

{ 75 Rt End Ret Wall  
 5498.18 (Property Line Guizot (Pan Edge))

83.98 83.98 83.90 84.30 84.73 83.8 81.2  
 3.33 3.33 3.41 3.01 2.58 3.5 0.1  
 75 75 75 75 75 75  
 cb gutt gutt cb Foot Top

{ 75 Rt begin conc Ret wall  
 5457 { 94 Rt End Ret wall

80.9 80.5 83.8 80.9 80.3 86.4  
 6.4 6.8 3.5 6.4 7.0 0.9  
 94 94 94 75 75 75  
 GRD Foot Top GRD Foot Top

87.31  $\pi$

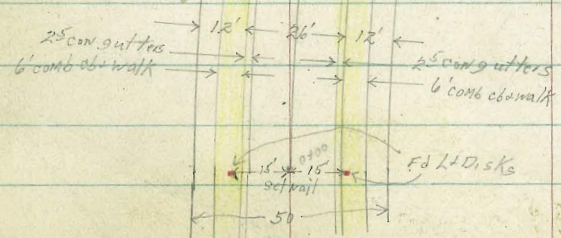
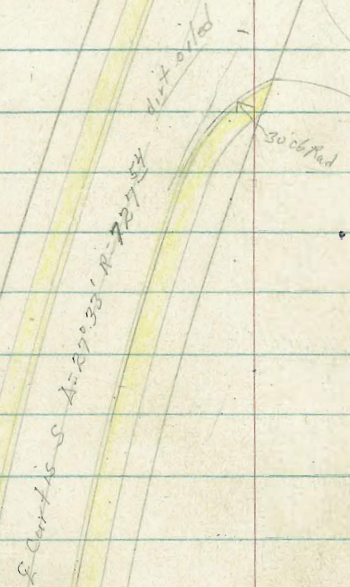
87.31  $\pi$





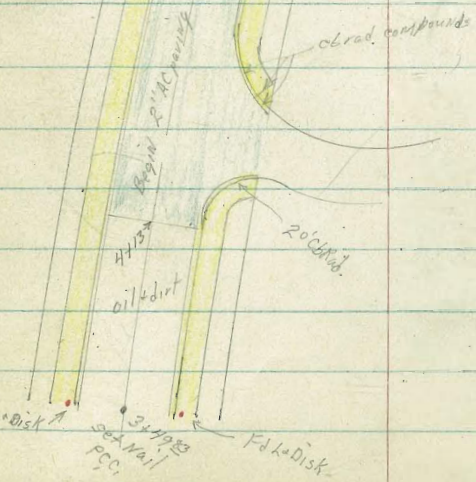
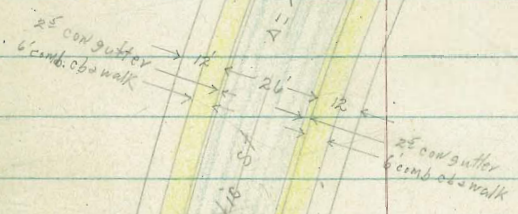
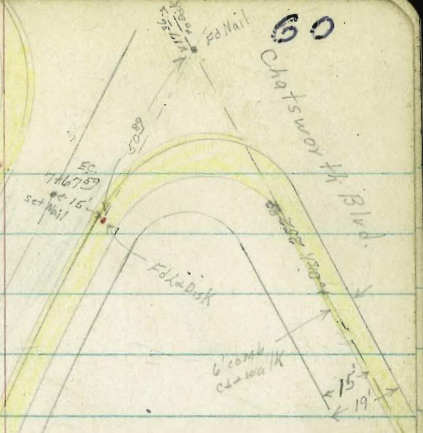


D.C.M.



from pg 59.

60





"X" Sec Curtis St NWly

Pt Loma Villas to Chatsworth Blvd

61

Lt = North

2

Rt = South

0795 Lt Begin gut & driveway

130.50  
52 620 613  
162 162 134  
cb gut gut

0794 24° Lt & 12" Cypress tree

1282 1283 1284 1285 1286 1287 1288 1289 1290 1291 1292 1293 1294 1295 1296 1297 1298 1299  
74 72 73 72 82 86 91 92 82 82 82 82 82 82 82 82 82 82  
35 212 162 162 13 142 173 173 223 38  
wk end cb gut wk

0780 162 Lt Begin 5' comb. cb & walk

TP 735 136<sup>32</sup> 007 128<sup>27</sup>

136<sup>32</sup>

0776

0766 24° Lt & 6" Cypress tree

0765 24° Lt & 3" Cypress tree

0756 24° Lt & 4" Cypress tree

0750

12029 12514 12034 12074 12448 12237 12519 12511 12299  
28 34 43 43 456 467 390 323 41  
35 17 14 148 175 175 225 35  
gut gut cb wk

Reduced by R. Barber  
1-7-53

0720 24° Lt & 6" Cypress tree

12134 12104 12034 12034 119161 11956 12019 12018 12044  
72 80 82 82 943 988 883 886 86  
35 17 12 15 173 175 225 35  
gut gut cb wk

0700 NWly Line Pt Loma Villas

0-50

11674 123 105 11814 106 120 122 124 128 124 115 115 114  
50 35 25 17 15 11 17 20 35 50

TP 322 129<sup>04</sup> 12<sup>34</sup> 125<sup>06</sup>

TP 019 137<sup>37</sup> 12<sup>39</sup> 137<sup>20</sup>

BM 016 149<sup>50</sup> 149<sup>43</sup>

#2213-76  
SE cor  
Rt. prop. BC  
210' x 110' Curtis  
disk

129<sup>04</sup>



1796 Rt of BC Ret.

14.01 140.58 139.88 139.58 139.19 139.38 139.90 139.96 140.78  
 75 80 87 90 94 95 86 86 78  
 225 225 16 13 174 174 225 35  
 C6 gut gut C6 w/k

1780 Lt C6 BC Ret

141.6 139.45 139.43 138.18 137.78 137.18 137.87 136.27 136.36 139.48  
 72 82 95 102 108 114 102 102 102 91  
 35 213 167 163 12 174 174 225 35  
 w/k C6 gut C6 w/k C6 w/k

TPH 1223 14858 ✓ 047 13585 ✓

1761<sup>2</sup> 164 Rt to E 15" RCP 25' outlet & wall end gutter

132.14 135.97 136.31  
 80 03 175  
 162 70 175  
 10 wall C6

1750

139.32 136.39 136.30 135.62 134.62 134.12 134.06 135.11 135.26 136.27  
 73 70 02 13 12 220 226 12 10 05  
 35 215 163 163 15 175 175 225 35  
 w/k C6 gut gut gut C6 w/k

1746 Rt gut Brk

134.09 133.93 134.62  
 223 239 170  
 150 175 175  
 227 gut C6

1725 Lt End drive way + cor gut

136.37 133.89 137.75 137.15 137.14 172.12 131.92 132.06 131.98 132.64 132.73 132.92  
 705 223 229 37 38 42 44 44 43 368 359 34  
 35 215 163 163 134 9 15 175 175 225 35  
 w/k C6 gut gut gut gut gut C6 w/k

1700

133.72 131.39 131.29 130.46 130.74 129.62 129.2 129.45 129.33 130.00 130.31 130.22  
 26 493 503 566 553 67 72 62 62 62 62 6  
 35 215 190 164 134 9 149 172 174 225 35  
 w/k gut gut w/k gut gut C6 w/k

136.32



Lt = North

Rt = South 63

Pointsetta  
PCC

CS 14212 gut  
6<sup>46</sup> 7° 141.58

4/5

142.18 141.81  
6<sup>40</sup> 6<sup>2</sup>

1/2

CS 143.36 gut  
5<sup>23</sup> 5<sup>2</sup> 142.81

3/5

141.96 141.58  
6<sup>62</sup> 7°

3/8

142.68 142.78  
5<sup>20</sup> 6<sup>5</sup> Pointsetta  
PCC CS 141.89 gut 143.98  
3<sup>69</sup> 4<sup>6</sup>

2/5

141.45 140.98  
7<sup>13</sup> 7<sup>6</sup>

1/4

141.78 141.18  
6<sup>00</sup> 7<sup>4</sup> 7/8 141.68 143.98  
3<sup>20</sup> 4<sup>6</sup>

1/5

140.59 137.88  
7<sup>29</sup> 8<sup>2</sup>

1/8

140.78 140.18  
7<sup>00</sup> 8<sup>2</sup> 3/4 141.43 143.68  
4<sup>0</sup> 4<sup>2</sup>

BC Curtis

139.98 139.38  
9° 10<sup>3</sup>  
CS gut

BC Curtis

139.00 139.38  
8<sup>55</sup> 9<sup>2</sup> 5/8 143.98 143.18  
CS gut 4<sup>60</sup> 5<sup>4</sup>  
CS gut

N.W. Ret. Length = 55° Prop Rad = 10<sup>98</sup> 5 parts 11° ea

S.W. Ret. Length = 87° Prop Rad = 5<sup>56</sup> 8 parts 11° ea

2150

144.68 144.58 143.98  
3<sup>2</sup> 4<sup>0</sup> 4<sup>6</sup> 4<sup>8</sup> 5<sup>3</sup>  
3<sup>5</sup> 1<sup>6</sup> 1<sup>9</sup> 3<sup>5</sup>

2123 17<sup>5</sup> RT & 24 x 2<sup>24</sup> catch basin check FK 2213-16

137.71 142.58 142.38  
10<sup>87</sup> 6<sup>00</sup> 6<sup>30</sup>  
17<sup>5</sup> 17<sup>5</sup> 22<sup>3</sup>  
1<sup>0</sup> grate 0<sup>6</sup>

2110

141.78 141.78 141.08 140.68 141.23  
6<sup>0</sup> 7<sup>3</sup> 7<sup>5</sup> 7<sup>9</sup> 7<sup>35</sup>  
3<sup>5</sup> 1<sup>6</sup> 1<sup>8</sup> 1<sup>8</sup> 0<sup>6</sup>  
9<sup>4</sup> 0<sup>6</sup>

148<sup>58</sup>



Lt = West Rt = East 64

1700 2° 09.28'

0796 21° RT & 9" Pine tree

0789 12° LT & 27' con drive

0785 22° RT & 10" Pine tree

0776 1° 36.96'

0768 23° RT & con steps & walk

0750 22° RT & 14" Pine tree

$\Delta 14^\circ 36'$   
 $\angle A = 133047$   
 $T = 170 \frac{44}{1}$   
 $L = 33903$   
 $d = 1.2928$

0735 14° LT begin c&w walk

0730 23° RT & 12" Pine tree

0725 0° 32.32'

0719 20° RT dead Man

0718 23° RT & 9" Pine tree

0700 24° RT & 24" Cypress tree

20° RT & 6' tel pole #5666364

0700 sig RCC Point setta see sketch

144.79 145.28 145.20 144.95 144.50 145.00 145.50 146.00 146.70 146.16 03150.17  
 54 482 520 520 520 52 47 43 35 204 40  
 25 195 w/k 170 193 123 123 11 15 25 23 23 40  
 145.34 145.32 144.50 144.57  
 482 488 570 563  
 195 172 193 125  
 w/k b/k 4W con set

145.32 145.44 145.39 144.21 144.76 145.10 145.70 146.20 146.50 146.22 02150.16  
 488 476 481 529 544 51 45 40 32 198 40  
 25 195 w/k 173 146 123 11 15 25 25 40  
 145.32 145.32 144.50 144.57  
 482 488 570 563  
 195 172 193 125  
 w/k b/k 4W con set

145.10 145.09 145.39 144.90 145.20 145.90 146.60 147.20 149.60  
 51 471 481 53 50 43 36 184 40  
 25 195 w/k 145 146 15 25 25 40  
 145.10 145.09 145.39 144.90 145.20 145.90 146.60 147.20 149.60  
 51 471 481 53 50 43 36 184 40  
 25 195 w/k 145 146 15 25 25 40

145.10 145.49 145.54  
 51 471 466  
 145 145 195  
 25 25 25 w/k

141.50 145.00 145.00 145.50 145.10 145.20 146.00 146.90 148.40 149.70  
 82 52 52 42 51 49 43 34 18 05  
 35 27 25 15 13 15 25 25 40  
 141.50 145.00 145.00 145.50 145.10 145.20 146.00 146.90 148.40 149.70  
 82 52 52 42 51 49 43 34 18 05  
 35 27 25 15 13 15 25 25 40

141.10 145.20 145.00 145.20 145.60 146.00 146.90 147.00 148.53 148.70  
 91 50 52 50 46 42 34 32 167 15  
 40 25 15 10 12 15 25 25 40  
 141.10 145.20 145.00 145.20 145.60 146.00 146.90 147.00 148.53 148.70  
 91 50 52 50 46 42 34 32 167 15  
 40 25 15 10 12 15 25 25 40

TPs 407 150 20 245 146 13

T 150 200



Lt=West & Rt=East 65

240  
115  
755

2450

5° 23.20

142.07 141.90 141.90 142.80 144.00 144.03 144.34 145.10  
83 83 83 75 62 527 588 588  
190 192 15 15 233 268 265  
06 947 947 947 06

2125

4° 50.88

141.60 142.30 143.30 144.70 145.00  
85 79 62 55 48  
25 15 15 25

2400

4° 18.56

142.00 142.70 143.80 145.70 146.20  
82 75 62 50 40  
25 15 15 25

2775

3° 46.24

143.05 142.80 142.60 142.00 143.10 144.10 145.70 146.20  
75 74 76 78 71 62 49 40  
285 285 25 21 15 15 25  
06 947

1750

3° 13.92

144.47 143.70 143.60 143.90 144.60 145.60 146.10  
523 65 65 63 56 46 41  
162 162 15 12 15 25  
06 947

1725

2° 41.60

145.30 145.12 144.91 144.30 144.00 144.60 144.80 145.80 145.59 146.47  
49 508 523 52 63 56 54 434 461 373  
25 194 142 144 125 8 123 154 154  
w/k 06 947 947 947 06

1715 134 Rt Begin c.b. walk also sly inlet

145.51 145.13 144.99 144.20 146.13 146.68  
409 507 821 808 402 352  
110 134 132 132 133 195  
947 947 947 947 947 947  
w/k 06 947 947 947 947 947

T 15020



1/3

9 1/2 146.92 1030 146.08

1/6

146.52 9 3/8 10 2/3 145.66

End Pointsetta

144.14 10 2/4 11 2/0 145.18 06 9ut

SE Return Pointsetta & Curtis. k = 69° N = 30' 6 parts 11 5/8

T.P.

8 7/5 156 3/8 2 5/7 147 6/3

3 + 39 03 P.R.C. 7° 18.00'

c = 14 03

3 + 25

7° 00.16'

c = 25 00

3 + 00

6° 27.84'

2 + 75

5° 23.20'

2 + 65

at end of walk gutter

P.R.C. Curtis

Lt = West

5/6

2/3

1/2

S

RT = East 66

6 9/4 149.44 7 2/2 148.62

7 2/0 148.68 8 6/0 147.78

148.06 8 3/8 147.21

8 3/8 9 1/7

147.45 146.57

8 2/3 9 2/1

06 9ut

7 156 3/8

140.01 10 1/9 10 5/5 10 3/3 9 5/8 9 1/4 10 0/0 9 5/8 8 2/7 15 15 8 11 13 14 25 06 9ut

140.50 9 2/0 10 2/2 9 2/4 140.70 9 5/8 8 8/8 9 5/8 8 8/8 14 40 14 70 14 90 14 20 14 30 14 8 14 8 13 15 25 06 9ut

141.29 8 2/1 9 5/5 9 1/1 141.70 8 5/8 9 2/2 142.50 8 5/8 14 70 14 2.40 14 3.00 14 3.60 14 4.20 14 4.80 14 5.40 14 6.00 14 6.60 14 7.20 14 7.80 14 8.40 14 9.00 14 9.60 14 10.20 14 10.80 14 11.40 14 12.00 14 12.60 14 13.20 14 13.80 14 14.40 14 15.00 14 15.60 14 16.20 14 16.80 14 17.40 14 18.00 14 18.60 14 19.20 14 19.80 14 20.40 14 21.00 14 21.60 14 22.20 14 22.80 14 23.40 14 24.00 14 24.60 14 25.20 14 25.80 14 26.40 14 27.00 14 27.60 14 28.20 14 28.80 14 29.40 14 30.00 14 30.60 14 31.20 14 31.80 14 32.40 14 33.00 14 33.60 14 34.20 14 34.80 14 35.40 14 36.00 14 36.60 14 37.20 14 37.80 14 38.40 14 39.00 14 39.60 14 40.20 14 40.80 14 41.40 14 42.00 14 42.60 14 43.20 14 43.80 14 44.40 14 45.00 14 45.60 14 46.20 14 46.80 14 47.40 14 48.00 14 48.60 14 49.20 14 49.80 14 50.40 14 51.00 14 51.60 14 52.20 14 52.80 14 53.40 14 54.00 14 54.60 14 55.20 14 55.80 14 56.40 14 57.00 14 57.60 14 58.20 14 58.80 14 59.40 14 60.00 14 60.60 14 61.20 14 61.80 14 62.40 14 63.00 14 63.60 14 64.20 14 64.80 14 65.40 14 66.00 14 66.60 14 67.20 14 67.80 14 68.40 14 69.00 14 69.60 14 70.20 14 70.80 14 71.40 14 72.00 14 72.60 14 73.20 14 73.80 14 74.40 14 75.00 14 75.60 14 76.20 14 76.80 14 77.40 14 78.00 14 78.60 14 79.20 14 79.80 14 80.40 14 81.00 14 81.60 14 82.20 14 82.80 14 83.40 14 84.00 14 84.60 14 85.20 14 85.80 14 86.40 14 87.00 14 87.60 14 88.20 14 88.80 14 89.40 14 90.00 14 90.60 14 91.20 14 91.80 14 92.40 14 93.00 14 93.60 14 94.20 14 94.80 14 95.40 14 96.00 14 96.60 14 97.20 14 97.80 14 98.40 14 99.00 14 99.60 14 100.20 14 100.80 14 101.40 14 102.00 14 102.60 14 103.20 14 103.80 14 104.40 14 105.00 14 105.60 14 106.20 14 106.80 14 107.40 14 108.00 14 108.60 14 109.20 14 109.80 14 110.40 14 111.00 14 111.60 14 112.20 14 112.80 14 113.40 14 114.00 14 114.60 14 115.20 14 115.80 14 116.40 14 117.00 14 117.60 14 118.20 14 118.80 14 119.40 14 120.00 14 120.60 14 121.20 14 121.80 14 122.40 14 123.00 14 123.60 14 124.20 14 124.80 14 125.40 14 126.00 14 126.60 14 127.20 14 127.80 14 128.40 14 129.00 14 129.60 14 130.20 14 130.80 14 131.40 14 132.00 14 132.60 14 133.20 14 133.80 14 134.40 14 135.00 14 135.60 14 136.20 14 136.80 14 137.40 14 138.00 14 138.60 14 139.20 14 139.80 14 140.40 14 141.00 14 141.60 14 142.20 14 142.80 14 143.40 14 144.00 14 144.60 14 145.20 14 145.80 14 146.40 14 147.00 14 147.60 14 148.20 14 148.80 14 149.40 14 150.00 14 150.60 14 151.20 14 151.80 14 152.40 14 153.00 14 153.60 14 154.20 14 154.80 14 155.40 14 156.00 14 156.60 14 157.20 14 157.80 14 158.40 14 159.00 14 159.60 14 160.20 14 160.80 14 161.40 14 162.00 14 162.60 14 163.20 14 163.80 14 164.40 14 165.00 14 165.60 14 166.20 14 166.80 14 167.40 14 168.00 14 168.60 14 169.20 14 169.80 14 170.40 14 171.00 14 171.60 14 172.20 14 172.80 14 173.40 14 174.00 14 174.60 14 175.20 14 175.80 14 176.40 14 177.00 14 177.60 14 178.20 14 178.80 14 179.40 14 180.00 14 180.60 14 181.20 14 181.80 14 182.40 14 183.00 14 183.60 14 184.20 14 184.80 14 185.40 14 186.00 14 186.60 14 187.20 14 187.80 14 188.40 14 189.00 14 189.60 14 190.20 14 190.80 14 191.40 14 192.00 14 192.60 14 193.20 14 193.80 14 194.40 14 195.00 14 195.60 14 196.20 14 196.80 14 197.40 14 198.00 14 198.60 14 199.20 14 199.80 14 200.40 14 201.00 14 201.60 14 202.20 14 202.80 14 203.40 14 204.00 14 204.60 14 205.20 14 205.80 14 206.40 14 207.00 14 207.60 14 208.20 14 208.80 14 209.40 14 210.00 14 210.60 14 211.20 14 211.80 14 212.40 14 213.00 14 213.60 14 214.20 14 214.80 14 215.40 14 216.00 14 216.60 14 217.20 14 217.80 14 218.40 14 219.00 14 219.60 14 220.20 14 220.80 14 221.40 14 222.00 14 222.60 14 223.20 14 223.80 14 224.40 14 225.00 14 225.60 14 226.20 14 226.80 14 227.40 14 228.00 14 228.60 14 229.20 14 229.80 14 230.40 14 231.00 14 231.60 14 232.20 14 232.80 14 233.40 14 234.00 14 234.60 14 235.20 14 235.80 14 236.40 14 237.00 14 237.60 14 238.20 14 238.80 14 239.40 14 240.00 14 240.60 14 241.20 14 241.80 14 242.40 14 243.00 14 243.60 14 244.20 14 244.80 14 245.40 14 246.00 14 246.60 14 247.20 14 247.80 14 248.40 14 249.00 14 249.60 14 250.20 14 250.80 14 251.40 14 252.00 14 252.60 14 253.20 14 253.80 14 254.40 14 255.00 14 255.60 14 256.20 14 256.80 14 257.40 14 258.00 14 258.60 14 259.20 14 259.80 14 260.40 14 261.00 14 261.60 14 262.20 14 262.80 14 263.40 14 264.00 14 264.60 14 265.20 14 265.80 14 266.40 14 267.00 14 267.60 14 268.20 14 268.80 14 269.40 14 270.00 14 270.60 14 271.20 14 271.80 14 272.40 14 273.00 14 273.60 14 274.20 14 274.80 14 275.40 14 276.00 14 276.60 14 277.20 14 277.80 14 278.40 14 279.00 14 279.60 14 280.20 14 280.80 14 281.40 14 282.00 14 282.60 14 283.20 14 283.80 14 284.40 14 285.00 14 285.60 14 286.20 14 286.80 14 287.40 14 288.00 14 288.60 14 289.20 14 289.80 14 290.40 14 291.00 14 291.60 14 292.20 14 292.80 14 293.40 14 294.00 14 294.60 14 295.20 14 295.80 14 296.40 14 297.00 14 297.60 14 298.20 14 298.80 14 299.40 14 300.00 14 300.60 14 301.20 14 301.80 14 302.40 14 303.00 14 303.60 14 304.20 14 304.80 14 305.40 14 306.00 14 306.60 14 307.20 14 307.80 14 308.40 14 309.00 14 309.60 14 310.20 14 310.80 14 311.40 14 312.00 14 312.60 14 313.20 14 313.80 14 314.40 14 315.00 14 315.60 14 316.20 14 316.80 14 317.40 14 318.00 14 318.60 14 319.20 14 319.80 14 320.40 14 321.00 14 321.60 14 322.20 14 322.80 14 323.40 14 324.00 14 324.60 14 325.20 14 325.80 14 326.40 14 327.00 14 327.60 14 328.20 14 328.80 14 329.40 14 330.00 14 330.60 14 331.20 14 331.80 14 332.40 14 333.00 14 333.60 14 334.20 14 334.80 14 335.40 14 336.00 14 336.60 14 337.20 14 337.80 14 338.40 14 339.00 14 339.60 14 340.20 14 340.80 14 341.40 14 342.00 14 342.60 14 343.20 14 343.80 14 344.40 14 345.00 14 345.60 14 346.20 14 346.80 14 347.40 14 348.00 14 348.60 14 349.20 14 349.80 14 350.40 14 351.00 14 351.60 14 352.20 14 352.80 14 353.40 14 354.00 14 354.60 14 355.20 14 355.80 14 356.40 14 357.00 14 357.60 14 358.20 14 358.80 14 359.40 14 360.00 14 360.60 14 361.20 14 361.80 14 362.40 14 363.00 14 363.60 14 364.20 14 364.80 14 365.40 14 366.00 14 366.60 14 367.20 14 367.80 14 368.40 14 369.00 14 369.60 14 370.20 14 370.80 14 371.40 14 372.00 14 372.60 14 373.20 14 373.80 14 374.40 14 375.00 14 375.60 14 376.20 14 376.80 14 377.40 14 378.00 14 378.60 14 379.20 14 379.80 14 380.40 14 381.00 14 381.60 14 382.20 14 382.80 14 383.40 14 384.00 14 384.60 14 385.20 14 385.80 14 386.40 14 387.00 14 387.60 14 388.20 14 388.80 14 389.40 14 390.00 14 390.60 14 391.20 14 391.80 14 392.40 14 393.00 14 393.60 14 394.20 14 394.80 14 395.40 14 396.00 14 396.60 14 397.20 14 397.80 14 398.40 14 399.00 14 399.60 14 400.20 14 400.80 14 401.40 14 402.00 14 402.60 14 403.20 14 403.80 14 404.40 14 405.00 14 405.60 14 406.20 14 406.80 14 407.40 14 408.00 14 408.60 14 409.20 14 409.80 14 410.40 14 411.00 14 411.60 14 412.20 14 412.80 14 413.40 14 414.00 14 414.60 14 415.20 14 415.80 14 416.40 14 417.00 14 417.60 14 418.20 14 418.80 14 419.40 14 420.00 14 420.60 14 421.20 14 421.80 14 422.40 14 423.00 14 423.60 14 424.20 14 424.80 14 425.40 14 426.00 14 426.60 14 427.20 14 427.80 14 428.40 14 429.00 14 429.60 14 430.20 14 430.80 14 431.40 14 432.00 14 432.60 14 433.20 14 433.80 14 434.40 14 435.00 14 435.60 14 436.20 14 436.80 14 437.40 14 438.00 14 438.60 14 439.20 14 439.80 14 440.40 14 441.00 14 441.60 14 442.20 14 442.80 14 443.40 14 444.00 14 444.60 14 445.20 14 445.80 14 446.40 14 447.00 14 447.60 14 448.20 14 448.80 14 449.40 14 450.00 14 450.60 14 451.20 14 451.80 14 452.40 14 453.00 14 453.60 14 454.20 14 454.80 14 455.40 14 456.00 14 456.60 14 457.20 14 457.80 14 458.40 14 459.00 14 459.60 14 460.20 14 460.80 14 461.40 14 462.00 14 462.60 14 463.20 14 463.80 14 464.40 14 465.00 14 465.60 14 466.20 14 466.80 14 467.40 14 468.00 14 468.60 14 469.20 14 469.80 14 470.40 14 471.00 14 471.60 14 472.20 14 472.80 14 473.40 14 474.00 14 474.60 14 475.20 14 475.80 14 476.40 14 477.00 14 477.60 14 478.20 14 478.80 14 479.40 14 480.00 14 480.60 14 481.20 14 481.80 14 482.40 14 483.00 14 483.60 14 484.20 14 484.80 14 485.40 14 486.00 14 486.60 14 487.20 14 487.80 14 488.40 14 489.00 14 489.60 14 490.20 14 490.80 14 491.40 14 492.00 14 492.60 14 493.20 14 493.80 14 494.40 14 495.00 14 495.60 14 496.20 14 496.80 14 497.40 14 498.00 14 498.60 14 499.20 14 499.80 14 500.40 14 501.00 14 501.60 14 502.20 14 502.80 14 503.40 14 504.00 14 504.60 14 505.20 14 505.80 14 506.40 14 507.00 14 507.60 14 508.20 14 508.80 14 509.40 14 510.00 14 510.60 14 511.20 14 511.80 14 512.40 14 513.00 14 513.60 14 514.20 14 514.80 14 515.40 14 516.00 14 516.60 14 517.20 14 517.80 14 518.40 14 519.00 14 519.60 14 520.20 14 520.80 14 521.40 14 522.00 14 522.60 14 523.20 14 523.80 14 524.40 14 525.00 14 525.60 14 526.20 14 526.80 14 527.40 14 528.00 14 528.60 14 529.20 14 529.80 14 530.40 14 531.00 14 531.60 14 532.20 14 532.80 14 533.40 14 534.00 14 534.60 14 535.20 14 535.80 14 536.40 14 537.00 14 537.60 14 538.20 14 538.80 14 539.40 14 540.00 14 540.60 14 541.20 14 541.80 14 542.40 14 543.00 14 543.60 14 544.20 14 544.80 14 545.40 14 546.00 14 546.60 14 547.20 14 547.80 14 548.40 14 549.00 14 549.60 14 550.20 14 550.80 14 551.40 14 552.00 14 552.60 14 553.20 14 553.80 14 554.40 14 555.00 14 555.60 14 556.20 14 556.80 14 557.40 14 558.00 14 558.60 14 559.20 14 559.80 14 560.40 14 561.00 14 561.60 14 562.20 14 562.80 14 563.40 14 564.00 14 564.60 14 565.20 14 565.80 14 566.40 14 567.00 14 567.60 14 568.20 14 568.80 14 569.40 14 570.00 14 570.60 14 571.20 14 571.80 14 572.40 14 573.00 14 573.60 14 574.20 14 574.80 14 575.40 14 576.00 14 576.60 14 577.20 14 577.80 14 578.40 14 579.00 14 579.60 14 580.20 14 580.80 14 581.40 14 582.00 14 582.60 14 583.20 14 583.80 14 584.40 14 585.00 14 585.60 14 586.20 14 586.80 14 587.40 14 588.00 14 588.60 14 589.20 14 589.80 14 590.40 14 591.00 14 591.60 14 592.20 14 592.80 14 593.40 14 594.00 14 594.60 14 595.20 14 595.80 14 596.40 14 597.00 14 597.60 14 598.20 14 598.80 14 599.40 14 600.00 14 600.60 14 601.20 14 601.80 14 602.40 14 603.00 14 603.60 14 604.20 14 604.80 14 605.40 14 606.00 14 606.60 14 607.20 14 607.80 14 608.40 14 609.00 14 609.60 14 610.20 14 610.80 14 611.40 14 612.00 14 612.60 14 613.20 14 613.80 14 614.40 14 615.00 14 615.60 14 616.20 14 616.80 14 617.40 14 618.00 14 618.60 14 619.20 14 619.80 14 620.40 14 621.00 14 621.60 14 622.20 14 622.80 14 623.40 14 624.00 14 624.60 14 625.20 14 625.80 14 626.40 14 627.00 14 627.60 14 628.20 14 628.80 14 629.40 14 630.00 14 630.60 14 631.20 14 631.80 14 632.40 14 633.00 14 633.60 14 634.20 14 634.80 14 635.40 14 636.00 14 636.60 14 637.20 14 637.80 14 638.40 14 639.00 14 639.60 14 640.20 14 640.80 14 641.40 1



0-00 PCC

0-17 13° RT Sly edge 2x2.5 grate drain see sketch

0-25

0-35 14° LT Nly edge 2x2.5 grate drain see sketch

0-45 15° LT E 15° CON drive

0-50

0-75

Begin oil on top of dirt pav.

0-100 PCC 3-100' see sketch  
Curtis St semi. tan. extended

Lt=North

RT=South

67

191.56	191.48	190.73	190.79	190.28	189.32	189.17	189.95	190.16
482	420	55	559	6	706	721	643	622
182	128	128	101		105	131	131	197
w/k	cc	gut	gut		gut	gut	cc	w/k

149.07	149.99	149.07	148.69
73	83	73	1169
135	135	131	135
cc	gut	grate	18
			12" pipe
			can.

150.25	150.25	149.35	149.70	149.18	149.98	149.80	149.68	148.56	148.07
613	613	703	668	73	81	853	820	782	721
192	135	133	111		13	137	163	167	205
w/k	cc	gut	gut		gut	gut	cc	cc	w/k

146.04	148.99	150.05	150.05
1034	739	633	633
142	140	142	142
12" pipe	cc	gut	grate cc

148.29	148.63	148.71
699	725	767
213	154	130
w/k	drive	gut

149.15	148.34	148.48	148.27	148.08	147.28	146.48
723	729	720	80	83	91	92
223	160	133	13		13	25
w/k	gut	gut				
	drive					

147.96	147.91	147.07	147.26	147.18	146.88	146.08	145.18
842	847	931	938	93	95	103	118
206	204	202	175	13		13	25
w/k	cc	gut	gut				

146.73	146.68	145.05	144.05	145.68	145.28	144.88	143.78
965	920	1043	1033	102	111	115	126
325	262	203	235	13		13	25
w/k	cc	gut	gut				

156.38



1475 Lt & 15' con drive  
6° 53.42'

1463 10° Lt & 10' of Broken out con gutter  
5° 54.36'

1425 4° 55.30'

1400 3° 56.24'

A = 27° 33'  
QR = 727.54  
L = 349.83  
d = 2.3625

0475 Lt & 16' con driveway 2° 57.18'

TP.7 12.88 16.84 ✓ 078 155.60 ✓

0450 13° Rt & 18' con driveway 1° 58.12'

0425 0° 59.06'

C = 2.052

Lt = North & Rt = South 68

166.36 166.25 165.93 165.95 165.78 165.13 165.06 165.79 166.03  
212 223 905 903 91 330 338 269 245  
182 170 126 103 108 133 133 193  
w/k B.K lip gut gut gut CB w/k

163.93 163.70 162.96 162.99 162.88 162.77 162.59 163.29 163.46  
455 478 552 549 5 571 589 519 502  
182 182 122 102 106 133 133 193  
w/k CB gut gut gut gut gut CB w/k

161.40 161.24 160.48 160.99 160.38 160.03 159.87 160.60 160.72  
708 724 800 729 845 861 788 726  
182 182 122 103 106 133 133 193  
w/k CB gut gut gut gut CB w/k

154.93 154.81 158.07 152.15 151.98 157.91 157.29 154.03 152.14  
955 967 1041 1033 10 1107 1149 1045 1034  
182 122 182 103 106 133 133 193  
w/k CB gut gut gut gut CB w/k

156.69 156.64 155.81 155.7 155.58 154.97 154.82 154.58 155.60  
1129 1184 1269 1261 122 1351 1366 1290 1288  
182 170 126 105 106 133 133 193  
w/k B.K lip drive gut gut CB w/k

154.67 154.60 153.84 153.82 153.58 152.74 152.77 153.49 153.56  
171 128 234 250 28 364 361 289 288  
182 128 128 106 103 133 173 193  
w/k CB gut gut gut drive B.K w/k

150.98 150.87 151.11 151.19 151.68 160.02 150.81 151.59 151.74  
343 351 427 419 417 546 557 428 464  
182 128 128 103 108 133 133 193  
w/k CB gut gut gut gut gut CB w/k

T 156.38



3100

11° 48.72'

2175

10° 49.66'

2165 Lt 2 14° con driveway

2150

9° 50.60

2129 Rt C6 APC

TP<sub>9</sub>

5<sup>88</sup>

178<sup>92</sup> ✓

460

173<sup>04</sup> ✓

on PCC dist  
to N10° line

2125

8° 51.54'

P.O.C.

2113 4° RT 2 tel ca M.H.

8<sup>35</sup>  
114

2108 5° RT 2

905 ca M.H.

8<sup>26</sup>  
171

2100

7° 52.48'

TP<sub>8</sub>

9<sup>23</sup>

177<sup>64</sup> ✓

077 167<sup>21</sup> ✓

69  
Lt = North  
646 172.46 172.33 171.61  
185 659 737 722 1750  
w/k C6 947 947 62 172.52 Rt = South  
13 25 26 28 28 28  
947 947 cc

172.04 171.90 171.67 171.28  
6<sup>88</sup> 702 725 724  
185 125 125 100  
w/k C6 947 947 62 172.02  
13 25 50

171.95 171.91 171.20 171.12  
6<sup>27</sup> 721 722 720  
185 162 123 10  
w/k C6 947 947

171.50 171.37 170.62 170.71  
7<sup>22</sup> 755 8<sup>30</sup> 8<sup>24</sup> 72  
185 125 125 100  
w/k C6 947 947 13 171.82  
203 241 241  
947 947 C6

170.60 170.52 171.19  
8<sup>30</sup> 8<sup>20</sup> 723  
105 133 133  
947 947 C6  
APC

170.28 170.21 169.98 169.59 169.94 170.33 170.22 170.90 171.04  
7<sup>36</sup> 743 816 805 72 731 742 674 660  
185 125 125 103 105 133 133 193  
w/k C6 947 947 547 947 C6 w/k

168.60 168.51 167.76 167.84 167.94 167.81 167.73 168.56 168.59  
904 913 928 920 92 983 921 908 905  
182 125 125 100 102 132 132 192  
w/k C6 947 947 947 947 C6 w/k

177<sup>64</sup> ✓



4400

1° 45.32'

A = 29° 20'

LR = 816

L = 417.76

d = 2.10646

3486 Lt & 13° cow drive way

C = 25.00

3475

0° 52.66'

C = 25.00

↑

0° 00'

134 Mt. P.R.C. C6

3449<sup>83</sup>

P.C.C.

13° 46.50'

C = 24.83

3435 12" Lt & inlet 4" cast Iron cross drain

3425

12° 47.78'

C = 25.83

3409 10" Lt outlet 4" cast Iron cross drain

Lt = North

Rt = South

70

5.27	173.83	5.27	173.71	5.28	172.99	5.24	173.08	5.4	173.52	5.4	173.52	5.29	173.93	4.29	172.93	4.21	174.15
185	125	125	10	102	134	134	134	102	134	134	134	102	134	134	134	134	134
w/k	C6	9ut	9ut	9ut	9ut	9ut	9ut	9ut	9ut	9ut	9ut	9ut	9ut	9ut	9ut	9ut	w/k

5.27	173.65	5.27	173.57	6.03	172.89	5.29	172.93
185	125	125	102	102	102	102	102
w/k	C6	9ut	11K	9ut	9ut	9ut	9ut

5.47	173.45	5.60	173.22	6.37	172.55	6.18	172.74	5.2	173.02	5.22	173.00	6.05	172.87	5.47	173.45	5.22	173.60
185	125	125	10	10	10	10	10	102	134	134	134	134	134	134	134	134	134
w/k	C6	9ut	9ut	9ut	9ut	9ut	9ut	9ut	9ut	9ut	9ut	9ut	9ut	9ut	9ut	9ut	w/k

5.82	173.10	5.27	173.01	6.65	172.27	6.54	172.38	6.0	172.92	5.28	172.99	6.05	172.19	5.65	173.27	5.43	173.99
185	125	125	10	10	10	10	10	102	134	134	134	134	134	134	134	134	134
w/k	C6	9ut	9ut	9ut	9ut	9ut	9ut	9ut	9ut	9ut	9ut	9ut	9ut	9ut	9ut	9ut	w/k

5.22	173.10	6.40	172.52	6.22	172.70	5.54	173.38
128	128	143	143	143	143	143	143
top	10	9ut	9ut	9ut	9ut	9ut	9ut
head							
tail							

6.14	172.78	6.24	172.68	6.26	171.96	6.59	172.03	6.2	172.72	5.22	172.95	6.05	172.71	5.43	173.93
185	125	125	102	102	102	102	102	143	143	143	143	143	143	143	143
w/k	C6	9ut	9ut	9ut	9ut	9ut	9ut	9ut	9ut	9ut	9ut	9ut	9ut	9ut	9ut

6.47	172.45	7.18	171.79	7.13	171.20	6.60	172.32
125	125	102	102	102	102	102	102
C6	9ut	10	10	10	10	10	10
			cow	head	head		

T 17892



TP <sub>10</sub>	6 <sup>0</sup>	179 <sup>68</sup> ✓	5 <sup>34</sup>	173 <sup>58</sup> ✓
cb@ gate		175 <sup>58</sup>	5 <sup>34</sup>	172 <sup>82</sup>
5/6		173 <sup>42</sup>	5 <sup>50</sup>	172 <sup>63</sup>
2/3		173 <sup>23</sup>	5 <sup>69</sup>	172 <sup>59</sup>
1/2		172 <sup>88</sup>	6 <sup>04</sup>	172 <sup>17</sup>
1/3		172 <sup>47</sup>	6 <sup>35</sup>	171 <sup>72</sup>
1/6		171 <sup>93</sup>	6 <sup>99</sup>	171 <sup>18</sup>
PRC cb Curtis		171 <sup>19</sup>	7 <sup>23</sup>	170 <sup>52</sup>
		cb	gut	gut

30' Rad L=59-6 parts 9<sup>8</sup> ea

SW Ret. Private drive

π 178<sup>92</sup>

cb@ gate		174 <sup>70</sup>	4 <sup>22</sup>	173 <sup>95</sup>
9/10		174 <sup>43</sup>	4 <sup>49</sup>	173 <sup>73</sup>
4/5		174 <sup>31</sup>	4 <sup>55</sup>	173 <sup>62</sup>
7/10		174 <sup>14</sup>	5 <sup>19</sup>	173 <sup>45</sup>
3/5		173 <sup>62</sup>	5 <sup>30</sup>	173 <sup>31</sup>
1/2		173 <sup>31</sup>	5 <sup>47</sup>	173 <sup>06</sup>
2/6		173 <sup>06</sup>	5 <sup>56</sup>	172 <sup>97</sup>
3/9		172 <sup>97</sup>	5 <sup>25</sup>	172 <sup>12</sup>
1/5		172 <sup>12</sup>	6 <sup>10</sup>	172 <sup>01</sup>
1/10		172 <sup>01</sup>	6 <sup>21</sup>	171 <sup>81</sup>
PRC, cb Curtis		171 <sup>81</sup>	6 <sup>31</sup>	171 <sup>64</sup>
		cb	gut	gut

110' Rad L=104 10 parts 10<sup>4</sup> ea

SE Ret. private drive

π 178<sup>82</sup>



5100

5° 15.96

L+ = North  
 RT = South 72  
 174.37 174.21 173.99 173.60 174.33 173.83 173.68 174.36  
 5.31 5.42 6.19 6.28 5.36 5.88 6.00 5.32  
 183 123 123 102 133 163 163  
 w/k 06 9ut 9ut 9ut 9ut 9ut 06

4475

4° 23.30'

174.67 174.52 173.79 173.81 174.75 175.02 174.93  
 5.02 5.16 5.89 5.80 4.23 4.66 4.25  
 185 123 123 102 13 25  
 w/k 06 9ut 9ut 9ut 13. 25  
 con drive

4450

3° 30.64'

174.63 174.46 173.76 173.89 174.80 175.19 175.41  
 5.25 5.22 5.22 5.29 4.88 4.28 4.20  
 185 123 123 100 13 23  
 w/k 06 9ut 9ut 9ut 13 23  
 con drive

4428<sup>5</sup> RT PRC, curb to private drive

174.27 174.21 174.75  
 5.41 5.47 4.93  
 106 133 133  
 9ut 9ut 06

4425

2° 37.98'

174.35 174.40 173.52 174.38 174.12 174.08 174.61 174.80  
 5.33 6.28 6.16 5.30 5.56 5.60 5.07 4.88  
 185 123 102 102 134 134 134 124  
 w/k 9ut 9ut 9ut 9ut 9ut 06 9ut  
 4.12 drive

4419 L+ E 17° con drive

174.23 173.35 173.83  
 5.45 6.33 6.23  
 185 123 102  
 w/k 4.12 9ut  
 drive

4413 endoiled dirt begin 2" AC paving

174.11 173.69 173.18 173.74 173.99 173.83 173.69 174.27 174.49  
 5.52 5.28 6.50 6.34 5.69 5.85 5.99 5.41 5.24  
 185 123 123 102 102 133 132 124  
 w/k 06 9ut 9ut 9ut 9ut 9ut 06 w/k

179.68 ✓



5750

7° 01.28

Lt = North  
 172.69 172.96 171.75 171.86 172.94 171.87 171.74 172.09 172.66  
 6.22 7.22 7.93 7.22 7.22 7.21 7.22 7.19 7.22  
 185 125 125 102 102 102 131 131 131 193  
 w/k c6 out out out out out c6 w/k

6° 08.62'

POC.

5725 PRC, curb ret to private drive

161.18 173.54 172.20 172.78 173.56 172.95 172.75 173.98 173.68  
 185 6.14 6.88 6.20 6.12 6.73 6.23 6.20 6.20  
 185 123 123 102 102 106 133 133 193  
 w/k c6 out out out out out c6 w/k

Prop Line

174.06  
5.62  
c6174.65  
5.23  
out

4/5

174.76  
4.92174.09  
5.59

Prop Line

175.93  
3.25175.51  
4.17

3/5

174.41  
5.27173.74  
5.94

2/3

175.42  
4.26174.91  
4.77

3/5

174.19  
5.49173.44  
6.24

1/3

175.02  
4.60174.57  
5.11

1/5

173.84  
5.84173.15  
6.55

PRC, Curtis

174.75  
4.93  
c6174.21  
5.47  
out

PRC, Curtis

173.08  
6.30  
c6172.75  
6.23  
out

R = 20° L = 215, 3 parts 7' ea  
 SW Ret to private drive

179.68

R = compounded L = 45°, 5 parts 9' ea  
 SE Ret to private drive

179.68



7400

12° 17.24'

74

Lt = North Pt = South

19.88	19.72	19.00	19.10	19.75	19.16	18.97	19.73	19.89
867	883	955	945	975	939	958	882	866
w/k	cb	gut	gut	88°	10E	133	133	193
					gut	gut	cb	w/k

6475

11° 24.58'

162.35	162.30	161.59	161.67	162.55	161.60	161.50	162.24	162.36
620	625	626	627	620	625	705	631	619
185	124	124	92	102	134	134	194	194
w/k	cb	gut	gut	gut	gut	cb	w/k	w/k

6450 Lt & 24° driveway 10° 31.92'

164.90	164.89	164.08	164.23	164.90	164.20	164.04	164.79	164.74
365	366	447	432	365	435	451	326	326
185	110	124	92	102	134	134	194	194
w/k	cb	gut	gut	gut	gut	cb	w/k	w/k

6425 Pt & 16° driveway 9° 39.26'

167.30	167.21	166.52	166.63	167.21	167.36	166.34	167.28
125	134	203	192	134	219	221	127
185	124	124	92	102	134	194	194
w/k	cb	gut	gut	gut	drive	w/k	w/k

TPH 134 168<sup>55</sup> 12<sup>47</sup> 167<sup>21</sup>

168<sup>55</sup>

6400

8° 46.60'

169.54	168.56	168.72	169.29	168.67	168.53	169.25	169.52
1014	1111	1026	1039	1101	1105	1043	1016
185	125	100	102	134	134	194	194
w/k	gut	gut	gut	gut	gut	cb	w/k

5496 Lt. & 14° driveway

169.66	168.71	168.92
1022	1027	1086
185	124	92
w/k	drive	gut

5475

7° 53.94'

171.28	171.05	170.33	170.45	171.06	170.42	170.29	170.65	171.22
820	863	935	923	962	926	939	863	826
185	125	123	100	102	134	134	194	194
w/k	cb	gut	gut	gut	gut	cb	w/k	w/k

170.68



BM

6<sup>50</sup>

148<sup>75</sup>  
-006 SEBP Curtis  
148<sup>62</sup> Chatsworth

TP13

8<sup>83</sup>

155<sup>19</sup>

10<sup>53</sup>

146<sup>36</sup>

8+25

148.57 147.89 148.09 148.51 148.56 147.88 147.66 147.45  
8<sup>30</sup> 9<sup>21</sup> 8<sup>30</sup> 8<sup>30</sup> 8<sup>33</sup> 9<sup>01</sup> 9<sup>23</sup> 9<sup>44</sup>  
23<sup>3</sup> 23<sup>4</sup> 20<sup>2</sup> 13 13 25 30  
05 9<sup>4</sup> 9<sup>4</sup>

8+00

150.11 149.36 149.54 149.68 150.51 150.01 149.45 148.83 147.99  
6<sup>28</sup> 7<sup>33</sup> 7<sup>35</sup> 7<sup>21</sup> 6<sup>38</sup> 6<sup>38</sup> 7<sup>44</sup> 8<sup>06</sup> 8<sup>20</sup>  
15<sup>9</sup> 15<sup>2</sup> 13<sup>2</sup> 13 13 25 35 40  
05 9<sup>4</sup> 9<sup>4</sup>

on semi tan extended

7+67<sup>59</sup>

Lt P.C.C. ob Return  
F.C.  
RT P.C.C. ob Return

14° 40.00'

c=17<sup>59</sup>

151.9 153.02 152.29 151.42 153.09 152.48 152.17 152.96 152.05  
3<sup>20</sup> 3<sup>37</sup> 4<sup>60</sup> 4<sup>47</sup> 3<sup>30</sup> 4<sup>41</sup> 4<sup>22</sup> 3<sup>23</sup> 3<sup>36</sup>  
18<sup>5</sup> 12<sup>5</sup> 12<sup>5</sup> 10<sup>2</sup> 10<sup>2</sup> 13<sup>2</sup> 13<sup>2</sup> 19<sup>2</sup>  
w/k 06 9<sup>4</sup> 9<sup>4</sup> 9<sup>4</sup> 9<sup>4</sup> 9<sup>4</sup> 06 w/k

7+50

14° 02.56'

c=25<sup>00</sup>

154.91 154.81 154.04 154.20 154.16 154.14 153.94 154.65 154.79  
1<sup>78</sup> 2<sup>08</sup> 2<sup>85</sup> 2<sup>69</sup> 2<sup>13</sup> 2<sup>25</sup> 2<sup>25</sup> 2<sup>24</sup> 2<sup>6</sup>  
18<sup>5</sup> 12<sup>5</sup> 12<sup>5</sup> 10<sup>2</sup> 10<sup>2</sup> 10<sup>9</sup> 13<sup>4</sup> 13<sup>4</sup> 19<sup>4</sup>  
w/k 06 9<sup>4</sup> 9<sup>4</sup> 9<sup>4</sup> 9<sup>4</sup> 9<sup>4</sup> 9<sup>4</sup> 06 w/k

TP12

1<sup>23</sup>

156<sup>89</sup>

12<sup>89</sup>

155<sup>66</sup>

156<sup>89</sup>

7+25

13° 09.90

157.99 157.33 156.65 157.2 157.29 156.74 156.54 157.20 156.80  
11<sup>06</sup> 11<sup>22</sup> 11<sup>20</sup> 11<sup>33</sup> 11<sup>26</sup> 11<sup>31</sup> 12<sup>01</sup> 11<sup>35</sup> 11<sup>05</sup>  
18<sup>5</sup> 12<sup>5</sup> 12<sup>5</sup> 10 10<sup>9</sup> 13<sup>4</sup> 13<sup>4</sup> 19<sup>4</sup>  
w/k 06 9<sup>4</sup> 9<sup>4</sup> 9<sup>4</sup> 9<sup>4</sup> 9<sup>4</sup> 9<sup>4</sup> 06 w/k

168<sup>55</sup>



FC, Chatsworth

148.04  
8<sup>85</sup>  
cc  
147.31  
9<sup>58</sup>  
9ut

7/8

148.36  
8<sup>53</sup>  
147.48  
9<sup>41</sup>

3/4

148.73  
8<sup>16</sup>  
147.84  
9<sup>05</sup>

5/8

149.19  
7<sup>20</sup>  
148.33  
8<sup>56</sup>

1/2

149.79  
7<sup>10</sup>  
148.90  
7<sup>29</sup>

3/8

150.49  
6<sup>40</sup>  
149.64  
7<sup>25</sup>

1/4

151.28  
5<sup>61</sup>  
150.47  
6<sup>42</sup>

1/8

152.10  
4<sup>79</sup>  
151.31  
5<sup>58</sup>

PRC, Curtis

152.96  
3<sup>23</sup>  
cc  
152.17  
4<sup>22</sup>  
9ut

R = 30° L = 65° 8 parts 8<sup>1</sup> ea

SW Ret. Curtis + Chatsworth

156.89

PRC, Chatsworth

146.40  
10<sup>49</sup>  
cc  
145.85  
11<sup>04</sup>  
9ut

7/8

146.84  
10<sup>35</sup>  
146.30  
10<sup>59</sup>

3/4

147.22  
9<sup>67</sup>  
146.48  
10<sup>41</sup>

5/8

147.67  
9<sup>22</sup>  
147.01  
8<sup>88</sup>

1/2

148.32  
8<sup>57</sup>  
147.64  
9<sup>25</sup>

3/8

149.17  
7<sup>22</sup>  
148.47  
8<sup>42</sup>

1/4

150.25  
6<sup>64</sup>  
149.51  
7<sup>38</sup>

1/8

151.52  
5<sup>31</sup>  
150.81  
6<sup>08</sup>

PRC, Curtis

152.02  
3<sup>27</sup>  
cc  
152.29  
4<sup>60</sup>  
9ut

R = 160° L = 126° 8 parts 15<sup>15</sup> ea

NW Ret. Curtis + Chatsworth

156.89





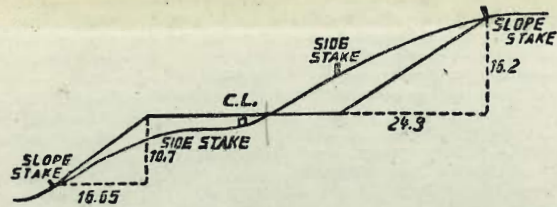












**DISTANCES FROM SIDE STAKES FOR CROSS-SECTIONING.**  
**SLOPE 1½ TO 1. ROADWAY OF ANY WIDTH.**

	0	.1	.2	.3	.4	.5	.6	.7	.8	.9	
0	0.00	0.15	0.30	0.45	0.60	0.75	0.90	1.05	1.20	1.35	0
1	1.50	1.65	1.80	1.95	2.10	2.25	2.40	2.55	2.70	2.85	1
2	3.00	3.15	3.30	3.45	3.60	3.75	3.90	4.05	4.20	4.35	2
3	4.50	4.65	4.80	4.95	5.10	5.25	5.40	5.55	5.70	5.85	3
4	6.00	6.15	6.30	6.45	6.60	6.75	6.90	7.05	7.20	7.35	4
5	7.50	7.65	7.80	7.95	8.10	8.25	8.40	8.55	8.70	8.85	5
6	9.00	9.15	9.30	9.45	9.60	9.75	9.90	10.05	10.20	10.35	6
7	10.50	10.65	10.80	10.95	11.10	11.25	11.40	11.55	11.70	11.85	7
8	12.00	12.15	12.30	12.45	12.60	12.75	12.90	13.05	13.20	13.35	8
9	13.50	13.65	13.80	13.95	14.10	14.25	14.40	14.55	14.70	14.85	9
10	15.00	15.15	15.30	15.45	15.60	15.75	15.90	16.05	16.20	16.35	10
11	16.50	16.65	16.80	16.95	17.10	17.25	17.40	17.55	17.70	17.85	11
12	18.00	18.15	18.30	18.45	18.60	18.75	18.90	19.05	19.20	19.35	12
13	19.50	19.65	19.80	19.95	20.10	20.25	20.40	20.55	20.70	20.85	13
14	21.00	21.15	21.30	21.45	21.60	21.75	21.90	22.05	22.20	22.35	14
15	22.50	22.65	22.80	22.95	23.10	23.25	23.40	23.55	23.70	23.85	15
16	24.00	24.15	24.30	24.45	24.60	24.75	24.90	25.05	25.20	25.35	16
17	25.50	25.65	25.80	25.95	26.10	26.25	26.40	26.55	26.70	26.85	17
18	27.00	27.15	27.30	27.45	27.60	27.75	27.90	28.05	28.20	28.35	18
19	28.50	28.65	28.80	28.95	29.10	29.25	29.40	29.55	29.70	29.85	19
20	30.00	30.15	30.30	30.45	30.60	30.75	30.90	31.05	31.20	31.35	20
21	31.50	31.65	31.80	31.95	32.10	32.25	32.40	32.55	32.70	32.85	21
22	33.00	33.15	33.30	33.45	33.60	33.75	33.90	34.05	34.20	34.35	22
23	34.50	34.65	34.80	34.95	35.10	35.25	35.40	35.55	35.70	35.85	23
24	36.00	36.15	36.30	36.45	36.60	36.75	36.90	37.05	37.20	37.35	24
25	37.50	37.65	37.80	37.95	38.10	38.25	38.40	38.55	38.70	38.85	25
26	39.00	39.15	39.30	39.45	39.60	39.75	39.90	40.05	40.20	40.35	26
27	40.50	40.65	40.80	40.95	41.10	41.25	41.40	41.55	41.70	41.85	27
28	42.00	42.15	42.30	42.45	42.60	42.75	42.90	43.05	43.20	43.35	28
29	43.50	43.65	43.80	43.95	44.10	44.25	44.40	44.55	44.70	44.85	29
30	45.00	45.15	45.30	45.45	45.60	45.75	45.90	46.05	46.20	46.35	30
31	46.50	46.65	46.80	46.95	47.10	47.25	47.40	47.55	47.70	47.85	31
32	48.00	48.15	48.30	48.45	48.60	48.75	48.90	49.05	49.20	49.35	32
33	49.50	49.65	49.80	49.95	50.10	50.25	50.40	50.55	50.70	50.85	33
34	51.00	51.15	51.30	51.45	51.60	51.75	51.90	52.05	52.20	52.35	34
35	52.50	52.65	52.80	52.95	53.10	53.25	53.40	53.55	53.70	53.85	35
36	54.00	54.15	54.30	54.45	54.60	54.75	54.90	55.05	55.20	55.35	36
37	55.50	55.65	55.80	55.95	56.10	56.25	56.40	56.55	56.70	56.85	37
38	57.00	57.15	57.30	57.45	57.60	57.75	57.90	58.05	58.20	58.35	38
39	58.50	58.65	58.80	58.95	59.10	59.25	59.40	59.55	59.70	59.85	39
40	60.00	60.15	60.30	60.45	60.60	60.75	60.90	61.05	61.20	61.35	40
41	61.50	61.65	61.80	61.95	62.10	62.25	62.40	62.55	62.70	62.85	41
42	63.00	63.15	63.30	63.45	63.60	63.75	63.90	64.05	64.20	64.35	42
43	64.50	64.65	64.80	64.95	65.10	65.25	65.40	65.55	65.70	65.85	43
44	66.00	66.15	66.30	66.45	66.60	66.75	66.90	67.05	67.20	67.35	44
45	67.50	67.65	67.80	67.95	68.10	68.25	68.40	68.55	68.70	68.85	45
46	69.00	69.15	69.30	69.45	69.60	69.75	69.90	70.05	70.20	70.35	46
47	70.50	70.65	70.80	70.95	71.10	71.25	71.40	71.55	71.70	71.85	47
48	72.00	72.15	72.30	72.45	72.60	72.75	72.90	73.05	73.20	73.35	48
49	73.50	73.65	73.80	73.95	74.10	74.25	74.40	74.55	74.70	74.85	49
50	75.00	75.15	75.30	75.45	75.60	75.75	75.90	76.05	76.20	76.35	50

225.04  
 229.04  
 114.52  
 11052