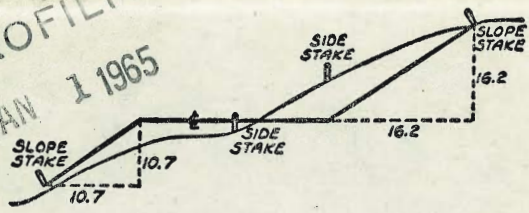




MICROFILMED  
JAN 1 1965

# 2143



DISTANCES FROM SIDE STAKES FOR CROSS-SECTIONING  
SLOPE 1 TO 1. ROADWAY OF ANY WIDTH

	0	.1	.2	.3	.4	.5	.6	.7	.8	9	
0	0.00	0.10	0.20	0.30	0.40	0.50	0.60	0.70	0.80	0.90	0
1	1.00	1.10	1.20	1.30	1.40	1.50	1.60	1.70	1.80	1.90	1
2	2.00	2.10	2.20	2.30	2.40	2.50	2.60	2.70	2.80	2.90	2
3	3.00	3.10	3.20	3.30	3.40	3.50	3.60	3.70	3.80	3.90	3
4	4.00	4.10	4.20	4.30	4.40	4.50	4.60	4.70	4.80	4.90	4
5	5.00	5.10	5.20	5.30	5.40	5.50	5.60	5.70	5.80	5.90	5
6	6.00	6.10	6.20	6.30	6.40	6.50	6.60	6.70	6.80	6.90	6
7	7.00	7.10	7.20	7.30	7.40	7.50	7.60	7.70	7.80	7.90	7
8	8.00	8.10	8.20	8.30	8.40	8.50	8.60	8.70	8.80	8.90	8
9	9.00	9.10	9.20	9.30	9.40	9.50	9.60	9.70	9.80	9.90	9
10	10.00	10.10	10.20	10.30	10.40	10.50	10.60	10.70	10.80	10.90	10
11	11.00	11.10	11.20	11.30	11.40	11.50	11.60	11.70	11.80	11.90	11
12	12.00	12.10	12.20	12.30	12.40	12.50	12.60	12.70	12.80	12.90	12
13	13.00	13.10	13.20	13.30	13.40	13.50	13.60	13.70	13.80	13.90	13
14	14.00	14.10	14.20	14.30	14.40	14.50	14.60	14.70	14.80	14.90	14
15	15.00	15.10	15.20	15.30	15.40	15.50	15.60	15.70	15.80	15.90	15
16	16.00	16.10	16.20	16.30	16.40	16.50	16.60	16.70	16.80	16.90	16
17	17.00	17.10	17.20	17.30	17.40	17.50	17.60	17.70	17.80	17.90	17
18	18.00	18.10	18.20	18.30	18.40	18.50	18.60	18.70	18.80	18.90	18
19	19.00	19.10	19.20	19.30	19.40	19.50	19.60	19.70	19.80	19.90	19
20	20.00	20.10	20.20	20.30	20.40	20.50	20.60	20.70	20.80	20.90	20
21	21.00	21.10	21.20	21.30	21.40	21.50	21.60	21.70	21.80	21.90	21
22	22.00	22.10	22.20	22.30	22.40	22.50	22.60	22.70	22.80	22.90	22
23	23.00	23.10	23.20	23.30	23.40	23.50	23.60	23.70	23.80	23.90	23
24	24.00	24.10	24.20	24.30	24.40	24.50	24.60	24.70	24.80	24.90	24
25	25.00	25.10	25.20	25.30	25.40	25.50	25.60	25.70	25.80	25.90	25
26	26.00	26.10	26.20	26.30	26.40	26.50	26.60	26.70	26.80	26.90	26
27	27.00	27.10	27.20	27.30	27.40	27.50	27.60	27.70	27.80	27.90	27
28	28.00	28.10	28.20	28.30	28.40	28.50	28.60	28.70	28.80	28.90	28
29	29.00	29.10	29.20	29.30	29.40	29.50	29.60	29.70	29.80	29.90	29
30	30.00	30.10	30.20	30.30	30.40	30.50	30.60	30.70	30.80	30.90	30
31	31.00	31.10	31.20	31.30	31.40	31.50	31.60	31.70	31.80	31.90	31
32	32.00	32.10	32.20	32.30	32.40	32.50	32.60	32.70	32.80	32.90	32
33	33.00	33.10	33.20	33.30	33.40	33.50	33.60	33.70	33.80	33.90	33
34	34.00	34.10	34.20	34.30	34.40	34.50	34.60	34.70	34.80	34.90	34
35	35.00	35.10	35.20	35.30	35.40	35.50	35.60	35.70	35.80	35.90	35
36	36.00	36.10	36.20	36.30	36.40	36.50	36.60	36.70	36.80	36.90	36
37	37.00	37.10	37.20	37.30	37.40	37.50	37.60	37.70	37.80	37.90	37
38	38.00	38.10	38.20	38.30	38.40	38.50	38.60	38.70	38.80	38.90	38
39	39.00	39.10	39.20	39.30	39.40	39.50	39.60	39.70	39.80	39.90	39
40	40.00	40.10	40.20	40.30	40.40	40.50	40.60	40.70	40.80	40.90	40
41	41.00	41.10	41.20	41.30	41.40	41.50	41.60	41.70	41.80	41.90	41
42	42.00	42.10	42.20	42.30	42.40	42.50	42.60	42.70	42.80	42.90	42
43	43.00	43.10	43.20	43.30	43.40	43.50	43.60	43.70	43.80	43.90	43
44	44.00	44.10	44.20	44.30	44.40	44.50	44.60	44.70	44.80	44.90	44
45	45.00	45.10	45.20	45.30	45.40	45.50	45.60	45.70	45.80	45.90	45
46	46.00	46.10	46.20	46.30	46.40	46.50	46.60	46.70	46.80	46.90	46
47	47.00	47.10	47.20	47.30	47.40	47.50	47.60	47.70	47.80	47.90	47
48	48.00	48.10	48.20	48.30	48.40	48.50	48.60	48.70	48.80	48.90	48
49	49.00	49.10	49.20	49.30	49.40	49.50	49.60	49.70	49.80	49.90	49
50	50.00	50.10	50.20	50.30	50.40	50.50	50.60	50.70	50.80	50.90	50

Distance of slope stake from side or shoulder stake for any width roadway, slope 1 to 1. If ground is nearly level, the cut or fill at side stake is located by the double entry method in left column and top row. The number in body of table in same row and column gives distance from side stake to slope stake. If ground is not level estimate the difference in elevation between the side stake and slope stake, lower target by this amount if cut, elevate if fill. Add this amount to cut or fill and find distance in table. Set up rod at this point, and line of sight should cut target. If it does not make the slight adjustment necessary.

TABLE XIII—CORRECTIONS FOR TANGENTS AND EXTERNALS

These corrections are to be added to the approximate values, found by dividing the tangent, or external, for a 1° curve (Table VIII) by the degree of curve, in order to obtain the true tangents, or externals. Intermediate values may be obtained by interpolation.

FOR TANGENTS ADD

Central Angle	DEGREE OF CURVE													
	5°	10°	15°	20°	25°	30°	35°	40°	45°	50°	55°	60°	65°	70°
10°	.03	.06	.09	.13	.16	.19	.22	.25	.28	.31	.34	.38	.42	.46
15°	.04	.10	.14	.19	.24	.29	.34	.39	.45	.51	.53	.58	.63	.68
20°	.06	.13	.19	.26	.32	.39	.45	.51	.58	.65	.72	.79	.84	.90
25°	.08	.16	.24	.33	.40	.49	.58	.67	.75	.83	.90	.99	1.06	1.14
30°	.10	.19	.29	.39	.49	.59	.69	.79	.89	.99	1.09	1.20	1.29	1.39
35°	.11	.22	.34	.47	.58	.69	.79	.81	.92	1.04	1.29	1.42	1.54	1.66
40°	.13	.26	.40	.53	.67	.80	.93	1.06	1.20	1.34	1.49	1.64	1.79	1.94
45°	.15	.30	.44	.60	.76	.91	1.06	1.21	1.37	1.52	1.70	1.87	2.04	2.21
50°	.17	.34	.51	.68	.85	1.02	1.19	1.36	1.54	1.72	1.91	2.10	2.29	2.48
55°	.19	.38	.57	.76	.95	1.14	1.32	1.52	1.72	1.92	2.14	2.35	2.56	2.77
60°	.21	.42	.63	.84	1.05	1.27	1.49	1.71	1.94	2.17	2.38	2.60	2.83	3.07
65°	.23	.46	.69	.93	1.16	1.40	1.64	1.88	2.13	2.38	2.63	2.88	3.13	3.39
70°	.25	.51	.76	1.02	1.28	1.54	1.80	2.06	2.33	2.60	2.88	3.16	3.44	3.72
75°	.27	.56	.83	1.12	1.40	1.69	1.98	2.27	2.57	2.87	3.16	3.47	3.78	4.09
80°	.30	.61	.91	1.22	1.53	1.84	2.15	2.46	2.78	3.10	3.44	3.78	4.12	4.46
85°	.33	.66	1.00	1.33	1.68	2.02	2.36	2.70	3.05	3.40	3.77	4.14	4.55	4.89
90°	.36	.72	1.09	1.45	1.83	2.20	2.57	2.94	3.32	3.70	4.10	4.50	4.91	5.32
95°	.39	.79	1.19	1.55	2.00	2.40	2.80	3.20	3.61	4.02	4.40	4.98	5.38	5.83
100°	.43	.86	1.30	1.74	2.18	2.62	3.06	3.50	3.95	4.40	4.88	5.37	5.85	6.34
110°	.51	1.03	1.56	2.08	2.61	3.14	3.67	4.21	4.76	5.31	5.86	6.43	7.01	7.60
120°	.62	1.25	1.93	2.52	3.16	3.81	4.45	5.11	5.77	6.44	7.12	7.80	8.50	9.22

FOR EXTERNALS ADD

Central Angle	DEGREE OF CURVE													
	5°	10°	15°	20°	25°	30°	35°	40°	45°	50°	55°	60°	65°	70°
10°	.001	.003	.004	.006	.007	.008	.009	.011	.012	.014	.015	.017	.018	.020
15°	.003	.007	.010	.014	.018	.023	.027	.029	.032	.035	.039	.043	.047	.051
20°	.006	.011	.017	.022	.028	.034	.038	.045	.051	.057	.063	.070	.076	.083
25°	.009	.018	.027	.036	.046	.056	.065	.074	.083	.093	.106	.120	.127	.135
30°	.013	.025	.038	.051	.065	.078	.090	.103	.116	.129	.149	.170	.179	.188
35°	.018	.035	.054	.072	.086	.109	.131	.153	.175	.197	.213	.230	.247	.264
40°	.023	.046	.070	.093	.117	.141	.172	.203	.234	.265	.277	.290	.315	.341
45°	.030	.060	.093	.119	.153	.184	.216	.254	.289	.325	.351	.378	.411	.445
50°	.037	.075	.116	.151	.189	.227	.266	.305	.345	.384	.425	.467	.508	.550
55°	.046	.093	.142	.188	.236	.283	.332	.381	.420	.479	.530	.582	.641	.700
60°	.056	.112	.168	.225	.283	.340	.398	.457	.516	.575	.636	.697	.774	.851
65°	.067	.135	.204	.273	.343	.412	.483	.554	.625	.697	.771	.845	.922	1.01
70°	.080	.159	.240	.321	.403	.485	.568	.652	.735	.819	.906	.994	1.08	1.17
75°	.095	.182	.286	.383	.480	.578	.678	.777	.877	.977	1.07	1.18	1.29	1.39
80°	.110	.220	.332	.445	.558	.671	.787	.903	1.02	1.13	1.25	1.38	1.50	1.62
85°	.128	.259	.391	.524	.657	.790	.926	1.06	1.20	1.34	1.47	1.62	1.76	1.91
90°	.149	.299	.450	.603	.756	.910	1.07	1.22	1.38	1.54	1.70	1.87	2.03	2.20
95°	.174	.350	.522	.706	.885	1.06	1.25	1.43	1.62	1.80	1.99	2.18	2.38	2.58
100°	.200	.401	.604	.809	1.01	1.22	1.43	1.64	1.85	2.06	2.28	2.50	2.73	2.96
110°	.268	.536	.806	1.08	1.35	1.63	1.91	2.20	2.48	2.76	3.05	3.35	3.66	3.96
120°	.360	.721	1.08	1.45	1.82	2.19	2.57	2.95	3.33	3.72	4.11	4.50	4.91	5.32

X Sec Erie St Milton to Lister 17-23  
 X Sec Lister St Erie to Frankfort 24-28  
 Sketch for below listed X Sec. 29, 30, 31  
 X Sec Frankfort St Lister to Kane 32-34  
 X Sec Kane St Erie to Galveston 35-40  
 X Sec Galveston St Kane to Ingulf 41-47  
 X Sec Jelleff St Frankfort to Galveston 48-50

INDEXED

OCT 7 1953

0+00 = Hub

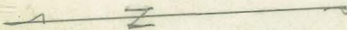
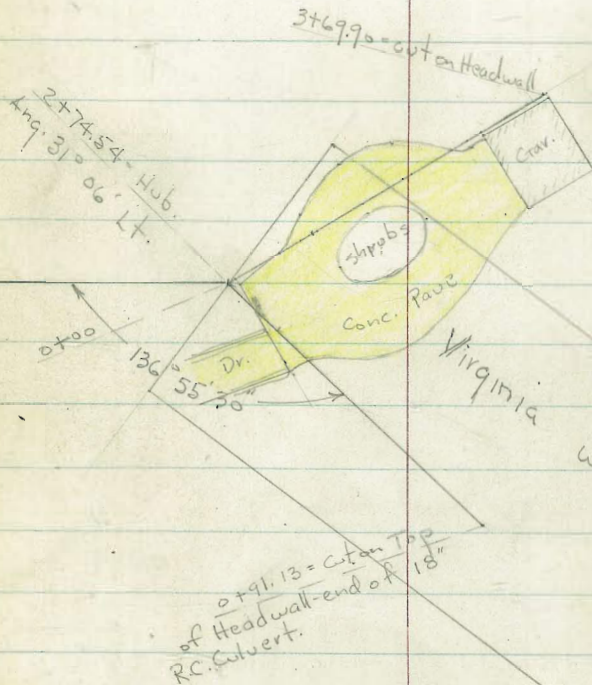
1+04.80 = Cross-Point

P.I. - "L" Line

1+41.68  
Cross in cb.  
P.O.T.

75° 53'

6+14.22 = B.C. - "L" Line



Levels along # of Prop. Drain across R.O.W.  
of Torrey Pines Rd. at Coast Blvd.

Lt. # Rt.

W.O. 22041 4-26-51 -7.0.

Sketch - P. 1

T.P. 12.42 100.99 0.44 88.57

83.6 80.2 80.8 85.1  
5.4 8.8 8.2 3.9  
12 13 15

0+50 = ± wash

19.0 14.0 81.9  
10.0 15.0 7.1  
10 10

0+30 = ± Wash

75.4 71.8 15.3 80.3  
13.6 7.2 13.7 8.7  
12 4 10  
± wash

0+12

74.2 68.7 70.6  
14.8 20.3 15.55  
13 9 on Hub.  
± Wash 89.01

0+00  
0.48 89.01 13.01 88.53

0.66 101.54 13.16 100.88

B.M. 0.49 114.04 113.55 = S.W. B.P.

Coast Blvd. # Torrey

1+77-13' Lt. =  $\phi$  - 12" Euc.

1+69-4.5' Rt. =  $\phi$  12" Euc.

T.P. 5.49 119.04 6.18 113.55 = B.P.

1+60

1+41.3 = curb.

1+25

1+08.2 = Top cb.

1+02.6 = edge walk

1+00

T.P. 12.80 113.73 0.06 100.93

0+80

Lt.  $\phi$  Rt.

3

119.04

111.3

110.4

112.1

2.4

3.3

1.6

30

10

110.1

111.0

3.3

2.66

gut.

Top

110.4

3.26

109.5

109.1

4.22

4.63

Top

gut.

109.5

4.16

109.6

108.4

110.4

4.1

4.8

3.3

15

15

113.73

98.1

94.4

95.9

1.9

6.6

5.1

10

18

100.99

2+90 = edge of Conc. Dr.

Lt.

±

Rt.

127.33

120.79

119.80

0.0  
106.54  
edge Conc.7.53  
10  
Conc.

2+76.3 2' Rt. = Cor. Conc. Dr.

123.7

120.1

119.8

119.10

118.80

119.56

3.6

7.2

7.5

7.63

8.53

7.77

70

3

2 = Cor.

10

16

Conc.

Conc.

edge

low pt.

By wall

2+74.54 = Ang 31° 06' Lt

119.47

7.86

on Hub.

2+61 = 4.8' Lt. = ± 20" Euc.

T.P. 8.53 127.33 0.24 118.80

127.33

2+55

121.9

118.5

117.54

117.7

117.9

+2.9

0.5

6.5

1.3

1.1

15

8

10

20

2+38 - 4' Rt. = ± 20" Euc.

119.

113.5

113.9

114.1

115.1

0.0

5.5

5.1

4.9

3.9

8

12

10

20

2+15 - 9' Rt. = ± 24" Euc.

1120

109.3

109.2

114.6

2+00 - Heavy Bamboo clump.

7.0

9.7

9.8

4.4

13

10

20

1+84.8 - 7' Rt. = ± 3' x 2.5' Conc. Box Inlet.

105.65

109.45

119.04

13.39

9.59

7

I.E. Box

Top grate

3+85 - 4' Rt. = ± 2' flume = end.

Rough Conc. flume 2' wide - Conc. bottom - wood sides

3+77.3 - 2' Rt. = end of wing wall

3+77 - 4.2' Rt. = end of wing wall

### culvert

3+70.9 = inside of Head wall = inlet of 24" R.C.

3+69.90 = cut on edge of 12" Conc. head wall

T.P. 7.08 133.59 0.82 126.51

3+51 - 1' Rt. = Cor. Grav.

3+42 = edge Conc.

3+15

Lt.

±

Rt.

5

126.08

7.51

4 = ±

Bottom = Conc.

126.41

125.47

7.18

8.12

2

2

Top wall-end

= Conc. Bottom of flume

7.22 8.15

4.2 4.2

Top wall-end flume Bottom flume

122.45

11.14

2.8

edge wing wall

122.18

11.41

I.E. of Pipe

122.18

11.41

13.5 =

edge wing wall

126.38

7.21

5.4

Top-end of wall + ground.

125.4

8.2

ground

126.54

7.05

Top wall

126.57

7.02

1.4 = wall at Grav.

129.4

+2.1

15

123.7

3.6

4

123.4

3.9

123.4

3.9

1

Cor. Grav.

123.66

3.67

2

edge Conc.

123.82

3.51

12 = floor

Grav.

4.01

122.32

5.01

11.7

edge Conc.

121.99

6.34

127.33

121.92

5.41

2.5 = edge Conc.



Req. Levels along E of Branch Line to Rt.  
 from Sta. 2 +74.54 = 0 to 0 To Rt

T.P. 130.06 143.24 0.14 130.18

0+35 = Toe Bank

0+28.9 = edge Conc.

0+17.5 = 2 ft. ± 2' Rock wall along Dr.

Rough Conc. Box - 12" Conc. pipes - in + out.

0+09.8 = 0.95 Lt. = ± 4.2 x 4 opening to

0+05.4 = edge Conc. Dr.

0+00 = Hub.

B.M. 11.52 130.32 118.80

Lt.

±

Rt.

6

120.1

9.6

120.58

120.39

120.39

122.71

9.74

9.93

9.99

7.55

10

5

along edge

Top wall

119.82

119.49

119.56

120.68

10.50

10.93

10.76

9.64

10

2

Top wall

Conc.

116.61

118.12

13.71

11.60

0.95 =

0.95 = Top

I.E. of Box

grate

119.34

10.98

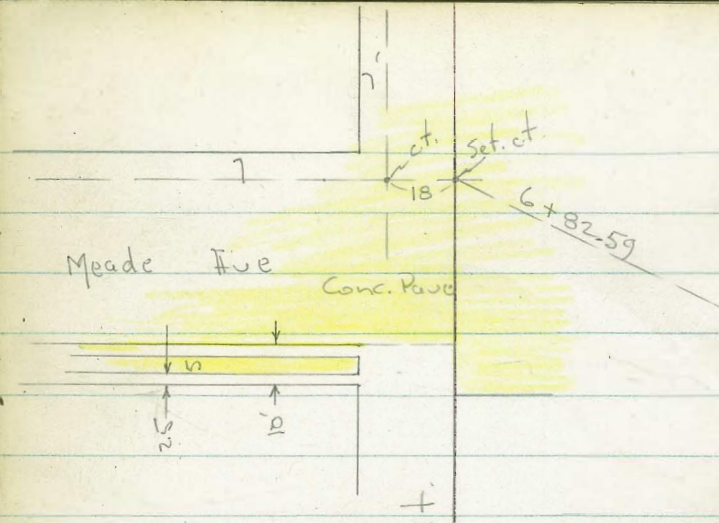
119.41

10.85

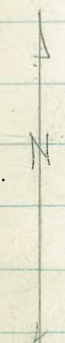
= on Hub.

130.32





See Plan 7148-L  
for improvements



±

58

25'

25'

RE. 491  
Fd. Conc.  
Mon.

45'

0+30 = Fd. 2 x 4 Hub + ct.

± of Trojan Ave

0+00 = P.K.

X-Sect. wly Half of 58th - from  
 Trojan to Meade - Sketch on P. 8 +  
 Copy of Plan - 7148-L  
 W.O. 21194 - 10-22-53 - 710

11+50

1+19- 18' Lt. = ± P. pole # 360029 BM=411.79 = spike

1+04- 0.7' Rt. = ± Sewer Mt. 13.08 Ely. Rim

0+99.45 = opp. cb. P.C. on Rt. (Plan Sta. O.K.)

0+96- 18.4 Lt. = ± Deadman

0+65

0+30

1.3' Rt.

0+14 = 1 PC. of Pave

0+00 = ± Trojan to W. = along edge of AC Pave

B.M. = S.W.R.P. - 58th + Trojan 419.50

9  
Lt. ± Rt.

06.7 07.2 09.6 09.11 08.98 08.51 09.12  
25 15 3 9 18  
Top. got.

12.2 12.9 13.50 12.91 13.64  
35 25 edge 18.1 Top =  
got. P.C.

15.9 17.0 16.47 16.26  
25 10 15

19.5 20.0 19.05 19.21  
25 3 edge AC 15

19.5 20.0 19.9 19.8 19.78 20.24  
25 15 3 1.3 15  
AC

17.44 18.91 19.76 20.20 20.83  
50 25 9 15  
edge PC. of on PK. Pave

400' fig. Not noted.

Actual Elev. shown

4+40

4+26- 4.2 Lt.

4x4 Posts. - 2"x6" Rails

= Beg guard Rail

Wash filled in at end of Pipe

Pipe - Runs thru Dale way to E.

4+24.10 = 33.3

Lt at 90° = outlet of 36" RC.

on Rt.

4+00 = Thru ± of grate - 15' opening inlet

3+33.30 = P.C. of cb. on Rt. (Plan Sta)

3+50

3+00

2+99- 19.2 Lt. = ± Deadman

2+81- 18' Lt. = ± P. pole # P. 37.0030

2+59- 18' Lt. = ± Deadman

2+50

2+00

Lt.

±

Rt.

10

94.6 90.1 91.9 93.7 92.30 92.42  
50 25 12 6 10

87.6 84.83 91.6 92.8 92.09 92.15  
45 33.3 25 10 Rim of  
in I.E. of Pipe Sewer M.H.

89.3 93.4 92.5 92.14 91.99 91.52 92.35  
35 25 12 edge 9 21.3  
Top cb.  
gut. on grate

89.2 93.8 92.7 92.61 92.44 92.00 92.70  
35 25 15 edge 9 18  
Top  
gut.

94.0 93.3 93.50 93.34 92.90 93.54  
25 15 edge 9 18  
Top  
gut.

87.3 92.6 96.0 96.42 96.27 95.85 96.52  
35 25 18 edge 9 19  
Top  
gut.

91.7 394.5 00.4 400.38 00.19 399.86 400.51  
35 25 12 edge 9 18  
Top  
gut.

02.6 03.3 05.2 04.78 04.67 04.12 04.80  
25 10 4 edge 9 18  
Top  
gut.

6+20 - Loc. of Conc. Dr.

6+17 - 25' Lt. = 10" Pine

6+13 - 23' Lt. = Shrub.

6+11.76 = opp. cb. P.C. on Rt.

6+07 = Ply. of Dr. at Gar.

6+00 - Thru Dr. on Lt.

5+92 = sly. of Conc. Dr. to Doub. Gar. under House

5+70

5+33.5 - 17.5' Lt. = Dead man

5+35.44 = opp. cb. P.C. on Rt.

5+4 - 17.2' Lt. = P. pole # P 178268 B.M. 398.27 = spike

5+00

4+92 - 18' Lt. = Dead man

4+74 - 4.6' Lt. = end Guard Rail

4+60

Lt. ± Rt. 11

09.73 09.68  
14.4 4.4  
edge Conc. Dr.

08.6 08.5 08.39 09.21 08.29 08.00 07.50 08.24  
35.7 25 19 5.67 9 18.3 Top  
By House edge Conc. Dr. edge P.C.

05.54 06.49 07.80 08.86  
35.7 25 18 6.2  
floor Conc. edge Conc. Dr.  
gar.

05.54 05.91 07.14 07.98  
35.7 25 18 7.7  
floor Conc. edge Conc. Dr.

05.52 05.69 06.44 07.4 05.78 05.42 04.97 05.79  
35.6 25 19 5 9 18 Top  
floor edge P.C. of edge  
gar. Conc. Curve - edge of Dr.

04.4 04.6 402.76 02.57 02.20 02.86  
27 25 6 9 18 Top  
fence edge gut

26.5 fence 99.4 99.1 98.24 98.21 97.91 98.51  
25 4 edge 9 18 Top = P.C.  
Jarry line Wrong line gut

95.9 95.6 95.01 94.91  
25 4 edge 10.

95.9 94.4 92.65 92.72  
25 15 edge 10

Lt.



Rt.

12

6 + 39.6 = S. cb. Line Meade

6 + 32 - 15' Lt. = ± P pole # 370192

6 + 29.59 = S. h. of Meade

10.75	10.20	09.92	09.95	09.99	Conc.
Top	25.1	14.2	0.7		
end	gut	+ Conc.	end-edge		
cb.		Pave	off Conc. Dr.		

10.6	10.34	10.22	09.58	09.41	08.92	09.32
25	13.3	3.3	edge	10	25	Top
		edge			gut	
		Conc. Dr.		Req. Conc.		
				Pave		

INDEXED Lt.

JAN 6 1954

Rt

13

Beq. New Sections along  $\pm$  of  
old Drain Survey shown in B. 1794-P 58

W.O. 32381 - 12-31-53 - HAPPY!  
New Year!  
7.0  
4' wide inside

3+10.4-35.5 Rt. = Beq. inside face of near 8" Conc. Block wall To Conc. Drain

24.63 23.31 24.60

35.5 Bottom 29.5  
Top wall  $\pm$  22.23 E wall37 = Bot.  
on Conc.

2+89-37 Rt. = Beq. Rough Conc Bottom in 4' Ditch

2+73.6-55 Lt. = Near Cor. of House (see sketch-B. 1794-P 58)

36.35

55 = Cor  
on Conc.  
Porch

30.4 29.2 29.0 22.0 24.6 24.5

2 28 37 = Ditch 39 60

2+75 = 37 Rt. - ang in Ditch

2+70.4-29.7 Rt. = end of Conc. wall

29.76

29.7

Top wall - 3.5  
High

2+5.6 = face of 8" Conc. Block wall

25.1 29.69  
gr. Top of wall

2+40

24.5 24.3 21.6 21.8 24.5 23.7

26 27 31 32 55  
Bot. Tax

2+00

24.0 24.0 21.3 21.4 23.4 23.7

16.5 17 23 23.5 50  
Bot. Ditch

1+52-16.5 Lt. = Cor. of House + end of Conc. Porch

23.04 22.97 23.2 23.1 21.3 21.4 23.1 23.4

16.5 = Hill  
Conc. at Cor. edge Conc.  
8.5 8.6 15.5 15.6 35  
Bot. Ditch

1+25.4-37 Lt. = Cor. of House + edge of 5' Conc. Porch

22.94

37 = Conc.  
Porch

1+20 -  $\pm$  = why top of Ditch

13.0 22.7 20.8 20.5 22.2 23.2

14.6 3 7.8 9 25

By House

100 sq. ft. Not Voted.  
Ditch

Actual Elev. shown

B.M. = Cross - 1+14.11

120.35

B. 1794-P. 63



Lt.

±

Rt.

4

4+24.20 = Ang Pt. - Sect. Same

127.13  
on Hub.

4+17 - Ang in Ditch

28.8 27.1 24.8 27.0 26.8

4+01 - 37.5 Rt. = ± 30" Cypress Tree

7 11 17 40  
±  
Ditch

4+00 - Ang in Ditch

29.0 26.8 26.4 24.7 26.4 27.5  
10 32 34.5 37 50  
±  
Ditch

3+80

33.5  
15

30.0 30.6 24.1 26.4 27.7

27 36 39 50  
±  
Bank  
Ditch

3+50

29.8 29.8 24.4 26.6 27.7

27 35 39 50  
±  
Ditch

3+35 - 32.7 Rt. = end wly. Steel Sheeting

29.6 29.0 26.47 24.1 26.44 28.5 29.5

3+32 - 28' Rt. = ± Sewer M.H.

28.85 - Rim

28 32.7 Bot. 40 43 60  
Top =  
end of wall wall Top  
Dirt  
Drive

Beg. Steel Sheeting on Sides

Culvert end Conc Bottom

3+30.8 - 36.6 Rt. = Nly. of Bridge + Walls, at ± of

27.71 27.90 27.73 23.75

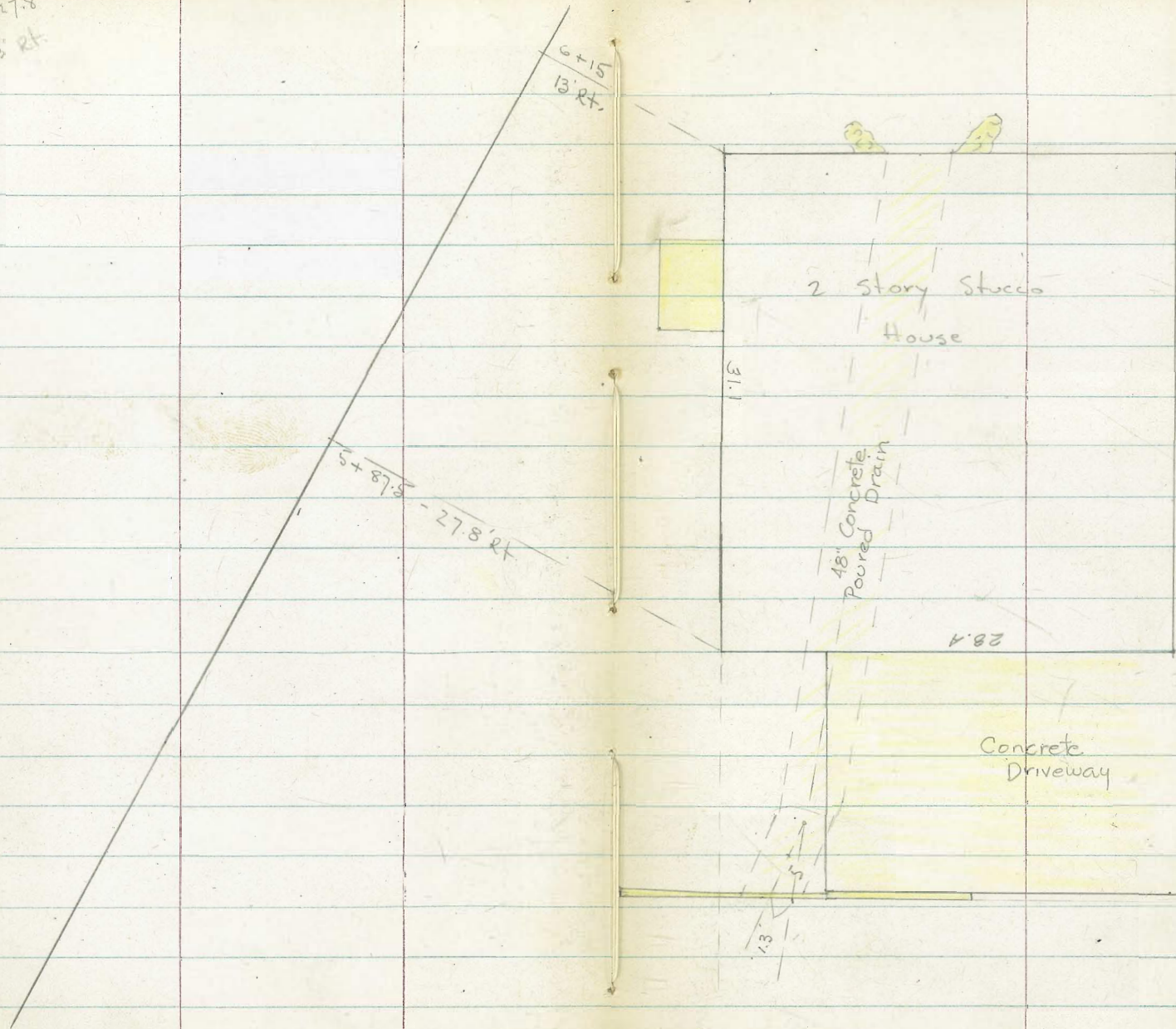
Top w. wall 36.6 Top of Deck Top - E. wall I-Est ±

3+18 - 35.6 Rt. = wooden Cov. Bridge over Culvert - 3.8' wide  
Beg. inside face of 8" Conc. wall - for27.67 27.61  
35.6 =  
Top w. wall Top E. wall

3+15 - 19.5 Lt. = ± P. poles # C 3448

29.1 28.5 25.58 23.37 25.45 27.6 29.2  
30 35.8 ± = 39.5 45 60  
Top I.E. Top  
wall wall

+87.5 - 27.8  
+15 - 13' Rt.



8+55

Lt. E Rt. 16.  
 38.6 37.3 34.5 36.0 37.4 43.6  
 20 7 2 on 14 25  
 old grd. end 1' fill old grd.  
 ditch

8+47.05 = Ang 9° 35' 30" Rt. B.M. ✓

137.76  
on knob

8+00 and 8+25 Sections (same) Book 1794

7+76 10' Lt South eastly cor of 9.5 x 9.5 shed

7+53

34.6 32.5 33.8 35.1 36.5 36.7 43.18 43.50 43.3  
 10 35 32 20 5 13 22.1 50  
 E.H. edge of apron house  
 ditch Toe

7+23 21.5 Rt Sthly. cor of 30' x 24' house

34.5 34.9 36.1 43.02 43.28  
 17 4 12.5 21.5  
 edge 8" Toe edge conc along house  
 ditch apron on apron

7+15

37.1 34.7 31.2 34.3 36.1 42.8 43.1  
 15 25 20 13 18 40  
 8" Ditch

7+00

37.2 35.4 33.8 31.0 34.0 33.8 34.3 34.0 43.5  
 35 25 13 10 5 11 25 40  
 E Ditch Toe

Sections 6+50 ~ same

6+21 - 23.8 Rt. E of 48" Drain (two 3' rock and conc. wing walks.) See drawing

31.8 31.6 31.97 28.45  
 17.5 18.0 15.5 15.5  
 Grd Top 1.5' Flow  
 Wall Wing 48" Drain  
 along house

6+00

32.6 31.1 30.7 30.5  
 15 10 21.2  
 along house

5+75 38.0 Rt. E of 48" Conc. Drain

30.3 29.2 32.9 34.32 28.46 38.7  
 15 36.5 36.5 38.0 57  
 8" Wall Top Flow  
 Grd Wall 1.5' 48" Pipe

Ground between here and last  
 section has not been changed.

See Book 1794 Page 65

Actual elevations shown

Lt.

E

Rt. 17.

10+16.20 to 17+23.15 No new constructions  
and ground elev. are same. Book 1794 Page  
67-73

10+16.20 Angle 21°23' Lt. - Northy edge of 3'x3'  
conc. cleanout. (Built on top of old  
existing headwall.)

			48.20				
			Top	Cleanout			
49.7	48.8	48.4	42.43	41.75	47.6	47.67	
80	60	25	1.5 Col.	1.5 pipe	20	41'	west edge 5' walk.

10+01 82.8 Lt. Easty end of 12" Cor. pipe  
protruding from 10' Bank

9+75

			48.8	53.60			
			grd. 82	82.8" I.E.			
				Flow			
48.9	48.0	47.7	47.7	47.7	47.6	47.2	
80	35	15			20	40	
			Toe 10'	Bank			

9+55 ~ 9.5 Rt. E 48" Pipe (covered with dirt  
from here on north.)

9+50

					43.36		
					9.5		
					Top pipe		
48.6	47.5	43.5	43.16	40.0	39.0		
35	15		10.5	13	32		
			Top Pipe	grd.	Toe		

9+25

49.2	46.7	43.1	42.50	39.4	39.7		
35	15		13.6	16	37		
			Top	grd.	Toe		
			pipe	along	pipe		

9+03 ~ 8.5 Rt. E Sewer Manhole

9+00

					42.36		
					west rim 8.5		
48.7	42.8	42.6	41.88	39.1	38.4	42.8	
30	17		15	18	40	48	
			on fill	Top pipe			

8+80

41.5	40.2	39.5	39.1	40.99	37.8	38.4	
35	15		6	9 Top	12	35	
			old grd.	pipe			

8+66 2' Rt. E of 48" Conc. Pipe  
(Southerly end)

35.84
Flow line
I.E. of 48" pipe

Lt.

E

Et. 18

1+10 Toe of fill

76.7

Toe  
newfill1+00 4.5 Rt. Exposed Top of 24" R.C.  
pipe for estimate I.E.

78.0	76.0	74.5	73.03	72.2
15	4.5	Top 24"	12	old
New fill	New fill	Grd. R.C. Pipe	Grd	

0+65

75.0	72.4	72.0	68.9	68.9
15	new	6	12	25
	fill			

End 24" Corr &amp; begin 24" R. Conc. pipe

0+37 10' Rt. E of 4.6 Conc. Headwall also

72.4	68.2	67.8	66.9	68.55	68.10	66.2
22	15	7.9	10	TOP	25	
		Grd	Top 46	24" R.C.		
		Headwall	Headwall	pipe		

0+24 - 3.5 Lt = E of 30" Euc.

0+17 - 10.4 Rt. End 20" Iron &amp; begin 24" Corr. pipe

66.75  
Top of  
28" Corr.

0+15 2' Rt = E of 20" Euc. stump

0+02.5 11.2 Rt. Begin 20" Beaten Iron Pipe  
2x2 Hub Begin "A" line

69.7	66.7	65.8	65.7	64.42
12	4	10	11.2	
Top	Toe		I.E.	
			20" Iron	
			pipe	

0+00 = 17+35 on original drain survey  
90° to back tangent - See book  
mentioned belowB.M. = B.P. South Ch. Penn approx. E 170.70  
of Dove St.  
Book 1794 Page 74

Actual elevations shown

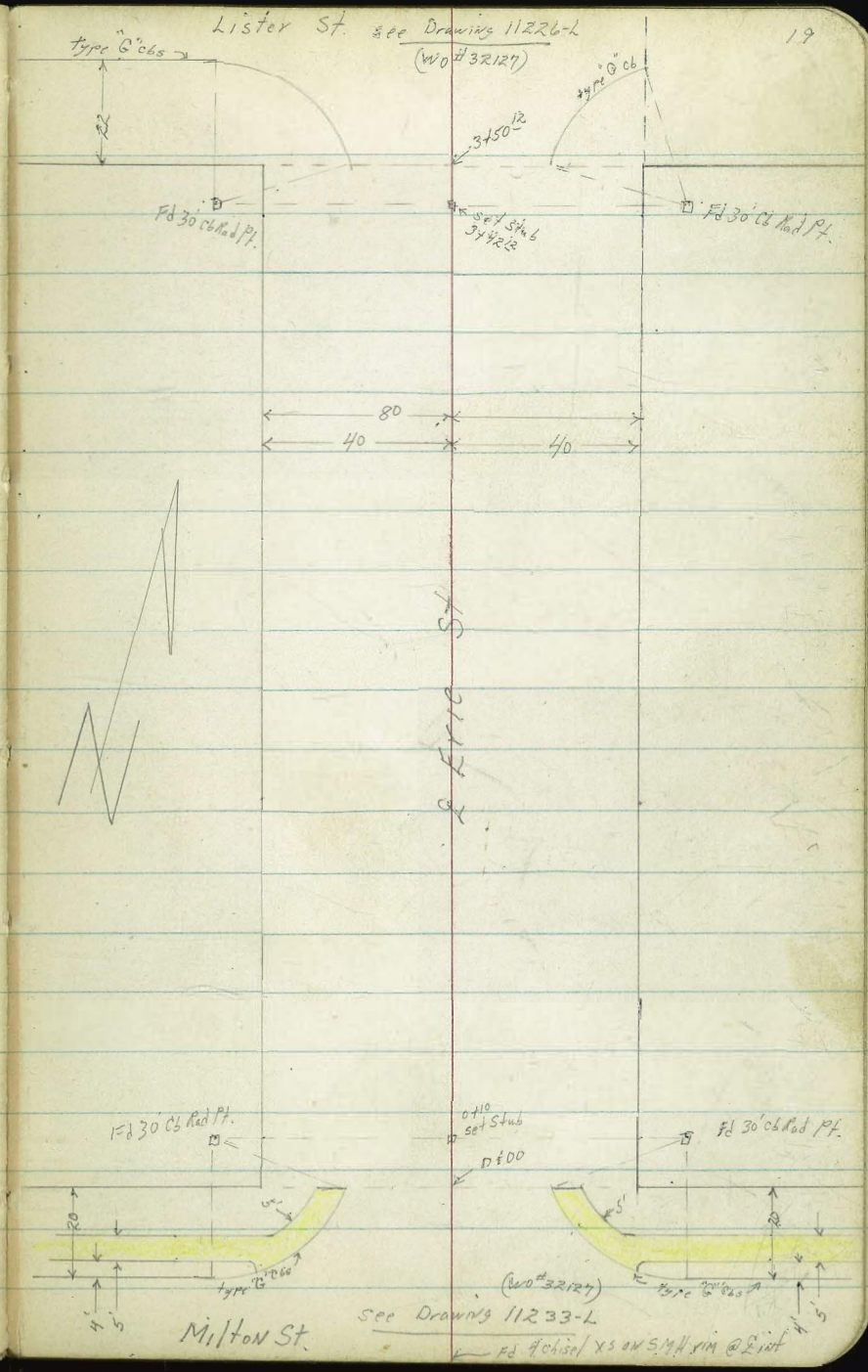
D. Smith  
 R Taylor  
 D. Chipman  
 C. Stebens

① "X" Sec Erie St  
 (Milton to Lister)

WO# 32453  
 6/2/55

Note: Both Lister St & Milton St were  
 being paved under WO# 32127 at  
 the time this cross section was being  
 made. I hope to have tie pts in and  
 recorded by time job is let. Also Benches.  
 D.D.S.

INDEXED  
 JUN 20 1955



Lt=Wly

£

Rt=Ely

20

1400

0+88 39° Rt & 12° con drive ✓

0+76 27° Lt & 14° P.P. 3004 ✓

0+75 22° Lt end 2' Eugina hedge ✓

0+67 21° Lt Begin 2' Eugina hedge ✓

0+58 38° Lt & 8° con drive ✓

0+50 25° Lt end 3' high Eugina hedge ✓

0+30 39° Rt & 3° con walk ✓

0+30 38° Lt & 3° con walk ✓

0+10

0+00 Nly line Milton St 25° Lt Begin 3' Eugina hedge

BM

782

4985

4203

SW.B.P.

Milton

Eric St.

4985

40.7 41.4 43.3 43.4 43.1 43.4 43.7 43.9 43.6 44.1 44.6  
 92 85 66 65 68 65 63 60 63 58 53  
 50 40 21 12 9 21 22 40 42 50

4459 45<sup>18</sup> 45<sup>87</sup>  
 398 drive 50 drive 603  
 2601

42.5 42.8 42.9 43.2 43.1 42.9 43.2 43.3 43.7 43.9 44.2  
 74 71 70 62 68 70 62 66 63 60 52  
 50 40 30 22 11 10 22 24 40 50  
 42.94 42.85 42.75  
 62 70 70  
 52 483 382  
 Elev

42.6 42.8 43.2 42.6 43.0 43.1 43.6 44.3 44.8  
 71 71 62 73 69 68 63 56 51  
 50 40 20 10 22 23 40 50

42.72 42.70 42.70 44.77 45.35  
 73 75 75  
 50 40 382  
 508 450  
 392 50

42.5 42.7 43.0 43.4 42.7 43.3 43.9 43.8 44.6 45.2  
 42.3 43.4  
 74 72 62 75 72 66 70 61 53 42  
 50 40 20 18 11 23 27 40 50

use plan 11233-L for section as intersection is still under construction. cal

2104 19<sup>s</sup> Lt E 8" Palm tree ✓  
 2101 27<sup>o</sup> Lt. Ely end 6" con wall ✓  
 TP, 5<sup>88</sup> 53<sup>96</sup> 177 48<sup>88</sup> spike in P.P. 2100 27<sup>o</sup> Lt #3044

2101 27<sup>o</sup> Lt Begun 5'icket fence 11 to 12 ✓  
 2100  
 2100 27<sup>s</sup> Lt E 14" P.P. #3044 ✓  
 1792 36<sup>s</sup> Rt E 4" con walk ✓  
 1783 41<sup>s</sup> Rt E 36" Cypress tree ✓ (400 to wly. side tree)  
 1782 30<sup>s</sup> Rt E 14" Pepper tree ✓  
 1778 39<sup>s</sup> Lt E 10" con drive ✓

1775  
 1750  
 1746 40<sup>o</sup> Lt E 3" con walk ✓  
 1725  
 1717 40<sup>o</sup> Lt E 14" con drive ✓

Lt. Wly & Rt. Ely 21

44.73  
 46.93  
 46.7  
 9<sup>23</sup> 7<sup>23</sup> 7<sup>3</sup>  
 27 27 27  
 Facing top wall

44.6  
 44.9  
 46.2  
 46.3  
 45.1  
 45.5  
 45.5  
 46.3  
 49.4  
 50.4  
 51.1  
 53 50 32 26 48 44 44 36 25 40 5 42  
 50 40 28 20 10 17 23 30 40 50  
 50.30 50.50 50.95 51.35 51.40  
 40.25 40.65 41.05 41.50 41.85  
 36 40 42 44 52  
 44

44.43  
 44.36  
 44.31  
 542 549 554  
 554 50 392  
 Floor

44.4  
 44.3  
 44.6  
 44.3  
 44.6  
 44.7  
 45.1  
 50.9  
 51.2  
 55 55 53 56 53 52 43 41 43  
 50 40 12 10 20 24 40 50

43.8  
 43.6  
 43.4  
 44.0  
 43.7  
 44.0  
 44.1  
 45.2  
 49.1  
 49.5  
 61 63 65 52 62 59 58 42 08 04  
 40 25 12 10 20 32 40 50  
 43.54 43.59  
 63 62 60  
 50 40

40.7  
 41.0  
 42.0  
 43.2  
 43.6  
 43.3  
 43.6  
 43.9  
 44.3  
 44.9  
 45.6  
 92 89 79 67 63 66 63 60 56 50 43  
 50 40 25 19 11 10 20 21 40 50

4086 4132  
 50 40 Drive  
 4085



Lt. Wly

2

RT = Fly  
50.52 52.21 53.51 22

6<sup>25</sup> 46 336  
242 274 4°  
161 step 7<sup>1/2</sup> 54<sup>1/2</sup> 2K

2+84 24" RT 3° con steps + walk ✓

2+75

2+74 19<sup>2</sup> LT 26" Palm tree ✓

2+59 19<sup>2</sup> LT 28" Palm tree ✓

2+50

2+43 29<sup>2</sup> RT 26" PP 10 JP 3085 ✓

2+43 19<sup>2</sup> LT 28" Palm tree ✓

7<sup>1/2</sup> 6<sup>40</sup> 56<sup>87</sup> 3<sup>79</sup> 50<sup>77</sup>

2+33 19<sup>2</sup> LT 4' Conc. Walk ✓

2+27 19<sup>2</sup> LT 2" Juniper ✓

2+25

2+22 19<sup>2</sup> LT 12" Palm ✓

2+11 41<sup>2</sup> RT 8° con drive ✓

47.4 47.8 48.2 48.6 48.4 48.0 48.3 48.4 49.2 51.9 53.6  
95 91 87 83 85 89 86 85 72 50 33 22  
50 40 26 20 12 10 16 24 28 40 50

47.1 47.2 47.9 47.7 47.3 47.6 47.4 46.1 48.3 51.0 52.5 52.9  
98 92 90 92 96 93 95 88 86 53 44 40  
46 27 18 12 10 18 19 22 28 40 50

46.50 46.73 46.99 56.87  
746 723 697 711  
50 40 23 19.9

45.9 46.5 46.9 47.3 46.7 46.3 46.5 46.7 47.2 51.2 51.9 52.5  
81 75 71 67 73 72 75 73 68 28 21 15  
50 40 30 18 13 11 19 22 30 40 50

49.58 50.75 51.43  
438 321 353  
412 372 58°  
Floor

5326

Lt-Wly

2

Rt-Ely

23

Note set BM

523

5160

N.W.R.P.  
Erie +  
Lister

TP<sub>3</sub>

11<sup>31</sup>

67<sup>56</sup>

0<sup>62</sup>

56<sup>25</sup>

3450<sup>12</sup> sly line Lister st

3450 25° Lt & 12" P.P. 1/2 # 3098

3448 29° Rt & 6" P.P. 1/2 # 3095

3442 23° Rt & Fire Hyd

3425

3424 3.0° Rt & 12" Pepper tree

3400 26° Lt enb 4' Picket fence

2496 26° Lt & 3° cov walk

2490 28° Lt & 36" Cypress tree

see Drawing # 11226-L for improvement plans  
of intersection now under construction

46.2	47.1	48.4	49.7	49.3	49.7	50.2	50.8	51.4	53.0	53.9	54.6
102	98	75	73	76	72	62	62	55	32	32	23
50	40	24	13	12		16	18	23	29	40	50

46.9	47.7	48.8	49.0	48.67	49.0	49.3	50.2	52.1	53.8	54.2
102	92	82	72	82	78	76	62	48	31	22
50	40	26	13	11		16	21	29	40	50

47.97  
 80°  
 40 26

TP 56<sup>87</sup>

D. Smith  
R. Taylor  
D. Chipman  
C. Stebens

"X" Section Lister St  
(Erie to Frankfort)

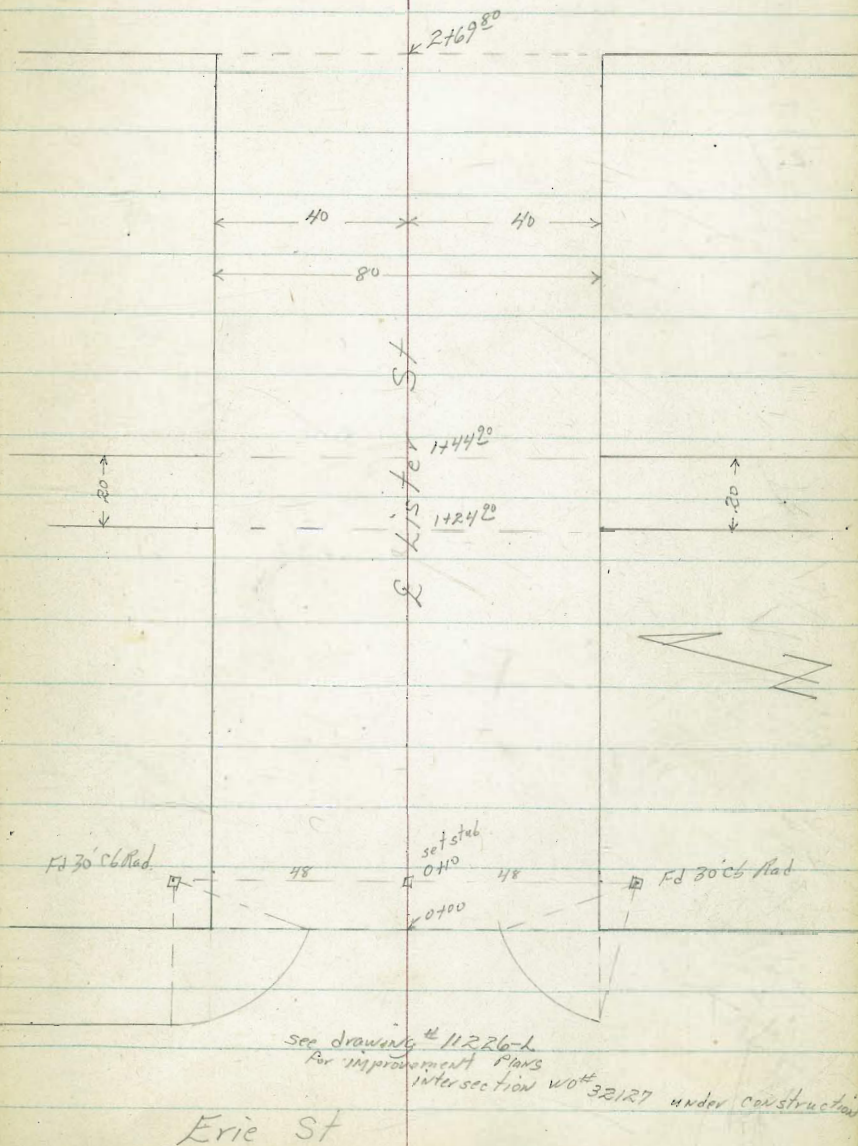
wo# 32453  
6/3/55

INDEXED  
JUN 20 1955

Frankfort St

7x4 chisel Xs on rim SMH  
as per F&S 1502

24



- 1700 (37° Lt & 1" Avocado tree ✓
- 0495 27° Lt & 3" Apricot tree ✓
- 0495 28° Rt & 10" Pepper tree ✓
- 0485 29° Lt Begin rail fence ✓
- 0483 28° Rt & 14" Pepper tree ✓
- 0482 26° Rt Begin 5' high Board fence ✓
- 0475
- 0471 28° Rt & 8" Pepper tree ✓
- 0458 27° Rt & 8" Pepper tree ✓
- 0450
- 0448 26° Lt & 1" tree ✓
- 0446 28° Rt & 10" Pepper tree ✓
- 0433 28° Rt & 15" Pepper tree ✓
- 0425 27° Lt & 5" Pepper tree ✓
- 0421 28° Rt & 12" Pepper tree ✓
- 0414 28° Lt & 2" Pepper tree ✓
- 0410
- 0408 28° Rt & 14" Pepper tree ✓
- 0400 Ely Live Erie St

Lt. Nly  
 65.2 65.0 63.8 63.0 61.8 62.5 62.1 63.0 62.9 61.8 61.5  
 24 26 38 46 54 50 45 46 47 58 61  
 50 40 27 14 11 13 15 27 40 50

60.1 60.2 60.3 60.4 59.5 60.1 59.6 60.3 59.7 59.7  
 75 74 73 72 81 75 80 72 72 72  
 50 40 30 15 13 13 15 40 50

59.3 59.3 59.2 59.0 58.3 57.2 57.9 57.5 58.5 58.2 58.4 58.6  
 83 83 84 85 93 101 97 106 94 94 92 92  
 56 40 30 17 13 12 13 15 25 40 50

57.6 57.3 57.1 56.3 55.3 55.8 55.3 56.3 56.4 56.5 56.9  
 102 103 105 113 123 118 123 113 113 115 112  
 50 40 28 15 13 13 15 25 40 50

56.8 56.5 56.1 55.4 55.3 54.0 54.6 54.0 54.9 55.6 55.1 55.0  
 102 111 115 122 123 136 130 136 122 123 125 126  
 50 40 26 24 14 12 14 16 25 40 50

see drawing # 11226-L for improvement plans  
 of intersection now under construction.

brought ahead from 1923  $\pi$  67.56

Lt = Nly

E

Rt = Sly

26

2107 28<sup>2</sup> Rt E 12" Pepper tree ✓TP<sub>5</sub>12<sup>83</sup> 88 L7138 75<sup>34</sup>

2100

1785 27<sup>2</sup> Lt E 10" Pepper tree ✓1784 28<sup>2</sup> Rt E 8" Pepper tree ✓

1775

1458 28<sup>2</sup> Rt E 14" Pepper tree ✓21<sup>2</sup> Rt E 6" tel pole #505510 H1744<sup>20</sup> Ely Alley line1735<sup>2</sup> E crosses S.M.H. ✓

303 Rt end Nail fence ✓

1724<sup>20</sup> Wly Alley line1723 26<sup>2</sup> Rt end 5' high board fence ✓1409 28<sup>3</sup> Rt E 12" Pepper tree ✓1408 27<sup>5</sup> Lt E 8" Pepper tree ✓TP<sub>4</sub>9<sup>27</sup> 76<sup>72</sup>0<sup>11</sup> 67<sup>25</sup>SPX in 505510 H  
71<sup>24</sup>

76.2	76.5	76.7	75.1	73.6	74.0	73.2	74.0	74.6	74.3	74.5
05	02	00	15	31	23	35	22	21	24	22
50	40	30	15	12	14	15	27	40	50	

71.9	72.0	72.2	71.6	70.4	70.9	70.3	71.2	71.8	71.4	70.7
48	47	45	51	63	58	64	55	49	53	60
50	40	33	16	12	14	15	27	40	50	

68.3	67.9	68.0	67.6	67.0	67.5	66.6	67.1	66.5	65.9	65.2	64.7
84	82	82	91	92	92	101	96	102	108	115	120
90	65	40	20	14	13	15	30	40	65	90	

66.72  
1000  
r/m

67.7	67.2	66.9	66.5	65.8	64.7	65.4	64.6	65.3	65.6	65.4	64.6	64.7
90	95	98	102	108	120	113	122	112	114	113	121	130
90	65	40	29	18	12	13	18	25	40	65	90	

76.72  
71

2490

6,2 4,8 4,3 4,0 3,6 3,3 3,1 2,9  
 2° 3° 4° 5° 4° 4° 4° 5°  
 40 23 16 14 13 17 23 40

2481 203 RT E 8" P P 6 # P 3098

3,5 2,9 2,7 2,6 2,4 2,1 2,1 2,1 2,1  
 42 53 65 76 68 71 61 61 66  
 40 30 15 14 13 15 37 40

2469 2° Wly Frankfort St

2462 202 RT E deadman ✓

2459 283 RT E 14" Pepper tree ✓

2457 242 LT to Sly end 8" con & brick wall (poor) ✓

2454 28° LT to Sly end 4" con block wall (poor) ✓

2452 47° LT to SE cor House

2450

8,0 8,0 7,9 7,7 7,9 7,2 7,9 8,0 7,7 7,6  
 73 75 83 85 93 90 93 82 85 86  
 40 26 23 16 13 13 15 40 50

2447 284 RT E 12" Pepper tree ✓

2446 23° LT E 3' Brick decorative walk & planting

2444 28° LT E 8' Arbor ✓

2435 27° LT E 8" tree ✓

2434 285 RT E 12" Pepper tree ✓

2426 36° LT E 3" Cypress tree ✓

2425

78,7 78,7 77,2 76,2 76,7 76,2 77,5 77,1 76,8  
 95 95 110 120 115 120 102 114 114  
 40 30 14 12 14 15 40 50

2410 27° LT E 12" Pepper tree

2408 46° LT to Sw cor House

88,17

Lt=Nly

Q

RT=Sty

28

4450

95.8	94.0	92.3	89.8	88.5	89.6	81.5	85.8	82.4
0°	13	6 <sup>5</sup>	7°	7 <sup>3</sup>	6 <sup>2</sup>	8 <sup>3</sup>	10°	13 <sup>4</sup>
40	25	14		9	10	17	25	40

4400

95.5	95.2	94.3	90.8	90.8	90.6	91.4	89.6	88.3
0 <sup>3</sup>	0 <sup>6</sup>	1 <sup>5</sup>	5 <sup>0</sup>	5 <sup>0</sup>	5 <sup>2</sup>	4 <sup>1</sup>	6 <sup>2</sup>	7 <sup>5</sup>
40	31	25	17		9	10	25	40

3+49<sup>80</sup> Ely Linn Frankfort St

92.2	91.5	88.8	88.9	88.5	89.0	89.2	88.1
3 <sup>6</sup>	4 <sup>3</sup>	7 <sup>0</sup>	6 <sup>3</sup>	7 <sup>3</sup>	6 <sup>8</sup>	6 <sup>6</sup>	7 <sup>3</sup>
40	25	18		12	13	20	40

3+36 26<sup>3</sup> RT & 12" Pepper tree

TP BM

11.54 95<sup>80</sup>

3<sup>9</sup> 84<sup>26</sup>

Road Spike  
P. 101 & P. 308  
Swiss  
Lister &  
Frankfort

95<sup>80</sup>

3+35 26<sup>3</sup> RT & 14" Pepper tree

86.27	87.8	86.9	87.3	86.9	87.5	87.4	86.6
10 <sup>0</sup>	0 <sup>7</sup>	1 <sup>3</sup>	0 <sup>9</sup>	1 <sup>3</sup>	0 <sup>2</sup>	0 <sup>8</sup>	1 <sup>4</sup>
40	30	15		12	17	30	40

3+30

86.9	85.7	85.62	85.0	85.5	85.8
1 <sup>3</sup>	2 <sup>5</sup>	3 <sup>55</sup>	3 <sup>2</sup>	2 <sup>2</sup>	2 <sup>4</sup>
40	20	rim	13	18	40

3+09<sup>80</sup> E Frankfort St Across SMH.

3+09 26<sup>3</sup> RT & 10" Pepper tree

T 88.17

Note: I ran 11 Disc. Frankfort St  
M. line to Lister so there should  
be a profile on this Sty line

see FB 3344  
59 resert  
x spec. ✓

coordinates next pg

FB 3499

FB 3499  
Rocks  
F3 Cow Man

FB 34504

FB 4291

FB 4425

FB 4245

E Kane

50 50

FB 30 C2 Rd  
P1 Pub

20

type 'C' cur

FB 3066 Rd P1  
Pub

20

FB 3066 Rd P1  
Pub

20

Erie St

see improvement plans  
# 11231-2  
now under construction

E Frankfort St

FB 10100

FB 10100  
H) chise (Xs) on rim 5/4  
as per FB 1502

WO# 32453  
6-10-55

D. Smith  
D. Chismar  
R. Taylor  
C. Stebens



E Lister St

see 1924 12's Book

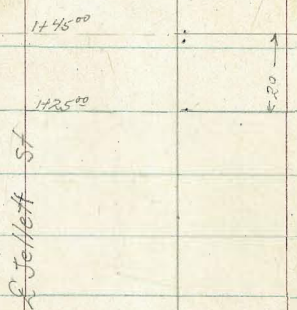
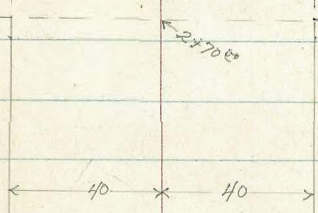
Note: I hope to have all  
paved sts under WO# 32124  
tie painted & beached soon  
BAW

Note: took soil samples at 2 intersections  
1) Frankfort + Kane St.  
2) Galveston + Jelleff St.

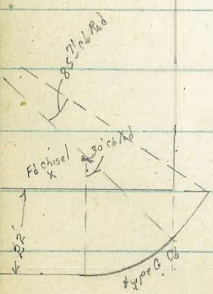




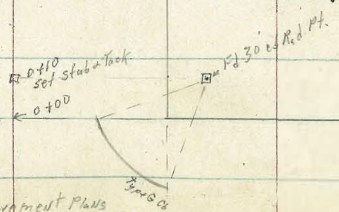
Galveston St



Jellet St



see improvement plans 11227-L NW UNOBY construction



Frankfort St

see FB 2344 for front x sec



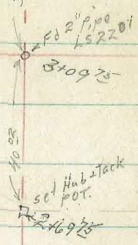
0400



Kane St

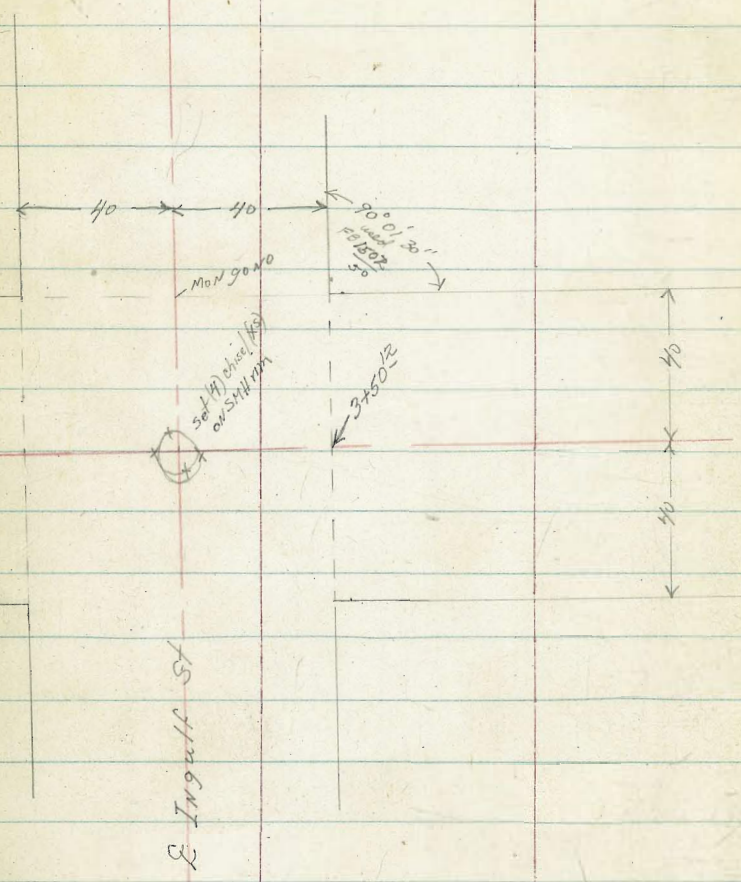
0400

Fd Con Mon see 1929 this Book

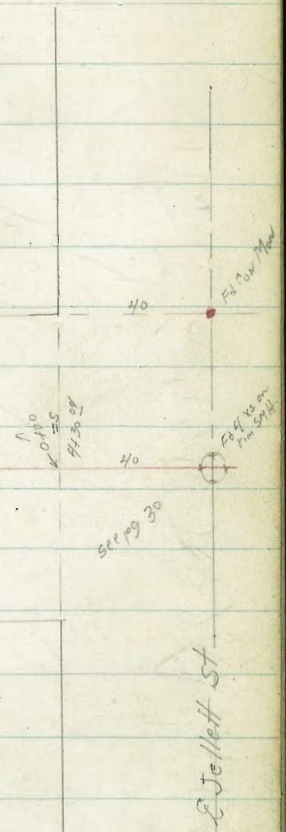


Fd Con Mon 3449.75

Ed Row Man  
& Int Hartford & Ingulf



E Galveston St



E Jellet St

INDEXED

JUN 20 1958

1717 28<sup>4</sup> Lt & dead man

✓ 1700 28<sup>3</sup> Lt & 10" pole #3120

✓ 0499 40<sup>3</sup> Lt & 2<sup>o</sup> con walk

✓ 0475

✓ 0460 38<sup>2</sup> Mt & 19<sup>o</sup> A.C. drive

✓ 0450

✓ 0430 35<sup>2</sup> Mt & 2<sup>o</sup> con + brick walk one step

✓ 0425

✓ 0400 Nly line Lister St

BM

13<sup>00</sup> 9731

8426

INT. 18098  
RR SW cor  
SW cor Lister &  
Frankfort

Lt = Wly

Rt = Fly

32

83.9 84.4 86.3 88.6 93.2 92.8 93.9 95.2 96.1 97.3 98.8 103.3  
 13<sup>2</sup> 12<sup>1</sup> 11<sup>o</sup> 8<sup>2</sup> 4<sup>1</sup> 5<sup>1</sup> 4<sup>5</sup> 3<sup>1</sup> 2<sup>1</sup> 1<sup>2</sup> 0<sup>o</sup> 4<sup>1</sup> 5<sup>o</sup> 4<sup>o</sup>  
 50 41 40 28 8 6 17 18 25 40 41 50

84.49 94.79

12<sup>02</sup> 12<sup>52</sup>  
50<sup>2</sup> 46<sup>2</sup>

84.6 84.8 85.2 90.2 91.4 90.6 91.3 92.7 94.0 94.8 95.7  
 12<sup>2</sup> 12<sup>5</sup> 12<sup>1</sup> 7<sup>1</sup> 5<sup>2</sup> 6<sup>2</sup> 6<sup>o</sup> 4<sup>6</sup> 3<sup>3</sup> 2<sup>5</sup> 1<sup>6</sup>  
 50 40 31 30 8 6 16 23 40 50

94.21 94.34 95.43 97.21

5<sup>20</sup> 2<sup>27</sup> 1<sup>00</sup> 0<sup>0</sup>  
38<sup>2</sup> 40 50 66<sup>2</sup>

84.3 85.0 87.1 90.2 89.3 89.9 91.4 92.0 93.2 94.3 94.9  
 13<sup>o</sup> 12<sup>3</sup> 10<sup>2</sup> 7<sup>1</sup> 8<sup>o</sup> 7<sup>1</sup> 5<sup>2</sup> 5<sup>3</sup> 4<sup>1</sup> 3<sup>o</sup> 2<sup>1</sup>  
 50 40 18 8 6 15 20 34 40 50

92.01 92.70 93.13 94.79  
5<sup>30</sup> 4<sup>6</sup> 4<sup>18</sup> 2<sup>52</sup>  
35<sup>4</sup> 36<sup>2</sup> 40 50

83.3 84.5 85.2 84.4 87.8 88.5 89.4 91.2 91.5 93.2 94.9  
 14<sup>o</sup> 12<sup>8</sup> 12<sup>1</sup> 8<sup>2</sup> 9<sup>5</sup> 8<sup>8</sup> 7<sup>5</sup> 6<sup>6</sup> 5<sup>8</sup> 4<sup>1</sup> 2<sup>4</sup>  
 50 40 35 23 18 5 9 30 40 50

83.0 83.4 87.0 86.7 86.9 86.3 89.8 92.8 94.3  
 14<sup>3</sup> 13<sup>2</sup> 10<sup>3</sup> 11<sup>1</sup> 10<sup>4</sup> 9<sup>o</sup> 7<sup>5</sup> 4<sup>5</sup> 3<sup>o</sup>  
 50 40 10 8 19 33 40 50

8529

9731

Lt-Wly

2

Rt-Ely

33

1775

84.8 85.0 85.2 90.3 93.5 95.0 96.2 96.6 95.8 96.1 94.5 99.5 102.3 107.9

16<sup>1</sup> 15<sup>2</sup> 12<sup>2</sup> 10<sup>6</sup> 7<sup>1</sup> 5<sup>2</sup> 4<sup>2</sup> 5<sup>3</sup> 5<sup>1</sup> 4<sup>2</sup> 2<sup>1</sup> 1<sup>4</sup> 1<sup>1</sup> 1<sup>7</sup>

50 41 40 27 22 17 6 4 20 23 36 40 50

1765 27<sup>2</sup> Rt & 3" Seyamori tree

1754 42<sup>1</sup> Rt & 6<sup>8</sup> con ribbed drive 2<sup>2</sup> ea

✓

1750

84.5 84.9 87.6 93.2 93.8 95.3 94.9 95.2 96.0 97.5 99.9 99.25 100.53

16<sup>1</sup> 16<sup>2</sup> 13<sup>3</sup> 7<sup>1</sup> 7<sup>1</sup> 5<sup>6</sup> 6<sup>2</sup> 5<sup>2</sup> 4<sup>2</sup> 3<sup>1</sup> 2<sup>2</sup> 0<sup>8</sup>

50 41 40 31 15 6 5 19 34 40 50

16<sup>1</sup> 12<sup>2</sup> 0<sup>7</sup>

4<sup>1</sup> 4<sup>2</sup> 5<sup>2</sup>

1747 41<sup>1</sup> Rt & 8<sup>5</sup> con drive

✓

1740

5<sup>1</sup>

100<sup>2</sup>

188

95<sup>1</sup>

1742 42<sup>3</sup> Rt & 3<sup>2</sup> con walk

✓

1737 42<sup>5</sup> Rt & 3<sup>2</sup> con stops

✓

1725

84.2 84.4 87.4 89.1 92.1 94.3 95.8 94.1 94.9 97.4 99.2 100.53 101.8 103.3 103.5

13<sup>1</sup> 12<sup>2</sup> 8<sup>2</sup> 5<sup>2</sup> 3<sup>2</sup> 3<sup>5</sup> 3<sup>2</sup> 2<sup>1</sup> 1<sup>1</sup> 1<sup>1</sup> 1<sup>1</sup> 1<sup>1</sup> 1<sup>1</sup> 1<sup>1</sup> 1<sup>1</sup>

50 40 28 20 7 4 17 22 38 40 42 50

13<sup>2</sup> 12<sup>2</sup> 12<sup>2</sup> 12<sup>2</sup> 12<sup>2</sup> 12<sup>2</sup> 12<sup>2</sup> 12<sup>2</sup> 12<sup>2</sup> 12<sup>2</sup> 12<sup>2</sup> 12<sup>2</sup> 12<sup>2</sup> 12<sup>2</sup> 12<sup>2</sup>

52<sup>2</sup> 42<sup>2</sup>

π 97<sup>3</sup>

3450<sup>04</sup> Sly Kane St.

✓ 3440 24° RT & 6" Fire Hyd

3425

3400

TR BM

2" 9939

364

9728

top Fire Hyd  
SK Col Kane  
Frankfort

2476 40° LT & 24" Cypress tree

2475

✓ 29° LT & 8" Pepper tree

2450 26° LT & 10" P. P. # 3148

2425

✓ 2413 31° LT & 12" clump of Pepper trees

< 2400

LT-Wly  
86.7 88.3 90.3 93.6 93.1 93.4 94.5 95.1 97.6 98.6 99.6  
122 111 91 58 63 60 42 43 18 08 +02  
50 40 25 6 5 21 23 33 40 50

84.7 87.4 89.5 94.1 93.4 93.6 94.4 95.2 95.7 96.9 98.5 99.6  
142 120 92 53 60 58 50 42 32 25 02 +02  
50 40 25 7 5 21 23 29 31 40 50

85.2 87.4 90.4 94.1 94.2 94.4 93.9 94.5 95.3 96.4 98.8 100.4  
142 120 90 53 52 60 55 49 46 30 06 +10  
50 40 20 8 5 4 21 23 32 40 50

9939  
84.8 87.1 89.9 94.2 94.1 94.7 95.4 97.6 99.1 99.2 105.1  
11 16 13 11 62 70 68 63 55 33 18 12 +42  
50 40 24 5 4 20 27 32 36 40 60

84.7 86.9 88.5 94.5 94.4 94.4 95.2 95.7 97.4 98.8 99.2 105.4  
168 140 124 64 62 65 52 52 35 21 12 +45  
50 40 30 6 4 20 22 32 36 40 50

85.0 86.9 90.9 95.2 94.8 94.9 95.9 96.5 97.6 97.7 98.8 99.3 100.5 102.3  
152 140 100 52 60 60 50 44 41 32 21 16 +36 +84  
50 40 17 5 4 20 28 28 33 35 40 50 60

84.8 85.4 87.3 87.6 94.7 94.4 95.6 96.7 97.9 99.1 100.9 105.0  
16 15 13 76 83 63 50 55 53 42 20 12 00 +41  
50 41 40 28 21 14 5 4 20 30 38 40 50

10022

④ X Sec Kane St  
Erie to Galveston

0+77 37° Lt & 15" Pepper tree ✓

0+75

INDEXED

JUN 20 1955  
0+51 48° Rt & 12" con drive ✓

0+50 38° Lt & 10" tree ✓

0+50

0+25 38° Lt & 30" Pepper tree ✓

0+24 37° Rt & 24" Pepper tree ✓

0+20 34° Rt & 3" con walk ✓

0+16 47° Lt & 3" con walk ✓

0+10

0+00 48° Rt Begin 3<sup>rd</sup> Mickel Lane ✓

0+00 see improvement Plans 11231-L  
intersec<sup>n</sup> from under construction at this time

TP, BM.

1107

6962

272

58

SEBP  
Kawer  
Erie  
(New)

BM

967

6127

5160

NWBP  
Erie + Lister  
(New)  
1923

X 6962

Lt = Nly

Rt = Sly

35

67.7 66.8 66.0 66.0 65.7 65.4 65.6 66.1 66.2 66.5 66.6  
19 28 36 35 42 42 38 42 35 34 30 30  
60 50 32 18 13 10 17 20 35 48 50

66.47 66.86  
35 276  
482 542  
64.6 64.8 64.2 64.6 64.4 64.1 63.4 62.6 62.4 63.5 63.5 63.5 63.6  
52 48 54 50 58 55 62 60 62 61 62 61 62  
80 50 48 38 31 16 14 15 19 32 50 60

63.5 62.9 62.9 62.9 62.5 62.2 61.5 61.4 61.4 61.0 61.9 62.0  
61 67 72 62 72 72 74 81 82 72 82 85 72 76  
60 50 47 43 23 17 12 8 16 20 32 50 53

62.87 62.22 62.03  
675 740 759  
60 50 478

60.74 61.80  
888 782  
342 50

62.2 62.0 61.4 60.6 61.4 59.5 59.6 59.2 60.2 59.2 59.6 59.5  
74 76 82 90 82 102 102 104 94 102 102 102  
60 50 38 30 16 15 17 19 32 50 60

37<sup>5</sup> LT & 6" tree ✓  
1498 37<sup>5</sup> RT & 10" tree ✓

1475

{ 362 LT & 10" Pepper tree ✓  
1473 { 379 RT & 10" Pepper tree ✓

1446 22<sup>8</sup> RT & 8" tel Pole # 484131H ✓

1444<sup>25</sup> Fly Line Alley

1435<sup>5</sup> 0<sup>4</sup> RT & SMH

38<sup>0</sup> RT & 16" Pepper tree ✓  
1426 37<sup>5</sup> LT & 24" Pepper tree ✓

{ 48<sup>5</sup> RT end 35" Pocket Fence ✓  
1424<sup>25</sup> { wly Alley Line

1417 22<sup>2</sup> RT & 6" Anchor Pole 630 995H ✓

1400 38<sup>0</sup> RT & 15" tree ✓

TP<sub>2</sub> 11<sup>10</sup> 80<sup>63</sup> 0<sup>37</sup> 69<sup>23</sup>

0496 22<sup>8</sup> RT & deadman ✓

0481 6<sup>2</sup> LT & double garage w/ floor only

Lt-Nly & RT-Sly 36

19.2 19.3 19.5 19.1 19.4 19.6 19.0 19.0 19.2 19.1 19.6 19.6  
12 13 14 25 32 48 40 36 36 44 35 22 30 30  
60 50 37 30 23 17 15 10 17 19 40 50 60

74.3 74.0 73.7 73.6 73.4 73.2 73.8 73.1 73.2 73.3 73.8  
63 66 69 70 72 74 68 75 74 73 78 82  
100 75 50 30 19 16 16 30 50 75 100

72.96  
767  
nm

72.43 72.1 72.3 72.6 72.4 72.5 72.8 72.5 72.6 72.3 72.6 72.8  
82 85 83 78 92 90 102 98 94 102 93 93 92 90 88  
100 75 50 40 32 20 16 13 16 19 35 50 75 100

68.6 68.4 68.6 68.2 68.4 68.2 68.0 68.4 68.5 68.9 68.8 68.6 68.6 68.3  
120 112 110 114 118 124 136 122 122 122 118 122 120 123  
60 50 45 32 19 17 14 11 16 18 32 50 60

7 80<sup>63</sup>  
68.44  
118  
642  
Floor  
7 69<sup>62</sup>

3409<sup>21</sup> & Frankfort St

2489<sup>21</sup>

TP<sub>4</sub> BM

11<sup>26</sup> 104<sup>24</sup>

0<sup>07</sup>

92<sup>98</sup>

& INT Mon  
Kane, Frankfort

π 10424

2483 41<sup>8</sup> N1E 10" 196 #3198

37<sup>5</sup> N1E 6" Pepper tree ✓

2469<sup>21</sup> Wly Frankfort St

37<sup>5</sup> N1E 10" Pepper tree ✓

2450

2449 37<sup>5</sup> N1E 8" tree ✓

2445 38<sup>5</sup> N1E 12" tree ✓

2425

2424 37<sup>5</sup> N1E 8" Pepper tree ✓

2400

TP<sub>3</sub>

12<sup>20</sup>

93<sup>05</sup>

0<sup>28</sup>

80<sup>35</sup>

Lt. Nly

& RT-Sly

37

94.2 93.6 93.1 93.4 92.9 93.3  
10° 106 11 105 11 102  
50 30 16 25 50

92.4 91.9 91.1 89.7 90.3 90.8 90.6 89.4 90.9 90.6 90.7  
11 12 13 14 13 13 13 14 13 13 13  
50 37 24 18 15 16 19 21 30 50

88.9 88.7 80.6 80.6 84.4 84.3 81.9 84.4 88.7 85.5 81.1 85.7 88.4  
42 44 25 25 43 46 5 47 44 46 6 45 44 42  
50 45 42 37 31 23 18 16 9 18 20 40 50

87.1 86.8 86.9 86.1 86.2 86.9 86.1 86.6 86.1 85.5  
6 6 6 7 6 7 8 7 6 7 7  
60 50 25 17 9 18 20 40 50 60

86.7 86.6 86.3 83.4 83.7 82.4 82.7 83.1 83.1 82.6 83.0 83.0  
6 6 6 9 9 10 10 10 10 10 10 10  
60 50 38 32 22 17 15 7 15 35 50 60

86.4 86.2 86.2 81.3 80.1 79.6 80.1 80.1 79.9 79.3 80.1 80.1 80.4  
62 68 68 11 12 13 13 13 13 13 12 12  
60 50 43 32 22 17 10 8 17 20 35 50

π 9305



1708 51<sup>5</sup> RT & 30 con walk

113<sup>21</sup> 114<sup>36</sup>  
51<sup>5</sup> 61<sup>5</sup>  
WIK

1702 37<sup>5</sup> RT & 6" tree ✓

1700 36<sup>2</sup> LT & 10" tree ✓

0785 49<sup>2</sup> LT Fly edge con drive →

106<sup>65</sup> 106<sup>68</sup>  
49<sup>2</sup> 77<sup>6</sup>  
april floor

0777 55<sup>3</sup> RT Fly edge con drive  
37<sup>2</sup> LT & 12" Pepper tree ✓

110<sup>10</sup> 110<sup>21</sup>  
55<sup>3</sup> 65<sup>9</sup>  
april floor

0775 38<sup>3</sup> RT & 10" Pepper tree ✓

0767 50<sup>2</sup> LT Wly edge con drive →

106<sup>33</sup> 106<sup>65</sup>  
50<sup>2</sup> 77<sup>6</sup>  
Floor

0760 55<sup>3</sup> RT Wly edge con drive →

0753 38<sup>3</sup> RT & 6" tree ✓

55<sup>3</sup> 65<sup>9</sup>  
april floor

0750 38<sup>6</sup> LT & 8" tree ✓

TP5 12<sup>03</sup> 115<sup>29</sup> 0<sup>48</sup> 103<sup>76</sup>

0725 { 38<sup>0</sup> LT & 12" Pepper tree ✓  
38<sup>2</sup> RT & 6" Pepper tree ✓

0704 23<sup>3</sup> RT & 6" tel pole #484132H

0700 { 37<sup>6</sup> LT & 6" Tree ✓  
Fly Line Frankfort St

3749<sup>2</sup> { 37<sup>8</sup> RT & 10" Tree ✓

3729<sup>2</sup>

BM pg 34

6<sup>22</sup> 97<sup>21</sup>

VSE 10/10/44  
Kauw Frankfort  
97<sup>25</sup> pg 34

LT = Wly & RT = Sly 38

112.0 111.5 111.4 109.9 110.5 109.8 109.6 110.0 109.6 110.0 110.1 111.7 111.7 112.9  
3<sup>8</sup> 4<sup>3</sup> 4<sup>2</sup> 5<sup>2</sup> 5<sup>3</sup> 7<sup>0</sup> 6<sup>2</sup> 5<sup>8</sup> 6<sup>3</sup> 5<sup>8</sup> 5<sup>7</sup> 4<sup>1</sup> 4<sup>1</sup> 2<sup>2</sup>  
60 50 36 26 18 10 7 20 22 31 40 50 60

107.4 107.5 108.3 107.1 107.6 106.2 106.7 107.2 106.8 107.5 108.7 109.2  
8<sup>0</sup> 8<sup>3</sup> 7<sup>5</sup> 8<sup>2</sup> 8<sup>2</sup> 9<sup>8</sup> 9<sup>1</sup> 8<sup>6</sup> 9<sup>0</sup> 8<sup>3</sup> 7<sup>4</sup> 6<sup>6</sup>  
60 50 39 25 18 13 10 20 30 50 60

104.3 104.4 104.6 103.8 104.4 103.2 103.4 103.9 103.2 104.1 103.8 104.4 104.5 104.9  
11<sup>5</sup> 11<sup>4</sup> 11<sup>2</sup> 12<sup>0</sup> 11<sup>4</sup> 12<sup>0</sup> 12<sup>0</sup> 11<sup>2</sup> 12<sup>6</sup> 11<sup>2</sup> 12<sup>0</sup> 11<sup>4</sup> 11<sup>3</sup> 11<sup>0</sup>  
60 50 38 28 19 12 9 20 22 30 38 45 50 60

115<sup>29</sup>

101.9 102.0 102.0 100.4 101.2 99.9 100.5 100.6 100.4 101.0 100.6 101.0 101.0 101.0  
2<sup>3</sup> 2<sup>2</sup> 2<sup>2</sup> 3<sup>1</sup> 3<sup>0</sup> 4<sup>3</sup> 3<sup>1</sup> 3<sup>6</sup> 3<sup>1</sup> 4<sup>2</sup> 3<sup>2</sup> 3<sup>6</sup> 2<sup>6</sup> 2<sup>2</sup> 2<sup>2</sup> 2<sup>6</sup>  
60 50 34 29 18 13 8 4 20 21 30 40 44 50 60

95.8 99.2 98.3 98.2 97.2 97.8 97.9 97.7 97.1 97.9 97.9 97.2  
5<sup>4</sup> 5<sup>2</sup> 5<sup>9</sup> 6<sup>0</sup> 7<sup>2</sup> 6<sup>4</sup> 6<sup>3</sup> 6<sup>5</sup> 7<sup>4</sup> 6<sup>3</sup> 6<sup>3</sup> 6<sup>0</sup>  
50 30 28 19 13 7 9 18 21 35 50

95.1 95.1 95.3 95.6 95.5 94.8 94.5 94.4  
9 9 8 8 8 9 9 9 9  
50 35 15 12 22 40 50

104<sup>24</sup>

2125

2119 37° Lt & 10" Pepper tree ✓

2109 43° Rt & 18" con drive ✓

2100 41° Rt end 2' high hedge ✓

1775

1770 35° Lt & 12" Pepper tree ✓

1768 28° Rt & 3' con walk ✓

{ 40° Rt basin 2' high hedge -  
372 Rt & 12" tree ✓

1744<sup>87</sup> Fly Alley line ✓  
37° Lt & 8" tree ✓

1744 50° Rt & 3' con walk ✓

1743 23° Rt & 6" tal Pole 484/33H ✓

TP<sub>6</sub> 11<sup>39</sup> 126<sup>14</sup> 10<sup>2</sup> 114<sup>37</sup>

1727 38° Rt & 8" Pepper tree ✓

1724<sup>87</sup> Fly Alley line

{ 38° Lt & 12" Pepper tree ✓

Lt-Nly  
 123, 227, 122, 121, 9, 121, 0, 119, 3, 120, 2, 119, 5, 119, 6, 118, 5, 118, 4, 118, 3, 39  
 22 34 42 52 68 52 66 65 76 72 78  
 60 50 37 24 20 15 30 40 50 60

118, 71, 118, 76, 118, 92  
 743 738 722  
 435 50 633  
 122, 5, 121, 4, 118, 4, 118, 3, 117, 6, 118, 1, 118, 3, 118, 1, 118, 5, 118, 5, 118, 4, 39  
 36 43 73 68 85 80 78 80 76 76 76 72  
 60 50 28 18 11 12 20 26 40 50 60

122, 3, 120, 9, 119, 8, 117, 4, 116, 1, 115, 8, 116, 3, 116, 5, 116, 1, 117, 0, 117, 7, 118, 0, 118, 1  
 38 52 63 82 90 103 98 96 100 91 84 81 80  
 60 50 40 27 17 10 11 20 26 40 50 60

116, 91, 117, 89, 117, 2  
 923 825 794  
 288 50 576  
 124, 5, 121, 4, 117, 9, 116, 9, 115, 3, 115, 2, 113, 3, 113, 9, 114, 2, 113, 5, 116, 9, 115, 6, 115, 9, 115, 9  
 16 43 82 93 103 102 128 123 112 126 114 105 92 90 82  
 100 75 50 38 31 20 10 10 20 22 29 40 50 75 100

117, 36, 117, 72  
 878 842  
 50 60

π 126, 14  
 120, 2, 118, 3, 115, 9, 114, 6, 113, 4, 112, 4, 112, 7, 112, 0, 113, 1, 112, 8, 114, 9, 117, 7, 117, 7  
 74 72 50 12 22 24 44 32 34 38 22 30 12 0 72 115  
 100 75 50 34 26 19 11 11 20 25 33 40 50 75 100

π 115, 79

3+49<sup>75</sup> Ely Line Galveston St

3+29<sup>75</sup>

3+26 { 15° At to E 4 water meters ✓  
5° At to E 3 water meters ✓

3+09<sup>75</sup> ♀ Galveston St

2+89<sup>75</sup>

2+83 50° At to E 12" PPole # 3198 ✓

2+69<sup>75</sup> Wly Prop Galveston

TP7 BM 5<sup>64</sup> 126<sup>76</sup> 5<sup>02</sup> 121<sup>12</sup> 2+69<sup>75</sup> Pot. Hub Wly Prop Galveston St E Kane St

2+64 22° At to E 6" to 1 Pole # 184134A ✓

2+50

Lt = Nly

♀

At = Sly

40

115.4  
114.4  
113.7  
111.2  
108.5  
106.0  
104.0  
101.3  
114 124 134 156 183 208 228 255  
50 40 20 20 30 50 75

118.6  
117.6  
116.4  
114.9  
112.8  
112.3  
109.6  
108.3  
104.8  
82 92 104 112 140 145 173 185 220  
50 40 20 10 25 40 50 75

121.9  
121.1  
119.4  
117.2  
115.3  
113.6  
112.2  
108.5  
48 52 74 96 115 132 146 183  
50 40 20 20 35 50 75

123.8  
122.3  
120.8  
119.2  
117.2  
115.4  
114.0  
110.5  
30 44 60 76 96 114 128 163  
50 30 15 20 35 50 75

124.3  
123.1  
122.4  
121.6  
121.0  
120.3  
119.1  
118.9  
117.6  
117.7  
25 31 44 52 58 65 72 78 92 94  
50 30 20 12 15 30 40 50 75

123.5  
122.9  
122.0  
121.6  
120.6  
119.9  
118.6  
118.3  
26 32 44 45 55 62 75 76 118.3  
60 50 25 25 41 50 60

126<sup>14</sup>

③

"X" Sec Galveston St.  
Kane to Ingulf

1425 382 AT&E 1" Eugenia tree ✓

1400

0499 396 L&E 15<sup>3</sup> condrive ✓

0475

TP7

123<sup>20</sup> 138<sup>66</sup>

0<sup>30</sup>

126<sup>46</sup>

0260 1124  
(Rock)

0450

0425

0400 Nly Linc Kane St

Lt = Wly

♀

At = Ely

41

131.7	131.5	131.0	130.7	130.5	130.5	130.5	129.2	128.6	128.0	
75	72	72	85	82	82	82	105	13L	132	154
50	40	22	19	7		7	20	36	40	50

129.6	129.6	129.5	129.0	128.9	128.6	128.7	125.7	122.9	121.3
9L	9L	92	92	98	10L	100	130	158	17L
50	40	32	30	9		4	20	40	50

128.2	128.3	127.6	128.0	126.8	126.6	126.6	123.7	121.9	121.4	119.6
105	10L	11L	102	112	12L	12L	152	168	173	19L
50	40	38	15	10		5	20	38	40	50

π 138<sup>66</sup>

127.1	126.3	126.5	126.5	127.3	126.3	125.3	125.1	125.2	122.5	122.0	118.6	116.7
403	05	03	03	705	04	15	12	15	43	48	82	10L
50	47	40	26	25	13	10		4	15	20	40	50

124.9	125.3	125.3	125.9	125.5	124.8	123.6	123.5	122.4	120.3	116.5	114.9	
12	16	15	02	13	20	32	32	33	44	65	103	112
50	40	35	33	25	13	11		3	8	20	40	50

124.3	124.3	123.4	122.3	121.9	121.9	120.5	118.4	115.2	113.3
25	25	32	45	49	42	63	84	116	135
40	25	12	10		3	8	20	40	50

π 126<sup>76</sup>

2+68 35° RT & 2" Umbrella tree ✓  
 2+68 39° RT Begin 3<sup>s</sup> rail fence ✓  
 2+60 39° RT & 8° con drive ✓

2+50

2+42 39° LT & 14° con drive

2+25

2+00

1+85 38° RT & 1" Geranium Bush

1+75

1+59 39° LT & 16° con drive

1+50 37° RT & 1" Oleander Bush

1+49 28° LT & 9° P.P.R. #2425 ✓

1+30 38° RT & 1" Eugenia tree

1+28 27° LT & deadman ✓

129<sup>21</sup> 130<sup>14</sup> 131<sup>92</sup>  
 57 50 39<sup>2</sup>  
 8°K drive

132<sup>88</sup> 132<sup>82</sup> 132<sup>69</sup>  
 60° 50 39<sup>4</sup>  
 floor drive drive

Lt-Wly

2

Rt-Ely

42

131.4 132.0 132.9 133.4 133.4 133.8 134.0 133.9 133.2 133.71 133.52  
 73 67 58 42 53 42 43 48 55 52  
 50 40 24 13 12 12 27 40 50

132.3 132.7 132.7 133.6 134.0 133.4 133.5 133.7 132.6 131.6 130.4  
 64 60 60 51 42 53 52 50 60 71 83  
 50 40 35 16 13 11 14 30 40 50

133.2 133.8 133.2 133.8 133.0 133.1 133.2 132.1 130.7 129.6  
 55 42 55 42 52 56 55 66 80 91  
 50 40 30 11 10 11 25 40 50

133.0 133.3 133.1 133.3 132.4 132.1 132.7 131.0 130.1 129.4 128.0  
 52 54 56 54 63 60 60 72 86 93 96 102  
 50 40 25 12 11 14 25 33 35 40 50

132.7 132.8 132.7 132.6 131.4 132.1 132.0 129.1 128.1 127.7 126.5  
 60 52 60 61 73 66 62 96 106 110 123  
 50 40 30 14 13 12 30 35 40 50

13066

Lt-Wly

2

Rt-Ely

43

3+90<sup>04</sup> 2 Jelleff 2SMH

133.5	135.2	137.0	137.74	138.1	140.3	141.7	142.1
10 <sup>6</sup>	8 <sup>9</sup>	7 <sup>1</sup>	6 <sup>39</sup>	6 <sup>0</sup>	3 <sup>8</sup>	2 <sup>4</sup>	2 <sup>0</sup>
40	25	10	14	15	26	40	30

3+70

132.7	134.5	136.1	136.8	137.4	139.4	140.8	141.4
11 <sup>1</sup>	9 <sup>6</sup>	8 <sup>0</sup>	7 <sup>3</sup>	6 <sup>7</sup>	4 <sup>2</sup>	3 <sup>3</sup>	2 <sup>2</sup>
40	25	11		13	24	40	30

3+62 28° Lt & 10" Pole #4361 ✓

131.6	132.9	134.7	135.5	136.0	136.6	137.6	139.0	139.9	140.7
12 <sup>5</sup>	11 <sup>8</sup>	9 <sup>4</sup>	8 <sup>5</sup>	8 <sup>1</sup>	7 <sup>5</sup>	6 <sup>5</sup>	5 <sup>1</sup>	4 <sup>2</sup>	3 <sup>4</sup>
40	30	20	10		13	15	27	40	50

3+50<sup>04</sup> sly line Jelleff

3+40<sup>05</sup> 24° Rt & 6" Fire Hyd ✓

129.5	131.1	132.9	134.4	135.3	135.7	137.0	137.8	137.9	139.4
14 <sup>6</sup>	13 <sup>0</sup>	11 <sup>2</sup>	9 <sup>2</sup>	8 <sup>8</sup>	8 <sup>4</sup>	7 <sup>1</sup>	6 <sup>3</sup>	5 <sup>2</sup>	4 <sup>2</sup>
50	40	25	17		13	14	25	40	50

3+25

TP<sub>8</sub>

9<sup>13</sup>

144<sup>13</sup>

3<sup>66</sup>

135<sup>00</sup>

T 144<sup>13</sup>

3+00

129.5	130.7	131.9	133.9	134.7	135.2	136.1	136.8	136.8	137.3
9 <sup>2</sup>	8 <sup>0</sup>	6 <sup>8</sup>	4 <sup>8</sup>	4 <sup>0</sup>	3 <sup>5</sup>	2 <sup>6</sup>	1 <sup>2</sup>	1 <sup>2</sup>	1 <sup>4</sup>
50	40	30	15		12	14	30	40	50

2+99 38° Rt end 3<sup>5</sup> rail fence ✓

2+89 39° Rt & 3° con walk ✓

136.34	136.59
2 <sup>32</sup>	2 <sup>07</sup>
39 <sup>2</sup>	50

2+75

130.1	131.0	132.6	133.5	134.2	134.5	134.7	135.4	135.7	136.1
8 <sup>6</sup>	7 <sup>5</sup>	6 <sup>1</sup>	5 <sup>2</sup>	4 <sup>5</sup>	4 <sup>2</sup>	4 <sup>0</sup>	3 <sup>3</sup>	3 <sup>0</sup>	2 <sup>6</sup>
50	40	21	13		16	17	30	40	50

T 138<sup>66</sup>



2409 39<sup>2</sup> LT & 8<sup>0</sup> con drive ✓

Lt = Wk  
147.73  
147.6  
147.63  
461 468 472  
65 50 39<sup>2</sup>  
Floor  
RT = Ely 95

2400

147.6  
147.6  
147.7  
146.6  
144.5  
143.5  
143.4  
143.4  
143.7  
143.7  
143.7  
143.7  
146.1  
145.8  
42 42 46 52 78 88 82 82 82 86 86 56 65  
50 40 30 23 15 11 13 25 30 40 50

146.23  
146.27

64 607  
515 776

1780 41<sup>6</sup> LT & 4<sup>0</sup> con walk ✓

146.2  
146.2  
146.0  
143.7  
142.9  
142.7  
142.7  
143.0  
143.1  
145.5  
144.4  
61 61 63 86 94 96 96 93 92 68 72  
50 40 19 15 11 13 28 30 40 50

1775

1750

145.3  
145.7  
145.8  
142.9  
142.2  
142.1  
142.1  
142.6  
143.0  
143.5  
143.4  
70 66 65 94 104 102 102 92 93 88 85 102  
50 40 23 16 12 20 30 32 40 45 50

143.38  
143.45  
143.87

898 889 842  
350 50 45  
Floor

1735 40<sup>0</sup> LT & 16<sup>0</sup> con drive ✓

142.1  
143.3  
143.9  
142.7  
141.6  
141.5  
141.5  
141.9  
142.3  
141.8  
102 90 84 96 102 102 102 102 102 105  
50 40 30 20 12 15 30 40 50

TP, BM

11<sup>52</sup>

152<sup>34</sup>

3<sup>31</sup>

140<sup>82</sup>

Con Mon  
& Jellott  
Fly line  
Galston

152<sup>34</sup>

1712 29<sup>5</sup> LT & 2" Pepper tree ✓

139.3  
139.9  
141.2  
141.4  
141.1  
140.8  
141.3  
141.6  
141.6  
141.9  
48 48 22 22 30 33 28 25 25 25 28  
50 40 23 15 11 24 25 40 50

1400

144<sup>13</sup>



3+41 19° RT & L "Fire Hyd" ✓

3+40 28° LT & R deadman

3+25 41° RT & 20° con drive ✓ 148<sup>38</sup> 148<sup>52</sup>  
41<sup>2</sup> 51<sup>3</sup>  
drive

3+09 40° LT & 8° con drive ✓

3+00

TP<sub>10</sub> 10<sup>27</sup> 158<sup>32</sup> 42<sup>9</sup> 147<sup>35</sup>

2+97 41° RT & 20° con drive ✓ 147<sup>56</sup> 147<sup>23</sup>  
41<sup>4</sup> 51<sup>2</sup>  
drive

2+95

2+55

2+54 41° RT & 18° con drive ✓ 146<sup>55</sup> 146<sup>96</sup>  
41<sup>1</sup> 51<sup>0</sup>  
drive

2+50

2+25

Lt=Wly

E

RT=Fly

46

153.5 153.5 153.5 150.8 147.5 147.5 147.5 148.2 147.5 147.1  
 48 48 48 75 62 62 102 102 102 112  
 50 40 38 25 12 15 28 40 50

151.54 151.51 150.90  
 678 681 742  
 552 502 402  
 Floor

151.3 150.9 148.4 146.8 146.7 146.7 147.1 148.8 148.2 146.9  
 70 75 92 112 116 116 112 95 102 112  
 50 40 20 12 15 30 38 40 50

π 158<sup>32</sup>

155.3 156.3 156.3 148.1 146.7 146.5 146.5 147.1 148.1 148.5 147.1  
 432 442 442 48 56 58 58 52 42 38 52  
 50 40 28 15 12 14 30 37 40 50

151.3 152.8 155.4 154.6 146.6 145.3 145.1 145.1 145.8 148.7 147.3  
 12 40 32 42 52 70 72 72 65 36 52  
 50 40 30 26 15 11 15 30 40 50

147.5 147.6 147.6 145.3 145.0 145.0 145.6 148.8 147.3  
 48 42 42 70 73 73 62 35 52  
 50 40 20 11 15 30 40 50

147.4 147.4 147.4 147.0 144.3 144.1 144.1 144.7 148.1 146.9  
 42 42 42 53 80 82 82 76 42 54  
 50 40 30 22 11 15 29 40 50

π 152<sup>34</sup>

Lt=Wly

Rt=Ely

47

TP<sub>12</sub> BM

646

140<sup>81</sup>

2 Nov Jettett St  
 Ely Galveston  
 19 45  
 140<sup>82</sup>

TP<sub>11</sub>

141

147<sup>27</sup>

1296

145<sup>86</sup>4430<sup>12</sup> Wly Line Inguilt

151.4 151.8 151.8 150.6 150.6 151.8 149.8 149.7 149.7  
 65 65 65 72 72 72 65 85 86 86  
 50 40 21 13 17 32 37 40 50

4410

149.9 150.2 150.2 150.3 150.2 150.0 150.7 148.9 149.1  
 84 84 84 80 81 83 75 94 92  
 50 40 30 13 17 32 40 50

3490<sup>12</sup> 04A+E SMH ✓ E Inguilt St

151.5 152.3 153.3 153.1 150.3 149.7 149.62 149.6 150.2 148.6 148.1 148.5  
 68 60 50 53 80 86 820 82 81 92 102 98  
 50 40 31 22 17 14 11 17 32 38 40 50

3470

153.1 153.5 153.8 153.3 149.6 149.3 149.3 149.0 149.1 149.8 147.8 145.1  
 58 48 45 50 82 91 91 93 92 85 105 102  
 50 40 33 22 17 14 15 30 32 40 50

3462 50° Lt E 8° tel Pole #447062H

3462 31° Lt E dead man ✓

3461 29° Lt E 8° tel Pole #484180H

153.9 154.1 153.8 149.3 148.4 148.4 148.3 148.8 148.9 147.4 147.4  
 44 48 45 90 92 99 100 95 94 102 102  
 50 40 36 18 14 16 27 31 40 50

3450<sup>12</sup> Sly Prop Inguilt St ✓

158<sup>32</sup>

⑥

X Sec Jellet St.  
Frankfort to Galveston

0+75

0+61 46' Lt & double garage on floor

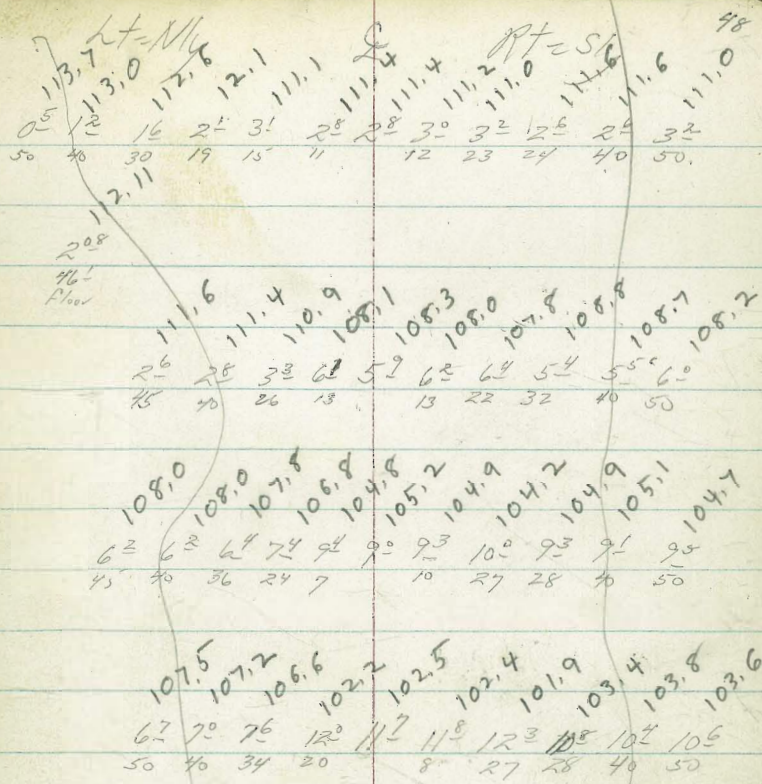
0+50

0+25

0+10

0+00 see improvement plan #11227-L  
for intersection now under const

TP <sub>5</sub>	13 <sup>13</sup>	114 <sup>19</sup>	2 <sup>25</sup>	101 <sup>06</sup>	SE End of
BM			7 <sup>47</sup>	95 <sup>84</sup>	NW B.P. Jellet Frankfort
BM (double road)			7 <sup>89</sup>	95 <sup>42</sup>	SW B.P. Frankfort & Jellet
TP <sub>3</sub>	12 <sup>39</sup>	103 <sup>31</sup>	0 <sup>31</sup>	90 <sup>42</sup>	
TP <sub>2</sub>	12 <sup>51</sup>	90 <sup>23</sup>	0 <sup>02</sup>	78 <sup>19</sup>	
TP, BM	13 <sup>39</sup>	78 <sup>21</sup>	3 <sup>46</sup>	64 <sup>87</sup>	SW B.P. Jellet & Eric
BM pg 35	9 <sup>28</sup>	68 <sup>33</sup>		58 <sup>55</sup>	S.F. B.P. Eric & Kane St.



114<sup>19</sup>

1475

TP7

1163

136<sup>86</sup>

027

125<sup>23</sup>

1460 39° Lt & 8° on drive

1445<sup>00</sup> 262 Lt & 24" Eucalyptus tree  
Fly Alley line

1441 28° Rt & dead man

14342 & SMH

1426 { 392 Lt & dead man  
28° Rt & 12" PP 6/6 # 4349

1425<sup>00</sup> { 265 Lt & 30" Eucalyptus tree  
Wly Alley line

1425 39° Lt End 4' Picket Fence

1400 { 266 Lt & 20" Eucalyptus tree  
28° Rt & 18" Eucalyptus tree

TP6

1148

125<sup>40</sup>

027

113<sup>92</sup>

0479 39° Lt Begin 4° high picket fence

Lt = Nly

R

Rt = Sly

49

126.3 126.3 126.3 124.9 122.7 123.3 123.4 123.0 123.6 122.9 122.5 122.5

10<sup>6</sup> 10<sup>6</sup> 10<sup>6</sup> 12<sup>0</sup> 14<sup>2</sup> 13<sup>6</sup> 13<sup>5</sup> 13<sup>8</sup> 13<sup>3</sup> 14<sup>0</sup> 14<sup>4</sup> 14<sup>4</sup>

50 40 37 23 22 17 17 22 30 40 50

125.3 124.93 124.6 136<sup>86</sup>

02 04 08 08

442 408 39

125.2 123.7 122.4 122.1 121.6 120.0 120.2 119.8 119.3 120.3 120.8 120.2 119.6 119.9 119.5

02 12 30 33 38 54 52 55 61 51 46 53 53 65 62

100 75 50 40 26 17 17 22 26 33 40 50 75 100

119.19

6<sup>22</sup>

117

123.7 122.0 120.8 120.2 120.4 119.6 117.4 117.9 117.7 117.4 118.0 118.1 117.7 117.2 116.3

12 34 46 52 50 53 80 75 72 80 74 73 72 82 92 90

100 75 50 40 28 24 14 15 22 24 33 40 50 75 100

116.4 116.7 116.5 115.5 113.9 114.6 114.8 114.6 114.2 114.9 115.5 114.4 113.9

9<sup>0</sup> 82 82 92 115 108 106 108 112 105 92 110 115

50 40 28 19 17 7 75 23 25 36 40 50

125<sup>40</sup>

1140

Lt=My

♀

Rt=Sty

50

BM

275

140<sup>83</sup>

8 Mon  
2 Fly live  
140<sup>82</sup>  
1995, 47

Jellal St  
Galveston St

TP<sub>8</sub>

808

143<sup>28</sup>

166

135<sup>20</sup>

2470 Wly Galveston St

134.8	134.1	133.6	133.7	133.7	133.5	132.4	133.3	131.8
2 <sup>1</sup>	2 <sup>2</sup>	3 <sup>2</sup>	3 <sup>2</sup>	3 <sup>2</sup>	3 <sup>2</sup>	4 <sup>1</sup>	3 <sup>2</sup>	5 <sup>1</sup>
40	30	25	16		11	21	25	40

2450

133.7	133.5	133.0	130.6	131.2	131.4	130.9	130.5	130.9	129.7	129.0
3 <sup>2</sup>	3 <sup>1</sup>	3 <sup>2</sup>	6 <sup>3</sup>	5 <sup>3</sup>	5 <sup>5</sup>	6 <sup>2</sup>	6 <sup>2</sup>	6 <sup>2</sup>	7 <sup>2</sup>	7 <sup>2</sup>
50	40	26	24	17		15	21	24	40	50

2443 28<sup>8</sup> N+E 36" Eucalyptus tree

2425

131.7	131.3	130.0	128.0	128.1	128.7	128.1	127.7	128.1	127.0	126.4
5 <sup>2</sup>	5 <sup>2</sup>	6 <sup>2</sup>	8 <sup>2</sup>	8 <sup>2</sup>	8 <sup>2</sup>	8 <sup>2</sup>	9 <sup>2</sup>	8 <sup>2</sup>	9 <sup>2</sup>	10 <sup>5</sup>
49	40	24	22	13		15	20	25	40	50

T, 2400

1495 29<sup>8</sup> RT 36" tree stump

129.6	129.2	129.1	128.0	125.3	125.9	126.0	125.4	125.2	125.6	125.0	124.2
7 <sup>2</sup>	7 <sup>2</sup>	7 <sup>2</sup>	8 <sup>2</sup>	11 <sup>2</sup>	11 <sup>2</sup>	10 <sup>2</sup>	11 <sup>2</sup>	11 <sup>2</sup>	11 <sup>2</sup>	11 <sup>2</sup>	12 <sup>2</sup>
50	40	37	25	24	15		16	22	33	40	50

136<sup>86</sup>

D. Smith

New Improvements Frankfort St  
Kave to Jellett.

original X-sec in FB 2344  
wasn't given with job 59

✓ 2+63 40° L+E 23° con walk

90<sup>55</sup>  
40°

2+50 55° R+E double garage still under const 101<sup>33</sup>

332  
floor we  
think

2+28 40° R+E 13° con drive

99<sup>50</sup> 97<sup>59</sup>  
50 40  
drive

0+00 Nly line Kave

P. Smith  
D. Chipman  
C. Steffens

X-sec Lister St  
Frankfort to Galveston

1+25 Wly Alley?

1+10 19<sup>3</sup> RT & dead man

1+00

0+93 19<sup>2</sup> RT & 10" 199/10 SP4345

0+74 20<sup>6</sup> RT & 17" con drive

0+50

0+25

0+00 Ely Line Frankfort

BM

84<sup>26</sup>  
1932

W0# 32453 52

4-26-56

Lt-Mly

E

RT Sly

94<sup>8</sup> 92<sup>9</sup> 88<sup>2</sup> 86<sup>6</sup> 86<sup>0</sup> 85<sup>5</sup> 86<sup>9</sup> 85<sup>3</sup> 82<sup>3</sup> 78<sup>2</sup> 75<sup>3</sup>  
60 40 23 16 6 8 13 25 40 50

96<sup>6</sup> 95<sup>6</sup> 93<sup>4</sup> 89<sup>3</sup> 88<sup>6</sup> 88<sup>2</sup> 89<sup>4</sup> 87<sup>3</sup> 84<sup>2</sup> 81<sup>8</sup> 79<sup>2</sup>  
50 40 25 17 6 9 17 30 40 50

96<sup>28</sup> 95<sup>03</sup> 93<sup>80</sup> 91<sup>27</sup> 90<sup>1</sup> 90<sup>2</sup> 90<sup>2</sup> 89<sup>6</sup> 85<sup>5</sup> 84<sup>0</sup>  
45 37 30 20 8 10 15 40 50  
floor drive

95<sup>8</sup> 95<sup>5</sup> 95<sup>0</sup> 94<sup>4</sup> 91<sup>0</sup> 90<sup>7</sup> 90<sup>6</sup> 91<sup>2</sup> 90<sup>5</sup> 88<sup>1</sup> 87<sup>1</sup>  
45 40 31 25 17 10 12 15 40 50

95<sup>3</sup> 95<sup>1</sup> 94<sup>4</sup> 90<sup>3</sup> 90<sup>3</sup> 90<sup>1</sup> 90<sup>2</sup> 89<sup>5</sup> 88<sup>6</sup> 87<sup>9</sup>  
50 40 26 17 10 13 30 40 50

93<sup>6</sup> 92<sup>5</sup> 89<sup>3</sup> 88<sup>6</sup> 89<sup>0</sup> 88<sup>6</sup> 89<sup>2</sup> 88<sup>3</sup> 87<sup>4</sup>  
40 27 19 14 11 15 40 50

elevations are as shown.

Lt. Nly

E

Nt. S14

2+70

68° 67<sup>1</sup> 67<sup>2</sup> 67° 65<sup>8</sup> 65° 64<sup>7</sup>  
50 40 20 20 40 50

2+35

77<sup>3</sup> 77<sup>2</sup> 73<sup>6</sup> 70<sup>1</sup> 69<sup>6</sup> 69<sup>2</sup> 67<sup>1</sup> 67° 64<sup>1</sup> 64<sup>2</sup>  
50 40 25 15 7 11 25 40 50

2+00

89<sup>2</sup> 89<sup>6</sup> 89<sup>5</sup> 75<sup>5</sup> 74<sup>8</sup> 74<sup>5</sup> 75° 69<sup>1</sup> 67<sup>1</sup> 66° 65<sup>6</sup>  
45 40 34 13 6 8 18 30 40 50

1+75

89<sup>3</sup> 89° 82<sup>2</sup> 80<sup>2</sup> 79<sup>2</sup> 79<sup>2</sup> 79<sup>2</sup> 74<sup>1</sup> 69<sup>5</sup> 67<sup>3</sup>  
40 32 22 15 6 8 12 40 50

1466 29<sup>3</sup> N E 105° con drive btwn (2) High 8' con block walls

83<sup>33</sup> 83°  
45° 29<sup>2</sup>  
Floor drive

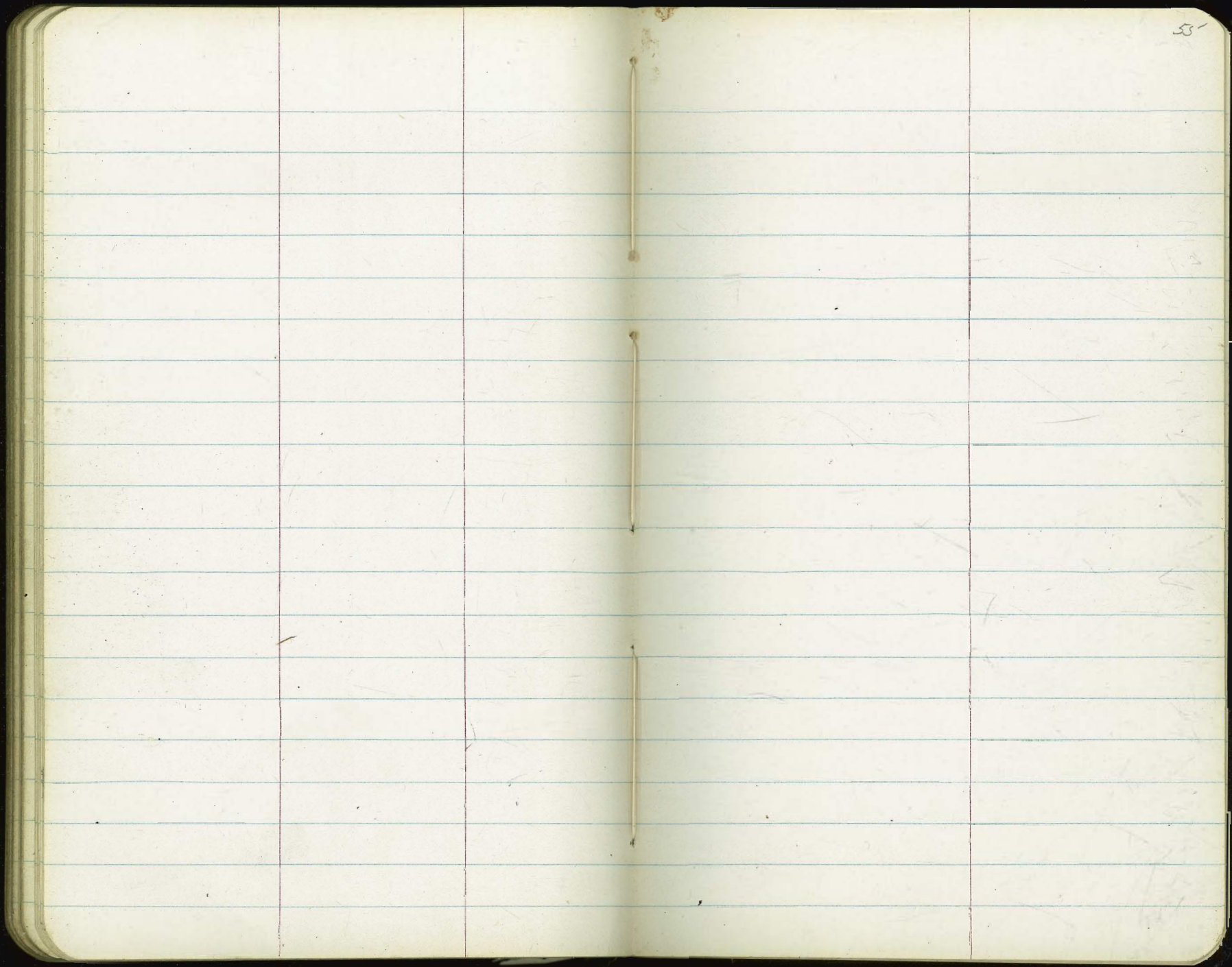
H45 Fly Alley?

93<sup>2</sup> 90<sup>5</sup> 84<sup>5</sup>  
60 40 15

83<sup>6</sup> 83<sup>4</sup> 84<sup>4</sup> 81<sup>1</sup> 74<sup>4</sup> 71<sup>5</sup>  
6 8 14 40 50















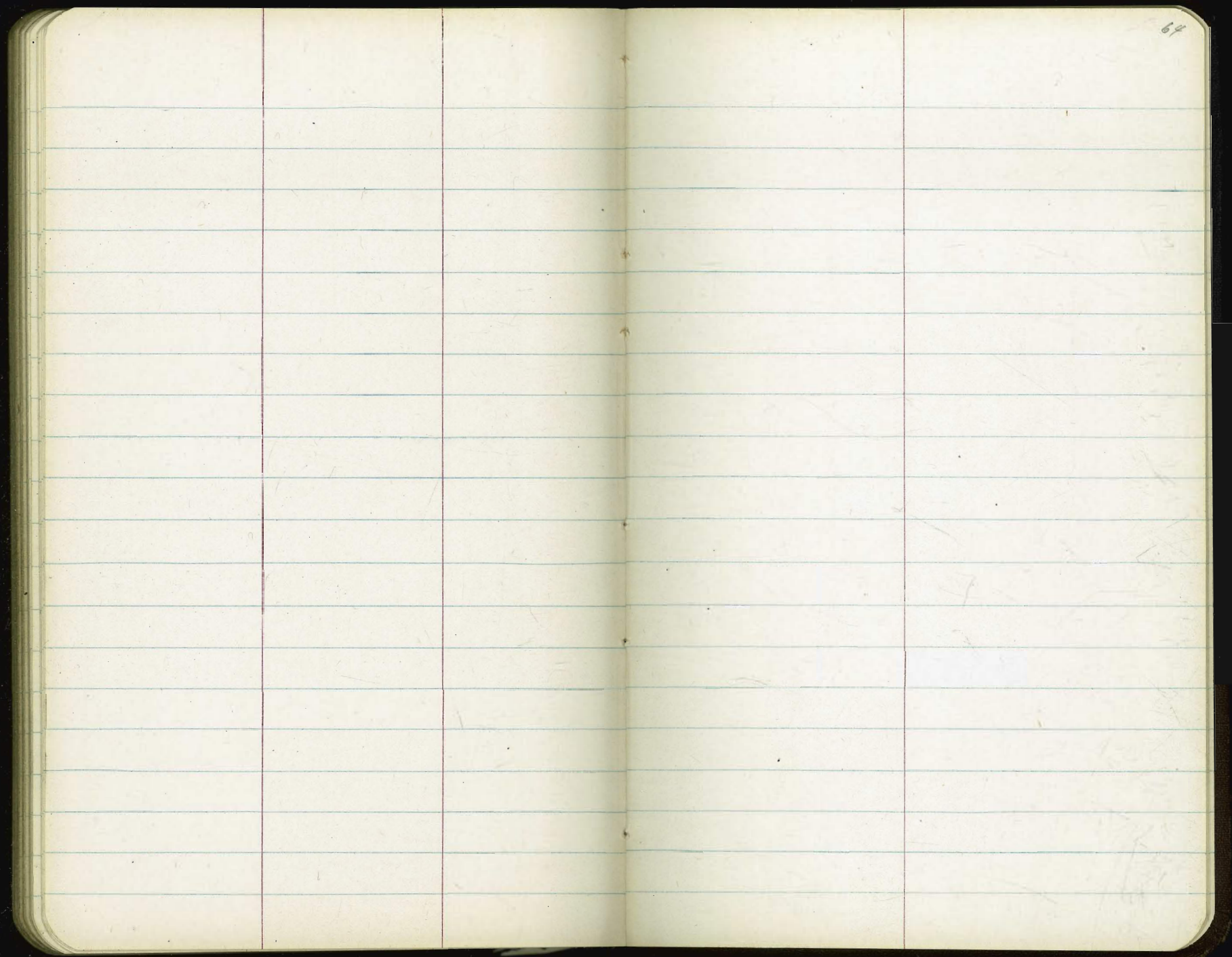


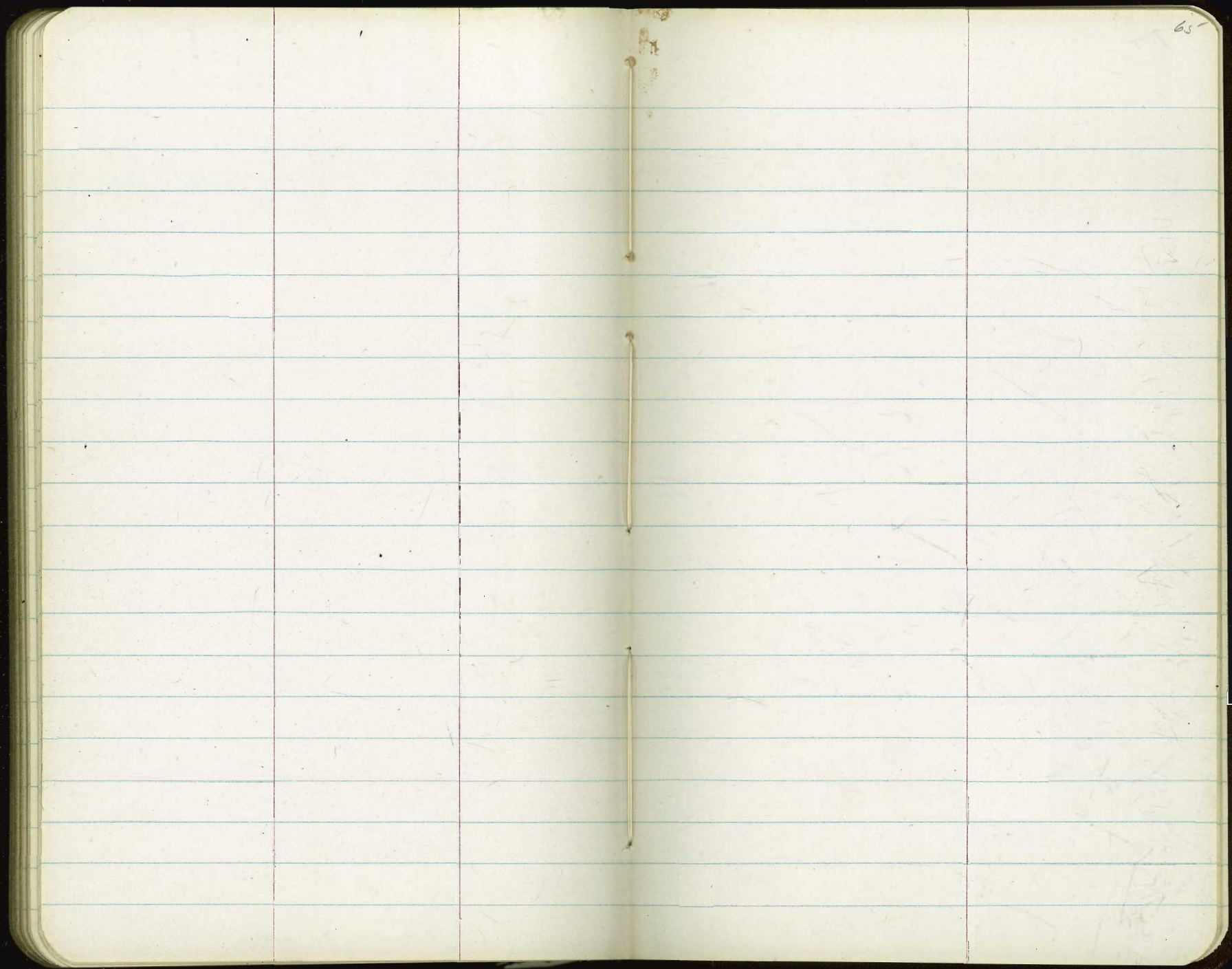












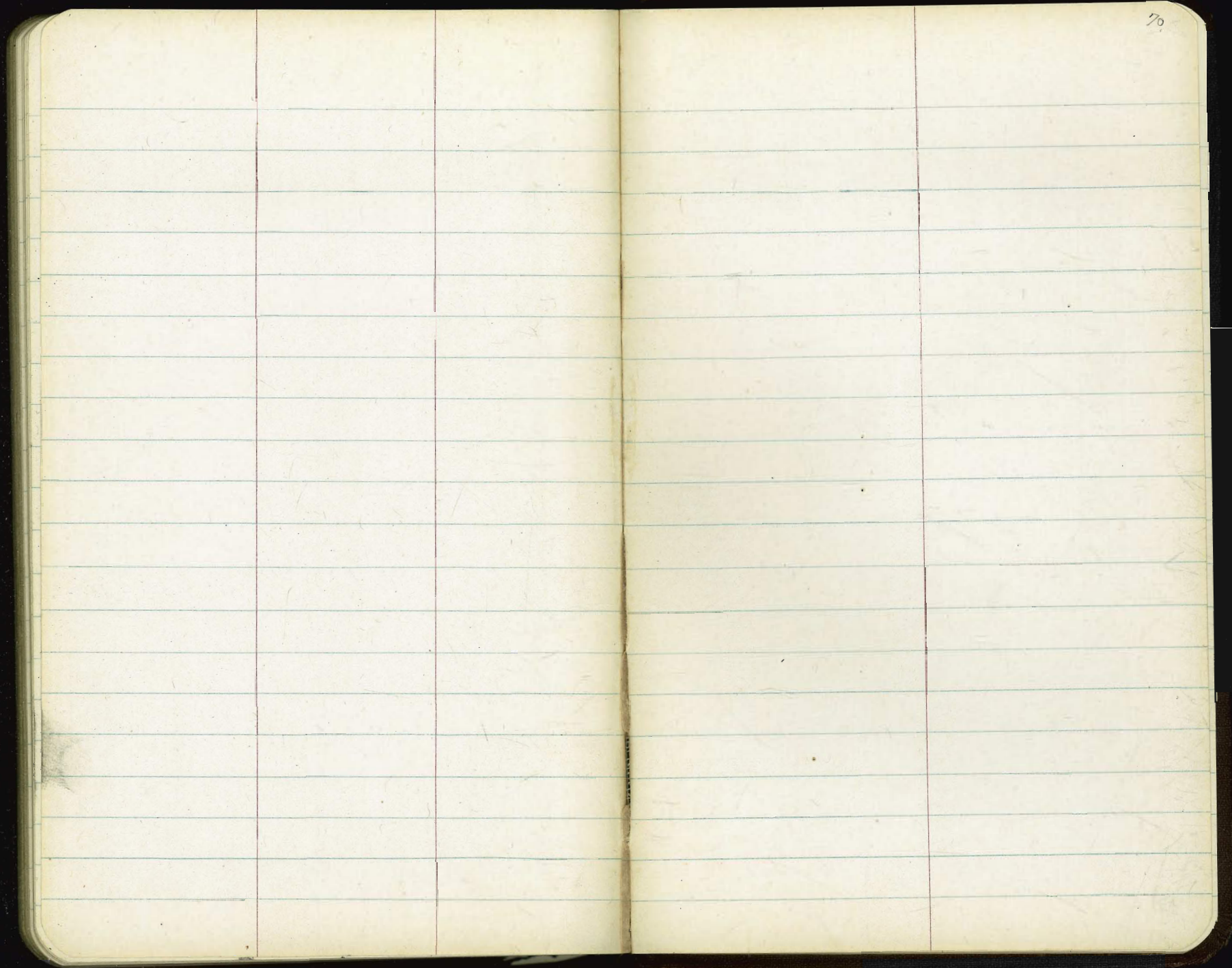






























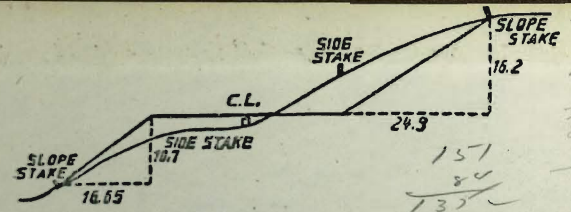


92.12  
 1.57  
 90.55

NE

90 02 40

113.55  
 113.18



93.12  
 2.70  
 3.80  
 9.59

1.57  
 3.0  
 7.37

1.57

DISTANCES FROM SIDE STAKES FOR CROSS-SECTIONING.  
 SLOPE 1 1/2 TO 1. ROADWAY OF ANY WIDTH.

	0	.1	.2	.3	.4	.5	.6	.7	.8	.9	
0	0.00	0.15	0.30	0.45	0.60	0.75	0.90	1.05	1.20	1.35	0
1	1.50	1.65	1.80	1.95	2.10	2.25	2.40	2.55	2.70	2.85	1
2	3.00	3.15	3.30	3.45	3.60	3.75	3.90	4.05	4.20	4.35	2
3	4.50	4.65	4.80	4.95	5.10	5.25	5.40	5.55	5.70	5.85	3
4	6.00	6.15	6.30	6.45	6.60	6.75	6.90	7.05	7.20	7.35	4
5	7.50	7.65	7.80	7.95	8.10	8.25	8.40	8.55	8.70	8.85	5
6	9.00	9.15	9.30	9.45	9.60	9.75	9.90	10.05	10.20	10.35	6
7	10.50	10.65	10.80	10.95	11.10	11.25	11.40	11.55	11.70	11.85	7
8	12.00	12.15	12.30	12.45	12.60	12.75	12.90	13.05	13.20	13.35	8
9	13.50	13.65	13.80	13.95	14.10	14.25	14.40	14.55	14.70	14.85	9
10	15.00	15.15	15.30	15.45	15.60	15.75	15.90	16.05	16.20	16.35	10
11	16.50	16.65	16.80	16.95	17.10	17.25	17.40	17.55	17.70	17.85	11
12	18.00	18.15	18.30	18.45	18.60	18.75	18.90	19.05	19.20	19.35	12
13	19.50	19.65	19.80	19.95	20.10	20.25	20.40	20.55	20.70	20.85	13
14	21.00	21.15	21.30	21.45	21.60	21.75	21.90	22.05	22.20	22.35	14
15	22.50	22.65	22.80	22.95	23.10	23.25	23.40	23.55	23.70	23.85	15
16	24.00	24.15	24.30	24.45	24.60	24.75	24.90	25.05	25.20	25.35	16
17	25.50	25.65	25.80	25.95	26.10	26.25	26.40	26.55	26.70	26.85	17
18	27.00	27.15	27.30	27.45	27.60	27.75	27.90	28.05	28.20	28.35	18
19	28.50	28.65	28.80	28.95	29.10	29.25	29.40	29.55	29.70	29.85	19
20	30.00	30.15	30.30	30.45	30.60	30.75	30.90	31.05	31.20	31.35	20
21	31.50	31.65	31.80	31.95	32.10	32.25	32.40	32.55	32.70	32.85	21
22	33.00	33.15	33.30	33.45	33.60	33.75	33.90	34.05	34.20	34.35	22
23	34.50	34.65	34.80	34.95	35.10	35.25	35.40	35.55	35.70	35.85	23
24	36.00	36.15	36.30	36.45	36.60	36.75	36.90	37.05	37.20	37.35	24
25	37.50	37.65	37.80	37.95	38.10	38.25	38.40	38.55	38.70	38.85	25
26	39.00	39.15	39.30	39.45	39.60	39.75	39.90	40.05	40.20	40.35	26
27	40.50	40.65	40.80	40.95	41.10	41.25	41.40	41.55	41.70	41.85	27
28	42.00	42.15	42.30	42.45	42.60	42.75	42.90	43.05	43.20	43.35	28
29	43.50	43.65	43.80	43.95	44.10	44.25	44.40	44.55	44.70	44.85	29
30	45.00	45.15	45.30	45.45	45.60	45.75	45.90	46.05	46.20	46.35	30
31	46.50	46.65	46.80	46.95	47.10	47.25	47.40	47.55	47.70	47.85	31
32	48.00	48.15	48.30	48.45	48.60	48.75	48.90	49.05	49.20	49.35	32
33	49.50	49.65	49.80	49.95	50.10	50.25	50.40	50.55	50.70	50.85	33
34	51.00	51.15	51.30	51.45	51.60	51.75	51.90	52.05	52.20	52.35	34
35	52.50	52.65	52.80	52.95	53.10	53.25	53.40	53.55	53.70	53.85	35
36	54.00	54.15	54.30	54.45	54.60	54.75	54.90	55.05	55.20	55.35	36
37	55.50	55.65	55.80	55.95	56.10	56.25	56.40	56.55	56.70	56.85	37
38	57.00	57.15	57.30	57.45	57.60	57.75	57.90	58.05	58.20	58.35	38
39	58.50	58.65	58.80	58.95	59.10	59.25	59.40	59.55	59.70	59.85	39
40	60.00	60.15	60.30	60.45	60.60	60.75	60.90	61.05	61.20	61.35	40
41	61.50	61.65	61.80	61.95	62.10	62.25	62.40	62.55	62.70	62.85	41
42	63.00	63.15	63.30	63.45	63.60	63.75	63.90	64.05	64.20	64.35	42
43	64.50	64.65	64.80	64.95	65.10	65.25	65.40	65.55	65.70	65.85	43
44	66.00	66.15	66.30	66.45	66.60	66.75	66.90	67.05	67.20	67.35	44
45	67.50	67.65	67.80	67.95	68.10	68.25	68.40	68.55	68.70	68.85	45
46	69.00	69.15	69.30	69.45	69.60	69.75	69.90	70.05	70.20	70.35	46
47	70.50	70.65	70.80	70.95	71.10	71.25	71.40	71.55	71.70	71.85	47
48	72.00	72.15	72.30	72.45	72.60	72.75	72.90	73.05	73.20	73.35	48
49	73.50	73.65	73.80	73.95	74.10	74.25	74.40	74.55	74.70	74.85	49
50	75.00	75.15	75.30	75.45	75.60	75.75	75.90	76.05	76.20	76.35	50

THE NATIONAL BLANK BOOK COMPANY  
 HOLYOKE MASSACHUSETTS  
 NEW YORK CHICAGO BOSTON SAN FRANCISCO