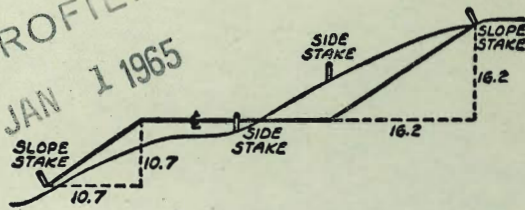


MICROFILMED
JAN 1 1965



DISTANCES FROM SIDE STAKES FOR CROSS-SECTIONING
SLOPE 1 TO 1. ROADWAY OF ANY WIDTH

	0	.1	.2	.3	.4	.5	.6	.7	.8	.9	
0	0.00	0.10	0.20	0.30	0.40	0.50	0.60	0.70	0.80	0.90	0
1	1.00	1.10	1.20	1.30	1.40	1.50	1.60	1.70	1.80	1.90	1
2	2.00	2.10	2.20	2.30	2.40	2.50	2.60	2.70	2.80	2.90	2
3	3.00	3.10	3.20	3.30	3.40	3.50	3.60	3.70	3.80	3.90	3
4	4.00	4.10	4.20	4.30	4.40	4.50	4.60	4.70	4.80	4.90	4
5	5.00	5.10	5.20	5.30	5.40	5.50	5.60	5.70	5.80	5.90	5
6	6.00	6.10	6.20	6.30	6.40	6.50	6.60	6.70	6.80	6.90	6
7	7.00	7.10	7.20	7.30	7.40	7.50	7.60	7.70	7.80	7.90	7
8	8.00	8.10	8.20	8.30	8.40	8.50	8.60	8.70	8.80	8.90	8
9	9.00	9.10	9.20	9.30	9.40	9.50	9.60	9.70	9.80	9.90	9
10	10.00	10.10	10.20	10.30	10.40	10.50	10.60	10.70	10.80	10.90	10
11	11.00	11.10	11.20	11.30	11.40	11.50	11.60	11.70	11.80	11.90	11
12	12.00	12.10	12.20	12.30	12.40	12.50	12.60	12.70	12.80	12.90	12
13	13.00	13.10	13.20	13.30	13.40	13.50	13.60	13.70	13.80	13.90	13
14	14.00	14.10	14.20	14.30	14.40	14.50	14.60	14.70	14.80	14.90	14
15	15.00	15.10	15.20	15.30	15.40	15.50	15.60	15.70	15.80	15.90	15
16	16.00	16.10	16.20	16.30	16.40	16.50	16.60	16.70	16.80	16.90	16
17	17.00	17.10	17.20	17.30	17.40	17.50	17.60	17.70	17.80	17.90	17
18	18.00	18.10	18.20	18.30	18.40	18.50	18.60	18.70	18.80	18.90	18
19	19.00	19.10	19.20	19.30	19.40	19.50	19.60	19.70	19.80	19.90	19
20	20.00	20.10	20.20	20.30	20.40	20.50	20.60	20.70	20.80	20.90	20
21	21.00	21.10	21.20	21.30	21.40	21.50	21.60	21.70	21.80	21.90	21
22	22.00	22.10	22.20	22.30	22.40	22.50	22.60	22.70	22.80	22.90	22
23	23.00	23.10	23.20	23.30	23.40	23.50	23.60	23.70	23.80	23.90	23
24	24.00	24.10	24.20	24.30	24.40	24.50	24.60	24.70	24.80	24.90	24
25	25.00	25.10	25.20	25.30	25.40	25.50	25.60	25.70	25.80	25.90	25
26	26.00	26.10	26.20	26.30	26.40	26.50	26.60	26.70	26.80	26.90	26
27	27.00	27.10	27.20	27.30	27.40	27.50	27.60	27.70	27.80	27.90	27
28	28.00	28.10	28.20	28.30	28.40	28.50	28.60	28.70	28.80	28.90	28
29	29.00	29.10	29.20	29.30	29.40	29.50	29.60	29.70	29.80	29.90	29
30	30.00	30.10	30.20	30.30	30.40	30.50	30.60	30.70	30.80	30.90	30
31	31.00	31.10	31.20	31.30	31.40	31.50	31.60	31.70	31.80	31.90	31
32	32.00	32.10	32.20	32.30	32.40	32.50	32.60	32.70	32.80	32.90	32
33	33.00	33.10	33.20	33.30	33.40	33.50	33.60	33.70	33.80	33.90	33
34	34.00	34.10	34.20	34.30	34.40	34.50	34.60	34.70	34.80	34.90	34
35	35.00	35.10	35.20	35.30	35.40	35.50	35.60	35.70	35.80	35.90	35
36	36.00	36.10	36.20	36.30	36.40	36.50	36.60	36.70	36.80	36.90	36
37	37.00	37.10	37.20	37.30	37.40	37.50	37.60	37.70	37.80	37.90	37
38	38.00	38.10	38.20	38.30	38.40	38.50	38.60	38.70	38.80	38.90	38
39	39.00	39.10	39.20	39.30	39.40	39.50	39.60	39.70	39.80	39.90	39
40	40.00	40.10	40.20	40.30	40.40	40.50	40.60	40.70	40.80	40.90	40
41	41.00	41.10	41.20	41.30	41.40	41.50	41.60	41.70	41.80	41.90	41
42	42.00	42.10	42.20	42.30	42.40	42.50	42.60	42.70	42.80	42.90	42
43	43.00	43.10	43.20	43.30	43.40	43.50	43.60	43.70	43.80	43.90	43
44	44.00	44.10	44.20	44.30	44.40	44.50	44.60	44.70	44.80	44.90	44
45	45.00	45.10	45.20	45.30	45.40	45.50	45.60	45.70	45.80	45.90	45
46	46.00	46.10	46.20	46.30	46.40	46.50	46.60	46.70	46.80	46.90	46
47	47.00	47.10	47.20	47.30	47.40	47.50	47.60	47.70	47.80	47.90	47
48	48.00	48.10	48.20	48.30	48.40	48.50	48.60	48.70	48.80	48.90	48
49	49.00	49.10	49.20	49.30	49.40	49.50	49.60	49.70	49.80	49.90	49
50	50.00	50.10	50.20	50.30	50.40	50.50	50.60	50.70	50.80	50.90	50

Distance of slope stake from side or shoulder stake for any width roadway, slope 1 to 1. If ground is nearly level, the cut or fill at side stake is located by the double entry method in left column and top row. The number in body of table in same row and column gives distance from side stake to slope stake. If ground is not level estimate the difference in elevation between the side stake and slope stake, lower target by this amount if cut, elevate if fill. Add this amount to cut or fill and find distance in table. Set up rod at this point, and line of sight should cut target. If it does not make the slight adjustment necessary.

2144

- ① 0+89 5.75' + ch at 1+00
- ② 1+39 5.6' + " " 1+50
- ③ 2+40 7.0' + " " 2+50
- ④ 2+89 8.3' + " " 3+00

TABLE XIII—CORRECTIONS FOR TANGENTS AND EXTERNALS

These corrections are to be added to the approximate values, found by dividing the tangent, or external, for a 1° curve (Table VIII) by the degree of curve, in order to obtain the true tangents, or externals. Intermediate values may be obtained by interpolation.

FOR TANGENTS ADD

Central Angle	DEGREE OF CURVE													
	5°	10°	15°	20°	25°	30°	35°	40°	45°	50°	55°	60°	65°	70°
10°	.03	.06	.09	.13	.16	.19	.22	.25	.28	.31	.34	.38	.42	.46
15°	.04	.10	.14	.19	.24	.29	.34	.39	.45	.51	.53	.58	.63	.68
20°	.06	.13	.19	.26	.32	.39	.45	.51	.58	.65	.72	.79	.84	.90
25°	.08	.16	.24	.33	.40	.49	.58	.67	.75	.83	.90	.99	1.06	1.14
30°	.10	.19	.29	.39	.49	.59	.69	.79	.89	.99	1.09	1.20	1.29	1.39
35°	.11	.22	.34	.47	.58	.69	.79	.81	.92	1.04	1.29	1.42	1.54	1.66
40°	.13	.26	.40	.53	.67	.80	.93	1.06	1.20	1.34	1.49	1.64	1.79	1.94
45°	.15	.30	.44	.60	.76	.91	1.06	1.21	1.37	1.52	1.70	1.87	2.04	2.21
50°	.17	.34	.51	.68	.85	1.02	1.19	1.36	1.54	1.72	1.91	2.10	2.29	2.48
55°	.19	.38	.57	.76	.95	1.14	1.32	1.52	1.72	1.92	2.14	2.35	2.56	2.77
60°	.21	.42	.63	.84	1.05	1.27	1.49	1.71	1.94	2.17	2.38	2.60	2.83	3.07
65°	.23	.46	.69	.93	1.16	1.40	1.64	1.88	2.13	2.38	2.63	2.88	3.13	3.39
70°	.25	.51	.76	1.02	1.28	1.54	1.80	2.06	2.33	2.60	2.88	3.16	3.44	3.72
75°	.27	.56	.83	1.12	1.40	1.69	1.98	2.27	2.57	2.87	3.16	3.47	3.78	4.09
80°	.30	.61	.91	1.22	1.53	1.84	2.15	2.46	2.78	3.10	3.44	3.78	4.12	4.46
85°	.33	.66	1.00	1.33	1.68	2.02	2.36	2.70	3.05	3.40	3.77	4.14	4.55	4.89
90°	.36	.72	1.09	1.45	1.83	2.20	2.57	2.94	3.32	3.70	4.10	4.50	4.91	5.32
95°	.39	.79	1.19	1.55	2.00	2.40	2.80	3.20	3.61	4.02	4.40	4.98	5.38	5.83
100°	.43	.86	1.30	1.74	2.18	2.62	3.06	3.50	3.95	4.40	4.88	5.37	5.85	6.34
110°	.51	1.03	1.56	2.08	2.61	3.14	3.67	4.21	4.76	5.31	5.86	6.43	7.01	7.60
120°	.62	1.25	1.93	2.52	3.16	3.81	4.45	5.11	5.77	6.44	7.12	7.80	8.50	9.22

FOR EXTERNALS ADD

Central Angle	DEGREE OF CURVE													
	5°	10°	15°	20°	25°	30°	35°	40°	45°	50°	55°	60°	65°	70°
10°	.001	.003	.004	.006	.007	.008	.009	.011	.012	.014	.015	.017	.018	.020
15°	.003	.007	.010	.014	.018	.023	.027	.029	.032	.035	.039	.043	.047	.051
20°	.006	.011	.017	.022	.028	.034	.038	.045	.051	.057	.063	.070	.076	.083
25°	.009	.018	.027	.036	.046	.056	.065	.074	.083	.093	.106	.120	.127	.135
30°	.013	.025	.038	.051	.065	.078	.090	.103	.116	.129	.149	.170	.179	.188
35°	.018	.035	.054	.072	.086	.109	.131	.153	.175	.197	.213	.230	.247	.264
40°	.023	.046	.070	.093	.117	.141	.172	.203	.234	.265	.277	.290	.315	.341
45°	.030	.060	.093	.119	.153	.184	.216	.254	.289	.325	.351	.378	.411	.445
50°	.037	.075	.116	.151	.189	.227	.266	.305	.345	.384	.425	.467	.508	.550
55°	.046	.093	.142	.188	.236	.283	.332	.381	.420	.479	.530	.582	.641	.700
60°	.056	.112	.168	.225	.283	.340	.398	.457	.516	.575	.636	.697	.774	.851
65°	.067	.135	.204	.273	.343	.412	.483	.554	.625	.697	.711	.845	.922	1.01
70°	.080	.159	.240	.321	.403	.485	.568	.652	.735	.819	.906	.994	1.08	1.17
75°	.095	.182	.286	.383	.480	.578	.678	.777	.877	.977	1.07	1.18	1.29	1.39
80°	.110	.220	.332	.445	.558	.671	.787	.903	1.02	1.13	1.25	1.38	1.50	1.62
85°	.128	.259	.391	.524	.657	.790	.926	1.06	1.20	1.34	1.47	1.62	1.76	1.91
90°	.149	.299	.450	.603	.756	.910	1.07	1.22	1.38	1.54	1.70	1.87	2.03	2.20
95°	.174	.350	.522	.706	.885	1.06	1.25	1.43	1.62	1.80	1.99	2.18	2.38	2.58
100°	.200	.401	.604	.809	1.01	1.22	1.43	1.64	1.85	2.06	2.28	2.50	2.73	2.96
110°	.268	.536	.806	1.08	1.35	1.63	1.91	2.20	2.48	2.76	3.05	3.35	3.66	3.96
120°	.360	.721	1.08	1.45	1.82	2.19	2.57	2.95	3.33	3.72	4.11	4.50	4.91	5.32

INDEX

Pg

Levels Bay Park Village 1-38
 Crittenden Add. 39-
 X-sec. Denver - Jellott to Ingham 52-56
 X-sec Alley Blk 30, Elbert to sunset cliffs 57

D. Smith
C. Allen
McK
H. Bruner

Levels Bay Park
Chicago

Village Street

wo# 25020
6-27-51
RT East

Note

Also 1845
28-35
2060
38-41

INDEXED
JUN 29 1951

0460 18² RT & 7' con drive

20.8 21.64 22.32 23.00
48 383 325 257
185 218 475
drive drive drive

0440 20² RT & 7' con ribbon drive 2' ca

20.9 21.70 22.30 23.12
47 387 327 245
205 229 422
drive drive drive

0427 16⁴ LT & 3' con walk

20.45 20.65 21.0
518 492 46
362 162
walk walk

0423 20⁵ RP & 3' con walk

21.1 22.16 23.23
45 341 534
205 405
walk walk

0400 N line Milton

21.2
38

TP₂ 4.75 25.57 1414 20²²
TP₁ 0⁰⁸ 34.96 858 34⁸⁸
BM 1.43 43.46 42.03

E Mon Milton
Chicago

Spoke in St. S.
N. cor. Perry St.
Milton

S.W. B. P.
Milton
Eric

25.57

LT West

RT = East 2

2741 15³ LT E 7' con ribbon drive 2' ea

18.57 19.78 19.76 20.2
7.00 5.79 5.81 5.4
392 192 152

2740 20⁵ RT E 7' con ribbon drive 2' ea

20.2 20.42 20.57 21.40
5.4 5.15 5.00 4.17
203 223 423

1790 16² LT E 7' con drive

18.82 19.70 19.65 20.2 20.76 21.58
6.75 5.87 5.92 5.4 4.81 3.99
40.9 20.5 16.2 20.3 40.3
drive drive drive drive drive

1790 20³ RT E 7' con ribbon drive 2' ea

1740 17⁰ LT E 7' con drive ribbon 2' ea

19.14 20.03 19.99 20.4
6.39 5.54 5.58 5.3
40.2 20.2 17.0
drive drive drive

1739 19³ RT E 7' con drive

20.47 20.86 21.39 21.85
5.3 4.71 4.15 3.22
193 223 423
drive drive drive

0774 18³ LT E 3' con walk

19.71 20.41 20.8
5.86 5.16 4.8
38 18
walk walk

0761 14⁵ LT E 7' con ribbon drive 2' ea

19.53 20.39 20.39 20.8
5.24 5.18 5.15 4.8
38 18 145 5 57
drive drive 25 57

Lt West

£

Rt East 3

0100 N prop Lister

19.4
55

3790 £ Lister

19.6
53

3750 S Prop Lister

19.9
50

3710 195 Rt £ 7' con ribbon drive 2' eq

20° 20.52 20.99 21.51
42 442 320 337
195 220 420

3708 195 Lt £ 7' con ribbon drive 2' eq

19.45 19.56 19.52 20.04
643 538 542 42
425 225 195

TP₃

288

2494

351

2206

Spike in A's
NE cor Chicago
Lister

2790 182 Lt £ 7' con drive

18.14 19.48 19.52 20.17
743 609 605 55
425 225 182

2784 182 Rt £ 7' con ribbon drive 2' eq

20.17 20.27 20.85 21.71
55 530 422 326
2557 182 223 50 423

Lt = West

E

Rt = East 4

1413 39° RT E 3' con walk

19.8	21.31	21.85
51	563	309
	398	498

1409 16° LT E 6' con ribbon drive 2' ea

18.06	19.24	19.47	19.8
688	520	542	51
398	198	165	

0490 14° LT E 7' con ribbon drive 2' ea

17.41	18.35	19.17	19.30	19.7
733	659	577	564	52
433	233	187	148	

0455 40° RT E 8' con drive

19.6	21.71	22.20
53	324	224
	403	302

0441 40° RT E 7' con drive

19.5	21.71	22.42
52	323	252
	405	305

0410 41° RT E 3' con walk

19.4	22.16	22.44
55	220	250
	412	37

0406 26° LT E 3' con walk

19.56	19.4
638	55
264	2494

LT. West

RT East 5

3+10 17⁸ LT & 7' con ribbon drive 2' eq

20.67	20.98	20.92	21.2
427	396	422	37
322	222	178	

2+92 18³ LT & 9' con drive

20.66	20.94	21.0
428	400	32
383	183	

2+42 22³ RT & 7' con ribbon drive 2' eq

20.7	21.89	22.44	22.79
43	305	250	210
	222	28	36

2+10 14^E LT & 10' con drive

19.29	20.34	20.29	20.6
565	460	465	43
385	185	145	

1+94 37² RT & 8' con drive

20.4	21.94	22.41
45	300	253
	372	50

1+90 15^d LT & con ribbon drive 2' eq

17.14	20.20	20.06	20.4
580	424	488	45
38	18	152	

1+63 39⁵ RT & 5' con walk

20.2	21.94	22.06
47	300	288
24	395	495
	walk	

0472 25² Nt £ 3' con walk

0460 18² Lt £ 7' con ribbon drive 2' eq

0440 18² Lt £ 7' con ribbon drive 2' eq

0400 North prop Kane St

TP₄ 8⁵¹ 29⁵² 3⁹² 20²⁵

£ Mon Kane
Chicago

4400 £ Kane

3450 S prop Kane St

3436 18² Lt £ 3' con walk

Lt West

Σ
23.0
65
257
74 = East
24.43
509
482
25.61
391

21.42
22.27
22.6

80
352
725
182

20.89
21.83
22.2

863
382
769
182

21.4

81

2952

21.1

38

21.4

35

20.99

21.12

21.4

385

382

35

382

182

2494

Lt = West

Rt = East 7

3750 South prop Jelleff

28.3
12

3700

28.9
06

2750

28.1
14

2717 20^c Lt & 25 brick walk

26.07
345 26.49
405 206 27.0
25

2707 41^s Rt & 8' con drive

26.9 29.47 29.80
27 005 4028
415 515

1760

25.7
38

1711 41⁴ Rt & 7' con drive

24.3 26.07 26.52
52 343 300
29 52 414 514

Chicago

Lt. West

RT - East 8

2102 35² RT & 8 con drive

34.8 34.80 34.95
45 446 431
352 452

1456

32.0
73

1400

30.9
84

0450

29.9
94

0400 North Prop Jelleff

28.6
102

3490 & Jelleff

27.8
115

TPs 1020 3936 056 2826

Spike in Pole
SW cor
Jelleff
Chicago

3936

Chicago

TP₇

4130 North Prop Ingulf

154 46.42 Spike Ingulf 50' West Denver

Lt = West E Rt = East 9

28.7
19.3

3490 E Ingulf

13.48 on Mon 34.61

37.5 35.2 34.6 35.1 40.7
10.5 12.8 13.4 12.9 7.3
15 10 5 15

3450 South Prop Ingulf

40.5 40.7 41.9
7.5 7.3 6.6
10 10

3424 37.5 Rt E 6 con walk

40.4 41.44 41.47 41.34
7.6 6.57 6.54 6.67
37.5 40 50

3400

39.9
8.6

2450

38.1
9.2

TP₆

11.72 48.01 29.7 36.29

48.01

2229 36.0 Rt E 3' con walk

36.8 36.19 36.36
2.5 3.07 2.90
39.26 36.2 46

INDEXED

Denver St.

Lt. East

♀

Rt. East

10

1+41 29² Rt. ♀ 7⁵ con drive

32.2 34.14 24.50
4⁸ 2⁸² 2¹⁶
292 492

1+09 16⁵ Lt ♀ 6⁵ con drive

31.14 31.96 32.3
5⁸² 5⁰⁰ 4⁷
365 165

0+90 15⁰ Lt ♀ 7' con ribbon drive 2' ea

31.02 31.98 32.00 32.5
5²⁴ 4²⁸ 4⁹⁶ 4⁵
385 185 15

0+70 18⁰ Lt ♀ 3 con walk

31.51 32.11 32.7
5⁴⁰ 4⁸⁵ 4³
388 185

0+43 30⁴ Rt ♀ 3' con walk

32.9 24.53 35.10
4¹ 2⁴³ 1⁸⁶
364 504

0+00 North prop Milton

33.3

37

BM. TP, pegel 2⁰² 36⁹⁶

34⁸⁸

Spike in St.
Sign Post
NECOR
Denver
Milton

36⁹⁶

3+09 14° LT & 7 con ribbon drive 2' ea

2+60 40° RT & 8 con drive

2+60 14° LT & 7 con ribbon drive 2' ea

2+41 41° RT & 7 con drive

2+39 15° LT & 7 con ribbon drive 2' ea

1+91 41° RT & 7 con drive

1+78 15° LT & 3 con walk

1+58 15° LT & 7 con drive

1+ West
30.39 31.05 31.07 31.5
6.57 5.21 5.89 5.5
37° 17° 14° RT East

30.16 31.22 31.17 31.4 32.93 33.20
6.00 5.23 5.27 5.6 4.03 3.26
37° 17° 14° 40 50

31.5 33.36 33.58
5.5 3.60 3.38
41 51

30.39 31.20 31.19 31.5
6.57 5.26 5.27 5.5
38° 18° 15°

31.8 33.69 33.91
5.2 3.27 3.05
41 51

31.03 31.93 32.0
5.23 5.03 5.0
35° 15°

20.98 31.70 32.1
5.98 5.26 4.9
35° 15° 36.26

0491 18° LT & 7' con ribbon drive 2' con

0460 18° LT & 3' con walk

0439 17° LT & 7' con drive

0400 ~ North Prop Lister

TP, 988 42³⁷ 4⁵⁷ 32³⁹

3490 S Lister

3450 South Prop Lister

3427 41° RT & 3' con walk

Lt. West

32.99
983
382 183

RT East

12

35.24
903
380 180

34.32 34.7
785
34.1

33.78 35.71
967 849 856 82

42²⁷
32.4
46

31.8
52

31.6 33.43 33.91
54 353 305
3696 410 372

Lt = West E Rt = East 13

TP₂ 939 49⁹³ 164 40⁶³ spike in pole
SW cor Kane
Denver

4400 E Kane St

41.2
14

3450 South Prop Kane St

40.1
23

3403 59° Lt E 3' con walk

55.56 36.22 38.7
67 605 36
47 57

2445 40° Lt E 8' con drive

55.16 35.95 37.9
74 632 44
505 405

2400

36.9
54

1458 17⁸ Lt E 6' con ribbon drive 2' eq

34.64 35.26 35.8
763 701 706 65
435 235 178

1407 18° Lt E 7' con ribbon drive 2' eq

33.13 34.07 34.24 34.9
94 820 803 74
435 235 182
42 27

2450

2423 38° LT & 3' con walk

1463 38° LT & 3' con walk

1416 17° RT & 12' con walk

0478 35° LT & 7' brick walk

0450

0400 North prop Kane St

LT = West

&

RT = East

14

46.9

3°

43.49

43.74

46.7

644

619

32

488

38°

42.45

42.51

46.0

748

742

32

488

38°

45.0

45.38

46.90

48.62

42

433

323

131

17°

20°

40°

bot step

top step

43.96

44.01

43.41

43.21

44.3

527

523

622

56

51

410

353

bot step

top step

43.7

62

42.6

73

4923

Denver

0450 18² RT end Brick wall

0429 18⁵ RT & 3' con walk steps

0400 North prop Jelleff

0-12 18² RT Begin Brick wall 1' high

TP₃ 7³² 54⁴¹ 2⁵⁴ 47⁰⁹

Top brick wall for
NE. cor Jelleff
Denver

3490 S Jelleff

3450 South prop Jelleff

3400

Lt. West

45.7	RT = East	15
82	65.71	07.34
	82	702
	182	182
	Footing	Top

45.3	45.95	47.37	48.69
92	846	704	522
	185	21	41
	bot step	Top	step

44.9
95

44.6	45.5	47.07
95	82	732
	182	182
	Footing	Top

5441

44.3

56

45.1
45

46.73

32

49.93

Denver

2+50 16^s RT end con wall

2+39 16^s RT & 7' con drive

2+00 36° LT & 2^s AC walk

2+00 16^s RT Begin 1' high con wall

1+91 17^s RT & 7' con drive

1+76 38^s LT & 4' con walk

1+40 16^s RT & 6' con drive

0+90 16^s RT & 7' con ribbon drive 2' ea

LT = West

RT = East 16

	51.3	51.71	52.43
3	22	128	
	165	165	
	footing	top	

	51.0	51.81	52.95
3	260	186	52.12
	165	360	40
			60
			floor
			gal

	48.08	48.76	50.8	50.21	51.11
6	33	5-65	44	42	330
	46	36		162	162
				footing	top

	49.8	50.71	51.26	52.28
4	6	320	320	213
	175	215	415	

	47.39	47.62	49.3
7	02	6-79	51
	485	385	

	48.4	49.67	50.05	50.82
6	0	434	436	359
	165	20	40	

	46.8	47.46	47.92	49.05
7	6	625	649	536
	54	41	165	20
			40	

check TR page 9

785

46

55

46

47

Sp. K. Ingulf.
50' west Den.

Lt. West

9

RT = East F 79

Denver

48.9
55

4430 North Prop Ingulf

53.9
05

4400

53.5
09

3490 E Ingulf

53.0

3450 South Prop Ingulf

14

3437 35° RT E 8' con drive

52.8 54.94 55.46
16 +0.53 +1.05
35.5 48.5

2492 17° RT E 7' con ribbon drive 2' ea

51.8 52.96 53.66 54.23
26 145 075 018 54.75
172 235 385 504

2487 19° RT end 0' high con wall

52.0 52.82 53.37
24 15 104
198 198
Footing top

2454 26° LT 9' AC drive

2452 19° RT begin 0' high con wall

47.78 48.26 50.46 51.3 52.21 52.92
63 65 325 31 22 148
49 339 265 192 192
54 41 Footing top

Erie St.

2+32 17° Lt E 5' con walk

1+78 40° Lt E 9' con drive

1+46 40° Lt E 3 con walk

1+00

0+50

0+00 North Prop Milton

BM

10⁶⁷ 52²⁰

4203

SWBP Erie
Milton

Lt West

E

Lt = East

18

46.65
60⁵ 57⁴ 58² 57
40 20 17²

44.62
80⁸ 83⁵ 81
50 40

43.49
9²¹ 9¹⁰ 8⁸
50² 40²

43.4
9³

43.1
9⁶

42.50
10²

52²⁰

0490 76° RT & 7' con & brick drive

0410 152° RT & 7' con ribbon drive 2' ea

0400 North Prop Lister

TP, 868 5988 150 5120

3490 E Lister St

3450 South Prop Lister St

3433 26° RT & 3' con walk

2483 25° RT & 3' con walk & steps

L. West

53.6	47 = East	19
53.89		
55.23		58.96
5.99	4.65	1.02
160	222	422

61.7	52.97	54.69	56.20
83	69	59	368
	152	24	44

51.5
84

5988
50.83

187
NIM
SMH

50.3
24

49.9	52.73	53.50
28	10.03	10.80
	26	46

48.7	50.50	52.20	53.45
40	220	050	1035
5220	250	28	40
	60	140	
	540	500	

TP₂ 13⁹² 69⁹² 3⁸⁸ 56⁰⁰ Spike in pole
SW cor
Kane & Erie

4100 E Kane St

3750 South prop Kane St

2790 15⁵ RT & 7' con ribbon drive 2' ea

2738 15⁰ RT & 7' con ribbon drive 2' ea

1460 15³ RT & 7' con drive ribbon 2' ea

1441 16⁰ RT & 7' con drive

270 West 2 RT-East 20

56.88
3⁰⁰
rim
SMH

56.1
3⁸

55.4 56.11 58.14 59.53
4⁵ 377 174 0³⁰
155 265 465

55.0 55.67 57.35 58.53
4⁹ 421 253 135
15 262 462

54.6 55.14 56.67 58.20
5³ 474 320 168
152 272 473

54.4 55.43 56.82 58.16
5⁵ 425 306 122
59⁸⁸ 165 283 483

2400

1750

17 08 52² RT & 9' con drive

0499 27⁵ RT end 1⁵ high con rock wall

0476 27¹ RT & 3⁵ con walk

0450 26² RT Begin 1⁵ high con rock wall

0400 North Prop Kane St

16 West

62.4 RT = East 21
75

61.1
88

60.0 64.59 65.61
92 533 431
527 622

60.0 61.32 62.48
92 86 744
276 273
footing top

59.2 61.61 62.26 63.31
102 823 766 655
272 293 395
60' top step top step

58.5 60.82 61.77
114 95 815
262 262
footing top

57.2

127

69 92

Erie

0-07 137^s Lt Degin con block wall

TP₃

70

73⁹⁴

3⁰⁸

66⁸⁴

spike in pole
SW cor Jelleff
Erie

3490 E Jelleff

3450 South Prop Jelleff

3434 19^b Lt E 3' con walk

3400

2450

Lt West

114 = East

22

63.34
10^b
375
Footings

63.92
10⁰²
375
Top

65.9
8'

73.94

65.89

4.03

rim
SMH

65.2

42

64.8

67.70

69.35

51

2²²
19

0⁵⁷
39

66.3

56

63.4

65

69.92

Erie

1710 31² Lt E 7 con ribbon drive 2' ea

0791 24⁵ At E 8' con drive

0769 24⁵ At E 3' con walk

0756 27⁵ Lt E 7 con ribbon drive 2⁵ ea

0749 37⁰ Lt End con block wall

0727 37⁰ Lt E 7 con drive

0700 North Prop Jelleff

Lt. West

At. East = 23

64.20
 9²⁴ 9³⁶ 7²
 41² 31³

66.2
 66.2
 68.14
 69.34
 7² 5⁸⁰ 4⁶⁰ 67.66
 24⁵ 34⁵ 40

66.1
 67.69
 68.64
 7⁵ 6³⁰ 5³⁰
 24⁵ 34⁵

64.73
 65.06
 66.0
 9³¹ 8⁸⁸ 7²
 37⁵ 27⁵

64.04
 66.32
 65.9
 9² 7⁶² 8⁰
 77⁰ 37⁰
 feeting

63.40
 63.90
 65.7
 10⁵⁴ 10⁰⁴ 8³
 47⁰ 37⁰

65.7
 8²
 73²⁴

Erie

3790

3750 South Prop In Gulf

2796 41^s Lt & 8' con drive

2754 44^s Lt & 8' con drive

2743 40^s Lt & 8^s con drive

1792 40^s Lt & 7' con drive

1750

Lt = West E. Rt = East 24

65.23
8²¹
17m
54H

65.2
8²

62.92
63.43
65.2
11⁰² 10⁵¹ 8²
375 415

65.4
69.87
71.22
8⁵ 4⁰² 2⁷²
445 545

62.22
62.62
65.12
11²² 11³² 8⁵
300 400

62.95
63.34
65.6
11⁰⁹ 10⁶⁰ 8³
50 400

65.9
8⁰
73²⁴

Erie

Lt-West

Σ

Rt-East 25

TP4

0⁸⁵

73⁰⁹

4th post TP4
approx 20' East
of Line Erie
on S Ingot

4430 North prop Ingot A

62.14
115

73⁹⁴

Frankfort

st

Lt = West

2

Rt = East

26

1700

63

56.5

0750

72

55.4

0718

72

55.6

0700 North Prop Milton

120

50.8

0-09

134

49.4

0-27

72

55.1

TP

933

62²⁸

033

53⁴⁵

spike S
Frankfort
Milton

BM

1180

53²³

4203

SW BP
Milton
Eric

62²⁸

3790 E Lister

3750 South Prop Lister

3700

2768 40° Lt & 18' con drive

TP₃ 13³³ 87¹² 1¹² 73²⁹

2700

TP₂ 12⁵⁴ 74⁹¹ 0⁴¹ 62³⁷

1750

1734 34⁵ Lt & double garage dirt floor

Lt = west

8 8551 Rt = East
14
11m
3411

1 86.0

32 83.4

76.86
10²⁴ 9²⁵ 9⁶ 7² 8² 79.0
50³ 40³ 14 410
drive

87¹²
68.6
6³

74²¹
62.8
0⁰

61²⁸ 59.6
1⁵ 3²
34² Floor 62⁷⁸

2100

1760

1442 61° Lt E con porch

1400

0764 60° Rt E 10° con drive gravel approach

0700 North prop Lister

TP4

1247

9676

283

8429

Sp. No in hole
Sugar Frankfort
Lister

Lt = West

♀

Rt = East

28

12

95.9

02

95.33

1133

61
Porch

95.2

16

92.7

54

91.0

58

96.76 97.08
000 1032
603 66

97.5

93

9676

11-10-11 11 = East

1400

42

94.7

0750

43

94.8

0700 North prop Kane St

44

94.7

TP₃

837

9908

605

902

Spike in pole
Swear Kane
Frankfort

9908

93.7

4700 E Kane

31

3750 South prop Kane St

38

93.0

3700

35

93.3

2750

32

92.9

9676

Frankfort

also page 50

0700 North prop Jelleff

TP₆ 13³³ 106⁶⁸ 5⁷³ 93³⁵

5 spike in pole
Surcor Jelleff
+ Frankfort

3490 E Jelleff

3750 South prop Jelleff

3700

2750

2700

1750

Lt = West

E

Nt = East

99.3
7 1/2

106⁶⁸

97.52

126

1100
500H

97.2

12

95.2
3 1/2

94.0
5 1/2

93.7

5 1/2

93.9

5 1/2

99.08

Frankfort

2450 20¹/₂ RT Begin con wall

2450 36⁵/₈ RT Begin con brick wall

2440 20⁴/₈ RT & 10' con drive

61²/₈ Gear

1490 20²/₈ RT & 7' con drive

1439 20³/₈ RT & 8' con ribbon drive 2' ca 61²/₈ gear

TP₇

10⁶⁶

116⁹⁷

031

106³¹

0489 20⁵/₈ RT & 10' con drive 60⁵/₈ gear

0475 40⁵/₈ LI & 3' con walk

0421 37³/₈ RT & 4' wood steps

17 West

11⁸/₈ 105.17
36⁵/₈ 104²⁰/₈
Footings 36⁵/₈

111.2

112.90
42
20²/₈
Footings

31

110.8
63 5¹²/₈
20²/₈

11180
22³/₈
30²/₈

114.24
40 = Dr.

16.02

108.5
85 7²⁰/₈
20²/₈

109.47
5³⁹/₈
30

111.58
40

13.22

105.8
11⁸/₈ 9²³/₈
20²/₈

107.24
8⁴³/₈
26

108.54
6⁵⁷/₈
36

110.10

116⁹⁷

104.3
24 2³⁰/₈
20⁵/₈

104.38
0⁰⁰/₈
31

106.68

97.65

9²³/₈ 8⁵⁵/₈
50⁵/₈ 40⁵/₈

102.5
4²/₈

100.4

63

104.21
24¹²/₈
37³/₈
20²/₈ for step

107.56
+ 0⁸⁸/₈
43³/₈
for step

106

Frankfort

Lt. West

Rt. East 32

4730 North Prop Ingal/F

113.3
32

3790 E Ingal/F

584

111.13

E Mon Ingal/F
Frankfort

112.6
42

3750 South prop Ingal/F

113.7
38

3710 E SMH

112.71
42
111
584

2798 39° Lt End con brick wall

1051.07
112 1054
395 395
Footing top

112.4
46

2789 21° Rt E con drive

43° Jar

112.3
42

113.20
115.60
321 127 17.84
21 31 40

2780 20° Rt End con wall

112.00
50
116.92
323 42
30 top 20
top 1000g

INDEXED
JUN 29 1957

Galveston

Ave

Lt-West

2

Rt-East

33

1+89 Center draw

55.5
19L

1+81

64.0
10C

1+65

65.3
93

1+35

71.4
32

1+00

72.0
26

D+50

72.5
2L

0+00

74.0
0.6

0-40 = E Milton

75.6
+10

TP

12.60

74.61x

3.41

62.01

BM TP, page 26

53.45

2 spike
Milton
Frankford

11.97

65.43

53.45

T

1400

TP_n

0450

0400 = North line lister

3490 = E. Lister

3450 So. Ph. Lister

3400

2450

2425

Lt = West

69.5
16.8
±

E

Rt = East 34

~~74.5~~
~~11.7~~
86.31

11.81

86.31

0.11

74.50

69.1
55
61.6
70.

66.9
72
66.8
72

65.2
9±
63.5
11L
62.5
12L

7461 T

Lt-West

Rt-East

35

TP₄

12.94	$\frac{135.63}{135.69}$	0.45	$\frac{122.69}{123.75}$
	$\frac{\quad}{\quad}$		

0+00 = Noeth Prop Line Kane

4+00 = ϕ Kane

3+50 = So. Prop Line Kane

TP₅

13.21	$\frac{123.14}{123.20}$	0.31	$\frac{109.93}{109.99}$
	$\frac{\quad}{\quad}$		

2+50

 ϕ EL = 96.5TP₄

11.78	$\frac{110.24}{110.30}$	0.29	$\frac{98.46}{98.52}$
	$\frac{\quad}{\quad}$		

2+00

 ϕ EL = 88.3

1+50

 ϕ EL = 76.0TP₃

12.60	$\frac{98.75}{98.81}$	0.16	86.15
	$\frac{\quad}{\quad}$		

86.31 X

0+00 = No. prop line Jelle TT

3+90 = E Jelle TT

3+50 = So prop line Jelle TT

TP₇

3+00

2+50

2+00

1+50

1+00

0+50

L.T. = West

139.2 RT = East 36
8 2

137.67
10 44
8 2 11 7
137.3
10 8

12.80 148.11
+ 48.17

 x

0.32 135.31
+ 35.37

135.2
0 2

134.0
1 6

133.8
2 3

132.7
3 3

129.4
7 2

125.9
9 8

135.63
+ 35.69

LT = West

RT = east

4430 = No line Ingolf.

3490 = & Ingolf

3450 = So prop line Ingolf

3100

2750

2100

1750

1433-40[±] LT = 16' wid. Conc. Drive

1400

8750

+2 150.9

+2 150.3

+1 149.1

147.0

3 144.9

143.4

6 142.1

6 141.7

7 140.9

8 140.0

143.36
475
50.5

143.88
423
405

148.11

148.13

BM check

73.06 ✓ TP4 page 25
6.05 ✓ 73.12 ✓ 73.00

TP₁₃ 1.08 79.11 12.97 78.03
~~79.17~~ ~~78.09~~

TP₁₂ 1.47 91.00 12.36 89.53
~~91.06~~ ~~89.59~~

TP₁₁ 0.99 101.89 12.78 100.90
~~101.95~~ ~~100.96~~

5.3 ✓
2.62 ✓
E.32
S Mon Engle B
1113 Frankfurt

TP₁₀ 0.39 113.68 13.16 113.29
~~113.74~~ ~~113.35~~

TP₉ 0.94 126.45 12.42 125.51
~~126.51~~ ~~126.57~~

TP₈ 1.66 137.93 11.84 136.27
~~137.99~~ ~~136.33~~

148.11
148.17 ✓

X-Sect. 20' Alley in Block 8
Crittendens Add. for Grade est.

5712 9-13-51 - 7.0.

W.O. 25020

10' Lt begin 30' with Russell line

0+61.7 - 9.7 Lt. = end Conc. curb

0+44.6 - 10.6 R. = end Bldg.
curb.

0+24.3 - 9.4 Lt. = end curb + Walk + Beg. private

0+12.3 = ± and edge of A.C. pave (Beg. oil pave) ^{very poor}

0+00 = S.L. Pennsylvania to W.

0-04 = P.C. curbs on Rt. = Beg. Cross gut

0-10 = S. cb. to W.

Used F. Rod - Actual Elev. shown

B.M.

278.04 = S.E.

7th ct. 7th + Pennsylvania

INDEXED

SEP 17 1951

70.02	69.5	69.4	69.4	69.5	69.6	70.7
9.7	9.7	7		7	10	20
Top	gut	edge		edge		
end cb.						

69.7
10.6 = ground.

69.24	68.98	69.4	69.6	69.7	69.7
9.4 = Top	9.4 = gut		edge	10	10.5 = Bldg.
end cb.					

68.82	68.93	69.34	69.5	69.6	69.6
.13	10	edge A.C.	edge	10	10.5
Cross gut			oil		along Bldg.

69.18	69.28	69.23	69.33	69.74
20	10		9.9	Top = end
			gut.	cb.

69.41
10.3
gut
69.50
Top

68.85	68.31	69.49	69.64	69.60	70.06	70.48	71.30	71.95
Top	32.9	10		10	28	Top =	50	Top
cb.	gut.		200' Not		gut.	rd.	gut.	
			Noted.					

2+68-10.3 Rt. = Beg. Conc. wall - Base for fence

2+50

2+24-10.3 Rt. = end apron
also begin 6" board fence // line

2+20 7 1/2" Lt & 10" dia PP/10 # JPA 3664

2+05-10.6 Rt. = Beg. Conc. apron to Doub. Grav.

2+18 8 1/2" Lt begin 4" wire fence // line

2+00

1+96-9.1 Rt. = Conc. apron to Sing. Grav.

1+80 9 1/2" Lt & 10" Long wooden shed

1+75-9.7 Lt. = end apron

1+51-9.3 Lt. = Beg. Conc. apron to Doub. Grav.

1+50 9 1/2" Lt end Lath fence // line

1+47.5-9.9 Rt. = end Found.

1+23.6-10.4 Rt. = Beg. Conc. Found. to frame House

1+19-9.6 Lt. = 2' Conc.

1+00

0+98 8" Lt + 10" 12" PP/10 # JPA 3682

Lt. # Rt. 70.00 41
Top wall

67.3 67.4 67.5 67.8 67.9 69.4 69.6
15 10 6 7 10 15
edge edge

68.98
10.3
apron. 69.04 69.66
10.6 Apron 15.5
floor.

68.8 68.6 68.3 68.5 68.6 68.8
15 10 7 7 10
floor Grav. (Dirt) edge edge

68.93 69.40
9.1 10.9
floor Grav.

69.07
9.7
apron + 0.1

69.61 69.16
14.2 9.3
floor Grav. apron

69.2 69.1 68.9 69.0 69.2 69.6
10 8 5 10 15
edge edge

69.1 70.51
9.9 Conc.

69.5 9' 70.72
10.4 10.4
ground Top found.

69.34
9.6 = walk

69.3 69.2 69.2 69.3 69.3 69.8 70.0
15 10 7 7 10 15
edge edge

Lt. ± Rt.

4+55

26.3 31.3 34.8 38.0 41.2
27 10 10 20
wash

308054-H
Set B.M. = spike in pole - 4+45 - Lt. 238.29

4+10

33.0 39.4 43.8 48.7 52.0
20 10 10 20
wash

3+80

35.3 41.04 42.7 46.0 50.5 55.9
25. 4" ^{Top} _{of} ^{Sewer} _{let.} 10 10 20
wash

↑
same section line to end of road 2-25-58

3+43.5 = 0.5' Rt. ± Sewer M.H. 58.34 = Rim

42.7 53.4 59.1 60.97 61.40
30 = 10 9.6 = 14 = walk
Bottom of edge walk
wash from Bldg.

3+40

3+28

51.2 55.1 60.6 61.6 62.4
15 10 3 10

3+35.7 - 7.7 Rt. = Ely. of Conc. step at end of Bldg.

3+06.5 9.2 Lt. end Picket fence

60.7 60.97 61.34
7.7 7.7 10.6 = Conc. at
ground Top cor. Bldg.
Cont.
63.0 63.3 64.0 64.7
20 10 10 10
53.9 59.7 62.3 64.8 64.5
20 10 10 10
10.9 = along
Bldg.

3+07

3+10

Set. B.M. = spike in Pole - Lt. 2+98 - JPA 3650 264.21

Stucco Apt. Bldg.

3+01 - 7.3' Rt. = Div. of 5 Conc. slab. at Cor. of large

64.9 65.6 65.73
7.3 Top 11
ground Conc. = at Cor. of
Bldg.
65.4 65.7 65.5 64.8 64.9 65.3
20 10 7 6 8 8
62.7 66.0 65.6 65.9
20 10 10

3+00

2+98 7.6 Lt. 8" P.P. 1/2 # JPA 3650

2+96 9.9 Rt. = end Conc. wall fence on top also.

2+75 } 8.2 Lt. end wire fence // line
end oil pave

9.3 Lt. begin 4.5 picket fence // line

66.2 69.90
9.9 9.9
66.6 66.7 66.8 67.0 67.4 69.7 69.9
15 10 7 5 10
edge edge Top wall

6+32.6 = 1' Rt. = Sewer M.H. 13.83 on Rim

6+20 = Creek along Brookes St.

10.4 9.1 10.5 10.1 10.5
20 10 in Creek 10 20

S.E. Cor. Lot 1

Set B.M. on 1/4 pipe on Rt.

216.96

5+99.47 = N.L. Brookes

12.8 15.5 16.7 16.9 17.2
32 wash 10 10 20

33.15

5+70

15.7 22.0 22.7 24.4 26.6
38 wash 10 10 20

5+40 - 11.5 Rt. = Cor. House = end.

19.8 28.6 34.0 34.3 34.3 38.80
40 wash 10 10 11.5 at floor
Cor.

5+14 - 7.3 Rt. = end wing

37.4
7.3 = ground

5+04 - 7.2 Rt. = Cor of Wing of House

37.7 38.81
7.2 floor
ground

5+00

22.9 35.0 39.3 40.3 42.1
40 wash 10 10 20

X-Sect. Denver - Jellet to Ingulf.

Indexed

Lt.

±

Rt.

Sketch-P. 46
 W.O. 1-9-52 7.0.

1+50 46.9 47.5 48.6 48.9 50.0 51.1
 40 20 12 20 40

1+48-39.3 Lt. = Beg Picket fence

1+24-39.8 Lt. = end fence

1+04-17.8 Rt. = ± of 1 Hedge - 2' High ?

1+00-17 Rt. = wly. ± of 2' Hedge - 4' High 45.8 46.1 47.1 47.9 49.3
 40 20 20 40

0+98-39.4 Lt. = Beg. Picket fence

0+92-39.6 Lt. = ± of Sing. Gar. - Dirt floor 45.6
 39.6 floor.

0+86-34 Lt. = end fence

0+64-19 Rt. = ± w.M.

0+50

0+36-34.8 Lt. = end Hedge + Beg. wire fence 32.6 Lt. 43.8 44.5 45.6 46.1 47.32 48.2
 40 20 18.9 Top wall 40

0+17-22 Rt. = ± w.M. 46.00

0+00 = N.L. Jellet.

0-11-35 Lt. = Beg. ± 2' Hedge - 5' High 43.0 43.4 44.6 45.9 46.56 48.5
 40 20 18.9 Top wall 40

47.09 = Top Brick = P. 15
 Wall - N.E. Cor. Denver + Jellet.

Actual Elev. shown.

Cont. on P. 47

Lt.

E

Rt.

✓ 2+99- 21.1' Rt. = Φ 2' Palm = wly. of 3' Hedge to E.✓ 2+88- 20.5' Rt. = end Φ of Hedge

✓ 2+81- 27.9' Rt. = E 4" Acacia

39.3' Lt. = Beg. Φ of 4' Hedge - 5' High✓ 2+74- 35.3' Lt. = end Φ of Hedge✓ 2+61- 35' Lt. = Beg. Φ of 1' Hedge - 2' High✓ 2+60- 27.9' Rt. = Φ 3" Acacia✓ 2+52- 20.5' Rt. = Beg. Φ 1' Hedge - 2' High17.4' Rt. = end Hedge Φ - also goes E.

✓ 2+50- 34.6' Lt. = end Hedge

✓ 2+45- 33' Rt. = Φ 3" Orange✓ 2+43- 17.4' Rt. = Beg. Φ 3' Hedge - 6' High✓ 2+31- 32.3' Rt. = Φ 10" Acacia32.6' Rt. = Φ 12" Acacia Tree✓ 2+07- 18' Rt. = end Φ Hedge✓ 2+04- 35.4' Lt. = end Ely. of walk + 34' Lt. = Beg. Φ of
1' Hedge - 1' High

Also goes E.

✓ 2+00- 18' Rt. = Beg. Φ of 2' Hedge - 6' High

✓ 1+99- 39.2' Lt. = end fence

✓ 1+75- 35.4' Lt. = Beg. Ely. of 17' A.C. walk

✓ 1+59- 33.8' Rt. = Φ 5" shrub.✓ 1+54- 22' Rt. = Φ 12" Shrub.

47.74	48.3	50.0	50.4	51.2	51.8	52.45	52.3	53.3
50 = walk	40	32	20		16.3	Top wall	20	40

47.76	48.80
52 = walk to N.	35.4 = walk

48.3	48.54	48.67	48.9	49.9	50.4	51.09	51.5	52.2
40	37.1	35.4	20		16.9	Top wall	25	40
		edge walk						

47.66
35.4 = walk

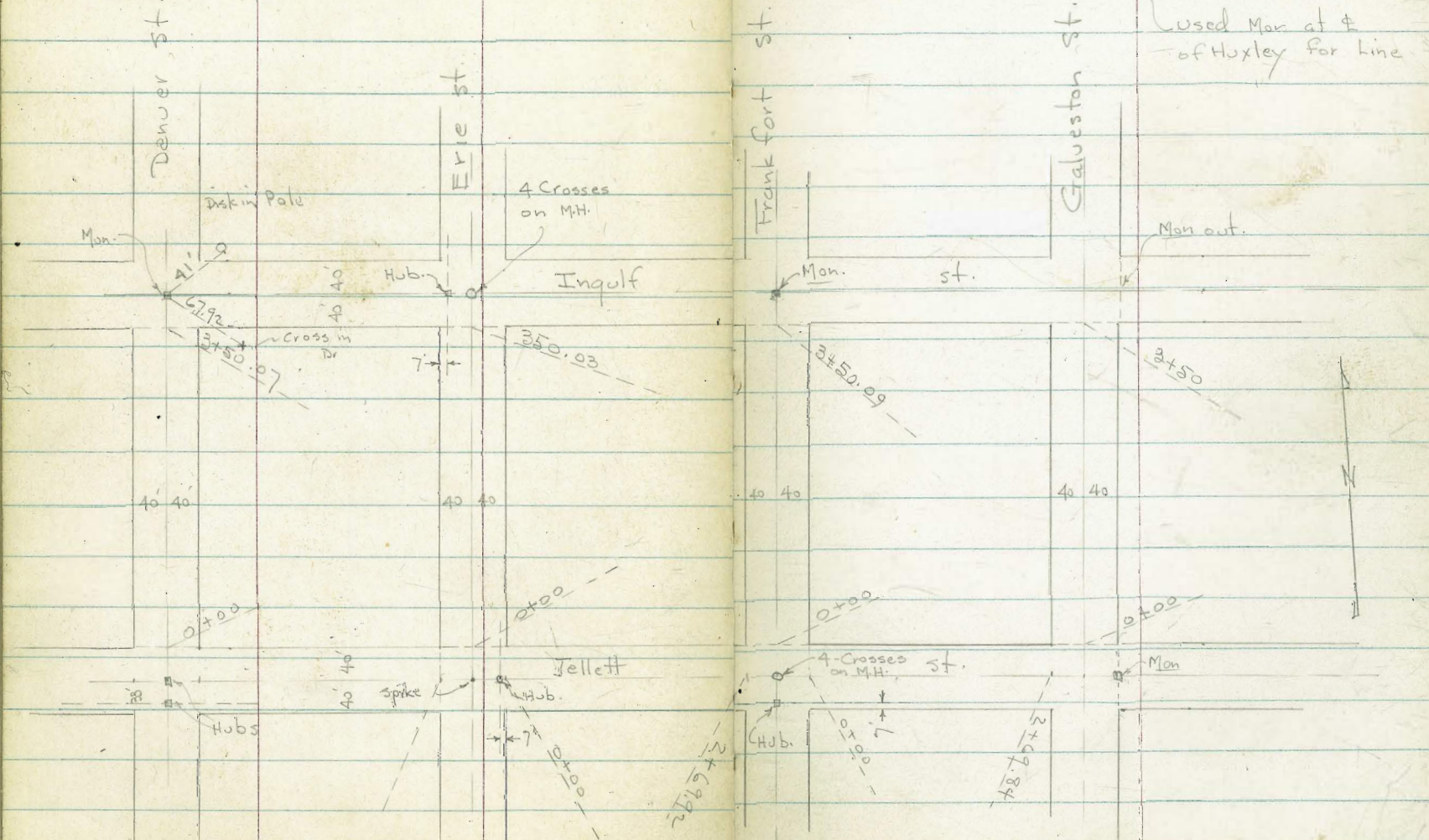
X-Sept - Denver - Erie - Frankfort + Galveston + Jelleff - Notes - P. 44 to

5951

1-10-52

7.0

W.O. 32014



Lt.

±

Rt.

Set B.M. on Mon = ± Both ways

53.05

3+90.07 = ± Inqulf = end.

47.2	50.3	52.1	53.3	53.8	54.5	55.5
80	40	20		20	40	90

3+76 = N. edge Roadway

46.4	50.1	51.7	53.0	53.9	54.7	56.5
80	40	20		20	40	90

3+62 = edge of graded Roadway

47.0	50.3	51.9	53.0	53.7	54.5	56.3
80	40	20		20	40	90

3+50.07 = sl. Inqulf - 31' Rt. = ± Dead man

47.5	51.1	52.1	53.0	53.6	54.3	55.2	56.4
80	40	20		16	20	40	90

13+49 - 28' Rt. = ± 6" Acacia

lawn

13+47 - 39.4 ft. = end ± of Hedge

13+07 - 27.7 Rt. = ± 5" Acacia

13+00

50.5	51.5	52.2	52.3	53.8	54.6
40	20		12	20	40

lawn

Cont. from P. 45

X-Sept. Eric St. - Jellet to Ingulf.

See P. 23 for Drives etc.

3+00

63.4	64.7	65.2	65.5	67.5	70.4
40	20		11	20	40

2+50

62.6	64.0	65.4	65.7	66.7	69.1
40	20		12	20	40

2+00 - 35.7 Lt. = \pm 2' Cactus

63.0	64.3	65.6	65.7	67.9	69.8
40	20		10	20	40

1+82 - 32.7 Lt. = \pm 2' Cactus1+77 - 36.5 Lt. = \pm 2" Orange1+57 - 36.8 Lt. = \pm 2" Orange1+55 - 33 Lt. = \pm 24° Cactus

1+50 - 25.7 Lt. = end Hedge

64.0	65.2	65.9	66.2	68.5	70.9
40	20		10	20	40

1+14 - 26.5 Lt. = \pm New young Hedge1+00 - 27.5 Lt. = end \pm Hedge - goes to W.

64.2	65.4	66.2	66.5	68.4	69.6
40	20		9	20	40

0+61 - 28.5 Lt. = Beg. \pm 2' Hedge - 2' High

0+50

64.3	65.1	65.9	65.9	66.8	68.5
40	20		9	20	40

0+02 - 28' Lt. = \pm Guy Pole

0+00 = N.L. Jellet

63.4	64.57	64.3	65.6	65.6	67.2	68.0
40	37.7	20		9	20	40

B.M. = s.w. Pole - P. 22

66.84

Top wall

Actual Elev. Shown

Inverted

Lt.

±

Rt.

Erie

62.70
5.35
57.35

Lt.

±

Rt.

49

3+90.03 = ϕ + \pm of Sewer M.H. = Wly. of Roadway

60.3	62.3	63.6	65.25	66.5	67.8	70.5
80	40	20		20	40	70

on Rim-on
Sly. Cross

3+55 = edge of Roadway along Conc. curb on Lt.

60.9	63.30	62.8	64.1	65.3	66.1	67.8	70.9
80	Top wall	40	20		20	40	70

3+50.03 = S.L. of Ingulp

61.5	63.2	63.84	64.0	65.3	66.1	67.6	69.8	72.2
80	40	29=Top wall on curve	20		20	35	40	70

3+02 = 26.1 Lt. = Beg. Loose Conc. block curb.

64.47
26.1 = Top
cbl.

Indexed

Lt. ± Rt.

X-Sect. Frankfort - Jellett to Ingulf.

See P. 31 for Drives - etc.

2+51-36.6 Lt. = Cor. of loose Conc. Block wall

06.60 05.6
-Top
wall 36.6

-20.9 Rt. = Beg. 8" Conc. curb.

2+50-25.5 Rt. = ± wly. of 3' Hedge-6' High

05.0 06.0 10.2 11.6 11.0 11.2 11.6 12.2 12.85 15.5 17.7
40 33 20 13 10 18 20.9 20.9 26 40
Top
of

2+00-23.5 Rt. = ± wly. of 2' Hedge-5' High

04.0 06.3 08.7 08.8 08.9 09.4 12.7 14.5
40 27 20 8 18 28 40

1+50-23' Rt. = ± wly. of 2' Hedge-5' High

01.5 03.1 06.9 06.1 06.3 07.1 10.2 12.0
40 28 17 8 18 27 40

1+47-24.2 Rt. = wly. of 10" Rock + Conc. wall

08.7 09.24 11.84
24.2 24.2 40
Top Top wall

1+00-20.8 Rt. = ± wly. of 2' Hedge-6' High

99.4 02.2 04.0 03.2 03.7 04.6 07.5 09.2
40 20 12 9 20 27 40

0+99-17.8 Lt. = ± 2' Hedge-3' High

0+53-16.1 Lt. = ± of Ely. of 2' Hedge-3' High

0+50-21.5 Rt. = wly. of 2' Hedge-6' High

96.8 99.7 01.1 01.4 02.0 05.0 06.5
40 20 10 20 27 40
100' Elev. Not Noted

0+00 = N.L. Jellett

95.3 98.6 98.6 99.1 100.2 03.2 05.7
40 20 9 20 38 40

B.M. = S.W. Pole - P. 30

93.35

Actual Elev. Shown

Lt.

±

Rt.

3+90.09 = ±

04.7	07.0	09.7	13.5	15.2	20.3
40	25	10		19	40

3+50.09 = S.L. In gulf

04.2	07.4	13.0	12.9	13.2	13.8	18.0	21.7
40	25	14	.4		19	.24	40

3+02 - 27 Rt. = ± wly. of 2 Hedge - G High

3+00

05.0	08.1	12.3	12.0	12.5	13.0	17.2	19.2
40	27	17	.11		20	29	40

INDEXED
JAN 14 1952

X-Sect. Galveston - Jellett to Ingulf.

for Drives etc. - see P. 37

3+50 = 30.3' Lt. = # Tel. pole # 484180-H
= S.L. Ingulf.

59.2 59.4 58.7 49.3 48.9 48.6 48.8 47.8 46.5
50 40 28 9 15 34 40 30

3+00

57.9 58.7 59.1 47.4 47.0 46.9 47.1 48.5 46.7
50 40 30 17 15 32 40 50

2+50

51.2 52.2 55.0 45.7 45.1 45.2 45.7 48.7 47.4
50 40 28 17 15 32 40 50

2+05

49.7 50.1 44.3 43.6 42.9 44.2 47.1 46.0
40 25 16 15 30 40 50

2+00

45.8 46.5 44.0 43.4 42.7 44.1 46.5 47.1 45.9
40 23 16 15 30 40 42 50
front of New House

1+50

44.7 44.6 42.6 42.2 42.3 42.4 43.5 44.0 42.3
40 20 16 20 30 40 43 50

1+00

39.9 41.4 41.0 41.4 41.6 41.2
40 20 33 40

0+50

36.6 37.8 39.3 40.0 40.6 40.8
40 25 10 20 40

0+00 = N.L. Jellett

35.0 36.8 38.8 39.9 40.5 42.0
40 20 15 29 40

B.M. = Mon. # Jellett + E.L. Galveston 140.82

- B. 2060 - 7.70
Elev. shown 100' Elev. figure not Noted

Lt.

±

Rt.

3+90 = ± Inqulf. = end.

53.6	53.6	50.1	50.0	49.6	49.7	47.3	47.2
40	23	16		15	24	40	50

Indexed

Lt.

±

Rt.

X-Sect. Jellert - Erie to Galveston

6 Drives - etc. - See B. 2060 - P. 65

1+50	81.9 40	81.6 25	81.0 14	81.2 edge	80.5 15	80.7 25	80.3 40
1+49-29' Rt. = ± Pole # P 4251							
1+47-29 Rt. = ± Pole stump - 3' High							
1+34.5 = ± Sewer M#		79.85	= on Rim sly.				
1+25-29 Rt. = ± 36" Euc.							
1+00	77.4 40	77.0 25	75.9 15	76.7 edge	76.2 16	76.9 25	76.8 40
0+65 = ± AC Drive to Double Gear.					73.93 21- Dr.	74.06 40	74.03 45.5 Floor
0+50	72.4 40	72.6 25	72.0 14	72.4 edge	72.2 15	73.0 25	72.6 40
0+24-27' Lt. = ± 30" Euc Tree							
0+00 = E.L. Erie	68.0 40	68.6 25	68.2 15 edge	68.8	68.2 17 edge	69.2 22	69.8 40
0-40 = ±	65.6 40	65.6 25	65.7 15 edge	66.1	65.7 17 edge	65.4 30	65.0 40
0-80 = W.L. Erie - Rough oil pane on Rdwy.	63.4 40	63.5 25	63.2 15 edge oil	63.6	62.9 17 edge oil	63.0 25	63.1 40
B.M. - S.W. Pole - P. 48		66.84					

Elev. shown.

Jellett

Lt.

±

Rt.

55

1+01-27' Lt. = ± 24" Euc.

1+00

16.4 15.8 14.8 14.7 14.9 14.2 15.0 14.7
40 25 20 12 edge 19 25 40

0+99-29' Rt. = ± 24" Euc.

0+50

10.9 09.5 08.4 08.4 08.5 07.8 07.9 08.7
40 20 19 12 edge 18 25 40

0+48-39.9 Lt. = End. sly. of walk

10.97 10.89
50 39.9=walk
walk

0+17-39.9 Lt. = Beg. sly. of 2' Conc. walk along House

07.68
39.9=walk

0+00 = E.L.

05.7 04.3 03.2 01.4 02.3 02.6 01.8' 01.9 02.3
40 30 20 19 12 edge 17 25 40

± Frank fort.

99.1 98.5 98.4 98.4 97.6 97.5 97.1
40 25 15 edge on Mt. edge 17 25 40

Check BM = S.W. Pole - used 93.35

2+69.92 = W.L. Frank fort - 29' Rt. = ± 24" Euc.

95.3 94.5 93.7 94.0 93.2 93.1 92.7
40 20 15 edge 16 25 40

2+67-28.6' Rt. = ± P. pole # 4299

2+46-29' Rt. = ± 36" Stump.

2+35

91.3 90.6 89.5 89.8 89.2 88.9 88.3
40 22 16 edge 15 25 40

2+00

87.6 86.8 86.0 86.0 85.1 85.2 85.4
40 20 16 edge 16 25 40

1+74-28.9 Rt. = E Dead man

Jellett

check B.M. = Mon.

140.82

3+49.84 = E.L. = end.

42.0 41.8 41.3 40.9 40.0
40 20 20 40

3+09.84 = ϕ - end oil pipe

38.8 38.4 37.8 36.9 36.2
40 20 20 40

2+81.84 - 28' Rt. = ϕ P. pole # 4361

2+80.84 - 28.5' Lt. = ϕ Guy Pole

2+69.84 = w.L. Galveston

35.0 34.4 33.9 33.7 32.8 32.6 32.1
40 25 19 edge 20 30 40

2+43 - 28.7 Rt. = ϕ 32" Euc.

2+35

32.0 31.1 29.6 29.8 29.7 28.9 28.8 28.1
40 23 22 13 edge 19 30 40

2+00

29.1 27.5 26.0 26.1 26.0 25.3 25.2 24.9
40 23 22 13 edge 19 25 40

1+95 - 30' Rt. = ϕ 36" stump

1+50

23.1 21.8 20.8 20.9 20.8 20.1 20.6 20.3
40 25 20 12 edge 18 30 40

1+48 - 28.7 Rt. = ϕ Deadman

wrong line - sorry

1+46 - 27' Lt. = ϕ 36" Euc.

1+35 + ϕ Sewer Mt.

19.16

on Rim sly.

1+26 - 29' Rt. = ϕ P. pole # 4349

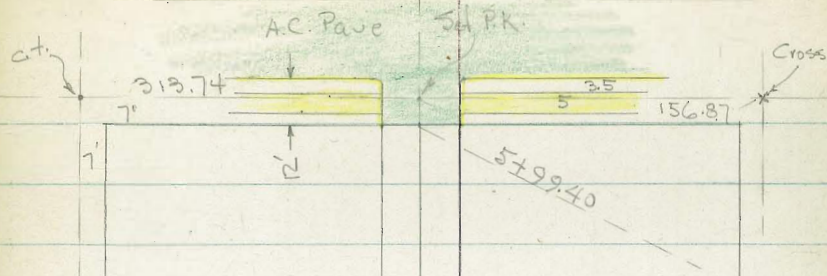
1+24 - 27' Lt. = ϕ 30" Euc.

56

EBERS

ST.

57



Block 30
Ocean Beach

10' 10'

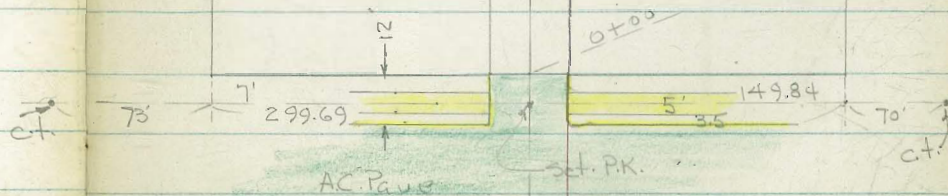
Hue

Hue

Cape May

Varatoga

INDEXED
Law
FEB 8 1952



SUNSET CLIFFS Blvd.

Lt. ♀ Rt.

γ-Sect. 20 Alley in Block 30 for Grade

Est. # 5941 2-1-52 - 7.0.

W.O. 25020 - Sketch - P. 57

T.P. = spike in Pole - Rt. of 2+00 29.70

1+00

27.1 26.8 27.4 27.4
 10 10 12.5 = along church

0+95 11.8' Lt. = end apron

26.89
 11.8 = apron

0+69 11.9' Lt. = Beg. Conc. apron to 3 Car Gar.

27.05 26.72
 14 11.9
 floor apron

26.3 25.9 26.3
 10 10

0+50

0+45 9' Rt. = ± 3' Conc. walk

26.47 26.53
 9 15
 walk

0+44 12.4' Lt. = ± of 8' Conc. apron - Sing. Gar.

26.33 26.08
 15 12.4 = apron
 floor.

Pave + end curbs.

0+00 = E.L. of Sunset Cliffs Blvd. + edge of A.C.

25.32 24.98 24.70 25.05 25.30
 Top 10 10 Top
 gut. gut.

0-12 = E. cb. line

24.86 24.21 25.08 24.45 24.40 24.43 25.02 24.48 25.16
 Top 50 Top 10 10 Top 50 Top
 gut. 2' Rad. gut. gut. 2' Rad. gut.

Actual Elev. Shown

check B.M.

25.03 = N.W. B.P. Saratoga + Sunset.

B.M.

24.04 = N.W. B.P. Cape May + Sunset Cliffs

Jim: - This is it. ?

3+33 - 21.8' Rt. = Sing. Gar. - Needs Grade for apron. to E.

3+28 - 6' Lt. = end extra Sect. of Apron - 9.9 Lt.

3+00 = ± Sewer MH

2+99 - 5.7' Lt. = Beg. Conc. apron to 4 Car. Gar.

2+74 - 14' Lt. = ± of Conc. apron to Doub. Gar.

2+50 = 4' W. of end of apron on Rt.

2+28 - 10.1' Rt. = Beg. Conc. apron to 3 Car. Gar.

2+24.5 - 10.4 Lt. = end wall

2+00

1+95 - 10.2 Lt. = ± 3' Conc. walk Thru wall

1+75 - 10.1 Lt. = end Conc. apron + Beg. Conc. wall

1+51 - 10' Lt. = Beg. Conc. apron to Doub. Crat.

1+50

Lt. ± Rt.

34.21
21.8 = floor

32.99 32.91
9.9 = 6 = apron
apron ahead. Back

32.71 32.61 31.98 32.3
10 5.7 on Rim 10
Conc.

32.15 32.72 32.62
18 10 5.7 = apron
floor

31.83 31.45
18 14 = apron
floor

30.5 30.4 30.75
10 10.1 = apron

30.49 31.08
10.1 14.2 = floor
apron

30.0
10.4
at Cor.
29.1 29.0 29.3
10 10
By wall

29.06
10.2
walk 28.70
10.1 = apron

28.63 28.45
14.8 10
floor apron 28.2 27.9 28.0
10 10

	Lt.	±	Rt.
5+70 - 9.9' Lt. = E. of 2' Conc. walk	39.36 15	39.26 9.9	
5+50	38.5 10	38.3	39.0 10
5+49 - 9.9 Rt. = ± of 3.5 Conc. walk			39.30 9.8 walk
5+41 - 9.9 Rt. = ± of Conc. apron to Sing. Gar.			39.39 13.8
5+31 - 14.2 Lt. = ± Sing. Gar. - wood floor	38.15 14.2		39.25 13.3 apron floor
5+13 - 14.1' Rt. = ± Doub. Gar. - Dirt floor			38.1 14.1 = floor
5+00	37.5 10	37.4	37.9 10
4+93 - 8.8' Rt. = ± of 13' Conc. apron to Small House (was Gar.)			37.98 8.8 apron
			38.50 10.2 = floor.
4+86 - 7.8' Rt. = ± 3' Conc. walk			37.53 7.8 walk
4+75 - 10.1 Rt. = end House			37.75 10.1 at Cor.
4+70 - 16 Lt. = ± Sing. Gar. - Conc. floor	36.97 16 floor.		
4+52 - 7 Rt. = Beg. wly. of 6' Conc. slab. to step to house			37.05 7 slab. top step
			37.38 37.85 38.14 10 = at house floor.
4+50	36.5 10	36.3	36.9 10
4+00	35.3 10	35.0	35.6 10
3+87 - 19.6' Rt. = ± Doub. Gar. - also Needs grade (New)			35.91 19.6 = floor
3+50	33.4 10	33.5	34.1 10
3+49 - 9.9 Lt. = end Conc. apron	33.28 9.9 = apron		

Lt.

±

Rt.

Set. B.M. = spike in Pole - S. side - by cb. 40.63

6 + 11.40 = W. cb.

38.97	38.45	39.80	39.27	39.37	39.62	40.25	40.45	41.02
Top	50	Top	10		10	Top	50	Top
	gut.	2' rad.	gut.		gut.	2' rad.	gut.	

of curbs.

5 + 99.40 = W.L. of Ebers + edge of A.C. + end.

39.88	39.75	39.33	39.82	40.33
Top	9.9 = gut.		9.9	Top
			gut.	

Roberts
lots

Moore
4-3-52
NS 2000L

Q & P.L. Profile on Orange

500' Wly from E.L. 54th St.

TP 3661A

Fd. H. b.
& CT.

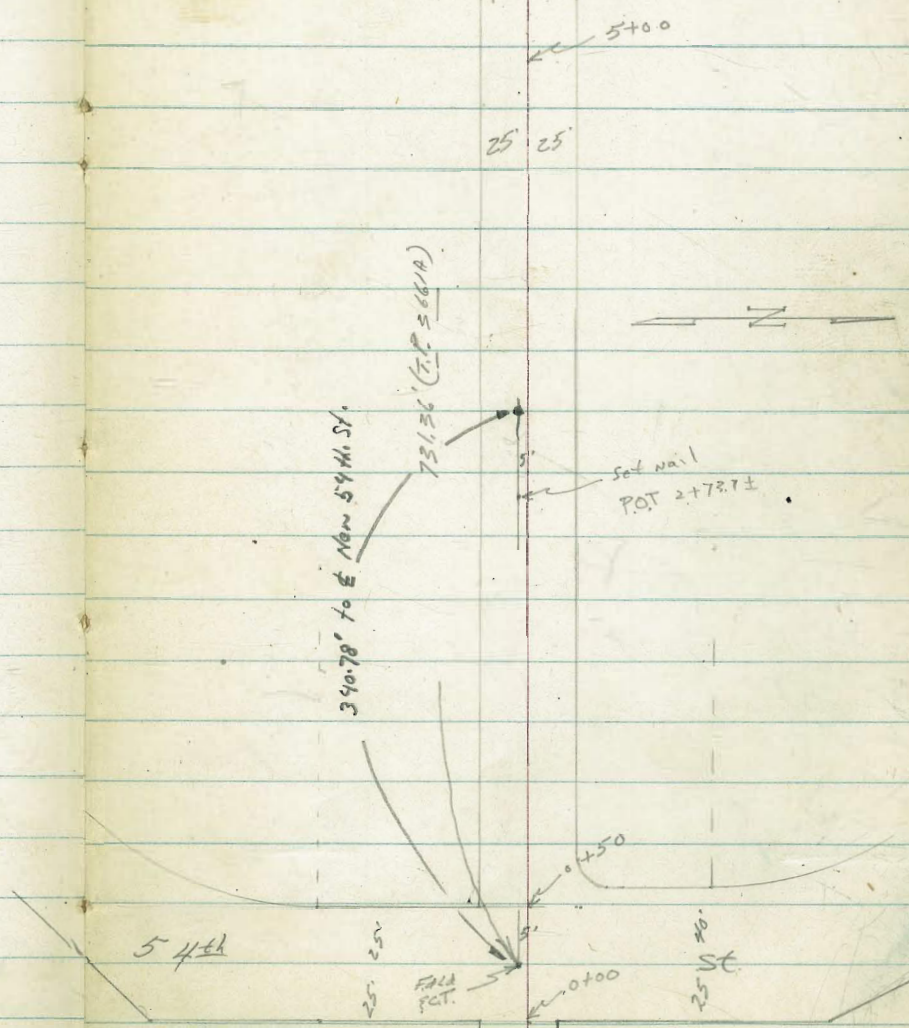
Fd. Pipe

62

INDEXED

Law

APR 4 1952



Contd From Page 62

Lt
So.
PL.

Q

373.7
11.3
2.5

63

1+22

T.P. 12.22 385.04 \uparrow 0.24 372.82

385.04 \uparrow

1+00

374.7
+1.6
25

370.5
2.6

373.4
+0.2
25

0+50

Notes reduced by
P.B. Carson
4-11-52

365.1
8.0
25

364.0
9.1

363.1
10.0
25

0+25

364.0
8.3
25

363.7
9.4

362.5
10.6
25

0+00

East Line 54th

364.4
8.7
25

363.4
9.7

362.4
10.7
25

Set BM

9.25 363.81

21 FT
orange
54th

T.P. 11.21 373.06 \uparrow 0.12 361.85

373.06 \uparrow

T.P. 12.80 361.97 9.14 349.17

BM 2.64 354.31 351.67

2d $\frac{1}{2}$ CT on
Q Trojan $\frac{1}{2}$
Q 54th

Cont'd From Page 63

Lt

R

R Lt

2+50

389.2

386.9

2.7
25

5.0

391.9

0.0
25

2+22

389.2

385.3

2.7
25

6.6

390.7

1.2
25

T.P.

7.16

391.88 $\bar{\wedge}$ 0.32 384.72

391.88 $\bar{\wedge}$

2+17

389.0

383.2

+4.0
25

1.8

386.5

+1.5
25

2+00

383.2

377.5

+3.0
25

388.0

1+50

1.8
25

7.5

381.3

3.7
25

1+26

377.3

7.7
25

385.04 $\bar{\wedge}$

385.04 $\bar{\wedge}$

Cont'd From Page 64

(3+65.78 @ of New 59 ST.)

3+50

3+35

3+30

3+20

3+14

3+00

2+75

391.88 π

Lt

387.7
4.2
25

388.7
3.2
25

388.9
3.0
25

Rt
387.2
4.7

388.0
3.9

387.7
4.2

392.1
+0.2
25

391.9
0
25

390.0
1.9
25

390.4
1.5
25

392.3
+0.4
25

392.5
+0.6
25

394.8
0.1
25

391.88 π

Cont'd From Page 65

5700

4790

4755

4748

4738

4733

4700

391.88 $\bar{\pi}$

Lt

384.0
7.9
25

385.3
6.6
25

385.4
6.5
25

385.9
6.0
25

383.5
8.3

384.8
7.1

385.2
6.7

386.1
5.8

391.88 $\bar{\pi}$

Rt 66
386.6
5.3
25

389.4
2.5
25

389.7
2.2
25

387.5
4.4
25

387.5
4.4
25

389.3
2.6
25

389.1
2.8
25

Cont'd From Page 66

67

check

443 351.66 = 351.67

T.P.

144

356.09

12.90

354.65

T.P.

0.86

367.55

12.80

366.69

362.81

374

T.P.

0.14

379.49

12.53

379.35

371.887

Lots 1-2-3-4-27+28
 BIK. 69 Morena Sub.

2-13-53
 Sammormeyer
 Bogg
 Oltman

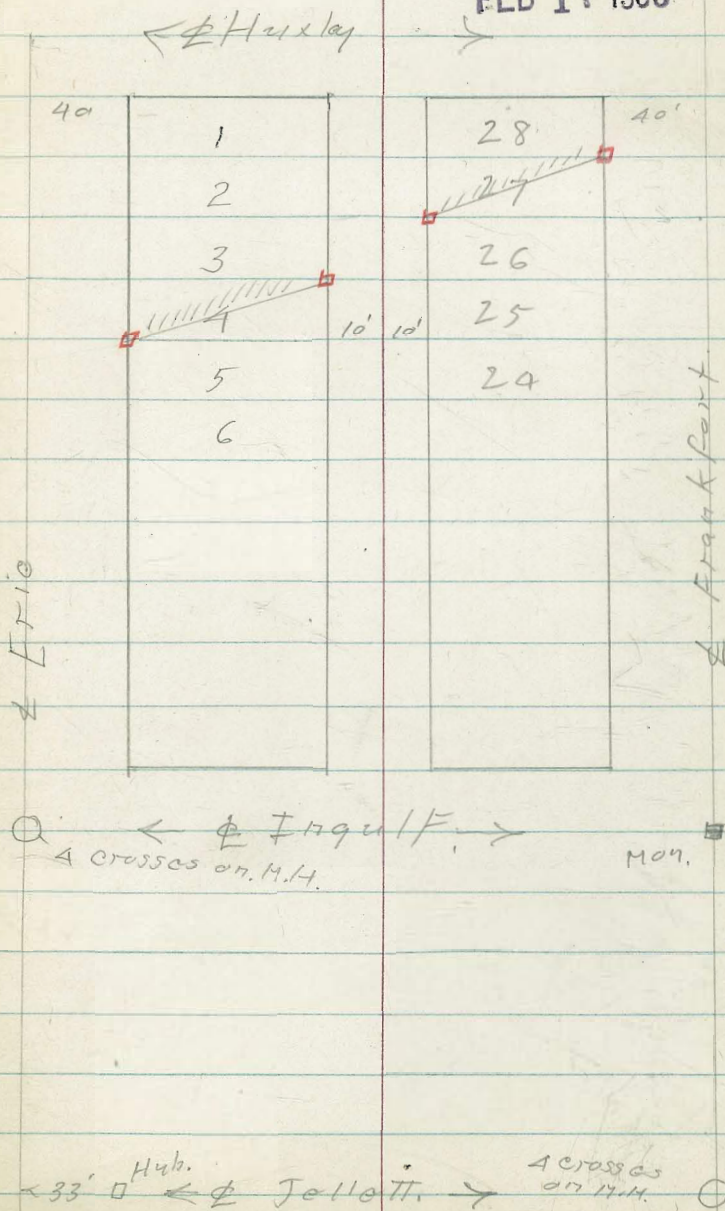
Sheet 201A-D.

Lines Nly from Inqulf St.
 were produced from south.
 Map. &/or Tie point distances used.

□ denotes set Hub & disk

INDEXED
 FEB 17 1953

68



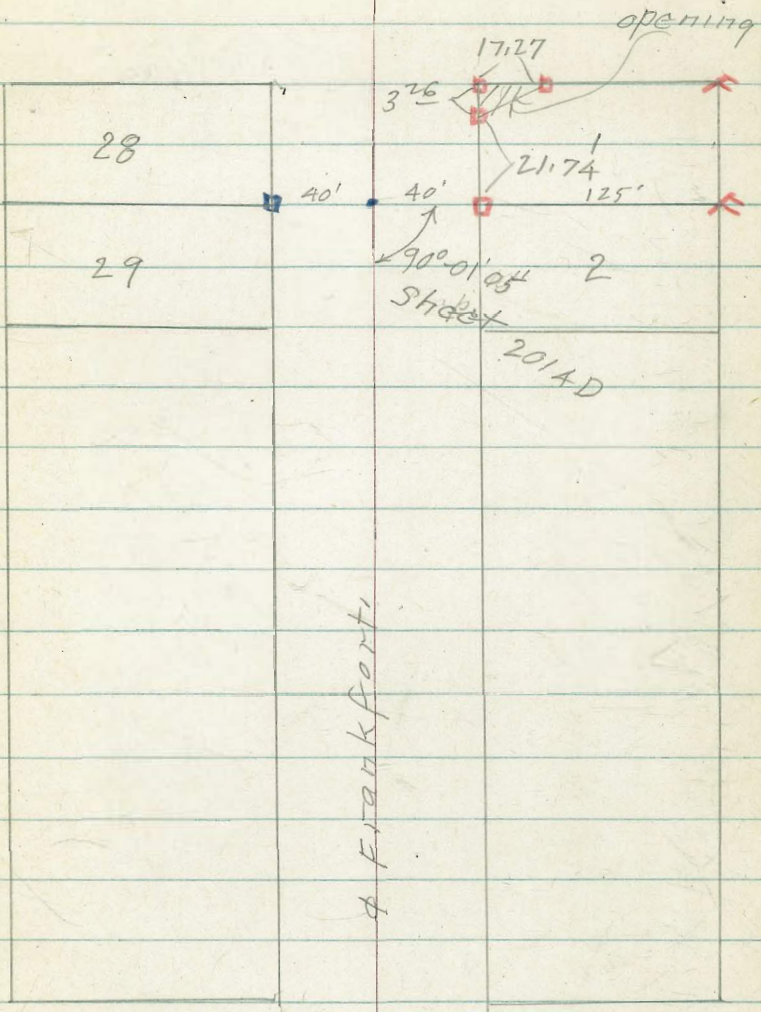
Lot #1 BIK 84 Morena Sub.

3-16-53

C.H.S.
Beqq
oltman
schelin

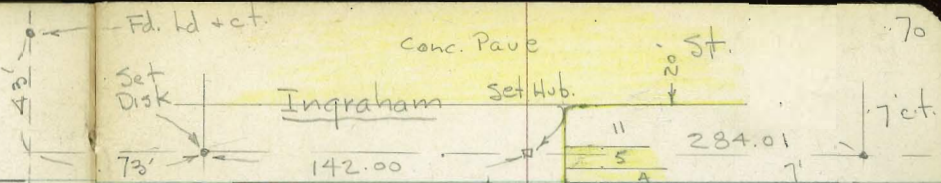
INDEXED
Law
MAR 19 1953

- ◻ denotes Fd. 1/2 hub
- ◻ denotes set 1/2 hub
- F " " Flag



E INQUIF. ◻ Conc. Mon.

INDEXED
NOV 6 1953



Block 201

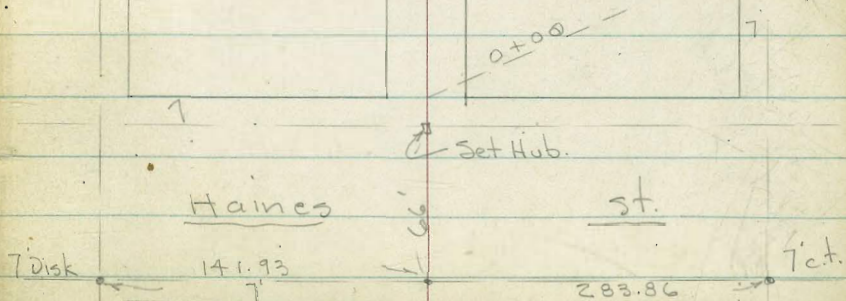
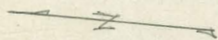
P. B.

Map 854

St
Telspav

10 10

St
Carnet



X-Sect. 20 Alley in Block 201 - P.B.
for Grade Est. - See Sketch - P. 70
W.O. 25020 - 11-4-53 - 7.0.

LT. ± RT.

1+97.5- 10' Lt. = ± 5' Conc. walk
1+91- 13' Lt. = end Conc. apron to Gar.

69.33 69.23
16 10 = walk
walk 69.32
13

1+58- 13' Lt. = Beg. Conc. apron to Row of ^{Gar.}

69.56 69.22
15.9 13 = apron
floor

1+50

69.12 69.1 68.9 69.0
10.6 10 10 10
edge Conc.

1+44- 10.6 Lt. = ± 10' Conc. Slab.

69.30 69.21
22.6 10.6 = Conc.
end.

1+00

69.0 68.8 69.0
10 10

0+58- 12.5' Rt. = ± Sing. Gar. - Dirt floor

68.6
12.5 = floor.

0+50

68.8 68.8 68.8
10 10

0+18= 9.2 Rt. = end Gar.

69.2
9.2 = gr.
at Gar.

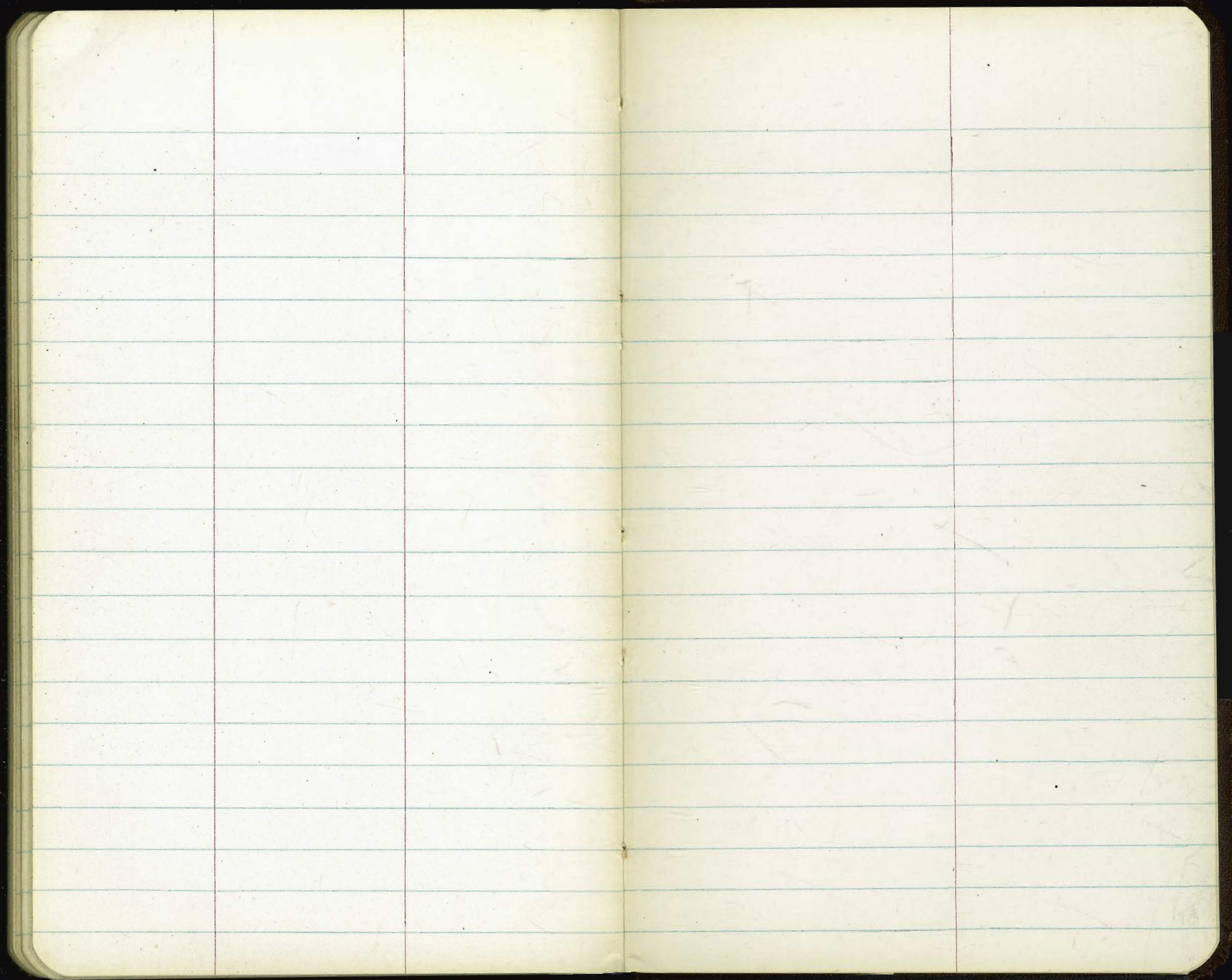
0+00 = F.L. Haines

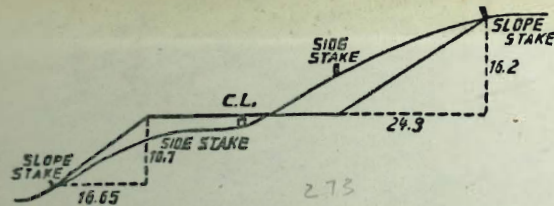
69.9 69.2 69.39
10 8.9 = Beg. Cor. of
Sing. Gar. - Conc.
floor.

B.M. = N.W. 7' ct.
Ingraham + Garnet

63.26

Actual Elev. Shown.





DISTANCES FROM SIDE STAKES FOR CROSS-SECTIONING.

SLOPE 1½ TO 1. ROADWAY OF ANY WIDTH.

	0	.1	.2	.3	.4	.5	.6	.7	.8	.9	
0	0.00	0.15	0.30	0.45	0.60	0.75	0.90	1.05	1.20	1.35	0
1	1.50	1.65	1.80	1.95	2.10	2.25	2.40	2.55	2.70	2.85	1
2	3.00	3.15	3.30	3.45	3.60	3.75	3.90	4.05	4.20	4.35	2
3	4.50	4.65	4.80	4.95	5.10	5.25	5.40	5.55	5.70	5.85	3
4	6.00	6.15	6.30	6.45	6.60	6.75	6.90	7.05	7.20	7.35	4
5	7.50	7.65	7.80	7.95	8.10	8.25	8.40	8.55	8.70	8.85	5
6	9.00	9.15	9.30	9.45	9.60	9.75	9.90	10.05	10.20	10.35	6
7	10.50	10.65	10.80	10.95	11.10	11.25	11.40	11.55	11.70	11.85	7
8	12.00	12.15	12.30	12.45	12.60	12.75	12.90	13.05	13.20	13.35	8
9	13.50	13.65	13.80	13.95	14.10	14.25	14.40	14.55	14.70	14.85	9
10	15.00	15.15	15.30	15.45	15.60	15.75	15.90	16.05	16.20	16.35	10
11	16.50	16.65	16.80	16.95	17.10	17.25	17.40	17.55	17.70	17.85	11
12	18.00	18.15	18.30	18.45	18.60	18.75	18.90	19.05	19.20	19.35	12
13	19.50	19.65	19.80	19.95	20.10	20.25	20.40	20.55	20.70	20.85	13
14	21.00	21.15	21.30	21.45	21.60	21.75	21.90	22.05	22.20	22.35	14
15	22.50	22.65	22.80	22.95	23.10	23.25	23.40	23.55	23.70	23.85	15
16	24.00	24.15	24.30	24.45	24.60	24.75	24.90	25.05	25.20	25.35	16
17	25.50	25.65	25.80	25.95	26.10	26.25	26.40	26.55	26.70	26.85	17
18	27.00	27.15	27.30	27.45	27.60	27.75	27.90	28.05	28.20	28.35	18
19	28.50	28.65	28.80	28.95	29.10	29.25	29.40	29.55	29.70	29.85	19
20	30.00	30.15	30.30	30.45	30.60	30.75	30.90	31.05	31.20	31.35	20
21	31.50	31.65	31.80	31.95	32.10	32.25	32.40	32.55	32.70	32.85	21
22	33.00	33.15	33.30	33.45	33.60	33.75	33.90	34.05	34.20	34.35	22
23	34.50	34.65	34.80	34.95	35.10	35.25	35.40	35.55	35.70	35.85	23
24	36.00	36.15	36.30	36.45	36.60	36.75	36.90	37.05	37.20	37.35	24
25	37.50	37.65	37.80	37.95	38.10	38.25	38.40	38.55	38.70	38.85	25
26	39.00	39.15	39.30	39.45	39.60	39.75	39.90	40.05	40.20	40.35	26
27	40.50	40.65	40.80	40.95	41.10	41.25	41.40	41.55	41.70	41.85	27
28	42.00	42.15	42.30	42.45	42.60	42.75	42.90	43.05	43.20	43.35	28
29	43.50	43.65	43.80	43.95	44.10	44.25	44.40	44.55	44.70	44.85	29
30	45.00	45.15	45.30	45.45	45.60	45.75	45.90	46.05	46.20	46.35	30
31	46.50	46.65	46.80	46.95	47.10	47.25	47.40	47.55	47.70	47.85	31
32	48.00	48.15	48.30	48.45	48.60	48.75	48.90	49.05	49.20	49.35	32
33	49.50	49.65	49.80	49.95	50.10	50.25	50.40	50.55	50.70	50.85	33
34	51.00	51.15	51.30	51.45	51.60	51.75	51.90	52.05	52.20	52.35	34
35	52.50	52.65	52.80	52.95	53.10	53.25	53.40	53.55	53.70	53.85	35
36	54.00	54.15	54.30	54.45	54.60	54.75	54.90	55.05	55.20	55.35	36
37	55.50	55.65	55.80	55.95	56.10	56.25	56.40	56.55	56.70	56.85	37
38	57.00	57.15	57.30	57.45	57.60	57.75	57.90	58.05	58.20	58.35	38
39	58.50	58.65	58.80	58.95	59.10	59.25	59.40	59.55	59.70	59.85	39
40	60.00	60.15	60.30	60.45	60.60	60.75	60.90	61.05	61.20	61.35	40
41	61.50	61.65	61.80	61.95	62.10	62.25	62.40	62.55	62.70	62.85	41
42	63.00	63.15	63.30	63.45	63.60	63.75	63.90	64.05	64.20	64.35	42
43	64.50	64.65	64.80	64.95	65.10	65.25	65.40	65.55	65.70	65.85	43
44	66.00	66.15	66.30	66.45	66.60	66.75	66.90	67.05	67.20	67.35	44
45	67.50	67.65	67.80	67.95	68.10	68.25	68.40	68.55	68.70	68.85	45
46	69.00	69.15	69.30	69.45	69.60	69.75	69.90	70.05	70.20	70.35	46
47	70.50	70.65	70.80	70.95	71.10	71.25	71.40	71.55	71.70	71.85	47
48	72.00	72.15	72.30	72.45	72.60	72.75	72.90	73.05	73.20	73.35	48
49	73.50	73.65	73.80	73.95	74.10	74.25	74.40	74.55	74.70	74.85	49
50	75.00	75.15	75.30	75.45	75.60	75.75	75.90	76.05	76.20	76.35	50

THE NATIONAL BLANK BOOK COMPANY
 HOLYOKE MASSACHUSETTS
 NEW YORK CHICAGO BOSTON SAN FRANCISCO