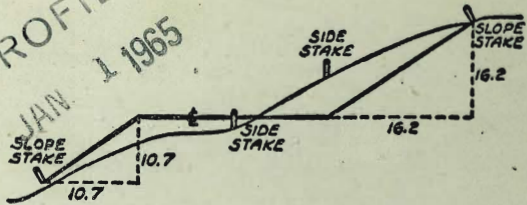


MICROFILMED
JAN 1 1965



2146

DISTANCES FROM SIDE STAKES FOR CROSS-SECTIONING
SLOPE 1 TO 1. ROADWAY OF ANY WIDTH

	0	.1	.2	.3	.4	.5	.6	.7	.8	.9	0
0	0.00	0.10	0.20	0.30	0.40	0.50	0.60	0.70	0.80	0.90	0
1	1.00	1.10	1.20	1.30	1.40	1.50	1.60	1.70	1.80	1.90	1
2	2.00	2.10	2.20	2.30	2.40	2.50	2.60	2.70	2.80	2.90	2
3	3.00	3.10	3.20	3.30	3.40	3.50	3.60	3.70	3.80	3.90	3
4	4.00	4.10	4.20	4.30	4.40	4.50	4.60	4.70	4.80	4.90	4
5	5.00	5.10	5.20	5.30	5.40	5.50	5.60	5.70	5.80	5.90	5
6	6.00	6.10	6.20	6.30	6.40	6.50	6.60	6.70	6.80	6.90	6
7	7.00	7.10	7.20	7.30	7.40	7.50	7.60	7.70	7.80	7.90	7
8	8.00	8.10	8.20	8.30	8.40	8.50	8.60	8.70	8.80	8.90	8
9	9.00	9.10	9.20	9.30	9.40	9.50	9.60	9.70	9.80	9.90	9
10	10.00	10.10	10.20	10.30	10.40	10.50	10.60	10.70	10.80	10.90	10
11	11.00	11.10	11.20	11.30	11.40	11.50	11.60	11.70	11.80	11.90	11
12	12.00	12.10	12.20	12.30	12.40	12.50	12.60	12.70	12.80	12.90	12
13	13.00	13.10	13.20	13.30	13.40	13.50	13.60	13.70	13.80	13.90	13
14	14.00	14.10	14.20	14.30	14.40	14.50	14.60	14.70	14.80	14.90	14
15	15.00	15.10	15.20	15.30	15.40	15.50	15.60	15.70	15.80	15.90	15
16	16.00	16.10	16.20	16.30	16.40	16.50	16.60	16.70	16.80	16.90	16
17	17.00	17.10	17.20	17.30	17.40	17.50	17.60	17.70	17.80	17.90	17
18	18.00	18.10	18.20	18.30	18.40	18.50	18.60	18.70	18.80	18.90	18
19	19.00	19.10	19.20	19.30	19.40	19.50	19.60	19.70	19.80	19.90	19
20	20.00	20.10	20.20	20.30	20.40	20.50	20.60	20.70	20.80	20.90	20
21	21.00	21.10	21.20	21.30	21.40	21.50	21.60	21.70	21.80	21.90	21
22	22.00	22.10	22.20	22.30	22.40	22.50	22.60	22.70	22.80	22.90	22
23	23.00	23.10	23.20	23.30	23.40	23.50	23.60	23.70	23.80	23.90	23
24	24.00	24.10	24.20	24.30	24.40	24.50	24.60	24.70	24.80	24.90	24
25	25.00	25.10	25.20	25.30	25.40	25.50	25.60	25.70	25.80	25.90	25
26	26.00	26.10	26.20	26.30	26.40	26.50	26.60	26.70	26.80	26.90	26
27	27.00	27.10	27.20	27.30	27.40	27.50	27.60	27.70	27.80	27.90	27
28	28.00	28.10	28.20	28.30	28.40	28.50	28.60	28.70	28.80	28.90	28
29	29.00	29.10	29.20	29.30	29.40	29.50	29.60	29.70	29.80	29.90	29
30	30.00	30.10	30.20	30.30	30.40	30.50	30.60	30.70	30.80	30.90	30
31	31.00	31.10	31.20	31.30	31.40	31.50	31.60	31.70	31.80	31.90	31
32	32.00	32.10	32.20	32.30	32.40	32.50	32.60	32.70	32.80	32.90	32
33	33.00	33.10	33.20	33.30	33.40	33.50	33.60	33.70	33.80	33.90	33
34	34.00	34.10	34.20	34.30	34.40	34.50	34.60	34.70	34.80	34.90	34
35	35.00	35.10	35.20	35.30	35.40	35.50	35.60	35.70	35.80	35.90	35
36	36.00	36.10	36.20	36.30	36.40	36.50	36.60	36.70	36.80	36.90	36
37	37.00	37.10	37.20	37.30	37.40	37.50	37.60	37.70	37.80	37.90	37
38	38.00	38.10	38.20	38.30	38.40	38.50	38.60	38.70	38.80	38.90	38
39	39.00	39.10	39.20	39.30	39.40	39.50	39.60	39.70	39.80	39.90	39
40	40.00	40.10	40.20	40.30	40.40	40.50	40.60	40.70	40.80	40.90	40
41	41.00	41.10	41.20	41.30	41.40	41.50	41.60	41.70	41.80	41.90	41
42	42.00	42.10	42.20	42.30	42.40	42.50	42.60	42.70	42.80	42.90	42
43	43.00	43.10	43.20	43.30	43.40	43.50	43.60	43.70	43.80	43.90	43
44	44.00	44.10	44.20	44.30	44.40	44.50	44.60	44.70	44.80	44.90	44
45	45.00	45.10	45.20	45.30	45.40	45.50	45.60	45.70	45.80	45.90	45
46	46.00	46.10	46.20	46.30	46.40	46.50	46.60	46.70	46.80	46.90	46
47	47.00	47.10	47.20	47.30	47.40	47.50	47.60	47.70	47.80	47.90	47
48	48.00	48.10	48.20	48.30	48.40	48.50	48.60	48.70	48.80	48.90	48
49	49.00	49.10	49.20	49.30	49.40	49.50	49.60	49.70	49.80	49.90	49
50	50.00	50.10	50.20	50.30	50.40	50.50	50.60	50.70	50.80	50.90	50

Distance of slope stake from side or shoulder stake for any width roadway, slope 1 to 1. If ground is nearly level, the cut or fill at side stake is located by the double entry method in left column and top row. The number in body of table in same row and column gives distance from side stake to slope stake. If ground is not level estimate the difference in elevation between the side stake and slope stake, lower target by this amount if cut, elevate if fill. Add this amount to cut or fill and find distance in table. Set up rod at this point, and line of sight should cut target. If it does not make the slight adjustment necessary.

Tie Points - Pl. 277	2
Kurtz ^{Sherman to} Sewer Houston	3-9
Sewer Bk. 2. PL 277	10
Drainage Survey P.L. 1119	13
X-sec - Sherman Grant to Morgan Anna Morgan to Pacific	17-27
Sta - State Ry to Pac. Highway	28
X-sec - Atkins - 69 th Ely to City li.	32
" " " " add. notes	47
X-sec La Jolla Blvd, Colima to Camino de la Costa	55

Tie Points P.L. 277

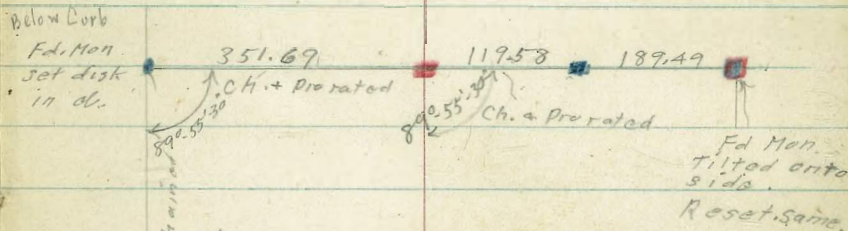
9-13-51
 Sammer Meyer
 Beqq.
 R. Sisson
 Altman

F.B. 871-P29
 F.B. 1587-2A

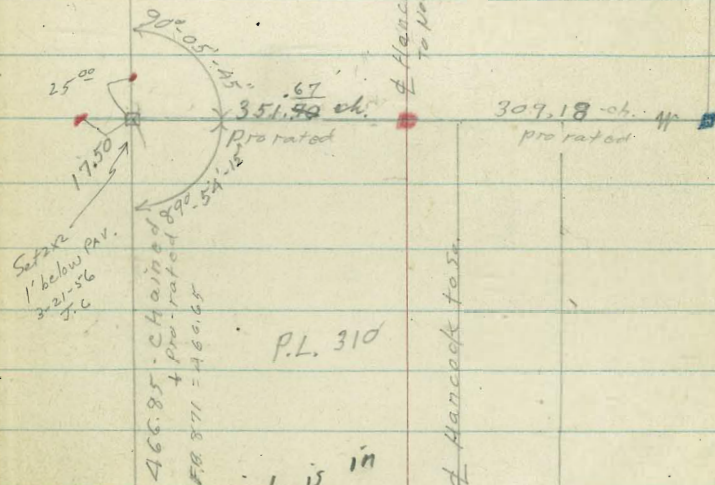
- = Set. Conc. Mon.
- = Sed lead & disk in conc.
- = Fd. Conc. Mon.
- = Fd. L. + T.

Also copied into FB 871-69

PL 276



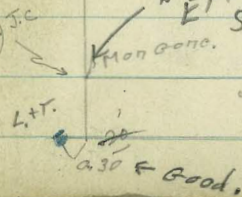
P.L. 277



P.L. 310

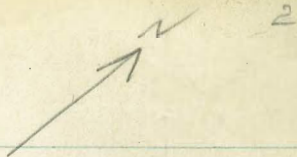
Disk is in Error. SEE FB 871 69

(now hit Fd. City) No pt. J.C. over main



Sty. Line P.L. 310

& Greenwood.



Sewer Prelim.

Kurtz - Sherman to Houston

9-14-51
W.O. 32045

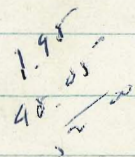
Sommermeier
Begg
R. Sisson
Oltman

Ties - Page 2

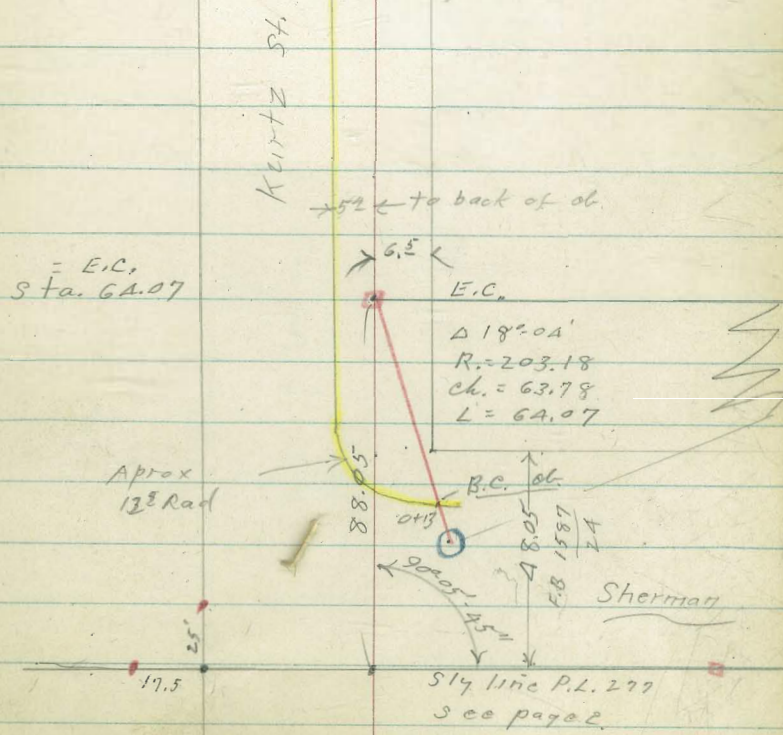
○ = existing sewer M.H.

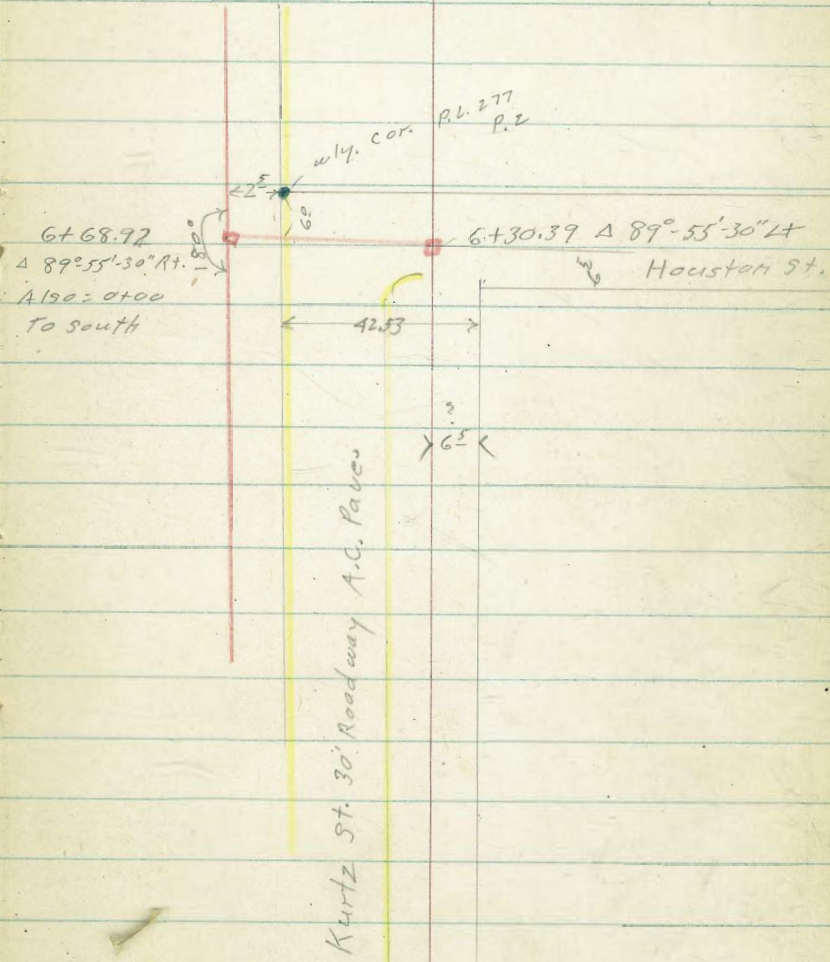
■ = set 1/2" + disk

Direct elevation rod used



INDEXED
SECRET





Kurtz St.
Sewer

#

5

2+56 - 3^d Lt. = (W)

2+50

3.7

2+48 7th Rt. = start fence

2+28 - 3^d Lt. = (W)

2+00

4.25
59

3.35

1+98 - 8' Rt. = end fence

1+87 3' Lt. = (W)

1+49 3' Lt. = (W)

1+20 6th Rt. = start fence

1+00

(W) = Ctr. water meter box
Cb. = top. back of curb

4.49
54
66

4.53

0+64.07 = E.C.

4.39
55
66

4.38

0+13 top of curb (Approx B.C.)

4.24 El.

0+13 in gutter

3.77 El.

0+00 (Elevations from $\frac{2104}{57}$)

El. - 607 El.
404 Rim I.E.

Elevations - not rods
are shown

4.18

B.M. = A Nail Sta. 0+38

$\frac{FB 2104}{57}$

6+23 - 7th Rt. = end fence.

6+21⁷ 5th Lt. = ^{5' Rad.} B.C. ob. = back of ob.

2.73

~~6+23 7th Rt. = end fence~~

54
06

6+09 3rd Lt. = (W)

6+02 2nd Lt. = (W)

6+00

2.77

2.6

5+91 2nd Lt. = (W)

54
06

5+73 7th Rt. = start fence.

5+57³ = enc. Conc. walk.

3.21

5+49 2nd Lt. = (W)

back of ob. to Prop. line
5+39 start conc. walk. runs from

3.23

5+00

3.13

3.1

4+74 6th Rt. = end fence

54
06

4+00

3.50

3.6

3+93 3rd Lt. = (W)

54
06

3+71 3rd Lt. = (W)

3+03 3rd Lt. = ctr. 15" diam. tree

3+00

3.91

3.5

2+88 3rd Lt. = (W)

54
06

6+67

3.14

6+66⁴ top of cb. = cross curb

3.62

6+66.4 in G.

2.98

6+65⁴ = start conc. gutter

3.03

6+51

3.17

also start A.C. Pave.

6+37² = end conc. gutter

2.27

6+36² in gutter

2.21

6+35² = start conc. gutter

2.25

6+30.39 = Δ 89°-55'-30" H.

2.38

Hub

6+26 1' H. = end curb

2.68

1/16

8+25 Pole # P. 3515 wly face. on line.

2, 9

3, 19

2²
06

8+21 8' Lt = end fence
Ely. end lateral fence

8+00

2, 7

3, 25

2²
06

7+91 6.9 Lt = start fence
Ely end lateral fence

7+50 4' Lt = end fence
4' Lt = ely. end lateral fence

2, 6

2²
06

7+01 4' Lt = start fence
4' Lt = ely. end lateral fence

7+00

2, 8

3, 50

2²
06

6+79 4' Lt = end fence
4' Lt = ely. end lateral fence

6+78 1st Lt = Face of pole # P 3501

6+69 4' Lt = line of fence

Also = 0100 to south.

6+68.92 = A 89°-55'-30" Rt.

3, 28

Hub

Kurtz 2

line to south SW of Kurtz
in P.L. 339.

B.L.

9

Note. Profile 15' Rt = same as on B.L.

3+15	0 ⁸ Lt. = pole # 530498-H	4.50	4.6
3+14	also = Fly. end lateral fence 4' Rt. = end fence	2 06	
3+00			4.4
2+84	Near face 1' Lt. = pole # 557565 H		
2+65	1 ² Lt. = dead man		
2+00	4' Rt. = line of fence	4.20	3.7
1+52	1 ^A Lt. = (W)	2 06	
1+50	2' Rt. = dead man		
1+34	4' Rt. = fly. end lateral fence		
1+16 ⁵	2 ³ Lt. = Near face pole # 3485		
1+09 ⁵	on line = (W)		
1+00	3 ² Rt. = line of fence	3.92	3.4
0+80 ⁵	4' Rt. = Fly and Lateral fence	2 06	
0+53	1' Lt. = (W)		
0+50		3.71	3.2
0+28 ⁵	0 ² Lt. = (W)	2 06	
0+27 ⁵	0 ³ Lt. = (W)		
= 0+00			
6+68.92 Page 8	4' Rt. = line of fence		3.28 Hub

Prop. Sewer BIK 2 PL 277

9-25-51

W 031813
 Sommer meyer
 B 099
 R. Sisson
 alt man

- = Fd 1/2 + disk
- = Fd L + disk
- ⊙ = Existing Man Hole
- = Set 1/2 + disk

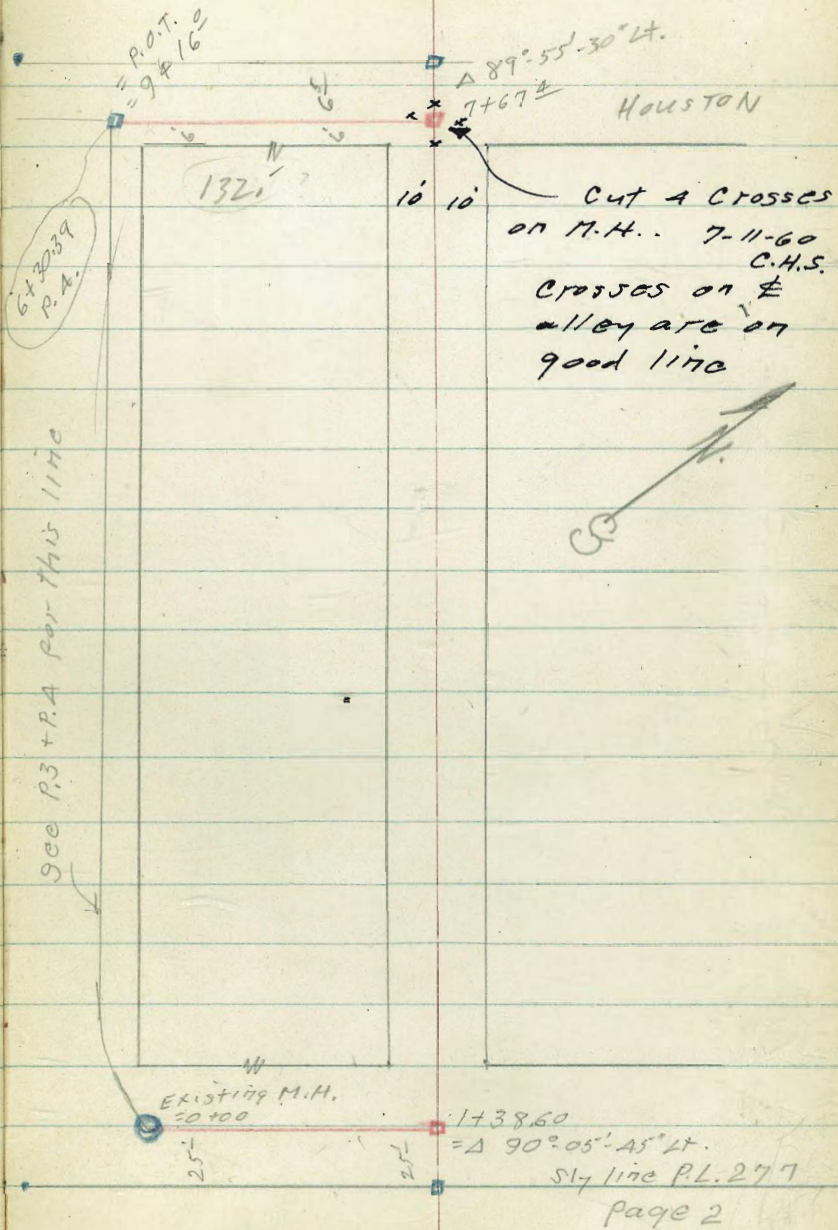
direct observation rod used

Elevations shown.

outs to pole = alley face.

$$\Delta 0+38 \frac{2104}{57} = 4.18 = B.M.$$

INDEXED
 JAW
 OCT 8 1951



Sewer BIK. 2. P.L. 277

sketch - p10

4+56 - on line = 2.1" diam trunk. Locust tree
Face

4+22 6" Lt. Pole # PA3445

4+00

soil pipe to New church.
3+70 Ad Lt. = outlet end A" existing

0.84 El.
I.E. A" pipe

4.6 El

3+00

3.2 El

2.9 El

100

2+98 8" Lt. = Face pole # PA3425

3.95

2+00

4.3 El

3.2 El

75

1+85 0.5 Rt. = 6" diam apricot tree.

1+56 = Cross lath Fence.

1+50

3.6 El

1+38 6" Δ 90° - 05' - 45" Lt.

3.81
on hub

3.9 El

1+00

4.0 El

0+04 = leave A.C. Pavc.

4.03 El

0+00 = Existing M.H. $\frac{2146}{3}$ and $\frac{2104}{56}$

4.04
Rim El

-6.07
I.E

{ 2.5 3.6 }
5.6

BIK 2.
P.L. 277

9+16 (El. Hub. = 2.38 - P. 7) (OK)
9+10 6' Lt. = end picket fence.
8+50
8+22 6' Lt. = ± 16' long conc. apron
8+00 6^E Rt. = start paved parking lot.
7+77- 6' Lt. = start picket fence
7+67⁴ Δ 89°-55'-30" 2.26
Δ Hub.
7+00
6+00
5+50
5+00
4+68 8' Lt. = ctr. deadman
4+60- 7⁶ Lt. = Guy pole for pole # P.A. 3445

2.39 El.
Hub

2.4 El.
6^E = paved

2.9 El.
3.1 El. = paved
6^E

3.46 El.
6

3.6 El.
3.6 El.
6^E
paved

2.7 El.

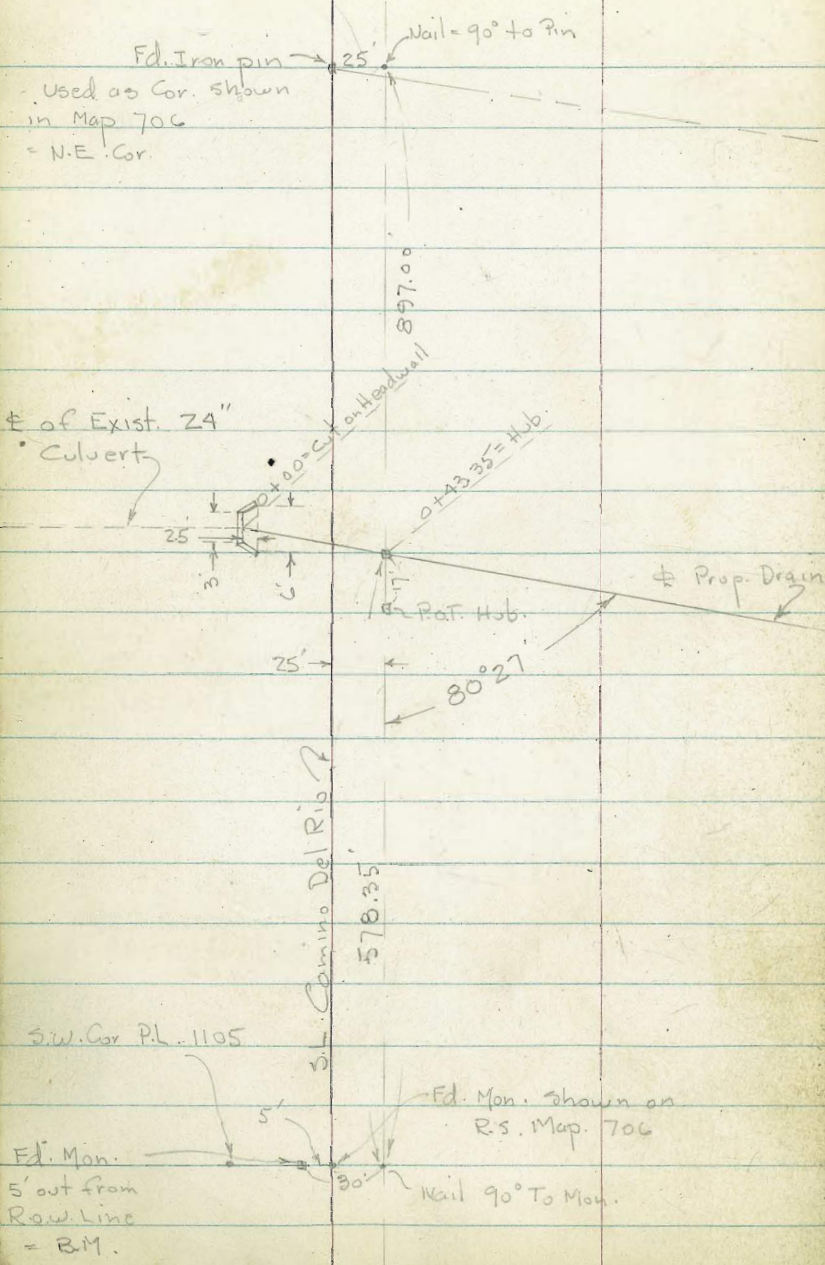
3.1 El.

3.3 El.

3.8 El.
3.3 El.
75

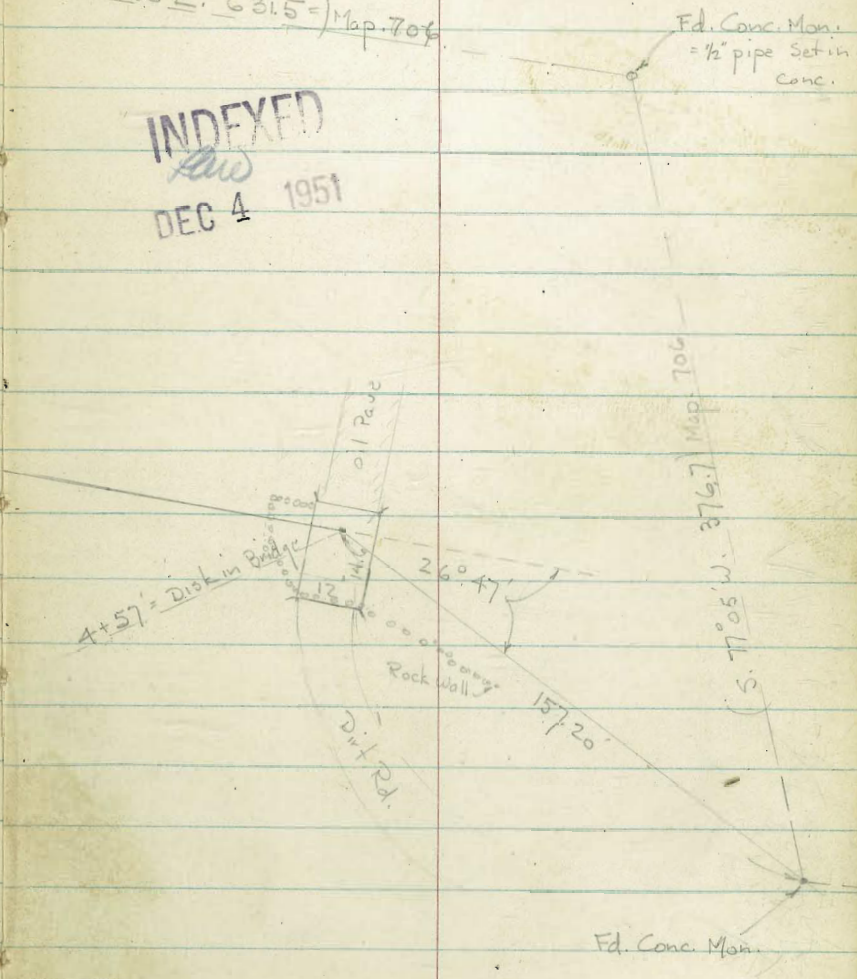
4.2 El.

Drainage Survey
WB #20735
P.L. 1119



S. 04° 30' E. 631.5' = Map 706

INDEXED
aw
DEC 4 1951



Fid. Conc. Mon.

Levels along \pm of Prop. Drainage Easement

P.L. 1119 - Thru. prop. Shown on R.O.F.S. Map

No. 706 - See Sketch - P. B - See B. 1670-

P. 48 - for Mon. found.

5802 12-3-51 7.0.

W.O. 20735

0+43.35 = Hub. - 25' S. of S.L. Camino Del Rio

0+30

4' Lt. = \pm 4" Cypress

0+19 - 4' Rt. = \pm 15" Cypress

0+17.5 = Cross wire fence

0+13

\pm wall

0+00 = face of \pm Head wall of 24" Culvert. - \pm of pipe

T.P. 3.63 22.76 \checkmark 4.63 19.13 \checkmark

#11 = Sta. 37+33.3

Set B.M. Cross on Sly. Rim of M.H. 4.07 19.69 \checkmark

7.66 23.76 \checkmark

B.M. = Mon. By S.F. Cor.

16.10

P.L. 1105 = 35+62.48

B. 1670 - P. 61

Lt. \pm Rt.

18.42

0+40.6

15.0

4.8

5

\pm Ditch

18.9

4.7

12.7

19.6

5.1

3.2

4

\pm Ditch

17.17

5.59 =

IE pipe

22.76 \checkmark

19.85

2.81

Top of wall

Lt. Rt.

T.P. 7.93 35.61[✓] 240 27.68[✓]

4+10-7.1' Lt. = Φ f wly. of 4.5' Dig. Conc. Water Drinking Tank

4+00-9.7' Lt. = fence

3+50 = Φ Ditch - very shallow

3+00-8.9' Lt. = fence

2+50

2+00-8.1' Lt. = fence

1+50

T.P. on P.O.T. Hub. 10.95 30.08[✓] 263 19.13[✓]

1+00

0+44-6.4' Lt. = Beg Rail + Wire fence

	29.67		27.7			
	0.41		2.4			
	Top Tank		7.1 = ground			
	26.4	26.9	22.7	27.0	28.4	28.5
	3.7	3.2	2.4	3.1	1.7	1.8
	30	13	9		10	30
			26.4	26.2		
			3.7	3.9	3.6	
	23.5	23.6	24.4	24.5	24.9	24.2
	6.6	6.5	5.1	5.6	5.2	5.9
	30	16	8	2	3	11
			Φ Ditch			
			24.2	24.2		
			6.9			
	21.1	21.4	22.6	22.3	23.0	21.5
	9.0	8.7	7.5	8.1	7.1	8.8
	30	15	8	3	6	14
			Φ Ditch			
			21.2	21.2		
			8.9			
			30.08 [✓]			
	18.5	18.7	20.5	20.0	20.7	19.5
	4.3	3.9	2.3	2.8	2.1	3.3
	40	15	6	2	2	10
	flat field		Φ Ditch			flat field
			22.76 [✓]			

Reduced By CPL 12-6-51

4+90 - on Tie line = Show profile of Ditch

4+63.6 = Sly. of Bridge on tie line = wall on Lt. ends:

4+57 = end = Disk in Bridge - Ang. 26° 47' Rt.

4+50.7 = Nly. of Wood Bridge

4+45.5 = ϕ of Cross 3" water pipe

4+45 = end Conc. Bottom of Culvert

4+44.0 = Beg. Rock + Conc. open Culvert fence

4+43.7 = Cross fence - 9.6' Ht. = Cor = end N+S. open Culvert under Bridge

4+40.7 = 3.1 Lt. = Beg. Rock + Conc. Wall for

4+30

3130	3028	301	28.1	30.3	31.59
4.41	5.33	5.5	6.9	5.3	4.02
6.8	6.1	2	4 Ditch	4	4 = Top wall
end Bridge	Top end wall	ground.	Deck	ground	ground Top wall
3127	3104	289	3106	286	298
4.34	4.57	6.7	4.55	7.0	5.8
3.5	2.3	2.3	2.14	7.4	7.4
end Bridge	Top wall	ground	Deck	ground	Top wall
3115	283	293	28.1	30.27	30.95
4.46	7.3	6.3	4.47	5.34	4.66
6.246	Bottom	ground	on Disk	9	11.1 = end Bridge
3098	2769	2766	6.15	8.09	30.09
4.63	7.92	7.95	Top of pipe	8.09 = Conc. Bottom	5.52
2.7	2.4	7.66	27.66	7.66	3.4
Top of wall	Bot.	Conc. Bottom	27.95	3.1	Top of wall
287	2857	7.10	27.95	27.95	30.09
6.9	3.1	3.1 - end wall	7.95	7.66	5.52
8	7.6	7.6	7.66	3.1	3.4
	280	280	280	280	280
	6.3	6.3	6.3	6.3	6.3
	7	7	7	7	7
	15	15	15	15	15
			35.61		

G. Walker
D. Smith
G. Pope
Bishop

Cross Sec Anna St (New Location) Pacific Hwy to Sherman

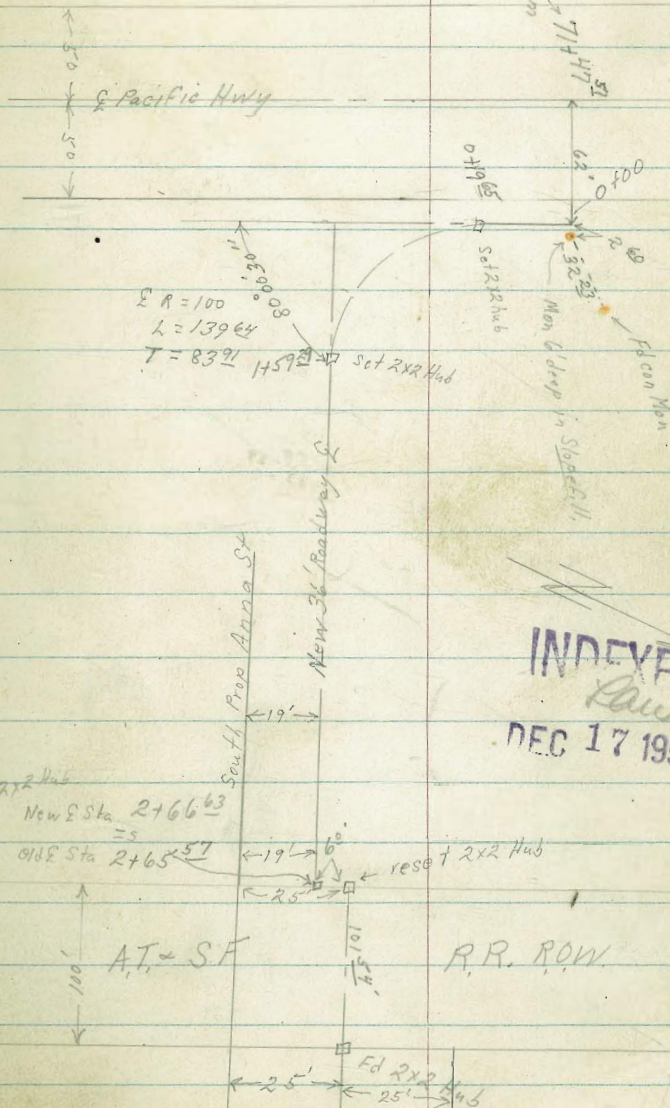
WO # R0947
12-12-51

Ref: F.B # 1693-29-7

1875-63

2125-28 For BM Morena Blvd.

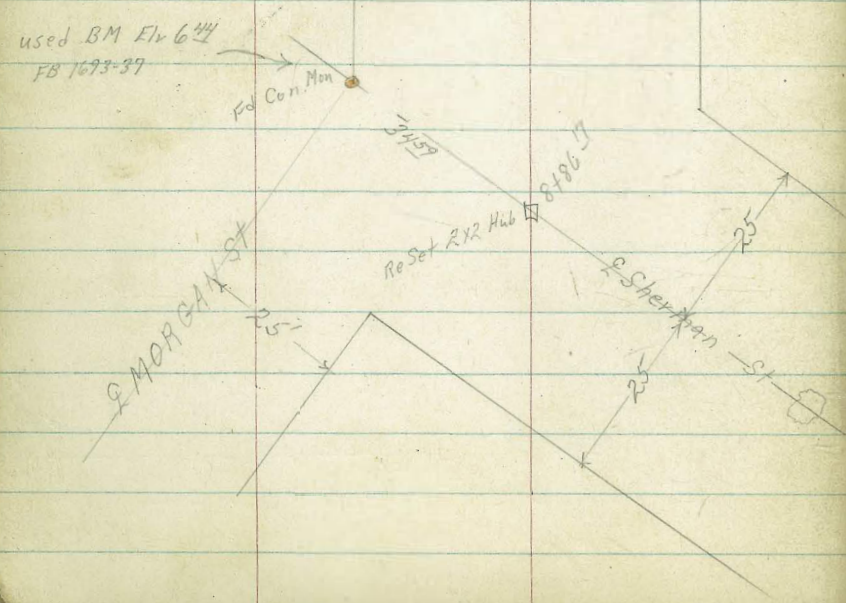
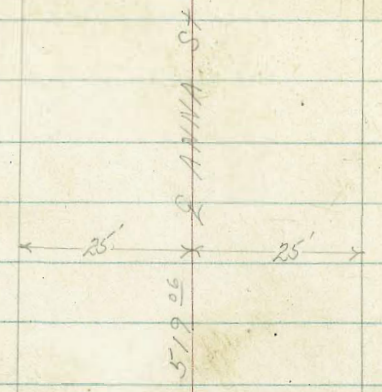
159.29
83.91
75.38



INDEXED
Law
DEC 17 1951

Elg RR ROW
 34672
 516
 3925
 34672

586.17
 34.59
 851.58



mail site
 38' Eucalyptus tree

Custer 11160.79 Ed Hub St



Sherman St

Banks 14170.06 Ed Hub St

1945.473
 519 Grant FB 1693-29A
 for Grant St

"X" Sec Anna St Pacific

Lt-North
Hwy Fly

Q

Rt=South

19

0-19 BC Lt

5.9	5.9	8.6	8.8	15.1	15.67	16.5	19.95
16 ⁵	16 ⁵	13 ²	13 ²	7 ³	6 ⁶⁸	3 ²	2 ⁴⁰
50	37	32	18	4	on Hub	18	32 Par edge

0-22: 41° Lt E. Power Pole #537437H

6.1	8.0	8.4	13.1 ⁶	17.3	18.3	19.83
16 ³	14 ²	14 ²	9 ²⁷	5 ¹	4 ²	2 ²²
45	18	12	on Hub	8	18	32 Par edge

0-400.

0-50

6.6	7.9	7.4	11.4	16.95
15 ²	14 ⁵	15 ²	11 ²	3 ⁴⁰
50	18		18	32 Par edge

0-100

6.3	7.4	8.7	8.7	8.3	8.2	6.2	18.20
16 ²	15 ²	13 ²	13 ²	14 ²	14 ²	16 ²	4 ¹⁵
50	26	23	18		3	18	32 Par edge

0-150

6.0	6.7	9.0	8.4	8.7	8.7	17.67
16 ²	18 ²	15 ²	14 ²	13 ²	13 ²	4 ⁶⁸
50	26	18		18	20	32 Par edge

0-200

5.6	6.1	8.1	8.4	8.0	9.0	16.82
16 ²	16 ³	14 ³	14 ²	14 ²	13 ²	5 ⁵³
50	25	21	18		18	32 Par edge

BM

10²⁷

22³⁴

52⁴

11⁵⁸

Hub 34674
Fly RR
Anna
BM Con Mon
FB 1693-37

10³⁸

16⁸²

6⁴⁴

22³⁵

~~22¹⁵~~

use 6.44 R.M.

~~22³⁰~~

See p. 27

Lt = North

8

Rt = South

20

2440 15° RT & Fire Hyd

2418 15° RT & Power Pole # 537436 H

2400

9.8	10.0	9.8	9.1	9.2	8.2
10.6	10.2	10.6	11.3	11.2	12.2
16	18	10	18	50	

1459²⁹ EC

8.1	7.4	8.0	8.2	8.1	7.2
12.3	12.8	12.4	12.2	12.3	13.2
50	35	18	0.1/4.6	18	50

1425

7.3	7.4	7.9	8.0	7.8	7.3	7.0
13.1	13.0	12.5	12.4	12.6	13.1	13.4
50	38	32	18		18	50

TP

8.86

20.44

10.27

11.58

π 20.44

1400

6.7	8.7	8.9	8.6	6.4	5.6	6.7
15.2	14.3	13.5	13.2	16.0	16.8	15.2
50	41	18		18	29	50

0475

6.1	8.2	8.5	9.7	10.4	11.5	6.7	6.2	20.1
16.3	14.3	13.2	12.8	12.0	10.2	15.4	16.2	2.3
48	40	28	25	18		18	24	50

0450

6.7	6.1	8.3	8.8	11.9	14.5	17.6	20.79
16.3	16.3	14.4	13.6	10.5	7.9	4.8	18.6
44	44	36	24	18		18	42

π 22.24

3437

3419 Ely Rail Top

3414 wly Rail Top

2486

2467 14° RT & Power Pole #537199H

2465⁵⁷ ↑ on old E 50' wide
=5

2466⁶³ ↓ on new E 38' wide

2450

to North

Q

RT = South

21

13.4	13.1	12.3	11.9	12.11
7°	7°	8°	8°	8°
50	25	8	25	50

19.01	19.06	19.09
143	138	135
25		25

19.02	19.05	19.09
142	139	135
25		25

5.5	6.8	7.8	11.7	11.6	11.1	11.6
142	136	126	82	82	93	88
50	27	25	19		25	50

5.11	5.7	10.4	10.5	10.6	10.4	10.4	7.6	7.9	9.8	10.4
152	142	102	92	92	102	102	122	125	105	102
50	31	23	18	69		12	18	35	40	36

5.9	6.2	10.7	10.5	10.4	10.3	6.7	6.9	8.7	8.9
145	142	92	92	102	102	132	135	112	115
50	28	20	18		9	18	35	40	50

π 20 44

TPe 2.36 14.95 7.85 12.59

Nail in Pole
6718 20247
#P/647

6718 20° N E Tel Pole # P/647

6700

5750

5700

4750 12° N E SMT

4715 21° N E Tel Pole # 537338H

4700

3767^u Ely RR ROW.

Lt. North

E

pt. South

22

11.9 11.6 11.6 11.2 10.8
8⁵ 8⁸ 8⁸ 9² 9⁶
50 25 25 25 50

12.2 12.1 11.5 11.3 11.2
8² 8³ 8² 9¹ 9³
50 25 25 25 50

12.3 12.1 11.8 12.5 12.3
8¹ 8³ 8⁶ 7² 8¹
50 25 25 25 50

13.2 12.2 15.4⁵ 11.9 12.5 12.1
7² 8² 4²⁷ 8⁵ 7² 8³
50 25 11m 25 50

14.7 12.8 12.5 12.0 11.6 11.5
5⁷ 7⁶ 7² 8⁴ 8⁸ 8²
50 35 25 25 50

12.2 12.1 12.2 11.9 12.3
8² 8³ 8² 8⁵ 8¹
50 25 25 25 50

T 2044

H=North

E

Rt=South

23

9:00

9.8	9.1	9.3	9.5	10.1
52	52	52	55	42
50	25		25	50

8+86¹³ L. 46°17' Lt Taken on split

9.8	9.3	8.85	9.4	9.9	10.7
52	52	60	55	51	42
50	25	on Hub	50	25	50

8+63 19⁵ Rt E 7.1 18/6 # P1601

8:50

9.8	9.6	9.5	10.0	10.8
52	54	55	50	42
50	25		25	50

8:00

10.6	10.3	9.9	9.7	10.3
42	42	51	52	42
50	25		25	50

7:50

11.3	11.0	10.7	9.9	10.4
32	40	43	51	46
50	25		25	50

7:00

11.4	11.1	10.7	11.6	13.4
36	32	43	34	16
50	25		25	50

6:50

11.7	11.5	11.3	10.3	10.1
33	35	32	42	42
50	25		25	50

14/75

H. West

RT = East 24

TP₃ 416 11 71 740 755

11485⁷⁹ N1/4 Custer St

8.4 8.2 7.0 7.6 7.5 7.9
6⁶ 6⁸ 8⁰ 7⁴ 7⁵ 7¹
50 26 25 25 50

11460⁷⁹ E Custer St

8.7 7.3 7.6 7.7 7.7
6³ 7² 7⁴ 7³ 7³
50 25 25 50

11440 23^S RT E Power Pole # P34 39
Sly Custer St

11435⁷⁹ 23^S RT End Cyclone 6' Fence

9.0 7.9 7.6 7.3 7.7
6⁰ 7¹ 7⁴ 7² 7³
50 25 25 50

11425 20^S RT E Fire Hyd

11400

8.2 8.0 7.4 7.5 7.5
6⁸ 7⁰ 7⁶ 7⁵ 7⁵
50 25 25 50

10464 17^S RT E the N Pole 93564H

10464 E 38" Eucalyptus tree

10450

8.6 8.3 7.6 7.6 7.5
6⁴ 6² 7⁴ 7⁴ 7⁵
50 25 25 50

23^S RT Begin 6' Cyclone Fence

10400 19^S RT E Power Pole 4323

8.4 8.0 7.9 7.5 7.6
6⁶ 7⁰ 7¹ 7⁵ 7⁸
50 25 25 50

9450

9.4 8.4 7.9 7.6 7.8
5⁶ 6⁶ 7¹ 7⁴ 7²
50 25 25 50
14 9⁵

Lt - West

2

RT - East

25

14770⁰⁶ E Banks St

5.3	4.5	3.8	4.4	4.8	5.3
6 ⁴	7 ²	7 ²	7 ³	6 ²	6 ⁴
50	25	19		25	50

14745⁰⁶ S1/2 Banks St25¹ RT E Power Pole #4458

5.0	4.1	3.1	3.7	4.0	5.7	5.2
6 ²	7 ⁵	8 ⁶	8 ⁰	7 ¹	6 ⁰	6 ⁵
50	25	18		25	28	50

14700

4.9	2.7	3.1	3.8	5.2	5.7
6 ²	9 ⁰	8 ⁶	7 ²	6 ⁵	6 ⁰
50	25		25	32	50

13797 18⁰ LT E Tol Pole #456790

8.2	7.8	6.8	2.6	7.4	3.7	6.7	7.2
3 ⁵	3 ⁹	4 ²	9 ²	8 ³	8 ⁰	5 ⁰	4 ⁵
50	28	28	19		25	36	50

13750

13709 25² RT E Power Pole #4449

8.5	8.1	7.1	4.6	5.0	5.6
3 ²	3 ⁵	4 ⁵	7 ⁴	6 ⁷	6 ⁴
50	28	25	21		25

13700

12790 24⁰ RT E Dead Man12766 18¹ LT E Tol Pole #93566

8.3	8.5	8.5	5.9	6.6	6.3
3 ⁴	3 ²	3 ³	5 ⁸	5 ¹	5 ⁴
50	25	20	18		25

12750

12700

8.3	8.0	7.0	7 ⁵	6.9
3 ⁴	3 ²	4 ³	4 ²	4 ⁸
50	25	23		25

7 11 21

25° RT E Fire Hyd.
17754³³ Sly Grant St

17700

16750

16700

192° LT E Tel Pole # 4472
15730 25° RT E Power Pole # 4473

15750

15725

14795⁰⁶ Nly Banks St

Lt=West

RT=East

26

8.4 8.4 8.94 9.2 9.6 8.4
33 33 27 25 24 33
50 25 09 H46 9 25 35

9.3 9.3 9.9 10.3
24 24 18 14
50 25 25

9.0 9.8 10.0 10.2
27 12 12 15
50 25 25

8.2 8.2 8.5 9.3 9.3
35 35 33 24 24
50 25 16 25

8.5 8.7 8.3 8.3
32 30 34 34
50 25 25

6.4 6.8 6.8 7.1 6.5
53 42 42 46 53
50 25 25 50

5.6 5.0 5.3 5.5 5.6
61 62 64 62 64
50 25 25 50
7 11 21

BM	6 ⁷⁰	13 ⁴⁴		6 ⁴⁴ starting
TP ₁	4 ⁴³	14 ⁰⁵	3 ⁵²	9 ⁶² = TP ₁ in Polc
TP ₂	6 ⁵⁰	18 ⁶⁷	1 ⁸⁸	12 ¹⁷
BM			4 ²²	14 ⁴⁵ E 2nd Morena Linda Vista
			Correct 20	FB2125-28
			14 ²⁵	elv. 14 ²⁷

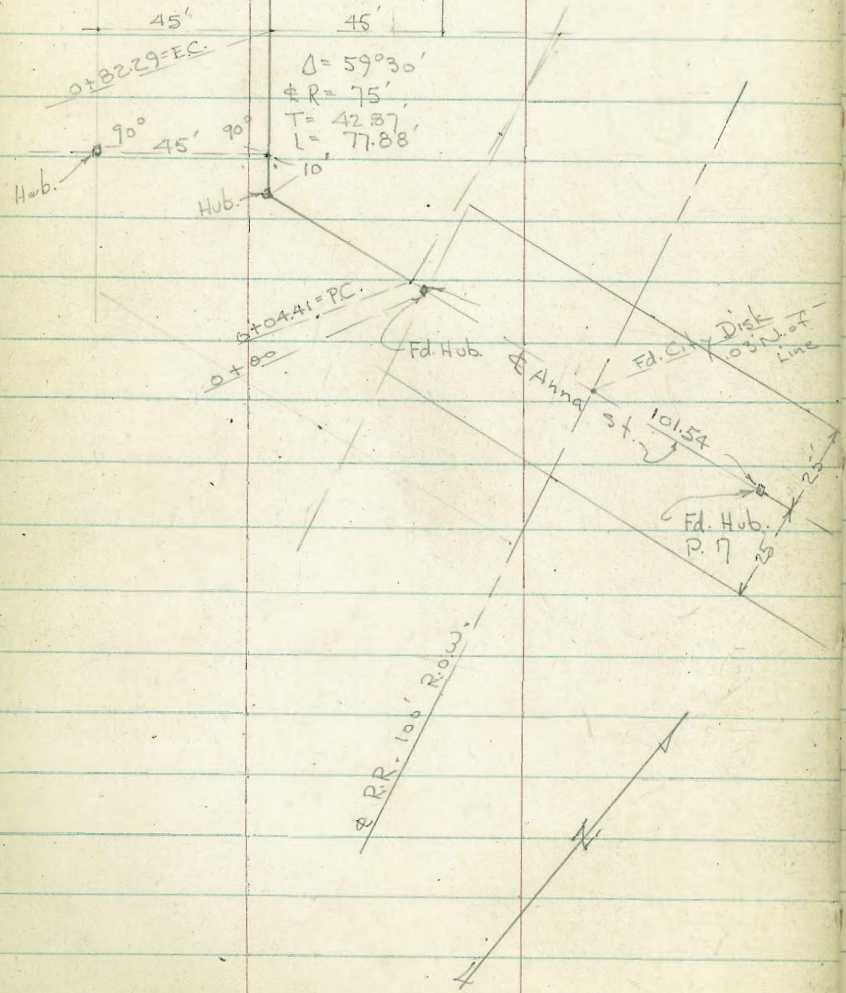
Note We checked some BM's spikes in poles of State Hwy. and seem to consistently be 0.20 high.

Use 6.44 BM at ANNA AVE & STEWART ST.

				FB2125-28
			4 ⁴⁶	✓ elv. 14 ²⁷
TP ₅	9 ³⁹	18 ⁹²	4 ⁹¹	9 ⁵³ ✓ PJ & Morena Linda Vista
TP ₄	4 ⁷⁷	14 ⁴⁴	2 ⁰⁴	9 ⁶⁷ well in Polc

± of Prop. 90' Row:
Anna St.

Sta 7c Ry to Pacific Hiway

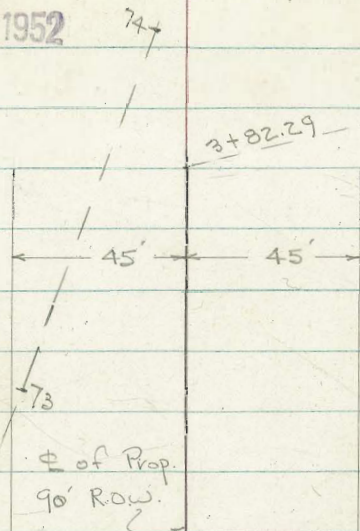


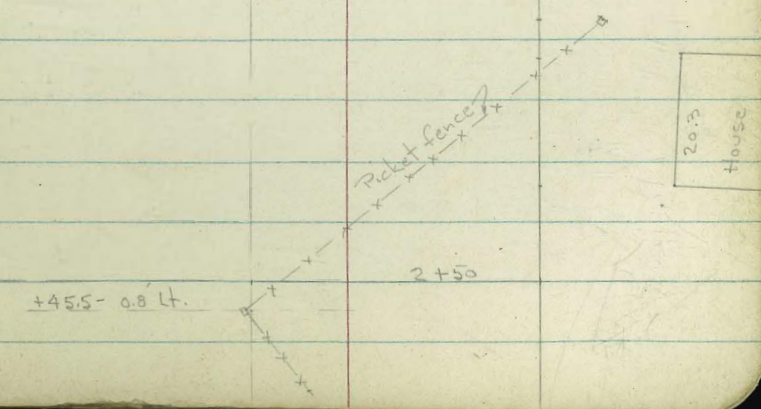
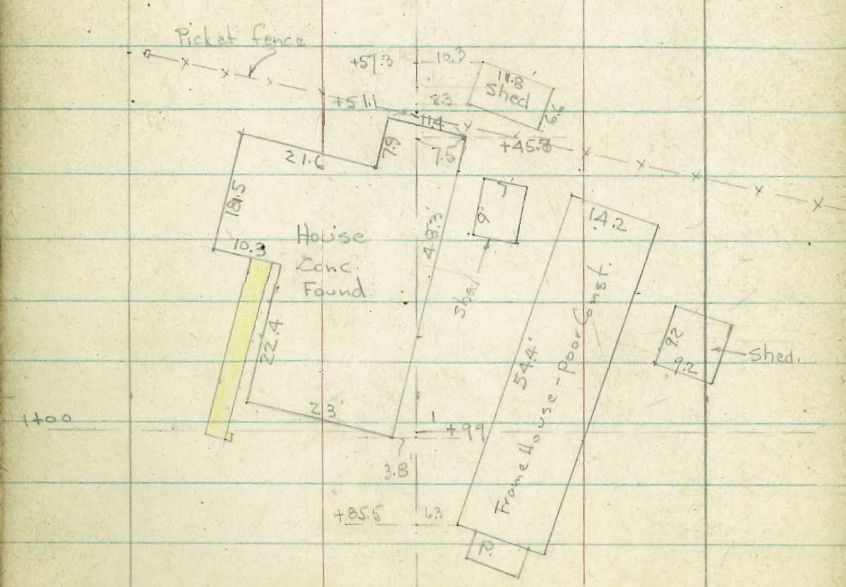
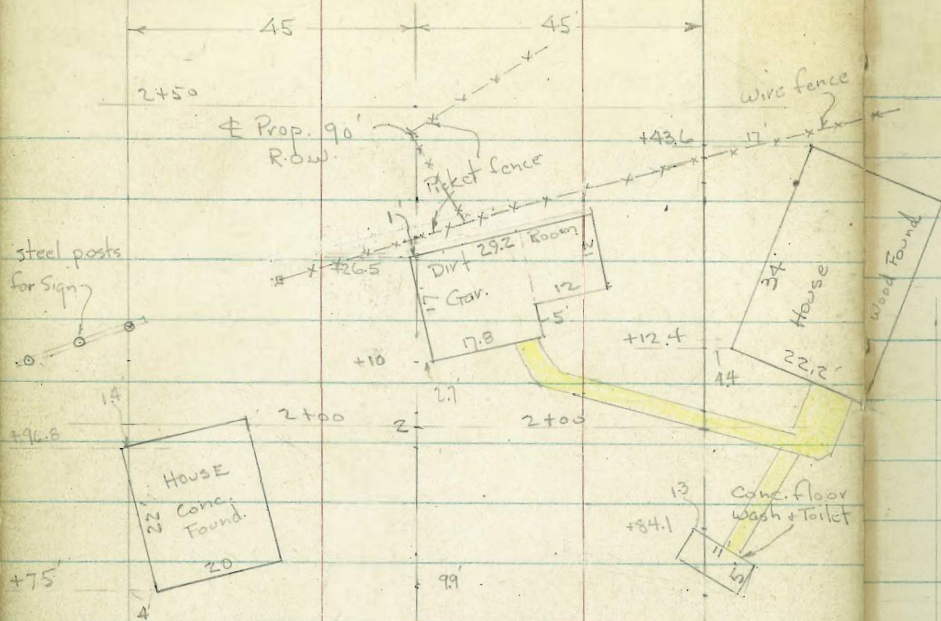
INDEXED
Law
FEB 4 1952

20°33'

± of State Access 28
Road.

$4 + 63.50 = 74 + 22.20$ (state)
 Ang. 20°33' Rt. = stub.





X-Sect. & Topo. for Improvements for

Prop. 90' R.O.W. - Anna St. to Hwy.

5936

1-29-52

J.P.

Lt.

#

Rt.

W.O. 20947

Sketch - P - 28 + 29

2+00

1+92 - 60.5' Lt. = ± P. pole # J.P. 1748

1+90 = Floor of House on Lt.

1+50

1.3	6.5	6.8	6.9	1.0	9.10	16.00	11.64
4.7	5.5	5.2	5.1	5.0	2.94	2.04	0.40
60	45	20		20	45	60 = Conc.	Floor of House
					on walk	By Torch	
8.86							
3.18							
24 = floor	6.6	6.2	6.7	5.9	1.3	9.9	9.7
	5.4	5.8	5.3	6.1	4.7	2.1	2.3
	60	45	25		25	30	45
							55

I.P.

2.90

12.04

7.32

8.14

12.04

1+15

8.1	7.1	8.60	10.84	8.9	9.7	9.5	6.2	9.51	5.8
7.4	8.4	6.86	4.62	6.6	5.8	6.0	9.3	5.95	9.7
60	45	25	floor edge of House	along House	17.2	36	45	floor of shed	60
7.9	8.2	8.5	9.7	10.2	11.26	9.3	6.7	6.6	5.7
7.6	7.3	7.0	5.8	5.3	4.20	6.2	8.8	8.9	9.8
55	45	25		15	15	25	35	45	55
	8.0	9.9	10.4	11.0	6.7	5.7	5.8	5.4	
	7.5	5.6	5.1	4.5	8.8	9.9	9.7	10.1	
	50	25	= P.I.	15	26	45	60	70	

0+82.29 = E.C. = Sect. at 90° to ±

Sect. from P.I. - on split of Ang.

See p. 19+20 - for loc. of F.H. & Poles

0+04.41 = P.C.

Set B.M.

4.09

15.46

10.35

11.37 = Nail in Pole

J.P. 1697

15.46

B.M.

10.14

21.72

11.58 = Hub -

3+67.11 - P. 19

Lt. ± Rt.

4+63.50 = Int. of State Access Road. at Sta. 7+ 22.20

8.13

3.91

on Stub.

4+00

8.0	7.9	8.4	7.6	5.1	5.3	5.2	5.0
4.0	4.1	3.6	4.4	6.9	6.7	6.8	7.0
35 = Toe	15		5	10	30	45	60

3+50

7.4	7.4	8.3	8.5	6.1	6.3	5.4	5.2	5.2
4.6	4.6	3.7	3.5	5.3	5.7	6.6	6.8	6.8
50	45	30	15	8		25	45	60

Toe of

2+00

6.7	8.0	8.4	6.8	6.1	6.0	4.5	5.0
5.3	4.0	3.6	5.2	5.9	6.0	7.5	7.0
60	45	30	25		25	45	60

Hwy fill

2+97- 34' Rt. = ± 30" Pepper

2+83- 28.5' Rt. = ± 18" Pepper

2+73- 16' Rt. = ± P. pole # P.C. 1746

2+51- 21' Rt. = ± 36" Tree

2+50

7.5	7.6	6.5	6.4	4.8	4.9	5.9
4.5	4.4	5.5	5.6	7.2	7.1	6.1
60	45	25		25	45	55

2+31- 3' Lt. = ± 18" Willow

2+15- = floor of Gar- on Rt.

7.1

4.9 = floor,

12.04

X-SEC. AKINS ST. 67TH ST. TO 69TH

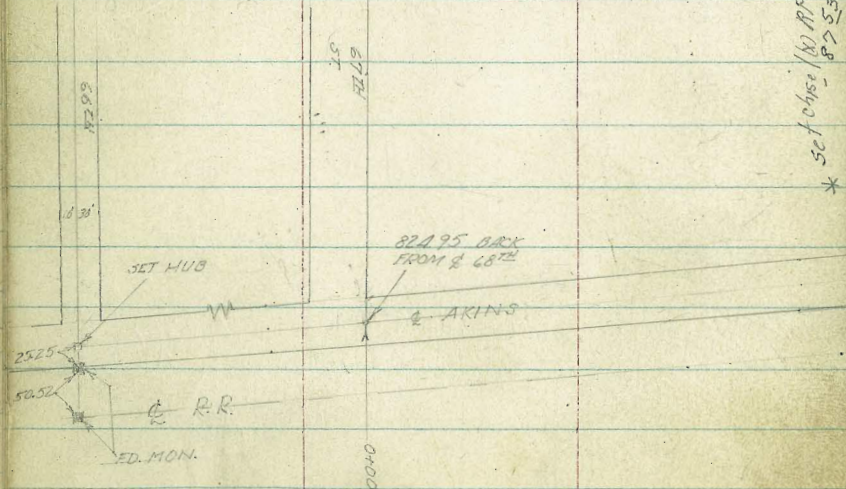
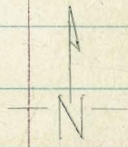
City Boundary

COTA
MOORE
WILLEN
N.D.# 25020
7-11-52

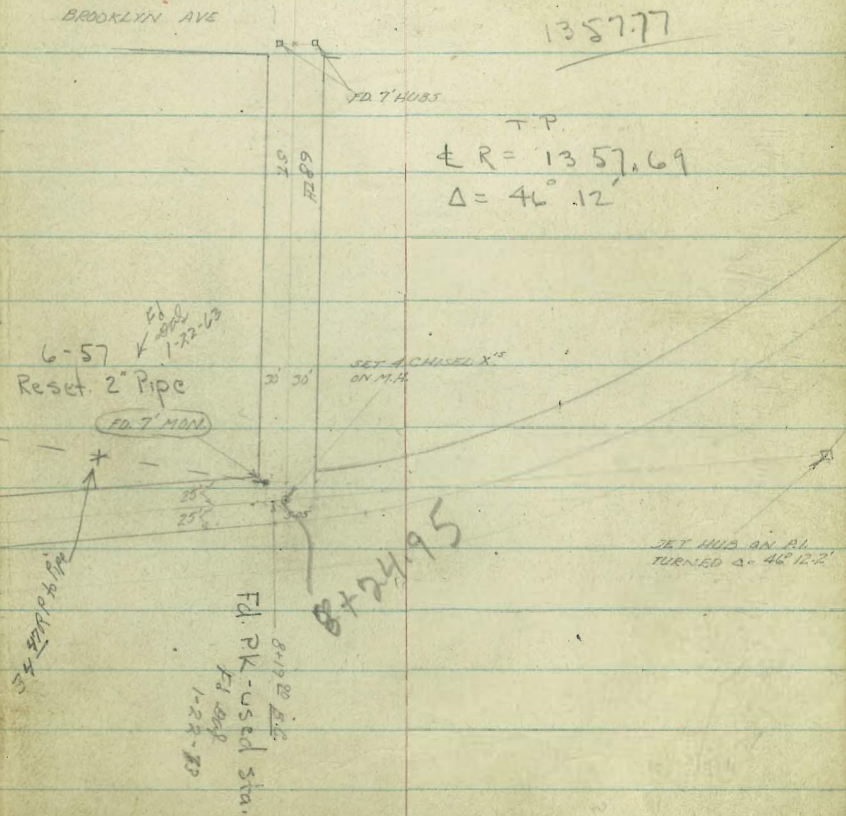
INDEXED
JUL 14 1952

NOTE!
WOOD BARRICADES APPROX.
17' RT. OF 2 AKINS FROM 0+00 TO 14+32
3' HIGH, 16' LONG, 15' BETWEEN BARRICADES

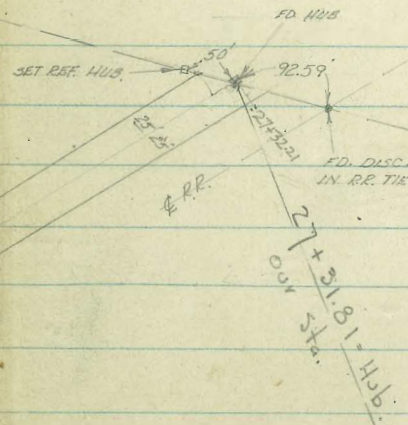
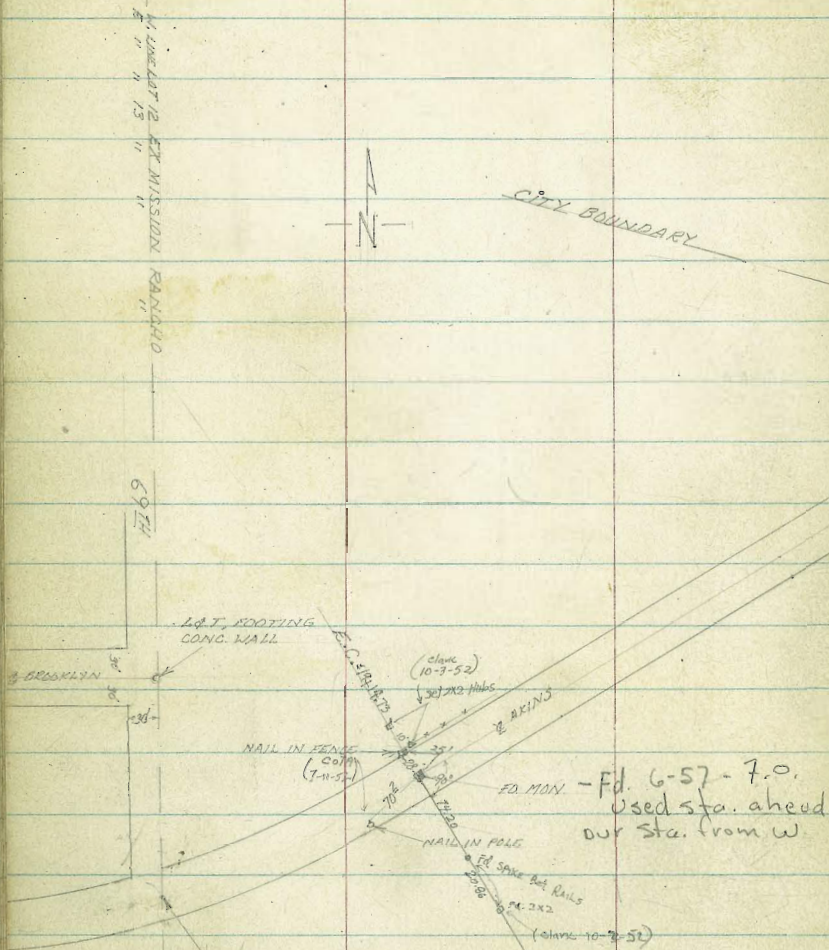
NOTE.
SEE T.P. 12 PAGES 33, 34, 63.
FOR MORE DETAIL
TP. 3242



* Set chise / 81.99 to Pipe
- 87.53



T.P.
R = 1357.69
Δ = 46° 12'



$19 + 14.14 = \text{on Curve}$
 Line = 020 N.

ED. MON. 4.8' S. OF OLD S. EDGE
 PAV'T. IMPROVAL AVE
 (7-1-12, 7-1-13)

0+50

228.8	228.5	228.3	228.6	228.2	229.0	228.3	226.6	226.7
46	49	51	48	52	10.4	10.1	68	6.7
50	25	12	18	18	25	38	41	45

0+00 EAST LINE 67TH

228.0	227.9	227.4	227.9	227.8	222.4	223.1	227.3	227.0
52	55	62	55	56	11.0	10.3	6.1	6.4
60	25	14	15	15	25	39	41	50

0-30.3 § 67TH

228.0	227.6	228.2	228.0	227.9	227.9	226.9	226.9
57	58	52	54	11.5	11.5	6.5	6.5
50	25	11	25	33	44	44	50

0-50

227.0
54

0-1400

225.0
84

233.39 H.I.

B.M.

229 233.39 H.I.

230.40 1st ALL.

HOODMAN SO. 7' LINE IMPERIAL AVE.

2+00

LT.	RT.
234.8	231.9
61 50	9.0 20
233.9	224.5
70 25	16.4 25
233.0	224.7
79 10	16.2 33
232.7	231.9
82	9.0
	58 TOP

T.P.

2.79 240.92 H.I. 0.4 232.73

240.92 H.I.

1+50

233.0	233.0	231.5	230.7	224.3	224.1	130.7	
10.4 50	0.4 25	18 11	19	27 18	9.1 25	9.3 32	27 10 TOP

1+14 25' LT, CENTER SINGLE GARAGE 10' WIDE

232.87
0.52
25.7
CONC FLOOR

232.29
1.10
22.0
2 1/2"
DENSE

1+05 16' LT, CENTER RR # P70911

1+00

233.1	232.0	230.7	230.1	229.4	223.9	223.9	229.5
0.3 50	1.4 25	2.7 10	3.3	4.0 19	9.5 25	9.5 33	3.9 41 TOP

233.39 H.I.

233.39 H.I.

X-SEC. AKINS ST. CONT'D.

LT.

\$

RT.

1+50

240.5	240.1	239.0	239.3	238.5	229.1	229.4	237.5
104	0.8	1.9	1.6	2.4	11.8	11.5	3.4
50	25	12		17	25	34	39
							TOP

4+00

240.2	239.6	238.1	238.0	237.3	228.5	228.1	237.0
0.7	1.3	2.8	2.9	3.6	12.1	12.8	3.9
50	25	11		19	25	34	39
							TOP

3+50

238.4	238.0	236.9	236.8	236.0	227.1	227.0	235.0
2.3	2.9	4.0	4.1	4.9	13.8	13.9	5.2
50	25	12		19	25	32	39
							TOP

3+00

237.6	236.9	235.5	235.4	234.5	226.9	224.7	234.0
3.3	4.0	5.4	5.5	6.4	14.0	14.2	6.9
50	25	11		18	25	31	37
							TOP

2+86 17° LT, PP# 170432

2+50

235.5	235.4	234.4	234.0	233.3	225.5	225.3	232.8
5.4	5.5	6.5	6.9	7.6	15.4	15.7	8.1
50	25	12		20	25	35	38
							TOP

240.92 H.1

240.92 H.1

X-SEC. AKINS ST. CONT'D.

LT.

RT.

T.P. 494 252.06 H.I. 0.44 247.12

252.06 H.I.

6+00

244.6	244.2	243.2	243.1	242.6	231.1	231.1	240.7
30	31	44	45	50	16.5	16.5	6.9
50	25	12		18	25	32	10 TOP

5+58 185° LT, CENTER 8" WIDE DRIVE

243.61	243.19	242.67
395	437	489
35	25	185 LIP

5+50

243.9	243.0	241.8	241.3	230.6	230.1	240.0
37	46	58	63	17.0	17.5	7.6
50	25	14	18	25	33	4.3 TOP

T.P. 714 247.56 H.I. 0.50 240.42

247.56 H.I.

5+00

239.7	239.7	240.8	240.6	239.9	230.0	230.2	238.7
112	112	0.6	0.3	1.0	10.9	10.7	7.2
50	25	12		18	25	34	38 TOP

240.92 H.I.

240.92 H.I.

7+09 25° LT. BEGIN CONC. CURBING (E-W.)

7+04 24.2 LT. CENTER 6° NIDE DRIVE

7+00

6+82 25° LT. 3° NIDE WALK

6+77 16° LT. 10" ACACIA TREE

6+67 16° LT. 9" ACACIA TREE

6+55 16° LT. P.P.# P70925

6+50

252.06 H.I.

LT.

£

RT.

	247.7						
	4.5	5.0					
	25 ⁰	25 ⁰					
	GROUND	FOOT					
	247.66	247.1					
	110	145					
	35	24.9					
		LIF					
	297.9	246.3					
	297.4	247.61					
	42	58					
	40	58					
		6.4					
		18					
		19.8					
		25					
		19.6					
		51					
		6.8					
		40					
		TOP					
	247.31	246.97					
	1.75	50.9					
	39	25.3					
		LIF					
	246.4	243.9					
	245.6	230.3					
	244.6	230.4					
	244.6	243.4					
	57	82					
	50	17					
	6.5	21.8					
	25	25					
	75	21.7					
	12	33					
	7.5	8.7					
		11					
		TOP					

252.06 H.I.

7497 24⁵ LT, END CURBING

7495 WEST LINE 68TH (ALONG 68TH ST. PRSP.)

T.P. 747 257.61 H.L. 192 250.14

7496

7490 16³ LT, 9" ACACIA TREE

7465 16² LT, 8" ACACIA TREE

7450

7414 16⁵ LT, 9" ACACIA TREE

252.06 H.L.

LT.

Q

RT.

85	81							
245	245							
250.6	249.6							
10	20	24	8.4	8.9	21.8	21.8	21.8	10.3
30	25	11	8.4	17	21	25	35	40
								TOP

250.6	249.6	249.1	249.2	248.6	233.0	232.9	233.2	247.0
15	2.5	3.0	2.9	3.5	19.1	19.2	18.9	5.1
40	25	11		18	22	25	33	40
								TOP

249.6	248.7	248.0	248.0	247.3	232.6	232.6	246.2	
25	3.4	4.1	4.1	4.8	19.5	19.5	5.9	
40	25	11		17	25	32	40	
								TOP

252.06 H.L.

8+50

0° 38'

8+45 (RADIAL)

8+43 26³/₄ LT & 19⁵/₈ RT. 2' DIAM. METAL PIPE-DRAIN

8+24⁹⁵ @ 68TH ST. (ALONG 68TH ST. @)

8+19²⁰ B.C.

8+12 26⁹/₈ LT, INLET 2' DIAM. METAL PIPE (DRAIN)

8+02⁵ 21⁵/₈ RT, OUTLET 2' DIAM. METAL PIPE (DRAIN)

8+00

257.61 H.I.

LT.

RT.

RT.

Station	LT. Elev.	LT. Slope	RT. Elev.	RT. Slope
8+50	257.1		250.4	
8+45 (RADIAL)	6.5 50	7.1 25	7.2 16	250.0
8+43 26 ³ / ₄ LT & 19 ⁵ / ₈ RT. 2' DIAM. METAL PIPE-DRAIN	247.52 10.09 26.2 INLET INVERT	250.5 7.5 25	245.06 12.55 19.5 OUTLET INVERT	290.1 17.5 35
8+24 ⁹⁵ @ 68 TH ST. (ALONG 68 TH ST. @)	257.5 6.1 50	250.6 7.0 25	250.1 7.5	249.4 8.2 25
8+19 ²⁰ B.C.	250.8 6.8 50	250.1 7.5 25	250.0 7.6	249.4 8.2 25
8+12 26 ⁹ / ₈ LT, INLET 2' DIAM. METAL PIPE (DRAIN)		246.69 10.97 26.9 INVERT		
8+02 ⁵ 21 ⁵ / ₈ RT, OUTLET 2' DIAM. METAL PIPE (DRAIN)	250.8 250.0 249.4 249.4	249.69 12.92 21.5 INVERT	249.4	248.9 239.8 239.8 239.8
8+00	6.8 50	7.7 25	8.2 11	8.2 17
				247.3 10.3 40 TOP

257.61 H.I.

X-SEC. AKINS ST CONT'D.

10+50

4° 51' 15"

	LT.		RT.
	254.8		255.3
	+28	+12.3	+14
	30	25	12
			7
			1.8
			2.3
			16
			22
			25
			32
			40
			TOP

10+15 14⁵ LT, CENTER 9° WIDE DRIVE

	254.81	257.11	256.63
	+280	+1050	0.98
	70	25	14.5
			LIP

10+00

3° 48'

	255.4	257.3	258.9	254.6	257.2	241.2	241.2	241.6	253.2
	+2.2	+0.3	2.7	3.0	3.4	16.4	16.4	16.0	4.4
	40	25	7		17	21	25	33	39
									TOP

9+50

2° 44' 45"

	257.3	251.3	252.9	252.8	252.4	241.2	241.0	241.3	251.1
	+0.3	1.3	4.7	4.8	5.2	16.4	16.6	16.3	6.5
	40	25	6		17	21	25	34	39
									TOP

9+46 15° LT PP# P70927

9+00

1° 41' 45"

	254.0	253.1	257.6	251.5	250.9	240.3	240.3	240.4	248.9
	3.6	4.5	6.0	6.1	6.7	17.3	17.3	17.0	8.7
	40	25	8.0		17	21	25	35	42
									TOP

8+55 EAST PROP LINE 68TH (ALONG 68TH PROP.)

	252.9	252.6	250.7	250.5	250.2	240.2	240.2	248.7
	4.7	5.0	6.9	7.1	7.4	17.4	17.4	8.9
	40	25	10		17	25	35	40
								TOP

257.61 H-1

257.61 H-1

X-SEC AKINS ST. CONT'D.

LT.

±

RT.

11+73 23⁷ LT BEGIN CONC. BRICK WALL

	261.6	260.6	260.9
+0.5	1.5	1.2	
237	237	237	
TOP	Foot.	GRD.	

11+61 23⁴ LT, END ROCK WALL

	260.0	260.9	260.0	257.1	258.6	243.3	243.4	243.3	255.9
+2.1	+0.6	1.2	2.1	4.1	5.5	18 ⁸	18 ²	18 ⁸	6.2
30	25	25	18	8.	17	21	25	34	39
	261.5	260.9	260.0	257.5					TOP
	+0.8	1.1	1.1	261.0					
	23.4	23.4	23.4						
	TOP	Foot.	GRD.						
	261.31	261.5	261.0						

11+50 6° 58'

11+18 24⁶ LT BEGIN ROCK WALL

	241.5	241.2	260.9
+0.6	1.9	1.2	
241	241	241	
TOP	Foot.	GRD.	

11+10 13⁷ LT J.P. 370428

11+00 5° 54' 30"

	260.5	260.7	259.1	258.9	256.4	256.1	242.8	243.1	243.1	255.5
+1.6	1.4	3.0	5.7	5.7	6.0	19.3	19.0	19.0	6.6	
40	25	11	7		18	22	25	34	39	
									TOP	

10+64 19² LT 3' DIAM. PALM TREE

T.P. 616 26211 H-1 166 255.95

262.11 H-1

13437 22¹/₂ LT. CENTER 8° WIDE DRIVE

LT.
259.39
272 3.17
35 221
LIP

RT

RT

13400

10° 07' 45"

259.7 258.9 257.7 257.1 258.4 245.0 245.1 259.6
2.4 3.2 4.4 5.0 5.7 17.1 17.0 7.5
40 25 10 18 25 36 39
TOP

12459 15° LT. JP. 370429

12450

9° 04' 30"

262.09 260.9 259.8 258.3 257.2 258.7 249.6 244.6 246.1 255.6
0.2 1.2 2.3 3.8 4.9 5.4 17.5 17.5 17.0 6.5
40 25 15 13 17 21 25 35 39
TOP

12440 23⁵/₂ LT. CENTER 8° WIDE DRIVE

12416 24⁸/₂ LT. CENTER 8° WIDE DRIVE

12412 24¹/₂ LT. END CONC. BRICK WALL

12400

8° 01' 15"

261.36 261.36 260.31
0.75 1.80
34 23.5
LIP
+1.09 0.68
38 24.8
LIP
261.7 260.7 260.0
+0.4 1.4 1.1
241 241 241
TOP Feet GRD
261.1 261.4 257.3
+1.0 +0.4 +0.4 0.7 4.8 4.9
40 25 24 24 6 257.2
TOP WALL

262.11 H.I.

262.11 H.I.

X-SEC. AKINS ST. CONT'D.

14+60 21° LT., CENTER 8° WIDE DRIVE

14+50 13' 17' 45"

T.P. 228 258.51 H.I. 588 256.23

14+09 10° AT P 376764 (RR)

14+00 12° 14' 30"

13+96 21° LT. CENTER 8° WIDE DRIVE

13+50 11° 11'

262.11 H.I.

LT.
254.71
3.80
21
FLOOR
GAR. 259.20

RT.

2550
3.5
40
254.7
3.8
25
253.7
4.8
12
253.3
5.2
17
253.0
5.5
17
247.7
10.8
25
247.0
11.5
37
252.0
6.5
40
TOP

258.51 H.I.

257.3
4.8
40
256.8
5.3
25
256.5
5.6
20
254.8
7.3
8
254.6
7.5
17
204.0
8.1
20
245.3
16.8
25
245.3
16.8
25
246.0
16.1
33
253.5
8.6
43
TOP

257.09
5.07
35
256.62
5.49
21.8
LIP

258.6
3.5
40
257.5
4.6
25
256.3
5.8
10
255.9
6.2
17
203.5
6.6
20
245.5
16.6
25
246.1
16.0
33
246.1
16.0
39
253.6
8.5
TOP

262.11 H.I.

LT. & RT.

15+45 25° LT, 28" PEPPER TREE

15+45 21° LT. P.P. # 370481

15+41 20° LT. END CONC. BRICK WALL

15+27 WEST PROP. LINE 69TH INTERSECTS & AKINS
SEC. TAKEN ALONG PROP. LINE

15+00 14° 21'

14+91 20° LT. BEGIN CONC. BRICK WALL

14+85 20° LT, CENTER 8° WIDE DRIVE.

Station	LT. (Top)	LT. (Foot)	LT. (GRD.)	&	RT. (Top)	RT. (Foot)	RT. (GRD.)
15+45	255.9	253.2	253.5				
15+41	259.2	259.0	253.7		253.2	253.0	252.9
15+27	259.2	259.0	253.7		253.2	253.0	252.9
15+00	4.3	4.5	4.8		5.5	5.6	10.7
	40	25	20		19	25	36
							40
							TOP
14+91	259.2	259.0	253.7		253.2	253.0	252.9
14+85	259.27	253.80	253.6		253.2	253.0	252.9
	4.24	4.71			5.5	5.6	10.7
	40	20			19	25	36
							40
							TOP

258.51 H.I.

258.51 H.I.

LT. & RT.

CHECKED
BY
R.C. Boyd
8-7-52

For Adv. Levels See Pg 47

BM

509 253.42 = 253.44 2" PIPE S.W. BOX CULVERT
IMPERIAL & 69TH

1+63²

SEC. TAKEN ALONG EX MISSION RANCHO LINE
UP 69TH ST.

256.0
259.9
25
34
100
50

1+63²

EAST LINE LOT 13, EX MISSION RANCHO (SEE PAGE 33)
SEC. TAKEN RADIAL.

254.2 253.9 253.6 253.0 249.4 249.4 249.3 253.9
4.3 4.6 4.9 5.5 9.1 9.1 9.2 4.6
10 25 18 22 25 31 41
TOP

15+50 (RADIAL) 15° 24' 15"

254.2 253.7 253.6 253.5 248.4 248.6 253.6
4.3 4.8 4.9 5.0 10.1 9.9 4.9
10 25 18 25 35 43
TOP

15+49 15° RT. TEL. POLE (NO NUMBER)

258.51 H.I.

258.51 H.I.

Clark
Shepherd
Bruner
Perkins
W.O. 25020
10-3-52

ADD X-SECTIONS - AKINS
694h to City Boundary

(See Pgs. 32-46 For Further DATA.)

LT E RT 47

INDEXED
Law
OCT 6 1952

T.P. 7.14 261.10 4.43 253.96

17+06 93 LT END Fence

17+00 18° 34' 15"

4.5
25 4.5
3.9 25
4.0 25

261.10

4.5
25 3.9

253.8
6.6
oiled
PAV

253.6
4.8
Brow

250.8
2.5
Toe

250.0
3.2
Toe

255.1
4.3
Draw

16+53 19.0' LT E 2' Conc. Walk

16+50 17° 31'

254.5
3.9
25
3.9
19
2.5
lip

253.5
4.9

253.7
4.7
oiled
PAV

253.6
4.8
Brow

250.2
8.0
Toe
Ditch

16+48 12' LT E 5' slab concrete (7x10.5')

16+22 17.7 RT END Wooden Barricade along ditch

16+20.5 3 RT E 1' Pepper tree

16+13.5 1 RT E 24" Pepper tree

16+00 16° 27' 30" (sections taken Radial)

254.6
3.8
4.0
254.4
4.0
25

253.6
4.8

253.5
4.9
Shoulder

249.2
9.2
Toch

249.1
9.3
Toch

255.1
4.6
S. BANK
DITCH

15+88 12 LT E 8' Dusk

15+84 Bag taken strip 8' wide oiled-PAV. 2 PAV. 4-6' R Toth St. (Avenue)

15+78. 10 RT E SDGVE M.H. 6x6'

15+74 16.2 LT Bag 3 Wire Fence

4.93
10
EMH

B.M. 4-95 258.39

253.44 = 2" Pipe S/ry Box Culvert, IMPERIAL 1694h

258.39

X-SECT AKINS (CONT.)

LT.

S

RT.

18+50	21° + 44'
18+45	18 RT E Pole ⁴ 498054-11; 24 to deadman
18+13	24.8 LT END FENCE
18+00	20° 40' 45"
17+50	19° 37' 30"
17+42.5	E M.H.
17+36	16.5 LT Beg Fence
17+35	18 LT E 2' CONC WALK
17+30	26.4 LT to N.E CORN. Shed
17+16	17.9 LT E gar CONC Floor
17+12	12.4 LT to S/E CORNER Comb gar 4 shed

5.2
5.5
5.5

25

5.8
5.8
5.3

58

5.8
5.8
5.3

26

taken

Pav

5.1
5.1
5.0

19

Brow

8.9
8.9
8.2

25

Toe

24ch

6.1
40
25

25.5

6.5
25

25.4

6.6
25

25.4

6.6
6
taken
oil Pav

25.5

6.6
19
Brow

25.4

9.3
25
Toe

25.1

9.7
34
Toe

25.1

1.8
46
S. Bank
Ditch

24.9

7.3
25

25.3

7.2
25

25.3

7.0
6
taken
oil Pav

25.2

6.8
19
Brow

25.1

9.3
25
Toe

25.1

7.1
Rim
M.H.

25.3

7.40
18.0
Lip
6.42
6.90
17.9
Floor

7.40

18.0

Lip

6.42

6.90

17.9

Floor

261 10

X-SECT. AKINS (CONT)

21+00

LT
260.4
5.8
50

RT
257.4
6.8
25

257.2
70

259.2
6

258.9
7.3
17
Brow

255.7
10.5
Toe

254.8
11.4
Toe

262.6
3.6
47
S. BARK
DITCH

20+71

25.1 LT EIA Fence

20+57

14.2 LT & Cluster 5 EUCALYPTUS trees
AV. D.A.M. 12"

T.P.

7.48

266.20

2.39

258.72

266.20

20+50

258.4
2.7
25

258.4
2.7
25

258.3
2.8
6

258.5
2.6
18
Brow

255.0
6.1
25
Toe

20+00

3.0
40

257.4
3.5
25

257.5
3.6
6

257.5
3.0
18
Brow

254.6
6.5
25
Toe

252.8
7.3
38

262.6
+1.3
47

19+50

256.8
4.3
25

256.7
4.4
6

256.8
4.3
18
Brow

257.1
7.0
25
Toe

254.0
7.1
25
Toe

19+20

18 RT & gas valve

19+14.73 = E.C.

23° 06"

19+02

25.1 LT Bay 5' wire Fence

19+00

22° 47' 30"

255.9
5.2
40

256.0
5.1
25

256.1
5.0

256.0
5.0
EG
to loc
oil-pat

256.4
4.7
19
BROW
DITCH

256.8
8.3
25
Toe

252.2
8.9
37
R

261.0
0.00
44
S BARK
DITCH

261.10

X-SECT. AKINS (cont.)

LT.

C

RT.

22+03 25 LT & 12" Pepper

22.9
3.3
50

6.19
4.3
25

26.0
5.2

260.8
5.4
5

26.1
5.2
16
Brow
Toe

25.5
9.7
2.5
Toe

25.0
10.2
3.4
Toe

26.4
1.5
46
TOP BANK
SEASIDE DRILL

21+94 25.7 LT END 3' steel wire Fence

21+59 15.8 RT & DEADMAN

21+52 26.8 LT & 8.0 Conc. Spike

4.36
4.5
Brow

5.12
26.8
MP

26.1
0.2
5.2
25

260.1
6.1

6.3
5
E taken at
Brow

6.3
18
Brow
Toe

10.1
2.5
5.1
Toe

21+50 25.6' LT Beg 3' steel wire Fence

21+45 23.7 LT & Pole # 498055-H

21+39 15.5 RT & Pole # 498055-H

21+30 22 LT & 3' Palm

21+15 21.5 LT & 3' Palm

266.20

X-SECT. ARINS (Cont.)

23+54

24.5 LT & Pole # P-275978

23+50

23+46

26.6 LT & 8' Conc. Drive

23+40

26.2 LT END WALL

23+02

26.2 LT Beg 3' Conc Blk Wall

23+00

22+95

25.3 LT & 8' Conc Drive

22+91

26.6 LT END Conc Wall

22+50

22+48

26.6 LT 3' Conc Blk Wall

LT.

C

RT.

LT.	C	RT.
266.5	265.4	263.1
0.7	28	3.1
25	4	3.3
		16 Brow
		25
		259.2
266.5		
0.15		
40		
Drive		
265.45		
0.75		
26.6		
LP		
264.1		
0.8		
50		
2.1		
25		
3.6		
264.5		
3.7		
4		
4.1		
16		
Brow		
8.0		
23		
102		
8.0		
25		
8.3		
32		
102		
357.9		
0.40		
4.5		
LP		
SE Bank		
Drive		
265.80		
262.9		
3.3		
25		
4.4		
45		
4		
4oken-oil		
Pay		
261.7		
4.5		
16		
Brow		
251.7		
9.0		
25		
257.2		

X-SECT. ARINS (CONT.)

25+50 END taken - oil pav (E Pav 5' RT E Street)

25+45 25.5 LT Pole # P275979

25+38 24.3 LT E 8' CONC. DRIVE

25+00

24+96 24.8 LT END 3' WIRE FENCE

24+89 24.8 LT E 8' CONC. DRIVE

24+50

24+49 25.5 LT Bay 3' FT WIRE FENCE

24+00

T.P. 10.77 274.05 2.92 263.28

LT

4.8
25 269.3

8.5
7 265.6

9.8
264.3

9.9
5 264.2

RT

10.1
19 Blow 263.0

12.5
5 261.5

2.59
40 Drive 270.46
5.03
24.3 LP 269.02

4.5
50 268.6

5.4
25 268.7

8.6
10 265.5

10.2 263.9

10.3
4 263.8

10.7
18 Blow 259.4

14.2
25 259.9

14.2
32 Top 159.9

6.1
46 Top SKY BANK 268.0

5.10
40 Drive 269.85

6.40
24.8 LP 267.65

6.2
25 267.9

8.9
13 265.2

10.3 263.8

10.5
4 263.6

11.0
17 Blow 263.1

14.8
25 259.3

6.5
50 267.6

7.3
25 266.7

7.4
8 264.6

10.4 263.7

10.6
4 E taken oil Pav 263.4

11.2
18 Blow 262.8

14.4
25 259.6

15.8
25 Top 258.2

15.8
34 Top 258.2

8.3
45 Top BANK 265.7

274.05

X. SECT. AKINS (CONT.)

LT.

R

RT.

27+16	270' LT & Deadman	273.7 0.4 50 Brow	266.2 7.9 32 Toe	265.1 7.0 25	265.3 8.8	265.5 8.6 16 Brow	262.6 11.5 20 Toe Ditch	262.5 11.6 34 Toe	270.5 3.6 46 TOP BANK Ditch
27+00									
26+96	270' LT & Pole # 277060								
26+50				268.7 5.1 25 Brow	266.4 7.7	265.7 8.4 17 Brow	261.9 12.2 25		
26+45	227' LT & 8' Conc Drive	1.44 40 Brow Ditch	5.57 22.7 Lip	268.48 26.8 40	270.8 3.3 25	264.9 9.2	264.3 9.8 19 Brow	261.6 12.5 25 Toe Ditch	260.2 13.9 32 Toe Ditch
26+00				272.6 1.5 40	270.8 3.3 25	264.9 9.2	264.3 9.8 19 Brow	261.6 12.5 25 Toe Ditch	258.3 5.8 46 TOP BANK Ditch
25+91	471' 8' Oil-por Drive	2.8 35	271.3 2.8 35	270.3 3.8 25	265.1 9.0 4				
25+75	45.6' LT & 3' conc Walk	3.16 45.6 Lip	270.8 3.16 45.6 Lip						
25+62	26' LT & Deadman								

274.05

X-SECT. AKINS (CONT.)

LT.

☉

RT.

Check: 9.04 253.40 = 253.44 = 2'

Pipe for Cor. Imperial + 6946

T.P. 0.08 262.44 11.69 262.36

27132.21 - ☉ AKINS + City Bdry Sect. taken along Bdry

274.6	8.9	265.2
+0.5	30.86	
60	Prop. loc	
41		
70c		

266.1

8.0

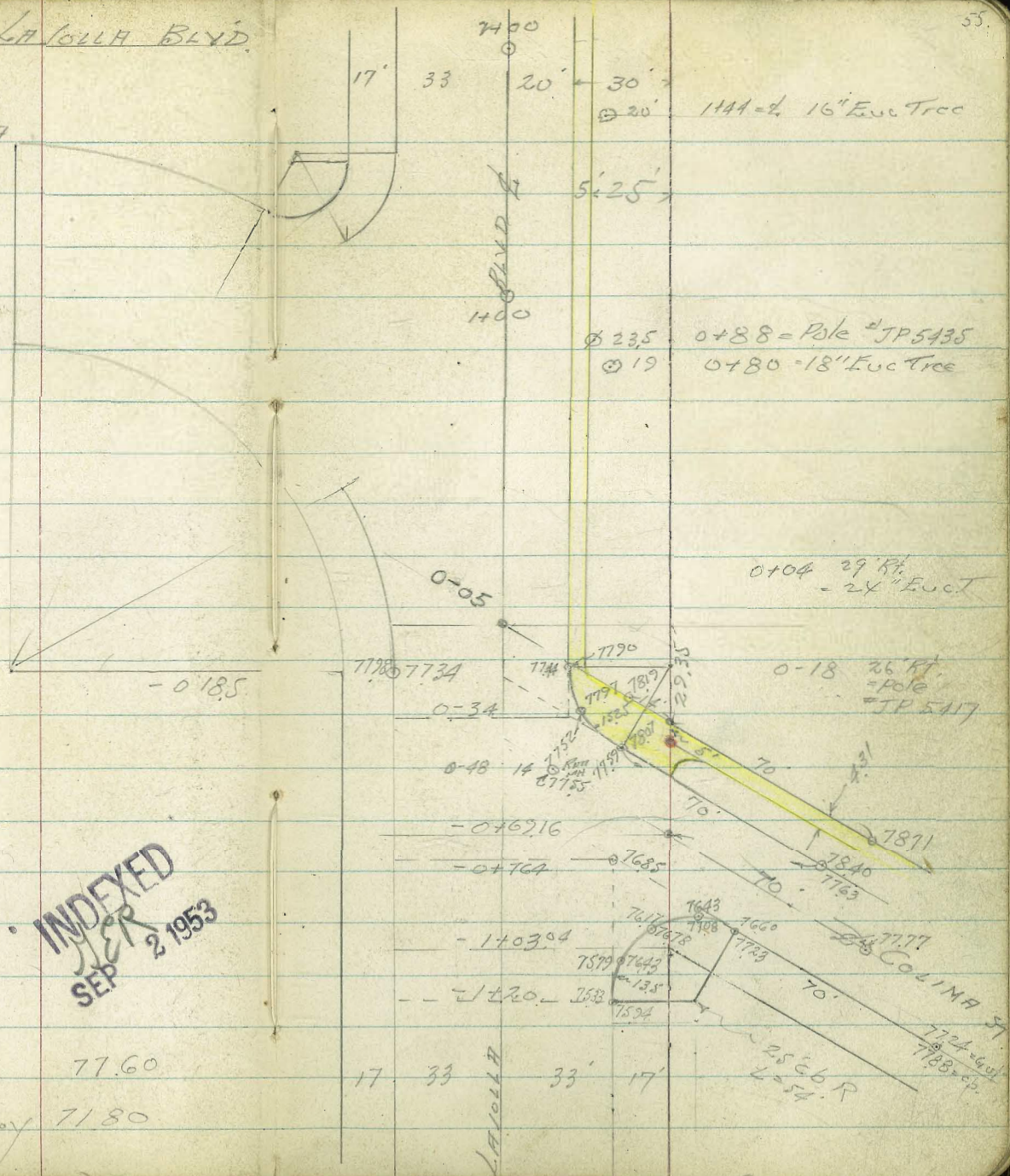
266.5	11.0	11.0	3.0
262.1	30.86	40	58
263.1	Prop. L	70c	Top Bank
271.1	70c		S/S

274.05

CROSS SECTIONS - LA LOJA BLVD.
 FROM COLIMA
 TO CAMINO DE LA COSTA

Walker
 BPC
 Pollen
 Hetch
 8-18-53

140 22017



INDEXED
 SEP 2 1953

TP 77.60
 B.M. S.E. B.P. Laajilla & Midway 71.80

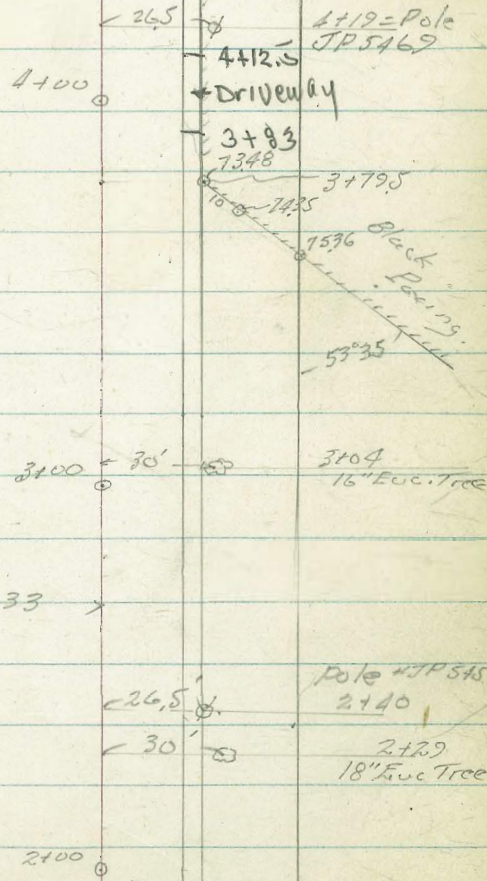
1444-d 16" Euc Tree
 0+88 = Pole #JP5435
 0+80 = 18" Euc Tree

0+04 29 Ft. pole
 24" Euc T
 0-18 26 Ft. pole
 #JP 5417

COLIMA ST
 77.24
 77.83

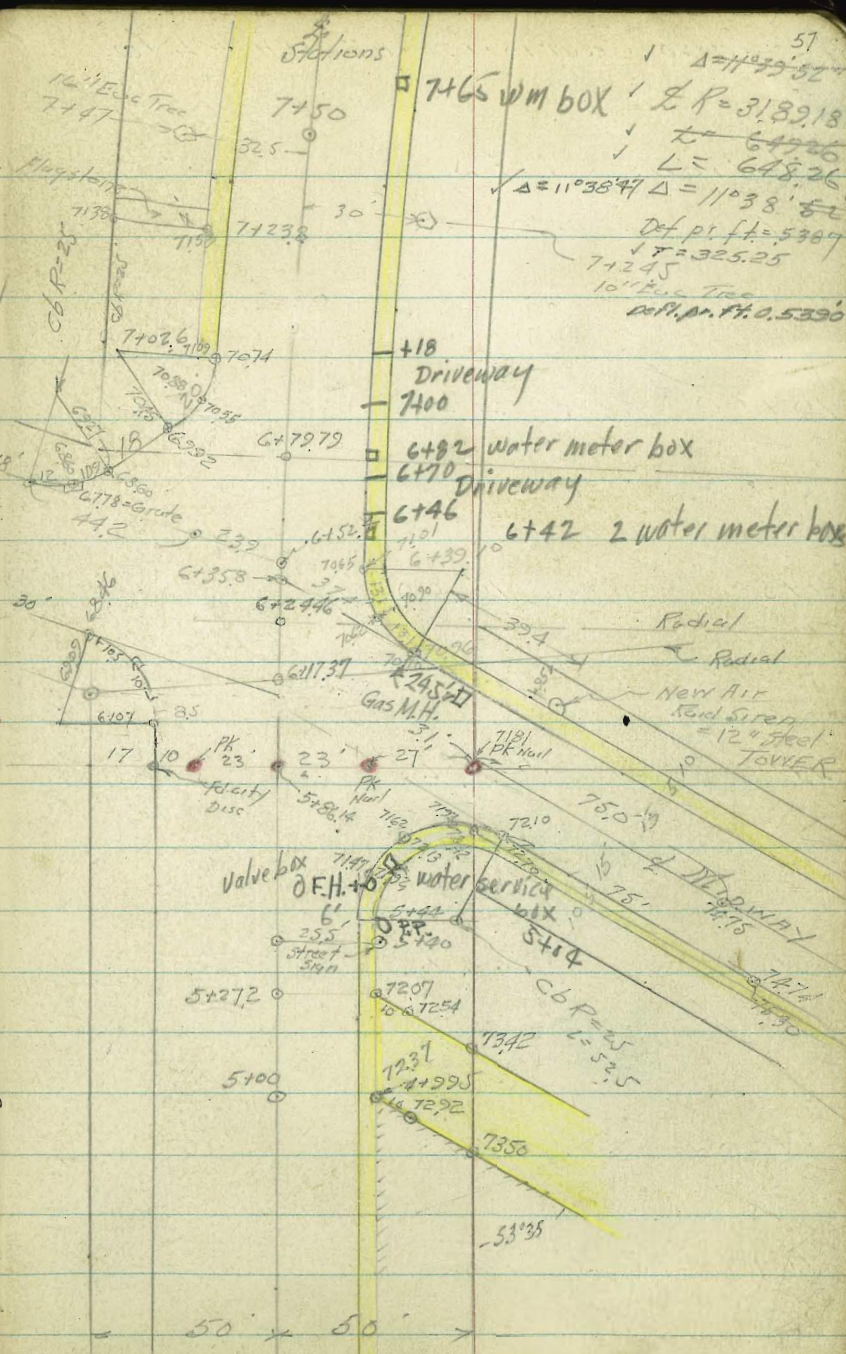
17 33 33' 17'

CROSS SECTIONS - LA JOLLA BLVD.



Cross Section - LA KOLLA BLVD.

Stations	Def Δ
7+50	1°28.24
7+00	1°01.3
6+79.79	0°50.43
6+24.46	0°20.62
5+86.14 = BC Pt.	



57
 $\Delta = 11^{\circ}38'52''$
 $R = 3189.18$
 $L = 648.26$
 $\Delta = 11^{\circ}38'47''$ $\Delta = 11^{\circ}38'52''$
 Def pt. H = 5387
 $T = 325.25$
 7+245
 10' Euc. Tree
 with p. H. 0.5330

cb R=25
 $L=31.31$

cb R=25
 $L=53.5$

50 x 50

CROSS SECTION - LA JOLLA BLVD.

Stations Def Δ
10+50 4°09.88

10+00 3°24.42

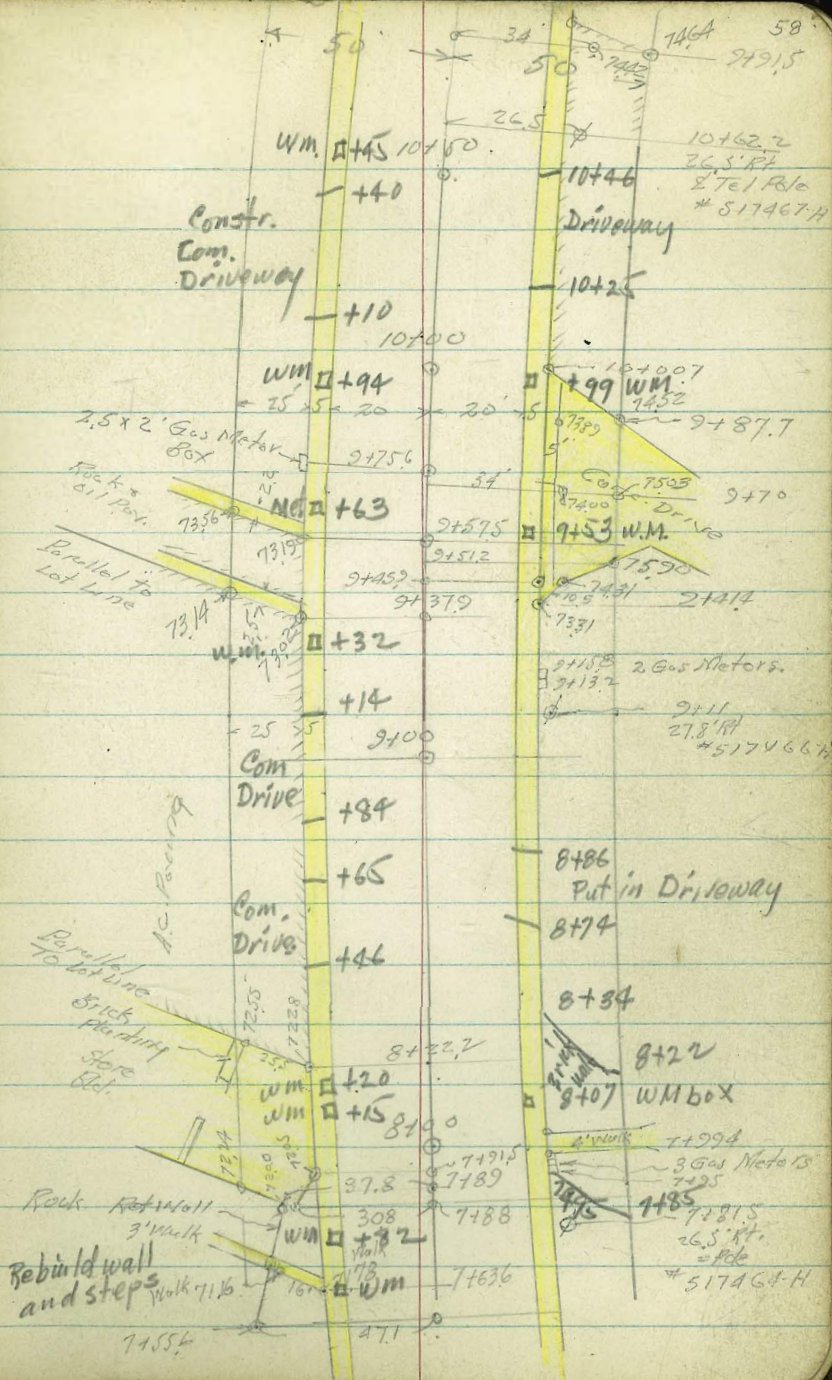
9+50 3°16.00

9+00 2°49.06

8+50 2°22.12

8+00 1°55.18

7+89 27.5' Lt Tel Guy Pole # 517465-H



CROSS SECTION - LA TOLLA 82' D.

550 Gal Gasoline Tank Elev. Invert 6690
 13759.6 35.6' Lt. - Fill Pipe 74.3 - Top Fill Pipe
 217 Gal. Gas Tank 669 - Elev Bottom
 13750 37.1' Lt. - Fill Pipe
 550 Gal. Tank Elev. 6670 - Bottom
 13734 38.1' Lt. Fill Pipe

Diag. 12+68.2

Diag. Sec. 12+37.6

12735.4 - Tie street
 (fd to be this str.)
 13734.40

5°49.23

Fd. Mod. 3.36
 used. Agrees with Tie street

12700

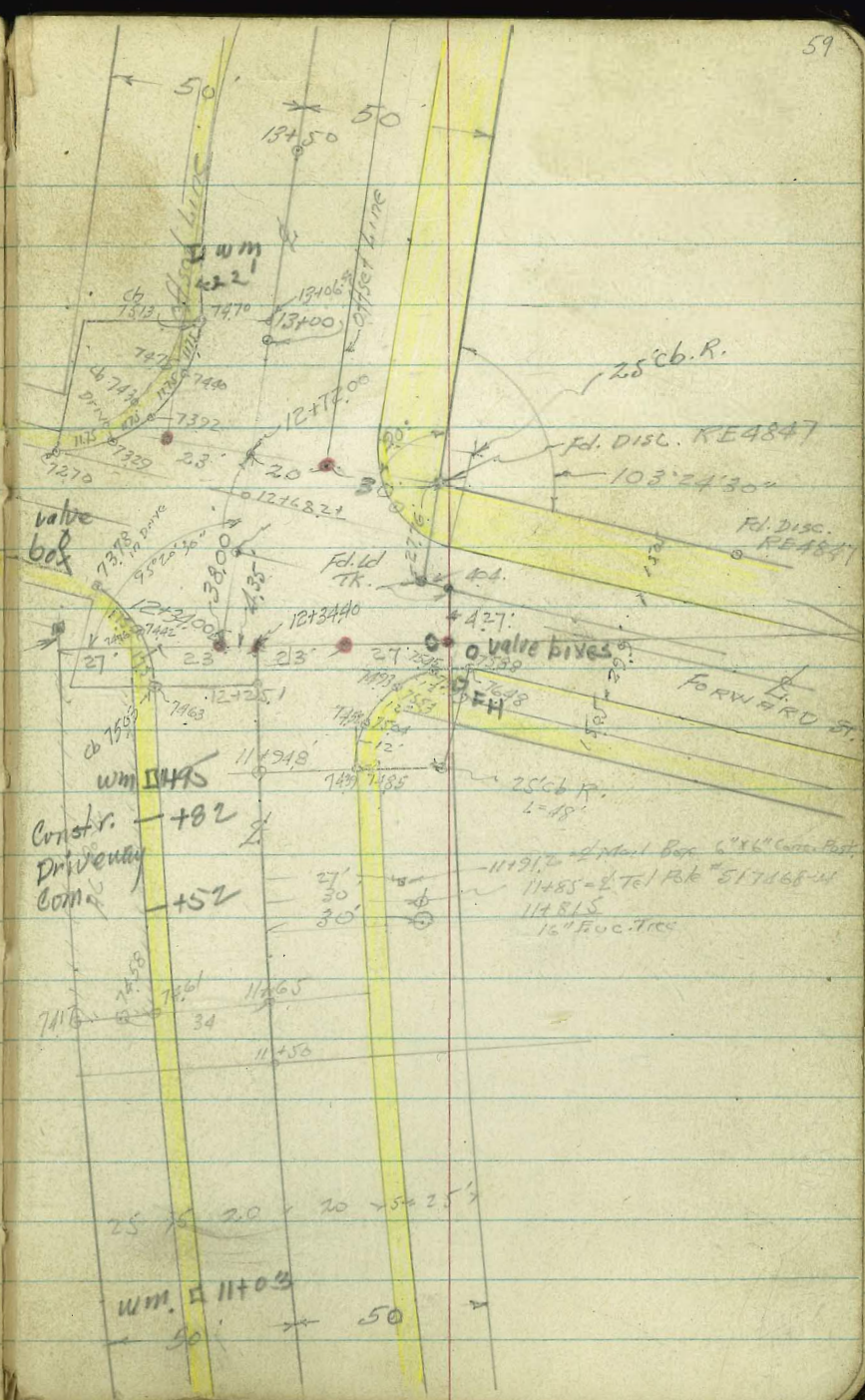
5°30.7

11750

5°03.76

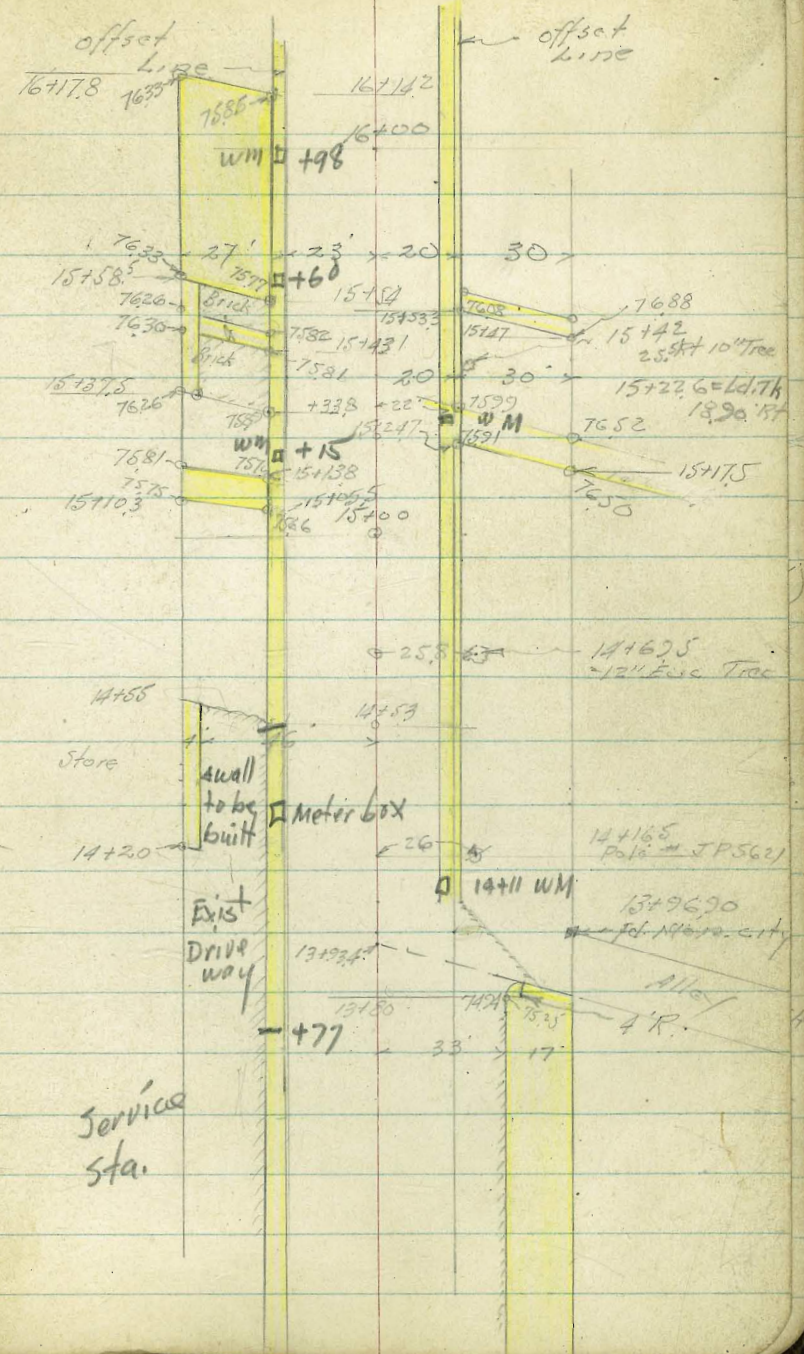
11700

4°36.87



Cross Sections - LAJOLLA BLVD.

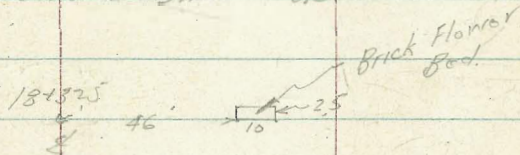
- 17+32.90 Fd. DISC LS#2236 = 24.70' Lt.
- 16+92.91 Fd. DISC LS#2236 = 24.70' Lt.
- 16+82.07 = Rd. Chisled Cross 21.02' Rt.
- 16+53.13 Fd. DISC RE#32 = 25.66' Lt.
- 16+32.34 = Chisled Cross 20.61' Rt.
- 16+13.13 = DISC LS#2201 = 25.64' Lt.
- 15+73.14 = DISC RE#32 = 25.63' Lt.
- 15+53.14 = L.S. DISC #2201 25.64' Lt.
- 15+33.20 = L.S. DISC #2241 25.63' Lt.
- 14+98.18 = L.S. DISC #2241 25.64' Lt.
- 14+70 25.5' Rt. = 8" 10" Elec Tree
- 14+53.20 = L.S. DISC #2341 25.66' Lt.
- 14+16 36' Rt. = Pole #JP #5621
- 14+14.87 = L.S. DISC 25.65' Lt.
- 14+0.5 = Beg. Sb. + Walk on Rt.



Cross Sections - LA TOLLA Blvd.

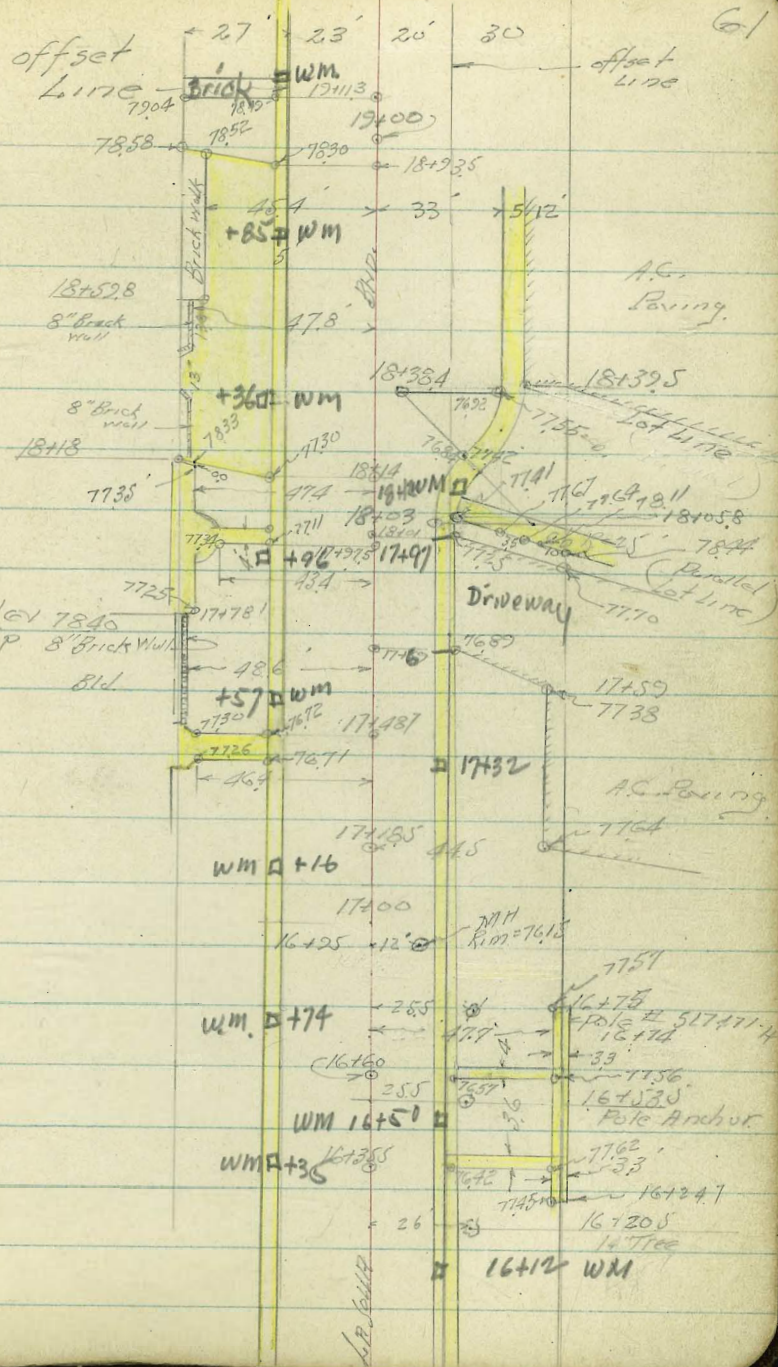
18+93.59 Fd. Id. Tack 27.18 Lt.

18+93.01 Fd. Disc 45.2341 = 25.80 Lt.



18+12.89 Fd. Disc 45.2236 = 24.80 Lt.

17+72.90 = Fd. Disc 45.2236 = 24.75 Lt.

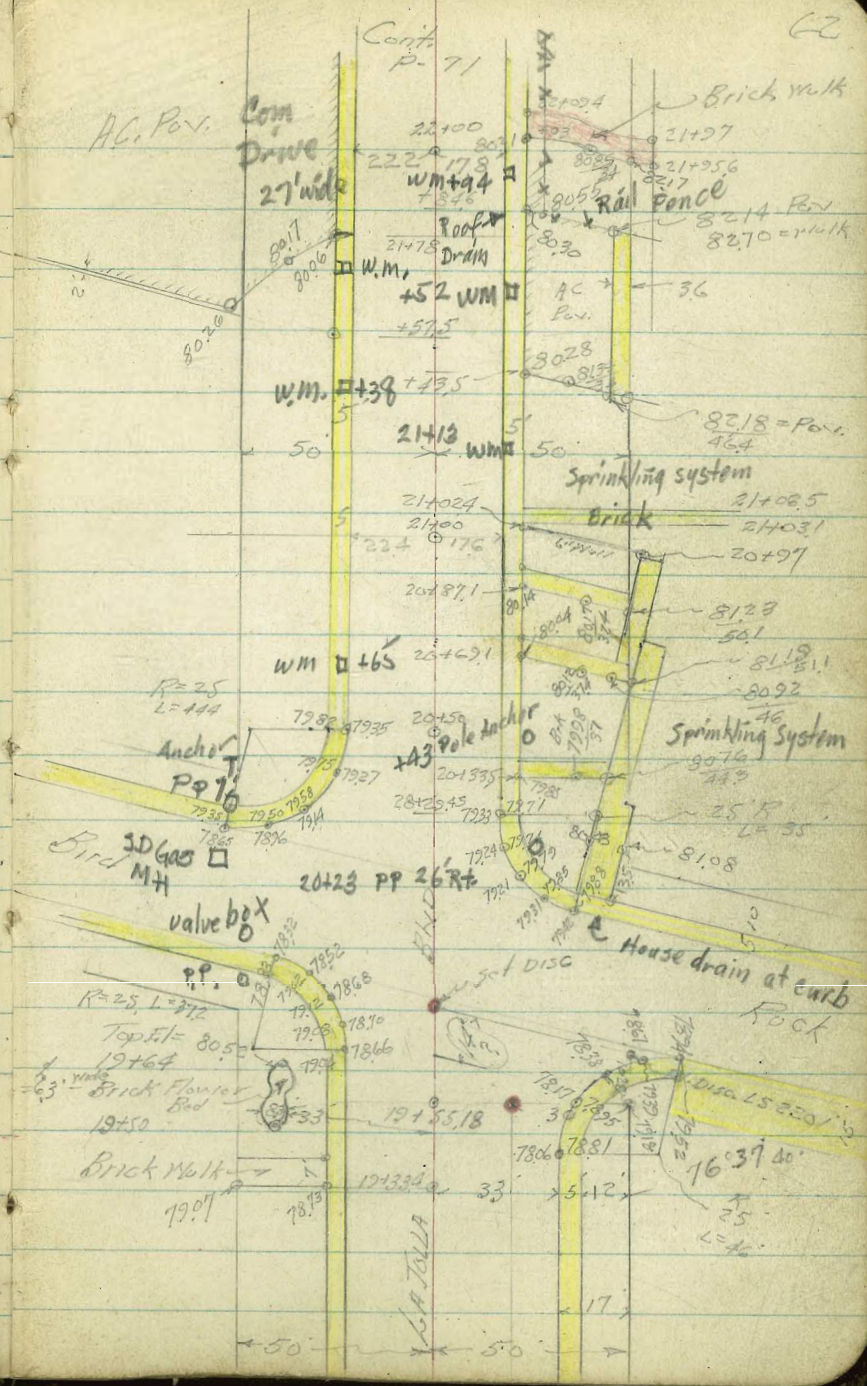


Cross Sections - LA JOLLA BLVD

• Set Cap Disc

- 21+88.70 Fd. Id & Tack 2099' RA
- 21+54.83 Fd. Disc. LS#2201 = 25.67' Lt.
- 21+54.66 Fd. Id & Tack = 2494' Lt.
- 21+43.71 Fd. Chisled Cross 20.93' RA
- 21+14.64 Fd. Id & Tack 2538' Lt.

- 19+70.8 12.5' RA = 2' D.H.
- 19+65 = 1/2 Gas 3' x 3' 5/8" M.H. 19.6' Lt.
- 19+55.18
- 19+25 = 3" Tree 11' Lt.



Cont. p. 71

Lt. L R C3

0+50

81.3 80.8 80.5
28 50 60

0+50

77.86 77.77 77.64 77.42 76.28 77.35 77.5
33 17 10 20 20 25
Gut

- 0.5. Cont.

80.8 80.5 80.5
28 50 60

- 0+05.0

77.67 77.95 78.20 77.95 77.71 77.80 78.0
33.5 10 10 20 20 25
Gut. Rd. Gut. Cb.

- 0+34

77.64 76.27 77.63 77.93 77.74 77.60
33 33 17 10 20
Cb.

- 0+69.16

- 076A

76.07 76.24 77.37 77.30 77.13 77.11 77.15
33 17 10 20 33 50
in Drive

- 103.04

75.18 76.03 76.53 76.43 76.17 76.04
33 17 10 20 33
in Drive

- 120.34

74.74 75.62 76.23 76.20 75.72 75.33 75.94
33 17 10 20 33 33
Gut. in Drive Gut. Cb.

Direct File. Red used.

7760 P-55

TP

Lt.

L

Rt.

64

3100

766	774	767	76.6
28	40	50	60

3100

73.73	74.40	74.68	74.43	74.62	74.42	74.6
33	17		10	20	20	26
Gut, in Drive						

TR

75.89

2150

777	77.7	77.8	76.7	77.0
	30	40	50	60

2150

75.63	74.40	74.93	75.25	75.63	74.59	74.93	75.1
33	33	17		10	20	20	26
cb.							

2100

78.4	78.5	77.9
28	50	60

2100

75.01	75.56	75.80	75.60	75.12	75.47	75.75
33	17		10	20	20	26
in Drive						

1150

79.0	78.7	78.7
28	50	60

1150

76.30	75.66	76.18	76.40	76.17	76.10	76.12	76.3
33	33	17		10	20	20	26
cb. Gut.							

1100

80.0	80.1	79.1
28	50	60

1100

77.12	77.06	77.00	76.84	76.38	76.80	77.0
33	17		10	20	20	25
cb.						

71.80

5+86, 14-B.C.
 SE. B.P. L. Jolla & Midway
 T.P. 5454 = L Pole 51' Ht. #P403 71.80
 5+49 = L Fire Hydr. 21.5' Ht.
 5+44

	70.12	70.92	71.12	71.09	71.03	71.39	71.90
	33	17		10	20	34	50
	in Drive						
Midway	72.0	73.7					
71.80	<u>67.2</u>	<u>68.1</u>					
PL	+2.5	+5.0					

73.72
 50
 Pav.

5+44 = B.C. curb Ret. on Rt. 26' Ht = L Pole #JP5497

71.24	70.60	71.46	71.89	71.70	71.45	71.70	72.72
33	33	17		10	20	20	34
cb.						cb	Pav.

72.83 73.30 73.75
 34 50 60
 Conc. Conc. Conc.
 Pav. Pav. Pav.

5+00

71.80	71.15	72.04	72.43	72.24	71.82	72.16
33	33	17		10	20	20
cb						cb

5+00

4+50

73.24 74.06 74.46
 34 50 60
 Pav. Pav. Pav.

4+50

72.41	71.77	72.58	73.02	72.78	72.33	72.73
33	33	17		10	20	20
cb						cb
					75.03	
					60	
					Pav.	

4+00

4+00

73.06	72.41	73.15	73.52	73.28	72.88	73.75	74.67
33	33	17		10	20	34	50
cb.						Pav.	Pav.

3+50

73.9 75.8 76.2 75.6 75.7
 26 28 40 50 60

3+50

73.72	73.06	73.77	74.09	73.88	73.41	73.85
33	33	17		10	20	20
cb						

La Jolla Blvd.

Lt.

L

Rt.

66

Guy

6+97 26' Lt Pole JP 5516

6+79.79 Sec Radial

6+76.3 = E Pole 5505 26.8' Rt

676 686
60 50

6978 6918 7025 7060 7126 7148
374 374 25 20 10
cb Gut

7132 7075 7117 723 728
10 20 20 50 60
Gut

D109

6+52.4 = Int NW cb Midway

6548 6615
865 865
Gut Brk
cb

6779 6705 6796 6988 7065 7103
682 682 54 32 15
cb Gut
Ret

6+35.8 Cont.

7118 7165 7224 7366
38 58 108 105
Gut cb Gut cb

D109

6+35.8 Sec Along cb NE

7059 7058 7070 7096
18 374 374
Gut cb

6+2446

723
50

6+2446

6964 6873 6966 7012 7033 7046 7058 7059 7067 7090
433 433 30 20 10 10 20 243 243
cb Gut cb Gut cb Ret

SE Midway = La Jolla Blvd.

TP. BW

7180

6+17.37

7104 7148 719 725
34 425 50 60
Back edge Walk

6+17.37 = Radial SW Prop.

7003 6922 6994 7024 7038 7048 7055 7062 7070 7086
367 367 30 20 10 10 20 32 32
cb Gut Brk Gut cb

6+07 SW Curb Ret.

6909 6846 6922 6853 6976
3131 3131 29 29 185
cb E.C. cb Gut cb
Gut on Midway

6891 7008 6927 7032 6993
185 85 85 80 B.C.
Gate cb Gut cb Gut

Substation Blvd.

Lt.

E

Rt.

67

T.P.
7+00

7309

729 758
25 50
at
St.

7+00

7252 7272 7274 7229 7224 7219 7226 7236 7283
50 34 25 30 10 10 20 20
Pav. Pav. Walk Pav. in Drive cb.

8+50

726 746 752 756
25 41 50 50

8+50

7220 7231 7234 7124 7260 7284 7262 7203 7249
50 34 25 30 10 10 20 20
Pav. Pav. Walk in Drive cb.

T.P.

7246

8+00

7229 7199 7156 7220 7247 7232 7171 7214 7234 7244
50 20 20 10 10 20 20 25 50
on cb Walk Walk
Conc. Slab

7+89

695 696 716
50 38 378
Yard. Yard on Wall

7+55.6

689 689 712
50 47.5 471
in Yard Top
Pav. Wall

7+50 Cont.

734 739
50 60

(7+43.2)

7257
38 ft.
Pav. Wall

7+50

715 715 7154 7114 7194 7210 7190 7127 7165 721
50 50 20 20 10 10 20 20 40
at cb. Gut cb.

7+28 = End Fence 29' Lt

7+13

25.8 = Pole Anchor
Beg. 25' Fence 29' Lt

7+07.5

25.5 ft = Pole Anchor

7+00

674 681 689 712 7104 7091 7126 7168 7145 7085 7123 725
60 50 49 28 20 20 10 10 20 20 50 60
cb Gut cb.

Lapolla Blvd.

12+37.6 Cont. outs from E. To North

12+37.6 Diag. Sec. = South Curb Lane Forward.

S.W. Prop Mon Forward
T.P. Lapolla & Highway

74.15 74.13
= 782020
76

S.W. S.W.B.P. Lapolla & Highway
T.P. Forward

75.04

12+00

74.71
50
P.C.
Par.

11+50

11+04 For yardage only

11+00

11+60

10+50

T.P.

10+00

9+50

4.

4.

Rt.

68

71.25 70.69
100 100
cb Gut

77.58 78.23
100 100
Gut cb

72.57 72.00 73.78 75.00 75.25 75.13 74.62 75.88 76.48
74 74 38 12 15 26 60.7 60.7
cb Gut in Drive F.C. Ret. Gut. cb. Ret.

74.90 74.91 74.50 75.04 75.25 75.02 74.43 74.91 76.8
34 25 20 20 10 10 20.9 20.6 50
P.C. Walk cb Gut. Ret.

74.44 74.53 74.02 74.70 74.90 74.65 74.10 74.53 74.7 75.9
50 25 20 10 10 20 20 25 36
Walk in Drive Gut.

74.4 76.8 77.0
25 29 50

76.5 77.0
37 50

74.0 74.14 73.72 74.37 74.55 74.30 73.80 74.28 74.5
50 20 20 10 10 20 20 28
Brick Walk cb. Gut Gut

73.3 73.77 73.38 74.01 74.22 73.28 73.45 73.91 74.20 74.31
50 20 20 10 10 20 20 34 50
oil cb. Gut Gut. cb Par. Par.

73.2 73.48 73.06 73.69 73.90 73.65 73.07 73.61 73.96
50 25 20 10 10 20 25 34 50
oil Walk Gut Walk Par. Par.
in Drive in Drive

73.10 73.0 73.05 72.65 73.22 73.54 73.31 72.73
50 34 20 20 10 10 Gut. in Drive
oil cb. in Drive

Lafayette Blvd.

13+50

7355
50
Par.

Edge Par.
7381
38

7381 7382 7529 7522 7492 7552 7560 7636 7490 7479 7518 7560
33 31 28 23 23 10 10 20 33 45 50
Par. Walk cb. Gut. Drive Walk Edge Walk

13+00

7335 7399
50 31
Par. Par.

748 7541 7497 7460 7526 7548 7524 7482 7474 7581 7564
30 265 21.6 21.6 10 10 20 33 45 50
Par. Walk Back Edge cb. Gut. Gut. Walk Walk
Ret. at cb Ret. in Drive Back Edge

#D-5601

12+76.8 = Fire Alarm & Tel Bld 35' RT

12+72 RT 1 to N.E. Prop. Cor.

7542 7504 7462 7493 7591
16 26 342 342 9
Gut. cb

N.E. Curb Ret. on Lafayette Forward Length = 34'

7517
cb
EC
on Lafayette

7475 7549 7498 7578 7528 7608 7562 7642 7597
Gut cb Gut cb Gut. Gut. EC EC
cb. on Forward

12+68.2 Cont.

7792 7859
100 100
Gut. Curb.

12+68.2 Diag Sec N Curb Forward 7029 7034
100 100
cb. Gut

7250 7194 7239 7378 7489 7540 7510 7472 7597 7645
70 70 50 37 17 15 24 543 543
cb. Gut cb. Gut EC Ret

12+53.1 Cont.

7813
10.0
Curb.
Par.

12+53.1 = Diag. Sec S Forward

70.88 7346 7449 7492 7538 7512 7465 7523 7607
100 50 28 127 15 24 374 515
Par. Par. Par. MM Gut. Gut. MM

Not taken in regular order

12+34.40 = F.C. outs from South &

7420
50
Par.

7481 7512 7489 7468 7518 7538 7514 7461 7618
34 272 217 217 10 10 20 50
Par. Walk cb. Gut at curb Ret.

Leopolde Blvd

Lt.

L.

Rt.

70

17+00

764	7628	7586	7609	7658	7663	7636	7602	7633	773
498	286	276	20	10		10	164	164	50
Ground at Brick Stop	Walk	Drive					Gut.	cb	

16+50

758	7610	7578	7602	7651	7652	7620	7587	7624	7757
50	278	238	20	10		10	163	163	50
	cb	Gut.					Gut.	cb	Walk

T.P.

7597

16+00

7629	7603	7607	7577	7587	7633	7639	7600	7563	7599	776
50	34	24	24	20	10		10	162	162	50
Walk	Walk	cb	Gut.					Gut.	cb	

26 Rt Pole # 517470-H

15+50

7626	7590	7586	7548	7574	7618	7624	7592	7555	7534	7600
50	34	24	24	20	10		10	161	161	50
Walk	Brick	cb	Gut.					Gut.	cb	Low n

15+00

758	7566	7534	7559	7604	7609	7570	7537	7565	758	763	766
50	cb	24	20	10		10	158	158	30	50	60
		24	Gut.				Gut.	cb			

14+50

7416	7419	7528	762	764	770
50	46	34	23	50	60
Walk	Walk	Par.			

14+50

7556	7498	7532	7592	7593	7552	7523	7530	758
29	242	20	10		10	157	157	21
Walk	Gut.					Gut.	cb	

PK Nail 23' H 14+00

T.P.

7419

14+00

Sec Pt A to E

7419	7546	7486	7574	7580	7546	7515	7571	767
50	29	24	10		10	16	23	50
Par.	Walk	Gut.				Gut.	Par.	

13+93.4

7541
565
oncb

13+99.4

Diag Sec sketch P-60

7580	7554	7525	7502	7524	7527
14	27	37	43	43	43
				47	Gut.
				cb	Par.

Lafolla Blvd

19+27.9 Cont.

Diag. Sec.
19+27.9 = ♀ Bird Rock Ave

19+82.48 Cont.

19+82.48 = Diag. Sec. South Cb. Bird Rock Ave

S.W.B.P. Lafolla Bird Rock Ave

TP

19+55.18 = M.A. to S.F. Cont. Bird Rock Ave

19+00

18+50

18+03.5 25' RT = ♀ Pale 517472-H

18+00

TP

17+50

Lt.

L

RT.

71

7723
100

7726 7735 7776 8079
264 497 70 120
Rim
MH

7806 7870 7937 7962 7966 7939 7931 7915
75 55.5 20.6 10.3 10.3 12 23
Cont. MH
on Pav. MH

7789 7724 7826 7792 8053
80 80 657 110 110
Cb Gut Gut Cb
catch EC.

7832 7904 7914 7945 7953 7921 7888 7880 7872
432 23 20.6 10.3 10.3 20.6 33.7 54
Gut
Ec Red

7700

770 7892 782 7876 7916 7922 7889 7840 7817 7825 7825
50 23 23 20 10 10 20 36 36 50
Cb. Gut Gut. Cb Pav.
Red

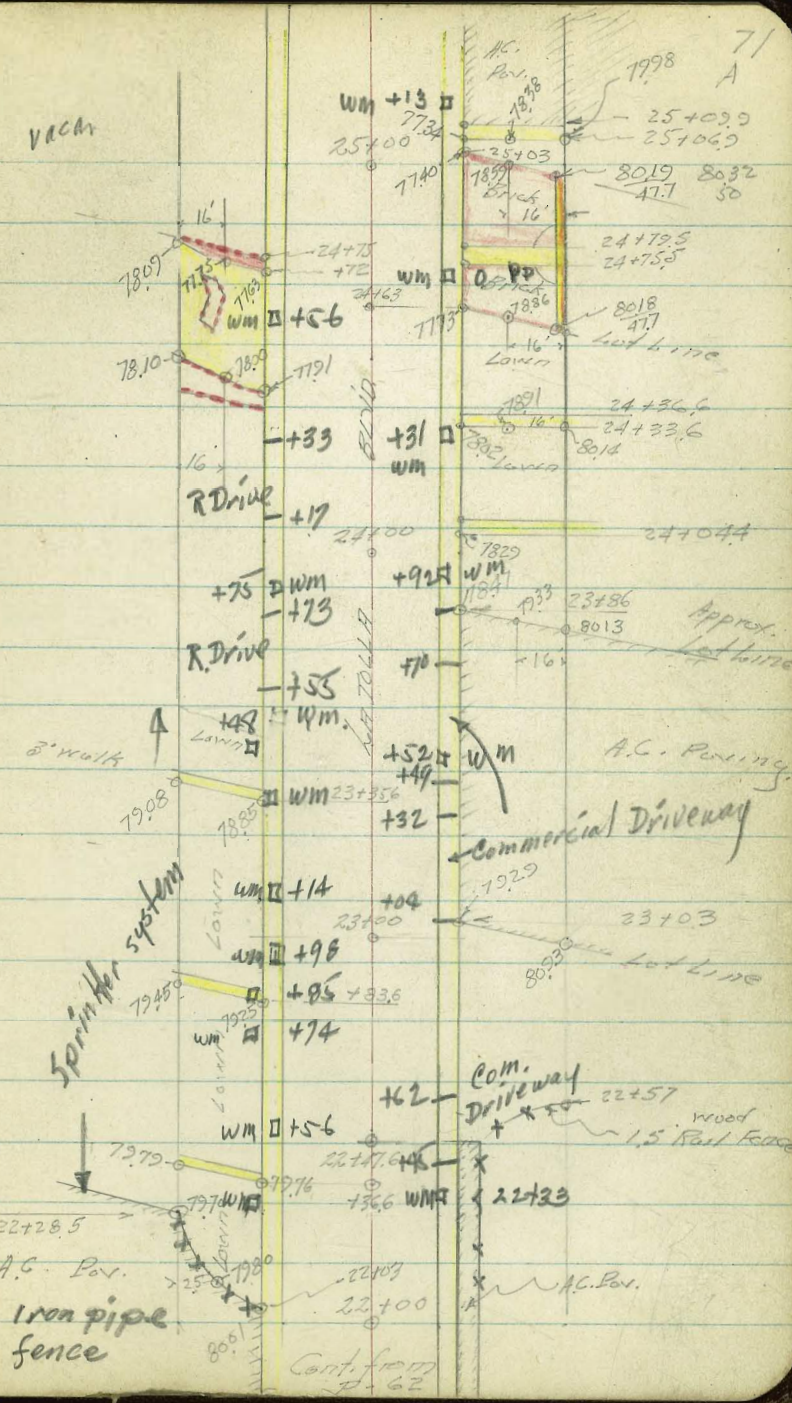
785 7825 7986 7807 7855 7858 7820 7773 7750 7820 7872
50 23.1 23.1 20 10 10 20 33 33 38
Ground Cb. Gut Gut Cb Walk

7841 7723 7760 7721 7742 7790 7792 7763 7714 7725 7778 7728
476 24 23.2 23.2 20 10 10 20 33 38 50
at Brick wall Cb Gut 17. Walk Pav

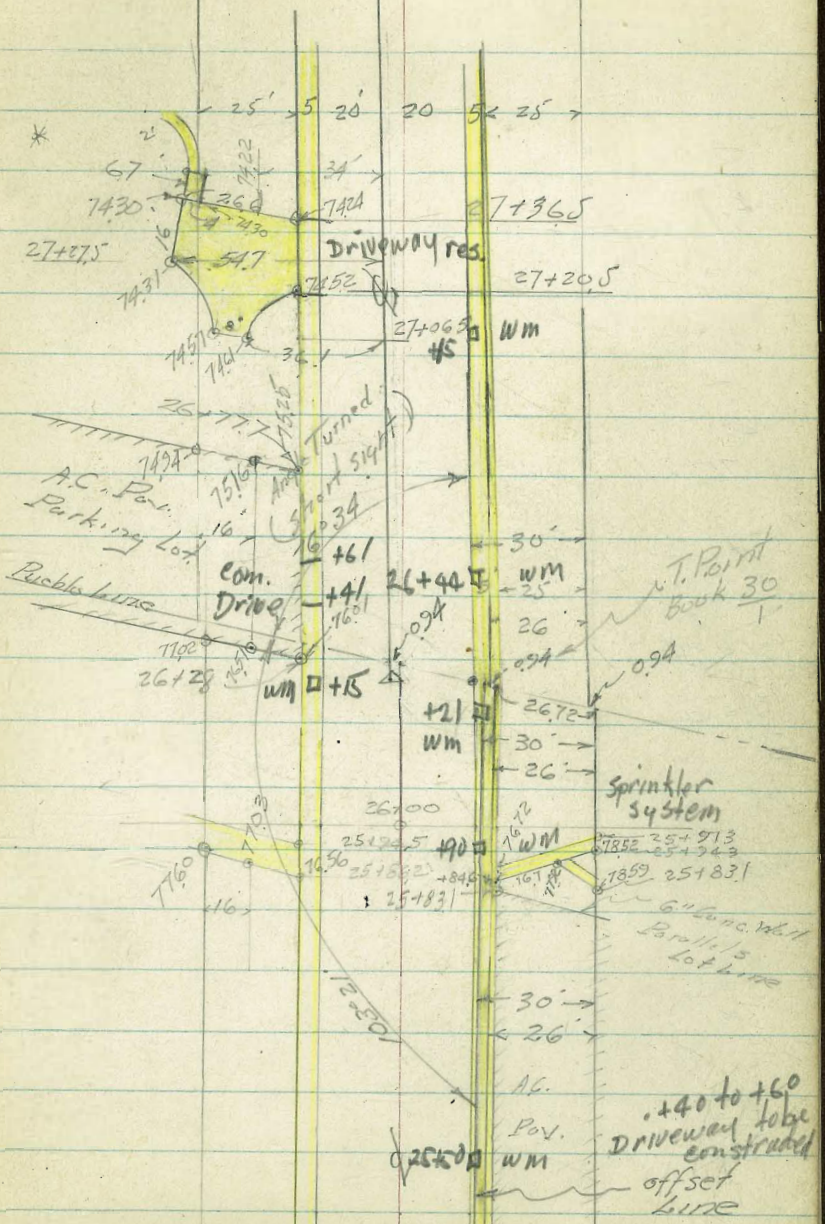
7720 7694 7656 7677 7729 7736 7700 7666 7714 7842
34 23.4 23.4 20 10 10 16.6 16.6 50
Walk Cb. Gut Gut Cb Walk

772 7656 7616 7635 7684 7670 7689 7622 7663 7740
486 23.5 23.5 20 10 10 16.5 16.5 45 50
Cb. Gut Gut. Cb Edge Pav.
Pav.

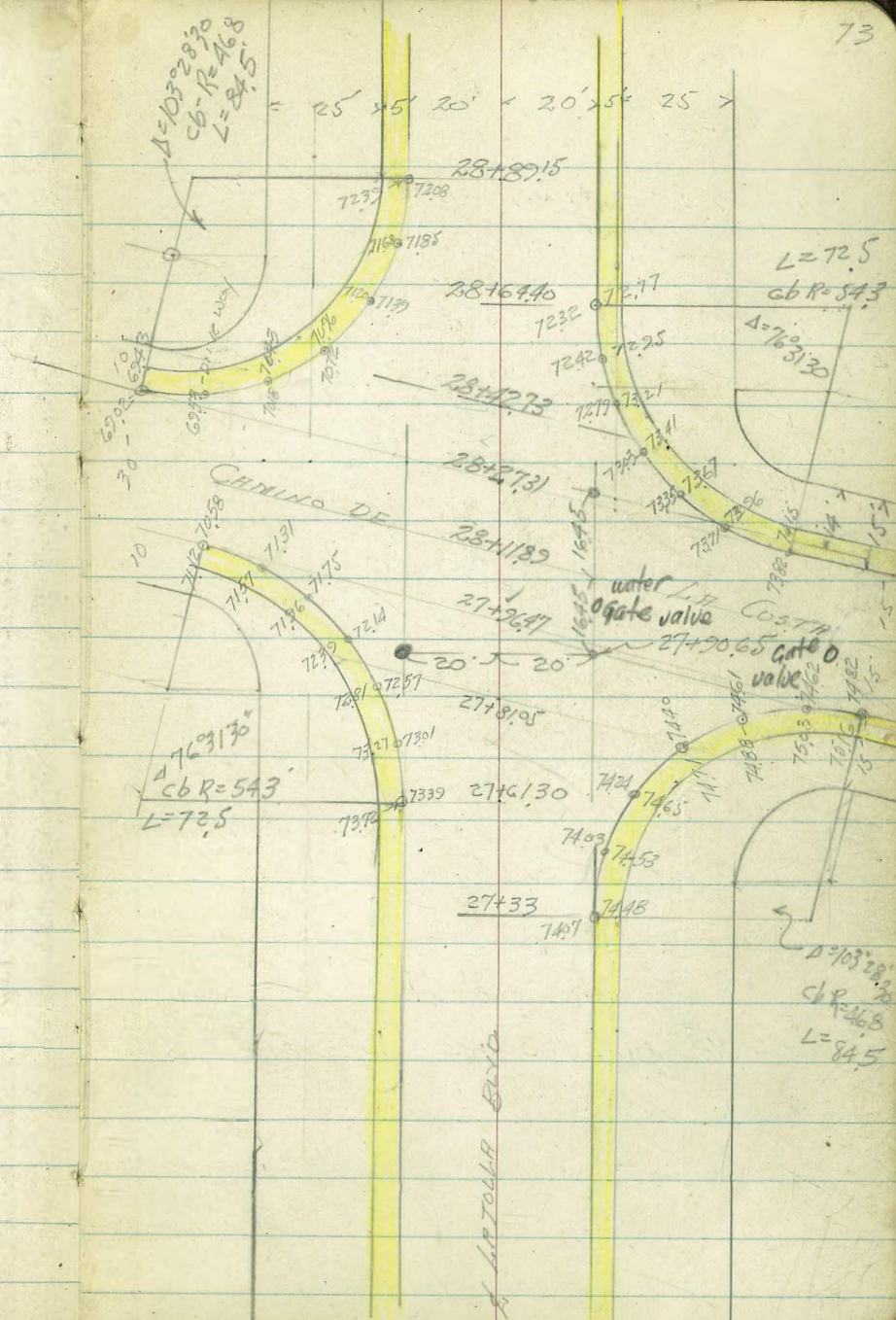
25+2378 Fd. DISC LS 2201 = 2081' RH
 24+7465 Fd. DISC LS 2201 = 25' Lt.
 24+6380 Fd. DISC LS 2201 = 2085' RH
 24+6323 Fd. DISC RE 913 = 2327' RH
 24+3460 Fd. LS DISC #2201 = 25.00 Lt.
 23+64 20.5 Lt = 16" Cypress
 23+5484 Fd. DISC LS 2201 = 25.66 Lt.
 23+5463 Fd. Ld + Task 2498 Lt.
 23+0382 Fd. DISC LS 2236 = 2081 RH
 22+6379 Fd. DISC RE 32 = 2081 RH
 22+5463 Fd. Ld + Task = 2498 Lt.
 22+4879 Fd. Ld + TR = 25.66 Lt.
 22+4864 Fd. Ld + TR = 24.95 Lt.
 22+1482 Fd. DISC LS 2201 = 25.68 Lt.
 22+1462 Fd. Ld + Task = 2495 Lt.



26+28.90 = lot. Pucbb line
26+24.16 = A Lt 0°05'



- 28+109 66.5' Lt. = 18" Fun Palm 30' High
- 27+97.5 46.8' Lt. = Pole Anchor
Lt fun
- 27+91 42.5' = 16" Palm 30' High
- 27+89 37.3' Lt. = Pole # 399
- 27+78 31' Lt. = Pole Anchor
- 27+62.5 30' Lt. = 15" Eug Tree
- 27+32 26.8' Rt. = Pole 517479-H
- 27+36 = 3" G.L. St. Sign
- 26+99.5 38.5' Lt. = 4" Acacia Tree
- 25+36 31.5' Lt. = 8" Eug. Tree



21403.1

21402.4 Sec Diag on 6" Red Wall
from Walk
Lafayette Blvd.
TP BR SW Bird Rock Ave 7909

21400 Cont

21400

20+97

20+50 Cont

20+50 Sec A to E

20+2874 Diag Sec. NLY LITE Bird Rock Ave

20+1332 = Ncb Bird Rock

lt.

g.

ft

74

8023 226 Walk
8025 285 Walk
8228 50 Walk

8020 226 cont Walk
8105 272 Walk
8184 34 Walk
8267 504 Walk

807 50
810 31

8153 33.5 Walk
823 50 Lawn

801 275
7994 224 cb
7956 224 Gut
8025 10
8036 10
8009 17.6 Gut
7960 17.6 Gut
8006 17.6 cb
8036 37.4

7958 17.6
8003 17.6
805 38
811 38
8267 38
Cont.
Walk

8111 48.1 Walk
8125 54.4 Walk

810 50
808 35
800 28
7982 22.5 cb
7994 22.5 Gut
8000 10
8012 10
7980 10
7941 17.5 Gut
7982 17.5 cb
801 35

803 50

8032 41.5 Walk
8078 49.5 Gut
Edge Walk

7969 29.6 Top cb
7922 29.6 Gut
7937 20.8
7986 10.4
7992 10.4
796 10.4
7926 17.7 Gut
7972 17.7 cb

7776 100 cb
7712 100 Gut
7864 75 cb
7800 75 Gut

7962 70 Gut
8031 70 cb
8044 120 Gut
8099 120 cb

7864 53.6 EC. RL
7911 40 Gut
7950 30.6
7976 10.3
7978 10.3
7950 10.3
7920 21
7942 38 Gut

21+00

23+72

TR

23+50

26.2' RT = Pole # 517476-H

23+02.4

23+00

22+50

22+00

22+00

21+84.6 Diag. at Pav

21+82 26' Rt. Pole # 517475-H

21+62 28' Rt. Pole 18" Eye Tree

21+50

783 7819 7776 7840 7851 7828 7779 7824 789 799
 50 216 216 10 10 18.5 18.5 37 50
 cb. Gut Gut cb

7804 7850 7862 7875 7982
 187 184 234 34 50
 Gut. cb. Milk Pav Pav
 + Pav.

789 7863 7816 7884 7897 7871 7823 7865 7919 8003
 50 217 217 10 10 18.5 18.5 34 50
 cb. Gut Gut. cb Pav. Pav.

794 7982 7864 7927 7940 7913 7876 7916 8000 8071
 50 218 218 10 10 18.2 18.2 34 50
 cb. Gut Gut. cb Pav. Pav.

795 7953 7908 7974 7984 7956 7915 7970 813
 50 22 22 10 18 23 50
 cb Gut. Gut. Milk
 + Lawn in Drive

7973

50

8052

8290

27.0

50

Edge

Lawn

Pav. = Lawn

7996 8003 7951 8014 8023 7998 7962 8006 8022
 34 272 222 10 10 17.8 17.8 22.8
 Pav. Pav. Gut. Gut. cb
 + Milk in Drive

8128 8223 8263 8275
 34 464 464 30
 Pav. Gut Pav. Milk Milk

802 8009 7964 8029 8043 8016 7974 8017 8029
 50 223 223 10 10 17.7 17.7 22.7
 cb. Gut Gut. cb. Milk
 + Pav

25+83.1 Cont.

See on Diag. = Top Wall

25+83.1 Dist. out = Rt. Angle to \perp 7894 7937
50 50
Par on
Wall2672 7718 7762 7803
2.4 24.1 34 34
Walk Wall Pav. Wall
at Wall

TR

7731

25+50

776
507635 7691 7677 7636 7704 7720 7694 7644 7628 7787 7824
28 26.2 21.2 21.2 10 10 18.8 23.8 34 50
Walk Cb. Gut Dime Wall Pav. Pav.
+ Pav.

25+00 Cont.

7867 787 796
34.7 39 50
Brick Walk Ground Ground

25+00

780 779 774 7722 7679 7748 7762 7738 7687 7729 7744
50 30 26.4 21.4 21.4 10 10 18.7 18.7 23.7
Gut Cb. Walk Gut Cb. Walk

24+75.5

7764 7877 7965 8017
29.6 34 42.2 48
Walk Walk Walk Walk

24+75.5

24+50 →

790 800
38 50

24+73.3

264 Rt = L Pole # 517477-H

24+50.

7811 7796 7773 7729 7793 7804 7783 7735 7778 7789
50 34 21.5 21.5 10 10 18.6 18.6 23.6
Conc. Conc. Cb. Gut Gut Cb
Stub

Settled & Broken at

24+04.4

See on Walk

Trunk Sewer Location 12

7829 7892 7897 7938 8025
23.5 31.5 35 38 50

TR

7248

27+61.3 Cont.

27+61.3

27+33 Cont.

27+33 = 80 Ret. on Rt.

27+00 Cont.

27+00

26+50 Cont.

26+50

26+22.5 25.5' Rt = 2 Pole # 5174784

26+14.5 - 2 Fire Hydr. = 24' Rt.

Brass Pl. Pl. Lot Line

West Side La Jolla Blvd.

TR South Camino De La Costa

7523

26+00

77.7

50

Lt.

L

Rt.

77

7478

36.8
Walk

758

50 = lawn

73.6	7372	7339	7405	7420	7410	7385	7425	7463
50	20 cb.	20 Gut.	10		10	20	30.4 Gut. at Net.	30.4 cb.

7432

50
Drive

757 773

32 50
Lawn Lawn

7428	7431	7393	7452	7468	7455	7497	7446	7458
34 Drive	25 Walk	20 out. in DRIVE	10		10 20 Gut.	20 cb.	25 Walk	

746 747

50 32

7500 764 775

25 33 50
Walk Lawn Lawn

7487	7476	7448	7510	7528	7510	7455	7491
25 Walk	20 cb.	20 Gut.	10		10	20 Gut.	20 cb.

776 784

28 50

7553	7565	7576	7540	7595	7611	7592	7536	7575	7586
50 Pav.	34 Pav.	25 Walk Pav.	20 Gut. in Drive	10		10	20 Gut.	20 cb.	25 Walk

77A	7638	7627	7588	7660	7677	7657	7609	7638	7655	786
42	26 Walk	21 cb.	21 Gut.	10		10	19.1 Gut.	19.1 cb.	24.1 Walk	50

La Jolla Blvd.

Lt

L

Rt

78

28+64.40 Sec = Rt Δ to L, opp. cb ES. on 1st.

20+90.65 20' Lt,

T.P. on city Disc.

73.00

Diag. section

28+42.73 = N.H. CAMINO DE LA COSTA

28+27.31 Cont.

28+27.31 = N. cb.

28+23.2 1/2 3' x 3' Gus MH

28+11.89 Cont.

28+11.89 = L. CAMINO DE LA COSTA

27+96.47 Cont.

27+96.47 = South cb

(Note) All sections Diag. in this lot

27+81.05 = SHORE CAMINO DE LA COSTA

705	714A	7140	7121	7202	7275	72	99	7280	7281	7277	7290	735
50	34	28	28	20	10			16	20	20	25	34
Lawn	Walk	cb.	Gut.					Gut	cb	Walk	Lawn	

74.9
Lawn

75.5
50=Lawn

707

514

7331

325

Walk

744

44

Lawn

752

514

Lawn

7081	7055	7159	7238	7286	7306	7291	7266	7275	7319
115	415	30	20.6	10.3		103	20.6	26	26
cb	Gut.							Gut	cb

1376 = Gut

7380	7412	74635	7686
637	638	120	120
Gut	cb.	Gut.	cb.

2 EC. Ref.

67.87	6528	6840	6901
100	100	794	794
Gut	cb	cb	Gut

6276	7054	7145	7267	7307	7320	7311	7307	7340	7370
594	514	39	20.6	10.3		10.3	20.6	30	514
Conc.									
Exc.									

6848

100

7429	7457	7481	7671
514	642	76	120
Conc.	Brk.		
Pat.			

7060	7132	7283	7320	7341	7337	7331	7581	7407
595	514	20.6	10.3		10.3	20.6	29	37
								Rim MH

6842

6880

100

Gut.

7479	7515	7646	7624
805	805	120	120
Gut.	cb.	Gut.	cb.

2 EC. Ref.

7067	7139	7200	7300	7240	7361	7363	7415	7467	7466	
65	514	33	20.6	10.3		10.3	20	27	51	64.8
Gut.							Brk.	Brk.		Exc.

72.5

50

Lawn

7271

283

cb.

7245

283

Gut

7299

20.6

10.3

7336

10.3

7385

7384

10.3

7365

20.6

37

7442

439

Gut.

7450

439

cb.

7478

439

52

7491

52

L.A. JOLLA BLYD.

Lt.

£

Rt.

79

28

T.P.

28

28

28

28

28

B.M. Book = 75.84

p-77 75.23

75.24

chk. B.M. B.P. Nicb. Shina Kaplla Harimosa

29 + 40

28

7190	7182	7161	7227	72.47	7237	7175	7202
25	20	20	10		10	20	20
Walk	cb	Gut.				Gut.	cb.

64.5	655
50	40

7202	726	732	733
25	38	45	50
Walk	Lowr	Lowr	Lowr

27

28 + 89.15 Gut

628	705	7252	733	746	75.1
50	34	25	34	42	50
	Lowr	Walk	Lowr	Lowr	Lowr

27

28 + 89.15

7239	7208	7265	72.87	72.73	72.22	72.62	72.74
20	20	10		10	20	20	25
cb	Gut.				Gut.	cb.	1

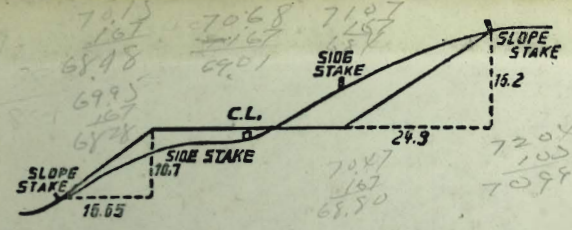
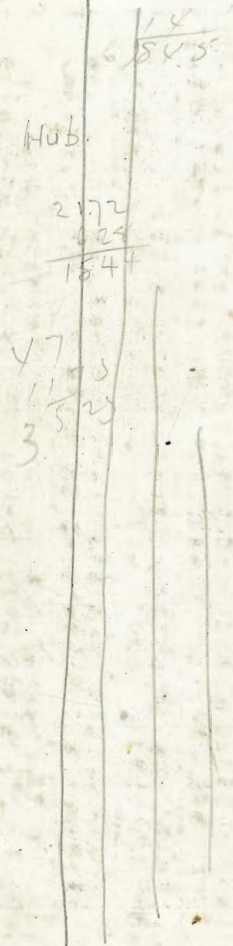
27

644
 10 38
 16 22
 5 24
 11 58
 11 37
 19

20988 L-17°00'30"

28
 T.P.
 28
 28
 28
 28
 28
 27
 27
 27

11.58 = 1006
 10.14
 21.72
 10.35
 11.37 =
 spike in Pole



DISTANCES FROM SIDE STAKES FOR CROSS-SECTIONING.
 SLOPE 1 1/4 TO 1. ROADWAY OF ANY WIDTH.

	0	.1	.2	.3	.4	.5	.6	.7	.8	.9	
0	0.00	0.15	0.30	0.45	0.60	0.75	0.90	1.05	1.20	1.35	0
1	1.50	1.65	1.80	1.95	2.10	2.25	2.40	2.55	2.70	2.85	1
2	3.00	3.15	3.30	3.45	3.60	3.75	3.90	4.05	4.20	4.35	2
3	4.50	4.65	4.80	4.95	5.10	5.25	5.40	5.55	5.70	5.85	3
4	6.00	6.15	6.30	6.45	6.60	6.75	6.90	7.05	7.20	7.35	4
5	7.50	7.65	7.80	7.95	8.10	8.25	8.40	8.55	8.70	8.85	5
6	9.00	9.15	9.30	9.45	9.60	9.75	9.90	10.05	10.20	10.35	6
7	10.50	10.65	10.80	10.95	11.10	11.25	11.40	11.55	11.70	11.85	7
8	12.00	12.15	12.30	12.45	12.60	12.75	12.90	13.05	13.20	13.35	8
9	13.50	13.65	13.80	13.95	14.10	14.25	14.40	14.55	14.70	14.85	9
10	15.00	15.15	15.30	15.45	15.60	15.75	15.90	16.05	16.20	16.35	10
11	16.50	16.65	16.80	16.95	17.10	17.25	17.40	17.55	17.70	17.85	11
12	18.00	18.15	18.30	18.45	18.60	18.75	18.90	19.05	19.20	19.35	12
13	19.50	19.65	19.80	19.95	20.10	20.25	20.40	20.55	20.70	20.85	13
14	21.00	21.15	21.30	21.45	21.60	21.75	21.90	22.05	22.20	22.35	14
15	22.50	22.65	22.80	22.95	23.10	23.25	23.40	23.55	23.70	23.85	15
16	24.00	24.15	24.30	24.45	24.60	24.75	24.90	25.05	25.20	25.35	16
17	25.50	25.65	25.80	25.95	26.10	26.25	26.40	26.55	26.70	26.85	17
18	27.00	27.15	27.30	27.45	27.60	27.75	27.90	28.05	28.20	28.35	18
19	28.50	28.65	28.80	28.95	29.10	29.25	29.40	29.55	29.70	29.85	19
20	30.00	30.15	30.30	30.45	30.60	30.75	30.90	31.05	31.20	31.35	20
21	31.50	31.65	31.80	31.95	32.10	32.25	32.40	32.55	32.70	32.85	21
22	33.00	33.15	33.30	33.45	33.60	33.75	33.90	34.05	34.20	34.35	22
23	34.50	34.65	34.80	34.95	35.10	35.25	35.40	35.55	35.70	35.85	23
24	36.00	36.15	36.30	36.45	36.60	36.75	36.90	37.05	37.20	37.35	24
25	37.50	37.65	37.80	37.95	38.10	38.25	38.40	38.55	38.70	38.85	25
26	39.00	39.15	39.30	39.45	39.60	39.75	39.90	40.05	40.20	40.35	26
27	40.50	40.65	40.80	40.95	41.10	41.25	41.40	41.55	41.70	41.85	27
28	42.00	42.15	42.30	42.45	42.60	42.75	42.90	43.05	43.20	43.35	28
29	43.50	43.65	43.80	43.95	44.10	44.25	44.40	44.55	44.70	44.85	29
30	45.00	45.15	45.30	45.45	45.60	45.75	45.90	46.05	46.20	46.35	30
31	46.50	46.65	46.80	46.95	47.10	47.25	47.40	47.55	47.70	47.85	31
32	48.00	48.15	48.30	48.45	48.60	48.75	48.90	49.05	49.20	49.35	32
33	49.50	49.65	49.80	49.95	50.10	50.25	50.40	50.55	50.70	50.85	33
34	51.00	51.15	51.30	51.45	51.60	51.75	51.90	52.05	52.20	52.35	34
35	52.50	52.65	52.80	52.95	53.10	53.25	53.40	53.55	53.70	53.85	35
36	54.00	54.15	54.30	54.45	54.60	54.75	54.90	55.05	55.20	55.35	36
37	55.50	55.65	55.80	55.95	56.10	56.25	56.40	56.55	56.70	56.85	37
38	57.00	57.15	57.30	57.45	57.60	57.75	57.90	58.05	58.20	58.35	38
39	58.50	58.65	58.80	58.95	59.10	59.25	59.40	59.55	59.70	59.85	39
40	60.00	60.15	60.30	60.45	60.60	60.75	60.90	61.05	61.20	61.35	40
41	61.50	61.65	61.80	61.95	62.10	62.25	62.40	62.55	62.70	62.85	41
42	63.00	63.15	63.30	63.45	63.60	63.75	63.90	64.05	64.20	64.35	42
43	64.50	64.65	64.80	64.95	65.10	65.25	65.40	65.55	65.70	65.85	43
44	66.00	66.15	66.30	66.45	66.60	66.75	66.90	67.05	67.20	67.35	44
45	67.50	67.65	67.80	67.95	68.10	68.25	68.40	68.55	68.70	68.85	45
46	69.00	69.15	69.30	69.45	69.60	69.75	69.90	70.05	70.20	70.35	46
47	70.50	70.65	70.80	70.95	71.10	71.25	71.40	71.55	71.70	71.85	47
48	72.00	72.15	72.30	72.45	72.60	72.75	72.90	73.05	73.20	73.35	48
49	73.50	73.65	73.80	73.95	74.10	74.25	74.40	74.55	74.70	74.85	49
50	75.00	75.15	75.30	75.45	75.60	75.75	75.90	76.05	76.20	76.35	50

THE NATIONAL BLANK BOOK COMPANY
 HOLYOKE MASSACHUSETTS
 NEW YORK CHICAGO BOSTON SAN FRANCISCO