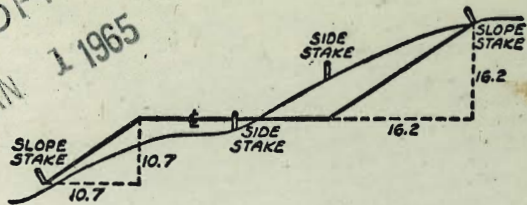






MICROFILMED  
 JAN 1 1965

2147



DISTANCES FROM SIDE STAKES FOR CROSS-SECTIONING  
 SLOPE 1 TO 1. ROADWAY OF ANY WIDTH

	0	.1	.2	.3	.4	.5	.6	.7	.8	.9	
0	0.00	0.10	0.20	0.30	0.40	0.50	0.60	0.70	0.80	0.90	0
1	1.00	1.10	1.20	1.30	1.40	1.50	1.60	1.70	1.80	1.90	1
2	2.00	2.10	2.20	2.30	2.40	2.50	2.60	2.70	2.80	2.90	2
3	3.00	3.10	3.20	3.30	3.40	3.50	3.60	3.70	3.80	3.90	3
4	4.00	4.10	4.20	4.30	4.40	4.50	4.60	4.70	4.80	4.90	4
5	5.00	5.10	5.20	5.30	5.40	5.50	5.60	5.70	5.80	5.90	5
6	6.00	6.10	6.20	6.30	6.40	6.50	6.60	6.70	6.80	6.90	6
7	7.00	7.10	7.20	7.30	7.40	7.50	7.60	7.70	7.80	7.90	7
8	8.00	8.10	8.20	8.30	8.40	8.50	8.60	8.70	8.80	8.90	8
9	9.00	9.10	9.20	9.30	9.40	9.50	9.60	9.70	9.80	9.90	9
10	10.00	10.10	10.20	10.30	10.40	10.50	10.60	10.70	10.80	10.90	10
11	11.00	11.10	11.20	11.30	11.40	11.50	11.60	11.70	11.80	11.90	11
12	12.00	12.10	12.20	12.30	12.40	12.50	12.60	12.70	12.80	12.90	12
13	13.00	13.10	13.20	13.30	13.40	13.50	13.60	13.70	13.80	13.90	13
14	14.00	14.10	14.20	14.30	14.40	14.50	14.60	14.70	14.80	14.90	14
15	15.00	15.10	15.20	15.30	15.40	15.50	15.60	15.70	15.80	15.90	15
16	16.00	16.10	16.20	16.30	16.40	16.50	16.60	16.70	16.80	16.90	16
17	17.00	17.10	17.20	17.30	17.40	17.50	17.60	17.70	17.80	17.90	17
18	18.00	18.10	18.20	18.30	18.40	18.50	18.60	18.70	18.80	18.90	18
19	19.00	19.10	19.20	19.30	19.40	19.50	19.60	19.70	19.80	19.90	19
20	20.00	20.10	20.20	20.30	20.40	20.50	20.60	20.70	20.80	20.90	20
21	21.00	21.10	21.20	21.30	21.40	21.50	21.60	21.70	21.80	21.90	21
22	22.00	22.10	22.20	22.30	22.40	22.50	22.60	22.70	22.80	22.90	22
23	23.00	23.10	23.20	23.30	23.40	23.50	23.60	23.70	23.80	23.90	23
24	24.00	24.10	24.20	24.30	24.40	24.50	24.60	24.70	24.80	24.90	24
25	25.00	25.10	25.20	25.30	25.40	25.50	25.60	25.70	25.80	25.90	25
26	26.00	26.10	26.20	26.30	26.40	26.50	26.60	26.70	26.80	26.90	26
27	27.00	27.10	27.20	27.30	27.40	27.50	27.60	27.70	27.80	27.90	27
28	28.00	28.10	28.20	28.30	28.40	28.50	28.60	28.70	28.80	28.90	28
29	29.00	29.10	29.20	29.30	29.40	29.50	29.60	29.70	29.80	29.90	29
30	30.00	30.10	30.20	30.30	30.40	30.50	30.60	30.70	30.80	30.90	30
31	31.00	31.10	31.20	31.30	31.40	31.50	31.60	31.70	31.80	31.90	31
32	32.00	32.10	32.20	32.30	32.40	32.50	32.60	32.70	32.80	32.90	32
33	33.00	33.10	33.20	33.30	33.40	33.50	33.60	33.70	33.80	33.90	33
34	34.00	34.10	34.20	34.30	34.40	34.50	34.60	34.70	34.80	34.90	34
35	35.00	35.10	35.20	35.30	35.40	35.50	35.60	35.70	35.80	35.90	35
36	36.00	36.10	36.20	36.30	36.40	36.50	36.60	36.70	36.80	36.90	36
37	37.00	37.10	37.20	37.30	37.40	37.50	37.60	37.70	37.80	37.90	37
38	38.00	38.10	38.20	38.30	38.40	38.50	38.60	38.70	38.80	38.90	38
39	39.00	39.10	39.20	39.30	39.40	39.50	39.60	39.70	39.80	39.90	39
40	40.00	40.10	40.20	40.30	40.40	40.50	40.60	40.70	40.80	40.90	40
41	41.00	41.10	41.20	41.30	41.40	41.50	41.60	41.70	41.80	41.90	41
42	42.00	42.10	42.20	42.30	42.40	42.50	42.60	42.70	42.80	42.90	42
43	43.00	43.10	43.20	43.30	43.40	43.50	43.60	43.70	43.80	43.90	43
44	44.00	44.10	44.20	44.30	44.40	44.50	44.60	44.70	44.80	44.90	44
45	45.00	45.10	45.20	45.30	45.40	45.50	45.60	45.70	45.80	45.90	45
46	46.00	46.10	46.20	46.30	46.40	46.50	46.60	46.70	46.80	46.90	46
47	47.00	47.10	47.20	47.30	47.40	47.50	47.60	47.70	47.80	47.90	47
48	48.00	48.10	48.20	48.30	48.40	48.50	48.60	48.70	48.80	48.90	48
49	49.00	49.10	49.20	49.30	49.40	49.50	49.60	49.70	49.80	49.90	49
50	50.00	50.10	50.20	50.30	50.40	50.50	50.60	50.70	50.80	50.90	50

Distance of slope stake from side or shoulder stake for any width roadway, slope 1 to 1. If ground is nearly level, the cut or fill at side stake is located by the double entry method in left column and top row. The number in body of table in same row and column gives distance from side stake to slope stake. If ground is not level estimate the difference in elevation between the side stake and slope stake, lower target by this amount if cut, elevate if fill. Add this amount to cut or fill and find distance in table. Set up rod at this point, and line of sight should cut target. If it does not make the slight adjustment necessary.



TABLE XIII—CORRECTIONS FOR TANGENTS AND EXTERNALS

These corrections are to be added to the approximate values, found by dividing the tangent, or external, for a 1° curve (Table VIII) by the degree of curve, in order to obtain the true tangents, or externals. Intermediate values may be obtained by interpolation.

FOR TANGENTS ADD

Central Angle	DEGREE OF CURVE															
	5°	10°	15°	20°	25°	30°	35°	40°	45°	50°	55°	60°	65°	70°		
10°	.03	.06	.09	.13	.16	.19	.22	.25	.28	.31	.34	.38	.42	.46		
15°	.04	.10	.14	.19	.24	.29	.34	.39	.45	.51	.53	.58	.63	.68		
20°	.06	.13	.19	.26	.32	.39	.45	.51	.58	.65	.72	.79	.84	.90		
25°	.08	.16	.24	.33	.40	.49	.58	.67	.75	.83	.90	.99	1.06	1.14		
30°	.10	.19	.29	.39	.49	.59	.69	.79	.89	.99	1.09	1.20	1.29	1.39		
35°	.11	.22	.34	.47	.58	.69	.79	.81	.92	1.04	1.29	1.42	1.54	1.66		
40°	.13	.26	.40	.53	.67	.80	.93	1.06	1.20	1.34	1.49	1.64	1.79	1.94		
45°	.15	.30	.44	.60	.76	.91	1.06	1.21	1.37	1.52	1.70	1.87	2.04	2.21		
50°	.17	.34	.51	.68	.85	1.02	1.19	1.36	1.54	1.72	1.91	2.10	2.29	2.48		
55°	.19	.38	.57	.76	.95	1.14	1.32	1.52	1.72	1.92	2.14	2.35	2.56	2.77		
60°	.21	.42	.63	.84	1.05	1.27	1.49	1.71	1.94	2.17	2.38	2.60	2.83	3.07		
65°	.23	.46	.69	.93	1.16	1.40	1.64	1.88	2.13	2.38	2.63	2.88	3.13	3.39		
70°	.25	.51	.76	1.02	1.28	1.54	1.80	2.06	2.33	2.60	2.88	3.16	3.44	3.72		
75°	.27	.56	.83	1.12	1.40	1.69	1.98	2.27	2.57	2.87	3.16	3.47	3.78	4.09		
80°	.30	.61	.91	1.22	1.53	1.84	2.15	2.46	2.78	3.10	3.43	3.78	4.12	4.46		
85°	.33	.66	1.00	1.33	1.68	2.02	2.36	2.70	3.05	3.40	3.77	4.14	4.55	4.89		
90°	.36	.72	1.09	1.45	1.83	2.20	2.57	2.94	3.32	3.70	4.10	4.50	4.91	5.32		
95°	.39	.79	1.19	1.55	2.00	2.40	2.80	3.20	3.61	4.02	4.40	4.98	5.38	5.83		
100°	.43	.86	1.30	1.74	2.18	2.62	3.06	3.50	3.95	4.40	4.88	5.37	5.85	6.34		
110°	.51	1.03	1.56	2.08	2.61	3.14	3.67	4.21	4.76	5.31	5.86	6.43	7.01	7.60		
120°	.62	1.25	1.93	2.52	3.16	3.81	4.45	5.11	5.77	6.44	7.12	7.80	8.50	9.22		

FOR EXTERNALS ADD

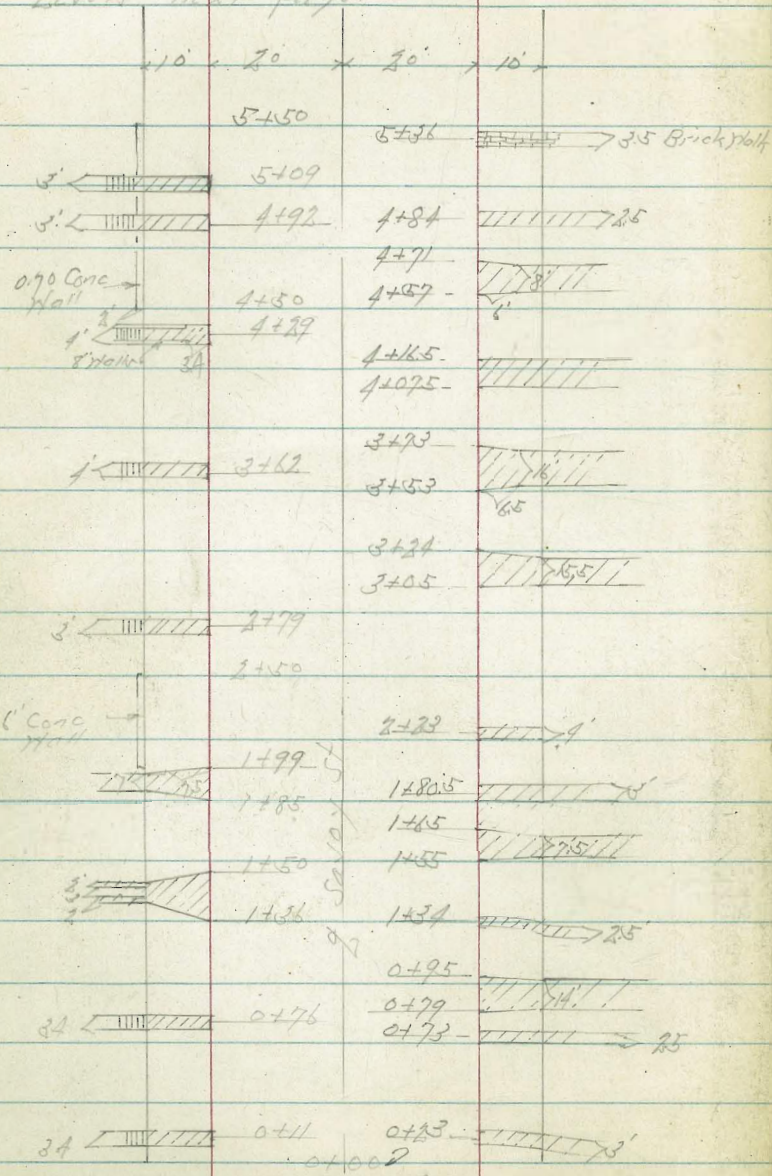
Central Angle	DEGREE OF CURVE															
	5°	10°	15°	20°	25°	30°	35°	40°	45°	50°	55°	60°	65°	70°		
10°	.001	.003	.004	.006	.007	.008	.009	.011	.012	.014	.015	.017	.018	.020		
15°	.003	.007	.010	.014	.018	.023	.027	.029	.032	.035	.039	.043	.047	.051		
20°	.006	.011	.017	.022	.028	.034	.038	.045	.051	.057	.063	.070	.076	.083		
25°	.009	.018	.027	.036	.046	.056	.065	.074	.083	.093	.106	.120	.127	.135		
30°	.013	.025	.038	.051	.065	.078	.090	.103	.116	.129	.149	.170	.179	.188		
35°	.018	.035	.054	.072	.086	.109	.131	.153	.175	.197	.213	.230	.247	.264		
40°	.023	.046	.070	.093	.117	.141	.172	.203	.234	.265	.277	.290	.315	.341		
45°	.030	.060	.093	.119	.153	.184	.216	.254	.289	.325	.351	.378	.411	.445		
50°	.037	.075	.116	.151	.189	.227	.266	.305	.345	.384	.425	.467	.508	.550		
55°	.046	.093	.142	.188	.236	.283	.332	.381	.420	.479	.530	.582	.641	.700		
60°	.056	.112	.168	.225	.283	.340	.398	.457	.516	.575	.636	.697	.774	.851		
65°	.067	.135	.204	.273	.343	.412	.483	.554	.625	.697	.711	.845	.922	1.01		
70°	.080	.159	.240	.321	.403	.485	.568	.652	.735	.819	.906	.994	1.08	1.17		
75°	.095	.182	.286	.383	.480	.578	.678	.777	.877	.977	1.07	1.18	1.29	1.39		
80°	.110	.220	.332	.445	.558	.671	.787	.903	1.02	1.13	1.25	1.38	1.50	1.62		
85°	.128	.259	.391	.524	.657	.790	.926	1.06	1.20	1.34	1.47	1.62	1.76	1.91		
90°	.149	.299	.450	.603	.756	.910	1.07	1.22	1.38	1.54	1.70	1.87	2.03	2.20		
95°	.174	.350	.522	.706	.885	1.06	1.25	1.43	1.62	1.80	1.99	2.18	2.38	2.58		
100°	.200	.401	.604	.809	1.01	1.22	1.43	1.64	1.85	2.06	2.28	2.50	2.73	2.96		
110°	.268	.536	.806	1.08	1.35	1.63	1.91	2.20	2.48	2.76	3.05	3.35	3.66	3.96		
120°	.360	.721	1.08	1.45	1.82	2.19	2.57	2.95	3.33	3.72	4.11	4.50	4.91	5.32		

Cross Sec Javoy St Varona St to La Paloma St 1-10  
 Roosevelt Ave - X-sec Sequoia to Crown Pt Drive 11-21  
 Survey Abbott Place 22  
 West Pt. Loma Blvd Tie Pts. Ocean Beach Park to Abbott St. 23-25  
 X-SECT. WEST. PT. LOMA Blvd, MUIR to VOLTAIRE 26  
 Elev BOREN & GLADE STS Redwood Village #6 29  
 X-sec Alley BIK II, North shores Highland 32-  
 X-sec site Fire Sta. 26-on 5th 40  
 X-sec Hilltop St - 47th St to East 43-55  
 X-sec 47th St - Hilltop to 900' x 1/4 in EX-Mission lands Lot # 29. 56-65  
 Proposed Drain connection - Hilltop St 66-  
 ADD notes: WPT. LOMA & VOLTAIRE 72-



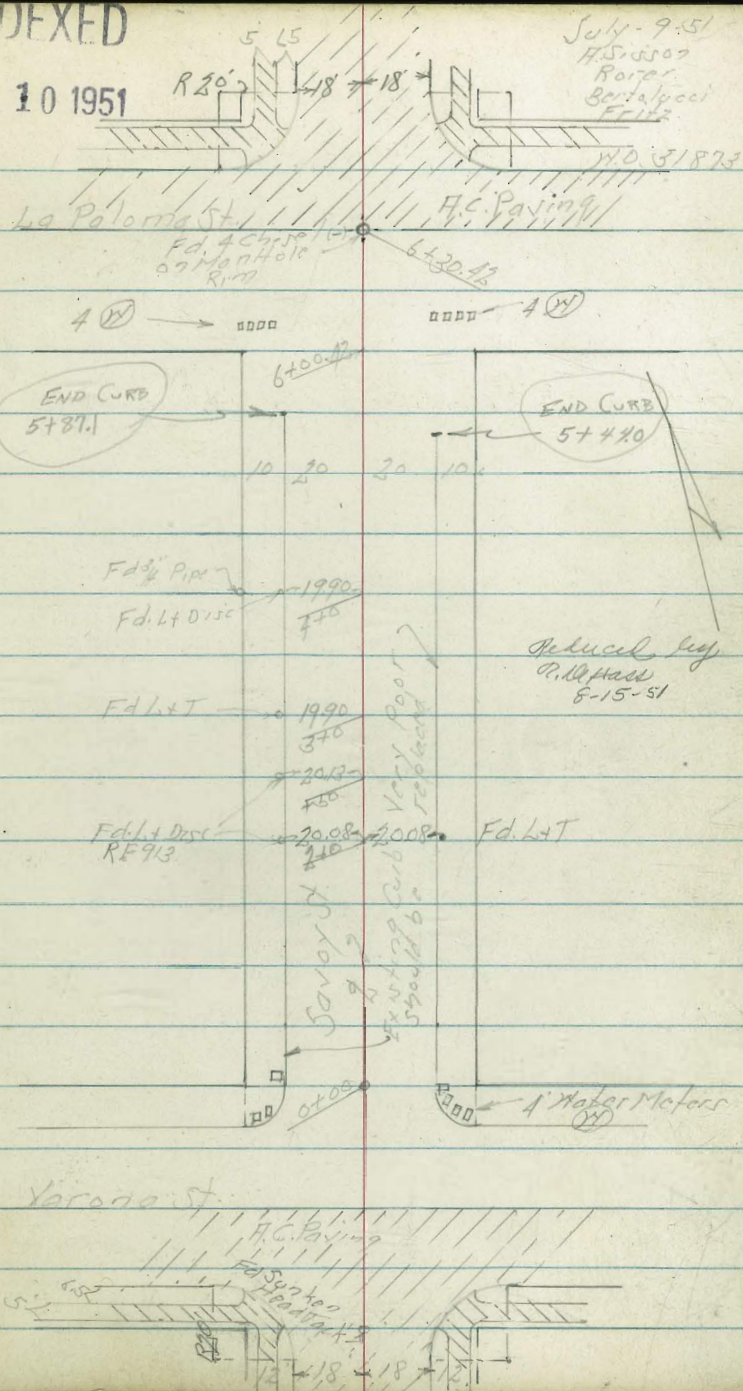
Cross Section Savoy St.  
 Verona St. to La Paloma St.

Levels next page



INDEXED

JUL 10 1951









+74

+50

+23

+11

+02

0 + 0 = North line Verona St

0-02

28463

St

St

St

485 279.78  
 542 277.8  
 567 277.11  
 582 276.4  
 597 276.5  
 612 276.3  
 627 275.9  
 642 275.4  
 657 276.23  
 672 276.2  
 687 277.8  
 702 277.8  
 717 277.11  
 732 276.4  
 747 276.5  
 762 276.3  
 777 275.9  
 792 275.4  
 807 276.23  
 822 276.2  
 837 277.8  
 852 277.8  
 867 277.11  
 882 276.4  
 897 276.5  
 912 276.3  
 927 275.9  
 942 275.4  
 957 276.23  
 972 276.2  
 987 277.8  
 1002 277.8  
 1017 277.11  
 1032 276.4  
 1047 276.5  
 1062 276.3  
 1077 275.9  
 1092 275.4  
 1107 276.23  
 1122 276.2  
 1137 277.8  
 1152 277.8  
 1167 277.11  
 1182 276.4  
 1197 276.5  
 1212 276.3  
 1227 275.9  
 1242 275.4  
 1257 276.23  
 1272 276.2  
 1287 277.8  
 1302 277.8  
 1317 277.11  
 1332 276.4  
 1347 276.5  
 1362 276.3  
 1377 275.9  
 1392 275.4  
 1407 276.23  
 1422 276.2  
 1437 277.8  
 1452 277.8  
 1467 277.11  
 1482 276.4  
 1497 276.5  
 1512 276.3  
 1527 275.9  
 1542 275.4  
 1557 276.23  
 1572 276.2  
 1587 277.8  
 1602 277.8  
 1617 277.11  
 1632 276.4  
 1647 276.5  
 1662 276.3  
 1677 275.9  
 1692 275.4  
 1707 276.23  
 1722 276.2  
 1737 277.8  
 1752 277.8  
 1767 277.11  
 1782 276.4  
 1797 276.5  
 1812 276.3  
 1827 275.9  
 1842 275.4  
 1857 276.23  
 1872 276.2  
 1887 277.8  
 1902 277.8  
 1917 277.11  
 1932 276.4  
 1947 276.5  
 1962 276.3  
 1977 275.9  
 1992 275.4  
 2007 276.23  
 2022 276.2  
 2037 277.8  
 2052 277.8  
 2067 277.11  
 2082 276.4  
 2097 276.5  
 2112 276.3  
 2127 275.9  
 2142 275.4  
 2157 276.23  
 2172 276.2  
 2187 277.8  
 2202 277.8  
 2217 277.11  
 2232 276.4  
 2247 276.5  
 2262 276.3  
 2277 275.9  
 2292 275.4  
 2307 276.23  
 2322 276.2  
 2337 277.8  
 2352 277.8  
 2367 277.11  
 2382 276.4  
 2397 276.5  
 2412 276.3  
 2427 275.9  
 2442 275.4  
 2457 276.23  
 2472 276.2  
 2487 277.8  
 2502 277.8  
 2517 277.11  
 2532 276.4  
 2547 276.5  
 2562 276.3  
 2577 275.9  
 2592 275.4  
 2607 276.23  
 2622 276.2  
 2637 277.8  
 2652 277.8  
 2667 277.11  
 2682 276.4  
 2697 276.5  
 2712 276.3  
 2727 275.9  
 2742 275.4  
 2757 276.23  
 2772 276.2  
 2787 277.8  
 2802 277.8  
 2817 277.11  
 2832 276.4  
 2847 276.5  
 2862 276.3  
 2877 275.9  
 2892 275.4  
 2907 276.23  
 2922 276.2  
 2937 277.8  
 2952 277.8  
 2967 277.11  
 2982 276.4  
 2997 276.5  
 3012 276.3  
 3027 275.9  
 3042 275.4  
 3057 276.23  
 3072 276.2  
 3087 277.8  
 3102 277.8  
 3117 277.11  
 3132 276.4  
 3147 276.5  
 3162 276.3  
 3177 275.9  
 3192 275.4  
 3207 276.23  
 3222 276.2  
 3237 277.8  
 3252 277.8  
 3267 277.11  
 3282 276.4  
 3297 276.5  
 3312 276.3  
 3327 275.9  
 3342 275.4  
 3357 276.23  
 3372 276.2  
 3387 277.8  
 3402 277.8  
 3417 277.11  
 3432 276.4  
 3447 276.5  
 3462 276.3  
 3477 275.9  
 3492 275.4  
 3507 276.23  
 3522 276.2  
 3537 277.8  
 3552 277.8  
 3567 277.11  
 3582 276.4  
 3597 276.5  
 3612 276.3  
 3627 275.9  
 3642 275.4  
 3657 276.23  
 3672 276.2  
 3687 277.8  
 3702 277.8  
 3717 277.11  
 3732 276.4  
 3747 276.5  
 3762 276.3  
 3777 275.9  
 3792 275.4  
 3807 276.23  
 3822 276.2  
 3837 277.8  
 3852 277.8  
 3867 277.11  
 3882 276.4  
 3897 276.5  
 3912 276.3  
 3927 275.9  
 3942 275.4  
 3957 276.23  
 3972 276.2  
 3987 277.8  
 4002 277.8  
 4017 277.11  
 4032 276.4  
 4047 276.5  
 4062 276.3  
 4077 275.9  
 4092 275.4  
 4107 276.23  
 4122 276.2  
 4137 277.8  
 4152 277.8  
 4167 277.11  
 4182 276.4  
 4197 276.5  
 4212 276.3  
 4227 275.9  
 4242 275.4  
 4257 276.23  
 4272 276.2  
 4287 277.8  
 4302 277.8  
 4317 277.11  
 4332 276.4  
 4347 276.5  
 4362 276.3  
 4377 275.9  
 4392 275.4  
 4407 276.23  
 4422 276.2  
 4437 277.8  
 4452 277.8  
 4467 277.11  
 4482 276.4  
 4497 276.5  
 4512 276.3  
 4527 275.9  
 4542 275.4  
 4557 276.23  
 4572 276.2  
 4587 277.8  
 4602 277.8  
 4617 277.11  
 4632 276.4  
 4647 276.5  
 4662 276.3  
 4677 275.9  
 4692 275.4  
 4707 276.23  
 4722 276.2  
 4737 277.8  
 4752 277.8  
 4767 277.11  
 4782 276.4  
 4797 276.5  
 4812 276.3  
 4827 275.9  
 4842 275.4  
 4857 276.23  
 4872 276.2  
 4887 277.8  
 4902 277.8  
 4917 277.11  
 4932 276.4  
 4947 276.5  
 4962 276.3  
 4977 275.9  
 4992 275.4  
 5007 276.23  
 5022 276.2  
 5037 277.8  
 5052 277.8  
 5067 277.11  
 5082 276.4  
 5097 276.5  
 5112 276.3  
 5127 275.9  
 5142 275.4  
 5157 276.23  
 5172 276.2  
 5187 277.8  
 5202 277.8  
 5217 277.11  
 5232 276.4  
 5247 276.5  
 5262 276.3  
 5277 275.9  
 5292 275.4  
 5307 276.23  
 5322 276.2  
 5337 277.8  
 5352 277.8  
 5367 277.11  
 5382 276.4  
 5397 276.5  
 5412 276.3  
 5427 275.9  
 5442 275.4  
 5457 276.23  
 5472 276.2  
 5487 277.8  
 5502 277.8  
 5517 277.11  
 5532 276.4  
 5547 276.5  
 5562 276.3  
 5577 275.9  
 5592 275.4  
 5607 276.23  
 5622 276.2  
 5637 277.8  
 5652 277.8  
 5667 277.11  
 5682 276.4  
 5697 276.5  
 5712 276.3  
 5727 275.9  
 5742 275.4  
 5757 276.23  
 5772 276.2  
 5787 277.8  
 5802 277.8  
 5817 277.11  
 5832 276.4  
 5847 276.5  
 5862 276.3  
 5877 275.9  
 5892 275.4  
 5907 276.23  
 5922 276.2  
 5937 277.8  
 5952 277.8  
 5967 277.11  
 5982 276.4  
 5997 276.5  
 6012 276.3  
 6027 275.9  
 6042 275.4  
 6057 276.23  
 6072 276.2  
 6087 277.8  
 6102 277.8  
 6117 277.11  
 6132 276.4  
 6147 276.5  
 6162 276.3  
 6177 275.9  
 6192 275.4  
 6207 276.23  
 6222 276.2  
 6237 277.8  
 6252 277.8  
 6267 277.11  
 6282 276.4  
 6297 276.5  
 6312 276.3  
 6327 275.9  
 6342 275.4  
 6357 276.23  
 6372 276.2  
 6387 277.8  
 6402 277.8  
 6417 277.11  
 6432 276.4  
 6447 276.5  
 6462 276.3  
 6477 275.9  
 6492 275.4  
 6507 276.23  
 6522 276.2  
 6537 277.8  
 6552 277.8  
 6567 277.11  
 6582 276.4  
 6597 276.5  
 6612 276.3  
 6627 275.9  
 6642 275.4  
 6657 276.23  
 6672 276.2  
 6687 277.8  
 6702 277.8  
 6717 277.11  
 6732 276.4  
 6747 276.5  
 6762 276.3  
 6777 275.9  
 6792 275.4  
 6807 276.23  
 6822 276.2  
 6837 277.8  
 6852 277.8  
 6867 277.11  
 6882 276.4  
 6897 276.5  
 6912 276.3  
 6927 275.9  
 6942 275.4  
 6957 276.23  
 6972 276.2  
 6987 277.8  
 7002 277.8  
 7017 277.11  
 7032 276.4  
 7047 276.5  
 7062 276.3  
 7077 275.9  
 7092 275.4  
 7107 276.23  
 7122 276.2  
 7137 277.8  
 7152 277.8  
 7167 277.11  
 7182 276.4  
 7197 276.5  
 7212 276.3  
 7227 275.9  
 7242 275.4  
 7257 276.23  
 7272 276.2  
 7287 277.8  
 7302 277.8  
 7317 277.11  
 7332 276.4  
 7347 276.5  
 7362 276.3  
 7377 275.9  
 7392 275.4  
 7407 276.23  
 7422 276.2  
 7437 277.8  
 7452 277.8  
 7467 277.11  
 7482 276.4  
 7497 276.5  
 7512 276.3  
 7527 275.9  
 7542 275.4  
 7557 276.23  
 7572 276.2  
 7587 277.8  
 7602 277.8  
 7617 277.11  
 7632 276.4  
 7647 276.5  
 7662 276.3  
 7677 275.9  
 7692 275.4  
 7707 276.23  
 7722 276.2  
 7737 277.8  
 7752 277.8  
 7767 277.11  
 7782 276.4  
 7797 276.5  
 7812 276.3  
 7827 275.9  
 7842 275.4  
 7857 276.23  
 7872 276.2  
 7887 277.8  
 7902 277.8  
 7917 277.11  
 7932 276.4  
 7947 276.5  
 7962 276.3  
 7977 275.9  
 7992 275.4  
 8007 276.23  
 8022 276.2  
 8037 277.8  
 8052 277.8  
 8067 277.11  
 8082 276.4  
 8097 276.5  
 8112 276.3  
 8127 275.9  
 8142 275.4  
 8157 276.23  
 8172 276.2  
 8187 277.8  
 8202 277.8  
 8217 277.11  
 8232 276.4  
 8247 276.5  
 8262 276.3  
 8277 275.9  
 8292 275.4  
 8307 276.23  
 8322 276.2  
 8337 277.8  
 8352 277.8  
 8367 277.11  
 8382 276.4  
 8397 276.5  
 8412 276.3  
 8427 275.9  
 8442 275.4  
 8457 276.23  
 8472 276.2  
 8487 277.8  
 8502 277.8  
 8517 277.11  
 8532 276.4  
 8547 276.5  
 8562 276.3  
 8577 275.9  
 8592 275.4  
 8607 276.23  
 8622 276.2  
 8637 277.8  
 8652 277.8  
 8667 277.11  
 8682 276.4  
 8697 276.5  
 8712 276.3  
 8727 275.9  
 8742 275.4  
 8757 276.23  
 8772 276.2  
 8787 277.8  
 8802 277.8  
 8817 277.11  
 8832 276.4  
 8847 276.5  
 8862 276.3  
 8877 275.9  
 8892 275.4  
 8907 276.23  
 8922 276.2  
 8937 277.8  
 8952 277.8  
 8967 277.11  
 8982 276.4  
 8997 276.5  
 9012 276.3  
 9027 275.9  
 9042 275.4  
 9057 276.23  
 9072 276.2  
 9087 277.8  
 9102 277.8  
 9117 277.11  
 9132 276.4  
 9147 276.5  
 9162 276.3  
 9177 275.9  
 9192 275.4  
 9207 276.23  
 9222 276.2  
 9237 277.8  
 9252 277.8  
 9267 277.11  
 9282 276.4  
 9297 276.5  
 9312 276.3  
 9327 275.9  
 9342 275.4  
 9357 276.23  
 9372 276.2  
 9387 277.8  
 9402 277.8  
 9417 277.11  
 9432 276.4  
 9447 276.5  
 9462 276.3  
 9477 275.9  
 9492 275.4  
 9507 276.23  
 9522 276.2  
 9537 277.8  
 9552 277.8  
 9567 277.11  
 9582 276.4  
 9597 276.5  
 9612 276.3  
 9627 275.9  
 9642 275.4  
 9657 276.23  
 9672 276.2  
 9687 277.8  
 9702 277.8  
 9717 277.11  
 9732 276.4  
 9747 276.5  
 9762 276.3  
 9777 275.9  
 9792 275.4  
 9807 276.23  
 9822 276.2  
 9837 277.8  
 9852 277.8  
 9867 277.11  
 9882 276.4  
 9897 276.5  
 9912 276.3  
 9927 275.9  
 9942 275.4  
 9957 276.23  
 9972 276.2  
 9987 277.8  
 10002 277.8  
 10017 277.11  
 10032 276.4  
 10047 276.5  
 10062 276.3  
 10077 275.9  
 10092 275.4  
 10107 276.23  
 10122 276.2  
 10137 277.8  
 10152 277.8  
 10167 277.11  
 10182 276.4  
 10197 276.5  
 10212 276.3  
 10227 275.9  
 10242 275.4  
 10257 276.23  
 10272 276.2  
 10287 277.8  
 10302 277.8  
 10317 277.11  
 10332 276.4  
 10347 276.5  
 10362 276.3  
 10377 275.9  
 10392 275.4  
 10407 276.23  
 10422 276.2  
 10437 277.8  
 10452 277.8  
 10467 277.11  
 10482 276.4  
 10497 276.5  
 10512 276.3  
 10527 275.9  
 10542 275.4  
 10557 276.23  
 10572 276.2  
 10587 277.8  
 10602 277.8  
 10617 277.11  
 10632 276.4  
 10647 276.5  
 10662 276.3  
 10677 275.9  
 10692 275.4  
 10707 276.23  
 10722 276.2  
 10737 277.8  
 10752 277.8  
 10767 277.11  
 10782 276.4  
 10797 276.5  
 10812 276.3  
 10827 275.9  
 10842 275.4  
 10857 276.23  
 10872 276.2  
 10887 277.8  
 10902 277.8  
 10917 277.11  
 10932 276.4  
 10947 276.5  
 10962 276.3  
 10977 275.9  
 10992 275.4  
 11007 276.23  
 11022 276.2  
 11037 277.8  
 11052 277.8  
 11067 277.11  
 11082 276.4  
 11097 276.5  
 11112 276.3  
 11127 275.9  
 11142 275.4  
 11157 276.23  
 11172 276.2  
 11187 277.8  
 11202 277.8  
 11217 277.11  
 11232 276.4  
 11247 276.5  
 11262 276.3  
 11277 275.9  
 11292 275.4  
 11307 276.23  
 11322 276.2  
 11337 277.8  
 11352 277.8  
 11367 277.11  
 11382 276.4  
 11397 276.5  
 11412 276.3  
 11427 275.9  
 11442 275.4  
 11457 276.23  
 11472 276.2  
 11487 277.8  
 11502 277.8  
 11517 277.11  
 11532 276.4  
 11547 276.5  
 11562 276.3  
 11577 275.9  
 11592 275.4  
 11607 276.23  
 11622 276.2  
 11637 277.8  
 11652 277.8  
 11667 277.11  
 11682 276.4  
 11697 276.5  
 11712 276.3  
 11727 275.9  
 11742 275.4  
 11757 276.23  
 11772 276.2  
 11787 277.8  
 11802 277.8  
 11817 277.11  
 11832 276.4  
 11847 276.5  
 11862 276.3  
 11877 275.9  
 11892 275.4  
 11907 276.23  
 11922 276.2  
 11937 277.8  
 11952 277.8  
 11967 277.11  
 11982 276.4  
 11997 276.5  
 12012 276.3  
 12027 275.9  
 12042 275.4  
 12057 276.23  
 12072 276.2  
 12087 277.8  
 12102 277.8  
 12117 277.11  
 12132 276.4  
 12147 276.5  
 12162 276.3  
 12177 275.9  
 12192 275.4  
 12207 276.23



+85

+85

+18 - 1/4 Ribbon Case Drive on Lt.

+36

+99

28 Rt of Lt - 1/2 Double 2" Sh-05

TP

679 279.78 1161 272.99

+97

23 Rt of Lt - Cluster 2-1 "Bocals"

+95

0-79

+76

123 Rt of Lt - 1/2 Cluster 1 "Bocals"  
284.63

272.64  
714  
20-cb+1/4  
3000Dr

272.56  
732  
3000Dr

272.78  
780  
45-NY  
6000Dr

272.91  
687  
20-cb+1/4  
3000Dr

272.68  
710  
3000Dr

272.68  
710  
45-NY  
6000Dr

274.94  
734  
20-cb+1/4  
3000Dr

274.23  
555  
3000Dr

273.55  
123  
20-cb+1/4  
3000Dr

274.7  
51  
20

274.44  
524  
20

273.7  
61  
20

273.7  
61  
20

273.5  
68  
20

273.9  
65  
20

273.0  
68  
20

273.58  
633  
20-cb+1/4  
3000Dr

273.7  
66  
20

279.78

275.8  
88  
3000Dr

275.72  
891  
20-cb+1/4  
3000Dr

274.9  
97  
20

275.0  
96  
20

274.8  
98  
20

274.5  
101  
20

274.0  
106  
20

274.85  
928  
20-cb

274.92  
971  
3000Dr

275.42  
921  
45-NY  
6000Dr

274.6  
100  
20-cb+1/4  
3000Dr

275.34  
979  
20-cb+1/4  
3000Dr

275.11  
957  
3000Dr

275.43  
920  
45-NY  
6000Dr



840

88 271.0 Lt  
 530 270.4  
 94 269.46  
 58 268.4  
 100 268.6  
 20.5  
 20.9  
 10  
 11.5 268.5  
 11.6 268.2  
 12.2 267.5  
 11.2 268.58  
 20.2  
 11.2 268.6  
 50

+79

273.22  
 270.37  
 270.10  
 273.75  
 271.7  
 270.98  
 270.4  
 270.1  
 270.1  
 269.8  
 269.4  
 270.10  
 270.2

+50

103 273.75  
 81 271.7  
 80 270.98  
 94 270.4  
 97 270.1  
 97 270.1  
 100 269.8  
 106 269.4  
 96 270.10  
 96 270.2

2+23

274.36  
 272.9  
 271.76  
 271.2  
 271.1  
 270.9  
 270.6  
 269.9  
 270.87  
 270.90

+96 = My Core Drive on It

275.70  
 273.41  
 272.66  
 271.88

+85

273.8  
 273.2  
 272.68  
 272.2  
 272.2  
 272.1  
 271.8  
 271.5  
 272.04  
 271.9

1+80.5

272.19  
 271.85

27998

27978







+68

262.66  
10.80  
30 Butter  
10 Drive  
263.63  
9.83  
26-But  
263.69  
9.77  
30 on Drive  
264.08  
9.68  
25-But  
50 on

+70

215 Lt of 2 - 2 2" tree

262.66  
10.80  
30 Butter  
10 Drive  
263.64  
9.86  
26-But  
263.68  
9.78  
30 on Drive  
264.04  
9.68  
25-But  
50 on Drive

+60

+56

215 Lt of 2 - 2 1/2" tree

265.41  
50.5  
30-Butter  
10 Drive  
265.5  
8.0  
30  
264.76  
8.70  
30  
264.1  
9.1  
30  
264.0  
9.5  
30  
263.9  
9.6

263.6  
9.9  
10  
263.3  
10.1  
20  
263.90  
9.56  
30  
264.4  
9.1  
50

+29

270.63  
28.2  
38.5  
266.53  
69.2  
30-Butter  
10 Drive  
265.44  
8.02  
30-Butter  
10 Drive

+16.5

264.55  
8.91  
30-Butter  
10 Drive  
265.52  
9.0  
30 on Drive  
266.64  
6.92  
25-Butter  
50 on Drive

+07.5

264.84  
8.62  
30-Butter  
10 Drive  
265.82  
7.64  
30 on Drive  
266.68  
6.78  
25-Butter  
50 on Drive

4+0

268.4  
5.1  
30  
267.1  
4.4  
25  
266.37  
7.09  
26  
265.3  
8.2  
30  
265.5  
8.0  
30  
265.5  
8.0

265.5  
8.0  
265.2  
9.2  
265.0  
8.5  
20  
265.37  
8.09  
30  
266.1  
7.6  
30

273.46

273.46







+48.42 = North Circle line

260.12

274.136  
50 50 50  
38.25

259.46  
1.40  
195  
227  
250  
265  
3.00  
3.17  
3.87  
4.1  
5.15  
4.69

257.9  
257.39  
256.99  
257.25  
255.70  
256.27

254.75  
5.1  
5.55  
5.0  
5.55  
5.31

+30.42 = La Paloma - S/H HC Pavilion

260.33  
1.45  
1.85  
2.26  
2.58.60

258.21  
257.74  
257.23  
256.71  
255.50

TP 215 260.86 10.60

258.21  
La Paloma  
+ 50.00

260.86

+10.42

260.9  
260.7  
260.1  
259.5  
259.0  
258.9  
258.6

258.1  
258.8  
258.6  
258.0

+09

258.52  
10.22  
21.5  
258.63  
10.18  
28.2

+07

259.85  
259.80  
259.4

+00.42 = South Circle La Paloma

260.5  
259.6  
259.4  
259.6  
259.0  
258.4  
259.3  
259.8

259.6  
259.0  
258.4  
259.3  
259.8

268.81

268.81



Lt

Z

Rt 10

BM

342

250.86

S.W. B.P.  
Catalina  
Vernon  
250.83

TP

9.31

254.28

1.88

244.97

BM

12.21

246.85

5.06

234.14

N.W. B.P.  
Catalina Blvd  
La Paloma  
(Sta. 233.40)

TP

2.45

239.70

12.04

237.25

TP

0.16

249.29

11.73

247.13

L+60.42 = North Line La Paloma

260.86

259.11  
 175  
 30 = E. of  
 Catalina  
 258.72  
 271  
 258.15  
 295  
 30  
 257.91  
 3.75  
 257.61  
 257.16  
 256.62  
 257.18  
 257.00  
 376  
 4.21  
 368  
 384  
 36  
 1/20 = Catalina  
 1/20 = Catalina  
 260.86



CROSS SECTIONS - ROOSEVELT AVE  
from SEQUOIA

To E.H. of CROWN POINT DRIVE

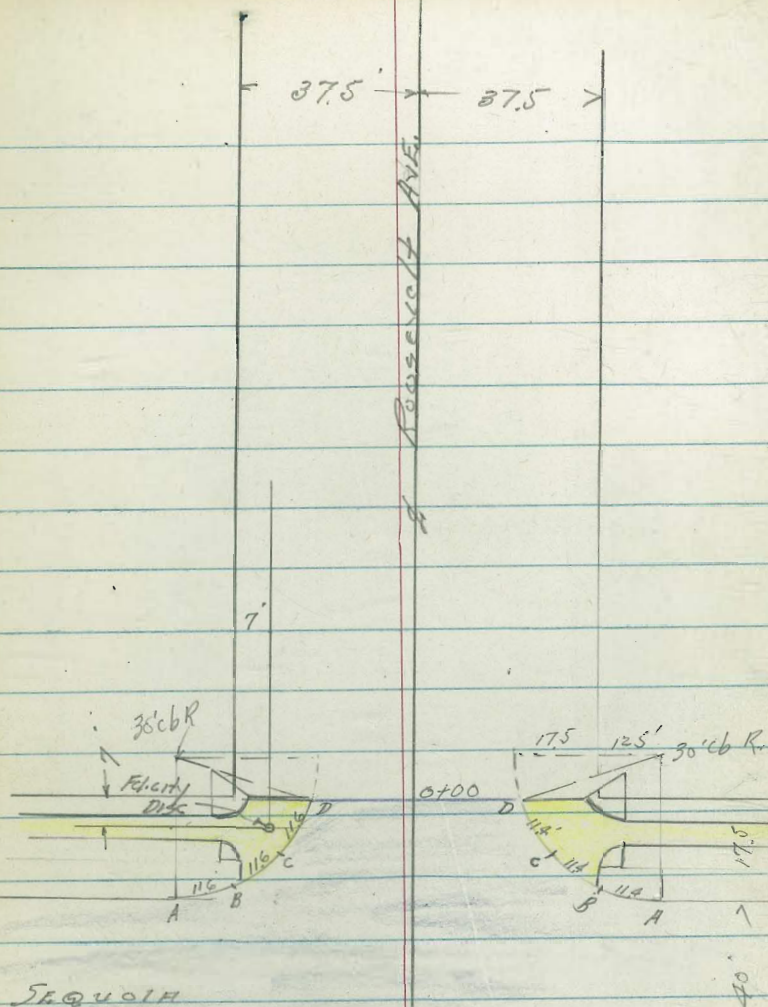
Walker  
Pope  
Huffman  
Allen 11-8-51

NO 31914

Soil Samples Taken

INDEXED  
NOV 13 1951

Reduced  
P.E. Ryan  
11-23-51

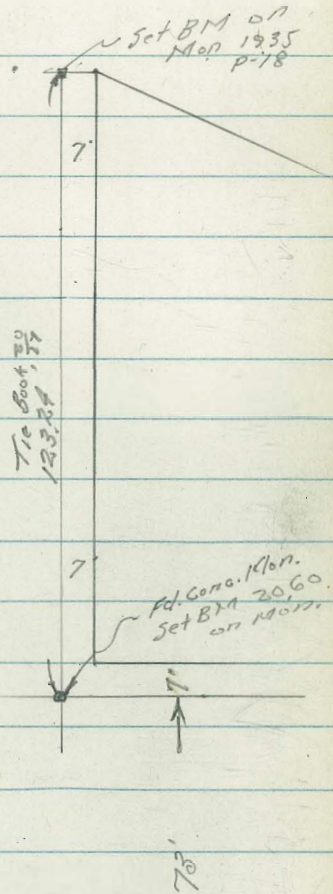
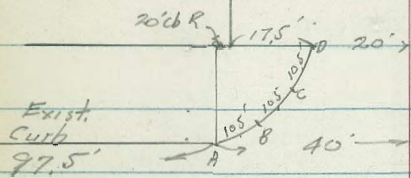




End Exist curb  
Good Condition.

LAMONT ST.

ROOSEVELT AVE.



37.5' x 37.5'







Roosevelt Ave ~ Cross Section

0-17.5 Cont

0-17.5 - E. cb. Sequoia

0-37.5' - E. Sequoia

22.47  
4.95  
85  
Top  
Cb  
21.92  
5.10  
85  
Gut  
25.32  
3.60  
92  
Gut  
Cb  
25.91  
2.25  
92  
Cb  
22.34  
22.24  
21.66  
21.95  
21.90  
21.92  
21.90  
21.93  
22.12  
22.30  
22.93  
4.58  
5.26  
5.07  
5.02  
5.60  
5.02  
4.99  
4.80  
4.62  
3.99  
50  
50  
37.5  
20  
13  
20  
37.5  
50  
50  
Gut  
Top  
Cb

22.52  
4.60  
50  
22.18  
4.74  
37.5  
22.02  
4.90  
20  
22.15  
4.79  
13  
22.12  
4.80  
20  
22.18  
4.74  
37.5  
22.16  
4.74  
50  
22.46  
3.76  
50

26.92  
S.E. 7' Conc. Mon  
B.M. on Mon TP#2 Roosevelt & Lamont

6.32 26.92 20.60

B.M. on Mon TP#2 Roosevelt & Lamont

0.01

N.W. B.P.  
Grand Ave & Lamont St.

chk. 076 50.37 50.38

TP#7 10.38 51.14 4.23 40.76

TP#6 6.00 45.69 1.79 39.69

N.E. 7' Lock Pacific Beach Drive & Lamont  
Same Point and Different Elev. for B.M.

chk B.M. 588 35.10

chk. F.B. 1749 35.28 in F.B. 1563-48

TP#5 12.16 40.98 0.38 28.82

TP#4 8.07 27.20 3.79 21.32 FB 1563 48 21.13

Nail SW Pole Fortuna & Lamont

TP#3 4.73 24.22 5.80 20.19

S.E. 7' Conc. Mon  
Lamont & Roosevelt Ave

TP#2 5.39 25.99 4.74 20.60

Conc. Mon E 7' Line Lamont Rt. & to N.E. Prop. Crown Point Drive  
FB. 1563-48

TP#1 8.10 25.34 7.16 17.24 = 17.99

B.M. N.W. Conc. Mon.  
Prop. Cor. Sequoia & Crown Point Drive  
Grade Book 218-70 FB. 1749 72

363 29.40 20.77



Roosevelt Ave - Cross Sections

H. K. RT. 15

	20.4	20.1	20.3	20.6	21.9	23.0	23.6	24.1	24.0	24.2	21.9	22.0	21.0	21.64	21.5	24.1	23.9	23.8
1708	63	66	64	61	49	87	31	2.6	27	2.5	4.8	4.7	5.7	5.10	5.2	2.6	2.8	2.9
	400	350	300	250	200	150	100	50	37.5	31	24	19	17	26.74	21	22	37.5	50

RR MH 1708																		
TR	5.10	26.74	528	21.64	24.2	24.3	24.7	21.9	22.0	21.1	21.3	21.4	24.6	24.3	24.4			
1700					2.7	2.6	2.7	5.0	4.9	5.8	5.6	5.5	2.3	2.6	2.5			
					60	37.5	31	24	19	17		21	22	37.5	50			

0+98 = Elec. Pole #1875 27.4' Rt.  
 0+70 = Pole Anchor 27.4' Rt.

0+50 = End 6" Conc. Tile Wall	24.3	30.0																
	2.6	+318	2.0	2.3	4.9	4.7	5.5	5.0	5.4	1.3	2.0	1.3						
	37.9	37.9	37.5	29	24	19	17		21	2.5	37.5	50						
	Bottom Footing	Top Wall																

0+20	24.3	30.0																
	1.9	2.0	4.7	4.7	5.5	5.1	5.5	1.7	1.3	1.3								
	37.5	29	24	19	17		20	21	37.5	50								

0+00 = E. Saguaro	24.5	29.07	25.7	22.41	22.24	21.62	21.70	21.80	21.97	21.83	21.60	22.24	22.52	22.7	25.9
	2.4	+1.15	1.7	4.51	4.68	5.30	5.22	5.12	5.03	5.09	5.32	4.68	4.70	4.2	1.0
	37.8	37.9	37.9	34.2	22.6	22.6	2.3	1.2	1.3	2.28	2.28	34.5	37.5	50	
	Bottom Conc. Footing	Top Conc. Tile Wall	Conc. Tile Wall	Edge Work	cb.	Gut.	1/p	Conc. Gut			cb	140/k	-Edge		

SE Ret.	21.60	22.24	21.80	22.44	22.00	22.62	22.30	22.94							
	532	468	512	448	492	429	462	398							
	D	D	C	C	B	B	A	A							
	Gut	cb	Gut	cb	Gut	cb	Gut	cb = 86. on Saguaro							

NE Ret.	22.24	21.62	21.69	22.30	21.70	22.32	22.35	21.66							
	468	530	523	462	522	460	457	526							
	D	D	C	"C"	B	B	A	A = 86. on Saguaro							
	cb.	Gut	Gut	cb	Gut	cb	Gut	cb							

26.92

26.92



Roosevelt Ave Cross Section

2+46 = West Edge Exist PC Pav Lammont

21.13 21.15 21.32 21.36 21.30 21.13 17.16  
 561 559 542 538 544 561 580  
 50 37.5 20 20 37.5 50

2+42

21.1 21.1 21.1 21.2 20.9 20.6 20.6  
 56 56 56 55 58 61 61  
 50 37.5 20 23 37.5 50

2+36

22.4 22.5 22.9 21.3 21.4 20.8 21.2 20.8 22.1 21.8 21.6  
 43 42 38 54 53 59 55 59 46 49 51  
 50 37.5 29 26 19 17 22 27 37.5 50

2+15.15 = W. Lammont

22.8 22.9 23.4 21.1 21.2 20.6 21.1 20.8 22.9 22.3 22.3  
 39 38 33 56 55 61 56 59 38 44 44  
 50 37.5 27 25 18 16 22 23 37.5 50

2+12 = E. loc. P/s #1899 27.6 RI

2+00

22.8 22.8 23.0 21.3 21.4 20.7 21.3 20.9 22.8 22.5 22.5  
 37 39 37 54 53 60 54 58 37 42 42  
 50 37.5 27 24 17 16 22 22.5 37.5 50

1+62 L. Garage

25.13 23.45  
 301 329  
 418 375  
 Garage floor Conc. Apron

1+50

23.5 22.5 21.4 21.6 20.9 21.5 21.1 23.6 22.3  
 32 53 51 58 52 56 31 34  
 27 23 19 17 22 22.5 37.5

26.74

26.74



Roosevelt Ave ~ Cross Sections

Lat.

Lo

St. 17

0+32 = End

20.96  
5/8 5.00  
37.3 38.6  
Apron Floor

0+17 Beg. Dble Garage

21.04  
5.10 5.01  
37.1 38.5  
Apron Floor

0+00 = Elmer's Barn

2+25.15 = Beg 6' Board Fence 37.1 ft

21.6 21.5 21.28 20.9 21.4 21.0 21.0 21.4 21.2 21.2  
4.5 4.6 4.86 5.2 4.7 5.1 5.1 4.7 4.9 5.1  
50 37.5 20 20 14 5.1 19 22 37.5 50  
cb. G.d.

N.E. Ret.

21.28 21.34 21.32  
4.86 4.80 4.82  
0 0 8  
cb. cb. cb.

2+77 = L Fire Hydrant 42.5 ft

Exist.

2+75.15 = East Curb on Lt.

20.96 20.86 21.16 20.6 20.8 21.3 21.1 21.4 21.2 20.9  
5/8 5.28 4.28 5.5 5.3 4.8 5.0 4.7 4.9 5.2  
137.5 90 40 40 20 20 26 37.5 50  
End. Exist. G.d. Dnt.  
cb. Top. 36.14

on 887' station

TP 5.54

26.14

6.15

20.60 = correct  
20.59

2+65 = East Edge Exist. AC Pav.

21.07 21.08 21.35 21.43 21.31 21.24 21.05  
5.72 5.66 5.41 5.31 5.43 5.50 5.69  
50 37.5 20 20 37.5 50

2+55.15 = L. Lamont

26.74

21.40 21.47 21.62 21.67 21.59 21.43 21.29  
5.34 5.27 5.12 5.07 5.15 5.31 5.45  
50 37.5 20 20 37.5 50

26.74



Roosevelt Ave - Cross Sections

Lot.

L

Rt.

SW 7th Cor. Roosevelt Ave. Drive

TP 360 22.75 515 19.35

1+76.7 opp NW cor. = End Fence = 355 Lt.

Guy Pole Anchor 34' Rt

1+65 = 1/2 Guy Pole 34' Rt

1+64

1+75.7 opp NW cor.

TP 466 24.50 630 19.84

1+50

1+35 = Beg. Fence 37.7 Rt.

1+26 = 1/2 MH

1+16.2 = opp SW Prop cor. = End Fence 37.3 Rt

1+12 = 1/2 Elec Pole Number 27.6 Rt

0+50

0+37 = 1/2 3' Brick Walk

6' Board

0+35 = Beg Fence 37.1 Rt

26.14

20.6 19.9 19.6 19.8 19.6 20.1 19.6 19.9 2.0 2.0  
 3.9 4.6 4.9 4.7 5.0 4.4 4.9 13.6 24.5 26.5  
 31 30 25 8 12 24 39 77 100  
 Mod Flat Mod Flat

20.7 20.7 20.7 20.0 19.5 19.7 19.9 19.8 19.7 16.5 11.1  
 3.8 3.8 3.8 4.5 5.0 4.8 5.1 4.7 4.8 8.0 13.4  
 50 37.5 32 31 15 24.50 25 31 40 50 65

20.5 20.5 19.9 19.9 19.6 19.6 19.4 19.1  
 5.6 5.6 6.2 6.2 6.5 6.5 6.7 7.0  
 37.5 33 32 20 20 37.5 50

20.7 20.6 20.3 19.9 19.6 19.6  
 5.4 5.5 5.8 6.2 6.5 6.5  
 50 37.5 16 16 37.5

21.6 21.4 20.8 20.4 20.6 20.3 20.6 19.4  
 4.5 4.7 5.3 5.7 5.8 5.8 5.5 5.5  
 50 37.5 16 11 20 24 37.1

at fence  
 20.67 20.74  
 547 540  
 29 37  
 Walk Walk

26.14



Roosevelt Ave - Cross Sections

ft.

ft.

ft.

19

Sec B  
2+48 - Diag Sec = Parallel to Sec "A"

<sup>-2.8</sup>  
25.7  
100

<sup>-2.8</sup>  
25.7

<sup>-2.8</sup>  
25.7  
100

2+20 Sec "B" diag = Parallel to Sec "A"

<sup>-1.4</sup>  
24.3  
75

<sup>-1.4</sup>  
24.3  
48

<sup>-1.0</sup>  
23.9  
30

<sup>-1.6</sup>  
24.5

<sup>-1.4</sup>  
24.4  
30

<sup>-1.6</sup>  
24.6  
48

<sup>-1.6</sup>  
24.6  
75

Sec "A"  
1+94.5 = diag. Sec. Sketch P-13

<sup>19.4</sup>  
25  
75

<sup>19.4</sup>  
2.8  
48

<sup>19.0</sup>  
3.9  
20

<sup>19.2</sup>  
3.7  
21

<sup>19.2</sup>  
2.8  
47

<sup>19.4</sup>  
3.6  
47

<sup>19.2</sup>  
3.7  
75

22.25



Levels - Low Area Lt And Rt

of L. Belmont.

Set. Roosevelt And Fortuna

5+00

	22.0	20.8	20.4	20.28	19.3	18.8	14.6
	4.5	5.7	6.1	6.23	7.2	7.7	7.9
	140	100	50		50	100	160

4+36

	20.7	20.3	20.0	20.45	19.7	19.5	19.3
	5.8	6.2	6.5	6.06	6.8	7.0	7.2
	140	100	50		50	100	160

3+75

	20.1	20.1	19.9	20.43	20.3	20.4	20.6
	6.4	6.4	6.6	6.08	6.2	5.9	5.9
	140	100	50		50	100	160

3+23

	19.6	19.6	20.4	20.57
	6.9	6.9	5.1	5.94
	140	100	50	

2+75

	20.1	20.3	21.1	20.67
	6.4	6.2	5.4	5.84
	140	100	50	50

0+00 =

6.32

26.51

20.19

26.51



Low Area Topog.  
 Lts. & Rts. of L. Linnont  
 Cont. from p-20

G+37.63 Cont.

G+37.63 Cont.

G+37.63 - A Fortuna

TP 432 25.44 21.13  
 Chk B.M.-TP#4 p.19 5.39 31.12

G+60

5+75

26.51

2  
 Linnont  
 St

21

11.6 17.3  
 7.8 8.1  
 400 450

11.6 11.4 11.1 18.6  
 5.8 6.0 6.3 6.8  
 200 250 300 350

20.32  
 5.2 5.5 5.8  
 50 100 160

25.44

20.11 20.0 19.3 18.8 19.3  
 6.40 6.5 7.2 7.7 7.2  
 50 100 115 160

20.06  
 6.45 7.1 7.6 8.3 7.1  
 50 100 115 160

26.51



Survey of ABBOTT PLACE.

5-29-52

C.H. Sommermeier  
Beeg  
oltman  
Johns

N.O. 20006

Ref. to Map # 1189

Trif. sheet # 699

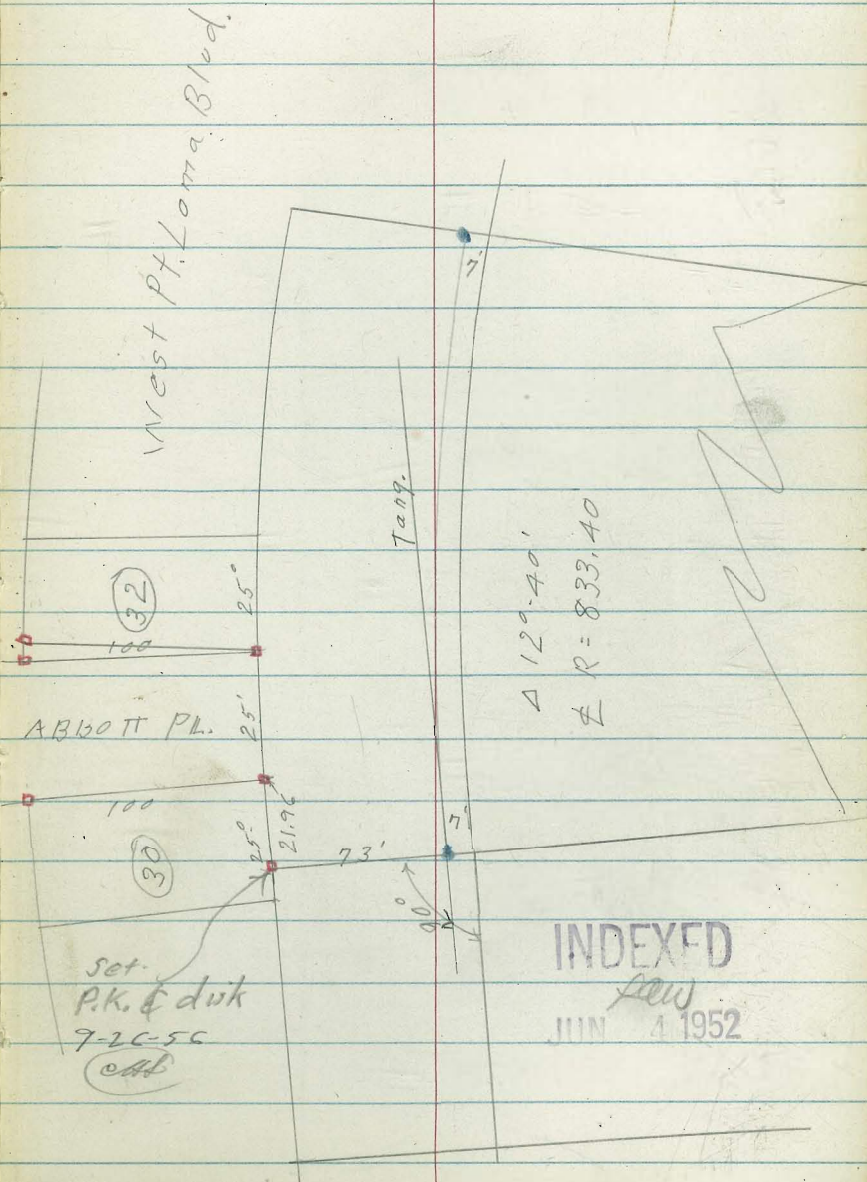
• = Fd. L+T. in walk.

◻ = set 1/2 hub + disk

Def. rate = 1.968' per feet. Rad = 873.40'

Def. for 21.96' = 0°-43'-14"

" " 46.96' = 1°-32'-26"





Check Tie Points  
West Pt. Loma Blvd  
From Ocean Beach Park  
to Abbott St.

C.H.S.  
Begg  
Altman  
Johns.

6-20-52

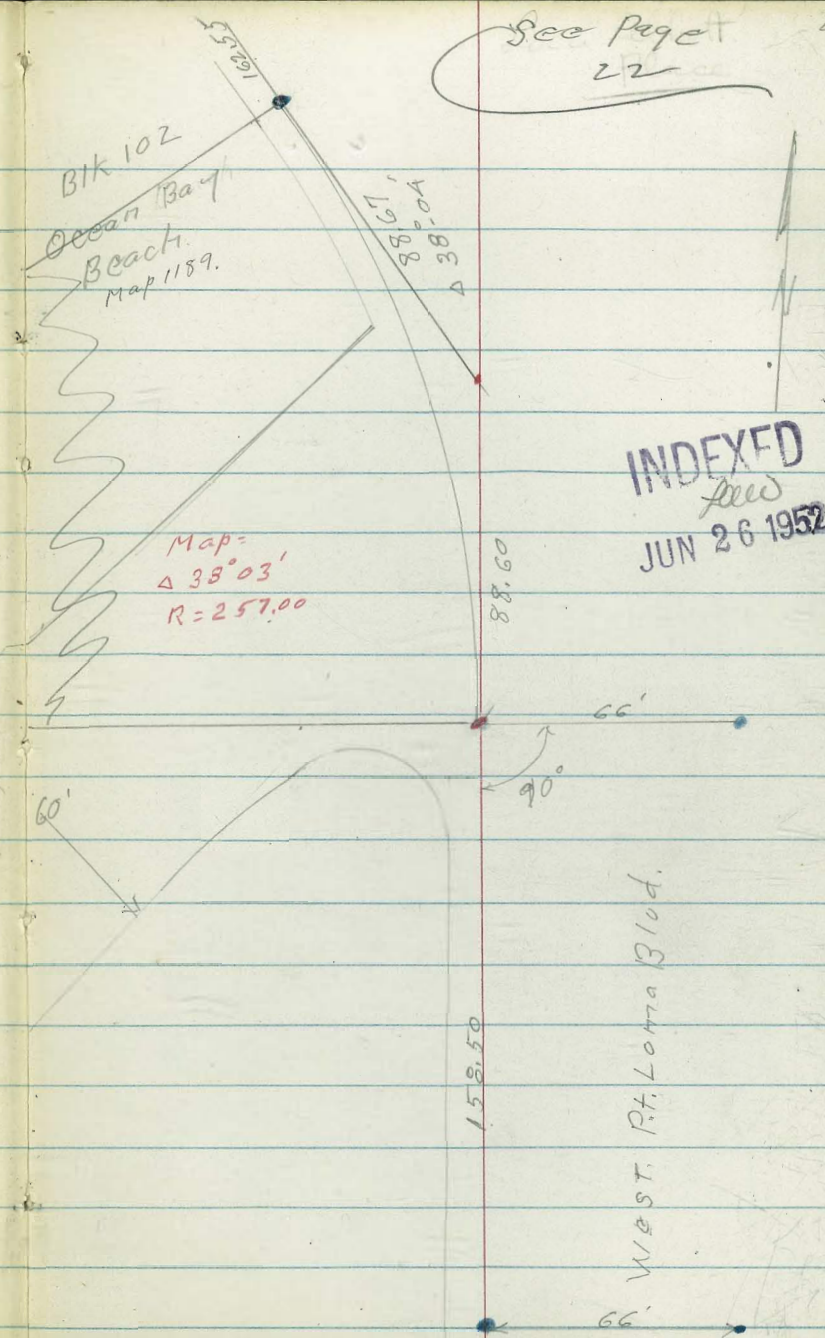
Δ = turned + distance  
chained unless noted  
otherwise.

Red = Map + T.P.S.

Run on Nly + Wly 7' line w. Pt Loma Blvd.

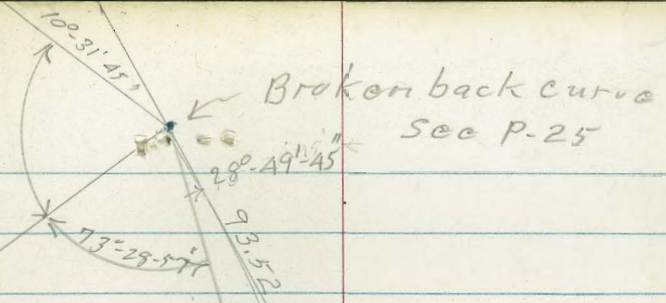
Suggest Tie points in  $\frac{T.P. 15}{158}$   
be kept + used as basic  
data.

These L + T. points move  
as walk is moved by  
tree roots, expansion, etc.  
L + T. Points could be re-set to  
fit map without disturbing  
any existing surveys.



INDEXED  
JUN 26 1952





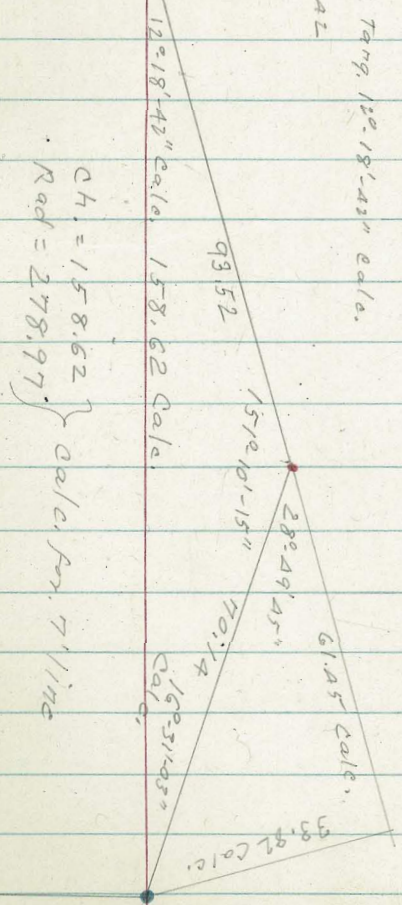
Broken back curve  
See P-25

$\Delta = 33^{\circ} - 02' - 06''$   
 $R = 278.97$   
 $ch = 158.62$   
 Calc. per 7' line  
 sec below  
 $\Delta = 33^{\circ} - 01'$

Calculations for above curve

162.55  
~~162.50~~

$\frac{38.82}{154.92} = .21824 = \text{Tang. } 12^{\circ} - 18' - 43'' \text{ calc.}$   
 Secant = 102.3542

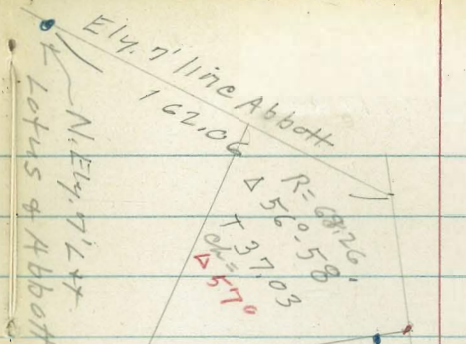


$Ch = 158.62$   
 $Rad = 278.97$   
 Calc. for 7' line

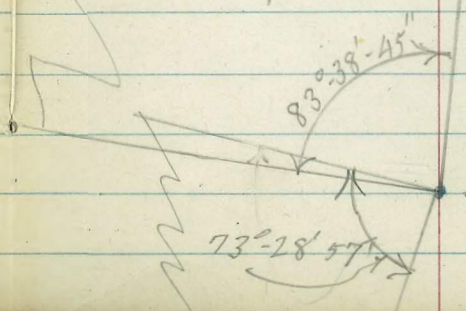
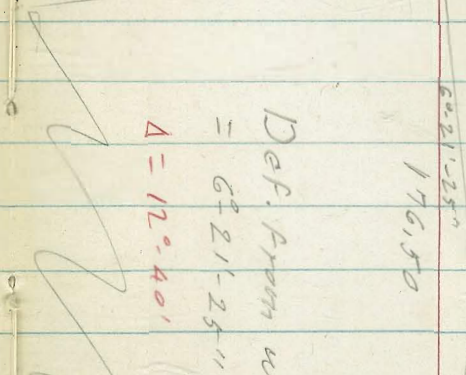
10°-31'-45"







63.79  
 114.92





Clark 7-7-52  
Shepherd W.O. 25020  
Bryson

X-SECT. WEST PT. LOMA Blvd.

Muir to Voltaire

DATA: MAP 1189  
" 1814

Notes: Pg 27

61-44'

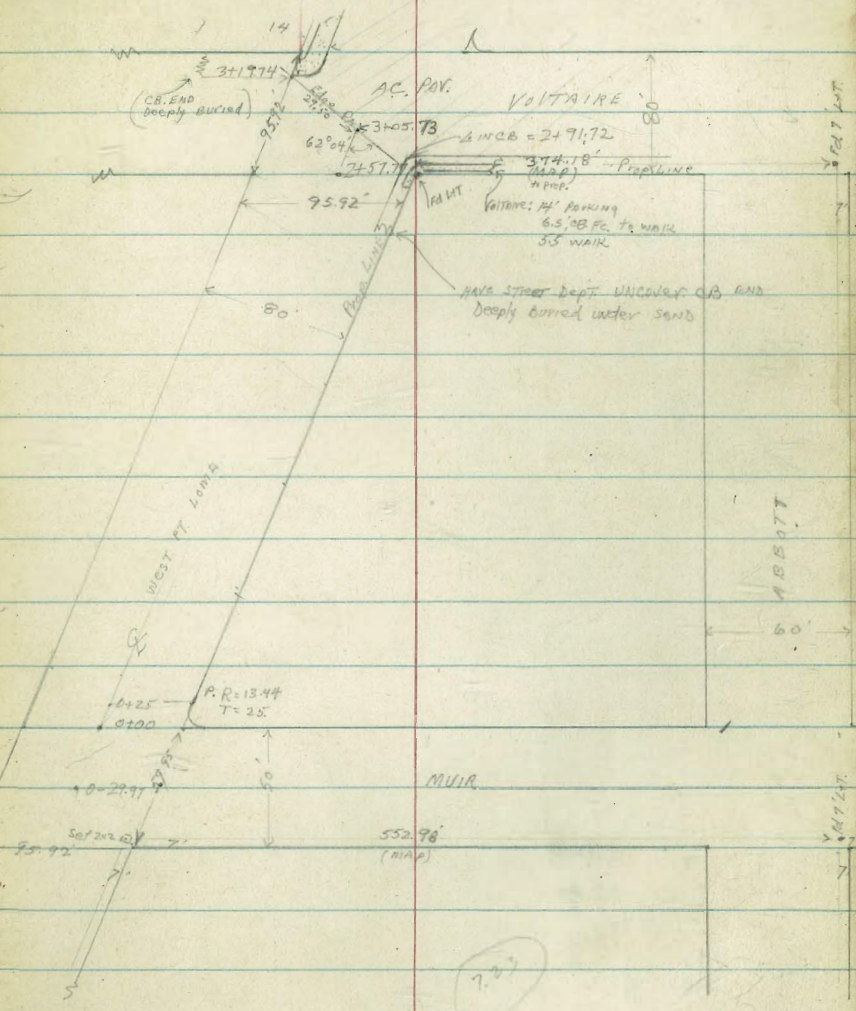
$\frac{95.92}{97.96}$

NOT TO SCALE

INDEXED  
Law

JUL 9 1952

26





X-SECT. WEST POINT LOMA

B/d. - Muir to Voltair

LT      E      RT

2+25				1.7 87 50	1.6 87 40	0.3 82.3	4.7 57 40 Toe Barricade	7.5 29 52 72	5.4 50 66 72	
2+00				1.4 9.0 50	1.4 9.0 40	1.8 8.6	3.5 6.9 40	4.4 6.0 50 Toe Rock Sand Barricade	8.4 2.0 83 77 Toe	5.4 5.0 8.1 8.0
1+50				1.1 9.3 50	1.0 9.4 40	0.8 9.6	1.3 9.1 40	0.7 8.6 50	0.7 1.8	1.8
1+00				1.4 9.7 50	0.8 9.6 40	0.6 9.8	0.7 9.7 40	0.7 9.7 50	0.7 50	FLAT →
0+50				1.1 9.3 50	1.1 9.3 40	0.9 9.5	0.5 9.9 40	0.3 10.1 50		
0+25				1.6 8.8 50	1.6 8.8 40	0.9 9.5	0.7 9.7 40	0.2 10.2 50		
0+00				1.3 9.1 100	1.3 9.1 50	1.4 9.0	0.4 10.0 50	0.5 9.9 100		
0-29.97				1.5 8.9 100	1.7 8.7 50	1.8 8.6	1.3 9.1 50	0.8 9.6 100		
0-100				1.7 87 100	1.9 86 50	2.0 84	1.7 87 50	2.6 7.8 100		

B.M.      8.84      10.36

1.52 = N/E B.P. Voltair and W. Pt. Loma

10.36



Check: 8.84 - 1.52 = 1.52 611 W/F BP Valtaire + W.P.T. LOMA Blvd

3+19.74

opp Edge PAV. LT.

1.5  
8.8  
26  
TR  
CB  
9.67  
26  
6

3+05.73

Edge EXIST. PAV. + E Valtaire (sect. # E Valtaire)

(NOT END CB)  
(CB covered deeply, SAND)  
8.4  
100  
8.20  
65  
TR  
CB  
4.3  
35  
TR  
Barricade  
4.3  
20  
Top  
Barricade  
8.97  
45  
PAV.  
(Top  
Barricade)  
8.60  
50  
8.207  
100

2+74.42

C.B. LINE (SECT ON LINE Valtaire)

8.8  
100  
8.4  
47.95  
TR  
4.4  
25  
7.5  
10  
3.5  
5.6  
23.5  
9.59  
31.75  
GUTT  
TR, CB  
(24112.47)  
9.08  
31.75  
GUTT  
TR, CB  
2.77  
35.70  
GUTT  
TR, CB  
1.60  
38.76  
100  
1.14  
1.67

2+57.77

S/Way Line Valtaire (SECT. ON LINE Valtaire)

1.6  
8.8  
47.96  
TR  
4.2  
10  
3.4  
7.0  
Barricade  
5.1  
5.3  
27  
9.23  
31.75  
TR, CB  
ON DIAGONAL  
1.87  
35.70  
Edge  
TR, CB  
1.86  
38.76  
100

2+50

2.8  
1.6  
50  
2.7  
4.1  
6.3  
4.6  
5.8  
70  
Top  
Barricade  
7.3  
3.1  
2.4  
40  
Top  
6.0  
40  
Top  
5.1  
5.3  
5.20  
5.5  
Edge  
Private  
Work

10 36

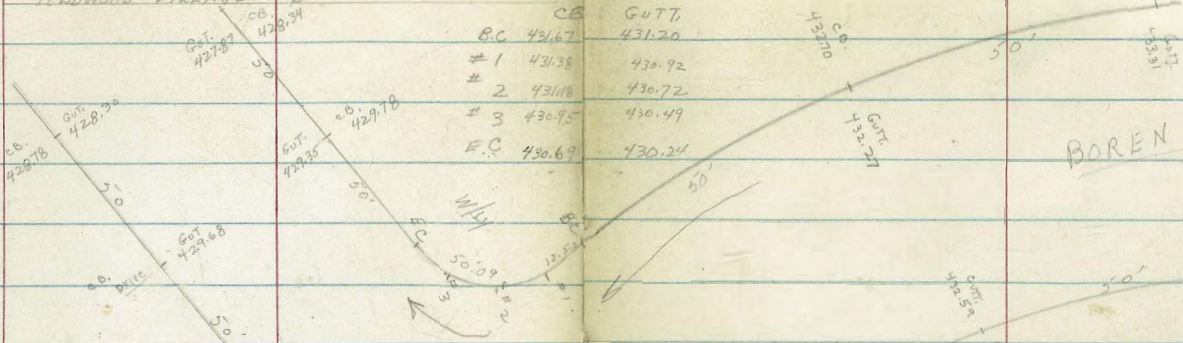


Clark  
Shepherd  
Bruner  
Perkins

W.O. 21051  
10-30-52

Sketch not to scale

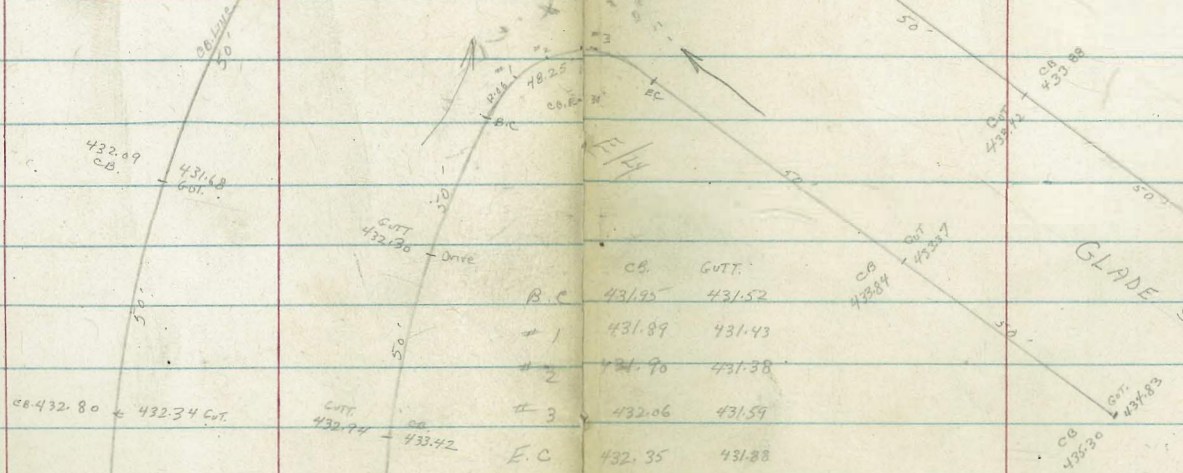
ELEV. BOREN & GLADE STS.  
REDWOOD VILLAGE #6



	B.C.	C.B.	GUTT.
	431.35	430.90	
#1	431.71	430.78	
#2	431.10	430.64	
#3	430.99	430.55	
E.C.	430.88	430.45	

SLY

(For PAV. Elev.)  
SEE pg. 32



	B.C.	C.B.	GUTT.
	432.06	431.60	
#1	431.94	431.45	
#2	431.96	431.50	
#3	432.02	431.55	
E.C.	432.30	431.85	

TYPE G. CBS & GUTT.

	B.C.	C.B.	GUTT.
	431.95	431.52	
#1	431.89	431.43	
#2	432.70	431.38	
#3	432.06	431.59	
E.C.	432.35	431.88	

431.95 = B.C. (DITG 8848-4)  
GLADE

INDEXED  
ALCO  
OCT 31 1952

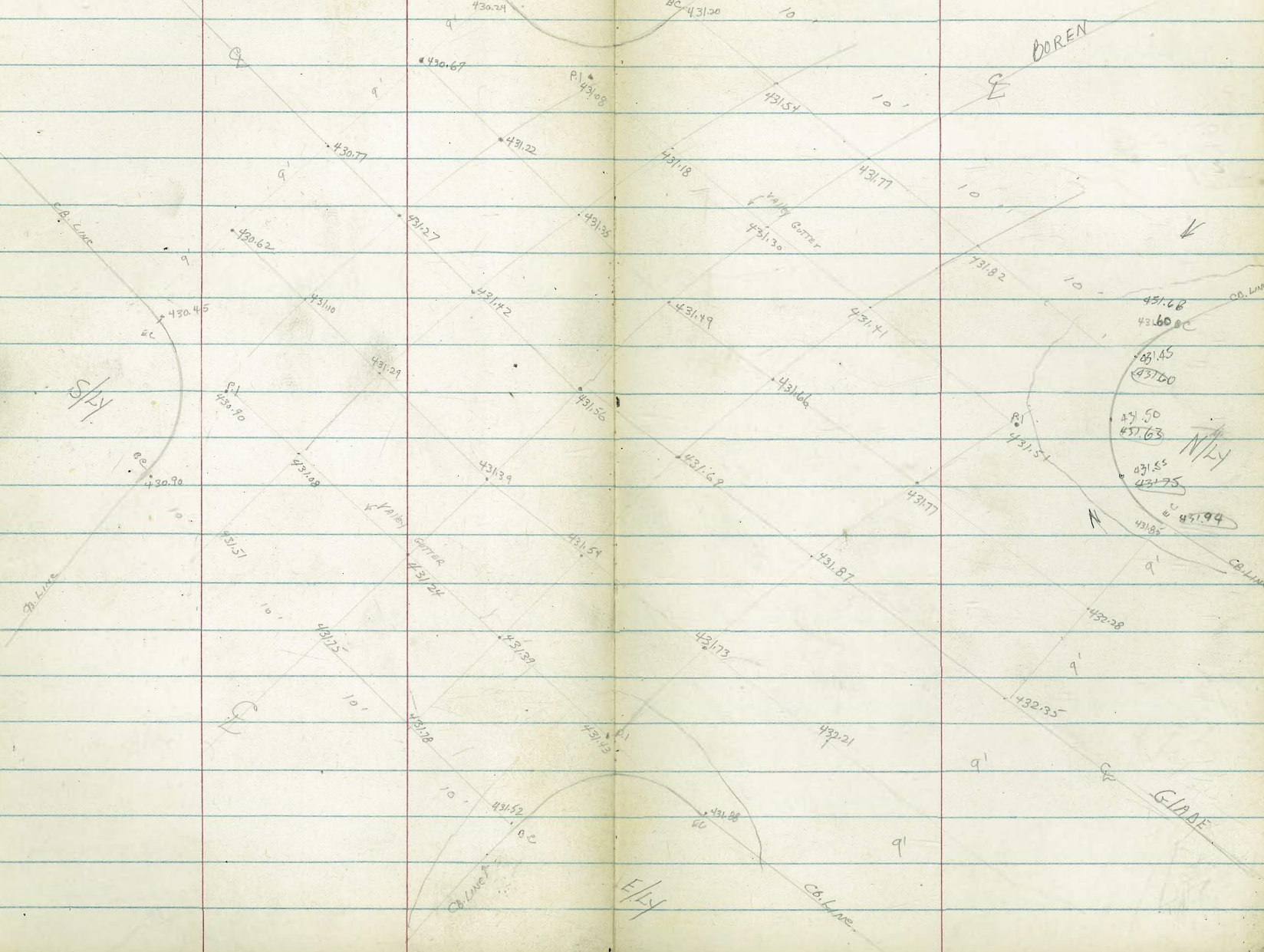
B.M.

DIRECT. #/of. ROD:



ELEV. BOREN & Glade STS. (Cont)

Sketch not to scale.



W/LY

BOREN

S/LY

N/LY

E/LY

GLADE

C.B. Line

C.B. Line

C.B. Line

C.B. Line

C.B. Line

C.B. Line

C.B. Line

BC 431.20

430.67

P1 431.08

431.54

430.77

431.22

431.18

10'

10'

430.62

431.27

431.35

431.30

10'

430.45

431.00

431.42

431.49

431.41

10'

430.90

431.10

431.29

431.56

431.64

431.69

431.68

431.60

431.45

431.60

431.50

431.63

431.55

431.75

431.85

431.94

431.18

431.39

431.54

431.69

431.77

431.54

10'

431.57

431.78

431.87

431.94

432.28

431.75

431.96

432.05

432.13

432.21

432.35

10'

10'

10'

10'

10'

10'

431.88

432.09

432.18

432.26

432.34

10'

10'

10'

10'

10'

431.52

431.68

431.76

431.84

C.B. Line

C.B. Line

E/LY

G/LY

a'

q'

a'

a'

a'

a'

a'

a'

a'

a'

a'

a'

a'

a'

a'

a'

a'

a'

a'

a'

a'

a'

a'

a'

a'

a'

a'

a'

a'

a'

a'

a'

a'

a'

a'

a'

a'

a'

a'

a'

a'

a'

a'

a'

a'

a'

a'

a'

a'

a'

a'

a'

a'

a'

a'

a'

a'

a'

a'

a'

a'

a'

a'

a'

a'

a'

a'

a'

a'

a'

a'

a'

a'

a'

a'

a'

a'

a'

a'

a'

a'

a'

a'

a'

a'

a'

a'

a'

a'

a'

a'

a'

a'

a'

a'

a'

a'

a'

a'

a'

a'

a'

a'

a'

a'

a'

a'

a'

a'

a'

a'

a'

a'

a'

a'

a'

a'

a'

a'

a'

a'

a'

a'

a'

a'

a'

a'

a'

a'

a'

a'

a'

a'

a'

a'

a'

a'

a'

a'

a'

a'

a'

a'

a'

a'

a'

a'

a'

a'

a'

a'

a'

a'

a'

a'

a'

a'

a'

a'

a'

a'

a'

a'

a'

a'

a'

a'

a'

a'

a'

a'

a'

a'

a'

a'

a'

a'

a'

a'

a'

a'

a'

a'

a'

a'

a'

a'

a'

a'

a'

a'

a'

a'

a'

a'

a'

a'

a'

a'

a'

a'

a'

a'

a'

a'

a'

a'

a'

a'

a'

a'

a'

a'

a'

a'

a'

a'

a'

a'

a'

a'

a'



LEVELS - TOPOG - CONTROL

VERNON PARK

Contours on Hand Copy

Walker  
Pope  
Foster  
Rjart  
2-9-53

Indexed  
2-13-53

				0.02	
check starting BM.	4.51		2285	22.87	
TP #5	7.10	26.88	0.53	19.78	
			13.10	7.21 = SPIKE	& Banks &
TP #4	11.79	20.31	2.81	8.52	
			5.13	6.20 = CONC.	Mon. E Sherman St. Line Anna St
			4.69	6.64 = SPIKE	& Sherman & Custer
TP #3	5.47	11.33	6.30	5.86 = SPIKE	& Banks & Sherman
2X2 Hub & Sherman E. Line Grant			4.01	8.15	
TP #2	1.36	12.16	7.66	10.80	PK No. 1 in Powe Pole
L & T. Int. Morena & Sherman St.			3.54	14.92	
TP #1	2.55	18.46	6.95	15.91	
B.M.	0.51	22.86		22.35	BM = P.N.E. Wing Wall New Morena Bridge

+



X-sec Alley B1K 11, North Shores Highlands

5-27-53

W.O. # 31254.

Ref. Map 1969

Allen

TP sheet 1771

D. Sisson

C. Powell

INDEXED

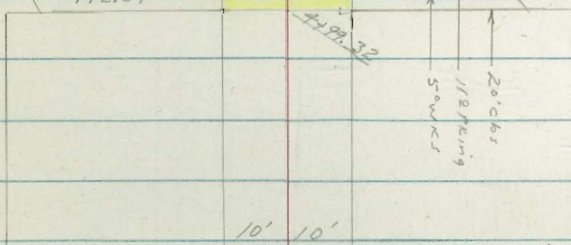
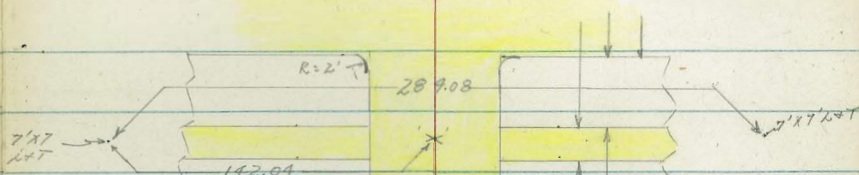
Law

MAY 29 1953

Levels page 33.

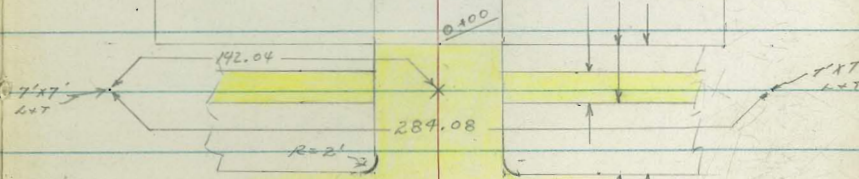
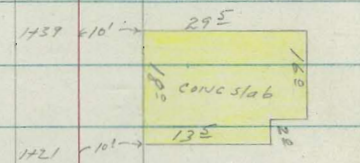
Reduced Section  
5-3-53

Foruel ST



Beryl ST

Law ST



Everts ST



0+15

97.4	97.4	97.2	95.6	96.0	95.8
12	12	24	30	26	200
25	100	60		10	25

10<sup>7</sup> RT = begin 2<sup>5</sup>' high picket fence  
 0+00 11<sup>6</sup> LT = begin 5' high conc wall.

0+00 = Fly Everts + Fly edge Portland Concrete

93.73	93.20	94.4	93.8	92.72	93.90	92.91	92.97
490	543	42	48	591	47	572	566
99	99	99	9.	100	100	100	100
CB	GOT	DIRT	DIRT	DIRT	GOT	CB	CB

0-02 - to show DIRT over pavement

93.68	93.1	92.8	92.8	92.9
125	55	58	58	570
10	10		10	100
TOP			DIRT	CB
CB				TOP

0-20 = Fly Curb line Everts

92.85	92.19	93.62	93.05	92.91	92.45	92.13	92.04	92.63	88.68	89.37
178	244	501	558	572	618	650	659	600	985	926
100	100	120	120	10		10	120	120	100	100
CB	GOT	CB	GOT	BC			GOT	CB	GOT	CB
		BC	BC				BC	BC		

TP, 7.93 98.63 0.75 90.70

98.62 K

BM 12.34 91.45 79.11

NE. 7' x T - Chalcedony + Everts



Alley BIK II, No. Shores Highlands

Wall under construction

12<sup>3</sup> RT = end 4' high conc block wall

1+00 - 7<sup>2</sup> RT = 10" power pole PA 1220

0+92 - 11<sup>4</sup> LT = 4' single gar. conc apron + floor

0+80 - 11<sup>0</sup> LT = end 4' high conc BIK wall

conc BIK wall

11<sup>2</sup> LT = end 5' high conc wall + begin 4' high

11<sup>2</sup> RT = Begin 4' high conc block wall

0+50 - 11<sup>2</sup> RT = end 2<sup>5</sup> high picket fence

0+30

TP<sub>2</sub> 5.56 102.81 1.38 97.25

LT = N/4

RT = S/4

39

98.4

4<sup>4</sup>

25

98.1

4<sup>2</sup>

10

97.5

5<sup>3</sup>

10

97.7

5<sup>2</sup>

10

97.5

5<sup>3</sup>

12<sup>3</sup>

6<sup>2</sup>

96.7

6<sup>1</sup>

12<sup>3</sup>

25

96.2

6<sup>2</sup>

10

FOOT

98.86

3<sup>9</sup>5

17<sup>0</sup>

Floor

98.20

4<sup>1</sup>

11<sup>4</sup>

Apron

97.5

5<sup>3</sup>

11<sup>0</sup>

Foot

98.2

4<sup>6</sup>

11<sup>0</sup>

6<sup>2</sup>

97.1

5<sup>2</sup>

11<sup>2</sup>

Foot

97.8

5<sup>0</sup>

11<sup>2</sup>

6<sup>2</sup>

97.8

5<sup>0</sup>

10

97.3

5<sup>5</sup>

10

97.4

5<sup>4</sup>

10

97.4

5<sup>4</sup>

11<sup>2</sup>

96.6

6<sup>2</sup>

11<sup>2</sup>

Foot

97.7

5<sup>2</sup>

10

96.8

6<sup>0</sup>

5

96.6

6<sup>2</sup>

10

96.7

6<sup>1</sup>

10

102.81 T

98.63 T



Alley B/C 11, No. Shore Highlands

LT = NLY

RT = SLY

35

✓ 1+44-10<sup>2</sup> RT = <sup>Apron is contiguous with conc slab</sup> Single gar. Conc Apron + Floor

97.28  
553  
102  
Apron

97.31  
550  
154  
Floor

✓ 1+39-10<sup>2</sup> RT = NE. cor slab

97.28  
553  
102  
NECOR  
slab

1+26-10<sup>2</sup> LT = begin 5' high Redwood board fence

✓ 1+21-10<sup>2</sup> RT = <sup>slab = 4" thick</sup> NWCOR Conc slab (See sketch)

97.13  
568  
102  
NWCOR  
slab

97.29  
552  
396  
SWCOR  
slab

✓ 1+21-10<sup>2</sup> RT = NE COR Cabana

96.9  
59  
61  
102

96.34  
647  
102  
Floor

✓ 1+12-13<sup>2</sup> LT = Double gar. Conc Apron + Floor

92.85

97.80

396  
18"  
Floor

501  
13"  
Apron

1+00-10<sup>2</sup> RT = <sup>Conc foundation</sup> NWCOR Cabana - Flagstone Floor

97.5  
53  
102  
Dirt

96.33  
648  
102  
Floor

102.81 T



Alley BIK 11, No Shores Highlands

LT = N14

RT = S14

36

2+15- 10' LT = 2 Double gar - Conc Apron + Floor

99.86	99.13
295	368
146	102
Floor	Apron

2+04- 9' LT = 4' long 6" wide Footing  
for future Conc BIK Wall -

2+00- 9' LT = S14 of 4' high Conc BIK wall  
North + South Wall ⊥ to Alley.

99.1	98.9	98.4	97.8	97.2
37	39	44	50	56
25	10		10	25

1+99- 9' RT = begin 4' high Lath fence - Poor condition

1+97- 6' LT = 5' wide Conc Walk

99.61	99.43	98.92
320	338	389
192	92	67
	8K	WK

1+89- 10' RT = 2 Double gar - Conc Apron + Floor

97.76	97.98
505	483
102	152
Apron	Floor

1+79- 9' RT = end 5' high board fence

1+50- 9' RT = begin 5' high board fence

98.6	98.4	97.9	97.4	96.9
43	44	49	54	59
25	10		10	25

102.81



Alley BIK 11 - N. Shore Highlands

123 LT = Begin 6' high Board fence

99 LT = end 5' Board fence

3450-108 Rt = end New 3' high Conc BIK wall

3421 - = 9' wide opening in wall on Rt.

94 to sly edge Board fence on Left

3400-102 Rt = begin 4' high Conc Block Wall

Sewer Manhole on 4 Alley

5 1/2' board fence

95 LT = end 4' high Conc BIK Wall + begin

2450 - 85 Rt = 10" pernick pole # PA 1260

2440-103 Rt = 4 Double gar, Conc Apron + Floor

2430-92 Rt = end 4' high Lath fence  
Poor condition

2422-96 LT = begin 4' high Conc BIK Wall

LT = N14

4

Rt = S14

37

102.0  
08  
10

101.8  
10

101.6  
10

101.2  
16  
10 8  
6

100.1  
27  
10 8  
Foot

101.0  
18  
25

100.7  
21  
10

100.6  
22

100.2  
26  
10

100.2  
26  
10 2  
Gr

99.2  
36  
10 8  
Foot

99.0  
38  
25

99.6  
32  
25

99.3  
35  
95  
Foot

100.0  
28  
95  
Gr

99.69  
312  
Rim  
SMH

99.0  
38  
10

98.5  
43  
25

98.31  
450  
10 3  
Apron

98.57  
424  
20 2  
Floor

98.9  
39  
96  
Foot

99.5  
33  
96  
Gr

102.81



Alley BIK 16, No. Shores Highlands

10<sup>8</sup> LT = end 5' cyclone fence

4499.32 = wly line Fanuel + wly edge part land conc

4475

11<sup>0</sup> LT = end 6' board fence + begin 5' cyclone

4450.11<sup>2</sup> RT = end 5' Redwood fence

4416.9<sup>5</sup> RT = 2 10" power pole # JPA 1280

11<sup>0</sup> RT = begin 5' high Redwood fence

10<sup>0</sup> RT = end 4 1/2' high board fence

11<sup>3</sup> LT = begin 6' high board fence

4400.12<sup>1</sup> LT = end 6' high board fence

TP<sub>2</sub> 5.05 107.36 0.50 102.31

3450<sup>5</sup> 10<sup>0</sup> RT = begin 4 1/2' high board fence

LT = N14

RT = S45

38

102.64

472

98  
GUT

102.02

534

98  
CB

101.45

521

101.46

570

102  
CB

101.66

570

102  
GUT

103.1

43

10

102.5

42

6

102.4

50

102.5

49

10

103.8

35

25

103.3

41

10

102.6

48

6

102.6

48

102.3

51

10

99.9

75

50

103.3

44

25

102.9

45

10

102.4

50

101.9

55

10

100.9

65

25

107.36 x

102.81 x



Alley BIK II, No. Shoes Highlands

LT = N 14

♀

Et = 514

39

TP<sub>4</sub> = Starting B.M.

10.21

(79.11)  
79.10

TP<sub>5</sub>

3.05

89.31

9.83

86.26

TP<sub>7</sub>

1.86

96.09

13.13

94.23

5+19<sup>32</sup> Wly. Curb line Fuel

ST

5+17<sup>32</sup> = BC Alley Returns

106.63	106.08	102.54	101.86	101.81	101.40	100.91	100.81	101.33	96.76	98.06
073	128	482	550	555	96	645	655	603	1060	993
100 Cb	100 GUT	120 Cb Bc	120 GUT Bc	10		10	120 GUT Bc	120 Cb Bc	100 GUT	100 Cb
		102.51	101.91		101.06		101.49			
	485		545		630		587			
	98		98		100		100			
	Cb		GUT		GUT		Cb			

10 7.36 X



Roberts  
Cota  
Morales  
7-6-53  
W.O.# 2870

X-Section Site For Fire Sta. #26

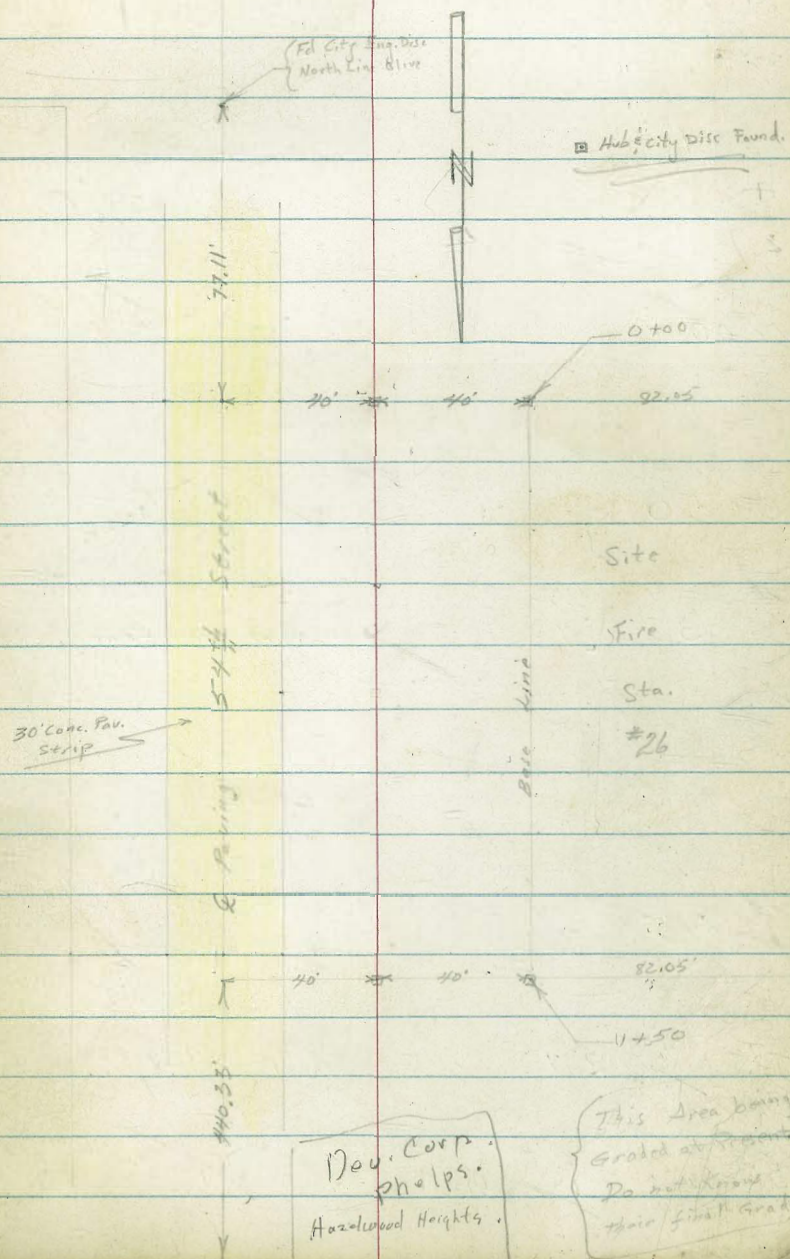
E side 54th Street

Grades on Access Road 4890  
West Side Krenning to Nutmeg.  
Nutmeg str. Sec 8.782L

Olive St.

INDIVIDUAL

JUL 7 1953





Cont'd From Page 40

Lt

Rt

#1

1+21

265.65	265.15	264.95	265.25	262.55	265.45	267.65	268.75
10.4	10.3	10.5	10.2	12.9	9.8	7.8	6.7
82	40		11	16	20	40	43

1+00

265.75	266.05	266.75	268.25	269.35	269.45	268.65	269.01	268.96
9.7	9.4	8.7	7.2	6.1	6.0	6.8	6.44	6.47
82	40		44	46	55	58	65	95
							EP	EP

0+50

266.65	268.75	269.15	270.65	270.75	270.45	270.97	270.50
8.8	7.2	6.3	4.8	4.7	5.3	4.98	4.75
82	40		40	54	57	65	95
						EP	EP

0+035

{ 79' Lt to S.W. Corner Wire Fence  
 { 73' Lt to S.E. Corner Wire Fence

0+00

South Boundary of Site

267.45	270.45	271.95	273.5	272.95	272.85	272.01	271.86
8.0	5.0	3.5	2.3	2.5	3.6	3.44	3.57
82	40		40	56	58	65	95
						EP	EP

0-045

{ 39.6' Lt. to NW Corner House  
 { 7.7' Lt. to NE Corner House

271.95  
 2.5  
 7.7  
 Floor  
 1st

T.R.

297 275.45  $\pi$  12.79 272.48

275.45  $\pi$

B.M.

192 285.27

NEBY  
 283.35 Redwood 52'



check

200 283.33 = 283.35

T.P.

11.11

285.33

1.23

274.22

Grading just beyond 1450!

1450

262.45	262.05	262.25	262.45	262.15	264.35	261.35	262.75	262.15	262.05	267.51	267.52
180	134	12.6	140	133	11.1	14.1	7.7	7.8	8.4	7.8	7.93
28	40	28	12		22	27	43	56	58	65	95
										EP	EP

1449

(Sta. 94)

55' Rt to center P.P. # 170659

1449

77' Lt to NW Corner Fence  
73' Lt to NE Corner Fence

1443

267.65	264.45	264.95	262.05	264.05	265.95	267.85
11.8	11.0	10.5	13.4	11.4	9.5	7.6
26	40	16		8	40	43

275.45

275.45



CROSS SECTION - HILLTOP DR.

From 47th St. - East

NO 62366

Walker  
Pope  
Olman  
Olson  
4-13-54

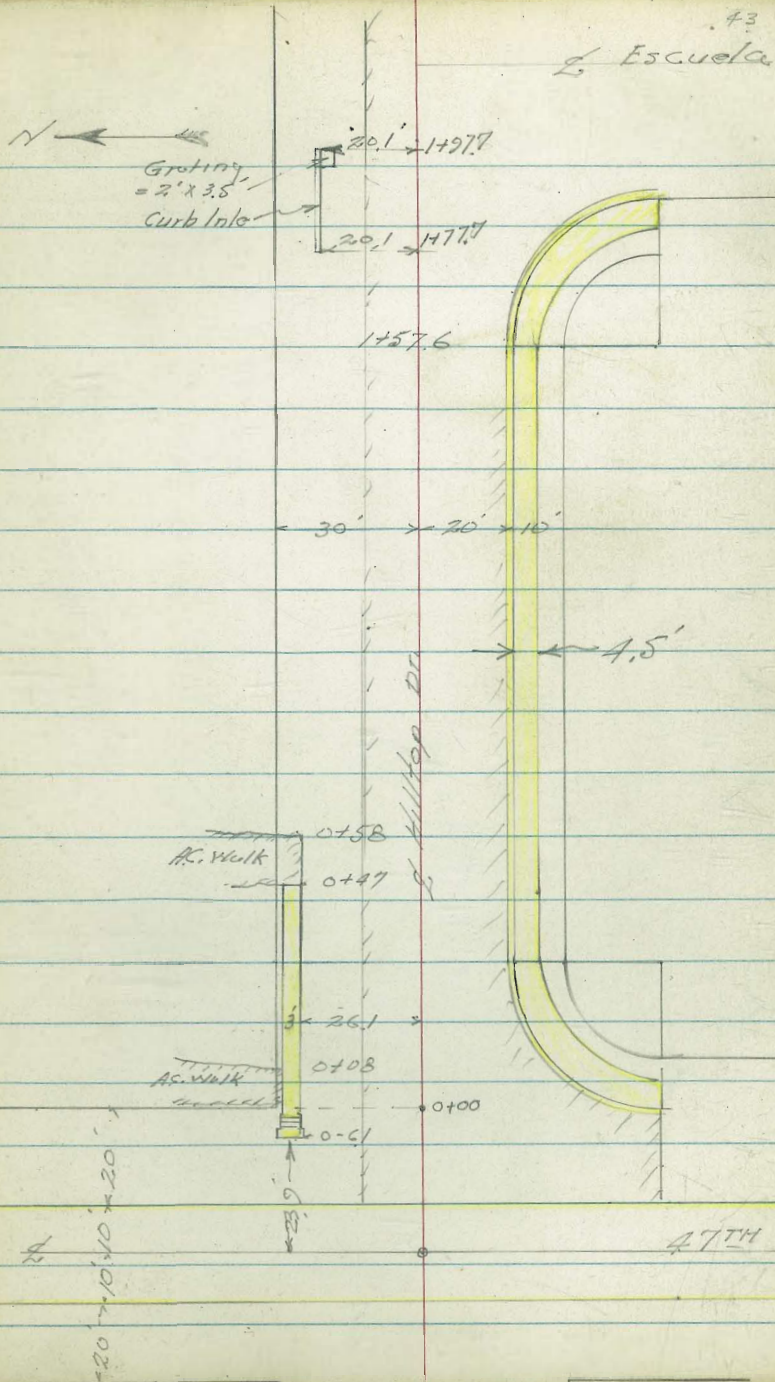
INDEXED  
APR 15 1954

1+14 = 2 4" Pepper Tree 24.5'lt

0+70 = 2 12" Pepper Tree 25'lt

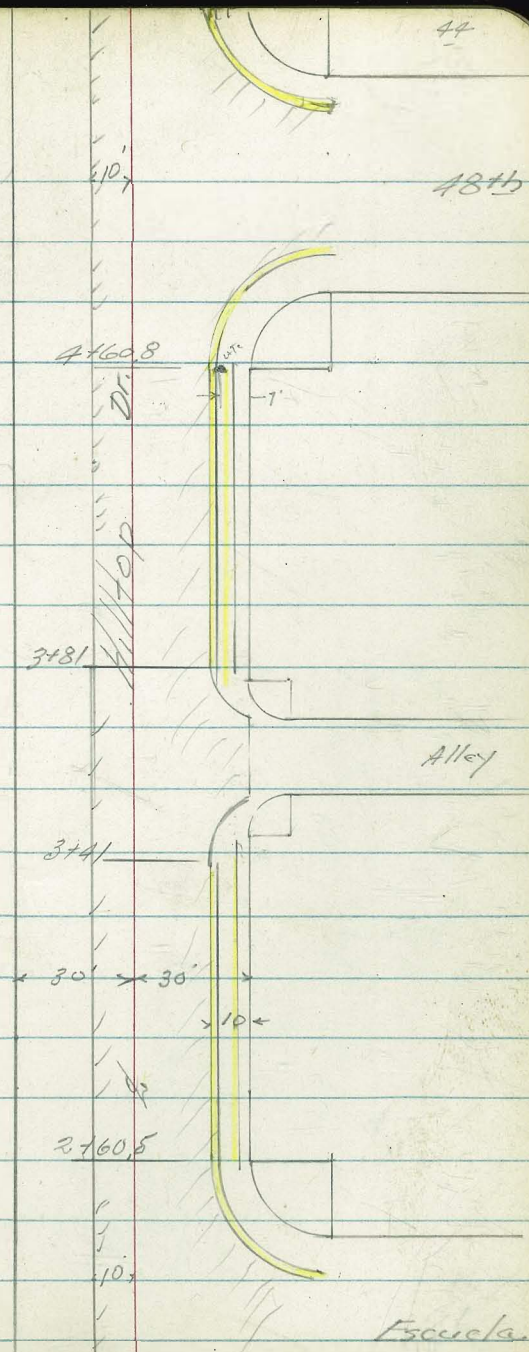
0+37 = 2 4" Pepper Tree 24'lt

0+08 2 6" Pepper Tree 24'lt



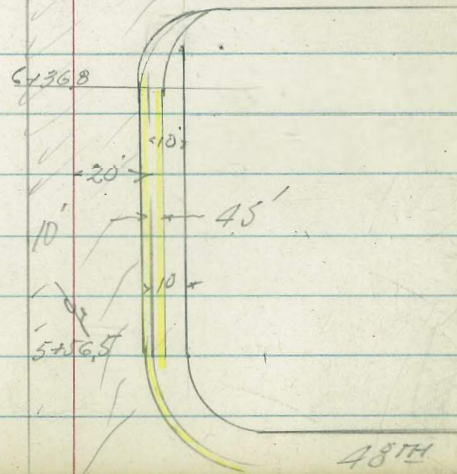
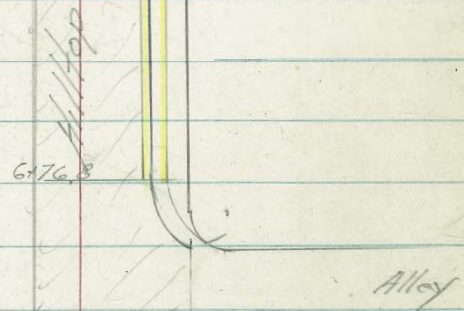
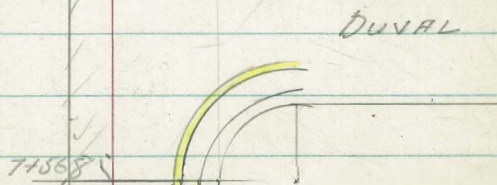
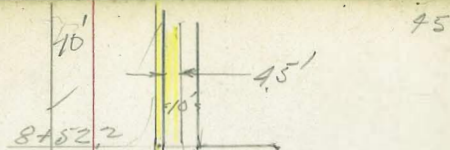


Hilltop





Hilltop Drive





Hilltop Drive

30' x 20' x 10'

11+49

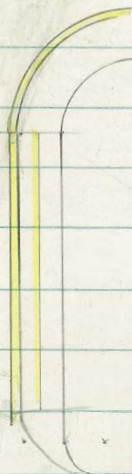


49TH

11+53

Hilltop Drive

9+73



ALLEY

9+33.3



DUVAL



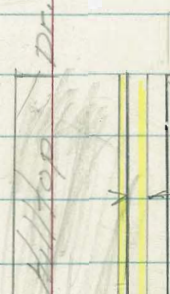
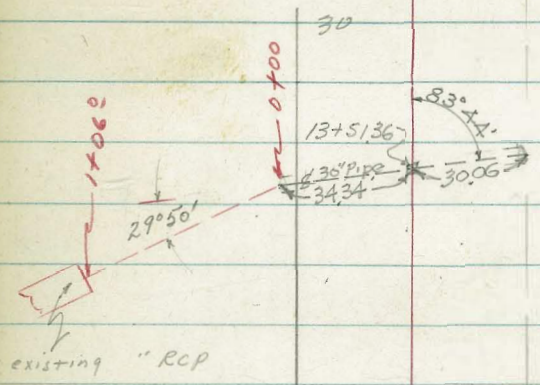
Hilltop Drive

----- Proposed Storm Drain Connection

Proposed drain Connection Made by C. Allen - 5-14-54  
for Levels Proposed drain see page 66

Set Hub & Disc

13751.36 = P.O.T. = Int. Exist. 30" Conc. Pipe Culvert



Sub. Line  
Glencliff  
Map # 2970

NO Points Ed.  
Used curb line  
to establish  
E of street,  
and C.T. Ld. Plg.  
at 4710

49TH St.



Hilltop Drive n

1+57.6 = BC Ret. on Rt.

T.P.

184.90

1+50

1856  
45

1851 1852 1843 F.P. 18496  
30 25 20 10

18417 18411 18490  
187 20 cb  
Lip Gut 20

1+00

1874  
45

1871 1874 1850 18530 18548 18512 18496 18550  
30 22 20 10 187 20 20  
F.P. Lip Gut cb.

0+58 = End AC Walk on Lt.

18956 18915  
45 26  
AC Walk AS Walk

0+50

18966 18922 18918  
45 30 26  
AC AC Walk AC Walk

1890 1858 18590 18596  
22 20 10  
F.P.

0+47 = End Walk

18927 18926 }  
29 26  
Walk Walk

0+32

18598 18617 18579 18569 18620  
10 187 20 20  
F.P. Lip Gut Gut cb

0+00

1898 18927 18923  
40 291 261  
Walk Walk

1890 1862 1860 18659 18666 18674 18564  
22 20 11 10 20 50  
Puv. Puv.

B.M. Ld & Tack.

E. 47th & Hilltop FB 1849  
25

18681



~ Hilltop Dr. ~

H.

£

Rt

49

3+00

1853 1852  
45 30

1851 1832 18336 18353  
28 23 10  
ER

18319 18307 18357  
187 20 20  
Lip Gut. cb

2+60.5 = F.C. Ret.

18355 18342 18324  
187 20 20  
Lip Gut. cb

2+50

1854 1851  
45 30

1850 1833 18398 18402  
27 20 10  
ER

2+07.7

18450  
Rim  
M.H.

2+00

1853  
45

1854 1853 1837 18436 18455 18400  
30 26 20 10 20

1+97.7

18452 18369 18381  
201 20 18  
cb Gut. Grotting

1+77.7 = Mast end 20' cb inlet

18460 18372  
201 20  
Top Gut  
cb



~ Hilltop Dr. ~

5+56.5 = E.C. cb Ret. on Rt

5+50

1876  
56

1882 1902 1894 1807 18100 18111  
39 32 30 21 10

180.58 180.48 181.00  
18.7 20 20  
Lip Gut cb

North

TP Rim Nth

18172

5+08

18172  
Rim  
Nth

5+00

1884 1885 1812 18154 18172  
~~70~~ 30 21 10  
50

18138  
2.0

4+60.8 = B.C. Ret. on Rt

18154 18140 18193  
18.7 20 20  
Lip Gut cb

4+50

1867 1873 1814 18194 18205  
45 30 21 10  
EP

4+00

1863 1862 18200 18235 18257 18212 18200 18252  
45 30 22 10 20 20  
EP Lip Gut cb

3+50

1856  
45

1854 1826 18283 18299  
30 23 10  
EP



✓ Hilltop Driven

Lt.      ♀      Rt.      51

8+50

1798 1790 1776 17725 17737  
50 30 20 10

8+05

17835  
R<sup>17</sup>  
M<sup>14</sup>

8+00

1813 1805 1796 1782 17840 17848 17834  
50 30 23 20 10 EP 20

7+56.8 = BC. Ret. on Rt

17860 17851 17899  
187 20 20  
Lip Gut cb

7+50

1849 1844 1789 17888 17908  
50 30 21 10  
EP

7+00

1872 1866 1863 1792 17944 17954 17912 17903 17952  
50 31 30 21 10 EP 187 20 20  
Lip Gut cb.

6+50

1889 1882 1878 1799 17920 18005  
50 31 30 21 10  
EP

6+00

1880 1903 1895 1903 18050 18058 18019 18007 18034  
50 31 30 21 10 EP 187 20 20  
Lip Gut cb



Hilltop Dr

Lt.

Rt

Rt

52

11400

1688	1687	1674	16736	167.55	16745	16746
50	30	22	10		26	20
			EP		Rip	MH

TP

169.55

10+53.0 = BC. Ret on

16913	16902	16958
187	20	20
Lip	Gut	cb

10+50

1736	1729	169.08	162.50	169.57
50	30	22	10	

10+00

1758	1757	171.5	171.58	171.71	171.34	171.24	171.74
50	30	22	10		18.7	20	20
					Lip	Gut	cb

9+50

1773	1766	173.6	173.77	173.84
50	30	22	10	
			EP	

TP

175.79

9+00

1786	1779	175.6	175.68	175.80	175.42	175.31	175.79
50	30	22	10		18.7	20	20
					Lip	Gut	cb

8+52.2

FC. Ret on Rt.

17620	17680	17729
18.7	20	20
Lip	Gut	cb



Hilltop Drive

Lt.

Rt.

Rt.

53

12+82

160.2 161.0 163.2  
28 30 50

12+82

150.3 152.3 160.0 159.75 160.01 159.59 159.48 159.98 160.07  
60 30 19 10 20 20 24.5  
E.P. Lip Walk

12+60

153.3 153.4 153.9 157.4 160.5 160.62 160.88  
50 30 27 26 21 10  
E.P.

12+50

154.0 154.5 155.3 158.5 160.9 161.03 161.31  
50 30 23 15 14 10  
E.P.

T.P.

161.88

12+00

159.4 160.1 160.6 163.3 163.15 163.32 162.93 162.78 163.29  
50 30 24 18 18.7 20 20  
Lip Gut. cb.

11+50

165.0 165.2 164.2 165.17 165.35  
50 30 23 10  
E.P.

11+49

165.11 165.00 165.48  
18.7 20 20  
Lip Gut. cb.



Hilltop Drive

13+51.36 = Diag. Section = 2' Exist. Culvert

1446	143.34	1460	157.6	157.05	156.5	145.07	142.37	140.7
72	34.34	31	17	on Hub	13	30	30	80
	Invert.					Top Pipe	Invert	
	Next							
	Culvert							

13+50

INDOVER  
MAY 17 1954

1449	1439	1468	157.4	157.1	156.8	142.7	141.4
75	34	30	17		13	33	80

13+00

145.7	147.5	148.6	150.6	158.9	159.0	158.7	159.0	151.1	151.5
80	60	34	30	17		19	22	30	60

12+94

159.47	154.6	154.4	153.2
24.5	24.7	35	60
Walk	Wash		

12+94 = End of Exist. Pav. And Walk on Rt

159.2	159.25	159.58	159.33	159.00	158.86	159.3
16	10		15	187	20	20
			By Settlement	Lip	Cut	Cb

12+88.4 Pav undermined on gutter line

159.48	159.80	159.36	159.26	159.76	159.79
10		18.7	20	20	24.5
		Lip	Cut	Cb	Walk

12+85 = End of Good Walk on Rt.  
Walk cracked at this point

159.46	159.33	159.85	159.33
18.7	20	20	24.5
	Cut	Cb	Walk



Hilltop Drive

Lt.

£

ft.

55

0.02 Error

U.K. Starting P.M. 186.81  
186.83

TP 181.33

TP 172.60

12100  
TP. E. Pen Hill 163.33

TP 155.02

15100

1588 1672 1547 1544 1541 1547  
50 30 12 30 50

14150

1547 1549 1540 1542 1500 1500  
50 30 21 30 50

14100

1552 1494 1557 1554 1551 1487 1479 1454  
60 30 21 17 25 30 60



CROSS SECTION - 47TH ST.

From Hilltop Drive To 900' North.

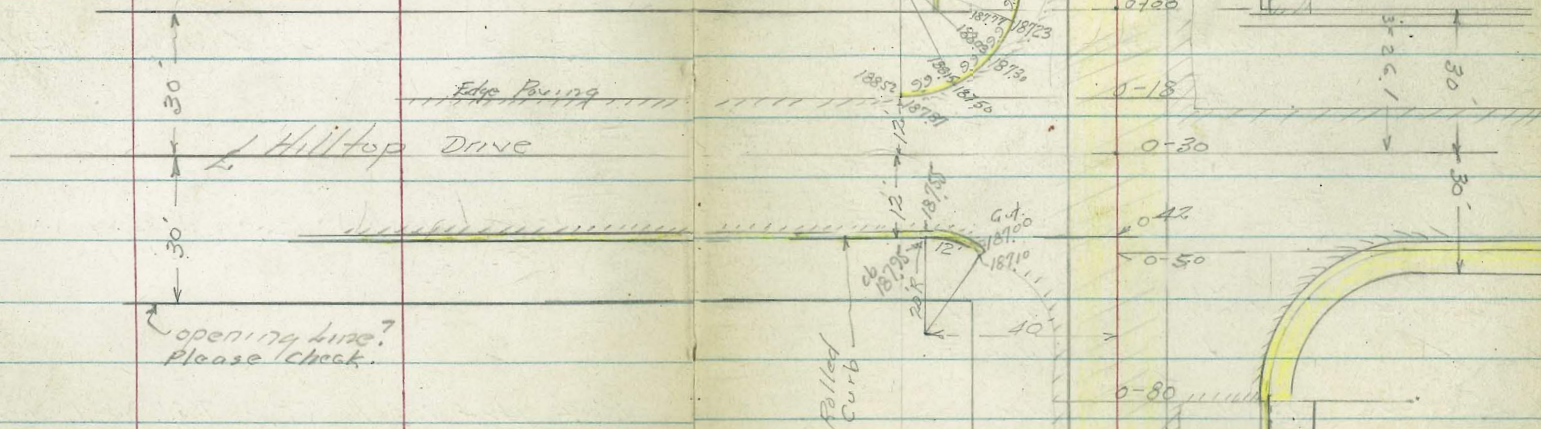
Walker  
Pope  
Oltman  
Olson  
4-14-54

MO 62,366

Edge of Existing  
Concrete Paving  
Now Topped  
With 6" of  
Concrete  
and Top Extends  
About 3' beyond  
Concrete Pav.

4' west of paving 4" HP

262' N. of Hilltop 24" HP





(2+60) 30.3' Rt = 1/2 Pole #453556-H

7+83 = 1/2 Pole 453559-H 30' Rt

6+98 = 1/2 Tel MH 37.6' Rt 2.6 dia. Round

6+38 = 1/2 Pole #453555-H 30.3' Rt

2+88.5 = 1/2 Pole #453587-H 30' Rt

2+63 = 1/2 2'x3' Meter Box 29.7' Rt

2+61 = 1/2 10" Gas Valve Cover 30' Rt

1+09 = 1/2 Pole #453558-H 30.5' Rt

0+77 = End chain wire fence 27.6' Rt

0+28.5 = 1/2 36" Date Pole 30' Rt

0+16.5 = 1/2 22'x22' Conc. (Gas MH) 13.8' Lt = L

0+16 = 1/2 Pole #591804-H 29.3' Rt

0+10 = 1/2 Fire Hyd 21.6' Rt

0+04 = 1/2 Pole Anchor 29.3' Rt

0-21 24' Rt. Water Valve

0-25 12' Rt = 1/2 Water Valve

0-26 17' Lt.

0

19676

37.6

Rim MH

Tel.

18702

138

1/2 Rim

Gas MH

18673

Rim

MH



47TH

ST.

Lt.

L

RT

58

0-30

18886

74  
Pov.

18855

62  
Pov.

18762

40  
Pov.

18681

19  
Pov.

18668

16  
Gut

18678

10  
Pov.

18657

Pov.

18658

10  
Pov.

0-42

18926

80  
cb.

18892

80  
Gut

18877

62  
Top

18850

62  
Gut

18795

40  
cb

18765

40  
Gut

18675

19  
Pov.

18659

16  
Valley

18670

10  
Pov.

18677

Pov.

18669

10  
Pov.

0-50

18655

15  
Pov.

18661

10

18671

10

18662

10

0-57 =  $\frac{1}{2}$  Fire Alarm Pole # P-176839 22' Lt.

18635

15  
F.P.

18645

10

18659

10

18645

10  
Pov.

0-60

0+80

18584

15  
F.P.

18599

10  
Pov.

18612

10  
Pov.

18595

30.7  
Lip

18565

32  
Gut

18556

32

18610

32  
cb.

0-130'

18443

15  
EP

18478

10

18457

30.7  
Lip

18432

32  
Gut

18417

32

18419

32  
cb.B.M. 2d + 7K 2. 47th & Hilltop 18681  
P-48



47<sup>th</sup> St.

0+32

19125  
30  
on Conc.  
Wall

0+21 = Top steps

19124  
30  
Conc.  
Landmark

0+17 = Beg. Conc. Steps on Lt.

18880  
30

0+01 Beg. Conc. Wall

19029 18884  
36 36  
Top on  
Wall Ground

0+00

18711 18691 18697 18705 1869 18688 1867 18754 18285  
208 15 10 10 12 17 239 30  
Gut F.P. Ground Conc.  
at curb Return Landmark  
of Step

0-18

18864 18837 18852 18787 18705 18682 18687 18694  
70 63 45 45 17 10  
Fov. Fov. cb Gut. Gut.  
F.C. F.C. (Valley)

0-20

18694 18687 18672 18659  
10 15 30



47TH

1750 Cont.

18762	18725	190.0
36.6	45	48.6
Edge Walk		

1750

18748	18752	18765	18749	18729	1869	18763
13	10		10	12	18	31.6
E.P.				E.P.		Walk

1700 Cont.

120.0	120.3
45	48.6
Ground at Panch.	

1700

18724	18734	18745	18730	18724	18748	18752
14	10		10	15	31.6	32.6
E.P.				E.P.	Edge Walk	Cont.

T.P.

18747

0+77

18734	18711	18055	18779	19056
16		31.6	40.7	48.6
E.P.		Cont. Walk		Board Panch

0+66

18728	18695	1914	19143	19113
	16	27	30	39
			Edge Walk	39-45.6 K
				190.94 38 Edge Walk H.C.

0+50

18716	18720	18723	18716	18692	1868	1907	19100	19102
14	10		10	17	18	27	30	31
E.P.				E.P.				Walk H.C.



4714 Ft.

3+50

15808	18817	18822	18808	18778	1881	1885	1904
14	10		10	18	30	42	48.2
EP				EP			Ground at Fench

3+00

18792	18800	18814	18804	18762	1880	1881	1903
14	10		10	18	30	39	48.8
EP				EP			Ground at Fench

2+57.5 = End Exist. Conc. Walk on Ft.

18802	18809
31.6	40.2
Edge Walk	Edge Walk

2+50

192.54  
48.6  
Top step  
= Fench

2+50

18777	18781	18727	18783	18748	18722	18813
14	10		10	18	31.7	40.2
EP				EP	Edge Walk Conc.	Landing Step Conc.

2+00 Cont.

18784	1882	1901	1903
36.7	39.5	44	48.6
Edge Walk			

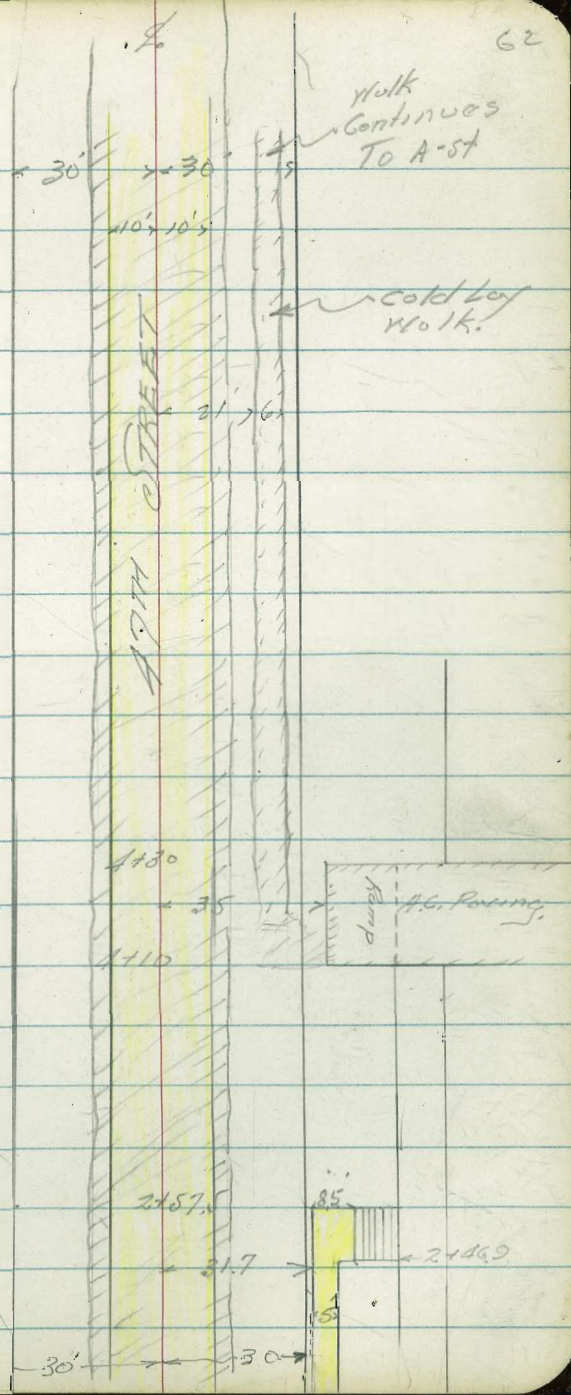
2+00

18766	18768	18782	18765	18728	18721
13	10		10	18	31.7
EP					Edge Walk



17th St

62





47TH St.

14 1 Rt. 63

189.2  
47.5

5+50

188.84 188.86 189.01 188.92 188.81 189.60 189.5  
14 10 15 22 30  
E.P. E.P.

5+00

188.59 188.69 188.79 188.68 188.64 189.2 189.0  
14 10 16 22 30  
E.P. E.P.

189.3  
57.5

4+60 = 4 Tel. Pole #453556H 30' Rt.

189.9 188.5  
57.5 31

4+50

188.43 188.53 188.72 188.60 188.25 189.6 188.6  
14 10 17 22 30  
E.P. E.P.

4+30 = End Pav. Ramp to School Yard

188.48 188.70 190.58 190.72  
35 41.5 48 57.5  
Pav. Sk. Sk. Pav.

4+10

188.42 188.77 190.45 190.61  
35 41.5 48 60  
Pav. Pav. Sk. Pav.

4+00

188.20 188.29 188.46 188.26 187.87 188.2 188.6 188.4  
14 10 17 30 42 48.3  
E.P. E.P.

TP

188.26



47th Street

8+50

19691	19705	19712	19696	19678	19666	1971	1971
14	10		10	15	18	20	27
EP				EP			

1968	1962	1960
30	34	50

8+00

19517	19536	19555	19541	19517	1950	1954	1954
5	10		10	18	18	19	27
EP							

8+00	1952	1944	1937
	30	37	50

7+50 Cont.

1939	1935	1928	1929
27	30	33	50

7+50

19367	19381	19397	19380	19352	1934	1939
15	10		10	14	17	19
EP				EP		

7+00

19204	19220	19234	19216	19195	1925	1925
15	10		10	15	23	28
EP				EP		
					1920	1917
					30	50

6+50

19047	19061	19075	19056	19043	1912	1911
14	10		10	14	22	30
EP				EP		
						1917
						50

TR

19076

6+00

18923	18928	18949	18936	18940	1903	1902
13	10		10	15	22	30
EP				EP		

1903
51.5



47th St.

L1

L

R1

W

0.04 Diff.

L A-St 4726

210.62

chk & Revolving FB  $\frac{1172-12197.25}{73}$

210.58

206.92

T.P

198.80

9+00 Cont.

1988 128.2 1987 1981 1977  
21 27 30 36 50

9+00

1985/ 1986/ 1987/ 1986/ 1983/ 1983  
15 10 10 15 18  
EP F.R



Proposed drain connection in  
 Lot 29, Ex. Mission Lands  
 See sketch page 47

Levels checked into Nly end exist 30" RCP  
 under Hilltop Drive - see page 54 -

1+06<sup>e</sup> = Chisel 'x' on top Sly end exist 30" RCP

LT = Wly

RT = eLy - 66

149.1	145.3	145.68	145.3	145.3	147.5
3 <sup>6</sup>	7 <sup>4</sup>	6 <sup>7</sup>	7 <sup>4</sup>	7 <sup>4</sup>	5 <sup>2</sup>
10 on fill under const	3	1 E 30" RCP	2 ground	3	10 on fill under const

Under Construction

0+75<sup>-</sup> - 10<sup>e</sup> LT = present toe slope

149.7	145.3	145.3	145.1	146.2
3 <sup>0</sup>	7 <sup>4</sup>	7 <sup>4</sup>	7 <sup>6</sup>	6 <sup>5</sup>
20 on slope	10 Toe slope		10	20

0+50

145.7	145.8	145.5
7 <sup>0</sup>	6 <sup>9</sup>	7 <sup>2</sup>
10		10

0+25

145.8	145.5	144.5
6 <sup>9</sup>	7 <sup>2</sup>	8 <sup>2</sup>
10		21 Low Point in creek

0+00 = Chisel 'x' on top Nly end 30" RCP under Hilltop

146.6	143.32	144.3
6 <sup>1</sup>	9 <sup>35</sup>	8 <sup>4</sup>
10 on fill Hilltop	1 E 30" RCP	10 in creek bottom

152.67 x

TP, 6.61 152.67 13.41 146.06

on chisel 'x' 0+00

BM 2.42 159.47 157.05

04 2" x 12" RW Hub sta. 13+51.36 - page 54



Roberts  
Rorer  
Moore  
Morales  
7-22-55  
W.O. #32651

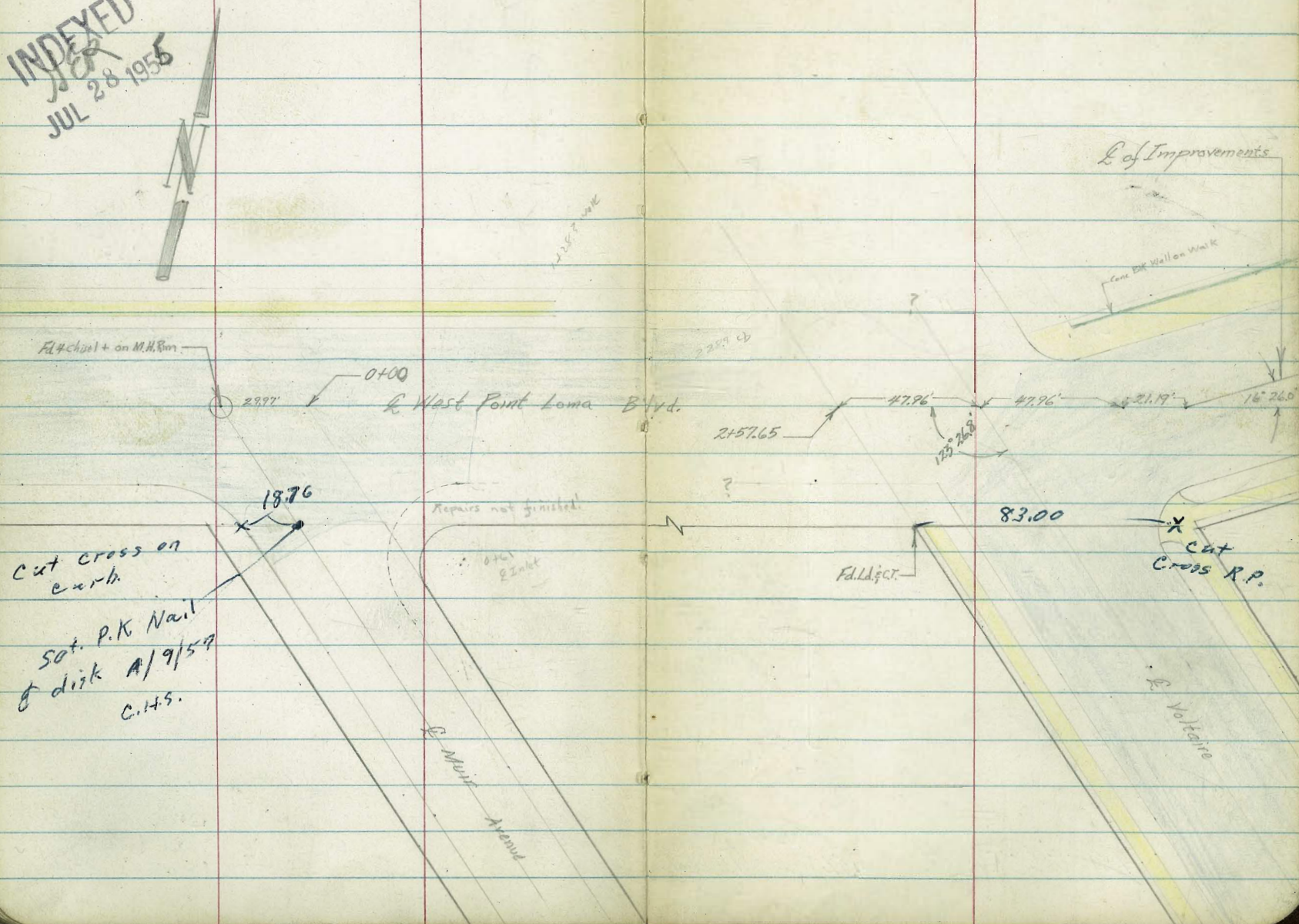
X-Section West Point Loma Blvd.

Muir to Voltaire

See Page 26  
See FB2363 pg 13

For ADD: Notes See pg 72

INDEXED  
JUL 28 1955





Cont'd From Page 67

0+61

opposite of 3<sup>rd</sup> curb inlets

	+0.83	+0.01	+0.75	+0.89	+0.71	-0.02	+0.81	+1.6	+2.1
Drive	470	552	478	414	482	555	472	39	34
26	26	13		13	26	26	26	40	50
cb	GRATE				GRATE	cb			

0+50

	+0.38	+0.76	+0.87	+0.68	+1.34	
Drive	515	477	416	485	419	Repair Area
26	26	13		13	22	
cb	cut					

0+00

Nly line of Muir (section 90° to E)

	+0.47	+0.81	+0.95	+0.75	<del>0.89</del>	+0.71	+0.67
Drive	516	472	458	478	504	482	426
26	26	13		15	26	40	50
cb	cut						

0+00

Nly line of Muir

	+0.95	+0.51	+0.87	+0.95	+0.77	+0.44	
Drive	458	502	466	458	481	509	Repair area
31	31	15		17	31		
cb	cut						

0-12.3

Nly Curb Line Muir

Sections Parallel to line of Muir

	+0.58	+0.93	+0.78	+0.83	+0.50	+0.54	+1.02
Drive	485	460	455	470	533	477	451
31	31	14		15	28	37	37
cb	cut				cut	cb	

curb grate set to base

0-29.97

E Muir

	+0.66	+0.93	+1.00	+0.96	+0.63	+0.52	+0.68	+0.66	+0.8
Drive	487	460	453	457	470	501	485	487	47
31	31	16		12	31	37	41	51	100
cb	cut							44	26

B/M

4.01 5.53A

NEBP  
152<sup>nd</sup> W. W. Lamm Blvd.

5.53A



1+48 35° Lt & 175' conc slab

+1.91  
372 4.07  
45 35  
conc conc

1+39.5 35° Rt to N.W. Corner parking ramp.

+1.30  
423  
35  
conc

1+343 28° Lt NE P. Pole # 5160  
N.E. = NEAR EDGE

1+28.3 Lt End conc walk

+1.48 +1.16 +1.17 +0.71  
425 437 441 482  
30 30 26 26  
walk walk cb cut

1+00

+0.54 +0.94 +1.11 +1.0 +0.9 +1.118 +1.50  
Drive 499 459 442 415 416 435 403  
26 26 13 13 28 35 40  
cb cut conc conc

0+97 49° Rt to SE corner park. Ramp

+2.10  
343  
495  
conc

0+88 35° Lt begin conc parking ramp (SW Corner)

+1.21  
432  
351  
conc

0+64 End A.C. Paving on Right half.

+0.88 +0.15 +0.74 +0.90 +0.77 +0.20 +1.0 +2.1 +2.6  
465 538 479 463 481 533 45 34 29  
26 26 13 13 235 29 40 50  
cb cut



Cont'd From Page 59

Lt £ Rt 70

2+57.65 Sly Line of Voltaire

	+1.5	+2.5	+1.3	+1.5	+1.0	+1.9	+2.4	+4.1
	44	44	56	54	59	50	45	28
	50	40	22		22	25	40	50

T.P. 5.40 6.92A 4.01 1.52

6.92A

2+28.9 End Good H. Paving  
End Curb on left.

	+1.5	+1.4	+1.53	+1.11	+1.56	+1.59	+0.9	+2.2	+2.4	+2.5
	41	42	406	441	397	394	46	33	31	30
	50	40	26 cb	26 Gut	13		16	30	40	50

2+18 35 Lt 21' conc slab

	-1.84	-1.70
	369	383
	45 conc	35 conc

2+00

	+1.8	+1.6	+1.48	+0.98	+1.42	+1.58	+0.8	+2.4	+2.6
	37	39	405	458	411	395	47	31	29
	50	40	26 cb	26 Gut	13		18	40	50

1+53 28<sup>2</sup> Lt to dead man

1+50 49<sup>4</sup> Rt to N.E. Corner parking ramp

	+1.1	+1.23	+0.79	+1.17	+1.28	+1.0	+1.3	+2.1	+2.34
	43	430	474	436	425	45	42	34	39
	35 GAD	26 cb	26 Gut	13		11	22	40	49

5.53A

5.53A



Cont'd from Page 70

checked back flat.

3+74.76 Section at Right  $\leftarrow$ s to Improvements in this block.

+1.62	+0.98	+1.48	+1.64	+1.46	+0.99	+1.16
530	594	574	528	546	593	536
26	26	13		13	26	26
cb	Gut				Gut	cb

3+53.57 Nly Line Voltaire

+1.63	+0.97	+1.17	+1.54	+0.81	+1.56
529	600	545	538	611	536
210	210	13	332	332	
cb	Gut		Gut	cb	

{ 10'  $\leftarrow$  to N.E. 35' X 2' Inlet

3+36.7 Nly curb Line Voltaire

+1.57	+1.57	+0.94	+0.80	+1.18	+1.57	+0.92	+1.11	+1.45	+1.20			
12	20	45	540	598	612	574	535	578	531	543	562	Out
60	48	31	31	31	104		202	47	53	53	105	105
		GRD	cb	Gut	GRATE				Gut	cb	Gut	cb

did not dig further for curb

3+05.65 E Voltaire (Edge A.C. Paving)

+2.6	+2.9	+1.6	+1.40	+1.52	+1.77	+2.10
43	40	53	532	540	520	482
60	48	24		22	48	98

2+74.5 Sly Curb Line of Voltaire

+2.9	+3.1	+1.4	+1.5	+1.2	+1.7	+1.27	+0.78	+1.60
40	38	55	54	57	57	575	614	532
60	48	28		20	312	312	53	55
					GRD	cb	GRATE	cb

Angle Point  
32 Grate Inlet

2+57.65 Sly Line of Voltaire

+1.5	+1.4	+1.7	+1.5	+1.4	+2.3	+1.9	+1.9
54	55	57	54	55	46	5.0	5.0
60	48	30		29	32	48	60

6.92  $\pi$

6.92  $\pi$

Everything is parallel to Voltaire Street











The image shows an open notebook with two facing pages. Both pages are cream-colored and feature light blue horizontal ruling. A vertical red margin line is present on the left side of each page. The right page has the number '14' written in the top right corner. The notebook is bound in the center, and the pages appear slightly aged with some minor discoloration and faint smudges.























148.44  
3.35  
145.09  
2.72  
142.37



