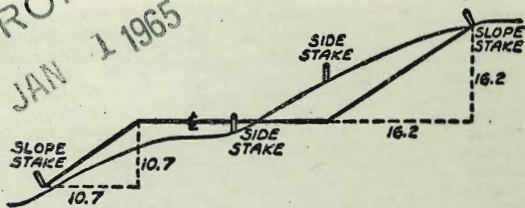


MICROFILMED
JAN 1 1965

2148



DISTANCES FROM SIDE STAKES FOR CROSS-SECTIONING
SLOPE 1 TO 1, ROADWAY OF ANY WIDTH

	0	.1	.2	.3	.4	.5	.6	.7	.8	.9	
0	0.00	0.10	0.20	0.30	0.40	0.50	0.60	0.70	0.80	0.90	0
1	1.00	1.10	1.20	1.30	1.40	1.50	1.60	1.70	1.80	1.90	1
2	2.00	2.10	2.20	2.30	2.40	2.50	2.60	2.70	2.80	2.90	2
3	3.00	3.10	3.20	3.30	3.40	3.50	3.60	3.70	3.80	3.90	3
4	4.00	4.10	4.20	4.30	4.40	4.50	4.60	4.70	4.80	4.90	4
5	5.00	5.10	5.20	5.30	5.40	5.50	5.60	5.70	5.80	5.90	5
6	6.00	6.10	6.20	6.30	6.40	6.50	6.60	6.70	6.80	6.90	6
7	7.00	7.10	7.20	7.30	7.40	7.50	7.60	7.70	7.80	7.90	7
8	8.00	8.10	8.20	8.30	8.40	8.50	8.60	8.70	8.80	8.90	8
9	9.00	9.10	9.20	9.30	9.40	9.50	9.60	9.70	9.80	9.90	9
10	10.00	10.10	10.20	10.30	10.40	10.50	10.60	10.70	10.80	10.90	10
11	11.00	11.10	11.20	11.30	11.40	11.50	11.60	11.70	11.80	11.90	11
12	12.00	12.10	12.20	12.30	12.40	12.50	12.60	12.70	12.80	12.90	12
13	13.00	13.10	13.20	13.30	13.40	13.50	13.60	13.70	13.80	13.90	13
14	14.00	14.10	14.20	14.30	14.40	14.50	14.60	14.70	14.80	14.90	14
15	15.00	15.10	15.20	15.30	15.40	15.50	15.60	15.70	15.80	15.90	15
16	16.00	16.10	16.20	16.30	16.40	16.50	16.60	16.70	16.80	16.90	16
17	17.00	17.10	17.20	17.30	17.40	17.50	17.60	17.70	17.80	17.90	17
18	18.00	18.10	18.20	18.30	18.40	18.50	18.60	18.70	18.80	18.90	18
19	19.00	19.10	19.20	19.30	19.40	19.50	19.60	19.70	19.80	19.90	19
20	20.00	20.10	20.20	20.30	20.40	20.50	20.60	20.70	20.80	20.90	20
21	21.00	21.10	21.20	21.30	21.40	21.50	21.60	21.70	21.80	21.90	21
22	22.00	22.10	22.20	22.30	22.40	22.50	22.60	22.70	22.80	22.90	22
23	23.00	23.10	23.20	23.30	23.40	23.50	23.60	23.70	23.80	23.90	23
24	24.00	24.10	24.20	24.30	24.40	24.50	24.60	24.70	24.80	24.90	24
25	25.00	25.10	25.20	25.30	25.40	25.50	25.60	25.70	25.80	25.90	25
26	26.00	26.10	26.20	26.30	26.40	26.50	26.60	26.70	26.80	26.90	26
27	27.00	27.10	27.20	27.30	27.40	27.50	27.60	27.70	27.80	27.90	27
28	28.00	28.10	28.20	28.30	28.40	28.50	28.60	28.70	28.80	28.90	28
29	29.00	29.10	29.20	29.30	29.40	29.50	29.60	29.70	29.80	29.90	29
30	30.00	30.10	30.20	30.30	30.40	30.50	30.60	30.70	30.80	30.90	30
31	31.00	31.10	31.20	31.30	31.40	31.50	31.60	31.70	31.80	31.90	31
32	32.00	32.10	32.20	32.30	32.40	32.50	32.60	32.70	32.80	32.90	32
33	33.00	33.10	33.20	33.30	33.40	33.50	33.60	33.70	33.80	33.90	33
34	34.00	34.10	34.20	34.30	34.40	34.50	34.60	34.70	34.80	34.90	34
35	35.00	35.10	35.20	35.30	35.40	35.50	35.60	35.70	35.80	35.90	35
36	36.00	36.10	36.20	36.30	36.40	36.50	36.60	36.70	36.80	36.90	36
37	37.00	37.10	37.20	37.30	37.40	37.50	37.60	37.70	37.80	37.90	37
38	38.00	38.10	38.20	38.30	38.40	38.50	38.60	38.70	38.80	38.90	38
39	39.00	39.10	39.20	39.30	39.40	39.50	39.60	39.70	39.80	39.90	39
40	40.00	40.10	40.20	40.30	40.40	40.50	40.60	40.70	40.80	40.90	40
41	41.00	41.10	41.20	41.30	41.40	41.50	41.60	41.70	41.80	41.90	41
42	42.00	42.10	42.20	42.30	42.40	42.50	42.60	42.70	42.80	42.90	42
43	43.00	43.10	43.20	43.30	43.40	43.50	43.60	43.70	43.80	43.90	43
44	44.00	44.10	44.20	44.30	44.40	44.50	44.60	44.70	44.80	44.90	44
45	45.00	45.10	45.20	45.30	45.40	45.50	45.60	45.70	45.80	45.90	45
46	46.00	46.10	46.20	46.30	46.40	46.50	46.60	46.70	46.80	46.90	46
47	47.00	47.10	47.20	47.30	47.40	47.50	47.60	47.70	47.80	47.90	47
48	48.00	48.10	48.20	48.30	48.40	48.50	48.60	48.70	48.80	48.90	48
49	49.00	49.10	49.20	49.30	49.40	49.50	49.60	49.70	49.80	49.90	49
50	50.00	50.10	50.20	50.30	50.40	50.50	50.60	50.70	50.80	50.90	50

Distance of slope stake from side or shoulder stake for any width roadway, slope 1 to 1. If ground is nearly level, the cut or fill at side stake is located by the double entry method in left column and top row. The number in body of table in same row and column gives distance from side stake to slope stake. If ground is not level estimate the difference in elevation between the side stake and slope stake, lower target by this amount if cut, elevate if fill. Add this amount to cut or fill and find distance in table. Set up rod at this point, and line of sight should cut target. If it does not make the slight adjustment necessary.

TABLE XIII—CORRECTIONS FOR TANGENTS AND EXTERNALS

These corrections are to be added to the approximate values, found by dividing the tangent, or external, for a 1° curve (Table VIII) by the degree of curve, in order to obtain the true tangents, or externals. Intermediate values may be obtained by interpolation.

FOR TANGENTS ADD

Central Angle	DEGREE OF CURVE													
	5°	10°	15°	20°	25°	30°	35°	40°	45°	50°	55°	60°	65°	70°
10°	.03	.06	.09	.13	.16	.19	.22	.25	.28	.31	.34	.38	.42	.46
15°	.04	.10	.14	.19	.24	.29	.34	.39	.45	.51	.53	.58	.63	.68
20°	.06	.13	.19	.26	.32	.39	.45	.51	.58	.65	.72	.79	.84	.90
25°	.08	.16	.24	.33	.40	.49	.58	.67	.75	.83	.90	.99	1.06	1.14
30°	.10	.19	.29	.39	.49	.59	.69	.79	.89	.99	1.09	1.20	1.29	1.39
35°	.11	.22	.34	.47	.58	.69	.79	.81	.92	1.04	1.29	1.42	1.54	1.66
40°	.13	.26	.40	.53	.67	.80	.93	1.06	1.20	1.34	1.49	1.64	1.79	1.94
45°	.15	.30	.44	.60	.76	.91	1.06	1.21	1.37	1.52	1.70	1.87	2.04	2.21
50°	.17	.34	.51	.68	.85	1.02	1.19	1.36	1.54	1.72	1.91	2.10	2.29	2.48
55°	.19	.38	.57	.76	.95	1.14	1.32	1.52	1.72	1.92	2.14	2.35	2.56	2.77
60°	.21	.42	.63	.84	1.05	1.27	1.49	1.71	1.94	2.17	2.38	2.60	2.83	3.07
65°	.23	.46	.69	.93	1.16	1.40	1.64	1.88	2.13	2.38	2.63	2.88	3.13	3.39
70°	.25	.51	.76	1.02	1.28	1.54	1.80	2.06	2.33	2.60	2.88	3.16	3.44	3.72
75°	.27	.56	.83	1.12	1.40	1.69	1.98	2.27	2.57	2.87	3.16	3.47	3.78	4.09
80°	.30	.61	.91	1.22	1.53	1.84	2.15	2.46	2.78	3.10	3.44	3.78	4.12	4.46
85°	.33	.66	1.00	1.33	1.68	2.02	2.36	2.70	3.05	3.40	3.77	4.14	4.55	4.89
90°	.36	.72	1.09	1.45	1.83	2.20	2.57	2.94	3.32	3.70	4.10	4.50	4.91	5.32
95°	.39	.79	1.19	1.55	2.00	2.40	2.80	3.20	3.61	4.02	4.40	4.98	5.38	5.83
100°	.43	.86	1.30	1.74	2.18	2.62	3.06	3.50	3.95	4.40	4.88	5.37	5.85	6.34
110°	.51	1.03	1.56	2.08	2.61	3.14	3.67	4.21	4.76	5.31	5.86	6.43	7.01	7.60
120°	.62	1.25	1.93	2.52	3.16	3.81	4.45	5.11	5.77	6.44	7.12	7.80	8.50	9.22

FOR EXTERNALS ADD

Central Angle	DEGREE OF CURVE													
	5°	10°	15°	20°	25°	30°	35°	40°	45°	50°	55°	60°	65°	70°
10°	.001	.003	.004	.006	.007	.008	.009	.011	.012	.014	.015	.017	.018	.020
15°	.003	.007	.010	.014	.018	.023	.027	.029	.032	.035	.039	.043	.047	.051
20°	.006	.011	.017	.022	.028	.034	.038	.045	.051	.057	.063	.070	.076	.083
25°	.009	.018	.027	.036	.046	.056	.065	.074	.083	.093	.106	.120	.127	.135
30°	.013	.025	.038	.051	.065	.078	.090	.103	.116	.129	.149	.170	.179	.188
35°	.018	.035	.054	.072	.086	.109	.131	.153	.175	.197	.213	.230	.247	.264
40°	.023	.046	.070	.093	.117	.141	.172	.203	.234	.265	.277	.290	.315	.341
45°	.030	.060	.093	.119	.153	.184	.216	.254	.289	.325	.351	.378	.411	.445
50°	.037	.075	.116	.151	.189	.227	.266	.305	.345	.384	.425	.467	.508	.550
55°	.046	.093	.142	.188	.236	.283	.332	.381	.420	.479	.530	.582	.641	.700
60°	.056	.112	.168	.225	.283	.340	.398	.457	.516	.575	.636	.697	.774	.851
65°	.067	.135	.204	.273	.343	.412	.483	.554	.625	.697	.711	.845	.922	1.01
70°	.080	.159	.240	.321	.403	.485	.568	.652	.735	.819	.906	.994	1.08	1.17
75°	.095	.182	.286	.383	.480	.578	.678	.777	.877	.977	1.07	1.18	1.29	1.39
80°	.110	.220	.332	.445	.558	.671	.787	.903	1.02	1.13	1.25	1.38	1.50	1.62
85°	.128	.259	.391	.524	.657	.790	.926	1.06	1.20	1.34	1.47	1.62	1.76	1.91
90°	.149	.299	.450	.603	.756	.910	1.07	1.22	1.38	1.54	1.70	1.87	2.03	2.20
95°	.174	.350	.522	.706	.885	1.06	1.25	1.43	1.62	1.80	1.99	2.18	2.38	2.58
100°	.200	.401	.604	.809	1.01	1.22	1.43	1.64	1.85	2.06	2.28	2.50	2.73	2.96
110°	.268	.536	.806	1.08	1.35	1.63	1.91	2.20	2.48	2.76	3.05	3.35	3.66	3.96
120°	.360	.721	1.08	1.45	1.82	2.19	2.57	2.95	3.33	3.72	4.11	4.50	4.91	5.32

INDEX

Pages

R.O.F.W. OF IMPERIAL AVE TO 69TH	MERLIN DR	1 to 33
X-SEC Walruska Drive		34-38
Recheck measurements,	52nd & Orange	39
X-SECT. ALLEY Bk 12, Sunset cliffs		41
E.S.D. Recreation, Colina Del Sol.		59-66
Colina Del Sol Golf Course Fence		67-68

4+43.97 = Fd. Ld + c.t. shown in T.P. 12 - P. 29

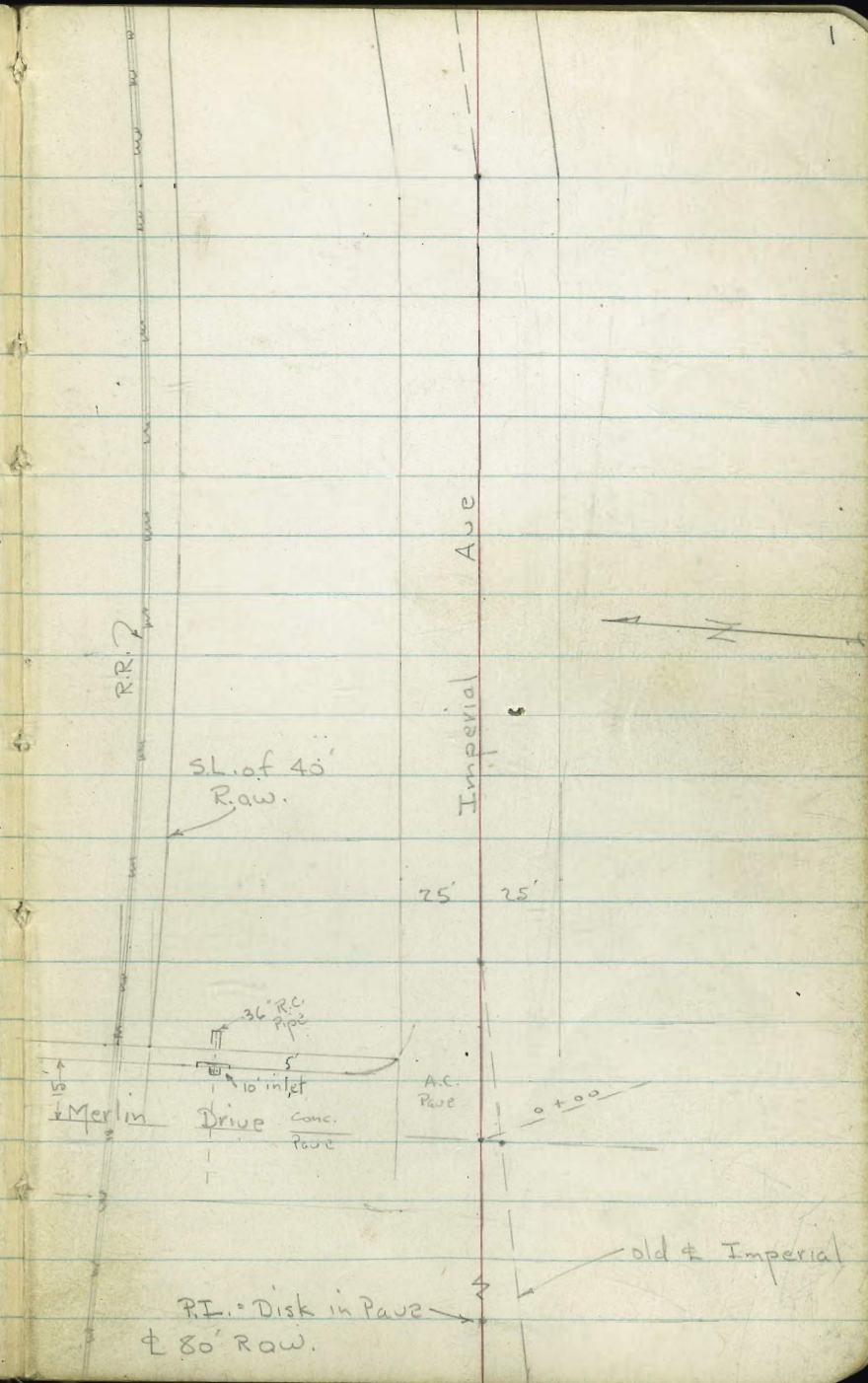
Ang. 7° Lt.

IMPROVED
LOW
OCT 4 1951

0+34.59 = spike - Book 1702 - P. 74

0+00 = ± Merlin + ± Imperial (New 80' Row.)

See T.P. Book 12 + T.P. Sheets - B. 1702 - P. 74
Plan. 7388-L for Imperial to W.



Tang. ahead to E.L. of 63rd
To the S.

To Mon. on S.L. Akins + ϕ
of 61st

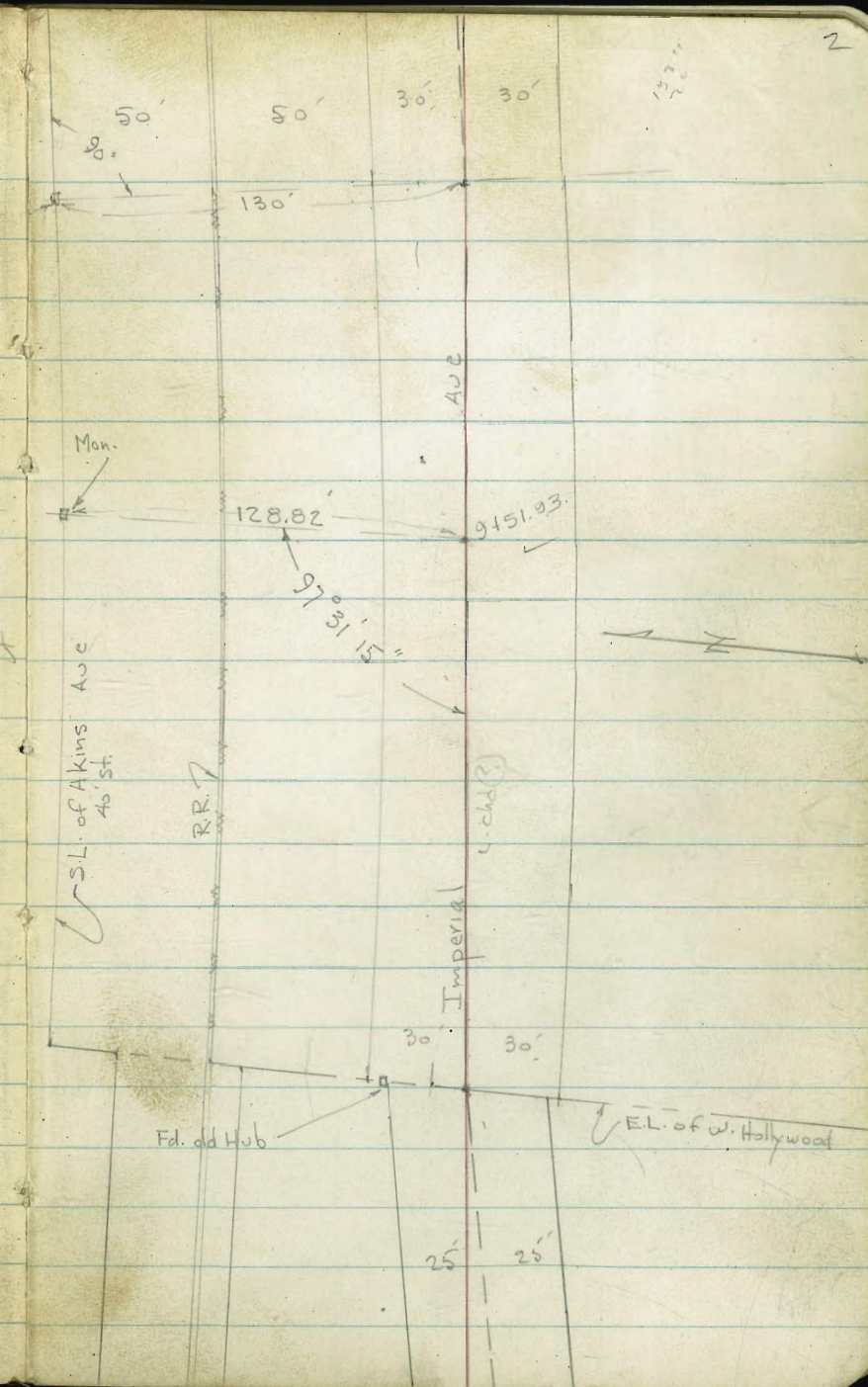
11+14.19 = Nail in pave

Ang. $1^{\circ} 37' 30''$ Lt.

9+51.93 = ϕ of 60th Produced. = Nail

Note: ϕ is Tang. Thru Curve - Some adjustment
may be needed for final Row. after Study
of Sub. Maps.

7+12.86 spike - 25.63 from ϕ of old Hub.
on N.L. To W. (on E.L. West Hollywood)
Ang. $1^{\circ} 20' 15''$ Rt.



Cont. on P. 15

27+32.54 = E. 7' 63rd Prod.

26+44.43 = Nail = E. 63rd from N. Prod.

22+04.37 = Nail = E. 62nd Prod.

→ E 63rd
Hub.

E 62nd

Mon.

Mon

Tang. straight
Thru

79° 48' 30"
63rd st

81° 45' 15"

81° 44' 45"

23.27

131.35

131.46

S.L. of Akins Ave

R.R. Tracks

50' 50'

30' 30'

INDEXED

25
02 4

Req. X-Sections of Row from # of

Imperial to 100' N.

Lt. = N.

AUG 10 1951

⊕

5553

W.O. (20006) 20884 7-16-51 F.O.

Sect. Normal

0+35.6 - 84 Lt = ⊕ inlet of 36" RC Culvert.

160.37	154.11	162.5	161.5	162.1	161.54	161.57	161.41
7.20	134.6	5.1	6.1	5.5	6.03	6.00	6.16
110.1	84	63	50	25	21	10	
S. Rail	I.E. of Pipe				edge A.C.		

0+20 - 52 Lt. at edge of walk = ⊕ Tel pole # D36470T

0+20 = E.L. Merlin - Sect. along E.L. = edge walk

160.31	160.10	160.47	161.38	161.94	161.37	161.38	161.57	161.35
7.26	7.47	7.10	6.19	5.63	6.20	6.21	6.00	6.22
110.2	79.2	62.3	42.5	27	27	25	10	
S. Rail	Req. walk	end walk		Top end bb.	gut.			

0+15 - Cont.

160.49	159.97	160.33
7.08	7.60	7.24
143	143	110.5 = S. Rail
end Inlet	Top of Bridge	gut.

0+15 = E.cb. - Sect. along cb.

160.21	159.34	159.25	160.27	159.34	160.38	159.95	161.35	160.76	161.40	161.56	161.34
7.36	8.23	8.32	7.30	8.23	7.19	7.62	6.22	6.81	6.17	6.01	6.23
90.6	90.6	85.4	79.5	79.5	62.6	62.6		42.5	25	10	
Top end Inlet	gut.	grate	Top end Inlet + Req. walk	gut.	end walk	Top gut.	Top P.C.	gut.			

0+00 = ⊕ Merlin - Sect. along ⊕ of Merlin

160.62	160.36	160.33	159.96	160.12	160.97	161.49	161.25
6.95	7.21	7.24	7.61	7.45	6.60	6.08	6.32
155.5	140	110.8	86	75	42	25	10
S. end bridge		S. Rail					

B.M. 629 167.57

161.28 = B.P. in Bridge Merlin - N. of Imperial

Imp.

3+50

163.67 Lt. 159.1 156.7
 5.79 Lt. 10.4 10.8 6.7 8.7 7.99 162.18
 102.7 88 75 50 25 15
 S. Rail edge

3+00

163.00 159.0 157.9 160.2 158.9 161.1 161.61 162.07
 6.46 10.5 11.6 9.3 10.6 8.4 7.85 7.39
 102.8 90 75 60 35 25 14
 S. Rail edge

2+50

162.42 157.5 157.3 164.1 162.4 161.49 162.00
 7.04 12.0 12.2 5.4 7.1 7.97 7.46
 103.7 87 70 44 25 14
 S. Rail edge

2+11.5 - 16' H. = ± water MH 8.10 on Riv

T.P. 8.06 169.46 6.17 161.40 169.46

2+00

161.69 156.0 155.8 159.9 162.2 161.0 161.19 161.88
 5.88 11.6 11.8 7.7 4.4 6.6 6.38 5.69
 104.9 86 80 55 40 25 16
 S. Rail edge

1+95 - 70.4 H. = ± P. pole # 70 146

1+50

161.29 157.8 156.8 164.1 161.5 161.29 161.61 161.73
 6.28 9.8 10.8 3.5 6.1 6.28 5.96 5.84
 106.2 94 80 50 25 21 10
 S. rail Toe edge AC.

1+00

160.95 157.7 156.4 164.7 162.5 161.75 161.60 161.63
 6.62 9.9 11.2 2.9 5.1 5.82 5.97 5.94
 107.8 96 85 50 25 22 10
 S. rail Toe edge

0+86 - 495 H. = ± Gray Pole # 548345-H

0+60

160.53 156.8 152.2 164.3 162.3 161.71 161.60 161.54
 7.04 10.9 10.4 3.3 5.3 5.86 5.97 6.03
 109.4 97 75 50 25 22 10
 S. Rail Toe edge

7+00

168.13	163.5	LT	162.5	164.7	165.04	165.64
6.55	11.2		12.2	10.0	9.64	9.04
81	65		45	25	16	
S. Rail					edge	

6+50

167.45	163.1		162.2	164.0	164.23	164.58
7.23	11.6		11.5	10.7	10.45	10.10
84.8	65		45	25	16.3	
S. Rail	Toe				edge	

T.P. 11.46 174.68 6.24 163.22

174.68

6+00

166.83	161.8	163.3	163.3	163.55	163.89
2.63	7.7	6.2	6.2	5.91	5.57
98.7	73	50	25	15.5	
S. Rail				edge	

5+50

166.05	162.3	161.9	162.4	162.81	163.34
3.41	7.2	7.6	7.1	6.65	6.12
93.3	80	45	25	16	
S. Rail	Toe			edge	

5+00

165.35	161.4	160.8	161.3	161.7	162.11	162.25
4.11	8.1	8.7	8.2	7.8	7.35	7.1
98	85	65	45	25	17	
S. Rail					edge	

4+61.5 - 74' LT = t. P. pole # 70 148

4+43.97 - Ang. Pt. - Sect. on split

164.70	159.4	160.8	159.9	161.4	161.79	162.39
4.76	10.1	8.7	9.6	9.1	7.67	7.07
103.1	88	65	45	25	19.4	
S. Rail	Toe				edge	

4+00

164.28	161.7	159.9	160.0	160.9	161.60	162.31
5.18	7.8	9.6	9.5	8.6	7.86	7.15
102.6	90	75	50	25	17	
S. Rail	Toe				edge	

Imp

Lt.

7

9+36 - 31.3 Lt. = E P. pole # 70151 = B.M. El. 173.87

9+35

171.88
6.94 171.8 172.6 172.11 172.35
75 6.8 6.0 6.51 6.27
S. Rail 50 30 26
edge

9+00

171.20 170.2 169.5 170.9 170.8 170.99 171.32
7.42 8.4 9.1 7.7 7.8 7.63 7.30
75.4 70 60 50 30 20.2
S. Rail edge

8+50

170.27 168.9 167.6 168.8 169.50 169.98
8.35 9.8 11.0 9.8 9.12 8.64
76.1 60 50 30 19.3
S. Rail edge

T.P. 4.75

179.62

0.81

173.87

Imperial
= Nail in S.W. Pole - 60th 178.62

8+00

169.50 165.5 164.3 166.2 167.85 168.59
5.18 9.2 10.4 8.5 6.83 6.09
77.1 63 50 30 18.3
S. Rail edge

7+50

168.85 163.7 163.2 165.4 166.40 167.17
5.83 11.0 11.5 9.3 8.28 7.51
78.6 65 50 30 17
S. Rail edge

7+23 - 45.5 Lt. = E P. pole # 173014

7+12.86 = Ang. 1° 20' 15" Rt. - Sect. on split

166.34 165.7 162.6 161.9 165.43 166.00
6.34 12.0 12.1 9.8 9.25 8.68
80.1 60 50 25 16
S. Rail edge

174.68

Imp

Lt.

±

11 + 14.19 = Ang. 1° 37' 30" Lt. - Sect. on split.

173.80	173.0	176.1	176.8	176.9	175.7	175.91	176.19	176.43	176.19
9.33	10.1	7.0	6.3	6.2	7.4	7.22	6.94	6.70	6.94
77.5	75	65	50	35	30	25	20	10	
S. Rail						edge			

T.P. 4.74 183.13 0.23 178.39 =

spike in Pole 183.13

11+00

173.64	172.9	175.6	176.2	175.8	175.81	176.06	176.30	176.09
4.94	5.7	3.0	2.4	3.0	2.91	2.56	2.32	2.53
77.1	75	65	50	30	24.5	20	10	
S. Rail					edge			

10+50

173.06	172.2	174.7	175.3	175.0	174.52	175.12	175.56	175.43
5.56	6.4	3.9	3.3	3.6	4.10	3.50	3.06	3.19
76.1	70	65	50	30	29	20	10	
S. Rail					edge			

10+00

base - 2.5' High

9+97 - 32.5' Lt. ± 3.5 x 2.5 oblong Conc. Bus Stop

172.55	171.5	172.4	173.3	173.6	173.63	173.97	174.38	174.19
6.07	7.1	6.2	5.3	5.0	4.99	4.65	4.20	4.43
75.4	70	68	50	30	28.5	20	10	
S. Rail					edge			

9+80 - sect. at 90°

172.37	173.04	173.44	173.66	173.68
6.25	5.58	5.18	4.96	4.94
75.2	50	30	15	
S. Rail	E. edge			

9+51.93 = ± ± 60th Produced - Roadway across

171.3	172.09	172.11	172.74	172.79	172.93	172.85
7.3	6.53	6.51	5.88	5.83	5.69	5.77
100	80.5	75.6	50	30	15	
	N. Rail	S. Rail				

Tracks - Rough Cold lay pave - from Tracks ± Imp. Pave. - Sect. along ± of 60th

178.62

Imp

14+63 - 32.6 Lt. = P. pole # 70154

14+50

17822	17617	1769	1787	17915	17962	17974	17963
4.91	6.4	6.2	4.4	3.98	3.51	3.39	3.50
77.5	60	50	30	22.9	15	10	
S. Rail				edge			

14+00

17765	1766	1777	1792	1783	17879	17913	17922	17908
5.48	6.5	5.4	3.9	4.6	4.39	4.00	3.91	4.05
77.5	70	50	35	30	22.3	15	10	
S. Rail					edge			

13+50

17703	1764	1781	1769	1789	1779	17824	17867	17874	17857
6.10	6.7	5.0	4.2	4.2	5.2	4.89	4.46	4.39	4.56
77.5	75	70	50	35	30	22.8	15	10	
S. Rail						edge			

13+32 - 33' Lt. = P. pole # 374442

13+00

17636	1757	1784	1796	1792	1778	17793	17824	17827	17808
6.77	7.4	4.7	3.5	3.9	5.3	5.20	4.89	4.86	5.06
77.5	75	70	50	35	30	22.9	15	10	
S. Rail						edge			

12+50

17569	1751	1774	1792	1788	1773	17741	17779	17774	17754
7.44	8.0	5.7	3.9	4.3	5.8	5.72	5.34	5.39	5.55
77.5	75	70	50	35	30	23.6	15	10	
S. Rail						edge			

12+03 - 33' Lt. = P. pole # 173015

12+00

17500	1741	1771	1785	1781	1764	17686	17725	17719	17701
8.13	9.0	6.0	4.6	5.0	6.7	6.27	5.88	5.94	6.12
77.5	75	70	50	35	30	23.4	15	10	
S. Rail						edge			

11+50

17430	1735	1754	1782	1777	1759	17635	17673	17652
8.83	9.6	7.7	4.9	5.4	7.2	6.78	6.40	6.61
77.5	75	70	50	35	30	23.7	15	
S. Rail						edge		

Lt

E 9

Imp

17+50

17+19 = 32' Lt. = ± Poplar # 70155

17+00

16+50 - 40' Lt. = ± 30" Willow

16+05 = ± 24" Conc. Culvert - 2/3 full of Dirt.

16+00

15+45

T.P. 6.39 185.76 3.76 179.37

Creek Crosses to S. side of Tracks

14+90.6 = ± of 15' R.R. Bridge - single span. 9.3
100
Creek

Lt.

± 10

182.70	178.0	177.1	178.2	181.1	181.62	182.34	182.52	182.40
3.06	7.8	8.7	7.6	4.7	4.14	3.42	3.24	3.36
77.5	60	50	40	30	23.8	15	10	
S.R.					edge			

181.89	177.7	177.1	177.5	180.5	181.15	181.87	182.07	181.94
3.87	8.1	8.7	8.3	5.3	4.61	3.89	3.69	3.82
77.5	65	50	40	30	23.5	15	10	
S.R.					edge			

181.00	177.2	177.5	178.9	180.4	180.94	181.53	181.61	181.45
4.76	8.6	8.3	6.9	5.4	4.82	4.23	4.15	4.31
77.5	65	50	35	30	22.5	15	10	
S.R.					edge			

175.94
9.82
3.3 = I.E.
outlet.

9.03
13
I.E.
inlet

180.08	177.4	177.1	177.4	180.3	180.51	181.00	181.12	180.91
5.68	8.4	8.7	8.4	5.8	5.25	4.76	4.64	4.85
77.5	68	50	40	30	22.8	15	10	
S.R.					edge			

179.90	178.8	177.2	178.2	177.1	179.4	179.91	180.45	180.57	180.43
6.36	7.0	8.6	9.6	8.7	6.4	5.85	5.31	5.19	5.33
77.5	75	60	50	40	30	22.8	15	10	
S.Rail						edge			

178.69	173.9	174.6	175.4	178.8	179.41	179.98	180.11	179.97
4.45	9.2	8.5	7.7	4.3	3.72	3.17	3.02	3.16
77.5	77.5	60	50	30	22.7	15	10	
S.R. Creek	Creek	Creek	To E.		183.13 edge			

Imp

Lt.

±

T.P. 8.91 199.10 0.84 190.19 Rt. 20+00 spike in pole

20+50 2.91 6.8 7.1 3.0 2.68 2.29 2.12 2.18
77.5 65 50 30 20.6 15 5
S.R. edge

20+00 3.84 9.1 9.1 5.0 4.53 4.07 3.96 4.10
77.5 60 50 30 20.8 15 5
S.R. edge

19+52 - 32' Lt. = P. pole

19+50 4.85 10.2 9.7 6.6 6.20 5.82 5.64 5.74
77.5 65 50 30 21.7 15 6
S.R. edge

19+00 5.75 10.9 10.6 9.4 8.1 7.43 7.09 6.90 6.95
77.5 60 50 40 30 22.2 15 6
S.R. edge

18+50 6.54 11.5 11.9 11.0 9.0 8.30 7.76 7.55 7.62
77.5 60 50 40 30 22.5 15 7
S.R. edge

T.P. 7.71 191.03 2.44 183.32 Rt. 18+05 spike in pole

191.03

18+00 2.16 7.3 7.9 6.7 4.3 3.61 3.01 2.75 2.86
77.5 65 50 40 30 23.4 16 7
S.R. 185.76 edge 182.60 178.5 178.0 178.9 181.5 182.15 182.75 183.01 182.90

Imp

Lt

€

23+50

12.07	13.4	13.6	6.1	5.9	6.9	6.52	5.76	5.68
78	70	55	48	32	30	22.2	10	
S.R.						edge		

23+00

13.11	14.0	8.0	8.0	8.28	7.60	7.52
78	55	50	30	29	10	
S.R.			207.33	edge		

T.P. 9.26 207.33 1.03 198.07

22+80 - 38'8" Lt. = € 3" St. Sign

22+50

5.92	4.15	2.50	2.16	1.42	1.43
78	50	30	24	10	
S.R.	edge	oil	edge		

22+04.37 = € 62nd Prod. - Sect along € 62nd

12.211.5	9.5	6.84	5.0	4.46	4.16	3.92	3.50	3.46
150	125	100	78.3	50	36	30	21.6	10
				edge	oil	edge		
				oil				

22+00

7.14	4.8	4.35	4.17	3.90	3.65	3.66
78	50	30	21.5	15	4	
S.R.		edge	edge			
		oil	pave			

21+84 - 32' Lt. = € P. pole # 70.157

21+50

8.48	8.9	6.7	6.70	6.12	5.87	5.90
78	50	30	20.5	15	4	
S.R.			edge			

21+00

9.76	11.9	12.5	9.4	8.85	8.42	8.15	8.19
78	20	50	30	20.4	15	5	
S.R.			199.10.	edge			

Imp.

26+44.43 = \pm 63rd to N. - Sect. on \pm 63rd

Note: 12" C.I. Culvert - 5' S. of S. Rail - 24.4'

Long. - under 63rd st. pave. - See 63rd St. Sections.

26+35

14.7	11.5	11.16	7.65	5.42	4.74	4.45	4.32
150	100	79	50	30	18	10	
		S.R.					

11.57	9.3	7.9	4.9	4.2	5.36	4.97	4.54	4.47
77.9	70	50	45	30	27.2	20	7	
S.R.					edge			

26+29 - 31' Lt. = \pm P. pole # 70159

26+00

12.25	13.0	4.5	5.1	6.0	5.54	5.11	5.05
78	54	45	30	28	19.7	7	
S.R.					edge		

25+50

13.08	14.5	15.4	5.2	5.6	6.6	6.32	5.91	5.87
78 S.R.	70	55	47	30	28	19.2	7	
						edge		

T.P. 6.46 212.28 1.51 20 5.82

212.28

25+00

9.11	10.7	11.3	10.8	2.4	2.0	2.5	2.40	1.80	1.75
78	70	60	55	48	32	30	19.4	7	
							edge		

24+50

10.06	11.4	12.1	11.6	3.4	3.3	3.9	3.66	2.75	2.78
78	70	60	55	48	32	30	19.8	5	
							edge		

24+05 - 32' Lt. = \pm P. pole # 70158

24+00

11.07	12.5	13.5	12.1	4.8	4.6	5.5	4.98	4.36	4.15
78	70	60	55	48	32	30	20.4	10	
S.R.					207.33		edge		

Lt.

 \pm

13

Imp.

Cont. P.M

Lt.

826
423
1723
864

14

E

28+50

12.16	13.0	10.9	9.4	8.9	9.02	8.65	8.26	8.22
S.R.	71	67	53	30	26	18	10	
					edge			

28+41 - 32' Lt. = E Pole # 70160

28+00

13.19	14.6	11.0	9.7	8.4	8.58	8.28	7.91	7.84
S.R.	74	67	50	30	26.5	20	10	
					edge			

27+60

14.04	15.4	11.1	9.6	8.1	8.24	7.96	7.76
S.R.	74	67	50	30	27.2	10	
					edge		

27+32.54 = E. 7 Line. 63rd to S. - Prod.

14.61	15.7	10.9	9.3	8.2	8.54	8.06	7.95
77.9	74	67	50	30	26.4	10	
S.R.					edge		

27+11 - 31' Lt. = E Guy Pole

27+00

15.27	16.5	11.1	10.3	8.7	9.05	8.62	8.35
77.9	74	67	50	30	25.5	15	
S.R.					edge		

T.P. 7.12 217.16 224 210.04

217.16

check B.M. on S.E. Top Hyd. +0.34 212.62

Set B.M. on S.E. Disk 2.07 210.21

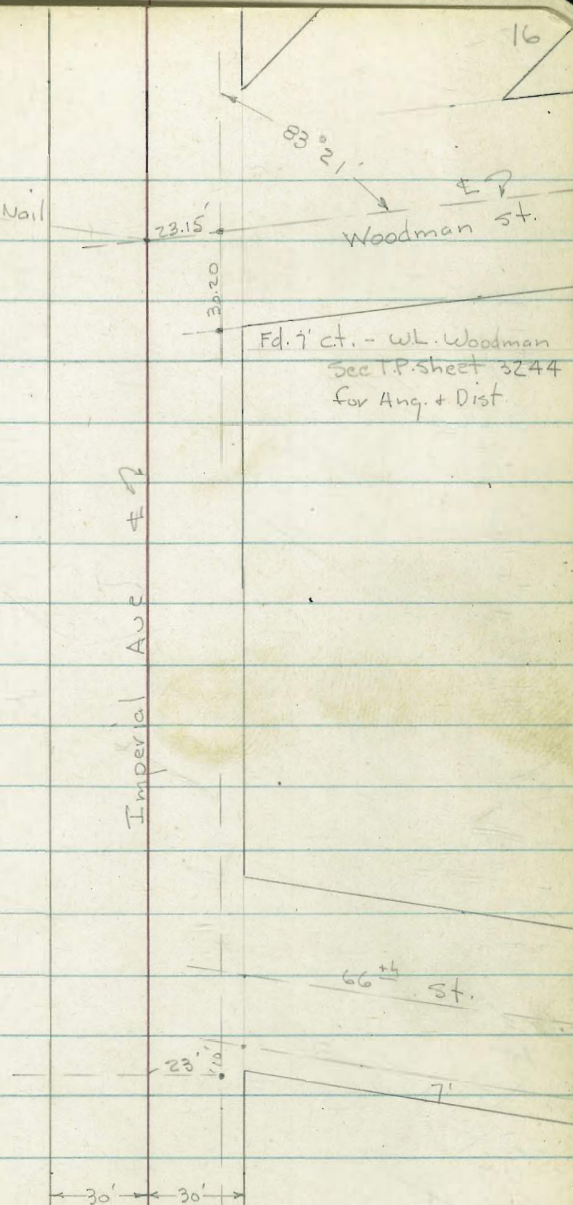
26+80

10.77	8.6	7.0	5.91	4.91	4.23	3.83	3.77
77.9	68	50	40.5	30	20	9	
S.R.			edge				
			oil				
							212.28

Cont. on P. 27

50+05.02 = Nail T = \pm Woodman Prod.

Ang. $0^{\circ} 00' 25''$ Lt.



Imp.

T.P. 9.90 221.44 5.62 211.54

32+02 - 28' Lt. - ± 14' Palm

32+00

6.85 7.3 7.3 6.6 6.4 6.2 6.61 5.70 5.58
S.R. 73 57 55 50 30 25.4 edge 10

31+50

7.38 8.3 8.0 8.1 7.6 7.85 6.83 6.81
S.R. 73 63 50 30 25.8 edge 10

31+39 - 31' Lt. - ± P. pole # 372842

31+10 - 31.5' Lt. - ± P. pole # 372840

31+00

8.01 9.0 8.3 8.1 8.52 7.71 7.69
S.R. 50 48 30 25.5 edge 10

30+50

8.73 9.7 9.8 8.6 8.6 9.07 8.42 8.41
S.R. 70 54 50 30 25.7 edge 10

30+00

9.49 10.5 8.4 8.5 9.2 9.63 9.06 9.06
63 55 50 30 25.8 edge 10

29+99 - 31.5' Lt. - ± P. pole # 70 161

29+50

10.31 11.1 9.9 9.6 9.81 9.32 9.16
S.R. 72 65 50 30 25.1 edge 10

29+00

11.24 11.8 10.5 9.4 9.2 9.29 8.72 8.69
S.R. 72 68 50 30 27.1 edge 10

Cont. from P. 14

Lt.

17
±

Imp

T.P. 7.81 226.57 2.68 218.76

35+00

8.41	8.8	7.0	3.31	3.52	3.58	2.85	2.70
S.R.	65	57	Top	29.6	25	10	
		ground	Conc.	gut.	edge	A.C.	
		at Nly. of					
		Bldg.					

Feed store - 27' wide
 34+73.5 - 29.6' Lt. = Beg. Conc. found. to Cor. Iron

34+56 - 28.5' Lt. = # 10" Palm

4.35	3.85	4.20
30	29.6	29.6
Floor	Top Conc.	pare
Bldg.		

34+50

8.79	9.4	5.6	4.5	4.77	4.08	3.85
S.R.	65	50	30	25.5	10	
				edge		

34+00

9.18	9.7	9.9	6.4	5.7	6.04	5.18	5.02
S.R.	75	65	50	30	25.5	10	
					edge		

33+50

7.63	10.2	10.1	7.8	7.2	7.34	6.40	6.21
S.R.	75	67	50	30	25.5	10	
					edge		

33+44 - 30' Lt. = # P. pole # 171821

33+00

10.14	10.9	9.0	8.	7.98	7.53	7.43
S.R.	70	50	30	25.5	10	
				edge		

32+50

10.65	11.2	9.8	9.2	9.35	8.74	8.65
S.R.	75	50	30	25.1	10	
				edge		

32+14 - 31 Lt. = # P. pole # 70 162

221.44

Imp.

37+99 - 28' Lt. = \pm 12" Palm

37+61.5 - 31' Lt. = \pm P. pole # 70164

37+50

37+00

36+73 - 29' Lt. = \pm Bus stop Sign

36+69 - 28' Lt. = \pm 12" Palm

36+55 29.3' Lt. = \pm P. pole # 174220

36+50

36+16 = Ely of oil Parking

36+00

T.P. 5.69 227.92 4.34 222.23 =

35+50 - Conc. Dr. - To 85' E. of Bldg.

oil paved parking from Bldg. East

35+45.2 - 29.5' Lt. = end Conc. found + Bldg.

35+24 - 29.5' Lt. = \pm P. pole along Bldg. # 70163

Lt.

\pm

19

13.00	13.7	11.7	8.7	7.9	6.8	6.98	6.40	6.27
S.R.	75	60	50	47	30	25	10	
						edge		

13.43	14.0	14.2	7.3	7.2	7.61	7.07	6.97
S.R.	75	65	50	30	25.5	10	
					edge		

13.75	14.3	14.1	8.2	8.2	7.9	8.33	7.61	7.52
S.R.	75	65	57	50	30	25.3	10	
						edge		

14.09	14.7	14.7	10.1	9.8	9.6	8.56	8.87	8.05	7.90
S.R.	75	65	57	52	50	30	25.5	10	
				edge		oil	edge		
				oil					
					227.92				

13.11	13.5	11.4	9.10	8.75	8.20	7.70	7.19	7.02
S.R.	75	60	49	40	30	20	10	
			edge	Conc.	edge	Conc.		
			Conc.	Dr.		Dr.		

11.0	8.86	7.76	7.95
57	49		29.5' out.
	ground	Top	
	at Cov.	Conc.	
		edge	
		Conc.	
		Dr.	226.57

Imp.

40+25.5 - 37.6' Lt. = EC. = end of cb.

40+18 - 32.5' Lt. = \pm P. pole # 70165

40+15.3 - 28.9' Lt. = P.C. of 10' Rad. Ret.

40+00

39+66.1 - 29' Lt. = Beg. curb

39+50

T.P. 5.26 226.34 684 221.08

39+21 - 28.5' Lt. = \pm 12" Palm

39+00

38+81.5 - 28.2' Lt. = \pm 12" Palm

38+50

38+40 - 28' Lt. = \pm 12" Palm

38+12.5 - 21' Lt. = \pm Water M.H. 655 on line

38+00

H.

20

#

6.00 6.56
Top = lead. 37.6 = gut

5.21 6.06
Top = P.C. 28.9 = gut.

9.83	9.9	6.7	6.06	5.17	6.09	5.52	5.23
S.R.	64	50	29	29	24	12	
77.8			Top	gut.			
out Here							
	5.06	5.84					
	29 = top-end cb.	29 = gut.					

10.15	13.9	13.6	6.0	5.4	5.74	5.04	4.98
S.R.	68	60	50	30	25.5	10	
					edge		
				226.34			

11.92	12.6	7.7	6.8	7.00	6.23	6.10
	75	50	30	25.9	10	
				edge		

12.29	13.3	8.1	7.4	6.9	6.74	5.90	5.73
S.R.	72	15	65	50	30	25	10
					edge		

12.67	13.6	6.9	6.6	6.70	5.94	5.77
S.R.	71	50	30	25	10	
					edge	
				227.92		

Imp.

Lt.

±

41+55'

7.40	8.2	5.6	4.8	5.10	4.52	4.39
S.R.	60	50	30	27	12	
				edge		

T.P. 4.72 225.12 5.94 220.40

225.12

check B.M. - S.E. B.P. - 65th 5.24 221.10

221.14 = Book

41+34.5 - 31' Lt. = ± P. pole # 74150

41+31.2 - 30' Lt. = end of cb. = Cor. 4' Conc. Slab.

5.52	5.53	6.21
34 = Cor.	30 = Top	30 = gut.

41+12 = Ely. of Coldlay for Bus stop

9.07	9.6	6.6	5.97	6.04	6.18	5.67	5.55
S.R.	75	50	41.4 Cor. e.L.	Top	30 gut.	12	

40+75'

9.29	6.7	6.01	6.01	6.20	6.27	5.68	5.49
S.R.	50	41.6 edge CL. for Bus stop	60 Top	30	28	12	
				gut.			

40+69.4 - 30.3 = E.C. of Ret.

6.04	6.36
Topcb.	30.3 = gut.

40+64.5 - 41.5 Lt. = ± F.H.

40+61.6 - 37 Lt. = Beg. cb. - 10' Rad.

9.34	8.10	6.58	7.15	6.30	5.69	5.47
77.8 S.R.	50 AC. edge	Top = 37 endcb. gut.	25	12		

40+40.23 = ± of 65th Prod. from N.

10.14	9.31	9.42	7.66	6.51	5.67	5.42
150	100	78.5 S.R.	50	30	12	

Sect. on ± of 65th

226.34

Imp.

Lt.

24

Φ

49+00

6.72	6.2	5.8	4.6	4.1	4.83	4.43	4.30
S.R.	68	55	50	30	23.5	12	
					edge		

48+90-28' Lt = 14" Palm

48+80.5-26.5 Lt = 4"x4" Traffic sign

48+54.5-28' Lt = 14" Palm

48+50

7.60	8.9	7.7	7.2	5.6	5.96	5.26	5.04
S.R.	72	60	50	30	23.5	12	
					edge		

48+19.5-28' Lt = 14" Palm

48+00

8.45	9.4	9.1	8.0	6.6	6.98	6.30	6.14
S.R.	73	55	50	30	23.5	12	
					edge		

47+85.5-28' Lt = 14" Palm

47+81-27' Lt = St sign

47+50 = Thru Cold Lay Pave to 66th to N.

9.27	8.60	7.92	7.73	7.37	7.24
77.7	50	30	24.5	12	
S.R.	C.L.	C.L.	edge		

47+31-31' Lt = P. pole # P.-70168

47+13-28' Lt = 14" Palm

47+00

10.06	12.2	10.7	9.6	9.19	8.52	8.26
S.R.	62	50	30	23.5	12	
				edge		

46+78.5-28' Lt = 16" Palm

232.81

Imp.

Lt.

25

±

50+94.2 = Fly of Bridge

50+90

15.0	14.5	5.8	5.7	5.47	6.25	5.80	5.63
75	50	34	30	Top	28.2	12	

diverging line of curb.

60" pipes - See plan for location - Note

50+73.7 = ± of 3.5' opening Inlet to twin

15.50	15.1	16.41	5.6	5.51	6.41	5.83	5.65
75	50	45.7	30	28.2	28.7	12	

I.E. outlet. Top grate

50+50

6.49	14.6	5.2	5.4	5.57	6.31	5.86	5.73
S.R.	75	50	30	Top	28.1	12	

under bridge

50+48.5 = Wly. of R.R. Bridge

50+10 - 30.5 Lt. = ± Guy Pole # 95650-H

50+05 - 28' Lt. = Beg. curb.

5.72	6.32
28	28 = gut.

Top cb.

T.P. 4.75 23 5.67 2.49 230.32 = spike in N.E. Pole - Woodman 235.07

check B.M. - S. 7' dt. - W.L. Woodman 248 230.33 230.30 = Book

50+00 - S. Rail: is 77.75 Lt.

5.17	6.5	4.2	3.1	2.4	4.07	3.70	3.67
S.R.	73	66	50	30	27	12	

77.75 edge

49+78 - 31' Lt. = ± P. pole # 70169

49+61 - 28' Lt. = ± 16" Palm

49+50

5.99	7.3	3.5	3.0	4.23	3.92	3.91
S.R.	74	50	30	23.5	12	

edge

49+25 - 28' Lt. = ± 14" Palm

232.81

Imp.

Cont p. 29

26

Lt

€

53+91- 28.7 Lt = € 12" Palm

53+50

1.48	5.9	4.6	4.79	4.51	4.46
S.R.	50	30	15.6	8	
			edge		

53+20- 29' Lt = € 16" palm

53+00

2.37	4.5	6.5	5.0	5.12	4.89	4.74
S.R.	70	50	30	16.2	8	
				edge		

52+54- 29' Lt = € 16" Palm

52+50

3.28	5.8	6.3	5.0	5.36	5.20	5.05
S.R.	70	50	30	22	12	
				edge		

52+20- 28.5' Lt = € 16" Palm

52+07- 31' Lt = € P. pole # 70 17.0

52+05- 28.6' Lt = end curb.

4.93	5.75
Top	28.6
	gut.

52+00

4.18	8.7	8.1	7.0	4.8	5.0	4.98	5.72	5.45	5.28
S.R.	60	50	40	35	30	Top	28.6	12	
							gut.		

51+50

5.04	9.8	9.9	8.2	5.5	5.3	5.18	5.88	5.64	5.47
S.R.	60	50	42	36	30	Top	28.4	12	
							gut.		

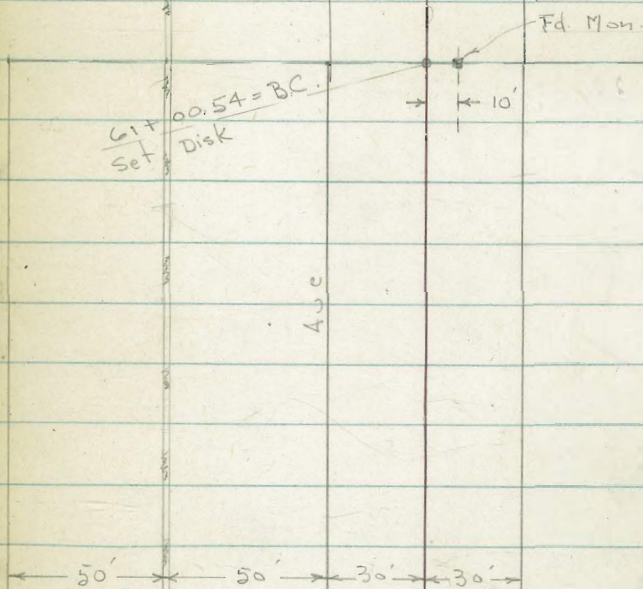
51+10

5.68	9.6	10.1	8.3	5.1	5.4	5.38	6.08	5.75	5.66
S.R.	65	50	40	35	30	Top	28.3	12	
							235.07	gut.	

$\Delta = 26^\circ 24' 06''$
 $R = 1512.69$
 $L = 697.04$

61+00.54 = B.C. = Set Disk

68th St.



Cont. from P. 16

67+97.58 = Disk = P.O.C. on ϕ

68+47.58

14° 08' 45"

67+97.58 = P.O.C.

13° 12' 03"

+50

12° 18'

67~

$\Delta = 26^{\circ} 24' 06''$

11° 21' 15"

+50

$\phi R = 1512.69$

10° 24' 15"

66~

$l = 697.04$

9° 27' 30"

+50

$d - l' = 1.1363$

8° 30' 45"

65~

7° 34'

+50

6° 37'

64~

5° 40' 15"

+50

4° 43' 30"

63~

3° 46' 45"

+50

2° 49' 45"

62~

1° 53'

+50

0° 56' 15"

61+00.54 = Disk = B.C.

ϕ Lisbon

F.G. Man.

69th St. 28

67+97.58 = Disk
P.O.C.

30' 30'

30'

30'

Imp

T.P. 13.23 248.36 4.86 235.13

56+65.5-28.5 Lt = ± 10' Palm

56+50

0.31	5.1	5.8	5.5	6.03	5.71	5.68
S.R.	60	50	30	16.4	8	
				edge		

56+24.5-28.5 Lt = ± 10" Palm

56+00

1.26	5.4	6.5	6.5	6.87	6.52	6.45
S.R.	65	50	30	16.4	8	
				edge		

55+84.5-28.5 Lt = ± 12" Palm

55+50

2.26	6.6	7.4	7.1	7.55	7.32	7.32
S.R.	63	50	30	16.1	8	
				edge		

55+43.5-28.5 = ± 16" Palm

55+03-28.7 Lt = ± 10" Palm

55+00

3.27	7.8	8.2	7.4	8.27	8.06	8.07
S.R.	65	50	30	15.8	8	
				edge		

54+93-31.3 Lt = ± P. pole # 70171

54+61.5-28.7 Lt = ± 12" Palm

54+50

4.39	9.9	9.1	8.2	8.79	8.66	8.64
S.R.	63	50	30	15.2	8	
				edge		

54+26-28.7 Lt = ± 16" Palm

T.P. 9.06 239.99 4.14 230.93

239.99

54+00

0.49	5.3	4.1	4.44	4.21	4.15
S.R.	50	30	15.6	8	
			edge		

Cont. from P. 26

Imp.

60+00

59+99- 28' Lt. = ± 16" Palm

59+59- 28' Lt. = ± 12" Palm

59+50

59+17- 28' Lt. = ± 12" Palm

59+00

58+76- 28.6 Lt. = ± 10" Palm

58+50

58+35- 28.5 Lt. = ± 10" Palm

58+00

57+95- 28' Lt. = ± 18" Palm

57+82.5- 30.6 Lt. = ± P. pole # 70172

57+50

57+00

30

Lt.

±

2.35
S.R.

7.4
50

7.5
30

8.15
16.1
edge

7.61
8

7.45

3.13
S.R.

8.1
62

8.8
50

9.3
30

9.28
16.1
edge

8.82
8

8.68

4.12
S.R.

9.0
60

9.6
50

10.0
30

10.35
15.9
edge

10.05
8

9.97

5.10
S.R.

9.6
62

10.7
50

10.9
30

11.23
16.3
edge

10.93
8

10.88

5.97
S.R.

11.0
63

10.5
50

11.6
30

12.13
16.5
edge

11.78
8

11.66

6.44
S.R.

11.3
65

11.7
50

12.5
30

12.86
15.7
edge

12.55
8

12.48

7.74
S.R.

12.8
62

12.9
50

13.0
30

13.72
15.6
edge

13.29
8

13.24

248.36

Imp

62+97- 30.5' Lt. = Φ 16" Palm

62+50

62+36.5- 31.5 Lt. = Φ P. pole # 7017462+14.5- 29.5 Lt. = Φ 8" Palm

62+00

61+74- 30.5 Lt. = Φ 16" Palm

61+50

Sections Radial

61+25

T.P. 10.45 254.62 4.19 244.17

61+00.54 = B.C. S. Rail is 78.1 Lt. must be on spiral

60+80 - Thru Cold Lay Pave to 68⁴60+61 - 31 Lt. = Φ P. pole # 7017360+56.5- 27 Lt. = Φ Mail box Post.

60+50

Lt.

78.1

31

 Φ

250.13	248.3	247.5	246.9	246.30	246.88	247.15
4.49	6.3	7.1	7.7	8.32	7.74	7.47
S.R.	70	50	30	22.2	10	
				edge		

5.21	5.9	7.7	8.5	9.23	8.72	8.56
S.R.	70	50	30	22	10	
				edge		

5.88	7.9	8.5	9.8	10.40	10.04	9.84
S.R.	70	50	30	22.3	12	
				edge		

6.28	9.0	9.4	10.2	10.68	10.70	10.43
S.R.	65	50	30	21.2	10	
				254.62	edge	

48.00	0.37	2.12	3.44	4.59	4.81	4.72
	78.1	50	30	16	8	
	S.R.		C.L.			

0.78	3.06	4.22	5.17	5.33	5.28
S.R.	50	30	17	8	
			edge		

1.37	5.7	6.0	6.66	6.24	6.12
S.R.	50	30	19	8	
			248.36	edge	

Lt.

32

E

66+00					252.97	252.5	251.6	250.5	250.65	250.83	251.05
65+85 - 32' Lt. = ± 8" Palm					4.77	5.2	6.1	7.2	7.09	6.91	6.69
T.P.	7.14	257.74	4.02	250.60	S.R.	70	50	30	17	12	
							257.74		edge		

65+58 - 33.5' = ± P. pole # 70176					252.60	251.8	251.0	250.2	250.11	250.37	250.54
65+50					2.02	2.8	3.6	4.4	4.51	4.25	4.06
					S.R.	70	50	30	17.2	12	
									edge		

65+00					252.35	251.1	250.6	249.9	249.49	249.84	250.11
					2.27	3.5	4.0	4.7	5.13	4.78	4.51
					S.R.	70	50	30	17.9	12	
									edge		

64+60 - 32' Lt. = ± 5" Palm					352.02	251.0	250.4	248.9	248.86	249.36	249.68
64+50					2.60	3.6	4.2	5.7	5.76	5.26	4.94
					S.R.	70	50	30	18.4	12	
									edge		

64+19 - 30.5' Lt. = ± 8" Palm					251.68	250.3	249.9	248.27	248.80	249.12
64+00					2.94	4.3	4.7	6.35	5.82	5.50
					S.R.	50	30	19.3	12	
									edge	

63+85 - 31.5' Lt. = ± P. pole # 70175					251.17	250.0	249.5	248.0	247.67	248.27	248.62
63+77 - 29.5' Lt. = ± 14" Palm					3.45	4.6	5.1	6.6	6.95	6.35	6.00
63+50					S.R.	70	50	30	20.3	12	
									edge		

63+00					250.73	249.1	248.4	247.5	246.97	247.67	248.11
					3.89	5.5	6.2	7.1	7.65	6.95	6.51
					S.R.	70	50	30	22.3	12	
								254.62	edge		

Lt.

check B.M.

4.27 253.47 = 253.44 = Book

68 + 4 7.58 = 50' ahead on Curve for profile = End.

3.17	4.3	9.8	8.9	8.1	4.2	4.21	3.71	3.47
S.R.	65	58	50	43	30	20.2	10	
						edge		

S. of \pm of Imperial

67 + 97.58 = P.O.C. = Rad. to 30' Line of 69th + 10

254.24	249.4	247.9	248.2	250.9	252.7	252.90	253.30	253.46
3.50	8.3	9.8	9.5	6.8	5.0	4.84	4.44	4.28
S.R.	65	50	40	30	25	19.5	10	
						edge		

67 + 90 = 31' Lt. = \pm P. pole # 370 480

No Conc Bottom - see old Sections for Loc.

67 + 68.5 = 26.9 Lt. = \pm of 6 x 4.6 High. Twin Conc Box

246.63
11.11
26.9 = I.E. Culvert at outlet. - 4.6 down from top.

67 + 50

253.81	249.5	249.7	248.9	249.9	252.1	252.31	252.64	252.85
3.93	8.2	8.0	8.8	7.5	5.6	5.43	5.10	4.89
S.R.	65	50	40	30	25	19.4	10	
						edge		

67 + 00

253.56	248.8	250.1	250.6	252.4	251.76	252.09	252.23
4.18	8.9	7.6	7.1	5.3	5.98	5.65	5.51
S.R.	65	50	30	25	17.9	10	
					edge		

66 + 50

253.30	252.4	250.7	250.6	251.3	251.18	251.46	251.62
4.44	5.3	7.0	7.1	6.4	6.56	6.28	6.12
S.R.	65	50	40	30	17.5	10	
					edge		

257.74

Roberts
Cota
Near
Pillay
2-11-52
No 22004

X-Section Wabaska Drive

Sta 29+00 thru Sta. 37+00

Indexed
5-13-52
JAW

Lt
Wly

Q

Ely 34

29+85					46.1	47.4	46.1	42.8	39.9	36.7	33.6	25.2
					+1.3	+2.6	+1.3	2.0	4.9	8.1	11.2	19.6
					100	75	40		25	40	58	100

29+60	Inspector says spoil begins 2' outside of fill area. This is now impossible to discriminate between spoil and solid. Inspector was on job.				41.1	41.7	40.7	39.3	34.7	34.1		26.2
					3.7	3.1	4.1	5.5	10.1	10.7		18.6
					100	40	20		28	50		100

29+30	Vegetation skinned off				37.0	34.7		33.3	30.3			27.0
					7.8	10.1		11.5	14.5			17.8
					100	35			50			100

T.P.	12.55	44.84X	0.19	32.29								44.84X
------	-------	--------	------	-------	--	--	--	--	--	--	--	--------

29+05	Fill				33.2	31.2	32.2	31.8	29.8	28.7	26.0	22.8
					+0.7	1.3	0.3	0.7	2.7	3.8	6.5	9.7
					100	63	60	35		47	50	100

29+00	Original Ground				32.8	29.9		29.0	27.0	24.6	25.1	22.1
					+0.3	2.6		3.5	5.5	7.7	7.4	10.4
					100	63		35		47	50	100

T.P.	11.28	32.48X	0.16	21.20								32.48X
------	-------	--------	------	-------	--	--	--	--	--	--	--	--------

TBM	4.41	21.36		16.95								
												ON E Hub Sta. 25+46.89

Cont'd From Page 34

L+

E

R+ 35

32+35

Begin of Spoil in bottom

51.4	46.1	41.2	38.0	27.8	15.9	13.7	15.
40.4	4.9	9.8	13.0	23.2	35.1	37.3	36.0
100	50		17	44	80	94	118

T.P.

7.56

51.03 π 12.91 #3.4751.03 π

32+00

53.9	49.6	46.0	42.3	39.3	28.3	18.3	15.1	15.4
2.5	6.8	10.4	14.1	17.1	28.1	38.1	41.0	41.0
100	80	40		15	45	70	70	100

31+50

55.0	48.2	42.9	31.2	23.0	15.2	13.9
1.4	7.2	13.5	25.2	33.4	41.2	42.5
100	50		30	60	85	100

31+00

55.8	50.7	46.7	44.0	29.2	14.7	14.7
0.6	5.7	9.7	12.4	27.2	41.7	41.7
100	50	10		36	94	96

30+50

55.1	48.1	45.6	43.3	23.9	1.2
1.3	7.7	10.8	18.1	32.5	39.2
100	85	30		30	70

30+10

50.8	49.1	47.1	45.3	31.1	20.6
5.6	6.7	8.7	11.1	18.7	35.8
100	50	20		40	100

T.P.

12.12

56.38 π 0.58 #4.2656.38 π #4.84 π

Cont'd from Page 35

T.P. 0.33 24.39π 12.82 24.06

T.P. 0.60 36.88π 3.38 36.28

35+14

34+50

34+00

T.P. 1.49 39.66π 12.86 38.17

33+50

33+00

32+55

51.03π

6t

8

2t 36

35.3 33.3 26.3 25.3 24.4 20.4 18.8 17.5 15.5
 4.3 6.4 14.3 14.4 15.3 19.3 20.9 22.2 24.2
 100 52 45 17 18 42 114 119

37.1 36.2 28.1 27.1 26.4 20.6 18.4 16.4 14.5
 2.0 3.5 11.6 12.0 13.3 19.2 21.3 23.3 25.2
 100 45 43 25 37 45 115 120

40.2 37.9 34.3 30.5 28.5 18.3 16.5 15.3
 40.5 1.4 5.4 11.2 11.2 21.4 23.2 25.4
 100 52 50 30 62 111 116

43.4 41.3 39.1 37.2 26.6 17.3 16.1 15.4
 7.6 9.7 11.3 13.8 24.4 33.7 34.9 37.6
 100 60 20 40 75 112 119

47.0 42.9 38.1 36.3 25.1 18.0 17.2 14.8
 4.0 8.1 12.3 14.7 25.3 33.0 33.8 36.2
 100 50 20 50 76 112 117

50.0 45.0 40.5 38.0 23.6 18.1 16.0
 1.0 6.0 10.5 13.0 27.4 32.3 35.0
 100 50 17 60 115 120

51.03π

Cont'd From Page 36

37+17

31.2	29.4	30.4	16.3	16.2	15.9	14.1	14.5
+6.8	+5.0	+6.0	8.1	8.2	8.5	10.3	9.9
100	50	45	33		15	22	100

37+00

31.8	30.7	32.4	16.4	16.2	16.4	14.4	14.5
+7.4	+6.3	+8.0	8.0	8.2	8.0	10.0	9.9
100	50	45	30		40	45	100

36+76

32.1	30.9	32.4	17.5	17.6	16.9	16.4	14.9	14.5
+7.7	+6.5	+8.0	6.9	6.8	9.5	8.0	9.5	9.9
100	50	45	25		15	70	73	100

36+68

Unable to intelligently estimate ^{spoils} amount.
Edge of Spoil not yet moved on left.

32.1	31.1	18.7	17.6	16.9	16.6	14.5	14.5
+7.7	+6.7	5.7	6.8	7.5	7.8	9.9	9.9
100	65	30		45	73	80	100

36+50

32.2	31.0	19.3	17.6	16.4	16.8	14.6	14.6
+7.8	+6.6	5.1	6.8	8.0	7.6	9.8	7.8
100	65	30		45	84	90	100

36+00

33.1	31.3	19.6	18.0	16.8	18.0	14.8
+8.7	+7.1	7.8	6.4	7.6	6.4	7.6
100	65	35		50	110	116

35+50

32.7	32.7	25.0	20.9	10.4	11.1	16.3	14.8
+9.8	+8.3	+0.6	+0.5	5.0	7.3	8.1	9.6
100	55	53	37		45	112	117

24.39π

24.39π

check

0.70

36.13 = 36.09

see FB 2085 pg. 60

T.P.

12.64

36.83

0.20

24.19

37+31

Unchanged

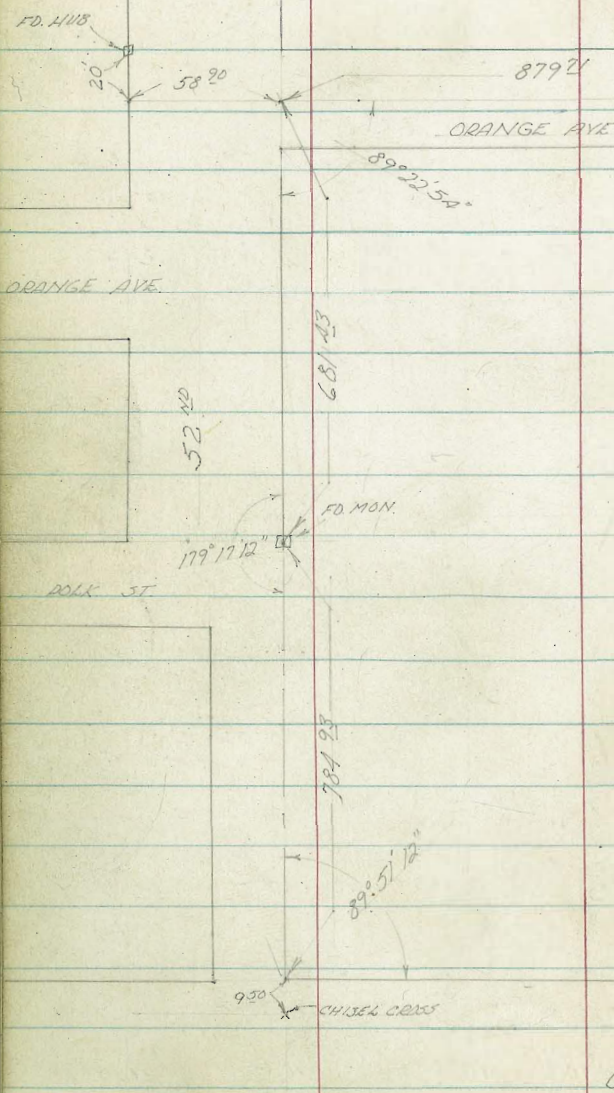
31.2	13.6	13.6	13.8	14.4
+68	10.8	10.8	10.6	10.0
100	74		50	100

24.39X

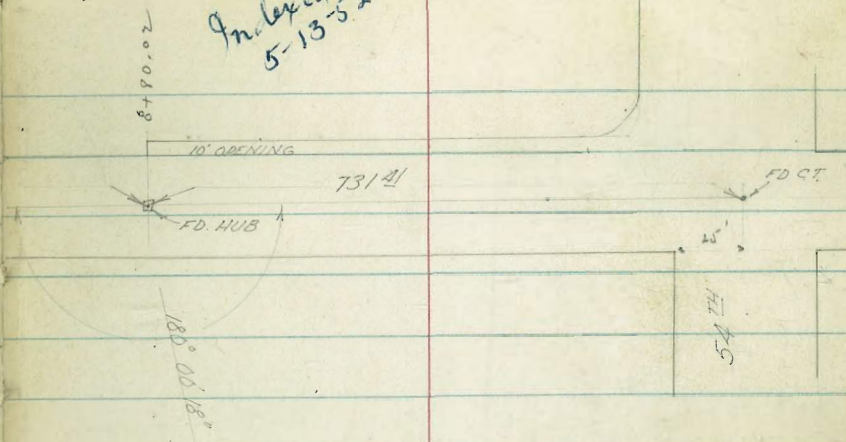
24.39X

RECHECK MEASUREMENTS, ORANGE AVE & 52ND ST

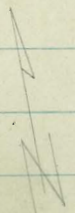
ROBERTS
COTH
MOORE
PILLEN
4-3-52



Incl. ed
5-13-52 - Alvin



SEE FB 1726 PG. 2



Clark 7-3-52
 Shephard w.o. 31842
 Bruner
 Bryson

X-SECT ALLEY B/W 12 SUNSET

CLIFFS. GUIZOT to NOVARA ST.

Notes: No tr. pts. fd. used MAP DATA
 MAP #1889 SUNSET CLIFFS

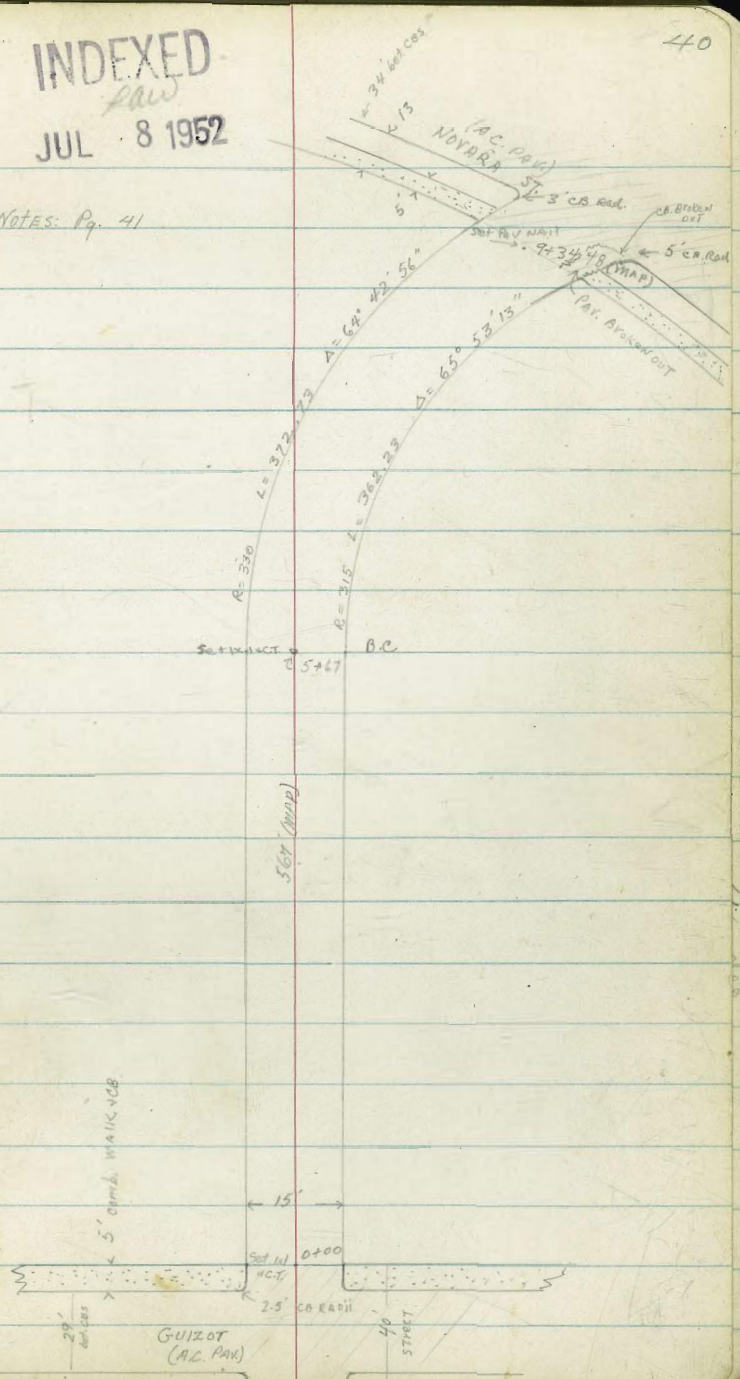
Σ STATIONING

For ties
 See GB 292
 P-59 (old)

INDEXED
 JUL 8 1952

40

Notes: Pg. 41



LT. S RT

2172 9' LT Bay 4' wall
 T.P. 11.87 148.90 1.06 137.03

138.56
 137.48
 138.10
 10.34
 11.42
 10.8
 TP wall 2nd wall 2nd wall
 148.90

2170 6.5' RT E w meter
 2165 41 RT END 2-COR 99R

2145 41 RT Bay 2-COR 99R

2142 Top terrace LT

2140 { 6.2' RT pole # PA 4464
 Bay terrace LT
 7.2 RT END 8' Hedge

2108 7' LT E w meter

2103 7.8' RT E w meter

2100

1480 7.3 RT Bay 8' Hedge
 Top terrace LT

1473 Bay terrace LT

137.34
 0.75
 41 floor
 136.94
 115
 41 floor
 135.0
 155.1
 155.7
 2.8 3.2 3.9 3.7 3.1 2.4
 15 9 7.5 3.7 7.5 12
 131.5 132.2 134.5 134.1 134.1 135.1
 6.6 5.9 3.6 4.0 4.0 5.0
 30 9 7.5 7.5 7.5 15
 130.0 130.1 129.9 129.5 128.5 128.1
 8.1 8.0 8.2 8.6 8.6 8.0
 20 10 7.5 7.5 7.5 20
 129.6 129.7 127.8 127.2 127.6 128.6
 8.5 8.4 10.3 10.9 10.5 9.5
 30 10 7.5 7.5 7.5 20
 123.6 124.0 125.5 126.6 127.1 127.1
 14.5 14.0 10.6 11.5 11.0 11.0
 50 14 7.5 7.5 7.5 15
 138.09

					LT.	E	RT.	
4450					1596	1590	1584	1588
4418	6.1' LT & meter				0.7 15	1.3 7.5	1.9 7.5	0.7 15
4413	16.75' LT END 2 car gar. 7.25 apron				6.07 16.75 Floor	6.09 7.25 Apron		
4400					7.09 7.5 (on apron)	7.4 7.2 DIT	7.8 7.5	6.5 20
3498	7.2' LT Beg 2 car gar apron 16.7 to Floor 7.2' LT END terraced wall				6.07 16.7 Floor	7.35 7.2 Apron	8.80 7.2 Top Wall	7.35 7.2 Top Wall
3460	7.6' LT Beg terraced CONC. WALL 6.1' RT & Pole PA 1444	5 fences 7.0 = 1 sample (average rise = .50)			15419 15291 15206	15146 14736	15291	
T.P.	11.96	160.26	0.60	14830	10120 7.6 Top Wall	1290 7.6 Top Wall	7.6 Top Wall	
3450					1475 15	1477 7.5	160.26 1472	147.2
3400	7.0' LT END 4' WALL M.H. & 6.2 RT. END 5' Board Fence				1419 7.0 20 Foot FIN	1418 7.1 9.0 TP	1410 7.80 6.7 7.5 RM M.H.	1482 6.4 20
2475	5.8 RT Beg 5' Board Fence							

148.90

LT E RT

5764 7.8' LT Bq Conc Brick Retain. Wall

175.88
841
7.8
Top
Wall
12.84
7.8
Foot
FITU
171.45

5759 22.4' LT END 2-Car gar 8.25' LT apron

11.80
22.4
Floor
172.49
11.87
8.25
Apron
172.03
171.9

5741 22.4' LT Bq 2-car gar 8.25' LT apron

11.82
22.4
Floor
169.0
12.26
8.25
Apron
170.0
12.4
7.5
171.9
169.9
14.5
6
17.0
7.5
171.3
13.0
15
171.8

T.P. 12.32 184.29 0.03 171.97

5740

169.0
3.0
20
169.0
3.0
7.5
170.0
2.0
3
184.29
2.1
168.9
169.9
2.1
5
170.8
1.2
7.5
171.2
0.8
15

5706 7.5' LT E W meter

165.2

5700 6.2' RT E W meter

68
20

4781 6.1' RT & Pole P.A. 4424

4776 7.5' RT & W. Meter

4775 20.0' RT END 2-Car gar 10.0' RT apron

4755 20.2' RT Bq 2-Car gar 10.2' RT apron

161.94
10.6
10.0
Apron
161.95
10.05
20.2
Floor
162.00

T.P. 12.16 172.00 0.42 159.84

172.00

6+58 11.2' LT Beg 10' Conc Brick wall (Rough tangent)
 7.7 LT. END Conc. Brick wall

6+52 18.7' RT Beg 2-cav apr 13.2 apron

6+50

5+46 11.1 RT & W. meter

T.P. 12.05 196.32 0.02 184.27

6+25 7.6' LT & 4.5 gateway (8" conc. strip across walkway)

6+08 2.6 LT & M.H.

6+03 6.4 RT & Pole # PA 4414

6+00 7.6' LT Beg 5' Conc-Brick (on curve)

5+67 = B.C. (Sections taken Radially from here on)

LT. 187.42 188.50

87.0 78.2
 7.7 7.7
 Foot Path Foot Path

RT. 187.16 187.77
 7.16 8.55
 13.2 Apron 18.7 Floor

187.6 186.2 186.2 186.5
 8.7 10.1 10.1 9.8
 7.5 7.5 15

196.32

82.8 182.78 182.1 182.6 184.0 184.79 184.79
 1.5 1.51 1.5 1.7 1.7 0.3 + 0.50 + 0.50
 20 7.6 7.5 7.5 7.5 10 15
 Conc. Conc. 18 Down

150.51 180.51
 3.78 2.6
 Foot Path M.H.

175.8 178.7 178.7 178.7 178.7 178.6 179.3 180.2
 5.5 5.52 4.82 5.6 5.7 5.0 4.1
 20 7.6 7.6 7.0 4 7.5 15
 Foot Path Foot Path

8.5 8.6 9.8 10.2 11.0 11.1 10.9 10.1 9.6
 15 9 15 5 3 6 7.5 15

184.29

7+32 LT Bag Conc FATN & Ret Wall For 2 Car gar
 9.0 LT END Conc BRK. wall
 7+30 9.0 LT & 2.5' CONC. Steps & walk
 7+25 6' LT & w. meter
 7+11 6.5 RT & Pole PA 4410
 7+10 7.5 RT & water meter
 7+09 9.4 RT END Conc. Ret. Wall
 7+06 9.5' LT Bag Conc Brick Wall (av. HT. 5')
 9.2 LT END Conc Brick Wall
 T.P. 10.83 206.70 0.45 195.87
 6+86 13.5' Bag Conc. Ret. Wall
 6+80 7.6' LT & w. meter
 6+75 9.6' LT & 3.5' driveway Conc
 6+72 17.1 RT. END 2 car gar 11.1 RT apron

196.58 200.58 199.8 197.3
 10.12 6.12 6.7 9.4
 2.5 7.5 7.5 7.5
 5.77 7.39 9.1 9.8
 1.3 7 7.5 7.5
 elev 28.4
 TP STEP 26.4
 of WALL 5.6
 200.93 197.31 197.68 196.9 196.6 196.8
 RT. 196.7 197.2

194.2 192.66 191.61
 12.5 14.04 11.84
 9.4 9.4 9.4
 DIRT FOOT TR
 FATN WALL

206.70
 1940 1934 1928 1929 1932 1935 1948
 2.3 2.9 3.5 3.4 3.1 2.8 1.5
 9.0 7.5 4 7.5 10 11.5
 WALL

1912
 5.20 9.0
 188.01 187.77
 8.31 8.55
 16.1 17
 Apron Floor
 196.32

Indexed
Pair

LT E RT

check: 10.50 205.25 = 205.31 3/4 B.P. SANTA BARBARA TIVOLI

T.P. 0.35 215.95 10.37 215.40

T.P. 8.96 225.79 1.79 216.83

9+66.52 E Navaro (sect. LINE Navaro)

9+49.12 N/ly CB. LINE NAVARO (sect. ON LINE NAVARO)

9+34.48 N/ly LINE NAVARO (sect. ON LINE NAVARO)

9+25

9+00

8+90 92 LT. END CONC. RR RET. WALL

8+75

50' JETS SUFFICIENT WITH THIS slope

21703 21492 21432 21385 21388 21259 21222 21188 20899 20966

DIVE 1.59 3.70 4.30 4.77 5.44 6.03 6.40 6.74 7.63 8.96
50 50 90T TCB 90T 90T 8.19 12.60 12.60 50 50 50 50
50 90T TCB 90T 90T 8.19 12.60 12.60 50 50 50 50

21480 21461 21364 21321 2131 21333

3.82 4.11 4.92 5.41 5.5 5.29
8.20 8.20 8.96 8.19 8.19 8.90
TPCB 90T 90T 90T 90T 90T 90T
90T 90T 90T 90T 90T 90T

2156 2146 2130 2126 2123 2105

3.0 4.0 5.6 6.3 6.3 8.1
10 7.5 4 7.5 7.5 20

2141 2132 2113 2109 2104 2082

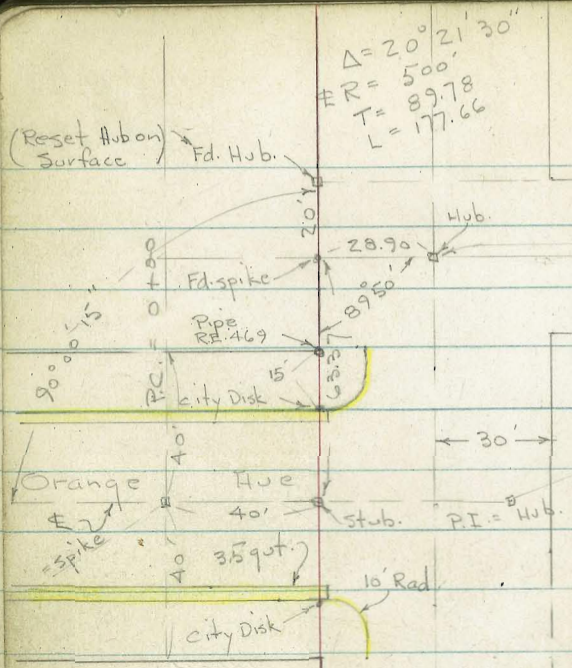
4.5 5.4 7.3 7.7 8.2 10.4
10 7.5 4 7.5 7.5 20

21172 21132 20974 2099 2092 2090 2061

6.96 7.30 8.88 8.7 9.4 9.6 12.5
7.5 8.2 8.2 7.5 7.4 7.0 20
TP TCB TCB TCB TCB TCB TCB
TP TCB TCB TCB TCB TCB TCB

218.62

Cont. on P. 51

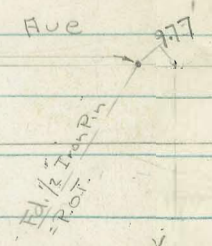
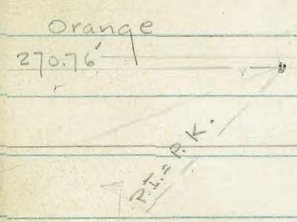
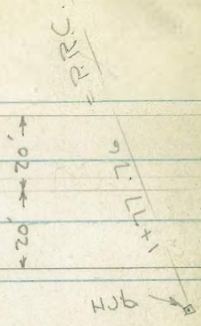


$$\Delta = 20^{\circ} 21' 30''$$

$$\# R = 500'$$

$$T = 89.78$$

$$L = 177.66$$



$$\Delta = 20^{\circ} 31' 45''$$

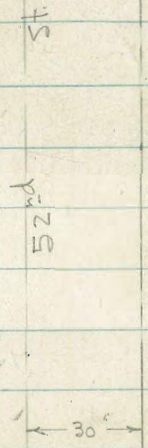
$$\# R = 500'$$

$$T = 90.55$$

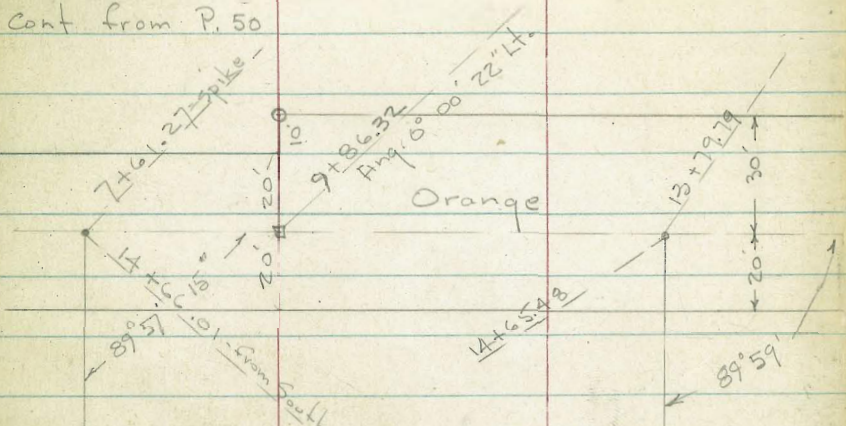
$$L = 179.15$$

$$E.C. = 3 + 56.81 = R.K.$$

see page 39



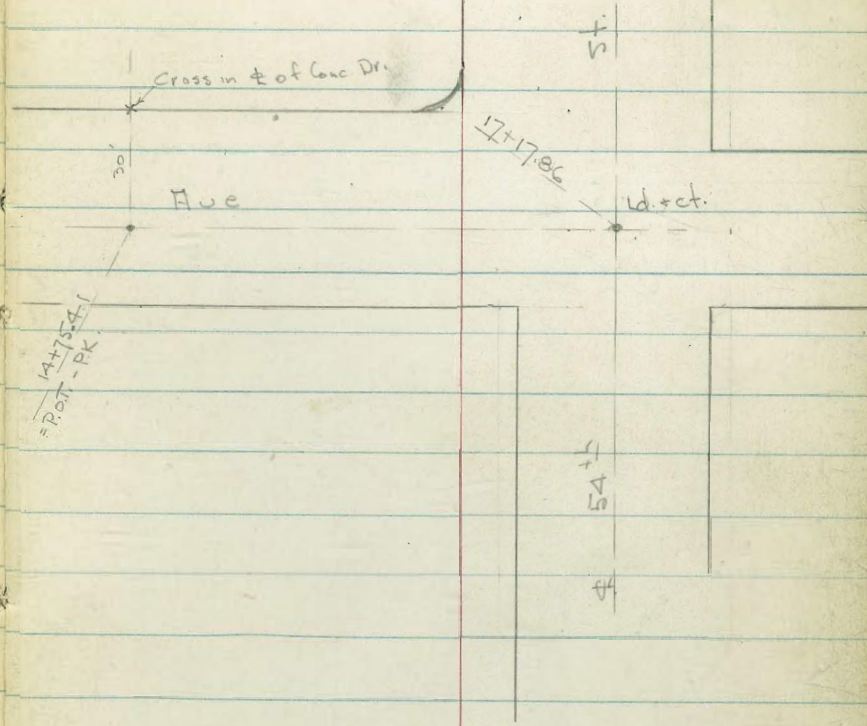
Cont from P. 50



Base Line

$$\begin{array}{r} 14+00 \\ 20\ 21 \\ \hline 1999 \end{array}$$

8+59.35

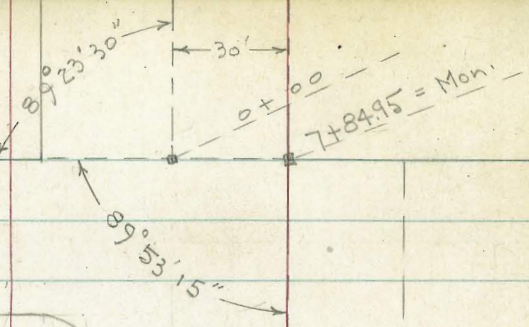


$$\begin{array}{r} 17+17.86 \\ 25 \\ \hline 1692.86 \\ 18 \\ \hline 1677.86 \end{array}$$

54+

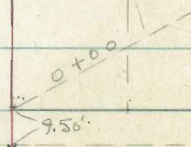
Line from pipe at
N.W. Cor.

Polk Ave



5th

30'
52nd

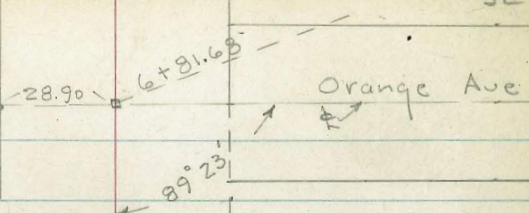
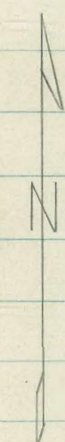


University

Ave

Orange Ave

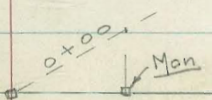
See P. 50 for curbs.



5th

52nd

30'



Polk Ave

Lt.

±

Rt.

X-Section to Restudy Grades -

Orange - 52nd to 54th + 52nd Univ. to

Orange 1-15-53 7.0.

W.O. 20637

1+50

Plotted
C.R. 2/14/53

82.0	82.1	87.0	85.3	82.0	79.2
55	30	20		20	40
edge	C.L. edge				

1+10

79.6	79.3	84.8	84.6	82.6	80.3	78.5
65	38	30	20		20	40
edge	edge of	C.L.				

1+00

78.9	78.8	80.0	79.8	80.0	78.8
40	35	20		20	40
	Beq. edge	at Coldlay			

0+50

78.5	78.50	77.9	78.0	77.5	75.9
40	Top	24.3		20	40
		gut			

Now all Sections will be Radial to ± on Curve.

for Rest. of Returns See 52nd Sections0+45 = W.L. 52nd

78.15	77.18	77.38	77.38	76.62	76.43	77.35
Top	25.1	21.5		21.6	25.1	Top
	gut.	edge		edge	gut.	

0+20 of 52nd to show curbs.

Note: cuts are from tang. produced - up to the W.L.

75.97	75.05	75.24	75.6	74.28	74.06	75.01
Top	25.1	21.4		21.7	25.2	Top
	gut.	edge		edge	gut.	

0+00 = P.C. of 500 R. Rev. Curve

73.08	72.18	72.37	72.8	71.38	71.22	72.17
Top	25.1	21.4		21.5	25.2	Top
	gut.	edge of Conc.		edge of	gut.	
		gut.		Conc. gut.		

B.M. = S.W. B.P. Orange + 52nd 377.51

Actual Elev. Shown. - 300' fig. Not Noted.

Orange

54.

Lt.

±

Rt.

4+68.5 - 18.5' Lt. = end of Conc. walls

92.44	91.2	91.16	89.6
Top wall	22.6 Bottom wall	Top wall	18.5 = Bottom

4+50

92.54	91.5
Top wall	22.5 Bot. of 6" Conc. wall

91.3	91.29	89.9	88.6	89.0	88.6	89.2	93.1	92.5
20	Top wall	18.4 Bot.	13 edge		9 edge	20	25	40

4+26.5 - 18.4' Lt. = Beg 6" Conc. wall

91.44	90.2 = Bottom
Top	18.4

4+17 - 14.4' Lt. = ± 14.5' Conc. Dr.

91.95	89.78
35 Dr.	14.4 = Dr.

4+00

91.1	90.6	89.9	90.1	89.6	90.7	91.0
30	20	13 edge		9 edge	20	40

3+56.81 = E.C.

91.6	90.9	90.3	90.5	90.0	90.8	90.9
30	20	13 edge		10 edge	20	40

3+00

92.6	91.0	90.4	90.7	90.1	91.7	90.9
26 Top	20	16 edge		8 edge	20	40

2+50

92.2	88.9	89.3	89.0	91.0	88.4
35 Top	26 edge	20	edge	20	40

2+00

85.6	86.5	86.1	89.5	87.6	84.3
42 edge	20	14 edge		20	40

1+77.66 = P.R.C.

83.8	84.2	88.2	87.53	85.5	82.3
48 edge	20 edge	8	on Hub	20	40

Orange

Lt. ~~☒~~ Rt.

9+00	72.3 30	71.2 20	70.5 9 edge	70.6	70.4 7 edge	70.4 20	67.1 30	66.6 40
------	------------	------------	-------------------	------	-------------------	------------	------------	------------

8+51.5 Cont.

71.9 30	70.8 20
------------	------------

66.53
= I.E. of
Box

on Both sides - 18" pipe to Rt. - wing walls
8+51.5 = \pm 0 + 12" Culvert + 10' opening in lets

67.06 I.E. of Box	70.67 Top cb.	69.63 15 on grate	70.1 7 edge	70.3	70.1 6 edge	68.96 15.7 grate	69.96 Top cb.	69.7 20	66.91 31.7 Top out wall let
-------------------------	---------------------	-------------------------	-------------------	------	-------------------	------------------------	---------------------	------------	--------------------------------------

8+00	72.3 30	71.0 20	70.6 11 edge	70.6	70.5 5 edge	70.2 20	64.7 33	63.2 40
------	------------	------------	--------------------	------	-------------------	------------	------------	------------

7+50	74.6 30	72.3 20	71.5 12 edge	71.2	71.1 8 edge	71.0 20	65.9 30	64.4 40
------	------------	------------	--------------------	------	-------------------	------------	------------	------------

7+00	74.2 30	74.3 20	73.1 12 edge	73.2	72.8 9 edge	73.1 20	70.3 28	69.1 40
------	------------	------------	--------------------	------	-------------------	------------	------------	------------

6+50	77.5 30	76.8 20	76.4 12 edge	76.6	76.2 7 edge	75.9 20	72.4 30	70.8 40
------	------------	------------	--------------------	------	-------------------	------------	------------	------------

6+00	81.4 30	80.5 20	79.8 11 edge	80.1	79.6 8 edge	79.8 20	74.7 40
------	------------	------------	--------------------	------	-------------------	------------	------------

5+50	86.5 30	84.9 20	83.3 16	83.1 11 edge	83.7	83.2 7 edge	83.7 20	82.6 40
------	------------	------------	------------	--------------------	------	-------------------	------------	------------

5+08 - 17 ft. = \pm Tel pole # 202 387.66 = spike - B.M.

5+00	91.5 30	88.7 20	86.1 12 edge	86.8	86.3 9 edge	88.2 20	92.3 26	92.0 40
------	------------	------------	--------------------	------	-------------------	------------	------------	------------

Orange

56

12+00

88.4	88.2	81.5	82.0	81.0	82.0	81.9	75.8
30	24	13 edge		11 edge	20	35	50

11+57 - 13.5 Lt. = ± 9' Conc. Dr.

87.68	83.41	79.74
50 Dr.	30 Dr.	13.5 Dr.

11+50

86.9	86.5	82.2	80.4	79.3	79.3	78.4	79.2	79.2
30	25	Top wall	19 not	13 edge		12 edge	20	40

11+30 - Thr middle of Rock walls between Drives

85.3	84.60	82.2	81.82	79.1
30	Top wall	24.4 Bottom	Top wall	19.1 Bottom

11+00 - in Conc. Dr. on Lt.

82.43	79.01	76.30	76.4	75.9	76.1	75.1
50 Dr.	30 Dr.	13.5 edge of Dr.		10 edge	20	40

walls.

10+79 = wly of 7' Dr. + 2-2' Conc Strips - end of

81.50	79.36	76.98	75.46
50 Dr.	30.4 end wall	20.5 end wall	13.6 = end of Dr. on Dr.

10+41.5 - 17.8 Lt = Beg. 4" Conc. wall

77.55	76.9	75.30	74.2	73.5	73.9	73.5	73.7	69.4
Top wall	30.3 Bottom	Top wall	17.9 Bottom	11 edge		8 edge	20	40

This opening begins with E 1/2 Lot 13, Luman Villa - Approx. 227.5' N of this station

9+86.32 = Beg. 10' opening on Lt.

74.1	73.2	71.9	72.2	71.8	72.2	69.2	68.0
30	20	12 edge		9 edge	20	28	40

B.M. = Pole Lt. 9+65 ± 205

372.82 = spike

9+70 - 30.5 Lt. = ± 7' Dr. - 2-2' Conc. Strips

74.38	73.65
45 Dr.	30.5 Dr.

9+50

73.2	72.6	71.4	71.4	71.1	71.4	69.0	67.9
30	20	13 edge		8 edge	20	28	40

Orange

Lt.

#

Rt.

57

15+50

88.2	87.5	81.9	82.6	81.8	85.1	88.7	89.2
.30	25	12		10	20	23	40
		edge		edge			

15+33-18.3' Lt. = Φ 9' Conc. Dr.

88.03	86.26	84.20
50	30	18.3
	Dr.	Dr.

15+00 = Thru Conc. Block walls - Terrace 92.0

91.49	90.28	89.20	87.4	86.4	86.7	85.7	87.0	89.4	88.5
236	21	Top	18.4	13		12	20	25	40
Top wall	Top wall	Top	Bot.	edge		edge			

14+75 18.2' Lt. = Φ 10' Conc. Dr.

92.22	90.00	88.23
46	30	18.2
Dr.	Dr.	Dr.

14+50

92.4	87.8	87.9	87.3	88.0	88.3
30	13		10	20	40
	edge		edge		

14+04 - Lt. = Pole #208 = B.M.

388.17 = spike

14+00

91.9	87.2	87.3	86.5	87.4	87.0
30	13		11	20	40
	edge		edge		

13+50

91.2	86.2	86.1	85.4	85.9	86.1
30	12		10	20	40
	edge		edge		

13+00 = in Conc. Dr. on Lt. '9' wide

90.68	87.79	85.14	84.8	85.0	84.3	85.1	85.1
50	30	18	13		11	20	40
	Dr.	Dr.	edge		edge		

12+50

89.4	89.1	83.6	83.8	82.7	83.8	84.0
30	26	13		11	20	40
		edge		edge		

12+42-13.4' Lt. = Φ 14' Conc. Dr.

89.37	86.27	83.66	83.53
50	30	17	13.4
	Dr.	Dr.	Dr.

Orange

Lt.

±

Rt.

B.M. = ± d+ct -

363.82

17+17.86 = ± 54[±]

60.50 61.30 62.42 62.90 363.82 64.76 65.74 66.76
45 50 30 20 on ct. 20 40 60

17+07.9 = edge of Conc. pave - puts along edge

60.10 61.06 62.24 62.78 63.73 64.59 65.55 66.52
65 50 30 20 20 40 60

17+00

60.6 62.2 62.3 63.3 63.8 64.3 65.0
50 32 30 15 20 40
edge edge

16+90

64.6 65.0 63.4 64.2 64.3 66.2 68.3
50 30 20 10 20 40
edge edge

16+50

71.0 68.8 69.4 69.0 69.3 71.3 73.4 74.0
30 12 10 15 20 24 40
edge edge

16+25 = ± Gar on Lt. - Dirt Dr.

74.10 73.4 72.7
50 30 13
floor Dirt Dr. edge
gar.

16+00

79.9 79.8 75.6 76.7 76.0 77.0 78.7 82.0 82.1
30 23 14 10 17 20 24 40
edge edge

INDEXED

SEP 17 1953

Req. X-Sect. of 52nd - Univ. to Orange

See P. 50 to 53

1+49-26.3 Rt. = Sewer M.H.

98.06 = Rim
26.3

1+20

06.6 05.6 03.2 01.6 01.0 01.3 93.6 93.8 94.0
50. 35 30 25 7 20 30 40
at Bldg.

1+16.5 - 9.5' Rt. = inlet of 24" steel Culvert

1+08.5 RR² Lt & dead man

0+85.5 RR² Lt & 12" tel Pole # 589469H

91.90
19.5
I.E. of inlet

0+84- 50.2 Lt. = S.E. Cor. New Bldd. - Conc.

07.4
50.2 = ground

0+80

07.4 07.3 04.8 04.5 04.4 04.8 00.4 29.67 95.1
50.8 40 30 15 10 20 30
By wall

0+50- 50.8 Lt. = Nly. of Prop Dr. - S. of New Bldg

08.42 = Prop
50.8 Top. of AC. in Dr.

0+40

8.1 8.9 9.8 10.0 10.0 06.4 05.2
50 30 15 15 30 40

0+00 = N.L. Univ. + edge of AC. + end curbs.

16.0 15.70 15.26 15.47 15.00 15.43 15.0
30 Top 18.2 13.5 Top 30
endcb. gut. gut. endcb.

0-10 = N. cb. of Univ.

15.23 14.75 15.62 15.10 15.37 15.65 15.22 14.88 15.33 14.09 14.57
Top 50 Top 28 18 13.5 23.5 Top 50 Top
gut. = PC. Rod. gut. 200' fig Not noted = PC. Rod. gut.

B.M. = N.W. B.P. - Univ. + 52nd

315.57

Actual Elev. Shown.

⊕ = P.L. Line

Rt.

59

52nd

5+16 - 28.8' Lt. = ± 3.5' Conc. walk

5+00

4+50

4+21 - 28.8' Lt. = ± 3' Conc. walk

4+00

2+50 - on Conc. Slab on Lt. - Car Port

3+30⁸ 32° Lt end AC yard

3+00

2+50

2+04.6 - 50.2' Lt. = NE. Cor. of Bldg.
35° Lt Begin AC yard

2+00.

1+60

60

Lt ♀ Rt.

13.43	12.80	12.33					
44.9	3	28.8 = walk					
at	walk						
step	12.8	12.5	10.2	10.1	10.0	09.0	07.7
	40	30	20		20	30	40

09.4	08.8	08.5	08.4	08.4	06.2	05.2	
40	30	20		20	30	40	

08.00	07.88						
45	28.8 = walk						
at porch							

07.7	07.8	06.2	06.9	06.9	02.5	02.5	
40	30	20		12	30	40	

05.46	04.9	03.8	04.1	04.4	01.6	01.8	05.0
45.2	30	20		10	15	30	40

Conc. slab	04.56						
	30						
04.9	04.5	02.3	02.0	02.2	99.6	02.3	04.8
40	30	25		5	10	30	40

04.2	04.5	01.4	01.0	01.3	94.6	98.1	99.6
40	30	25		7	20	30	40

05.6	05.23						
50.2 = ground	35						
	10						

05.9	05.6	01.0	00.5	00.9	94.2	94.2	94.5
50.2	40	30		10	25	30	40
at Bldg.							

05.8	05.58	02.4	00.5	00.1	300.0	93.8	93.7	93.7
50.2	35	30	25		10	25	30	40
at Bldg.								

52nd

30' w.

End of \pm on Pl. line - \pm to N. is

7+84.95 = U.L. Polk = otoochead. 319.67 = on Mon.

20.8	20.4	18.4	19.3	19.6	19.8	20.0	20.0
80	50	45	30	20		30	40
Rdwy.							

7+80

Set. B.M. = spike in S.E. Pole - Polk 319.57

17.4	18.0	19.0	19.3	19.9	19.3	19.7
80	50	30	20		30	40
Rdwy.						

7+60

7+52 7³ Rt \pm 10" Pl Polk \pm 4099

16.7	17.1	17.9	18.6	19.0	18.7	18.3	18.1
80	50	30	15		15	30	40
Rdwy.							

7+45 = S.L. Polk

19.1	18.5	16.4	17.5	18.0	18.4	18.2	17.7	17.6
80	65	50	30	15		15	30	40
Rdwy.								

7+00

17.2	15.8	16.3	16.3	16.7	16.8	16.3
50	30	15		15	30	40

6+50

15.7	15.6	14.2	14.8	14.9	14.3	14.0
40	30	20		15	30	40

6+25 - 30.6 ft. = \pm 8' Conc. Dr.

15.45	14.76
50	30.6 = Dr.
Dr.	

6+00

14.6	14.3	12.6	13.1	13.2	12.3	11.8
40	30	15		15	30	40

5+54 - 30.3 \pm 5.5' Conc. walk

13.85	13.84
45	30.3 = walk
at step.	

5+50

13.6	13.0	11.6	11.7	11.5	11.9	11.9	10.9
40	30	15		10	20	30	40

61

Lt.

 \pm

Rt.

52nd

Lt. # Rt.

3+31.5 - 23.7 Lt. = # 3' Conc. walk

45.79 46.34
45.8 23.7
at step walk

3+00

43.2 43.9 43.2 43.6 45.3 47.2 47.7
40 25 20 10 30 40

2+81 - 32.2 Lt. = # 3' Conc. walk

41.85 41.71
46.5 32.2
at step walk

2+56 - 32.5 Lt. = # 7' Conc. Dr.

38.60 39.27
50 32.5
Dr. Dr.

2+50

38.4 39.1 38.6 39.0 39.8 41.6 42.0
40 25 20 5 30 40

2+06 - 32.8' Lt. = # 8' Conc. Dr.

34.72 35.41
50 32.8 = Dr.
Dr.

2+00

34.4 35.4 34.4 35.0 36.2 38.0 38.0
40 25 20 5 30 40

1+50

30.7 31.6 30.1 30.7 32.2 32.9 33.1
40 25 20 5 30 40

1+00

26.1 27.1 25.9 26.6 27.4 28.4 28.6
40 20 17 10 30 40

0+50

22.8 23.1 22.2 22.8 23.3 24.0 24.0
40 20 17 15 30 40

0+00 = N.L. Polk 30' w. of Pl. Line

see 7+84.95

52nd

63

Lt.

±

Rt.

5+78- Lt. = end of cb.

76.2	77.3	75.6	76.1	75.2	77.3	77.7
30	Top	17.8		15	30	40
	end cb.	gut				

5+50

74.4	73.3	71.3	72.0	71.2	73.3	72.4	70.4
40	30	15		15	20	30	40

5+00

61.2	62.1	63.1	63.5	64.2	63.2	63.4
40	25	15		10	30	40

4+50

52.6	53.9	56.4	56.7	57.1	57.0	57.0
40	25	15		15	30	40

4+26-25.6 Lt. = End wall

49.51
25.6 = Top wall

4+00

48.1	48.92	51.4	51.7	52.7	55.5	57.2
40	25.7	15		15	30	40
	TOP wall					

3+91-25.9 Lt. = Beg. 8" Conc. block wall

49.21 48.7
TOP wall 25.9 = gr.

3+87-26.8 Lt. = ± 8' Conc. Dr.

47.70 48.46
46.8 26.8
floor. gar. Dr.

3+75-31.5 Lt. = ± 4' Conc. walk

46.50 47.53 47.94
50 39 31.5
walk walk walk

3+50

46.4	47.1	47.8	50.4	52.3	53.0
40	20		15	30	40

52nd

Lt

Lt

±

Rt.

7+80 = end.

78.7	80.0	80.5	81.0	83.1	84.3	85.1
40'	30	15		15	30	40

7+43-29-Lt = ± 5' Conc Walk

80.88	80.83	81.6	82.4	83.8	85.0
38.9	29	15		15	30
Walk	on Walk				

7+19-46.5 Lt. = ± 9' Conc Dr.

80.52	80.75
59.6	46.5 = Dr.
Floor. Grav.	

7+10

80.7	81.4	81.2	82.5	84.2	85.1
40	30	15		15	30

6+96

80.5	80.6	79.7	79.3	79.4	79.6
40	30	15		15	30

6+81.68 = ± Orange

80.3	78.6	78.6	79.0	79.2	79.6	79.7
40	30	15		15	28	30
					edge	
					cut.	

6+58.5 = opp. end of cb. on Lt.

78.7	78.39	77.9	78.9	78.6	79.6
29	Top	17.1		15	30
	end cb.	gut.			

6+43 = N. cb.

78.14	77.19	77.37	78.1	78.8	78.2	80.2
Top	29.2	26.7	15		15	30
	w.L.	end Conc.				
	gut.	gut.				

6+18 =

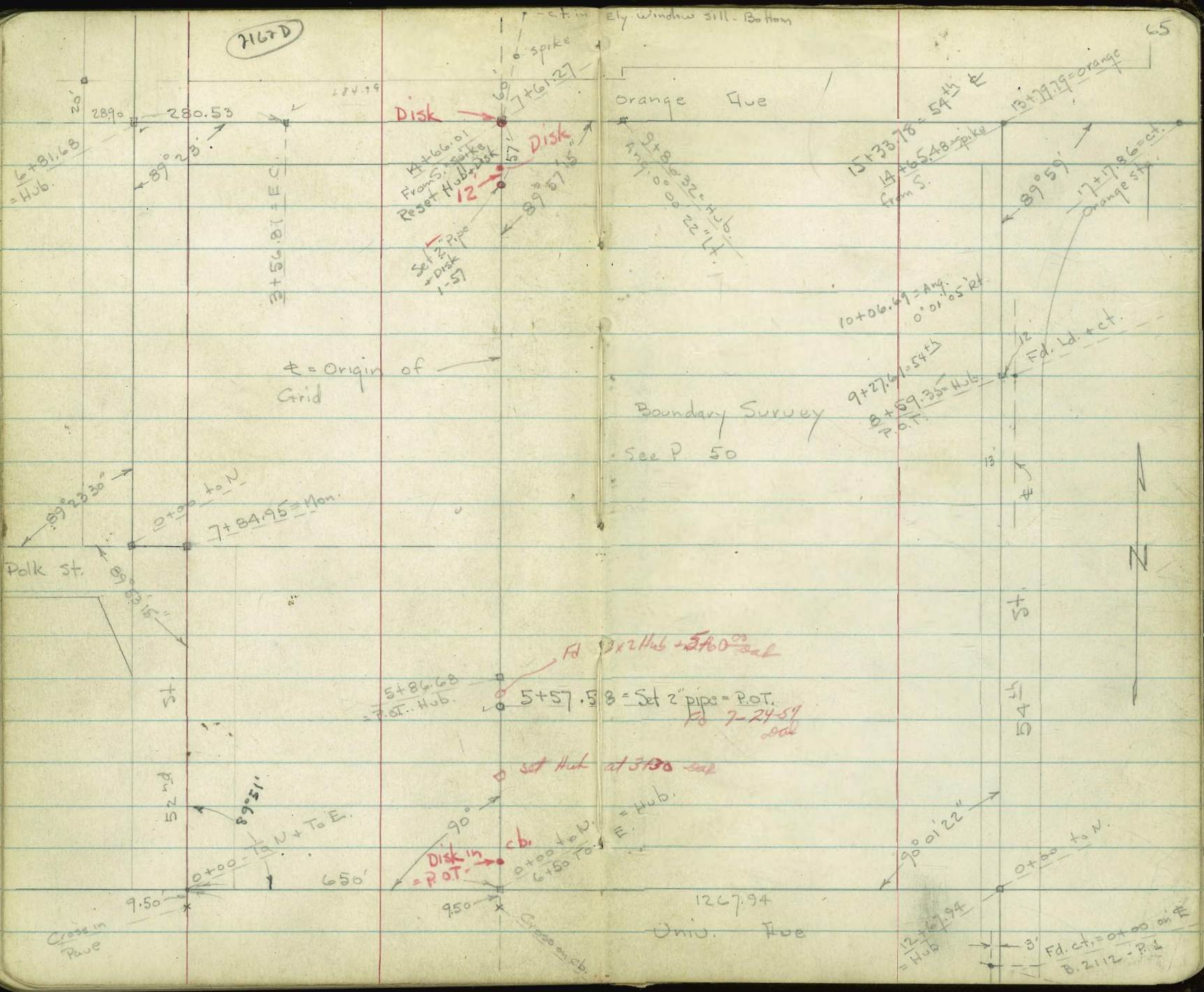
77.4	78.0	78.4	77.7	79.7
30	15		15	30

5+93.5 = S. cb Line

77.36	76.4	76.6	77.2	77.5	76.5	78.3	78.9
Top	29.6	27.5	15		15	30	40
	w.L.	end 3.5 Conc.	gut.				
	gut.						

2167D

65



† = Origin of Grid

Boundary Survey
See P 50

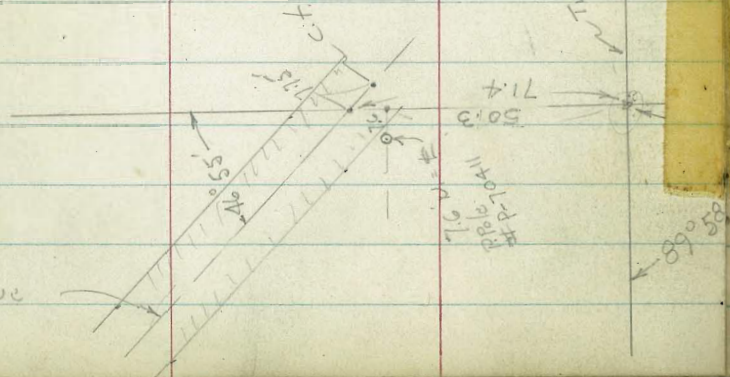
1267.94
Unid. Fee

† 13
† 10
† 10

3' Fd. ct. = 0+00 on E
B.2112 - P.d

stubs at Cor. of Bldg.

* Pave



See T.P. Sheet for Curve Data.

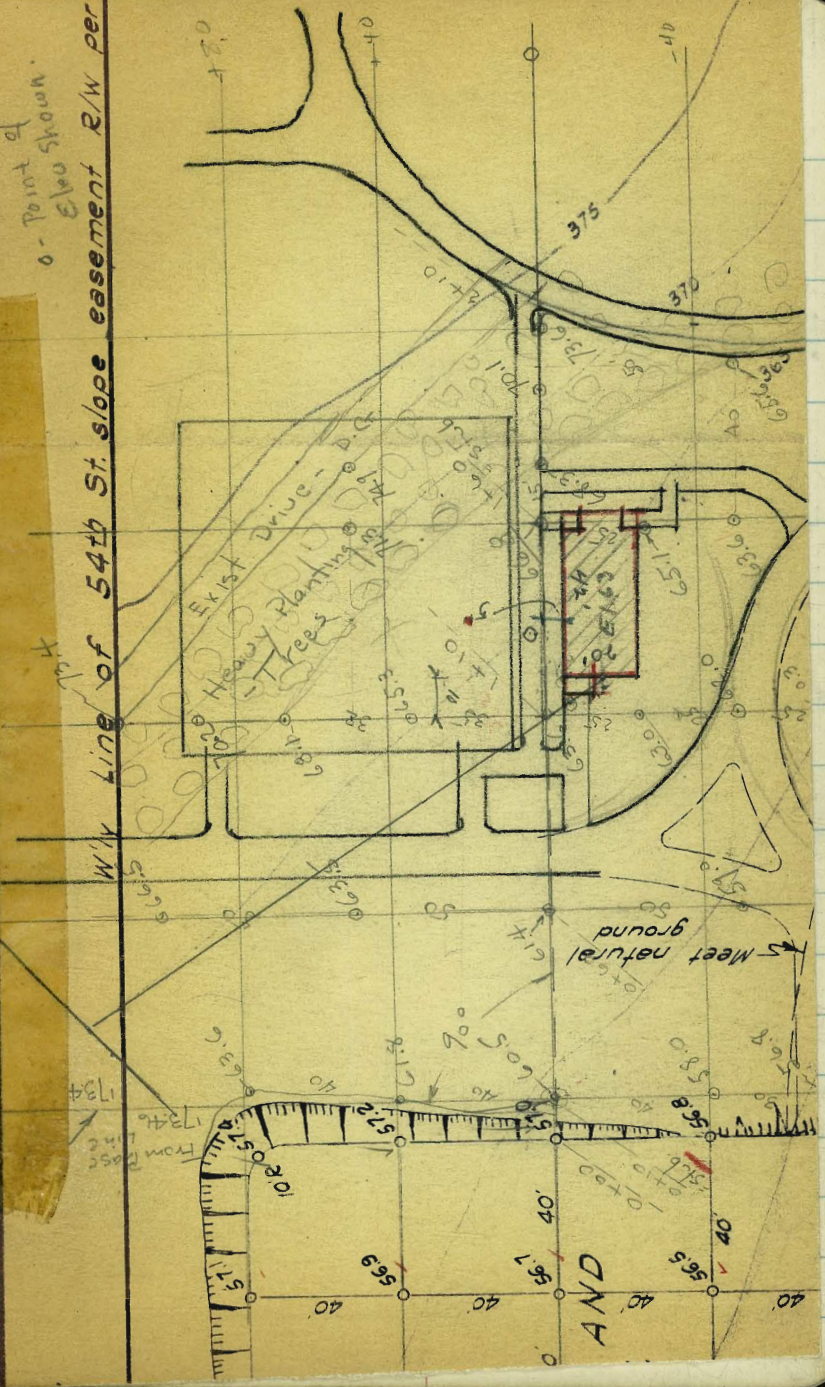
8+59.35 = Point of
H.B. - P. 65

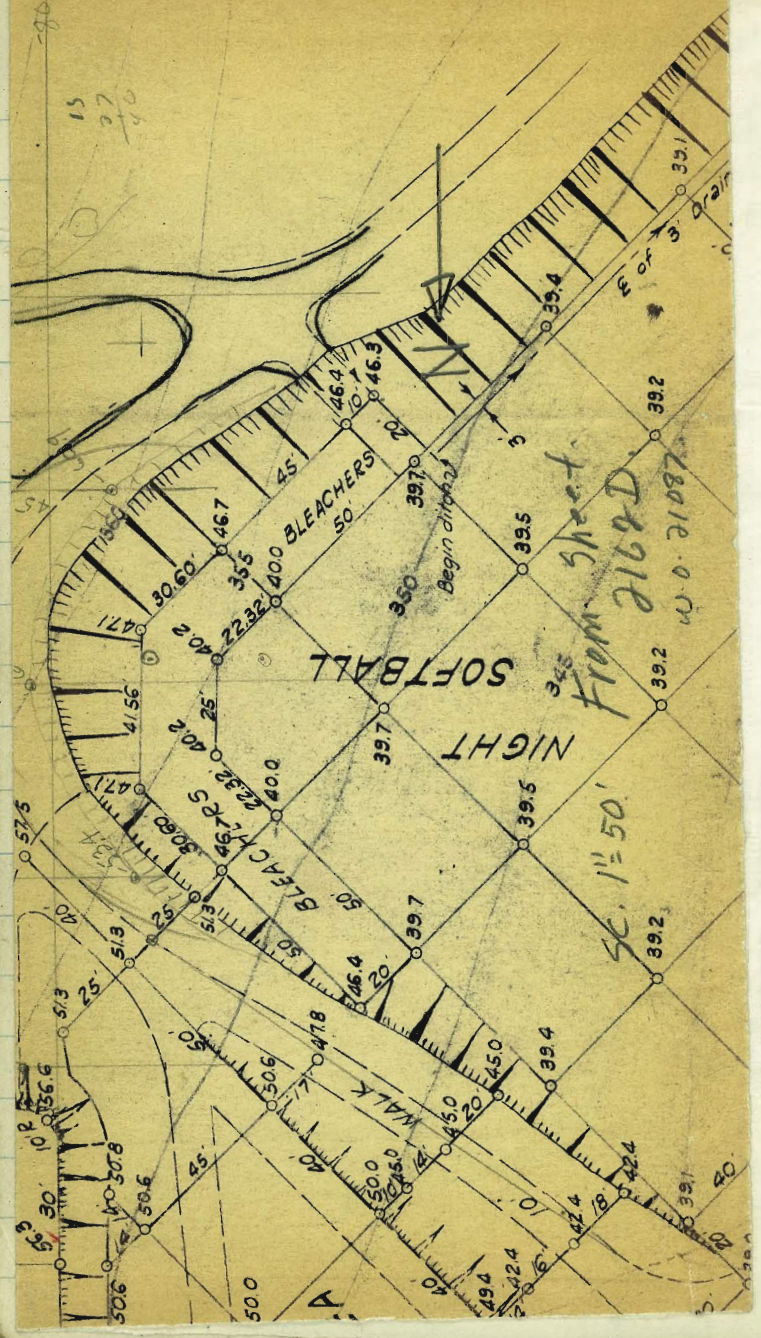
142.19
8 - 8 W. = 1" W.M.

20' Conc. Pave Strip
6' Pave + 701B
88 W. =

* Pave

W/W Line of 54th St. slope easement R/W per
0 - Point of
Elev shown.





15
27
40

66

Location of Fence for Golf Course -
 52nd + Orange - By Azimuth + Dist. from
 Base Line - Shown on P. 65 - Assumed - N. + S.

Sta. on Base line	Az.	Dist
3+10.70	270° 05'	199.8'
5+57.58	206° 43'	257.9'
"	210° 38'	139'
"	267° 15'	129.6'
"	316° 33'	86.5'
8+40.42	259° 28'	182.2'
"	306° 07'	208.3'
"	345° 19'	238'
"	345° 25'	252.2'
"	348° 41'	260.9'
"	351° 33'	282.5'
12+73.70	204° 21'	112.6'
"	252° 57'	103.6'
"	276° 14'	216.1'
"	276°	257.7'
90° To Base Line	270° = west.	394.50
Hub. - 394.50 Lt.	118° 41'	23.9'

Cont. on Bottom of P. 68

W.O 21087- 1-18-56 - 7.0. 97

North = 0° Az. - Turned Clockwise

East = 90° S = 180° W = 270°

INDEXED
 JER
 JAN 24 1956

= Ang.

= Cor. - S.E.

Ang.

"

"

"

"

"

"

"

"

"

"

"

"

To Hub = A for Top Ang. in fence Tie to loc Shown in B 1726 P. 5

Loc. of Ball Diamond fence - N. = 0° Az. Same as P. 67

68

Sta. on Base Line	Az.	Dist.	
8+40.42	175° 08'	150	= Beg. fence - 6' High
"	273° 01'	143.2	= Ang
"	276° 04'	147.5	" } Curve?
"	279° 46'	150.5	" }
"	312° 17'	190.5	
"	351° 33'	236.3	end - 6' fence
"	351° 59'	230	= Beg. 10' fence
"	9° 27'	315.4	= End " " at Backstop.
"	14° 58'	322	= Beg " " " "
"	75° 41'	323.2	= End " " " "
"	81° 15'	316.8	Beg " " " "
"	98° 58'	230.6	End " " " "

Az - 0° = N.

from 394.50 Lt. 277° 12' 86.3 - Cor. By 6+43.48 - B. 1726 - P. 5

2207

M.H. 298.03

308.5 = Dr. Elev.

19.67
7.89
-56

327.56
7.61
-1.975

27.56
3.87
-23.69

27.56

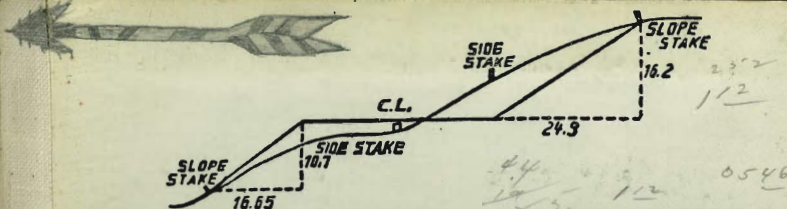
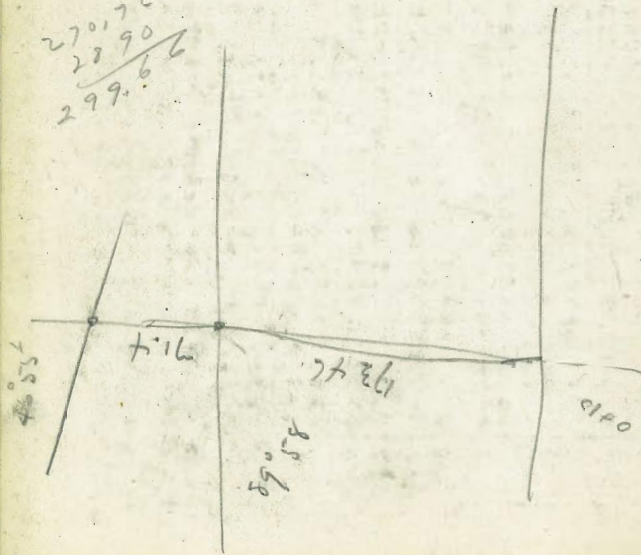
27.56
6.20
-21.36

27.56
4.30
-23.26

27.56
3.86
-23.70

57.56

270.76
27.90
-299.66



DISTANCES FROM SIDE STAKES FOR CROSS-SECTIONING.

SLOPE 1 1/2 TO 1. ROADWAY OF ANY WIDTH.

	0	.1	.2	.3	.4	.5	.6	.7	.8	.9	
0	0.00	0.15	0.30	0.45	0.60	0.75	0.90	1.05	1.20	1.35	0
1	1.50	1.65	1.80	1.95	2.10	2.25	2.40	2.55	2.70	2.85	1
2	3.00	3.15	3.30	3.45	3.60	3.75	3.90	4.05	4.20	4.35	2
3	4.50	4.65	4.80	4.95	5.10	5.25	5.40	5.55	5.70	5.85	3
4	6.00	6.15	6.30	6.45	6.60	6.75	6.90	7.05	7.20	7.35	4
5	7.50	7.65	7.80	7.95	8.10	8.25	8.40	8.55	8.70	8.85	5
6	9.00	9.15	9.30	9.45	9.60	9.75	9.90	10.05	10.20	10.35	6
7	10.50	10.65	10.80	10.95	11.10	11.25	11.40	11.55	11.70	11.85	7
8	12.00	12.15	12.30	12.45	12.60	12.75	12.90	13.05	13.20	13.35	8
9	13.50	13.65	13.80	13.95	14.10	14.25	14.40	14.55	14.70	14.85	9
10	15.00	15.15	15.30	15.45	15.60	15.75	15.90	16.05	16.20	16.35	10
11	16.50	16.65	16.80	16.95	17.10	17.25	17.40	17.55	17.70	17.85	11
12	18.00	18.15	18.30	18.45	18.60	18.75	18.90	19.05	19.20	19.35	12
13	19.50	19.65	19.80	19.95	20.10	20.25	20.40	20.55	20.70	20.85	13
14	21.00	21.15	21.30	21.45	21.60	21.75	21.90	22.05	22.20	22.35	14
15	22.50	22.65	22.80	22.95	23.10	23.25	23.40	23.55	23.70	23.85	15
16	24.00	24.15	24.30	24.45	24.60	24.75	24.90	25.05	25.20	25.35	16
17	25.50	25.65	25.80	25.95	26.10	26.25	26.40	26.55	26.70	26.85	17
18	27.00	27.15	27.30	27.45	27.60	27.75	27.90	28.05	28.20	28.35	18
19	28.50	28.65	28.80	28.95	29.10	29.25	29.40	29.55	29.70	29.85	19
20	30.00	30.15	30.30	30.45	30.60	30.75	30.90	31.05	31.20	31.35	20
21	31.50	31.65	31.80	31.95	32.10	32.25	32.40	32.55	32.70	32.85	21
22	33.00	33.15	33.30	33.45	33.60	33.75	33.90	34.05	34.20	34.35	22
23	34.50	34.65	34.80	34.95	35.10	35.25	35.40	35.55	35.70	35.85	23
24	36.00	36.15	36.30	36.45	36.60	36.75	36.90	37.05	37.20	37.35	24
25	37.50	37.65	37.80	37.95	38.10	38.25	38.40	38.55	38.70	38.85	25
26	39.00	39.15	39.30	39.45	39.60	39.75	39.90	40.05	40.20	40.35	26
27	40.50	40.65	40.80	40.95	41.10	41.25	41.40	41.55	41.70	41.85	27
28	42.00	42.15	42.30	42.45	42.60	42.75	42.90	43.05	43.20	43.35	28
29	43.50	43.65	43.80	43.95	44.10	44.25	44.40	44.55	44.70	44.85	29
30	45.00	45.15	45.30	45.45	45.60	45.75	45.90	46.05	46.20	46.35	30
31	46.50	46.65	46.80	46.95	47.10	47.25	47.40	47.55	47.70	47.85	31
32	48.00	48.15	48.30	48.45	48.60	48.75	48.90	49.05	49.20	49.35	32
33	49.50	49.65	49.80	49.95	50.10	50.25	50.40	50.55	50.70	50.85	33
34	51.00	51.15	51.30	51.45	51.60	51.75	51.90	52.05	52.20	52.35	34
35	52.50	52.65	52.80	52.95	53.10	53.25	53.40	53.55	53.70	53.85	35
36	54.00	54.15	54.30	54.45	54.60	54.75	54.90	55.05	55.20	55.35	36
37	55.50	55.65	55.80	55.95	56.10	56.25	56.40	56.55	56.70	56.85	37
38	57.00	57.15	57.30	57.45	57.60	57.75	57.90	58.05	58.20	58.35	38
39	58.50	58.65	58.80	58.95	59.10	59.25	59.40	59.55	59.70	59.85	39
40	60.00	60.15	60.30	60.45	60.60	60.75	60.90	61.05	61.20	61.35	40
41	61.50	61.65	61.80	61.95	62.10	62.25	62.40	62.55	62.70	62.85	41
42	63.00	63.15	63.30	63.45	63.60	63.75	63.90	64.05	64.20	64.35	42
43	64.50	64.65	64.80	64.95	65.10	65.25	65.40	65.55	65.70	65.85	43
44	66.00	66.15	66.30	66.45	66.60	66.75	66.90	67.05	67.20	67.35	44
45	67.50	67.65	67.80	67.95	68.10	68.25	68.40	68.55	68.70	68.85	45
46	69.00	69.15	69.30	69.45	69.60	69.75	69.90	70.05	70.20	70.35	46
47	70.50	70.65	70.80	70.95	71.10	71.20	71.40	71.55	71.70	71.85	47
48	72.00	72.15	72.30	72.45	72.60	72.75	72.90	73.05	73.20	73.35	48
49	73.50	73.65	73.80	73.95	74.10	74.25	74.40	74.55	74.70	74.85	49
50	75.00	75.15	75.30	75.45	75.60	75.75	75.90	76.05	76.20	76.35	50

THE NATIONAL BLANK BOOK COMPANY
HOLYOKE MASSACHUSETTS
NEW YORK CHICAGO BOSTON SAN FRANCISCO