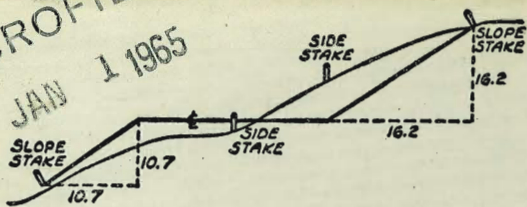


MICROFILMED
JAN 1 1965



2149

4 / 14142
35395

DISTANCES FROM SIDE STAKES FOR CROSS-SECTIONING
SLOPE 1 TO 1. ROADWAY OF ANY WIDTH

	0	.1	.2	.3	.4	.5	.6	.7	.8	9	
0	0.00	0.10	0.20	0.30	0.40	0.50	0.60	0.70	0.80	0.90	0
1	1.00	1.10	1.20	1.30	1.40	1.50	1.60	1.70	1.80	1.90	1
2	2.00	2.10	2.20	2.30	2.40	2.50	2.60	2.70	2.80	2.90	2
3	3.00	3.10	3.20	3.30	3.40	3.50	3.60	3.70	3.80	3.90	3
4	4.00	4.10	4.20	4.30	4.40	4.50	4.60	4.70	4.80	4.90	4
5	5.00	5.10	5.20	5.30	5.40	5.50	5.60	5.70	5.80	5.90	5
6	6.00	6.10	6.20	6.30	6.40	6.50	6.60	6.70	6.80	6.90	6
7	7.00	7.10	7.20	7.30	7.40	7.50	7.60	7.70	7.80	7.90	7
8	8.00	8.10	8.20	8.30	8.40	8.50	8.60	8.70	8.80	8.90	8
9	9.00	9.10	9.20	9.30	9.40	9.50	9.60	9.70	9.80	9.90	9
10	10.00	10.10	10.20	10.30	10.40	10.50	10.60	10.70	10.80	10.90	10
11	11.00	11.10	11.20	11.30	11.40	11.50	11.60	11.70	11.80	11.90	11
12	12.00	12.10	12.20	12.30	12.40	12.50	12.60	12.70	12.80	12.90	12
13	13.00	13.10	13.20	13.30	13.40	13.50	13.60	13.70	13.80	13.90	13
14	14.00	14.10	14.20	14.30	14.40	14.50	14.60	14.70	14.80	14.90	14
15	15.00	15.10	15.20	15.30	15.40	15.50	15.60	15.70	15.80	15.90	15
16	16.00	16.10	16.20	16.30	16.40	16.50	16.60	16.70	16.80	16.90	16
17	17.00	17.10	17.20	17.30	17.40	17.50	17.60	17.70	17.80	17.90	17
18	18.00	18.10	18.20	18.30	18.40	18.50	18.60	18.70	18.80	18.90	18
19	19.00	19.10	19.20	19.30	19.40	19.50	19.60	19.70	19.80	19.90	19
20	20.00	20.10	20.20	20.30	20.40	20.50	20.60	20.70	20.80	20.90	20
21	21.00	21.10	21.20	21.30	21.40	21.50	21.60	21.70	21.80	21.90	21
22	22.00	22.10	22.20	22.30	22.40	22.50	22.60	22.70	22.80	22.90	22
23	23.00	23.10	23.20	23.30	23.40	23.50	23.60	23.70	23.80	23.90	23
24	24.00	24.10	24.20	24.30	24.40	24.50	24.60	24.70	24.80	24.90	24
25	25.00	25.10	25.20	25.30	25.40	25.50	25.60	25.70	25.80	25.90	25
26	26.00	26.10	26.20	26.30	26.40	26.50	26.60	26.70	26.80	26.90	26
27	27.00	27.10	27.20	27.30	27.40	27.50	27.60	27.70	27.80	27.90	27
28	28.00	28.10	28.20	28.30	28.40	28.50	28.60	28.70	28.80	28.90	28
29	29.00	29.10	29.20	29.30	29.40	29.50	29.60	29.70	29.80	29.90	29
30	30.00	30.10	30.20	30.30	30.40	30.50	30.60	30.70	30.80	30.90	30
31	31.00	31.10	31.20	31.30	31.40	31.50	31.60	31.70	31.80	31.90	31
32	32.00	32.10	32.20	32.30	32.40	32.50	32.60	32.70	32.80	32.90	32
33	33.00	33.10	33.20	33.30	33.40	33.50	33.60	33.70	33.80	33.90	33
34	34.00	34.10	34.20	34.30	34.40	34.50	34.60	34.70	34.80	34.90	34
35	35.00	35.10	35.20	35.30	35.40	35.50	35.60	35.70	35.80	35.90	35
36	36.00	36.10	36.20	36.30	36.40	36.50	36.60	36.70	36.80	36.90	36
37	37.00	37.10	37.20	37.30	37.40	37.50	37.60	37.70	37.80	37.90	37
38	38.00	38.10	38.20	38.30	38.40	38.50	38.60	38.70	38.80	38.90	38
39	39.00	39.10	39.20	39.30	39.40	39.50	39.60	39.70	39.80	39.90	39
40	40.00	40.10	40.20	40.30	40.40	40.50	40.60	40.70	40.80	40.90	40
41	41.00	41.10	41.20	41.30	41.40	41.50	41.60	41.70	41.80	41.90	41
42	42.00	42.10	42.20	42.30	42.40	42.50	42.60	42.70	42.80	42.90	42
43	43.00	43.10	43.20	43.30	43.40	43.50	43.60	43.70	43.80	43.90	43
44	44.00	44.10	44.20	44.30	44.40	44.50	44.60	44.70	44.80	44.90	44
45	45.00	45.10	45.20	45.30	45.40	45.50	45.60	45.70	45.80	45.90	45
46	46.00	46.10	46.20	46.30	46.40	46.50	46.60	46.70	46.80	46.90	46
47	47.00	47.10	47.20	47.30	47.40	47.50	47.60	47.70	47.80	47.90	47
48	48.00	48.10	48.20	48.30	48.40	48.50	48.60	48.70	48.80	48.90	48
49	49.00	49.10	49.20	49.30	49.40	49.50	49.60	49.70	49.80	49.90	49
50	50.00	50.10	50.20	50.30	50.40	50.50	50.60	50.70	50.80	50.90	50

Distance of slope stake from side or shoulder stake for any width roadway, slope 1 to 1. If ground is nearly level, the cut or fill at side stake is located by the double entry method in left column and top row. The number in body of table in same row and column gives distance from side stake to slope stake. If ground is not level estimate the difference in elevation between the side stake and slope stake, lower target by this amount if cut, elevate if fill. Add this amount to cut or fill and find distance in table. Set up rod at this point, and line of sight should cut target. If it does not make the slight adjustment necessary.

126-25.

89-37-30

89 3,647 30

DIRECTIONS FOR USE OF TABLES

TABLE No. XIV

Distance of ship's side from side of anchor
state for any width of anchor line in fathoms
if anchor is used for the first time

IMPROVED TABLES
AND
INFORMATION

TABLE No. VIII

To find Tension and Extension for any
any other size of wire by dividing the
and extension found for 10000 lb. by
the weight of wire in lb. and the result
by dividing weight of wire by 10000 lb.
is an answer for extension.

The distance from a point on the surface to
the center of gravity of the surface of the sphere
length divided by twice the radius.

INDEX:

Key sketch P. 2

"A" line = Fresno - Sly. end to Riley St.					Page 1 2 93-10
"B" " = Eureka. Sly. end to		Lauretta St.			11-15
"C" " = Danahue St. From Sly.		end to Riley			16-19
"D" " = Colusa St. From Andrade		to Riley	47-51	+ 20 + ²⁶ 29	
"E" " = Benecia St. Andrade		to Bk. "C" Bay View 1/4 Acres	21 + 30 + 31		
"F" " = Though portion of P.L. 1103			22 + 32-33		
"G" " = Andrade St.			23 + 34 + 35		
"H" " = } Yuma St {	Benecia to	Colusa -	"H" =	24 + 36	
"I" " = }	Colusa to	Fresno -	"I" =	25 + 37-38	
"J" " = Riley St.	Azusa to	Goshen		39 - 46	
"K" " = Lauretta St.	Mollie to	Huenehne		52 + 63	
"L" " = Thru. Bk's. 2-8 + 13	Silver	Terrace		64 - 71	
"M" " = Alley in Bk's. 2-3 + 4	"	"		72 -	

Benches

4-5 + 79

Continued in F.B. # 2160

References
see FB 2160

79

Field book #

371
487
871
974
1471
1630
1643
1845
2075
2160
374
1629
1767
1777

Maps

179
271
430
569
695
1654

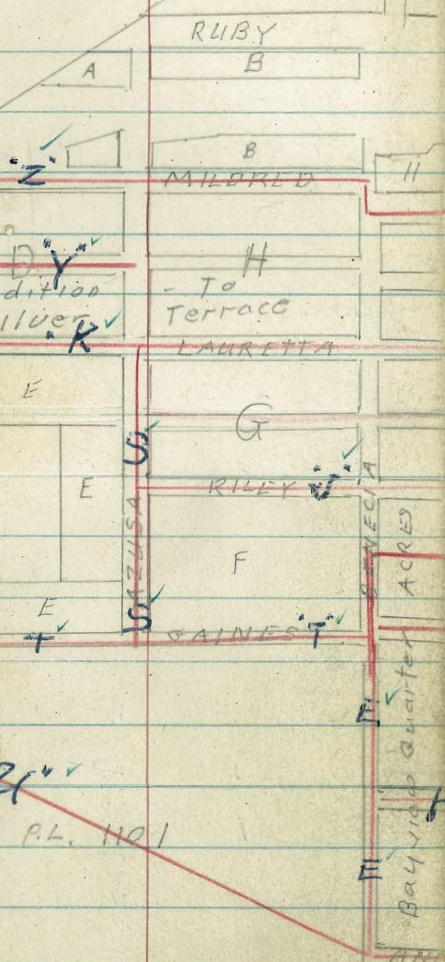
Silver Terrace - et al.
Sewer prelim.

Sommermeier
B 99
R. Sisson
oitman
9-20-51
W.O.

F.B. 2125 & 2156
LINDA VISTA ROAD
I.P. Jones Sub.

W
X
Y
Z
T

see
2162
37

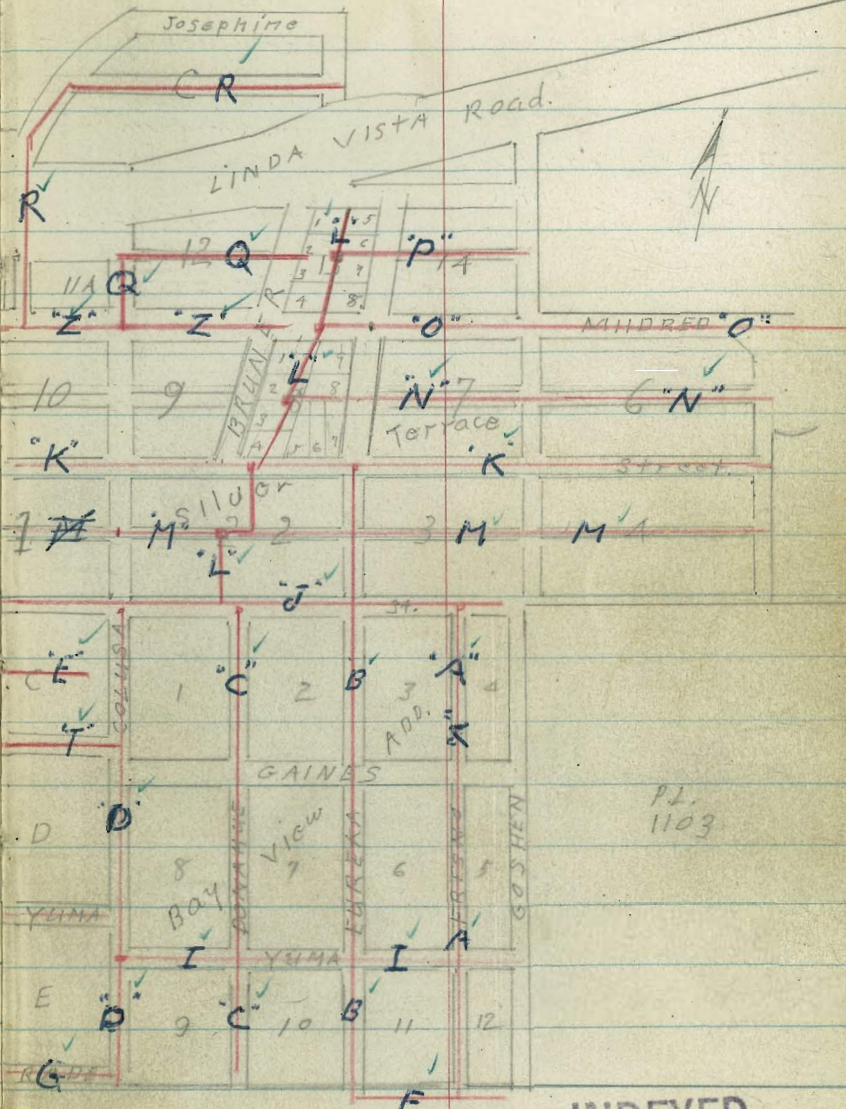


P.L. 1101

P.L. 1102

Key sketch.

INDEX-P.1



P.L. 1103

P.L. 1103

INDEXED
Nov
NOV 20 1951
all of this Book

"A" line = FRESNO ST.

Sly. End to Riley St.

10-1-51

W.O.

■ = Set conc. Mon.

□ = Set $\frac{1}{2}$ " + Disk

• = Nail

Sammermeyer
Beag
R. Sisson
W. Oltmann

FB 1630-72+1

Map 271

References - F.B. 2160
79

Posted T.P.S. 1129-1135
11-20-51 M.R.

3

± Riley

9+43.5

←25 →25→

± Gaines

5+93.5±

FRESNO

2+43.5 ± Yuma

20'
15'

2+48.5

25'

2+33.5

25' L.F.
Fd. $\frac{1}{2}$ "
Replaced with
conc. Mon.

←25 →25→

∠ 89°-57'

0+00

10'

0-20

P.L. 1103

For R.P. stubs

Sec. 9704-L

6-29-53

B.M. #32. Chisle on Ctr. N. Wly. Head

wall of culvert thru Dyke EL=13.54 ^A

	+	H.I.	-	EL.	
	11.48	64.53	2.46	53.05	T.P. NAIL IN ASPHALT & INTERSECTION (N.E. COR. CON. DRIVE. W. LINE FRESNO)
	11.89	55.51	6.45	43.62	T.P. (APPROX. 100' NORTH YUMA)
	12.53	50.07	0.63	37.54	T.P.
B.M. #9	12.48	38.17	2.36	25.69	CON. MON. 10' SO. & YUMA, & FRESNO
	9.82	28.05	0.19	18.23	T.P.
B.M. #8	5.05	18.42	4.45	13.37	2 X 2 HVB & DISC. & FRESNO (263.50 SO. & YUMA)
B.M. #7	5.85	17.82	5.24	11.97	2 X 2 HVB & DISC. & EUREKA (243.50 SO. & YUMA)
B.M. #6			6.56	10.65	CON. MON. 10' SO. & YUMA - WEST LINE EUREKA
	6.65	17.21	4.49	10.56	T.P.
B.M. #5	5.12	15.05	12.15	9.93	PROPERTY PIPE - N.E. COR. COLUSA & YUMA
	0.80	22.08	11.99	21.28	T.P.
	0.63	33.27	13.09	32.64	T.P. (N.E. COR. GAINES & COLUSA (POLE NO. 1105))
B.M. #4	0.40	45.73	2.66	45.33	SPIKE IN POLE #1105
	7.21	47.99	1.47	40.78	T.P.
B.M. #3	5.90	42.25	0.26	36.35	SPIKE IN 6 X 8 POST - & BENICIA, SOUTH LINE GAINES CHISLE "+" (POLE NO. 5400)
B.M. #2	5.05	36.61	4.81	31.56	CONCRETE FOUNDATION - POLE, N.E. COR. GAINES & AZUSA
	6.14	36.37	0.20	30.23	T.P.
	12.88	30.43	0.18	17.55	T.P.
B.M. #1	6.12	17.73	-	11.61	Spike in pole #4650 - From sheet 9103-L

Benchmarks Cont. on P. 79

	+	H.I.	-	EL.	
✓ B.M. #17 - P. 54				31.61	CONC. MON. & LAURETTA + WLY. LINE MOLLIE
B.M. #16 - P. 41				28.05	R.R. SPIKE & RILEY + AZUSA.
B.M. #15				55.36	1/2 & RILEY + & COLUSA
✓ B.M. #14				7.61	(page 26) CONC. MON. ELY. LINE COLUSA - SLY. 15' LINE YUMTA
✓ B.M. 13				8.96	{ SLY. 15' LINE YUMA } CONC. MON. { WLY. LINE DONAHUE } FROM P-17
✓ B.M. #12			2.05	181.30	CON. MON. & LAURETTA, EAST LINE HUENEME
	9.15	183.35	0.83	174.20	T.P.
	11.97	175.03	0.47	163.06	T.P.
	11.88	163.53	0.78	151.65	T.P.
	13.22	152.43	0.41	139.21	T.P.
	13.30	139.62	1.59	126.32	T.P.
	13.01	127.91	1.70	114.90	T.P.
	11.93	116.60	4.55	104.67	T.P.
✓ B.M. #11			7.03	102.19	DUEBLO COR. MON. RILEY & GOSHEN
B.M. #10			4.55	104.67	S.W. PROP. PIPE (3/4") FRESNO & RILEY
	8.38	109.22	0.35	100.84	T.P.
	12.99	101.19	0.48	88.20	T.P.
	12.28	88.68	0.61	76.40	T.P.
	12.68	77.01	0.20	64.33	T.P.
		64.53			

"A" line - Fresno St.
Sketch - P 3

1+50

10.6
7.5

1+40

10.9
7.2

1+25

11.3
6.8

1+15

13.5
4.6

1+00

13.5
4.6

7²Lt. = end row of 4"x4" posts
0+67 on line = end stables

13.7
4.4

4.4
2.4
N.E. 1/4 cor
stables

0+00

13.8
4.3

4"x4" posts supporting canopy
6' Lt. = start line of 10' spaced
foundation
0-13⁵ } 13' Rt. = start stables conc.
or higher than Φ .
outs not shown are level with

0+00 = 243⁵' Sly. of Φ , Yuma St.

4.72 18.09 - 13.37

18.09

B.M. # 8 - Page 4

A. line

4+00

46.3
6.6

3+30 55' Lt. = Ely, side house

^{334.9}
18.0 11.4 10.3 11.3 9.2 21.0
125 75 55 30 100

T.P. 11.60 ~~52.94~~ 0.14 ~~41.34~~ ~~41.39~~

52.94

2+90

30.1
11.4

T.P. 12.03 ~~41.48~~ 0.13 ~~29.45~~ ~~29.58~~

41.48

2+68⁵ - Nly Yuma

27.0
2.4

2+48⁵ = Junction with Yuma St. line

2.9^{26.7}

2+43⁵ = E Fresno + Yuma

2.9^{26.7}

2+07

15.0 4.3 3.5 2.8 7.4 15.0
100 20 25 75 100

T.P. 11.91 29.58
11.96 ~~29.53~~ 0.42 17.67

29.58

↑ Rod read wrong should have been 11.91

1+8A

13.6
4.5
18.09

"A"

T.P.	11.85	86.25 86.30	0.65	74.40 74.45
------	-------	---------------------------	------	---------------------------

7+20

7+00

T.P.	12.39	75.05 75.10	0.37	62.66 62.71
------	-------	---------------------------	------	---------------------------

6+50

6+18.5 = Nly. Gaines

5+93.5 ± Gaines. *Pave.* Approx. 20' wide A.C.

5+68.5 ± = Sly. 11% Gaines. *Pave.* at 20' wide

5+50

T.P.	10.36	67.03 67.08	0.27	52.67 52.72
------	-------	---------------------------	------	---------------------------

5+00

4+50

8

61°
8.1'
80
Grd. at back
of house

62°
13.1
100

4

10°

4.5

67.4

7.7

75.10
75.05

60.6

2.4

56.8

6.2

53.04

9.97

Nail in Pave

50°

13.0

100

53.8

9.2

59.0

4.0

75

56.2

6.8

100

53.8

9.2

63.93

51.2

1.7

42.9

10.1

100

48.3

4.6

52.99

14.4

100

32.6

A line

±

9

T.P.	0.18	51.49	13.14	51.31
Nail in Pave & Gaines			11.35	53.10
T.P.	0.75	64.45	12.32	63.70
T.P.	0.92	76.02	12.48	75.10
T.P.	0.99	87.58	12.08	86.59
T.P.	0.50	98.67	12.60	98.17
			6.04	104.68 (104.67)
				104.73

{ 53.05 - on P-4
53.11 in A line notes P-8.

by 0.05.
page 7. lowers these elevations
This error in reading rod on

B.M. # 10 - P.5

9+43^E ± Riley

108.5
2.2

9+18^E = Sly. line Riley

96.8
13.9
100

104.8
5.9
110.72

102.6
8.1
100

T.P.	12.53	110.72	0.10	98.19
		<u>110.77</u>		<u>98.24</u>

8+50

81.3
12.0
100

93.4
4.7
98.29

93.5
4.8
100

T.P.	12.51	98.29	0.47	85.78
		<u>98.34</u>		<u>85.83</u>

8+00

78.8
7.5
100

94.8
1.5

7+35

79.6
18.7
80

74.1
12.2

End. at
back of
house

86.30

"A" line
 Check levels

0+00 to 9+43⁵ on "A" line.

⌈ + T.P. corrected from

			3.33	16.12	(13.37)
T.P.	4.61	19.75	11.67	15.14	
T.P.	1.01	26.81	13.19	25.80	
			13.24	25.75	(25.69)
T.P.	0.25	38.99	12.75	38.74	
		51.47			

B.M. # 8 - P.A.

B.M. B.M. # 9

by 0.05

these elevations

page 7. lowers

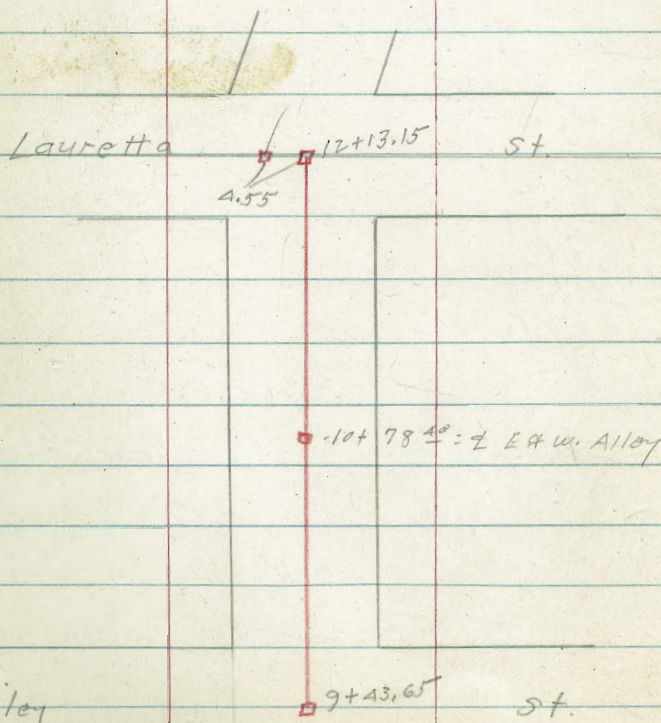
rod shown on

Error in reading

"B" line
Eureka St.
Sly. end to Laurretta 10/5/51

■ = set Mon.
■ = set 1/2" disk

1630-1
F.B. 1630-72
Map 271

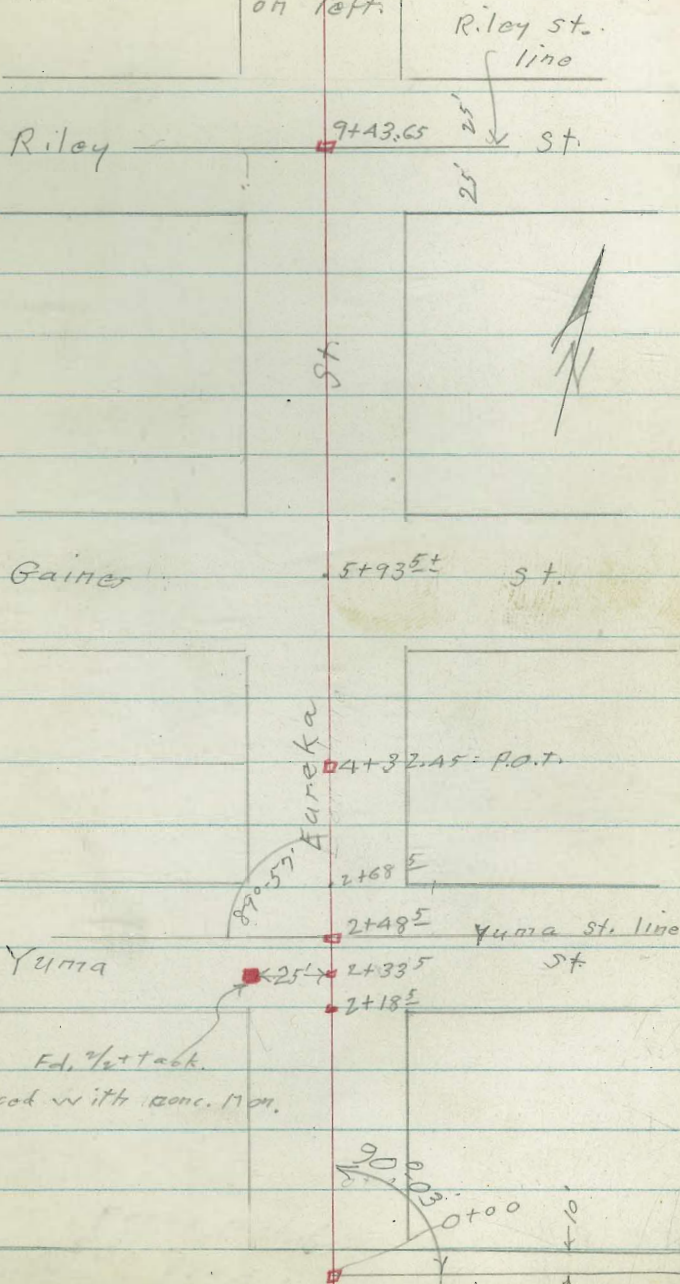


continued from right.

Posted.
T.P.S. 1129, 1135
11-20-51 M.S.O.

Continued
on left.

11



P.L. 1103

Eureka st = "B" line

Sly end to Lauretta st.

Sketch - P. 11

2+48^E = Junction Yuma line

12.1
3.2

2+43^E ± Yuma.

11.9
3.4

2+18^E sly line Yuma

11.1
4.2

2+00

10.0
5.3

1+50

10.3
5.0

0+99 7' Rt = end stable
3' Rt = edge of roof

11.1 11.1 11.2
4.2 4.2 4.1
7 31
N.E. Cor
stable

0+38 7' Rt = start stable
3' Rt = edge of roof

11.6 11.1
3.7 3.6
7
15.32

T.P. 4.67 15.32 7.70 10.65

0+00

12.1
6.3
18.35

7.70 18.35 - 10.65

B.M. #6 - page 4

0+00 = 243^E So. of ± Yuma - P-3.

"B"
Line

5+68⁵ = Sly Gairies

5+00

4+50

T.P. 10.85 49.52 0.29 38.67

4+00

T.P. 12.14 38.96 0.24 26.82

3+30

T.P. 11.99 27.06 0.25 15.07

2+68⁵ = N. line Yuma.

4

13

42.9
6.6

41.5
8.0

39.2
10.3 38.9
10.6
7.0

49.52

31.8
7.2 33.3
5.7 12.6
50 7.5
38.96 Low point
12.96

18.4
8.7

50
Low
point

27.06

13.8
1.5

15.32

"B" line

14

8+60	12.89	<u>87.74</u>	0.31	74.85
------	-------	--------------	------	-------

T.P.	13.37	<u>75.16</u>	0.15	61.79
------	-------	--------------	------	-------

8+00

7+50

7+00

6+60

T.P.	12.65	<u>61.94</u>	0.23	49.29
------	-------	--------------	------	-------

6+18⁵ = Nly Gains

5+93⁵⁺ = \pm Gains (on pavement) Approx. \pm 20' wide Pass.

54.2	87	74
21.0	57.8	67.7
100	17.4	7.5
	75	

75.16

39.9	58.9
22.0	3.0
75	

35.7	53.0
26.2	8.9
100	

37.5	50.4
24.4	11.5
100	

38.9	48.5
23.0	13.4
100	

61.94

37.4	44.1
12.1	5.4
100	

43.4
6.1

49.52

B' Line

2 1/2 - 4.55 Lt. 12 + 13.15

4.60 105.27 Temp 8.4

12 + 13.15

106.5
3.4

11 + 88.15 S Prof line Lauretta

92.4
17.5
100

104.0
5.9

11 + 50

97.2
12.7
30

101.2
8.7

1038 109.87 0.08 99.49

109.87

11 + 50

88.1
11.5
100

96.1
3.5

10 + 50

92.8
7.3

12.08 99.57 0.25 87.49

99.57

10 + 00

76.6
11.1
100

83.0
4.7

9 + 43.65 ^{792 79.82} of Riley on Hub

79.82
7.92

87.74

87.74

"C" line
Donahue St.

±

3+00

15.1
4.3

2+75

14.4
5.0

2+20 = Nly. line Yuma

10.4
9.0

o.h. hub	2+00	9.64	9.71	Temp. B.M.	19.35
t.p.	9.28	<u>19.35</u>	3.55	10.07	

2+00 = Int. Yuma St. line
 1+93 - 5' Lt. = 8" Eucalyptus 10' Rt. = 14" Eucalyptus
 1+85 - 25' Lt. = Conc. Men.

10.1
3.5

1+70

9.1
4.5

1+00

9.9
3.7

0+00 = 195' so. from ± Yuma

11.1
2.5
13.62

Set. B.M. #13	4.66	8.96	
	3.69	<u>13.62</u>	9.93

Yuma,
 Conc. Men. Nly line Donahue - Sly. 15' line
 B.M. #5 - P.4

"C" line
Donatue

±

18

5+45 = \pm Gaines = Apex. oil pavement
 \pm 18' wide

34.0

1.1
on nail

5+33 = top of Gaines St. Fill.

33.9

1.2

T.P. 9.54 35.10 0.92 25.56

35.10

5+17 Top of Gaines St fill.

24.4

1.9

5+00

23.2

3.3

4+50

18.4

8.1

100

between houses

19.8

6.7

4+00

17.5

9.0

26.48

T.P. 8.26 26.48 1.13 18.22

3+70

16.9

2.5

19.35

"C"

Donahue St.

Temp. B.M. on $\frac{1}{2}$ 8+95⁵ 0.75 45.19

8+95¹⁵

8+85

8+50

T.P. 10.18 45.94
8.96 44.92 0.63 35.76

8+00

7+00

T.P. 10.84 36.39 9.55 25.55

6+00

5+70 = Top Gainer St. Fill.

5+58 = Top of Gainer St. Fill.

19

±

45.3

0.6

45.2

0.7

38.2

7.7

45.94

33.9

2.5

23.2

8.2

50
Low point

29.2

7.2

36.39

27.2

7.9

50
Low point

25.5

9.6

24.9

10.2

34.2

0.9

35.10

"D" line
Colusa St.
Andrade to Riley

10-9-51

Sommermeier
13099
Altman
Brunner

□ = Fd. Hub;

■ = Set Conc. Mon.

◻ = set hub + disk

• = nail

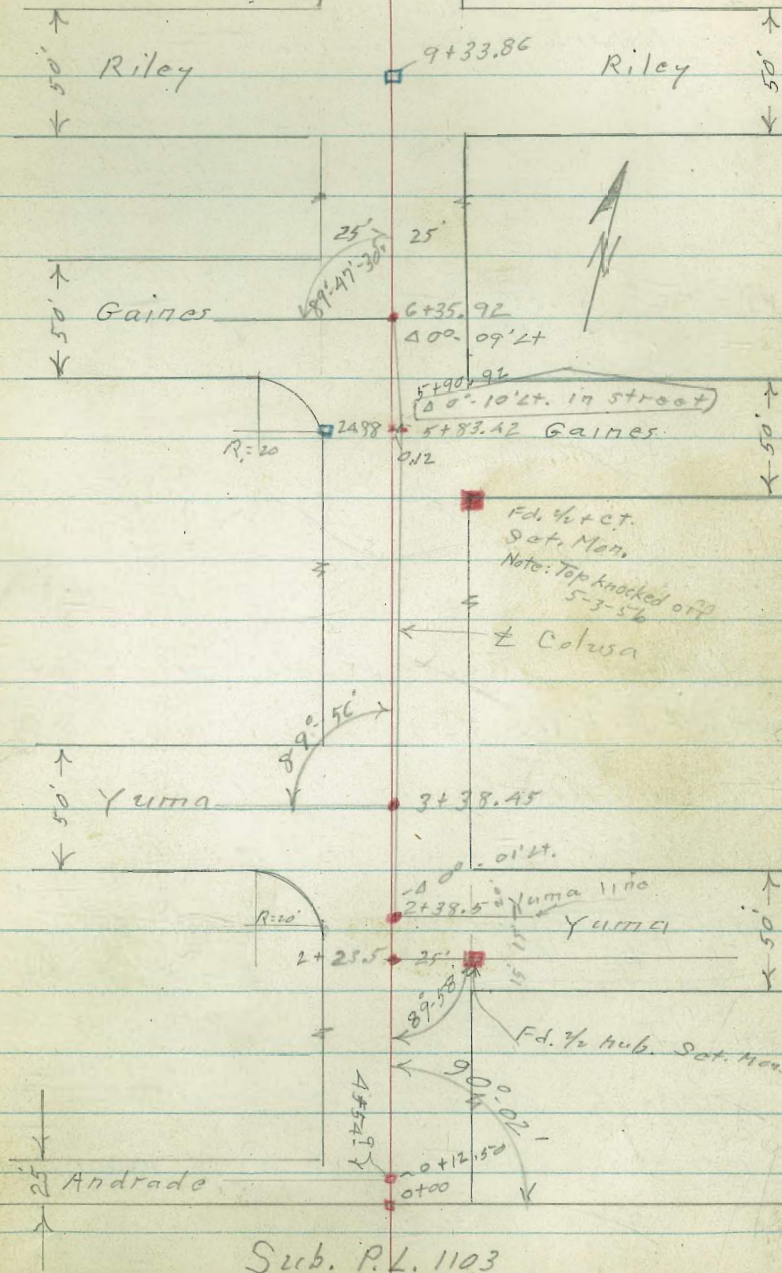
F.B. 1471-10
" 1630-72
Map 271
" 1654

Levels - P-26

This line runs from $\frac{1}{2}$ of Colusa and
 $\frac{1}{2}$ of Yuma to $\frac{1}{2}$ of Colusa and $\frac{1}{2}$
Gaines to west. By passes
by ~~at~~ $\frac{1}{2}$ of Colusa + $\frac{1}{2}$ of
Gaines to East.

T.P.S - 1129

20



Map 183. Sub. P.L. 1103

E. Line
Benecia -
Andrade to Gaines 10-10-51

Sommermeier
Beqq
oltman
Brunner

FB 1630-72
1630-1
Map 430
" 1654

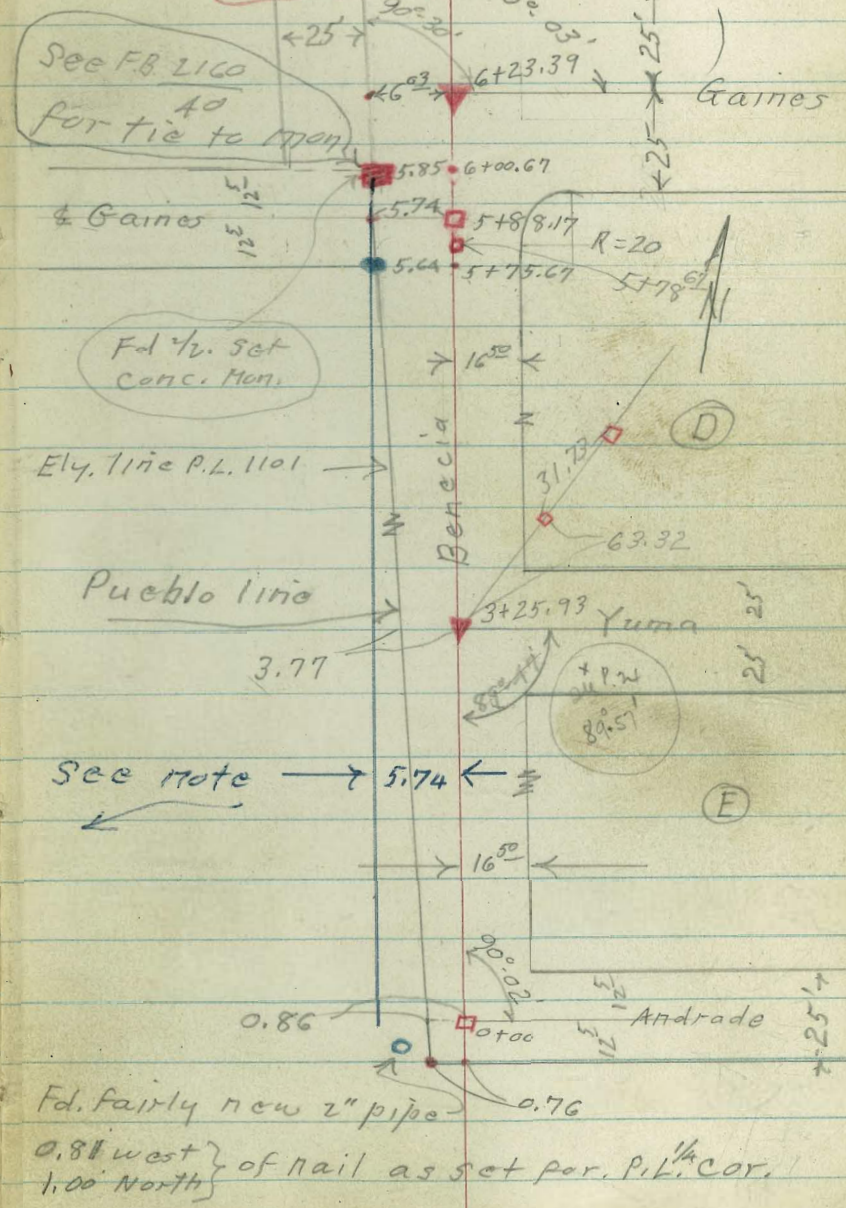
- = Fd. Conc. Mon.
- = Fd. City disk
- = Fd. pipe
- = Set Conc. Mon.
- ▼ = " R.R. spike
- = " 1/2 hub
- = Nail

Levels - P-30

Note: - Line of levels 5⁷⁴ Lt. of E
(on P-30 & 31) runs 22.24' west of
Ely. line Benecia south of Gaines.
this line comes into ~~of~~
~~Gaines Benecia~~, north of Gaines,
pueblo line at
at a point ~~at~~ E of Gaines to
the west. Line north of
Gaines to west follows ~~of~~
25' East of west line of
Benecia North of Gaines.

See page

Cont. P. 47



"F" line
Thru.
Portion of P.L. 1103

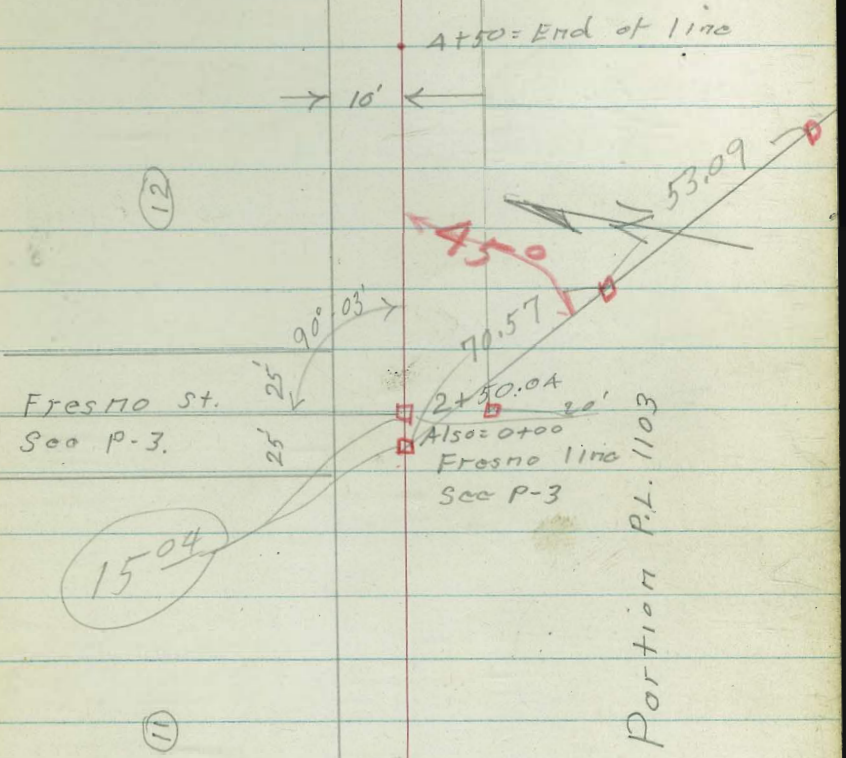
10-10-51
C.H.S.

FB 1630-72
Map. 271

□ = set 1/2 Hub + disk
• = nail

Levels - P-32

Goshen.



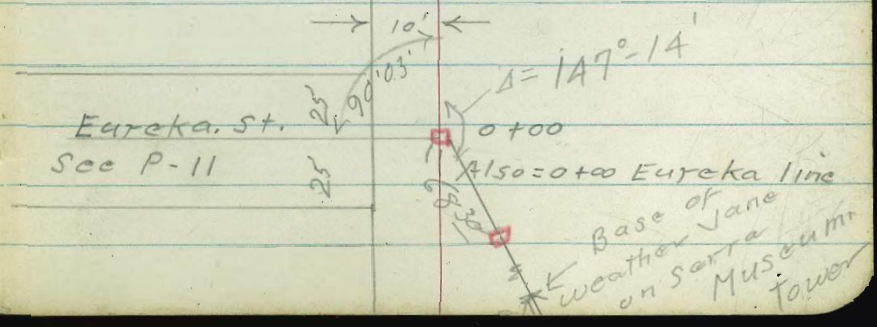
Fresno St.
See P-3.

4+50 = End of line

2+50.04
Also = 0+00
Fresno line
See P-3

Portion P.L. 1103

Eureka St.
See P-11



0+00

Also = 0+00 Eureka line

Base of
weather vane
on Serra
Museum
Tower

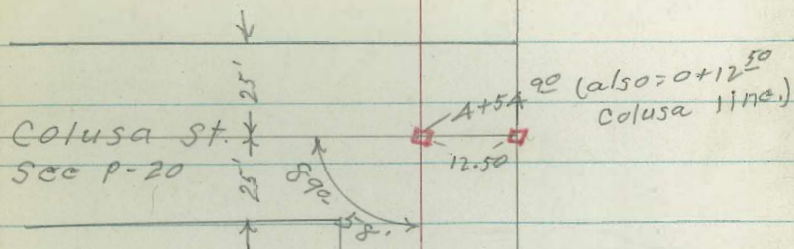
"G" line
Andrade st

10-11-51
C.H.S.

- = Fd. pipe
- = Set. 1/2 hub + disk
- = " Disk
- = Nail

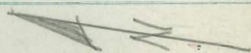
FB. 1630-72
Map 1654

Levels - P-34

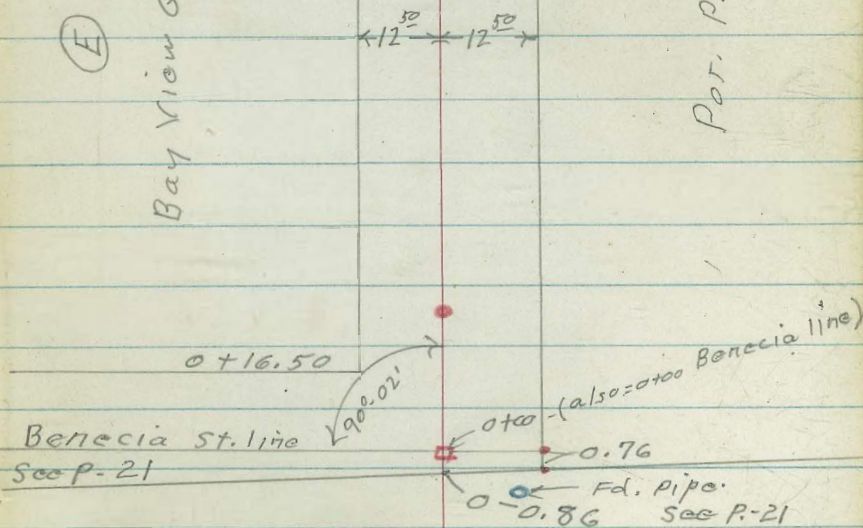


Bay View Quarter Acres.

Andrade.



Por. P.L. 1103.



Benecia St. line
See P-21

P.L. 1101

2160
50 For. Tie outs
C-8-53

"H" - line
Yuma st.
Benecia to Colusa

FB 1630-72

Map 1654

• = Set Nail

▼ = Set. Rail Road spike

Levels - P-36.

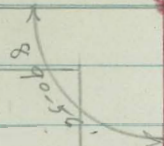
TPS 1128-1129
Posted 11-20-51-MRQ

24

Colusa line
P-20

3 + 38.45 - P20

4 + 54.86



(D)

(E)

YUMA ST.

3 + 25.93 (P21)

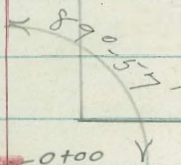
0 + 16.50

Benecia line
Page 21,

Ely. line P.L. 1101

0 + 00

0 - 3.77



179° 60'
89 57'
90° 03'

I line

Yuma St. Colusa to Fresno

10-12-51
C.H.S.

□ = Fd. 1/2 hub

■ = Set Conc. Man.

□ = " hub + disk

• = Nail

FB 1630-72
Map 271
" 1654

Sewer line run 5' north of \pm Yuma
to avoid trees.

Levels - P-37

Fresno line

P-3

Eureka line

P-11

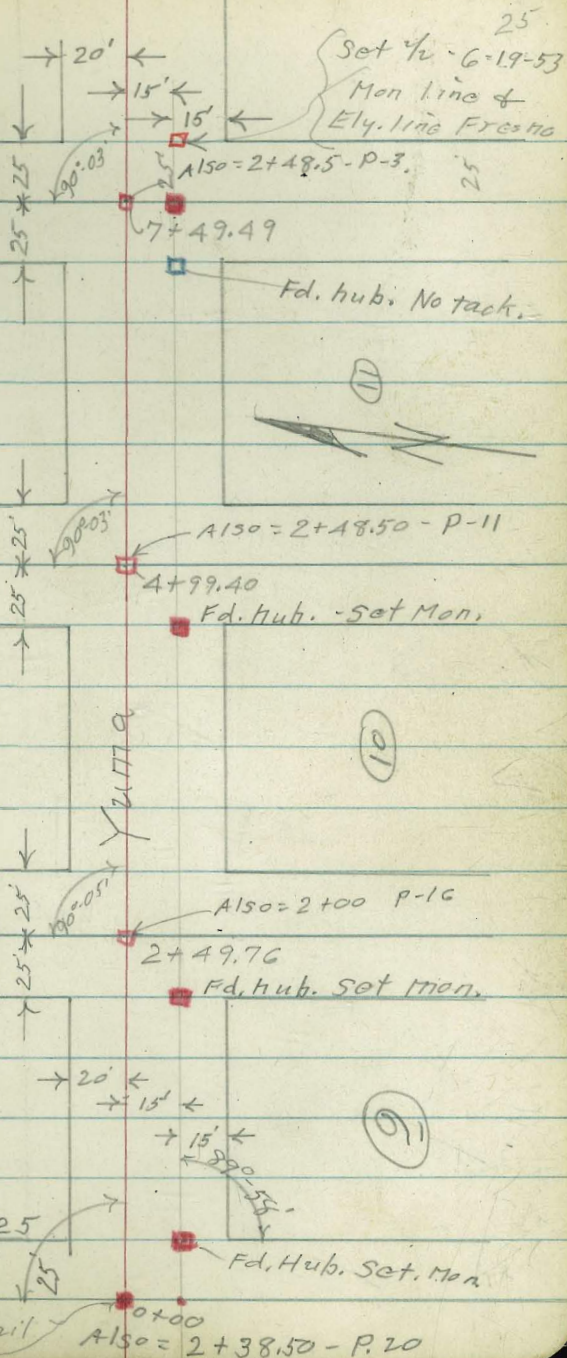
Donahue line

P-16

Colusa line

P-20

Nail



25
Set 1/2 - 6-19-53
Man line &
Ely. line Fresno

Fd. hub. No tack.

Also = 2+48.50 - P-11
4+99.40
Fd. Hub. - Set Man.

Also = 2+00 P-16
2+49.76
Fd. Hub. Set Man.

Also = 2+38.50 - P-20
0+00

Levels. "D" line = Colusa st.

Colusa - Andrade to Riley

Sketch - P-20

10/17/51

C.H.S.

8099

Altman

2+00 = start oil + rock pave 1 1/2" thick

8.7
5.6

1+50

9.8
4.5

1+07 = start 1" thick oil

10.8
3.5

1+00

11.1
3.2

0+50

10.7
3.6

0+12.5 = ϕ Andrade = 4+54.2 on "G" line

11.2
3.10
Hub

0+20 (P-20) = S. Andrade + ϕ Colusa.

(0-10) deck

11.71
2.60
Hub

14.31

Set. B.M. # 1A

6.70 7.61

Conc. Mon. Ely line Colusa - Sly. 15' line Yuma

4.38 14.31

9.93

B.M. # 5 - P. 4

"D"
line

5+00

34.0
3.8

4+50 77' RT. = Approx. \pm 2 unit Apt.

27.2 27.7 23.7 17.4 17.8
10.6 10.1 14.1 20.4 20.
25 40 50 97
37.82 at 8149.

T.P. 12.40 37.82 0.09 25.42

4+00

20.0 19.0 16.4 16.1
15.5 6.5 9.1 9.4
25 33 75

3+63⁴⁵ Nly. line Yuma to west.

15.0
10.5

T.P. 12.91 25.51 1.71 12.60

25.51

3+38⁴⁵ = \pm Yuma to west. = 4+54.86 - "H" line
(Yuma to west.)

12.60
1.71
Nail.

2+59⁵ N. line Yuma to east.

9.1
5.2

2+38⁵ = 0+00 Yuma ("I") line - P.25

8.6
5.65
Nail

2+23⁵ 25' RT. = Mon. (P.20)

8.4
5.7

14.31

"D" line
colusa.

±

28

8+00

50°
6.2

49.5
6.7
100
End. back of
house

10.84 56.17

45.33 = B.M.#4

56.17

10.84 45.31 (45.33)

B.M.#4, P.-4

T.P. 10.92 56.15 2.90 45.23

56.15

7+00

45.23
2.90
Nail

= Δ 0°-09' Lt.

6+35.92 = ± Gain to west

48.13
5.41
42.72

42.72
5.41
Nail

5+90⁹² 24⁸⁸ Lt. = 1/2 hub (P1-20)

41.9
6.2

5+75

41.5
6.6

5+50

39.1 39.0 37.4
7.0 7.1 10.7
4.0 7.5

5+40

38.0 38.4 23.0 18.6
10.1 7.7 25.0 29.5
4.0 5.0 7.5

T.P. 11.24 48.13 0.93 36.89

48.13

37.82

"D" line
Colusa.

£

29.

9+33 86 on hub. 0.81 55.36 =

B.M. #15

9+33.86 = £ Riley

55.7
0.5

9+00

54.1
2.1

58.7
+ 2.5
100

56.29
+ 0.12
110

laundry
room

56.17

"E" line

Benevia - Andrade to Gaines
Sketch - P-21.

4

30

T.P. spike

3+25.93

12.29

20.02

7.16

7.73

{ 4' Lt. = line of fence
 3' Lt. = Face of pole # 559618-H.
 on "H" Line
 3+25.93 = R.R. spike = + Yuma, also = 0+00

7.1
7.2
25

1.0
7.9
5.74

7.73
7.16
spike

2+65

1.4
7.5
25

1.3
7.6
5.74

8.8
6.1

2+00

4.8
5.1
5.24

9.8
5.1

{ 3' Lt. = line of fence.
 1+50 { 2' Lt. = Face of pole # 559617-H
 { 2' Lt. = line of fence.
 1+29 { 0.6 Lt. = Face of pole # 550 R.

10.1
4.8
5.74

10.2
4.7

9 1+00

10.4
4.5

17' Lt. = (line of R.R. tie + wire fence.
 0+00 (see page 21)

10.5
4.4
5.74

10.86
4.03

4.03

10.86

= 0+00

1/2 + Andrade + 16⁵⁰ west of. Ely, line Benevia

14.89

9 T.P.

4.19

14.89

4.29

10.70

B.M. #5

5.06

14.99

-

9.93

B.M. #5 - P-4 pipe Colusa + Yuma.

"E" line
Benecia

2.64 36.33 (36.35)

5+88.17 = Hub + Jack = 4 Gainers to West.

5+75⁰⁷ = 5² Lt. = end R.R. tie + wire fence.
5⁶⁴ Lt. = Pub. Cor. (See P. 11)

5+30

T.P. 18.73 38.97 1.73 39.24

3⁸ Lt. = face of pole # 559619-H
5+00 - 4⁶ Lt. = line of fence

4+50

T.P. 12.55 31.97 0.60 19.42

4+09 { 5² Lt. = ctr. 18" diam. Eucalyptus
4¹ Lt. = line of fence

4+00

3+65

Levels Cont. on P-48

= B.M. # 3 - P. 4 - Benecia + Gainer

34.5
4.4

34.6 36.3 34.3
4.4 2.7 4.7
25 5.74

29.3 29.5 32.3
9.7 9.5 6.7
25 5.74 38.97

22.8 27.6 29.0
3.2 4.4 3.0
25 5.74

20.0 19.3 22.8
12.0 12.7 9.2
25 5.74 31.97

12.3 12.7 15.2
7.7 7.3 4.8
25 5.74

9.0 9.0 9.4
11.0 11.0 10.6
25 5.74

20.02

"F" line

32

Thru. Portion of P.L. 1103

Sketch - P. 22

10/15/51

1/2-20' RT. of 2+50.04

T.P. 5.60 18.95 4.48 13.35

2+51³ 6' RT = S.W. Cor. Stables

(see page 6) ↗

2+50⁰⁴ 67' Lt. = N.W. Cor. Stables

= 1/2 = 0400 on "A" line - P-3

2+44 7' Lt. } = "A" 4" Copy support
3' RT }

2+00

12.8
5.0

1+75

11.8
6.0 12.5
30 5.3

1+50

11.8 13.4 13.1
6.0 4.4 4.7
30 25

1+10 7' Lt. = end Junky fence.

1+00

11.7 12.9
6.1 7.9
25

7¹ Lt. = line of fence. (it is junky)

See P-11 + P. 22

0400: 10' south of sly. end Eureka

5.86 17.83 3.53 11.97

12.2
5.6
17.83

4.85 15.50

-

10.65

B.M. #6

Conc. Men. Yuma + Eureka - P-4

"F" 111a
Por. P.L. 1103

33

4+50			7.4	11.6
4+00			7.3	11.7
3+65			7.1	11.9
3+60 [±]	1' RT = Nly. ^{NTS} end post + wire fence			
3+50			8.3	10.1
3+29			7.6	11.4
3+28	Cross post + wire fence			
3+26			4.9	14.1
3+20	6' RT = 12' x 12' portable shed.		5.3	13.7
2+82	7' Lt. } = 4x4" post. canopy support. 3' RT }			
2+75	6' Lt. = N.E. cor. stables 13' RT = S.E. " "		5.0	14.0

18.95

"G." line

Andrade St.
Sketch p-23

10-15-51
C.H.S.
Boyg
Oltman

T.P. 5.05 15.68 4.44 10.63

2+13⁵ cross 4' high arena fence. (board fence)

2+13

1+75

1+00

0+63 End frame grand stand

T.P. 1.78 15.07 2.15 13.29

For arena.

0+25= start frame grand stand

0+00 = 1/2 - See p-23 (Also = 0+00 Benecia line-p.21)

4.58 15.44

10.86 - 1/2

0+00 Benecia line p.30

4

3.7 ^{11.4}

4.6 ^{10.5}

4.5 ^{10.6}

3.7 ^{11.4}

15.07

4.8 ^{10.6}

4.5 ^{10.9}

15.44

S.E. Cor.
stand
60

S.W. Cor.
stand
60

"G"
Andrade

= 0+12^E P-26
4+54?
4.48 11.20 Hub.

4+54? = 0+12^E Colusa line ("D" line - P-20)

11.1
4.6

4+00

10.8
4.9

3+00

10.9
4.8

2+60 - 1' At = Palm tree 7' high
12" diam. trunk

10.8
4.9

2+52 = Fly. edge cold lay. road.

10.7
5.0

2+28 wly edge cold lay road.

11.3
4.4

(Cross Plank retaining wall - 2⁵' high
= ~~cross waven wire fence.~~

14.0
1.7

2+27 = end bleachers + cold lay.

2+15 = start row of portable bleacher
seats

13.4
2.3

2+14 - start 1" to 2" thick cold lay
bleacher base.

13.4
2.3

15.68

"H" line

Yuma St.

Benecia to Colusa 10-15-21

sketch - P.24

C.H.S.
R. Sisson
Oltman

4+54.86 = 3+38⁴⁵ P.20

~~12.60~~
3.06

4+00

~~12.0~~
3.7
15.66

T.P. 3.76 15.66 0.46 11.90

3+00

~~13.2~~ 9.8
2.5

2+00

~~11.8~~ 8.1
3.9

1+00

~~11.1~~ 7.7
4.6

0+50

~~10.9~~ 7.5
4.8

0+00 = R.R. spike = 3+25²¹ "E" line. P.30

~~11.5~~ 7.73
4.63

4.63 12.36 - 7.73

R.R. spike 3+25⁹³ "F" line. - P.30

"I" line

Yuma St.

Colusa to Fresno

Sketch P 25

T.P. 6.80 17.30 3.90 10.50

3+00

10.2
4.2

2+49⁷⁶ = \neq Dorratus

9.9
4.5

2+13 9' RT = pole # 5649

2+00 { average 12' apart.
to 14" Diam Eucalyptus
6' RT = \neq start row of 10"

9.1
4.7

1+00

9.9
4.5

0+40 - 3⁵ RT = pole # 5607

0+25 - 4⁵ RT = Gas. Co. valve.

9.4
5.0

0+19 - 4' RT = dead man

0+17 - 5' RT = start R.R. Tie + wire fence

0+00 - R.25 = (2+38⁵ P. 20 - "B" line)

8.1
5.7
14.40

4.47 14.40 - 9.93

B.M. # 5-P-4

Pipe Colusa + Yuma

"I" line

±

38

7+49.49 = ± Fresno Also: 2+48⁵ P-3. 07 "A" line

0.3 26.7

7+00

20.8
6.2 20.3 13.1 10.7
35 46 100
26.97

T.P. 10.17 26.97 0.50 16.80

6+50

16.8
0.5 10.7
6.6
100

24⁵ RT = Δ RT - in fence line
6+05 A N. in line of trees - 19⁵ RT

6+00

14.1
3.2 10.5
6.8
100

5+50

12.3
5.0 10.5
6.8
100

Hub: 5.46

4+99⁴⁰ ± Eureka = 2+48⁵ P-11

12.1
5.2
6.7

4+00

10.6
6.7

17.30

"J" line
RILEY ST.
Azusa to Goshen

10-16-51
C.H.S.
Boeg
oltman

FB. 1630

- = Fd. Conc. Men
- = " 1/2 hub
- ▼ = Fd. R.R. spike with cross
- ◻ = set. 1/2 + disk
- = Nail

Cont. P. 40 - Left.

39

Colusa

R.O.T.

9+28⁷⁰

Page - 20
St.

Benevia

4+66.5A
100°-43'-30" RT St.

13.09

28.22

P.M. Nails

Azusa

0+00

St.

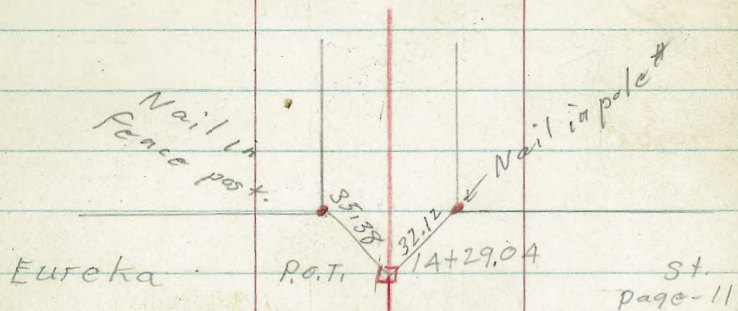
0-25'

189°-32' ↘

90°-16'-30" ↙



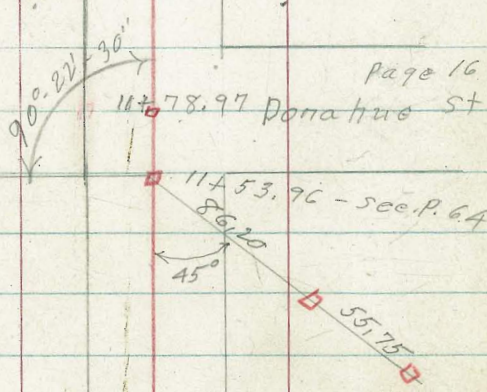
"J" line
Riley St



Eureka

R.P.T.

St.
page-11



To Blks }
2-8 +13 }
Line

Page 16

Donahue St

Colusa

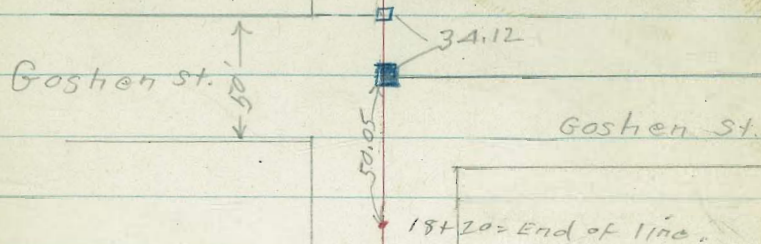
R.P.T.

page 20

From P 39

"J" line
Riley St.

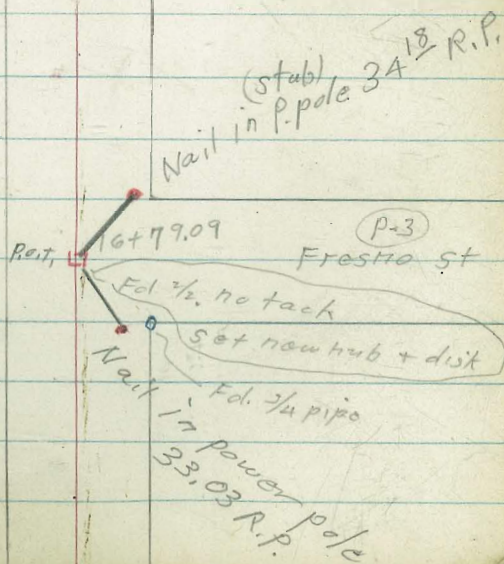
40



Goshen St.

Goshen St.

18+20 = End of line.



(stub) in P. pole 34¹⁸ R.P.

(P-3)
Frost St

R.P.T.

Ed 1/2, no tack

Set new hub + disk

Ed. 3/4 pipe

Nail in power pole
33.03 R.P.

J. line
Riley

10-17-57
C.H.S.

T.P. 9.95 45.12 0.74 35.17

2+00

1+00

0+75

0+00

Set B.M. 7.86 35.91 3.84 28.05
#16

0-05 - 7' RT = Ctr. Gas + Elec. Co. M.H.

0-15 start cold lay pave.

0-2500 = Wly. line Azusa.

T.P. 4.89 31.89 6.42 27.00

1.86 33.42

31.56

BM #2
P. 4

±

41

53.1

2.8

29.7

6.2

29.1

6.8

28.05

7.86

35.91

R.R. spike ± Riley + Azusa

27.9

4.0

27.91

3.78

7

M.H. cover

27.7

4.2

28.3

3.6

31.89

X. in conc. foundation for pole N.E. Gaines + Azusa.

"J" line
Riley

±

42

T.P. 9.61 63.89 0.17 54.28

9+00

54.3
0.2

8+00

51.6
2.9

7+00

48.7
5.8

6+00

45.5
9.0

T.P. 9.71 54.45 0.38 44.74

54.45

5+00

42.5
2.6

Δ 00° 45' 30" RX
4+66⁵⁴ = ± Benecia. (P-39)

41.6
3.5

4+00

39.7
5.7

3+00

36.6
8.5

45.12

J
Riley

11+40

42.5
9.7 37.6
14.6
50

11+20

43.7
8.5 37.1
15.1
50

11+00

46.9
5.3 36.9
15.3
50
52.20

T.P. 0.58 52.20 11.27 51.62

10+60

54.9
9.0

10+30

59.5 56.3
7.6
35
laundry room
7.4

10+00

60.7
3.2

9+80

59.5
4.7

9+38 = end cold lay. Pauc.

BM #15
8.56 55.33 (55.36)

56.0
7.9

9+28.90 = Colusa = (9+33.80 - P 20)

55.7
8.2

63.89

J
Riley

2

44

1A+00

71.4

11.7

T.P. 12.24 89.12 0.13 76.88

89.12

13+50

71.3

5.7

59.9

17.1

T.P. 12.76 77.01 0.05 64.25

77.01

75

6nd

73+00

63.9

0.4

50.1

14.2

53.2

11.1

63

and.

65 - Floor level

12+78 65' Rt. = s.w. cor. House

60.7

3.6

53.2

11.1

65

Floor level for

12+35

55.6

8.7

45.1

lowest plumbing

19.2

50

64.30

T.P. 12.49 64.30 0.39 51.81

49.1

12+00

3.1

11+78.97 = 8+95^{15"} C line 7.02 45.18 (45.19)
P. 19 Hub

45.2

7.0

11+55

42.7

9.5

52.20

J
lino.
Riley

16+79⁰⁹ = \pm Fresno - (9+43^E - P.3)

\pm
108.4
2.0

16+70

108.2
2.2

16+50

107.2
3.2

16+00

101.4
9.0
92.1
18.3
75

T.P. 9.64 110.43 0.31 100.79

110.43

15+50

94.3
6.8
101.10 94.7
16.4
75

T.P. 12.86 101.10 0.88 88.24

15+00

88.7
0.4
85.4
3.7
12.0
31
Floor level
60
end back
of house

14+50

82.3
6.8

14+29⁰⁴ - { \pm Eureka - 9+43⁶⁵ P.11+P.15

9.29 79.83 (79.82)
Hub.

80.1
9.0

89.12

"J"
line
Riley

46

B.M. #11 - P. 5 102.19 8.26 102.17^{0.02}

18+20

18+00

17+50 62' ± = back of house

17+00

104.2
6.2

96.4
14.0
65
End

104.9
5.5

107.1
3.3

102.0
8.4
62
Floor level
98.1
12.3
65
End

108.4
2.0

110.43

"E" line Cont.
 Benecia
 Also Blk. "C" Bay View 1/4 Acres.

Also see sketch on P. 21

F.B. 1630

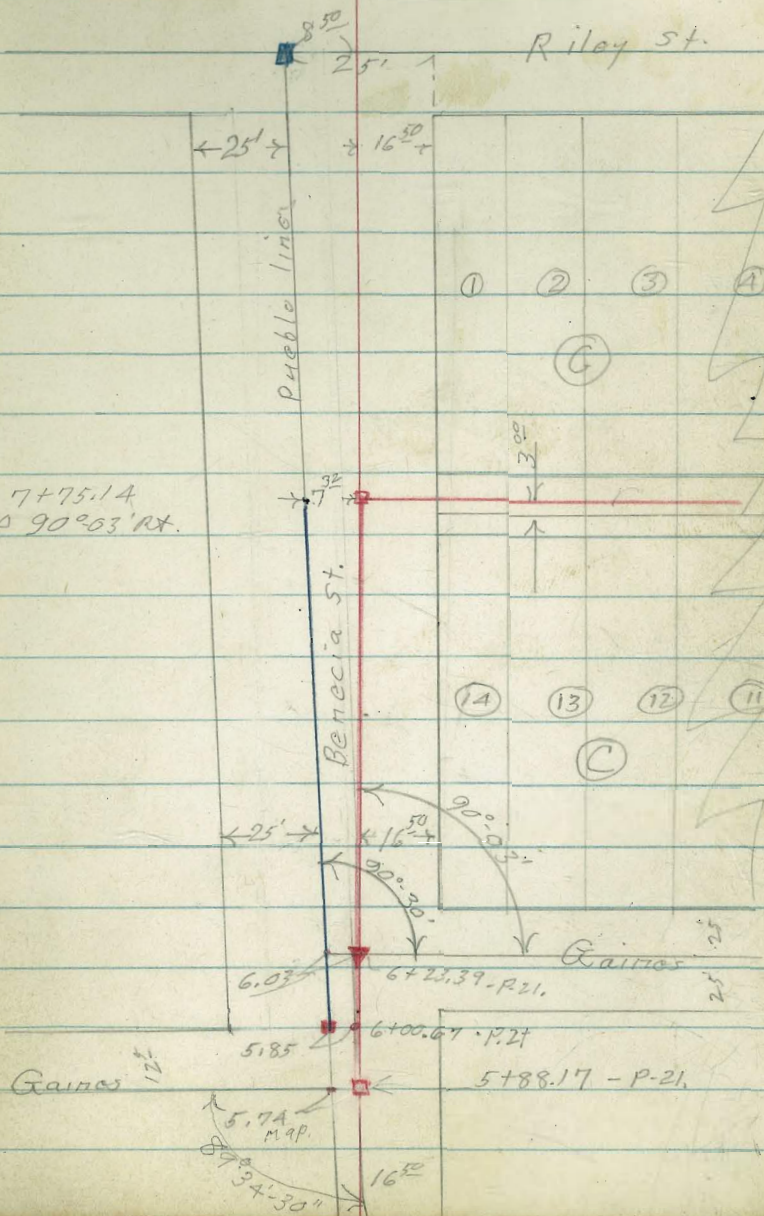
1+12

C.H.S.
 Allen
 Oltman
 10/19/17

- T ■ = # Conc. Mo. 9
- ▼ = R.R. spike
- = Hub + disk
- = Nail

P.L. = pueblo line = 25' east
 of West line Benecia.

7+75.14
 $\Delta 90^{\circ}03' \text{ Rt.}$



E line

Benecia

also BIK. "C" Bayview Quarter Acres

4.93 32.42

Hyb

of \perp BIK. "C".

$7+75^{14} = \frac{1}{2} = \Delta 90^{\circ}03' \text{ RT.} = 3' \text{ North}$

7+40

7+00

6+75

6+48³⁹

6+23³⁹ = \perp Gaines to east

6+00⁶⁷

5+88¹⁷ = \perp Gaines to west (See P-31)

1.00 37.35 — 3635

Levels Cont. from P-31

48

\perp

36.4 32.5 32.3
1.0 4.7 5.1
75 73 Gnd.

28.5 28.3 21.6
8.9 9.1 9.8
75 7 P.L.

23.2 25.4 25.4
14.2 12.0 12.0
75 62 P.L.

22.0 25.5 25.6
15.4 11.9 11.8
75 62 P.L.

28.4 28.9
9.0 8.5
62 P.L.

33.2 33.7
4.2 3.7
6.03 P.L.

34.4 34.7
3.0 2.7
58 P.L.

37.35

B.M.#3 - P-4 Nail in 6"x8" post. Gaines + Benecia

"E" line
 Benecie
 + BIK. "C" B.V. 1/4 Acres

T.P. 13.35 49.89 0.81 36.54

plumbing in block.
 8+72 - 80' Lt. = house with lowest

8+50 = Cross board rail fence.

8+45

8+25

7' Rt. = end frame shed
 8+20 3' Rt. = line of fence

8+17 7' Lt. = end stucco Gar.

7+98 6⁵ Lt. = start stucco Gar. west entrance

7+96 - 6 Rt. = start frame shed.

3' Rt. = start board rail fence
 7+91.64 = wly line BIK. C. B.V. 1/4 Acres.

7+90 = cross rail fence.

7+87 - 4' Rt. = Ctr. 12" pepper tree.

4

49

35.5
 0.9
 80
 on floor

33.6
 3.8

30.9
 6.5

30.7 30.7 29.4 22.7
 6.7 6.7 8.0 8.7
 3 4 25

30.8 8.0 29.4
 6.6 7 at Bldg.

30.9 30.9 29.4
 6.5 6.5 8.0
 7 at Bldg. 5

32.6 32.6
 4.8 4.8
 65 at Bldg.

32.7 30.5
 4.7 6.9
 65 at Bldg.

33.4 32.8 30.4
 4.0 4.6 7.0
 5 10

37.35

"E" line

T.P. 6.55 52.57 3.87 46.02

10+00

46.4
3.5
75
44.8
5.1
6.9
60
43.0

9+69 = { 3' Rt. = start board rail fence
3' Rt. = end Cobble Conc. wall.
cross board rail fence

43.7
6.2
43.7
7.7
42.2
5.4
44.5
8.8
3
3
78
B.W. T.W. at house

9+32

42.3
7.6

all rods on E. sewer

9+31 = Cross Conc. block wall.

39.8
10.1
E
B.W.
40.5
9.4
40.5
7.6
42.3
E
T.W.

9+30 2nd Rt. = Face of wall.

40.4
9.5
7.8
42.1
8.6
41.3
6.7
2.7
2.7
2.7
B.W. T.P.

T.W. = top of wall

9+17 180 Lt. = house with low plumbing

38.6
11.3
80
on floor
37.9
12.0
75
40.5
9.4

2nd Rt. = start Cobble Conc. wall.

2nd Rt. = pole # 66236-H.

9+10 = { cross board rail fence

2nd Rt. = end E. + W. board rail fence

B.W. = base of wall

T.W. = top of wall

39.7
10.2
38.9
11.0
42.5
7.4
2.7
2.7
B.W. T.W.

9+00 - 8' Lt. = 4" diam. Apriact

36.6
13.3
77
35.7
14.2
60
37.9
12.0

+85 - 7' Lt. = 3" diam. Peach

49.89

"E" line

Q

51

11+50

4.1 48.5
6.7 46.5
50

11+46 = 2nd Rt = end fence.
Cross board rail fence.

11+45 = 2nd Rt = pole # 457246-H.

11+00

4.9 47.7
7.8 44.8
50

10+88 = cross board rail fence.

10+50

5.9 46.7
7.9 44.7
60

10+28 = { 3rd Rt = line of fence.
2nd Rt = ctr 8" pole - # 466237-H.
cross board rail fence.

52.57

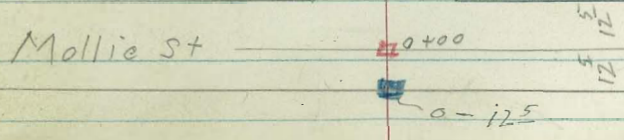
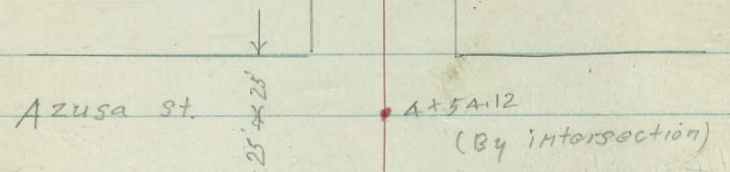
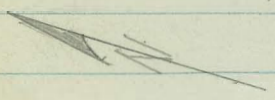
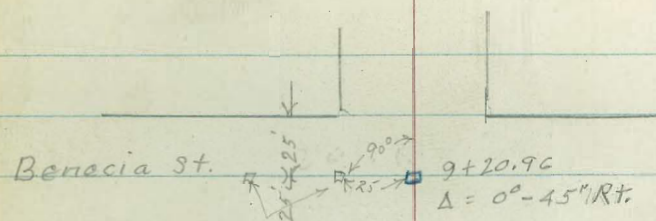
"K" line
Lauretta
Mollie to Hueneme

C.H.S.
Begg
oltman
Allen

F.B. 1630-1

- = Fd. Conc. Mon.
- = Fd. 1/2 Hub.
- = nail
- ◻ = set Hub & dist
- = set. Conc. Mon.

existing plumbing.
Floor level = lowest floor with



K 1110
Lauretta st.

Eureka St.

37^m R.P.
= P.K. Nail in pole

18+84.07

18+79.52

Eureka St.

28³⁴ R.P. = MK

16+58.96 Arit.

Nad
in pole

Brunner St.

15+69.52

186.1

50⁰⁰

Colusa St.

13+83.84

Δ 0°-02' Lt.

50⁰⁰

90° to R.P. Nails

25' 25'

Hueneme St.

Fd. 1/2 Aub.
Replaced with
Conc. Mon.

269.94

28⁵⁸

28⁴⁴

33

50'

25' 25'

Goshert St.

23+34⁰⁰

50'

25' 25'

Eureka

18+84⁰⁷

18+79⁵²

Eureka

51.44

53

"K" line
 Lauretta
 Molly to Hueheme

¢

54

C.H.S. - 10/19/51

Boyer
 Allen
 Hoffman

4+00

32.0
 4.8

21.0
 15.8
 1.10

3+50

35.0
 1.8

36.76

T.P. 1.13 36.76 2.14 35.63

3+00

35.8
 2.0

20.7
 17.1
 1.00

2+00

34.0
 3.8

30.8
 7.0
 1.00

1+00

32.7
 5.1

0+00 = ¢ Lauretta + ¢ Mollie.

32.3
 5.5

Set B.M. on Mon.

0-12.50 = B.M. #17 6.16 31.61 Conc. Mon.

¢ Lauretta + Wly. line Mollie.

37.77

3.81 37.77 6.70 33.96

Nail in pole # 5331

7.99 40.66 1.47 32.67

Nail - ¢ Lauretta + Azusa

6.09 34.14 - 28.05

R.R. Spike - Riley + Azusa = B.M. #16

K
line

55

T.P. 13:10 48.18 1.68 35.08

34.7

6+50

2.6

6+00

32.0

28.2

4.8

8.6

100

5+50

31.0

26.6

5.8

10.2

100

5+00

31.0

25.3

5.8

11.5

100

4+63 = Ely. edge Azusa Pave.

32.5

4.3

4+54¹² = Nail = \pm Azusa

32.67

4.09

4+49 4³ RT = Ctr. Gas. + Elec. Co. M.H.

32.63

4.13

4+44 wly. edge Azusa Pave.

32.4

4.2

4+25

31.7

5.1

36.76

K
line
Lauretta

±

56

T.P. 1022 69.97 0.46 59.75

10400

57.8
2.4 55.2
5.0
100

9450

56.0
4.2

9420⁹⁶ ± Benecia ^{Hub. 2} 5.57 54.64 = B.M. #18
Δ - 00-45' RT.

55.1
5.1
Bnd

9400 start oil pave. No good

54.4
5.8

8450

52.6
7.6 42.2
12.0
100

8400

49.5
10.7

T.P. 1229 60.21 0.26 47.92

60.21

7450

43.9
4.3

7400

36.6
11.6

48.18

"K" line
Lauretta

57

= B.M. #19

T.P. 12.75 82.23 0.49 69.48 13+83⁸⁴ ^{1/2}

13+83⁸⁴ end oil pave. (Pave is N.G.)

69.7
0.3

T.P.

13+83⁸⁴ = 1/2 = $\Delta - 0^{\circ} 02' 44''$ Colusa.

69.8
0.2
63.8
6.2
125

13+50

68.3
1.2

13+00

67.5
2.5
59.0
11.0
125

12+50

66.5
3.5

12+00

65.1
4.9
57.8
13.8
125

11+50

63.5
6.5

11+00

61.9
8.1
54.0
16.0
125

10+50

59.7
10.3
69.77
55.0
15.0
125

"K" line
Lauretta

±

58

Set. B.M. #20 9.75 62.06

Set. B.M. #20 on P.O.T. $\frac{1}{2}$ 16+58⁹⁶

T.P. 1.90 71.81 12.32 69.91

12

16+33 edge of canyon

75.5
6.7

16+25

80.1
2.1

16+15

82.23
0.0

16+00

81.8
0.4

71.2
11.0
100
Rim of canyon

Temp. B.M. #1

1.36 80.87

Hub.

15+69⁵⁰ = $\frac{1}{2}$ ± Brunner to North only

80.87
1.36
Hub + Ord.

72.2
10.0
100

15+00

77.1
5.1

14+50

74.5
7.7

67.6
14.6
100

14+00

70.5
11.7
82.23

"K" line

Lauretta

18+05 40' RT = N.E. Cor. house

18+00

4

59

94.8
6.8

75
Ord. back of house

101.61

Set. B.M. #24 11.17 101.61 2.80 90.44

Nail in pole # P5685 opposite Sta. 17+70±

17+50

88.0
5.2 79.8
13.4
100

17+02 Top of canyon.

84.6
8.6

93.24

T.P. 11.09 93.24 0.16 82.15

75.5
6.8

16+82

82.31

T.P.

T.P. 12.40 82.31 1.90 69.91

62.5

16+72 east side of wash

9.3

16+58 ⁹⁶ = 1/2

62.06

9.75

16+47 west edge of wash

62.4

9.4

71.81

K. line
Lauretta st.

T.P. 10.53 136.48 0.03 125.95

20+22 78 RT. = S.W. Cor. House

S. 20+00

T.P. 12.46 125.98 0.69 113.52

19+00 62 RT. = S.W. Cor. House

19+12 55' RT. = N.W. Cor. Bar.
plumbing inside.

18+ 89.09 = E Eureka to south.

18+ 75⁵⁰ = E Eureka to North

check (12+13.15 R.15) 8.93 105.28 (105.27)

T.P. 12.68 114.21 0.08 101.53

18+25 83' RT. = S.W. Cor. house
40' RT. = N.W. Cor. House

±

60

123.9
2.1 116 9.0 111.4
78 78 100
Floor level

121.7
4.3 16.3
109.7
100

125.98

113.4
0.8 5.7 9.5 102.7
62 100
End.

105.1
9.1
55
End

106.3
7.9

105.8
8.4

114.21

98.5 95.8 95.0 92.0
3.1 5.8 8.6 9.6
40 83 100
End at Back of House

101.61

"K" line
Lauretta.

24+60

24+00

23+34 = ± Goshen

22+85

22+34 58' Rt. = S.W. Cor. House

21+91 62' Rt. = S.W. Cor. House

T.P. 9.78 145.80 0.46 136.02

21+65

21+18 62' Rt. = S.W. Cor. House

20+70

±

61

3.8 142.0

22.5
100
123.3

3.8 142.0

10.1
50
135.7

18.6
100
127.2

5.1 140.7

19.9
100
125.9

5.5 140.3

20.0
100
125.8

7.3 138.5

9.3
58
Floor level
136.5

14.6
58
131.2

19.0
100
126.2

8.8 137.0

13.2
62
Floor level
132.6

15.2
62
130.6

18.8
100
127.0

145.80

1.2 155.3

11.6
100
124.9

5.1 131.4

3.9
62
Floor level
132.6

9.6
62
126.9

13.1
100
123.4

7.6 128.9

18.3
100
118.2

136.48

"K" line

T.P. 8.12 Laretta
182.56 0.83 174.44

28+00 Rt. = N.W. Cor. House

27+50

T.P. 10.49 175.27 0.72 164.84

27+00 = Apex lot line to south

27+01 191 Rt. = N.E. Cor. House

T.P. 7.81 165.56 0.76 157.75

26+40

26+00

T.P. 13.18 158.51 0.47 145.33

25+00

±

175.27
0.0 6.7 9.7
50 100

169.1
6.2
175.27

162.2 160.3 155.7 149.3 153.7
3.4 5.3 9.9 16.3 11.9
6 50 115 191

155.3 152.4
10.3 13.2
191 Floor Level 191 Gnd.

165.56

153.2 153.2 139.5 132.9
5.3 5.3 19 25.6
15 50 75

151.0 141.0 133.6
7.5 17.5 24.9
50 75
158.51

144.2 136.4 124.2
1.6 9.4 21.6
50 100

145.80

"K" line

Lauretta.

±

.129

181.27 (181.30)

28+58⁴⁴

Mon. B.M. #12. P5

+ ♀ Lauretta,
Ely Hyenome

181.4
1.2

28+33⁴⁴

♀ Hyenome

179.6	171.9	166.8	165.6	166.1
3.0	10.7	15.8	17.0	16.5
	50	100	150	200

28+08⁴⁴

146' rd = N. E. Cor. House

= ~~Apex~~ lot line.

176.4	172.8	162.0	166.4
6.2	10.2	18.6	16.2
	25	146	146
		End.	Floor level

182.56

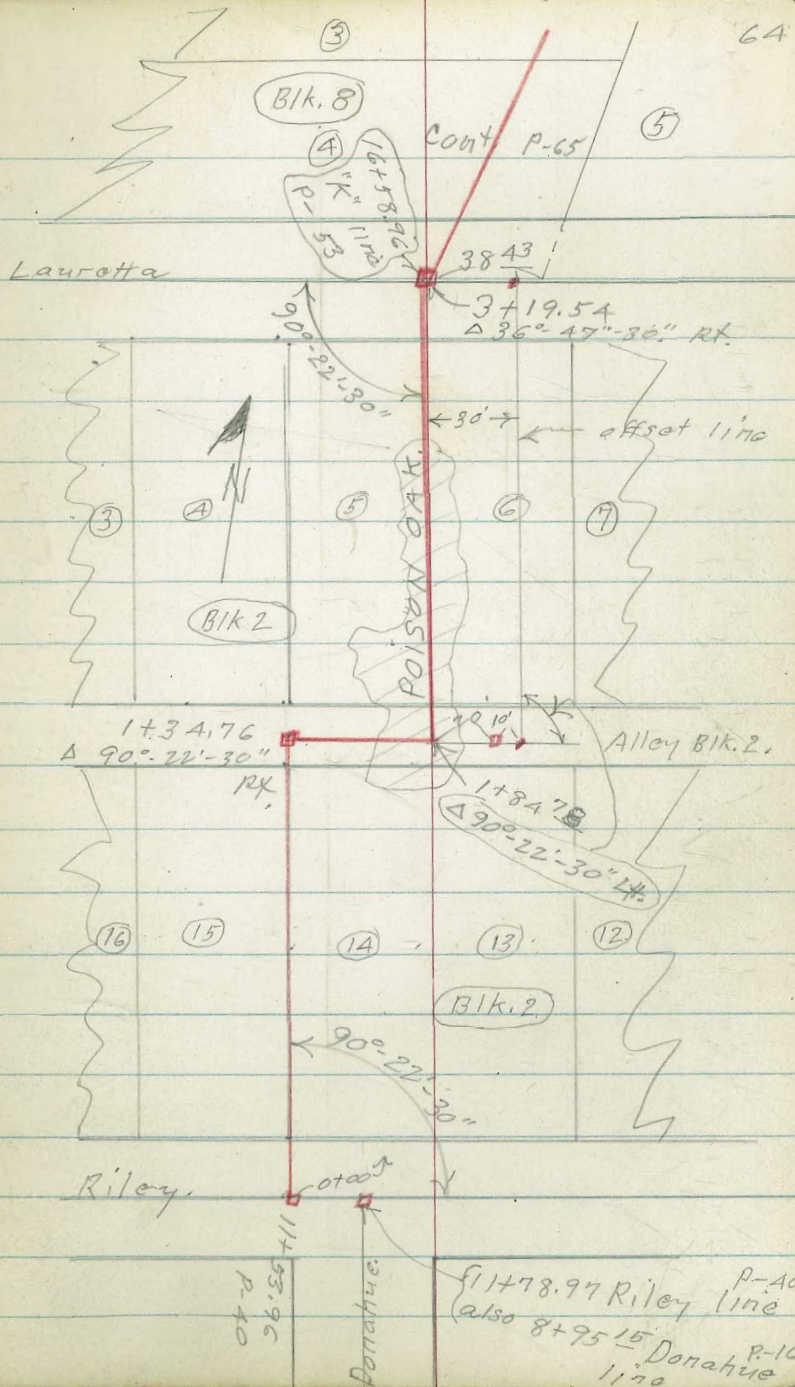
"L" line
 BIKs. 2 - 8 + 13
 Silver Terrace. - Map 695

10-23-51

C.H.S.
 Bagg &
 Allen
 Olman

F.B. 1630-1

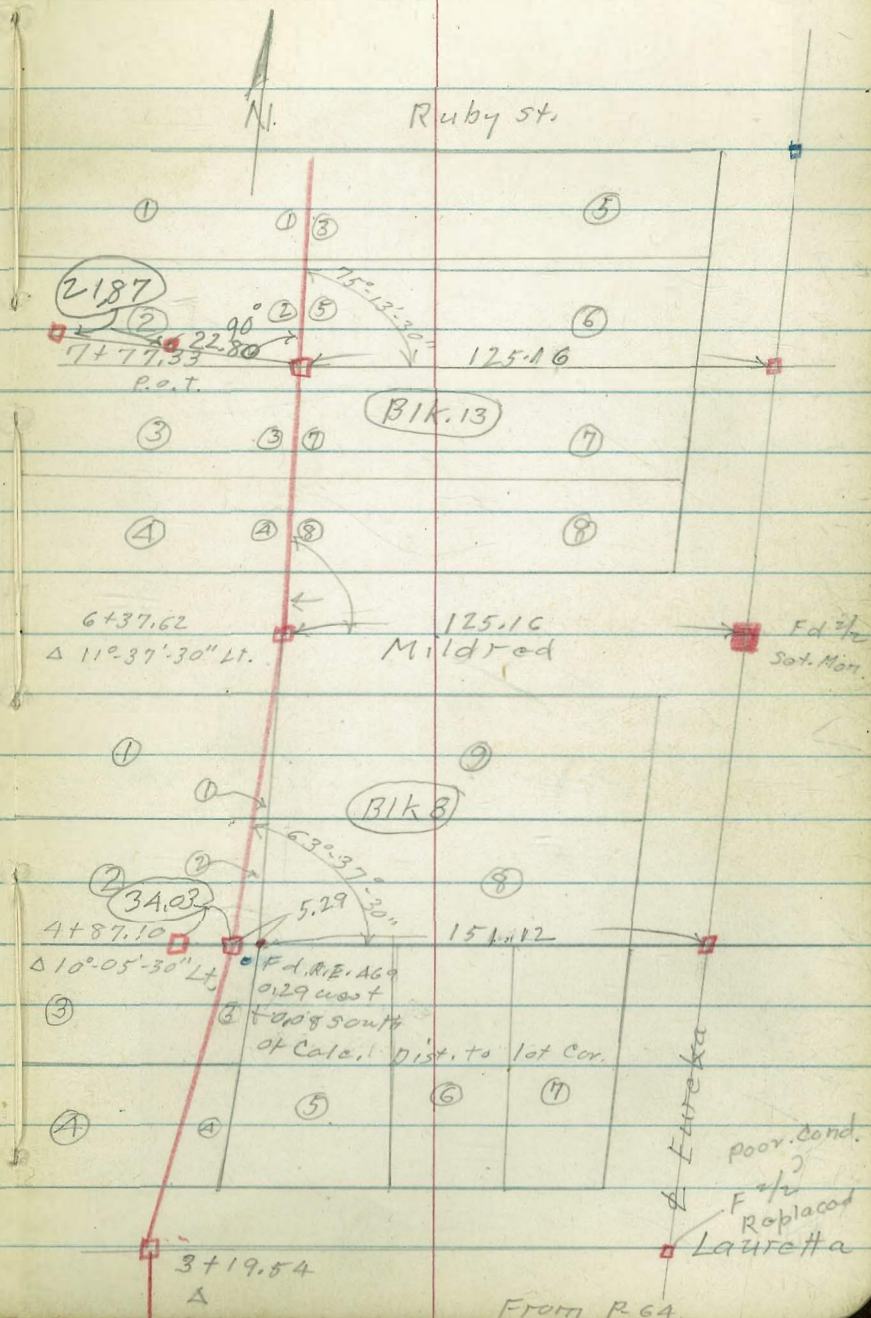
- = Fd. 1/2 hub + tack
- = set conc Mon.
- ▣ = Set 1/2 hub + disk
- = nail



"L" line
Blks. 2-8+13.

Found several survey makers,
do not check by - from 0.03 to
0.92

Hubs shown as set (on P 65 Rt.)
were set by intersection or
shown distances off intersected
points.



"L" line
Levels
Sketch on P-64

0+80

0+69 - 1' rt. = small fruit tree.

0+47 { 10' Lt.
2' Rt. } = small fruit tree
13' Rt.

0+36 { 12' Rt.
12' Lt. } = small fruit tree
± = small fruit tree

0+30

0+27 Heaters half way under ground.
Cross row of old water

(W - Denotes in wash)

0+16

Hub = 13.19 42.57

0+00 = 11+53.96 J. line - P 40 Lt.

10.57 55.76 - 45.19

66

52.7	47.6	47.6	48.4
3.1	8.2	8.2	7.4
15	2	w	15
	w		w

46.8	46.2	45.1
9.0	9.6	10.7
15	w	20
w		w

47.1
8.7
w

43.3
12.5

42.7
13.1
55.76

8+95¹⁵ P-19 ± Riley + ± Donahue

"L" line

±

67

1+78

14.0 ^{52.8}

1+61 cross & wash

14.9 ^{51.9}

1+49

14.4 ^{52.4}

1+41 = toe (end of) loose fill

13.1 ^{53.7}

1+34.76 Δ 90°-22'-30" Rt.

9.3 ^{51.5}

T.P. 11.14 66.75 0.15 55.61

66.75

1+24 - Cross wire fence.

1+19 start loose fill

55.8
0.0 4.2 ^{51.6}
10.0 5.1 ^{50.7}
15.0
W

1+13 3' Rt. = 2" Diam lemon
2' Lt. = 6" Diam Apricot

1+06 18' Rt. = 22' x 10' No Floor
leaves wash Shack

55.8
0.0 4.9 ^{49.9}
8.0 5.9 ^{48.9}
55.76 18
W

L time

68

3+64

14.0
0.0 7.3 7.6 7.0 0.0
7 W 9 16 19

3+50

64.7
9.3
W
73.96

T.P. 11.90 73.96 9.22 62.06

3+19.54 A 36° 47'-30" RT. ^{Hub} ↑

68.3 62.5 62.2 62.3 67.3
3.0 8.8 9.1 9.0 4.0
15 10 W 74 17

3+00

66.3 60.3 60.1 61.2 61.2 66.3
5.0 11.0 11.2 10.1 10.1 5.0
25 20 14 W 7 11

2+80

65.3 59.9 59.1 60.5 60.8 66.8
6.0 11.4 12.2 10.8 10.5 4.5
20 15 8 W 12 20

T.P. 8.09 71.28 3.56 63.19

71.28

2+25

57.3 57.3 57.3 61.7
9.5 9.5 9.5 5.1
15 W W 8

2+00

53.2 53.8 58.8
13.6 13.0 8.0
15 W 5

1+84.78 A 90°-22'-30" LT.

58.8
8.0

66.75

L - line

T.P. 8.15 99.77 0.75 91.62

5+65

5+30

5+00

T.P. 8.67 92.37 0.87 83.70A+87¹⁰ = Δ 10°-05'-30" Lt. on hub.

4+80

4+45

T.P. 12.90 84.57 2.29 71.67

3+92

3+70

69

47.2	91.2	92.4	87.4
51.2	11.2	10.0	51.0
9	3		5
	W		

86.8	79.6	85.5	90.5
51.6	12.8	6.9	1.9
20	10		6
	W		

82.4	77.8	79.4	82.4
10.0	14.6	13.0	10.0
13	3		5
	W		
<u>92.37</u>			

83.70
0.87

79.4	76.5	84.3	88.6
51.2	8.1	0.3	+4.0
20	12		5
	W		

80.1	73.9	80.1
4.5	10.7	4.5
10	W	5

84.57

73.0	69.2	72.2
1.0	4.8	1.8
5	W	5

69.0	68.0	
5.0	6.0	
	5	
	W	

73.96

"L" time

±

70

TIP. 11.14 116.67 3.60 105.53 Temp. B.M.
 7+77³³ P.O.T. Hub
 ↗

99.5
 7.6 3.6
 8
 W

7+46

102.8
 6.3 97.9 104.9
 7 W 11.2 4.2
 10

7+12

103.9 99.1 95.1 100.1 103.1
 3.2 10.0 14.0 7.0 6.0
 7 2 W 5 12

TIP. 10.41 109.13 1.05 98.72

109.13

7+00

101.0 98.2 91.3 99.4
 +1.2 1.6 8.5 0.0
 5 W 7 13

6+70

99.0 94.4 90.2 91.2
 0.8 7.4 7.5 2.6
 6 W 5 15

Temp. B.M.

7.31 92.46

91.7 92.5 88.1 94.0
 2.1 7.3 11.7 5.8
 10 W 6 15

6+37⁶² = Δ 11°-37'-30" Lt.
 Hub.

6+00

93.1 84.0 93.0
 6.7 15.8 6.8
 6 W 10

99.77

L. line

9+00

8+83

8+76

T.P. 8.67 123.47 1.87 114.80

8+65

8+50

8+30

8+00

117.5
6.0
6

117.2
6.3

117.3
6.2
5

113.3
10.2
11
W

116.8
6.7
18

110.9
12.6
W

110.6
12.9
W

123.47

111.5
5.2
24

106.4
10.3
18
W

111.4
5.3
11

113.9
2.8

115.3
1.4
5

110.1
6.6
18

104.6
12.1
12
W

110.1
6.6
7

113.6
3.1

114.7
2.0
5

110.2
6.5
15

104.3
12.4
7
W

109.6
7.1

114.5
2.2
8

108.1
8.6
22

102.6
14.1
14
W

106.5
10.1
9

109.8
6.9

113.3
3.4
7

116.67

- 71

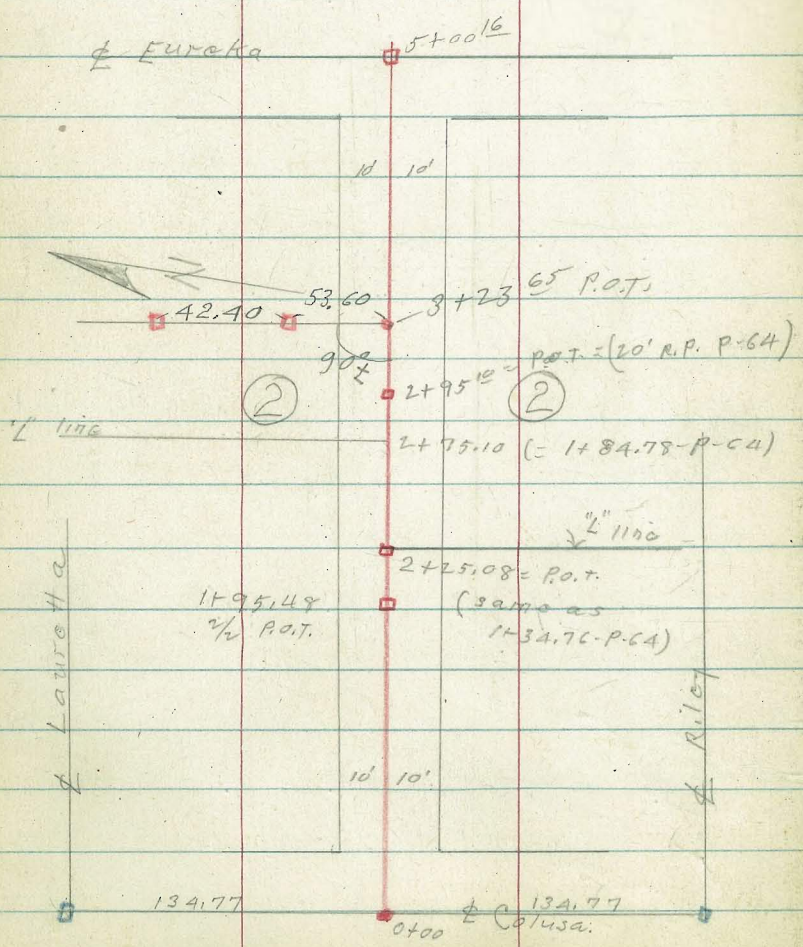
"M" line
 Alley Bks. 2-3+4
 Silver Terrace.

53.60

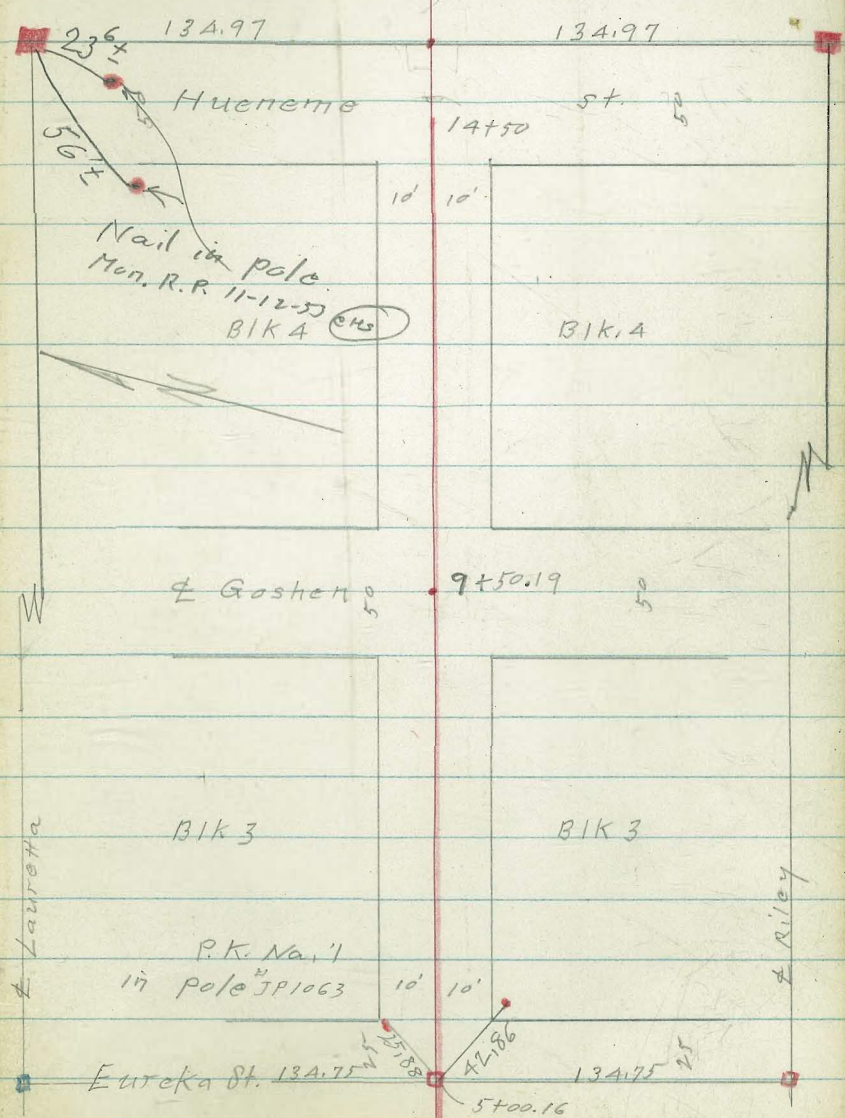
10-25-51

- = fd. 1/2 hub
- = set Mon
- = " hub
- = nail

C.H.S.
 19099
 Allen
 R. Sisson
 ditman
 FB. 1630-1



BIK. 5



"M" line

Alley Bks. 2-3-4

Silver Terrace.

1+78 = rim of canyon

72.5
0.0

(pile to be moved)

1+95.48 = 1/2 P.O.T. on top of trash pile.

T.P. 4.24 72.45 5.40 68.21

72.45

1+70 75' Mt. = Rim of canyon

71.7
1.9 66.6
7.0
75

1+00

68.4
5.2

0+75

67.2 63.6
6.4 10.0
75

0+25

65.0
8.6

0+00 = Φ Colusa

62.99
10.62
Nail

T.P. 10.62 73.61 3.39 62.99

73.61

11.02 66.38 - 55.36

B.M.#15 - P-5 - 1/2 Φ Colusa
Riley

"M." line

¢

75

T.P. 13.09 120.62 0.27 107.53

6+00

107.1
0.7 6.8
75

5+71 33' Rt. z outlet from house.

103.5
4.3 8.8 12.3
99.0 75
I.E. 95.5
Pipe 33'

5+50

101.2
6.6

107.80

T.P. 12.97 107.80 1.11 94.83

5+00.16 = 1/2 = ¢ Eureka

94.83
1.11 82.7
H.C. 75

4+50

90.3 88.7 82.1
5.6 7.7 13.8
10 75

4+00

86.1 83.2 75.2
9.8 12.7 20.7
10 75

3+70

83.7
12.2

T.P. 12.31 95.94 0.50 83.63

95.94

3+50

80.2
3.9

84.13

M. line

± Gasher

9+00

8+79 68' Rte = N.W. cor. house

8+50

8+00

7+75 28' Rte = N.E. cor. house

7+30

T.P. 10.28 128.05 2.85 117.77

7+15

7+00 67' Rte = Nly. face house

6+50

76

7.8 ^{120.3}

6.1 ^{122.0}

13.4 ^{112.7}
68' End.

14.8 ^{113.3}
68' Floor level

4.6 ^{123.5}

4.7 ^{123.4}

5.4 ^{122.7}

8.8 ^{119.3}
28' End.

8.5 ^{119.4}
28' Floor level

11.8 ^{116.3}
75'

7.6 ^{120.5}

128.05

3.0 ^{117.6}

3.7 ^{116.9}

7.7 ^{112.9}
67' End.

7.6 ^{116.0}
67' Floor

7.3 ^{113.3}

13.0 ^{107.6}
75'

120.62

"M" line

T.P. 11.93 151.13 0.26 139.20

12+70

12+50

T.P. 12.63 139.46 0.08 126.8312+05 3' RT = 6" diam elder tree
1' RT = 6" diam elder tree12+00 also = cross canyon wash
5' LT = 8" diam elder tree

11+50

T.P. 6.54 126.91 7.68 120.37

11+00 75' RT = bottom of canyon

10+50 85' RT = rim of canyon

10+00 75' RT = rim of canyon

±

137.2

2.3

130.5

9.0

139.46127.50
12.0
25126.0
13.5
25119.3
7.6
10116.1
10.8
10118.1
8.8
10117.4
9.5126.91115.3
12.898.1
30.0
75121.4
6.7103.4
24.7121.7
6.4109.8
18.3
75128.05

Benchies
also see P. 4 & P. 5

Set B.M. #31 2.02 56.15

T.P. #31 8.82 58.17 4.75 49.35

R.R. spike 11.91 54.10 — 42.19

B.M. #30 $\frac{2160}{26}$ 79.60

B.M. #29 $\frac{2160}{57}$ 10.99

B.M. #28 $\frac{260}{63}$ 9.35

B.M. #27 $\frac{FB 2160}{45}$ 30.64

B.M. #26 $\frac{FB 2160}{24}$ 119.98

B.M. #25 $\frac{F.B. 2160}{24}$ 97.07

B.M. #24 230.24

B.M. #23 175.15

B.M. #22 128.75

B.M. #21 90.44

B.M. #20 - P. 58 62.06

B.M. #19 - P. 57 69.48

B.M. #18 - P. 56 54.64

Conc. Mon. & Azusa + Nly. line Mildred.

1750 = R.R. spike T.P. $\frac{F.B. 2160}{71}$

N.W. Prop. Mon. Josephine + Mildred.

Nail in Pole #4483 Riley + Pine
Conc. Mon. Grounds.
So. line Riley Wly. line Isolation Hospital

N.W. Conc. Mon. Gaines + Azusa.

& Mon. Mildred + Brunner to North

& Mon Mildred + Colusa

Nly line Mildred 20[±] wly. west line Huehoma $\frac{2160}{14}$

R.E. 469 N.E. Prop. Pipe Mildred + Goshen $\frac{FB 2160}{12}$

Mon. & Eureka $\frac{FB 2160}{10-11}$
& Mildred

Nail in Pole #P5685 Lauretta 20[±] at 17+70[±]

1/2 Sta. 16+58⁹⁶ Lauretta St. line

1/2 Hub. & Lauretta + & Colusa

1/2 Hub. & Lauretta + & Benicia

Geno Sappor
 576 8367 11.97
 $\frac{1}{2} @ 0100 = 17.42$ 335
 4+5412 10837 1532
 10165 4.67

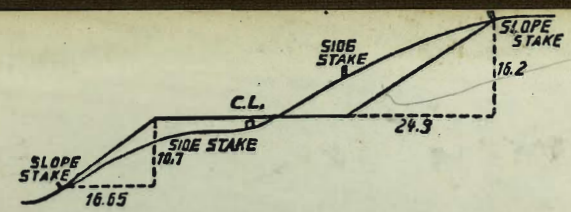
146. 17527
 113 1431
 260
 164-0-1 1171
 1906 1568
 17527 1121
 81 949

15 69 80
 13+83.84 166.5 244
 18596 97.07
 12.94 1412

11001
 30 357
 10971

1839
 83.7
 34 69
 10069
 249
 118019
 469
 12397
 490
 11897

1473
 2
 14



DISTANCES FROM SIDE STAKES FOR CROSS-SECTIONING.
 SLOPE 1 1/2 TO 1. ROADWAY OF ANY WIDTH.

	0	.1	.2	.3	.4	.5	.6	.7	.8	.9	
0	0.00	0.15	0.30	0.45	0.60	0.75	0.90	1.05	1.20	1.35	0
1	1.50	1.65	1.80	1.95	2.10	2.25	2.40	2.55	2.70	2.85	1
2	3.00	3.15	3.30	3.45	3.60	3.75	3.90	4.05	4.20	4.35	2
3	4.50	4.65	4.80	4.95	5.10	5.25	5.40	5.55	5.70	5.85	3
4	6.00	6.15	6.30	6.45	6.60	6.75	6.90	7.05	7.20	7.35	4
5	7.50	7.65	7.80	7.95	8.10	8.25	8.40	8.55	8.70	8.85	5
6	9.00	9.15	9.30	9.45	9.60	9.75	9.90	10.05	10.20	10.35	6
7	10.50	10.65	10.80	10.95	11.10	11.25	11.40	11.55	11.70	11.85	7
8	12.00	12.15	12.30	12.45	12.60	12.75	12.90	13.05	13.20	13.35	8
9	13.50	13.65	13.80	13.95	14.10	14.25	14.40	14.55	14.70	14.85	9
10	15.00	15.15	15.30	15.45	15.60	15.75	15.90	16.05	16.20	16.35	10
11	16.50	16.65	16.80	16.95	17.10	17.25	17.40	17.55	17.70	17.85	11
12	18.00	18.15	18.30	18.45	18.60	18.75	18.90	19.05	19.20	19.35	12
13	19.50	19.65	19.80	19.95	20.10	20.25	20.40	20.55	20.70	20.85	13
14	21.00	21.15	21.30	21.45	21.60	21.75	21.90	22.05	22.20	22.35	14
15	22.50	22.65	22.80	22.95	23.10	23.25	23.40	23.55	23.70	23.85	15
16	24.00	24.15	24.30	24.45	24.60	24.75	24.90	25.05	25.20	25.35	16
17	25.50	25.65	25.80	25.95	26.10	26.25	26.40	26.55	26.70	26.85	17
18	27.00	27.15	27.30	27.45	27.60	27.75	27.90	28.05	28.20	28.35	18
19	28.50	28.65	28.80	28.95	29.10	29.25	29.40	29.55	29.70	29.85	19
20	30.00	30.15	30.30	30.45	30.60	30.75	30.90	31.05	31.20	31.35	20
21	31.50	31.65	31.80	31.95	32.10	32.25	32.40	32.55	32.70	32.85	21
22	33.00	33.15	33.30	33.45	33.60	33.75	33.90	34.05	34.20	34.35	22
23	34.50	34.65	34.80	34.95	35.10	35.25	35.40	35.55	35.70	35.85	23
24	36.00	36.15	36.30	36.45	36.60	36.75	36.90	37.05	37.20	37.35	24
25	37.50	37.65	37.80	37.95	38.10	38.25	38.40	38.55	38.70	38.85	25
26	39.00	39.15	39.30	39.45	39.60	39.75	39.90	40.05	40.20	40.35	26
27	40.50	40.65	40.80	40.95	41.10	41.25	41.40	41.55	41.70	41.85	27
28	42.00	42.15	42.30	42.45	42.60	42.75	42.90	43.05	43.20	43.35	28
29	43.50	43.65	43.80	43.95	44.10	44.25	44.40	44.55	44.70	44.85	29
30	45.00	45.15	45.30	45.45	45.60	45.75	45.90	46.05	46.20	46.35	30
31	46.50	46.65	46.80	46.95	47.10	47.25	47.40	47.55	47.70	47.85	31
32	48.00	48.15	48.30	48.45	48.60	48.75	48.90	49.05	49.20	49.35	32
33	49.50	49.65	49.80	49.95	50.10	50.25	50.40	50.55	50.70	50.85	33
34	51.00	51.15	51.30	51.45	51.60	51.75	51.90	52.05	52.20	52.35	34
35	52.50	52.65	52.80	52.95	53.10	53.25	53.40	53.55	53.70	53.85	35
36	54.00	54.15	54.30	54.45	54.60	54.75	54.90	55.05	55.20	55.35	36
37	55.50	55.65	55.80	55.95	56.10	56.25	56.40	56.55	56.70	56.85	37
38	57.00	57.15	57.30	57.45	57.60	57.75	57.90	58.05	58.20	58.35	38
39	58.50	58.65	58.80	58.95	59.10	59.25	59.40	59.55	59.70	59.85	39
40	60.00	60.15	60.30	60.45	60.60	60.75	60.90	61.05	61.20	61.35	40
41	61.50	61.65	61.80	61.95	62.10	62.25	62.40	62.55	62.70	62.85	41
42	63.00	63.15	63.30	63.45	63.60	63.75	63.90	64.05	64.20	64.35	42
43	64.50	64.65	64.80	64.95	65.10	65.25	65.40	65.55	65.70	65.85	43
44	66.00	66.15	66.30	66.45	66.60	66.75	66.90	67.05	67.20	67.35	44
45	67.50	67.65	67.80	67.95	68.10	68.25	68.40	68.55	68.70	68.85	45
46	69.00	69.15	69.30	69.45	69.60	69.75	69.90	70.05	70.20	70.35	46
47	70.50	70.65	70.80	70.95	71.10	71.25	71.40	71.55	71.70	71.85	47
48	72.00	72.15	72.30	72.45	72.60	72.75	72.90	73.05	73.20	73.35	48
49	73.50	73.65	73.80	73.95	74.10	74.25	74.40	74.55	74.70	74.85	49
50	75.00	75.15	75.30	75.45	75.60	75.75	75.90	76.05	76.20	76.35	50

THE NATIONAL BLANK BOOK COMPANY
 HOLYOKE MASSACHUSETTS
 NEW YORK CHICAGO BOSTON SAN FRANCISCO