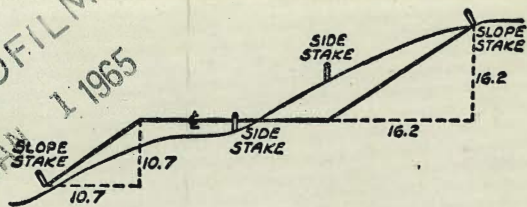


MICROFILMED
JAN 1 1965



DISTANCES FROM SIDE STAKES FOR CROSS-SECTIONING
SLOPE 1 TO 1. ROADWAY OF ANY WIDTH

	0	.1	.2	.3	.4	.5	.6	.7	.8	.9	
0	0.00	0.10	0.20	0.30	0.40	0.50	0.60	0.70	0.80	0.90	0
1	1.00	1.10	1.20	1.30	1.40	1.50	1.60	1.70	1.80	1.90	1
2	2.00	2.10	2.20	2.30	2.40	2.50	2.60	2.70	2.80	2.90	2
3	3.00	3.10	3.20	3.30	3.40	3.50	3.60	3.70	3.80	3.90	3
4	4.00	4.10	4.20	4.30	4.40	4.50	4.60	4.70	4.80	4.90	4
5	5.00	5.10	5.20	5.30	5.40	5.50	5.60	5.70	5.80	5.90	5
6	6.00	6.10	6.20	6.30	6.40	6.50	6.60	6.70	6.80	6.90	6
7	7.00	7.10	7.20	7.30	7.40	7.50	7.60	7.70	7.80	7.90	7
8	8.00	8.10	8.20	8.30	8.40	8.50	8.60	8.70	8.80	8.90	8
9	9.00	9.10	9.20	9.30	9.40	9.50	9.60	9.70	9.80	9.90	9
10	10.00	10.10	10.20	10.30	10.40	10.50	10.60	10.70	10.80	10.90	10
11	11.00	11.10	11.20	11.30	11.40	11.50	11.60	11.70	11.80	11.90	11
12	12.00	12.10	12.20	12.30	12.40	12.50	12.60	12.70	12.80	12.90	12
13	13.00	13.10	13.20	13.30	13.40	13.50	13.60	13.70	13.80	13.90	13
14	14.00	14.10	14.20	14.30	14.40	14.50	14.60	14.70	14.80	14.90	14
15	15.00	15.10	15.20	15.30	15.40	15.50	15.60	15.70	15.80	15.90	15
16	16.00	16.10	16.20	16.30	16.40	16.50	16.60	16.70	16.80	16.90	16
17	17.00	17.10	17.20	17.30	17.40	17.50	17.60	17.70	17.80	17.90	17
18	18.00	18.10	18.20	18.30	18.40	18.50	18.60	18.70	18.80	18.90	18
19	19.00	19.10	19.20	19.30	19.40	19.50	19.60	19.70	19.80	19.90	19
20	20.00	20.10	20.20	20.30	20.40	20.50	20.60	20.70	20.80	20.90	20
21	21.00	21.10	21.20	21.30	21.40	21.50	21.60	21.70	21.80	21.90	21
22	22.00	22.10	22.20	22.30	22.40	22.50	22.60	22.70	22.80	22.90	22
23	23.00	23.10	23.20	23.30	23.40	23.50	23.60	23.70	23.80	23.90	23
24	24.00	24.10	24.20	24.30	24.40	24.50	24.60	24.70	24.80	24.90	24
25	25.00	25.10	25.20	25.30	25.40	25.50	25.60	25.70	25.80	25.90	25
26	26.00	26.10	26.20	26.30	26.40	26.50	26.60	26.70	26.80	26.90	26
27	27.00	27.10	27.20	27.30	27.40	27.50	27.60	27.70	27.80	27.90	27
28	28.00	28.10	28.20	28.30	28.40	28.50	28.60	28.70	28.80	28.90	28
29	29.00	29.10	29.20	29.30	29.40	29.50	29.60	29.70	29.80	29.90	29
30	30.00	30.10	30.20	30.30	30.40	30.50	30.60	30.70	30.80	30.90	30
31	31.00	31.10	31.20	31.30	31.40	31.50	31.60	31.70	31.80	31.90	31
32	32.00	32.10	32.20	32.30	32.40	32.50	32.60	32.70	32.80	32.90	32
33	33.00	33.10	33.20	33.30	33.40	33.50	33.60	33.70	33.80	33.90	33
34	34.00	34.10	34.20	34.30	34.40	34.50	34.60	34.70	34.80	34.90	34
35	35.00	35.10	35.20	35.30	35.40	35.50	35.60	35.70	35.80	35.90	35
36	36.00	36.10	36.20	36.30	36.40	36.50	36.60	36.70	36.80	36.90	36
37	37.00	37.10	37.20	37.30	37.40	37.50	37.60	37.70	37.80	37.90	37
38	38.00	38.10	38.20	38.30	38.40	38.50	38.60	38.70	38.80	38.90	38
39	39.00	39.10	39.20	39.30	39.40	39.50	39.60	39.70	39.80	39.90	39
40	40.00	40.10	40.20	40.30	40.40	40.50	40.60	40.70	40.80	40.90	40
41	41.00	41.10	41.20	41.30	41.40	41.50	41.60	41.70	41.80	41.90	41
42	42.00	42.10	42.20	42.30	42.40	42.50	42.60	42.70	42.80	42.90	42
43	43.00	43.10	43.20	43.30	43.40	43.50	43.60	43.70	43.80	43.90	43
44	44.00	44.10	44.20	44.30	44.40	44.50	44.60	44.70	44.80	44.90	44
45	45.00	45.10	45.20	45.30	45.40	45.50	45.60	45.70	45.80	45.90	45
46	46.00	46.10	46.20	46.30	46.40	46.50	46.60	46.70	46.80	46.90	46
47	47.00	47.10	47.20	47.30	47.40	47.50	47.60	47.70	47.80	47.90	47
48	48.00	48.10	48.20	48.30	48.40	48.50	48.60	48.70	48.80	48.90	48
49	49.00	49.10	49.20	49.30	49.40	49.50	49.60	49.70	49.80	49.90	49
50	50.00	50.10	50.20	50.30	50.40	50.50	50.60	50.70	50.80	50.90	50

Distance of slope stake from side or shoulder stake for any width roadway, slope 1 to 1. If ground is nearly level, the cut or fill at side stake is located by the double entry method in left column and top row. The number in body of table in same row and column gives distance from side stake to slope stake. If ground is not level estimate the difference in elevation between the side stake and slope stake, lower target by this amount if cut, elevate if fill. Add this amount to cut or fill and find distance in table. Set up rod at this point, and line of sight should cut target. If it does not make the slight adjustment necessary.

Alloy BIK37-32070

2150

179

Index

Loma Alta #2, Alley BIK. 25, X-sec. for grade	1
BIK 20 Fairmount Add. to City Hqts.	7-
Xsec Noyes - Felspar to Hornblend	10
X Sec Felspar - Noyes to Puddleton	18
X sec Olney - Felspar to Gemelt	33
" Alley BIK 212 + 213 Pacific Beach ³⁶⁻	43
Tie Points Olney St. Garnet to Diamond	46
X-sec. (BIK 177 Alley.) Pac. Beach	44-54
" (BIK 208 ")	
" Alley BIK 179 " "	55-59
Cross Sec. Noyes St. Felspar to Diamond	60-66
" " Alley BIK 169 Pacific Beach	67-70
Sty. end Oleander	73-74
Olney - Felspar to Emerald	75-77

D. Smith
C. Allen
P. Shepard
Mick

Cross Sec For Grade
Alley BIK 25 Loma Alta #2

INDEXED

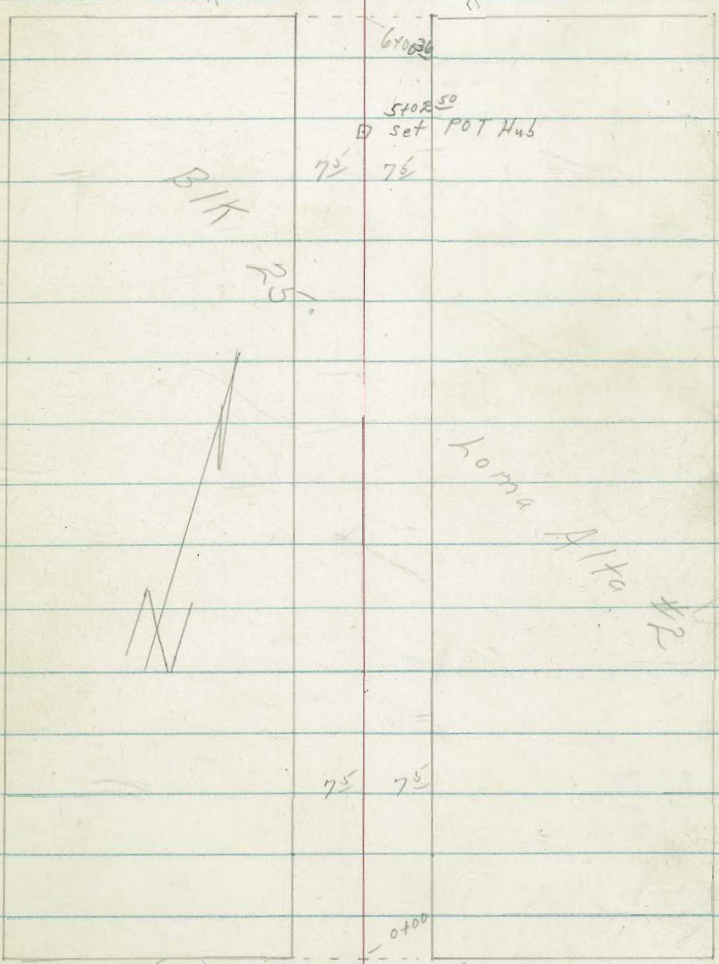
JUL 16 1951

Montalvo St

4th Hub 717
279 28
13964
Wot# 25020
7-13-51
Edg. Mon 717

Clovis

dirt St
set Hub



278 20
FB 13957
Camulos St

set Hub
dirt

Edg. Mon
717

X Sec Alley BIK 25

0+50 7¹/₂ RT Begin 4 car garage con floor apron

0+25

0+00 North Prop Camulos

0-14

0-17

0-30 E Camulos

TP 744 98¹⁸ 10¹⁶ 90²⁴

BM 090 100⁹⁰

100⁰⁰ relative
= 60.70 actual

Reduced
to
P. R. 9.11.51

Loma Alta #2

W0# 25020 2
7-73-51

55.7 55.4 55.1 54.4 54.6 54.95 55.3⁰
3² 3² 3² 4⁵ 4³ 3² 3⁵
1⁵ 7⁵ 3 7⁵ 7⁶ 16⁶
dirt apron floor

55.4 55.3 54.7 54.4 53.7 53.5 53.5
3⁵ 3⁶ 4² 4⁵ 5² 5⁴ 5⁴
20 11 7⁵ 4 7⁵ 15

53.8 53.5 52.8 52.5 52.2 52.0
5² 5⁴ 6¹ 6⁴ 6² 6²
1⁵ 7⁵ 5 7⁵ 15

53.9 51.2 50.9 50.4 51.3 49.6
5⁰ 7² 8⁰ 8⁵ 7⁴ 10³
5⁰ 7⁵ 7⁵ 10 5⁰

53.0 50.7 50.3 49.7 46.8
5² 8² 8⁶ 9² 12²
5⁰ 7⁵ 7⁵ 5⁰

52.9 50.4 49.9 49.5 46.6
6² 8⁵ 9⁰ 9⁴ 12³
5⁰ 2⁵ 7⁵ 5⁰

98¹⁸ = 58.88

NW 1/4 Mon.
Camulos
Montalvo

Lt West 2 Rt East 3

57.7	62.45	56.7	57.4	56.9	56.9	56.6	56.0
82	325	92	90	95	95	98	104
15	72	72	75	4		75	15

top wall footing.

1450 72 Lt Begin 5' con block wall

TP2 842 10520 095 9723

10520 = 66.40

1436 75 Rt end 5' high con wall

55.4	60.31
35	+143
75	75
footing	top wall

1405.6 Lt & 12" power pole # JPA 4320

1400 72 Rt Begin con wall wall 5' high

1400 72 Rt End 4 car garage con floor + apron

1400 78 Lt End con block wall 5' high

56.9	59.65	55.7	56.4	56.4	55.6	55.4	55.35	54.7	59.31	55.35
20	1027	32	28	25	33	35	353	42	1042	353
20	78	78	75	5		75	72	72	72	162

top wall footing apron footing top wall floor

0476 78 Lt Begin con block wall 5' high

54.65	54.8
+077	44
78	78
top wall	footing

0465 165 Lt & double garage con floor

55.60
323
165
floor
9818 = 58.88

Lt = West

Rt = East

4

3+50 7 1/2 Lt Begin 5' con block wall

67.6 67.2 67.33 66.1 73.07 66.5 66.7 67.0 66.9

3+50 7 1/2 Lt End 5' board fence con footing + wall

8^E 9^E 8⁸⁹ 10^L 3¹⁵ 9^Z 9^E 9^Z 9^Z
 15 7^S 7^Z 7^Z 7^L 7^L 7^S 15
Top Footing Top wall Footing

TP3 10⁴⁹ 115⁵² D⁶⁷ 105⁰³

115⁵³ = 76.22

3+03 6^S Lt & 10" Power pole # JPA 4350

3+00 7 1/2 Lt Begin 6' Board fence con footing + wall

65.1 64.6 65.62 64.4 63.6 63.4 62.8

3+00 7' Lt End 7' lath fence

13 18 0²⁸ 2⁰ 2⁸ 3⁰ 3⁶
 15 7^Z 7^Z 7^S 7^S 15
Footing Top wall

61.6 61.3 60.7 60.8 60.0

2+50 7^Z Lt Begin 7' lath fence

4⁸ 5^L 5^Z 5^E 6^L
 15 7^S 7^S 15

2+02 6^S Lt & 12 power pole # JPA 4336

69.7 62.84 58.5 59.0 58.7 58.3 58.3 58.7

2+00 7^Z Lt end 5' con block wall

7^Z 3⁵⁶ 7^Z 7^Z 7^Z 8^L 8^L 8^Z
 15 7^Z 7^Z 7^S 6 7^S 15
Top wall Footing

58.25 58.51

1+88 7^E Rt & double garage con floor + apron

66.40 8¹⁵ 7⁸⁹
 105²⁰ 7⁶ 12²
apron floor

5432 Lt & single garage on floor

71.02	70.9	70.9	71.0	71.5	71.4
5 ²⁰	5 ³	5 ²	5 ²	4 ⁷	4 ⁸
29 ⁵	15	7 ⁵		7 ⁵	15
floor					

5415

72.4	72.4	72.0	72.3	72.2
3 ⁸	3 ⁸	4 ²	3 ⁹	4 ⁰
15	7 ⁵		7 ⁵	15

5700

4499 6⁶ Lt & 10" Power Pole # JPA 4380

73.1	72.7	72.1	72.3	72.3
3 ⁴	3 ⁵	4 ⁴	3 ²	3 ²
15	7 ⁵		7 ⁵	15

4476

72.6	72.3	71.8	71.9	71.9
3 ⁶	3 ²	4 ⁴	4 ³	4 ³
15	7 ⁵		7 ⁵	11

4450

72.1	71.6	71.0	71.1	70.9
4 ⁴	4 ⁶	5 ²	5 ⁴	5 ³
15	7 ⁵		7 ⁵	15

75.53 69.9

0.69 63
75 75
the wall cutting

4435 7⁵ Lt East 5' con block wall

4401 6⁶ Lt & 11" Power Pole # JPA 4368

69.9	69.7	69.3	69.3	69.6
6 ³	6 ⁵	6 ²	6 ²	6 ⁶
15	7 ⁵		7 ⁵	10

4400

115 SR = 76.22

Starting BM

TP5 962 112.39

BM 487

1235 100.21 ✓ 100.00 relative
102.77
spike in pole
Swear Clovis
Mentene

*P.2699

62.32 relative

6730

63.0 63.1 63.1 63.1 62.9
42 44 44 44 43
50 75 75 50

6713

63.0 63.2 63.3 63.2 62.3
43 40 32 40 42
50 75 75 50

6705

64.4 64.2 63.9 64.1 62.5
25 30 32 32 47
50 75 75 50

TP4 200 106.49 1163 103.89

106.49 = 67.19

6700 36 75 Lt end con block wall
South Prop Clovis

64.3 68.3 68.38 63.8 64.2 64.2 64.6 68.6
112 79 78 124 120 120 116 76
15 dirt 15 top wall 70 top wall 70 Footing 75 15

5765

69.2 69.99 67.7 67.6 68.0 70.7 70.7
64 623 85 86 82 55 55
15 75 75 75 11 15
Top wall

5748 75 Lt Begin con block wall

70.62 69.3
560 62
75 75
Top wall Footing 115 SR = 76.22

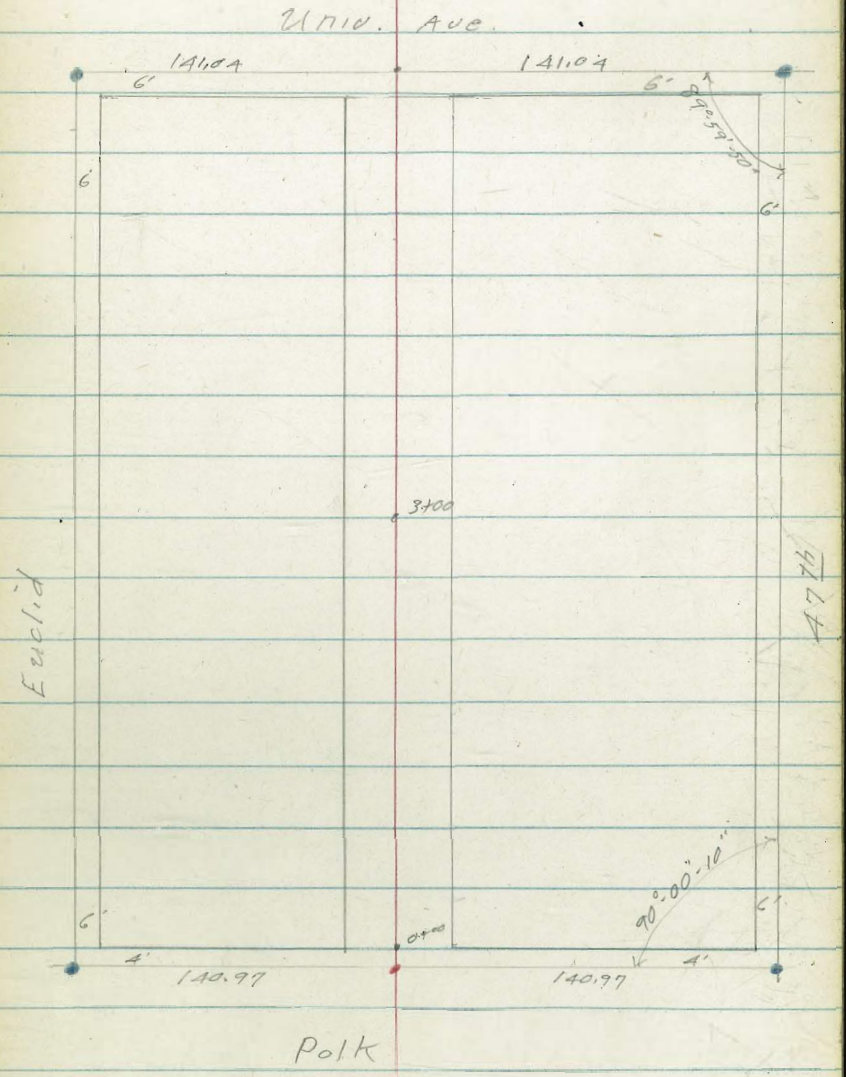
Topog. Lots #1 to #12
B/K. 20 Fairmount Add. to City Hqts.

9-19-51
W.D. # 31931

Sommermejer
Begg
R. Sisson
Ottman

IND. D
7
SEP 20 1951

• = fd. L+T.
• = set nail



B/K. 20. - Fairmount Add.
To City Hqts.

1757

1752

T.P. 7.23 346.01 7.06 338.78

1705

1700

T.P. 5.70 345.84 7.71 340.14

0750

0700

5.38 347.85 9.05 342.47

B.M. 1. 8.25 351.52 - 343.27

Revised by
F. A. ...
9-20-51

\$

338.14
7.6
10
338.6
7.4
6.6
10
338.5
7.5
10
339.4
6.6
10
338.7
7.3
25
341.8
5.7
92
at house
342.7
3.3
130
341.8
342.7
3.3
130

346.01

340.1
5.7
10
340.6
5.2
10
342.7
3.1
25
342.3
3.5
70

340.2
5.6
10
345.84
340.6
5.2
10
341.5
4.3
25
341.3
4.5
70

342.1
5.8
10
342.1
5.9
10
341.1
6.9
60

342.4
5.4
10
347.85
342.4
5.1
10
344.8
6.1
60

Nail - 04.

N.E.B.P. Polk + 48th

Blk. 20 Fairmount Add. to City Hat.

			10.02	341.55 N.W. B.P.
T.P.	5.10	351.66	3.44	341.6A 346.56

3+00

T.P.	7.23	350.00	4.12	342.77
------	------	--------	------	--------

2+50

2+46

T.P.	7.41	346.89	6.53	339.48
------	------	--------	------	--------

2+00

1+95

1+72

check is not good it is close enough for
47th + Univ. - will not rerun because while
this topog. work.

5.1	4.6	2.9
10	10	100

350.00

5.3	2.6	1.1	0.6	0.5	3.0
10	36	50	125	130	

5.6	4.7	3.8	1.5	1.5	3.5
10	36	50	125	130	

346.89

7.4	6.1	2.2	1.4	1.1
10	65	90	125	

7.4	7.5	4.7	2.8	2.3
10	65	90	125	

7.8	7.8	7.0	5.2	3.4
10	50	95	130	

346.01

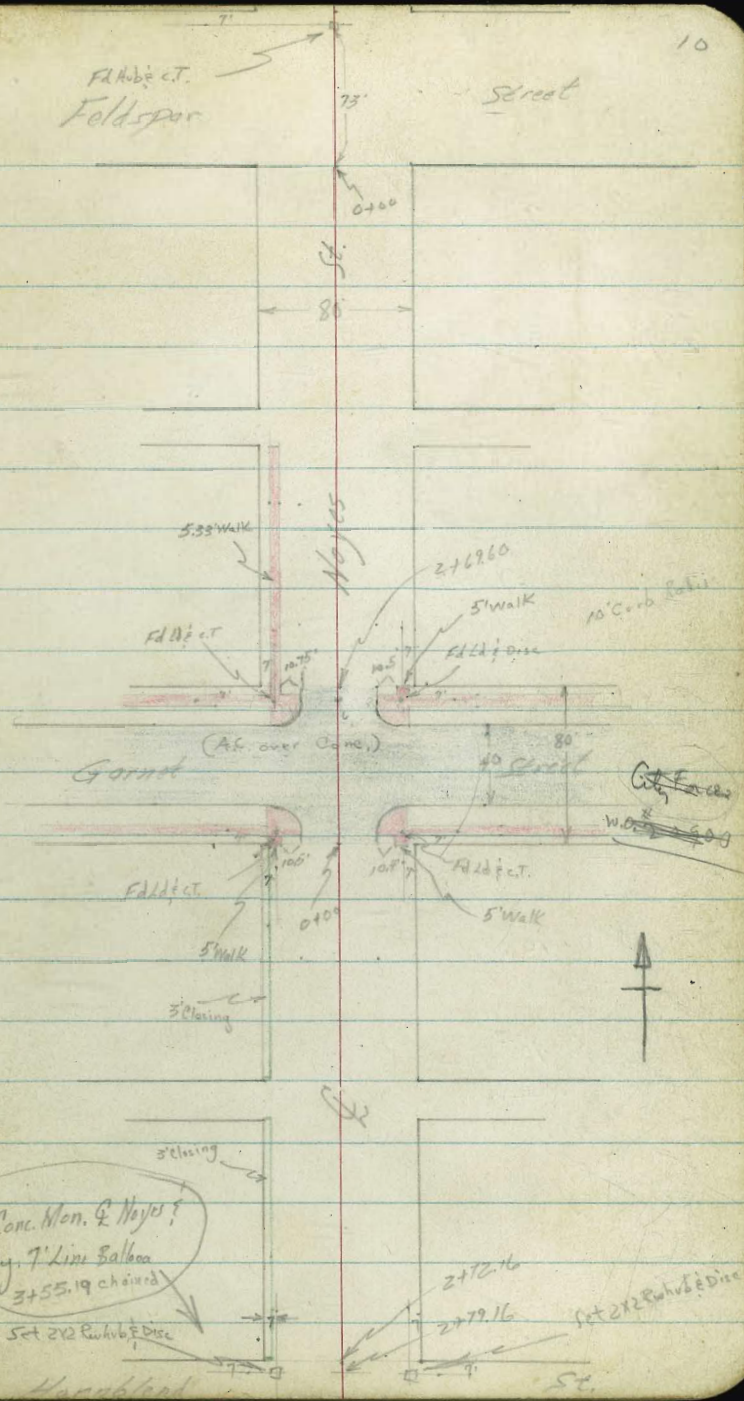
Roberts
Cata
Moon
P. Han
October 9, 1951
WP.31967

X-Section Noyes Street
Humboldt to Feldspar

T. 720 P. 3, 4 & 11 FB 1787 #0

INDEXED
OCT 19 1951

Feldspar Ct.
Feldspar



Fd. Conc. Mon. & Noyes?
Nty. 7" Line Balloon
3+55.19 checked

Set 2x2 Rehub & Disc

Humboldt

Set 2x2 Rehub & Disc

Cont'd From Page 10

Lt

Q

Rt

11

1+24[±] 40° Rt End Picket Fence

1+23[±] 39° Lt End Conc Wall

63.6	62.1	62.8
392	392	392
Top	Foot	GRD

1+03 28' Rt to Center 30" Palm Tree ✓

1+00 39° Lt Step in wall

63.5	61.7	62.0	62.9	62.8	62.4	63.3	63.1	63.6	64.2	64.5
391	392	392	392	22	21		18	19	40	50
Top	Top	GRD	GRD							

0+89 27° Rt & 3' Conc Walk

0+82[±] 23° Rt. METER BOX

64.7	64.65
272	40
conc	conc
63.61	
23°	
STEM G.N. METER	

0+76 28° Rt to Center 30" Palm Tree ✓

0+75 40° Rt Begin Picket Fence

0+53 40' Lt Step in wall

63.5	63.5	67.7	63.0	64.1	63.5	62.9	63.7	63.7	63.7	64.0	65.0	65.4	65.7
50	40.5	40	40	40	21	20	6		17	18	26	40	50
		Top	Foot	GRD									

{ 40.1' Lt begin " wall (conc.)

0+00 { Sly. Line Feldspar

65.48	63.1	64.9	64.7	64.2	65.1	65.1	64.6	65.6	66.4
402	402	40	20	17	5		17	18	40
Top	Foot								

BM used direct elevation read.

62.02 NWBP

(61.96 See F.B.

Garnet & Noyes (Bench Book
1708 pg 41)

Cont'd From Page 11

Lt

Q

Rt

12

2+73 21⁸ Rt to Center R Pole # JP4524 ✓

2+23 22⁰ Rt to Deadman ✓

2+21 27² Lt to Center 12" Tree ✓

2100

60.0	60.4	61.6	60.8	61.9	61.9	62.4	62.6	63.20
50	40	32	21		18	19	30.5	30.5
								SIDEWALK

1482 27.0 LT 10" TREE ✓

1451 35.2 RT 50' EDGE CONC SLAB

63.85	63.90	63.85
30.6	35.9	40
EDGE SIDE WALK	SIDE WALK	CONC
	50' EDGE	SLAB
	CONC SLAB	

1448 38.5 LT 31" PEPPER TREE ✓

1447 32.2 RT RR # 4530 ✓

63.71	63.99	63.94
40	35.9	30.6
CONC	SIDE WALK	SIDE WALK
SLAB	50' EDGE	
	CONC SLAB	

1445

61.2	61.5	62.2	62.1	62.7	62.6	62.7	63.2
50	40	30	18		18	19	30.6
							CRD.

1484 21^o RT END BOARD FENCE1473 19^o RT. CENTER OF DEADMAN

1459 33' Lt to 3" Pepper Tree

1450

55.5	56.0	56.7	56.6	57.0	57.2	57.5	58.2	57.8	57.8
50	40	23	22		10	11	21	37	50

X 21^o RT. Begin Board Fence1452 20^o RT to Center P. Pole # 4474

1424

Conc. slab

31' = 1424

56.02	56.28
45.1	37.0
conc.	conc.

1400

57.3	57.3	57.8	57.8	57.5	57.9	57.9	58.4	59.1	59.6
43	40	24	20	19		12	13	37	50

0793

39^o Lt to 4' Conc. slab at door

0750

59.3	59.6	59.8	59.4	58.9	58.9	58.5	59.5	60.3	60.9	61.2
43	40	29	19	18		16	17	22	37	50

0749

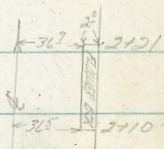
26^o Lt to Center 9" Tree

2450

2449 39.8 LT CENTER 3" WIDE WALK

2428 19.7 RT BEGIN 3" HIGH Picket FENCE

2422 36.7 RT COR CONC FLOWER BOX



2416 39.8 LT CENTER 8" WIDE CONC FLAS.

2410 36.5 RT COR CONC FLOWER BOX

2400

14925 30.7 RT 7" WIDE DRIVE

LT

4

RT

15

55.0	55.0	54.5	54.1	54.2	54.5	55.0
40	37	25		6	7	37

54.9	55.0
60	39.8
CONC	EDGE
	CONC

55.32	55.25
16.7	39.8
CONC	CONC

55.2	55.6	55.0	55.1	55.9	56.8	55.8	56.1	56.1
15	10	25	24	10		9	10	34

56.50	56.46
30.3	41.0
CONC DRIVE	CONC

Cont'd. From Page 15

16

LT RT

(3412)

CENTER HORNBLEND

50.1 50.3 51.1 51.2 50.9
50 29 25 50

2192

528 528 52.7 52.5 52.1 51.8 51.6
50 40 26 3 37 50
4

2190

537 53.7 53.9 52.8 52.6 52.5 53.9 52.9 52.6
50 40 28 26 3 6 37 50

2173 202 RT END PCHT FENCE

2172/16 NO. PROP. LINE HORNBLEND

545 54.2 54.9 53.8 53.5 53.9 53.7 53.8 53.5
50 40 28 26 4 5 37 50

2178.5 223 RT. PCHT H-4152

Cont'd from pg. 16

11

2

RT

17

checked back within 0.01

11.00

44.5

94.52 TO PL HORN BLEND

47.0

Cont'd from Page 18

R
C
M
P
10-
we

Water Meters in intersection of
Road shown in block.

0-19

0-20

0-40

♀ Noyes

0-57

0-60

0-61

24^E Rt to Center P. Pole # 4598

0-80

West Line Noyes Pav. Edge.

BM

838

70.40 N

6202 NNBP

Lt

♀

R

19

67.6	66.1	66.2	68.9	64.8
2.8	3.7	4.2	4.5	5.6
70	40	20		40

66.8	66.0	66.0	65.8	64.2
3.6	4.4	4.4	4.6	6.2
70	40	20		40

67.6	66.9	66.0	65.1
2.8	3.5	4.4	5.3
70	40		40

67.4	66.7	66.1	66.3	65.5	65.1	65.0	64.5
3.0	3.7	3.7	4.1	4.6	5.3	5.4	5.7
70	40	37	25		24	25	40

69.0	68.2	67.2	66.3	65.1	65.2	65.3	65.5
1.4	2.2	2.2	4.1	4.3	5.2	4.1	4.6
70	40	37	25		24	25	40

67.62	67.55	67.44	67.1	66.99	66.0	65.6	65.94	65.34	65.44	65.56
2.78	2.85	2.76	3.67	3.61	3.70	4.14	4.56	4.06	3.76	3.84
30	25	21.30	21.20	10		10	21.90	21.90	25	30
walk	walk	cb	cut				walk	cb	walk	walk

Garnet & Noyes

70.40 N

Cont'd From Page 19

Lt R 20

1406 40' Lt & 8' Conc. Drive

6.38
6.60
50
conc

6.57
6.83
40
conc

1700

6.41
6.3
50

6.39
6.5
40

6.33
7.1
14

6.25
7.9
13

6.25
7.7

6.20
8.7
20

6.24
8.0
40

6.22
8.2
50

0+60

40' Lt & 8' Conc Drive
39' Rt & 8' Conc Drive

6.68
7.40
6.5
Floor

6.55
5.03
6.13
BRK

6.47
5.64
40
conc

6.313
7.27
3.92
conc

6.30
7.10
5.9
Floor

0+50

6.49
5.5
50

6.45
5.9
40

6.47
5.7
14

6.37
6.7
13

6.40
6.4

6.35
6.6
16

6.31
7.3
24

6.32
7.2
40

6.32
7.2
50

0+47

40' Rt & 2' Conc. Walk

6.342
6.98
40
conc

6.335
7.02
50
conc

0+46

40' Rt End Conc. Wall

6.28
7.6
40
Foot

6.34
7.0
40
GRD

6.34
7.00
40
T.P

0+00

40' Rt Begin Conc. Wall
East Line Noyes

See Page 11

6.41
3.3
50

6.4
4.0
40

6.4
5.0
14

6.5
6.4
12

6.53
5.1

6.45
5.6
20

6.49
5.5
40

70.40X

70.40X

2+00.5 { 395 Rt Begin Picket Fence
 395 Rt Begin 4" Curb w/ Fencs on Top

59.4
 76 78 723
 395 395 395
 Foot 670 Top

T.P. 224 67.01A 563 64.77

67.01A

2+00 395 Rt Begin Picket Fence

64.3 63.2 61.9 61.2 61.0 60.9 60.6 60.0 59.7 58.5
 6.1 7.2 8.5 9.2 9.4 9.5 9.8 10.4 10.7 10.9
 50 40 30 14 13 14 18 40 50

1+59 406 Lt @ 9" Conc. Drive

63.26 63.05
 7.12 7.35
 50 Conc 40 Conc

1+50

63.0 62.7 62.4 61.2 61.3 60.7 60.2 60.0
 7.4 7.7 9.0 9.2 9.1 9.7 10.2 10.4
 50 40 15 13 17 40 50

1+29 40 Lt @ 3" Conc Walk

63.62 63.41
 6.78 6.99
 50 Conc 40 Conc

1+10 40 Rt @ 8" Conc Drive

63.17 62.31
 8.23 8.09
 40 Conc 59 Conc

70.40A

70.40A

Cont'd From Page 21

3700 392 Rt End conc. curb & Fence

66.7	66.0	61.5	61.1	60.9	60.3	59.4	58.2	58.5	58.3	58.6
0.3	1.0	5.5	5.9	6.1	6.7	7.6	8.1	8.5	7.6	8.4
50	40	15	9		15	19	392	392	392	50
							660	Foot tip		

2798 40 4 Q 2 1/2 Conc Walk } Loose Brick in St.

66.68	66.15
0.33	0.83
50 conc	40 conc

2782 392 Rt Break in curb.

59.4	59.7	59.4
7.6	7.3	7.07
392	392	392
Foot	GRD	Top

2764 40 4 Q 2 1/2 Conc. Walk } Loose Brick in St.

66.54	65.48
0.47	1.53
50 conc	40 conc

2750

66.0	64.9	62.1	61.0	61.1	60.4	59.7	59.9
1.0	2.1	4.9	6.0	5.9	5.9	6.6	7.3
50	40	24	10		13	17	20
							50

2734 40 Rt Q 8' Conc Drive

59.71	60.12
7.30	6.89
40 conc	57 Floor

2718 392 Rt Q 8' Conc Drive

This Garage is now a room!

59.61	59.47
7.40	7.54
392 conc	543 Floor

2709 41 1/2 Lt Q 8' Conc Drive

65.41	64.33
1.60	2.68
51 conc	412 conc

6701A

6701A

3795 39²Rt Q 3' Conc Walk56.99
10.02
592
conc57.06
9.95
50
conc

3780

66.2	65.6	62.6	59.7	59.7	59.3	57.4	57.0
0.8	1.4	4.4	7.3	7.3	7.7	9.6	10.0
50	40	22	9		20	40	60

3775

66.2	65.6	62.5	60.0	59.4	59.6	58.6	57.6
0.8	1.4	4.5	7.0	7.2	7.4	8.4	9.4
50	40	22	9		20	40	60

3761 33²Rt Q 3' Conc Walk59.27
7.74
332
conc59.1
7.9
40
conc55.71
8.30
50
conc

3750

66.1	65.8	62.6	60.5	60.5	60.5	58.8	58.6
0.9	1.2	4.2	6.5	6.5	6.7	8.2	8.4
50	40	17	9		17	40	50

3727

33⁵Rt Q 2' Conc Walk56.67
8.34
332
conc58.47
8.54
40
conc58.29
8.72
50
conc

3710

40¹Lt Q 8' Conc Drive66.76
0.25
50
conc65.44
1.57
40
conc

67.01X

67.01X

4446

61.7	60.7	60.4	59.5	58.3	57.4	56.1	53.9	51.3	51.3
+2.5	+1.5	2.4	3.7	3.9	4.4	5.1	5.3	7.7	7.9
50	40	13	8		19	24	38	40E	50

T.P.

3.59 59.18A 11.42 55.59

59.18A

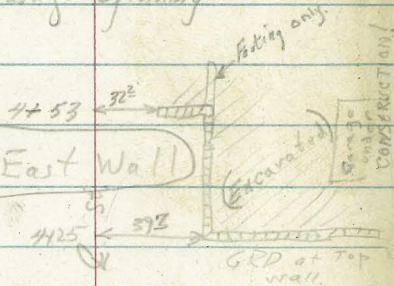
4440

owner says to be converted to apt.
55' Rt & 8' Garage Opening

65.4	64.4	59.8	57.4	55.5	55.7	55.3	54.6	54.6	51.2	51.0
1.6	2.6	7.2	9.6	11.2	11.3	11.7	12.4	12.4	15.8	16.0
50	40	29	12	8		18	26	38	42E	55 Dirt Floor

4425

GROUND East Wall



65.5	65.2	64.4	60.4	57.5	56.9	56.9	56.3	55.7	55.5	50.6
1.2	1.8	2.6	6.2	9.2	10.1	10.1	10.7	11.3	11.6	16.4
50	40	34	24	9	8		20	28	39E	39E TOP FOOT

4425

GRD. West Wall
392 Rt Begin Conc Wall (Retaining)

51.1	51.0
15.9	16.0
39E	55
GRD	GRD

4416

392 Rt & 8' Conc Drive (2' Conc walk on E. Side)

56.16	56.91
10.83	10.70
37E	50E
conc	Floor

4400

66.2	65.2	61.6	58.6	57.5	55.0	57.4	57.01	57.01
0.8	1.8	5.4	8.4	8.5	9.0	9.6	10.0	10.0
50	40	22	8		16	20	40	50

67.01A

67.01A

5+04

61.8	58.7	53.6	52.3	52.1	51.2	50.5	50.4
+2.0	+0.5	5.6	6.9	7.1	8.0	8.7	8.8
50	40	14	6		24	33	40

4+98.66 West Line Olney

61.4	59	53.9	52.4	52.2	51.5	50.5
+2.2	+0.6	5.3	6.8	7.0	7.7	8.7
50	40	14	8		22	40

4+94.5 35 Rt to Center 3" Tree (Archie)

4+83 25² Lt of 2 Conc Walk

61.53	61.4 ³	57.63
+2.65	+1.25	1.55
50 conc	40 conc	25 ² conc

4+61.5 40 Rt End of Footing

51.4	51.3	51.2
8.8	7.9	8.0
40 Foot	40 GRD	40 Top

4+55

61.4	61.6	57.5	54.9	54.6	54.1	53.4	51.3	51.1
+2.2	7.14	1.7	4.3	4.6	5.1	5.8	7.9	8.1
50	40	22	8		18	32	40	50

4+53 { 39.6 Rt to End of Wall (Footing Continues)
32² Rt to Wing of Conc Block Ret. Wall

53.1	50.61	55.59
6.1	3.57	3.59
32 ² Foot	32 ² Top	39.6 Top

Cont'd From Page 25.

Lt

R-20

0+35

59.3	59.9	56.2	51.1	51.9	53.9	53.2	51.5
+0.1	0.3	3.0	4.1	4.3	5.3	7.0	7.7
44	40	5	4		22	40	50

0+00 East Line One

61.4	59.8	56.9	51.9	51.1	53.8	52.4	50.3
+2.2	0.4	2.3	1.3	5.1	5.4	6.8	8.9
65	40	20	6	4		24	40

5+63

60.9	59.0	54.2	53.0	52.5	51.6	49.5
+1.7	0.2	5.0	6.2	6.4	7.6	9.7
65	40	5	3		20	40

5+55 8.8' Lt to Center 8" Poplar Tree

5+49

57.6	54.8	51.7	49.1	45.1
1.6	4.4	7.5	9.5	10.5
65	40		20	40

5+34

54.0	55.4	51.7	49.2
1.2	3.8	7.5	10.0
63	40		40

5+18

58.1	54.1	51.7	49.3
0.5	4.5	7.5	9.9
80	40		40

59.18 T

59.18 T

1+17 40 ft \angle 9⁵ Conc. Drive

56.53
2.35
56
Hour

56.66
2.52
40
conc

1+00 39⁵ R. End Conc Block wall

56.9 56.1 55.0 54.5 54.4 53.6 52.5 50.9 53.92 51.8
2.3 3.1 4.0 4.7 4.8 6.6 6.7 8.3 5.26 7.4
40 20 3 2 25 39⁵ 39⁵ 39⁵ 50
GRD Foot Top

0+84 38⁵ R \angle 4' Conc walk

52.65 51.6 51.66
6.53 6 7.42 7.52
38⁵ 41⁵ 42⁵ 53
conc conc conc conc
Steps

0+76 40⁵ L Begin Conc Block wall

6.3 57.4 56.7
+1.1 1.8 2.5
40⁵ 40⁵ 40⁵
Top GRD Foot

0+70

57.9 57.3 55.9 55.1 55.0 54.0 52.4 51.5 51.1
0.3 0.9 3.3 4.1 4.2 6.2 6.4 7.7 7.7
45 40 6 2 25 39⁵ 40⁵ 50

0+61 45⁵ L \angle 8' Conc Drive
45⁵ R \angle 12' Conc Drive

57.78 57.15
+0.4 +0.2
55⁵ 45⁵
conc conc

51.65 51.75
7.53 7.13
45⁵ 65⁵
conc conc

0+51 39⁵ R Begin Conc Block Wall

50.9 52.2 52.69
8.3 7.0 5.29
39⁵ 39⁵ 39⁵
Foot GRD Top

Cont'd From Page 27

T.P.

6.79 55.54T 10.43 48.75

2+00

50.9
83 89 94 10.4 10.9 11.5 12.4
50 40 20 20 40 7.0

1+75

52.0 51.2 50.6 50.0 49.6 49.3
7.2 8.0 8.6 9.2 9.6 9.7 10.0 10.9 10.2 10.9
50 40 20 5 3 24 35 48 60
60

1+70

4 1/2" R/W 3 Conc Walk

44.01
10.17
46.3
conc

1+50

40 Lt End Conc Block wall

53.1 51.2
6.1 1.92
50 40
6p

53.0 52.4 52.4 52.5 51.7 51.7
6.2 6.8 6.8 6.7 7.5 7.5 7.8 7.5 8.6 9.7
48 40 20 5 3 22 24 40 50
GRD Foot
20K 2

1+30

55.7 55.2 54.7 54.0 53.2 52.2
2.5 4.0 4.0 5.2 6.0 6.0 6.6 7.4 8.0
50 40 20 4 2 26 40 50

1+26

40 Lt Break in wall

60.4 55.6 54.6
+1.2 3.6 7.6
40 40 70
6p GRD Foot

59.18T

59.18T

Lt

R

Rt 28

3+16 41' R^t Q 2' Conc Walk

49' 23
49' 53
5.81 6.01
41' 2 51'
conc conc

3+00 40' R^t 6" Conc Curb Begins

53.54
52.9 51.4 51.2 50.3 50.5
2.0 2.6 3.7 4.3 5.0 5.0 5.2 5.7 5.6 5.2 6.0
50 40 20 6 3 20 40 40 40 60
50' 3 49' 4 49.9 50.3 49' 5

2+95 40' L^t Q 8' Conc Drive

53.51
203 53.14
50' 2.40
conc conc

2+45 67' R^t Q Single Garage

49.09 49.54
7.06 7.00
67' 67'
Apron Floor

2+50

51.8 51.4 50.4 49.6 49.4
3.7 4.1 5.1 5.9 6.1
50 40 20 7 18 40 60
49.9 49.0 48.2

2+28 { 40' R^t Q 4' Conc Walk
40' L^t Q 4' Conc Walk

51.62 50.99
3.92 4.15
50' 40
conc conc
47.73 47.57
7.81 7.97
40 50
conc conc

2+10 40' L^t Q 8' Conc Drive

51.66 50.91
2.88 4.63
61 40
Floor conc

55.54A

55.54A

Contd From Page 29

4+13 39²R4 Q 2-Ribbon Drives
{ 2'-strips
{ 6⁵-overall

4+07 40 Lt Q 6⁵ Conc Drive

4+00

3+55 39²R4 Q 8' Conc Drive

3+50 40' R4 End Curb

3+41 39² Lt Q 9' Conc Drive

3+22 40¹/₄ Q 4 Conc

55.54π

Lt

Q

R4

30

50.67
487
392
conc

50.22
532
50
conc

55.03
0.51
50
conc

54.13
111
40
conc

54.44
1.1
50

17
40

25
20

30
9

36
5

37
51.5

41
20

52
40

62
60

50.04
5.46
392
conc

49.69
5.85
50
conc

55.3
2.2
50

2.7
40

3.2
20

3.9
9

4.7
5

4.7
50.5

5.1
20

49.6
40
Foot

50
40
6RD

50.21
40
Top

53.3
60

6.8
60

53.66
188
50
conc

53.26
228
392
conc

53.75
1.77
50
conc

53.17
2.37
482
conc

55.54π

Westerly curb line

56.53	55.91	54.02	52.46	51.71	49.90	50.48	47.17	47.74
2.10	2.72	4.61	5.17	6.72	8.73	8.15	11.46	10.89
80	80	40	40		40	40	80	80
cb	Gutt	cb	Gutt		Gutt	cb	Gutt	cb

5400.64 West Line Penetration (Pav. Edge)

54.2	53.01	52.00	52.22	52.05	51.65	51.32	52.00	50.4
4.4	5.2	6.33	6.41	6.58	6.95	7.31	6.63	8.2
40	20	20	10		10	17.7	12.9	40
	cb	Gutt				Gutt	cb	

4495

57.9	57.2	55.5	52.8	52.3	51.9	52.6	51.5	50.1
0.7	1.4	2.8	5.8	6.3	6.7	6.0	7.1	7.9
50	40	24	15		17	20	40	50

T.P. 7.14 58.63A 4.05 57.47

ON CT.

58.63A

4470

57.1	57.3	55.3	54.4	53.6	53.3	52.7	51.5	50.5
+2.2	+1.8	0.2	1.0	1.9	2.2	2.8	4.0	5.0
50	40	20	9	6		19	40	60

4435

55.54	54.5	53.5	52.5	52.9	51.9	50.4	51.1	50.0
+0.50	0.0	0.7	1.7	2.0	2.6	2.6	3.1	4.4
50	40	34	20	9	6	20	40	60

4430 40' L & 3' Conc Walk

56.04	55.24
+0.50	+0.30
483	482
conc	conc

5354A

5554A

Contd from Page 31

44

£

RE

32

check

$\begin{matrix} \nearrow +0.19 & 136.86 \\ \downarrow & \\ 11.00 & 36.67 = 36.92 \text{ NNBP} \end{matrix}$

Garret & Pendleton

Walker's Bench

TP

143

47.67

12.39

46.24

£

Pendleton

58.63A

56.73

190

80

54.41

4.22

40

52.46

6.17

50.60

8.03

40

57.54

10.15

80

58.63A

Roberts
Cuba
Mount
Pelleu
12/18/51
N.O. 31967

Re-X-section Olney St.

Garnet to Palliser

FB 1870 pg 36

LT

E

Rt 33

1410

376 Lt E 3' Walk

46.2
300
726
cont.

46.19
303
396
cont.

1404

See above FB for sketch

46.1
3.1
40

46.1
3.1
30

45.5
43
28

45.1
47

1400

46.9
2.9
50

46.4
3.4
40

45.1
44
30

45.0
48

Right side
has no changes

0192

49' Lt E 10' Car Port

48.42
140
492
floor

46.91
285
412
Apron

0422

25 1/2 Lt to center 6" Tree (Acacia)

07685

25 3/4 Lt to center 6" Tree (Acacia)

0400

Nly Line Garnet

BW

472 4982 T

45.10 NWBP

Garnet & Olney

4982

2403 22° Rt to Center T. Pole # D18125T

1485 22° Rt to Deadman

1475 39° Lt @ 3' Conc Walk

49.33	48.75
391	449
184	392
conc	conc

1458 39° Lt End Conc Drive

46.60	46.23	46.0	46.0	45.7	46.2	45.2	44.1
464	501	72	72	75	70	80	83
492	392	20		11	13	40	50
Floor	conc						

T.P. 7.02 53.247 360 4622

53.247

1445 39° Lt Begin Conc Drive Single Garage

46.55	46.15
127	167
492	392
Floor	conc

1435

46.52	47.2	45.7	45.7	45.3	45.8	44.7	4
10	26	41	41	45	43	51	51
70	40	17		8	17	40	50

1426.6 22° Lt to Center P.P. # 4650

4982.7

4982.7

check 411 45.09 = 45.10
 T.P. 3.59 49.20 7.63 45.61

2+69.59 Southby Line Fieldpar

50.7	50.5	49.4	49.2	48.5	49.4	49.3	50.3
2.5	2.7	3.8	4.0	4.4	3.8	3.9	2.9
40	23	19		11	12	26	40

2+69 22nd Lt to center P. Pole # 4598

2+57 27th Lt End new hedge

2+26

50.3	49.9	49.3	49.6	49.6	49.3	47.8	47.6	46.7	47.3
2.9	3.3	3.9	5.6	5.6	5.9	5.4	5.6	6.5	5.9
47	40	21	19		10	12	24	40	50

2+25 27th Lt Begin new Hedge (small)

2+23 36th Lt & 2' conc walk

50.38	49.51	49.64
2.86	3.43	3.56
49	40	36
conc	conc	conc

2+21 27th Rt to Deadmen

2+18 37th Lt & Conc Drive

50.44	49.63
2.80	3.61
49	37
Floor	conc

2+07

49.3	48.5	48.1	47.3	47.0	46.5	47.4	46.9	45.9	45.4
3.9	4.4	5.1	5.9	6.2	6.4	5.8	6.3	7.3	7.8
50	40	24	21		11	13	27	40	50

Alley in BIK 212 + BIK 213

Pacific Beach

W.O. 25020

Sommermeyer

E. Begg

R. Sisson

W. Oltman

12-17-51

This point set by intersection of lines produced from north + from west as shown. Close enough for grade establishment but do not use for construction.

Olney

5772.36

St.

4999.36

I have no tie points on this.

INDEXED

DEC 20 1951

BIK 212

Garnet St.

Hornblend St.

Noyes St.

143.08

143.08

4999.96

BIK 213

0+00

Morrell St

N.W. P. Garnet + Noyes

62.02

Alley Blk. 213
Pacific Beach

4

T.P. 2.28 61.55 6.43 59.32

12' Rt. = 3' door.
0+21.5 10' Rt. = N.W. Cor. stucco Bldg.

0+00 6.43
± Hub

62.5 60.3 59.6 59.5 59.8 58.8
3.3 5.5 6.2 6.3 5.95 7.0
50 10 10 10 10 12
Grd. db. end door sill

0-17- 10' Rt. = E.C. 3' Rad. Alley Cl. Rct

3' Rad.
17' Rt. = B.C. existing alley curb.
0-20. = Ely Cl. line Morrell

61.5 59.5 58.65 59.37 57.5 58.2
4.3 6.3 7.1 6.38 8.3 7.58
50 17 17 50 50
Grd. cl. B.C. Grd. cl.

0-40 ± Morrell

61.8 60.0 57.7
4.0 5.8 8.1
50 65.75 50

Set B.M. #1 0.98 65.75 A120 64.77
5.30 68.97 A105 63.67
5.70 67.72 62.02

SE. 7' L+T. Garnet + Morrell
N.W. B.P. Garnet + Noy os

5706.96

T.P. Hub. } set. B.M. #2

6.02 ✓ 57.90 ✓

5739.95 = 4 Noyes

3 4799.26 = wly. Noyes

1759 11" Pt. - end conc. apron

3

2 4751 - 11" Pt. - start conc. apron to Sing. Gar.

2

In 4750

4700

T.P.

9.06

63.92

3.26

54.86 ✓

3794 - 12" Lt. = 4 Sing. Gar. dirt floor

3750

57.4

5.5
50

58.9

5.2
10

57.1

6.8
50

58.4

5.5
10

56.1

7.8
50

58.0

5.9
10

6.55

11" apron

57.38

6.54

11" apron

57.47

6.45

17" Gar. Floor

57.5

6.4
10

57.3

6.6
10

57.3

6.6
10

57.4

6.5
50

55.1

8.8
10

54.8

9.1
63.92

54.5

9.4
10

51.8

12.1
50

55.4

2.7
12"

53.3

4.8
10

53.1

5.0
58.12

52.9

5.2
11"

Alley BIK. 212 Pac. Beach

Sketch P. 36

1+50

51.2
418
10
50.9
51.1
10
50.9
51.1
10

1+00

52.0
3.0
50
52.3
3.7
10
52.1
3.9
10
52.1
3.9
10
52.3
3.7
50

T.P. 2.52 5601 7.45 53.49

56.01

0+60 = 10' RT = 9' wide Conc. Drive

54.00
6.94
10'
Drive
54.19
6.75
AZ
Gar. Floor

0+50

54.5
6.4
10
54.2
6.7
54.3
6.6
10

0+49 11' Lt. = S.E. Cor. Gar.

55.55
5.06
16'
Floor
55.4
5.5
11
Ord

16' Lt. = Gar. door - Conc. Floor

0+29 11' Lt. = S.W. Cor. Gar.

55.1
2.8
50
56.4
4.5
10
6.1
4.8
56.2
4.7
10
55.8
5.1
50

0+00 = Ely line Noyas

3.04 60.94 - 57.90

B.M. #2 - P. 39 60.94

BIK 212

2+71 - 11' Lt. = end conc. drive apron

50.2
191 2.62
19 11
Apron

2+55 - 11' Lt. = start conc. apron to double Gar.

50.61
51.23
1.52 1.90 2.35
31 19 11
Gar. floor Apron

Top of lath pole # A2150

T.P. 1.68 52.13 5.56 50.15

52.13

2+50

50.0
6.0 6.6 6.4
10 10

2+40 61' Rt. = Gar. conc. floor

49.4
49.6
6.65
61
Gar. floor

2+21 17' Lt. = end conc. apron

51.13
4.88 4.95 5.10
35 24 17
Gar. floor Apron

2+04 17' Lt. = start conc. apron to double Gar.

51.1
51.01 50.91
4.90 5.00 5.10
35 24 17
Gar. floor apron apron

2+00

51.2 50.5 50.2 50.3
4.8 5.5 5.8 5.7 6.5
50 10 10 50
56.011 49.5

BIK. 212

4+22 9³ RT = end conc. apron

43.98
2.72
93
apron
44.53
2.17
13²
Car. floor

4+06 9³ RT = start conc. apron to double bar.

44.1
2.60
93
Apron
44.15
2.45
13²
Car. floor
46.70 ✓

T.P. 2.31 46.70 ✓ 7.74 ✓ 44.39 ✓

4+00

45.5
6.3
50
44.7
7.4
10
44.2
7.9
44.6
7.3
10
44.3
7.8
50

3+50

45.9
6.2
10
45.7
6.4
45.6
6.3
10

3+00

45.1
4.0
50
47.7
4.4
10
47.5
4.6
44.0
4.1
10
47.7
4.4
40

2+81 11' RT = $\frac{1}{2}$ conc. car port.

44.33
3.80
11
car port
floor
52.13

check 0.54 $\frac{0.02}{62.00}$ (62102)

orig. B.M. N.W.B.P. Garnet + Olney

T.P. 11.80 62.54 0.80 50.74

T.P. 6.47 51.54 1.63 45.07 (45.10)

N.W.B.P. Garnet + Olney

5+39 = ϕ 24' wide pavement

40.58
5.82
50

40.01
6.63
10

39.50
6.70

39.60
7.10
10

39.75
7.95
50

5+27 = wly edge rock + oil pave

41.78
5.42
50

40.40
6.30
10

40.20
6.50

40.05
6.65
10

39.27
7.43
50

4+99.36 = wly. Olney

41.1
4.3
50

41.2
5.5
10

40.5
5.9

40.9
5.8
10

40.5
5.9
50

4+50

43.1
3.6
10

42.5
4.2

42.1
4.0
10

46.70

Alley BIK. 208

499.74

44

Pacific Beach

12-18-51

Sommersmeyer
B 999
R Sisson
Oltman

Pendleton

161.88

141.88

7

1

• = Fd LAT

x = cut cross in conc.

□ = set 1/4 hub + disk

• = " nail

See Olney St. ties P-46.

Levels - P-47

0+00 = Ely line Olney

BIK
208

Felspar

Garnet

< 40 >

7

7

□

Olney 174.77

0+00

141.77 St.

d-40

< 33 >

x 7 ←

Alley BIK 177 Pacific Beach

12-18-51

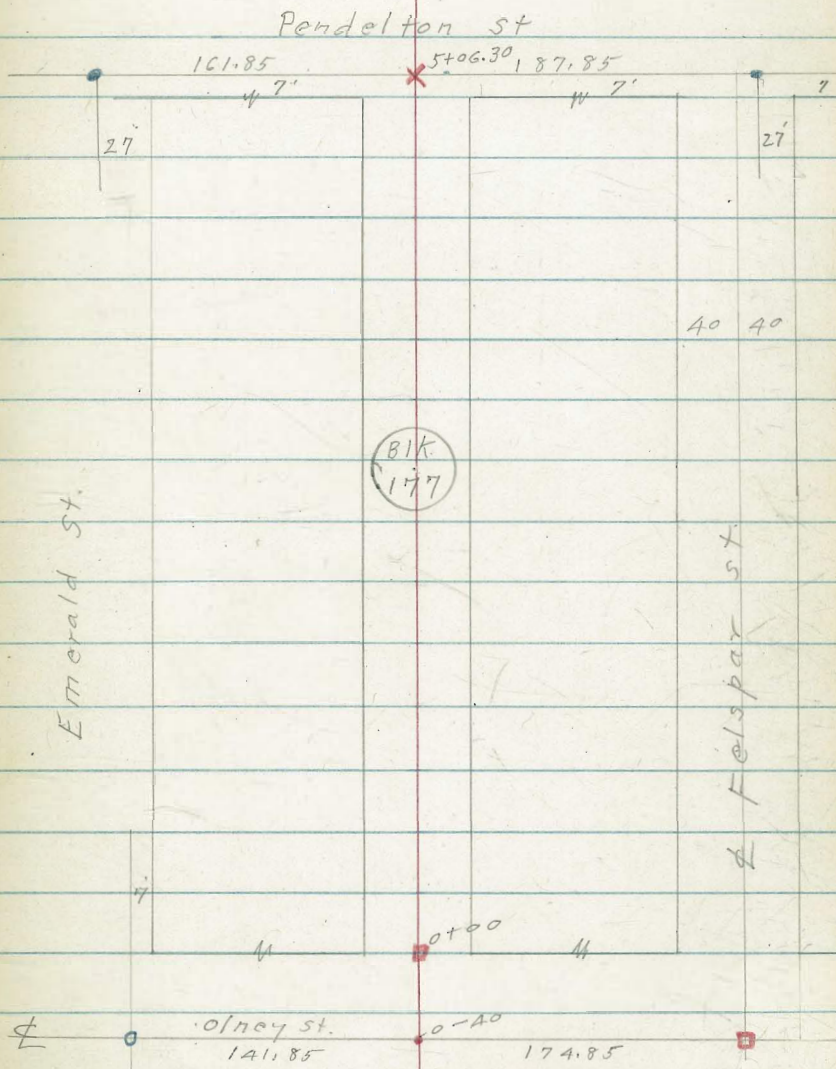
C.H.S.

Sommermeier
Boggs
R Gisson
W. Altman

- denotes Fd LTT or disk
- " Fd pipe
- ✕ " cut cross in conc.
- ◻ " set. Hub + disk
- " nail

Levels - P 52

see P. 46 for Olney St. ties

$$\begin{array}{r} 125 \\ 17 \\ \hline 142 \end{array}$$


Ties Points Olney St.

Garnet to Diamond

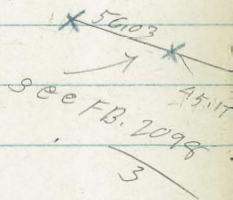
12-18-51

C.H.S.
B 099

R. Sisson
W: Oltman

- denotes found conc. Mon
- " " City disk or LTR
- " " pipe - no disk
- denotes hub + disk set
- " nail set.

Distances chained



Indexed

⊕ Diamond

382.90

Ely T'line

Emerald

Fd 3/4" pipe

316.71

⊕ Felspar

Set 1/2 hub + disk
by intersection

316.54

wly T'line
Perridet (13)

⊕ Noyes

N. T'line
Garnet.

33'

33'

⊕ Olney

Alley BIK. 208 Pacific Beach

47

Sketch - P. 44

T.P. 6.19 51.01 ✓ 4.69 44.82 ✓

1+00

42.7
4.8
50

43.7
5.8
10

43.5
6.0

43.5
6.0
10

43.1
6.4
50

0+50

44.2
5.3
10

43.9
5.6

44.0
5.5
10

0+49 10' Rt. = \pm 18" wide Conc. walk

44.50
5.01
10

44.3
5.2
20

0+46 10' Rt. = end same

44.54
4.97
10
Apron

0+26 10' Rt. = start double Car. apron to

44.65
4.80
10
Apron

44.96
4.65
15
Car. Floor

0+00 Ely. Olney 5.04 44.47
Hub

45.5
4.0
50

44.9
4.6
10

44.7
4.8

44.7
4.8
10

44.0
5.5
50

0-40 \pm Olney

46.6
2.9
50

45.8
3.7
10

45.6
3.9

45.5
4.0
10

44.9
4.6
50

4.41 49.51 ✓ - 45.10 ✓

N.W. B.P. Garnet + Olney
49.51

2+26 10' RA start ^{double Car.} conc. apron to

46.58
4.43
10
Apron

46.95
4.06
14.8
Car. floor

2+24 10' RA = end apron

46.23
4.78
10
Apron

2+17 - 14⁸ RA = \pm Garage

45.98
5.03
10
Apron

46.21
4.80
14.8
Car. floor

2+01 10' RA = start ^{to start Comb. Car. + shed} (built up on tile blocks)

49.0

7.0
10

44.1
6.9

45.6
6.4
10
Apron

45.75
5.26
10
Apron

44.5
4.86
14.8
at Bid 9

1+00

44.8
6.2
50

44.0
7.0
10

44.0
7.0

43.6
7.4
10

43.5
7.5
40

1+93 9² RA = \pm Sing. Car. dirt floor

44

43.5
7.5
92

1+50

43.6
7.4
10

7.8

43.2

43.1
7.9
10

51.01

2+97 11' Lt = end conc. apron

48.01
3.00
20
Gar. floor

47.54
3.43
112
Apron.

2+83 14' Rt. = \pm Sing. Gar. - dirt floor

46.9
4.1
14

2+78 11' Lt. = start Conc. apron to
double Gar.

47.95
3.03
20
Gar. floor

47.51
3.50
112
Apron

2+75 9' Rt = \pm 3' wide Conc. walk.

47.07
3.99
92
walk

41.10
9.90
20

2+73 - 9' Rt. = end frame dwelling
 \pm Gar.

2+51E 10' Rt. = \pm Gar. doors.

46.90
4.11
10
Conc. floor

1 2+50

46.6
4.14
10

46.7
4.7

46.8
4.2
10

2+44 10' Rt. = start frame dwelling
 \pm Gar.

46.79
4.22
10
apron

1 2+43 - 10' Rt. = end Conc. apron.

51.01

Bik. 208

T.P. 5.19 46.50 6.17 41.31

4+67 10³ L¹ = end conc. apron.

4+60 15' L¹ = 2 Sing Bar Conc. Floor

4+53 - 10³ L¹ = start conc. apron

4+50

T.P. 1.75 47.48 5.28 45.73

4+00

3+50

3+00

Cross in Paue Sta. 5+06 ⁷⁸

43.36
4.10
10²
Apron

44.54
2.94
15
Floor

43.37
4.11
10²
Apron

43.0
4.5
10

5.1
4.24

42.3
5.2
10

47.48

45.4
5.6
50

45.4
6.6
10

44.1
6.9
10

44.6
6.4
10

44.1
6.9
50

44.3
4.7
10

46.0
5.0

46.1
4.9
10

49.0
3.0
50

47.4
3.6
10

47.1
3.9

47.3
3.7
10

46.5
4.6
50

51.01

Set B.M. #2

3.00 61.91 ✓

Set B.M. on Cross Sta. 5+06.30 Page 45

T.P. 6.75 64.91 ✓ 0.19 58.16 ✓

T.P. 12.49 58.35 ✓ 0.64 45.86 ✓

A+19.8 = Wly. C. line Pendelton

44.70	44.10	42.27	41.74	41.14	40.70	41.26	39.33	39.90
1.80	2.40	4.23	4.81	5.36	5.80	5.24	7.17	6.60
50	50	13	13		13	13	50	50
cb.	G.	cb.	G.		G.	cb.	G.	cb.
		EC				EC.		

A+16.8 - 10' Lt. } = B.C. 3' Rad. Cb. Ret.
 10' Rt }

42.09	41.50	40.97	41.40
4.41	5.00	5.53	5.10
10	10	10	10
cb	G	G.	cb

10' Lt. } = start alley curbs.
 10' Rt }

A+99.78 = start Conc. Pave
 = W. line Pendelton

40.24	41.77	41.43	41.50	41.58
4.26	4.73	5.07	5.00	4.92
10L	10L		10L	10L
cb	G		G.	cb

East front
 A+86 19' RT = ± double Cor. Conc. floor

42.14
 4.36
 19
 Floor

46.50

Sketch - p 45

1+50 10' RR = ^{future wall} ~~and~~ Conc. footing for

1+00

B.F. = base of footing
future wall

0+75 10' RR = start footing for

0+50

0+00 = Ely. Olney

T.P. 0+ 4.50 68.85 ✓ 5.08 64.35 ✓ Sta. 0+00

0-40- ϕ Olney

T.P. 5.78 69.43 ✓ 0.61 63.65 ✓

T.P. 11.35 64.26 ✓ 1.85 52.91 ✓

10.29 54.96 ✓ — 44.47

	57.4		57.0	56.5	55.5
	11.4	11.8	12.3	13.3	
	10		10	10	B.F.
61.9	59.4	58.8	58.5	57.4	57.8
6.9	9.4	10.2	10.3	11.4	11.0
50	10		10	10	50
				B.F.	

	58.9	57.9
	9.9	10.9
	10	10
	B.F.	B.F.

	62.4	61.7	61.5
	6.4	7.1	7.3
	10		10

	66.1	64.9	64.5	64.6	63.8
	2.7	3.9	4.5	4.2	5.0
	50	10		10	50
			68.85		

	67.0	65.7	65.4	64.9	63.0
	2.4	3.7	4.0	4.5	6.4
	50	10		10	50
			69.43		

Hub. 0+00 P. 47

T.P. 6.00 67.83 ✓ 2.30 61.83 ✓

3+68 21' Lt. = 2 Sing. Bar. Conc. Floor.

3+50

3+00

2+92 .17' Lt. = 2 3' wide Conc. walk

2+50

2+00

1+75

T.P. 6.55 64.13 ✓ 17.27 57.58 ✓

68.85

61.33
2.80
21
Floor
60.5
60.0
3.6 4.1 59.4
10 10 10

60.5
3.6 4.4 59.7 59.1 56.8 56.0
50 10 5.0 5.3 6.1
10 10 50

60.13
4.00 59.98 59.6
27 17 17
17
end

59.0
5.1 5.4 56.7 56.3
10 10 10

54.1
6.0 6.4 57.1 57.3
10 10 10

56.5
5.6 6.7 57.4 57.2 64.13
50 10 6.9 7.2 8.9
10 10 50

check B.M#2 - P51 5.96 61.87 (61.91)

5+19³ = wly. cl. line Pendleton

62.63 4.20 50 cl	63.03 4.80 50 G	62.71 5.12 13 oc. E.C.	62.09 5.74 13 G	61.67 6.16	61.23 6.60 13 G	61.77 6.06 13 E.C.	58.91 8.92 50 G	59.53 8.30 50 cl
---------------------------	--------------------------	---------------------------------	--------------------------	---------------	--------------------------	-----------------------------	--------------------------	---------------------------

5+16³ - 10' RT } = B.C. 3' Rad. Cl. Ret.
10' Lt }

62.63 5.20 10 cl	62.10 5.73 10 G	61.59 6.30 10 G	61.96 5.87 10 cl
---------------------------	--------------------------	--------------------------	---------------------------

10' RT } = start alley curbs
10' Lt } = start conc. pave

4+99³ = wly. line Pendleton

62.81 5.02 10 cl	62.93 5.50 10 G	62.09 5.74	62.23 5.60 10 G	62.29 5.54 10 cl
---------------------------	--------------------------	---------------	--------------------------	---------------------------

4+74 15' RT = 4' wide Conc. patch

62.5 5.3 15 Gnd	63.03 4.80 15 patch
--------------------------	------------------------------

4+50

62.13 5.75 10	62.0 5.8 10	61.5 6.3 10
---------------------	-------------------	-------------------

4+00

62.6 5.10 50	61.1 6.7 10	60.8 7.0 67.83	60.6 7.2 10	59.5 8.3 50
--------------------	-------------------	----------------------	-------------------	-------------------

Alley BIK 179 Pacific Beach

W.O. 25020

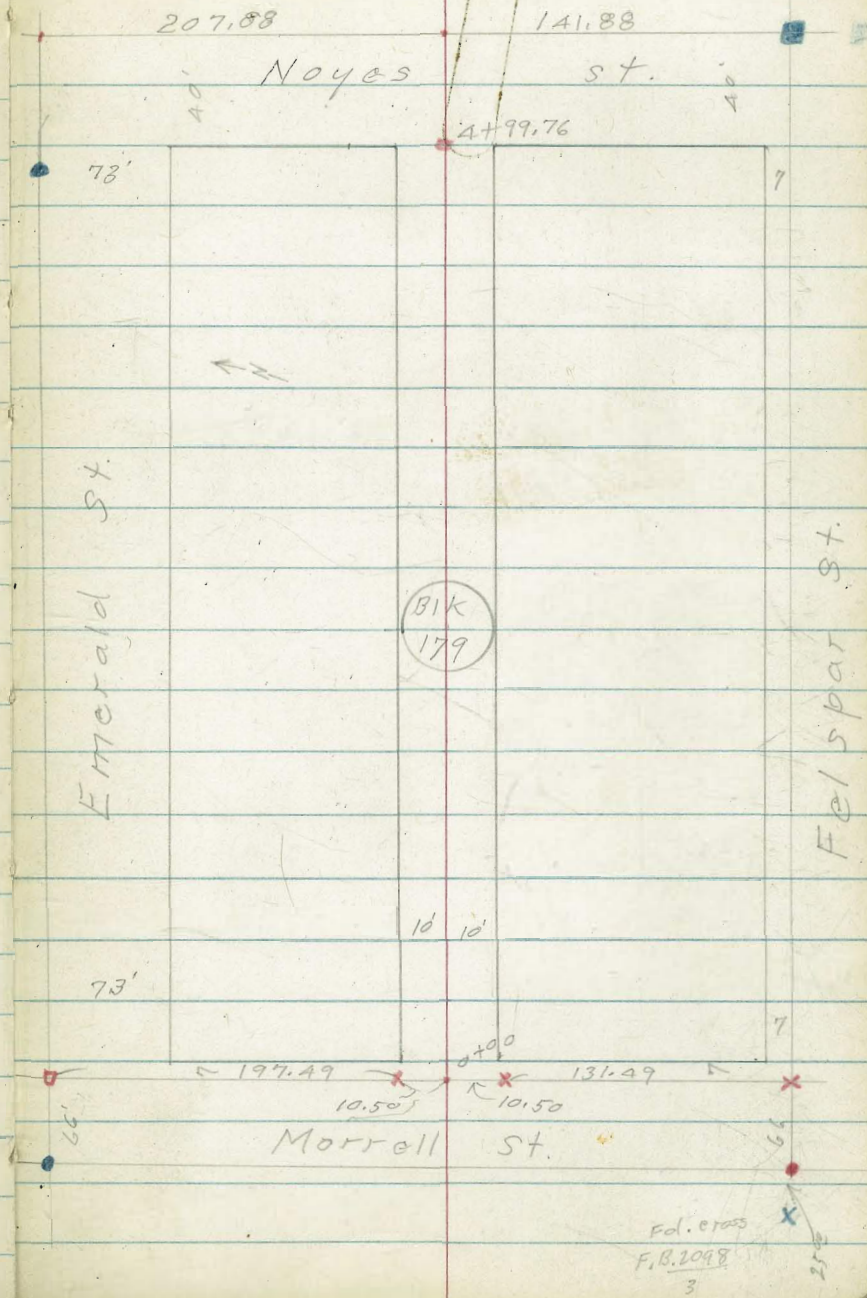
12-20-51

C.H.S.
Bo. 99
R. Sisson
Attman

Indepel

- = Fd. Monr
- = Fd. disk
- = set disk
- = nail
- = set 141 track
- x = cut cross in conc.

55.



Fd. cross
F.B. 2098
3

Sketch - P-55

X. in ch. 10' RT. of 0-07

T.P. 3.19 81.29 5.11 78.10

0+23 10' Lt. = 3' wide conc. walk

0+19 - 10' Lt. = end conc. wall

T.W. = top of wall
B.W. = base of wall

0+04 - 10' Lt. = start conc. wall.

= Ely Morrell

0+00 10' Lt. } End alley etc.
10' RT }

0+18 10' RT } E.C. 2' Rad. Ch. Ret.
10' Lt }

0-20 = Ely. Ch. line Morrell
12' RT } = B.C. 2' Rad. Ch. Ret.
12' Lt }

T.P. 9.63 83.21 0.65 73.58

9.46 74.23 — 64.77

81.01
2.20
20
walk

80.93
2.28
10
walk

81.2
2.0
10
T.W.

79.9
3.3
10
B.W.

80.6
2.6
10

81.3
1.9
10
T.W.

79.4
3.8
10
B.W.

79.6
3.6
10

79.12
4.09
10
el.

79.2
4.0
10

76.6
4.6

75.2
5.0
10
el.

75.2
5.00
10
el.

78.58
4.33
10
el.

77.84
5.33
10
N.E.C.

80.57
2.64
50
el.

78.51
4.40
12
el.
B.C.

78.1
5.1
12
Gnd

77.6
5.6
83.21 J

77.7
6.0
12
Gnd.

77.50
5.41
12
B.C.

76.11
7.03
50
el.

Set. B.M. N.W. 7' disk Morrell & Felspar

B.M. #1 - P-37

BIK. 179

P.B.

1+40 9⁴ Rt. = end conc. walk

1+27 12⁴ Rt. = end stucco Bldg.

1+07 12⁴ Rt. = ϕ door way to Bldg.

1+05 9⁴ Rt. = start conc. walk

1+00 11' Rt. = general line of wall
Bldg.
12⁴ = end Brick wall = start stucco

0+82 - 10² Rt. = ϕ 3' conc. walk thru brick wall
outs to portion nearest alley.
wall is curved (thus)

0+50 10² Rt. = start brick wall.
= general line of brick wall.

0+30

76.21
5.08
9⁴
walk

76.20
5.09
10
walk

77.10
4.19
12⁴
walk

77.17
4.12
12⁴
door way

77.11
4.18
9⁴

77.09
4.20
12⁴
at Bldg.

77.6
3.7
10

77.4
3.9

77.3
4.0
10

76.4
4.9
12⁴
B.W.

83.6
+2.3
12⁴
T.W.

77.72
3.57
10⁹
walk

80.3
1.0
10

79.6
1.7

79.3
2.0
10

79.1
2.2
10²
B.W.

85.2
+3.9
10⁶
T.W.

80.7
0.6
10

80.1
1.2

79.5
1.5
10

81.29

142 RT
3+10 142 LT = start 4 Car. Garage floor
Conc.

92 RT }
3+00 92 LT } Start Conc. apron for row of garages.

T.P. 4.22 79.11^N 6.40 74.89^V

2+50

2+25 8³ LT = ± 2⁵" wide Conc. walk

0+23⁵ 9⁵ RT = end Conc. wall

2+00 9⁵ LT = start Conc. wall

1+54 - 14' RT = ± 3' wide Conc. walk

1+50

75.79
3.32 75.71
14.8 92
Car. Apron
4.59 74.54
92
Apron
4.30 74.61
142
Car.

75.98
3.13 75.3
92
Apron
79.11
4.22 74.59
92
Apron

77.4
3.5 77.5
10 3.8 77.4
3.9
10

78.09
3.20 77.92
20 10 3.53
83

78.3
2.0 77.1
50 3.6 76.6
T.W. B.W. 4.5 76.5
4.7 76.6
4.6 76.7
10 5.6
50

77.5
3.8 77.2
92 1.1 77.5
B.W. 3.5
T.W.

75.59
5.77
14
walk
77.7 76.4 76.3
3.6 4.9 5.0 76.2 75.9
40 10 81.29 10 40

BIK. 179

4+45 } 15' RT } = End 4 Car. Bar.
 15' LT }

74.11
 5.00 73.15
 15 99
 Bar apron

72.46
 6.65 73.49
 10 15
 apron Bar

4+10 } 15 RT } start 4 Car. Bar. floor
 15 LT } Conc.

74.13
 4.98 73.77
 15 99
 Bar apron

73.09
 6.02 73.51
 99 15
 Apron Bar

walk on Lt. used as drain

4+00 } 15' RT } = walk between Bldgs
 15' LT }

74.51 74.31
 4.60 4.80 74.01 73.5
 30 15 99 5.6
 walk apron

73.25 73.74 73.46
 5.86 5.37 5.65
 99 15 30
 apron walk

3+90 } 149 RT } = end 4 Car. Bar.
 149 LT }

74.85 74.23
 4.23 4.88
 149 99
 Bar apron

73.7
 5.74 73.95
 99 149
 apron Bar.

3+55 } 149 RT } = start 4 Car. Bar. floors
 15' LT } Conc.

74.91 74.77
 4.20 4.34
 15 10
 Bar. apron

73.82 73.99
 5.29 5.12
 99 149
 apron Bar.

walk on left used as drain

3+50 } 149 RT } = 10' walk between garages
 15 LT }

75.04 74.80
 4.07 4.31 74.77 74.3
 walk 15 10 4.8
 35 walk apron

73.85 74.31 73.91
 5.23 4.80 5.20
 99 149 30
 apron walk

3+45 } 149 RT } = end 4 Car. Bar.
 15 LT }

75.65 75.03
 3.46 4.08
 15 10
 Bar. apron

73.94 74.85
 5.13 4.26
 99 149
 apron Bar.

B/K 179

6.37 62.05 (62.02)

T.P. 0.95 68.42 ✓ 7.47 67.47 ✓

5739²⁶ = E Noyes

T.P. 3.35 74.94 ✓ 7.52 71.59 ✓
Hub. 5706.76 on E

row of garages

199 RT } - end Conc. apron to
99 LT }

4799⁷⁶ = wly line Noyes

4790 15 RT } = end 4 car. Car.
15 LT }

4755 15 RT } = start 4 car Car. Conc. floor
15 LT }

walk on Lt. used as drain

4750 15 RT } = walk between Bldgs.
15 LT }

Emerald & Noyes N.W.B.P. 77.58

59

N.W. B.P. Garnet + Noyes = Orig. B.M. P-37

	71.1	70.5	70.5	69.9	68.1
	2.8	7.4	4.6	5.0	6.2
	80	10	74.94	10	60
23.7	72.36	71.95	71.9	71.50	71.44
5.4	6.75	7.16	7.2	7.61	7.67
50	142	92		92	142
	Apron			apron	

	72.46	72.29	71.61	71.56
	6.25	6.82	7.24	6.55
	15	99	99	15
	Car	apron	apron	Car.

	73.01	72.94	72.31	72.51
	6.10	6.17	6.80	6.54
	15	99	10	15
	Car.	apron	apron	Car

	73.15	73.15	72.82	72.7	72.38	73.05	73.55
	5.20	5.96	6.29	6.4	6.73	6.06	5.56
	40	15	99		10	15	40
	walk		Apron		apron	walk	

79.11

Hoyer St.

270

$\frac{74.31}{370}$ $\frac{74.1}{39}$ $\frac{73.5}{33}$ $\frac{72.4}{30}$ $\frac{71.1}{15}$ $\frac{71.3}{10}$ $\frac{71.2}{58}$ $\frac{71.0}{10}$ $\frac{71.2}{19}$ $\frac{71.7}{20}$ $\frac{71.1}{40}$
 42-EX Gene
 Talk

165

$\frac{72.91}{505}$ $\frac{73.0}{50}$ $\frac{72.2}{55}$ $\frac{72.4}{78}$ $\frac{72.7}{70}$ $\frac{71.2}{80}$ $\frac{70.5}{70}$ $\frac{70.2}{18}$ $\frac{71.1}{20}$ $\frac{71.7}{40}$
 40-EX Gene
 Talk

+35 = $\frac{1}{2}$ Alley Rt + Lt

$\frac{71.9}{40}$ $\frac{70.2}{20}$ $\frac{69.9}{17}$ $\frac{70.2}{10}$ $\frac{70.5}{75}$ $\frac{70.0}{80}$ $\frac{69.6}{84}$ $\frac{70.0}{80}$ $\frac{70.2}{40}$

+25 25 1/4 of $\frac{1}{2}$ Perrier Pole #4624

+22 22 1/4 of $\frac{1}{2}$ Tot pole #559546H

140

$\frac{71.22}{279}$ $\frac{71.3}{40}$ $\frac{70.1}{20}$ $\frac{69.1}{18}$ $\frac{69.2}{88}$ $\frac{69.2}{87}$ $\frac{69.3}{91}$ $\frac{69.5}{94}$ $\frac{69.6}{80}$ $\frac{69.9}{40}$

+90

$\frac{69.39}{937}$ $\frac{69.39}{2300}$

+66

$\frac{69.39}{940}$ $\frac{69.39}{950}$ $\frac{69.39}{950}$

0+50

$\frac{69.29}{40}$ $\frac{69.86}{40}$ $\frac{69.86}{18}$ $\frac{69.9}{99}$ $\frac{69.9}{99}$ $\frac{69.9}{108}$ $\frac{69.9}{111}$ $\frac{69.9}{101}$ $\frac{69.9}{99}$ $\frac{69.9}{101}$

78.01

78.01

Hoyas St.

Lt.

D

Rt.

63

+19.84 = North Line Emerald St

75.4	76.0	77.0	75.5	75.5	83.7	75.4	76.5	77.0
61	65	75	87	70	80	81	87	80
40	20	13	25	7	20	26	24	40

+29.84 = North Carb Line

77.5	76.4	76.3	75.7	75.5	91.5	75.5	75.7	76.6	75.3	76.7	77.3
91	78	82	88	100	91	88	88	79	79	76	78
10-26	10-6	30	14	7	10	10	20	33	40	50	50

3+09.84 = 1/2

76.1	75.0	74.9	74.1	74.5	74.3	75.1	75.4	75.8
83	93	96	104	96	92	94	97	78
10-01	20-01	14	7	10	18	20	40	40

B.M.

6.89

84.47

0.43

77.58

N.W. 8P
Emerald +
Hoyas
77.58

84.47

+89.84 = South Carb Line

76.1	75.1	74.3	73.9	73.9	74.3	74.7	74.4	75.4	75.9	76.4
78	78	37	41	41	37	33	36	29	206	76
10-01	10-01	20	15	10	27	10	20	40	50	50

+71.5

217 St of 1/2 Tail Pole # 559 517 H

+19.84 = South Line Emerald

76.4	75.7	75.2	73.1	73.9	74.0	73.5	74.5	75.6
16	22	17	49	41	40	20	25	24
10	20	17	10	10	10	20	25	40

2+50

76.9	75.9	74.9	72.3	72.5	72.5	73.3	72.7	73.7	74.3
203	21	31	57	53	45	47	52	43	27
13-01	40	31	18	10	10	10	10	10	40

78.01

78.01

Hoyas St.

Lt Rt 64

5422

TP 1006 92.15 238 82.09

+94.86 = North Line E & W Alley

+93 15.5 Lt of 1/2 = 1/2 24 Tree

+84.86 = 1/2 Alley Rt + Lt

+72 20 Lt of 1/2 = 1/2 Power Pole # 500181H

+50

+14

440

8447

92.15

52.29
9.86
24.0
24.0
24.0

82.6	82.6	82.8	81.4	81.4	81.1	81.1	81.9	81.9
19	19	17	11	21	28	34	26	26
40	30	30	11	10	10	20	25	40

82.0	81.7	81.4	81.34	81.4	80.9	81.1
25	28	31	38	31	36	34
40	30	10	10	10	20	40

82.32	82.1	81.3	81.4	79.6	79.5	80.0	79.3	79.0	80.0	81.1
15	24	32	41	49	50	45	52	55	45	38
40	40	20	10	8	10	10	20	23	25	40

79.74
423
18.50
0.07
0.05

82.1	79.7	78.9	77.4	77.5	75.2	77.7	77.2	77.9	80.2
14	48	56	70	79	62	68	72	66	42
10	20	14	10	10	10	20	24	25	40

8447

Hoyas St.

4

2

Rt. 66

BMA

074

91.41

3 E Top Ethel
Diamond
+ Royal
91.37

+59.89 = 1/2 Diamond

+19.89 = 5/4 Conc Paving

6 + 39.89 = Sect 5 Carb Line of Diamond

9215

87.17	87.75	87.59	87.62	87.79	87.97	88.16	88.67	90.95
398	140	156	153	136	118	397	245	130
90	40	20	10		10	46	40	90

88.03	87.60	87.34	87.36	87.52	87.67	87.97	88.56	90.82
112	155	181	177	163	148	418	257	133
70	40	20	10		10	50	40	90

86.8	86.8	87.0	87.0	87.3	87.5	88.5
54	54	52	52	49	47	31
40	20	10		10	10	46

9215

Filey Block 169 Pacific Beach

JP 3.61 90.65 4.88 87.04

+92 110 Lt of $\frac{1}{2}$ - Fly High Board Fence

+85 9.8 Rt of $\frac{1}{2}$ - Fly Lot's House

+75 110 Lt of $\frac{1}{2}$ - Fly High Board Fence
10.5 Lt of $\frac{1}{2}$ - Fly High Board Fence

+49 100 Rt of $\frac{1}{2}$ - Fly Wire Fence Also Fly Lot's House

+25 10.2 Lt of $\frac{1}{2}$ - Fly High Board Fence

+02

1701 10.8 Rt of $\frac{1}{2}$ - Fly Wire Fence

0+95

91.92

Lt. 2 Rt. 88

85.54
338
15.55
90.00
Conc. 200'
87.60
87.60
Fly Conc.
Fly 200'

87.0
87.2
4.7
4.7
10

87.6
87.6
86.6
4.4
4.3
5.3
10
6
5.6
5.3
6.0
10
7.3
4.10
Fly Conc.
Fly 200'

87.41
85.4
4.45
6.5
10.2
Fly Conc.
Fly 200'

87.3
87.5
87.8
9.5
8.9
8.9
7.4
7.5
10
7.5
8.5

87.8
87.1
87.8
8.8
10
9.8
9.8
1.2
1.2
1.2
9.8
8.8
10
1.2
1.2
1.2
9.8
8.8
10

91.92

Block 169

4+0 10.2 Lt of $\frac{1}{2}$ - Fly Picket Fence
8.6 Rt of $\frac{1}{2}$ - $\frac{1}{2}$ Post Pole # PR 2180

+50 10.4 Lt of $\frac{1}{2}$ - Picket Fence
10.4 Rt of $\frac{1}{2}$ - Fly Cyclone Fence

3+0
+75 10.5 Lt of $\frac{1}{2}$ - Fly Wire Fly Picket Fence
Also Fly Cyclone Fence
+68 10.1 Rt of $\frac{1}{2}$ - Fly High Board Fence

+50

+26

+25 10.4 Rt of $\frac{1}{2}$ - Fly High Board Fence
10 Rt of $\frac{1}{2}$ - $\frac{1}{2}$ Post Pole # PR 2198

2+09 10.6 Lt of $\frac{1}{2}$ - Fly High Board Fence

1+96

90.65

Lt

65.0
10

63.7
10

75.20
10
10.5 Fly Wire
Fly Picket Fence
Fly Wire
Fly Picket Fence

71.5
10

55.1
20

54.7
10

63.9
10

63.3
10

62.8
10

71.5
20

63.1
20

55.6
20

54.2
11

54.7
10

63.0
10

63.9
10

64.5
10

71.5
11

63.3
20

53.1
10

53.0
10

53.1
10

48.3
10

53.2
10

86.5

91.4

104.7
10

10.5 Lt of $\frac{1}{2}$ - Fly High Board Fly Wire Fence

58.54
7.1
15 = Fly Wire
Con. Floor

59.4
3.2
10 approx Apron

57.5
5.07
8 = Fly Wire
Apron

50.9
8.7
10

66.4
7.7
10

66.1
1.5
10

66.1
1.5
10

66.1
1.5
10

66.4

1.7
15 = Fly Wire
Apron

66.5

1.2
15 = Fly Wire
Apron

66.5

1.2
15 = Fly Wire
Apron

90.65

Rt 68

Block 189

BM

725

83.13

S. W. BP
Diamond
+ Percolator
83.11

BM

215

90.38

0.50

88.23

S. E. Top Fire
Aid.
Diamond
Olney
88.22

TP

763

88.73

182

84.70

+39.85 = Olney

+27.85 = W. Y. P.C. Paving

+99.85 = W. L. Olney

108 Rto of 1/2 = Ely Picket Fence

+99.

110 Rto of 1/2 = Ely High Board Fence

TP

273

82.92

10.46

80.19

+50

106 Rto of 1/2 = Ely Wire Fence Also 10' High
100 Rto of 1/2 = W. Y. Picket Fence
30' tall

+19

10.5 Rto of 1/2 = W. Y. Wire Fence

+109

90.65

Lt

8

Rt

70

77.72
120
50-PC

77.11
100
50-PC

76.67
100
50-PC

76.32
100
50-PC

75.94
100
50-PC

79.49
120
50-PC

77.85
100
50-PC

77.45
100
50-PC

77.10
100
50-PC

75.72
100
50-PC

77.4
120
50-PC

79.0
100
50-PC

77.4
100
50-PC

75.1
100
50-PC

77.4
100
50-PC

82.92

81.5

81.9

80.5

80.0

80.2

91

97

101

98.5

104

10 = Footing
4 Ely Conc
Block Wall

84.0
100
50-PC

90.65

Sly and Oleander Drive

1-12-53

Levels

W.O. 21063

Sommermayor
Boggs
oltman
Powell

Ref: piece of
sheet 845L-L

• Denotes Fd. Disk in curb.

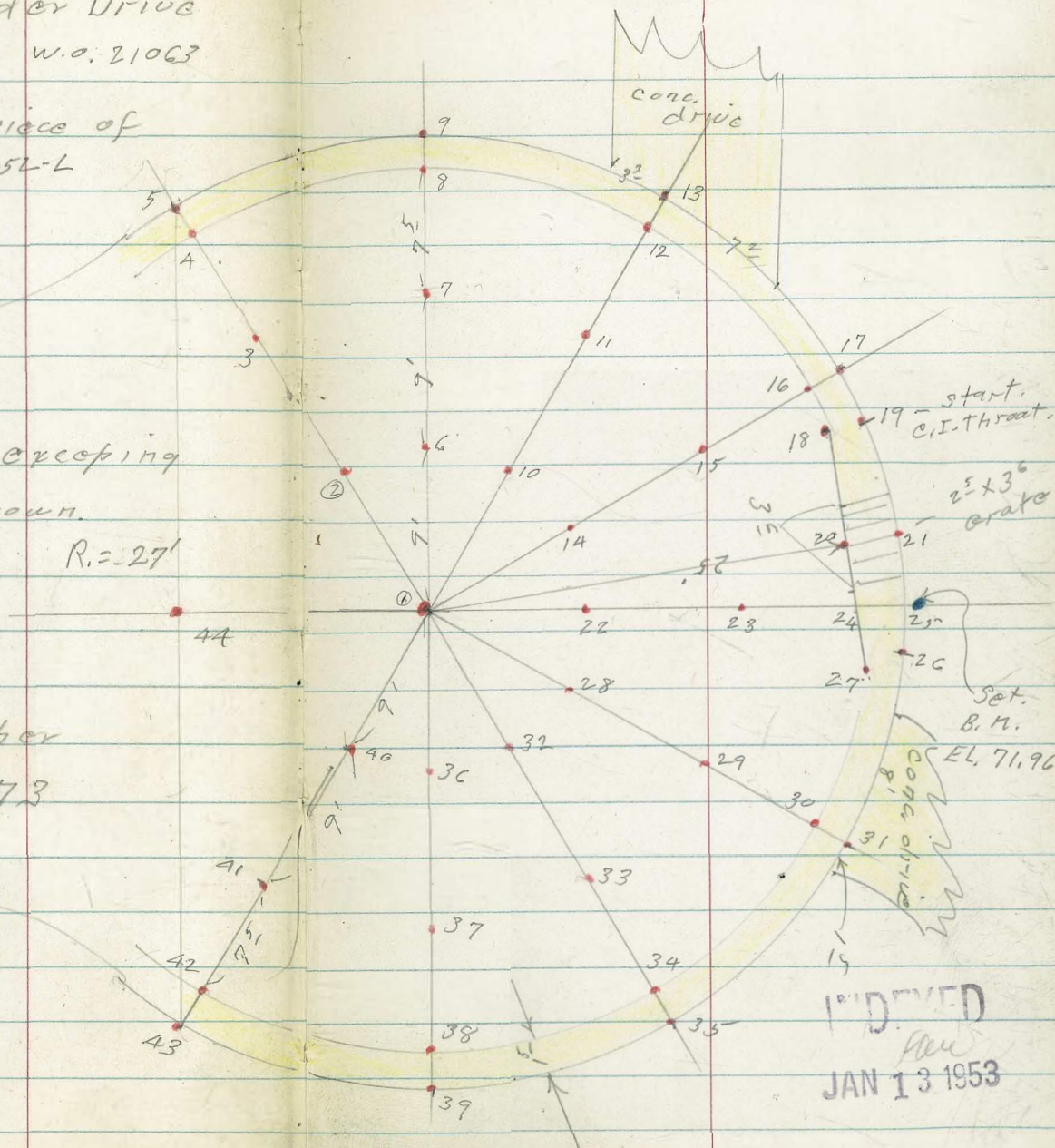
A.C. Pave.

1 1/2 wide conc. gutter creeping
at curb inlet as shown.

R. = 27'

Oleander Drive

Elevations by number
shown on page 73



1st D. EXED
JAN 13 1953

oleander

Set-B.M.		8.97	71.96	± disk - Sly. end of oleander
T.P.	0.91	80.93	13.10	80.02
T.P.	0.09	73.12	12.64	93.03
T.P.	2.08	105.67	11.79	103.59
T.P.	1.97	115.38	2.57	113.41
T.P.	1.43	115.98	4.73	114.55
	10.61	119.28	-	108.67

B.M. = S.E.B.P. Freeman + Chatsworth

Oleander

Point #	Elev.		Point #	Elev.	
#15	72.05		#27	71.59	End. Apron To C.I. Box.
#14	72.42		#26 cl	71.93	} End C.I. Throat.
#13 cl	71.68	drive	#26 G	71.10	
#13 G	71.59		#25 cl	71.94	
#12	71.71		#25 G	71.06	
#11	72.11		#24	71.58	
#10	72.45		#23	72.00	
#9 cl	72.27		#22	72.39	
#9 G	71.79		#21 cl	71.97	
#8	71.91		#21 grate	71.02	
#7	72.28		#20	71.58	E grate
#6	72.55		#19 cl	72.01	} C.I. Throat
#5 cl	72.70		#19 G	71.21	
#5 G	72.24		#18 cl	72.01	
#4	72.35		#18 G	71.20	
#3	72.58		#18	71.62	Start Apron of C.I. Box.
#2	72.71		#17 cl	72.01	
#1	72.68	Rad. point	#17 G	71.26	
			#16	71.63	

These are actual Elevations

INT. D.

JAN 13 1953

Oleander Dr.

Point #	Elev.
# 43 G	72.54
# 42	72.68
# 41	72.71
# 40	72.78
# 39 cl	72.52
# 39 G	72.07
# 38	72.14
# 37	72.42
# 36	72.64
# 35 cl	72.32
# 35 G	71.86
# 34	71.97
# 33	72.25
# 32	72.51
# 31 cl	71.60
# 31 G	71.57
# 30	71.66
# 29	72.05
# 28	72.39

in drive

Point #	Elev.
# 44	73.07
# 43. cl	73.00

X-sec. Olney 1-29-54

75

INDEXED
MER
FEB 1

Felspar. to Emerald
(see page 33)

C.H.S. 1954

Ties - page 46

Begg
Schelin
pullen

0+85

62.7	62.0	60.2	60.5	60.3	63.4	63.7
5.8	6.5	8.3	8.0	8.2	5.1	4.8
40	19	18		14	19	40

0+50

62.4	60.4	57.6	57.7	57.5	61.0	62.4	63.4
6.1	8.1	10.9	10.8	11.0	7.5	6.1	6.1
40	21	18		13	17	24	40

68.49

TIR 9.50 68.49 2.85 58.99

0+00: Nly line Felspar

59.7	55.9	52.9	53.2	53.0	59.1	59.5
2.1	5.9	9.1	8.6	8.8	2.7	2.3
40	25	18		17	20	40

0-35

52.8	52.7	51.6	51.3	51.3	53.6	55.0	55.3
9.0	9.1	10.2	10.5	10.5	8.2	6.8	6.5
40	25	20		17	19	25	40

0-40 = $\frac{1}{2}$ Felspar

52.0	51.5	51.1	52.2	53.6
9.8	10.3	10.7	9.6	8.2
40	20		20	40

4.89 61.84 56.95

No change Garnet to Felspar

5+00 stub on Right N.E. Felspar &
(G-317-P2A) Olney

Olney St

1+85

69.6	68.6	66.1	66.0	65.6	66.7	66.3
4.1	5.1	7.6	7.7	8.1	7.0	7.4
40	22	19		18	24	40

T.P.

6.92

73.69

1.72

66.77

73.69

1+45

63.88	67.8	67.2	65.9	63.7	63.9	63.7	65.9	65.2
4.6	0.7	1.3	2.6	4.8	4.6	4.8	2.6	3.3
40	40	28	20	19		15	27	40

Alley
Pave

1+42

63.9	63.5	63.8	63.5	65.9	65.1
4.6	5.0	4.7	5.0	2.6	3.4
40	20		15	27	40

1+28

63.4	63.0	63.1	62.7	65.0	64.6
5.1	5.5	5.4	5.8	3.5	3.9
40	20		15	28	40

1+25

63.45	64.5	64.1	62.7	63.6	62.6	64.7	64.5
5.04	4.0	4.4	5.8	5.5	5.9	3.8	4.0
40	40	20	19		15	28	40

Alley
pave.

1+10

63.1	63.8	61.9	62.2	62.0	63.6	64.4	64.4
5.4	4.7	6.6	6.3	6.5	4.9	4.1	4.1
40	20	19		15	20	35	40

68.49

Olney st

2500 2+70 ±

Nail in pole # PACA 8 1.70 71.99

2+70 = Sly

2+30

72.9	71.5	69.9	69.2	69.1	69.8	69.2
0.8	2.2	3.8	4.5	4.6	3.9	4.5
40	22	20		19	20	10

71.9	70.7	68.2	68.0	67.3	68.2	68.1
1.8	3.0	5.5	5.7	6.4	5.5	5.6
40	22	19		21	24	40

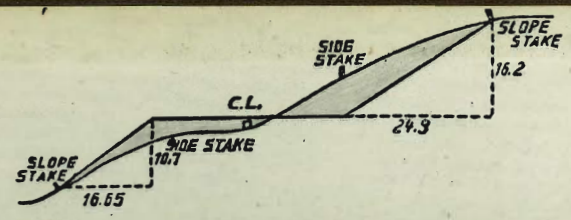
73.69

741.55

Nov 24, 1951
 1 Dec
 2 Jan
 3 Feb
 4 Mar
 5 Apr
 6 May
 7 June
 8 July
 9 Aug
 10 Sept 24, 1952

4982
 387
 4393

2469.57



DISTANCES FROM SIDE STAKES FOR CROSS-SECTIONING.
 SLOPE 1 1/2 TO 1. ROADWAY OF ANY WIDTH.

	0	.1	.2	.3	.4	.5	.6	.7	.8	.9	
0	0.00	0.15	0.30	0.45	0.60	0.75	0.90	1.05	1.20	1.35	0
1	1.50	1.65	1.80	1.95	2.10	2.25	2.40	2.55	2.70	2.85	1
2	3.00	3.15	3.30	3.45	3.60	3.75	3.90	4.05	4.20	4.35	2
3	4.50	4.65	4.80	4.95	5.10	5.25	5.40	5.55	5.70	5.85	3
4	6.00	6.15	6.30	6.45	6.60	6.75	6.90	7.05	7.20	7.35	4
5	7.50	7.65	7.80	7.95	8.10	8.25	8.40	8.55	8.70	8.85	5
6	9.00	9.15	9.30	9.45	9.60	9.75	9.90	10.05	10.20	10.35	6
7	10.50	10.65	10.80	10.95	11.10	11.25	11.40	11.55	11.70	11.85	7
8	12.00	12.15	12.30	12.45	12.60	12.75	12.90	13.05	13.20	13.35	8
9	13.50	13.65	13.80	13.95	14.10	14.25	14.40	14.55	14.70	14.85	9
10	15.00	15.15	15.30	15.45	15.60	15.75	15.90	16.05	16.20	16.35	10
11	16.50	16.65	16.80	16.95	17.10	17.25	17.40	17.55	17.70	17.85	11
12	18.00	18.15	18.30	18.45	18.60	18.75	18.90	19.05	19.20	19.35	12
13	19.50	19.65	19.80	19.95	20.10	20.25	20.40	20.55	20.70	20.85	13
14	21.00	21.15	21.30	21.45	21.60	21.75	21.90	22.05	22.20	22.35	14
15	22.50	22.65	22.80	22.95	23.10	23.25	23.40	23.55	23.70	23.85	15
16	24.00	24.15	24.30	24.45	24.60	24.75	24.90	25.05	25.20	25.35	16
17	25.50	25.65	25.80	25.95	26.10	26.25	26.40	26.55	26.70	26.85	17
18	27.00	27.15	27.30	27.45	27.60	27.75	27.90	28.05	28.20	28.35	18
19	28.50	28.65	28.80	28.95	29.10	29.25	29.40	29.55	29.70	29.85	19
20	30.00	30.15	30.30	30.45	30.60	30.75	30.90	31.05	31.20	31.35	20
21	31.50	31.65	31.80	31.95	32.10	32.25	32.40	32.55	32.70	32.85	21
22	33.00	33.15	33.30	33.45	33.60	33.75	33.90	34.05	34.20	34.35	22
23	34.50	34.65	34.80	34.95	35.10	35.25	35.40	35.55	35.70	35.85	23
24	36.00	36.15	36.30	36.45	36.60	36.75	36.90	37.05	37.20	37.35	24
25	37.50	37.65	37.80	37.95	38.10	38.25	38.40	38.55	38.70	38.85	25
26	39.00	39.15	39.30	39.45	39.60	39.75	39.90	40.05	40.20	40.35	26
27	40.50	40.65	40.80	40.95	41.10	41.25	41.40	41.55	41.70	41.85	27
28	42.00	42.15	42.30	42.45	42.60	42.75	42.90	43.05	43.20	43.35	28
29	43.50	43.65	43.80	43.95	44.10	44.25	44.40	44.55	44.70	44.85	29
30	45.00	45.15	45.30	45.45	45.60	45.75	45.90	46.05	46.20	46.35	30
31	46.50	46.65	46.80	46.95	47.10	47.25	47.40	47.55	47.70	47.85	31
32	48.00	48.15	48.30	48.45	48.60	48.75	48.90	49.05	49.20	49.35	32
33	49.50	49.65	49.80	49.95	50.10	50.25	50.40	50.55	50.70	50.85	33
34	51.00	51.15	51.30	51.45	51.60	51.75	51.90	52.05	52.20	52.35	34
35	52.50	52.65	52.80	52.95	53.10	53.25	53.40	53.55	53.70	53.85	35
36	54.00	54.15	54.30	54.45	54.60	54.75	54.90	55.05	55.20	55.35	36
37	55.50	55.65	55.80	55.95	56.10	56.25	56.40	56.55	56.70	56.85	37
38	57.00	57.15	57.30	57.45	57.60	57.75	57.90	58.05	58.20	58.35	38
39	58.50	58.65	58.80	58.95	59.10	59.25	59.40	59.55	59.70	59.85	39
40	60.00	60.15	60.30	60.45	60.60	60.75	60.90	61.05	61.20	61.35	40
41	61.50	61.65	61.80	61.95	62.10	62.25	62.40	62.55	62.70	62.85	41
42	63.00	63.15	63.30	63.45	63.60	63.75	63.90	64.05	64.20	64.35	42
43	64.50	64.65	64.80	64.95	65.10	65.25	65.40	65.55	65.70	65.85	43
44	66.00	66.15	66.30	66.45	66.60	66.75	66.90	67.05	67.20	67.35	44
45	67.50	67.65	67.80	67.95	68.10	68.25	68.40	68.55	68.70	68.85	45
46	69.00	69.15	69.30	69.45	69.60	69.75	69.90	70.05	70.20	70.35	46
47	70.50	70.65	70.80	70.95	71.10	71.25	71.40	71.55	71.70	71.85	47
48	72.00	72.15	72.30	72.45	72.60	72.75	72.90	73.05	73.20	73.35	48
49	73.50	73.65	73.80	73.95	74.10	74.25	74.40	74.55	74.70	74.85	49
50	75.00	75.15	75.30	75.45	75.60	75.75	75.90	76.05	76.20	76.35	50

THE NATIONAL BLANK BOOK COMPANY
 HOLYOKE MASSACHUSETTS
 NEW YORK CHICAGO BOSTON SAN FRANCISCO