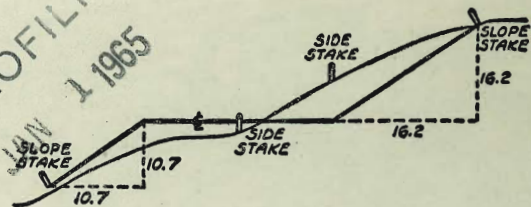


MICROFILMED
1965



DISTANCES FROM SIDE STAKES FOR CROSS-SECTIONING
SLOPE 1 TO 1. ROADWAY OF ANY WIDTH

	0	.1	.2	.3	.4	.5	.6	.7	.8	.9	
0	0.00	0.10	0.20	0.30	0.40	0.50	0.60	0.70	0.80	0.90	0
1	1.00	1.10	1.20	1.30	1.40	1.50	1.60	1.70	1.80	1.90	1
2	2.00	2.10	2.20	2.30	2.40	2.50	2.60	2.70	2.80	2.90	2
3	3.00	3.10	3.20	3.30	3.40	3.50	3.60	3.70	3.80	3.90	3
4	4.00	4.10	4.20	4.30	4.40	4.50	4.60	4.70	4.80	4.90	4
5	5.00	5.10	5.20	5.30	5.40	5.50	5.60	5.70	5.80	5.90	5
6	6.00	6.10	6.20	6.30	6.40	6.50	6.60	6.70	6.80	6.90	6
7	7.00	7.10	7.20	7.30	7.40	7.50	7.60	7.70	7.80	7.90	7
8	8.00	8.10	8.20	8.30	8.40	8.50	8.60	8.70	8.80	8.90	8
9	9.00	9.10	9.20	9.30	9.40	9.50	9.60	9.70	9.80	9.90	9
10	10.00	10.10	10.20	10.30	10.40	10.50	10.60	10.70	10.80	10.90	10
11	11.00	11.10	11.20	11.30	11.40	11.50	11.60	11.70	11.80	11.90	11
12	12.00	12.10	12.20	12.30	12.40	12.50	12.60	12.70	12.80	12.90	12
13	13.00	13.10	13.20	13.30	13.40	13.50	13.60	13.70	13.80	13.90	13
14	14.00	14.10	14.20	14.30	14.40	14.50	14.60	14.70	14.80	14.90	14
15	15.00	15.10	15.20	15.30	15.40	15.50	15.60	15.70	15.80	15.90	15
16	16.00	16.10	16.20	16.30	16.40	16.50	16.60	16.70	16.80	16.90	16
17	17.00	17.10	17.20	17.30	17.40	17.50	17.60	17.70	17.80	17.90	17
18	18.00	18.10	18.20	18.30	18.40	18.50	18.60	18.70	18.80	18.90	18
19	19.00	19.10	19.20	19.30	19.40	19.50	19.60	19.70	19.80	19.90	19
20	20.00	20.10	20.20	20.30	20.40	20.50	20.60	20.70	20.80	20.90	20
21	21.00	21.10	21.20	21.30	21.40	21.50	21.60	21.70	21.80	21.90	21
22	22.00	22.10	22.20	22.30	22.40	22.50	22.60	22.70	22.80	22.90	22
23	23.00	23.10	23.20	23.30	23.40	23.50	23.60	23.70	23.80	23.90	23
24	24.00	24.10	24.20	24.30	24.40	24.50	24.60	24.70	24.80	24.90	24
25	25.00	25.10	25.20	25.30	25.40	25.50	25.60	25.70	25.80	25.90	25
26	26.00	26.10	26.20	26.30	26.40	26.50	26.60	26.70	26.80	26.90	26
27	27.00	27.10	27.20	27.30	27.40	27.50	27.60	27.70	27.80	27.90	27
28	28.00	28.10	28.20	28.30	28.40	28.50	28.60	28.70	28.80	28.90	28
29	29.00	29.10	29.20	29.30	29.40	29.50	29.60	29.70	29.80	29.90	29
30	30.00	30.10	30.20	30.30	30.40	30.50	30.60	30.70	30.80	30.90	30
31	31.00	31.10	31.20	31.30	31.40	31.50	31.60	31.70	31.80	31.90	31
32	32.00	32.10	32.20	32.30	32.40	32.50	32.60	32.70	32.80	32.90	32
33	33.00	33.10	33.20	33.30	33.40	33.50	33.60	33.70	33.80	33.90	33
34	34.00	34.10	34.20	34.30	34.40	34.50	34.60	34.70	34.80	34.90	34
35	35.00	35.10	35.20	35.30	35.40	35.50	35.60	35.70	35.80	35.90	35
36	36.00	36.10	36.20	36.30	36.40	36.50	36.60	36.70	36.80	36.90	36
37	37.00	37.10	37.20	37.30	37.40	37.50	37.60	37.70	37.80	37.90	37
38	38.00	38.10	38.20	38.30	38.40	38.50	38.60	38.70	38.80	38.90	38
39	39.00	39.10	39.20	39.30	39.40	39.50	39.60	39.70	39.80	39.90	39
40	40.00	40.10	40.20	40.30	40.40	40.50	40.60	40.70	40.80	40.90	40
41	41.00	41.10	41.20	41.30	41.40	41.50	41.60	41.70	41.80	41.90	41
42	42.00	42.10	42.20	42.30	42.40	42.50	42.60	42.70	42.80	42.90	42
43	43.00	43.10	43.20	43.30	43.40	43.50	43.60	43.70	43.80	43.90	43
44	44.00	44.10	44.20	44.30	44.40	44.50	44.60	44.70	44.80	44.90	44
45	45.00	45.10	45.20	45.30	45.40	45.50	45.60	45.70	45.80	45.90	45
46	46.00	46.10	46.20	46.30	46.40	46.50	46.60	46.70	46.80	46.90	46
47	47.00	47.10	47.20	47.30	47.40	47.50	47.60	47.70	47.80	47.90	47
48	48.00	48.10	48.20	48.30	48.40	48.50	48.60	48.70	48.80	48.90	48
49	49.00	49.10	49.20	49.30	49.40	49.50	49.60	49.70	49.80	49.90	49
50	50.00	50.10	50.20	50.30	50.40	50.50	50.60	50.70	50.80	50.90	50

Distance of slope stake from side or shoulder stake for any width roadway, slope 1 to 1. If ground is nearly level, the cut or fill at side stake is located by the double entry method in left column and top row. The number in body of table in same row and column gives distance from side stake to slope stake. If ground is not level estimate the difference in elevation between the side stake and slope stake, lower target by this amount if cut, elevate if fill. Add this amount to cut or fill and find distance in table. Set up rod at this point, and line of sight should cut target. If it does not make the sight adjustment necessary.

2152

TABLE XIII—CORRECTIONS FOR TANGENTS AND EXTERNALS

These corrections are to be added to the approximate values, found by dividing the tangent, or external, for a 1° curve (Table VIII) by the degree of curve, in order to obtain the true tangents, or externals. Intermediate values may be obtained by interpolation.

FOR TANGENTS ADD

Central Angle	DEGREE OF CURVE													
	5°	10°	15°	20°	25°	30°	35°	40°	45°	50°	55°	60°	65°	70°
10°	.03	.06	.09	.13	.16	.19	.22	.25	.28	.31	.34	.38	.42	.46
15°	.04	.10	.14	.19	.24	.29	.34	.39	.45	.51	.53	.58	.63	.68
20°	.06	.13	.19	.26	.32	.39	.45	.51	.58	.65	.72	.79	.84	.90
25°	.08	.16	.24	.33	.40	.49	.58	.67	.75	.83	.90	.99	1.06	1.14
30°	.10	.19	.29	.39	.49	.59	.69	.79	.89	.99	1.09	1.20	1.29	1.39
35°	.11	.22	.34	.47	.58	.69	.79	.81	.92	1.04	1.29	1.42	1.54	1.66
40°	.13	.26	.40	.53	.67	.80	.93	1.06	1.20	1.34	1.49	1.64	1.79	1.94
45°	.15	.30	.44	.60	.76	.91	1.06	1.21	1.37	1.52	1.70	1.87	2.04	2.21
50°	.17	.34	.51	.68	.85	1.02	1.19	1.36	1.54	1.72	1.91	2.10	2.29	2.48
55°	.19	.38	.57	.76	.95	1.14	1.32	1.52	1.72	1.92	2.14	2.35	2.56	2.77
60°	.21	.42	.63	.84	1.05	1.27	1.49	1.71	1.94	2.17	2.38	2.60	2.83	3.07
65°	.23	.46	.69	.93	1.16	1.40	1.64	1.88	2.13	2.38	2.63	2.88	3.13	3.39
70°	.25	.51	.76	1.02	1.28	1.54	1.80	2.06	2.33	2.60	2.88	3.16	3.44	3.72
75°	.27	.56	.83	1.12	1.40	1.69	1.98	2.27	2.57	2.87	3.16	3.47	3.78	4.09
80°	.30	.61	.91	1.22	1.53	1.84	2.15	2.46	2.78	3.10	3.44	3.78	4.12	4.46
85°	.33	.66	1.00	1.33	1.68	2.02	2.36	2.70	3.05	3.40	3.77	4.14	4.55	4.89
90°	.36	.72	1.09	1.45	1.83	2.20	2.57	2.94	3.32	3.70	4.10	4.50	4.91	5.32
95°	.39	.79	1.19	1.55	2.00	2.40	2.80	3.20	3.61	4.02	4.40	4.98	5.38	5.83
100°	.43	.86	1.30	1.74	2.18	2.62	3.06	3.50	3.95	4.40	4.88	5.37	5.85	6.34
110°	.51	1.03	1.56	2.08	2.61	3.14	3.67	4.21	4.76	5.31	5.86	6.43	7.01	7.60
120°	.62	1.25	1.93	2.52	3.16	3.81	4.45	5.11	5.77	6.44	7.12	7.80	8.50	9.22

FOR EXTERNALS ADD

Central Angle	DEGREE OF CURVE													
	5°	10°	15°	20°	25°	30°	35°	40°	45°	50°	55°	60°	65°	70°
10°	.001	.003	.004	.006	.007	.008	.009	.011	.012	.014	.015	.017	.018	.020
15°	.003	.007	.010	.014	.018	.023	.027	.029	.032	.035	.039	.043	.047	.051
20°	.006	.011	.017	.022	.028	.034	.038	.045	.051	.057	.063	.070	.076	.083
25°	.009	.018	.027	.036	.046	.056	.065	.074	.083	.093	.106	.120	.127	.135
30°	.013	.025	.038	.051	.065	.078	.090	.103	.116	.129	.149	.170	.179	.188
35°	.018	.035	.054	.072	.096	.109	.131	.153	.175	.197	.213	.230	.247	.264
40°	.023	.046	.070	.093	.117	.141	.172	.203	.234	.265	.277	.290	.315	.341
45°	.030	.060	.093	.119	.153	.184	.216	.254	.289	.325	.351	.378	.411	.445
50°	.037	.075	.116	.151	.189	.227	.266	.305	.345	.384	.425	.467	.508	.550
55°	.046	.093	.142	.188	.236	.283	.332	.381	.420	.479	.530	.582	.641	.700
60°	.056	.112	.168	.225	.283	.340	.398	.457	.516	.575	.636	.697	.774	.851
65°	.067	.135	.204	.273	.343	.412	.483	.554	.625	.697	.711	.845	.922	1.01
70°	.080	.159	.240	.321	.403	.485	.568	.652	.735	.819	.906	.994	1.08	1.17
75°	.095	.182	.286	.383	.480	.578	.678	.777	.877	.977	1.07	1.18	1.29	1.39
80°	.110	.220	.332	.445	.558	.671	.787	.903	1.02	1.13	1.25	1.38	1.50	1.62
85°	.128	.259	.391	.524	.657	.790	.926	1.06	1.20	1.34	1.47	1.62	1.76	1.91
90°	.149	.299	.450	.603	.756	.910	1.07	1.22	1.38	1.54	1.70	1.87	2.03	2.20
95°	.174	.350	.522	.706	.985	1.06	1.25	1.43	1.62	1.80	1.99	2.18	2.38	2.58
100°	.200	.401	.604	.809	1.01	1.22	1.43	1.64	1.85	2.06	2.28	2.50	2.73	2.96
110°	.268	.536	.806	1.08	1.35	1.63	1.91	2.20	2.48	2.76	3.05	3.35	3.66	3.96
120°	.360	.721	1.08	1.45	1.82	2.19	2.57	2.95	3.33	3.72	4.11	4.50	4.91	5.32

alignment for
Pro Sewer - Tecolote Canyon 1-17
Sewer Exten. S.L. 1204 N. of Linda Vista 18-41
X-sec Sunset for Pav. Taylor to a Rosecrans 42
Loca. Buildings - Sunset & Taylor 45
X-SECT. Alley BIK. 16 MCKSON BAY PARK TRACT 46
X-SECT. Alley West College Ave - bet Linda Paseo & Hardy Ave. 63

Proposed TECOLOTE CANYON SEWER
EXTENSION TO N.E. in P.L.'s 1204
and 1203

W.O. 20883

9+69.00 = Hub

Ang. $24^{\circ}05'45''$ Lt.

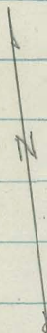
0+00 - of New Prop. Sewer Ext. to N.
from Sta. 196+77.89 on Orig. Line.
Ang. $41^{\circ}05'30''$ Lt.

Indexed
8-1-57

7-30-51

9+69.00 = Hub.

± of Prop. Sewer Ext.



197+90 = end.
← $41^{\circ}05'30''$

old ±
Prop. Sewer
B. 2133 - P. 18

196+77.89 = Hub. =
0+00 to N.
Also 0+00 to East.

Tecolote Canyon Sewer line
See P.B. 2133 P. 18

21+18.28 = Hub.

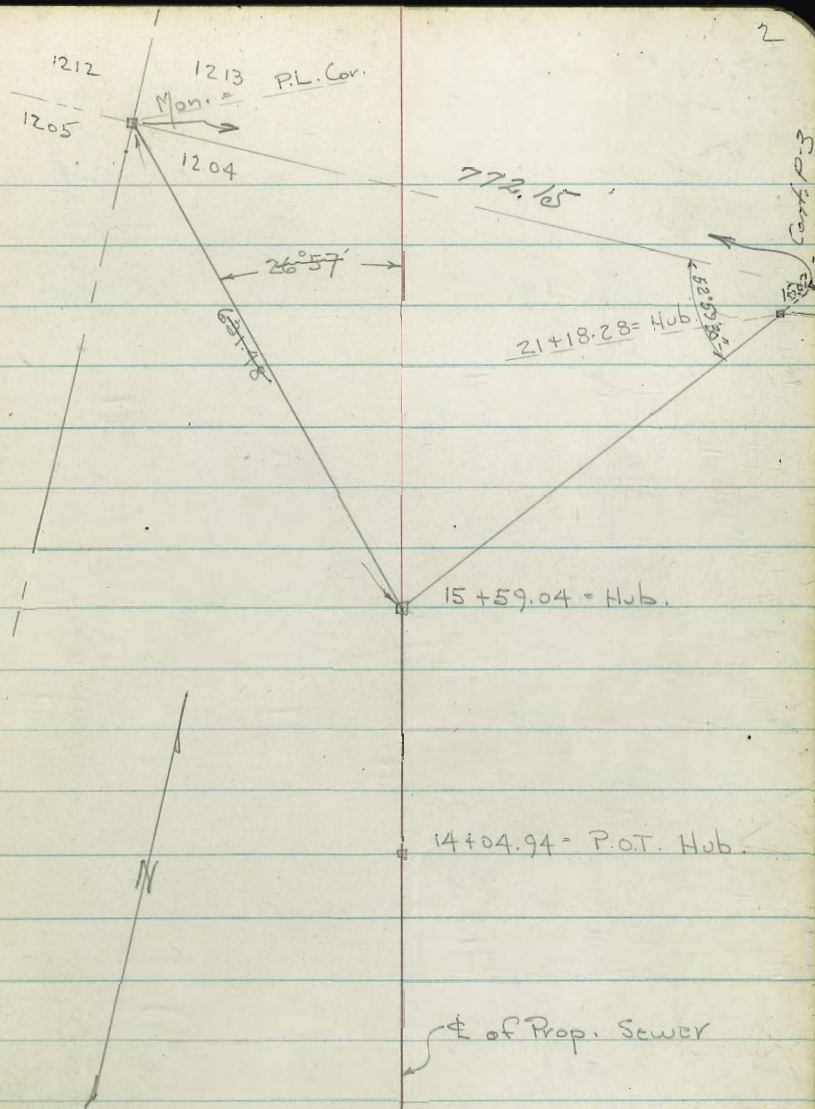
Ang. $50^{\circ} 19' \text{ Rt.}$

Tie to Mon = N.W. Cor. P.L. 1204 - $26^{\circ} 57' \text{ Lt.} - 631.48'$

15+59.04 = Hub.

Ang. $52^{\circ} 53' 45'' \text{ Rt.}$

14+04.94 = P.O.T. Hub.



40+51.89 = Hub. on W.L. of P.L. 1214.

Ang. $88^{\circ} 56' 30''$ - N. to W.

38+24.88 = P.O.T. Hub.

33+95.58 = Hub.

Ang. $25^{\circ} 54' 30''$ Rt.

28+97.23 = Hub.

Ang. $22^{\circ} 23'$ Lt.

2" pipe = LS. 2334 - N.W. Cor. PL. 1214

40+51.89 = Hub.

Conc. Mon.

224.76

1214 1203

1213 1204

$88^{\circ} 56' 30''$

38+24.88 = P.O.T. Hub.

± of Prop. Sewer

33+95.58 = Hub.

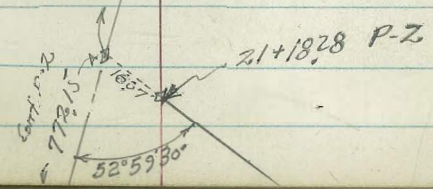
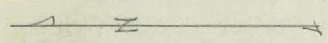
1324.35
18877.48

N.W. Cor

Same Point

552.20

28+97.23 = Hub.



INDEXED^{Lt.}

£

Rt.

AUG 1 1951

Begin Levels along £ of Prop. Sewer Ext.

from Sta. 196+77.89 on Orig. Line to w.L. of

P.L. 1214 - Sketch - P. 1 to 3 - See Book 2133 for Orig.

#. 4291

7-30-51

Osborne
Hatch
Brunner
Fritz

w.o. 20790

1+50

1820
1.9

1+04 = Bank

1846
4.3

0+90 = £ Creek - from E.

179.4
9.5

0+83 = Bank

183.3
5.6

0+50

183.9
5.0

0+00 = Hub. = 196+77.89 on Orig. Line

182.85
6.01
on Hub.

check on Hub - 197+90

2.81

B.M. 2.83 188.86

186.03 = \square on Rock - B. 2133 - P 66

188.86

Lt.

±

Rt.

5

T.P. 12.05 204.95✓ 2.22 192.90✓

4+40

30 192.1

3+85 = Top Bank

4.9 190.8

3+65 = ± Main Creek

9.7 185.4

3+58 = Top Bank

5.2 189.9

3+00

5.3 189.0

2+70 - 100' Rt. = ± of Creek - Most Ely. of Bend.

2+60

6.5 186.6

2+20 = Top of bank

8.5 186.6

2+07 = ± Main Creek - goes W. for 100' To turn

11.7 183.4

T.P. 7.23 195.12✓ 0.97 187.89✓

195.12✓

1

1+94 = Top of Bank - 20' Rt. = ± 10" Oak Tree

0.6 188.3

198.86

T.P. 7.00 211.61 ✓ 0.34 204.61 ✓

8+00 - 60' Rt. = ± Creek

7+50

7+00

6+50

6+30

6+15 = Top bank

6+02 = ± Creek

5+90 = Top bank

5+50

5+00

4+50 - 75' Lt. = ± Creek

Lt.

±

Rt.

6

203.1
1.3

211.1
+6.7
40

202.0
30

198.5
6.5
15

198.8
6.2
50

197.7
7.3

201.8
3.2
40

196.3
8.7

194.3
10.7
10

195.2
9.8
40

195.4
9.6

192.0
13.0

190.0
15.0

194.4
10.6

194.7
10.3

194.9
10.1

204.95 ✓

Lt.

±

Rt.

7

12+00

6.6 2050

11+85 = Top bank

8.0 203.6

11+65 = ± Creek

11.6 2000

11+55 = Top bank

8.3 203.3

11+49 - 10.5 Lt. = ± 8" Oak = Ely. of Grove

11+00

7.8 203.8

10+50 - 55' Rt. = ± Creek

2.0
40

5.3 206.3

10+00

5.1 206.5

9+69.00 = Ang. 24° 05' 45" Lt.

5.03 206.58

60 Hub

9+00

210.4
1.2
45

5.6 206.0

5.3 206.3

13.1 199.5

15.6 196.0

8+50

210.7
6.9
40

207.9
3.7
15

6.3 205.3

25 Top bank

29 ± Creek

211.61 ✓

6.5 205.1
13 = Top bank

Lt.

±

Rt.

16+50

213.6
7.1

16+00

207.8
12.9
± 5' creek

209.4
11.3
13
Top bank

211.4
9.3

215.6
5.1
30

15+89.04 = Anc 52° 53' 45" Rt.

209.7
11.06
on Hub.

15+00

206.0
14.7
50
± Creek

207.9
12.8
36
Top bank

212.8
7.9

217.6
3.1
40

14+70

215.8
4.9

14+25

204.2
16.5
25
± Creek

207.7
13.0
17
Top bank

215.4
5.3

220.5
0.2
15

14+00

216.6
4.1

13+50

206.7
14.0
45

212.0
8.7

216.8
3.9
25

T.P. 11.47 220.73 ✓ 2.35 209.26 ✓

220.73 ✓

13+00 ~ 55' Lt = ± Creek

208.4
3.2

12+50

205.5
6.1

211.61 ✓

3.0
50

19+60 = Top bank

19+57 - 13 Lt. = 8" Oak = Sly of Growth

19+50 = ± Creek

19+30 = U. bank

19+14 = ± Creek

19+11 - 6' Rt. = ± 18" Oak stump

19+00 - Top bank

18+50

18+00

17+50

T.P.

7.15

221.75 ✓

6.13

214.60 ✓

17+00

Lt.

±

Rt.

5.3 216.5

6.8 215.0

5.7 216.1

7.7 214.1

5.6 216.2

0.0 221.8
25

5.7 216.1

211.9
9.9
65
± Creek

214.2
7.6
50

4.9 216.9

0.9 220.9
25

5.7 216.1

221.75 ✓

210.4
10.3
28
± Creek

8.9 214.8
17

6.9 213.8

220.73 -

2 218.1
20

25+22 = ± Creek

25+00 = ± Creek - 3.4' Rt. = fence

24+83 - Top bank

24+50

24+00 - 11.6 Lt. = fence

23+50 = edge Creek

23+17 = in Creek

23+04 = Top bank - Lt. = 5 wire fence

T.P. 12.23 242.02 ✓ 0.07 | 229.79 ✓

22+55 = Top bank - 35 Lt. = ± Creek

22+30 = ± Creek

Lt.

±

Rt.

11

228.7
13.3

230.0
12.0
5
Top
bank

228.1
13.9

233.8
8.2
6
Top
bank

233.1
8.9

226.9
15.1
16
± Creek

233.1
8.9

225.6
16.4
24
± Creek

231.2
10.8

237.5
4.5
30

225.7
16.3

224.8
17.2

230.7
11.3

242.02 ✓

227.2
2.7

229.5
0.4
20

219.8
10.1

229.86 ✓

T.P. 12.32 254.18 ✓ 0.16 241.86 ✓

27+25

27+06 = \pm Creek

27+00 - 16.4 Rt. = fence

26+95 = Top of bank

26+60

26+40 - 30 Rt. = \pm Creek

26+00 - 10.1 Rt. = fence

25+90 = Top bank

25+85 = \pm Creek

25+68 = Top bank

25+50 - 12 Lt. = \pm Creek

25+28 = Top bank

Lt.

\pm

Rt.

12

239.5
2.5

236.2
5.8

232.1
3.3

241.1
0.9

244.4
+ 2.4
20

240.0
2.0

233.6
8.4

230.6
11.4

232.9
9.1

239.5
7.5
14

241.2
0.8
35

232.5
9.5

230.9
11.1

242.02 ✓

Lt.

±

Rt.

13

29+63 = ± Creek

9.5

244.7

29+30

4.6

249.6

28+97.23 - Ang. 22° 23' Lt.

6.86

on Hub.

247.32

28+80

242.6
11.6
42
± Creek

8.3

245.9

5.5

25

248.7

28+50

10.2

244.0

28+25 = ± Creek

13.2

241.0

28+08

244.4
9.8
25

11.7

242.5

13.6

15 = ±
Creek

240.6

27+89 = ± Creek

13.9

240.3

27+80

12.2

242.0

27+50 - 48' H. = ± Creek

12.0

242.2

7.2

20

247.0

254.18 ✓

Lt. ± Rt.

33+00

2545
11.3

259.6
6.2

262.6
3.2

22
± Creek

20

32+70

258.6
7.2

32+35

259.5
13.3
29
± Creek

259.0
7.8

261.3
4.5
20

31+95 = ± Creek

251.4
14.4

31+80

253.4
12.4

250.5
15.3
30 ± creek

31+45 = ± Creek

263.1
2.7
40

248.4
17.4

254.2
11.6
30

31+20 = ± Creek

247.7
18.1

31+04

251.6
14.2

T.P.

11.96

265.84 ✓

0.30

253.88 ✓

265.84 ✓

30+25

253.4
0.8
20

250.6
3.6

245.9
8.3
25
± Creek

30+00

249.0
5.2

254.18

35+45

35+30 = \pm Creek

34+95 = \pm Creek

34+90

34+40

34+26 = \pm Creek

T.P. 1129 276.51[✓] 0.62 265.22[✓] Ang. Hub. \pm Creek

33+95.58 = Ang. 25° 54' 30" Rt.

33+85

33+65

33+57 = \pm Creek

Lt.
264.6
11.9
5
 \pm
Creek

\pm
266.1
10.4
264.0
12.5

Rt. 15
269.3
8.2
20

263.0
13.5

266.3
10.2

270.9
5.6
30

264.1
12.4

261.3
15.2
46
 \pm Creek
259.6
16.9
276.51

265.22
0.62
on Hub.

266.8
+1.0
20

263.9
1.9

251.7
8.1
46 = \pm Creek

266.5
+0.7
20

260.5
5.3

256.9
8.9

265.84[✓]

Lt. \$ Rt.

39+10

282.2
C.C

38+85

287.6
1.2
20

283.9
5.0

274.1
14.7
51 = \$ Creek

38+50

284.1
4.7

38+24.88 = Pot. Hub.

4.84

on Hub

38+00

282.4
6.4

37+50

283.2
5.6
20

277.1
11.7

270.6
18.2
38
\$ Creek

T.P. 12.55 288.80 0.26 276.25 ✓

288.80 ✓

37+12 = \$ Creek

269.7
2.8

36+75

268.7
7.8
24
\$ Creek

270.3
6.2

36+40 = \$ Creek

267.0
9.5

274.3
2.2
30

36+20 = \$ Creek

271.6
4.9
30

266.2
10.3

36+00

265.5
11.0
5 \$ Creek

268.0
8.5

276.51

271.1
5.4
20

Lt.

±

Rt.

17

Gate Post - 40+50 - 99' Lt.

Set B.M. = Spike in 8x8"

3.89

284.91 ✓

40+51.89 = end on W.L. P.L. 1214

40+50 = Cross 4 wire fence - in Gateway

40+10.

39+70

39+40

39+32 = ± Creek

280.2

8.6

33 =

± Creek

278.3

10.5

18

± Creek

277.7

11.1

18

± Creek

281.2

26.8

on Hub.

284.2

4

C

282.3

6.5

30

278.7

10.1

276.0

12.8

288.80 ✓

295.5

+ 6.7

35

287.1

1.7

30

INDEXED
also
 NOV 16 1951

Branch of
 Tecolote Cañon Trunk
 Sewer

Proposed Sewer Extention - in PL. 1204

N. of Linda Vista. - To & Wellington - 5'

N. of S.L. PL. 1203 10-29-51 7.0.

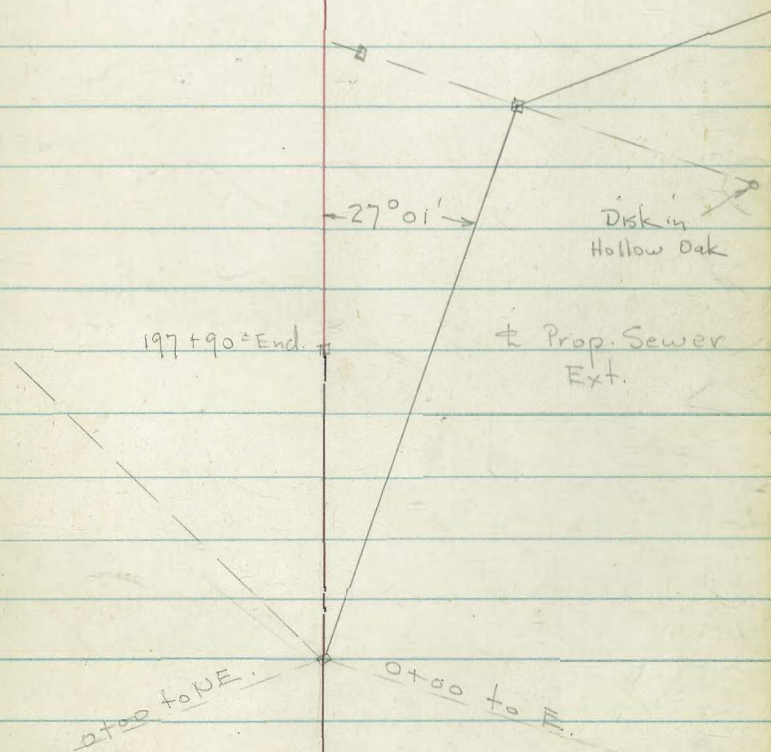
W.O. 20903

2+86.42 = Ang. 47° 52' 15" Rt. = Hub.

0+00 = 0+00 of Ext. to N.E. - See P. 1

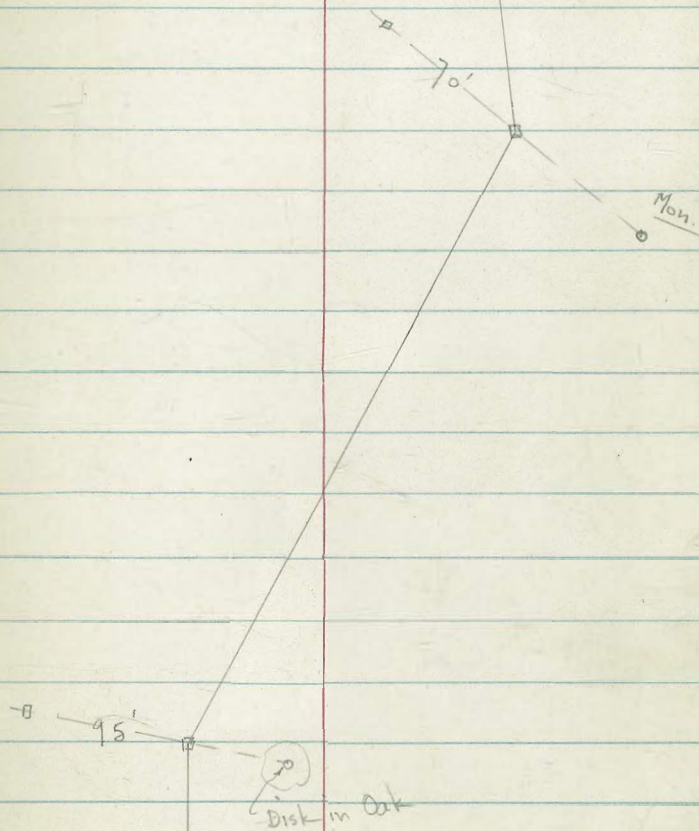
Sta. 196+77.89 on Orig. Line

27° 01' Rt. from Orig. Tang.



12+79.90 = Ang. $28^{\circ} 01'$ Lt. = Hub.

8+06.00 = Ang. $21^{\circ} 56'$ Rt. = Hub.



Top. Cor. Root
Mid. House

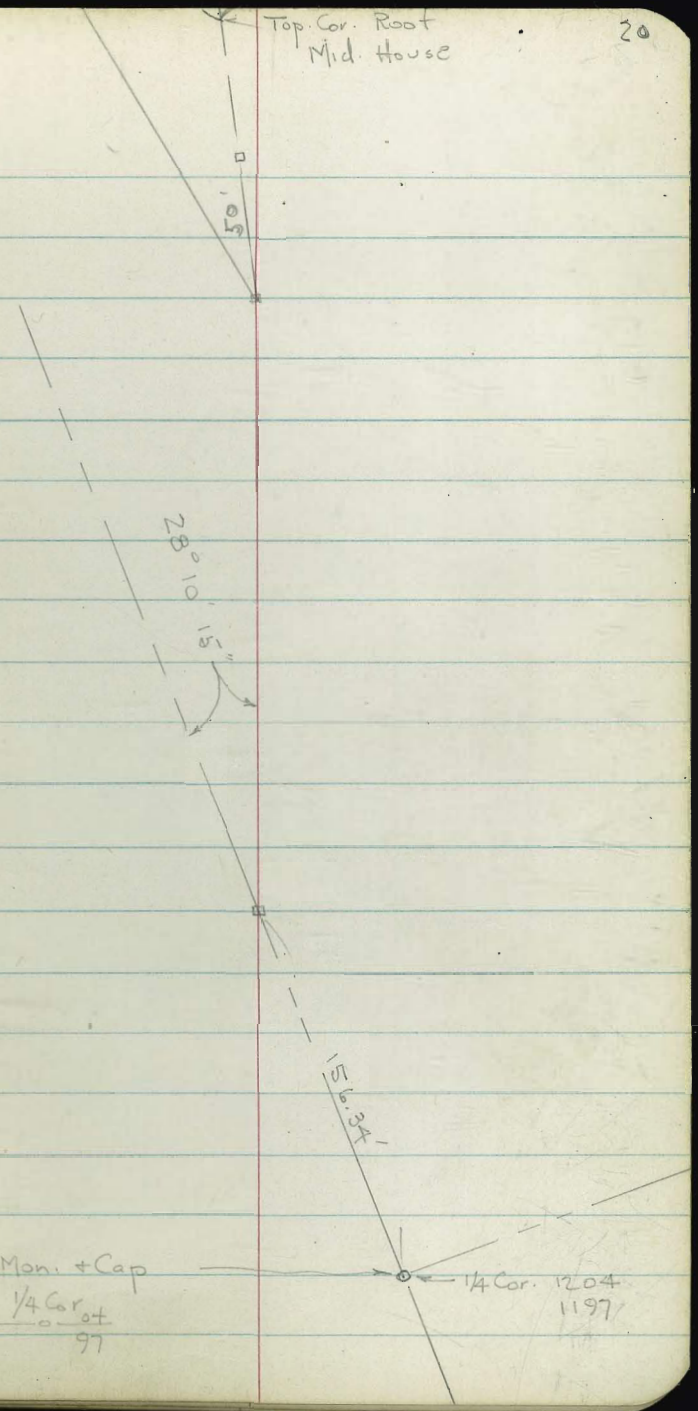
21+32.31 = Ang. 41° 45' Lt.

13+55.43 = Tie to S.L. of Pk. 1204 = Hub.

Ang = 28° 10' 15"

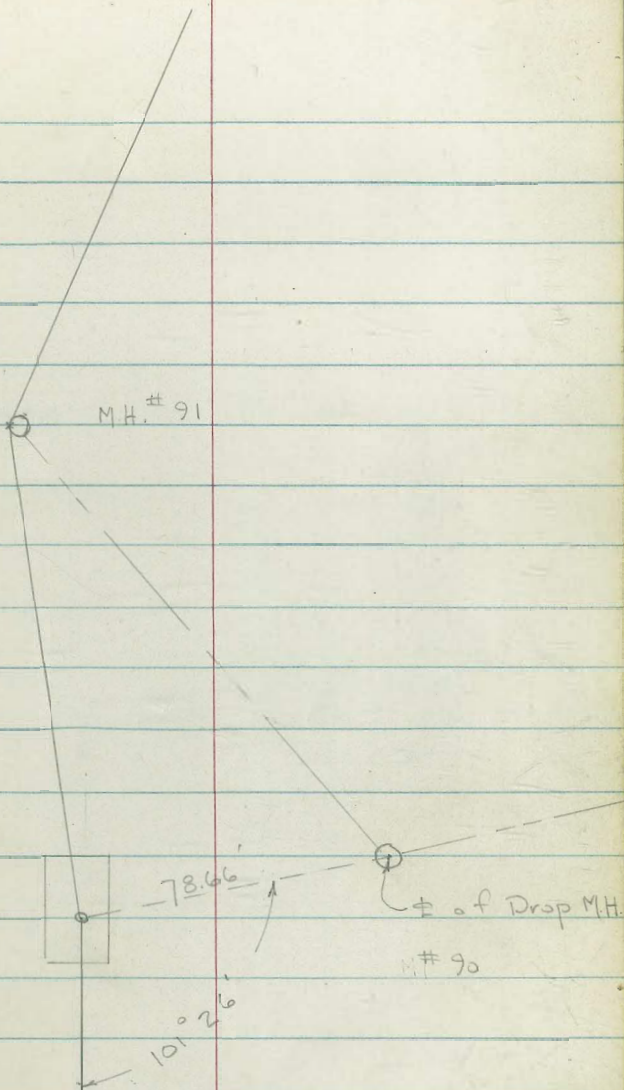
Fd. Conc. Mon. + Cap
Marked. $\frac{1/4 \text{ Cor. } 1204}{97}$

1/4 Cor. 1204
1197



32+65.71 = Ang. 31° 42' Rt. = Cross on Nly.
Rim of Conc. Rim

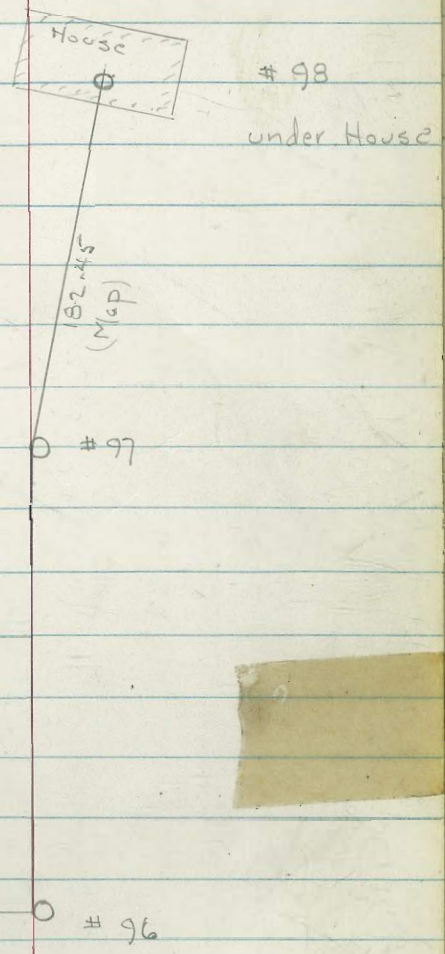
29+08.22 = ± of M.H. in Middle of Settling Tank
Tie to M.H. #90 - Plan 3843-L
Ang. 5° or 15' Lt. on line ahead.



This M.H. is under House - Not Visible
ahead - use plan for loc. from Here to
Wellington

45 + 09.90 = Cross on Rim (12° 33' Rt. from Map.)

42 + 35.53 = Ang. 90° 13' Lt. = Cross on Rim

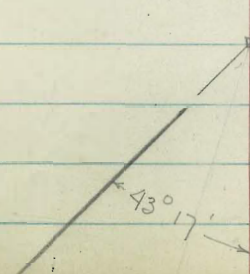
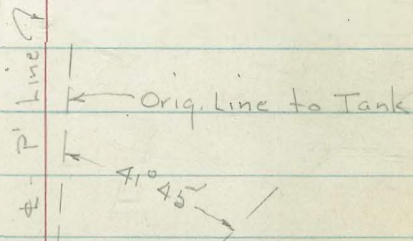
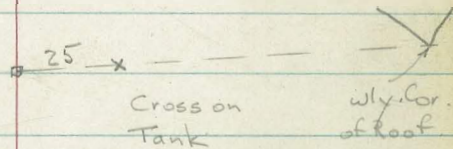


Begin Independent Line from Sta.

21+32.31 - See P. 20 = Called "P" Line

29+07.38 = Ang. $1^{\circ} 30'$ Lt. = Hub. - N. of Tank

21+32.31 = Ang. $43^{\circ} 17'$ Lt. = Hub. = Beg. P' Line



$42 + 16.01 =$

 $30^{\circ} 04' 30''$ Lt.

$42 + 18.61 =$ Ang.

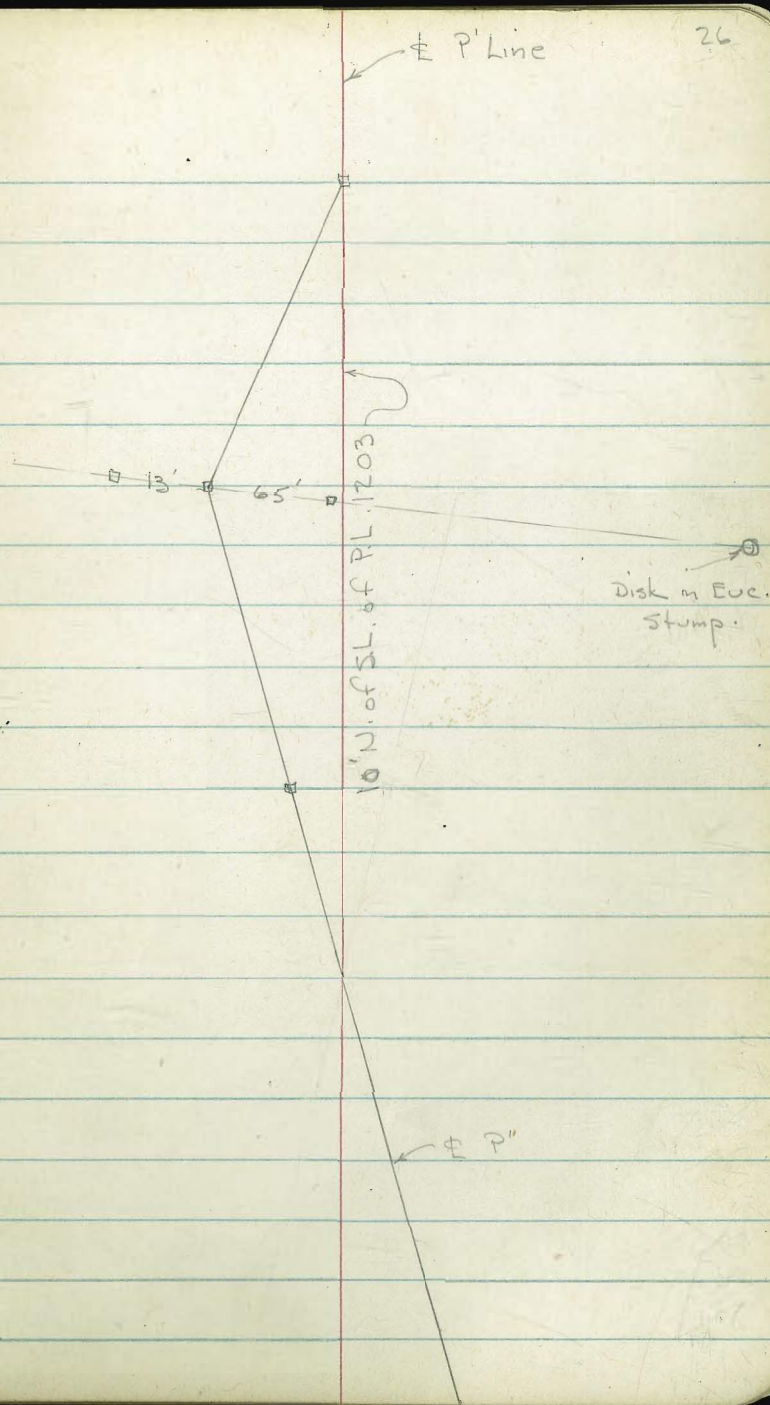
 $31^{\circ} 02'$ Lt. = Hub.

= Line 10' N. of S.L. of P.L. 1203.

$39 + 60.80 =$ Ang.

 $46^{\circ} 45'$ Rt. $52^{\circ} 17' 15''$ Rt. = Hub.

$35 + 33.32 =$ P.O.T. - Hub.



Disk in Φ Linda Vista Rd.
R.E. 32

10'

64°

Wellington St.

$R=20$
L.S. 2201
33'

47+95.02 = Hob. =
 Φ Wellington
Ang. 64° Lt.

47+95.02
= station to South
2" pipe - L.S. 2201

25.85'

90°

171.81'

62° 49' 30"
of MH. # 99

South line of P.L. 1203

To Granite Mon.

$\Phi P'$

10'

Begin Levels along Φ of Prop. Sewer Ext.

P.L. 1204 - See loc. sketch - P. 18

W.O. 20903

7.0

2+86.42 = Ang. $47^{\circ} 52' 15''$ Rt. - Sect. on split

2+50

T.P. 13.09 206.82 0.27 193.73

2+00 = \pm Creek

1+50

1+00

0+50

0+00

B.M. 7.97 194.00 186.03 = Π on Rock - P4

Lt.

Φ

Rt.

203.63
 0.9 3.19 11.7 16.6 6.4
 20 on Hub. 60 80 160
 200.3
 6.5

206.82

188.2
 3.6 5.8 4.0 +4.3
 15 65 115
 188.5 edge of
 10' dia. spring
 Mud bog.
 5.5

188.7

5.3 0.8
50

184.9

9.1

182.82

11.7
on Hub.

194.00

Lt. † Rt.

T.P. 9.70 210.99 5.53 201.29

7+00

8.0 4 1 202.7
15 † Creek 0.0
35

6+50

200.5
6.3

6+00

8.1 10.6 8.7 198.1
50 25 † Creek 2.0
30

5+50

197.0
9.8

5+00

4.3 11.7 11.1 8.0 4.5
50 † Creek 27 35 60

4+50

196.3
6.5

4+00

3.8 9.4 13.0 14.6 8.9
20 14 45 † Creek 120

3+50

201.8
5.0

3+00

203.5
2.3
206.82

Lt.

±

Rt.

12+00

214.9
8.4

11+50

213.5
9.8

11+00

13.6
90
± Creek

212.3
11.0

7.6
35

10+50

211.2
12.1

10+00

15.9
95
± Creek

209.9
13.4

9.3
35

T.P. 13.10 223.30 0.79 210.20

223.30

9+50

8+81 - 20' Rt.

Set B.M. = spike in stump of oak 0.57 210.42

208.9
2.1

9+00

5.9
85
± Creek

207.5
3.5

0.5
30

8+50

206.6
4.4

8+06.00 = Ang. 21° 56' Rt. Set on split

7.8
20
± Creek

205.39
5.60

On Hob.

0.0
25

6.0

210.99

Lt.

±

Rt.

16+20 = ± Creek

225.2
C.C.

16+00

4.8
30

226.4

5.4

6.4

12
± Creek

15+70 = ± Creek

223.9

7.9
± Creek

15+00

10.5
20
± Creek

223.0

8.8

4.5
25

14+50

221.7
10.1

14+00

13.5
25
± Creek220.6
11.29.8
30

T.P. 13.22 231.76 476 218.54

231.76

13+50

218.4
4.9

13+00

216.9
6.4

12+79.90 = Ang 28° 01' Lt. - Sect. on split

9.0
27
± E.
Branch of Creek216.31
6.9
on Hub.6.5
20

12+55 = ± Creek

214.3
9.0
223.30

20+50

20+10 = ± Creek

19+85

19+45

19+15 = ± Creek

18+60

18+00

17+50

T.P. 13.01 244.70 0.07 231.69

17+00

16+40

Lt.

±

Rt.

3.1 241.6

5.8 238.9

5.0 239.7

7.2 238.1
25
± Creek

8.1 235.4

9.2 235.5

12.4 234.0
40
± Creek

12.4 232.3

244.70

3.6 229.2
45
± Creek

4.3 227.5

231.76

4.7

7
± Creek

7.0

25

8.7

35

2.0

15

□ on Rock
17+40-25 Lt.

Lt.

±

Rt.

33

22+90

249.8
5.9

22+40

10.3
47
± Creek247.8
7.3
3.9
25

22+00

246.6
8.7

21+60

11.8

243.9
11.2

40

± Creek

See P. 25

Will use ± of P' line as ± of Notes.

21+32.31 = Ang 43° 17' Lt. - sect. on split

11.6
20248.74
5.31
on Hub.1.7
20

21+00

12.2
35
± Creek12.0
10246.1
9.0
5.5
20

20+85

246.6
12.5

T.P.

11.63

255.05

12.8

243.42

255.05

20+70

241.9
2.8

20+62 ± Creek

240.5
4.2

244.70

Lt.

±

Rt-

26+00

1.6
35

6.6

260.2

8.0
12.4
orig ±

9.7
32
±Creek

25+75

9.1

257.7

25+20

10.9
38
Toe

10.6

256.2

12.4
70
±Creek

T.P. 13.10 266.78 1.37 253.68

Don Rock
24+60-20 Lt

266.78

24+70

1.2

253.9

24+45 = in Creek = ±

4.1

251.0

24+10 = ± Creek

5.1

250.0

24+00

3.9

251.2

5.9
7
±Creek = orig line

23+60

5.2

249.9

2.1
6
±Creek

23+25 = ± Creek

8.2

246.9

255.05

Creek

Lt. ♀-P' Rt.

30+50

273.8
3.1

30+00

5.6 4.2 272.3
30 ♀ Creek 6.5
45

29+65 = ♀ Creek
50 y. vent.

269.6
7.3

Set B.M. = D on forest 7.52 269.41

Rim of M.H. #90 - See sketch

29+07.38 = Ang. 1° 30' Lt.

5.0 5.46 8.52 123 584
12 Rim I.E.
Toe 20.85 = T.E.
29+08.22
on M.H.
Rim

28+50

268.1
8.8

28+00

6.9 9.9 9.7 12.7
25 267.0 17.9 60
276.93 old ♀ ♀ Creek

T.P. 12.06 276.93 19.1 264.87

27+50

264.5
2.3

27+00

3.9 3.9 6.8
15.3 43.4
♀ Creek

26+40

261.4
5.4 7.8
266.78 ♀ Creek

Lt.

±

Rt.

36

T.P. 12.73 300.73 1.17 288.00

34+15 = ± Creek

282.6
6.6

33+65

7.9
23
± Creek287.2
2.0

0.04 = Rim

6.2

± M.H. 91

33+50

286.7
2.5

33+00

9.9
29
± Creek283.9
5.3

3.1

7.5

old ±

32+60

280.7
8.5

32+30

12.0
9
± Creek279.9
9.3

32+00

13.4
23
± Creek279.6
9.6

8.8

10.8

old ±

31+50

14.7
16
± Creek277.8
11.4

T.P. 13.10 289.17 0.86 276.07

± Creek

289.17

31+00 = ± Creek

2.0
20
276.93273.8
3.1

1.2

14.3

old ± 31+00

T.P. 13.10 337.27 0.16 324.17

41+55

41+20

= Cross

T.P. 12.37 324.33 0.26 311.96

Rim of M.H. #

95 = 40 + 88.47 0.26

41+00

40+50 = \pm Creek

40+00

39+60.80 = Ang.

39+20.47

sect. on split

E Mon Cross on Rim M.H. # 94 890 303.32

39+05 = \pm Creek

38+70

38+15 = \pm Creek

Lt.

\pm

Rt.

38

319.5

4.8

309.6

14.7

324.33

309.4

2.8

4.1

15

\pm Creek

305.9

6.3

5.4

17

To e

305.8

6.4

5.6
28
 \pm Small
wash

305.07

1.0

7.15

9.1

40

= \pm Creek

15

302.3

2.2
20

9.9

301.8

11.7
 \pm 15
 \pm Creek

10.4

298.7

6.1
25

13.5

12.8

30

312.22

Lt.

±

Rt.

39

45+20

7.0
345.4

45+00

4.2
254.7
347.76.3
20

44+50

4.8
347.6

5.0

3

346.3

Top

44+00

4.2
20

6.1

6.5

5 = Top

16.2

20

43+50

6.1
346.3

43+00

5.0
347.4

42+50

4.9
205.0
347.40

7.3

33

352.36

Top Canyon

5.31 352.36

Set B.M. = π on Rock - 8' N.

3.33 347.05

42+16.01 = Ang. $30^{\circ} 04' 30''$ Lt.3.82
346.56

on Hub.

340.7

42+00

9.7

T.P. 13.21 350.38 0.10 337.17

350.38

337.27

47+77- 35.9 Rt. = Rad. pt. of 25' Rad. Paving

T.P. 5.58 356.67 127. 351.09

47+50

47+11- 25' Rt. = Cor. of House

47+00

46+50

46+11- 27' Rt. = Cor. of House

46+04 = Top of Bank

45+70 = Bot. of Wash

45+60 = Bot. of Wash

45+40

56.67
5.58
50.78

Lt.

±

Rt.

40

351.2
5.5

5.85
10.9
edge pave

50.78
5.89
35.9 = Rad.
Pt.

356.67

350.5
1.9

2.3
15

349.9
2.5

2.5
15

2.7
25
ground

348.4
3.8

4.8
27 = ground

5.4
26

347.3
5.1

5.1
20

333.4
19.0

18.2
20
in wash

333.2
19.2

20.0
20
in wash

339.2
13.2

352.36

10 11
8.05 41
18.16

Lt # Rt

Made 47+95.02 Hub ^{on} 351.16

354.53

used L+Disk PL int E Linda Vista Rd. 356.61 ^{at} ⁷⁻¹⁻⁵² ^{Dad}
S. of P.L. line
= R.R. spike in Pole # P 178643 - W. side of Linda Vista Rd.

6.51 354.56

T.P. 3.50 361.07 10.48 357.57

4.72 368.05 363.33 = using This Datum.

= Nail in Pole 4.72 363.51

363.33 = Elev. from Disk at P.L. + Linda Vista Rd.

T.P. 12.73 368.23 11.7 355.50

Now Covered - See X-Sect. of Wellington at N. end.
356.61 = our Elev.

1+71.81 = Rim of M.H. # 99

342.12
8.05 18.16
Rim I.E.

1+00

349.84
6.83

0+50

350.62
6.01

0+15 = edge of pave

P. 27
See sketch

117° 10' 30" Rt = Line to M.H. # 99 = 0+00

351.0
5.70

47+95.02 = end at E of Wellington

351.32
5.35 = on Hub.

356.67

Re Cross Section Sunset St.
Taylor to Rosecrans

Feb. 26-52
H. Simon
Garber
Rorer
Fritz
M.O. 82347

Lt-S

Z

Rt-N

42

+50

5.1	5.6	5.1	5.4	5.1	5.8
$\frac{46}{25}$	$\frac{47}{15}$	$\frac{46}{15}$	$\frac{49}{11}$	$\frac{46}{15}$	$\frac{45}{25}$

+37 193 Lt. of - Sly Parker Pole #2925

5.14

+13

5.20
18.3
0.256

+10

5.8	5.6	5.6	5.6	5.4	5.6	5.1
$\frac{45}{20}$	$\frac{45}{15}$	$\frac{48}{13}$	$\frac{47}{17}$	$\frac{49}{11}$	$\frac{47}{15}$	$\frac{46}{25}$

+94 167 Rt of $\frac{1}{2}$ - NY Tel Pole #442580 H

4.94

+54

5.10
17.5
0.256

INDEXED

FEB 27 1952

+50

5.1	5.1	5.5	5.5	5.4	5.8	5.1	5.6
$\frac{46}{25}$	$\frac{46}{15}$	$\frac{48}{14}$	$\frac{48}{18}$	$\frac{47}{13}$	$\frac{45}{14}$	$\frac{46}{15}$	$\frac{47}{25}$

+19 165 Rt of $\frac{1}{2}$ - NY Tel Pole #442579 H

6.06	5.88	5.31	5.48	5.47	5.46	5.24	5.22	5.9
$\frac{48}{25}$	$\frac{46}{15}$	$\frac{50.3}{15.5}$	$\frac{48.6}{17.5}$	4.87	$\frac{48.8}{17.5}$	$\frac{5.10}{15.5}$	$\frac{4.42}{15.5}$	$\frac{4.4}{25}$

0+0 M.L. Taylor - NY S/W CB + Pav 129

BM 5.62 10.34

472 S.E.B.P.
Taylor +
Swan

10.34

Lt

Z

Rt

+90

16.5 Lt of L - L Fire Hyd.

5.49

5.54

+72.5

4.85

4.80

25.50
Co. 25
Main

35.00
Main

+19

28 Lt of L - L 31" Cotton Wood

4.85

+58

5.47

16.75
0.50
0.50

+50

5.4

5.5

5.6

5.9

6.1

5.7

5.7

4.9
2.5

4.8
1.2

4.7

5.0
1.0

4.2
1.2

4.6
1.5

4.6
2.5

+23.5

17.8 Rt of L - 11/4 TC/Pole = 44.25 81 H

+19

24 Lt of L - L 24" Cotton Wood

6.2

5.7

5.6

5.5

5.6

5.7

270

5.1
2.5

4.6
1.5

4.7

4.8
1.1

4.7
1.5

4.6
2.5

+93

4.47

5.87

18.50
0.50
0.50

17.56

4.70

5.44

16.50
0.50
0.50

For recent Cross Sec of Rosocrans
see Harry Horn

+50 = W.L. Rosocrans

5.6	5.4	5.5	5.3	5.6
4.7	4.9	4.8	5.0	4.7
3.5	3.5		3.5	3.5

+25 = Z Rosocrans

5.2	5.4	5.6	5.7	5.6
5.1	4.9	4.7	4.6	4.7
3.5	3.5	3.5	3.5	3.5

on P. 7
S. 10. 11. 12.

340 = E.L. Rosocrans

5.4	5.6	5.2	5.6	5.5	5.7	5.7
4.9	4.7	5.1	4.7	4.8	4.6	4.6
3.5	3.5	3.4		3.3	3.5	3.5

10.34

10.34

Clark 7-30-52
Shepherd W.O. 25020
Brimer
Bryson

X-SECT. ALLEY BIK 16 MISSION

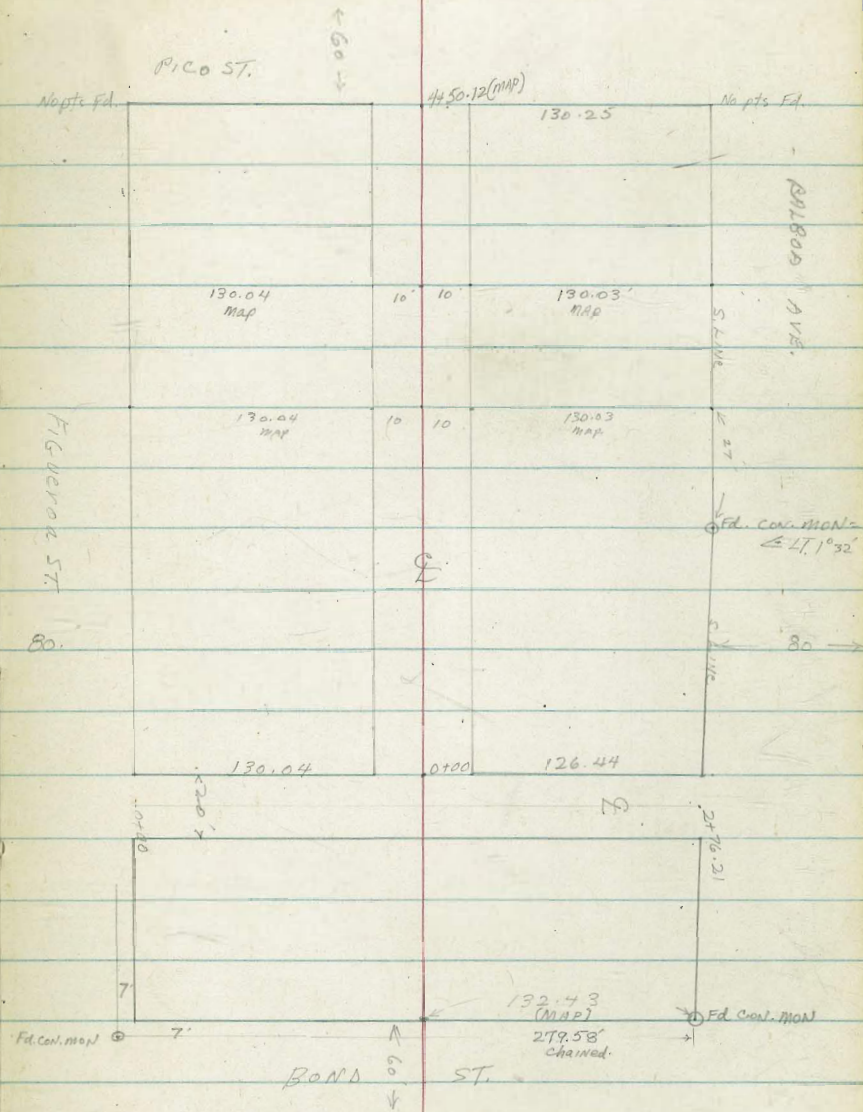
BAY PARK TRACT

Survey for grade ord. only

DATA: MAP 1120
" 1530

INDEXED
Law

AUG 4 1952



X-SECT ALLEY BIK 16, MISSION BAY PARK

(T-Alley) N+S Alley bet. FIG. + BAIBOA

LT

RT

RT

INDEXED
Law
AUG 4 1952

1+25 9' RT E Deadman

1+14 9' RT E Pole # A4550

1+00

9.4 9.6 9.8 9.9 9.5
20 10 10 20

0+78 23' LT END apron 2-Car gar 27' to Floor

9.16 9.26
27 23
Floor LIP

0+60 23' LT Beg apron 2-Car gar 27' to Floor

9.15 9.37
27 23
Floor LIP

0+50

9.6 9.9 9.9 10.0 9.6
20 10 10 20

0+11 9.7 LITE 2.5' CON. WALK

9.72 9.89
20 9.7
WALK LIP

0+00 = N.L. FIGUEROA

10.1 10.4 10.4 10.4 10.2
50 10 10 50

0-30 = E FIGUEROA ST

10.6 10.6 10.6 10.7 10.7 10.7 10.9
100 50 10 10 50 100

3.54 17.26

13.72 B.P. S/E Cor. Tp. CB. BAIBOA BRIDGE, BAIBOA AVE

17.26

			LT.	♀		AT.	
2+76-21 (map)	9.2' LT END Picket Fence S.L. BALBOA	(toe Fill Along Balboa)	6.2 5.0	5.6 10	5.2	5.6 10	6.7 5.0
2+50			7.3 20	7.4 10	7.6	7.4 10	7.5 20
2+03	10.1 LT ♀	2.5 CONC WALK	7.75 20 MAX	7.84 10.1 LIP			
2+00			8.0 20	8.2 10	8.4	8.3 10	8.1 20
1+75	9.75 LT	3.5' picket Fence					
1+59	10.8 LT ♀	Single-pyr dirt Flat	8.9 10.8 DIRT				
1+50.04 (map)	N.L. E.W. Alley		9.4 20	9.3 10	9.2	9.7 10	9.2 20
1+30.04 (map)	S.A. NE E.W. Alley		9.4 20	9.5 10	9.6	9.6 10	9.2 20

17.26

N+S Alley BIK 16

LT. E RT.

(Cont. on Next. Pg)

T.P. 6.28 14.07 9.47 7.79

3+01.5 - E EXIST PAV. BALBOA
(Not E. ST.)

3.78 4.07⁰⁰ 4.13 4.15 4.14 4.07⁰⁰ 4.04
150 100 50 50 100 150

2+91.5 - S. Edge Pav. BALBOA (A.C. PAV.)
(PAVING irreq. AT this PT.)

4.26 4.27 4.21 4.17 4.17 4.26 4.18 (A.C.)
100 50 (PAV) 10 50 100

2+82.21 - To Fill ALONG BALBOA

3.5 3.8 4.5 4.2 4.1
50 10 10 50

17.26

F.Y.W. Alley BK 16

50.

LT.

£

RT.

3+50

5.3
20

5.0
10

4.8

4.7
10

4.3
20

3+00

5.4
20

5.2
10

4.8

4.6
10

4.6
20

2+50

5.5
20

5.3
10

4.9

4.9
10

4.8
20

2+00

5.7
20

5.6
10

5.2

6.0
10

6.0
20

1+50

5.6
20

5.6
10

5.2

5.3
10

5.5
20

1+00

5.8
20

5.8
10

5.5

5.6
10

5.6
20

0+90

12 RT £ single gar (opens on ST.)

5.7

15

DIRT

0+50

6.2
20

6.2
10

6.2

6.0
10

5.8
20

0+00.2

£ 3x4 Brisk incinerator

0+00 = E.L. N.Y.S. Alley
(Sketch Pg 46)

6.3
10

6.3

6.1
10

Note: From sta 0+30 to 2+00 Alley planted to garden, flowers etc.

14. 07 (see prev. pg)

E.W. Alley BIK 16

check 0.33 13.74 = 13.72 ^{corn,} S/E BP BALBOA Bridge, BALBOA Ave.

LT.

♀

RT.

4480-12

♀ Pico

14.5
50 4.0
10 13.5 13.0
10 12.5 10.5 6.0
25 30 60
TP BANK
West
Creek

4450-12 (map) E.L. Pico (IN creek)

15.2
20 15.0
10 14.8 15.0
10 14.7
20

4401 Toe Bank, Bottom Creek

12.8
20 12.7
10 12.7
70 12.7
10 12.6
20

3786 Tp. Creek BANK

4.7
20 4.5
10 4.8
TOP
BANK 0.8
10 12.4
20
Toe

3780

4.7
20 4.7
10 4.8 5.2
10 12.4
2.3
Shoulder
Creek
BANK Toe BANK
Bottom Creek

14.07
11

Contd From Page 52

East and West Alley

2799.83 West Line Illinois St. { 9' Rt. Begin Alley Curb Return
12' Lt. Begin Alley Curb Return

2135 96' Rt. to center 3' Avocado Tree

2125 12' Lt. to center P. Pole # 29989X

2101 98' Rt. to center 6" Apricot Tree

1756 102' Lt. to center P. Pole # JPA 3135

1738 112' Lt. to center 12" Guy Pole

0748 10' Lt. to center P. Pole # JPA 3107

0700 East Line Iowa St. { 9' Rt. End Curb Return
10' Lt. End Curb Return

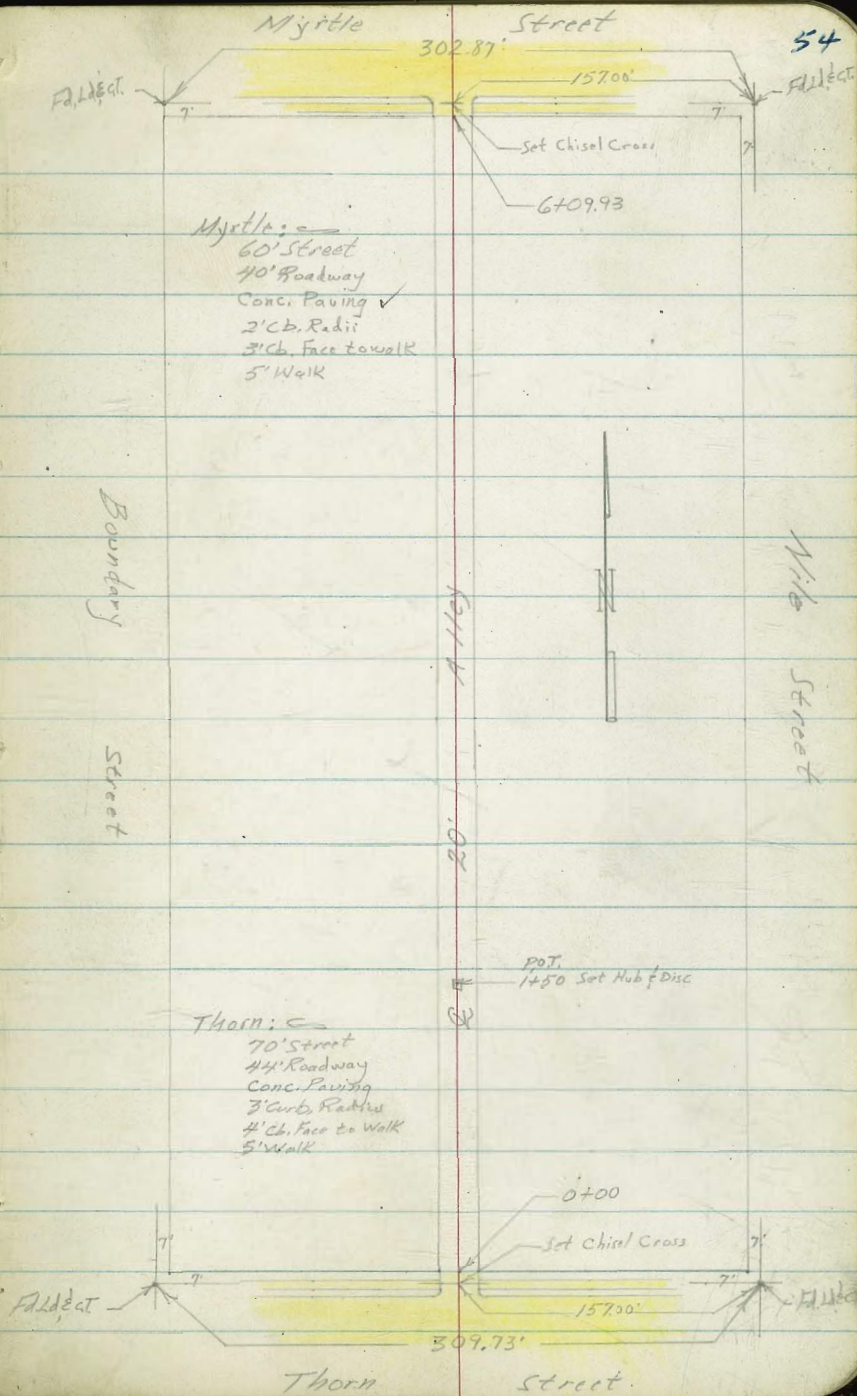
53

No encroachments in the north and south
alley of block 116 Univ. Hts.

Roberts
Cota
Moore
Pullen
4-14-53
W.O. #32172

X-Section Alley Block 3, City Hts.
From Thorn to Myrtle
Between Boundary and Nile

IMPROVED
APR 16 1953



0+50 8.8 Lt to center P.P. to # PA3315

7.0	7.0	8.0	7.4	6.8
20	10		10	20

0+25

8.5	8.4	10.5	10.6	10.4	8.8	7.7
20	10	5	10.6	7	10	20

0+23

12.3	11.0	10.8	10.8	8.4	7.8
20	10		7	10	20

T.P. 1186 31.50 T 442 299.94

311.50 T

0+00 North Prop. Line Thorn

8.27	7.28	7.82	6.86	6.42
10	10		10	10
cb	Gutt		Gutt	cb

North Curb Line Thorn

8.68	9.39	7.42	8.87	7.65	7.19	6.53	5.91	5.27
50	50	13	13		13	13	50	50
cb	Gutt	cb	Gutt		Gutt	cb	Gutt	cb

Thorn Street

11.19	9.41	7.89	5.85	4.12
100	50	14.4	50	100

B61 0.67 304.36 T

303.69 NE BP, Thorn & Me

304.36 T

1446 9⁸ Rt End Conc Apron

307.49
#10
9⁸
conc

307.21
3.59
15⁸
Floor

1429 10¹ Rt begin conc Apron

307.31
4.19
10¹
conc

307.82
3.68
15.6
Floor

1415 10⁸ Rt @ 3' Conc Walk

306.55
4.65
10⁸
conc

306.51
4.52
20⁸
conc

1408 10⁶ Rt @ Single Garage

306.57
4.83
10⁶
conc
Floor

1400

305.5
5.9
20

305.8
5.7
10

305.2
5.6

306.3
5.2
10

306.6
4.9
20

0495 9⁶ Rt @ 2' Conc Walk

306.5
6.0
11⁰
Dirt

306.11
5.39
9⁶
conc

306.22
5.28
18
conc

0483 11⁰ Rt @ Single Garage

Cont'd From Page 56.

3700

2766 { 85' Lt to center P. Pole # PA 3385
10' Rt End Conc. Drive

2755 92' Lt begin wire Fence

2758 & Garage

2754 13' Lt & 2' Conc Walk

2752 10' Rt begin Conc Drive. Single Garage

T.P.

5.89 316.20 \checkmark 119 310.31 \checkmark

2750 10' Rt to 4" Conc. Tile Drain

2740 92' Rt End Board Fence

2700 92' Rt begin board Fence

1750 82' Lt to center P. Pole # PA 3351

311.50 \checkmark

Lt.

Rt

Rt 57

311²

5.2
20

311⁵

4.7
10

311³

4.9

311⁴

4.8
10

311⁴

4.8
20

311.15

5.05
102
CONC

309.54

6.66
23
CONC

309.81

6.37
13
CONC

311.31

4.89
24
CONC
Floor

311.02

5.18
101
CONC

316.20 \checkmark

309.2

1.8
20

310.0

1.5
10

310.2

1.3
10

310.4

1.1
10

310.4

1.1
106
INVERT

310.5

0.9
20

308.4

3.1
20

308.5

2.9
10

308.5

3.0

308.5

2.9
10

309.1

2.4
20

307.1

4.4
20

307.2

4.3
10

307.5

4.0

307.2

4.3
10

307.5

3.9
20

311.50 \checkmark

3+81 12' Rt Q 2' conc walk

31298

5.85
12
conc

31293

5.90
12
conc

3+78 9' Rt Q 3' conc walk

31271

6.12
9
conc

31280

6.03
9
conc

3+76 10' Rt End House

3+76 7' Lt to center P. Pole # PA 3421

3+74 10' Lt End board Fence

3+58 10' Rt begin house

3+56 10' Rt Q 2' conc walk

31244

6.48
10
conc

31255

6.28
20
conc

3+50 9' Lt End wire fence begin board fence

3118

7.0
20

3124

6.4
10

3124

6.4
10

3126

6.2
10

3126

6.2
20

T.P. 4.64 318.83 π 2.01 314.19

318.83 π

31620 π

Cont'd From Page 58

4442 15' RT ♀ Single Garage

4433 14' RT ♀ Single Garage

4424 13' RT ♀ 5' Conc. Walk

4416 15' RT ♀ Single Garage

4405 15' RT ♀ Single Garage

4400

3790 15' RT ♀ Single Garage

318.83 ♂

Lt

♀

Rt 59

313.96

4.87

131

conc
Apron

314.18

4.65

15

conc
Floor

314.21

4.62

142

conc
Floor

313.90

4.93

132

conc

313.92

4.91

232

conc

313.84

4.99

152

Floor
conc

313.65

5.18

122

conc
Apron

313.89

4.84

152

conc
Floor

312.8

60

20

313.3

55

10

312.2

59

20

313.1

5.7

10

313.3

5.5

20

313.09

5.74

122

conc
Apron

313.37

5.46

152

conc
Floor

318.83 ♂

Cont'd From Page 59

Lt

Q

Rt

60

5704

10⁵' Rt & 4' conc walk

315.27

3.56
10²
conc

315.53

3.30
20²
conc

5700

314.2

3.9
20

314.2

3.9
10

314.8

4.0

315.1

3.7
10

4796⁵

10³' Rt & Single Garage

314.71

4.12
8²
conc
Apron

315.21

3.62
10²
Floor
conc

4786

10⁵' Rt & Single Garage

315.19

3.64
10²
conc
Floor

4774

8²' Lt to center R Pd # PA3457

314.33

4.50
10²
conc

314.37

4.46
20²
conc

4757⁵

10²' Rt & 3' Conc Walk

314.2

4.7
20

314.1

4.7
10

313.8

5.0

314.3

4.5
10

313.2

5.1
20

4750

318.83 π

318.83 π

Cont'd From Page 60

Lt

Rt

Rt

61

6709.93

South Line Myrtle

315.39

315.48

315.16

315.36

315.51

5.31
10
cb

5.22
10
G.H.

5.54

5.34
9.8
G.H.

5.19
9.8
cb

Curb Settled

5785

316.7

316.6

316.9

316.4

316.4

4.0
20

4.1
10

4.7

4.3
10

4.3
20

T.P.

487

320.70 π

3.00

315.83

320.70 π

5750

316.0

315.8

315.7

315.9

315.9

2.8
20

3.0
10

3.1

2.9
10

2.9
13

5738

13rd Lt End Conc Apron parallel to Alley

315.84

2.99

13rd

Conc

Apron

5730^E

10th Rt G Single Garage

315.44

3.39

8th

Conc

Apron

315.83

3.00

10th

Conc

Floor

5728

12th Lt NE Cor. Single Garage Opening North

Has Conc. Apron Parallel Alley

315.67

3.16

22nd

Floor

315.77

3.06

12th

Floor

318.83 π

318.83 π

Cont'd From Page 61

26

2

Rt 62

check

6.16 34.54 = 314.56

SEBP Nile & Myrtle (shown as Nile & Boundary in Bench Book)

Q Myrtle Street

South Curb Line Myrtle

320.70x

315.87	315.74	315.67	315.49	315.41
4.83	4.96	5.03	5.21	5.29
100	50		50	100

315.54	315.15	315.36	314.85	314.83	314.82	315.27	314.74	315.20
5.16	5.35	5.34	5.85	5.87	5.88	5.43	5.96	5.50
50	50	12	12		12	12	50	50
cb	Gutt	cb	Gutt		Gutt	cb	Gutt	cb

320.70x

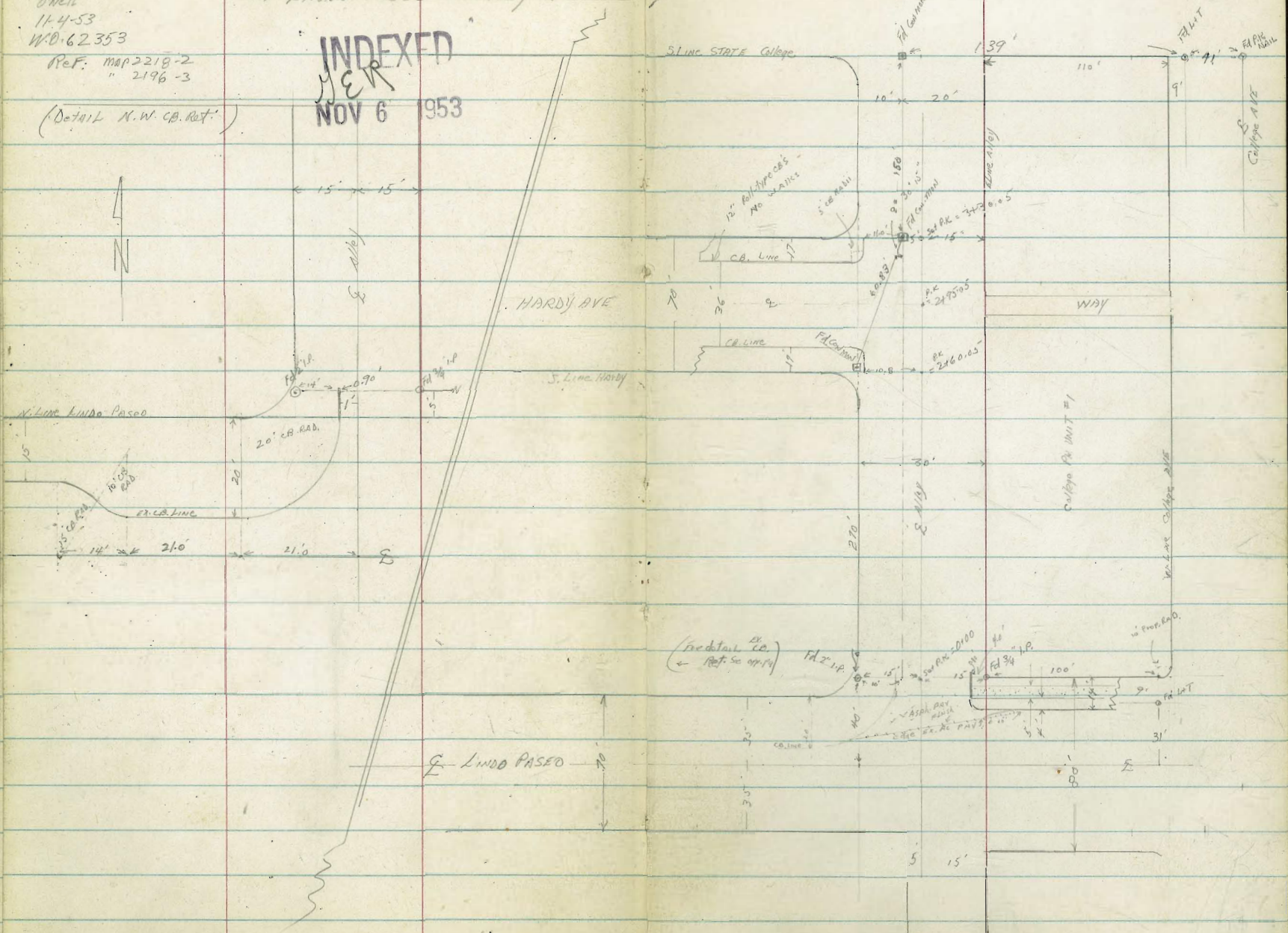
Clark
Shepherd
Brumer
Owell
11-4-53
W.D. 62353

X-SEC. ALLEY; West College Ave
bt. LINDA PASCO & HARDY AVE

INDEXED
M.E.R.
NOV 6 1953

Ref. MAP 2219-2
" 2196-3

(Detail N.W. CB. Ret.)



X-Seat Alley (cont)

LT

E

RT

T.P. 4.57 454.1 ✓ 5.60 449.54 ✓

1+92 15.1 17 END BOARD Fence & Bay 6 Hedge
15.2 LT1+50 5.0 5.1 5.24 5.92 5.51 5.10 5.0
20 15 5 edge dip 13 Edge 25 PHT

1+27.5 15.0 17 6' BOARD Fence

1+20 5.5 RT E M.H

1+17.5 17.5 LT END garages

1+00 5.16 4.9 5.06 5.06 5.18 4.82 5.0
14.5 15 5 Edge 3 dip 13 Edge 250+80 5.24 4.3 4.76 5.07 5.22 4.87 4.7
14.5 Ford 15 5 edge dip 13 Edge 25 PHT0+50 4.92 5.0 4.97 4.98 5.12 5.00 5.3 4.50
14.5 Ford 15 5 dip 11 Edge 15 250+25 5.06 5.1 4.83 4.96 5.10 4.89 4.9 4.7
14.5 Ford 15 5 dip 11 Edge 15 20 PHT

Alley (cont.)

LT.

Q

RT.

Chk: 6.19 449.85 = 449.83 (See B.M.)

T.P. 6.06 456.04 7.26 449.98

3+30.05 = N. Line HARDY

3+18.05 11 LT = CA. EC

3+13.05 = N/4 CB Line HARDY

{ 14.75 - S.W. Corner QUETZ'L HALL (Girls dorm)
14.7 RT. End Comp. Pav

3+05

3+00.5 5.0 RT E M.H. (SW)

2+95.05 E HARDY AV (AC Pav)

2+85 14.9 RT Bay Conv. Pav. (26' way to College ave) S. Line

2+84 7.6 RT E S.D. G. 15 M.H.

T.P. 5.74 454.24 5.61 448.50

2+77.05 = S. CB. Line HARDY 11.9 RT E Tol. M.H.

449.85	449.27	449.25	449.08	449.20	448.98	448.91	448.85	448.72	448.22	448.54
4.7 25	4.9 15	5.05 12 CA	5.39 11 CB END	5.92	6.02 DP.	5.70 14.9 14.2				
449.65	449.27	449.25	449.08	449.20	448.98	448.91	448.85	448.72	448.22	448.54
4.59 75 CA	4.87 75 G	4.89 50 CB	5.16 50 V	4.74 16 CB	5.26 16 G BC	5.33 11 Pav	5.79	5.72 DP	5.63 14.7 END	5.45 25 CA
449.06	449.81	449.81	449.58	449.20	449.09	448.63	448.53	448.22	448.84	448.51
4.38 75	4.38 50	4.66 25	4.94 15	5.15 11	5.61	5.71	5.70 148 47 CAN	5.75 25 CAN	5.61 50	5.45 50
449.04	449.00	449.47	449.00	449.58	449.23	448.24	448.68	448.76	448.01	449.3
3.97 75 CB	4.57 75 G	4.21 50 CB	4.44 50 G	4.31 8 CB	4.63 15.8 G BC	4.78 10.8 Pav	5.78	5.43 5 21P	5.35 11.9 Rim	5.28 15 END
450.14	449.00	449.47	449.00	449.58	449.23	448.24	448.68	448.76	448.01	449.3
4.54	4.54	4.54	4.54	4.54	4.54	4.54	4.54	4.54	4.54	4.54

Reduced By 10mm
12-12-53

454.24

454.11

'A' Line

3+00

TP#2 13.17 314.28 000 301.11

2+75

2+50

2+00

1+50

TP#1 11.51 301.11 356 289.60

1+00

0+45

0+26

0+00

12.35 293.16

280.81 - Invert

Lt. 307.8 R. 303.6 RL 301.7 298.9 69

6.5 10.7 12.6 15.4
23 314.28 20 27

300.7 298.4 297.3 297.0 299.9

0.4 2.7 3.8 9.1 1.2
15 10 16 21

300.9 295.3 295.6 297.2 300.1

0.2 5.8 5.5 3.9 1.0
24 16 8 15

297.0 292.3 291.9 292.2 295.4 297.7

4.1 8.8 2.2 8.9 5.4 3.4
20 8 3 9 15

293.8 291.8 288.9 289.5 292.0

7.3 9.3 12.2 11.6 9.1
15 6 7 16

301.11

289.9 287.1 287.3 287.4 290.6

3.3 6.1 5.9 5.8 2.5
23 14 17 30

28.4 281.4 282.4

11.8 11.8 10.8
25 25

279.8 280.7 281.5

13.4 12.5 11.7
25 25

286.28 25

6.88
on Hub

B.M. = Invert MH #8 - 3A+60 Plan 1876-D

293.16

"A" Line

6+50

6+00

5+50

TP # 6 8.45 355.59 3.54 347.14

5+00

4+23.13 = POT.

4+00

TP # 5 12.02 350.68 0.61 338.66

TP # 4 12.55 339.27 0.10 326.72

3+50

TP # 3 12.70 326.82 0.16 314.12

Lt. 350.0 Lt. 349.7 157 348.1 344.4 70

5.6

5.9

7.5

11.2

50

50

50

100

349.3

348.1

345.09

Brow

63

7.5

10.5

50

43

Brow

348.8

346.4

345.5

68

9.2

10.1

50

18

Brow

355.59

348.6

346.4

344.7

2.1

4.8

6.0

50

15

Brow

347.0

345.55

344.18

3.7

5.13

6.5

2.1

0.4 Hub

14

343.9

340.4

Brow Canyon
336.4

343.2

6.8

7.5

10.3

14.3

25

15

350.68

17

322.6

317.9

312.4

4.2

8.9

14.1

20

20

326.82

20

"A-Line"

10+50

10+00

9+50

9+00

8+43.29

on Hub 8+43.29

TP7-5.00 358.07 252 353.07

8+43.29 = Δ 30° 26'

8+00

7+50

7+00

355.59

Lt.

L

Rt. 71

352.0

61

353.2

49

353.2

47

353.6

45

355.4

353.1

351.1

344.1

2.7

5.00

7.0

13.4

50

50

200

358.07

Rm Conspert

353.07

353.3

252

on Hub

352.39

351.2

349.9

344.9

2.3

3.2

4.4

5.7

10.7

100

50

50

50

180

350.6

50

349.9

5.7

355.59

15+00

355.78
2.29
146

14+50

355.5

14+00

2.6
353.9

13+50

4.2
353.2

13+00

353.1	352.3	352.4	353.5	353.1	352.9
5.0	5.8	5.7	4.6	5.0	5.2
150	50	50	50	100	200

12+50

351.1

12+00

6.6
70

11+50

351.3

11+00

354.6	351.3	351.9	350.0	348.9
2.5	6.8	6.2	8.1	2.2
150	50	50	100	200

358.07

358.07

N.L.
Hd. Drawn

Cont. P-74

17+79 ± ^{Approp} opp Prop Cor.

355.7

5.7

356.5

17+50

4.9

17+05 4' H = 2 E/loc. ^{Pole #} 474026

347.7

351.7

354.3

356.7

358.9

358.6

17+00

13.7

2.7

7.1

4.7

2.5

2.8

260
Rim
Curfan

250

150

50

257.2

50

100

16+50

4.2

357.86

16+14.6 = Int. NW End Conc. ^{Box} ~~Stub~~

356

357.85

16+05.6 = Int. Conc. ^{Box} ~~Stub~~ = fuel Supply

357

357.59

15+93

3.83

2.8 (Gasoline)

4" Fuel Pipe

357.89

15+88.2 = Int. Bld Wnd

356.7

4.7

3.53

13.0

Cont. Floor.

352.1

351.7

354.9

356.4

2.3

2.7

6.5

5.0

250

150

50

Low Point

15+50

TP #8 5.64 361.42 2.29 355.78

361.42

358.07 Cont from P 72

"A" Line

11. E Rt. 74

Proposed Sewer
State Armory Bld.

0.02

→ P-41 by Don A Smith

↳ Linda Vista Rd. & S.L. Pl. 1209	356.61
chk. B.M. Id. Disc.	793 356.59
TP#13 223	364.52 735 362.29
TP#12 708	369.64 561 362.56
TP#11 424	368.17 313 363.23
TP#10 785	366.36 244 358.51

"B" Line on P 75

TP#9 517	360.25 564 355.78
both marked	→ 362.03
	362.01 = state datum

on Hub 15100

Check B.M. (state B.M.)	553 355.89 = city datum
	6.12

on 2" B.M. Pipe About 10' E of NW Cor Armory Site

348.6	355.4	(guess) 356.7	354.1	355.1	357.2	359.5
12.8	6.0	4.7	7.3	6.3	4.2	1.5
225	100	50		50	100	200

18 + 20 ± = Approx E Tecolote Rd

17 + B45 36' Lt. - E Elec. Pole # 472045

361.42

361.42

Proposed Lower
State Armory site

"B" line.

Location

75

3+46.6

356.7
353.35
4.3
Ground 7.60
0
356.5 invert

3+00

4.5
354.5

2+50

6.5
354.9

2+00

355.06
357.45
355.3
6.1
355.17

1+53.00

5.89 3.5 5.7 5.78
9305 9305 42
invert diag. see sketch
4" soil line p-68

1+00

357.1
3.9

0+50

357.0
4.0

0+00 "B" line

15+00 "A" line

360.95 X from P-74

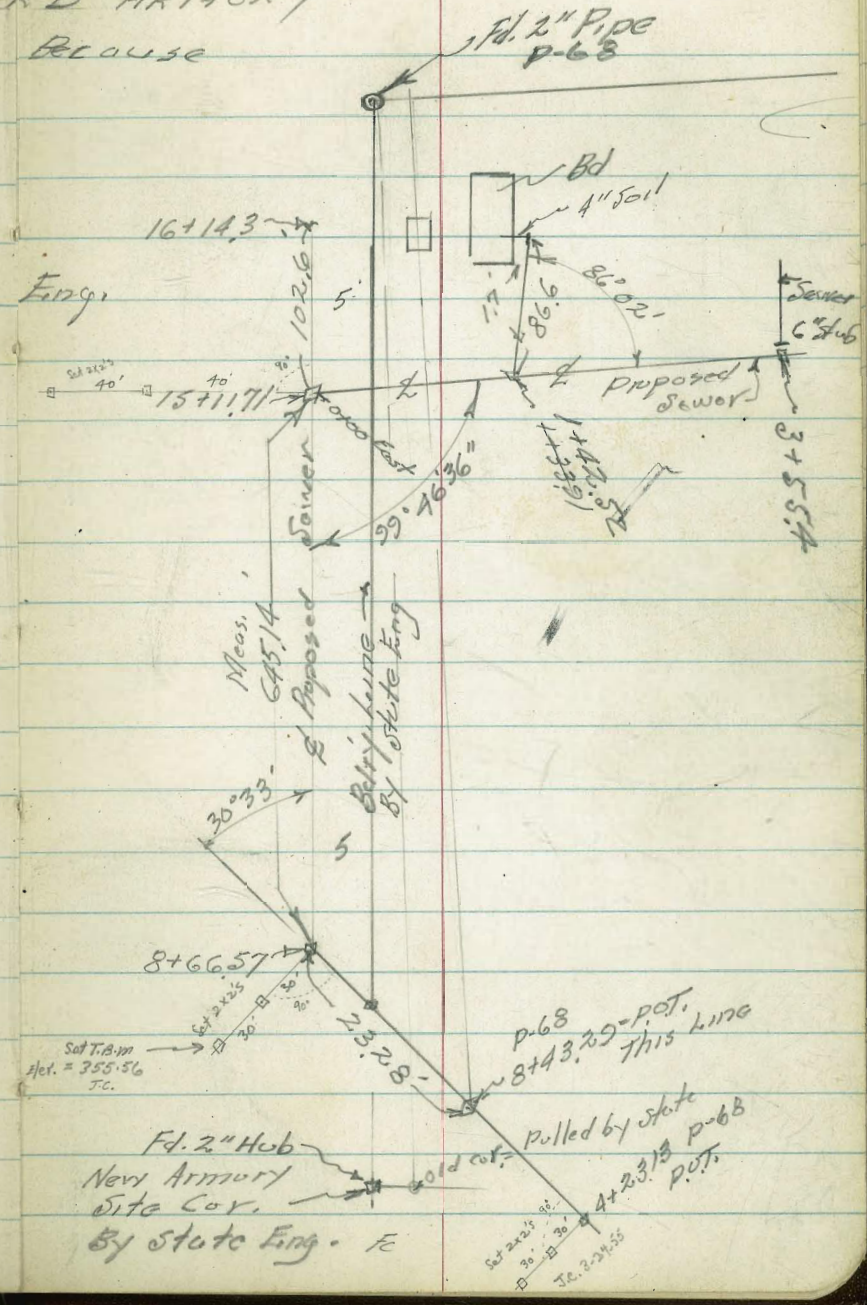
355.78
5.17

360.95

RE. LOCATION PROPOSED SEWER
 TO SERVE CALIF. NATL GUARD ARMORY
 THIS PORTION REALLOCATED BECAUSE
 of line being moved 5' West
 of Armory Bdry. line And
 Because of Bdry line being
 Moved at one cor by State Eng.

Welker
 Pope
 Hoffman
 Olow
 3-755.

110 20638

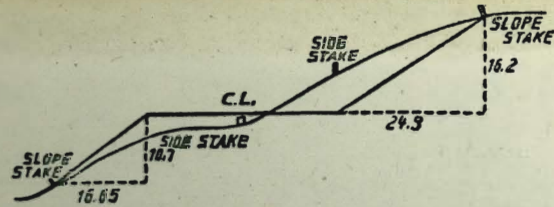


WELKER
 MAR 8 1955

179 59 60
62 49 30

117° 10' 30"

2186



DISTANCES FROM SIDE STAKES FOR CROSS-SECTIONING.
SLOPE 1½ TO 1. ROADWAY OF ANY WIDTH.

	0	.1	.2	.3	.4	.5	.6	.7	.8	.9	
0	0.00	0.15	0.30	0.45	0.60	0.75	0.90	1.05	1.20	1.35	0
1	1.50	1.65	1.80	1.95	2.10	2.25	2.40	2.55	2.70	2.85	1
2	3.00	3.15	3.30	3.45	3.60	3.75	3.90	4.05	4.20	4.35	2
3	4.50	4.65	4.80	4.95	5.10	5.25	5.40	5.55	5.70	5.85	3
4	6.00	6.15	6.30	6.45	6.60	6.75	6.90	7.05	7.20	7.35	4
5	7.50	7.65	7.80	7.95	8.10	8.25	8.40	8.55	8.70	8.85	5
6	9.00	9.15	9.30	9.45	9.60	9.75	9.90	10.05	10.20	10.35	6
7	10.50	10.65	10.80	10.95	11.10	11.25	11.40	11.55	11.70	11.85	7
8	12.00	12.15	12.30	12.45	12.60	12.75	12.90	13.05	13.20	13.35	8
9	13.50	13.65	13.80	13.95	14.10	14.25	14.40	14.55	14.70	14.85	9
10	15.00	15.15	15.30	15.45	15.60	15.75	15.90	16.05	16.20	16.35	10
11	16.50	16.65	16.80	16.95	17.10	17.25	17.40	17.55	17.70	17.85	11
12	18.00	18.15	18.30	18.45	18.60	18.75	18.90	19.05	19.20	19.35	12
13	19.50	19.65	19.80	19.95	20.10	20.25	20.40	20.55	20.70	20.85	13
14	21.00	21.15	21.30	21.45	21.60	21.75	21.90	22.05	22.20	22.35	14
15	22.50	22.65	22.80	22.95	23.10	23.25	23.40	23.55	23.70	23.85	15
16	24.00	24.15	24.30	24.45	24.60	24.75	24.90	25.05	25.20	25.35	16
17	25.50	25.65	25.80	25.95	26.10	26.25	26.40	26.55	26.70	26.85	17
18	27.00	27.15	27.30	27.45	27.60	27.75	27.90	28.05	28.20	28.35	18
19	28.50	28.65	28.80	28.95	29.10	29.25	29.40	29.55	29.70	29.85	19
20	30.00	30.15	30.30	30.45	30.60	30.75	30.90	31.05	31.20	31.35	20
21	31.50	31.65	31.80	31.95	32.10	32.25	32.40	32.55	32.70	32.85	21
22	33.00	33.15	33.30	33.45	33.60	33.75	33.90	34.05	34.20	34.35	22
23	34.50	34.65	34.80	34.95	35.10	35.25	35.40	35.55	35.70	35.85	23
24	36.00	36.15	36.30	36.45	36.60	36.75	36.90	37.05	37.20	37.35	24
25	37.50	37.65	37.80	37.95	38.10	38.25	38.40	38.55	38.70	38.85	25
26	39.00	39.15	39.30	39.45	39.60	39.75	39.90	40.05	40.20	40.35	26
27	40.50	40.65	40.80	40.95	41.10	41.25	41.40	41.55	41.70	41.85	27
28	42.00	42.15	42.30	42.45	42.60	42.75	42.90	43.05	43.20	43.35	28
29	43.50	43.65	43.80	43.95	44.10	44.25	44.40	44.55	44.70	44.85	29
30	45.00	45.15	45.30	45.45	45.60	45.75	45.90	46.05	46.20	46.35	30
31	46.50	46.65	46.80	46.95	47.10	47.25	47.40	47.55	47.70	47.85	31
32	48.00	48.15	48.30	48.45	48.60	48.75	48.90	49.05	49.20	49.35	32
33	49.50	49.65	49.80	49.95	50.10	50.25	50.40	50.55	50.70	50.85	33
34	51.00	51.15	51.30	51.45	51.60	51.75	51.90	52.05	52.20	52.35	34
35	52.50	52.65	52.80	52.95	53.10	53.25	53.40	53.55	53.70	53.85	35
36	54.00	54.15	54.30	54.45	54.60	54.75	54.90	55.05	55.20	55.35	36
37	55.50	55.65	55.80	55.95	56.10	56.25	56.40	56.55	56.70	56.85	37
38	57.00	57.15	57.30	57.45	57.60	57.75	57.90	58.05	58.20	58.35	38
39	58.50	58.65	58.80	58.95	59.10	59.25	59.40	59.55	59.70	59.85	39
40	60.00	60.15	60.30	60.45	60.60	60.75	60.90	61.05	61.20	61.35	40
41	61.50	61.65	61.80	61.95	62.10	62.25	62.40	62.55	62.70	62.85	41
42	63.00	63.15	63.30	63.45	63.60	63.75	63.90	64.05	64.20	64.35	42
43	64.50	64.65	64.80	64.95	65.10	65.25	65.40	65.55	65.70	65.85	43
44	66.00	66.15	66.30	66.45	66.60	66.75	66.90	67.05	67.20	67.35	44
45	67.50	67.65	67.80	67.95	68.10	68.25	68.40	68.55	68.70	68.85	45
46	69.00	69.15	69.30	69.45	69.60	69.75	69.90	70.05	70.20	70.35	46
47	70.50	70.65	70.80	70.95	71.10	71.25	71.40	71.55	71.70	71.85	47
48	72.00	72.15	72.30	72.45	72.60	72.75	72.90	73.05	73.20	73.35	48
49	73.50	73.65	73.80	73.95	74.10	74.25	74.40	74.55	74.70	74.85	49
50	75.00	75.15	75.30	75.45	75.60	75.75	75.90	76.05	76.20	76.35	50

THE NATIONAL BLANK BOOK COMPANY
HOLYOKE MASSACHUSETTS
NEW YORK CHICAGO BOSTON SAN FRANCISCO