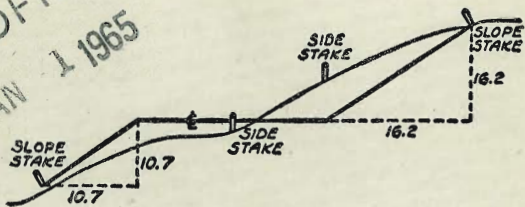


2153



MICROFILMED  
 JAN 1 1965



DISTANCES FROM SIDE STAKES FOR CROSS-SECTIONING  
 SLOPE 1 TO 1, ROADWAY OF ANY WIDTH

	0	.1	.2	.3	.4	.5	.6	.7	.8	9	
0	0.00	0.10	0.20	0.30	0.40	0.50	0.60	0.70	0.80	0.90	0
1	1.00	1.10	1.20	1.30	1.40	1.50	1.60	1.70	1.80	1.90	1
2	2.00	2.10	2.20	2.30	2.40	2.50	2.60	2.70	2.80	2.90	2
3	3.00	3.10	3.20	3.30	3.40	3.50	3.60	3.70	3.80	3.90	3
4	4.00	4.10	4.20	4.30	4.40	4.50	4.60	4.70	4.80	4.90	4
5	5.00	5.10	5.20	5.30	5.40	5.50	5.60	5.70	5.80	5.90	5
6	6.00	6.10	6.20	6.30	6.40	6.50	6.60	6.70	6.80	6.90	6
7	7.00	7.10	7.20	7.30	7.40	7.50	7.60	7.70	7.80	7.90	7
8	8.00	8.10	8.20	8.30	8.40	8.50	8.60	8.70	8.80	8.90	8
9	9.00	9.10	9.20	9.30	9.40	9.50	9.60	9.70	9.80	9.90	9
10	10.00	10.10	10.20	10.30	10.40	10.50	10.60	10.70	10.80	10.90	10
11	11.00	11.10	11.20	11.30	11.40	11.50	11.60	11.70	11.80	11.90	11
12	12.00	12.10	12.20	12.30	12.40	12.50	12.60	12.70	12.80	12.90	12
13	13.00	13.10	13.20	13.30	13.40	13.50	13.60	13.70	13.80	13.90	13
14	14.00	14.10	14.20	14.30	14.40	14.50	14.60	14.70	14.80	14.90	14
15	15.00	15.10	15.20	15.30	15.40	15.50	15.60	15.70	15.80	15.90	15
16	16.00	16.10	16.20	16.30	16.40	16.50	16.60	16.70	16.80	16.90	16
17	17.00	17.10	17.20	17.30	17.40	17.50	17.60	17.70	17.80	17.90	17
18	18.00	18.10	18.20	18.30	18.40	18.50	18.60	18.70	18.80	18.90	18
19	19.00	19.10	19.20	19.30	19.40	19.50	19.60	19.70	19.80	19.90	19
20	20.00	20.10	20.20	20.30	20.40	20.50	20.60	20.70	20.80	20.90	20
21	21.00	21.10	21.20	21.30	21.40	21.50	21.60	21.70	21.80	21.90	21
22	22.00	22.10	22.20	22.30	22.40	22.50	22.60	22.70	22.80	22.90	22
23	23.00	23.10	23.20	23.30	23.40	23.50	23.60	23.70	23.80	23.90	23
24	24.00	24.10	24.20	24.30	24.40	24.50	24.60	24.70	24.80	24.90	24
25	25.00	25.10	25.20	25.30	25.40	25.50	25.60	25.70	25.80	25.90	25
26	26.00	26.10	26.20	26.30	26.40	26.50	26.60	26.70	26.80	26.90	26
27	27.00	27.10	27.20	27.30	27.40	27.50	27.60	27.70	27.80	27.90	27
28	28.00	28.10	28.20	28.30	28.40	28.50	28.60	28.70	28.80	28.90	28
29	29.00	29.10	29.20	29.30	29.40	29.50	29.60	29.70	29.80	29.90	29
30	30.00	30.10	30.20	30.30	30.40	30.50	30.60	30.70	30.80	30.90	30
31	31.00	31.10	31.20	31.30	31.40	31.50	31.60	31.70	31.80	31.90	31
32	32.00	32.10	32.20	32.30	32.40	32.50	32.60	32.70	32.80	32.90	32
33	33.00	33.10	33.20	33.30	33.40	33.50	33.60	33.70	33.80	33.90	33
34	34.00	34.10	34.20	34.30	34.40	34.50	34.60	34.70	34.80	34.90	34
35	35.00	35.10	35.20	35.30	35.40	35.50	35.60	35.70	35.80	35.90	35
36	36.00	36.10	36.20	36.30	36.40	36.50	36.60	36.70	36.80	36.90	36
37	37.00	37.10	37.20	37.30	37.40	37.50	37.60	37.70	37.80	37.90	37
38	38.00	38.10	38.20	38.30	38.40	38.50	38.60	38.70	38.80	38.90	38
39	39.00	39.10	39.20	39.30	39.40	39.50	39.60	39.70	39.80	39.90	39
40	40.00	40.10	40.20	40.30	40.40	40.50	40.60	40.70	40.80	40.90	40
41	41.00	41.10	41.20	41.30	41.40	41.50	41.60	41.70	41.80	41.90	41
42	42.00	42.10	42.20	42.30	42.40	42.50	42.60	42.70	42.80	42.90	42
43	43.00	43.10	43.20	43.30	43.40	43.50	43.60	43.70	43.80	43.90	43
44	44.00	44.10	44.20	44.30	44.40	44.50	44.60	44.70	44.80	44.90	44
45	45.00	45.10	45.20	45.30	45.40	45.50	45.60	45.70	45.80	45.90	45
46	46.00	46.10	46.20	46.30	46.40	46.50	46.60	46.70	46.80	46.90	46
47	47.00	47.10	47.20	47.30	47.40	47.50	47.60	47.70	47.80	47.90	47
48	48.00	48.10	48.20	48.30	48.40	48.50	48.60	48.70	48.80	48.90	48
49	49.00	49.10	49.20	49.30	49.40	49.50	49.60	49.70	49.80	49.90	49
50	50.00	50.10	50.20	50.30	50.40	50.50	50.60	50.70	50.80	50.90	50

Distance of slope stake from side or shoulder stake for any width roadway, slope 1 to 1. If ground is nearly level, the cut or fill at side stake is located by the double entry method in left column and top row. The number in body of table in same row and column gives distance from side stake to slope stake. If ground is not level estimate the difference in elevation between the side stake and slope stake, lower target by this amount if cut, elevate if fill. Add this amount to cut or fill and find distance in table. Set up rod at this point, and line of sight should cut target. If it does not make the slight adjustment necessary.

TABLE XIII—CORRECTIONS FOR TANGENTS AND EXTERNALS

These corrections are to be added to the approximate values, found by dividing the tangent, or external, for a 1° curve (Table VIII) by the degree of curve, in order to obtain the true tangents, or externals. Intermediate values may be obtained by interpolation.

FOR TANGENTS ADD

Central Angle	DEGREE OF CURVE													
	5°	10°	15°	20°	25°	30°	35°	40°	45°	50°	55°	60°	65°	70°
10°	.03	.06	.09	.13	.16	.19	.22	.25	.28	.31	.34	.38	.42	.46
15°	.04	.10	.14	.19	.24	.29	.34	.39	.45	.51	.53	.58	.63	.68
20°	.06	.13	.19	.26	.32	.39	.45	.51	.58	.65	.72	.79	.84	.90
25°	.08	.16	.24	.33	.40	.49	.58	.67	.75	.83	.90	.99	1.06	1.14
30°	.10	.19	.29	.39	.49	.59	.69	.79	.89	.99	1.09	1.20	1.29	1.39
35°	.11	.22	.34	.47	.58	.69	.79	.81	.92	1.04	1.29	1.42	1.54	1.66
40°	.13	.26	.40	.53	.67	.80	.93	1.06	1.20	1.34	1.49	1.64	1.79	1.94
45°	.15	.30	.44	.60	.76	.91	1.06	1.21	1.37	1.52	1.70	1.87	2.04	2.21
50°	.17	.34	.51	.68	.85	1.02	1.19	1.36	1.54	1.72	1.91	2.10	2.29	2.48
55°	.19	.38	.57	.76	.95	1.14	1.32	1.52	1.72	1.92	2.14	2.35	2.56	2.77
60°	.21	.42	.63	.84	1.05	1.27	1.49	1.71	1.94	2.17	2.38	2.60	2.83	3.07
65°	.23	.46	.69	.93	1.16	1.40	1.64	1.88	2.13	2.38	2.63	2.88	3.13	3.39
70°	.25	.51	.76	1.02	1.28	1.54	1.80	2.06	2.33	2.60	2.88	3.16	3.44	3.72
75°	.27	.56	.83	1.12	1.40	1.69	1.98	2.27	2.57	2.87	3.16	3.47	3.78	4.09
80°	.30	.61	.91	1.22	1.53	1.84	2.15	2.46	2.78	3.10	3.44	3.78	4.12	4.46
85°	.33	.66	1.00	1.33	1.68	2.02	2.36	2.70	3.05	3.40	3.77	4.14	4.55	4.89
90°	.36	.72	1.09	1.45	1.83	2.20	2.57	2.94	3.32	3.70	4.10	4.50	4.91	5.32
95°	.39	.79	1.19	1.55	2.00	2.40	2.80	3.20	3.61	4.02	4.40	4.98	5.38	5.83
100°	.43	.86	1.30	1.74	2.18	2.62	3.06	3.50	3.95	4.40	4.88	5.37	5.85	6.34
110°	.51	1.03	1.56	2.08	2.61	3.14	3.67	4.21	4.76	5.31	5.86	6.43	7.01	7.60
120°	.62	1.25	1.93	2.52	3.16	3.81	4.45	5.11	5.77	6.44	7.12	7.80	8.50	9.22

FOR EXTERNALS ADD

Central Angle	DEGREE OF CURVE													
	5°	10°	15°	20°	25°	30°	35°	40°	45°	50°	55°	60°	65°	70°
10°	.001	.003	.004	.006	.007	.008	.009	.011	.012	.014	.015	.017	.018	.020
15°	.003	.007	.010	.014	.018	.023	.027	.029	.032	.035	.039	.043	.047	.051
20°	.006	.011	.017	.022	.028	.034	.038	.045	.051	.057	.063	.070	.076	.083
25°	.009	.018	.027	.036	.046	.056	.065	.074	.083	.093	.106	.120	.127	.135
30°	.013	.025	.038	.051	.065	.078	.090	.103	.116	.129	.149	.170	.179	.188
35°	.018	.035	.054	.072	.086	.109	.131	.153	.175	.197	.213	.230	.247	.264
40°	.023	.046	.070	.093	.117	.141	.172	.203	.234	.265	.277	.290	.315	.341
45°	.030	.060	.093	.119	.153	.184	.216	.254	.289	.325	.351	.378	.411	.445
50°	.037	.075	.116	.151	.189	.227	.266	.305	.345	.384	.425	.467	.508	.550
55°	.046	.093	.142	.188	.236	.283	.332	.381	.420	.479	.530	.582	.641	.700
60°	.056	.112	.168	.225	.283	.340	.398	.457	.516	.575	.636	.697	.774	.851
65°	.067	.135	.204	.273	.343	.412	.483	.554	.625	.697	.771	.845	.922	1.01
70°	.080	.159	.240	.321	.403	.485	.568	.652	.735	.819	.906	.994	1.08	1.17
75°	.095	.182	.266	.353	.440	.528	.617	.707	.797	.887	.977	1.07	1.18	1.29
80°	.110	.220	.332	.445	.558	.671	.787	.903	1.02	1.13	1.25	1.38	1.50	1.62
85°	.128	.259	.391	.524	.657	.790	.926	1.06	1.20	1.34	1.47	1.62	1.76	1.91
90°	.149	.299	.450	.603	.756	.910	1.07	1.22	1.38	1.54	1.70	1.87	2.03	2.20
95°	.174	.350	.522	.706	.885	1.06	1.25	1.43	1.62	1.80	1.99	2.18	2.38	2.58
100°	.200	.401	.604	.809	1.01	1.22	1.43	1.64	1.85	2.06	2.28	2.50	2.73	2.96
110°	.268	.536	.806	1.08	1.35	1.63	1.91	2.20	2.48	2.76	3.05	3.35	3.66	3.96
120°	.360	.721	1.08	1.45	1.82	2.19	2.57	2.95	3.33	3.72	4.11	4.50	4.91	5.32

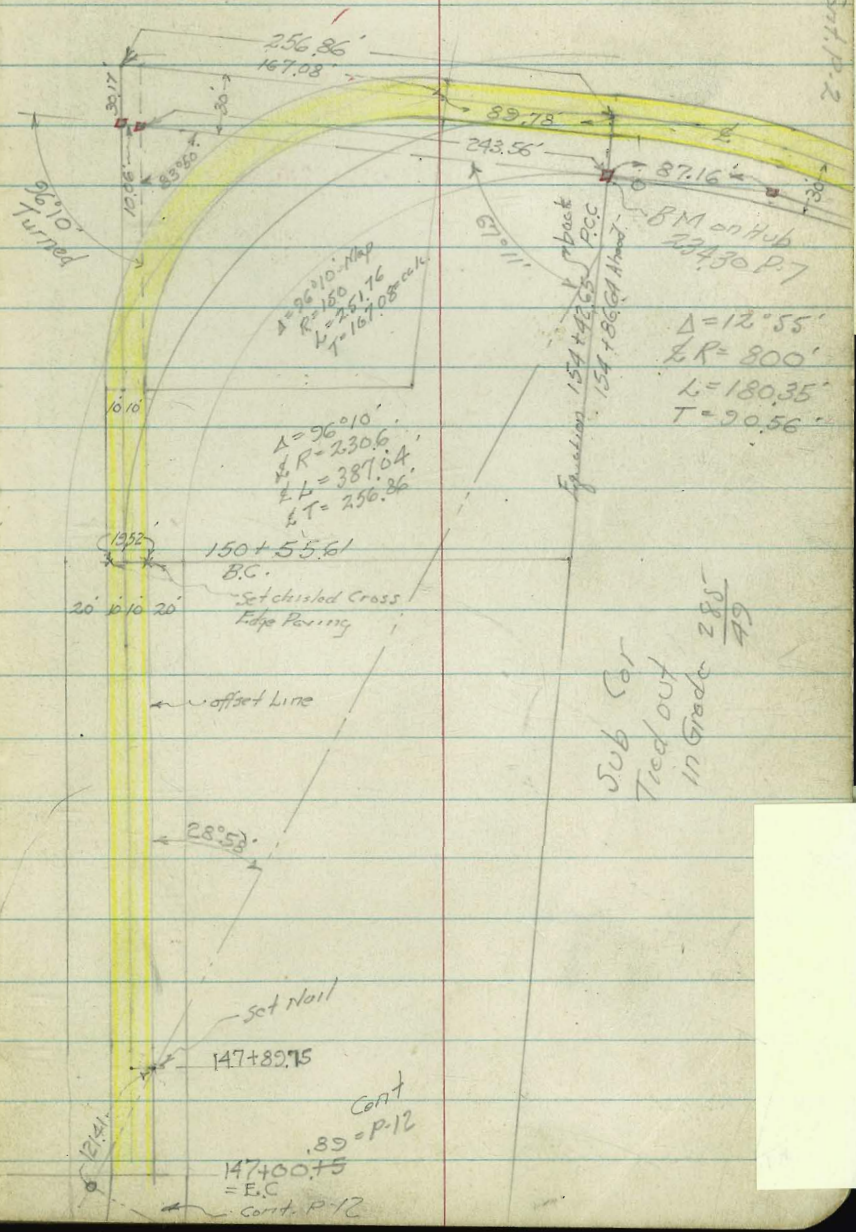
Index

- Fairmount Ave. - Alignment & X-Sec. for prop. change in line and grade Ties Lot 2, Horton's Purchase 1
- Fairmount Ave. - Ties - Lot 4, Horton's Purchase 1 2
- N & S Alley in Blk 244, Univ. Htz 14
- Cross Section Thorn St Central to 41<sup>st</sup> 21-25
- Profile & Glenfield - Fairmount 1. MANZ. DR 26
- " & HEATHER - Poplar " " 27
- X-SECT. PEPPER Drive - Violet to Tuberosa MANZ. Place to 28-34
- Profile & MANZANITA DR Marlborough 35
- X-Sec 40<sup>th</sup> Dwight to Redwood 38
- X-Sec Alley Blk 4 - Lexington Park 56-63
- X Sec Thorn St. - 40<sup>th</sup> to Central 52-55

Cont. P. 2

FAIRMOUNT AVE.  
Alignment and Cross Sections  
for Proposed Change in Line  
and Grade

Walker  
Pope  
Clark  
Hoffmann  
7-16-51  
Reference Roll #4340. W.D. 20837  
□ = set Hub & Disk



Sub Cor  
Tied out  
in Grade  
288  
49



Fairmount Ave ~ Cross Sections

3

Fairmount Ave. - Cross Sections

Lt.

L

ft. 4

149+50

166.0 169.9 173.1 173.5 172.0 172.00 172.11 172.02 171.8 184.5 193.5  
 40 30 24 19 16 10 10 18 28 60  
 Toe

TP #4

171.69

149+00

163.4 165.0 168.3 167.1 167.19 167.35 167.24 167.1 170.5 172.5  
 30 24 19 16 10 10 27 32 45  
 Toe

TP #3

162.19

148+50

156.6 163.6 162.0 162.19 162.31 162.21  
 30 19 16 10 10

148+00

160.8 162.7 157.8 157.61 157.73 157.71  
 30 19 17 10 10

147+50

153.09 153.49 153.69  
 10 10

TP #2

152.96

147+00, 15 = E.C.

149.22 149.24 150.42  
 10 10

TP #1

144.46 See P. 13

Top of NW Cor Bridge  
 Fmt & Cholla Creek

137.95

B.M. on Hedge Paving Fmt Ave 6178270 Feb. 1888  
 La Mesa  
 Sewer Sta.  
 41

Direct Elev. Rod used.

Fairmount Ave.

Lt.

2

RT

5

151+50

186.7 189.9 194.7 193.2  
61 51 38 35

192.89 191.94 190.89 190.3 207.0 210.7 214.5 217.1  
30.8' 20' 10' 4' 17' 30' 50' 60'  
EP EP EP Top

TP#6

190.45

151+00

178.2 182.3 188.3  
40 30 24

188.2 186.8 186.8d 186.56 186.40 186.13 185.9 199.4 212.8  
22 19 14.5 EP 4.5 EP 6.0' 15' 23' 60'  
EP Top

150+55.6' B.C.

170.3 175.5  
40 30

183.5 183.3 182.2 182.04 182.11 182.04 181.8 196.6 207.7  
19 17 15 10 10 20 32 60

TP#5

181.25

150+00

171.3 174.8  
37 30

178.8 178.2 176.7 176.76 176.90 176.82 176.6 192.2 207.7  
24 19 14 10 10 20 30 60



Fairmount Ave - Cross Sections

Lt

R

Rt

6

154+00

197.5 204.5  
70 50

2174 2206 2194 2200 2198 2197A 2198 2193 2294 232.7 235.3  
30 25 22 14.5 4.4 Por. 58 16 21 30 50  
Hitt  
Edge  
E.P.  
Por. Por. Edge  
Por.

TP #9

216.46

153+50

197.2 202.1 214.7  
70 58 40

2144 21441 21430 21404 2134 2135 223.2 231.2 2339 235.2  
36 30.9 20 9.6 2 5 30 50 60  
Edge  
E.P.  
E.P.

153+00

206.7 208.1 210.7 209.3  
85 64 56 51

20908 20824 207.8 2184 2204 228.3 231.4  
46.0 25.5 15 10 Uniform - 30 50  
E.P. E.P.

TP #8

207.39

152+50

202.6 203.7 205.3 205.7 204.2  
85 72 69 63 58

20380 20239 201.7 2130 2156 221.8 235.8  
50.9 31 19 12 30 50  
E.P. E.P.

TP #7

199.17

152+00

192.7 196.7 199.6 199.4 198.8  
85 63 57 56 53

19840 19755 196.62 196.1 2091 2105 2159 2196  
45.4 35 25.5 19 6 30 50  
EP EP EP Toe

Fairmount Ave Cross Sections

TP #11 233.99  
 155+75 233.0 232.6 232.38 232.23 231.91 231.8 231.6 231.2 231.3  
 40 30 10 10 10 20 23 30 50  
 E.P. E.P.

155+50 231.0 230.4 229.95 229.91 229.55 229.4 234.9 235.1 237.4  
 40 30 10 10 10 18 24 30 50  
 E.P. E.P.

155+25 229.2 228.1 227.69 227.59 227.7 226.9 233.9 234.2 237.0  
 45 30 10 10 10 20 23 30 50  
 E.P. E.P. E.P.

155+00 225.5 225.5 225.47 225.34 224.88 224.5 233.7 234.4 236.3  
 40 30 10 10 10 20 26 30 50  
 E.P. E.P.

TP #10 224.95  
 154+86.64 Ahead B.C.R.  
 154+42.65 Back Equation  
 211.3 214.1 219.6 224.9 223.9 224.29 224.10 223.63 223.3 233.2 234.30 236.1  
 60 38 30 21 18 10.3 9.51 19 25 30 50  
 as slope 1/2" 1 Edge on Hub  
 Pav. Pav.

~ Fairmount Ave Cross Sections

#13  
T.P. on Pipe

238.50

#12  
T.P. on Pipe

0 33  
238.83 = subdivision  
238.50 Party Chief

from city B.M. on culvert Hd Wall Home Ave & First Ave

157+00

239.0	239.3	239.64	239.66	239.56	239.1	239.2
50	30	10 E.P.		10 E.P.	30	50

156+66.99 = F.C.

239.0	238.96	238.87	238.85	238.61	238.50	239.2
50	30	10 Pov.		10	30 on Pipe	50

156+50

238.6	238.4	238.11	238.01	237.75	238.2	238.9
50	30	10 E.P.	10 Pov.	10	30	50

156+25

237.4	236.9	236.60	236.52	236.23	236.1	237.2	237.6	238.3
50	30	10 E.P.	10 Pov.	10 E.P.	18	21	20	50

156+00

235.1	234.8	234.72	234.55	234.28	234.0	237.2	237.8
40	30	10 E.P.	10 Pov.	10 E.P.	20	30	50

Fairmount Ave

Lt.

X

Rt. 9

159+00

2336 229.7 225.1 225.5 225.20 225.04 225.8 227.1  
50 30 15 10 10 30 50  
EP EP

TR#14

230.48

158+50

236.0 233.5 231.5 231.27 231.24 231.7 232.0  
50 30 10 10 10 30 50  
EP

158+25

236.9 235.7 234.4 234.20 234.13 234.2 234.3  
50 30 10 10 30 50  
EP

158+00

237.6 236.8 236.4 236.5A 236.48 236.4 236.4  
50 30 10 10 30 50  
EP EP

157+75

238.2 238.0 238.01 238.08 237.97 237.8 237.6  
50 30 10 10 30  
EP

157+50

238.6 239.0 239.08 239.12 239.00 238.7 238.6  
50 30 10 10 30 50  
EP EP

157+25

239.0 239.3 239.54 239.58 239.48 239.1 239.2  
50 30 10 10 30 50  
EP

Fairmount Area Cross Sections

Lt. E. Rt. 10

Cont. P. 11

TP # 22 157.51  
 TP # 21 166.59  
 TP # 20 175.80  
 TP # 19 184.90  
 TP # 18 194.43

161+56.63 = B.C. Lt.

211.4 199.9 193.5 193.65 194.20 194.47 195.0 193.5 195.34 211.7  
 50 22 19 10 10 19 2.8 30 50  
 on 2" pipe

161+00

216.6 205.8 200.8 200.81 201.04 200.99 201.5 199.8 216.3  
 50 21 19 10 EP 10 20 30 50

TP # 17

209.33

160+50

221.3 213.1 207.6 206.98 207.04 206.79 206.1 206.9 219.2  
 50 27 20 10 EP 10 30 33 50

TP # 16

212.63

L Hel. Wall on Lt. = 16' from E. Not in use

160+48 = E. Exist. Culvert (Ends Covered up.)

160+00

222.8 214.9 213.3 213.00 213.06 212.88 212.1 213.4 223.2  
 50 21 19 10 EP 10 30 35 50

159+50

223.0 222.7 219.0 219.05 219.11 218.95 218.8 219.5 224.5 224.9  
 50 30 19 10 EP 10 30 37 47 50

TP # 15

221.71

Fairmount Ave Cross Sections

N.E. Cor Box Culvert  
Chk B.M. Brass Plg

0.05  
148.05 Feb. 1435  
148.00 ✓ 10

N.E. Cor  
Fairmount & Home Ave



Garber  
Bertolucci  
Aug. 29, 51

Check Levels

		0.32	237.60		
	237.97				
12.23					
		0.34	225.69		
12.05	226.03				8.25 148.04 ✓
		0.44	213.98	0.46	156.29
					BP Fly Cor. Culv. Home. & Fairmount.
11.80	214.42				11.75 155.83
		0.25	202.62	0.19	167.58
12.12	202.87				12.30 167.39
		0.02	190.75	0.02	179.69
11.84	190.77				12.27 179.67
		0.21	178.93	0.13	191.94
11.72	179.14				12.28 191.81
		0.10	167.42	0.18	204.09
12.16	167.52				12.28 203.91
		0.21	155.36	0.08	216.19
		11.66	143.91		12.05 216.11
			My edge Pave & Bridge		
11.11	155.57			0.03	228.16
			144.46 T.P. <sup>H</sup>		11.79 228.13
			Top Cb. N/W Cor. Bridge Fairmount & Chollas Creek	2.32	239.92



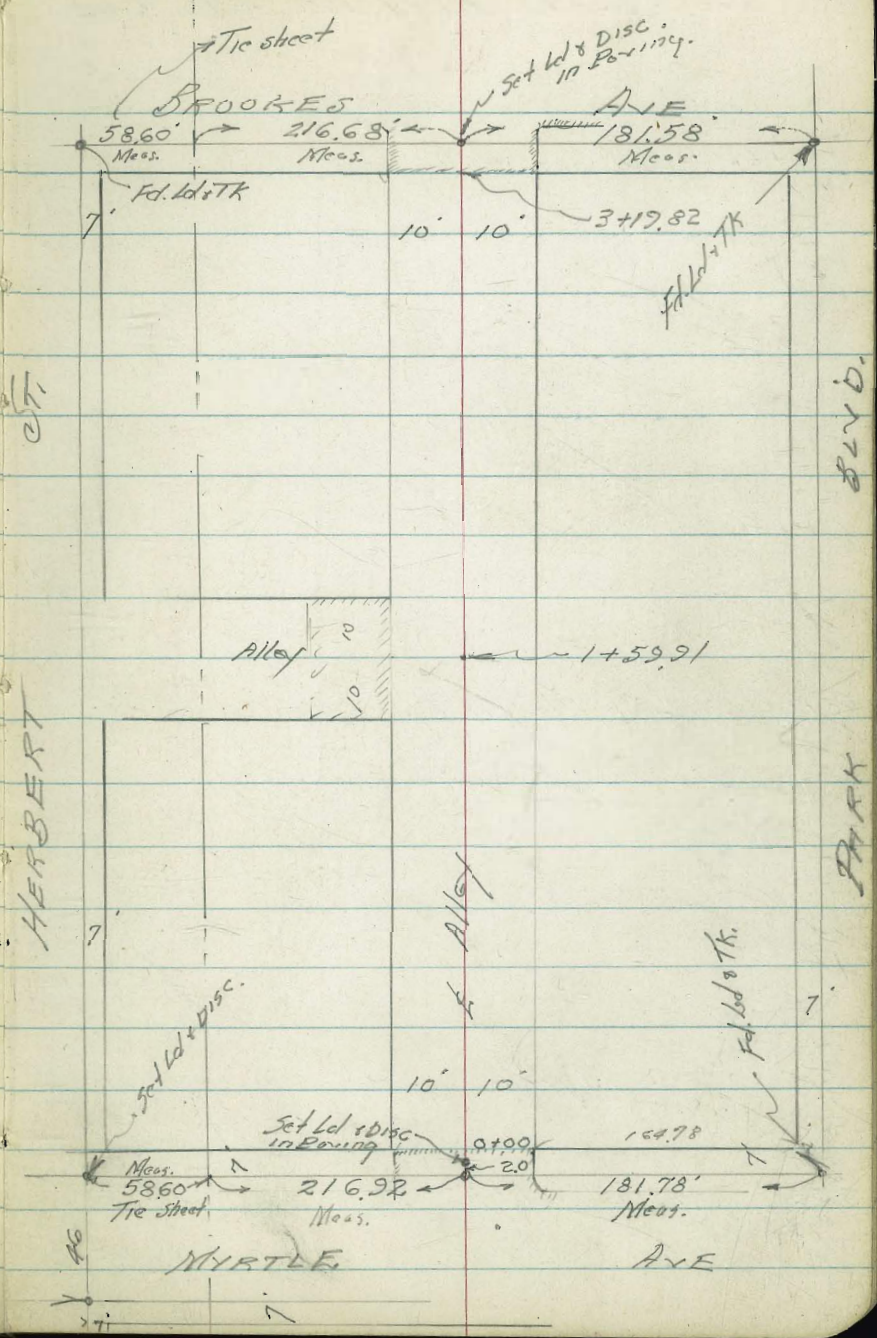
CROSS SECTION North & South Alley  
 31k. 244-Union Hts.  
 Between Park Blvd And Herbert  
 from Myrtle to Brooks

Walker 10-31-51 140 32017  
 Pope  
 Allen Orig. Sections FB 1252-45, 1294, 67

(Took Soil Sample 2 at 1750)

INDEXED  
 Law  
 NOV 1 1951

Reduced 11-1-51 Robert Bailey



Fol. l'd & Tk

N. South Alley Brk 244-4th v. Hts

Lt. L Rt 15

0+66 = End Conc. Wall

292.55  
2.00  
10  
on Wall

0+50

290.05  
4.5  
15  
290.05  
4.5  
10  
290.85  
4.7  
10  
290.35  
4.2  
10  
Ground at Wall  
292.24  
2.31  
10  
Wall  
287.34  
4.9  
10  
Bottom of Wall

0+04 = Brk in Conc. Wall on Rt

291.37  
2.18  
10  
on Wall  
289.45  
5.1  
Bottom of Wall

0+00 = N. Myrtle Ave. - Bay. 8" Conc. Ret. Wall

289.53  
5.02  
10.2  
cb.  
289.26  
5.29  
10.2  
Gut  
289.26  
5.89  
9.8  
Gut  
289.91  
4.64  
9.8  
Gut  
290.30  
4.25  
9.8  
cb.  
290.30  
4.25  
10  
on Wall

0-10' = N. cb. Myrtle

288.35  
6.20  
30  
6  
287.73  
6.82  
30  
Gut  
289.12  
5.93  
12  
cb.  
288.56  
5.99  
12  
Gut  
288.66  
5.89  
10  
289.02  
5.53  
10  
289.49  
5.06  
10  
289.56  
4.99  
12  
Gut  
290.13  
4.42  
12  
cb.  
290.12  
4.43  
30  
Gut  
290.82  
3.75  
30  
cb.

0-30' = N. Myrtle

288.54  
6.01  
25  
289.19  
5.36  
10  
289.52  
5.83  
10  
289.91  
4.64  
10  
290.24  
4.09  
25

TP 2.55 294.55 5.63 292.00

BM  
S.F., B.P. Brooks & Herbert

8.50 297.63 289.13

294.55

1/8 South Alley Blk 244 Univ. Hqs.

Lt. 8 Rt. 16

1+14.1 = Beg. Conc. Slab, Supports 3.4' overhang.

291.80  
275  
10  
291.79  
276  
13.4

Slab  
291.43  
312  
9.4  
291.50  
305  
13.4  
Walk  
Walk at Bld.

1 + 14 = End 4' Walk

1+00

291.15  
3.4  
20  
290.85  
3.7  
10  
290.75  
3.8  
291.15  
3.4  
9.4  
291.30  
32.5  
9.5  
291.52  
303  
13.5  
Walk  
Walk at Bld.  
291.33  
32.2  
9.6  
Walk  
Walk at Bld.

0+88 97' RA = 2 TEL Pole #88000 H-

0+84.5 = Beg 4' Conc Walk Runs Parallel to Alley

0+82.5 = 3' Corner Walk

0+81 = End Conc Apron

290.61  
3.4  
15.1  
Walk  
290.53  
4.02  
10.1  
Walk  
290.61  
3.4  
10.3  
Toe Apron  
290.81  
3.74  
11.8  
Apron  
Ork.  
290.85  
3.70  
13.7  
Floor.

0+72 = Beg. Conc. Apron to Garage

290.43  
4.12  
10.3  
Toe Apron  
290.81  
3.68  
13.8  
Floor.

0+71.9 = End Walk

0+67 = Beg. Conc. Walk

290.76  
3.79  
10.3  
Walk  
290.87  
3.68  
10.3  
Walk  
294.55

North & South Alley Blk 244 Univ Hts.

1+70 = 11 Edge Pav. E & W Alley Lt.

1+60 = 8 Pav. on Lt. Alley E & W

1+51 = 8 Pav. 22' Lt. PA 3592

1+50 = 5 Edge Paving Alley on Lt.

1+43

1+34 = End Conc. Apron Rt.

1+33 = 2 Garage on Lt.

1+26 = 2' Walk

1+18 Cont.

TR 4.21      296.72    274      291.81

1+18 = End Conc. Slab - Beg. Conc. Apron to Garage

294.55

Lt.

290.84  
588  
70

290.51  
621  
70

291.30  
542  
70

291.03  
569  
40  
Floor

290.97  
575  
40  
Floor

291.37  
535  
10  
Walk

291.13  
552  
50

290.78  
594  
50

291.96  
476  
19.5

291.72  
50  
10

291.52  
52  
10

291.92  
480  
92  
Top  
Apron

292.27  
445  
134  
Floor

296.72

292.25  
497  
174  
Garage  
Floor

291.91  
264  
93  
294.55  
Top  
Apron

292.04  
251  
134  
on Apron

Rt.

17

North & South Alley Bk 244 Univ. Hts

2+41 = Beg. Dble. Garage Conc. Apron

2+27 = Beg. 10 Car Garage on Rt  
Conc. Floors,  
Asphalt Apron

2+00

1+225 = Beg. Asphalt Apron. from this Sta. to St. Brooks

1+223 = End Conc. Walk = Rt & to Alley  
Walk Runs

1+85 = Beg. Conc. Walk on Rt.

TR 6.23 297.88 507 291.65

1+85 = Beg. Conc. Walk

1+85 2.6 RT Tel Pole # 537260

296.72

44

2

174

18

292.57  
531  
17  
Floor.  
292.65  
523  
134  
Bk  
Apron  
292.43  
545  
101  
Toe Apron

292.08  
5.8  
15  
292.08  
5.8  
10  
291.78  
6.1  
5  
291.78  
6.1  
5

292.56  
532  
9.5  
Apron  
293.67  
421  
78  
Floor.

292.08  
5.8  
9.8  
292.79  
5.09  
12  
293.03  
4.95  
18

292.12  
5.76  
9.9  
292.79  
5.09  
14  
292.93  
4.95  
18

292.06  
5.82  
9.8  
292.80  
5.08  
14  
292.96  
4.92  
18

291.97  
5.91  
9.8  
Walk  
292.76  
5.12  
14  
Bk  
walk  
292.90  
4.98  
18

297.88

296.72

North & South Alley Blk. 244 Univ. Hts

3+19.82 = SL. Brookes

3+15 = N end 10 Car Garage on Rt

3+03 = 2 Tree 11' Lt. = Brk in Walk

3+00

2+98.5 = 2 Pole 2' Lt. A 3595

2+60 = End Conc. Apron 2' Parallel To Walk  
Beg. Conc. Walk

2+50

292.80	292.49	292.31	292.73	293.18
5.08	5.39	5.57	5.15	4.70
10.0	19.0		225	225
cb.	cut		cut	cb.

292.80	293.63
5.08	4.25
.97	18
	Floor.

293.50  
4.38  
11.9  
East  
edge walk

292.18	292.58	292.58	292.89	293.53
4.7	5.3	5.3	4.99	4.35
10	8.5		99	18
			Toe Apron	Floor.

292.56  
292.44  
292.31  
5.32  
5.44  
5.57  
16  
11.6  
10  
Floor  
Walk Apron

292.33	292.30	292.64	293.56
5.55	5.5	5.24	4.32
10.1		9.6	18
Apron		Apron	Floor.

297.88

N.S. Alley Blk 244 - Univ. Hts

Lt.

£

Rt.

20

North + South Alley

		0.01
		289.13
Chk. Starting B.M.	876	289.12

3+29.82 £ Brookes

	292.13	292.56	292.71	292.84	293.35
	5.75	5.32	5.17	5.04	4.53
	40	10		10	50
	Pay	Pay.	Pay.	Pay.	Pay.

3+29.82 = 5 cb Brookes

293.23	292.53	292.62	291.98	292.01	292.13	292.25	292.26	292.93	292.67	293.35
4.65	5.35	5.26	5.20	5.87	5.75	5.63	5.62	4.25	5.21	4.53
40	40	12	12	10		10	12	12	Gut	45
cb	Gut	cb	Gut.				Gut.	cb.	45	cb.

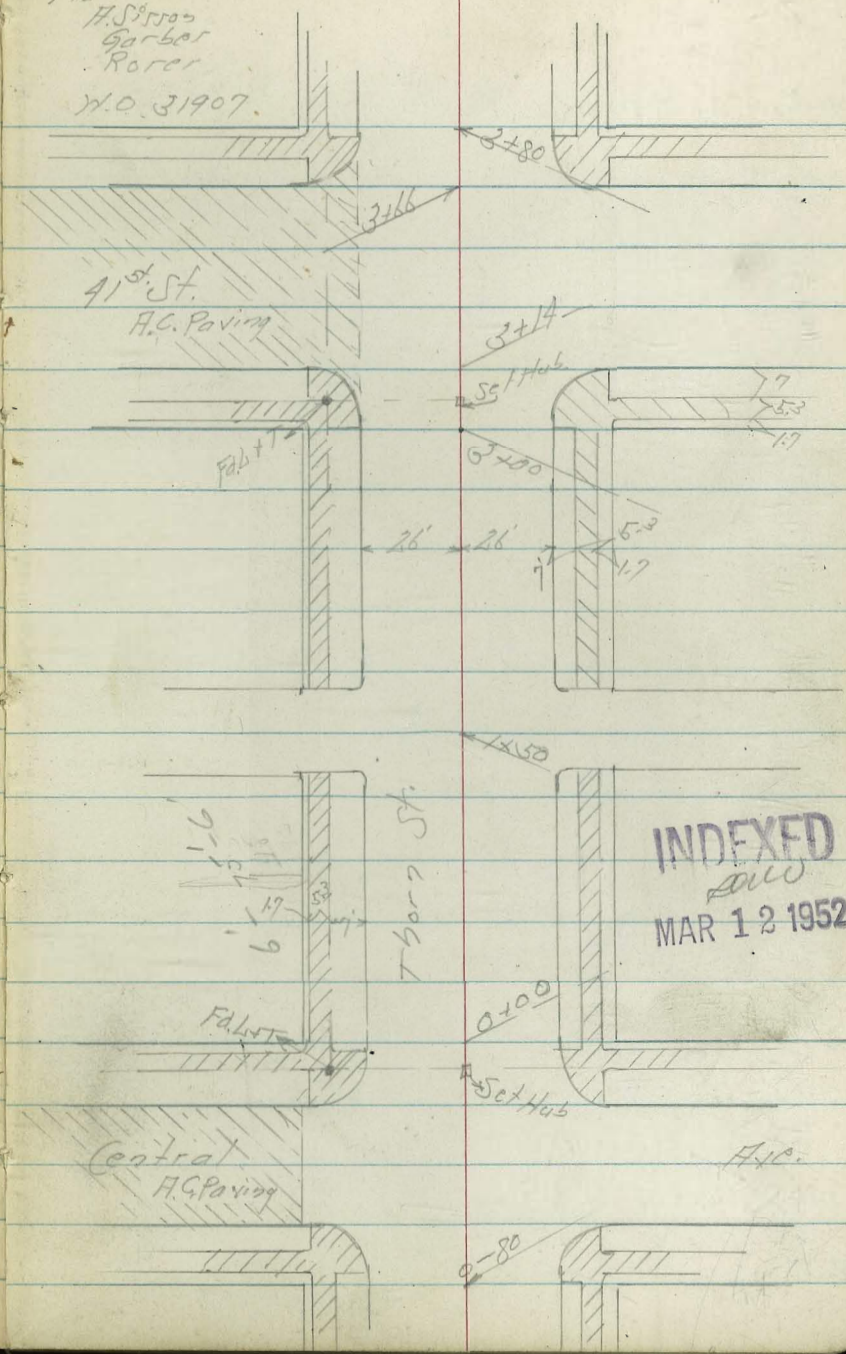
297.88

297.88

Cross Section Thorn St.  
Central to 41<sup>st</sup>.

Levels next page

March 12, 1952  
H. Stroon  
Garber  
Rorer  
N.O. 31907.



INDEXED  
MAR 12 1952





Thorn St.

Lt.

L

Rt.

23

+60 = East Line Alley

309.66	308.47	309.0	308.1	308.2	309.5	307.3	307.72	308.05
263	282	33	32	31	34	40	3.37	3.24
40	28-Cbfc.	26	13	13	13	26	28-Cbfc.	40-SyCbx
Diff.								Diff.

+50 = East Alley

308.9	307.8	308.1	308.1	307.8	307.3	308.7
24	35	33	32	35	4.0	26
40	26	13		13	26	40

+48

307.96	307.96
3.34	3.33
1175.41	9.15-51.25x45
504	Conf. Box
	Meta Cover

+10 = West Line N + S Alley

308.24	308.02	307.3	307.8	307.8	307.4	306.9	307.55	307.90
295	327	40	35	35	39	44	374	339
40-H40	28-Cbfc.	26	13		13	26	28-Cbfc.	40-SyCbx
								Diff.

1405

307.8	307.57	306.7	307.1	306.9	306.6	305.8	306.78	307.1
35	39	46	43	44	48	55	451	43
40	28	26	13	13	26	26	26	48

0+70

307.59	306.93	306.25	306.1	306.6	306.4	305.9	305.2	306.14	306.6
370	136	529	52	48	47	54	61	515	48
18-Drive	28-Cbfc.	26-Drive	26	13	13	13	26-Cbfc.	26-Cbfc.	40

311.29

311.29

T. Horn St.

Lt.

R

Rt

+10

310.39	310.25	310.4	310.4	310.2	310.1	310.1
552	561	55	55	57	58	58
40-11C	26-11C	13	13	13	26	40

+14 = West Carb Line

310.98	310.55	310.22	310.4	312.4	310.2	311.8	309.6	310.39
193	536	569	55	55	57	61	63	552
40-00	40-54	26-11C	13	13	13	26	40	40-00

3+0 = West Line 41<sup>st</sup> St.

311.41	310.86	309.9	310.3	310.3	310.0	309.7	310.39	310.6
450	505	60	56	56	59	62	552	500
40-Conc	26-C0	26-Gut	13	13	13	26	26	40

+65

310.63	310.29	309.4	309.9	309.9	309.6	309.0	309.81	310.4
578	562	65	60	60	63	69	610	55
40-Conc	26	26	13	13	13	26	26	40

2+30

310.06	309.66	308.8	309.3	309.3	309.0	308.5	309.16	309.4
585	626	71	66	66	69	74	675	65
40-Conc	26	26	13	13	13	26	26	40

TP 6.87 315.91 1.75 309.54

315.91

1495

309.4	309.07	308.5	308.7	308.6	308.3	307.9	309.51	308.7
19	227	28	26	27	20	24	277	26
40	26-00	26-Gut	13	13	13	26	26-00	40

311.29

311.29

Lt.

L

Rt.

B.M.

6.43 301.81

M.K. 87  
Thorn +  
Marlborough  
301.82

TP

1.77

308.24

9.44

306.47

3480 = Ford Line

310.27	310.27	309.4	309.7	309.6	309.4	309.0	309.76	310.3
5.32	5.64	6.5	6.7	6.3	6.5	6.9	6.5	5.6
10-10-10	16-06	10-9-10	13		13	10-9-10	16-06	10

3466 = Ford Carb Line 41st St.

310.23	309.72	309.59	310.1	310.0	309.8	309.5	309.6	309.82
5.68	6.19	6.33	5.8	5.9	6.1	6.4	6.3	6.09
10-06	10-9-10	16-06	13		13	16	10-9-10	10-06

Clark. Profile E Glenfield

Shepherd  
Johns  
N.O. 32059  
9-25-52

Fairmount to MANZANITA DR.

STA.	LT.	RT.	STA.	LT.	RT.
579			401.53	app. Prop. B.C. LT.	306.31
1796		307.14	398.98		306.33
1776		307.10	383.98	CB. EC RT.	306.59 Drive 306.51 15 GUTT 6057 15 T.C.B.
1756	306.18 GUTT.	306.68 TP.C.B. 15	306.76	Drive 306.63 15 TP.C.B. (Not Lip)	306.74
1736		306.75	3750		306.96
1716	W.L. Alley - D.V.C.	306.46	306.63 TP.C.B. 15	3700	307.16
1701	E.L. Alley	306.24		2776 E.V.C.	307.21
0742.75	app. CB. EC RT	305.21	2756	306.52 GUTT.	307.55 307.52 TP.C.B. 307.04 GUTT. TYP.C. (NOT LIP)
0700		304.57 old P.V. broken out	2736		307.21
(0700 = W. Line Fairmount)			2716		307.19

INDEXED  
LW  
SEP 20 1952

E STATIONING

B.M.

DIRECT ELEV. Rd:

318.02 = B.P. S/E THORN & FAIRMOUNT.

Profile of HEATHER ST.

Poplar to MANZ. DR.

STA.	LT.	Σ	RT.	STA.	LT.	Σ	RT.
1+60		299.09					
1+40		299.26					
1+20		299.37					
1+00	299.00 CUTT 18 TP CB	299.49	299.46	3+15.07 = S.L. MANZ. DR LT.		299.04	
+80		299.53	299.52 18 TP CB	299.08 CUTT	3+07.07 = CB BCLT.	296.61 CUTT 18 TP CB	297.20
+60		299.52		2+99 = CB BC RT.		297.35	297.73 18 TP CB
0+40 B.V.		299.40		2+50		298.18	
0+05 = CB EC	298.86 CUTT 18 TP CB	298.86	298.81	2+00 = F.V.C.	298.07 CUTT	298.55 18 TP CB	298.72
			299.27 18 TP CB			298.25 CUTT	298.82 18 TP CB
0+00 = N.W. LINE Poplar		298.65		1+80		298.89	

INDEXED  
SEP 29 1952

Σ STATIONS

B.M.

Direct Elev. Rod:

318.02 B.P. S/E THORN FAIRMOUNT

Clark  
Shepherd  
Bruner  
W.O. 32061  
9-26-52

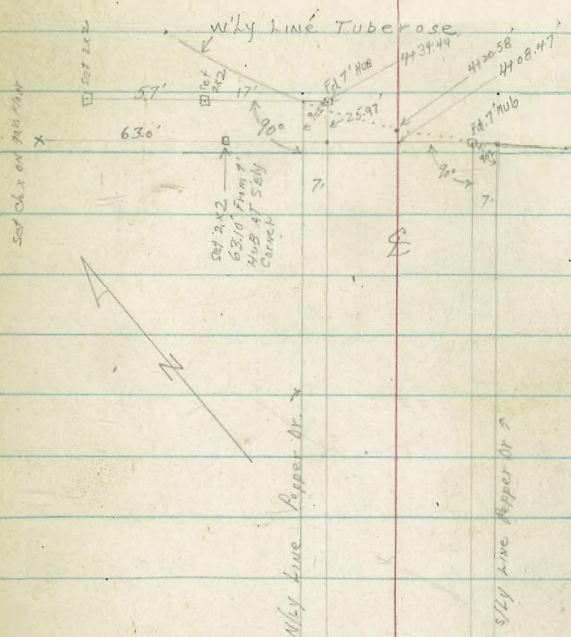
X-SECT PEPPER DRIVE

Violet to Tuberosa E

Dwg not to scale: Notes Pg.-29.

DATA: MAP 1696, # 314

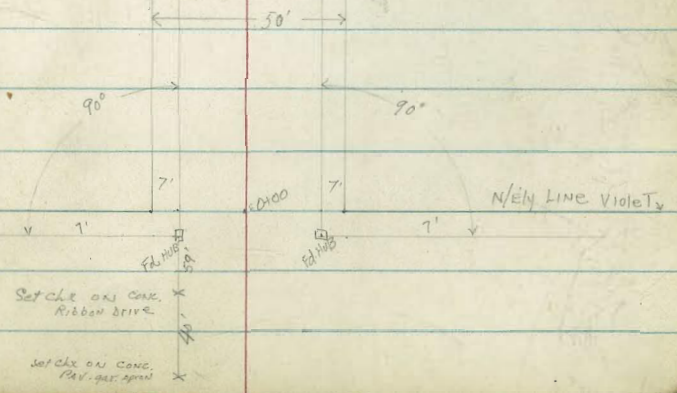
T.P. 21/126



INDEXED  
SEP 29 1952

Soil - Sample  
TAKEN AT  
STATION 2450 E

Pepper Dr. has  
strip of old broken  
oil-pav. approx. 20  
wide



X-SECT. PEPPER DRIVE

Violet to TUBEROSE

Sketch pg. 28.

✓ 1+00

✓ 0+99

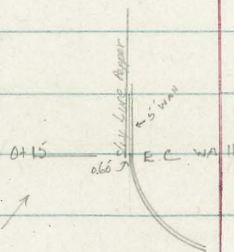
24.5' RT & S' CONE WALK

✓ 0+80

24.7 RT Beg. 30' wide x 5' high CONC. COPING.

25.1 RT END 5' CONC. BIK WALL

✓ 0+50



✓ 0+15

25.6' RT. EC OF 5' CONC. BIK WALL

checked - 9-15-53 - 7.0.

✓ 0+00 = N/4 line Violet

Beg. 3'icket Fence 25.7 LT

Beg. taken Cold-Lay roughly 12x80 with N/4 Edge along J Pepper

0-25 = E Violet.

T.P. 6.62 287.66 7.10 281.04

B.M. 1.76 288.14 286.38 N/E F.H. yd. Poplar + Violet.

LT.

283.7  
4.0  
35  
283.6  
4.1  
25  
283.1  
4.6  
15  
282.3  
5.4  
12

E

RT.

282.4  
5.3  
282.0  
5.7  
10  
282.5  
5.2  
24.5  
282.86  
4.80  
27.5  
282.2  
4.5  
4.5

282.80  
4.86  
27.5  
EDGE  
WALK

282.01  
4.65  
4.7  
WALK

282.73  
4.93  
24.7  
TP  
Coping

282.4  
5.3  
25.1  
TP  
WALL

282.7  
5.0  
30  
282.6  
5.1  
25  
282.4  
5.3  
15  
281.6  
6.1  
12

281.7  
6.0  
12  
281.3  
6.4  
12  
281.8  
5.9  
15  
281.8  
5.9  
25  
282.1  
5.6  
35

282.2  
5.5  
50

281.7  
6.0  
25

280.9  
6.7  
14

280.9  
6.7

281.6  
6.1  
25.6  
DIRT

280.7  
7.0  
FFG  
WALL

282.4  
5.3  
100  
Taken  
Cold-Lay

281.4  
5.7  
50  
Taken  
Cold-Lay

280.9  
6.7  
Broken, set pit

280.9  
6.7  
50

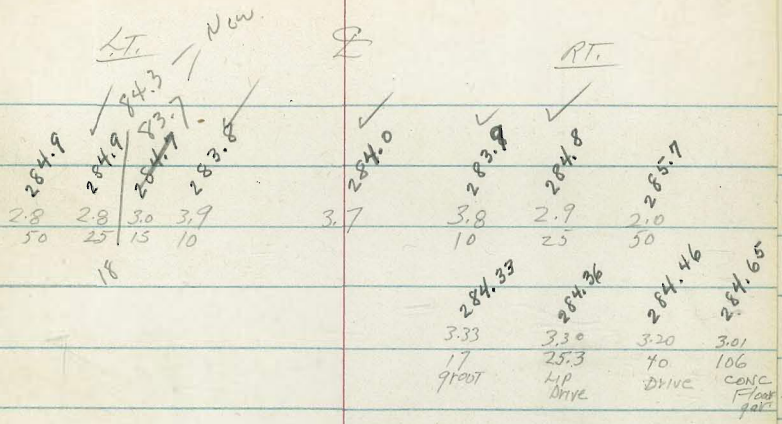
280.2  
7.5  
50

280.1  
7.6  
100

287.66



X SECT. PEPPER (CONT.)



✓ 2400 25' LT Bag 3' Hedge

✓ 1496 25.3' RT 7.5' Conc Drive  
17 RT to Edge of Groot

✓ 1486 19.1' RT 3" Pepper tree

✓ 1476 19.3' RT 5" Palm Tree

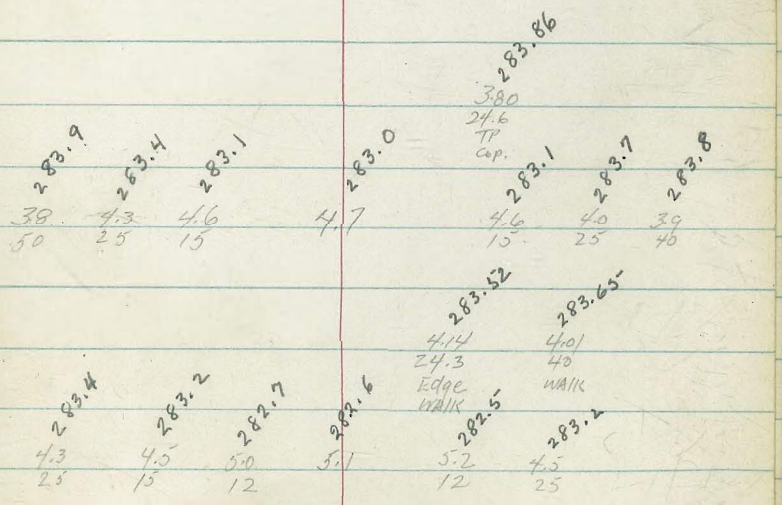
✓ 1468 19.3' RT 3" Pepper Tree

✓ 1460 24.6 RT END CONC Coping

✓ 1450 38.50 4.3 25 4.6 15

✓ 1441 24.3' RT 3' CONC WALK

✓ 1420 25.2' LT END 3' Picket Fence



287.66

X-SECT. PEPPER (CONT.)

- ✓ 2169 18' LT ♀ 3" Pepper Tree
- ✓ 2158 25.0' RT ♀ 2.5' CONC WALK
- ✓ 2153 18.0' LT ♀ 3" Pepper tree
- ✓ 2150 21.7' LT ♀ 2" Pepper Tree  
24.7' RT. Bq 30' x 50' Conc Coping + 2.5'  
Rail Fence
- ✓ 2136 ♀ DIRT DRIVE RT
- ✓ 2130 24.5 RT ♀ 2' CONC WALK
- ✓ 2122 25' LT END Hedge
- ✓ 2109 19.3 RT ♀ 4" Pepper Tree

T.P. 6.42 290.50 3.58 284.08

LT.

♀

RT.

285.88  
4.67  
25.0  
LIP  
WALK  
286.00  
4.50  
4.2  
WALK

285.5 5.0 70  
285.5 5.0 25  
284.9 5.6 14  
284.8 5.7  
284.7 5.8 11  
285.4 5.1 17  
285.7 4.8 25  
285.9 4.6 35

285.83  
4.67  
24.7  
TP  
COP  
285.1  
5.4 25 DIRT  
285.2 5.3 50 DIRT  
285.1 5.4 710 DIRT Floor 90'

285.13 5.37  
24.5  
LIP  
WALK  
285.27 5.23  
4.6  
WALK

290.50

X-SECT. PEPPER (CONT.)

3+13

26.7 RT & 8.5 Conc Drive

3+12

17.2 LT & 15" Oleander

3+05

25.2 LT & 3' Conc Walk

3+00

T.P.

5.27 291.48 4.29 286.21

2+98

18' LT & 1" Pepper tree

2+88

17 LT & 1" Oleander Bush

2+87

62 LT & 9' Conc Drive

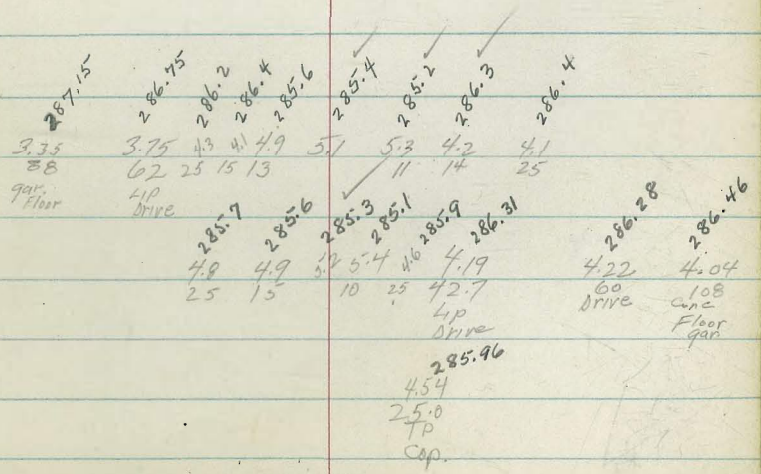
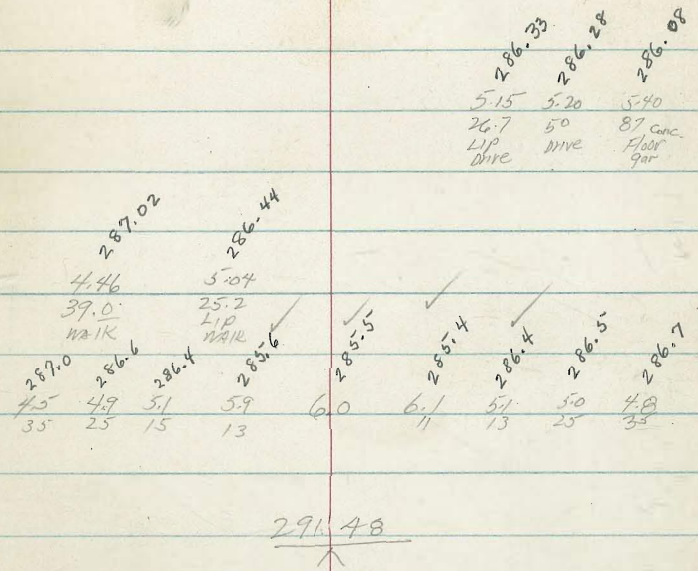
2+77

42.7 RT & 8' Conc Drive

2+71

25.0 RT END Conc Cap + RAIL Fence

LT E RT



X-SECT. PEPPER DR. (CONT.)

4+08.47

= N/4 LINE TUBEROSE ON R.T.

285.0  
6.5  
50

284.6  
6.9  
25

283.7  
7.8  
10

283.7  
7.8

283.5  
8.0  
12

284.2  
7.3  
16

283.8  
7.7  
25

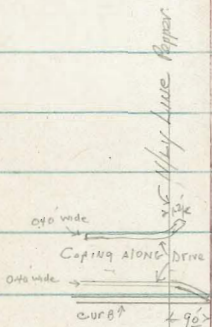
283.7  
7.8  
50

4+07

E DIRT DRIVE L.T. 1' GRV @ 112' LT

286.53  
7.95  
112  
CONC. / HOOR GRV

284.6  
6.9  
25  
DFT



4+00

16' LT END OF 9" x 15" CURB. ] TO E STREET

285.50  
5.78  
25  
TOP CURB

285.54  
5.94  
16  
TOP CURB

286.1  
5.1  
50

286.2  
5.3  
25

286.1  
5.4  
14

284.9  
6.6  
11

284.6  
6.9  
11

285.3  
6.2  
13

285.3  
6.2  
25

285.0  
6.5  
50

3+75

3+42

17.5' LT E 1" SHrub

286.9  
7.6  
50

286.7  
4.8  
25

286.6  
4.9  
15

285.5  
6.0  
10

285.4  
6.1

285.4  
6.1  
11

286.4  
4.9  
14

286.0  
5.5  
25

285.8  
5.7  
50

3+40

3+20

16.9' LT E 3" PEPPER TREE

291.48

X SECT. Pepper Dr. (cont.)

LT.      E      RT.

CHK: 2.08      289.29 - 289.27 top. Fly Tuberos + Poplar

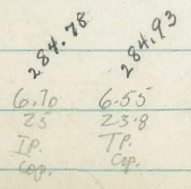
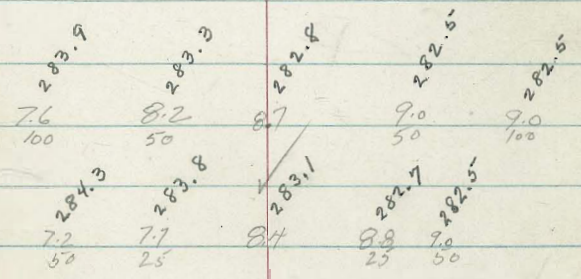
T.P.      7.10      291.37      7.21      284.27

4448      ANL & Tub. Section along approx E Tuberos. on Corrs  
see sketch p. 33

4434.44      opp. My Live Tub. LT  
See New Sections of Tuberos

(Sections at Rt. 2. to 9. Pepper)

4417.5      23.8 LT Edge Cap. Along Drive  
See sketch p. 33



291.78

Clark  
Shepherd  
Bruner  
W.O. 32059  
9-26-52

PROFILE  $\frac{1}{2}$  MANZANITA DR

MANZANITA PLACE to MARLBOROUGH  
(to STAT. 15772.15)

STA.	LT.	$\frac{1}{2}$	RT.	STA.	LT.	$\frac{1}{2}$	RT.
				5+22.92			297.91
2+50		304.94		(SPTS. 28.44 area)			
				4+94.48 - P.P.C. MANZ.	chk: 297.54 18 GUTT.	299.10	297.34 chk. 18 GUTT.
2+27.64	opp. B.C. LT. AT Glenfield (S/LY)	chk 305.02 G+18 B.C.	305.30				
				4+70.09		298.61	
2+00		306.66					
				4+45.71		299.20	
1+50		308.34					
				4+21.33		299.83	
1+00		309.92					
				3+96.95		300.46	
0+50		311.58		(SPTS. 24.28 area)			
				3+72.51 (B.C. MANZ.)	chk 300.83 18 GUTT.	301.15	300.35 chk. 18 GUTT.
0+00	chk. 312.26 18 GUTT	312.13 (Flat) 18 T.P.C. B.C.	313.04	312.75 18 T.P.C. B.C.	312.70 18 GUTT	313.04	(TYPE C. GUTTERS)
				3+50		301.88	
				3+00		303.37	

INDEXED  
SEP 29 1952

(0+00 = S/LY LINE MANZ. PLACE)  
( $\frac{1}{2}$  STATIONS as per F.D. 7/652)

B.M. DIRECT. ELEV. RD. 318.02 = B.P.  $\frac{1}{2}$  THIN & FAIRMOUNT.

Profile - MANZANITA DR. (CONT.)

36

STA.	LT.	E	RT	STA.	LT.	E	RT.
8+4.96		294.27					
				11+00		288.98	
7+79.06		294.59					
				10+50		290.14	
(6 pts. 25.895 mcs)							
7+53.17 = BC MANZ.	chk. 29440 18 GUTT	294.88	293.95 18 GUTT	10+00		291.23	
7+00		295.46		9+66.98 = E.C. MANZ.	291.00 chk 18 GUTT	291.84	290.95 chk 18 GUTT
6+50		296.03		9+47.50		292.17	
6+36.70 = EC MANZ.	chk. 29525 18 GUTT	296.17	295.25 18 GUTT	9+28.02		292.52	
(3 pts. 19.48' avcs)							
6+08.24		296.57		9+08.54 = PRC MANZ.	292.36 18 GUTT	292.88	292.97 chk 18 GUTT
				8+82.62		293.29	
5+79.80		296.93		8+56.74		293.68	
5+51.36		297.28		8+30.85		294.01	

STA.	LT	E	RT.	STA.	LT	E	RT.
(2 pts: 41.37 acres)							
14+89.41 = BC MANZ.		280.42					
14+50		279.83					
14+00		279.12					
13+50	chk. Box 18 GUTT 278.27	283.90	chk. Box 18 GUTT 278.18				
13+24.35 = BC MANZ.		280.63					Check: 286.81 - 286.82 =
12+94.19		282.67					Elev. Top. F. Hyd. S/Ly Ret. DAHLIA + MANZ. Dr.
12+69.57		284.34					
12+08.02 = PRC MANZ.		286.60		15+72.15 (By. Dave.)	chk 18 GUTT 280.71	281.20 on side of rd	chk 281.25 18 GUTT
11+58.65 = B.C MANZ.	287.01 18 GUTT:	287.57	286.98 18 GUTT.	15+30.78		280.86	



Roberts  
Cota  
Moore  
Pollen  
V-23-53  
WA #21673

X-Section 40<sup>th</sup> Street  
Redwood to Dwight

T.P. 3533, 3523 & 3524

Notes Reduced  
by R. Garrett  
3-19-53

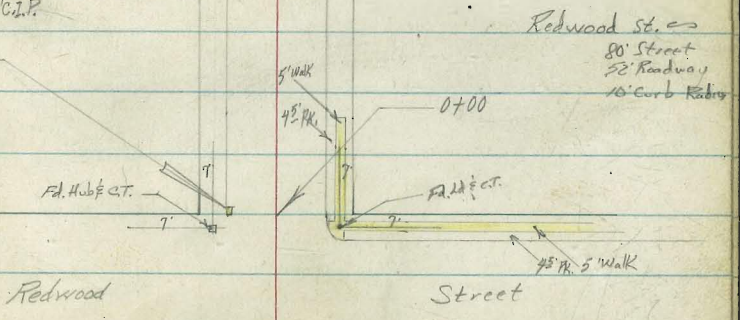
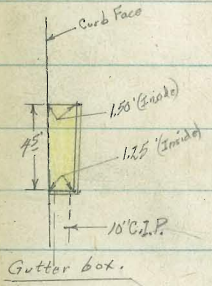
Thorn

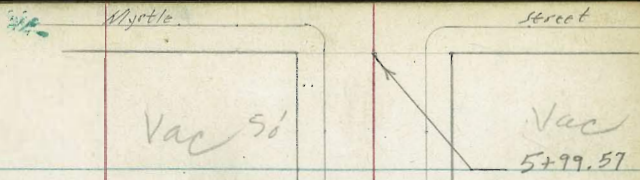
St.

INDEXED  
Law  
JAN 28 1953

N.Y.

40<sup>th</sup> St. ←  
80' Street  
52' Roadway  
10' Curb Radius

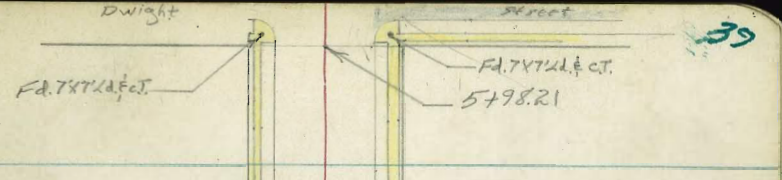
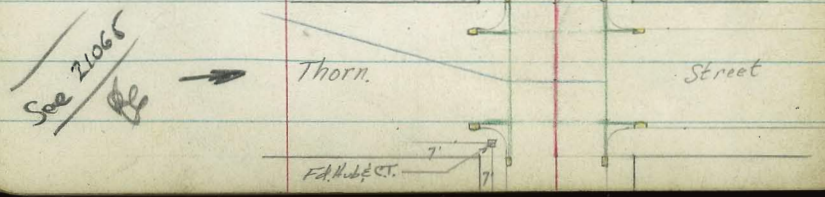




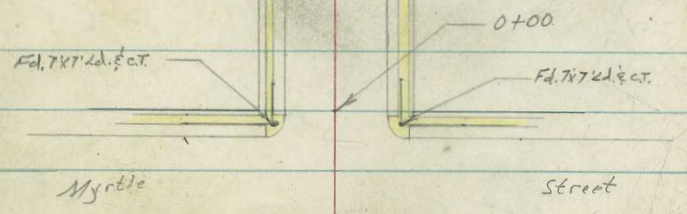
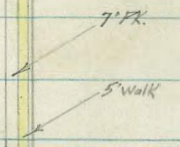
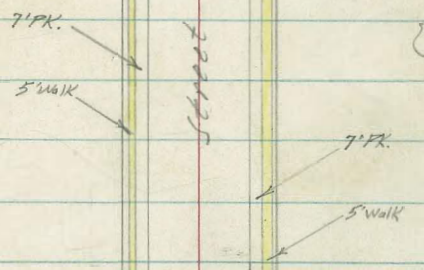
Myrtle  
 80' Street  
 52' Roadway  
 10' Cb. Radius  
 7' Curb face to walk  
 5' Walk  
 Walks only on one side, see sketch.

Sidewalk  
 0+50 to 2+00  
 East Side

Thorn St.  
 80' Street  
 52' Roadway  
 10' Curb Radius  
 (Gutter boxes (yellow) are in bad shape)  
 10' C.I.P. (green) rusted out in places!  
 Needs to be replaced or abandoned.  
 See F.B. 2210, pg. 17 for detail.



Dwight  
 80' Street  
 52' Roadway  
 10' Curb Radius  
 7' Cb. Face to walk  
 5' Walks  
 { A.C. Pav. to Ely, cb.  
 Line of 40th  
 No. curbs in on N.W.  
 Corner or west side of  
 40th beyond Dwight.



Cont'd From Page 39

Lt

Q

Rt

40

0+81 Lt Q 5' Conc. Walk

303.9  
401  
40  
conc

303.58  
434  
26  
cb

0+50

304.8 304.8 303.6 303.29 302.6 302.9 302.5 302.3 302.8 302.47

31 31 43 43 53 49 44 46 51 450

50 42 40 26 26 13 13 13 26 26

cb gutt cb

0+00 North Line Redwood

302.8 302.5 302.1 302.14 301.91 302.5 302.7 302.7 302.91

41 44 41 48 59.5 54 52 57 50.1

100 41 40 26 26 27 26 26 26

cb gutt cb

From 0+00 12' of <sup>to</sup>cb South needs replacement on right or east.

E.C. Curb Return on Right (0-04)

302.94  
302.94  
57 498  
26 26  
gutt cb

Sly Curb Line Redwood (0-14)

303.4 303.4 302.2 302.4 302.2 302.3 303.02 302.3 302.87

4.5 4.5 5.2 5.5 5.7 5.6 4.70 4.6 4.05

100 40 26 26 26 36 36 100 100

gutt cb gutt cb

Q Redwood (0-40)

302.8 302.1 302.4 302.9 302.7 302.7

5.1 4.8 5.4 5.9 5.5 4.2

100 50 28 50 100

BM 4.95 307.92  $\uparrow$

302.97 <sup>N.W. 1/4</sup> Redwood  $\frac{1}{4}$

307.92  $\uparrow$

Cont'd From Page 40

2+50

2+33

Rt Q 3<sup>1</sup>/<sub>2</sub> Conc. Walk

2+00

1+75

Lt Q 5' Conc. Walk

T.P

402 308.19 T 3.75 304.17

1+50

1+00

END WALK ON RIGHT

307.92 T

Lt

Q

Rt

41

206.0	205.1	204.25	203.2	203.7	204.0	204.1	204.0	204.73	204.9	206.6
2.2	3.1	3.74	4.9	4.5	4.2	4.1	4.2	3.46	3.3	1.6
50	40	26 cb	26 gutt	13		13	26 gutt	26 cb	40	41 50

304.80	304.90
3.39	3.29
26 cb	40 conc

205.7	205.0	204.37	203.8	204.1	204.2	204.4	204.1	204.72	205.1	206.4	206.5
2.5	3.2	3.82	4.4	4.1	4.0	3.8	4.1	3.47	3.1	1.8	1.7
50	40	26 cb	26 gutt	13		13	26 gutt	26 cb	40	42	50

204.9	204.31
3.4	3.88
40 conc	26 cb

308.19 T

204.9	204.5	204.18	203.5	204.0	204.1	204.1	204.8	205.61	205.52	206.9
3.0	3.4	3.74	4.4	3.9	3.8	3.8	3.1	2.31	2.4	1.0
50	40	26 cb	26 gutt	13		13	26 gutt	26 cb	40	50

204.9	204.5	204.4	203.74	203.9	203.6	204.2	203.8	203.40	203.97	204.20	204.37
3.0	3.4	3.5	4.18	4.9	4.3	3.9	4.1	4.5	3.95	3.72	3.60
50	41	40	26 cb	26 gutt	13		13	26 gutt	26 cb	30.5 walk	35.5 walk

307.92 T

Cont'd From Page 41

Lt

Q

Rt 42

T.P.

6.00 305.53  $\pi$

8.67 299.52

5+50

300.7	300.2	300.00	299.4	299.8	300.2	300.3	299.9	300.41	300.7	301.2
7.5	8.0	8.19	8.8	8.4	8.0	7.9	8.3	7.78	7.5	7.8
50	40	26 cb	26 Gutt	13	13	13	26 Gutt	26 cb	40	50

5+00

302.0	302.9	301.3	300.77	300.19	300.7	301.1	301.1	300.6	301.25	301.2	301.4
5.2	5.3	6.9	7.42	8.0	7.5	7.1	7.1	7.6	6.94	6.9	6.8
50	41	40	26 cb	26 Gutt	13	13	13	26 Gutt	26 cb	40	50

4+50

302.8	303.7	302.1	301.59	301.2	301.6	302.1	301.9	301.3	302.04	302.2	302.2
4.7	4.5	6.1	6.6	7.2	6.6	6.2	6.3	6.9	6.15	6.0	6.0
50	41	40	26 cb	26 Gutt	13	13	13	26 Gutt	26 cb	40	50

4+00

301.1	301.0	303.1	302.35	301.6	302.2	302.1	302.5	302.2	302.85	302.4	302.9
3.1	3.2	5.1	5.84	6.6	6.0	5.5	5.7	6.0	5.34	4.8	4.3
50	41	40	26 cb	26 Gutt	13	13	13	26 Gutt	26 cb	40	50

3+50

305.4	303.9	302.13	302.5	302.7	302.5	303.4	302.9	302.62	302.9	304.5	304.8
2.8	4.3	5.6	5.7	5.2	4.7	4.8	5.3	4.57	4.3	3.7	3.4
50	40	26 cb	26 Gutt	13	13	13	26 Gutt	26 cb	38	40	50

3+00

306.0	305.8	304.6	303.80	302.2	302.5	303.9	304.0	302.7	304.35	304.5	304.1	304.1
2.2	2.4	3.6	4.39	4.9	4.7	4.3	4.2	4.5	5.84	3.7	2.1	2.1
50	45	40	26 cb	26 Gutt	13	13	13	26 Gutt	26 cb	40	41	50

308.19  $\pi$

308.19  $\pi$

Cont'd From Page 42

0+00 North Line Thorn

200.0	299.83	299.1	299.9	300.2	300.4	299.20	300.33	300.7
55	5.8	6.4	5.6	5.3	5.1	6.32	5.19	4.8
40	26	26	13	13	26	26	36	40
	cb	gutt			gutt	conc	cb	

Curb Return E.C.s - 4

299.84	299.0	300.32	300.24
5.8	6.5	5.2	5.8
26	26	26	26
cb	gutt	gutt	cb

North Curb Line Thorn -14

298.6	299.89	299.4	299.88	299.4	299.3	299.8	300.0	300.3	300.2	300.5	300.36	299.81	300.37
6.9	5.83	6.1	5.64	6.1	6.2	5.7	5.8	5.2	5.3	5.0	5.16	6.71	5.15
100	40	40	36	36	26	13	13	26	26	36	36	20	40
	cb	gutt	cb	gutt				gutt	cb	gutt	cb	conc	cb

Thorn Street +40

299.3	299.6	299.9	300.1	300.9
6.2	5.9	5.6	5.4	4.6
100	50		50	100

South Curb Line Thorn -14

298.9	299.13	298.06	299.19	299.3	299.4	299.6	299.8	299.8	299.4	299.4	299.66	298.67	299.68
6.6	6.39	7.06	6.33	6.2	6.1	5.9	5.7	5.7	6.1	6.1	5.86	6.25	5.84
100	40	40	36	36	26	13	13	13	26	36	36	40	40
	cb	gutt	conc	cb	gutt				gutt	cb	gutt	cb	conc

From Cb BC to point 3' So. Prop. Line Curb should be replaced on right or East.

Curb Return B.C.s +4

299.21	299.3	299.3	299.63
6.31	6.2	6.2	5.89
26	26	26	26
cb	gutt	gutt	cb

5+99.52 South Line Thorn Street

299.5	299.4	299.21	298.26	299.3	299.5	299.6	298.54	299.63	299.9	300.1
6.0	6.1	6.31	7.26	6.2	6.0	5.9	6.98	5.89	5.6	5.4
50	40	26	26	13	13	26	26	26	40	50
		cb	gutt	conc.		gutt	conc	cb		

305.52 T

305.52 T

Lt

E

R

43

Cont'd From Page 43

Lt

£

Rt

1+92

Rt £ 4' drive opening in curb

305.37

8.91  
26  
Lip

T.P.

9.89

314.28 T

113

304.39

314.28 T

1+50

305.52

1.13

304.39

9.89

314.28

303.4	304.0	304.06	303.4	303.9	304.4	304.0	303.9	304.73
2.1	1.5	1.46	2.1	1.6	1.1	1.5	1.6	0.79
50	40	26	26	13		13	26	26
		cb	Gutt				Gutt	cb

1+06

Rt £ 10' drive opening in curb.

302.82

2.69  
26  
Lip

1+00

302.7	302.6	302.7	301.8	302.5	302.9	302.8	301.4	302.26
3.3	2.9	2.80	3.7	3.0	2.6	2.7	3.1	2.26
50	40	26	26	13		13	26	26
		cb	Gutt				Gutt	cb

0+88

Rt £ 14' drive opening in curb

302.19

3.33  
26  
Lip

0+50

Rt Begin Conc. Walk

301.1	301.4	301.24	300.7	300.9	301.4	301.5	301.0	301.78	301.91	302.00	302.9
4.4	4.2	4.28	4.8	4.6	4.1	4.0	4.5	3.74	3.61	3.52	2.6
50	40	26	26	13		13	26	26	26	26	26
		cb	Gutt			Gutt	cb	cb	cb	cb	40
									30.5	35.5	
									Walk		

305.52 T

305.52 T

Cont'd From Page 44

Lt

R

R 45

3+50

309.5	309.9	309.90	309.1	309.8	310.3	310.2	309.8	310.55	310.97	311.3
4.8	4.4	4.40	5.2	4.5	4.0	4.1	4.5	3.73	3.41	3.0
50	40	26	26	13		13	26	26	40	50
		cb	Gutt				Gutt.	cb.		

3+00

309.3	309.3	308.43	307.9	308.4	308.7	308.5	308.5	309.10	309.5	310.3
5.0	5.0	5.85	6.4	5.9	5.6	5.8	5.8	5.18	4.8	4.0
50	40	26	26	13		13	26	26	40	50
		cb	Gutt				Gutt	cb		

2+90

Rt & 13' drive opening in curb

308.26	308.87	308.99	309.15
6.02	5.45	5.29	5.13
26	30.5	33	40
Lip	conc	conc	conc

2+66

Rt 3' Conc. Walk

308.08	308.37	308.54
6.20	5.76	5.72
26	35.5	40
cb	conc	conc.

2+50

306.8	307.2	306.90	306.28	306.9	307.2	307.1	306.8	307.66	308.1	308.5
7.5	7.2	7.38	8.0	7.4	7.1	7.2	7.5	6.62	6.2	5.8
50	40	26	26	13		13	26	26	40	50
		cb	Gutt				Gutt	cb		

2+10

Lt 11' drive opening in curb.

305.81	305.84	305.78
8.47	8.44	8.90
40	30	26
conc	Break	Lip
	conc	

2+00

END WALK ON RIGHT

304.1	305.5	305.57	304.9	305.3	305.8	305.1	305.4	306.14	306.30	306.40	306.3
9.6	8.8	8.71	9.4	9.0	8.5	8.6	8.9	8.12	7.98	7.88	8.0
50	40	26	26	13		13	26	26	30.5	35.5	40
		cb	Gutt				Gutt	cb	walk		

314.287

314.287



Cont'd from Page 45

Lt

Q

Rt

46

5+50

315.5	315.8	315.64	315.2	315.6	316.0	315.7	315.7	316.39	316.8	317.0
7.7	7.6	7.73	8.2	7.8	7.4	7.7	7.7	6.98	6.6	6.4
50	40	26 cb	26 Gutt	13		13	26 Gutt	26 cb	40	50

5+10

Rt Q 15' drive opening in curb

314.66	315.47	315.61	315.71
8.71	7.90	7.76	7.66
26 tip	33 conc	38 conc	40 conc

5+00

END WALK ON RIGHT

314.4	314.4	314.23	313.6	314.1	314.52	314.6	314.3	314.92	315.14	315.25	315.56
9.0	9.0	9.14	9.8	9.3	8.85	8.8	9.1	8.45	8.23	8.12	7.81
50	40	26 cb	26 Gutt	13		13	26 Gutt	26 cb	33 walk	38	40

T.P.

9.70 323.37A 0.61 313.67

323.37A

314.28  
61  
313.67  
9.70  
323.37

4+56

Rt Q 10' drive opening in curb

312.10  
1.18  
26  
tip

4+50

Rt begin conc. walk

312.8	312.0	312.80	312.2	312.8	312.2	312.2	312.8	312.52	312.83	312.91
1.5	1.3	1.48	2.1	1.5	1.1	1.1	1.5	0.76	0.45	0.37
50	40	26 cb	26 Gutt	13		13	26 Gutt	26 cb	33 walk	38

4+00

311.8	311.6	311.4	310.7	311.3	311.7	311.7	311.3	312.06	312.7	312.6
2.5	2.7	2.90	3.6	3.0	2.6	2.6	3.0	2.22	2.1	1.6
50	40	26 cb	26 Gutt	13		13	26 Gutt	26 cb	40	50

31428A

31428A

Curb Return E.C.s -4

318.07 217.8  
6.05 6.3  
26 26  
cb Gutt

318.47 217.8  
5.65 6.3  
26 26  
Gutt cb

North Curb Line Myrtle -14

314.08  
8.04  
105  
cb

315.4  
8.7  
105  
Gutt

318.06  
6.4  
40  
cb

319.4  
6.7  
40  
Gutt

318.06  
6.06  
36  
cb

317.5  
6.6  
36  
Gutt

317.8  
6.3  
26  
cb

318.2  
5.9  
13

318.4  
5.7

318.1  
6.0  
13

317.7  
6.4  
26

317.7  
6.4  
36  
Gutt

318.40  
5.72  
36  
cb

318.1  
6.0  
95  
Gutt

318.76  
5.36  
95  
cb

Q Myrtle Street ±40

315.4  
8.5  
100

317.1  
7.0  
50

317.6  
6.5  
35

318.1  
6.0

317.4  
6.7  
33

317.6  
6.5  
50

318.7  
5.9  
100

T.P.

5.51

324.12

4.76

318.61

7th & 4th  
NE 2121

324.12

South Curb Line Myrtle +14

315.09  
8.28  
100  
cb

314.4  
9.0  
100  
Gutt

316.98  
6.39  
36  
cb

316.6  
6.8  
36  
Gutt

316.9  
6.5  
26  
cb

317.4  
6.0  
13

317.7  
5.7

317.4  
6.0  
13

316.9  
6.5  
26

316.9  
6.5  
36  
Gutt

317.80  
5.57  
36  
cb

317.4  
6.0  
100  
Gutt

318.28  
5.09  
100  
cb

Curb Return B.C.s +4

317.04  
6.33  
26  
cb

316.5  
6.9  
26  
Gutt

316.8  
6.6  
26  
Gutt

317.87  
5.50  
26  
cb

5+99.57 South Line Myrtle

316.4  
7.0  
50

316.9  
6.5  
40

317.04  
6.33  
26  
cb

316.4  
7.0  
26  
Gutt

317.0  
6.4  
13

317.3  
6.1

317.0  
6.4  
13

316.8  
6.6  
26  
Gutt

317.88  
5.49  
36  
cb

318.0  
5.4  
40

318.7  
5.1  
50

323.37

323.37

Cont'd From Page 47

Lt

324.1

£

Rc

48

2+06

Lt £ 11' drive opening in curb.

320.78

321

26

Lip.

2+00

321.17	320.6	320.9	321.2	321.0	320.5	321.41
2.95	3.5	3.2	2.9	3.1	3.6	2.71
26 cb	26 cut	13		13	26 cut	26 cb

1+50

320.47	319.8	320.2	320.5	320.4	319.8	321.64
3.65	4.3	3.9	3.6	3.7	4.3	3.98
26 cb	26 cut	13		13	26 cut	26 cb

1+00

319.64	319.2	319.4	319.8	319.6	319.2	319.89
4.48	5.1	4.7	4.3	4.5	5.1	4.23
26 cb	26 cut	13		13	26 cut	26 cb

0+95

Lt £ 11' drive opening in curb

319.15

4.97

26

Lip

0+50

318.89	318.1	318.8	319.2	319.2	318.3	319.17
5.28	6.0	5.3	4.9	5.1	5.8	4.85
26 cb	26 cut	13		13	26 cut	26 cb

0+00 North Line Myrtle

318.04	317.7	318.3	318.6	318.3	317.6	318.46
6.08	6.4	5.8	5.5	5.8	6.3	5.66
26 cb	26 cut	13		13	26 cut	26 cb

324.12X

324.12X

4407

Rt Q 9' drive opening in curb.

323.91  
6.02  
26  
21P

4400

324.31	323.6	323.9	324.3	324.2	323.6	324.44
5.62	6.3	6.0	5.6	5.9	6.3	5.9
26 cb	26 Gntt	13		13	26 Gntt	26 cb

3450

323.48	323.8	323.2	323.5	323.2	323.7	323.64
6.45	7.1	6.7	6.4	6.7	7.2	6.29
26 cb	26 Gntt	13		13	26 Gntt	26 cb

3412

Rt Q 17' drive opening in curb.

322.55  
7.38  
26  
21P

3400

322.78	322.1	322.4	322.7	322.5	322.1	322.9
7.5	7.8	7.5	7.2	7.4	7.8	7.0
26 cb	26 Gntt	13		13	26 Gntt	26 cb

2450

321.97	321.2	321.6	321.9	321.8	321.2	322.17
7.96	8.7	8.3	8.0	8.1	8.7	7.76
26 cb	26 Gntt	13		13	26 Gntt	26 cb

T.P.

8.02

329.93A

2.21

321.91

329.93A

324.12A

Curb Return E.C.s +4

327.59	327.0
2.34	2.9
26	26
cb	Gutt

326.7	327.38
32	255
26	26
Gutt	cb

So. side of end of walk +2

327.77
2.16
40
conc

5+98.21 South Line Dwight

327.57	326.9	327.1	327.2	327.2	326.7	327.41
2.41	3.0	2.8	2.7	2.9	3.2	2.52
26	26	13		13	26	26
cb	Gutt				Gutt	cb

5+50

326.68	326.8	326.3	326.5	326.5	326.2	326.67
3.25	4.1	3.6	3.4	3.4	3.9	3.26
26	26	13		13	26	26
cb	Gutt				Gutt	cb

5+48 to 5+56 Curb on right needs to be replaced!

5+06

Lt @ 10' drive opening in curb.

327.54
4.39
232
47

5+00

4+77 to 5+00 left curb should be replaced

RG

325.90	325.1	325.4	325.7	325.5	325.2	325.9
4.03	4.8	4.5	4.2	4.4	4.7	4.03
26	26	13		13	26	26
cb	Gutt				Gutt	cb

4+50

324.10	324.5	324.7	324.9	324.7	324.3	325.05
4.83	5.4	5.2	5.0	5.2	5.6	4.88
26	26	13		13	26	26
cb	Gutt				Gutt	cb

333

Q Dwight Street +40

328.3	328.2	327.8	327.9	327.1	327.28	327.76	328.39
4.7	4.8	5.2	5.1	5.9	5.96	5.22	4.59
100	50	26		23	26	50	100
					AC.		

South Curb Line Dwight +14

328.5	328.7	327.78	327.9	327.74	327.8	327.5	327.4	327.5	327.1	326.99	327.01	327.38	327.52	327.78
4.5	4.3	5.20	5.1	5.24	5.2	5.5	5.6	5.5	5.9	5.99	5.97	5.60	5.46	5.20
100	50	40	40	36	36	36	13		13	26	36	36	100	100
		cb	Gutt	cb	Gutt					AC.	Gutt	cb	Gutt	cb

T.P. 5.49 332.98  $\bar{\pi}$  2.44 327.49 = 327.53 SW BP Dwight @ 40th 332.98  $\bar{\pi}$

No. Side of end of Walk +7

327.79  
2.14  
40  
conc

329.93  $\bar{\pi}$

329.93  $\bar{\pi}$

Reports  
H. Hoffman  
Moore  
Pike  
1-27-53  
W.D. # 2473

X-Section Thorn Street  
40th to Central

52

Street

N/y.

Asphalt

Ally  
(Ac. Pav)

0+00

2+99.41

Thorn

Street

(see pg. 39 for T.P.)

40th

Notes Reduced  
by R. Garrett  
3-19-53

Thorn:  $\rightarrow$   
90' Street  
52' Roadway  
7' Curb face to walk  
5.33' Walk  
10' Curb Radius  
2' Curb Radius at Alley.

Central

Central:  $\rightarrow$   
80' Street  
52' Roadway  
7' Curb face to walk  
5.33' Walk  
AC. Paving

Cont'd From Page 52

Lt

R

Rt 302.3 **53**  
44  
50

1+39.70 West Line of Alley

304.6	302.65	302.8	302.49	302.1	301.6	301.9	301.7	301.7	301.4	301.8	301.80	301.2	302.13
21	28	39	24	46	51	48	50	50	57	49	43	47	46
50	40	40	28	28	26	13		13	26	28	28	40	40
	cb	Gutt	cb	Gutt					Gutt	cb	Gutt	cb	

1+37.70 Alley Return B.C.

302.47	301.6	301.2	301.81
26	51	57	49
26	26	26	26
cb	Gutt	Gutt	cb

1+00

304.7	304.7	301.9	301.92	300.9	301.3	301.2	301.1	300.4	301.26	301.5	303.1	303.4
20	20	48	48	58	54	55	56	63	54	52	36	33
50	46	40	26	26	13		13	26	26	40	43	50
		cb	Gutt					Gutt	cb			

0+50

303.4	303.2	301.4	301.9	300.3	300.7	300.7	300.5	299.9	300.44	300.6	302.6	302.5
3.3	3.5	5.3	5.5	6.4	6.0	6.0	6.2	6.8	6.2	6.1	4.1	4.2
45	41	40	26	26	13		13	26	26	40	42	50
		cb	Gutt					Gutt	cb			

0+00 East Line 40<sup>th</sup>

301.1	300.7	300.38	299.34	300.1	300.1	299.9	298.67	299.69	299.9	300.8
5.6	6.0	6.35	7.39	6.6	6.6	6.8	8.06	7.04	6.8	5.9
50	40	26	26	13		13	26	26	40	50
		cb	Gutt				Gutt	cb		

(For intersection see page 43.)  
F.B. 2210 p. 17 also.

T.P. 5.85 306.73 X 9.00 300.88

306.73 X

BN 6.91 309.88 X

N.W.B.P  
302.97 Redwood 1/2 40<sup>th</sup>



West Edge of End of walk +167

304.54  
5.89  
40  
conc

2+99.41 West Line Central

304.88	304.2	304.2	304.2	304.1	303.3	304.28
5.55	6.4	6.4	6.2	6.3	7.1	6.15
26	26	13		13	26	26
cb	Gutt				Gutt	cb

T.P. 6.41 310.43A 271 304.02

310.43A

2+50

304.18	303.3	303.1	303.1	303.4	302.6	303.53
2.55	3.4	3.0	3.0	3.3	4.1	3.20
26	26	13		13	26	26
cb	Gutt				Gutt	cb

2+00

303.39	302.6	303.2	303.1	302.1	301.9	302.76
3.34	4.1	3.7	3.6	4.0	4.8	3.97
26	26	13		13	26	26
cb	Gutt				Gutt	cb

1+61.70 Alley Return EC

307.57	301.9	301.5	302.14
3.86	4.8	5.2	4.59
26	26	26	26
cb	Gutt	Gutt	cb

1+59.70 East Line Alleys

305.1	302.16	302.2	302.41	302.2	301.9	302.3	302.4	302.1	301.5	307.0	302.21	302.4	302.41	301.6
1.6	3.57	3.5	3.82	4.5	4.8	4.4	4.3	4.6	5.2	4.7	4.52	4.3	4.32	4.1
50	40	40	28	28	26	13		13	26	28	28	40	40	50
	cb	Gutt	cb	Gutt						Gutt	cb	Gutt	cb	

306.73A

306.73A

check

570 302.96 = 302.97 Starting B.M.

T.P. 742 308.66 9.19 301.24

Central Avenue

306.56	304.98	305.0	304.7	304.7	304.2	303.7
3.87	5.45	5.4	5.7	5.7	6.2	6.7
100	40	13	13	13	50	100
AC	AC					

West Curb Line Central +14

306.37	305.83	304.91	304.33	304.96	304.1	304.2	304.3	304.4	304.3	303.7	303.5	304.27	303.4	304.24	303.1
4.1	4.0	5.52	6.10	5.47	6.3	6.4	6.1	6.0	6.1	6.7	6.9	6.16	7.0	6.19	7.3
100	100	40	40	36	36	26	13	6	13	26	36	36	40	48	100
cb	gutt	cb	gutt	cb	gutt						gutt	cb	gutt	cb	

East Edge of End of walk +7

gutt  
AC

304.43	End of curb
6.00	
40	
conc	

Curb Return B.C.s +4

304.87	304.2	303.5	304.31
5.56	6.4	6.9	6.12
26	26	26	26
cb	gutt	gutt	cb

310.43

310.43

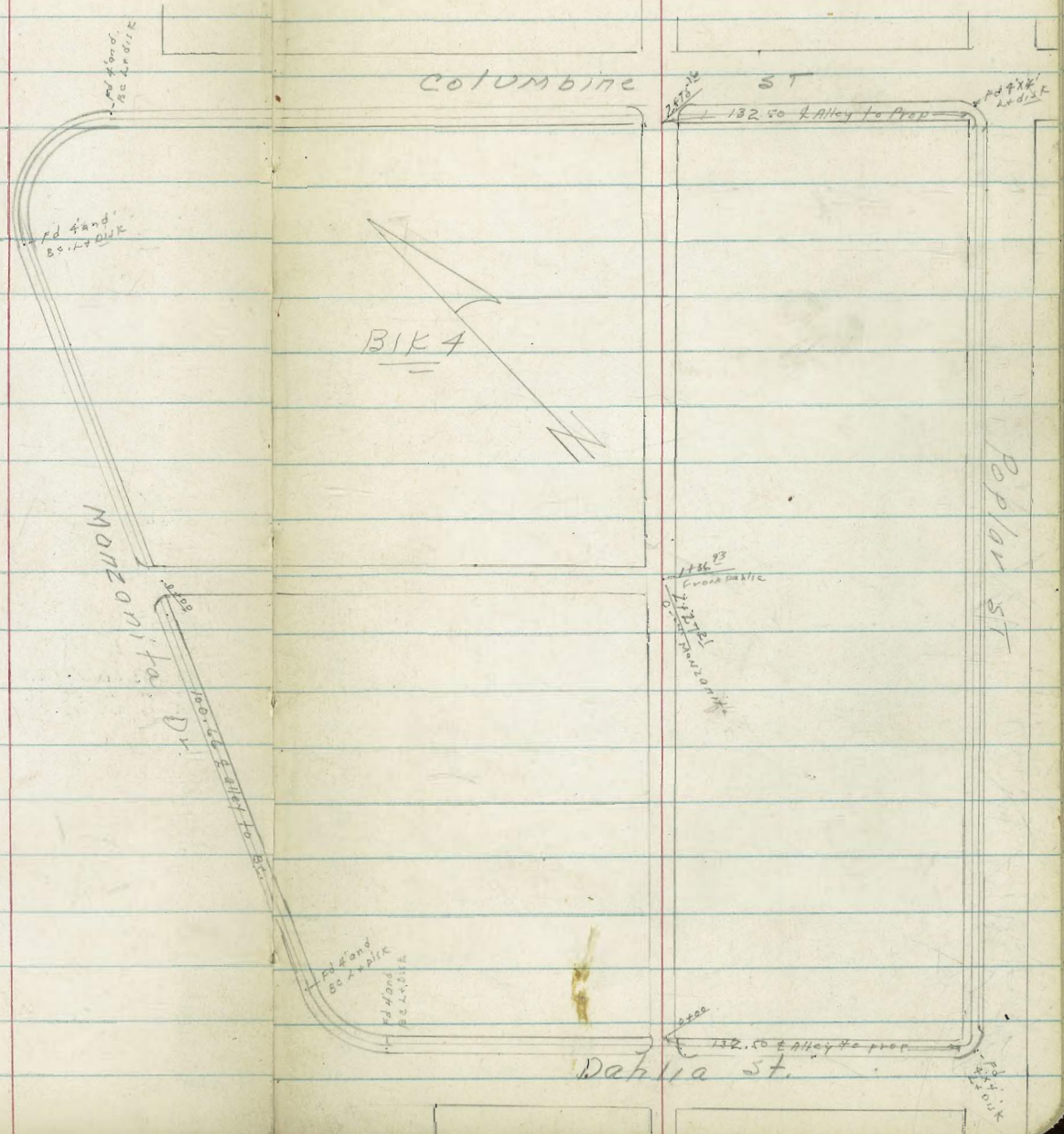
X-sec 'T' Alley BIK 4 Lexington Park  
R-17-53.  
W.O.# 25020

Allen  
Sisson  
Powell  
Schelin

Ref. FB 1852-45, 46.  
T.P. Sheet 2520  
Filed Map 1696.  
Dwg. 100512  
Levels page 57.

INDEXED  
210  
FEB 18 1953

56





1+44.43 - Nly line of alley to cly

1+36<sup>93</sup> @ intersection of Alleys.

1+29<sup>43</sup> - S wly line - wly alley to cly

TP4 7.05 300.49 2.62 293.44

1+00

0+94.8<sup>2</sup> Lt = 2 Single garage - Cone apron + floor  
apron = 9' wide

0+50

LT = Nly 2 et = Sly 58

6 1/2	6 1/2	6 1/2	6 10
7 1/2	7 1/2	7 1/2	30
6 293.9	6 293.9	6 294.2	6 294.3
6 1/2	6 1/2	6 1/2	6 1/2
7 1/2	7 1/2	7 1/2	30
6 293.8	6 293.8	6 294.2	6 294.3
6 1/2	6 1/2	6 1/2	6 1/2
7 1/2	7 1/2	7 1/2	50

2 293.6	2 293.6	2 300.49	2 293.9	2 294.0
2 1/2	2 1/2	2 1/2	2 1/2	2 1/2
2 1/2	2 1/2	2 1/2	2 1/2	2 1/2
2 293.5	2 293.6	2 300.49	2 293.9	2 294.0
2 1/2	2 1/2	2 1/2	2 1/2	2 1/2
2 1/2	2 1/2	2 1/2	2 1/2	2 1/2

2 1/2	2 1/2	2 1/2	2 1/2	2 1/2
2 292.8	2 292.7	2 292.7	2 293.8	2 293.5
2 1/2	2 1/2	2 1/2	2 1/2	2 1/2
2 292.7	2 292.7	2 292.7	2 293.8	2 293.5
2 1/2	2 1/2	2 1/2	2 1/2	2 1/2
2 1/2	2 1/2	2 1/2	2 1/2	2 1/2
Prop	Prop	Prop	Prop	Prop

296.06

R+75<sup>16</sup> = NELY line Columbine Street.

R+35

R+00

1+89. 30' Lt =  $\frac{1}{2}$  single garage - Conc Floor. No opton.

1+75

1+67. 8' Lt =  $\frac{1}{2}$  3' wide Conc walk

1+45. 6' Lt =  $\frac{1}{2}$  14" power pole PA 4274

	Lt = W14	Rt = S14
	295.6	295.43
	49	506
	25	74
	cb	cb
	60T	60T
	295.75	295.66
	485	483
	74	74
	60T	60T
	295.64	295.80
	485	469
	74	74
	60T	60T
	295.52	295.3
	50	52
	75	75
	294.9	295.0
	56	55
	25	75
	295.0	295.70
	55	55
	75	25
	294.62	
	587	
	30' Floor	
	294.5	294.5
	60	60
	75	75
	294.52	294.7
	597	508
	110 WK	75
	294.51	
	598	
	80 WK	
	300.49	

See page for check of starting BM

TP5 7.67 292.82

R+82.16 - N' Fly Curb line Columbine St

294.86	294.37	295.73	295.27	295.51	295.31	295.36	295.29	295.73	294.89	295.35
56.3	6.12	4.76	5.22	5.13	5.18	5.13	5.20	4.76	5.60	5.14
100	100	95	95	75		75	95	95	100	100
cb	G	cb	G				GUT	cb	G	cb

300.49





apron

1427. 8<sup>1</sup>/<sub>2</sub> ft = L double garage Conc Floor

1421-8<sup>6</sup> Lt = L 3' wide Conc walk

1412. 8<sup>8</sup> Rt = L 4' wide Conc walk

1400

0499. 8<sup>5</sup> Lt = L 12' power pole - No Number

0483- 8<sup>6</sup> Lt = L Deadman

0470- 21<sup>1</sup>/<sub>2</sub> Rt = L 13<sup>5</sup>/<sub>8</sub> wide conc Drive

TP6 5.51 298.78 1.68 293.27

Lt = N 1/4

φ

293.42

Rt = 5 1/4

62

47 293.42  
36  
8<sup>1</sup>/<sub>2</sub>  
apron

87 293.42  
16  
12  
Floor

293.76  
503  
86  
WK

5 293.46  
12

8<sup>8</sup>  
WK

293.7

5 293.7

5 293.4

293.2

48

49

51

54

56

25

75

75

25

5 292.97

581  
Rt  
Drive

293.08

570  
280  
Gar  
Floor

298.78 x

294.95 x

TPB

2.28

S.E. top Fire Hyd  
Cora Columbina &  
Populau  
FA1623  
15

297.68

(297.72)

15

TP7

6.07 299.96 4.89 293.89

2419.71- Wly line Alley-

1+75

1458- 8<sup>1</sup>/<sub>2</sub> ft = 6 3' wide conc walk

1455- 8<sup>1</sup>/<sub>2</sub> ft = 6 3' wide conc walk

1450

1448- 31<sup>2</sup>/<sub>2</sub> ft = 2 single garage conc floor

No apron.

Lt = N14

2

Rt = S14-

63

294.1

47

75

5-293.7

75

5-293.6

75

4-293.9

19

5-293.8

10

5-293.6

75

5-293.6

20

5-293.57  
84  
WK



293.9

49  
25

5-293.91  
84  
WK

5-293.8  
10  
75

5-193.7

51

5-293.5  
10  
75

5-293.0  
10  
30

292.99  
579  
319  
Floor

298.78 x



























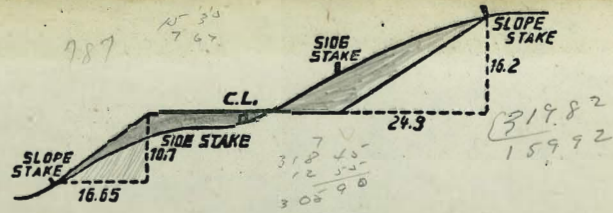








The image shows an open notebook with two facing pages. Both pages are cream-colored and feature light blue horizontal ruling. A vertical red margin line is present on the left side of each page. The pages are blank, with no handwriting or printed text. The notebook is bound in the center, and the pages show signs of age and use, including some faint smudges and discoloration. The number '78' is written in the top left corner of the left page, and '79' is written in the top right corner of the right page.



**DISTANCES FROM SIDE STAKES FOR CROSS-SECTIONING.**  
 SLOPE 1 1/2 TO 1. ROADWAY OF ANY WIDTH.

	0	.1	.2	.3	.4	.5	.6	.7	.8	.9	
0	0.00	0.15	0.30	0.45	0.60	0.75	0.90	1.05	1.20	1.35	0
1	1.50	1.65	1.80	1.95	2.10	2.25	2.40	2.55	2.70	2.85	1
2	3.00	3.15	3.30	3.45	3.60	3.75	3.90	4.05	4.20	4.35	2
3	4.50	4.65	4.80	4.95	5.10	5.25	5.40	5.55	5.70	5.85	3
4	6.00	6.15	6.30	6.45	6.60	6.75	6.90	7.05	7.20	7.35	4
5	7.50	7.65	7.80	7.95	8.10	8.25	8.40	8.55	8.70	8.85	5
6	9.00	9.15	9.30	9.45	9.60	9.75	9.90	10.05	10.20	10.35	6
7	10.50	10.65	10.80	10.95	11.10	11.25	11.40	11.55	11.70	11.85	7
8	12.00	12.15	12.30	12.45	12.60	12.75	12.90	13.05	13.20	13.35	8
9	13.50	13.65	13.80	13.95	14.10	14.25	14.40	14.55	14.70	14.85	9
10	15.00	15.15	15.30	15.45	15.60	15.75	15.90	16.05	16.20	16.35	10
11	16.50	16.65	16.80	16.95	17.10	17.25	17.40	17.55	17.70	17.85	11
12	18.00	18.15	18.30	18.45	18.60	18.75	18.90	19.05	19.20	19.35	12
13	19.50	19.65	19.80	19.95	20.10	20.25	20.40	20.55	20.70	20.85	13
14	21.00	21.15	21.30	21.45	21.60	21.75	21.90	22.05	22.20	22.35	14
15	22.50	22.65	22.80	22.95	23.10	23.25	23.40	23.55	23.70	23.85	15
16	24.00	24.15	24.30	24.45	24.60	24.75	24.90	25.05	25.20	25.35	16
17	25.50	25.65	25.80	25.95	26.10	26.25	26.40	26.55	26.70	26.85	17
18	27.00	27.15	27.30	27.45	27.60	27.75	27.90	28.05	28.20	28.35	18
19	28.50	28.65	28.80	28.95	29.10	29.25	29.40	29.55	29.70	29.85	19
20	30.00	30.15	30.30	30.45	30.60	30.75	30.90	31.05	31.20	31.35	20
21	31.50	31.65	31.80	31.95	32.10	32.25	32.40	32.55	32.70	32.85	21
22	33.00	33.15	33.30	33.45	33.60	33.75	33.90	34.05	34.20	34.35	22
23	34.50	34.65	34.80	34.95	35.10	35.25	35.40	35.55	35.70	35.85	23
24	36.00	36.15	36.30	36.45	36.60	36.75	36.90	37.05	37.20	37.35	24
25	37.50	37.65	37.80	37.95	38.10	38.25	38.40	38.55	38.70	38.85	25
26	39.00	39.15	39.30	39.45	39.60	39.75	39.90	40.05	40.20	40.35	26
27	40.50	40.65	40.80	40.95	41.10	41.25	41.40	41.55	41.70	41.85	27
28	42.00	42.15	42.30	42.45	42.60	42.75	42.90	43.05	43.20	43.35	28
29	43.50	43.65	43.80	43.95	44.10	44.25	44.40	44.55	44.70	44.85	29
30	45.00	45.15	45.30	45.45	45.60	45.75	45.90	46.05	46.20	46.35	30
31	46.50	46.65	46.80	46.95	47.10	47.25	47.40	47.55	47.70	47.85	31
32	48.00	48.15	48.30	48.45	48.60	48.75	48.90	49.05	49.20	49.35	32
33	49.50	49.65	49.80	49.95	50.10	50.25	50.40	50.55	50.70	50.85	33
34	51.00	51.15	51.30	51.45	51.60	51.75	51.90	52.05	52.20	52.35	34
35	52.50	52.65	52.80	52.95	53.10	53.25	53.40	53.55	53.70	53.85	35
36	54.00	54.15	54.30	54.45	54.60	54.75	54.90	55.05	55.20	55.35	36
37	55.50	55.65	55.80	55.95	56.10	56.25	56.40	56.55	56.70	56.85	37
38	57.00	57.15	57.30	57.45	57.60	57.75	57.90	58.05	58.20	58.35	38
39	58.50	58.65	58.80	58.95	59.10	59.25	59.40	59.55	59.70	59.85	39
40	60.00	60.15	60.30	60.45	60.60	60.75	60.90	61.05	61.20	61.35	40
41	61.50	61.65	61.80	61.95	62.10	62.25	62.40	62.55	62.70	62.85	41
42	63.00	63.15	63.30	63.45	63.60	63.75	63.90	64.05	64.20	64.35	42
43	64.50	64.65	64.80	64.95	65.10	65.25	65.40	65.55	65.70	65.85	43
44	66.00	66.15	66.30	66.45	66.60	66.75	66.90	67.05	67.20	67.35	44
45	67.50	67.65	67.80	67.95	68.10	68.25	68.40	68.55	68.70	68.85	45
46	69.00	69.15	69.30	69.45	69.60	69.75	69.90	70.05	70.20	70.35	46
47	70.50	70.65	70.80	70.95	71.10	71.25	71.40	71.55	71.70	71.85	47
48	72.00	72.15	72.30	72.45	72.60	72.75	72.90	73.05	73.20	73.35	48
49	73.50	73.65	73.80	73.95	74.10	74.25	74.40	74.55	74.70	74.85	49
50	75.00	75.15	75.30	75.45	75.60	75.75	75.90	76.05	76.20	76.35	50

THE NATIONAL BLANK BOOK COMPANY.  
 HOLYOKE MASSACHUSETTS  
 NEW YORK CHICAGO BOSTON SAN FRANCISCO

305  
 75036  
 173  
 23430 - 841  
 500  
 237.35  
 200  
 237.35