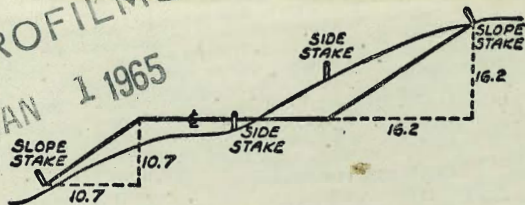


P 2 to 24
MICROFILMED

JAN 1 1965



2154

1911 Xsect

DISTANCES FROM SIDE STAKES FOR CROSS-SECTIONING
SLOPE 1 TO 1. ROADWAY OF ANY WIDTH

	0	.1	.2	.3	.4	.5	.6	.7	.8	.9	
0	0.00	0.10	0.20	0.30	0.40	0.50	0.60	0.70	0.80	0.90	0
1	1.00	1.10	1.20	1.30	1.40	1.50	1.60	1.70	1.80	1.90	1
2	2.00	2.10	2.20	2.30	2.40	2.50	2.60	2.70	2.80	2.90	2
3	3.00	3.10	3.20	3.30	3.40	3.50	3.60	3.70	3.80	3.90	3
4	4.00	4.10	4.20	4.30	4.40	4.50	4.60	4.70	4.80	4.90	4
5	5.00	5.10	5.20	5.30	5.40	5.50	5.60	5.70	5.80	5.90	5
6	6.00	6.10	6.20	6.30	6.40	6.50	6.60	6.70	6.80	6.90	6
7	7.00	7.10	7.20	7.30	7.40	7.50	7.60	7.70	7.80	7.90	7
8	8.00	8.10	8.20	8.30	8.40	8.50	8.60	8.70	8.80	8.90	8
9	9.00	9.10	9.20	9.30	9.40	9.50	9.60	9.70	9.80	9.90	9
10	10.00	10.10	10.20	10.30	10.40	10.50	10.60	10.70	10.80	10.90	10
11	11.00	11.10	11.20	11.30	11.40	11.50	11.60	11.70	11.80	11.90	11
12	12.00	12.10	12.20	12.30	12.40	12.50	12.60	12.70	12.80	12.90	12
13	13.00	13.10	13.20	13.30	13.40	13.50	13.60	13.70	13.80	13.90	13
14	14.00	14.10	14.20	14.30	14.40	14.50	14.60	14.70	14.80	14.90	14
15	15.00	15.10	15.20	15.30	15.40	15.50	15.60	15.70	15.80	15.90	15
16	16.00	16.10	16.20	16.30	16.40	16.50	16.60	16.70	16.80	16.90	16
17	17.00	17.10	17.20	17.30	17.40	17.50	17.60	17.70	17.80	17.90	17
18	18.00	18.10	18.20	18.30	18.40	18.50	18.60	18.70	18.80	18.90	18
19	19.00	19.10	19.20	19.30	19.40	19.50	19.60	19.70	19.80	19.90	19
20	20.00	20.10	20.20	20.30	20.40	20.50	20.60	20.70	20.80	20.90	20
21	21.00	21.10	21.20	21.30	21.40	21.50	21.60	21.70	21.80	21.90	21
22	22.00	22.10	22.20	22.30	22.40	22.50	22.60	22.70	22.80	22.90	22
23	23.00	23.10	23.20	23.30	23.40	23.50	23.60	23.70	23.80	23.90	23
24	24.00	24.10	24.20	24.30	24.40	24.50	24.60	24.70	24.80	24.90	24
25	25.00	25.10	25.20	25.30	25.40	25.50	25.60	25.70	25.80	25.90	25
26	26.00	26.10	26.20	26.30	26.40	26.50	26.60	26.70	26.80	26.90	26
27	27.00	27.10	27.20	27.30	27.40	27.50	27.60	27.70	27.80	27.90	27
28	28.00	28.10	28.20	28.30	28.40	28.50	28.60	28.70	28.80	28.90	28
29	29.00	29.10	29.20	29.30	29.40	29.50	29.60	29.70	29.80	29.90	29
30	30.00	30.10	30.20	30.30	30.40	30.50	30.60	30.70	30.80	30.90	30
31	31.00	31.10	31.20	31.30	31.40	31.50	31.60	31.70	31.80	31.90	31
32	32.00	32.10	32.20	32.30	32.40	32.50	32.60	32.70	32.80	32.90	32
33	33.00	33.10	33.20	33.30	33.40	33.50	33.60	33.70	33.80	33.90	33
34	34.00	34.10	34.20	34.30	34.40	34.50	34.60	34.70	34.80	34.90	34
35	35.00	35.10	35.20	35.30	35.40	35.50	35.60	35.70	35.80	35.90	35
36	36.00	36.10	36.20	36.30	36.40	36.50	36.60	36.70	36.80	36.90	36
37	37.00	37.10	37.20	37.30	37.40	37.50	37.60	37.70	37.80	37.90	37
38	38.00	38.10	38.20	38.30	38.40	38.50	38.60	38.70	38.80	38.90	38
39	39.00	39.10	39.20	39.30	39.40	39.50	39.60	39.70	39.80	39.90	39
40	40.00	40.10	40.20	40.30	40.40	40.50	40.60	40.70	40.80	40.90	40
41	41.00	41.10	41.20	41.30	41.40	41.50	41.60	41.70	41.80	41.90	41
42	42.00	42.10	42.20	42.30	42.40	42.50	42.60	42.70	42.80	42.90	42
43	43.00	43.10	43.20	43.30	43.40	43.50	43.60	43.70	43.80	43.90	43
44	44.00	44.10	44.20	44.30	44.40	44.50	44.60	44.70	44.80	44.90	44
45	45.00	45.10	45.20	45.30	45.40	45.50	45.60	45.70	45.80	45.90	45
46	46.00	46.10	46.20	46.30	46.40	46.50	46.60	46.70	46.80	46.90	46
47	47.00	47.10	47.20	47.30	47.40	47.50	47.60	47.70	47.80	47.90	47
48	48.00	48.10	48.20	48.30	48.40	48.50	48.60	48.70	48.80	48.90	48
49	49.00	49.10	49.20	49.30	49.40	49.50	49.60	49.70	49.80	49.90	49
50	50.00	50.10	50.20	50.30	50.40	50.50	50.60	50.70	50.80	50.90	50

Distance of slope stake from side or shoulder stake for any width roadway, slope 1 to 1. If ground is nearly level, the cut or fill at side stake is located by the double entry method in left column and top row. The number in body of table in same row and column gives distance from side stake to slope stake. If ground is not level estimate the difference in elevation between the side stake and slope stake, lower target by this amount if cut, elevate if fill. Add this amount to cut or fill and find distance in table. Set up rod at this point, and line of sight should cut target. If it does not make the slight adjustment necessary.

Archer LaJolla Mesa Dr. to Cass 2-11

Archer - Dawes to Ely L. Monte Villa Tract 12-15

Agate - Cass to Dawes - X - Sec. 16-24

Sewer - Dawes & Archer 25

Alley BIK 11 Second Fortuna Park Add 26

Storm Drain " " " " 33

Nashville St. Morano to Tonopah 36-

Opal St. Dawes to Everts 41-49

Opal & Tourmaline (Bench check) 69

ARCHER ST.

La Jolla Mesa Dr. to Cass

X-Sec for Imp.

W.O. 31602

17 July 1951

Sommermeier

Bey

R. Sissen

Altman

FB 1668 - P1

1774 - P. 62

1662 - P47

2068 - P53

■ = Fd. Mon.

stationing from F.B. 1774-62

See F.B. 2068-P53 For water meter boxes.

where aprons to single garages
are about level across. Φ only

is shown

B.W. = base of wall

T.W. = Top of wall

INDEXED

2

JUL 19 1951

Cass

St.

REDUCED
7-19-51 HK

11+26.12
11+19.12

28'

7

35'

7

ARCHER ST.

35'

29'

7

0400

La Jolla Mesa Drive

Archer St.

17 July '51

⊕

3

T.P. 12.08 140.45 3.55 12837

1+16 52 Lt. = ⊕ 5' wide Conc. steps.

134.6	132.1
+2.7	+0.2
5.8	5.2
on porch	At steps

1+00

131.9	130.8	127.0	126.9	126.4	126.4	126.1
0.0	1.1	4.9	5.0	5.5	5.5	5.8
50	35	17		20	35	50

0+50

170.2	125.4	125.3	124.8
1.7	6.5	6.6	7.1
35	16		35

0+32 34^c At. = ⊕ 3' wide conc. walk

124.28	124.20	124.34
7.64	7.62	7.58
34 ^c	35	45

0+10

131.9	131.9	129.2	127.7	127.1	125.4	124.2
0.0	0.0	2.7	7.2	7.8	8.5	7.7
50	41	35	16		25	35

0+00 = Ely line La Jolla Mesa Dr.

126.2	126.1	124.6	123.9	123.1	123.6
5.7	5.8	7.3	8.0	8.8	8.3
50	35	16		25	35

8.64

131.92

123.28

131.92

SE Corner Map. Archer + La Jolla Mesa Dr.

Archer

2+82 35⁹ Lt. = ± 4' wide Conc. walk

136.10	135.60
4.35	4.85
462	352
At. steps	

2+59 35' Lt. = ± 10' wide Conc. drive

135.91	135.00
4.54	5.45
62	35
Gar. floor	

2+50

134.9	134.6	131.9	131.6	130.7	131.0	130.6
5.6	5.9	8.6	8.9	9.8	7.5	7.9
45	35	16		20	35	45

2+00

132.6	130.7	130.1	129.9	129.9
7.9	9.8	10.4	10.6	10.6
35	16		20	35

1+89 35⁸ Lt. = ± 8' wide Conc. drive

134.66	133.15
5.77	7.30
63	358
Gar. floor	

1+74 44⁸ Lt. = ± 4' wide walk to steps

135.9	133.30
4.6	7.15
51	448
on porch	walk

1+50

132.1	131.9	129.1	129.0	128.2	128.5
8.4	8.6	11.4	11.5	12.3	12.0
40	35	16		20	35

1+40 35³ Lt. = ± 8' wide Conc. Dr.

133.02	131.62
7.43	8.63
52	352
Gar. Floor	

140.45

ARCHER ST.

£

5

5+00

141.5	140.7	140.3	140.2	139.9	140.0
6.2	7.0	7.4	7.5	7.8	7.7
35	18	16		20	35

4+50

140.2	139.3	138.8	138.6	138.3	138.2
7.5	8.4	8.9	9.1	9.4	9.5
35	18	15		20	35

147.70

9.77
T.P. SE. Corn wall
(35' Lt. 3+10)

147.70 2.52 137.93

4+00

138.7	137.6	137.2	136.8	136.3	136.4
1.8	2.9	3.3	3.7	4.2	4.1
35	18	16		20	35

3+50 35' Lt. = end brick wall

138.0	136.0	136.6	135.4	135.1	134.4	134.4	134.5
2.5	4.5	3.7	5.1	5.4	6.1	6.1	6.0
35	35	35	15		20	35	40
T.W.	B.W.						

3+10 35' Lt. = thru brick wall & 10' wide Conc. drive

137.61	136.13
2.84	4.32
63	355
Bar. floor	

3+00 Cont.

137.7	135.4
2.8	5.1
355	355
T.W.	B.W.

3+00 35' Lt. = start brick wall

136.0	136.0	135.8	133.5	133.5	132.7	133.3	132.6
4.5	4.5	4.7	7.0	7.0	7.8	7.2	7.9
355	35	30	16		20	22	35

140.45

ARCHER St.

⊕

6

6+42 44 Lt. = ⊕ 5' wide Conc. walk.

145.91 145.65
1.79 2.05
54 44

6+00

143.7 143.1 143.0 142.8 142.4
40 46 4.7 4.9 5.3
35 20 17 35

5+87 35² Rt. = ⊕ 8' wide Conc. drive

142.18 142.14
5.52 5.58
35³ 70
Gar. floor

5+75 - 23 Rt. = Ctr. Fire Hydr.

5+62 39⁸ Rt. = ⊕ 2⁵' wide Conc. walk

140.90 140.89
6.80 6.81
39⁸ 50

5+52 35² Lt. = ⊕ 3' wide Conc. walk

145.15 143.19
2.55 4.51
48 35²

5+50

143.1 141.1 141.7 141.4 141.4
4.6 6.0 6.0 6.5 6.5
35 18 20 35

5+37 35¹ Lt. = ⊕ 9' wide Conc. drive

145.70 143.55 143.06
2.00 4.15 4.62
65 45 35¹
Gar. floor

147.70

ARCHER ST.

2

7

7+75 60' Rt. = $\frac{1}{2}$ 3' wide Conc. walk

148.05 148.13
8.02 7.94
60 70

7+65

150.1 150.0 149.1 148.7 148.5
6.0 6.1 7.0 7.4 7.6
35 10 20 35

7+60

55' Rt. = $\frac{1}{2}$ ^{1' wide} Conc. steps

147.8 149.83
8.3 6.24
55 57.5
End of steps on porch

7+50

149.6 149.1 148.8 148.5 148.1
6.5 7.0 7.3 7.6 8.0
35 20 20 35

7+00

147.1 146.7 146.9 146.6 146.4
9.0 9.4 9.2 9.5 9.7
35 20 18 35
156.07

T.P.

10.61 156.07 2.24 145.46

6+54

48' Lt. = $\frac{1}{2}$ double Gar no apron conc. floor

146.35
1.35
48'

6+50

145.0 144.4 144.6 144.4 144.2
2.7 3.3 3.1 3.5 3.5
35 22 16 35

147.70

T.P. 8.59 163.97 0.69 155.38

9+00

153.1	154.5	154.3	154.1	152.8	153.4	153.6	153.5
3.0	1.6	1.8	2.0	3.3	2.7	2.5	2.6
50	40	35	20		20	35	40

8+93- 35² AT = start picket fence.

8+90

145.8	148.1	153.6	153.6	152.1	150.8	150.6	152.0
10.3	8.0	2.5	2.5	4.1	5.3	5.5	4.1
35	26	23	15	10		20	35

8+80

146.6	145.8	145.6	150.9	148.9	148.3	147.8
9.5	10.3	10.5	5.2	7.2	7.8	8.3
60	35	21	13		20	35

117 wash to north

8+65

152.3	152.3	145.5	144.8	147.7	146.5	146.5	147.3
3.8	3.8	10.6	11.3	8.4	9.6	9.6	8.8
40	35	28	18	13		20	35

8+33

151.6	151.6	147.0	144.4	144.1	144.3	142.1	141.3
4.5	4.5	9.1	11.7	12.0	11.8	14.0	14.8
35	30	25	15		17	35	50

117 wash to south

8+00

150.8	150.7	146.6	146.4	146.1	148.5	148.8
5.3	5.4	9.5	9.7	10.0	7.6	7.3
35	12	4		18	20	35

156.07

ARCHER ST

T.P. 6.30 168.39 1.88 162.09

10+51 34' Rt. = end board fence

10+50

160.9 160.9 161.4 161.4 160.8 160.6 160.5
 3.1 3.1 2.6 2.6 3.2 3.4 3.5
 40 35 31 20 20 35

10+37 36' Lt. = ± 3' wide Conc. walk.

160.81 160.70
 3.16 3.27
 46 36

10+20 { 35' Rt. = start board fence
 36' Lt. = start picket fence

10+00

157.3 158.8 158.6 158.1 157.8 157.4
 6.7 5.2 5.4 5.7 6.2 6.6
 60 35 20 20 35

9+56 45' Lt. = ± 6' wide Conc. steps.

158.09 156.2 156.1 156.1 155.5 155.2 155.1
 5.88 7.8 7.9 7.9 8.5 8.8 8.9
 47 45 35 20 20 35
 on porch and at steps

9+29 34' Rt. = ± 8' wide Conc. drive.

154.41 154.47
 9.56 9.50
 346 50
 Car floor

9+21 34' Rt. = end picket fence.

9+16 34' Rt. = ± 9' wide Conc. drive

153.61 153.81 153.77
 10.16 10.16 10.20
 345 35 50
 on drive

163.97

11+00

163.9	163.9	163.4	162.9	162.7
4.5	4.5	5.0	5.5	5.7
35	20		20	35

10+79 34³ Lt. = ± 8' wide conc. drive

163.84	163.21	163.20
4.55	5.18	5.19
51	35	34.3

Cor. floor

160.4
8.0
35.3
B. W.
E+W wall

3.5' Lt. = end picket fence.

10+69 35³ Lt. = end E+W conc. block wall

(= wly face N+S. Conc. wall

163.0	162.0	162.6	162.2	161.8	161.4	161.8	161.4
5.4	6.4	5.8	6.2	6.5	7.0	6.6	7.0
35.3	35.3	35	20		20	22	35

T.W. B.W. End
N+S wall

10+65 35³ Lt. = start E+W conc. block wall

(= wly face N+S. Conc. wall

162.9	160.4	161.8
5.5	8.0	6.6
35.3	35.3	35.3

T.W. B.W. End

10+62 35³ RA. = start rail fence

161.14	160.89
7.25	7.50
72	52

on drive

10+60 52' Lt. = ± 9⁵ wide conc. drive

10+57 39⁸ RA. = ± 10' wide conc. apron

160.52	160.60
7.87	7.79
39.8	50

Cor floor

168.39

Archer

#

5.32 163.07 (163.06)

S.W. Men. Cass + Archer $\frac{FB1662}{47}$

11+19.12 { = wly line Cass
35' Mc end rail fence.

165.4	165.4	164.6	164.2	163.4	163.1
3.0	3.0	3.8	4.2	5.0	5.3
40	35	20		20	35

11+18

164.0	164.0	164.7	164.6	164.1	163.3	163.2
4.4	4.4	3.7	3.8	4.3	5.1	5.2
40	35	34	20		20	35

11+02 33' Lt = £ 3' wide conc. walk.

164.17	163.94	163.94
4.22	4.45	4.45
45	35	33 1/2

168.39

D. Smith
R. Shepherd
Wm Ottman

X Sec Archer

0758 16² RT Northwly 6" Con wall

Reduced AR
8-10-51

0750

0735 31⁰ LT & 3⁵" con walk

0734 31^E & 2" Tree

0728 31^E RT & 4" Tree

0718 31³ & 4" tree

0711 23⁰ RT & Fire Hyd

0700 E line Dawes

B.M.

11⁷ 176⁰⁰

164²⁹

SW 7th Man
Dawes +
Archer

Dawes to East

LT-North

&

INDEXED

AUG 10 1951

111.2	169.1	166.8	166.6	165.8	163.9	163.4
48	62	92	94	102	124	126
45	35	19		14	35	45

170.14	168.89
586	711
410	310

169.4	168.2	166.3	165.8	165.5	164.9	163.0	162.7
66	78	92	102	105	114	130	133
45	35	20	19		12	35	45

176⁰⁰

WO # 31602 12

8-9-51

RT-South

165.8

166.26

164.40

102

974

1160

162

162

345

Footing

Top

Top

Lt = North

E

Rt = South

13

1+50 33² Lt E 3' con steps & walk1+50 32² Rt E 10" Tree1+40 36² Rt E single garage con floor & apron1+28 34² Lt E single garage con floor & apron1+31 31² Rt E 14" Tree1+26 35² Rt E 3' con walk1+15 31² Rt E 10" Tree1+00 36² Lt E 7' con drive0+71 16² Rt E 3' brick walk

174.20	174.17	172.62	171.8	170.5	170.8	169.6	168.7	168.1	167.0
180	183	322	42	55	52	64	73	72	90
400	360	335	21	19		14	24	35	45
walk	Top	but		step					

167.14

167.23

886

877

362

392

apron

floor

171.70

171.56

430

444

362

342

floor

apron

166.00

166.10

10.00

9.90

352

452

172.33	170.82	170.4	168.3	168.0	167.7	165.4	164.5
362	518	56	72	80	82	106	115
460	360	35	19		15	35	45

166.33

165.83

165.46

164.58

962

1017

1054

1142

162

222

224

35

176.00

7.5 step

step

2760⁸

2745¹

7P, 8²⁵ 183⁹⁹ 0²⁶ 175²⁴

2742 24² Rt E 2' con walk

2723 24⁸ Rt E 2' con walk

2700

1777 35² Rt E 3' con walk

1763 40³ Rt E double garage con floor + apron

Lt = North					8	Rt = South					14
181.9	180.7	179.0	178.6	177.5		177.0	177.0	175.6	175.5	175.6	
2 ¹	3 ²	5 ⁰	5 ⁴	6 ⁵		7 ⁰	7 ⁰	8 ⁴	8 ⁵	8 ⁴	
45	35	23	20			10	17	25	35	45	

180.7	179.9	178.4	177.5	176.3		175.7	176.5	175.1	174.5	174.0	
3 ²	4 ²	5 ⁰	6 ⁵	7 ²		8 ³	7 ⁵	8 ²	9 ⁵	10 ⁰	
45	35	22	20			10	12	17	35	45	

183⁹⁹

174.60	174.16
140	184
24 ²	35
walk	walk

173.16	172.90
25 ⁴	30
24 ⁸	35
walk	walk

176.9	176.2	175.6	173.8	173.1		172.3	172.8	171.1	171.1
70 ²	70 ²	0 ⁴	2 ²	2 ²		8 ²	3 ²	4 ²	4 ²
45	35	30	19			11	12	35	45

169.46	169.36
65 ⁴	66 ⁴
35 ²	45 ²

168.99	169.18
7 ⁰¹	6 ⁸²
40 ³	42 ³
apron	floor

176⁰⁰

Lt = North

Rt = South

15

BM starting

8⁸⁵

164²⁹

164²⁹

TP₂

0²⁷

173¹⁴

11¹²

172⁸⁷

3400

185.0	183.1	181.1	180.2	179.8	180.0	176.6	177.9	177.9	177.4
71 ⁰	02	22	38	42	40	74	61	64	66
45	35	19		8	14	26	34	35	45

183⁹⁹

Roberts
Cota
Moore
Pollen
Aug 17, 1951
WB 31602

X-Section Agate St.

Cass to Dawes

See FB 1659 pg 58

Duplicated C. Moore's Line!

0+50

0+11 23'-Rt to center Fire Hydrant

0+00 East Line Cass

0-20

0-25

Q Cass

BN

5.11

159.61T

154.50 NWT'Mon

Cass & Agate

159.61T

Lt

Q

Rt

16

INDEXED

AUG 20 1951

Notes reduced 8-20-51 HR

157.9	157.4	156.2	155.3	154.8	154.5	153.4	152.9
1.7	2.2	3.4	4.3	4.8	5.1	6.2	6.7
50	40	17	15		20	40	50

157.1	156.6	155.6	154.3	153.9	153.3	153.8	152.8	152.3
2.5	3.0	4.0	5.3	5.7	6.3	5.8	6.8	7.3
50	40	18	15		19	21	40	50

156.9	156.4	155.0	153.8	153.5	152.7	152.3	151.0
2.7	3.2	4.6	5.8	6.1	6.9	7.3	8.6
60	40	18	17		20	40	60

155.2	154.4	153.7	153.3	152.2	150.7	149.6
4.4	5.2	5.9	6.3	7.4	8.9	10.0
60	40	17		20	40	60

156.6	154.6	152.9	150.8	148.3
3.0	5.0	6.7	8.8	11.3
90	70		40	90

Cont'd From Page 16

2+

Q

R

17

1410 25² Rt to Center Water Dept MH

154.96
265
25²
TOP
MH

1408 407 Rt Q 2 Strip Drive 2' strips
7' overall

153.77 152.35
5.84 726
402 82
conc. Floor

1400

158.5 158.0 157.1 156.1 155.6 154.9 154.0 153.3
11 16 25 3.5 40 4.7 5.6 6.3
50 40 17 15 20 40 50

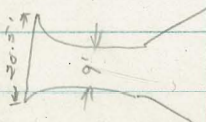
0496 22² Lt Q 2 Ribbed Drive 2' strips
6² overall

158.27 157.03
134 258
40 222
conc. conc.

0474 21⁶ Lt to water (water)

156.13
348
216
ON VALVE

0473 15' Rt to Q Wires Conc. Drive
Garage being converted to Apartment



154.61 154.89 153.71 152.85
5.00 4.72 5.90 6.76
15' Drive 20' Drive 40' Drive 61' Floor

0457 39² Lt Q 25' Conc. Walk

158.16 157.70
145 191
498 398
WALK WALK

159.617

159.617

Cont'd From Page 17

14

E

R2

18

2700

157.8	157.4	156.1	155.5	155.2	154.8	153.8	153.6
0.4	0.8	2.1	2.7	3.0	3.2	2.4	2.6
50	40	17	15		20	20	50

1793

40² R6 @ 2 Strip Drive 2 Strip

65 overall

154.30

153.46

3.89

4.73

402

60

conc.

conc.

T.P.

3.88 158.19π 5.30 154.31

158.19π

153.81

1487

21² R4 to Water Meter

5.80

213

ON

VALVE

1485

31² R4 to @ 3' Conc Walk

158.15	157.71	157.35
1.46	1.90	2.26
50	40	31 ²
conc.	conc.	conc.

1450

158.2	157.7	156.3	155.7	155.6	154.9	154.1	153.7
1.4	1.9	3.3	3.9	4.0	4.7	5.5	5.9
50	40	17	15		20	40	50

1441

32' R4 to Abrams Bush

154.05

1421

21⁵ R4 to Water Meter

5.36

223

ON VALVE

1419

32' R4 to Abrams Bush

159.61π

159.61π

Cont'd From Page 18

2+47 21³ Lt to Water Meter

T.P. 3.68 158.02X 3.85 157.34

2+41 39⁸ R & 8³ Conc Drive

2+46 37³ Lt to Center 6" Pine Tree

2+35 37² Lt & 9' Conc Drive

2+12 34⁴ Lt & 8' Conc Drive
W

2+06 21³ R to Water Meter

2+01 24⁸ Lt to Water Meter

158.19X

Lt

R

R

19

155.90

2.12

21³
ON VALVE

158.02X

154.09

153.37

4.10
39²
conc.

4.82
60
conc

158.79 157.39 157.28
+0.60 0.80 0.91
0⁴ 40 37²
Floor conc conc

157.38 157.63 158.34
0.81 0.56 +0.15
34⁴ 40 34²
conc conc Floor

153.78

4.41

21³
ON VALVE

155.89

2.30

24⁸
ON VALVE

158.19X

Cont'd From Page 19

Lt

E

Rt

20

3+00

156.9	156.5	155.5	154.9	154.9	154.5	153.9	153.4
1.1	1.5	2.5	3.1	3.1	3.5	4.1	4.6
50	40	16	14		20	40	50

2+84 38° Lt to Center 8" Pine Tree

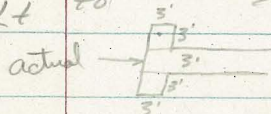
2+87 40' Rt E 3' Conc Walk

153.62 153.44
4.20 4.58
40' conc 50 conc

2+74 215' Rt to Water Meter

153.53
4.49
215 ON VALVE

2+72 368' Lt to Abies Bush



2+64 154' Lt E 3' Conc Walk "T"

157.14 155.89
0.88 2.13
40 conc 154 conc

2+63 399' Rt E 15' Conc Drive

153.92 152.21
4.10 5.81
399 conc 75 conc

2+59 365' Lt to Abies Bush

2+50

157.9	157.1	156.1	155.1	155.0	154.7	153.9	153.6
0.1	0.9	1.9	2.9	3.0	3.3	4.1	4.4
50	40	16	14		20	40	50

158.02 T

158.02 T

Cont'd From Page 20

3+66 40' Rt to Q 8' Conc Drive

3

3+59 22' Rt to Water Meter

3+56 21' Lt to Water Meter

3+50

3+40 40' Rt Q 3' Conc Walk

3+38 40' Lt Q 10' Conc Drive

3+08 21⁵' Lt to Water Meter

158.02

lt.

Q

Rt

21

153.01

5.01
40
conc

152.74

5.28
50
conc

152.5

5.5
21
ON Valve

154.95

3.07
21
ON Valve

156.9	156.5	155.7	154.9	154.7	153.9	153.4	153.3
1.1	1.5	2.3	3.1	3.3	4.1	4.6	4.7
50	40	20	15		20	40	50

153.48

4.54
40
conc

153.31

4.71
50
conc

156.99

1.03
50
conc.

156.68

1.34
40
conc.

155.00

3.02
21⁵
ON Valve

158.02

Cont'd From Page 21

Lt

E

Rt

22

4455 21" Rt to Water Meter

150.13

7.89

21" ON VALVE

4450

154.7	154.3	153.4	152.5	152.8	152.5	151.3	150.4
3.3	3.7	4.6	5.5	5.2	5.5	6.7	7.6
50	40	16	13		20	40	50

4442 40" Rt E 3' Conc Walk

150.69

150.71

7.33

7.31

40" CONC

50 CONC

4440 40" Lt to E 10' (Forms In For Drive)

154.69

3.33

40" ON FORM

4415 24" Lt to Water Meter

154.27

3.75

24 ON VALVE

4400

156.0	155.7	155.0	153.8	153.8	153.4	152.4	152.0
2.0	2.3	3.0	4.2	4.2	4.6	5.6	6.0
50	40	25	15		20	40	50

3489 40 Lt E 95' Conc Drive

156.76

156.39

1.26

1.63

50 CONC

40 CONC

158.02T

158.02T

Cont'd From Page 22

4

8

Rt

23

5422

152.8	152.4	151.0	151.0	150.7	149.3	148.7	148.3
52	56	7.0	7.0	7.3	8.7	7.3	9.7
50	40	26	24		32	40	50

5421

151.9	151.5	151.8	151.0	150.7	149.5	149.8	149.6
6.1	6.5	6.2	7.0	7.3	8.5	8.2	8.4
50	40	26	24		32	40	50

5417

41' Rt to Center P. Pole # 5248

153.4	152.8	151.8	151.2	151.4	150.7	150.5	149.8
46	52	6.2	6.8	6.6	7.3	7.5	8.2
50	40	17	13		20	40	50

4499

West Line Daves

4498

23² Lt to Water Meter

151.48

6.54

23⁵
on Valve

4497

23² Lt to Water Meter

151.48

6.54

23²
on Valve

4485

39¹ Lt to 8' Conc Drive

154.84

154.06

3.18
50
conc

3.76
39¹
conc

158.02X

158.02X

Cont'd From Page 23

24

£

27

24

Check

3.57 154.45 = 154.50

£ Dawes

153.9	151.9	150.5	148.7	147.2
4.1	6.1	7.5	9.3	10.8
90	40		40	90

158.02

158.02

Elev. on Sewer M.H.

Dawes And Archer

INDEXED
law
OCT 15 1951

Walker
Pope NO. 31602
Huffman
10-10-51

ST

1452.6 on Invert = 5.32 164.56
6" ? .50
1452.6 on Top pipe 4.76 165.12

← 1452.6
- Dead End.

Archer

0+00 on Invert 9.34 160.54
0+00 on Rim MH 4.03 165.85

0+00 → East MH Dawes

7'
7' B.M. in Conc. Man. P-12

5.59 169.88 164.29

X-Sec. Alley BIK 11
Second Fortuna park Add.

12-26-51
W.O. 25020

C.H.S.
Begg
R. Sisson
Oltman

Fortuna.

o = Fed. 3/4" pipe

75 o Fed pipe

BIK.
11

< 75 X 75 >

INDEXED
Dec 28 1951

75

Roosevelt (unimproved st.)

75 o-75

(cannot tell if this is REELS) Fed pipe # 2201

T.P. 7.57 32.33 9.02 24.76
 0+00 stub.

0+30 - 16' Lt. = start 4 Car. Garage ^{floor.} Conc.

0+28 - 14' Lt. = start 2' Jdg. in Bldg.

20' ext. = \pm door. (on Conc. Floor)

0+11 10' ext. = S.W. cor double Car. South ^{front}

0+09 14' Lt. = start Conc. block House ^{+ Car. Curb.}

0+00 - Nly. line Roosevelt.

0-35 = \pm Roosevelt.

Temp. B.M.

0-75 - 7' Lt. = Prop. pipe 3.32 30.46 B.M.#2

T.P. 12.87 33.78 0.59 20.91

T.P. 8.54 21.50 8.54 12.96

T.P. 0.59 21.50 3.48 20.91

T.P. 1.19 24.39 3.29 23.20

B.M.#1 7.04 26.49 - 19.45

24.33
 9.45
 16
 Floor level

236	245	248	255	280	246
10.2	9.3	9.0	8.3	5.8	5.2
15	75		5	75	15
180	242	253	264	311	
15.8	9.6	8.5	7.6	2.7	
50	75		75	50	

33.78

Set. B.M. S.E. 7' Lt. Roosevelt + Riviera Drive

N.E. B.P. La Playa + Riviera Dr.

Reduced & Plotted
 1-52
 H. Mills

Bik. 11

Pole # J.P.A. 3921

T.P. 3.60 25.62 10.31 22.02

1+25 7th Lt. = start 5' high Conc. wall

196 20.3
12.7 12.0
74 74
B.W.

1+00

183 231 211 231 232 253
14.0 11.2 11.2 9.2 9.1 7.0
25 7E 3 7E 7E 15

0+92 14th Rt. = end 6' high Conc. wall

278 271
4.5 5.2
14 14E
B.W.

0+62 16th Lt. = end 4 Car. Bay Conc. floor

2434 241
7.99 8.2
16 16
Floor Gd.

0+50

239 232 236 276
8.4 9.1 8.7 4.7
7E 5 7E

B.W. denotes base of wall

14th Rt. = start 6' high Conc. wall

0+31 - 10th Rt. = end garage. (South front)

281 279
3.2 4.4
14E 14E
Gnd. B.W.

T.P. 4.37 29.39 0.60 25.02

3+00 10³ Rt. = N.W. Cor. garage

2+79 10³ Rt. = S.W. Cor. Gar. (front) South

2+71 9⁸ Lt. = N.E. Cor. Gar.

2+50 9⁸ Lt. = S.E. Cor. garage (west front)

2+00

1+74- 7³ Lt. = end 5' high conc. wall.

1+50

116
80
35
290
5.6
75
204
5.2
210
4.6
75
213
4.3
10

144
6.2
75
204
5.2
214
4.2
75
22.29
3.33
193
± Bar door
on Bar. floor

110
6.6
98
117
5.9
75
204
5.2
210
4.6
75

143
7.3
40
141
6.5
75
201
5.5
209
4.7
75
213
1.3
20

116
6.0
77
B.W.
202
5.4
75

207
4.9
75
212
4.4
25.62
215
4.1
75

Blk. 11

Pipe 75' x 8" 5400

T.P. 4.83 32.01 2.21 27.18

5400

25.4 26.0 26.0 27.1
 4.0 3.4 3.4 2.3
 25 75 75

4450

23.4 24.7 24.8 25.3 26.8
 6.0 4.7 4.6 4.2 2.6
 20 75 75 75 20

4424 - 8' RT = 8' wide Conc. drive

21.4 25.24
 8.00 4.15
 8.9 49
 Cov. Floor

4400

24.5 22.7 23.0 22.7 25.5
 8.9 6.7 6.4 5.7 3.9
 30 75 75 75 25

3470 - 23' RT = end Car.

26.03 3.36

3451 23' RT = start double Car. Conc. floor.

23 floor
 25.7 26.04
 3.5 3.35
 23 23
 Floor

3450

21.4 21.6 21.9 25.5
 8.0 7.8 7.5 3.9
 75 29.39 75 20

74 RT }
 75 RT } = start alley curbs.
 6+00 = start A.C. pave

2287	2969	2981	3042	3482
6.70	7.10	6.98	6.37	5.89
75	75		79	74
26	6		6.	26

36.79

T.P. 6.90 36.79 2.12 29.89

5+50

278	284	285	287	301
4.2	3.6	3.5	3.3	1.9
25	75		75	25

5+49 9⁸ RT = N.W. Cor. garage

287
 3.3
 98
 Grd.

5+29 } {
 32' RT = N.E. Cor. Conc. apron
 25' RT = door. - south front.
 9⁸ RT = S.W. Cor. garage

284	3096	3493
3.6	1.05	1.08
98	25	32
Grd.		

5+24 9⁵ RT = N.W. Cor Conc. Apron

2818	3008	3432
3.83	1.93	1.69
95	20	31
	on apron	

5+02 8⁵ RT = S.W. Cor. Conc. Apron
 double Corr
 32' RT = S.E. cor. Conc. Apron to

2761	3421
1.40	1.80
85	32
apron	

32.01

±

In walk, S.W. Cor. Riviera + Greatham
plate B.M. # A. 408 - date 1949

Sat. B.M. 7.83 9.30

Calif. State Land Commission brass

Check B.M. 6.95 10.18 (10.19)

B.P. N.W. Riviera + Greatham

T.P. 1.85 17.13 12.29 15.28

T.P. 2.20 27.57 11.48 25.31

6417⁸ = 1170 existing slst cl. Fortuna

2659	2625	2542	2881	2778	3445	3109	3313	3354
9.90	10.54	11.37	7.98	7.01	6.84	5.70	3.66	2.95
50	50	115	115		115	115	50	50
cl	G	cl.	G		G	cl	G	cl

6413⁸ } 7E 4
7E RK } = BC A' Rad. Alley cl. Ret.

2277	2215	2228	3419	2084
7.02	7.64	7.01	6.60	5.95
75	75		75	75
cl	G		G	cl

36, 79

D. Smith
C. Allen
R. Taylor
Wm Ferguson

Locate and X Sec Storm Drain Easement ^{& Lot 14} BKK 11-alley W.O.# 25020 33
2d. Fortuna Park 1-24-52

6100
Ed Nail

Note Lot 14 + 13 carries a house

Lot 15, 16 + 17 are vacant

All property owners say there is
an easement some where in Lot 15 or 16

roll top of set comb.

4 1/2 side walk

75 75

Alley BKK 11

Lot 14

Lot 15

0040

Set 2x2 Hub
2150 checks prop pipes west of
Lot 14 + Lot 15

INDEXED
JAN 25 1952

0100
Ed Stud

Lt = South
Lot 15

Prop
line

Rt = North
Lot 14

14.4	14.4	15.2	15.22
12 ⁵	12 ⁵	11 ²	11 ⁶⁹
5	1		1 ^L
			drive

16.1	16.1	16.7	16.79
10 ⁸	10 ⁸	10 ²	10 ¹²
5	1		1 ^L
			drive

17.2	17.6	17.84
9 ²	9 ³	9 ²¹
5		1 ^L
		Floor

19.5	19.5	19.6
7 ⁴	7 ⁴	7 ³
5		5

20.1	20.1	20.3
6 ¹⁰	6 ¹⁰	6 ⁶
5		5

~~20.18~~
6²³
Hub

26⁹¹

0775

0750

0732 1^L RT SW cor double garage con floor

0710 1^L RT SE cor double garage con floor

0775

0705

set Hub 212

0700 E Alley int. prop line 14+15 extended

BM

215

26⁹¹

24⁷⁶

0700 Stub Alley
Page 27

X-SEC. NASHVILLE ST.
Moreno to Tonopah.

C.H.S.
Begg
oltman
Johns

7-25-52
W.O.# 32139

No tie points available in field
used $\frac{FB1807}{71}$ + curb line Tonopah for
line + station. Check T.P. book
for corrected stationing.

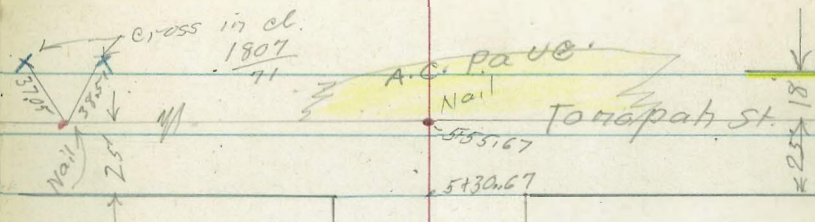
Direct elevation rod used so
figures shown in level notes
are actual elevations.

B.M. = B.P. \neq Ely wall tesolote creek
culvert at Moreno Blvd EL = 10.04

B.W. = base of wall

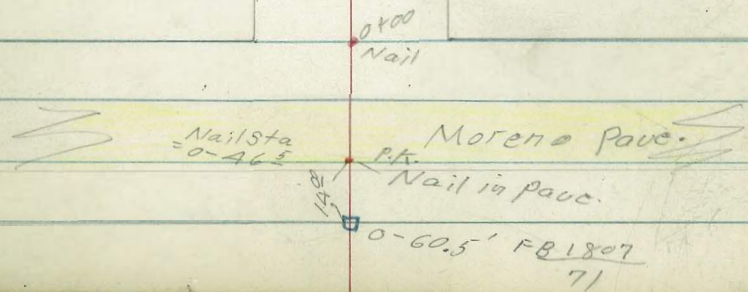
T.W. = Top of wall

(W) = Ctr. water meter box



INDEXED
JUL 28 1952

See page 54 for X-SEC. 5/11/53
cut



1+55 - 22' RT = Pole # J.P. 1335

1+52 27' RT. = (W)
25' RT. = 2" wide conc. walk

1+44 25' Lt. = 3" wide flag + conc. walk.

7.34	7.31	7.0	6.4	6.2	6.0	5.8	6.4	6.3	6.31	6.52
30	25	25	20	11		13	16	25	25	35
walk										

1+30 29' RT = start 3" wide conc. Ret. wall.

6.8	6.7	6.3	5.9	5.8	6.3	6.3	6.1	6.5
35	25	10		13	18	29	29	30
B.W. T.W.								

1+15 22' Lt. = Pole # P1328

1+00

8.1	8.2	6.9	5.8	6.0	5.7	6.8	7.1	7.2
35	25	14	10		14	17	25	35

0+60

7.5	7.7	6.7	5.6	5.8	5.7	7.0	7.2	7.3
35	25	14	9		15	19	25	35

0+30

7.4	7.6	6.3	5.7	5.8	5.8	6.8	7.0
35	25	9	8		17	25	35

0+27 22' Lt. = Pole # P1314

0+10 13' RT. = ^{ctr} Fire Hydr.

0+06 22' Lt. = double deadman

0+00 = Nly line Morana

7.6	7.7	6.6	6.1	5.5	5.9	5.8	6.3	6.1
35	25	20	9	8		24	25	35

0-27' = Ely edge Morana Pavc.

5.86	6.65	6.97	7.26	8.49
125	25		25	125

0-37' = E Morana

6.12	6.98	7.29	7.57	8.74
125	25		25	125

Set B.M. on P.K. Mail 0-46⁵ E Loui = 7.06

See P.

Nashville St

#

38

3+00

7.9 7.6 6.4 6.0 6.2 6.6 6.8
35 25 19 20 25 35

2+88- 24' RT. = (W)

2+82 23' Lt. = Pole # P 1346

RT. = Pole # J.P. 1345

2+80-25' Lt. = end brick wall

7.6 6.3 7.1
T.W. B.W. 9th
25 25 25

2+78-24' Lt. = (W)

also # 3' wide conc. walk.

2+63-25' Lt. = Face of brick wall

7.68 7.56 6.6 6.1 6.1 6.0 6.4 6.4
35 25 25 14 12 25 35
walk T.W. & B.W. walk

2+50 - 20' RT. = # 3' wide conc. walk.

6.20 6.20 6.25
20 25 35
on walk

2+46- 25' RT. = (W)

2+41 25' Lt. = thru. wall
8' wide dirt drive

2+31 - 24' Lt. = start 4" wide brick wall

7.5 6.4 6.9
242 242 246
T.W. B.W.

2+27 24' Lt. = (W)

~~2+22~~ see page 54

2+12 27' Lt. = # 3' wide conc. walk

7.65 7.61 7.6 6.6 6.3 6.0 6.1 6.5 6.4
37 27 25 23 15 14 25 35
walk

1+80

7.2 7.1 6.5 6.2 6.0 5.7 6.2 6.6 6.7
35 25 20 11 13 15 25 35

1+77 24' Lt. = (W)

1+68 24' RT. = # 2' wide conc. walk.

1+58 24' RT. = (W)

6.45 6.31
35 249
walk

1+57-25' RT. = end 3" wide conc. wall.

6.4 6.2 6.6
25 25 25
B.W. T.W.

Nashville

#

39

A+55 21⁶ Lt. = dead man

A+50

8.9	8.8	7.2	6.3	6.3	6.2	6.3	7.7	7.5
35	30	25	22		19	25	28	35

the dead man

A+42 19' Lt. = Φ 2' wide conc. ribbon of drive

8.62	8.43	8.05	7.50	6.30
42	32	28	25	19

of drive

A+37 19' Lt. = Φ 2' wide Conc. ribbon

8.62	8.42	8.02	7.46	6.26
42	32	28	25	19

A+31 22' Lt. = pole # P1362

A+27 24' Lt. = (W)

27' Lt. = Φ 3' wide conc. walkA+11 24⁴ Lt. = Φ 5' wide Conc. steps

8.42	8.30	7.30	6.8
37	27	24 ⁴	24
walk		stop	end.

A+00

8.2	8.2	6.6	6.3	6.2	7.2	7.5
35	25	17		18	25	35

3+79 24' Lt. = (W)

3+50

7.9	7.7	6.3	5.8	6.0	6.1	6.1
35	25	18		15	25	35

3+36- 14² Lt. = Φ 7' wide level conc. drive

7.95	7.91	7.49	6.37
40	31	25	142
R on drive \rightarrow			

3+27 24' Lt. = (W)

3+19 - 27' Lt. = Φ 8' wide level conc. Drive

6.24	6.70
27	71
drive	Gar. floor

25' Lt. = Φ 27' wide Conc. walk.3+11 23' Lt. = Φ steps to Conc. walk

7.81	7.72	7.10
35	25	23
walk		top of
		lower
		stop.

Nashville

weakeyes EL 5

Tonopah + Knoxville EL = 11.98 = 12.02

Set. B.M. on B.P. Wly. end Nly Return

5+73.7 = Nly. el. face Tonopah

13.32	12.94	10.20	9.79	9.04	8.73	8.56	8.82	7.00	7.46
125	125	63	63	25		25	75	119	119
cc	G	el	G					G	cc
		BC							BC

5+56 = sly edge regular A.C. Pav.

13.34	10.70	9.09	8.60	8.40	8.90	9.40
125	75	25		25	75	125

5+55⁶⁷ = Nail + Tonopah

8.55
07 nail
17 pave.

5+35 25^E Lt. = Pole # 4399

5+30⁶⁷ sly line Tonopah

8.9	8.7	7.3	7.1	6.8	7.1	7.7
35	25	20		15	25	35

26^E Lt. = 3' wide conc. walk

5+00 22^E Lt. = 3' wide conc. steps

22 ^A	8.91	7.82	7.22	7.0	6.6	6.5	7.9	8.1
3C	26 ^E	25	22 ^E	20		25	30	35
	walk		steps					

4+76 24' Lt. = (W)

OPAL St. 70' wide
Dawes to Everts

2-9-53
w.c. # 32042

INDEXED
FEB 11 1953

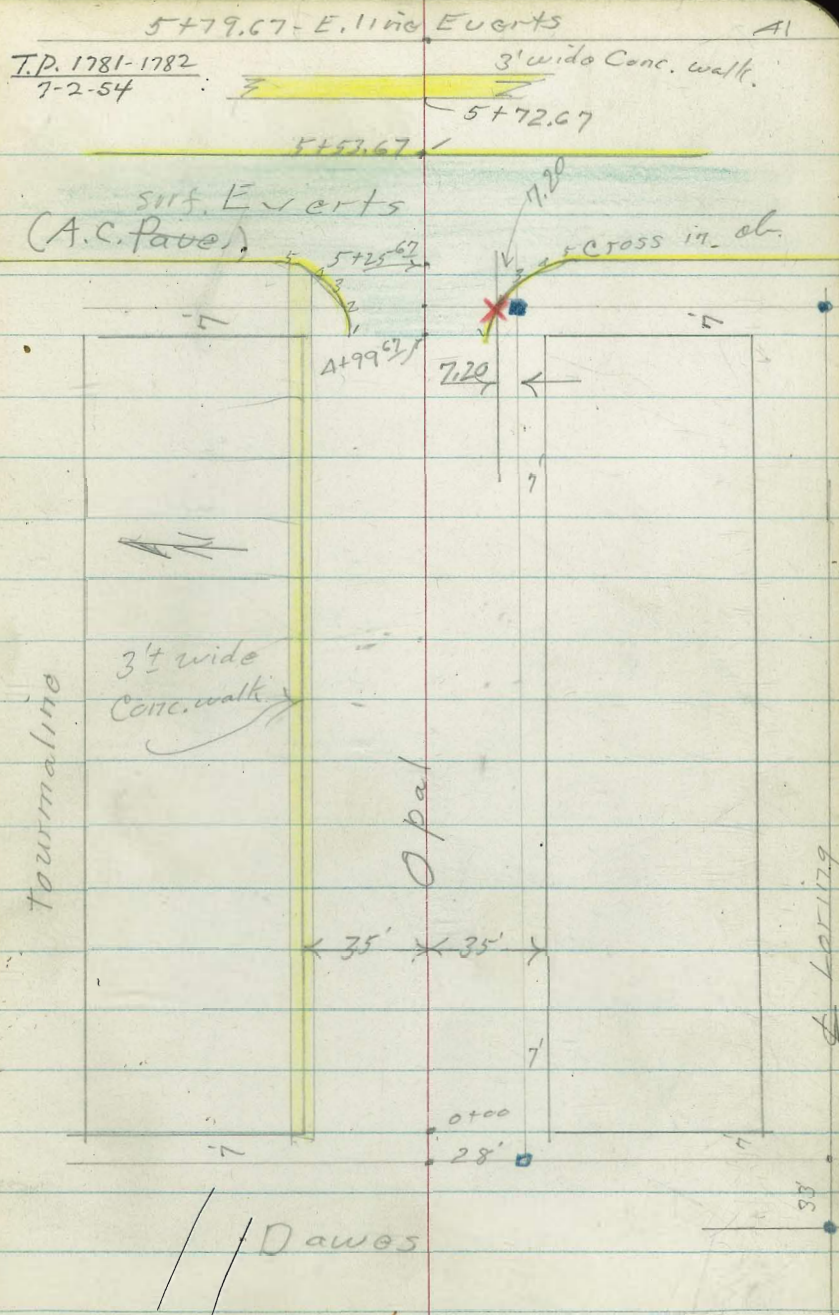
Sommermeier
Beeg
Altman

- denotes Fd. Ltt.
- " Fd. Conc. Man.
- " " 3/4" hub + disk
- ✕ " cut cross in curb.

Portion of opal st. has a
 $1/2$ " \pm thick oil coating.

This is to come out and so
is not noted in levels.

(W) denotes Ctr. of water meter box



OPAL ST.

Dawes to Everts

sketch P. 41

42

0+36 28^E Rt. = end Euginias.

0+31 20⁴ Rt. = (W)

0+21 - 35^E Rt. = ± 3' wide Conc. walk

spaced 6' apart.

0+05 { 29' 8" Rt. = start row of Euginias
19^E Rt. = Ctr. Fire Hydr.

0+00 = Fly line Dawes

0-01 - 34³ Lt. = start 3' wide E. & W. conc. walk.

0-40 = ± Dawes

T.P. #1 9.22 121.01 1.56 111.79

9.65 113.35 103.70

116.26
116.30
116.9

4.75 4.71
35.8 45.8
walk

4.1
20.4
top of
box

117.04 117.04 116.7 116.0 115.7 116.0 115.8

3.97 3.97 4.3 5.0 5.3 5.0 5.2
37.2 34.2 20 10 11 35

117.0 117.0

4.00 4.00
37.2 34.2

115.1 114.5 113.8 113.3 112.2

5.9 6.5 7.2 7.7 8.8
85 35 35 85

121.01

Chiseled square Ctr. S.W. of Ret
Loring + Dawes

Pal St.

T.P² 8.90 129.08 0.83 120.18

37' Lt = Nly edge walk.

34' Lt = sty. edge walk

1+00- 34' Rt = start 4' high Hedge &

120.58	120.56	120.56	119.7	120.0	119.9	119.3
0.43	0.45	0.45	1.3	1.0	1.6	1.7
37L	35	34L	20		11	35

0+95- 35' Rt = end drive

119.30	118.96
1.71	2.55
35	51
drive	

0+88- 35' Rt = start Conc drive to Sing. Car.

119.09	118.46
1.92	2.55
35	51
drive	Car

0+50

118.60	118.4	118.2	117.7	117.3
2.41	2.6	2.8	3.3	3.7
35	20		10	35
on walk				

0+45 35' Rt = 2' wide Conc. ribbon of drive

116.79
4.22
35
Ribbon

0+40- 35' Rt = 2' wide Conc. ribbon of drive

116.78	116.94
4.23	4.07
35	.61
Ribbon	Car. 1
	floor

121.01

(Rod was 200' off.)

T.P. + T.P. as shown in book are corrected,

T.P. 200' Nail	132.29	5.29	123.79
T.P. #3	8.50	<u>134.29</u>	<u>3.29</u> 125.79

200	39' Lt = Nly edge walk
	34' Lt = Sly edge walk

124.78	124.68	124.63	124.4	123.5	123.8	123.6	123.8	123.6
4.30	4.40	4.45	4.7	5.6	5.3	5.5	5.3	5.5
37	35	34	24	18		10	13	35

1493- 212 Rt = (W)

1463 32' Rt = end drive

1455 32' Rt = start conc. drive

1450

1433 31' Rt = 2' wide conc. walk

1430 33' Rt = end hedge

1411 20' Rt = (W)

122.95	122.6	121.7	121.9	121.5	121.9	121.9
6.13	6.5	7.4	7.2	7.6	7.2	7.2
35	23	18		10	20	35

on walk

121.99	121.98	121.83
7.12	7.13	7.25
32	35	65

on drive
Floor

120.63	120.83	120.86
8.45	8.25	8.22
31	35	45

129.08

120.0
9.1
20'

top of Box

T.P.*1 8.8G 136.44 127.58
~~138.44~~ 4.71 ~~129.58~~

3+00 34³ RT = end picket fence

128.62	128.59	128.1	127.3	127.5	127.1	127.5	127.0
3.69	3.70	4.2	5.0	4.8	5.2	4.8	5.3
362	337	23	20		10	11	35
N14	S14						
Edge	Edge						
walk	walk						

2+92 - 21' RT = (W)

2+80 33⁸ RT = 3' wide Conc. walk

2+58 - 32³ RT = start picket fence

126.79	126.3	125.6	125.8	125.6	125.9	125.4
5.50	6.0	6.7	6.5	6.7	6.4	6.9
35	25	20		10	11	35
on walk						

2+50

2+43 21' RT = (W)

2+14 = end drive 32³ RT

2+06 32³ RT = start Conc. drive to Sing. Cor.

124.09	124.03	123.86	123.83	123.83
8.20	8.26	8.43	8.46	8.46
32 ³	35	32 ³	35	55
				Cor.
				Flon

132.29

3+73 20⁵ Rt. = (W)

3+67 33' Rt. = 3' wide Conc. walk.

3+50

3+49 33' Rt. = start picket fence

3+45 34' Rt. = end ^{to Sing Cor.} ribbon drive3+36 34' Rt. = ^{to Sing Cor.} start ribbon drive3+28 20⁹ Rt. = (W)

120.37

120.0

128.8

129.1

128.8

129.2

128.8

6.07	6.4	7.6	7.3	7.6	7.2	7.6
35	23	19		10	11	35

on walk

128.54

128.51

7.90	7.93
34	35

drive

128.30

128.28

127.99

8.14	8.16	8.45
34	35	59

drive Port floor

8.2

20⁹
top of box129.8
6.6
20⁵
top of box

129.54

129.52

129.38

6.90	6.92	7.06
33	35	45

Opal Str

4

47

T.R.#5 6.17 ~~140.44~~ 138.44 4.17 132.27 134.27

4+45 34² RT = ent drive

4+38 34² RT = start Conc. drive
to Sing. Carr.

4+25 20⁵ RT. = (W)

4+00 33² RT. = start picket fence.

3+95 - 33² RT = end ribbon drive

to Sing. Carr

3+88 - 33² RT = start Ribbon drive

131.51

131.49

4.93 4.95
34² 35
drive

131.44

131.42

131.39

5.00 5.02 5.05
34² 35 60
on drive Car floor

131.11

5.3
20⁵
top of box.

132.16

132.09

131.6

129.7

130.8

130.6

130.8

130.2

4.28 4.35 4.8 5.7 5.6 5.8 5.6 6.2
36² 33² 23 20 11 12 35
walk

129.99

129.96

6.45 6.49
33² 35
drive

130.01

129.98

129.82

6.43 6.46 6.62
33² 35 59
Car Floor

136.44

Opal st

S.W. Return. 4 parts - B.C. = #1

132.89	133.29	132.78	133.21	132.69	133.14	132.59	133.00	132.32	132.87
5.55	5.15	5.66	5.23	5.76	5.30	5.85	5.44	6.12	5.57
1	1	2	2	3	3	4	4	5	5
C	cc	C	cc	C	cc	C	cc	C	cc

N.W. Return - 4 parts B.C. = #1

133.35	133.83	133.67	134.21	134.06	134.67	134.62	135.15	134.95	135.54
5.09	4.68	4.77	4.23	4.38	3.77	3.82	3.29	3.49	2.90
1	1	2	2	3	3	4	4	5	5
C	cc	C	cc	C	cc	C	cc	C	cc

4+99.67 } 34' RT = end picket fence
 } 20' Lt. } curbs. R=25'
 } 20' RT } B.C. existing curbs
 } A pick. start A.C. pavement

134.74	134.65	133.83	133.36	133.4	132.89	133.24	132.7
3.70	3.79	4.61	5.08	5.0	5.55	5.20	5.7
365	335	20	20		20	20	35
Ntg.	514	cc	C		C	cc	
Edge walk	Edge walk						

4+79 20' RT = (W)

132.7
 5.7
 208
 top of box

4+67 34' RT = 3' wide conc. walk

132.26	132.23	132.00
6.18	6.21	6.44
34	35	45
on walk		

4+50

133.54	132.8	133.3	131.9	131.8
4.90	5.6	6.1	6.5	6.6
35	20		13	35
on walk				

138.44

Opal

Note - checked 2nd off starting B.M.
 Reran turns & found T.P. #3 - Page A4
 off 200' - corrected notes as shown.

		11.84	103.69 - ok 105.69 (103.70)
T.P. #8	2.91	115.53 117.53	112.62 114.62
T.P. #7	0.82	124.61 126.61	123.79 125.79
T.P. #6	0.89	134.16 136.16	133.27 135.27

5+53⁶¹ - Ely. cl. line Events.

5+39⁶⁷ - Events pavement

5+25⁵¹ - wly cl. line

Reduced
2-17-53
RCB

chiseled □ S.W. Ret. Loring + Dawes

Opal.
 wly. 7' line Events Sly. 1A, 20' line
 Set. B.M. Chiseled Cross on curb.

126.64	135.94	134.81	134.24	133.59	132.78	130.92
1.80	3.00	3.63	4.20	4.85	5.66	7.52
100	45	20		20	45	100

136.64	136.11	
1.80	2.33	7.82
100	100.	100
cl	G	G
		7.31
		100
		cl

135.54	134.95	134.28	133.77	133.18	132.32	132.87
2.90	3.49	4.16	4.67	5.26	6.12	5.57
45	45	20		20	45	45
cl.	G			G	G	cl, E.C.
E.C.						

138.44

Tie Points - Corella Tract - Map. 1571

Fd: 2" pipe

Set Disk

Indexed

290.09

Tonapah
290.08

Set Disk

10'

24' 25' 90° 01' 30"

90° 01' 15"

St.

Frankfort

555.90

Fd pipe
1.5.2201
on line

Nashville

25 25

24' 25'

89° 01' 30"

1/2" I.P.

used: Fd. dd Hub + Tack

290.23

290.19

Morena

Set Disk

Fit Fd. dd

875.03

Set Disk

4-30-53

Osborne Hatch
whipple.

Cold & full of Beer
windy

290.07

290.08

Ave

Set Disk

10' 875.05

St. 220

90° 01' 30"

St.

25 25

Lehigh

2x4 post + Disk

294.66

294.68

294.89

89° 01' 30"

28.90
(29.80?)

(29.80)
map & Calc.

St.

Knoxville

555.84

P.L. Line

550.60

Fairly well
Hub + tack

290

290.06

Blud.

Set Disk

89° 01' 30"

90° 01' 30"

294.80

294.83

Nail-over
Cap. Nail

X-Section. Lehigh St. from Morena to
Tonapah - for paving. - See Sketch-p. 50

W.O. 32139 - 4-30-53 7.0.

1+23.9 - 0.6' Rt = Sewer M.H. - Rim = 12.31

1+20 - in Alley

1+14 - 21.5' Lt = P. pole # P. 1326 - 8.96
B.M. = spike

1+00 - 33.7' Lt = House Floor = 9.75

0+90

0+60

0+25

0+24 - 22.4' Lt = P. pole # P-1316

0+00 = N.L. Morena

0-37.5 = Pave on Morena

See Morena x-Section.

B.M. = B.P. in Bridge

10.04

Lehigh + Morena

Lt.

Rt.

REVISED
MAY 12 1953

Level To Nashville	7.2 60	7.6 25	7.8	8.0 10	13.1 17	7.5 25	5.3 29	Bottom
	7.8 40	7.7 25	8.2 10	12.3	4.8 14	4.6 24	12.9 35	9.4 42.8
	7.8 40	7.8 25	7.9 21	12.7 12	5.0 Bottom, 14	4.5 25	12.0 25	8.9 40
	7.8 40	8.1 25	10.5 20	4.0 5	4.0 Bottom, 2	10.8 18	8.8 25	8.8 40
	7.7 50	8.5 25	4.3 12	040	10.7 9	8.5 17	8.7 25	8.8 50
	9.91 75	10.21 25	10.21	10.13 25	9.97 75			
Actual Elev. Shown								

		Lt.	±	Rt.					
4+00		9.32 floor	7.5 52.4 by House	7.3 25	7.4	7.6 15	7.8 25	8.0 44.9 by House	8.60 floor
3+50		7.4 40	7.3 25	7.1 20	7.3	7.7 25	7.6 40	9.68 44.9 = floor	
3+42 = 44.9	Rt. = ± House								
3+30 = 24.7	Rt. = end fence								
3+00		7.4 40	7.7 25	7.2 20	7.4	7.9 25	8.0 35	8.83 44.8 floor House	
2+91 = 25.3	Lt. = ± 8' Conc. Dr.		7.50 49.8 floor gar.	7.40 25.3 Dr.		7.68 25.4	7.93 50 Dr.		
2+88 = 25.4	Rt. = ± 7' Dr. - 2 = 2' Conc. strips								
2+81 = 21.8	Lt. = ± P. pole # P 1338								
2+71 = 25	Lt. = ± 8' Drive - 2 = 2' strips		7.53 40 Dr.	7.48 = Dr. 25					
2+55	24.1 Rt. = Reg. picket fence	8.05 52.1 floor House	7.9 35	8.1 25	7.7 20	7.6	7.5 25	7.5 40	
2+30 = 25.2	Lt. = End ± Hedge								
2+00		9.73 floor	8.4 43.3 by House	8.6 25	8.1 18	7.6	8.0 25	8.2 31	13.2 44 Top bank
1+82 = 20.5	Rt. = ± P. pole # 1321								
1+80 = 25	Lt. = Reg. ± 5' Hedge - 5' High								
1+60			8.2 43.3 by House	8.1 25	7.7	7.8 20	9.9 25	11.9 35	5.2 46 Bottom
1+40 = 25.6	Lt. = ± 10 Conc. Dr. - sty. of House same Elev	8.53 43.5 floor gar.		8.20 25.6 = Dr.					

Lt.

E

Rt.

Tonapah + Knoxville
check B.M. = N.W.B.P.

12.02 ok

5+55.88 = ± edge of A.C. pave

5+37 - 21.5' Lt. = ± p. pole # P-4499

5+30.88 = S.L. Tonapah

5+00

4+67.5 - 26.1' Rt. = ± 2.5' Conc. walk

4+50

4+30 - 21.9' Lt. = ± P. pole # P 1360

4+24 - 24.8' Rt. = ± Brick Dr. 10'

4+06 - 24.8' Rt. = ± 3' Brick walk

9.86	10.08	10.04	10.05	10.16	10.59
75	25	1.5		25	75
		Rim M.H.			

9.2	9.0	8.2	8.4	8.3	9.0	9.2
50	25	20		20	25	50

9.50	9.2	8.8	7.9	7.9	7.9	8.8	8.8	9.66
floor	41.9	25	20		15	25	44.7	floor
	by House						by House	

7.97	8.23
26.1	walk 40

7.4	7.7	7.4	7.5	7.6	8.1	8.2	10.57
40	25	20		15	25	45	floor
						by House	

7.74	7.97	8.16
24.8	24.8	40
walk	Dr	Dr
	7.92	40

Nashville Street
Morena to Tomopak 5-11-53

for Yardage W.O. # 32139

C.H.S.
Begg
Altman
Schelin

Sketch P-36

Direct elevation rod used

INDEXED
JAW
MAY 12 1953

2+50

6.8 6.4 6.2 6.4 6.5 6.2
25 22 14 15 25

2+22 = 27⁴ RT. = ± 8' wide level Conc. ^{Dr.}

6.76 7.31
27⁴ 53
drive over floor

2+00

G.A. 2.18

7.4 6.5 6.2 6.6 6.2 6.5
25 22 11 13 25

1+50

7.0 6.2 5.8 6.3 6.1 6.4 6.3
25 14 12 15 18 25

1+00

8.1 7.1 5.7 5.9 5.8 7.3 7.0
25 18 12 15 18 25

0+50

7.7 6.9 5.6 5.9 5.9 5.6 7.1
25 15 12 16 17 25

0+00 = Nly Morena (See page 36)

7.3 7.4 7.4 6.2 6.3 6.2 5.8 6.1
35 25 21 16 15 25 35

10.04

culvert - at Morena Blvd.

See page 37 - for Paver

B.P. Fly head wall Tecolote creek

Nashville

See page 40 for intersection

7+55⁶¹ = Nail in pave (P-40)

8.55 ✓

7+30⁶¹ - page 40 = sly. tomopaki

8.1	7.0	7.3	7.1	7.7	8.2
25	20		8	12	25

5+00

8.5	6.7	6.8	6.7	7.5	7.4	6.6	7.4
25	18		8	10	23	25	30

4+50

7.5	6.4	6.9	6.5	6.8
25	19		10	25

4+00

7.5	6.6	7.3	6.7	6.8
25	18		14	25

3+50

7.6	6.7	6.8	6.6	7.2
25	18		13	25

3+00

7.6	6.5	6.7	6.7	6.2	6.3
25	19		11	20	25

INDEXED
MER
JAN 4 1954

X-sec Alley B/K 22, Ocean Beach

WO# 31600

12-30-53

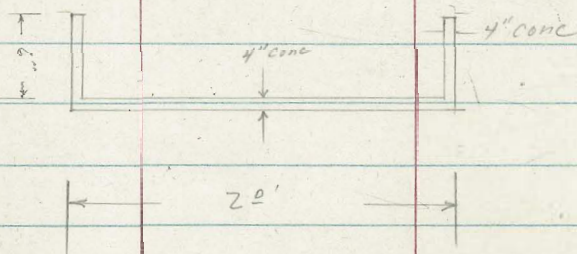
C. Allen

D. Sisson

J. Rover

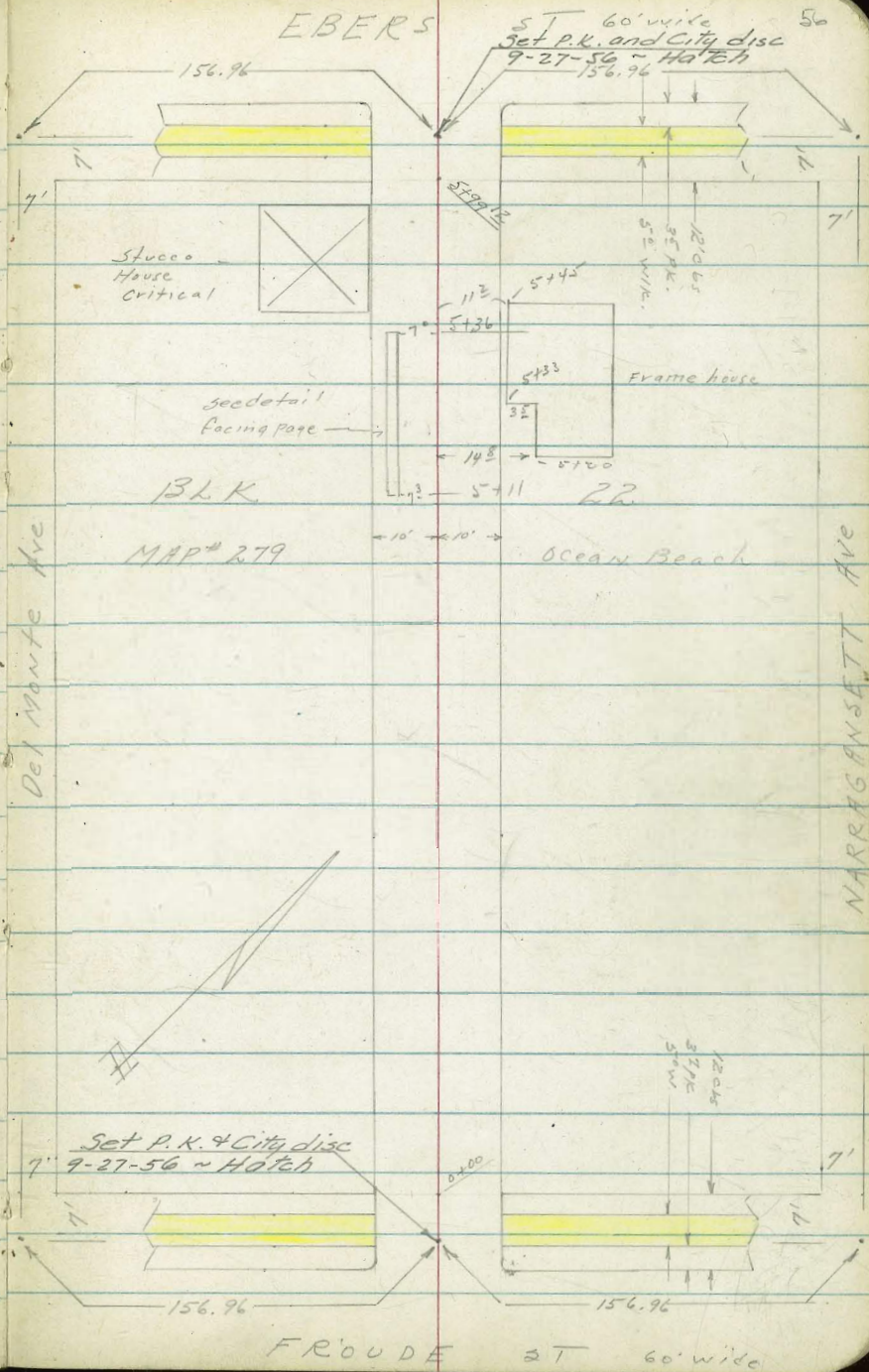
Ref: TP sheet # 772

File Map # 279



Detail of home drain starting

at station 5+11.



X-sec Alley B/K 22, Ocean Beach

LT = SWly

RT = NEly (7) 57

0+20

6 ¹⁸	6 ⁴	5 ¹³	5 ¹	6 ¹	5 ⁶	4 ⁶	4 ⁶	4 ⁴
130.17	131.1	132.2	131.6	131.4	131.91	132.9	132.9	133.1
25	10	7	5	6	7 ²	8	10	20

9⁸ RT = begin 3' high Lath Fence
 9⁹ RT + 10² LT = end Alley Curbs
 5⁵ RT = 15" gas co gate valve cover

0+00 = NWly line Froude ST

4 ⁸⁶	4 ⁸³	5 ¹	5 ¹	5 ¹	4 ⁵⁷
132.66	132.69	132.4	132.51	132.40	132.95
10 ²	10 ²	5 ³	5 ³	9 ⁹	9 ⁹
TC	9 ⁰ T	Rate	Rate	9 ⁰ T	TC
	very poor cond.		cover		

0-09 = EC's Alley Returns

4 ⁹⁵	5 ²⁰	4 ⁹⁵	4 ⁹⁹
132.57	132.24	132.57	133.08
10 ²	10 ²	10	10
TC	9 ⁰ T	9 ⁰ T	TC

Alley Curbs O.K.

Alley Apron is in peak condition - should be replaced

0-12 = NWly Curb Line Froude ST

5 ⁴⁶	6 ¹⁷	5 ⁰⁷	5 ⁶⁸	5 ⁵²	5 ³⁴	5 ²⁰	4 ⁹⁸	4 ³⁴	3 ⁴⁰	2 ⁰⁰
132.06	131.35	132.45	131.84	132.00	132.18	132.52	132.54	133.18	134.72	134.70
50	50	13 ⁰	13 ⁰	10	10	10	13 ⁰	13 ⁰	50	50
TC	9 ⁰ T	TC	9 ⁰ T	TC	TC	9 ⁰ T	TC	TC	9 ⁰ T	TC

137.52
~~147.16~~ T

BM

7⁸⁵

137.52
~~147.16~~

129.67
~~139.21~~

NE BP Froude + Del Monte

Elev BP in Error - Red. Change

X-sec Alley BIK22 - Ocean Beach

LT = SWly (?)

RT = NEly -

58

TP₂ - 5.10 117.27 ~~126.94~~ 13.14 112.17 ~~121.81~~

1+25

7 ⁵	8 ²	8 ⁴	12 ¹	12 ¹⁰	11 ³	10 ⁰	9 ²	8 ⁴
25	10	7	1	12	8	10	13	25

1+00 - 10° LT = begin 4' high cyclone fence

5 ¹⁰	5 ¹	7 ¹	8 ¹⁰	7 ⁵	6 ¹⁰⁰
25	10	3	8	10	25

0+80

2 ⁵	3 ¹⁰	3 ¹⁰	4 ⁷	4 ⁹	5 ¹⁰
25	10	7	10	10	25

0+60-45⁵ RT = 2 Single garage - Conc Floor

TP₁ 0.93 125.31 ~~134.95~~ 13.14 124.38 ~~134.02~~

0+55

11 ⁰	12 ¹⁰	11 ⁰	10 ⁸	11 ²	11 ⁸	12 ⁰	11 ⁷	14 ⁰	14 ⁶
25	10	7	4	3	11	6	10	17	30

0+52 - 9⁵ LT = 2 12" power pole # JPA 4710

0+40 - 9⁶ RT = end 3' high Lath fence

9 ⁵	9 ⁵	8 ⁰	8 ⁰	9 ⁰	9 ⁰	9 ¹	4 ⁸	4 ⁸	4 ⁵
25	10	8	5	4	5	9	10	10	25

137.52

~~147.16~~

124.26
45⁵
conc floor

X-sec Alley BIK 22, O.B.

1475-

LT = SWY
 64/110.9
 100±
 102
 120
 105.3
 114
 105.9
 12
 15.1
 12
 105.1
 117
 105.6
 RT NEXY 59
 25 10 7 3 10 25

1470 - 94 LT = 12" power pole # JPA4630

Board Retaining Wall -

1460 - 102 LT = end Cyclone fence

1450^S to show terracing on RT

113.0
 110.4
 109.3
 109.0
 108.8
 108.1
 4^W 62 80 8^W 85 9^W
 10 2 1 10 25

102 LT = end Conc Retaining Wall - Poor cond.
 Dirt on uphill side is level with top wall.
 Section taken along top wall.

1450 - 102 RT = Sly end of N^S Block wall (Lateral)

116.32
 112.9
 113.0
 113.0
 110.4
 109.3
 109.0
 108.8
 107.3
 111.99
 112.0
 102 102 102 252
 Top Foot ground Top Top Wall

1440

116.9
 116.2
 115.1
 111.1
 110.9
 110.7
 110.9
 113.0
 115.8
 116.1
 0^W 4 1 1 6 4 4 1 5 12 19 30
 25 10 5 1 6 7 10 12 19 30

Wall in poor condition - almost no footing

1437 - 102 LT = begin Conc Retaining Wall.

116.3
 116.1
 116.7
 102 ground Footing Top

117.27
 126.91

X-sec Alley BIK 22, 0.13

LT: SWLY

RT: NELY

60

2+88-16⁵ LT= 1 single garage Conc Floor

97.11

10¹²

16.5
Conc floor

98.0

96.8

96.1

96.4

97.6

99.7

92

104

112

100

96

75

25

10

8

101

25

98.43

98.19

880

904

16.5
Conc Floor

14.5
Apron

99.8

98.0

98.0

97.6

97.8

98.4

101.6

74

92

92

96

94

80

51

25

112

10

6

10

25

Apron
Conc Retaining Wall

2+50-11¹ LT= Nly end st. N+S Lateral

102.1

99.2

99.7

99.6

100.6

101.0

102.1

21

80

75

77

66

62

24

28

10

5

7

7

10

25

106.6

102.4

102.2

102.6

102.2

102.9

103.9

06

48

50

46

50

43

31

25

10

7

5

10

10

25

107.23

116.87 X

2+00

TP3

0.26

107.23

116.87 ↓

10.30

106.97

116.61 ↓

Spike in pole # JPM #630 - 9th LT sta 1470

117.27

126.91 X

X-sec Alley BIK 22, 0, 13

LT SWLY

RT NELY

3+25

92.3	91.6	91.5	92.0	93.3	93.4
4 4	5 1	5 2	4 7	3 4	2 3
10	5		8	10	13 0

sty frame
house
ground

3+22 - 10⁸ LT = end Low Conc Retaining Wall

94.75	92.8	92.6
1 92	3 9	4 1
10 ⁸ Top Wall	10 ⁸ 9r	10 ⁸ Footring

3+12 - 10⁸ LT = } Begin Low Conc Retaining Wall -
Cor shack Conc Foundation

94.77	94.4	92.6
1 90	2 3	4 1
10 ⁸ Top Wall	10 ⁸ 9r	10 ⁸ Footring

3+06 - 13⁰ RT = entrance from house

95.81

0 86

14 0

Floor

96.67

95.39

96.67

106.31 v T

TP4 1.28

11.84

105.03

DN 3/4" prop pipe 10' RT stat 3+00.

3+00 - 10⁸ LT = sty side front shack
Conc foundation

95.5	95.5	94.2	94.4	94.4	95.1	96.0
12 0	12 0	13 0	12 8	12 8	12 1	11 1
10 ⁸ Shack	10	5		8	10	25

2+98⁵ = sewer manhole

94.5
12 68
Kitt

2+97 - 9² LT = 12" power pole #. PA4650

107.23
116.87 T

3475

3472 - 11° LT = start Conc Apron (slab)

3468 - 11° LT = 1/4 of Conc slab 6' wide

3463 - 9° LT = 2 Risers
Frame house
4' wide Conc steps to

3450

3438 - 20° RT = 2 car garage
Floor
DIRT

3435 - 13° LT = 2 car garage
DIRT floor

LT = SW 1/4

RT = NE 1/4

62

80.2

85

10

89.44

72.3

21.0

90.21

64.6

11.0
Top slab

130.8

62.6

10.2

T.P
Riser

91.9

4.8

25

88.64

80.3

11.0
Top Conc

88.9

7.8

11.0
ground

89.60

70.7

9.2

Top
First Riser

91.5

5.2

13

90.3

6.4

10

RT

87.2

95

10

88.9

7.8

11.0
ground

88.9

7.8

11.0
ground

88.9

7.8

9.2

ground

89.2

7.5

10

87.2

94

10

88.9

7.8

11.0
ground

88.9

7.8

11.0
ground

88.9

7.8

9.2

ground

89.2

7.5

10

90.1

6.5

20.3

DIRT floor

89.9

6.00

25

92.0

4.7

13.5

DIRT floor

96.67

~~106.21~~ K

X-sec Alley B/K 22, OB.

4+25

4+21 - 9° RT = begin 3' high picket fence

4+05 - 11° LT = of single garage - Conc Floor + Apron

4+00 - 11° LT = Nly edge Conc Apron

LT SWLY		RT NEly	63
84.6	84.6	83.9	
37	42	44	
10	7	10	
86.79	86.6		
150	162		
12°	11°		
Conc Floor	Apron		
88.29	86.1	85.4	85.5
167	16	22	28
11	10	8	10
Nly Apron			25
		88.29	
		89.93	

TP5 1.31 ~~88.29~~ 9.67 ~~86.98~~

Nail in pole # PA 4666 - 10° LT stat 3+98.

3+98 - 10° LT = of 10" power pole # PA 4666

3+97 - 11° LT = end Conc apron + end 2 Car garage Conc Floor

3+86 - 11° LT = begin 2 car garage - Conc floor
Conc Apron continues

89.27	86.90
745	977
244	110
Garage Floor	Nly Apron
89.05	88.2
762	855
244	110
Garage Floor	Nly Apron
	86.67
	86.31

X-sec Alley BIK 22 O.R.

LT = SWLY

RT = NELY 64

4+90 } 17⁵ LT = 1/2 single garage conc floor
 4+85-9² } 12² RT = 1/2 single garage conc floor
 4+85-9² RT = end 3⁵ high picket fence.

80.13
 80.10
 17⁵
 Conc Floor
 80.24
 80.05
 12²
 Conc Floor

4+81-10⁷ LT = end Conc Retaining wall
 Poor cond.

82.96
 5 3³ 80.1 80.3
 10⁷ 10⁷ 10⁷
 Top Wall Foot gr.

4+75-11⁰ RT = 1/2 10" pine tree.

83.4 81.4 80.5 80.8 80.1 80.5 80.7 80.8
 4² 4² 7² 7² 7⁸ 8³ 8³ 7⁶ 7⁵
 25 11⁶ 10⁶ 10 6 5 6 10 25
 Gr sign wall grully wall

4+69-10⁶ LT = begin Conc Retaining wall
 Poor condition

83.31 81.0 81.6
 4² 7² 6⁷
 10⁶ 10⁶ 10⁶
 Top Wall Foot ground

4+61-10⁵ RT = 1/2 6" pine tree (25" high)

4+50

83.7 83.0 82.0 81.5 81.7 82.1 82.4 82.4
 4⁶ 5¹ 6³ 6¹⁰ 6⁶ 6² 6² 4¹
 15 10 7 5 6 6 10 15

4+48-10⁶ LT = begin 3⁵ high picket fence

84.96 84.85 84.15 83.3
 3 3³ 3⁴ 4⁴ 5¹⁰
 20⁴ 10⁵ 9⁵ 9⁵
 Walk Top 2nd Top First Ground
 Riser Riser
 + NY Walk

4+46-9⁵ LT = 1/2 2⁸ wide conc steps
 2 Risers backed by 2⁸ walk

88.29
~~97.93~~ T

X-sec Alley BIK 22, 0.13.

LT: SWLY

RT: NELY 65

11³ RT - sly wall frame house } To show
 5+33 - 14⁸ RT - sly wall frame house } To show
 } To show
 } To show

5+25

77.5	77.3	77.31	76.7	76.3	76.5	76.8	76.8	76.5
10 ⁸	11 ⁰	10 ⁹⁸	11 ⁶	12 ⁰	11 ⁸	11 ⁶	11 ⁶	11 ⁸
15	10	7 ³	6		6	7	10	14 ⁸
		Top Drain						9 ⁸ at sly house

Not used as garage at present

5+23 - 18⁶ LT = double garage conc floor

98.23
 10⁰⁶
 18⁶
 Conc floor

5+20 - 14⁸ RT = cor begin frame house

5+11 - 7³ LT = Nly edge open Top Conc Drain

78.15	77.12	78.15	76.6
10 ¹⁴	10 ¹²	10 ¹⁴	11.7
9 ³	8 ³	7 ³	14 ⁸
Top Sly Wall	Bottom	Top Nly Wall	FLOOR

10⁵ LT = begin 4⁵' high board fence

5+03 - 9² LT = 10" power pole # 5PA4680

5+00

79.4	79.3	78.4	78.4	78.2	78.9	78.9	77.9	77.3
8 ²	9 ⁰	9 ²	10 ²	10 ¹	9 ⁴	9 ⁴	10 ⁴	11 ²
25	10	6		6	7	9 ¹	10	25

4+99 - } to show Terracing on RT

4+99 - 1 9¹ RT = begin 3' high Lot W fence

79.4	78.5	78.2	78.3	79.0	79.0	79.2	79.3
8 ²	9 ⁸	10 ¹	10 ⁰	9 ³	9 ³	9 ¹	9 ⁰
10	6		6	7	10	25	50

88.29
~~97.93~~
 X

Alley BIK 22, O.R.

(crawl-in)

5+69 - 10' LT = ϕ to opening under house

Watch this one!

5+51 - 10⁰⁵ LT = cor begin stucco house

TP6 0.95 76.53
86.17 12.71

75.58
85.22

76.53
86.17 ∇

of no valve -
Begin 10' \pm wide Rough AC pave (1/2" thick)

5+50 - 10⁰ LT = ϕ 3' conc walk

11² RT = end front house

5+45 } 10⁶ LT = end conc retaining wall

board fence on top
5+37 - 10⁴ LT = begin conc retaining wall

See sketch
5+36 - 7⁰ LT = nly of homemade conc drain

LT SWLY ∇ RT NELY ∇
73.20 72.4
333 41
104 102
Bottom of crawl-in 9r

77.8 74.8
+ 125 18
10⁰⁵ Floor 10⁰⁵ 9r or house

76.11 75.54 75.31 73.8 73.6 73.4 76.1 75.6
12¹⁸ 12²⁵ 13⁰ 14⁰⁵ 14¹ 14⁹ 12²² 12⁷
20 Walk 10⁰ Walk 10⁰ 9r 6 6 10 25

76.20 75.8
11 79 12⁵ 12⁵ 10⁰⁰
106 Top Wall 106 Foot on top 9r

76.49 75.8 76.4
11 80 12⁰⁵ 11 9
104 Top Wall 104 Foot 9r

76.54 75.99 76.46
11 25 12 30 11 33
90 Top sty Wall 80 2 Bottom Drain 70 Top. Nly Wall Drain

88.29
97.93 ∇

X-sec Alley BK 22 - 0.13

LT = SWLY

RT = NELY 67

6+08¹² = 9.2 RT+LT = EC's Alley Returns

66.79	66.33	65.78	66.12
974	1028	1075	1041
99	99	99	99
T.C.	90T	90T	T.C.

9.2 RT face end alley curb
 9.2 LT face end Alley cb
 Apron in poor condition
 5+99¹² SELY Line Ebers 3T

67.8	66.93	66.59	66.17	66.08	66.17	66.1
87	960	954	1036	1045	1035	104
25	92	92	92	92	92	25
	T.C.	90T		90T	T.C.	

72	71	71
44	46	6 1/2
25	16	125

Walls are on private prop.
 Conc wing Walls. 10" thick & 2 5/8' high
 Nly edge

5+95-9¹² LT = 6' slab (conc) for trash cans

67.54	67.52	67.52	67.3	66	66	70.2	69.2
899	901	901	92	92	92	5100	6100
122	102	92	92	6	8	10	25
Back slab	on slab	Top slab	ground				

5+84-10²⁶ LT = Cor end stucco House

70	70	68	68	69	71	71	71
65	65	72	810	82	65	45	47
103	10	7	4	7	8	10	25
grat	grat	house					

5+70

72	72	70	70	73	73	73	73
44	46	51	51	59	213	32	42
10	8	6	518	4	9	10	25
grat							
Nly house							

76.53
~~86.17~~

X-sec Alley BIK 22, O, B.

LT 314

RT-N14

68

(del Monte)
Froude No 9000
Use NEBP For BM- 7' LT at Ebers + Del Monte

TP12 - Starting BM-		7.82	129.69 (139.31) 129.33 ✓
TP11	13.21	149.15 ✓	1.36 124.40 ✓
TP10	13.08	125.76 ✓	0.05 112.68 ✓
TP9	13.25	112.73 ✓	0.10 99.48 ✓
TP8	12.60	99.58 ✓	1.44 86.98 ✓
TP7	12.84	88.42 ✓	0.95 75.58 ✓

6411.12 = S. Fly curb line Ebers

68.00	67.36	66.86	66.21	66.17	65.79	65.52	65.44	66.08	64.29	64.92	
85 ³	1917	967	1032	1036	10	74	1097	1109	1045	1224	1111
50	50	130	130	10		10	130	130	50	50	
Tc	90T	Tc	94T				90T	Tc	90T	Tc	

~~76.53~~
86.17 x

check bench

Opal + Tourmaline

O.H.S.

B099.

4-12-54

S.S. 3.69 158.54

155.07 ^{Bench}
~~161.07~~ ^{Bench}

S.S. 0.96 161.27

T.P. 5.93 162.23 0.92 156.30

T.P. 10.91 157.22 0.32 146.31

13.36 146.63 - 133.27

C.T. S.W. cl. Opal + Tourmaline

(161.28 in office book.)

Top. Hydt. S.E. Opal + Tourmaline

Sly. 14^{20'} line Opal. (Page 49)

Chisel X on cl. Wly. 7' line Everts

ENCROACHMENT Survey on Redwood
 fence ON Alley BIK J, LOT 1 Riviera Villas
 Baseline is Nly line Alley BIK J.
 Note - Redwood fence is NOT
 encroaching on Alley.

1+50 - 0⁴ LT = sly of Conc block wall.
 } 0⁵ LT = sly of Redwood fence + Block wall
 1+33⁶¹ = } SFLY COR LOT #2 - begin Conc block wall

1+25 - 0⁹ LT = sly of Redwood fence

1+00 - 3⁰ LT = sly of Redwood fence

0+75 - 6⁰ LT = sly of Redwood fence

0+72⁶¹ } 6⁰ LT = sly of Redwood fence
 } = SFLY COR LOT #1 + SWLY COR LOT 2

0+50 - 3³ LT = sly of Redwood fence

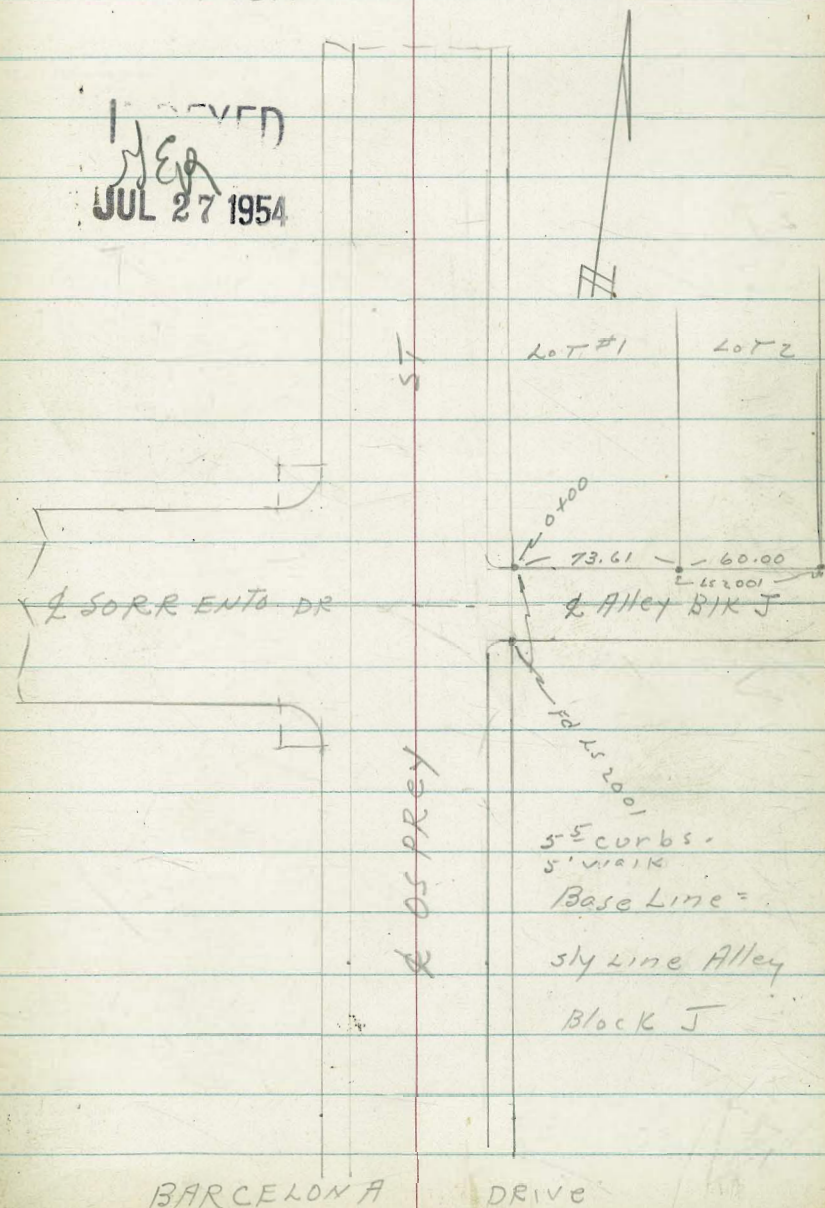
0+25 - 1⁴ LT = sly of Redwood fence

0+04⁷ 0⁵ LT = begin 5' high Redwood fence

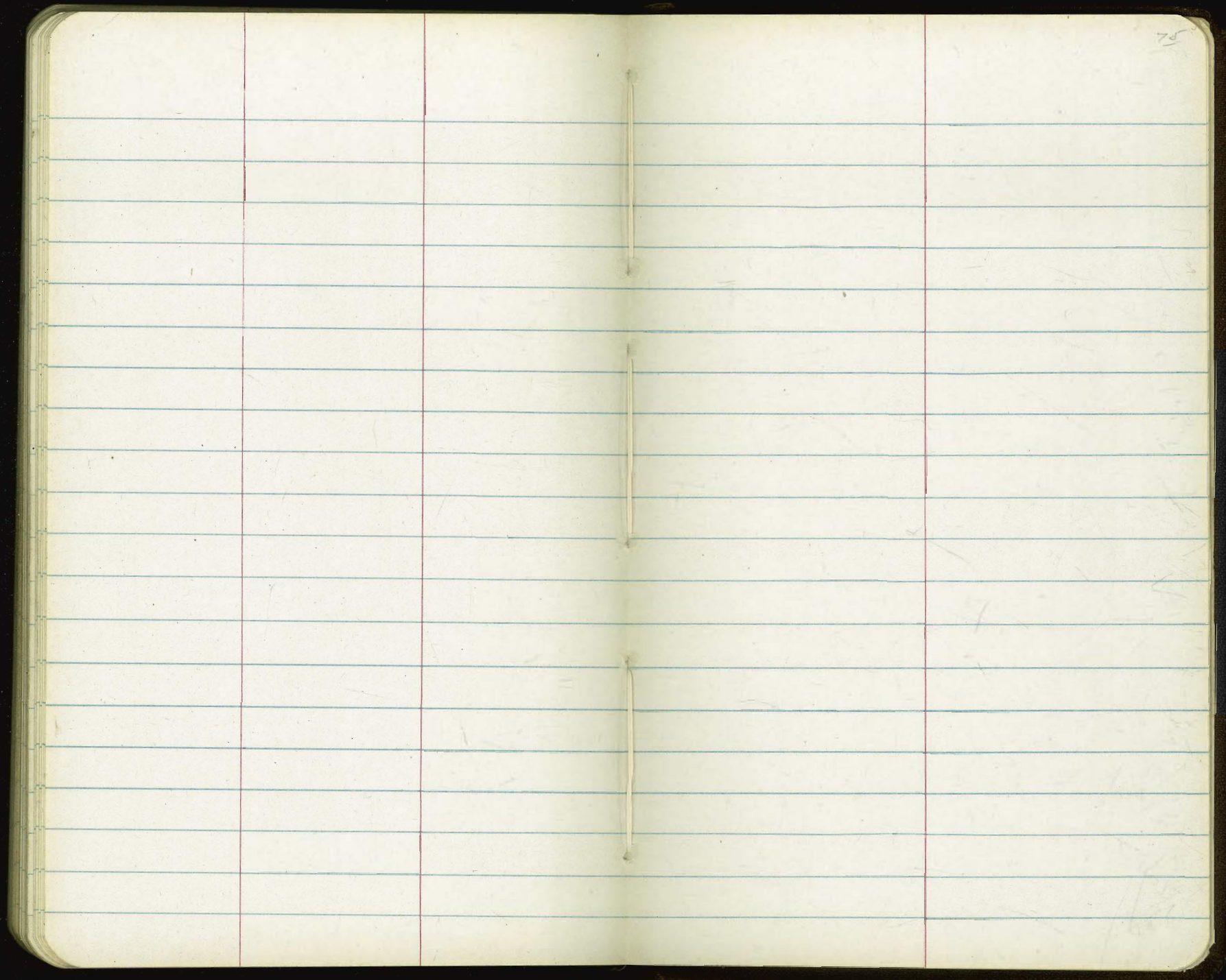
0+00 = SWLY COR LOT #1, Block J

TRIESTE Drive

RECEIVED
 JUL 27 1954



BARCELONA DRIVE



The image shows an open notebook with two facing pages. Both pages are cream-colored and feature horizontal blue ruling lines. A vertical red margin line is present on each page, positioned approximately one-third of the way from the left edge. The pages are otherwise blank, with no handwriting or printed text. The number '76' is handwritten in the top right corner of the right-hand page. The notebook's dark cover is visible at the edges.

10,29

17.13

6.95

10.08

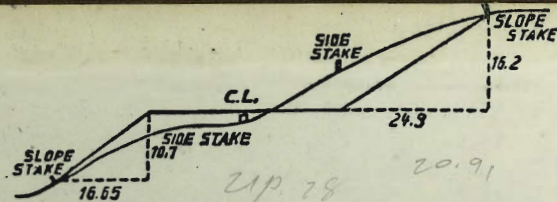
89° 57' - S.W.

24 + 35.18 - .41 Lt

21 + 44.96 .26 Lt

18 + 54.90 .13 Lt

21.75



DISTANCES FROM SIDE STAKES FOR CROSS-SECTIONING.

SLOPE 1 1/2 TO 1. ROADWAY OF ANY WIDTH.

	0	.1	.2	.3	.4	.5	.6	.7	.8	.9	
0	0.00	0.15	0.30	0.45	0.60	0.75	0.90	1.05	1.20	1.35	0
1	1.50	1.65	1.80	1.95	2.10	2.25	2.40	2.55	2.70	2.85	1
2	3.00	3.15	3.30	3.45	3.60	3.75	3.90	4.05	4.20	4.35	2
3	4.50	4.65	4.80	4.95	5.10	5.25	5.40	5.55	5.70	5.85	3
4	6.00	6.15	6.30	6.45	6.60	6.75	6.90	7.05	7.20	7.35	4
5	7.50	7.65	7.80	7.95	8.10	8.25	8.40	8.55	8.70	8.85	5
6	9.00	9.15	9.30	9.45	9.60	9.75	9.90	10.05	10.20	10.35	6
7	10.50	10.65	10.80	10.95	11.10	11.25	11.40	11.55	11.70	11.85	7
8	12.00	12.15	12.30	12.45	12.60	12.75	12.90	13.05	13.20	13.35	8
9	13.50	13.65	13.80	13.95	14.10	14.25	14.40	14.55	14.70	14.85	9
10	15.00	15.15	15.30	15.45	15.60	15.75	15.90	16.05	16.20	16.35	10
11	16.50	16.65	16.80	16.95	17.10	17.25	17.40	17.55	17.70	17.85	11
12	18.00	18.15	18.30	18.45	18.60	18.75	18.90	19.05	19.20	19.35	12
13	19.50	19.65	19.80	19.95	20.10	20.25	20.40	20.55	20.70	20.85	13
14	21.00	21.15	21.30	21.45	21.60	21.75	21.90	22.05	22.20	22.35	14
15	22.50	22.65	22.80	22.95	23.10	23.25	23.40	23.55	23.70	23.85	15
16	24.00	24.15	24.30	24.45	24.60	24.75	24.90	25.05	25.20	25.35	16
17	25.50	25.65	25.80	25.95	26.10	26.25	26.40	26.55	26.70	26.85	17
18	27.00	27.15	27.30	27.45	27.60	27.75	27.90	28.05	28.20	28.35	18
19	28.50	28.65	28.80	28.95	29.10	29.25	29.40	29.55	29.70	29.85	19
20	30.00	30.15	30.30	30.45	30.60	30.75	30.90	31.05	31.20	31.35	20
21	31.50	31.65	31.80	31.95	32.10	32.25	32.40	32.55	32.70	32.85	21
22	33.00	33.15	33.30	33.45	33.60	33.75	33.90	34.05	34.20	34.35	22
23	34.50	34.65	34.80	34.95	35.10	35.25	35.40	35.55	35.70	35.85	23
24	36.00	36.15	36.30	36.45	36.60	36.75	36.90	37.05	37.20	37.35	24
25	37.50	37.65	37.80	37.95	38.10	38.25	38.40	38.55	38.70	38.85	25
26	39.00	39.15	39.30	39.45	39.60	39.75	39.90	40.05	40.20	40.35	26
27	40.50	40.65	40.80	40.95	41.10	41.25	41.40	41.55	41.70	41.85	27
28	42.00	42.15	42.30	42.45	42.60	42.75	42.90	43.05	43.20	43.35	28
29	43.50	43.65	43.80	43.95	44.10	44.25	44.40	44.55	44.70	44.85	29
30	45.00	45.15	45.30	45.45	45.60	45.75	45.90	46.05	46.20	46.35	30
31	46.50	46.65	46.80	46.95	47.10	47.25	47.40	47.55	47.70	47.85	31
32	48.00	48.15	48.30	48.45	48.60	48.75	48.90	49.05	49.20	49.35	32
33	49.50	49.65	49.80	49.95	50.10	50.25	50.40	50.55	50.70	50.85	33
34	51.00	51.15	51.30	51.45	51.60	51.75	51.90	52.05	52.20	52.35	34
35	52.50	52.65	52.80	52.95	53.10	53.25	53.40	53.55	53.70	53.85	35
36	54.00	54.15	54.30	54.45	54.60	54.75	54.90	55.05	55.20	55.35	36
37	55.50	55.65	55.80	55.95	56.10	56.25	56.40	56.55	56.70	56.85	37
38	57.00	57.15	57.30	57.45	57.60	57.75	57.90	58.05	58.20	58.35	38
39	58.50	58.65	58.80	58.95	59.10	59.25	59.40	59.55	59.70	59.85	39
40	60.00	60.15	60.30	60.45	60.60	60.75	60.90	61.05	61.20	61.35	40
41	61.50	61.65	61.80	61.95	62.10	62.25	62.40	62.55	62.70	62.85	41
42	63.00	63.15	63.30	63.45	63.60	63.75	63.90	64.05	64.20	64.35	42
43	64.50	64.65	64.80	64.95	65.10	65.25	65.40	65.55	65.70	65.85	43
44	66.00	66.15	66.30	66.45	66.60	66.75	66.90	67.05	67.20	67.35	44
45	67.50	67.65	67.80	67.95	68.10	68.25	68.40	68.55	68.70	68.85	45
46	69.00	69.15	69.30	69.45	69.60	69.75	69.90	70.05	70.20	70.35	46
47	70.50	70.65	70.80	70.95	71.10	71.25	71.40	71.55	71.70	71.85	47
48	72.00	72.15	72.30	72.45	72.60	72.75	72.90	73.05	73.20	73.35	48
49	73.50	73.65	73.80	73.95	74.10	74.25	74.40	74.55	74.70	74.85	49
50	75.00	75.15	75.30	75.45	75.60	75.75	75.90	76.05	76.20	76.35	50

THE NATIONAL BLANK BOOK COMPANY

HOLYOKE



MASSACHUSETTS

NEW YORK

CHICAGO

BOSTON

SAN FRANCISCO