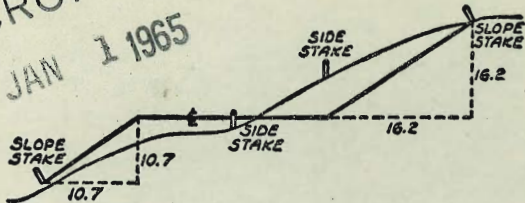


MICROFILMED

JAN 1 1965



DISTANCES FROM SIDE STAKES FOR CROSS-SECTIONING
SLOPE 1 TO 1. ROADWAY OF ANY WIDTH

	0	.1	.2	.3	.4	.5	.6	.7	.8	.9	
0	0.00	0.10	0.20	0.30	0.40	0.50	0.60	0.70	0.80	0.90	0
1	1.00	1.10	1.20	1.30	1.40	1.50	1.60	1.70	1.80	1.90	1
2	2.00	2.10	2.20	2.30	2.40	2.50	2.60	2.70	2.80	2.90	2
3	3.00	3.10	3.20	3.30	3.40	3.50	3.60	3.70	3.80	3.90	3
4	4.00	4.10	4.20	4.30	4.40	4.50	4.60	4.70	4.80	4.90	4
5	5.00	5.10	5.20	5.30	5.40	5.50	5.60	5.70	5.80	5.90	5
6	6.00	6.10	6.20	6.30	6.40	6.50	6.60	6.70	6.80	6.90	6
7	7.00	7.10	7.20	7.30	7.40	7.50	7.60	7.70	7.80	7.90	7
8	8.00	8.10	8.20	8.30	8.40	8.50	8.60	8.70	8.80	8.90	8
9	9.00	9.10	9.20	9.30	9.40	9.50	9.60	9.70	9.80	9.90	9
10	10.00	10.10	10.20	10.30	10.40	10.50	10.60	10.70	10.80	10.90	10
11	11.00	11.10	11.20	11.30	11.40	11.50	11.60	11.70	11.80	11.90	11
12	12.00	12.10	12.20	12.30	12.40	12.50	12.60	12.70	12.80	12.90	12
13	13.00	13.10	13.20	13.30	13.40	13.50	13.60	13.70	13.80	13.90	13
14	14.00	14.10	14.20	14.30	14.40	14.50	14.60	14.70	14.80	14.90	14
15	15.00	15.10	15.20	15.30	15.40	15.50	15.60	15.70	15.80	15.90	15
16	16.00	16.10	16.20	16.30	16.40	16.50	16.60	16.70	16.80	16.90	16
17	17.00	17.10	17.20	17.30	17.40	17.50	17.60	17.70	17.80	17.90	17
18	18.00	18.10	18.20	18.30	18.40	18.50	18.60	18.70	18.80	18.90	18
19	19.00	19.10	19.20	19.30	19.40	19.50	19.60	19.70	19.80	19.90	19
20	20.00	20.10	20.20	20.30	20.40	20.50	20.60	20.70	20.80	20.90	20
21	21.00	21.10	21.20	21.30	21.40	21.50	21.60	21.70	21.80	21.90	21
22	22.00	22.10	22.20	22.30	22.40	22.50	22.60	22.70	22.80	22.90	22
23	23.00	23.10	23.20	23.30	23.40	23.50	23.60	23.70	23.80	23.90	23
24	24.00	24.10	24.20	24.30	24.40	24.50	24.60	24.70	24.80	24.90	24
25	25.00	25.10	25.20	25.30	25.40	25.50	25.60	25.70	25.80	25.90	25
26	26.00	26.10	26.20	26.30	26.40	26.50	26.60	26.70	26.80	26.90	26
27	27.00	27.10	27.20	27.30	27.40	27.50	27.60	27.70	27.80	27.90	27
28	28.00	28.10	28.20	28.30	28.40	28.50	28.60	28.70	28.80	28.90	28
29	29.00	29.10	29.20	29.30	29.40	29.50	29.60	29.70	29.80	29.90	29
30	30.00	30.10	30.20	30.30	30.40	30.50	30.60	30.70	30.80	30.90	30
31	31.00	31.10	31.20	31.30	31.40	31.50	31.60	31.70	31.80	31.90	31
32	32.00	32.10	32.20	32.30	32.40	32.50	32.60	32.70	32.80	32.90	32
33	33.00	33.10	33.20	33.30	33.40	33.50	33.60	33.70	33.80	33.90	33
34	34.00	34.10	34.20	34.30	34.40	34.50	34.60	34.70	34.80	34.90	34
35	35.00	35.10	35.20	35.30	35.40	35.50	35.60	35.70	35.80	35.90	35
36	36.00	36.10	36.20	36.30	36.40	36.50	36.60	36.70	36.80	36.90	36
37	37.00	37.10	37.20	37.30	37.40	37.50	37.60	37.70	37.80	37.90	37
38	38.00	38.10	38.20	38.30	38.40	38.50	38.60	38.70	38.80	38.90	38
39	39.00	39.10	39.20	39.30	39.40	39.50	39.60	39.70	39.80	39.90	39
40	40.00	40.10	40.20	40.30	40.40	40.50	40.60	40.70	40.80	40.90	40
41	41.00	41.10	41.20	41.30	41.40	41.50	41.60	41.70	41.80	41.90	41
42	42.00	42.10	42.20	42.30	42.40	42.50	42.60	42.70	42.80	42.90	42
43	43.00	43.10	43.20	43.30	43.40	43.50	43.60	43.70	43.80	43.90	43
44	44.00	44.10	44.20	44.30	44.40	44.50	44.60	44.70	44.80	44.90	44
45	45.00	45.10	45.20	45.30	45.40	45.50	45.60	45.70	45.80	45.90	45
46	46.00	46.10	46.20	46.30	46.40	46.50	46.60	46.70	46.80	46.90	46
47	47.00	47.10	47.20	47.30	47.40	47.50	47.60	47.70	47.80	47.90	47
48	48.00	48.10	48.20	48.30	48.40	48.50	48.60	48.70	48.80	48.90	48
49	49.00	49.10	49.20	49.30	49.40	49.50	49.60	49.70	49.80	49.90	49
50	50.00	50.10	50.20	50.30	50.40	50.50	50.60	50.70	50.80	50.90	50

Distance of slope stake from side or shoulder stake for any width roadway, slope 1 to 1. If ground is nearly level, the cut or fill at side stake is located by the double entry method in left column and top row. The number in body of table in same row and column gives distance from side stake to slope stake. If ground is not level estimate the difference in elevation between the side stake and slope stake, lower target by this amount if cut, elevate if fill. Add this amount to cut or fill and find distance in table. Set up rod at this point, and line of sight should cut target. If it does not make the slight adjustment necessary.

2158

TABLE XIII—CORRECTIONS FOR TANGENTS AND EXTERNALS

These corrections are to be added to the approximate values, found by dividing the tangent, or external, for a 1° curve (Table VIII) by the degree of curve, in order to obtain the true tangents, or externals. Intermediate values may be obtained by interpolation.

FOR TANGENTS ADD

Central Angle	DEGREE OF CURVE													
	5°	10°	15°	20°	25°	30°	35°	40°	45°	50°	55°	60°	65°	70°
10°	.03	.06	.09	.13	.16	.19	.22	.25	.28	.31	.34	.38	.42	.46
15°	.04	.10	.14	.19	.24	.29	.34	.39	.45	.51	.53	.58	.63	.68
20°	.06	.13	.19	.26	.32	.39	.45	.51	.58	.65	.72	.79	.84	.90
25°	.08	.16	.24	.33	.40	.49	.58	.67	.75	.83	.90	.99	1.06	1.14
30°	.10	.19	.29	.39	.49	.59	.69	.79	.89	.99	1.09	1.20	1.29	1.39
35°	.11	.22	.34	.47	.58	.69	.79	.81	.92	1.04	1.29	1.42	1.54	1.66
40°	.13	.26	.40	.53	.67	.80	.93	1.06	1.20	1.34	1.49	1.64	1.79	1.94
45°	.15	.30	.44	.60	.76	.91	1.06	1.21	1.37	1.52	1.70	1.87	2.04	2.21
50°	.17	.34	.51	.68	.85	1.02	1.19	1.36	1.54	1.72	1.91	2.10	2.29	2.48
55°	.19	.38	.57	.76	.95	1.14	1.32	1.52	1.72	1.92	2.14	2.35	2.56	2.77
60°	.21	.42	.63	.84	1.05	1.27	1.49	1.71	1.94	2.17	2.38	2.60	2.83	3.07
65°	.23	.46	.69	.93	1.16	1.40	1.64	1.88	2.13	2.38	2.63	2.88	3.13	3.39
70°	.25	.51	.76	1.02	1.28	1.54	1.80	2.06	2.33	2.60	2.88	3.16	3.44	3.72
75°	.27	.56	.83	1.12	1.40	1.69	1.98	2.27	2.57	2.87	3.16	3.47	3.78	4.09
80°	.30	.61	.91	1.22	1.53	1.84	2.15	2.46	2.78	3.10	3.44	3.78	4.12	4.46
85°	.33	.66	1.00	1.33	1.68	2.02	2.36	2.70	3.05	3.40	3.77	4.14	4.55	4.89
90°	.36	.72	1.09	1.45	1.83	2.20	2.57	2.94	3.32	3.70	4.10	4.50	4.91	5.32
95°	.39	.79	1.19	1.55	2.00	2.40	2.80	3.20	3.61	4.02	4.40	4.98	5.38	5.83
100°	.43	.86	1.30	1.74	2.18	2.62	3.06	3.50	3.95	4.40	4.88	5.37	5.85	6.34
110°	.51	1.03	1.56	2.08	2.61	3.14	3.67	4.21	4.76	5.31	5.86	6.43	7.01	7.60
120°	.62	1.25	1.93	2.52	3.16	3.81	4.45	5.11	5.77	6.44	7.12	7.80	8.50	9.22

FOR EXTERNALS ADD

Central Angle	DEGREE OF CURVE													
	5°	10°	15°	20°	25°	30°	35°	40°	45°	50°	55°	60°	65°	70°
10°	.001	.003	.004	.006	.007	.008	.009	.011	.012	.014	.015	.017	.018	.020
15°	.003	.007	.010	.014	.018	.023	.027	.029	.032	.035	.039	.043	.047	.051
20°	.006	.011	.017	.022	.028	.034	.038	.045	.051	.057	.063	.070	.076	.083
25°	.009	.018	.027	.036	.046	.056	.065	.074	.083	.093	.106	.120	.127	.135
30°	.013	.025	.038	.051	.065	.078	.090	.103	.116	.129	.149	.170	.179	.188
35°	.018	.035	.054	.072	.086	.109	.131	.153	.175	.197	.213	.230	.247	.264
40°	.023	.046	.070	.093	.117	.141	.172	.203	.234	.265	.277	.290	.315	.341
45°	.030	.060	.093	.119	.153	.184	.216	.254	.289	.325	.351	.378	.411	.445
50°	.037	.075	.116	.151	.189	.227	.266	.305	.345	.384	.425	.467	.508	.550
55°	.046	.093	.142	.188	.236	.283	.332	.381	.420	.479	.530	.582	.641	.700
60°	.056	.112	.168	.225	.283	.340	.398	.457	.516	.575	.636	.697	.774	.851
65°	.067	.135	.204	.273	.343	.412	.483	.554	.625	.697	.771	.845	.922	1.01
70°	.080	.159	.240	.321	.403	.485	.568	.652	.735	.819	.906	.994	1.08	1.17
75°	.095	.182	.286	.383	.480	.578	.678	.777	.877	.977	1.07	1.18	1.29	1.39
80°	.110	.220	.332	.445	.558	.671	.787	.903	1.02	1.13	1.25	1.38	1.50	1.62
85°	.128	.259	.391	.524	.657	.790	.926	1.06	1.20	1.34	1.47	1.62	1.76	1.91
90°	.149	.299	.450	.603	.756	.910	1.07	1.22	1.38	1.54	1.70	1.87	2.03	2.20
95°	.174	.350	.522	.706	.885	1.06	1.25	1.43	1.62	1.80	1.99	2.18	2.38	2.58
100°	.200	.401	.604	.809	1.01	1.22	1.43	1.64	1.85	2.06	2.28	2.50	2.73	2.96
110°	.268	.536	.806	1.08	1.35	1.63	1.91	2.20	2.48	2.76	3.05	3.35	3.66	3.96
120°	.360	.721	1.08	1.45	1.82	2.19	2.57	2.95	3.33	3.72	4.11	4.50	4.91	5.32

Pg
2
5

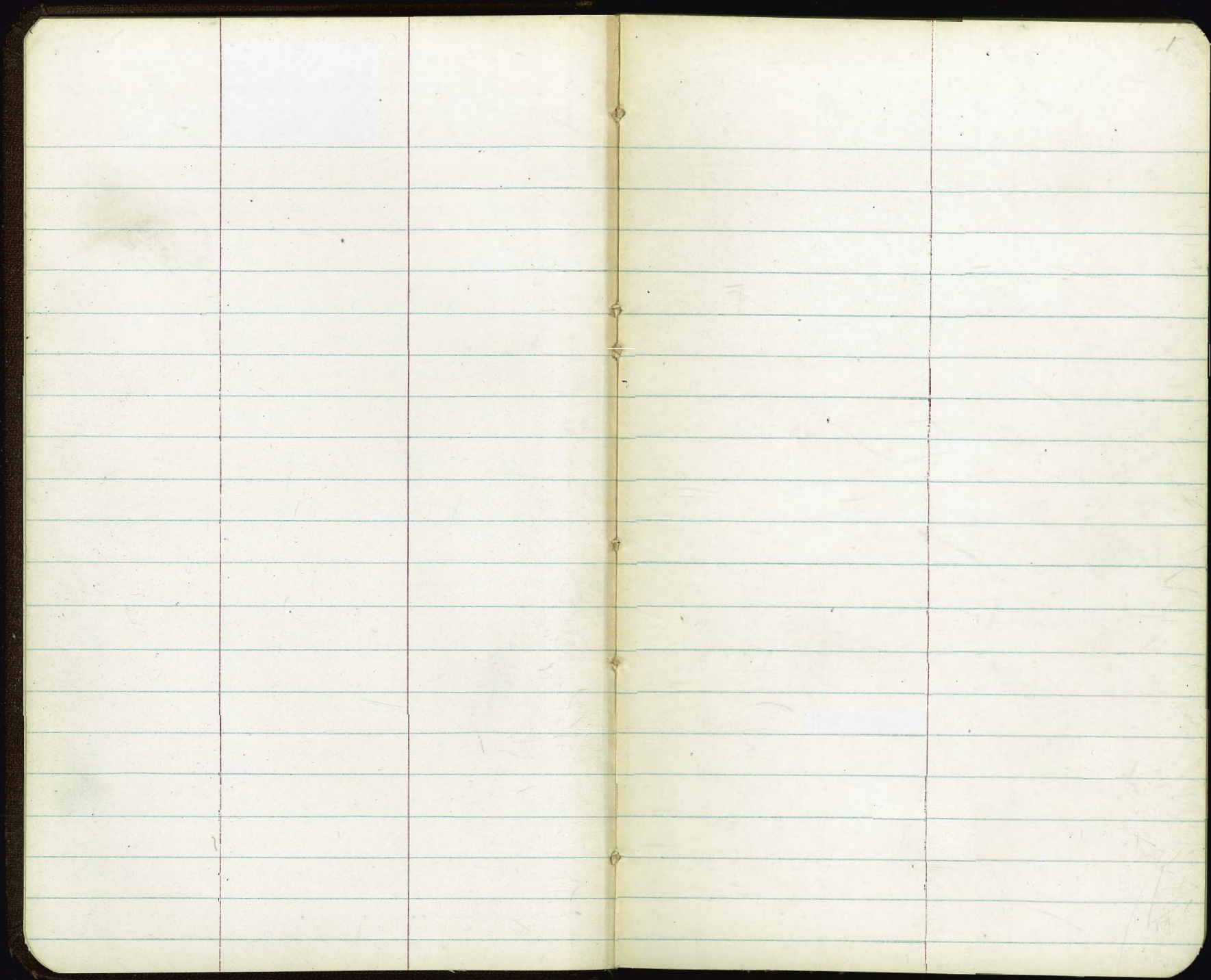
Wabaska Di Freeway
X-sec Sunset Cliffs Blvd

Loc. IMP 4 BIGS - ELEC. BY RW. PL 1773 10-23

X-sec Thorn St Fairmount to 45th St 26-36

X-sec Highland Ave Thorn St to Canyon 26-37/28

X-sec CELIA DRIVE: 100' ELY of ROLANDO BLVD, WLY to D. END 41



MABASKA DRIVE - FREEWAY

CROSS SECTIONS

S.W.O.C

MO 22002

Alignment FB 2085-5A

INDEXED
 RW
 DEC 22 1952

2

Walker
 Pope
 Clark
 Huffman
 8-15-51

Lt.

L

Rt.

1+00

24.92	25.01	24.76	24.73	25.8	26.7	27.8
520	511	536	539	43	34	23
24.2	10		2	4	18	35
Prov.	Prov.	Prov.				
Approp.						
S.W. Platons						

0+75

REDUCED MEEHAN
 AUG 20, 1951

26.02	26.31	26.32	26.37	27.6
410	381	380	375	250
25	10	Prov.	7.3	30
			Valley	cult
			Gutter	Co. Prov.

0+50

26.62	26.92	26.86	26.86	26.20	27.90
350	320	326	326	292	222
25	10	Prov.	11.5	23	23
Prov.	Prov.		Valley	Gut.	cb.
			Gutter		

0+25

27.31	27.70	27.60	27.47	28.09	28.28	28.3	31.0	34.0
275	242	252	265	203	184	18	+0.9	+0.9
25	12	Prov.	132	182	28.3	27	31	40
	Prov.		Prov.	Gut.	cb.	Edge		
				Prov.		Walk		

0+00 = BC Rt.

28.13	28.30	28.35	28.12	28.84	28.88	28.9	31.6	31.6
199	182	179	200	128	124	13+15.	+15	
25	12	Faving	14	14	26	30	32	40
Prov.	Prov.	30.12	Prov.	Gut.	Edge	Lower	Lower	
				Prov.	Walk			

161

30.12

28.51

45.9.5 S.W. W Point Luma + Seaside Pl.

FB 2085-62

S.M.O.C - Cross Sections

Lt.

E

Ft.

3

2+50

12.9
9.2
50
Mud

13.6
8.5

14.6
7.5
50

2+25

16.1 11.0 13.4
5.4 5.1 8.7
50 36 30

13.4
8.7
Mud

14.2
7.9
50
Mud

1+90

18.45 11.9 18.1 18.6
366 420 34 35
50 34 30 10
Pav Pav Mud

13.1
8.4
Mud
22.11

14.2
7.9
50
Mud.

TR 472 22.11 1273 17.39

1+80.41 = P.C.C

1+70

19.49 19.19 20.0
1063 1093 10.1
50 22 20
Pav Pav Mud

20.0
10.1
Mud

13.9
16.2
11
Mud

14.0
16.1
50

$\Delta = 24^{\circ} 58' 05''$
R = 414
L = 180.41
T = 91.66

1+50

21.07 20.62 21.2
9.05 9.50 8.9
41 18 13
Pav Edge Pav

21.7
8.4

21.5
8.6
12
Mud
Flut

13.8
16.3
25

18.1
12.0
50

Apprx. & W.P. Loma

1+25

23.01 22.15 22.6 23.1
7.11 7.37 7.5 6.4
315. 10 6 2
Pav Pav

23.8
6.3

23.9
6.2
18

21.1
8.1
30

21.1
8.4
40

3012

Apprx. & W.P. Loma

3012

S.W.O.C Cross Sections

Cont. from p-3

chk West end of Inlet
on Pt Lorne Blvd.
FB. 2085-71

0.01
13.56
854 13.57

3+89.88 = E.C.

14.8	14.6	14.1
7.3	7.5	8.0
50		50
Mud	Mud	Mud

$\Delta = 60^{\circ} 00' 27''$
 $R = 200'$
 $L = 209.47'$
 $T = 115.49'$

3+50

14.4	14.4	14.5
7.7	7.7	7.6
50		50
Mud	Mud	Mud

3+00

2211

14.1	14.2	14.1
8.0	7.9	7.4
50		50
Mud	Mud	Mud
	22.11	

Cross Section Sunset Cliffs Boulevard
 Sunset Cliffs Bridge North to Midway Drive
 To determine Quantity of Embankment
 made from under Bridge

+5.0

TP 120 9.86 10.70 8.66

+25

42+0

+77 Sec C

Taken 90° to L on Lt.

+77 Sec B

Taken on Diag
 Parallel to Bridge

41+62.3 = NY Conc. Abut.
 Sec B

Taken on Diag or
 Parallel to Bridge

BM 167 19.36

17.89
 1/4" x 1/4" Wing Wall
 Sabre Cliffs
 Br 1490

Lt. A

8

6.	6.3.	7.0.	8.	8.2.	8.3.	8.3.
8.3	3.7	3.9	1.2	1.7	1.6	1.6
42	55	25		25	50	70

9.86

INDEXED

DEC 22 1952

6.1.	6.8.	7.7.	9.0.	8.9.	8.3.	8.2.
12.3	12.6	14.7	10.4	19.5	11.1	11.2
70	30	25		25	50	70

5.6.	8.4.	8.7.	10.7.	11.5.	11.1.	11.6.
13.8	11.0	10.7	8.9	7.9	8.2	7.8
76	35	28	21		18	31 = NY Conc. 21.9

8.8.	8.9.	13.9.	14.1.
10.6	10.5	5.5	5.5
70	25	20	

8.2.	7.9.	8.7.	16.5.	17.1.	12.6.	10.5.	11.8.	8.3.	8.3.
11.2	11.5	10.7	2.9	5.2	6.8	5.9	7.6	11.1	11.6
72	50	42	29		18	22	40	23	70

11.5.	11.6.	17.2.	15.4.	14.5.	15.3.
7.9	7.8	2.2	4.0	4.9	4.1
38	29	23		18	38 = NY Conc. 21.9

19.36

Nov. 22 1952
 No. 5
 Garber
 R.E. Roger
 Kelley

+50

47	41	40	40	40	40
-0.0	3.6	4.1	5.0	4.3	4.0
10.2	63	58	79	56	59
55.6	45	35	25	25	45

RT -0.5
54.6: Shop

45+0

49	47	53	52	49	43
-0.9	4.7	5.3	5.2	4.9	4.3
10.8	52	46	47	50	56
59.0	46	35	25	25	47

57.5: Shop
57.6: Tol

+50

44	46	50	55	52	49
-0.4	4.6	5.0	5.5	5.2	4.9
10.2	53	49	44	47	50
80	49	35	25	25	50

10.0
59.8

44+0

45	49	52	58	45	45
-0.5	4.9	5.2	5.8	4.5	4.5
94	50	47	41	45	45
81	50	35	25	25	45

9.6
8.4

+50

51	50	57	61	59	59
5.1	5.0	5.7	6.1	5.9	5.9
84	49	42	32	40	40
60.2	52	35	25	25	30

9.6
8.6

43+0

49	45	40	33	37	42
-0.1	4.5	4.0	3.3	3.7	4.2
90	45	40	33	37	42
63.4	53	25	25	25	50

70.0: Tol

43+75

42	45	36	21	25	22
4.2	4.5	3.6	2.1	2.5	2.2
79	45	36	21	25	22
84	53	25	25	25	55

8.8
8.6: Tol

9.86

9.86

H. 2 Rt. 7

+50

4.0	4.0	3.8	4.1	4.4	3.1	3.1
90	46	48	45	42	43	49
474	38	25		25	40	51
						25
						38

48+0

0.0	4.6	4.2	4.2	4.5	3.9	0.9
86	40	44	44	41	47	73
474	38	25		25	47	53

+50.

4.0	3.1	3.9	4.5	4.4	4.0	4.1
90	43	47	41	42	46	55
496	39	25		25	43	58

TP 9.42 8.62 1066 - 0.80

862

47+0

4.9	4.3	5.1	4.1	4.3	4.1	4.0
103	56	54	58	56	58	96
510	40	25		25	41	477

+50

4.3	3.9	4.1	4.6	4.3	5.0	4.8
107	60	58	52	56	49	91
522	42	25		25	40	488

46+01.96 = 80 Rt. 1.000

4.0	3.5	3.1	4.7	4.5	4.7	5.0
98	64	56	52	54	51	94
532	44	25		25	42	512
						700

986

986

TP 531 6.85 708 154

+50

51+0

+50

50+0

+50

49+0

862

St

S

Rt

8

14.	5.5.	5.5.	26.	28.	28.	3.	3.
72	54	54	60	58	58	56	63
40	35	20		26	30	75	100

07.	07.	05.	37.	8.	0.	9.	7.	19.
79	55	51	54	58	56	57	59	67
41	38	26		25	50	75	73	100

2.5.	3.	7.	6.	6.	3.	1.	7.
54	48	47	50	50	54	55	69
39	36	25		25	30	75	88

8.	5.	3.	0.	8.	6.	5.	7.
104	50	53	4	48	50	51	69
47.4	36	25		25	47	86	79

10.	5.	3.	0.	9.	8.	3.	7.
96	51	54	45	47	48	53	69
46.8	36	25		25	45	83	70

09.	7.	4.	0.	9.	7.	5.	3.
95	47	52	47	45	45	51	73
47.2	38	25		25	43	67	84

8.65

Lt.

L

Rt.

2

BM

5.00 1.85

LTT 118706
Midway Is
Sunset Cliff
1.84

30 Run off
67

+75

0.8	1.9	2.6	2.5	2.5	2.0	1.6	2.0	2.6
6.1	5.0	4.3	4.4	4.1	4.9	5.3	4.9	6.2
115.706	110	73	50	25		25	48	50

+50

1.8	2.4	2.8	2.6	2.0	2.1	1.7	1.6	1.6	1.8	1.6
5.1	4.5	4.1	4.3	4.9	4.8	5.2	5.3	5.3	5.1	5.2
90.706	85	50	25		25	50	75	100	125	138

5370

1.6	2.5	2.4	2.4	2.6	2.6	2.6	2.4	2.1	2.3	2.1
5.2	4.4	4.5	4.5	4.5	4.3	4.2	4.5	4.8	4.6	4.8
57	54	20			25	50	75	100	123	145

+50

0.7	2.3	2.9	2.5	2.0	2.9	2.1	2.5	2.0
5.4	4.6	4.1	4.1	3.9	4.0	4.7	4.4	4.9
46	41	20		25	50	75	100	122

5270

1.1	2.3	2.9	2.0	2.0	2.0	2.9	2.6	2.1
5.8	4.6	4.0	3.9	3.9	3.9	4.0	4.3	4.8
41	35	20	29	25	50	75	100	130

685

1.85

Clark
Shepherd
Bruver
Presley
1-8-53
W.O. 27526

LOCATION; IMPROVEMENTS LYING NEAR
WITHIN PROPOSED 80' R.O.W. ALONG
ELECTRIC RY-R.W. - P.L. 1773

Notes: P. 13
Sketch NOT TO SCALE:

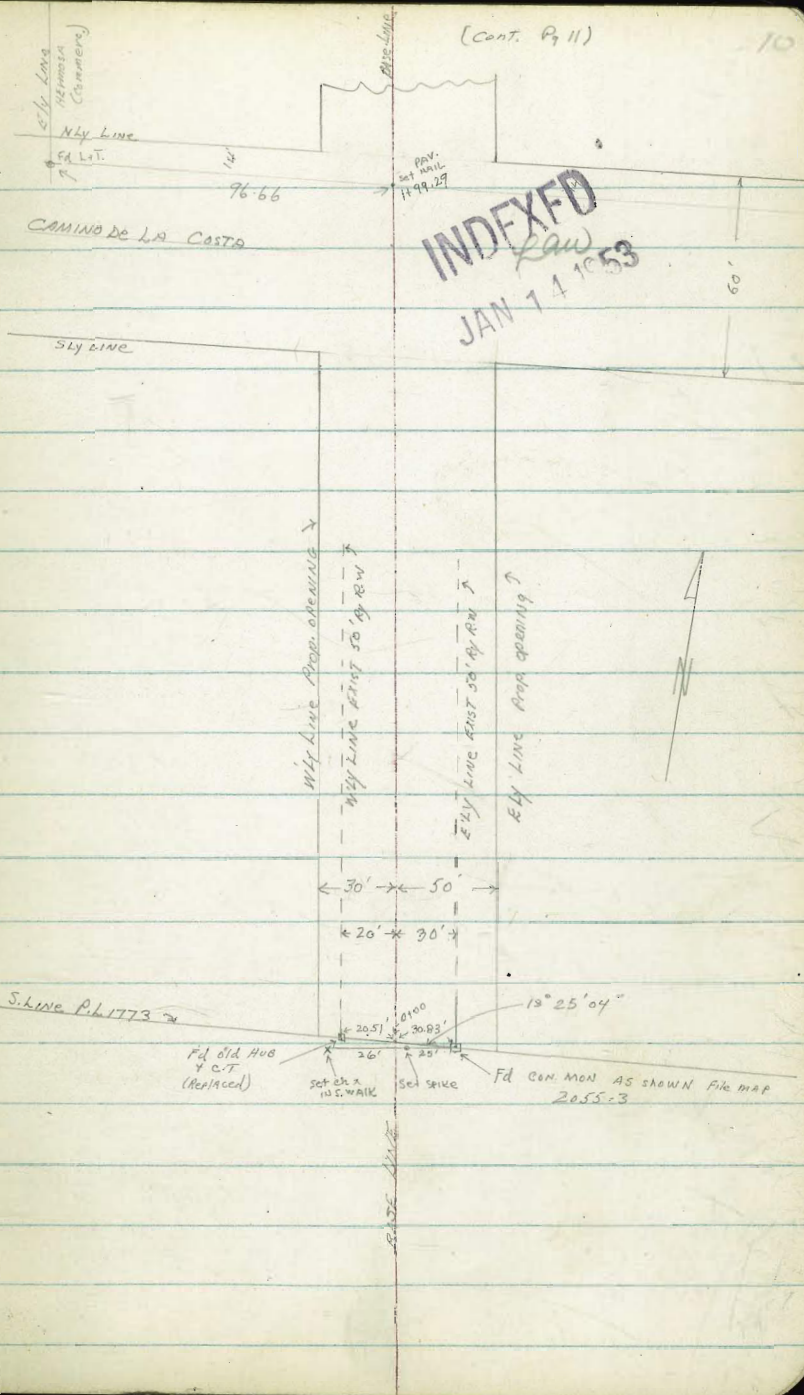
DATA: F.B. # 1639-52-53-58, 69

Filed MAPS: 1810
2055
2086
397
L.S. 280

Tie SHEETS: 1728
1738
2109

Note: BASE LINE OFFSET 5' WEST OF $\frac{1}{2}$ OF
EXIST 50' R.W. OF ELECTRIC RY.
ALL LOTS ARE TAKEN FROM THIS BASE-LINE

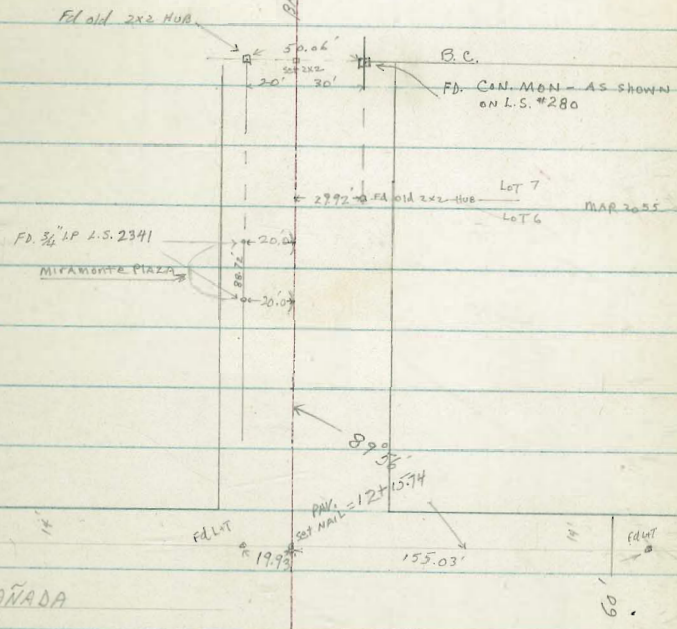
Note: TIES ARE SHOWN ON LA COSTA, LA CAÑADA,
& DEL NORTE TO LIT. PTS, NOT SHOWN IN
CITY DATA. THESE PTS ARE PRIVATE SURVEY TIES
APPARENTLY, IN REFERENCE TO PTS. SHOWN ON
MAPS LISTED ABOVE.



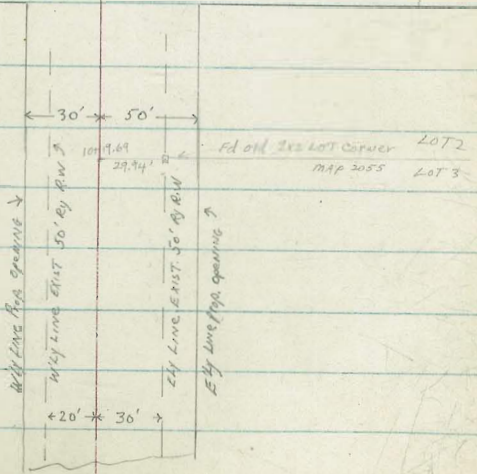
ELECTRIC BY R.W. (CONT.)

(CONT. P. 12)

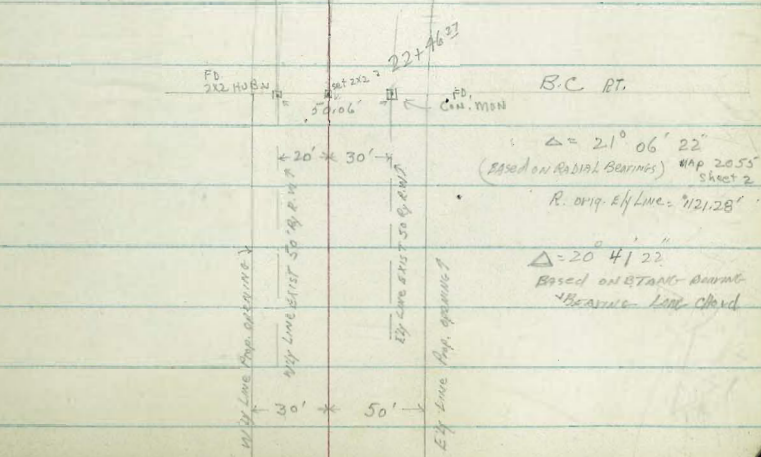
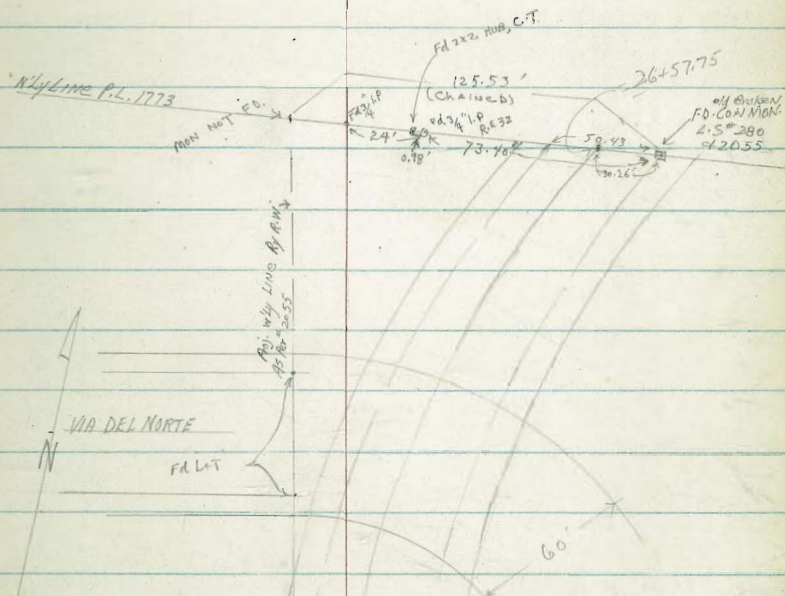
11



LA CAÑADA



ELECTRIC Ry R.W. (CONT)



Note: CONFLICT IN BEARINGS sheet 2 MAP 2055 ON CURVE
 DATA SHOWS DIFF OF $0^{\circ} 12' 30''$ IN FULL DEFLECTION
 Full Deflect (2%) BASED ON RADIAL BEARINGS = $10^{\circ} 33' 11''$
 " " " " ON BACKSIGHT & CHORD BEARINGS = $10^{\circ} 20' 41''$
 Rough Field CHK INDICATES DATA BASED ON FULL DEF. OBTAINED
 FROM DIFF. BEARING, BEARING & CURVING OF LONG-CHORD FITS POINTS
 FOUND IN FIELD.

ELECT BY D.W. (CONT.)

9+49 32.9 RT Fence L to Base Line
 9+44.5 22.3 LT END Fence

9+40 34.3 LT N.E. Corn House

8+76 34.3 LT to S.E. Corn House

8+71 22.5 LT Beg 5' Board Fence

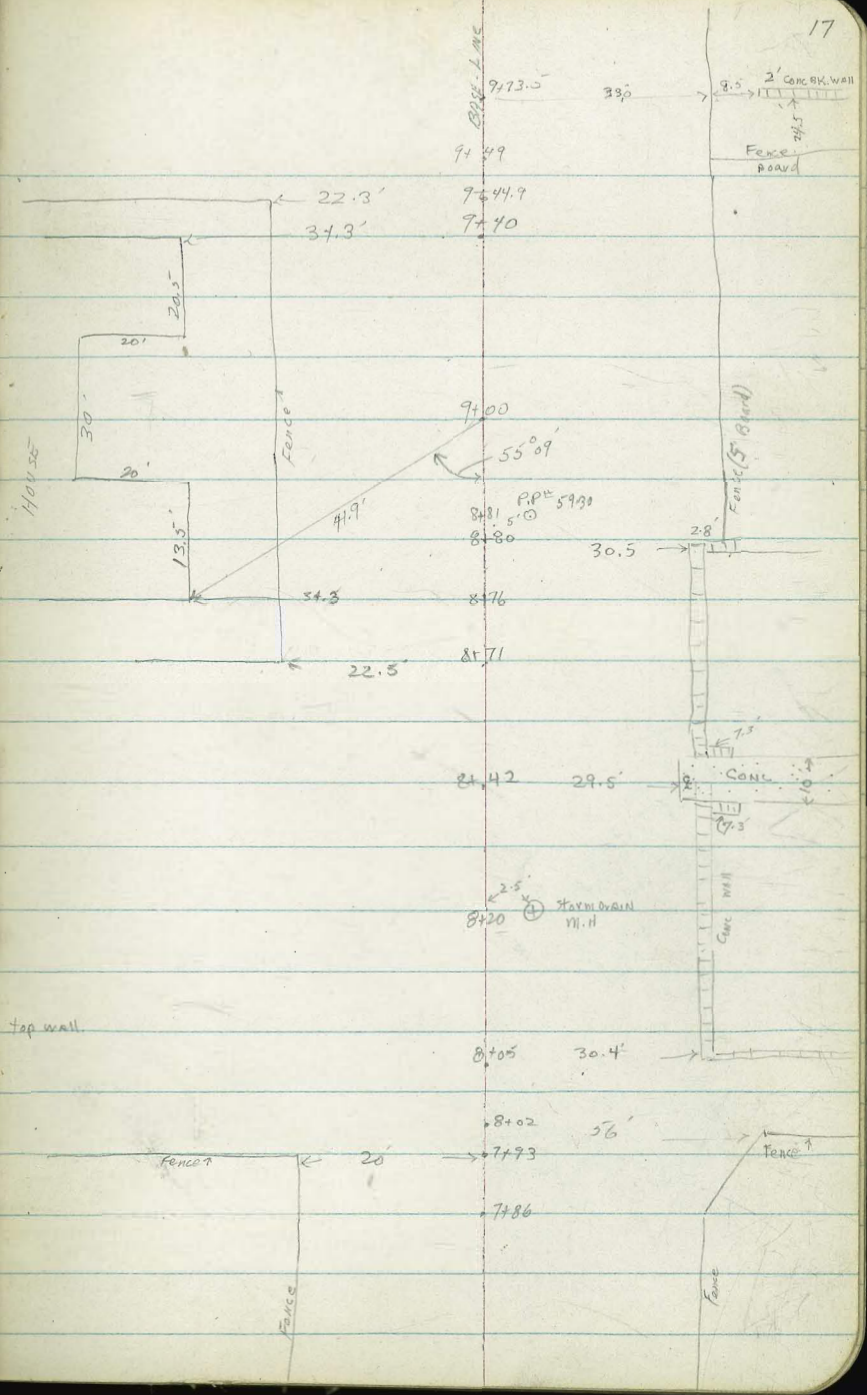
8+42 29.5 RT 9' 10' Conc. Driveway

8+05 30.4 RT Beg 3' high Conc^{gr} wall with 5' steel wire fence on top wall.

8+02 56 RT END B. Fence

7+93 20' LT END Board Fence

7+86 36.5 RT jog in Board Fence



ELECTRIC Ry R.W (cont)

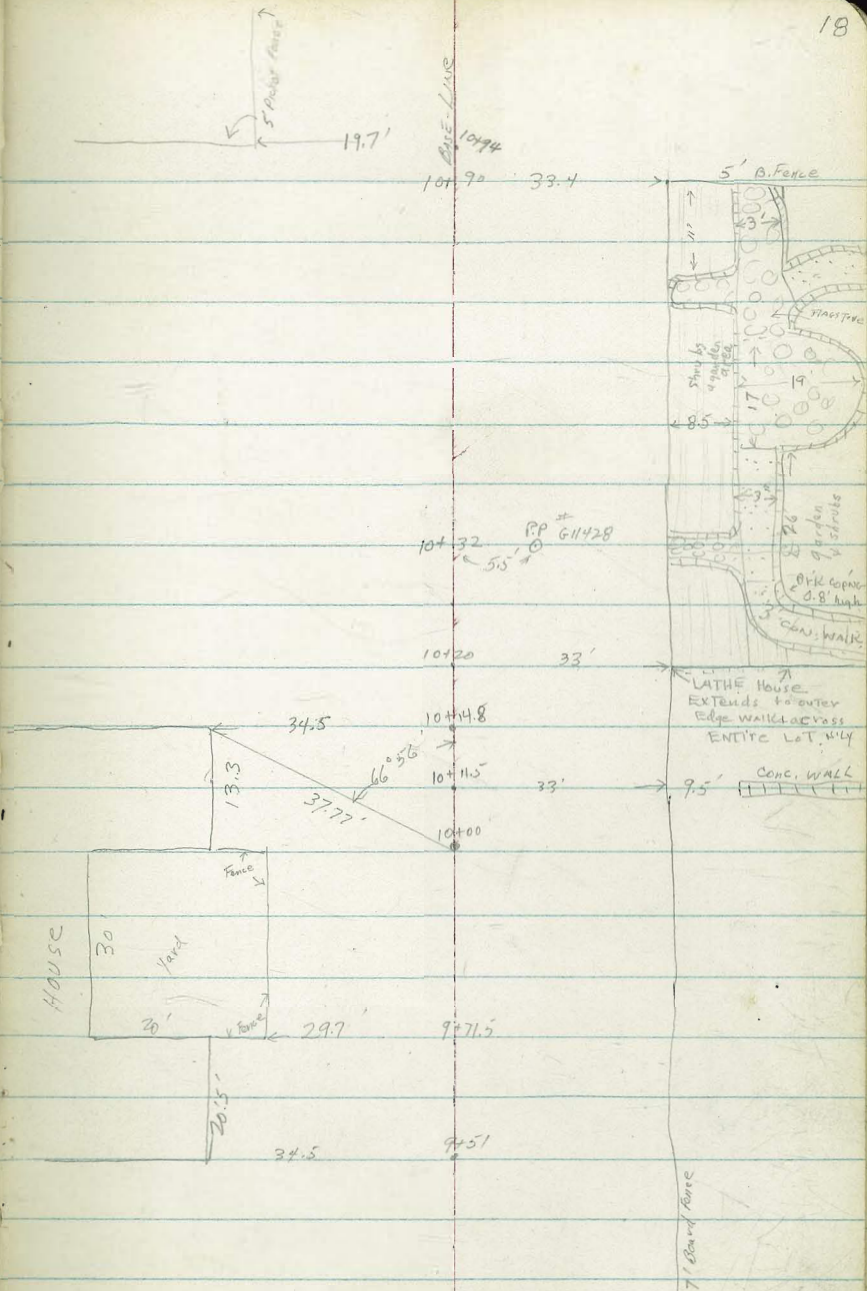
10+90 33.4 RT 5' Board Fence | to Base-Line

10+33 33 RT & 3' Flagstone WALK

10+20 33 FT. 7' B. Fence | to Base-Line

9+71.5 29.7 LT. Bag Fence

9+51 34.5 LT S.E. Corr. House



ELECTRIC BY R.W. (CONT.)

12+14.7 = N/4 CB LINE LA CANADA

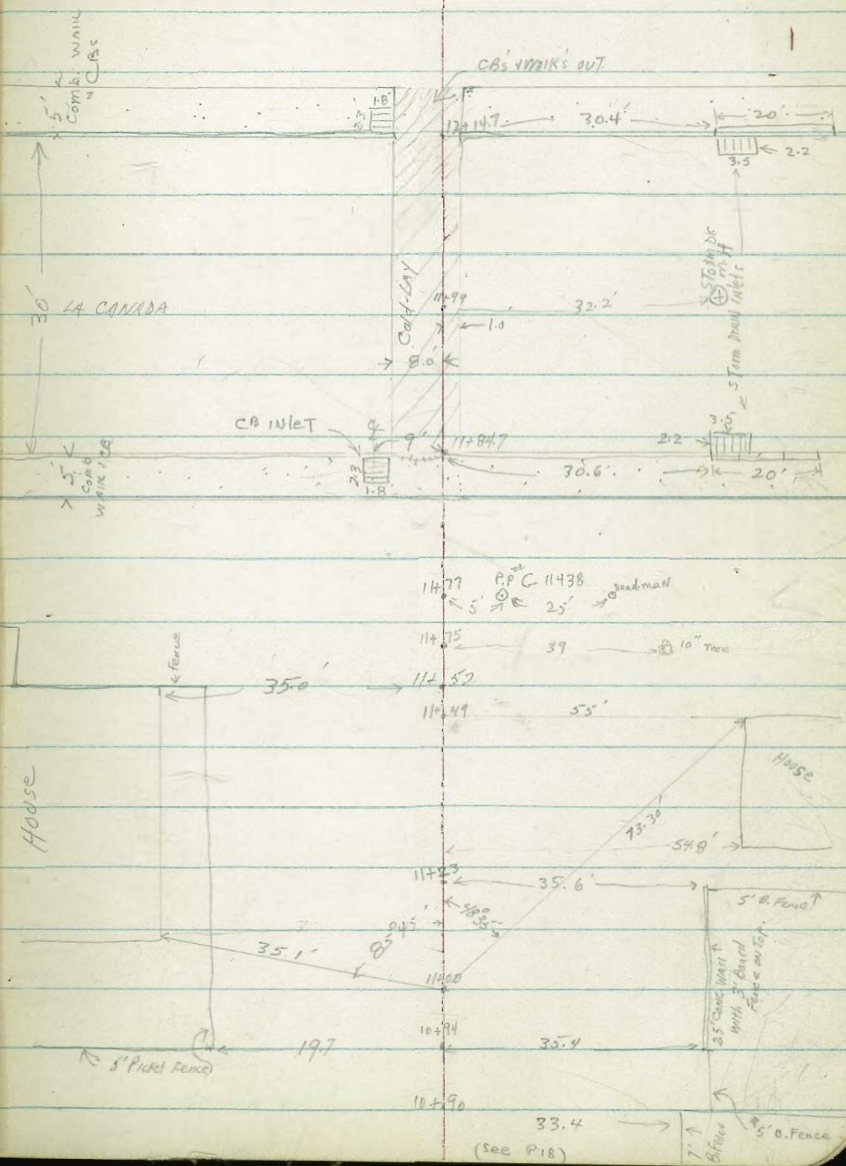
11+84.7 = S/4 CB LINE LA CANADA

11+52 } 35' RT NE Corn House
19.2 LT out Picket Fence

11+49 55' RT NW Corn House

11+23.5 54.8 RT SW Corn House

11+02.5 35.0 LT SE Corn House



ELECTRIC Ry R.W (Cont)

14+80

4 RT of Pole # 6029

14+80
4' PP # 6028

14+61 30.5'

6' B. Fence

13+8.5

30.8 RT by 6' B. Fence

13+8.5 30.8'

6' Board Fence

13+7.7 39.1' 10' Tree

13+3.0 5' PP # 7201-R

13+0.4

32.1' RT END Rail Fence

13+0.4 32.1'

12+7.5

30.4' LT NE Corn House
11.75' LT end Fence



12+9.3.4

12' LT by 5' B. Fence
30.10' LT SE Corn House

12+9.34

12+3.7

30.10' LT to S.E. Corn Brick Porch

12+3.8

12+5.7

31.9' 3' Rail Fence

12+30

50.5' RT of 2.0' Palm

ELECTRIC BY R.W. (CONT.)

17+50.3 RT N.W. CORN. GAR.

17+30 RT S.W. CORN. GAR.

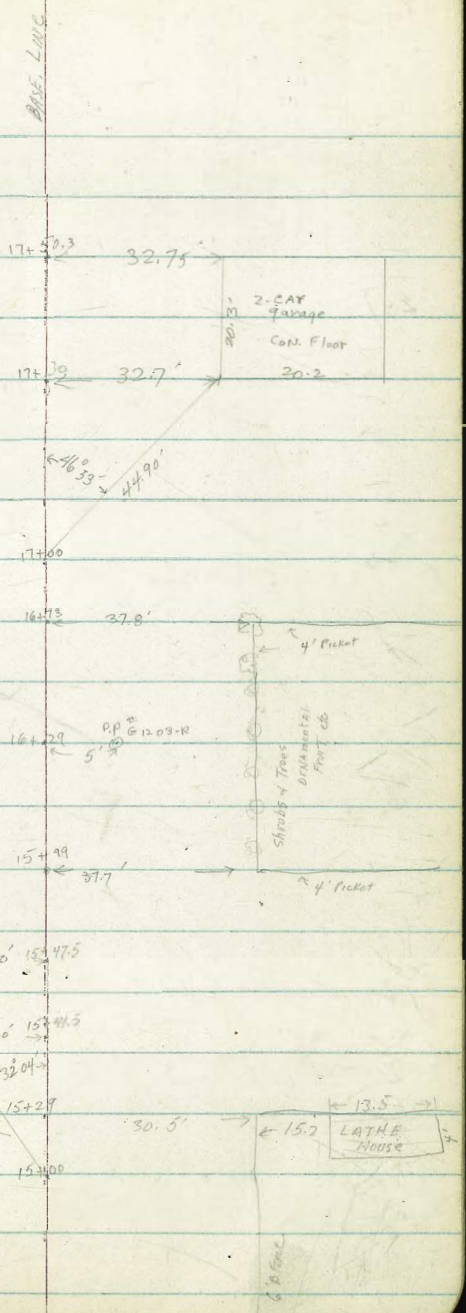
16+73.6 37.8' RT END PICKET FENCE

15+99 37.7' RT. Beg 4' PICKET FENCE

15+47.5 26.0' LT N.E. CORN. LAUNDRY ROOM

15+41.5 26.0' LT S.E. CORN. LAUNDRY ROOM

15+29 { 30.5' RT. END 6' BOARD FENCE
45.7' RT TO N.W. CORN. LATHE HOUSE



ELECTRIC Ry R.W. (cont.)

19+98

28.1 LT. Beg Brick Pav'd Slab & Ret Wall
21.1 LT NE Corner Bldg

19+66

29.8 RT Beg 25' high rail-Fence
29.0 RT NY CO. LINE PLAZA

19+10

LT SE Corner Bldg

18+97

29.0 RT NY CO. LINE MIVAMINTE

18+28

29.0 RT. CO. LINE MIVAMINTE
8.08 LT SE Corn Civil Platform
15.08 " " ART. Bldg

17+88

18.68 LT END WALL

17+84

4' RT 3.7x3.7 CONC. M.H.

17+73

31 RT E Deadman

17+66

18.68 LT Beg Conc. Ret Wall 4' high, 1.50' wide

17+61

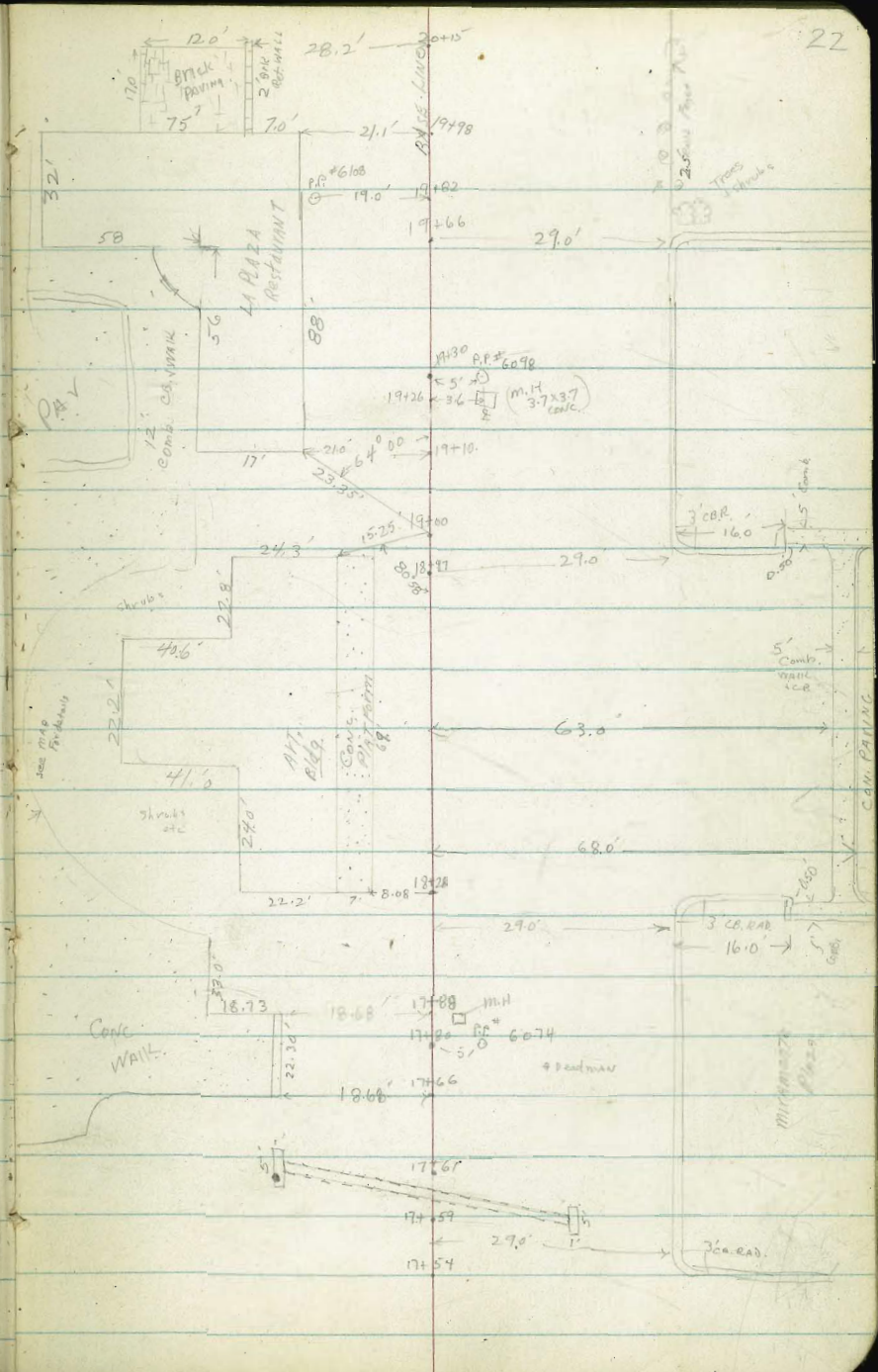
22.42 LT 24" C. Iron Culvert Shearwall (3' high)

17+59

13.6 RT 24" C. Iron Culvert & Shearwall (3' high)

17+54

(29' RT to ca. line) Beg 8" ca. 1.5' high
MIVAMINTE PLAZA



ELECTRIC RY. R.W. (Cont.)

All $AP\frac{1}{2}$ -ties made from B.C.
 & turned off semi-tangent

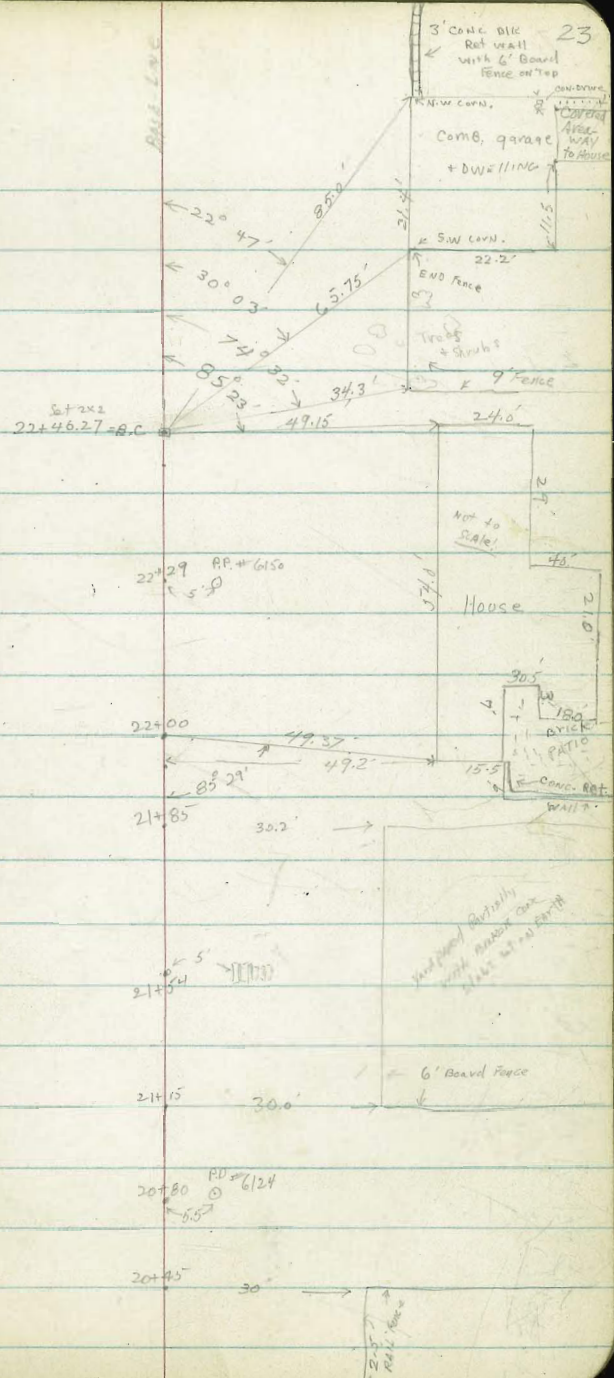
21+96.5 49.2' RT S.W. Corn House

21+85 30.2' RT END 6' Fence

21+54 5' RT & Broken slab steps (4 steps) 2.5' wide

21+15 30.0' RT Beg 6' B. Fence

20+45 30.0' RT END RAIL Fence



RAIL LINE

3' CONCRETE BOLLARD RET. WALL WITH 6' BOARD FENCE ON TOP

NEW CORN.

COMB. GARAGE + DWELLING

SW CORN. 22.2'

END FENCE

Trees + Grub?

9' FENCE

22+46.27 = B.C.

22+29 AP # 6150

House

48'

30.5'

150' B.V. PATIO

15.5'

CONC. RET. WALL

30.2'

5'

21+15

6' BOARD FENCE

21+15 30.0'

20+80 PD # 6124

30'

20+45

RAIL FENCE

ELECTRIC Ry P.W. (cont.)

BASALINE
ON CURVE

25

No improvements beyond this point

INDEXED
LOW
JAN 14 1953

25+89 POC

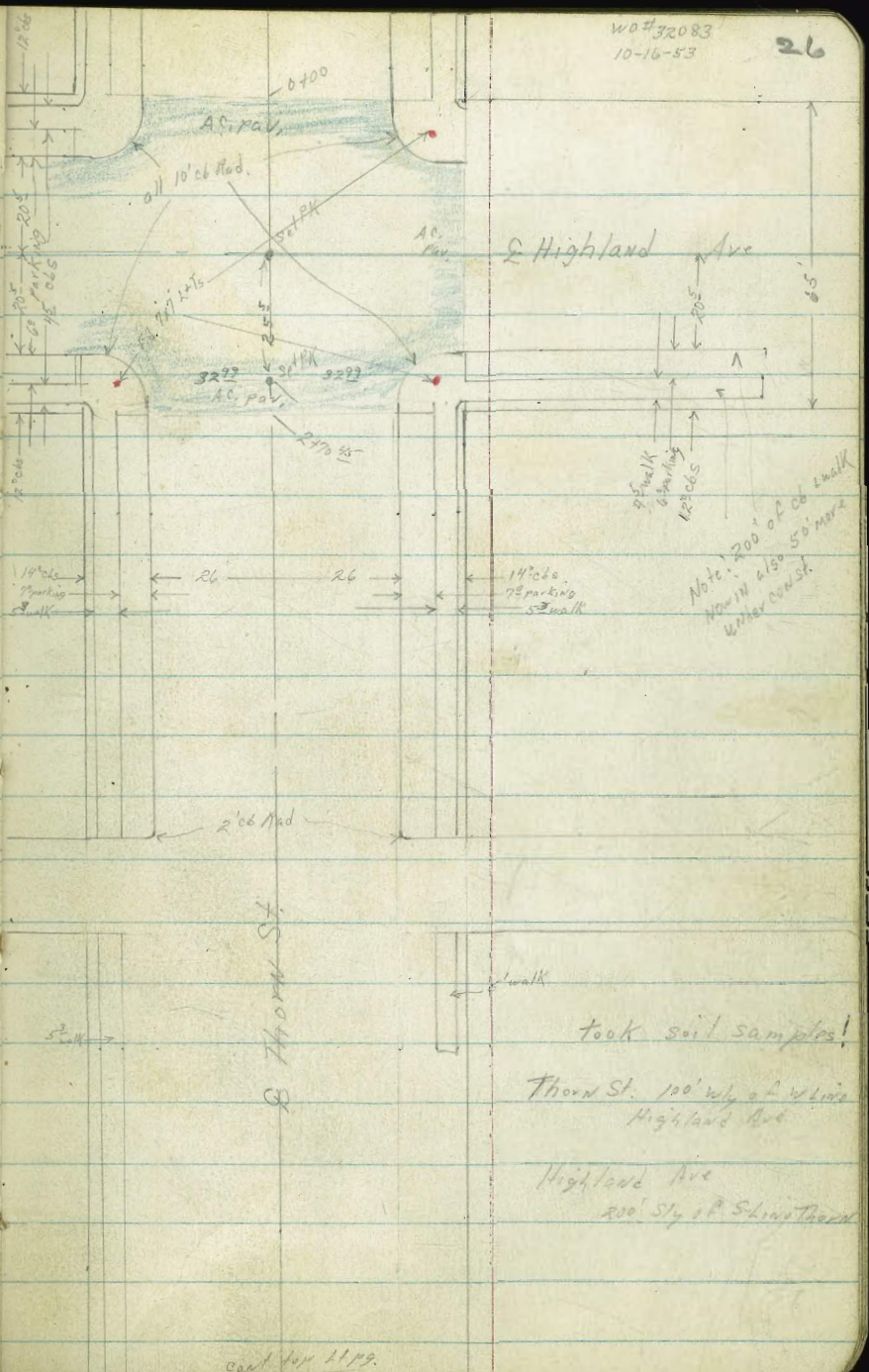
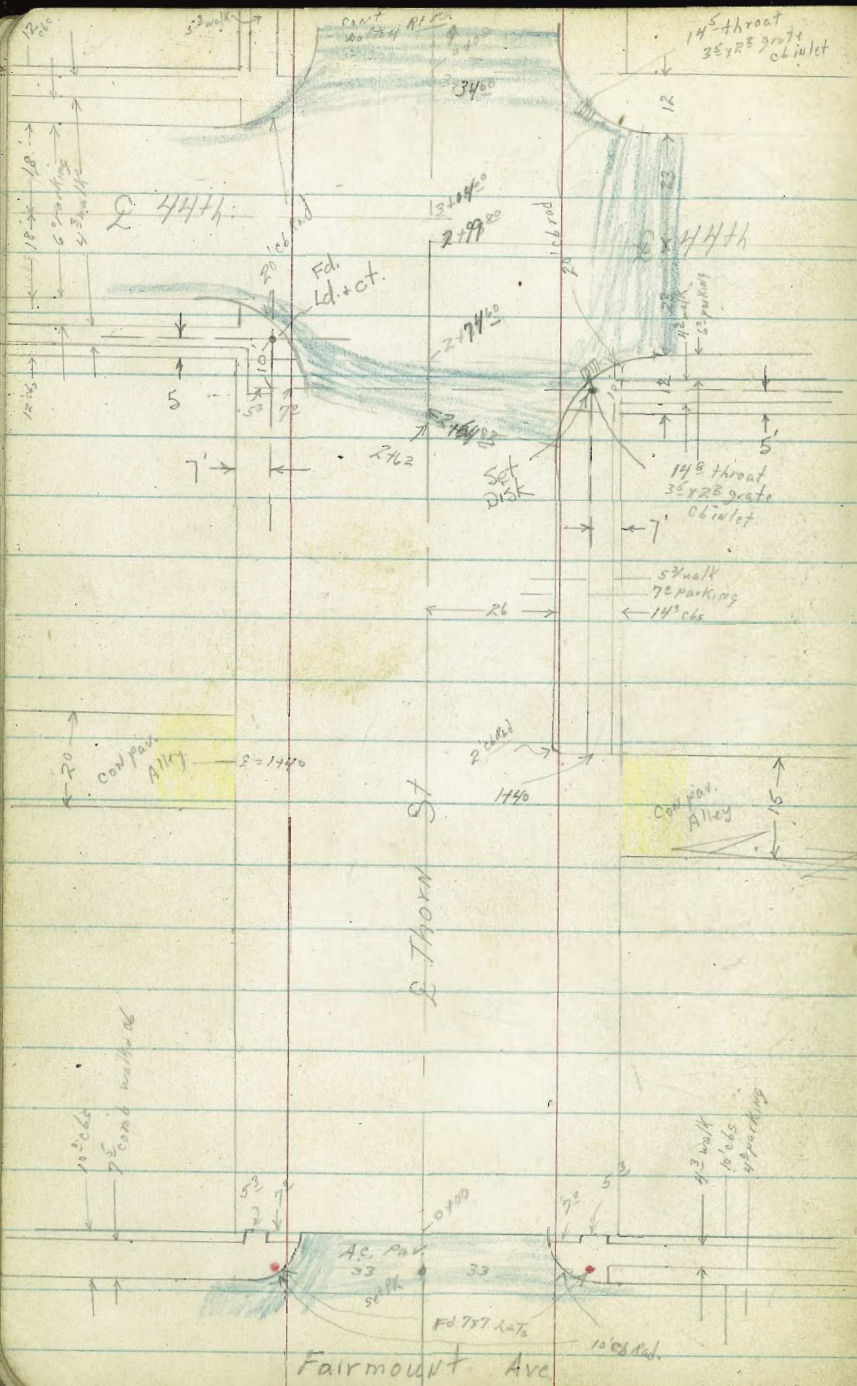
44 RT (RADIAL) END @ Hedge
34 RT END Row EUC. Trees

25+25 POC

25 RT (RADIAL) Beg Row, 4 small EUCalyptus Trees

25+00 POC

39⁰ RT (RADIAL) Beg @ Hedge

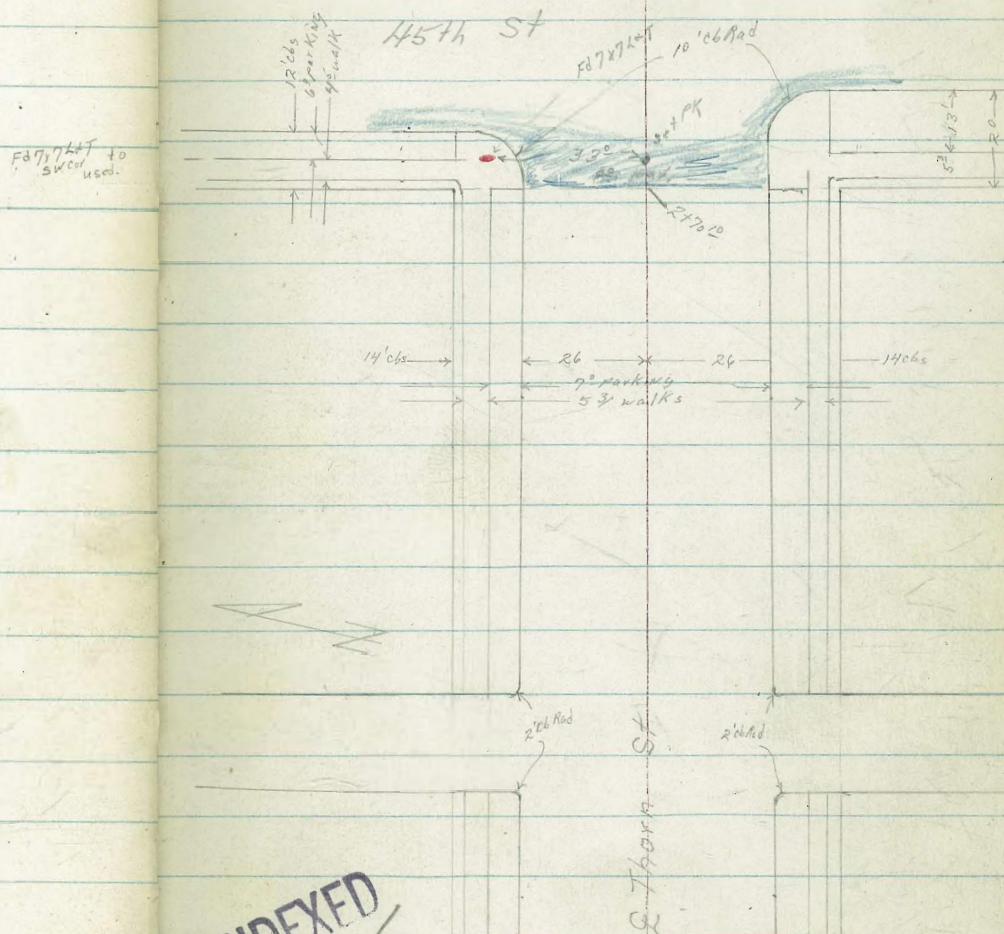


"X" Sec. Thorn St
"X" Sec. Highland Ave

Fairmount to 45th
Thorn to Canyon (Sly).

wo # 32083
10-16-53

27



INDEXED
Series
OCT 21 1953

X Sec Thorn St Fairmount to 48th

Lt. N/4

Wb # 32083 28

Rt = S/4

0+75

60 306.7
40 31
76 306.1
23 76 351
13 74 315.3
74 74 315.3
13 76 315.1
22 81 314.2
25 68 315.9
25 64 316.3
40 42 318.5
60 42 318.5

0+50

42 318.5
46 46 318.1
29 54 317.1
24 54 317.1
13 54 317.1
52 52 316.8
13 69 316.7
27 69 316.4
25 43 318.4
40 44 318.3
60 44 318.3

0+40 40th Lt Begin 8" cor block retaining wall

46 318.1
32 319.0
240 320.31
Footing 406
9d wall

0+25

40 319.6
35 33 319.4
25 45 318.2
13 44 318.3
48 48 317.9
13 51 317.6
22 52 317.5
30 45 318.2
40 42 318.0

0+10 26th R+S Fire Hyd

39 319.4
40 319.54
33 319.42
26 319.25
26 42 318.69
13 48 318.63
24 48 318.97
13 45 318.14
23 51 317.54
42 42 318.00
40 46 318.11
40 46 318.11
42 42 317.8

0+00 Ely Fairmount. end of edge AC paving

39 319
40 386
33 319
26 319.33
26 319.33
13 48 318.73
24 48 317.55
13 45 317.55
23 45 317.95
42 42 318.00
40 46 318.11
40 46 318.11
42 42 317.8

Mid Pt Returns

26 320.06
30 319.47
40 319.33
40 318.75
36 319.35
36 318.75
26 318.50
13 43 318.36
13 43 318.18
13 42 317.92
26 42 317.72
36 317.54
36 318.01
40 317.43
40 318.39
40 318.87

0-10 Ely cb Fairmount

26 320.06
30 319.47
40 319.33
40 318.75
36 319.35
36 318.75
26 318.50
13 43 318.36
13 43 318.18
13 42 317.92
26 42 317.72
36 317.54
36 318.01
40 317.43
40 318.39
40 318.87

BM 469 322.71

318.02

S.E. RR Fairmount - Thorn

TI 322.71

2168⁵ 26² Lt C6 end + B.C.

2164⁸³ Why line 44th St to South

2162⁹ crosses beginning A.C. part.

2157 26² Lt C6 B.C.

2135

2129 27² Lt E dead mat

2104 27² Lt E 9" Anchor Pole # 527845H

2102 40³ Lt E 10" cov under clothes lines

2100

1498 39⁶ Lt End 8' cov retaining wall

1483 39² Lt E 7' cov drive

72	305.5								
383	305.10	74	305.8	40	74	305.9	40	74	305.9
33	305.22	27	304.8	26	26	305.10	26	26	305.10
26	304.50	26	304.6	26	26	304.6	26	26	304.6
13	304.65	13	304.75	13	13	304.9	13	13	304.9
8	305.50	8	304.64	8	8	305.0	8	8	305.0
13	304.05	13	304.28	13	13	304.7	13	13	304.7
30	303.30	30	303.62	30	30	304.13	30	30	304.13
20	304.32	20	304.107	20	20	304.56	20	20	304.56
8	304.47	8	304.47	8	8	304.82	8	8	304.82
40	306.1	40	306.1	40	40	308.43	40	40	308.43
26	305.4	26	305.4	26	26	308.5	26	26	308.5
13	305.8	13	305.8	13	13	307.6	13	13	307.6
8	306.0	8	306.0	8	8	307.1	8	8	307.1
13	305.7	13	305.7	13	13	307.5	13	13	307.5
26	305.2	26	305.2	26	26	307.9	26	26	307.9
26	305.72	26	305.72	26	26	307.6	26	26	307.6
33	305.96	33	305.96	33	33	307.1	33	33	307.1
33	305.96	33	305.96	33	33	309.67	33	33	309.67
33	305.96	33	305.96	33	33	307.77	33	33	307.77
47	309.8	47	309.8	47	47	308.5	47	47	308.5
396	310.31	396	310.31	396	396	307.6	396	396	307.6
396	309.0	396	309.0	396	396	307.1	396	396	307.1
396	311.97	396	311.97	396	396	307.5	396	396	307.5
396	309.24	396	309.24	396	396	307.9	396	396	307.9
120	323	120	323	120	120	307.6	120	120	307.6
193	392	193	392	193	193	307.1	193	193	307.1
193	392	193	392	193	193	309.67	193	193	309.67
193	392	193	392	193	193	307.77	193	193	307.77

3134

33° At end walk // to line + wly Alleys
1425 27° RT E 14" P.P. 14 # P4425

1423 33° RT end walk // to line

1413 32° RT E 12" Acacia tree

1400

TP3 1129 32112 052 30933

0481 30° RT E 12" Acacia tree

0479 33° RT begin walk // to line

0470

0435

0408 edge AC, paving + Cbs

0400 Ely 4444

80 512 315.9
40 74 313.7
80 313.07
83 313.01
44
26 8 312.5
13 8 312.6
80 312.5
13 8 312.3
96 311.5
88 312.3
93 312.0
93 312.0
82 312.2
70 78 313.3

984 311.28
100 311.1
106 310.5
104 310.7
104 310.7
103 310.4
115 309.6
106 310.5
102 310.92
13 24 28 382
w/k

383 27 25 13 14 16 26 29 40
w/k

309.30
309.1
308.6
308.6
308.5
308.3
307.3
308.4
308.7

307.03
306.7
305.8
306.0
306.2
305.8
305.3
306.0
305.9
304.9

305.35
305.15
304.49
304.80
304.72
304.48
304.13
304.79
304.6

304.9
304.88
304.23
304.27
304.37
304.11
303.65
304.34
304.6

450 497 568 538 548 524 620 531 513
40 27 27 13 13 13 27 27 26

383 26 26 13 13 13 26 26 40
w/k end out out out out out out out

30985

32

Mid Pt NWly Ret

R+70¹⁰ Wly 45¹⁴ St edge AC, pav

TP₅ 6⁰¹ 331⁵¹ 2²⁵ 325⁵⁰

R+30

R+02 26° AT E 8° broken out ab for drive (dirt)

1+90

1+45 Ely Alley S

1+35 50° AT S SMH

1+25 Wly Alley S

At=Nly

At=Sly

35

5²⁴ 326.27
5²⁴ 325.69

326.53
326.27
~~325.27~~
325.57
325.49
325.08
324.60
325.12
325.08

326.07
325.75
325.0
325.4
325.3
324.5
324.82
325.05

325.59
325.35
325.35
324.7
325.0
324.9
324.5
323.9
324.40
324.48

328.5
325.14
325.2
324.84
324.4
324.4
324.4
324.0
323.5
323.80
324.4
324.02
326.1
325.5

328.7
324.94
325.0
324.57
324.3
324.1
324.3
323.9
323.2
323.64
323.9
323.94
325.2

+ 328⁵⁰

"X" Sec Highland Ave
Thorn Stly to Canyon

1793 20^s RT & 9^o con driveway

1750

1740 32^s LT & 3^o con walk

1709 30^s LT & 3^o con walk

1705 20^s RT & 9^o con driveway

1700

0754 20^s RT & 9^o con driveway

0750

0745 20^s RT & 8^o con driveway

0700 Sly Thorn St edge Ac. par 10600 East

BM 2⁷⁵ 325²⁵

322⁵⁰ NWBP Highland
136 Thorn
note

LT = Ely

61 319.2
45
64 318.9
325 22
62 318.4
15
82 317.1
10
84 317.1
10

319.73
320.20
319.95
528
429 wlk
512
329
319.63
319.43

48 320.7
112 wlk
505
322
520
305 wlk
42 320.5
25
53 320.0
17
66 318.7
10
62 319.1
10
63 319.0

16 323.8
40
32 322.1
325
38 321.5
28
42 320.6
22
52 320.1
20
50 320.3
10
42 320.3

322.23
302
31 wlk
322 321.97
205 end
341 321.78
202 out
340 321.85
10
345 321.80
3
369 321.56
10
437 320.88
205 out
385 321.40
31 wlk
358
321.67

325²⁵

32083 37
314.19
1126
205
112 315.2
265
112 wlk
315.86
314.14
314.01
924
31 wlk
924
205 out
924
205 out
924
205 out

6.1
316.86
317.70
318.10
318.4
317.10
317.69
318.10
318.4
317.10
317.69
318.10
318.4
317.10
317.69
318.10

318.49
319.55
676
205
66 319.2
205
66 319.2
205
58 319.42
205
58 319.90
205
58 319.90
205
58 319.90
205

4450 30° Lt end 3° picket fence

71° 2 26 307 31 11 53 305° 09

4428

4424 & crosses guard rail fence

4400 27° Lt Begin 3° picket fence

3475

3450

3414 16° Rt & W can drive with 15" RCP under 1st Arc drive with only

Lt = Ely

Rt = Wly

39

78° 308.1
50 30
80 306.5
50 302.3
63 301.0
78 399.5
124 294.9
142 292.1
190 288.3

68 310.3
80 308.6
85 308.1
82 307.9
10 306.6
112 304.9
152 301.4
200 296.6
243 292.4

62 310.7
70 309.4
78 308.8
80 308.6
84 308.2
89 307.7
128 303.8
144 302.5
222 293.9

42 311.7
65 310.1
69 309.7
75 309.1
74 309.2
80 308.6
80 307.8
110 305.4
81 308.5
91 307.1
185 298.1

48 312.4
54 311.2
60 310.6
70 309.6
68 309.8
73 309.5
80 308.4
90 306.8
95 307.1
100 306.6
122 304.4

78 308.80
145 844 1090
drive door
307.35
928
1220
outlet

π 316.60

Lt = Fly

At = wly

40

INDEXED
OCT 21 1953

BM start p37, 36

282

322⁴⁸

✓ 322⁵⁰

TP₇

8²⁵

323³⁰

159

316³⁵

TP₃

11⁵

317²⁴

054

306⁷⁷

6400

13 ⁴	16 ⁸	18 ⁰	19 ²⁰	25 ⁵	31 ⁶	34 ⁵	37 ⁵	45 ⁷
50	32 ⁵	27	12	13	22	32 ⁵	50	
29	290.5	289.3	288.1	281.8	275.7	273.5	269.8	261.6

5450

8 ³	10 ²	14 ³	17 ⁸	19 ³	29 ³	36 ⁰
50	32 ⁵	15	8	32 ⁵	50	
299.1	297.1	293.1	289.5	288.0	278.1	271.3

5400

3 ¹	6 ²	7 ²	9 ⁰	12 ⁷	14 ³	16 ¹	20 ⁵	27 ²
50	32 ⁵	24 ⁵	15	10	18	32 ⁵	50	
304.2	301.1	299.6	297.5	294.6	293.1	290.5	285.8	280.1

307³¹

C 24 one station

0550 2645

16024 2595

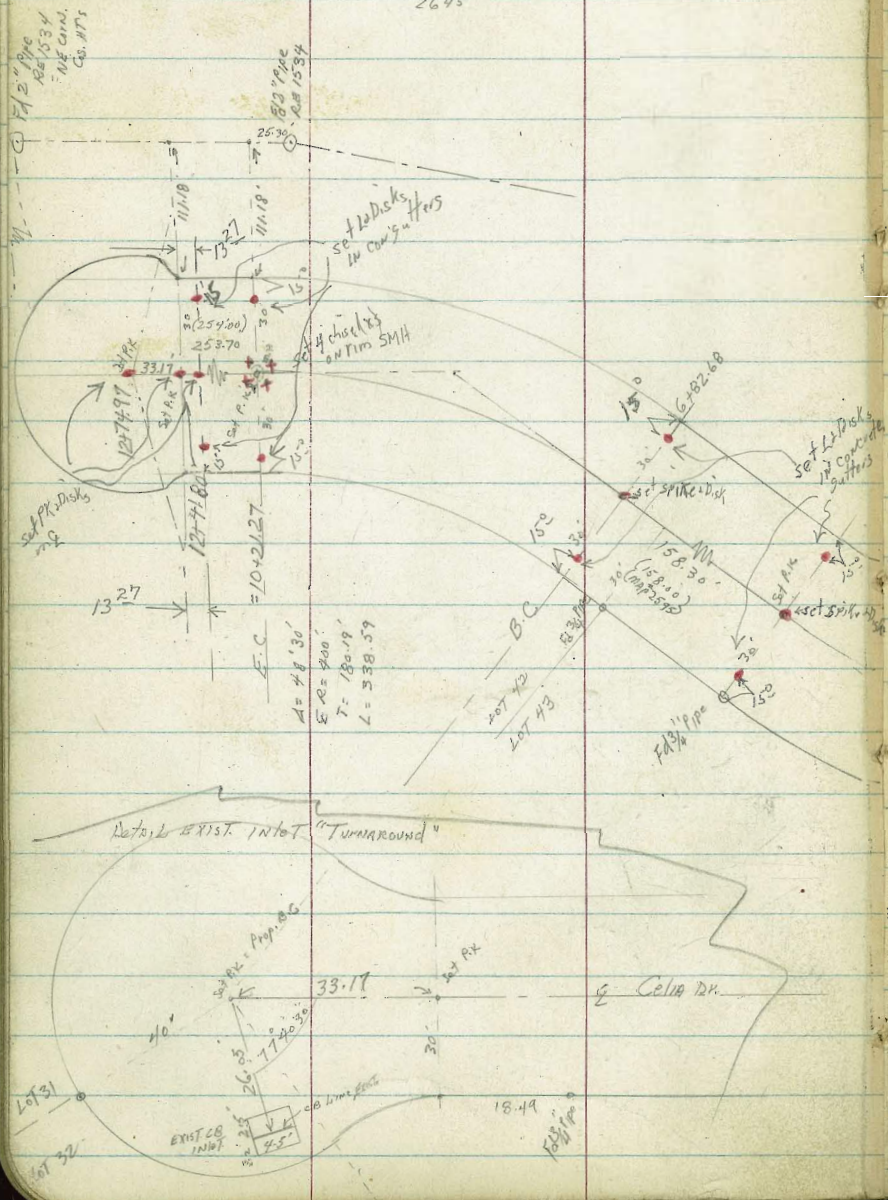
Clark
Shepherd
Brunner
Smith

8-16-55

W.O. 32510

X-SECT CELIA DRIVE: 100' ELY OF
ROLANDO BLVD WLY TO D-END

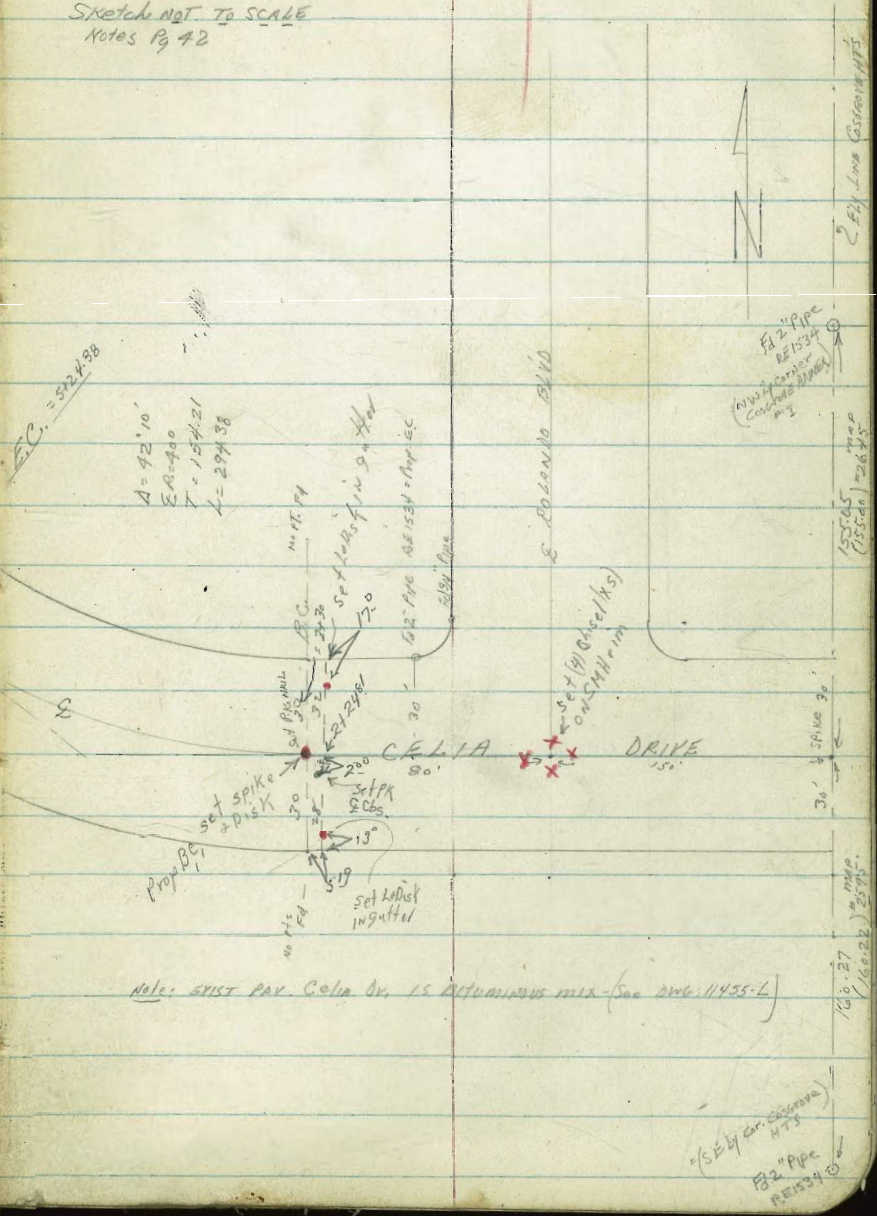
REF: MAP 2595-2
2645



INDEXED
MAR 1 1955
Sketch NOT TO SCALE
Notes Pg 42

TBS
3754

41



Note: EXIST PAV. Celia Dr. IS ALUMINUM MIX (see DWG. 11455-L)

(Set by Dr. Cassanova)
HTS
82" PIPE
RE1534

X-SECT: CALIA DRIVE

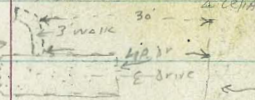
0+58 = Grid Brn 22.1 LT & Pole # P 272889

0+54 27.1 LT & 1" Tree

0+31 = Grid on

T.P. 5.26 446.04 8.67 440.78

Notes: all walks along Calia
see this →
(only those walks which are in st. are shown)



0+23 30 LT = N'y edge 3' walk - Curves AWAY FROM ST.

0+21 26.8 LT & 1" Tree

0+16 28' LT Big 3' Conv Walk - Curves S'y & W'y AWAY FROM ST.
20.2 LT end Drive

0+08.5 20.1 LT Big 7.5' Conv Drive, 35.2 LT gar

0+00 = E'y Line Cast ROVE HT'S
20.2 LT = n'y end 6" wide Conv. wall n'y 45'ly

0-03 = END EXIST. CALIA 18' x 18" Type G CO 18' RT

0-05 = 18' LT & 18' RT & EXIST CO INLETS (see DWG 11455-L)

0-50

B.M. 3.65 449.45

445.80 = T.P. CB IN NET
DWG # 11455-L (this

0-03 18' LT (Sly) E Calia Dr.
DATUM MAY NOT CHG: CITY DATUM

* New City Datum = EL 440.18

LT E RT 42

442.9 3.1 30	441.9 4.1 22	440.9 5.1 18	440.66 5.38 16 E.P.V.	440.63 5.41	440.08 5.96 18 G	440.65 5.39 18 CB	440.0 6.0 21	437.4 11.6 28 T.C.	434.3 11.7 30
--------------------	--------------------	--------------------	--------------------------------	----------------	---------------------------	----------------------------	--------------------	-----------------------------	---------------------

443.5 2.5 40	443.1 2.9 30	442.54 3.50 18 E.P.V.	442.83 3.21	442.69 3.35 18 G	443.13 2.91 18 CB	443.0 12.0 30 T.C.	443.3 11.7 40
--------------------	--------------------	--------------------------------	----------------	---------------------------	----------------------------	-----------------------------	---------------------

443.69
5.76
30
N'y
E.P.V.

~~446.04~~

443.09 5.66 28 N'y E.P.V.	443.02 5.93 20.2 Lip	443.69 5.76 18 edge E.P.V.	443.95 5.50	443.77 5.68 18 G	444.24 5.21 18 CB	443.6 6.0 22 T.C.	436.5 13.0 30 T.C.	435.5 14.0 40
---------------------------------------	-------------------------------	--	----------------	---------------------------	----------------------------	----------------------------	-----------------------------	---------------------

444.03
5.42
35.3
FL

443.92
5.63
20.1
Lip

444.87 4.58 18 G	445.08 4.07 18 CB	445.0 4.5 30 FL	445.0 4.5 40	444.91 4.46	444.87 4.58 18 G	445.08 4.07 18 CB	445.0 4.5 30 FL	445.0 4.5 40
---------------------------	----------------------------	--------------------------	--------------------	----------------	---------------------------	----------------------------	--------------------------	--------------------

444.97
4.53
18
G

444.91
2.48
18
G (101) CH'S

440.56
8.89
18
FL

447.04
2.41

449.45

5.62

CELIA Dr. (CONT.)

LT.

E

RT

43

mid-RT NELY Pt. 32' CB Rad

1720 = E. Line Polanco

1710 20.3 RT w/ly edge Drive

1703 30' RT w/ly edge Drive

1701 18.65 RT = ELY Edge Drive at BK CB.

0+98 - 18 RT = CB B.C.

0+91.5 35.9 RT = L Con. Drive - No gap.

0+86.5 at this point NLY edge walk 30' LT. E

0+79.5 19.1 LT End Drive, 28.2 LT Beg Walk approx
 // to ST. Curves S'ly & w/ly
 away from st.

0+71.5 19' LT Beg Con. Drive, 35.5 LT gap

0+63

4374 8.6 30
 4361 9.7 19
 43602 10.02 16
 43604 10.00 18
 43582 10.22 18
 4339 12.1 30
 4326 13.4 20

43399 12.25
 43426 11.78
 C CB

43560 10.44
 20.3
 w/ly
 drive
 43512 10.92
 5
 w/ly E.
 drive

4391 6.9 40
 4390 7.0 30
 4377 8.8 18
 43731 8.73 16
 43744 8.60

43638 9.66 18
 43681 9.23 18
 43569 10.35 23
 43492 11.12 30
 G CB
 ELY
 drive on
 drive

43444 11.60
 35.9
 ELY edge
 drive

43932

6.72 30
 2.5 min

43947 6.57 28.2
 43906 6.98 19.1
 43936 6.66 19
 43936 6.66 19

43980 6.24 35.5
 5/4

4397

6.3 30

4403 5.7 8

44024 5.80 16
 20/11
 2/11

44022 5.92

43956 6.40 18
 6 CB

44017 5.92 18

4395 6.5 20

43944 11.6 28
 30

43943 11.7 30

446.04

C. E. LIA Dr (CONT.)

EXIST. EDGE Pav. divided
INTO 3 PTS (RT) - Beg. AT EXIST CB END AS EC
#1 = 18' SLY etc
#3 = Proposed CB. R.C

1470 { 50' RT = SLY CB END (Nwly)
= W CB LINE Rolando
N.B: EXIST OIL Pav. Approx. on 33' Rad. AT
Nwly Ret. (edge curven) Pav. L: approx 54'

1467.5 18.3 LT = 88' drive, 35 LT 99'

1463.5 27.9 LT = N.E. Walk - RT E. ly. Edge Drive
V.M.H. CURVES ELY 1524
AWAY FROM ST

1454 30' RT = N'ly Edge walk

1450 { 0.35' RT & M.H.
= E Rolando

1436 28 LT = E 2" Tree

1430 { 50' RT = NE CB E.C
= E CB. Line Rolando

1422 18.6 LT Beg 25' Stake & Rail fence

T.P. 2.88 437.28 11.64 434.40

LT.

±

RT.

436.96 0.82 30 on Dr (Flush with grid)	435.31 1.97 18	435.24 2.04 16 E Pav	435.06 2.22	434.18 3.10 18	430.61 6.59 50 6 CB Nwly	431.13 6.15 50 6 CB	432.99 13.29 100 6 CB	434.23 12.85 100 6 CB	
436.88 0.40 35 P.V.	435.62 1.66 20.5 B.V.K	435.26 2.03 18.3 L.P							
	436.24 1.04 27.9 N.E Walk								
	436.59 0.69 18 Walk								
435.9 1.4 30	435.7 1.6 18	435.26 2.02 16 E Pav	435.10 2.18 P.V. E	435.01 2.27 0.35 R.M M.H	434.09 3.19 18	430.91 6.47 50	424.27 13.06 100		
436.3 1.0 40	436.3 1.0 30	436.1 1.2 18	435.71 1.57 16 E Pav	435.61 1.67	434.41 2.87 18 CB. P.1	430.62 6.66 50 CB E.C NEly	431.01 6.27 50 6 CB	432.94 13.34 100 6 CB	434.39 12.89 100 6 CB

437.28

T

CELIA DM (cont.)

LT. E RT

2+37 { 23' LT E Shrub
 21.5' RTE End Hedge
 29' RTE 3" Shrub

2+30 = B.G. CELIA, P.R.T. (See sketch) { All sections 40' to 45' STA'S
 Radial on Curve

2+23 28.8 RTE 5" Tree

2+07 30 LT = N.E. WALK

2+02 = Proposed CB. B.S. N.W. 4

1+99 20' LT E 2' Hedge
 27.6 N.E. WALK

1+95 18.2 LT E 8' Conv. Drive - No gar

T.P. 82.5 443.89 1.64 435.64

1+85 18' LT - 8' Cold-Lay Drive - No gar

1+80 = W'ly Line Rolanda
 { 22' LT E 3" Tree

1+79 { 18.9 LT END STAKE FENCE

1+77 22.2 LT. E Pole # P37 2888

437.3 437.3 436.9 436.1 435.83
 6.6 6.6 7.0 7.8 8.06
 40 30 20 18 16
 E.PAV

436.45 435.99 435.9 436.4 436.8
 7.44 7.90 8.0 7.5 7.1
 16 18 21 30
 E.PAV

436.09 7.00 50
 EDGE WALK

436.9 436.9 436.4
 7.0 8.0 8.50
 30 18 16
 E.PAV

435.69 435.26 435.2 436.1 436.6 436.9
 8.20 8.63 8.7 7.8 7.3 7.0
 16 18 22 30 40
 E.PAV

436.6 7.28 27.6
 WALK

436.85 435.71 435.37
 7.04 8.18 8.52
 30 20 18.2
 ON ORK LP

436.58 435.66 435.49 435.26
 0.70 1.62 1.79 2.02
 30 18 16
 ON DRIVE Prop. CB Line

434.55 435.9 436.4
 2.73 1.4 0.9
 18 30 40
 E.PAV Prop. CB Line

435.18 434.29 434.09 433.2 432.1
 2.79 3.19 4.1 5.2
 18 21 30 40
 E.PAV

437 28
 T

CELIA DR. (CONT.)

3+24.5 30' LT N. Edge walk

3+03 18.3 RT END DRIVE

3+00

2+94 18.4 RT Begln Drive, 38 RT gar.

2+85.5 19.6 LT END

2+82 20.7 RT - SLY END 6' NWS Hedge

2+77 { 19.3 LT Beg Con Drive, 34 LT gar
26.9 LT WALK AT DR.

2+68 30' LT. N. Edge 3' WALK

2+54 19' RT END DRIVE

2+50

2+46 28.6 RT - S Edge 3' WALK AT DRIVE

2+45.5 19' RT Beg Drive, 35.7 RT gar

2+40 30' RT - S. Edge 3' WALK

LT.

E

RT.

46

4420.62

3.27
30
WALK

43802

5.87 5.42
18.3 21
E.Pav BHK

43995 43867 43865 43841
4.4 5.2 5.4 5.48
30 20 18 16
E.Pav

43867

43793 43788 43963
5.96 6.1 4.26
16 18 30
E.Pav

43795 43820 43963 44011
6.14 5.69 4.31 3.78
17.6 21.3 30 38
LIP BHK BHK FI

43807 43799
5.62 5.90
21.6 19.6
BHK LIP

43862 43837 43806 43774
5.27 5.57 5.83 6.15
34 26.9 21.1 19.3
FI WALK BHK LIP

43862
5.27
30
WALK

43911 43883
4.8 5.6
40 30

43835 43854
7.4 7.35
18 16
E.Pav

43705 43648 43661 43679
7.38 7.10
19 21
LIP BHK BHK
7.51 18
E.Pav (So Dr. Above)

43638 43710 43731
7.51 7.23 6.58
19 21 30
LIP BHK WALK FI
6.73
30
WALK

443.89

CELIA DR (CONT.)

FT.

F

RT.

3+78 -27.6 RT WALK AT DR
 (17.5 RT & 4' hedge
 3+77 } 17.0 RT END DRIVE
 (30 LT - N edge WALK
 3+71 21.1 LT Beg 2.5 STAKE RAIL Fence
 26.8 LT. WALK AT DR.
 3+69 18.9 LT END DRIVE
 3+68 17.2 RT Beg Drive , 36.7 RT qqr
 3+60 19.4 LT Beg Drive , 34.5 LT qqr
 3+54 =E 20.4 RT. 8" CON BLK WALL - Nxt South 'ly
 3+51 22.8 LT & Pole # P372890
 3+50
 3+48 26.7 RT & 4" ACACIA
 3+44 19.0 LT END DRIVE
 26.9 - WALK
 3+33 19.2 LT Beg Dr. , 34 LT qqr.

442.21
 1.88
 30
 WALK

442.20
 1.69
 27
 WALK
 440.23
 3.16
 17.0
 LIP
 441.16
 273
 19.5
 BRK
 440.21
 16.8
 28
 BRK

441.73
 2.16
 26.8
 WALK
 441.37
 2.52
 20.5
 BRK
 440.95
 2.95
 18.9
 LIP

440.55
 3.34
 17.2
 LIP
 440.94
 2.95
 19.5
 BRK
 441.99
 1.70
 28
 BRK
 442.51
 1.38
 36.7
 FT

442.09
 1.80
 34.5
 FT.
 441.04
 2.85
 21
 BRK
 440.64
 3.25
 19.4
 LIP

440.8
 3.1
 30
 440.6
 3.3
 21
 440.11
 3.8
 18
 440.26
 3.63
 16
 E.P.M

440.41
 3.48
 439.90
 3.99
 16
 E.P.M.
 440.0
 3.9
 18
 439.8
 4.1
 30

440.80
 3.09
 34
 FT.
 440.20
 3.69
 30
 BRK
 440.42
 3.47
 26.9
 WALK
 439.89
 4.00
 19.0
 LIP
 440.10
 3.79
 21
 BRK
 439.71
 4.18
 19.2
 LIP

CELIA DR. (CONT)

Σ

4438 16.4 RT END dr.

4431 30 LT ENI Edge WALK

4430 16.5 RT, Bay Dr, CONC, 37.8 RT GAR

4422 26.9 LT N.E. WALK AT DR.
20.1 LT END DR.

4420.5 = Σ 21.5 RT 8" CON. BIK WALL (NLY ↓ SLY)

4415 Σ 17' RT END Hedge

4414 20.4 LT Bay Drive Grc. 34.5 LT GAR

4406 20.9 LT END Fence.

T.P. 8.63 451.34 1.18 442.71

4400

3186 30 RT - WALK - SLYedge

44365

7.79
30
WALK

44337

7.97
26.9
WALK

44302

8.32
22.
GRK

44272

8.62
20.1
FIP

44329

7.55
34.5
FIP

44287

8.52
22.5
GRK

44247

8.87
20.4
FIP

44222

1.7
30

4418

2.1
18

44190

1.99
17
E. Pav

451.34

44220

1.69

44179

2.18
14
E. Pav.

4419

2.0
18

4424

1.5
30

44250

1.39
30
WALK

44389

44312
8.22 7.71
16.4 19.5
LIP GRK

44293
8.41 8.07 6.65
16.5 19.5 37.8
LIP GRK FI

44262

44297

44469

CEVA Dr (CONT.)

5711.5 18.6 RT END DR.
 5703 18.4 RT Begun. Dr., 35.8 RT GAR

5700 19.8 LT to Fc. wall here

4491 20.4 LT & 3' WALK (walk approx. Radial to ST)

4488 & 20.7 RT = S'ly END 1' CON. WALL (N45W)

4479 20' RT & 2" Pepper Tree

4471 22.4 RT & 3" Tree

4462 & 21.4 LT = N END 8" CONG. BRK N45. WALL
 & - Fc. 8" E-WLY WALL, Beg. - 2' HIGH
 (E-WLY WALL BUILT OUTING, RATHER THAN CURVE)

4454 @ LT & M.H

4450

LT. E RT #9

4458 4455 4450 44510 44650
 5.5 5.8 6.3 6.24 5.84
 30 21 18 17 E.P.V.
 44546 44532 44513
 5.88 6.02 6.21
 30 21.4 20.4
 44540 BRK 20.4 LIP

44523 44550
 6.11 5.84
 18.6 20
 LIP BRK
 44502 44532 44669
 6.32 6.02 4.65
 18.4 19.5 35.8
 LIP BRK FI
 44499 44510 44600
 6.95 6.3 5.3
 16 18 30
 E.P.V.

4441
 7.2
 21.4
 Fc
 WALL
 4438 4437 44347 44358 44395
 7.5 7.6 7.87 7.96 7.39
 30 20 19 18
 44247 44305 44445
 7.87 7.8 6.8
 19 18 30
 E.P.V.

451.34

CELIA DR. (CONT.)

5761.5 18.6 RT Beg Con. Drive, 35 RT 99R.

57550 20.2 RT = S edge N4 SLY WALK
4 = END ELY W4LY WALK

57435 30' LT = N4LY edge WALK

5737 } 27.7, LT N edge WALK RT DR.
19.0 LT END DR.

5729 19.0 LT Beg Con. Drive, 35 LT 99R.

5724.38 = F.C. CELIA DR.

5719 21.6 LT & Pole # P 372891

5716.5 20.2 LT END 8" CONC. BIK WALK

5714 21.00 RT Beg 6" CONC. BIK WALK -1' high

5712.5 19.0 RT & 2' CON. WALK.

LT.

RT

RT

50

447.1
4.2 30
4.6 20
5.0 18
446.7
4.6 20
446.3
4.94 17
E.PAY

447.19

4.15
30
E.PAY

447.04
4.30
27.7
WALK
21' RT

446.64

4.70 21
4.95 19.0
WIP

447.44
3.90
35
F.I.

446.41

4.95 21
5.26 19.0
WIP

446.7
4.6 30

446.2

5.1 20

445.9

5.6 18

445.9
5.55 17
E.PAY

446.90

4.44

446.20

5.14 16
E.PAY

446.2

5.1 18

445.4

5.9 20.2
FTL
WALK

446.7

4.6 30

446.52

4.72 18.6
WIP

447.22

4.12 21.5
BIK

448.49

2.95 35
F.I.

446.19

5.15

445.57

5.77 16
E.PAY

445.5

5.85 18

445.5

5.0 14

446.3

5.0 21

446.4

4.9 30

444.8

6.5 20.2
FTL
WALK

444.8

6.5 21
FTL
WALK

445.31

6.03 19.0
WIP

446.19

5.05 30
ON
WALK

CELIA DR. (CONT.)

LT.

CD

RT.

51

6+10.5 18.5 RT END Picket Fence
 6+08 22 RT E ORNAMENTAL SHRUB
 6+06.5 23.8 LT & 2" IRON STD FOR ORNAMENTAL LAMP

6+04 30 LT NLYE WALK

T.P. 6.40 454.51 3.23 448.11 = Red. Road At Groove

6+00

24.0' LT = N Edge WALK AT Drive
 19.0' LT END Drive
 22.5' LT E Bag 2' hedge

5+87

5+78.5

19.0' LT Bag Drive - No gap

5+78

22' LT = END OF 1' hedge (NLY 15' 4")
 18.0' RT Bag 2' Picket Fence

5+76

30' RT = SLY edge WALK

5+69

27.9' RT SLY edge WALK AT Drive
 18.4' RT END Drive

448.25
 6.26
 30
 N edge

454.51
 448.11
 448.1
 447.4
 440.51
 3.2
 30
 3.9
 18
 3.83
 E.P.A.R.
 3.23
 447.53
 447.5
 448.1
 3.81
 16
 E.P.A.R.
 3.8
 18
 3.2
 30
 447.77
 447.34
 3.57
 27
 WALK
 1.00
 19.2
 LIP
 448.00
 447.19
 3.34
 30
 ON DRIVE
 7.15
 19.0
 LIP

448.07
 448.89
 447.31
 447.86
 3.27
 30
 edge
 WALK
 4.45
 18.4
 LIP
 4.03
 21.5
 BRN
 3.28
 27.9
 SLY
 WALK

451.34

CELIA DR. (CONT)

6+82.68 = B.C. CELIA DR - LT
 ALL STA. TOUTS RAD. AND CURVE

6+77 18.5 RT & W/4 2' RIBBON

6+74 19.3 LT & 3' CON. MARK

6+72.5 18.8 RT & 2' CON. RIBBON DR. - NO GAR.

6+70.5 19.0 RT END 4" CON. COPING

6+50

6+45 18.2 LT & 8' CON. DRIVE - NO GAR.

6+36 22.1 RT END Hedge

6+19 18.8 RT Beg 4" wide Conc. Coping

6+18.5 18.9 RT & W/4 2' RIBBON

6+13 18.9 RT & 2.0' CONC. RIBBON DRIVE

52

449.0 5.5 30	449.0 5.5 20	448.5 6.0 18	448.90 5.71 16 E.PAV	449.73 5.28	448.72 5.79 16 E.PAV	448.6 5.9 18	449.4 5.1 25	449.6 4.9 30
448.85 5.66 30 ON SIDE	448.81 5.70 20.5 SIDE	448.56 5.95 19.3 LIP			448.66 5.85 18.5 LIP	449.45 5.06 25 BRK	449.57 4.84 30	
					448.77 5.79 18.8 LIP	449.47 5.04 25 BRK	449.70 4.51 30 ON DR	
						448.6 5.90 19.0 7.4	449.15 5.76 19.0 TP	446.49 6.02 19.0 FTG
449.0 5.5 30	448.6 5.9 20	448.2 6.3 18	448.9 6.32 16 E.PAV	448.90 5.61	448.36 6.15 15.8 E.PAV	448.3 6.2 18	448.9 5.6 20	449.3 5.2 30
					448.27 5.69 30 ON DR	448.29 6.12 19.7 BRK	449.01 6.50 18.2 LIP	
						447.61 6.70 18.8 9th	448.51 6.00 18.8 TP	447.51 7.00 18.8 FTG
						447.96 6.55 18.9 LIP	448.64 5.87 24.5 BRK	448.91 5.60 30
					447.97 6.54 18.9 LIP	448.69 5.82 24.5 BRK	448.91 5.60 30 dr.	

459.51

CELIA DR. (CONT)

7+50

7+42

7+34

7+26

7+12

7+02

7+00

6+99

6+88

6+84.5

Brick Cop. 193 RT here
19.2 RT END DR

18.7 RT Beg CON. DRIVE, 49.6 RT GRK

19 RT Beg Brick Coping - 4" wide, 1' high
30 LT - N'ly edge 3' WALK
24.3 RT - END RAIL FENCE

28.6 LT - N Edge 3' WALK
20.4 LT - N'ly end 6" N.E. SLY WALK

20.4 LT - N'ly end 6" N.E.S. CON. WALK

Soil Sample here

28.4 LTE FIRE-HYD.
22.3 LT & Pole # P372892

25' RT Beg 2x5' WOOD - RAIL FENCE

18.6 RT & 8' CON. DR.

449.4
5.1
30

448.9
5.6
18

448.95
5.56
16
E.P.

449.48
5.03

449.11
5.40
16
E.P.

449.1
5.4
18

449.1
5.4
18.9

449.8
4.7
20

450.2
4.3
30

449.19
5.32
19.2
LIP

449.78
4.73
22.5
B.K.

449.07
5.42
18.7
LIP

449.77
4.74
22.5
B.K.

450.86
3.65
49.6
FZ

448.8
5.8
19
F.T.

449.8
4.7
19
T.P.

449.44
5.07
30
N. Edge
WALK

449.94
4.77
28.6
N.E. WALK

449.51
5.00
30

449.0
5.5
18

449.08
5.43
16
E.P.V.

449.39
5.12

449.84
5.68
16
E.P.V.

448.8
5.7
18

449.8
4.7
30

448.70
5.81
18.6
LIP

449.17
5.34
21

449.57
4.94
30

454.51

CELIA DR. (CONT)

8+79 30' LT N. Edge walk
16.6 RT Bay Dr, 49.5 RT 99R

8+50

8+37 17.6 RT END CON DR.

8+26 18.0 LT END DR.

8+21.5 19.6 RT END BRK WALL
17.4 RT Bay Dr. - no gar.

8+17.5 29.0 LT = N.E. WALK AT DR.
17.8 LT Bay Con. Dr, 36 LT 99R

8+13 30' LT N Edge walk

8+00

7+84 19.75 RT END BRICK Coping & Bay 5" wide CONC
BRK WALL

7+53 6' RT E.M.H.

LT E

RT

44837
6.14
30
N. Edge
walk
at Dr

44835
6.0
30

44836
6.79
18
E.P

44836
5.95

44836
6.56
16.6
LIP

44836
6.11
19
BRK

44836
5.42
16
E.P

44836
6.0
18

44836
5.22
22

44836
4.7
30

44836
5.82
17.6
LIP

44836
5.04
24.5
BRK

44836
4.84
30

44836
6.02
17.4
LIP

44836
4.05
19.6
TP

44836
5.8
19.6
FTL

44836
4.99
21.5
BRK

44836
4.59
30
Dr.

44836
5.37
36
FL

44836
5.52
29.0
WALK

44836
5.68
20
BRK

44836
5.79
17.8
LIP

44836
5.69
30
N. Edge
walk

44836
5.6
30

44836
5.8
18

44836
5.70
16
E.P

44836
5.34

44836
4.49.17
5.26
16
E.P

44836
5.6
18

44836
5.5
19

44836
4.1
20

44836
4.1
30

44836
4.50.4
4.50.4

44836
4.59
19.75
TP
BRK

44836
5.6
19.75
FTL
BRK

44836
4.10
19.75
TP
CON

44836
5.12
19.75
FTL
BRK

44836
5.13
6
Rim

CELIA DR. (CONT.)

LT.

E

RT.

9+50

30 LT - Nly edge walk at Dr.

446.7
2.4 2.37
30 19
9th MEADGE
2011

446.73
2.9 3.3 3.4
18 16
21.2K

445.9
445.90

446.41
2.69

446.13
2.97
14
E. 2K

446.4
2.7
18

447.5
1.6
30

9+89.5

17.3 RT Bag Conv. Dr. 49 RT 99r

446.45
2.65
17.3
4p

446.87
2.23
19.5
8K

447.65
1.45
30
8K

448.02
1.08
47
F1

1.84
17.7
TP

9+38

19.79 RT to EAST 28 K. here

446.5
2.6
18.1
FTG

447.46
1.64
18.1
TP

9+09

18.1 LT Bag 4" Conv. Coping

449.10

T.P.

1.02 449.10 6.43 448.08

447.66
6.85

9+00

447.6
6.9
30

447.5
7.0
20

447.2
7.3
18

447.17
7.34
16
E.P.

447.29
7.22
13.8
E.P.

447.4
7.1
17.65
9th

448.01
6.50
17.65
TP

447.9
6.6
18
8th

448.2
6.3
30
CO

8+96

22.5 RT E Pole # P372893
17.5 RT Bag 5" Conv. CB. (not STD.)

448.08
6.43
17.5
TP

447.28
7.23
17.5
FTG

8+91

18.7 LT END DR.

447.83
6.68
21
8th

447.45
7.06
18.7
21P

8+86

17.6 RT END DR.

447.90
6.61
17
4p

448.43
6.08
19
8K

449.2
5.49
30

8+83.5

11.1 LT Bag Dr. — 36 LT 99r
29.6 LT - N E. walk at Drive

448.69
5.82
36
F1

448.38
6.13
21
N.E.
8K

447.96
6.35
21
8K

447.68
6.93
19
21P

CELIA DR. (CONT.)

10+10 19.2 RT END DR.
 10+09 19.8 LT & 3' CON. WALK (N/S)
 10+05 21.6 LT & 4" PALM

10+00

9+985 18.4 RT Beg. CON. DRIVE, 46' RT 99%
 18.4 RT END COPING
 19.0 RT & 5' 2" end 4" N/S CON. WALL

9+87 20' LT E Beg. Shrubs
 18.5 LT Beg. 8" CON. BRK WALL

9+75 18.8 LT END 4" COPING
 -E 18.8 LT OF 4" TILE DRAIN

9+67 18.8 LT END DRIVE

9+57 17.3' RT END 5" CB, 4' Beg. 4" CON. COPING

9+56 19.1 LT Beg. CON. DR. 36' LT. 99%
 29.0 LT N. & 4' WALK AT DR.

9+52 17.0 RT END DR.

LT.

E

RT.

445.18
 5.92 4.19
 30 ONWALK 17.8
 LIP

445.2
 445.2
 445.5
 445.4
 444.46
 3.9 3.9 4.6 4.7 4.64
 30 20 19 18 16
 E.P.W.

444.4
 445.19
 4.7 3.91
 18.5 18.5
 7.6 TP
 445.04
 444.7
 446.20
 7.06 4.4 2.90
 18.8 18.8 18.8
 N/S 4" FL FTA TP
 DRAIN Cap.

446.20
 445.45
 2.90 3.65
 21.5 18.8
 BRK LIP

447.00
 446.73
 446.25
 445.71
 2.10 2.37 2.85 3.37
 36 29 21 19.1
 FL WALK BRK LIP

445.03
 445.58
 4.07 3.52
 19.2 23
 LIP BRK

445.09
 444.65
 445.04
 445.65
 4.01 4.05 4.06 3.3
 15 18 30
 E.P.W.
 445.50
 444.9
 445.11
 445.00
 446.76
 3.60 4.2 3.97 3.50 2.32
 18.4 18.4 18.4 23 4.6
 TP FL LIP BRK FL

446.3
 446.64
 445.84
 446.04
 2.8 2.46 3.26 3.06
 17.3 17.3 17.3 17.3
 9.4 TP FTA FTA
 CB CB COPING
 + COPING

446.37
 446.85
 2.73 2.25
 17.0 19.5
 LIP BRK

449.10

CELIA DR. (CONT.)

10785 20.5 RT Bay 6" Con. Coping (irreg. broken)

10778 30 LT N edge 3' walk

23.2 RT E SLY END 8' NYS BIK WALL

22.8 RT E Pole # P 312894

10771.5 20.35 RT END 6" CB

10756 18.8 RT E 8' Con. Drive, 49 RT GAR

10750

20' LTE End Row Shrubs

10743 19.7 LT END 8' BIK WALL 4 Bay 6" Con. CB (out STD)

10740.5 19.6 LTE 4" Tile Drain (ANSY)

10734 26.5 LT E 6" Tee

10721.3 0.6 RT E M.H.

10721.27 = E.C. CELIA

17.3 RT Bay 6" Con. CB (out STD)

19.3 RT E SLY END NYS 5' WALL 1' high

10713 21.7 LT E 4" Palm

LT.

♀

RT.

44316
44256
5.94 6.54
20.5 20.5
TP FTG

44389
5.21
30
N edge
walk

44357
44277
5.53 6.33
20.35 20.35
TP FTG

44376
44474
44576
5.82 4.36 3.84
18.8 27 44
49 FTG

44411
44404
44393
44326
44395
5.0 5.06 5.8 5.74 5.15
30 16 18 15
TP CB E.PAV

44376
44355
44418
44411
44488
5.5 5.6 4.92 5.0 4.3
16 18 19.7 20.5
E.PAV TP CB BK CB

44383
44411
44376
44483
5.8 4.99 5.5 4.27
19.7 19.7 19.7 19.7
FTG TP FTG TP
CB CB BIK

44380
5.25
19.6
F.L

44457
4.53
0.6
rim

44451
44450
44411
44399
44405
4.0 4.1 5.0 5.2 5.05
30 20 19 18 16
E.PAV

44457
44416
44422
44411
44418
44451
4.94 4.9 4.9 4.2 4.0
16 18 19 20 30
E.PAV

44436
44415
4.24 4.95
19.3 19.3
TP FTG
CB

CELIA DR. (CONT.)

LT.

⊗

RT.

11779 18.6 RT & 8' CON. DR., 38' RT GAR.

11750

11748 19.2 LT & 8' CON. DRIVE, 35' LT GAR.

11744 28.2 LT N edge WALK AT DR.

11736 30' LT N edge 3' WALK
26.6 LT & 4" Tree

11731.5 20.4 RT & N.S. 6" NAIL

11721 23.8 RT & 3" PEACH TREE

T.P. 6.34 447.05 8.39 440.71 = PK NAIL
12+7497 2

11700

10796 26.9 RT & 3" Tree

10791 18.9 LT & 8' CON. DRIVE, 35' LT GAR.

10787 28 LT = N.E. WALK AT DR.

442.55
4.5
30
EIP.
441.5
5.6
19
441.2
5.9
18
5.74
16
EIP.

442.98
4.07
35
Fl.
441.97
5.13
22
BRK
441.43
5.62
19.2
47

442.97
4.63
28.2
N.E. WALK

442.61
4.44
30
N edge
WALK

5.12
441.93

440.92
6.12
18.6
21
EIP
441.49
5.56
BRK
442.85
4.20
38
Fl.
441.46
5.59
16
EIP
441.6
5.5
18
441.6
5.5
20
442.1
5.0
21
442.7
5.4
30

447.05

442.89
6.21

442.37
6.73
16
EIP
442.3
6.8
18
442.8
6.3
20
443.2
5.9
30

443.0
5.6
30
442.94
6.16
19.6
25
442.6
6.65
19.18
25
442.2
6.82
15.5
6.71

443.04
5.49
28
N edge
WALK
442.32
6.06
21.5
BRK
6.78
18.9
LIP

449.10

CELIA Dr (cont.)

12+36 17.8 RT & 8' con Dr, 36.8 RT 99V

12+27 21.8 RT & 2" Tree

12+23 35' LT Beg. 5' Board Fence
19.5 LT END GN. CB (not stb)

12+21 (19.5 LTR 4' con walk - meets CB
7108 Fe.)

12+19 22' RTE 2" iron Lamp stb.

12+15 27.9 LT = rd edge walk - Curves wly to meet CB

12+14 23' RTE Shrub

12+12 22' RT & Dead man

12+00

11+94 19.4 RT Beg. Rubble-walk 1" high

(11+98) { 30 LT wedge 3' walk
22.5 RTE 1" Tree

11+91 { 22.2 RTE Alc # P 3728 95
19.7 RT END Coping

LT

E

RT

59

440.42
440.86
441.55
6.63 6.19 5.50
17.8 21 36.8
Lip Oil FI

440.4
441.05
6.7 6.02
19.5 17.5
TR CB
441.06
5.71 5.99
25 19.5
on walk

441.88
5.67
27.9
wly edge
walk

441.6
441.1
441.24
440.7
440.5
440.57
5.5 6.0 5.92 6.4 6.6 6.48
30 20 19.6 17 18 15
TP CB EP

441.17
440.73
440.7
440.9
441.6
441.8
5.88 6.32 6.4 6.2 5.5 5.3
16 18 19 21 30
Lip

441.54
5.51
30
R.E. walk

441.75
441.0
5.30 6.1
19.7 19.7
TP FT

441.05

CELIA DR (CONT.)

LT.

E

RT.

- 12+98 24.6 L&E 1" Tree
- 12+91 27.1 R&E 1" Tree
- 12+85 1' RT = E D. END Sewer Clearout
- 12+74.97 { 33.5 L&E 1" Tree
= Prop. RADIUS - 40'S
note: uneven edges of pad at turnaround
no det. radii on pad.
- 12+72.5 35.4 LT END 5' Board Fence

- 12+69.5 25.4 L&E EXIST 4.5 wide INLET
(See sketch for ties)

- 12+67.5 26.5 RT END DRIVE

- 12+55 21.0 RT Big Car Drive #65 RT gar

- 12+54 24.9 R&E 1" Tree

- 12+50 19.5 RT END Rubble wall

- 12+41.80: Prop B.C.

441.1	441.0	440.5	439.74	439.95	440.48	440.35
6.0	6.1	6.6	7.31	7.10	6.62	6.70
50	40	30	25	16	15	15
			APPROX			APPROX
			E-PAD			E-PAD

435.23	440.51	439.68
11.82	6.54	7.42
25.4	25.4	25.4
FL.	CB	C

440.78	440.76	
6.82	6.29	
26.5	26.5	
LIP	ARK	
440.97	440.72	
6.78	6.33	5.90
21	21	46.5
LIP	ARK	FL

440	441.9	441.6	441.1	440.25	440.71	440.36	440.7	441.1	441.3	441.5
6.1	6.2	6.5	7.0	6.80	6.34	6.69	6.5	6.0	5.8	5.6
40	30	20	18	16		15.5	18	21	30	40
				E.P.		E.P.				

447.05

CELIA Dr. (Cont.)

LT.

♀

RT.

61

chk

0:10 445.87 - 445.80 =
576 B.M.

T.P. 3.84 445.97 12.39 442.13

T.P. 9.39 454.52 1.92 445.13

13+25

13+15.± = Approx Pipe at E Termination

8.9 LTE Pole # P-572896

13+08.5 2' LTE 3" Tree

13+00 = Approx Edge EXIST oil Par.

441.9
6.2

441.1
6.0
40

440.5
6.6

440.5
6.6
40

447.0
6.1
40

440.2
6.9
20

440.31
6.74

440.1
7.0
20

440.9
6.7
40

447.05

185 23
10
125 23

$$\begin{array}{r} 257 \text{ } 36 \\ 132 \text{ } 23 \\ \hline 389 \text{ } 59 \end{array}$$
 wly Alley

$$257 \text{ } 35 \text{ } \angle L + 90^\circ$$

2767

2780

3707

3730

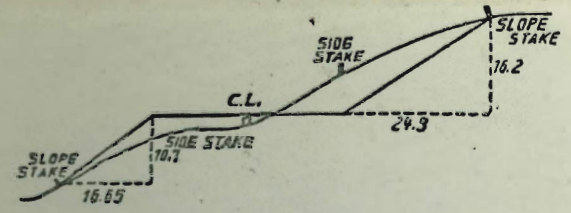
3745

3760

3775

$$389 \text{ } 58$$

 47



DISTANCES FROM SIDE STAKES FOR CROSS-SECTIONING.
SLOPE 1 1/2 TO 1. ROADWAY OF ANY WIDTH.

	0	.1	.2	.3	.4	.5	.6	.7	.8	.9	
0	0.00	0.15	0.30	0.45	0.60	0.75	0.90	1.05	1.20	1.35	0
1	1.50	1.65	1.80	1.95	2.10	2.25	2.40	2.55	2.70	2.85	1
2	3.00	3.15	3.30	3.45	3.60	3.75	3.90	4.05	4.20	4.35	2
3	4.50	4.65	4.80	4.95	5.10	5.25	5.40	5.55	5.70	5.85	3
4	6.00	6.15	6.30	6.45	6.60	6.75	6.90	7.05	7.20	7.35	4
5	7.50	7.65	7.80	7.95	8.10	8.25	8.40	8.55	8.70	8.85	5
6	9.00	9.15	9.30	9.45	9.60	9.75	9.90	10.05	10.20	10.35	6
7	10.50	10.65	10.80	10.95	11.10	11.25	11.40	11.55	11.70	11.85	7
8	12.00	12.15	12.30	12.45	12.60	12.75	12.90	13.05	13.20	13.35	8
9	13.50	13.65	13.80	13.95	14.10	14.25	14.40	14.55	14.70	14.85	9
10	15.00	15.15	15.30	15.45	15.60	15.75	15.90	16.05	16.20	16.35	10
11	16.50	16.65	16.80	16.95	17.10	17.25	17.40	17.55	17.70	17.85	11
12	18.00	18.15	18.30	18.45	18.60	18.75	18.90	19.05	19.20	19.35	12
13	19.50	19.65	19.80	19.95	20.10	20.25	20.40	20.55	20.70	20.85	13
14	21.00	21.15	21.30	21.45	21.60	21.75	21.90	22.05	22.20	22.35	14
15	22.50	22.65	22.80	22.95	23.10	23.25	23.40	23.55	23.70	23.85	15
16	24.00	24.15	24.30	24.45	24.60	24.75	24.90	25.05	25.20	25.35	16
17	25.50	25.65	25.80	25.95	26.10	26.25	26.40	26.55	26.70	26.85	17
18	27.00	27.15	27.30	27.45	27.60	27.75	27.90	28.05	28.20	28.35	18
19	28.50	28.65	28.80	28.95	29.10	29.25	29.40	29.55	29.70	29.85	19
20	30.00	30.15	30.30	30.45	30.60	30.75	30.90	31.05	31.20	31.35	20
21	31.50	31.65	31.80	31.95	32.10	32.25	32.40	32.55	32.70	32.85	21
22	33.00	33.15	33.30	33.45	33.60	33.75	33.90	34.05	34.20	34.35	22
23	34.50	34.65	34.80	34.95	35.10	35.25	35.40	35.55	35.70	35.85	23
24	36.00	36.15	36.30	36.45	36.60	36.75	36.90	37.05	37.20	37.35	24
25	37.50	37.65	37.80	37.95	38.10	38.25	38.40	38.55	38.70	38.85	25
26	39.00	39.15	39.30	39.45	39.60	39.75	39.90	40.05	40.20	40.35	26
27	40.50	40.65	40.80	40.95	41.10	41.25	41.40	41.55	41.70	41.85	27
28	42.00	42.15	42.30	42.45	42.60	42.75	42.90	43.05	43.20	43.35	28
29	43.50	43.65	43.80	43.95	44.10	44.25	44.40	44.55	44.70	44.85	29
30	45.00	45.15	45.30	45.45	45.60	45.75	45.90	46.05	46.20	46.35	30
31	46.50	46.65	46.80	46.95	47.10	47.25	47.40	47.55	47.70	47.85	31
32	48.00	48.15	48.30	48.45	48.60	48.75	48.90	49.05	49.20	49.35	32
33	49.50	49.65	49.80	49.95	50.10	50.25	50.40	50.55	50.70	50.85	33
34	51.00	51.15	51.30	51.45	51.60	51.75	51.90	52.05	52.20	52.35	34
35	52.50	52.65	52.80	52.95	53.10	53.25	53.40	53.55	53.70	53.85	35
36	54.00	54.15	54.30	54.45	54.60	54.75	54.90	55.05	55.20	55.35	36
37	55.50	55.65	55.80	55.95	56.10	56.25	56.40	56.55	56.70	56.85	37
38	57.00	57.15	57.30	57.45	57.60	57.75	57.90	58.05	58.20	58.35	38
39	58.50	58.65	58.80	58.95	59.10	59.25	59.40	59.55	59.70	59.85	39
40	60.00	60.15	60.30	60.45	60.60	60.75	60.90	61.05	61.20	61.35	40
41	61.50	61.65	61.80	61.95	62.10	62.25	62.40	62.55	62.70	62.85	41
42	63.00	63.15	63.30	63.45	63.60	63.75	63.90	64.05	64.20	64.35	42
43	64.50	64.65	64.80	64.95	65.10	65.25	65.40	65.55	65.70	65.85	43
44	66.00	66.15	66.30	66.45	66.60	66.75	66.90	67.05	67.20	67.35	44
45	67.50	67.65	67.80	67.95	68.10	68.25	68.40	68.55	68.70	68.85	45
46	69.00	69.15	69.30	69.45	69.60	69.75	69.90	70.05	70.20	70.35	46
47	70.50	70.65	70.80	70.95	71.10	71.25	71.40	71.55	71.70	71.85	47
48	72.00	72.15	72.30	72.45	72.60	72.75	72.90	73.05	73.20	73.35	48
49	73.50	73.65	73.80	73.95	74.10	74.25	74.40	74.55	74.70	74.85	49
50	75.00	75.15	75.30	75.45	75.60	75.75	75.90	76.05	76.20	76.35	50

THE NATIONAL BLANK BOOK COMPANY
 HOLYOKE MASSACHUSETTS
 NEW YORK - CHICAGO BOSTON SAN FRANCISCO