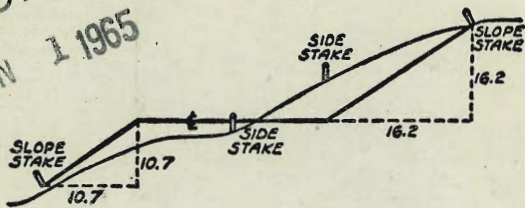


MICROFILMED
 JAN 1 1965



DISTANCES FROM SIDE STAKES FOR CROSS-SECTIONING
 SLOPE 1 TO 1. ROADWAY OF ANY WIDTH

	0	.1	.2	.3	.4	.5	.6	.7	.8	.9	
0	0.00	0.10	0.20	0.30	0.40	0.50	0.60	0.70	0.80	0.90	0
1	1.00	1.10	1.20	1.30	1.40	1.50	1.60	1.70	1.80	1.90	1
2	2.00	2.10	2.20	2.30	2.40	2.50	2.60	2.70	2.80	2.90	2
3	3.00	3.10	3.20	3.30	3.40	3.50	3.60	3.70	3.80	3.90	3
4	4.00	4.10	4.20	4.30	4.40	4.50	4.60	4.70	4.80	4.90	4
5	5.00	5.10	5.20	5.30	5.40	5.50	5.60	5.70	5.80	5.90	5
6	6.00	6.10	6.20	6.30	6.40	6.50	6.60	6.70	6.80	6.90	6
7	7.00	7.10	7.20	7.30	7.40	7.50	7.60	7.70	7.80	7.90	7
8	8.00	8.10	8.20	8.30	8.40	8.50	8.60	8.70	8.80	8.90	8
9	9.00	9.10	9.20	9.30	9.40	9.50	9.60	9.70	9.80	9.90	9
10	10.00	10.10	10.20	10.30	10.40	10.50	10.60	10.70	10.80	10.90	10
11	11.00	11.10	11.20	11.30	11.40	11.50	11.60	11.70	11.80	11.90	11
12	12.00	12.10	12.20	12.30	12.40	12.50	12.60	12.70	12.80	12.90	12
13	13.00	13.10	13.20	13.30	13.40	13.50	13.60	13.70	13.80	13.90	13
14	14.00	14.10	14.20	14.30	14.40	14.50	14.60	14.70	14.80	14.90	14
15	15.00	15.10	15.20	15.30	15.40	15.50	15.60	15.70	15.80	15.90	15
16	16.00	16.10	16.20	16.30	16.40	16.50	16.60	16.70	16.80	16.90	16
17	17.00	17.10	17.20	17.30	17.40	17.50	17.60	17.70	17.80	17.90	17
18	18.00	18.10	18.20	18.30	18.40	18.50	18.60	18.70	18.80	18.90	18
19	19.00	19.10	19.20	19.30	19.40	19.50	19.60	19.70	19.80	19.90	19
20	20.00	20.10	20.20	20.30	20.40	20.50	20.60	20.70	20.80	20.90	20
21	21.00	21.10	21.20	21.30	21.40	21.50	21.60	21.70	21.80	21.90	21
22	22.00	22.10	22.20	22.30	22.40	22.50	22.60	22.70	22.80	22.90	22
23	23.00	23.10	23.20	23.30	23.40	23.50	23.60	23.70	23.80	23.90	23
24	24.00	24.10	24.20	24.30	24.40	24.50	24.60	24.70	24.80	24.90	24
25	25.00	25.10	25.20	25.30	25.40	25.50	25.60	25.70	25.80	25.90	25
26	26.00	26.10	26.20	26.30	26.40	26.50	26.60	26.70	26.80	26.90	26
27	27.00	27.10	27.20	27.30	27.40	27.50	27.60	27.70	27.80	27.90	27
28	28.00	28.10	28.20	28.30	28.40	28.50	28.60	28.70	28.80	28.90	28
29	29.00	29.10	29.20	29.30	29.40	29.50	29.60	29.70	29.80	29.90	29
30	30.00	30.10	30.20	30.30	30.40	30.50	30.60	30.70	30.80	30.90	30
31	31.00	31.10	31.20	31.30	31.40	31.50	31.60	31.70	31.80	31.90	31
32	32.00	32.10	32.20	32.30	32.40	32.50	32.60	32.70	32.80	32.90	32
33	33.00	33.10	33.20	33.30	33.40	33.50	33.60	33.70	33.80	33.90	33
34	34.00	34.10	34.20	34.30	34.40	34.50	34.60	34.70	34.80	34.90	34
35	35.00	35.10	35.20	35.30	35.40	35.50	35.60	35.70	35.80	35.90	35
36	36.00	36.10	36.20	36.30	36.40	36.50	36.60	36.70	36.80	36.90	36
37	37.00	37.10	37.20	37.30	37.40	37.50	37.60	37.70	37.80	37.90	37
38	38.00	38.10	38.20	38.30	38.40	38.50	38.60	38.70	38.80	38.90	38
39	39.00	39.10	39.20	39.30	39.40	39.50	39.60	39.70	39.80	39.90	39
40	40.00	40.10	40.20	40.30	40.40	40.50	40.60	40.70	40.80	40.90	40
41	41.00	41.10	41.20	41.30	41.40	41.50	41.60	41.70	41.80	41.90	41
42	42.00	42.10	42.20	42.30	42.40	42.50	42.60	42.70	42.80	42.90	42
43	43.00	43.10	43.20	43.30	43.40	43.50	43.60	43.70	43.80	43.90	43
44	44.00	44.10	44.20	44.30	44.40	44.50	44.60	44.70	44.80	44.90	44
45	45.00	45.10	45.20	45.30	45.40	45.50	45.60	45.70	45.80	45.90	45
46	46.00	46.10	46.20	46.30	46.40	46.50	46.60	46.70	46.80	46.90	46
47	47.00	47.10	47.20	47.30	47.40	47.50	47.60	47.70	47.80	47.90	47
48	48.00	48.10	48.20	48.30	48.40	48.50	48.60	48.70	48.80	48.90	48
49	49.00	49.10	49.20	49.30	49.40	49.50	49.60	49.70	49.80	49.90	49
50	50.00	50.10	50.20	50.30	50.40	50.50	50.60	50.70	50.80	50.90	50

Distance of slope stake from side or shoulder stake for any width roadway, slope 1 to 1. If ground is nearly level, the cut or fill at side stake is located by the double entry method in left column and top row. The number in body of table in same row and column gives distance from side stake to slope stake. If ground is not level estimate the difference in elevation between the side stake and slope stake, lower target by this amount if cut, elevate if fill. Add this amount to cut or fill and find distance in table. Set up rod at this point, and line of sight should cut target. If it does not make the slight adjustment necessary.

3734 Jewell
 16.000

2159

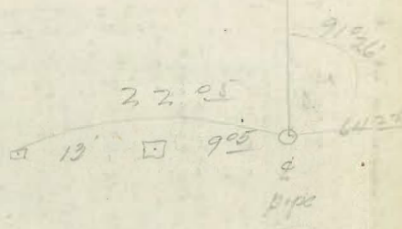


TABLE XIII—CORRECTIONS FOR TANGENTS AND EXTERNALS

These corrections are to be added to the approximate values, found by dividing the tangent, or external, for a 1° curve (Table VIII) by the degree of curve, in order to obtain the true tangents, or externals. Intermediate values may be obtained by interpolation.

FOR TANGENTS ADD

Central Angle	DEGREE OF CURVE													
	5°	10°	15°	20°	25°	30°	35°	40°	45°	50°	55°	60°	65°	70°
10°	.03	.06	.09	.13	.16	.19	.22	.25	.28	.31	.34	.38	.42	.46
15°	.04	.10	.14	.19	.24	.29	.34	.39	.45	.51	.53	.58	.63	.68
20°	.06	.13	.19	.26	.32	.39	.45	.51	.58	.65	.72	.79	.84	.90
25°	.08	.16	.24	.33	.40	.49	.58	.67	.75	.83	.90	.99	1.06	1.14
30°	.10	.19	.29	.39	.49	.59	.69	.79	.89	.99	1.09	1.20	1.29	1.39
35°	.11	.22	.34	.47	.58	.69	.79	.81	.92	1.04	1.29	1.42	1.54	1.66
40°	.13	.26	.40	.53	.67	.80	.93	1.06	1.20	1.34	1.49	1.64	1.79	1.94
45°	.15	.30	.44	.60	.76	.91	1.06	1.21	1.37	1.52	1.70	1.87	2.04	2.21
50°	.17	.34	.51	.68	.85	1.02	1.19	1.36	1.54	1.72	1.91	2.10	2.29	2.48
55°	.19	.38	.57	.76	.95	1.14	1.32	1.52	1.72	1.92	2.14	2.35	2.56	2.77
60°	.21	.42	.63	.84	1.05	1.27	1.49	1.71	1.94	2.17	2.38	2.60	2.83	3.07
65°	.23	.46	.69	.93	1.16	1.40	1.64	1.88	2.13	2.38	2.63	2.88	3.13	3.39
70°	.25	.51	.76	1.02	1.28	1.54	1.80	2.06	2.33	2.60	2.88	3.16	3.44	3.72
75°	.27	.56	.83	1.12	1.40	1.69	1.98	2.27	2.57	2.87	3.16	3.47	3.78	4.09
80°	.30	.61	.91	1.22	1.53	1.84	2.15	2.46	2.78	3.10	3.44	3.78	4.12	4.46
85°	.33	.66	1.00	1.33	1.68	2.02	2.36	2.70	3.05	3.40	3.77	4.14	4.55	4.89
90°	.36	.72	1.09	1.45	1.83	2.20	2.57	2.94	3.32	3.70	4.10	4.50	4.91	5.32
95°	.39	.79	1.19	1.55	2.00	2.40	2.80	3.20	3.61	4.02	4.40	4.98	5.38	5.83
100°	.43	.86	1.30	1.74	2.18	2.62	3.06	3.50	3.95	4.40	4.88	5.37	5.85	6.34
110°	.51	1.03	1.56	2.08	2.61	3.14	3.67	4.21	4.76	5.31	5.86	6.43	7.01	7.60
120°	.62	1.25	1.93	2.52	3.16	3.81	4.45	5.11	5.77	6.44	7.12	7.80	8.50	9.22

FOR EXTERNALS ADD

Central Angle	DEGREE OF CURVE													
	5°	10°	15°	20°	25°	30°	35°	40°	45°	50°	55°	60°	65°	70°
10°	.001	.003	.004	.006	.007	.008	.009	.011	.012	.014	.015	.017	.018	.020
15°	.003	.007	.010	.014	.018	.023	.027	.029	.032	.035	.039	.043	.047	.051
20°	.006	.011	.017	.022	.028	.034	.038	.045	.051	.057	.063	.070	.076	.083
25°	.009	.018	.027	.036	.046	.056	.065	.074	.083	.093	.106	.120	.127	.135
30°	.013	.025	.038	.051	.065	.078	.090	.103	.116	.129	.149	.170	.179	.188
35°	.018	.035	.054	.072	.086	.109	.131	.153	.175	.197	.213	.230	.247	.264
40°	.023	.046	.070	.093	.117	.141	.172	.203	.234	.265	.277	.290	.315	.341
45°	.030	.060	.093	.119	.153	.184	.216	.254	.289	.325	.351	.378	.411	.445
50°	.037	.075	.116	.151	.189	.227	.266	.305	.345	.384	.425	.467	.508	.550
55°	.046	.093	.142	.188	.236	.283	.332	.381	.420	.479	.530	.582	.641	.700
60°	.056	.112	.168	.225	.283	.340	.398	.457	.516	.575	.636	.697	.774	.851
65°	.067	.135	.204	.273	.343	.412	.483	.554	.625	.697	.711	.845	.922	1.01
70°	.080	.159	.240	.321	.403	.485	.568	.652	.735	.819	.906	.994	1.08	1.17
75°	.095	.182	.286	.383	.480	.578	.678	.777	.877	.977	1.07	1.18	1.29	1.39
80°	.110	.220	.332	.445	.558	.671	.787	.903	1.02	1.13	1.25	1.38	1.50	1.62
85°	.128	.259	.391	.524	.657	.790	.926	1.06	1.20	1.34	1.47	1.62	1.76	1.91
90°	.149	.299	.450	.603	.756	.910	1.07	1.22	1.38	1.54	1.70	1.87	2.03	2.20
95°	.174	.350	.522	.706	.985	1.06	1.25	1.43	1.62	1.80	1.99	2.18	2.38	2.58
100°	.200	.401	.604	.809	1.01	1.22	1.43	1.64	1.85	2.06	2.28	2.50	2.73	2.96
110°	.268	.536	.806	1.08	1.35	1.63	1.91	2.20	2.48	2.76	3.05	3.35	3.66	3.96
120°	.360	.721	1.08	1.45	1.82	2.19	2.57	2.95	3.33	3.72	4.11	4.50	4.91	5.32

Index on page 1

Alley BK 223 Pac. Beach ^{X-Set. for} Grade 2-7

Cross Section Beta St. 36-38 8-K

X-Set Alley BK 221 Pac Beach 25020 17-22

X-Set Alyl 226, 224, 196, PB. 23-59
225, 195, 197,

Alley BIK 223 Pacific Beach

8-30-51

W.O. 25020

Sammy Meyer
Begg
R Sisson
C Ford.

Hornblend tie points have not been replaced since construction work this year.

Used curb Radius points as shown. These should be good for tie point R.P.

- = Fd. L+T.
- = Fd. Radius $\frac{1}{2}$
- X = cut cross in walk
- = set nail
- = set disk

Notes:-

Additional notes shown

in red added 3/9/53

OK

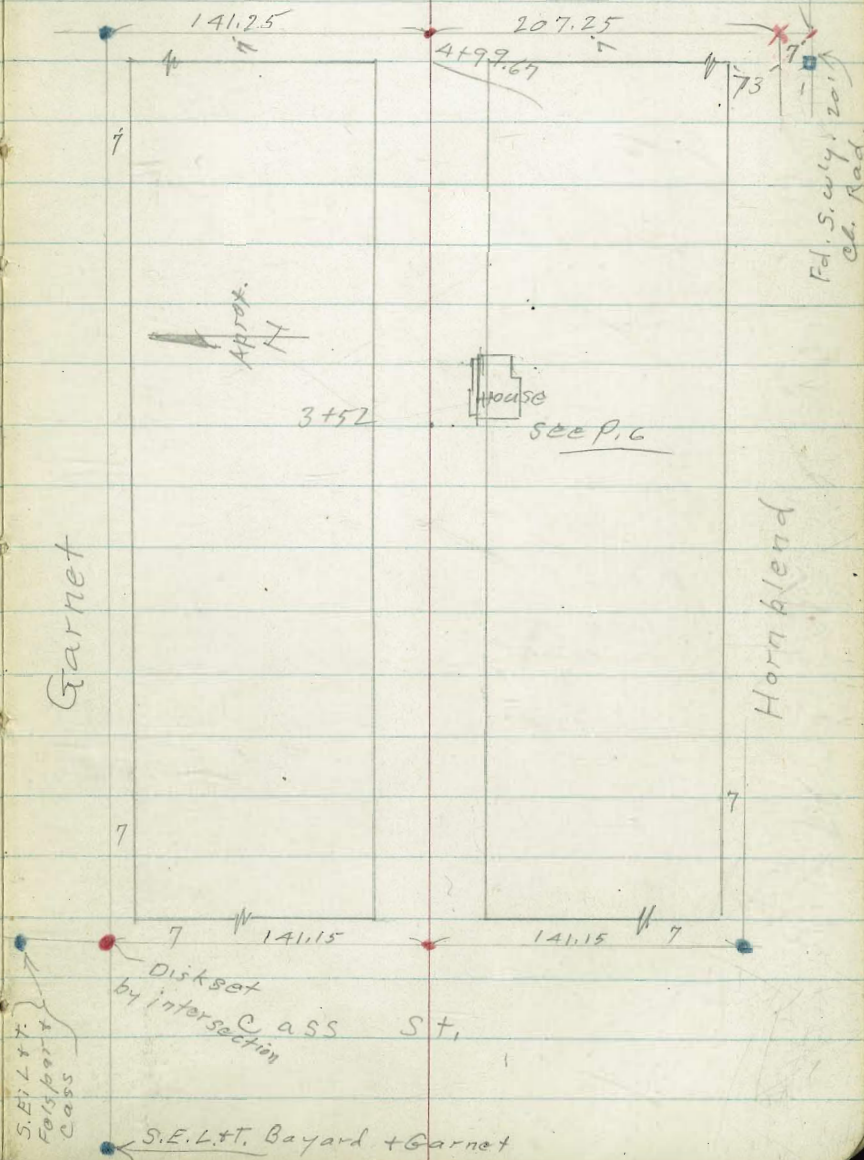
INDEXED

Aug 30 1951

Dawes St.

Fd. S.E. 1/4, 35' Ch. Rad.

2



0+43 - 10' RT = end Apron to 4 car Gar.

25740
5.80
103
Apron
25745
5.75
135
Gar. Floor

Nail. 0-07
T.P.

6.49 31.20
~~6.25~~ 30.95 5.02 24.71

31.20

wrong nail given on + red

0+25

25744
4.29
10
E.P.
25747
4.66
25753
4.50
103
E.P.
+ Apron
25758
4.35
135
Gar. Floor

E.P. = edge of Pavc.

conc. floor

0+05 { 13' RT = start 4 car Gar.
10' RT = start conc. apron

25755
4.38
10
E.P.
25760
4.87
25771
4.50
103
E.P. +
Apron
25782
4.41
135
Gar. Floor

9' LT } End alley curbs

0+00 = Ely. line Cass
10' LT = start stucco Bldg.

Reduced & Plotted
by
H. Mills

25780
4.23
98
cl
25787
4.44
98
G
25795
4.88
25793
4.80
105
G
25793
4.60
105
cl

0-07 = Nail 5.02 24.71

10' LT }
0-11-10' RT } = E.C. 3' rad cl. Ret.

25743
4.30
10
cl
25748
4.85
10
G
25755
5.18
10
G
25759
4.61
10
cl

{ 13' LT }
13' RT } = B.C. 3' Rad. cl. Ret.
0-14 = Ely. cl. line Cass

25799
3.74
50
cl
25806
4.87
50
G
25794
4.19
13
cl
25795
4.95
13
G
25795
5.18
29.73
G
25793
5.40
13
G
25808
4.65
13
cl
2365
6.08
50
G
2445
5.28
50
cl

1.88 29.73 - 27.85

S.E. B.P. Garnet & Cass

1+25 10⁰ Rt = end conc. block wall

26.2
5.0
Bnd
2.52
6.0
B.W.
10
3.16
+0.4
10
T.W.

1+00

26.0
5.2
10
2.57
5.5

2.58
5.4
10

B.W. = Base of footing or wall
T.W. = top of wall.

0+95 - { 10² 10' = start conc. block wall
10³ Rt = end conc. apron + Cor

25.74
5.46
10
Apron
2.520
6.0
10
B.W.
3.16
+0.4
10
T.W.
5.38
1.48
Gar Floor

0+75 10⁴ Rt = start conc. apron to double Cor.

2.574
5.44
10
apron
2.582
5.38
1.48
Gar Floor

0+73 10⁵ Rt = 4' 18" wide conc. walk

2.574
5.66
10
2.546
5.74
20

0+72 10⁵ Rt = end conc. apron to double Cor.

2.557
5.66
10
Apron
2.560
5.60
13.8
Floor

0+51 - 7' Rt = Pole # A. 1019

0+50 - 10⁴ Rt = start conc. apron to double Cor.

0+50 10⁴ Lt = Pole # J.P.A. 1011

2.58
5.4
10
2.544
5.76

2.544
5.8
10
apron
2.545
5.75
10
Gar

0+49 = end grad. A.C. Pav.

2.562
5.58
10

2.544
5.76
10

0+48 - 10' Lt = 4' wide conc. walk

2.566
5.54
10
walk

0+46 - 10' Lt = end stucco Bldg.

31.20

2439 - 16' Lt. = end stucco 13' dg.

27.37
3.83
16
Floor at doors.

2406 - 11³ Rt. = end car. port.

26.29
4.91
11.3
26.34
4.86
21

so not shown.
Rough conc. apron 5' wide is poor
open onto alley.

2403 16' Lt. = start stucco sliding doors

27.40
3.80
16
Floor at doors

2402 - 16' Lt. = 2' wide conc. walk

27.21
3.99
26
on walk
27.02
4.18
16

2400 - 11³ Rt. = start conc. car. port.

26.6
4.6
10

26.5
4.7
26.53
4.67
10
26.24
4.96
11.5
conc.
26.21
4.99
20
conc.

1493 - 22' Rt. = end conc. apron

26.14
5.06
22
Apron
26.30
4.90
29
Car. floor

1476 22' Rt. = start conc. apron to double

26.12
5.08
22
Apron
26.29
4.91
28
Car. floor

1+50 10' Lt. = pole[#] D 18270 T

26.5
4.7
10
26.1
5.1

1+50

26.5
4.7
10

1+48 6⁷ Rt. = pole[#] A 1042

31.20

7.19 27.86
 2.49 35.05 2.06 32.56
 T.P. 3.80 34.38 4.00 30.82
~~34.81~~ ~~32.32~~ ~~34.38~~ ~~32.58~~

S.E.B.P. Garnet + Cass (Orig. B.M.)
 N.W.B.P. Garnet + Dawes

5+19⁶⁷ } = E.C. 2' Rad. Alley Returns.
 12' RA }
 12' Lt. }

30/11	28/5	28/15	28/46	28/16	27/28	28/58	26/76	27/26
4.71	5.29	5.67	6.30	6.66	6.84	6.24	8.06	7.46
62	62	12	12		12	12	62	62
cl	G	cl	G		G	cl	G	cl.

5+19⁶⁷ } = B.C. 2' Rad. alley cl. Rot.
 10' RA }
 10' Lt. }

28/4	28/2	28/42	28/42
5.70	6.43	6.86	6.20
10	10	10	10
cl	G	G	cl

{ 10' Lt } = start alley curb.
 10' RA }

4+99⁶⁷ } = start A.C. Pave.
 Wly. line Dawes

28/6	28/18	28/48	28/66	28/83
5.66	6.04	6.34	6.16	5.99
10	10	10	10	10
cl	G	G	G	cl

4+99 9³ RA = pole # 4474

4+50 7³ RA = end fence.

310	28/8	28/5	28/2	28/9	28/1	28/1
3.8	4.0	5.3	6.6	6.7	6.7	6.7
40	15	10	8		10	40

4+50 9³ Lt = pole. Number 9 one (telephone.)

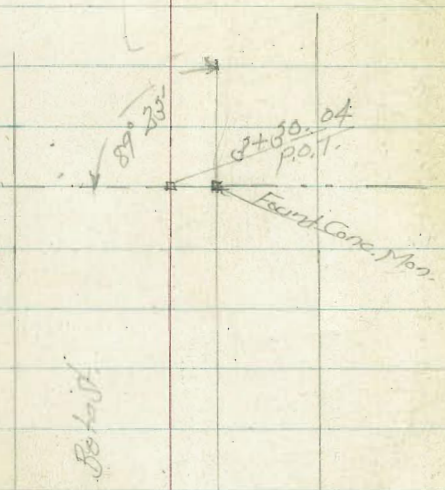
4+29 7' RA = start 4' high board fence

4+07 7' RA = pole # A1076

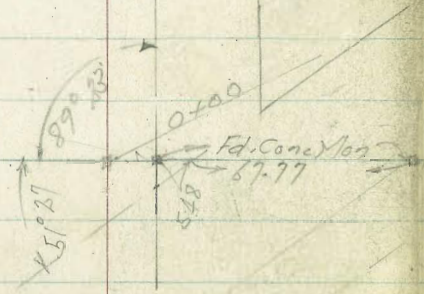
28/8	28/9	28/5	28/7	28/8
5.0	6.9	7.3	7.1	8.0
40	10		10	40

34.82

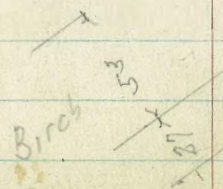
Cross Section Beta St
36 1/2 St to 38 1/2 St



40' 13' 27'



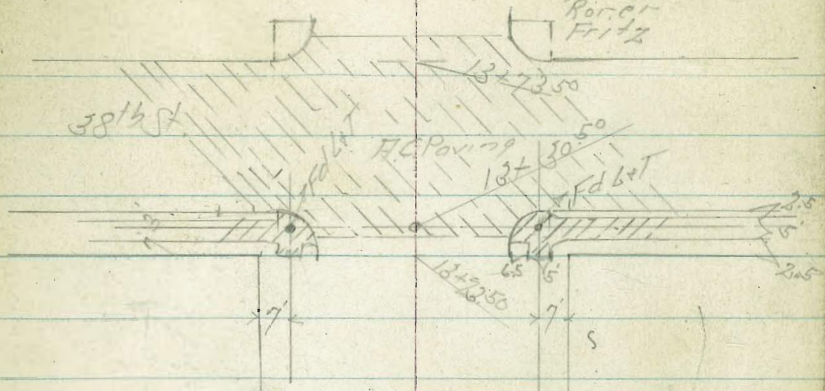
For change here at 36th,
see T.P. sheet #11.



TP #14 Page 59

Dec. 10. 51 8

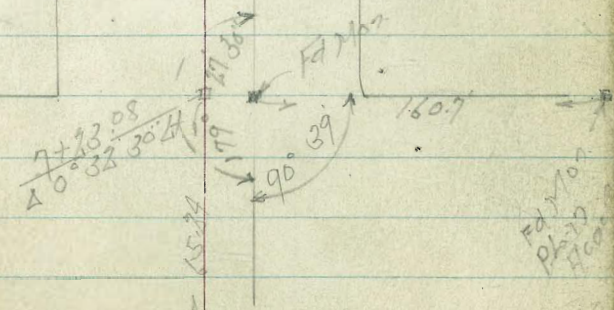
F. Sisson
Garber
Rorger
Fritz



13	20	50
7	23	00
6	07	40

REVISED
DEC 10 1951

40' 13' 27'



Fd. Mon.
0+00
1+00

Betast.

At North

Pl. 5.11.9

+98 12.78.01 2-114 Lath Fence

+50

6.1	6.1	6.1	4.4	4.3	5.9	5.4	5.0
7.1	7.0	7.0	8.7	8.8	7.2	7.3	8.1
4.0	3.8	3.5		5-114 Lath	1.3	2.5	4.0

1+0 31.5 1101 1/2 Picket Fence

6.2	6.2	6.2	4.0	3.6	5.9	5.8	5.4
6.9	6.9	6.9	9.1	9.3	7.2	7.3	7.7
4.0	3.8	3.6		5-114 Picket	1.3	2.5	4.0

+50

6.4	6.2	6.2	4.4	3.2	6.5	6.1	5.8
6.7	6.9	6.9	8.7	9.9	6.6	7.0	7.3
4.0	3.8	3.4		5-114 Picket	1.5	2.5	4.0

+34 32' 1101 1/2 Picket Fence

BM

9.26 3.80

on Map
11.3.89
13 Line Beta

6.2	6.2	6.1	5.2	3.6	2.7	6.6	6.1
6.9	6.9	7.0	7.9	9.5	10.4	6.5	7.1
4.0	3.8	3.0	4.1		4-114 Picket	2.6	4.0

0+00

0-50

6.3	6.1	5.4	4.2	2.7	4.6	4.0	5.7	5.6	2.3
6.8	7.0	7.7	8.9	10.4	8.5	8.1	7.4	7.5	10.8
4.0	3.8	4.1		5-114 Picket	1.7	2.6	4.0	3.0	8.0

0-100

6.0	6.1	5.2	4.6	2.5	1.5	2.1	2.6	9.5	6.1
7.0	7.0	7.9	8.5	10.6	11.6	11.1	6.5	3.6	7.1
	3.4	3.8		8	11-114 Picket	2.8	4.0	5.0	

BM

6.71

13.06

6.35

Chisel 4
11.11.89
Cottonwood
+Thor

13.06

+79 28 Pt of $\frac{1}{2}$ - $\frac{1}{2}$ 48" Palm Tree

+50

6.1	6.4	5.8	6.6	6.6	6.0	6.1	6.9	6.4
5.5	5.7	5.8	6.0	5.0	5.6	4.9	4.7	4.9
10	20	13	8	17	10	24	10	

+18 36 3/4 Pt of $\frac{1}{2}$ - Fly Picket Fence

4+04

6.2	6.2	5.6	6.5	6.6	5.9	6.5	6.79	6.81
5.1	5.1	6.0	5.1	5.1	5.7	5.1	4.8	4.80
18	16	13	11	17	26	31	22	20

+93 31.8 Pt of $\frac{1}{2}$ - Fly Picket Fence

+69

36 Pt of $\frac{1}{2}$ - Fly Picket Fence

6.9	5.9	5.5	6.6	6.2	5.7	6.5	6.3
5.7	5.7	5.7	5.0	5.1	5.1	5.1	5.1
10	26	14	1	11	21	26	10

+30 41.2 Pt of $\frac{1}{2}$ - Fly Picket Fence

JP

36.3 Pt of $\frac{1}{2}$ - Fly Picket Fence
5.13 11.61 6.57 6.49

33.4 Pt of $\frac{1}{2}$ - Fly Lath Fence
30.5 Pt of $\frac{1}{2}$ - Fly 6 Cypress Hedge
11.61

2+0

5.8	5.8	5.8	6.3	6.5	5.5	6.3	6.3
7.3	7.3	7.3	7.8	6.6	7.5	6.8	6.8
10	26	23	14	8	23	26	10

+92 41. Pt of $\frac{1}{2}$ - Fly Lath & Fly Picket Fence

+50

6.0	5.7	5.3	5.7	5.9	6.5	6.2	6.2
7.1	7.1	7.8	7.2	7.2	7.6	6.2	6.2
10	24	13	14	23	23	26	10

+39 { 33 Pt of $\frac{1}{2}$ - Fly Lath Fence
31.5 Pt of $\frac{1}{2}$ - Fly Picket & Fly 6 Cypress Hedge

2+0

30.9 Pt of $\frac{1}{2}$ - Picket Fence
13.06

6.0	6.1	5.0	4.6	6.0
7.1	7.0	8.1	8.5	7.1
10	26	13.06	26	10

Bata

11

11

11

11

+71 130 Lt of 1/2 - 1/2 Fire Hyd. NW Top
Fire Hyd
Bata 37
TP 3.58 12.40 2.79 8.82

+60.5 340 Lt of 1/2 - Fly Wire Fence
299 Pto of 1/2 - Fly Wire Fence
+57.84

+53 398 Lt of 1/2 - 1/2 30" Palm Tree
+42

+21.5 309 Pto of 1/2 - Fly Wire Fence
670

+79 325 Lt of 1/2 - Fly Wire Fence
+50

570

4+84

11.61

7.1	6.9	6.8	6.5	6.7	6.3	7.1	7.6
4.5	4.7	4.8	5.1	4.9	5.3	4.5	4.1
40	26	17	14		10	17	26
							40

6.63	6.59	7.0	6.4	6.7	6.3	7.0	6.9
4.98	5.02	4.6	5.2	4.9	5.3	4.6	4.7
100m Walk	38.5	30	22		11	17	26
							40

6.3	6.7	7.0	6.2	6.7	6.4	7.0	6.7
5.3	4.9	4.6	5.4	4.9	5.2	4.6	4.7
40	26	17	14		11	26	40

6.4	6.7	6.2	6.8	6.4	6.6	6.2	6.2
5.2	4.9	5.4	4.9	5.2	5.0	5.1	5.1
40	26	13		19	26	40	75

6.6	6.7	6.1	6.8	6.7	6.1	6.6	6.6
5.0	4.9	5.5	4.8	4.9	5.5	5.0	5.0
40	26	14		6	15	26	40

6.39	6.39
5.22	5.22
35.5	100m Walk

11.61

+73.5 - 389 4th of 7 - rdly Picket Fence
+63

7.5
190
128
183
Cott. 190
7.52
188
187
Cott. 187

+50

5.2
10
5.2
10
5.2
10
7.7
47
7.1
5.8
12
7.1
5.8
10
7.1
5.7
10

840

7.1
5.3
10
7.1
5.3
10
7.1
5.3
10
7.7
47
7.0
5.4
15
6.8
5.6
10
6.8
5.6
10

+50

7.2
5.8
10
7.1
5.8
10
7.4
5.0
10
6.5
5.6
10
7.9
5.0
10
6.9
5.5
9
6.7
5.7
10
6.6
5.8
10

+2308: East Line 37th

7.0
5.4
10
7.1
5.3
10
7.2
5.3
10
6.6
5.8
10
7.0
5.4
10
6.5
5.9
9
7.1
5.3
11
6.9
5.5
10
6.9
5.5
10

740

6.0
6.4
150
6.1
6.3
100
6.1
6.3
40
6.1
6.3
10
6.0
6.4
15
6.0
6.4
10
6.0
6.4
10
6.3
6.1
10
6.7
6.1
10
6.5
6.9
100

6+7A

1240

6.6
5.6
75
6.7
5.9
40
6.5
5.9
10
6.3
6.1
17
6.8
5.6
1240
6.4
6.0
10
6.5
5.7
10
6.7
5.7
40
7.1
5.9
75

874

3.86

10.87

S.F.B.P.
Flap +
3876 ST
1406

+73.50 = East Curb Line 3876 ST

+53.50 = 3876 ST

+33.50 = W. C. Line 3876 ST

+272 = West Edge H.C. Parking

+23.50 = W. L. 3876 ST

409 402 Rt 97 - Ely Picket Fence

1240

12450

1473

1471

2

pt

16

9.51	8.98	8.95	9.21	9.60	9.60	9.34	9.24	9.34	9.99
5.22	5.77	5.78	5.42	5.13	5.13	5.27	5.11	5.27	4.71
40.0	40.6	36	13	13	13	28	26	10.5	40.0

9.01	8.69	9.29	9.61	9.53	9.25	9.15	9.40
5.72	6.01	5.44	5.12	5.20	5.48	5.58	5.23
40	26	13	13	13	26	27	40

8.93	8.40	8.41	8.86	9.17	9.09	8.85	8.91	9.51
5.80	6.33	6.32	5.85	5.56	5.14	5.88	5.82	5.22
40.0	40.0	26	13	13	13	26	10.5	40.0

8.87	8.30	8.77	9.02	9.04	8.80	9.41	9.60
5.86	6.43	5.96	5.71	5.69	5.93	5.32	5.10
28.0	28.0	13	13	13	25.0	25.0	40.0

9.1	8.47	8.4	9.0	8.9	9.36	9.8
5.6	5.86	6.3	5.7	5.8	5.35	4.9
40	27.0	27.0	13	25.0	25.0	40

9.4	9.2	8.2	9.3	9.5	9.1	9.8	9.9
5.3	5.5	6.5	5.4	5.9	5.6	5.9	4.8
40	26	26	15	20	26	26	40

8.7	8.6	7.95	8.0	9.1	8.5	9.1	9.4
6.0	6.1	6.78	6.7	5.6	6.2	5.6	5.3
40	36	25.0	18	13	13	36	40

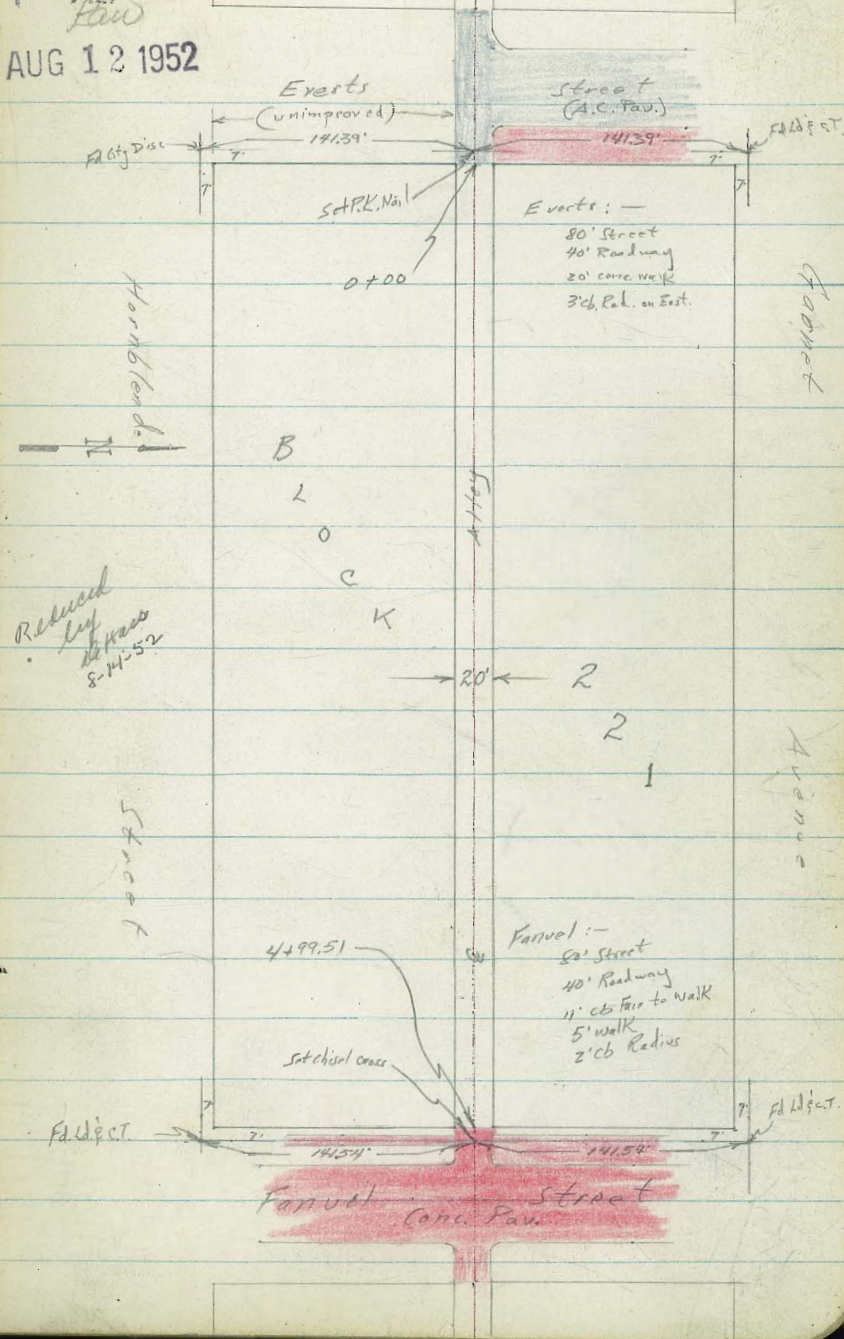
1473

Roberts
Cota
Pollen
8-11-52
W.D. #25100

X-Section Alley Block 221
Pacific Beach
Events to Fanuel
Between Garnet & Hornblende

INDEXED
LOW
AUG 12 1952

17



Cont'd From Page 17

Lt

Q

Rt 18

Becomes Garage Apron

1750

10³' Rt begin 3' walk Parallel to Q

0.8
20
39.8

0.5
10
40.1

1.0
39.6

0.5
10
40.1

0.69
10⁵
cure
39.89

0.64
13⁵
cure
39.94

1749

9' Lt to center T. Pole #DIR261T

1700

1.6
20
39.0

1.6
10
39.0

1.8
38.8

1.8
10
38.8

2.1
20
39.5

0750

8⁵' Rt to center T. Pole #A1210

2.5
20
38.1

2.5
10
38.1

2.9
37.7

2.9
10
37.7

2.9
20
37.7

0700

East Line Events (End Paving)

2.90
10
cb
37.68

3.44
10
gutt
37.14

3.89
36.99

3.72
10
Pav.
Edge
36.82

4.3
50
36.3

East Curb Line Events

1.77
90
cb
38.79

2.49
90
gutt
38.79

2.46
50
cb
38.12

3.15
50
gutt
37.43

3.04
13
cb
37.54

3.73
13
gutt
36.98

3.73
36.65

4.00
10
Pav.
Edge
36.52

5.8
50
34.8

6.7
100
33.7

Q Events

2.29
100
38.29

3.22
50
37.96

4.05
36.83

4.15
10
Edge
P.S.
36.43

5.4
50
35.2

6.5
100
34.1

BM

1.05 40.58 T

39.53 NWBP
Garnet Q
Events

40.58 T

Cont'd From Page 18

Lt

E

Rt 19

2752 9² Rt to center P. Pole # A1254

2750

40.9	40.5	40.4	40.5
5.2	5.6	5.7	5.6
20	10		10

2742 12⁵ Rt & Double Garage

40.1
6.0
123
Dir
Floor

2700 10² Rt End Walk

40.4	40.3	40.2	40.33	40.28
5.7	5.8	5.9	5.75	5.80
20	10		10 ² conc	13 ² conc

1792 10² Rt End Apron (Begin Walk)

Apt. over
(3 Car Garage)

40.14
5.94
10²
conc

40.17
5.91
13²
Floor

1765 10² Rt begin Apron (End walk)

39.91
6.17
10²
conc

40.10
5.98
13²
Floor

T.P. 631 46.08 T 0.81 39.77

46.08 T

1751 9' Rt to center P. Pole # A1232

40.58 T

40.58 T

Cont'd From Page 19

Lt

Q

Rt 20

4475

^{43.6}
4.0
10

^{43.6}
4.0

^{43.8}
3.8
10

^{43.6}
4.0
20

4451

9' Lt to center T. Pole # JPA1269

4450

10' Lt End AC Parking Area

^{42.72}
4.87
20
AC

^{42.76}
4.83
10
AC
Edge

^{43.2}
4.4

^{43.4}
4.2
10

^{43.3}
4.3
20

4413

16' Rt Q Double Garage (Level ^{Floor} is 15)

^{43.23}
4.36
76
Floor

4400

8' Rt to center P. Pole # A1276

^{42.26}
5.34
20
AC

^{42.13}
5.46
10
Edge
AC

^{42.1}
5.5

^{42.6}
5.0
10

^{42.4}
5.2
20

3450

^{41.53}
6.06
20
AC

^{41.47}
6.12
10
Edge
AC

^{41.3}
6.3

^{41.3}
6.3
10

^{41.3}
6.3
20

T.P.

37.2 47.59 X 2.21 43.87

47.59 X

3400

9' Lt begin AC Parking Area
9' Lt to center T. Pole # JPA1257

^{41.44}
4.64
30
AC

^{40.92}
5.16
9' AC

^{41.1}
5.0

^{41.1}
5.0
10

^{40.8}
5.3
20

46.08 X

46.08 X

check

6.03 39.52 = 39.53

starting B.M

T.P. 3.39 45.55 6.86 42.16

T.P. 3.61 47.02 4.17 45.41

Q Fanuel

44.83
5.25
50
43.47
6.11
42.73
6.85
50

West Curb Line Fanuel

44.01 43.45 43.59 42.86 42.52 42.45 43.10 41.98 42.63
5.57 6.13 5.99 6.72 7.06 7.13 6.48 7.60 6.95
50 50 12 12 12 12 12 50 50
cb Gutt cb Gutt Gutt cb Gutt cb

T.P. 6.24 49.58x 4.25 43.34

49.58x

4+99.51 West Line Fanuel (Paving Edge)

43.67 43.27 42.78 43.06 43.34
3.92 4.32 4.81 4.53 4.25
10 10 10 10
cb Gutt Gutt cb

47.59x

47.59x

Contd From Page 21

16

2

R 22

Cross Section

Alleys { 226-225-224 } Pacific
 { 195-196-197 } Beach

3-18-53

C.H.S.
 Bogg
 Oltman
 Schelin

W.D. 31957

- Fd. L+T or disk
- x Fd. cross in conc.
- x Cut cross in conc. or on M.H.
- Sat. Mail in Pave

(W) denotes Motor box
 Ctr. water

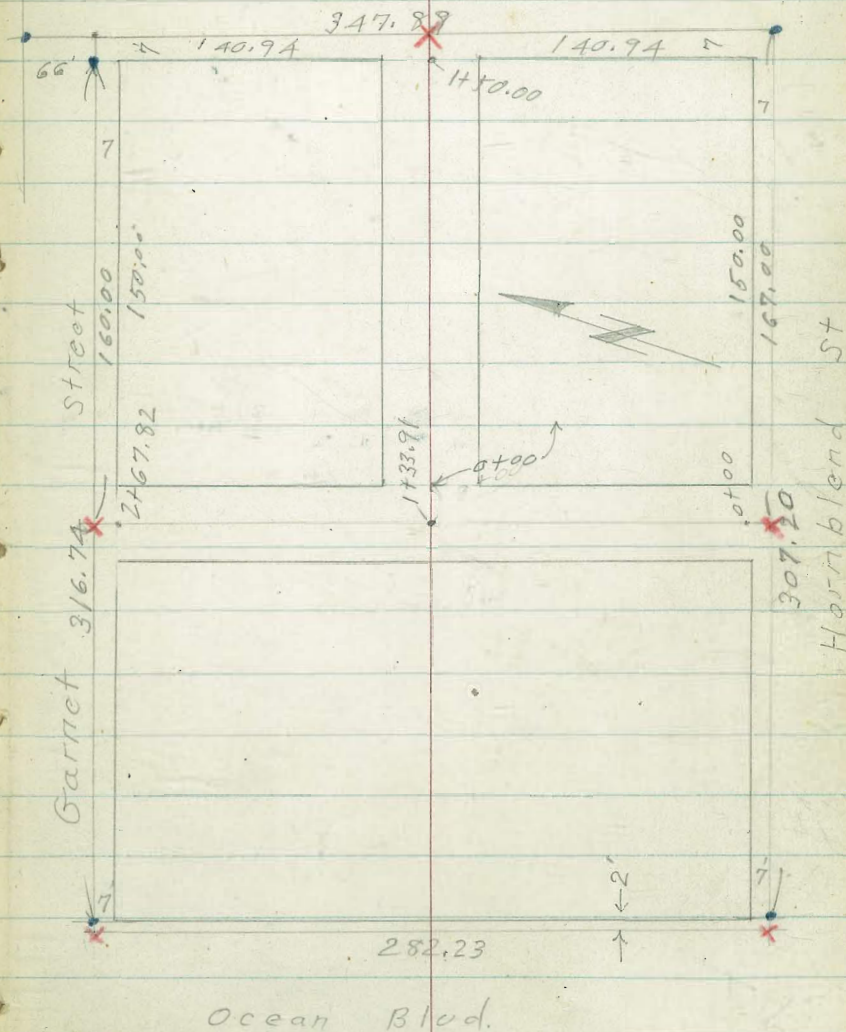
T.W. " Top of wall
 B.W. " Base of wall

INDEXED
 MAR 27 1959

Blk. 226

Pacific Beach

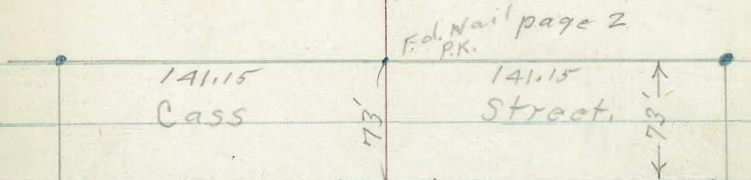
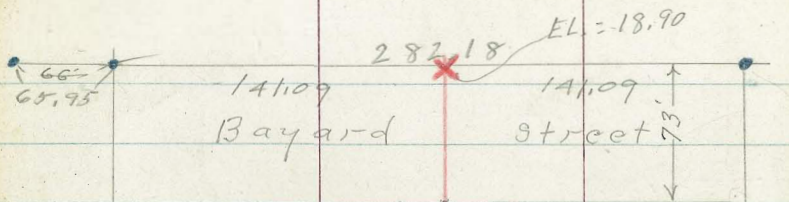
Mission Blvd



BIK 225 - Pac. B.

BIK 224 - Pac. Beach.

24



Levels - P-33

Levels - P40

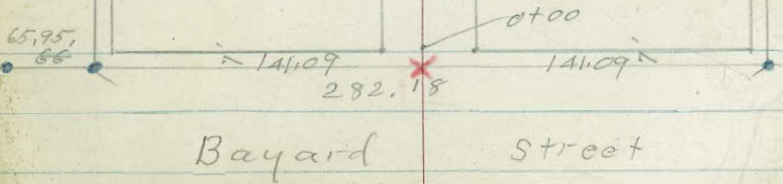
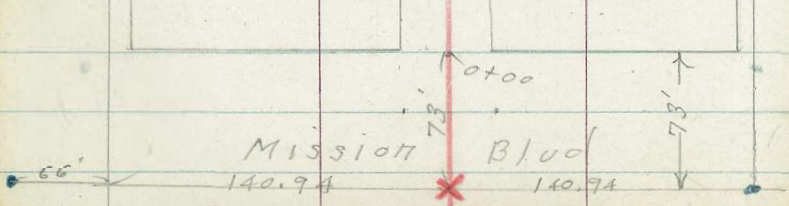


Garnet St.

Hornblend St.

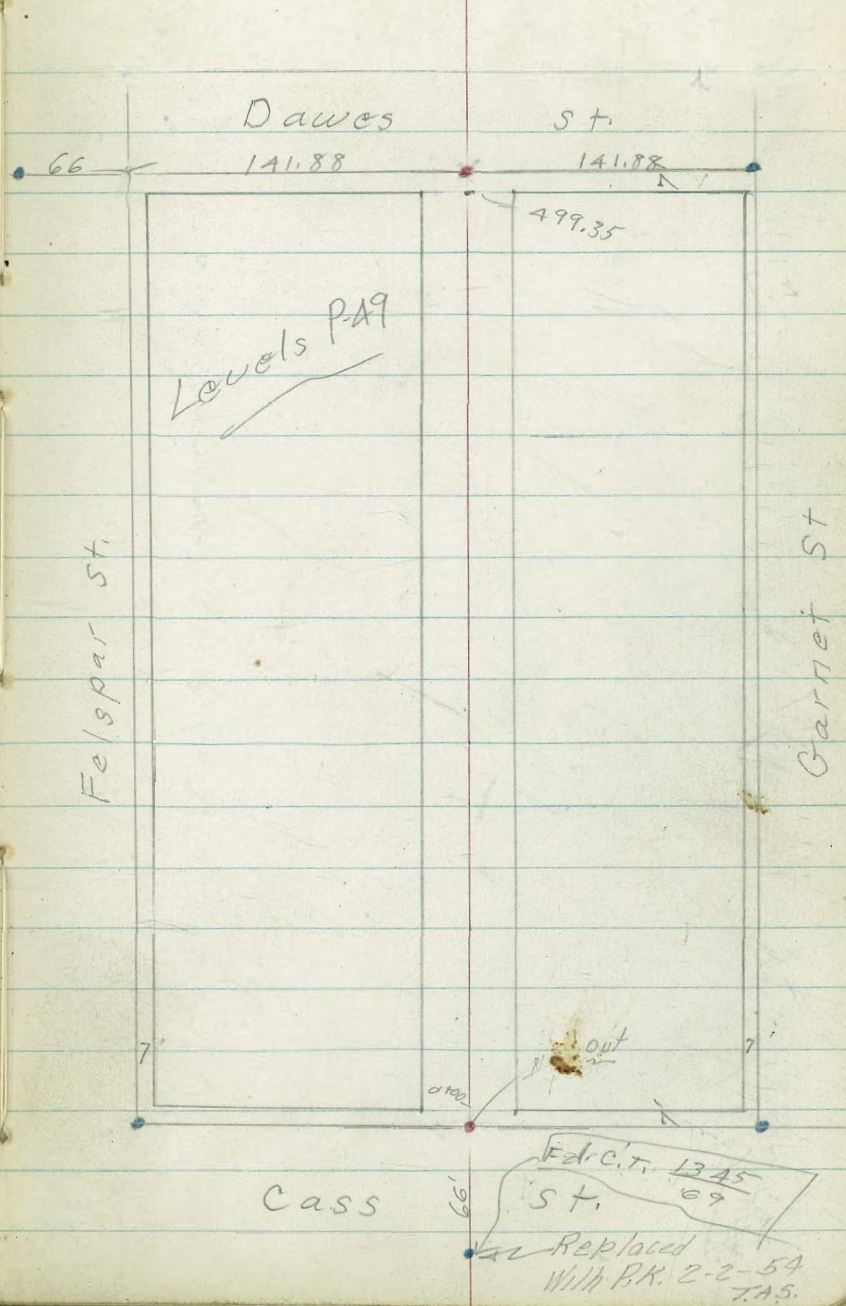
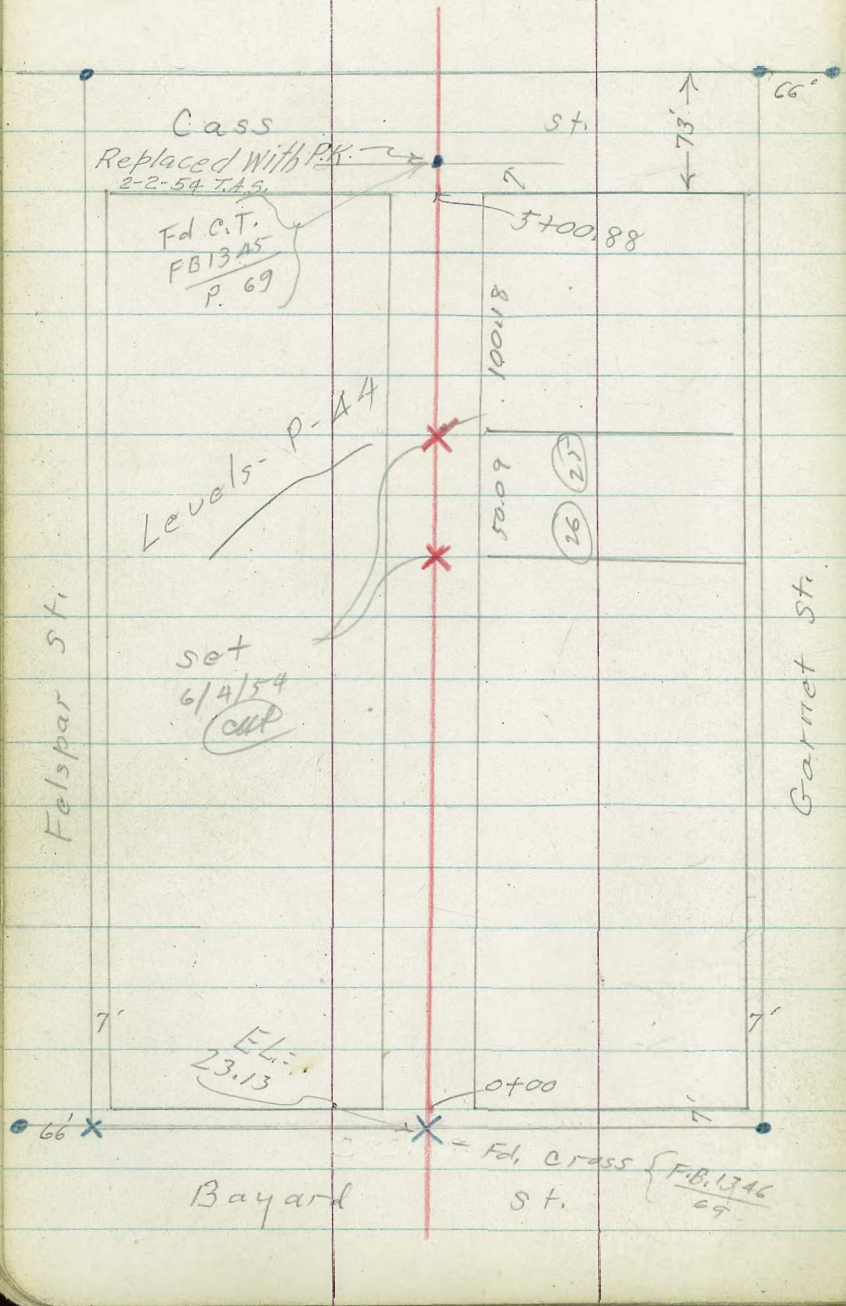
Garnet St.

Hornblend St.



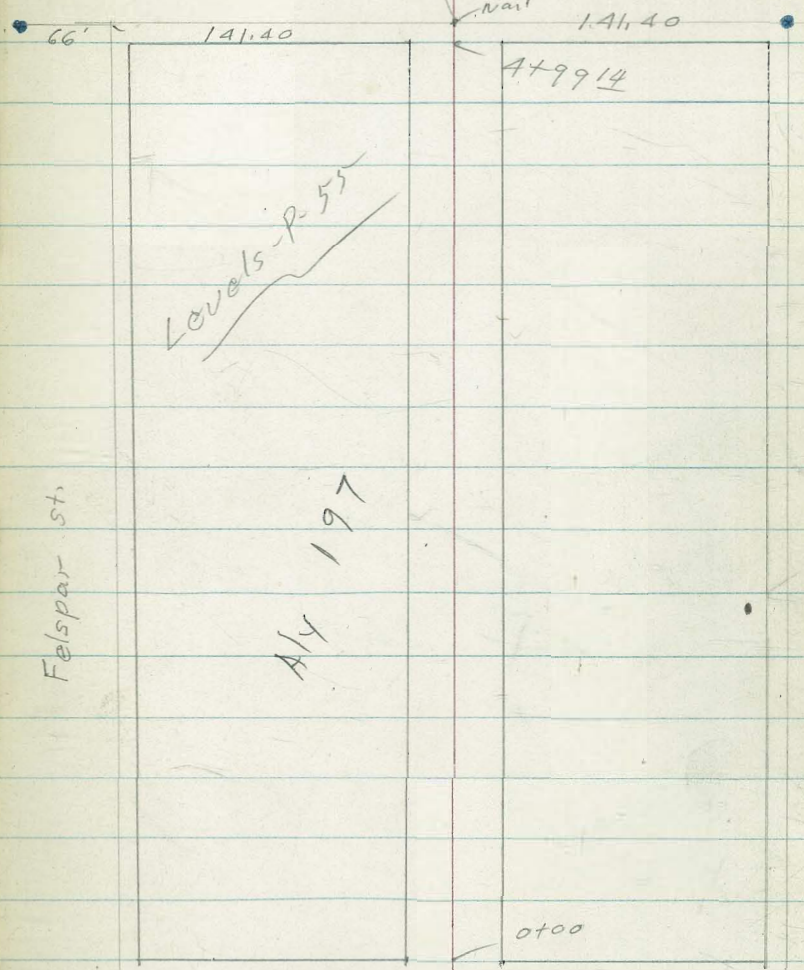
Blk. 195 - Pac. Beach

Blk. 196 Pac. Beach



BIK. 197
Pac. Beach

Everts 33' ← A crosses in M.H. Rim. St.



Felspar st

Aly 197

Garnet St.

66 Dawes 141.88 St. 141.88

±

N+S alley BIK.
226
0+99-11⁵ RT = S.W. cor. 2 story frame Bldg.

0+96-10⁴ RT = (W)

0+50

12.9
3.7 3.9 3.6
10 10 10

0+16 9⁶ Lt. = Pole # J.P.A. (12" diam.)
4453

0+07

12.0 12.0 14.8 10.9 11.8 1.8 1.8
4.6 4.6 5.6 5.7 5.4 4.9 4.9
15 10 5 8 10 15

= end Conc. Paug.

0+00 9³ Lt. } = end alley els.
10¹ Rt. }

11.06 10.76 10.42 10.65 10.82
5.50 5.80 6.14 5.91 5.74
10 9.9 10 10
cc c cc

12' Lt. } B.C. 2' Rad. cb. Ret
12' Rt. }

0-14 = Nly el line Hornblend

11.09 10.54 10.90 10.35 10.31 10.24 10.21 10.21 10.72 9.90 10.44
5.47 6.02 5.66 6.21 6.25 6.32 6.35 6.35 5.84 6.06 6.12
60 60 12 12 10 10 12 12 12 60 60
cc c c c c c c c c c c

0-40 = ± Hornblend

10.86 10.63 10.48 10.45 10.11
5.70 5.93 6.08 6.11 6.45
60 10 10 60

T.P. 6.22 16.56 5.19 10.34

T.P. 5.55 15.53 7.33 9.98

3.23 17.31 - 14.08

X in Conc. - Sta 0-7 - N+S Alley (BIK. 226)

N.W. 7' Lt. Mission Blud + Hornblend

S.E.P.P. Mission Blud. + Garnet

T.P. 4.8.3 19.26 2.13 14.43

2+00

1+98 - 10⁴ Lt. = 6" diam. Cedar tree,

1+73 - { 13' Lt. = (W)
98' Lt. = (W) }

1+70

1+43⁹¹ = 10' Rk = start (wall) Nly. line E. & W. alley

1+30 9⁵ Lt. = pole # PA. 4475 (14" diam.)

1+23.91 = Sky line - E & W. alley, to east.

1+22⁴ = 11⁴ Lt. = NW. Cor. Bldg.

1+01 = 3¹ Lt. = 3' wide Concr. walk.

1+00

14.2	14.1	14.5	13.3	14.65	14.1	14.1
2.3	2.4	2.0	3.2	1.91	2.4	2.4
10		10	10	10	11	15
			B.W.	T.W.		
14.1	14.0	14.3	13.1	14.38	13.8	13.8
2.4	2.5	2.2	3.4	2.18	2.7	2.7
10		10	10	10	11	15
			B.W.	T.W.		
13.8	13.7	14.1	12.9	14.14		
2.7	2.8	2.4	3.6	2.42		
10		10	10	10		
			B.W.	T.W.		
13.7	13.5	13.4				
2.8	3.0	3.1				
10		10				
			13.43	13.42		
			3.13	3.14		
			10	11.5		
				at door		
13.3	13.1	13.3				
3.2	3.4	3.2				
10		10				

16.56

E.+W. Alley BIK 226 P.B.

Sketch - P-23,

0+31 - { 10' RT. = end Conc. apron.
9' RT. = start board fence
11' RT. = N.E. Cor. Bldg.

0+29 11' 3" Lt. = Pole # D16146T
(12" diam.)

0+27 11' RT. = 3rd door

0+17- 11' RT. = 2nd door

0+07- 11' RT. = 1st Gar. door
Conc. Gar. floor.

0+02- 10' RT. = start Conc. apron.
to 3 car. Gar.

0+01 1/2 - 11' 5" RT. = N.W. cor 2 story
frame Apt. + Gar.

0+00- 10' Lt. = start 5" wide Conc.
Ret. wall.

±

30

13.19
5.35
10L
Apron

13.41
5.13
114
at Bldg.

13.20
5.34
10L
Apron

13.44
5.10
114
Gar. floor.

13.24
5.30
10L
apron

13.47
5.07
114
Floor

13.27
5.27
10L
Apron.

13.47
5.07
114
Floor

13.32
5.22
10L
Apron

13.51
5.03
115
at Bldg.

14.15
4.39
10
T.00

12.9
5.6
10
B.W.

14.0
4.5
10

13.6
4.9

13.4
5.1
10

18.54

0+99 - 10' RT. = end conc. apron

0+94 - 9' Lt. = (W) Ret. wall.

0+88 10' Lt. = end ~~thigh~~ Conc.

to double car.

0+85 10' RT. = start conc. apron

0+82 - 10' RT. = 4' wide conc. walk

10' RT. = end conc. block wall.

0+80 9' RT. = end base of wall

10' Lt. = Face of wall
 base wall.
 10' RT. = Start 6' high conc. block
 9' RT. = end board fence.
 0+50 - 8' RT. = pole # A 776. 16" diam.
 10' RT. = Nly face conc. block wall

0+33 - 8' RT. = dead man.

0+32 - 8' RT. = dead man

13.54	12.3	13.4	13.0	12.88	13.08
5.00	6.2	5.1	5.5	5.66	5.46
10	10	10		10L	14E
T.W.	B.W.	End.		Apron	Floor
				12.9	
				5.6	
				10	

12.76	13.07
5.78	5.47
10L	14E
Apron	Car. floor

13.28	13.31
5.26	5.23
10L	20
walk	

12.1	13.3
6.4	5.2
9L	10
B.W.	End.

13.6	13.3	13.3	12.2
4.9	5.2	5.2	6.3
10		10	10
			B.W.

E+W. Alley BIK 226- P.B.

±

32

+Garret (Starting B.M.
S.E.B.P. Mission Blvd 3.68 14.09 (14.08)

1+90 = ± Mission (Conc. Pavement)

13.02	12.26	12.10	11.97	11.22
4.75	5.52	5.67	5.80	6.55
60	10		10	60

13' Rt }
13' Lt } = E.C. 3' Rad cb. Ret.
1+60 = Wly cb. line Mission Blvd.

12.87	12.20	12.20	11.59	11.56	11.37	11.26	11.20	11.78	10.97	11.09
4.90	5.55	5.57	6.18	6.21	6.40	6.51	6.57	5.99	7.30	6.68
60	60	13	13	10		10	13	13	60	60
cb	c		c		17.77		c	cb	c	cb

TBM #1 6.31 17.77 7.08 11.46

± cross sta. 11.57

{ 9' Rt }
10' Lt } = Start all by curbs.
= Start Conc. Pav
1+50 = end 1" thick oil + rock
= Wly line Mission Blvd.

12.26	12.05	11.60	11.82	11.97
6.28	6.49	6.94	6.72	6.57
10	10		99	99
cb	c		c	cb

1+40 - 9' Rt. = (W)

11' Rt. = End frame shed.
1+37 - 11' Lt. = pole # D. 16/45 T.

12.6	11.9	12.1
5.9	6.6	6.4
10		10

pave. (do not use)

1+00 = start 1" thick oil + rock

11' Rt = start frame shed

12.7	12.7	13.1
5.8	5.8	5.4
10		10

18.54

Alley BIK 225- Pac. Beach
Sketch - P 24-1 left.

0+24 - 10^s Lt. = end A.C. paved yard.

0+18 9^s Rt. = (VI)

12^s Rt. = start 2' wide E+Ws
Concr. walk

0+07 - 10^s Rt. = end conc. slab

0+01 - 11^s Lt. = 10" pole # 511226H

10^s Rt. = start conc. slab.
10' Lt. = start A.C. paved yard
10' Rt. } = end of alley curbs.
9^s Lt. }
= end Concr. pave.

0+00 Ely line Mission Blvd.

0-10 Cont.

13' Lt. }
13' Rt. } = E.C. 3' Rad. cl. Ret.

0-10 = Ely. cl. line Mission Blvd.

12.2
4.5
10.5
A.C.

12.06
12.14
4.64
10.5
slab
4.56
12.1
walk

12.2	12.24	11.96	11.56	11.78	11.93	11.93
4.5	4.46	4.75	5.14	4.92	4.77	4.77
10	9.9	9.9		10	10	10.5
A.C.	cc	G		G	cl	Conc.

12.86	12.30	10.50	11.05
3.84	4.40	6.20	5.65
60	60	60	60
cc	G	G	cc

12.16	11.59	11.52	11.33	11.20	11.08	11.76
4.54	5.11	5.18	5.37	5.50	5.62	4.94
13	13	10		10	13	13
cc	G				G	cc.

16.70

5.24 16.70

11.46

TBM #1 - P-32 = A cross Sta. 0-73

Bik 225

34

From 5 car Gar

1+15- 13⁷ RT = start Apt. converted

12.95

6.45

13.2

Floor

19.40

5.15 19.40 2.45 14.25

Nail in pole # D 16143T

1+00 9⁷ RT = end Row of 4" pipes
9⁸ RT = end paved parking lot

12.0

12.2

12.3

4.7

4.5

4.3

10

10

0+74 7' RT = 18" pole # A 810

(2'± Above ground) 6' apart.
set. 17 + filled with CONC.
pipes - vertical in ground

0+51 - 9⁷ RT = start row of 4"

0+50

12.1

11.9

11.9

4.6

4.8

4.8

10

10

paved parking lot.
0+33 - 9⁵ RT = start cold lay

12.1

12.0

4.6

4.7

9⁵

10

0+26 - 12' RT = end E. side walk

12.30

4.40

16.70

12
walk

2+75 6³/₄ RT = 18" pole # A 852

= start 4" wide conc. wall

2+72 10' Lt = end porch

15.89	15.4	15.8
3.53	4.0	3.6
10	10L	10
T.W.	B.W.	

9 Lt = start ramp to porch

2+55 10' Lt = end wall start

15.7 ²	15.4	15.5	15.4	15.4	15.9
3.68	4.0	3.9	4.0	4.0	3.5
10	10	10		7	10
T.W.	B.W.	Grd.			
+ Ramp					

2+21- 10' Lt = start 4" wide conc. wall

15.40	14.9	15.1	14.6	14.3	14.3	15.0	14.9
4.00	4.5	4.3	4.8	5.1	5.1	4.4	4.5
10L	10L	10	6		6	7	10
T.W.	B.W.						

2+00

14.7	14.3	13.8	13.8	14.5	14.3
4.7	5.1	5.6	5.6	4.9	5.1
20	10		5	6	10

1+73 - 6⁷/₈ RT = 20" pole # A 832

1+62 9' RT = (W)

1+60 13⁸/₈ RT = end Apt

13.1	12.9	12.8	12.7	12.8
6.3	6.5	6.6	6.7	6.6
30	10	10		10
	1			

1+50

1+48 - 10⁷/₈ Lt = 12" pole # D 16143T.

19.40

BIK 225

Cont on page 38

3+68 7.8 Rt = Nly. edge porch
10.8 Rt = \pm 2⁵ door

3+56 9' Rt = (W)

3+50

3+37^E 8^E Rt = \pm 2⁵ door to house

T.P. 3.60 22.00 1.00 18.40
Pole # D 4696T

See detail - page 37

8^E Rt. = start house

3+33- 8^E Rt = end fence

3+28- 10⁵ Lt. = 10" pole # D 4696T.

3+27- 8^L Rt = start picket fence.

3+06- 10³ Lt. = deadman

3+00

2+91- 10^L Lt. = end wall.

36

16.6 16.85 17.08
5.4 5.15 4.92
7 7^E 10^E
Porch door sill

16.9 16.6 16.5 16.60 16.64
5.1 5.4 5.5 5.40 5.36
30 10 8^E 10
conc. conc.
+ dirt

16.59

5.41
8^E
door sill

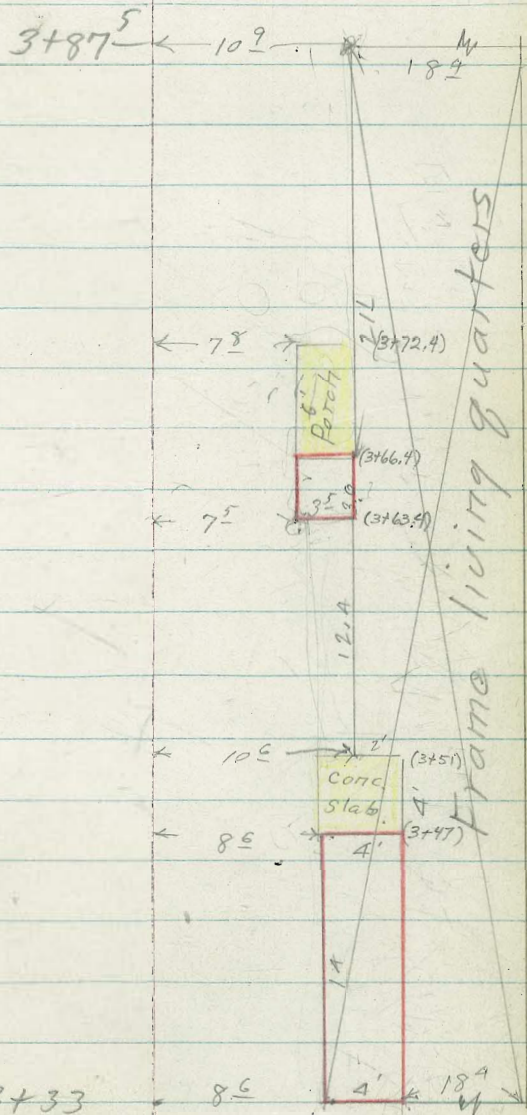
22.00

16.0 15.9 16.2 15.9
3.4 3.5 3.2 3.5
10 6 10

16.07 15.6 15.9
3.33 3.8 3.5
10^L 10^L 10
T.W. 8.W

19.40

Portions of Bldg. that
are outlined in red, are
separate frame additions
added onto main frame
building.



3+33

3+33

T.P. 5.92 24.82 3.10 18.90

T.P. on Cross 5+72²¹

= wly line Bayard
 10¹ Lt. } = start alley curbs
 9⁹ Rt. }
 4+99²¹ } start conc. pave.

4+97 - 9⁸ Lt. = Pole: 1' diam. # 18344T

4+93 - 10⁴ Rt. = 12" diam. cedar. *should come out.*

4+83 - 10³ Rt. = 8" diam cedar. *should come out.*

4+76 9' Lt. = (W)

4+50

4+32 - 10¹ Rt. = 10" cedar tree. *(should come out.)*

4+01 - 9⁵ Rt. = 14" diam cedar tree. *(should come out.)*

4+00 10' Lt. = start A.C. parking lot

3+99 - 6² Rt. = 2' diam pole # A876

3+87⁵ 10² Rt. = end dwelling

3+71 10⁸ Rt. = 2⁵' wide door

From page 36

18.94	18.72	18.30	18.48	18.71
3.06	3.28	3.20	3.52	3.29
10 ¹	10 ¹		9 ⁹	9 ⁹
06	6		0	06

18.1	18.0	17.8	17.8	18.1	18.0
3.9	4.0	4.2	4.2	3.9	4.0
20	A.C.		7	8	10
A.C.	10				

17.4	17.3	17.0	17.0	17.3	17.5
4.6	4.7	5.0	5.0	4.7	4.5
20	10		6	7	10
A.C.	A.C.				

17.0	16.9	16.9	16.9
5.0	5.1	5.1	5.1
10		10	10.9

17.08
4.92
10⁸
door sill

22.00

= 0400 page 40

5+79.21 = Ely line Bayard (

5+79 = end conc. Pave

E 7' line Bayard + ϕ Allow

T.B.M.#2 7.02 25.92 5.92 18.90

19.64	19.39	19.01	19.22	19.38
6.28	6.53	6.91	6.70	6.54
106	101		99	99
06	6	25.92	0	06

cont.

20.25	19.81	17.92	18.52
45.7	51.01	6.90	6.30
60	60	60	60
	0	0	06

5+65.21 = Ely cl. line Bayard

6

19.39	19.14	19.08	18.90	18.78	18.71	19.23
5.23	5.68	5.74	5.92	6.04	6.05	5.59
12	12	10		10	12	12
06	0				6	06

5+39.21 = Bayard (conc. Pave.)

20.02	19.36	19.18	19.04	18.32
4.80	5.46	5.64	5.78	6.50
60	10		10	60

12' RT }
12' LT } = E.C. 2' Rad. Cl. Ret.

5+13.21 = wly cl. Bayard

19.46	18.98	17.36	17.90
5.36	5.84	7.46	6.92
60	60	60	60
06	0	0	06

18.85	18.39	18.35	18.28	18.14	18.10	18.52
5.97	6.43	6.47	6.54	6.68	6.72	6.30
12	12	10		10	12	12
06	0		24.82		0	06

Alley BIK 224- P.B. 3/19/53

Sketch - P 24 - right

= T.P. 4.99 28.24 2.67 23.25
 2+49 9' Lt. = 1' pole # D 1827AT
 2+48 11' Rt. = start board fence
 2+06 9' Lt. = (W)
 2+00
 1+77 8' Rt. = (W)
 1+74 6' Rt. = 16" pole (No #)
 1+51 9' Rt. = Nly end N. & S. board
 = 1+50
 3 1+22- 9' Lt. = 10" pole # 414096H

1+00

0+73- 7' Rt. = 16" pole # A 910

0+50

{ 9' Rt. }
 { 10' Lt. } = end alley chs.
 = 0+00
 5+79, 21 } P 39 } Ely. Bayard.
 { 9' Lt. = 12" diam pole (no #)

Pole # A 954 (on nail)

21.7	22.1	21.4	21.6	21.3	21.9	21.7
4.2	3.8	4.5	4.6	4.6	4.0	4.2
30	10	8		5	7	10

21.9	21.4	20.9	20.9	21.4	21.3
4.0	4.5	5.0	5.0	4.5	4.6
30	10		6	7	10

20.6	21.1	21.1	20.4	20.6	20.9	21.4	21.2
5.3	4.8	4.8	5.5	5.3	5.0	4.5	4.7
30	10	7	6		7	8	10

20.3	20.4	19.8	19.7	19.6	20.0	20.1
5.6	5.5	6.1	6.2	6.3	5.9	5.8
10	7	6		7	8	10

19.67	19.6	19.0	19.3	19.40
6.25	6.3	6.9	6.6	6.52
10	10		9	9
End ch.		25.92		End of ch.

BIK 224

E

- 3+77 - 11' Rt. = start slat fence.
 3+75 - 10⁶ Lt. = end dwelling
 3+72 9' Lt. = 9" diam pole # 582440H
 = start dwelling
 3+55 10⁹ Rt. = end fence.
 3+50
 3+46 10' Lt. = (W)
 3+27- 9¹ Rt. = start lath fence.
 3+23 - 9² Rt. = end Gar.
 3+17 10' Rt. = Gar. door conc. floor
 start frame Gar.
 3+05 10' Rt. = end fence +
 3+03 - 8⁴ Rt. = (W)
 3+00
 2+92 8' Rt. = 14" Eucalyptus
 stump
 2+75 { 9⁵ Rt. = start board fence.
 11² Rt. = end fence
 2+74 6⁸ Rt. = 16" pole # A 954
 2+61 - 8⁵ Rt. = (W)
 2+57 - 8⁵ Rt. = (W)
 2+50

23.1	22.9	22.9	23.4	23.2
5.1	5.3	5.3	4.8	5.0
10		5	6	10

22.79
5.45
10
floor

23.8	22.7	22.4	22.7	22.4
5.4	5.5	5.8	5.5	5.8
20	10		7	10

21.4	22.6	22.0	22.0	22.1
5.8	5.6	6.2	6.2	6.1
20	10	7		10

28.24

BIK 224

5+11A ⁸⁸ 12' RT } = EC. 2' Rad. cl. Rot.
 12' LT }

99 Lt. } = start allow curbs
 10' RT }
 5+00 ⁸⁸ = wly. line cass = start A.C. Pauc.

T.P. 4127 28.49 4.02 24.22

5+00 Lt. = pole # 8" diam

stab along building.
 4+52 10' Lt. = start 3' wide conc.

4+50

4+02 7' RT = 16" pole # A976

4+00 11' RT = crd fence.

3+99 9' RT = (W)

25.23 25.02 € 22.85 23.21 42
 3.26 3.47 5.64 5.22
 60 60 60 60
 cl c cl cl
 24.56 24.24 24.17 23.99 23.69 23.68 24.06
 3.94 4.25 4.32 4.50 4.80 4.81 4.43
 12 12 10 10 10 12 12
 cl c cl c cl cl cl

24.62 24.46 24.08 24.11 24.21
 3.87 4.03 4.41 4.38 4.28
 99 99 10 10
 cl c 28.49 c cl

24.0 23.9 24.2 24.7 24.7
 4.2 4.3 4.0 3.5 3.5
 10 7 8 10

24.76 24.6 23.9 23.7 23.6 23.9
 3.48 3.6 4.3 4.5 4.6 4.3
 10 10 9 9 10
 Conc.

23.9 23.7 23.6 23.9
 4.3 4.5 4.6 4.3
 10 8 10

23.8 23.6 23.3 23.3 23.6 23.6
 4.4 4.6 4.9 4.9 4.6 4.6
 20 10 5 6 10

28.24

BIK.224

£

T.B.M. #5.			3.45	(34.61) 34.60
T.P	5.49	38.05	5.49	32.56
T.P	6.68	38.05	3.56	31.37
T.P	7.10	34.93	4.50	27.83
T.P	4.24	32.33	0.40	28.09

T. B.M. #4 - P-54

N.W. B.P. Dawes + Garnet.

(27.85)

S.E. B.P. Cass + Garnet.

5 + 40.88 = £ Cass (A.C. Paue)

25.94	25.04	24.7	24.67	23.81
2.55	3.45	3.7	3.82	4.68
60	10		10	60

28.49

Alley BIK 195 P.B

Sketch - P-25

0+50

10' LT } = end alley curbs
98 RT

0+00 = Ely line Bayard

0-00³ = end of Conc. Pave

0-14 Cont.

12' RT } = B.C. 2' Rad. cl. Rot
12' LT

0-14 = Ely. cl. line Bayard.

0-40 = \pm Bayard. Conc. Pave

T.B.M#3 6.92 30.05 4.47 23.13

8.70 27.60 - 18.90

44

\pm

25.3 24.8 24.9 25.5 25.4

4.7 5.2 5.1 4.5 4.6
10 7 10 20

23.84 24.1 23.6 23.2 23.4 23.75 23.8
6.21 5.9 6.4 6.8 6.6 6.30 6.2
10² 10 9 9 9 9 10
cl. cl. cl.

23.84 23.55 23.22 23.40 23.75
6.21 6.30 6.83 6.65 6.30
10² 10² 9 9 9
cl. cl. cl. cl.

24.25 23.60 22.51 23.10
5.80 6.45 7.54 6.95
60 60 60 60
cl. cl. cl. cl.

23.77 23.19 23.17 23.03 23.00 23.03 23.62
6.28 6.86 6.88 7.02 7.05 7.02 6.43
12 12 10 10 12 12
cl. cl. cl. cl. cl.

23.91 23.41 23.34 23.15 22.75
6.14 6.64 6.71 6.90 7.30
60 10 30.05 10 60

\pm Cross Sta 0-07'

TBM#2 - P-39

BIK 195

45

Conc. Apron to Sing. Car.
2+42 12⁵ Lt = \pm 10' wide level

28.31 28.15
4.66 4.82
15 12⁵
Gar. floor apron

2+17 9⁵ Lt = \textcircled{W}

32.97

T.P. 4.85 32.97 1.93 28.12
Nail in pole P.A. 940

27.1 26.7 26.5 27.1 27.1
2.9 3.3 3.5 2.9 2.9
10 7 8 10

2+00 9² Rt = 9" pole # P.A. 940

11' Lt = \pm 2' wide conc. walk
1+66 9⁵ Lt = \textcircled{W}

27.15 26.95
2.90 3.00
11
2' walk walk

apron to Sing. Car.
1+57 10¹ Lt = \pm 8' wide level conc.

27.20 27.09 26.9
2.85 2.90 3.1
12 10¹ 10
Gar. Apron

1+50

26.8 26.4 26.5 26.9 26.9
3.2 3.6 3.5 3.1 3.1
10 8 10 20

1+00

26.3 25.9 26.0 26.5 26.5
3.7 4.1 4.0 3.5 3.5
10 8 10 20

0+74- 8⁴ Rt = 12" diam pole # P.A. 910

30.05

BIK 1.95

3+60 - 13⁵ Rt = ϕ 1st Car. door

3+54 - 11⁵ Rt = start conc. apron
to 4 car Gar. - (Conc. Floor)

3+50 10² Rt = end fence
10² Lt = end fence

3+26 - 10³ Rt = ϕ 2' wide conc. walk

3+24 8⁵ Rt = (W)

3+22 8⁵ Rt = (W)

3+15 - 10' Rt = start picket fence

3+01 10² Lt = start board fence

3+00 8⁷ Rt = 12" diam pole # P.A960

2+74 10' Lt = (W)

2+50

46

ϕ

28.15

28.24

4.82

4.73

11⁵

13⁵

Apron

Floor

28.19

28.24

4.78

4.73

11⁵

13⁵

apron

at Car

29.5

28.9

28.3

27.9

27.8

28.1

3.5

4.0

4.6

5.0

5.1

4.8

20

10

7

8

10

29.2

28.5

28.0

27.7

27.5

28.1

28.1

28.21

3.7

4.4

4.9

5.2

5.4

4.8

4.8

4.76

20

10

8

7

8

10

10³

walk

28.9

28.5

27.8

27.5

27.1

27.9

27.9

4.0

4.4

5.1

5.4

5.8

5.0

5.0

20

10

8

8

9

10

28.1

27.9

27.5

27.1

26.8

4.8

5.0

5.4

5.8

6.1

20

10

8

10

32.97

BIK 195

Pole # P.A. 970

T.P. 5.94 35.39 3.52 29.45

4+00 10^E Lt. = Sly. edge A.C. Pavc.

3+95 9⁸ Rt. = (W)

3+94 11⁷ Rt. = end conc. apron

3+90 13^E Rt. = ϕ 4th Car. door

3+80- 13^E Rt. = ϕ 3rd Car. door

+ parking lot.

10' Lt. = start A.C. paved. drive

3+73 9⁸ Lt. = (W)

3+70 13^E Rt. = ϕ 2nd Car. door

47

ϕ

28.6	28.8	28.4	28.2	28.1	28.3
4.1	4.1	4.5	4.7	4.8	4.6
105	10	5		6	10
A.C.					

28.22 28.24

4.75 4.73
117 13E
Apron at Car.

28.14 28.24
4.83 4.73
117 13E
Apron Floor

28.09 28.24
4.88 4.73
117 13E
Apron Floor

28.0 28.1 28.7 28.4
4.9 4.8 4.2 3.5
10 8 10
A.C.

28.07 28.24
4.90 4.73
11E 13E
Apron Floor

32.97

Blk. 195

12' Lt. } = E.C. 2' Rad. ab. Ret
 12' Rt }
 5+14.88 = wly. ch. Cass.

10' Rt. = start alley curb
 10' Lt. = " " "
 10' Lt. = end A.C. parking lot.
 5+00.88 = wly. line Cass

5+00

4+99 9' Rt. = (W)

4+52 - 9' Rt. = (W)

4+50 10' Lt. = sly edge A.C.

9' Rt. = New. cor. Conc. block Bldg.
 4+31 8' Rt. = end A.C. parking lot

iron pipe set in conc.
 4+30 - 9' Rt. = 6" diam conc. filled

parking lot.
 8' Rt. = start A.C. paved
 4+01 8' Rt. = 14" diam pole # PA. 970

30.73
 4166
 60
 Cc

28.39
 7.00
 60
 C

28.58
 6.81
 60
 Cc

48

30.44
 4.95
 60
 C

29.99
 5.40
 12
 Cc

29.69
 5.70
 12
 C

29.69
 5.70
 10
 Cc

29.51
 5.88
 10
 C

29.31
 6.08
 10
 C

29.23
 6.16
 12
 C

29.54
 5.85
 12
 Cc

30.13
 5.26
 10
 A.C.
 Paved
 lot.

30.13
 5.26
 10
 Cc

30.16
 5.23
 10
 Alley
 Pave.

29.82
 5.57
 10
 C

29.83
 5.56
 10
 C

29.87
 5.52
 10
 Cc

30.09
 5.30
 10

29.6
 5.7
 10

29.8
 5.5
 10

29.59
 5.80
 30

29.17
 6.22
 10
 A.C.

28.8
 6.5
 10
 Gnd

28.6
 6.7
 10

28.6
 6.7
 10

28.67
 6.72
 85
 0.17

28.84
 6.55
 10
 A.C.

29.19
 6.20
 20

28.3
 7.0
 8
 Gnd

28.89
 6.50
 85
 A.C.

28.91
 6.48
 10

35139

Alley BIK 196 P.B.

Sketch - P25-RT.

0+27 - 10' Lt. = end house

0+02 10' Lt. = start house

10' RT. = start stucco Bldg.

92 RT. = End alley curbs

10' Lt.

0+00 = Fly Cass.

0-00 = End A.C. Pavc

T.P. 5.13 35.88 4.64 30.75

0-14 Cont.

12' RT. } = B.C. v' Rad. Cl. Ret.
12' Lt. }

0-14 = Fly cl. Cass

0-40 = Fly Cass

31.09	31.0	30.6	30.6	30.81	30.7
4.79	4.8	5.2	5.2	5.07	5.1
10'	10'		92	92	10
cl	end		end	cl	

31.07	30.68	30.71
4.81	5.20	5.17
10'		92
G	<u>35.88</u>	G

31.71	31.05	29.19	29.68
3.68	4.34	6.20	5.51
60	60	48	48
cl	G	G	cl

31.06	30.37	30.32	30.09	29.97	29.94	30.64
4.33	5.02	5.07	5.30	5.42	5.45	4.75
12	12	10		10	12	12
cl	G			G	G	cl

31.54	30.71	30.49	30.39	29.44
3.85	4.68	4.90	5.00	5.95
60	10		10	60

35.39

B1K 196

apron to sing bar.

1+56- 10' Lt. = 4 10' wide level conc.

33.00 32.55
2.88 3.33
15' 10'
Apron.

1+50

32.2 31.8 31.8 32.1
3.6 4.0 4.0 3.7
10 7 10

1+00

End. A.C. parking lot.
10' Rt. end chain link fence

31.5 31.2 31.1 31.2 31.33
4.3 4.6 4.7 4.6 4.55
10 6 10 10
Grd A.C.

0+75

31.2 30.9 30.8 31.2 31.1
4.6 4.9 5.0 4.6 4.7
19 8 10 20

0+50

8' Rt = 14" diam pole # P.A. 1004

31.4 31.4 31.4 30.7 30.6 30.8 31.0
4.4 4.4 4.4 5.1 5.2 5.0 4.8
10 10 9 8 7 10
at house

0+43-

10' Lt. = 4 9' wide dwelling

0+34-

10' Lt. = end stucco Bldg.
9' Rt. = start chain link fence
Start A.C. paved parking lot.

31.13 31.1
4.75 4.7
9 20
A.C. Pave.

0+28

10' Lt. = 4 2' wide conc. walk

31.4 31.29
4.4 4.59
15 108
walk

35.88

2+46. 10' Lt = end conc. apron

33.49 33.19
5.00 5.30
16 10
Floor Apron

2+42 12⁵ Ft. = Sing Gar. dirt floor

32.7
5.7
12.5
dirt Floor

T.P. 4191 38.49 2.30 33.58

38.49

2+26 10' Lt = start conc. apron
to double car.

33.32 33.09
2.56 2.79
16 10
Car. floor Apron

2+21 10' Lt = end fence
= end fence
= end conc. wall

33.38 32.2 32.9
2.50 3.6 2.7
10 10 10
T.W. B.W. G

2+00

32.6 32.2 32.1 32.3
3.2 3.6 3.7 3.5
10 6 10

1+74 8⁵ Ft. = 14" diam Pole # P.A. 102A

33.45 32.2 32.7
2.43 3.6 3.1
10L 10L 10
T.W. B.W.

1+67- 10' Lt = start Conc. wall.

1+74

32.98 32.93 32.74
2.90 2.95 3.14
15 10 9

1+66 - 9⁰ Ft. = 2' wide conc. walk

1+65 - 10³ Ft. = start picket fence

35.88

3+44 10' Pt. = ϕ 10' wide A.C. drive

33.28 33.29
5.21 5.20
10 20

west. entrance & dirt floor

3+26 - 18' Lt. = ϕ door to Sing Bar

33.6
4.8
18
Grid

3+00

33.3 32.9 33.0
5.1 5.5 5.4
10 10

2+99⁵ 9' Lt. = ϕ N. & S. Conc. wall

34.19 33.0 33.2
4.30 5.4 5.2
9' 9' Grid
T.W. B.W. 9'

2+99 8' = 12" diam pole # P.A. 1050
conc. wall

2+98 9' Lt. = ϕ 4' long E+W.

34.19 33.0 33.2
4.30 5.4 5.2
9' 9' 9'
T.W. B.W.

2+83 10' Pt. = ϕ 10' wide A.C. drive

32.89 32.94
5.60 5.55
10 20

2+50

32.9 32.6 32.7
5.5 5.8 5.7
10 10

38.49

4+34 12⁶ Lt = end apron

Conc. floor

35.47 34.74
3.02 3.75
20 12⁶
Floor Apron

4+04 12⁴ Lt = start Conc. Apron
to 3 car bar.

35.46 34.45
3.03 4.05
20 12⁴
Floor Apron

10' { Rt = start A.C. parking lot.
Rt = end conc. slab

4+00 8 Rt = 12" pole # P.A. 1076

34.0 33.6 34.0 34.01 33.96
4.4 4.8 4.4 4.48 4.53
10 10 10 10 20
A.C.
& Conc.

3+94 12' Lt = end Conc. apron.

34.89 34.29
3.60 4.20
21 12
Bar. Apron
Floor

3+74 10' Rt = start Conc. slab.
loading

33.6 33.89 33.99
4.8 4.60 4.50
10 10 20
end slab

3+65 12' Lt = start Conc. apron to
triple bar.

34.95 34.17
3.55 4.32
21 12
Bar. Apron
Floor

3+50

33.6 33.3 33.2
4.8 5.1 5.2
10 10

38.49

+ Garnet
Dawes
N.W.B.R.

BIK 196

B. Book
(32.54)

±

54

7.07 32.56

5419³⁵ Cont

14' RT } = E.C. 4' Rad ch. Ret.
14' LT }

5419³⁵ = wly ch. line Dawes

99' RT } = start alley curbs
99' LT }

4499³⁵ = wly line Dawes = start A.C. Pave

4498 = 8" RT = 10" diam pole # 505904H

4494 - 12" Lt = end conc apron

4464 12" Lt = start conc. apron
to 3 Car. Gar.

T.B.M.# A 5.02 39.63 3.88 34.61

4450

36.03	35.40	33.37	33.95
3.60	4.23	6.26	5.68
60	60	60	60
cl	cl	cl	cl

35.21	34.62	34.60	34.40	34.22	34.13	34.77
4.36	5.01	5.03	5.23	5.41	5.50	4.86
14	14	10		10	14	14
cl	cl			cl	cl	cl

36.43	35.08	34.69	34.89	35.09
4.20	4.55	4.94	4.74	4.54
99	99		99	99
cl	cl		cl	cl

35.80	36.15
3.83	3.48
12"	21"
Apron	Floor

35.66	36.16
3.97	3.47
12"	21"
Apron	Gar Floor

39.63

on rail wly 7 Dawes + 4 Alley BIK 196

34.6	34.2	34.44
3.8	4.2	4.05
10		10
		on A.C.

38.49

+ End.

Alley BIK 197 - P.B.

Sketch Page 26

55

0+25 - 11⁸ Rt. = N.E. cor. shed

37.4	37.2	36.2	36.5	36.6	36.8	31.5	31.2	37.2
3.7	3.7	4.9	4.6	4.5	4.3	3.6	3.9	3.9
20	11	10	7		6	7	10	11.2

0+05 11⁸ Rt. = N.W. cor shed. Conc. floor

36.8	36.8	35.4	35.6	35.4	36.7
4.3	4.3	5.7	5.5	5.7	4.4
20	10	9		10	11.8

and at Bldg.

0+05

0+00 = { 98' Rt } = end alley elev.
 { 78' Lt }
 = END A.C. PAVING & CURBS

35.91	35.65	35.13	35.25	35.50
5.24	5.60	6.02	5.90	5.65
CB.	9.8	6.02	9.8	CB
36.68	35.84		33.83	34.2
4.47	5.31		7.32	6.73
60	60		70	70
CB	CB		CB	CB

1A' Rt } = B.C. A' Rad. cb. Ret.
 1A' Lt }

0-20 = Ely. cb. line Dawes.

35.78	35.20	35.09	34.95	34.82	34.71	35.34
5.37	6.03	6.06	6.20	6.33	6.44	5.81
14	14	10		10	14	14
CB	CB			CB	CB	CB

0-40 = & Dawes

36.10	35.25	35.14	34.98	34.15
5.05	5.90	6.01	6.17	7.00
60	10		10	60

41.15

6.54 41.15

34.61

T.B.M. # 4 P. 54

Bik 197

1+54 13⁴ Lt = start conc. apron to

3 car. Car.

1+50

1+44 - 13' Lt = end apron

1+15 - 13' Lt = start conc. apron to

3 car. Car.

T.P. 5.18 43.97 2.36 38.77

1+00

0+50 - 8⁸ Rt = 10" pole # JPA 1110

0+28 - 8⁸ Rt = deadman

56

39.85 38.90
4.12 5.07
20 13
Car. Floor apron

39.0 37.9 36.0 38.2 38.6 38.1 37.9
4.9 6.0 5.7 5.7 5.3 5.8 6.0
20 10 6 8 10 15

39.44 38.56
4.53 5.41
20 13
Car. Apron

39.45 38.35
4.52 5.62
20 13
Car. Floor Apron

43.97

38.1 37.6 37.8 38.0 37.8
3.0 3.5 3.3 3.1 3.3
12 10 7 10

38.0 37.6 36.9 37.3 37.1 37.6
3.1 3.5 4.2 3.8 3.4 3.5
20 11 10 8 10

41.15

B/K 197

Nail in pole JPA 1150

T.P. 4.87 45.53 3.31 40.66

2+99 9⁶LT } = end fence.
9⁴RT }

2+84 9⁵RT = end shed + start board fence

2+74 9⁵RT = N.W. cor shed

2+51 8⁶RT = 14" pole # J.P.A. 1150

10⁵LT = start board fence

2+50 8⁵RT = end picket fence

2+13 - 8⁶RT = start picket fence

2+11 9⁸RT = end conc. drive

2+03 9⁸RT = start conc. drive

2+00

1+84 - 13⁴LT = end conc. apron

57

39.9 39.7 39.3 39.3 39.1 39.5
4.0 4.2 4.6 4.6 4.8 4.4
15 10 8 6 10

39.02

4.95
98
apron

38.87

38.51

5.10 5.46
98 40
Car. floor

38.9 38.9 39.5 38.6 38.7 39.0 38.6
5.0 5.0 5.4 5.3 5.2 4.9 5.3
20 11 10 5 6 10

39.87

39.21

4.10 4.70
20 13.4
Car. floor Apron

43.97

Alley BIK 197

T.R. 3.80 46.59 2.74 42.79

4+50

const.
4+25 - 15' Lt. = 4 car. Car. under

4+00

3+99 8" Lt. = 9" pole # PA. 1180

const.
3+75 - 15' Lt. = 4 car. Car. under

3+50

const.
3+23 - 15' Lt. = 4 car. Car. under

3+00

sta. 4
slly Cross in M.H. 4+39.19

41.1 40.8 41.0

4.4 4.7 4.5
10 10

41.7

3.8

15

Aprox. future
floor level.

40.7 40.4 40.8

4.8 5.1 4.7
10 10

41.2

4.3

15

Aprox. future
floor level

40.3 40.1 40.1

5.2 5.4 5.4
10 10

40.7

4.8

15

Aprox. future
floor level

39.9 39.6 39.6

5.6 5.9 5.9
10 10

45.53

BIK. 197

59

(32.56 - page 54) (32.54 Bench book)
N.W.B.P. Dawes & Garnet

T.P. 2.85 41.83 7.61 38.98

43.4 42.7 42.7 42.3 41.5
3.1 3.8 3.8 4.2 5.0
60 10 10 10 60

5+39¹⁴ = ϕ Events

43.1 42.3 42.1 42.0 41.1
3.4 4.2 4.4 4.5 5.4
60 10 10 10 60

(do not regard.)
5+32 = wly edge rock & oil pavement

43.4 42.1 41.7 41.6 41.22 40.51
3.1 4.4 4.8 4.9 5.37 6.08
40 10 10 5.43 92
top of ab

5+19¹⁴ 5A³ Mt. = Nly end curb. existing conc.

5+17 - 11' Mt. = 14" diam pole # P 45A 8

A+99¹⁴ = wly. Events

41.9 41.4 41.5
4.6 5.1 5.0
10 10

A+75 - 15' Lt. = ϕ A car. Cor. under

42.4
4.1
15
Approx. future
floor level
46.59

Roberts
Rorer
Moore
Morales
5-5-55
W.O.# 32567

X-Section Alley Block 281, Pacific Beach

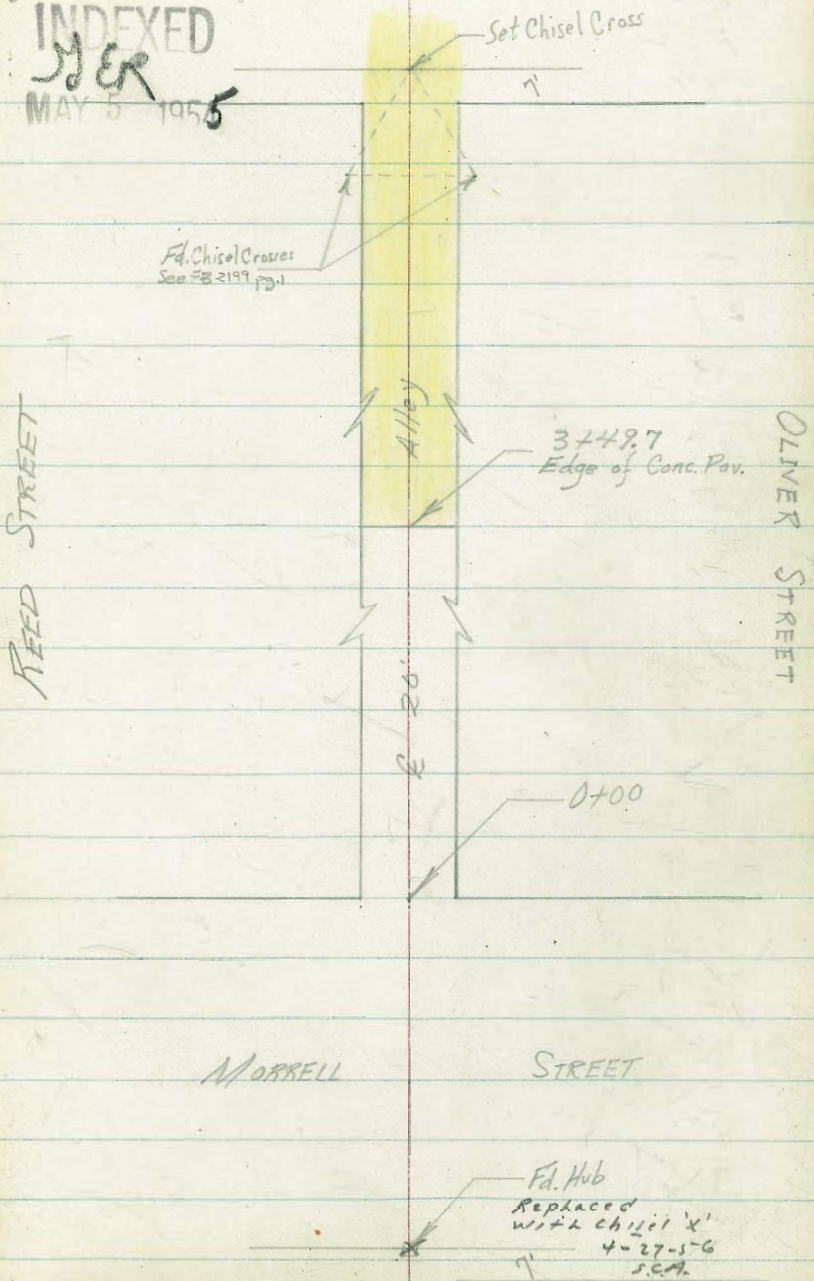
See FB 2199 pg 1



INDEXED
MER
MAY 5 1955

NOYES

STREET 60



Cont'd From Page 60

0+37 20° R & Single garage

0+25

0+15 72° R. to deadman.

0+00 East Line Morrell Street

0-13

0-23

0-40 L Morrell

BM

7.31 30.75 K

23.44 ^{Hub-Wly 7'} Line of

Morrell & Alley

30.75 K

Lt

Q

Rt 61

24.69
6.06 5.99
10.4 20
Conc Floor
8' Apron

26.5 25.9 25.3 25.2 25.2 24.6 24.6
4.3 4.9 5.5 5.6 5.6 6.2 6.2
20 10 7 7 10 20

26.6 26.3 25.1 25.5 25.5 24.8 24.5
4.2 4.5 5.1 5.3 5.3 6.0 6.3
25 10 8 6 10 25

27.8 26.8 25.9 25.3 25.1 23.5
3.0 4.0 4.9 5.5 5.7 7.3
50 25 10 8 50

26.9 25.3 24.2 21.5
4.4 5.5 6.6 9.3
50 25 50

26.5 25.4 24.3 21.3
4.3 5.4 6.5 9.5
50 25 50

Note!!
Fences are same!

1+49 7.7 Rt to Near Edge T. Pole # 562262H

1+25

T.P. 4.78 2442A 11.11 19.64

1+00

0+75

0+50 99 Lt End conc. ret. wall

0+40 99 Lt begin conc ret. wall

30.75A

20.0	19.6	19.6	19.7	19.6	19.3	19.2
4.4	4.8	4.8	4.7	4.8	5.1	5.2
30	20	10		7	10	20

2442A

20.8	20.8	20.7	20.9	20.3
10.0	10.0	10.1	9.9	10.5
30	10		10	20

23.0	22.8	22.5	22.7	22.6	22.3
7.8	8.0	8.3	8.4	8.2	8.5
20	10	6		10	20

26.3	24.1	24.5	24.1	24.2	23.5	23.1
4.5	6.7	6.3	6.7	6.6	7.1	7.7
99	99	99		8	10	30
Top	Foot	GRD.				

25.3	24.7	25.1
4.5	6.1	5.7
99	99	99
Top	Foot	GRD

30.75A

2795 29 Lt End garages

16.17
8.25

29
conc
Floor

2775

15.5	15.3	15.1	15.1	17.6	18.8	18.8
8.9	9.1	9.3	9.3	6.8	5.6	5.6
20	9.4		6	10	13	25
AC	AC					

2757 290 Lt begin garages

16.12
8.30
29
conc
Floor

2751 10.2 Lt End of conc block retaining wall
running N. & S. Ground level west of
wall same as top of wall.

16.3	19.2	15.8	16.1	16.3	16.1	16.0	17.7	19.1	18.5
8.1	5.0	8.6	8.3	8.1	8.3	8.4	6.7	5.3	5.9
25	10.2	10.2	9.1	8		6	10	15	25
AC	Tip wall	AC	AC						

2725

19.0	19.1	19.1	18.2	18.0	17.8	19.0	18.8	18.4
5.4	5.3	5.3	6.2	6.4	6.6	5.4	5.6	6.0
20	10	7	6		6	8	10	20

2700

18.7	18.8	18.7	18.6	18.8	18.5	18.3
5.7	5.6	5.7	5.8	5.6	5.9	6.1
20	10		5	7	10	20

1750

19.6	19.3	19.2	18.9	18.7
4.8	5.1	5.2	5.5	5.7
20	10		10	20

Check

6.50 23.45 = 23.44

T.P.

8.09 29.95 2.56 21.86

4+00

11.18
13.24

3+49.7 Edge of conc. paving

12.91
11.57
10
11.92
12.50
11.78
9.2
12.64

3+25

14.3	14.5	14.1	13.7	13.8	13.1	14.9	16.9	17.1
10.1	9.9	10.3	10.7	10.6	10.7	9.5	7.5	7.3
20	11	10	7		6	10	14	25

3+02

11.2 Lt & 5' conc walk

14.56	14.46	14.8	14.6	14.5	17.1	18.1	18.2
9.86	9.96	9.6	9.8	9.9	7.3	6.3	6.2
21	11	10		6	10	15	25
conc	conc						

2+99

End AC

15.7	14.9
8.7	9.5
20	96
AC	AC

2+98

7.4 Rt to N.E.T. Pole # 562263H

24.42

24.42

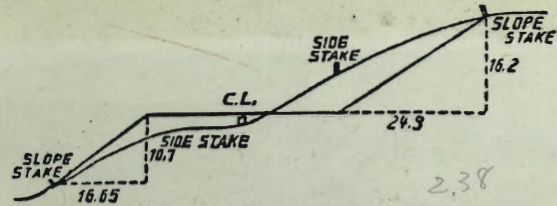
65

66

3237 - 223

14.08
 2.01
 16.69

499.21
 579.21
 579



DISTANCES FROM SIDE STAKES FOR CROSS-SECTIONING.
 SLOPE 1 1/2 TO 1. ROADWAY OF ANY WIDTH.

	0	.1	.2	.3	.4	.5	.6	.7	.8	.9	
0	0.00	0.15	0.30	0.45	0.60	0.75	0.90	1.05	1.20	1.35	0
1	1.50	1.65	1.80	1.95	2.10	2.25	2.40	2.55	2.70	2.85	1
2	3.00	3.15	3.30	3.45	3.60	3.75	3.90	4.05	4.20	4.35	2
3	4.50	4.65	4.80	4.95	5.10	5.25	5.40	5.55	5.70	5.85	3
4	6.00	6.15	6.30	6.45	6.60	6.75	6.90	7.05	7.20	7.35	4
5	7.50	7.65	7.80	7.95	8.10	8.25	8.40	8.55	8.70	8.85	5
6	9.00	9.15	9.30	9.45	9.60	9.75	9.90	10.05	10.20	10.35	6
7	10.50	10.65	10.80	10.95	11.10	11.25	11.40	11.55	11.70	11.85	7
8	12.00	12.15	12.30	12.45	12.60	12.75	12.90	13.05	13.20	13.35	8
9	13.50	13.65	13.80	13.95	14.10	14.25	14.40	14.55	14.70	14.85	9
10	15.00	15.15	15.30	15.45	15.60	15.75	15.90	16.05	16.20	16.35	10
11	16.50	16.65	16.80	16.95	17.10	17.25	17.40	17.55	17.70	17.85	11
12	18.00	18.15	18.30	18.45	18.60	18.75	18.90	19.05	19.20	19.35	12
13	19.50	19.65	19.80	19.95	20.10	20.25	20.40	20.55	20.70	20.85	13
14	21.00	21.15	21.30	21.45	21.60	21.75	21.90	22.05	22.20	22.35	14
15	22.50	22.65	22.80	22.95	23.10	23.25	23.40	23.55	23.70	23.85	15
16	24.00	24.15	24.30	24.45	24.60	24.75	24.90	25.05	25.20	25.35	16
17	25.50	25.65	25.80	25.95	26.10	26.25	26.40	26.55	26.70	26.85	17
18	27.00	27.15	27.30	27.45	27.60	27.75	27.90	28.05	28.20	28.35	18
19	28.50	28.65	28.80	28.95	29.10	29.25	29.40	29.55	29.70	29.85	19
20	30.00	30.15	30.30	30.45	30.60	30.75	30.90	31.05	31.20	31.35	20
21	31.50	31.65	31.80	31.95	32.10	32.25	32.40	32.55	32.70	32.85	21
22	33.00	33.15	33.30	33.45	33.60	33.75	33.90	34.05	34.20	34.35	22
23	34.50	34.65	34.80	34.95	35.10	35.25	35.40	35.55	35.70	35.85	23
24	36.00	36.15	36.30	36.45	36.60	36.75	36.90	37.05	37.20	37.35	24
25	37.50	37.65	37.80	37.95	38.10	38.25	38.40	38.55	38.70	38.85	25
26	39.00	39.15	39.30	39.45	39.60	39.75	39.90	40.05	40.20	40.35	26
27	40.50	40.65	40.80	40.95	41.10	41.25	41.40	41.55	41.70	41.85	27
28	42.00	42.15	42.30	42.45	42.60	42.75	42.90	43.05	43.20	43.35	28
29	43.50	43.65	43.80	43.95	44.10	44.25	44.40	44.55	44.70	44.85	29
30	45.00	45.15	45.30	45.45	45.60	45.75	45.90	46.05	46.20	46.35	30
31	46.50	46.65	46.80	46.95	47.10	47.25	47.40	47.55	47.70	47.85	31
32	48.00	48.15	48.30	48.45	48.60	48.75	48.90	49.05	49.20	49.35	32
33	49.50	49.65	49.80	49.95	50.10	50.25	50.40	50.55	50.70	50.85	33
34	51.00	51.15	51.30	51.45	51.60	51.75	51.90	52.05	52.20	52.35	34
35	52.50	52.65	52.80	52.95	53.10	53.25	53.40	53.55	53.70	53.85	35
36	54.00	54.15	54.30	54.45	54.60	54.75	54.90	55.05	55.20	55.35	36
37	55.50	55.65	55.80	55.95	56.10	56.25	56.40	56.55	56.70	56.85	37
38	57.00	57.15	57.30	57.45	57.60	57.75	57.90	58.05	58.20	58.35	38
39	58.50	58.65	58.80	58.95	59.10	59.25	59.40	59.55	59.70	59.85	39
40	60.00	60.15	60.30	60.45	60.60	60.75	60.90	61.05	61.20	61.35	40
41	61.50	61.65	61.80	61.95	62.10	62.25	62.40	62.55	62.70	62.85	41
42	63.00	63.15	63.30	63.45	63.60	63.75	63.90	64.05	64.20	64.35	42
43	64.50	64.65	64.80	64.95	65.10	65.25	65.40	65.55	65.70	65.85	43
44	66.00	66.15	66.30	66.45	66.60	66.75	66.90	67.05	67.20	67.35	44
45	67.50	67.65	67.80	67.95	68.10	68.25	68.40	68.55	68.70	68.85	45
46	69.00	69.15	69.30	69.45	69.60	69.75	69.90	70.05	70.20	70.35	46
47	70.50	70.65	70.80	70.95	71.10	71.25	71.40	71.55	71.70	71.85	47
48	72.00	72.15	72.30	72.45	72.60	72.75	72.90	73.05	73.20	73.35	48
49	73.50	73.65	73.80	73.95	74.10	74.25	74.40	74.55	74.70	74.85	49
50	75.00	75.15	75.30	75.45	75.60	75.75	75.90	76.05	76.20	76.35	50

THE NATIONAL BLANK BOOK COMPANY
 HOLYOKE MASSACHUSETTS
 NEW YORK CHICAGO BOSTON SAN FRANCISCO