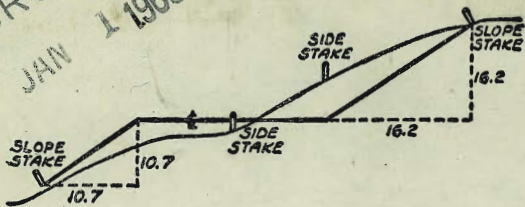


MICROFILM
JAN 1 1965



DISTANCES FROM SIDE STAKES FOR CROSS-SECTIONING
SLOPE 1 TO 1, ROADWAY OF ANY WIDTH

	0	1	.2	.3	.4	.5	.6	.7	.8	.9	
0	0.00	0.10	0.20	0.30	0.40	0.50	0.60	0.70	0.80	0.90	0
1	1.00	1.10	1.20	1.30	1.40	1.50	1.60	1.70	1.80	1.90	1
2	2.00	2.10	2.20	2.30	2.40	2.50	2.60	2.70	2.80	2.90	2
3	3.00	3.10	3.20	3.30	3.40	3.50	3.60	3.70	3.80	3.90	3
4	4.00	4.10	4.20	4.30	4.40	4.50	4.60	4.70	4.80	4.90	4
5	5.00	5.10	5.20	5.30	5.40	5.50	5.60	5.70	5.80	5.90	5
6	6.00	6.10	6.20	6.30	6.40	6.50	6.60	6.70	6.80	6.90	6
7	7.00	7.10	7.20	7.30	7.40	7.50	7.60	7.70	7.80	7.90	7
8	8.00	8.10	8.20	8.30	8.40	8.50	8.60	8.70	8.80	8.90	8
9	9.00	9.10	9.20	9.30	9.40	9.50	9.60	9.70	9.80	9.90	9
10	10.00	10.10	10.20	10.30	10.40	10.50	10.60	10.70	10.80	10.90	10
11	11.00	11.10	11.20	11.30	11.40	11.50	11.60	11.70	11.80	11.90	11
12	12.00	12.10	12.20	12.30	12.40	12.50	12.60	12.70	12.80	12.90	12
13	13.00	13.10	13.20	13.30	13.40	13.50	13.60	13.70	13.80	13.90	13
14	14.00	14.10	14.20	14.30	14.40	14.50	14.60	14.70	14.80	14.90	14
15	15.00	15.10	15.20	15.30	15.40	15.50	15.60	15.70	15.80	15.90	15
16	16.00	16.10	16.20	16.30	16.40	16.50	16.60	16.70	16.80	16.90	16
17	17.00	17.10	17.20	17.30	17.40	17.50	17.60	17.70	17.80	17.90	17
18	18.00	18.10	18.20	18.30	18.40	18.50	18.60	18.70	18.80	18.90	18
19	19.00	19.10	19.20	19.30	19.40	19.50	19.60	19.70	19.80	19.90	19
20	20.00	20.10	20.20	20.30	20.40	20.50	20.60	20.70	20.80	20.90	20
21	21.00	21.10	21.20	21.30	21.40	21.50	21.60	21.70	21.80	21.90	21
22	22.00	22.10	22.20	22.30	22.40	22.50	22.60	22.70	22.80	22.90	22
23	23.00	23.10	23.20	23.30	23.40	23.50	23.60	23.70	23.80	23.90	23
24	24.00	24.10	24.20	24.30	24.40	24.50	24.60	24.70	24.80	24.90	24
25	25.00	25.10	25.20	25.30	25.40	25.50	25.60	25.70	25.80	25.90	25
26	26.00	26.10	26.20	26.30	26.40	26.50	26.60	26.70	26.80	26.90	26
27	27.00	27.10	27.20	27.30	27.40	27.50	27.60	27.70	27.80	27.90	27
28	28.00	28.10	28.20	28.30	28.40	28.50	28.60	28.70	28.80	28.90	28
29	29.00	29.10	29.20	29.30	29.40	29.50	29.60	29.70	29.80	29.90	29
30	30.00	30.10	30.20	30.30	30.40	30.50	30.60	30.70	30.80	30.90	30
31	31.00	31.10	31.20	31.30	31.40	31.50	31.60	31.70	31.80	31.90	31
32	32.00	32.10	32.20	32.30	32.40	32.50	32.60	32.70	32.80	32.90	32
33	33.00	33.10	33.20	33.30	33.40	33.50	33.60	33.70	33.80	33.90	33
34	34.00	34.10	34.20	34.30	34.40	34.50	34.60	34.70	34.80	34.90	34
35	35.00	35.10	35.20	35.30	35.40	35.50	35.60	35.70	35.80	35.90	35
36	36.00	36.10	36.20	36.30	36.40	36.50	36.60	36.70	36.80	36.90	36
37	37.00	37.10	37.20	37.30	37.40	37.50	37.60	37.70	37.80	37.90	37
38	38.00	38.10	38.20	38.30	38.40	38.50	38.60	38.70	38.80	38.90	38
39	39.00	39.10	39.20	39.30	39.40	39.50	39.60	39.70	39.80	39.90	39
40	40.00	40.10	40.20	40.30	40.40	40.50	40.60	40.70	40.80	40.90	40
41	41.00	41.10	41.20	41.30	41.40	41.50	41.60	41.70	41.80	41.90	41
42	42.00	42.10	42.20	42.30	42.40	42.50	42.60	42.70	42.80	42.90	42
43	43.00	43.10	43.20	43.30	43.40	43.50	43.60	43.70	43.80	43.90	43
44	44.00	44.10	44.20	44.30	44.40	44.50	44.60	44.70	44.80	44.90	44
45	45.00	45.10	45.20	45.30	45.40	45.50	45.60	45.70	45.80	45.90	45
46	46.00	46.10	46.20	46.30	46.40	46.50	46.60	46.70	46.80	46.90	46
47	47.00	47.10	47.20	47.30	47.40	47.50	47.60	47.70	47.80	47.90	47
48	48.00	48.10	48.20	48.30	48.40	48.50	48.60	48.70	48.80	48.90	48
49	49.00	49.10	49.20	49.30	49.40	49.50	49.60	49.70	49.80	49.90	49
50	50.00	50.10	50.20	50.30	50.40	50.50	50.60	50.70	50.80	50.90	50

Distance of slope stake from side or shoulder stake for any width roadway, slope 1 to 1. If ground is nearly level, the cut or fill at side stake is located by the double entry method in left column and top row. The number in body of table in same row and column gives distance from side stake to slope stake. If ground is not level estimate the difference in elevation between the side stake and slope stake, lower target by this amount if cut, elevate if fill. Add this amount to cut or fill and find distance in table. Set up rod at this point, and line of sight should cut target. If it does not make the slight adjustment necessary.

Notes NW 65
Olney NW 35

2162

27
18
45
25
70

23488.58

45
42
47

DIRECT FOR USE OF TABLES

TABLE No. XIV

74
69.48
6.52

Distance of slope stake from side of shoulder
stake for any width roadway slope 1 1/2 to 1
is given by the number in the table multiplied
by the distance of the stake from the side of the
roadway.

IMPROVED TABLES
AND
INFORMATION

cut longer. If it does not make the slope ab-
solutely necessary.

TABLE No. VIII

To find Tangent and Length of curve of
any other degree, divide by degree of curve and
add correction found in column of corrections.
Degree of curve will be given. I may be found
by dividing tangent (or versine), opposite L by
given tangent (or versine).
The distance from a point on the tangent to
the curve is very nearly the square of the tangent
length divided by twice the radius.

DIRECTIONS FOR USE OF TABLES

TABLE No. XIV

Distance of slope stake from side or shoulder stake for any width roadway, slope $1\frac{1}{2}$ to 1. If ground is nearly level, the cut or fill at side stake is located by the double entry method in left column and top row. The number in body of table in same row and column gives distance from side stake to slope stake. If ground is not level estimate the difference in elevation between the side stake and slope stake, lower target by this amount if cut, elevate if fill. Add this amount to cut or fill and find distance in table. Set up rod at this point, and line of sight should cut target. If it does not make the slight adjustment necessary.

TABLE No. VIII

To find Tangent and External for curve of any other degree, divide by degree of curve and add correction found in column of corrections. Degree of curve with a given I may be found by dividing tangent, (or external), opposite I by given tangent, (or external).

The distance from a point on the tangent to the curve is very nearly the square of the tangent length divided by twice the radius.

27
1798
44.98
22.50
67.48

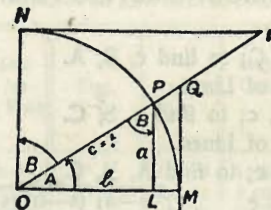


TABLE II
TRIGONOMETRIC FORMULÆ.

$$\begin{aligned} \angle A &= \angle MOP & \angle B &= \angle PON = \angle OPL \\ R &= OB = c = 1 \\ \sin A &= \frac{a}{c} = \frac{a}{1} = a = \text{cos } B = LP \\ \text{cos } A &= \frac{b}{c} = \frac{b}{1} = b = \text{sin } B = OL \\ \tan A &= \frac{a}{b} = \frac{MQ}{OM} = \frac{MQ}{1} = MQ = \text{cot } B = MQ \\ \text{cot } A &= \frac{NT}{ON} = \frac{NT}{1} = NT = \text{tan } B = NT \\ \text{sec } A &= \frac{OQ}{OM} = \frac{OQ}{1} = OQ = \text{csc } B = OQ \\ \text{csc } A &= \frac{OT}{ON} = \frac{OT}{1} = OT = \text{sec } B = OT \\ \text{vers } A &= \frac{LM}{OP} = LM = \text{covers } B \\ \text{covers } A &= \frac{OP-LP}{OP} = OP-LP = \text{vers } B \\ \text{exsec } A &= PQ = \text{coexsec } B \\ \text{coexsec } A &= PT = \text{exsec } B \\ \sin \frac{1}{2} A &= \sqrt{\frac{1-\text{Cos } A}{2}} & \cos \frac{1}{2} A &= \sqrt{\frac{1+\text{Cos } A}{2}} \\ \sin 2A &= 2 \sin A \cos A & \cos 2A &= \cos^2 A - \sin^2 A \\ \text{Law of Lines} & \frac{\sin A}{a} = \frac{\sin B}{B} = \frac{\sin C}{C} \\ \text{Law of Cosines} & c^2 = a^2 + b^2 - 2 ab \cos C \\ \text{Law of Tangents} & \frac{a+b}{a-b} = \frac{\tan \frac{1}{2} (A+B)}{\tan \frac{1}{2} (A-B)} \end{aligned}$$

TABLE XIII—CORRECTIONS FOR TANGENTS AND EXTERNALS

These corrections are to be added to the approximate values, found by dividing the tangent, or external, for a 1° curve (Table VIII) by the degree of curve, in order to obtain the true tangents, or externals. Intermediate values may be obtained by interpolation.

FOR TANGENTS ADD

Central Angle	DEGREE OF CURVE													
	5°	10°	15°	20°	25°	30°	35°	40°	45°	50°	55°	60°	65°	70°
10°	.03	.06	.09	.13	.16	.19	.22	.25	.28	.31	.34	.38	.42	.46
15°	.04	.10	.14	.19	.24	.29	.34	.39	.45	.51	.53	.58	.63	.68
20°	.06	.13	.19	.26	.32	.39	.45	.51	.58	.65	.72	.79	.84	.90
25°	.08	.16	.24	.33	.40	.49	.58	.67	.75	.83	.90	.99	1.06	1.14
30°	.10	.19	.29	.39	.49	.59	.69	.79	.89	.99	1.09	1.20	1.29	1.39
35°	.11	.22	.34	.47	.58	.69	.79	.81	.92	1.04	1.29	1.42	1.54	1.66
40°	.13	.26	.40	.53	.67	.80	.93	1.06	1.20	1.34	1.49	1.64	1.79	1.94
45°	.15	.30	.44	.60	.76	.91	1.06	1.21	1.37	1.52	1.70	1.87	2.04	2.21
50°	.17	.34	.51	.68	.85	1.02	1.19	1.36	1.54	1.72	1.91	2.10	2.29	2.48
55°	.19	.38	.57	.76	.95	1.14	1.32	1.52	1.72	1.92	2.14	2.35	2.56	2.77
60°	.21	.42	.63	.84	1.05	1.27	1.49	1.71	1.94	2.17	2.38	2.60	2.83	3.07
65°	.23	.46	.69	.93	1.16	1.40	1.64	1.88	2.13	2.38	2.63	2.88	3.13	3.39
70°	.25	.51	.76	1.02	1.28	1.54	1.80	2.06	2.33	2.60	2.88	3.16	3.44	3.72
75°	.27	.56	.83	1.12	1.40	1.69	1.98	2.27	2.57	2.87	3.16	3.47	3.78	4.09
80°	.30	.61	.91	1.22	1.53	1.84	2.15	2.46	2.78	3.10	3.44	3.78	4.12	4.46
85°	.33	.66	1.00	1.33	1.68	2.02	2.36	2.70	3.05	3.40	3.77	4.14	4.55	4.89
90°	.36	.72	1.09	1.45	1.83	2.20	2.57	2.94	3.32	3.70	4.10	4.50	4.91	5.32
95°	.39	.79	1.19	1.55	2.00	2.40	2.80	3.20	3.61	4.02	4.40	4.98	5.38	5.83
100°	.43	.86	1.30	1.74	2.18	2.62	3.06	3.50	3.95	4.40	4.88	5.37	5.85	6.34
110°	.51	1.03	1.56	2.08	2.61	3.14	3.67	4.21	4.76	5.31	5.86	6.43	7.01	7.60
120°	.62	1.25	1.93	2.52	3.16	3.81	4.45	5.11	5.77	6.44	7.12	7.80	8.50	9.22

FOR EXTERNALS ADD

Central Angle	DEGREE OF CURVE													
	5°	10°	15°	20°	25°	30°	35°	40°	45°	50°	55°	60°	65°	70°
10°	.001	.003	.004	.006	.007	.008	.009	.011	.012	.014	.015	.017	.018	.020
15°	.003	.007	.010	.014	.018	.023	.027	.029	.032	.035	.039	.043	.047	.051
20°	.006	.011	.017	.022	.028	.034	.038	.045	.051	.057	.063	.070	.076	.083
25°	.009	.018	.027	.036	.046	.056	.065	.074	.083	.093	.106	120	127	135
30°	.013	.025	.038	.051	.065	.078	.090	.103	.116	.129	.149	.170	.179	.188
35°	.018	.035	.054	.072	.086	.109	.131	.153	.175	.197	.213	.230	.247	.264
40°	.023	.046	.070	.093	.117	.141	.172	.203	.234	.265	.277	.290	.315	.341
45°	.030	.060	.093	.119	.153	.184	.216	.254	.289	.325	.351	.378	.411	.445
50°	.037	.075	.116	.151	.189	.227	.266	.305	.345	.384	.425	.467	.508	.550
55°	.046	.093	.142	.188	.236	.283	.332	.381	.420	.479	.530	.582	.641	.700
60°	.056	.112	.168	.225	.283	.340	.398	.457	.516	.575	.636	.697	.774	.851
65°	.067	.135	.204	.273	.343	.412	.483	.554	.625	.697	.711	.845	.922	1.01
70°	.080	.159	.240	.321	.403	.485	.568	.652	.735	.819	.906	.994	1.08	1.17
75°	.095	.182	.286	.383	.480	.578	.678	.777	.877	.977	1.07	1.18	1.29	1.39
80°	.110	.220	.332	.445	.558	.671	.787	.903	1.02	1.13	1.25	1.38	1.50	1.62
85°	.128	.259	.391	.524	.657	.790	.926	1.06	1.20	1.34	1.47	1.62	1.76	1.91
90°	.149	.299	.450	.603	.756	.910	1.07	1.22	1.38	1.54	1.70	1.87	2.03	2.20
95°	.174	.350	.522	.706	.885	1.06	1.25	1.43	1.62	1.80	1.99	2.18	2.38	2.58
100°	.200	.401	.604	.809	1.01	1.22	1.43	1.64	1.85	2.06	2.28	2.50	2.73	2.96
110°	.268	.536	.806	1.08	1.35	1.63	1.91	2.20	2.48	2.76	3.05	3.35	3.66	3.96
120°	.360	.721	1.08	1.45	1.82	2.19	2.57	2.95	3.33	3.72	4.11	4.50	4.91	5.32

PAGE

x-sec. Jewell - Chalcedony to Missouri 1
 " " Missouri to Diamond 6
 X-SECT. Cottonwood - N/wly UWA to Sully VESTA 11
 x-sect alley B/R 4 Cass to Daves 17
 x sec Garnet + Balboa Merrell to U.S. 101, Pacific Hwy 22-61

Robert
Cota
Moore
Fillen
10-30-51
wa. 31879

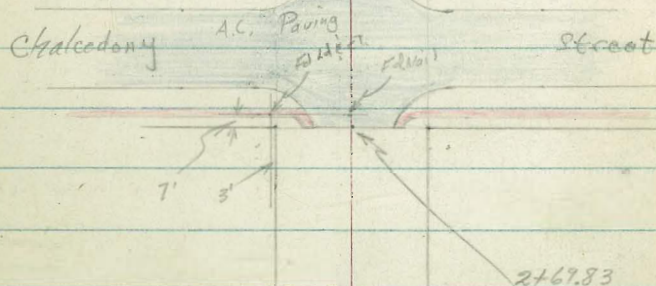
X-Section Jewell Street

Missouri to Chalcedony

7.12.0 pg 58

INDEXED
LAW
OCT 31 1951

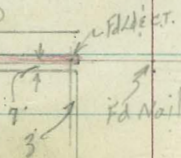
Chalcedony: -
50' Street
40' Roadway
11' Cb. For. to Walk
5' Walk
30' Carb. Pav.



Reduced by
R.W.M.
10-31-51

Missouri 1 -
50' Street
40' Roadway
11' Cb. For. to Walk
5' Walk

Missouri
(old surface)



Cont'd From Page 1

0-20 Nly Curb Line Missouri

100.41 99.8 101.38 100.9 100.9 101.5 101.0 102.3 102.8
 6.12 67 5.5 5.6 5.6 5.0 5.5 4.2 3.7
 90 90 40 40 17 16 40 90
 cb gutt cb gutt

0-40 E Missouri

99.7 100.5 100.4 100.9 100.4 101.0 102.2
 6.8 6.0 6.1 5.6 6.1 5.5 4.3
 90 40 25 18 40 90

0-60 Sly Curb Line Missouri

99.52 99.00 100.44 99.9 99.5 100.3 99.6 100.3 100.8 101.9
 7.1 7.5 6.0 6.6 7.0 6.2 6.9 6.2 5.7 4.6
 90 90 40 40 23 16 20 40 90
 cb gutt cb gutt

0-71

100.60
 5.73
 40
 NaK

0-76

100.63
 5.70
 40
 NaK

0-77 to 0-59 33² Lt to Row of 3 Eucalyptos Trees

0-80 Sq. Line Missouri

100.3 100.6 99.9 99.2 99.8 99.3 101.00 101.5
 6.2 5.9 6.6 7.4 6.7 7.2 5.5 5.0
 50 40 38 44 15 40 80

T.P. 1.44 106.53 $\bar{\lambda}$ 8.32 105.09

106.53 $\bar{\lambda}$

BM 0.13 113.41 113.28 NEBP

Chalcedony & Jewell

Contd From Page 2

T.P. 993 116.01A 0.45 106.04

1700

103.6	104.1	104.9	104.8	104.7	103.9	105.4	104.8	104.5	105.4	104.9	105.5	105.8
2.9	2.4	1.6	1.7	2.3	2.6	1.1	1.7	2.0	1.1	1.6	1.0	0.7
50	40	26	20	17	13	16	19	20	32	40	50	

0+83 37' Rt Begin Lath Fence

0+50

102.4	102.4	102.9	102.7	103.8	103.2	102.3	103.3	104.0	104.3
4.1	4.1	3.6	3.8	2.7	3.3	4.2	3.2	2.5	2.2
44	40	26	16	15	18	20	40	50	

0+00 My Line Missouri

101.6	101.7	102.0	101.4	102.1	101.3	102.7	103.3	103.6
4.7	4.8	4.5	5.1	4.4	5.2	3.8	3.2	2.9
50	40	32	14	18	20	40	90	

0-04

101.73
480
40
walk

0-09

101.70
483
40
walk

0-15 37' Rt to center P. Pole # 99751

0-17 to 2+68 34' Lt Row of 32 Eucalypto Trees
& a few stumps

Ave. 18" dia.

106.53A

106.53A

Cont'd From Page 3

2+52 21³/₄ Lt to Deadman

2+35 39⁷/₈ Rt 4' Conc. Walk

2+07 40' Lt End Fence

2+00

1+56 40⁵/₈ Rt 4' Conc. Drive

1+50

1+44 39⁵/₈ Lt Begin Picket Fence

1+25 39⁸/₈ Rt End Fence

1+22²/₂ 38³/₈ Rt to Center P. Pole # P4775

116.01A

Lt.

Rt.

Rt.

109.6	109.8	110.6	111.1	108.9	109.5	108.9	109.9	110.4	112.18	113.45
6.4	6.2	5.4	4.9	7.1	6.5	7.1	6.1	5.6	3.83	2.56
50	40	36	21	19	19	21	30	37.2	50	50
								conc	conc	conc

107.8	108.6	109.4	109.4	107.9	108.5	107.9	108.7	110.1	110.7
8.2	7.4	6.6	6.6	8.1	7.5	8.1	7.3	5.9	5.3
50	40	28	21	19	16	20	40	50	50

108.65	108.96
7.36	7.05
40.2	65.5
conc.	fair

106.0	106.8	107.4	107.1	106.3	107.2	106.7	108.3	108.5	108.7
10.0	9.2	8.6	8.9	7.7	8.8	9.3	7.7	7.5	7.3
50	40	30	20	18	16	32	40	50	50

116.01A

check

2.73 113.28 = 113.28

♀ Chalcedony

110.13	111.11	111.34	111.80	111.58	112.68	113.44
5.88	4.90	4.67	4.21	4.43	3.33	2.57
100	50	22		18	50	100

Sly curb line Chalcedony

110.39	110.28	110.88	111.41	111.30	111.97	112.41	112.72	113.19
6.62	5.73	5.13	4.60	4.71	4.04	3.60	3.29	2.82
100	50	50	20	20	50	50	100	100
cb	Gutt	cb	Gutt		Gutt	cb	Gutt	cb

2+69.83 Sly Line Chalcedony (Paving Edge)

110.84	110.65	109.99	110.53	110.79	110.75	110.51	111.39	111.60
5.17	5.36	6.02	5.48	5.22	5.26	5.50	4.62	4.41
282	212	212	10	10	10	212	212	292
WAK	cb	Gutt				Gutt	cb	WAK

2+68

111.4	111.6	110.1	110.6	110.1	111.3	112.2
4.6	4.4	5.9	5.4	5.9	4.7	3.8
40	24	20		20	22	40

2+61.5 21.8 Lt to center Guy Pole

116.01X

116.01X

D. Smith
C. Allen
R Taylor

"X" Sec Jewell St

Missouri to Diamond

W0# 31584

2-27-52

Missouri St

cd nail used in previous pages

21692e

INDEXED
Law
FEB 28 1952

80'

E Jewell St

0+00

end cd nail

10' 24"

20' 6 1/2"

18' 0"

5' 0"

80'
20'

E Diamond St
con paving

20'

80'

Lt=West

RT=East 7
723 93.72
05

Mid Pt. Return RT

0-20 Nly ob line Diamond

92.1	93.2	93.2	93.3	92.8	93.2	93.70	93.1	93.80	93.9	94.67
88	72	72	76	81	72	725	78	75	70	628
80	40	20	16	30	30	30	30	40	80	80
				94.7	06	80	94	06	94	05

0-30 Nly paving edge

92.41	93.20	93.19	93.13	92.97	93.17	94.13
854	725	726	782	728	728	682
80	40	20		20	40	80

0-40 E Diamond

92.45	93.21	93.19	93.11	93.05	92.86	94.10
850	724	726	784	790	809	685
80	40	20		20	40	80

0-50 Sly paving "con" edge

92.38	93.16	93.07	92.95	92.63	92.87	93.95
857	729	788	820	832	808	700
80	40	20		20	40	80

0-80 Sly Diamond

90.9	92.2	92.4	90.7	91.3	91.6	91.4	90.9	91.9	92.7	93.1
102	82	85	103	96	93	95	102	92	82	78
80	40	25	20	11		12	17	26	40	80

TP 052 100 35 12 95 100 42

BM 009 113 37 113 38

NEBR Jewell
Chalcedony

100 25

Lt=West

S

Rt=East

8

1415 13° Lt + 6° Rt. Begin rear cold lay paving

1400

95.6	95.7	95.8	95.1	95.6	95.6	94.9	95.8	96.8	97.1
53	53	51	58	53	53	60	51	41	38
50	40	22	19		8	16	19	40	50

0489 37° Rt 9 4' walk

96.66	96.92
429	403
372	472
walk	

0466 37° Rt 817^s drive

96.02	96.78
493	417
372	472
drive	

0450

94.8	94.7	94.9	94.3	94.7	94.2	94.9	95.6	95.9	96.3
61	62	60	66	62	62	60	53	50	46
50	40	21	18		15	21	32	40	50

0442 37° Rt 4' walk

96.90	96.27
505	468
372	472
walk	

0400 Nly Diamond end of on Rt

D-17 24° Lt & Rt water meters

93.4	93.9	93.6	93.6	92.8	93.72	94.5
75	70	73	73	81	723	64
40	24	15		20	20	40

24 valve π 100 95

2418 39° Lt & 3' walk

2409 39° Rt & 18' drive

2402 41° Lt & double garage + con floor + apron

1470

1460 39° Rt & 18° drive + walk comb.

1452 33° Lt Begin row of 19" Eucalyptus trees 6 apart
17 trees

1445 36° Rt & 12" Power Pole # JP1704

1445 19° Lt & 14" Anchor Pole

1435

1423 36° Rt & 8" Anchor Pole None

1422 22° Lt & 22" Power Pole # 4724

Lt = West

Rt = East

9

98.98	98.97
197	198
50	392
walk	

99.04	98.77
192	218
443	412
Floor	Apron

100.32	100.58
063	037
398	436
drive	Floor
	gar

97.8	97.8	97.8	97.9	97.1	97.3	97.8	97.7	97.1	97.8	98.8	99.4
3L	3L	3L	30	38	36	3L	33	38	3L	2L	15
50	40	30	20	15	14	6	15	18	30	40	

99.15	99.33
180	162
392	478
inv	Floor
	gar

96.4	96.6	96.8	96.3	96.6	96.8	96.8	96.4	96.8	97.6	97.9
45	43	46	46	43	4L	4L	45	46	33	30
80	40	20	17	13	5	14	18	40	80	

T 100 95

Lt. West

2

870 East

10

BM starting

0³⁰

113²⁷

113²⁸

TP₂

13³¹

113⁵²

069

100²⁶

2191 34⁴ Lt End 2 14" average Eucalyptus (17) trees

2169²⁸ sly. Missouri ST

2120

99.9	99.5	99.0	99.3	99.7	99.8	99.7	98.9	99.6	101.0
10	12	12	16	12	12	13	20	13	40
40	26	14	13		4	7	16	19	40

99.9	98.6	98.3	98.8	98.7	98.0	98.9	99.7	100.3
20	23	25	21	23	23	20	12	05
40	23	13	5	16	20	30	40	

100²⁵

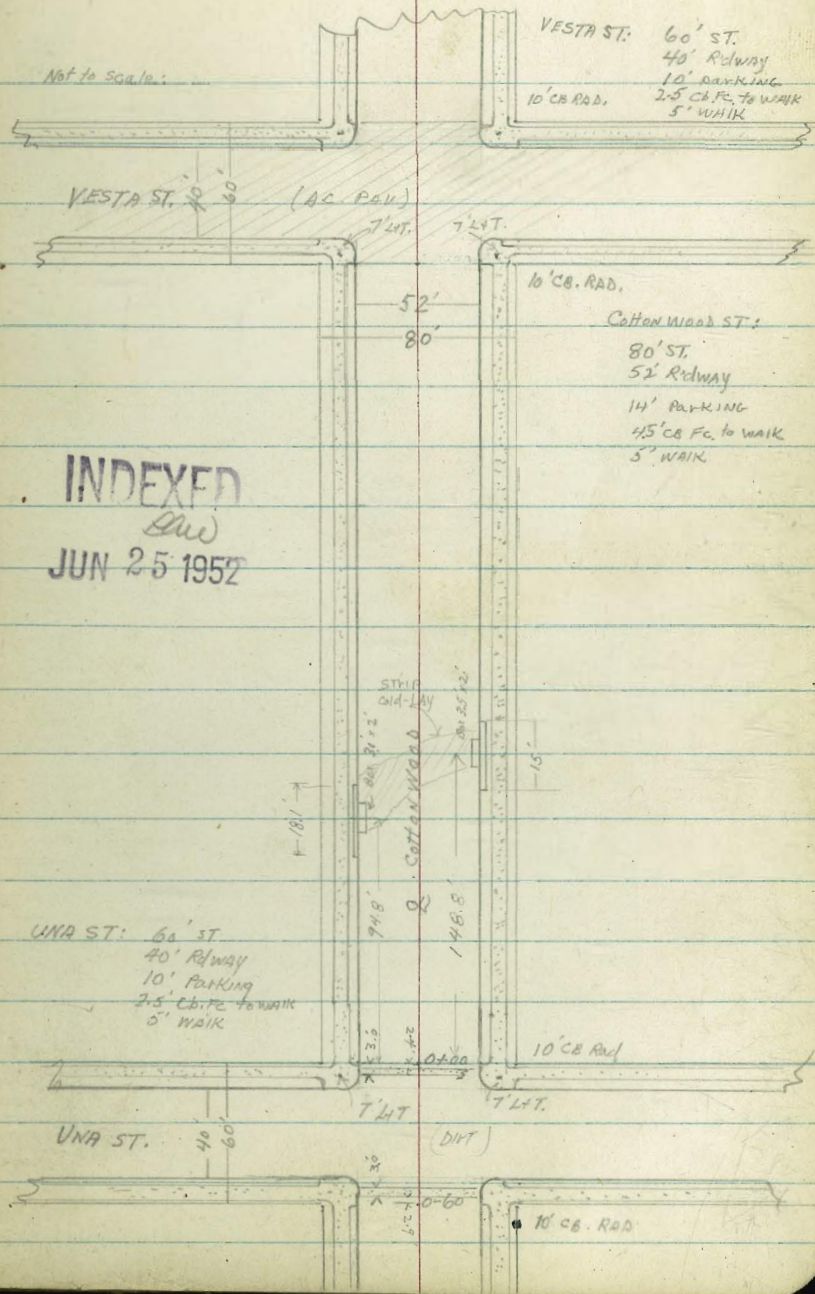
Clark 6-23-52
Shephard W.O. 31664
Bruner
Bryson

X-SECT. COTTONWOOD ST. N/WLY

LINE UNA ST. TO SELLY LINE VESTA ST.

(As Per Int. Reg. 6127)

Notes page: 12



L.T. £ R.T.

0+85.6 Reg. 18' CB inlet & Box on LT

0+85 26' RT £ 19' Drive

0+50

0+36 26' RT £ 13.50' Drive

0+12 (Brk)

0+00 S/E 14 Line UNA

0-024

0-053 N/Wly edge 3' conc. Strip
(7" thick)

0-07 Mid-pts of S/Ely Returns

REDUCED BY GIBLIN

10.45	6.75	7.95	6.8	6.4	6.2	6.80	10.40
26	26	26	13	26	13	26	26
TCB	NET	NET				LIP	LIP
11.6	11.05	10.3	10.7	11.4	11.6	11.3	12.12
6.04	6.05	6.9	6.9	5.8	5.6	5.9	5.08
35.3	26	26	13	13	26	26	26
12.15	12.00	11.2	12.2	12.4	12.6	12.7	13.50
5.2	5.2	6.0	5.0	4.8	4.6	4.5	3.70
26	26	26	13	13	13	26	26
TCB	TCB	TCB	TCB	TCB	TCB	TCB	TCB
12.51	12.23	11.6	12.5	12.8	12.9	13.1	13.50
4.6	4.9	5.6	4.7	4.4	4.3	4.1	3.35
35.5	26	26	13	13	13	26	26
B.WRK	TCB	TCB	TCB	TCB	TCB	TCB	TCB
12.04	11.53	12.84	12.90	12.90	12.90	13.05	14.23
5.16	5.67	4.86	4.30	4.10	3.97	4.0	3.29
26.13	26.3	13	13	13	19.2	26.3	26.3
TCB	G	TCB	TCB	TCB	END	TCB	TCB
12.03	11.30	12.80	12.98	12.98	13.17	13.4	13.93
5.17	5.90	4.90	4.38	4.22	4.03	3.8	3.27
27.5	27.5	13	13	13	19.2	26.3	26.3
TCB	G	TCB	(CONC)	(CONC)	END	TCB	TCB
12.06	11.8	12.80	12.98	12.98	13.17	13.4	13.93
5.14	5.4	4.9	4.38	4.22	4.03	3.8	3.27
29	29	13	13	13	19.2	26.3	26.3
TCB	G	TCB	(CONC)	(CONC)	END	TCB	TCB
12.06	11.8	12.80	12.98	12.98	13.17	13.4	13.93
5.14	5.4	4.9	4.38	4.22	4.03	3.8	3.27
29	29	13	13	13	19.2	26.3	26.3
TCB	G	TCB	(CONC)	(CONC)	END	TCB	TCB

17.20

D. Smith
J. Rorer
P. Taylor
C. Shutt

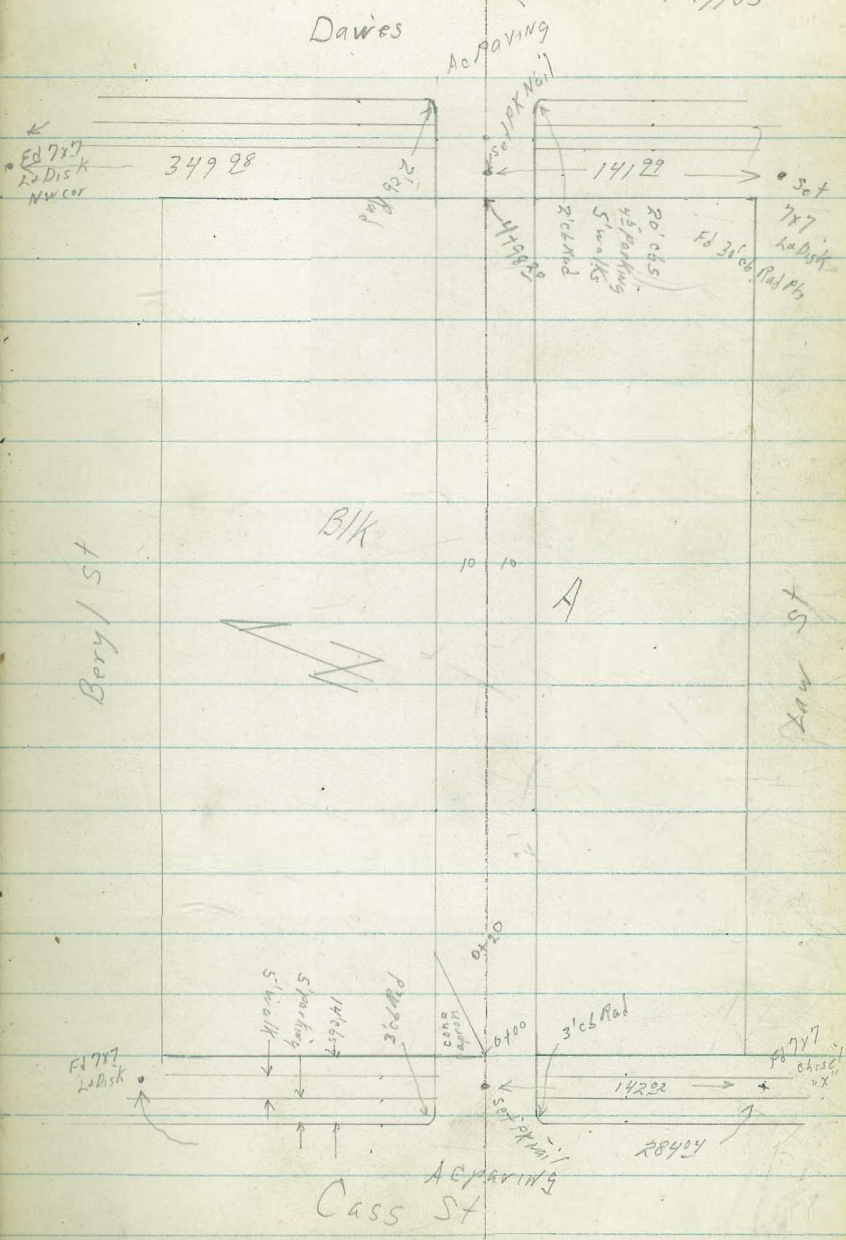
Cross Sec Alley BIK "A" 1st Add. Ocean Front
Btwn Dawes & Cass Lane Beryle

wo # 32261 17

5/29/53

INDEXED
JUN 2 1953

Reduced & Plotted
C. Peterson
6-18-53



Lt=North

Rt=South

18

0+87 11.7 Lt Begin Conc Apron

0+50

0+37 10.5 Rt End conc apron

0+32 9.9 Lt & 8.5 conc drive

0+28 10.6 Rt & 2 car garage & apron

0+20 End apron on Lt.

0+00 Begin 10' Lt apron. (see detail)

0+00 Ely Cass end. chs & Ac paving
1 10.6 Rt Begin conc apron

0-14 Ely Cb Live Cass

73.07 73.05
2.80 2.82
2.17 11.7
71.8 71.1
4.1 4.8 5.0 5.3 5.6
25 10 10 25

10.9 10.6 10.3

71.21 71.31

4.66 4.56
10.5 apron 16.4

71.67 71.09
4.20 4.78
15.2 9.9

71.22 71.39

4.65 4.48
10.6 apron 16.4 Floor

70.81

5.06 70.17 70.52
10 apron

5.70 5.35

70.77 70.52 70.17 10 10.5 10.5 10.6 10.5 10.6 10.5

5.10 5.35 5.70 5.35 5.36 5.36 4.82

71.18 70.92 70.73 9.9 9.9
C6 Gut 10.05 10.02
4.69 5.35 5.14 5.82 5.85 6.03 6.21 6.24 5.43 6.81 6.10
50 50 13 13 10 10 13 13 50 50
C6 Gut C6 Gut Gut C6 Gut C6

BM

9.47

75.87

66.40 SWBP Low Cass

75.87

2 +00

1+95 11.5 Φ 2.5' conc walk

1+76 11.5 Lt. End conc apron

1+64 11.3 Lt. Begin conc apron

1+50

1+42 12.5 Lt. Φ 11' conc apron single garage

1+25 8.6 Rt. Φ 4 1/2' walk

TP, ^{pole #A1020} 1+02 7.08 80.78 2.17 73.70

1+07 11.7 Lt. End conc apron

1+04 11.0 Lt. Φ 10" cypress tree

1+02 9.2 Rt. Φ 12" power pole #A1020

1+00 10.5 Rt. begin conc block wall

1+00

15.5 74.9 14.6 Φ 14.6 74.8 74.4
5.3 5.9 6.2 6.2 6.0 6.4
25 10 7.0 10 25

75.15
5.63
11.5 14.60
6.18
11.5 14.50
6.28

11.3.

73.8 13.6 13.2 13.5 12.2 12.6 12.4
7.0 7.2 7.6 7.3 8.6 8.2 8.4
25 10 10 10.6 11 25

13.51 13.26
7.37 7.52
15.9 Floor 12.5 apron

12.53 12.13 12.01
8.25 8.65 8.77
8.6 9.0 20.0

73.12 80.78 π
2.75 2.71
2.17 11.7

10.6
5.3
13.2 12.1 11.1 10.5
2.7 3.2 4.2 4.4 3.3 4.0 4.6
25 10 4 7 10 25

75.87 π

TP₂ - 5.35 82.01 4.12 76.66

3+50 98 RT ⊕ 8" power pole PA 1070

3+50

3+10 17.11 Lt ⊕ single car garage

3+00

2+61 18.7 Lt ⊕ single garage

2+50

2+34 13.6 Lt ⊕ 2.3' conc walk

2+11 10.6 Rt ⊕ 16.5 conc apron + 2 car garage

2+02 10.4 Rt ⊕ 14" power pole A1040

11.4	11.1	16.1	16.6	15.8
3.4	3.7	4.1	4.2	5.0
25	10	10	35	

11.0	16.5	16.4	16.3	15.6
3.8	4.3	4.4	4.5	5.2
25	10	10	25	

16.4	18.7	15.8	16.0	15.5
4.4	4.9	4.9	4.8	5.3
25	10	MH rim	10	25

16.16	16.39
4.32	4.39
24	13.6

15.14	15.28
5.64	5.50
10.6	19.0
apron	Floor

80.78 π

9.36 66.40 ^{SW BP} Law + Cass
+
T P₃ 1.44 75.76 7.69 74.32

5+18²⁰ Wly Cb line Dawes

5+00 9.5 Rt. & 8" power pole #JPA1090

4+98²⁰ 10.2 Rt. end conc block wall

4+98²⁰

4+81 9.1 Rt & Deadman

4+50

4+49 10.2 Rt. Begin conc block wall 4.2 high

4+48 9.8 Lt. End board fence

4+00 9.9 Lt. Begin board fence 4.5 high

4+00

3+70 15.7 Lt. & single garage // alley facing west

80.43 19.04 19.59 19.11 19.06 18.54 18.60 18.59 19.13 17.63 18.13

1.58 2.07 2.42 2.90 2.95 3.17 3.41 3.42 2.88 4.38 3.88

50 50 12 12 10 10 12 12 50 50

Cb Gut Cb Gut Gut Cb Gut Cb

80.3 19.18 19.15 19.13 19.11 19.26 19.2 19.8

1.7 2.23 2.56 2.7 2.90 2.75 2.8 2.2

25 10 10 10 10 10 25

Cb Gut Gut Cb Feeding

19.4 19.1 18.6 18.5 18.2

2.6 2.9 3.4 3.5 3.8

25 10 10 25

18.1

3.9

10.2

Feeding

18.3 17.8 17.7 17.2 16.7

3.7 4.2 4.8 4.8 5.3

25 10 10 25

18.47

3.54

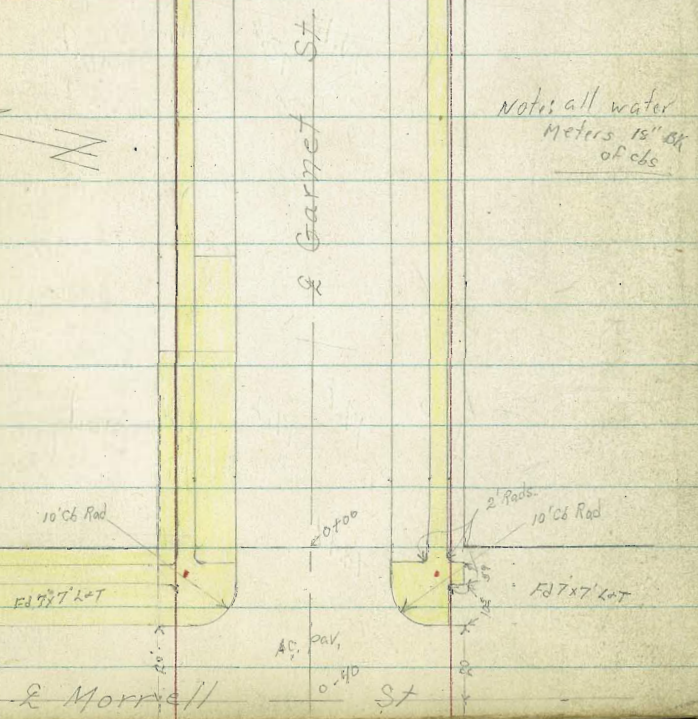
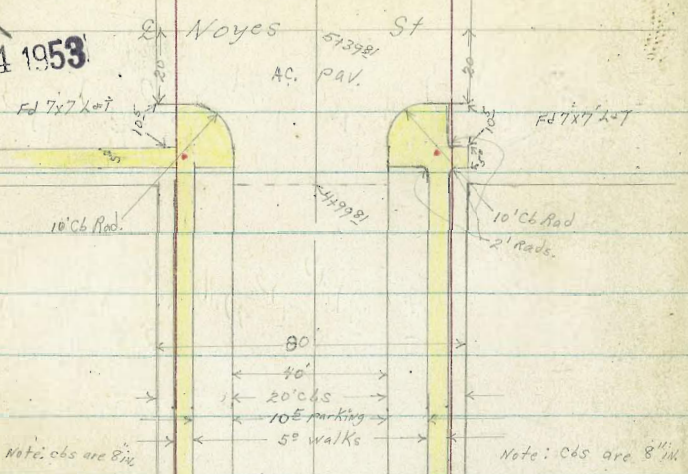
21.2

& garage Floor

82.01 π

D.S. Mill
INDEXED
SEP 14 1953

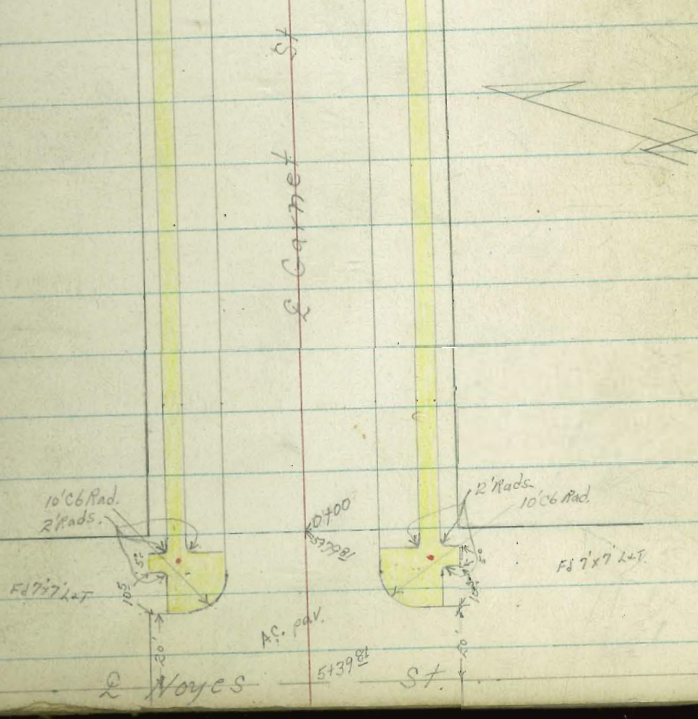
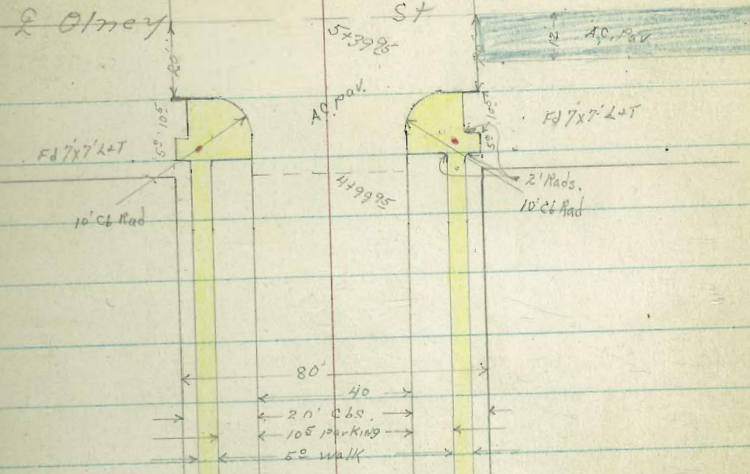
X" Sec Garnet St Morrell to



Note: all water meters 15" or of c&bs

Pacific Hwy.

W021137
 7-20-53



CONV. Pav.

Q. Pendleton

AC Pav

18' BerM

ST

51398

FD 7x7 LOT

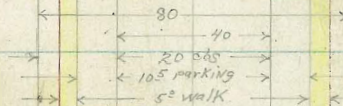
2' Rads

20' Ck Rad

44998

FD 7x7 LOT

20' Ck Rad



Note: 8' cbs

St

Garnet St

Note:
All water
meters 18' dia
of cbs

10' Ck Rad

2' Rads

Q. Olney

St

51398

ST

20' Ck Rad

2' Rads

18' BerM

AC Pav

18' BerM

AC Pav

P.L. Live

CONT. P.H.D



23

12" CON PIPE

20' CORRUGATED PIPE

9" THICK WALL ST

9" THICK WALLS

CON STORM DITCH

30' CORRUGATED PIPE

36" PIPE



3' wide
AC walk with
2 1/4" Headers

AS. Pav. parking area

Stucco
Grocery Store
Bldg

20' Ck Rad

2' Rads

FD 7x7 LOT

CON Pav

Q. Pendleton

AC Pav

51398

ST

20' Ck Rad

2' Rads

FD 7x7 LOT

18' BerM

Garnet St

0-13 Lt Begin con driveway

0-100 Fly Morrell

0-04 22⁴ Lt. & Street Sign (Name) con IV.

0-05 at Begin con driveway

0-10

Mid pts Fly Returns

0-20 Fly Ch Morrell

0-40 & Morrell

TP

5⁷⁴ 6⁹⁴⁸

4⁶² 6³⁷⁴

NWBP

BM

6³⁴ 6⁸³⁶

6²⁰²

Noyes & Garnet

4499 Lt-North
449 453 503 511 525
353 305 20 20 20
w/k w/k 11/2 2ut

6512 6502 6471 6414 6466
436 446 427 534 482 461 425 567 504 424 484
40 305 20 20 10 10 20 305 356 40
w/k w/k 66 5ut

Rt-South

27

6487 6453 6438 6449 6464 6464
425 425 567 504 424 484
10 20 305 356 40
5ut w/k w/k

6385 6395 6445 6472 6473
563 553 503 426 425
22 20 305 356 40
22 20 w/k w/k

6514 6496 6478 6423 6471 6492 6468 6492 6471 6475
434 453 470 525 477 453 480 522 500 477 473
40 305 20 20 10 10 20 20 305 40
w/k w/k 66 5ut 66 w/k

6482 6426
466 522
66 2ut

6404 6404
544 504
22 66

6491 6438 6486 6434 6436 6492 6505 6488 6425 6407 6446 6405 6425
454 510 462 514 512 456 443 460 523 511 502 513 427
10 70 30 30 20 10 10 20 30 30 40 40
66 2ut 66 2ut 66 2ut 66 2ut 66 2ut 66 2ut 66 2ut 66 2ut 66 2ut 66 2ut 66 2ut

6517 6514 6482 6537 6554 6571 6531 6526 6507
441 399 466 411 394 407 417 422 441
26 40 20 10 10 20 20 26 40

π 6948

1739 35^s Lt & 6' con walk

1700 Lt End con driveway

0776 Rt End con driveway

0766 Lt Begin con driveway

0750

0746 Rt Begin con driveway

0745 25^s Lt & 4x4 Bus Stop sign

0744 Lt End con drive

0726 Rt End con driveway

Lt = North

Rt = South

25

5411
537
40
w/k
5413
535
353

5446
502
40
5452
518
305
w/k
5408
540
20
c6
5454
520
20
lip
5456
522
20
gut
5405
540
10
5428
528
10
5493
555
10
5430
618
20
5403
563
20
5402
546
305
w/k
5405
544
40

5470
608
20
gut
5477
551
305
w/k
5426
522
355
w/k
5421
517
40

5460
488
40
5456
492
305
w/k
5408
568
20
lip
5422
576
20
gut

5423
475
40
5469
479
305
w/k
5430
518
20
c6
5401
567
20
gut
5436
512
10
5408
500
10
5415
531
10
5456
592
20
gut
5417
531
305
w/k
5446
502
355
w/k
5425
522
40

5459
589
20
gut
5463
525
20
lip
5418
530
305
w/k
5446
502
355
w/k
5426
522
40

5479
469
40
5478
420
353
w/k
5479
474
305
w/k
5499
549
20
lip
5408
560
20
gut

5471
527
20
gut
5474
574
20
lip
5431
571
305
w/k
5456
422
353
w/k
5445
503
40

T 69 48

3700

2174 20° Lt & 4' con walk

2156 22° Rt & 12" Power Pole # 2041

2150

2135 22° Rt & dead man

2126 26° Lt & 36" Palm tree

2100

1773 35° Rt & 3' con walk

1771 35° Lt & 4' con walk

1771 25° Lt & 36" Palm tree

1762 35° Rt & 4' con walk

1750

Lt-North

63.48 63.40 63.09 62.40 63.01 63.16 62.81 62.26 62.81 62.94 62.88
 40 30^s 20 20 10 10 20 20 20 30^s 40
 w/k 26 94t 10 94t 26 w/k
 63.20 63.18 63.14 63.19 63.19
 5.88 6.08 6.06 6.39
 40 35^s 30^s 20
 w/k

Rt-South 26

63.58 63.57 63.27 62.64 62.21 63.20 63.17 62.57 63.07 63.23 63.08
 5.2 5.91 6.21 6.84 6.27 6.08 6.31 6.91 6.41 6.25 6.4
 40 30^s 20 20 10 10 20 20 20 30^s 40
 w/k 26 94t 10 94t 26 w/k

63.88 63.81 63.53 62.97 62.54 62.69 63.43 62.76 63.35 62.49 63.38
 5.6 5.67 5.93 6.51 5.94 5.79 6.05 6.22 6.13 5.99 6.1
 40 30^s 20 20 10 10 20 20 20 30^s 40
 w/k 26 94t 10 94t 26 w/k

62.29 62.90
 5.24 5.58
 40 35^s
 w/k

62.77 62.76
 5.71 5.72
 35^s 40
 w/k

63.79 63.76
 5.69 5.72
 35^s 40
 w/k

62.18 62.91 62.74 62.26 62.82 62.95 63.67 63.04 62.61 62.78 62.68
 5.3 5.57 5.74 6.22 5.66 5.53 5.81 6.41 5.82 5.76 5.8
 40 30^s 20 20 10 10 20 20 20 30^s 40
 w/k 26 94t 10 94t 26 w/k

62.48

4450

4445 35° RT & 3' con walk

4444 26° LT & 20" Palm tree

4436 25° RT & 20" clump Olives

4429 35° LT & 5' con walk

4418 26° LT & 28" Palm tree

4411 35° RT & 2' con walk

4404 20° RT & 16" Olive clump

4400

3490 20° LT & 3' con walk

3487 26° LT & 24" Palm tree

3474 22° RT & 10" Power Pole #2075

3466 26° RT & 4" Olive tree

3450

TP₂ 424 67²² 62⁹⁸ 62⁹⁸

3435 20° LT & 4' con walk

LT=North

6212 45 40
6256 466 w/k
6226 496 20
6157 565 20
6204 518 20
6224 535 10

RT=South

6187 535 10
6148 574 20
6201 581 20
6218 508 305
622 50 w/k
6228 40

6316 406 40
6381 471 355
w/k

6245 477 355
6242 480 40
w/k

6312 41 40
6288 434 305
6256 466 20
6185 537 20
6225 497 20
6247 475 10

6217 505 10
6179 513 20
6233 489 20
6214 428 305
6212 51 40
w/k

6312 40 40
6291 431 355
6292 430 305
6271 457 20
w/k

6312 41 40
6312 410 305
6292 440 20
6212 510 20
6254 468 10
6279 443 10
6248 474 10

62102 520 20
6257 465 20
6266 456 20
6262 46 40
w/k

6355 593 40
6277 611 355
6300 610 305
6312 636 20
w/k

67²²

69⁴⁸

5419⁸¹ Wly C6 Noyes

5419 36^s Lt & 4x4 Stop Sign

5418 37^s Rt & 14" Power Pole #4498

Mid Pt Wly Returns

5709⁸¹

4799⁸¹ Wly Noyes St

4799 22^s Rt & 4x4 Bus Stop Sign

4798 26^o Lt & 30" Palm tree

4785 35^s Rt & 2^s con walk

4781 20^o Lt & 14^o con drive

4771 26^o Lt & 32" Palm tree

4765 20^o Rt & 15^o con drive

4754 20^o Lt & 14^o con driveway

Lt=North

Rt=South

28

61.92	61.27	61.92	61.19	60.83	61.91	61.67	61.43	61.03	60.98	61.80	60.85	61.79
5:30	5:35	5:30	6:03	6:37	5:51	5:57	5:59	6:19	6:24	5:42	6:37	5:43
40	40	30	30	20	10	10	20	30	30	40	40	
cb	sat	cb	sat					sat	cb	sat	cb	end
end												

61.86	61.09
5:36	6:13
cb	sat

61.04	61.76
6:18	5:46
sat	cb

62.27	62.08	61.94	61.15	61.13	61.85	61.62	61.17	61.73	62.00	61.96
4:35	5:14	5:28	6:07	5:59	5:37	5:60	6:05	5:49	5:22	5:26
40	30	20	20	10	10	20	20	30	30	40
wlk	wlk	cb	sat			sat	cb	wlk	wlk	wlk

62.42	62.25	62.00	61.28	61.68	61.93	61.63	61.25	61.72	62.00	62.22
4:8	4:27	5:22	5:24	5:31	5:39	5:39	5:27	5:50	5:22	5:0
40	30	20	20	10	10	20	20	30	30	40
wlk	wlk	cb	sat			sat	cb	wlk	wlk	wlk

62.33	61.49	61.32
4:59	5:23	5:50
30	20	20
wlk	wlk	sat

62.07	62.17
5:13	5:05
35	40
wlk	

61.42	61.99	62.10	62.15
5:30	5:23	5:12	5:07
20	20	30	40
sat	wlk	wlk	wlk

62.56	61.66	61.57
4:6	5:56	5:05
30	20	20
wlk	wlk	sat

T 67 22

0+16 35° RT & 2' con walk

0+16 25° RT & 12" Acacia tree

6+05 26° LT & 3" Acacia tree

0+05 22° RT & Fire Hyd.

TP₃ BM start 0⁰⁵ 62⁰⁷ 5²⁰

NW. R.A. Noyes
+ Garnet

0+00 ↑

5+79⁸¹ ↓ Fly Noyes
22° LT 4'x4' con Mail Box post

5+76 21° LT & street sign (name)

5+76 22° RT & 4'x4' speed limit sign

5+69⁸¹

Mid Pts Fly Returns

5+62 36° RT & 4'x4' stop sign

5+59⁸¹ Fly cb Noyes

5+39⁸¹ & Noyes

Lt=North

♀

RT=S₀ at 4

29

5957
3550
3555
w/k
5912
42
40

6032 6010 5982 5999 5970 6207
69 712 740 823 752 717 740 787 733 700 68
40 305 20 20 10 10 20 20 305 40
w/k cb Sat w/k

6033 6028 6004 5935 5993 6026 6008 5988 5998 6028 6025
689 694 718 787 729 696 714 724 724 694 677
40 305 20 20 10 10 20 20 305 40
w/k w/k cb Sat w/k w/k

6026 5965
696 757
cb gut
5963
759 722
gut cb

6060 6003 6045 5990 5974 6022 6059 6044 5990 5966 5903 5972 6003
662 719 697 732 748 680 663 682 732 756 719 700 719
40 40 30 30 20 10 10 20 30 30 40 40
cb Sat cb Sat Sat Sat Sat Sat Sat Sat Sat Sat Sat Sat Sat

6100 6078 6033 6084 6115 6105 6094 6086 6075
622 644 689 638 607 617 628 636 644
40 30 20 20 10 20 30 40

↑ 6722

Lt. North

Rt. South

30

1450

5597	5537	5505	5476	5491	5509	5471	5410	5451	5473	5427
66	669	702	791	716	98	736	727	72	734	78
40	302	20	20	10	10	20	20	302	40	
	w/k	cb	gut			gut	cb	w/k		
						66	680			
						355	40			
							w/k			

1432 35° Rt E 4° Brick walk

1417 26° Lt E 15" Acacia tree

1414 26° Rt E 18" Pepper tree

1400

5717	5698	5622	5575	5680	5689	5646	5588	5636	5648	5627
42	502	445	632	567	538	561	619	571	557	518
40	302	20	20	10	10	20	20	302	40	
	w/k	cb	gut			gut	cb	w/k		

0488 26° Lt E 30" Palm tree

0483 20° Rt E 3° cow walk

0477 20° Lt E 4° cow walk

0474 25° Rt E 14" Acacia tree

0466 25° Lt E 36" Palm tree

0461 Rt E 11° cow driveway

5725	5726	5780	5719	5722
432	441	463	428	422
40	302	20	302	40
	w/k		w/k	

5718	5793	5803	5794
489	444	404	423
20	302	35	40
w/k	w/k	w/k	

0450 23° Rt E 12" Power Pole # 2125

0447 25° Lt E 2" Bush flowers

0439 25° Rt E 18" Pepper tree

0418 20° Lt E 4° cow walk

5807	5825	5817	5837	5807	5831	5806	5761	5812	5832	5877
32	362	390	420	400	376	401	446	396	372	38
40	302	20	20	10	10	20	20	302	40	
	w/k	cb	gut			gut	cb	w/k		

5930	5939	5935	5915
277	268	272	292
40	355	302	20
		w/k	

X 6207

2477 20° RT & 3° con walk
 2463 25° RT & 9" Pepper Tree
 2456 22° RT & dead man
 2450 36° RT 1° wide cob block wall L to st line

2449 20° LT & 3° con walk
 2436 23° RT & 11" Power Pole # 2145
 2422 20° RT 5° con brick walk
 2415 35° LT & 4° con walk
 2413 25° RT & 30" Pepper tree
 2412 35° RT & 4° con walk
 2411 25° LT & 40" Palm tree
 2400

TP4 143 55^{L7} 8³³ 53²⁴

1483 26° LT & 40" Palm tree
 1477 20° LT & 4° brick walk
 1470 26° LT & 3" Hibiscus bush
 1460 RT & 11° con driveway
 1452 20° LT & 4° con walk

LT-North

RT-South 31

5077 5091 5106 5108
 440 426 411 409
 20 30E 35E 40
 w/k

5217 5239 5195 5125 5192 5201 5181 5111 5155 5170 5167
 23 278 322 325 316 336 406 362 347 335
 40 30E w/k 20 20 10 20 20 20 30E 40
 w/k 20 20 30E w/k
 5292 5249 5240 5263
 225 268 277 314
 40 35E 30E 20
 w/k

5361 5363
 156 174
 40 35E
 w/k

5214 5268
 268 249
 20 30E end
 walk

5417 5394 5365 5279 5344 5358 5332 5258 5303 5322 5317
 10 123 152 238 173 159 185 229 214 128 20
 40 30E w/k 20 20 20 30E 40
 w/k 20 20 30E w/k

5472 5467 5462 5432 5512
 735 740 745 725
 40 35E 30E 20
 w/k

5529 5529 5534 5506
 678 678 673 701
 40 35E 30E 20
 w/k

5325 5304 5394 5454 5422
 832 823 746 753 785
 20 20 30E 35E 40
 20 20 30E 40
 20 20 30E 40

6207

4450

4138 26° LT & 24" Pepper tree

4138 25° RT & 18" Pepper tree

4128 35° LT & 3° con walk

4112 26° LT & 24" Pepper tree

4400

TPs 221 5040 698 4819

3187 35° RT & 3° con walk

3181 20° LT & 12° con drive

3169 20° LT & 12° con drive way

3164 26° RT & 8" Pepper tree

3150

3146 20° LT & 12° Long broken cb

3118 40° LT & 24" Pepper tree

3114 25° RT & 15" Pepper tree

3108 20° LT & 10" Long broken out cb

3100

2190 LT & 15° con driveway

LT=North

RT=South

32

4720	4656	4627	4557	4615	4618	4590	4519	4560	4590	4580
32	384	413	489	425	423	450	521	480	450	46
40	305 wtk	20 cb	20 gut	10		10	20 gut	20 cb	305 wtk	40

4850	4805	4771	4695	4753	4759	4733	4668	4713	4734	4740
19	235	262	345	287	281	307	322	327	306	30
40	305 wtk	20 cb	20 gut	10		10	20 gut	20 cb	305 wtk	40

4913	4869	4857	4768	4759	4781	4791
604	648	660	749	758	736	726
40	355	205	20	20	355 wtk	40

4917	4890	4893	4816	4787	4714	4887	4818	4860	4883	4857
60	627	624	74	730	603	630	629	657	625	66
40 out	315 cb	315	20 cb	20 gut	10	10	20 gut	20 cb	305 wtk	40

5117	5102	5073	4993	5057	5057	5024	4967	5007	5027	5037
32	415	444	524	466	460	493	550	510	420	48
40	305 wtk	20 cb	20 gut	10		10	20 gut	20 cb	305 wtk	40

5169	5127	5122	5028	5019	348	320	325	422	428
40	355	305	20 cb	20 gut	40	355	305	20 cb	20 gut

5512

5459²⁵ Fly C6 Olney

Lt = North					♀	Pt = South					33
7 ⁰²	7 ²⁷	7 ²⁵	7 ⁸¹	7 ⁸³	7 ⁵²	7 ³⁶	7 ⁶⁸	8 ⁴⁶	8 ⁷⁹	8 ⁰⁰	8 ⁴⁷
40	40	30	30	20	10		10	20	30	40	40
ent	ent	bc	ent					ent	bc	ent	begin

5439⁹⁵ Fly Olney

6 ⁴⁸	6 ⁷²	7 ⁰⁹	6 ⁷⁷	6 ⁶⁵	6 ²¹	7 ¹²	7 ³⁰	7 ⁶⁵
40	30	20	10	10	20	30	40	40

5419⁹⁵ wly C6 Olney

5 ³⁵	6 ²⁹	5 ⁴⁵	6 ³⁰	6 ⁵⁵	6 ³⁰	6 ¹⁷	6 ⁴⁰	6 ⁸³	7 ⁰⁵	6 ²⁸	7 ⁰⁷	6 ³⁷
40	40	30	30	20	10	10	20	30	30	40	40	40
ent	ent	bc	ent					ent	bc	ent	ent	ent

5419 37° Lt E 4x4" Stop sign

5418 36° Pt E 12" Power Pole #4498

Mid Pt wly Returns Olney

5 ⁴⁸	6 ³⁴	6 ²¹	6 ³⁵
ent	ent	ent	ent

5409²⁵

5 ¹⁰	5 ²⁶	5 ⁴⁴	6 ³⁸	6 ⁰⁷	5 ⁸⁶	6 ²⁴	6 ⁷⁴	6 ²⁰	6 ⁰⁶	6 ⁰⁰
40	30	20	20	10		10	20	20	30	40
w/k	w/k	bc	ent			ent	ent	bc	w/k	w/k

4499⁹⁵ 23° Pt E 4x4" Bus Stop sign wly Olney

4 ⁸	5 ¹⁵	5 ³²	6 ²⁴	5 ⁶³	5 ⁶¹	5 ⁹⁷	6 ⁶³	6 ¹⁴	5 ²⁵	5 ²
40	30	20	20	10	10	20	20	30	30	40
	w/k	bc	ent			ent	ent	w/k		

4490 26° Lt E 18" Pepper tree

4475 35° Lt E 3" con walk

4463 25° Pt E 18" Pepper tree

4461 26° Lt E 3" tree

0469 26° Rt £ 2" Oleander Bush

0453 26° Rt £ 4" Oleander Bush

6450

2280	2267	2240	2181	2218	2129	2199	2139	2200	2202	2250
76	723	820	842	822	84	84	90	840	838	84
40	303	20	20	10	10	20	20	303	303	40
	w/k	cb	94t			94t	cb	w/k		

0439 26° Rt £ 2" Oleander Bush

0434 35° Lt £ 3" con walk

230	2279	2286	2281	2224	2243	2207	2157	2222	2242	2250
74	74	790	852	816	727	833	883	818	728	72
40	303	20	20	10	10	20	20	303	303	40
	w/k	cb	94t			94t	cb	w/k		

0425 26° Rt £ 12" Acacia tree

0412 26° Rt £ 2" Oleander Bush

6465 22° Rt £ Fire Hydrant

0400 ↑ 40° Lt £ 40" Pepper tree

5477 ↓ Ely Olney

5478 26° Rt £ 1" Oleander Bush

2310	2289	2265	2207	2251	2263	2220	2168	2242	2255	2270
73	751	775	833	789	777	820	872	798	785	72
40	303	20	20	10	10	20	20	303	303	40
	w/k	cb	94t			94t	cb	w/k		

5475 22° Lt £ Street sign post (w/ones)

5469

2308	2299	2282	2220	2262	2282	2239	2177	2170	2252	2251	2239
73	74	758	820	728	758	801	863	820	788	789	801
40	303	20	20	10	10	20	222	222	303	40	40
	w/k	cb	94t			94t	cb	cb	w/k	w/k	w/k

Mid Pt Returns Ely

5462 Rt £ 4" x 4" Stop sign

5461 39° Lt £ 6" Tel Pole # 53537 CH

2297	2232									
743	802									
cb	94t									

Lt=North

♀

Rt=South

35

1489 35° RT 3° con walk

1475 24° LT 15" Acacia tree

1469 20° LT 3° con walk

1461 20° LT 10° con driveway

1455 35° RT 2° con walk

1453 30° LT 8" con pipe drain under side walk

1450 35° LT 12" wide con wall + gutter + to line

1433 20° RT 4° con walk

1425 35° LT 5° con walk

1422 25° LT 14" Acacia tree

1408 20° RT 16° con driveway

1405 20° LT 10° Long Broken out c6

1400

0499 25° RT 3" Magnolia tree

0481 26° RT 5" Oleander Bush

0476 20° LT 3° con walk

TRC

44

4672

809

4231

4121

545

355

556

40

w/k

4234

438

40

355

w/k

4234

438

305

20

4222

472

20

4200

441

440

447

522

548

40

355

305

20

20

414

305

20

20

20

20

20

20

20

20

20

20

20

20

20

20

20

20

20

4157

515

355

4143

529

40

walk

4242

43

40

4229

443

305

4209

468

20

4130

542

20

4163

509

10

4170

502

10

4129

543

10

4074

598

20

4128

544

20

4146

526

305

4152

52

40

4159

533

20

4151

521

305

4167

505

355

4171

52

40

4101

521

20

4111

501

20

4131

54

21

4162

520

305

4177

435

355

4184

43

40

4282

32

40

4258

424

305

4221

451

20

4158

514

20

4191

481

10

4209

468

10

4162

510

10

4107

565

20

4166

506

20

4170

502

305

4202

42

40

4277

375

40

4268

404

355

4261

44

305

4234

438

20

4672

2475

2466 20° RT & 10° con driveway

2454 20° LT & 4° con walk

2450

2446 35° RT & 2° con walk

2433 35° LT & 3° con walk

2425

2424 24° LT & 18" Pepper tree

TP7 BM

165

4672

165

4507

NW BP 152

Olney Garnet

2410 35° RT & 3° con walk

2400 20° RT & 3° con walk 10' long only

Lt = North &

RT = South

36

4262 4198 4163 4080 4099
 41 474 509 592 573
 40 305 w/k 20 20 10
 28 sut

4099 4051 3993 4036 4050 4082
 573 621 679 636 672 52
 10 20 20 305 40
 sut 26 w/k

4207 4202 4197 4177
 465 470 475 475
 40 355 w/k 305 20

3997 4060 4072 4072
 675 612 600 600
 20 305 355 40
 sut 26 w/k

4262 4200 4177 4097 4117
 41 472 495 575 555
 40 305 w/k 20 20 10
 28 sut

4122 4076 4006 4055 4074 4122
 550 596 666 617 598 55
 10 20 20 305 40
 sut 26 w/k

4266 4216
 406 456
 40 355 w/k

4094 4094
 578 528
 355 40
 w/k

4262 4216 4189 4109 4129
 41 456 483 564 543
 40 305 w/k 20 20 10
 28 sut

4134 4088 4018 4073 4092 4111
 538 584 654 599 580 56
 10 20 20 305 40
 sut 26 w/k

4530 Walker heads

4111 41102
 561 570
 355 40
 w/k

4232 4207 4182 4172 4141
 44 465 420 560 531
 40 305 w/k 20 20 10
 28 sut

4144 4095 4034 4093 4111 4122
 528 577 638 579 561 55
 10 20 20 305 40
 sut 26 w/k

4672

LT=North
39.53
248 269
40 35
w/k

RT=South 37

40.55
40.31
40.18
39.94
140 164 177 204
40 35 30 20
w/k

38.99
39.00
296 295
35 45
w/k

3498 35° LT & 4° con walk

3475 25° RT & 6" Acacia tree

3462 35° RT & 2° con walk

3452 20° LT & 4° con walk

TPg 197 41²⁵ 674 3998

3450

40.42 40.20 39.94 39.18 39.44 41.95
63 653 698 754 728 718 763 833 725 761 74
40 30 20 20 10 10 20 20 30 30 40
w/k w/k w/k w/k w/k w/k w/k w/k w/k w/k w/k

3425 23° RT & 8" Acacia tree

40.82 40.82 40.57 39.78 40.00 40.08
52 590 615 694 672 664
40 30 20 20 10 70
w/k w/k w/k w/k w/k w/k

3421 20° LT & 4° con walk

41.17 41.99 40.86 40.70
555 573 526 602
40 35 30 20
w/k w/k w/k w/k

3401 20° LT & 3° con walk

41.50 41.63 41.36 41.08
522 529 536 564
40 35 30 20
w/k w/k w/k w/k

3400

41.69 41.66
503 506
40 35
w/k

2493 35° LT & 3° con walk

46.72

INDEXED

MAR 21 1954

5139⁸⁶ E Pendleton

water main Elevation 34" Below
Pave at w.c.L.

34 40L

780

NW BP Pendleton
+ GARNET
36 65

5119⁸⁶ Wly of Pendleton

5119 40° RT E 12" Power Pole # gone

5119 40° LT E 12" Tel Pole # 49 33 44 H

Mid Pt Returns Wly

5100 23° RT E 4x4 Bus Stop sign

4799⁸⁵ Wly Pendleton

4795 22° LT E 4x4 speed limit sign

4785 25° LT E 40" Palm tree

4750

4745 20° LT E 3" con walk

4722 25° LT E 4" Acacia tree

4700

Lt North

RT-South

38

34.68 34.40 36.11 35.84
527 505 504 64
40 30 20 10

35.50 35.33 35.10 35.50 35.05 34.86 34.5
645 662 685 648 690 709 732
10 20 20 21 30 40
Berm

37.19 36.54 35.95 35.77
476 541 600 618
40 40 20 10
cb gut
BC

35.55 35.31 35.13 35.73 34.91 34.43 35.03
40 664 682 622 704 752 692
10 20 20 21 40 40
Berm gut cb
ent

36.91 36.27
502 568
cb gut

34.86 35.41
709 654
gut cb

-34" 35.80 = 32.97 El TOP water iron

37.83 37.05 36.94 36.23 35.97 36.10
472 490 501 532 598 585 577
40 355 305 20 20 10
wk 14 wk 8c gut 10

34.18 37.80 35.32 35.90 35.93 35.8
615 663 605 602 65
10 20 20 305 40
gut cb wk
BC

38.25 37.90 37.75 36.97 37.30
32 405 420 498 465 464
40 305 20 20 10
wk 14 wk 8c gut 10

37.31 36.94 36.30 36.77 36.93 36.75
501 565 518 58 52
10 20 20 305 40
gut 8c wk

39.75 39.05 38.86 38.12 38.35
22 220 309 383 360
40 305 20 20 10
wk cb gut

38.43 38.01 37.36 37.79 38.01 38.15
352 394 459 416 394 38
10 20 20 305 40
gut cb wk

4/1/95

cont. p 41

Lt = North

Rt = South

39

1750

44.97	37.57	21.33	30.67	29.97	30.15	30.48	30.57	30.45	29.84	30.74	29.17
72	705	574	64	71	62	659	650	662	723	633	79
60	40	298	23	19	17	10	10	18	22	40	
		Ny			Bum						
		AC									
		wk									

1700 20° Rt end AC, parking area

35.67	37.07	33.03	32.67	31.70	32.00	31.95	31.85	31.65	32.08	31.97	30.74
86	02	404	44	532	507	512	522	542	427	560	622
60	40	293	22	16	10		10	16	20	25	40
		Ny			Bum						AC
		AC									
		wk									

0750° 30° Rt end cond walk

35.67	30.94	37.07	33.42	33.58	33.99	33.30	33.07	33.21	33.88	34.02	34.00	34.80
14	13	30	365	349	338	377	400	375	349	302	307	218
40	313	21	17	10		10	17	20	20	303	352	40
	Ny			Bum						wk	wk	con
	AC									cul	cul	
	wk											

0704° 21° Rt & Fire Hyd.

(362) walkers head NW BP Pendleton Garinet

TP9 BM 042 37.02 530 36.65

0704 23° Lt & 4x4 Bus stop sign

0700

5479⁸⁶ Fly Pendleton

5479 23° Rt & 4x4 Speed Limit sign

36.95	32.43	35.59	35.03	34.95	34.93	34.72	34.55	35.15	35.23	35.04
50	558	636	692	700	702	723	740	680	672	656
40	303	20	20	10		10	20	20	303	40
	wk	cul	cul				cul	cul	wk	wk
		89	end				86	cul		

Mid Pt Returns Fly

35.06	35.51	34.11	34.75
389	644	784	720
25	cul	cul	cul

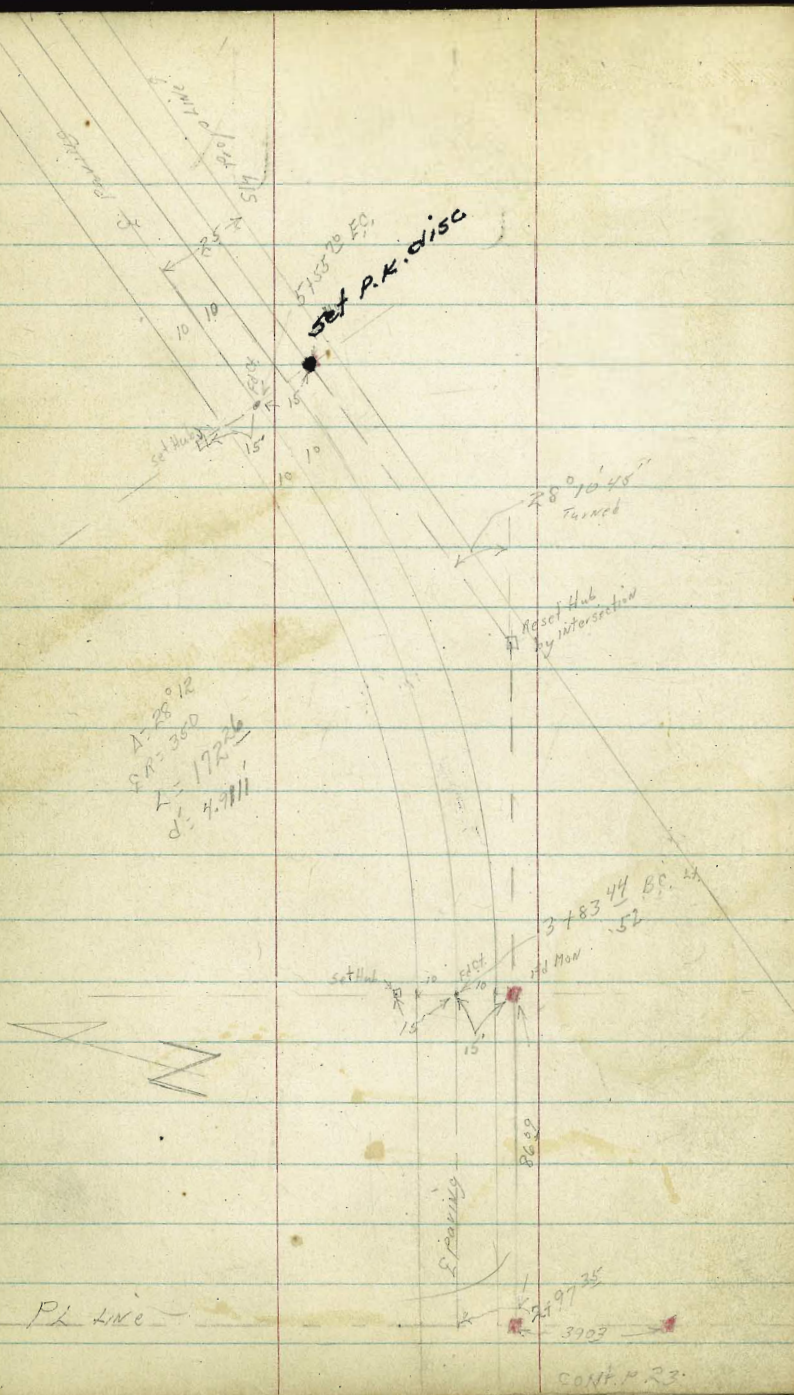
5464 39° Lt & street sign (name)

5459⁸⁶ Fly CB Live Pendleton

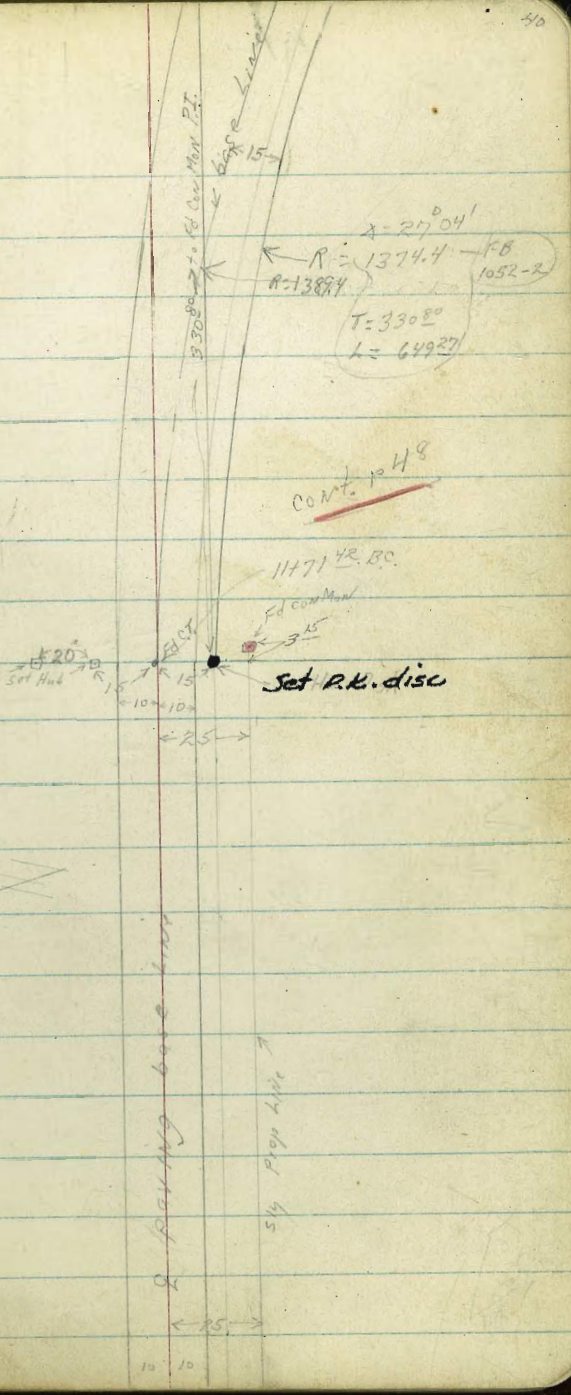
34.66	36.09	35.54	35.95	35.30	34.91	34.70	35.07	34.50	34.22	34.22
529	586	644	651	665	704	725	688	745	813	763
40	40	20	10		10	20	205	21	40	40
BC	cul						Bum		cul	cul

41.95

HF 2212 4



$\Delta = 28.912$
 $\text{FA} = 360$
 $\text{F} = 172.26$
 $\text{d} = 4.9111$



$\Delta = 27.041$
 $R = 1374.4$ - FB
 $R = 1387.9$ 1052-X
 $T = 330.8^\circ$
 $L = 649.27$

TP₁₀ 236 2958 985 27 22

2400

1477 23° RT C 18" Eucalyptus tree

1475 29° RT Ely end 8" Head wall

1474 20° LT Ely end 8" Head wall see sketch

1472 20° LT E 24" corrugated pipe ends

1472 30° RT E 24" pipe

1470 30° RT E 30" pipe

1467 33° RT = wly Headwall

1466 19° RT E 44" Curve road sign

1464 18° RT Ely end Headwall

1462 24° RT E 30" corrugated pipe Nly end

see sketch

1457 26° RT wly edge Headwall 8" enclosed with guard rail fence

1452 26° LT wly Headwall 8"

CONT from p 39

LT = Nly

RT = Sly

3557 788 63 3467 21 40 2970 73 20 2947 76 20 2875 83 10 2814 79 10 2918 89 10

2909 728 10 2901 806 12 2657 105 40

3098 1009 Top Headwall

2714 923 252 10 2710 927 202 10

2978 723 292 100 Headwall

2659 1028 10 30

2627 1080 308 10

2979 728 100 35

3015 628 182 Top

2674 1033 244 10

3013 694 Top Headwall

3168 539 262 Top Headwall

3707

4125 3° 24.09'

4117 61° RT E 14" P.P. 2407

4100 1° 21.31'

3198 21° LT E 36" Eucalyptus

3197 31° RT E 4x4" stop sign

3185 32 LT E tel MH

3183 4 BC LT 0° 00'

3140

this book same Mon

2329

check levels G237 - L2 7/8 elev. of Mon. Balboa = PL Line = 2334

2197 35 PL line intersection

2150 42° RT E 4x4" st sign (Name)

2150 24° LT E 24" Eucalyptus tree

2150 23° RT E 30" Eucalyptus tree

LT - N1/4

24.18	22.88	22.49	22.68	21.92	22.11	22.49	22.92	23.07	23.08	22.88	16.18	12.98
54	62	70	62	86	77	70	66	65	65	62	134	166
70	30	32	27	18	10	10	10	17	25	35	50	75
		1/4		Berm					Berm			
		AC										
		Wk										

2178	2178	2135	2198	2268	2226	2280	2332	2373	2383	2349	2228	2178	2038	2108
18	58	63	61	62	732	678	26	588	58	61	63	78	98	148
70	50	31	23	19	16	10	10	14	25	32	45	76	55	75
		1/4			Berm				Berm					
		AC												
		Wk												

2048	2438	2402	2408	2275	2376	2371	2421	2428	2308	2178	1618	1518
702	52	556	55	683	622	587	527	530	65	78	134	144
70	76	30	21	16	10	10	13	36	53	82	100	
		1/4		Berm				Berm				
		AC										
		Wk										

3198	2878	2496	2482	2440	2472	2494	2502	2499	2358	2258	2238	1968	1848
7102	08	42	42	58	486	484	456	459	62	72	72	96	102
70	76	22	21	16	10	10	12	12	30	50	60	88	100
		1/4		Berm				Berm					
		AC											
		Wk											

448	3128	2639	2628	2557	2611	2622	2618	2608	2498	2327	2378
1142	412	39	33	32	377	336	340	350	46	62	52
63	40	30	21	17	10	10	12	Berm	25	540	40
		1/4		Berm				Berm		Mon	
		AC									
		Wk								Balboa	

1228	2268	2808	2838	2712	2757	2756	2747	2735	2728	2618
173	731	150	12	246	201	203	211	223	23	34
63	40	30	23	17	10	10	12	20	20	40
		1/4		Berm						
		AC								
		Wk								

1958

23° RT E 10" P Pole. U gone
5455 2° E. 14' 06"

5450 13° 37.99

5425 11° 34.21'

TP 11 329 2334 963 1985

5400 9° 32.43'

4487 21" RT E 4x4 caution sign

4481 24" L4 E 24" Eucalyptus tree

4475 7° 29.65'

4450 5° 26.87'

Lt-Nly

RT-Sly

23

1924	1904	1959	1984	1800	1928	1872	1915	1921	1914	1784	1294
40	38	36	32	32	42	42	42	42	52	102	
70	50	35	29	18	10	10	15	21	25	41	
		Nly		Rem			Rem				
		ACWK									

1984	2024	2029	1994	1874	1866	1916	1961	2009	2017	2024	1794	1214
32	30	29	33	45	45	45	36	35	30	28	58	105
70	50	35	26	22	20	10	10	15	20	20	42	
		Nly		Rem				Rem				
		ACWK										

33 24

2038	2068	2089	2088	1938	2023	1973	2028	2090	2117	2118	1938	1338
92	82	86	82	102	92	92	80	86	84	81	102	162
70	50	34	29	22	19	10	10	15	20	25	40	
		Nly		Rem				Rem				
		ACWK										

2128	2128	2133	2178	2018	1983	2027	2100	2154	2190	2188	2098	1918	1778
82	82	82	78	92	92	82	82	72	76	72	86	154	152
70	50	34	22	20	18	10	10	14	14	23	23	44	50
		Nly		Rem				Rem					
		ACWK											

2208	2208	2185	2158	2162	2115	2154	2213	2290	2238	2218	1968
62	75	72	80	82	82	72	72	72	72	74	142
70	50	33	22	18	10	10	15	25	28	28	50
		Nly		Rem			Rem				
		ACWK									

TP 29 58

6+75 24° RT E 14" Power Pole # 2453

TP12 247 1781 72° 1534 Nail in Pole 6775 #2453

6750 55 70 72 6⁰¹ 6⁰⁶ 6⁰⁵ 6⁰² 6⁰² 7¹¹ 7¹⁷ 7¹² 7¹³ 7⁰⁹ 7⁰⁶ 7⁰⁸ 12⁰⁶

6742 30° LT E 4x4 Bus Stop sign

6738 27° RT E 18" Eucalyptus tree

6733 59° LHC Fire Hyd.

6728 32° RT E 4x4 Stop sign

6725 Ely Edge A.C. paving Vuelta St

6702 wly edge A.C. paving Vuelta St

6702 135° RT E gas gates

5799 25° RT E SMH

5794 26° RT Nly 3' E AC walk ↓ to live

5792 29° LT E 4x4 ST sign

5787 23° LT E 4x4 Stop sign

5765 27° RT E 18" Eucalyptus tree

5764 22° RT E 4x4 Bus Stop sign

5760 28° LT E 36" Eucalyptus

161 16.9 15.94 16.12 15.83 15.75 15.82
 72 6⁰¹ 6⁰⁶ 6⁰⁵ 6⁰² 6⁰² 7¹¹ 7¹⁷ 7¹² 7¹³ 7⁰⁹ 7⁰⁶ 7⁰⁸ 12⁰⁶
 70 35 30 29 22 21 15 10 10 15 23 25 50
 8 Nly 5.18 AC walk 1.16

6⁰⁶ 6⁰⁵ 6⁰¹ 6⁰⁹ 6⁰⁴ 6⁰² 6⁰³ 7⁰⁷ 8⁰³
 70 35 16 10 10 10 16 25 50
 16.60

17.85 16.81 16.94 17.07 17.28 17.43 17.10 16.66 15.21
 5³⁷ 6¹³ 6³⁰ 6¹⁷ 5²⁶ 5²¹ 6¹⁴ 6⁵⁸ 8⁰³
 70 35 16 10 10 10 16 25 50

16.75 16.95 16.45
 6⁴⁹ 6²⁹ 6²⁹
 258 260 300
 11M 11M 11M

Lt-Nly

♀

Rt-Sly

45

9+38 26° N+E 30" Eucalaptus tree

9+36 27° N+E 18" Eucalaptus tree

9+31 28° N+E 12" Pole # 2498

9+00

8+61 27° N+E 29" Eucalaptus tree

8+61 29° N+E 24" Eucalaptus tree

8+56 22° N+E 4" x 4" caution sign

8+50

8+00 32° N+E 10" Tel Pole # 505686H.

7+98 23° N+E Dead man

7+98 27° N+E 12" Pole # 2475

7+82 28° N+E 27" Eucalaptus

7+79 26° N+E 36" Eucalaptus tree

7+50

7+11 27° N+E 10" Eucalaptus tree

7+00

21.81
+40
70

19.61	16.21	14.3	15.7	15.51	12.91	12.05	12.00	12.01	11.86	11.58	10.11	8.71	8.41
718	76	35	25	23	42	528	5.81	80	5.95	6.23	7.2	9.5	9.4
58	45	40	35	30	20	17	10	10	17	25	40	60	
						Born			Born				

14.5	15.8							11.97					
714	20	33	22	23	5	5.7	5.88	84	5.96	6.23	6.2	8.5	8.8
70	45	40	35	30	20	17	10	10	17	25	40	60	
						Born			Born				

18.01	16.21	14.6	16.23	16.01	12.41	12.31	12.22	12.14	12.02	11.75	11.61	9.81	
708	76	30	7.58	18	5.4	5.30	5.59	5	6.7	5.79	6.06	6.2	8.0
70	50	40	35	26	19	16	10	10	18	18	25	40	60
						Born			Born				

14.9	16.5							13.02					
0.2	14	23	7.29	17	4.7	4.72	4.72	4.79	4.92	5.9	6.5	7.8	
70	50	40	35	29	17	10	10	10	17	25	40	60	
						Born			Born				

17.81	16.71	15.6	16.6	16.61	14.70	14.92	14.42	14.42	13.92	12.81	12.31	9.81	
0.2	76	23	16	13	3.57	3.39	3.39	3.39	3.89	5.0	7.5	8.0	
70	50	39	34	26	17	10	10	10	17	25	40	60	
						Born			Born				

17 81

11750

11735 21³ Lt E 3'x3' con stand for jr Patrol

11750

10496 25³ Lt E 6" tall Pole #505684H

10486 27⁵ Lt E 24" Eucalyptus tree

10478 21² Rt E 8' wide con steps & AC walk Lt five

10469 28² Rt E 14" PPole # 2501

10450

10432 15² Rt E tel MH

TP₁₃ 5⁵⁵ 18³¹ 5⁰⁵ 12⁷⁶

10422 20² Rt Nly of 3'x3' con stand for jr Patrol boys

10412 27⁵ Lt E 18" Eucalyptus tree

10411 29² Lt E 24" Eucalyptus tree

10400

9450

9449 18² Lt E dead man

9446 27⁵ Lt E 10" tall Pole #505685H

Lt. Nly

E

Rt. Sly

76

70 ⁶	02	3 ⁸	5 ⁶	4 ⁰⁷	4 ²	5 ³	6 ⁰⁶	5 ⁷⁶	6 ¹³	6 ⁴¹	6 ⁷⁷	7 ¹	9 ⁶	10 ²
70	60	45	39	34	30	20	16	10	10	17	25	35	60	

3²⁰
21²
stand

2151
132
90

20.41	15.21	13.4	14.74	14.61	13.41	12.68	12.13	12.14	12.02	11.55	10.01	9.51	7.91
+ 21	31	42	35	32	42	6 ²³	6 ¹⁸	6 ¹⁵	6 ²⁹	6 ⁷⁶	8 ³	9 ⁸	10 ²
60	45	40	35	30	23	16	10	10	17	25	35	60	

4⁰⁷ 5⁴³
2⁴³ 2¹³
Top

6⁵⁷ 9⁵⁰
2¹² 2⁸⁶
Top

756
70

42	14	33	45	34	36	52	6 ²⁶	6 ²⁰	6 ¹⁵	6 ³²	6 ⁷¹	8 ²	10 ²	10 ²
66	50	45	40	35	30	22	16	10	10	17	25	40	60	

π 18³¹

6⁴⁴
15⁰⁰
rim

5⁰⁴
2⁰²
Top

21.31	22.01	16.91	13.8	15.0	15.11	12.12	12.09	12.06	11.95	11.64	10.71	9.51	8.11
+ 65	748	02	40	2 ⁸⁷	22	5 ⁶⁹	5 ⁰⁸	5 ⁷²	5 ⁸⁸	6 ¹⁷	7 ⁵	9 ²	9 ²
70	65	50	40	35	27	16	10	10	17	25	35	60	

21.03

+ 51	736	12	14.0	15.4	2 ²⁷	24	5 ²	5 ⁷⁸	5 ⁰⁸	5 ²⁸	5 ⁸⁹	6 ¹⁵	6 ⁵	9 ⁵	9 ⁶
70	60	48	40	35	30	17	15	10	10	17	25	40	60		

π 17⁸¹

Lt-Nly

Base Line

Nt-Sly 47

13+32 22° RT & 12" P.P. # 2531

38° RT & dead man
13+28 (32° LT & 10" Anchor Pole

13+21 21° LT & 4" x 4" sign post

13+08 22° LT & 24" Eucalypetus tree

13+00 2° 39' 05"

5.21	14.41	12.11	11.51	13.13	13.09	13.11	12.41	12.39	12.48	12.24	11.88	11.57	10.11	10.81	9.57	9.01
14	22	32	51	328	352	35	42	422	413	437	423	504	55	58	71	76
70	60	50	46	40	352	21	18	14	10	10	10	18	22	25	38	50
				AC				Berm	edge		AC	Berm				

12+54 13° LT & 4.5 x 4° gas & elec vault

410
136
00N 47

12+50 1° 37' 20"

12+45 25° LT & 8" tel. Pole # 5056 & 83 H

0.4	12	32	42	316	316	33	41	421	416	442	477	508	54	70	72
70	55	46	41	358	308	21	18	15	10	10	10	18	25	37	50
				AC				Berm	edge		AC	Berm			

12+35 23° LT & 18" Eucalypetus tree

12+07 54° RT & 36" Pine tree

12+04 28° RT & 14" P.P. # 2515

12+00 0° 35' 35"

17.21	15.91	14.51	12.1	13.8	13.25	13.01	12.51	12.36	12.24	12.16	11.82	11.35	11.31	11.31	9.11	8.41
70.2	07	21	45	20	208	36	41	425	427	445	429	520	53	53	75	80
70	55	46	40	344	304	22	18	15	10	10	10	19	28	27	36	50
				AC				Berm	edge		AC	Berm				

11+90 47° RT begin 3° picket fence

TP.4 35° 16.61 52° 13.11

Nail in P.P. # 2515
12.10

16.61

11+71 12° BC RT 0° 00'

09	12	26	6	42	44	53	602	525	106	37	684	74	92	104
70	60	45	39	34	30	20	17	10	10	10	16	25	35	60
				AC				Berm			Berm			

11+62 26° RT & 24" Eucalypetus tree

11+61 25° LT & 8" Eucalypetus tree

18.31

Lt-Nly

Base
LHM

Nt-Sly

49

15113 58° Lt E. Mail Box 4x4" con post post

15109 65° Lt E 6" Eucalyptus tree

15103 25° Rt E No Picket Fence

15102 65° Lt E 40" clump Eucalyptus trees 3
6° 46.45'

15100 25° Rt to fence here

14165 68° Lt E 8" Eucalyptus tree

14160 50° Lt E 5MH

14173 16° Rt E 4x4" Bus sign

14162 19° Rt E 24" Eucalyptus tree

14155 21° Rt E 12" Pole # 2553

45° Lt E dead man

14155 31° Lt E 10" Tel Pole # P2552

14150 5° 44.60'

4° 42.75'

14100 39° Rt now to 3rd Picket Fence

13191 37° Lt E 4" Tel Pole # 5056 82H

13185 19° Rt E 18" Eucalyptus tree

13198 32° Lt E (2) 4x4" sign posts

13150 3° 40.90

13.51	10.11	13.25	13.76	13.01	12.76	12.71	12.66	12.48				
31	65	33	32	36	38	32	35	413	454	462	48	52
77	70	68	59	40	31	17	10	10	10	15	25	50
		con.	nk		rim	edge		edge	rim			

50
rim

12.47

22	40	60	37	37	36	32	40	35	41	462	485	42	62	62	72
70	62	55	50	46	30	28	10	10	10	10	15	20	25	30	50
			con	nk			rim	edge	edge	edge	rim				

13.51	12.21	10.91	12.78	12.81	12.91	12.91	12.51	12.85	12.54	12.30	11.97	11.69	11.61	10.11	9.61
41	42	53	38	38	32	32	41	43	42	41	464	478	53	65	74
70	59	53	42	38	35	25	23	17	10	10	10	10	19	25	50
			con	nk				rim	edge	edge	edge	rim			

12.24

20	36	52	32	32	35	36	32	42	44	41	37	471	507	52	61	72	72
70	57	50	77	39	35	24	20	14	10	10	10	10	15	20	25	35	50
								rim	edge	edge	edge	rim					

T 16 61

17+95 52° RT & dead man
17193 64° LT & 30" Kato Sessions Tipuana Tree

17160 23° RT & 10" Flaming Eucalaptus tree
11° 55.70

17150 30° LT & 23" con drive

17114 34° LT & 8" tel Pole # 505680 H

17113 39° LT & dead man

17111 26° RT & 12" Power Pole # 2593

17100 10° 53.85'

16485 51° LT & S.M.H

16150 9° 52.00'

16145 69° LT & 3" con slab telephone booth

16140 70° LT & 72" clump (3) trees over root base

16108 18° RT & 12" Flaming Eucalaptus tree

16100 8° 50.15'

15196 14° RT & tel M.H.

15195 60° LT & group 40" 4 Eucalaptus trees

15189 27° LT & 4x4 Bus sign

15185 53° LT & dead man

15184 26° LT & 10" tel Pole # 2572

15184 23° RT & 12" P.P. # 2573

L.N.M.

Base
L.N.M.

RT

1294 1268 8.62 1355 1306 1291 1249 124 123 11.5 10.1
559 585 491 498 507 563 604 612 62 70 84
70 50 305 26 17 63 10 12 20 25 50
drive side drive AC edge AC AC

1353 1333 1353 1337 1283 1226 1213 1173 1113 8.83
50 52 520 516 520 624 640 68 72 92
70 50 29 23 13 15 20 25 50
1354 500 513 11M AC edge AC AC

1333 1323 1320 1323 1266 1210 1204 1107 1113 1002
50 52 533 530 587 639 649 66 72 85
70 50 26 24 13 15 20 25 50
AC edge AC AC

1333 1353 1333 1281 1286 1291 1267 1209 1217 1283 1113 1013
52 50 52 572 507 562 586 644 636 52 72 84
70 65 35 25 21 10 10 12 20 25 50
AC edge AC AC AC

625
143
11M

1261
54 52 2 522 520 520 522 638 644 60 62 80 102
70 50 25 27 21 10 11 13 21 25 38 50
AC edge AC AC AC

1853

Lt. Nly

Base
LINA
RT = Sly

54

12.2	12.4	12.3	12.25	12.98	12.93	12.91	12.7	11.9	10.0	9.3
5 ²	5 ⁰	5 ¹	4 ⁴	4 ³	4 ⁴	4 ⁶	4 ²	5 ⁵	7 ⁴	8 ¹
100	70	50	21	12	8	10	15	20	45	60
			Ac. edge		Ac. edge	Beam				

22150

22138 37° RT & 6" Holly Tree Bush

22128 57° LT & 6" Black wall L to LINA

22123 59° LT & 30" Eucalyptus

22114 26° RT & 5" Eugenia tree

22111 19° RT & 4⁵ con walk & steps

22108 26° RT & 5" Eugenia tree

22101 23° RT & 16" P.Pole # P2649

22100

21175 62° LT & 20" Eucalyptus tree

21170 21° RT & 20" Eucalyptus tree

21165 72° LT & 3' con walk

21159 28° RT & 8" Pepper tree

21150 61° LT & 20" Eucalyptus tree

21136 34° RT & 16" Pepper tree

21131 34° LT & tel. MH

21125 73° LT & 2⁵ con walk

21108 32° RT & 6" Pine tree

12.36	10.19	10.09
5 ⁰	7 ⁸	7 ⁸
19	21	35
Top	wlk	wlk
5 ¹		

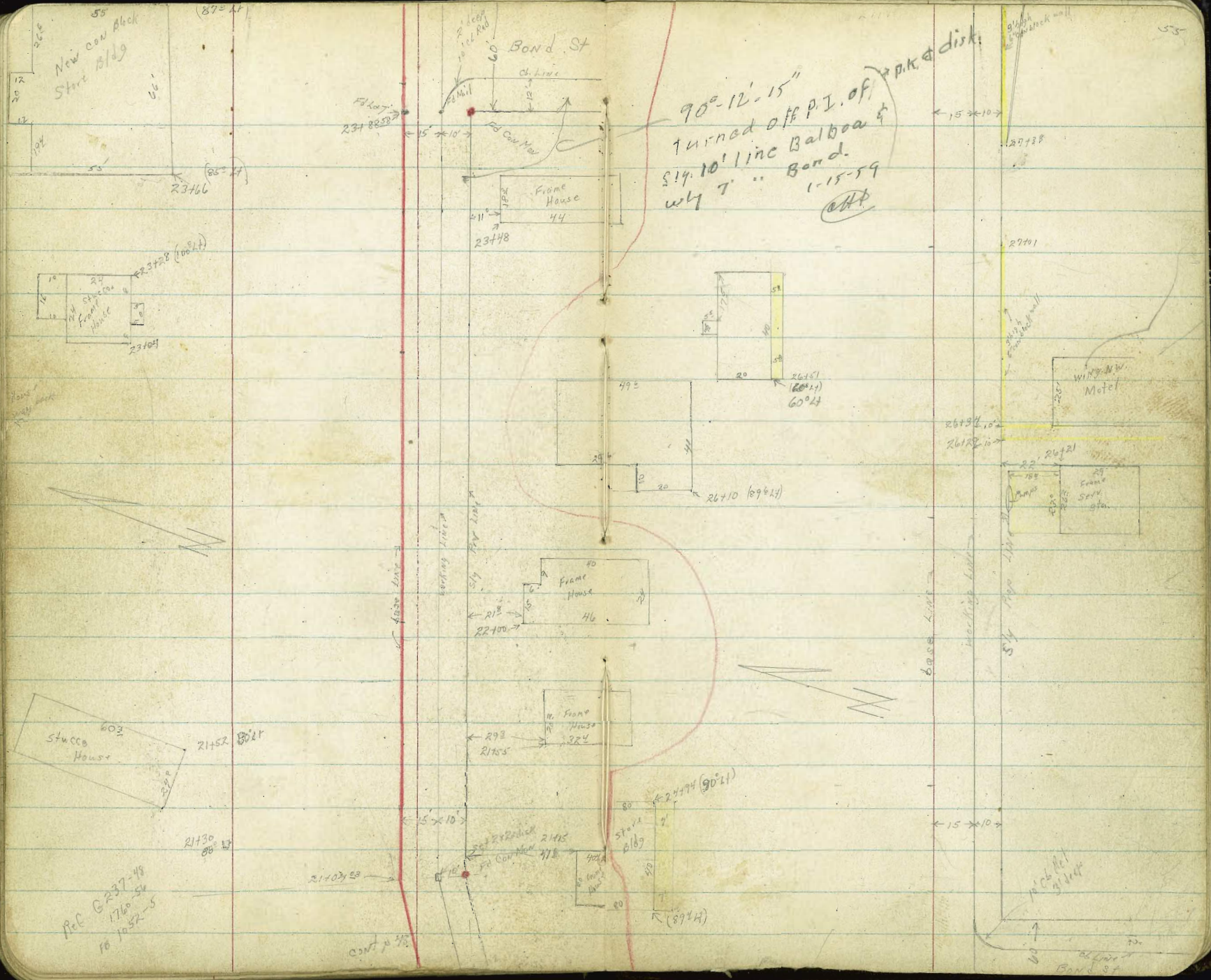
12.6	13.2	12.6	13.05	13.12	12.99	12.80	12.84	13.7	10.7	9.8
4 ²	4 ²	4 ²	4 ²	4 ⁵	4 ³	4 ²	4 ³	3 ²	6 ²	7 ⁶
100	75	50	25	12	8	10	19	25	50	
			Ac. edge		Ac. edge	Beam				

12.52	12.56
4 ⁵	4 ¹
82	72
wlk	

12.4	12.0	13.1	13.3	12.96	12.88	12.83	13.0	11.6	9.6	9.4
5 ⁰	4 ²	4 ³	4 ²	4 ⁴	4 ²	4 ⁵	4 ⁴	5 ²	7 ²	8 ²
100	70	50	29	75	10	18	25	40	50	
			Ac. edge	Ac. edge	Beam					

12.27	12.30
5 ⁰	5 ⁰
83	73
wlk	

X 17 37



90° 12' 15"
 turned off P.I. of
 514.10' line Balboa &
 wly T. " Bond.
 1-15-59
 (att)

55
 New Con Block
 Street Bldg

Bond St

Frame House
44

Stucco House
602

Wing N.W.
Motel

Frame House
46

Stucco House
6109

Ref G-237-49
 1760-50
 10 10-52-5

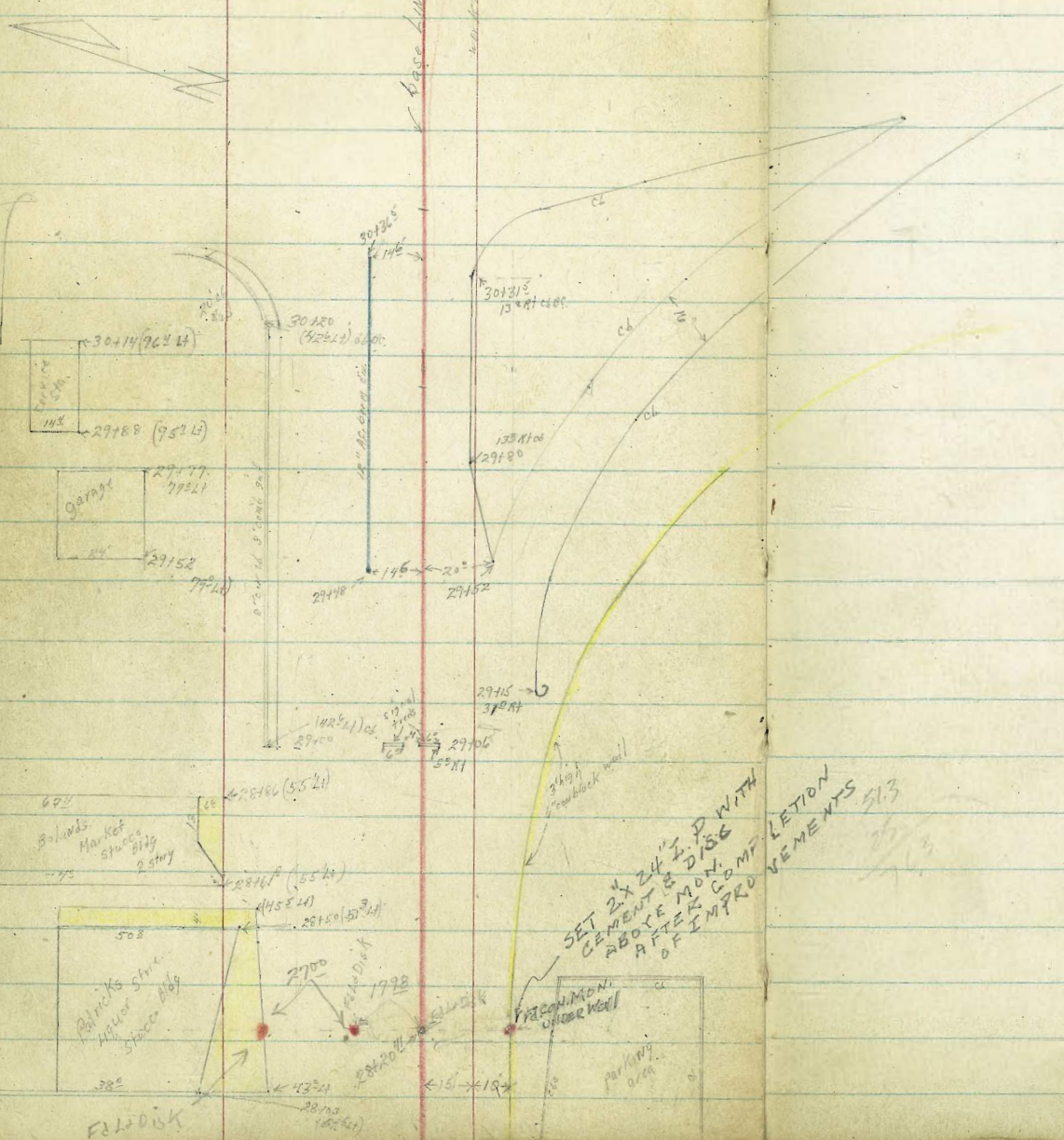
100' N of
 Bond St

55

Ref: 6237-48
Feb. 1760-56

30' 30" S
29' 48"
38' 5"

Ref: 2213-44
For Balboa Ely of 101 to Moreno Blvd.



28500
238858
43183

28+2011
21 31
P 2

SET 2x24" I.D. WITH
CEMENT & DISG
ABOVE MON. COMF
AFTER INTRO
OF IMPROVEMENTS

17 39

24170 19° RT & 8" Eucalyptus tree

24170 19° LT & 20" Eucalyptus tree

24161 43° LT & dead man

24153 43° LT & deadman

24142 38° LT & tel MH

24141 43° LT & 8" Nly SP2702

TP19 334 1754 317 1420

24138 34° RT & Fire Hyd.

24138 34° RT & 20" Palm tree

24136⁵³ Ely of Line Bond St.

24100⁵³ Wly of Line Bond St

23797 35° RT & 20" Palm tree

23795 20° LT & 30" Eucalyptus tree

23793 23° RT & P Pole # 2699

23788 18° RT & 24" Eucalyptus tree

23750

23719 18° RT & 30" Eucalyptus tree

23700

22771 42° LT & 8" tel Pole # 505677H

12.9	12.1	12.7	12.8	13.02	12.99	13.09	12.97	12.95	13.2	12.6	10.3	9.9
46	48	48	42	452	453	445	457	457	43	42	72	76
85	70	50	35	12	10	10	12	12	20	25	40	60
				Berm	Ac	edge	Ac	Ac	Berm			

12.91
463
88
rim

1754

13.7	12.8	13.0	13.0	13.95	13.99	13.00	12.86	12.85	12.3	10.31	10.02	10.0	9.65	9.3
32	44	44	44	442	443	437	451	442	51	706	735	71	722	81
95	70	50	20	11	9	10	16	16	25	25	1.50	50	25	25
				Berm	Ac	edge	Ac	Berm	Ac	Berm	Ac	Ac	Ac	Ac

13.4	13.2	13.1	13.0	12.92	12.95	13.00	12.91	12.06	11.6	10.65	10.02	9.4	9.03	9.12
40	42	43	44	445	443	433	446	431	60	62	735	50	725	5
100	70	50	35	12	95	10	16	16	25	25	50	30	60	60
				Ac	edge	Ac	Ac	Berm	Ac	Ac	Ac	Ac	Ac	Ac

12.1	12.4	12.1	12.6	12.92	12.92	13.05	12.91	12.06	13.0	11.1	10.9	10.2
53	50	53	48	445	445	434	446	453	44	63	65	72
100	70	50	35	12	85	10	16	12	16	23	25	50
				Berm	Ac	edge	Ac	Ac	Berm			

12.1	12.2	12.5	12.59	12.96	13.0	10.7	9.8	9.6			
53	52	42	42	443	441	452	455	44	62	72	72
100	70	50	17	10	10	12	12	17	25	37	50
			Ac	edge	Ac	Ac	Berm				

1737

27100

26194 17° RT & 20" Eucalyptus tree

26194 18° LT & 30" Eucalyptus tree

26167 23° RT & 12" PPole # 2749

26150

26143 17° RT & 20" Eucalyptus tree

26129 25° RT Begin 3' high 6" corr block wall

26120 18° LF 30" Eucalyptus tree

TP₂₀ 4⁰⁵ 18⁶⁹ 2²⁰ 14⁶⁴

26101 44'4" & 6" Tel Pole # 505851 H

26100

25150 24° RT & 10" PPole # 2719

25144 17° RT & 15" Eucalyptus tree

531° L+E Anchor pole no #

25143 19° LT & 30" Eucalyptus tree

25107 39° LT & 18" Eucalyptus tree

25100

LT-Nly

12.1 12.6 12.4 13.14 13.16 13.21 13.07 13.19 13.61 13.57 10.61 10.66

65 61 63 55 53 54 52 50 50 52 50 73

80 50 35 14 10 10 14 22 25 42 60

Born. edge Born. edge (drier 4°)

13.0 12.7 12.4 12.7 13.04 13.08 13.18 13.07 13.04

51 64 63 64 55 51 52 54 55 60 72

85 60 50 35 11 85 10 13 25 27 43

Born. edge Born. edge

11.9 13.4 12.2

68 53 38

20 23 25

Feeding Top wall

18⁶⁹

12.0 12.1 12.3 12.7 13.06 13.18 13.04 13.10 13.08 13.02

55 54 52 48 43 48 43 45 44 46 45

100 70 35 20 12 10 10 15 15 25 20

Born. edge Born. edge

10.5 15 25 20

rise Born. Station

11.2 12.0 12.0 12.9 13.11 13.18 13.07 12.92 12.4 12.5

63 55 51 46 44 43 36 44 42 51 50

100 70 35 16 12 10 10 14 17 25 50

Born. edge Born. edge

12.4 12.4 12.5 12.7 13.05 13.16 13.05 15.00 12.89 13.0 13.8 9.9 10.1

51 51 50 48 46 47 38 48 45 48 32 76 72

85 70 50 35 12 10 10 10 13 22 25 40 50

Born. edge Born. edge

17⁵⁴

TT

21⁰² 20⁰⁰ 20⁰⁰
where it was in
off Sta pump island
Wly on Pacific Hwy
at Belton
-22
100

30750 taken along wly of Line Pacific Hwy

30731⁵ 138 Rt of BC

30720 42⁴ 11 of BC

30700

(see loose leaf for pump island)

29780

TPA

6⁶⁸ 22⁹⁵ 2³⁶ 16³³

29777 54⁴ LT & 2x2² con base for light post (service Sta)

29769 43² LT & 2x1¹ pole # 468307H ✓

29752

29729 54² LT & dead max ✓

29723 54² LT & 4x4⁴ bus sign ✓

29721 54² LT & Mail box cow post 4'x4' ✓

29715 54⁰ LT & sign 2 4x4⁴ posts ✓

Lt. Hwy

Base

Rt. Hwy

60

18.06	17.87	17.61	17.70	17.66	17.65	17.72	18.00	17.65	18.14	17.56	18.09	17.77	17.68
489	508	504	520	529	530	523	495	527	481	539	488	528	527
90	65	35	13	10	37	31	60	60	90	90	136	136	136
94	85				94	86		94	86				
14	14				14	14		14	14				
drive	drive				drive	drive		drive	drive				

1645

42⁸
94
in drive

17.61	16.79	15.94	16.48	16.62	16.48	16.45	16.49	16.91	16.14	15.68	14.71	14.30	15.42
534	616	701	642	633	617	650	646	604	621	722	823	765	753
75	52	42	25	13	10	132	132	465	465	671	671	70	70
						94	86	24	94	94	86		

17.15	16.25	16.03	15.07	15.49	16.15	15.92	15.80	15.93	16.38	15.83	15.34	14.24	14.86	14.77
558	623	627	748	696	680	703	715	702	657	727	761	871	829	818
25	53	42	42	25	13	10	132	138	32	32	81	81	80	80
		86	94				94	86	86	94	94	86		

22⁹⁵

17.04	17.61	16.01	15.32	15.52	15.21	15.23	15.73	15.55	15.89	14.53	14.54	14.4
166	328	368	329	327	340	346	354	314	40	46	45	42
75	50	42	30	13	10	20	20	392	392	86	86	70
		94	86	13		94	86	86	94	86	86	70

15.09	14.75	14.14	14.67	14.52	14.46	13.95	13.62	14.23	14.23	14.23	13.86	13.89
360	326	4153	402	412	423	424	507	416	446	403	420	420
70	47	42	20	10	25	25	94	86	86	86	86	86
		94	86				31	31	39	94	86	86

Lt-Nly

Base
LWE

Rt-Sly

61

FB 2213-46 For Xsec Balboa from 101 to Mor. eno Blvd.

			0 ⁸⁴	44 ²⁶	45 ⁰⁷ NWB slwy Garnet
TP ₂₇ BM	9 ²³	45 ⁸⁰	2 ⁴⁰	36 ⁵⁸	NWB Pendleton Garnet 36 ⁴⁵
TP ₂₆	9 ⁰⁰	38 ²⁷	0 ⁵⁶	29 ⁹⁷	
TP ₂₅	13 ⁰⁷	30 ⁵²	2 ³⁷	17 ⁴⁶	
TP ₂₄	7 ⁵⁵	19 ⁸³	5 ⁹⁵	12 ²⁷	
TP ₂₃	4 ⁶²	18 ²³	4 ⁵⁰	13 ⁵⁴	BP Sely Balboa 1354
TP ₂₂	3 ²⁴	18 ⁰⁴	8 ¹⁵	14 ⁸⁰	

D. Smith
J. Rorer
R. Taylor
S. Fish

X Sec Rose Creek

@ Grand Ave
L. Fly

Channel

H. W. W. 60
W of 21154
5/18/54

INDEXED
SER
MAY 19 1954

17125

34	44	72	60	58	52	42	30	15	11	11	10	10	10	23	12
100	82								5	7	29	58	85	100	

0785

33	25	91	92	102	121	108	63	58	45	32	14	10	93	106	103	23	28
100	87											15	39	58	88	100	

0760

36	30	85	86	91	102	132	122	98	96	27	30	44	58	65	74	100
100		84	70	58	44	32	20	10		27	30	44	58	65	74	100

0730

63	68	72	112	124	87	83	100	82	58	48	18	12	21	14	28
100	82	58	48	18	12			82	80	38			24	58	100

5/4

22	22	78	82	92	112	103	106	98	94	94	33	25	100
100	82	75	64	58	41	20		12	25	58	86	100	

0700 = E Grand Ave both Sly + Nly

BM = TP27

Nail in pole
2599
2145 4354

Note Set Pot. Hub @ Sta 2371958

also @ 2213768 E creek int. E Grand

please put into FB 2235 sketch

656

0785

0760

0730 Nly

Nly

Sly

1750

1725

Lt-Wly

Channel

Rt-Ely

63

3	2.3	-27	-22	-3.6	-4.7	-5.0	-2.4	-0.1	0	0	N
35	37	82	103	98	103	113	116	90	67	36	34
100	76	38	23	5	16	39	40	58	78	100	

N	N	-1.6	-2.2	-2.6	-3.1	-3.3	-4.3	-5.4	-4.5	-2.3	-0.4	N	
34	22	82	83	92	92	92	102	120	116	82	70	32	34
100	80	65	58	40	21	16	23	39	47	58	76	100	

N	N	-1.6	-2.5	-3.2	-2.3	-3.4	-3.9	-4.1	-5.2	-4.6	-2.8	-1.5	N	
22	32	82	91	98	92	100	105	107	118	114	94	84	32	30
100	84	58	55	70	24	12	22	31	46	58	76	82	100	

Lt-Ely

Channel

Rt-Wly

N	0	N	51	42	47	44	45	45	45	45	45	45	45
34	58	98	112	108	113	110	120	120	102	113	100	21	
110	700	84	58	39	25	15	28	37	58	79	100		

36	3.5	4.4	4.9	5.1	4.0	4.7	5.4	4.9	3.9	4.2	3.5	4.2	4.9	
30	101	110	115	112	106	113	120	115	92	105	108	104	124	13
100	76	60	58	50	43	30	8	15	40	58	75	92	100	

T 656

Lt. Why

Channel

Rt. Why

64

1750

42	42	41	42	43	45	48	50	55	60	65	70	75	80	85	90	95	100
24	24	62	78	83	81	84	102	106	132	112	83	64	40	30	22		
100	77	65	58	41	12	6		7	9	25	33	38	54	59	68		

40	41
26	25
80	100

1725

35	39	40	44	49	55	62	70	76	82	88	94	100
32	36	42	80	85	91	100	112	122	62	41	24	30
100	78	58	41	22	3		13	31	38	58	75	100

1707⁵

34	39	40	46	51	57	63	70	76	82	88	94	100	
33	42	60	78	81	82	102	112	126	112	62	45	29	30
100	77	58	34	28	3		11	25	36	41	58	67	100

T. 6 ⁵⁶

D. Smith

X Sec Blvd St
Grand Ave to Hornblend

L to Wly

2

Wot 21154 65
N. H. 8-11-54

1400

4L 32 26 24 22 21 23 30 47 44 42
60 36 30 28 18 27 30 35 40 60

0492 19° RT 18" Palm

0492 22° LT 18" Palm

0486 30° LT 18" con walk + steps

404 37 247
426 326 306
Top 21
544 544

0475

32 38 24 21 23 21 26 47 32
50 35 30 18 27 30 35 50

0467 17° RT 18" Palm

0466 22° LT 18" Palm

0450

35 34 26 22 22 26 44 38
60 38 30 28 30 34 60

0442 17° RT 18" Palm

0441 22° LT 18" Palm

0425

32 33 26 18 22 20 20 30 44 38
60 33 30 27 15 24 30 35 60

0416 19° RT 18" Palm

0415 21° LT 18" Palm

0411 17° RT 6" Fir Hyd

0400 Nly Grand

22 29 23 22 15 24 32 32
60 30 25 17 30 45 60

BM

213

2 BC Mon
Grand Ave.

elevations as read

Lt-Wly

E

rt-ely

66

2425

46	42	41	26	28	25	32	48	45	44
60	35	30	18		27	30	34	42	60

2417 22° Lt E 18" Palm ✓

2417 19° Rt E 18" Palm ✓

2409

46	45	40	25	26	24	35	42	44	44
45	34	30	18		26	30	34	43	60

1492 22° Lt E 18" Palm ✓

1492 19° Rt E 18" Palm ✓

1483 30° Lt E 9' concrete

456	386
49	302
floor	drive

1475

42	32	25	24	23	36	42	42	42
60	30	17		27	30	35	42	60

1467 22° Lt E 18" Palm ✓

1467 19° Rt E 18" Palm ✓

1450

42	46	36	23	23	23	32	48	42	42
60	34	30	28	18		27	30	36	43

1442 22° Lt E 18" Palm

1442 19° Rt E 18" Palm

1425

44	41	34	25	23	24	23	36	46	42	42
50	36	30	24	18		27	30	35	43	60

1417 22° Lt E 18" Palm tree

1417 19° Rt E 18" Palm

1412 21° Lt E 14" Anchor Pole

1412 19° Rt E 14" PPole # P4423

ely, as shown direct

2410

2490

2485⁵ 32⁴ Lt E 8" P.P. 1/2 #604682 H

2485⁵ 34⁵ Rt E 8" P.P. 1/2 #604687 H

2480³ Sly Hor. v. bleed.

2470 18⁸ Rt E 8" P.P. 1/2 46 40 82 H

2467 22⁰ Lt E 18" P. 1/2 m

2467 19⁵ Rt E 18" P. 1/2 m

2464⁵ 32² Lt NE cor. con. patio

2450

2448 18⁰ Rt E (B) dead man

2441 19⁵ E 18" P. 1/2 m

2441 22⁰ Lt E 18" P. 1/2 m

2433⁵ 33¹ Lt SE cor. con. patio

Lt = Wly

E

Rt = Ely

67

34	31	28	28	27	28	30	34
100	50	30	20		30	50	100

34	30	33	28	30	27	33	36	42
100	50	30	18		18	30	50	100

42	35	28	31	26	30	32	47	50	52
60	30	18		17	26	30	33	44	60

486
328

38	27	30	25	46	47	44	44
30	18		26	30	33	40	60

484
331

elu as shown

Lt-Wly

At-Ely

3740⁰³ Nly Hornblend

5L	45	38	28	34	22	42	46	48
100	50	30	18		28	30	50	100

3730

32	36	30	28	33	22	30	32	36
100	50	30	19		17	30	50	100

elv. as shown

Garnet Ave.

1+0

+82.14 BC. 47.

+40

3+0

+50

2+0

Lt. North

L

pt. 8011

70

234	2345	238	2370	2377	2344	2386	247	232
40	286	27.5	20-EP	15		20-EP	31	40

SYNCH
WATER

241	2398	233	2282	2390	2433	251	234
40	272	280	24-EP		18-EP	36	40

SYNCH
WATER

290	252	2501	248	2406	2511	2530	252
40	312	268	24	23-EP		197-EP	40

SYNCH
WATER

316	267	2637	265	2584	2631	2611	256
40	32	268	221	21-EP		20-3-EP	40

345	285	2800	280	2738	2776	2747	2772	2772	269	265
40	30	270	215	20-5-EP		20-EP	21	24-5-EP	38	40

SYNCH
WATER

353	302	2941	294	2886	2922	2886	294	293	280	294
40	31	285	20	19-EP		20-EP	22	25-5-EP	34	40

SYNCH
WATER

Garnet Ave

71

H

Z

Rt.

BM

NIX BP
36.65 Garnet +
Pend/10/07
36.65

+5570 FC

19.6 19.56 18.3 17.88 18.43 18.86 19.24 19.71 19.5 18.8 18.0
40 32.0 SYHC
28-EP 13 17.5-EP Roll 21 36 40

+25

20.3 20.19 19.3 18.55 19.24 19.82 20.50 21.10 21.1 18.6 18.9
40 32.0 SYHC
28-EP 13 17.5-EP Roll 21 36 40

570

20.8 20.88 19.7 19.05 19.90 20.52 21.29 21.86 21.9 18.7 18.1
40 31.6 SYHC
28-EP 13 17.5-EP Roll 21 36 40

+75

21.6 21.45 20.4 19.76 20.55 21.23 22.00 22.6 22.5 14.4
40 31.3 SYHC
28-EP 13 17.5-EP Roll 21 36 40

+50

22.0 21.94 21.1 20.42 21.26 21.85 22.50 23.0 22.0 17.8
40 30.5 SYHC
28-EP 13 17.5-EP Roll 21 36 40

+125

22.7 22.51 21.7 21.21 22.04 22.63 23.17 23.9 21.1 17.0
40 29.5 SYHC
28-EP 13 18.5-EP Roll 21 36 40

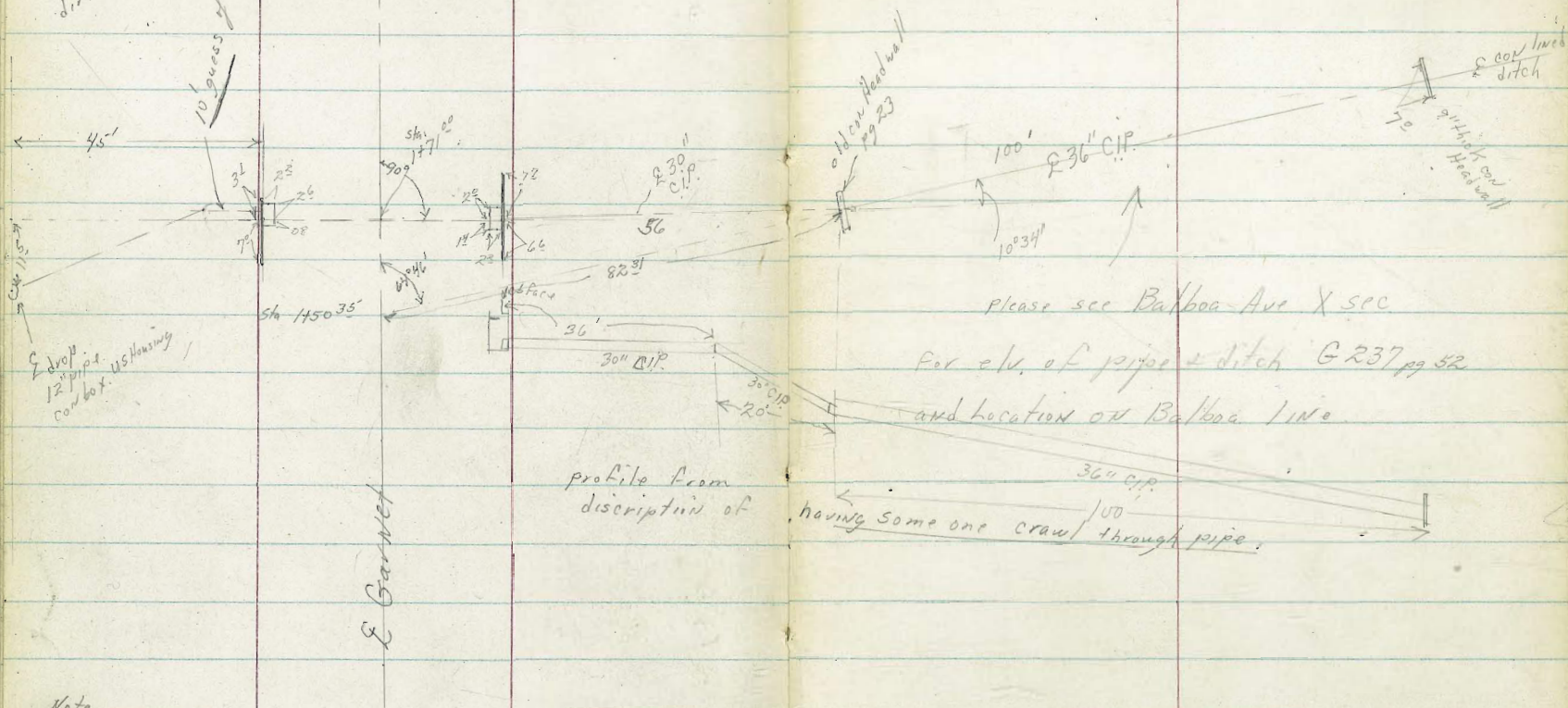
INDEXED

HER with
MAR 21 1905
12" pipe
ditch

10' guess of 12" on 10' 100

27 1/2 12" outlet
grade rate 1' pipe dug out
1 1/2 per foot or 14%

this should cover let
10' Nly of Box anyway



2 drop
12" pipe
con box - US Housing

please see Balboa Ave X sec
for elev. of pipe + ditch G 237 pg 52
and location on Balboa line

Note
24" C.I.P. crossing St is centered in inlet boxes

4-05-56

Stampex
Huffman
Blunt
Kelley

73

CROSS SECTION GARNET ST. AS

CHECK ON NEW CURBS & PAVT.

MORRELL TO NOYES

LT

New
E

RT

0.55

below cb. = Lip

$$\left(\frac{10}{28}\right)^2 = .12755755$$

4+00

61.97
28

28

New Gut
Grade

61.96

62.58

61.86

22

(61.88)
mean

18

28

61.79

28

New Gut
Grade

2+50

62.78
28

28

62.76

63.54

62.68

22

(499)

(62.67)
mean

18

28

62.56

28

$$\left(\frac{6}{28}\right)^2 = .04591806$$

1+00 = 100' E. OF E.

63.59
28

28

New
cb. line

63.62

64.35

63.45

22

E.P.

(64.11)
TH.
Crown

(33.46 Mean)

18

E.P.

28

New
cb. line

63.33

28

New E = 42' S. OF N. P.

New Cbs = 56'

14' Parking on N.; 10' Parking on S.

B. M.

63.17

P.K. Conc. Bk Wall NW Cor Garnet & Noyes

GARNET ST. X-SEC. NOYES TO OLNEY

LT.

New

4

RT

4+00

47.33

28

New
Gutter
Grade

28

47.16

22

47.72

0

(46.98)
Mean

46.81

18

28

46.64

28

New
Gutter
Grade

TP.

51.90

2+50

51.66

28

28

51.51

22

52.11

0

(51.33)
Mean

51.19

18

28

51.00

28

1+00

56.13

28

28

New
cb. Line

56.01

22

EP

56.78

0

(55.98)
Mean

55.96

18

EP

28

New
cb line

55.83

28

GARNET ST. X-SEC. OLNEY TO PENDLETON H

New
E RT

NOTE: Direct ELO Rod Used

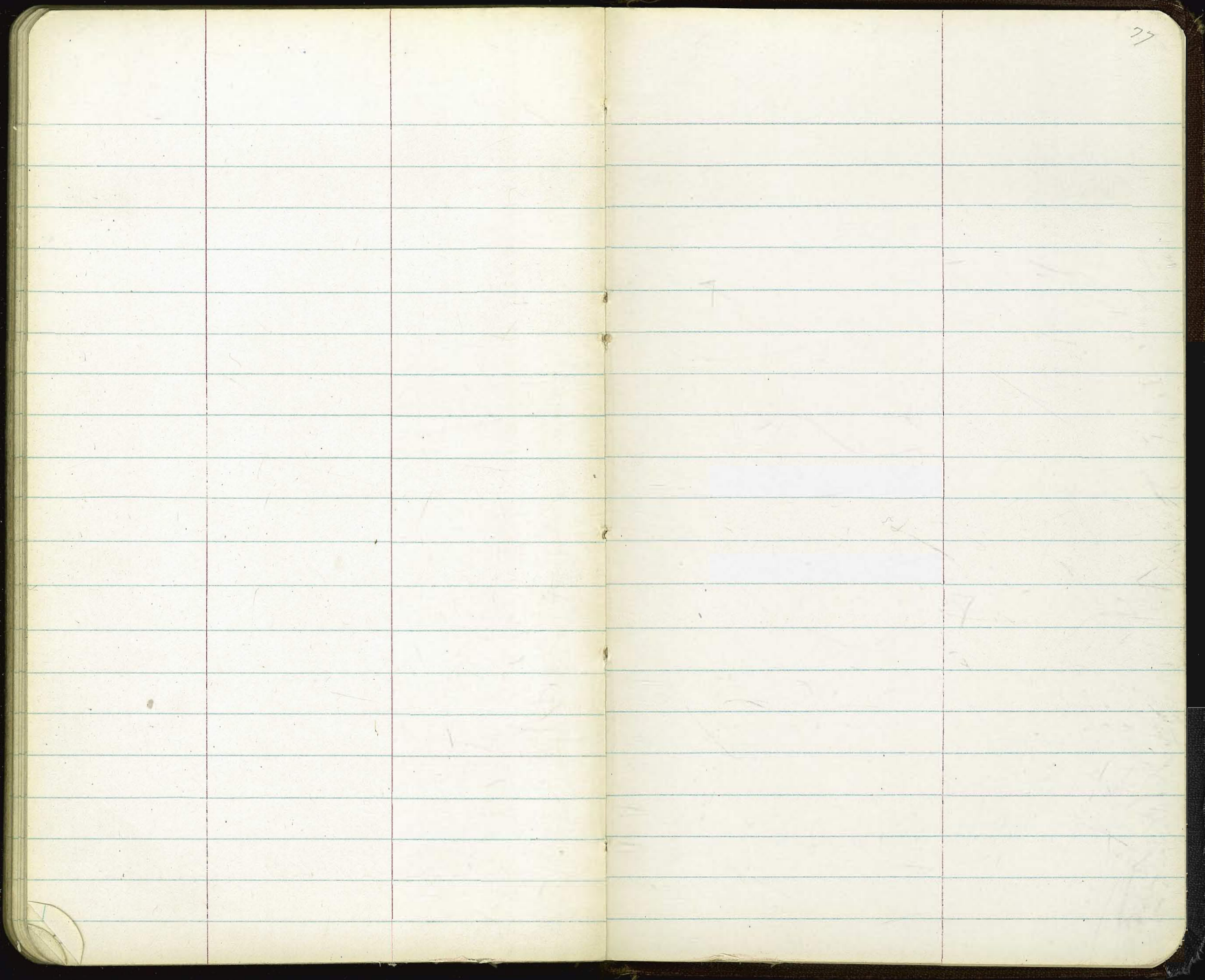
1+0.5 = 105' Ely of E. Pt. Pendleton	31.63 28 New Gutter Grade	28 New cb. Line	31.86 22 EP Mean	32.00 0 (31.63) Mean	31.66 18 EP	28 New cb. Line	31.64 28 New Gutter Grade
4+00	38.10 28	28	38.23 22	38.45 0 (37.72) Mean	37.41 18	28	37.35 28
2+40	41.02 28	28	41.14 22	41.29 0 (40.58) Mean	40.20 18	28	40.15 28
1+00	41.67 28	28	41.65 22	42.06 0 (41.37) Mean	41.15 18	28	41.07 28

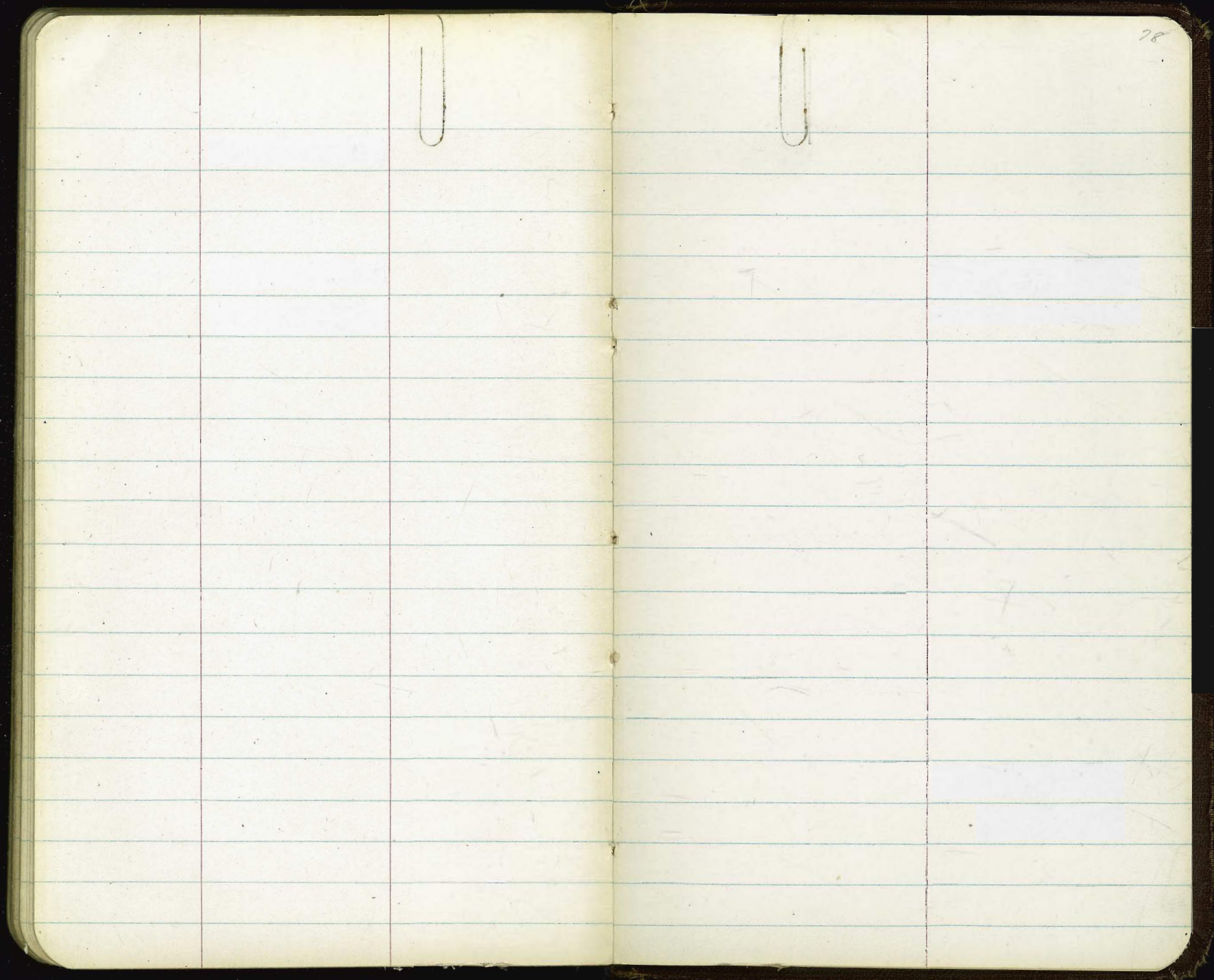
T.B.M.
B.M.

37.72
44.38

Chris @ 26' P.P. To TX 7' C.T. N.W. Cor of Garnet
P.K. P.P. N^o 53576-H NE Cor. Olney & Garnet

Pendleton





$$\begin{array}{r} 1.48 \\ 25 \\ \hline 1.73 \\ 2.20 \\ 55 \\ \hline 1.65 \end{array}$$

Well 146 77

$E = .7 \cdot Cb$
 $5' - .5 -$
 $\frac{1}{2} - 1'$

6" Rim
 33" x 57" O.D.

	$\begin{array}{r} 9.2 \\ 84 \\ \hline 39 \\ 87 \end{array}$	$\begin{array}{r} 45.07 \\ 36.65 \\ \hline 8.42 \end{array}$
$\begin{array}{r} 42.10 \\ 10 \end{array}$	$\begin{array}{r} 41.73 \\ EP \end{array}$	$\begin{array}{r} 41.65 \\ LIP \end{array}$

6.00
 28
 30

 6.58

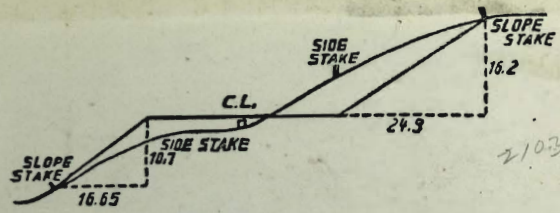
6.58
 1.50

7
 80
 1.5

 6.5

25
 17.98
 27

 69.98



DISTANCES FROM SIDE STAKES FOR CROSS-SECTIONING.
 SLOPE 1 1/2 TO 1. ROADWAY OF ANY WIDTH.

	0	.1	.2	.3	.4	.5	.6	.7	.8	.9	
0	0.00	0.15	0.30	0.45	0.60	0.75	0.90	1.05	1.20	1.35	0
1	1.50	1.65	1.80	1.95	2.10	2.25	2.40	2.55	2.70	2.85	1
2	3.00	3.15	3.30	3.45	3.60	3.75	3.90	4.05	4.20	4.35	2
3	4.50	4.65	4.80	4.95	5.10	5.25	5.40	5.55	5.70	5.85	3
4	6.00	6.15	6.30	6.45	6.60	6.75	6.90	7.05	7.20	7.35	4
5	7.50	7.65	7.80	7.95	8.10	8.25	8.40	8.55	8.70	8.85	5
6	9.00	9.15	9.30	9.45	9.60	9.75	9.90	10.05	10.20	10.35	6
7	10.50	10.65	10.80	10.95	11.10	11.25	11.40	11.55	11.70	11.85	7
8	12.00	12.15	12.30	12.45	12.60	12.75	12.90	13.05	13.20	13.35	8
9	13.50	13.65	13.80	13.95	14.10	14.25	14.40	14.55	14.70	14.85	9
10	15.00	15.15	15.30	15.45	15.60	15.75	15.90	16.05	16.20	16.35	10
11	16.50	16.65	16.80	16.95	17.10	17.25	17.40	17.55	17.70	17.85	11
12	18.00	18.15	18.30	18.45	18.60	18.75	18.90	19.05	19.20	19.35	12
13	19.50	19.65	19.80	19.95	20.10	20.25	20.40	20.55	20.70	20.85	13
14	21.00	21.15	21.30	21.45	21.60	21.75	21.90	22.05	22.20	22.35	14
15	22.50	22.65	22.80	22.95	23.10	23.25	23.40	23.55	23.70	23.85	15
16	24.00	24.15	24.30	24.45	24.60	24.75	24.90	25.05	25.20	25.35	16
17	25.50	25.65	25.80	25.95	26.10	26.25	26.40	26.55	26.70	26.85	17
18	27.00	27.15	27.30	27.45	27.60	27.75	27.90	28.05	28.20	28.35	18
19	28.50	28.65	28.80	28.95	29.10	29.25	29.40	29.55	29.70	29.85	19
20	30.00	30.15	30.30	30.45	30.60	30.75	30.90	31.05	31.20	31.35	20
21	31.50	31.65	31.80	31.95	32.10	32.25	32.40	32.55	32.70	32.85	21
22	33.00	33.15	33.30	33.45	33.60	33.75	33.90	34.05	34.20	34.35	22
23	34.50	34.65	34.80	34.95	35.10	35.25	35.40	35.55	35.70	35.85	23
24	36.00	36.15	36.30	36.45	36.60	36.75	36.90	37.05	37.20	37.35	24
25	37.50	37.65	37.80	37.95	38.10	38.25	38.40	38.55	38.70	38.85	25
26	39.00	39.15	39.30	39.45	39.60	39.75	39.90	40.05	40.20	40.35	26
27	40.50	40.65	40.80	40.95	41.10	41.25	41.40	41.55	41.70	41.85	27
28	42.00	42.15	42.30	42.45	42.60	42.75	42.90	43.05	43.20	43.35	28
29	43.50	43.65	43.80	43.95	44.10	44.25	44.40	44.55	44.70	44.85	29
30	45.00	45.15	45.30	45.45	45.60	45.75	45.90	46.05	46.20	46.35	30
31	46.50	46.65	46.80	46.95	47.10	47.25	47.40	47.55	47.70	47.85	31
32	48.00	48.15	48.30	48.45	48.60	48.75	48.90	49.05	49.20	49.35	32
33	49.50	49.65	49.80	49.95	50.10	50.25	50.40	50.55	50.70	50.85	33
34	51.00	51.15	51.30	51.45	51.60	51.75	51.90	52.05	52.20	52.35	34
35	52.50	52.65	52.80	52.95	53.10	53.25	53.40	53.55	53.70	53.85	35
36	54.00	54.15	54.30	54.45	54.60	54.75	54.90	55.05	55.20	55.35	36
37	55.50	55.65	55.80	55.95	56.10	56.25	56.40	56.55	56.70	56.85	37
38	57.00	57.15	57.30	57.45	57.60	57.75	57.90	58.05	58.20	58.35	38
39	58.50	58.65	58.80	58.95	59.10	59.25	59.40	59.55	59.70	59.85	39
40	60.00	60.15	60.30	60.45	60.60	60.75	60.90	61.05	61.20	61.35	40
41	61.50	61.65	61.80	61.95	62.10	62.25	62.40	62.55	62.70	62.85	41
42	63.00	63.15	63.30	63.45	63.60	63.75	63.90	64.05	64.20	64.35	42
43	64.50	64.65	64.80	64.95	65.10	65.25	65.40	65.55	65.70	65.85	43
44	66.00	66.15	66.30	66.45	66.60	66.75	66.90	67.05	67.20	67.35	44
45	67.50	67.65	67.80	67.95	68.10	68.25	68.40	68.55	68.70	68.85	45
46	69.00	69.15	69.30	69.45	69.60	69.75	69.90	70.05	70.20	70.35	46
47	70.50	70.65	70.80	70.95	71.10	71.25	71.40	71.55	71.70	71.85	47
48	72.00	72.15	72.30	72.45	72.60	72.75	72.90	73.05	73.20	73.35	48
49	73.50	73.65	73.80	73.95	74.10	74.25	74.40	74.55	74.70	74.85	49
50	75.00	75.15	75.30	75.45	75.60	75.75	75.90	76.05	76.20	76.35	50

THE NATIONAL BLANK BOOK COMPANY,
 HOLYOKE MASSACHUSETTS
 NEW YORK CHICAGO BOSTON SAN FRANCISCO