

DISTANCES FROM SIDE STAKES FOR CROSS-SECTIONING
SLOPE 1 TO 1. ROADWAY OF ANY WIDTH

	0	.1	.2	.3	.4	.5	.6	.7	.8	.9	
0	0.00	0.10	0.20	0.30	0.40	0.50	0.60	0.70	0.80	0.90	0
1	1.00	1.10	1.20	1.30	1.40	1.50	1.60	1.70	1.80	1.90	1
2	2.00	2.10	2.20	2.30	2.40	2.50	2.60	2.70	2.80	2.90	2
3	3.00	3.10	3.20	3.30	3.40	3.50	3.60	3.70	3.80	3.90	3
4	4.00	4.10	4.20	4.30	4.40	4.50	4.60	4.70	4.80	4.90	4
5	5.00	5.10	5.20	5.30	5.40	5.50	5.60	5.70	5.80	5.90	5
6	6.00	6.10	6.20	6.30	6.40	6.50	6.60	6.70	6.80	6.90	6
7	7.00	7.10	7.20	7.30	7.40	7.50	7.60	7.70	7.80	7.90	7
8	8.00	8.10	8.20	8.30	8.40	8.50	8.60	8.70	8.80	8.90	8
9	9.00	9.10	9.20	9.30	9.40	9.50	9.60	9.70	9.80	9.90	9
10	10.00	10.10	10.20	10.30	10.40	10.50	10.60	10.70	10.80	10.90	10
11	11.00	11.10	11.20	11.30	11.40	11.50	11.60	11.70	11.80	11.90	11
12	12.00	12.10	12.20	12.30	12.40	12.50	12.60	12.70	12.80	12.90	12
13	13.00	13.10	13.20	13.30	13.40	13.50	13.60	13.70	13.80	13.90	13
14	14.00	14.10	14.20	14.30	14.40	14.50	14.60	14.70	14.80	14.90	14
15	15.00	15.10	15.20	15.30	15.40	15.50	15.60	15.70	15.80	15.90	15
16	16.00	16.10	16.20	16.30	16.40	16.50	16.60	16.70	16.80	16.90	16
17	17.00	17.10	17.20	17.30	17.40	17.50	17.60	17.70	17.80	17.90	17
18	18.00	18.10	18.20	18.30	18.40	18.50	18.60	18.70	18.80	18.90	18
19	19.00	19.10	19.20	19.30	19.40	19.50	19.60	19.70	19.80	19.90	19
20	20.00	20.10	20.20	20.30	20.40	20.50	20.60	20.70	20.80	20.90	20
21	21.00	21.10	21.20	21.30	21.40	21.50	21.60	21.70	21.80	21.90	21
22	22.00	22.10	22.20	22.30	22.40	22.50	22.60	22.70	22.80	22.90	22
23	23.00	23.10	23.20	23.30	23.40	23.50	23.60	23.70	23.80	23.90	23
24	24.00	24.10	24.20	24.30	24.40	24.50	24.60	24.70	24.80	24.90	24
25	25.00	25.10	25.20	25.30	25.40	25.50	25.60	25.70	25.80	25.90	25
26	26.00	26.10	26.20	26.30	26.40	26.50	26.60	26.70	26.80	26.90	26
27	27.00	27.10	27.20	27.30	27.40	27.50	27.60	27.70	27.80	27.90	27
28	28.00	28.10	28.20	28.30	28.40	28.50	28.60	28.70	28.80	28.90	28
29	29.00	29.10	29.20	29.30	29.40	29.50	29.60	29.70	29.80	29.90	29
30	30.00	30.10	30.20	30.30	30.40	30.50	30.60	30.70	30.80	30.90	30
31	31.00	31.10	31.20	31.30	31.40	31.50	31.60	31.70	31.80	31.90	31
32	32.00	32.10	32.20	32.30	32.40	32.50	32.60	32.70	32.80	32.90	32
33	33.00	33.10	33.20	33.30	33.40	33.50	33.60	33.70	33.80	33.90	33
34	34.00	34.10	34.20	34.30	34.40	34.50	34.60	34.70	34.80	34.90	34
35	35.00	35.10	35.20	35.30	35.40	35.50	35.60	35.70	35.80	35.90	35
36	36.00	36.10	36.20	36.30	36.40	36.50	36.60	36.70	36.80	36.90	36
37	37.00	37.10	37.20	37.30	37.40	37.50	37.60	37.70	37.80	37.90	37
38	38.00	38.10	38.20	38.30	38.40	38.50	38.60	38.70	38.80	38.90	38
39	39.00	39.10	39.20	39.30	39.40	39.50	39.60	39.70	39.80	39.90	39
40	40.00	40.10	40.20	40.30	40.40	40.50	40.60	40.70	40.80	40.90	40
41	41.00	41.10	41.20	41.30	41.40	41.50	41.60	41.70	41.80	41.90	41
42	42.00	42.10	42.20	42.30	42.40	42.50	42.60	42.70	42.80	42.90	42
43	43.00	43.10	43.20	43.30	43.40	43.50	43.60	43.70	43.80	43.90	43
44	44.00	44.10	44.20	44.30	44.40	44.50	44.60	44.70	44.80	44.90	44
45	45.00	45.10	45.20	45.30	45.40	45.50	45.60	45.70	45.80	45.90	45
46	46.00	46.10	46.20	46.30	46.40	46.50	46.60	46.70	46.80	46.90	46
47	47.00	47.10	47.20	47.30	47.40	47.50	47.60	47.70	47.80	47.90	47
48	48.00	48.10	48.20	48.30	48.40	48.50	48.60	48.70	48.80	48.90	48
49	49.00	49.10	49.20	49.30	49.40	49.50	49.60	49.70	49.80	49.90	49
50	50.00	50.10	50.20	50.30	50.40	50.50	50.60	50.70	50.80	50.90	50

Distance of slope stake from side or shoulder stake for any width roadway, slope 1 to 1. If ground is nearly level, the cut or fill at side stake is located by the double entry method in left column and top row. The number in body of table in same row and column gives distance from side stake to slope stake. If ground is not level estimate the difference in elevation between the side stake and slope stake, lower target by this amount if cut, elevate if fill. Add this amount to cut or fill and find distance in table. Set up rod at this point, and line of sight should cut target. If it does not make the slight adjustment necessary.

TABLE XIII—CORRECTIONS FOR TANGENTS AND EXTERNALS

These corrections are to be added to the approximate values, found by dividing the tangent, or external, for a 1° curve (Table VIII) by the degree of curve, in order to obtain the true tangents, or externals. Intermediate values may be obtained by interpolation.

FOR TANGENTS ADD

Central Angle	DEGREE OF CURVE															
	5°	10°	15°	20°	25°	30°	35°	40°	45°	50°	55°	60°	65°	70°		
10°	.03	.06	.09	.13	.16	.19	.22	.25	.28	.31	.34	.38	.42	.46		
15°	.04	.10	.14	.19	.24	.29	.34	.39	.45	.51	.53	.58	.63	.68		
20°	.06	.13	.19	.26	.32	.39	.45	.51	.58	.65	.72	.79	.84	.90		
25°	.08	.16	.24	.33	.40	.49	.58	.67	.75	.83	.90	.99	1.06	1.14		
30°	.10	.19	.29	.39	.49	.59	.69	.79	.89	.99	1.09	1.20	1.29	1.39		
35°	.11	.22	.34	.47	.58	.69	.79	.81	.92	1.04	1.29	1.42	1.54	1.66		
40°	.13	.26	.40	.53	.67	.80	.93	1.06	1.20	1.34	1.49	1.64	1.79	1.94		
45°	.15	.30	.44	.60	.76	.91	1.06	1.21	1.37	1.52	1.70	1.87	2.04	2.21		
50°	.17	.34	.51	.68	.85	1.02	1.19	1.36	1.54	1.72	1.91	2.10	2.29	2.48		
55°	.19	.38	.57	.76	.95	1.14	1.32	1.52	1.72	1.92	2.14	2.35	2.56	2.77		
60°	.21	.42	.63	.84	1.05	1.27	1.49	1.71	1.94	2.17	2.38	2.60	2.83	3.07		
65°	.23	.46	.69	.93	1.16	1.40	1.64	1.88	2.13	2.38	2.63	2.88	3.13	3.39		
70°	.25	.51	.76	1.02	1.28	1.54	1.80	2.06	2.33	2.60	2.88	3.16	3.44	3.72		
75°	.27	.56	.83	1.12	1.40	1.69	1.98	2.27	2.57	2.87	3.16	3.47	3.78	4.09		
80°	.30	.61	.91	1.22	1.53	1.84	2.15	2.46	2.78	3.10	3.44	3.78	4.12	4.46		
85°	.33	.66	1.00	1.33	1.68	2.02	2.36	2.70	3.05	3.40	3.77	4.14	4.55	4.89		
90°	.36	.72	1.09	1.45	1.83	2.20	2.57	2.94	3.32	3.70	4.10	4.50	4.91	5.32		
95°	.39	.79	1.19	1.55	2.00	2.40	2.80	3.20	3.61	4.02	4.40	4.98	5.38	5.83		
100°	.43	.86	1.30	1.74	2.18	2.62	3.06	3.50	3.95	4.40	4.88	5.37	5.85	6.34		
110°	.51	1.03	1.56	2.08	2.61	3.14	3.67	4.21	4.76	5.31	5.86	6.43	7.01	7.60		
120°	.62	1.25	1.93	2.52	3.16	3.81	4.45	5.11	5.77	6.44	7.12	7.80	8.50	9.22		

FOR EXTERNALS ADD

Central Angle	DEGREE OF CURVE															
	5°	10°	15°	20°	25°	30°	35°	40°	45°	50°	55°	60°	65°	70°		
10°	.001	.003	.004	.006	.007	.008	.009	.011	.012	.014	.015	.017	.018	.020		
15°	.003	.007	.010	.014	.018	.023	.027	.029	.032	.035	.039	.043	.047	.051		
20°	.006	.011	.017	.022	.028	.034	.038	.045	.051	.057	.063	.070	.076	.083		
25°	.009	.018	.027	.036	.046	.056	.065	.074	.083	.093	.106	.120	.127	.135		
30°	.013	.025	.038	.051	.065	.078	.090	.103	.116	.129	.149	.170	.179	.188		
35°	.018	.035	.054	.072	.086	.109	.131	.153	.175	.197	.213	.230	.247	.264		
40°	.023	.046	.070	.093	.117	.141	.172	.203	.234	.265	.277	.290	.315	.341		
45°	.030	.060	.093	.119	.153	.184	.216	.254	.289	.325	.351	.378	.411	.445		
50°	.037	.075	.116	.151	.189	.227	.266	.305	.345	.384	.425	.467	.508	.550		
55°	.046	.093	.142	.188	.236	.283	.332	.381	.420	.479	.530	.582	.641	.700		
60°	.056	.112	.168	.225	.283	.340	.398	.457	.516	.575	.636	.697	.774	.851		
65°	.067	.135	.204	.273	.343	.412	.483	.554	.625	.697	.771	.845	.922	1.01		
70°	.080	.159	.240	.321	.403	.485	.568	.652	.735	.819	.906	.994	1.08	1.17		
75°	.095	.182	.266	.353	.440	.528	.618	.707	.797	.887	1.07	1.18	1.29	1.39		
80°	.110	.220	.332	.445	.558	.671	.787	.903	1.02	1.13	1.25	1.38	1.50	1.62		
85°	.128	.259	.391	.524	.657	.790	.926	1.06	1.20	1.34	1.47	1.62	1.76	1.91		
90°	.149	.299	.450	.603	.756	.910	1.07	1.22	1.38	1.54	1.70	1.87	2.03	2.20		
95°	.174	.350	.522	.706	.885	1.06	1.25	1.43	1.62	1.80	1.99	2.18	2.38	2.58		
100°	.200	.401	.604	.809	1.01	1.22	1.43	1.64	1.85	2.06	2.28	2.50	2.73	2.96		
110°	.268	.536	.806	1.08	1.35	1.63	1.91	2.20	2.48	2.76	3.05	3.35	3.66	3.96		
120°	.360	.721	1.08	1.45	1.82	2.19	2.57	2.95	3.33	3.72	4.11	4.50	4.91	5.32		

X sec. from
Gresham St. Diamond to Pac. Beach Dr. 1-38

Roberts X-Section Graham Street

Cota Diamond to Pac. Beh. Dr.

Moore
Pullen
11-3-51

WO# 32038

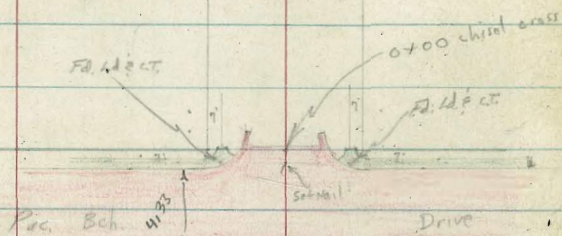
T.P. 20 35, 39 & 62

Oliver (5' No Curb) street

Oliver: -

80' Street
40' Roadway
4.5' Pav.
11' Cb. Pav. to walk
5' walk
30' Curb Radii
15' std. Curb Inlets in SE SW Cor.

SEE SW Cor.



Pac. Beh. Drive: -

60' Street
41.33' BK. Cb. to 30' Cb.
2.66' Roll Cb. (odd)
4.33' Walk
20' Cb. Radii
10' std. Cb. Inlet on Nly. Side of
Pac. Beh. Dr. End opp. 07/107' Both have
5' wide cur. aprons.
0x012 End Conc. Paving

Thomas

Street

INDEXED

NOV 8 1951

2169.53

Reed: -

80' Street
40' Roadway
Curb Pav. to west
AC. Pav. to East
5' Cb. Pav. to walk
5' walk
20' Cb. Radii
15' std. Cb. Inlets in SW E
SE Cor.

To be Conc. Pav.
Reed
In process of Paving.

2169.86

2169.86

Cut Cross in
conc. 2/26/53
517.12' line Reed
on 7' line
Graham
Reed

NOTE: FOR EXISTING INLET ELEVATIONS

AT REED AVE. & OLIVER SEE

PAGE 38.

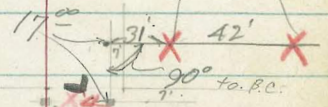
Oliver

Street

Garnet

Street

Cut crosses in walks
2/26/53
CHP



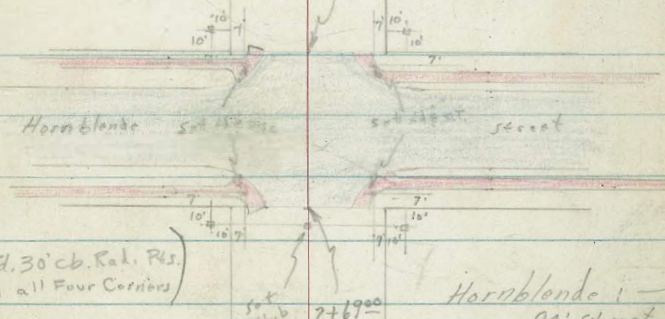
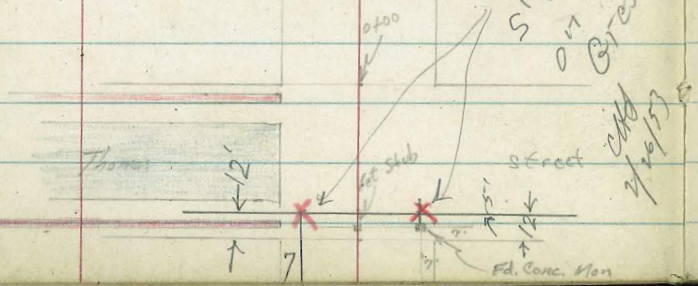
(A' Horn. R.R. Thus L)

Grand
(Unpaved)

Street

Cut crosses in conc.
5' x 12' line
on 7' Lines
Thomas
Bresham
2/26/53

Thomas: -
80' Street
40' Roadway
A.C. Pav.
11' cb for walk
5' walk
30' curb Rad.



(Fd. 30' cb. Rad. P.S.
in all Four Corners)

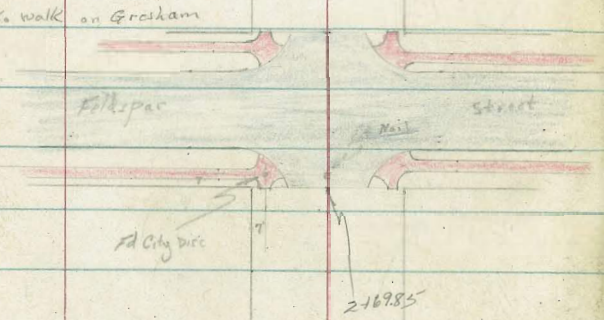
Hornblende: -
80' Street
40' Roadway
A.C. Pav.
To west { 11' cb for walk
5' walk
To East { 5' cb for walk
5' walk
30' curb Rad.

Grand

Street

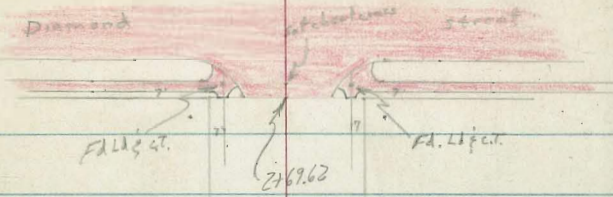
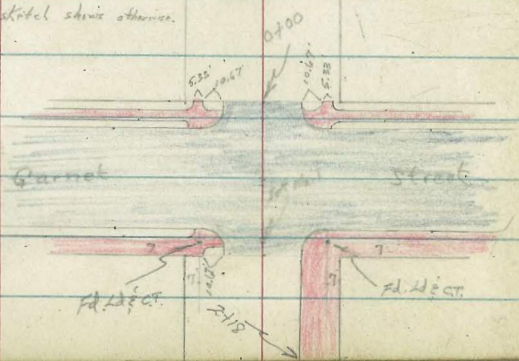
Feldspar: -

20' Street
 40' Roadway
 A.C. Pav.
 To West { 11' cb. for walk
 5' walk
 To East { 5' cb. for walk
 5' walk
 30' Curb Radii
 5' walk for 11' cb. face to walk on Graham



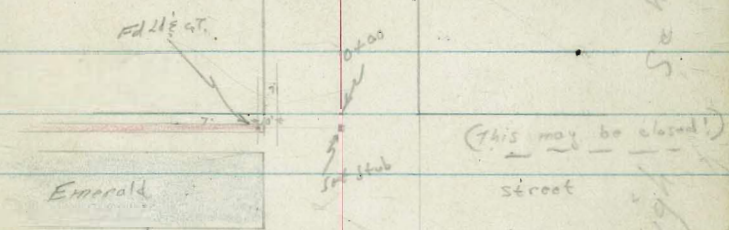
Garnet: -

20' Street
 30' Roadway
 A.C. Pav. over concrete.
 { 45' cb. for walk } Unless skidol skims otherwise.
 5' walk
 10' cb. Radii



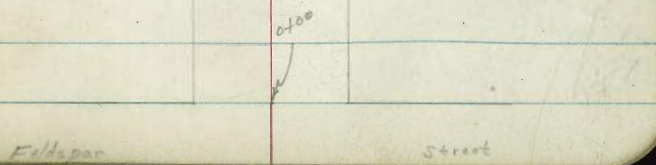
Diamond: -

20' Street
 40' Roadway
 Conc. Pav.
 11' cb. for walk
 5' walk
 30' cb. Radii



Emerald: -

20' Street
 40' Roadway
 A.C. Pav.
 11' cb. for walk
 5' walk
 Not built for 30' cb. Rad.



Junior High School
 (This may be closed!)
 Street

Cont'd From Page 3

Reduced &
Plotted by
G. B. Finney

0+015 Pav. Edge

21.34	20.78	20.99	21.12	21.37	21.47	21.51	21.01	21.92
6.51	7.37	6.76	6.73	6.48	6.38	6.34	6.78	5.93
22	22	16E	10		10	16E	21E	21E
cb	Gutt						Gutt	cb

0+00 No. Line Pac. Bch. Dr. (Not Pav. Edge)

21.33	21.40	21.31	22.09	22.25
6.52	6.45	6.54	5.76	5.60
36	31		31	31
walk	walk		walk	walk

No. Curb Line

20.80	20.17	21.19	20.53	21.01	21.57	22.20	22.20	23.22
7.05	7.64	6.66	7.32	6.84	6.28	5.65	5.15	4.53
90	90	40	40		40	40	90	90
cb	Gutt	cb	Gutt		Gutt	cb	Gutt	cb

Pac. Bch. Dr.

20.00	20.44	21.14	21.97	23.12
7.85	7.41	6.71	5.88	4.73
100	50		50	100

So. Curb Line

19.03	19.69	20.18	19.55	20.33	21.11	21.71	22.47	23.13
8.82	8.16	7.67	8.30	7.52	6.74	6.14	5.38	4.72
95	95	40	40		40	40	100	100
cb	Gutt	cb	Gutt		Gutt	cb	Gutt	cb

So. Line Pac. Bch. Drive

20.6	20.18	19.83	20.52	20.81	21.47	21.4
7.3	7.67	8.22	7.33	7.04	6.38	5.5
40	22E	22E		22.8	22.8	40
	cb	Gutt		Gutt	cb	

BM .666 27.85 T

21.19 NWBP

Pacific Beach Drive & Grastam

1+10 39¹Rt End Fence
42^ELt to Edge of 2' Walk (End)

23.93
39² 40 42 48 44 46 37 40
42^E 40 19 17 18 24 40
conc.

1+00

23.1 22.9 23.6 23.0 23.3 23.3 23.0 24.1 24.0 23.6
4.8 4.0 4.3 4.9 4.6 4.6 4.9 3.8 3.9 4.3
46 40 18 17 10 17 23 40 50

0+90^E 23^ELt water meter

22.69
5.16
23^E
valve
23.91
3.94
42^E
walk

0+70 42^ELt to Edge of 2' conc. Walk parallel to R
Beginning

0+73 39²Rt Begin Board Fence

0+68 39¹Rt R 7' Conc. Drive

24.37
3.44 2.77
39² 666
conc floor

0+49 42^LLt R Single Garage

23.38 23.22 23.6 23.8 23.0 23.5 23.1 24.2 24.3 24.5
4.77 4.13 5.3 5.1 4.9 5.4 4.4 3.7 3.6 3.4
42^L 38^L 16 10 18 19 28 40 50
floor conc

0+10^L End 10' Std. Cb. Inlets with 5 Conc. Aprons

21.2 21.2 21.6 21.48 20.66 21.06 21.8 21.43 21.07 21.98 22.0 23.4 23.2
5.7 5.7 6.3 6.37 7.19 6.79 6.1 6.42 6.78 5.87 5.9 4.5 4.2
40 30 22 20 20 15^L 14^L 20 20 23 28 40
cb Gutt conc Gutt cb

27.85 A

27.85 A

1456 28' Rt to Deadman

1437

21.6	24.7	23.4	23.9	23.6	24.1	24.1	24.3
4.4	4.3	5.6	5.1	5.4	4.9	4.9	4.7
40	22	16		17	18	40	50

1435 I 40' Lt Begin Conc. Block Wall

29.85
+0.83
40' Top

23.3
5.7
40' Foot

1434.76 28' Rt to Center T. Pole # JP4151 No. Line Alley

22.85	23.07	23.8	23.5	23.9	23.6	24.1	24.1	24.2
5.17	5.95	5.2	5.7	5.1	5.4	4.9	4.9	4.8
90 AC.	40 Edg. AD.	23	16		17	19	40	50

1424.76 Q Alley

23.42
22.72
22.97

5.60
90 AC.

6.30
40 Edg. AD.

5.85
40 Edg. AD.

T.P. 5.07 29.02 A 390 23.75

29.02 A

1414.76 (Alley on Lt. A.C. Paving) So. Line Alley

22.28	22.90	22.8	22.7	22.4	21.3	22.9	22.3
4.47	4.95	5.1	4.2	4.5	3.6	4.0	4.6
75 Pav. Edg.	40 Pav. Edg.	20		17	25	40	50

1413 28' Rt to Center P. Pole # JP4149

27.85 A

27.85 A

Contd From Page 6

2+58.52

2+53.52

2+54.2 23' Lt & Rt Begin 15' Sid Curb Inlets

2+49.52 So. Line Oliver

2+44 21' Rt to center Fire Hydrant

2+42 28' Rt to center P. Pole # 5P4199

2+23.5 21' Rt to water Meter

2+17 40' Lt End wall

1+82 39' Rt @ 16' Conc. Apron

29.02 π

25.22
3.80
#0
walk

25.25
3.77
#0
walk

24.49
4.52
238
cb

24.06
5.34
238
cut

23.68
4.77
238
cut

24.52
4.15
238
cb

26.3	26.0	25.5	24.4	25.0	25.3	25.1	24.2	25.4	25.92	25.2
2.7	3.0	3.5	4.6	4.0	3.7	3.9	4.8	3.6	3.60	3.8
50	40	27	20	10		12	21	22	40 END of walk	50

24.77

4.25

21
av
walk

25.9
3.1
40' GRD

25.3
3.7
40' Foot

24.9	24.5	24.1	24.4	24.1	24.8	24.83	24.83	25.12
4.1	4.5	4.9	4.6	4.9	4.2	4.19	4.19	3.90
40	19	16		17	22	392 C&C	490 C&C	50 K/door

29.02 π

Cont'd From Page 7

0+00 { 26.5 Rt to Water Meter
No Line Oliver

3+25.52

3+20.52

3+09.52 Nly Curb Line

2+89.52 E Oliver

T.P. 6.44 31.69 X 3.77 25.25

2+69.52 Sly Curb Line

(ON Lt. 5' of Curb not built From the
Curb Inlet to End of Curb in Oliver)

2+65.7 35.2 Lt & Rt End 15' sed Cb Inlets

27.02 X

14

8

Rt

8

27.1	26.5	25.8	26.2	26.0	26.6	26.9	26.5	26.5
46	5.2	5.9	5.5	5.7	5.1	5.50	5.2	5.2
40	22	17		17	24	26.2 ON WALK	40	90

26.32
5.37
46
WALK

26.27
5.42
40
WALK

26.91 26.23
4.72 5.46
90 90
Cb Gutt

26.14	25.38	26.09	25.24	25.18	25.3	26.0	25.6	25.5	25.8
5.55	6.31	5.60	6.45	6.51	6.4	5.7	6.1	6.2	5.9
50	50	40	40	40	20		20	40	90
Cb	G.H.	Cb	G.H.	Par					
1.75' No. Edge of Sta.									

26.05	24.98	24.8	25.8	25.3	25.7	25.9
5.64	6.71	6.9	5.9	6.4	6.0	5.8
90	39.2	30		20	40	90
As.	Par.	Edge				

31.69 X

Depos 10' Probab of SW 77 Line Gresham & Oliver

25.55 24.93
3.47 4.09
90 90
Cb Gutt

25.24	24.61	25.09	24.39	24.39	24.2	25.2	25.5	25.3	24.3	25.6	25.7	25.5
3.78	4.41	3.93	4.63	4.63	4.8	3.8	3.5	3.7	4.7	3.4	3.3	3.5
30	50	40	40	40	32	12		10	36	40	50	79
Cb	Gutt	Cb	Gutt	Edge	Par							
1.75' No. Edge of Sta.												

U
As

25.07 24.25
3.95 4.79
35.2 35.2
Cb Gutt

23.77 24.62
5.25 4.40
35.2 35.2
Gutt Cb

27.02 X

Cont'd From Page 8

lt Q RT 9

1+18 28⁵ RT to center T. Pole # 55 4225

1+01⁵ 40³ RT @ 3⁵ Conc Walk

1+00

(Water meters for these houses on corner.)

0+77⁵ 40² RT @ 9' Conc. Drive

0+62 40² RT @ 3² Conc. Walk

0+50

0+41⁵ 40² RT @ 3⁵ Conc Walk

31.69X

28.64 28.74
3.05 2.95
40² 50
conc

29.4 29.0 28.6 28.2 28.0 27.7 27.4 27.7 28.6 29.0
23 27 29 35 37 40 43 40 31 27
50 40 17 16 12 20 21 40 50

27.69 27.82
40⁰ 387
40⁰ 38
conc floor

27.52 27.77
4.17 3.92
40² 50
conc

28.4 27.9 27.7 27.3 27.2 27.0 26.5 27.1 27.5 27.8
33 38 40 44 45 47 52 46 42 39
50 40 18 17 11 20 25 40 50

27.17 27.21
4.52 4.48
40² 50
conc conc

31.69X

Cont'd From Page 9

Lt

R

R 10

2700

31.2	30.9	30.4	30.0	29.9	29.6	29.3	30.3	30.1	30.0
3.3	3.6	4.1	4.5	4.6	4.9	5.2	4.2	4.4	4.5
50	40	16	15		12	20	24	40	50

1796 38⁶ Lt & 3' Conc Walk

31.22	30.92
3.25	3.55
48	38.6
conc	conc

1789 37³ Rt Hedge mostly dead - an eyesore!
Begin cypress Hedge

1766 { 39' Lt & 8' Conc Drive
38' Rt End Hedge (Partially dead)
Eyesore!

31.07	30.74
3.40	3.73
60	39
conc	conc

T.P. 5.54 34.47 T 2.76 28.93

34.47 T

1751^E 28³ Rt to Deetman

1750

1745 39⁵ Lt Begin Eugenia Hedge

1748 38' Rt Begin cypress Hedge

1747 24" Lt to center 6" Tree

1745 28⁵ Rt to Center Guy Pole

30.3	29.6	29.1	28.9	28.7	28.5	28.3	28.2	28.2
1.4	2.1	2.6	2.8	3.0	3.2	2.4	2.5	2.5
40	17	15		12	20	22	40	50

31.69 T

31.69 T

- Cont'd From Page 10

2+84.86

2+79.86

2+74.8

RH¹ Lt Begin 15³ Std Curb Inlets
24³ | 23²

2+72

28⁵ Rt. to Center P. Pole # 4249

T.P.

6.69 37.81 X 3.35 31.12

39' Rt End Hedge
38' Lt End Hedge
So. Line Road

2+69.86

2+54

24¹ Rt to Center W. Papper Tree

2+35

2+30.5

39¹ Rt & 3³ Conc. Walk

3447 X

lt

ℓ

Rt

11

31.69 6.17
39I Walk
6.12 39I Walk

32.00 5.81
40Z Walk 32.03
5.78 40Z Walk

31.43	30.58	31.5	31.5	31.3	30.74	31.57
6.38	7.23	6.3	6.3	6.5	7.07	6.24
23E	23E	10		12	24E	24E
cb	Gutt				Gutt	cb

37.81 X

32.3	32.0	31.1	30.7	31.2	30.7	31.9	31.9
2.2	2.5	3.4	3.8	3.3	3.8	2.6	2.6
40	21	17		13	22	24	40

31.9	31.7	31.0	30.7	30.7	30.5	30.2	31.2	31.0	30.6
2.6	2.8	3.5	3.8	3.8	4.0	4.3	3.3	3.5	3.7
50	40	16	15		12	20	24	40	50

30.57 390
39L conc 30.72 3.75
47 conc

3447 X

Cont'd From page 11

22

2

22

12

0+00 No. Line Reed

33.5	33.4	31.8	32.4	32.7	32.5	32.9	33.1
43	44	6.0	5.4	5.1	5.3	4.9	4.7
40	16	12		15	20	27	40

3
5+39.86

32.33		32.29
5.48		5.52
39E		40E
walk		walk

3
5+34.86

32.27	32.22
5.54	5.59
39E	40E
walk	walk

3+29.86 Nly Curb Line

31.66	31.03	32.07	31.42	32.11	31.28	31.2	31.9	31.2	32.4	32.2	31.29	31.50	32.11	31.57	32.11
6.15	6.78	5.74	6.39	5.90	6.23	6.6	5.9	5.6	5.4	5.6	6.22	6.31	5.70	6.14	5.60
100 cb	100 gutt	50 cb	50 gutt	40 cb	40 gutt	40 sub	40 10	18	32	40	40	40	40	50	50
		30'cb Red		1.75 No. of Sta						Ac		1.5 No. of Sta			

3+09.86 E Reed

31.14	31.61	31.9	32.0	31.9	31.68	31.26
6.67	6.20	5.9	5.8	5.9	6.13	5.55
100 on Header Board	39E on Header Board	17		22	40 on Par Edge	100 Ac

2+89.86 Sly Curb Line

31.18	30.51	31.57	30.95	31.05	31.7	31.32	31.38	31.99	31.59	31.22
6.63	7.30	6.24	6.86	6.76	6.1	6.49	6.42	5.12	6.22	5.59
100 cb	100 gutt	50 cb	50 gutt	40 Par Edge		40E Par Edge	50 gutt	50 cb	100 gutt	100 cb

2+85.9

No Ch. left out here.
End of Curb Inlets

31.65	30.79	30.98	31.84
6.16	7.02	6.83	5.97
34E cb	34E gutt	35E gutt	35E cb

37.81A

37.81A

Contd From Page 12

Lt

Q

Rt

13

1+00

34.9	33.9	34.1	34.3	34.2	34.9	34.9	34.9
5.6	6.6	6.4	6.2	6.3	5.6	5.6	5.6
40	12		16	21	30	40	50

0+93

39² Lt Q 4' Conc Walk

35.06
540
39²
conc

0+83

39² Lt Q 4' conc. Walk
40 Rt Q 3 Conc. Walk

34.75	34.70	34.60	34.65
5.73	5.78	5.88	5.83
43 ⁸ conc	39 ² conc	40 conc	34 conc

0+62

40 Lt End Wall

33.82	34.4	33.5
2.46	6.1	7.0
40 Top	40 GRD	40 Foot

0+50

34.3	34.1	34.1	32.7	33.2	33.3	33.6	33.4	34.0	34.0	34.0
6.2	6.4	6.4	7.8	7.3	7.2	6.9	7.1	6.5	6.5	6.5
50	40	18	12	6		14	20	28	40	50

0+45⁵

39² Lt Q 3' Conc. Walk

34.22
6.26
39²
conc

0+43

40 Lt Begin conc. BK Wall

32.0	34.1	33.5
2.5	6.4	7.0
40 Top	40 GRD	40 Foot

T.P.

5.25 40.48 T 2.58 35.23
37.81 T

40.48 T

2400

	Lt					Rt			
	^{36.0}	^{36.0}	^{35.7}	^{35.0}	^{35.3}	^{35.6}	^{35.5}	^{36.2}	^{36.2}
	4.5	4.5	4.8	5.5	5.2	4.9	5.0	4.3	4.3
	50	40	15	10		16	22	40	50

1797 40' Rt @ 8' Conc Drive

	^{36.5}	^{36.43}
	4.13	4.05
	40	55
	conc	Floor

1779 37' Rt to Center 24" Cypress Tree

1767 29' Rt to Deadman

1755^E 37' Rt to Center 30" Cypress Tree

1750

	^{35.2}	^{35.13}	^{35.2}	^{34.5}	^{34.9}	^{35.0}	^{35.0}	^{35.3}	^{35.4}	^{35.4}
	5.3	5.2	5.3	6.0	5.6	5.5	5.5	5.2	5.1	5.1
	50	40	16	11		15	25	28	40	50

1748 29' Rt to Center Pole # 4275

1735^E

5.50
MH

1715 40' Rt @ 8' Conc. Drive

	^{35.13}	^{35.2}
	5.35	5.16
	40	67
	conc	Floor

1708^E 39' Lt @ 3' Conc. Walk

	^{35.35}	^{35.22}
	5.13	5.26
	46	39
	conc	conc.

40.48π

40.48π

Cont'd From Page 14

40' Lt End Wall
 2+69.53 SO. Line Thomas

Lt						Q ^d	Rt				
39.91	35.9	36.7	36.6	36.2	35.7	36.0	36.2	36.1	36.6	36.7	37.0
1.90	5.9	5.1	5.2	5.6	6.1	5.8	5.6	5.7	5.2	5.1	4.8
40	40	40	18	12	10		17	22	26	40	90
Top	Foot	GRD									

T.P. 5.69 41.81A 436 36.12

41.81A

2+58 37' Lt to Center 3" Pepper Tree

2+47 23' Lt to Deadman

2+42 37' Lt to Center 4" Eucalyptus Tree

2+35

36.7	36.4	35.9	36.4	35.4	35.7	35.9	35.8	36.3	36.5	36.7
3.8	4.1	4.6	4.1	5.1	4.8	4.6	4.7	4.2	4.0	3.8
50	40	28	17	10		17	22	29	40	50

2+31^E 36' Rt to Center 24" Cypress Tree

2+29 37' Lt to Center 4" Pepper Tree

2+14 39' Lt Begin Conc BIK Wall

40.13	36.1	35.4
0.35	4.4	5.1
39	39	39
Top	GRD	Foot

2+07 39' Lt & Conc. Drive

35.98	35.96
4.50	4.50
44	39
floor	conc

40.48A

40.48A

Cont'd From Page 15

Lt

Q

Rt 16

3+45.53

37.48
4.33
402
Walk

3+40.53

37.38
4.43
402
Walk

3+29.53

Nly Curb Line

56.28	55.73	57.02	56.42	57.17	56.53	56.01	56.7	56.9	57.2	57.1	57.4
5.43	6.08	4.79	5.39	4.64	5.28	5.20	5.1	4.9	4.6	4.7	4.4
100 Cb	100 Gutt	50 Cb	50 Gutt	40 Cb	40 Gutt	396 Pav.	10 Edge		18	40	90

30' Cb Rad
175%
of Sta.

3+09.53

Q Thomas

55.97	56.66	56.4	56.7	56.9	57.0	57.2
5.84	5.15	5.4	5.1	4.9	4.8	4.6
100 AC	396 Edge	10 Pav		20	40	90

2+89.53

Sly Curb Line

55.91	55.26	56.54	55.91	56.63	56.01	56.16	56.3	56.5	56.4	56.7	56.8	57.2
5.90	6.55	5.27	5.90	5.18	5.28	5.65	5.5	5.3	5.4	5.1	5.0	4.6
100 Cb	100 Gutt	50 Cb	50 Gutt	40 Cb	40 Gutt	396 Edge		17	22	27	40	90

30' Cb Rad
175%
of Sta.

2+78.53

40
Walk

2+73.53

56.92
4.89
40
Walk

2+70 22' Lt to Center P. Pole # 4298

41.81X

41.81X

Cont'd From Page 16

26

27

R+

17

1750

40.0	39.9	39.7	39.4	39.7	39.8	39.9	39.8	40.4	41.1
1.8	1.9	2.1	2.4	2.1	2.0	1.9	2.0	1.4	0.7
50	40	15	13	7		16	23	40	50

1735[±]

39.65
216
MH
②

1735

39.56
215
52
MH
①

1726[±]

23[±] 26 to Center P.Pole # JP4324

1706

23[±] 24 to Deadman

1700

39.2	39.2	39.2	39.0	38.5	38.8	39.1	38.9	39.5	39.7
2.6	2.6	2.5	2.8	3.3	3.0	2.7	2.9	2.3	2.1
50	40	21	11	10		13	20	40	50

0750

38.4	38.4	38.5	38.2	37.8	38.0	38.2	38.2	38.9	38.9
3.4	3.4	3.3	3.6	4.0	3.8	3.6	3.6	2.9	2.9
50	40	22	10	9		15	30	40	50

0700

No. Line Thomas

37.7	37.4	37.0	37.2	37.4	38.0	38.0
4.1	4.4	4.8	4.6	4.4	3.8	3.8
40	11	10		22	40	90

4181X

4181X

Cont'd From Page 17

2135

2131 42³ RT & 3' Conc Walk

2106² 40³ Lt Begin 3' Conc Walk parallel to Q

2105 38¹ Lt to brick Flower box 11' long 1¹/₂' wide

2101⁵ 40⁵ RT & 3' Conc Walk

2100

1472 42⁶ RT & 3' Conc Walk

T.P. 7.81 47.90~~N~~ 172 40.09

41.81~~N~~

17

Q

RT

18

42.0	41.9	41.1	41.4	41.5	41.5	41.1	42.6	43.3
5.9	6.0	6.8	6.5	6.4	6.4	6.8	5.3	4.6
40	25	14	8		10	20	40	50

42.96	43.32
4.94	4.58
42 ³	50
conc	conc

41.95

5.95
40²
walk

42.92 41.1 40.4

4.98	6.8	7.5
38 ²	38 ²	38 ²
Top	CRP	Foot

42.40

42.67

5.50	5.23
42 ⁵	50
conc	conc

40.5	40.7	40.9	40.4	40.7	40.6	40.4	41.8	42.5
7.4	7.2	7.0	7.5	7.2	7.3	7.5	6.1	5.4
50	40	17	13		14	20	40	50

41.97

5.93
42⁶
conc

47.90~~N~~

Cont'd From Page 18

Lt

E

Rc 19

3+10.20

42.9	43.8	44.4	44.9	46.0
6.4	5.5	7.9	7.4	3.3
100	70		70	100

2+90.20

42.5	43.6	43.9	43.2	43.6	43.1	43.8	44.4	43.9	44.9
6.8	5.7	5.4	6.1	5.9	6.2	5.5	4.9	5.4	7.4
100	40	16	14		20	23	40	42	100

T.P. 3.72 49.25 π 2.37 45.53 NE

49.25 π
7 Conc. Mon. Grand & Greenham

2+71 23³ Lt to Center P. Pole # 4396

42.4	42.7	42.9	42.3	42.5	42.7	42.8	42.4	42.4	43.9
5.5	5.2	5.0	5.6	5.4	5.2	5.1	5.5	4.5	4.0
90	40	17	15	10		8	20	40	90

2+70.20 So. Line Grand

2+55 38⁴ Lt End of Brick Flower box 11x14

42.02	42.2	41.8
4.8	5.7	6.1
3/4	3/4	3/4
70	60	50

2+53² 40 Lt to End Walk

42.45
5.45
70
walk

47.90 π

47.90 π

Cont'd From Page 19

LL

LR

RT

20

0+50

44.1	44.1	44.3	43.5	44.1	44.0	44.7	45.0	45.5
5.2	5.2	5.0	5.8	5.2	5.3	4.6	4.3	3.8
50	40	30	19		17	25	30	72 ² ₁₀₀

0+43⁵

28⁵ LL 8' Conc. Walk

44.05	44.06	43.94
5.20	5.19	5.31
60	40	28 ⁵
conc	conc	conc

0+36

39² RL 5' 3x6 Conc. Landing

46.26
2.99
39²
conc

0+27

31⁵ LL to Center 10" Pine Tree

0+01

31⁵ LL to Center 10" Pine Tree

0+00

No. Line Grand

44.1	44.2	44.0	43.4	44.2	44.3	45.5	46.5
5.6	5.1	5.3	5.9	5.1	5.0	3.8	2.8
100	40	24	20		20	40	100

3+5

43.0	43.5	44.7	44.6	44.8	45.7
6.3	5.8	4.6	4.7	4.5	3.6
100	40		30	40	100

3+30.90

LR GRAND

43.2	44.2	44.9	45.2	46.3
6.1	5.1	4.4	4.1	3.0
100	40		40	100

4925A

4925A

Cont'd From Page 20

1445 } 38^E Rt to Edge 2' Conc. Walk Parallel to E
28^E Rt begin 3 Rail wood Fence

1434

1424 23^E Lt to center P. Pole #4424

1416 20^E Lt 230' Conc. Walk

1401^E 31' Lt to center 10" Pine Tree

1400

0481 39^E Rt 23' Conc. Walk

0457 39^E Rt 23' Conc. Landing

0451 31^L Lt to center 18" Pine Tree

4925 A

lt

R

R

21

46.57
2.68
392
conc

44.31
3.94
HH

45.10 44.50 44.31
4.15 4.75 4.94
403 40 conc 202
Top conc. Park conc conc

44.1 44.1 44.1 44.6 44.4 45.4 45.4
5.2 5.2 5.2 4.7 4.7 3.9 3.9
50 70 16 18 26 40

46.48 46.49
2.77 2.76
392 50
conc conc

46.29
2.96
392
conc

4925 A

Cont'd From Page 21

2+41 28^E Rt Q 3' Conc Walk

2+35

2+27 26^L Lt to Center 8" Pepper Tree

2+25 28^E Rt Q 3' Conc Walk

T.P. 701 53.05 π 3.21 46.04

2+00

1+79^E 26^L Lt Begin Picket Fence

1+69 38^L Rt to Edge Conc Walk (End)

1+66 41^L Lt Q 2' Conc Walk

1+50

49.25 π

Lt

Rt

Rt

22

45.9

45.9

46.1

46.4

7.2
50

7.2
40

7.0
16

6.7

6.7
18

5.2
28

5.3
40

47.84

5.21

28.3
conc

46.4

47.9

47.8

47.94

5.11

40
conc

47.97

5.08

42
conc

47.57

5.48

28.5
conc

47.93

5.22

40
conc

47.83

5.22

42
conc

53.05 π

45.6

45.6

45.8

45.3

46.0

45.9

47.0

47.4

47.4

3.7
50

3.7
40

3.5
18

3.8
17

3.3

3.4
17

2.3
27

1.9
40

1.9
50

46.90

49.94

45.00

2.45

5.31
39
conc

4.25
41.2
conc

38.5
conc

44.8

44.8

44.7

44.4

45.3

45.2

46.2

46.5

4.5
50

4.6
40

4.6
20

4.9
17

4.0

4.1
17

3.1
28

2.8
38

49.25 π

0+00 No. Line Hornblend (End Pav.)

47.45	47.36	46.71	47.48	47.30	48.00	48.06
5.60	5.69	6.34	5.57	5.75	5.05	4.99
273 Walk	216 cb	216 Gutt		216 Gutt	216 cb	303 Walk

Nly Curb Line

42.52	49.86	46.61	45.92	47.22	47.27	47.71	48.22	48.84	49.46
7.53	8.19	6.44	7.13	5.83	5.78	5.34	4.73	4.21	3.59
100 cb	100 Gutt	50 cb	50 Gutt		20	50 Gutt	50 cb	100 Gutt	100 cb

Q Hornblende

45.04	46.15	47.02	47.09	47.95	48.06
8.01	6.90	6.03	5.96	5.12	3.99
100	50		20	50	100

Sly Curb Line

47.25	44.25	46.05	45.55	46.47	46.78	46.75	47.30	47.94	48.27	48.96
8.30	8.20	7.00	7.50	6.58	6.27	6.30	5.95	5.11	4.68	4.07
100 cb	100 Gutt	50 cb	50 Gutt	20		20	50 Gutt	50 cb	100 Gutt	100 cb

2+6900 So. Line Hornblende (Pav. Edge)

46.49	46.37	45.91	46.54	46.51	47.18	47.34
6.56	6.69	7.14	6.51	6.54	5.87	5.71
292 Walk	216 cb	216 Gutt		218 Gutt	218 cb	303 Walk

2+68 225' Lt to center P. Pole #4449

2+65 30' Rt End Fence

2+49 25' Lt End Picket Fence

2+47 26' Lt to center 8" Pepper Tree

53.057

53.057

1+26^E - 23¹ Lt to Center P. Pole # 4474

49.7	50.0	50.5	50.1	49.5	50.2	49.9	51.0	50.6	51.7
------	------	------	------	------	------	------	------	------	------

1+25^E 22³ Lt End Fence

3.4	3.1	2.6	3.0	3.6	2.9	3.2	2.1	2.5	1.4
50	40	22	17	14		18	23	40	50

1+00

49.9	49.2	49.9	49.9	49.9	49.5	49.5	50.3	51.3	51.6
4.2	3.9	3.2	3.2	4.2	3.6	3.6	2.8	1.8	1.5
50	40	23	16	15		18	20	40	46

0+91 27³ Rt & 3' Conc Walk

50.87	51.26	51.48
2.14	1.67	1.57
272	40	422
conc	conc	conc
		Edge Patch

0+51^E 28⁸ Rt & 3' Conc Walk

50.20	50.94	51.04
2.85	2.11	2.01
288	40	50
conc	conc	conc

0+50

49.0	48.4	49.0	49.9	48.0	48.5	48.6	49.2	50.7
5.1	4.7	4.1	4.2	5.1	4.6	4.5	3.9	2.4
50	40	23	15	14		18	20	40

0+23 22³ Lt Begin wire Fence (Bad Shape)

47.3	47.6	47.5	47.0	47.6	47.6	49.1	49.8	50.1
5.8	5.5	5.6	6.1	5.0	5.5	4.0	3.3	3.0
50	40	24	20		20	23	40	50

0+02

53.05 T

53.05 T

Check 6.20 52.59 = 52.42
 T.P. 5.53 58.79 π 4.60 53.26 = ?

SW 7' 2 1/2 T Garnet & Gresham
 Ld E CT
 NWT Garnet & Gresham

(15' Walk to come out of gutter drain)

2+18 20' Rt begin curb & walk

51.6 52.44 52.76
 6.3 542 5.10
 20 20 40
 6ft CB Walk

2+06 39' Lt End Fence begin 8" conc. Ret. Wall

51.4 52.0
 6.5 5.06
 37E 39E
 52D CONC TOP
 (26)

2+00

52.0 52.2 51.5 51.1 50.6 51.2 51.5 51.8 52.6 52.7
 5.9 5.7 6.6 6.8 7.3 6.7 6.6 6.1 5.3 5.2
 50 40 38 19 13 19 24 40 50

T.P. 7.05 57.86 π 2.24 50.81

57.86 π

1+45 39' Lt begin cyclone fence

49.5 49.9 50.1 49.9 50.6 50.3 51.9 52.2 52.0
 3.6 3.2 3.0 3.2 2.5 2.8 1.3 0.9 1.1
 50 40 23 13 20 22 40 50

1+43.5 39' Rt to center T. Pole # 2

1+34.5

49.3 49.6 50.1 49.8 50.0 50.1 51.2 51.2 51.5
 3.8 3.5 3.0 3.3 2.45 3.0 1.9 1.9 1.6
 50 40 19 13 11.7 18 35 40 50

53.05 π

53.05 π

0+26 22' Lt to Deadman

0+15 22' Lt to Center Guy Pole

0+00 No. Line Garnet (Edge Pav.)

53.27	53.34	53.34	53.33	53.67	53.64	54.26	54.25	54.26
5.42	5.45	5.45	5.96	5.12	5.15	4.53	4.44	4.41
36	38.67	20	20	192	192	30.57	35.93	35.93
Walk	Walk	cb	Gutt	Gutt	cb	Walk	Walk	Walk

+66 No. Curb Line

52.23	51.64	52.19	52.67	52.81	52.13	52.36	52.52	54.10	53.62	54.27	55.27	55.49
6.56	7.15	5.60	6.12	5.98	5.66	5.43	5.27	4.67	5.11	4.52	3.42	3.20
100	100	30	30	20	20	20	30	30	40	40	100	100
cb	Gutt	cb	Gutt	Gutt	Gutt	Gutt	Gutt	cb	Gutt	cb	Gutt	cb

+40 E Garnet

52.07	52.84	52.44	54.41	55.85
6.72	5.95	5.35	4.21	2.94
100	30	50	50	100
cb	Gutt	Gutt	Gutt	Gutt

+10 So. Curb Line

51.66	51.09	52.29	51.49	52.41	51.94	51.98	52.49	52.78	52.42	53.16	54.20	55.29
7.13	7.70	6.26	6.20	6.38	6.85	6.81	6.30	6.01	5.87	5.33	3.89	3.40
100	100	40	40	30	30	20	20	20	30	30	100	100
cb	Gutt	cb	Gutt	cb	Gutt	Gutt	Gutt	Gutt	cb	cb	Gutt	cb

2769¹⁹ So. Line Garnet (Pav. Edge)

52.20	52.23	52.61	52.25	51.63	52.53	52.54	52.21
6.07	6.06	6.18	6.54	7.16	6.26	6.25	5.58
40	362	3027	201	204	20	20	20
Walk	Walk	Walk	cb	Gutt	Gutt	Gutt	cb

2727² 20' Rt E 13' Drive opening in Curb

52.01
6.74
20
4IP

58.79X

58.79X

1725^E 19^E Lt to Center P. Pole # JTA 1390

1725^E 33' Rt End Apron

1706^E 32^E Rt Begin Conc. Apron

1700

0791^E 36^E Rt. & 4' Conc. Walk

0784 33' Rt. End Conc. Apron

0765 32^E Rt. Begin Conc. Apron

0750

5879X

53.5	53.8	54.5	54.0	54.3	54.6	56.0	56.3
5.3	5.0	4.3	4.8	4.5	4.2	2.8	2.5
50	40	18	16		18	29	392

56.46
2.33
33
conc

56.69
2.10
392
Floor

56.24
2.35
322
conc

56.63
2.16
392
Floor

56.62
2.17
362
conc

56.64
2.15
392
Floor

56.04
2.75
33
conc

56.55
2.24
392
Floor

55.10
3.69
322
conc

56.60
2.19
392
Floor

53.4	53.5	53.9	53.4	53.9	54.0	55.3	55.6
5.4	5.3	4.9	5.4	4.9	4.8	3.5	3.2
50	40	18	17		19	40	50

5879X

1480 39[±] Rt to center 36" Palm Tree1472 37[±] Rt to center 4" Cypress Tree1470 41[°] Rt & 6² conc work1467⁵ 36[±] Rt to center 4" Cypress Tree1460 38[±] Rt to center 36" Palm Tree

1445

54.1	54.2	54.7	54.4	55.0	55.4	56.7	57.0	57.0
82	80	76	79	73	69	56	53	53
38	40	17	15		18	22	40	50

1435³

54.0	54.2	54.3	54.8	55.3	56.2	56.4
83	81	80	79	70	61	59
50	40	15	14	16	40	50

1427

53.9	54.3	54.9	54.3	54.8	55.0	55.9	56.9	57.3
84	80	74	80	75	73	64	54	50
50	40	19	18		18	30	40	50

T.P.

716

62.28 π

3.67

~~4.67~~

55.12

62.28 π 58.79 π

57.36	57.55
4.92	4.73
41	49
conc	conc

So. Curb Line

56.09	55.46	56.95	56.32	57.13	57.49	57.39	57.99	57.82	60.50	61.11
7.42	8.05	6.56	7.19	6.38	6.02	6.12	5.52	4.89	3.01	2.40
100	100	50	50	20		20	30	50	110	110
cb.	Gut.	cb.	Gut.	20		20	Gut.	cb.	Gut.	cb.

2+70⁷ Paving Edge

57.19	57.14	57.12	56.96	57.17	56.96	57.61	57.74	57.78
6.82	6.37	6.39	7.05	6.34	6.55	5.90	5.77	5.73
36	30	21	21		22	22	31	36
Walk	Walk	cb	Gut		Gut	cb	Walk	Walk

2+69.85 { 39' Rt End Hedge
So. Line Feldspar

2+49 39' Rt & 3' Conc Walk

55.5	55.6	55.9	55.4	56.0	56.5	57.1	58.0	58.5
8.6	7.9	7.6	8.1	7.5	7.0	6.4	5.5	5.0
50	40	16	15		19	21	40	50

2+17 39' Rt Begin cypress Hedge (eye sore & half dead)

2+03 51' Rt Double Garage (16 1/2')

T.P. 6.30 63.51 T 5.07 57.21 SW 7' Disc Feldspar & Gresham

55.2	55.2	55.3	54.7	55.5	56.1	56.5	57.6	58.0
7.1	7.1	7.0	7.6	6.8	6.2	5.8	4.7	4.3
50	40	17	15		18	19	40	50

2+00

62.28 T

62.28 T

Cont'd From Page 29

Lt

Q

Rt 30

1+245 { 36' Rt to Deadman
26' Rt to center Guy Pole
21' Lt to center P. Pole #P4624

1+00

59.0	59.1	59.9	58.6	59.8	60.1	59.4	60.5	61.3	65.5
45	44	37	49	37	34	41	30	22	20
50	40	15	13		12	21	23	40	52

0+60

58.4	58.7	59.0	57.9	59.1	59.3	58.8	59.6	60.7	65.2
51	48	45	56	44	42	47	39	32	47
50	40	18	14		12	21	23	40	52

0+15

57.9	58.2	58.4	57.8	58.6	58.3	58.8	59.0	60.9	65.0
5.6	5.3	5.1	5.7	4.9	5.2	4.7	4.5	2.7	4.5
50	40	19	18		21	23	36	40	54

0+00 No. line Feldspar (0.67' short Pav. Edge)

58.2	58.55	58.49	58.39	57.76	58.47	58.24	58.85	58.91	58.98	59.8
5.3	4.96	5.32	5.12	5.75	5.04	5.27	4.66	4.60	4.55	3.7
40	36	31	22	22		21.8	21.8	31	36	40
	Walk	Walk	cb	Gutt		Gutt	cb	Walk	Walk	

No. Curb line

57.11	56.44	57.93	57.29	57.93	58.16	58.01	58.47	59.12	60.58	61.21
6.40	7.07	6.58	6.22	6.58	5.35	5.50	5.04	4.39	2.93	2.30
100	100	50	50	20		20	50	50	100	100
cb	Gutt	cb	Gutt			Gutt	cb	Gutt	cb	

Q Feldspar

56.44	57.27	57.86	57.68	58.61	60.71
7.07	6.24	5.65	5.83	4.90	2.80
100	50		20	50	100

63.51A

63.51A

2+77.06

38' Lt End Eugenia Hedge

62.34
565
392
walk

2+70.06

So. Line Emerald

62.3 62.2 61.0 62.3 62.3 61.8 62.9 62.4 65.4
5.7 5.8 7.0 5.7 5.7 6.2 5.1 4.6 2.6
48 17 14 10 18 20 40 45

2+35

61.9 61.7 61.6 60.7 61.7 61.8 61.5 62.4 63.0 65.2
6.1 6.3 6.4 7.3 6.3 6.2 6.5 5.6 5.0 2.8
50 40 15 14 10 19 21 40 47

2+22

39' Lt Begin Eugenia Hedge

2+02.5

33' Lt Q. 2 Strip Conc Driveway { 25' strips
8' overall

61.24 61.14 61.14
6.75 6.85 6.75
49 Floor 40 Conc 33 Conc

2+00

61.1 61.1 60.5 61.2 61.2 61.3 62.1 62.4 65.1
6.9 6.9 7.5 6.8 6.8 6.7 5.9 5.2 2.9
40 15 12 12 18 21 40 48

T.P.

7.09 67.99A 2.61 60.90

67.99A

1+50

60.1 60.3 60.6 59.9 60.6 60.9 60.3 61.3 61.8 65.2
3.4 3.2 2.9 3.6 2.9 2.6 3.2 2.2 1.7 +1.7
50 40 14 12 12 20 21 40 50

63.51A

63.51A

0+00

No. Line Emerald

3+46.06

3+41.06

3+30.06

No. Curb Line

3+10.06

Q Emerald

2+90.06

So. Curb line

2+79.06

67.99 T

Lt

Q

Rt

32

63.1	62.1	62.1	62.4	63.0	63.2	63.1	63.0	64.5	65.6	65.4	65.6
49	49	49	56	50	48	49	50	35	24	26	24
50	40	17	16	9		8	16	20	27	40	50

61.93
506
39
walk

62.24
515
39
walk

61.13	61.46	62.59	61.98	62.9	62.5	63.0	62.0	63.9	64.9	65.4
586	653	540	601	51	57	50	50	41	31	26
110 Cb	110 Gutt	392 Cb	392 Gutt	19	16		16	19	40	50

61.57	61.89	62.5	62.2	62.6	62.6	63.8	65.4
642	610	55	58	54	54	42	26
100 AL	392 Rev. Case	20	15		14	40	45

61.57	60.98	62.14	61.55	62.1	61.6	62.5	62.6	62.1	62.7	64.0	65.5
642	701	585	644	59	64	55	54	59	53	40	25
110 Cb	110 Gutt	392 Cb	392 Gutt	21	17		10	17	18	40	43

62.24
570
392
walk

67.99 T

2+00

67.3	67.4	67.7	66.4	67.2	67.6	67.3	66.8	67.9	68.9	68.4
7.5	7.4	7.1	8.4	7.6	7.2	7.5	8.0	6.9	5.9	5.4
50	40	22	20	12		12	22	23	40	50

1781⁵ 37' Rt Begin Row of Posts

1+50

66.3	66.4	66.8	65.8	66.4	66.7	66.3	65.8	66.8	67.3	67.4
8.5	8.4	8.0	9.0	8.4	8.1	8.5	9.0	8.0	7.5	7.4
50	40	21	20	10		12	20	22	40	50

T.P. 8.51 74.79π 1.71 66.28

74.79π

1734⁵66.63
1.36
MH1723 23² Lt to center P. Pole # A4674
24² Rt to center Guy Pole

1+00

65.5	65.6	65.7	64.4	65.0	65.3	65.0	64.5	66.0	66.8	66.9	67.1
2.5	2.4	2.3	3.6	3.0	2.7	3.0	3.5	2.0	1.2	1.1	0.9
50	40	20	18	11		10	20	21	30	40	50

0+50

64.4	64.4	64.5	63.1	63.8	64.1	63.9	63.6	65.0	66.1	66.2	66.5
3.6	3.6	3.7	4.9	4.2	3.9	4.1	4.4	3.0	1.9	1.8	1.5
50	40	19	18	10		8	19	20	32	40	50

67.99π

67.99π

T.P.	2.71	55.32	7.50	52.61	→ S.W. 7' 11' f.c.t. Garnet & Gresham
T.P.	2.88	60.11	8.48	57.23	→ S.W. 7' 1d f.city Disc Feldspar & Gresham
T.P.	2.82	65.71	8.47	62.89	→ { 10' f.c.t. 10' to back of N.W. 7' pt. Emerald & Gresham
Check	0.81	71.36	4.24	70.55 = 70.37	N.W.B.P. Gresham & Diamond

No. Curb Line

70.10	69.12	70.53	69.88	70.28	70.42	70.19	70.32	70.99	70.81	71.54
4.69	5.37	4.26	4.91	4.41	4.37	4.60	4.47	3.80	3.98	3.25
100	110	50	50	20		20	50	50	100	100
cb	Gutt	cb	Gutt				Gutt	cb	Gutt	cb

Q Diamond

69.76	70.11	70.17	69.99	70.32	71.14
5.03	4.68	4.62	4.80	4.47	3.65
100	50		20	50	100

So. Curb Line

69.26	69.73	69.56	69.09	69.73	69.93	69.73	69.98	70.55	70.53	70.99
5.53	6.06	5.23	5.70	5.06	4.26	5.06	4.91	4.44	4.26	3.90
100	100	50	50	20		20	50	50	100	100
cb	Gutt	cb	Gutt				Gutt	cb	Gutt	cb

2+69.62 So. Line Diamond

0.5' 11' 11' 11'
(Pav. Edge)

69.86	69.76	69.34	69.76	69.24	69.24	69.06	70.02	70.14
4.93	5.03	5.45	6.03	5.35	5.55	4.95	4.77	4.65
36	31	212	212		212	212	31	36
Walk	Walk	cb	Gutt		Gutt	cb	Walk	Walk

2+35

69.7	69.5	69.3	69.2	69.9	69.6	69.5	69.9	69.6	69.9
6.1	6.3	7.5	6.6	6.0	6.2	7.3	5.9	5.2	4.9
40	22	20	10		12	22	24	40	50

74.79A

74.79A

Use these BM & TBMs for construction!

WOW!

Check			777	21.19	= 21.19	NWBP Pac. Beh. Dr. @ Gresham (starting BM)
T.P.	3.70	28.96	9.54	25.26		→ Ld. City Disc 10' to back of SW 7' Pl. Oliver & Gresham
T.P.	3.30	34.80	8.59	31.50		→ Chisel Square End Ch Inlet SW Side Reed at Gresham
T.P.	2.92	40.09	9.40	37.17		→ Chisel square End Curb NW Side Thomas at Gresham
T.P.	1.01	46.57	4.82	45.56		→ N.E. T Cone Mon. Grand & Gresham
T.P.	3.11	50.38	8.12	47.20		→ NW 7' Ld. City Disc Horriblende & Gresham

55.32A

ROBERTS
COTA
MOORE
PULLEN
11-4-51
W.B.#32078

Check Levels For Gresham Street -

Pac. Beh. Dr. to Diamond St X-Sections

Indexed
4-30-52

36

B.M.	8.18	47.81	3.12	39.63 = 39.53 - N.W. B.P.	Garnett + Everts
TP	8.52	42.75	2.73	34.23	
TP	6.87	36.96	6.01	30.09	
TP	2.72	36.10	8.81	33.38	
TP	2.04	42.19	8.15	40.15	
TP	7.64	48.30	2.32	40.66	
B.M.			5.82	37.16 = 37.17 -	Chisel, Square End of cb. N.W. Cor. Thomas + Gresham
TP	8.06	42.98	3.25	34.92	
B.M.	5.84	38.17	3.15	32.33 = 32.18 - S. E. Top Hydrant -	Thomas + Fanuel - See F.B. 1766-25 F.B. 1769
TP	7.30	35.48	3.84	28.18	
TP	6.94	32.02	4.24	25.08	
B.M.	9.12	29.32	1.84	20.20 = 20.07	Chisel Cross in walk - 30' Cb. Rad. Pt. - Reed + Everts
TP	7.58	22.04	1.50	14.46	
B.M.	8.56	15.96	8.15	7.40 = 7.40	NWBP - Pac. Beh. Dr. + Everts
TP	4.00	15.55	8.76	11.55	
TP	3.55	20.31	8.21	16.76	
B.M.	3.78	24.97		21.19	NWBP - Pac. Beh. Dr. + Gresham

Check Levels - (Cont.)

B.M.		0.70	83.74 = 83.59	Ld. 4 c.t. ♀
TP	6.81	84.44	4.04	77.63
TP	7.70	81.67	2.70	73.97
TP	6.12	76.67	3.83	70.55 = 70.37 N.W. B.P. -
TP	6.95	74.38	4.24	67.43
TP	8.73	71.67	0.56	62.94
B.M.		3.08	60.42 = 60.29	S.E. Hyd. -
B.M.		5.12	58.38 = ?	S.E. B.P. - Fanuel
TP	6.69	63.50	3.26	56.81
TP	6.77	60.07	1.93	53.30
TP	8.44	55.23	1.02	46.79

NWBP - Pac. Bch. Dr. & Gresham

37

8
 $\begin{array}{r} .77 \times \\ 8.21 \\ \hline 16.76 \text{ TP} \\ + 3.55 \\ \hline 20.31 \times \\ - 8.76 \\ \hline 11.55 \text{ TP} \\ + 4.00 \\ \hline 15.55 \times \\ - 8.15 \\ \hline \end{array}$

$7.40 \text{ TP} = 7.40$ NWBP - Pac. Bch. Dr. & Everett

$\begin{array}{r} + 8.56 \\ \hline 15.96 \times \\ - 1.50 \\ \hline 14.46 \text{ TP} \\ + 7.58 \\ \hline 22.04 \times \end{array}$

$\begin{array}{r} - 1.84 \\ \hline 20.20 \text{ T.P.} \\ + 9.12 \\ \hline 29.32 \times \\ - 4.24 \\ \hline \end{array}$

$\begin{array}{r} 25.08 \text{ TP} \\ + 6.94 \\ \hline 32.02 \times \\ - 3.84 \\ \hline 28.18 \text{ TP} \\ + 7.30 \\ \hline 35.48 \times \end{array}$

check cross in walk 30' ch. Rad. Pt.
 Reed & Everett
 From NE 2d & c.t. Reed & Cass
 Elev. = 9.11

Could be FB 1769
 Thomas & Fanuel
 $\begin{array}{r} - 3.15 \\ \hline 32.33 = 32.18 \text{ SE Top Hydrant} \\ \text{See FB 1766 pg. 25} \end{array}$

Check Levels - (cont.)

B.M.			0.70	83.74 = 83.59	Ld. 4 c.t.
TP	6.81	84.44	4.04	77.63	
TP	7.70	81.67	2.70	73.97	
TP	6.12	76.67	3.83	70.55 = 70.37	N.W. B.M.
TP	6.95	74.38	4.24	67.43	
TP	8.73	71.67	0.56	62.94	
B.M.			3.08	60.42 = 60.29	S.E. H
B.M.			5.12	58.38 = ?	S.E. B.P. - P
TP	6.69	63.50	3.26	56.81	
TP	6.77	60.07	1.93	53.30	
TP	8.44	55.23	1.02	46.79	

32.33 T.P.
+ 5.84
38.17
- 3.25
34.92 TP
+ 8.06

42.98 T.P.
- 2.32
40.66 TP
+ 7.64

41.30 T.P.
- 8.15
40.15 TP
+ 2.04

42.19 T.P.
- 8.91
33.38 TP
+ 2.72

36.10 T.P.
- 6.01
30.09 TP
+ 6.87

36.96 T.P.
- 2.73
34.23 TP
+ 8.52

42.75 T.P.
- 3.12

39.63 TP = 39.53 NWBP Garnet & Emits

+ 8.18
47.81 T.P.

42.98

- 5.82

37.16

37.17

→ chisel square
End of curb
NW corner of
Thomas & Graham

Check Levels - (cont.)

B.M.			0.70	83.74 = 83.59	Ld. 4 c.t.
TP	6.81	84.44	4.04	77.63	
TP	7.70	81.67	2.70	73.97	
TP	6.12	76.67	3.83	70.55 = 70.37	N.W. B.P.
TP	6.95	74.38	4.24	67.43	
TP	8.73	71.67	0.56	62.94	
B.M.			3.08	60.42 = 60.29	S.E. Hyd.
B.M.			5.12	58.38 = ?	S.E. B.P. - Fanuel
TP	6.69	63.50	3.26	56.81	
TP	6.77	60.07	1.93	53.30	
TP	8.44	55.23	1.02	46.79	

47.81π
 $- 1.02$

 $46.79 TP$
 $+ 8.44$

 55.23π
 $- 1.93$

 $53.30 TP$
 $+ 6.77$

 60.07π
 $- 3.26$

 $56.81 TP$
 $+ 6.69$

63.50π
 $- 0.56$

 $62.94 TP$
 $+ 8.73$

 71.67π
 $- 4.24$

 $67.43 TP$
 $+ 6.95$

 74.38π
 $- 3.83$

 $70.55 TP = 70.37$ NWBP Diamond & Gresham
 $+ 6.12$

 76.67π

63.50π
 $- 5.12$

 $58.38 = ?$ S.E. B.P.
 63.50π Fanuel & Emerald
 $- 3.08 = 60.29$ S.E. Hyd.
 60.42 Fanuel & Emerald

Check Levels - (Cont.)

B.M.			0.70	83.74 = 83.59	Ld. 4 c.t.
TP	6.81	84.44	4.04	77.63	
TP	7.70	81.67	2.70	73.97	
TP	6.12	76.67	3.83	70.55 = 70.37	N.W. B.P. -
TP	6.95	74.38	4.24	67.43	
TP	8.73	71.67	0.56	62.94	
B.M.			3.08	60.42 = 60.29	S. E. Hyd.
B.M.			5.12	58.38 = ?	S. E. B.P. - Fanu
TP	6.69	63.50	3.26	56.81	
TP	6.77	60.07	1.93	53.30	
TP	8.44	55.23	1.02	46.79	

76.67 T
 $- 2.70$

 73.97 TP
 $+ 7.70$

 81.67 T
 $- 4.04$

 77.63 T.P.
 $+ 6.81$

 84.44 T
 $- 0.70$

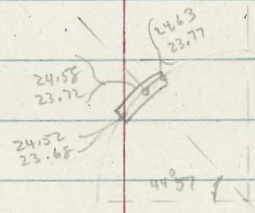
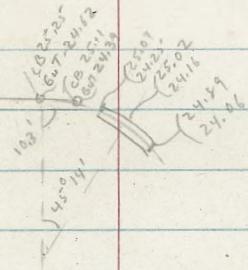
$83.74 = 83.59 \text{ Ld. } \frac{4}{8} \text{ c.t.}$
 Q Diamond E.L. Ingraham

- Check Levels - (Cont.)

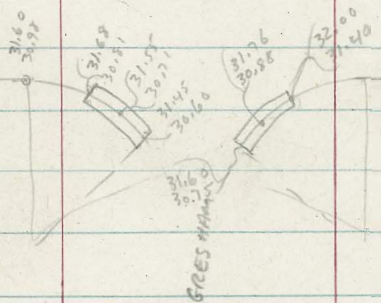
B.M.			0.70	83.74 = 83.59	Ld. & c.t. of Diamond & E.L. Ingraham
TP	6.81	84.44	4.04	77.63	
TP	7.70	81.67	2.70	73.97	
TP	6.12	76.67	3.83	70.55 = 70.37	N.W. B.P. - Diamond & Gresham
TP	6.95	74.38	4.24	67.43	
TP	8.73	71.67	0.56	62.94	
B.M.			3.08	60.42 = 60.29	S.E. Hyd. - Fanel & Emerald
B.M.			5.12	58.38 = ?	S.E. B.P. - Fanel & Emerald
TP	6.69	63.50	3.26	56.81	
TP	6.77	60.07	1.93	53.30	
TP	8.44	55.23	1.02	46.79	

GRESHAM ↑

OLIVER AVE



REED AVE.



GRESHAM ↓

Alley BIK 287 INDEXED
Pacific Beach, w.o.# 25020

C.H.S.
Boqq
Scholin
pullen

Jan 18, 1954

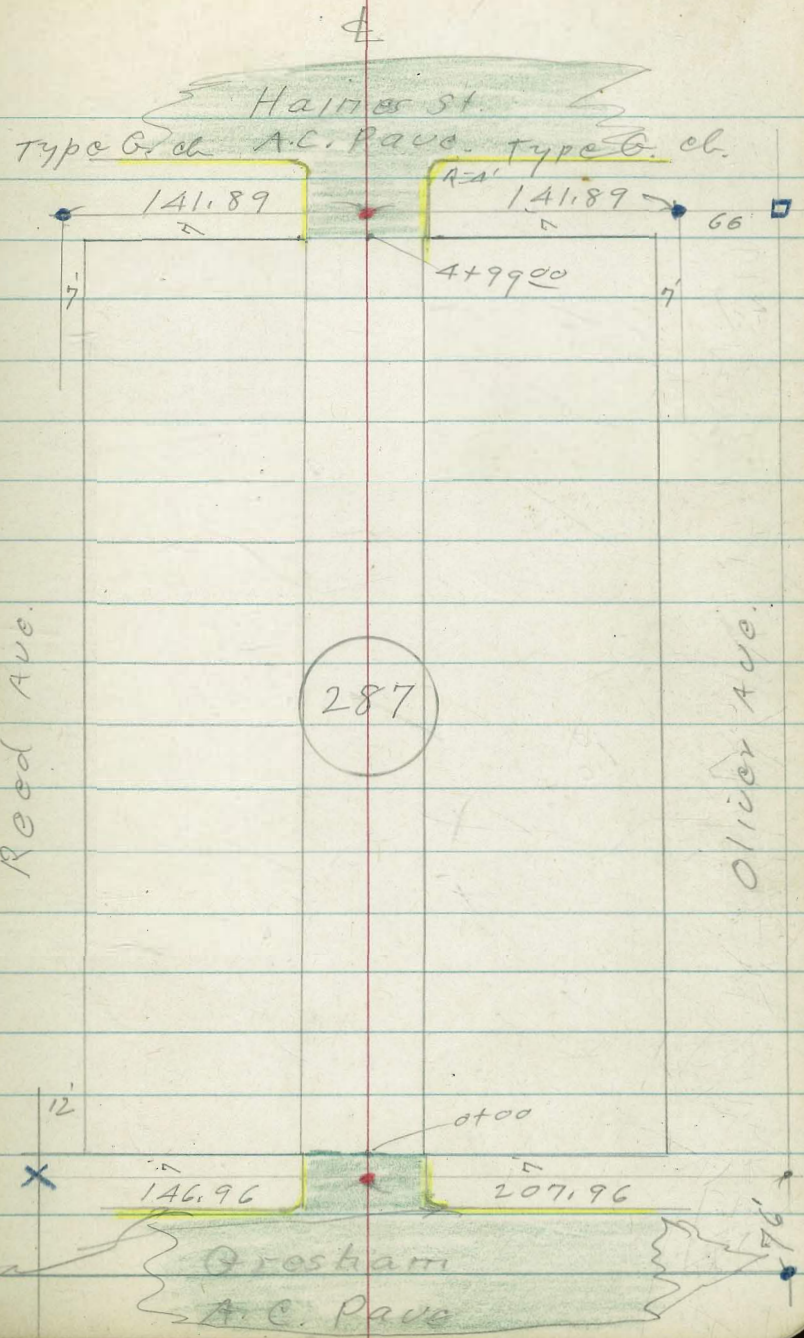
Ref.
FB 2163-P-1
Map# 923

Rain + cold
no wind

- denotes Fd. City disk
- x " " cross in walk
- " " 1/2 + disk
- " " Set. p.K. conc. Nail
- " " Temporary nail

Also F.B. 1998
1871

B.M. = 10' R.P. disk to S.W. 7' x 7'
- Page 8 this book. E.L. = 25.25



Type G.
curb.

Alley BIK 287- P.B.

B.M.#2 = Nail 0-07 5.25 28.20

0+00 = end A.C. Pavc
10' L } = end curb
10' R }

0-07

T.P. 5.16 33.45 4.92 28.29

12' RT } = end curb.
12' LT }
0+00 = end A.C. Pavc.

0-18 10' RT } = E.C. 2' Rad cb. Rot
10' LT }

Type G curb.
12' RT } B.C. 2' Rad. cb. Rot.
12' LT }

0-20 = Ely. cb. line Gresham

B.M.#1 7.96 33.21 25.25

29.12	28.74	28.12	28.43	28.78
4.23	4.71	5.33	5.02	4.67
10 cl	10 c		10 c	10 cl
29.08	28.60	28.20	28.23	28.65
4.37	4.85	5.25	5.22	4.80
10 cl	10 c		10 c	10 cl
		33.45		
28.81	28.33		27.89	28.36
4.40	4.88		5.32	4.85
10 cl	10 c		10 c	10 cl
29.89	29.39		26.47	26.97
3.52	3.82		6.74	6.24
72 cc.	72 c		72 c	72 cl
28.85	28.31	28.09	27.88	27.85
4.36	4.85	4.90	5.33	5.36
12 cl	12 c	10.	12 c	12 cl
		33.21		

S.W.-3' Prop + 7' line disk (see P-39)

BIK 287 P.B.

41

1400

28.8	28.4	28.2	28.0
4.7	5.1	5.3	5.5
10		10	25

0+91 - 13' Lt. & Sing. Gar. dirt floor

28.6
4.9
13
dirt floor

28.59

0+84 - 20' Rte & Sing. Gar. Conc. floor 170 apron

4186
20
Floor

conc. floor 170 apron

0+61 - 20' Rte & double Gar.

28.21
5124
20
Floor

0+50

29.1	28.9	28.6	28.5	28.3
4.4	4.6	4.9	5.0	5.2
25	10		10	25

0+35 11² Rte = end dwelling

0+15 - 11³ Rte - start stucco dwelling

29.1	28.9	28.8	28.8
4.4	4.6	4.7	4.7
10		10	113

33.45

Alley BIK 287 P.B.

2+50 10⁵ RT = Face N. + S. wall
end wall

5.1 32.6
25

5.3 32.4
10

5.5 32.2

6.1
11
End. to west

5.3 32.4
10

6.5 31.2
10⁵
B.W.

5.5 32.2
10^E
T.W.

2+30

5.3 32.2
30

5.5 31.7
15

6.3 30.8
10

6.9 31.0
4

6.7 31.2
10

2+26 10⁶ RT = start Conc. Retaining wall

6.5 31.2
25

7.1 30.6
10

7.1 30.6

7.0 30.7
10

7.1 30.6
10⁶
B.W.

5.6 32.1
10⁶
T.W.

7.2 30.1
20

2+13 -17' RT = ^{Bar.} 16' wide level
conc. apron to double

7.2 30.7
17
apron

7.15 30.58
18
Floor

2+00

7.5 30.2
25

7.7 30.0
10

7.8 29.9
8

7.8 29.9
10

8.1 29.6
25

T.P. 8.15 37.73 3.87 29.58

37.73

1+50

29.5
4.0
25

29.2
4.3
10

29.5
4.0
9

29.3
4.2
9

29.1
4.4
10

28.7
4.8
25

33.45

Alley Bk 287- P. B.

T.P. 6.78 49.77 3.00 42.99

4+14- 11' Lt. 2 end apron

Future double Car. & Conc. Floor

4+00- 11' Lt. = start Conc. apron to

3+50

T.P. 10.55 45.99 2.29 35.44

3+00

2+80

2+70

	44.14	43.53	43.11	42.6	42.3	42.4	42.2
	185	246	219	314	3.7	3.6	3.8
	165	119	10	7		10	25
			39.3			39.3	
			6.7			6.7	
			10			10	
					45.99		
			36.2			35.1	35.1
			1.5			2.6	2.6
			25			10	25
			36.2			33.4	33.2
			1.5			4.3	4.5
			30			10	25
			32.8			33.2	
			4.9			4.5	
			30			10	
					37.73		

#

Alley Bk 287 - P.B.

±

44

4+80

45.5
413
10

45.1
4.7

45.0
4.8
10

4+63- 9² Lt. = end apron

44.8
5.00
99
apron

4+57⁵ 17' Lt. = ± Sing Bar.

44.97
4.80
17
Floor

~~4.80~~

4+52 9² Lt. = start conc. apron to Sing Bar

44.61
5.16
99
apron.

4+50

44.2
5.6
10

44.1
5.7

44.0
5.8
10

4+21 11⁶ Lt. = ± 2' wide Conc. walk,

44.17
6.19
5.60 5.58
21⁶ 11⁶
walk

43.8
6.0
10

49.77

Alley BIK 287 - R.B.

INDEXED
HER
JAN 19 1954

B.M.#1.
(25.25)

8.61 25.26

T.P. 4.43 33.87 10.30 29.44

T.P. 0.72 39.74 10.75 39.02

14' Lt. }
14' Rt. } = E.C. 4' Rad. cl. Ret.
5+19 = Why cl. time Haines

45.07
44.49
44.47
44.38
45.07
44.49
44.47
44.38
4.70 5.28 5.30 5.39
14 14 10
cl c c

5+15 10' Rt }
10' Lt } = B.C. A' Rad. cl. Ret.

45.07
44.51
4.70 5.26
10 10
cl c

B.M.#3 P.K. Nail 5+06⁰⁰ 5.16 44.61

10' Rt }
10' Lt } = start alley curbs

4+99⁰⁰ = Why Haines = start A.C. Pavement

45.27
45.01
44.67
44.66
44.94
4.50 4.76 5.10 5.11 4.83
10 10 10 10
cl c c cl

49.77

Roberts
Cota
Moore
Moralez
2-9-54
No. #31800

X-Section Alley Blk. 83, Point Loma Hqs.

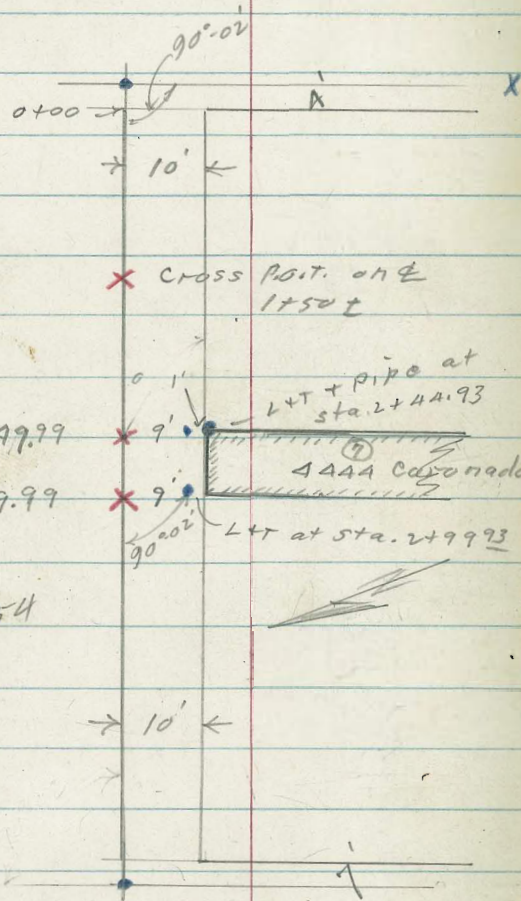
Santa Barbara to Guizot
Between Santa Cruz & Coronado

See FB 1752 pg. 66

INDEXED
HER
OCT 18 1954

Did not replace
lot stakes. Fd. L+T + pipe
as shown. Left, same
as found. C.H.S.

~~lot stakes~~
Replaced 11/22/54
C.H.S.



X Cross Point on E
1+50+

L+T + pipe at
sta. 2+44.93

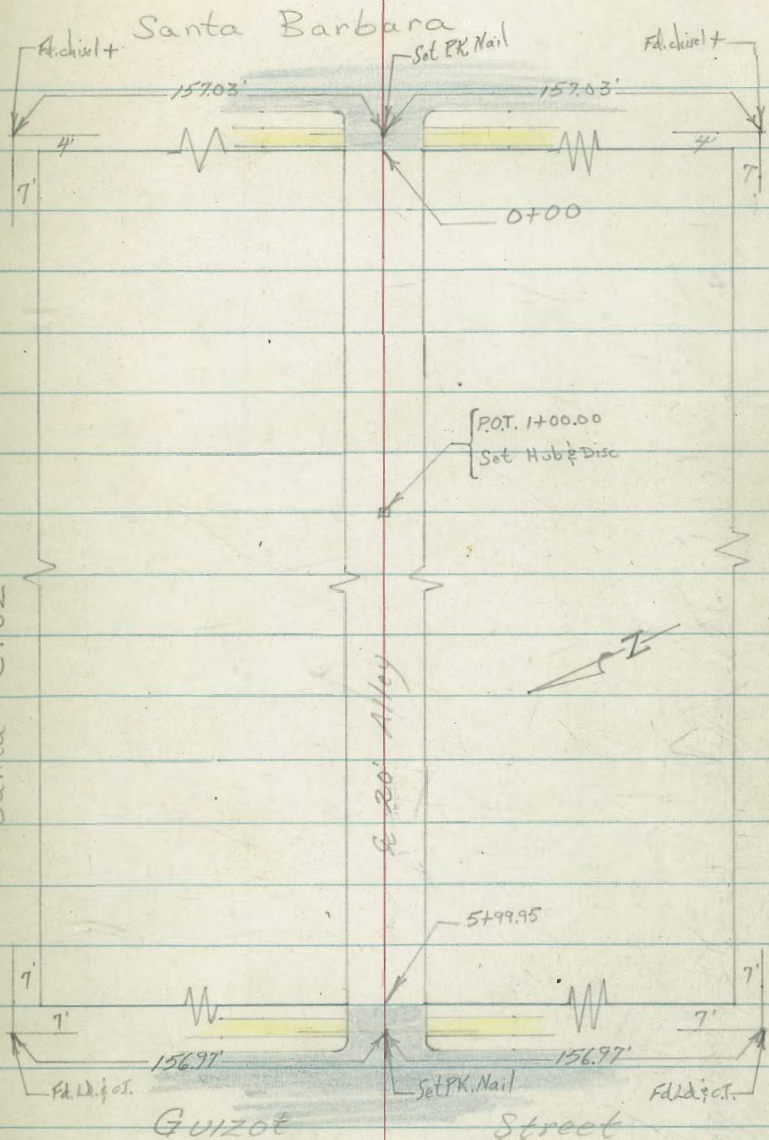
4444 Coronado

L+T at sta. 2+99.93

Santa Cruz

E 20' Alley

Coronado



[POT. 1+00.00
Set Hub & Disc

Guizot

Street

LT.

±

RT.

0+51 98 LT. TO CENTER RR # P.A. 4410

0+50

	250.77	250.77	250.77	251.27	252.57	252.87
	62	62	62	57	44	41
	20	10		6	10	20

T.P. 11.16 256.97 H.I. 0.42 250.81

256.97 H.I.

0+05

	249.33	249.33	246.73	247.03	247.33	247.53	249.53
	19	19	45	42	39	27	17
	25	14	10		8	10	15

0+00 WLY LINE SANTA BARBARA ST.

	246.40	246.63	246.99	247.52
	4.88	4.10	4.25	3.71
	10.8		9.6	9.6
	CB		GUT.	CB.
	4			
	CUT.			

0-10 WLY CB. LINE SANTA BARBARA ST.

	244.46	243.95	243.50	244.09	246.04	246.71	247.42	248.87	249.59
	6.78	7.38	5.73	5.14	5.19	4.52	3.81	2.36	1.61
	50	50	12	12		12	12	50	50
	CB.	CUT.	CUT.	CB		GUT.	CB	GUT.	CB.

0-30 ± SANTA BARBARA ST.

	243.92	246.18	249.02
	7.31	5.05	2.21
	50		50
			← 5.6870

Hed HCO
3/9/54

B.M.

11.06 251.23 H.I.

240.17 S.N.B.P. Coronado ± Santa Barbara

251.23 H.I.

R-SEC ALLEY BLK. 83 PT. LOMA HTS.
CONT'D.

INDEXED
MER
FEB 15 1954

1487, 10⁵ RT. ϕ 2 STRIP RUBBER DRIVE
79 OVERALL 29 STRIPS.

1459 16² LT. CENTER SINGLE GARAGE

1451, 9² LT. CENTER RR. (NO NUMBER)

1450

1424 37² RT. CENTER DOUBLE GARAGE

1400, 9⁸ RT. END SWED.

0+91, 9⁸ RT. BEGIN SWED.

0+61, 10² LT. ϕ 14⁵ WIDE CONC. DRIVE TO GAR.

256.97 H.I.

LT.

ϕ

RT.

48

257.22
5.75 5.35
10.5 80
CONC CONC

252.07 251.88
4.90 5.09
16 18
CONC APRON
FLOOR CONC.

251.77 252.07 251.97 252.07 252.41 252.87
5.2 4.9 5.0 4.9 4.5 4.1
20 10 6 10 20

251.17 251.89
2.80 3.08
37 31
CONC APRON
FLOOR

251.97 252.21 252.17 252.77 253.37
5.0 4.7 4.8 4.2 3.7
20 10 10 20

251.17 251.77
5.80 5.20
30 10.3
CONC CONC

256.97 H.I.

Plotted by
Hatties 3/1/54

3450

242.13	241.83	241.83	241.83	242.03	242.53	242.53
25	28	28	28	26	21	21
25	10		7	10	15	25

3449⁵ 92 LT. BEGIN 3' HIGH BOARD FENCE

3449 92 LT. CENTER P.P. # PA. 4460

3444 21² RT. END DOUBLE GARAGE

243.57
237.00

10.63	0.46
10.6	21.2
CONC	CONC
APRON	FLOOR

244.17

3432 21² RT. BEGIN DOUBLE GARAGE

243.51

112	0.47
10.6	21.2
CONC	CONC
APRON	FLOOR

244.16

TP. 023 244.6341 12.57 244.40

244.63 H.I.

3400

245.17	244.97	245.07	245.27	245.37
11.8	12.0	11.9	11.7	11.7
20	10		10	20

3487, 37.2 RT. & DOUBLE GARAGE

246.67

103	9.92
32.7	37.2
CONC	CONC
APRON	FLOOR

247.05

256.97 H.I.

256.97 H.I.

1468 { 10⁸ LT. BEGIN ROCK WALL
11² LT. END DOUBLE GARAGE

236.00 ✓
237.62 ✓
235.43 ✓
234.83 ✓
8.63 7.01 9.2 9.8
11.2 10.8 10.8 10.4
CONC. TOP GED. FOOT
FLR. GAR.

1457 13° RT. CONC. BLOCK WALL CURVES INTO PROPERTY ✓

236.43 ✓
234.43 ✓
240.64 ✓
9.2 10.2 8.99
13 13 13
GED. FOOT TOP

1450 { 13° RT. BEGIN CONC. BLOCK WALL
11² LT. BEGIN DOUBLE GARAGE

236.00 ✓
235.93 ✓
236.63 ✓
235.43 ✓
235.43 ✓
235.53 ✓
234.43 ✓
240.64 ✓
8.63 8.7 9.0 9.2 9.0 9.1 10.2 8.99
11.2 10 CONC. FLOOR
7 10 13 13 15
GED. FOOT TOP

1449 9⁶ LT. & RR PA 1174 ✓

1422 16° RT. END DOUBLE GARAGE ✓

237.11 ✓
238.53 ✓
9.52 6.10
10 CONC. APRON
16 CONC. FLOOR

1404 16° RT. BEGIN DOUBLE GARAGE ✓

238.19 ✓
238.54 ✓
6.11 6.09
10 CONC. APRON
16 CONC. FLOOR

1400 END 3° HIGH BOARD FENCE 10³ LT. ✓

238.53 ✓
238.03 ✓
238.53 ✓
238.23 ✓
238.23 ✓
238.23 ✓
5.1 5.1 6.1 6.3 6.1 5.1
26 10 6 10 15

5410 22° LT TO CENTER DOUBLE GARAGE ✓

✓ 233.19
0.57
22.
CONC.
FLOOR

5400 10° RT END CONC. BRICK WALL

233.96
0.8 1.0 1.2
15 10 10
GRD Foot TOP
✓ 233.76
✓ 233.56
✓ 233.36
✓ 233.46
+5.3

4498 10⁵ LT. END ROCK WALL ✓

← 231.76 ✓ 233.76 ✓ 232.86
+2.0 0.0 0.9
10.5 10.5 10.5
TOP GRD FOOT

4497, 10° RT. & 1" DRAIN OUTLET ✓

✓ 232.74
1.02
10.2
INVERT
✓ 232.56 233.56 ✓ 232.86
1.2 0.2 +5.4
10.5 10.5 10.5
FOOT GRD TOP

4489⁵ 10⁵ RT BEGIN CONC. BRICK WALL

T.P. 009 233.76 H.I. 10.96 233.67 ✓

233.76 H.I.

4481 16° RT END DOUBLE GARAGE ✓

234.35 ✓
10.29
16
CONC.
FLOOR

4468 22° RT. BEGIN DOUBLE GARAGE ✓

234.34 ✓
10.29
26
CONC.
FLOOR

200.63 H.I.

210.63 H.I.

6+11.95 ELY OS. LINE GUIZOT ST

22516	22468	22341	22309	22259	22209	22145	22032	22079
775	823	950	982	1032	1082	1046	1259	1212
50	50	13	13	13	13	13	50	50
OS.	GUT	OS.	GUT	GUT	OS.	GUT	GUT	OS.

T.P. 10.31 232.91 H.I. 11.16 222.60

232.91 H.I.

5499⁹⁵ ELY LINE GUIZOT ST START A.C.

22359	22331	22271	22254	22271
1017	1045	1105	1122	1105
10	10	10	10	10
OS.	GUT	GUT	OS.	OS.

5475

23106	22896	22776	22746	22596	22586	22606	22696	22686
27	29	60	68	78	79	77	69	69
15	14	10	7	6.5	7.5	10	12	12

5450

23096	23036	23016	22826	22816	22816	22816
28	31	31	55	56	57	56
15	10	6.5	6	5	10	20

5445

23106	23066	23046	22846	22876	22836	22856	22206	23206
27	31	33	49	50	54	32	17	17
15	10	6.5	6	5	9	10	13	20

5425

23176	23136	23106	23096	23146	23146	23146	23206
18	24	27	28	28	28	12	17
20	10	6	6	10	10	13	20

233.76 H.I.

233.76 H.I.

LT.

¢

RT.

NOTE!

+0.23

2331A = 23310 SE. B.P. CORDONADO & GUIZOT

B.M.

6+29.95 ¢ GUIZOT ST.

232.91 H.I.

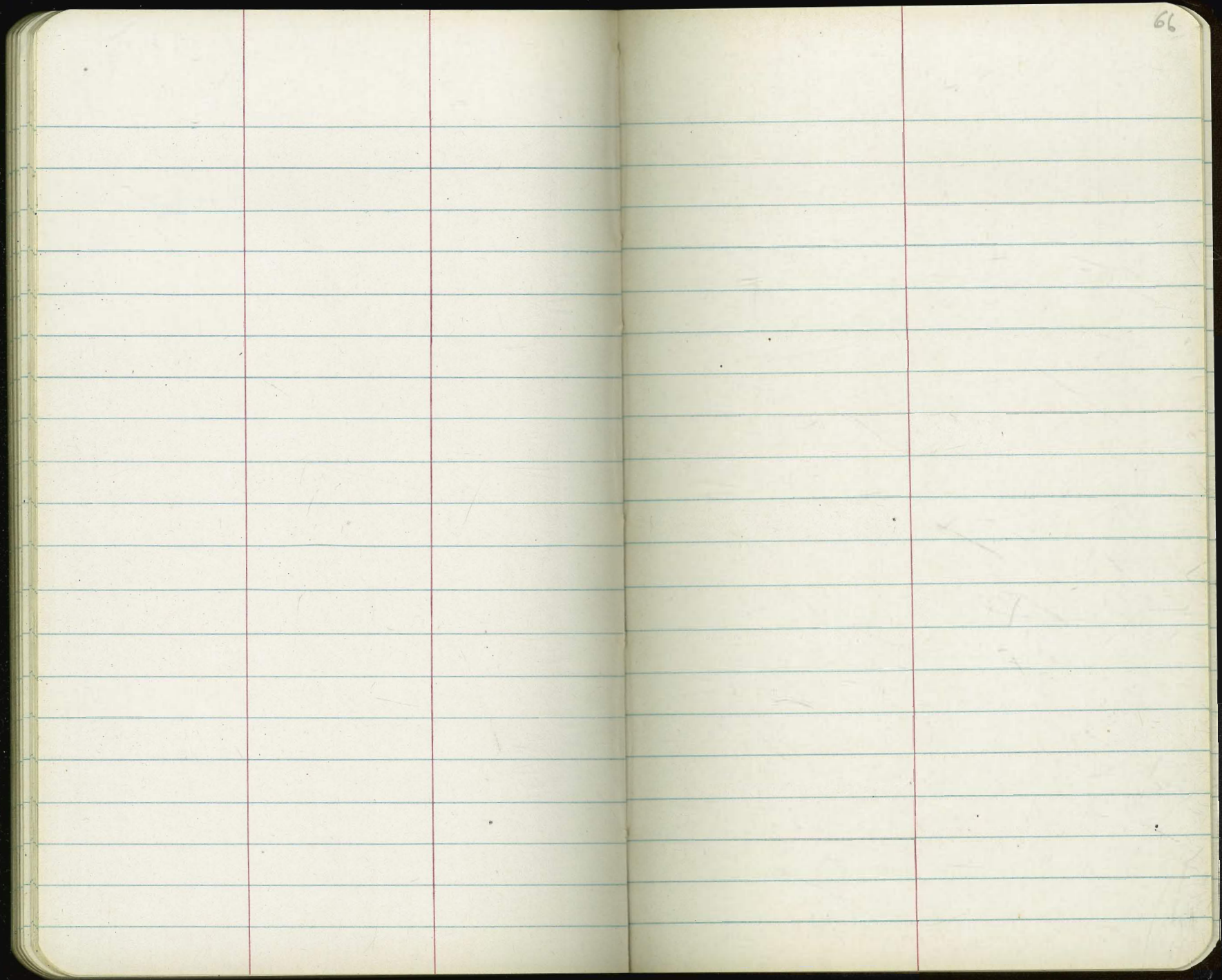
Plotted by
Kiethe 3/9/54

23471
8.20
50

23257
10.34
50

22008
12.83
50

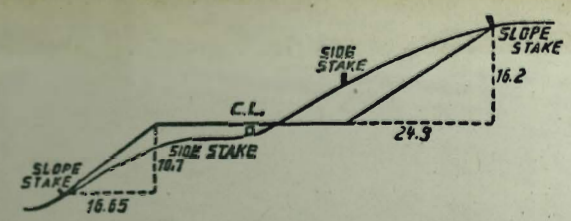
232.91 H.I.



The image shows an open notebook with two facing pages. Both pages are cream-colored and feature light blue horizontal ruling. Each page is divided into three vertical columns by two red lines. The left page is completely blank. The right page is also blank but contains two light blue rectangular marks, one in the top right corner and another in the middle right section. The page number '72' is printed in the top right corner of the right page. The notebook is bound in the center, and the dark cover is visible around the edges.

SEBP-233.10
 5326
 808
 5734
 475
 5259

00 RONADO # 60207



DISTANCES FROM SIDE STAKES FOR CROSS-SECTIONING.
 SLOPE 1 1/4 TO 1. ROADWAY OF ANY WIDTH.

	0	.1	.2	.3	.4	.5	.6	.7	.8	.9	
0	0.00	0.15	0.30	0.45	0.60	0.75	0.90	1.05	1.20	1.35	0
1	1.50	1.65	1.80	1.95	2.10	2.25	2.40	2.55	2.70	2.85	1
2	3.00	3.15	3.30	3.45	3.60	3.75	3.90	4.05	4.20	4.35	2
3	4.50	4.65	4.80	4.95	5.10	5.25	5.40	5.55	5.70	5.85	3
4	6.00	6.15	6.30	6.45	6.60	6.75	6.90	7.05	7.20	7.35	4
5	7.50	7.65	7.80	7.95	8.10	8.25	8.40	8.55	8.70	8.85	5
6	9.00	9.15	9.30	9.45	9.60	9.75	9.90	10.05	10.20	10.35	6
7	10.50	10.65	10.80	10.95	11.10	11.25	11.40	11.55	11.70	11.85	7
8	12.00	12.15	12.30	12.45	12.60	12.75	12.90	13.05	13.20	13.35	8
9	13.50	13.65	13.80	13.95	14.10	14.25	14.40	14.55	14.70	14.85	9
10	15.00	15.15	15.30	15.45	15.60	15.75	15.90	16.05	16.20	16.35	10
11	16.50	16.65	16.80	16.95	17.10	17.25	17.40	17.55	17.70	17.85	11
12	18.00	18.15	18.30	18.45	18.60	18.75	18.90	19.05	19.20	19.35	12
13	19.50	19.65	19.80	19.95	20.10	20.25	20.40	20.55	20.70	20.85	13
14	21.00	21.15	21.30	21.45	21.60	21.75	21.90	22.05	22.20	22.35	14
15	22.50	22.65	22.80	22.95	23.10	23.25	23.40	23.55	23.70	23.85	15
16	24.00	24.15	24.30	24.45	24.60	24.75	24.90	25.05	25.20	25.35	16
17	25.50	25.65	25.80	25.95	26.10	26.25	26.40	26.55	26.70	26.85	17
18	27.00	27.15	27.30	27.45	27.60	27.75	27.90	28.05	28.20	28.35	18
19	28.50	28.65	28.80	28.95	29.10	29.25	29.40	29.55	29.70	29.85	19
20	30.00	30.15	30.30	30.45	30.60	30.75	30.90	31.05	31.20	31.35	20
21	31.50	31.65	31.80	31.95	32.10	32.25	32.40	32.55	32.70	32.85	21
22	33.00	33.15	33.30	33.45	33.60	33.75	33.90	34.05	34.20	34.35	22
23	34.50	34.65	34.80	34.95	35.10	35.25	35.40	35.55	35.70	35.85	23
24	36.00	36.15	36.30	36.45	36.60	36.75	36.90	37.05	37.20	37.35	24
25	37.50	37.65	37.80	37.95	38.10	38.25	38.40	38.55	38.70	38.85	25
26	39.00	39.15	39.30	39.45	39.60	39.75	39.90	40.05	40.20	40.35	26
27	40.50	40.65	40.80	40.95	41.10	41.25	41.40	41.55	41.70	41.85	27
28	42.00	42.15	42.30	42.45	42.60	42.75	42.90	43.05	43.20	43.35	28
29	43.50	43.65	43.80	43.95	44.10	44.25	44.40	44.55	44.70	44.85	29
30	45.00	45.15	45.30	45.45	45.60	45.75	45.90	46.05	46.20	46.35	30
31	46.50	46.65	46.80	46.95	47.10	47.25	47.40	47.55	47.70	47.85	31
32	48.00	48.15	48.30	48.45	48.60	48.75	48.90	49.05	49.20	49.35	32
33	49.50	49.65	49.80	49.95	50.10	50.25	50.40	50.55	50.70	50.85	33
34	51.00	51.15	51.30	51.45	51.60	51.75	51.90	52.05	52.20	52.35	34
35	52.50	52.65	52.80	52.95	53.10	53.25	53.40	53.55	53.70	53.85	35
36	54.00	54.15	54.30	54.45	54.60	54.75	54.90	55.05	55.20	55.35	36
37	55.50	55.65	55.80	55.95	56.10	56.25	56.40	56.55	56.70	56.85	37
38	57.00	57.15	57.30	57.45	57.60	57.75	57.90	58.05	58.20	58.35	38
39	58.50	58.65	58.80	58.95	59.10	59.25	59.40	59.55	59.70	59.85	39
40	60.00	60.15	60.30	60.45	60.60	60.75	60.90	61.05	61.20	61.35	40
41	61.50	61.65	61.80	61.95	62.10	62.25	62.40	62.55	62.70	62.85	41
42	63.00	63.15	63.30	63.45	63.60	63.75	63.90	64.05	64.20	64.35	42
43	64.50	64.65	64.80	64.95	65.10	65.25	65.40	65.55	65.70	65.85	43
44	66.00	66.15	66.30	66.45	66.60	66.75	66.90	67.05	67.20	67.35	44
45	67.50	67.65	67.80	67.95	68.10	68.25	68.40	68.55	68.70	68.85	45
46	69.00	69.15	69.30	69.45	69.60	69.75	69.90	70.05	70.20	70.35	46
47	70.50	70.65	70.80	70.95	71.10	71.25	71.40	71.55	71.70	71.85	47
48	72.00	72.15	72.30	72.45	72.60	72.75	72.90	73.05	73.20	73.35	48
49	73.50	73.65	73.80	73.95	74.10	74.25	74.40	74.55	74.70	74.85	49
50	75.00	75.15	75.30	75.45	75.60	75.75	75.90	76.05	76.20	76.35	50

THE NATIONAL BLANK BOOK COMPANY
 HOLYOKE MASSACHUSETTS
 NEW YORK CHICAGO BOSTON SAN FRANCISCO