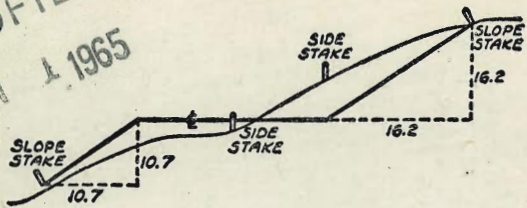


MICROFILMED
JAN 1 1965



2164

X-SECT. GRADE ORD.

DISTANCES FROM SIDE STAKES FOR CROSS-SECTIONING
SLOPE 1 TO 1. ROADWAY OF ANY WIDTH

	0	.1	.2	.3	.4	.5	.6	.7	.8	.9	
0	0.00	0.10	0.20	0.30	0.40	0.50	0.60	0.70	0.80	0.90	0
1	1.00	1.10	1.20	1.30	1.40	1.50	1.60	1.70	1.80	1.90	1
2	2.00	2.10	2.20	2.30	2.40	2.50	2.60	2.70	2.80	2.90	2
3	3.00	3.10	3.20	3.30	3.40	3.50	3.60	3.70	3.80	3.90	3
4	4.00	4.10	4.20	4.30	4.40	4.50	4.60	4.70	4.80	4.90	4
5	5.00	5.10	5.20	5.30	5.40	5.50	5.60	5.70	5.80	5.90	5
6	6.00	6.10	6.20	6.30	6.40	6.50	6.60	6.70	6.80	6.90	6
7	7.00	7.10	7.20	7.30	7.40	7.50	7.60	7.70	7.80	7.90	7
8	8.00	8.10	8.20	8.30	8.40	8.50	8.60	8.70	8.80	8.90	8
9	9.00	9.10	9.20	9.30	9.40	9.50	9.60	9.70	9.80	9.90	9
10	10.00	10.10	10.20	10.30	10.40	10.50	10.60	10.70	10.80	10.90	10
11	11.00	11.10	11.20	11.30	11.40	11.50	11.60	11.70	11.80	11.90	11
12	12.00	12.10	12.20	12.30	12.40	12.50	12.60	12.70	12.80	12.90	12
13	13.00	13.10	13.20	13.30	13.40	13.50	13.60	13.70	13.80	13.90	13
14	14.00	14.10	14.20	14.30	14.40	14.50	14.60	14.70	14.80	14.90	14
15	15.00	15.10	15.20	15.30	15.40	15.50	15.60	15.70	15.80	15.90	15
16	16.00	16.10	16.20	16.30	16.40	16.50	16.60	16.70	16.80	16.90	16
17	17.00	17.10	17.20	17.30	17.40	17.50	17.60	17.70	17.80	17.90	17
18	18.00	18.10	18.20	18.30	18.40	18.50	18.60	18.70	18.80	18.90	18
19	19.00	19.10	19.20	19.30	19.40	19.50	19.60	19.70	19.80	19.90	19
20	20.00	20.10	20.20	20.30	20.40	20.50	20.60	20.70	20.80	20.90	20
21	21.00	21.10	21.20	21.30	21.40	21.50	21.60	21.70	21.80	21.90	21
22	22.00	22.10	22.20	22.30	22.40	22.50	22.60	22.70	22.80	22.90	22
23	23.00	23.10	23.20	23.30	23.40	23.50	23.60	23.70	23.80	23.90	23
24	24.00	24.10	24.20	24.30	24.40	24.50	24.60	24.70	24.80	24.90	24
25	25.00	25.10	25.20	25.30	25.40	25.50	25.60	25.70	25.80	25.90	25
26	26.00	26.10	26.20	26.30	26.40	26.50	26.60	26.70	26.80	26.90	26
27	27.00	27.10	27.20	27.30	27.40	27.50	27.60	27.70	27.80	27.90	27
28	28.00	28.10	28.20	28.30	28.40	28.50	28.60	28.70	28.80	28.90	28
29	29.00	29.10	29.20	29.30	29.40	29.50	29.60	29.70	29.80	29.90	29
30	30.00	30.10	30.20	30.30	30.40	30.50	30.60	30.70	30.80	30.90	30
31	31.00	31.10	31.20	31.30	31.40	31.50	31.60	31.70	31.80	31.90	31
32	32.00	32.10	32.20	32.30	32.40	32.50	32.60	32.70	32.80	32.90	32
33	33.00	33.10	33.20	33.30	33.40	33.50	33.60	33.70	33.80	33.90	33
34	34.00	34.10	34.20	34.30	34.40	34.50	34.60	34.70	34.80	34.90	34
35	35.00	35.10	35.20	35.30	35.40	35.50	35.60	35.70	35.80	35.90	35
36	36.00	36.10	36.20	36.30	36.40	36.50	36.60	36.70	36.80	36.90	36
37	37.00	37.10	37.20	37.30	37.40	37.50	37.60	37.70	37.80	37.90	37
38	38.00	38.10	38.20	38.30	38.40	38.50	38.60	38.70	38.80	38.90	38
39	39.00	39.10	39.20	39.30	39.40	39.50	39.60	39.70	39.80	39.90	39
40	40.00	40.10	40.20	40.30	40.40	40.50	40.60	40.70	40.80	40.90	40
41	41.00	41.10	41.20	41.30	41.40	41.50	41.60	41.70	41.80	41.90	41
42	42.00	42.10	42.20	42.30	42.40	42.50	42.60	42.70	42.80	42.90	42
43	43.00	43.10	43.20	43.30	43.40	43.50	43.60	43.70	43.80	43.90	43
44	44.00	44.10	44.20	44.30	44.40	44.50	44.60	44.70	44.80	44.90	44
45	45.00	45.10	45.20	45.30	45.40	45.50	45.60	45.70	45.80	45.90	45
46	46.00	46.10	46.20	46.30	46.40	46.50	46.60	46.70	46.80	46.90	46
47	47.00	47.10	47.20	47.30	47.40	47.50	47.60	47.70	47.80	47.90	47
48	48.00	48.10	48.20	48.30	48.40	48.50	48.60	48.70	48.80	48.90	48
49	49.00	49.10	49.20	49.30	49.40	49.50	49.60	49.70	49.80	49.90	49
50	50.00	50.10	50.20	50.30	50.40	50.50	50.60	50.70	50.80	50.90	50

Distance of slope stake from side or shoulder stake for any width roadway, slope 1 to 1. If ground is nearly level, the cut or fill at side stake is located by the double entry method in left column and top row. The number in body of table in same row and column gives distance from side stake to slope stake. If ground is not level estimate the difference in elevation between the side stake and slope stake, lower target by this amount if cut, elevate if fill. Add this amount to cut or fill and find distance in table. Set up rod at this point, and line of sight should cut target. If it does not make the slight adjustment necessary.

INDEX

TABLE XIII—CORRECTIONS FOR TANGENTS AND EXTERNALS

These corrections are to be added to the approximate values, found by dividing the tangent, or external, for a 1° curve (Table VIII) by the degree of curve, in order to obtain the true tangents, or externals. Intermediate values may be obtained by interpolation.

FOR TANGENTS ADD

Central Angle	DEGREE OF CURVE													
	5°	10°	15°	20°	25°	30°	35°	40°	45°	50°	55°	60°	65°	70°
10°	.03	.06	.09	.13	.16	.19	.22	.25	.28	.31	.34	.38	.42	.46
15°	.04	.10	.14	.19	.24	.29	.34	.39	.45	.51	.53	.58	.63	.68
20°	.06	.13	.19	.26	.32	.39	.45	.51	.58	.65	.72	.79	.84	.90
25°	.08	.16	.24	.33	.40	.49	.58	.67	.75	.83	.90	.99	1.06	1.14
30°	.10	.19	.29	.39	.49	.59	.69	.79	.89	.99	1.09	1.20	1.29	1.39
35°	.11	.22	.34	.47	.58	.69	.79	.89	.99	1.04	1.20	1.42	1.54	1.66
40°	.13	.26	.40	.53	.67	.80	.93	1.06	1.20	1.34	1.49	1.64	1.79	1.94
45°	.15	.30	.44	.60	.76	.91	1.06	1.21	1.37	1.52	1.70	1.87	2.04	2.21
50°	.17	.34	.51	.68	.85	1.02	1.19	1.36	1.54	1.72	1.91	2.10	2.29	2.48
55°	.19	.38	.57	.76	.95	1.14	1.32	1.52	1.72	1.92	2.14	2.35	2.56	2.77
60°	.21	.42	.63	.84	1.05	1.27	1.49	1.71	1.94	2.17	2.38	2.60	2.83	3.07
65°	.23	.46	.69	.93	1.16	1.40	1.64	1.88	2.13	2.38	2.63	2.88	3.13	3.39
70°	.25	.51	.76	1.02	1.28	1.54	1.80	2.06	2.33	2.60	2.88	3.16	3.44	3.72
75°	.27	.56	.83	1.12	1.40	1.69	1.98	2.27	2.57	2.87	3.16	3.47	3.78	4.09
80°	.30	.61	.91	1.22	1.53	1.84	2.15	2.46	2.78	3.10	3.44	3.78	4.12	4.46
85°	.33	.66	1.00	1.33	1.68	2.02	2.36	2.70	3.05	3.40	3.77	4.14	4.55	4.89
90°	.36	.72	1.09	1.45	1.83	2.20	2.57	2.94	3.32	3.70	4.10	4.50	4.91	5.32
95°	.39	.79	1.19	1.55	2.00	2.40	2.80	3.20	3.61	4.02	4.40	4.98	5.38	5.83
100°	.43	.86	1.30	1.74	2.18	2.62	3.06	3.50	3.95	4.40	4.88	5.37	5.85	6.34
110°	.51	1.03	1.56	2.08	2.61	3.14	3.67	4.21	4.76	5.31	5.86	6.43	7.01	7.60
120°	.62	1.25	1.93	2.52	3.16	3.81	4.45	5.11	5.77	6.44	7.12	7.80	8.50	9.22

FOR EXTERNALS ADD

Central Angle	DEGREE OF CURVE													
	5°	10°	15°	20°	25°	30°	35°	40°	45°	50°	55°	60°	65°	70°
10°	.001	.003	.004	.006	.007	.008	.009	.011	.012	.014	.015	.017	.018	.020
15°	.003	.007	.010	.014	.018	.023	.027	.029	.032	.035	.039	.043	.047	.051
20°	.006	.011	.017	.022	.028	.034	.038	.045	.051	.057	.063	.070	.076	.083
25°	.009	.018	.027	.036	.046	.056	.065	.074	.083	.093	.106	.120	.127	.135
30°	.013	.025	.038	.051	.065	.078	.090	.103	.116	.129	.149	.170	.179	.188
35°	.018	.035	.054	.072	.086	.109	.131	.153	.175	.197	.213	.230	.247	.264
40°	.023	.046	.070	.093	.117	.141	.172	.203	.234	.265	.277	.290	.315	.341
45°	.030	.060	.093	.119	.153	.184	.216	.254	.289	.325	.351	.378	.411	.445
50°	.037	.075	.116	.151	.189	.227	.266	.305	.345	.384	.425	.467	.508	.550
55°	.046	.093	.142	.188	.236	.283	.332	.381	.420	.479	.530	.582	.641	.700
60°	.056	.112	.168	.225	.283	.340	.398	.457	.516	.575	.636	.697	.774	.851
65°	.067	.135	.204	.273	.343	.412	.483	.554	.625	.697	.771	.845	.922	1.01
70°	.080	.159	.240	.321	.403	.485	.568	.652	.735	.819	.906	.994	1.08	1.17
75°	.095	.182	.286	.383	.480	.578	.678	.777	.877	.977	1.07	1.18	1.29	1.39
80°	.110	.220	.332	.445	.558	.671	.787	.903	1.02	1.13	1.25	1.38	1.50	1.62
85°	.128	.259	.391	.524	.657	.790	.926	1.06	1.20	1.34	1.47	1.62	1.76	1.91
90°	.149	.299	.450	.603	.756	.910	1.07	1.22	1.38	1.54	1.70	1.87	2.03	2.20
95°	.174	.350	.522	.706	.885	1.06	1.25	1.43	1.62	1.80	1.99	2.18	2.38	2.58
100°	.200	.401	.604	.809	1.01	1.22	1.43	1.64	1.85	2.06	2.28	2.50	2.73	2.96
110°	.268	.536	.806	1.08	1.35	1.63	1.91	2.20	2.48	2.76	3.05	3.35	3.66	3.96
120°	.360	.721	1.08	1.45	1.82	2.19	2.57	2.95	3.33	3.72	4.11	4.50	4.91	5.32

Texas and

Loca Signals & Lights Camino del Rio 2

X-sec Alley Blk 41 Fairmount Add Trajan to El Cajon 5-10

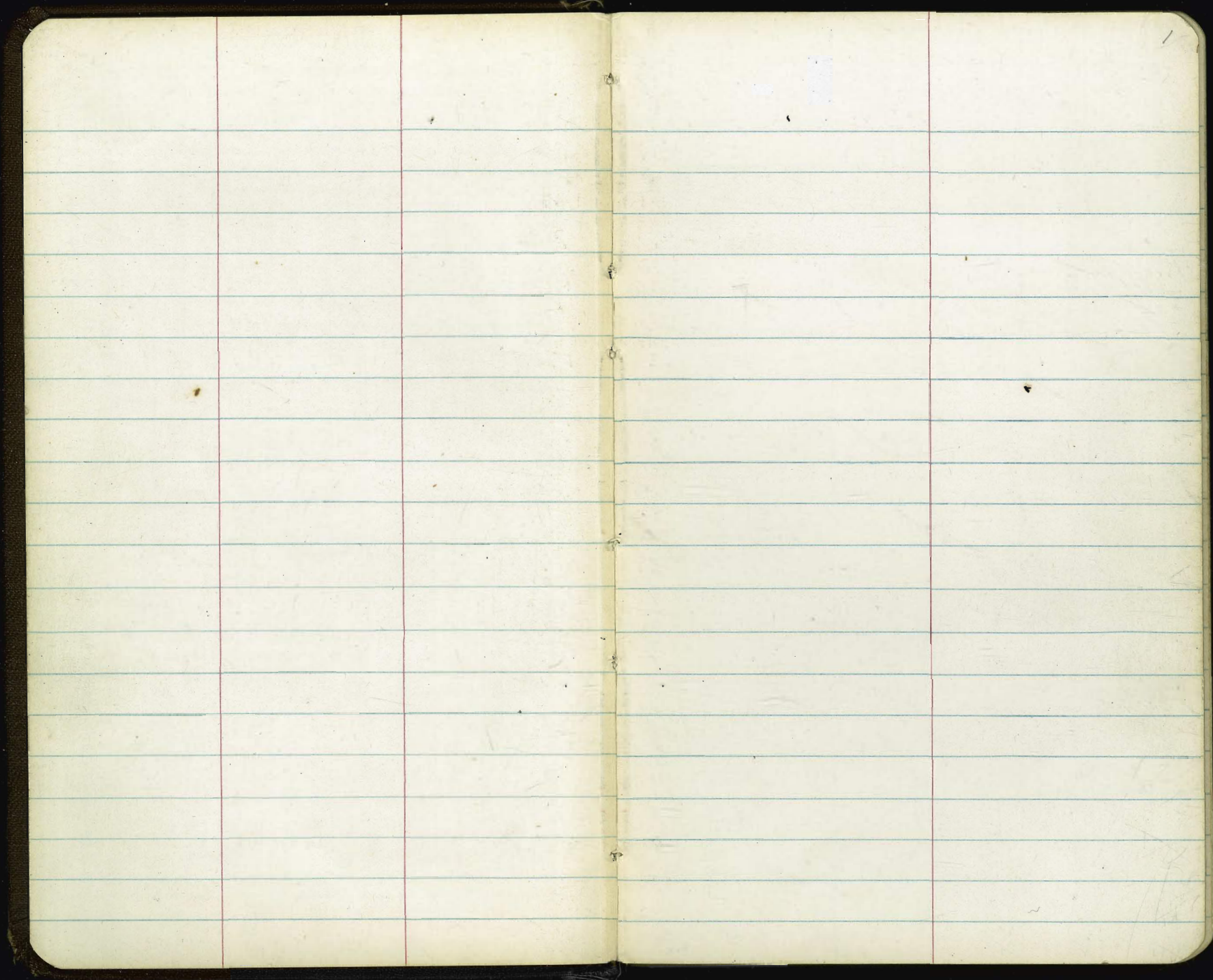
X-sec Chokedom - Pendleton to Randall 11-18

Encrachment Alley Blk 5, P.B. Vista 19-

Friars Road - Location of buildings west of 6th St. Ext. 22

Udal St. East + west of Locust 31

Friars Road (Prop. opening) 30



LOCATION PROPOSED SIGNAL
AND LIGHT STANDARDS
TEXAS ST AND CAMINO DEL RIO

Note: All distances are from
E 1/2 Line Radially

Walker
Pope
Huffman

No.

Stations. Def Δ are
from BC

70+50

4° 03.53

Power Pole

69+10

3° 39.5

$R = 10000'$
 $\Delta = 12^\circ 36' 30''$
 $L = 2200.57'$

67+30

3° 08.6

56+32.68 = B.C. Pt.

E
Curve
1/2"
Line

2



INDEXED
LW
DEC 19 1951

Singer Pole # P-75199

70+50 Nail 176.0

69+10 Nail

78.58

Nail 5'

Sta. #5

Center Line

67+30 Nail

66.17

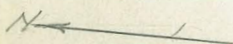
Sta. #6

Signal & Light Std Corit. from P. 2

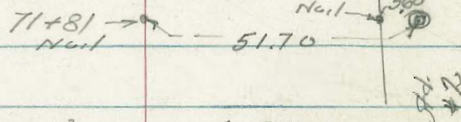
Curve
1/10'
Line

3

Stations Defs



71+81 4° 26.17

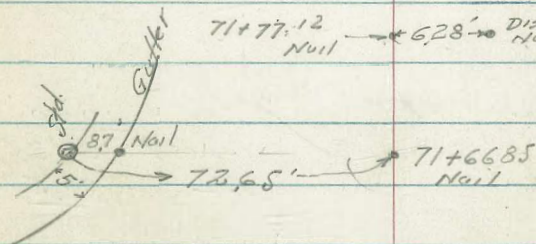


71+77.12 4° 25.5

Street 9 - Gentry

71+77.12 Nail 628' Disc. Nail

71+71.87 = P.O.C = lat of Texas from South, Produced.



71+66.85 4° 23.73

71+6685 Nail

71+28.55 4° 17.15

71+28.55 Nail 247.25 Gutter

71+09 4° 13.79

71+09 Nail 62.35 Gutter

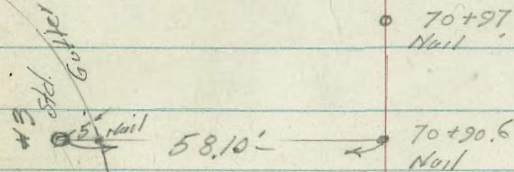
70+97.22 4° 11.75

Signal on 2

70+97.22 Nail

70+90.6 4° 10.5

58.10' lt = std.



70+90.6 Nail

Signal & Light Stds. Cont. from P3

Stations

78+33.25 = E.C. 6°18.25

$R = 10000'$
 $\Delta = 12^{\circ}36'30''$
 $E.L = 2200.57$

75+60 5°31.3

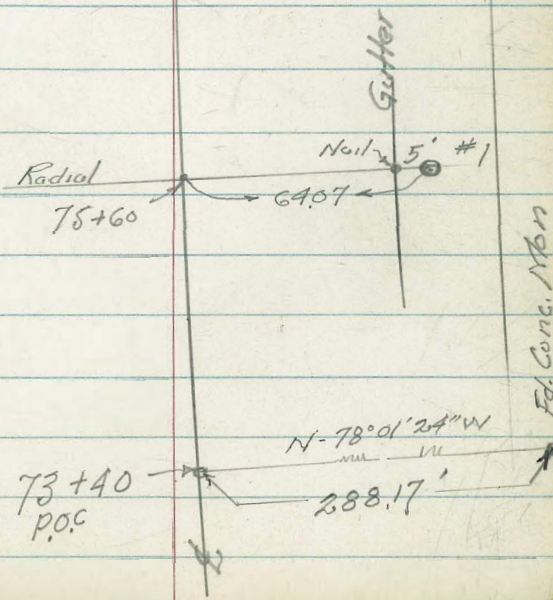
64.07 RL

73+40 = P.O.C. 4°53.5
 set spike on L

CAMINO DEL RO
 Freeway

Fd. Conc. Mon.

78+33.25
 set Hub
 "D110" E.C. 80.00'



Fd. Conc. Mon

73+40
 P.O.C. 288.17'

X-Section 20' Alley in Block 41 - Fairmount

Add. - Map. 1035 - T.P. Sheet 3673

5845

W.O. 25020

12-20-51

7.0

49.43
7.11
56.54

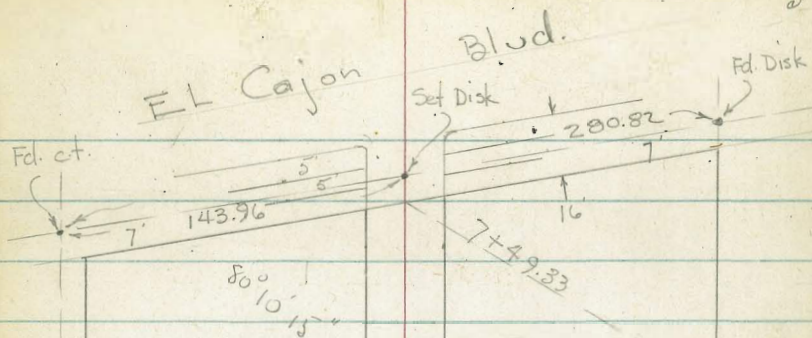
1704-6

T.P. 23-18

B.M. - 0 350.57

S.E. Ret. - N.E. Cor

51' + Trojan



Block 41

3+41 = Cross
in Dr.

INDEXED
DEC 21 1951

10' 10"

10' x
Crossin walk
sta. 2+00

0+00

Fd. Iron
Pin - 1/2"

Fd. Hub.

Trojan

Hue

Set Hub.

Fd. pipe
LS-2234

269.54

5'

7-Sect. 20 Alley in Block 41
 sketch - P. 5

1+37- Lt. = end wall

1+23

T.P. 12.93 376.64 0.26 263.71

1+00-10.1 Lt. = Beg. Conc wall

0+50

T.P. 12.62 363.97 0.13 351.35

0+40- 11.5 Rt. = \pm Near Wing of Frame House

0+00 = N.L. of Trojan

0-15 = Edge of Graded Roadway

B.M. 2.75 351.48 348.73 = S.E. 7'

Lt. \pm Rt.

372.21 372.4 366.6 370.8 369.9
 4.43 4.2 5.0 5.8 6.7
 10 10 10 15
 Top wall
 367.7 366.3 365.1 365.3 364.2
 8.69 10.3 11.5 11.3 12.4
 10 10 10 15
 Top wall
 376.84

368.47 363.7 360.4 358.9 358.4
 + 4.50 0.3 3.6 5.1 5.6
 10.1 10 10 15
 Top wall
 354.9 354.2 351.9 350.5 345.9
 9.1 9.8 12.4 13.5 18.1
 15 10 10 15
 363.97

345.6 347.18
 5.9 4.30
 11.5
 ground floor
 342.8 341.8 341.5
 7.0 2.7 9.3 9.7 10.0
 15 10 10 10 15
 342.4 339.6 338.1 336.4 334.0
 7.1 11.9 13.4 15.1 17.5
 30 10 10 10 30

Hub. 51st + Trojan - See 51st st. X-Sect.
 351.48

3+04- Rt. 346
Set B.M. 7 Spikes in Pole J.P.A. 4336 385.99

4+00

3+50

3+41- 7.6 Lt. = E 11' Conc apron to Sing. Gar.

3+00

2+50

2+00

1+98- 11' Rt. = E 2.5' Conc. walk

T.P. 13.17 389.45 0.36 376.28

1+60

Lt. ♀ Rt. 7

386.9 386.2 386.1 385.8 384.5

2.6 3.3 3.4 3.7 4.0
15 10 10 15

386.5 385.8 385.7 385.5 385.2

3.0 3.7 3.8 4.0 4.3
15 10 10 15

387.06 386.53 385.75

2.39 2.92 3.70
18.5 10.6 7.6 = Conc.
B.K.

385.8 385.3 385.2 385.0 384.7

3.7 4.2 4.3 4.5 4.8
15 10 10 15

384.4 383.8 383.8 383.6 383.4

5.1 5.7 5.7 5.9 6.1
15 10 10 15

380.8 380.2 379.9 379.4 379.5

8.3 9.3 9.6 10.1 10.0
15 10 10 15

379.37 379.06

10.08 10.39
11 20
Walk

389.45

375.3 375.9 375.3 375.3 374.8

+1.3 0.7 1.3 1.3 1.8
15 10 10 15

376.64

6+22 - 7.7 Lt. = end Conc apron + Slab.

383.00 Lt. # Rt
6.45 382.61
15.1 apron 7.7 = apron

6+12 - 3.2 Lt. = Ely. of Conc. Slab.

382.77 382.19
7.01 7.59
8.1 apron 3.2 = slab.

6+05 - 5.6 Lt. = Beg. Rough Conc. slab along apron

382.92 382.49
8.4 apron 5.6 = edge Conc.

6+00

383.71 383.23 383.14 382.6 382.3 381.76
6.07 floor. 6.55 Conc. 6.64 edge apron 7.2 7.5 8.2
15.1 10 8.8 10 15

5+78 - 10.1 Lt. = Beg. Conc. apron to 4 Car Gar.

383.73 383.59
6.05 floor. 6.19 10.1 = Conc.

5+59 - 10.3 Lt. = ± A.C. Dr. to Gar. Conc. floor

386.28 384.80
3.50 floor. 4.98 10.3 = A.C.

5+50 = c Ly. of A.C. Drive to Ding. Gar.

385.70 385.06 384.9 384.5 384.3 382.7
4.08 floor. 4.72 edge A.C. 4.9 5.3 5.5 7.1
15 10.2 10 10 15

5+00

385.9 385.4 385.3 385.3 385.9
3.9 floor. 4.4 4.5 4.5 3.9
15 10 10 15

T.P. 3.89 389.78 3.56 385.89

389.78

4+50

386.4 386.0 385.9 385.8 385.5
3.1 floor. 3.5 3.6 3.7 4.0
15 10 389.45 10 15

= edge AC pauc & curbs.
 7+49.33 = S.L. Fl Cajon - Sect. along S.W.

7+45 - 10.7' Rt. = end wall
 7+40.8 - 10.3' Lt. = Beg. Conc. Dr. to Motel

T.P. 5.86 386.15 9.49 380.29

7+00

6+96 - 7' Lt. = end Conc. apron

Parking for Motel

6+63 - 7.5' Lt. = Beg. Rough Conc. apron to A.C.

6+50

6+25 - 10.5' Rt. = Beg. Rocks Conc. wall

381.40 380.92 380.15 379.50 379.28 379.42
 4.75 5.23 6.00 6.65 6.87 6.73
 20 13 10.2 = 9.9 9.9 Top Curb.
 Conc. Dr. Conc. Dr. gut

380.83 380.15
 5.32 6.0
 10.3 10.3 = ground
 Top of
 cb. to Dr.

379.55 380.20
 6.6 5.95
 10.7 Top
 ground wall

386.15

382.2 381.3 380.6 380.3 380.5 378.96 378.54
 7.6 8.5 9.2 9.5 9.33 10.82 11.24
 11.3 10 10 10 10.9 12 20
 along Bldg. Top C.L. !
 382.08 381.83 381.21 wall parking
 7.60 7.95 8.57
 10.7 7 = Conc.
 A.C.

382.16 381.66
 7.62 8.12
 10.7 7.5 = Conc.
 = A.C.

382.8 381.9 381.2 381.1 381.3 379.7
 7.0 7.9 8.6 8.7 8.51 10.8
 11.4 10 10 10.9 15
 along Top
 Bldg. wall
 381.6 381.65
 8.2 8.13
 10.5 Top wall
 ground

389.78

Lt. # Rt.

El Cajon + 51 st
 check B.M. SW.B.P. 4.59 386.80
 T.P. 6.60 391.39 1.36 384.79

7 + 65.8 = ± at S. cb. line - sect. along cb. line

386.58 380.92 380.47 379.80 379.20 378.64 379.23 374.40 378.01
 4.57 5.23 5.68 6.35 6.95 7.51 6.92 8.75 8.14
 Top 30 Top 10.2 10.2 Top 30 Top
 9ft. 2' Rad. 9ft. 9ft. 2' Rad. 9ft. Top

386.15

R. Smith
C. Allen
R. Taylor
R. Parks

X-sec Chalcedony

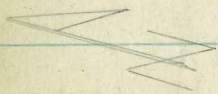
INDEXED
Lew
SEP 30 1952

Quincy St

Set Hub

Ed Con Mon 7x7'
SW Cor.

4499.56



Chalcedony

0+00

0+29

Pendleton St

0+24.9

0+53

0+42.0

0+20

Ed 7x7' Con Mon
SW Cor.

Randall St

sec 182334
1, 3, 5

W 0+25.020
9-29-52

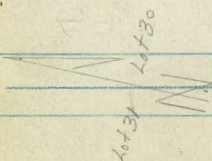
Set Hub
Ed 2336-2
3299

ST

Set Hub

Ed Con Mon 7x7'
SW Cor.

4498.01



Set Hub
Ed 2493-2
L.H.

Chalcedony

Set Hub
2+49.30

0+00

Quincy St

ST

D. Smith
C. Allen
R. Taylor
R. Parks

INDEXED

Cross Sec. Chalcedony
Pendleton to Randall

0-8-80 1052 LT = 8' wide Conc Walk

0-60 Ely Prop line Pendleton ST

0-17-51° RT = 4" Acacia tree

0-29- Ely edge A.C.

0-40 = E Pendleton

0-53. Wly edge A.C.

0-80 = Wly Line Pendleton

see pg. 42

B.M. 7.67 134.95

SW 747 con Mon
127.88 Pendleton
Chalcedony

W0# 25020 12
9-29-52

RT = South

Lt. North

	126.35		126.24		
	8 ⁶⁰		8 ⁷¹		
	50 ²		40 ²		
	WIK		WIK		
	127.9		126.8		
	7 ¹		8 ²		
	60		20		
	127.9		126.9		
	7 ¹		8 ¹		
	60		20		
	127.9		125.8		
	7 ¹		9 ²		
	60		20		
	127.9		124.3		
	7 ¹		10 ¹		
	60		60		
	127.9		123.2		
	7 ¹		11 ⁸		
	60		60		
	127.9		123.2		
	7 ¹		11 ⁸		
	60		60		
	127.9		123.2		
	7 ¹		11 ⁸		
	60		60		
	127.9		123.2		
	7 ¹		11 ⁸		
	60		60		
	127.9		123.2		
	7 ¹		11 ⁸		
	60		60		
	127.9		123.2		
	7 ¹		11 ⁸		
	60		60		
	127.9		123.2		
	7 ¹		11 ⁸		
	60		60		
	127.9		123.2		
	7 ¹		11 ⁸		
	60		60		
	127.9		123.2		
	7 ¹		11 ⁸		
	60		60		
	127.9		123.2		
	7 ¹		11 ⁸		
	60		60		
	127.9		123.2		
	7 ¹		11 ⁸		
	60		60		
	127.9		123.2		
	7 ¹		11 ⁸		
	60		60		
	127.9		123.2		
	7 ¹		11 ⁸		
	60		60		
	127.9		123.2		
	7 ¹		11 ⁸		
	60		60		
	127.9		123.2		
	7 ¹		11 ⁸		
	60		60		
	127.9		123.2		
	7 ¹		11 ⁸		
	60		60		
	127.9		123.2		
	7 ¹		11 ⁸		
	60		60		
	127.9		123.2		
	7 ¹		11 ⁸		
	60		60		
	127.9		123.2		
	7 ¹		11 ⁸		
	60		60		
	127.9		123.2		
	7 ¹		11 ⁸		
	60		60		
	127.9		123.2		
	7 ¹		11 ⁸		
	60		60		
	127.9		123.2		
	7 ¹		11 ⁸		
	60		60		
	127.9		123.2		
	7 ¹		11 ⁸		
	60		60		
	127.9		123.2		
	7 ¹		11 ⁸		
	60		60		
	127.9		123.2		
	7 ¹		11 ⁸		
	60		60		
	127.9		123.2		
	7 ¹		11 ⁸		
	60		60		
	127.9		123.2		
	7 ¹		11 ⁸		
	60		60		
	127.9		123.2		
	7 ¹		11 ⁸		
	60		60		
	127.9		123.2		
	7 ¹		11 ⁸		
	60		60		
	127.9		123.2		
	7 ¹		11 ⁸		
	60		60		
	127.9		123.2		
	7 ¹		11 ⁸		
	60		60		
	127.9		123.2		
	7 ¹		11 ⁸		
	60		60		
	127.9		123.2		
	7 ¹		11 ⁸		
	60		60		
	127.9		123.2		
	7 ¹		11 ⁸		
	60		60		
	127.9		123.2		
	7 ¹		11 ⁸		
	60		60		
	127.9		123.2		
	7 ¹		11 ⁸		
	60		60		
	127.9		123.2		
	7 ¹		11 ⁸		
	60		60		
	127.9		123.2		
	7 ¹		11 ⁸		
	60		60		
	127.9		123.2		
	7 ¹		11 ⁸		
	60		60		
	127.9		123.2		
	7 ¹		11 ⁸		
	60		60		
	127.9		123.2		
	7 ¹		11 ⁸		
	60		60		
	127.9		123.2		
	7 ¹		11 ⁸		
	60		60		
	127.9		123.2		
	7 ¹		11 ⁸		
	60		60		
	127.9		123.2		
	7 ¹		11 ⁸		
	60		60		
	127.9		123.2		
	7 ¹		11 ⁸		
	60		60		
	127.9		123.2		
	7 ¹		11 ⁸		
	60		60		
	127.9		123.2		
	7 ¹		11 ⁸		
	60		60		
	127.9		123.2		
	7 ¹		11 ⁸		
	60		60		
	127.9		123.2		
	7 ¹		11 ⁸		
	60		60		
	127.9		123.2		
	7 ¹		11 ⁸		
	60		60		
	127.9		123.2		
	7 ¹		11 ⁸		
	60		60		
	127.9		123.2		
	7 ¹		11 ⁸		
	60		60		
	127.9		123.2		
	7 ¹		11 ⁸		
	60		60		
	127.9		123.2		
	7 ¹		11 ⁸		
	60		60		
	127.9		123.2		
	7 ¹		11 ⁸		
	60		60		
	127.9		123.2		
	7 ¹		11 ⁸		
	60		60		
	127.9		123.2		
	7 ¹		11 ⁸		
	60		60		
	127.9		123.2		
	7 ¹		11 ⁸		
	60		60		
	127.9		123.2		
	7 ¹		11 ⁸		
	60		60		
	127.9		123.2		
	7 ¹		11 ⁸		
	60		60		
	127.9		123.2		
	7 ¹		11 ⁸		
	60		60		
	127.9		123.2		
	7 ¹		11 ⁸		
	60		60		
	127.9		123.2		
	7 ¹		11 ⁸		
	60		60		
	127.9		123.2		
	7 ¹		11 ⁸		
	60		60		
	127.9		123.2		
	7 ¹		11 ⁸		
	60		60		
	127.9		123.2		
	7 ¹		11 ⁸		
	60		60		
	127.9		123.2		
	7 ¹		11 ⁸		
	60		60		
	127.9		123.2		
	7 ¹		11 ⁸		
	60		60		
	127.9		123.2		
	7 ¹		11 ⁸		
	60		60		
	127.9		123.2		
	7 ¹		11 ⁸		
	60		60		
	127.9		123.2		
	7 ¹		11 ⁸		
	60		60		
	127.9		123.2		
	7 ¹		11 ⁸		
	60		60		
	127.9		123.2		
	7 ¹		11 ⁸		
	60		60		
	127.9		123.2		
	7 ¹		11 ⁸		
	60		60		
	127.9		123.2		

LT = NORTH

RT = SOUTH

1450 - LT = end Conc Block Wall

4E	117.6	50	117.2	60	115.4	72	114.5	95	112.7	109	111.3
60	40 ^z Top	40 ^z Foot	40 ^z Gr	50	60	72	80	95	109	112.7	111.3

1412 - 40^z LT = Begin Conc Block Wall

177	119.0	32	119.0
40 ^z Top	40 ^z Foot	40 ^z Gr	40 ^z Gr

1404 - 40^z LT & 8' Wide ^{exc} Drive Way

062	120.26	50 ^z Drway	40 ^z Drway
119	120.26	50 ^z Drway	40 ^z Drway

1400 - 40^z LT = end Conc Block Wall

0.3	121.9	1190	119.4	28	120.1	32	118.5	4	117.4	52	116.5	74	115.1
60	40 ^z Top	40 ^z Foot	40 ^z Gr	20	20	20	20	4	48	52	60	74	60

0499 - 27^z RT = & 8" Power Pole # P2324

TT, 0.51 122.22 13.24 121.71

0450 - 40^z LT = Begin Conc Block Wall

107	124.3	1088	124.01	120	123.0	116	123.4	122.24	122.7	122.22	122.1	120.1	119.5
60	40 ^z Top	40 ^z Foot	40 ^z Gr	20	20	20	20	20	133	132	149	155	60

0425

90	126.0	96	125.4	104	124.5	107	124.3	111	123.9	117	123.3	133	121.7
60	40	40	40	20	20	30	40	40	40	40	60	60	60

124.95

0420

LT North

$\frac{27}{60} \frac{78.3}{15}$	$\frac{22}{40} \frac{85.1}{15}$	$\frac{10}{15} \frac{94.7}{19}$	$\frac{980}{16}$
---------------------------------	---------------------------------	---------------------------------	------------------

RT = South

$\frac{62}{7} \frac{98.9}{11}$	$\frac{65}{11} \frac{99.1}{16}$	$\frac{101.3}{15}$	$\frac{101.1}{45}$	$\frac{99.7}{60}$
--------------------------------	---------------------------------	--------------------	--------------------	-------------------

0400 Fly Line Quincy St.

$\frac{187}{60} \frac{86.9}{15}$	$\frac{148}{40} \frac{90.8}{15}$	$\frac{89}{15} \frac{96.7}{15}$	$\frac{59}{6} \frac{99.7}{15}$	$\frac{52}{5} \frac{100.4}{15}$
----------------------------------	----------------------------------	---------------------------------	--------------------------------	---------------------------------

$\frac{45}{15} \frac{101.1}{15}$	$\frac{27}{20} \frac{102.9}{20}$	$\frac{07}{40} \frac{104.9}{40}$	$\frac{104.0}{60}$
----------------------------------	----------------------------------	----------------------------------	--------------------

TP: 398 105.58 12.98 101.60

543956 & Quincy St.

$\frac{196}{60} \frac{94.9}{15}$	$\frac{163}{40} \frac{98.2}{15}$	$\frac{163}{26} \frac{97.2}{15}$	$\frac{130}{17} \frac{101.5}{15}$	$\frac{132}{17} \frac{105.58}{15}$
----------------------------------	----------------------------------	----------------------------------	-----------------------------------	------------------------------------

$\frac{130}{2} \frac{101.5}{15}$	$\frac{110}{6} \frac{103.5}{15}$	$\frac{98}{20} \frac{104.7}{15}$	$\frac{96}{40} \frac{104.9}{15}$	$\frac{98}{60} \frac{104.9}{15}$
----------------------------------	----------------------------------	----------------------------------	----------------------------------	----------------------------------

5427-264 RT = & 6" Euc. Tree

$\frac{123}{60} \frac{102.2}{15}$	$\frac{82}{40} \frac{106.3}{15}$	$\frac{77}{34} \frac{106.8}{15}$	$\frac{83}{20} \frac{106.2}{15}$	$\frac{94}{15} \frac{105.1}{15}$
-----------------------------------	----------------------------------	----------------------------------	----------------------------------	----------------------------------

$\frac{88}{20} \frac{105.7}{15}$	$\frac{88}{40} \frac{105.7}{15}$	$\frac{85}{60} \frac{105.9}{15}$
----------------------------------	----------------------------------	----------------------------------

449956 W/ Quincy St

$\frac{105}{60} \frac{1040}{15}$	$\frac{69}{52} \frac{107.6}{15}$	$\frac{63}{40} \frac{108.2}{15}$	$\frac{76}{20} \frac{106.9}{15}$	$\frac{77}{20} \frac{106.8}{15}$
----------------------------------	----------------------------------	----------------------------------	----------------------------------	----------------------------------

$\frac{76}{20} \frac{106.9}{15}$	$\frac{81}{40} \frac{106.4}{15}$	$\frac{85}{60} \frac{105.9}{15}$
----------------------------------	----------------------------------	----------------------------------

4488 - 312 RT = & 6" Euc. Tree

4475

$\frac{109.7}{109.7} \frac{109.7}{15}$	$\frac{108.7}{108.7} \frac{108.7}{15}$	$\frac{108.4}{108.4} \frac{108.4}{15}$	$\frac{108.1}{108.1} \frac{108.1}{15}$
--	--	--	--

$\frac{107.2}{107.2} \frac{107.2}{15}$	$\frac{106.2}{106.2} \frac{106.2}{15}$	$\frac{105.4}{105.4} \frac{105.4}{15}$
--	--	--

4450

$\frac{48}{60} \frac{58}{40}$	$\frac{61}{20} \frac{61}{20}$	$\frac{64}{64} \frac{64}{20}$	$\frac{73}{20} \frac{73}{20}$	$\frac{83}{40} \frac{83}{40}$	$\frac{91}{60} \frac{91}{60}$
-------------------------------	-------------------------------	-------------------------------	-------------------------------	-------------------------------	-------------------------------

114 48 X

LT = NORTH

RT = SOUTH

16

R+00

76	78	83	88	100	94	92
60	40	20	20	40	60	60
62.3	62.1	61.7	61.1	59.9	60.5	60.2

TP₆ 0.04 69.85 11.50 69.81

1456

644	647	645	<u>69.85</u>	X	70.00	72.0
169	166	168	648	154	110	910
60	40	15	60	15	40	60
67.6	67.8	69.7	71.8	73.2	77.3	78.8

1422

137	135	116	95	81	40	25
60	40	15	20	40	60	60

TP₅ 1.03 81.31 12.42 80.28

0480

197	144	105	<u>81.31</u>	X	90.1	90.0
60	40	20	587	26	27	17
77.6	78.3	82.2	81.7	90.1	90.0	91.0

TP₄ 0.35 92.70 13.23 92.35

0453

73.8	77.6	88.5	<u>92.70</u>	X	97.4	96.7
318	280	172	93.9	97.4	89	107
60	40	20	117	15	40	60

105.58 X

4+50

TP8 10.35 92.48 0.01 82.13

4+04

3+56

TP7 12.33 82.14 0.04 69.81

3+24

2+84

2+37

Lt = North				RT = South			
3 ¹³	5 ⁴	7 ¹	8 ¹⁶	8 ¹⁰	13 ¹	13 ¹	16 ¹
89.2	87.1	84.8	83.9	82.9	79.4	79.4	76.1
60	40	32	20	20	40	60	

				92.48 x			
	85.2						
+3 ¹	+1 ²	+0 ⁴	6 ¹³	9 ¹⁶	17 ⁰	21 ¹	22 ⁴
60	40	30	10	20	40	60	
	84.7	78.0	78.5	74.3	69.5	62.4	59.9
	1 ⁴	4 ¹	3 ⁶	7 ⁸	12 ⁶	19 ³	22 ²
	60	40	15	20	30	40	60
							57.4

				82.14 x			
	76.4						
+7 ⁵	+6 ¹	+4 ⁰	0 ¹³	3 ¹³	7 ⁸	11 ⁰	11 ²
60	40	28	13	20	40	60	
	76.0	73.9	69.6	66.6	62.1	58.9	58.2

	66.2	65.5	61.7	60.7	60.4	59.0	58.5
3 ⁷	4 ⁴	8 ²	9 ¹²	9 ⁵	10 ⁹	11 ⁴	
60	40	20	20	20	40	60	
	70.9	64.9	62.9	62.2	59.4	59.2	59.0
+1 ⁰	7 ¹⁰	5 ⁰	7 ⁰	7 ²	10 ⁵	10 ⁷	10 ⁹
60	40	20	10	20	20	40	60

69.85 x

LT = North

⊕

RT = South

18

Chokedony Randall (85.93)
 BM = S.W. 7'x7' MOM 6.53 85.95

5478⁶ = Fly Line Randall

92.1	90.3	88.8	87.3	85.6	82.5	81.1
0 ⁴	2 ²	3 ¹	5 ²	6 ²	10 ²	11 ⁴
60	40	20		20	40	60

5438⁶ = E Randall St.

92.1	89.9	88.6	87.2	85.8	84.3	82.1
0 ⁴	2 ²	3 ²	5 ³	6 ¹	8 ²	10 ⁴
60	40	20		20	40	60

4498⁶ Wly Line Randall St

91.5	89.1	88.3	87.0	85.9	85.0	86.0	85.3	83.3
10	3 ⁴	4 ²	5 ²	6 ⁴	7 ²	6 ²	7 ²	9 ²
60	40	35	20		20	25	40	60

90.4	88.3	84.5	85.4	84.8	84.3	85.3	82.2	79.7
2 ¹	4 ²	6 ²	7 ¹	7 ¹	8 ²	7 ²	10 ³	12 ⁸
60	40	35	20		15	20	40	60

4475

92487

Allen
D. Sisson
C. Powell
5-22-53

WOT# 20008

Encroachments in Alley BIK 5
First Addition to Pacific Beach Vista
and Beach Vista
15' wide Alley

2+23-6⁸ Rt = city edge 1⁵ 59 incinerator

2+09-7⁵ Rt = end 5' high picket fence

1+50-7⁵ Rt = begin 5' high picket fence

1+00-6⁶ Rt = 10" power pole # A840

0+96-6⁹ Rt = end 5' high lattice fence

0+69-6² Rt = begin lattice fence - 5⁵ high

0+00 = Fly Line La Jolla Mesa Drive

CASS

ST

19

FD Hub
7'4" Alley

1119 40

7⁵ 7⁵

INDEXED

FILED
MAY 25 1953

Alley BIK 5
First Add to
Pacific Beach Vista
and also Beach Vista
Tract

Beach ST

Agate ST

La Jolla Mesa

Drive

FD Hub & City Dist

See X-sec of Alley

Encroachments in Alley BIK 5 CONT

5+78-5² RT- ϕ 12" power pole #PA 900

5+64-5² RT- ϕ Roadman

2 5+49-6² RT- ϕ Nudge 2² wide conc walk
N+S walk

2 5+38-7⁵ LT=end 8" high conc block curb

14 5+27-7⁴ LT=begin 8" high conc block curb

1 5+00-8⁰ RT- ϕ 10" power pole JPA 884

0 4+76-9⁶ LT- ϕ 18" cypress tree
Branches overhang should be trimmed

4+15-7⁸ RT- ϕ 10" power pole JPA 880

0 2+51-7⁵ RT- ϕ 8" power pole #A 870

Cont. Alley BIK 5-

8+93-9² LT to sledge House below

Wooden floor on porch
attached to dwelling

8+93⁵ 6¹ LT- S.W. COR screened in porch

8+93⁵ 6¹ LT=end 4' high picket fence

8+57⁵ 7⁰ LT=begin 4' high picket fence

ON CONC. FOUNDATION
8+40-7⁰ LT= S.W. COR 9' N+S and 17⁵ E+W Shed

8+40-6⁸ LT=end 3⁵ high Board fence

8+35-6¹ RT- ϕ 14" power pole PA-946

8+22-6⁷ LT=begin 3⁵ high Board fence
(poor condition)

8+09-8⁵ RT- ϕ 6" Eco Tree - Branches overhang
Alley

6+84-5¹ RT- ϕ 8" power pole #PA 920

Alley BIR 5 Conct

11+19^{to} = Wly Cass ST

11+19- 7th LT = end 1² high Conc Block wall-

11+04- 7th LT = step in conc wall Reduces to 1² high

11+00- 7th LT = sly edge Conc Block wall-

10+90- 7th LT = step in wall - Reduces to 3² high

10+64- 7th LT = 5⁵ high Conc Block wall-

10+64- 7th LT = S.E. COR Stucco garage

10+46- 7th LT = S.W. COR Stucco garage
opens to Ely-

10+19- 6^o RT = ϕ 12" power pole # PA 982

9+29- 6^o RT = ϕ 10" power pole # JPA 964

9+11^E 9^o LT to S.E. COR Dwelling

9+11^E 5⁶ LT = S.E. COR Screened in porch
attached to house

Friars Road
Location of buildings west of 6th
street extension.

C.H.S.
Beqq
oltman
Schelin

8-11-53
N.O.# 20006

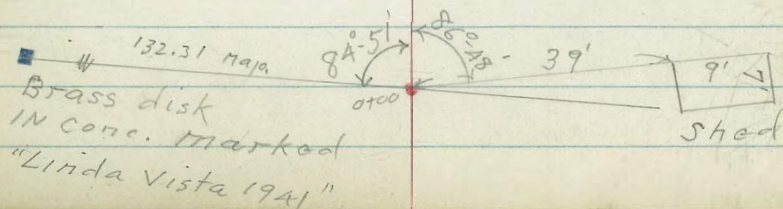
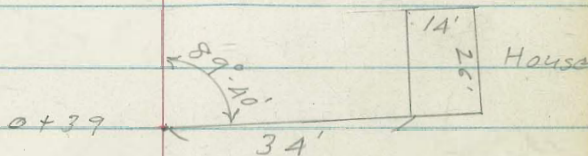
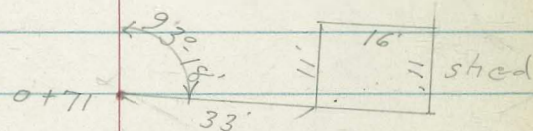
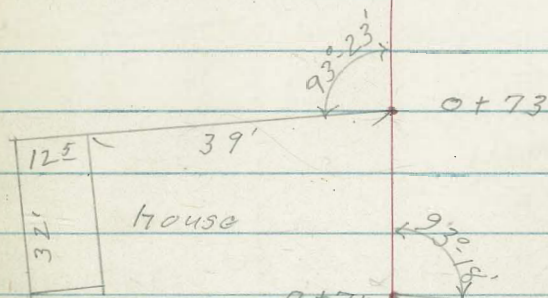
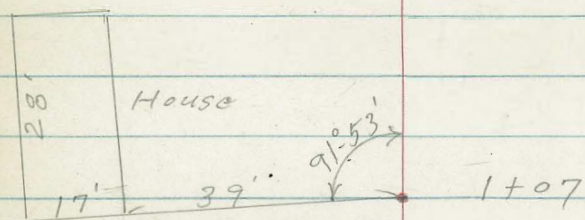
- denotes Fd. Con. Mon.
- " " " L+T.
- ◻ " set 1/2 + disk
- " " Nail (P.K. conc. nail)

Alignment taken from
F.B. 1534 - page 8 and from
sheet # 5A56-A-L.

Ties from F.B. 1534 - page 8

INDEXED
JER
AUG 12 1953

0+00 = P.L. = Wly. line Lot 2, (Por. P.L. 1173)
= Sta. 64+92 1/2 F.B. 1534 page 7 (Por. P.L. 1174)



Roberts
Cata
Mans
Murder
10-30-53
W.D. # 23757

X-Section Euclid Avenue

100' both ways from E Ridgeway Drive
Sec 10591L

INDEXED

NOV 2 - 1953



Curb Ends here.

Proposed Curb

E Ridgeway Drive

DELTA
HEIGHTS

Avenue

E Euclid

0+00

{ 1+00
E.A. 2d E. D.C. 15, 260L

{ 1+90.40
E.A. 1d B.C.T. B.C.

No data on Curve.

Scale:
1" = 50' Sec 10591L

1+00 & Ridgeview Drive

233.42	233.48	233.31
333	327	3.44
10	9.8	5.P
EP		

0+80 Opposite curb line Ridgeview

231.2	231.33	231.44	231.28	231.0	231.17 Elev.	242.37 Elev
5.5	5.42	5.31	5.47	3.8	116.35	156.35
19	9.2		9.2	50	End of	Top
	EP		EP		Exit Curb	cb

0+56.3 End Roll Edge on Right

229.0	228.89	229.08	228.96	229.12	229.4
7.7	7.86	7.67	7.79	7.63	7.4
20	9.2	9.2	10.2	40	7.4
EP	EP	EP	EP	EP	Top

Curb Covered with Dirt

0+55.3 End Rolledge on left

228.95	228.84	228.98	228.89	229.08
7.80	7.91	7.77	7.86	7.67
10.2	10	9.2	10.2	EP
EP			EP	

0+23

226.01	225.80	225.95	225.88	226.68
10.74	10.95	10.80	10.87	10.67
10.2	9.2	9.2	10.2	EP
EP			EP	

0+00

223.4	223.60	223.37	223.47	223.37	229.61	223.2
13.3	13.15	13.38	13.28	13.38	7.14	13.5
18	10.2	9.2	9.2	10.2	37	7.0
EP	EP			EP		

Using this 125 236.75 A

235.50 Curb Grade from Plans at Curb BL as built. 236.75 A

BM

NOTE } 148.30 NE Corner Headwall of Culvert on Fairmount East of Harris Avenue - 105.91 L
 148.05 ← City Bench book

check

9.23 23550 = 235.50

2400 on Tangent (No Curve Data)

243.6	243.92	243.67	243.26	241.7
1.1	0.81	1.06	1.47	3.0
18	92	10	10	27
Toe	EP	EP	EP	Toe

1790.40 BC

242.68
2.05
of rd
ct.

Hope you have a BM on this

1775

241.20	241.10	240.73
3.53	3.63	4.00
92	92	92
EP	EP	EP

238.7

1750

238.4	238.55	238.54	238.34	237.5
6.3	6.18	6.19	6.39	7.2
17	92	92	92	29
Toe	EP	EP	EP	Toe

238.6

T.P.

8.59 244.73 ∇ 0.61 236.14

244.73 ∇

236.13 Elev Track (Bench)

1720

Opposite Curb Line of Ridgeview

235.8	235.40	235.45	235.34
0.9	1.35	1.30	1.41
23	92	92	92
	EP	EP	EP

235.50	236.52	236.70 Elev
1.25	0.23	2
59.75	78.9	116.7
Top curb	Top	Top
End of	cb	cb
Exit Curb		cb RC

236.75 ∇

236.75 ∇

X-Section, Lot 17, BIK 6, Golden Park
for Extension of Runnymede Lane

Shepard
Bruner
O'Neil
1-9-59
W.O. 25010

INDEXED
JER
JAN 5 1954

27

#15

Fd. Lvt →

#15

Fd. Lvt →

Comp. Base

#16

#16



0-0.95 L 4x4 Conc. Box
Grate = 24x4

#17

0.50

0+16 15.1 Rt. Edge of F+W Walk

151.90
151.95
7.07 7.02
15.1 13.3
walk walk

0+08 Begin F+W Walk 15.8 Rt. to Edge

152.84
153.12
6.09 5.55
15.8 12.0
walk walk

0+1.25 End Tulet on Lt.

150.45
150.46
8.52 8.51
12.1 8.1
cont. cont.

0+00

150.0
150.5
150.5
150.4
151.0
152.7
154.1
9.0 8.5 8.5 8.7 8.0 6.3 7.9
25 15 12 12 12 13 25

End of Pave.
0+.75 4' x 4' Conc. Tulet 8' Lt.

151.8
151.51
148.09
150.49
150.48
150.53
150.75
151.49
152.7
7.2 7.4 10.88 8.98 8.49 8.14 8.28 7.48 6.3
15 5 12 12 8 8 12 12 15
Ch. Cont. Cont. Cont. Cont. Cont. Cont. Cont.

0-3.5 Ch. B.C. on Rt.

156.81
156.52
156.03
156.17
156.31
156.70
157.9
2.16 2.25 2.94 2.80 2.44 2.21 1.0
12 12 12 12 12 12 15
Ch. Cont. Cont. Cont. Cont. Cont. Cont.

158.97

T.P. 0.07 158.97 6.72 158.90 Lt. & Runymead
& Runymead

T.P. 0.15 165.62 13.08 165.47

T.P. 0.24 178.65 13.05 178.31

B.M. 0.17 191.36 191.19 N.E. Id. Plug on Ch.
Martinez + Harbor View

NE Ld. Plug
Martinez Harbor
View

Reduced
1-19-54
Rzmt

		9.21	191.17 = 191.19
12.71	195.38	0.45	182.67
12.38	189.12	0.07	190.74
7.7	11.87	170.76	0.06 158.89

0490

138.0
21.0
15'

139.0
20.0
15'

141.5
19.5
15'

0450 12.7 Rt. to fence

142.0
17.0
50'

146.3
12.7
15'

146.5
12.5
12'

147.3
11.7
12'

144.0
11.0
12'

149.3
10.7
15'

148.5
10.5
25'

0436 12.0 Rt. Begin 4' Cyclone Fence

0429 12.2 Rt. End E/W Walk

150.08
8.89
17.3
walk

8.86
19.9
walk

0425

146.0
13.0
50'

149.4
9.6
15'

149.7
9.3
12'

150.5
8.5

150.7
8.3
12'

150.5
8.5
15'

150.6
8.4
20'

158.92

Proposed Opening
Portion of Friars Rd.

10/15/54
w.o. 20006

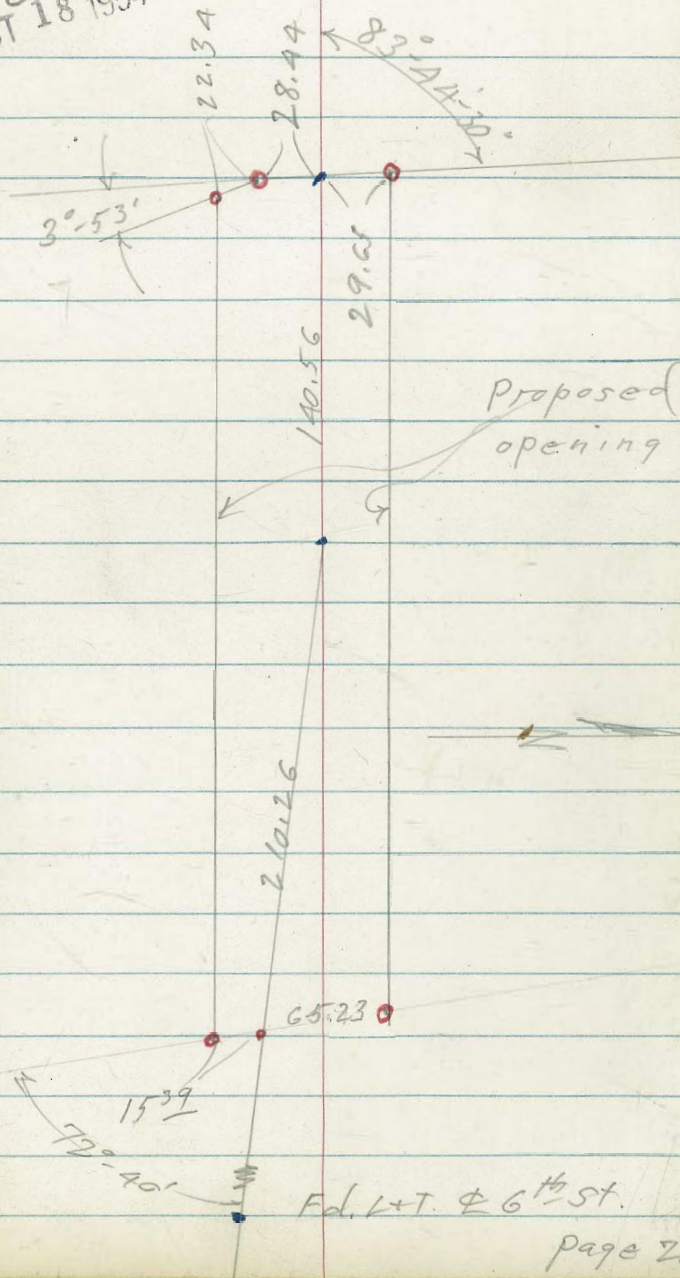
C.H.S.
Bo99
Schelin
Pulle9

5350-B
5456-A.L.
FB 2164-P22
FR 1534-7-

Fd. P.I. 47'-10" T=62.62 page 23

INDEXED
OCT 18 1954

30



X-Sec. Eldall St.

East + west of Locust

C.H.S.
Schelin
Pulley

INDEXED
NOV 12 1954
11-8-54
W.O. 20005

Base of Survey { Mon. etc as shown.
wly. line Locust = 3' to

■ denotes Fd. City Man.

• " " " " L+T.

X " cut cross in Conc.

T.W. " Top of wall

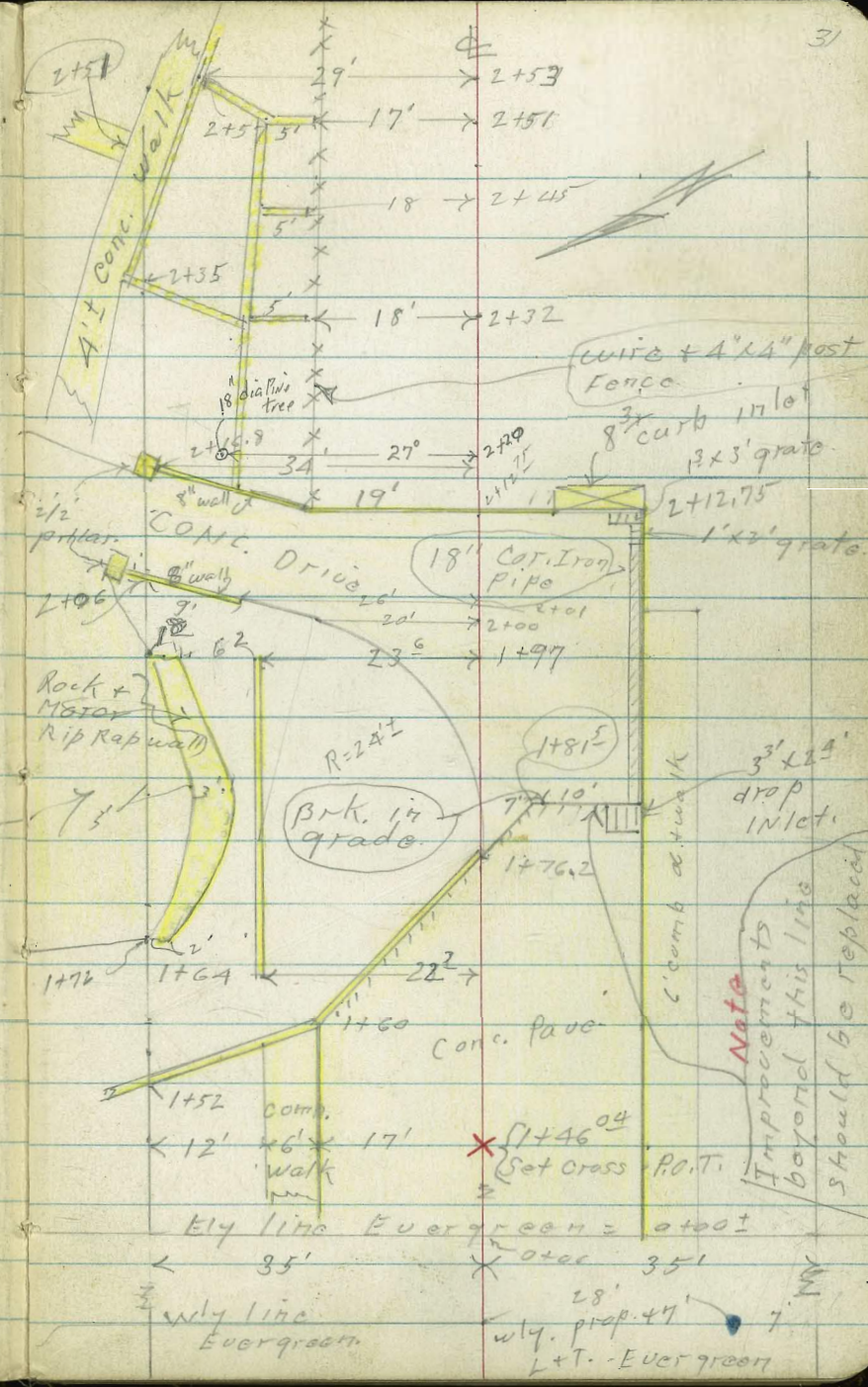
B.W. " Base of wall

E.P. " Edge of pave.

Ⓛ " on loose fill. Not good for

Top " Top of loose fill

Conc. drive



wire + 4"x4" post fence

8" curb in lot
3'x3' grate

1'x3' grate

18" Cor. Iron Pipe

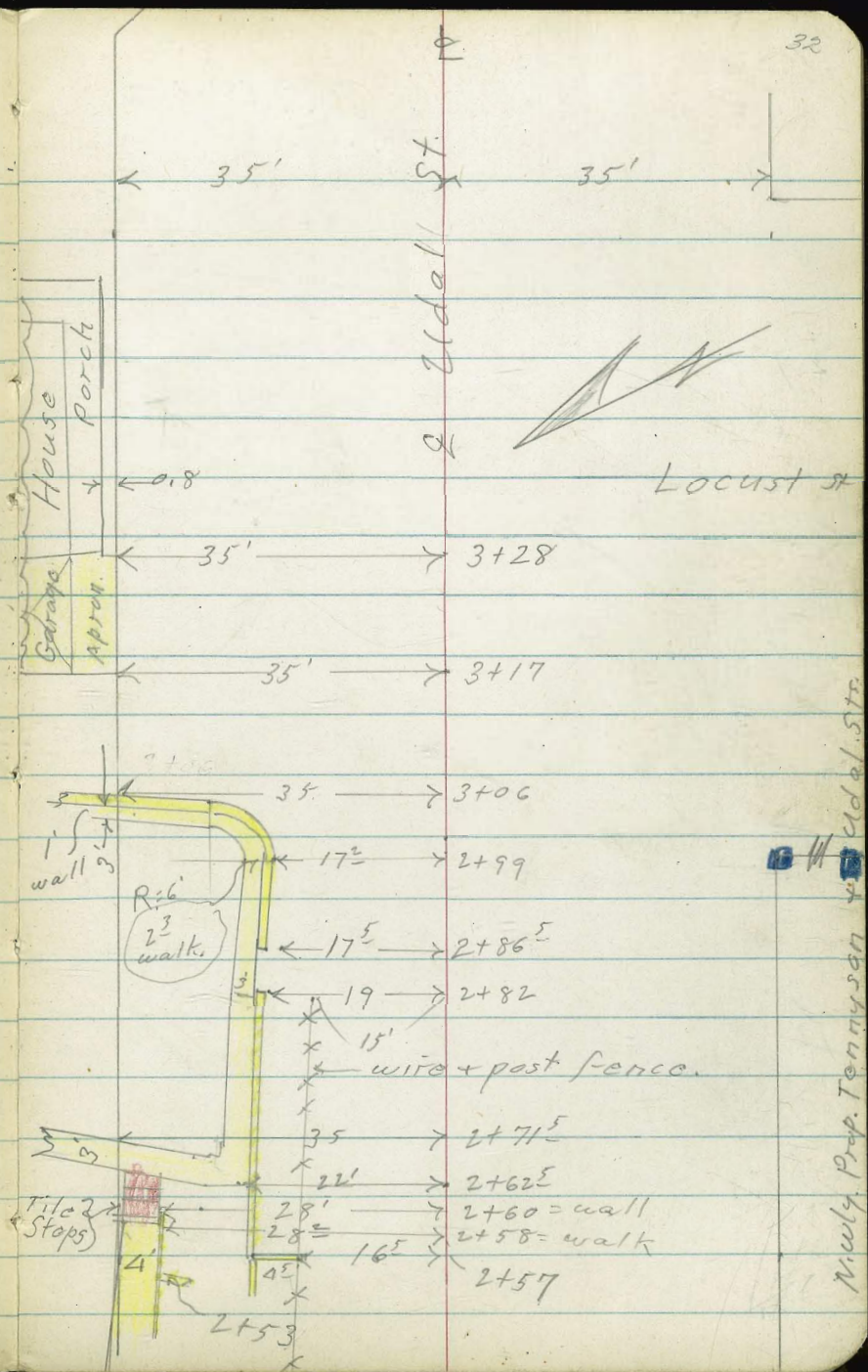
Brk. in grade

Note
Improvements beyond this line should be replaced

Ely line Evergreen = 0+00!

wly. line Evergreen

28' wly. prop. 47
L+T. Evergreen



Newly Prop. Tennyson & Uddal St

Udall St.

also = Δ in wall.
1+60 - 17' 1/2" = end ob. + walk

back edge.
1+58t 23' 1/2" end of wall on

North Prop.
1+52 35' 1/2" Int. of wall +

1+00

B.M. #2 - S.S. 8.91 143.40

T.P. 0.43 152.31 12.85 151.88

T.P. 0.25 164.73 12.36 164.48

T.P. 0.89 176.84 12.54 175.75

B.M. #2 1.33 188.29 - 187.16

		139.3		140.2			
		13.0		12.1			
		35		18			
		end.		end.			
139.4	141.98	140.98	140.43	140.89	141.05	141.79	141.6
12.9	10.33	11.43	11.88	11.42	11.26	10.52	10.7
17	17	17	17		17	23	35
B.W.	T.W.	cc.	G		C.	walk	
					1 ^h drive		

140.71
11.60
23
walk + end.

141.4
142.54
10.9 9.77 10.5
35 35 35
B.W. T.W. end.

151.05 150.54 151.93 151.29 151.79
1.26 1.77 0.98 1.02 0.52
17 17 17 17 17
cc c G cc

152.31

P.O.T. Cross Sta 1+46⁰⁴ P-31

S.W.B.P. Willow & Udall Sts.

125.2
16.9
35

16.9	11.5	13.5	11.5
32	29	24	24
B.w.	T.w.	B.w.	Ord.
+ drive	+ G.d.		

32' Lt. start drive
 1+76² } end wall on E
 also B.C.Lt. in pave.

136.6	138.0	140.70	138.06		
5.5	4.1	2.36	4.00	4.25	3.07
23		±	pave	17	17
T.w.	Ord.	T.w.		Q	W.
+ G.d.					

35' Lt. start conc. drive
 1+72 } 30' Lt. start rock + conc. wall

130.4	130.1	134.7	138.0
11.7	11.0	5.4	4.1
232	233	222	222
B.w.	Ord.	T.w. to east	T.w. to west

1+64 - 22³ Lt. Face 1' thick conc. wall

135.1	133.1	138.04
8.0	9.0	4.02
232	232	222
Ord.	B.w.	T.w.
		142.06

FR 2.36 142.06 12.61 139.70
 152.31

1497 } 31⁶ Lt. = end rock wall - B.W.
 29⁸ Lt. = end rock wall - T.W.
 23⁶ Lt. = end conc. wall

1255	1255	130.12	130.4
14.4	14.4	9.75	9.5
35	31.6	298	25
drive	B.W.	T.W.	
1290	133.3	133.0	133.69
10.9	6.6	6.9	6.18
23 ⁶	23 ⁶	23	13
B.W.	T.W.		E.P.

1481⁵ } see sketch
 7' Rt. = L in good pave.
 station is right.

125.3	125.3	130.6	130.3	129.0	134.90	138.15	138.26	138.9
14.6	14.6	9.3	9.6	10.9	4.97	1.72	1.61	1.0
53	31	28	24	23	17	17	23	35
drive	B.W.	T.W.		B.W.	T.E.	cb	walk	
1366	135.5	137.0	137.21	137.91	137.42	137.04	136.86	
3.3	4.4	2.9	2.66	2.56	2.45	2.83	2.91	
23	23	1'	0.5	1	1	7	17	
T.W.			E.P.	139.87			C + Top of grate	

T.P.
 0.17 139.87 236 139.70

Top of wall - 07 1476²

1484 } 23³ Lt. = Face. 1' thick wall
 station is right.

1296	1307	136.6	133.3
12.5	11.4	5.5	8.8
16.8	16.8	11.5	
35	30	27	
drive	B.W.	T.W.	
1255	1307	136.6	133.3
243	243	23	23
B.W.	Gd.	T.W.	T.W.
		to west	to east
			142.06

127.3
12.6
34
drive
west of wall

2+16⁸ } sly. face v' pillar.
34' Lt. end conc. wall +

124.4
14.5 10.3 13.5 12.8
34 34 34 26
B.W. T.W. Grd Grd

128.7 11.2 11.1 9.0 133.2
25 19 12 9
T.W. & Grd. (L)

125.8 126.98
14.1 13.5 12.89
45 38 35
on drive

133.5 134.1 133.4
6.4 5.8 4.5
17 35
134.07 135.83 129.63 135.4
5.80 4.04 10.24 4.5
17 17 17 35
Grate I.E. EC

2+12⁷⁵ = wly face of cross curb.

2+11 - 22' Lt. = 12" pepper tree
at conc. pillar

127.45 131.57 131.08 134.20
12.42 8.30 8.79 5.67
32 19 19 0
97' drive 4" dr. G

134.67 134.62 135.94 134.16
5.20 5.25 3.93 5.71
06 68 8.3 8.6
ch ch G

2+06 - 36' Lt. = Grd. Conc. wall
drive at wall

125.5 125.7 124.7 129.7 127.16
14.4 14.2 15.2 10.2 12.71
40 36 36 36 36
drive Grd. B.W. T.W. drive

2+01 - 26' Lt. = S.wly. end. 8" wide
conc. wall.

128.3 130.18 129.7
11.6 9.69 10.2
26 26 26
B.W. Pave. T.W.

2+00 - 20' Lt. = Approx E.C. Pave

131.95
7.92
20
E.P.

139.87

4

also = top of tile steps

2+58- 30³ Lt. = E Ely. end 4' walk

2+57¹ 21' Lt. = start E+W. wall.

21' Lt. = { Ely end E+W. wall,
Nly end N+S wall

2+57 16⁵ Lt. = sly. end N+S. wall.

29¹ Lt. = sly. edge E+W. walk walls

2+53 29' Lt. = end of N+S + E+W.

also Nly edge 3' E+W. walk

35' Lt. = E 3' wide N+S walk

22' Lt. = Δ in wall

2+51- 17' Lt. = sly end N+S. wall

121.41

9.36
30⁵
walk

119.4
11.4
21
B.W.

121.6
7.2
21
T.W.

122.0
7.7
21
B.W.

122.0
8.8
21
T.W.

123.12
7.65
40
walk

121.0
7.8
16.5
B.W.

123.8
8.9
29
B.W.

123.3
8.5
16.5
T.W.

121.0
9.2
22
B.W.

123.8
7.0
22
T.W.

121.6
9.2
17
B.W.

123.8
7.0
17
T.W.

2+86^E 17^E Lt. = start 1' wide walk.

	117.3	117.7				
	3.2	2.2	2.2	2.5	3.3	4.2
	17 ^E	17 ^E	17		20	35
	13 W	T.W.				
	117.8	118.3	118.3	118.0	117.2	116.5

2+82-19' Lt. = End. E+W. wall

	2.7	1.40				
	19	19				
	B.W.	T.W.	120.	46		

T.P. 0.68 120.46 10.99 119.78

	118.55	118.60				
	12.22	12.17				
	35	25				
	walk + Od.	walk + Od.				

25^E Lt. = Nly edge E+W. walk

Ely. edge of walk.

2+71^E 35' Lt. = Int. Prop. +

	118.61	119.9	120.2	120.6	121.3	120.8	120.4
	12.16	10.9	10.6	9.2	9.5	10.0	10.4
	23	22	18	13		20	35
	walk + Od.	T.W.					

2+66-18^E Rt. = 8" pepper tree.

see sketch - P-32

2+62^E 22' Lt. = S.Wly. cor. walk

	118.81					
	11.96					
	22					
	walk					

2+60 28' Lt. = end. E+W. wall.

	120.7	121.9				
	10.1	8.9				
	28	28				
	13. W.	T.W.				

130.77

3+28

110.92
 9.74 9.9 10.8 109.4
 35 35 35 103.2
 drive (L) (L) (L) Toe
 19.4 35

3+17 35' Lt. = start conc.

apron

111.01 111.86 110.7 110.6 110.0 1107.1 104.8
 9.45 9.60 9.8 9.9 10.5 13.4 15.7
 42 35 35 23 26 35
 Ord. apron (L) Toe

face 1' wide wall.

3+06- 35' Lt. = Int. Prop + Fly

117.21 117.38 111.0
 3.25 3.08 9.5
 35 35 35
 walk + T.W. B.W.
 29.4
 west of wall
 111.7 113.2 112.4 112.4
 8.8 7.3 8.1 8.1 8.3 11.0
 35 20 14 22 35
 Ord. East of wall

3+05- 23' Lt. = Wall E.C.

117.51 117.71 111.2
 2.75 9.3
 23 23
 T.W. B.W.

2+99 17' Lt. = B.C. (6' Rad) in wall.

20' Lt. = Nly. line of walk

117.75 114.8
 2.95 2.71 5.9
 20.5 17.5 17.5
 walk T.W. B.W.
 Ord. 120.46

1.65 - .02 Error
187.14

B.M. #1 Page 33 = 187.16

41

T.P. 5.82 188.79 1.21 182.97

T.P. 13.24 184.18 0.21 170.94

T.P. 12.70 171.15 0.18 158.45

T.P. 13.00 158.63 0.44 145.63

T.P. 13.11 146.07 0.46 132.96

T.P. 13.04 133.42 0.08 120.38

B.M. #3 S.W. Conc. Mon.

Locust + Uldall

9.06 111.40

950.0

3+63

24.0 24.2 27.5 32.4
35 22 35
Toe Toe

181

3+58

22.0 21.2 20.4 25.3 30.6
38 35 22 35
Toe (L) (L) Toe

889

3+43

13.5 10.8 10.8 16.0 21.2 24.1
35 30 20 23 35
Toe (L) (L) (L) Toe

104.5

5

96.4

3+36

11.8 9.9 11.0 14.9 20.3 22.0
40 35 15 25 35
Toe (L) (L) (L) Toe

105.2

100.2

98.5

120.46

0+50 { 40' Lt begin conc. block retaining wall.
 40' Lt End fence atop conc. foundation

125.6	124.1	123.2	124.4	124.2	122.5	122.3	121.8	121.3	120.1	119.5
6.6	8.1	9.0	7.8	8.0	9.7	9.9	10.4	10.9	12.1	12.7
60	40	40	40	33	27	20		20	40	60
	Ret. wall	Foot	GRD							

0+25

126.0	126.1	125.5	125.3	124.8	124.3	124.3	123.9	122.5	121.7
6.2	6.1	6.7	6.9	7.4	7.9	7.9	8.3	9.7	10.5
55	41	40	33	30	20		20	40	60

0+18 40' Lt & 3' opening in wall to conc. slab.

126.27
5.90
50
cont

126.21
5.76
40
conc

0+00 { 40' Lt begin wire fence atop conc. foundation
 East Line Pendleton

127.9	127.1	126.4	127.0	126.6	124.9	124.0	124.3	123.3	123.5
4.3	5.1	5.8	5.2	5.6	5.3	6.2	7.9	8.9	8.9
60	40	40	40	20		20	40	60	
	Top	Foot	GRD						

0-12

129.8	129.3	128.1	127.7	127.5	125.6	125.0	123.5	123.5
2.4	3.0	4.1	4.5	4.7	4.7	5.6	7.2	8.7
60	40	33	20		10	25	40	60

0-17 21' RE to NE 4" Acacia Tree

130.33
1.84
60

129.81
2.36
40

129.10
3.07
20

128.46
3.71

127.44
4.73
20

125.92
6.25
40

124.38
7.79
60

0-29 East Edge AC Paving (Govt)

132.17A

132.17A

1+04 40³ Lt & conc drive

1+00

0+98 27³ Rt to N.E. P. Pole # P2325

0+96 { 40 Lt to BC. in Ret. Wall
33 Lt to N.E. T. Pole # 582729H

T.P. 234 122.17 $\bar{\Delta}$ 1234 119.83

0+75

0+70 40²¹ Lt opening in Ret. Wall - steps

0+52

Lt C Rt 44

122.00
0.17
56
BRK
120.7
1.90
403
CONC

120.4	118.7	118.6	118.4	117.8	117.1	116.1	116.6	115.8
18	35	36	40	44	51	61	56	64
40	28	15		15	30	35	40	50
								60

120.5
119.9
123.1
+1.9
40
TOP
1.7
40
Foot
40
GRD

123.9	123.8	121.8	121.4	120.3	120.6	119.8	118.8	118.2	117.9
8.3	8.4	10.4	10.7	11.9	11.6	12.4	13.3	14.0	14.3
55	41	40	34	27	9		20	30	40
									60

123.925	123.74	121.48	122.1	121.7	120.1	119.5
8.25	8.43	9.69	12.2	12.1	12.1	12.7
475	407	402	12.3	11.0	12.1	12.7
Walk	Top	Bottom	33	20	40	60
	step	step	28	20		
124.0	123.20	122.3	10.1	10.5	11.0	12.7
7.9	9.0	9.9	20		20	
50	41	40				

132.17 $\bar{\Delta}$

132.17 $\bar{\Delta}$

2+49 24^E Rt to NE Pole #JP 2353

2+25

2+00

1+75

1+50

1+25

1+10

24^E Rt to NE Pole

#JP 2353

40^E Lt End conc. block Ret. wall40^E Lt begin conc block Retaining wall

GRD. East of wall

108.0	109.2	109.4	110.2	110.4	111.2	112.4	112.5	113.0	113.7	114.2	115.4	116.8	117.0	117.5	118.5	120.3	120.5	120.5
142	130	128	120	118	110	98	97	92	101	80	68	54	52	47	37	19	17	17
60	40	33	28	15	16	16	32	40	15	11	15	15	16	36	50	40	40	40
109.3	110.2	110.5	111.4	111.6	112.1	113.0	113.1	113.5	114.2	114.2	115.4	116.8	117.0	117.5	118.5	120.3	120.5	120.5
12.9	12.0	11.7	10.8	10.6	10.1	9.2	9.1	8.7	8.0	8.0	6.8	5.4	5.2	4.7	3.7	1.9	1.7	1.7
60	40	34	30	15	15	15	31	34	31	11	15	15	16	36	50	40	40	40
110.4	111.4	111.7	113.0	113.3	113.7	114.2	114.2	115.0	116.4	117.3	118.5	120.3	120.5	120.5	120.5	120.5	120.5	120.5
11.8	10.8	10.5	9.2	8.9	8.5	8.0	8.0	7.2	6.8	4.9	3.7	1.9	1.7	1.7	1.7	1.7	1.7	1.7
60	40	35	26	15	15	11	11	34	31	60	50	40	40	40	40	40	40	40
111.9	112.6	114.6	115.3	115.4	115.4	117.0	117.0	117.5	118.5	120.3	120.5	120.5	120.5	120.5	120.5	120.5	120.5	120.5
10.3	9.6	7.6	6.9	6.8	6.8	6.8	6.8	5.5	4.7	3.7	1.9	1.9	1.9	1.9	1.9	1.9	1.9	1.9
60	40	29	15	15	15	16	16	36	36	50	40	40	40	40	40	40	40	40
114.2	114.5	116.4	117.9	118.8	120.4	120.4	120.4	120.4	120.4	120.4	120.4	120.4	120.4	120.4	120.4	120.4	120.4	120.4
8.0	7.7	5.8	6.3	5.4	5.4	5.2	5.2	3.6	3.5	1.8	1.7	1.7	1.7	1.7	1.7	1.7	1.7	1.7
60	40	26	15	15	15	16	16	37	40	40	40	40	40	40	40	40	40	40
119.8	119.0	120.5	120.5	120.5	120.5	120.5	120.5	120.5	120.5	120.5	120.5	120.5	120.5	120.5	120.5	120.5	120.5	120.5
2.4	3.2	1.7	1.7	1.7	1.7	1.7	1.7	3.2	3.2	1.7	1.7	1.7	1.7	1.7	1.7	1.7	1.7	1.7
GRD	Foot	Top	Top	Top	Top	Top	Top	Foot	Foot	Top	Top	Top	Top	Top	Top	Top	Top	Top

122.17A

122.17A

2+05

114.1	113.3	112.6	111.5	110.0	109.0	108.9	107.9
1.9	2.7	3.4	4.5	5.0	6.0	7.1	8.1
50	40	27	15		20	40	60

2+90 40' Lt ℄ 4 brick walk

113.43
2.55
50' Brick

113.03
2.95
40' Brick

2+85

113.5	113.0	112.5	111.2	110.2	109.5	108.7	107.8
2.5	3.0	3.5	4.8	5.8	6.5	7.3	8.2
50	41	40	17		18	40	60

T.P. 474 115.98℄ 10.93 111.24

115.98℄

2+75

113.5	113.0	112.5	111.8	110.5	110.5	109.5	108.6	107.7
8.7	9.2	9.7	10.4	11.4	11.7	12.7	13.6	14.5
50	41	40	30	15		15	27	60

2+67 24° Rt to deadman

2+66 383 Lt to N.E. P. Pole # J.P. 2354

2+50

113.8	113.3	112.8	111.8	111.5	111.7	110.9	109.8	108.6	107.8
8.4	8.9	9.4	10.4	10.7	10.5	11.3	12.4	13.6	14.4
50	41	40	30	19	16		15	32	60

122.17℄

122.17℄

Cont'd From Page 46

Lt

Q

Rt 47

T.P.

10.54

105.44

on conc. Men. Quincy & chalcodan

4+25

105.3	106.1	107.3	108.4	109.2	109.6	110.3
10.7	9.9	8.2	7.6	6.8	6.4	5.7
60	40	15		25	40	82
						Rim

4+05

106.6	106.4	107.5	108.0	109.3	109.5	110.2
10.4	9.6	8.5	8.0	6.7	6.5	5.8
60	40	27	17	13	26	40
						Rim

4+00

105.6	106.5	107.4	108.0	109.4	109.5	110.7
10.4	9.5	8.6	8.0	6.6	6.5	5.3
60	40	29	17	12	23	40
						Rim

3+75

106.3	106.8	108.0	108.1	110.0	111.9	111.9
9.7	9.2	8.0	7.9	6.0	4.1	4.1
60	40	28	15	20	50	50

3+50

107.3	107.9	108.6	109.8	111.1	112.0	112.7
8.7	8.1	7.4	6.2	4.9	4.0	3.3
60	40	20	20	20	30	35

3+25

108.1	108.7	109.5	110.5	111.4	113.2	113.5
7.9	7.3	6.5	5.5	4.6	2.8	2.5
60	40	20	15	22	33	40

115.98X

115.98X

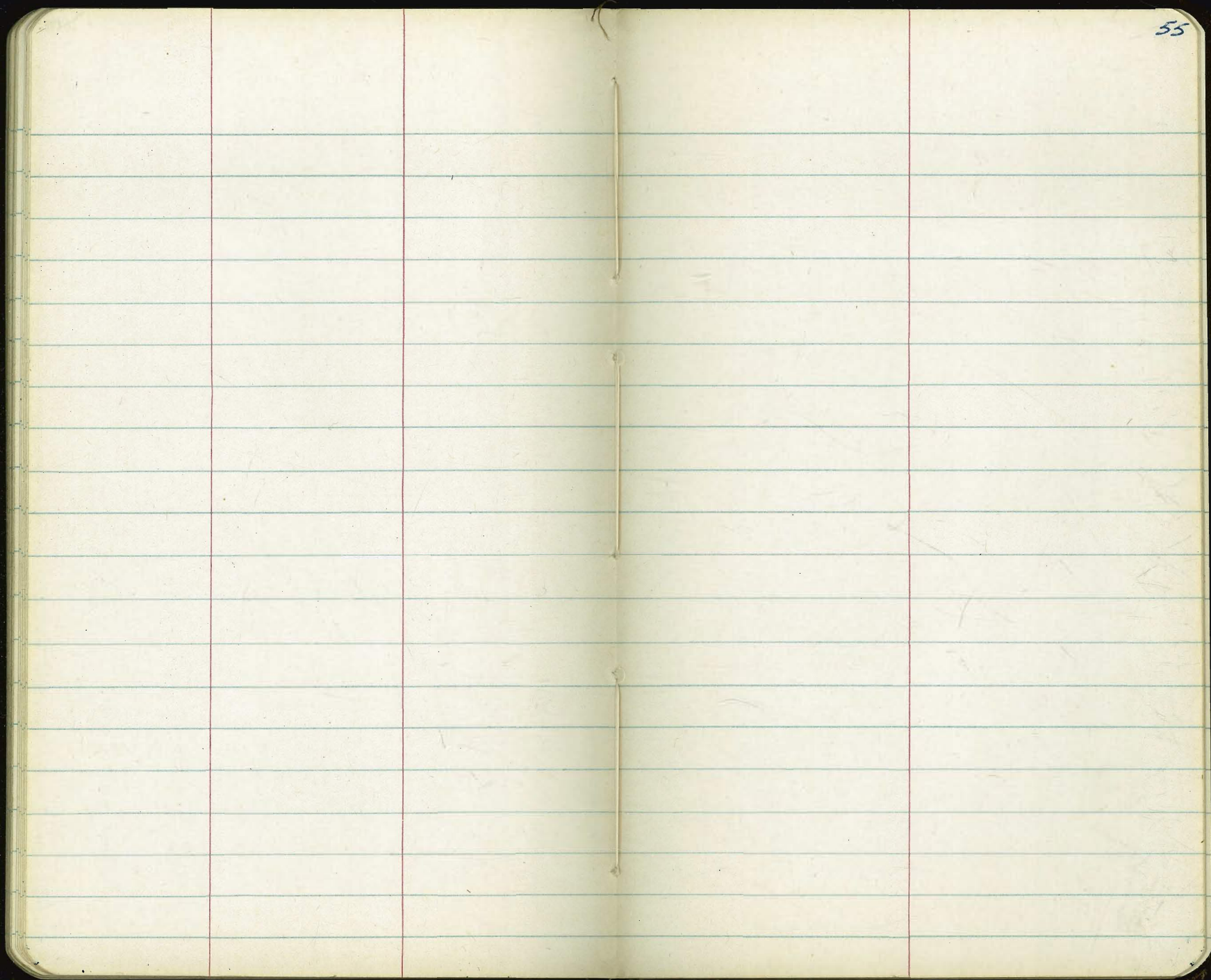
Lt

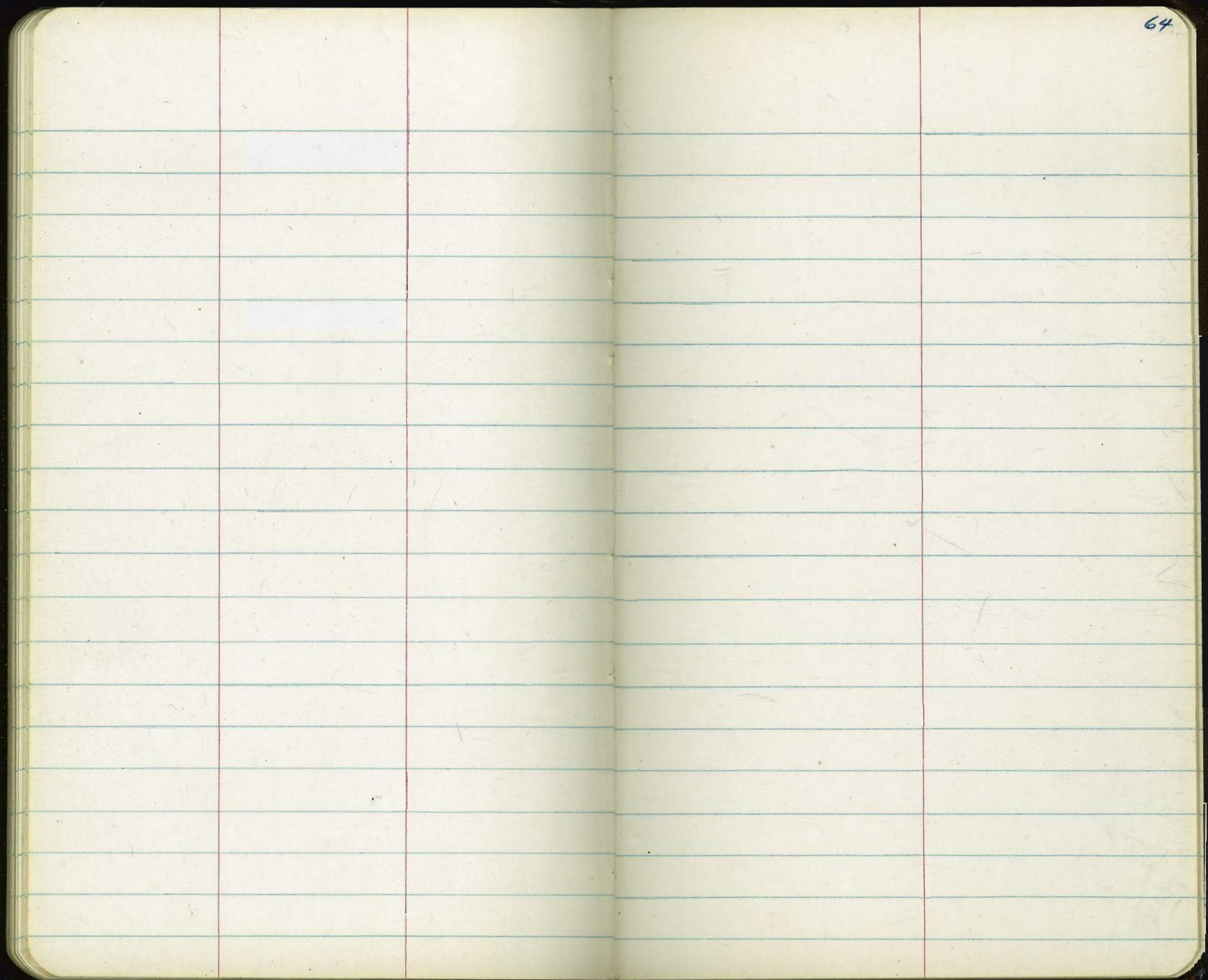
£

Rt

48

The image shows an open notebook with two facing pages. Both pages are cream-colored and feature light blue horizontal ruling. Each page is divided into three vertical columns by two red margin lines. The right page has the number '50' written in the top right corner. The pages are otherwise blank, with no text or drawings.





56.54
7.11
49.43

105.44 Quincy

85.93 Randall

56.40
7.07
49.33

7.93 = 7' Line Prod. to spike = P.I.

89° 58'

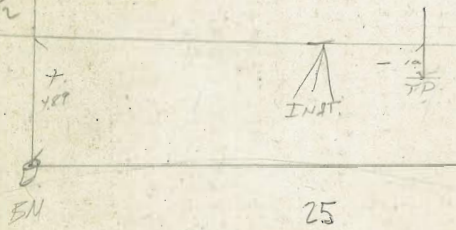
.63
322.5

269.52
25
4.52

Hub. = .87 N. of 7' Line Prod from W.

7.00
586
1.14
7.0
70
53
17 24

347.52
25
322.52



25
53
78

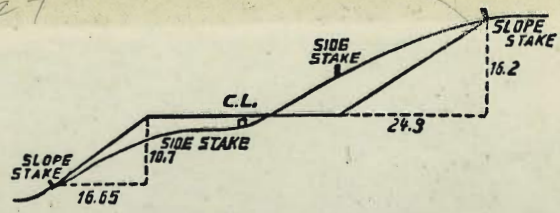
347.52
78

Cross on M.H. = .22 N.

269.52
1.34.76
53
187.76 = 37

Disk = 8.86 N. of NL = 7' Prod. from W.
Pin = 1.41 N. of NL

27



DISTANCES FROM SIDE STAKES FOR CROSS-SECTIONING.
SLOPE 1 1/2 TO 1. ROADWAY OF ANY WIDTH.

	0	.1	.2	.3	.4	.5	.6	.7	.8	.9	
0	0.00	0.15	0.30	0.45	0.60	0.75	0.90	1.05	1.20	1.35	0
1	1.50	1.65	1.80	1.95	2.10	2.25	2.40	2.55	2.70	2.85	1
2	3.00	3.15	3.30	3.45	3.60	3.75	3.90	4.05	4.20	4.35	2
3	4.50	4.65	4.80	4.95	5.10	5.25	5.40	5.55	5.70	5.85	3
4	6.00	6.15	6.30	6.45	6.60	6.75	6.90	7.05	7.20	7.35	4
5	7.50	7.65	7.80	7.95	8.10	8.25	8.40	8.55	8.70	8.85	5
6	9.00	9.15	9.30	9.45	9.60	9.75	9.90	10.05	10.20	10.35	6
7	10.50	10.65	10.80	10.95	11.10	11.25	11.40	11.55	11.70	11.85	7
8	12.00	12.15	12.30	12.45	12.60	12.75	12.90	13.05	13.20	13.35	8
9	13.50	13.65	13.80	13.95	14.10	14.25	14.40	14.55	14.70	14.85	9
10	15.00	15.15	15.30	15.45	15.60	15.75	15.90	16.05	16.20	16.35	10
11	16.50	16.65	16.80	16.95	17.10	17.25	17.40	17.55	17.70	17.85	11
12	18.00	18.15	18.30	18.45	18.60	18.75	18.90	19.05	19.20	19.35	12
13	19.50	19.65	19.80	19.95	20.10	20.25	20.40	20.55	20.70	20.85	13
14	21.00	21.15	21.30	21.45	21.60	21.75	21.90	22.05	22.20	22.35	14
15	22.50	22.65	22.80	22.95	23.10	23.25	23.40	23.55	23.70	23.85	15
16	24.00	24.15	24.30	24.45	24.60	24.75	24.90	25.05	25.20	25.35	16
17	25.50	25.65	25.80	25.95	26.10	26.25	26.40	26.55	26.70	26.85	17
18	27.00	27.15	27.30	27.45	27.60	27.75	27.90	28.05	28.20	28.35	18
19	28.50	28.65	28.80	28.95	29.10	29.25	29.40	29.55	29.70	29.85	19
20	30.00	30.15	30.30	30.45	30.60	30.75	30.90	31.05	31.20	31.35	20
21	31.50	31.65	31.80	31.95	32.10	32.25	32.40	32.55	32.70	32.85	21
22	33.00	33.15	33.30	33.45	33.60	33.75	33.90	34.05	34.20	34.35	22
23	34.50	34.65	34.80	34.95	35.10	35.25	35.40	35.55	35.70	35.85	23
24	36.00	36.15	36.30	36.45	36.60	36.75	36.90	37.05	37.20	37.35	24
25	37.50	37.65	37.80	37.95	38.10	38.25	38.40	38.55	38.70	38.85	25
26	39.00	39.15	39.30	39.45	39.60	39.75	39.90	40.05	40.20	40.35	26
27	40.50	40.65	40.80	40.95	41.10	41.25	41.40	41.55	41.70	41.85	27
28	42.00	42.15	42.30	42.45	42.60	42.75	42.90	43.05	43.20	43.35	28
29	43.50	43.65	43.80	43.95	44.10	44.25	44.40	44.55	44.70	44.85	29
30	45.00	45.15	45.30	45.45	45.60	45.75	45.90	46.05	46.20	46.35	30
31	46.50	46.65	46.80	46.95	47.10	47.25	47.40	47.55	47.70	47.85	31
32	48.00	48.15	48.30	48.45	48.60	48.75	48.90	49.05	49.20	49.35	32
33	49.50	49.65	49.80	49.95	50.10	50.25	50.40	50.55	50.70	50.85	33
34	51.00	51.15	51.30	51.45	51.60	51.75	51.90	52.05	52.20	52.35	34
35	52.50	52.65	52.80	52.95	53.10	53.25	53.40	53.55	53.70	53.85	35
36	54.00	54.15	54.30	54.45	54.60	54.75	54.90	55.05	55.20	55.35	36
37	55.50	55.65	55.80	55.95	56.10	56.25	56.40	56.55	56.70	56.85	37
38	57.00	57.15	57.30	57.45	57.60	57.75	57.90	58.05	58.20	58.35	38
39	58.50	58.65	58.80	58.95	59.10	59.25	59.40	59.55	59.70	59.85	39
40	60.00	60.15	60.30	60.45	60.60	60.75	60.90	61.05	61.20	61.35	40
41	61.50	61.65	61.80	61.95	62.10	62.25	62.40	62.55	62.70	62.85	41
42	63.00	63.15	63.30	63.45	63.60	63.75	63.90	64.05	64.20	64.35	42
43	64.50	64.65	64.80	64.95	65.10	65.25	65.40	65.55	65.70	65.85	43
44	66.00	66.15	66.30	66.45	66.60	66.75	66.90	67.05	67.20	67.35	44
45	67.50	67.65	67.80	67.95	68.10	68.25	68.40	68.55	68.70	68.85	45
46	69.00	69.15	69.30	69.45	69.60	69.75	69.90	70.05	70.20	70.35	46
47	70.50	70.65	70.80	70.95	71.10	71.20	71.40	71.55	71.70	71.85	47
48	72.00	72.15	72.30	72.45	72.60	72.75	72.90	73.05	73.20	73.35	48
49	73.50	73.65	73.80	73.95	74.10	74.25	74.40	74.55	74.70	74.85	49
50	75.00	75.15	75.30	75.45	75.60	75.75	75.90	76.05	76.20	76.35	50

THE NATIONAL BLANK BOOK COMPANY
HOLYOKE MASSACHUSETTS
NEW YORK CHICAGO BOSTON SAN FRANCISCO