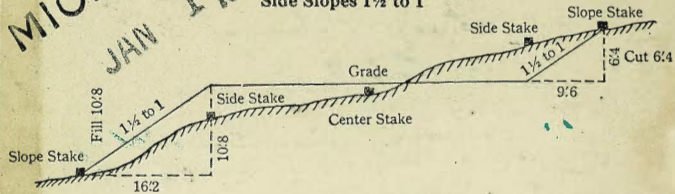


MICROFILMED
 JAN 1 1969

DISTANCES FROM SIDE STAKES FOR CROSS-SECTIONING
 Roadway of any Width
 Side Slopes 1½ to 1



In the figure above: Opposite 6 under "Cut or Fill" and under .4 read 9:6 the distance from the side stake to the slope stake at right. Opposite 10 under "Cut or Fill" and under .8 read 16:2, the distance from the side stake to the slope stake at the left.

Cut or Fill	Distance out from Side or Shoulder Stake										Cut or Fill
	0	.1	.2	.3	.4	.5	.6	.7	.8	.9	
0	0.0	0.2	0.3	0.5	0.6	0.8	0.9	1.1	1.2	1.4	0
1	1.5	1.7	1.8	2.0	2.1	2.3	2.4	2.6	2.7	2.9	1
2	3.0	3.2	3.3	3.5	3.6	3.8	3.9	4.1	4.2	4.4	2
3	4.5	4.7	4.8	5.0	5.1	5.3	5.4	5.6	5.7	5.9	3
4	6.0	6.2	6.3	6.5	6.6	6.8	6.9	7.1	7.2	7.4	4
5	7.5	7.7	7.8	8.0	8.1	8.3	8.4	8.6	8.7	8.9	5
6	9.0	9.2	9.3	9.5	9.6	9.8	9.9	10.1	10.2	10.4	6
7	10.5	10.7	10.8	11.0	11.1	11.3	11.4	11.6	11.7	11.9	7
8	12.0	12.2	12.3	12.5	12.6	12.8	12.9	13.1	13.2	13.4	8
9	13.5	13.7	13.8	14.0	14.1	14.3	14.4	14.6	14.7	14.9	9
10	15.0	15.2	15.3	15.5	15.6	15.8	15.9	16.1	16.2	16.4	10
11	16.5	16.7	16.8	17.0	17.1	17.3	17.4	17.6	17.7	17.9	11
12	18.0	18.2	18.3	18.5	18.6	18.8	18.9	19.1	19.2	19.4	12
13	19.5	19.7	19.8	20.0	20.1	20.3	20.4	20.6	20.7	20.9	13
14	21.0	21.2	21.3	21.5	21.6	21.8	21.9	22.1	22.2	22.4	14
15	22.5	22.7	22.8	23.0	23.1	23.3	23.4	23.6	23.7	23.9	15
16	24.0	24.2	24.3	24.5	24.6	24.8	24.9	25.1	25.2	25.4	16
17	25.5	25.7	25.8	26.0	26.1	26.3	26.4	26.6	26.7	26.9	17
18	27.0	27.2	27.3	27.5	27.6	27.8	27.9	28.1	28.2	28.4	18
19	28.5	28.7	28.8	29.0	29.1	29.3	29.4	29.6	29.7	29.9	19
20	30.0	30.2	30.3	30.5	30.6	30.8	30.9	31.1	31.2	31.4	20
21	31.5	31.7	31.8	32.0	32.1	32.3	32.4	32.6	32.7	32.9	21
22	33.0	33.2	33.3	33.5	33.6	33.8	33.9	34.1	34.2	34.4	22
23	34.5	34.7	34.8	35.0	35.1	35.3	35.4	35.6	35.7	35.9	23
24	36.0	36.2	36.3	36.5	36.6	36.8	36.9	37.1	37.2	37.4	24
25	37.5	37.7	37.8	38.0	38.1	38.3	38.4	38.6	38.7	38.9	25
26	39.0	39.2	39.3	39.5	39.6	39.8	39.9	40.1	40.2	40.4	26
27	40.5	40.7	40.8	41.0	41.1	41.3	41.4	41.6	41.7	41.9	27
28	42.0	42.2	42.3	42.5	42.6	42.8	42.9	43.1	43.2	43.4	28
29	43.5	43.7	43.8	44.0	44.1	44.3	44.4	44.6	44.7	44.9	29
30	45.0	45.2	45.3	45.5	45.6	45.8	45.9	46.1	46.2	46.4	30
31	46.5	46.7	46.8	47.0	47.1	47.3	47.4	47.6	47.7	47.9	31
32	48.0	48.2	48.3	48.5	48.6	48.8	48.9	49.1	49.2	49.4	32
33	49.5	49.7	49.8	50.0	50.1	50.3	50.4	50.6	50.7	50.9	33
34	51.0	51.2	51.3	51.5	51.6	51.8	51.9	52.1	52.2	52.4	34
35	52.5	52.7	52.8	53.0	53.1	53.3	53.4	53.6	53.7	53.9	35
36	54.0	54.2	54.3	54.5	54.6	54.8	54.9	55.1	55.2	55.4	36
37	55.5	55.7	55.8	56.0	56.1	56.3	56.4	56.6	56.7	56.9	37
38	57.0	57.2	57.3	57.5	57.6	57.8	57.9	58.1	58.2	58.4	38
39	58.5	58.7	58.8	59.0	59.1	59.3	59.4	59.6	59.7	59.9	39
40	60.0	60.2	60.3	60.5	60.6	60.8	60.9	61.1	61.2	61.4	40

SAN DIEGO

City Engineer

Civic Center

on Pacific Highway

AERIAL SURVEY
 ONLY

2141

2167

2168

2250

INDEXED
 JUN 2 1953

This Field Book is manufactured of a High Grade 50% Rag Paper having a WATER RESISTING SURFACE, and is sewed with Bing Special Enamel Waterproof thread.

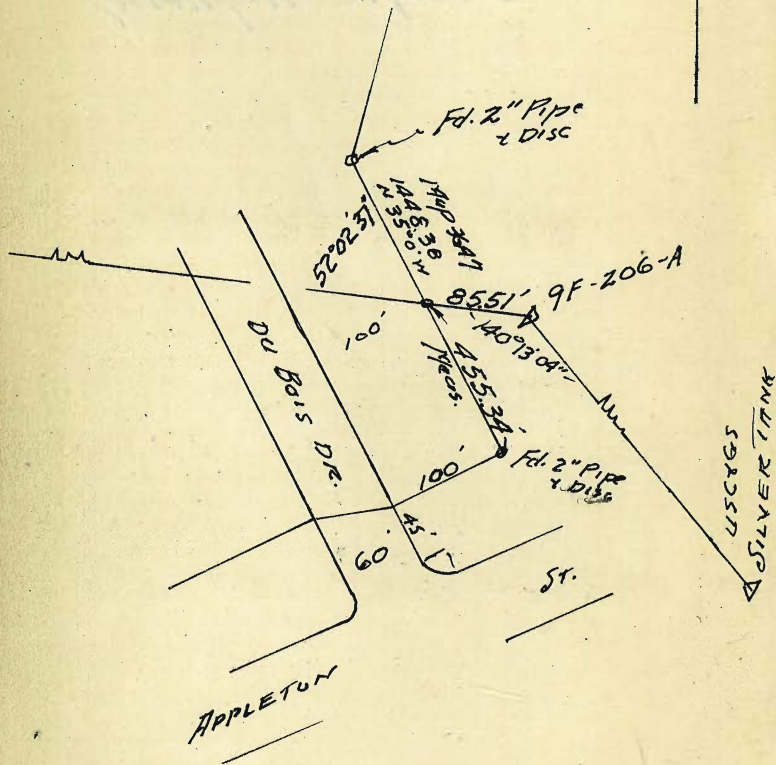
Made in U. S. A.

-0

TIES - 9F-206A

Walker
Schelin
Meyer
Boires
8-30-1957

(Sketch of Ties
Also shown on Loose
Leaf Horiz. Dr. sheet)



INDEX Cont from P. 1

0

Station

Page

10F 700

78

10F 699

77

10F 704

76

10F 723

75

10F 702

74

30

3

INDEX

Station	Page	Station	Page
BACK BAY ^{Museo 1977} OUT 69		9F 208 ✓	37
Juniper Serra		9F 209 ✓	33
LADRILLO OUT 67		9F 210 ✓	38
Morena Airway OUT 68		9F 211 ✓	34
Murphy FB 2280-51		9F 212 ✓	54
Soledad		9F 213 ✓	53
Tecolote ✓ OUT 64		9F 215 ✓	59
Silver Water Tank OUT		9F 216 C.I.	
S.M. H-47		9F 217 ✓	57
Nira		9F 219 ✓	64
9F 193 ✓	44	9F 220	
9F 194 ✓	39	9F 221 ✓	31
9F 195 ✓	41	9F 222	32
9F 196 ✓	42	9F 222A	
9F 197 ✓	3	9F 223 ✓	29
9F 199 ✓	3	9F 224 ✓	65
9F 200 ✓	2	9F 225 ✓	27
9F 201 ✓	52	9F 226 ✓	28
9F 202 ✓	5	9F 227 ✓	30
9F 203 ✓	4	9F 227	
9F 204 ✓	7	9F 228 C.I.	80
9F 205 ^{cf. Derric} ^{Air Beacon}		9F 229 ✓	21
9F 206 ✓	8	9F 230 ✓	20
9F 207 ✓	36	9F 231	62
9F-206A	-0	9F 232 C.I. = Flag Pole Gibbs Airport Montgomery Field.	

INDEX 2168

Station	Page	Station	Page
9F 233 ✓	22	9F 256A	
9F 234 ✓	23	9F 257 ✓	16
9F 235 ✓	24	9F 258 ✓	15
9F 236 Not Found		9F 259 ✓	
9F 237	60	9F 260 ✓	15
9F 238	61	9F 261 ✓	56
9F 239 Not Found		9F 262 ✓	55
9F 239A Not Found		9F 265 ✓	58
9F 240 Id.	80	9F 266 Not Id.	
9F 241 ✓	26	9F 280 ✓	45
9F 242 ✓	25	9F 281 ✓	70
9F 243 ✓	19	9F 282 ✓	61
9F 244 ✓	66	9F 283 ✓	50
9F 245 ✓	18	9F 284 ✓	49
9F 246 ✓	17	9F 285 ✓	46
9F 247 ✓	35	9F 286 ✓	47
9F 248 ✓	12	9F 287 ✓	48
9F 248A Not Id.		9F 288 C.I.	
9F 249 ✓	13	9F 289 ✓	40
9F 250 ✓	9	9F 290 ✓	43
9F 251 ✓	14	Morena ECC	
9F 252 ✓	11	Island	
9F 254 ✓	63	S.D.U.	6
9F 255 CONTIN		BM. A322	73
9F 256 ✓	10	Cont. on Page 0	

AERIAL SURVEY COORDINATE

2

POSITIONS

Walker ~ TIES ~
 Pope
 Huffman 9 F-200
 Bishop
 1-22-52

Photo 1-31

9 F 200 Fd. Pipe.
 Set Conc. Mon
 221757.88 N
 1,706 377.24 E

Flor

TP -4.61

4.04

4.23

↑

▲ 9 F 200

on city Mon. (Which replaces 3/4" Pipe.)

B.M. Top 3/4" Pipe = Aerial Survey Cross

AERIAL SURVEY, PLANE COORDINATE POSITIONS

TIES

9 F-199

Walker
Pore
Huffman
Elder
1-28-52

9 F-197 Fd. Pipe
Set Mon & Ref Ties.

229,986.52 N Photo 29

1707,342.99 E

9 F-197 325 196.95 on Mon

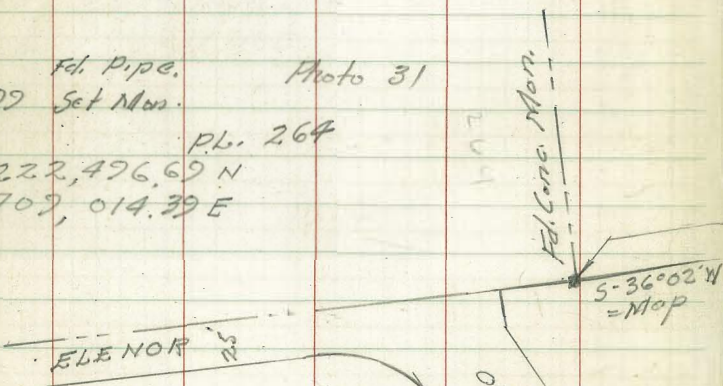
9 F-197 335 200.20 on Pipe
196.85

Fd. Pipe. Photo 31
9 F 199 Set Mon.

PL. 264

222,496.69 N

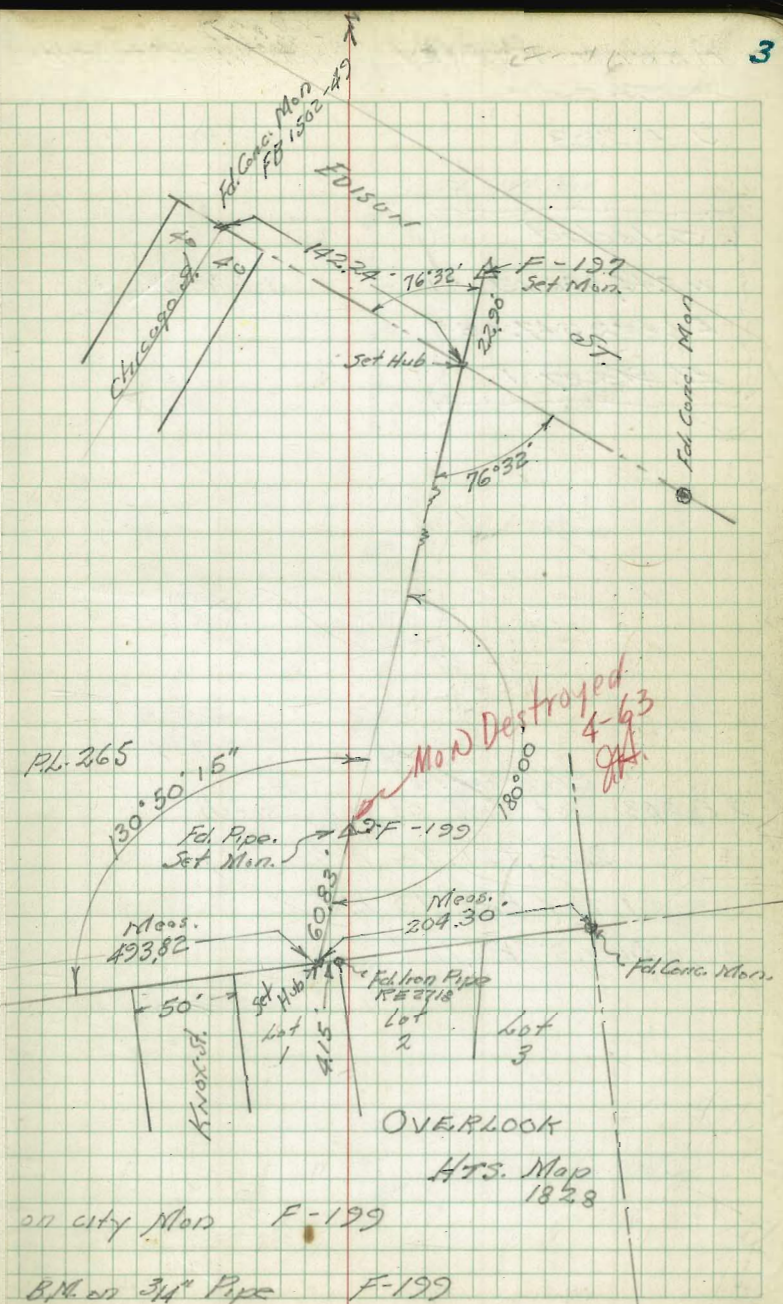
1709,014.39 E



4.88 180.44

499 1853.2

180.33



Mon Destroyed 4-63

on city Map F-199
B.M. on 3/4 Pipe F-199

AERIAL SURVEY PLANE COORDINATE POSITIONS

~Ties~

9 F 203

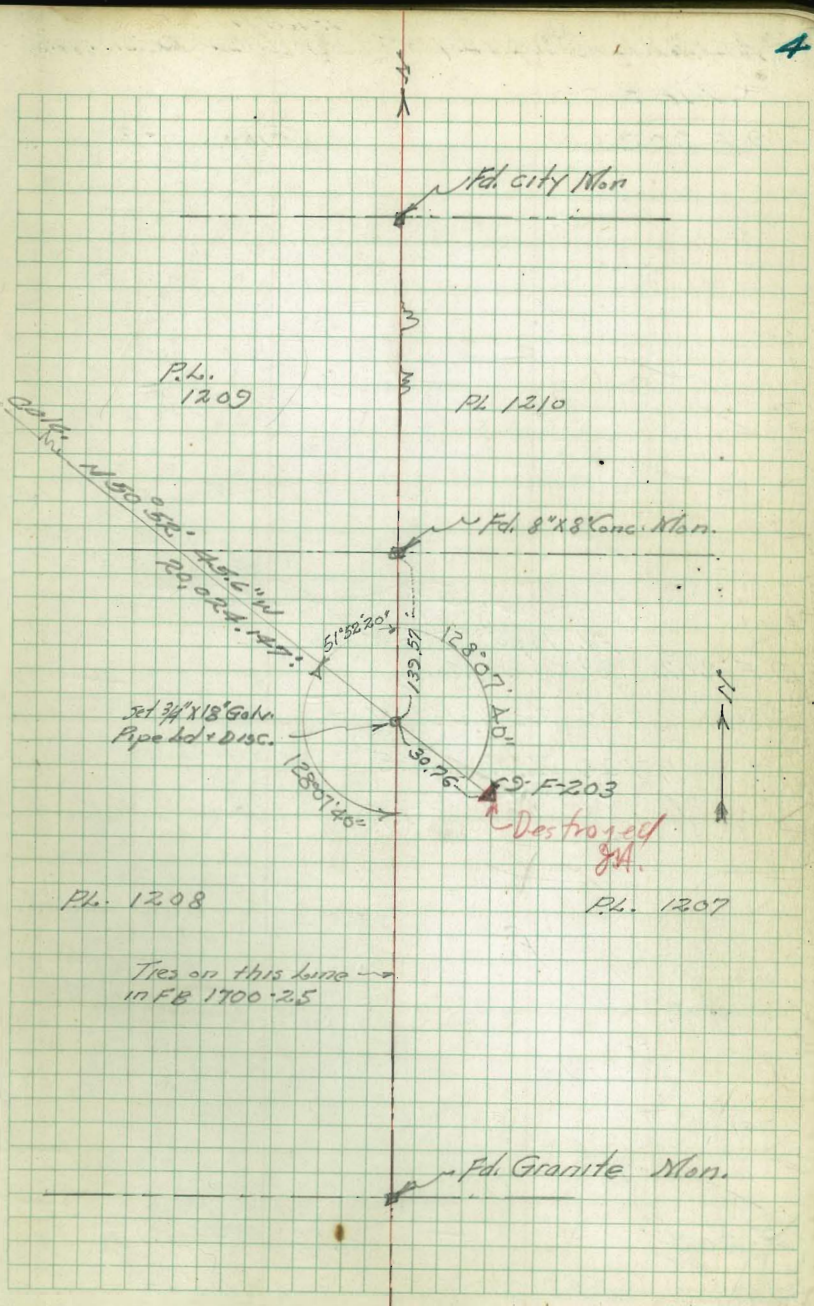
Photo 1-28

Soledad V
 N 246,396.13 ✓
 E 1,192,347.68 ✓
 El. 815.27 ✓

Soledad ~~W~~ A

Fd. Pipe.
 9 F 203 Set Ties as per sketch
 233,761.78 N ✓
 1,707,882.79 E ✓
 Elev. = 284.71 ✓

E -14



Pl. 1209

Pl. 1210

Fd. 8" x 8" Conc. Mon.

Set 3/4" x 18" Galv. Pipe hd. + Disc.

9 F 203

Destroyed
 9A.

Pl. 1208

Pl. 1207

Ties on this line
 in FB 1700-25

Fd. Granite Mon.

AERIAL SURVEY ^{PLANE} COORDINATE POSITIONS

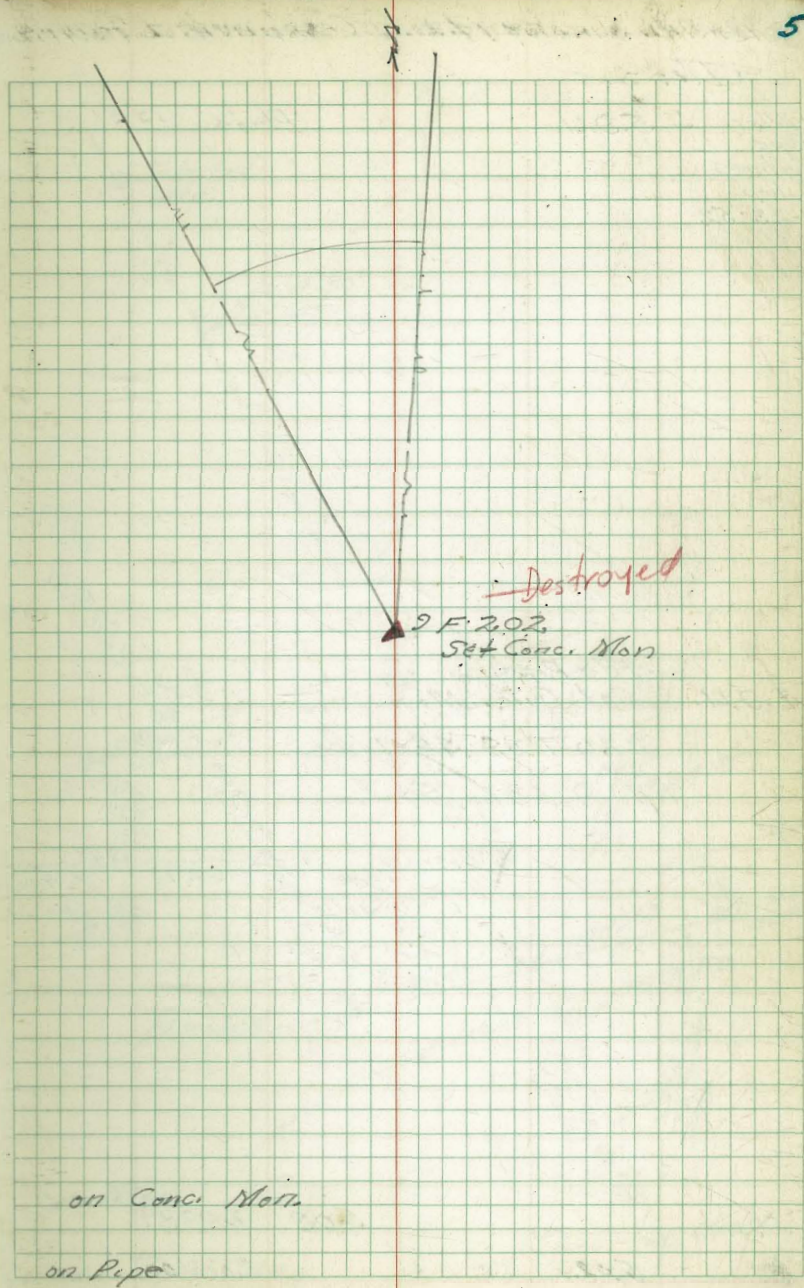
TIES ~

9 F 202

Photo 1-30

Fd. Pipe
9 F 202 Set Conc. Mon
226,232.33 N
1,709 793.01 E

F 202 4.80 245.41
F 202 4.82 250.21 245.35



on Conc. Mon.
on Pipe

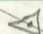
AERIAL SURVEY PLANE COORDINATE POSITIONS

TIES

9 F 204

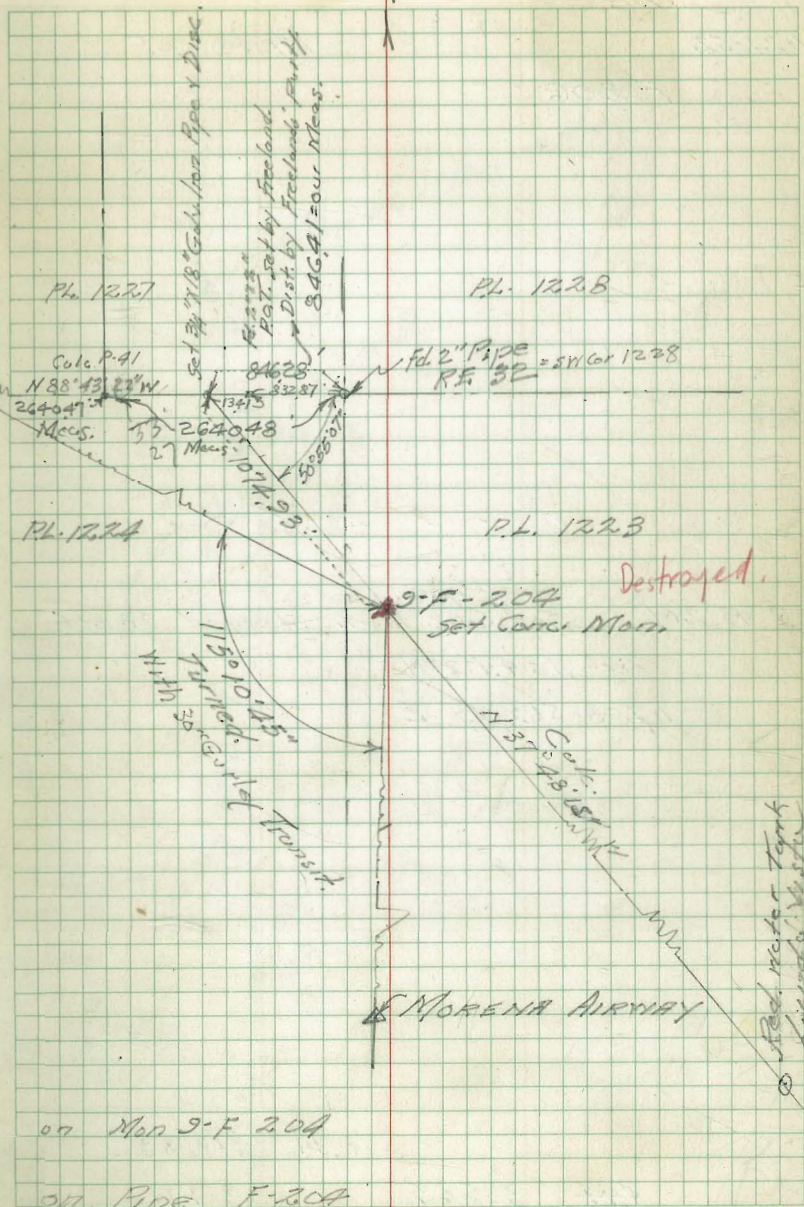
Photo 27

1-24-52

SOLEDAD MOUNTAIN 

Fd. Pipe
9 F 204 Set Conc. Mon Stamped 9 F 204
238,388.67 N
1,707,691.28 E

4.72 334.87
4.92 327.95
330.15



on Mon 9-F 204
on Pipe F-204

Red water tank
Landed with
9-F-19

AERIAL SURVEY PLANE COORDINATE POSITIONS

Wulley TIES

1-24-52

Photo 25

F 206

9 F 206 Fd. Pipe.
Set Conc. Mon. Stamped 2F 206

246,134.72 N

1,708,563.33 E

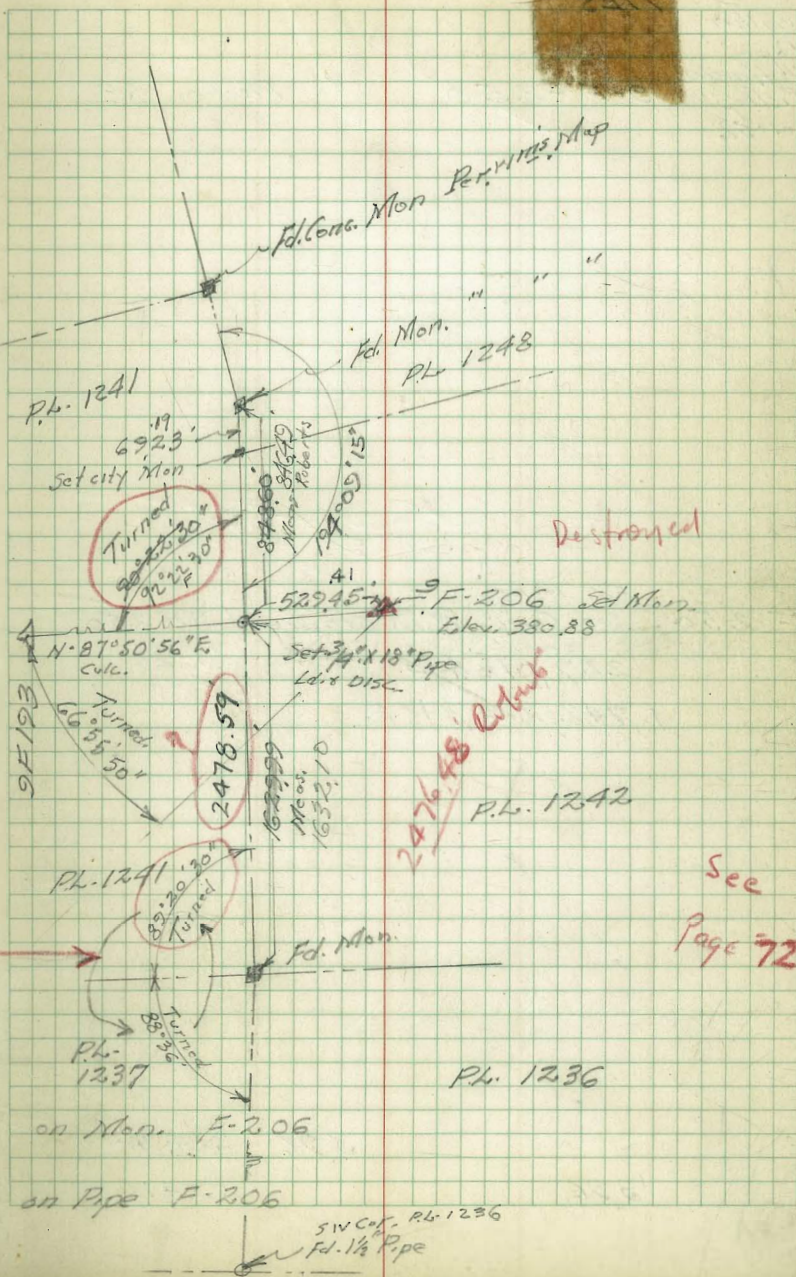
4.77 380.88

4.44 385.65

381.21

Gurley 30" Transit #48198

8



Destroyed

2476.48' *cutback*

See Page 72

AERIAL SURVEY - PLANE COORDINATE POSITIONS

TIES

Walker
Pope
Hoffman
Bishop
2-1-52

9-F-250

Photo 83

9F 250 Fd. Pipe
Set Conc. Mon. Stamped 9F 250
229,078.42 N
1,742,224.31 E

396 224.24
396 224.24



Destroyed
Bridge
Set Conc. Mon + DISC.
Stamped "9F-250"

on Conc. Mon
on Pipe

AERIAL SURVEY - PLANE COORDINATE POSITIONS

TIES

Walker
Pope
Huffman
Eisher
3-1-52

9 F 256

Photo 89

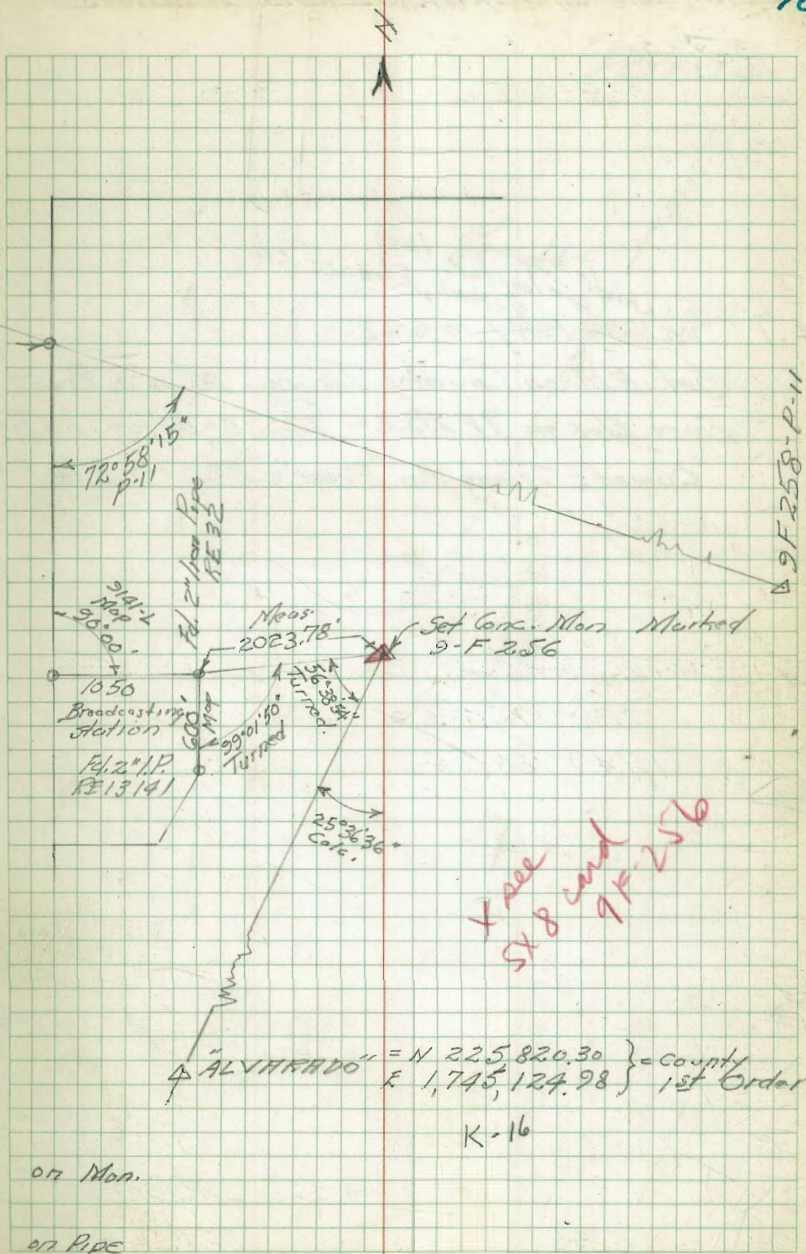
9F252 → A
P-11
21557
P-11

9 F 256 Fd. Pipe.
Set Conc. Mon Stamped 9F256

230, 321.57 N
1,747, 282.58 E

1.96 351.48

1.96 351.48



X see
9F256

"ALVARADO" = N 225,820.30 } = County
E 1,745,124.98 } 1st Order

K-16

on Mon.

on Pipe

AERIAL SURVEY PLANE COORDINATE POSITIONS

TIES

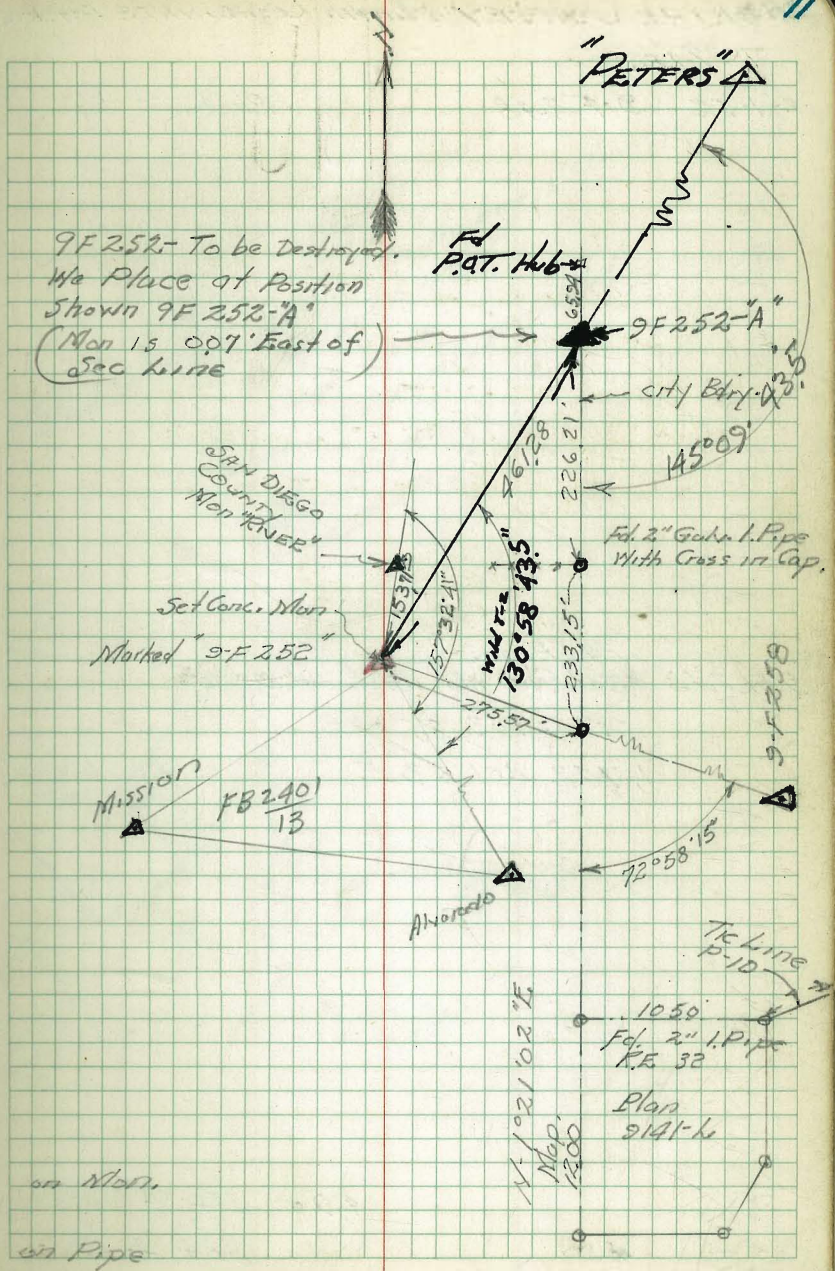
Walker 9-F-252 Photo 90
 Pope & Hoffman
 Bishop 2-1-52

chief: ^{Inst} Taylor
 J. G. Jones, Elmore. ch.
 Walker & Party 10-6-55

Set B.M. on County Triang. Mon & RIVER
 From Elev. on 9F252 = 325.93 - Bottom This Pg.
 County Triang Mon "River" = 326.19 Elev.

9-F-252 Set Conc. Mon. Marked 9-F-252
 230,815.23 N
 1,743,980.34 E
 K-14

4.36 325.93
 4.35 325.94



AERIAL SURVEY PLANE COORDINATE POSITIONS

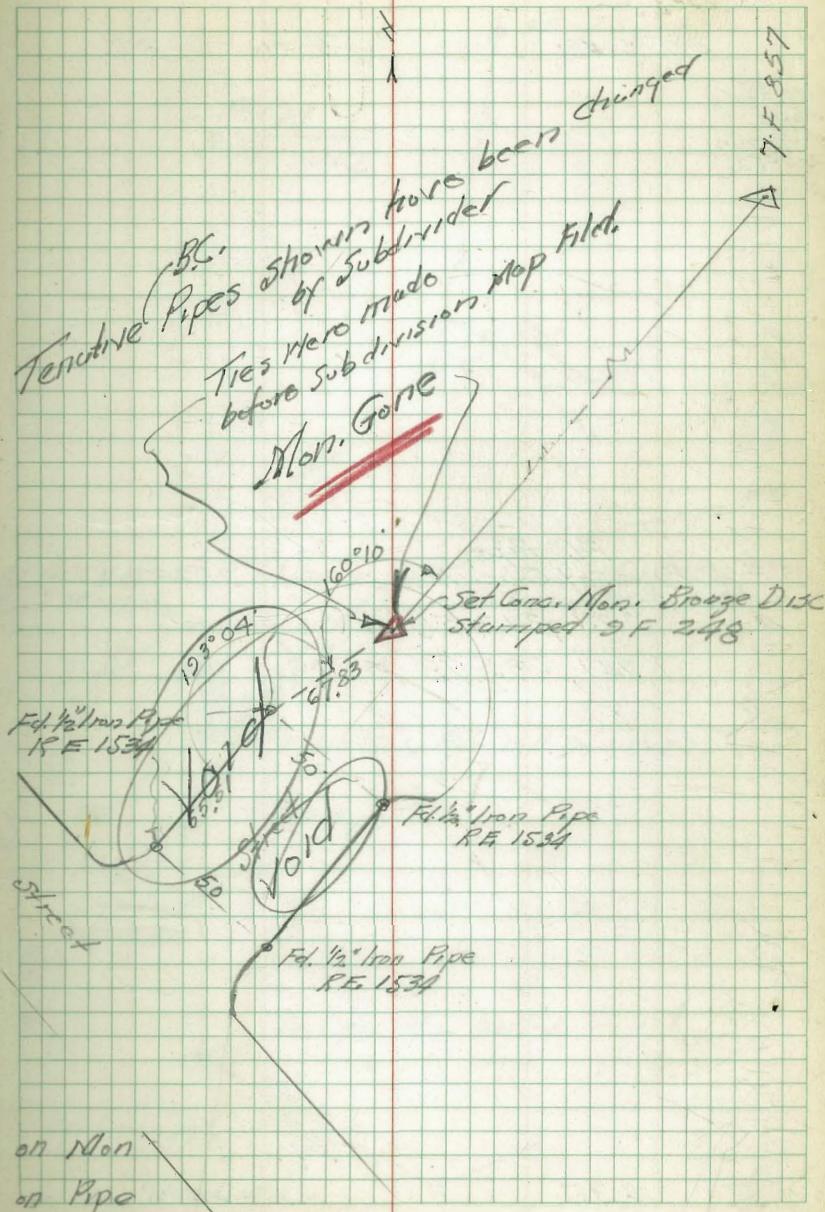
TIES

2-1-52 9-F 248

Photo 1- 88

Fd. Pipe.
 9-F 248 Set Conc. Mon. Stamped 9-F 248
 222,703.85 N
 1,742,401.63 E

4.80
 4.90 384.04
 384.14



Ties

9-F 249

Photo 1-82

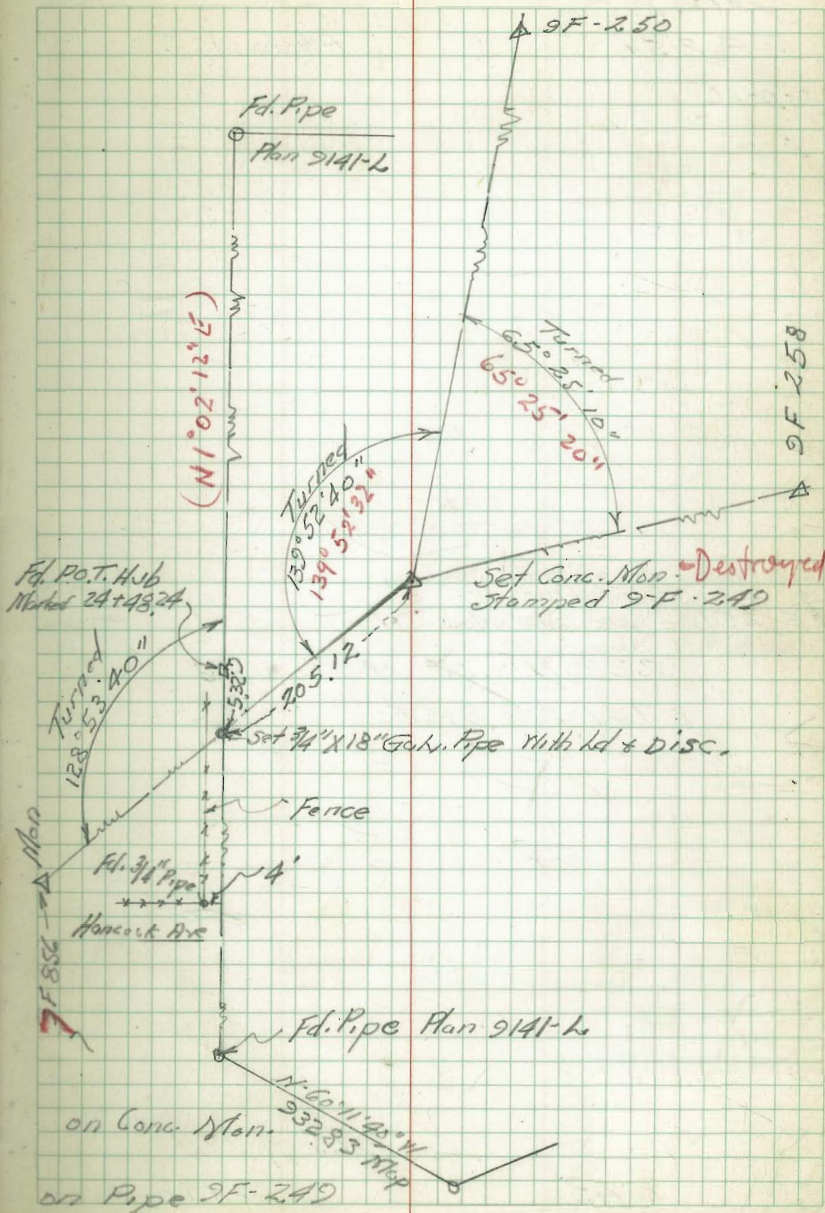
Walker
Slope
Huffman
2-4-52

9-F 249 Fd. Pipe
Set Conc. Mon. Stamped 9-F 249
226,313.59 N
1,741,635.73 E

4.35

4.37

250.48



AERIAL SURVEY PLANE COORDINATE POSITIONS

~ TIES ~

9F 251

Photo 1-70

2-6-52

9F 251 *Fd. Pipe,
Set Conc. Mark*
233, 115.18 N
1, 741 418.98 E

0.23

0.25 27.70

27.72

Fd. Pipe (in Md. Sand 10" High)
Set Conc. Mark
Stamped 9F 251

on Men

on Pipe

AERIAL SURVEY PLANE COORDINATE POSITION

W.T.H.S.

9F-260

Photo 1-93

229,742.93 N
1,754,267.83 E

= S
COUNTY STATION
MURRAY

9F 258 ^{Copper} set ~~Orange~~ Disc. in Large Rock
Marked "city Sta."

Elev 822.88

228,437.48 N Photos 1-93
1,751,168.67 E

= COUNTY STA
"CITY"

9F-260

0.88 644.67

163 645.65

644.02

Stamped

▲ 9F 260 ←

Set Conc. Mark.
30" long 0.8"
Above Nat. Ground.

Concret. around Earth
0.8' High 3' Dia.
Top Ridge in Plowed
field.

▲ 9F 258

Destroyed

Existing Triang. Mark
U.S. 1880 "Diane"
Dated Nov. 17-1938.
We stamped this No. → 9F 259

on Mark

on Pipe

AERIAL SURVEY PLANE COORDINATE POSITIONS

TIES

9F 257

Photo 1-90

Walker
Pope
Huffman
2-6-52

9F 257 Fd. Pipe.
Set Conc. Mon. Stamped 9F 257
233,729.43 N
1,747,704.24 E.

0.21

0.18 341.16

341.13

Fd. Pipe
Set Conc. Mon
Stamped 9F 257

on Mon

on Pipe

AERIAL SURVEY PLANE COORDINATE POSITIONS

TIES

Walker
Pope
Huffman

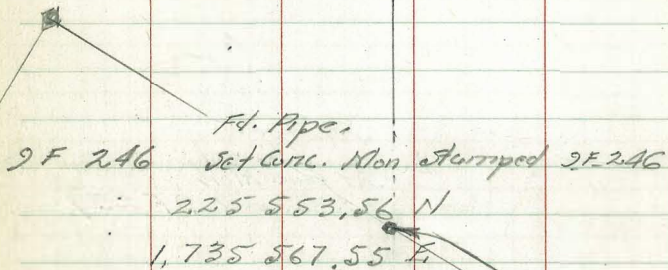
9F 246

2-6-52

Photo 1-83

Ties Made 8-26-52

Walker
Hardin
Huffman
Presley



on Conc. Mon.

0.21

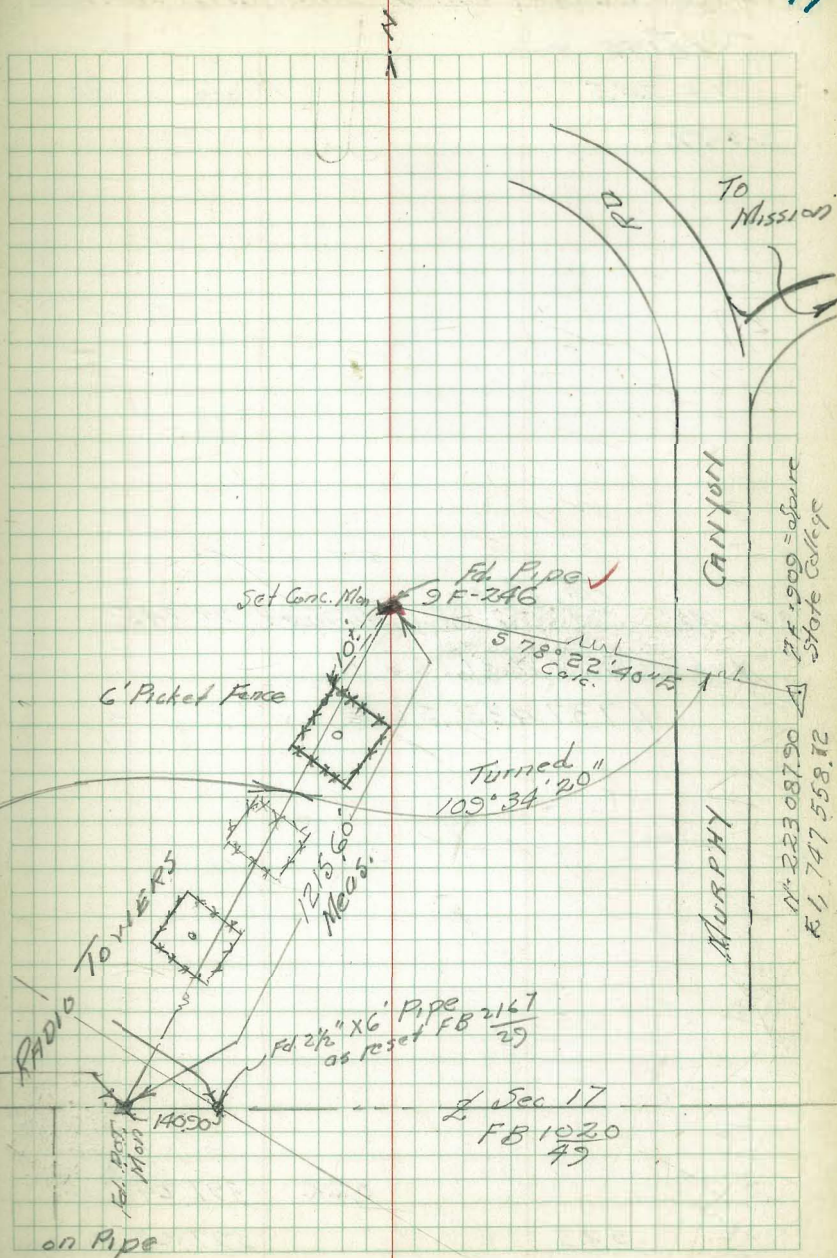
0.23 59.13

59.15

FB 1020-49
1301.40

Fd. Post Mon

-100
-100



AERIAL SURVEY PLANE COORDINATE POSITIONS

TIES

9F 243

Photo 1-68

2-6-52

9F 243 Fcl. Pipe.
Set Conc. Mark. Stamped 9F 243

246, 136.97 N

1,731, 258.48 E

0.42

0.43

424.62

9F 243 Fcl Pipe

Set Conc. Mark
Stamped 9F 243 ✓

on Man

on Pipe

AERIAL SURVEY PLANE COORDINATE POSITIONS

TIES

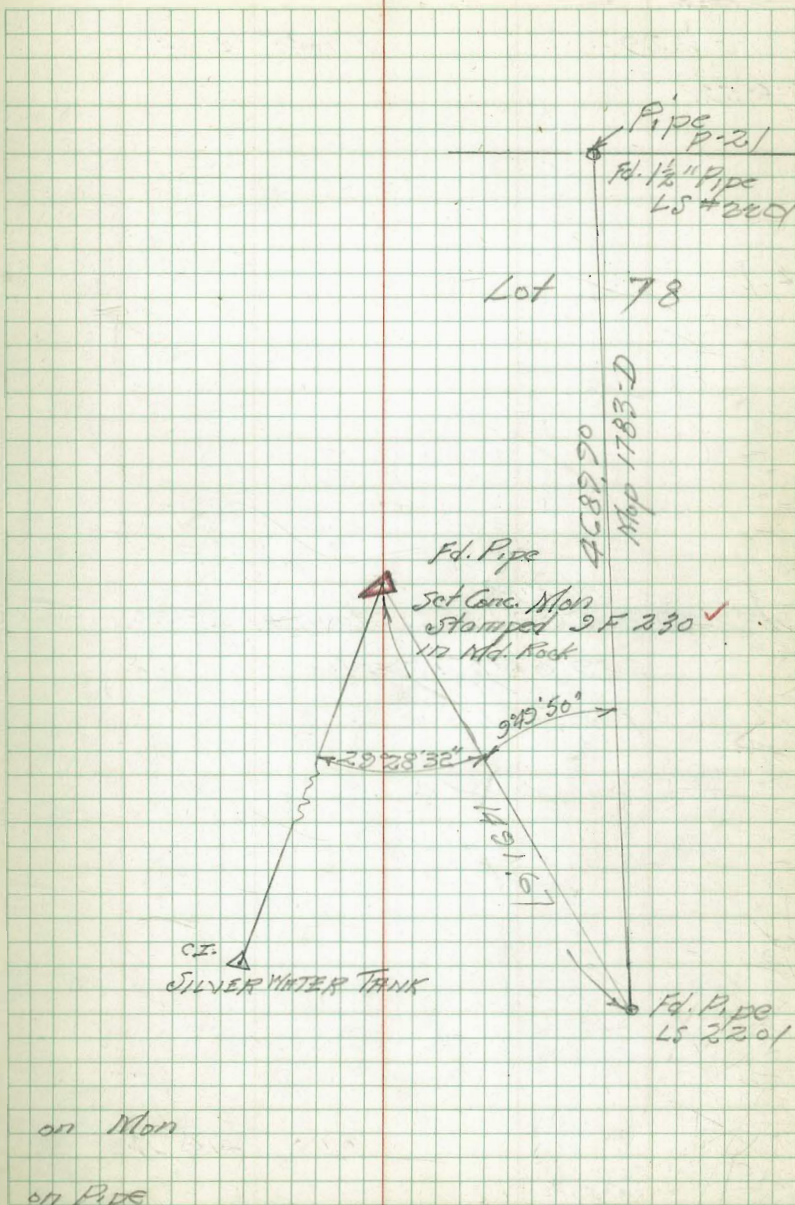
9F 230

Photo 1-42

2-6-52

9F 230 Fd. Pipe.
Set Conc. Mon. Stamped 9F 230
245,394.23 N
1,726,432.89 E

		407.46
	0.00	406.24
0.61	407.46	406.85
	X	



on Mon

on Pipe

AERIAL SURVEY PLANE COORDINATE POSITIONS

TIES

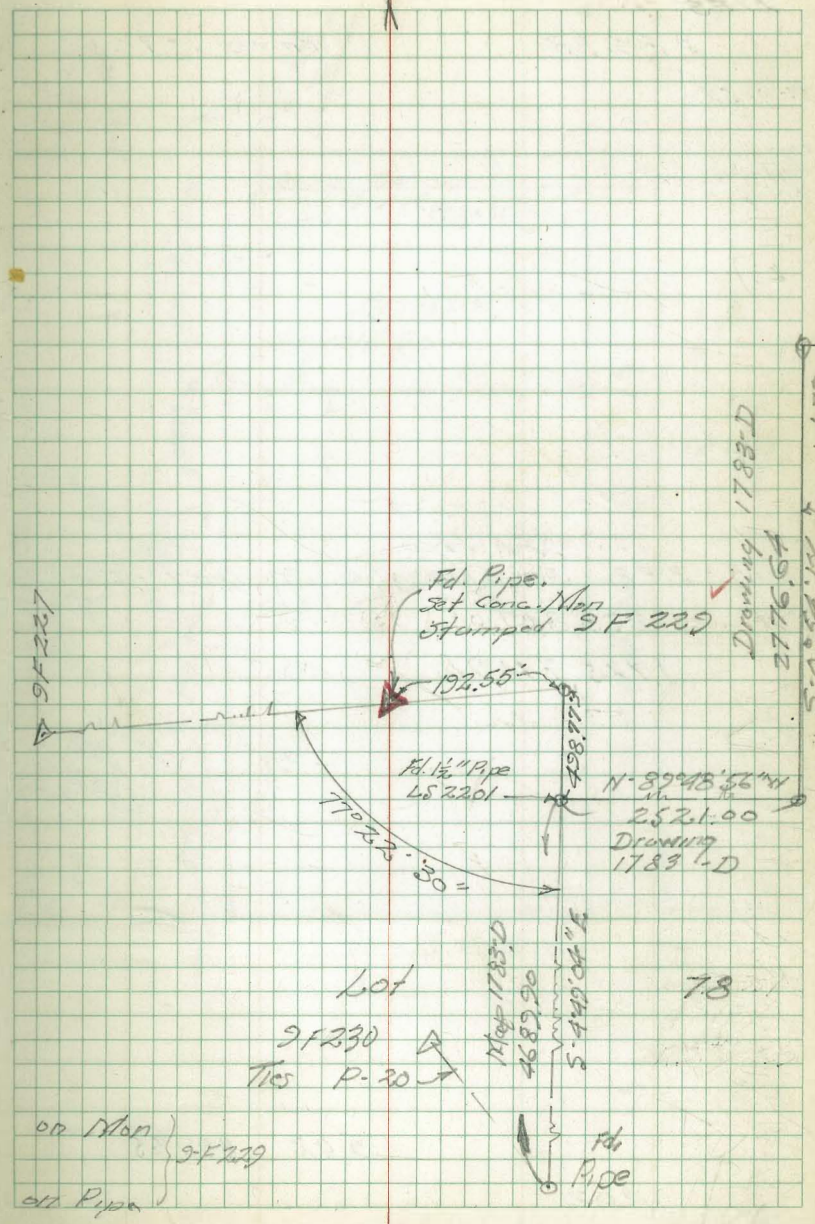
9F-229

Photos 1-41

2-6-52

Fd. Pipe.
 9F 229 Set Conc. Mon. Stamped 9F-229
 249,067.15 N
 1,726,221.25 E

0.00 416.35
 0.00



Drawing 1788-D
 2776.64

5-0-52-11 Twp. Lot 72
 RINCHO MISSION

N-39°45'56\"/>
 2521.00
 Drawing
 1789-D

Lot
 9F 230
 Ties P-20

on Mon } 9F 229
 on Pipe }

Map 1783-D
 4682.96
 S-44°04'11\"/>

AERIAL SURVEY PLANE COORDINATE POSITIONS

TIES

9 F 233

Photo 1-72

2-7-52

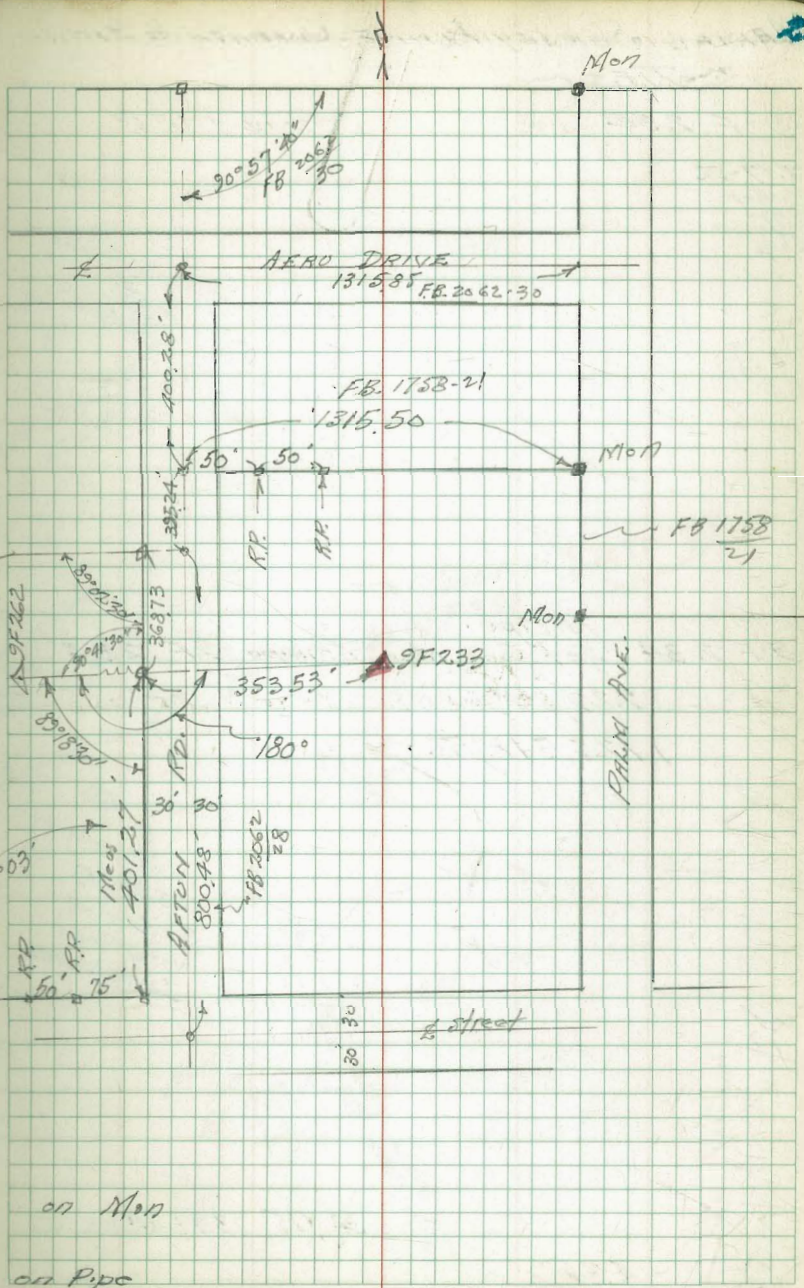
Walker
Page
Huffman
Bishop

Fd. Pipe
9 F 233 Set Conc. Mon. Stamped 9 F 233
233,807.05
1,725,741.97

SCHOOL
SITE
FB 2062
28

5.02 399.65

5.02



on Mon
on Pipe

AERIAL SURVEY PLANE COORDINATE POSITIONS

in TIES in

9-F 234

Photo 1-74

2-7-52
Walker
Goffman
Dishup

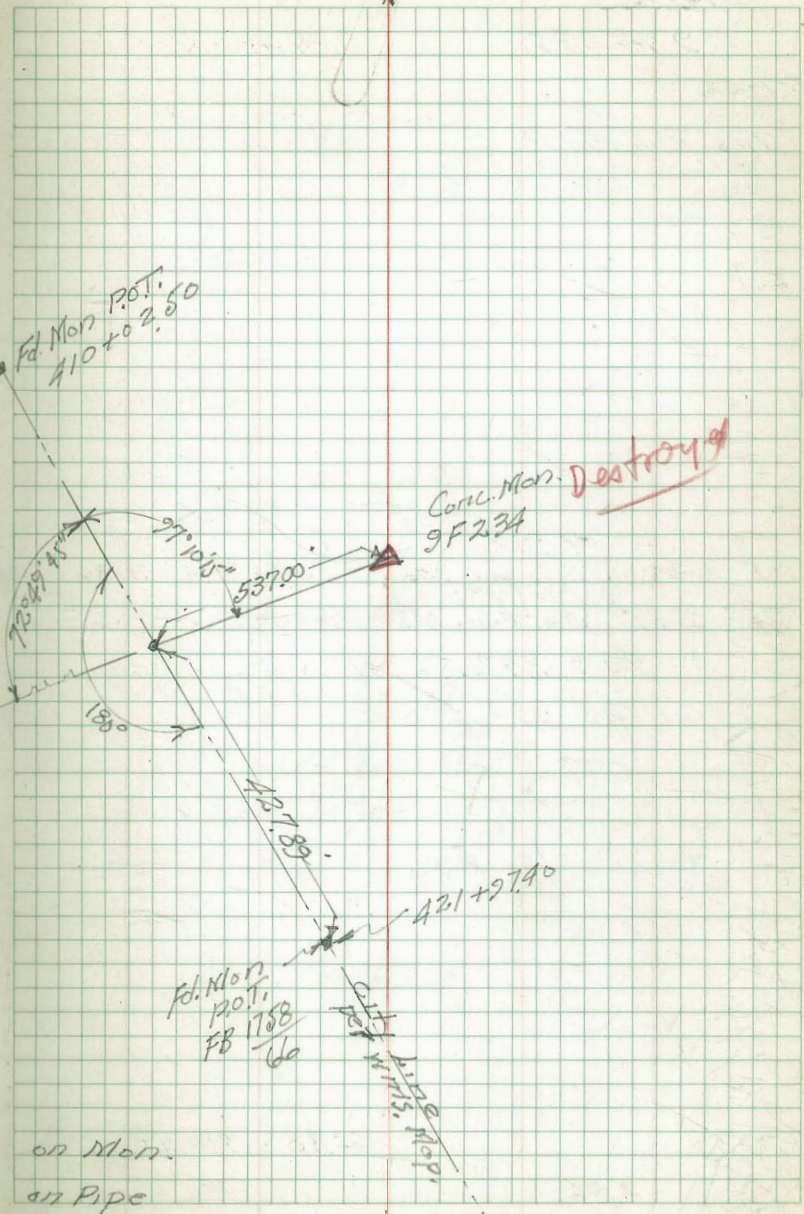
400+0687
P.O.T.
Conc. Mark

Fd. Pipe.
9 F 234 Set Conc. Mon. Stamp 9 F 234
229,849.80
1,725,578.56

C19F219
Red checked
Water Tank
LIVON VISTA.

4.65 397.64

4.65



AERIAL SURVEY PLANE COORDINATE POSITIONS

TIES

9F 242

Photo 1-70

2-7-52

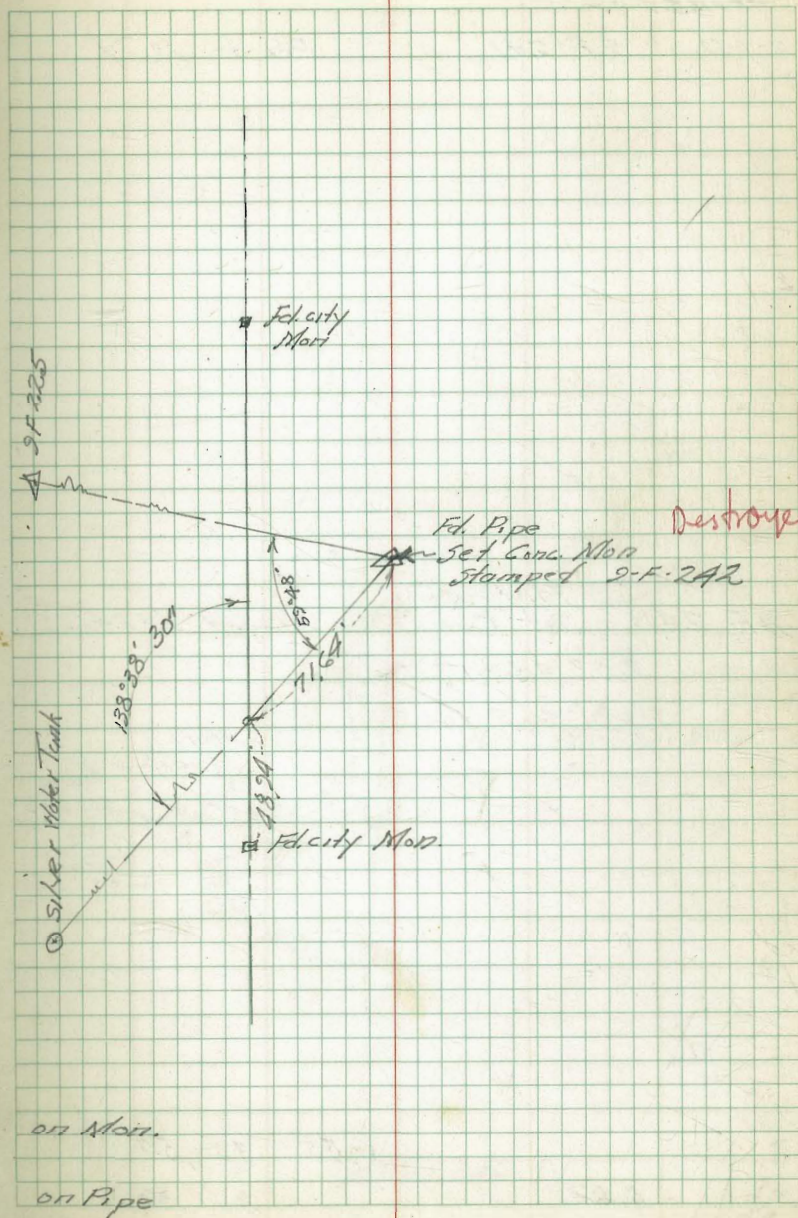
Fd. Pipe.
9F 242 Set Conc. Mon. Stamped 9F 242

241,461.75 N
1,731,004.50 E

3.44

3.45 426.39

426.40



AERIAL SURVEY PLANE COORDINATE POSITIONS

TIES on

2-7-52

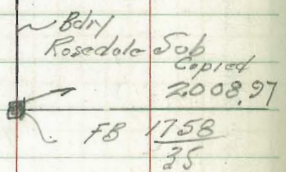
9 F 241

Photo 1-71

9 F 241. ^{Fd. Pipe.} Set Cor. Mon Stamped 9 F 241.

233,457.17 N

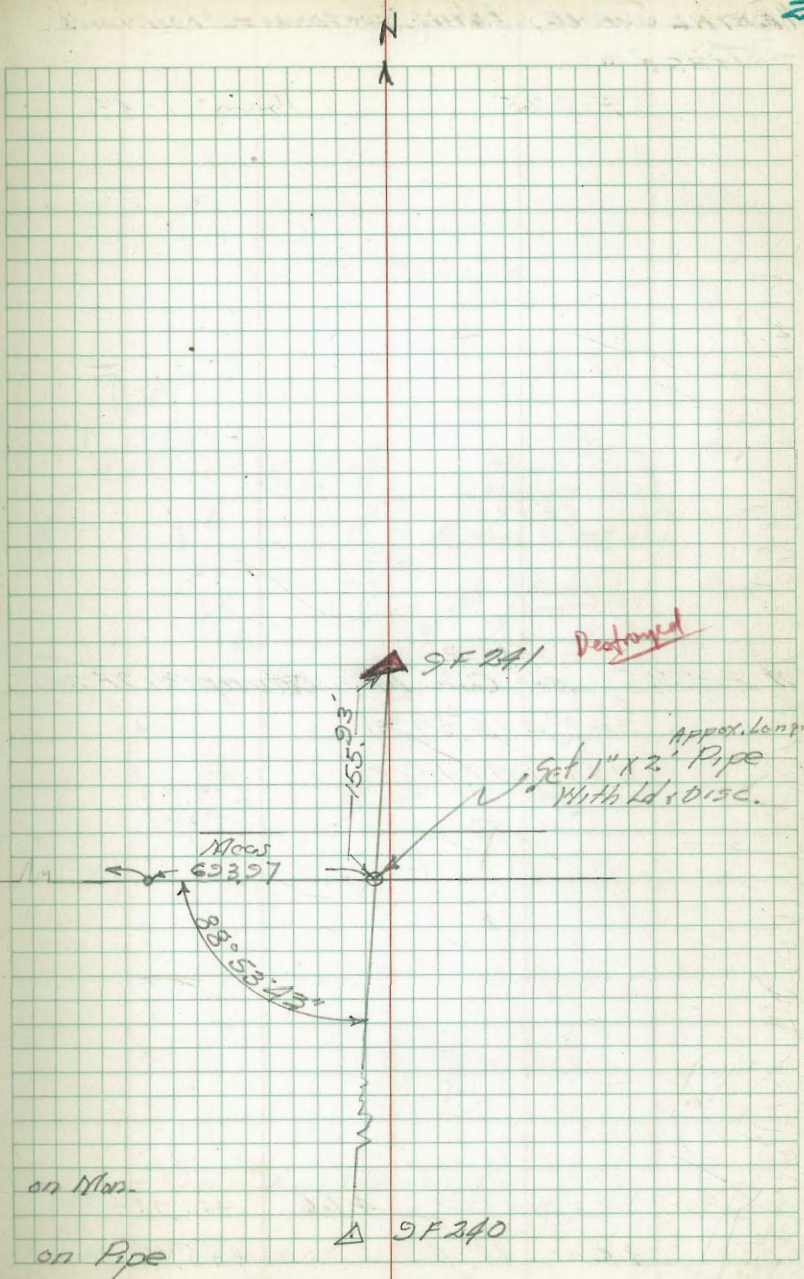
1,731,665.14 E



4.58 390.54

4.62

390.50



AERIAL SURVEY PLANE COORDINATE POSITIONS

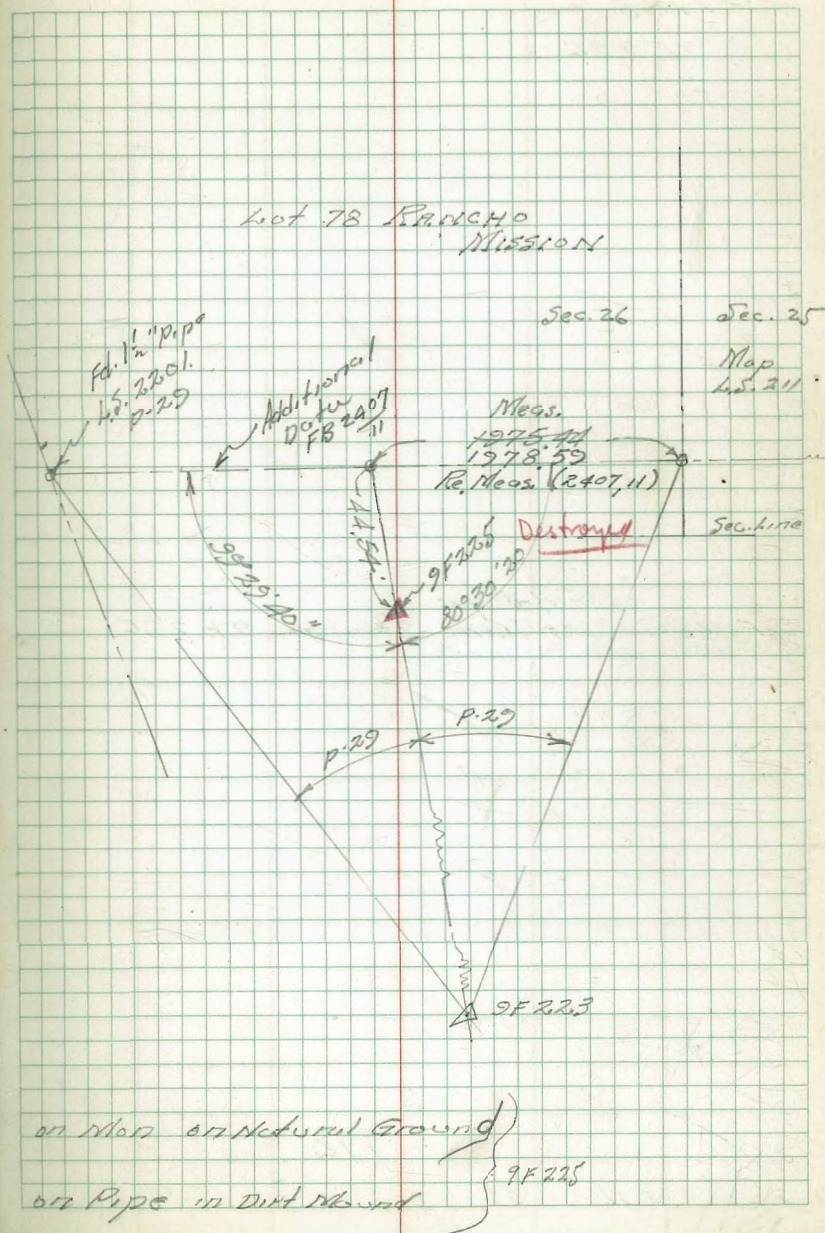
TIES

9 F 225

Photo 1-43

Id. Pipe
9 F 225 set Conc. Mon. Stopped 9 F 225
243,478.57 N
1,721,101.77 E

set Mon to this → 4.66 444.78 = Mon.
3.60 442.44 445.84



AERIAL SURVEY PLANE COORDINATE POSITIONS

TIES

9 F 226

3-7-52

9 F 226 Fd. Pipe set Mon. Stamped 9 F 226

176

2.11



Set Corr. Mark ✓
in Hard Pan Mound
Approx 7' Above Nat'l Ground.

on Mon.

on Pipe

AERIAL SURVEY PLANE COORDINATE POSITIONS

TIES

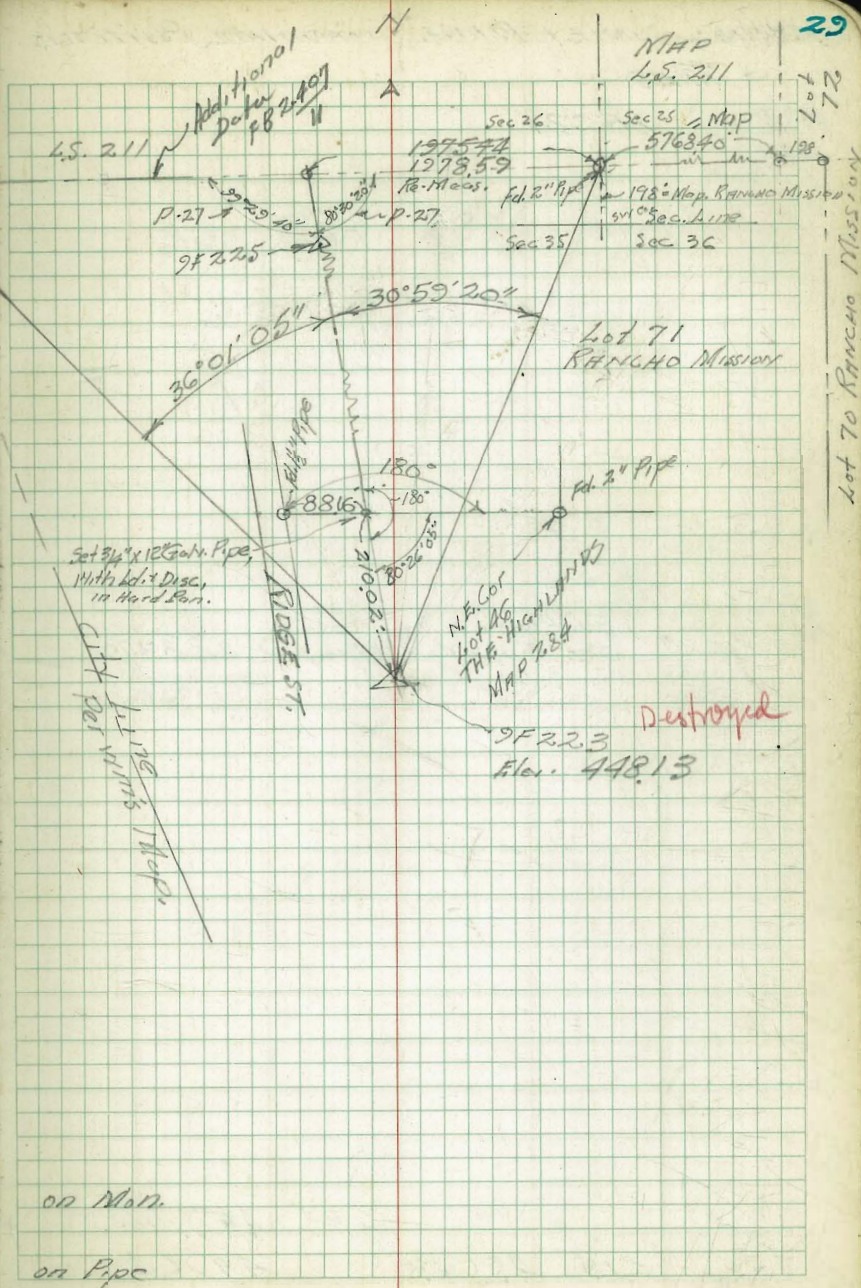
2-8-52 Walker
Huffman
Pape

9-F-223

Fd. 1 1/2" Pipe
L.S. 2201

9 F 223 Fd Pipe.
Set Conc. Men Stamped 9 F 223

2.80 450.94
2.81 448.13
448.14



Lot 70 RANCHO MISSION

AERIAL SURVEY PLANE COORDINATE POSITIONS

~ TIES ~

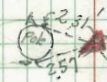
2-8-57 9F227
Walker
Huffman
Pope

9 F 227 Fd. Pipe.
Set Conc. Men Stamped 9F227

6.19 455.83
6.21 449.62
449.64

See Book 2376 page 11
for 9F-227 ECU

Set R.P.S
Cap, Disc 117
Transformer
Pole



Approx
to

Note: Fd. Tap Broken off
10-13-1955
Set Ld. Ply + Disc 117
Conc. Base, from Ties
As shown Fd. in Pole.
Walker
Taylor
Johns
Elmore



on Meter
on Pipe

~TIES~

9 F 221

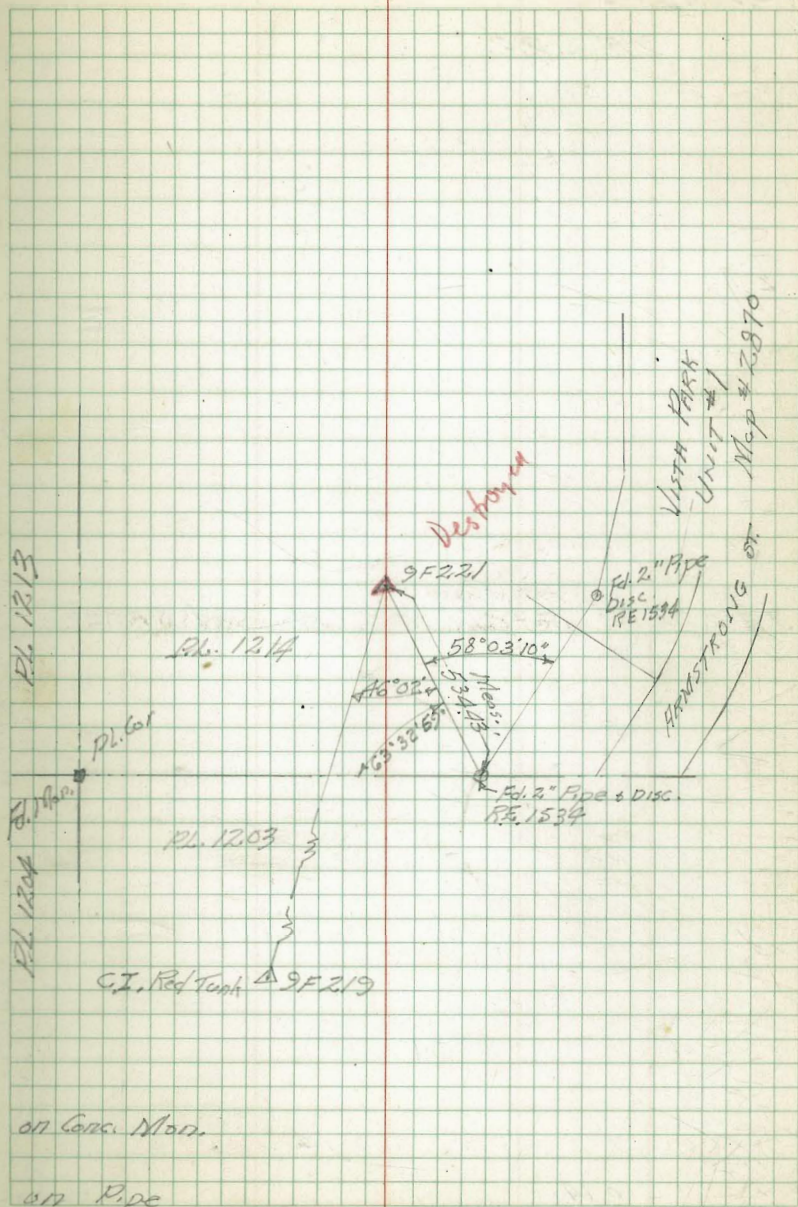
2-7-52

Trs Made To sub. 3-10-58
Walker
Pope
Broyton

Fd. Pipe.
9 F 221 Set Conc. Mon stamped 9 F 221

0.16

0.18



on Conc. Mon.

on Pipe

AERIAL SURVEY PLANE COORDINATE POSITIONS

~TIES~

2F 222

2F 222 Id. Pipe
Set Conc. Mon. Stamped 2F 222

0.14

0.14

△ Destroyed

on Mon

on Pipe

AERIAL SURVEY PLANE COORDINATE POSITIONS

TIES

9F209

2-7-52

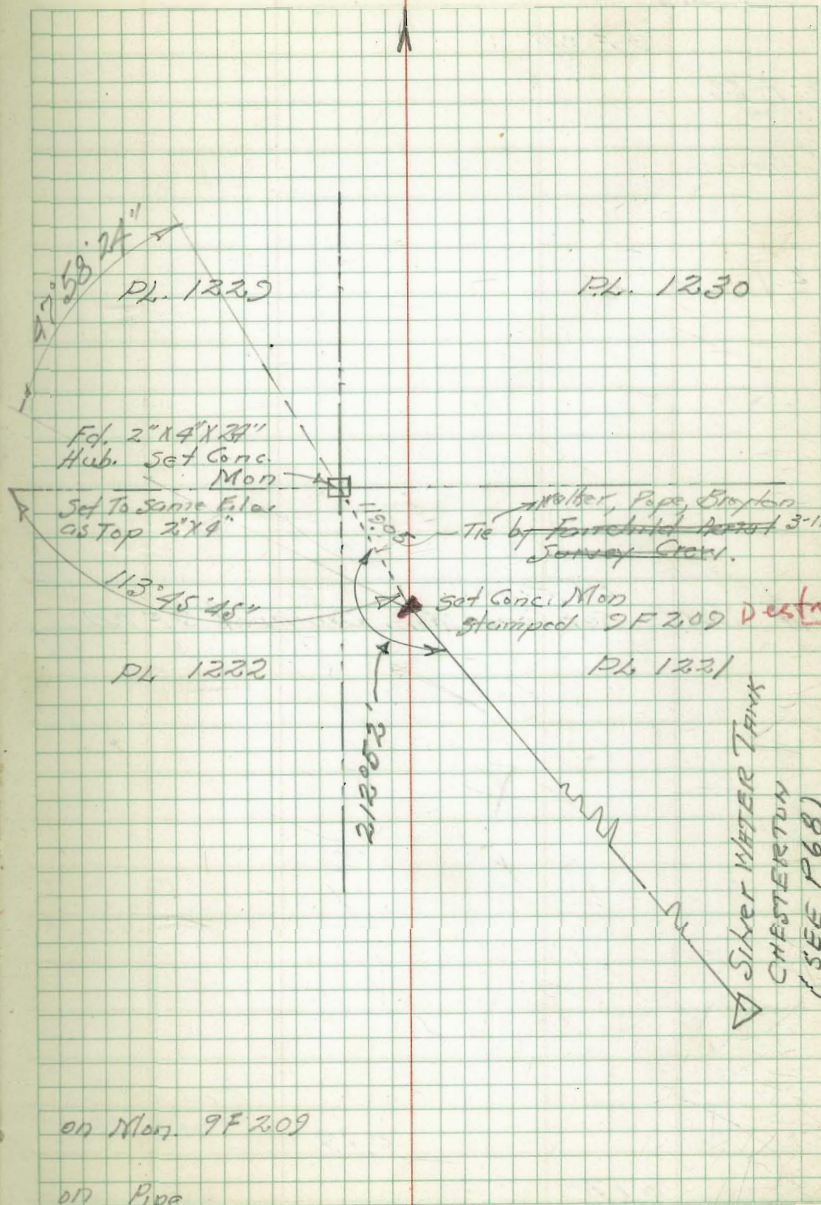
Fd. Pipe.
9F209 Set Conc. Mon Stamped 9F209

0.10

0.10

379.09

379.09



on Mon. 9F209

on Pipe

Walker, Pope, Empton
Tie by ~~Forschild~~ ~~Reed~~ 3-11-53
Survey Crew.

Set Conc. Mon
Stamped 9F209 **Destroyed**

Silver Water Tank
CHESTERTON
(SEE P68)

AERIAL SURVEY PLANK COORDINATE POSITIONS

~ TIES ~

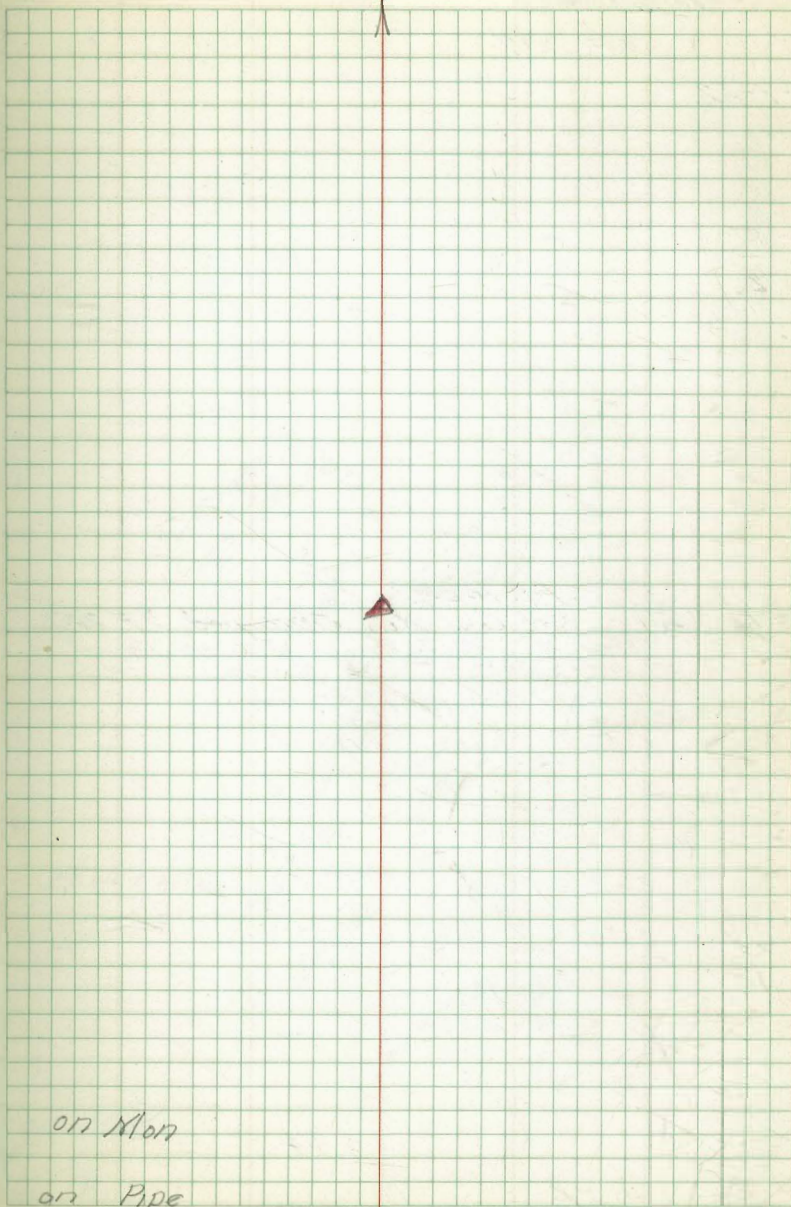
2 F 211

2-7-52
Walker
Pope
Hoffman

Fd. Pipe.
2 F 211 Set Conc. Mon. stamped 2 F 211

0.17

0.19



on Mon

on Pipe

AERIAL SURVEY PLANNING COORDINATE POSITIONS

TIES

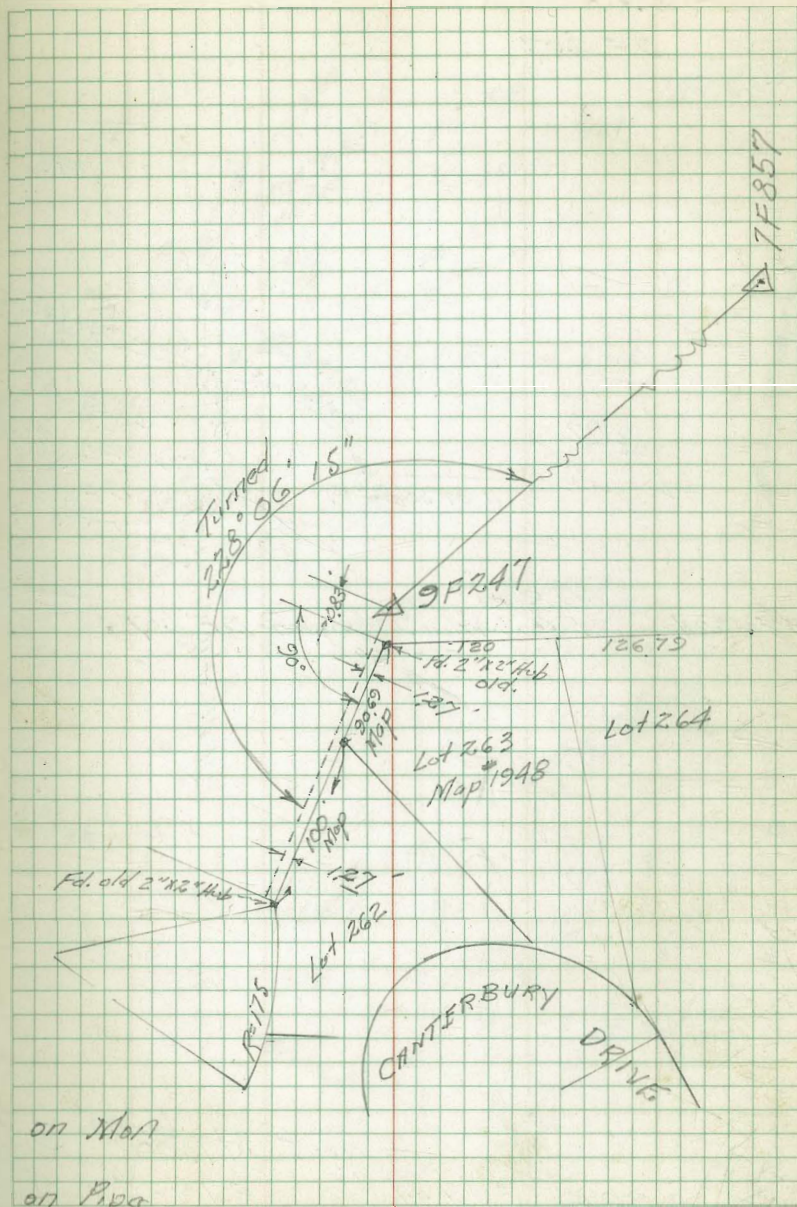
9F 247

2-7-52

Fd. Pipe.
 9F 247 Set Cass. Mon Stamped 9F 247
 a Back Gate Woven Wire Fence
 Residence 4104 Palisades Drive
 Near Canterbury Drive

0.24

0.24



on Map

on Pipe

AERIAL SURVEY PLANE COORDINATE POSITIONS

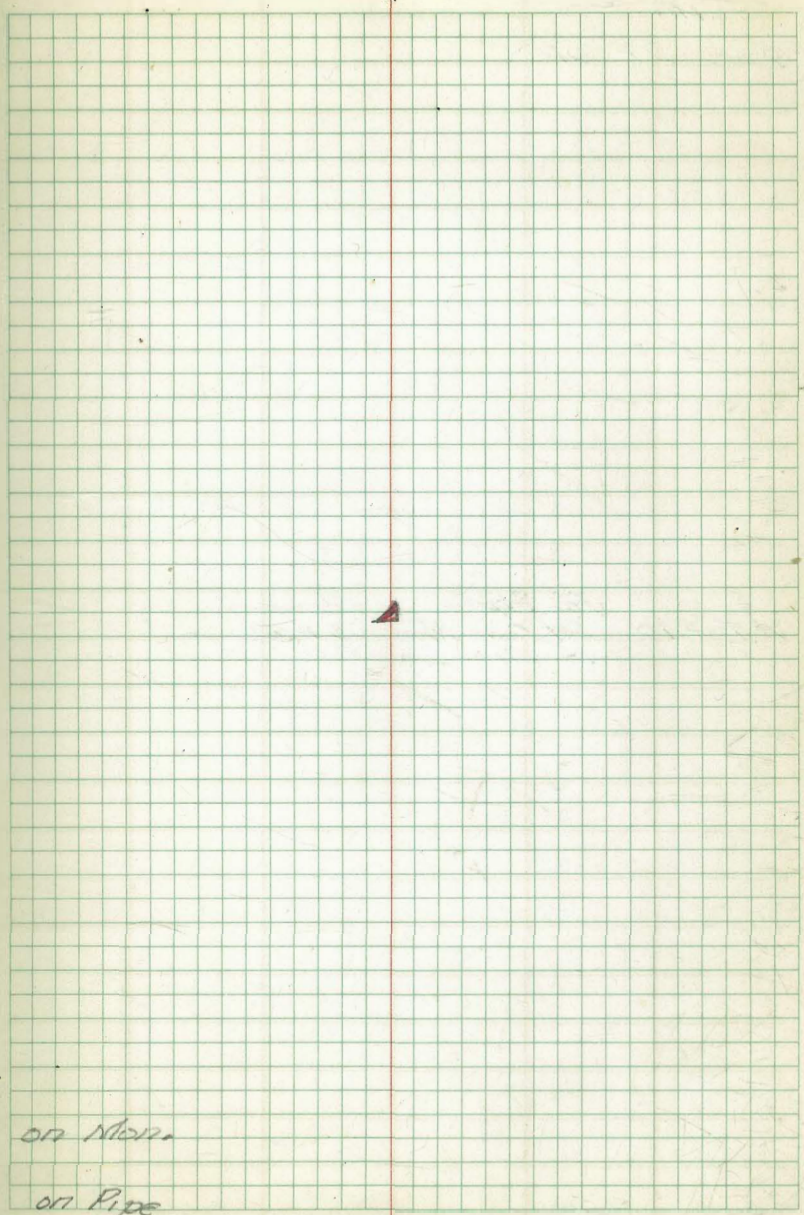
TIES ~

2-18-52 9F208

9 F 208 Fd. Pipe
Set Conc. Mon. Stripped 9F208
in Mound Rock

		0.03	359.86
0.06	359.83		359.77

on Mon.
on Pipe



AERIAL SURVEY PLANE COORDINATE POSITIONS

~TIES~

2-19-52 9F 210

2 F 210 Fd. Pipe Stamped
 set Cons. Mon 9F 210
 117 Mound of Rock

0.56

0.35

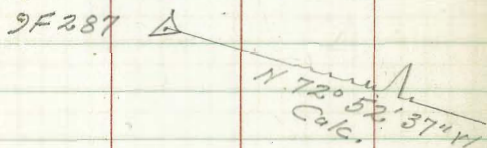
on Mound

on Pipe

AERIAL SURVEY PLATHE COORDINATE POSITIONS

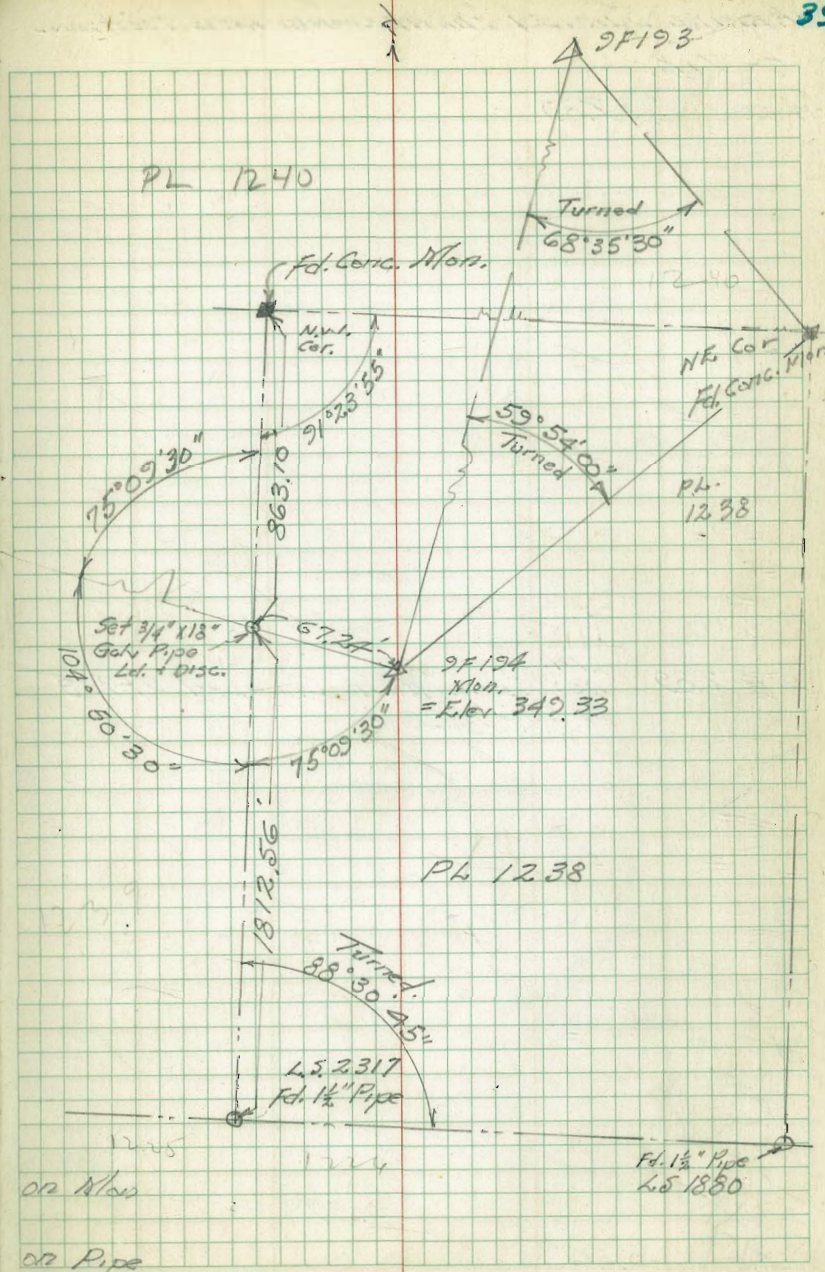
~T15.5~

Walker 9F194
H. Hoffman
Bishop
2-19-52



9F194 Fd. Pipe
Set Conc. Nlon stamped 9F194
in Nth. of Rock

0.33	349.69	0.36	349.33
			349.36



or Nlon
or Pipe

AERIAL SURVEY PLANE COORDINATE POSITIONS

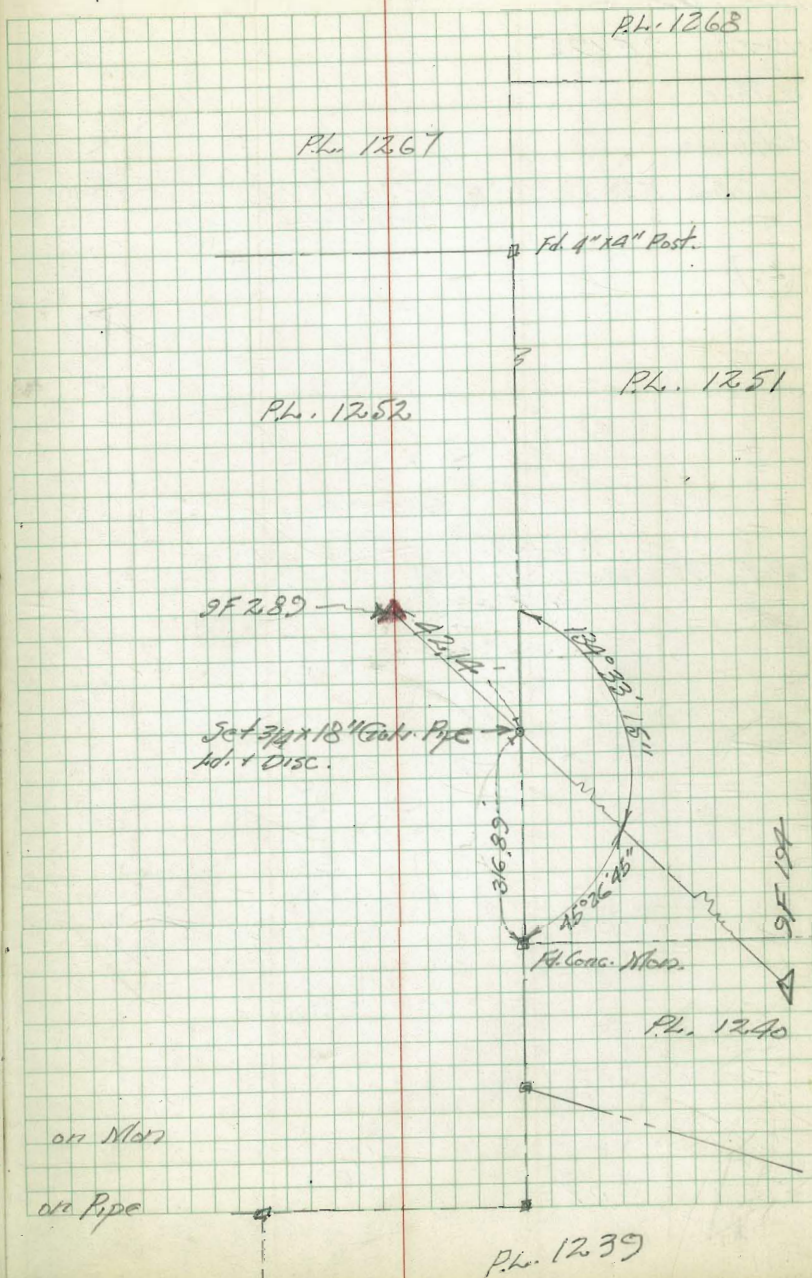
TIES

2-19-52 9F289

9 F 289 Id. Pipe.
Set Conc. Mon. Stamped 9F289
in Large Md. Rock

0.56

0.57



AERIAL SURVEY PLANE COORDINATE POSITIONS

TIES ~ see FB 2229-57

2-12-52 2F196

Photo 1-9

2 F 196 Fd. Pipe.
Set Conc. Mon. stamped 2F196
in red rock
15' south of lone oak bush
on High Point of hill

0.21

0.28

on Mon.

on Pipe

AERIAL SURVEY PLANE COORDINATE

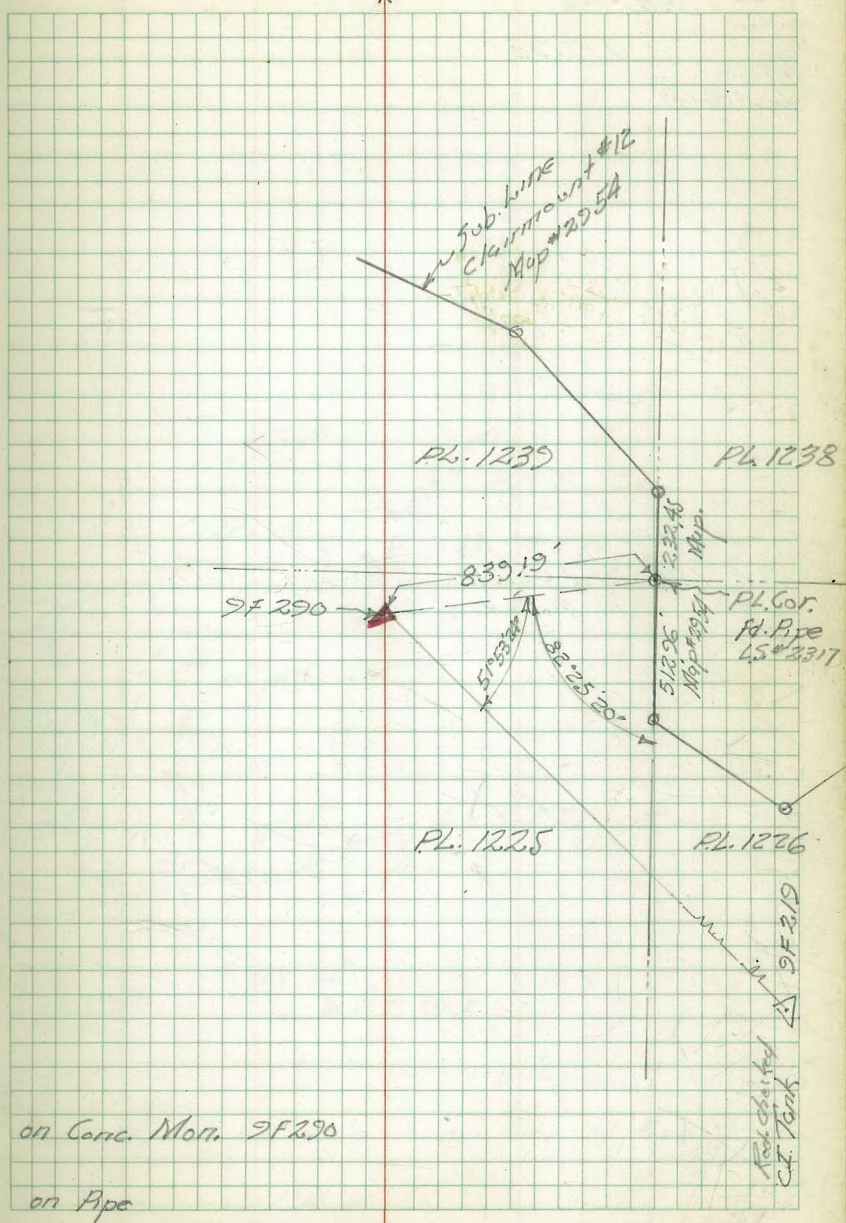
POSITIONS

TIES

Mother
 Pipe 9F 290
 Hoffman
 Bishop 2-20-52

9F 290 Fd. Pipe
 set Conc. Mass Stamped 9F 290
 in Mt. Rock

0.05
 0.10



on Conc. Mass 9F 290
 on Pipe

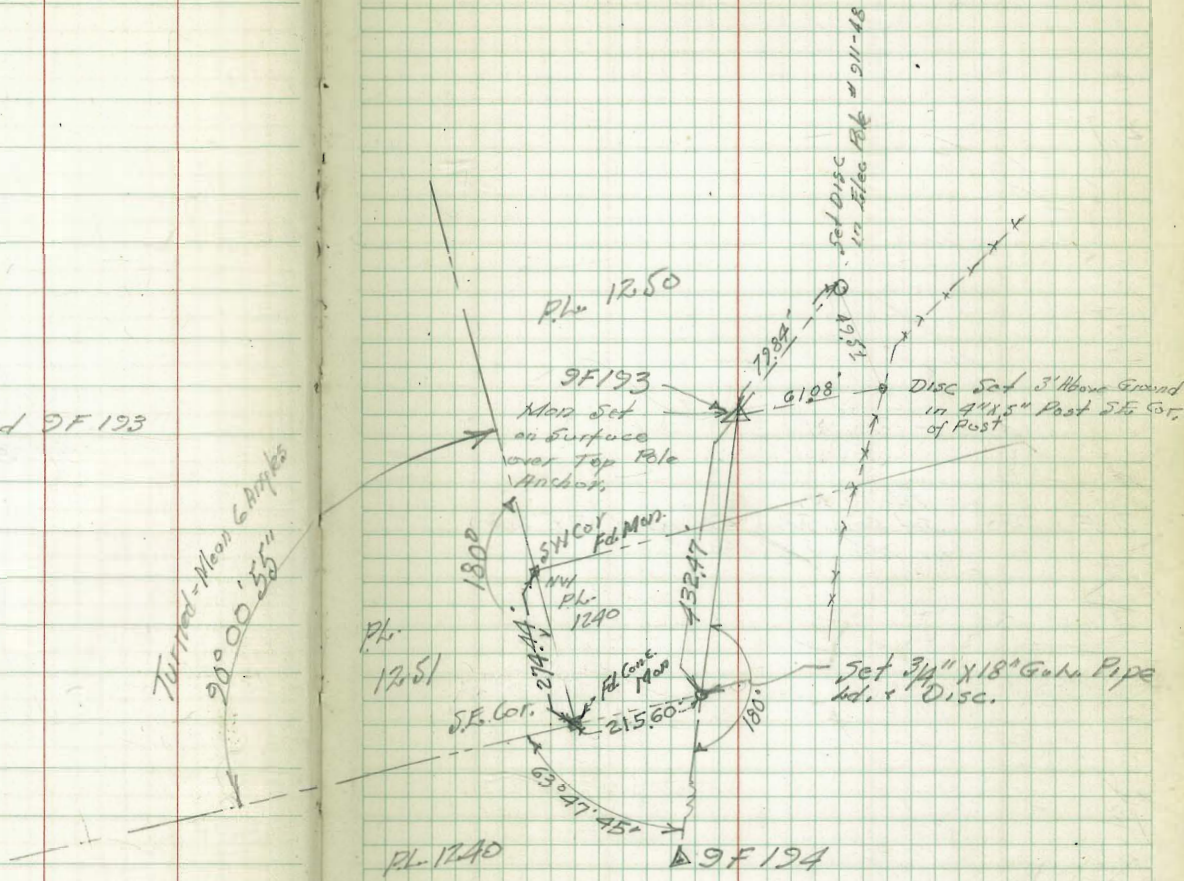
AERIAL SURVEY PLANE COORDINATE POSITIONS

44

TIES

Walker
 Pope 9F 193
 Wiffenun
 Bishop 2-20-52

Ed. Pipe.
 2 F 193 Set Code. Min. Stamped 9F 193
 in Wood of Rock



Turned - Mean 6 Amps
 20°00'55"

Note 9F193
 Mon approx 0.5 Above orig. Ed. of Pipe
 on Pipe in Soft Hole
 over Pole Anchor

SEE PAGE 72

AERIAL SURVEY PLANE COORDINATE POSITIONS

TIES ~ sec FB 2229-57

Walker

Pope

Huffman

Bishop 2-2052

9 F 280

9 F 280

fd. Pipe.

Set Conc. Man Stumped 9 F 280
in Head of Rock

0.13

0.23

on Man

on Pipe

AERIAL SURVEY PLUMME COORDINATE POSITIONS

TIES

Walker
Pope
Huffman
Eislop 2.25.52

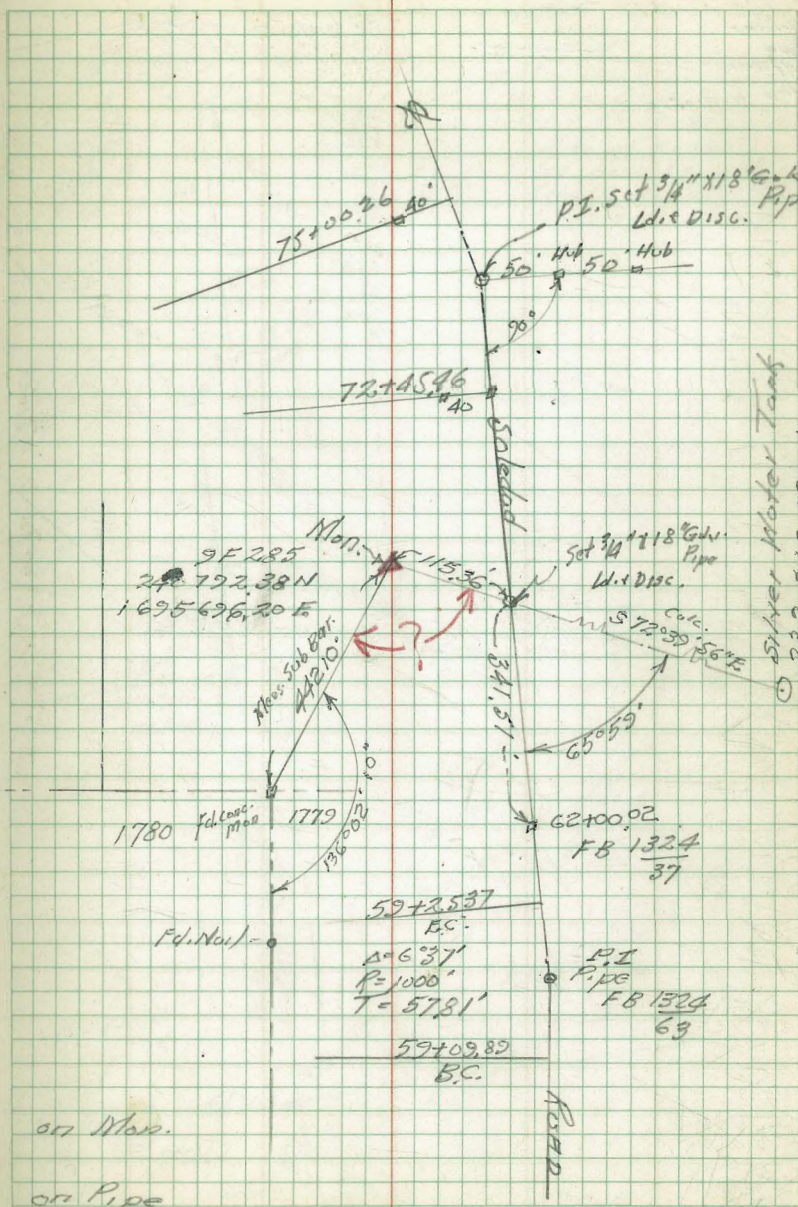
9F 285

9F 285

Fd. Pipe.
Set Conc. Mon. Stamped 9F 285
in Mound Rock

0.23

0.15



AERIAL SURVEY PLUMME COORDINATE POSITIONS

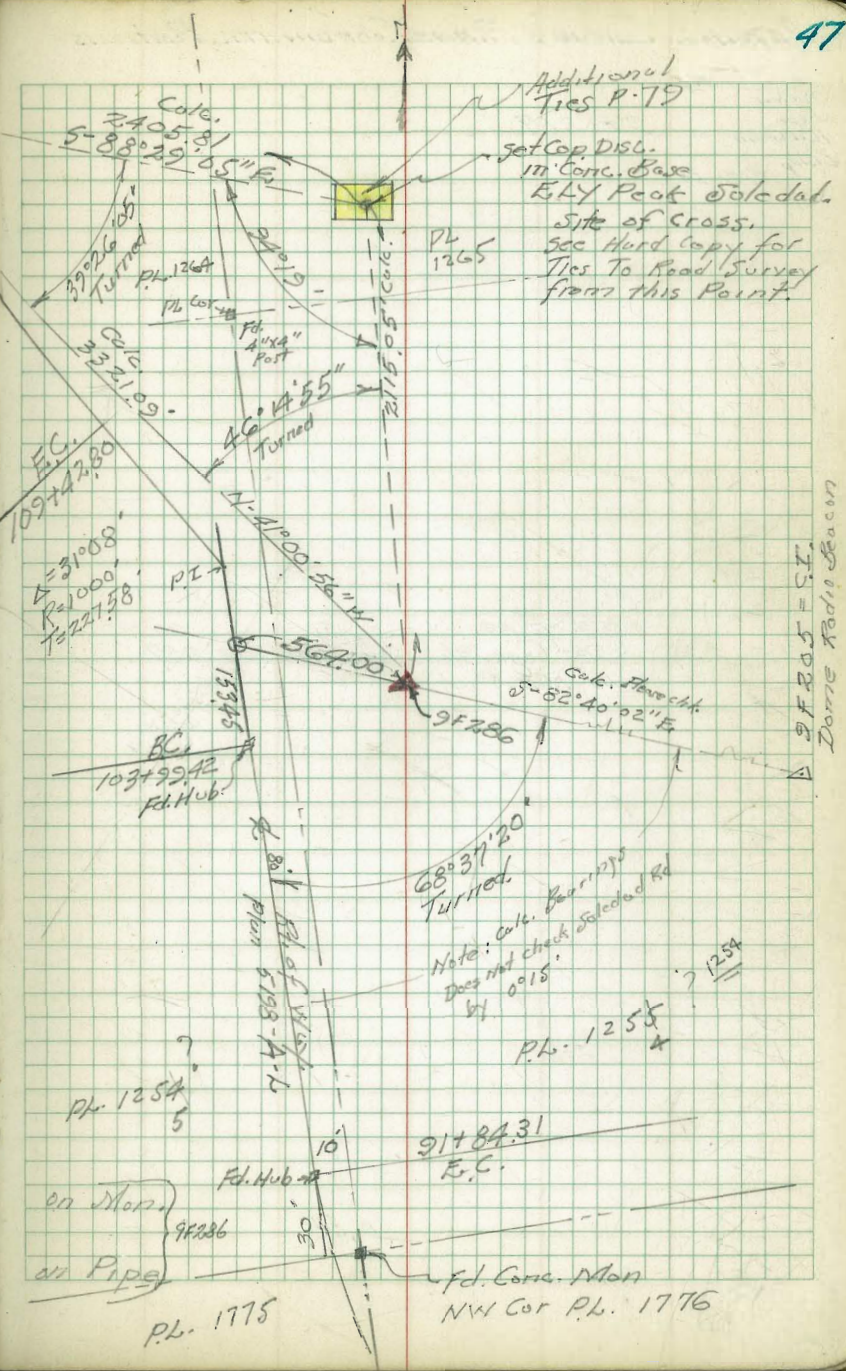
TIES
 Walker
 Page
 Hoffmann
 Bishop 3-28-52

Soledad
 U.S. Geol. Surv.

9 F 286 *Fd. Pipe* Set Conc. Mon stamped 9 F 286
 in Med. Rock.

0.23

0.08



AERIAL SURVEY PLANE COORDINATE POSITIONS

TIES
Walker
Pope 2F 287
Huffman
Bishop 2-20-52

Fd. Pipe,
2F 287 Set Conc. Mon. Stamped 2F 287
in Md. Rock

0.40

0.31

on Marr

on Pipe

AERIAL SURVEY PLANE COORDINATE POSITIONS

TIES

Walker
Roe
Huffman
Bishop 2-20-52

9 F 284

10 F 700
P-78

9 F 284 Fd. Pipe.
Set Conc. Man Stamp 9 F 284

P.L. 1781

228.27 cal

Conc
Man
SWC
P.L. 1780

0.24

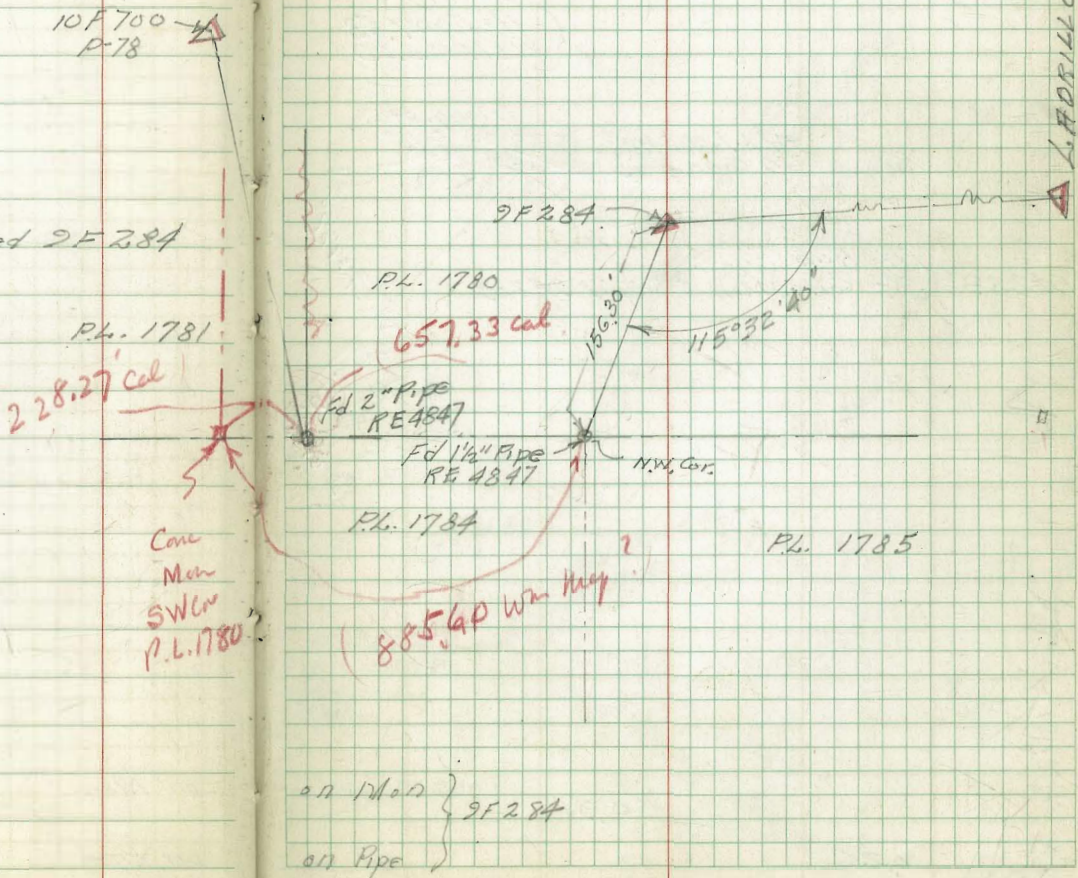
0.20

W 0 20639

49

Gurley # 431280
30"

L. ADRIANO



P.L. 1780

657.33 cal

Fd 2" Pipe
RE 4847

Fd 1 1/2" Pipe
RE 4847

N.W. Cor.

P.L. 1784

P.L. 1785

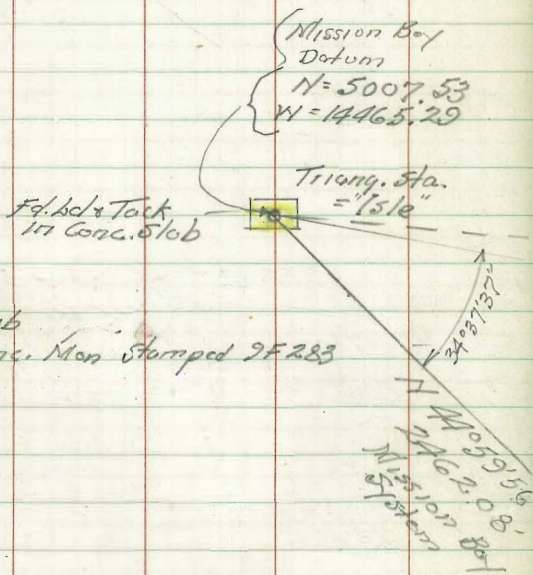
885.40 w m hyp ?

on Man }
9 F 284
on Pipe }

AERIAL SURVEY PLANE COORDINATE POSITIONS

~ TIES ~

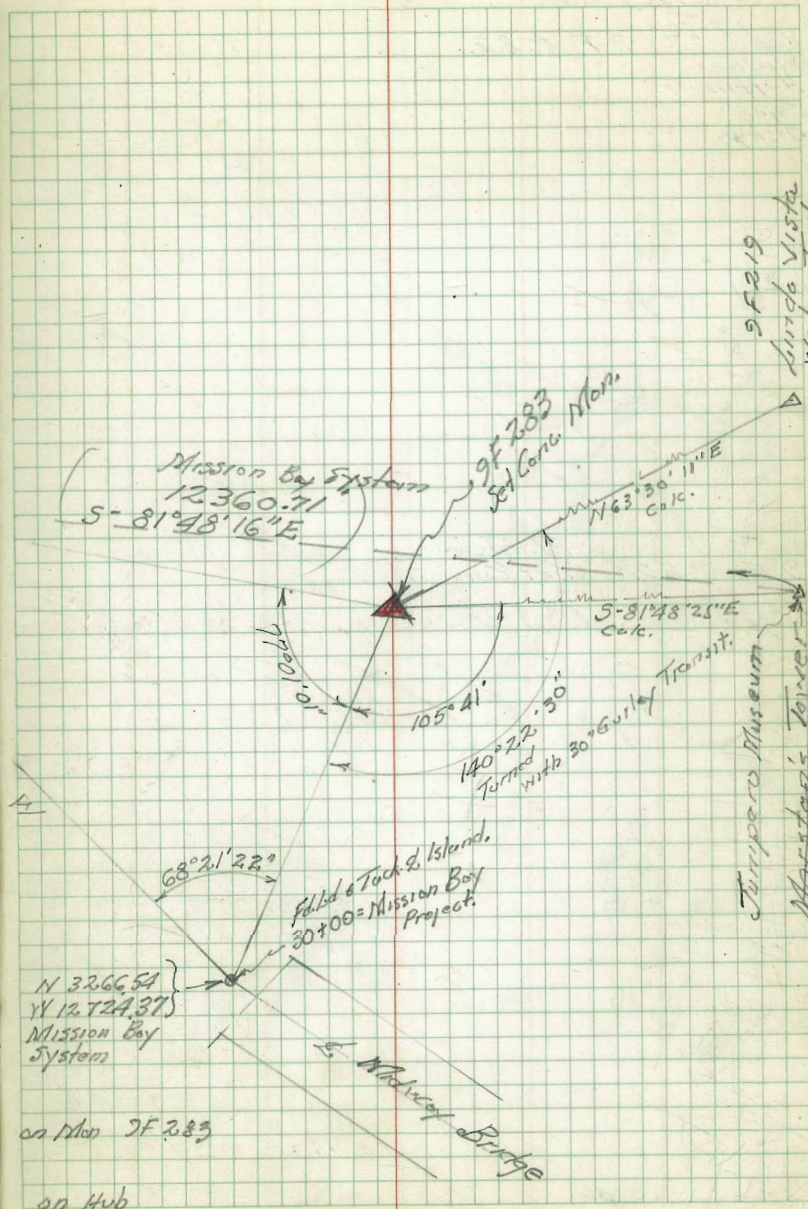
Walker 9F 283
 Pope
 Huffman
 Bishop
 2-5-52



9F 283 Fd Hub
 Set Conc. Mon Stamped 9F 283

0.31

0.26



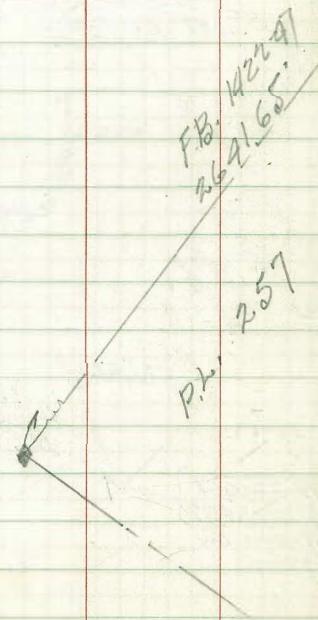
on Mon 9F 283

on Hub

AERIAL SURVEY PLANE COORDINATE POINTS

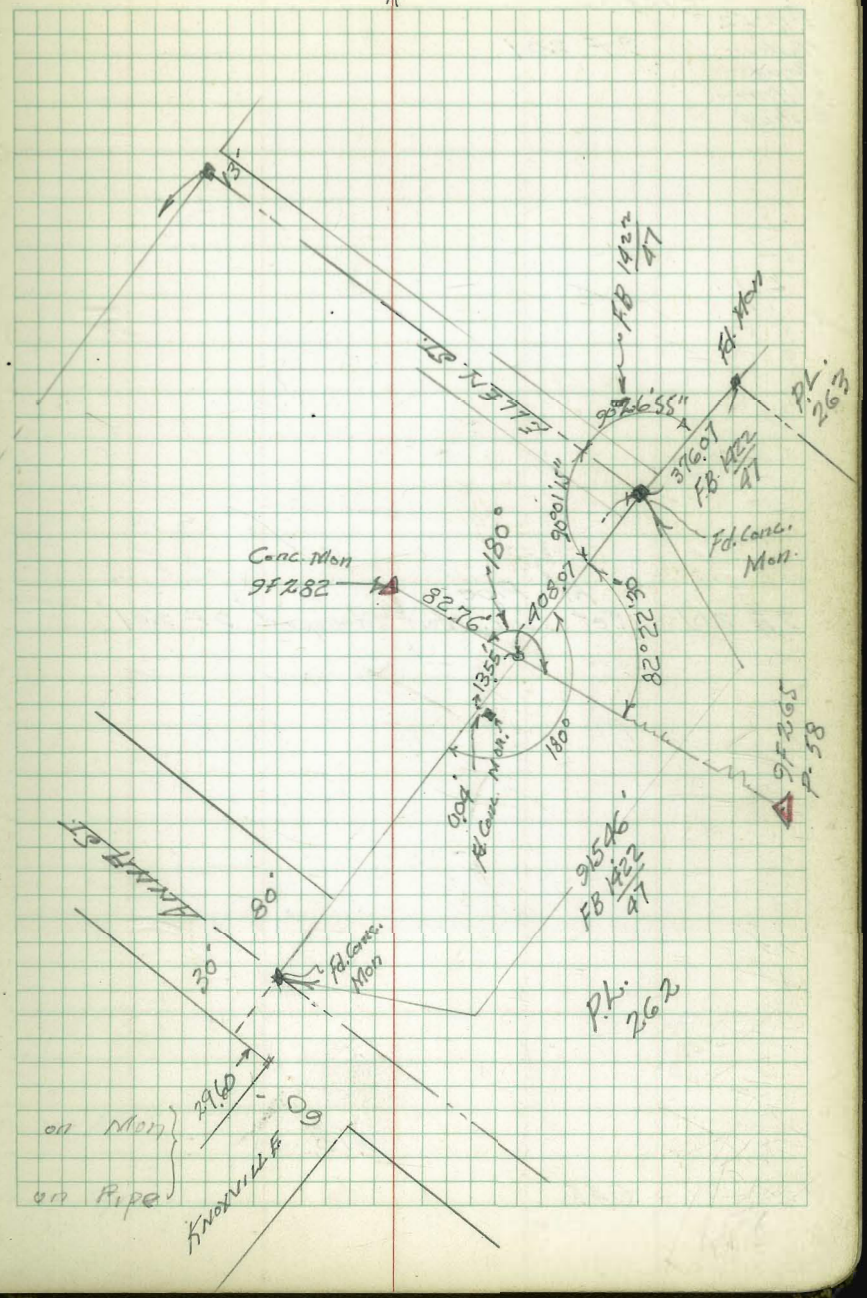
TIES
 2-17-52 2 F 2.82
 Walker
 Huffman
 Pope
 Bishop

9 F 2.82 Fd. Pipe
 Set Conc. Mon



0.41

0.40



TIES

3-17-52
Walker 2F 201
Pipe
Hoffman
Bishop

2F 201 ^{fd. Pipe.}
Set Conc. Mon Stamped "2F 201"

0.18

0.45

on Mon.

on Pipe

AERIAL SURVEY PLANE COORDINATE POSITIONS.

TIES

Walker
Pope 2F 213
Hoffman
Bishop.
3-17-52

2F 213 Fd. Pipe.
Set Corc. Men. Stamped 2F 213

0.50

0.33

on Map.

on Pipe

AERIAL SURVEY PLANE COORDINATE POSITIONS.

TIES

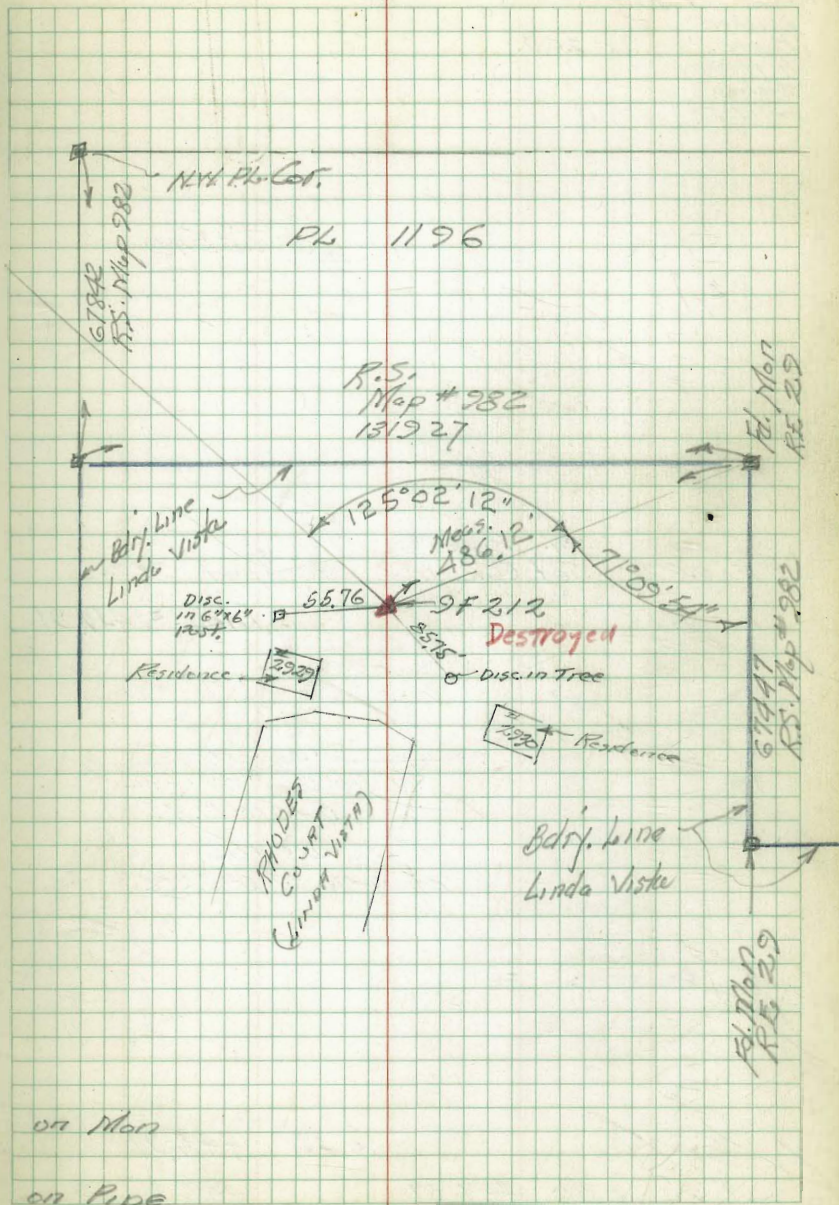
9F 212

SOLEDA

9F 212 Fd. Pipe.
Set Conc. Mark, Striped 9F 212

0.29

0.29



on Mark
on Pipe

AERIAL SURVEY PLANE COORDINATE POSITIONS

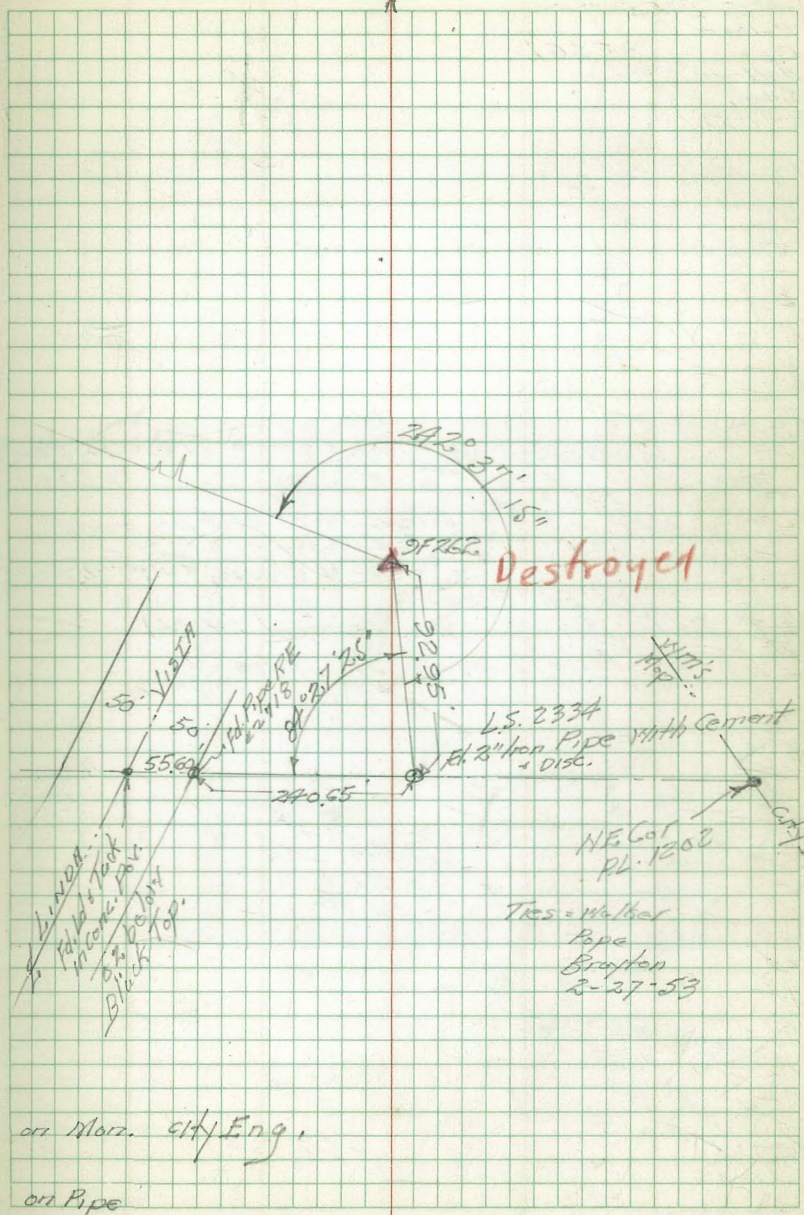
TIES
 Walker
 Pope 9F 262
 Hoffman
 Bishop
 3-17-52

"SOLEDAD"

9F 262. Fd. Pipe
 Set Conc. Mon stamped 9F 262
 Elev. = 446.91

Sub-line
 N Line PL. 1202 A
 MAGNOLIA
 DOWNS
 Sub. Map # 2864

0.50 447.37
 0.46 446.91
 446.87



on Moz. city Eng.
 on Pipe

Ties = Walker
 Pope
 Bishop
 2-27-53

✓ AERIAL SURVEY PLANE COORDINATE POSITIONS

TIES

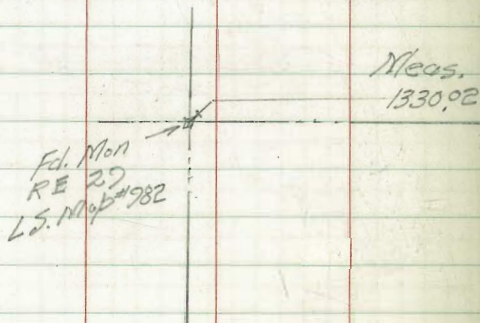
Walker
Pope 2F 261
Huffman
Bishop
3-17-52

Ties Made 3-9-53

Walker
Pope
Broyden

Note: We
Top Graded off. - Reset from Ties as shown
TO EXACTLY SAME LOCATION,
But Elev. Will Not be good
C.B. Walker
Johns, Elmore, June 19-1956

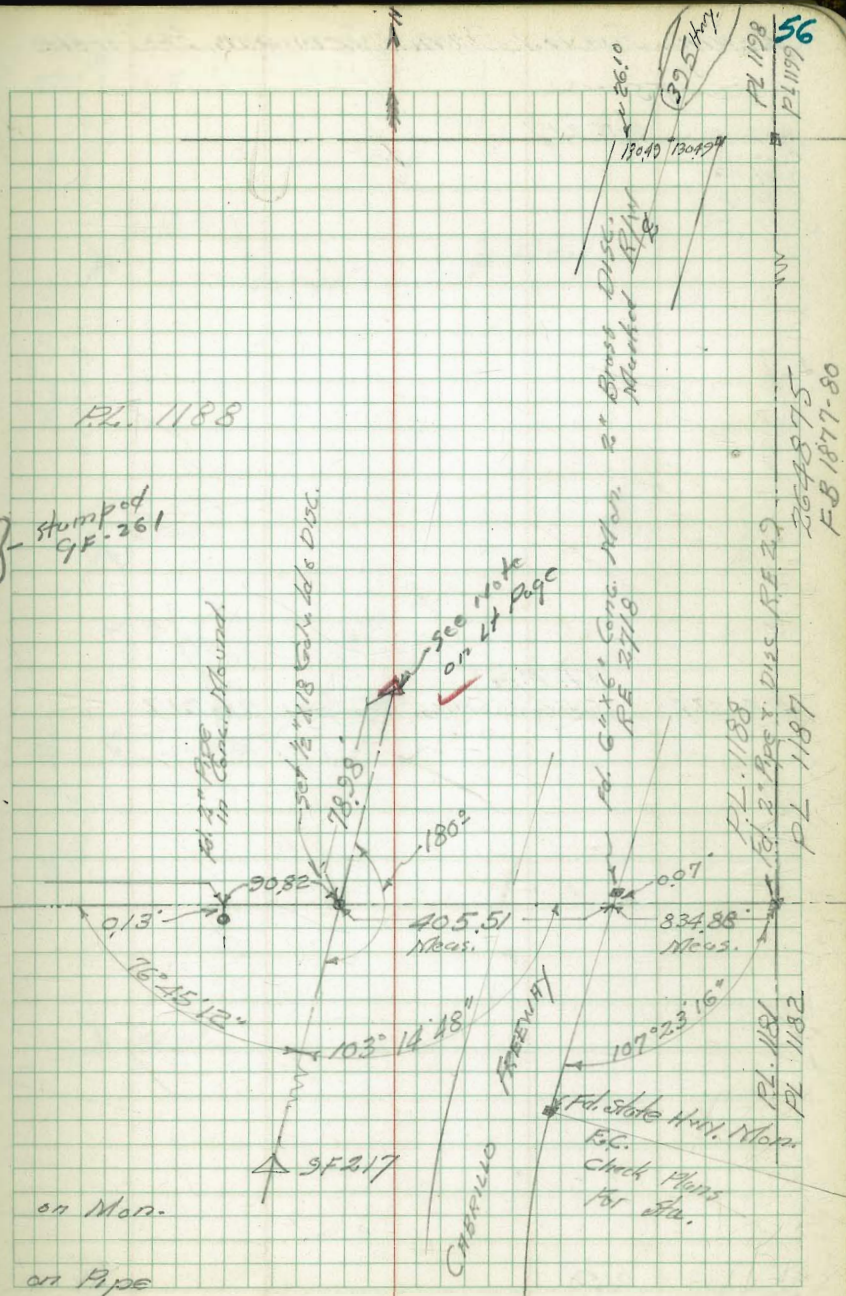
Fd. Pipe.
2F 261 Set Conc. Mon. stamped 2F 261
ft. of Judson St. on knoll



2F 261

013

012



on Mon.
on Pipe

Std. State Hwy. Mon.
B.C.
Chk. Mon.
for Sta.

264875
F.B. 1877-80

AERIAL SURVEY PLANE COORDINATE POSITIONS

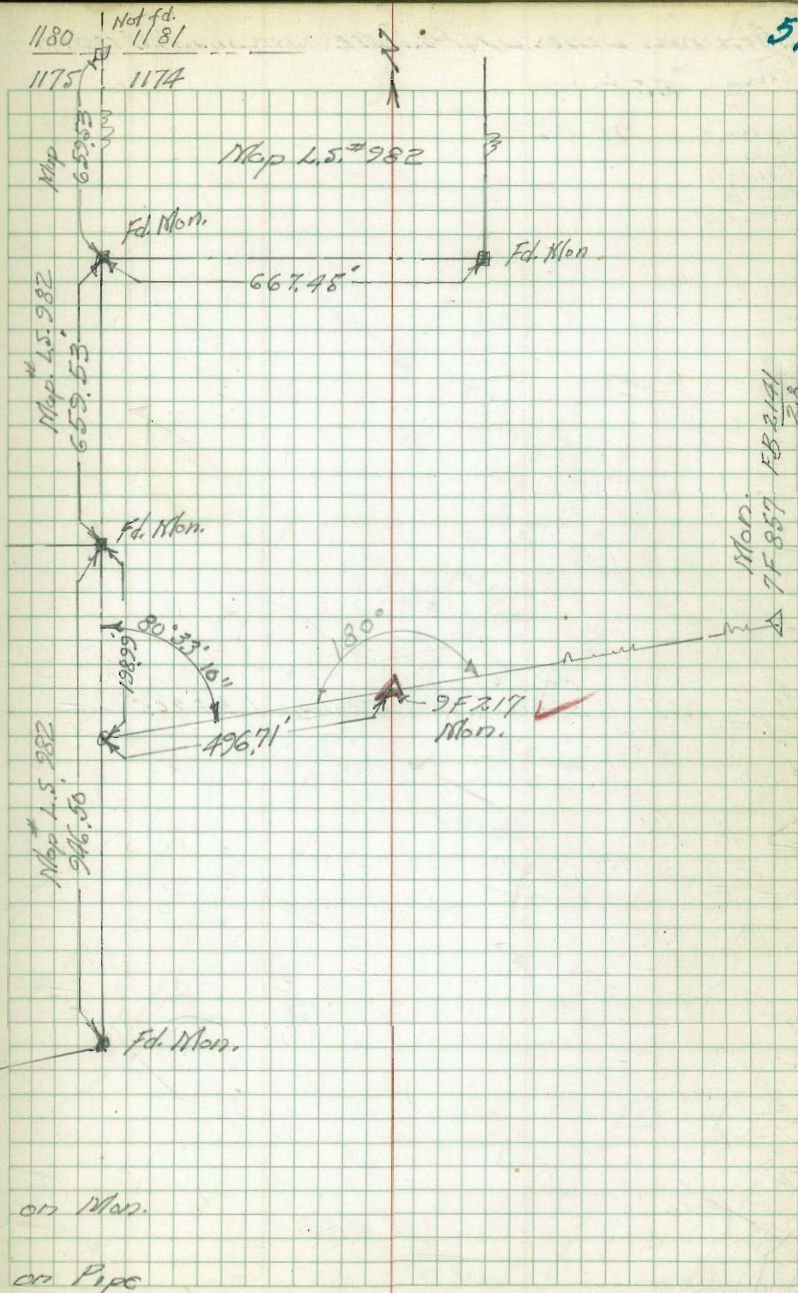
TIES

Walker 9F 217
 Pope
 Huffman
 Gistrop
 3-17-52

9F 217 Fd. Pipe
 Set Conc. Mon. stamped 9F 217

0.50

0.61



on Mon.
 on Pipe

AERIAL SURVEY PLANE COORDINATE POSITIONS

~TIES~

Walker 9F 265
 Pope
 Hoffman
 Bishop
 3-17-52

9 F 265 Fd. Pipe, set Conc. Mon. stamped 9F 265

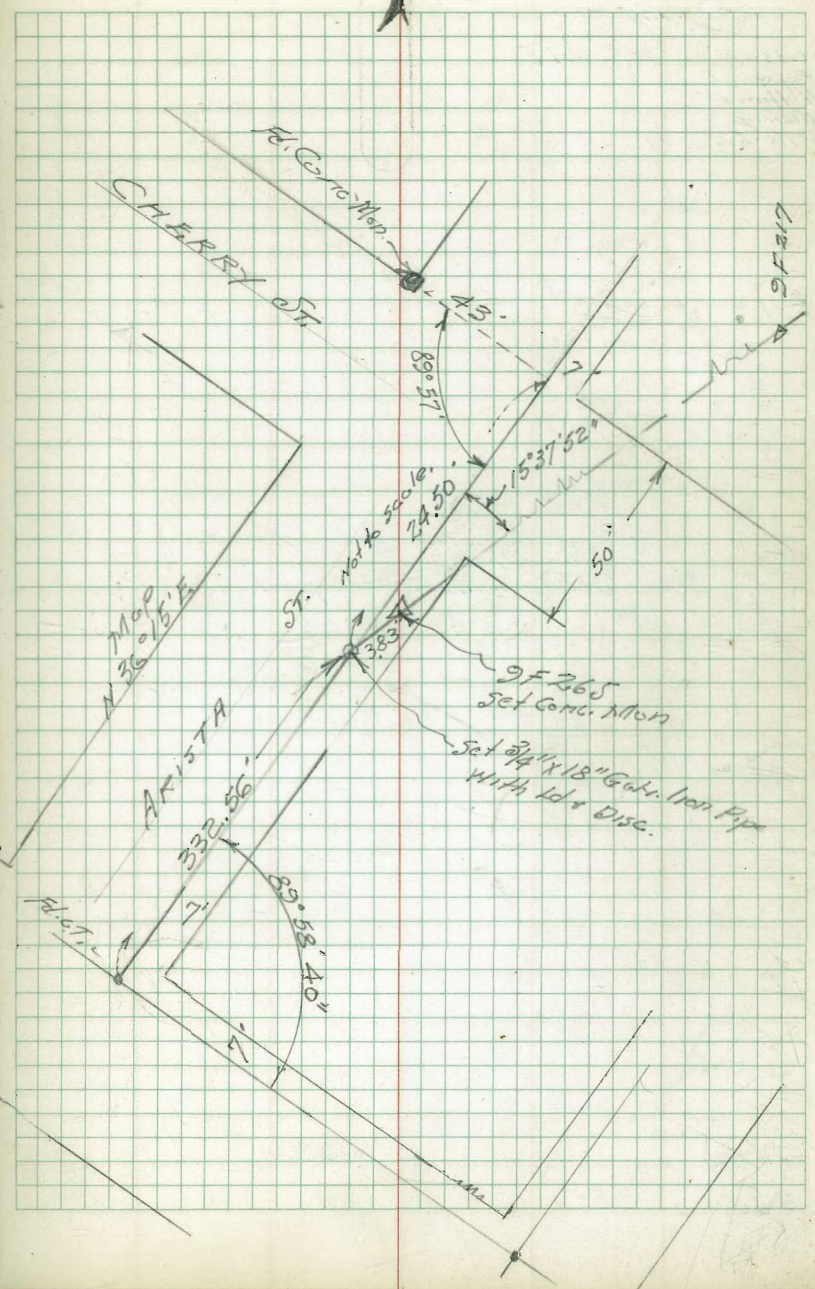
on Mort.

0.43

on Pipe

0.40

PIKE ST.



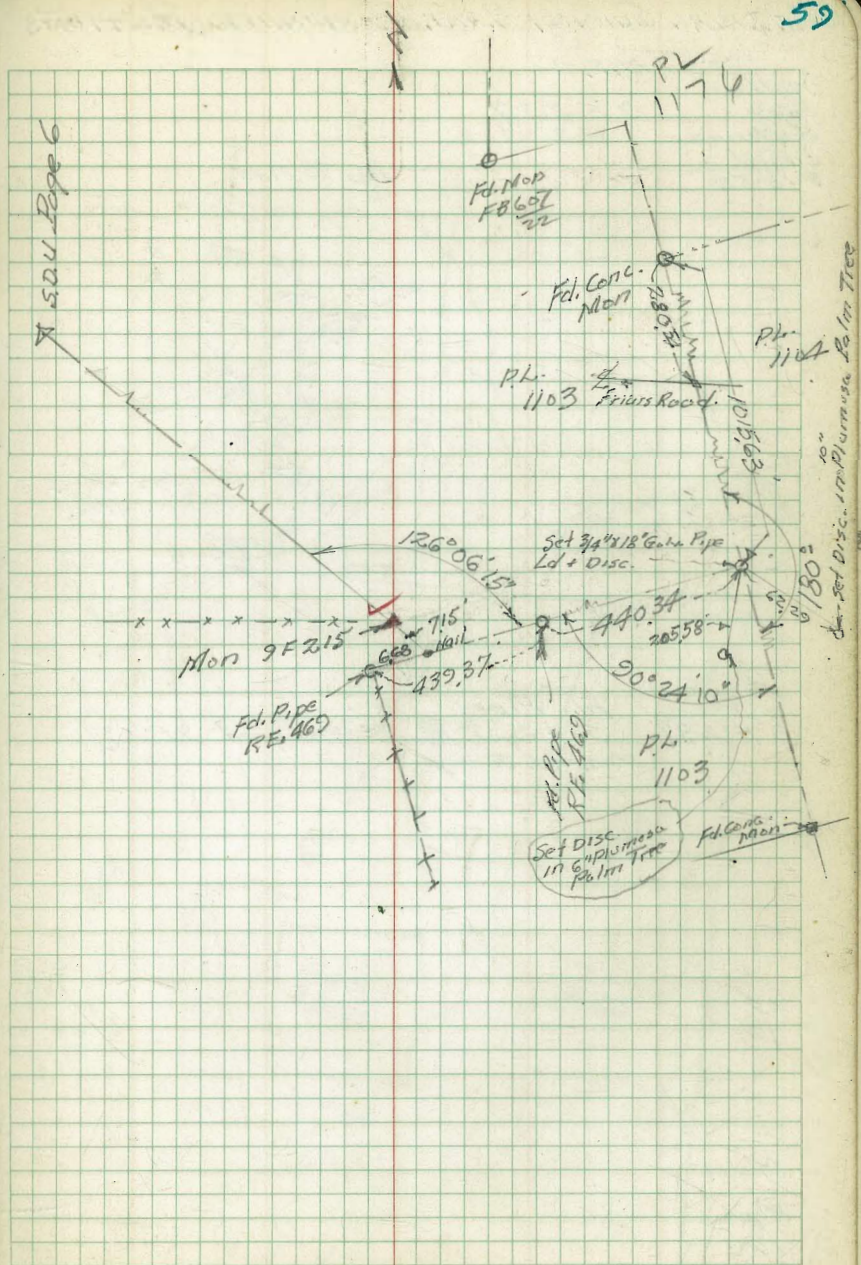
AERIAL SURVEY PLANE COORDINATE POSITIONS

TIES

Walker 9 F 215
 Pope
 Hoffman
 Bishop
 3-18-52

9 F 215 Fd. Pipe
 Set Conc. Main Stumped 9 F 215

Mon. 033
 Pipe 035



AERIAL SURVEY PLANE COORDINATE POSITIONS

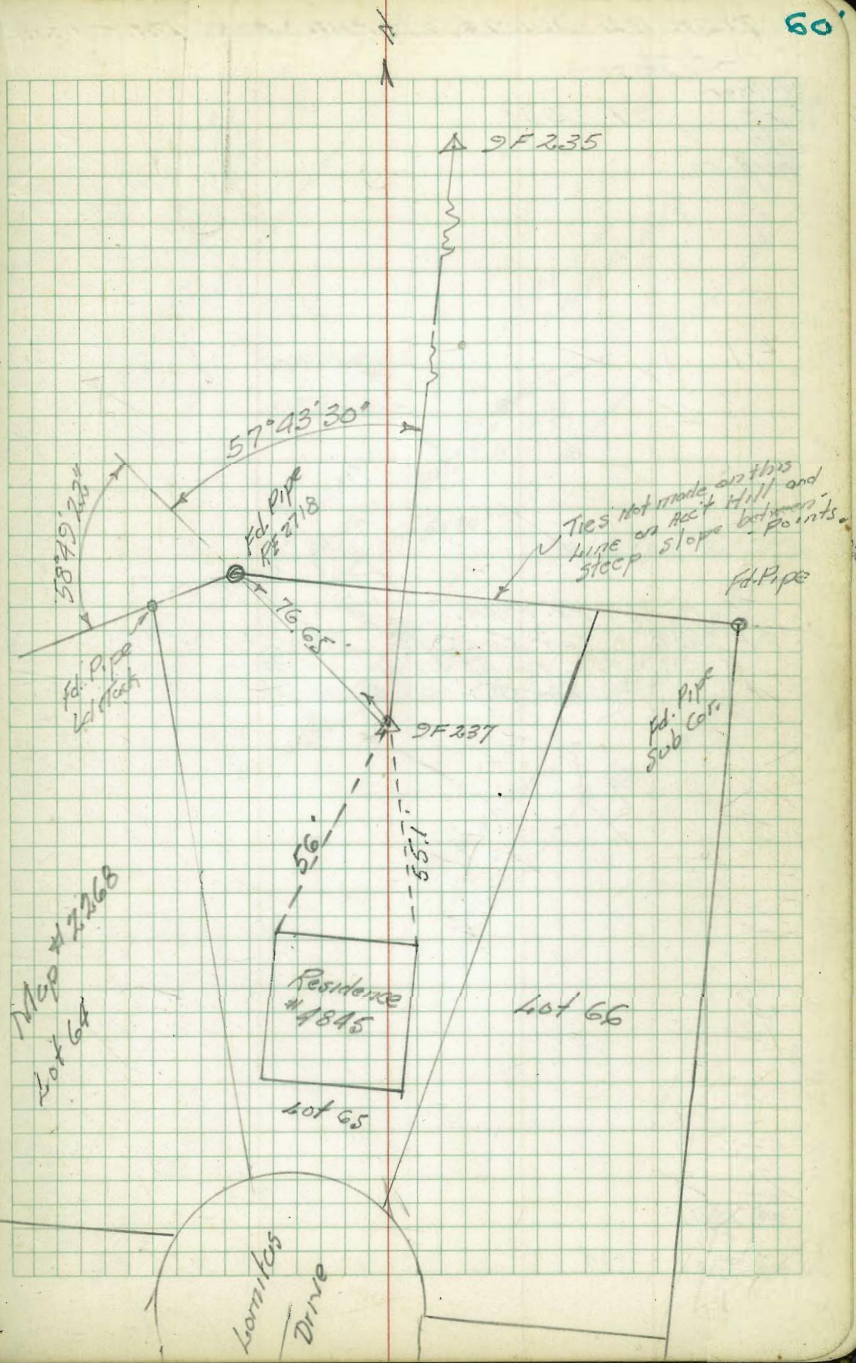
Ties

Walker
 Pope 2 F 237
 Hoffman
 Bishop
 3-18-52



Fal. Pipe.
 2 F 237 Set Conc. Mon. Stamped 9F 237
 (Mon. in S. Terrace)

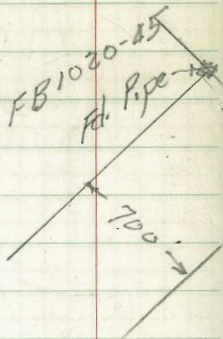
Mon 0.90
 Pipe 0.30



AERIAL SURVEY PLANE COORDINATE POSITIONS

Ties -

Walker
Pipe 9F 238
Hoffman
Strop
3-13-52



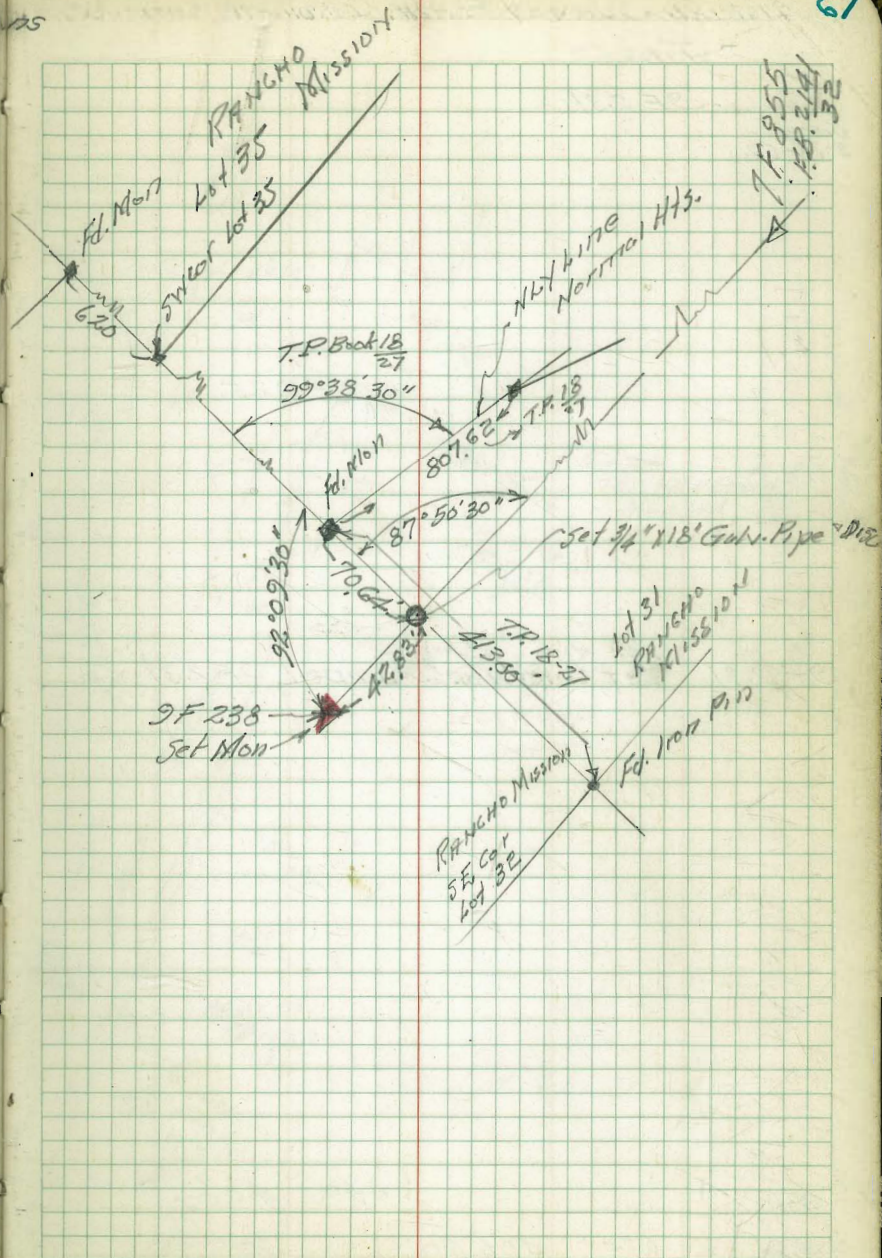
Fd. Pipe,
9F 238 Set Conc. Mon. Stamped 9F 238
Approx 600' NW from NW end 34th St.
on Same Ridge as Residence # 5174 24th St.

on Mon.

032

on Pipe

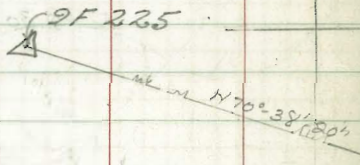
034



AERIAL SURVEY PLANE COORDINATE POSITIONS

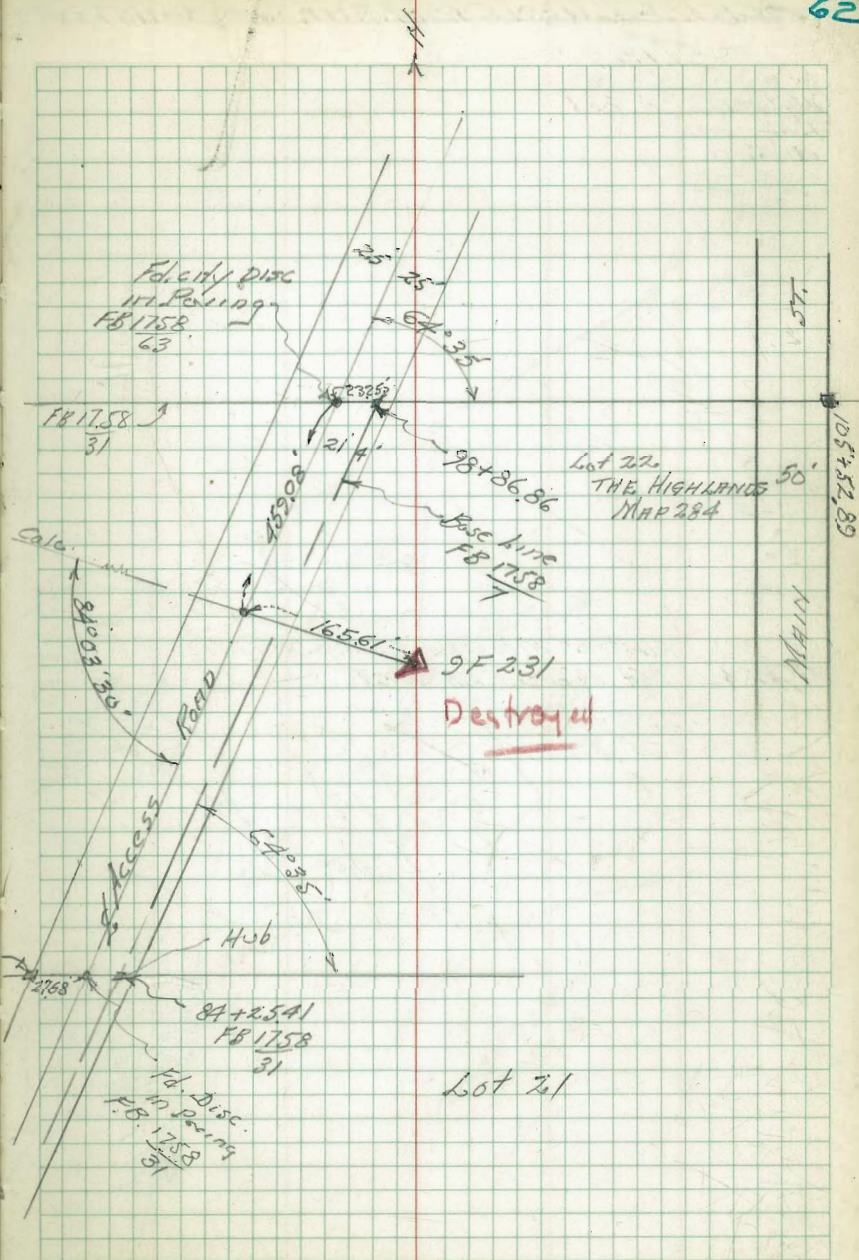
TIES

Walker
Pipe
Hoffman 9F 231
Bishop
3-18-52



9F 231 Fd. Hub.
Set Conv. Mon stamped 9F 231

Mon	0.70	406.10
Pipe	0.20	406.50
		406.30



57'
105° 52' 89
50'
MAIN

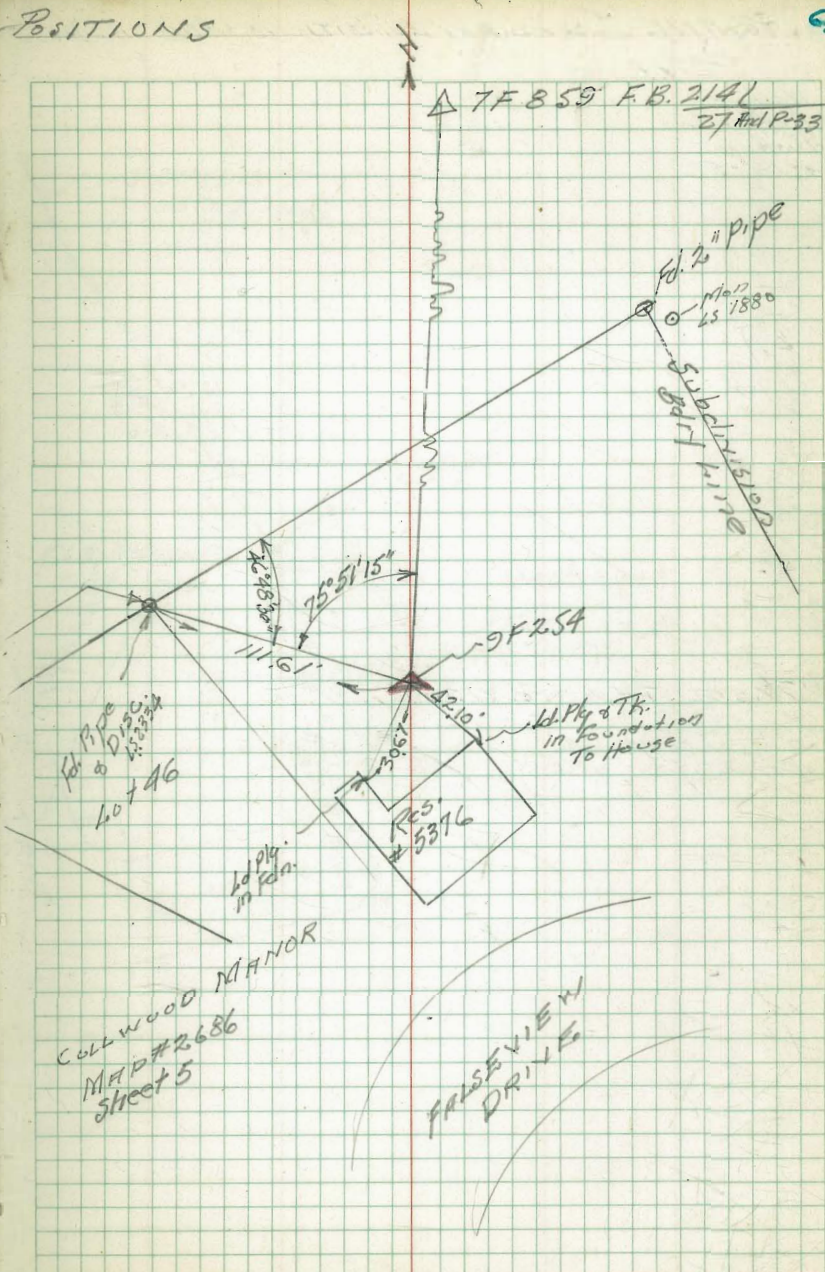
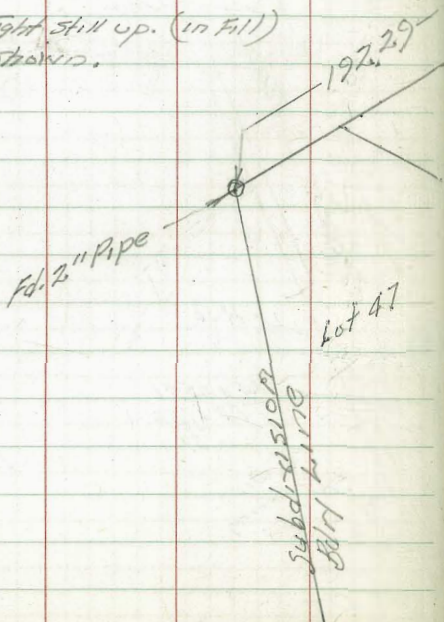
AERIAL SURVEY PLANE COORDINATE - POSITIONS

~ TIES ~

Mulker
Huffman
Bishop
4-14-52

9F 254 Fd. 1"x2" with Sight still up. (in fill)
Set Ref. as shown.

2,22,952.2311
1,749,454.42 E



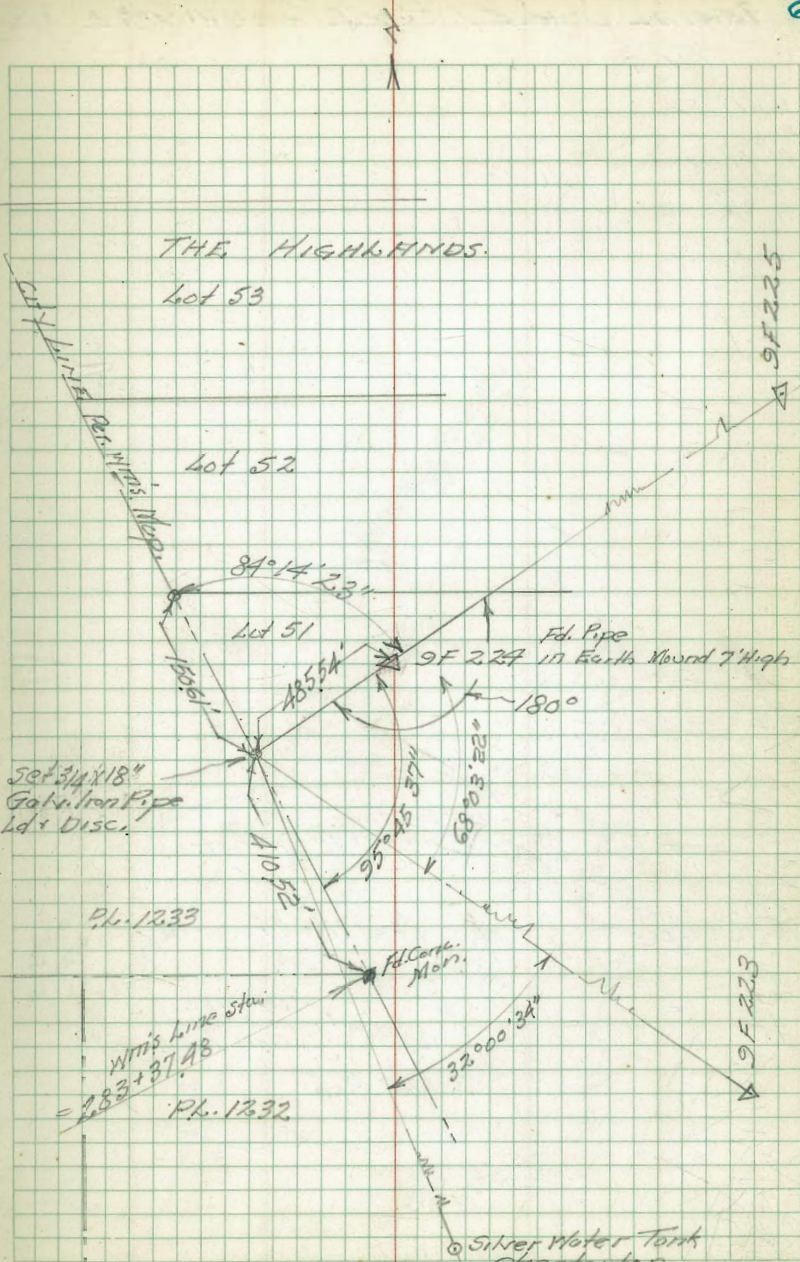
AERIAL SURVEY PLANE COORDINATE POSITIONS

TIES

Walker
Huffman
Bishop
4-18-52

C.I. Fd. Pipe in Earth Mound 7' High.
9F 224 Nothing Set.

PL. 1231



THE HIGHLANDS.
Lot 53

Lot 52

Lot 51

Set 3/4 x 18"
Galv. Iron Pipe
Ld + Disc.

PL. 1233

Wm's Line Stair
= 283 + 37.98

PL. 1232

Fd. Cerk.
Moun.

Silver Water Tank
Chesterton

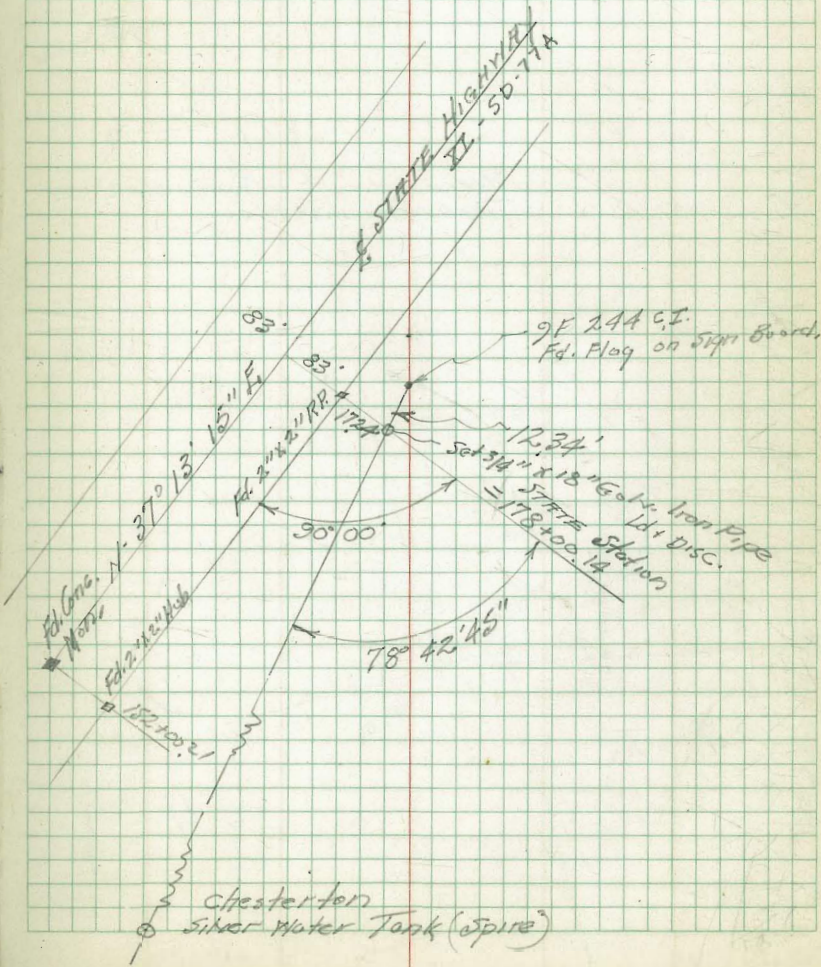
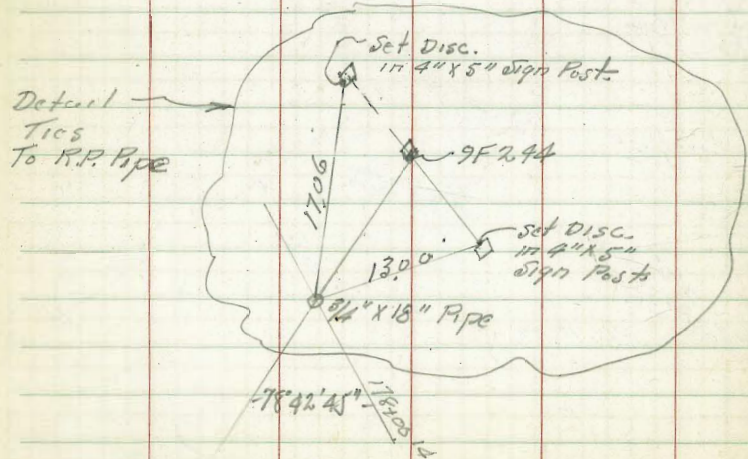
↑ see P 68

AERIAL SURVEY PLANE COORDINATE POSITIONS

TIES

Walker
 Pope
 Haffman
 Station
 9-22-52

9 F 244 C.I.

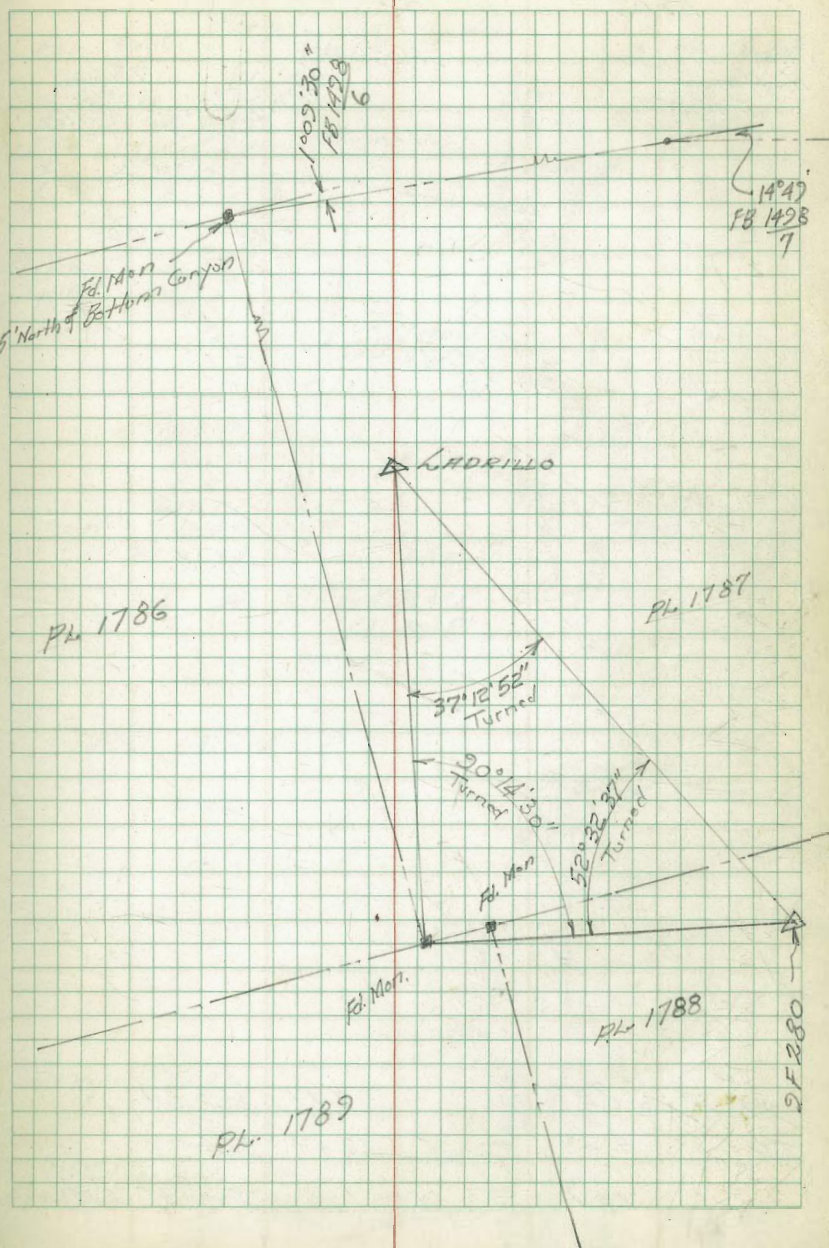


AERIAL SURVEY PLANE COORDINATE POSITIONS

TIES

Walker
 Pope
 Huffman
 Bishop
 4-23-52

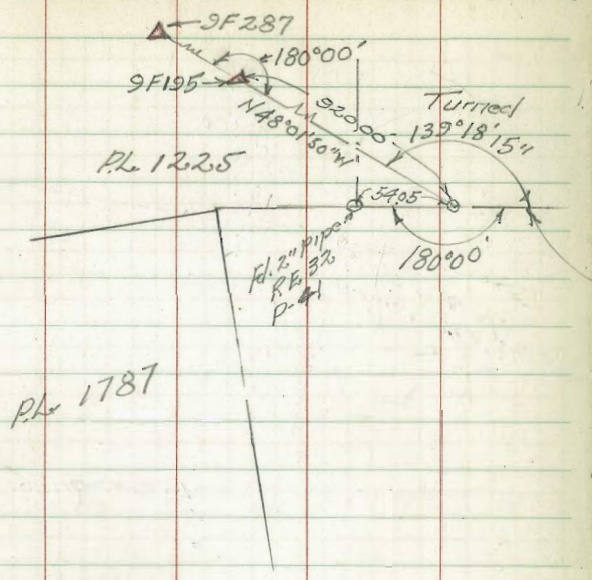
LADRILLO Fd. U.S. CONST & GEODETIC
 TRIANG. MON.



AERIAL SURVEY PIPE COORDINATE POSITIONS

TIES

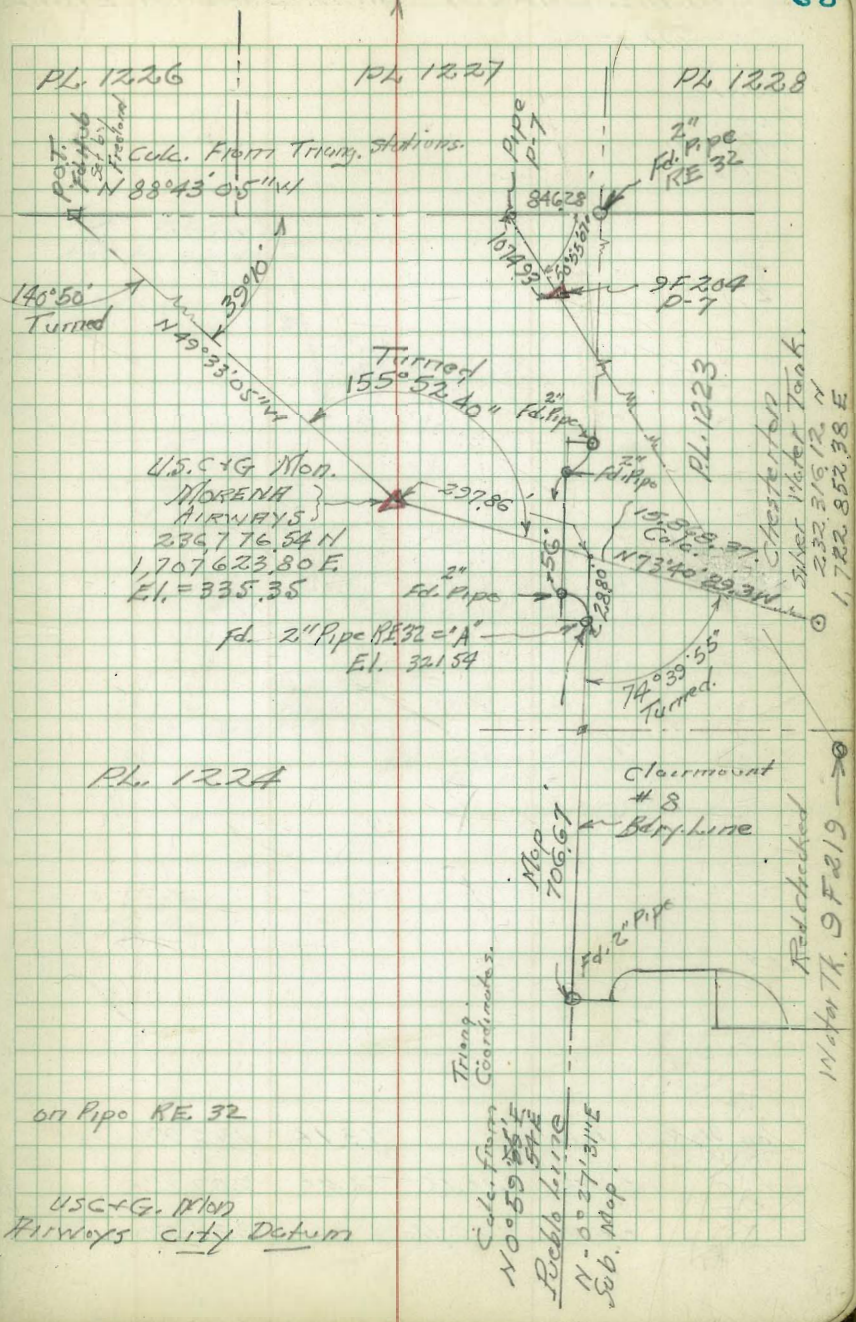
Walker, Pope
Huffman
5-16-52



PL 1787

on Pipe "A"		7.41	321.54	
TR	9.20	328.95	1241	324.75
	1.81	337.16		335.35

B.M. Morena



on Pipe RE 32
U.S.C+G. Mon
AIRWAYS city Datum

Clearmont #8
Brylune
Map 706.67
2\"/>

Reached
W. of T. 9 F 219

Triang. Coordinates.
Calc. from
N 0° 59' 28\"/>

Reckoning
N 0° 27' 31\"/>

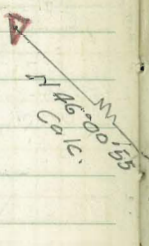
S. 6. Map.

AERIAL SURVEY PLANE COORDINATE POSITIONS

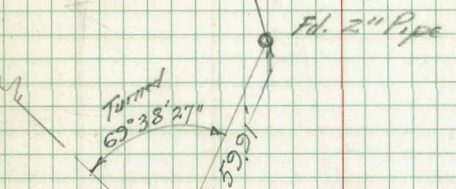
on TIES on

Walker
 Pope
 Huffman
 5-21-52

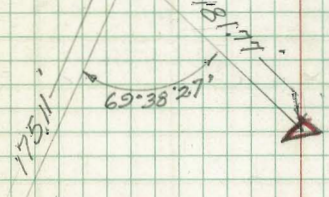
LADRILLO



MAP # 2709
 BAY PARK VISTA
 Subdivision
 Line



Set 3/4" 118" Galv. Pipe Elev. 196.99
 with lead & disc.



2"
 f.d. Pipe

B.M. on Man Back Bay

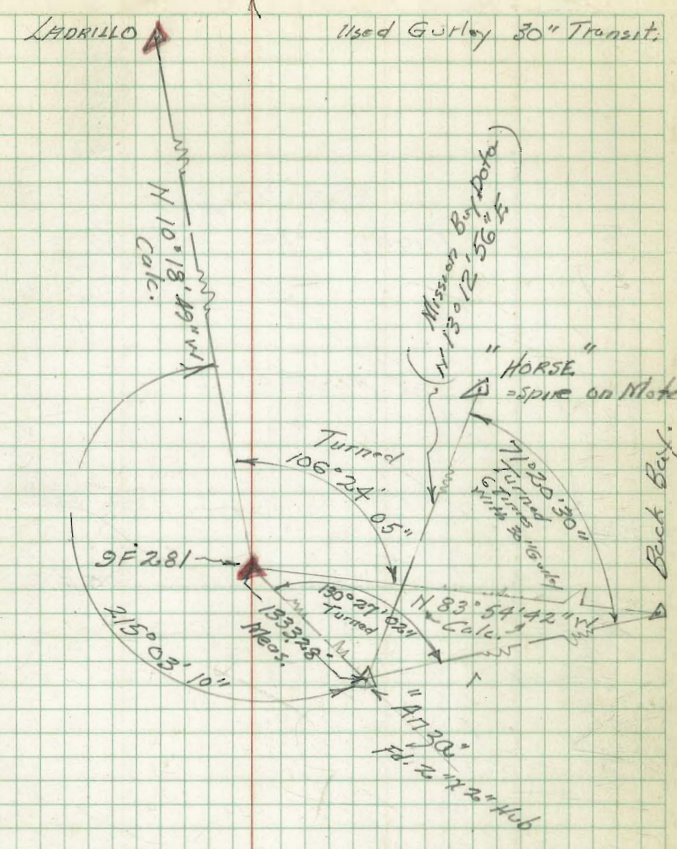
on 3/4 Galv. Pipe		13.16	196.99
043	210.15	12.40	209.72
062	222.12		221.50

AERIAL SURVEY PLANE COORDINATE POSITIONS

TIES in
Walker
Pope
Huffman
5-21-52

2 F 281 Fed. Pipe 3' Deep
left in.
Set Conc. Mon. 0.5' Below Surface
Stamped "2F281"

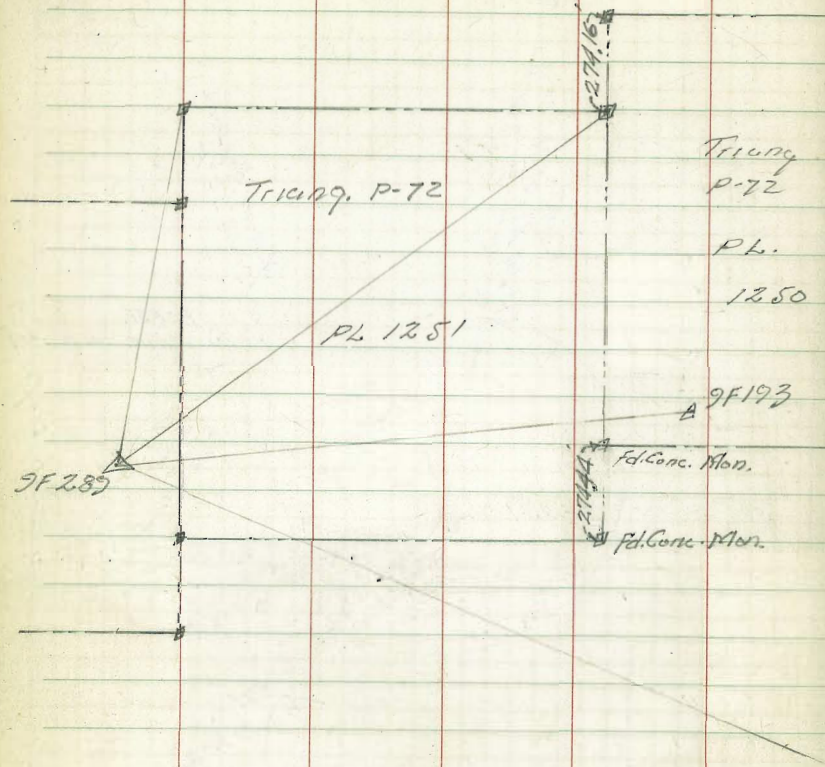
8.07 1061 5.36 2.54



60 Mon 2F281
BM
5' 07" Pipe 2F281

~ AERIAL SURVEY ~

PL. 1250, 1251



Triang.
P-72

Triang. P-72

PL.
1250

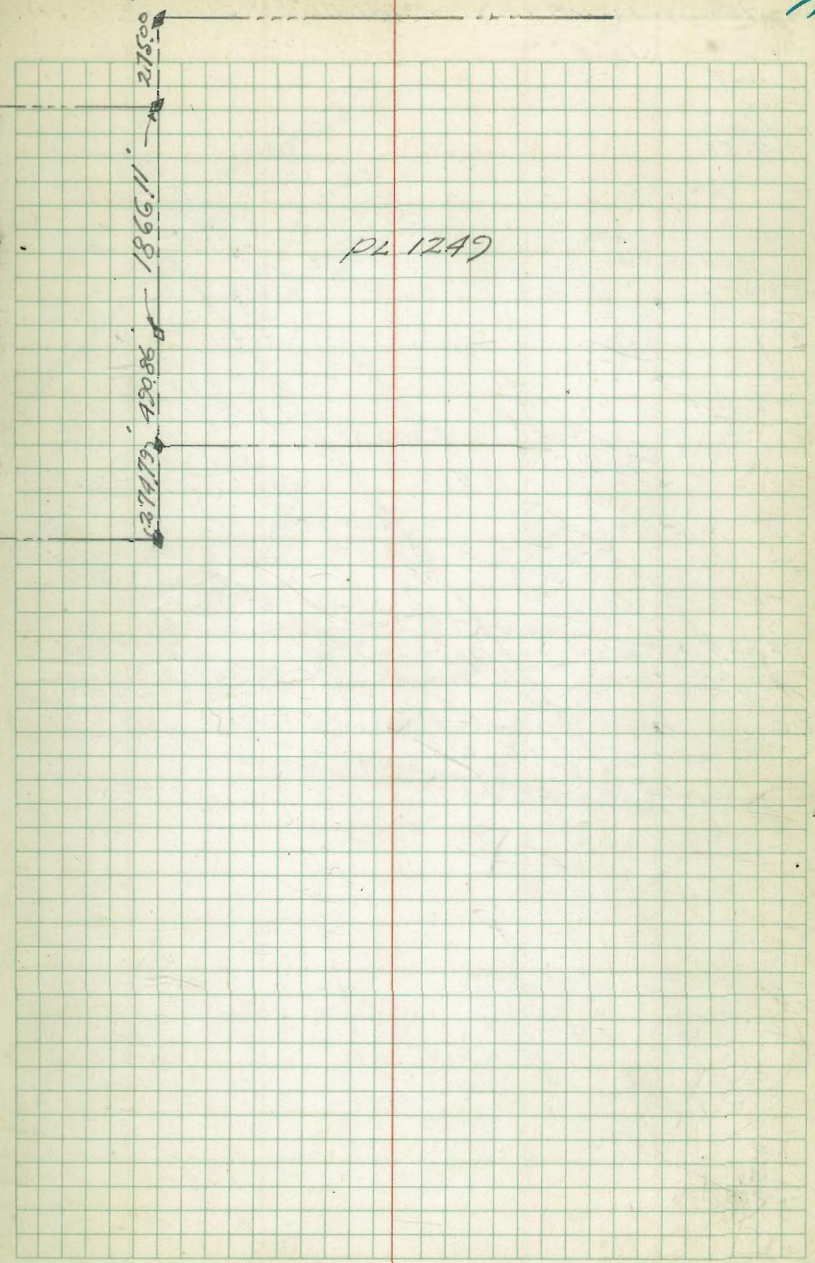
PL 1251

9F193

fd. Conc. Mon.

fd. Conc. Mon.

9F289



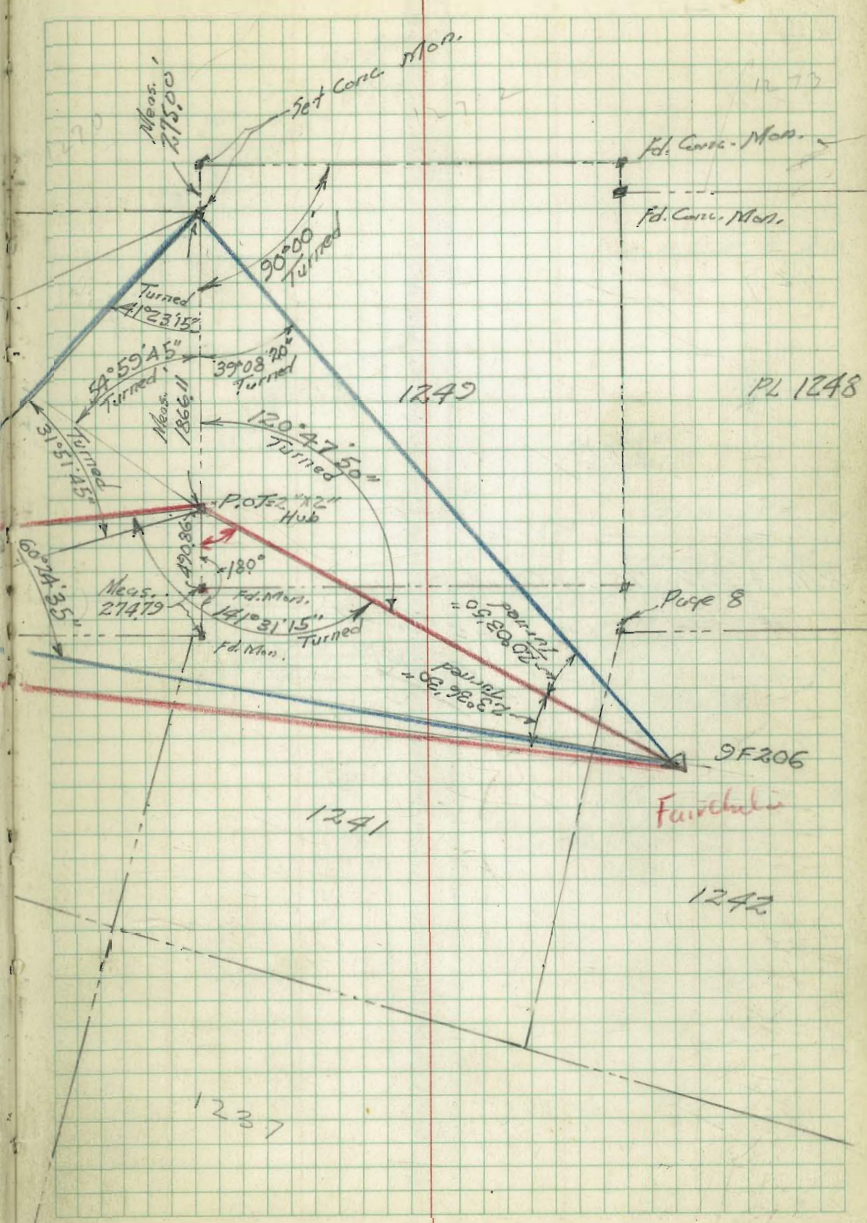
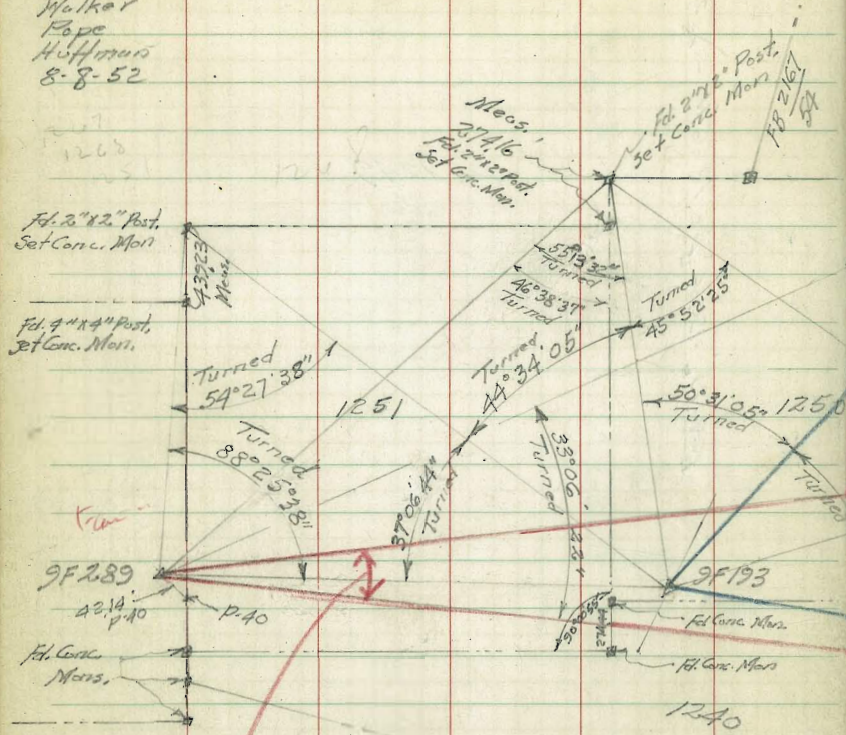
27500
18661
27413 42086

PL 1249

AERIAL SURVEY - PLANE COORDINATE POSITIONS

TIES

Walker
Pope
Huffman
8-8-52



1777

1239

1238

1237

1241

1242

PL 1248

Page 8

Fairchukin

AERIAL SURVEY PLANE COORDINATE POSITIONS

TIBS

ORCLTT

73

B.M. A-322 USC & GS

7F 855 - A
FB 2141
32

m

Set by
with
County
Pipe
50' 40" 40"

20° 41' 30"

MISSION FORCE ROAD
1884137
20289
(TUBBEL ST)

LASSEN AVE

Ed. Spike -
by Gas Co.

GLACIER AVE

27.34
Ed. U.S.C. & G.S. No. 100
BMA 322
N 227,339.97
E 1,739,761.20
E1. 99.94

434° P.P. 0.00
Alley

50
50

VANDEVER AVE.

Ed. Large Spike
in Paving

Aerial Survey

Walker
Pope

10-F-702

Bennett
Hunter } Fairchild
crew

1-10-53

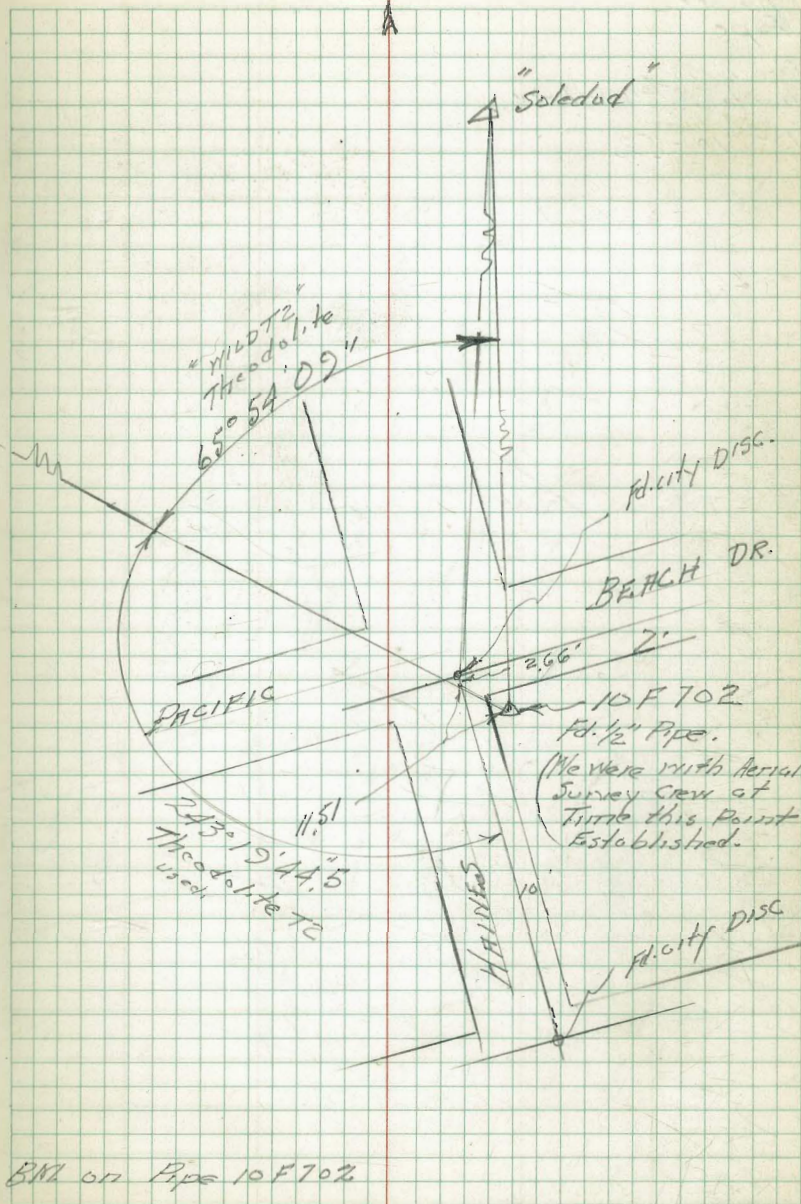
North Cupla Crystal
Pier

SE Pacific Beach DINE
ON DISC Haines

522

185

74



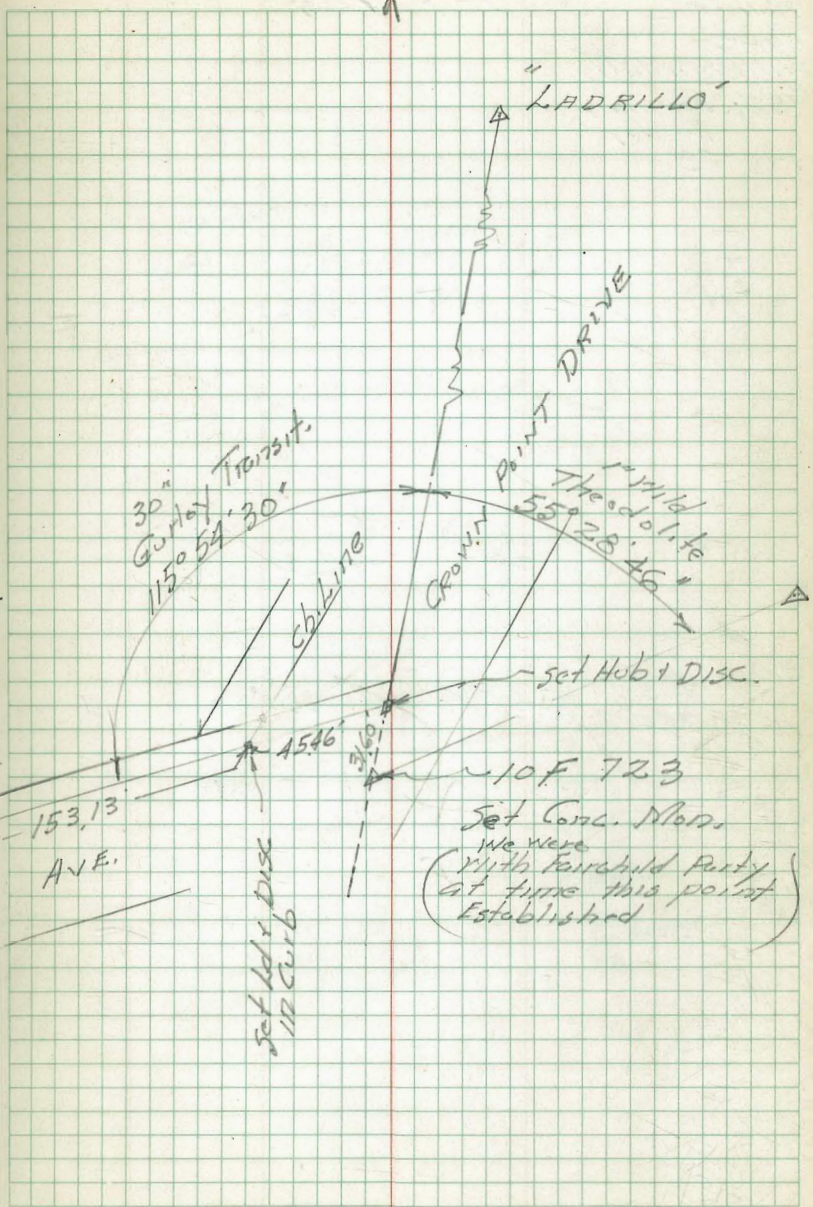
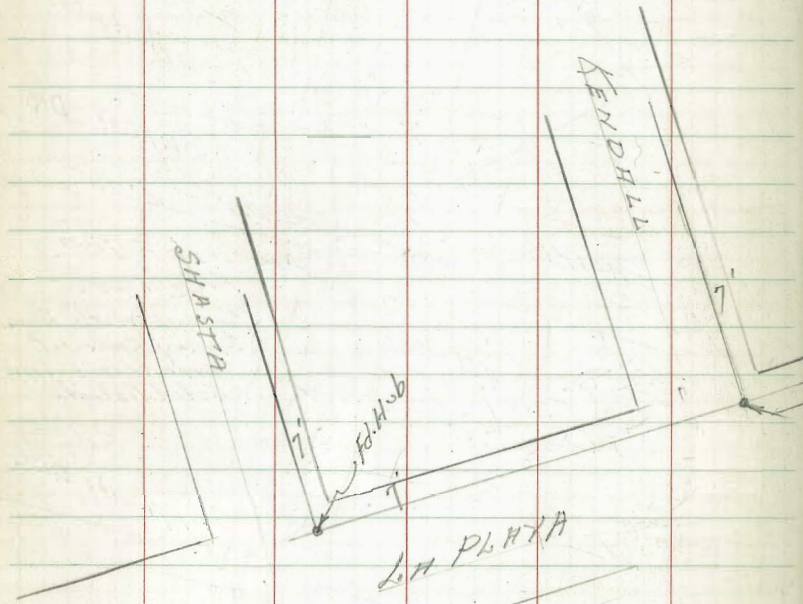
AERIAL SURVEY

Walker
Pope

10-F-723

(Brennan Hunter) = Fairchild crew

1-10-52



10F 723
Set Conc. Mark.
We were
with Fairchild Party
(at time this point
Established)

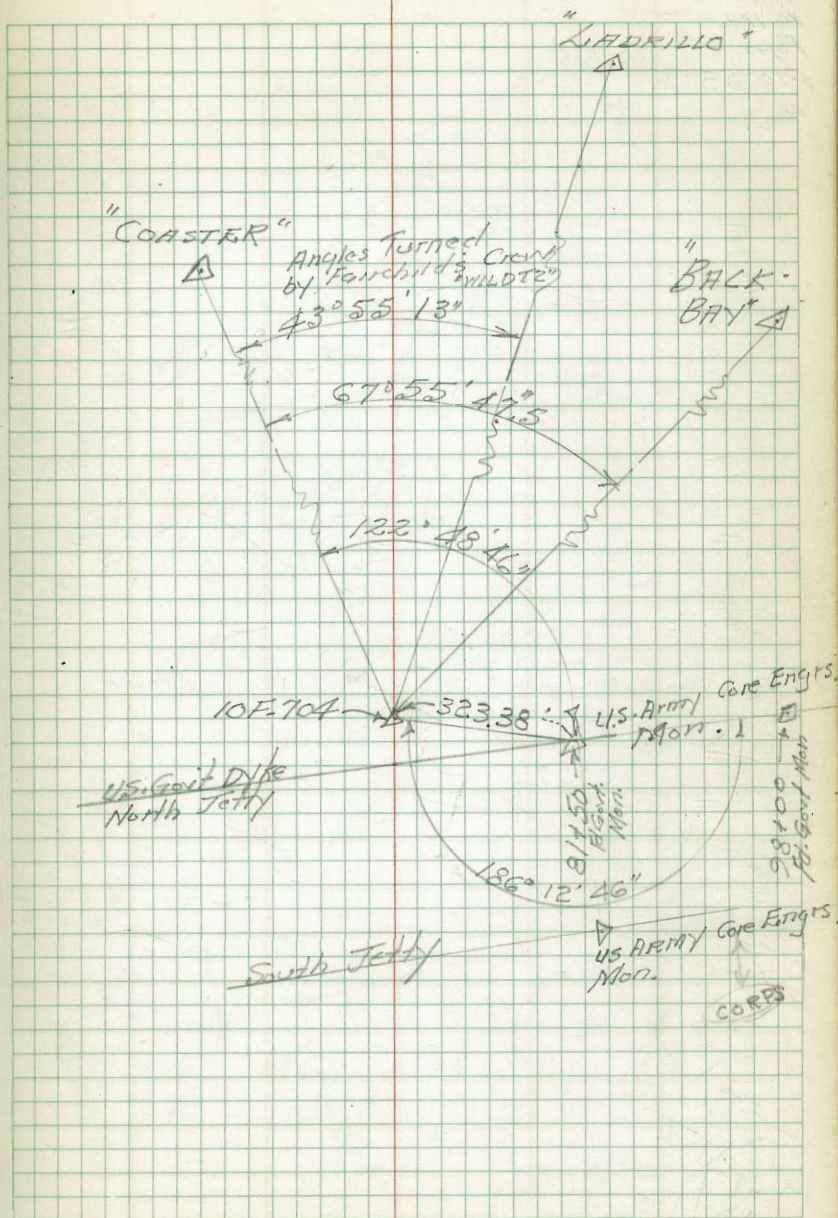
AERIAL SURVEY

Walker
Pope -
with Fairchild's
Crew - Brennan
Hunter
1-10-53

10 F. 704

76

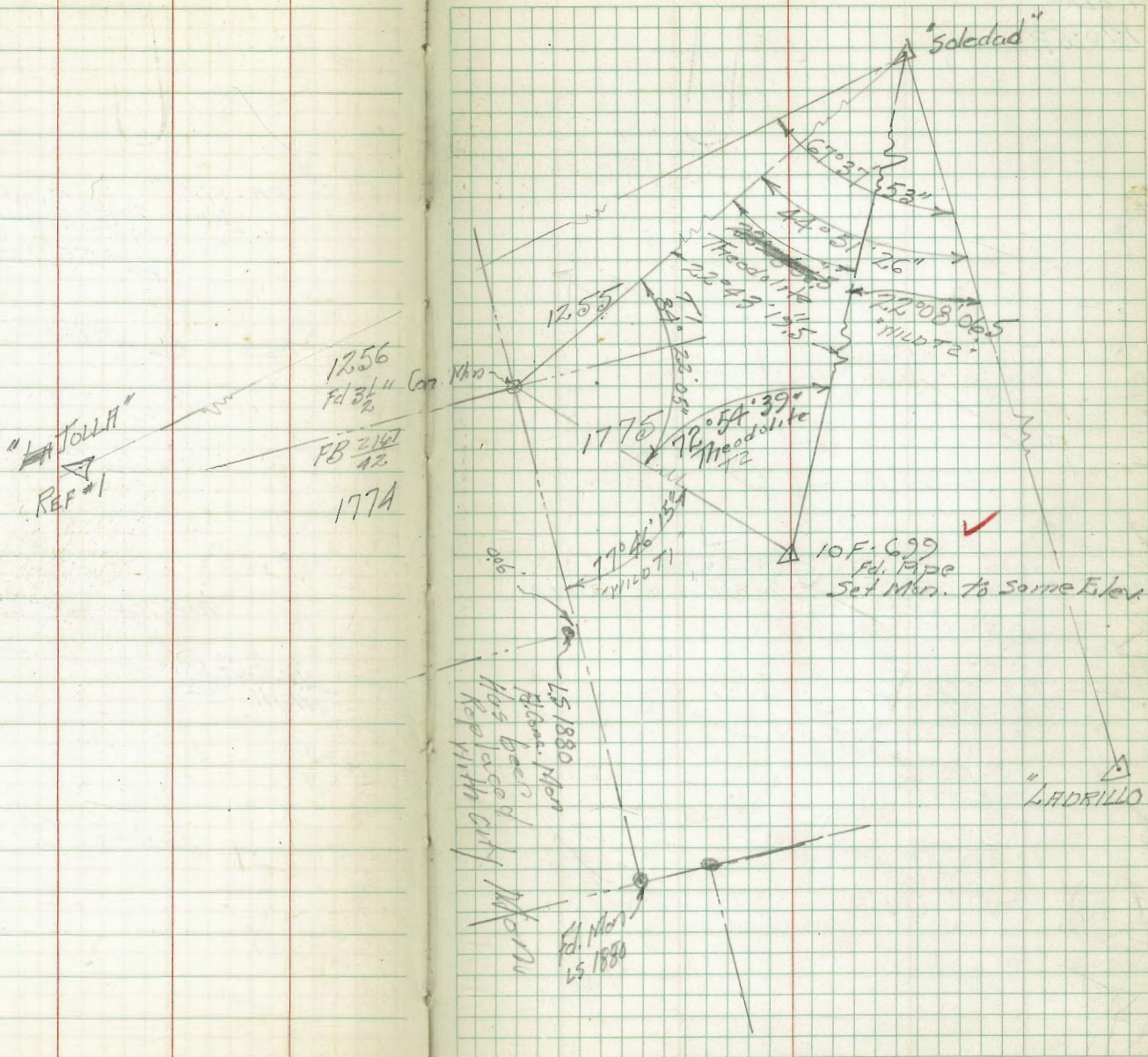
10 F 704 Set Comp. MOD.



AERIAL SURVEY

Walker
Pope
1-10-53
Pam.

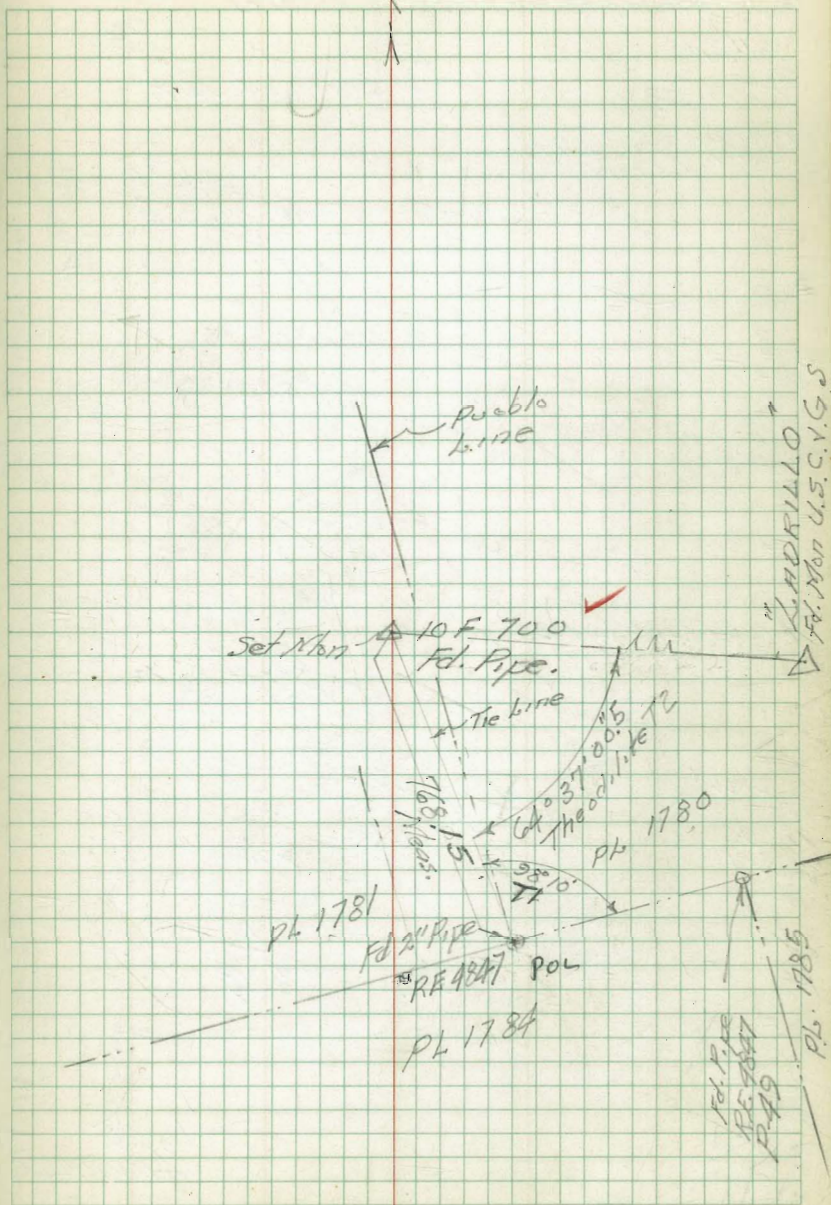
77



Walker AERIAL SURVEY
Pope 10F-700
1-10-53

Fd 1/2" Pipe.
10F 700 Set Man. to Same Elev.

78

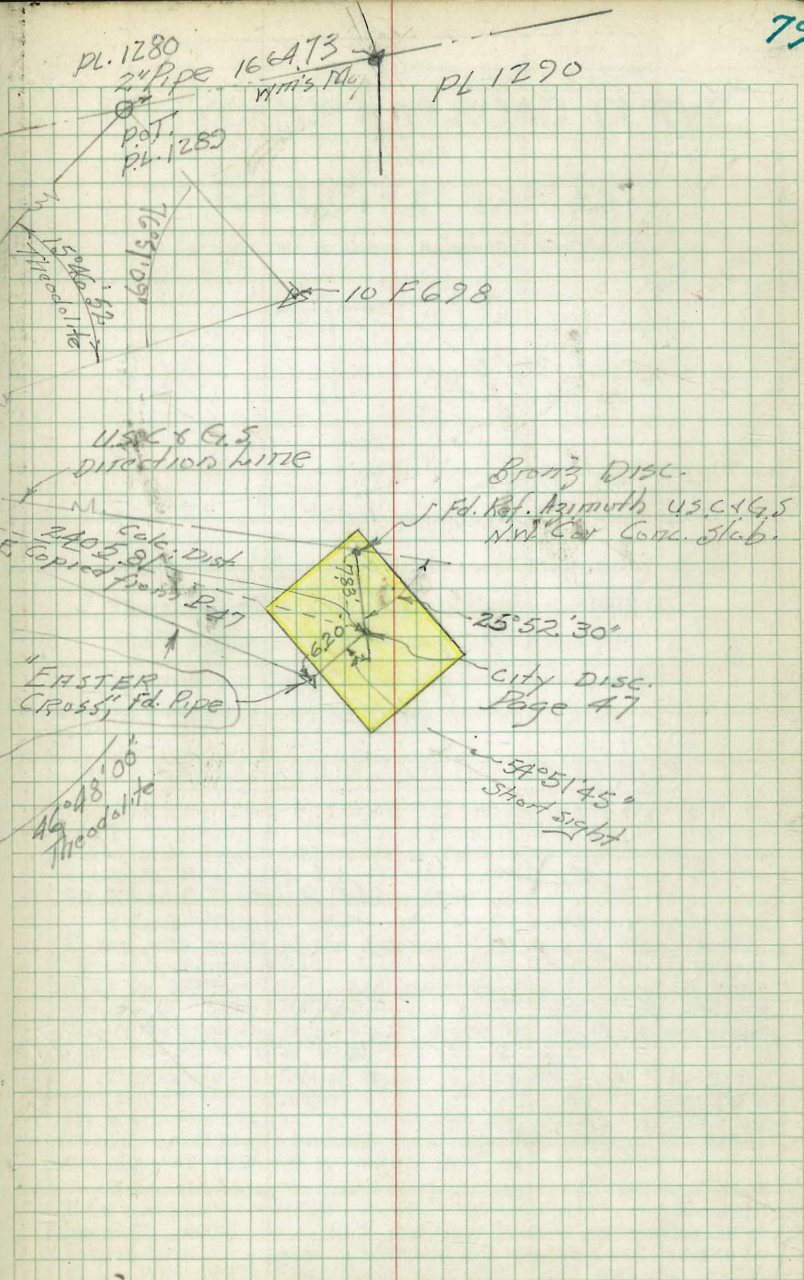
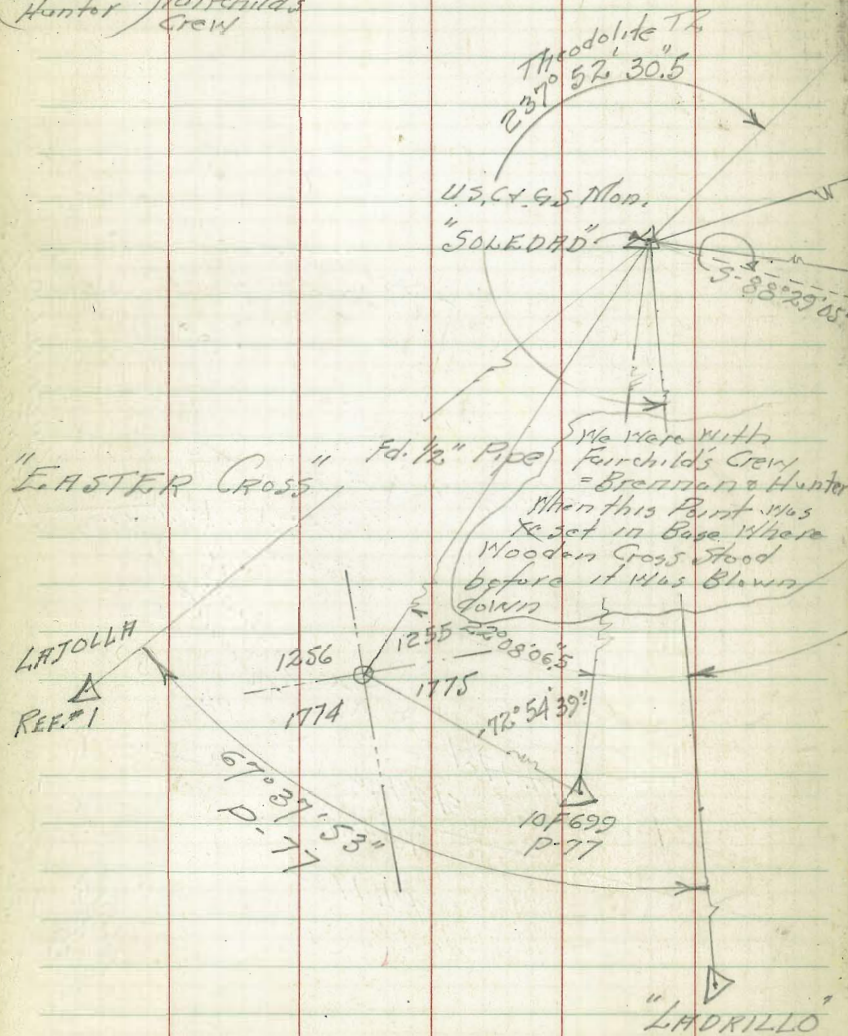


AERIAL SURVEY

Plane Coordinate Positions.

Walker TIES ~ "EASTER CROSS"
 Pipe 1-17-53 on Soledad Mt.

(Brennan) Fairchild's
 Hunter Crew



80

AERIAL SURVEY

Walker
alone

PLANE COORDINATE POSITIONS

2-26-53

Fd. Pipe

9F 228 Set Conc. Man To 929 Above = 393.59

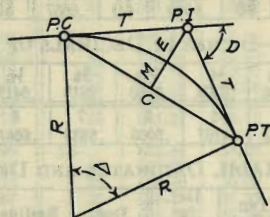
Fd. Pipe.

9F 240 Set Conc. Man To same Elev. = 362.77

I

DIETZGEN'S RAILROAD CURVE AND REDUCTION TABLES

Copyright, 1914, by Eugene Dietzgen Co., New York City



CURVE FORMULAS

- Radius $= R = \frac{50}{\sin \frac{D}{2}}$ (1) Degree of Curve $= D$ and $\sin \frac{D}{2} = \frac{50}{R}$ (2)
 Tangent $= T = R \tan \frac{\Delta}{2}$ (3) Length of Curve $= L = 100 \frac{\Delta}{D}$ (4)
 Middle ordinate $= M = R(1 - \cos \frac{\Delta}{2})$ (5) $= R \text{vers} \frac{\Delta}{2}$ (6)
 External $= E = T \tan \frac{\Delta}{4}$ (7) $= R \div \cos \frac{\Delta}{2} - R$ (8) $= R \text{exsec} \frac{\Delta}{2}$ (9)
 Long Chord $= C = 2 R \sin \frac{\Delta}{2}$ (10) $\Delta =$ Central Angle

EXPLANATION AND USE OF TABLES

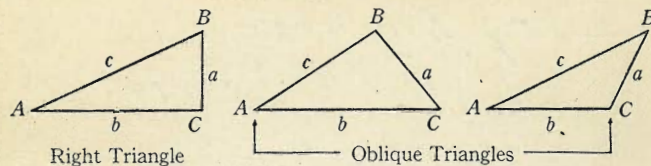
Stations.—Given P. I. = Sta. 161+60.35 to find Sta. of P. C. and P. T. $\Delta = 62^\circ 10'$ $D = 8^\circ 20'$. From Table IV for 1° curve $T = 3454.1$ and $\div 8\frac{1}{3} = 414.49$ ft. From Table V correction = .36 or $T = 414.85$ ft. P. C. = Sta. P. I. $- T = 157 + 45.50$. Also from (4) $L = 746.00$ and P. T. = Sta. P. C. $+ L = 164 + 91.50$.

Offsets.—Tangent offsets vary (approximately) directly with D and with square of the distance. Thus tangent offset for Sta. 158 on above curve is 2.16 ft. found as follows. From Table III tangent offset for 100 ft. = 7.27 ft. Distance = 158 - Sta. P. C. = 54.50, hence offset = $7.27 (54.50 \div 100)^2 = 2.16$ ft. Also square of any distance divided by twice the radius equals (approximately) the distance from tangent to curve. Thus $(54.50)^2 \div (2 \times 688.26) = 2.16$ ft.

Deflections.—Deflection angle = $\frac{1}{2} D$ for 100 ft., $\frac{1}{4} D$ for 50 ft., etc. For c ft. = (in minutes) $.3 \times C \times D^2$ or = defl. for 1 ft. from Table III $\times C$. For Sta. 158 of above curve = $.3 \times 54.5 \times 8\frac{1}{3} = 136.2'$ or $2^\circ 16.2'$, or = $2.50 \times 54.5 = 136.2'$ from Table III. For Sta. 159 deflection angle = $2^\circ 16.2' + 8^\circ 20' \div 2 = 6^\circ 26.2'$, etc.

Externals.—May be found in similar manner to tangents. Thus E for curve above is 115.37. For from Table IV for 1° curve $E = 960.6$ for $8^\circ 20' = 960.6 \div 8\frac{1}{3} = 115.27$ and from Table V correction = .10 or $E = 115.37$ ft. Or suppose $\Delta = 32^\circ$ and E is measured and found to be 42 ft. What is D ? From Table IV $E = 230.9$ and $\div 42 = 5.5$ or $D = 5^\circ 30'$.

TRIGONOMETRIC FORMULÆ



Right Triangle

Oblique Triangles

Solution of Right Triangles

For Angle A. $\sin = \frac{a}{c}$, $\cos = \frac{b}{c}$, $\tan = \frac{a}{b}$, $\cot = \frac{b}{a}$, $\sec = \frac{c}{a}$, $\text{cosec} = \frac{c}{a}$

Given	Required	Formulas
a, b	A, B, c	$\tan A = \frac{a}{b} = \cot B$, $c = \sqrt{a^2 + b^2} = a\sqrt{1 + \frac{b^2}{a^2}}$
a, c	A, B, b	$\sin A = \frac{a}{c} = \cos B$, $b = \sqrt{(c+a)(c-a)} = c\sqrt{1 - \frac{a^2}{c^2}}$
A, a	B, b, c	$B = 90^\circ - A$, $b = a \cot A$, $c = \frac{a}{\sin A}$
A, b	B, a, c	$B = 90^\circ - A$, $a = b \tan A$, $c = \frac{b}{\cos A}$
A, c	B, a, b	$B = 90^\circ - A$, $a = c \sin A$, $b = c \cos A$

Solution of Oblique Triangles

Given	Required	Formulas
A, B, a	b, c, C	$b = \frac{a \sin B}{\sin A}$, $C = 180^\circ - (A+B)$, $c = \frac{a \sin C}{\sin A}$
A, a, b	B, c, C	$\sin B = \frac{b \sin A}{a}$, $C = 180^\circ - (A+B)$, $c = \frac{a \sin C}{\sin A}$
a, b, C	A, B, c	$A+B = 180^\circ - C$, $\tan \frac{1}{2}(A-B) = \frac{(a-b) \tan \frac{1}{2}(A+B)}{a+b}$ $c = \frac{a \sin C}{\sin A}$
a, b, c	A, B, C	$s = \frac{a+b+c}{2}$, $\sin \frac{1}{2} A = \sqrt{\frac{(s-b)(s-c)}{bc}}$ $\sin \frac{1}{2} B = \sqrt{\frac{(s-a)(s-c)}{ac}}$, $C = 180^\circ - (A+B)$
a, b, c	Area	$s = \frac{a+b+c}{2}$, $\text{area} = \sqrt{s(s-a)(s-b)(s-c)}$
A, b, c	Area	$\text{area} = \frac{bc \sin A}{2}$
A, B, C, a	Area	$\text{area} = \frac{a^2 \sin B \sin C}{2 \sin A}$

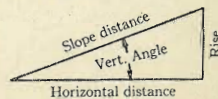
REDUCTION TO HORIZONTAL

Horizontal distance = slope distance multiplied by the cosine of the vertical angle. Thus, for a slope distance of 403.6 ft. and a vertical angle of $4^\circ 40'$ —the cosine of $4^\circ 40'$, taken from a table of natural trigonometrical functions, = .9967, and horizontal distance = $403.6 \times .9967 = 402.27$ ft.

Horizontal distance also = Slope distance minus slope distance times (1 - cosine of vertical angle). Using the same figures as in the preceding example— $\text{Cos } 4^\circ 40' = .9967$, $1 - .9967 = .0033$, $403.6 \times .0033 = 1.33$ ft. Horizontal dist. = $403.6 - 1.33 = 402.27$ ft.

When the rise is known, the horizontal distance may be found by the following approximate rule:—the slope distance less the square of the rise divided by twice the slope distance. Thus, for a slope distance of 372.5 ft., and a rise of 15 ft. the horizontal distance =

$$372.5 - \frac{15 \times 15}{2 \times 372.5} = 372.5 - .30 = 372.2 \text{ ft.}$$



165

Handwritten calculations on the left page:

$$\begin{array}{r} 86016.09 \\ 277 \overline{) 24000000} \\ \underline{360000} \\ 360000 \\ \underline{360000} \\ 3045 \end{array}$$

Return To:-
City Engineer
Civic Center
San Diego
Calif.

10 F 698
2 98 825
253 79 225
237 52 305
1546520
253-39 225

2823
1948

66
914
779
675
520
482
364
264
150
110

86
34
690
249
2