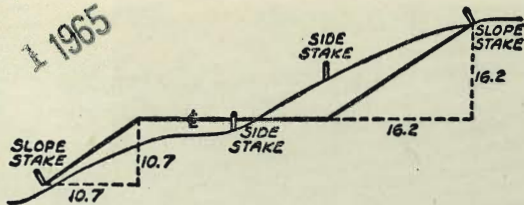


MICROFILMED
JAN 1 1965



DISTANCES FROM SIDE STAKES FOR CROSS-SECTIONING
SLOPE 1 TO 1. ROADWAY OF ANY WIDTH

	0	.1	.2	.3	.4	.5	.6	.7	.8	.9	
0	0.00	0.10	0.20	0.30	0.40	0.50	0.60	0.70	0.80	0.90	0
1	1.00	1.10	1.20	1.30	1.40	1.50	1.60	1.70	1.80	1.90	1
2	2.00	2.10	2.20	2.30	2.40	2.50	2.60	2.70	2.80	2.90	2
3	3.00	3.10	3.20	3.30	3.40	3.50	3.60	3.70	3.80	3.90	3
4	4.00	4.10	4.20	4.30	4.40	4.50	4.60	4.70	4.80	4.90	4
5	5.00	5.10	5.20	5.30	5.40	5.50	5.60	5.70	5.80	5.90	5
6	6.00	6.10	6.20	6.30	6.40	6.50	6.60	6.70	6.80	6.90	6
7	7.00	7.10	7.20	7.30	7.40	7.50	7.60	7.70	7.80	7.90	7
8	8.00	8.10	8.20	8.30	8.40	8.50	8.60	8.70	8.80	8.90	8
9	9.00	9.10	9.20	9.30	9.40	9.50	9.60	9.70	9.80	9.90	9
10	10.00	10.10	10.20	10.30	10.40	10.50	10.60	10.70	10.80	10.90	10
11	11.00	11.10	11.20	11.30	11.40	11.50	11.60	11.70	11.80	11.90	11
12	12.00	12.10	12.20	12.30	12.40	12.50	12.60	12.70	12.80	12.90	12
13	13.00	13.10	13.20	13.30	13.40	13.50	13.60	13.70	13.80	13.90	13
14	14.00	14.10	14.20	14.30	14.40	14.50	14.60	14.70	14.80	14.90	14
15	15.00	15.10	15.20	15.30	15.40	15.50	15.60	15.70	15.80	15.90	15
16	16.00	16.10	16.20	16.30	16.40	16.50	16.60	16.70	16.80	16.90	16
17	17.00	17.10	17.20	17.30	17.40	17.50	17.60	17.70	17.80	17.90	17
18	18.00	18.10	18.20	18.30	18.40	18.50	18.60	18.70	18.80	18.90	18
19	19.00	19.10	19.20	19.30	19.40	19.50	19.60	19.70	19.80	19.90	19
20	20.00	20.10	20.20	20.30	20.40	20.50	20.60	20.70	20.80	20.90	20
21	21.00	21.10	21.20	21.30	21.40	21.50	21.60	21.70	21.80	21.90	21
22	22.00	22.10	22.20	22.30	22.40	22.50	22.60	22.70	22.80	22.90	22
23	23.00	23.10	23.20	23.30	23.40	23.50	23.60	23.70	23.80	23.90	23
24	24.00	24.10	24.20	24.30	24.40	24.50	24.60	24.70	24.80	24.90	24
25	25.00	25.10	25.20	25.30	25.40	25.50	25.60	25.70	25.80	25.90	25
26	26.00	26.10	26.20	26.30	26.40	26.50	26.60	26.70	26.80	26.90	26
27	27.00	27.10	27.20	27.30	27.40	27.50	27.60	27.70	27.80	27.90	27
28	28.00	28.10	28.20	28.30	28.40	28.50	28.60	28.70	28.80	28.90	28
29	29.00	29.10	29.20	29.30	29.40	29.50	29.60	29.70	29.80	29.90	29
30	30.00	30.10	30.20	30.30	30.40	30.50	30.60	30.70	30.80	30.90	30
31	31.00	31.10	31.20	31.30	31.40	31.50	31.60	31.70	31.80	31.90	31
32	32.00	32.10	32.20	32.30	32.40	32.50	32.60	32.70	32.80	32.90	32
33	33.00	33.10	33.20	33.30	33.40	33.50	33.60	33.70	33.80	33.90	33
34	34.00	34.10	34.20	34.30	34.40	34.50	34.60	34.70	34.80	34.90	34
35	35.00	35.10	35.20	35.30	35.40	35.50	35.60	35.70	35.80	35.90	35
36	36.00	36.10	36.20	36.30	36.40	36.50	36.60	36.70	36.80	36.90	36
37	37.00	37.10	37.20	37.30	37.40	37.50	37.60	37.70	37.80	37.90	37
38	38.00	38.10	38.20	38.30	38.40	38.50	38.60	38.70	38.80	38.90	38
39	39.00	39.10	39.20	39.30	39.40	39.50	39.60	39.70	39.80	39.90	39
40	40.00	40.10	40.20	40.30	40.40	40.50	40.60	40.70	40.80	40.90	40
41	41.00	41.10	41.20	41.30	41.40	41.50	41.60	41.70	41.80	41.90	41
42	42.00	42.10	42.20	42.30	42.40	42.50	42.60	42.70	42.80	42.90	42
43	43.00	43.10	43.20	43.30	43.40	43.50	43.60	43.70	43.80	43.90	43
44	44.00	44.10	44.20	44.30	44.40	44.50	44.60	44.70	44.80	44.90	44
45	45.00	45.10	45.20	45.30	45.40	45.50	45.60	45.70	45.80	45.90	45
46	46.00	46.10	46.20	46.30	46.40	46.50	46.60	46.70	46.80	46.90	46
47	47.00	47.10	47.20	47.30	47.40	47.50	47.60	47.70	47.80	47.90	47
48	48.00	48.10	48.20	48.30	48.40	48.50	48.60	48.70	48.80	48.90	48
49	49.00	49.10	49.20	49.30	49.40	49.50	49.60	49.70	49.80	49.90	49
50	50.00	50.10	50.20	50.30	50.40	50.50	50.60	50.70	50.80	50.90	50

Distance of slope stake from side or shoulder stake for any width roadway, slope 1 to 1. If ground is nearly level, the cut or fill at side stake is located by the double entry method in left column and top row. The number in body of table in same row and column gives distance from side stake to slope stake. If ground is not level estimate the difference in elevation between the side stake and slope stake, lower target by this amount if cut, elevate if fill. Add this amount to cut or fill and find distance in table. Set up rod at this point, and line of sight should cut target. If it does not make the slight adjustment necessary.

11.45
99.6
7.49
13.58
15.07

X-SECT. GRADE ORD

N.W.
= NE
12.22 = 13.58
12.22
1.36

10.93
1.36
9.57

S.W. 15.07

10.93
1.49
9.44

TABLE XIII—CORRECTIONS FOR TANGENTS AND EXTERNALS

These corrections are to be added to the approximate values, found by dividing the tangent, or external, for a 1° curve (Table VIII) by the degree of curve, in order to obtain the true tangents, or externals. Intermediate values may be obtained by interpolation.

FOR TANGENTS ADD

Central Angle	DEGREE OF CURVE													
	5°	10°	15°	20°	25°	30°	35°	40°	45°	50°	55°	60°	65°	70°
10°	.03	.06	.09	.13	.16	.19	.22	.25	.28	.31	.34	.38	.42	.46
15°	.04	.10	.14	.19	.24	.29	.34	.39	.45	.51	.53	.58	.63	.68
20°	.06	.13	.19	.26	.32	.39	.45	.51	.58	.65	.72	.79	.84	.90
25°	.08	.16	.24	.33	.40	.49	.58	.67	.75	.83	.90	.99	1.06	1.14
30°	.10	.19	.29	.39	.49	.59	.69	.79	.89	.99	1.09	1.20	1.29	1.39
35°	.11	.22	.34	.47	.58	.69	.79	.81	.92	1.04	1.29	1.42	1.54	1.66
40°	.13	.26	.40	.53	.67	.80	.93	1.06	1.20	1.34	1.49	1.64	1.79	1.94
45°	.15	.30	.44	.60	.76	.91	1.06	1.21	1.37	1.52	1.70	1.87	2.04	2.21
50°	.17	.34	.51	.68	.85	1.02	1.19	1.36	1.54	1.72	1.91	2.10	2.29	2.48
55°	.19	.38	.57	.76	.95	1.14	1.32	1.52	1.72	1.92	2.14	2.35	2.56	2.77
60°	.21	.42	.63	.84	1.05	1.27	1.49	1.71	1.94	2.17	2.38	2.60	2.83	3.07
65°	.23	.46	.69	.93	1.16	1.40	1.64	1.88	2.13	2.38	2.63	2.88	3.13	3.39
70°	.25	.51	.76	1.02	1.28	1.54	1.80	2.06	2.33	2.60	2.88	3.16	3.44	3.72
75°	.27	.56	.83	1.12	1.40	1.69	1.98	2.27	2.57	2.87	3.16	3.47	3.78	4.09
80°	.30	.61	.91	1.22	1.53	1.84	2.15	2.46	2.78	3.10	3.44	3.78	4.12	4.46
85°	.33	.66	1.00	1.33	1.68	2.02	2.36	2.70	3.05	3.40	3.77	4.14	4.55	4.89
90°	.36	.72	1.09	1.45	1.83	2.20	2.57	2.94	3.32	3.70	4.10	4.50	4.91	5.32
95°	.39	.79	1.19	1.55	2.00	2.40	2.80	3.20	3.61	4.02	4.40	4.98	5.38	5.83
100°	.43	.86	1.30	1.74	2.18	2.62	3.06	3.50	3.95	4.40	4.88	5.37	5.85	6.34
110°	.51	1.03	1.56	2.08	2.61	3.14	3.67	4.21	4.76	5.31	5.86	6.43	7.01	7.60
120°	.62	1.25	1.93	2.52	3.16	3.81	4.45	5.11	5.77	6.44	7.12	7.80	8.50	9.22

FOR EXTERNALS ADD

Central Angle	DEGREE OF CURVE													
	5°	10°	15°	20°	25°	30°	35°	40°	45°	50°	55°	60°	65°	70°
10°	.001	.003	.004	.006	.007	.008	.009	.011	.012	.014	.015	.017	.018	.020
15°	.003	.007	.010	.014	.018	.023	.027	.029	.032	.035	.039	.043	.047	.051
20°	.006	.011	.017	.022	.028	.034	.038	.045	.051	.057	.063	.070	.076	.083
25°	.009	.018	.027	.036	.046	.056	.065	.074	.083	.093	.106	.120	.127	.135
30°	.013	.025	.038	.051	.065	.078	.090	.103	.116	.129	.149	.170	.179	.188
35°	.018	.035	.054	.072	.086	.109	.131	.153	.175	.197	.213	.230	.247	.264
40°	.023	.046	.070	.093	.117	.141	.172	.203	.234	.265	.277	.290	.315	.341
45°	.030	.060	.093	.119	.153	.184	.216	.254	.289	.325	.351	.378	.411	.445
50°	.037	.075	.116	.151	.189	.227	.266	.305	.345	.384	.425	.467	.508	.550
55°	.046	.093	.142	.188	.236	.283	.332	.381	.420	.479	.530	.582	.641	.700
60°	.056	.112	.168	.225	.283	.340	.398	.457	.516	.575	.636	.697	.774	.851
65°	.067	.135	.204	.273	.343	.412	.483	.554	.625	.697	.771	.845	.922	1.01
70°	.080	.159	.240	.321	.403	.485	.568	.652	.735	.819	.906	.994	1.08	1.17
75°	.095	.182	.286	.383	.480	.578	.678	.777	.877	.977	1.07	1.18	1.29	1.39
80°	.110	.220	.332	.445	.558	.671	.787	.903	1.02	1.13	1.25	1.38	1.50	1.62
85°	.128	.259	.391	.524	.657	.790	.926	1.06	1.20	1.34	1.47	1.62	1.76	1.91
90°	.149	.299	.450	.603	.756	.910	1.07	1.22	1.38	1.54	1.70	1.87	2.03	2.20
95°	.174	.350	.522	.706	.885	1.06	1.25	1.43	1.62	1.80	1.99	2.18	2.38	2.58
100°	.200	.401	.604	.809	1.01	1.22	1.43	1.64	1.85	2.06	2.28	2.50	2.73	2.96
110°	.268	.536	.806	1.08	1.35	1.63	1.91	2.20	2.48	2.76	3.05	3.35	3.66	3.96
120°	.360	.721	1.08	1.45	1.82	2.19	2.57	2.95	3.33	3.72	4.11	4.50	4.91	5.32

X-sec. Eugene Place

Survey - To bottom canyon. Eugene Pl.

RE-X-SECT. MOHAWK 71ST 1/2 2nd

X-SECT 71ST - EL CATON to SARANAC

" Alley BLK 275 Pac. Beach

X-sec AMHERST ST - Benton to Ely

RE-X-SECTION ALLEY BLK. 275 PAC. BEACH

Pgs
1-4

5

10

13

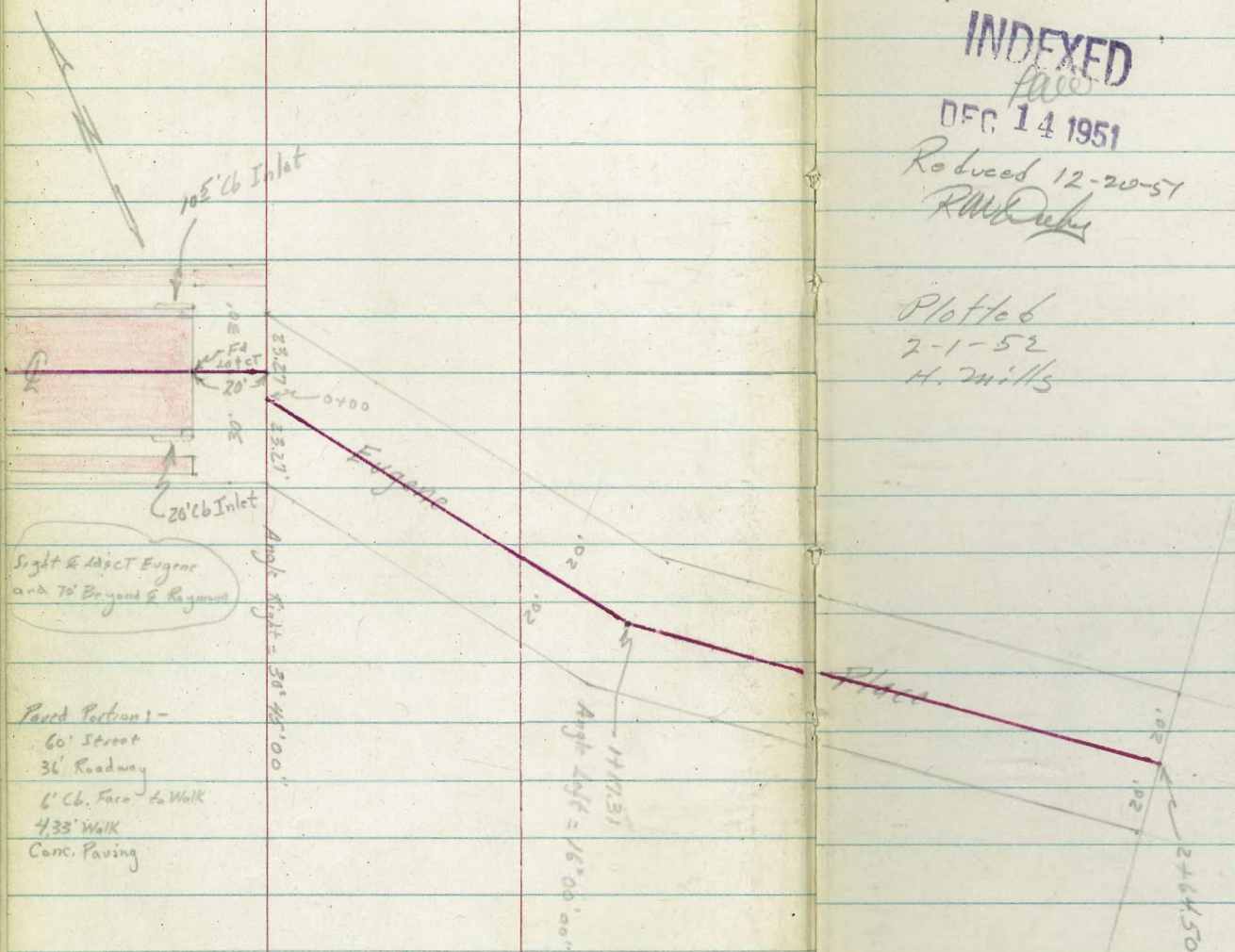
21

26

60-63

Roberts X-Section Eugene Place
 Cota
 Moore Portion in Rereb of Lot 137 Normal Hts.
 Fuller
 12-12-51
 W.P. 25020

Map 1338 Map 985



INDEXED

DEC 14 1951

Reduced 12-20-51

RMB Debus

Plotted

7-1-52

H. Mills

Contd From Page 1

ft.

¢

ft.

¢

0-20

End of Paving & walk

376.88

6.74
18
cb

376.35

6.97
18
gutt

376.35

6.97
18
cb

376.72

6.60
18
gutt

376.20

7.12
18
cb

376.73

6.59
18
gutt

376.88

6.44
24
walk

377.02

6.30
24
walk

377.22

6.1
30
walk

376.92

23.1
32
walk

0-20

Break in gutter

377.06

6.26
18
cb

376.04

7.21
18
gutt

376.59

6.73
18
gutt

375.91

7.41
18
gutt

376.95

6.37
18
cb

0-30.5

Begin 10' cb Inlet on Left

377.36

5.96
18
cb

376.33

6.94
18
gutt

0-40

Begin 20' cb Inlet on Right

376.85

6.47
18
gutt

377.80

5.52
18
cb

0-70

379.19

4.13
18
cb

378.69

4.63
18
gutt

379.01

4.31
18
gutt

378.64

4.68
18
gutt

379.29

4.03
18
cb

-1-20

381.50

1.92
18
cb

381.04

2.28
18
gutt

381.39

1.93
18
gutt

381.15

2.17
18
gutt

381.68

1.64
18
cb

383.32

TBM

6.60

383.32 A

376.72 & Lect

in Cb End Pav. Eugene Place

BM

393.98 S.E. BP.

Sidney & Mt. View Dr.

Cont'd From Page 2

Lt

Rt

Rt

W

T.P. 0.31 358.14 π 13.02 357.83

1+17.31 \angle Lt (Section on Split)

363.4	368.8	368.5	363.8	363.2	355.0	355.7	349.4	349.3	347.7
7.5	2.1	2.4	7.1	7.7	15.9	15.2	21.5	21.6	23.2
64	52	37	PL	13	12		11	PL	50

0+50

369.9	373.9	373.8	370.6	368.3	368.3	367.9	360.5	350.7	350.6	349.4
-3.0	+3.0	+2.9	0.3	2.6	2.6	3.0	10.4	20.2	20.3	21.5
53	42	35	25	24	20	11		12	20	50

T.P. 0.39 370.85 π 12.86 370.46

370.85 π

0+00 } Q = 2 of 40' ROW; Section taken Rt. 4 to E. of 60' ROW.
 END 60' ROW, Begin 40' ROW
 End of walk on Lt. (Bad shape for T')

375.93	375.97	376.6	377.8	379.8	374.8	374.3
7.39	7.35	6.7	15.5	23.5	28.5	27.0
35.6	30.75	6		23.27	35	60
WALK	WALK					

0-08

376.18	376.2	377.2	376.7	360.7	357.3	347.3
7.14	7.1	6.1	6.6	22.6	26.0	36.0
18	19		15	16	30	60
cb	cut					

0-07 End. cb on Lt. (VG)

cb on Lt from 0-20 in bad shape

0-14E End cb on Rt.

376.54	376.6	376.9	376.4	376.38	363.4	359.3	349.3
6.78	6.7	6.4	6.9	6.94	19.9	24.0	34.0
18	18		14	17	18	30	60
cb	cut		cut	cb			

383.32 π

383.32 π

Cont'd From Page 3

lt.

R

Rz

+

check

327 376.72 = 376.72

T.P. 10.16 379.99 0.20 367.83

J.P. 12.44 370.03 0.55 357.59

3+20

342.4
15.7

2+6450 Road End of Eugene

329.1 341.6 341.6 341.8 342.1 336.0
29.0 16.5 16.5 16.3 16.0 22.1
40 25 20 20 50

2+00

340.0 347.6 348.9 348.1 343.8 349.8 341.8 341.9 333.9
18.1 10.5 9.2 10.0 14.3 14.3 16.3 16.2 24.2
40 25 20 13 10 13 20 50 65

1+50

358.1 363.0 362.9 360.1 358.1 349.0 348.0 347.1
0.0 +4.9 +4.8 +2.0 0.0 9.1 10.1 11.0
51 34 27 20 7 20 50

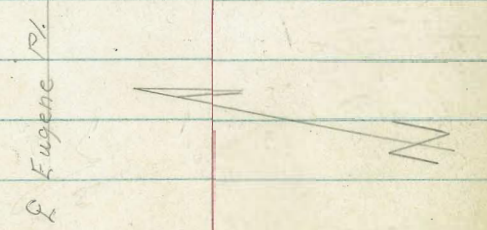
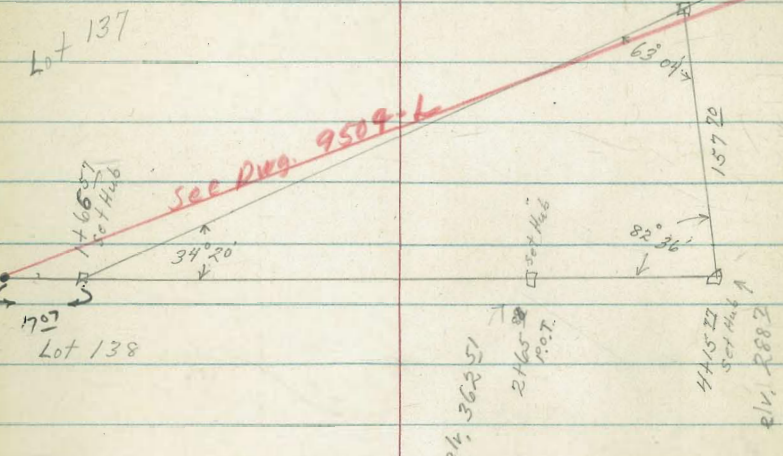
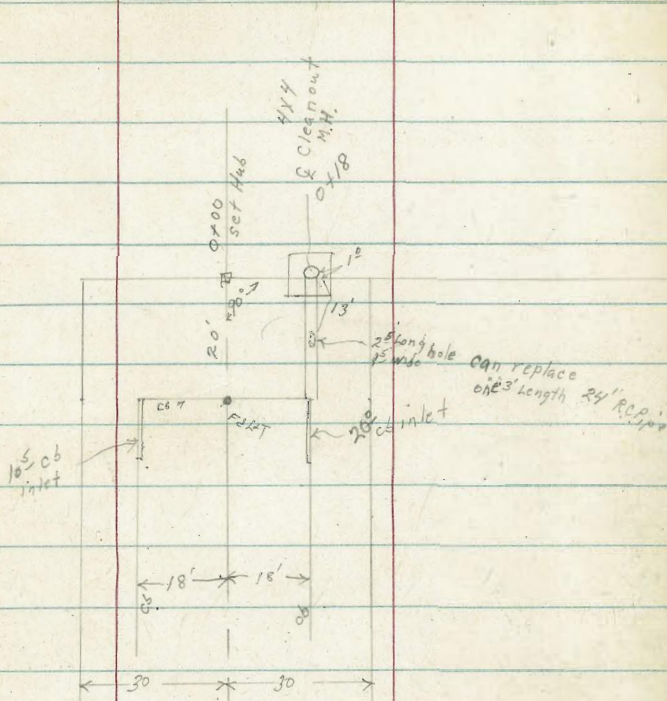
358.14 X

358.14 X

D. Smith
C. Allen
J. Bishop
R. Taylor

Storm Drain Extension, Eugene Pl.

WO# 20953 5
1-29-51



INDEXED
Ruw
JAN 30 1952

Lt = East

E

Rt = west

6

0+60

Reduced 2/19/52
4.15 8.10

349.5	350.2	350.2	349.2	353.6
140	133	132	136	92
35	20		10	20

0+40

356.2	353.8	352.2	355.0	358.2	360.9
68	105	113	85	53	26
30	20	16		10	20

TP₂

678

363⁴⁵

1239

356⁶⁷

357.2	352.2	354.2	370.2	375.2
			363 ⁴⁵	

0+33

118	167	150	710	763
30	20	10		10

0+20

359.6	359.2	351.85	355.85	361.2	361.8	361.24	371.78	361.94	376.19	366.20
95	100	1720	1361	8	75	77 ²²	77 ¹²	236		
17	7	10	1	7	15	20	20	20	20	20
			EMH. rim			cs	grate	10		

TP₁

0⁴⁸

369⁰⁶

1238

368⁵⁸

369⁰⁶

0+00

370.2	375.85	377.2
52	551	32
10	H ₄₆	10

BM

424

38026

376172

SL+T End
Eugene Pl.
dead end Co. face
p 2.

38026

2+34

Lt: East

Rt = West 7

344.3	344.2	337.3	344.5	346.2	351.4
7 ^L	7 ^L	14 ^L	6 ^L	5 ^L	0 ^L
40	13	7		8	20

2+00

346.2	346.1	340.2	340.2	342.2	344.2	348.2	358.0
5 ^L	5 ^S	11 ^L	11 ^L	8 ^L	6 ^L	2 ^L	+6 ^L
40	17	10	3		3	14	36

1+66⁵⁷ L. Lt 34°20'

346.8	346.2	343.2	346.1	347.0	355.4
4 ^L	5 ^S	8 ^L	5 ^S	4 ^S	+4 ^L
40	24	20	17	4.6	20

TP₃ 1²² 351⁴⁰ 13²⁹ 350¹⁸

346.2	346.5	344.4	346.5	346.2	346.9	350.8	358.1
16 ^S	17 ^L	19 ^L	16 ^L	16 ^S	16 ^L	12 ^L	5 ^L
40	24	21	18		7	16	28

1+30 2°RY & 12" Acacia Tree

1+00

348.2	348.3	347.2	346.0	353.0
15 ^S	15 ^L	15 ^L	15 ^S	10 ^S
25	10		12	22

363⁴⁵

4410

2852 2863 2822 2812 2852
 50 46 81 92 52
 14 2 19 21

TP₈ 0²⁶ 290⁸⁵ 12⁰⁷ 290¹²

3052 3012 2950 2922 2970 3023
 73 08 73 94 53 00
 20 10 5 16 20

3475

TP₇ 0⁷⁶ 302²⁶ 12⁶⁴ 301⁵⁰

π 302²⁶

TP₆ 0²⁴ 314¹⁴ 13⁰⁰ 313⁹⁰

3152 3062 3152 3222
 110 20 112 32
 9 6 16

3430

2789

3212 3170 3162 3212 3232 3512
 50 92 106 54 32 242
 30 20 12 7 15

TP₅ 0⁴⁶ 326²⁰ 12²⁷ 326⁴⁴

π 326⁹⁰

TP₄ 0⁵³ 338⁷¹ 13²² 338¹⁸

3442 3442 3262 3452 3512
 73 73 248 52 00
 40 15 6 20

2450

π 351⁴⁰

BM starting

3⁹⁸

376⁶⁵

✓
376⁷²

TP₁₇

11⁴⁸

380⁶³

1³⁰

369¹⁵

TP₁₆

13⁰¹

370⁴⁵

0³³

357⁴⁴

TP₁₅

12¹⁸

357²⁷

0³⁹

345⁵⁹

TP₁₄

12²⁹

345⁹⁸

0³⁰

332⁹⁹

TP₁₃

12²³

333²⁹

0⁸³

321⁰⁶

TP₁₂

12²⁷

321⁸⁹

0⁰²

309¹²

TP₁₁

12⁵⁵

309¹⁴

0²¹

296⁵⁹

TP₁₀

12⁴⁶

296⁸⁰

1²⁰

284³⁴

4465

E E+W stream (sewer)

271⁴

273⁵

276⁰

279²

14⁸

12⁷

10²

6⁴

20

5

20

4458⁸⁹

Hub

279⁶

279²

280⁶⁵

280³

276²

281²

6⁶

6³

5⁵⁹

5⁹

9⁵

5²

20

10

Hub

5

8

18

TP₉

3⁴⁵

286²⁴

8⁰⁶

282²⁹

π

286²⁴

Clark
Shepherd
Bruner
Ornel

W.O. 31984
4-16-53

RE-7 SECT. MOHAWK - 71st to 72nd

LT.

£

RT.

NOTE: ADDT. notes to show NW improvements etc. shown here.
For sketch - See F.B. 1801 - 17, & notes # 18-20

0+70

19.5 LT & 8' Cold-Lay Drive
(Note: Believe this drive may have been noted as being at STA. 471 in F.B. 1801-18 (No drive at 471))

494.92 494.40 493.57
30 26.5 19.5
C-LAY 'A-K' LIP

INDEXED
RUL

APR 22 1953

0+65

LT. END WALL SHOWN F.B. 1801

494.0 497.76
30.3 30.3
FTC TP
WALL WALL

0+58

4.6 RT 8" wide rock & Conc. WALL | top street extends to prop. line
30.6 RT END Conc. WALL

491.33 490.40
30.6 30.6
TP FTC
WALL WALL

0+56

29.0' RT & 1 1/2' Cypress tree

0+51

45.5 RT. END 2-Car gar.

491.56
45.5
Floor

0+50

492.9 492.7 492.7 491.8
30 17 17

491.3 491.7 491.4
12 13 30

0+49

30.8 RT & 1.5' Conc. Ribban

491.45
30.8
LIP

0+42

30.8 RT & 2.5' Conc. Ribban

491.48
30.8
LIP

0+37

30.8 RT & 1.5' Conc. Ribban

491.49
30.8
LIP

0+35

45.5 RT. Beg 2 Car gar (3-Ribban - drive)
29.8 RT END Hedge

491.53
45.5
Con. Floor

0+21

30.7 RT & 3' conc. walk

491.60
30.7 (Flush with TP wall)
LIP

491.56
4.6
WALK

0+00 - (B-Line 71st)

421.0 on LT shown F.B. 1801
30.6 RT Beg Conc. WALL 2.32 wide
29.8 RT & 1' Hedge, Beg in

497.7 495.9 493.0 492.6 491.2
30.3 30 23 18 4.5
TP WALL
Shown F.B. 1801

490.9

490.3 490.5
15 18

491.3

491.7 490.6
30 30.6 30.6
TP TP
WALL WALL

0-02

29 RT 1" Cypress tree

0-30 - £ 71st

492.2
30

490.50

489.8
30

CHK:

NAIL IN Pile SW
71ST-MOHAWK

492.80 = 492.78 F.B.

1801-18

B.M.

Dir. Elev. Rod:

473.05 S.W.B.P
71st + E1 CANTON

MOHAWK (CONT.)

LT.

Q

RT.

CHK:

497.79 = 497.79 = Lip 9' 15' CONC. DRIVE 5+41 = 15' RT. FA 1801 = 20

6+19.54

X-SECT. CHK. FA 1801

499.7

6+00

501.2
30499.5
13

499.4

498.4
14497.7
30

5+50

X-SECT. SAME FA 1801

499.0

5+00

X-SECT. SAME AS FA 1801

498.9

4+50

X-SECT. SAME AS FA 1801

499.5

4+01

29.1 RT. EWA PICKET FENCE

4+00

504.2
30503.7
22501.3
11

500.7

500.5
12500.1
30

3+83

29.1 RT. 3' CONC. WALK

500.0
29.1
LIP499.70
40
WALK

3+59

29.4 RT. BAY 3' PICKET FENCE

3+50

X-SECT. SAME AS FA 1801

500.5

3+30

24.9 RT. 9' 2.5' CONC. WALK

499.51
24.9
LIP499.45
30
WALK499.16
40
WALK

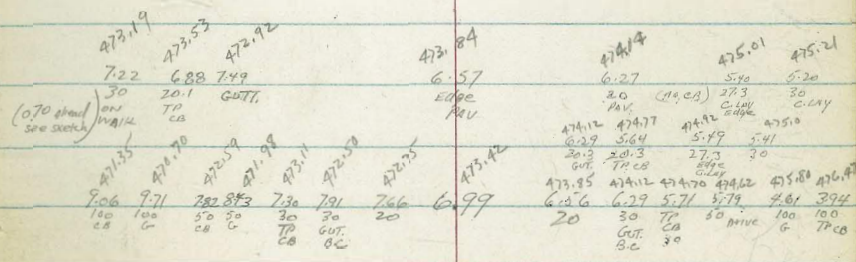
71' ST. EL CATON to MOHAWK

L.T.

£

R.T.

Station	Description	479.0	479.0	479.3	478.2	479.0	478.8	480.0	480.0	480.4	480.4
100		1.4 40	1.4 30	2.1 16	2.2 13	1.4	1.6 9	0.4 17	0.4 23	0.0 30	0.0 40
0+98	27.0' RT Beg Wire Fence										
0+75		478.0 2.4 30	478.0 2.4 30	476.3 3.1 17	477.3 3.1 12	477.7 2.7	477.4 3.0 10	478.8 1.6 18	478.8 1.6 30	478.7 1.7 40	
0+59	30.9 RT END 99R										
0+50	29.6 LT £ 2 1/2 Helix	477.7 2.7 40	477.5 2.9 30	477.6 2.8 18	475.6 4.8 14	476.3 #1	476.0 4.4 11	477.4 3.0 18	477.6 2.8 30		
0+46	29.1 LT END Fence										
0+33	22.3 LT £ Pole # P.71109										
0+30	31.3 RT Beg single-gar - Faces sly									477.12 3.19 31.3 Floor	
0+29	26.8 RT END Cont Lay Pav.							476.80 3.61 26.8 EDGE CLAY	476.92 3.49 30 CLAY		
0+20	30.6 LT Beg 3' wooden Fence										
0+18	29.5 LT £ 1" wide Con. Drain to £ ST.	475.83 4.38 35	475.76 4.63 29.5 2" diam	475.71 4.7 21	474.11 6.3 17	474.61 5.8	474.71 5.7 12	476.01 4.40 27 EDGE CLAY	476.14 4.27 30 CLAY	476.41 4.00 46 CLAY	
0+17	{ 21.1 LT £ 4" Drain Pipe - drains water from hof into ST. 30.6 LT END Bldg.										
0+00.70	30.6 LT Beg Succ Bldg										
0+00	= NLY line EL CATON - END CB LT V END Pav. £										
0-04.5	{ 27.3 RT Beg Cont Lay PAVING in front yard (PKG Area). 20.3 RT = END CB.										
0-14	= NLY CB line EL CATON										
B.M	736	480.41	473.05	S.W.O.P. EL CATON				480.41			



71' ST (CONT.)

LT E RT

(Cont. Pg 17)

CHK:

2.64
NAIL IN R/C S.M. 71' ST
4 MOHAWK

492.80 = 492.78 F.B. 180) -18

3+40.06 = E MOHAWK

489.37	489.88	489.97	490.5	490.9
6.07	5.56	5.47	4.9	4.5
100	40	30		30
R.C.		EDGE R.C. PAR.		

3+22.06 = SLY C.B. LINE MOHAWK

489.73	489.64	489.13	489.42	490.0	490.0	490.9	491.4
6.71	5.80	6.31	6.02	5.4	5.4	4.5	4.0
DRK 100	40	40	30.0		14	22	30
GUTT	TP	607	EDGE R.C. PAR.				
	CS						

3+20.2

30.4 LT END CB. (5' COMB. WALL & C.B. TYPE & GUTT)

489.75	489.25
5.69	6.19
30.4	30.4
TRAIL	GUTT

3+15

30.5 LT BK WALL

489.93
5.51
30.5
EDGE WALL

3+12

23.0 LT & Pole P 71107

3+1006 = SLY LINE MOHAWK

489.9	489.9	490.2	489.4	489.6	489.6	490.6	491.4
5.5	5.5	5.2	6.0	5.8	5.8	4.9	4.0
40	30	18	16		12	19	30
							491.69
							3.75
							2.17
							30.7
							TRAIL
							FTG

3+07.5

30.7 RT END CONC. WALL

T.P.

5.04 495.44 1.14 490.40

495.44

2+76

30.5 RT Bay CON. BK Ret. WALL

489.4	489.0	489.4	488.5	488.9	488.5	489.8	491.75	488.64
2.1	2.5	2.1	3.0	2.6	3.0	1.7	+0.21	2.70
35	30	20	16		12	22	30.5	30.5
							TRAIL	FTG
							489.5	489.2
							2.0	2.3
							30	35

2+75

491.54

71st MOHAWK to SARANAC

LT £ .P.T.

0+63 29.6 RT £ 12 Con. Apron, 34.1 to Floor Single gar.

500.81
0.97
29.6
4.0
Apron
(Lamb)

501.14
0.64
34.1
Con. Floor

0+50

499.0 499.0 498.6 498.4 498.5
2.8 2.0 3.2 3.8 3.3
to 30 14 8

498.1 499.0 499.6 499.6
3.7 2.8 2.2 2.2
14 17 30 35

0+48

22. LTC Pole P 71106

0+35

4978 4979 4973 4970 495.8 496.4
4.0 3.9 4.5 4.8 6.0 5.4
to 30 22 16 12

496.2 497.2 497.8
5.6 4.6 4.0
14 17 30

0+00

30.2 LT Reg 5' Cyclope Fence
30.3 RT 4' MAIL (CON. BK) L to ST.

4941 492.6 492.1 491.6 492.2
7.7 9.2 9.7 10.2 9.6
30 28 21 16

492.7 493.3 493.6 496.0 495.6 496.3
9.1 8.5 8.2 5.8 6.16 5.5
15 18 25 30 30.3 to
FTG
MAIL

0-01

END Conc Steps - Meets 2' Conc WALK - ON Diag. AWAY FROM ST. to house
30.4 LT TR. Step

493.14 494.24
8.64 7.54
30.4 30.4
FTG

0-05

30.4 LT Reg 5' Conc. Steps

490.92
10.86
30.4

0-05.5

9. MIN 0.20 W EST
30.3 LT BK WALK

490.89 491.72
10.89 10.06
30.3 30.3
8' MAIL 5' 4" MAIL

0-10.2

30.4 LT END CB.

490.61 491.87
11.17 11.91
30.4 30.4
TRAC CUT.

0-12 = NLY CB. LINE MOHAWK

489.92 489.17 490.36 489.72 491.07 491.3
11.86 12.61 11.52 12.06 11.71 10.5
100 100 40 40 30
TRAC CUT TRAC CUT CUT CUT CUT
AC TRAC

491.5 492.3
10.3 9.5
25 30

0-30 = S MOHAWK

(See Pg 16 For Sect.)

B.M.

9.00 501.78

492.78 (See Pg 16) CHIC

501. 78

71st (Cont)

LT

E

RT

1450 30.2 LT. END Cyclone Fence

513.1	513.1	512.7	511.4	511.7	511.5	512.1	512.6	512.7
6.6	6.6	7.0	8.3	8.0	8.2	7.6	7.1	7.0
40	30	17	10		14	18	30	40

1446 24.5 RT E. F.A.Y.D

1445 22.7 LT. E. Pale P-71105

1441 22' RT E 1' Palm

1431 27.7 RT E 2.0 Conc WALK

510.15	510.14	510.10
9.54	9.55	9.59
27.7	30	40
LIP	WALK	WALK

T.P. 6.69 519.69 0.44 513.00

519.69

1408 30.2 RT. END Conc BK. Ret WALL - 1' high here

505.3
8.10
30.2
FTG

1407 30.1 LT E 3.0 Conc WALK

506.77	507.09							
6.67	6.35							
40	30.1							
WALK	WALK							
506.4	506.4	505.8	505.1	505.6	504.9	505.4	505.9	505.9
6.6	7.0	7.6	8.3	7.8	8.5	8.0	7.5	7.5
40	30	14	10		14	30	31	40
							0.17	
							0.17	
							WALK	

1400

T.P. 11.88 513.44 0.22 501.56

513.44

0169 312 LT E 4' Conc WALK

501.86	502.10
+0.08	0.32
40	31.2

500.58
1.20
30.1
FTG
WALK

501.78

71st ST (Cont.)

LT.

Σ

RT.

2195 30 RT Σ 2.5' Hedge

2169 29.3 RT Key 3' conc wall, 6" wide
(At this pt)

2162 29.2 RT Σ 10' conc apron, 41.8 to Fl. gar. (single)
Con. Floor

2159 29.2 RT Σ 1' conc wall, 6" wide, ↓ to st. between aprons

2152 29.2 RT Σ 9.5' conc apron - 41.8 to Fl. single gar
2 Con. Ribbons (2.5') for Floor

2147 29.2 RT Σ 1' high conc. Ret wall ↓ to st. - JOINS
(6" wide) Apron to get to North

T.P. 11.60 530.71 0.58 519.11

2100

1170 (Soil sample taken)

1160 E.M.H. 020' N of ST

525.69 521.7 522.0
502 70 8.7
29.2 29.2 29.2
Wall FTO OUT

522.44 522.57
8.27 8.14
29.2 41.8
LIP Floor

522.01
8.70
29.2
FTO
Wall

522.14 522.24
8.57 8.47
29.2
LIP Ribbon

521.1	521.1	521.1	520.2	520.5	520.5	521.5	521.7	521.2
9.6	9.6	9.6	10.5	10.2	10.2	9.2	9.0	9.5
40	30	16	11		15	21	30	40
						FTO		
						Wall		

530.71

517.1	517.1	517.1	516.4	516.8	516.2	517.1	517.1
2.6	2.6	2.6	3.3	2.9	3.5	2.6	2.6
40	30	15	10		16	30	38

514.1	514.3	514.4	513.6	513.9	513.6	514.2	515.0
5.6	5.7	5.3	6.1	5.8	6.1	5.5	4.7
70	30	18	10		15	30	40

513.7	513.8	513.4	512.6	512.53	512.6	513.3	513.4
6.0	5.9	6.3	7.1	7.16	7.1	6.4	6.3
30	30	18	10	54.4 RIM	13	30	50
				M.H.			

519.69

LT

E

RT

CAK1

2.23 492.81 = 492.79 = Nail in Pole - SW 71st + MANAWIK

T.P.

0.23 495.04 12.36 494.81

T.P.

0.03 507.17 11.78 507.14

T.P.

0.34 518.92 12.13 518.58

REDUCED
R.H. MESSICK
JULY 14 - 1953

3+50.04

= E SARANAC

527.04 527.78 527.89 527.93 527.92 528.94 528.11
3.67 2.93 2.82 2.78 2.79 2.77 2.60
100 50 30 30 30 50 100

3+31.3

= Edge Cold Lay Pole SARANAC

526.44 527.10 527.19 527.11 527.06 527.06 527.12 527.19 527.36
4.27 3.61 3.52 3.60 3.65 3.65 3.59 3.52 3.35
100 50 30 15 15 15 20 50 100
EDGE
POLE

3+29

22.2' LT & Deadman

3+20.04

= 5 1/2' Line SARANAC

29.2 RT. END CORN. WALL
36 RT END Hedge

527.12 527.2 526.8 525.9 526.1 526.1 526.7 527.40 526.3 527.0 527.4
3.5 3.5 3.9 4.8 4.6 4.6 4.0 3.71 4.4 3.7 3.3
40 30 13 10 16 19 22 17.2 29.2 29.2 40
10.0 10.0
MILL MILL

3+16

22.5' L&E Pole # P. 71104

3+00

526.2 525.5 525.3 524.4 524.7 524.6 525.1 525.6 526.4 526.6
4.5 5.2 5.4 6.3 6.00 6.1 5.6 5.1 4.3 4.1
40 30 14 10 18 20 29 30 40
DUT
MILL
MILL

530.71

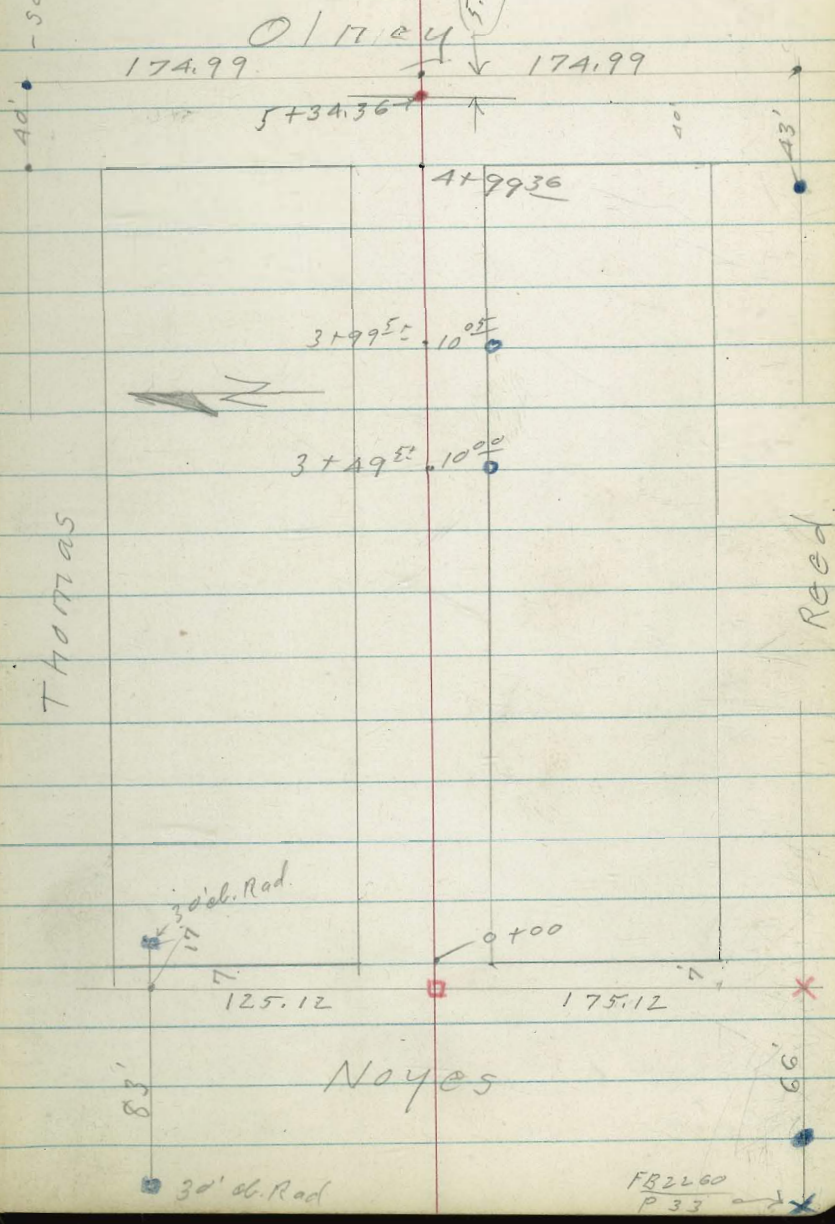
Alley BIK 275-Pac. Beach.

INDEXED
JER
JAN 27 1954

1-25-54
C.H.S.
Berry
Schelin
Pullin

- See C.B.317
P. 14

- x denotes Fd. cross in conc.
- denotes Fd disk
- " " 1/2 Hub
- " " set 1/2 disk
- x " " cut cross in conc.
- " " Fd. Private Survey pipe
- " " Set. P.K. Conc. nail



Alley B.I.K. 275 P.B.

3+96 11² Lt. ± 13' wide level conc. apron to Sing. Gar.

Pole J.P.A. 2120
T.P. Nail 4.03 32.72 3.32 28.69

0+49^E 10' Lt. ± 5' high conc. block wall.

0+46 10² Lt. end house

0+10 10² Lt. start house

0+00 = Ely line Noyes

0-40

1/2-Hub.
0-.07 = B.M. #4 4.59

B.M. #3 3.31 32.01 - 28.70 B.M. #2 Set from

B.M. #2 41.70 B.M. #1 Set from

B.M. #1 41.76

29.71 28.53
3.00 4.19
1.98 11²
Gar. apron
Floor 32.72

28.0 28.7
4.10 3.3
10 10
B.M.

28.7 28.4 27.6 26.0
3.3 3.6 4.4 6.0
10 10 40

29.4 28.7
2.6 3.3 4.0 4.1 6.5 25.5
35 10 10 40

28.7 28.1 26.4 21.3 21.5
3.3 3.7 5.6 8.7 11.5
80 50 50 80

32.01

cross in drive G317
N.W. 30' ab. Rad. Noyes + Thomas P18
Laimont + Thomas
Cross in curb North of Nly. End N.E. Ret.
Chiseled □ - N.E. Ret. Laimont + Thomas

4

LT

RT

T.P. 3.88 30.04 6.56 26.16

3+00

24.5 26.5 26.1 26.0 27.4
 8.2 6.2 6.6 6.7 5.3
 70 10 10 10 70

2+50

27.5 27.0 26.9
 5.2 5.7 5.8
 10 10

2+10

187

Conc. floor. - No apron
 RT = 2 ϕ double bar.

27.21
 5.51
 187
 FLOOR

2+00

28.1 27.4 27.4
 4.6 5.3 5.3
 10 10

1+50

30.7 28.2 28.0 27.7 25.7
 2.0 4.5 4.7 5.0 7.0
 80 10 10 10 80

1+40 - 10⁸ 4. = 2 18' long steel.

1+00

28.5 28.1 27.7
 4.2 4.6 5.0
 10 10

32.72

BIK 275 RB,

T.P. 21.41 23.62 8.83 21.21

4+50

^{20.6} 9.4 8.8 8.8 8.2 9.0
60 10 10 10 70

4+00

^{22.4} 7.6 5.8 5.8 5.5 7.4
60 10 10 10 80

3+86 14⁹ Lt. = ^{to double garage.} level conc. apron

^{24.96} 5.58 5.75
17.9 14.9
Gar floor apron

3+59 29' No. apron
Single Car. Conc. floor

^{25.82} 4.22
2.9
Floor

3+50

^{25.2} 4.8 5.1 4.6
10 10

3+12 16⁸ Lt. = ^{under construction} double Gar.

^{26.3} 3.7
16⁸
Approx. future
Floor level

30.04

Alley
 BIK 275 P.B.

±

From D in Bl. Larnont + Thomas - N.E. Rot.

AK Nail ± Olney
 ± Thomas 7.68 26.91 4.39 19.23 B.M. #5

19.25 $\frac{G 317}{1A}$

5+51⁴ = Ely edge Pavc

17.5
 6.11 16.1 15.1
 80 7.50 8.50
 80

5+39³⁶ = ± Olney

17.0
 6.64 15.7 14.6
 80 7.95 9.05
 80

5+34³⁵ ± P.K. Nail 7.84 15.78
 B.M. #4

5+27⁴ = wly edge 24' wide A.C. Pavc

17.42 16.94 16.14 15.54 15.16
 6.20 6.68 7.48 8.04 8.56
 80 50 50 50 80

4+99³⁶ = wly Olney

17.5 17.4 17.8 19.0 19.3
 6.1 6.2 5.8 4.6 4.3
 50 10 10 10 80

4+85 12⁵ Lt. ± 26' long shed

18.5
 5.1
 125

4+81 14⁸ Rt. ± 24' long ^{House} stucco

18.8 19.4 20.7 20.4
 4.8 4.2 2.9 3.0
 10 10 10 14⁸

23.62

x-sec Amherst St

LT = N14

Amherst

ET = S14 23

1700

79 ² 30	79 ⁴ 18 N14 AC	79 ³	79 ² 20 S14 AC	80 ⁹ 30
-----------------------	------------------------------------	-----------------	------------------------------------	-----------------------

0+81 - R18 RT = 9' 12" power pole # P77237

0+55 - 30² LT = 2' 3' wide Conc Walk

78 ³⁵ 40 ² Walk	478 ⁴⁹ 30 ² Walk
---	--

0+50 30² RT = Sky edge AC

78 ⁶ 30	78 ⁹ 17 AC	79 ¹	79 ² 3 AC	80 ⁶ 30
-----------------------	-----------------------------	-----------------	----------------------------	-----------------------

0+28 - 16² RT = 2' 3' wide Conc Walk

79 ⁷¹ 16 ² Walk	80 ³² 30 ² Walk	80 ⁷² 40 ² Walk
---	---	---

0+22 - 29³ LT = 2' 26' wide Conc Drive

77 ³⁹ 39 ² Drive	77 ⁵⁹ 29 ² Drive
--	--

0+00 = approx ely line Benton St

77 ¹ 30	77 ⁵ 17 N14 Pave	77 ² AC	77 ⁴ 30 ² Sky edge AC	79 ¹ 30
-----------------------	--------------------------------------	-----------------------	--	-----------------------

BM = SWBP 72NS + ELCAJON - EL = 480.46

add 400' to all elevations
Direct elevation Red used.

X-sec Amherst
ST

Wall runs N+S - 1' high
30° LT = Sly and 4" clay brick wall

1+91.5 = wly line 72nd

1+86 - 28th RT = 2 7' wide conc drive

1+73 - 30° LT = 2 8' wide conc drive

1+62 - 22nd RT = 2 3' wide conc walk

1+50

1+29 - 30° RT = 2 8' wide conc drive

1+12 - 31° LT = 2 12" clump of pepper trees

LT = N14

2
Amherst

RT = Sly.

28th

78⁸
30

79²
22
N14
AC

79⁵ 79⁵
2
S14
AC

80³
30

80⁵¹ 80⁵⁹ 80⁴⁷
28⁵ 30° 40°
Dr. Dr. Dr.

78⁸³
50°
Drive

79³⁵
30°
Drive

80⁷⁴ 80³⁹ 80³⁷
22³ 30° 40°
Walk Walk Walk

79³
30

79⁵
15
N14
AC

79⁴
2
S14
AC

79³
2
S14
AC

80⁴
30

80⁸¹ 80⁹⁴
30° 40°
Drive Drive

Direct elev. Reduced add 400' to all elev.

X-sec Amherst St

LT = N14

Amherst

RT = S14 29

2+46 - 21° RT = ϕ 12" power pole # P273859

ON ARC - 20' Rad

2+44° 30° LT = Sly end Fly curb 72nd St

77⁵⁹ 77¹²
30° 30°
T.C. 90T

2+41.5 = Fly curb Line 72nd St to N14

77⁶⁵ 77¹⁹ 77¹ 79³ 79⁷ 79² 79⁵
40 40 30 19 2° 30
Tape AC BC N14 S14
AC AC AC

2+38 - 30° RT = 2 - 2' Ribbon ϕ 7' Wide Ribbon Drive

79⁵⁷ 79²³
30 40
pr pr

2+21.5 = ϕ 72nd St to N14

77⁶ 77⁸ 79⁶ 79⁷ 79⁷ 79⁶
40 30 18 2 30
N14 S14
AC AC AC

2+01.5 = Wly curb Line 72nd St to N14

78⁰⁵ 77⁵⁸ 77³ 79⁵ 79⁶ 79⁶ 80¹
40 40 30 18 2 30
T.C. AC AC N14 S14
AC AC AC

See sheet 7 - Pwg 11072-L

ON ARC - 20' Rad

Recently constructed -

1+99 - 30° LT = Sly end of Wly curb 72nd St

78⁰⁵ 77⁵⁵

1+94 - 20° RT = begin 3' high picket fence

30° 30°
Tape 90T

direct elevation Rod used - Add 400 to all elevat.

X-sec Amherst
cont

LT=N14

Q

RT=S14 30

Amherst

3+50 - RT=Q wide conc drive

78 ¹ 30	77 ⁴ 18	77 ⁴ 16 N14 AC.	77 ³	77 ³ 2 S14 AC.	76 ¹	76 ⁰	76 ²	76 ⁰ 40
					19	30	30	9" Drive

3+34 - 30^E LT=Q 3' wide conc walk

78 ²⁹ 40 ^E Walk	78 ⁰⁹ 30 ^E Walk
---	---

2 T.P. on L.S. Pipe & intersection 72ND ST Amherst
EL=479.33

3+25

78 ² 30	77 ⁸ 17 N14 AC.	78 ¹⁰	78 ¹ 30 S14 AC.	78 ⁰ 6	76 ² 30
-----------------------	-------------------------------------	------------------	-------------------------------------	----------------------	-----------------------

3+11 - 22⁰ LT=Q 8" acacia tree.

3+00

78 ⁵ 30	78 ⁴ 15 N14 AC.	78 ⁷	78 ² 30 AC.	77 ⁸ 30
-----------------------	----------------------------------	-----------------	------------------------------	-----------------------

29⁰ LT=Q 3' conc walk

2+84 - 30^E RT=Q 9' wide conc drive

78 ⁸⁰ 40 ^E Walk	78 ⁷¹ 30 ^E Walk	78 ⁷¹ 29 ⁰ Walk	78 ¹¹ 30 ^E Drive	77 ⁸⁶ 40 ^E on Drive
---	---	---	--	---

2+72 - 21⁰ RT=Q deadman.

2+51.5+ = Fly Line 72ND ST to N14.

78 ⁸ 40	79 ⁰ 30	79 ¹ 23 N14 AC.	79 ⁶	79 ⁶ 2 S14 AC.	78 ⁹ 30
-----------------------	-----------------------	-------------------------------------	-----------------	------------------------------------	-----------------------

Direct elev Rod used - Add 400' to all elevs.

X-sec Atthurst
cont

LT = NY

Atthurst

RT = SY 31

ETW Conc walk

4+12 26' LT = Sly edge of Flyend 4' wide

76⁷⁶ 76⁷⁶
30^L 26^L
NY Sly edge
edgewalk walk

4+09- 30° RT = 9' wide Conc drive

73⁴⁷ 72⁶³
30° 40°
ON DR. DR.

4+05- 22' RT = 1' high
NY end 8" conc wall

4+00- 26' RT = 8' wide conc drive

77⁰³ 76⁸² 76⁵⁵ 76²² 76²² 76^L 76^L 75^L 74^L 74^L
40^L 30^L 26^L 20 15 2 6 11 30
Dr also NYWIK walk walk AC Sly AC

3+82-30° RT = 3' wide Conc walk

75³¹ 75³⁴
30° 40°
walk walk

3+75- 26' LT = Sly edge ETW walk

77⁴⁷ 77⁴⁵ 76^L 76⁸ 76^L 76^L 75⁸ 75^L
30^L 26^L 20 15 3 14 30
NY Sly NYAC Sly AC
walk walk

3+58- 26' LT = Sly edge of 4' wide ETW
walk

78⁰ 77⁹³
30^L 26^L
NY of Sly of
walk walk

3+54- 26' LT = 8' wide Conc drive

78³⁰ 78¹¹ 77⁸³
40^L 30^L 26^L
Dr

Direct elev Rod used. All elevs true. add 400'

X-sec Amherst cont

LT = N14

♀
Amherst

RT = S14 - 32

4+75

72 ⁵	71 ⁹	71 ⁸	70 ⁹	70 ⁷	70 ⁸	66 ⁷
30	20	17 N14 AC		20 S14 AC	9	30

4+50

75 ¹	74 ⁴	73 ⁹	73 ⁹	73 ⁶	73 ⁵	73 ²	68 ³
30	21	20	17 N14 AC		20 S14 AC	9	30

4+61 21 30° LT = begin 1' high conc wall -

4+25

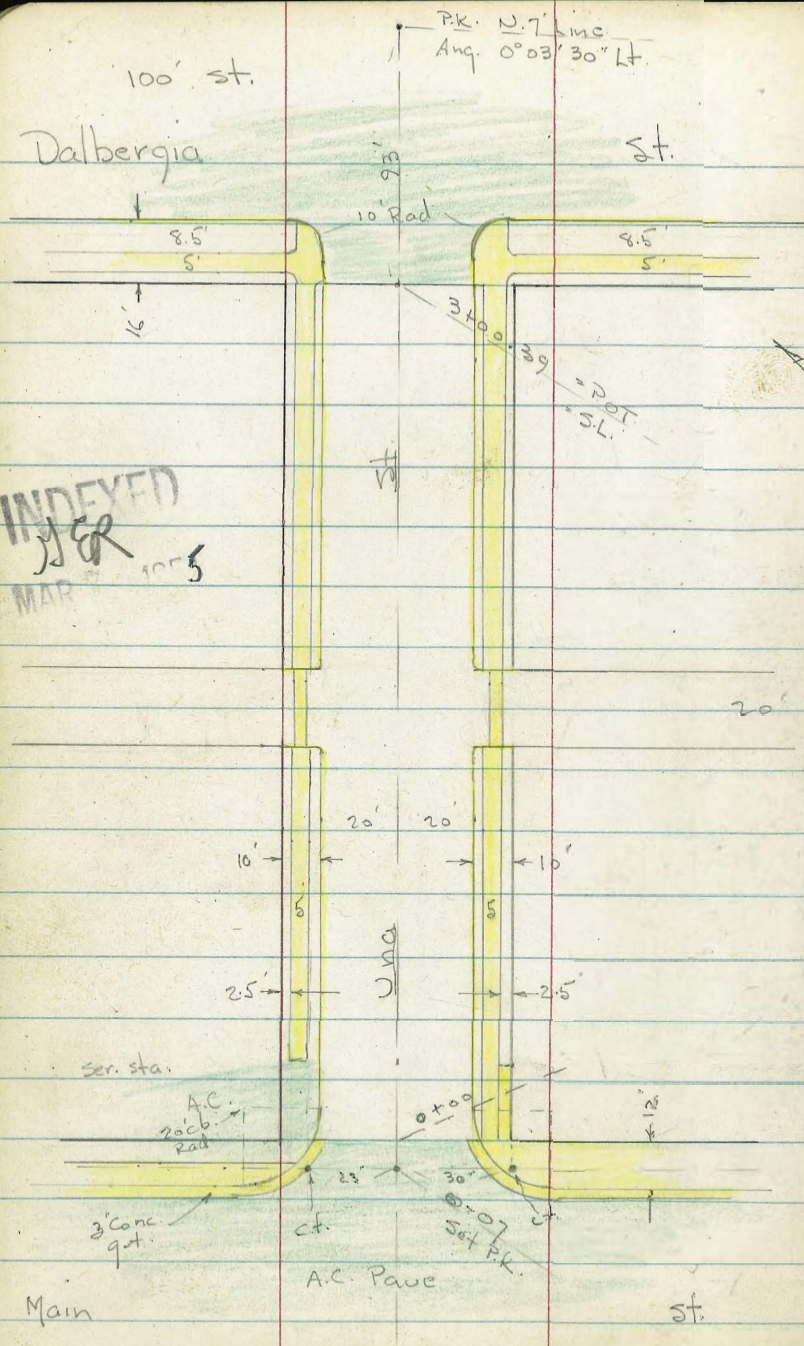
76 ²	75 ⁴	75 ⁴	75 ³	75 ³	74 ⁸	72 ²
30	20	16 N14 AC		2 S14 AC	9	30

4+21 - 30° LT = ♀ 3⁵' wide conc walk

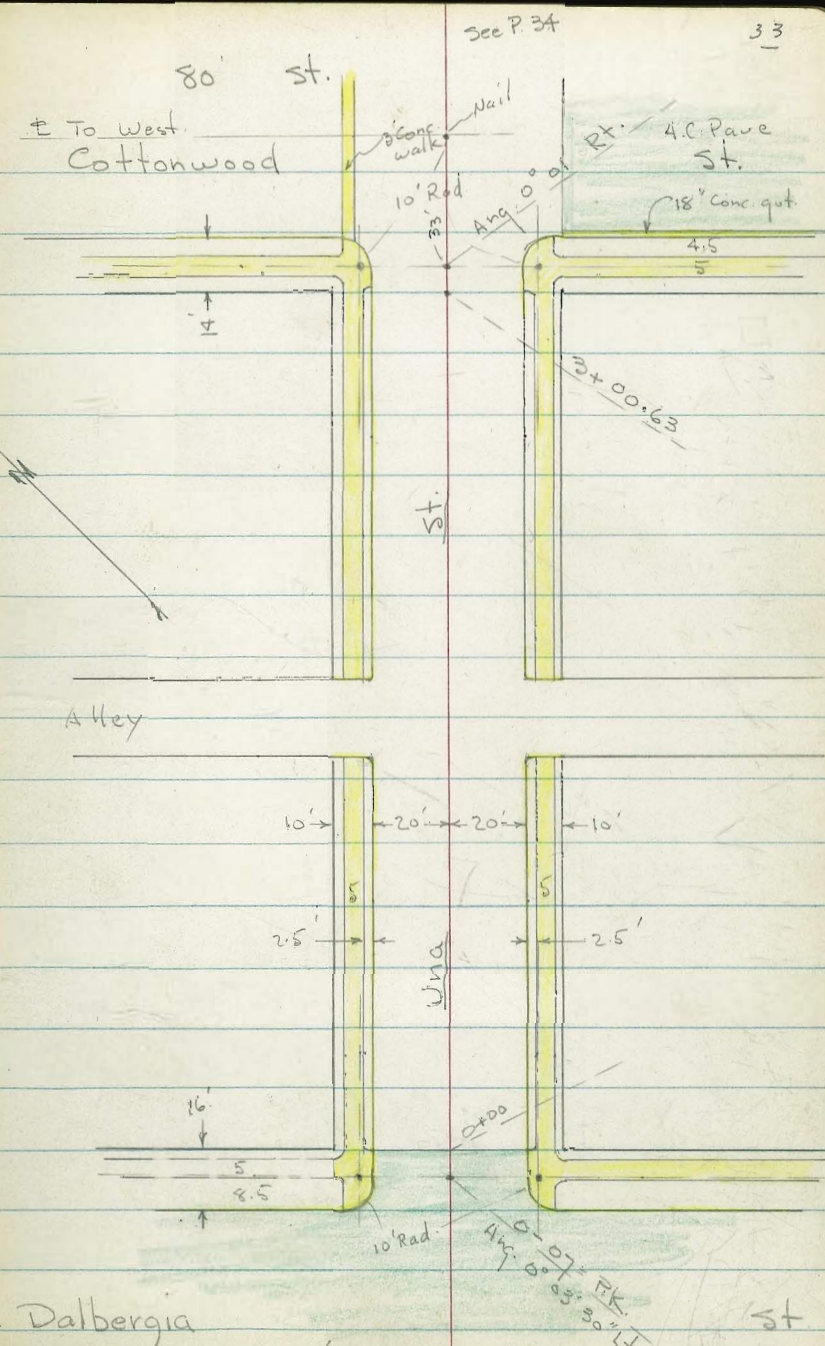
76 ⁶²	76 ⁵⁰
40° walk	30° walk

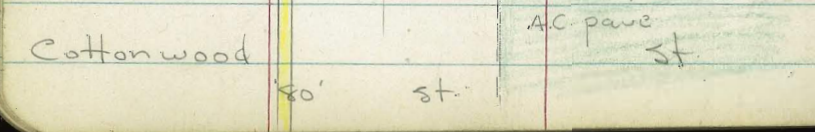
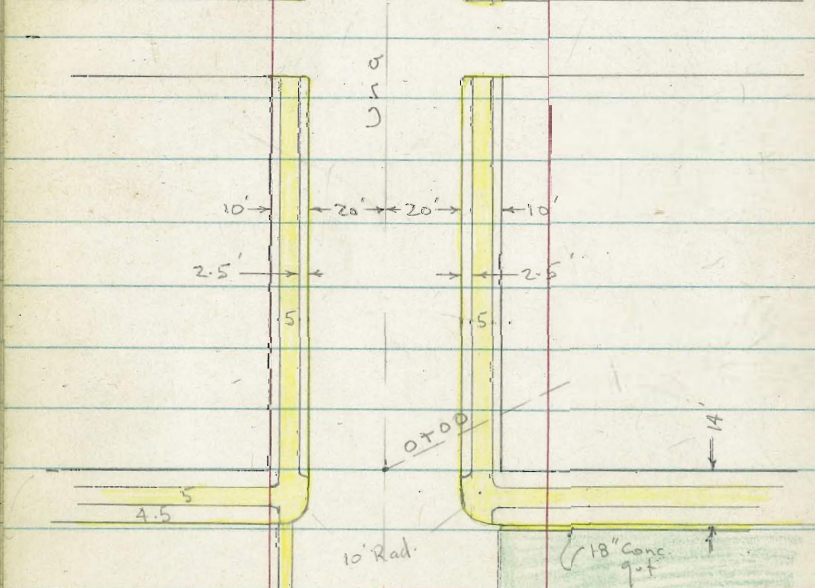
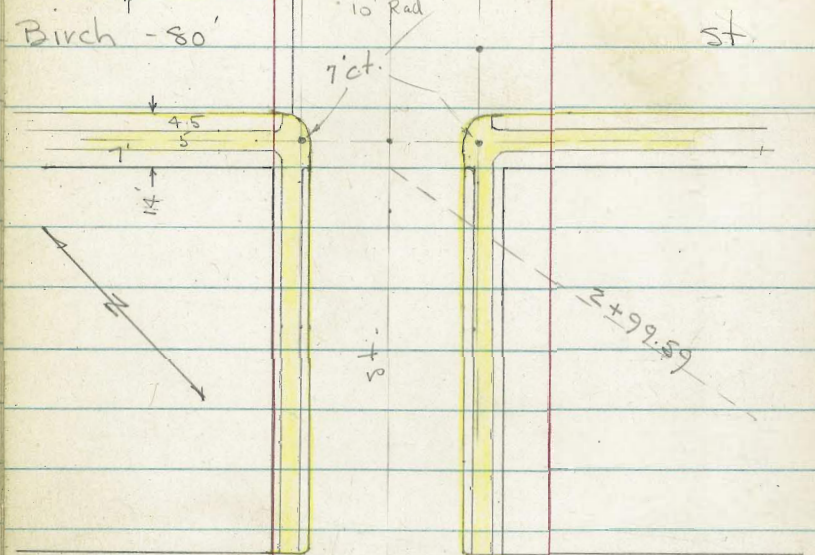
4+19 - 21° RT = ♀ 12" power pole # 370748

Direct elev Rod used - Add 400' to elevs.



INDEXED
JGR
MAR 1955





Lt. & Rt.

X-Sect. Una St. from Main to Birch
w.O. 32488 3-1-55 7.0.
Book 2155 - P. 7 - See sketch - P. 33-34

1+00 15.11 14.5 14.5 14.5 15.27
Top 19.7 gut 20.4 Top
0+63 - 20.4 R. = & 21' Conc. Dr. 14.23 14.80
20.4 Dr. 22.9 walk

0+50 14.32 14.1 13.9 13.9 14.62
Top 19.6 gut 20.4 Top
0+48 = end Dr. on Lt.

0+34 - 22.1 = Beg. 5' Conc. walk on Lt.
0+08 = P.C. of 20' Rad. Ref. 14.38 14.37
27' walk 22.1
13.84 13.70 13.2 13.5 13.6 14.05
30 20 12 20.4 Top = E.C.
AC. Cover over Dr. Conc. gut

0+02 - 9.5' H. = & 2.5 x 2.5 Gas. Co. M.H. 13.28 = S. Rim.
Beg. Dr. to Ser. Sta. on Lt.

0+00 = N.L. Main St. - was edge of A.C. - Now broken up 13.76 13.14 13.23 13.38 13.65 13.61 14.15
Top 21.4 18.3 18.9 22 Top
gut Cor. Conc. Cov. Conc. gut

0-12 = N. cb. Line 13.06 12.45 13.45 12.99 13.18 13.36 13.52 13.63 13.74 14.34
Top 90 Top 40 20 20 40 90 Top
gut = P.C. gut in Dr. gut

B.M. - Set. on N.E. 7' ct. 14.20
Una + Main Actual Elev. Shown

Una

B. 2155-P. 25

Check BM - NE 7' of Dalbergia

19.02

68 N. = N. cb. Line = 0-16 - P. 37

3+16.39 = S. cb. Line

18.52	18.01	18.22	18.19	17.83	17.40	18.00
Top	30	15		15	30	Top = E.C.
= E.C.	gut.				gut.	

± of Returns - Prop to Prop - 22' around

S.W. =	17.93	18.46		S.E.	17.97	17.43
	gut	Top			Top	gut

3+00.39 = S.L. of Dalbergia + edge of A.C. Pavé

18.47	17.78	18.00	17.95	17.75	17.29	17.99
Top	19.9	10		10	20	Top
	gut.				gut.	

2+50

17.55	16.5	16.8		16.5	17.18
Top	19.9			20.2	Top
	gut.			gut.	

2+00

16.78	15.8	16.1		15.7	16.66
Top	19.8			20.3	Top
	gut.			gut.	

1+80 - ± 10' Dr. Sec. on Rt. (not used)

15.71	16.33
20.2	22.9 = walk
Dr.	

1+60.5 - N. cb. of Alley Ret.

16.37	16.0	15.88	15.76	16.13	15.33	15.7	15.2	16.10	15.79	15.80	16.0	16.40
Top	29.6	26.3	23.3	Top	19.7		20.2	Top	23.9	26.9	30.4	Top
end	gut.	Conc.	walk	±	Rad.	gut.	gut.	±	Conc.	walk	gut.	end
cb.												cb.

1+56.5 - 10.8' ± ± 2.5 x 2.5' Gas. M.H. 15.49 = ±

1+50.5 = ± Sewer M.H.

16.6	15.9	15.2	15.67	15.2	15.8	16.0
50	30	20	S. Rim	20	30	50

3' Conc. walk across Alley - Both Sides

1+40.5 = S. do. of Alley Ret. - all in poor Condi.

16.04	15.8	15.60	15.50	15.81	14.9	15.3	15.1	15.80	15.43	15.58	15.7	15.98
Top	30	26.4	23.4	±	19.8		20.3	±	23.9	26.9	30.4	Top
end	gut.	(Conc.)	2'	Rad.	gut.		gut.	2'	Conc.	walk	gut.	end
cb.		walk						Rad.				cb.
								Top				

Una

Lt. = €

Rt. 37

1+60.5 = N. cb. Line of Alley

20.85	20.37	20.28	20.58	20.2	19.7	19.3	19.73	19.38	19.45	19.6	19.95
end. cb.	Top	Conc walk	Top € 2' Rad.	20 gut.		20 gut.	Top € 2' Rad.	Conc walk	26.5	30 gut.	Top end cb.

1+50.5

21.4	20.4	20.2	19.7	19.3	19.6	19.9
50	30	20		20	30	50

1+40.5 = S. cb. Line of Alley - cbs. in poor Cond.

30.7	30.6	20.33	20.25	20.45	20.1	19.7	19.2	19.72	19.46	19.57	19.97
Top end cb.	30 gut.	Conc walk	23.4	Top € 2' Rad.	20 gut.		20 gut.	Top € 2' Rad.	23.7	26.7	30.1 = Top-end cb. + gr.

1+16.5 = € of 16.5' Conc. Dr.

20.52 19.90

1+06 = € of 4" Drain Thru cb. on Lt

19.65 27.5 19.8

20
E.E. of Drain

20.25	19.9	19.5	19.0	19.53
Top	20 gut.		20 gut.	Top

1+00

0+50

19.84	19.4	19.4	18.6	19.20
Top	19.9 gut.		20.1 gut.	Top

0+33 = € , 16.5' Conc. Dr. on Lt

19.91	19.19
27.4 edge Dr.	19.9 gut. = Dr.

0+00 = N.L. of Dalbergia + edge of A.C. Pavc

19.46	18.77	18.79	18.82	18.64	18.51	18.95
Top	20 gut.	10		10	20 gut.	Top

€ of Ret. - Prop. to Prop - 22 around

N.W.	18.80	19.42	N.E.	19.02	18.42
	gut.	Top		Top	gut

0-16 = N. cb. Line

19.42	18.77	18.67	18.59	18.47	18.40	18.94
Top = E.C.	30 gut.	15		15	30 gut.	Top = E.C.

Una

Lt.

¢

Rt.

38

check BM. = N.W. 7' ct. Una + Cottonwood. 13.58 ✓

3+40.63 = ¢

14.2 14.15 14.02 13.7 13.7 13.5 13.30 12.56
30 27.5 24.5 15 15 30 50
Conc. walk A.C.

3+14.63 = S. cb.

16.04 15.2 14.99 14.6 14.47 14.35 14.7 14.6 14.3 13.38 13.92 12.70 13.14
Top 50 Top 30 27.5 24.5 10 10 29.6 Top 50 Top
gut = PC gut Conc. walk Beg. Conc. cb gut Top
gut PC

¢ of Ret. 20.4' around prop. to prop.

S.W. 14.4 15.00 13.99 13.7
gut. Top Top gut

3+00.63 = S.L. Cottonwood.

14.95 14.7 15.1 15.0 14.6 14.0 14.06
Top 20 10 10 20 Top
gut

2+60

17.45 16.7 16.7 15.7 16.39
Top 20.1 20 Top
gut

2+40

18.50 17.7 17.6 16.8 17.47
Top 20 19.9 Top
gut

2+20

19.26 18.6 18.4 17.75 18.51
Top 19.9 19.9 24.2
gut Dr. walk

2+19 = ¢ 13' Conc. Dr. on Rt.

17.78 18.56
19.9 24.2
Dr. walk

2+00

19.91 19.2 19.1 18.4 19.04
Top 20 20 Top
gut

1+80

20.30 19.9 19.5 18.9 19.50
Top 29 20 Top
gut

Jna

Lt.

±

Rt.

39

1+40 = 5. cb. of Alley

8.31	8.35	8.1	8.2	8.2	8.3	8.2	8.76	8.5	8.92
30.1 = Top-end ob ± 2' ± gr.	Top = 20'	got	10'		10'	20'	Top = ± 2' ± Rad.	30'	Top = end cb.

1+21.5 = jog in Top of cb. on Lt.

8.67	8.48
Top to North	20.1 = Top to South

1+10

8.77	8.65	8.6	8.8	9.0	8.9	8.4	9.02
22.5 walk	Top	20.1 got.	10'		10'	20' got.	Top

1+01 = 20' Rt. = Brk. in cb.

9.16

0+98 = ± 13.5 Conc. Dr. on Lt.

9.23	8.52
24.1 walk	20' Dr.

20 = Top

0+80 = 25.4 Rt. = 1.7 x 1.7 Clean out. - 18" + 24" pipes

9.49	9.1	9.6	9.7	9.4	8.8	9.15	9.32	5.60
Top	20' got.	10'		10'	20.1 got.	Top	22.5	28.4 I.E. of Box

0+55 = ± 13' Conc. Dr. on Rt.

18.84	19.45
20' Dr.	22.5 walk

0+40

10.72	10.2	10.8	10.8	10.4	9.7	9.40	9.67
Top	19.9 got.	10'		10'	20.3 gr.	Top cb. covered	22.7 walk

3+80.63 = N.L. Cottonwood = 0+00 ahead

13.31	12.0	12.2	11.3	12.17
Top	19.8 got.		20' got.	Top

± of Ret. 20' around - prop. to prop.

N.W.	12.6	13.58	N.E.	12.06	11.80
	got.	Top		Top	got.

3+66.63 = N. cb.

13.69	13.4	13.19	13.11	12.7	12.8	12.4	11.80	12.24	11.31	11.79
Top	30' got.	27.3 Conc. walk	24.3	15'		15'	30' got. AC.	Top	50' got.	Top

Una

E of Ret. 20' around - prop. to prop.

2+99.59 - S.L. Birch

2+60

2+20

1+83 = N. end of opening

1+66.5 = Nly. of grate

1+63 - 20.1 Lt. - cb. at S. end of 20' opening inlet

1+60 = N. cb. of Alley

1+50 = E Alley

1+45 = 42.5 Lt. = E Clean out - 5x5 Cmc.

20

Lt.

E

Rt.

S.W. 10.6 10.92 SE 11.97 11.1
gut. Top gut.

10.93 10.3 10.9 11.1 11.0 10.8 11.78
Top 20 10 10 19.8 Top
gut.

10.10 9.6 10.3 10.5 10.4 9.8 10.66
Top 19.8 10 10 19.8 Top
gut.

9.30 8.9 9.6 9.8 9.7 9.0 9.44
Top 20 10 10 19.9 Top
gut.

8.72 7.89 8.7 8.9 8.8 8.5 8.96
Top 20.1 15 10 20 Top
gut =
opening

7.58 7.71
20.1 18.1
grate

8.38 7.60 7.72
Top 20.1 18.1 = 60
grate grate

8.22 8.34 7.7 8.1 8.3 8.3 8.4 8.89 8.9 9.00
30.2 Top = 20 10 10 20 Top 30.1 Top = end
Top-end #2 Rad gut gut. 2' Rad. gut.

8.0 8.4 8.5 7.8 8.2 8.1 8.3 8.4 8.5 9.2
50 30 21 20 10 10 20 30 50

8.06
42.5 = Top

Una

Lt

←

Rt

41

Una + Birch
Set B.M. - SE 7' ct.

12.07 - gone

3 + 79.59 = N.L. Birch = end.

± of Returns - 20 around

3 + 65.59 = N. cb.

3 + 39.59 = ±

3 + 13.59 = S. cb.

10.60
Top

✓ 11.99	11.7	12.3	12.6	12.7	12.6	12.98
Top	19.9 gut.	10		10	20.1 gut.	Top

N.W.

11.6
gut

11.99
Top

N.E.

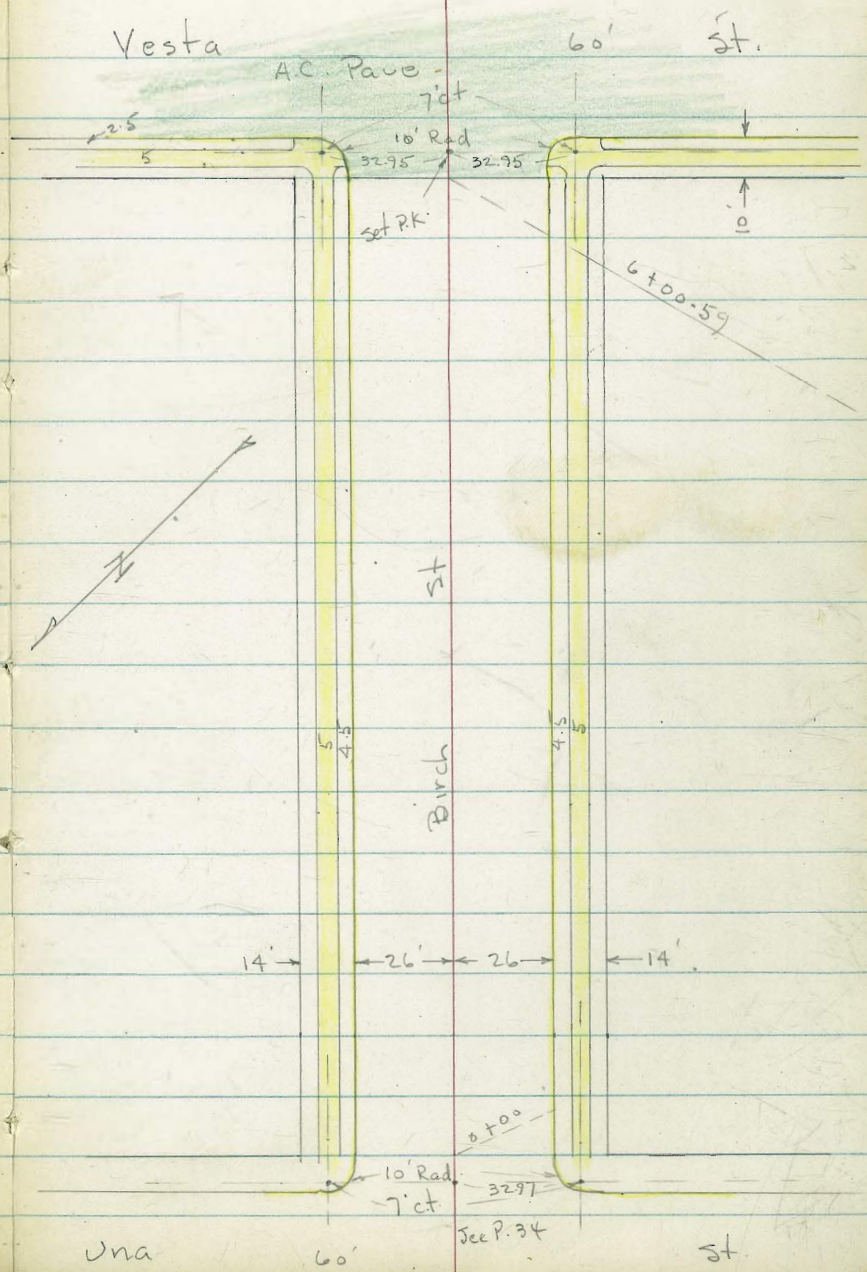
12.97
Top

12.4
gut.

1154	10.99	11.93	11.41	11.36	11.8	12.3	12.3	12.4	13.01
Top	50 gut	Top	30 gut	24.8 Conc walk	15		15	30 gut.	Top

11.18	11.53	11.37	10.97	11.6	11.8	11.8	12.1
50	30	25	24.4	15		15	30
		AC.	edge	Conc. walk			

10.06	10.93	10.39	10.31	10.9	11.4	11.1	11.5	12.00
50 gut	Top	30 gut.	24.3 beg Conc.	15 gut.		15 Cross walk	30 gut.	Top



Lt. E Rt.

X-Section Birch St. from Una to Vesta.

W.O. 32488

3-4-55

7.0

sketch- P-42

2+85 = ± 13 Conc. Dr. on Rt.

14.24 15.04
25.9 30.6
Dr. walk

2+50

15.70 14.9 15.3 14.9 14.5 13.9 14.72
Top 26 13 13 26 Top
 gut.

2+00

15.15 14.4 14.6 14.4 14.0 13.4 14.15
Top 26 13 13 26 Top
 gut.

1+50

14.60 13.8 14.1 13.9 13.5 12.9 13.60
Top 26 13 13 26 Top
 gut.

1+00

14.11 13.3 13.5 13.4 12.9 12.6 13.14
Top 26 13 13 26 Top
 gut.

0+56 = ± 11 Conc. Dr. on Rt.

12.10 12.67
26 30.6
Dr. walk

0+50

13.50 12.7 12.9 12.8 12.4 12.1 12.65
Top 26 13 13 26 Top
 gut.

0+00 = E.L. of Una - See P. 41 for Int.

13.00 12.4 12.2 12.1 11.8 11.4 12.00
Top 26 13 13 26 Top
 gut.

B.M. = S.E. 7' ct. Una + Birch

12.07

Actual Elev. Shown.

Birch

4+92 = ± 12' Conc. Dr. on Lt.

19.45	18.58
30.5 walk	25.9 Dr.

4+60

18.43	17.7	18.0	17.9	17.5	16.7	17.39
Top	26 gut.	13		13	26 gut.	Top

4+40

17.88	17.2	17.7	17.6	17.0	16.2	16.88
Top	26.1 gut.	13		13	25.9 gut.	Top

4+20

17.53	16.9	17.4	17.2	16.7	16.0	16.57
Top	26.1 gut.	13		13	26 gut.	Top

4+11 = ± of 10.5' Conc. Dr. on Rt.

16.03	16.51
26 Dr.	30.5 walk

4+00

17.29	16.7	17.0	16.9	16.2	15.8	16.36
Top	25.9 gut.	13		13	26 gut.	Top

3+66 = ± 13' Conc. Dr. on R.

15.38	15.96
25.9 Dr.	30.6 walk

3+60 = ± 14' Conc. Dr. on Lt.

16.96	16.31
30.5 walk	26 Dr.

3+50

16.80	16.1	16.3	16.1	15.6	15.1	15.81
Top	26 gut.	13		13	26.1 gut.	Top

3+07.5 = ± 13.5' Conc. Dr. on Lt.

16.34	15.59
30.5 walk	26 Dr.

3+00

16.21	15.4	15.7	15.6	15.0	14.4	15.22
Top	26 gut.	13		13	26 gut.	Top

Lt.

±

Rt.

44

Birch

Lt

♀

Rt.

45

Set B.M. on S.W. 7th ct. - Vesta 21.60

6 + 30.59 = †

23.13 22.93 22.56 22.25 22.10
40 26 26 40

6 + 10.59 = W. cb. Line

23.30 23.00 22.53 22.14 22.14 22.12 21.95 21.63 21.29 21.12 21.49 20.76 21.20
Top 80 Top 40 26 13 13 26 40 21.49 80 21.20
gut gut gut Top gut Top

E. of Returns - 20' around - prop. to prop

N.W. 22.09 22.55 S.W. 21.53 21.14
gut Top Top gut

6 + 100.59 = W.L. of Vesta = edge of A.C. pave
(Note: May not be standard pave)

22.55 22.08 21.91 21.83 21.66 21.48 21.11 21.55
Top 26 13 8.5 13 26 Top
♀ water. gut
M.H. - N. Rim

5 + 50

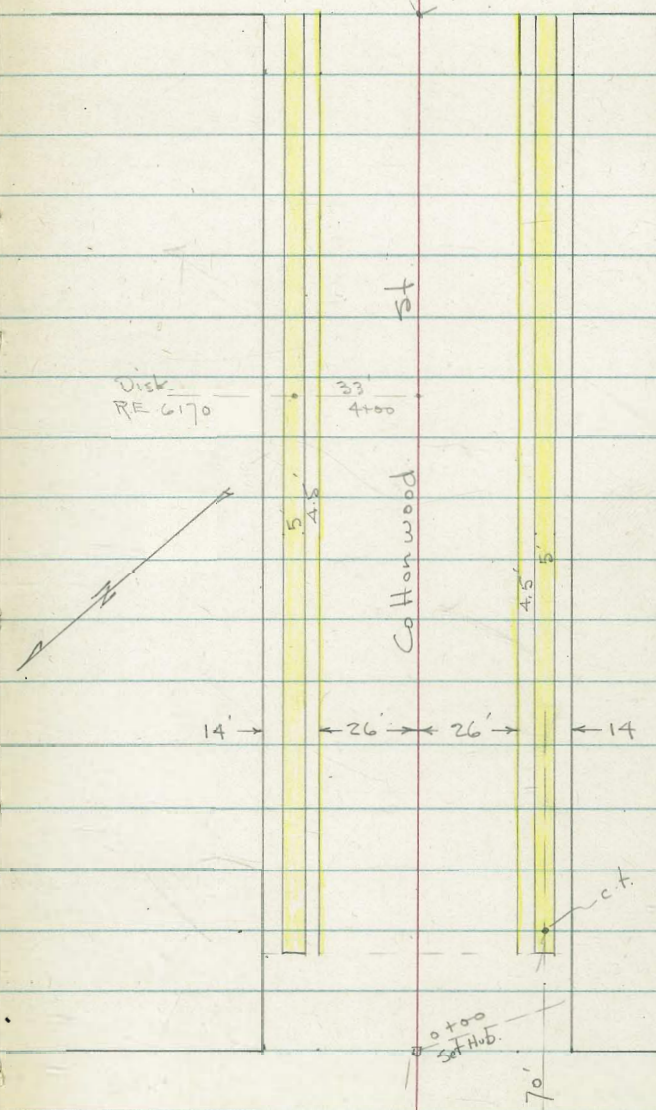
20.97 20.1 20.5 20.4 20.0 19.4 20.07
Top 26 13 13 26 Top
gut gut

5 + 00

19.55 18.9 19.0 18.8 18.4 17.9 18.60
Top 26 13 13 26 Top
gut gut

± ↗
Una st.
See P. 33+34

30'
C+00.29



st

Disk
RE 6170

33'
4+00

Cottonwood

14' ← → 26' → ← 26' → ← 14'

c.t.

0+00
St. Hub.

70'

Thor - 60'

43'

Fd.
Hub.

st.

13' 20'

13' Line to
Dalbergia

X-Sect Cottonwood from Thor to Una
w.O. 32488 3-4-55 7.0.
Sketch = P. 46

Lt. ⊕ Rt.

2+50 = Thru Dr Sect on Lt. - 2' from E. end of 11' Dr.

20.83 20.15 20.4 20.5 20.3 19.7 20.68
30.7 26.1 13 13 25.9 20.68
walk gut. in Dr. gut. Top

2+00

17.53 16.8 17.1 17.2 17.0 16.6 17.53
Top 26.1 13 13 25.8 Top
gut. gut.

1450

14.42 13.3 13.7 14.0 14.0 13.4 14.30
Top 26.1 13 13 25.9 Top
gut. gut.

1+06 = ⊕ 10' Conc. Dr. on Lt.

11.66 10.94
30.7 26
walk Dr.

1+00

11.16 10.4 10.7 10.9 10.8 10.4 11.04
Top 26.2 13 13 25.8 Top
gut. gut.

0+50

8.00 7.6 7.7 7.8 7.6 7.1 7.90
Top 26.2 13 13 25.9 Top
gut. gut.

0+25 = Beg. cbs + walks

6.32 6.36 6.35 5.8 6.4 6.4 6.4 5.8 6.30 6.32 6.34
35.8 30.8 Top 26.3 13 13 25.9 Top 30.4 35.4
walk end cb. gut. gut. walk

0+11 = 28.1' Rt. = ⊕ F.H.

0+00 = E.L. Thor.

5.2 5.4 5.5 5.2 5.7 5.3 4.2
40 26 26 27 40 50

0-30 = ⊕ Thor

4.6 4.9 4.9 5.0 5.0 4.9 4.9
80 40 26 26 40 80

B.M. ⊕ in Nly. cb. end -
Cottonwood + Thor. B.2155 - P. 15

6.35

Actual Elev. Shown

Cottonwood

Lt.

±

Rt.

48

4+33 = ± 9.5' Dr. Sect. on Lt.

23.50 22.78
30.6 walk 26 Dr.

4+70 = F.U.C.?

24.10 23.3 23.7 23.9 23.9 23.7 24.49
Top 26.2 gut. 13 13 25.8 gut. Top

4+00

25.09 24.3 24.5 24.8 24.7 24.6 25.20
Top 26.2 gut. 13 13 25.9 gut. Top

3+92 = ± 16' Conc. Dr. on Lt.

25.47 24.76
30.7 walk 26.2 Dr.

3+80

25.68 25.0 25.2 25.4 25.3 25.1 25.63
Top 26.2 gut. 13 13 25.9 gut. Top

3+60

25.90 25.3 25.5 25.7 25.5 25.3 25.86
Top 26.2 gut. 13 13 25.9 gut. Top

3+40

25.55 25.0 25.2 25.5 25.3 25.0 25.53
Top 26.3 gut. 13 13 25.8 gut. Top

3+20

24.90 24.1 24.5 24.8 24.6 24.1 24.77
Top 26.3 gut. 13 13 25.9 gut. Top

3+00 = P.U.C.

23.88 23.1 23.5 23.7 23.6 22.8 23.86
Top 26.2 gut. 13 13 25.9 gut. Top

2+87 = ± 14' Conc. Dr. on Lt.

23.21 22.53
30.7 walk 26.2 Dr.

Cottonwood

Lt.

±

Rt.

49

check B.M. - N.W. 7' ct.

13.58[✓]

6+00.29 = W.L. of Una - See P. 38 for Int.

13.68	13.4	13.7	14.2	14.4	14.6	14.99
Top	26 gut	13		13	26 gut	Top

5+50

16.54	15.7	16.4	16.8	16.9	16.8	17.71
Top	26 gut	13		13	26.1 gut	Top

5+00

19.47	18.7	19.5	19.8	19.8	19.6	20.20
Top	26.1 gut	13		13	25.9 gut	Top

4+92 = ± 8.5' Dr. Sect. on Rt.

20.10 20.83

4+85 = ± 9' Dr. Sect. on Lt.

20.47 19.73
30.6 26
walk Dr.

25.9 30.5
Dr. walk

4+60

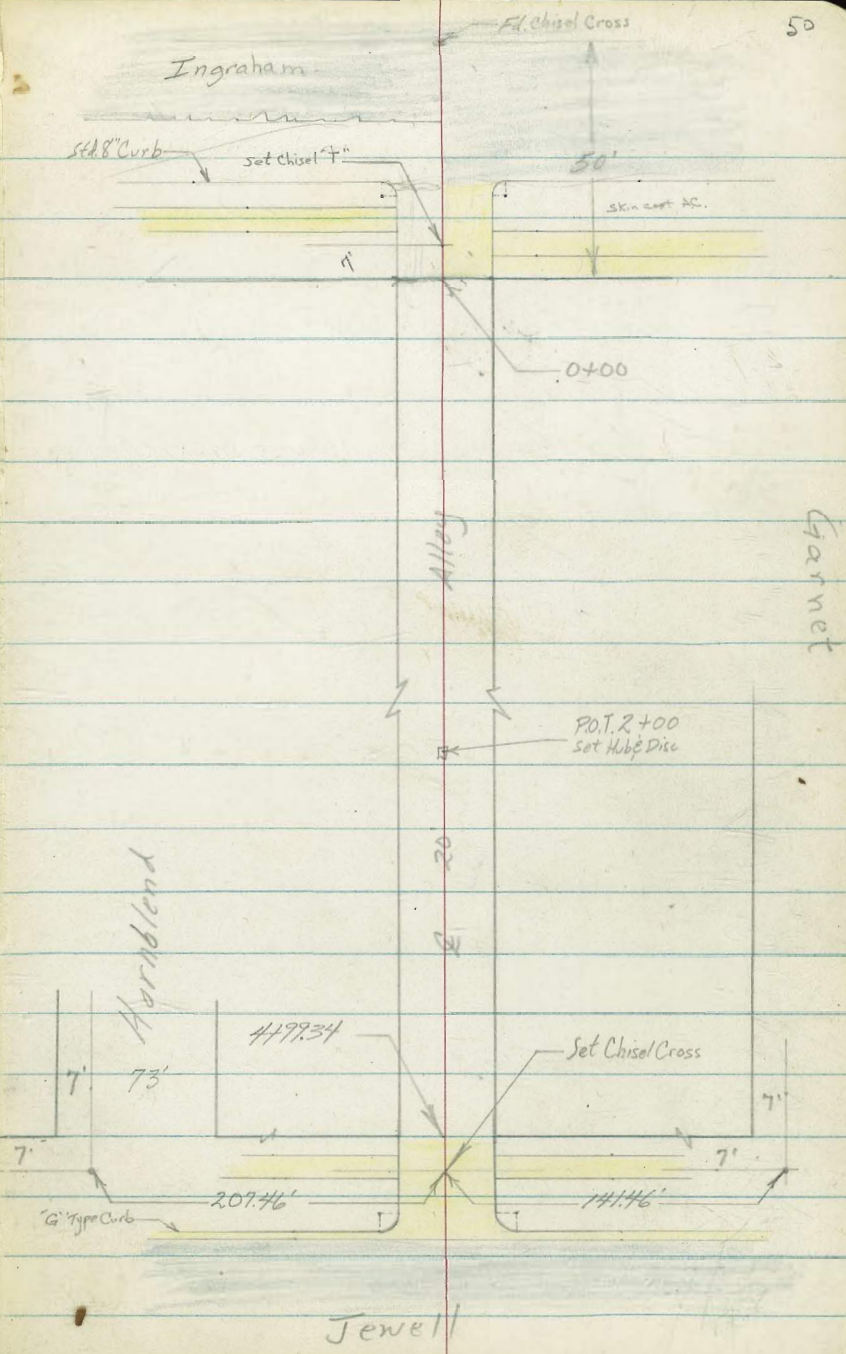
21.88	21.0	21.8	22.0	21.9	21.6	22.42
Top	26.1 gut	13		13	25.8 gut	Top

Roberts
Rorer
Moore
Moralez
5-4-53
W.D. #32611

X-Section Alley Block 217, Pacific Beach

see FB/675 pg 37

INDEXED
JER
MAY 5 1955



T.P. 8.07 73.68A 0.35 65.61

0+00 92 Lt begin building
East Line Ingraham

61.71 61.47 61.08 61.7 61.52
425 449 488 43 444
10 10 10 10
cb gut gut cb

0-02 7.5 Lt to Near Edge P. Pole # D18243T

0-20 Curb Line

62.13 61.57 61.76 61.21 61.48 60.92 60.75 60.7 61.28 60.5 61.04 60.1 60.65
383 439 420 475 448 504 521 53 468 55 472 59 531
100 100 50 50 13 13 13 13 50 50 100 100
cb gut cb gut cb gut gut cb cb gut cb

0-33 Edge Pav on Rt.

61.52 61.15 60.84
444 481 572
50 50

0-50

62.17 61.85 61.45 61.11 60.73
379 411 451 485 523
100 50 50 100

T.P. 5.03 65.96A 10.05 60.93 ON CHISEL T 0-09

65.96A

T.P. 9.24 70.98 2.37 62.74

BM 13.27 65.11 NWBP 51.84 Grand & Jewell

0+68 10° Rt to fence

0+63 17° Lt to 6' service door

66.3	65.8
7.4	7.9
17°	14°
Floor	conc
8.3	8.3
17°	10
AC	AC

0+52 10 Lt AC behind Store

0+51 8° Lt to N.E. P.P. # PA1605

0+50 Lt End conc Ret. wall

62.00	66.24	65.1	65.3	65.3	65.3	66.5	66.5
10.88	7.34	8.6	8.4	8.4	8.4	7.2	7.2
10	10	10	4	7	10	20	
Floor	Top						

0+48.5 8.0 Rt to near edge P.P. # A1606
Has conduit going underground to transformer yard. Encased in concrete.

0+42.5 9° Lt End bldg begin ret. wall has stairway

62.00	66.24	65.0	64.9	65.0	66.4	66.4
10.88	7.34	8.7	8.8	8.7	7.3	7.3
92	92	92	7	10	20	
conc. Floor	Top	GRD				

0+25 8° Rt to Near Edge N' Cypress

64.2	63.8	63.7	64.0	65.4	66.0	66.1
9.5	9.9	10.0	9.7	8.3	7.7	7.6
92	6	8	10	11	20	
Bldg						

0+10

63.3	62.5	62.4	62.1	63.5	66.1	65.9
10.4	11.2	11.3	11.0	10.2	7.6	7.8
92	8	9	10	12	20	
Bldg						

Cont'd From Page 52

1+50 { 10° Lt Ent AC Parking Lot.
 10± Rt begin conc. apron to garages.
 10± Rt End fence.
 ↑
 Garages - 2 apt. Bldg.
 Continuous Apron.

Lt	C	Rt	53
68.1	69.3	69.1	69.3
56	44	46	44
30	10	7	5
AC	AC		
			10.0
			69.85
			3.7
			3.83
			10±
			conc
			15±
			Floor

1+47 78 Lt to N.E. P. Pole # D18242T

1+25 74 Rt to N.E. P. Pole # A1626
 conduit into conc. encasement behind
 this pole.

67.6	68.3	68.7	68.8	68.7	69.2	69.3
6.1	54	50	49	50	45	44
30	10	5		6	10	20
AC	AC					

1+00 10± Rt to fence

67.2	67.0	67.7	67.8	67.9	68.5	68.4
65	63	60	59	58	52	53
20	10	5		6	10	20
AC	AC					

0+98 84 Rt to N.E. 16" Cypress Tree

↖ New big parking lot.

0+80 8° Rt to N.E. 16" Cypress Tree

0+75

66.5	66.3	66.6	66.7	68.1	68.1
7.2	74	71	70	56	56
17L	10		6	10	20
AC	AC				

0+74 85 Rt to deadman

0+73 89 Rt to deadman

73.68X

73.68X

2+56 32⁸ Lt E single garage69.5
5.0
22.8
Floor
Dirt2+54 7⁵ Rt to NE 30" cypress Tree2+51 8⁵ Rt to NE 15" cypress Tree

2+50

69.6 69.7 69.8 69.9 70.1 69.9
4.9 4.8 4.7 4.6 4.1 4.6
20 10 5 10 202+48 8⁹ Rt End AC entrance69.9 69.9 69.8
4.6 4.6 4.7
8 10 20
AC AC AC2+24 { 9² Rt to NE P. Pole* A 1646
10⁴ Rt End conc apron to garages
8 Rt Begin AC Entrance to Parking lot69.3 69.5 69.8 69.9 70.1 70.7 70.20 70.1
5.2 5.0 4.7 4.6 4.4 4.38 4.25 4.4
20 10 8 10 10 15 20
AC AC conc Floor AC

T.P. 4.72 74.45 T 3.95 69.73

74.45 T

2+00

69.3 69.7 69.7 69.8 70.0 70.05
4.4 4.0 4.0 3.9 3.7 3.63
20 10 6 10 10
conc

73.68 T

73.68 T

3+11 11¹ Rt begin AC entrance to parking lot.

69.2 68.8
5.3 5.7
11¹ 21¹
AC AC

3+06 8⁵ Rt to NE. 30' Cypress Tree

3+00

69.6 69.6 69.5 69.6 70.0 69.9 69.5
4.9 4.9 5.0 4.9 4.5 4.6 5.0
20 10 5 7 10 20

2+99 9⁰ Rt to NE. P. Pole # A1656

2+97 7⁷ Lt to NE P. Pole # JPA1657

2+81 7⁸ Rt to NE 24" cypress Tree

2+72 9⁶ Rt to dead man

2+64 8⁵ Rt to NE 24" cypress Tree

2+60 8² Rt to NE 14" cypress Tree

7445 X

7445 X

3+82 8¹/₂ Rt to NE 20" cypress Tree3+73 9¹/₂ Lt \approx 4' opening in wall3+70 8¹/₂ Rt to NE 11" cypress stump3+67 9¹/₂ Rt to NE 14" cypress stump3+58 8¹/₂ Rt to N.E. 18" cypress Tree3+55 8¹/₂ Rt to NE 24" cypress Tree3+51 8¹/₂ Rt to NE 24" cypress Tree3+50 9¹/₂ Lt begin conc. block wall3+27 11¹/₂ Rt End AC entrance7445 π 68.79
5.66
9¹/₂
conc

74.0	67.6	68.5	68.4	68.3	68.2
0.5	6.9	6.0	6.1	6.2	6.3
9 ¹ / ₂	9 ¹ / ₂	9 ¹ / ₂		10	20
Top	Feet	GRD			

69.0	68.7
55	58
11 ¹ / ₂	21 ¹ / ₂
AC	AC

7445 π

67.1 66.1 67.69 67.73 68.01
 74 84 67.6 67.2 644
 102 102 102 132 202
 GRD Foot conc conc conc

4+23 10² Rt to jog in walk

4+18 8⁰ Rt to NE 48" cypress Tree

4+05 8⁵ Rt to NE P. Pole #A1676

4+00

68.1 68.0 67.8
 6.4 6.5 6.7 7.1 7.1
 20 10 10 132

3+93 13¹ Rt begin conc walk in front of Bldg

3+92 16³ Lt & Single Garage

3+89 8⁸ Rt to NE 24" cypress Tree

3+85 8⁸ Rt to NE 15" cypress Tree

3+83 9¹ Lt End conc block wall

74.0 67.4 68.5
 05 7.1 6.0
 9L 9L 9L
 Top Foot GRD

67.67 67.98
 6.78 6.47
 132 21
 conc conc

68.75
 5.70
 162
 conc
 Floor

4+95

66.15	65.6	65.1A	65.4
40	45	47	47
10	8		10

4+75 10² Rt Step down in curb

67.0	66.6	66.1	65.9	65.1A	65.0	64.8	65.9A
3.1	3.5	4.0	4.2	4.7	5.1	3.3	4.8
20	10		10 ⁴	10 ⁴	10 ⁴	10 ⁴	10 ⁴
			GRD	Foot	Foot	Top	Top

T.P. 3.70 70.12A 8.03 66.42

70.12A

4+53 7.6 Lt to N.E. Pole # D18240T

4+50

67.3	66.9	66.6	66.5
7.2	7.6	7.9	8.0
10	10		10

4+36 10² Rt walk ends, 6" curb starts

66.8	65.7	67.71	66.85
7.7	8.8	6.74	7.60
10 ²	10 ²	10 ²	10 ²
GRD	Foot	same	Top
		walk	cb

4+30 10² Rt to 4" drain in walk

66.88
7.57
10 ²
Invert

74.45A

74.45A

check 9.23 51.84 = 51.84

T.P. 1.15 61.07 10.20 59.92

5+39.34 ☒ Jewell Street

61.32
3.80
50

65.27
4.85

63.95
6.17
6.17
50

5+19.34 Curb Line

66.45	65.99	65.69	65.15	64.81	64.44	64.91	63.53	64.02
3.67	4.13	4.48	4.97	5.31	5.68	5.21	6.59	6.10
50	50	14	14		14	14	50	50
cb	gut	cb	gut		gut	cb	gut	cb

4+99.34 } 10° Rt End. of Curbing
West Line Jewell Street

65.82	65.38	64.92	65.10	65.39	65.94
4.30	4.74	5.20	5.02	4.73	4.18
99	99		10	10	10
cb	gut		gut	cb	curbing end

70.12A

70.12A

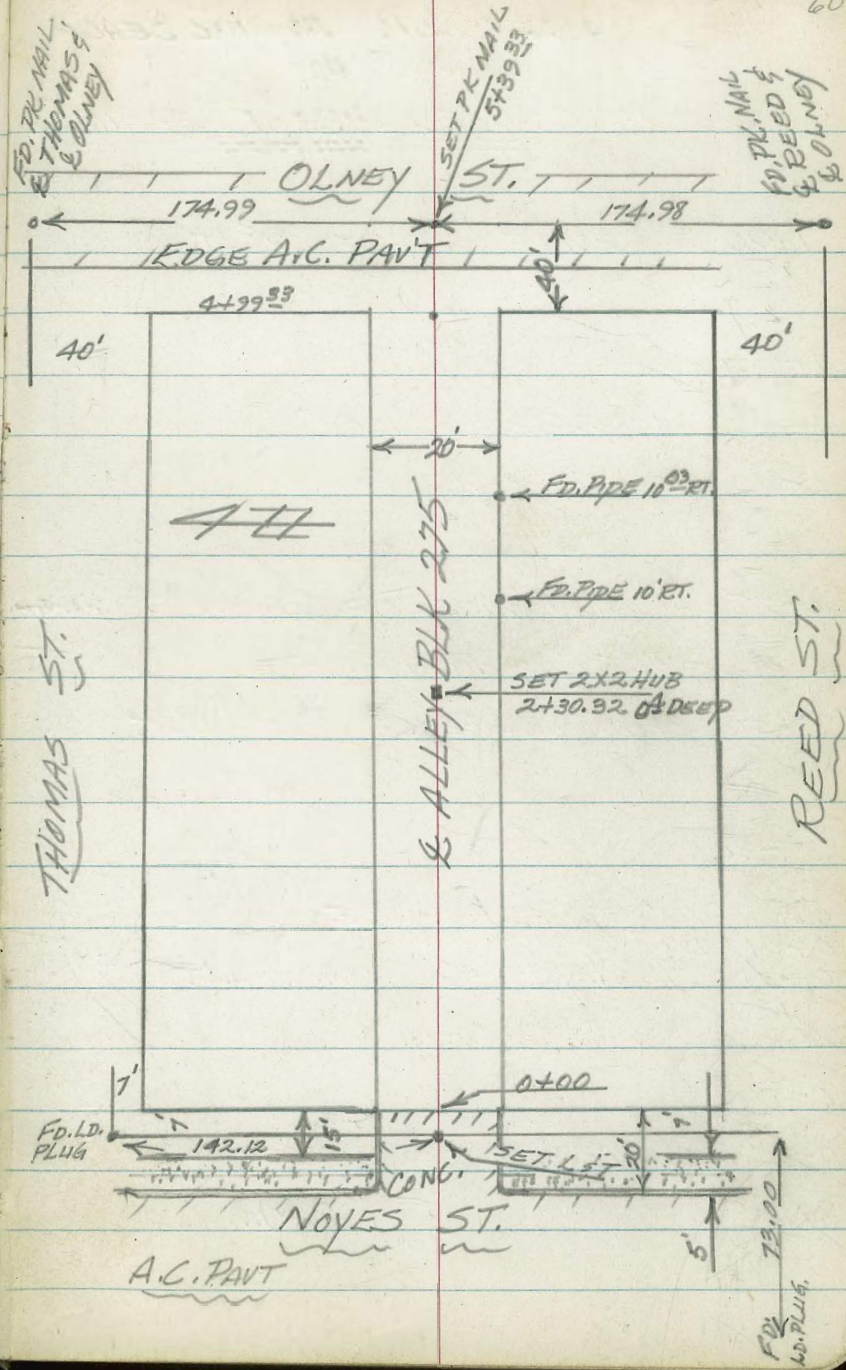
ALLEY BLK. 275 PACIFIC BEACH

8/15/58

SHOREY

HALBERT

KEHLER



ALLEY BLK., 275 PAC. BEACH
(CONT'D)

NOTE: USED DIRECT READING ROD

	LT.	♀	RT
1490 ♀ 16' WIDE GARAGE 9 ³ LT.	29.32 20 ³ FLOOR	28.25 9 ³ A.C. APRON	
1450	28.2 10	28.0	27.6 10 25.7 80
1402 8 ³ RT. P.P. JPA 2120			
1400 10 ³ RT. END WOOD FENCE	28.5 10	28.1	28.5 10
0495 11 ³ LT. 13' WIDE CONC. APRON TO GARAGE	29.71 19 ³ FLOOR	28.53 11 ³ APRON	
0483 10' LT. END WOOD FENCE			
0450 BEGIN WOOD FENCE 10 ³ RT. & 10' LT.	28.7 10	28.3	28.3 10
0430			
0410 10 ³ LT. BEGIN HOUSE	29.2 10 ² CONC. FOUNDATION	28.4	28.1 10
0401 10' RT. P.P. JPA 2104			
0400 E/L. NOVELS - END CONC. PAVT.	25.90 10 EDGE CONC. PAVT.	25.01 EDGE CONC. PAVT.	25.38 10 EDGE CONC. PAVT.
0-07		24.56	
0-15 BEGIN CONC. BLK. WALL 10 ² LT.			
TBM	24.60	♀ L & T 0-07	(SEE PAGE 24)
P	22.71		
BM	19.23	♀ PK NAIL THOMAS & OLNEY	(SEE PAGE 25)

ALLEY BLK. 275 PAC. BEACH
(CONT'D)

	LT.	♀	RT.
4+02 7 ³ RT. P.P. JPA 2172			
4+00 10 ³ RT. BEGIN WOOD FENCE	24.3 10	24.1	25.0 10
3+85 ♀ 16' WIDE GARAGE 14 ⁵ LT.	24.48 17 ³ FLOOR	24.33 14 ⁵ CONC. APRON	
3+74 10' LT. END WOOD FENCE			
3+63 ♀ 16' WIDE GARAGE (NO APRON) 29 ³ RT. TV			25.82 29 ³ FLOOR
3+50	25.2 10	25.1	25.2 10
3+46 ♀ 16' WIDE GARAGE 14' LT.	25.87 16 ³ FLOOR	25.53 14' CONC. APRON	
3+13 ♀ 16' WIDE GARAGE 12' LT.	26.42 16 ³ FLOOR	26.06 12' CONC. APRON	
3+00	26.5 10	26.0	26.2 10
2+99 9 ⁵ RT. P.P. PA 2160			
2+50 9' RT. P.P. PA 2150	27.5 10	26.9	26.9 10
2+13 ♀ 19 ³ WIDE HOUSE 18 ³ RT.		27.20	27.20 18 ³ FLOOR
2+00 BEGIN WOOD FENCE 10' LT.	28.0 10	27.5	27.4 10

ALLEY BLK, 275 PAC. BEACH
(CONT'D)

LT. & RT.

NOTE: LEVELS CHECK ORIGINAL X-SECTION
NOTES, PG'S 22 TO 25

CK. BM. #5

19.20 = 19.23

PK NAIL @ THOMAS & @ OLNEY (SEE PG. 25)

5+39³³ = @ OLNEY ST.

15.62

5+27 = W. EDGE 25' A.C. PAVT.

16.85
50

16.20

15.57
50

TP

18.18

4+99 89

~~5+60~~ W. LINE Olney

17.4
10

17.8

18.8
10'

4+72 10' RT. END WOOD FENCE

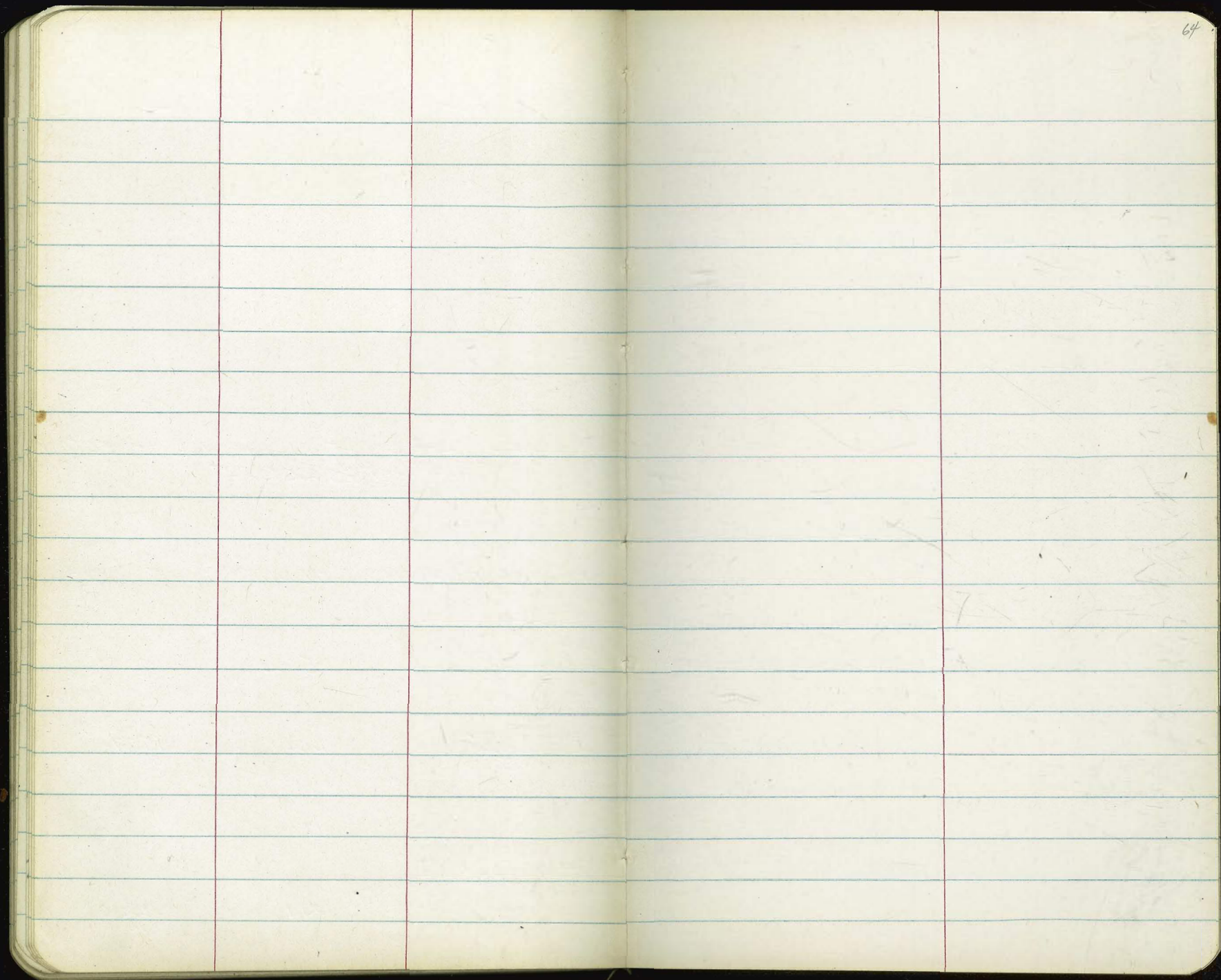
4+50

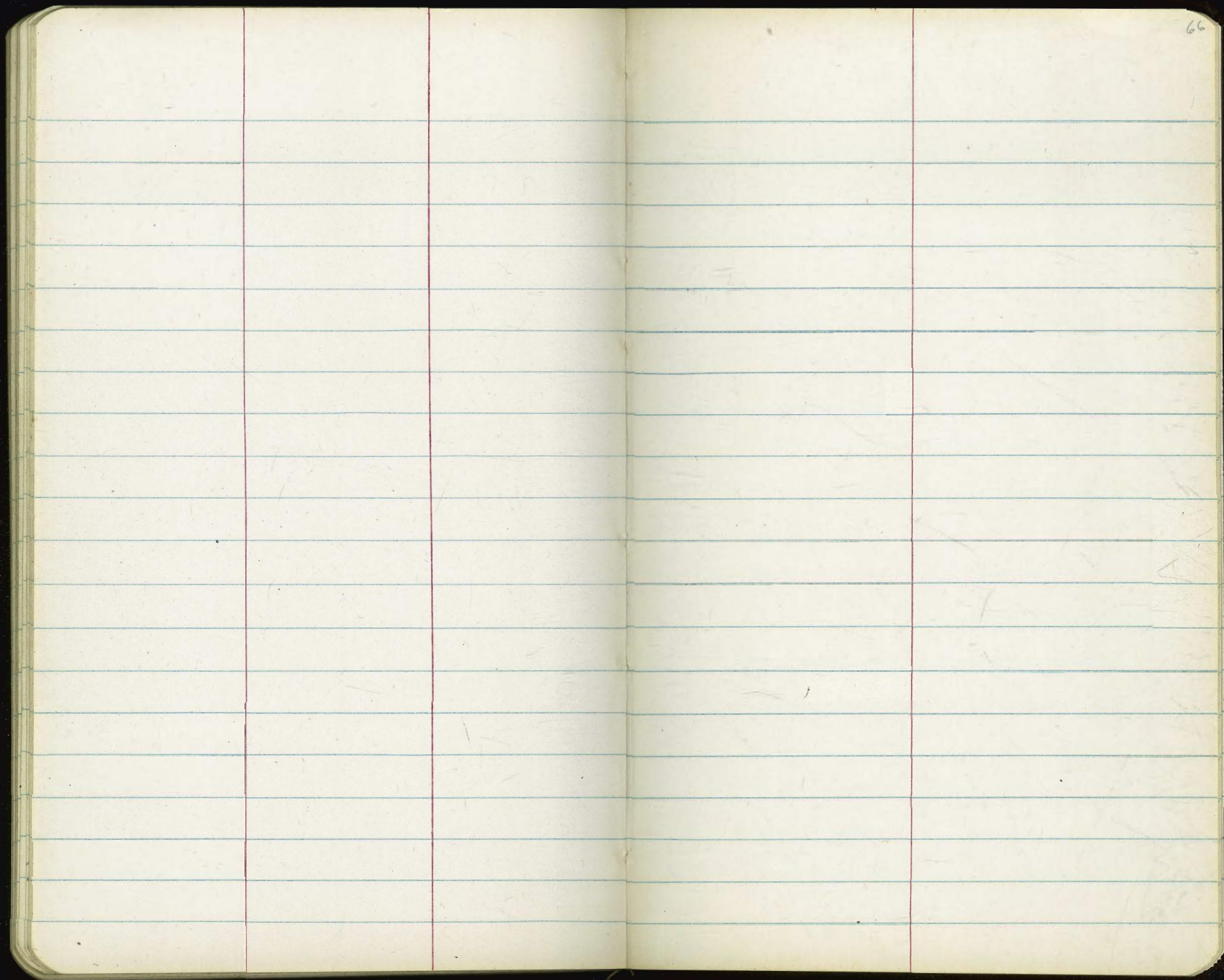
21.2 20.6
10 8

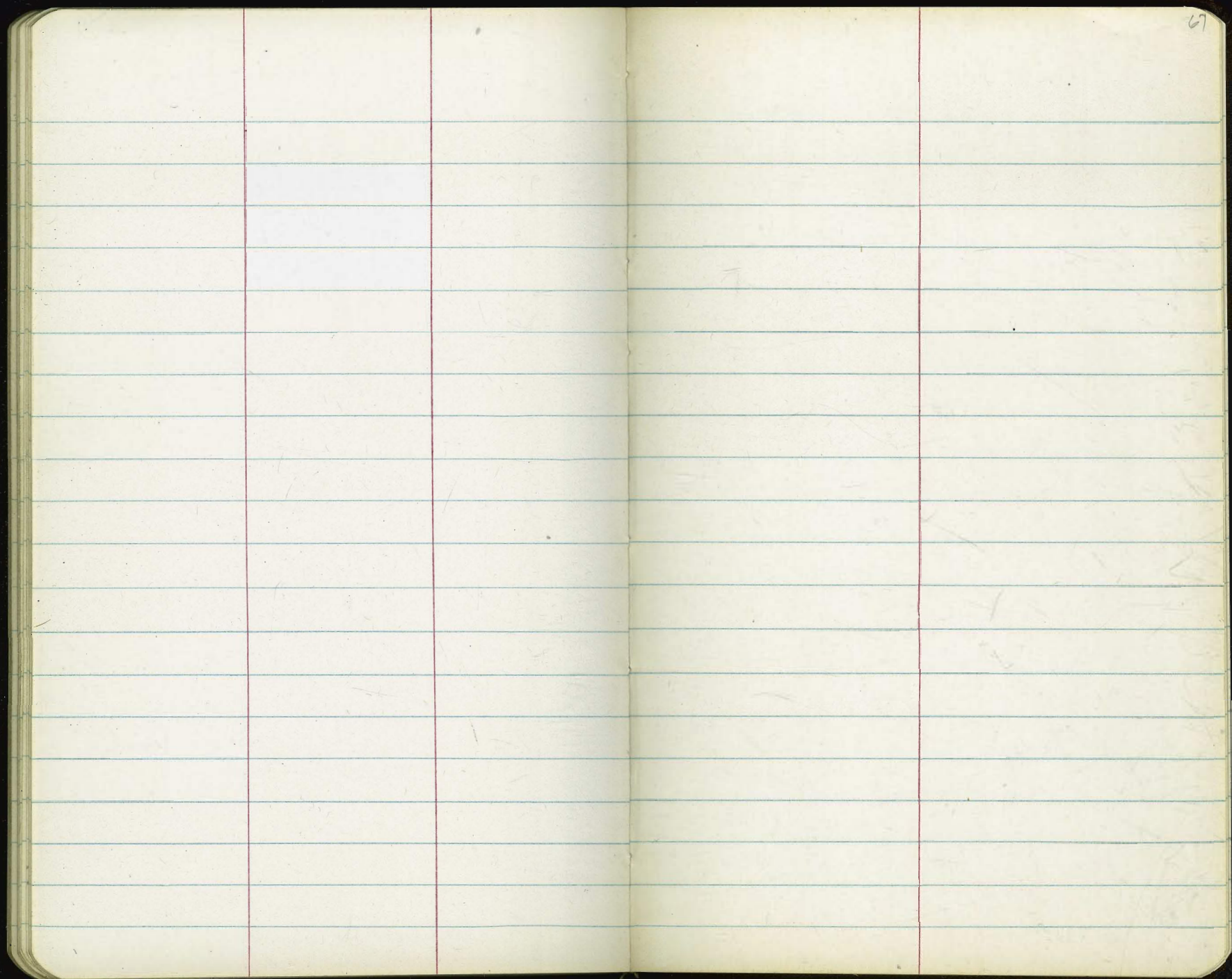
21.1

22.0
10

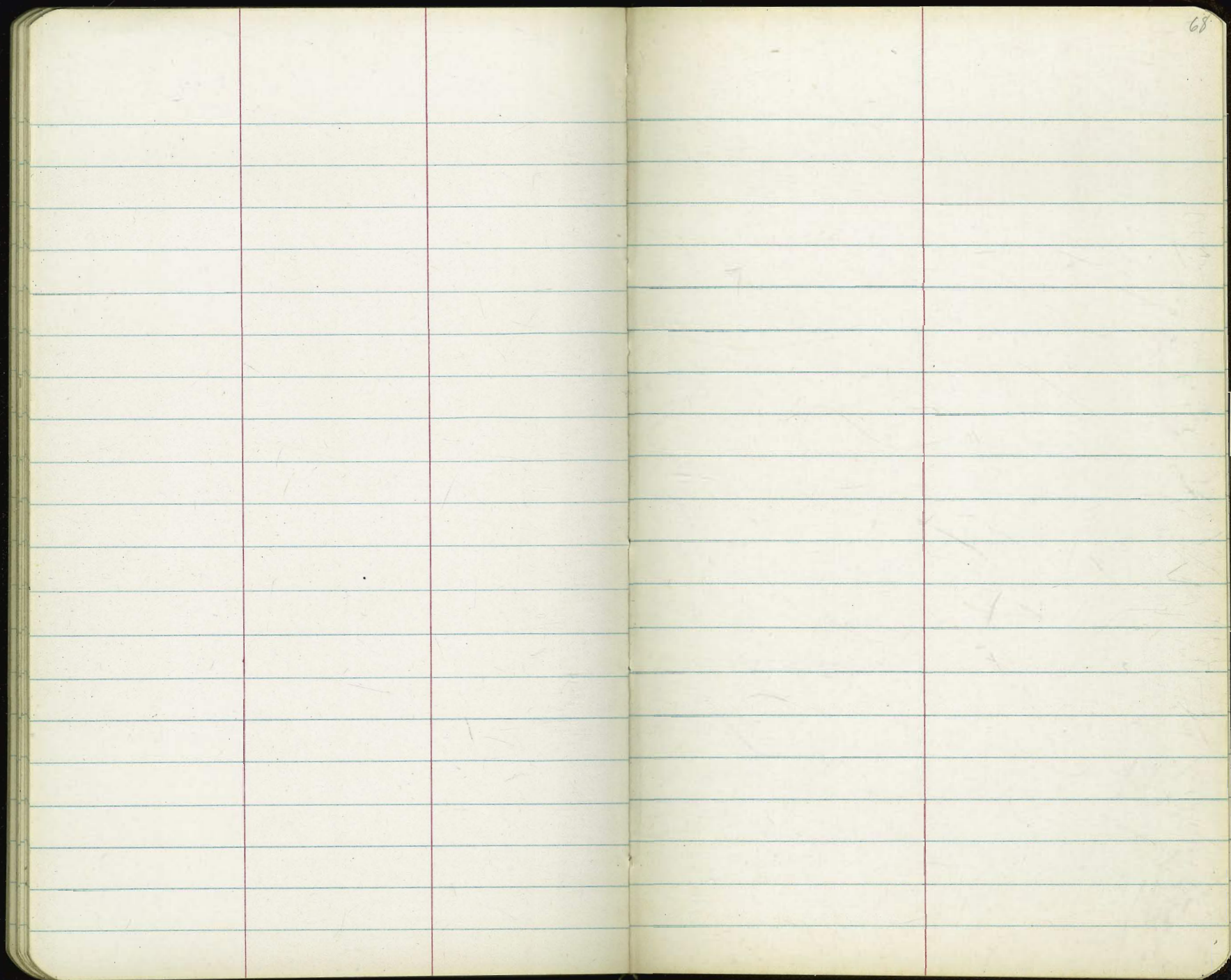
4+24 8² RT. GUY LINE DEADMAN







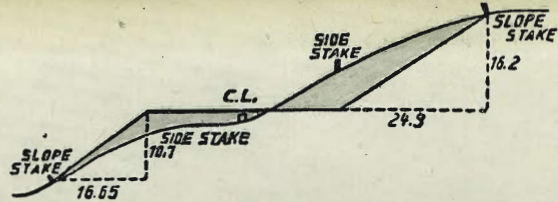
67



The image shows an open notebook with two facing pages. Both pages are cream-colored and feature light blue horizontal ruling. Each page is divided into three vertical columns by two red lines. The right page has the number '70' written in the top right corner. The pages are otherwise blank, with no text or drawings.

849
545

331



DISTANCES FROM SIDE STAKES FOR CROSS-SECTIONING.
SLOPE 1 1/2 TO 1. ROADWAY OF ANY WIDTH.

	0	.1	.2	.3	.4	.5	.6	.7	.8	.9	
0	0.00	0.15	0.30	0.45	0.60	0.75	0.90	1.05	1.20	1.35	0
1	1.50	1.65	1.80	1.95	2.10	2.25	2.40	2.55	2.70	2.85	1
2	3.00	3.15	3.30	3.45	3.60	3.75	3.90	4.05	4.20	4.35	2
3	4.50	4.65	4.80	4.95	5.10	5.25	5.40	5.55	5.70	5.85	3
4	6.00	6.15	6.30	6.45	6.60	6.75	6.90	7.05	7.20	7.35	4
5	7.50	7.65	7.80	7.95	8.10	8.25	8.40	8.55	8.70	8.85	5
6	9.00	9.15	9.30	9.45	9.60	9.75	9.90	10.05	10.20	10.35	6
7	10.50	10.65	10.80	10.95	11.10	11.25	11.40	11.55	11.70	11.85	7
8	12.00	12.15	12.30	12.45	12.60	12.75	12.90	13.05	13.20	13.35	8
9	13.50	13.65	13.80	13.95	14.10	14.25	14.40	14.55	14.70	14.85	9
10	15.00	15.15	15.30	15.45	15.60	15.75	15.90	16.05	16.20	16.35	10
11	16.50	16.65	16.80	16.95	17.10	17.25	17.40	17.55	17.70	17.85	11
12	18.00	18.15	18.30	18.45	18.60	18.75	18.90	19.05	19.20	19.35	12
13	19.50	19.65	19.80	19.95	20.10	20.25	20.40	20.55	20.70	20.85	13
14	21.00	21.15	21.30	21.45	21.60	21.75	21.90	22.05	22.20	22.35	14
15	22.50	22.65	22.80	22.95	23.10	23.25	23.40	23.55	23.70	23.85	15
16	24.00	24.15	24.30	24.45	24.60	24.75	24.90	25.05	25.20	25.35	16
17	25.50	25.65	25.80	25.95	26.10	26.25	26.40	26.55	26.70	26.85	17
18	27.00	27.15	27.30	27.45	27.60	27.75	27.90	28.05	28.20	28.35	18
19	28.50	28.65	28.80	28.95	29.10	29.25	29.40	29.55	29.70	29.85	19
20	30.00	30.15	30.30	30.45	30.60	30.75	30.90	31.05	31.20	31.35	20
21	31.50	31.65	31.80	31.95	32.10	32.25	32.40	32.55	32.70	32.85	21
22	33.00	33.15	33.30	33.45	33.60	33.75	33.90	34.05	34.20	34.35	22
23	34.50	34.65	34.80	34.95	35.10	35.25	35.40	35.55	35.70	35.85	23
24	36.00	36.15	36.30	36.45	36.60	36.75	36.90	37.05	37.20	37.35	24
25	37.50	37.65	37.80	37.95	38.10	38.25	38.40	38.55	38.70	38.85	25
26	39.00	39.15	39.30	39.45	39.60	39.75	39.90	40.05	40.20	40.35	26
27	40.50	40.65	40.80	40.95	41.10	41.25	41.40	41.55	41.70	41.85	27
28	42.00	42.15	42.30	42.45	42.60	42.75	42.90	43.05	43.20	43.35	28
29	43.50	43.65	43.80	43.95	44.10	44.25	44.40	44.55	44.70	44.85	29
30	45.00	45.15	45.30	45.45	45.60	45.75	45.90	46.05	46.20	46.35	30
31	46.50	46.65	46.80	46.95	47.10	47.25	47.40	47.55	47.70	47.85	31
32	48.00	48.15	48.30	48.45	48.60	48.75	48.90	49.05	49.20	49.35	32
33	49.50	49.65	49.80	49.95	50.10	50.25	50.40	50.55	50.70	50.85	33
34	51.00	51.15	51.30	51.45	51.60	51.75	51.90	52.05	52.20	52.35	34
35	52.50	52.65	52.80	52.95	53.10	53.25	53.40	53.55	53.70	53.85	35
36	54.00	54.15	54.30	54.45	54.60	54.75	54.90	55.05	55.20	55.35	36
37	55.50	55.65	55.80	55.95	56.10	56.25	56.40	56.55	56.70	56.85	37
38	57.00	57.15	57.30	57.45	57.60	57.75	57.90	58.05	58.20	58.35	38
39	58.50	58.65	58.80	58.95	59.10	59.25	59.40	59.55	59.70	59.85	39
40	60.00	60.15	60.30	60.45	60.60	60.75	60.90	61.05	61.20	61.35	40
41	61.50	61.65	61.80	61.95	62.10	62.25	62.40	62.55	62.70	62.85	41
42	63.00	63.15	63.30	63.45	63.60	63.75	63.90	64.05	64.20	64.35	42
43	64.50	64.65	64.80	64.95	65.10	65.25	65.40	65.55	65.70	65.85	43
44	66.00	66.15	66.30	66.45	66.60	66.75	66.90	67.05	67.20	67.35	44
45	67.50	67.65	67.80	67.95	68.10	68.25	68.40	68.55	68.70	68.85	45
46	69.00	69.15	69.30	69.45	69.60	69.75	69.90	70.05	70.20	70.35	46
47	70.50	70.65	70.80	70.95	71.10	71.25	71.40	71.55	71.70	71.85	47
48	72.00	72.15	72.30	72.45	72.60	72.75	72.90	73.05	73.20	73.35	48
49	73.50	73.65	73.80	73.95	74.10	74.25	74.40	74.55	74.70	74.85	49
50	75.00	75.15	75.30	75.45	75.60	75.75	75.90	76.05	76.20	76.35	50

141.46
141.46
66

207.46

THE NATIONAL BLANK BOOK COMPANY
HOLYOKE MASSACHUSETTS
NEW YORK CHICAGO BOSTON SAN FRANCISCO