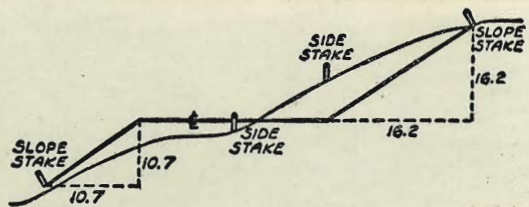


2171

X-SECT. 1911-ACT

X-SECT. 1911-Act.



DISTANCES FROM SIDE STAKES FOR CROSS-SECTIONING
SLOPE 1 TO 1. ROADWAY OF ANY WIDTH

	0	.1	.2	.3	.4	.5	.6	.7	.8	.9	
0	0.00	0.10	0.20	0.30	0.40	0.50	0.60	0.70	0.80	0.90	0
1	1.00	1.10	1.20	1.30	1.40	1.50	1.60	1.70	1.80	1.90	1
2	2.00	2.10	2.20	2.30	2.40	2.50	2.60	2.70	2.80	2.90	2
3	3.00	3.10	3.20	3.30	3.40	3.50	3.60	3.70	3.80	3.90	3
4	4.00	4.10	4.20	4.30	4.40	4.50	4.60	4.70	4.80	4.90	4
5	5.00	5.10	5.20	5.30	5.40	5.50	5.60	5.70	5.80	5.90	5
6	6.00	6.10	6.20	6.30	6.40	6.50	6.60	6.70	6.80	6.90	6
7	7.00	7.10	7.20	7.30	7.40	7.50	7.60	7.70	7.80	7.90	7
8	8.00	8.10	8.20	8.30	8.40	8.50	8.60	8.70	8.80	8.90	8
9	9.00	9.10	9.20	9.30	9.40	9.50	9.60	9.70	9.80	9.90	9
10	10.00	10.10	10.20	10.30	10.40	10.50	10.60	10.70	10.80	10.90	10
11	11.00	11.10	11.20	11.30	11.40	11.50	11.60	11.70	11.80	11.90	11
12	12.00	12.10	12.20	12.30	12.40	12.50	12.60	12.70	12.80	12.90	12
13	13.00	13.10	13.20	13.30	13.40	13.50	13.60	13.70	13.80	13.90	13
14	14.00	14.10	14.20	14.30	14.40	14.50	14.60	14.70	14.80	14.90	14
15	15.00	15.10	15.20	15.30	15.40	15.50	15.60	15.70	15.80	15.90	15
16	16.00	16.10	16.20	16.30	16.40	16.50	16.60	16.70	16.80	16.90	16
17	17.00	17.10	17.20	17.30	17.40	17.50	17.60	17.70	17.80	17.90	17
18	18.00	18.10	18.20	18.30	18.40	18.50	18.60	18.70	18.80	18.90	18
19	19.00	19.10	19.20	19.30	19.40	19.50	19.60	19.70	19.80	19.90	19
20	20.00	20.10	20.20	20.30	20.40	20.50	20.60	20.70	20.80	20.90	20
21	21.00	21.10	21.20	21.30	21.40	21.50	21.60	21.70	21.80	21.90	21
22	22.00	22.10	22.20	22.30	22.40	22.50	22.60	22.70	22.80	22.90	22
23	23.00	23.10	23.20	23.30	23.40	23.50	23.60	23.70	23.80	23.90	23
24	24.00	24.10	24.20	24.30	24.40	24.50	24.60	24.70	24.80	24.90	24
25	25.00	25.10	25.20	25.30	25.40	25.50	25.60	25.70	25.80	25.90	25
26	26.00	26.10	26.20	26.30	26.40	26.50	26.60	26.70	26.80	26.90	26
27	27.00	27.10	27.20	27.30	27.40	27.50	27.60	27.70	27.80	27.90	27
28	28.00	28.10	28.20	28.30	28.40	28.50	28.60	28.70	28.80	28.90	28
29	29.00	29.10	29.20	29.30	29.40	29.50	29.60	29.70	29.80	29.90	29
30	30.00	30.10	30.20	30.30	30.40	30.50	30.60	30.70	30.80	30.90	30
31	31.00	31.10	31.20	31.30	31.40	31.50	31.60	31.70	31.80	31.90	31
32	32.00	32.10	32.20	32.30	32.40	32.50	32.60	32.70	32.80	32.90	32
33	33.00	33.10	33.20	33.30	33.40	33.50	33.60	33.70	33.80	33.90	33
34	34.00	34.10	34.20	34.30	34.40	34.50	34.60	34.70	34.80	34.90	34
35	35.00	35.10	35.20	35.30	35.40	35.50	35.60	35.70	35.80	35.90	35
36	36.00	36.10	36.20	36.30	36.40	36.50	36.60	36.70	36.80	36.90	36
37	37.00	37.10	37.20	37.30	37.40	37.50	37.60	37.70	37.80	37.90	37
38	38.00	38.10	38.20	38.30	38.40	38.50	38.60	38.70	38.80	38.90	38
39	39.00	39.10	39.20	39.30	39.40	39.50	39.60	39.70	39.80	39.90	39
40	40.00	40.10	40.20	40.30	40.40	40.50	40.60	40.70	40.80	40.90	40
41	41.00	41.10	41.20	41.30	41.40	41.50	41.60	41.70	41.80	41.90	41
42	42.00	42.10	42.20	42.30	42.40	42.50	42.60	42.70	42.80	42.90	42
43	43.00	43.10	43.20	43.30	43.40	43.50	43.60	43.70	43.80	43.90	43
44	44.00	44.10	44.20	44.30	44.40	44.50	44.60	44.70	44.80	44.90	44
45	45.00	45.10	45.20	45.30	45.40	45.50	45.60	45.70	45.80	45.90	45
46	46.00	46.10	46.20	46.30	46.40	46.50	46.60	46.70	46.80	46.90	46
47	47.00	47.10	47.20	47.30	47.40	47.50	47.60	47.70	47.80	47.90	47
48	48.00	48.10	48.20	48.30	48.40	48.50	48.60	48.70	48.80	48.90	48
49	49.00	49.10	49.20	49.30	49.40	49.50	49.60	49.70	49.80	49.90	49
50	50.00	50.10	50.20	50.30	50.40	50.50	50.60	50.70	50.80	50.90	50

Distance of slope stake from side or shoulder stake for any width roadway, slope 1 to 1. If ground is nearly level, the cut or fill at side stake is located by the double entry method in left column and top row. The number in body of table in same row and column gives distance from side stake to slope stake. If ground is not level estimate the difference in elevation between the side stake and slope stake, lower target by this amount if cut, elevate if fill. Add this amount to cut or fill and find distance in table. Set up rod at this point, and line of sight should cut target. If it does not make the slight adjustment necessary.

TABLE XIII—CORRECTIONS FOR TANGENTS AND EXTERNALS

These corrections are to be added to the approximate values, found by dividing the tangent, or external, for a 1° curve (Table VIII) by the degree of curve, in order to obtain the true tangents, or externals. Intermediate values may be obtained by interpolation.

FOR TANGENTS ADD

Central Angle	DEGREE OF CURVE													
	5°	10°	15°	20°	25°	30°	35°	40°	45°	50°	55°	60°	65°	70°
10°	.03	.06	.09	.13	.16	.19	.22	.25	.28	.31	.34	.38	.42	.46
15°	.04	.10	.14	.19	.24	.29	.34	.39	.45	.51	.53	.58	.63	.68
20°	.06	.13	.19	.26	.32	.39	.45	.51	.58	.65	.72	.79	.84	.90
25°	.08	.16	.24	.33	.40	.49	.58	.67	.75	.83	.90	.99	1.06	1.14
30°	.10	.19	.29	.39	.49	.59	.69	.79	.89	.99	1.09	1.20	1.29	1.39
35°	.11	.22	.34	.47	.58	.69	.79	.81	.92	1.04	1.29	1.42	1.54	1.66
40°	.13	.26	.40	.53	.67	.80	.93	1.06	1.20	1.34	1.49	1.64	1.79	1.94
45°	.15	.30	.44	.60	.76	.91	1.06	1.21	1.37	1.52	1.70	1.87	2.04	2.21
50°	.17	.34	.51	.68	.85	1.02	1.19	1.36	1.54	1.72	1.91	2.10	2.29	2.48
55°	.19	.38	.57	.76	.95	1.14	1.32	1.52	1.72	1.92	2.14	2.35	2.56	2.77
60°	.21	.42	.63	.84	1.05	1.27	1.49	1.71	1.94	2.17	2.38	2.60	2.83	3.07
65°	.23	.46	.69	.93	1.16	1.40	1.64	1.88	2.13	2.38	2.63	2.88	3.13	3.39
70°	.25	.51	.76	1.02	1.28	1.54	1.80	2.06	2.33	2.60	2.88	3.16	3.44	3.72
75°	.27	.56	.83	1.12	1.40	1.69	1.98	2.27	2.57	2.87	3.16	3.47	3.78	4.09
80°	.30	.61	.91	1.22	1.53	1.84	2.15	2.46	2.78	3.10	3.44	3.78	4.12	4.46
85°	.33	.66	1.00	1.33	1.68	2.02	2.36	2.70	3.05	3.40	3.77	4.14	4.55	4.89
90°	.36	.72	1.09	1.45	1.83	2.20	2.57	2.94	3.32	3.70	4.10	4.50	4.91	5.32
95°	.39	.79	1.19	1.55	2.00	2.40	2.80	3.20	3.61	4.02	4.40	4.98	5.38	5.83
100°	.43	.86	1.30	1.74	2.18	2.62	3.06	3.50	3.95	4.40	4.88	5.37	5.85	6.34
110°	.51	1.03	1.56	2.08	2.61	3.14	3.67	4.21	4.76	5.31	5.86	6.43	7.01	7.60
120°	.62	1.25	1.93	2.52	3.16	3.81	4.45	5.11	5.77	6.44	7.12	7.80	8.50	9.22

FOR EXTERNALS ADD

Central Angle	DEGREE OF CURVE													
	5°	10°	15°	20°	25°	30°	35°	40°	45°	50°	55°	60°	65°	70°
10°	.001	.003	.004	.006	.007	.008	.009	.011	.012	.014	.015	.017	.018	.020
15°	.003	.007	.010	.014	.018	.023	.029	.032	.035	.039	.043	.047	.051	.055
20°	.006	.011	.017	.022	.028	.034	.038	.045	.051	.057	.063	.070	.076	.083
25°	.009	.018	.027	.036	.046	.056	.065	.074	.083	.093	.106	1.20	1.27	1.35
30°	.013	.025	.038	.051	.065	.078	.090	.103	.116	.129	.149	.170	.179	.188
35°	.018	.035	.054	.072	.086	.109	.131	.153	.175	.197	.213	.230	.247	.264
40°	.023	.046	.070	.093	.117	.141	.172	.203	.234	.265	.277	.290	.315	.341
45°	.030	.060	.093	.119	.153	.184	.216	.254	.289	.325	.351	.378	.411	.445
50°	.037	.075	.116	.151	.189	.227	.266	.305	.345	.384	.425	.467	.508	.550
55°	.046	.093	.142	.188	.236	.283	.332	.381	.420	.479	.530	.582	.641	.700
60°	.056	.112	.168	.225	.283	.340	.398	.457	.516	.575	.636	.697	.774	.851
65°	.067	.135	.204	.273	.343	.412	.483	.554	.625	.697	.711	.845	.922	1.01
70°	.080	.159	.240	.321	.403	.485	.568	.652	.735	.819	.906	.994	1.08	1.17
75°	.095	.182	.286	.383	.480	.578	.678	.777	.877	.977	1.07	1.18	1.29	1.39
80°	.110	.220	.332	.445	.558	.671	.787	.903	1.02	1.13	1.25	1.38	1.50	1.62
85°	.128	.259	.391	.524	.657	.790	.926	1.06	1.20	1.34	1.47	1.62	1.76	1.91
90°	.149	.299	.450	.603	.756	.910	1.07	1.22	1.38	1.54	1.70	1.87	2.03	2.20
95°	.174	.350	.522	.706	.885	1.06	1.25	1.43	1.62	1.80	1.99	2.18	2.38	2.58
100°	.200	.401	.604	.809	1.01	1.22	1.43	1.64	1.85	2.06	2.28	2.50	2.73	2.96
110°	.268	.536	.806	1.08	1.35	1.63	1.91	2.20	2.48	2.76	3.05	3.35	3.66	3.96
120°	.360	.721	1.08	1.45	1.82	2.19	2.57	2.95	3.33	3.72	4.11	4.50	4.91	5.32

City Hts Annex #1 Page
 Survey - Improv. Lot 39 - Blk. 12 1/2 - 1-3

X-sec. El Carmel Place H

X Sec Unpaired Sts + Alleys La Jolla Shores 10.

Calle Clara, Vallecitos + El Pasco Grande 10

Paseo Del Ocaso, La Jolla Shores Dr

Alleys Blk 34

Del Oro, Pasco Grande, Calle Frescuta 26

Calle Frescuta Pasco Grande Del Ocaso + La Jolla Shores Dr 27

Paseo Grande, Del Oro, Del Ocaso, 28

Paseo Grande Calle Opava Del Oro La Jolla Shores Dr 29

Indexed to page 99

Roberts
 Moore
 Pullen
 11-29-51
 W.D. #31832

Survey To show Improvements on or
 near Easements in Lot 39 Block 12 1/2
 City Hts. Annex 1

See FB2022 pg 6 4379B

INDEXED
 Paid
 NOV 30 1951

FD Hub & CT.
 4+50.23

FACTORY
 Landis & Chamourc

Lot 40

Lot 39

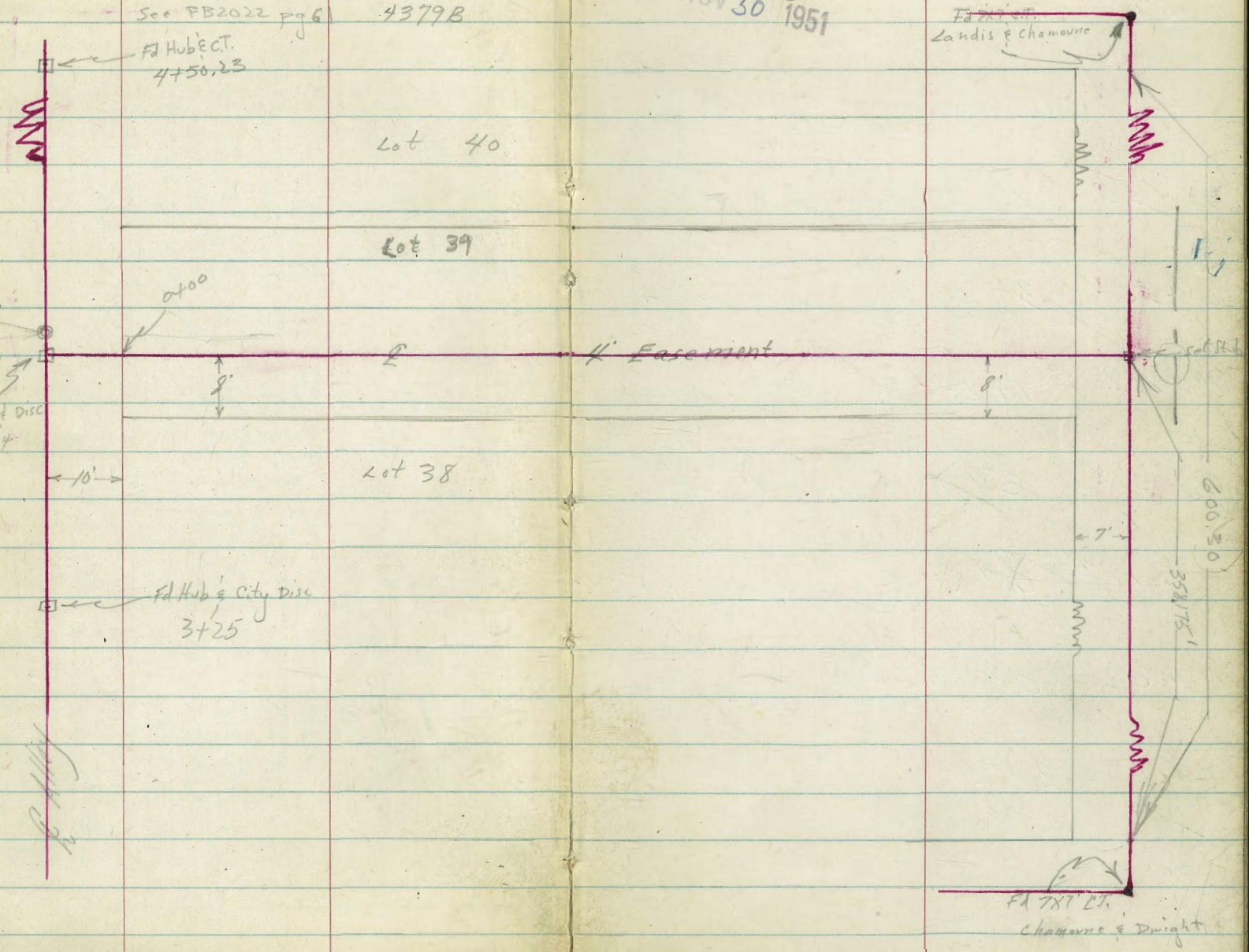
Lot 38

4' Easement

5+100.4
 25' over
 Man Hole
 H.S. Iron
 set Hub & Disc
 3+58.14

FD Hub & City Disc
 3+25

FACTORY
 Chamourc & Dwight



Cont'd From Page 1

Reduced 2-26-52
Barley

0+67.8 33' Rt Begin Wood Frame House

331.34 330.72

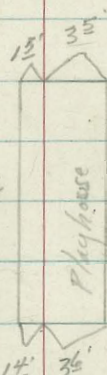
0+55.2 1.5' Lt. End Playhouse

1437¹²/₆₆

983 1045
66 94

0+53 2.3' Lt. End Fence

1431¹⁹/_{walk}



331.49
968

0+52.1 3' Lt Begin Stucco Garage (16'x12')

1426⁸⁶/_{walk}

331.57
960

0+41.2 1.4' Lt Begin 5'x14' movable playhouse

1410

331.5
92

0+31.8 3.2' Rt to Center 4" Tree

1400

0+18.4 0.7' Rt End Dwelling (16'x24')

0+50

331.9
93

0+02.4 0.75' Rt begin Dwelling on Solid Concrete Foundation

0+01 2.4' Lt Begin Lattice Fence

0+20

333.4
78

Lt = North Rt = South

0+00 = East Line Alley

0+00

335.8
54

BM 5-16 341.17 10.09 336.01 on Hub 2 Alley

BM 5-10 346.10 341.00 NW 1/4 Landis Chamounie

Note: 9' North Line

341.17

Cont'd From Page 2

3

1+37.12 West Curb Line Chamoune

1+31.19 Leave Walk

1+26²⁶ Hits Walk 6' 26" to Conc Drive

1+26¹ End Fence 2° Left

1+12¹ 15³ Lt End House

1+07¹ 22¹ Rt End House

0+73 15³ Lt Begin Stucco Frame House

0+72¹ 5³ Lt to End of Extension on garage to house cadillac!

0+69² Begin Lath Fence 2° Left

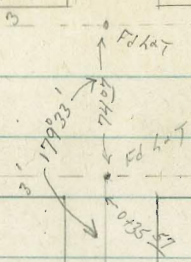
0+68² 32¹ Lt End Garage 6° Lt to Near Edge Conc Drive

D. Smith
W. Moore
P. Pullum
J. Bishop

Cross Sec.

Mission

Blvd



F.d. Disk
E. Monterey Cr.

Strand Way

F.d. Disk

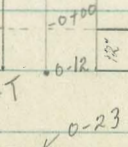


Sea Walk

F.d. ANT

0-23

Sea Wall



wo# 31972
12-6-57

4

Re set the Disk

Bay side

3.80 Walk

0-50.5

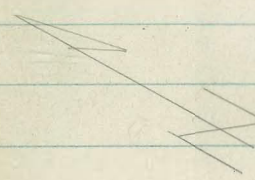
INDEXED
Law
DEC 7 1951

Bay side

Lane

F.d. ANT

1-420.57



12' 12'

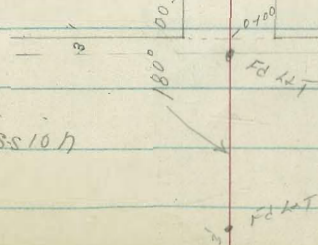
180° 00'

F.d. ANT

Mission

Blvd.

F.d. ANT



Cross Sec El.

Carmel Pt

South Pt

5

North

4.00

3.97

3.98

4.01

0+90 E Strand Way

5.27 5.30 5.33 5.32 5.29
22 12 12 22

0+80 12° Rt. End con block wall

4.89 4.92 4.92 4.94 5.60 4.91
4.41 4.38 4.38 4.36 3.70 4.39

0+80 Wly Strand Way

4.89 4.92 4.92 4.94 5.60 4.91
22 12 12 12 22

0+565 12° Rt & 3' con walk

4.30
5.00

4.30
12°
walk

4.3 4.3 4.2 4.1 4.3
5.0 5.0 5.1 5.2 5.2

0+40

4.3 4.3 4.2 4.1 4.3
22 12 12 22

0+00 12° Rt End decorative Begin^{6'} con block wall

4.5 4.5 4.4 5.2
4.2 4.2 4.1 4.1
4.8 4.5 4.7 4.9 4.4 5.2
12 12 12 12
footing

0-11 13° Lt E Lamp Post

4.66 4.67 4.69 4.66 5.00 3.52 4.62
4.64 4.63 4.61 4.64 4.30 5.28 4.62

12° Rt Begin Rock con decorative wall

0-12 Ely Ocean Sea Walk

4.66 4.67 4.69 4.66 5.00 3.52 4.62
22 12 12 12 12 18
footing top wall

B.M. 221 930

709 SWBP Sea Wall
El Carmel Pt

930

TP, 2²⁵ 3⁷⁵ 7⁸⁰ 1⁵⁰

0445⁵⁷ Wly gutter line Mission Blvd

0435⁵⁷ Edge con paving
Wly Mission Blvd

0434⁶ 12⁰ Lt end con block wall

0423⁶ 11² Lt & 3' con step & walk

0417⁸

0400 12¹ Lt Begin 2⁵' con block wall

0400 Fly Strand Way

Lt
North

E

Rt
South

6

1.98	1.55	1.94	1.59	1.66	1.64	1.92	1.66	1.23
7 ³²	7 ²⁵	7 ³⁶	7 ⁷¹	7 ⁶⁴	7 ⁶⁶	7 ³⁸	7 ⁶⁴	7 ³⁷
22 06	22 gut	12 06	12 gut		12 gut	12 06	22 gut	22 06

2.11	2.07	2.13	2.04	2.10
7 ¹⁹	7 ²³	7 ¹²	7 ²⁶	7 ³⁰
12 06	12 gut		12 gut	12 06

3.21	2.80	2.60
6 ⁰⁹	6 ¹⁴	6 ⁰⁹
125 walk	112 gut stop	

3.3	3.1	2.6	2.9	3.3
6 ⁰	6 ²	6 ²	6 ⁴	6 ⁰
22	12		12	22

4.25	3.3	4.24	3.87	4.22	4.28
5 ⁰⁵	6 ⁰	5 ⁰⁶	5 ¹³	5 ⁰⁸	5 ⁰²
22	12 ¹ footing	12		12	22

9³⁰

0780

0745 12th N + E 3rd con. walk

0762 12th N + E 3rd con. walk

0760 12th E 3rd con. walk

0740

Edge. Con. paving
0700 Fly Mission Blvd

0-10 Fly gutter line Mission Blvd.

RT
North

-0.1
32
22

-0.7
45
12

-0.8
46

RT
South

-0.9
47
12

-0.25
40
13

-0.25
40
22

7

-0.02
322
120
walk

-0.28
403
124
walk

-0.12

387
123
walk

0.6
32
22

0.1
37
12

0.0
38

-0.1
39
12

+0.5
32
22

1.45

0.93

0.97

0.93

1.45

230
118
cb

282
118
gut

278

282
12
gut

230
12
cb

1.46

1.14

1.46

1.11

1.11

1.10

1.47

1.15

1.42

229
22
cb

261
22
gut

229
12
cb

264
12
gut

264

265
12
gut

228
12
cb

260
22
gut

233
22
cb

375

0700 Fly Bay side Lane

1728⁵ E Bay side Lane

1720⁵⁷ wly Bay side Lane

1705⁵ 16² Lt E 3⁵ Brick walk

1704⁵ 12⁶ Rt E 3⁵ con walk

1708⁶ 12⁴ Rt E 3² con walk

Lt
North

4⁹³
22

22

-1.41

5¹⁶
22

25

5

5¹⁰

22

E

4²²
12

12

-1.32

5¹⁷
12

-1.24

4⁹⁹

12

4⁵³
16²
walk

E

5⁰⁷

12

-1.39

5¹⁴

-1.37

5¹²

12

Rt
South

4⁸⁸

12

-1.31

5⁰⁶

-1.12

4⁸⁹

12

4⁴¹
12⁶
walk

4¹⁷

12⁴
walk

12

22

22

22

22

22

22

22

22

22

22

375

BM starting

196 75 709

TP

6³⁴ 9⁰⁷ 102 273

13° RT end cold lay parking
0480² wly Bayside Walk

0462 12° LT & 4° con walk

0460

0442⁵ 12⁴ LT & 7⁵ con ribbon drive 2' ea

0442 12° RT Begin 2° picket fence

0430

0401 13° RT Begin cold lay parking

LT
North

2

RT
South

9

-0.42	-0.59	-0.43	-0.45	-0.45
412	414	418	420	420
22	12		12	22

-0.63	-0.74
438	469
22	12
walk	walk

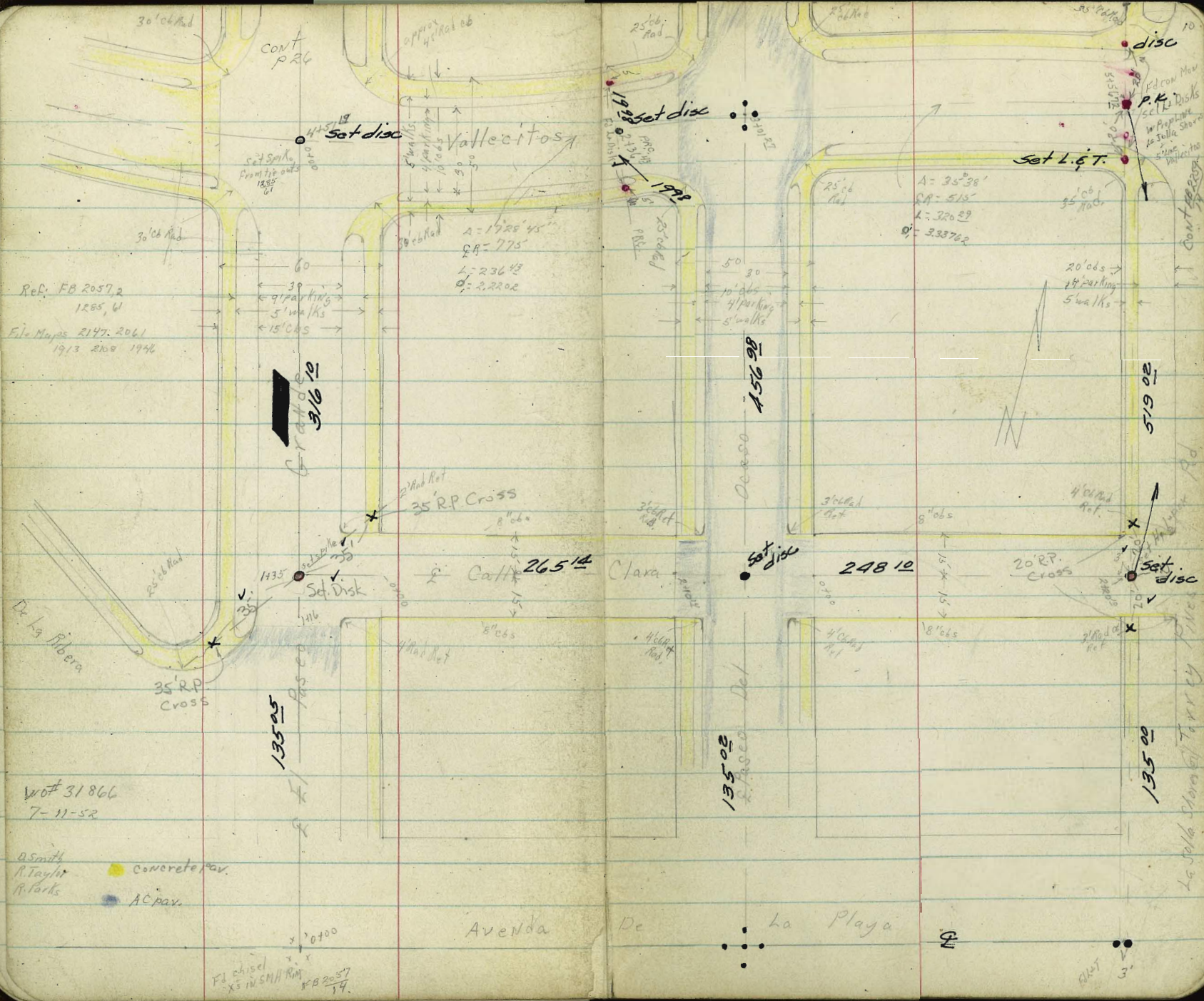
-0.7	-0.8	-0.5	-0.37	-0.24	
45	46	46	43	412	399
22	12		12	13	23
				cold lay	cold lay

-0.87	-0.33
462	508
22	12
drive	drive

-0.7	-1.1	-1.1	-0.5	-0.51	-0.25
45	49	49	43	426	400
22	12		12	12	22
				cold lay	cold lay

-0.93
468
13
cold lay

325



Ref: FB 20572
 1285, W
 Filo Maps 2147, 2061
 1913 2109 1946

60
 30
 9 parking
 5 walks
 15' cbs

$A = 1720'45''$
 $RA = 775'$
 $L = 236'49''$
 $D = 2,220'$

$A = 35'38''$
 $RA = 519'$
 $L = 320'29''$
 $D = 3,337'62''$

Wof# 31866
 7-11-52

a Smith
 R Taylor
 R Parks

F. chisel
 X's in SMH RM
 FB 2057
 14

La Jolla Shores to Tarry Pines

D. Smith
P. Taylor
P. Parks

X Sec Vallecitos

P.R.C. Vallecitos
6.41 5.91
5.21 5.21

3/4
6.57 6.13
5.05 5.47

31' begin cov. par. in gut
6.57 6.20
5.05 5.42
06 9.47

1/2
6.62 6.0
5.00 5.6

1/4
6.55 5.9
5.07 5.7

P.C. Paseo Grande
6.59 5.8
5.03 5.8
06 9.47

30' Rad Length 50' 4 parts 12.5 ea

SW Ret int Paseo Grande + Vallecitos

BM.

4LZ

11.62

7.45

chisel X
X 1/2 in SW cor
El Paseo Grande
Vallecitos
FB 2057-9

El Paseo Grande to (Torrey Pines Rd.
La Jolla Shores Dr.)

wo# 31866
7-30-52

INDEXED
Law
OCT 2 1952

Reduced 9/53
C Lawrence
stations unadjusted in
gross additional by
computation.

P.C.C. Vallecitos
6.30 5.77
5.32 5.65

3/4
6.45 5.92
5.12 5.20

32' cov par in gut begins
6.50 5.91
5.12 5.7
06 9.47

1/2
6.55 6.0
5.07 5.6

1/4
6.63 6.2
4.72 5.4

P.C. Paseo Grande
6.84 6.2
4.78 5.4
06 9.47

30' Rad Length 50' 4 parts 12.5 ea

NW Ret int Paseo Grande + Vallecitos

π 11.62

P.R.C. Vallecitos

7.25
437 6.5
5.1

3/4

7.22
440 6.4
5.3

1/2

7.20
442 6.3
5.3

1/4

7.20
442 6.3
5.3

P.C. Paseo Grande

7.26
436 6.3
5.3
cut

Rad = 30 length 40' 4 parts 10' ea
SE Ret Vallecitos + Paseo Grande

11/62

P.C. Vallecitos

5/6

2/3

1/2

1/3

1/6

P.C. Paseo Grande

Rad 45' approx length = 90' 6 parts 15' ea
N.E. Ret. Vallecitos + El Paseo Grande

11/62

6.86
476
put in driveway
7.22
440 6.7
4.2

7.12
450 6.7
4.2

7.12
450 6.4
5.3

7.13
449 6.4
5.3

7.27
435 6.4
5.3

7.38
429 6.6
5.0
cut
76.8

1725

1714?

1704 16^{SE} rt & 21 drive way

1700 19^{SE} rt & 22 drive

(0780^{SE} BC NE)

0775

0750

(0732^E BC SE)

0725

0700 E INT El Paseo Grande taken radiantly

Lt = North

7.81	7.22	7.74	7.46	7.88
381	40	42	44	374
154	154		16	16
CS			CS	

7.31	7.80
42	383
163	202
118	walk

7.60	6.94	7.1	7.2	7.75
403	420	45	44	302
183	143		163	163
walk	walk			CS

7.11	6.68	7.26	7.08
451	6.7	7.0	6.9
116	42	46	42
CS	94		163
			94
			CS

6.5	6.7	6.6	7.36
51	42	50	426
15		153	153
		94	CS

6.65	6.45	6.72
6.5	6.5	6.5
51	51	51
30	15	15

6.60	6.67	6.70
6.2	6.2	6.3
54	54	53
30	15	15

1162

274.22 W line

276/43

236³⁶ comp.

2136⁴³ PRC

TP, 6³⁶ 1466 3³² 8³⁰

(2+26⁷³ BC SW)

2125

2100

1480 15=rt. & 257 drive way

1475

1450

Lt=North

R RT=South

14

9.04	8.0	8.1	8.4	8.4
56 ³	66	65	63	63
144	144	15	30	
06				

2	8.86	7.9	8.2	8.0	8.0	8.81
5 ⁵⁰	62	64	66	66	5-85	
142	142		15	17	17	05
06						

			1466		8.76	
9.00	8.28	8.59	8.10	8.72		
2 ⁶²	36	33	32	298		
142	142		142	142		
06				06		

8.60	7.5	8.1	7.7	8.32	63
3 ⁰²	41	35	32	330	
153	153		142	142	08
06					

7.62	8.16
4 ⁰⁰	316
142	193
06	walk

8.38	7.84	8.14	7.60		34
324	44	38	40	346	
153	153		150	150	05
06					

8.11	7.1	7.5	7.4	8.07	8.15
351	45	42	42	355	
153	153		155	155	05
06					

1162

Lt = North

2

Rt = South

16

4411⁴³

	9.20	10.15	9.80	
10.26	9.3	9.9	9.6	10.35
420	53	42	50	431
132	132		165	165
CS				CS

3486⁴³

10.10	9.1	9.6	9.3	10.14
466	55	50	53	452
131	131		168	168
CS				CS

(3461⁷⁵ BC NE)3461⁴³

	9.20	9.27	9.48	
9.76	9.0	9.4	9.1	9.90
420	56	52	55	426
145	142		166	165
CS				CS

3436⁴³

			9.0	
9.4	9.2	9.3	9.0	9.71
53	54	53	56	495
30	15		16	160
				CS

329.29 E line

(3426⁷⁸ BC SE)3411⁴³

9.33	8.94	9.19	9.10
533	572	547	556
30	15		15

3401²⁷ 2 int Pasco Del Ocaso

9.03
563
SMH
RM

2486⁴³(2778⁹⁹ B.C. NW)

9.35	8.76	8.76	8.83	8.99
531	520	520	583	573
152	152		152	30
CS	24			
		1466		

27 = North

8

RT = South

17

11.84	10.9	10.7	10.8	10.5	10.7	11.47
2 ²²	32	32	32	44	32	319
175	175	15		15	182	182
06						06

11.56	10.5	10.6	10.6	11.50
36	44	40	40	36
142	142		152	152
06				06

11.28	10.73	10.4	10.5	11.06
338	43	43	43	360
148	148		152	153
06				06

11.02	10.1	10.3	10.3	10.86
368	45	43	43	380
146	145		154	154
06				06

10.78	10.20	10.60	10.26	10.91
388	9.8	10.1	440	325
143			154	193
06			06	

10.78	10.20	10.60	10.19	10.70
388	9.8	10.1	9.9	42
143				156
06				06

10.51	9.7	9.9	9.8	10.53
45	42	42	48	413
142	142		161	161
06				06

5156⁷² Wly Torrey Pines Rd

(5142⁸ BC NW)

(5140⁴⁸ BC SW)

5136⁴³

5711⁴³

4786⁴³

4781 15⁴ RT & 14⁰ driveway

4761⁴³

4736⁴³

1466

P.C.C. Vallecitos

8.76 7.9
5²⁰ 6²

4/5

8.81 8.0
5⁵⁰ 6⁶

3/5

8.88 8.1
5²⁸ 6⁵

1/5 edge Ac parking out

9.03 8.10
5⁶³ 6⁵⁶

1/5

9.06 8.40
5⁶⁰ 6²⁶

P.C. del Ocaso

9.04 8.40
5⁶² 6²⁶
8.66 25 9.27 9.27
6⁰⁰ 5³⁹
55 ← → 9.27

50' south of P.C.

25' Rad Length 55' 5 parts 11° ea

SW Ret Vallecitos + Paseo del Ocaso

1466

P.C.C. Vallecitos

9.26 8.6
5⁴⁰ 6⁰

24' around edge Ac parking

9.29 8.72
5³⁷ 5²⁴

2/3

9.37 8.86
5²⁹ 5⁵⁰

1/3

9.48 8.97
5¹⁸ 5⁶⁹

P.C. del Ocaso

9.60 9.08
5⁰⁶ 5⁵⁸
65 9.27

50' North of P.C.

10.36 9.78
4³⁰ 4⁸⁸
66 9.27

NW Ret Vallecitos + Paseo del Ocaso

25' Rad Length 26° 3 parts 8 1/2° ea

1466

TP₃ 5⁵² 15⁴⁷ Lamp Post on 120' N on Torrey Rd. of Calle Clara

TP₂ 5⁰⁷ 15²⁹ 374 10²²

P.C.C. Vallecitos 9.64 9.2
5⁰² 5⁴

P.R.C. Vallecitos 9.74 9.0
4²² 5⁶

238' AC paving edge 9.64 9.03
5⁰² 5⁶³

2/3 9.81 8.8
4⁸⁵ 5⁸

2/3 9.64 9.16
5⁰² 5⁵⁰

24' paving AC edge 9.81 8.99
4⁸⁵ 5⁶⁷

1/3 9.53 9.07
5¹³ 5⁵⁹

1/3 9.85 9.44
4⁵¹ 5²²

P.C. del Ocaso 9.51 8.97
5¹⁵ 5⁶⁹
cb 3ut

P.C. del Ocaso 10.00 9.54
4⁶⁶ 5¹²
cb 3ut

50' South of P.C. 9.64 9.18
5⁰² 5⁴⁸
cb 3ut

60' North P.C. 10.82 10.46
3⁵⁴ 4²⁰
cb 3ut

SE Ret Vallecitos + Pasco del Ocaso
Rad 25' Length 28² 3 parts 9⁴ca

NE Ret Vallecitos + Pasco del Ocaso
25' Rad Length 45² 3 parts 15²ca

T 1466

T 1466

PCC, Vallecitos
 11.52 10.5
 446 54
 06 out

4/5
 11.53 10.6
 446 53

3/5
 11.51 10.8
 448 51

2/5
 11.50 10.9
 449 50

1/5
 11.56 11.1
 443 48

PC, Torrey Rd
 11.65 11.0
 434 42
 06 out

35' Rad length 55' 5 parts 11° ea
 (La Jolla Shores Rd)
 SW Ret Vallecitos + (Torrey Pines Rd)

π 15 22

P.R.C. Vallecitos
 11.62 10.5
 437 54
 06 out

4/5
 11.79 10.8
 420 51

3/5
 11.94 10.9
 405 50

2/5
 12.11 11.2
 388 42

1/5
 12.11 11.3
 388 46

PC, Torrey Rd
 12.07 11.5
 392 44
 06 out

35' Rad length 55' 5 parts 11° ea
 (La Jolla Shores Rd)
 NW Ret Vallecitos + (Torrey Pines Rd)

π 15 22

X Sec. Calle Clara

El Pasco Grande to Torrey Pines Rd. 21

0+94 15° RT & 9' con drive to garage

0+65 15° RT & 9' con drive to garage

6+50

0+40 15° RT & 4" drain in cb

0+34 15° RT & 9' con drive to garage

0+00 East Line El Pasco Grande

0-15 East Cb Line El Pasco Grande

970 562 1260 483 698

BM 436 1181

745
X 11 p 11
SECOR
Vallecitos
El Pasco Grande

Lt North

INDEXED
Jaw
OCT 2 1952

7.96 58.54
464 406
15 172
hip floor

7.30 8.24
530 436
150 182
hip floor

7.50 6.88 7.35 6.97
510 615 7.3 7.1 7.47
142 142 53 55 513
ca 15 15
ca

6.77
583
18

6.62 7.39
528 521
150 172
hip floor

6.27 5.77 6.05 5.83
633 73 6.6 5.9 6.35
142 142 6.6 6.2 6.25
ca 15 15
ca

6.17 5.67 5.67 5.61 6.11
643 5.5 5.7 5.6 6.49
15 15
mid pt 2' rad 941 15
941 15
mid pt 4' rad

7 1260

Lt=North

2

Rt=South

2403 15² Rt & 12 driveway

1780

10.42	9.5	9.92	10.29	9.87	10.37
365	45	42	42	42	320
142	142	142	142	142	142
06	5at	5at	5at	5at	06

1760 15¹ Rt & 12 drive

1750

9.68	9.0	9.1	9.33	9.89
439	50	42	52	424
142	142	142	142	142
06	5at	5at	5at	06

1741 15² Rt & 12 driveway

1730 14⁶ Lt & 15' cow driveway

1717 15³ Rt & 12' cow drive

TP₂ 709 1407 562 628

9.08	9.03	8.62	9.10	9.33	9.76
499	501	545	427	474	431
30	20	145	162	16	185
06	06	110	5at	Floor	Floor

8.57	8.00	1407	8.15	8.72
403	50	43	44	388
142	142	142	142	142
06	06	1260	06	06

1700

Lt = North

E

pt = South

23

0431 16⁵ pt E single garage cb continues through ^{unbroken}

12.13 12.30
4.09 3.22
15.4 16.5
cb floor

0409 Fly line Pasco del Ocaso

11.39 10.87 11.14 11.19 11.17 11.00 11.47
4.84 5.33 5.68 5.03 5.05 5.22 4.21
142 142 7 7 153 153
cb out cb

2450¹⁴ Fly cb line Pasco del Ocaso

10.89 10.35 11.13 10.67 10.67 10.73 10.72 10.61 11.17 10.82 11.39
5.33 5.07 5.09 5.35 5.55 5.49 5.50 5.61 5.05 5.40 4.83
772 772 172 172 142 153 172 172 672 672
cb out cb out cb out cb out cb

2435¹⁴ E Pasco del Ocaso

10.50 10.85 10.87 10.86 11.01 11.06 11.22
5.72 5.37 5.33 5.26 5.21 5.16 5.00
772 172 142 16 17 69

2420¹⁴ wly cb line Pasco del Ocaso

10.34 10.01 10.89 10.40 10.45 10.57 10.53 10.48 10.98 10.60 11.08
5.68 6.21 5.33 5.82 5.21 5.65 5.67 5.74 5.24 5.63 5.14
772 772 172 172 172 16 17 17 69 67
cb out cb out cb out cb out cb out cb

2410¹⁴ wly line Pasco del Ocaso

10.93 10.20 10.39 10.42 10.41 10.29 11.01
5.29 6.23 5.83 5.30 5.21 5.23 5.21
142 142 7 7 153 153
cb out cb out cb out cb

TP3 524 16²² 302 10²⁸

π 16²²

2400

1750

TP4 569 20⁰⁸ 1⁸³ 14³⁹

1721 15² RT E 17' driveway

1400

0796 14² LT E 16' driveway

0750

0744 16² RT E double garage cb continues unbroken

LT = North 1458 1509 RT = South 24

15.08	14.0	14.6	14.4	15.5
520	60	54	56	43
144	144	133	133	
cb	sat	sat	cb	

13.62	14.21	14		
14.12	13.2	13.7	13.2	14.50
526	68	63	68	558
143	143	152	152	
cb	sat	sat	cb	

T 20⁰⁸

13.82	14.62
240	160
153	193
4/10	Floor

12.71	13.25	13.		
12.71	13.2	12.6	13.45	
352	30	36	277	
143		154	154	
4/10		sat	cb	

13.42	12.63
280	359
203	143
1/10	4/10

12.37	11.74	12.29	12.06	
11.6	12.4	12.2	12.58	
355	46	38	40	364
146	146	154	154	
cb	sat	sat	cb	

12.47	12.57
325	565
153	165
cb	Floor

T 16²²

Lt = North

§

Rt = South

25

BM
TP 3 p 19

459

1549

1547

2440¹⁰ Wly C6 Line La Jolla Shores Dr.

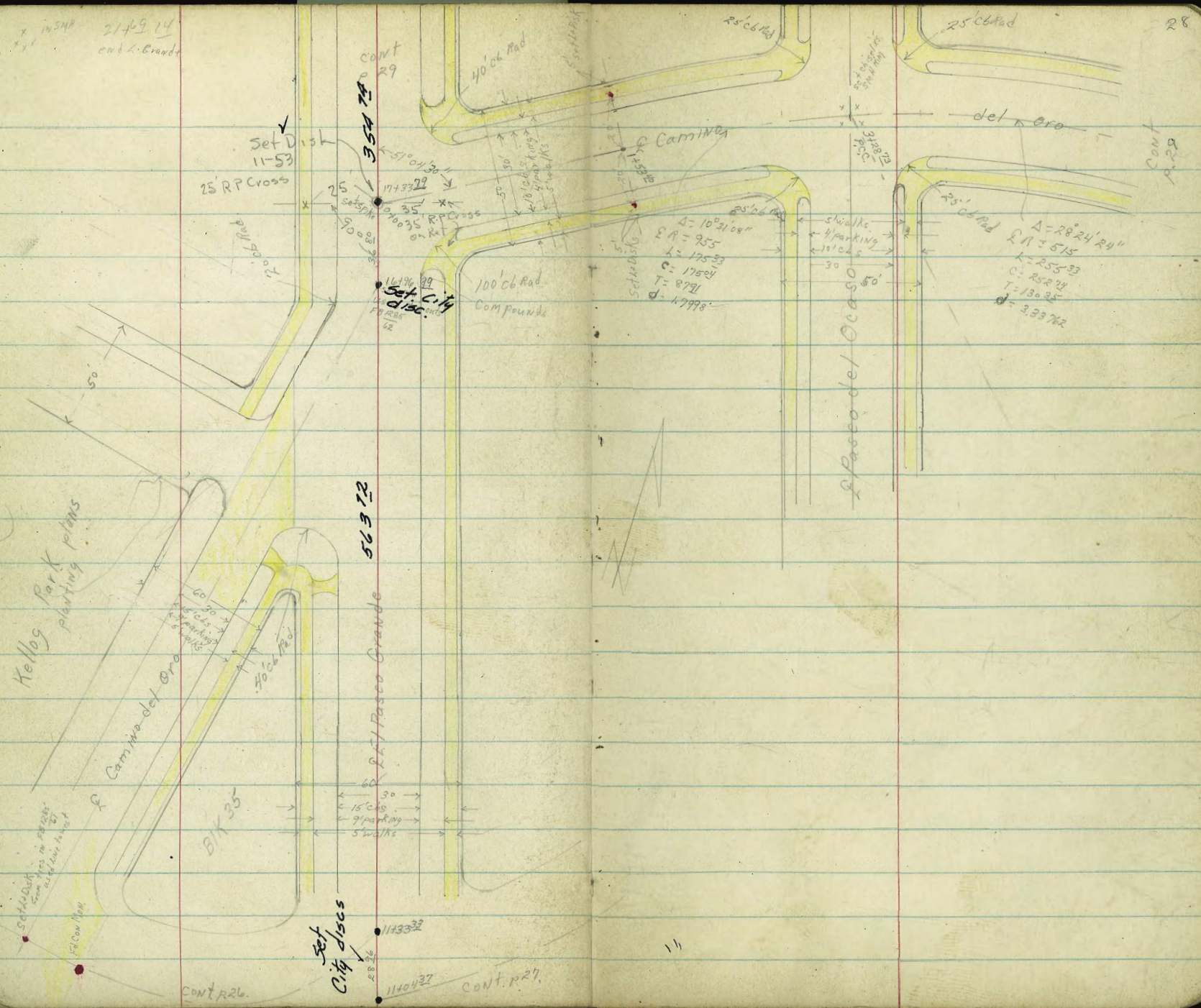
14.81	14.1	15.16	14.9	14.4	14.9	14.8	14.8	15.30	15.7	16.56
527	52	423	52	56	51	52	52	428	42	352
685	685	185	185	145		155	185	185	685	685
C6	sat	C6	sat				sat	C6	sat	C6
		80						130		

2120¹⁰ Wly La Jolla Shores Dr.

		14.89			
		1543	144	14.7	1544
		465	56	53	15.30
		144	144	549	14.59
		C6	sat	20.02	15.80
					15.5
					15.5
					sat
					C6

MSA 2149 14
cont. L. Grande

28



CONT 29

CONT A. 29

Set D 11-53

25' RPC Cross

Set C 14 disc

100' CB Rad Compound

$\Delta = 102' 00''$
 $R = 955$
 $L = 175' 33''$
 $R = 175' 33''$
 $T = 130' 35''$
 $d = 33' 72''$

$\Delta = 282' 24''$
 $R = 515$
 $L = 255' 33''$
 $C = 250' 24''$
 $T = 130' 35''$
 $d = 33' 72''$

Kelloog Park planting plans

Camino del Oro

563 12

25' Pasa Grande

BY 35

Set City discs

1143332

1140437

CONT R. 26

CONT R. 27

11

"X" Sec El Paseo
De la Playa to

Grande Lt=West 2

RT=East

30

1700

at North end
4.54 4.53 4.76 5.23 5.58 5.49 6.01 6.27
5.17 6.20 5.97 5.50 5.15 5.24 4.72 4.46
50 40 30 15 15 15 29
out 06 W/K

0725

5.16 5.29 5.49 5.55 5.43 5.94 6.20
5.53 5.84 5.24 5.18 5.30 4.72 4.53
50 30 15 15 15 29
out 06 W/K

0754 C6 P.C. NE Return

IMPROVED
low
OCT

low
5.25 5.56 5.59 5.53 5.37 5.84 6.14
5.32 5.17 5.14 5.20 5.36 4.89 4.59
50 30 15 15 15 29
out 06 W/K

0740 N14 De la Playa

5.27 5.57 5.61 5.43 5.48 5.57 5.96 6.30
5.46 5.16 5.12 5.30 5.25 5.16 4.77 4.43
50 30 15 15 18 18 29
06 W/K

0720 N14 C6 LINT De la Playa

5.03 5.34 5.39 5.56 5.63 5.77 6.04 6.61
5.20 5.39 5.34 5.17 5.10 4.96 4.69 4.42 6.55
50 30 15 15 30 52 52
out 06 W/K

0700 E De la Playa

5.72 5.95 6.08 6.30 6.40 6.63 7.01
5.01 4.78 4.65 4.43 4.33 4.10 3.72
50 30 15 P.M. 15 30 50
W/K

TP₂ 4²⁰ 10²³ 3²⁶ 5³³

TP 6³⁰ 9²⁷ 3⁶⁰ 2²⁷

BM 3⁰⁸ 6⁵² 3⁵¹
3⁵¹

Southerly Sea
wall W
De la Playa

7 10²³

1735 E Calle Clara

1730⁶⁷ BC NW

NW Ret. 25' Rad 65° Length 6 parts 10' ea

1725 PC, cb NW, Ret

Begin 16' wide 8' each side & 1/2" Cold lay

1716 End AS paving BC cb ret SE Calle Clara

Lt = West

5.6 ²	5.4 ⁶	5.1	5.3
5.11	5.27	5.6	5.1
29 w/k	15 cb	15	8

PC, De la Ribera

5/6

2/3

1/2

1/3

1/6

PC, Paseo Grandol

5.6 ⁰	5.4 ⁵	4.9	5.2
5.13	5.28	5.8	5.5
29 w/k	15 cb	15 out	8

5.51	5.36	4.78	4.83	5.08	5.57	5.60	6.11	6.28
5.22	5.37	5.75	5.20	5.45	5.16	5.13	4.62	4.45
29 w/k	16 cb	16 out	15 8	8	15 out	15 out	15 bc	29 w/k

RT = East

5.6 ²	5.6	5.6	5.7
5.1	5.1	5.0	4.9
8	8	15	30

5.00 4.42

5.23 6.31
cb out

5.02 4.42

5.21 6.31
cb out

5.08 4.46
5.65 6.27

5.23 4.66
5.50 6.07

5.29 4.75
5.44 5.28

5.35 4.82
5.38 5.21
9.4
AC

5.45 4.9

5.28 5.8

5.60 cb 5.65 out 5.85

5.6 ⁰	5.4 ⁵	4.9	5.2
5.13	5.28	5.8	5.5
29 w/k	15 cb	15 out	8

TP₂ 5.02 10 26 479 5.94

2175

2150

2125

2100

1484 E SMH

1475

1452 NE cb BC Calle Clara

14 West

RT = East

32

6.00	5.92	5.2	5.6	5.9	5.9	5.6	6.76	6.94
473	492	5.5	5.1	4.8	4.8	5.1	3.97	3.72
29	142	142	8	8	8	15.2	15.2	29
w/k	cb	Sat				Sat	cb	w/k

		5.26			6.07			6.08
5.92	5.74	5.3	5.5	5.9	5.9	5.5	6.68	6.88
481	499	5.4	5.2	4.2	4.2	5.2	4.05	3.85
29	142	142	8	8	8	15.2	15.2	29
w/k	cb	Sat				Sat	cb	w/k

5.84	5.68	5.2	5.5	5.8	5.8	5.4	6.51	6.71
482	5.05	5.5	5.2	4.2	4.2	5.3	4.22	4.02
29	142	149	8	8	8	15.1	15.1	29
w/k	cb	Sat				Sat	cb	w/k

		5.12			5.92			5.92
5.78	5.58	4.9	5.5	5.8	5.8	5.4	6.47	6.67
485	5.15	5.2	5.2	4.2	4.2	5.3	4.26	4.06
29	147	142	8	8	8	15.2	15.2	29
w/k	cb	Sat				Sat	cb	w/k

5.79

4.94

11.1

		5.16			5.99			6.01
5.73	5.57	4.9	5.4	5.7	5.7	5.3	6.26	6.50
5.00	5.16	5.2	5.3	5.0	5.0	5.4	4.47	4.23
29	142	142	8	8	8	15	15.2	29
w/k	cb	Sat				Sat	cb	w/k

		5.00			5.77			5.75
5.69	5.46	5.1	5.3	5.7	5.6	5.5	6.14	6.30
5.04	5.27	5.6	5.4	5.3	5.1	5.2	4.59	4.43
29	15	15	8	8	8	15	15	29
w/k	cb					Sat	cb	w/k

10 23

Vallejos

4700

6.91	6.45	5.7	5.9	6.1	6.2	6.0	7.06	6.38
405	451	53	50	48	42	42	320	358
29	152	15	8		8	152	152	29
w/k	06					94	06	w/k

(3796⁵²)

3795 PC, C6 Ret + S.W.

(3792 6' C6 Ret)

6.88	6.58	5.7	5.9	6.1	6.2	6.0	7.07	7.38
408	438	52	50	48	42	42	389	358
29	148	148	8		8	152	152	29
w/k	06	94				94	06	w/k

3775

6.59	6.35	5.7	5.8	6.0	6.1	5.8	6.97	7.29
437	461	52	51	42	42	51	399	367
29	142	142	8		8	152	152	29
w/k	06	94				94	06	w/k

3755 15³ R+S 12 drive

6.14	7.11
452	385
152	24
410	w/k

3750

6.27	6.07	5.6	5.7	6.0	6.0	5.9	6.91	7.23
469	489	53	53	42	42	50	405	373
29	142	142	8		8	152	152	29
w/k	06	94				94	06	w/k

3725

6.11	5.97	5.5	5.6	5.9	5.9	5.7	6.90	7.14
485	429	54	53	50	50	52	406	382
29	148	148	8		8	152	152	29
w/k	06	94				94	06	w/k

3700

6.02	5.86	5.3	5.6	5.9	5.9	5.8	6.84	7.11
424	520	56	53	50	50	51	412	385
29	142	142	8		8	152	152	29
w/k	06	94				94	06	w/k

1096

West

East

33

5700

7.01	6.84	6.1	6.3	6.4	6.5	6.5	6.4	7.14
395	412	48	46	45	44	44	45	382
29	142	148	8		8	15	310	310
w/k	cb	cut						cb

(4493^{cb} 38)
 4487 PC. cb Ret NW1
 4486^{ss} BC PL

6.89	6.82	6.1	6.3	6.4	6.4	6.5	6.6
407	414	48	46	45	45	44	43
29	142	148	8		8	15	30
w/k	cb	cut					

4475

6.61	6.62	6.1	6.0	6.2	6.3	6.4	6.4	6.5
435	434	48	42	42	46	45	45	44
29	19	19	15	8		8	15	30
w/k	cb							

4450

6.16	6.2	6.2	6.2	6.2	6.2	6.3	6.4
480	42	42	42	42	41	46	45
30	15	8			8	15	30
CON							
PAV.							

4 wide 2' high rectangular con drain runs East to West.
 25 x 25 grate

4436 15^{ss} RT & 35 x 35 con Storm drain box

6.14	1.85
482	94
155	155
grate	16

4425

6.26	5.9	6.0	6.1	6.2	6.2	6.2	7.23	7.55
420	50	42	48	42	42	42	323	344
30	15	8		8	15	165	165	29
CON						cut	cb	w/k
PAV.								

4418 Cb PC. Ret SE

(4417.29 SE cb (map))

6.56	6.20	5.9	6.0	6.1	6.2	6.2	7.25	7.53
440	426	50	42	48	42	42	32	343
315	315	15	8		8	15	15	29
cb	cut					cut	cb	w/k

Lt = West & Rt = East 35

(6708.29)

6708 PC cb Ret NW southerly Alley BIK 34

7.20	7.12	6.1	6.4	6.7	6.7	6.6	7.57	7.74
437	445	54	51	48	48	42	400	383
29	148	148	8	8	8	152	152	29
w/k	cb	cut				cut	cb	w/k

TP4 BM 413

11.57

352

tie out chisel X
SE Ret.
Vallecitos
El Paseo Grande
745 P.9 FB2057

6700

7.02	6.94	6.1	6.1	6.4	6.7	6.6	6.6	7.52	7.61
374	402	48	48	45	42	43	43	344	329
29	165	15	8	8	8	152	152	29	
w/k	cb	cut				cut	cb	w/k	

5775

6.4	6.3	6.4	6.6	6.6	6.5	7.50	7.60
45	46	45	43	42	42	346	336
30	15	8	8	152	152	29	
				cut	cb	w/k	

5750

6.98	6.81	6.2	6.1	6.3	6.5	6.5	6.5	7.41	7.52
328	415	47	48	46	44	42	44	355	344
29	173	173	15	8	8	152	152	29	
w/k	cb					cut	cb	w/k	

(5738.29)

5737 PC, cb Ret SW southerly Alley BIK 34

7.18	6.93	6.0	6.3	6.5	6.4	6.5	7.39	7.50
323	400	42	46	44	45	44	357	346
29	148	148	8	8	152	152	29	
w/k	cb	cut			cut	cb	w/k	

5730 P.C. cb Ret NE

(5729.13)

7.12	6.91	6.0	6.3	6.4	6.4	6.4	7.38	7.55
384	405	42	46	45	45	45	358	344
29	142	142	8	8	152	152	29	
w/k	cb	cut			cut	cb	w/k	

89 BC PL

5725

7.10	6.91	6.1	6.3	6.4	6.5	6.5	7.31	7.57
326	405	48	46	45	44	44	365	332
29	148	148	8	8	15	152	29	
w/k	cb	cut				cb		

Lt = West

Rt = East

36

7175

6.63	6.54	5.7	6.0	6.2	6.3	6.2	7.5 ²	7.66
3.55	3.64	4.4	4.1	3.2	3.8	3.9	2.66	2.52
29	148	148	8	8	8	152	152	29
w/k	cb	out				out	cb	w/k

7150

6.83	6.68	5.8	6.1	6.3	6.5	6.4	7.58	7.77
3.30	3.50	4.3	4.2	3.8	3.6	3.7	2.60	2.41
29	148	148	8	8	8	152	152	29
w/k	cb	out				out	cb	w/k

7148 & SMH

7125

7.07	6.92	5.9	6.3	6.5	6.6	6.6	7.70	7.87
3.11	3.26	4.2	3.8	3.6	3.5	3.5	2.48	2.31
29	148	148	8	8	8	152	152	29
w/k	cb	out				out	cb	w/k

TP5

3⁰⁰10¹⁸4³⁹7¹⁸cow nail in cb
7100 44 152

7100

7.21	7.17	6.60	6.3	6.5	6.8	7.18	7.94
4.36	4.20	5.2	5.0	4.8	4.7	4.8	3.28
29	148	148	8	8	8	152	152
w/k	cb	out				out	cb

6775 *

7.37	7.27 ^v	6.3	6.6	6.8	6.9	6.8	7.80	7.95
4.20	4.30	5.2	4.2	4.2	4.6	4.2	3.77	3.62
29	148	148	8	8	8	152	152	29
w/k	cb	out				out	cb	w/k

6750

7.34	7.20 ^v	6.1	6.5	6.8	6.9	6.7	7.72	7.89
4.23	4.37	5.4	5.0	4.7	4.6	4.8	3.85	3.68
29	148	148	8	8	8	152	152	29
w/k	cb	out				out	cb	w/k

6725

7.30	7.15 ^v	6.1	6.5	6.7	6.8	6.6	7.66	7.84
4.27	4.42	5.4	5.0	4.8	4.7	4.2	3.91	3.78
29	148	148	8	8	8	152	152	29
w/k	cb	out				out	cb	w/k

9700

4.95 5.72
 4.5 4.5 4.8 5.1 5.1 5.0 6.26 6.46
 5.6 5.6 5.3 5.0 5.0 5.1 3.92 3.72
 30 15 8 8 15.2 15.3 29
 sut cb w/k

8785 12^s Rt 2 12' driveway

has rough cordin St.

5.36 5.89 6.55
 4.82 4.29 3.63
 12.5 15.3 24
 4.4 w/k

8775

5.90
 5.63 5.48 4.5 5.19 4.6 4.9 5.2 5.3 5.4 6.55 6.72
 4.55 4.20 5.6 5.5 5.2 4.2 4.8 4.2 3.63 3.76
 29 192 192 15 8 8 15.3 15.3 29
 w/k cb sut sut cb w/k

8758 BC cb Rt SW Northernly Alley BIK 34

5.99 5.82 4.8 5.1 5.4 5.5 5.5 6.69 6.94
 4.19 4.36 5.3 5.0 4.2 4.6 4.6 3.49 3.34
 29 142 142 8 8 15.3 15.3 29
 w/k cb sut sut cb w/k
 BC

8750

6.04 5.88 4.8 5.2 5.4 5.6 5.5 6.95 6.95
 4.14 4.30 5.3 4.2 4.2 4.5 4.6 3.43 3.23
 29 142 142 8 8 15.3 15.3 29
 w/k cb sut sut cb w/k

8725

6.22 6.08 5.1 5.5 5.8 5.8 5.7 6.99 7.17
 3.26 4.10 5.0 4.6 4.3 4.3 4.4 3.19 3.01
 29 142 142 8 8 15.3 15.3 29
 w/k cb sut sut cb w/k

8700

5.65 6.61 6.58
 6.39 6.32 5.4 5.8 6.0 6.1 6.1 7.26 7.48
 3.72 3.86 4.2 4.3 4.1 4.0 4.0 2.28 2.70
 29 142 142 8 8 15.3 15.3 29
 w/k cb sut sut cb w/k
 T 10.18

TP₆ BM₂ 5²⁵ 8⁴³ 6⁸⁰ 3³⁸

10725

chisel "D"
Center Ret
NW cor
Friscota
El Paseo Grande

4.13	4.03	3.3	3.3	3.8	4.2	4.3	4.3	5.30	5.44
6 ⁰⁵	6 ¹⁵	6 ⁸	6 ⁸	6 ³	5 ²	5 ⁸	5 ⁸	4 ⁸⁸	4 ⁹⁴
29	17 ⁸	17 ⁸	15	8		8	15 ³	15 ³	29
w/k	06	9ut					9ut	06	w/k

10709 BC c6 Ret SW cor Friscota

4.26	4.21	3.4	3.9	4.2	4.4	4.3	5.12	5.51
5 ⁸²	5 ²⁷	6 ²	6 ²	5 ²	5 ²	5 ⁸	4 ⁷⁶	4 ⁶¹
29	14 ²	14 ²	8		8	15 ⁴	15 ⁴	29
w/k	06	9ut				9ut	06	w/k

10700

4.26	4.29	3.6	3.9	4.3	4.4	4.4	5.19	5.62
5 ⁸²	5 ⁸⁹	6 ⁵	6 ²	5 ⁸	5 ²	5 ²	4 ⁶²	4 ⁵⁶
29	14 ²	14 ²	8		8	15 ⁴	15 ⁴	29
w/k	06	9ut				9ut	06	w/k

9775

4.66	4.59	3.8	4.1	4.4	4.6	4.6	5.66	5.81
5 ⁵²	5 ⁵⁹	6 ³	6 ⁰	5 ²	5 ⁵	5 ⁵	4 ⁵²	4 ³⁷
29	14 ²	14 ²	8		8	15 ⁴	15 ⁴	29
w/k	06	9ut				9ut	06	w/k

9750

98	4.89	3.9	4.2	4.6	4.8	4.7	5.86	5.99
5 ²⁰	5 ²⁹	6 ²	5 ²	5 ⁵	5 ³	5 ⁴	4 ³²	4 ¹⁹
29	14 ²	14 ²	8		8	15	15 ⁴	29
w/k	06	9ut				9ut	06	w/k

9730 BC c6 Ret Northwly Alley BIK 34

5.16	5.13	4.1	4.4	4.9	4.9	4.8	6.05	6.21
5 ⁰²	5 ⁰⁵	6 ⁰	5 ²	5 ²	5 ²	5 ³	4 ¹³	3 ²⁷
29	14 ²	14 ²	8		8	15 ²	15 ²	29
w/k	06	9ut				9ut	06	w/k

9725

5.15	5.15	4.2	4.5	4.9	5.0	4.8	6.08	6.32
5 ⁰³	5 ⁰³	5 ²	5 ⁶	5 ²	5 ¹	5 ³	4 ¹⁰	3 ²⁶
29	15	15	8		8	15 ²	15 ²	29
w/k	06	9ut				9ut	06	w/k

T 10 18

1163³³ BC cb NW

11763

3.50	3.43	3.0	3.3	3.6	3.8	3.9	4.0	5.03	5.16
4.93	5.00	5.4	5.1	4.8	4.6	4.5	4.4	3.40	3.32
29	145	145	8		8	15	193	193	29
w/k	cb	cut					cut	cb	w/k

1148⁴⁶

11748 BC cb Ret NW Friscota

		2.72		3.89		4.35			
3.60	3.44	3.2	3.3	3.8	4.0	4.1	4.6		
4.83	4.99	5.2	5.1	4.6	4.4	4.3	3.8		
29	15	15	8		8	15	30		
w/k	cb	cut							

11725

3.47	3.41	2.8	3.2	3.6	3.9	4.1	4.3	4.8
4.96	5.02	5.6	5.2	4.8	4.5	4.3	4.4	3.6
29	233	233	15	8		8	15	30
w/k	cb	cut						

11700

		3.70		4.71		4.6		
3.0	3.6	3.8	4.0	4.1	4.3	4.9		
5.1	4.8	4.6	4.4	4.3	4.4	3.5		
30	15	8		8	15	30		

10775

10770²⁰ BC PL

		3.75		4.05		4.65		
3.5	3.7	3.9	4.1	4.2	4.1	4.1	5.30	5.77
4.2	4.2	4.5	4.3	4.2	4.3	4.3	3.13	2.66
30	15	8		8	15	16.4	16.4	29
						cut	cb	w/k

10762⁹⁹ BC cb

10756 BC cb Ret SE cor Friscota

3.4	3.7	4.0	4.3	4.2	4.3	5.13	5.43
5.0	4.2	4.4	4.1	4.2	4.1	3.30	3.00
30	15	8		8	15.3	15.3	29
					cut	cb	w/k

10750

3.2	3.7	3.9	4.2	4.3	4.1	5.13	5.30
5.2	4.2	4.5	4.2	4.1	4.3	3.30	3.13
30	15	8		8	15.4	15.4	29
			8		cut	cb	w/k

1308 in Lml

TP7 520 762 601 242

13700

12787 15² RT S 11' driveway

12775

12750

12725

12700

1178¹⁶ BC NEcb

11777 BC cb RT NE Friscota

Lt=West

Q

RT=East

40

4.27 3.03 2.1 2.4 2.7 3.0 3.2 3.84 4.03
 4.6 5.40 6.3 6.0 5.1 5.4 5.2 4.59 4.40
 29 142 142 8 8 153 153 29
 w/k cb out out cb w/k

3.38 4.02
 5.05 4.41
 152 24
 w/k w/k

3.29 3.12 2.4 2.6 2.8 3.1 3.2 3.92 4.10
 5.14 5.31 6.0 5.8 5.6 5.3 5.2 4.51 4.33
 29 142 142 8 8 153 153 29
 w/k cb out out cb w/k

3.34 3.26 2.6 2.8 2.9 3.1 3.0 4.10 4.26
 5.09 5.17 5.8 5.6 5.5 5.3 5.4 4.33 4.12
 29 142 142 8 8 153 153 29
 w/k cb out out cb w/k

3.28 3.23 2.7 2.9 3.1 3.2 3.2 4.24 4.31
 5.15 5.20 5.1 5.6 5.3 5.2 5.2 4.12 4.06
 29 142 142 8 8 153 153 29
 w/k cb out out cb w/k

3.34 3.34 2.8 3.0 3.3 3.4 3.4 4.35 4.54
 5.09 5.09 5.6 5.4 5.1 5.0 5.0 4.05 3.89
 29 142 142 8 8 153 153 29
 w/k cb out out cb w/k

3.45 3.40 3.0 3.2 3.5 3.6 3.6 4.59 4.80
 4.98 5.03 5.4 5.2 4.9 4.8 4.8 3.84 3.63
 29 142 142 8 8 153 153 29
 w/k cb out out cb w/k

843

TP₈ 4⁵³ 6²⁶ 5²¹ 2⁴¹

14750

14735^{of} BC PL

14730 B.C. cb Ret SW Del Oro

14725

14700

13775

13750

13725

Lt = West

♀

Rt = East 41

3.01	2.88	1.9	1.9	2.3	2.5	2.5	2.3	3.48	3.76
461	474	52	52	53	51	51	53	414	386
29	18	18	15	8	8	8	15 ²	15	29
w/k	06	Sat					Sat	06	w/k

3.03	2.84	2.0	2.2	2.5	2.5	2.3	3.56	3.80
459	428	56	54	51	51	53	404	380
29	14 ²	14 ²	8	8	8	15 ²	15 ²	29
w/k	06	Sat				Sat	06	w/k

2.84	2.82	2.0	2.2	2.5	2.5	2.4	3.54	3.80
458	480	56	54	51	51	53	408	382
29	14 ²	14 ²	8	8	8	15 ²	15 ²	29
w/k	06	Sat				Sat	06	w/k

3.01	2.85	2.0	2.3	2.5	2.5	2.5	3.60	3.78
461	477	56	53	51	51	51	402	384
29	14 ²	14 ²	8	8	8	15 ²	15 ²	29
w/k	06	Sat				Sat	06	w/k

3.09	2.89	2.2	2.4	2.5	2.6	2.6	3.69	3.86
453	473	54	52	51	50	50	383	376
29	14 ²	14 ²	8	8	8	15 ²	15 ²	29
w/k	06	Sat				Sat	06	w/k

3.12	2.94	2.2	2.3	2.5	2.6	2.7	3.72	3.97
450	468	54	53	51	50	49	380	365
29	14 ²	14 ²	8	8	8	15 ²	15 ²	29
w/k	06	Sat				Sat	06	w/k

3.19	3.02	2.1	2.3	2.5	2.7	2.8	3.78	4.23
443	460	55	53	51	49	48	384	339
29	14 ²	14 ²	8	8	8	15 ²	15 ²	29
w/k	06	Sat				Sat	06	w/k

T 7 62

Lt = West

Rt = East

42

16425

2.14	1.8	1.7	1.8	1.9	2.1	3.14	3.31
4 ⁸²	5 ¹	5 ²	5 ¹	5 ²	4 ⁸	3 ⁸²	3 ⁶⁵
30	15	8		8	15 ²	15 ²	29
CON					9ut	06	w/k
PAV							

16400

2.25	1.7	1.7	1.9	1.9	2.1	3.22	3.37
4 ²¹	5 ²	5 ²	5 ²	5 ²	4 ⁸	3 ²⁴	3 ⁵⁹
30	15	8		8	15 ¹	15 ¹	29
CON					9ut	06	w/k
PAV							

15475

2.25	1.8	1.8	2.0	2.1	2.1	3.26	3.41
4 ²¹	5 ¹	5 ¹	4 ²	4 ⁸	4 ⁸	3 ²⁰	3 ⁵⁵
30	15	8		8	15 ³	15 ³	29
CON					9ut	06	w/k
PAV							

15450

2.30	1.8	2.0	2.2	2.2	2.1	3.34	3.47
4 ⁶⁶	5 ¹	4 ²	4 ²	4 ²	4 ⁸	3 ⁶²	3 ⁴²
30	15	8		8	15 ³	15 ³	29
CON					9ut	06	w/k
PAV							

15425

2.30	2.0	2.1	2.3	2.3	2.3	3.45	3.61
4 ⁶⁶	4 ²	4 ⁸	4 ⁶	4 ⁶	4 ⁶	3 ⁵¹	3 ³⁵
30	15	8		8	15 ³	15 ³	29
CON					9ut	06	w/k
PAV							

15400

2.16	2.1	2.3	2.4	2.4	2.3	3.43	3.66
4 ⁸⁰	4 ⁸	4 ⁶	4 ⁵	4 ⁵	4 ⁶	3 ⁵³	3 ³⁰
30	15	8		8	15 ³	15 ³	29
CON					9ut	06	w/k
PAV							

14475

2.65	2.1	2.4	2.5	2.4	2.3	3.44	3.66
4 ²¹	4 ⁸	4 ⁵	4 ⁴	4 ⁵	4 ⁶	3 ⁵²	3 ³⁰
30	15	8		8	15 ³	15 ³	29
CON					9ut	06	w/k
PAV							

π 696

Lt = West

Rt = East

43

Chisolm
Center Ret.
NE Cor.
Camino Del

ORO + EL Paseo Grande

TPg. BM₃ 46³ [76⁵] 394 3⁰²17452 = $\frac{1}{2}$ Manhole.

2.25

47

Rim

17450

2.52	2.41	1.7	1.9	2.2	2.2	2.2	2.3
444	456	52	50	47	47	47	46
29	142	142	8	8	15	30	
WIK	cb	9UT					

17425

2.48	2.36	1.7	1.8	2.1	2.1	2.2	2.1	3.09
448	460	52	51	48	48	47	48	382
29	148	142	8	8	15	30	30	
WIK	cb	9UT				9UT	cb	

17408 = BC curb Ret. N.W. Del Oro

17404⁸⁴ - " " "

2.54	2.38	1.7	1.8	2.0	2.1	2.0	2.1	3.06	3.24
442	458	52	51	48	48	48	48	320	372
29	140	140	8	8	15	24	24	30	36
WIK	cb	9UT				9UT	cb	WIK	

17400

2.51	2.42	1.8	1.9	2.0	2.1	2.0	1.9	3.00	3.24
445	454	51	50	49	48	47	50	326	322
30	150	150	8	8	15	22	22	36	36
WIK	cb	9UT				9UT	cb	WIK	

16475

1.9	2.31	1.7	1.7	1.8	2.0	2.0	1.9	1.9	3.13	3.23
50	465	52	52	51	49	49	50	50	383	373
30	26	26	15	8	8	15	18	18	29	
	cb	9UT				9UT	cb	WIK		

16466⁶⁸ BC cb SE

16450

16440⁹⁷

1.85	1.8	1.9	1.9	2.0	2.2	3.13	3.26
54	52	50	50	49	42	383	370
30	15	8	8	8	15	15	29
comp					9UT	cb	WIK

696

Nail in POT 42T 20+00

TPo 765 1085 445 320

LT = WEST

♀

RT = EAST

44

19400

2.86	2.68	2.0	2.3	2.6	2.7	2.7	3.51	3.72
479	497	56	53	50	42	49	44	393
290	142	142	80		80	152	152	290
WIK	cb	POT				POT	cb	WIK

18475

2.72	2.59	1.9	2.2	2.5	2.6	2.6	3.31	3.50
493	506	57	54	51	50	50	36	415
290	142	142	80		80	152	152	290
WIK	cb	POT				POT	cb	WIK

18448 = BC Curb Ret N.E. Cor. Camino Del Oro.

18444⁶⁷

1.62	2.52	1.7	2.1	2.4	2.5	2.4	3.02	3.19
503	513	59	55	52	51	52	463	446
290	142	142	80		80	152	152	290
WIK	cb	POT				POT	cb	WIK

18425

2.53	2.43	1.5	2.1	2.3	2.4	2.3	2.1	2.96	3.09
512	522	61	55	53	52	53	55	469	446
290	142	142	80		80	150	223	223	290
WIK	cb	POT					POT	cb	WIK

18400

2.43	2.37	1.7	2.0	2.3	2.3	2.5	2.7	
512	528	59	56	53	53	51	42	
290	142	142	80		80	15	30	
WIK	cb	POT						

17475

2.52	2.40	1.6	1.9	2.2	2.2	2.3	2.4	
513	525	60	57	54	54	53	52	
290	142	142	80		80	152	300	
WIK	cb	POT						

{765}

LT = WEST

RT = EAST 45

20+50

4.36	4.11	3.4	3.5	4.0	4.1	4.2	5.11	5.33
6.49	6.74	7.4	7.3	6.8	6.7	6.6	5.74	5.53
290	148 cb	148 90T	80		80	152 90T	152 cb	290 WIK

20+25

4.12	3.76	3.1	3.4	3.5	3.7	3.9	4.79	4.97
6.73	7.08	7.2	7.5	7.3	7.1	6.9	6.06	5.88
290 WIK	148 cb	148 90T	80		80	152 90T	152 cb	290 WIK

20+00 - 15³ RT = 13' wide Conc. Drive

3.85	3.50	3.0	3.0	3.2	3.5	3.9	3.96	4.71
7.00	7.35	7.8	7.8	7.6	7.3	6.9	6.49	6.44
290 WIK	14 cb	148 90T	80		80	152 90T	152 LIP Drive	290 WIK

19+75

3.57	3.30	2.7	2.8	3.1	3.3	3.4	4.23	4.54
7.28	7.55	8.1	8.0	7.7	7.5	7.4	6.62	6.31
290 WIK	14 cb	148 90T	80		80	152 90T	152 cb	290 WIK

19+50

3.37	3.12	2.9	2.6	2.9	3.1	3.2	4.02	4.23
7.48	7.73	8.5	8.2	7.9	7.7	7.5	6.83	6.63
290 WIK	142 cb	142 90T	80		80	152 90T	152 cb	290 WIK

19+25

3.06	2.89	2.3	2.5	2.8	2.9	2.9	3.73	4.00
7.80	8.02	8.5	8.3	8.0	7.9	7.9	7.12	6.85
290 WIK	14 cb	142 90T	80		80	152 90T	152 cb	290 WIK

19+11 - 15³ RT = 12' wide Conc. Drive

3.03	3.63
7.82	7.02
152 LIP Drive	290 WIK

[10 85]

54' wly
1.84
1257
cb
2.9
115
947

EC. Calle Opina
4.01
1040
cb
4.0
104
947

3/4
4.21
1030
4.2
103

1/2
4.39
1002
3.9
105

1/4
4.63
978
4.1
103

BC Pasco Grande
4.70
971
cb
3.9
105
947

30' Rad 48' length 4 parts 12' ea
SW Ret. Calle Opina + Pasco Grande

TP₁₁ BM₄ P₄₄ 7⁵⁰ 14⁴¹

6³¹ 55. Disk #2201 156.11211694

9.4 8.74 8.27 8.55 8.71 8.69 8.66 9.06 9.14
5⁰ 5⁶⁷ 6¹⁴ 5²⁶ 5²⁰ 5²³ 5²⁵ 5³⁵ 5²⁹
25 15 15 8 8 15 15 24
wly cb out 8 Sat cb wly
lt. West At. East

22 + 19¹¹ 98 to line to North
5.48
8²³
End cb
cb out 5.95 5.48 9¹
cb out 8²³

1/2
cb 8⁴⁶ 8²³
cb out 6.46 6.94
BC Pasco Grande 7²⁵ 8⁴⁷
cb out 947

30' (Rad approx) 15' length 2 parts 7⁵ ea
NW Ret. Calle Opina + Pasco Grande

14⁴¹

TP₂₀ 4⁴⁷ 9⁸⁶ 12⁰⁹ 5³⁹

TP₁₉ BM₈ 0⁵⁸ 17⁴⁸ 4⁰⁷ 16²⁰

Chisel "H"
SW Ret Wly R₂
De La Playa
La Jolla Shores Dr

TP₁₈ 5⁵² 20⁹⁷ 2¹⁸ 15⁴⁵

TP₁₇ BM₇ 6¹⁸ 17⁶³ 7⁰⁵ 11⁵¹

Chisel "H"
SW Ret Center
Vallecitos
La Jolla Shores Dr

TP₁₆ 2⁵⁸ 18⁵⁶ 10²⁸ 15⁶⁸

TP₁₅ BM₆ 3²⁹ 25²⁶ 8⁶⁷ 22⁶⁷

Chisel "H"
SW Ret Center
Frescota
La Jolla Shores Dr

TP₁₄ 4⁰⁵ 31³⁴ 7²⁰ 27²⁹

BM₅ 6⁸⁰ 27⁶⁹

1-Disk LS2201
Prop P1
Sweet
Camino Del Oro
La Jolla Shores Dr

BM start

TP₁₃ 10⁶⁵ 34⁴⁹ 2²¹ 23⁸⁴

TP₁₂ 12⁴⁴ 26⁵⁵ 0³⁰ 14⁴⁴

TP₂₁ 4⁶⁹ 6⁵⁸ 7²⁷ 1⁰⁹

3⁰⁸ 3⁵⁰ 3⁵¹ sly sea wall
De La Playa

D. Smith
C. Allen
R. Taylor
R. Parks

"X" Sec Southerly Alley BLK 34
Lt=North

49
No 31866
Pt=South 8-13-52

0-15 Ely Cb line Del Oro

3.65 3.31 3.85 3.49 3.24 3.17 3.12 3.04 3.47 2.87 3.24
4⁸⁰ 5¹⁴ 4⁶⁰ 5⁰² 5²¹ 5²⁸ 5³³ 5⁴¹ 4²⁸ 5⁵⁸ 5²¹
50 50 25 25 10 10 10 25 25 50 50
cb sut cs sut 10 10 25 25 50 50

0-30 E Del Oro

3.17 3.23 3.22 3.16 3.13 3.03 2.92
5²⁸ 5²² 5²³ 5²⁹ 5³² 5⁴² 5⁵³
50 25 10 10 25 50

EC prop Del Oro

3.51 3.49
4²⁴ 4²⁶
cb sut

EC prop Del Oro

3.43 3.22
5²² 5²³
cb sut

2/3

3.63 3.39
4²² 5⁰⁶

2/3

3.30 3.20
5¹⁵ 5²⁵

1/3

3.84 3.38
4⁶¹ 5⁰⁷

1/3

3.37 3.16
5⁰⁸ 5²⁹

BC Del Oro

3.85 3.43
4⁶⁰ 5⁰²
cb sut

BC Del Oro

3.47 3.04
4²⁸ 5⁴¹
cb sut

15' Rad 24° length 3 parts 8' ea

15' Rad 24° length 3 parts 8' ea

N-E Ret. Sly Alley BLK 34 + Del Oro

SE Ret Sly Alley BLK 34 + Del Oro

TP, 4²⁷ 8⁴⁵ 5²⁰ 4¹⁸

BM, 1²⁴ 9³⁸ 7⁴⁴ p 35

8⁴⁵

INDEXED
OCT 12 1952

Lt = North

Rt = South

50

1708³ 9³ Lt Radial & Dead man

begin AC paving

1708 9⁵ Lt radial end 4' high curb block wall

7.58	4.28	3.8	3.4
0.87	4.2	4.6	5.0
9 ³	9 ³	9 ³	9 ³
Top wall	par	2d	Footing

L = 45.84

R = 110'

1701³³ BC Lt A = 23° 52' 30"

3.7 3.5 3.4 3.5

4.2 4.2 5.0 4.2

10 10 25

3.6 3.5 3.5 3.5

4.8 4.2 4.2 4.2

10 10 25

3.7 3.5 3.4 3.4

4.2 4.2 5.0 5.0

10 10 25

0470

0435

0415 10° Lt End walk begin 4' high curb block wall

7.59	3.7	3.3
0.86	4.2	5.1
10°	10°	10°
Top wall	2d	Footing

0400 9² Lt Begin 3⁵ con walk || to line

3.9	3.50	3.50	3.30	3.22	3.23	3.4
4.5	4.2	4.2	5.15	3.23	5.22	5.0
25	9 ⁸⁵	9 ⁸⁵		9.2	9.1	25
	06	2.4		9.1	06	

0400 E Line De Oro end con par + cbs

T. 8.45

2400 9² Lt End AC paving

1781 9² Lt SE cor 4 garages cor floor AC apron

1775

TP₂ 6¹⁷ 9²³ 4⁶⁹ 3⁷⁶

1747¹⁷ EC

1737 9² Lt Radial SW cor 4 garages cor floor AC apron

Radial
1735 9² Lt E 8" Power Pole #61747

Radial
1731 8² RT E 8" Anchor Pole no Number

1724²⁵ Mid. PT 2² RT E SM.H.

Lt = North ♀ RT = South 51

4.08	3.94	3.8	3.6	3.6
5 ⁸⁵	5 ⁸⁸	6 ¹	6 ³	6 ³
20	92	10	10	25
	AC			

4.59	4.06			
5 ³⁴	5 ⁸²			
118	92			
Floor	apron			
	4.06	3.8	3.7	3.9
	5 ⁸⁷	6 ¹	6 ³	6 ²
	92	10	10	25
	AC			

π 9²³

4.11	3.91	3.9	3.5	3.8
4 ³⁴	4 ⁵⁴	4 ³	4 ²	4 ⁶
10	94		10	25
	AC			

4.59	3.91
3 ⁸⁶	4 ⁵⁴
132	92
Floor	AC apron

4.15	3.99	3.89	4.2	3.43	3.9	3.8
4 ³⁰	4 ¹⁶	4 ⁵⁶	4 ²	5 ⁰²	5 ¹	4 ⁶
20	10	88		2	10	25
		AC apron		RTM		

π 8⁴⁵

4411⁷ cb ends

4408 8¹/₂ Lt & Dead man

4400

3493 8¹/₂ Lt & 8" Power Pole #JP61834

3450

3400

2462 9¹/₂ Lt & 10" Power Pole #P61746

2452 14" Lt & single garage con floor + apron

2450

2440 14" Lt & 3' con walk

Lt=North

S

Rt=South

52

7.0	6.7	6.7 ²	6.3	6.4	6.3	6.66	6.8
22	32	32 ¹	36	35	36	32 ²	3L
25	25	10	95	95	104	104	25
		cb	sat		sat	cb	end
		end				end	

6.8	6.1	6.4	6.2	6.5
3L	38	35	32	32
25	10		10	25

5.9	5.8	5.6	5.6	5.7
42	41	43	43	42
25	10		10	25

4.8	4.9	4.8	4.7	5.0
51	50	51	52	42
25	10		10	25

5.20	4.97	4.33
473	496	560
30 ²	24	142
floor	B+K	9/20

5.0	3.9	4.0	3.8	3.6
42	60	52	61	63
25	10		10	25

4.36

557

142

walk

993

BM start p 49 250 743 744

End cl 6.66 6.3
327 36
06 947

3/4 6.70 6.2
323 37

1/2 6.75 6.1
318 38

1/4 6.81 6.2
312 32

BC Paseo Grande 6.96 6.0
297 39
06 947

39.21

25' Rad 38' Length 4 parts 95 ea

SW Ret Sly Alley BIK 34 + Paseo Grande

4+36⁶³ Wly Cl Line Paseo Grande

4+21⁶³ Wly El Paseo Grande

End cl 6.72 6.3
321 36
06 947

3/4 6.78 5.8
320 41

1/2 6.79 5.8
314 41

1/4 6.99 6.1
300 38

BC Paseo Grande 7.12 6.2
297 37
06 947

25' Rad 38' Length 4 parts 95 ea

NW Ret Sly Alley BIK 34 + Paseo Grande

7.12	6.50	6.48	6.46	6.44	6.42		
321	32	32	35	35	32	297	
35	35	10		10	35	35	
06	947				947	06	
				6.20	6.50		
6.72	5.9	5.9	6.3	6.0	6.2	6.73	
321	40	40	36	32	32	320	
111	111	10		10	121	121	
06	947				947	06	

7.93

D. Smith
C. Allen
P. Taylor
P. Parks

Nly Alley B/K 34

0-15 Ely Cb Line Del Oro

0-30 E Del Oro

Prop Del Oro

2.61 2.61
5.66 5.66
cb gut.

2/3

2.66 2.54
5.61 5.23

1/3

2.77 2.49
5.50 5.78

B.C. Del Oro

2.77 2.48
5.50 5.29
cb gut

15' Rad 24° Length 3 parts 8° ea

NE Ret Nly Alley B/K 34 - Del Oro

TP₁

5.25 8.27 6.23 3.02

BM₂

5.87 9.25 3.38 p.38

"X" Sec

Lt = North

Rt = South

W of 31866 54

2.77 2.43 2.77 2.48 2.48 2.48 2.53 2.57 2.96 2.53 2.83
5.50 5.84 5.50 5.22 5.72 5.72 5.74 5.20 5.31 5.24 5.44
50 50 25 25 10 10 25 25 50 50
cb gut cb gut 10 gut 25 50 50
cb gut cb gut

2.48 2.60 2.62 2.66 2.69 2.74 2.78
5.22 5.67 5.65 5.61 5.58 5.53 5.49
50 25 10 10 25 50

Prop Del Oro

2.71 2.71
5.56 5.56
cb gut

2/3

2.62 2.52
5.65 5.25

1/3

2.75 2.54
5.52 5.73

B.C. Del Oro

2.96 2.57
5.31 5.20
cb gut

15' Rad 24° Length 3 parts 8° ea

SE Ret, Nly Alley B/K 34 + Del Oro

8.27

1700

TP₂

6⁷³

9¹⁸

5⁸²

2⁴⁵

on EC Hub

0179²³ EC ↗

0156⁴ 114^{LT} ^{radial} NE cor double garage con floor.

0156³³ mid pt ↗

0133⁵ 13^{LT} SW cor double garage con floor

L=45° 80

R=110

0133⁴³ BC ↗ LT Δ=23° 51' 15" 16

0100 Ely Del Oro end con par + cbs

2.5	2.6	2.7	2.8	3.5	3.8
66	65	64	63	56	53
25	10		10	20	30

π 9¹⁸

2.4	2.4	2.6	2.8	3.5
58	58	56	54	42
25	10		10	25

3.22	2.8	2.4	2.7	3.2
502	54	58	55	42
114	10		10	25

Floor

3.28

4.99

132

Floor

3.1	2.9	2.7	2.9	3.1
51	53	55	53	51
25	10		10	25

2.61	2.61	2.60	2.71	2.71
566	566	567	556	556
102	102		25	25
04	04		04	04

π 8²⁷

Lt = North

Rt = South

56

3701 ^{4R} W
Ely C6 line El. Paseo Grande

5.14	4.1	4.4	4.5	4.6	4.7	5.80
4.2	5.0	4.2	4.6	4.5	4.4	3.38
35	35	10		10	35	35
C6	9ut				9ut	C6

2786 ^{4R} W
Ely line El. Paseo Grande

4.98	4.6	4.5	4.6	4.4	4.6	5.34
4.20	4.5	4.4	4.5	4.2	4.5	3.84
112	11	10		10	125	125
C6	9ut				9ut	C6

2777 End C6s

4.88	4.7	4.6	4.7	5.19
4.20	4.4	4.5	4.4	3.99
88	88		103	103
C6	9ut		9ut	C6

2740

4.5	4.4	4.6	4.8	5.0
4.6	4.2	4.5	4.3	4.4
25	10		10	25

2700

3.8	4.0	4.1	4.0	4.4
5.3	5.1	5.0	5.1	4.2
25	10		10	25

1750

3.2	3.3	3.4	3.7	4.0
5.9	5.8	5.2	5.4	5.1
25	10		10	25

T 9/8

Lt = North

L

Rt = South

57

BM₂ starting p 545⁸⁰3³⁸3³⁸

end cb

5.19

4.7

3⁹⁹4⁴

3/4

5.35

4.6

3⁸³4⁵

1/2

5.43

4.3

3⁷⁵4⁸

1/4

5.56

4.6

3⁶³4⁵

BC Paseo Grande

5.80

4.7

3³⁸4⁴

cb

9^{ut}25' Rad 38' length 4 parts 9⁵ ea

SW Ret Northerly Alley B/K 34 + Paseo Grande

T 9¹⁸

end cb

4.88

4.7

3³⁰4⁴

3/4

4.99

4.5

4⁹4⁶

1/2

5.04

4.3

4⁴4⁸

1/4

5.11

4.2

4⁰²4²

BC Paseo Grande

5.14

4.1

4⁰⁴5⁰

cb

9^{ut}25' Rad 38' length 4 parts 9⁵ ea

NW Ret Northerly Alley B/K 34 + Paseo Grande

T 9¹⁸

D. Smith
C. Allen
R. Taylor
R. Parks

"X" Sec Frescota St
Del Oro to La Jolla Shores Dr

W/O # 31866 58
8-14-52

PCC, Frescota
2.78 1.9
4²⁵ 5⁶
cb out

1/5
2.78 1.9
4²⁵ 5⁶

2/5
2.68 2.1
4⁸⁵ 5⁴

+10° pave edge
2.67 2.09
4⁸⁶ 5⁴⁴

1/5
2.69 2.20
4⁸⁴ 5³³

1/5
2.68 2.28
4⁸⁵ 5²⁵

BC, Del Oro
2.81 2.35
4⁷² 5¹⁸
cb out

40' Rad 56' Length 5 parts 11° ea
SE Ret Del Oro + Frescota

BM2 p 38 4¹⁵ 7⁵³

3³⁸

PCC, Frescota
2.41 1.7
5¹² 5⁸

5/6
2.35 1.4
5¹⁸ 6¹

2/3
2.25 1.6
5²⁸ 5²

1/2 pave edge
2.07 1.74
5⁴⁵ 5⁷⁹

1/3
2.17 1.74
5³⁶ 5⁷⁹

1/6
2.23 1.77
5³⁰ 5⁷⁶

BC, Del Oro
2.42 1.83
5⁴ 5⁷⁰
cb out

40' Rad 60' length 6 parts 10° ea
NE Ret Del Oro + Frescota

X 7⁵³

INDEXED
OCT 2 1952

Frescota

1700 14° 23.060'

0725 10° 47.295'

0750 7° 11.530'

0733⁵⁴ BC NE c3

0725 3° 35.765'

0719⁹⁷ BC SE

C=24⁹⁸

Fly Del Oro BC in Lt
0700 edge con paving

0-15 Fly cb line Del Oro

0-30 & Del Oro

Lt = North

RT = South

59

2.79	2.62	2.12	2.76	2.61	3.06	3.14
474	471	55	54	54	477	439
235	176	146	164	164	252	
w/k	cl	gut.	gut	cl	w/k	

2.65	2.53	1.6	2.3	2.1	3.00	3.12
488	500	52	52	54	453	441
291	151	151	145	145	235	
w/k	cl	gut	gut	cl	w/k	

2.50	2.37	1.9	2.3	2.41	2.91	2.98
503	516	56	53	53	462	458
241	151	151	132	132	222	
w/k	cl	gut	gut	cl	w/k	

2.41	2.39	1.6	2.2	2.0	2.83	2.95
522	514	52	53	55	420	458
241	152	152	136	136	225	
w/k	cl	gut	gut	cl	w/k	

2.09	1.74	1.87	2.03	2.06	2.09	2.67
544	572	566	550	547	544	486
252	252	15	15	222	222	
cl	gut			gut	cl	

2.40	1.91	2.42	1.83	1.70	1.81	2.06	2.11	2.17	2.35	2.81	2.43	2.45
513	562	54	520	523	522	547	542	536	518	472	510	470
100	100	51	57	25	15	15	25	50	50	100	100	
cl	gut	cl	gut					gut	cl	gut	cl	
		BC								BC		

2.09	1.98	1.67	1.73	1.91	2.03	2.33	2.48
544	555	526	520	562	550	520	505
100	51	25	15	15	50	100	

T 753

Freewater

2775 39° 33.415'

2750 35° 57.650'

2749⁸⁸ BC NW

2738⁰² Wly PL Grande

2725 32° 21.885'

2700 28° 46.120'

1780⁵⁷ BC SW

1775 25° 10.355'

1750 21° 34.590'

1725 17° 58.825'

Lt = North

Q

RT = South

60

3.52	3.39	2.9	3.5	4.0	4.2
422	414	46	41	35	33
242	150	150	15	25	
w/k	CS	9ut			

3.38	3.34	2.5	3.2	3.7	4.0
415	419	50	43	32	35
234	144	144	15	25	
w/k	CS	9ut			

3.40	3.16	2.2	3.0	3.4	3.5
413	437	53	45	41	40
232	142	142	15	25	
w/k	CS	9ut			

3.21	3.04	2.1	2.9	2.8	2.7	3.44	3.59
432	449	54	46	42	48	409	394
232	142	142	15	20	20	25	
w/k	CS	9ut		9ut	06	w/k	

3.11	3.03	2.2	2.7	2.4	3.58	3.61
442	450	53	48	52	325	320
232	142	142	15	15	15	246
w/k	CS	9ut	9ut	06		w/k

3.01	2.92	2.1	2.6	2.4	3.50	3.55
452	461	54	42	51	403	378
232	142	142	15	15	15	242
w/k	CS	9ut	9ut	06		w/k

2.93	2.79	1.9	2.5	2.4	3.29	3.37
460	474	56	50	51	424	416
232	142	142	16	16	16	250
w/k	CS	9ut	9ut	06		w/k

753

1
P.R.C. Frescota
3.45 2.5
4⁰⁸ 5⁰
c6 9ut

5/16
3.47 2.1
4⁰⁶ 4⁸
c6 9ut

4/3
3.65 2.9
3⁸⁸ 4⁶

1/2
3.79 3.0
3²⁴ 4⁵

1/3
3.94 3.1
3⁵² 4²

1/6
4.13 3.3
3⁴⁰ 4²

BC Pasco Grande
4.21 3.5
3³² 4⁰
c6 9ut

40' Rad 73° Length 6 parts 12² ea

SW Ret. Frescota + Pasco Grande

11433³³ El Pasco Grande
= 5 42° 08'

279221 E int Calle Frescota + El Pasco Grande

c=1720

Lt = North

Q. pt = South 61

BM₂ starting p58

4¹⁵ 3³⁸ 3³⁸

P.C. Frescota
3.38 2.8
4¹⁵ 4²
c6 9ut

2/3
3.38 2.9
4¹⁵ 4⁶

4/3
3.47 3.1
4⁰⁶ 4²

BC Pasco Grande
3.44 3.2
4⁰² 4³
c6 9ut

40' Rad 29° Length 3 parts 9² ea

NW Ret Frescota + Pasco Grande

3.47 3.1 3.1 3.8 4.2 4.5
4⁰⁶ 4⁴ 4⁴ 3⁷ 3³ 3⁰
17² 17³ 15 15 25
c6 9ut

753

Frescota

1170437 El Paseo Grande

= 5

0+00 E Frescota & Paseo Grande

$$d = 2,5093'$$

$$L = 230^{\circ} 05'$$

$$R = 685'$$

$$\Delta = 19^{\circ} 14' 30''$$

PRC, Frescota
6.69 5.3
5.07 6.3
cb 947

4/5
6.30 5.1
5.46 6.6

3/5
5.87 4.8
5.89 6.2

2/5
5.69 4.5
6.4 7.2

1/5
5.28 4.2
6.48 7.5

BC, Paseo Grande
5.14 4.2
6.62 7.5
cb 947

51°

40' Rad 50° length 5 parts 10° ea

SE Return Frescota & Paseo Grande

BM₂ P38 8³⁸ 1176

3³⁸

Lt = North

E

RT = South

62

3.8	3.9	3.9	4.0	4.1
72	75	78	77	76
25	15		15	25

PRC, Frescota
7.27 6.4
4.49 5.3
cb 947

5/6
6.72 5.7
5.07 6.0

2/3
6.22 5.1
5.54 6.6

1/2
5.77 4.7
5.22 7.0

1/3
5.29 4.3
6.47 7.4

1/6
4.95 3.9
6.81 7.8

BC, Paseo Grande
4.60 3.6
7.16 8.1
cb 947

40' Rad 76° length 6 parts 12° ea

NE Ret. Frescota & Paseo Grande

1176

Lt = North

Rt = South

1725 5° 13.66'

9.07	8.98	8.2	8.8	8.9	9.78	9.87
269	228	35	22	28	128	129
252	164	164	22	28	128	129
w/K	cs	cut		153	152	242
				cut	cs	w/K

1710 16° Lt end con drive

8.37	7.63
339	413
205	160
w/K	lip

1706 15° Rt end con drive

8.34 9.09

1700 4° 10.93'

8.12	8.01	7.23	7.7	8.19	9.02	9.07
364	325	453	40	352	274	269
248	192	150		185	192	245
w/K	w/K	in drive		in drive	w/K	w/K

0787 14° Lt Begin con drive

7.66	6.79
410	437
183	142
w/K	lip

0784 15° Rt Begin con drive

7.72 8.40

0779 21 BC NE

0775 3° 08.20'

7.06	6.99	5.9	6.6	7.0	7.92	8.03
420	420	58	51	42	384	373
24	150	150		148	148	24
w/K	cs	cut		cut	cs	w/K

0750 2° 05.46'

5.89	4.7	5.1	5.6	5.7	6.97	7.13
587	70	66	61	60	423	463
264	264	15		149	148	24
cs	cut			cut	cs	w/K

0738 90 BC SEI

0730 75 PL

0725 10-02.73'

4.1	4.2	4.6	4.9	5.0	6.13	6.29
76	75	71	68	62	563	547
25	15		15	160	160	25
				cut	cs	w/K

C = 25°

11/76

Frescota

2775 (W line Pano del Ocaso) 2° 30.19

C=25°00

d=3.33762

L=327°33

T=169°40

ER=515

Δ=36°25

2750 1° 06.76'

C=19°25

2130°05 PRC 9° 37.25'

C=5°05
(2+26⁵¹ BC.SW)

2125 19° 24.59'

2400 8° 24.86'

1775 7° 19.13'

TP, 10⁴⁸ 21⁴⁵ 0⁷⁹ 10²⁷

Nail in Post of
1460 17211 (Sly side)
P61068

1750 6° 16.39'

Lt=North

S

At=South

64

15.47 15.20 14.44 15.08 15.12 15.25
598 625 701 637 633 630
235 145 146 140 15 25
w/K C6 out 1150

14.15 14.10 13.2 14.0 14.2 14.3
730 735 83 72 72 71
234 144 144 15 25
w/K C6 out

13.27 13.25 12.75 13.20 14.35 15.09
818 820 88 83 81 668 636
w/K C6 out 142 142 238
347 26 w/K

13.22 13.07 12.4 12.9 13.2 14.75 15.01
823 838 90 85 82 620 644
24 151 151 142 142 238
w/K C6 out 347 C6 w/K

12.13 11.5 11.55 12.70 13.05 13.62
932 940 100 95 92 726 783
245 155 155 146 146 236
w/K C6 out 347 C6 w/K

11.07 10.99 10.3 10.9 11.3 12.24 12.42
1038 1046 111 105 101 921 903
246 156 156 143 143 233
w/K C6 out 347 C6 w/K

9.45 9.95 9.0 9.9 10.1 10.70 11.13
10.06 9.95 9.0 9.9 10.1 11.09 11.13
252 162 162 152 152 240
w/K C6 out C6 w/K

T 11 76

Lt = North

4750 12° 14.27'

20.75	20.69	20.08	20.54	20.10	20.58	20.73
020	026	15	14	17	027	022
233	142	143	158	158	158	249
w/k	cb	9ut	9ut	cb	cb	w/k

4725 10° 50.83

19.68	19.56	18.8	19.1	19.0	19.88	20.00
172	189	26	23	24	157	148
231	141	141	158	158	158	248
w/k	cb	9ut	9ut	cb	cb	w/k

4700 9° 27.39'

18.67	18.41	18.0	18.1	18.1	18.95	19.04
228	304	31	33	33	250	241
233	143	143	158	158	158	248
w/k	cb	9ut	9ut	cb	cb	w/k

3775 8° 03.95

17.51	17.38	17.0	17.1	17.2	18.00	18.12
324	402	44	43	42	345	333
231	141	141	158	158	158	248
w/k	cb	9ut	9ut	cb	cb	w/k

(3762⁵³ BC NE)

3750 6° 40.51'

16.89	16.67	16.0	16.0	16.4	16.1	17.10	17.27
450	428	54	54	50	53	435	428
231	142	142	15	152	152	152	249
w/k	cb	9ut	15	9ut	cb	cb	w/k

(330.07 Fly Line Paso del Ocaso)

(327.56 BC S.E)
3725 5° 17.07'

15.56	15.67	15.84	15.75	15.7	16.16	16.49
589	578	561	520	52	529	488
25	15		100	100	159	249
			100	100	9ut	cb
			edge			w/k

(302.05 del Ocaso)

3700 3° 53.63

15.08	15.33	15.57	15.45	15.55
637	612	588	600	591
25	15	15	15	25

(279⁶⁵ BC NW)

T 2145

Frescota

5757³⁸ 18° 12.50' EC? wly La Jolla Shores Dr

Lt North 23.25
 23.88 23.80 22.6 22.4 23.20 22.6 22.20 22.06
 5²⁵ 5³³ 6⁵ 6² 6⁵ 7⁰ 7¹ 22.58 22.67
 25 185 185 15 15 190 175 25
 w/k c6 9ut . 9ut c6 w/k

5750 17° 48.03'

23.53 23.6 23.5 22.5 22.6 22.0 22.2 22.61 22.73
 5⁶⁰ 5⁶⁷ 6⁶ 6⁶ 6⁵ 7¹ 6² 6⁵² 6⁴⁰
 25 155 155 15 15 162 162 25
 w/k .06 9ut . 9ut c6 w/k

(5743⁴⁶ BC NW)

(5741¹² BC SW)

5725 16° 24.59'

22.97 22.71 22.0 22.0 21.7 22.28 22.44
 6¹⁶ 6²² 7¹ 7¹ 7⁴ 6⁵⁵ 6⁶⁹
 230 175 145 154 154 244
 w/k c6 9ut 9ut c6 w/k

5703 14⁵ Lt exd drive

22.31 21.76
 6⁸² 7³⁷
 183 145
 w/k lip

5700 15° 04.5'

22.33 22.25 21.66 21.4 21.0 21.76 21.90
 6⁸⁰ 6⁸⁸ 7⁴² 7² 8¹ 7³² 7²³
 232 182 142 155 155 246
 w/k w/k lip drive 9ut c6 w/k

4788 14³ Lt Begin' con drive

21.97 21.37
 7¹⁶ 7⁷⁶
 182 143
 w/k lip

4775 13° 37.71'

21.62 21.50 20.8 20.7 20.3 21.21 21.43
 7⁵¹ 7⁶³ 8² 8⁴ 8⁸ 7²² 7⁷⁰
 232 142 142 155 155 245
 w/k c6 9ut 9ut c6 w/k

TP₂ 8⁷⁹ 29¹³ 14 20³⁴

T 29¹³

BM₆ 10 48

645

22¹⁰⁰₆₈

22[✓]₆₇

22.56

21.9

PCC, Frescota

6⁵⁷

7²

PCC, Frescota

23.34

22.4

5⁷⁹

6⁷

06

9^{ut}

06

9^{ut}

4/5

22.61

22.1

4/5

23.65

22.6

6⁵²

7⁰

5⁴⁸

6⁵

3/5

22.61

21.9

3/5

23.13

22.9

6⁵²

7²

5²⁰

6²

2/5

22.68

21.8

2/5

24.12

23.0

6⁴⁵

7²

5⁰¹

6¹

1/5

22.67

21.7

1/5

24.17

23.2

6⁴⁶

7⁴

4⁹⁶

5⁹

BC La Jolla Shores Dr.

22.61

21.2

BC, La Jolla Shore Dr

24.32

23.1

6⁵²

7⁹

4²¹

6⁰

06

9^{ut}

06

9^{ut}

35' Rad 57° Length 5 parts 1/4 ea

SW Ret Frescota + La Jolla Shores Dr

35' Rad 57° Length 5 parts 1/4 ea

NW Ret Frescota + La Jolla Shores Dr

5777³⁸ Wly cb line La Jolla Shores

24.69	23.6	24.32	23.1	23.1	23.1	22.9	22.4	21.9	21.2	22.61	20.5	21.40
4 ⁴⁴	5 ⁵	4 ²¹	6 ⁰	6 ⁰	6 ⁰	6 ²	6 ⁷	7 ²	7 ²	6 ⁵²	8 ⁶	7 ²³
100	100	50	50	25	15		15	25	50	50	100	150
06	9 ^{ut}	06	9 ^{ut}						9 ^{ut}	06	9 ^{ut}	06

T 29 13

Frescota

68

	14.85	13.3		
P.R.C. Frescota	6.44	7.9		
	cb	gut		
	15.01	13.7		
4/5	6.28	7.5		
	15.26	14.1		
3/5	6.03	7.2		
	15.51	14.93		
2/5 edge AC	5.72	6.36		
	15.81	15.29		
1/5	5.48	6.00		
	15.88	15.34		
BC Del Ocaso	5.41	5.95	15.56	14.97
	cb	gut	cb	gut
50' south on Del Ocaso			5.23	6.32
			cb	gut
25 Rad. 55° length 5 parts 11° ea				
SW Ret Frescota + Del Ocaso				

TP, p64 10³² 21²⁹

1022

	15.36	14.6		
P.R.C. Frescota	5.93	6.6		
	15.33	14.59		
16° edge AC par.	5.26	6.20		
6°				
	15.30	14.80		
2/3	5.99	6.49		
	15.43	14.94		
1/3	5.86	6.35		
	15.56	15.03		
BC Del Ocaso	5.73	6.26	15.34	14.79
	cb	gut	cb	gut
50' Northern Del Ocaso			5.95	6.50
			cb	gut
25 Rad 26° length 3 parts 8.2° ea				
NW Ret Frescota + Del Ocaso				

21²⁹

TP₂ p66
 094 2035 ✓ 2034 ✓
 15.95
 5.34
 Pav edge.
 extra shot E Frescota + E prop line Del Ocaso

	16.15	15.6
P.R.C. Frescota	5.14	5.6
	cs	9ut
↑ 44° edge AC, pav	16.17	15.75
	5.12	5.54
↓ 42°		
2 1/2	16.21	15.79
	5.08	5.50
1/2	16.22	15.82
	5.07	5.47
BC Del Ocaso	16.09	15.65
	5.20	5.64
↑ 50		
↓ 50	15.83	15.40
50' South on Del Ocaso	5.16	5.89
	cs	9ut

25' Rad. 30° Length 3 parts 10° ea
 SE Ret Del Ocaso + Frescota

π 2139

	16.89	16.4
P.R.C. Frescota	4.40	4.8
	cs	9ut
	16.73	16.0
4 1/5	4.56	5.2

	16.52	15.7
3 1/5	4.77	5.5
↑ 44° edge AC, pav	16.36	15.91
	4.93	5.38
↓ 44°		
2 1/5	16.25	15.84
	5.04	5.45
1/5	16.04	15.53
	5.25	5.26
BC Del Ocaso	15.71	15.24
	5.58	6.05
↑ 50		
↓ 50	15.48	14.99
50' North on Del Ocaso	5.81	6.30
	cs	9ut

25° Rad 49° Length 5 parts 9° ea
 NE Ret Del Oro + Frescota
 Ocaso

π 2129

D. Smith
C. Allen
R. Taylor
R. Parks

"X" Sec Del Oro
Paseo Grande

to La Jolla Shores Dr

W^o# 31866 70
8-15-52

INDEXED
filed
OCT 2 1952

	2.82	1.90
5/5	467	559
13 1/2	os	947
	2.83	1.93
4/5	466	556
13 1/2		
W prop Paseo Grande	2.91	2.01
3/5 pave edge	458	548
	os	947
	2.97	1.8
2 1/5	452	56
	2.76	1.8
1/5	473	56
	2.82	1.7
BC Paseo Grande	462	52
	os	947

5 parts 12 2ea .63 5'

40' Cb Rad 38 1/2 length BC Paseo Grande to pave

SW Ret Del Oro + Paseo Grande

BM₃ p 43 442 742

302

	3.16	2.4
BC Del Oro	433	50
	os	947
	3.17	2.3
4/5	432	51
	3.13	2.2
3/5	436	52
	3.09	2.1
2/5	440	53
	3.07	2.0
1/5	442	54
	3.07	2.0
PCC El Paseo Grande	442	54
	os	947

100' Rad 77° length 5 parts 15 1/2 ea

SE Ret Paseo Grande + Del Oro

742

D.
C.
R.
R.

0125

1713379

=5

0160 E El Paseo Grande INT E Del Oro

5/1
12
4/3
12
3/3

Lt = North

E

Rt = South

71

2.2	2.2	2.2	2.1	2.2	3.10	3.19
52	52	52	53	52	439	430
25	15		15	205	205	25
				341	06	w/k

	2.45	2.60	2.65		
1.6	1.8	2.0	2.1	2.0	
58	56	54	53	54	
25	15		15	25	

EC, Del Oro

3.18	2.6
4/31	48
06	341
3.00	2.4
449	50

4/5

3.03	2.3
446	51

3/5

2.99	2.0
450	54

2/5

2.96	2.0
453	54

1/5

3.03	2.3
446	51
06	341

BC, Paseo Grande

40' Rad 85° Length 5 parts 17' ea

NE, Ret Paseo Grande + Del Oro

71

Del Oro

1731 14² Lt end drive

1725

(1711⁰⁷ BCNE)

Lt. Begin driveway
1711 LP BC curb NERet

1700

0175

(0166.92 BC SE)

0160 15⁰ Rt BC curb SERet

0150

37.75 Fly PL

Lt=North

Rt=South

72

3.82 3.25
3.67 4.25
18⁰ 142
w/k 210

3.68 3.63 3.03 3.5 3.2 3.98 4.17

3.81 3.86 4.46 3.2 4.2 3.51 3.32
24 18⁰ 14⁰ 15⁰ 15⁰ 24⁰
w/k w/k lip out cs w/k

3.21 3.30 3.14 2.73 3.2 2.8 3.47 3.63

4.22 4.2 4.31 4.76 4.3 4.6 4.02 3.86
24 19⁰ 14⁰ 14⁰ 15⁰ 15⁰ 24⁰
w/k w/k cs lip out cs w/k

3.08 3.04 2.45 2.5 3.10 2.78
2.4 2.5 3.1 2.6 3.19 3.37

4.11 4.4⁰ 5⁰ 4.9 4.3 4.8 4.20 4.12
262 177 172 15 154 154 244
w/k cs out cs w/k

2.3 2.7 2.8 2.8 2.6 3.14 3.29

5.1 4.7 4.6 4.6 4.8 4.35 4.20
40 25 15 153 153 243
out cs w/k

2.5 2.5 2.6 2.6 2.4 3.16 3.28

4.2 4.2 4.8 4.8 5⁰ 4.33 4.21
40 25 15 156 153 246
out cs cs w/k

2.5 2.6 2.45 2.65
2.4 2.5 2.4 2.3 3.20 3.27

5⁰ 4.2 5⁰ 5¹ 4.29 4.22
25 15 150 153 243
out cs w/k

749

2125 2° 08.860'

2117 14° RT end drive

2106 14° RT begin drive
1° 23.875'

0525⁰⁰

TP, 12³¹ 18⁶³ 117 6³²

1475 0° 38.88'

0=216°

1453⁵ RT end driveway

1453⁴⁰ BC, RT

1450

1435 15³ RT Begin driveway

Lt-North & Rt-South 73

748 7.33 7.1 7.5 7.7 8.81 9.11
11¹⁵ 11³⁰ 11¹⁵ 11¹ 10² 9²² 9⁵²
243 155 155 146 146 235
w/k c6 out out c6 w/k

7.80 8.53 8.70
10²³ 10¹⁰ 9²⁷
146 185 202
lip w/k Bk

6.44 6.24 5.74 6.58 6.83
6.2 7.12 7.63 7.97 8.17 8.09
12¹⁹ 12²⁹ 12² 12² 11⁵¹ 11⁰⁰ 10⁵⁶ 10⁴⁶ 10⁶⁰
242 183 153 144 144 185 207 235
w/k c6 out lip c6 w/k Bk w/k

1863
5.29 5.29 4.3 5.1 5.4 6.23 6.45
220 220 31 23 20 126 104
24 142 142 150 150 24
w/k c6 out out c6 w/k

4.10 4.70 4.70
4.52 4.47 3.4 4.3 4.69 5.25 5.32 5.43
227 302 40 31 220 224 212 206
235 146 146 153 153 185 203
w/k c6 out lip c6 w/k w/k

4.44 4.36 3.3 4.2 4.55 5.17 5.23
305 313 41 32 224 232 226
232 142 142 151 194 24
w/k c6 out lip w/k w/k
drive

3.91 4.54

358 225
153 293
lip w/k

749

Spike on 11/4 Pole
P61880
1485 16° LT

T = 8721

d = 1.7998'

L = 175³³

EA = 955

A = 10° 31' 08"

Del Oro

3475 2° 34.531

(3454²⁴ BC SE)

3456.39 PL

3450 1° 11.091

T = 130.35

d = 3.33762

L = 255.33

RM = 515

A = 28° 24' 24"

3428²³ PCC. \checkmark Int Del Ocaso 0° 00'
5° 15' 34" RSMH

0.323

3425 5° 08.840

(3405²⁷ BC NW)

3400 4° 23.845 edge Pav. AC.

2475 3° 38.850

(2457¹⁶ BC SW)

2450 2° 53.855 Ocaso

Lt = North 13.65
14.53 14.49 13.6 13.7 14.1 14.65 15.30 15.51
40 44 50 42 45 44 323 313
RS w/k 172 172 15 143 143 24
06 9ut 06 4/k

12.78 12.89 13.20 13.00 12.9 13.44 13.72
5.85 5.74 5.43 5.63 5.2 5.12 4.81
25 15 112 162 162 25
Ac edge 9ut 06 4/k

12.48 12.38 12.67 12.48 12.66
6.15 6.25 5.26 6.15 5.22
25 15 15 15 25

12.41 12.25 12.52 12.43 12.69
6.22 6.38 6.4 6.20 5.94
25 15 15 25

11.97 11.73 11.0 11.85 9.77 8.19
6.66 6.20 7.6 6.78 6.86 6.50
24 150 150 15 15
w/k 06 9ut 24 edge

10.33 10.25 9.5 10.4 10.4 10.8 11.29 12.07
8.30 8.38 9.1 8.2 8.3 7.8 6.84 6.54
24 150 150 15 203 203 25
w/k 06 9ut 9ut 06 4/k

8.35 9.47 9.79
8.82 8.71 8.2 9.0 9.0 10.29 10.52
9.2 9.2 10.2 9.6 9.6 8.34 8.4
w/k 06 9ut 148 148 24
06 9ut 06 4/k

T. 18.63

5700 9° 31.73

4775 8° 09.29'

4771 14 Lt End driveway

4765 Br Kin C4 grades

4452 15° Lt Begin driveway

4750 6° 44.85'

4725 5° 21.41'

TP2 12³⁹ 29⁹⁵ 102 17⁵⁶

4706 3° 57.97'

(3789²¹ BC NE)

Lt=North				♀	Pt=South			75
23.47	23.36	22.3	22.9	23.0	24.02	24.19		
648	659	76	7°	62	523	576		
231	142	141		16°	162	232		
w/k	cs	9ut		9ut	cs	w/k		

22.17	22.10	21.50	22.28	22.26		
778	785	86	86	84	719	627
233	143	143		152	152	247
w/k	cs	9ut		9ut	cs	w/k

21.71	21.65	20.90	21.77	21.07		
824	830	905	818	850	407	20.8
235	185	145	183	142	92	22.18
w/k	w/k	lip	w/k	lip	92	777
			20.60	20.04		155
			935	98		155
			79°	15°		245
			w/k	lip		w/k

20.50	20.30	19.2	19.6	19.9	21.23	21.39
945	965	102	103	102	822	856
24	148	148		150	150	24
w/k	cs	9ut		cs	cs	w/k

18.29	18.05	17.55	18.51	18.68		
1166	1120	128	124	112	1069	1054
245	155	155		148	146	231
w/k	cs	9ut		9ut	cs	w/k

τ 2925

16.00	15.90	15.1	15.6	16.2	17.31	17.44
263	223	35	30	24	132	119
243	152	152		145	143	232
w/k	cs	9ut		9ut	cs	w/k

τ 1863

Del Oro

Lt-North

f

Rt-South

76

BMS p 48

227

2768

2769

AS DISK #2201 Prop PL

La Jolla Shores Del Oro SW cor.

6+04⁰⁶ wly C6 La Jolla Shores Dr.

27.59	27.2	27.31	26.5	26.8	27.0	27.0	26.9	26.9	27.0	26.26	27.1	27.04
236	27	264	34	31	29	29	30	30	29	169	28	121
100	100	50	50	25	15		15	25	50	50	100	100
C6	9ut	C6	9ut						9ut	C6	9ut	C6

5484⁰⁶ wly Prop La Jolla Shores Dr. EC. 14° 12' 18"

26.99	26.95	26.3	26.3	26.5	26.6	26.7	27.43	27.68
226	300	36	36	34	33	33	252	227
25	183	183	15		15	192	190	25
w/k	C6	9ut				9ut	C6	w/k

5475 13° 42.05'

(5470⁴ BC NW)

26.95	26.85	25.8	26.3	26.4	27.34	27.52
300	30	41	36	35	261	243
25	154	154		159	152	25
w/k	C6	9ut		9ut	C6	w/k

(5467⁸⁰ BC SW)

5450 12° 18.61'

25.90	25.81	24.5	25.2	25.4	26.44	26.56
405	44	54	47	45	351	339
24	148	148		153	153	243
w/k	C6	9ut		9ut	C6	w/k

5425 10° 55.17'

24.65	24.60	23.6	24.1	24.3	25.20	25.37
530	535	63	58	56	425	458
235	148	145		156	156	245
w/k	C6	9ut		9ut	C6	w/k

π 29⁹⁵

PEC. Del Oro

27.22 26.0
273 32
cb 947

4/5

27.36 26.5
259 34

3/5

27.58 26.7
237 32

2/5

27.79 26.9
216 30

1/5

28.10 26.9
185 30

BC. La Jolla Shores Dr

28.26 27.0
169 29
cb 947

55.57
56.28

35' Rad 56° length 5 parts 11² ea

SW Ret La Jolla Shores Dr + Del Oro

K 29⁹⁵

PEC. Del Oro

26.72 26.6
323 43
cb 947

4/5

26.92 27.0
303 22

3/5

26.96 26.4
299 35

2/5

27.12 26.7
283 32

1/5 Begin 4° of cb bank

27.18 26.7
277 32

BC La Jolla Shores Dr

27.31 26.5
267 34
cb 947

35' Rad 51' length 5 parts 10² ea

NW Ret La Jolla Shores Dr + Del Oro

K 29⁹⁵

Del Oro

	10.8	9.6
PCC, Del Oro	10.2	11.2
	CB	gut
	11.56	10.5
4/5	9.25	10.3
	12.12	11.1
3/5	8.69	9.2
	12.56	14.86
124	8.25	8.25
↑		
124		
↓		
7/5	12.68	13.09
	8.13	8.72
	12.98	12.48
1/5	7.83	8.33
	12.99	12.58
BC, Del Ocaso	7.82	8.23
↑		
50'		
↓		
50' South of BC	13.24	12.76
	7.52	8.05
	CB	gut

25' Rad 52 length 5 parts 10° ea

SW Ret Paseo Del Ocaso - Del Oro

TP₂ + 75 3.35 20.81

17.56

78

	11.95	11.4
P.R.C. Del Oro	8.26	9.4
	CB	gut
	12.09	11.40
140	8.72	9.11
↑		
140		
↓		
3/4	12.23	11.69
	8.58	9.12
	12.53	12.02
1/2	8.28	8.79
	12.78	12.32
1/4	8.03	8.49
	13.03	12.48
BC, Del Ocaso	7.78	8.33
↑		
50'		
↓		
50' North of BC	12.76	13.30
	7.05	7.51
	CB	gut

25' Rad 28' length 4 parts 7° ea

NW Ret Paseo Del Ocaso - Del Oro

TP₂ + 20.81

	13.40	
	7 ⁴¹	
	Par edge AC	
extra shot & Del Oro Ely Prop Del Ocaso		
	13.46	13.1
PRC Del Oro	7 ³⁵	7 ²
	13.41	12.85
123 edge Pav. AC.	7 ⁴⁰	7 ²⁶
23		
↓		
3/4	13.40	12.92
	7 ⁴¹	7 ⁸⁹
	13.36	12.90
1/2	7 ⁴⁵	7 ⁸¹
	13.36	12.89
1/4	7 ⁴⁵	7 ⁸²
	13.42	12.93
BC, Del Ocaso	7 ³⁹	7 ⁸⁸
↓		
50 South BC.	13.57	13.05
	7 ²⁴	7 ⁷⁶
	66	94

25' Rad. 28° Length 4 parts 7' ea
S.E. Ret Paseo Del Ocaso + Del Oro.

2081

check TP, p73

1449

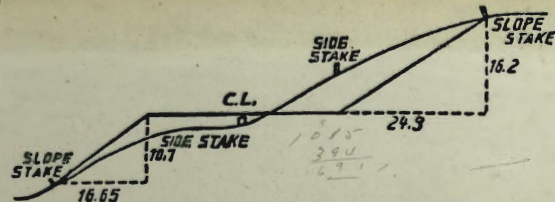
632

632

	14.91	14.1
PRC, Del Oro	5 ²⁰	6 ⁷
	66	94
	14.61	13.6
4/5	6 ²⁰	7 ²
	14.23	13.5
3/5	6 ⁵⁸	7 ³
	13.98	13.51
134	6 ⁸³	7 ²⁰
↓		
34		
↓		
2/5	13.85	13.41
	6 ²⁶	7 ⁴⁰
	13.57	13.11
1/8	7 ²⁴	7 ²⁰
	13.38	12.94
BC, Del Ocaso	7 ⁴³	7 ⁸⁷
↓		
50 North ABC	14.17	13.76
	6 ⁴⁴	7 ²⁵
	66	94

25' Rad 49° Length 5 parts 9' ea
NE Ret Paseo Del Ocaso + Del Oro

2081



DISTANCES FROM SIDE STAKES FOR CROSS-SECTIONING.
SLOPE 1 1/2 TO 1. ROADWAY OF ANY WIDTH.

	0	.1	.2	.3	.4	.5	.6	.7	.8	.9	
0	0.00	0.15	0.30	0.45	0.60	0.75	0.90	1.05	1.20	1.35	0
1	1.50	1.65	1.80	1.95	2.10	2.25	2.40	2.55	2.70	2.85	1
2	3.00	3.15	3.30	3.45	3.60	3.75	3.90	4.05	4.20	4.35	2
3	4.50	4.65	4.80	4.95	5.10	5.25	5.40	5.55	5.70	5.85	3
4	6.00	6.15	6.30	6.45	6.60	6.75	6.90	7.05	7.20	7.35	4
5	7.50	7.65	7.80	7.95	8.10	8.25	8.40	8.55	8.70	8.85	5
6	9.00	9.15	9.30	9.45	9.60	9.75	9.90	10.05	10.20	10.35	6
7	10.50	10.65	10.80	10.95	11.10	11.25	11.40	11.55	11.70	11.85	7
8	12.00	12.15	12.30	12.45	12.60	12.75	12.90	13.05	13.20	13.35	8
9	13.50	13.65	13.80	13.95	14.10	14.25	14.40	14.55	14.70	14.85	9
10	15.00	15.15	15.30	15.45	15.60	15.75	15.90	16.05	16.20	16.35	10
11	16.50	16.65	16.80	16.95	17.10	17.25	17.40	17.55	17.70	17.85	11
12	18.00	18.15	18.30	18.45	18.60	18.75	18.90	19.05	19.20	19.35	12
13	19.50	19.65	19.80	19.95	20.10	20.25	20.40	20.55	20.70	20.85	13
14	21.00	21.15	21.30	21.45	21.60	21.75	21.90	22.05	22.20	22.35	14
15	22.50	22.65	22.80	22.95	23.10	23.25	23.40	23.55	23.70	23.85	15
16	24.00	24.15	24.30	24.45	24.60	24.75	24.90	25.05	25.20	25.35	16
17	25.50	25.65	25.80	25.95	26.10	26.25	26.40	26.55	26.70	26.85	17
18	27.00	27.15	27.30	27.45	27.60	27.75	27.90	28.05	28.20	28.35	18
19	28.50	28.65	28.80	28.95	29.10	29.25	29.40	29.55	29.70	29.85	19
20	30.00	30.15	30.30	30.45	30.60	30.75	30.90	31.05	31.20	31.35	20
21	31.50	31.65	31.80	31.95	32.10	32.25	32.40	32.55	32.70	32.85	21
22	33.00	33.15	33.30	33.45	33.60	33.75	33.90	34.05	34.20	34.35	22
23	34.50	34.65	34.80	34.95	35.10	35.25	35.40	35.55	35.70	35.85	23
24	36.00	36.15	36.30	36.45	36.60	36.75	36.90	37.05	37.20	37.35	24
25	37.50	37.65	37.80	37.95	38.10	38.25	38.40	38.55	38.70	38.85	25
26	39.00	39.15	39.30	39.45	39.60	39.75	39.90	40.05	40.20	40.35	26
27	40.50	40.65	40.80	40.95	41.10	41.25	41.40	41.55	41.70	41.85	27
28	42.00	42.15	42.30	42.45	42.60	42.75	42.90	43.05	43.20	43.35	28
29	43.50	43.65	43.80	43.95	44.10	44.25	44.40	44.55	44.70	44.85	29
30	45.00	45.15	45.30	45.45	45.60	45.75	45.90	46.05	46.20	46.35	30
31	46.50	46.65	46.80	46.95	47.10	47.25	47.40	47.55	47.70	47.85	31
32	48.00	48.15	48.30	48.45	48.60	48.75	48.90	49.05	49.20	49.35	32
33	49.50	49.65	49.80	49.95	50.10	50.25	50.40	50.55	50.70	50.85	33
34	51.00	51.15	51.30	51.45	51.60	51.75	51.90	52.05	52.20	52.35	34
35	52.50	52.65	52.80	52.95	53.10	53.25	53.40	53.55	53.70	53.85	35
36	54.00	54.15	54.30	54.45	54.60	54.75	54.90	55.05	55.20	55.35	36
37	55.50	55.65	55.80	55.95	56.10	56.25	56.40	56.55	56.70	56.85	37
38	57.00	57.15	57.30	57.45	57.60	57.75	57.90	58.05	58.20	58.35	38
39	58.50	58.65	58.80	58.95	59.10	59.25	59.40	59.55	59.70	59.85	39
40	60.00	60.15	60.30	60.45	60.60	60.75	60.90	61.05	61.20	61.35	40
41	61.50	61.65	61.80	61.95	62.10	62.25	62.40	62.55	62.70	62.85	41
42	63.00	63.15	63.30	63.45	63.60	63.75	63.90	64.05	64.20	64.35	42
43	64.50	64.65	64.80	64.95	65.10	65.25	65.40	65.55	65.70	65.85	43
44	66.00	66.15	66.30	66.45	66.60	66.75	66.90	67.05	67.20	67.35	44
45	67.50	67.65	67.80	67.95	68.10	68.25	68.40	68.55	68.70	68.85	45
46	69.00	69.15	69.30	69.45	69.60	69.75	69.90	70.05	70.20	70.35	46
47	70.50	70.65	70.80	70.95	71.10	71.25	71.40	71.55	71.70	71.85	47
48	72.00	72.15	72.30	72.45	72.60	72.75	72.90	73.05	73.20	73.35	48
49	73.50	73.65	73.80	73.95	74.10	74.25	74.40	74.55	74.70	74.85	49
50	75.00	75.15	75.30	75.45	75.60	75.75	75.90	76.05	76.20	76.35	50

THE NATIONAL BLANK BOOK COMPANY
 HOLYOKE MASSACHUSETTS
 NEW YORK CHICAGO BOSTON SAN FRANCISCO