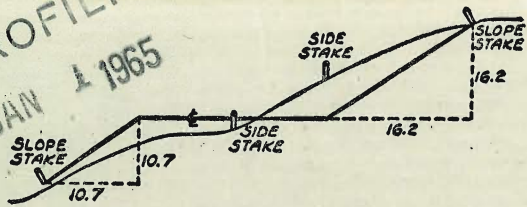


MICROFILMED
 JAN 1 1965



Grade Estab

DISTANCES FROM SIDE STAKES FOR CROSS-SECTIONING
 SLOPE 1 TO 1, ROADWAY OF ANY WIDTH

	0	.1	.2	.3	.4	.5	.6	.7	.8	9	
0	0.00	0.10	0.20	0.30	0.40	0.50	0.60	0.70	0.80	0.90	0
1	1.00	1.10	1.20	1.30	1.40	1.50	1.60	1.70	1.80	1.90	1
2	2.00	2.10	2.20	2.30	2.40	2.50	2.60	2.70	2.80	2.90	2
3	3.00	3.10	3.20	3.30	3.40	3.50	3.60	3.70	3.80	3.90	3
4	4.00	4.10	4.20	4.30	4.40	4.50	4.60	4.70	4.80	4.90	4
5	5.00	5.10	5.20	5.30	5.40	5.50	5.60	5.70	5.80	5.90	5
6	6.00	6.10	6.20	6.30	6.40	6.50	6.60	6.70	6.80	6.90	6
7	7.00	7.10	7.20	7.30	7.40	7.50	7.60	7.70	7.80	7.90	7
8	8.00	8.10	8.20	8.30	8.40	8.50	8.60	8.70	8.80	8.90	8
9	9.00	9.10	9.20	9.30	9.40	9.50	9.60	9.70	9.80	9.90	9
10	10.00	10.10	10.20	10.30	10.40	10.50	10.60	10.70	10.80	10.90	10
11	11.00	11.10	11.20	11.30	11.40	11.50	11.60	11.70	11.80	11.90	11
12	12.00	12.10	12.20	12.30	12.40	12.50	12.60	12.70	12.80	12.90	12
13	13.00	13.10	13.20	13.30	13.40	13.50	13.60	13.70	13.80	13.90	13
14	14.00	14.10	14.20	14.30	14.40	14.50	14.60	14.70	14.80	14.90	14
15	15.00	15.10	15.20	15.30	15.40	15.50	15.60	15.70	15.80	15.90	15
16	16.00	16.10	16.20	16.30	16.40	16.50	16.60	16.70	16.80	16.90	16
17	17.00	17.10	17.20	17.30	17.40	17.50	17.60	17.70	17.80	17.90	17
18	18.00	18.10	18.20	18.30	18.40	18.50	18.60	18.70	18.80	18.90	18
19	19.00	19.10	19.20	19.30	19.40	19.50	19.60	19.70	19.80	19.90	19
20	20.00	20.10	20.20	20.30	20.40	20.50	20.60	20.70	20.80	20.90	20
21	21.00	21.10	21.20	21.30	21.40	21.50	21.60	21.70	21.80	21.90	21
22	22.00	22.10	22.20	22.30	22.40	22.50	22.60	22.70	22.80	22.90	22
23	23.00	23.10	23.20	23.30	23.40	23.50	23.60	23.70	23.80	23.90	23
24	24.00	24.10	24.20	24.30	24.40	24.50	24.60	24.70	24.80	24.90	24
25	25.00	25.10	25.20	25.30	25.40	25.50	25.60	25.70	25.80	25.90	25
26	26.00	26.10	26.20	26.30	26.40	26.50	26.60	26.70	26.80	26.90	26
27	27.00	27.10	27.20	27.30	27.40	27.50	27.60	27.70	27.80	27.90	27
28	28.00	28.10	28.20	28.30	28.40	28.50	28.60	28.70	28.80	28.90	28
29	29.00	29.10	29.20	29.30	29.40	29.50	29.60	29.70	29.80	29.90	29
30	30.00	30.10	30.20	30.30	30.40	30.50	30.60	30.70	30.80	30.90	30
31	31.00	31.10	31.20	31.30	31.40	31.50	31.60	31.70	31.80	31.90	31
32	32.00	32.10	32.20	32.30	32.40	32.50	32.60	32.70	32.80	32.90	32
33	33.00	33.10	33.20	33.30	33.40	33.50	33.60	33.70	33.80	33.90	33
34	34.00	34.10	34.20	34.30	34.40	34.50	34.60	34.70	34.80	34.90	34
35	35.00	35.10	35.20	35.30	35.40	35.50	35.60	35.70	35.80	35.90	35
36	36.00	36.10	36.20	36.30	36.40	36.50	36.60	36.70	36.80	36.90	36
37	37.00	37.10	37.20	37.30	37.40	37.50	37.60	37.70	37.80	37.90	37
38	38.00	38.10	38.20	38.30	38.40	38.50	38.60	38.70	38.80	38.90	38
39	39.00	39.10	39.20	39.30	39.40	39.50	39.60	39.70	39.80	39.90	39
40	40.00	40.10	40.20	40.30	40.40	40.50	40.60	40.70	40.80	40.90	40
41	41.00	41.10	41.20	41.30	41.40	41.50	41.60	41.70	41.80	41.90	41
42	42.00	42.10	42.20	42.30	42.40	42.50	42.60	42.70	42.80	42.90	42
43	43.00	43.10	43.20	43.30	43.40	43.50	43.60	43.70	43.80	43.90	43
44	44.00	44.10	44.20	44.30	44.40	44.50	44.60	44.70	44.80	44.90	44
45	45.00	45.10	45.20	45.30	45.40	45.50	45.60	45.70	45.80	45.90	45
46	46.00	46.10	46.20	46.30	46.40	46.50	46.60	46.70	46.80	46.90	46
47	47.00	47.10	47.20	47.30	47.40	47.50	47.60	47.70	47.80	47.90	47
48	48.00	48.10	48.20	48.30	48.40	48.50	48.60	48.70	48.80	48.90	48
49	49.00	49.10	49.20	49.30	49.40	49.50	49.60	49.70	49.80	49.90	49
50	50.00	50.10	50.20	50.30	50.40	50.50	50.60	50.70	50.80	50.90	50

Distance of slope stake from side or shoulder stake for any width roadway, slope 1 to 1. If ground is nearly level, the cut or fill at side stake is located by the double entry method in left column and top row. The number in body of table in same row and column gives distance from side stake to slope stake. If ground is not level estimate the difference in elevation between the side stake and slope stake, lower target by this amount if cut, elevate if fill. Add this amount to cut or fill and find distance in table. Set up rod at this point, and line of sight should cut target. If it does not make the slight adjustment necessary.

TABLE XIII—CORRECTIONS FOR TANGENTS AND EXTERNALS

These corrections are to be added to the approximate values, found by dividing the tangent, or external, for a 1° curve (Table VII) by the degree of curve, in order to obtain the true tangents, or externals. Intermediate values may be obtained by interpolation.

FOR TANGENTS ADD

Central Angle	DEGREE OF CURVE													
	5°	10°	15°	20°	25°	30°	35°	40°	45°	50°	55°	60°	65°	70°
10°	.03	.06	.09	.13	.16	.19	.22	.25	.28	.31	.34	.38	.42	.46
15°	.04	.10	.14	.19	.24	.29	.34	.39	.45	.51	.53	.58	.63	.68
20°	.06	.13	.19	.26	.32	.39	.45	.51	.58	.65	.72	.79	.84	.90
25°	.08	.16	.24	.33	.40	.49	.58	.67	.75	.83	.90	.99	1.06	1.14
30°	.10	.19	.29	.39	.49	.59	.69	.79	.89	.99	1.09	1.20	1.29	1.39
35°	.11	.22	.34	.47	.58	.69	.79	.81	.92	1.04	1.29	1.42	1.54	1.66
40°	.13	.26	.40	.53	.67	.80	.93	1.06	1.20	1.34	1.49	1.64	1.79	1.94
45°	.15	.30	.44	.60	.76	.91	1.06	1.21	1.37	1.52	1.70	1.87	2.04	2.21
50°	.17	.34	.51	.68	.85	1.02	1.19	1.36	1.54	1.72	1.91	2.10	2.29	2.48
55°	.19	.38	.57	.76	.95	1.14	1.32	1.52	1.72	1.92	2.14	2.35	2.56	2.77
60°	.21	.42	.63	.84	1.05	1.27	1.49	1.71	1.94	2.17	2.38	2.60	2.83	3.07
65°	.23	.46	.69	.93	1.16	1.40	1.64	1.88	2.13	2.38	2.63	2.88	3.13	3.39
70°	.25	.51	.76	1.02	1.28	1.54	1.80	2.06	2.33	2.60	2.88	3.16	3.44	3.72
75°	.27	.56	.83	1.12	1.40	1.69	1.98	2.27	2.57	2.87	3.16	3.47	3.78	4.09
80°	.30	.61	.91	1.22	1.53	1.84	2.15	2.46	2.78	3.10	3.44	3.78	4.12	4.46
85°	.33	.66	1.00	1.33	1.68	2.02	2.36	2.70	3.05	3.40	3.77	4.14	4.55	4.89
90°	.36	.72	1.09	1.45	1.83	2.20	2.57	2.94	3.32	3.70	4.10	4.50	4.91	5.32
95°	.39	.79	1.19	1.55	2.00	2.40	2.80	3.20	3.61	4.02	4.40	4.98	5.38	5.83
100°	.43	.86	1.30	1.74	2.18	2.62	3.06	3.50	3.95	4.40	4.88	5.37	5.85	6.34
110°	.51	1.03	1.56	2.08	2.61	3.14	3.67	4.21	4.76	5.31	5.86	6.43	7.01	7.60
120°	.62	1.25	1.93	2.52	3.16	3.81	4.45	5.11	5.77	6.44	7.12	7.80	8.50	9.22

FOR EXTERNALS ADD

Central Angle	DEGREE OF CURVE													
	5°	10°	15°	20°	25°	30°	35°	40°	45°	50°	55°	60°	65°	70°
10°	.001	.003	.004	.006	.007	.008	.009	.011	.012	.014	.015	.017	.018	.020
15°	.003	.007	.010	.014	.018	.023	.027	.029	.032	.035	.039	.043	.047	.051
20°	.006	.011	.017	.022	.028	.034	.038	.045	.051	.057	.063	.070	.076	.083
25°	.009	.018	.027	.036	.046	.056	.065	.074	.083	.093	.106	.120	.127	.135
30°	.013	.025	.038	.051	.065	.078	.090	.103	.116	.129	.149	.170	.179	.188
35°	.018	.035	.054	.072	.086	.109	.131	.153	.175	.197	.213	.230	.247	.264
40°	.023	.046	.070	.093	.117	.141	.172	.203	.234	.265	.277	.290	.315	.341
45°	.030	.060	.093	.119	.153	.184	.216	.254	.289	.325	.351	.378	.411	.445
50°	.037	.075	.116	.151	.189	.227	.266	.305	.345	.384	.425	.467	.508	.550
55°	.046	.093	.142	.188	.236	.283	.332	.381	.420	.479	.530	.582	.641	.700
60°	.056	.112	.168	.225	.283	.340	.398	.457	.516	.575	.636	.697	.774	.851
65°	.067	.135	.204	.273	.343	.412	.483	.554	.625	.697	.771	.845	.922	1.01
70°	.080	.159	.240	.321	.403	.485	.568	.652	.735	.819	.906	.994	1.08	1.17
75°	.095	.182	.286	.383	.480	.578	.678	.777	.877	.977	1.07	1.18	1.29	1.39
80°	.110	.220	.332	.445	.558	.671	.787	.903	1.02	1.13	1.25	1.38	1.50	1.62
85°	.128	.259	.391	.524	.657	.790	.926	1.06	1.20	1.34	1.47	1.62	1.76	1.91
90°	.149	.299	.450	.603	.756	.910	1.07	1.22	1.38	1.54	1.70	1.87	2.03	2.20
95°	.174	.350	.522	.706	.985	1.06	1.25	1.43	1.62	1.80	1.99	2.18	2.38	2.58
100°	.200	.401	.604	.809	1.01	1.22	1.43	1.64	1.85	2.06	2.28	2.50	2.73	2.96
110°	.268	.536	.806	1.08	1.35	1.63	1.91	2.20	2.48	2.76	3.05	3.35	3.66	3.96
120°	.360	.721	1.08	1.45	1.82	2.19	2.57	2.95	3.33	3.72	4.11	4.50	4.91	5.32

Pg

Pg

Warrington - Tennyson to Voltaire } 2
Udall - Worden to 270' East of Warrington } 11

X-sec Alley Blk 2 Alhambra Park 12

Lots 63 & 64 HORTON'S PURCHASE (Logan & Euclid) 19
south of.

X-sec 4th Ave Walnut, 150' N by 23-25

Survey, end Logan @ Encina Dr 20-22

Grade Stakes 4th & Walnut N.E. Cor. 27-28

X-SECT "T" ALLEY BLK 45 W.P. HERBERTS (EL CANTON) 29
MEADE 37th etc.

Recreation Area Linda Vista 7/30-'53. 37

X-sec. Udall Worden to Warrington 49 53

Fire Sta #27 Claremont Dr. & Cole 42

X-sec Alley Blk 13, Swans Add. 54

See Page 37

Add Notes on Rec Area Linda Vista 60

See also Previous Page for Index

WARRINGTON

Tennyson to Voltaire

INDEXED

NOV 29 1951

11-28-51
W.O. 25020

C.H.S.
899
R. Sisson
Oltman

0+76 Sketch $\frac{FB. 1856}{2-3}$ 35' Lt. = B.C. in walk

0+75 21^e Lt. = deadman

0+67- 35' Lt. = end house & start conc. walk

0+50

Reduced & Plotted
by
H. Mills 11-29-51

0+26 17² Rt. = pole 461202H

0+20^e 35' Lt. = start house

0+11 17^e Rt. = deadman

0+10 19² Rt. = wly line of wide N. + S. Conc. walk.

See $\frac{FB 1856}{5}$ for. cb. Returns + Intersection.

Set. B.M. 3.93 89.76 6.08 85.83

T.P. 2.29 91.91 7.54 89.62

1.41 97.16 - 95.75

84.54
5.22
35

84.62
5.14
35
walk

4.54	8.55	8.49	8.55	8.48	8.522	8.533	8.58
4.4	4.3	4.9	4.3	5.0	4.54	4.43	4.0
30	16	15		15	20	25	30
					walk		

82.16
2.60
35
on porch

86.2
3.6
35
end

86.3	85.8	85.3	85.4	84.8	85.8	85.42	85.58
3.5	3.94	4.5	4.4	4.9	4.48	4.34	4.21
25	15	15		15	15	199	149
	06. end				end	end	walk

89.76

End. Exist. cl. = P.C. 25' Lt. 0+10 $\frac{1856}{2}$

Wly. B.P. Alicia + Tennyson

Warrington

1+29^E 20' Rte end conc. apron to 3 car. Gar.

8488
4.89
20
8501
4.75
25
8534
4.42
30
8554
4.22
324
Gar. Floor

1+25 - 24' Ltr. end conc. Apron

8478
4.98
35
Gar. Floor
8465
5.11
30
Apron
8470
5.06
241
848
5.0
15
855
4.3
846
5.12
15
8489
4.87
20
Apron
8509
4.72
25
8536
4.40
30

1+07 { 24.1 Ltr. = start Conc. Apron to double
27.7 Ltr. = end walk Gar.

8480
4.96
35
Gar. Floor
8472
5.04
30
8472
5.04
27.7
walk
8473
5.03
241
Apron

1+01 27³ Ltr. = E.C. of walk

8463
5.13
27.7
walk E.C.

1+00

841
5.7
70
847
5.1
30
852
4.6
17
848
5.0
15
855
4.3
847
5.1
15
8501
4.75
20
Apron
8513
4.63
25
8562
4.14
322
Gar. Floor

0+98^E 22^E Ltr. = pole # P212A (apron to 3 car Gar.
20' Ltr. = end walk and start

8502
4.74
20
walk +
Apron
8512
4.64
25
8562
4.14
322
Gar. floor

89.76

Warrington

start Conc. apron to 3 car. Gar. Conc. floor.
 2+15³ 25⁴ Lt. = end. 7" conc. wall.

8497
 8447
 8512
 842
 858

6.30 6.80 3.1 7.1 6.3

305 254 254 254 25

Gar. Apron top B.W. End.
 floor wall.

2+00

4 8 8 8 8
 848 854 857 866

6.9 6.1 6.3 5.8

50 25 15 15

6.4 5.9 5.6 4.7

15 16 25 50

TIR 5183 91.27 4.32 85.44

91.27

1+74 20² Lt. = 3² wide thru. wall
 conc. walk

8448 850 8460 850 854 850 854 855

4.80 4.8 5.16 4.8 4.4 4.8 4.4 4.5 3.8

25 20² 20² 15 15 20 25 75

walk end. walk

1+41- 24¹ Lt. = start 7" wide conc. wall.

848 858 848

1.8 5.9 5.0

24¹ 24¹ 24¹

top. B.W. End.
 wall

1+40 17⁵ Rt. = pole # A30640 H

841 848 847 847 855 849 852 852 854

5.7 5.0 5.1 5.1 4.3 4.9 4.6 4.6 4.4

60 30 25 15 15 25 30 50

1+34 17' Rt. = deadman

1+31⁵ { 27' Lt. = outlet 24" conc. pipe
 18' Rt. } = ctr. 3² x 4³ catch basin
 17' Lt.

8418 8418 8418 8418 8418 8418

8.0 7.80 7.90 5.23 4.96 7.38

27' 17 17 18 18

I.E. I.E. Grate I.E. I.E. Box

24" Conc. 24" Conc. Grate I.E. Box
 Pipe

89.76

Warrington

2+61 - 32' Lt. = sid. cor. house

8519
6.08
312
walk

8511
6.16
292
walk

2+57 29² Lt. = start 2⁵ wide conc. walk

8536
5.91
28

2+53 - 28' Lt. = end sing. Gar. Conc. floor.

8534
5.93
28
Gar.

8537
6.00
25
Apron

852
6.1
17

859
5.4

855
5.8
15

840
5.3
16

870
4.3
25

2+50⁸ - 25' Lt. = end Conc. apron to sing. Gar.

2+43 - 25' Lt. = start Conc. apron to Gar.

8534
5.93
28
Gar.

8516
6.11
25
Apron

2+41 28' Lt. = start single Gar. Conc. Floor.

8534
5.93
28'
Floor

2+39 25' Lt. = Pole # 2138

2+38 { 30⁵ Lt. = end Garage
25⁴ Lt. = end apron

8509
6.18
30⁵
Garage

8457
6.170
25⁴
Apron

Warrington

\$

6

T.P. 7.35 94.99 3.63 87.64 87.65

20400

A+099 17' Rx = pole # 430645H

3+749 = E Udall

3+399 = sly. side Udall.

3+24⁵ 31⁶ Lt. = Ely. Cor. House

{ 27⁷ Lt. = E 6' wide conc. porch.

3+14 { 25⁷ Lt. = E 6' wide conc. steps.

2+92⁵ 31⁸ Lt. = sly. Cor. house

2+85

2+83⁵ - 31⁸ Lt. = Ely. Cor. house

2+82 - 27⁷ Lt. = Ely. Cor. porch

27⁷ Lt. = sly. Cor. conc. porch.

2+76 - 29⁵ Lt. = end walk.

2+75 - 17' Rx = pole # 461209H

Wly. Conc. Mon. Udall + Warrington

909	888	888	882	889	893	897
0.4	2.4	2.5	2.1	2.4	2.0	1.6
25	20	15		.15	17	25

883	892	893	890	893	892	901
2.39	2.1	2.0	2.3	2.0	2.1	1.2
25	25	17	15		15	25
Hub.						

8764	879	882	888	886	889	892
3.63	3.4	3.1	2.5	2.7	2.7	2.1
25	25	15		15	17	25
07. Mon						

884	8700	870	878	875	881	884	888
3.13	4.27	4.3	3.5	3.8	3.2	2.9	2.0
272	252	16		15	17	25	50
porch	steps.						

850	856	859	867	864	821	876	883
6.3	5.7	5.4	4.6	4.9	4.2	3.7	2.0
50	25	16		15	17	25	37

8535	8559
5.92	4.68
292	272
walk	porch

91.27

Warrington

1756 26⁵ Lt. = \pm conc. landing
steps to north + to south.

9421	8810	876	863	864	860	851	845	845
4.78	7.0	7.4	8.7	8.6	9.0	6.9	6.5	6.5
26 ⁵	26 ⁵	25	16		14	19	25	30
07 landing		8842						

1752 27⁵ Lt. = end 2' wide conc. walk

6.57
27⁵ walk.

1750

885	874	865	865	861	854	842
6.5	7.6	8.5	8.5	8.9	7.6	6.8
27	25	15		14	25	30

1700 { 27⁵ Lt. = start 2' wide conc. walk
17² Rx. = pole # A58081H
21³ Lt. = pole # P2130

946	9404	899	884	875	879	875	890	898	944	926
4.4	4.95	5.1	6.6	7.5	7.1	7.5	6.0	5.2	0.6	2.4
30	27 ⁵	25	16	15		15	16	25	28	60
	walk									

0780 52' Lt. = \pm 2 car. garage. under
Floor. not yet poured Const.

941	941	880	881	883	881	894	901
4.9	4.9	6.2	6.9	6.7	6.9	5.6	4.9
52	25	16	15		15	17	25
	Aprox. floor						

0743- 35² Lt. = \pm 4' wide steps to porch.

9122	9137	913	872	887	887	886	907	941	930
3.77	4.62	4.7	5.8	6.3	6.3	6.4	4.3	0.9	2.0
372 Porch	352 steps	25	15	1A		15	25	28	60

0729 35² Lt. = \pm 4' wide conc. steps
to porch.

9119	9024
3.80	4.75
372 07 porch	352 step.

941 99

Warrington

7.35 87.64

see F.B. $\frac{1856}{1A}$ for intersection

175 Lt. } = start curbs.
175 Rt. }

2400± = start A.C. Pavc.

272 Lt. = edge of walk
1+95 - 16² Rt. = pole # 4306 47H

1+70 22' Lt. = deadman

1+55 22' Lt. = Pole (Guy pole to Pole # 458081H)

1+51 33⁵ Rt. = 4' wide conc. walk

1+60⁵ 27² Lt. = start 2' wide conc. walk

1

84.44	98.58	85.58	84.84	85.39
85.55	9.13	91.41	10.15	9.60
175	175		175	175
86	6		6	6

86.76	76.8	85.8	85.7	85.1	87.4
8.23	8.2	9.2	9.3	9.9	7.6
272	25	14		14	25

88.88	88.82
6.16	6.17
33 ⁵	40
walk	

87.78
7.21
272
walk

94.99

ULDALL

Sketch - FB1856
P. 3

11/28/51

1+50

T.P. 8.05 91.69 1.75 83.64

1+00

0+50

INDEXED

NOV 29 1951

Reduced & Plotted
by
H. Mills

Note:-

See Notes pg. 49
this Book

0+10

0+00 = Ely. Warden

0-50 = Wly. 1150 Warden

5.26 85.39 10.26 80.13

2.7A 9.039 — 87.65

9

82.6
1.9
70
85.0
6.7
35
83.5
8.2
91.69
81.6
10.1
35
81.3
10.4
70

88.1
+2.7
60
83.6
1.8
35
81.8
3.0
81.1
4.3
35
80.4
5.0
75

86.9
+1.5
60
81.9
3.5
35
80.2
5.2
75.0
10.4
35
75.2
10.2
42
80.4
5.0
55
80.4
5.0
60

82.8
2.6
35
80.4
5.0
14.27
80.4
5.0
13.0
35
72.4
7.7
35
80.2
5.2
50
80.2
5.2
60

77.5
5.9
35
80.1
5.3
10
80.1
5.3
25
72.0
13.4
33
72.4
13.0
35
73.6
11.8
35
79.8
5.6
49
79.8
5.6
60

77.6
5.8
35
82.8
5.6
3
78.4
7.0
17
67.8
17.6
17
68.4
17.0
25
75.4
10.0
35
78.5
6.9
42
78.4
6.0
60

85.39

Wly. Mon. Uldall + Warrington

Udall

0+05

92.6
0.9
35

813
3.2

894
4.1
35

= 0+00

3+50 = Ely, Warrington

899
3.6
35

801
3.4

893
4.2
35

25' Rt. = Conc. Mon.

3+00 = 1/2 Hub. = Wly, Warrington

90.9
2.6
35

892
4.3

879
5.6
35

2+61 8 = end Conc. drive

86.67
6.78
345
Drive

86.71
6.74
495
Bar. Floor

2+54 E - 345 RT = start Conc. Drive

86.63
6.82
345
Drive

86.70
6.74
495
Bar. Floor

93.45

T.P.

6.78 93.45 5.02 86.67

2+50

903.
1.4
70

897
2.0
35

881
3.6

859
5.8
35

830
8.7
70

2+00

909
0.8
70

883
3.4
35

857
4.0

822
8.5
35

822
9.5
70

911.69

"X" Sec East-West

Alley B/LK² = Lt = North

Rt = South

13

0+90

376.3	375.9	374.4	373.7	373.3	373.7	374.4	375.0
5 ³	5 ²	7 ²	7 ²	8 ³	7 ²	7 ²	6 ²
20	12	10	8		9	10	20

0+75

376.8	376.6	375.1	373.9	373.9	373.8	374.3	375.2
4 ⁸	5 ⁰	6 ⁵	7 ²	8 ²	7 ⁸	7 ³	6 ⁴
20	12	10	7		8	10	20

0+50 113h+E garage con floor opens west to St.

377.24	376.7	375.2	374.8	374.0
4 ³⁴	4 ⁹	6 ⁴	6 ⁸	6 ⁶
113	10	7		10
Floor				

0+25

377.6	376.5	376.0	376.3	376.3	377.08
4 ²	5 ¹	5 ⁵	5 ³	5 ²	4 ⁵⁰
12	10		10	13 ¹	13 ²

Top Foundation of House

0+00 East line 52nd St. edge con part + obs

377.25	377.00	376.58	376.60	376.69
4 ³³	4 ⁵⁸	5 ⁰⁰	4 ²⁸	4 ⁸⁹
9 ⁵	9 ⁵		10 ¹	10 ¹
06	94 ⁷		54 ⁷	06

0-12 Fly C6 line 52nd St

378.31	377.94	376.77	376.69	376.54	376.31	376.24	376.60	376.34	375.98
3 ²⁷	3 ⁶⁴	4 ⁰¹	4 ⁵⁹	5 ⁰⁷	5 ²⁷	5 ³⁴	4 ²⁸	6 ⁰⁷	5 ⁶⁰
60	60	13	10		10	13	13	60	60
08	94 ⁷	94 ⁷	94 ⁷		94 ⁷	06	94 ⁷	06	06

BM 700 381⁵⁸

374⁵⁸ NE 454/607
Fl 02/01/52
52nd

Plotted
3/21/52
H. Mills

X 381⁵⁸

Reduced 3-11-52
RMB

TP, 10⁴⁵ 389²⁵ 2²⁸ 379³⁰

1770

1766 15° Lt End cold lay parking area
which drain is for

1754 10° Lt end & 3' cold lay surface drain

1745³⁵ Ely Prop N+S Alley

1735⁰⁵

1729 10° RT & guy pole

1725⁰⁵ Wly Prop N+S Alley

Lt=North & RT=South

14

381.1	379.5	378.1	377.9	378.1	378.3
02	22	35	32	35	32
14	10	8		10	20

380.99
0.53
parking
4' x 15'

377.05
4.53
100'
drain

376.4	376.2	376.3	376.5
52	54	53	51
10		10	15

375.53
6.05
rim
SMH

376.0	374.8	375.2	376.4
66	68	64	52
10		10	15

381.58

E+W Alley

Lt = North

S

gt = South

15

TP 894 386⁴² 12²⁹ 377⁴⁸

① 57 82' Wly Cb Lino Dawson St.

385.57	385.01	385.13	384.76	384.72	384.63	384.61	384.61	384.97	384.38	384.79
438	474	462	499	503	512	514	514	478	537	496
60	60	12	12	10	10	10	12	12	60	60
cb	54	cb	54				54	cb	54	cb

2+70' Wly Dawson St edge Con paving + cbs

385.20	384.99	384.74	385.02	385.17
455	476	501	473	458
95	95	102	102	
cb	54	54	cb	

2+50

384.9	384.7	384.6	384.7	384.1
42	51	52	51	54
15	10	10	10	20

2+25' 14° RT & Hous.

383.7	383.3	383.0	383.1	383.7
61	65	68	62	60
15	10	10	10	14
				Floor

2+00

382.6	380.8	380.5	380.5	380.7
72	90	93	93	94
13	10	10	10	20

1 38925

N+S Alley

Lt = West

E

Rt = East

16

1+25 10° Lt End 4' con block wall begin 6' con wall

377.4	377.7	378.1
9°	8°	8°
10'	10'	10'
Footing 6' wall	Footing 4' wall	Sid

1+05 9° Rt Begin 4 car garage con floor + apron

378.13	379.28
7°	7°
9°	10°
apron	Floor

1+00

377.7	377.6	377.6	378.0	378.8
8°	8°	8°	8°	7°
15'	10'	10'	10'	15'

0+97 10° Lt Begin 4' con block wall

381.22	377.1	377.9
5°	9°	9°
10'	10°	10°
Top	Footing	9°

0+90 9° Lt & 10' Power Pole # PA 4453

0+68 9° Lt & Dead man

0+50

376.7	377.0	376.7	377.2	378.1	382.3
9°	9°	9°	9°	8°	4°
20'	10'	8'	10'	20'	

0+08 7° Lt & 12" Power Pole # SP 44 45

0+00 North line of E+W alley

375.0	375.8	376.3
11°	10°	10°
10'	10'	10'

TT 386.42

2150

2126 10° RT End 6" wall with fence on top

2100

1488 10° RT Begin 6" con wall with fence on top

1476 75° LT & 10" Power Pole # JPA4461

1475 10° LT End E/West con wall

1461 10° LT end 6' con wall

1450 10° RT End Near garage con floor + apron

Lt West
382.9
32
20
382.7
32
20
382.4
42
10
382.4
40
10
382.6
58
20

382.0
44
382.3
51
382.80
362

382.1
43
20
381.7
42
10
381.7
42
10
381.5
42
20
381.5

381.4
50
10
380.8
56
10
382.10
432
100
Top

380.2
62
100
380.9
55
100
51

379.7
62
100
380.7
52
100
54

380.8
56
20
379.0
74
10
378.9
75
103
apron
379.32
70
172
garage
floor

386.42

BM

571

385⁰⁸

✓
385⁰⁸
NW 676 217
Monroe + 52 nd

3787⁰² South ebatine Monroe

378⁰² Sly Monroe edge con poring + c65

TP3

612

39079

100

384⁶²

3735

3700

2180 8 21 1/2 14" Power Pol. 4 PA 4481

2465 12 2 1/2 14" double garage con floor

L to West

£

W to East

18

38566	38570	38509	38561	38579	38565	38576	38580	38623	38606	386152
513	542	480	518	520	514	513	472	400	473	477
60	60	12	12	10	10	12	12	60	60	
c6	347	c6	347				347	c6	347	c6

38611	38584	38578	38583	38622
465	495	521	476	457
100	100	92	82	
c6	347	347	c6	

3841	3842	3843	3843	3845
23	22	21	21	12
20	10	10	20	

3839	3839	3832	3834	3835
23	30	32	30	22
20	10	10	20	

38325
307
122
floor

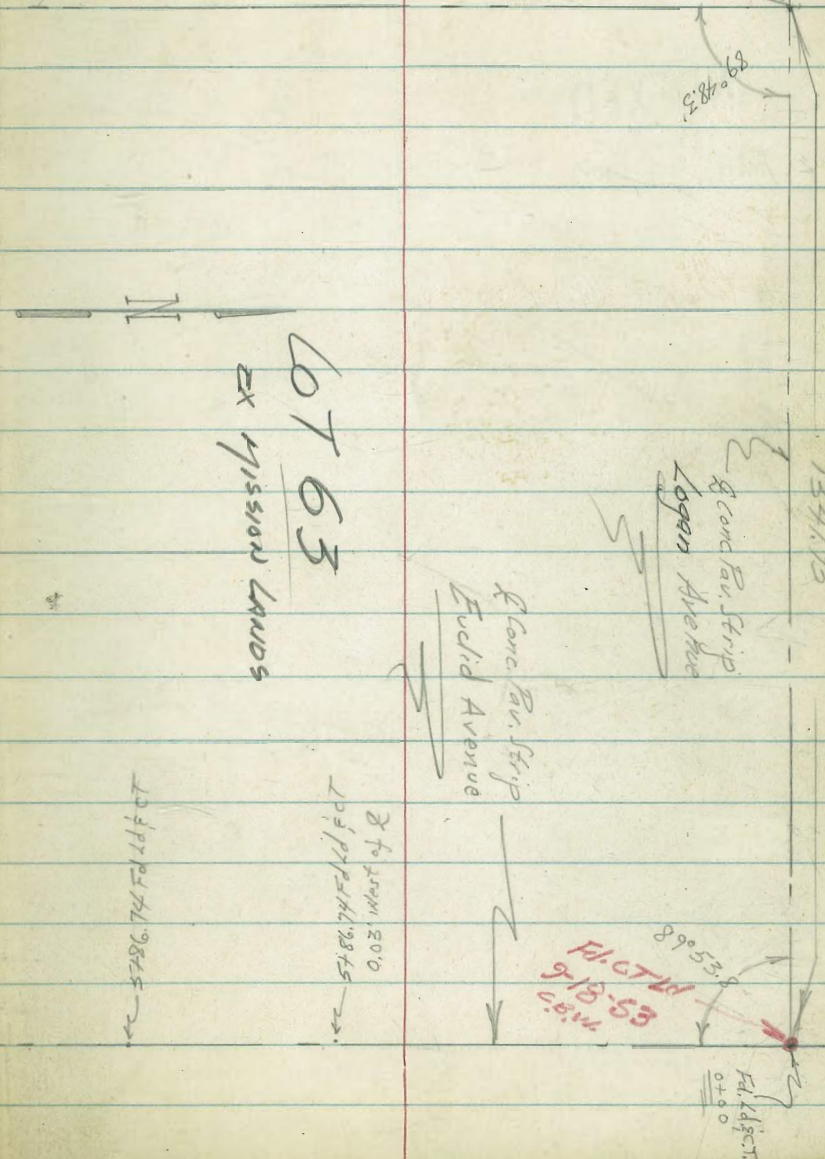
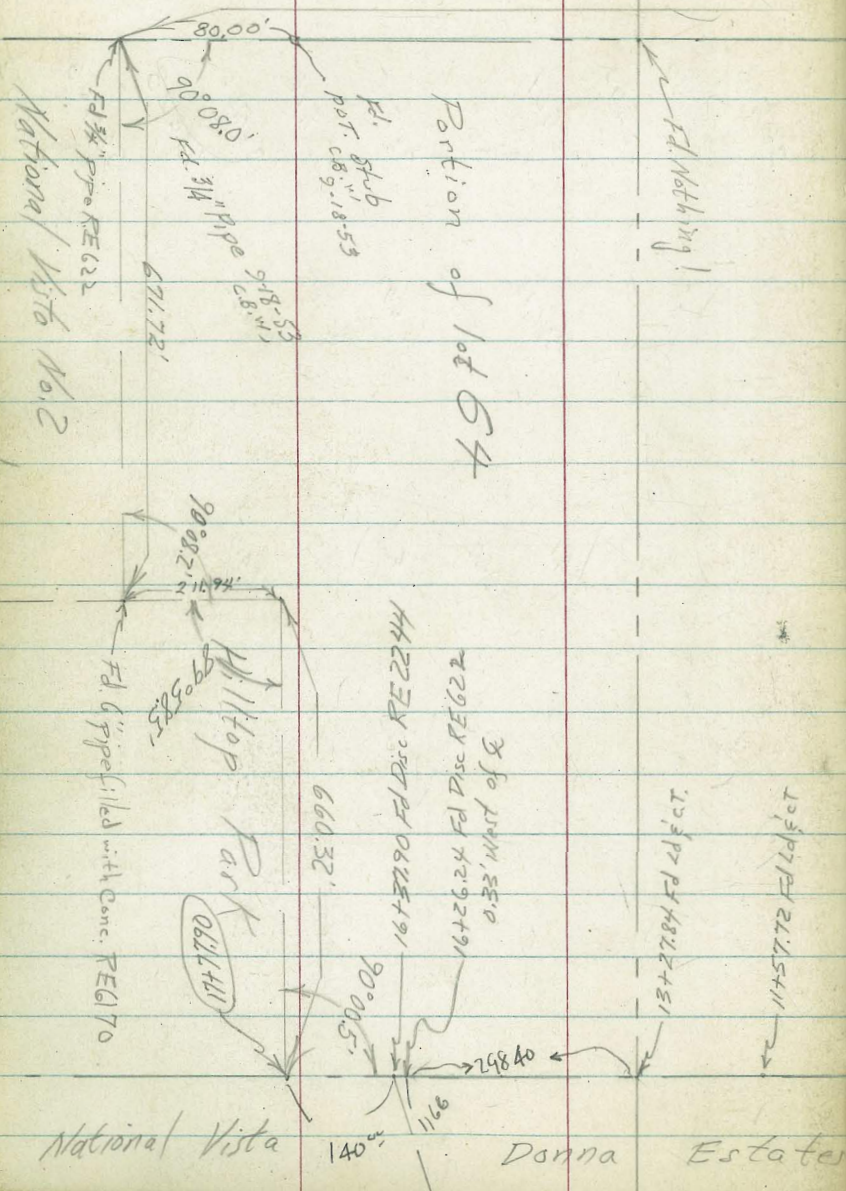
X 386 1/2

Roberts
Cota
Piken
8-14-57
MA-20572

Survey of Lots 63 and portion
64 Horton's Purchase Ex-Mission Lands
(Logan & Euclid)

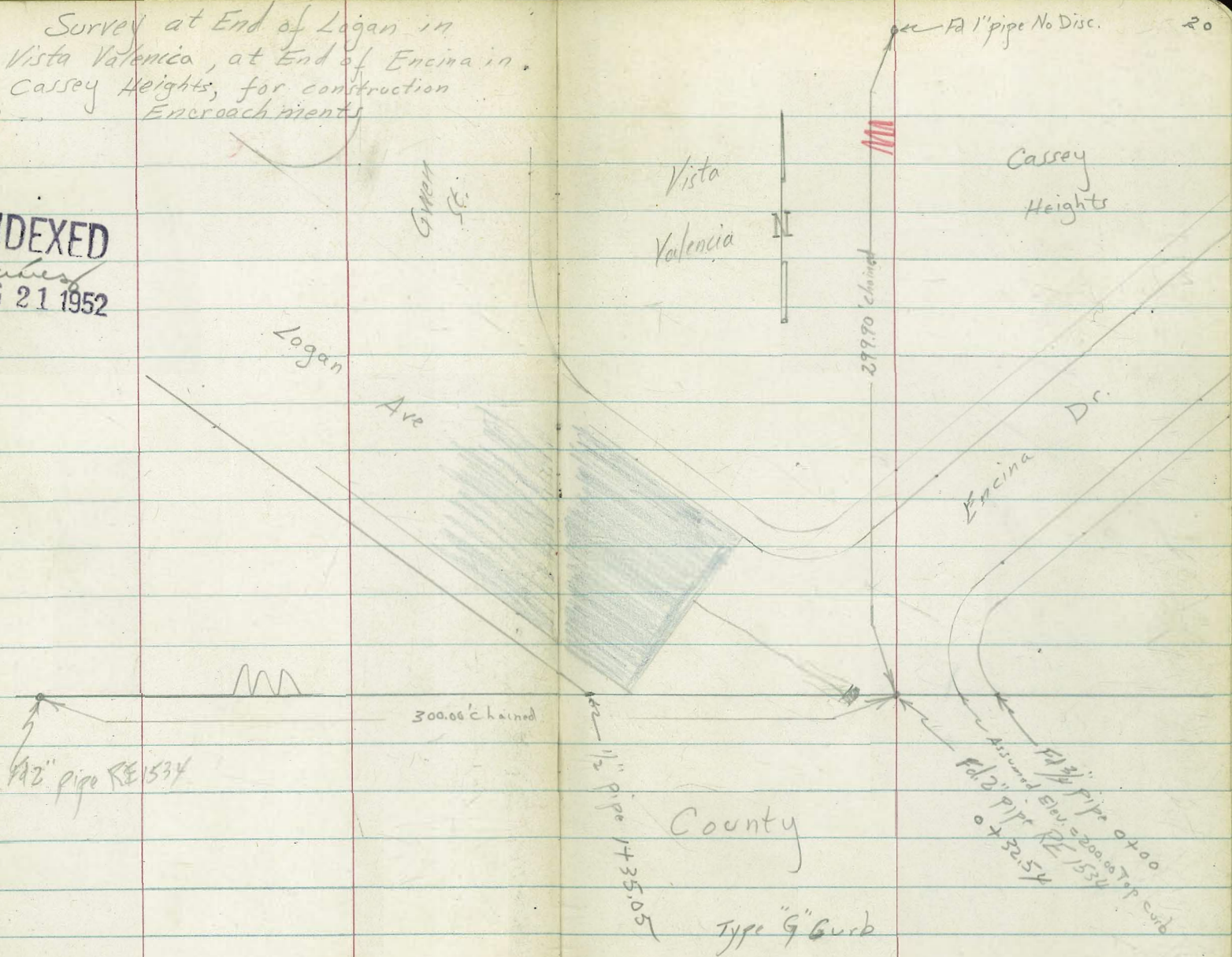
INDEXED
Survey
AUG 21 1952

1989.22'



Roberts Survey at End of Logan in
 Vista Valencia, at End of Encina in.
 8-16-52 Cassey Heights, for construction
 W.O. - 20006 Encroachments

INDEXED
 Suber
 AUG 21 1952



Contd From Page 20

26 INDEXED

£

Rt 21

City, County Bdry.

Aug 01

0+60.5 94' Lt End Lath House

8.7 13.7
2

0+40.5 94' Lt Begin Lath House

0+32.54

4.7 4.7 13.1
5 5

0+10

Opposite curb face of curb end
(Gutter is encroaching)

1.2 11.48
1 cb

0+07

0.5' Lt to center P.Pole # P373470

0.8 11.5
1

0+00

0.8 0.8 4.9
5 5

BM

11.48 211.48X

200.00 Assumed

211.48X
Top curb on end of Curb Engine & Logan

Contd From Page 21

INDEXED

22

AUG 21 1952

1435.05

11.5 13.6 17.2
5 0.5

1419.4 Opposite curb face of Curb and
(Back of curb encroaches)

11.4 15.74
2.5 CB
encroachment

0483 6' Lt to Edge of both on Water Line "T" Joint
← encroachment

98 13.8

0477

211.48 π

211.48 π

Roberts
P. Allen

X-Section 4th Ave.
Walnut to 150' North

8-18-52

WD. 21020

INDEXED

Sunrise
AUG 21 1952



4th Avenue

4th Ave. -
70' Street
45' Roadway
A.C. Pav.
5' Ch face to Walk
5' E Walk

Walk out

30' Ch. Pav.

7'
20' Drive | 20' Drive

150' P.C.T.

Walnut AVENUE

Walnut Ave. -
80' Street
52' Roadway
A.C. Pav.
5' Ch face to Walk
(9' Walk on North)

Cont'd From Page 23.

lt → Base line ← Xdel Rt 24

0+61 to 0+99 Drive opening in curb

0+50

488.03	287.20	287.45	287.62	287.73	288.0
430	513	488	471	460	43
28	53	53	5	40	70
	Gutt	cb			

0+26 to 0+46 Walk out!

0+26 25' lt to leadman

0+16

287.89	287.11	287.41	287.53	287.64	287.7	287.4	288.4
444	522	492	480	469	46	49	3.9
28	53	53	5	40	60	70	
	Gutt	cb					

0+12 1' lt to center P. Pole # 3503

0+00

287.78	287.44	286.98	287.21	288.35
455	489	5.35	5.12	3.98
28	cb	Gutt	40	80

0-14 North Curb Line Walnut

287.57	287.22	286.69	286.51	286.88	286.95	286.4
476	5.11	5.44	5.82	5.45	6.38	5.72
28		23	43	43	80	81
		Gutt	Gutt	cb	Gutt	cb

T.P. 3.64 292.33 ↑ 489 288.69

292.33 ↑

BM 10.26 283.58 283.32 NWBP Brooks & 4th

1455 12' RT to NW cor. Apt. Bldg

1440 3' Lt to center 16" Palm

1431 12' & 16' RT to Jog Apt. Bldg

1418 16' RT to Apt. (SW corner)

1415 3' Lt to center 16" Palm

1408 5' RT & 2' Conc Walk

1402 Row of shrubs on Right

1401

1400

287.91
442 306 2.89
5 15 25
conc conc conc

288.24
409 4.99 4.64 4.51 4.36 3.0 2.5
28 55 55 5 40 80
6.44 cb

284.24
287.35
287.69
287.82
287.97
409 4.78 4.64 4.51 4.36 3.8 2.5
28 55 55 5 40 80
6.44 cb

Contd From Page 23

12.5
7
5.5

check

7.82 283.90 = 293.32

T.P.

2.64

291.12

3.85

288.48

1450

1747²

5' RT Q³⁵ Conc Walk

292.33A

LT

→
Baseline
7 Line

←
Note

RT

26

INDEXED
AUG 21 1952

288.42
287.54
287.79
287.94
288.02
289.0

3.91 4.79 4.54 4.39 4.31 3.3
2Y 5² 5² 5² 5² 12
cont cont

287.98 289.18

4.35 3.15
5 12
conc conc

292.33A

1-28-53

GRADES FOR STREET WIDENING AT 4TH
 AVE & WALNUT STREET W.O. 21020

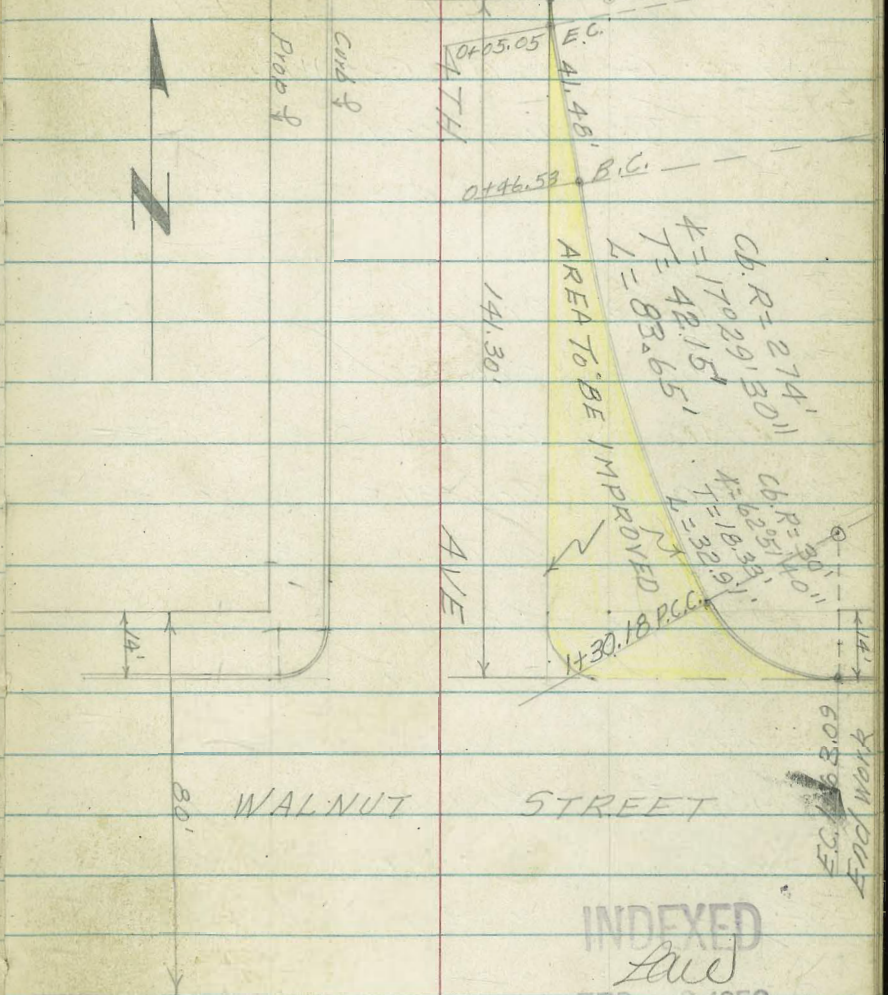
Stampert
 Sisson
 Shorey
 Sherry

CURVE DATA

0+00 = 127.3' N. OF N. PROP. WALNUT ST.

cb. R = 30' $\Delta = 9^{\circ}38'50''$ L = 5.05' T = 2.52'

Sta.	Def. Δ	Chord
Lt. B.C. 0+00	0° 00' 00"	0.0
E.C. 0+05.05	4° 49' 25"	5.05
Tan 0+25	—	19.95
Lt. B.C. 0+46.53	17° 29' 30"	42.15'
L = 83.65 d = 6.27326058 Per. ft.		
0+50	0° 21' 46" V	3.47
0+75	2° 58' 36" V	24.99
1+00	5° 35' 26" V	24.99
+25	8° 12' 16" V	24.99
P.C.C. +30.18	8° 24' 45" V	5.18
R = 30' $\Delta = 62^{\circ}51'40''$ T = 18.33' L = 32.91' d = 57.29578 Per. ft.		
1+40	9° 22' 38"	9.78
1+50	18° 55' 36"	9.95
E.C. 1+63.09	31° 25' 50"	12.99



INDEXED
 Feb
 FEB 3 1953

608.99
 133
 HIGH DUG
 END WORK

GRADES FOR STREET WIDENING AT
4-TH AVE & WALNUT STREET N.E. COR.

1-28-53

Sta + H.I. Elev.
NOTE: Grades are set with a direct
Reading Rod

NOTE: See Sketch Pg. 27.

	Cb. Grade	Elev	Cut	Gut. Grade	Elev.	Cut
End of Proj (10)						
E.C. 1+63.09	286.70 ^v	286.89	0.19	286.36 ^v	286.89	0.53
(10) 1+50	286.78	287.11	0.33	286.45	287.11	0.66
(10) 1+40	286.84	287.14	0.30	286.53	287.14	0.61
(10) P.C. 1+30.18	286.91 ^v	287.52	0.61	286.61 ^v	287.52	0.91
(10) 1+25	286.94	287.74	0.80	286.64	287.74	1.10
(10) 1+00	287.10	287.77	0.67	286.80	287.77	0.97
(10) 0+75	287.26	287.86	0.60	286.97	287.86	0.89
(10) 0+50	287.43	287.97	0.54	287.13	287.97	0.84
(10) B.C. 0+46.53	287.45 ^v	287.99	0.54	287.15 ^v	287.99	0.84
(5) P.O.T. 0+25	287.58	287.88	0.30	287.23	287.88	0.65
(8) E.C. 0+05.05	287.71	287.91	0.20	287.31	287.91	0.60
(8) B.C. 0+00	287.74	-	-	287.44	-	-
T.M.		287.41		N.W. BR. 4th & Walnut		
B. M.		See Pg. 24				
		283.32				

0.638%
0.75%
0.61
0.32
0.653%
0.653%
0.527%
0.526%

Clark
Shepherd
O'Neil
6-17-53
W.O. 32307

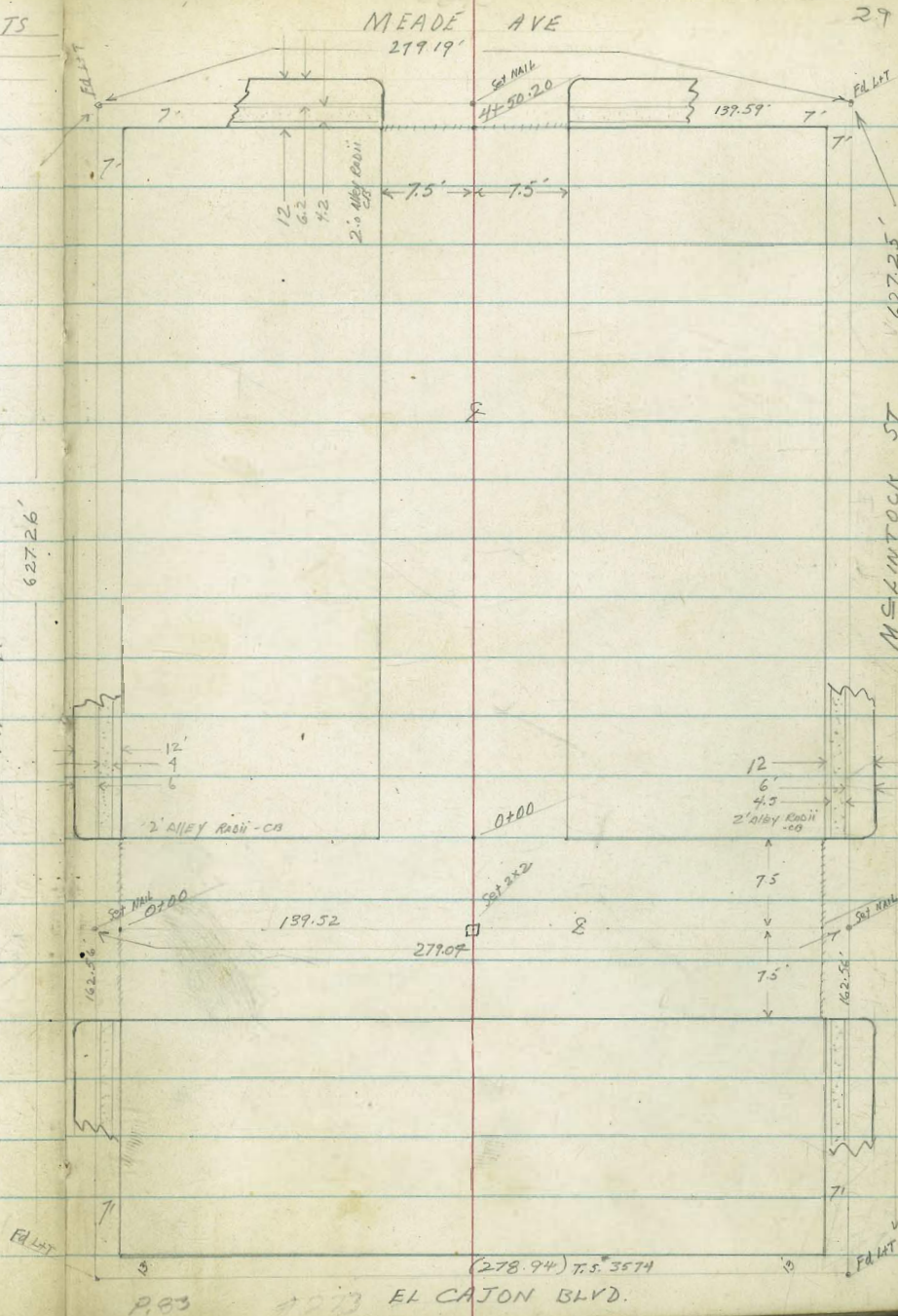
X-SECT "T" ALLEY - W.P. HERBERTS
BK 45 - 37th - McLINTOCK
MEADE

SKETCH NOT TO SCALE
Notes Pg 30

REF: T.P. 18
T.P.S. 3574
MMP. 1108

INDEXED
JUN 19 1953

6/23/53
Reduced & Plotted
C. Pearson



X-SECT "T" ALLEY BIK 45
W. P. HERBERTS - EL CATON - MEADE - 3742. etc

374h to McLINTOCK

(144) LT.

E

RT. (sly) 30

0175

377.1
4.7
15

377.5
4.3
7.5

376.9
6.4
7

376.2
5.6

376.3
5.5
5

376.4
5.4
7.5

376.2
5.6
15

0159

8.3 LT ← IN WALK - ADVY From Alley

377.3
4.5
15

377.34
4.44
8.35
E. WALK

376.8
5.0
7.5

376.6
5.2

376.6
5.2
5

376.8
5.0
7.5

376.6
4.2
15

0150

0134

6.2 RT & Pole PA 3710

377.4
4.7
15

377.30
4.8
8.3
E. WALK

377.2
4.6
7.5

376.7
5.1

376.9
4.9
6.0

377.9
3.9
7.5

378.0
3.8
15

0125

0117

6.2 RT & DEADMAN

0100

8.8 LT Edge 2' WALK // to Alley
END PUL. END CBS 7.5 LT & 7.15 RT.

377.08
4.70
8.8
Mile
Walk

376.91
4.87
7.5
C

376.67
5.7
7.5
C

376.41
5.37

376.53
5.25
7.15
C

376.20
5.08
7.15
C

376.96
4.82
5.0
CB

376.33
5.45
5.0
C

376.54
5.24
7.5
CB

376.13
5.65
7.5
H

376.10
5.64

376.00
5.78

376.09
5.67
7.5
H

376.06
5.72
4.5
6

375.53
5.72
7.5
CB

376.19
6.25
5.64
6
CB

377.20
7.58
5.0

376.77
5.01

376.37
5.41
5.0

0-12. Fly CB. LINE 374h

note: water stank in GUTT & ONLY

0-40 = ♀ 374h

B.M.

828 381.78

373.50: S.W. B.P
EL CATON 9 374h

381.78

ALLEY - 3744 to MC LINTOCK

2+00

1+75

1+58

79 RT END WALL

Note: Water stans OR store bldg

1+43

62 RT E DOORWAY Rear Furniture Bldg

1+40.02

79 RT Pop 4' Cor Wall 8" wide

1+39.7

75 LT Pop 5' Board Fence

1+25.02

79 RT E N.S. WALL 4' high
= W. Line N+S. Alley

1+23.5

64 RT E Pole PA 3726

1+00

Note: water stans incl BK Furniture store

0+98

50' RT E Rear entrance Furniture Store

T.P.

4.03 379.95 5.86 375.92

379.95

LT
 5.3 374.7
 15
 5.4 374.6
 7.5
 5.2 374.6
 7.5
 5.0 375.0
 15
 5.3 374.7
 7.0
 5.2 374.8
 7.5
 5.2 374.8
 7.5
 5.6 374.9
 15
 5.6 374.9
 15

375.6
 4.4
 7.5
 375.3
 7.7
 5.40
 6.2
 F1
 375.5
 4.5
 7.5
 375.5
 4.5
 7.9
 6.90
 7.9
 DIRTY
 WALL
 FTG
 WALL

375.8
 4.2
 7.5
 375.5
 4.5
 375.6
 4.4
 5
 376.0
 4.0
 7.5
 375.0
 4.2
 8.5
 374.8
 5.2
 20

376.8
 3.2
 15
 376.2
 3.8
 7.5
 375.9
 4.1
 376.0
 4.0
 5
 376.3
 3.7
 7.5
 375.8
 4.2
 12.5
 375.7
 4.3
 15

375.93
 4.02
 5.0
 Floor

WLEY 3744 to McLINTOCK

(N24) LT.

⊕

RT. (54)

Cont. Page 33 with N.S. WLEY

T.P. 6.25 381.34 4.30 375.09

2195.02 = ⊕ McLINTOCK

2177.02 = Wley CB Line

2165.02 = W. Line McLINTOCK
2164 ~ 8.1 LT END Fence

2164.48 = Edge Pav. 4 CP ends 7.2 RT & 7.70 LT.

T.P. 5.82 379.39 6.38 373.57

2155 8.5 RT END BID

2148 7.3 RT ⊕ double deadman

2140

2129 6.9 RT ⊕ Pole TPA 3738

2125 8.3 RT Bay Corrug. IRON Bldg

374.41
7.78
80

374.06
5.33
50

373.64
5.75

373.33
6.86
50

373.27
6.12
75

374.35
5.04
CB

374.01
5.38
6

374.31
5.08
6

373.77
5.62
6

373.85
5.34
CB

373.41
5.98
6

373.40
5.77
75

373.40
5.99

373.94
5.95
75

373.94
5.75
6

373.73
5.66
CB

373.24
6.00
CB

373.22
6.17
75

6.17
75

374.37
5.02
7.10
4

374.05
5.34
7.70
6

373.79
5.00

374.03
5.36
7.12
6

374.35
5.04
7.12
CB

379.39

374.5
5.5
15

374.5
5.5
7.5

374.4
5.6

374.6
5.4
5.5

375.1
4.9
7.5

379.95

ALLEY - "T" ALLEY (ENV) to MEADE
NYS.

(WLY) LT

Σ

RT. (ENV)

33

2125 11.45 LT Bay 2 car gar. no apron

T.P. 6.15 383.61 3.88 377.46

377.87
5.79
11.45
F.I.

383.61

2100 7.3 RT END Board Fence

376.8 376.8 376.7 376.8 376.8
4.5 4.5 4.6 4.5 4.5
15 7.5 7.5 7.5 15

1488 6.5 LT & 6" EUCALYPTUS

1450

376.9 376.7 376.5 376.4 376.4
4.4 4.6 4.8 4.7 4.7
15 7.5 7.5 7.5 15

1416 7.4 RT END LATTICE FENCE - Bay 2 Board Fence

1409 7.8 LT & Pole PA 4339

1400 7.3 RT & 2.0' Con. 1434

376.9 376.5 376.7 375.9 375.98 375.99 376.02
4.4 4.8 5.1 5.4 5.36 5.3 5.32
15 7.5 7.5 7 7.3 7.5 15
LUP 144K

0486 6.5 LT & dead man

0484 7.5 RT end LATH FENCE - Bay LATTICE FENCE 35' 1448

0450

376.7 376.0 375.8 375.8 375.8
4.6 5.3 2.5 5.5 5.5
15 7.5 7.5 7.5 15

0449 7.6 RT END Picket Fence + Bay LATH FENCE

7.2 RT Bay 5' Picket Fence

375.8 375.6 375.8
5.5 5.7 5.5
7.5 7.2

0400 = N. LINE E-WEST ALLEY

381. 34

N+S ALLEY (CONT.)

3455 7.5 LT Bay Apron + Single gar 13.2 LT
(wide angle apron)
+ Swelling

3451 13.6 RT Bay 3-car gar

3450 7.5 RT END Fence + WALL

3448 16.5 LT end gar 6.4 apron

3431 16.5 LT Bay 2-Car gar 6.5 to apron

3400 7.5 RT Bay 3.5' high Board Fence on 1' high Con. wall - 6' wide

2486 10.9 RT & Single gar (Being built - Spot on TP, FPN
OWNER SAYS WILL BE
Fl. Level)

2457 11.3 RT & Single gar

2452 6.0 LT & Pole Pa 4359

2450

2447 11.45 LT. END gar

380.10
3.51
4.51
13.2
FL
LT.
379.39
4.22
7.5
LIP

RT.

379.72
4.4
1.5
379.67
3.99
16.2
Fl
379.80
3.81
16.15
Fl
379.53
4.08
10.5
Bnk
379.22
4.39
6.4
LIP
379.23
4.38
6.5
LIP
378.6
5.0
7.5
378.5
5.1
7.5
378.3
5.3
378.2
5.4
7.5
Ground
379.01
4.80
7.5
TP
WALL
378.26
5.25
10.9
TP FPN
378.91
5.70
11.3
Fl
379.22
4.39
13.6
Fl.
378.01
5.00
7.5
FTG
WALL
379.1
4.5
1.5
379.1
4.5
7.5
379.1
4.5
7.5
FTG
WALL
378.4
5.2
7.5
WALL

383.61

NYS Alley (Cont.)

4450.20 = S' Line MEADE Bay Park & CB's 7.25 LT & 7.40 RT

LT
379.56
379.17
5.09 5.48
7.25 7.25
TP CB G

E
378.79
5.86

RT
378.76
379.05
5.89 5.60
7.4 7.4
TP CB

4441 7.45 RT Bay 6" Con CB

379.55
379.85
5.10 4.80
7.45 7.45
TP CB

379.93
379.11
5.22 5.54
7.45 7.75
TP CB FTB

4439 7.45 LT Bay 6" Con CB

~~7.45~~

T.P. 5.86 384.65 7.82 378.79

380.23
379.8
3.38 3.8
7.9 7.5
TP curbing

384.65

379.7

379.3

4435 7.9 LT & 2.0' x 1.5 curbing around Rent under house

3.9 4.3
7.5

4416 6.5 LT & deadman

4402 6.9 LT & Pole JPA 4389

4400 20.6 RT & single gar 9.0 to lip

379.7

379.6

379.5

379.3

379.30

379.33

3.9 4.0 4.1 4.3 4.31 4.28
1.5 7.5 9 20.6
4.37 4.2
4.1
FI

3490 14.4 RT END 3-car gar

3483 14.4 RT E 3rd door 3-car gar

3472 14.2 RT & 2nd open 3-car gar

3466 8.0 LT END apron

3461 14.1 RT & opening 3-car -gar

379.70
4.7
8.0
LIP

379.24
379.27
4.37
14.3
4.37
14.2
FI

379.23
4.38
14.1
FI

38361

N. S. ALLEY (CONT.)

LT.

Q

RT.

CHK

9.77 373.53 = 373.50 (see 13M)

T.P.

2.30 383.30 3.65 381.00

4190.20 = Q MEAN



4162.20 = S' CR LINE MEAN

380.75
1.10
30.

379.60
5.05

378.90
5.75
50

379.60
379.08
379.20
378.66
378.60
378.97

5.05 5.57 5.95 5.99 6.05 6.18
28 30 30 30 30 30
CR C CR C CR C

378.38
378.38
378.81
377.75
378.27

6.27 6.27 5.78 6.21 6.30
7.5 9.5 9.5 5.0 5.0
C CR C C CA

384.65

T. A. Stamper

INDEXED

JUL 9 1953 7-30-53

TOPOGRAPHIC FEATURES OF LINDA-VISTA RECREATIONAL AREA W.O. 20006

NOTE: Basis of Bearing for Coords. are according to 319-B to Linda Vista Road which bears N21°23'E

See Page 60 for add. Notes

W. Line Lot 5 Lemona St

PL 1197

8' Woven Wire Fence

BASEBALL DIAMOND

N 8653.37
W 5044.815

Ed. 12" Conc. Man under 8' Shrub

5 1/2" Cor. Pl. 1189

RS 98W 1197 2+

Set Hub & Disk Home Plate 448' 539.00' 589° 34' 53" E

Replaced with PK Nail 11/5/55

NOTE: Used this line for bearing to C.T.

Baseline

Light Pole

3+58.80 Set Hub & Disk

2+58.80 Set Hub & Disk

243' stadia

60' 15" 007.07" E 258.80'

100'

26.59'

25'

19.5'

N 3

N 2

N 1

N 4
set Vertical Chis. in Wall
B.M. Elev. = 352.75

NO Scale

N 8641.32
W 3392.48

(Destroyed)
N 8634.76
W 3728.69

B.M. Elev. 345.80

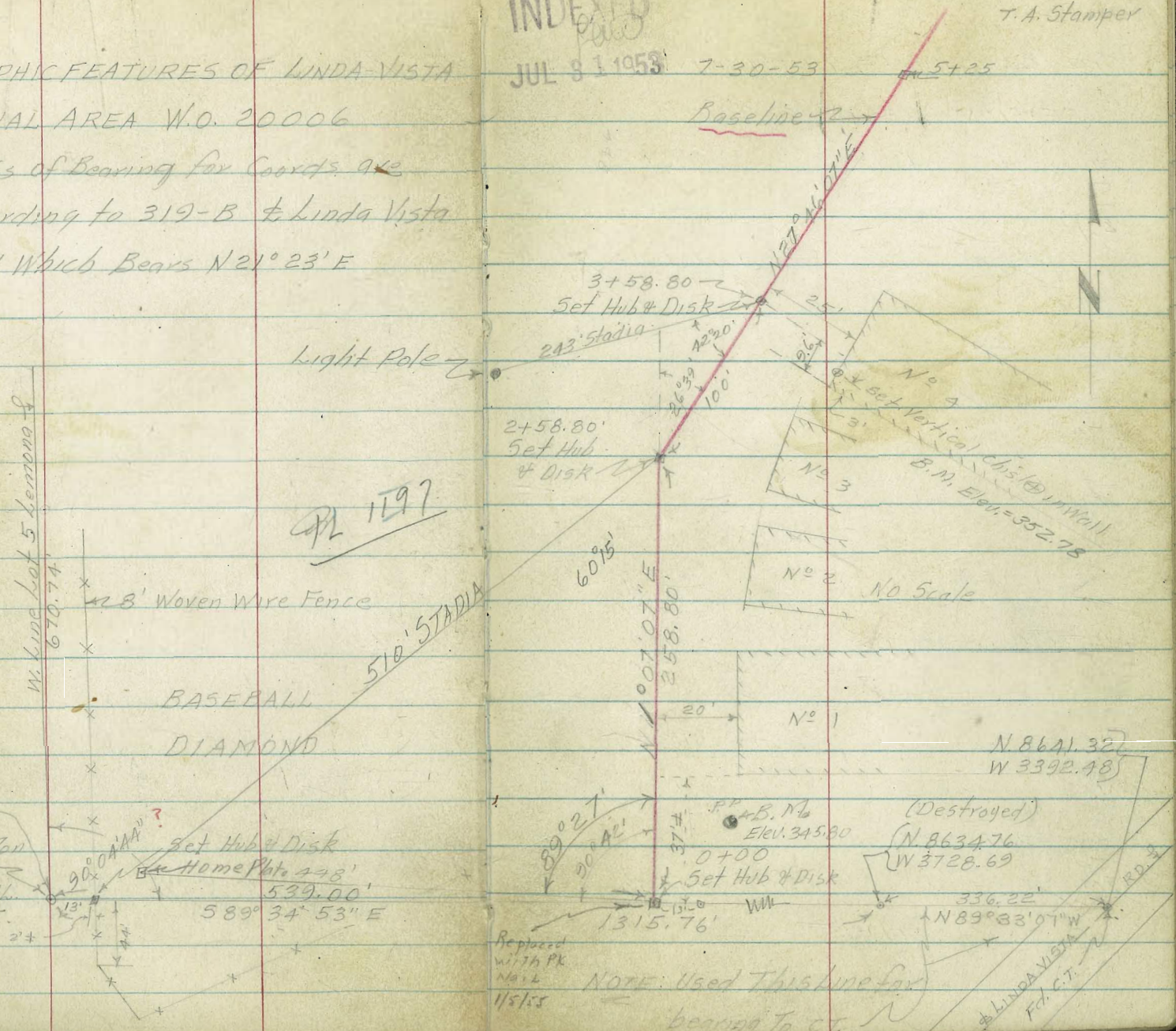
0+00 Set Hub & Disk

1315.76'

336.22'

N 89° 33' 07" W

LINDA VISTA Rd. C.T.



CROSS SECTION'S OF LINDA VISTA
RECREATION AREA W.O. 20006

DWG 10987-L
Ref FB. 2272
5 7-30-53
G-312
33

Stampers
K Huffman
+ Moralez
+ Less

Sta	H.I	Flev.
3+00	341.59 13.4 200	342.18 11.8 175 150 39 125
2+75	341.59 13.4 200	342.09 12.9 175 150
2+58.80	341.78 13.7 200	342.38 12.6 175 150
B.M.	2.20	352.78
B.M.	3.21	351.77
	3.18	354.98
T.B.M.	2.06	345.80
	1.16	347.86
B.M.		346.70

Lt.	±	Rt.
345.59 94 100	346.58 2.7 75	347.88 7.0 50
344.75 106 125	345.08 2.1 100	345.88 8.7 75
344.78 11.8 125	343.98 9.5 101	345.48 8.9 75
	346.08 8.3 25	346.68 8.2 0
	347.08 7.9 25	347.18 7.8 50
	K 354.98	

Set Check Bench Chisel + 3' from Cor Blch (see sketch)

Top 2x28 Disk Sta 3+58.80

Set 8-d Nail in
N14 Side P.P. Opposite Sta 0+00 (see sketch)

Top 1/2" Bolt Top F.H. 5ly ab. Ret Fulton St +
Approx 200' Wly of Levant St.

7-30-53

X-SEC'S REC AREA LINDA VISTA CONTD

Lt. ± Rt.

4+00

342.88
11.1 2.0
200 175 150

345.08
9.9 2.0
175 150

345.78
9.0 2.0
175 150

347.48
7.5 125

348.38
6.6 100

349.38
5.6 75

350.08
4.9 50

350.48
4.5 25

350.98
4.0 0

351.78
3.7 25

351.78
3.6 50

3+75

343.38
11.6 200

344.28
10.7 175

345.18
9.8 150

346.48
8.5 125

347.75
7.2 100

349.18
5.8 75

350.48
4.5 50

351.18
3.8 25

351.48
3.5 0

352.08
2.9 25

352.18
2.8 50

3+50

343.08
11.9 200

343.78
11.2 175

344.58
10.4 150

346.18
8.8 125

347.58
7.4 100

348.58
6.3 75

349.98
5.0 50

350.88
4.0 25

351.78
3.2 0

352.18
2.8 25

@Bldg

3+25

341.98
13.0 200

342.68
12.3 175

343.58
11.0 150

344.98
10.0 125

346.18
8.8 100

347.28
7.6 75

348.38
6.6 50

349.78
5.2 25

350.38
4.6 0

350.48
4.5 25

350.88
4.5 50

↗ 354.98

X-5EG'S LINDA VISTA REG AREA CONTD

7-30-53

Lt ♀ Rt.

5+00

343.58	344.28	345.58	346.28	347.28
11.4	10.6	9.1	8.7	7.6
200	175	150	139	125

347.68	348.18	349.18	350.38	351.28	352.48	353.18	353.48
7.3	6.8	5.8	4.6	3.6	2.5	1.8	1.5
128	100	75	50	25	0	25	50

4+75

4+75

343.98	345.18	346.28	346.58	347.28
11.0	9.8	8.7	8.4	7.2
200	175	150	141	125

348.28	349.28	350.18	351.18	352.08	352.98	353.18	353.58
6.2	5.6	4.8	3.8	2.9	2.0	1.5	1.4
111	100	75	50	25	0	25	39

@B119

4+50

344.18	345.18	345.58	346.28	348.58
10.8	9.8	9.4	8.6	6.9
200	175	161	150	136

348.28	349.28	350.48	351.28	352.18	352.88	353.28	353.28
6.6	5.2	4.5	3.7	2.8	2.1	1.7	1.7
125	100	75	50	25	0	25	50

4+25

343.88	345.28	346.88
11.1	9.6	8.1
200	175	150

347.28	348.88	349.78	350.68	351.28	351.28	351.98	352.28
7.6	6.1	5.2	4.3	3.6	3.2	3.0	2.6
125	100	75	50	25	0	25	50

354.98

7-30-53

X-SEC. LINDA VISTA REC. AREA CONTD

4. ⅈ RT

Sta

B.M. 1399 346.72 ~

346.70 (see Pg. 38)

11.2 337.5

Ground Elev Baseball Diamond Mt. Pole
opp.
(see sketch)

2.28 348.71

T.B.M. 8.55 346.43

Top B.L. Hub Sta 2+58.80 (see sketch)

5+25

344.28			
10.7	344.68	345.28	345.68
200	175	150	125

346.98									
85	8.0	7.1	6.0	4.3	3.1	2.3	1.8		
115	100	75	50	25	0	25	50		

354.98

354.98

TOPOGRAPHIC FEATURES LINDA VISTA

7-30-53

RECREATION AREA

Sta	Dist	Azim	Rod	Elev
B.M. +5.75	352.18			346.43

Top Hub Sta 2+5880

Note zero Azim. = North

1	30'	260°30'	6.7	345.5
2	124'	281°00'	9.5	342.7
3	200'	284°15'	12.2	340.0
4	178'	272°27'	12.6	339.6
5	182'	271°42'		
6				
7				
8				
9				

± Pole

Fire Sta. #27.

INDEXED

BEK

OCT 13 1953

CROSS SECTIONS OF CLAREMONT MANOR N^o 4 W.O. 21184

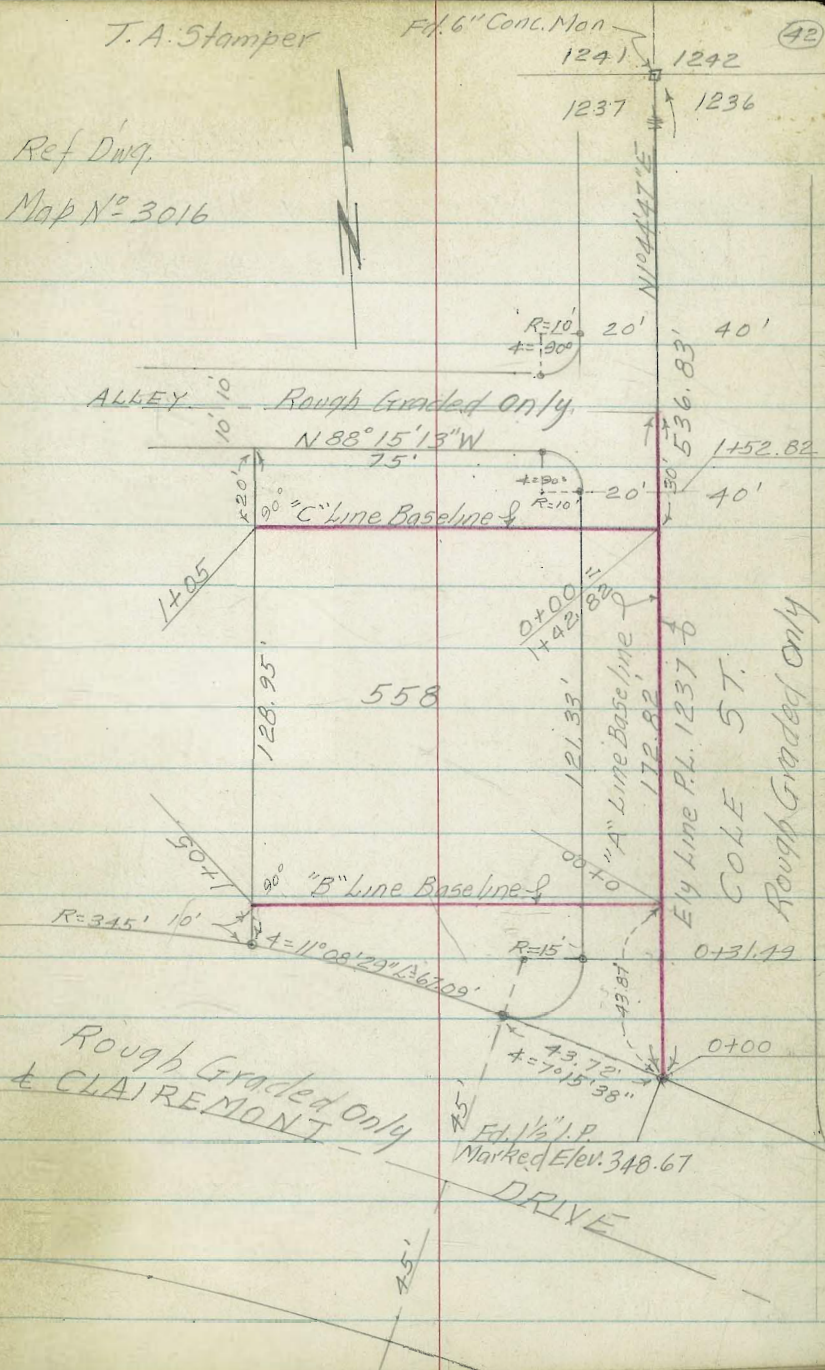
T.A. Stamper

Ft. 6" Conc. Man

(42)

Ref Dwg.

Map N^o 3016



See Sheets 10074-8 L.

10-14-53

CROSS SECTIONS OF LOT N^o 558 OF
CLAIREMONT MANOR N^o 4 W.O. 21184
"A" Line Sections (See Sketch)

Lt. & Rt.

NOTE: Direct Rod used
"Z"

Stamp
Huffman
Nordahl
Sherry

1+00

348.1	348.4	348.9	349.3	349.7	349.8	348.6	348.5
125	105	75	50	20	12	10	0

0+75

347.8	348.3	348.8	349.0	349.6	349.5	348.4	348.4
125	105	75	50	20	12	10	0

0+43.87

347.9	347.8	348.3	348.5	349.0	349.0	348.9	348.1	348.2
125	105	75	50	35	20	11	9	0

0+31.49

348.5	349.0	348.8	348.8	347.8	348.0
50	27	20	14	11	0

B.M.

348.67

Top of 1/2" Pipe Sta. 0+00 (See Sketch)

10-14-53

"A" LINE X-SEC'S CONT'D

Lt.

±

Rt.

1+72.82 ± Alley

347.5	348.1	348.5	349.0	349.2	349.3	349.6
150	125	105	75	50	20	0

1+62.82 Sly Alley Line

348.6	348.8	349.3	349.8	349.8	349.5	349.4	349.4	349.3	349.4
125	105	75	50	27	26	20	17	12	0

1+52.82

349.9	350.0	349.9	349.3	349.2
50	20	14	12	0

1+42.82

348.9	349.2	349.6	349.9	350.1	349.9	349.7	349.1	349.1
125	105	75	50	30	20	13	12	0

1+25

348.3	348.7	349.3	349.7	350.0	349.8	349.1	348.8
125	105	75	50	20	13	11	0

10-14-53

X-SEC'S "B" LINE

Lt. ♀ Rt.

0+75

346.6 346.8 346.3 346.4
50 49 35 27

346.9 347.0 348.1 348.3 348.6
24 18 9 0 11

0+50

347.2 347.1 346.6 347.4
75 50 34 32

347.3 347.7 348.5 348.6
22 20 14 18

0+35

347.4 347.4 347.3 346.8
75 50 43 34

347.4 347.9 348.8 349.0 349.4
32 21 17 8 25

0+20

347.6 347.7 347.4 347.2
75 50 36 30

347.4 348.4 348.4 348.6 349.0 349.4
27 25 20 12 0 16

0+00

348.1 348.0 348.0 348.2 348.3
75 50 25 0 25

X-SEC'S "B" LINE.

Lt. C Rt.

1 + 25

346.2	345.8	346.0	346.6	346.6	347.5
45	23	16	15	9	0

1 + 0.5

346.1	346.3	345.9	346.2	346.7	346.6	346.8	347.7	347.8	348.1
50	38	27	19	17	13	10	3	0	16

10-14-53

(47)

X-SEC'S "C" Line

Lt. E Rt.

0+75

349.3 349.3 349.9 349.6 349.3 348.9 349.0
20 11 7 8 20 21 30

0+50

349.7 349.8 350.1 350.2 350.0 350.1 349.9 349.8 349.3 349.2
20 12 10 9 6 4 8 18 20 30

0+30

350.0 350.0 350.2 350.1 350.3 350.1 350.1 349.8 349.5 349.3
20 12 11 8 5 8 10 18 20 30

0+20

350.0 349.9 350.0 349.8 349.5 349.4 349.3
10 8 10 16 18 20 30

0+00

349.1 349.5 349.7
0 25 50

10-14-53

X-SEC'S "C" LINE CONT'D

Lt. † Rt

B.M.

348.67 ~ 348.67 (see Pg. 43)

1+25

348.4 348.5 349.3 349.3 348.7 348.5 348.2 348.1
20 11 7 6 8 20 21 30

1+05

348.7 348.8 349.3 349.2 349.1 348.9 348.6 348.5
20 11 9 8 9 20 21 30

X- Sect Udall St.
Worden to Warrington

Shepard
Bruner
& Neil

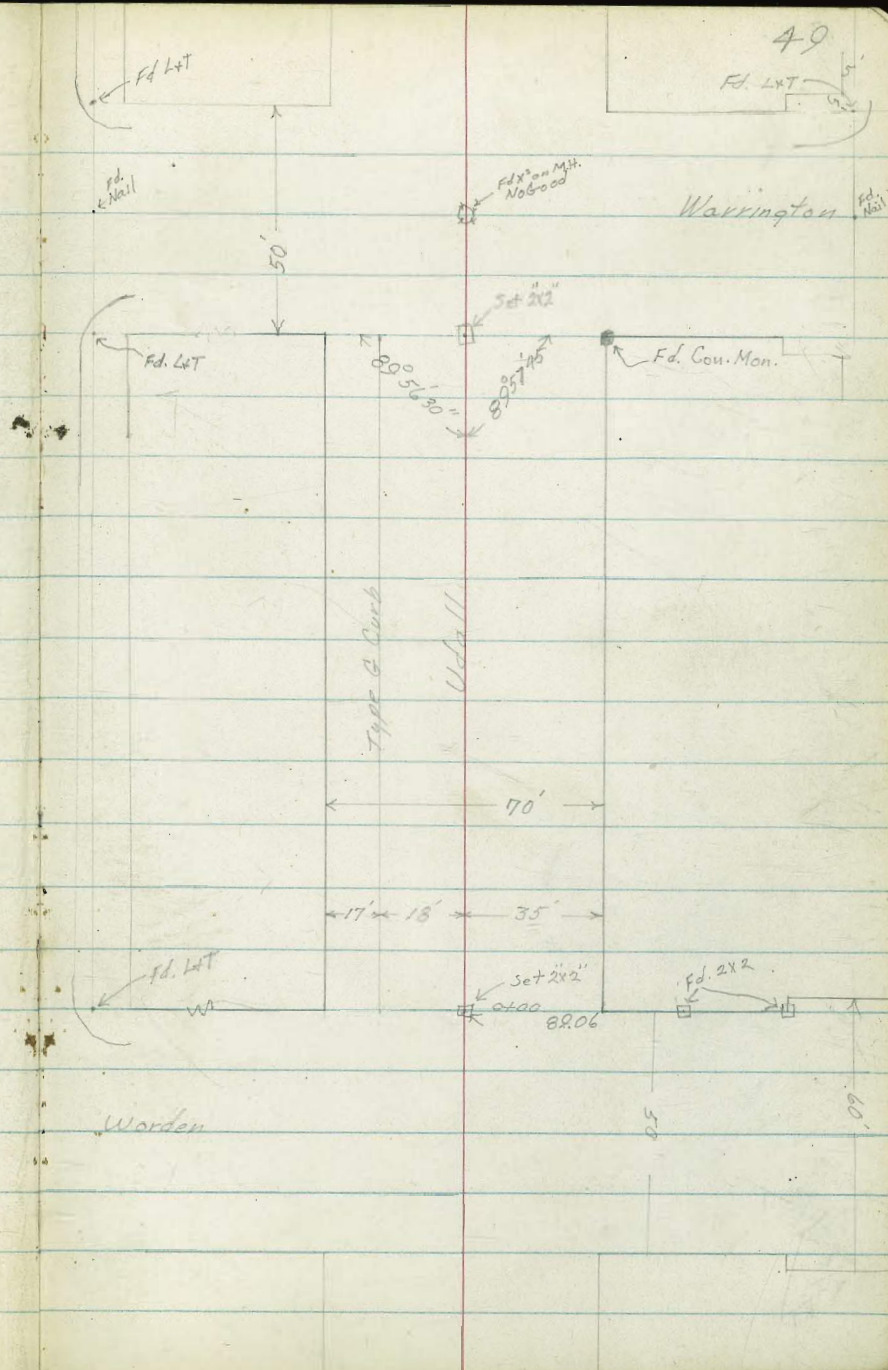
1-4-54
W.O. 32379

Ref: F.B. 1856
P. 3
F.B. 2172
P. 9
F.B. 2085
P. 21

INDEXED

HER
JAN 6 1954

Reduced 1/25/54
R. O'Low



0-28 24.3 Lt. & Deadman

0-41 24.8 Lt. & Anchor Pole

0-00 { 18.0' Lt. Begin Type B. Cont
Fly line Warden

85.0	84.0	81.1	79.5	79.03	78.44	78.8	78.8	73.0	72.9	79.5	80.0
+0.5	15.44	6.3	6.5	7.04	6.7	6.9	12.5	12.6	6.0	5.5	
75	50	35	23	18.18	17	20	31	35	50	75	
				CB. Gut.		TOP	TOE	TOE	TOP		

0-04 32.4 Lt. End Wood Fence

0-25 & Warden

80.5	79.1	78.3	78.6	78.4	71.5	71.4	72.7	78.9	79.8
5.0	6.4	7.2	6.9	7.1	14.0	14.1	12.8	6.6	5.7
75	35	25	6	12	25	33	35	46	75
				TOP	TOE	TOE	TOP	TOP	

0-37 35.3 Lt. Begin 3' High Wood Fence

0-49 33.4 Lt. & Power Pole #2150

0-50 Wly line Warden

80.3	78.3	77.8	78.3	69.7	69.6	74.2	78.0	79.5
5.2	7.2	7.7	7.1	15.8	15.9	11.3	7.5	6.0
75	35	25	70	170	272	350	22	75
			TOP	TOP	TOP	TOP	TOP	

85.48

6.47 85.48 11.86 79.01

B.M. 3.22 90.87 87.65

SW. Corn. Man.,
Warrington &
Udall

Udall St.

1411 180 Lt Fly Edge Conc. Drive

25.6 R+ & Power Pole #3833

1400 180 Lt 1 22' Conc. Dr

0489 120 Lt Wly. Edge Conc. Dr.

0480

0470

0450

0445 180 Lt & 13' Conc. Drive

82.0 81.34

3.98 3.11
23 Cut

83.92	84.94	81.75	81.04	81.1	80.4	81.0	81.1	80.5
4.56	0.59	3.73	4.49	4.4	5.1	7.5	7.4	5.0
45	35	23	18	18	19	21	35	30
Dr.	Dr.		4.44 Cut					

81.49 80.72

3.99 3.26
23 18
Dr. Cut

84.8	81.7	81.10	80.47	80.7	80.1	80.3	80.6
0.7	3.8	3.88	5.01	7.8	5.4	5.2	4.9
35	23	18	18		19	35	50
		66	6.7				

84.6	81.5	80.82	80.25	80.3	79.8	80.4	79.3	77.0
0.9	7.0	4.6	5.23	5.2	5.7	5.1	7.2	8.5
35	33	18	18		19	29	35	50
		66	6.7			Top	Top	Top

83.3	80.45	79.7	79.8	79.5	80.1	77.4	75.0	80.2
2.20	5.05	5.60	5.7	6.0	5.4	8.1	10.5	5.3
35	23	18		19	26	35	44	58
Dr.	Dr.	6.7			Top	Top	Top	Top

85.02	85.05	80.32	79.59
0.46	2.43	5.16	5.89
45	35	23	18
Dr.	Dr.	Dr.	4.7

85.48
7

Vdall St

1450

90.0	88.9	86.2	85.61	85.00	84.7	84.3	84.8	86.4	86.0
17	2.8	5.5	6.12	6.73	7.0	7.4	6.9	5.3	5.7
45	35	23	18	18		19	18	33	50
			Dr.	Gut					

2422 26.4 Rt & Dendron

2409 18.0 Lt. Ely Edge Con. Drive

84.74 83.94

6.99	7.79
23	18
Dr.	Gut

2400

88.74	87.10	84.31	83.66	83.4	82.9	83.2	84.6	84.7
2.99	7.63	7.42	8.07	8.3	8.8	8.5	7.1	2.0
45	35	23	18		17	18	35	50
Dr.	Dr.	Dr.	Gut					

1499 26.5 Rt. & Power Pole #3817

1490 18.0 Lt. Wly Edge Conc. Dr.

84.19 83.40

7.59	8.33
23	18
Dr.	Gut

91.73

78 274 91.93 1.99 83.98

1450

82.0	84.2	83.7	83.01	82.39	82.2	81.7	81.9	81.6	81.7
+35	+13	18	2.47	3.09	3.7	3.8	3.6	3.9	3.8
50	30	23	18	18		18	19	35	50
			Dr.	Gut					

85.48

Udall St.

TR

4.07 82.66 = 82.65
 Sw. Con Man
 Warrington &
 Udall

3+25.14 C.M.H.
 Warrington

88.0 81.6 81.5 81.39 81.9 81.7
 3.7 4.1 4.2 4.34 3.8 4.5
 25 50 35 Am 35 25

3+0.2

88.0 81.2 86.6 86.5
 3.7 4.5 5.1 5.2
 50 35 18

3+0.1 333 Rt. & Power Pole #2146

3+00.14 { 18.0 Lt. End Type G. Ch
 Wly Line Warrington

89.4 89.2 88.6 81.2 81.05 86.42 86.2 86.1 81.8 81.8 86.4
 2.3 2.5 3.1 4.5 4.6 5.31 5.5 5.6 3.9 3.9 5.3
 25 50 35 23 18 18 18 18 30 35 25
 Ch 6.5

2+5.7 34.5 Rt. & 10' Conc Dr.

86.57 86.78
 5.16 7.75
 34.5 49.3

Reduced 1/25/54
 R. O Low

91.73

Re. X-sec Alley Block 13, Swans Add.

38² RT= garage Floor

10⁰ RT= begin Conc Drive

0+78- 10⁰ RT= end 5' high board fence

10⁵ RT= begin 5' high board fence

0+50- 10⁰ RT= end 4' high board fence

0+42- 10² LT= end 3' high wire fence

0+25- 10⁰ RT= 2 3' wide Conc. Walk

0+04- 13² LT= NWly COR gar opening Nly

10⁴ LT= begin 3' high wire fence

10' RT= begin 4' high board fence

0+00- sly line 1 Maple 3T - 2" x 2" Hub 6" deep

0-11-10⁵ RT= 14" Power pole P4375-

BM- 11.29

291.46

280.17

LT= e14

Alley

RT= W14-

6 284.78
100
Dr.
7 14
38²
Conc Floor

286.5
5⁰
20

286.3
5²
10

285.6
5⁹

285.5
6⁰
10

285.1
6¹⁴
20

285.82
5-6
10⁰
Walk

287.79
3⁶⁷
13²
Conc Floor

287.8
3¹
50

287.41
4⁰⁵
NELY
COR
Dr.

287.11
4³⁵
12⁰
NWly
COR Ramp
into gar
opening
Nly.

286.6
4⁹
10

285.52
5²⁴
ON d
Hub ground

286.2
5¹¹
10

286.2
5³
10³
NECOR
Conc Dr.
opening
Nly.

285.72
5⁷⁴
37⁰
NWCOR
Dr.

285.4
6¹
50

291.46

NW BP. Maple + Fairmount

X-sec Alley BIK 13 - Swans Add

2+00

1+75

1+50

1+25

1+04 - 12° LT = d 2 1/2' Conc Walk

1+00 - 8 1/2° RT = d 10" power pole PA2597

0+94 - 10° RT = end Conc Drive

LT = cly
7 1/2' 283.7
20

8 1/2' 283.1
10

10' Alley
8 1/2' 282.7

RT = WLY
8 1/2' 282.6
10

9' 282.2
20

8 1/2' 283.4
10

8 1/2' 283.1

8 1/2' 283.2
10

6 1/2' 284.8
20

7 1/2' 284.0
10

8 1/2' 283.5
20

8 1/2' 283.5
10

8 1/2' 282.8
20

7 1/2' 284.5
10

7 1/2' 284.0

7 1/2' 283.9
10

6 1/2' 285.21
12 1/2' WIK

6 1/2' 285.5
20

6 1/2' 285.1
10

6 1/2' 284.6
6

7 1/2' 284.3
10

7 1/2' 284.5
10

7 1/2' 284.1
20

7 1/2' 284.43
10 1/2' Dr.

291.46 7

X-sec Alley BIK 13, Swans add.

2+53- 7⁵ RT= ϕ 10" power pole PA 2573

2+50

282.4
9¹
20
282.0
9⁵
10

ϕ
Alley
281.4
10¹

RT= W/4. 57

281.5
10⁰
10
281.3
10²
20

2+33- 9⁸ RT= ϕ 2⁵ conc walk

281.98
9⁴
9⁸
WIK

2+25

282.5
9⁰
10

282.1
9⁴

282.1
9⁴
10

2+09- 14² LT= ϕ single car garage
conc Floor only

283.54
7⁹
14²
Floor

283.54
7⁹
14²
WIK

2+02- 14⁹ LT ϕ 2⁵ conc walk

2+01- 13⁸ RT= ϕ 2⁵ conc walk

282.45
9⁰
13⁸
WIK

291.46 π

x-sec Alley BIK 13, SWANT ADD

3+50

3+25- 15³ LT= ONLY COR single gar. Conc Floor

3+00

2+90- 10° LT= begin Conc Apron + Walk

2+87- 10° LT= 4 15" CONC WALK

2+75

2+71- 7² RT= & Deadman

LT= cly

$\frac{278.4}{13.1}$
26

$\frac{277.7}{13.8}$
10

280.66
10⁸⁰
15³
Conc Floor

279.49
11⁹⁷
10²
Conc

279.1
12⁴
10²
Dirt

$\frac{280.43}{11.3}$
10²
Conc
W/edge

$\frac{280.3}{11.2}$
10²
Dirt

$\frac{279.8}{11.7}$

$\frac{280.77}{10.69}$
10²
NW/4
COR APRON

$\frac{281.02}{10.44}$
10²
W/K.

$\frac{281.1}{10.4}$
10

RT= W/4- 5²

$\frac{277.4}{14.1}$
10

$\frac{277.4}{14.1}$
10

$\frac{277.1}{14.1}$
20

$\frac{278.7}{12.8}$

$\frac{278.4}{13.1}$
10

$\frac{278.2}{13.3}$
20

$\frac{279.8}{11.7}$

$\frac{279.4}{12.1}$
10

$\frac{279.5}{12.0}$
20

$\frac{280.7}{10.90}$
10

$\frac{280.1}{11.4}$
10

291.46 T

x-sec Alley Blk 13, Swain's Add

LT = 214

Alley

RT = w/ly - 59

3

TP₃ - Start BM. 5.45 ^(280.17) 280.19

NW BP - Maple Fairmount

3 TP₂ 6.39 285.61 0.49 279.22

4+25 - Falls steeply to bottom of canyon.

3

4400

2 3+99 - 8⁵ RT = & Dead Man

3+78 - 8⁵ RT = & 10" power pole PA 2551

2 Small draw parallels & Alley and will carry water sly to bottom of canyon.

3+75 - Nly Rim Canyon.

2

2 TP₁ 0.70 279.71 12.45 279.01

on Prop pipe on left stat 3+25

291.46

		259.5		256.7		258.6
		20 ²		23 ²		21 ⁴
		10		& Draw		10
		270.5		265.5		270.4
		9 ²		14 ²		9 ³
		20		5		20
				BOTTOM of DRAW		
		277.7		268.2		270.4
		12 ⁰		11 ⁵		9 ³
		10		10		20
		279.2		276.3		275.8
		0 ⁵		3 ⁴		4 ³
		20		36 ⁴		10
		20		Hub		20
		10		276.9		275.4
				276.3		274.9
				276.07		
				39		48
				40		40

279.71 π

INDEXED
JAN 6 1955

X-sec of Recreation Bldg at
Community Center

See Page 37

Dwg 10, 987-L

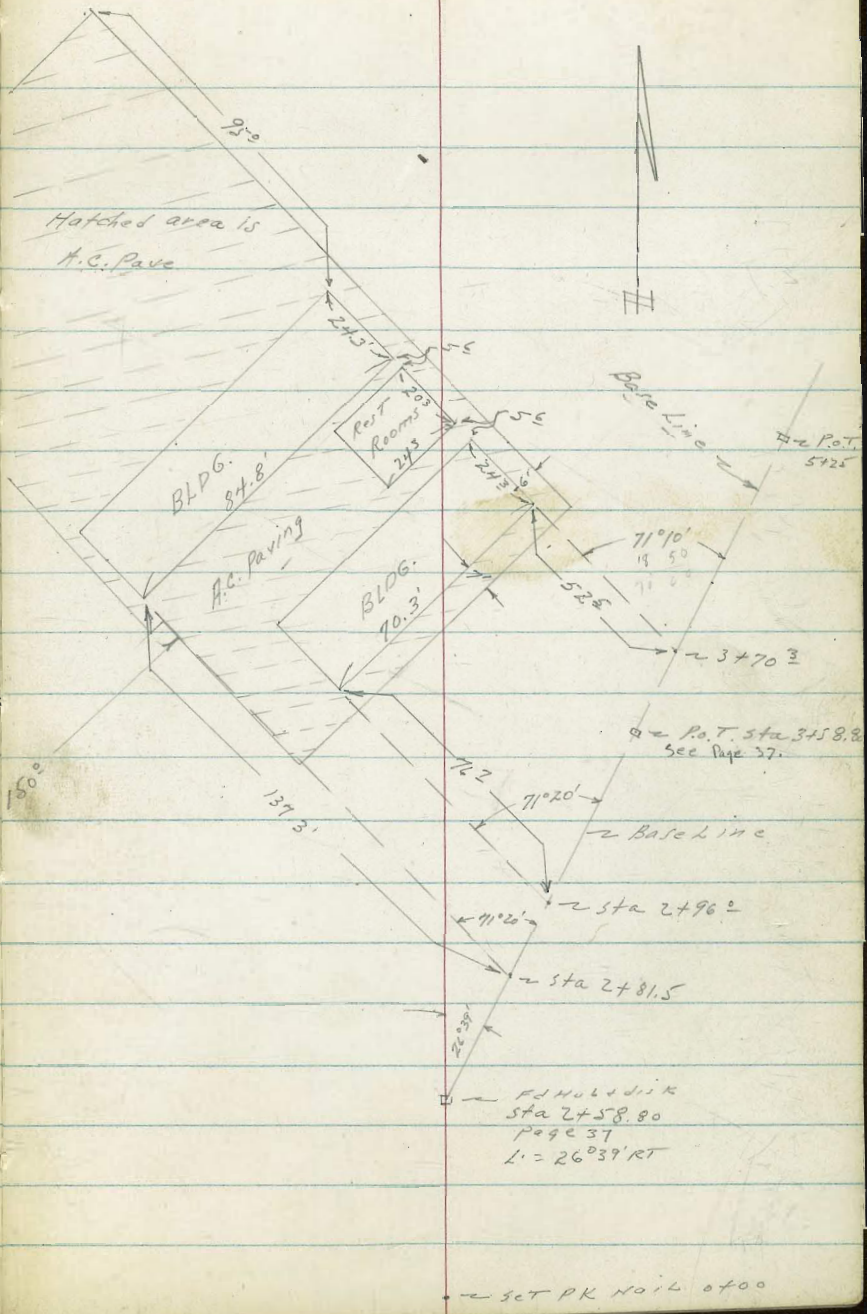
See Page 61 for Levels

1-5-55

C. Allen

D. Sisson

C. Powell



Levels on Rec area Linda Vista

See Page 37 + 60 -

354.79K

4+25

344.50	344.59	344.79	344.81	346.01
10 ²	10 ²	10 ²	9 ²	8 ¹
200 ON A.C.	175 ON A.C.	150 A.C.	145 ON A.C.	139 ² ON A.C.

347.19	347.37	347.89	348.99	350.49	351.39	351.79	352.19	352.49
7 ⁶	7 ⁴	6 ⁹	5 ⁴	4 ³	3 ⁴	3 ⁰	2 ⁶	2 ³
125 ON A.C.	113 NLY A.C.	100	75	50	25		25	50

90° to Bl.

4+100

347.49	347.49	347.79	350.79	350.99	351.79	351.49
7 ³	7 ³	7 ⁰	4 ²	3 ⁸	3 ⁵	3 ³
78 NLY Bldg Line	66 A.C.	44	20		25	50

344.09	344.59	344.79	345.09
10 ²	10 ²	10 ²	9 ²
229 ² COR. AS. Area	200	175	150 A.C.

Nly edge of A.C. near
Same elev + 6' ahead

346.79	347.29	349.04	347.59
8 ⁰	7 ⁵	5 ^{7⁵}	7 ²
143 Br. Kin A.C.	132 ⁵ COR Bldg A.C.	108 ³ FLOOR Bldg	108 ³ A.C. AT COR Bldg

347.59	349.47	347.49	347.49
7 ²	2-37	7 ³	7 ³
102 ² A.C. AT PORT Bldg COR	82 ⁴ FLOOR PORT Bldg	82 ⁴ COR PORT Bldg	76 ⁸ A.C. AT COR Bldg

of existing Bldgs - L: 71010 from NELY
3+70.3 - Section taken ON SKIN along Back.

349.04	347.79	347.29	347.49	350.69	351.69
5 ^{7⁵}	7 ⁴	7 ²	7 ³	4 ¹	3 ¹
52 ⁵ FLOOR A.C.	52 ⁵ A.C. edge Bldg	45 ² edge A.C.	42	25	

354.79 X

BM. 3.02

354.79

351.77

2" x 2" Hub Sta 358.80 - Page 38

Rec. area
Linda Vista cont

LT

Base
line

RT

62

354.79.

5450

344.09	344.59	345.19	345.79	346.29	347.29	348.09	349.19	350.89	350.99	352.69
10 ⁷	10 ⁷	9 ⁶	9 ⁰	8 ⁵	7 ⁵	6 ⁷	5 ⁶	3 ⁹	3 ⁹	2 ¹
200	175	150	125	100	75	50	25		25	50

354.8

5425

344	344.8	345.2	346.5	347.5	348.1	349.2	350.7	351.9	352.7	351.9
10 ⁰	10 ⁰	9 ⁶	8 ³	7 ³	6 ⁷	5 ⁶	4 ¹	2 ⁹	2 ¹	2 ⁹
200	175	150	125	100	75	50	25		25	50

5400

343.7	344.8	346.8	347.5	348.4	349.4	350.7	351.5	352.5	353.0	353.4
11 ¹	10 ⁰	8 ⁰	7 ³	6 ⁴	5 ⁴	4 ¹	3 ³	2 ³	1 ⁸	1 ⁴
200	175	150	125	100	75	50	25		25	50

354.8

4775

344.0	345.2	346.3	347.8	349.3	350.2	351.2	352.1	353.0	353.5	353.8
10 ⁸	9 ⁶	8 ⁵	7 ⁰	5 ⁵	4 ⁶	3 ⁶	2 ⁷	1 ⁸	1 ³	1 ⁰
200	175	150	125	100	75	50	25		25	39 W/4 of Bldg

4750

344.2	345.5	347.0	348.5	349.8	350.3	351.2	352.1	352.9	353.3	353.4
10 ⁶	9 ³	7 ⁸	6 ³	5 ⁰	4 ⁵	3 ⁶	2 ⁷	1 ⁹	1 ⁵	1 ⁴
200	175	150	125	100	75	50	25		25	50

354.79 x

Rec. Area
Linda Vista
Cont.

LT

B.L. RT

43

354.8

TP, starting BM-

3.02 351.77

	342.1	342.2	342.1	343.3	343.9	343.8	344.8	345	345.1	345.3	345.7
6+50	12 ⁷	12 ⁶	11 ⁷	11 ⁵	10 ⁹	11 ⁰	10 ⁰	9 ⁰	9 ⁷	9 ⁵	9 ⁴
	200	175	150	125	100	75	50	25		25	50

	343.1	343.2	342.9	343.7	344.5	344.6	345.0	345.5	345.6	346.2	347.1
6+25	11 ⁷	11 ⁶	11 ⁹	11 ⁴	10 ³	10 ²	9 ⁸	9 ³	9 ²	8 ⁶	7 ⁷
	200	175	150	125	100	75	50	25		25	50

	343.4	343.5	343.9	344.5	344.7	345.5	346.0	346.6	347.0	347.5	349.5
6+00	11 ⁴	11 ³	10 ⁹	10 ³	10 ⁴	9 ³	8 ⁸	8 ²	7 ⁸	7 ³	5 ³
	200	175	150	125	100	75	50	25		25	50

	343.8	344.5	344.7	345	346	346.5	347.3	447.9	348.6	350.3	352.1
5+75	11 ⁰	10 ³	10 ⁴	9 ⁸	8 ⁸	8 ³	7 ⁵	6 ⁹	6 ²	4 ⁵	2 ⁷
	200	175	150	125	100	75	50	25		25	50

354.79

Roberts
Koren
Moore
6-28-55
W.O.# 25020

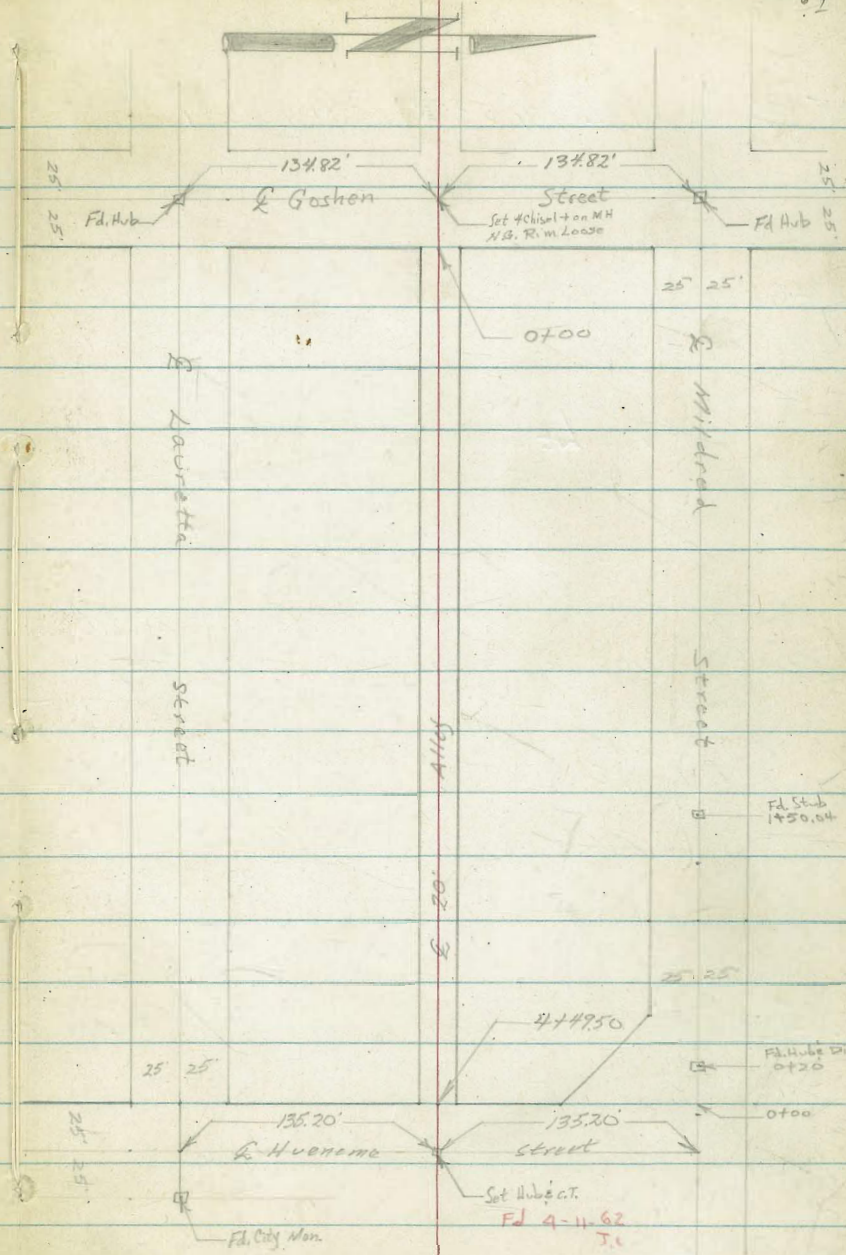
X-Section Alley Block 6, Silver Terrace

64

See FB 2236

INDEXED

JUL 5 1955



T.P. 922 171.53 N 0.99 162.31

0+63

161.5	160.5	161.1	161.0	160.2	159.9	159.9	157.9	160.7
0.5	0.9	1.6	1.7	1.8	1.7	1.8	5.0	6.3
13	10	8	8	5	5	5	98	98
							GRD	Foot
								Top

0+36

{ 13⁰ ~~at~~ begin conc block Ret. wall 6' 10"

{ 10⁰ ~~at~~ End planter box 11' 4"

13 13 13 13 13

Top Foot GRD Top Foot GRD Top

161.3	160.2	160.3	159.0	158.8	148.8	156.9	159.1	160.7
2.0	3.1	3.0	4.3	4.5	4.5	6.4	4.2	
10 ⁰	10 ⁶	10	8	5	5	9 ⁶	9 ⁶	9 ⁶
Top	Foot					GRD	Foot	Top

0+14

10⁰ ~~at~~ begin brick planter box

161.3	160.2	160.3	159.0	158.8	148.8	156.9	159.1	160.7
2.0	3.1	3.0	4.3	4.5	4.5	6.4	4.2	
10 ⁰	10 ⁶	10	8	5	5	9 ⁶	9 ⁶	9 ⁶
Top	Foot					GRD	Foot	Top

0+00

{ 9^E Rebegin conc. block wall (goes up by steps - 9)

{ East Line Goshen

159.8	158.3	157.7	157.6	156.3	155.6	157.9
3.5	5.0	5.6	5.7	7.0	7.7	5.5
10	8	5	5	9 ²	9 ⁵	9 ⁵
				GRD	Foot	Top

0-25

L Goshen

161.9	156.5	150.6
11.4	6.8	12.7
50		50

T.P.

124 163.30 N 13.17 162.06

163.30 N

BM

0.18 175.23

175.05 2" pipe N.E. Pt. of Curve
 Mildred of Goshen

2+50

171.6	Lt						
0.3		179.3					
20		3.6					
		178.3					
		3.7					
		178.2					
		4.3					
		7					
		177.6					
		5.4					
		10					
		176.5					
		8.5					
		25					

2+00

174.8							
7.1		172.7					
20		10					
		171.9					
		10.0					
		7					
		171.6					
		10.3					
		5					
		171.2					
		10.7					
		5					
		149.9					
		12.0					
		10					
		147.7					
		14.2					
		25					

T.P. 10.67 181.92 π 0.28 171.25

181.92 π

1+60

170.4							
1.1		168.7					
20		10					
		3.8					
		7					
		167.7					
		4.6					
		7					
		166.9					
		4.8					
		7					
		165.9					
		5.6					
		10					
		163.0					
		8.5					
		25					

1+39 13^o Lt End double garage

166.58							
4.95		166.52					
13 ^o Floor		10					
		5.0					
		10					
		166.5					
		6.3					
		10					
		166.2					
		5.4					
		10					
		166.1					
		9.0					
		18					
		162.5					
		11.0					
		30					
		160.5					

1+17 12^o Lt begin double garage

166.57							
4.96		166.49					
12 ^o Floor		10					
		5.05					
		10					
		164.4					

1+00 { 13^o Lt End wall
10^o Rt End wall

167.8							
3.7		164.6					
13 Top		10					
		6.9					
		13					
		13					
		6.9					
		10					
		164.4					
		7.1					
		4					
		164.5					
		7.0					
		10.3					
		4					
		161.2					
		11.9					
		10					
		GRD					
		159.6					
		7.0					
		10					
		Foot					
		164.5					
		7.0					
		10					
		Top					
		14.1					
		25					
		159.4					

171.53 π

171.53 π

Cont'd from Page 66

4+45

4+05

4+00

T.P. 12.38 204.90 ∇ 0.33 192.52

3+50

3+00

T.P. 11.10 192.85 ∇ 0.17 181.75

181.92 ∇

64

65

66 67

206.9	204.4	201.3	195.6	197.9	188.5
+2.0	0.3	3.6	9.3	15.0	16.4
20	10		10	20 yard	30 yard

201.1	197.7	196.1	195.3	195.1	192.2	188.8	187.5
3.8	7.2	2.1	9.6	9.8	12.7	16.1	17.4
20	10	5		6	10	17 yard	25 yard

202.6	197.3	195.5	195.1	194.8	193.9	189.9
4.3	7.6	7.4	9.8	10.1	11.0	15.0
20	10	5		6	10	25

204.90 ∇

192.1	188.7	187.7	187.4	187.4	185.3	181.8
0.8	4.2	5.2	5.5	5.5	7.6	11.1
20	10	5		3	10	25

187.7	185.1	183.9	181.3	177.0
5.2	7.8	9.0	11.6	15.9
20	10		10	25

192.85 ∇

Contd From Page 67

Lt

Q

R 68

check

1230 175.06 = 195.05

T.P.

692 187.36

180.44

check

11.40 180.44 = 191.30

Mon. Lauretta & Hueneme

T.P.

0.14 191.84

13.20 191.70

4+74.50

Q Hueneme

213.3
+ 8.4
30

205.2
+ 0.3

196.1
8.8
5.0

207.6

204.0

202.4

199.9

196.1

4+49.50

West Line Hueneme

+ 2.7
20

0.3
10

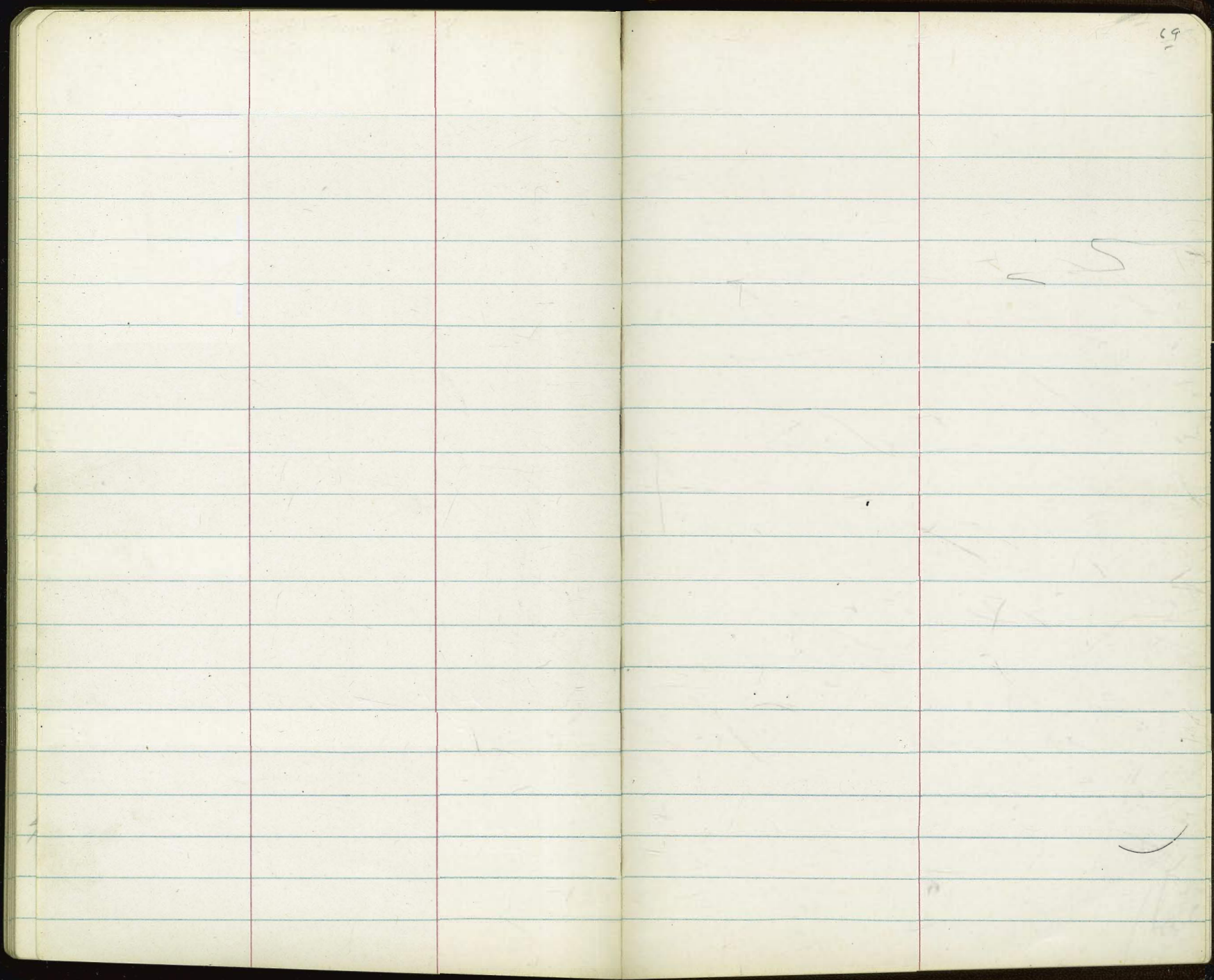
2.5

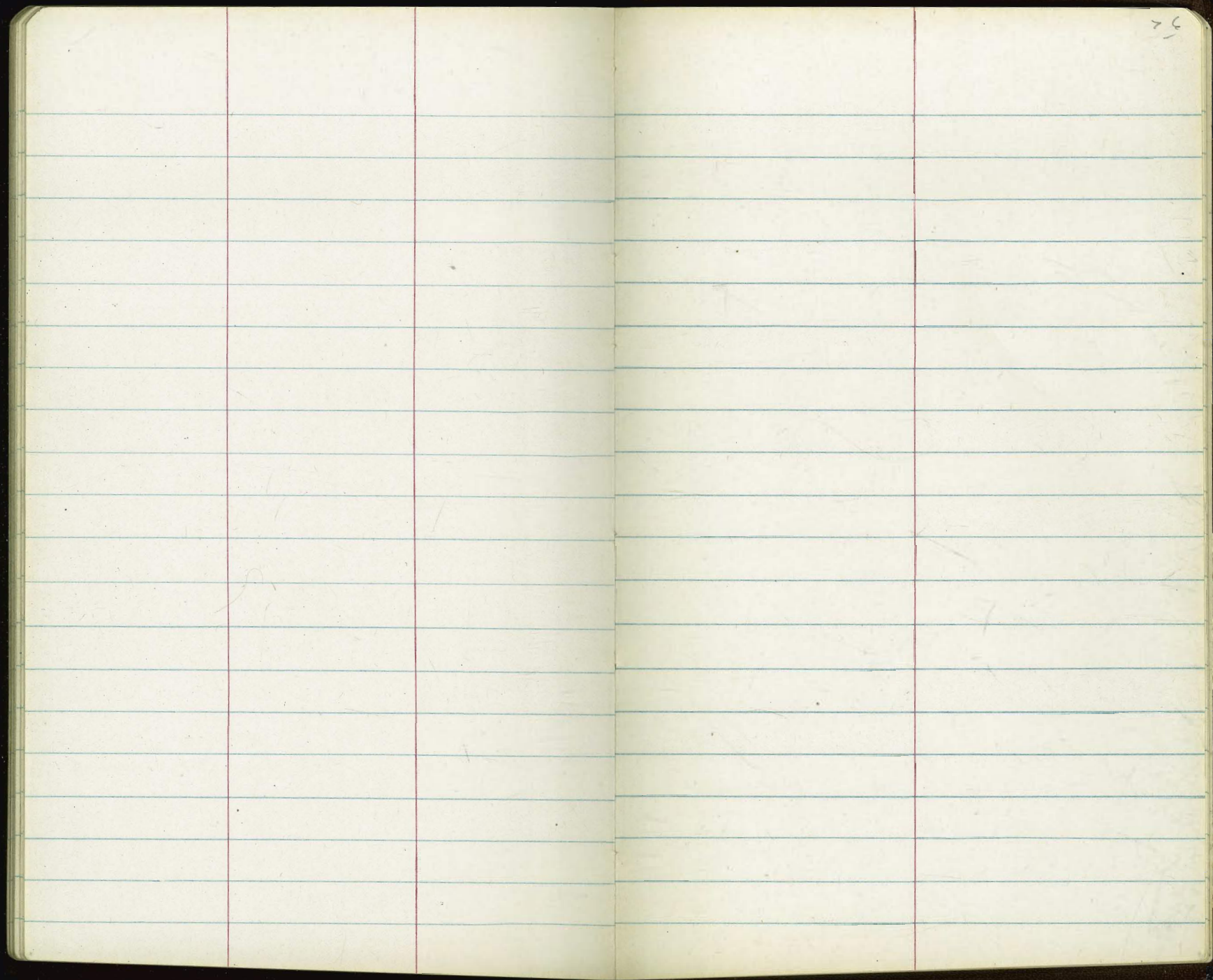
5.0
10

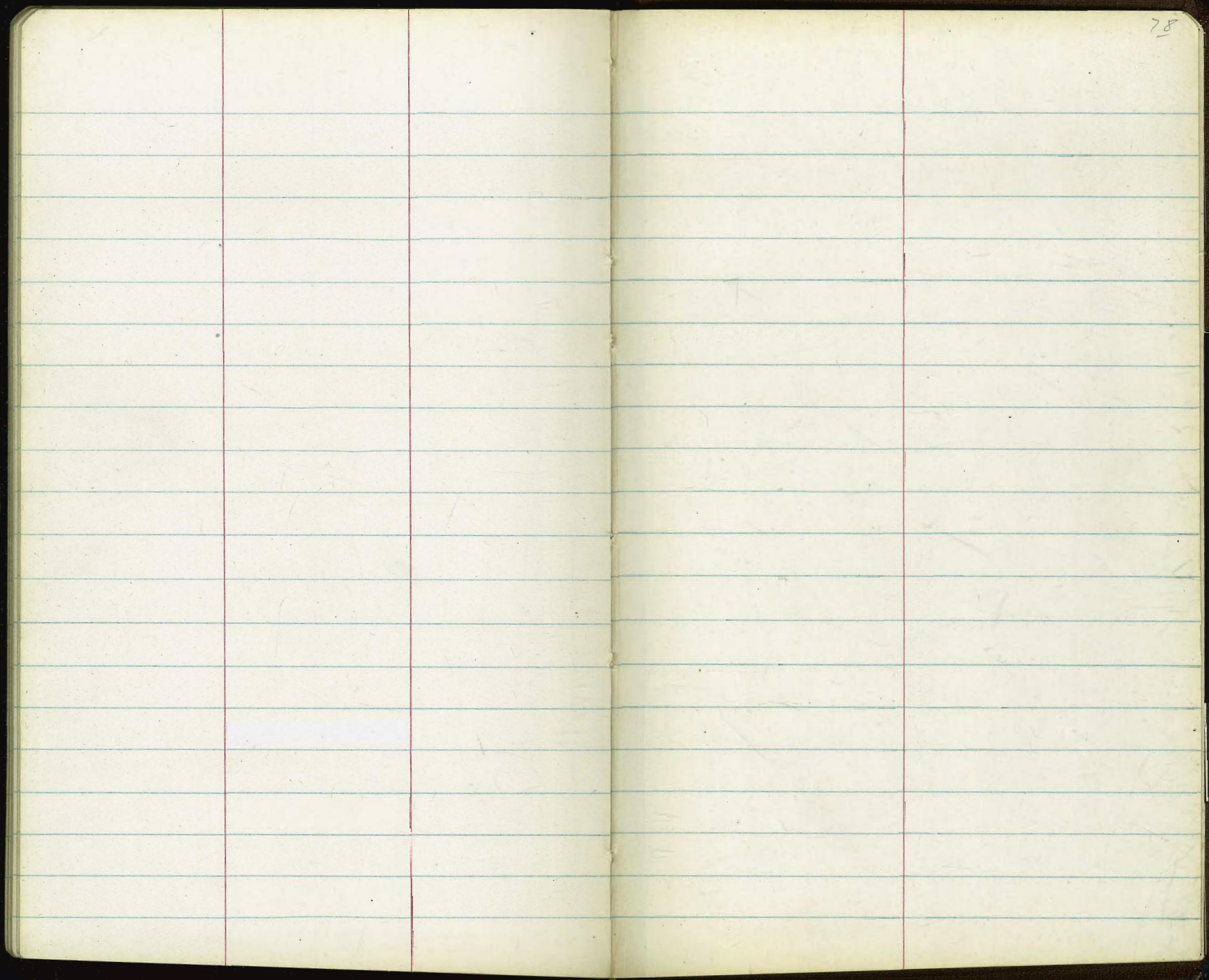
8.8
25

204.90X

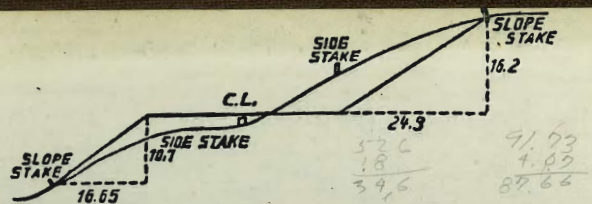
204.90X







L+70.5 21
1956-4



DISTANCES FROM SIDE STAKES FOR CROSS-SECTIONING.
SLOPE 1 1/2 TO 1. ROADWAY OF ANY WIDTH.

	0	.1	.2	.3	.4	.5	.6	.7	.8	.9	
0	0.00	0.15	0.30	0.45	0.60	0.75	0.90	1.05	1.20	1.35	0
1	1.50	1.65	1.80	1.95	2.10	2.25	2.40	2.55	2.70	2.85	1
2	3.00	3.15	3.30	3.45	3.60	3.75	3.90	4.05	4.20	4.35	2
3	4.50	4.65	4.80	4.95	5.10	5.25	5.40	5.55	5.70	5.85	3
4	6.00	6.15	6.30	6.45	6.60	6.75	6.90	7.05	7.20	7.35	4
5	7.50	7.65	7.80	7.95	8.10	8.25	8.40	8.55	8.70	8.85	5
6	9.00	9.15	9.30	9.45	9.60	9.75	9.90	10.05	10.20	10.35	6
7	10.50	10.65	10.80	10.95	11.10	11.25	11.40	11.55	11.70	11.85	7
8	12.00	12.15	12.30	12.45	12.60	12.75	12.90	13.05	13.20	13.35	8
9	13.50	13.65	13.80	13.95	14.10	14.25	14.40	14.55	14.70	14.85	9
10	15.00	15.15	15.30	15.45	15.60	15.75	15.90	16.05	16.20	16.35	10
11	16.50	16.65	16.80	16.95	17.10	17.25	17.40	17.55	17.70	17.85	11
12	18.00	18.15	18.30	18.45	18.60	18.75	18.90	19.05	19.20	19.35	12
13	19.50	19.65	19.80	19.95	20.10	20.25	20.40	20.55	20.70	20.85	13
14	21.00	21.15	21.30	21.45	21.60	21.75	21.90	22.05	22.20	22.35	14
15	22.50	22.65	22.80	22.95	23.10	23.25	23.40	23.55	23.70	23.85	15
16	24.00	24.15	24.30	24.45	24.60	24.75	24.90	25.05	25.20	25.35	16
17	25.50	25.65	25.80	25.95	26.10	26.25	26.40	26.55	26.70	26.85	17
18	27.00	27.15	27.30	27.45	27.60	27.75	27.90	28.05	28.20	28.35	18
19	28.50	28.65	28.80	28.95	29.10	29.25	29.40	29.55	29.70	29.85	19
20	30.00	30.15	30.30	30.45	30.60	30.75	30.90	31.05	31.20	31.35	20
21	31.50	31.65	31.80	31.95	32.10	32.25	32.40	32.55	32.70	32.85	21
22	33.00	33.15	33.30	33.45	33.60	33.75	33.90	34.05	34.20	34.35	22
23	34.50	34.65	34.80	34.95	35.10	35.25	35.40	35.55	35.70	35.85	23
24	36.00	36.15	36.30	36.45	36.60	36.75	36.90	37.05	37.20	37.35	24
25	37.50	37.65	37.80	37.95	38.10	38.25	38.40	38.55	38.70	38.85	25
26	39.00	39.15	39.30	39.45	39.60	39.75	39.90	40.05	40.20	40.35	26
27	40.50	40.65	40.80	40.95	41.10	41.25	41.40	41.55	41.70	41.85	27
28	42.00	42.15	42.30	42.45	42.60	42.75	42.90	43.05	43.20	43.35	28
29	43.50	43.65	43.80	43.95	44.10	44.25	44.40	44.55	44.70	44.85	29
30	45.00	45.15	45.30	45.45	45.60	45.75	45.90	46.05	46.20	46.35	30
31	46.50	46.65	46.80	46.95	47.10	47.25	47.40	47.55	47.70	47.85	31
32	48.00	48.15	48.30	48.45	48.60	48.75	48.90	49.05	49.20	49.35	32
33	49.50	49.65	49.80	49.95	50.10	50.25	50.40	50.55	50.70	50.85	33
34	51.00	51.15	51.30	51.45	51.60	51.75	51.90	52.05	52.20	52.35	34
35	52.50	52.65	52.80	52.95	53.10	53.25	53.40	53.55	53.70	53.85	35
36	54.00	54.15	54.30	54.45	54.60	54.75	54.90	55.05	55.20	55.35	36
37	55.50	55.65	55.80	55.95	56.10	56.25	56.40	56.55	56.70	56.85	37
38	57.00	57.15	57.30	57.45	57.60	57.75	57.90	58.05	58.20	58.35	38
39	58.50	58.65	58.80	58.95	59.10	59.25	59.40	59.55	59.70	59.85	39
40	60.00	60.15	60.30	60.45	60.60	60.75	60.90	61.05	61.20	61.35	40
41	61.50	61.65	61.80	61.95	62.10	62.25	62.40	62.55	62.70	62.85	41
42	63.00	63.15	63.30	63.45	63.60	63.75	63.90	64.05	64.20	64.35	42
43	64.50	64.65	64.80	64.95	65.10	65.25	65.40	65.55	65.70	65.85	43
44	66.00	66.15	66.30	66.45	66.60	66.75	66.90	67.05	67.20	67.35	44
45	67.50	67.65	67.80	67.95	68.10	68.25	68.40	68.55	68.70	68.85	45
46	69.00	69.15	69.30	69.45	69.60	69.75	69.90	70.05	70.20	70.35	46
47	70.50	70.65	70.80	70.95	71.10	71.20	71.40	71.55	71.70	71.85	47
48	72.00	72.15	72.30	72.45	72.60	72.75	72.90	73.05	73.20	73.35	48
49	73.50	73.65	73.80	73.95	74.10	74.25	74.40	74.55	74.70	74.85	49
50	75.00	75.15	75.30	75.45	75.60	75.75	75.90	76.05	76.20	76.35	50

THE NATIONAL BLANK BOOK COMPANY
HOLYOKE MASSACHUSETTS
NEW YORK CHICAGO BOSTON SAN FRANCISCO