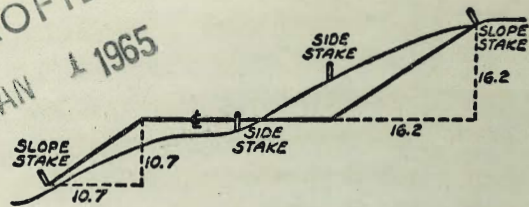


MICROFILMED
 JAN 1 1965



DISTANCES FROM SIDE STAKES FOR CROSS-SECTIONING
 SLOPE 1 TO 1. ROADWAY OF ANY WIDTH

	0	.1	.2	.3	.4	.5	.6	.7	.8	.9	
0	0.00	0.10	0.20	0.30	0.40	0.50	0.60	0.70	0.80	0.90	0
1	1.00	1.10	1.20	1.30	1.40	1.50	1.60	1.70	1.80	1.90	1
2	2.00	2.10	2.20	2.30	2.40	2.50	2.60	2.70	2.80	2.90	2
3	3.00	3.10	3.20	3.30	3.40	3.50	3.60	3.70	3.80	3.90	3
4	4.00	4.10	4.20	4.30	4.40	4.50	4.60	4.70	4.80	4.90	4
5	5.00	5.10	5.20	5.30	5.40	5.50	5.60	5.70	5.80	5.90	5
6	6.00	6.10	6.20	6.30	6.40	6.50	6.60	6.70	6.80	6.90	6
7	7.00	7.10	7.20	7.30	7.40	7.50	7.60	7.70	7.80	7.90	7
8	8.00	8.10	8.20	8.30	8.40	8.50	8.60	8.70	8.80	8.90	8
9	9.00	9.10	9.20	9.30	9.40	9.50	9.60	9.70	9.80	9.90	9
10	10.00	10.10	10.20	10.30	10.40	10.50	10.60	10.70	10.80	10.90	10
11	11.00	11.10	11.20	11.30	11.40	11.50	11.60	11.70	11.80	11.90	11
12	12.00	12.10	12.20	12.30	12.40	12.50	12.60	12.70	12.80	12.90	12
13	13.00	13.10	13.20	13.30	13.40	13.50	13.60	13.70	13.80	13.90	13
14	14.00	14.10	14.20	14.30	14.40	14.50	14.60	14.70	14.80	14.90	14
15	15.00	15.10	15.20	15.30	15.40	15.50	15.60	15.70	15.80	15.90	15
16	16.00	16.10	16.20	16.30	16.40	16.50	16.60	16.70	16.80	16.90	16
17	17.00	17.10	17.20	17.30	17.40	17.50	17.60	17.70	17.80	17.90	17
18	18.00	18.10	18.20	18.30	18.40	18.50	18.60	18.70	18.80	18.90	18
19	19.00	19.10	19.20	19.30	19.40	19.50	19.60	19.70	19.80	19.90	19
20	20.00	20.10	20.20	20.30	20.40	20.50	20.60	20.70	20.80	20.90	20
21	21.00	21.10	21.20	21.30	21.40	21.50	21.60	21.70	21.80	21.90	21
22	22.00	22.10	22.20	22.30	22.40	22.50	22.60	22.70	22.80	22.90	22
23	23.00	23.10	23.20	23.30	23.40	23.50	23.60	23.70	23.80	23.90	23
24	24.00	24.10	24.20	24.30	24.40	24.50	24.60	24.70	24.80	24.90	24
25	25.00	25.10	25.20	25.30	25.40	25.50	25.60	25.70	25.80	25.90	25
26	26.00	26.10	26.20	26.30	26.40	26.50	26.60	26.70	26.80	26.90	26
27	27.00	27.10	27.20	27.30	27.40	27.50	27.60	27.70	27.80	27.90	27
28	28.00	28.10	28.20	28.30	28.40	28.50	28.60	28.70	28.80	28.90	28
29	29.00	29.10	29.20	29.30	29.40	29.50	29.60	29.70	29.80	29.90	29
30	30.00	30.10	30.20	30.30	30.40	30.50	30.60	30.70	30.80	30.90	30
31	31.00	31.10	31.20	31.30	31.40	31.50	31.60	31.70	31.80	31.90	31
32	32.00	32.10	32.20	32.30	32.40	32.50	32.60	32.70	32.80	32.90	32
33	33.00	33.10	33.20	33.30	33.40	33.50	33.60	33.70	33.80	33.90	33
34	34.00	34.10	34.20	34.30	34.40	34.50	34.60	34.70	34.80	34.90	34
35	35.00	35.10	35.20	35.30	35.40	35.50	35.60	35.70	35.80	35.90	35
36	36.00	36.10	36.20	36.30	36.40	36.50	36.60	36.70	36.80	36.90	36
37	37.00	37.10	37.20	37.30	37.40	37.50	37.60	37.70	37.80	37.90	37
38	38.00	38.10	38.20	38.30	38.40	38.50	38.60	38.70	38.80	38.90	38
39	39.00	39.10	39.20	39.30	39.40	39.50	39.60	39.70	39.80	39.90	39
40	40.00	40.10	40.20	40.30	40.40	40.50	40.60	40.70	40.80	40.90	40
41	41.00	41.10	41.20	41.30	41.40	41.50	41.60	41.70	41.80	41.90	41
42	42.00	42.10	42.20	42.30	42.40	42.50	42.60	42.70	42.80	42.90	42
43	43.00	43.10	43.20	43.30	43.40	43.50	43.60	43.70	43.80	43.90	43
44	44.00	44.10	44.20	44.30	44.40	44.50	44.60	44.70	44.80	44.90	44
45	45.00	45.10	45.20	45.30	45.40	45.50	45.60	45.70	45.80	45.90	45
46	46.00	46.10	46.20	46.30	46.40	46.50	46.60	46.70	46.80	46.90	46
47	47.00	47.10	47.20	47.30	47.40	47.50	47.60	47.70	47.80	47.90	47
48	48.00	48.10	48.20	48.30	48.40	48.50	48.60	48.70	48.80	48.90	48
49	49.00	49.10	49.20	49.30	49.40	49.50	49.60	49.70	49.80	49.90	49
50	50.00	50.10	50.20	50.30	50.40	50.50	50.60	50.70	50.80	50.90	50

Distance of slope stake from side or shoulder stake for any width roadway, slope 1 to 1. If ground is nearly level, the cut or fill at side stake is located by the double entry method in left column and top row. The number in body of table in same row and column gives distance from side stake to slope stake. If ground is not level estimate the difference in elevation between the side stake and slope stake, lower target by this amount if cut, elevate if fill. Add this amount to cut or fill and find distance in table. Set up rod at this point, and line of sight should cut target. If it does not make the slight adjustment necessary.

TABLE XIII—CORRECTIONS FOR TANGENTS AND EXTERNALS

These corrections are to be added to the approximate values, found by dividing the tangent, or external, for a 1° curve (Table VIII) by the degree of curve, in order to obtain the true tangents, or externals. Intermediate values may be obtained by interpolation.

FOR TANGENTS ADD

Central Angle	DEGREE OF CURVE													
	5°	10°	15°	20°	25°	30°	35°	40°	45°	50°	55°	60°	65°	70°
10°	.03	.06	.09	.13	.16	.19	.22	.25	.28	.31	.34	.38	.42	.46
15°	.04	.10	.14	.19	.24	.29	.34	.39	.45	.51	.53	.58	.63	.68
20°	.06	.13	.19	.26	.32	.39	.45	.51	.58	.65	.72	.79	.84	.90
25°	.08	.16	.24	.33	.40	.49	.58	.67	.75	.83	.90	.99	1.06	1.14
30°	.10	.19	.29	.39	.49	.59	.69	.79	.89	.99	1.09	1.20	1.29	1.39
35°	.11	.22	.34	.47	.58	.69	.79	.81	.92	1.04	1.29	1.42	1.54	1.66
40°	.13	.26	.40	.53	.67	.80	.93	1.06	1.20	1.34	1.49	1.64	1.79	1.94
45°	.15	.30	.44	.60	.76	.91	1.06	1.21	1.37	1.52	1.70	1.87	2.04	2.21
50°	.17	.34	.51	.68	.85	1.02	1.19	1.36	1.54	1.72	1.91	2.10	2.29	2.48
55°	.19	.38	.57	.76	.95	1.14	1.32	1.52	1.72	1.92	2.14	2.35	2.56	2.77
60°	.21	.42	.63	.84	1.05	1.27	1.49	1.71	1.94	2.17	2.38	2.60	2.83	3.07
65°	.23	.46	.69	.93	1.16	1.40	1.64	1.88	2.13	2.38	2.63	2.88	3.13	3.39
70°	.25	.51	.76	1.02	1.28	1.54	1.80	2.06	2.33	2.60	2.88	3.16	3.44	3.72
75°	.27	.56	.83	1.12	1.40	1.69	1.98	2.27	2.57	2.87	3.16	3.47	3.78	4.09
80°	.30	.61	.91	1.22	1.53	1.84	2.15	2.46	2.78	3.10	3.44	3.78	4.12	4.46
85°	.33	.66	1.00	1.33	1.68	2.02	2.36	2.70	3.05	3.40	3.77	4.14	4.55	4.89
90°	.36	.72	1.09	1.45	1.83	2.20	2.57	2.94	3.32	3.70	4.10	4.50	4.91	5.32
95°	.39	.79	1.19	1.55	2.00	2.40	2.80	3.20	3.61	4.02	4.40	4.98	5.38	5.83
100°	.43	.86	1.30	1.74	2.18	2.62	3.06	3.50	3.95	4.40	4.88	5.37	5.85	6.34
110°	.51	1.03	1.56	2.08	2.61	3.14	3.67	4.21	4.76	5.31	5.86	6.43	7.01	7.60
120°	.62	1.25	1.93	2.52	3.16	3.81	4.45	5.11	5.77	6.44	7.12	7.80	8.50	9.22

FOR EXTERNALS ADD

Central Angle	DEGREE OF CURVE													
	5°	10°	15°	20°	25°	30°	35°	40°	45°	50°	55°	60°	65°	70°
10°	.001	.003	.004	.006	.007	.008	.009	.011	.012	.014	.015	.017	.018	.020
15°	.003	.007	.010	.014	.018	.023	.027	.032	.035	.039	.043	.047	.051	
20°	.006	.011	.017	.022	.028	.034	.038	.045	.051	.057	.063	.070	.076	.083
25°	.009	.018	.027	.036	.046	.056	.065	.074	.083	.093	.106	.120	.127	.135
30°	.013	.025	.038	.051	.065	.078	.090	.103	.116	.129	.149	.170	.179	.188
35°	.018	.035	.054	.072	.086	.109	.131	.153	.175	.197	.213	.230	.247	.264
40°	.023	.046	.070	.093	.117	.141	.172	.203	.234	.265	.277	.290	.315	.341
45°	.030	.060	.093	.119	.153	.184	.216	.254	.289	.325	.351	.378	.411	.445
50°	.037	.075	.116	.151	.189	.227	.266	.305	.345	.384	.425	.467	.508	.550
55°	.046	.093	.142	.188	.236	.283	.332	.381	.420	.479	.530	.582	.641	.700
60°	.056	.112	.168	.225	.283	.340	.398	.457	.516	.575	.636	.697	.774	.851
65°	.067	.135	.204	.273	.343	.412	.483	.554	.625	.697	.711	.845	.922	1.01
70°	.080	.159	.240	.321	.403	.485	.568	.652	.735	.819	.906	.994	1.08	1.17
75°	.095	.182	.286	.383	.480	.578	.678	.777	.877	.977	1.07	1.18	1.29	1.39
80°	.110	.220	.332	.445	.558	.671	.787	.903	1.02	1.13	1.25	1.38	1.50	1.62
85°	.128	.259	.391	.524	.657	.790	.926	1.06	1.20	1.34	1.47	1.62	1.76	1.91
90°	.149	.299	.450	.603	.756	.910	1.07	1.22	1.38	1.54	1.70	1.87	2.03	2.20
95°	.174	.350	.522	.706	.985	1.06	1.25	1.43	1.62	1.80	1.99	2.18	2.38	2.58
100°	.200	.401	.604	.809	1.01	1.22	1.43	1.64	1.85	2.06	2.28	2.50	2.73	2.96
110°	.268	.536	.806	1.08	1.35	1.63	1.91	2.20	2.48	2.76	3.05	3.35	3.66	3.96
120°	.360	.721	1.08	1.45	1.82	2.19	2.57	2.95	3.33	3.72	4.11	4.50	4.91	5.32

Index

Alley BIK 373-ELI Rogers Sub.	1-
Hancock Rosecrans to Gairnas	5 to 9
Moore	" " " " " "
Profile - pro-sawer - Pump Sta - Ventura Pt.	10
X-sec Alley BIK 89 - Pt Loma Hts	14-27
" Hancock Gairnas to Camino del Rio	28-31
" Moore st. Rosecrans to " " "	32-34
" Gairnas Hancock to Congress	35-47
" Moore - Riley to Camino del Rio	48-51
6th AVE - Montecito to ARBOR DR	52

Alley BIK 373 - Rogers

Alley BIK 373 E.O. Rogers Sub.

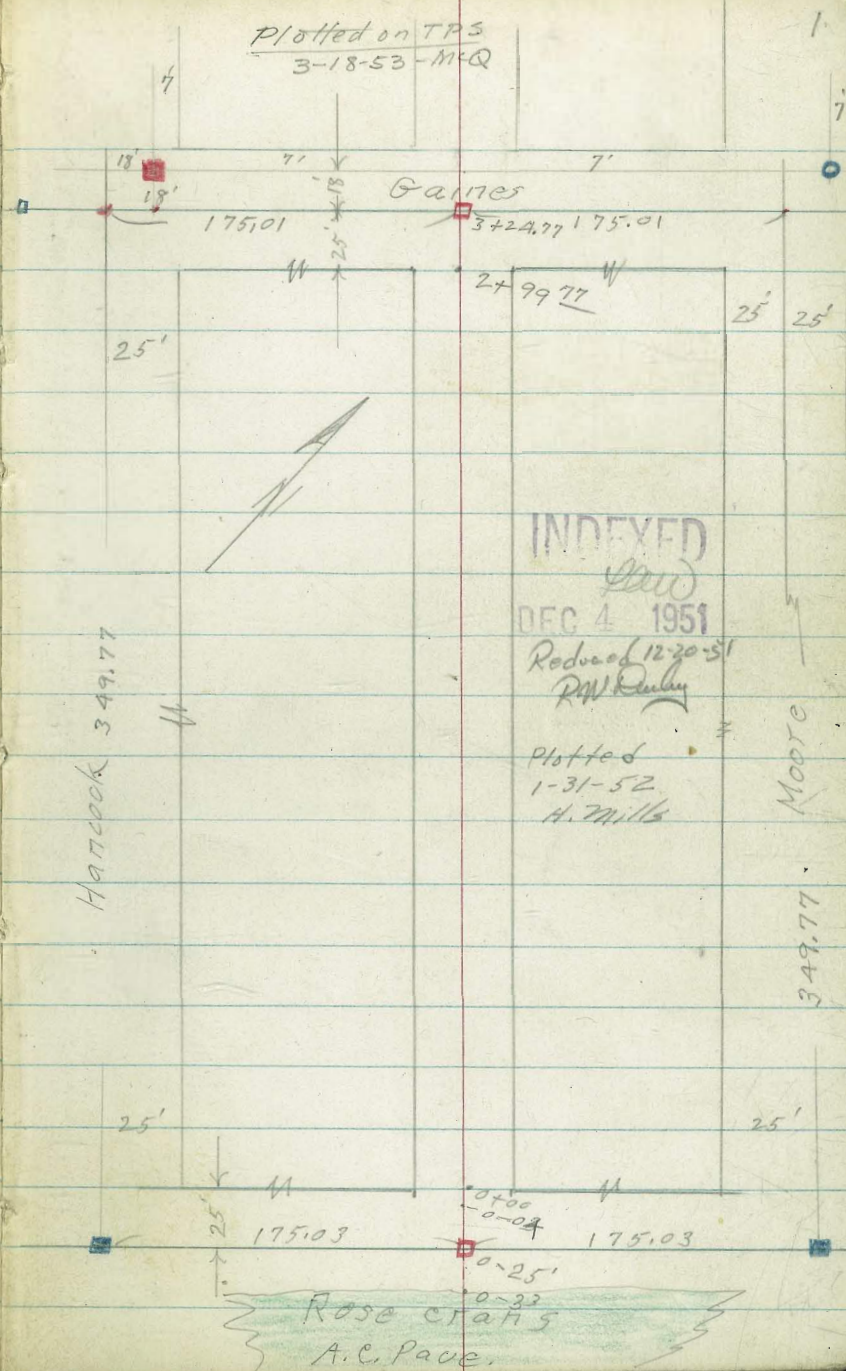
11-30-51
W.O. 25020

C.H.S.
B999
R. Sisson
W. Olthoff

Map #A29
T.P. sheet # 537
F.B 1651-45

- = Fd. Conc. Mon.
- = Fd. 3/4" pipe - City disk
- = Fd. 1/2" tack
- = Set. Conc. Mon.
- = set 1/2" disk.

Plotted on TPS
3-18-53 - M-Q



Alloy BIK 373
E.O. Rogers sub

2

0+52 9⁵ ft. = start paved yard

3' 1 1/4
4.40 4.60 4.58 4.70
10 10 40

0+50

2' 9
3' 1/4
3' 2 1/4
3' 3/4
3' 1
4.19 4.38 4.60 4.54 4.7
25 10 E.P. 75 E.P. 10

0+00 - 10' ft. = 1' wide conc. wall.

3' 6
3' 6 1/4
3' 5 1/4
3' 6 1/2
3' 1
2' 0
5' 1
4.2 4.17 4.30 4.19 4.4 5.8 2.7
15 12 E.P. 83 E.P. 10 10 L 10 L
B.W. Top.

E.P. = edge plant mix pave
B.W. = base of wall

To 2" thick.
0-04 = start plant mix from 1"

3' 3 1/4
3' 3 3/8
3' 3 3/8
3' 3 1/4
3' 2
4.5 4.46 4.45 4.47 4.6
15 10 10 15
7.84

T.P. 5.09 7.84 4.96 2.75

0-33 = edge Rosecrans A.C. Pave.

3' 1 1/2
3' 3 1/2
3' 3 1/4
3' 4 3/8
3' 8 3/8
4.52 4.39 4.34 4.28 3.88
100 10 10 100

Set B.M. S.S. 4.96 2.75

1/2 = 0-25

7.71

T.P. 5.18 7.71 4.64 2.53

BM 4.20 7.17 - 2.97

B.P. Wly. Ret. Kurtz + Rosecrans

Alley BIK 373 E.O. Rogers Sub.

#

3

T.P. 5.24 7.77 5.31 253

2+00 10' Lt. = line of Bldg.

9⁹ Lt. = Face of Bldg.
also 10' Rt. = end paved yard.
1+75^E = end plant mix pave.

1+50 9⁸ Lt. = start Gal. Iron Bldg.
Conc. foundation

1+47^E 9⁷ Lt. = end Gal. Iron Bldg.

1+17 10⁶ Lt. = start Gal. Iron Bldg.

1+09 10' Lt. = ϕ 15' wide paved drive

1+00

27
5.1
10

2.3
5.5

2.4
5.4
10

3.08
4.76
99
E.P.

2.49
5.35

2.59
5.25
10

2.71
5.07
40

2.96
4.88
98
E.P.

2.63
5.21

2.70
5.14
10

2.82
5.02
40

3.2
4.6
104

2.98
4.86
30

3.08
4.76
10

3.21
4.63
104
E.P.

3.21
4.63
10

2.92
4.92

3.02
4.82
10

3.14
4.70
40

7.84

Alley Bk. 373 E. Rogers Sub.

4

check 4.03 2.95 (2.97)
 T.P. 4.47 6.98 5.57 2.51
 T.P. 5.26 8.08 4.92 2.82 (2.93)
 T.P. #3 3.30 7.74 3.33 4.44

orig. B.M. Kurtz + Rosecrans

Men. \pm old Rosecrans + \pm Moore

Nail in pole N.Y. cor. Gaines + Moore

3+24^U = \pm Gaines
 Hub. 5.06

2.9 2.9 3.0 2.9 2.1
 4.9 4.9 4.8 4.9 5.1
 100 10 10 10 100

conc. foundation

10³ Lt. = end Gal. Iron Bldg.

10⁵ Rt. = end frame Bldg.

2+99^U = Fly line Gaines

3.2 3.2 3.3 3.0
 4.6 4.6 4.5 4.8
 102 10 10
 Gd.

on piers

2+50 10⁴ Rt. = start frame Bldg

2.6 2.1 2.5
 5.2 5.1 5.3
 10 10

7.77

Moore St.
Rosecrans to Gaines

Red figures
added 8/28/53 ML

C.H.S.
12-12-51

See P-1 for tie points

0+00 = Wly line Rosecrans

1+50

INDEXED

DEC 14 1951

3.3
4.4
25
2.9
4.8
4.6
25
3.1

1+00

3.3
4.4
50
3.3
4.4
25
3.0
4.7
7.74
3.1
4.6
25
3.4
4.3
50

T.P. 4.59 7.74 5.66 3.15

New levels 0+50 on - P 33

0+50 18' Lt. - start type G. cl.
17' Rt. pole #47220 H

3.5
5.3
25
3.5
5.3
25
3.3
5.5
25

0+36 20' Rt. = 8" tree

0+29 17' Rt. = dead man

0+17 20' Rt. = 16" tree

25' Rt. = 12" wide conc. wall.

0+00 25' Lt. = 12" wide conc. wall

5.1
3.7
25.2
7.0
2.8
6.0
25.2
B.W.
3.6
5.2
25
3.6
6.0
25
B.W.
5.4
3.4
25
T.W.
Aprox.

B.W. = base of wall

0+00 T.W. = top of wall
25' Rt. start lath fence for green-
house

3.6
5.2
25
3.1
5.1
3.6
5.2
24

0-34 = wly edge Rosecrans Pauc.

3.93
4.88
75
3.91
4.84
25
4.01
4.80
8.81
3.98
4.83
25
3.98
4.83
75

6.06 8.81 - 2.75

B.M. = 0-25 Page 2

3+24^U = ± Gaines

2.7	2.8	3.1	3.1	2.9
5.4	5.3	5.0	5.0	5.2
1.00	2.5	8.11	2.5	1.00

T.P. 3.68 8.11 3.31 4.43 (4.44) = T.P.#3-P.4

27[±] Lt. = end Bldg.
2+99^U = Ely. line Gaines

3.1	3.1	2.8
4.3	4.6	4.9
2.5		2.5

2+92 - 2A⁴ Lt = ± 12' wide Conc. slab porch

3.74	3.18	3.12
4.00	4.56	4.62
2.74	2.74	2A ⁴
Bldg. floor	porch	porch

2+50

see P 32
↓
for change

2.7	2.8	2.8
5.0	4.9	4.9
2.5		2.5

2+32 27' Lt = start frame Bldg.

2.7
5.0
2.7

2+00 17[±] RA = 9" pole # ATVAOLH

2.8	2.1	2.8	2.9	3.1
4.9	5.0	4.9	4.8	4.6
5.0	2.5		2.5	5.0

1+75 18' Lt = end G-type cl.

7.74

Hancock St.
See P. 1 for ties

T.P. 4.80 8.11 4.52 3.31

1+76 25' N.E. Plant Mix. service drive

1+61 - 27' Lt. = start cut stone
+ conc. wall

1+52 RTI - LAT 7. LAT 7. TOP PIPE EI - 0.64

1+50

1+40 - 23' Lt. = 10" pole # P3049

1+00

0+50

0+26 - 23' Lt. = 10" pole # J.P. 3005

0+10 23' Lt. = dead man

0+00 = Wly. line Rosecrans

0+09 - 24' Lt. = 14" pole # J.P. 3798

0-36 = Wly. edge Existing Pauc. - Rosecrans

5.08 7.83 — 2.75

1.5 = Elev 4.2 = elev.
27
B.W. Tim.

2.9	2.9	3.3	3.3
4.9	4.9	4.5	4.5
50	25		25

3.1	3.1	3.1	2.8	2.8
4.7	4.7	4.7	5.0	5.0
50	25		25	50

2.8	3.0	2.8
5.0	4.8	5.0
25		25

3.4	3.4	3.0	3.1	3.2
4.4	4.4	4.8	4.4	4.6
50	25		25	50

2.83	3.01	3.08	3.13	3.15
5.00	4.82	4.75	4.70	4.68
7.5	25	7.83	25	7.5

B.M. = 1/2 - 0-25 P. 2

2+50

2.8
5.3
2.5

3.0
5.1

3.2
4.9
2.5

2+41 21^E Rx. = 6' wide porch to Bldg.

3.2
4.9
2.1
Grd

4.21
3.90
2.15
porch

4.21
3.90
2.52
at Bldg.
on porch

2+35 26^{Lt.} = 6' wide porch to house

4.15
3.96
26^L
porch

2.8
5.3
2.6
Grd

2+04 25³ Rx. = start 2 story Bldg.

3.4
4.7
2.5
Grd.

2+02 - 2A¹ Rx. = 6 steps to 2nd floor Bldg.

4.77
on bottom step 2A¹

4.73

2+00

1+83 - 27' Lt = end stone & conc. wall

2.7
5.4
5.0

2.8
5.3
2.5

3.1
5.0

3.3
4.8
2.5

1.5 = Elev
B.W.

4.2 = Elev
27 T.L.O.

1+95

25' Lt. = thru Auto court
Plant mix drive

2.8
5.3
5.0

2.8
5.3
2.5

Hancock

See Page 28
For levels to west

check 3.23 4.45 4.44

3+24 ⁷⁷ = \pm Gaines

2+99 ⁷⁷ = El. line Gaines
25' Rt. = end 2 story Bldg.

2+99 27' Lt. = end rock + conc. wall

T.P. 4.72 7.68 5.15 2.96

2+78 27' Lt. = start cut stone + conc. wall

thru Auto Court.

2+65 25' Lt. = \pm plant mix drive

2+60 20' Rt. = \pm 5' wide steps to Bldg.

INDEXED

AW
DEC. 14 1951
Reduced 12-20-51
R.W. Daily

T.P. #3 - P. A

2.3	2.6	2.7	2.8	2.8
5.4	5.1	5.0	4.9	4.9
75	25		25	75

2.6	2.9	3.1
5.1	4.8	4.6
25		25

1.6 = El.	4.2 = El. on	7.68
27	27	
B.W	T.W.	

1.6 = El.	4.2 = El. on
27	27
B.W	T.W.
5.1	5.3
50	25

3.20	4.21	4.25
4.91	3.90	3.86
20	22	25
Stop	Start	at
	parch	Bldg.

8.11

6/23/54
Barb. mi.

	LT	RT
3700	L: LT 3° 05'	6 ² 32 34 3 ³³ 34 3 ² 40 22 10 on Hub 10 15 planting
2750		0.95 7 ⁰ 5 ² 4 ⁸ 4 ² 3 ² 40 10 10 23 planting
2700		+ 0.15 8 ⁸ 6 ² 5 ⁶ 5 ¹ 4 ³ 41 10 10 32 planting H.O. @ 9 AM
1750		- 0.25 8 ² 6 ⁶ 6 ⁰ 5 ⁶ 4 ² 43 10 10 40 planting High water @ 9 AM
1700		- 1.45 7 ³ 7 ² 6 ⁶ 10 10
0750		- 1.15 6 ² 6 ² 6 ² 10 10
0700		- 1.31 7 ⁰⁶ on Stud
TP ₂	452	5 ⁷⁵ 34 1 ²³
TP ₂	641	4 ⁶⁴ 8 ⁹⁶ -1 ⁷⁷
TP ₁	274	7 ¹⁹ 5 ²³ 4 ⁴⁵
BM	265	9 ⁶⁸ 7 ⁰³

LOT Wly Mission
Ventura Blvd.
75' into SW

SWBP Santa Barbara
Mission Beach
Sta V6 11

	LT	RT
7750		2.36 5 ⁵
7700	L: RT 25° 50'	2.98 ✓ 4 ⁸⁸ on Hub
6750		3.36 4 ⁵
6700		3.36 4 ⁵
5750		3.26 4 ⁵ 4 ⁶ 4 ² 10 10
5700		3.26 4 ⁵ 4 ⁶ 4 ⁶ 4 ² 10 10 26 planting
4750		3.26 4 ⁵ 4 ⁶ 4 ⁶ 4 ⁴ 10 10 17 planting
TP ₄	446	7 ⁸⁶
		2 ³⁵ 3 ⁴⁰
4100		3.15 2 ³ 2 ⁷ 2 ⁶ 2 ⁴ 2 ² 30 10 10 13 planting
3750		2.65 4 ⁶ 3 ⁵ 3 ⁰ 3 ¹ 2 ² 2 ² 40 27 10 10 12 planting
		5 ⁷⁵

	LT	RT
1240	1.9 48	
TP5	487 $\langle \underline{671} \rangle$	582 $\langle \underline{207} \rangle$
11450	2.0 52	
1170	2.1 52	
10450	2.0 52	
1070	2.4 53	
9450	2.0 52	
940	2.3 56	
8450	1.8 61	
870	1.86 60	

$\langle \underline{786} \rangle$

	LT	RT
1740	1.7 50	
16450	1.7 50	
1670	1.9 48	
15450	1.9 48	
1570	1.8 42	
14450	1.7 50	
1470	1.8 42	
13450	1.7 50	
1370	1.7 50	
12450	1.7 50	

$\langle \underline{671} \rangle$

BM starting

TP₉

8¹⁵

7 84

0 26 7 08 ✓

TP₈

4⁵²

3 94

4 25 0 31 ✓

TP₇

1⁰⁹

5 82

6 40 0 58 ✓

TP₆

4¹¹

6 40

2 67 3 93 ✓

4 22 2 49 ✓

20400

2.9
3.8

19450

4.3
2.4

19400

4.83
1.88
0.146

18450

3.5
3.2

1840

2.0
4.2

17450

2.0
4.2

6.71 ✓

X-sec Alley BIK 89 - Pt. Loma Hts

WO#

5-19-53

C. Allen

D. Sisson

C. Powell

Ref. File Map 1106

T.P. Sheet # 761-

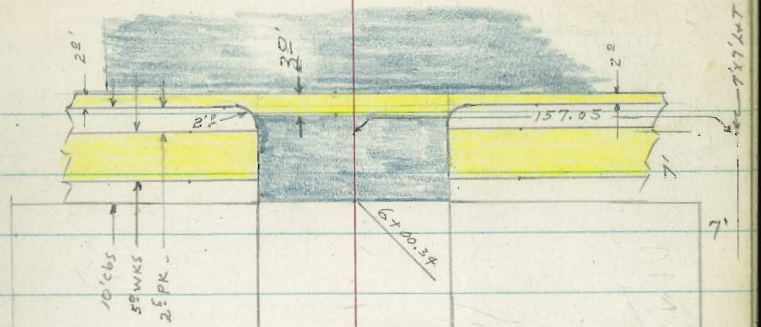
INDEXED

Also see base leaf **C-19**
Taken 2/1A/58 - W.O. 31702

Used 9'x7'
with M.W.
Car.

Used 9'x7' with N.E. corner saratoga & Guizot

Santa Barbara ST



BIK
Pt. Loma Hts.

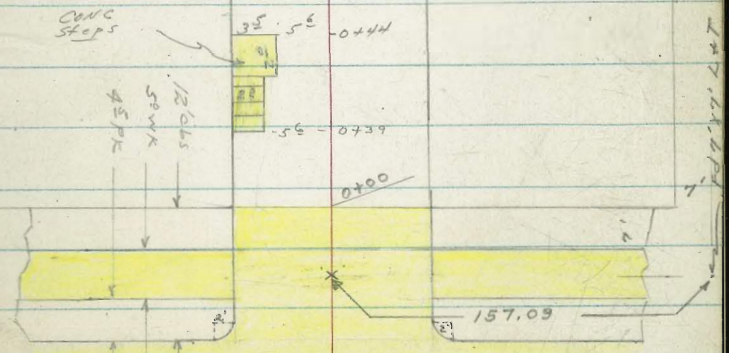
89

POF 5'x2' RW
3701.9

Saratoga Ave

Santa Monica Ave

CWC Steps



GUIZOT

ST

X-sec Alley BIK 89- Pt. Loma Mts
sketch page 14

LT = Nly

♀

pt: sly

15

TP₂ 12.38 161.39 0.38 149.01

161.39 T

0+00 = Fly Guizot ST + Fly edge Portland CONC.

143.19	144.15	143.86	143.77	144.21	144.50	145.19
62	524	553	562	518	489	42
50	100 cb	100 GUT		92 GUT	92 cb	50

0-10 = 12c Alley Returns

143.87	143.45	143.90	144.27
552	594	549	512
100 cb	100 GUT	92 GUT	92 cb

0-12 = Fly curb line Guizot

142.06	141.40	143.03	142.40	143.79	143.20	143.24	143.46	143.65	143.67	144.29	144.36	145.09	145.22	145.95
733	729	636	699	560	619	62	593	574	572	510	503	430	412	344
100 cb	180 GUT	50 cb	50 GUT	12 cb	12 GUT	10		10	12 PC	12 GUT	50 GUT	50 GUT	100 GUT	100 cb

149.39 T

TP₂ 2.15 149.39 6.05 147.24

N. Fly 7'x7' L+T Santa Monica + Guizot

TP, 0.98 153.29 13.18 152.31

BM- 1.73 165.49 163.76

S.W. BP Newport + Guizot

LT=N14

♀

Rt=514-

16

0+44-5⁶ LT= S. Ely cor conc steps

154.32
707
5E
TOP
STEP SE COR

157.70

968
5E
BOTT
STEP

0+39-5⁶ LT= SW. COR conc steps - See sketch

0+37+8³ Rt= end 6' high board fence

0+35-18³ Rt= 2 4' conc walk

152.17
922
183
WK
887
233
WK
152.52

0+25

154.09
153.99
153.99
149.09
148.99
149.99
151.79
151.99
73
74
74
123
124
119
96
99
20
11
10
3
7
10
20

7102 LT= begin 3 1/2' high conc block wall.

0+071-18² Rt= begin Board fence (6' high)

152.59
152.79
152.29
152.59
146.59
145.99
146.09
151.59
150.99
417.51
808
460
91
80
148
154
142
98
104
102
50
102
102
102
5
6
12
20
50
Top
Foot
Gr

161.39 T

LT = N14

RT = S11

17

0+89.5 118 RT = 2 CONC DRIVE

0+82-118 RT = NWLY COR CONC DRIVE
Gar opens to Ely.

0+75-25 RT = 2 SINGLE GARAGE CONC FLOOR
opening to East

0+51

0+50 - Section

10³ LT = Begin 6' high CONC Block Wall.
0+50 10² LT = end 3 1/2' high CONC Block Wall

157.48		
3 91	3 11	158.22
118	160	
Dr	BK	Dr
157.07		
4 32	3 7	157.92
118	160	26 1/2
Dr	BK	Dr
	120	24

157.29	155.89	155.89	156.29	157.99	158.69	158.74
4 1	5 5	5 5	5 1	3 1	2 70	
10	1		10	13	25 E	
					FLOOR	

154.69	154.69	154.29	152.69	152.69	156.39	156.89
6 7	6 7	7 1	8 7	8 7	5 10	9 1/2
25	10	3	1	10	15	20

154.69	154.69	154.29	152.69	152.49	152.69	152.29
6 7	6 7	7 1	8 7	8 9	8 7	9 1
25	10	3	1		10	20

154.09	154.69	154.19	154.69
7 3	6 7	7 2	6 7
10 1	10 1	10 3	10 3
FOOT	Gr	FOOT	Gr

16 1.39 x

TP4 10.13 171.43 0.09 161.30

Nail in pole PA 4490
11.2 RT Sta 1400

171.43 T

1401-12³ RT = begin 4' high Conc Wall.

160.39 160.39
10 10
12³ Gr 12³ Foot
Feet in top Ground

1400- } 10² LT = begin 10' high Conc Block Wall.
10³ LT = end 5' high Conc Block Wall.

158.49 158.79 159.49 159.79
2⁹ 1⁶ 1³ 1⁶
10³ 10³ 10³ 10³
Foot Gr Foot Gr

1400-11² RT = 11" power pole. # PA 4490

158.89 158.69 161.29
1⁷ 2³ 2⁵ 2⁷ 0¹
10 5 2 10 15

Nlyedge Drive is Not even
0+97-10² RT = end Conc Drive way.

157.66 158.35
37³ 304
10² 15²
13¹
0¹

0+90-9³ LT = slyedge Conc step - 4 1/2' wide

160.16 159.57 159.19
12³ 18² 2²
10³ 9³ 9³
Top Bott Br
Step step

161.39 T

LT = N14

Rt = S14

19

167.33

167.53

167.73

167.83

167.83

166.83

Setting atop 3' high conc wall.

1450-9⁹ LT = begin 6' high conc block wall

4' 3' 4' 3' 3' 4'
9' 9' 7' 10' 25'
Foot 6'

166.28 166.51 166.63

515 492 480
28° 18° 10°
Floor Dr Dr

1448 = S. Fly Cor Conc Drive for double gar.

1428-10⁰ LT = S.W. Cor Drive for double gar.

166.20 166.03 165.19
523 540 624
28° 18° 10°
Floor Brk IN Dr Dr

1428-10⁶ LT = end conc block wall
6' high Ely end

162.73 165.13
87 63
10' 10'
Foot 6'

1425-13⁴ Rt = end conc wall

169.53 163.23 163.23 162.93 163.73 163.73 162.93 165.63
69 5 00 14 00 14 00 14 00 14 00 14 00 14 00 14 00
10 5 00 14 00 14 00 14 00 14 00 14 00 14 00
Foot Foot

1405-13⁰ Rt = Join in 4' high conc wall.

174.43 X

BIK 89. Point Loma Hts

LT = N14

♀

Rt = S14

20

10⁸ LT = begin 6' board fence.

1+79-10⁸ LT = end 6' high Conc. Block wall.

170.59

170.99

14⁰

13¹⁶

10⁸
Foot

10⁸
6r

171.19

171.19

171.39

171.79

1+75- ♀ shot in rough Conc slab

13⁴
10

13⁴
10

13¹²
10

12¹⁰⁰
25

1473- } 2" ± thick - will be easy to remove
Rough and poorly finished
10⁰ E14 + W14 11⁰ N14 + S14 Conc slab

TP₅ 13.36 184.59 0.20 171.23

184.59 X

1460-20⁰ Rt = ♀ double gar. Conc floor

3¹⁰⁰ 167.63
10

167.53

170.68
0⁷⁵
20¹⁶
Floor

3¹⁰⁰ 168.13
7

169.63

10¹⁰⁰ 170.43
25

1+51-

171.43 X

10⁴ LT= end 5' high cyclone fence
 2450-10' RT= begin 3.5' high CMC Block Wall

2+25

2+23- 8⁴ LT= 1' clump Oleander

2+15- 9⁵ LT= 1.5' clump Oleander

2+10- 1⁵ RT= Sewer Man hole

2+07- 8⁵ LT= 2' clump Oleander

2+01- 11⁸ RT= 10" power pole # PA 4466

10³ LT= begin 5' high cyclone fence
 2+00 10³ LT= end 6' board fence

1+83- 11² RT= Dead Man

LT= N14

RT= S14- 21

179.09	179.19	178.69	178.99	178.99	179.09
5.5	5.4	5.2	5.6	6.1	5.5
25	10	10	10	10	25
			6'	Foot	
	176.99	176.49		176.89	
	7.6	8.1		7.7	
	10			10	

175.69

8.90

1.5
 RIM 5MM

173.89	173.89	173.89	174.19	175.89	176.09
10.7	10.7	10.7	10.4	8.7	8.5
25	10	10	10	12	25

184.59 x

3401

3400

3400-

TP

10.45

194.19

0.85

183.74

ON POT. Hub 3401.9

2491-10³ LT = 8' Wide Conc Apron to

Single garage

248610³ Rt = Top Now level with ground end Conc Block Wall

2475

2451

LT = N14

Rt = S14

22

184.99

183.89

184.09

183.29

184.39

184.79

185.29

9² 9³ 10¹ 10⁴ 9⁸ 9⁴ 8⁹
25 10 5 10 8 10 25

11⁴ 10⁹ 10⁴ 9⁸ 9⁴ 8⁹
25 10 10 8 10 25

182.52

182.69

183.08

194.19 x

207 190 159
29' Floor 20' Apron
9'-

182.99

182.59

16 20
10³ 10²
6' FOOT

181.59

181.89

181.79

30 23 20
10 10 10

179.09

179.19

178.69

178.99

183.59

183.79

55 54 59 56 10 0
25 10 10 11 25

184.59 x

LT = N14

RT = S14

23

4401 - 9⁵ RT = 10" power pile # JPA 4434

188.69

189.39

189.39

189.19

189.99

190.19

10° RT = begin 4' high Lath fence -
 4400 } 11° LT = end 5' high file wall

55

48

400

510

42

410

10°
Foot

11°
Gr

10

10

25

3489 - 10° RT = single gar. ^{Floor} Conc Apron

189.39

480

10°
Apron

189.56

460

14°
Floor

3480 - 9² RT = end 5' picket fence

9⁸ RT = begin 5' high wooden picket fence
 3450 } 11° LT = begin 5' high file wall

186.99

186.89

187.29

187.19

186.99

187.99

187.49

72

73

69

70

71

67

65

25

11°

11°

10

10

10

25

Foot

Gr

3425

185.79

185.69

185.69

185.69

185.99

185.99

3422 - LT = Double garage DIRT Floor

85

180

DIRT

FLOOR

194.19*

LT=N14

RT=514- 24

4+69-10⁴ RT= 3' CONC WALK

4+60-10⁵ LT= 1/2 Doorway to Small Dwelling

4+50-10³ RT- end 4' high lath + begin 5' Board fence

4+42-10⁸ LT= 1/2 Car port DIRT floor

4+19-15⁰ LT- end Double gar. CONC Apron^{Floor}

4+07-10⁰ RT= 1/2 2' CONC WALK

4+03-15⁰ LT- Begin Double garage CONC Floor^{Apron}

192.94
175
105
Floor
House

191.59
26
105
6-

191.39
28
10
190.59

36
108
DIRT
Floor

190.29
390
180
Floor

190.07
410
150
Apron

190.24
395
180
Floor

190.04
415
150
Apron

192.35
184
105
WK

192.55
164
204

191.69
25
10

191.69
25
25

190.20
399
100
WK

190.23
396
200
WK

194.19x

LT = Nly

Rt = Sly

25

5+24 - 17⁸ Rt = 1/2 single gar - DIRT Floor

These two garages are attached but have wall between

5+33 - 16⁸ Rt = 1/2 single gar - DIRT Floor

5+25

193.44
 35
 25
 193.69
 325
 170
 Floor

193.44
 35
 10
 193.34
 360
 100
 Apron

193.84

25
 168
 DIRT Floor
 194.44
 193.24
 194.34
 194.64
 37
 6
 25
 10
 23
 25

Apron is 15' wide & level Ely & Wly.

5+14 - 10⁰ LT = 1/2 Double gar CONC Apron + Floor

T₁

3.35

196.94 0.60

193.59

No. 1 IN pole RT 5100 PA 4420

196.94 x

5+00 } 10⁰ Rt = 1/2 10" power pole # PA 4420
 11⁴ Rt = end Board fence

192.99
 12
 25
 192.89
 13
 10
 192.39
 100
 94
 DIRT Floor

192.39
 18
 10
 193.19
 100
 25

↓ GONE 2/11/58 ~~CHD~~

4+91 - 9⁴ LT = 1/2 Single garage - DIRT Floor

194.19 x

X-sec Alley BIK 89- Pt. Lorna Hts.

LT = N 17

pt = S 14

26

2-2' strips
 21' LT = & 7' conc Ribbon Drive
 5+79- 10' RT = & 3' conc flagstone walk

192.53
 441
 310
 Dr

192.87
 407
 210
 Dr

193.34
 36
 10 4
 Ground

194.01
 293
 10 4
 WK

194.99
 96
 20.4
 WK

5+77- 11' RT = & 2' 5" dia. incinerator - Brick w/ conc Mortar

193.04
 39
 25

193.09
 39
 10

192.84
 41

193.14
 38
 6

194.04
 29
 10

194.64
 2 10
 12

194.64
 2 10
 10

5+75

5+68- 19' RT = & single gar - Conc Floor - No apron

195.59
 35
 Conc Floor

These two gars are attached but have wall between

5+58- 17' RT = & single gar, Conc Floor + Apron

193.34
 36
 25

193.34
 36
 10

193.14
 3 10

195.25
 69
 17 8
 Apron

195.25
 12 00
 19 4
 Floor
 Conc

193.44
 35
 6

193.94
 30
 10

195.24
 17
 20

5+50

196.94 x

TPg- 1.49 196.06 2.37 1.80
 194.26 (194.21)
 194.57

NW BP SMT MINICA 4
 SMT 80' bank

187.39 184.85
 186.76 12.49
 190.37 80
 189.73 13.4
 189.57 183.80
 190.40
 190.98
 191.12
 191.76 397
 192.21 100
 192.97 3.34
 27 192.24

Flow line Conc gutter
 6+10.35 = Wly Curb line Santa Barbara

9.55 10.18 6.57 7.21 7.07 6.54 5.96 5.82 5.17 4.68 4.01
 50 50 12 12 10 10 10 10 10 10 10
 cb GUT bc bc bc bc bc bc bc bc bc bc

6+09.35 = Wly edge Conc gutter

190.02 6.92 190.44 6.50 191.04 5.90
 10 10

6+08.35 = BC Alley returns

190.52 6.43 190.13 6.81 5.84 5.27
 10 10 10 10
 Topcb GUT GUT TOP cb

Wly line A.C. Pavc
 103 ft. end 6" CONC Wall
 6+00.35 = Wly Line Santa Barbara

192.64 190.62 190.58 190.92 191.27 191.77 191.44 192.24
 7.3 6.32 6.36 6.02 5.67 5.17 5.5 4.7
 25 10 10 10 10 10 10 25
 Topcb GUT GUT GUT TOP FOOT

5497

192.74 192.54 191.24 191.24 191.64 192.84 194.64 194.84
 4.2 4.2 5.1 5.7 5.3 4.1 2.3 2.0
 25 10 6 25 6 10 11 25
 Wly Wall

Board Fence at top
 5+82-10.5 ft. begin 6" CONC Wall

193.24 192.74 193.87
 3.6 4.2 3.07
 10.5 10.5 10.5
 6r FOOT TOP WALL

notes reduced
 by E. Hammer
 5-22-53

196.94

Hancock
Gaines to Camino del Rio

C.H.S.
Bo99
Schelin

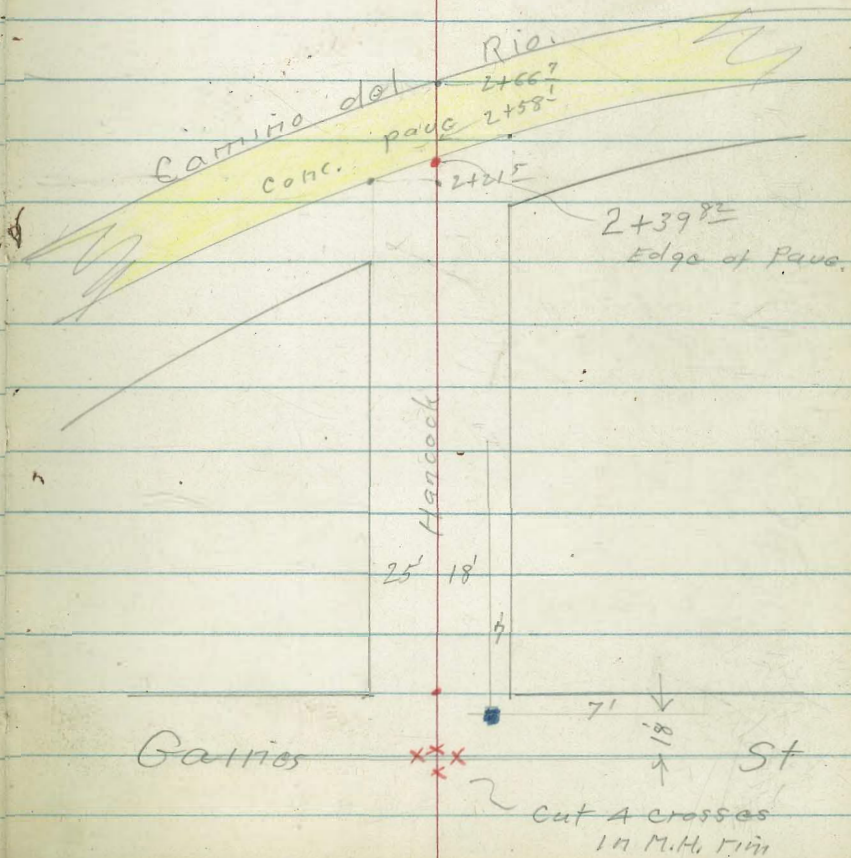
8-27-53
W.O. 32265

Fd. L+T

25'

Greenwood

- denotes Fd. Conc. Men
- " Fd. L+T.
- " Nail-set
- X " cross-cut.



INDEXED

M.E.R.
SEP 10 1953

Hancock

Fence.

0+91 25⁵ Lt. = start chain link
25⁴ Lt. = end Bldg0+50 25⁵ Lt. = line of Bldg.0+40 25⁵ Lt. } = Jog in Bldg.
33 Lt. }0+36 33²¹ } = 1st door. to shop0+13 - 33²¹ Lt. = 12' door. to Machine^{shop}0+02 - 21⁸ Lt. = Pole # P31010+00 = { 33' Lt. = start Machine shop.
25⁵ Lt. = start chain link fence
W 1/4 line GainesT.B.M. #1 3.79 7.67 4.31 3.88

T.P. 4.92 8.19 4.05 3.27

4.35 7.32 - 2.97

±

29

2.0	3.0	2.5	2.1	2.6
4.9	4.7	5.2	5.6	5.1
25	10		15	25

3.23
4.64
33
floor

3.03
4.64
33
conc. floor

2.9	2.8	2.8	2.1	2.3	2.9
4.8	4.9	4.9	5.0	5.4	4.8
33	25	20	7.67	15	25

Nail in pole # P3101 - (sta. 0+02)

S.W. B.P. Rosecrans + Kurtz

MS

1475

Apt. over Cor.
1473- 25' Lt. = 4 3' wide steps to

2.1
6.2 25
3.0
5.9 12
6.2 25
2.5
6.4 12
5.5 25

1471^S 25' Lt. = end v wide conc. walk

2.6
5.28 25
1.34
5.707 6.3 25
6.3 25
6.3 25

T.R. 5.92 8.88 4.71 2.96

2.93
5.89
2.5
walk

8.88

1466 27' Lt. = 4 Sing Cor Floor Conc.

2.97
4.70
27
Floor

1452 25' Lt. = start v wide conc. walk

2.87
4.80 35
walk
2.84
4.83 25

1451- 21' Lt. = Pole # P3151

1450 - 25' Lt. = end chain link fence

2.9
4.8 25
2.9
4.8 15
2.6
5.1
2.4
5.3 12
2.0
4.7 25

T.R. 1400

2.6
4.9 25
2.9
4.8 17
2.7
5.3
2.2
5.5 12
2.5
4.9 25

7.67

Hancock

Camino del Rio Paua.
This sec. along edge of
Rio pavement.

Ely strip Camino del
2+66¹ } = intersect wly edge of

4.66	4.63	4.68
4.22	4.25	4.20
3.19		3.14
0.17 Δ		0.17 Δ

del. Rio Paua.
2+58¹ - 25' Rt. = intersect Camino

4.45
4.43
25'
Crd. + Paua

Rio Paua.
2+39⁸² = intersect Camino del

4.43
4.45
Crd. +
Paua

4.1
4.18
25'

Camino del Rio Paua.
2+21⁵ - 25' Lt. = intersect Ely edge

4.40	3.9	3.6	3.9
4.48	5.0	5.3	5.0
25		15	25
Crd. + Corno Paua			

2+20 - 25' Lt. = crd fence

2+00

3.4	2	3.0	3.4
5.5	5.7	5.9	5.5
25	8.88	12	25

Moore St.

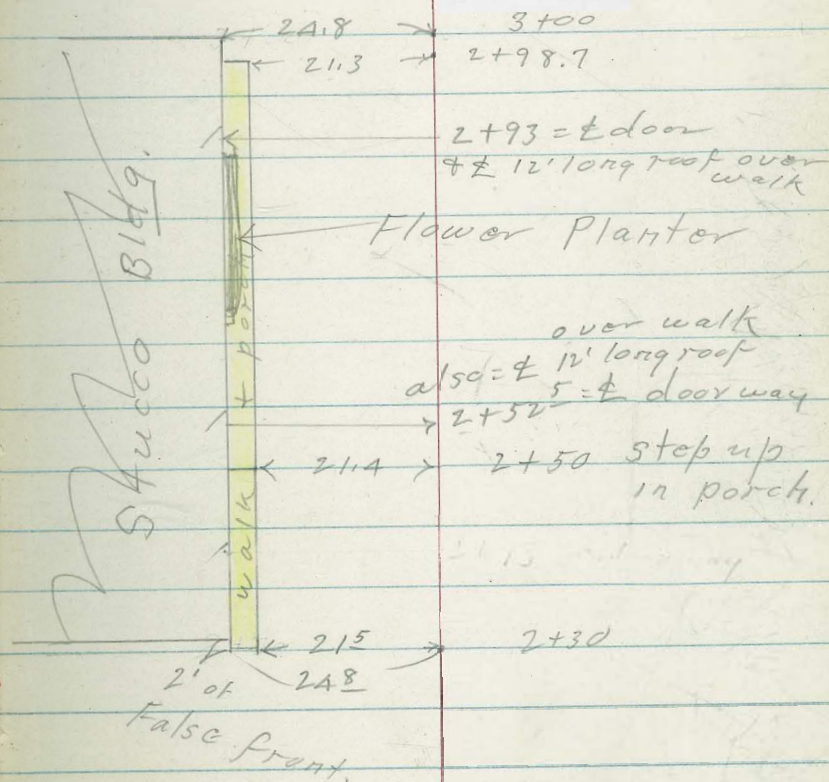
Rosecrans to Camino del Rio.

C.H.S.
Begg
Schelin

8-27-53

Additional notes to page 5

0+00 = wly line Rosecrans



Add to notes - p. 5

Moore St.
Rosecrans to Gainer
sketch P1 + 32.
see levels - P 5 + 6

±

2400

^{2.6} 5.13	^{2.4} 5.11	^{2.1} 5.12	^{2.0} 5.11	^{2.3} 4.16	^{2.1} 4.18
25	20		15	17	25

1475 18' Ltr 2 end G type eb.

^{3.2} 4.17	^{2.88} 5.06	^{2.42} 5.52	^{2.1} 5.12	^{2.4} 5.1	^{3.0} 4.9
25	18 cl	18 c	16		25

35' overall
past end of eb. cut out.
drive extends 5' each way

1435 18' = ± 25' drive thru curb

^{3.37} 4.63	^{2.70} 5.24	^{2.63} 5.31
25 drive	18 drive	18 c

1400

^{3.6} 4.4	^{3.37} 4.57	^{2.88} 5.05	^{3.1} 4.8	^{3.2} 4.7
25	18 cl	18 c		25

0450 18' Ltr = G type eb. (start of eb.)

^{3.6} 4.13	^{3.66} 4.28	^{3.14} 4.80	^{3.1} 4.4	^{3.4} 4.5
25	18 cl	18 c		25

same as on P 5

levels back of 0450 are

7.94

T.P. 5.07 7.94 5.18 2.87
4.17 8.05 - 3.88

T.B.M. #1 - P 29

1 Nail in pole
P 3101

Moore

Also see FB 2068
30

should be 3.61 - see p. 40

T.B.M.

4.30 3.64

T.P. N.E. Cor. porch 23' Lt. of 2+98²

3+00 - 24" Lt. = end Bldg
= Fly line Gainer

4.19 25
4.19 25
4.18 25

2+98¹ - 21³ Lt. = end walk

4.28 4.8
21³ 21
walk

2+98 } 22³ Lt. = 1 1/2" pipe - Roof support
2+87⁵ }

2+93 - 24" ϕ doorway

4.13

2+62 22" Lt. = 1" pipe - roof support

24⁸
Floor level

2+52⁵ 24" Lt. = ϕ doorway

4.12
24⁸
Floor level

2+50⁵ 22" Lt. = 1" pipe roof support

2+50 21⁴ left = step up in walk

4.38 4.40 4.92 5.0 5.1 5.2
24⁸ 21⁴ 21⁴ 21
at walk walk End
Bldg. ahead back

(see p 32)

2+30 21⁵ Lt. = start conc. walk

4.96
21⁵
walk

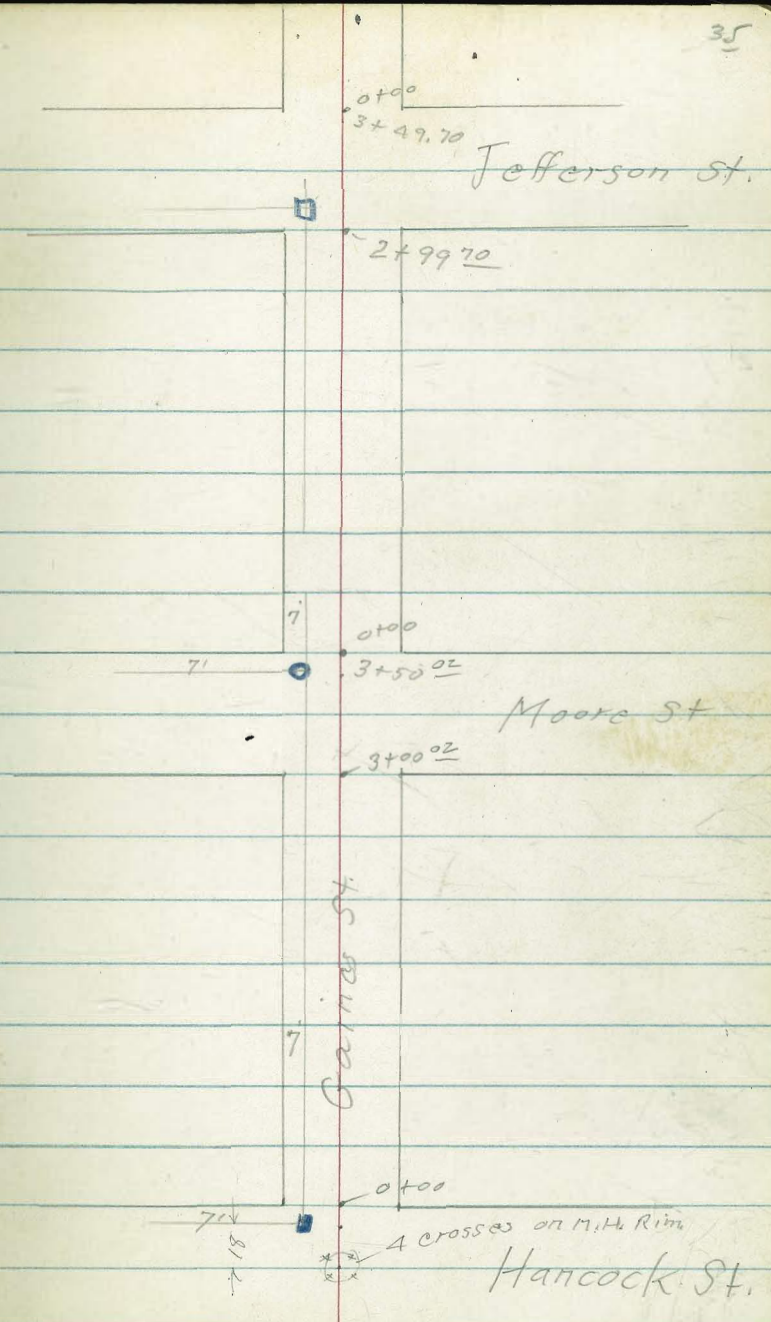
7.94

Gainies St. X-sec.

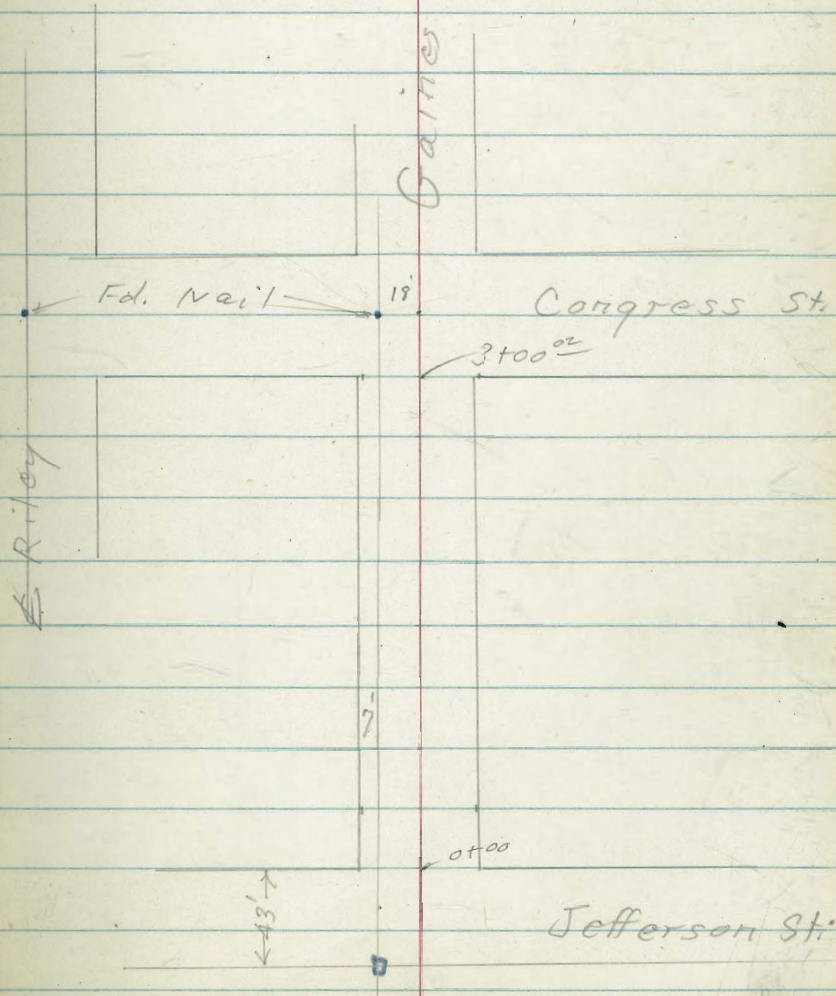
Hancock to Congress

C.H.S.	9-3-53
Begg	NO. # 32265
oltman	FB 1587
Schelin	- 1705
	✓ 2078
	✓ 2068

- denotes Fd. Conc. Mon.
- " Fd. pipe - City disk
- " Fd. 1/2" & tack. or disk



Paving is partly covered with
hard packed soil - See F.B. 1629-PA1 &
F.B. 1705-P-62 For Pavement levels.



Gaines St.

1+39 25² Rte end stucco Bldg.
 1+37 25² Lt. end chain link fence
 1+20 25² Lt. = 10" pole # 3827
 1+20 25² Rte start stucco Bldg.

1+12 25 Rte ± 16' wide A.C. drive

1+04 - 25' Rte end stucco Bldg.

1+00

0+50

0+40 - 25' Rte = start stucco Bldg.

0+32 - 25' Rte ± 16' wide A.C. drive

0+25 - 25' Rte end stucco Bldg.

0+00 } 25² Lt. start chain link fence
 25' Rte start stucco Bldg
 = Nly. line Hancock.

3.6
 2.9
 4.1 3.8
 25 35

2.8
 2.8
 4.9 4.9
 25 25

2.6
 2.8
 5.1 4.9
 25 25

3.1
 2.8
 4.2 3.9
 25 35

2.8
 2.9
 5.0 4.9
 25 7.74 25

3.86 7.74 - 3.88

T.B.M.#1 - P-29

Gaines

±

2+49- 21⁹ RT = ϕ 8⁰ long (N+S.)
 conc. Porch.

2.9	3.65	5.65
5.2	4.44	4.44
21	214	249
6	slab	at Bldg
	conc.	

2+30 = 24⁸ RT = start stucco Bldg.

2+13 24⁸ RT = end stucco Bldg.

2+00

3.1	3.1	5.8
5.0	4.8	5.3
25	8.09	25

T.P. 4.83 8.09 4.48 3.26

1+99 25 RT = ϕ 3' door to Bldg.
 loading dock.

1+87- 20² RT = ϕ 16 long wooden
 1-story.

1+82 26' Lt = start Apartments.

1+79- 22' Lt = deadman

1+60 25 RT = start stucco Bldg.

2.9	3.00
4.8	4.74
25	25
End.	Floor
	Total

1+50⁰¹ = ϕ Alley

2.3	2.8	3.1	2.8	4	3
5.4	4.9	4.6	4.9	4.3	4.4
100	25		13	18	25

7.74

Gains

T.B.M. - (23' Lt 2+982 Page 34) 4.48 3.61 (3.64)

3+50⁰³ = Nly line Moore

0	B	1	4	1
N	N	N	N	N
5.0	5.3	5.0	5.3	4.6
25	15		17	25

3+25⁰² = E Moore

0	1	0
N	N	N
5.1	5.0	5.1
25		25

3+08 23⁷ PA = 12" pole # 38493+00² = 25' Rt. = end stucco Bldg.3+00⁰² = Sly line Moore

9	9	9
N	N	N
5.2	5.2	5.2
25		

2+94 26' Lt. = end wall.

3	1	0
N	N	N
1.8	5.6	5.1
26	26	25
T.W.	B.W.	

2+66- 26' Lt. = end Bldg, start conc. wall

3	1	9
N	N	N
1.8	5.6	5.2
26	26	25
T.W.	B.W.	

2+55

9	3	9
N	N	N
5.2	4.8	5.2
25		24.8
		at Bldg
	8.09	

Gaines

T₁ 1+39 25² Lt. = End fence.
 18² Rt. = 10" pole # 3873
 1+17 18² Rt. = dead man
 1+05 18² Rt. = 1A" diam Palm.
 1+00

4.5	4.7	5.5	5.2	5.1	4.7	4.3
25	18	17		9	11	25

0+88 25' Rt. = ± 17' wide cold-lay drive

4.8	4.7
25	35

0+79 26³ Rt. = end house
 25² Rt. = start fence

4.8	4.8	5.5	5.3	5.1	4.7
25	18	16		10	25

(Note: Fence on right is 8' high lath fence for Green house.)

0+49 26³ Rt. = start frame Bldg
 24³ Rt. = end fence

0+28 - 24³ Rt. = ± drive way thru fence

4.8
24 ³

0+00 = Nly line Moore - (P. 40)
 { 25² Lt. } = start
 { 24³ Rt. } = fence

4.8	5.2	4.9	5.1	4.5
25	15		17	25

4.40 $\frac{8.01}{8.04}$ - 3.64 ←
 3.61 - P.39

T.B.M. 22' H. 2+98² (P-3A)

Gains

Pole # 3099

T.P. Nail 2.78 8.29 8.32 2.08 5.51 5.54

24th Lt = end fence.
 25th Rt = end fence
 2+99 } Sly. line Jefferson

2+90

2+61 2A Lt = start slot fence

2+50

2+00

3.7 4.15 4.4 4.6 3.5
 25 17 16 25

3.6 3.9 4.7 4.6 4.9 4.1 3.6
 25 19 17 11 13 25

4.3 4.6 5.0 4.7 5.0 3.6 3.6
 25 19 18 10 12 25

4.4 4.6 5.0 4.7 4.7 3.8 3.7
 25 18 17 10 12 25

3.8
 200

4.8 4.7 4.8 5.0 4.6 4.9 4.5 4.1
 100 25 18 16 9 10 25

1+50 } E Alley to west

1+48 - 20' Rd = Ctr. 10' diam. shrub Lantana

T.P. 4.65 7.58 7.62 5.07 2.94 2.97

7.58
 7.62

Gaines

0+14 - 25' RT. = ϕ 2' x 4' porch

0+100 }
3+4.9 } = Nly line Jefferson

3+41

3+39 } 14' tet
3+39 } 24' RT. = wly end 10' el

3+24 } = ϕ Jefferson

ϕ

42

4.1
4.2 2.25
25 25
porch

4.5 4.6 5.9 5.5 5.7 4.5 4.4
25 19 15 13 18 25

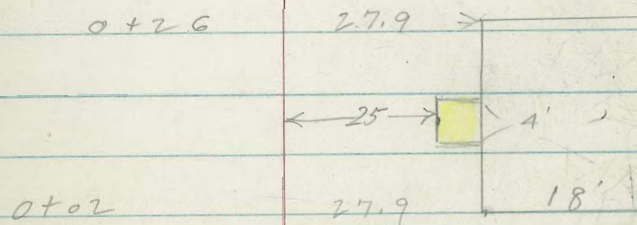
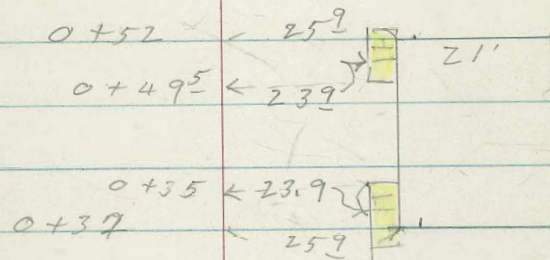
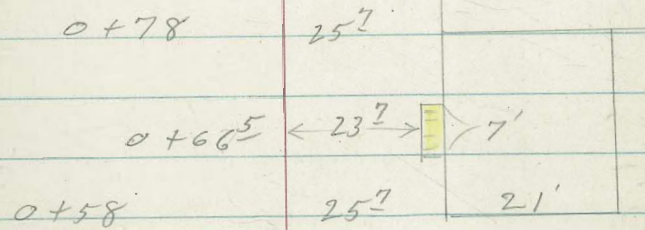
4.7 5.6 5.6 5.8 5.1 4.9
25 17 13 16 25

4.33
4.96
33
el
end

5.2 5.6 5.8 4.92 5.96 5.9
25 24 24 32 33
el grate

5.0 4.7 4.7
25 25

8.29



Gaines

T.P. 4.90 8.28 3.38
8.31 4.91 3.41

0+46 - 23' Pt. = end walk

0+38 - 23' Pt. = start ^{walk} 2' conc.

0+35 - 23' Pt. = ^{porch - conc.} 6' long stop +

0+28^E 25' Pt. = end walk

0+19 - 25' Pt. = start. conc. walk

44

	9	8	9	3 ²	3 ²	4 ²	4 ⁴¹
	4.4	4.5	5.4	5.1	5.1	4.1	3.88
	25	18	14		14	23 ²	23 ² 25 walk

4⁴¹
3.88
23²
walk

6¹⁵ 6¹⁵
2.14 2.14
23² 25²
porch →

	3 ⁷	3 ⁷	5.2.6	3 ¹	3 ¹	4 ⁰	4 ³
	4.6	4.7	5.7	5.2	5.2	4.3	4.0
	25	18	15		14	18	23 ²

4³³
3.96
25
walk

4²⁸
4.01
25
walk

8.29

0+81- } 23⁷ Rt = end conc. walk

4.2 4.0 5.2 4.8 4.1 3.71 3.67
25 18 15 10 232 232 25
walk

0+70- 23⁷ Rt = start 2' conc. walk

4.10
3.78
232
walk

0+66⁵ 23² Rt = ϕ 7' long porch +
steps - Conc.

4.1 6.26
4.2 2.02
237 237
end porch

0+63 - 23⁷ Rt = end walk

3.4 4.9 4.3 3.81 3.71
239 239 25
end walk

0+60 - 25' Rt = start Fence

0+53 23⁹ Rt = start 2' wide Conc.
walk.

4.40
3.88
232
walk

0+49^E 23⁹ Rt = ϕ 7' long porch
+ steps

4.2 6.23
4.1 2.05
239 239
end porch

8.28

Gaines

±

46

TP 5.42 8.79 4.91 3.37
~~8.82~~ 3.40

2+00

1+86 19' RT = deadman

slab to come out

1+73 24' Lt. = 15 sq. ft. 4" conc.

1+64 18⁵ RT = 10" Guy pole #3925

1+60 { 25⁸ RT = start corr. Iron Bldg.
 25² RT = start fence
 25 Lt = start fence

1+50⁰¹ = # Alley

1+40 - 25' Lt. = end fence

1+39 26⁴ RT = end Corr. Iron Bldg.

1+24 - 20⁵ RT = 10' conc drive into Bldg.

1+00 - 26⁷ RT = start corr. Iron, Conc. floor - Bldg.

⁵ / ₂	² / ₂	¹ / ₂	³ / ₂	⁵ / ₂	⁰ / ₂	³ / ₂
4.8	5.1	5.2	4.9	4.8	4.3	4.0
25	15	13		16	18	25

⁴ / ₂	⁹ / ₂	⁴ / ₂	⁰ / ₂	⁵ / ₂	⁴ / ₂	⁰ / ₂	³ / ₂	⁷ / ₂
4.5	4.4	4.5	5.3	4.8	4.9	4.3	4.0	3.6
75	25	15	13		13	17	25	75

¹/₂
 3.33
 264
 floor

²³/₂ ³/₂ ⁵/₂
 4.05 3.65 3.33
 225 25 269
 drive floor

⁷ / ₂	⁷ / ₂	⁰ / ₂	¹ / ₂	¹ / ₂	⁴ / ₂	⁰ / ₂
4.6	4.6	5.3	4.8	4.8	3.9	3.3
25	17	15		11	25	269
						Floor level

8.28

Gaines

FB
= 3,27-1705
62

wly, 7' Gaines
Nail & Congress

3,27
5.52 3.30

See note on P-36

3+25⁰² = Gaines Congress?

^{3.19} 5.60 ^{3.3} 5.85 ^{2.83} 5.96 ^{3.01} 5.78
M.H. 20 25
Rim

3+10

^{3.4} 5.4 ^{3.4} 5.4 ^{3.2} 5.6
25 25

3+09 25' Lt. = 14" pole # J.P. 3101

25' Lt. = end fence
25' Rt. = end fence
3+00⁰² = sly. Congress

^{3.3} 5.5 ^{3.4} 5.4 ^{3.4} 5.4
25 25

2+50

^{3.3} 5.5 ^{3.2} 5.6 ^{3.5} 5.3 ^{3.4} 5.4 ^{3.6} 5.2 ^{3.6} 5.2
25 17 16 18 25

2+44 27' Lt. = # 10' wide level
conc. drive

^{3.89} 4.90 ^{3.79} 5.00 ^{3.6} 5.12
50 274 27
on drive

2+40 25' Lt. = end Bldg,

8.79

Moore St.

Riley to Camino del Rio.

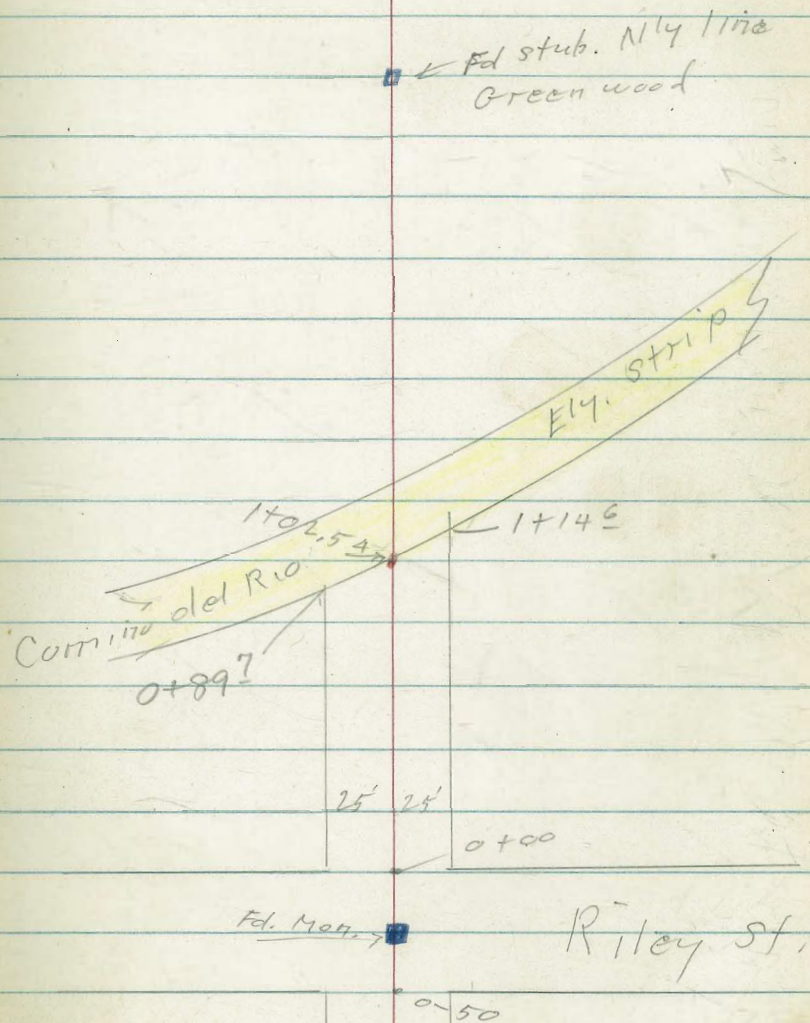
C.H.S.
Begg
oltman
Schelin

9/4/53
W.O. # 32265

48

See P-32

+ FB 2068-P 30



Moore St

~~Ely of Camino Del Rio~~
(Gaines to Camino Del Rio
0+00 = Wly line Gaines

1+50

2.9	2.7	2.9	2.9	4	4
5.0	5.2	5.0	5.0	4.5	4.5
25	17		14	15	25

1+00

2.9	2.4	2.8
5.0	5.1	5.1
25		25

0+55

2.9	2.7	2	2.8
5.0	5.2	5.2	5.1
25		18	25

0+50

2.9	2.7	2.7	2	2.7
5.0	5.2	5.2	4.7	4.6
25		16	18	25

0+00 = Wly Gaines

2.9	3.0	2.8	3.3	3.1
5.0	4.9	5.1	4.6	4.8
25		16	18	25

7.90

4.29 7.90

3.61

T.B.M. P-34 + P 40

Moore St

⊕

50

0+50 RA = start conc. slab

~~4.6 4.5 3.4~~

0+00 } = wly. line Riley

^{2.8}	^{3.0}	^{2.6}	^{3.1}	^{2.9}	^{3.1}
5.2	5.0	5.4	4.9	5.1	4.6
25	20	19		13	14
					25

⊕ Riley

^{2.5}	^{3.2}	^{3.3}
5.1	4.8	4.7
25		25

3+ = Ely Riley

^{3.1}	^{3.3}	^{3.3}
4.9	4.7	4.7
25		25

7.97

T.P. 4.70 7.97 4.63 3.27

2+50

^{3.2}	^{3.2}	^{3.4}
4.7	4.7	4.5
25		25

2+00

^{3.1}	^{2.9}	^{3.0}	^{3.6}	^{3.1}
4.8	5.0	4.9	4.3	4.2
25		14	15	25

7.90

Moore
 1st Strip Camino Del Rio Pave
 1+27^E Sec. Along wly edge of

5.29
 2.68
 25
 Edge of
 pave

±
 5.33
 2.61
 Edge of
 Pave.

5.42
 2.55
 25
 Edge pave

51

Pave. Camino Del Rio
 1+14^E -25' RT. = Ely. edge conc.

5.51
 2.76
 25
 Conc.

1+02^E = Ely edge Conc. Pave

5.16
 2.81
 5.50
 3.10
 25

0+91^E 25' RT. = end conc. slab.

4.62
 3.35
 25
 End. Conc. Slab.

Pave. Camino Del Rio

0+89^E 25' Lt. = Ely. edge conc.

5.05
 2.88
 25
 Conc.

4.9
 3.1
 4.63
 3.34
 25
 Conc. +
 End.

Service Sta. Yard
 0+50 RT. = start conc. Pave

3.2
 4.9
 25

3.0
 5.0
 15

3.4
 4.6
 12

3.1
 4.5
 12

4.31
 3.60
 25
 Conc.

4.46
 3.51
 35

0+40

3.0
 5.0
 25

3.1
 4.9
 20

3.4
 5.2
 18

3.2
 4.8
 12

3.2
 4.8
 12

3.1
 4.5
 13

3.3
 4.7
 25

Clark
Shepherd
Blumer
O'Neil

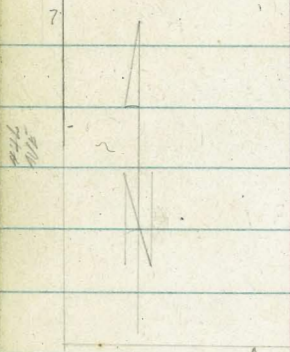
10-20-53
W.O. 25020

6TH AVE: - ALIGNMENT &
X-SECT: MONTECITO to ARBOR DR.

Ref: F.B. 1264-9
" 1489-6
Tie sheets: 223
259
262

ARBOR DR.

MT



(Back-sight 2.7' x T)
at 3rd arc

MONTECITO WAY

MT

H.C.T

54
54

12.27

12.27

349.84'

227

23

18

240.00

ARBOR DR.

(HAS 5/4 HAD 9' in' clearing)
2nd side?

(See tie sheets for angles)
this area

240.03

MONTECITO WAY

Fd 2x2 3.5'
below surface

48.10'

30'

Set 1x1

2799.76

200.48

726.96 (comp)

Fd 2x2 - 54' lot 27
F.B. 1489.6

Fd STATE MAN. 0.37
Fd 29.67
14.15
(MAP 14.50)

INDEXED
MAR 17 1954

W. LINE 5 1/2" AVE
347.98

6 1/2" AVE

W. L. Meridians

= 0+00

Ta. 2x2

50.42'

30'

Set 1x1

Set 2x2

48.54

Fd Very old 2x2 + 4x4 Post
F.B. 1489-6

S-T Line LEWIS &
S Line LEWIS &

LT

4.74

LT

6th AVE (CONT.)

LT.

BASE-LINE

RT.

T.P. 0.93 268.23 12.43 267.30

T.P. 1.78 279.73 12.60 277.95

2401 30.25 LT END Fence
(= Brown-Line)

2400 23.0 LT & Pole = 41.60

1482 15.0 LT & DEADMAN

1464 17.50 30.25 LT Bay 4.5 Steel-Wire Fence

1421 31.4 LT & 40' CON. WALK

1410 = Brown

1400

T.P. 10.22 290.55 0.13 290.33

T.P. 13.33 280.46 0.87 267.13

0450

Handwritten calculations and notes in the right margin, including values like 286.2, 285.8, 286.3, 286.55, 286.5, 285.6, 285.3, 285.8, 285.0, 284.5, 283.5, 283.6, 280.0, 285.6, 285.0, 284.6, 284.6, 249.0, 249.5, 251.8, 267.95, and various fractional adjustments (e.g., 4.4/40, 3.5/40, 3.85/40, 4.8/30, 5.6/20, 7.4/43, 7.8/40, 19.0/40, 19.30/40, 4.8/40, 5.4/40, 7.1/19.6, 12.0/19.70, 10.6/40, 19.0/10, 18.5/20, 16.2/40).

267.95

3+39.78 = NLY CB LINE ARBOR

3+24.78 = S ARBOR DR

3+17 = Bottom canyon at Base Line

3+09.78 = SLY CB LINE ARBOR DR

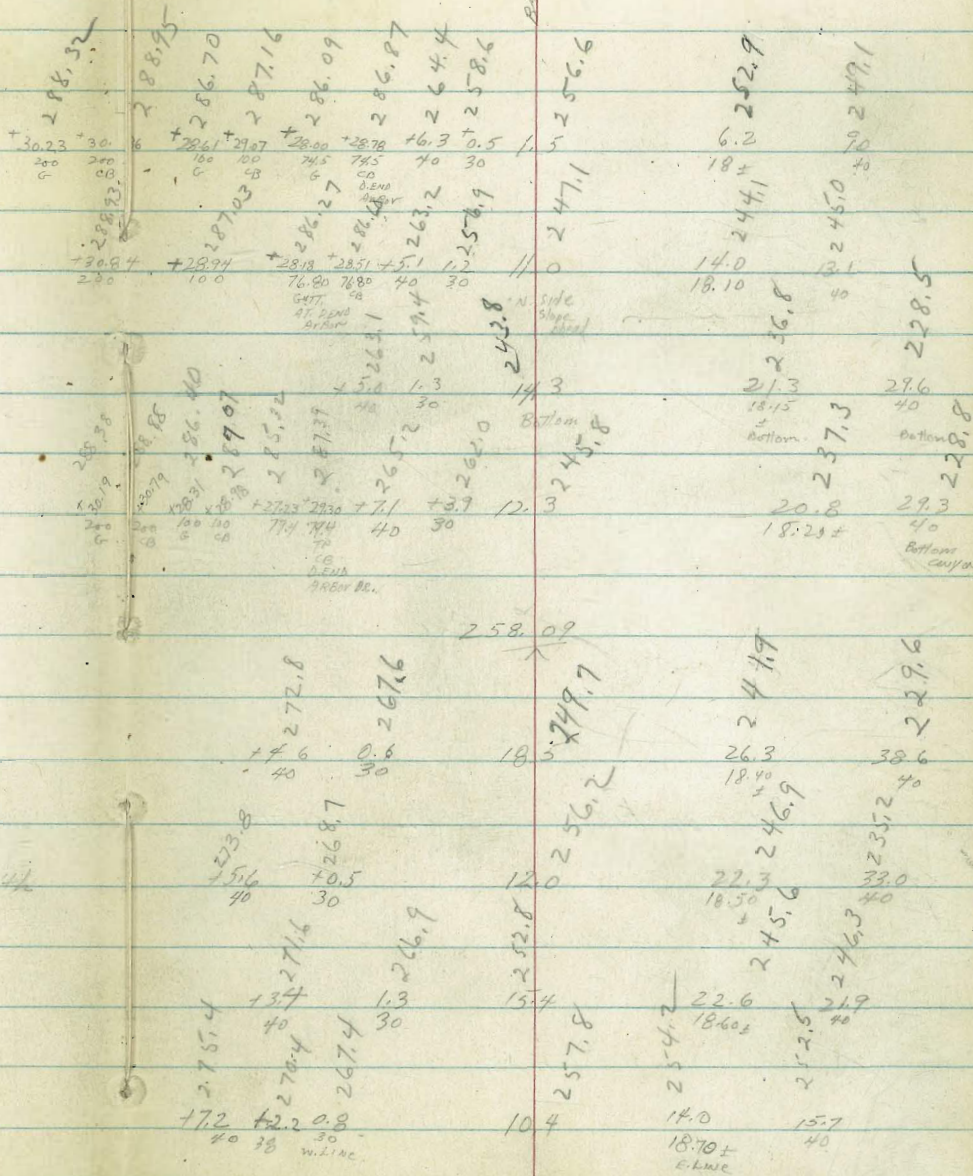
T.P. 0.34 258.09 10.48 257.75

2+99.78 = S Line ARBOR DR

2+89 = Top of Ridge running E. to 64th

2+67 Toe Slope (not at Canyon)

2+50



268.23

64th AVE. (CONT.)

Note: There are various shrubs & ornamentals
 as well as much loose-rock & tree-work in this area
 which falls within the street. However it is far too
 much to be located on a 25020 grade-study

CHKI 2.46 290.51 = 290.53 (see B.M.)

T.P. 12.43 292.97 0.02 280.54

T.P. 12.30 280.56 0.91 268.26

3149.78 - N. Line ARBOR ST.
 (on slope ahead)

1.2	48	7.0	11.0	15.3
$\frac{10}{10}$	$\frac{30}{30}$		18+	40

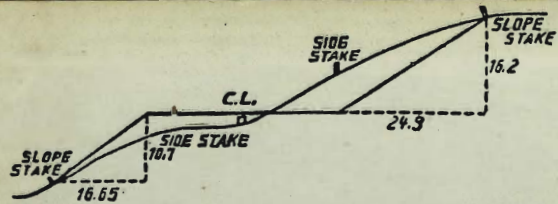
T.P. 11.42 269.17 0.34 257.75

269.17
 $\frac{16}{16}$

26.9
39.8

66.7

453



546
525

DISTANCES FROM SIDE STAKES FOR CROSS-SECTIONING.

SLOPE 1 1/2 TO 1. ROADWAY OF ANY WIDTH.

	0	.1	.2	.3	.4	.5	.6	.7	.8	.9	
0	0.00	0.15	0.30	0.45	0.60	0.75	0.90	1.05	1.20	1.35	0
1	1.50	1.65	1.80	1.95	2.10	2.25	2.40	2.55	2.70	2.85	1
2	3.00	3.15	3.30	3.45	3.60	3.75	3.90	4.05	4.20	4.35	2
3	4.50	4.65	4.80	4.95	5.10	5.25	5.40	5.55	5.70	5.85	3
4	6.00	6.15	6.30	6.45	6.60	6.75	6.90	7.05	7.20	7.35	4
5	7.50	7.65	7.80	7.95	8.10	8.25	8.40	8.55	8.70	8.85	5
6	9.00	9.15	9.30	9.45	9.60	9.75	9.90	10.05	10.20	10.35	6
7	10.50	10.65	10.80	10.95	11.10	11.25	11.40	11.55	11.70	11.85	7
8	12.00	12.15	12.30	12.45	12.60	12.75	12.90	13.05	13.20	13.35	8
9	13.50	13.65	13.80	13.95	14.10	14.25	14.40	14.55	14.70	14.85	9
10	15.00	15.15	15.30	15.45	15.60	15.75	15.90	16.05	16.20	16.35	10
11	16.50	16.65	16.80	16.95	17.10	17.25	17.40	17.55	17.70	17.85	11
12	18.00	18.15	18.30	18.45	18.60	18.75	18.90	19.05	19.20	19.35	12
13	19.50	19.65	19.80	19.95	20.10	20.25	20.40	20.55	20.70	20.85	13
14	21.00	21.15	21.30	21.45	21.60	21.75	21.90	22.05	22.20	22.35	14
15	22.50	22.65	22.80	22.95	23.10	23.25	23.40	23.55	23.70	23.85	15
16	24.00	24.15	24.30	24.45	24.60	24.75	24.90	25.05	25.20	25.35	16
17	25.50	25.65	25.80	25.95	26.10	26.25	26.40	26.55	26.70	26.85	17
18	27.00	27.15	27.30	27.45	27.60	27.75	27.90	28.05	28.20	28.35	18
19	28.50	28.65	28.80	28.95	29.10	29.25	29.40	29.55	29.70	29.85	19
20	30.00	30.15	30.30	30.45	30.60	30.75	30.90	31.05	31.20	31.35	20
21	31.50	31.65	31.80	31.95	32.10	32.25	32.40	32.55	32.70	32.85	21
22	33.00	33.15	33.30	33.45	33.60	33.75	33.90	34.05	34.20	34.35	22
23	34.50	34.65	34.80	34.95	35.10	35.25	35.40	35.55	35.70	35.85	23
24	36.00	36.15	36.30	36.45	36.60	36.75	36.90	37.05	37.20	37.35	24
25	37.50	37.65	37.80	37.95	38.10	38.25	38.40	38.55	38.70	38.85	25
26	39.00	39.15	39.30	39.45	39.60	39.75	39.90	40.05	40.20	40.35	26
27	40.50	40.65	40.80	40.95	41.10	41.25	41.40	41.55	41.70	41.85	27
28	42.00	42.15	42.30	42.45	42.60	42.75	42.90	43.05	43.20	43.35	28
29	43.50	43.65	43.80	43.95	44.10	44.25	44.40	44.55	44.70	44.85	29
30	45.00	45.15	45.30	45.45	45.60	45.75	45.90	46.05	46.20	46.35	30
31	46.50	46.65	46.80	46.95	47.10	47.25	47.40	47.55	47.70	47.85	31
32	48.00	48.15	48.30	48.45	48.60	48.75	48.90	49.05	49.20	49.35	32
33	49.50	49.65	49.80	49.95	50.10	50.25	50.40	50.55	50.70	50.85	33
34	51.00	51.15	51.30	51.45	51.60	51.75	51.90	52.05	52.20	52.35	34
35	52.50	52.65	52.80	52.95	53.10	53.25	53.40	53.55	53.70	53.85	35
36	54.00	54.15	54.30	54.45	54.60	54.75	54.90	55.05	55.20	55.35	36
37	55.50	55.65	55.80	55.95	56.10	56.25	56.40	56.55	56.70	56.85	37
38	57.00	57.15	57.30	57.45	57.60	57.75	57.90	58.05	58.20	58.35	38
39	58.50	58.65	58.80	58.95	59.10	59.25	59.40	59.55	59.70	59.85	39
40	60.00	60.15	60.30	60.45	60.60	60.75	60.90	61.05	61.20	61.35	40
41	61.50	61.65	61.80	61.95	62.10	62.25	62.40	62.55	62.70	62.85	41
42	63.00	63.15	63.30	63.45	63.60	63.75	63.90	64.05	64.20	64.35	42
43	64.50	64.65	64.80	64.95	65.10	65.25	65.40	65.55	65.70	65.85	43
44	66.00	66.15	66.30	66.45	66.60	66.75	66.90	67.05	67.20	67.35	44
45	67.50	67.65	67.80	67.95	68.10	68.25	68.40	68.55	68.70	68.85	45
46	69.00	69.15	69.30	69.45	69.60	69.75	69.90	70.05	70.20	70.35	46
47	70.50	70.65	70.80	70.95	71.10	71.25	71.40	71.55	71.70	71.85	47
48	72.00	72.15	72.30	72.45	72.60	72.75	72.90	73.05	73.20	73.35	48
49	73.50	73.65	73.80	73.95	74.10	74.25	74.40	74.55	74.70	74.85	49
50	75.00	75.15	75.30	75.45	75.60	75.75	75.90	76.05	76.20	76.35	50

537
532
545

THE NATIONAL BLANK BOOK COMPANY
HOLYOKE MASSACHUSETTS
NEW YORK CHICAGO BOSTON SAN FRANCISCO