

DISTANCES FROM SIDE STAKES FOR CROSS-SECTIONING
SLOPE 1 TO 1. ROADWAY OF ANY WIDTH

	0	.1	.2	.3	.4	.5	.6	.7	.8	9	
0	0.00	0.10	0.20	0.30	0.40	0.50	0.60	0.70	0.80	0.90	0
1	1.00	1.10	1.20	1.30	1.40	1.50	1.60	1.70	1.80	1.90	1
2	2.00	2.10	2.20	2.30	2.40	2.50	2.60	2.70	2.80	2.90	2
3	3.00	3.10	3.20	3.30	3.40	3.50	3.60	3.70	3.80	3.90	3
4	4.00	4.10	4.20	4.30	4.40	4.50	4.60	4.70	4.80	4.90	4
5	5.00	5.10	5.20	5.30	5.40	5.50	5.60	5.70	5.80	5.90	5
6	6.00	6.10	6.20	6.30	6.40	6.50	6.60	6.70	6.80	6.90	6
7	7.00	7.10	7.20	7.30	7.40	7.50	7.60	7.70	7.80	7.90	7
8	8.00	8.10	8.20	8.30	8.40	8.50	8.60	8.70	8.80	8.90	8
9	9.00	9.10	9.20	9.30	9.40	9.50	9.60	9.70	9.80	9.90	9
10	10.00	10.10	10.20	10.30	10.40	10.50	10.60	10.70	10.80	10.90	10
11	11.00	11.10	11.20	11.30	11.40	11.50	11.60	11.70	11.80	11.90	11
12	12.00	12.10	12.20	12.30	12.40	12.50	12.60	12.70	12.80	12.90	12
13	13.00	13.10	13.20	13.30	13.40	13.50	13.60	13.70	13.80	13.90	13
14	14.00	14.10	14.20	14.30	14.40	14.50	14.60	14.70	14.80	14.90	14
15	15.00	15.10	15.20	15.30	15.40	15.50	15.60	15.70	15.80	15.90	15
16	16.00	16.10	16.20	16.30	16.40	16.50	16.60	16.70	16.80	16.90	16
17	17.00	17.10	17.20	17.30	17.40	17.50	17.60	17.70	17.80	17.90	17
18	18.00	18.10	18.20	18.30	18.40	18.50	18.60	18.70	18.80	18.90	18
19	19.00	19.10	19.20	19.30	19.40	19.50	19.60	19.70	19.80	19.90	19
20	20.00	20.10	20.20	20.30	20.40	20.50	20.60	20.70	20.80	20.90	20
21	21.00	21.10	21.20	21.30	21.40	21.50	21.60	21.70	21.80	21.90	21
22	22.00	22.10	22.20	22.30	22.40	22.50	22.60	22.70	22.80	22.90	22
23	23.00	23.10	23.20	23.30	23.40	23.50	23.60	23.70	23.80	23.90	23
24	24.00	24.10	24.20	24.30	24.40	24.50	24.60	24.70	24.80	24.90	24
25	25.00	25.10	25.20	25.30	25.40	25.50	25.60	25.70	25.80	25.90	25
26	26.00	26.10	26.20	26.30	26.40	26.50	26.60	26.70	26.80	26.90	26
27	27.00	27.10	27.20	27.30	27.40	27.50	27.60	27.70	27.80	27.90	27
28	28.00	28.10	28.20	28.30	28.40	28.50	28.60	28.70	28.80	28.90	28
29	29.00	29.10	29.20	29.30	29.40	29.50	29.60	29.70	29.80	29.90	29
30	30.00	30.10	30.20	30.30	30.40	30.50	30.60	30.70	30.80	30.90	30
31	31.00	31.10	31.20	31.30	31.40	31.50	31.60	31.70	31.80	31.90	31
32	32.00	32.10	32.20	32.30	32.40	32.50	32.60	32.70	32.80	32.90	32
33	33.00	33.10	33.20	33.30	33.40	33.50	33.60	33.70	33.80	33.90	33
34	34.00	34.10	34.20	34.30	34.40	34.50	34.60	34.70	34.80	34.90	34
35	35.00	35.10	35.20	35.30	35.40	35.50	35.60	35.70	35.80	35.90	35
36	36.00	36.10	36.20	36.30	36.40	36.50	36.60	36.70	36.80	36.90	36
37	37.00	37.10	37.20	37.30	37.40	37.50	37.60	37.70	37.80	37.90	37
38	38.00	38.10	38.20	38.30	38.40	38.50	38.60	38.70	38.80	38.90	38
39	39.00	39.10	39.20	39.30	39.40	39.50	39.60	39.70	39.80	39.90	39
40	40.00	40.10	40.20	40.30	40.40	40.50	40.60	40.70	40.80	40.90	40
41	41.00	41.10	41.20	41.30	41.40	41.50	41.60	41.70	41.80	41.90	41
42	42.00	42.10	42.20	42.30	42.40	42.50	42.60	42.70	42.80	42.90	42
43	43.00	43.10	43.20	43.30	43.40	43.50	43.60	43.70	43.80	43.90	43
44	44.00	44.10	44.20	44.30	44.40	44.50	44.60	44.70	44.80	44.90	44
45	45.00	45.10	45.20	45.30	45.40	45.50	45.60	45.70	45.80	45.90	45
46	46.00	46.10	46.20	46.30	46.40	46.50	46.60	46.70	46.80	46.90	46
47	47.00	47.10	47.20	47.30	47.40	47.50	47.60	47.70	47.80	47.90	47
48	48.00	48.10	48.20	48.30	48.40	48.50	48.60	48.70	48.80	48.90	48
49	49.00	49.10	49.20	49.30	49.40	49.50	49.60	49.70	49.80	49.90	49
50	50.00	50.10	50.20	50.30	50.40	50.50	50.60	50.70	50.80	50.90	50

Distance of slope stake from side or shoulder stake for any width roadway, slope 1 to 1. If ground is nearly level, the cut or fill at side stake is located by the double entry method in left column and top row. The number in body of table in same row and column gives distance from side stake to slope stake. If ground is not level estimate the difference in elevation between the side stake and slope stake, lower target by this amount if cut, elevate if fill. Add this amount to cut or fill and find distance in table. Set up rod at this point, and line of sight should cut target. If it does not make the slight adjustment necessary.

TABLE XIII—CORRECTIONS FOR TANGENTS AND EXTERNALS

These corrections are to be added to the approximate values, found by dividing the tangent, or external, for a 1° curve (Table VIII) by the degree of curve, in order to obtain the true tangents, or externals. Intermediate values may be obtained by interpolation.

FOR TANGENTS ADD

Central Angle	DEGREE OF CURVE													
	5°	10°	15°	20°	25°	30°	35°	40°	45°	50°	55°	60°	65°	70°
10°	.03	.06	.09	.13	.16	.19	.22	.25	.28	.31	.34	.38	.42	.46
15°	.04	.10	.14	.19	.24	.29	.34	.39	.45	.51	.53	.58	.63	.68
20°	.06	.13	.19	.26	.32	.39	.45	.51	.58	.65	.72	.79	.84	.90
25°	.08	.16	.24	.33	.40	.49	.58	.67	.75	.83	.90	.99	1.06	1.14
30°	.10	.19	.29	.39	.49	.59	.69	.79	.89	.99	1.09	1.20	1.29	1.39
35°	.11	.22	.34	.47	.58	.69	.79	.81	.92	1.04	1.29	1.42	1.54	1.66
40°	.13	.26	.40	.53	.67	.80	.93	1.06	1.20	1.34	1.49	1.64	1.79	1.94
45°	.15	.30	.44	.60	.76	.91	1.06	1.21	1.37	1.52	1.70	1.87	2.04	2.21
50°	.17	.34	.51	.68	.85	1.02	1.19	1.36	1.54	1.72	1.91	2.10	2.29	2.48
55°	.19	.38	.57	.76	.95	1.14	1.32	1.52	1.72	1.92	2.14	2.35	2.56	2.77
60°	.21	.42	.63	.84	1.05	1.27	1.49	1.71	1.94	2.17	2.38	2.60	2.83	3.07
65°	.23	.46	.69	.93	1.16	1.40	1.64	1.88	2.13	2.38	2.63	2.88	3.13	3.39
70°	.25	.51	.76	1.02	1.28	1.54	1.80	2.06	2.33	2.60	2.88	3.16	3.44	3.72
75°	.27	.56	.83	1.12	1.40	1.69	1.98	2.27	2.57	2.87	3.16	3.47	3.78	4.09
80°	.30	.61	.91	1.22	1.53	1.84	2.15	2.46	2.78	3.10	3.44	3.78	4.12	4.46
85°	.33	.66	1.00	1.33	1.68	2.02	2.36	2.70	3.05	3.40	3.77	4.14	4.55	4.89
90°	.36	.72	1.09	1.45	1.83	2.20	2.57	2.94	3.32	3.70	4.10	4.50	4.91	5.32
95°	.39	.79	1.19	1.55	1.94	2.32	2.70	3.08	3.46	3.84	4.24	4.65	5.06	5.48
100°	.43	.88	1.30	1.74	2.18	2.62	3.06	3.50	3.95	4.40	4.88	5.37	5.85	6.34
110°	.51	1.03	1.56	2.08	2.61	3.14	3.67	4.21	4.76	5.31	5.86	6.43	7.01	7.60
120°	.62	1.25	1.93	2.52	3.16	3.81	4.45	5.11	5.77	6.44	7.12	7.80	8.50	9.22

FOR EXTERNALS ADD

Central Angle	DEGREE OF CURVE													
	5°	10°	15°	20°	25°	30°	35°	40°	45°	50°	55°	60°	65°	70°
10°	.001	.003	.004	.006	.007	.008	.009	.011	.012	.014	.015	.017	.018	.020
15°	.003	.007	.010	.014	.018	.023	.027	.029	.032	.035	.039	.043	.047	.051
20°	.006	.011	.017	.022	.028	.034	.038	.045	.051	.057	.063	.070	.076	.083
25°	.009	.018	.027	.036	.046	.056	.065	.074	.083	.093	.106	.120	.127	.135
30°	.013	.025	.038	.051	.065	.078	.090	.103	.116	.129	.149	.170	.179	.188
35°	.018	.035	.054	.072	.086	.109	.131	.153	.175	.197	.213	.230	.247	.264
40°	.023	.046	.070	.093	.117	.141	.172	.203	.234	.265	.277	.290	.315	.341
45°	.030	.060	.093	.119	.153	.184	.216	.254	.289	.325	.351	.378	.411	.445
50°	.037	.075	.116	.151	.189	.227	.266	.305	.345	.384	.425	.467	.508	.550
55°	.046	.093	.142	.188	.236	.286	.332	.381	.420	.479	.530	.582	.641	.700
60°	.056	.112	.168	.225	.283	.340	.398	.457	.516	.575	.636	.697	.774	.851
65°	.067	.135	.204	.273	.343	.412	.483	.554	.625	.697	.711	.845	.922	1.01
70°	.080	.159	.240	.321	.403	.485	.568	.652	.735	.819	.906	.994	1.08	1.17
75°	.095	.182	.286	.383	.480	.578	.678	.777	.877	.977	1.07	1.18	1.29	1.39
80°	.110	.220	.332	.445	.558	.671	.787	.903	1.02	1.13	1.25	1.38	1.50	1.62
85°	.128	.259	.391	.524	.657	.790	.926	1.06	1.20	1.34	1.47	1.62	1.76	1.91
90°	.149	.299	.450	.603	.756	.910	1.07	1.22	1.38	1.54	1.70	1.87	2.03	2.20
95°	.174	.350	.522	.706	.885	1.06	1.25	1.43	1.62	1.80	1.99	2.18	2.38	2.58
100°	.200	.401	.604	.809	1.01	1.22	1.43	1.64	1.85	2.06	2.28	2.50	2.73	2.96
110°	.268	.536	.806	1.08	1.35	1.63	1.91	2.20	2.48	2.76	3.05	3.35	3.66	3.96
120°	.360	.721	1.08	1.45	1.82	2.19	2.57	2.95	3.33	3.72	4.11	4.50	4.91	5.32

INDEX

Alley-Blk 19 Fortuna add, Roosevelt to Fortuna Pg 20
 " Blk. 7-8-9-17+18 Fortuna Park 7-22
 " Blk. 1-2-3-4+5 Venice Park 23-46
 " Blk 6 Fortuna Park 47
 Mission Hills Tennis Courts or Washington Pl. 53-54

Atley Bk 19

Fortuna 2/1

Roosevelt to Fortuna 2

Alley 131K. 19

Roosevelt to Fortuna

Fortuna Add.

11-27-51
W.D. 25020

C.H.S.
Bo 99
R. Sisson
W. Oltman

- = Fd. Conc. Mon.
- = Fd. Disk
- = Set Hub + disk
- = Nail

Reduced

11-29-51

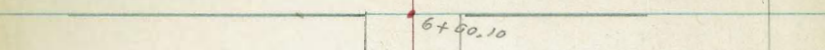
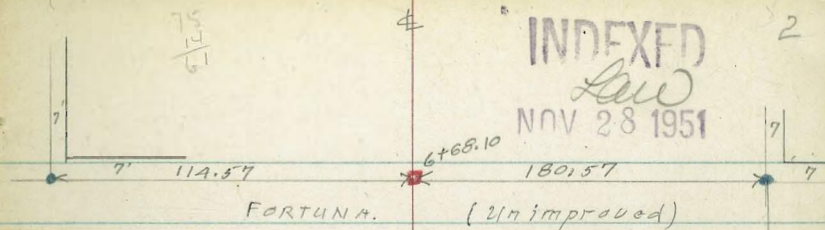
Ryan

See page 23 for Venice park.

F.B. 17A9-56

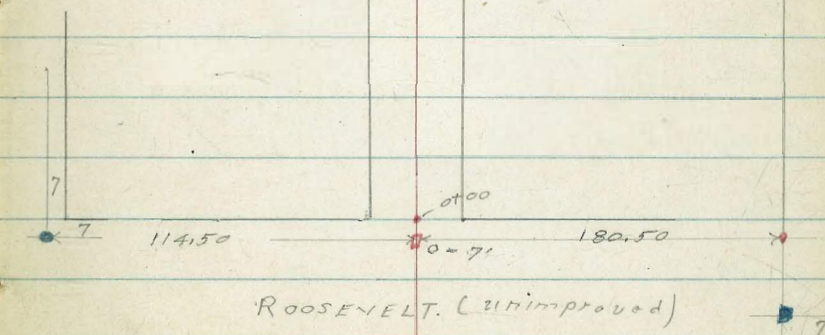
2081-7

2044-59



19

f f



0+43 - 11² Lt. = N.E. cor. house

24.58
11²
at. house.
07 conc. slab

0+42. 8² Lt. = end steps to porch

24.2
8²

0+35 - 8² Lt. = S.E. cor. conc. porch

24.7
8²
con.

0+12. 11² Lt. = S.E. Cor. house

24.6
11²
Con.

0+00

24.3
7⁵

23.9

24.3
7⁵

0-15 = 107⁵ Lt. = end of existing cb. on Sequoia.

21.61
107⁵
- 6.

21.23
107.5
6

21.5

21.23
137⁵
wly edge Lamont
Pave.

0-37⁵ = E Roosevelt.

21.88

21.5

21.23

107.5
Ely. Sequoia
Pave

137⁵
Wly. edge Lamont Pave.

Note Direct elevation rod used from here on.

Set. B.M.

4.78 22.30

N.E. 7' disk Sequoia + Roosevelt.

T.P.

3.09 22.08

4.10 23.99

7.32 28.09

- 20.77

N.W. Prop. Mem. Sequoia + Crown Pt. Dr.

2400

21.0 20.9 20.9
7⁵ 7⁵ 7⁵

1450

22.2 22.1 22.2 22.1 22.3
25 7⁵ 7⁵ 25

1401 31' RT. = 2⁵' wide conc. walk.

23.28
31' walk

1400

23.5 23.1 22.9 23.2
7⁵ 7⁵ 25

0472 - 11² Lt. = end conc. apron

24.15
11²
Apron

0469 18⁵ Lt. = end Gar.

24.57
18⁵
Floor

0454 - 18⁵ Lt. = start Gar. conc. floor

24.57
18⁵
Floor

0452 10⁹ Lt. = start conc. apron to Gar.

24.15
10⁹
Apron

0450

24.2 23.9 23.8 23.6 23.2
25 7⁵ 7⁵ 50

0435 8³ Lt. = 3' wide conc. slab.

24.58 24.54 24.2
11² 8³ 8
+ 3' slab. Crk.

3+75 75' Rt. = S.W. Cor. 20' x 20' Gar. Conc. floor - East Front

20.0 20.52
15 15
Grd. Floor

3+50

20.5 20.5 20.5 20.5 20
25 75 75 25

3+26 - 26' Rt. = S.W. Cor. 20' x 20' Gar. East Front. Conc. floor

20.5 20.3 20.3 19.7 20.13 19.6
25 75 26 26 50
Grd. Floor

Conc. floor - East Front.

3+05 10' Rt. = S.W. Cor. 20' x 20' Gar.

20.0 20.10 19.7
10 10 20
Grd. Floor Grd.

3+00

20.1 20.3 20.1
75 75

2+92 8' Rt. = end house Conc. floor

20.0 20.24
8 8
Grd. Floor

2+81 - 8' Rt. = S.W. Cor. House Conc. floor

20.0 20.28
8 8
Grd. Floor level

2+73 - 8' Lt. = 3' wide Conc. walk

20.49 20.40
16 89

2+50

20.7 20.3 20.3 20.4 20.7
50 75 75 50

2+06 - 17' Lt. = Sing. Gar. Conc. floor

21.08
175
Floor

Set B.M.
N.E. 7' disk in walk 27.40

G+37^c \neq Fortuna

26.45 23.8
107.5^t
pave

20.16
140^t
wly. edge
Lament. Pave

G+15 107^t Lt. = cly. end existing cb. + pave
Sequia - (see plans)

26.45 25.84
107.5^t 107.5^t
Burb. G

20.08
140^t
wly. edge. Lament
pave

G+00.10 = sly. line Fortuna

24.0 23.5 23.5
7.5 7.5

5+50

24.0 23.0 22.8 22.6 21.9
2.5 7.5 7.5 5.0

5+00

22.3 22.1 22.3 21.1
7.5 7.5 5.0

A+50

21.6 21.5 21.4 20.8
7.5 7.5 5.0

A+00 7² 11² = \neq 3' wide conc. walk.

21.0 21.0 20.8 20.5 20.60 20.50 20.28
2.0 7.5 7.5 7.3 1.6 2.5
walk walk walk

Alley Biks. 7+17
Fortuna Park.

INDEXED
FEB 6 1953

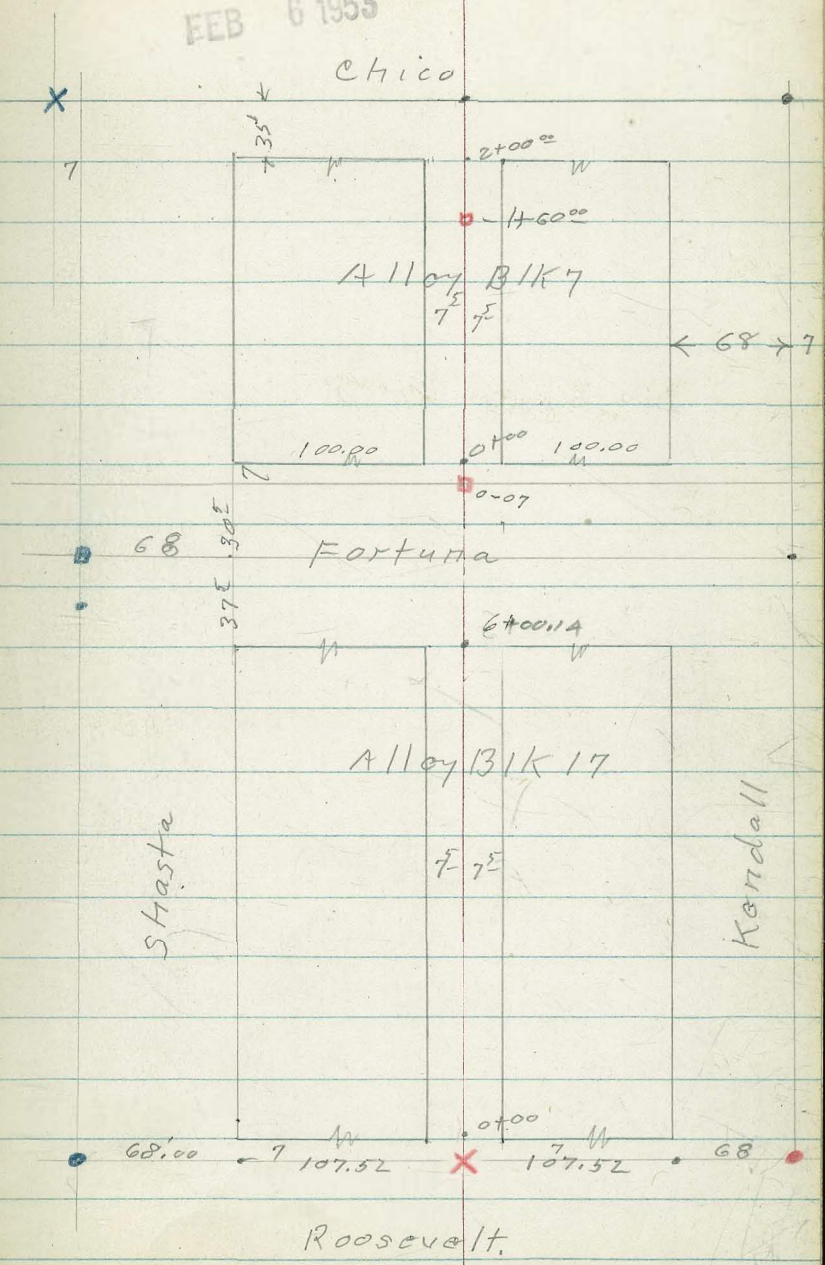
Levels - P13 →

Reduced B.L.C.
2/6/53

Levels P 8 →

INDEXED
FEB 6 1953

7



0+00 = Nly line Roosevelt.

27.85	27.65	27.55	27.85	28.55
4.7	5.1	5.2	4.7	3.9
25	75		75	25

oil pave.
 = start 10' wide 1" to 2" Rock
 0-06 = end conc. Pave

27.55	27.45	27.67
5.20	5.30	5.08
75		8
E.P.		E.P.

75 Rt end conc. curbs
 75 Lt
 0-09 = end conc. pave.

27.53	27.43	27.43	27.43	27.51
5.22	5.32	5.32	5.32	5.18
75	75		G	G
G	G		75	75

18' Lt = B.C. 10' Rad. Cl. Ret.

Rad. Cl. Ret

18' Rt = start 6" curb = B.C. 10'
 0-18 = Nly Cl. Roosevelt
 = start conc. Pave

27.13	26.69	27.23	26.81	26.89	26.81	27.10
5.62	6.06	5.52	5.94	5.86	5.88	5.65
50	50	G	18		18	18
G	G	G	G		G	G

0-37 = Roosevelt.

27.85	27.03	27.04	27.12	27.04	26.66	26.55
5.90	5.72	5.71	5.63	5.73	5.89	6.12
100	50	75	32.75	75	185	50
					East end Blvd.	
					A.C. Pave.	

BM² 6.44 32.75 3.62 26.31

BM¹ 7.63 29.93 — 22.30

N.E. 7' disk Kendall + Roosevelt.

N.E. 7' Disk Sequoia + Roosevelt.

1404 5' Lt. = Φ 2' wide Conc. walk

29.75	29.53	29.49
3.00	3.22	3.26
175	75	5

1400

29.9	29.5	29.4	29.7	29.8
2.9	3.3	3.4	3.1	3.0
25	75		75	25

under fence

0463 = 78' Rt. = end Conc. wall

29.3	29.2	29.4
3.5	3.6	3.4
78	78	78
	B.W.	T.W.

0461 5' Lt. = Φ 2' wide Conc. walk

29.34	29.81	29.65
3.41	3.94	4.07
175	75	5

0450

29.0	28.6	28.5	28.4	28.4
3.8	4.2	4.3	4.4	4.4
25	75		75	25

0432 5' Lt. = Φ 2" wide conc. walk

28.91	28.39	28.19
3.84	4.36	4.56
175	75	5

high Conc. wall under fence

0415 8' Rt. = start 5" wide 2"-3"

28.7	28.6	28.8
4.1	4.2	4.0
8	8	8
	B.W.	T.W.

Alley B/K. 17.

2+80 12' Lt. = 2' wide Conc. walk

32.74 32.66 32.7
5.72 5.80 5.8
22 12 12
walk Grd

2+50

32.0 31.8 32.0
6.5 6.7 6.5
75 75

2+25- 5' Lt. = 3' wide Conc. walk

31.85 31.57 31.51
6.61 6.89 6.95
175 75 5

2+00

32.7 31.2 31.0 31.2 31.2
5.8 7.3 7.5 7.2 7.3
50 75 75 50

T.P. Pole # 45 7708 H.

T.P. #1 6.89 38.46 1.18 31.57

38.46

1+50

30.8 30.6 30.2 30.6
2.0 2.2 2.6 2.2
25 75 75

1+48

to double bar. (Conc.)
5' Lt. = 7' Apron level apron

30.23 30.49 30.77
2.52 2.26 1.98
5 75 115
Apron Bar Floor

1+33⁵ 5' Lt. = 2' wide Conc. walk

29.60 29.97 29.95
2.65 2.78 2.80
175 75 5

32.75

Blk. 17

11

Pole # A3967

T.P.
#2

6.91

41.69 3.68 34.78

4+26 5 Lt. = 2' wide Conc. walk

34.9^v 34.76 34.71
3.54 3.70 3.75
175 75 5

4+00

35.0 34.3 34.2 34.2 33.8
3.5 4.2 4.3 4.3 4.7
30 75 75 75 50

3+72 5 Lt. = 2' wide Conc. walk

34.38 33.94 33.80
4.08 4.52 4.66
175 75 5

3+50

33.6 33.4 32.3
4.9 5.1 5.2
75 75

3+43- 6' Lt. = 2' wide Conc. walk

34.18 33.55 33.39
4.28 4.91 5.07
175 75 6'

3+00

33.4 32.8 32.66 32.9 32.6
5.1 5.7 5.80 5.6 5.9
50 75 M.H 75 50
R.M

38.46

T.P. Pole # P1775

6x10^{1/2} - 12' Lt.

BIK.17

T.P.#3

7.13

45.22 3.60 38.09

6x10^{1/2} - Sly line Fortuna

€

12

37.1
4.1
7537.5
4.2
7537.4
4.3
755483 - 5⁵ Lt. = 2' wide Conc. walk36.93
4.76
17537.18
4.51
7537.23
4.46
55450 - 7⁵ Rt. - on d wall37.0
4.7
3036.6
5.1
7536.6
5.1
7536.7
5.4
7535.5
6.2
7537.5
7.2
50

B.W.

5425 5 Lt. = 2' wide Conc. walk
6 Rt. = 3' wide walk thru wall36.10
4.99
17536.42
5.27
7536.36
5.33
536.08
5.61
635.96
5.73
7535.92
5.77
1755400 7⁶ Rt. = start Conc. wall 6' High.
5 Lt. = 2' wide Conc. walk36.43
5.26
17535.98
5.71
7535.93
5.76
535.8
5.9
7535.4
6.3
7534.5
7.2
75

B.W.

4470 - 5⁵ Lt. = 2' wide Conc. walk36.37
5.72
17535.57
6.12
7535.44
6.25
5535.7
6.0
5035.2
6.5
7535.0
6.7
7534.7
7.0
7534.3
7.4
50

41.69

A150

Alley BIK 7
 sketch - page 7.

±

13

2+00 7² Lt. = end house

42.6	42.8	42.9	42.9
2.4	2.4	2.3	2.3
72	72		72

Base of
 Foundation

1+50 7⁴ Lt. = start House Conc.

42.9	42.9	42.0	42.1	43.0
2.3	2.3	3.2	3.1	2.2
74	74		72	50

Base
 of foundation

1+40 10³ Rt = ± sing Car Floor Conc.

41.47
 3.75
 103
 Floor

1+00

43.8	40.8	40.8	40.7	39.8
1.4	4.4	4.4	4.5	5.7
50	72		72	50

0+50

40.2	39.5	39.2
5.0	5.7	6.0
72		72

0+00 Nly. line Fortuna

39.1	38.5	38.0
6.1	6.7	7.2
72		72

* from page 12

45.22

Alleys BIK. 8+18 Fortuna Park
15' wide

1-31-53

Sommermeier

R. Sisson

Powell

Pierson

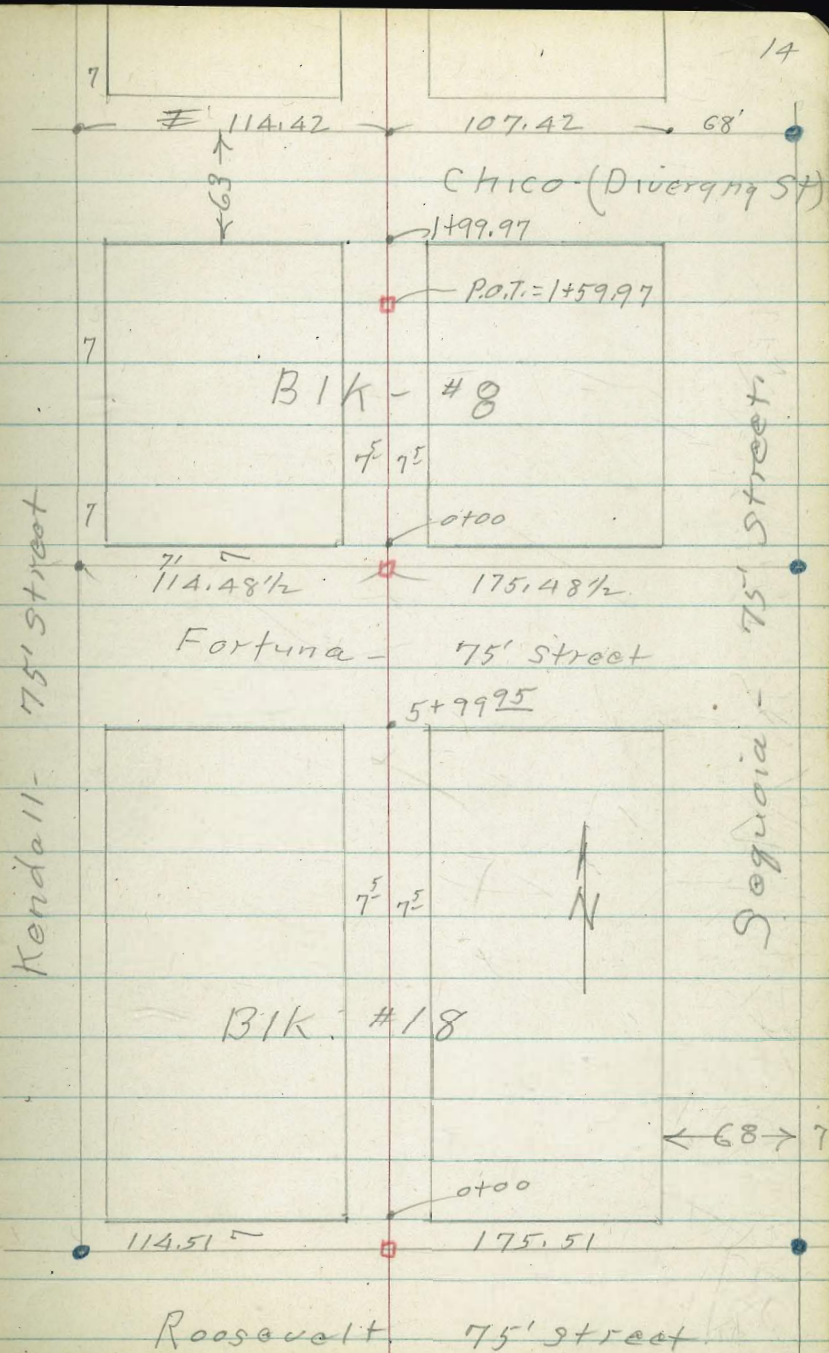
INDEXED
FEB 6 1953

• denotes Fd. disk

□ " set $\frac{1}{4}$ hub + disk

• " set temporary point.

B.W. " base of wall - or footing



Alley BIK. 18

T.P. Blk# PA. 3917 /
T.P. - 4.38

30.65 3.81 26.27

1+10 21' Lt. = \pm Double Gar ^{floor} Conc.

26.88
3.20
21

1+00 7⁵ Rt. = end brick wall

26.2 25.6 25.3 24.5
3.9 4.5 4.8 5.6
7⁵ 7⁵ 7⁵ 7⁵
B.W. B.W.

0+87 17' Lt. = \pm double Gar. ^{floor} Conc.

27.68
3.40
17
Floor

7⁵ Rt. = start 5' High brick wall
0+50 7⁵ Rt. = end conc wall

27.0 26.4 26.2 24.9 25.0
2.9 3.7 3.9 5.2 5.1
7⁵ 7⁵ 7⁵ 7⁵
B.W. B.W.

7⁵ Rt. = start 5' High Conc. wall
0+00 - N1/4 Roosevelt.

26.2 25.7 25.1 25.0
3.9 4.4 4.5 5.1
7⁵ 7⁵ B.W. 7⁵

0-37⁵ = \pm Roosevelt.

25.6 25.3 25.2 25.2 24.5
4.5 4.8 4.9 4.9 5.6
50 7⁵ 7⁵ 7⁵ 50
30.08

3.77 30.08 26.31

N.E. 7' disk Roosevelt & Kendall

2+58- 17' Rt. = ϕ Sing. Concr. Floor26.10
4.55
17
Floor

2+50

27.0	26.4	25.8	25.6	25.0
3.6	4.2	4.8	5.0	5.6
50	75		75	50

2+46 7⁸ Rt. = end wall.25.6 24.4
5.0 6.2
78 78
B.W.2+00 7⁸ Rt. = start 5' high Conc. wall.

25.9	25.5	25.5	24.1
4.7	5.1	5.1	6.5
75		75	78

1+50

25.7	25.3	24.9
4.9	5.3	5.7
75		75

1+41- 7³ H. = ϕ 8' wide level
Conc. apron to Sing. Con.

26.20	25.60
4.45	5.05
16	73
Bar.	Apron

30.65

Alley B/K.18

17

T.P. 7.25 36.47 1.43 29.22

Also = start 6' high Conc. wall
 4+50 7th Rt. = end 6' high Conc. wall

29.4	28.9	29.0	27.0	28.4
1.2	1.7	1.6	3.6	2.2
7 th		7 th	7 th	7 th
			B.W. to south	B.W. to North

4+00 7th Rt. = start 6' high Conc. wall.
 7th Lt. = end Conc. wall

27.8	28.7	28.2	28.3	27.1
2.8	1.9	2.4	2.3	2.9
7 th	7 th		7 th	7 th
B.W.				B.W.

3+74 7th Rt. = end Conc. wall.

28.1	27.2
2.5	3.4
7 th	7 th
	B.W.

3+50 7th Lt. = start 6' High Conc. wall.

27.6	27.8	27.6	27.6
3.0	2.8	3.0	3.0
7 th	7 th		7 th
B.W.			

3+25 7th Rt. = start 6' High Conc. wall

27.0	26.2
3.6	4.4
7 th	7 th
	B.W.

3+00

27.6	27.6	26.9	26.6	26.7	26.5
3.0	3.0	3.7	4.0	3.9	4.1
20	10	7 th	M.H. RITT	7 th	10

30.65

9.09 27.38 (27.40)

N.E. 7' disk Sequoia + Fortune

5499⁹⁵ 7² Stg. line Fortune
 Rt = end brick wall

2.1	31.8	31.6	30.7
4.4	4.7	4.9	5.8
7 ⁵		7 ⁵	7 ⁹
			B.W.

5482 7² Rt = start 5' high brick wall

31.3	30.8
5.2	5.7
7 ²	7 ²
	B.W.

5450

31.0	30.9	30.9
5.5	5.6	5.6
7 ⁵		7 ⁵

5409 7² Stg. Bar. (Conc)
 Rt = 10' Level apron to

29.76	29.81
6.71	6.66
7 ⁵	10 ⁷
AP1007	Cor.

5400 7⁷ Rt = end conc. wall

30.3	30.0	29.9	28.9
6.0	6.5	6.6	7.6
7 ⁵		7 ⁵	7 ²
			B.W.

• 36.47

Alley BIK 8
Sketch p-14

±

19

7² start 3" wide 6' high. Conc. wall
7² Rt. = End Conc. wall
1+00 15' Lt. = ± double Cor. Conc. Floor

36.0 ⁹	37.3	37.2	37.0	35.8	36.5
4.31	5.1	5.2	5.4	6.6	5.9
15	7.5		7.5	B.W.	7.2
Floor				to South	B.W.
				7.2	to North

0+62 15' Lt. = ± 2 car Cor. Conc. Floor

37.24
5.15
15
Floor

0+50 7² Lt. = end conc. wall

35.9	35.9	35.4	35.4
6.5	6.5	7.0	7.0
7.5	7.5		7.5
B.W.			

0+38 7² Lt. = start 5' high Conc. wall
7² Lt. = N.E. Cor. Cor.

35.8	35.4	35.8
6.6	7.0	6.6
7.5	7.1	7
B.W.	B.F.	A2.39

T.P. 8.14 A2.39 2.22 34.25
(5.00 Fortuna X-Soc.)

7² Lt. = S.E. Cor. Cor. So. Ent.
8² Rt. = start 5' high Conc. wall
0+00 = Nly line Fortuna
B.F. = base of foundation

32.9	33.7	33.6	33.4	32.6
3.6	2.8	2.9	3.1	3.9
7.5	7.5		7.5	8.5
B.F.				Bu

36.47

BIK 8

20

±

{ 75 RT } under const.
 { 75 LT } = conc. cb. + gutter
 1+99⁹⁷ } Sly. line Chico.

35.55	37.5	37.3	37.2	35.40
6.84	4.9	5.1	5.2	6.99
75	75		75	75
Gutter				Gutter

1+50 8' RT = end conc. wall

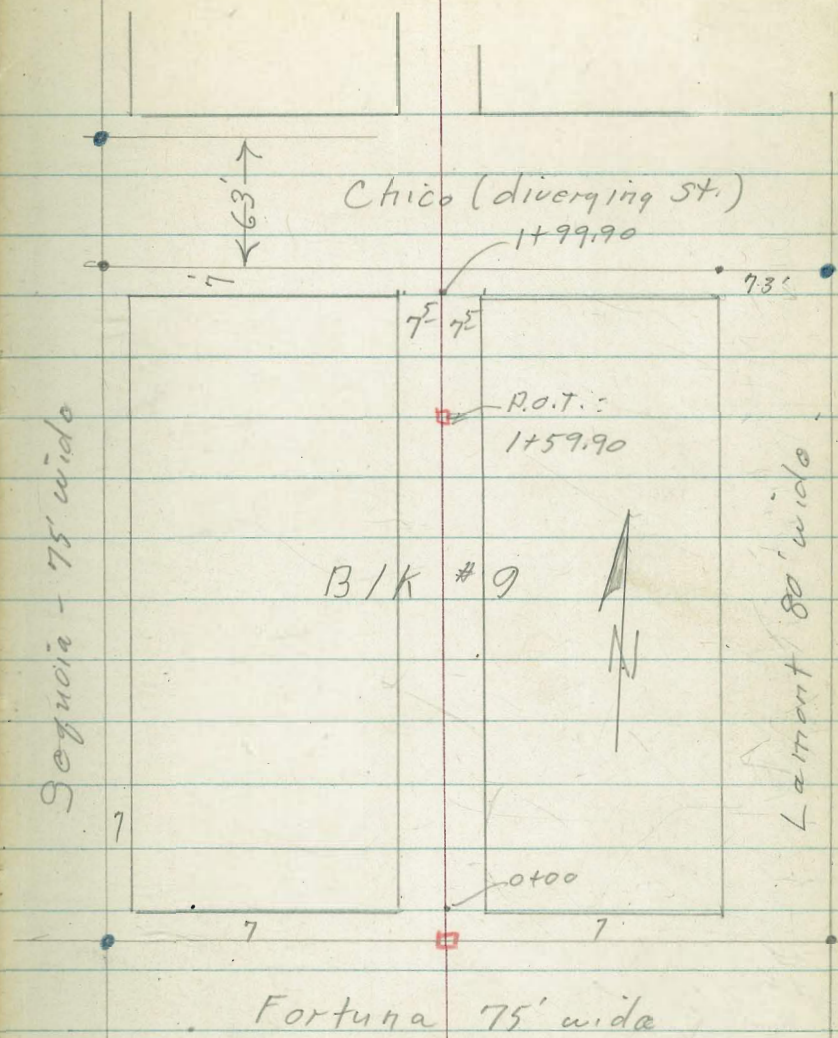
36.5	38.2	37.5	36.8
3.9	4.2	4.9	5.6
75		75	8
			B.W.

42.39

Alley Blk 9 Fortuna Park.

C.H.S. 1/31/53

- denotes Fd. city disk
- " set 1/2 hub + disk
- " set temporary point



BIK 9.

1799⁹⁰ = Sly Chico

26.4	26.1	26.6
2.6	2.8	2.9
75		75

1750

26.5	26.4	26.3
3.0	3.1	3.2
75		75

1700

27.0	26.1	25.7	25.4	24.3
2.5	3.4	3.8	4.1	5.2
50	75		75	50

0750 7⁹ RT = end conc wall

25.6	25.3	25.3	24.3
3.9	4.2	4.2	5.2
75		75	72
			B.W

0718- 7⁵ RT = start 1' high wall under fence.
8⁵ RT = N.W. Cor Cor.

24.7	24.4	24.1
4.8	5.1	5.4
78	78	85
	B.W	B.F

0700 = Nly Fortuna
8⁵ RT = S.W. Cor Cor. See Fortuna X-sec.

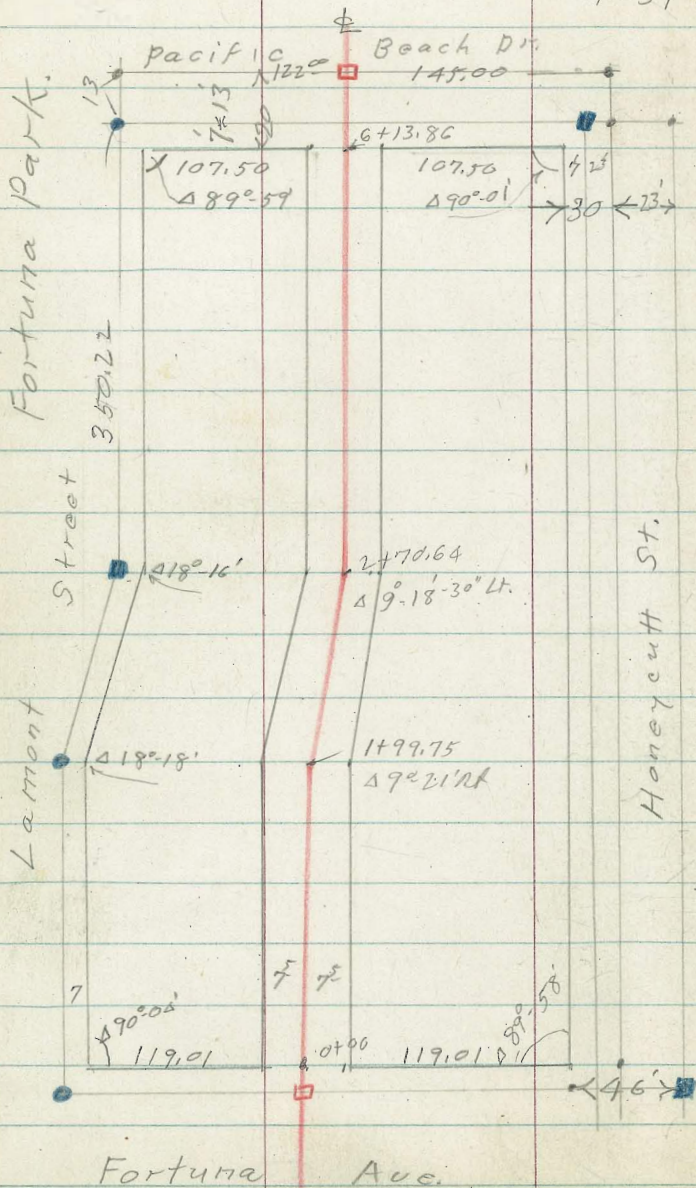
25.4	25.0	24.3
4.1	4.5	5.2
72	29.54	75
		85
		B.F

214 29.54 - 2740

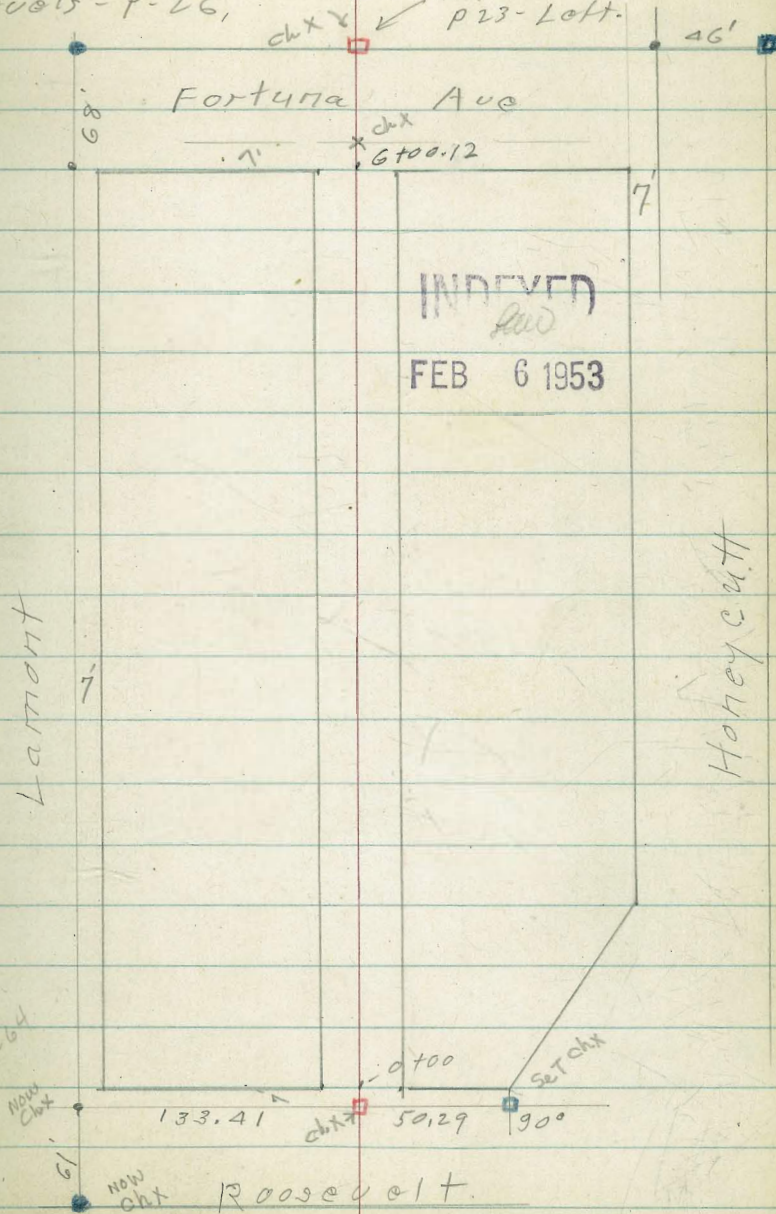
NE 7' disk Sequoia & Fortuna

Alley Block #1
Venice Park - Levels
P-31

See page 2 for
Fortuna Park.

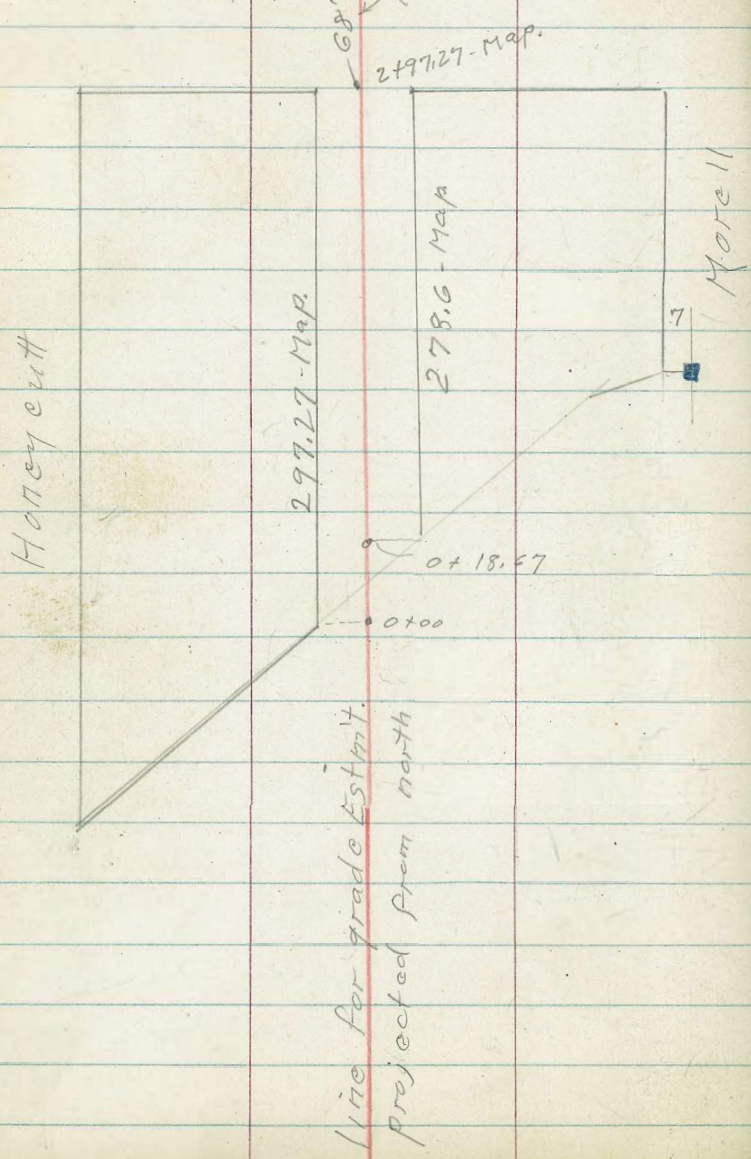


Alley BIK #4 Venice Park
Levels - P-26,

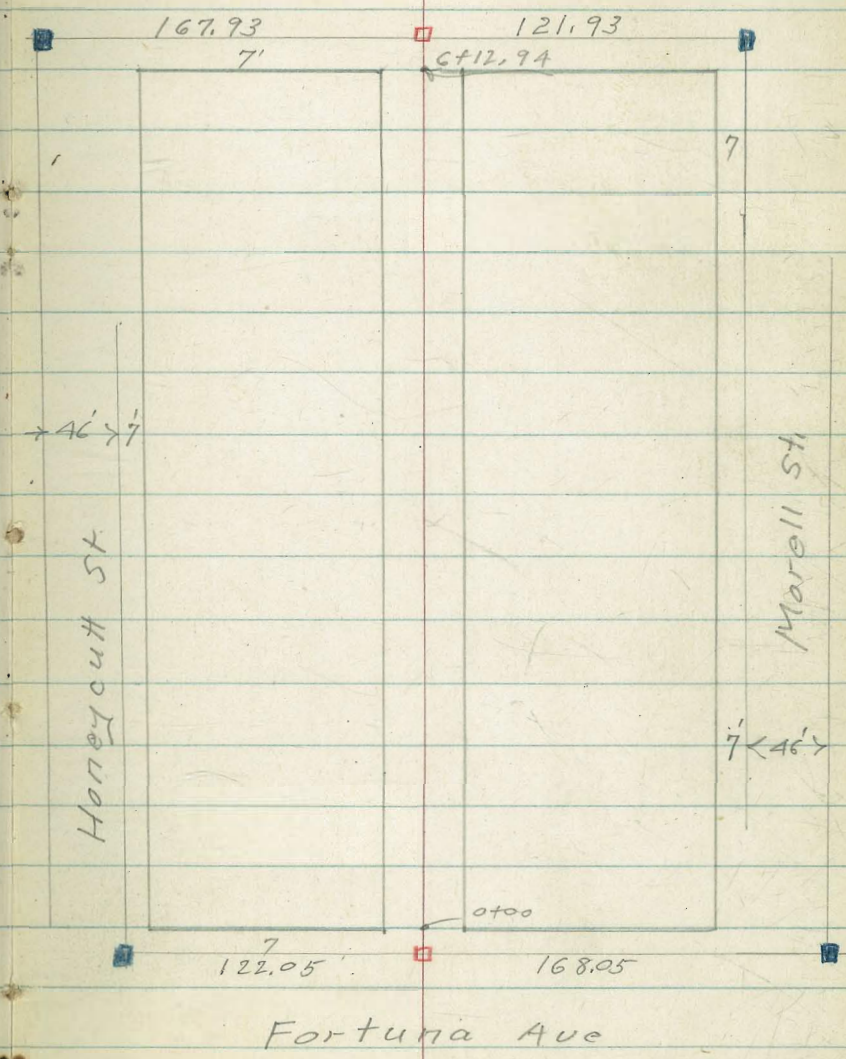


Alley Blk 5 \triangle Venice Park
Levels P.34

Nly. 7' line Fortuna
See Rt. Hand page



Alley Blk 2. Venice Park 24
Levels P.37
Pacific Beach Drive



Alley Blk 3 - Venice Park

25

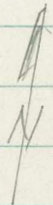
Levels - P. 41

Pacific Beach Drive

168.00

23.08

53'



Morell

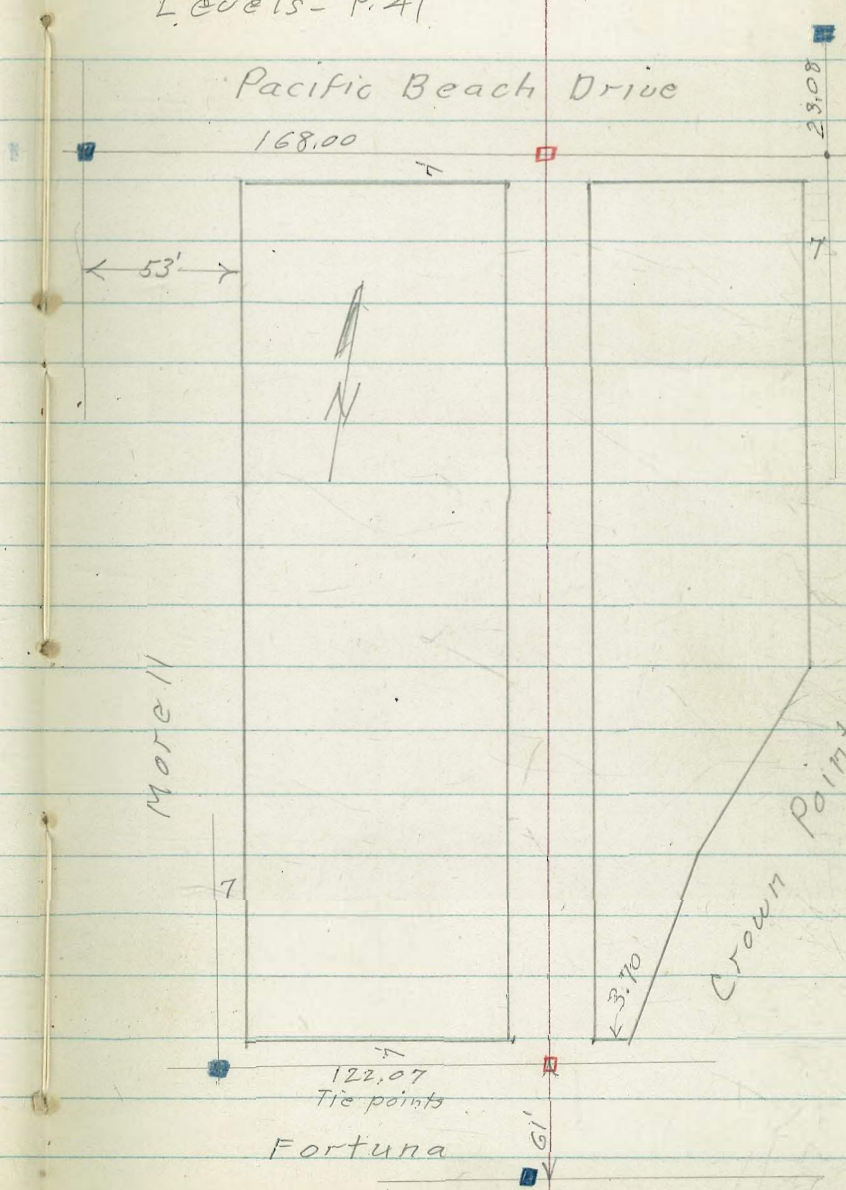
Crown Point Drive

3.70

122.07
Tie points

Fortuna

61'



Alley Bk. 4 Venice Park
Sketch P23 Rt.

4

T.P. 5.32 ✓ 26.83 3.67 21.51

0+75 8' Rt. = start conc. apron to
4 Car. Car.

21.58 21.78
3.60 3.40
8 15.2
Apron Car floor

0+57-75 Lt. = start conc. apron to
3 Car. Car.

21.98 21.52
3.20 3.66
15.5 7.5
Car floor Apron

0+50

21.5 21.1 21.1
3.7 4.1 4.1
7.5 7.5

0+00 = Nly. Roosevelt.

20.5 20.2 20.4
4.7 5.0 4.8
7.5 7.5

0+37.5 = 1/2 Rt. Roosevelt.

20.3 20.0 19.9 19.9 19.8
4.9 5.2 5.3 5.3 5.4 4.9
50 7.5 25.18 7.5 50 6.5
Edge of
bank

426' 25.18 5.44 20.92

S.E. 7'disk Lament + Roosevelt.

406' 26.36 ✓ - 22.30

N.E. 7'disk Sequoia + Roosevelt

Alley Bk 4 Venice Park

#

T.R. 4.57 26.44 4.96 21.87

7² Lt. = start 6" wide 5' high Conc. wall
2+00 7² Lt. = end 5" wide Conc. wall

21.2	20.7	21.6	21.8	21.4	21.9
4.6	6.1	5.2	5.0	5.0	5.1
72	72	72	75		75
T.W.	B.W.	B.W.			
To So	To No.	To So.			

1+30

21.6	21.6	21.8
5.2	5.2	5.0
75		75

1+25 8' Lt. = end conc. apron.

21.61	21.75
5.22	5.08
8	15.2
apron	Con Floor

1+17² 8' Lt. = start 5" wide Conc. wall

22.1	20.7	21.7
4.7	6.1	5.1
8	8	8
T.W.	B.W.	

1+

1+17 6' Lt. = end of shed

diff. floor on conc. Foundation

1+02 6' Lt. = S.E. Cor. Frame @ 15' X 19' shed

23.0	21.4			
3.8	5.4			
B.F.	end	21.7	21.3	21.4
		5.1	5.5	5.4
		75		75

1+00

0+95 - 7⁵ Lt. = end conc. apron.

21.96	21.86
4.87	4.97
15.5	75
Con Floor	AP

26.83

Alley BIK. 4 Venice Park

27 70
6 12
20 98

28

T.P. Nail in Pole # A 3957

3.9.6 25.0.2 5.3.8 21.0.6
6.12
.18

3+00 7⁶ Lt. = end Conc. wall

20.5	21.5	21.3	21.5
6.1	4.9	5.1	4.9
7 ⁶	7 ⁵		7 ⁵
B.W.			

2+87- 7² Lt. = start 5' high Conc. wall - Under Const.

20.3	21.4
6.1	5.0
7 ²	7 ²
B.W.	

2+78 8⁵ Lt. = 4' wide Conc. walk

21.58	21.51
4.86	4.93
18	8

2+76 7² Lt. = end Conc. wall

20.3	21.4
6.1	5.0
7 ²	7 ⁵
B.W.	

2+50 7² Lt. = start 5' high wall Under Const.
= end 5' high wall also

20.4	20.8	21.1	21.5	21.4
6.0	5.6	4.7	4.9	5.0
7 ²	7 ²	7 ⁵		7 ⁵
B.W.	B.W.			
To No.	To So.			

2+48 - 9' RT = s.w. cor. 19' E+W. x 24' N.E.S.

2+40 - 7² Lt. = 4' 10' opening thru wall

26.44

Alley Blk A Venice Park

T.P. 5.55 24.18 6.39 18.63

5+00

18.6
6.4
7.5

18.6
6.4

18.6
6.4
7.5

4+50

18.8
6.2
7.5

18.9
6.1

18.7
6.3
7.5

(10' wide, level N.T.S.)
Garage
4+29 7^e Lt. = $\frac{1}{2}$ amb. apron + walk. to

20.20
4.82
13
Gar. Floor

19.39
5.63
7.6
Apron

4+00 8^e Rt. = $\frac{1}{2}$ 2' wide Conc. walk.

20.0
5.0
7.5

19.9
5.1

19.9
5.1
7.5

19.79
5.23
8.5

19.69
5.33
18.5

Conc. apron to Sing Bar.
3+64- 7^e Rt. = $\frac{1}{2}$ 12' wide level

20.97
4.05
7.2

21.20
3.82
17
Gar. Floor

3+50

20.8
4.2
7.5

20.9
4.1

21.0
4.0
7.5

251.92

Alley BIK 4 Venice park.
sketch P-23 AX.

5.36 ✓ 18.82 ✓

N.E. 7' Mon. Honeycutt & Fortuna

6+00.16 = sly line fortuna

19.4	18.8	18.9
4.8	5.4	5.3
<u>7.5</u>		<u>7.5</u>

5+50

18.9	18.9	19.0
5.3	5.3	5.2
<u>7.5</u>		<u>7.5</u>

24.18

Alley BIK. 1 - Venice Park
sketch. P 23-left.

sec. 90° to End. Tang.
2+70⁶⁴ = Δ 9°-18'-30" Lt.

sec. 90° to back Tang.
1+95⁷⁵ = Δ 9°-21' Rt

1+50

1+00

T.P. 6.81[✓] 27.58[✓] 3.41[✓] 20.77[✓]

0+50

0+00 = Nly. Line Fortuna.

22.4
5.2
75

22.2
5.4
75

22.5
4.8
75

21.5
5.1
75

21.5
5.1
75

22.5
4.8
75

21.5
6.1
75

21.5
6.1
75

21.8
5.8
75

21.3
6.3
75

21.0
6.6
75

21.3
6.3
75

27.58

21.1
3.1
75

20.9
3.3
75

20.8
3.4
75

18.7
5.5
75

18.6
5.6
75

18.6
5
75

20.0
4.2
75

24.18

Alley BIK 1 - Venice park

4+40 7[±] RX = start 6' High Conc. wall.

27.5
7.7
7[±]
G.

27.2
8.0
7[±]
B.W.

4+36 7[±] RX = end conc. wall

27.2
8.0
7[±]
End

26.7
8.5
7[±]
B.W.

4+14 7^L RX = start 6' High Conc. wall.

26.7
8.5
7^L
End

26.5
8.7
7^L
B.W.

4+00

25.9
9.3
7[±]

26.0
9.2

26.2
9.0
7[±]

TIP.

9.14 35.18 1.54 26.04

35.18

3+50

25.4
2.2
7[±]

25.3
2.3

25.5
2.1
7[±]

3+00

25.3
4.3
7[±]

22.9
4.7

23.1
4.5
7[±]

27.58

Alley Bk 1 Venico Park

6.85 31.25

2.98 38.10

35.12 ✓
(35.12)

2.98 35.18

T.P. 5.50' 38.08 2.60' 32.58

6+13.86 = Sly. line P.B. Drive.

6+00

shown

Const. Approx Conc. Floor. level

5+50 12'± Lt. ± double Gar. under

30.4	30.3	30.2	30.7	30.2
4.4±	4.9	5.0	4.5	5.0
12	12	7±		7±
Approx	Grid			
Floor				

5+00

28.6	28.9	28.6
6.6	6.3	6.0
7±		7±

4+88 - 7th Rt = end conc. wall

24.5	21.9
6.7	7.3
7±	7±
End	B.W.

4+50

27.4	27.7	27.4
7.8	7.5	7.4
7±		7±

35.18

N.W. 7' Mon Honey Cutt + P.B. Dr.

N.E. Lt + T. Lamont + P.B. Drive

32.2	32.1	32.1
3.2	3.1	3.1
7±		7±

31.4	31.9	31.7
3.3	3.3	3.5
7±		7±

Alley BIK5 Venice Park
Sketch P-24-Left.

34

1+00

14.5

2.8

7.5

14.6

2.7

14.5

2.8

7.5

14.0

3.3

2.0

0+90 8' H. = end wall

18.5

3.8

8'

B.W.

14.8

2.5

8

0+72 8' Lt. = start Conc. wall 4' High

18.6

3.7

8'

B.W.

14.9

2.4

9'

end

0+50

20.0

2.3

7.5

14.9

2.4

14.9

2.4

7.5

0+18.67 = N.W. ly. line Crown Pt. Drive To right.

20.3

2.0

20.4

1.9

20.3

2.0

0+00 = N.W. ly. line Crown Pt. Dr. to Left.

20.1

2.2

7.5

14.9

2.4

14.9

2.4

7.5

0-50

20.3

2.0

7.5

20.3

2.0

Edge bank

22.34

3.52

22.34

18.82

N.E. 7' Man. Honey cutt + Fortuna (P-30)

Alley BIK. 5 Venice Park

2400 6^E RT = start frame house. 07 Conc. blocks.

17.5	17.6	17.6
4.8	4.7	4.7
75		75

1788 21' Lt. = 2 Sing. Car Conc. floor

17.14
5.20
21
Floor

1771 8^E Lt. = end wall.

16.7	17.6
5.6	4.7
8 ^E	8 ^E
B.W.	

1750

18.3	18.0	18.2
4.0	4.3	4.1
75		75

1722 8^E Lt. = start 4' high Conc. wall.

17.7	17.2
4.6	3.1
8 ^E	8 ^E
B.W.	end

1708 13' Lt. = 2 Double Car Conc. floor

14.6	14.5
2.7	2.8
13	13
Floor	end

Alley Bk. 5 Venice Park

T.P. 3.59 22.41 3.52 18.82

2+97.27 - Sly line Fortuna

16.9	17.0	17.0
5.4	5.3	5.3
75		75

2+76 7² Rt. = end Bar.

17.0	17.34
5.3	4.96
72	72
	Floor

2+59 7⁴ Rt. = start Foundation
Bar. on Conc.

17.1	17.44
5.2	4.90
74	74
	Floor
	level

2+50

17.0	17.0	17.1
5.3	5.3	5.2
75		75

2+39 6⁸ Rt. = end House

22.34

Alley BIK 2 Venice Park
Sketch - P-24

T.P. 8.84 ✓ 26.34 ✓ 4.91 ✓ 17.50 ✓

1+06 15' Rt. = ϕ Sing. Gar. Conc. Floor

17.3
5.03
15
Gar. floor

1+00

18.4 18.4 17.5 17.3
4.0 4.0 4.9 5.1
7.0 10 7.5 7.5

0+77- 7' Lt. = start Conc. Ret. wall.

18.6 17.3 18.0
3.8 5.1 4.4
7.8 7.8 7.5
T.W. B.W.

Former Gar. - Now dwelling
0+70 9' Lt. = ϕ 10' wide apron to
16' Rt. = ϕ Garage

18.6 18.43 17.26
3.75 3.98 5.15
13.2 9.5 16
at Bldg Floor

0+50

17.7 17.5 17.4
4.7 4.9 5.0
7.5 7.5

0+00 = Nly Fortuna

17.7 17.6 17.6
4.7 4.8 4.8
7.5 7.5

22.41

Alley BIK2, Venice Park.

3+0-8 13^E Lt. = end Cor. + Apts.

3+00

22.3	22.1	22.1
4.0	4.2	4.2
7 ^E		7 ^E

2+6-8 under apt. (Under Const.)
13^E Lt. = start 4 car Cor.

21.0
3.3
13^E
Approx Floor

2+50

21.3	21.0	20.7
5.0	5.3	5.7
7 ^E		7 ^E

2+00

20.0	19.8	19.8
6.3	6.5	6.5
7 ^E		7 ^E

1+50

19.1	18.5	18.7
7.2	7.5	7.6
7 ^E		7 ^E

1+12- 8^L Lt. = end Cor. wall.

18.7	17.6	18.0
7.6	8.7	8.3
8 ^L	8 ^L	8
7. W.	8. W.	

26.34

5+00

27.5	27.2	27.2
6.8	7.1	7.1
7.5		7.5

4+99 = 7³ Lt. = step up in wall

28.4	27.2	27.7	26.9
5.9	7.1	6.6	7.4
7.2	7.2	7.2	7.2
T.W. B.W.		T.W. B.W.	
to North		to South	

4+75 - 7⁵ Lt. = start conc wall

27.1	26.6	26.6
6.6	7.7	7.5
7.5	7.5	7.5
T.W.	B.W.	

4+50

26.8	26.3	26.2
7.5	8.0	8.1
7.5		7.5

T.P.

9.14 34.30 1.18 25.16

34.30

4+00

25.1	25.1	25.2
1.2	1.2	1.1
7.5		7.5

3+50

24.1	23.7	23.5
2.2	2.6	2.8
7.5		7.5

26.34

Alley Bk. 2 - Venice Park

T.B.M.#1 6.32 19.65

T.P. 1.93 25.97 19.26 24.04

6+12⁹⁴ = Sly. line Pac. Beach Drive

6+00

5+77 8^e Lt. = 2' wide Conc. walk

5+56- 6^z Rt. = end conc. drive

5+50

to double car.

5+41 6^z Rt. = start Conc. drive

Pole #2015 - Nly. end alley Bk 3. Venice Park

29.5 29.4 28.7
48 4.9 5.6
75 75

29.3 29.2 29.1
5.0 5.1 5.2
75 75

29.46 29.32
4.84 4.98
18^e 8^e

28.35 28.35
5.92 5.92
6^e 7^e

28.6 28.3 28.2
5.7 6.0 6.1
75 75 on drive

27.90 27.95 28.17
6.40 6.35 6.13
6^e 7^e 31

34.30

Car Floor

Alley Bk. 3 Venice Park
Sketch - P. 25

0+95- 8' Rt. = end walk + slab
start 2' wide N. + S. walk.

0+83 7' Rt. = start Comb. Concs
slab + walk

0+50

0+28 7' Lt. = end apron

0+12 7' Lt. = start Conc. apron
to double Gar.

0+00 = Nly line Fortuna

5.77 17.64

11.87

10.20
7.44
8

10.29
7.35
10

10.09
7.55
7.2

11.7
5.9
7.5

11.3
6.3
7.5

11.3
6.6
7.5

12.33
5.11
17.5
Gar. floor

12.09
5.55
7.5

12.53
5.11
17.5
Gar. floor

12.20
5.44
7.5

12.5
5.1
7.5

12.2
5.4
7.5

12.2
5.4
7.5

11.4
6.2
7.5

17.64

on E Fortuna,
Cross in Ely. Ch. Crown Pt. Drive

Alley Bk. 3 - Venice Park

±

42

T.P. 8.28 ✓ 20.82 5.10 ✓ 12.54 ✓

2+00

12.6	12.1	12.7
5.0	5.5	5.3
7.5		7.5

1+95 7.5 ~~7.5~~ Lt. = start conc. wall

13.0	12.2	12.3
4.6	5.4	5.3
7.5	7.5	7.5
T.w.	B.W.	End

1+50

11.3	10.4	10.6
6.3	6.7	7.0
7.5		7.5

1+25 8' Rt. = end 2' wide conc. walk

10.59
7.05
8.1

1+03 12.5 Lt. = Sing Bar. Conc. floor

12.05
5.59
12.5
Bar. Floor

1+00

10.8	10.9	10.4
6.8	6.7	7.2
7.5		7.5

17.64

Alley BIK3 - Venice Park.

3+35 7⁹ Rt. = start 6' high Conc. wall.
end apron. also =

(Conc.)
+ walk to double Gar.

3+15 7⁸ Rt. = start Comb apron

3+00

2+50

2+13- 7⁸ Lt. = end wall

2+08 7⁸ Lt. = ϕ 3' wide Conc.
walk thru wall

16.59	10.6	15.8
4.23	4.2	5.0
7.9	7.9	7.9
apron	Gar	B.W.

16.44	16.17
4.38	4.15
7.9	2.0
apron	Gar Floor

16.0	15.6	15.4
4.8	5.2	5.4
7.2		7.5

13.9	14.0	14.3
6.9	6.8	6.5
7.5		7.5

13.8	12.8	13.0
7.0	8.0	7.8
7.9	7.8	7.9
T.W.	B.W.	Gar.

13.10
7.72
7.8
walk

20.82

Alley Blk 3. Venice Park

A+70 - 7th Lt. = end wall

19.0
5.3
78
B.W.

A+63 7th Lt. = start 4' high Conc. wall.

19.0 19.1
5.3 4.6
78 75
B.W.

A+50

19.5 19.2 18.7
4.8 5.1 5.6
75 75

T.P. 5.69 24.28 2.23 18.59

24.28

A+00

19.2 18.4 18.2
1.6 2.4 2.6
75 75

3+63 7th Lt. = end wall.

17.6 16.3
3.2 4.5
75 72
B.W.

3+50

17.9 17.5 17.4
2.9 3.3 3.4
75 75

20.82

Alley Blk 3 Venice Park

5+5A 7² Lt. = start 4' high wall Conc.

18.6 19.6
5.7 4.7
7.7 7.5
B.W.

5+50

19.5 19.1 18.9
4.8 5.2 5.4
7.5 7.5

5+40 7¹ Lt. = end 4' high wall Conc.

18.9 19.6
5.4 4.7
7.7 7.5
B.W.

5+13 7² Lt. = start 4' high wall Conc.
7³ Lt. = end 4' high wall Conc.

18.9 19.1 19.8
5.4 5.2 4.5
7.8 7.3 7.5
B.W. B.W.
To North To So.

5+00

19.9 19.4 19.3
4.4 4.9 5.0
7.5 7.5

4+83 - 7¹ Lt. = start 4' high wall Conc.

19.3 19.8
5.0 4.5
7.7 7.5
B.W.

Alley Bk 3 Venice Park

2

46

T.B.M. #1 - P. 40

A. 68 19.60 (19.65)

6+12 ϵ Sly. line Pac Beach Dr.

18.3
5.8
75

17.9
6.4

17.5
6.8
75

6+00

19.1
5.2
75

18.8
5.5

18.5
5.8
75

5+63

72 ft. = end wall

18.6
5.7
77
B.W.

18.6
4.7
75

24, 28

Alley - BIK 6.

Fortuna Park

2-25-53

C.H.S.
Boyer
Oltman

N.O. 32074

- denotes Fd. Disk or Lat.
- ◻ " set 1/2 Hub + disk
- ✕ " cut cross in conc.

Revised - B.L.C.
2/26/53

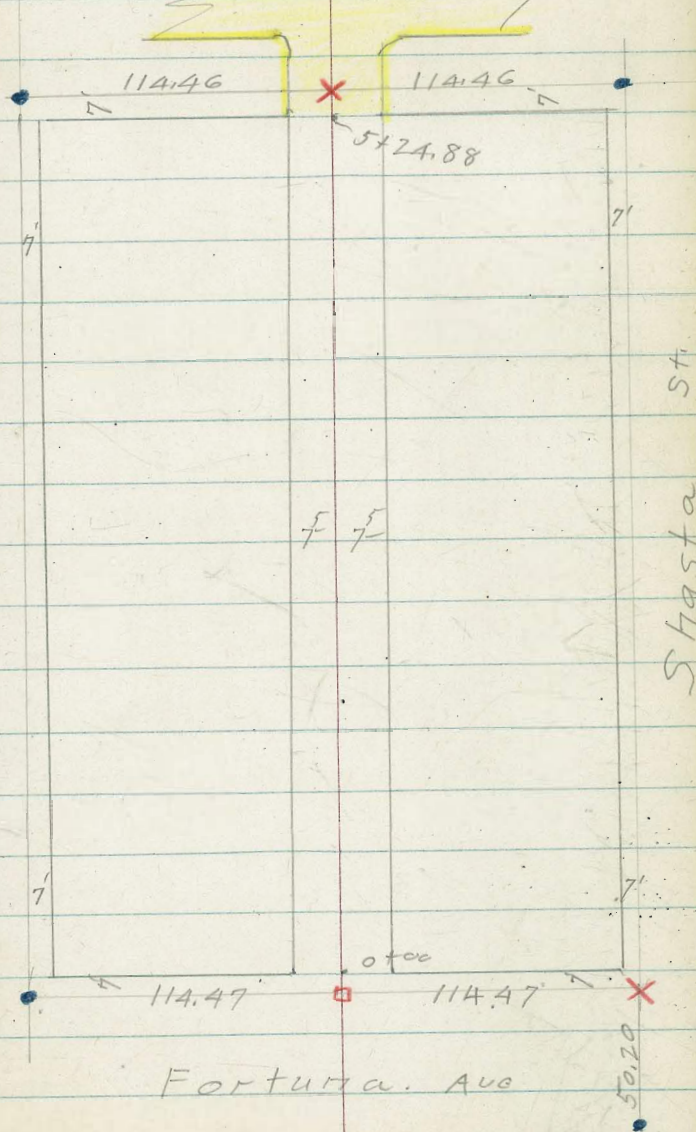
INDEXED

Law

FEB 26 1953

47

Pacific Beach Drive



Fortuna Ave

Alley BIK 6
Fortuna Park

INDEXED
FEB 26 1953

48

T.P. 456 ✓ 51.66 ✓ 0.53 ✓ 47.10 ✓

Nail in pole #, P.A. 40 21 6' 4" of sta. 1+25

1+00

44.1 45.5 46.3 46.0 46.7
2.9 2.1 2.3 1.6 2.9
50 75 75 75 50

0+50

43.9 44.3 45.0
3.7 3.1 2.6
75 75

0+30 - 8' Rt = end of house

43.7 44.4 44.6 44.6
3.9 3.2 3.0 3.0
75 75 82

9' Rt

0+09 - 8' Rt = Jog in house

Conc. Foundation

0+06 - 9' Rt = start house

0+00 = Nly Fortuna.

43.7 44.6 44.3
3.9 4.0 3.3
75 75

47.63

6.17 47.63

41.46

L+T. Wly. 7' line Shasta St.

3ly 17' line Fortuna Ave.

2404-7⁶ Lt = ^{to double Gar.} start Conc. apron

47.39	47.24	47.16
5.35	5.50	4.98
24 ⁶	24 ⁵	7 ⁶
Gar.	Apron	
Floor		

T.P. 490 52.74 3.82 47.84

52.74

2400

46.2	47.1	47.6	47.8	48.9
3.5	3.9	4.1	3.9	2.8
30	7 ⁵		7 ⁵	50

1493-7² Rt = end apron

47.53
3.83
7²
apron

1477 7⁸ Rt = ^{double Gar.} start Conc. apron to

47.73	48.16
3.93	2.90
7 ⁸	18
apron	Gar. floor

1450

46.2	46.7	47.0
5.5	5.0	4.7
7 ⁵		7 ⁵

1441-8² Rt = ^{made into dwelling.} + Conc. slab to Gar

46.90	47.36	47.76
4.76	4.30	3.90
83	11	188
		at house

51.66

Alley Bkt. C

4

50

T.P. 4.31 55.19 3.99 50.88

Nail in pole "P.A. 4081

2 3+50

49.2
5.7
75
5.4
49.9
5.0
75

3+46- 9^L RT = end apron

49.91
4.96
92
Apron

3+30- 8⁸ RT = start Conc. apron to Car.

49.41
5.40
88
Apron
50.76
4.11
132
Car. floor

T.P. 5.76 54.87 3.63 49.11

54.87

1 3+00

48.0
4.7
50
46.6
4.1
75
49.0
3.7
75
49.0
3.7
75
50.1
2.6
50

14 2+50

48.4
4.3
75
48.3
4.4
75
48.3
4.4
75

1 2+22- 7⁷ RT = end apron

47.39
5.35
24^E
Floor
47.24
5.50
24.5
Apron
48.21
4.53
77

52.74

Alley BIK 6

Φ

51

5417 - 14' Lt. = end Gar.

49.38
5.81
14
Floor

5401 - 14' Lt. ^{start} double - conc. floor

49.39
5.80
14
Floor

5400

49.5
5.7
75

49.9
5.3

50.0
5.2
75

4473 7² Lt. = end apron

50.41
4.78
75

4471 7² Lt. start conc. wall

50.7
4.5
75
G.

50.3
4.9
75
B.W.

51.7
3.5
75
T.W.

4456 - 7¹ Lt. start double gar conc apron to

50.63
4.56
11
Bas Floor

50.47
4.72
75
Apron

50.45
4.74
75

50.3
4.9

50.6
4.6
75

51.0
4.0
9

51.2
4.0
15

4400

48.4
6.8
50

50.0
5.2
75

49.8
5.4

50.2
5.0
75

51.4
3.8
50

55, 19

Alley BIK G
Fortuna Park

			6.88	41.46 ✓	41.46
T.P.	1.94	48.34	6.60	46.40	
T.P.	1.98	53.00	2.34	51.02	
			2.27	51.09	
			8.02	45.34 (45.21)	
	1.43	53.36	2.70	51.93	

Starting B.M. P 48

Bench book shows 45.21
S.W. 7' LT. Kendall + P.B. drive
S.W. 7' LT. Shasta + Pac. Beach Dr.

{ 105 RT } = E.C. 3' Rad. cl. Ret. ↗
{ 105 LT }

3+53 L = Face Sly cl. P.B. Drive

T.P.	5.68	54.63	6.24	48.95
------	------	-------	------	-------

47.33	46.73	48.73	48.16	48.45	48.77	49.31	50.08	50.81
7.30	7.30	5.90	6.47	6.18	5.86	5.32	4.55	3.82
60	60	105	105		105	105	60	60
cl	G	cl.	G		G	E.C.	G	cl
		E.C.						

54.63

5+50 L { 75 RT } B.C. 3' Rad. cl. Ret
{ 75 LT }

48.89	48.46	48.44	48.83	49.27
6.30	6.73	6.75	6.36	5.92
75	75		75	75
cl. B.C.	cl.		G	cl. B.C.

{ 79 RT } = start alley curbs.
{ 75 LT }

5+24.88 = Sly. line P.B. drive = Start Conc. pave.

72 RT = end Conc. wall.

44.05	48.88	48.70	49.19	49.46	48.6	51.7
6.14	6.31	6.47	6.00	5.73	6.6	3.5
75	75		74	74	72	72
cl	G		G	cl.	B.W. T.W.	

55.19

Clark
Shepherd
Oweil
6-19-53
NO. 21132

X-SECT. ELEV. FOR PROPOSED TENNIS
COURTS - WASHINGTON PL. W/4
OF RANDOLPH ST.

REF: DWG. D-2-1 Sketch not to scale.
NATIVE PTS. C.B. LINES USED FOR ALIGNEMENT.
AS PER OFFICE REQUEST.

INDEXED
JUN 22 1953

5-3
W.C.B. LINE
RANDOLPH
Randolph Str.

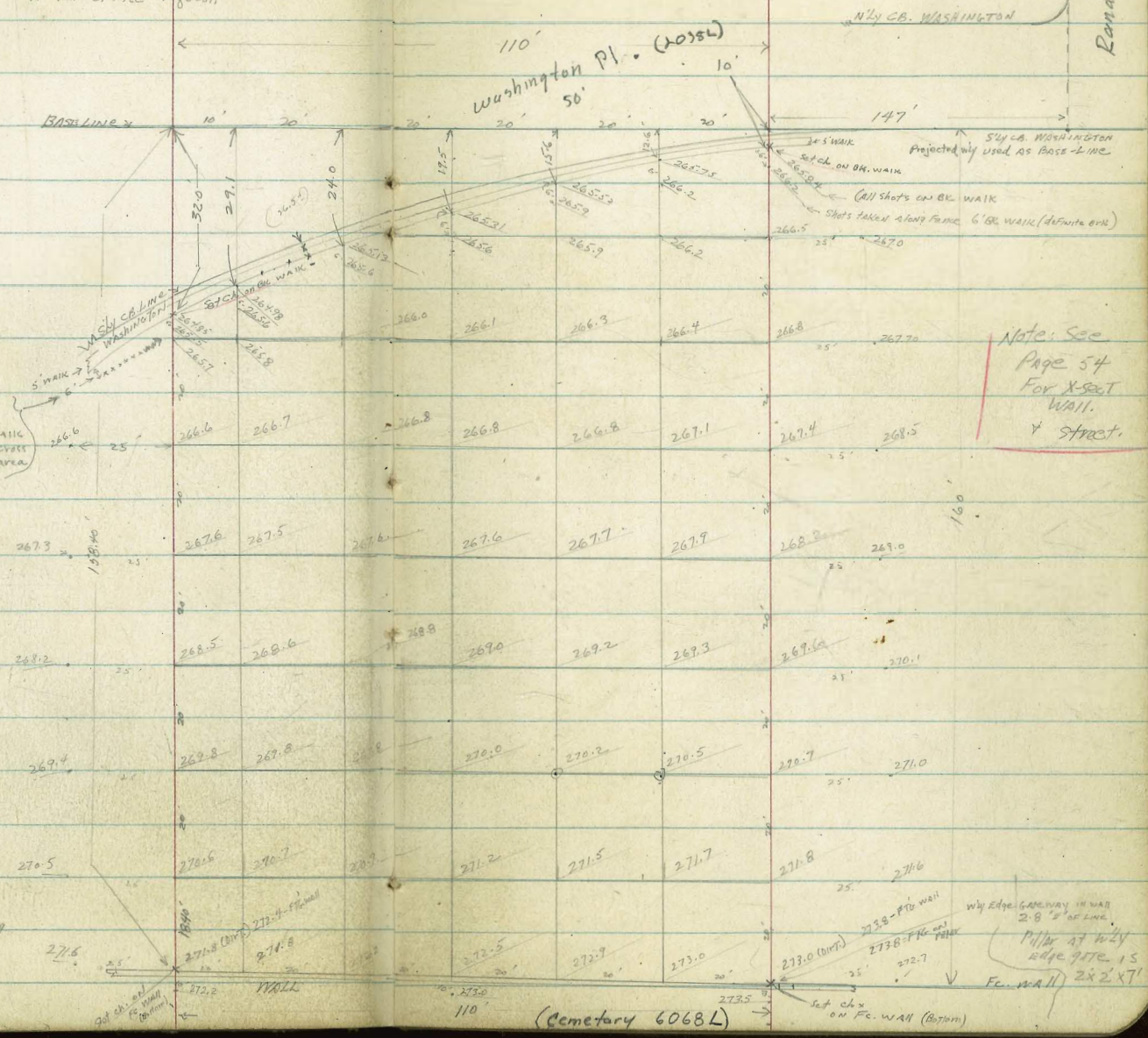
get Section of Wall & height.
Type Cap. height.

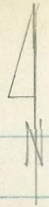
Note 8' wire
Fence 6' BK
OF BK. EDGE WALL
EXTENDS E/WY ACROSS
PROPOSED COURT AREA

1115
IV. Flornie Hgts.
Map C34

CHK. 270.10 = 270.11

B.M. DIR. ELEV. ROD: 270.11 - N.E. End of
Randolph St. Station





N. CB LINE WASHINGTON.

Not to scale

10' (see pg 53 For loc chx on BK WALK AT N.E. CORNER Proposed COURT AREA)

WALK
S.C.B. LINE

180' DRIVE

S.C.B. LINE WASHINGTON

T.P. WALL

END-SECTION-WALL (ADDFE)

1.3

ADDFE

3.85' WALK

Shoulder FDN

14" ±

Concrete

1.5

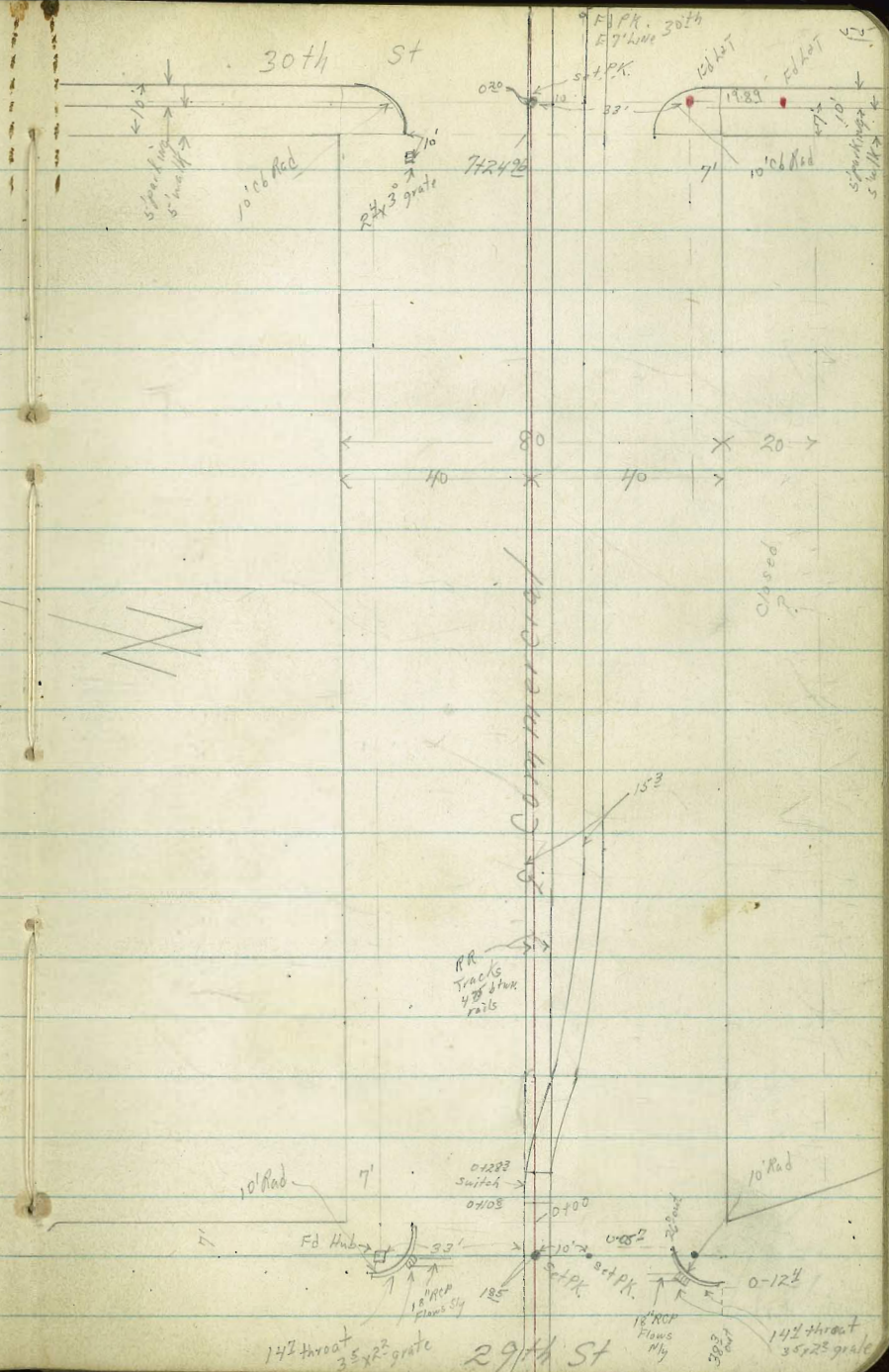
1.35

Both FDN

D. Smith
J. Rorer
R. Taylor

W^o# 32319
8-4-53

X Sec Commercial St.
29th to 30th



Ed 1977
Imperial
5/29
5/20

29th St

Lt. Nly

♀ Rt-Sly

56

0150

69.58 68.88 68.98
 45 53 56 50 40 46 47 48 47 50 53 48 41
 40 27 24 13 13 11 11 11 11 13 23 27 40

0100 Ely 29th edge AC paving

69.58 69.21 68.21 68.66 68.38 69.32 69.38 69.10 67.89 68.68 69.08
 45 48 58 54 42 47 42 43 61 54 50
 40 26 26 13 13 28 13 22 26 40
 05 out end

0-05 I C6 end RP 26

67.74 68.73

639 535
 262 262
 24 06
 end

Ret. grates C6 + 1c.

69.76 68.72 69.18

982 586 420
 70 24 06

68.70 67.76 62.63

538 632 1125
 03 24 10

0-10 Ely C6 29th

69.34 68.58 69.17 68.17 68.30 68.94 69.31 69.35 69.31 68.82 67.72 68.69 68.88
 474 550 421 52 52 54 42 42 42 526 636 539 52
 100 40 36 36 26 13 105 28 13 29 29 40
 out only end out end out end

0-124 383 Rt C6 end

0-30 ♀ 29th St

70.07 69.62 69.25 69.18 69.36 69.37 69.36 69.37 64.15 68.89 68.92 69.30
 401 446 483 420 476 421 472 421 423 519 516 428
 100 60 40 26 13 185 29 13 26 40 60
 05 05 05 05 05 05 05 05 05 05 05 05

TR, BM

512

74.08

768

68.26

787 Nub NE cor Commercial

SW 8P 29th

BM

459

76.64

72.05

Imperial

74.08

Lt = Mly

£

RT = Sly

57

2/66 ³⁶ Lt & 10' Broken out ch for drive

2750

70.18 70.06 69.97 69.38 69.98 70.36 70.28 10.35 69.86 69.86 69.95 69.38 70.07

5³ 5⁴ 5⁵ 6¹ 5⁵ 5¹² 5² 5¹³ 5⁶ 5⁶² 5⁶³ 6¹⁰ 5⁴¹

40 30³ 26 26 13 13⁵ 32 14 18 19 26 40

wk 06 cut AC

2726 26^o Lt Begin cb & walk 116 line

2700

70.18 69.68 69.28 69.70 10.18 70.08 10.17 69.66 69.69 69.91 69.29 69.97

5³ 5⁸ 6² 5² 5²⁰ 5⁴ 5³¹ 5²² 5²¹ 5⁷⁷ 6³⁹ 5⁵¹

40 28 24 13 13⁵ 32 14 19 19³ 26 40

wk AC AC AC AC AC

69.96 69.87 69.95 70.02

6L 5⁶¹ 5⁵³ 5⁴⁶

26 26 30.5 35.5

cut 06 wk wk

END.

1750

70.68 69.88 69.48 69.58 69.6 69.93 69.73 69.77 69.78 69.78

48 56 60 52 5⁵² 56 5⁵⁵ 5²⁵ 5²¹ 5²⁰ 60 5²⁰

40 27 23 13 14 33 122 173 18 26 40

AC AC AC AC AC

1710 19^o Rt Begin AC for Frazes stops at sly rail.

TP₂

5²¹ 75⁴⁸ 4³¹ 69²²

1700

69.98 69.68 68.88 69.38 69.75 69.68 69.78 69.76 69.73 69.58 69.80

4¹ 4¹ 5³ 4² 4²³ 4⁴ 4²⁰ 4³² 4³⁵ 4⁵ 5⁴ 5⁴

40 27 23 13 14⁵ 33 62 112 13 21 24

AC AC AC AC AC

75⁴⁸

74⁰⁸

Lt = Nly

Rt = Sly

58

71.38	70.78	69.98	70.58	71.08	70.98	71.06	70.56	70.53	70.49	70.45	70.49	71.08
41	42	55	42	40	4	42	42	42	49	50	42	44
40	28	23	13	11	35	44	19	25	28	29	40	

70.98	70.48	70.08	70.48	70.88	70.88	70.90	70.39	70.38	70.43	70.48	70.98
45	50	54	50	46	46	45	50	50	50	30	45
40	28	25	13	11	32	44	19	21	16	26	40

4750

4750

3761 143° Rt Begin switch for another spur track.

3752 17° Rt end AC, putting

70.15	70.01	70.55
53	54	42
19	26	40
AC	AC	AC

3750

70.68	70.28	69.88	70.18	70.74	70.68	70.72	70.15	70.12	70.25	69.98	70.58
48	52	56	53	47	48	47	53	53	53	50	42
40	27	24	13	11	32	43	18	19	26	40	

TP3

520

75 48

520

70 28

70.48	70.48	70.27	75 48
50	50	52	58
23	30	26	26
w/k	w/k	cd	out
		end	

3725 26° Lt end cb & walk N to line

3704 26° Lt 9 p° Broken out cb for drive

3700

70.58	70.31	70.22	69.58	70.18	70.58	70.48	70.54	70.04	70.03	70.02	69.69	70.36
42	57	52	52	53	40	52	42	54	54	56	52	52
40	30	26	26	13	12	32	42	14	18	19	26	40
	w/k	cd	out							AC		

75 48

Lt = Nly

RT = Sly

6412 26° Lt Begin con drive of drive of

11.71 11.46 11.38 11.0
 5⁰⁹ 5²⁴ 6⁰² 6⁴
 4R 30² 26⁰ 26⁰
 drive w/k c6 cut

TP4 6²⁴ 77⁴⁰ 4³² 71¹⁶

6400

12.78 71.48 70.98 71.18 71.56 77⁴⁰
 71.48 11.53 71.22 71.22 71.21 71.76
 22 40 45 43 32² 40 32⁵ 42⁶ 42⁶ 42⁷ 32³
 40 28 24 13 0²⁰ 40 40 14⁶ 19² 26 40
 R R R AC AC

5450

77.68 71.38 70.68 70.98 71.40 71.28 71.22 70.96 69.98 71.02 71.58
 38 41 45 45 40 43 40⁶ 45² 55⁰ 44⁶ 32⁰
 40 28 24 13 0²⁰ 40 40 14⁶ 19² 26 40
 R R R AC AC

5430 26° Lt end drive

71.37 71.21 71.10 70.48
 41 42⁷ 41³⁸ 5⁰
 40 30² 26 26
 drive w/k c6 cut

5417⁵ 26° Lt con drive

71.14 70.58
 43⁴ 42⁰
 30⁵ 26
 w/k 41⁰

5405 26° Lt Begin con drive of drive of

71.33 70.11 70.41 70.48
 41⁵ 43⁷ 42⁰ 5⁰
 40 30² 26² 26⁰
 drive w/k c6 cut

5400

71.48 70.78 70.38 70.88 71.26 71.18 71.28 70.73 70.72 70.45 71.14 71.15 71.25
 40 42 51 46 42² 43 42⁰ 42⁵ 42⁶ 45³ 42⁴ 43 43³
 40 26 24 13 0²⁰ 37 14² 19³ 26 34² 39² 40
 R R R AC R AC

4475 19° RT Beg of AC From Sly track to Prop beyond

70.71 70.73 71.38
 47⁷ 42⁵ 41⁰
 17 26 40
 AC

75⁴⁸

BM

475 74.97

74.97 NW 8P 30th Imprial

Lt-Nly

RT-Sly

11.36
60
90
out drive

TP 5 5.80 79.72 348 73.92

7+34.96 wly c 30th

72.95 71.95 72.09 71.59 72.06 71.59 71.7 71.94 71.97 72.00 71.86 71.66 72.08 71.63 72.11

495 545 531 581 534 581 520 546 543 540 554 574 632 577 529

90 40 40 36 36 26 13 13 26 26 36 40 40

c6 out c6 out c6 out 26 13 13 26 26 36 40 40

7+24.96 wly 30th edge con par cut c6s

72.04 71.77 71.38 71.85 71.88 71.92 71.97 71.97 71.84 72.13 72.09

5.36 5.63 6.02 5.58 5.2 5.48 5.43 5.43 5.56 5.27 5.31

90 26 26 13 63 42 152 152 26 26 40

wk c6 out 1 71.85 71.85 71.85 71.85 71.85 71.85 71.85 71.85 71.85 71.85

71.38

6.02
10 to deep grate

7+15 26° Lt Nly grate

7+100

72.50 72.0 71.50 71.60 71.84 71.70 71.83 71.95 71.72 71.71 72.00 72.55

49 54 52 58 58 52 557 565 568 569 520 420

40 28 26 13 02 42 42 192 20 26 40

71.70 71.83 71.95 71.72 71.71 72.00 72.55

6+50

71.90 71.76 71.40 71.80 71.66 71.70 71.67 71.45 71.47 71.58 72.25

55 57 60 56 524 52 523 528 523 522 515

40 27 25 13 06 42 146 192 24 40

71.70 71.67 71.45 71.47 71.58 72.25

6+37 26° Lt end drive

71.73 71.51 71.42 71.70

5.67 5.59 5.28 6.3

40 drive 305 wk 26 c6 262 out

6+24.5 E drive lt

71.44 70.83

5.96 6.57

302 wk 26 1.70

71.77 40

INDEXED
HER
MAY 5 1958

Levels on driveway in Park Row.

Why curb line used as base line

D 400 = Curb EC NW COR Prospect Pkt Park Row

WID # 25020

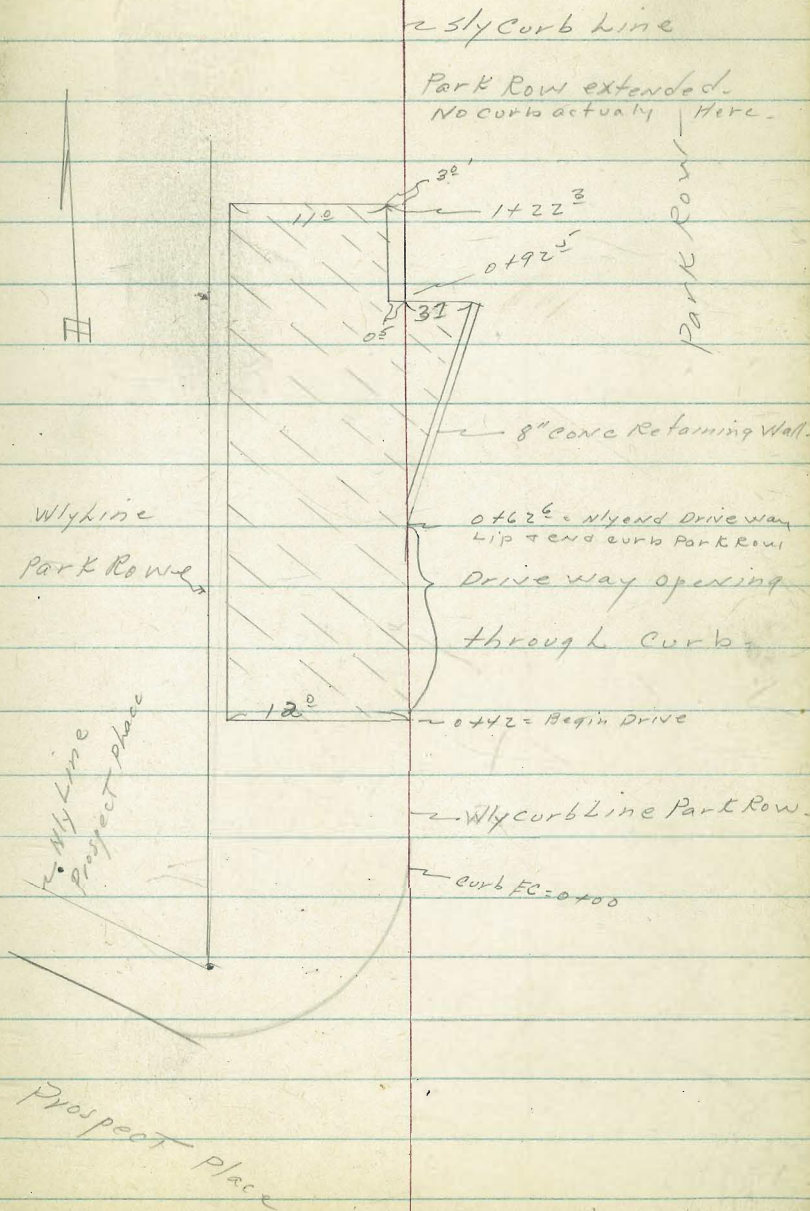
C. Allen

D. Sisson

C. Powell

No information on streets

office file # 21102



Levels on Driveway
 NW cor Prospect Place + Park Row

0+75 - 1° Rt. Wly edge Wall

0+62 = } Begin 8" conc wall Flared to Ely-
 curb of Park Row
 Nly end Drive opening + end wly

0+52 = 2 opening for Drive

0+42 = } 12° LT = SW cor Drive way
 begin opening for Drive through curb

0+00 = Curb E.C. Park Row

BM 0.62 132.70

BTSE Prospect Pl
 + Park Row
 132.08

2° = Wly.

Wly curb
 Line
 Park Row

Rt = Ely - 62

125.23

7.47

11
 Wly edge
 Drive

127.21

5.49

11
 Wly edge
 Drive

127.66

7.04

12°
 Wly edge
 Drive

127.45

5.25

25
 Bt in
 Drive

128.10

4.60

12°
 SW cor
 Drive

125.40

7.30
 on drive

127.23

5.47

Top
 of
 cut

126.79

9.1

11°
 Drive

127.87

4.83

Top
 of
 gutter

129.23

3.57

Top
 curb

125.43

7.27

1°
 Top Wall

126.4

6.3

Top
 of
 cut

126.79

9.1

11°
 Drive

127.1

5.6

Top
 of
 gutter

128.33

4.27

Top
 curb

126.90

5.80

14
 Top Wall

126.4

6.3

Top
 of
 cut

126.79

9.1

11°
 Drive

127.1

5.6

Top
 of
 gutter

128.33

4.27

Top
 curb

126.10

6.6

18
 Ely side
 Wall

132.70

1467

1454- 5° Rt = end Chain Link guard fence

1450

1423- 5° Rt = begin Chain Link guard fence

6° Rt = Rinn Canyon

14° Lt = NW COR CONC DRIVE

3° Lt = NE COR DRIVE

1422³ = Nly end CONC DRIVE

TP, 0.41 120.08 13.03 119.67

0+92⁵ - 3⁷ Rt = wly edge 8" CONC WALL

LT = Wly

Base Line
Wly curb
Line
Park Row
extended

Rt = Fly

63

110.8
9³
10

111.0

9¹

111.2

8⁹

3³
Rinn
Canyon

105.2

14⁹

1³

111.5
8⁶
10

111.6

8⁵

111.8

8³

6⁶
Rinn
Canyon

105.8

14³

16⁻

114.81
5²⁷

14°
NW
COR DR

114.77
5³¹

3°
NE COR
DRIVE

114.5
5¹⁶

115.5
9¹⁶

6°
Rinn
Canyon

118.6
11¹⁵

16⁻

121.52

11³⁸
11⁰
Wly edge
DRIVE

121.49

11²¹
05
ely edge
DRIVE
TONLY

121.52

11¹⁸

132.70 π

120.08 π

121.84

10⁸⁶
37
Wly edge
WALL

126.28

6³²

4°
Top Wall

125.7

7⁰

4³
ely
side

Levels on Drive - Prospect Place +
Park Row

LT = W14 -

Base
Line

RT = E14 -

64

TP₃ Starting BM. 054 132.08 ✓

TP₂ 12.95 132.62 0.41 119.67

2400

2+70 = EDW Chain Link fence

106.1 105.8 104.2 101.8
14⁰ 14³ 15² 18³
10 4 10

120.08

Robert X-Sect. Florence Lane
 Cota 35th to Wabash Freeway
 Moore No poles or fences shown - Grada Ord.
 Morales 11-10-53 If Garage or Conc. Apron level only & shown!
 WA#25020

Lt S Q R 65
 (OUR & IS 11.125' So. OF THE No. Line Florence Lane.) N

INDEXED
 JER
 NOV 18 1953

0+50

49.6	49.6	49.3	49.7	50.0	50.5
10.0	10.0	10.3	9.9	9.6	9.1
25	11	9		11	25

0+27

14 Rt & Double Garage

51.21
 8.57
 11
 Apron Floor
 Conc

51.73
 7.85
 14
 Floor

0+02.5

13 Rt & Single Garage

52.59
 7.19
 10
 Apron Floor
 Conc

52.80
 6.78
 13
 Floor

0+00

West Line 35th from South.

51.0	51.5	51.1	51.5	51.5	52.67
8.6	8.1	8.5	8.1	8.1	6.91
25	11	9	5	11	

0-22

20³ Rt to & Single Garage

53.4
 6.2
 20²
 Floor
 Dist

0-35

23² Rt to & Single Garage

53.7
 5.9
 23
 Floor
 Dist

BM

878 59.58 T

N.W.P.
 50.80 Florence, 25th

59.58 T

Cont'd From Page 65

Lt

R

Rt 66

S

N

1799 14 Rt & Single Garage

467
14
Floor

1760 14 Lt & Single Garage

45.2
3.8
14
Floor
Dirt

1750

45.1	45.4	45.4	44.8	45.1	45.2	45.2
3.7	3.6	3.6	4.2	3.9	3.8	3.8
25	11	9	7		9	11

1711.5 12⁵ Rt & 2 Conc Walk

48.02
0.93
12⁵
conc

1701 13⁶ Rt & Double Garage

47.98
0.97
116
Asph on
conc

48.05
0.90
136
Floor

1700

47.8	47.8	47.7	47.3	47.5	47.5	47.9
1.2	1.2	1.3	1.7	1.5	1.5	1.1
25	11	9	7		9	11

T.P. 114 48.95A 11.77 47.81

48.95A

59.58A

T.P. 0.17 39.76 $\bar{\Delta}$ 9.36 39.59

3+00

2+90 14⁵ $\bar{\Delta}$ Single Garage

2+65 13 $\bar{\Delta}$ Single Garage

2+50

2+31 12⁶ $\bar{\Delta}$ Single Garage

2+06 14 $\bar{\Delta}$ Single Garage

2+00

48.95 $\bar{\Delta}$

2+

$\bar{\Delta}$

R 62

59.9 5 59.5 59.4 59.6 20.0 2
 9.1 9.1 9.6 9.4 9.0
 11 10 7 11

40.09
 8.86
 14.5
 Floor

42.08

6.87
 13
 Floor

41.7 42.0 42.0 41.3 41.7 41.7 41.9
 7.3 7.0 7.0 7.7 7.3 7.3 7.1
 25 11 9 7 9 11

42.7

6.3
 12.6
 Floor
 Dist

43.3

5.7
 14
 Floor
 Dist

43.1 43.7 43.6 43.1 43.3 43.5 43.7
 5.9 5.3 5.4 5.9 6.7 5.5 5.3
 25 11 9 7 7 11

48.95 $\bar{\Delta}$

Cont'd From Page 67

3+83 12' Rt. begin Conc Apron to Single Garage

	Lt.	S	E	N	Rt. 68
				36.74	37.27
				3.02	2.49
				121	154
				conc	Floor

3+71.2 10' Rt End Conc Apron

				37.24	37.90
				2.52	1.86
				101	137
				conc	conc

3+63.3 10' Rt begin Conc Apron to Car Port

				37.89	38.08
				2.27	1.73
				102	137
				conc	conc

3+50

	35.9	37.9	37.1	37.6	37.7
	3.9	2.4	2.7	2.2	2.1
	25	11	6		11

3+48 13 Lt End Walk

				37.80
				1.96
				13
				conc

3+19 12' Lt begin Conc Walk Parallel to E

				38.27
				1.49
				121
				conc

3+0.9 12' Lt E Double Garage

				38.61
				+0.15
				126
				Floor

39.767

39.767

Cont'd From Page 68

4+79 20' RT @ Single Garage

4+50

4+39 19' RT @ Single Garage

4+07 11' RT End Conc Apron

4+00

3+94 11' RT begin Conc Apron to Single Garage

3+92

12' RT End Conc Apron

39.76 π

LT S E N RT 61

27.7
12.1
NO
Dir

31.6	31.5	30.1	30.5	30.7	31.1
8.2	8.3	9.1	9.3	9.1	8.7
25	11	6		11	25

33.26

6.50

196
Floor

35.77	35.26
3.99	3.50
112 conc	152 Floor

34.6

35.1

34.7

35.0

35.6

3.2	4.7	5.1	4.8	4.2
25	11	7		11

35.90

36.31

3.86	3.45
116 conc	151 Floor

36.22

37.24

3.54	2.52
124 conc	157 Floor

39.76 π

Cont'd From Page 69

LE

Q

R Z

S

U

check 8.60 50.82 = 50.80

T.P. 7.24 59.42 0.90 52.18

T.P. 12.44 53.08 0.27 40.64

T.P. 13.13 40.91 0.70 27.78

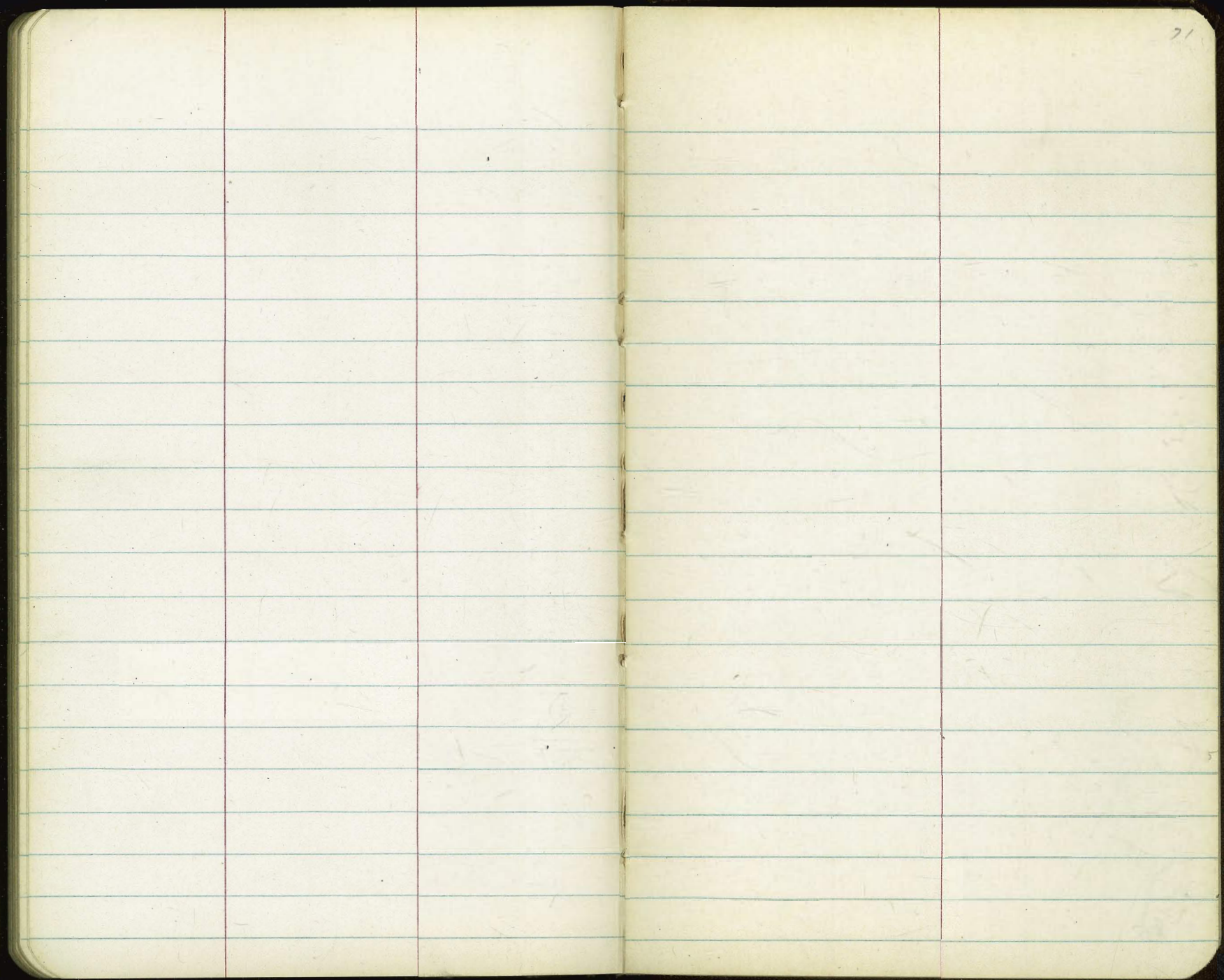
5711.3 { End of Proposed Curb Returns at
Wabash Freeway

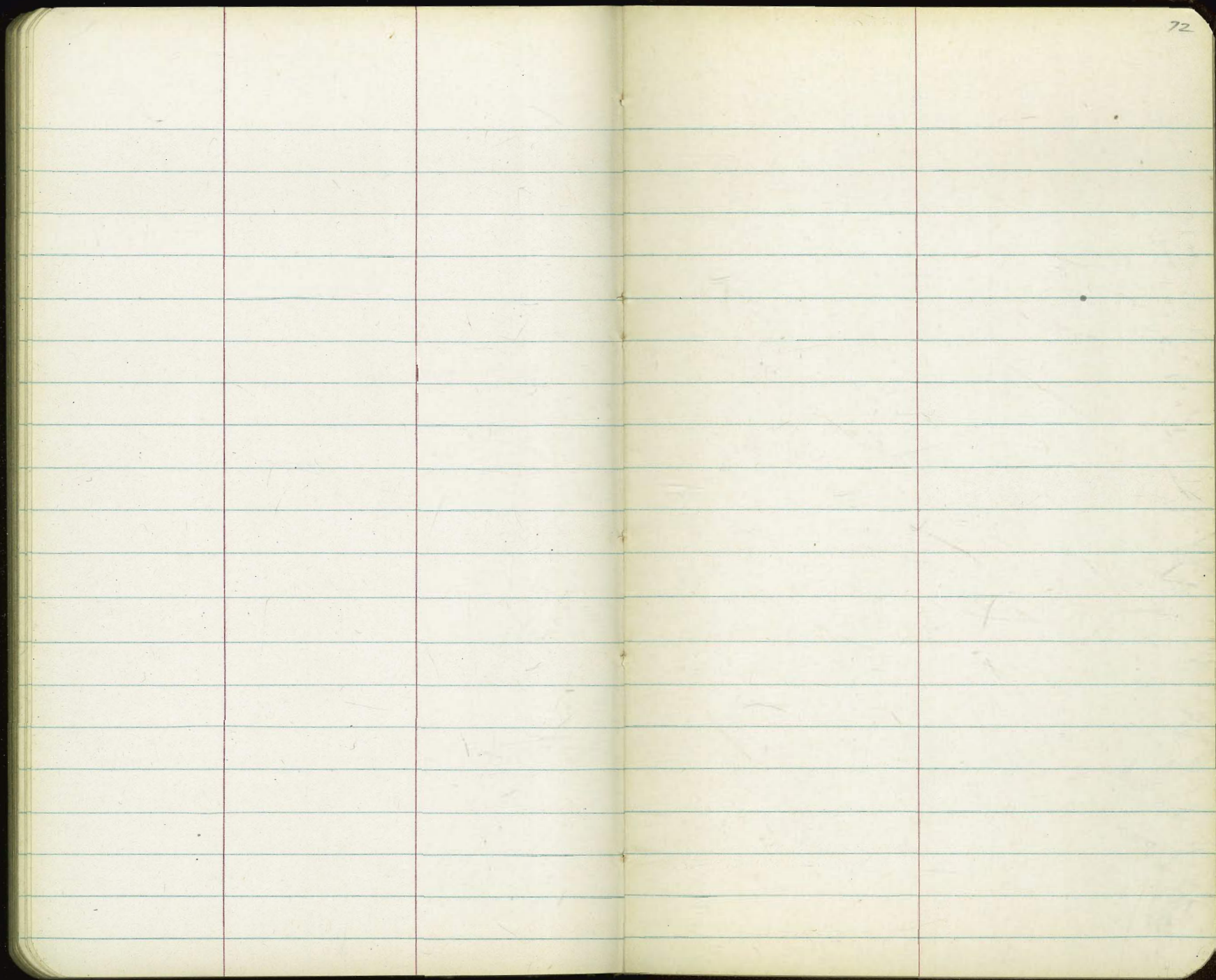
	22.9x	21.6	21.0	21.9	21.6	21.7	22.50
C-5.31 =	5.54	6.9	7.5	7.1	6.9	6.8	5.98 = C-4.2
	14	11	8	6		11	14
	on						on
	Stub						Stub

T.P. 1.52 28.48x 12.80 26.9.6

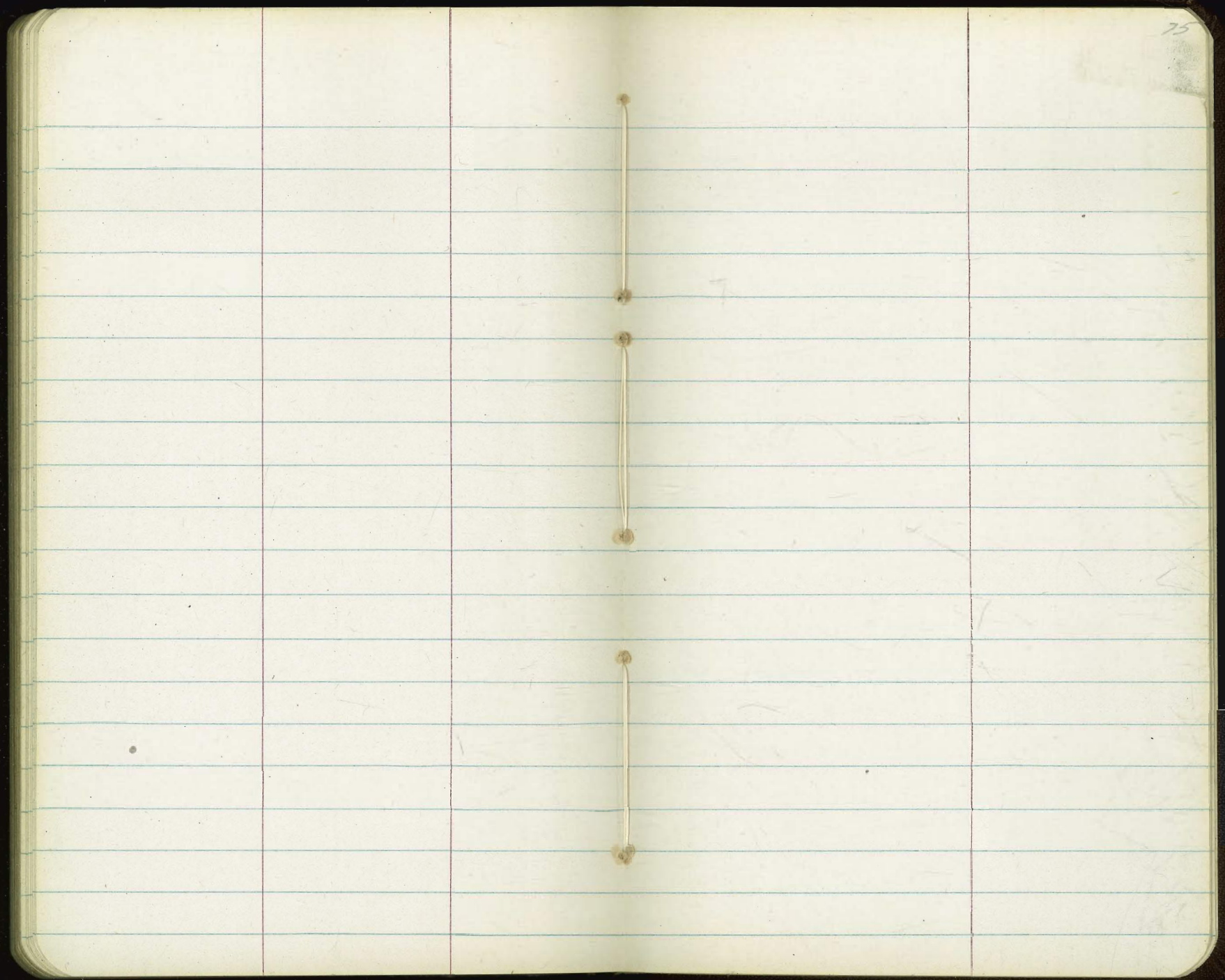
28.48x

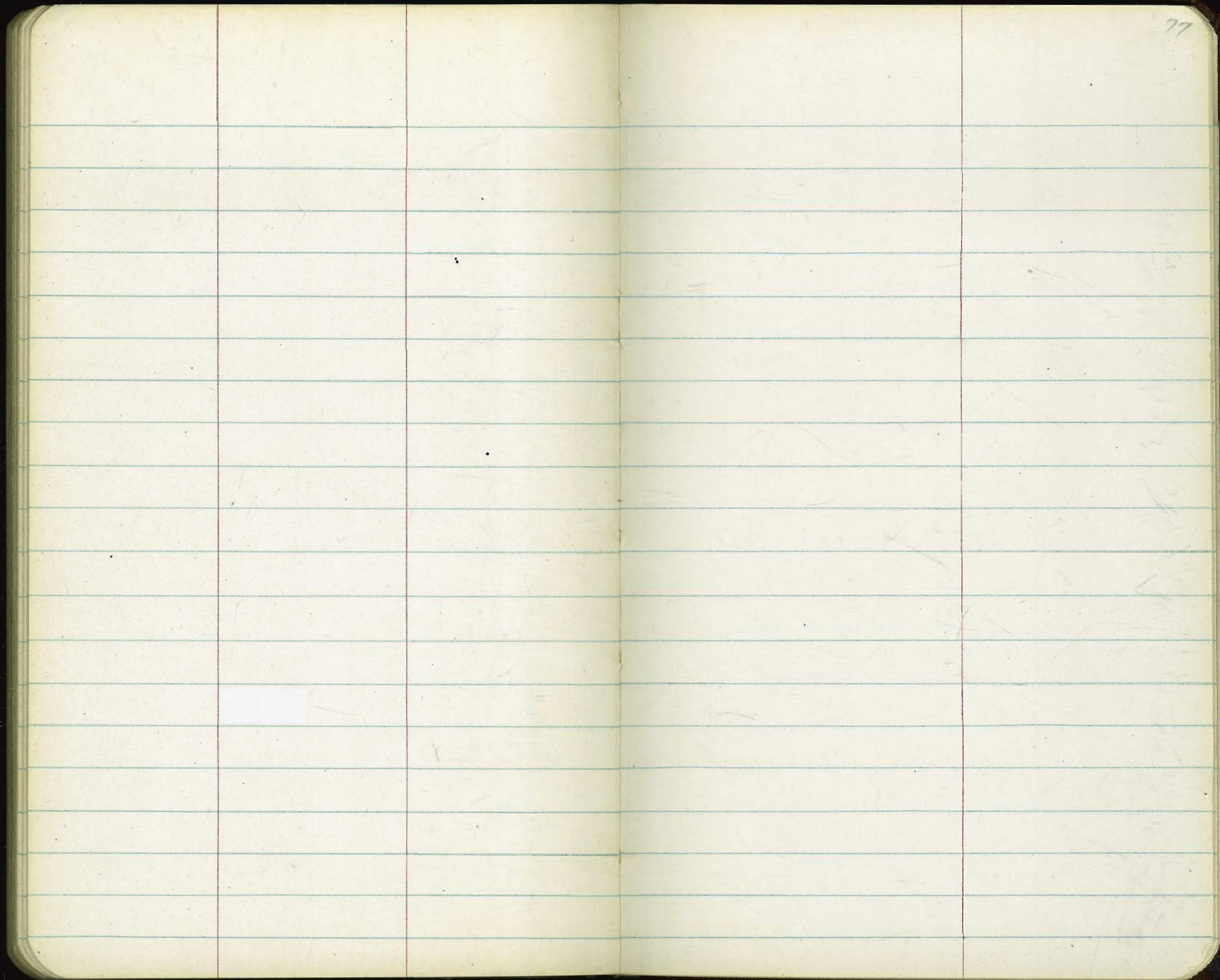
39.76x





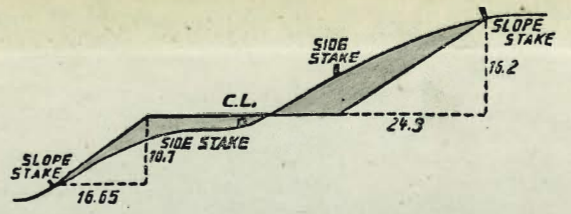
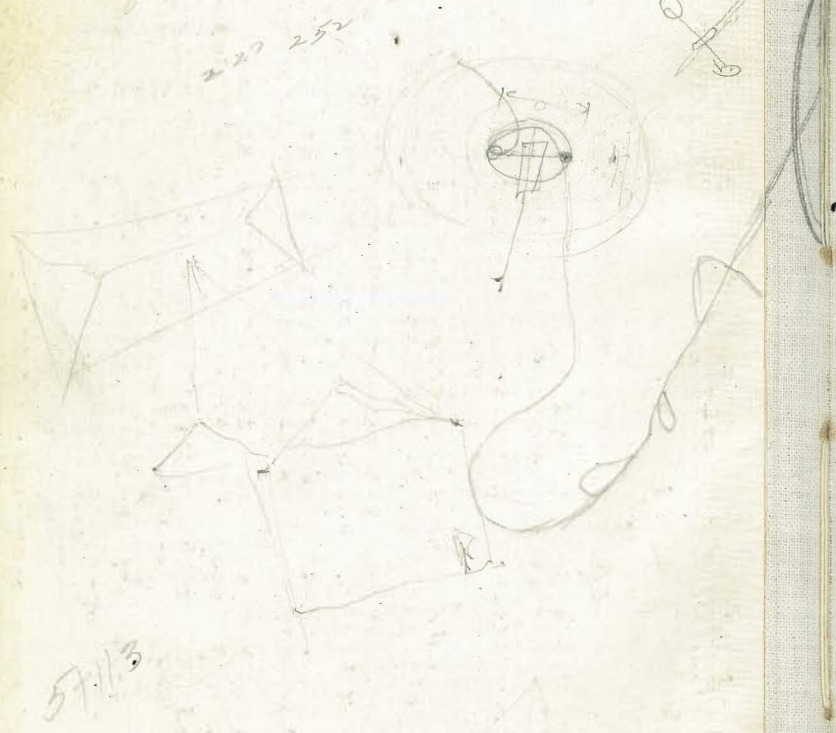
The image shows an open notebook with two facing pages. Both pages are cream-colored and feature light blue horizontal ruling. The notebook is bound in the center, with visible stitching or staples. The pages are otherwise blank, with the number '74' handwritten in the top right corner of the right page. The notebook is set against a dark, possibly black, background.





29+1 7205
 SW
 23.15
 22.24
 1.58
 30th + NW 7482
 6+26.6
 14
 18.70
 6+12.6

mon. dist. hub
 75 - 50
 all in line
 16.44
 53
 9.425
 8.75



DISTANCES FROM SIDE STAKES FOR CROSS-SECTIONING.
 SLOPE 1 1/2 TO 1. ROADWAY OF ANY WIDTH.

	0	.1	.2	.3	.4	.5	.6	.7	.8	.9	
0	0.00	0.15	0.30	0.45	0.60	0.75	0.90	1.05	1.20	1.35	0
1	1.50	1.65	1.80	1.95	2.10	2.25	2.40	2.55	2.70	2.85	1
2	3.00	3.15	3.30	3.45	3.60	3.75	3.90	4.05	4.20	4.35	2
3	4.50	4.65	4.80	4.95	5.10	5.25	5.40	5.55	5.70	5.85	3
4	6.00	6.15	6.30	6.45	6.60	6.75	6.90	7.05	7.20	7.35	4
5	7.50	7.65	7.80	7.95	8.10	8.25	8.40	8.55	8.70	8.85	5
6	9.00	9.15	9.30	9.45	9.60	9.75	9.90	10.05	10.20	10.35	6
7	10.50	10.65	10.80	10.95	11.10	11.25	11.40	11.55	11.70	11.85	7
8	12.00	12.15	12.30	12.45	12.60	12.75	12.90	13.05	13.20	13.35	8
9	13.50	13.65	13.80	13.95	14.10	14.25	14.40	14.55	14.70	14.85	9
10	15.00	15.15	15.30	15.45	15.60	15.75	15.90	16.05	16.20	16.35	10
11	16.50	16.65	16.80	16.95	17.10	17.25	17.40	17.55	17.70	17.85	11
12	18.00	18.15	18.30	18.45	18.60	18.75	18.90	19.05	19.20	19.35	12
13	19.50	19.65	19.80	19.95	20.10	20.25	20.40	20.55	20.70	20.85	13
14	21.00	21.15	21.30	21.45	21.60	21.75	21.90	22.05	22.20	22.35	14
15	22.50	22.65	22.80	22.95	23.10	23.25	23.40	23.55	23.70	23.85	15
16	24.00	24.15	24.30	24.45	24.60	24.75	24.90	25.05	25.20	25.35	16
17	25.50	25.65	25.80	25.95	26.10	26.25	26.40	26.55	26.70	26.85	17
18	27.00	27.15	27.30	27.45	27.60	27.75	27.90	28.05	28.20	28.35	18
19	28.50	28.65	28.80	28.95	29.10	29.25	29.40	29.55	29.70	29.85	19
20	30.00	30.15	30.30	30.45	30.60	30.75	30.90	31.05	31.20	31.35	20
21	31.50	31.65	31.80	31.95	32.10	32.25	32.40	32.55	32.70	32.85	21
22	33.00	33.15	33.30	33.45	33.60	33.75	33.90	34.05	34.20	34.35	22
23	34.50	34.65	34.80	34.95	35.10	35.25	35.40	35.55	35.70	35.85	23
24	36.00	36.15	36.30	36.45	36.60	36.75	36.90	37.05	37.20	37.35	24
25	37.50	37.65	37.80	37.95	38.10	38.25	38.40	38.55	38.70	38.85	25
26	39.00	39.15	39.30	39.45	39.60	39.75	39.90	40.05	40.20	40.35	26
27	40.50	40.65	40.80	40.95	41.10	41.25	41.40	41.55	41.70	41.85	27
28	42.00	42.15	42.30	42.45	42.60	42.75	42.90	43.05	43.20	43.35	28
29	43.50	43.65	43.80	43.95	44.10	44.25	44.40	44.55	44.70	44.85	29
30	45.00	45.15	45.30	45.45	45.60	45.75	45.90	46.05	46.20	46.35	30
31	46.50	46.65	46.80	46.95	47.10	47.25	47.40	47.55	47.70	47.85	31
32	48.00	48.15	48.30	48.45	48.60	48.75	48.90	49.05	49.20	49.35	32
33	49.50	49.65	49.80	49.95	50.10	50.25	50.40	50.55	50.70	50.85	33
34	51.00	51.15	51.30	51.45	51.60	51.75	51.90	52.05	52.20	52.35	34
35	52.50	52.65	52.80	52.95	53.10	53.25	53.40	53.55	53.70	53.85	35
36	54.00	54.15	54.30	54.45	54.60	54.75	54.90	55.05	55.20	55.35	36
37	55.50	55.65	55.80	55.95	56.10	56.25	56.40	56.55	56.70	56.85	37
38	57.00	57.15	57.30	57.45	57.60	57.75	57.90	58.05	58.20	58.35	38
39	58.50	58.65	58.80	58.95	59.10	59.25	59.40	59.55	59.70	59.85	39
40	60.00	60.15	60.30	60.45	60.60	60.75	60.90	61.05	61.20	61.35	40
41	61.50	61.65	61.80	61.95	62.10	62.25	62.40	62.55	62.70	62.85	41
42	63.00	63.15	63.30	63.45	63.60	63.75	63.90	64.05	64.20	64.35	42
43	64.50	64.65	64.80	64.95	65.10	65.25	65.40	65.55	65.70	65.85	43
44	66.00	66.15	66.30	66.45	66.60	66.75	66.90	67.05	67.20	67.35	44
45	67.50	67.65	67.80	67.95	68.10	68.25	68.40	68.55	68.70	68.85	45
46	69.00	69.15	69.30	69.45	69.60	69.75	69.90	70.05	70.20	70.35	46
47	70.50	70.65	70.80	70.95	71.10	71.25	71.40	71.55	71.70	71.85	47
48	72.00	72.15	72.30	72.45	72.60	72.75	72.90	73.05	73.20	73.35	48
49	73.50	73.65	73.80	73.95	74.10	74.25	74.40	74.55	74.70	74.85	49
50	75.00	75.15	75.30	75.45	75.60	75.75	75.90	76.05	76.20	76.35	50

THE NATIONAL BLANK BOOK COMPANY
 HOLYOKE MASSACHUSETTS
 NEW YORK CHICAGO BOSTON SAN FRANCISCO