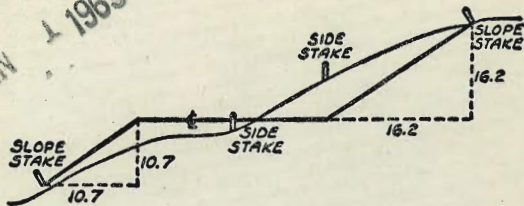




MICROFILMED  
JAN 1 1965



DISTANCES FROM SIDE STAKES FOR CROSS-SECTIONING  
SLOPE 1 TO 1, ROADWAY OF ANY WIDTH

	0	.1	.2	.3	.4	.5	.6	.7	.8	.9	
0	0.00	0.10	0.20	0.30	0.40	0.50	0.60	0.70	0.80	0.90	0
1	1.00	1.10	1.20	1.30	1.40	1.50	1.60	1.70	1.80	1.90	1
2	2.00	2.10	2.20	2.30	2.40	2.50	2.60	2.70	2.80	2.90	2
3	3.00	3.10	3.20	3.30	3.40	3.50	3.60	3.70	3.80	3.90	3
4	4.00	4.10	4.20	4.30	4.40	4.50	4.60	4.70	4.80	4.90	4
5	5.00	5.10	5.20	5.30	5.40	5.50	5.60	5.70	5.80	5.90	5
6	6.00	6.10	6.20	6.30	6.40	6.50	6.60	6.70	6.80	6.90	6
7	7.00	7.10	7.20	7.30	7.40	7.50	7.60	7.70	7.80	7.90	7
8	8.00	8.10	8.20	8.30	8.40	8.50	8.60	8.70	8.80	8.90	8
9	9.00	9.10	9.20	9.30	9.40	9.50	9.60	9.70	9.80	9.90	9
10	10.00	10.10	10.20	10.30	10.40	10.50	10.60	10.70	10.80	10.90	10
11	11.00	11.10	11.20	11.30	11.40	11.50	11.60	11.70	11.80	11.90	11
12	12.00	12.10	12.20	12.30	12.40	12.50	12.60	12.70	12.80	12.90	12
13	13.00	13.10	13.20	13.30	13.40	13.50	13.60	13.70	13.80	13.90	13
14	14.00	14.10	14.20	14.30	14.40	14.50	14.60	14.70	14.80	14.90	14
15	15.00	15.10	15.20	15.30	15.40	15.50	15.60	15.70	15.80	15.90	15
16	16.00	16.10	16.20	16.30	16.40	16.50	16.60	16.70	16.80	16.90	16
17	17.00	17.10	17.20	17.30	17.40	17.50	17.60	17.70	17.80	17.90	17
18	18.00	18.10	18.20	18.30	18.40	18.50	18.60	18.70	18.80	18.90	18
19	19.00	19.10	19.20	19.30	19.40	19.50	19.60	19.70	19.80	19.90	19
20	20.00	20.10	20.20	20.30	20.40	20.50	20.60	20.70	20.80	20.90	20
21	21.00	21.10	21.20	21.30	21.40	21.50	21.60	21.70	21.80	21.90	21
22	22.00	22.10	22.20	22.30	22.40	22.50	22.60	22.70	22.80	22.90	22
23	23.00	23.10	23.20	23.30	23.40	23.50	23.60	23.70	23.80	23.90	23
24	24.00	24.10	24.20	24.30	24.40	24.50	24.60	24.70	24.80	24.90	24
25	25.00	25.10	25.20	25.30	25.40	25.50	25.60	25.70	25.80	25.90	25
26	26.00	26.10	26.20	26.30	26.40	26.50	26.60	26.70	26.80	26.90	26
27	27.00	27.10	27.20	27.30	27.40	27.50	27.60	27.70	27.80	27.90	27
28	28.00	28.10	28.20	28.30	28.40	28.50	28.60	28.70	28.80	28.90	28
29	29.00	29.10	29.20	29.30	29.40	29.50	29.60	29.70	29.80	29.90	29
30	30.00	30.10	30.20	30.30	30.40	30.50	30.60	30.70	30.80	30.90	30
31	31.00	31.10	31.20	31.30	31.40	31.50	31.60	31.70	31.80	31.90	31
32	32.00	32.10	32.20	32.30	32.40	32.50	32.60	32.70	32.80	32.90	32
33	33.00	33.10	33.20	33.30	33.40	33.50	33.60	33.70	33.80	33.90	33
34	34.00	34.10	34.20	34.30	34.40	34.50	34.60	34.70	34.80	34.90	34
35	35.00	35.10	35.20	35.30	35.40	35.50	35.60	35.70	35.80	35.90	35
36	36.00	36.10	36.20	36.30	36.40	36.50	36.60	36.70	36.80	36.90	36
37	37.00	37.10	37.20	37.30	37.40	37.50	37.60	37.70	37.80	37.90	37
38	38.00	38.10	38.20	38.30	38.40	38.50	38.60	38.70	38.80	38.90	38
39	39.00	39.10	39.20	39.30	39.40	39.50	39.60	39.70	39.80	39.90	39
40	40.00	40.10	40.20	40.30	40.40	40.50	40.60	40.70	40.80	40.90	40
41	41.00	41.10	41.20	41.30	41.40	41.50	41.60	41.70	41.80	41.90	41
42	42.00	42.10	42.20	42.30	42.40	42.50	42.60	42.70	42.80	42.90	42
43	43.00	43.10	43.20	43.30	43.40	43.50	43.60	43.70	43.80	43.90	43
44	44.00	44.10	44.20	44.30	44.40	44.50	44.60	44.70	44.80	44.90	44
45	45.00	45.10	45.20	45.30	45.40	45.50	45.60	45.70	45.80	45.90	45
46	46.00	46.10	46.20	46.30	46.40	46.50	46.60	46.70	46.80	46.90	46
47	47.00	47.10	47.20	47.30	47.40	47.50	47.60	47.70	47.80	47.90	47
48	48.00	48.10	48.20	48.30	48.40	48.50	48.60	48.70	48.80	48.90	48
49	49.00	49.10	49.20	49.30	49.40	49.50	49.60	49.70	49.80	49.90	49
50	50.00	50.10	50.20	50.30	50.40	50.50	50.60	50.70	50.80	50.90	50

Distance of slope stake from side or shoulder stake for any width roadway, slope 1 to 1. If ground is nearly level, the cut or fill at side stake is located by the double entry method in left column and top row. The number in body of table in same row and column gives distance from side stake to slope stake. If ground is not level estimate the difference in elevation between the side stake and slope stake, lower target by this amount if cut, elevate if fill. Add this amount to cut or fill and find distance in table. Set up rod at this point, and line of sight should cut target. If it does not make the slight adjustment necessary.

2175

Succeeds #1475

FOR OFFICE USE ONLY

CITY ENGINEER

SAN DIEGO, CALIF.

MISC SEWERS

W.O. 20009

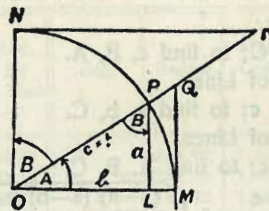


TABLE II  
TRIGONOMETRIC FORMULÆ.

$$\angle A = \angle MOP \quad \angle B = \angle PON = \angle OPL$$

$$R = OB = c = 1$$

$$\sin A = \frac{a}{c} = \frac{a}{1} = a = \text{cos } B = LP$$

$$\text{cos } A = \frac{b}{c} = \frac{b}{1} = b = \sin B = OL$$

$$\tan A = \frac{a}{b} = \frac{MQ}{OM} = \frac{MQ}{1} = MQ = \cot B = MQ$$

$$\cot A = \frac{NT}{ON} = \frac{NT}{1} = NT = \tan B = NT$$

$$\sec A = \frac{OQ}{OM} = \frac{OQ}{1} = OQ = \csc B = OQ$$

$$\csc A = \frac{OT}{ON} = \frac{OT}{1} = OT = \sec B = OT$$

$$\text{vers } A = \frac{LM}{OP} = LM = \text{covers } B \neq$$

$$\text{covers } A = \frac{OP-LP}{OP} = OP-LP = \text{vers } B$$

$$\text{exsec } A = PQ = \text{coexsec } B$$

$$\text{coexsec } A = PT = \text{exsec } B$$

$$\sin \frac{1}{2} A = \sqrt{\frac{1-\cos A}{2}} \quad \cos \frac{1}{2} A = \sqrt{\frac{1+\cos A}{2}}$$

$$\sin 2A = 2 \sin A \cos A \quad \cos 2A = \cos^2 A - \sin^2 A$$

$$\text{Law of Lines} \quad \frac{\sin A}{a} = \frac{\sin B}{B} = \frac{\sin C}{C}$$

$$\text{Law of Cosines} \quad c^2 = a^2 + b^2 - 2ab \cos C$$

$$\text{Law of Tangents} \quad \frac{a+b}{a-b} = \frac{\tan \frac{1}{2}(A+B)}{\tan \frac{1}{2}(A-B)}$$

TABLE XIII—CORRECTIONS FOR TANGENTS AND EXTERNALS

These corrections are to be added to the approximate values, found by dividing the tangent, or external, for a 1° curve (Table VIII) by the degree of curve, in order to obtain the true tangents, or externals. Intermediate values may be obtained by interpolation.

FOR TANGENTS ADD

Central Angle	DEGREE OF CURVE													
	5°	10°	15°	20°	25°	30°	35°	40°	45°	50°	55°	60°	65°	70°
10°	.03	.06	.09	.13	.16	.19	.22	.25	.28	.31	.34	.38	.42	.46
15°	.04	.10	.14	.19	.24	.29	.34	.39	.45	.51	.53	.58	.63	.68
20°	.06	.13	.19	.26	.32	.39	.45	.51	.58	.65	.72	.79	.84	.90
25°	.08	.16	.24	.33	.40	.49	.58	.67	.75	.83	.90	.99	1.06	1.14
30°	.10	.19	.29	.39	.49	.59	.69	.79	.89	.99	1.09	1.20	1.29	1.39
35°	.11	.22	.34	.47	.58	.69	.79	.89	.99	1.09	1.20	1.31	1.42	1.54
40°	.13	.26	.40	.53	.67	.80	.93	1.06	1.20	1.34	1.49	1.64	1.79	1.94
45°	.15	.30	.44	.60	.76	.91	1.06	1.21	1.37	1.52	1.70	1.87	2.04	2.21
50°	.17	.34	.51	.68	.85	1.02	1.19	1.36	1.54	1.72	1.91	2.10	2.29	2.48
55°	.19	.38	.57	.76	.95	1.14	1.32	1.52	1.72	1.92	2.14	2.35	2.56	2.77
60°	.21	.42	.63	.84	1.05	1.27	1.49	1.71	1.94	2.17	2.38	2.60	2.83	3.07
65°	.23	.46	.69	.93	1.16	1.40	1.64	1.88	2.13	2.38	2.63	2.88	3.13	3.39
70°	.25	.51	.76	1.02	1.28	1.54	1.80	2.06	2.33	2.60	2.88	3.16	3.44	3.72
75°	.27	.56	.83	1.12	1.40	1.69	1.98	2.27	2.57	2.87	3.16	3.47	3.78	4.09
80°	.30	.61	.91	1.22	1.53	1.84	2.15	2.46	2.78	3.10	3.44	3.78	4.12	4.46
85°	.33	.66	1.00	1.33	1.68	2.02	2.36	2.70	3.05	3.40	3.77	4.14	4.55	4.89
90°	.36	.72	1.09	1.45	1.83	2.20	2.57	2.94	3.32	3.70	4.10	4.50	4.91	5.32
95°	.39	.79	1.19	1.55	2.00	2.40	2.80	3.20	3.61	4.02	4.40	4.98	5.38	5.83
100°	.43	.86	1.30	1.74	2.18	2.62	3.06	3.50	3.95	4.40	4.88	5.37	5.85	6.34
110°	.51	1.03	1.56	2.08	2.61	3.14	3.67	4.21	4.76	5.31	5.86	6.43	7.01	7.60
120°	.62	1.25	1.93	2.52	3.16	3.81	4.45	5.11	5.77	6.44	7.12	7.80	8.50	9.22

FOR EXTERNALS ADD

Central Angle	DEGREE OF CURVE													
	5°	10°	15°	20°	25°	30°	35°	40°	45°	50°	55°	60°	65°	70°
10°	.001	.003	.004	.006	.007	.008	.009	.011	.012	.014	.015	.017	.018	.020
15°	.003	.007	.010	.014	.018	.023	.027	.029	.032	.035	.039	.043	.047	.051
20°	.006	.011	.017	.022	.028	.034	.038	.045	.051	.057	.063	.070	.076	.083
25°	.009	.018	.027	.036	.046	.056	.065	.074	.083	.093	.106	.120	.127	.135
30°	.013	.025	.038	.051	.065	.078	.090	.103	.116	.129	.149	.170	.179	.188
35°	.018	.035	.054	.072	.086	.109	.131	.153	.175	.197	.213	.230	.247	.264
40°	.023	.046	.070	.093	.117	.141	.172	.203	.234	.265	.277	.290	.315	.341
45°	.030	.060	.093	.119	.153	.184	.216	.254	.289	.325	.351	.378	.411	.445
50°	.037	.075	.116	.151	.189	.227	.266	.305	.345	.384	.425	.467	.508	.550
55°	.046	.093	.142	.188	.236	.283	.332	.381	.420	.479	.530	.582	.641	.700
60°	.056	.112	.168	.225	.283	.340	.398	.457	.516	.575	.636	.697	.774	.851
65°	.067	.135	.204	.273	.343	.412	.483	.554	.625	.697	.771	.845	.922	1.01
70°	.080	.159	.240	.321	.403	.485	.568	.652	.735	.819	.906	.994	1.08	1.17
75°	.095	.182	.286	.383	.480	.578	.678	.777	.877	.977	1.07	1.18	1.29	1.39
80°	.110	.220	.332	.445	.558	.671	.787	.903	1.02	1.13	1.25	1.38	1.50	1.62
85°	.128	.259	.391	.524	.657	.790	.926	1.06	1.20	1.34	1.47	1.62	1.76	1.91
90°	.149	.299	.450	.603	.756	.910	1.07	1.22	1.38	1.54	1.70	1.87	2.03	2.20
95°	.174	.350	.522	.706	.885	1.06	1.25	1.43	1.62	1.80	1.99	2.18	2.38	2.58
100°	.200	.401	.604	.809	1.01	1.22	1.43	1.64	1.85	2.06	2.28	2.50	2.73	2.96
110°	.268	.536	.806	1.08	1.35	1.63	1.91	2.20	2.48	2.76	3.05	3.35	3.66	3.96
120°	.360	.721	1.08	1.45	1.82	2.19	2.57	2.95	3.33	3.72	4.11	4.50	4.91	5.32

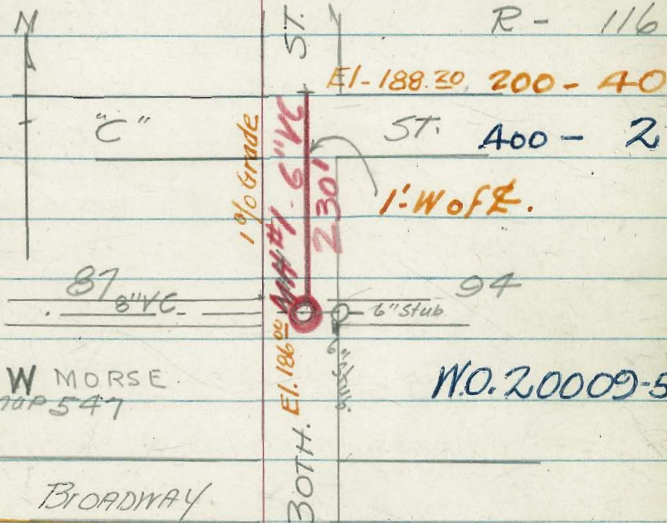
INDEXED

ALSO

OCT 31 1951

1

✓ 230' OF 6" V.C. Sewer Main & 1 M.H. on 30th St  
at "C" St. - Ref. Misc. Dwg #488 S.A.F. Sohier  
10-19-51



EW MORSE  
MAP 547

NO. 20009-5A

PACIFIC Tel & Tel Co Plats Showing  
Placing of Ducts - Filed W.O. 20009-5A

✓ 250' - 6" V.C. SEWER MAIN & 1 MH IN ALLEY

Southerly of AMARYLLIS DRIVE & Easterly of

A.F. Sotier - 12-28-51 -

Nipoma ST. - EXTENSION PLOTTED ON 8102-L

Notes in G.B. 281-66 1-7-52 MQR

W.O. 20009-55 R-118 200' Map - 227 400' MAP. 5

✓ 125' of 8" Sewer Main on Morenci St.

Sly From LITTLEFIELD ST. -

Notes in Sissons G.B. 283/40-43

A.F. Sotier

PLOTTED ON 1311-D - 12-29-51

MQR 1-7-52

W.O. 20009-56 - R-118 200-279 400-4

✓ 275' of 6" Main & 1 M.H. Westerly on Missouri

St & N<sup>14</sup> on Noyes St. - 1-8-52 Sotier

Notes G.B. 281

PLOTTED ON 414-D -

W.O. 20009-59 - R-118 200/318 400

✓ 125' of 6" V.C. Main W<sup>14</sup> on Thomas St from Noyes St

Notes - G.B. 281

PLOTTED ON 421-D - 1-14-52 Sotier

W.O. 20009-58 - R-118 200/311 400/6

✓ Alley B-15 Maribou Park - 6" Main Extended 9' East

W.O. 20009-60 R-118  $\frac{200}{52456}$   $\frac{400}{2}$

This Extension

2-8-52 Sotier

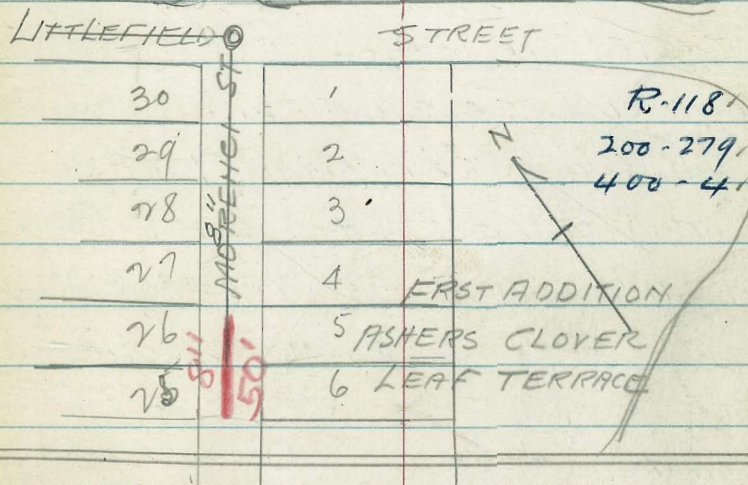
Removed 5-29-52 See 2175-73

✓ MORENCI STREET S<sup>14</sup> of LITTLEFIELD

8" Main Extended S W<sup>14</sup> 50'

W.O. 20009-61 R-118 -  $\frac{200}{279}$   $\frac{400}{4}$

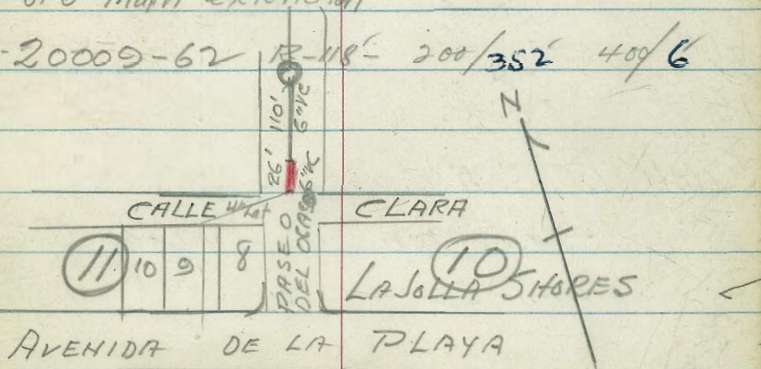
Sotier 2-25-52



✓ PASEO DEL OCASO at CALLE CLARA

26' of 6" Main extension

W.O. 20009-62 R-118 - 200/352 400/6

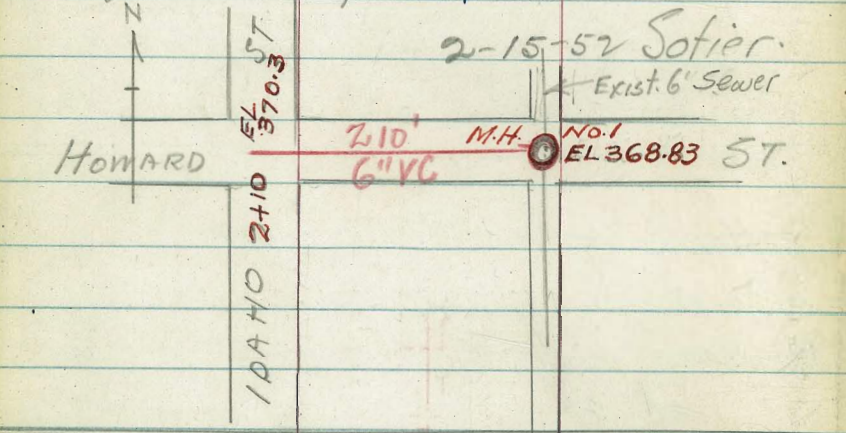


✓ LA JOLLA Blvd - N. of ARENAS ST  
 W.O. 20009-63-  
 75'- 6" V.C. Sewer Main Extension  
 R-118 200/346-7 400/6  
 Posted on 1541-L 2-14-52 Sotier

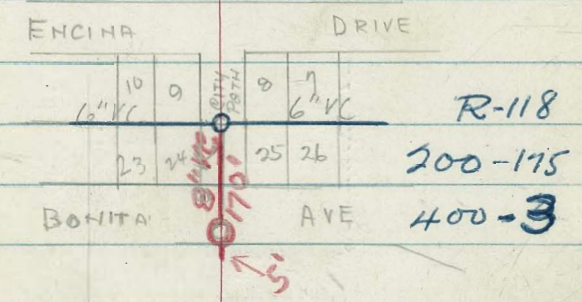
✓ Hillside Drive at Sierramar Dr. & Arnold St.  
60'- 8" V.C. W.O. 20009-66-  
 3-4-52. R-118 200-350-  
 A.F. Sotier 400-6-  
 Ref 4526-B

✓ HOWARD - EAST OF IDAHO  
 W.O. 20009-64  
 210' of 6" V.C. Sewer Main & 1 MH.  
 Water Dept Dwg 5534 W- 2-15-52 Sotier  
 R-118 200/72-77 400-2✓

✓ 63RD St - at Brookbank Place 20009-67  
201'- of 6" V.C. Main & 1 MH. 4-52  
 A.F. Sotier 3-6-52 R-118  
 200-118-  
 Ref 9354-L 400 3-



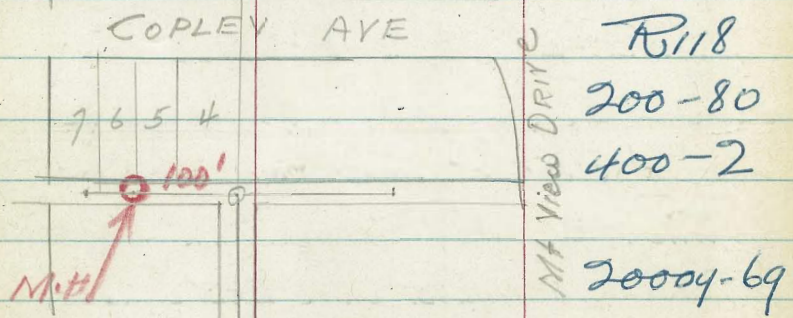
175'- 8" V.C. & 1 MH - Bonita Ave. S. 1/4 from Easement Bk 24 20009-68  
 VALENCIA PARK - to serve Lot 67. LAS ALTURAS VILLA SITES  
 GB 287 4-25-52 Sotier  
 59



✓ Adley Bet Cottonwood St & Dalbergia  
35' 6" V.C. Extension W.O. 20009-65  
 4-4-52 R-118 200-44-  
 A.F. Sotier 400-2✓  
 Asst Supt. See 1475-38

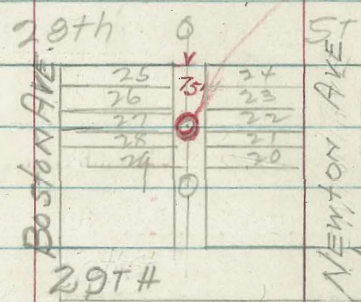
125'- 6" V.C. Main on KEATING ST N. 1/4 of  
 Linwood St to serve Lots 21 to 24 Middletown Addn  
 Ref 7861-L R-118 4-21-52  
 200 8 Sotier  
 400 4 20009-71

M.H. on Exist Main - In Alley South of  
 Copley Ave & E of 35th St. - 4-25-52



R118  
 200-80  
 400-2  
 20004-69

M.H. on Exist Sewer in Alley Between Boston  
 & Newton 75' E. of 28th St. - 4-25-52



New M.H.  
 Sotier  
 R-118  
 200-37  
 400-2  
 ST.  
 20009-70

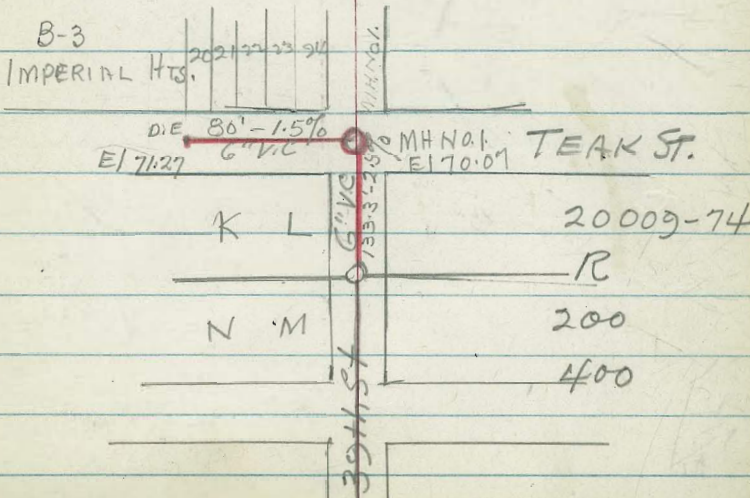
For 20009-71 sup 3

20009-72  
 113'-6" V.C. Sewer Main Extension W<sup>ly</sup> on  
 Imperial Ave at Merdin Drive.

Ref. 9135-L. 5-29-52 - Sotier  
 R-121 - 200/147 400/3

(S<sup>1</sup> Extension P-2 - Removed) 20009-73  
 1-M.H. & 80' of 6" V.C. Sewer Main Extension  
 in Alley - Block 15 Marilou Park - Between  
 Broadway & Hilltop Drive East of Quail St.  
 REF 8837-L 5-29-52 Sotier  
 R-121 200/156<sup>52</sup> - 400/2

213' of 6" V.C. Sewer Main & 1 M.H. N<sup>ly</sup> on 39th St  
 & W<sup>ly</sup> on TEAK ST. - 5-16-52 - AF Sotier



B-3  
 IMPERIAL HTS.  
 D.E. 80' - 1.5%  
 El 71.27 6" V.C.  
 M.H. No. 1  
 El 70.01  
 TEAK ST.  
 20009-74  
 R  
 200  
 400

20009-75 - Amalfi St. - Sierra Mar

323.35' - 8" V.C. & 100' - 6" V.C. Sewer Main & 3 M.H.'s

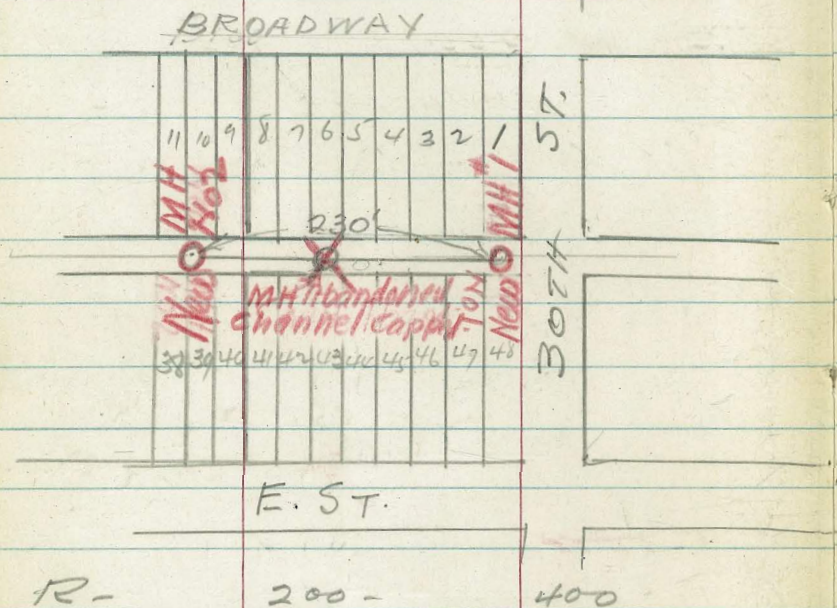
Ref. 4526-B - A.F. Sotier 5-19-52

R. 200 400

20009-76 - Alley - bet Broadway & E. St. W of 30th

Abandoned 1 M.H. & Built 2 New M.H.'s

A.F. Sotier 5-9-52



R. 200 400

20009-77 - Mesita Drive at 64th St

112' - of 8" Sewer Main

Posted on 8141-L - 6-4-52 R.F. Sotier

R. 200 400

20009-78 - 51st St Sly of Polk Ave

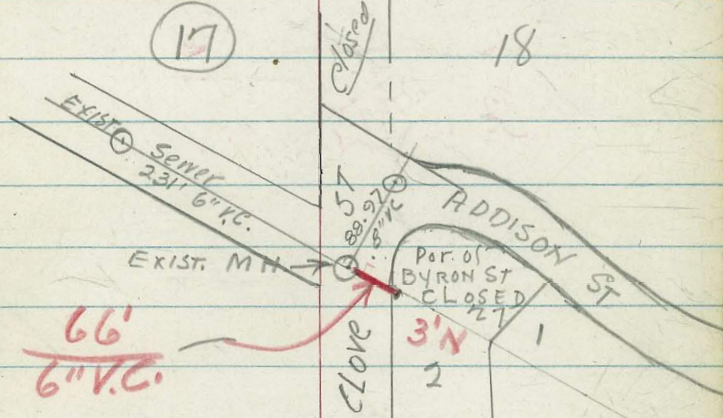
Posted 9669-L 6-6-52 - R.F. Sotier

6" Sewer Main Lowered for Dist of 95'

R. 200 400

20009-79 Addison & Clove Sts

66' of 6" Sewer Main 6-25-52 R.F. Sotier

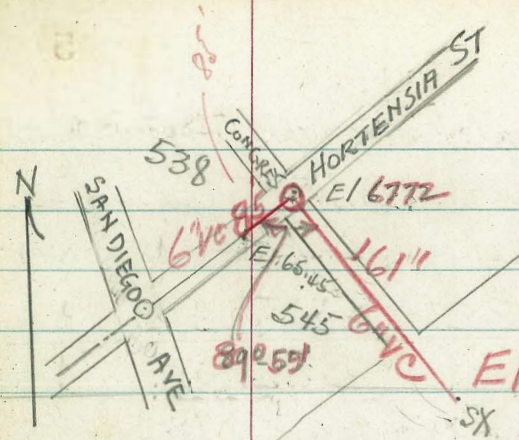


R. 200 400

20009-80 - 224' of 6" V.C. Sewer Main & 2 M.H. at 2857 Kalmia PL 6-25-52 - Sotier

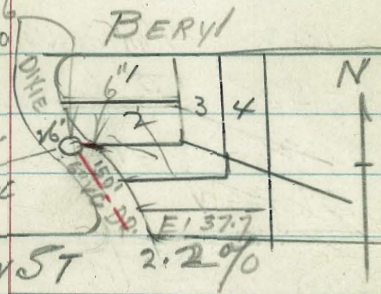
REF 4558-B - R. 200 400





R121  
200-250  
400-4  
20009-81

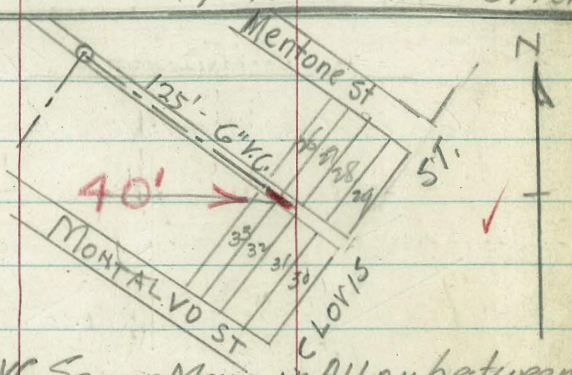
150'-6" V.C. Main on Dixie Drive S'y of M.H  
WQ 20009-84  
R-122  
200-279  
400-4  
G 296  
7-21-52



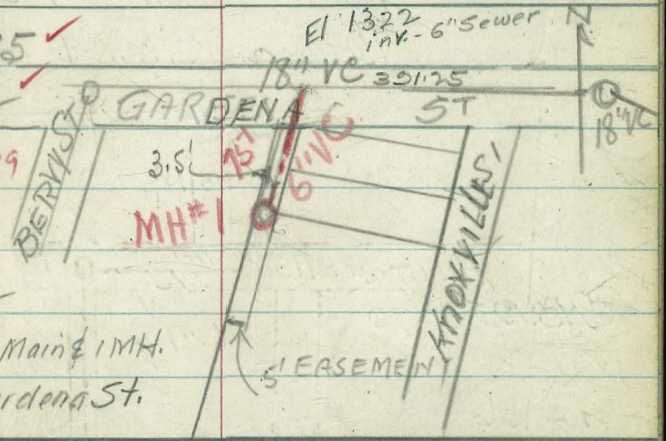
246' of 6" V.C. Sewer M. & 1 MH At Hortensia & Congress  
7-16-52 - A.F. Sotier

20009-85  
R-122  
200-279  
400-4

R-121  
200-279  
400-5  
20009-82



7-31-52  
75'-6" V.C. Main & 1 MH.  
S'y of Gardena St.



40' of 6" V.C. Sewer Main in ALLEY between  
Mentone St & Montalvo St N'y of Cloris St.  
7-14-52 - A.F. Sotier

20009-86  
R-122 Exist Main Lowered in Akron St bet  
200-208 ULLMAN ST & TRUMBULL

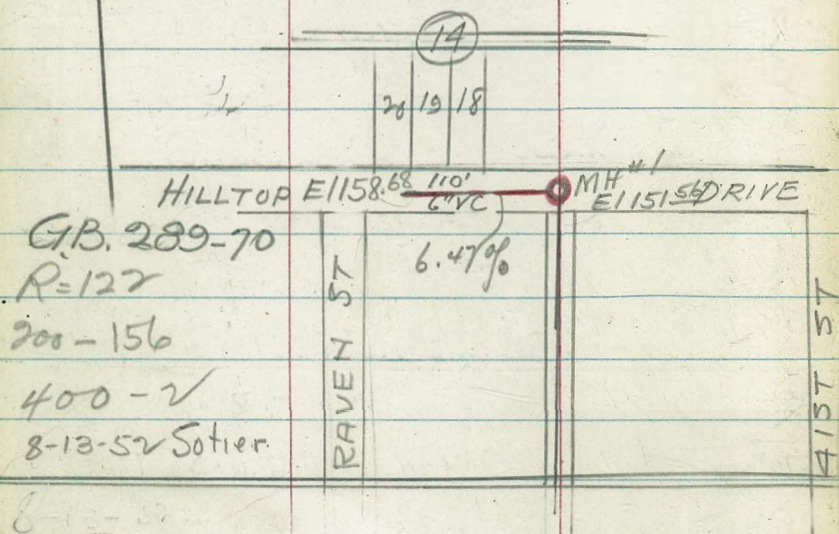
R-121  
200-119  
400-3  
8362-L  
20009-83

150' of 8" V.C. Sewer Main & 1 MH  
on Seminole Drive at Acorn St  
7-11-52 - Sotier  
Posted to 8362-L

400-5 140'-6" V.C. Main  
E1 131.68 to E1 133.08 at Plug.  
8-6-52-

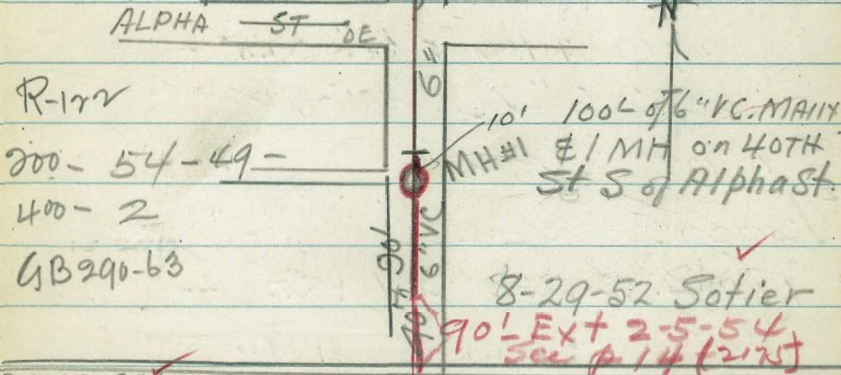
20009-87 ✓ - 65' of 8" V.C. Main on  
 R=122 Hilltop Dr. bet 39th St & Quarl St  
 200-52 ✓ Pasted on 8837-L ✓  
 400-2 ✓ 8-11-52 Sotier  
 GB.289-77

20009-88 ✓ - 110' of 6" V.C. Sewer Main  
 & 1 MH on Hilltop Drive  
 Between Raven & 41st St.



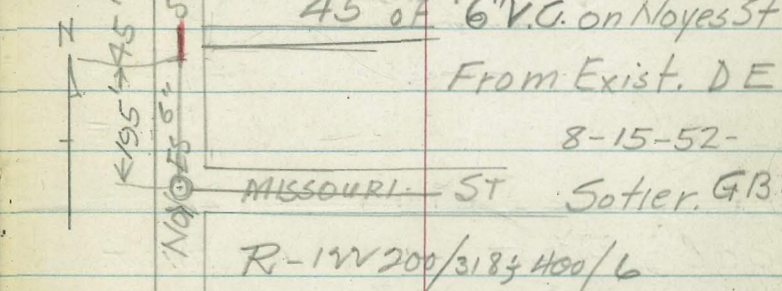
GB.289-70  
 R=122  
 200-156  
 400-2 ✓  
 8-13-52 Sotier

20009-89 ✓

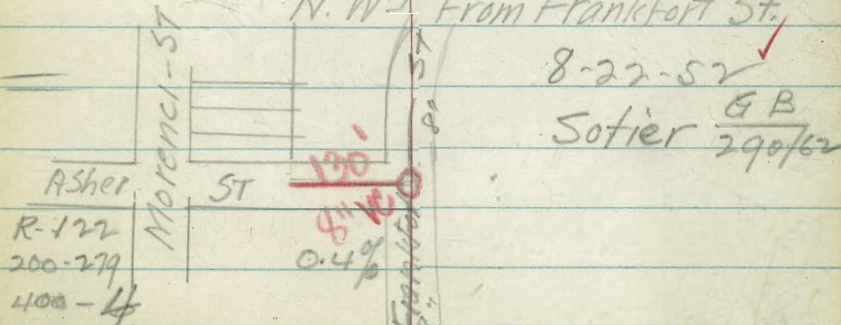


R-122  
 200-54-49-  
 400-2  
 GB290-63

20009-90 ✓



2009-91 - 130' of 8" V.C. & 1 MH on Asher  
 N. W 1/4 From Frankfort St.



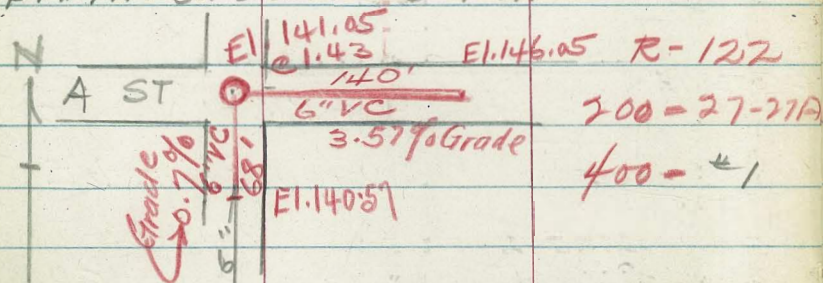
R-122  
 200-279  
 400-4

8-22-52 ✓  
 Sotier GB  
 290/62

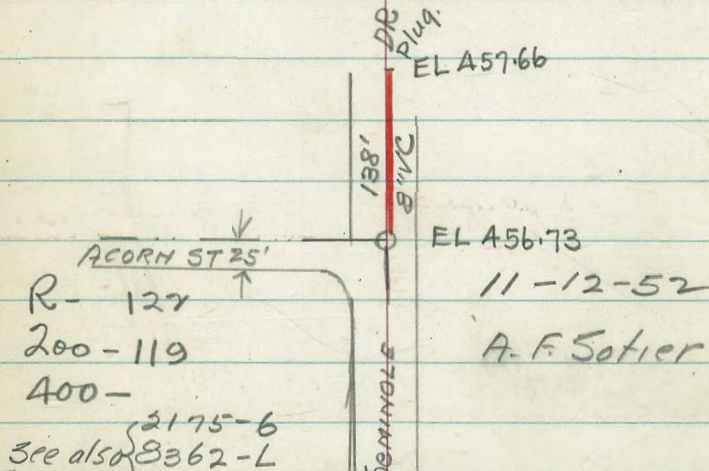
See 8837-L

20009-92. Sewer Extension  
in Pig Alley & 40th St -  
100'-6" VC, 9-12-52 Sotier  
R/122 200/52 400/2

20009-93 = 208' of 6" VC Sewer Main  
& 1 M.H. on 22nd St & A St -



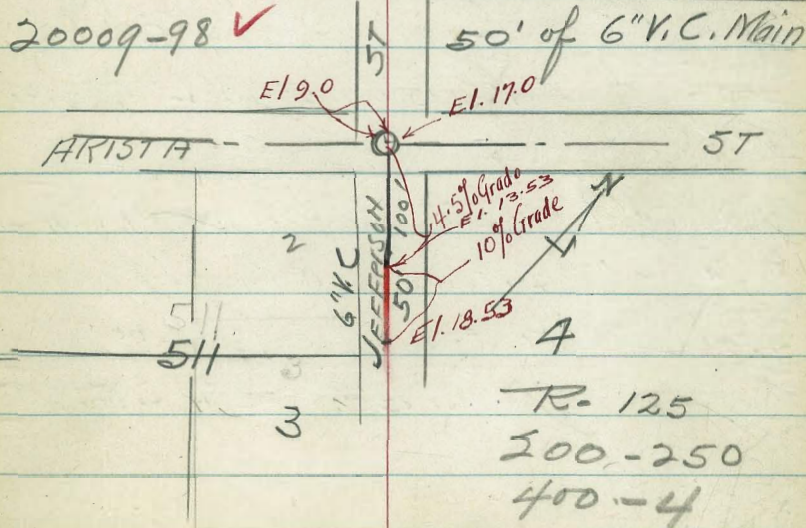
20009-97 ✓  
138'-8" VC Main in Seminole Drive  
North from Exist M.H. at Acorn St



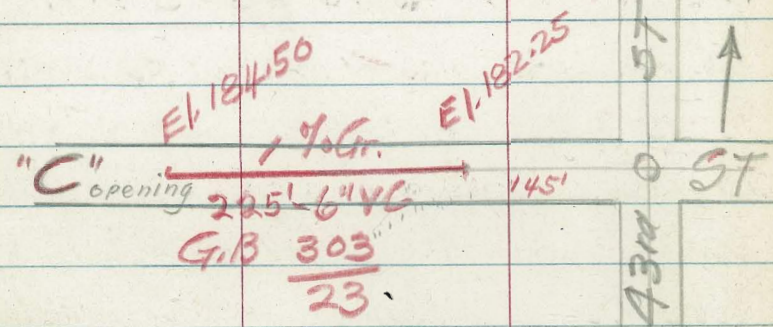
20009-94 - Pig Alley at 40th St.  
20009-87 765' - 8" VC Hilltop W of Quail.  
6289-72/40' - 6" VC Main Extension 12-5-52  
8837-L R-122 200/52 400/2

20009-95 Rosecrans St & Garrison St  
137'-4" VC Sewer Main  
466-D - R-122 200/15 400/5 Sotier 12-8-52

2009-96 Gloria St Slyfr Franklin Ave  
135'-6" VC & 1 M.H. Sotier  
942D - R-122 200 400 12-12-52



20009-99 - 225' of 6" V.C. Main Ext.  
 R-125 ✓ on "C" Street W 1/4 of 43rd St  
 200-156  
 400-2  
 2-20-53 - Sotier



20009-102 - 135' of 8" VC Sewer Main  
 R-125 ✓ & 1 MH at Klauber & Broadway  
 200149 Posted on 1125-D  
 400-3 ✓ 3-13-53 - Sotier

20009-103 - 210' of 8" VC Sewer Main  
 R-125 ✓ on La Jolla Shores Dr & Ardath Rd.  
 200-351 Posted on 9505-L  
 400-6 G.B.  $\frac{300}{76}$  3-31-53 - Sotier

20009-104 - 185' of 6" VC Sewer Main  
 R-125 ✓ G.B.  $\frac{292}{37}$  on Collingwood S 1/4 of Loring St.  
 200-322 Posted on 4215-L  
 400-6 4-2-53 - Sotier

20009-100 ✓ 81' of 6" Sewer Main <sup>1-MH</sup> on Por. Pl. 174  
 R-125 to replace former "E" line  
 200-207  
 400-5 Posted on 5590-L 5591-L  
 G.B. 288-23 12-2-52 - Sotier

20009-101 ✓ 55' 6" V.C. Main in Hilltop Dr  
 R-23 Extension W 1/4 of Easement  
 200 156  
 400 2 Posted on 3720-B.  
 8-4-52 - Sotier

20989 214' of Concrete  
 Encasement of 30" V.C. Sewer  
 Main at Fortuna Ave & Honeycutt St.  
 Pacific Beach Dwg 10182-L  
 3-5-53 - Sotier

20009-104 80' of 6" V.C. Sewer Main at Pardee<sup>st</sup> L

Posted on 5587-L A.F. Sotier 4-14-53

R-126 200/42 400/2

20009-105 22'-8" V.C. Main on Wellborn St

R-126 Sly of Sutter. A.F. Sotier 5-11-53

400-1

20009-106 50' of 6" V.C. Sewer Main on Broadway E of Canal

Aug 8837 - Posted  
R-126 G.B. 306-14 A.F. Sotier 4-17-53

200-5V 400/2

20009-107 4-MAN HOLES ON THE DE'S OF THE

R-126 FOLLOWING SEWER MAINS:

200-60 Cooper St }  
400-2 Olive St } West of Boundary St.  
Palm St }  
Quince St } A.F. Sotier 6-8-53

20009-108- 192' of 6" V.C. Sewer Main on 42nd

R-126 N. of Broadway. Ref 8889-L  
200-156 G.B. 307-38  
400-2 A.F. Sotier 6-5-53

20009-109 93.10' of 6" V.C. Sewer Main

R-126 in Alley N<sup>1</sup>/<sub>4</sub> of Walnut Ave  
200-16 G.B. 305 p 28  
400-4 Ref. 2845-L

A.F. Sotier 6-5-53

1938 Job

R-126 200-116 / 33' of 6" Sewer Extension in

400 Alley - Block A - Redland Gardens.

3

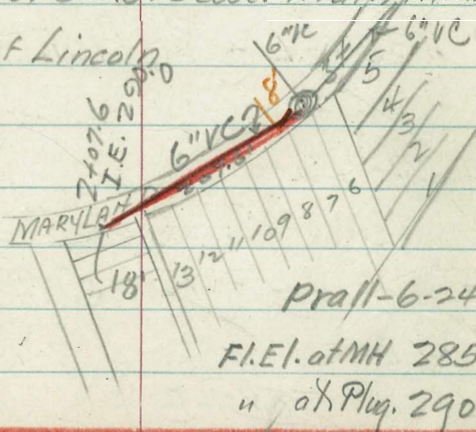
Ext. No 38501 in 1938 -

Ref 3684-L Y connection to

6" Line in T Alley. Mr. Prall - 6-16-53 M<sup>1</sup>/<sub>2</sub>

215 207' of 6" V.C. Sewer Main in Maryland

St. N<sup>1</sup>/<sub>4</sub> of Lincoln



20009-110

R-126

200-67-71

400-1

Prall-6-24-53

F.I.E. of MH 285.48

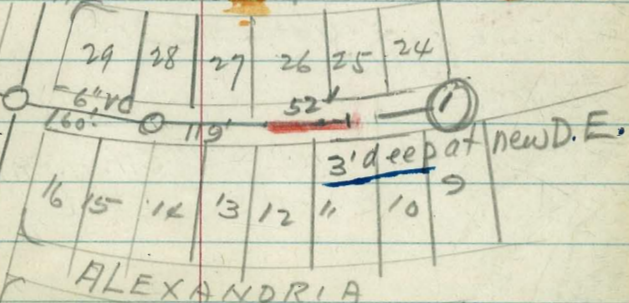
" at X Plug. 290.00

20009-111 52' of 6" Sewer Main in Alley B-1

R-126 between Moana Dr & Alexandria Drive

200-209

400-5



RAPrall-6-30-53

Completed  
 20009-111 215' of 6" V.C. Sewer Main on  
~~MARYLAND St Near Lincoln~~  
~~7-9-53 R.A. Prall~~  
 See 20009-110-

20009-112 -  
 R-126  
 200-371 95' of 8" V.C. Posted on  
 400-3 8351-L - R.A. Prall - 7-22-53

20009-113 -  
 R-126 75' of 6" V.C. Main in Delta St  
 200 East from Nat City - SD - Bdy.  
 400-2 H.T. Foster 9-1-53  
 Ref. 5087-B

20009-114 - Sewer Extension in  
 R-126 Alley. Bk-116 E.W. Motse's Sub  
 200-40 6" Cement Pipe 230' ±  
 installed by Sewer Dir July-1936  
 400-2 Entered - 9-17-53 M<sup>o</sup>Q

20009-115  
 R 126 53' of 6" C.W. from Naranja  
 200-169 across Euclid 9-1-53  
 400-3 Prall

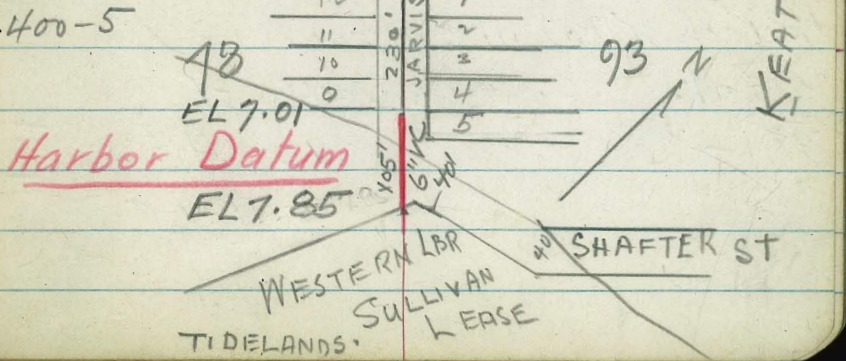
Customer  
 Weld

~~20009-116 - 50' of 8" V.C. on Galveston St  
 R-128 N. of Milton St.  
 200-379 402 9-1-53 - R.A. Prall  
 400-4 Ref 10129-L~~

20009-117 45' of 6" V.C. Sewer Main  
 R-128 from EX DE on Pac. Hwy at Grape  
 200-3 8-7-53  
 400-1 A.F. Sotier

20009-118 80' of 6" V.C. Sewer Main  
 R-128 in CASS St. off Alley bet Argate & Archer  
 200-324 G.B. 301 6" V.C. & Alley  
 70 148.16  
 400-6 6" V.C. 2% Gr.  
 149.76 & CASS ST Sotier

20009-119 105' of 6" V.C. Sewer Main  
 R-128 at Jarvis & Shafter Sts. (Harbor Dept)  
 200-215 Scott 10-1-53  
 400-5 Sotier



\$1 MH

20009-120 - 80' of 6" V.C. Main Ext  
 R-128 ✓ N<sup>ly</sup> on 33rd to Walnut  
 200-59-60  
 400-2 ✓  
 882-3-D (Plan & Profile) Sotier  
 10-1-53

---

20009-121  
 R-128 ✓ 108' of 8" V.C. Main on Euclid  
 200 bet. Logan Ave & Coban Pl.  
 400  
 9213-L Sotier  
 10-6-53

---

20009-122 ✓ 141' of 6" V.C. Sewer Main &  
 R-128 ✓ 1-MH in Alley - S of University E of  
 200 62 ✓  
 400 - 2 ✓  
 Posted-191-D GB <sup>308</sup>/<sub>39</sub> Ray. St - AF Sotier  
 9-28-53

---

20009-123 105' of 6" V.C. Sewer Main  
 R-128 ✓ (Replacement) on Point Loma  
 200212  
 400 5 ✓ Ave W<sup>ly</sup> of Sunset Cliffs Blvd  
 Posted 1355-D - AF Sotier  
 10-23-53

---

20009-124 - 102' of 6" Main SE<sup>ly</sup> from DE on  
 R-128 L Mead Ave at Fairmount  
 200-92 Posted on 3452-L  
 401-2 ✓  
 10-16-53  
 Sotier

20009-125- 42' of 6" V.C. Sewer Main  
 R-128 ✓ W from DE in Alley between Wilcox St  
 200-206 & Jennings St - Blk. 2 Loma View  
 400-5 ✓ Posted 1403-D - 10-20-53 - Sotier

---

20009-126 76' of 6" V.C. Main 2' W of Eline Cass<sup>St</sup>  
 R-128 ✓ N<sup>ly</sup> toward Wilbur Ave  
 200-315 Posted on 2980-L  
 400-6 ✓  
 10-20-53 Sotier

---

20009-127- 85' of 6" V.C. Main on Eside  
 R-128 ✓ of Ingraham St S<sup>ly</sup> from Alley North Thomas<sup>Ave</sup>  
 200-312 ✓ Posted on 2106-L  
 400 6 ✓  
 10-26-53 Sotier

---

20009-128 ✓ 56' of 6" V.C. Main on  
 200-775 ✓ Curtis St W<sup>ly</sup> from DE. bet Clave & Chatsw  
 400-5 ✓ Posted on 3015-L - 10-27-53  
 R-128 ✓ Sotier.

---

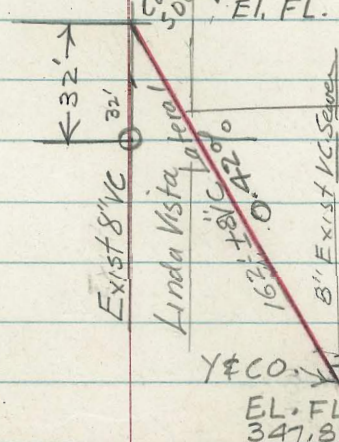
20009-129- 85' of 6" V.C. Extension  
 R-128 ✓  
 200 ✓ in 36th Street at "L" Street  
 400 ✓  
 Posted on 5587-L 11-30-53  
 MeQ  
 Print from M.L.M.

13

PHA-D1542

R

200  
405  
400  
8



Private Lateral in Lot #9  
162' of 8" VC Sewer Lateral

EL. FL. 347.20

Lot 10  
Block 54  
Lot 9

1953

Existing Lateral From Bldg  
EL. FL. 347.87

20009-130 - 140' of 8" Main on Marilou Rd

200-142  
400-3 E 1/4 of Altedena St

R-130  
Pasted on 9249-L 12-9-53 Sotier

20009-131 - 120' of 6" VC	
200-162 MAIN 8" MH on 69th St	2
400	
R-130 N 1/4 of Wunderlin Ave	3

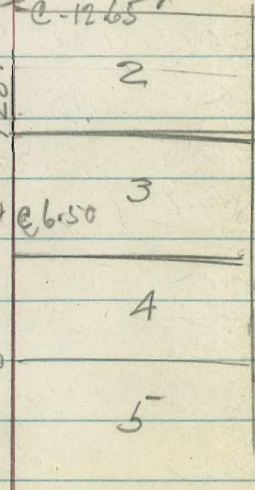
WONDERLIN AVE

G-305 473-5

12-15-53  
Sotier

Use Relative Elev. no  
Beach Found

69TH ST.



ADAMS AVE

3' + 27.32' MH  
Ang. 77° 09' RT.

Tank

CONC 6"

IE = 294.03

ASHBY ST.

2 + 80.89 = 4 MH  
Ang. 106° 23' LT.

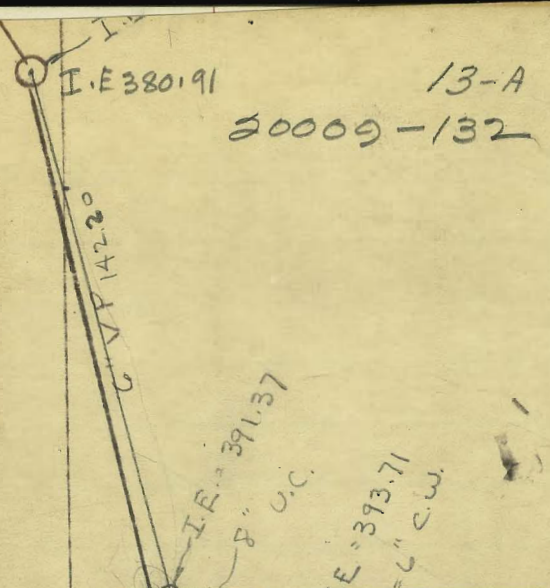
2 + 29.04 = 4 MH - New  
Ang. 25° 28' RT.

TANK - By-Pass

R 9-11-53 ✓  
200-116 ✓  
400-3 ✓

2175-13-A ✓

IE = 405.78



13-A

20009-132



ral

teral

4

A

uPd

+

||

"

13

2009-133 - 175' of 6" V.C. Main on  
 R=132 Jefferson St W<sup>1/4</sup> from Riley  
 200-<sup>253</sup> Posted 1083-D 1-8-54  
 400-  
 G-<sup>300</sup>/<sub>2463</sub> Paid Extension - Sotier -

2009-134 100' of 6" V.C. Main on  
 R=132 Maryland Ave Nly of Golden Gate  
 200-68 G-<sup>305</sup>/<sub>78</sub> Posted - 433D -  
 400- Paid Extension 1-20-54 Sotier

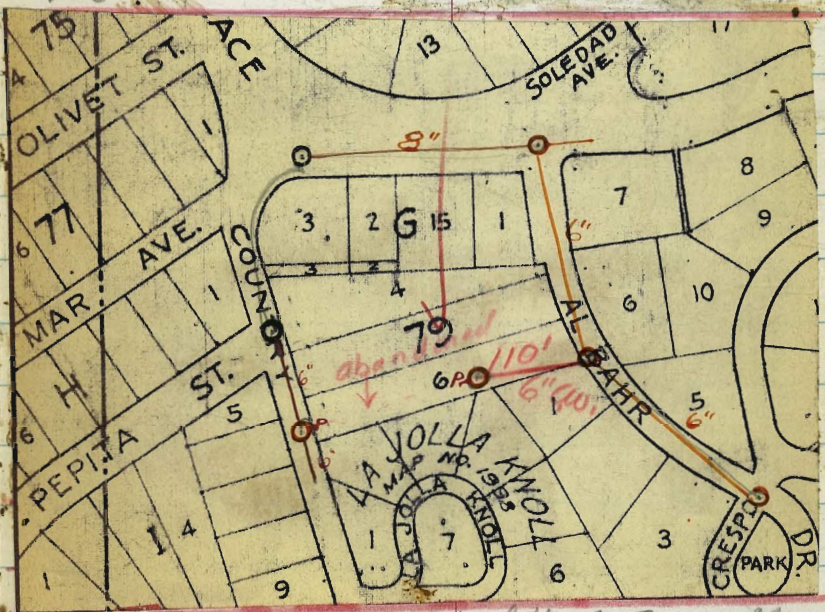
2009-135 - 90' of 6" V.C. Main on S. 40th  
 R- Sly from Ex D.E. - (P.Ex.)  
 200 49-54 R.F. Sotier 2-5-54  
 400-2  
 Ext 90' S. See 2175/7 - (2009-89)

2009-136 - 60' of 6" V.C. Main Ext on Broadway  
 R-133 Ely of Quail PEX. R F Sotier  
 200-156 See - 8837-L (6) 2-16-54  
 400-2 G-319/13

2009-137 - Alley Bk 2 Alhambra Pk <sup>5246-B</sup>  
 2009 138 - New M.H. on D.E Bk 237  
 R-132 Pennsylvania H<sup>1/2</sup> EY Herbert St  
 200-65  
 400 139 New M.H. on D.E. B 241  
 Pennsylvania Ave Near Park Blvd

2009-140  
 70' of 6" Ceramic Weld Sewer Main on Market  
 R-132 Street W<sup>1/4</sup> of D.E. to Serre Chollas <sup>School</sup> Elem.  
 200 <sup>Posted on</sup> 1258-D R.F. Sotier  
 400-2 4-6-54

2009-141 110' of 6" C.P. at La Jolla Reservoir  
 R-132 Sketch below  
 200 R.F. Sotier  
 480 4-12-54



2009-142 - 185' of 8" V.C. Sewer Main  
 R/132 on Beverly Street N<sup>1/4</sup> of Genera Ave  
 260  
 400 Posted 1538-D 4-26-54  
 R.F. SOTIER  
 ASST SUPT

20009-143- Man-Hole at intersection of  
Ref 10840-L Keating St & Puterbaugh St.

R-134  $\frac{200}{18}$   $\frac{400}{18}$  5-13-54 Sotier

20009-144 90' of 6" V.C. Sewer Main on  
Ref ~~8525B-L~~ <sup>G300-77</sup> Galveston St Sly of Sellett St

~~8529-L-200~~  $\frac{400}{4}$  5-11-54 Sotier  
R/134

20009-145 175' of 6" V.C. Main Exten on

Ref <sup>5590-91 L</sup> GB  $\frac{314}{200}$   $\frac{400}{207}$  Rosecrans to Serve PL 178

R-134  $\frac{200}{207}$  6-17-54 - A.F. Sotier

20009-146 Intersection Evergreen St & Poe St

Ref. 468-D Move M.H. 24' S Ely Realign 6" Sewer

R/134  $\frac{200}{216}$   $\frac{400}{5}$  6-18-54 A F Sotier

20009-147 1' M.H. in Alley bet 31<sup>st</sup> & Edgemont ~~S of~~ Grape  
249' N of Exist M.H. in Alley.

R/134  $\frac{200}{57}$   $\frac{400}{-}$  6-24-54 A F Sotier

20009-148 76' of 6" V.C. Main Nly on

R-134  $\frac{200}{70}$   $\frac{400}{-1}$  Florida St from M.H. & Madison Ave  
Paid Extension

8-2-54 Sotier

20009-149-77.5' of 8" Main on Budd St.

R134 Sly of Baltic St.

200-426 Posted on 9432 & 9435-L

400  
Chesterton Map (missing) 10-14-54 Sotier

20009-150. 45' of 6" Main & 1 M.H. on Manzanita Dr

R-134  $\frac{200}{89}$  bet. Columbine & Dalia sts.

400-2 Main in Alley - M.H. on Manzanita  
M.H. 2' Deep. E.I. 287.77. 10-18-54  
Sotier

20009-151 - New M.H. on E San Geronimo

R134  $\frac{200}{290}$  South of M.H. at intersection

200-201 Kellogg & San Geronimo.

400-5 Barrett 9-27-54

20009-152 New M.H. in Alley bet K & L Sts

R-134  $\frac{200}{30}$   $\frac{400}{-1}$  Opposite Lots 48 & 45 - Block 42

West of 27th Street.

20009-153 - 64.7' of 6" C.W

R-136 Main in Alley bet Mentone & Montalvo

200-229 Ely of W. Pt. Long Blvd. P.E

400-5 Posted = 1189-1190-D-8-24-54

Sotier

20009-154 - 70' of 8" V.C. Sewer Main  
 Ref 1831-32-D in Montezuma Road W<sup>1</sup>/<sub>4</sub> of La Dorra<sup>St</sup>  
 R-136 ✓ P. Ex. 11-8-54  
 200-118  
 400-3 R.F. Sotier-

20009-155 - One New M.H. in Alley N of  
 Ref 3684-L ✓ El Cajon Blvd at intersection  
 R-136 ✓ Between El Cerrito Dr. & 56th St.  
 200-116 11-29-54 K. O'Hara  
 400-3

20009-156 30th St & Alley N of El Cajon Blvd.  
 R-136-200<sup>400</sup>/<sub>16</sub> One new M.H. 12-14-54 O'Hara

20009-157 One New M.H. in Alley bet.  
 R-136 Main St & Newton Ave SE<sup>1</sup>/<sub>4</sub> of  
 200/36 ✓ Sampson St. - 5'-6" deep  
 400/1 12-14-54 O'Hara

20009-158 - 176' of 6" V.C. & 1 M.H. on  
 R-136 ✓ Fairmount Ave S<sup>1</sup>/<sub>4</sub> of Redwood<sup>St</sup>  
 200/89-96 G.B.  $\frac{328}{36}$  - Posted 341-D (Plan)  
 400/2 P. Ext. 12-21-54 Sotier  
 244-D (Profile)

20009-159 One New M.H. at 20th St &  
 R-136 ✓ Commercial St - 297' S.  
 200 of M.H. at S line Imperial Ave  
 400 12-30-54 O'Hara

Sewage Pump Sta #23 - 1756 Soledad Rd.  
 Located in Paved area - Authority  
 requested to fill w/ Sand 5-27-53  
 Sta #5 on City Owned Lot

Sta #6 in Public Street.

Sta #9 in Public Alley

Suggestion by Howard Ogden use as  
 Bomb Shelter - Otherwise

demolish and release lot for Sale

8-17-54 - Authority given  
 by City manager to demolish  
 these stations and Clear sites.

5-6-7-9-23.

120' ± 6" V.C. Sewer Abandoned  
 Alley Bk 7 - South Chollas Add  
 Bet Newton & Boston W of 36th  
 Alley Closed by School Board

✓  
20009-160 - 52' of 6" V.C. Main in Alley bet  
R-138 Greenwood St & Riley St E. of Kurtz  
200-253  
400-4 2-14-55 A.F. Sotier <sup>Eng</sup> <sub>Asst</sub>

20009-161 90' of 8" V.C. Main on Moana Dr  
R-138 Sly to Loma Lands Dr. for P.L. 146  
200-205  
400-5 G-326 <sub>15</sub> Ref 11124-L - 2-7-55 A.F. Sotier <sup>Asst</sup> <sub>Eng</sub>

20009-162 Pearl St & Olivitas  
See 5665.B. - 3-16-55  
6" V.C. 164' Private Sewer Lat.

20009-163 2 M.H.'s in Alley between  
R-138 National Ave & Logan Ave  
200-32  
400-1 N.E. of 16<sup>th</sup> St Woodall. 3-25-55

20009-164 51' of 6" V.C. - in Hilltop Dr  
R-138 W. of 39<sup>th</sup> St. 4-20-55  
200-5  
400-2 ✓ G.B. <sup>351</sup> <sub>34</sub> 3723-L 3726-L Sotier

20009-165 - M.H. BK Sterling Park 5-23-55

20009-166 - MH BK 2 Sterling Park  
R-138  
200-307  
400-6

20009 Conversion of  
167 one Inspection Wye to a M.H. on "G" St.  
<sup>200</sup>/<sub>27</sub> <sup>400</sup>/<sub>1</sub> West of 23rd St. -

168 <sup>400</sup>/<sub>3</sub> One Inspection Wye to a MH at  
<sup>200</sup>/<sub>27</sub> Intersection of Columbia & Hawthorn

169 One Inspection Wye to a MH at  
<sup>200</sup>/<sub>27</sub> Intersection 23RD & E. Street

170 one Inspection Wye to M.H. at 22<sup>nd</sup> & G Sts  
<sup>200</sup>/<sub>27</sub> Conversion <sup>400</sup>/<sub>1</sub>

171 - One Inspection Wye to M.H. at 23rd & F Sts  
<sup>200</sup>/<sub>27</sub> Conversion <sup>400</sup>/<sub>1</sub>

172 - One MH on Upas St 11' S of N. Line  
Upas St & E. Alley bet Park Blvd & Indiana  
<sup>200</sup>/<sub>65</sub> ✓ <sup>400</sup>/<sub>1</sub> END Fiscal 6-27-55 Woodall

173 - Conversion - Inspection Y to M.H.  
<sup>200</sup>/<sub>27</sub> <sup>400</sup>/<sub>1</sub> S. line C Street & 23rd St. 7-6-55 Woodall

174 New MH 130' N of N line of  
<sup>200</sup>/<sub>65</sub> <sup>400</sup>/<sub>1</sub> Upas St - on E Albert St.  
Woodall 7-7-55

175 - 1 - New M.H. & Brookes & Front.  
<sup>200</sup>/<sub>17</sub> <sup>400</sup>/<sub>1</sub> Woodall 7-21-55

- 20009 One Man Hole on Exist DE.  
176 Jackson St. N of Pennsylvania Ave.  
200/16. 40% Woodall 8-1-55
- 177- Converted Insp Y at 3rd & F  
to M.H. 8-5-55  
200/22 Woodall
- 178 One Inspection <sup>Conversion</sup> on S. Line of  
& E 3rd St. to M.H.  
200/22 Woodall 8-15-55
- 179 Two MH on Satter St W  
of Goda French St S of Line lots 11 & 13  
200/16 40% Woodall 7-76-55
- 180 One MH 55' W on Island St. from  
MH at intersection 20th St & Island  
200/28 40% Woodall 8-15-55
- 181 New MH - Walnut & India St.  
Easterly - 6" Line India St. bet.  
6 MH. 40 1.25' N & 180' South  
148' East to M.H. in  
Walnut St.
- 182 New MH at 4562-44TH St  
200-103 N.W. 1/4 of Wly Cor Lot 495
- 183 New MH Wly P.C. Bay View Court  
200-11 6 feet E of Wly Property Line.
- 184 New MH - E Copeland Ave 417' N of  
200-92 Existing MH
- 185 - Converted inspection Y to M.H.  
200-22 So. line 13th St & E State St.
- 186 New MH E Vista St 407' N of Exist.  
200-92 M.H. on Monroe St. (25' S of N line  
Monroe St.)
- 187 - New MH E Ward Road bet 38th & Cherokee Sts  
200-83 24' E of Exist MH.
- 188 New MH - E Spruce St & East line Front.  
200-19
- 189 New MH Amherst St N of Patria  
200-17 75' W. from Exist MH - E Amherst & Patria
- 190 Conversion - Inspection Y to MH  
200-21 S. Line Elm St & 2nd Ave.
- 191 Conversion Y to MH @ E State St  
200-22 Nov 1, 55

192 12-MH5- 11-55-

a. In Alley Blk 29 Fairmount Add  
~~200~~<sub>101</sub> 355' North of MH in Polk Ave.

b. - E Constance Dr 435' N of Exist MH.

c College Place & Plaza St.  
~~200~~<sub>117</sub>

d/m 69th St & Saranac St.

e/lb Lot 14 Crestline 71' South of  
~~200~~ MH in South Crest Court.

f-17 Walnut & Albatross - E Int.

g-65 Alley Blk 242 Univ Hts  
150' W of Exist MH.

h-58 Alley bet Blk 8 Park Add #58. Seaman  
Choates Add - 100' W of W line 30th St.

i-58 Alley Blk 3 Watkins & Biddles Add  
102' E of MH - E 31st St.

192 12-MH

18

192 Continued

j-58 Alley Blk 1 Watkins & Biddles Add  
132' W of MH - E 31st St

k-58 E Granada Ave - 35' S. of  
l-57 MH E Grape St & 100' S. to 11-55 (2MH)

193 - 1 - New MH at Intersection 47 & Meade  
~~200~~<sub>94</sub> 148' S of Exist MH. 12-30-55

194 1 - MH in Alley between 50th & Altedena  
South of El Cajon Blvd.  
~~200~~<sub>101</sub> 25' S of Exist. MH. 1-3-56

195 1 - MH bet. Maple & Cooper Sts 1-4-56  
~~200~~<sub>86</sub> 14' West of East Li. Montclair St.

196 1 - MH in Alley bet 49th & Estrella; Trojan & Orange  
~~200~~<sub>101</sub> 195' N of Exist MH on 15" Sewer  
1-5-56

197 1 - MH on Webster St bet 35th & Franklin  
~~200~~<sub>43</sub> 58' West of Exist MH. 1-9-56

198 1 - MH in alley bet Kalmia & Juniper  
~~200~~<sub>58</sub> E Side of Fern St. MH - 1-12-56  
275' W of Exist

199 - 1 - MH on Linda Paseo W of Campanile Dr  
~~200~~<sub>117</sub> 13' W of PL Lot 8 Blk 14 College Plc #2 1-16-56

200 1 MH on Keler St. 108' W of W Li 43rd St - 153'  
~~54~~ S of Exist MH 1-13-56

Postals	Manholes by Sewer Div	NO. 20009/201-224 incl. 19
201	5 270 1 on Del Monte St 208' S.	of Exist. M.H. in Intersect T Alley Bk 70 O.B. 1/30-56
2	2 56 1 on Gregory St 194' S	Exist. M.H. S of Cedar St. 2-2-56
3	5 28 1 at Intersection Newport & Venice Sts. 167' S.	of Exist M.H. on Venice - 2-3-56
4	5 216 1 Quimby St - 235' N.W. Exist.	M.H. on Evergreen St 2-6-56
5	2 58 1 Alley - Bk 5 Walkins & Biddle's	98' W of W li 31st St 2-10
6	5 223 1 Voltaire St S.E. Soto St 240'	S.E. of Exist M.H. 2-4
7	5 220 1 Abbott St. 182' S of Exist M.H.	Inter Sect @ Santa Monica 2-16
8	4 7 1 Titus 276' N.W. fr. M.H. at +	@ Henry 2-20
9	6 307 1 on La Playa St. W of Kendall	346' W of M.H. on La Playa 2-24
210	2 49 1 Alley Bk #1 Lee Bricks Add	366' E of M.H. on 39th St 2-29
1	Error Cancel.	
21	67 1 on Richmond St 213' - N.	of M.H. in Cleveland
31	32 1 Logan 140' S.E. M.H. on	S.E. Coblinc 16th St. 3-12
41	16 1 Bk 2 Marine View 236'	E. of 3rd 3-15
51	68 1 9' S. of H.L. Arch St 71' W	of W. Line Maryland St 3-20
61	70 1 Almad Bet Cleveland &	Campus Ave 3-29
71	17 1 On Robinson St W of Alber	cross St 15' fr Exist M.H. 4-3
81	14 1 ON 3RD St 265' N of	Exist M.H. on Arbor Dr. 4-9
91	22 1 Convent <sup>and</sup> St S Line Broadway	& State St M.H. 4-10
220	1 67 1 M.H. on 8th St 235' N Exist	M.H. N of University Ave 4-18



	400	200	MH	ST	Manholes by Sewer Div	(Continued) NO 20009.	
221	1	19	1	100' E of Eli Albatross	St & Upas St		4-20-56
222	1	27	1	at intersection 22ND	& E Sts		4-23-56
3	1	14	1	Albatross St 125' S	of S line Washington		4-27-
4	1	20	1	Maple St 14' S of N.P.L.	217' E of E 5th Ave		4-30
5	1	19	1	at Palm St 150' E of	E 5th Ave		5-3-56
6	3	115	1	S of Univ. Ave 8 of 60th & 111' W.	of exist MH on Lamesa Trunk Sewer		5-3-56
7	1	19	1	at Quince St 152' E of	E 5th Ave		5-11-56
8	1	19	1	at Upas - 135' E of	E 5th Ave		5-16-56
9	1	21	1	at Elm St 115' E of	E 5th A		
230	1	14	1	1-M.H. at 4th Ave 275' N of exist	MH at Arbor Drive		5-25-56
1	1	20	1	" Juniper St 17' North of S	Li. & 145' E of E 4th Ave		5-27-56
2	1	20	1	" on E Li. 5th Ave. & E Ivy	St.		5-23-56
3	1	20	1	" 12' W of E Li. 4th Ave & E Grape	St		5-31-56
4	1	70	1	" In Alley 240' North of exist	M.H. on So Side of Madison Ave W of Campus		6-10-56
5	5	206		EXT 40'-6" VC. in Alley Bk 4 Loma	View at 5.44% Grade GB $\frac{357}{48}$ El. new DE 270.187		6-10-56
6	1	71	1	1-MH. on Cleveland Ave 247'	North of MH & CLEVELAND & TYLER AVES		6-11-56
7	1	67	1	1-MH on Maryland St 213' S of	S Line of Van Buren St		6-11-56
8	2	56	1	1-MH. on Gregory St 165'	N of N Line of Cedar St		6-25-56
				14 - MHS <sup>1955-56</sup>	END		FISCAL YEAR

400 200 MH'S

Start 1956-

57 Fiscal Year

21

239	1	65	1 MH. $\Phi$ -Robinson $\Phi$ $\Phi$	65' NE of Exist MH in Alley W of Park Blvd 7-5-56
240	1	68	1 MH $\Phi$ Harvey Road 240' N	of Exist MH in Golden Gate Drive 7-11-57
241	1	14	1 MH in Alley North of Univ	$\Phi$ 152' E of E Prop Line of Brant St 7-12-56
242	5	221	40' V.C. Pd Exten. in Alley	5' Deep S of Long Branch Ave E of Spray St. 7-12-56
243	1	24	1 MH $\Phi$ 13TH ST $\Phi$ S Li.	of "L" St 7-13-56
244	3	119	1 MH $\Phi$ MATARO DR 131'	N of Exist MH opp li. bet Lot 39 & 40 <sup>Seminole Terr</sup> 7-19-56
245	1	78	1 MH $\Phi$ 15th $\Phi$ N li "L" St	— 7-25-56
246	2	48	1 MH in Alley Bet Cottonwood	$\Phi$ Dalbergia E of Woden 290' from Exist <sup>MH</sup> 7-30-56
247	2	48	1 MH in Alley bet Cottonwood $\Phi$	Dalbergia W. of Woden 300' from Exist MH - 7-30-56
248	2	57	1 MH in 30th St 365' So. of	Exist MH in Ash St. 8-6-56
249	1	28	2 MH'S on L St 230' West of	on 15th St Exist Donk St 182' West from MH on 15th St 8-8-56
250	1	78	1 MH - J Street 132' E. of $\Phi$ 16th	Street. 8-17
251	1	27	1/2 on 22nd St. North of N	Line of Broadway (Flush Tank Converted) 8-17-58
252	2	57	1/2 on Dale St S of Ash	St - 385' North of Exist MH. 8-17
253	1	24	1/2 on J. St. 17' W of $\Phi$	11th St 8-78-56
254	N	40	1 MH in Aly Bet E & F Sts	35' E of E. Line of 30TH ST. 8-10-56
255	N	41 40	1 MH " " " F & G Sts	E of 32nd St. 8-10-56
256	N	40	1 MH " " " B & C Sts	290' W of W. Line of 31st St. 9-21-56
257	65		Moved MH S - 15' From	End of Main at Park Blvd & Univ. RE 11-1-56
258	X	25	MH 17' W of $\Phi$ Inter	section on 11th Ave & "C" Street 11-1-56

See 253

27

259	V	<sup>400</sup> 40	1	MH in Alley Bet E & F Sts	84' W of 30th St	11-1-56
260	N	40	2	One at 30th St & G St one	in Alley Bet F & G E of 30th St.	11-1-56
1	1	27	1	MH at 22nd & "C"	18' E from W Line of 22nd	11-1-56
2	5	216	1	MH & Poe St. 94'	N Wly from NW Line of Willow St.	11-1-56
3	1	27	1	MH & C St & 19' E of	W Line of 21st St.	11-1-56
4	1	3	1	MH & Date St - 100'	E of & Keltner Blvd	11-5-56
5	1	27	1	MH at intersection	of &'s 15th & F Sts (10" & 6")	11-5-56
6	6	348	1	MH & Scripps Lane	69' S of S. La Jolla Blvd -	11-7-56
7	N	39	1	MH in Alley bet Market	& Island 395' W of MH in 32nd St	11-14-56
8	<del>1</del>	28	1	MH & Island & 115'	E of & 18th St.	11-21-56
9	V	96	1	MH & 47th St, 271'	S of MH & Dwight St	12-4-56
270	V	77	1	MH & Alley bet Illinois	St & Iowa St 95' N of N. Li Univ.	12-5-56
1	1	16	1	MH & Bush St 902'	W of MH & Hawk St	12-11-56
2	1	16	1	MH & Alley bet Penn.	St & Sutter St 320' W & Kite St	12-20-56
3	1	16	1	MH at intersestion	&'s Hawk St & Alberta Pl -	12-20-56
4	1	16	1	MH & Kite & Alley	bet Torrance & Peterbaugh	12-27-56
5	1	15	1	MH & Lewis St	80' W of W Line of Goldfinch St	12-27-56
6	1	16	1	MH in Alley bet Sutter &	Pennsylvania	1-22-57
7	1	led	1	MH in Alley 75' S of Univ	ersity Ave bet. Arnold & Villa Terr.	1-22-57
8	1	21	1	MH at Front St on S. Li	Beech (wys to MH)	1-31-57
279	1	30	1	MH at Union St on N. Li	Ivy	1-31-57

No	400	200							
279	1	16	1	MH -165' W of W. Liq	Eagle - On Goldfinch PL	1-31-57			
280	<sup>Rolando</sup>		2	MH's on Dead Ends on	Hi Line bet Rolando Blvd & Valencia Dr	2-7-57			
	1	5	20	1	MH Hill & Cordova X + 206' of	8" V.C. Sewer Main ext on Hill St.	2-14-57		
	2	4	28	1	M.H. 260' S of M.H. on Morena	Bld & Asher St.	2-15-57		
	3	1	3	1	M.H. S. Li Hawthorne & R	India - (Y to MH)	2-15-57		
283	1	7	1	MH & Fern 40' S of S. Li. of	Juniper St.	2-15-57			
284	1	7	1	MH Intersection of Georgia	& Howard Sts	2-15-57			
	5	1	2	1	MH & Columbia on S. Li.	of Elm St	2-26-57		
	6	2	1	1	MH bet Hilda Rd & Ellsworth	St. on DE - (150' E of E. Li. Hilda)	2-27-57		
	7	6	3	1	MH 380' N of MH on Coast	Bld (Flush Taw to MH)	3-7-57		
	8	6	3	3	MH's (DE) on Draper Sq, Silverado	<sup>2 on DE's</sup> on Eads bet Kline & Silverado	3-8-57		
	9	6	3	1	MH on DE Currier S of	Prospect St.	3-8-57		
290	2	7	1	1	MH at Intersection of Wores	Place and Alley S of Suncrest Dr.	3-21-57		
	1	2	4	2	1	MH at Intersection Francis	St & Imperial Ave.	3-25-57	
	2	2	8	1	1	MH in Alley bet Columbine St	& Fairmount Ave 343' S of MH in Quince St	3-21-57	
	3	4	2	5	3	1	MH 250' S of MH at X of	Juan St & Taylor St	3-27-57
	4	2	8	1	1	MH E of Wellborn St between	Torrance & Puterbaugh	3-27-57	
	5	2	8	1	1	MH in Alley bet Pepper Dr & Sy	camore St - 334' N' of MH in Violet St	4-23-57	
	6	2	8	1	1	MH 321' W of MH at intersec	tion Marigold & Sycamore Sts.	5-8-57	
	7	2	8	1	1	MH 265' West of M.H. in Ma	rigold between Sycamore St & Pepper Dr	5-8-57	
	8	2	8	1	1	MH in Poppy Pl 230' SE	of Manzanita Dr	5-16-57	

24 MH END - 5-16-57

	200	200			
299	287	1	M.H. in 39th St, 300' N of	M.H. in Sycamore St	5-16-57
300	289	1	M.H. in Alley 274' SW of	Marlborough St & Manzanita Dr.	5-17-57
301	289	1	M.H. 289' N of M.H. at X	Manzanita Dr. & Marlborough St	5-17-57
	289	1	M.H. 324' NE of M.H. at X	Manzanita Dr & Snowdrop St	5-17-57
3	291	1	M.H. in Alley bet Van Dyke	& 43rd St. 30' N of N. Li. University	5-17-57
(4)	4	291	<sup>ENO 1956-57</sup> M.H. in Alley bet Van Dyke st &	43rd St 76' S of M.H. S of University	5-21-57
305	289	1	M.H. in Alley S. of Thorn St, bet	Central & 41st St.	6-13-57
306	1	21	M.H. on S. line of Beech at	State	6-20-57
307	1	21	M.H. on S. line of Cedar	at India	6-21-57
308	1	21	M.H. on S. line of Cedar	at State	6-21-57
309	1	31	M.H. on S. line of Fir	at Calif.	6-26-57
310	1	22	M.H. on S. line of Union	at "A" St.	7-16-57
311	1	22	M.H. on S. line of Union	at G St.	7-16-57
312	257	1	M.H. 220' N. of M.H. in	Intersection of Grove & Cedar	7-18-57
313	250	1	M.H. in Alley S. of Imperial	and west of 39th St.	7-18-57
314	6317		Moved 28' East of its	original site. (Existing)	7-22-57
315	296	1	M.H. in Alley S. of Dwight	and E of 45th St.	7-29-57
316	121	1	M.H. on S. line of Beech	on Columbia St.	7-31-57
317	122	1	M.H. on S. line of "G" St.	on Front	7-31-57
318	123	1	M.H. on S. line of Market	at Union	8-1-57

319	1	22	1	M.H. on S. line of "A"	at Front	8-1-57
<sup>15</sup> NEW 320	1	22	1	M.H. on S. line of "E"	at Union	8-1-57
321	15	22	1	M.H. on S. line of E	at Columbia	8-19-57
322	15	22	1	M.H. on S. line of G	at India	"
323	15	22	1	M.H. on S. line of E	at 3rd	"
324	15	22	1	M.H. on S. line of A	at State	"
325	15	27	1	M.H. on S. line of B	at 12th.	8-20-57
326	18	50	1	M.H. Intersection 38th	& Ocean View	8-27-57
327	15	17	1	M.H. 6' N. of Dead End	Pennsylvania	9-16-57
328	4	7	1	M.H. Lot 9 - Blk. 2 Middle Town - S. of Estudillo bet	San Diego Ave. & W. Calif.	9-26-57
329	15	27	1	M.H. 20' S. of N.L. of "G", 15' E. of	& 16th St	10-2-57
330	15	27	1	M.H. S. of S.L. "G", Center Line of	23rd.	"
331	15	33	1	M.H. on & Evans bet. Frankl in &	Everett	10-4-57
332	15	28	1	M.H. on S. line of Imperial	at 20th	"
333	15	28	1	M.H. on S. Line of "K" at	17th.	10-4-57
334	15	33	1	M.H. on & Franklin Ely of	Evans	"
335	18	37	1	M.H. on W. line 32nd & on & of Alley bet	Newton & National	"
336	15	28	1	M.H. 173' E. of & 19th in	center of J	10-18-57
337	15	22	1	M.H. in center of 3rd. 11' Nly of Nly. line	Broadway	8-20-57
338	15	27	1	M.H. on & "C" and in 19th St. 179' E of W. MH. from 19 on	C	9-18-57

339	15	27	1	M.H. on S. line of E at 19th.	9-30-57
340	15	27	1	M.H. on S. line of G at 20th	10-25-57
341	15	28	1	M.H. on S. line of Island at 22nd	7-22-57
342	15	28	1	M.H. 140' E of E 22nd in alley bet. L & Imperial	10-17-57
343	4	8	1	M.H. 9' N of S. Line Andrews bet Titus & Linwood *	11-5-57
344	15	22	1	M.H. on S. line of G at 1st	11-19-57
345	15	22	1	M.H. on S. line of G at 2nd	11-25-57
346	15	22	1	M.H. on S. line of A at 2nd.	11-25-57
347	18	50	2	M.H. on N. line of Franklin & Alley bet. Milbrae & 38th M.H. 300' N of N line Franklin & Alley " " & 38th.	12-4-57
348	15	27	1	M.H. on E 24th and E Alley bet. B and C	12-11-57
349	15	40	1	M.H. 47' E & 28th & 75' S of S. line C St.	12-13-57
350	18	39	1	M.H. on E 32nd & E Alley bet. G. & Market	12-31-57
351	15	30	2	M.H. 50' W. of W line 25th St. M.H. 325' W. of W line 25th St.	on E Alley bet. Market & Island - Blk 9 <sup>12-31-57</sup>
352	18	39	1	M.H. 265' W. & 31st M.H. on E Alley Blk 102 bet K & L Sts.	1-6-58
353	18	39	1	M.H. 285' E & 31st M.H. on E Alley Blk 109 bet K & L Sts.	1-7-58
354	17	93	1	M.H. on E Marlborough Dr. 327' N. of M.H. & Alder Ave.	1-14-58
355	17	93	1	M.H. on E Canterbury - Wly Kensington Dr. Sly lot 14+15 Blk 5	1-15-58
356	17	93	1	M.H. on E Rochester Rd. 346' Wly. of M.H. & Marlborough Dr.	"
357	17	82	1	M.H. on E Westminster Terr. 331' S. of Exist M.H. Nly. of Rochester Rd.	1-22-58
358	17	93	1	M.H. on E Biong Dr. 300' Nly of Exist M.H. near lot 7 Blk G <sup>Kensington Park Ext.</sup>	1-29-58

359	1783	1	M.H. on E 40th 330' Nly	exist. M.H. in Madison Ave.	1-29-58
360	1783	1	M.H. on E 39th 300' Nly	exist. M.H. in Madison Ave.	1-31-58
43 NEW 361	1792	1	<del>M.H. on E Alley bet Terrace Dr &amp; 40th, 270' Nly of exist M.H. in Madison Ave</del>	<del>exist. M.H. in Madison Ave.</del>	<del>2-11-58</del>
			<small>END. 1957-58 15-423-58</small>		
362	257	1	M.H. on E FERN ST. 55' SLY	BEECH ST.	2-14-58
363	2101	1	M.H. ON E ALLEY ELY OF ALTEDENA SLY	EL CAJON	2-18-58
364	2101	1	M.H. AT DE. OF MAIN W ALLEY ELY OF 51 <sup>ST</sup> & 110' NLY	OF TROJAN AVE	2-18-58
365	293	1	M.H. on E 42 <sup>ND</sup> ST. 300' NLY	OF ALDER DRIVE	2-24-58
			<small>M.H. ON LOT 33 MARSTON HILLS - 160' NLY</small>	<small>OF MYRTLE WAY 11' ELY OF LOT LINE BET LOTS 33 &amp; 34</small>	<small>3-13-58</small>
366	1566	2	M.H. ON LOT 30 MARSTON HILLS 160' NLY	OF MYRTLE WAY & 18' NLY LOT LINE BET LOTS 29 & 30	3-5-58
367	2391	1	M.H. & HOTT ST. 4' SLY & PL. OF	ISLAND AVE - IN INTERSECTION	3-14-58
368	1522	1	M.H. & FIRST ST SLY	PL. OF E. ST.	3-21-58
369	1522	1	M.H. & SECOND ST SLY	PL. OF E. ST.	3-21-58
370	276	1	M.H. & BOUNDARY ST SELY	OF MADISON	3-31-58
371	283	1	M.H. & ALLEY BLK I ELY 38 <sup>TH</sup>	ST NLY MONROE AVE	3-31-58
372	282	1	M.H. & COLLIER AVE ELY	OF MT. VIEW DR.	4-11-58
373	283	1	M.H. & ALLEY BLK J ELY	OF 39 <sup>TH</sup> ST NLY MONROE AVE	4-11-58
374	258	1	M.H. & 28 <sup>TH</sup> ST AT DE. 240'	NLY OF MAPLE	4-21-58
375	279	1	M.H. & ALLEY BLK 40 290' NLY	OF EXISTING M.H. ON MADISON WLY OF 35 <sup>TH</sup> ST.	4-22-58
376	280	1	M.H. INT OF ALLEY BLK 27	WLY OF HAWLEY BLVD. SLY COLLIER AVE.	4-22-58
377	5302	1	M.H. AT INTERSECTION OF STR	ANDWAY & ALLEY SLY CAPISTRANO PL NLY BRIGHTON CT.	4-26-58
378	5302	1	M.H. & OF ALLEY BET SAN GABRIEL PL	DEAL CT. WLY MISSION BLVD.	5-20-58



379	5	302	2	M.H. #1 INTERSECTION OF STRANDWAY & ALLEY S'LY SAN LUIS REY W'LY MISSION BLVD M.H. #2 STRANDWAY 28' S'LY OF ASBURY COURT	5-21-58
380	5	302	2	M.H. #1 INTERSECTION OF STRANDWAY & ALLEY N'LY OF BALBOA CT. W'LY MISSION BLVD. M.H. #2 INTERSECTION OF STRANDWAY & ALLEY S'LY OF BALBOA CT. W'LY MISSION BLVD.	5-21-58
381	5	302	1	M.H. # INTERSECTION OF STRANDWAY & ALLEY N'LY SAN LUIS REY PL. & S'LY AVALON CT.	5-22-58
382	15	20	1	M.H. # L FRONT ST SEWER D.E. 237' NLY EXISTING MH ON MAPLE ST	5-28-58
383	1	15	1	M.H. # FALCON ST. AT SEWER D.E. 291.5' N'LY OF EXIST. MH ON MONTICELLO WAY	5-28-58
384	1	15	1	M.H. # JACKDAW SEWER DE. 277.2' NLY EXIST. M.H. ON ARBOR DR	5-28-58
385	1	12	1	M.H. ON ARCADIA W'LY OF AVALON DRIVE NW'LY OF BARR AVE	5-28-58
29 MH 386	1	15	2	M.H. #1 JACKDAW ST 52' N'LY OF HUNTER ST. AT SEWER D.E. M.H. #2 IBIS 47' N'LY OF HUNTER AT SEWER D.E.	5-28-58
387	1	334	1	96'-8" VC & INSPIRATION DRIVE ELY OF INSPIRATION WAY	5-29-58
388	10	279	1	120'-6" VC From Littlefield No IN Galveston	5-29-58
389	18	186	1	120'-6" VC 4500 BLOCK. DETTA ST	5-29-58
390	11	310	1	123'-8" VC ALLEY E. OF FIGUERA BLVD NO OF MAGNOLIA AVE	5-29-58
391	18	504B	1	60'-6" VC SO. 36TH ST. Bet. HEMLOCK ST & Ocean View BLDG.	5-29-58
392	15	16	1	115'-6" VC ALLEY W. OF LARK ST. No. OR WALNUT ST	5-29-58
393	15	19	1	M.H. # of FRONT ST. 182' N. OF & OF PALM ST (4'6")	7-16-58
394	11	12	1	M.H. S/L OF ARCADIA DR. W. OF AVALON DR. (10')	7-16-58
395	5	208	1	M.H. # 100' 6" VC MANOR WAY & TALBOT ST	1-6-59
396	6	348	1	M.H. # 75' 6" VC. in ALLEY BIRZI Btw. Fay St - EADS St. Eline St.	2-27-59
397	6	350	1	M.H. # at D.E. In Olliott St. South of Exchang Place	2-27-59

398

398	2	83	1	M.H. South Side of Monroe Ave, Blk -D, Btw Cherokee & 37 <sup>th</sup>	11-28-58
399	6	346	1	M.H. In Alley at Dead end of Line Btwn { Arenas St. - Rushville St } & Eads St	9-17-58
400	6	350	1	M.H. West of Pump house on 8" line Torrey Pines Road & Amalti St	12-2-58
401	6	338	1	M.H. & 120' of 6" VC line in Blk F from Draper Ave East. South of Bonair St	12-5-58
402	6	350	1	M.H. on 6" line in Alley of Blk 74 - 240' west of Prospect Place.	1-6-59
403	6	350	1	M.H. on 6" line in Castellana in front of lot 53	3-12-59
404	6	350	1	M.H. on 6" line in Crespo St. 120' west of M.H. at Crespo & Castellana	3-25-59
405	17	66	1	M.H. on 6" line 59' N.W. from Brookes Terrance	3-5-59
406	6	346	2	M.H. on Rushville St. 87' East & 196' East of Draper Ave	12-22-58
407	1	20	1	M.H. on South side of Intersection of 2nd & Iuy	9-17-58
408	1	22	1	M.H. on South side of Intersection of "A" & 1st St	9-17-58
409	1	21	1	M.H. on South side of Intersection of Date St. & Front St	9-17-58
410	6	349	1	M.H. on Sewer line in Intersection of Herschel & Wall St.	2-10-59
411	6	350	1	M.H. in 6" sewer on Castellana 68' East of N.S. Sewer	3-2-59
412	6	350	1	M.H. in Soledad 88' East of M.H. Existing	2-10-59
413	6	348	1	M.H. on Cast Blvd South in Existing Line 51' from Existing M.H. East	1-19-59
414	6	349	1	M.H. in Intersection of Girard Ave & Wall St.	2-22-58
415	1	28	1	M.H. at West side of Intersection of 15 <sup>th</sup> & Market St.	2-16-58
416	6	347	1	M.H. in ally West side of La Jolle Blvd Btwn Westbourne St. & Nautilus	5-13-59
417	6	347	1	M.H. In Olioctas South of Arenas St. 375' North M.H. in Fern Glen 5	5-13-59

	400'	200'	M.H.		
418	6	347	1	M.H. in Olivetas Ave South of Sea Lane 350' North of M.H.	5-13-59
419	6	347	1	M.H. in Alley East of Olivetas btwn Sea Lane & Marine St	5-13-59
420	6	347	1	M.H. in Marine St North of Olivetas Ave, 350' East of M.H. in Marine St	5-13-59
421	6	347	1	M.H. in Alley West of La Jolla Blvd Btwn Nautilus & Bon Air St	5-13-59
422	6	347	1	M.H. in Alley 295' South of Pearl St. Btwn Eads Ave & Fay Ave	5-13-59
423	6	347	1	M.H. in Crespo Drive 95' East of M.H. in Junction of Crespo Dr. & Castellana Rd	5-13-59
<del>67 MM. END FISCAL YEAR 1958-1959</del>					
424	18	38	0	110' of 6" v.c. in alley blk 336 bet. Ocean View Blvd & Valle Ave E of 31 <sup>st</sup> W of 32 <sup>nd</sup> st	7-24-59
425		118	1	M.H. in collwood Pk Unit 2 bet Mary Lane & Daxthr Dr W. of 63 <sup>rd</sup> st.	7-24-59
426	17	86	2	M.H.'s in Alley blk 86 bet Landis & Bowery st. E. of 35 <sup>th</sup> & W of Wilson Ave	7-24-59
427		271	1	M.H. in Knoxville st W'ly of Naples st.	7-24-59
428	1	65	1	M.H. on N. side of Georgia Ct. bet. Georgia & Florida sts.	7-24-59
429	1	67	1	M.H. in Lot 335 N. side of Maryland "Pl" & W of Maryland st.	7-24-59
430	15	28	1	Changed insp. wye to M.H. Corner of 24 <sup>th</sup> & K sts.	7-24-59
431	18	156	1	M.H. in Torne st N. of Market st & S. of F.	7-24-59
432	15	28	1	Changed insp. wye to M.H. on corner of 24 <sup>th</sup> st & Island Ave	7-24-59
433	15	25	1	changed insp. wye to M.H. corner of 14 <sup>th</sup> & F sts.	7-24-59
434	15	25		changed insp. wye to M.H. corner of 14 <sup>th</sup> & B sts	7-24-59
435	18	41		140' 6" v.c. extending from M.H. at 34 <sup>th</sup> & E sts. S. W'ly into Sunrise st.	8-5-59
436	1	15	1	M.H. at Ingalls & Arbor sts.	9-29-59

400		200		M.H.			
437	1	73	1	M.H. in Alley blk 17 bet Arizona & Hamilton sts. N. of Madison & S of Adams Aves	9-29-59		
438	17	78	1	M.H. in Alley blk. 196 bet Wabash & 33 <sup>rd</sup> st N side of University Ave	9-29-59		
439	15	65	1	M.H. at Alabama & UPas sts. N. side of upas st.	9-29-59		
440	1	64	1	M.H. in Mississippi st bet Wightman & Landis sts.	9-29-59		
441	15	64	1	M.H. in Arizona st. bet. Myrtle & Dwight sts.	9-29-59		
442	1	72	1	M.H. in Alley blk 200 bet Texas & Arizona N of University Ave	9-29-59		
443	15	25	1	M.H. in Bancroft Pl. bet. 14 <sup>th</sup> & 15 <sup>th</sup> sts. N of "C" st.	9-29-59		
444		72	1	M.H. in Alley blk 203 bet. IDAHO & Oregon st. N. of University Ave	9-29-59		
445	VI-20		1	M.H. IN ALLEY BLK 204 BET IDAHO & UTAH ST'S 50' S. OF LINCOLN AVE	6-3-60		
446	VI-20		1	M.H. IN ALLEY BIK 152 BET IDAHO & UTAH ST'S 130' N M.H. IN POLK AVE	6-3-60		
447	VI-20		1	M.H. IN ALLEY BLK 119 BET KANSAS & 30 <sup>TH</sup> ST'S S. OF EL CATON BLVD	6-3-60		
448	VI-20		1	M.H. IN ALLEY BIK 68 BET 40 <sup>TH</sup> & CENTRAL AVE 145' N. M.H. IN LANDIS ST	6-3-60		
449	VI-20		1	M.H. IN ALLEY BIK 203 BET IDAHO & OREGON ST'S 92' S. M.H. IN LINCOLN AVE	6-3-60		
450	VI-20		1	M.H. IN MEADE AVE BET 33RD PLACE & 33RD ST	6-3-60		
451	VI-20		1	M.H. IN MISSISSIPPI ST 132 BET BIK'S 11 & 12 N OF DWIGHT AVE	6-3-60		
452	VI-20		1	M.H. IN ALLEY BIK 39 BET FELTON & 34 <sup>TH</sup> ST S. OF EL CATON BLVD	6-3-60		
453	VI-21		1	M.H. IN PACIFIC HWY BIK 284 CORNER OF ELM ST & PACIFIC HWY	6-3-60		
454	V-21		1	M.H. IN CURLEW ST JUST S. OF LAUREL BET LAUREL & KALMIA ST	6-3-60		
455	V-21		1	M.H. IN STATE ST BET BIK'S 72 & 73 N. OF KALMIA ST	6-3-60		
456	V-21		1	M.H. IN REDWOOD ST BET 2ND & 3RD AVE	6-3-60		
457	V-21		1	M.H. IN NUTMEG ST BET 2ND & 3RD AVE	6-3-60		

458	V-21	1	M.H. IN KETTNER BLVD BET JUNIPER & IVY SOUTH OF JUNIPER	6-3-60
459	V-20	1	M.H. BET UNIV. AVE & WASHINGTON ST BET. BIK 16 & CABRILLO FREEWAY AT DEAD END	6-6-60
460	V-20	1	M.H. IN PUTERBAUGH ST BET ANDREWS & WELBORN ST 137' S. OF ANDREWS ST	6-6-60
461	V-20	1	M.H. IN HERBERT ST BET MYRTIE & BROOKES ST 298' NORTH OF MH IN MYRTIE ST	6-6-60
462	V-20	1	M.H. IN CENTER OF INTERSECTION OF HERBERT ST & ROBINSON AVE	6-6-60
463	V-20	1	M.H. IN ALLEY BIK 42 BET MARYLAND ST AND CLEVELAND AVE	6-6-60
464	V-21	1	M.H. IN PACIFIC HWY BET VINE & BEAN ST EVEN WITH LOTLINE BET LOTS 5 & 6 BIK 258	6-6-60
465	V-21	1	M.H. IN CENTER OF INTERSECTION OF KALMIA & SECOND AVE	6-6-60
466	VI-21	1	M.H. IN ALLEY BIK Q BET VANCOUVER & MONTCLAIR ST 320' N. EXISTING M.H.	6-6-60
467	V-22	1	M.H. S.E. CORNER POLICE STA. IN KETTNER BLVD JUST N. OF HARBOUR DRIVE	6-6-60
468	V-22	1	M.H. IN 16 <sup>TH</sup> ST EVEN WITH N. LOT LINES BIKS 13 & 14 OF F STREET	6-6-60
469	V-22	1	M.H. 6' N. EXISTING MH AT 10 <sup>TH</sup> & IMPERIAL AVE	6-6-60
470	VI-22	1	M.H. 300' E OF EXISTING M.H. IN BIK 100 BET ISLAND AVE & J. ST	6-6-60
471	VI-22	1	M.H. IN ALLEY BIK 3 BET SUPERIOR ST & FRANKLIN AVE	6-6-60
472	VI-22	1	M.H. IN CENTER OF INTERSECTION 33 <sup>RD</sup> ST & GREELEY AVE	6-6-60
473	VI-22	1	M.H. IN ALLEY BIK 2 BET SUPERBA & SUPERIOR STS 395' E. OF 38 <sup>TH</sup> ST	6-6-60
474	VI-22	1	M.H. IN E. ST 210' E. OF EXISTING M.H. IN 28 <sup>TH</sup> ST	6-6-60
475	II-19	1	M.H. IN MIDDLE OF BLYD GARDENS BET. NAPLES & WEEKS ST	6-6-60
476	II-19	1	M.H. IN KENSINGTON DR BET ALDER DR & SUSSEX DR 235' N OF ALDER DR	6-6-60
477	II-19	1	M.H. IN ALLEY BET 32 <sup>ND</sup> & BANCROFT STS BIK 37 W. OF BANCROFT	6-6-60

52 MH. END FISCAL YEAR 1959-1960 6/7/60 S.W.C.

FY 60-61

33

400 200 MH.

BEGIN FISCAL YEAR

1960-1961

478	VI-23	DRAFTED	1	M.H. BETWEEN BETA & GAMMA, IN	39 <sup>th</sup> , 190' N. of GAMMA ST.	11-22-60
479	VI-20		1	M.H. IN ALLEY BETWEEN PERSHING AVE	& 28 <sup>th</sup> ST., 35' S. of MYRTLE ST.	11-22-60
480	VI-20		1	M.H. IN HAMILTON, 300' S. of LINCOLN	AVE., BETWEEN LINCOLN & UNIV. AVE.	11-22-60
481	VI-20		1	Exist. Replaced M.H. IN HAMILTON ST., 300' S. of	POLK, BETWEEN POLK & LINCOLN AVE.	11-23-60
482	VI-20		1	M.H. IN HAMILTON, 490' N of M.H. IN	INTERS. of POLK & HAMILTON.	11-23-60
483	VI-20		1	M.H. IN HAMILTON 250' N. of M.H.	IN INTERS. of POLK & HAMILTON.	11-23-60
484	VI-20		1	M.H. IN ALLEY BETWEEN VILLA TERRACE	& ARNOLD; 50' S. of DWIGHT ST.	11-23-60
485	VI-20		1	M.H. IN GEORGIA ST, 690' S. of M.	M.H. IN INTERS. of CYPRESS AVE. & GEORGIA ST.	11-23-60
486	VI-20		1	M.H. IN WILSHIRE TERRACE 630' N.	of M.H. IN INTERS. of MYRTLE AVE. & <sup>WILSHIRE</sup> TERRACE	11-23-60
487	III-22		1	M.H. BUILT OVER "T" SECTION IN KELL	OG, MIDWAY BETWEEN SAN ELIJO & ROSECRANS	11-23-60
488	I-21	1	M.H. IN REDWOOD, 11' W. of W. PL.	of 3 <sup>rd</sup> . AVE.	11-25-60	
489	III-20	1	M.H. IN VOLTAIRE ST. S.E. of W. PL.	LOMA & N.W. of ABBOTT BET. LOT 7, <sup>&amp; LOT 10,</sup> BIK. 97, BIK. 105	11-25-60	
490	III-20	1	M.H. IN ALLEY, 50' E. of E. PL.	of CABLE ST., ALLEY BETWEEN <sup>SANTA CRUZ</sup> & DEL MONTE	11-25-60	
491	VII-21	1	M.H. IN PIROTTE DR., JUST E. of E	PL. of HANIMAN, EXT., & III' E. of NEXT M.H. W	11-29-60	
492	II-16	1	M.H. IN LA JOLLA BLVD. N. of ALLEY	BETWEEN GENTER & ARENAS, AND S. of GENTER ST.	11-29-60	
493	II-16	1	M.H. IN PEPITA WAY, 225' S. of NEXT	MH TO THE N., & JUST N. of MASSENA WAY	12-2-60	
494	II-16	1	M.H. BETWEEN LA JOLLA BLVD. & DRAPER	AVE., IN RUSHVILLE ST., 95' W. of M.H. IN DRAPER AVE.	12-2-60	
495	VI-20	1	M.H. IN ALLEY BETWEEN PERSHING AVE	& 28 <sup>th</sup> ST., 40' N. of MYRTLE (N PL).	12-8-60	
496	VI-20	1	M.H. IN ARNOLD AVE., 20' S. of	THE S. PL. of DWIGHT ST.	12-8-60	

For Info. concerning Field  
Sketches of M.H.'s. dial 863.  
(Mr. Sotier)

34

No	MAP #	M.H.			
497	VI-20	1	M.H. IN ALLEY BETWEEN WILSON &	WABASH AVE., 260' N. of M.H. <sup>WHICH</sup> N. of MYRTLE	12-8-60
498	VI-20	1	M.H. IN ALLEY BETWEEN WILSON AVE	& 36 <sup>th</sup> ST., 300' N. of of M.H. N. of MYRTLE	12-8-60
499	V-20	1	M.H. IN VERMONT ST. BETWEEN CYPRESS	WAY & CYPRESS AVE., 65' S. of CYPRESS WAY	12-8-60
500	V-20	1	M.H. IN CYPRESS WAY, 51' W of	WESTERNMOST M.H., ADJ. TO LOT # 6	12-8-60
501	V-20	1	M.H. IN ALLEY E. of CENTRE ST.	61' S. of S. PL. of UNIVERSITY AVE.	12-8-60
502	VIII-19	1	M.H. IN SOUTH SIDE OF EL CAJON	BLVD., 10' E. OF LOT LINE 17 WEST.	12-21-60
503	V-21	1	M.H. IN CENTER OF IVY 123 E. CEN	TEN OF IVY & BRANT INTERSECTION	12-21-60
504	VII-22	1	M.H. END OF LINE APPROX. 920'S	OF OCEANVIEW BLVD. S.	12-21-60
505	III-21	1	M.H. 10' W OF E BANGOR ST & with	alley between Trumbull & Hill.	12-21-60
506	III-21	1	M.H. IN CHATSWORTH H & END OF	ALLEY, 315' SE OF PINSETTA	12-21-60
507	IV-20	1	M.H. IN Plumosa Drive, 330'	NW of Hyacinth	12-21-60
508	III-20	1	M.H. In Alley Intersection, 260'	NW of Narcissus	12-21-60
509	III-20	1	M.H. In Zola Street, 380' W	of Clove St.	12-21-60
510	II-20	2	M.H. In intersection of KAUTZ +	NOELL ST., and 98' S from intersection to Noell	12-21-60
511	V-22	1	M.H. Calif St. 196' N from S of	E St.	12-21-60
512	V-22	1	M.H. 61' S of E St. in California	St.	12-21-60
513	V-22	1	M.H. 40' S of center of intersec	tion of C St + 6 <sup>th</sup>	12-21-60
514	V-22	1	M.H. E. Side of 5 <sup>th</sup> and in line	with S line of G St.	12-21-60
515	VI-22	1	M.H. In center of G. St., 177'	E of 30 <sup>th</sup> St. E	12-22-60

For information concerning  
M.H. SKETCHES Contact  
Mr. Sotier (863)

35

No.	MAP#	# of M.H.	L O C A T I O N		DATE DRAWN
516	V-21	1	M.H. in center of 3rd St., 50'	E. of EXIST. M.H. in center of 3rd + Juniper	12/22/60
517	V-21	1	M.H. in center of Albatross, 190'	N of EXIST. M.H. in center of Laurel + Albatross	12/22/60
518	V-20	1	M.H. in Johnson Avenue 67' E of Alley	in E side of 10th St.	12/22/60
519	V-20	1	M.H. in Alley 4' N of Robinson Ave. &	Approx. 130' E. of Centre	12/22/60
520	IV-20	1	M.H. in Freeman St. 300' E	of intersection of Willow + Freeman	12/22/60
521	VI-21	1	M.H. in Ash approx. 30' E of 32nd.	and approx. 20' N of S line of Ash.	12/24/60
522	VII-22	1	M.H. on 44th St. 80' N of N LINE	Market St.	3/21/61
523	VI-23	1	M.H. in end of alley 328' NW from	Gamma + 30th street.	3/21/61
524	VI-22	1	M.H. in alley 325' E of E side of 33rd.	Block 148, 33rd St, C+B	3/21/61
525	VI-20	1	M.H. on Bellingham Avenue approx.	300' S of Myrtle Ave.	3/21/61
526	VI-20	1	M.H. in Alley approx. 30' N of N line Park	in block 157 between Illinois + Iowa	3/21/61
527	VI-20	1	M.H. in Alley 90' N from center of Orange Ave.	BLK. 35 Wilson + 56th.	3/21/61
528	VI-20	1	M.H. in center of Lpas + in line with	E side of Florida street.	3/21/61
529	III-18	1	M.H. in center of La Mancha Dr. between	Rivera + Buena Vista	3/22/61
530	III-18	1	M.H. in center of La Mancha Dr. between	Buena Vista + Bayonne	3/22/61
531	V-20	1	M.H. approx. 161' from center of Lark's	Walnut St.	3/22/61
532	V-20	1	M.H. located at N corner of	GUY ST. + CLARK ST.	3/22/61
533	I-20	1	M.H. approx. 30' S of Torrence St.	on Dove Ct.	3/22/61
534	V-22	1	M.H. in center of 14th St + in	line with S line of E St.	3/22/61



For information concerning  
M.H. SKETCHES contact

Mr. Sotier (643)

36

Date  
DPL/1072

L O C A T I O N

No.	MAP#	# OF M.H.			
535	V-22	1	M.H. in center of 5 <sup>th</sup> St. & in line with N side of B <sup>th</sup> St N.		3/22/61
536	V-22	1	M.H. in center of 8 <sup>th</sup> St. & in line with S side of J <sup>th</sup> St S.		3/22/61
537	V-20	1	M.H. 1st one approx. 120' S of University, on E side of Ibis.		3/22/61
538	"	1	M.H. approx. 30' N of Ibis Ct. Facing Washington St.		3/22/61
539	VI-21	1	M.H. 197' east of existing MH on Juniper east of 28 <sup>th</sup> St.		7/20/61
540	V-21	1	M.H. in Kettner Blvd. S/4 <sup>o</sup> A St.		7/19/61
541	V-21	1	M.H. in Aly. bet. Juniper & Ivy St. E/L/0 Fern St.		7/20/61
542	VI-22	1	M.H. in Intersection of Imperial & Hensley - 55' N/0/S/4 Imperial		7/19/61
543	VI-20	1	M.H. in 30 <sup>th</sup> St. 50' S/0 the S/4 <sup>o</sup> University Ave.		7/19/61
544	VII-22	1	M.H. in center of Trinidad Way bet. Las Flores Terr. & Los Alamos		7/20/61
545	III-16	1	M.H. 14' from Prop. line bet lots 56 & 57. Inter. Crespo & Soledad Ave.		7/19/61
546	V-22	1	M.H. in 4 <sup>th</sup> St. S/4 <sup>o</sup> Market St.		7/19/61
547	VI-20	1	M.H. in Ray St. 14' S/0 the S/2 of Gunn St.		7/19/61
548	V-20	1	M.H. E of Maryland St. on N/L/0 Golden Gate Dr.		7/19/61
549	VII-21	1	M.H. in Bancroft St. 42' S/0 th S/4 of Cedar St.		7/20/61
550	VI-21	1	M.H. in Bancroft St. 52' N/0 the N/L/0 Cedar St.		7/20/61
551	VI-21	1	M.H. in 30 <sup>th</sup> St. 210' S of center of Redwood St.		7/20/61
552	VI-21	1	M.H. in 33 <sup>rd</sup> St. 42' S/0 the S/4 <sup>o</sup> Date St.		7/20/61
553	V-21	1	M.H. in Kettner Blvd. at S/4 <sup>o</sup> Beach St.		7/19/61

Information on M.H.  
Contact Mr. Sotier EXT 863

37

No.	Map#	# of M.H.	LOCATION	DATE DRAWN
554	I-22	1	M.H. in 11 <sup>th</sup> St. at N/4 of Imperial Ave.	7/19/61
555	I-22	1	M.H. in 8 <sup>th</sup> St. at s/4 of Broadway	7/19/61
556	I-21	1	M.H. in 4 <sup>th</sup> St. at s/4 of Hawthorne St.	7/19/61
557	I-22	1	M.H. in 8 <sup>th</sup> St. at s/4 of "F" St.	7/19/61
<b>81 M.H.s in FY 60-61</b>				
558	III 16	1	M.H. in Lot 21 L. J. Country Club Hts. 50' N. of Existing M.H. in Romero Dr.	11/7/61
559	VI 21	1	M.H. in 31 <sup>st</sup> St. at N/4 of Beech St.	11/7/61
560	III 17	1	M.H. in Linda Rosa Ave. S. of Forward St. 310' N. of Existing M.H.	11/7/61
561	II 17	1	M.H. in Beaumont Ave. N.W. of Forward St. 310' S. of Existing M.H.	11/7/61
562	II 17	1	M.H. in Beaumont Ave. S. of Camino De La Costa 300' N. of Existing M.H.	11/7/61
563	II 17	1	M.H. in Bellevue Ave. S. of Camino De La Costa 350' N. of ✓ ✓	11/7/61
564	II 17	1	✓ ✓ Waverly Ave. S. of ✓ ✓ ✓ 300' ✓ ✓ ✓	11/7/61
565	VI 23	1	M.H. in Alley S. of Boston Ave., 330' W. of Existing M.H. in 32 <sup>nd</sup> St.	11/7/61
566	II 17	1	M.H. in Chelsea Ave. 335' N. of Existing M.H. at Dolphin Pl.	11/7/61
567	VI 21	1	M.H. in "A" St. at 38 <sup>th</sup> St., 200' W. of Ex. M.H. in Home Ave.	11/7/61
568	I 21	1	M.H. in 5 <sup>th</sup> St. at s/4 of Kalamia St.	11/7/61
569	I 21	1	M.H. in 5 <sup>th</sup> St. at s/4 of Not meg.	11/7/61
570	III 17	1	M.H. in Midway St. & Alley between Tatt & Linda Rosa Ave's.	11/7/61

Information on M.H.  
Contact Mr. Sotier (863)

38

No.	Map#	# of M.H.	L O C A T I O N.	DATE DRAWN	Date Drawn
571	V 22	1	M.H. in India St. 3' N. of S 1/4 Broadway.		11/7/61
572	<sup>200x</sup> VI 21	1	M.H. in Alley Between Spruce & Redwood Sts. 127' West of Ex. M.H. in Dale St.		11/7/61
573	VIII 20	1	M.H. in Celia Vista Dr. Cul de Sac. 262' West of Existing M.H.		11/8/61
574	I 22	2	M.H.s in Kettner Blvd. 31' S of S 1/4 Broadway & on S 1/4 Broadway		11/8/61
575	I 22	1	M.H. in 7 <sup>th</sup> St. on S 1/4 Market St.		11/8/61
576	I 22	1	M.H. in Kettner Blvd. on S 1/4 "G" St.		11/8/61
577	VII 20	1	M.H. in Menlo Ave. 202' N. of N 1/4 El Cajon Blvd.		11/8/61
578	VI 20	1	M.H. in Alley Between Boundary & Nile Sts. 116' South of Myrtle Ave		11/8/61
579	V 21	1	M.H. in 5 <sup>th</sup> St. on S 1/4 Hawthorn St.		11/8/61
580	VI 22	1	M.H. in Alley Between "G" St. & Market St. 85' West of 25 <sup>th</sup> St.		11/8/61
581	VI 21	1	M.H. in Grove St. 312' South of Existing M.H. in Cedar St.		11/8/61
582	VI 19	0	2025'-6" V.C. in Alley & Park Place Crossing Kensington		11/8/61
583	V 21	3	M.H.s 59', 359', & 576' North of intersection of 16 <sup>th</sup> St & Russ Blvd.		11/8/61

Information on M.H.  
contact Mr. Sotier

39

No. | Map# | # of  
M.H.

L O C A T I O N

Date  
Drawn

INFORMATION ON M.H.  
contact Mr. Sotier. (863)

DATE

40

~~Drawn~~

No. MAP# # of  
M.H.

L O C A T I O N

~~DATE DRAWN ON MAP~~









































































72

73

74



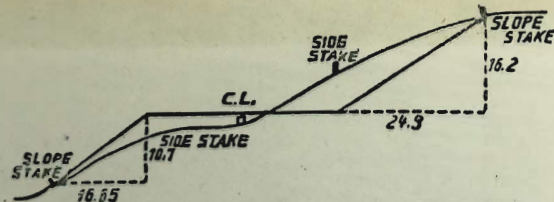












**DISTANCES FROM SIDE STAKES FOR CROSS-SECTIONING.**  
**SLOPE 1½ TO 1. ROADWAY OF ANY WIDTH.**

	0	.1	.2	.3	.4	.5	.6	.7	.8	.9	
0	0.00	0.15	0.30	0.45	0.60	0.75	0.90	1.05	1.20	1.35	0
1	1.50	1.65	1.80	1.95	2.10	2.25	2.40	2.55	2.70	2.85	1
2	3.00	3.15	3.30	3.45	3.60	3.75	3.90	4.05	4.20	4.35	2
3	4.50	4.65	4.80	4.95	5.10	5.25	5.40	5.55	5.70	5.85	3
4	6.00	6.15	6.30	6.45	6.60	6.75	6.90	7.05	7.20	7.35	4
5	7.50	7.65	7.80	7.95	8.10	8.25	8.40	8.55	8.70	8.85	5
6	9.00	9.15	9.30	9.45	9.60	9.75	9.90	10.05	10.20	10.35	6
7	10.50	10.65	10.80	10.95	11.10	11.25	11.40	11.55	11.70	11.85	7
8	12.00	12.15	12.30	12.45	12.60	12.75	12.90	13.05	13.20	13.35	8
9	13.50	13.65	13.80	13.95	14.10	14.25	14.40	14.55	14.70	14.85	9
10	15.00	15.15	15.30	15.45	15.60	15.75	15.90	16.05	16.20	16.35	10
11	16.50	16.65	16.80	16.95	17.10	17.25	17.40	17.55	17.70	17.85	11
12	18.00	18.15	18.30	18.45	18.60	18.75	18.90	19.05	19.20	19.35	12
13	19.50	19.65	19.80	19.95	20.10	20.25	20.40	20.55	20.70	20.85	13
14	21.00	21.15	21.30	21.45	21.60	21.75	21.90	22.05	22.20	22.35	14
15	22.50	22.65	22.80	22.95	23.10	23.25	23.40	23.55	23.70	23.85	15
16	24.00	24.15	24.30	24.45	24.60	24.75	24.90	25.05	25.20	25.35	16
17	25.50	25.65	25.80	25.95	26.10	26.25	26.40	26.55	26.70	26.85	17
18	27.00	27.15	27.30	27.45	27.60	27.75	27.90	28.05	28.20	28.35	18
19	28.50	28.65	28.80	28.95	29.10	29.25	29.40	29.55	29.70	29.85	19
20	30.00	30.15	30.30	30.45	30.60	30.75	30.90	31.05	31.20	31.35	20
21	31.50	31.65	31.80	31.95	32.10	32.25	32.40	32.55	32.70	32.85	21
22	33.00	33.15	33.30	33.45	33.60	33.75	33.90	34.05	34.20	34.35	22
23	34.50	34.65	34.80	34.95	35.10	35.25	35.40	35.55	35.70	35.85	23
24	36.00	36.15	36.30	36.45	36.60	36.75	36.90	37.05	37.20	37.35	24
25	37.50	37.65	37.80	37.95	38.10	38.25	38.40	38.55	38.70	38.85	25
26	39.00	39.15	39.30	39.45	39.60	39.75	39.90	40.05	40.20	40.35	26
27	40.50	40.65	40.80	40.95	41.10	41.25	41.40	41.55	41.70	41.85	27
28	42.00	42.15	42.30	42.45	42.60	42.75	42.90	43.05	43.20	43.35	28
29	43.50	43.65	43.80	43.95	44.10	44.25	44.40	44.55	44.70	44.85	29
30	45.00	45.15	45.30	45.45	45.60	45.75	45.90	46.05	46.20	46.35	30
31	46.50	46.65	46.80	46.95	47.10	47.25	47.40	47.55	47.70	47.85	31
32	48.00	48.15	48.30	48.45	48.60	48.75	48.90	49.05	49.20	49.35	32
33	49.50	49.65	49.80	49.95	50.10	50.25	50.40	50.55	50.70	50.85	33
34	51.00	51.15	51.30	51.45	51.60	51.75	51.90	52.05	52.20	52.35	34
35	52.50	52.65	52.80	52.95	53.10	53.25	53.40	53.55	53.70	53.85	35
36	54.00	54.15	54.30	54.45	54.60	54.75	54.90	55.05	55.20	55.35	36
37	55.50	55.65	55.80	55.95	56.10	56.25	56.40	56.55	56.70	56.85	37
38	57.00	57.15	57.30	57.45	57.60	57.75	57.90	58.05	58.20	58.35	38
39	58.50	58.65	58.80	58.95	59.10	59.25	59.40	59.55	59.70	59.85	39
40	60.00	60.15	60.30	60.45	60.60	60.75	60.90	61.05	61.20	61.35	40
41	61.50	61.65	61.80	61.95	62.10	62.25	62.40	62.55	62.70	62.85	41
42	63.00	63.15	63.30	63.45	63.60	63.75	63.90	64.05	64.20	64.35	42
43	64.50	64.65	64.80	64.95	65.10	65.25	65.40	65.55	65.70	65.85	43
44	66.00	66.15	66.30	66.45	66.60	66.75	66.90	67.05	67.20	67.35	44
45	67.50	67.65	67.80	67.95	68.10	68.25	68.40	68.55	68.70	68.85	45
46	69.00	69.15	69.30	69.45	69.60	69.75	69.90	70.05	70.20	70.35	46
47	70.50	70.65	70.80	70.95	71.10	71.25	71.40	71.55	71.70	71.85	47
48	72.00	72.15	72.30	72.45	72.60	72.75	72.90	73.05	73.20	73.35	48
49	73.50	73.65	73.80	73.95	74.10	74.25	74.40	74.55	74.70	74.85	49
50	75.00	75.15	75.30	75.45	75.60	75.75	75.90	76.05	76.20	76.35	50

THE NATIONAL BLANK BOOK COMPANY  
 HOLYOKE MASSACHUSETTS  
 NEW YORK CHICAGO BOSTON SAN FRANCISCO