

INDEX.

Survey Port BIK, L Azure Vista	2
Survey Cadby St Riley St N 1/4	3
" Bldgs La Jolla Blvd to Condo Hortensia S.D. + Condo	4-13
Survey for Prop. Row. - Taylor & Wiatman to	14-40
Re X Sec Alley BIK 1st. P Beach Paves to Case Missouri to Pittman	48-52
X-sec Franklin Ave - Francis to 36 ^B	52

Survey Por. B1K L
Azure Vista

C.H.S.
Be99
R. Sisson
altman

12-4-51
W.O. 20006

Map 1981 - sheet #3

G. 138 - P12 + 14

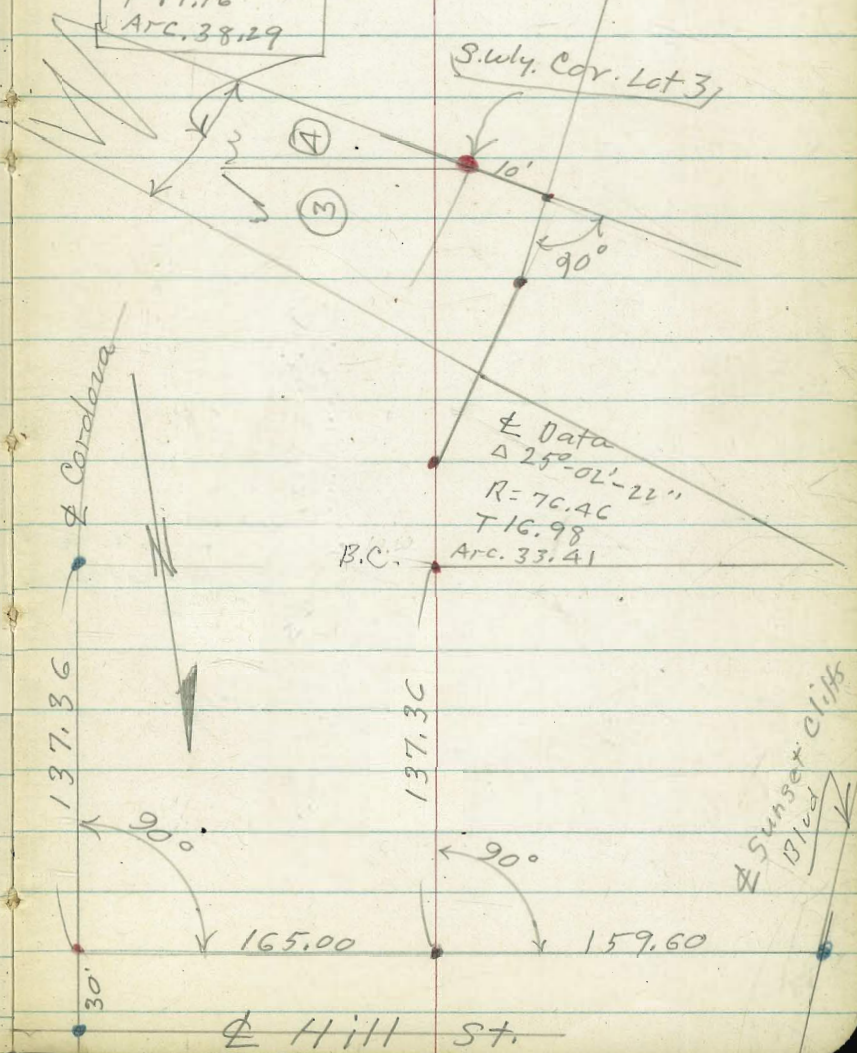
• Fd. L&T. G.-138- P12+14

• = set nail in Pav.

• = set pipe. = S.W.ly. Cor. Lot 3 B1K L.

INDEXED
PLW
DEC 7 1951

Alley & Data
 $\Delta 5^{\circ} 45' 28''$
R 381
T 19.16
Arc. 38.29



Sunset cliffs
Blvd

Survey Couby St. Riley St. North West.

Dec. 18. 51

3

H. Simon
Garber
Rorer
Fritz

Fd 2" Pipe +
Disc. R.F. 32

357.71
Greenwood St.
Closed

Fd 2" Pipe +
Disc. R.F. 32

125.75

24

89°
49'

45'

56'

First
Couby
Midway Drive

35'

West lawn

25

4

25'-25'

20'

20'

20'

20'

20'

20'

20'

20'

20'

20'

20'

20'

20'

20'

20'

20'

20'

20'

20'

20'

20'

20'

20'

20'

20'

20'

20'

20'

20'

20'

20'

20'

20'

20'

20'

20'

20'

20'

20'

20'

20'

20'

INDEXED

Law

DEC. 21 1951

26

3

27

4

28

5

148.75

148.75

Riley St.

R.S.

2/12/63

SET R/W MARK DISC.

First Couby

50' 50' 50'
SET P.K. NAILS + C.E. DISCS
2/12/63 R.S.

80°
90°
90°

58.95'

58.95'

387.15

Couby St. 170' 0" 0"

2/12/63
R.S.

LOCATION OF BUILDINGS
ALONG LA JOLLA BLVD.

Witherby to Conde

6-13-52

- denotes found Conc. Mon
- " " Lt. or disk
- " " 1/2 hub + tack
- ◻ " " Set 1/2 + disk
- " " disk in Conc.
- " " Nail
- x " " cut cross in c. or walk, etc.

$\Delta 9^{\circ} 52' \text{ Rt.}$

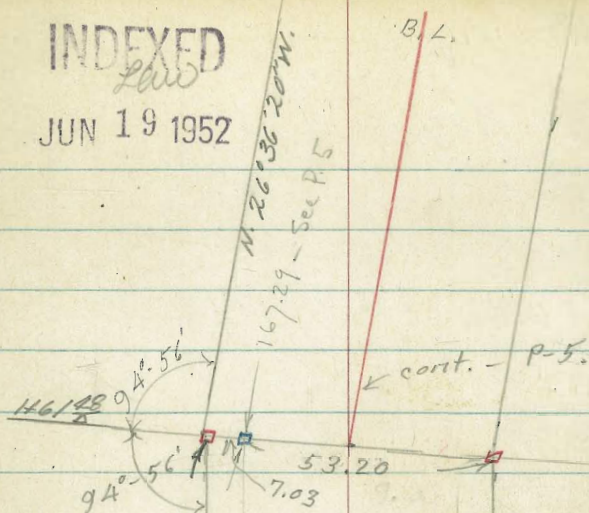
Tie Pt. sheets

T.P. Book #1 p 13-15 + 51

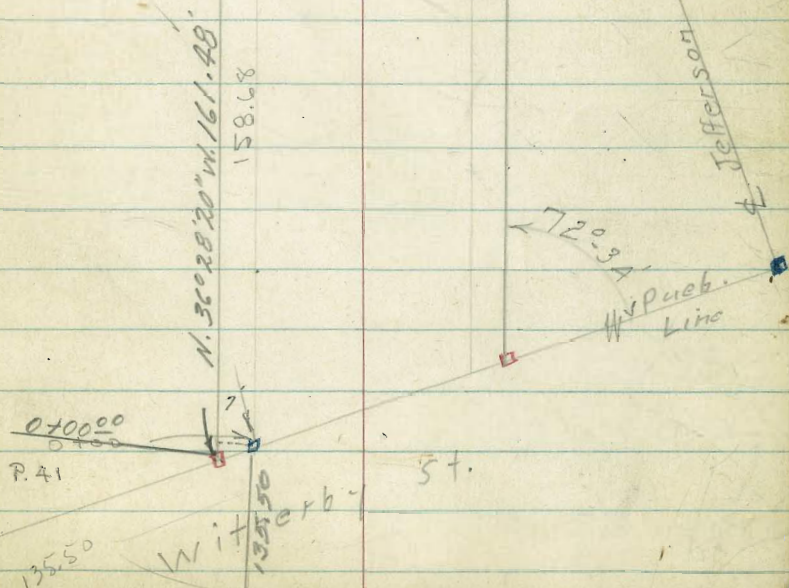
INDEXED

Law

JUN 19 1952

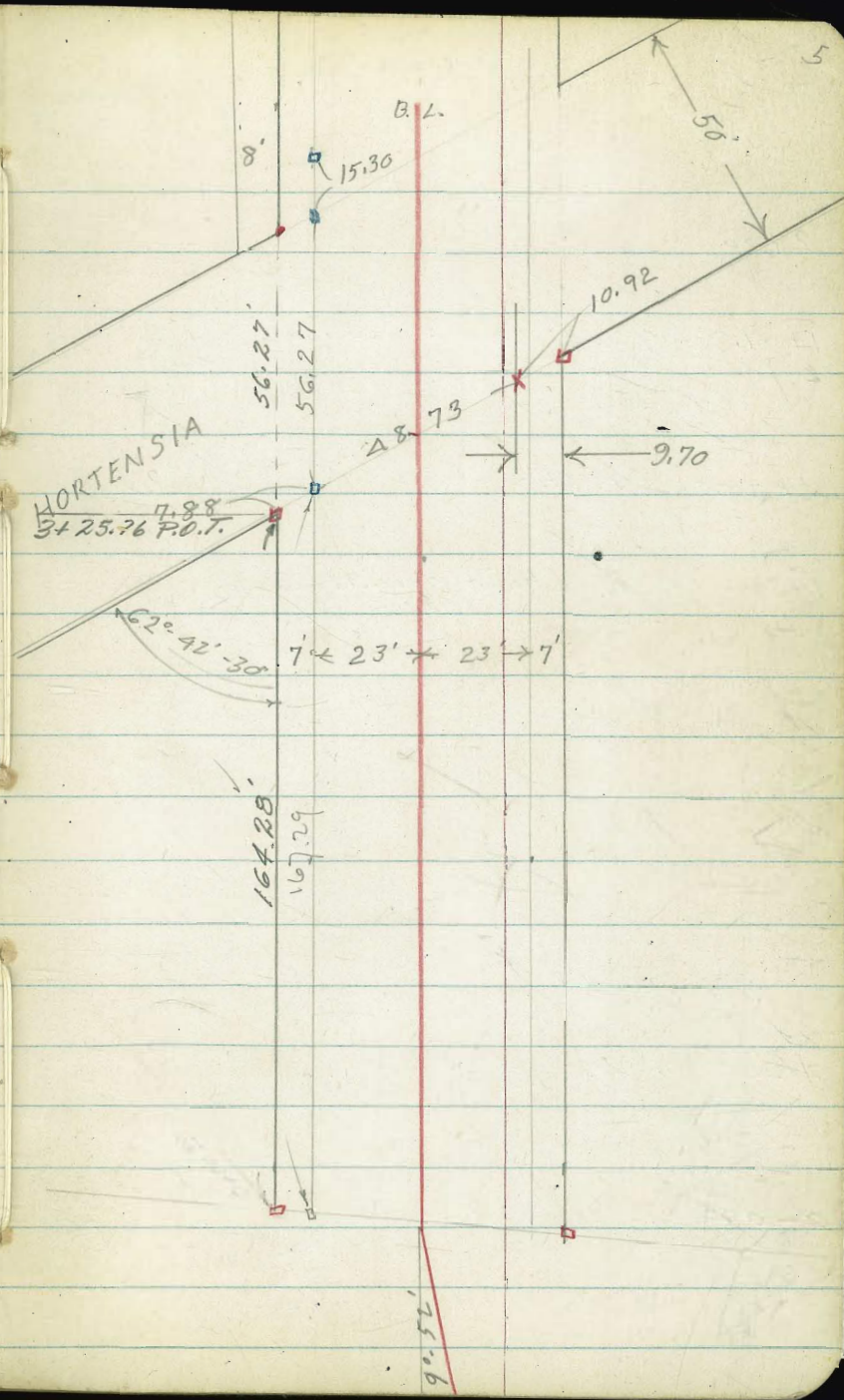


$\rightarrow 7' \leftarrow 23' \times 23' \rightarrow 7'$



La Jolla Blvd

5



La Jolla Blvd

B.L.

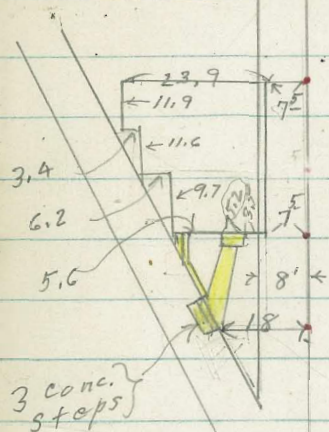
6

2+00

1+81.3 - 7⁵ Lt. = end house

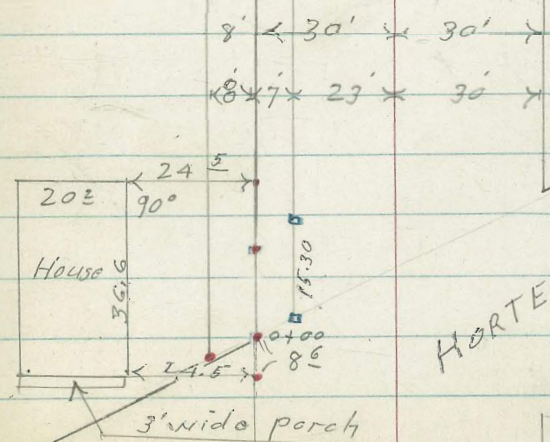
1+48.5 - 7⁵ Lt. = start stucco house

1+30 - 18' Lt. = start 3' wide walk



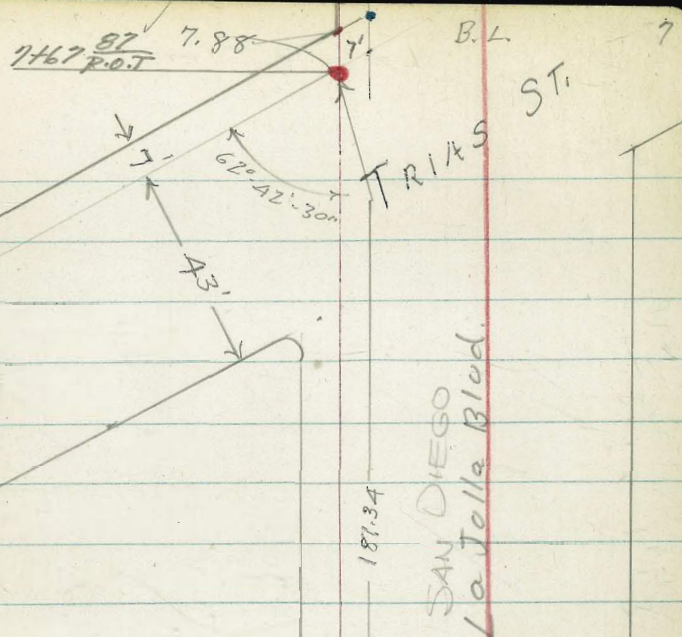
0+28 - 24⁵ Lt. = end house

0-08⁵ 24⁵ Lt. = start frame house

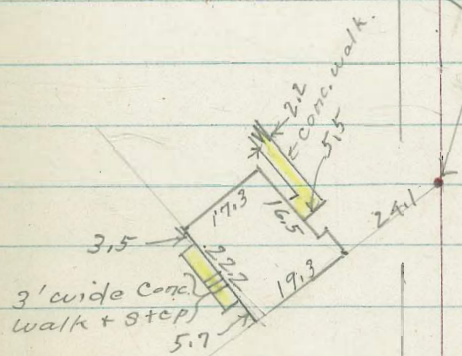


HORTENSIA

La Jolla Blvd



start Conc. Stucco house.
2404⁵ 24' Lt on $\Delta +57^{\circ} 10' Lt. =$
 $\Delta 117^{\circ} 10' Lt$



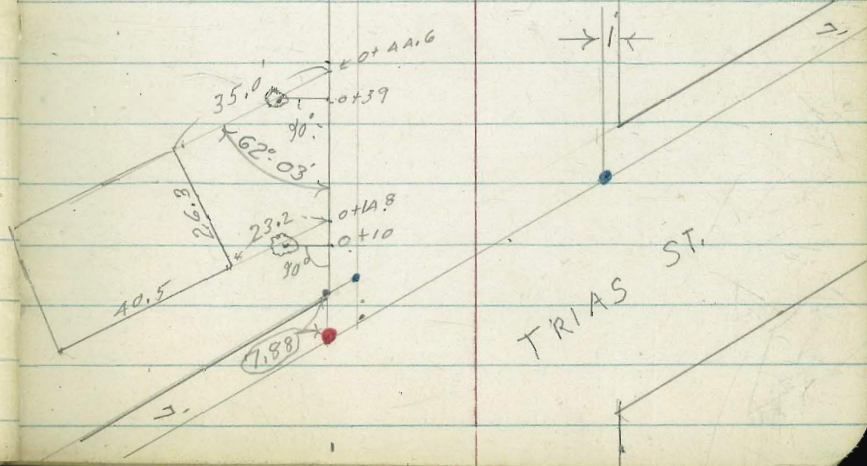
La Jolla Blvd

8.2.

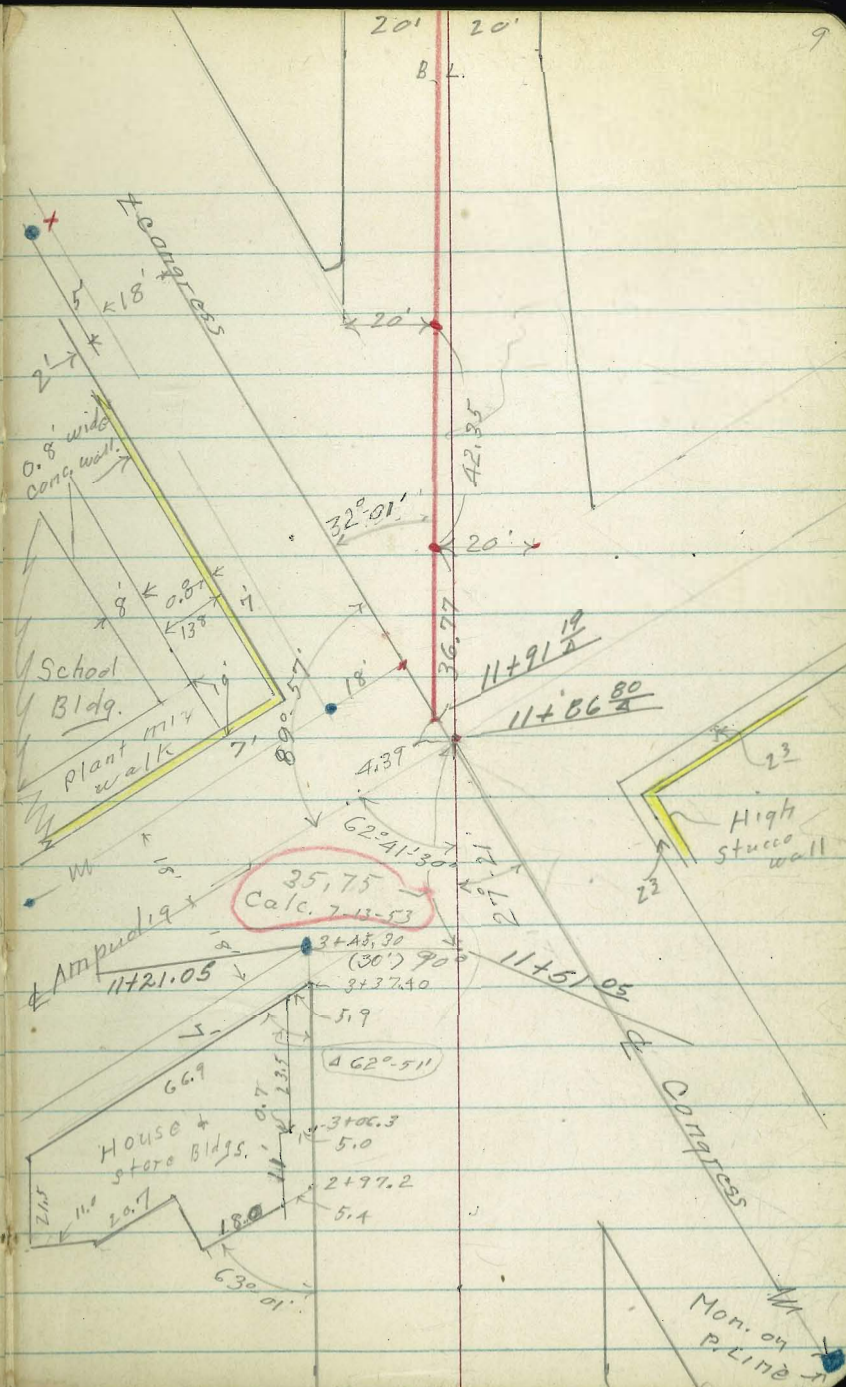
8

Congress St.

frame house.
0+44.6 - 35' Lt. on Δ of 117° 57' Lt. = end
0+39 - 10' Lt. = ctr. 30" diam palm
house
0+14.8 - 23.2 Lt. at Δ of 117° 57' Lt. = start frame
0+10 - 9' Lt. = ctr. 30" diam palm.
0+00 = N.W.ly. Prop. Trias + La Jolla Blvd.

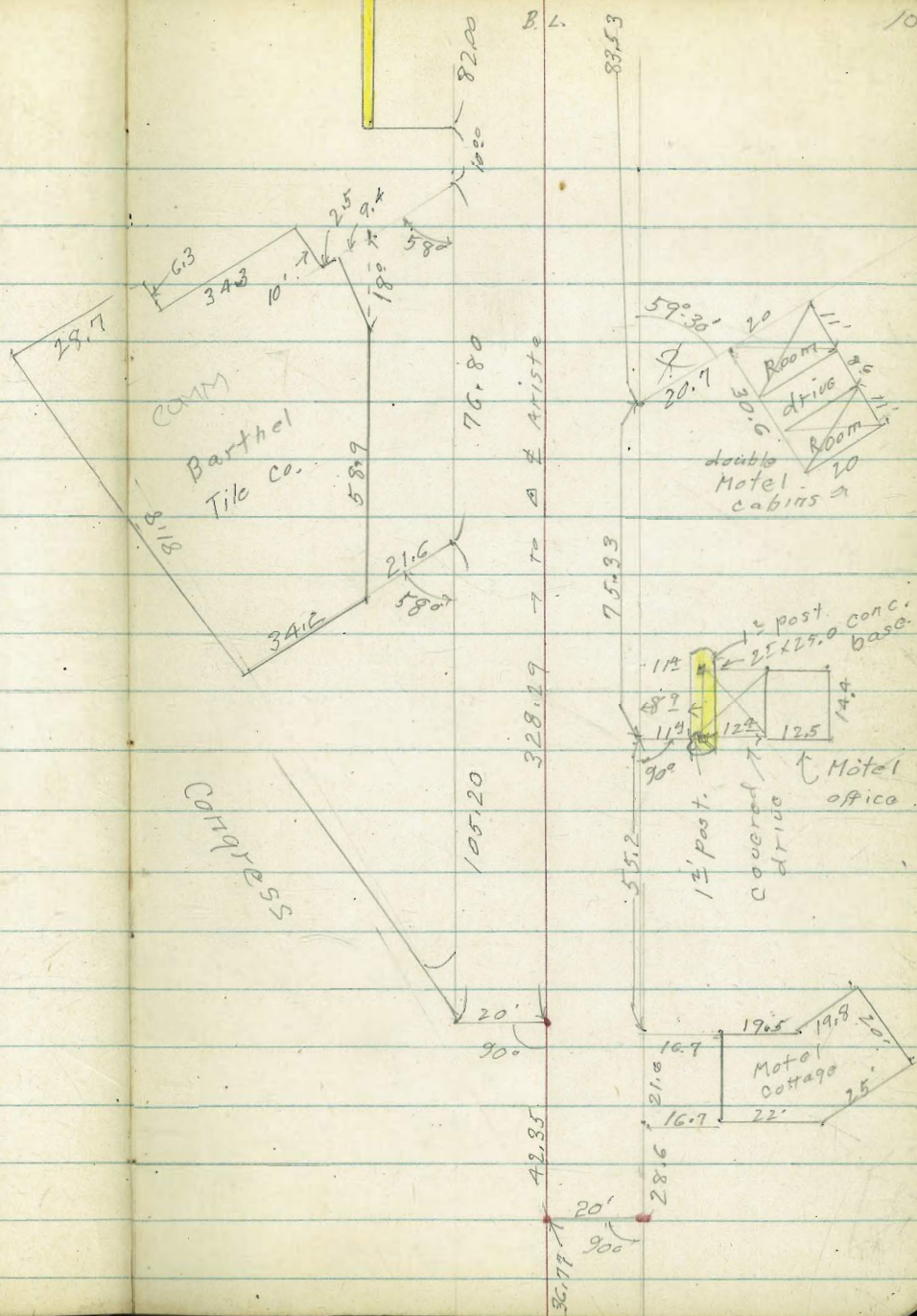


La Jolla Blvd



$3+45.3 = \text{Fd prop.} + 7' \text{ L} + \text{D. (as per tie sheet)}$
 $3+37.4 - 5.9 \text{ Lt. at } \Delta \text{ of } 117^\circ 09' \text{ Lt. = End. Bldg.}$
 $3+06.3 - 5.0 \text{ Lt.} \left. \begin{array}{l} \text{to 5.0 Lt.} \\ \text{to 5.0 Lt.} \end{array} \right\} = 0.7' \text{ jag in Bldg.}$
 Bldg. = House + stores + storeroom.
 $2+97.2 \quad 5.4 \text{ Lt. at } \Delta \text{ of } 116^\circ 59' \text{ Lt. = start from}$

La Jolla Blvd

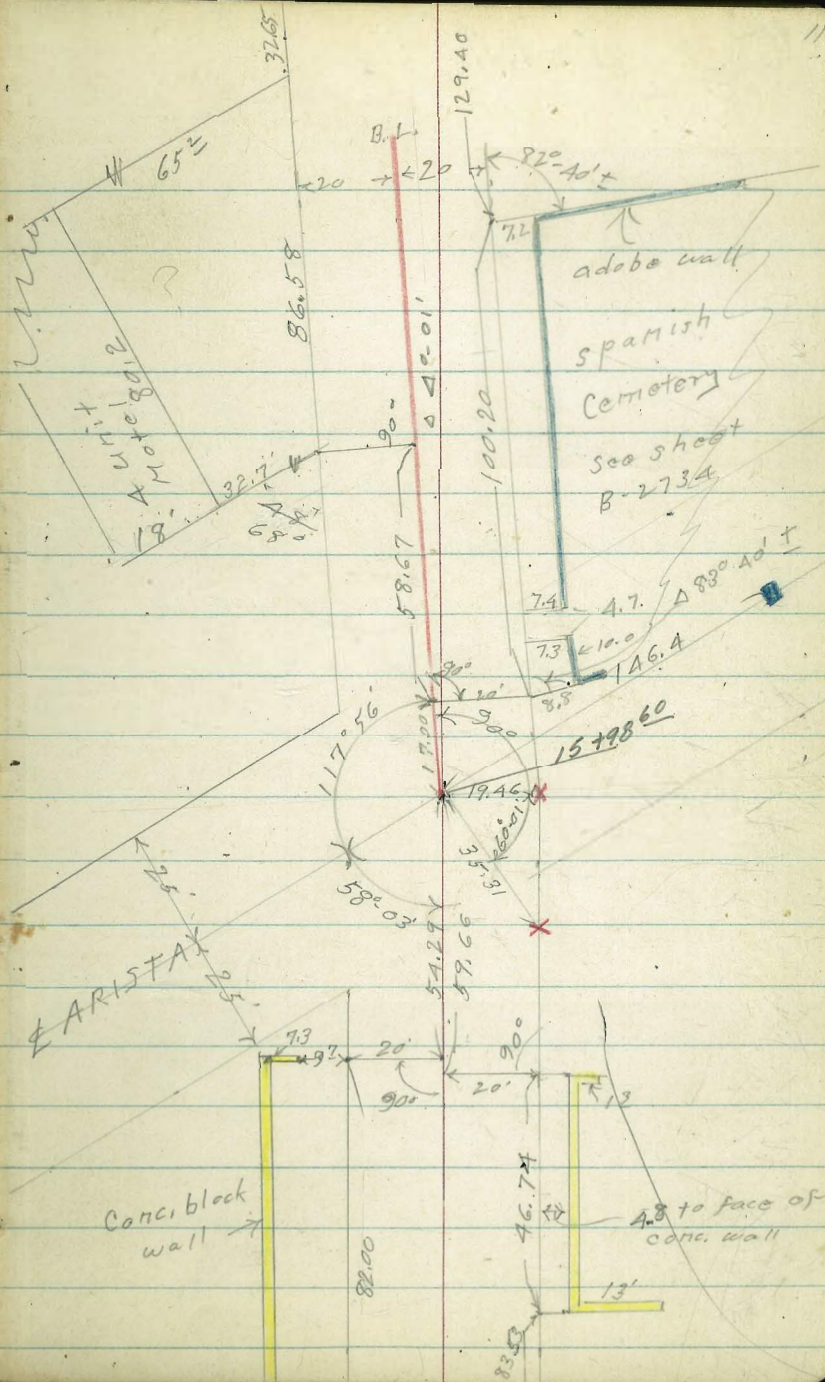


La Jolla Blvd

Starting at S.W. Cor. of Cemetery there runs N.W. a row of 5 tall palms spaced 35' apart + on a line which is 26' Nt of center base line, or 6' Nt of 20' offset line
 E ARISTA: $\Delta 4^{\circ} 01' 14''$

GOWIE
 12/22/88
 RW

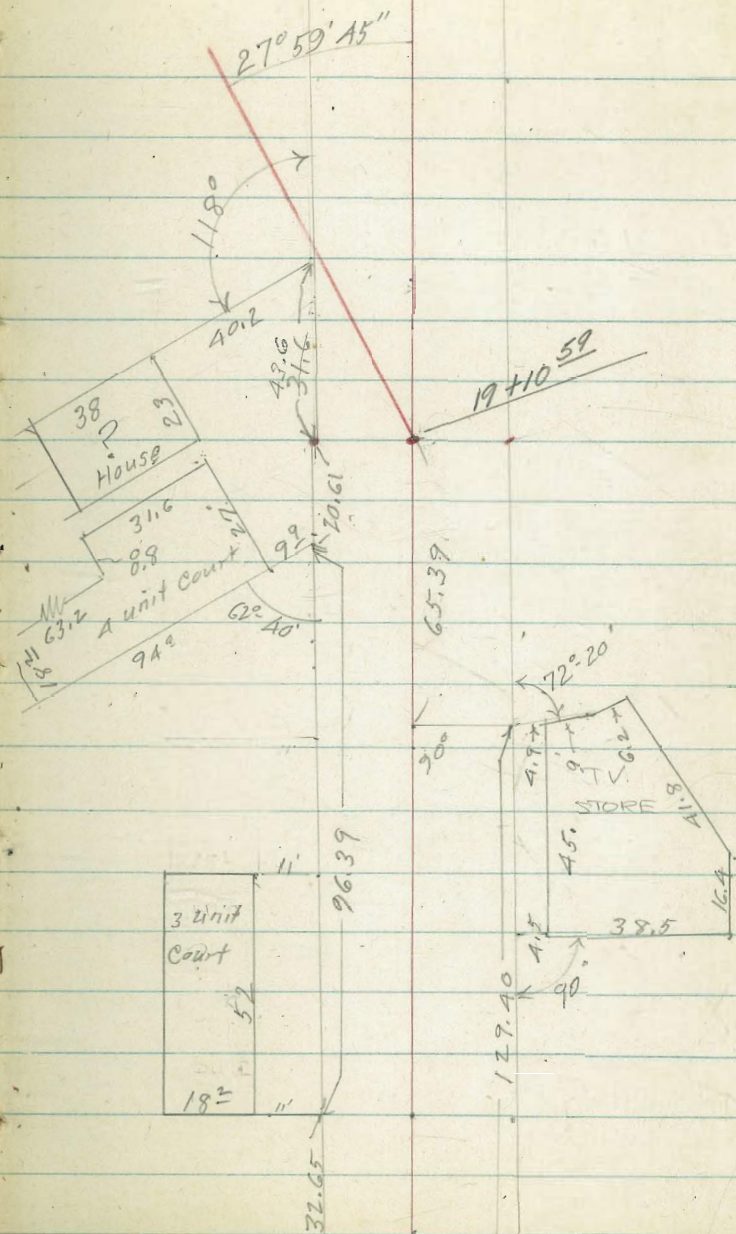
3' tie back
 on city 2' line
 Congress
 + Arista



La Jolla Blvd.

See P-13 for ties at Conde St.

$\Delta 27^{\circ}59'45''$ Lt.
+ La Jolla Blvd + + San Diego Ave



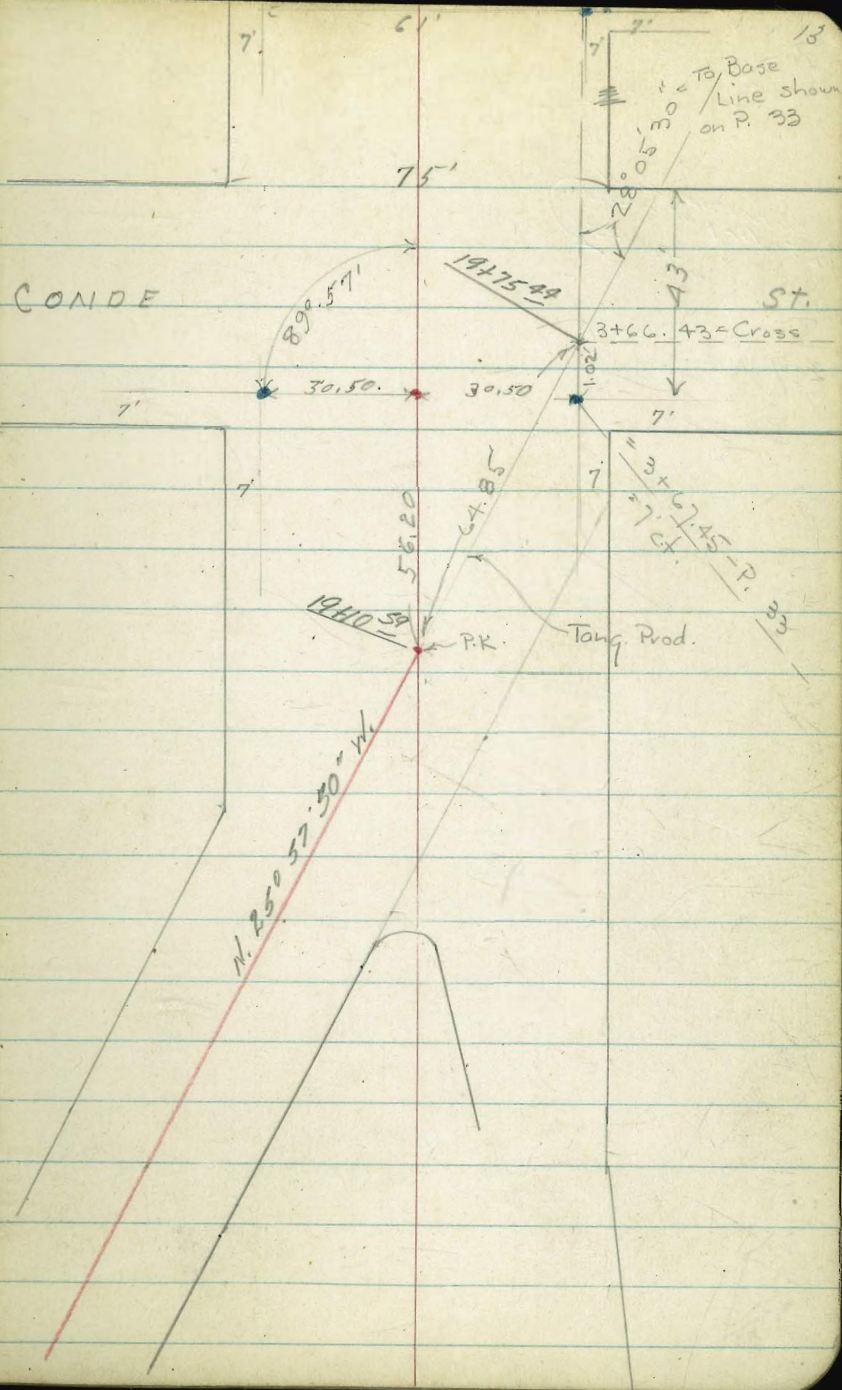
B.L. *20 ←

12

B.L. *20 →

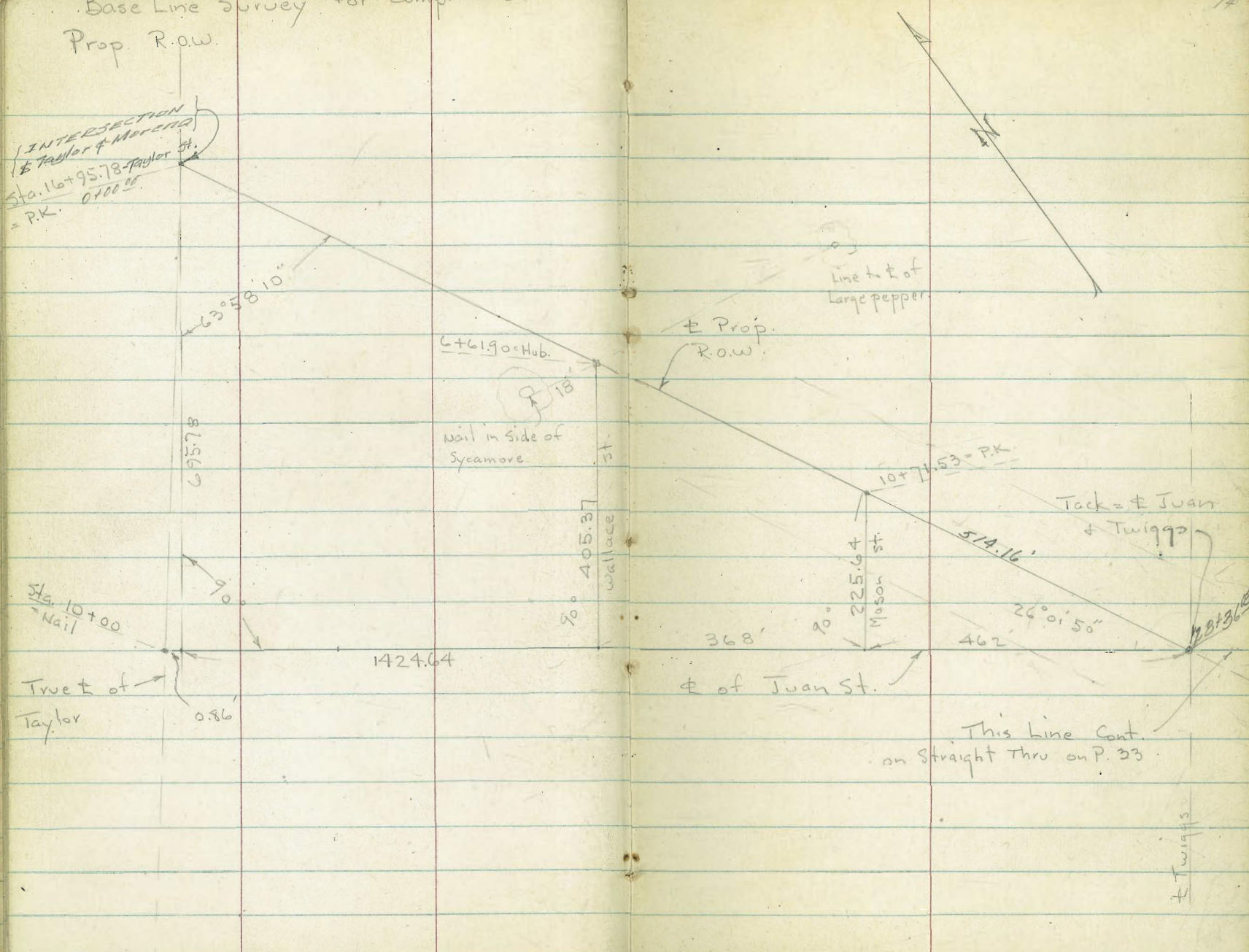
La Jolla Blvd

± San Diego Ave. $27^{\circ}-59'-45''$ Lt.
± La Jolla Blvd



Base Line Survey for Comp. & of
Prop. R.O.W.

INTERSECTION
of Taylor & Morena
Sta. 116+95.78 - Taylor St.
= P.K. 0+00.00



Line to E of
Large pepper

E Prop.
R.O.W.

6+61.90 = Hub.

Nail in side of
Sycamore

Wallace
St.

10+71.53 = P.K.

Tack = E Juan
& Twiggs

Sta. 10+00
= Nail

True E of
Taylor

90°

368'

90°

Mason
St.

26° 01' 50"

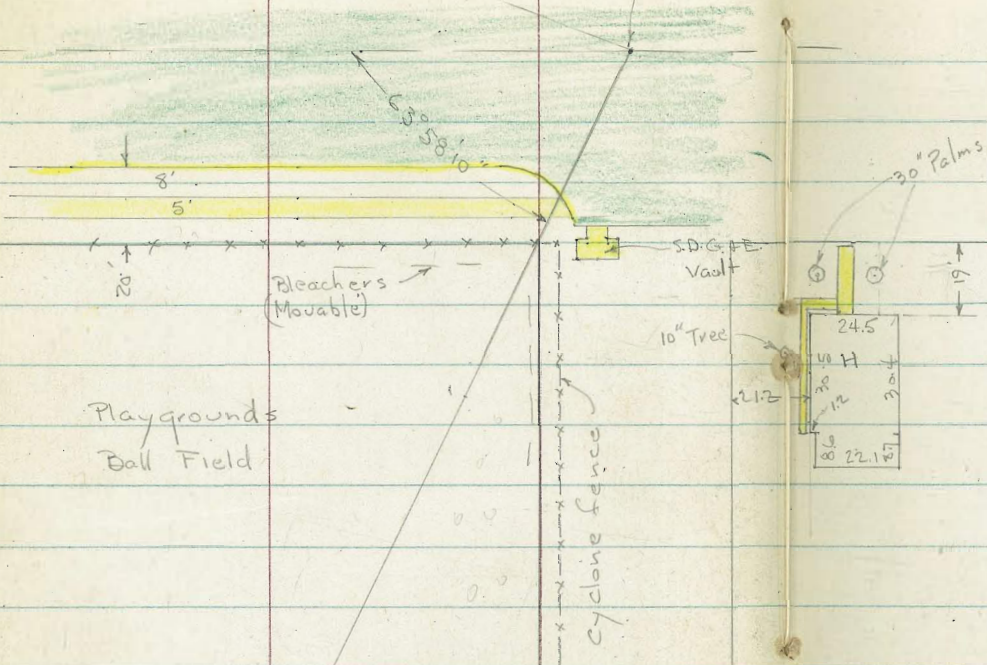
E of Juan St.

This Line Cont.
on Straight Thru on P. 33

E Twiggs

Note: Computed Line
is .08 S. of P.K.

$0+100 = P.K.$
 $= 16+95.78$



Playgrounds
Ball Field

2

3



Lt. † Rt.

X-Sect. along † of Prop. Row.

sketch - P. 15
w.o.

1+05.5 - 16.2' Lt. = † Tall light pole

1+00 - Sect. at 90° to † 6.6 7.4 7.2

0+88 - 37.5 - Rt. = † Tall Light Post. 12" Diam. 50 50

0+87.4 = Wire back stop for Home plate

0+67.5 = Back of Bleachers to ball park.
Box - 4" Conc. wells.

0+56.5 - 11.5' Lt. = † 6" Vent pipe - in 14x26

0+54.5 - 11' Lt. = † P. pole # P 2899

0+53.7 - 0.7' Lt. = † Tel. pole # 578845-H

0+51 - 19' Lt. = † of Ely. edge of Gas G. Vault.

6.28
19 = Conc. Top.

outs. along walk

0+48 = Back edge of walk + end of cb. 6.78 6.23 6.30 6.22 6.82 6.84 6.69

Top 41.8
end loc. gut. 25 .94 9.3 Top-end.

0+39.3 = † Crosses curb on Ret.

0+33.3 = E. curb line - outs on cb. line 6.90 6.20 6.10 6.08 6.09 6.72 5.91 6.56

Top = P.C. 53.9 20 16 Top = 50
gut. gut. P.C. gut. Top

0+00 = P.K. - Sta. 16+95.78 on R Taylor. 6.94 6.82 6.68

50 outs along † of Taylor. 50

B.M. = Rad. Hub. by Rosecrans + Whitman 6.91

Actual Elev. shown.

4+00

8.4
1008.3
50

8.8

8.3
506.0
100

3+50

Golf Course

8.1
1008.2
50

8.2

8.2
507.8
100

3+41.5 = Cross-wire fence = end Ball Field + Beg.

3+39 = 5.8' Lt. = ± 8" Light Post. 12' High

3+00

8.6
1008.2
50

8.2

7.9
507.6
100

2+50

8.2
1008.1
50

8.0

7.9
507.5
100

2+06 = 80.2' Lt. = ± 12" Tree

2+00 = 67.4' Lt. = ± 12" Tree

7.9
1008.1
50

7.8

7.8
507.5
100

1+92 = 61.9' Lt. = ± 15" Tree

1+91 = 54.6' Lt. = ± 9" Tree

1+87 = 79.4' Lt. = ± 12" Tree

1+75 = 39.6' Lt. = ± Tall Light Post.

1+73 = 53.8' Lt. = ± 10" Tree

1+67 = 66.7' Lt. = ± P. pole # P-2875

1+63 = 58.2' Lt. = ± 12" Tree

1+50 = 55.4' Lt. = Cyclone fence

7.0
1007.6
50

7.7

7.5
507.2
100

1+49 = 41.8' Lt. = ± 10" Tree

1+45 = 33.4' Lt. = ± 12" Tree

Lt.

±

Rt.

17

		Lt.	ϕ	Rt.	18	
8+00		15.7 100	13.6 50	14.1	13.1 50	12.0 100
7+68-62'	Rt. = ϕ 18' Clump of Trees					
7+50		15.4 100	13.4 50	11.6	11.9 50	11.2 100
7+00		13.1 100	12.3 50	11.5	12.2 50	10.3 100
6+51-15'	Rt. = ϕ 30" Sycamore					
6+50		11.7 100	10.8 50	10.1	9.3 50	8.5 100
6+31-105'	Rt. = ϕ 18" Acacia					
6+31-88'	Rt. = ϕ 16" Acacia					
6+13-71'	Rt. = ϕ 16" Acacia					
6+00		11.1 100	9.9 50	9.4	8.8 50	8.0 100
B.M. on Aub. - Sta. 6+61.90	10.45					
5+73-74.3	Rt. = ϕ 14" Acacia					
5+78-54.4	Lt. = ϕ 18" Pepper					
5+50		9.9 100	9.4 50	7.8	7.7 50	7.0 100
5+00		9.0 100	9.8 50	8.4	7.1 50	6.9 100
4+50		9.1 100	8.3 50	8.3	6.7 50	6.3 100

Cont. on P. 21

1+66.6 - 19' Rt. = \pm 16" Olive

1+50 = 10+71.53 - on Row. \pm

1+01 - 12.2' Lt. = \pm P. pole # 4152 = B.M. spike 27.92

1+00

0+77 - 15.5' Lt. = \pm 18" Euc.

0+50

0+00 is 150' s. of Row. \pm at Sta. 10+71.53

Run Thru Mason St. - See Sketch - P. 20

Req. Sections Normal to Base Line

10+45 = Toe of Bank at \pm

10+28 - 49' Lt. = \pm 24" Euc.

10+00

9+50

9+03 - 22' Lt. = \pm 22" Sycamore

9+00

8+59 - 8.4' Rt. = \pm 24" Sycamore

8+50

Lt.

\pm = Base Line "A"

Rt.

19

21.0	27.5	27.42	27.48	27.49	27.83	28.2
23	10	5		11.8	Top	22
Toe		edge		gut.		

22.7	26.9	26.91	26.88	26.69	27.20	27.8
20	12	6		11.7	Top	22
Toe		edge		gut.		

22.1	26.5	26.49	26.49	26.51	27.12	
21	14	6		11.6	22	
Toe		edge		gut.	on Dr.	
				11.2 Dr.		

22.9	26.2	26.16	26.10	26.03	26.52	27.1
21	15	7		11.6	Top	22.7
Toe		edge AL.		gut.		along House

30.69	28.92	28.6	20.1	21.4	19.1
100	51	38		50	20
	edge AL.	Top			
	Proc				

26.3	17.8	20.2	18.3	17.2
100	50		50	100
	Toe of bank			

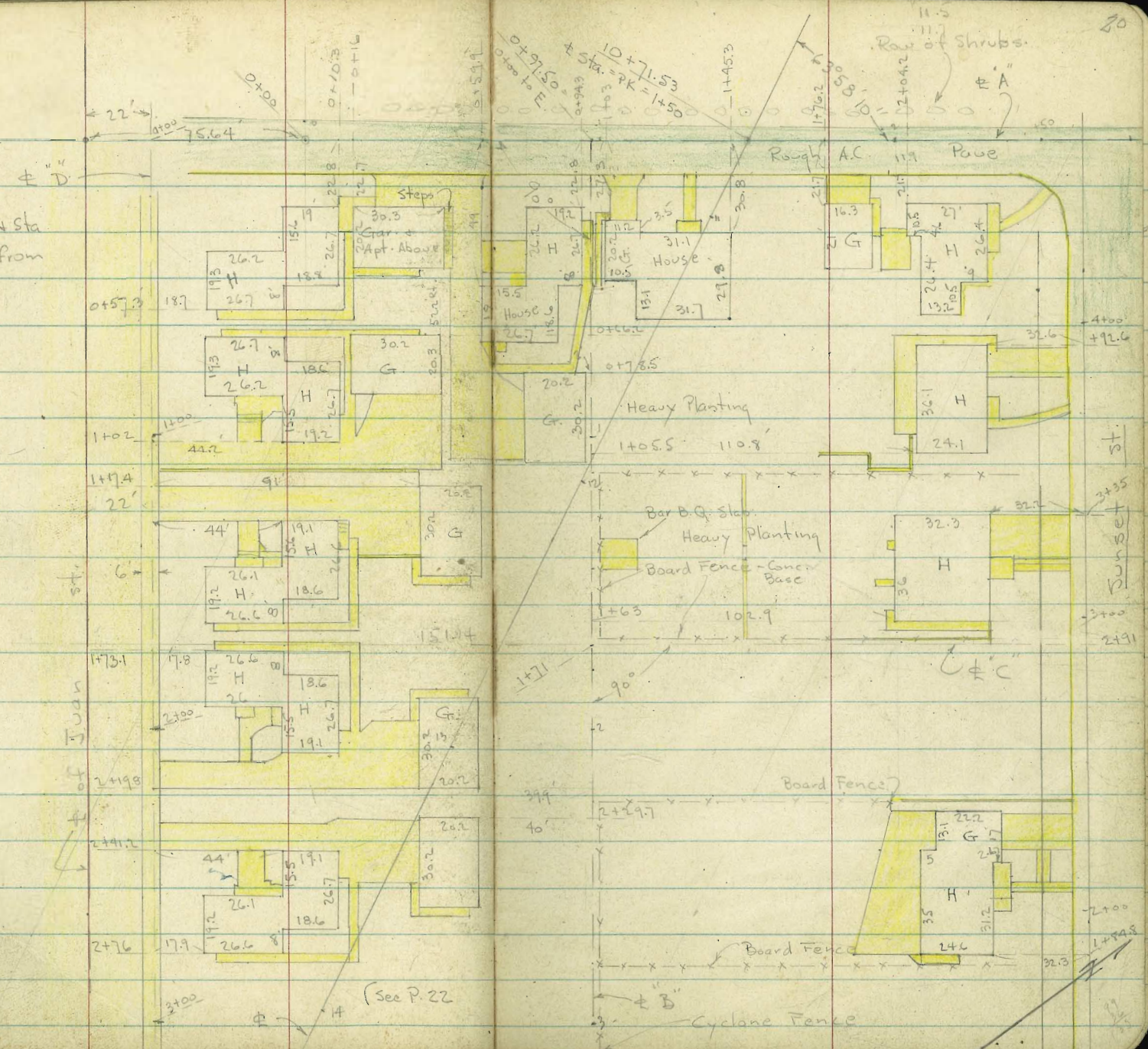
19.7	16.6	17.6	17.0	15.8
100	50		50	100

17.3	14.5	15.6	16.1	14.8
100	50		50	100

16.7	14.1	14.2	13.9	13.7
100	50		50	100

H = House
G = Garage

Note: outs + Sta
To Houses are from
+ "D"



Lt. ± = "B" Rt. .21

3+35

59.5 57.8 49.4 44.0 43.1 42.5
20 20 40 80 120
R/W
E

2+80

53.9 50.6 48.2 45.9 41.7 40.1 39.4 37.4
50 25 15 35 60 85 110
R/W
E

2+25

47.8 44.5 41.8 40.6 37.7 37.3
80 40 15 40 90

1+71

32.4 36.0 35.5 35.6 34.79 34.25
100 50 50 81.6 100
edge conc WALK
WALK

1+12

37.1 33.4 31.6 30.9 30.57 30.90
120 80 40 31.7 100
edge conc drive

0+63

34.2 30.0 29.2 29.0 28.72 29.2
135 100 50 48 100
edge Conc.
Dr.

Req. Sections Normal to ± "B"

End Sections on "A" ±

2+59.5' = Sly. Cb. Line of Sunset St.

31.2 30.98 31.01 30.84 33.30 33.81 37.30 37.88
10 5 11.7 23 63 22
edge gut. Top = P.C.I. gut Top

2+38 = opp. P.C. of Ret. on Rt.

17.5 30.2 30.07 30.04 29.88 30.30 31.1
44 9 5 11.7 Top = P.C.I. 22
Toe edge gut.

2+00

18.8 28.7 28.64 28.70 28.58 28.83 29.2
34 10 5-edge 11.9 Top 22
Toe 9.4

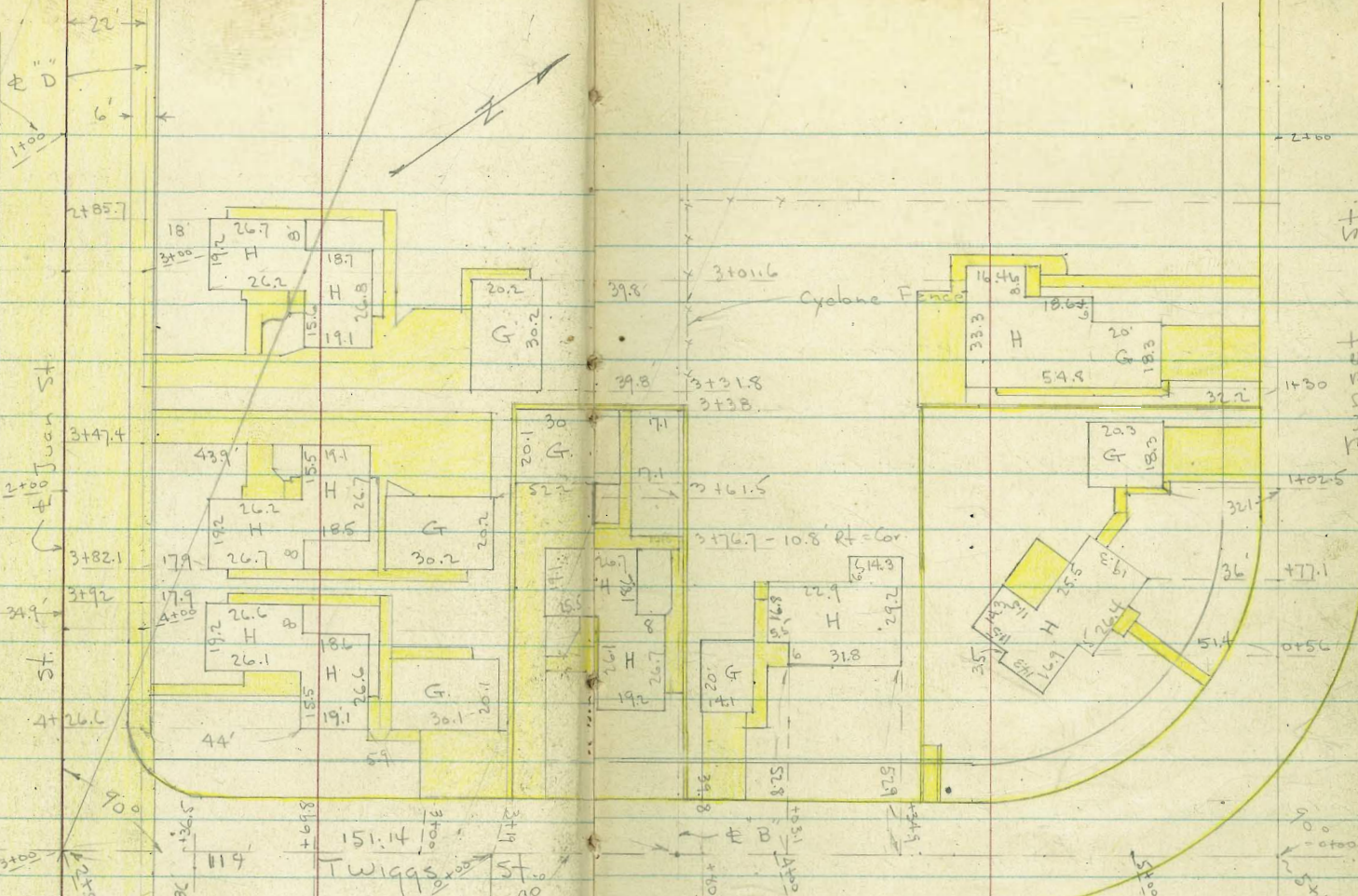
± = "A" →

Sta. for Juan-Sect.

See P. 20



22



See P. 26

Juan

1+59 - 25.4 Rt. = ♀ 12" Pepper

1+59 - 27 Lt. = ♀ 16" Pepper.

1+50

1+27 26.0 Rt. = ♀ 18" Pepper Tree

1+26 20.2 Rt. = ♀ Power pole # 2621

1+04 25.9 Lt. = ♀ 18" Pepper Tree

1~

0+50

0+47 26.8 = ♀ 18" Pepper tree

0+23.2 19.9 Lt. = ♀ Telephone pole # 415111H

0+00 = 300' West of ♀ Twigg's

Begin Sections Normal to ♀ Juan

End Sections of "B" ♀

4+47.1 = West curb line Twigg's

3+87

Sections Normal to ♀ "B"

Lt.

♀ "B"

Rt.

73

40.7	40.60	40.68	40.35	40.10	40.36	40.69	40.68	40.7	40.8
25	24	19	18		18	19	24	25	50
	edge	Top	Got.		Got.	Top	edge		
	walk						walk		

38.2	38.18	38.16	37.81	37.75	37.94	38.20	38.22	38.03	38.8
25	24	19	18		18	19	24	25	30
	edge	Top	Got.		Got.	Top	edge		
	walk						walk		

35.8	35.83	35.80	35.45	35.23	35.39	35.59	35.69	35.7
25	24	19	18		18	19	24	25
	back	edge	Top	Got.	Got.	Top	edge	
	walk						walk	

33.3	33.26	33.31	32.91	32.77	32.94	33.31	33.27	33.3
25	24	19	18		18	19	24	25
	edge	walk	Top	Got.	Got.	Top	edge	
							walk	

51.06	48.24	46.78	46.03
59.62	47.72	46.32	45.48
	30	80	135

53.31	53.2	48.64	45.7	45.8	45.0
on conc	10.8	5.0	6.5	11.0	13.5
walk	along	19			
	side	drive			
	house				

Juan St
Cont

Lt.

±

Rt.

24

4+75 - 19.8' Rt. = ± P. pole # 2551

4+50

62.6 55.60 55.62 55.25 55.04 55.26 55.65 55.66 55.6 49.29
30 24 19 18 24 18 19 24 28 40
edge Top gut Top edge conc. walk

4+00

56.9 53.10 53.10 52.72 52.53 52.71 53.10 53.15 53.15 49.15
31 24 19 18 18 19 24 31 40
edge Top gut Top edge conc. walk

3+73.5 - 19.8' Rt. = ± P. pole # 2581

3+50

54.09 50.69 50.67 50.32 50.12 50.25 50.60 50.63
25.3 24 19 18 18 19 24
Top edge Top gut Top edge

3+30.5 - 19.4' Rt. = ± F.H.

3+25 - 19.4' Lt. = ± Tel. pole # 4151124 = E.L.

54.05 49.45 49.39 49.02 18.92 49.07 49.35 49.33
25.3 24 Top 18 18 Top = 24 = edge
Top edge = PC 1 gut Top PC.
conc wall

3+00 = ± Twigggs

47.91 47.80 47.70 47.75 47.58
25 18 18 25

2+75 = w.L. Twigggs

BM = 47.05

47.19 47.05 46.78 46.46 46.57 46.94 46.91
25 20.7 18 19 24
walk Top gut Top = PC edge

2+72 = 20' Rt. = ± P. pole # 2601

2+65.5 = opp. P.C. on Lt.

46.65 46.55 46.18 45.93 46.11 46.38 46.50
24 Top 18 19 24
edge walk PC 1 gut Top edge

2+30.5 = End Roll type cb + Reg. Reg. on Lt.

2+08 - 38' Rt. = ± of 7.4' Diam. Oil tank?

50.78
38 = Top of Tank

2+07 - 25.7' Rt. = ± Pepper

2+06 - 37' Lt. = ± 18" Pepper

2+00

43.22 43.17 42.82 42.74 42.85 43.23 43.28 42.6 42.6
24 19 18 18 19 24 50 75
edge Top gut Top edge walk

1+75 - 20' Lt. = ± P. pole # J.P. 2614

Juan St.
cont.

Lt.

Rt.

25

Harney + Juan.

Set B.M. = \square on end of cb. - S.W. Ret.

64.46

6+50.34 = \pm

66.08 65.12 65.06 64.95 64.93 64.57
50 25 18 18 25

6+32.3 - 26.7 Rt. = \pm P. pole # 4098

6+25.34 = w.L. Harney St.

64.19 64.15 63.83 63.64 63.80 64.14 64.14
24 Top 18
edge Reg. gut. 18 Top 24
cb. (Reg. cb.) edge

6+14 - 19.5 Lt. Tel. pole # 415114-H

6+12 - 29 Rt. = \pm oil Tank - 5' Diam. 65.95 = \pm

6+00

67.1 63.00 62.97 62.59 62.38 62.60 62.97 62.95 59.49
35 24 19 18 18 19 24 40
edge Top gut. gut. Top edge

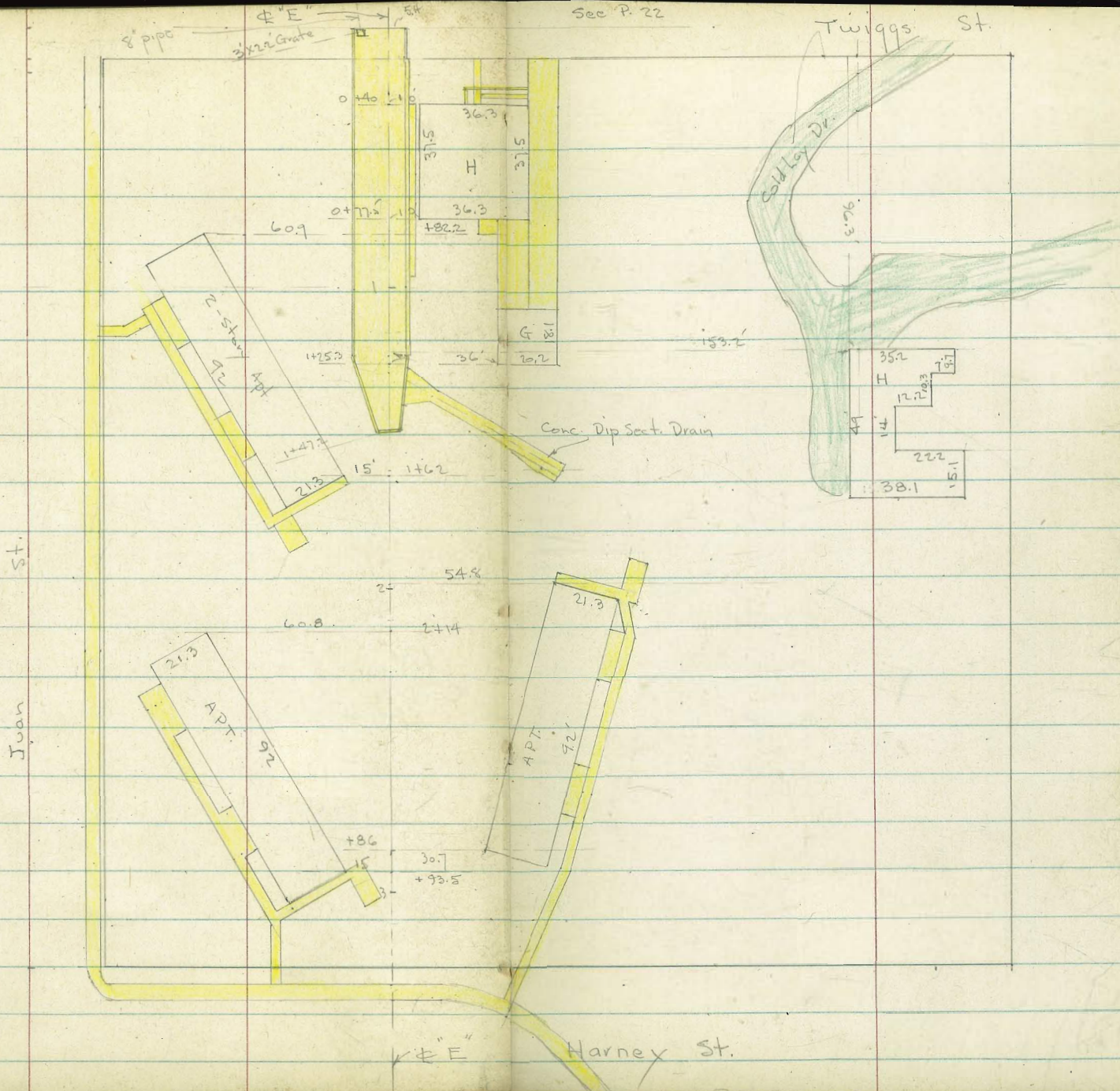
5+50

67.3 60.49 60.49 60.13 59.93 60.09 60.44 60.50 59.08
33 24 19 18 18 19 24 40
edge Top gut. gut. Top edge walk

5+00

66.4 58.08 58.06 57.66 57.47 57.64 58.02 58.06 59.15
30 24 19 18 18 19 24 40
Top edge Top gut. gut. Top edge walk
Bank

4+76 - 19.5 Lt. = Tel. pole # 523675-H



Twiggs St

117

180

0+00

Φ G

Φ F

0+40.8

San Diego Ave

A PT.

APT.

APT.

112'

112'

112'

A

1000'S

1+52.8

43'

21.3

21.3

44.8

1+97.4

21.3

APT.

112'

21.3

A PT.

112'

1+97.4

43'

21.3

APT.

112'

21.3

APT.

112'

44.8

1+97.8

3+09.4

3

3

3

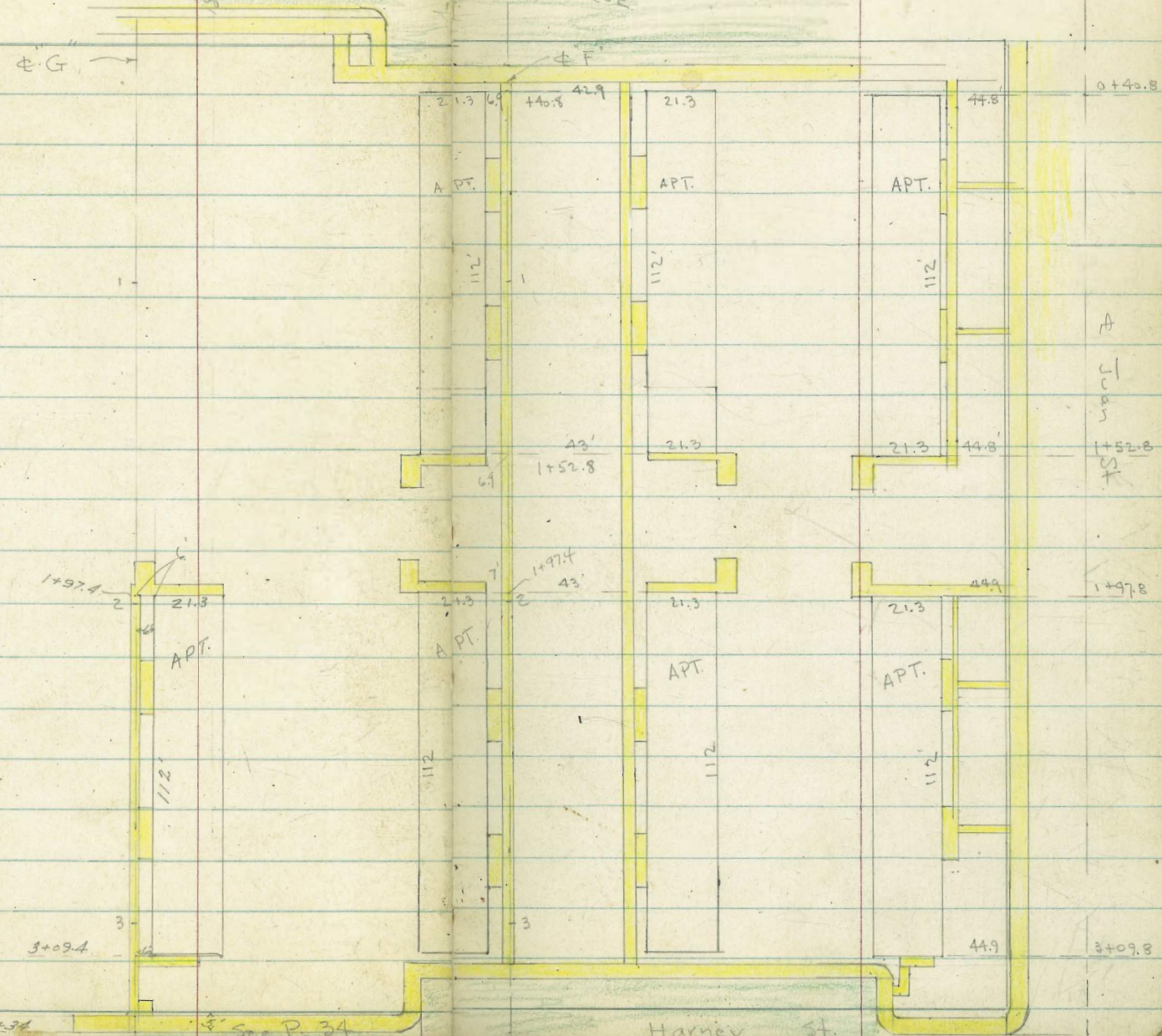
44.8

3+09.8

3+34

Sec P. 34

Harney St.



Twigg's Sect.
cont. = Bot

+ Beg. Sunset sections

29

T.P. on Disk - 5' ht. 2+82

67.38'

1+82

59.8 65.2 67.32 66.70 66.84 67.12 67.62 67.7
75 25 Top 5 25.2 Top 35 Toe
gut. gut.

1+25

64.1
105

68.1 71.3 73.80 73.24 73.39 73.50 74.13 74.5
65 25 Top 5 25.1 Top 35
gut. gut. Toe

0+95 = Prop + Cb. PC

67.2
105

71.7 75.0 77.14 76.52 76.63 76.76 77.46 78.1
65 25 Top 5.3 25 Top 36=Toe
gut. gut.

0+60

76.7 78.73 78.16 78.41 78.29 78.97 79.9
40 Top 14.8 .18.6 Top 30=Toe
gut. gut.

0+25

77.16 - 78.08 78.66 79.0 80.6
25 gut. 2.7 Top 10 =Toe

0+00 - Sect 90° to E to W. - in Sunset st.

75.60 78.3 87.8
32.6 15
gut. in Dr.

5+40 = Ang. Pt. - 90° = 0+00 to W.

BM. on N.W. Pole - Sunset + Twigg's
spike 79.08

5+00

76.83 76.36 75.58 74.85 74.75 77.44 87.5
Top 31.9 15 3.9 25 35
gut. gut. in Dr.

4+50 = Approx. PC. of cbs.

71.2 67.23 66.76 67.16 67.18 67.74 68.9 82.6
25 Top 13.7 15.4 Top 25 50
gut. gut. on
C.L. Dr.

4+00

62.0 57.50 56.85 57.22 57.25 57.70 59.7
25 Top 14.8 15.4 Top 25
gut. gut.

3+75.5 - 17' ht. = E Pole # P 4156

Sunset Cont.

Check B.M. on Pole - P. 19 27.92
Set B.M. = Wly. Sunset + Mason. 32.64

4+30 = end

32.1 33.71 33.18 33 28 33.53 34.13 37.5
25 Top 5 25.2 Top 40
gut. gut.

4+00

35.2 37.76 37.20 37 37 37.72 38.36 41.8
25 Top 5 25.1 Top 40
gut. gut.

3+50

42.5 44.82 44.39 44.58 44.76 45.36 48.6
25 Top 5 25.1 Top 40
gut. gut.

2+91 = Matches 1+71 on \pm "B"

49.9 53.14 52.60 52.59 53.29 53.75 56.3
25 Top 5 25 gut. Top 40

2+40

54.4 58.1 70.40 69.74 59.82 60.29 62.37
50 25 Top 5 25.1 40 on Dr.
gut. in Dr.

Lt.

\pm

Rt.

30

Lt. $\Phi = \text{"E"}$ Rt.

Beg. Levels along Φ "E" Thru Block - N. of
Juan + E. of Twiggs - See P. 22 + 26

2+00			63.9	64.4	61.0	58.7	58.6	58.7	67.1	67.1
			90	54	35	15		25	50	90
			Toe	By Apt.						

1+50			68.4	65.2	59.32	55.2	56.0	57.2		
			95	62	50 =	16		23.5 =	By Apt.	
			Toe		Φ Drain					

Culvert. - Cor. to Rt. is 0.5' ahead + Lt. is 0.5' back

1+47.2 = Φ at face of Headwall + Φ of 24" RC.			55.73	52.59	55.69	52.33	52.58	55.69		
			Top	2.9 = Cor. (0.5' Back)	Top wall = I.E. of Pipe + Drain	3.3 = Cor.		Top.		

outs along Φ of Drain										
1+27.4 = Φ of Drain Prod. to Φ		61.87	55.19	53.66	52.06	51.73				
		67 = end	30 along Φ of Drain	Top wall	5 = gut.					

1+00		53.6	52.4	53.17	51.93	51.37	51.13	51.25	51.72	55.3	57.2
		56 Top of steep slope	10	5.9 Top wall	Top	5.2 gut.		11.8 gut.	Top	23	50 = By House

0+50			52.1	52.84	50.78	50.27	50.05	49.98	50.44	52.3	53.6
			8.6 By House	6 Top wall	Top	5.4 gut.		11.5 gut.	Top	14	50

0+16.5 - 9.8' Rt. = Φ 3' x 2.2 Grate inlet - 8" outlet.

49.38 Grate 47.45 Bot. of Box

0+15.1 = Beg. Conc. Drain - 6" Curbs on Sides			50.16	49.67	49.50	49.41	50.12			
0+00 = 3+19 on Φ of Twiggs.			Top	5.4 gut.		11.3 gut.	Top			

Lt. "E" Rt.

3+35.6 = curb. face

3+00

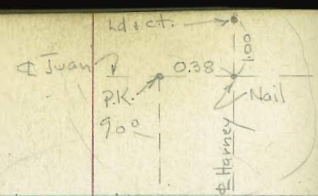
2+50

69.37	69.85	69.10	68.66	66.71	66.30
gut.	16.2	Top	gut.	50	gut.
	P.C			Top	
	Top				

65.8	65.2	67.8	67.9	67.9
66	50	15	40	75
Toe				

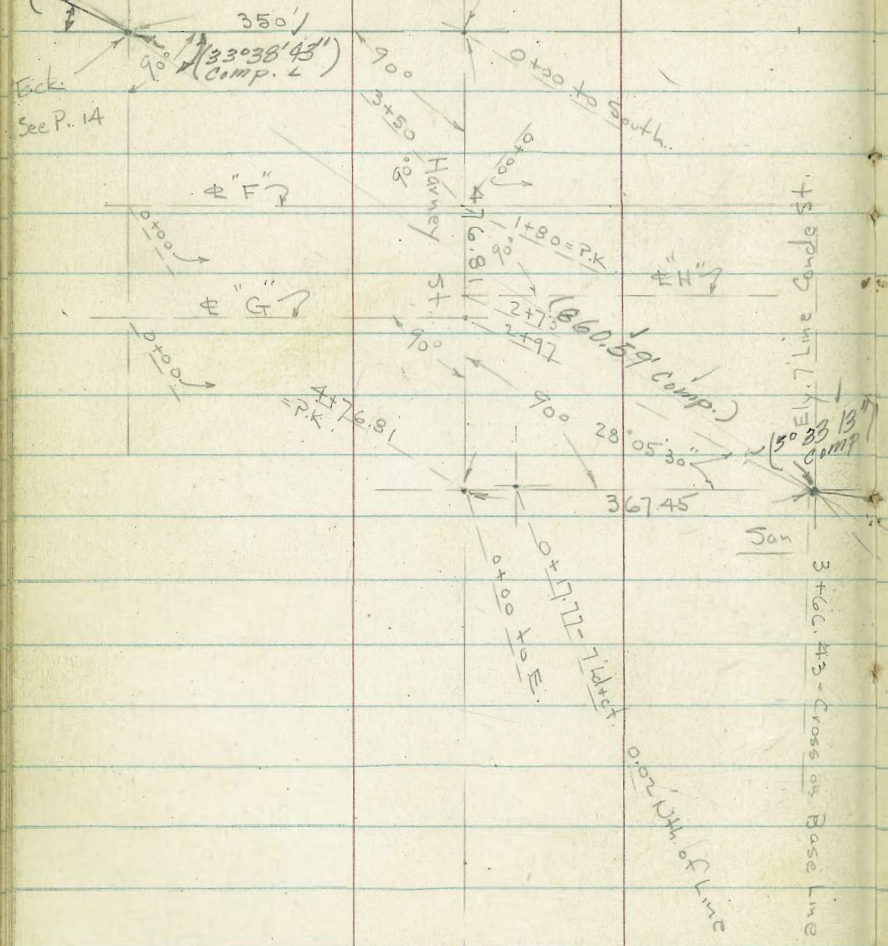
64.4	61.9	62.9	67.4	68.0
40	15		10	40
By apt.				By apt.

2600' 50" = cbl. T. #
7036' 53"

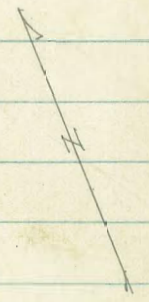


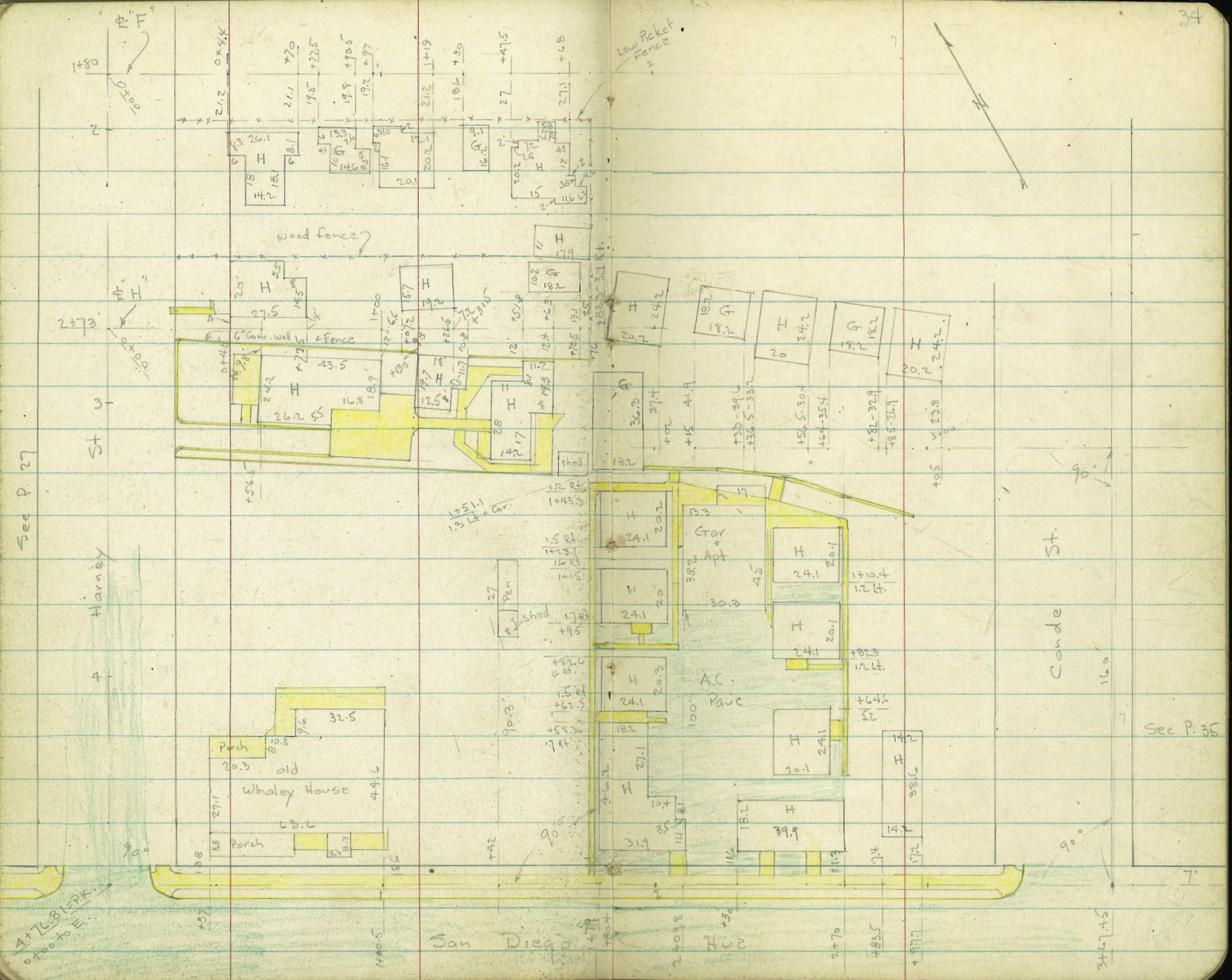
See Detail
0.38 w. of \pm of Harney + Juan
= PK. (checks for \pm of Juan)

\pm Juan (also \pm Prod. from Taylor St.)



ply. 7 Line ?
Diego Ave
PK.
 \pm P. 13 - Prod. N.
See P. 13
Condit + S.D. Ave.





A+ 76.81 17.0
0.00 to 4.0

See P. 27

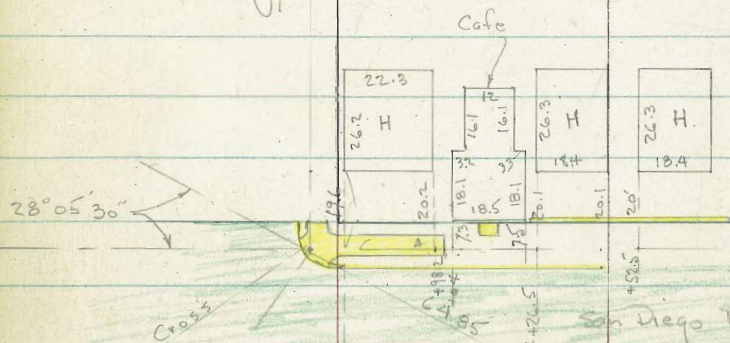
See P. 35

San Diego

3+6.1+5

See P. 34

Coide St.



28° 05' 30"

$S 46^{\circ} 43' 43'' E$ Cross
 $Ang. 28^{\circ} 05' 30''$
 $S 46^{\circ} 45' 75'' E$

San Diego Ave

Base Line Prod. - Not 7' Line
 See P. 33

La Tolla Blvd. Prod.
 P. 13



Lt. ← Rt.

Beq. levels along Φ "F" - 0+00 = Φ Twiggs
180' S. of Φ Juan - Sta. to E.

2+85	59.6 110	53.7 65	53.5 43	48.8	48.7 30	43.2 90
------	-------------	------------	------------	------	------------	------------

2+30	59.9 110	53.6 65	53.4 43	48.8	48.9 30	43.1 90
------	-------------	------------	------------	------	------------	------------

2+17-21.7 Lt = 7.4' Diam. Oil Tank

55.22
21.7 = Top

2+01.5-94' Lt = 7.4' " " "

1+85	59.0 110	53.6 65	53.3 43	48.5	48.8 30	42.9 90
------	-------------	------------	------------	------	------------	------------

1+79-30.5 Lt = Φ P. pole # C4073

1+65	49.3 110	46.4 65	46.2 43	44.4	44.1 30	45.6 60
------	-------------	------------	------------	------	------------	------------

1+00	49.8 110	46.2 65	46.1 43	44.1		
------	-------------	------------	------------	------	--	--

0+52	49.4 110	46.3 65	46.3 43	44.1		
------	-------------	------------	------------	------	--	--

Between Apts. By Apt.

0+32.5 = curb.				41.66 Top	41.23 gut.	
----------------	--	--	--	--------------	---------------	--

B.M. - spike in Pole - S.W. Cor. Twiggs + Juan 47.05'

Lt.

#

Rt.

37

Levels along Base line in \pm of Harney St.0+00 = \pm Juan - Sta. to S.2+45.5 - 31' Lt. = \pm 24" Acacia2+39 - 15.6' Lt. = \pm 40" Cypress.2+29 = \pm Sewer M.H.

45.27 = Rim.

2+15 - 30.5' Lt. = \pm 24" Acacia

2+07.6 = along jog in Cb. E+W.

2+06 - 30.5' Lt. = \pm 16" Acacia1+99 - 12.5' Lt. = \pm 24" Euc.

1+80

1+75 - 17' Lt. = \pm Tel. pole # 562426 - H.1+74 - 18.1' Rt. = \pm P. pole # 4068

1+00

0+66 = along jog in curb to W.

0+32.5' - 17.1' Lt. = \pm P. pole # 9360080+26.5 - 17.6' Rt. = \pm P. pole # 4098

0+25 = S.L. Juan

B.M. = \square in S.W. Ret.

Harney + Juan

46.8	46.60	46.59	46.39	46.82	46.59	47.05
25	11		15.7	Top	32.8	Top
	edge		gut.	5' Rad.	gut.	Ang. in Cb.

52.7	48.9	49.2	48.69	48.73	48.15	48.51	48.96
180	100	25	10	on PK	15.6	32.7	Top
			edge		\pm gut.	gut.	

57.1	56.24	56.15	55.55	56.05	56.47
25	10		15.6	32.6	Top
	edge		\pm gut.	gut.	cb.

61.2	60.18	60.03	59.66	60.35	59.64	60.15
25	10		15.9	Top =	32.7	Top
	edge		conc. gut.	\pm 5' Rad.	Ang. in Cb.	gut.

65.52	65.11	64.56	64.06	64.45
Top	15.9		15.2	Top
	gut.		gut.	

64.46

Lt.

+

Rt.

4+69.81 = N.L. San Diego Ave

32.7 32.41 31.81 31.85 31.73 32.24 32.0

Set D.M. = N.E. 7' ct. - Harney + S.D. Ave 32.20

25 Top = 14.9
end cb. 9' + 15 Top = end 25
gut. cb.

4+25

36.2 34.70 34.96 34.68 35.5

4+22 - 17.3' Rt. = \pm P. pole # 4010

25 13 edge 12 edge 25

3+75

36.5 37.4 37.8 38.4 37.30 37.52 37.23 38.5

3+29.5 - 16.5 Lt. = \pm Tel. pole J.P. 4017

175 12.5 7.5 2.5 13 edge 11 edge 2.5

3+25

37.3 37.8 39.1 39.5 40.5 39.70 39.82 39.73 40.8

3+17 - 18.3' Rt. = \pm P. pole # 4020

22.5 17.5 12.5 7.5 2.5 11 edge 16 edge 2.5

3+09 - $\left\{ \begin{array}{l} 37.7 \text{ Rt.} = \pm 16 \text{ Pepper} \\ 35 \text{ Rt.} = \pm 24 \text{ Palm} \end{array} \right.$

2+95

42.0 42.23 41.7 41.20 41.37 41.54 41.61 42.7 43.1

47 25.5 2.5 12 16 25 7.5 150
By House Top wall edge Ely. of walk on walk

2+51 - 48' Rt. = \pm 5' diam oil tank

49.90

2+50

41.7 43.2 43.7 44.2 43.76 43.83 43.99 44.7

48 Top

2+47 - 112.5' Lt. = \pm 24" Olive

22.5 15.0 7.5 2.5 12 edge 16.2 Ely. of walk 2.5

Lt.

± = Base Line } 47

Rt.

Req. Levels along Base Line = about N. 7' Line of San Diego Ave - 0+00 = Base Line in Harney - See P. 34 - Sta. to E.

2+73 - 2.7' Rt. = ± P. pole # P. 2460

2+70 49.0 41.8 41.5 39.9 36.7 35.4 33.0 32.8 32.70 32.07 32.26 31.29 31.64
235 215 185 142 140 100 50 7 5 56 Top
Top gut. 30.5 56 Top

2+46 - 5.2' Lt. = ± 12" Palm

2+20 41.7 41.1 40.3 37.3 35.4 33.4 32.03 31.91 32.12 31.12 31.43
225 190 152 150 100 50 5 56 Top
gut. in Dr. 30.5 56 Top

1+99.5 - 5.2' Lt. = ± 12" Palm

1+70 34.2 33.0 32.43 31.78 31.94 30.95 31.29
50 7 5 56 Top
Top gut. 30.5 56 Top

1+65 - 5.3' Lt. = ± 8" Palm

1+58 - 9.7' Lt. = ± 20" Pepper

1+48 - 22.4' Lt. = ± 12" Acacia

1+36 - 9.8' Lt. = ± 16" Pepper

1+24 - 30.3' Lt. = ± 30" Pepper

1+15 - 94.5' Lt. = ± 20" Pepper

1+08 - 65.4' Lt. = ± 20" Pepper

1+00 35.0 33.0 32.23 31.51 31.73 30.63 30.91
50 7 5 56 Top
Top gut. 30.5 56 Top

0+24.77 = E.L. Harney

31.98 31.30 31.51 30.32 30.70
5 56 Top
Top gut. ± gut. Top
cb.

Lt.

Base Line

Rt.

40

3+74.45 = E.L. Conde = End

3+24.45 = W.L. Conde St.

42.9 35.9 32.9 33.3

160 100 50 7

33.06 32.58 32.51 31.56 31.93

5 9.4 30.5 56 Top

42.9 40.1 35.1 33.0 33.0

200 135 100 50 7

Top
of Hill

32.86 32.27 32.52 31.49 31.83

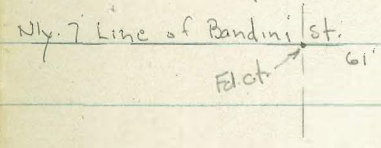
5 9.4 30.5 56 Top

Req. Alignment Survey + Ties along San Diego Ave
from Witherby to Washington Freeway

12+12.66 = 7' Id + ct. Wright St. = P.O.T.

= Fd. Id + ct. - 7'
5ly. 7' Line Wright St

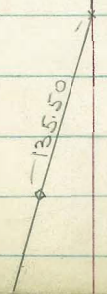
7+76.96 = Set. Hub. on Nly. 7' Line Bandini + wly. 7'
Line of S.D. Ave. Ang. 0° 01' Rt.



Set Hub. on wly. 7' Line

1+95.50 = Cross - on approx wly. 7' line of
Ang. 24° 52' 30" Lt.

Consider S.D. Ave
as being N. + S.



Cross on Ely. of walk

0+00 = Hub. on wly. 7' Line of S.D. Ave + Nly.
Line of Witherby St. - See P. 4

= 0+00 Hub on P. 4
wly. 7' Line S.D. Ave

California + S.D. Ave.

24 + 29.32 = Hob. = Ang. Pt. of Wly. 7' Line -
Ang. 24° 48' Rt.

23 + 38.30 = P.O.T. = 7' Ld + ct. on Sly. 7' Line
Sutherland.

22 + 72.35 = 7' Ld + ct. on Nly. 7' Line Sutherland St
Ang. 0° 04' 30" Rt.

18 + 90.79 = 7' Hub. - Nly. 7' Line Noel.
Ang. 0° 07' Lt.

15 + 41.55 = c.t. in Pass = Estudillo st.
+ Wly. 7' Line S.D. Ave.
Ang. 0° 03' 30" Rt.

Wly 7' California St.

Sly. 7' Line

Sutherland.

Nly. 7' Line

Sutherland st.

Nly. 7' Line

Noel st.

Estudillo

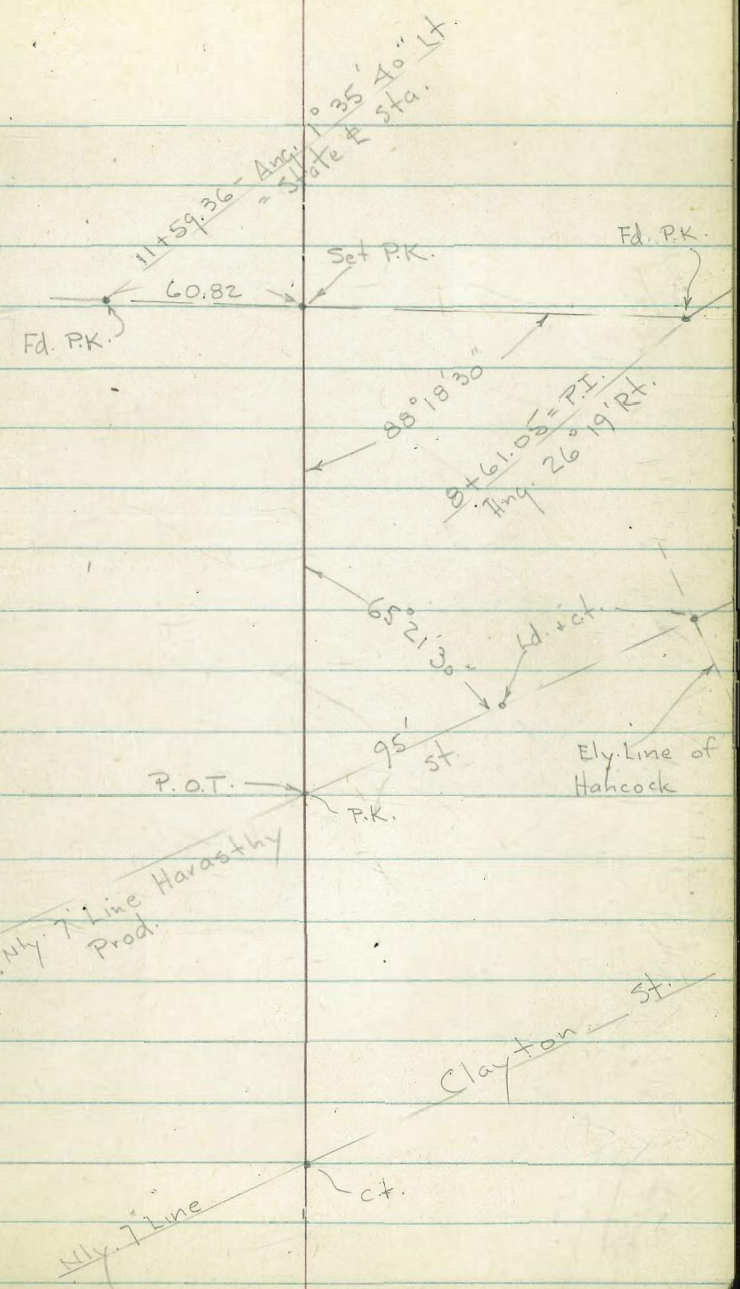
st.

San Diego Ave

32+48.83 = P.K. = end. = Tie to Φ or "L" Line of State Plan - DA-N153 - Sheet 11

= P.O.T.
 30+92.75 = P.K. on Nly. 7' Line of Harasthy St.
 Replaced from Data on T.P. Sheet
 Ang. $65^{\circ} 21' 30''$ with Φ

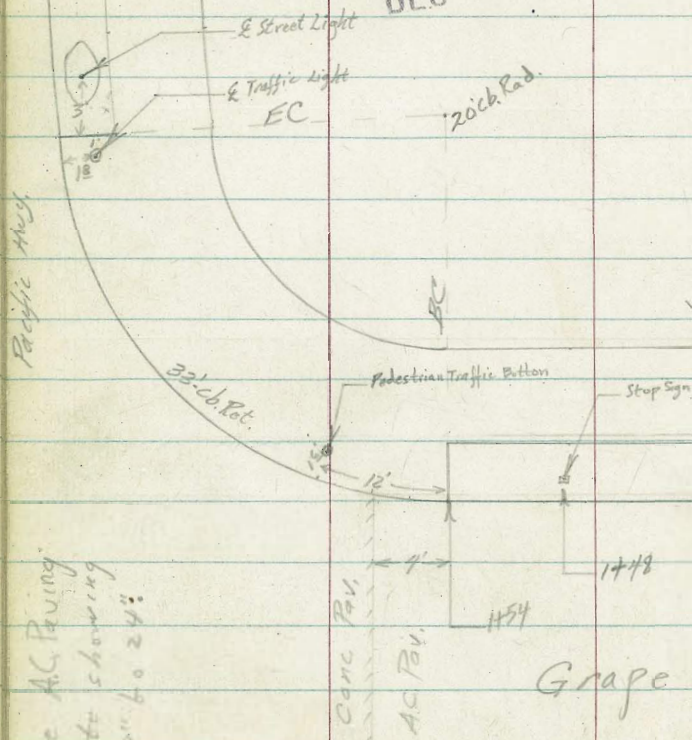
26+75.15 = 7' Id. + c.t. = Nly. 7' Line of Clayton + Wly. 7' Line of Calif St. - Ang. $0^{\circ} 00' 15''$ Lt.



Topo of S.W. Corner of Grape and Pacific Hwy. to Parking Entrance

INDEXED
DEC 14 1954

3' 5'



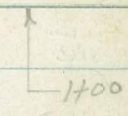
Pacific Hwy. must be AC Paving over concrete. Concrete showing along gutter from 18" to 24"

County Parking Lot

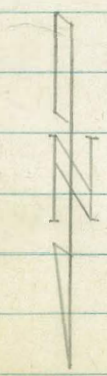
SPRINKLING SYSTEM ALONG WALK

5'

3'

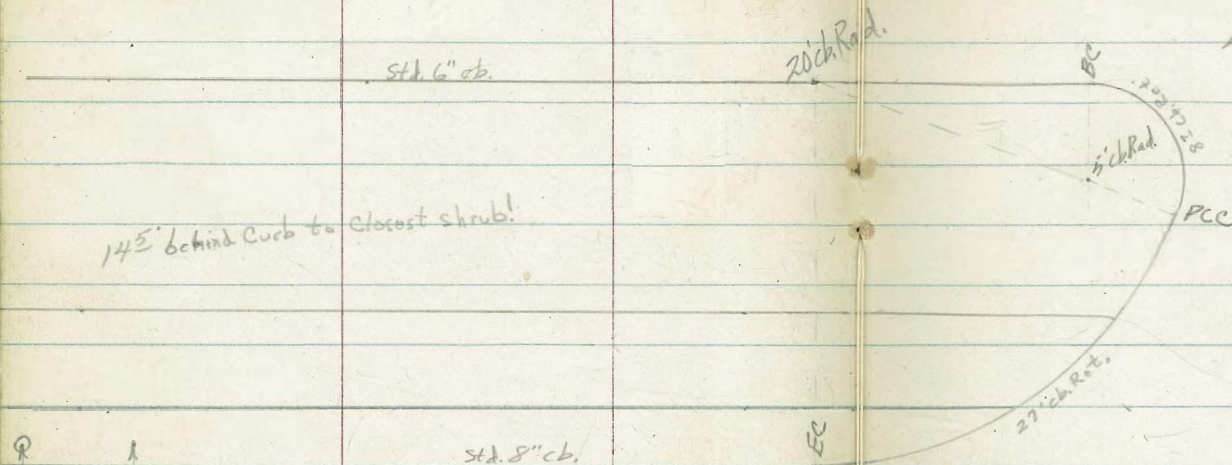


Grape Street

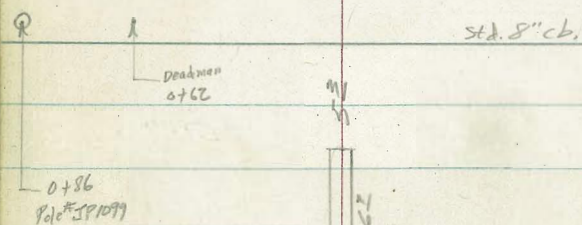


Roberts
Cata
O'Neil
12-13-54
NO# 20730

12373-1



14 1/2' behind curb to closest shrub!



Entrance
County
Parking
Lot.

Grape Street



0+58

1+27

6.09	5.79	5.30	5.90	6.01	6.3
25	13	Gut	cb	8	14
2 Island				walk	

1+00

6.29	5.92	5.25	5.89	6.02	6.3
26	13	Gut	cb	8	14
				walk	

0+50

6.27	6.02	5.36	5.93	6.05	6.3
26	13	Gut	cb	8	14
				walk	

0+00 EC

6.16	5.97	5.46	6.08	6.17	6.3
26	13	Gut	cb	8	14
				walk	

3/4

5.44	6.08
Gut	cb

1/2 Midpoint 20' Rad. Return

5.42	6.19
Gut	cb

1/4

5.39	6.18
Gut	cb

P.C.

5.39	6.18
Gut	cb

B.C. in Parking Lot End 6" cb begin 8" curb

5.64	6.33
Gut	cb

BM

44.02 SNBP India & Grape
Direct Elevation Rod Used

Cont'd From Page 46

LT

E

RT

47

EC. plus 50 feet

496 5.47
Gut cb

EC.

497 5.62
Gut cb

3/4

499 5.64
Gut cb

1/2 Mid point Return

5.05 5.66
Gut cb

1/4

5.12 5.74
Gut cb

1+54 B.C.

5.65 5.46 5.22 5.78 5.98 6.0
24 13 Gut cb 8 14
Gut cb walk
& Island

D. Smith
J. R. 1st
R. Taylor
D. Black

X Sec Alley BIK 151 Pacific Beach

Ref FB 2024 pg. 1 sketch

Lt-Sly

INDEXED
FEB

WO# 31860 48

2/3/53

RT-Nly

55.1	55.57	55.66	55.75	55.84	55.93	56.01
53	578	472	50	42	44	434
15	98	98	98	10	102	2000

feeding
fur
wall
end

0+50 9⁸ Lt end 8" con wall cb like 11 to line

0+47 9° RT & 10" PP 1/2 JPA 1081

0+28 10' RT Begin 3 car garage con floor approx

0+26 10' RT & 3° con walk L to line

0+25

0+23 10° RT & 3' con walk L to line

10° Lt Begin 8" con cb like wall 11 to line

0+00 Wly Dawes end cbs & AC paving

0-20 Wly cb Dawes

BM

41³⁸

60³⁵

55⁹⁷

Close Nly Alley
Wly Dawes
FB 2024 pg. 2

60³⁵

56.09
426
102
approx floor

55.76
459
102

55.4	55.43	55.47	55.5	55.8	55.8
50	478	50	42	46	46
14	98	98	10	15	

fur
wall

56.09
426
102
Wly

54.72	55.62	55.76	55.84	55.11	55.60	55.87
563	428	489	511	524	485	438
10	10	10	10	10	10	10

feeding top
wall
cb
end
gat
gat
cb
end

54.21	55.69	55.19	54.72	54.78	55.03	55.26	55.35	55.79	56.36	56.75
64	66	516	563	587	532	509	500	456	377	355
50	50	12	12	10	10	12	12	50	50	

cb
gat
cb
gat
gat
gat
cb
gat
gat
gat
cb

1704 10° Lt begin 4 car garage cov floor apron

TP, 33' 58" 80 490 55' 45'

1702 10° Lt & 2° cov walk L to line

98 Lt end board fence

1700 10° Rt begin 55' board fence // to line

0498 10° Rt & 2° cov walk L to line

0497 10° Rt end 3 car garage cov floor apron

0475

0473 12° Lt & 2° cov walk L to line

0465 10° Rt begin 3 car garage cov floor apron

0465 8° Rt & dead man

0462 10° Rt & 58' cov walk L to line

0459 10° Rt end 3 car garage cov floor apron

Lt-Sly

Rt-Nly

49

54.04
476
16.5
Floor
53.99
63.30
10
54.01
472
10.5
apron
58.80

54.1
63
15
54.5
52
10
54.8
5
10
54.8
5
10
54.9
5
10
55.22
51.3
10

55.26
489
10
apron
56.23
412
18
Floor

54.9
55
15
55.0
54
10
55.4
5
10
55.8
46
10
55.71
46
10

54.83
55.52
12

55.87
448
10
apron
56.24
411
18
Floor

446
101

55.95
440
10
apron
56.67
368
172
Floor

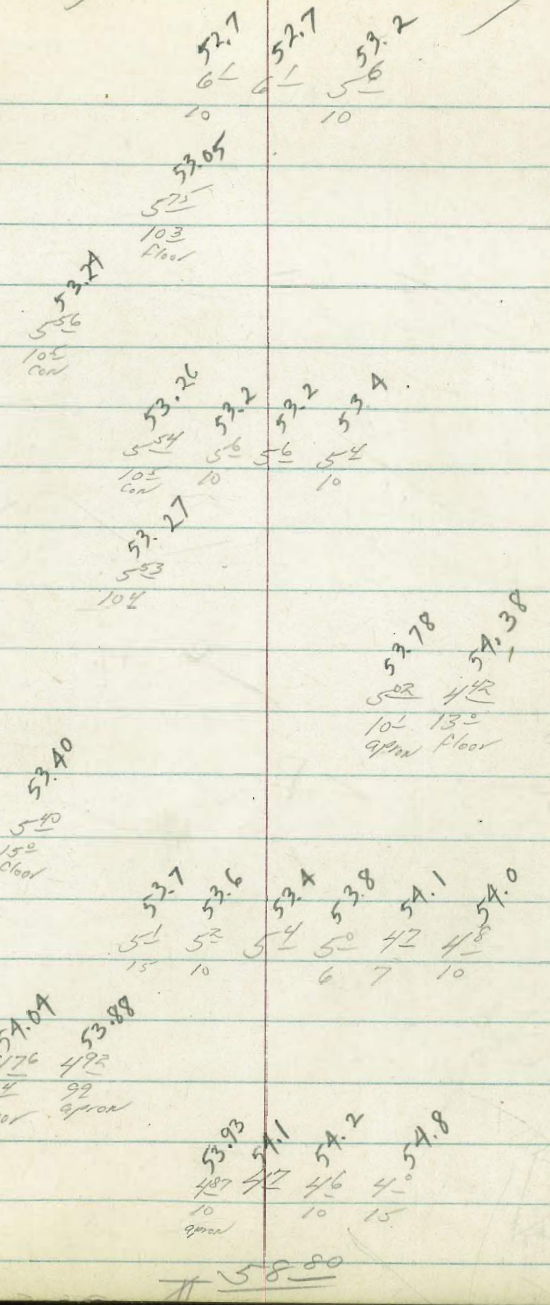
60.25

Lt = Sly

E

Rt = Nly

- 2100 10' Lt Begin 6' cyclone fence N to line
- 1490 10' Lt & double garage con floor
- 1480 10' Lt end con slab
- 1475 10' Rt begin 6' board fence N to line
- 1470 10' Lt Begin con slab
- 1463 10' Rt & single garage con floor & apron
- 1454 15' Lt NE cor bldg con floor
- 1450 10' Rt end 5' board fence
- 1447 9' Lt end 4' car garage con floor & apron
- 1447 9' Rt & 10' ppole # 5PA/061
- 1425



3100

10' Lt end cyclone fence
2482 Begin A.C. alley here

2475

2474 98 At end 6' board fence

2473 93 At 12' pp. 1/2 # PA 1035

2450

2449 05 Lt P SMH

2425

94 At Begin 6' Board fence
2424 10 At end 6' board fence 11 to line

2407 98 Lt Begin A.C. play area

Lt-Sly E Rt-Nly

50.33	50.19	50.30	51.08	51.30	51.34	51.63
847	861	850	772	750	746	717
18	11	10	5	5	10	

50.37	50.39	50.77	51.41	51.62	51.82
843	841	839	739	718	628
18	13	10	5	10	

50.24	50.37	50.75	51.5	51.8	51.9
858	853	805	73	70	69
22	12	10	5	10	
		AS			

50.37	50.42	51.15	52.1	52.5
843	838	768	67	63
24	14	10	10	10
		AS		

50.58	50.60	51.72	52.4	52.7
832	820	708	64	61
24	14	10	10	10
	AS	AS		

51.01	52.20
729	600
13	98
	AS

58.80

BM

305 51²⁹ SW 7X7 LT
Cass, Missouri

5752 ✓
FB 2024 1099

Lt-Sly

Rt-Nly

52

TR

60

54⁵⁴

10³⁶

48⁴⁴

49.65	49.53	49.48	49.49	49.54
9 ¹⁵	9 ²⁷	9 ³²	9 ³¹	9 ²⁶
13	10	8	10	10

4450

4418 16⁶ RT & double garage con floor raprow

50.42	51.08
8 ³⁸	7 ²²
16 ⁶	2 ⁴⁰
aprow	floor

4410 16⁴ RT ext 3 car garage con floor raprow

49.89	49.77	49.80	50.05	50.29	50.14	50.42	50.48	51.38
8 ³¹	9 ⁰³	9 ⁰⁰	8 ⁷⁵	8 ⁵¹	8 ⁶⁶	8 ³⁸	8 ³²	7 ⁴²
17	12	10	5	6	10	15	16 ⁴	2 ³⁸
							aprow	floor

4400

3499 9⁶ RT & 10" PP 1/2 # JPA 1017

3481 16³ RT Begin 3 car garage con floor raprow

49.96	49.86	49.92	50.23	50.44	50.44	50.61	50.90	50.83	51.35
8 ⁸⁴	8 ⁸¹	8 ⁸⁸	8 ⁵⁷	8 ³⁶	8 ³⁶	8 ¹⁹	7 ⁹⁰	7 ²⁷	7 ⁴⁵
17	12	10	5	7	10	15	16 ³	2 ³²	2 ³²
							aprow	floor	floor

3475

50.04	49.97	50.05	50.49	50.69	50.76	51.05	51.54
8 ²⁶	8 ⁸³	8 ²⁵	8 ³¹	8 ¹¹	8 ⁰⁴	7 ²⁶	7 ²⁶
17	12	10	5	7	10	15	15

3450

50.10	49.99	50.16	50.74	50.96	51.08	51.30	51.60
8 ²⁰	8 ⁸¹	8 ⁶⁴	8 ⁰⁶	7 ⁸⁴	7 ²²	7 ⁵⁰	7 ²⁰
17	12	10	5	7	10	14	14

3425

52.80

X-sec of Base Line Thru Playground
 ON ALLEY BIK 151, Pacific Beach
 See Red Line SKETCH FB 2024, Page 1
 See Page 48

INDEXED
 JER
 MAR 2 1955

0+25

LT = ELY

Base
 Line

RT = wly - 53

50 ⁶⁹	50 ⁴²	50 ³⁴	50 ²⁴	50 ²⁸
47°	25		25	28°
ELY of A.C.				ELY of Ridge

0+18.28⁶ RT = NELY COR Stucco School Bldg

50²⁸
 28°
 Flock of
 School

0+13

51 ¹²	50 ⁶⁴	50 ³⁷	50 ³⁴	50 ³¹
47°	25		25	29
ELY edge A.C.				

Fence
 Base Line Crosses 7' high ELY cyclone
 Play ground

0+10 = Sly Line Alley + Nly edge A.C. Paved

52 ²⁵	51 ¹¹	50 ⁷⁷
45°		29
A.C.		W.A.C.
NELYCOR		NWLYCOR
A.C. PAVE		A.C.

Dawes ST
 0+00 = 220' Alley + 253' wly of wly line

52 ⁶	52 ⁰	51 ⁶
45°		29

Direct elev. Rod used - True elev.

BM

51.30

Conc Nail at 3+00 Page 51

CONT

LT = ELY

L

BT = WLY

54

See Below -

1738 & Crosses Conc Block Retaining Wall

5039

4882

TOP
Wall

Walk at
Sly of Wall

Wall curves to WLY on 10' Radius
7° LT = Nly end Conc Block Wall

5004

4997

47°
Ely of
A.C.

25

22° LT = NELy COR Conc Drive

7° LT = NWly COR Conc Drive to Diamond
& crosses 7 high cyclone fence (E+W)

1726 = Sly edge A.C. Playground

4991

5039

4994

4997

4997

4980

4998

5015

22
NELy
COR Drive

7°
TOP
Wall

7°
CONC
DRIVE
NWly COR

20

22

25

28°
Floor

1700

5005

5009

5014

5002

5003

5020

47°
Ely of
A.C.

25

23

25

28°

A.C. AT
Bldg.

0+75

5025

5022

5020

5012

5018

47°
Ely of
A.C.

25

25

28°

FLOOR

0+50

5043

5030

5029

5015

5022

47°
Ely of A.C.

25

25

28°

ON FLOOR

Drain Cont

LT = 014

Base
Line

RT = Wly 55

28° LT = Sely corc conc drive

2° LT = Suly corc drive

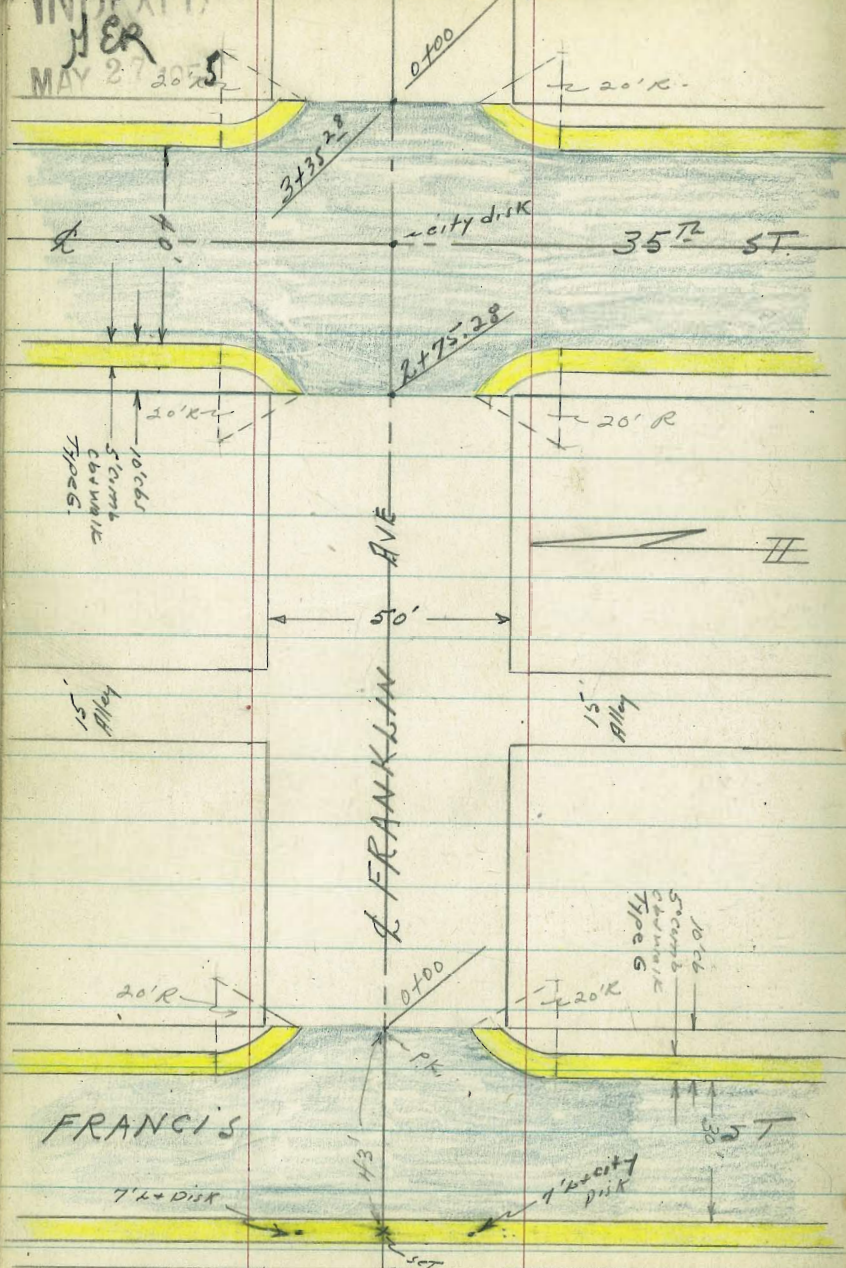
1+55 = Nly Curb Line Diamond ST

48 ⁹⁵	48 ²⁹	47 ⁸³	48 ⁶¹	48 ⁶⁰	47 ⁹⁰	48 ²²	47 ⁵⁵
28°	28°	2°	2°	T.C.	Base Line	25°	25°
T.C.	4ip	4ip	T.C.		9UTT	T.C.	9UT

INDEXED

HER
MAY 27 1955

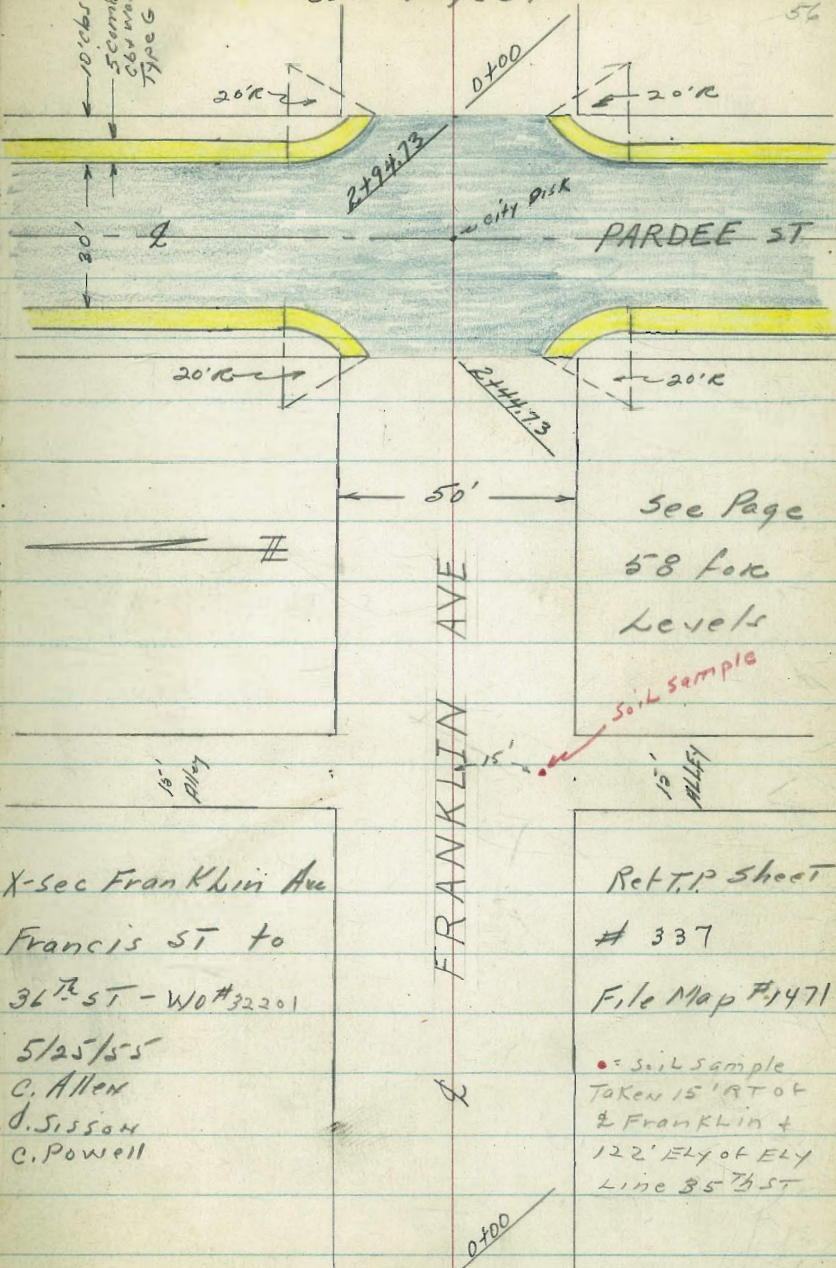
Cont on facing page



Closing on Franklin W/ly of Francis P?

Cont Page 57 -

56



See Page
58 for
Levels

Soil sample

X-sec Franklin Ave

Francis St to

36th St - W0 #32201

5/25/55

C. Allen

D. Sisson

C. Powell

Ret. T.P. Sheet

337

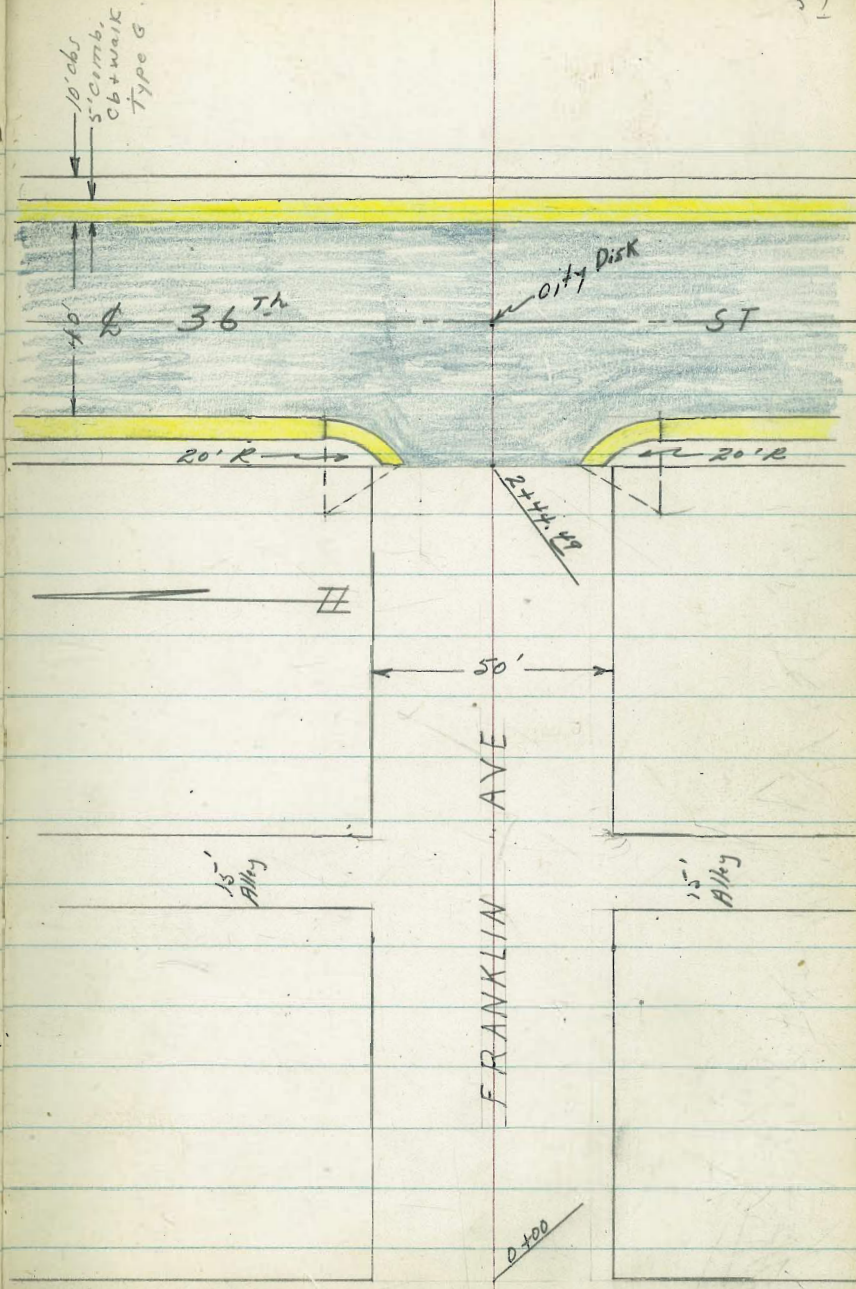
File Map #1471

• Soil Sample
Taken 15' RT of
& Franklin +
122' ELY of ELY
Line 35th St

35th

Cont from facing page ST

X-sec FRANKLIN ST - Francis
ST to 36TH Cont



CONT from page 56
PARDEE ST - See P. 52 for Detail

X-sec Franklin Ave. Francis
ST to 36th See sketches pp 56, 57

25² = begin 1' high
low. Conc Block Wall
= ely edge H.C. Pave
17⁶ LT = ely end curb Return - 20' R
18⁰ RT = ely end curb Return 20' R.

0+00 = Ely Line Francis ST

20' curb Radius on Returns
Type '9' curb + gutter

0-10 = Ely Curb Line Francis ST

0-25 = Francis ST - H.C. Paving -

TBM

58.90

B.M.

73.07

LT = Nly

50
Franklin

RT = Sly, 58

60⁴

25

59⁵⁴

236
NELYCOR
WALK

59⁷⁸ 60² 60⁹

24² = 25 25²
SELYCOR Footing
WALK

59⁴³ 58⁹⁵ 59¹⁵ 59²⁶ 59²¹ 59²⁴ 59⁷¹
17⁶ 17⁶ 10 10 18⁰ 18⁰
Tic. 9UT A.C. 9UT Tic.

58⁰⁴ 57⁶¹ 58⁵⁹ 58¹³ 59¹⁸ 59⁶³ 59⁸⁴ 60³⁰
100 100 50 50 50 50 100² 100²
Tic. 60T Tic. 9UT 9UT Tic. 9UT Tic.

58⁷⁶ 58²⁸ 58⁴⁹ 58⁷⁶ 58⁸¹ 58⁹⁴ 58⁹⁹ 59⁰⁰ 59⁴⁷
35⁰ 35⁰ 25 15 15 25 35² 35²
Tic. 9UT Tic. 9UT Tic. 9UT Tic.
AC AC AC AC

57⁸¹ 58⁰⁵ 58³³ 58⁶⁰ 58⁸⁴ 59⁰² 59²⁸ 59⁵⁶ 59⁸⁴
100 75 50 25 25 25 50 75 100

ON Swly T.L. & city disk - Franklin & Francis

Direct Rod - all elevations are True

+ 35th

P.K. Nail in Power pole Swly cor. Franklin

X-sec Franklin cont

24⁹ RT = begin 1⁵ high Conc Block wall

0+69-24⁹ RT = end 5' high Conc Block wall

0+63-24⁶ LT = 10' Conc Drive

0+50

0+25

24⁹ RT = begin 5' high Conc Block wall
 0+24-25⁰ RT = end 1' high Conc block wall

0+18⁵ 24³ LT = 3⁵ wide Conc walk

0+01-25⁰ LT = begin 4' high Picket fence

LT = Nly

RT = Sly

59

63 ²	62 ⁹	62 ⁹
24 ⁹	24 ⁹	24 ⁹
9' RT Wall	Foot 5' high	Foot 1 ⁵ wall

64 ⁷	63 ⁸	63 ⁸
33 ⁴	25 ⁰	24 ⁶
Gar Floor	Drive	Drive

63 ¹	61 ⁴	61 ⁵	61 ⁴	62 ⁰	62 ³
25	15	12	15	25	9' RT Wall

62 ⁰	60 ²	60 ³	60 ³	61 ¹	61 ⁶
25	15	13	15	25	

61 ⁶	61 ²
24 ⁹	24 ⁹
9' RT Wall	Foot

61 ⁶	61 ⁶	62 ⁵
25 ⁰	25 ⁰	25 ⁰
9' RT Wall	Foot	Top Wall

62 ⁴	62 ⁷	62 ⁶
34 ³	25 ⁰	24 ³
Walk	Walk	Walk

Direct Rod

X-sec Franklin Cont

LT = Nly

RT = Sly. 6°

} 25' LT = end 4' high Picket fence

0 1+29^E / 25³ RT = end 0.5' high Conc Block wall

66°	65°	66°
25 ³	25 ³	25 ²
9' not wall	Foot	Top wall.

1+29-18° RT = 2 10" Power pole # JP 3471

~~1+10-18° RT = 2 Dead man~~ Gone 11-8-56

0 1+00

65 ³	65 ^L	63 ⁷	63 ⁶	64 ^Z	63 ⁸	64 ^Z	64 ⁶	65 ^Z
35	25	18	15		12	15	25	35

0 0+90-24⁸ RT = end Conc Drive - 2 Car gar.

647°	647 ^Z	657°
24 ⁸	25°	44 ⁸
Drive	Dr	9' Floor

0+75

64 ^Z	62 ⁸	62 ⁷	62 ⁸	62 ⁶	63 ^L	642°	64 ^Z
25	18	15	11	15	24 ⁸	25°	25°
					Not Drive	ON Drive	

Opening thru 1.5' high Block wall for drive
2 Car Garage

0+73-24⁸ RT = begin Conc Drive for

64 ¹⁵	65 ⁶⁸
24 ⁸	44 ⁸
	Floor

Direct Rod

X-sec Franklin Court

LT = Nly

RT = Sly 61

2700

71 ^z	70 ⁶	68 ^z	68 ⁸	68 ¹ -68 ^z	69 ¹	70 ⁶
50	25	15		13 15	25	50

1775

70 ¹	69 ⁵	68 ^z	67 ⁵	67 ^z	67 ¹	67 ^z	68 ^z
50	25	18	15		13	15	25

1446- 25° RT = begin 5' high Fence PICKET

1445¹⁴ = FLY Line Alley

68 ⁸	67 ^z	66 ^z	66 ⁶	67 ⁸	66 ⁸	66 ⁶	67 ¹
25	22	17	15		10	15	

dist?

67 ⁶	69 ⁴	67 ^z	68 ^z
150	100	50	100

1+37⁶⁴ = 15' Alley = Sewer Manhole

68 ^z	66 ^z	66 ¹	66 ⁹⁴	65 ^z	66 ¹	66 ⁶
50	25	15	Rail SMH	10	15	25

1+30¹⁴ = Wly Line 15' Alley

66 ⁸	65 ⁴	66 ^z	65 ^z	65 ^z	66 ^z
25	15		10	15	25

Direct Rod

X-sec Franklin CRT

3+05.28 = ϕ 35th ST

Type G curbs
2+85.28 = Wly Curb Line 35th ST

25th RT = end 5' Picket Fence
17th LT = Wly end curb Return - 20'R
17th RT = Wly end curb Return - 20'R
Wly edge A.C. Paving

2+75.28 = Wly Line 35th ST

2+74.5 = 17th RT = ϕ 12" Power pile # 3499

2+50

2+25

LT = Nly

ϕ

RT = Sly

62

72⁸⁶ 72⁸⁸ 72⁸⁵ 72⁴⁷ 72⁸⁸ 72⁴² 72¹⁵ 72³³ 72⁹⁰ 73⁰⁷ 73²⁴
100 75 50 25 15 15 25 50 75 100

72⁶⁹ 72¹⁶ 72⁵⁸ 72¹⁶ 72²⁰ 72⁶⁶ 72⁵⁴ 73⁰⁰
100 100 50 50 50 50 100 100
T.C. 90T T.C. 90T 90T T.C. 90T T.C.

72⁵⁵ 72⁰⁹ 72¹⁴ 71⁹⁹ 72¹³ 71⁷⁷ 72⁰¹ 72⁰⁶ 72⁵³
35⁰ 35⁰ 25 15 15 25 35⁰ 35⁰
T.C. 90T T.C. 90T T.C. 90T T.C. 90T T.C.

72⁶ 72⁴⁵ 72²⁵ 71⁷² 71⁹² 72⁰² 71⁸³ 71⁶⁰ 72¹¹ 72³³ 72²⁵
25 23⁸ 17⁸ 17⁵ 9 9 17⁸ 17⁸ 24⁰ 25
N.Wly Curb Walk T.C. 90T A.C. A.C. 90T T.C. 3Wly OR Walk

72² 71² 71¹ 71¹ 70⁸ 71¹
25 18 15 15 25

72² 71⁹ 70¹ 69⁹ 69⁵ 70² 70⁴
50 25 15 13 15 25

Direct Rod.

0+5.0

76⁸ 76⁶-76⁰ 74⁵ 74² 73⁸ 73⁸ 73⁴ 73⁸ 74¹-75²
 35 28 25 22 15 14 13 15 21 25

0+25-27⁰ RT=begin 4' Redwood Fence

76⁰ 75⁹ 75² 73⁹ 73⁴ 73⁴ 73¹ 73⁴ 73⁸ 74⁶
 35 28 25 22 15 14 15 22 25

17¹ LT= city end NELY Curb Return
 17⁸ RT= Ely end SELY Curb Return
 = city edge A.C. Pave.
 3+35.28 Wly = 0+00 city. = Ely Line 35th

73⁸ 73² 73¹² 72⁶⁰ 72⁹¹ 73²¹ 72⁹³ 72⁸⁰ 73³⁴ 73²⁸ 73⁴
 25 23⁸ 172 172.9 AC 9 178 178 238 25
 NELY T.C. 90T A.C. 90T T.C. SELY AC WALK

TBM.

73.06

NEBP. 35th + Franklin Ave

73²¹ 72⁷⁵ 73¹⁹ 72⁷⁰ 72⁶⁶ 73¹⁵ 73⁰³ 73⁵⁰
 100 100 50 50 50 50 100 100
 T.C. 90T T.C. 90T 90T T.C. 90T T.C.

3+25²⁸ = Type 6 curb - Ely Curb Line 35th

73⁰³ 72⁵⁴ 72⁵¹ 72⁴² 72⁷¹ 72⁵⁰ 72⁵¹ 72⁵⁴ 73⁰⁵
 35⁰ 35⁰ 25 15 15 25 35⁰ 35⁰
 T.C. 90T BC BC 90T T.C. BC BC

Direct Road

X-sec Franklin Ave cont

142-17⁴ RT-Q 12" Pole # P3521-

More of a shack - about to fall -

DIRT FLOOR

1409-35° LT-Q single garage

25° LT= end 3° picket fence
opening thru fence

1403-19° RT-Q 8" wide conc Drive

74³⁰ 75⁴⁸ 76⁰⁸
19⁸ 25⁰ 27⁶
Drive Dr. For
Floor

1400-

76² 78¹ 74⁵ 74⁰ 74⁰ 73⁶ 73⁸ 75⁴
28 21 15 13 14 15 25

0+76-25° LT= begin 3° picket fence

0+78

76⁸ 76⁶ 75⁰ 74³ 74¹ 73⁸ 74¹ 74⁵ 75² 75⁴
35 25 22 15 13 15 21 25 35

Home made - poor condition

0+72-23° LT= Q 5' conc steps

76⁷⁰ 76⁵⁶ 78³⁹
37 27⁰ 23⁰
walk Tipstep Bottom
+ Begin step
walk

0+62-24° RT-Q 3° conc walk

75¹⁰ 75²⁰ 75⁴⁶
Direct Rod 24⁰ 25⁰ 27⁰
Walk Walk W

LT-Nly Q

RT-Sly 60

X-sec Franklin Cont

LT = N/4

X RT = S/4 65

opening in chain link fence for gas.
conc Apron is 8' wide

28° LT = garage floor

24° LT = begin good conc Apron
conc Apron + Floor

1+65-17° LT = single garage -

74⁷⁷ 74⁴⁰ 73⁷³
28° 24° 17°
gar floor begin Home Made
rod Apron conc

1+50

74⁷ 74⁵ 73⁹ 73⁵ 73⁵ 73¹ 73⁶ 73⁸
30 25 15 13 15 25 30

1+32°-27° RT = begin 4' picket fence

1+30°-25° LT = begin 5' chain link
fence

1+29,86 = Ely Line 15' Alley

75° 74² 73⁸ 73⁸ 73² 73⁴ 73⁸
25 15 13 13 15 25

1+22,36 = 2 Alley = 2 Sewer Manholes

76° 75⁸ 74⁸ 74³ 74° 73⁶⁷ 73³ 73⁶ 73² 74° 74⁵
100 50 25 15 12 13 15 25 50 100
SM.H.

1+14⁸⁶ = wly Line 15' Alley

74⁹ 74⁴ 73⁸ 73⁹ 73⁴ 73⁶ 74⁵
25 15 12 13 15 25

1+14⁵ - 27° RT = end 4' board fence

Direct Rod

Franklin 109T

LT=Nly

RT=Sly. 66

TBM-

73.44

on city disk & intersection Pardee + Franklin

25¹ LT = end 4' high Chain Link fence

17⁸ LT = Wly end of NWly curb. Return

17⁸ RT = Wly end of SWly Curb Return
Wly edge A.C. Paving

2+44⁷³ = Wly Line Pardee ST

2+43⁵ 17¹ RT = 10" Pole #JP 3849

2+43- 28² RT = end 4' picket fence

2+25

74 ³	74 ⁰⁰	73 ⁸²	73 ³³	73 ¹⁸	73 ⁰¹	72 ⁸⁴	72 ⁶⁴	73 ⁰⁷	73 ¹⁷	73 ¹
25	23 ⁸	17 ⁸	17 ⁸	9	9	17 ⁸	17 ⁸	23 ⁹	25	
	NWly T.C.	90T				90T T.C.		SWly		
	COR							COR		
	WALK							WALK		

74 ⁶	73 ³	73 ⁰	72 ⁸	73 ⁰	73 ³
25	15		13	15	25

2+00

74 ⁶	74 ⁶	73 ⁵	73 ³	73 ¹	73 ⁰	73 ²	73 ²
35	25	19	15		15	25	35

Eugonia Hedge

1+94- 24⁵ LT = end 1' wide + 4' high

1+75

74 ³	73 ⁶	73 ⁴	73 ³	73 ⁰	73 ²
25	15	13		15	25

Eugonia Hedge

1+73- 24⁵ LT = begin 1' wide + 4' high

Direct Rod

172 LT = Sec Fran Klein cont
 172 RT = Ely end of 3 Ely curb Ret
 Ely edge A.C.

2+94.73 = Wly = 0+00 Ely = Ely Line Pardee

2+93.73 = 25' Wall
 LT = begin Conc Block

2+84.73 = Type G - Ely Curb Line Pardee ST

2+69.73 = Pardee ST

2+54.73 = Type G Wly curb line Pardee ST

LT = Wly

RT = Sly 67

74 ⁷	74 ⁶⁹	74 ⁵⁴	74 ⁰¹	73 ⁹⁵	73 ⁸⁶	73 ⁵⁷	73 ²⁶	73 ⁷⁴	73 ²¹	73 ⁷
25	23 ¹	172	172	9	9	9	172	172	242	25
	NELY C&R Walk	T.C.	9UT				9UT	T.C.	SELY C&R Walk	

70 ³²	74 ⁴	74 ⁷
25 ¹	25 ¹	25 ¹
Top Wall	Foot	9 ¹

76 ⁷⁵	76 ³²	73 ²⁶	74 ⁸⁰
100	100	50	50
T.C.	9UT	T.C.	9UT

72 ²⁷	72 ⁷¹	71 ⁰¹	71 ⁴⁶
50	50	100	100
9UT	T.C.	9UT	T.C.

74 ⁸³	74 ³⁵	74 ¹²	73 ⁸⁰	73 ⁴⁵	73 ²¹	73 ⁰³	72 ⁶¹	73 ⁰⁷
35 ⁰	35 ⁰	25	15	15	25	35 ⁰	35 ⁰	
T.C.	BC					9UT	T.C.	BC
BC	9UT							

76 ³²	75 ²²	74 ⁹²	74 ⁰⁹	73 ⁸³	73 ⁴⁴	73 ¹²	72 ⁸⁹	72 ²⁴	71 ⁸¹	71 ²⁹
100	75	50	25	15		15	25	50	75	100

76 ¹⁹	75 ⁷²	72 ⁵⁹	71 ⁷⁹	72 ²⁴	70 ⁸⁰	71 ²⁷
100	100 ⁰	35 ⁰	50	50	100	100
T.C.	9UT	T.C.	9UT	T.C.	9UT	T.C.
		BC				

74 ⁷⁷	74 ³⁰	74 ³⁶	73 ⁸⁹	73 ⁶⁴	73 ²⁷	72 ⁸⁵	72 ⁶²	72 ⁴⁶	72 ¹³
50	50	35 ⁰	35 ⁰	25	15	15	25	35 ⁰	
T.C.	9UT	T.C.	9UT					9UT	BC
		BC	BC						

Direct Rod

X-sec Franklin cont.

249 LT = end Conc Drive - 2 car gar.

0+73-249 LT = begin Conc Block Wall

36° LT = garage floor

25° LT = begin Conc Drive - 2 car gar.

0+53-25° LT = end Conc Block Wall

0+53-27° RT = ϕ Conc Walk

24° RT = Begin 4' board Fence

0+50-24° RT = end 3' picket fence

0+31-24° RT = ϕ 10' Conc Walk

0+25

0+03-24° RT = begin 3' picket fence

LT = N44

RT = S14

68

776 ¹	769 ¹	795 ⁵	767 ⁷	769 ⁹
36°	24°	24°	24°	24°
gar	Drive	Top	Foot	grat
Floor		Wall		Wall
				S14

776 ³	767 ⁰
36°	25°
Conc Floor	Drive

785 ⁵	790 ⁰	761 ¹	766 ⁶
26°	25°	25°	25°
grat	Top	Foot	grat
Wall	Wall		Wall
			S14

757 ⁷	761 ⁰	761 ¹
27°	27°	37°
grat	Walk	Walk

766 ⁶	759 ⁹	757 ⁷	757 ⁷	754 ⁴	754 ⁴	756 ⁶
25	15	13		15	25	35

751 ¹	751 ⁹	753 ⁴	768 ³
24°	25°	27°	30°
Walk	Walk	grat	grat
		Porch	Porch

781 ¹	757 ⁷	751 ¹	748 ⁸	743 ³	746 ⁶	745 ⁵	751 ¹
26	25	15		13	15	25	30
grat	grat						
Wall	Wall						
N44	S14						

Direct Rod

X-sec Franklin cont

n.

1+29.86 = Fly Line 15' Alley = Sewer Manhole

81 ⁸	80 ⁷	79 ⁵	79 ³	79 ²	79 ⁰	78 ⁹	78 ⁷	78 ²	77 ⁰
100	50	25	15	RIM	2	15	25	50	100
				SM.H.	ground				

1+22.36 = 15' Alley

1+17-17³ RT = 14" Pole # P 3575

24¹ RT = end of board Fence

1+14.74 = Wly Line 15' Alley

79 ⁴	78 ⁷	79 ²	78 ⁴	78 ⁵
25	15		15	25

1+14-24⁵ LT = end Conc Block Wall

79 ⁷	79 ²	78 ³	78 ⁸
26 ⁰	24 ⁵	24 ⁵	24 ⁵
grat	Top	Foot	grat
Wlyot	wall		Slyot wall
Wall			

1+00

79 ⁴	78 ⁴	77 ⁷	77 ⁵	78 ²	77 ⁶	77 ⁷	77 ⁹
26 ⁰	24 ⁵	15	13		15	25	35
grat	grat						
Wlyot	Slyot						
Wall	Wall						

0+75

79 ²	77 ³	76 ⁷	76 ⁵	76 ⁸	76 ³	76 ⁵	77 ²
26	24 ⁹	15	13		15	25	35
grat	grat						
Wlyot	Slyot						
Wall	Wall						

Direct Rod

X-sec

Franklin cont

LT = NLY

RT = SLY

70

2+25

80 ⁶	88 ⁴	90 ⁴	90 ³	90 ⁰	90 ⁰	89 ⁷	90 ⁴	90 ²	87 ⁸	87 ⁸
35	25	19	15	14		14	15	19	25	35

2+00

86 ²	87 ²	87 ²	87 ³	87 ⁸	86 ⁸	87 ²	87 ¹	87 ⁵	84 ⁷	84 ⁷
25	19	15	14		13	14	15	17	25	35

1+75

83 ⁸	85 ⁵	85 ⁵	84 ⁶	84 ⁹	84 ¹	84 ⁷	84 ⁶	82 ⁴	82 ³
25	19	15	12		12	13	15	22	25

1+54-18° RT = dead Man

1+50

81 ⁷	82 ⁸	82 ⁶	81 ⁸	82 ³	81 ⁸	82 ²	82 ²	80 ⁶	80 ⁶
25	20	15	13		11	12	15	20	25

1+36-17° RT = 2 10" Anchor Pole #JP3583

Fence

1+33-23° RT = begin 4' Chain Link

1+29.74 = Ely Line 15' Alley

?

80 ³	80 ²	80 ⁴	79 ⁸	79 ⁴
25	15		15	25

Direct Road

X-sec Franklin Ave

LT = N14

RT = S14

71

Levels checked back to orig BM-

TBM - SWBP - Franklin + 36th = 91.37

2+74.49 = 36th ST

9361	9332	9305	9285	9276	9272	9226	9163	9087	8988
100	75	50	25	15	15	25	50	75	100

9298	9255	9250	9207
100	100	50	50
T.C.	9UT	T.C.	9UT

9053	9097	8869	8909
50	50	100	100
9UT	T.C.	9UT	T.C.

2+54.49 = Wly Curb Line 36th ST

9239	9190	9187	9184	9157	9132	9115	9092	9139
35	35	25	15	9	25	35	35	35
T.C.	9UT	9UT	9UT	9UT	9UT	9UT	9UT	T.C.
BC	BC					BC	BC	BC

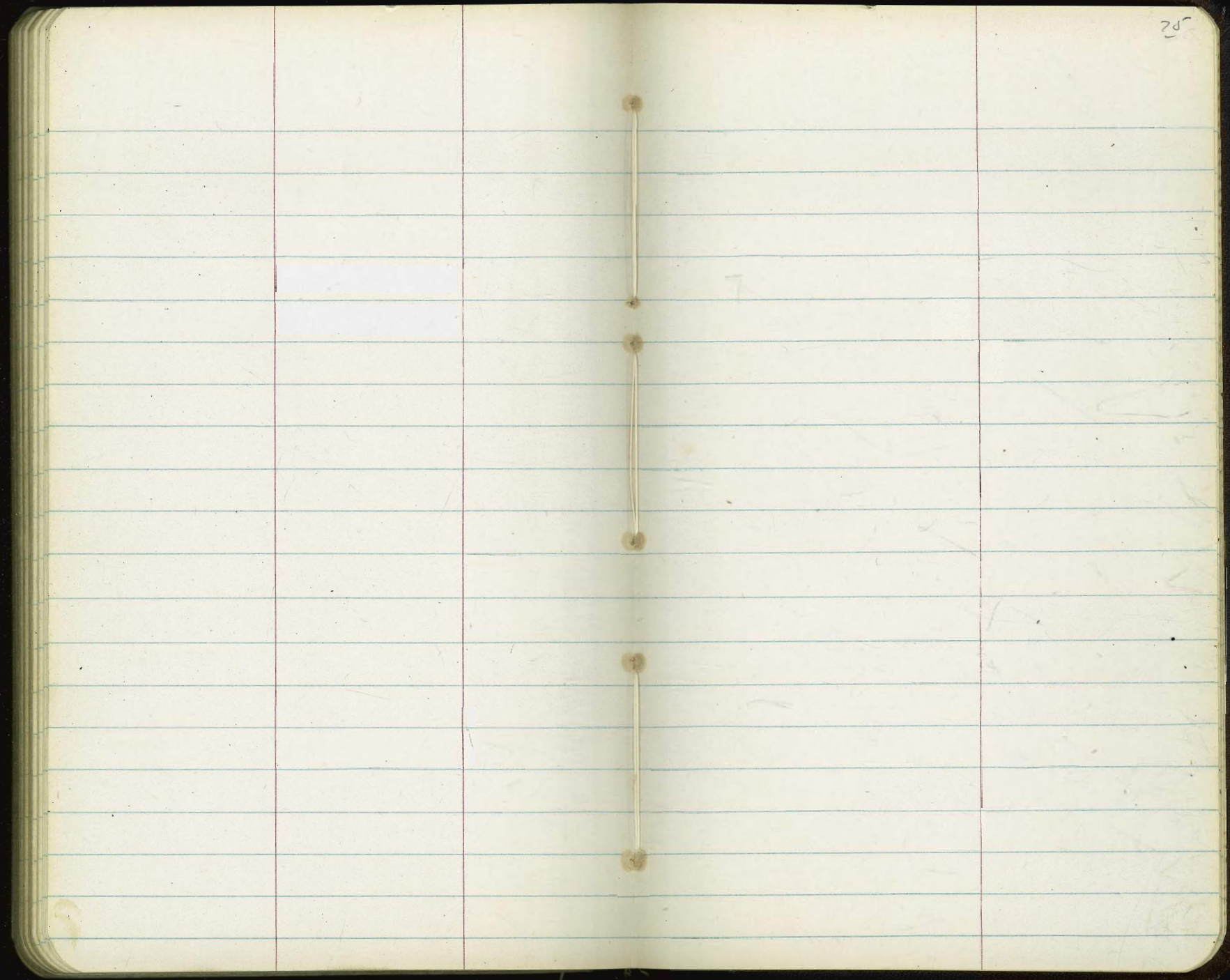
Fence
 25^{1/2} RT = end 4' high Chain Link
 17^{1/2} LT = wly end NWly Curb Return
 17^{1/2} RT = wly end SWly Curb Return
 Wly edge A.C. Pav

2+44.49 = Wly Line 36th ST

920	9205	9179	9132	9142	9139	9113	9078	9125	9141	912
25	23	17	17	9	9	17	17	23	25	25
	NWly	T.C.	9UT			9UT	T.C.	SWly	Cor	
	Cor									
	Walk				Direct	Rod		Walk		

The image shows an open notebook with two facing pages. The pages are cream-colored and feature light blue horizontal ruling. A vertical red margin line is drawn on each page, creating a narrow left margin. The notebook is bound in the center, and the dark cover is visible at the edges. The pages are blank, with no handwriting or printed text.

The image shows an open notebook with two facing pages. The pages are cream-colored and feature light blue horizontal ruling. Each page is divided into three vertical columns by two red lines. The leftmost column is the widest, followed by a narrower middle column, and a narrow rightmost column. The notebook is bound in the center, and the dark cover is visible at the edges. There are several small, brownish spots along the spine area, possibly from the binding or age. The page number '74' is written in the top right corner of the right page.



197.8
112
309.8

19.8
9.9
29.7

67.45
43
24.45

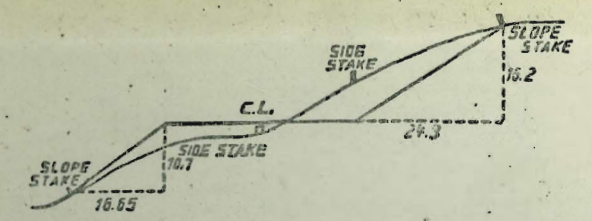
24° 52' 30"

641.46
135.50
776.96

30

225.64
150.00
75.64

475
29
442
1532



DISTANCES FROM SIDE STAKES FOR CROSS-SECTIONING.
SLOPE 1 1/2 TO 1. ROADWAY OF ANY WIDTH.

	0	.1	.2	.3	.4	.5	.6	.7	.8	.9	
0	0.00	0.15	0.30	0.45	0.60	0.75	0.90	1.05	1.20	1.35	0
1	1.50	1.65	1.80	1.95	2.10	2.25	2.40	2.55	2.70	2.85	1
2	3.00	3.15	3.30	3.45	3.60	3.75	3.90	4.05	4.20	4.35	2
3	4.50	4.65	4.80	4.95	5.10	5.25	5.40	5.55	5.70	5.85	3
4	6.00	6.15	6.30	6.45	6.60	6.75	6.90	7.05	7.20	7.35	4
5	7.50	7.65	7.80	7.95	8.10	8.25	8.40	8.55	8.70	8.85	5
6	9.00	9.15	9.30	9.45	9.60	9.75	9.90	10.05	10.20	10.35	6
7	10.50	10.65	10.80	10.95	11.10	11.25	11.40	11.55	11.70	11.85	7
8	12.00	12.15	12.30	12.45	12.60	12.75	12.90	13.05	13.20	13.35	8
9	13.50	13.65	13.80	13.95	14.10	14.25	14.40	14.55	14.70	14.85	9
10	15.00	15.15	15.30	15.45	15.60	15.75	15.90	16.05	16.20	16.35	10
11	16.50	16.65	16.80	16.95	17.10	17.25	17.40	17.55	17.70	17.85	11
12	18.00	18.15	18.30	18.45	18.60	18.75	18.90	19.05	19.20	19.35	12
13	19.50	19.65	19.80	19.95	20.10	20.25	20.40	20.55	20.70	20.85	13
14	21.00	21.15	21.30	21.45	21.60	21.75	21.90	22.05	22.20	22.35	14
15	22.50	22.65	22.80	22.95	23.10	23.25	23.40	23.55	23.70	23.85	15
16	24.00	24.15	24.30	24.45	24.60	24.75	24.90	25.05	25.20	25.35	16
17	25.50	25.65	25.80	25.95	26.10	26.25	26.40	26.55	26.70	26.85	17
18	27.00	27.15	27.30	27.45	27.60	27.75	27.90	28.05	28.20	28.35	18
19	28.50	28.65	28.80	28.95	29.10	29.25	29.40	29.55	29.70	29.85	19
20	30.00	30.15	30.30	30.45	30.60	30.75	30.90	31.05	31.20	31.35	20
21	31.50	31.65	31.80	31.95	32.10	32.25	32.40	32.55	32.70	32.85	21
22	33.00	33.15	33.30	33.45	33.60	33.75	33.90	34.05	34.20	34.35	22
23	34.50	34.65	34.80	34.95	35.10	35.25	35.40	35.55	35.70	35.85	23
24	36.00	36.15	36.30	36.45	36.60	36.75	36.90	37.05	37.20	37.35	24
25	37.50	37.65	37.80	37.95	38.10	38.25	38.40	38.55	38.70	38.85	25
26	39.00	39.15	39.30	39.45	39.60	39.75	39.90	40.05	40.20	40.35	26
27	40.50	40.65	40.80	40.95	41.10	41.25	41.40	41.55	41.70	41.85	27
28	42.00	42.15	42.30	42.45	42.60	42.75	42.90	43.05	43.20	43.35	28
29	43.50	43.65	43.80	43.95	44.10	44.25	44.40	44.55	44.70	44.85	29
30	45.00	45.15	45.30	45.45	45.60	45.75	45.90	46.05	46.20	46.35	30
31	46.50	46.65	46.80	46.95	47.10	47.25	47.40	47.55	47.70	47.85	31
32	48.00	48.15	48.30	48.45	48.60	48.75	48.90	49.05	49.20	49.35	32
33	49.50	49.65	49.80	49.95	50.10	50.25	50.40	50.55	50.70	50.85	33
34	51.00	51.15	51.30	51.45	51.60	51.75	51.90	52.05	52.20	52.35	34
35	52.50	52.65	52.80	52.95	53.10	53.25	53.40	53.55	53.70	53.85	35
36	54.00	54.15	54.30	54.45	54.60	54.75	54.90	55.05	55.20	55.35	36
37	55.50	55.65	55.80	55.95	56.10	56.25	56.40	56.55	56.70	56.85	37
38	57.00	57.15	57.30	57.45	57.60	57.75	57.90	58.05	58.20	58.35	38
39	58.50	58.65	58.80	58.95	59.10	59.25	59.40	59.55	59.70	59.85	39
40	60.00	60.15	60.30	60.45	60.60	60.75	60.90	61.05	61.20	61.35	40
41	61.50	61.65	61.80	61.95	62.10	62.25	62.40	62.55	62.70	62.85	41
42	63.00	63.15	63.30	63.45	63.60	63.75	63.90	64.05	64.20	64.35	42
43	64.50	64.65	64.80	64.95	65.10	65.25	65.40	65.55	65.70	65.85	43
44	66.00	66.15	66.30	66.45	66.60	66.75	66.90	67.05	67.20	67.35	44
45	67.50	67.65	67.80	67.95	68.10	68.25	68.40	68.55	68.70	68.85	45
46	69.00	69.15	69.30	69.45	69.60	69.75	69.90	70.05	70.20	70.35	46
47	70.50	70.65	70.80	70.95	71.10	71.25	71.40	71.55	71.70	71.85	47
48	72.00	72.15	72.30	72.45	72.60	72.75	72.90	73.05	73.20	73.35	48
49	73.50	73.65	73.80	73.95	74.10	74.25	74.40	74.55	74.70	74.85	49
50	75.00	75.15	75.30	75.45	75.60	75.75	75.90	76.05	76.20	76.35	50

THE NATIONAL BLANK BOOK COMPANY
HOLYOKE MASSACHUSETTS
NEW YORK CHICAGO BOSTON SAN FRANCISCO