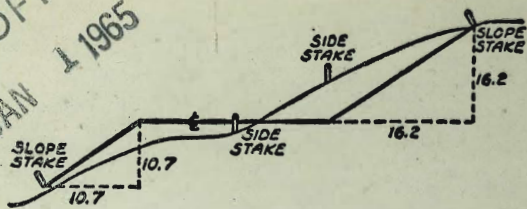


MICROFILMED
JAN 1 1965



DISTANCES FROM SIDE STAKES FOR CROSS-SECTIONING
SLOPE 1 TO 1. ROADWAY OF ANY WIDTH

	0	1	2	3	4	5	6	7	8	9	
0	0.00	0.10	0.20	0.30	0.40	0.50	0.60	0.70	0.80	0.90	0
1	1.00	1.10	1.20	1.30	1.40	1.50	1.60	1.70	1.80	1.90	1
2	2.00	2.10	2.20	2.30	2.40	2.50	2.60	2.70	2.80	2.90	2
3	3.00	3.10	3.20	3.30	3.40	3.50	3.60	3.70	3.80	3.90	3
4	4.00	4.10	4.20	4.30	4.40	4.50	4.60	4.70	4.80	4.90	4
5	5.00	5.10	5.20	5.30	5.40	5.50	5.60	5.70	5.80	5.90	5
6	6.00	6.10	6.20	6.30	6.40	6.50	6.60	6.70	6.80	6.90	6
7	7.00	7.10	7.20	7.30	7.40	7.50	7.60	7.70	7.80	7.90	7
8	8.00	8.10	8.20	8.30	8.40	8.50	8.60	8.70	8.80	8.90	8
9	9.00	9.10	9.20	9.30	9.40	9.50	9.60	9.70	9.80	9.90	9
10	10.00	10.10	10.20	10.30	10.40	10.50	10.60	10.70	10.80	10.90	10
11	11.00	11.10	11.20	11.30	11.40	11.50	11.60	11.70	11.80	11.90	11
12	12.00	12.10	12.20	12.30	12.40	12.50	12.60	12.70	12.80	12.90	12
13	13.00	13.10	13.20	13.30	13.40	13.50	13.60	13.70	13.80	13.90	13
14	14.00	14.10	14.20	14.30	14.40	14.50	14.60	14.70	14.80	14.90	14
15	15.00	15.10	15.20	15.30	15.40	15.50	15.60	15.70	15.80	15.90	15
16	16.00	16.10	16.20	16.30	16.40	16.50	16.60	16.70	16.80	16.90	16
17	17.00	17.10	17.20	17.30	17.40	17.50	17.60	17.70	17.80	17.90	17
18	18.00	18.10	18.20	18.30	18.40	18.50	18.60	18.70	18.80	18.90	18
19	19.00	19.10	19.20	19.30	19.40	19.50	19.60	19.70	19.80	19.90	19
20	20.00	20.10	20.20	20.30	20.40	20.50	20.60	20.70	20.80	20.90	20
21	21.00	21.10	21.20	21.30	21.40	21.50	21.60	21.70	21.80	21.90	21
22	22.00	22.10	22.20	22.30	22.40	22.50	22.60	22.70	22.80	22.90	22
23	23.00	23.10	23.20	23.30	23.40	23.50	23.60	23.70	23.80	23.90	23
24	24.00	24.10	24.20	24.30	24.40	24.50	24.60	24.70	24.80	24.90	24
25	25.00	25.10	25.20	25.30	25.40	25.50	25.60	25.70	25.80	25.90	25
26	26.00	26.10	26.20	26.30	26.40	26.50	26.60	26.70	26.80	26.90	26
27	27.00	27.10	27.20	27.30	27.40	27.50	27.60	27.70	27.80	27.90	27
28	28.00	28.10	28.20	28.30	28.40	28.50	28.60	28.70	28.80	28.90	28
29	29.00	29.10	29.20	29.30	29.40	29.50	29.60	29.70	29.80	29.90	29
30	30.00	30.10	30.20	30.30	30.40	30.50	30.60	30.70	30.80	30.90	30
31	31.00	31.10	31.20	31.30	31.40	31.50	31.60	31.70	31.80	31.90	31
32	32.00	32.10	32.20	32.30	32.40	32.50	32.60	32.70	32.80	32.90	32
33	33.00	33.10	33.20	33.30	33.40	33.50	33.60	33.70	33.80	33.90	33
34	34.00	34.10	34.20	34.30	34.40	34.50	34.60	34.70	34.80	34.90	34
35	35.00	35.10	35.20	35.30	35.40	35.50	35.60	35.70	35.80	35.90	35
36	36.00	36.10	36.20	36.30	36.40	36.50	36.60	36.70	36.80	36.90	36
37	37.00	37.10	37.20	37.30	37.40	37.50	37.60	37.70	37.80	37.90	37
38	38.00	38.10	38.20	38.30	38.40	38.50	38.60	38.70	38.80	38.90	38
39	39.00	39.10	39.20	39.30	39.40	39.50	39.60	39.70	39.80	39.90	39
40	40.00	40.10	40.20	40.30	40.40	40.50	40.60	40.70	40.80	40.90	40
41	41.00	41.10	41.20	41.30	41.40	41.50	41.60	41.70	41.80	41.90	41
42	42.00	42.10	42.20	42.30	42.40	42.50	42.60	42.70	42.80	42.90	42
43	43.00	43.10	43.20	43.30	43.40	43.50	43.60	43.70	43.80	43.90	43
44	44.00	44.10	44.20	44.30	44.40	44.50	44.60	44.70	44.80	44.90	44
45	45.00	45.10	45.20	45.30	45.40	45.50	45.60	45.70	45.80	45.90	45
46	46.00	46.10	46.20	46.30	46.40	46.50	46.60	46.70	46.80	46.90	46
47	47.00	47.10	47.20	47.30	47.40	47.50	47.60	47.70	47.80	47.90	47
48	48.00	48.10	48.20	48.30	48.40	48.50	48.60	48.70	48.80	48.90	48
49	49.00	49.10	49.20	49.30	49.40	49.50	49.60	49.70	49.80	49.90	49
50	50.00	50.10	50.20	50.30	50.40	50.50	50.60	50.70	50.80	50.90	50

Distance of slope stake from side or shoulder stake for any width roadway, slope 1 to 1. If ground is nearly level, the cut or fill at side stake is located by the double entry method in left column and top row. The number in body of table in same row and column gives distance from side stake to slope stake. If ground is not level estimate the difference in elevation between the side stake and slope stake, lower target by this amount if cut, elevate if fill. Add this amount to cut or fill and find distance in table. Set up rod at this point, and line of sight should cut target. If it does not make the slight adjustment necessary.

Ang. $17^{\circ} 44' 53''$

ch = 609.66

Ang. $14^{\circ} 39' 30''$

ch = 683.25

686.32

$12^{\circ} 50'$

1911 Xsect

INDEX

La Palma Drive - ^{Gresham} to Samuel	2-9
X-Sect. Dalbergia - Woden to Div.	10-
X-SECT ALLEY BLK ARINGTON ^{VESTA to WODEN}	17
X-sec Arbor Drive - Ingalls to Ibis	26-
X-Sec N ^o s Alley Blk. 27 - H.M. Higgins App	39-
X-Sec. Alley Blk. 2 BARTLETT Est. Co. Sub.	51-
X-Sec. University Ave. 54th St. to El Cerrito Hts.	62-

La Palma Dr.

Fanuel to Gresham

W.O. 32025

REDUCED 12-4-51
Ryan

12-3-51

Sommermaier
Begg

R. Sisson
Oltman

• = Fd. 7' L+T.

• = set city disk

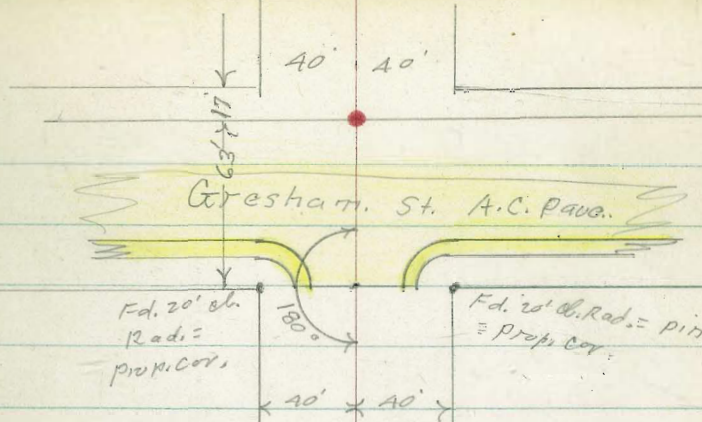
(W) = ctr. water meter box.

Soil sample 20' N of 3+75

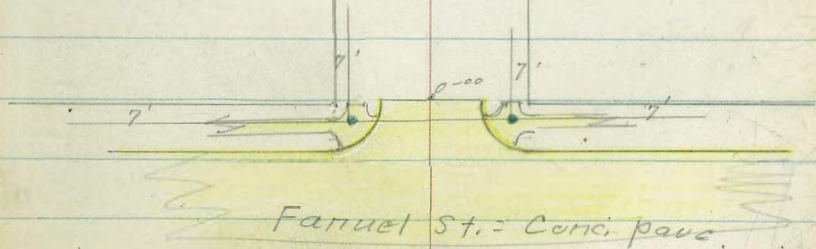
out. to trees = ctr. of trees.

out. to pole = \perp pole.

See note No. elevations P-9



INDEXED
DEC 4 1951



La Palma Dr.

0+30 - 35' Rt. = 12" diam. pepper.

0+16 - 35' Rt. = 10" diam pepper

0+15

8.1	7.3	6.3	6.2	5.9	5.3	6.7	5.8
2.4	3.2	4.2	4.3	4.6	5.2	3.8	4.7
40	19	18		10	17	18	40

0+04 - 35' Rt. = Ctr. 16" diam. cedar. ^{tree.}

36' Rt. S Ely. Cor. } = end of walk
 31' Rt. = N. Ely. Cor } CONC. walk
 36' Lt. = N. Ely. Cor. } = end of walk
 31' Lt. = S Ely. Cor } CONC. walk

7.6	4.13	6.99	5.64	5.65	5.8
2.9	3.41	3.55	4.90	4.89	4.7
40	36	31	31	36	40
		walk	walk		

20' Lt. } = end curb.
 20' Lt. }

0+00 } = end Conc. pava.

6.70	6.03	5.90	5.71	5.49	5.10	5.72
3.84	4.51	4.64	4.83	5.15	5.44	4.82
20	20	10	10	20	20	20
cb.	G.			G.		cb.

0-10 - 40' Rt. = start board fence.

0-20 Cont.

8.56	7.94	3.16	3.13
1.98	2.60	7.38	6.81
100	100	100	100
cb.	G.	G.	cb.

40' Rt. } = B.C. 20' Rad. cb. Rots.
 40' Lt. }

0-20 = Ely. cb. line Fanuel

7.08	6.45	6.01	5.49	4.94	4.56	6.19
3.46	4.09	4.53	5.05	5.60	5.98	4.35
40	40	20	10.54	20	40	40
cb.	G.			G.		cb.

9.57 10.54 - 6.97

N.E. Lt. La Palma Dr. & Fanuel ^{St.} F.B. 2083
 36

1+93 39[±] Lt. = end drive1+86[±] 39[±] Lt. = start conc. drive

1+69 22' Lt. = (W)

1+66- 28[±] Lt. = ϕ 3' wide conc. walk1+50 39[±] Lt. = start 18" wide 2' high hedge1+45 30[±] Lt. = 18" diam. cedar

T.P. 5.38 12.42 3.50 7.04

21[±] Rt. = pole # P 13170+99 38[±] Lt. = end wire fence0+76 38[±] Lt. = end picket & start wire fence.

0+75

0+70 25' Rt. = (W)

0+57 30[±] Lt. = 16" diam cedar stump 5' high0+49 33[±] Lt. = 14" diam pepper38[±] Lt. = start picket fence0+42-46 Rt. = ϕ sing. Gar. conc. floor0+37 40[±] Rt. = end board fence

9.46 9.62
 2.96 3.80
 70 49[±] 39[±]

8.60 8.27
 3.82 4.15
 49[±] 39[±]

9.50 8.47 1.84
 3.62 3.95 4.58
 50 40 28[±]

8.4 7.7 7.2 6.8 6.1 6.6 5.9
 4.0 4.7 5.2 5.6 6.3 5.8 6.5
 40 20 17 14 16 40

12.42

8.0 7.4 6.9 4.0 6.8 6.2 6.7 5.6
 2.5 3.1 3.6 3.5 3.7 4.3 3.8 4.9
 40 18 17 13 16 18 40

7.9 7.5 7.0 7.1 6.3 6.8 5.8
 2.6 3.0 3.5 3.4 4.2 3.7 4.7
 40 18 17 16 18 40

7.9 7.6 6.9 6.9 5.9 6.5 5.8 5.88
 2.6 2.9 3.6 3.6 4.6 4.0 4.7 4.66
 40 18 17 19 19 40 40[±]
 10.54 Gov. Floor

La. Palma Dr.

2+68 - 23' RT. = (W)

2+64 40' RT. = end conc. drive

2+56^E 40' RT. = start conc. drive

2+50 29' Lt. = pole # 546143 H

2+47 40' RT. = end conc. drive

2+39 40' RT. = start conc. drive

2+28 22' RT. = (W)

2+20 21' Lt. = (W)

2+00

1+97^E 31' RT. = start 5' wide conc. walk

1+99 21' RT. = pole # J.P. 1339

1+98

27' RT. = 16" diam. pine

6.78 6.70
5.64 5.72
40^E 50

6.64 6.60 6.65
5.78 5.82 5.77
40^E 50 73
Bar.
Floor

7.8	7.55	7.44	7.27	7.3	6.8	6.5
4.6	4.87	4.98	5.2	5.1	5.6	5.9
40	36 ^L	31 ^L	19		14	40
	Edge walk	edge walk				

6.21 6.12 6.00
6.21 6.30 6.42
40 50 73
Bar.
Floor

6.22 6.14
6.20 6.28
40 50

8.4	7.4	7.0	6.6	6.1	6.5	6.2
4.0	5.0	5.4	5.8	6.3	5.9	6.2
40	31	18		15	17	40

7.37	7.36
5.05	5.06
36 ^L	31 ^L
N.W. cor.	S.W. cor.
walk	

La Palma Dr.

4

T.P. 7.74 18.95 1.21 11.21

3+50

3+45^E 41' Lt. = end drive

3+38^E 41' Lt. = start conc. drive

3+36 21' Lt. = (W)

3+22 41^E Lt. = 3' wide conc. walk

3+00 40' Rt. = start rail fence.

2+99^E 31' Lt. = end 5' wide conc. walk

40^E Rt. = 3' wide conc. walk.

2+79- 23' Lt. = (W)

9.82 10.0 10.4 10.9 10.4 11.4 11.4
2.6 2.4 2.0 1.5 2.0 1.0 1.0
40 30 16 13 22 40

9.85 9.62
2.57 2.80
51 41

10.3 9.78 9.56
2.1 2.64 2.86
71 51 41
Cor.

9.12 9.01
3.30 3.41
50 41^E

8.2 8.3 8.5 8.6 8.1 8.3 8.0
3.9 4.1 3.9 3.8 4.3 4.1 4.4
40 31 17 14 23 40

4.32 4.74
4.10 4.18
36 3.1
Edge Edge
walk walk

1.82 7.42
5.10 5.00
12.42 40^E 55

4+31- 39^E Lt. = 3' wide Conc. walk

15.18
3.77
50
15.08
3.87
39^E

4+15 39^E Lt. = end Conc. drive

13.44
5.51
75
Gar. Floor
13.38
5.57
39^E

4+08 39^E Lt. = start Conc. drive

13.44
5.51
75
Gar. Floor
13.24
5.71
39^E

4+00

12.4
6.5
40
12.4
6.5
30
13.6
6.0
18
13.65
5.4
15
13.3
5.6
17
14.00
4.5
40

3+90 21^E Lt. = (W)

3+88 24' Rt. = deadman

3+73 40^L Lt. = 3' wide Conc. walk.

11.20
7.75
50
11.17
7.78
40^L

3+68 40^L Lt. = end Conc. drive

10.47
8.46
50
10.41
8.54
40^L
drive

3+62 23^L Rt. = Pole #1379

3+58^E 40^L Lt. = start conc. drive

10.89
8.06
75
Gar Floor
10.35
8.60
50
drive
10.29
8.66
40^L

18.95

La Palma Dr

At 7 = B.C. 20' Rad. cl. Ret.
 At 5 start Comb. cl. + walk
 5+00³ = start A.C. pave.

At 99²⁶ = wly. Gresham

27⁴ RT. ~ 3' wide. Flag stone + conc. walk
 At 82 39' LT. = 3' wide Conc. walk.

At 80

At 50

At 49² 39⁵ LT. = start rail fence

At 44 - 21' LT. = (W)

At 35

T.P. 8.20 23.98 3.17 15.78

18.95

#

8

11.96	17.88	17.24	17.42	17.34	17.08	16.62	17.26	17.42
6.02	6.10	6.74	6.56	6.64	6.90	7.36	6.72	6.56
25	20	20	10		10	20	20	25
Back of walk	cl.	6				6	cl.	Back of walk

11.9	11.9	16.2	17.9	17.3	17.4	16.8	17.4	17.7	21.0	21.0
4.1	4.1	5.8	6.1	6.7	6.6	7.2	6.6	6.3	3.0	3.0
40	34	27	20	19		20	21	25	32	40

18.54	18.84	16.84	20.35	20.32	20.12
5.44	5.14	5.14	3.63	3.66	3.86
50	40	39	274	40	50

18.8	16.8	17.5	17.5	16.9	17.1	16.7	19.4	20.3	
5.2	5.2	6.5	6.5	7.1	6.9	7.3	4.6	3.7	
40	27	25	19	18		18	20	25	40

17.1	17.6	16.7	16.5	15.9	16.3	15.8	17.8	18.8	19.0
6.7	6.5	7.3	7.5	8.1	7.7	8.2	6.2	5.2	5.0
40	27	25	18	17		19	20	27	40

15.4	15.7	15.2	15.6	15.0	16.7	17.5	17.9
8.6	8.3	8.8	8.4	9.0	7.3	6.5	6.1
40	18	17		19	20	25	40

23.98

La. Palma Dr

±

9

FB 2093
52
2104

342 21.06

T.P. 5.52 24.48 5.02 18.96

5+22.96 Disk 5.13 18.85

5+20 Cont.

5+20 - wly. cl. line Gresham

Am not sure of EL. 21.16 being correct.

existing work.
but used notes in 2093 to check
this shows as 21.19 in bench book

N.W. B.P. Gresham + Pac. Beach Dr.

set B.M.

18.80	18.34	17.42	17.88
5.18	5.64	6.56	6.10
100	100	100	100
cl.	G	G	cl.

18.57	18.06	18.24	18.20	17.89	17.64	18.14
5.41	5.92	5.74	5.78	6.09	6.34	5.84
40	40	20		20	40	40
cl.	G			G	G	cl.

23.78

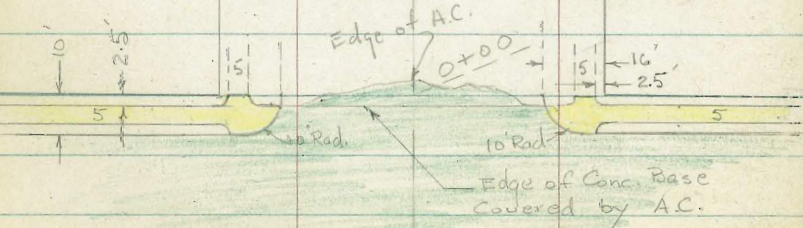
Yama
43'
17'

13'
180° 07' 39"
Fd. Mon
st.

6+00.25

50' 50'

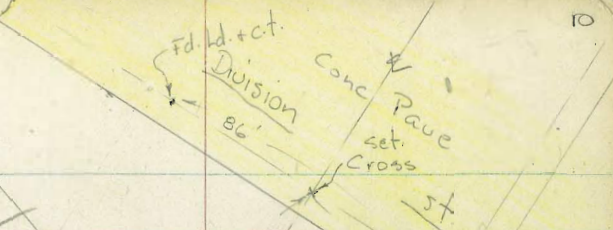
Dalbergia



Woden

st.

INDEXED
P.A. Sauer
OCT 22 1952



5+88.80
Ang. 32° 33' 30" Rt.

50' 50'

Osborn st.

Dalbergia

0+00

Yama

st.

Begin X-Section of Dalbergia St. from
Woden to Division St.

6497 10-6-52 7.0,

W.O. 31591

0+52 - 426' Lt. = end fence.

0+27 - 412' Lt. = Beg. picket fence

0+25

0+20 - 51.5' Lt. = Ely. Cor. of Frame House

0+05.5 - 36' Rt. = ± F.H.

0+00 = E. Line - 50.3' Rt. = Beg. Conc. Bldg.

0 - 02.5 = Edge of Conc. base pave

0 - 10 = E. curb line of Woden

Set B.M. - S.W. 7' Disk - Woden + Dalbergia 13.07

Check B.M. = S.W. 7' c't. Uesta + Dalbergia 16.28 -

B.M. = S.Ely B.P. Main + Uesta 14.89

Lt. Rt.

9.9 10.8 11.3 10.3 11.2 10.6 11.9 11.58
60 50 29 23 21 34 50.3' =
By Bldg.

12.69 11.0
floor 51.5' = ground
at Cor

12.24 12.21 11.99 11.6 11.78 11.90 11.74 11.1 11.50 11.70 11.80
47.4' 42.4' Top 34' 17' 17' 17' 33.9' Top 42.4' 47.4'
end walk end cb gut. AC. AC. AC. gut. end end walk
cb. cb.

11.93 11.36 11.87 11.90 11.84 11.26 11.52
Top 34.3' 17' AC. 17' 34.3' Top.
AC. AC. AC. gut.

13.43
100
Top

12.09 12.11 11.63 11.59 12.05 12.09 11.94 11.50 11.17 11.63 11.36
50 Top edge of 34' 17' 17' 34' 50' Top 100
Top Pavement gut.

13.06 = Book

16.21 = Book

Actual Elev. shown.

Rough
AC.

3+50-40.9' Rt. = end fence

3+41-52.1' Lt. = Gr. frame House

3+12-41.8' Rt. = Dog Rail fence

3+00

2+50

2+15-48.2' Lt. = 18" Euc.

2+00

1+73-85' Rt. = 1/2 Quonset - Dirt floor.

1+67-45.3' Lt. = 3.5' Conc. walk

1+54-49' Lt. = 24" Euc.

1+50

1+46-47.8' Lt. = 24" Euc.

1+37-47.4' Lt. = 24" Euc. tree

1+15-85' Rt. = E. of 30' steel Bldg. "Glenco"

1+00

0+60

	Lt.	±		Rt.					
	7.3	7.3	6.7	7.4	6.5	6.4	6.1	7.3	7.4
	52.1	50	34	18		17	34	50	60
	By House	9.40 floor.	7.6	52.1=ground					

	7.5	7.3	6.9	7.3	6.7	6.7	7.0	7.2	7.2
	60	50	34	19		17	34	50	60

	7.2	7.3	7.1	7.3	6.6	6.5	6.7	7.4	8.2
	60	50	34	18		17	34	50	60

	8.4	7.8	7.4	7.7	7.1	7.4	7.7	8.0	
	60	50	34	18		34	50	60	

	9.04	8.57	8.20					8.40 = floor.	
	60	50.8	45.3 = walk					85	

	09.1	8.6	08.0	07.5	8.3	8.0	7.5	8.4	8.5	8.4
	60	50	34	28	15		7	34	50	60

								11.70	
								85 = floor	

	07.7	07.8	07.9	08.9	08.2	09.3	09.4	08.8	11.0	11.5	11.6
	60	50	41	33	27	12		11	34	50	60

	08.0	08.6	10.2	09.2	10.1	10.4	09.8	11.5	11.8	
	60	50	32	24	12		15	34	50.4 = Bldg.	

BM on S.E. F.H.

8:92

13

Lt. # Rt.

40' F = # Drain Ditch to Rt.

6.9	7.0	6.9	6.8	6.4	6.1	5.4	4.7	4.0
100	50	34	17		17	34	50	100

← Ditch →

30' F = #

7.3	7.2	7.3	7.3	6.5	7.4	7.6	9.4	9.3
100	50	34	17		7	34	50	60

28' E. - 49.3' Rt = end fence

6+00.25 = WL of Yama - 49.6 Rt. = Wire fence

7.9	7.3	7.6	7.6	6.8	6.5	7.3	7.0	9.2	10.0
100	50	34	17		3	10	28	50	60

5+91 - 75.2' Lt = Cor. shop.

8.27 floor. 7.8 = ground.
75.2

5+55 - 75.4 Lt = Cor. Cabinet shop. - Conc. floor.

8.33 conc. floor. 8.1
75.4 = Cor.

5+50

7.7	7.5	7.5	7.4	6.5	6.2	7.5	7.1	9.6	9.6	10.0
60	50	34	17		4	8	34	40	50	60

5+00

7.5	7.7	7.4	7.3	6.3	5.9	7.2	6.6	9.0	9.4
60	50	34	17		3	8	34	50	60

4+50

7.2	7.0	7.0	6.8	5.9	6.6	5.9	6.7	6.7
60	50	34	17		17	34	50	60

4+24 - 45.6' Rt = # 27" Conc. walk

7.15 45.6 walk 7.20 6.3 at porch 9.20 70.1 = Cor. House

4+00

6.9	6.7	6.6	6.8	6.4	6.3	6.3	6.9	7.1
60	50	34	17		17	34	50	60

3+59 - 52.1 Lt = Cor. of House

7.5
52.1 = Cor.

Lt. € Rt.

3+00

2+77 - 50.7 Lt. = Beg. Cyclone fence

2+60

2+20

1+80

1+40

1+10 - Conc. Slab along House on Lt.

0+80

0+50 - Drain Ditch starts on Rt.

0+04 - 35.7 Rt. = € F.H. = B.M.

Cabinet Shop.

60'E. = E.L. Yama = 0+00 ahead - 71.3 Lt. = Beg.

15.8	15.8	15.1	16.4	15.3	15.6	12.8	11.6	9.5
60	50	34	10		10	34	50	65

8.4	8.7	9.7	9.4	6.7	8.8	7.3	6.4	7.7
60	50	34	17		17	34	50	60

7.9	8.0	7.6	8.1	6.9	7.1	5.8	6.0	6.8	5.2
60	50	34	17		17	34	50	60	low 100 Lot

8.1	8.0	7.3	7.8	7.5	7.5	6.2	5.9	6.6
60	50	34	17		17	34	50	60

8.2	5.6	7.8	7.8	7.1	6.6	6.7	6.6	6.7	6.7
70	60	50	34	17		17	34	50	60
Bank €		Bank							

8.19	8.43	8.2	7.2	3.9	7.4	7.8	6.8	7.0	7.8
71	51	50	40	18	Bank	17	34	50	60
By House	edge	conr.	Bank	€					

7.6	7.5	7.6	7.6	7.4	6.8	2.9	7.2	7.3	7.6
60	50	34	17		10	20	30	50	60
					Bank	€	Bank		

8.1	8.0	7.8	7.5	7.7	8.3	7.4	7.1	3.0	7.3
76	50	34	17		17	34	41	57	65
By Shop							Bank	€	Bank
								Ditch	

7.9	7.8	7.6	7.6	7.6	7.8	7.6	7.9	7.8
71.3	50	34	17		17	34	50	60
floor of Shop.								

Dalbergia

Lt.

±

Rt.

15

5+19- 47.5' Rt. = PC. of Curve in walk

29.77 29.84
47.5 50
-walk-

5+00

28.8 27.7 28.1 28.9 24.4 23.6 24.0 29.9 29.6 29.6 29.80
70 50 34 20 10 10 20 34 50 54.5
walk

4+50

28.6 29.0 28.7 28.8 21.9 22.0 21.8 28.7 28.1 27.6 27.78
60 50 34 18 7 7 15 34 50 54
walk

4+28 - 50.7 Lt. = end wall

29.50 28.50 30.0
walk Bottom 50.7-ground
To House

4+13 - 21.5 Rt. = ± 11" Pepper

Courts.

4+07 - 53.4' Rt. = Beg. My. of 2.5' Conc. walk along

24.45 24.44
53.4 55.9
-walk-

4+00

29.6 29.0 29.2 20.6 20.5 20.7 25.4 24.8 23.9 22.3
50 34 20 8 10 20 34 50 70

3+91.5 - 51' Rt. = ± 24" Pepper

3+81 - 26' Lt. = ± Guy Pole

3+75

29.4 29.4 28.4 28.4 22.0 19.5 19.9 24.6 24.0 22.8 20.5
50.9 50 34 20 10 10 15 34 50 70
By wall

3+50

27.5 26.4 26.2 19.3 18.6 18.9 23.2 23.0 22.0 15.4 15.0
50 34 20 8 10 15 34 50 55 70
By wall

3+38 - 50.6 Lt. = end fence + Beg. Conc. Blockwall

23.35 24.8
Bottom 50.6-ground at cor.

3+25

24.8 24.5 23.0 21.6 18.4 18.0 17.6 21.4 20.1 18.8 13.9 13.2
60 50 38 20 10 10 15 34 50 55 75

Lt. † Rt.

INDEXED

INDEXED

OCT 22 1952

Main + Division
Check B.M. = S.W. B.P.

8.94 - 8.98 = Book

Division + Dalbergia
Set B.M. on N.W. 7' cut.

24.65

6+47.73 = Curb line

27.74	27.24	26.44	25.94	25.55	25.19	25.10	24.85	24.63	24.30	24.04	23.70	24.35	23.00	23.60
Top 150	Top 102.2	75	50	36	18			18	36	50	Top	100	Top	
	15' Ret.	got.	got.							got				

6+33.73 = Uly. Line of Division St.
See sketch - P. 10

6+34.5 = edge of Conc. pave and Beg. Curbs.

26.48	25.89	25.70	25.42	25.30	25.09	24.71	24.46	24.34	25.06	24.76	25.4
Top 93	75	50	36	18		18	36	Top	43.1	50	
under got.								got.	ends.	EH	walk

6+13-38' Lt. = † Tel. pole # 459343-H

6+02.82 = 90° to Prop. cor on Rt - on forward Tang.

27.6	26.6	26.8	25.3	25.0	24.8	25.5	25.8	27.5
100	50	34	20		17	20	35	50

5+88.80 = Ang. in † - Sect. on split

28.3	27.6	27.4	25.6	25.3	25.0	25.7	27.0	27.3
75	52	34	17		17	34	40	52

5+74.78 = 90° to Ang. Pt. on Rt. Prop.

28.6	28.2	27.2	26.0	25.4	25.4	25.6	27.1	27.3	28.72
70	50	30	25		17	30	40	50	55.7
									Ang. in walk

5+73.5-34.7 Rt. = † P. pole # 3987

5+50

29.2	28.3	26.6	26.6	25.2	25.6	28.3	28.4	29.12
70	50	34	17		25	34	50	51.9 walk

5+25

29.2	27.2	27.5	24.8	24.1	25.0	29.4	29.68	29.8
70	50	20	8		75	25	48	54

5+24-47 Rt. = Beg. † of 3' Hedge - 4' High

Uly. By House
walk

Clark
Shepherd
Bruner
O'Neil
8-3-53
W.D. 32278

X-SECT. ALLEY BLK J - ARLINGTON
VESTA TO WODEN (Blk 255 Hoels Sub.)

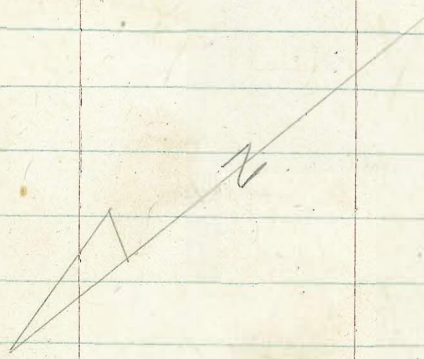
Ref: T.P. 14-49
T. Point sheet #28

Notes p. 18

INDEXED

Law.

JUN 3 1953



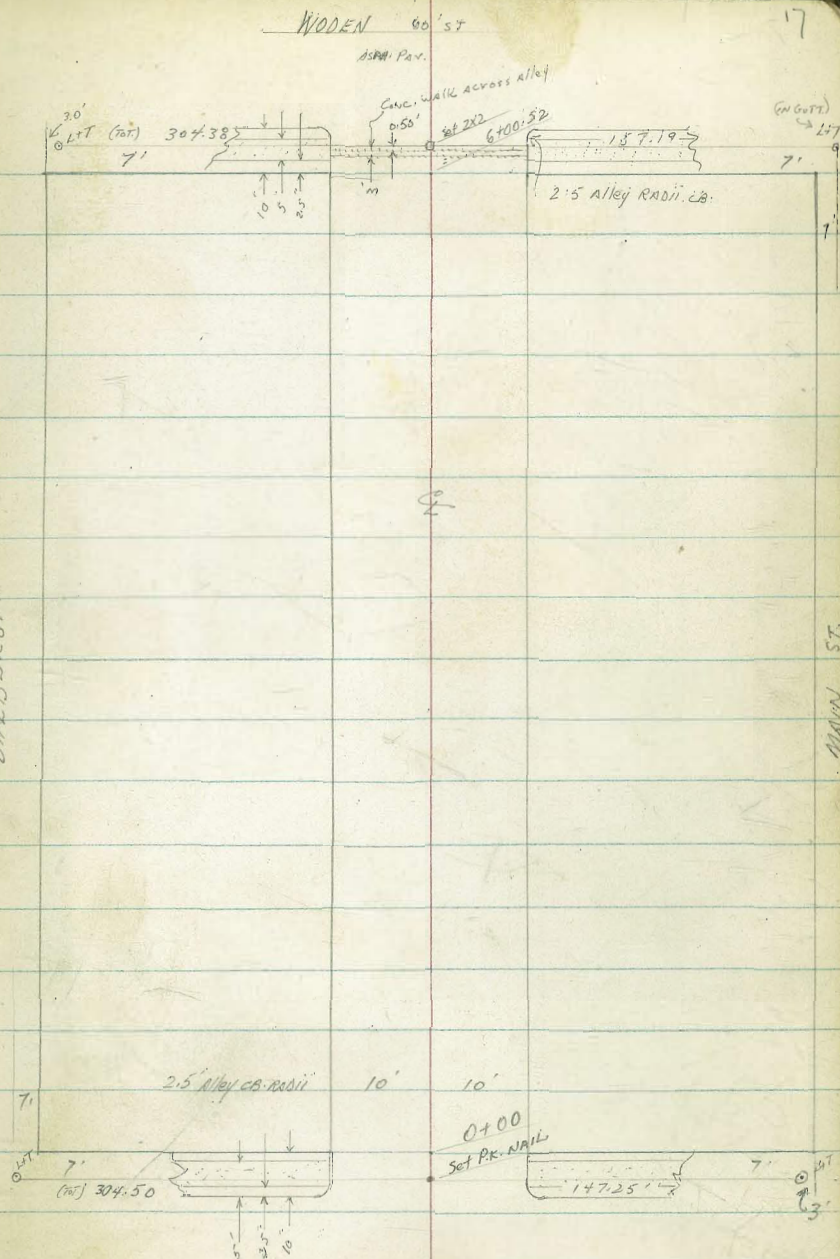
NOTE: CB's From EIC's to P.L. MARKER
Buckled at Vesta alley

Same condition AT WODEN For CB's
d on LT. WALK should come out 10' LT of
Alley Line

PAR. WODEN - Broken & Irreg.

DALBERGIA

MAIN ST.



VESTA

60' PAR.
60' ST.

X-SECT ALLEY B/T J - ARLINGTON
VESTA TO WOODEN

INDEXED

JUN 3 1953

LT.

RT.

1700
0192 25.5 LT END 2-CAR GAR.
0175
0174 27.5 LT Bay 2-CAR GAR - dirt floor
0150
0130
0110 (photomys cyclonoforus 2' ac trap)
12 RT & 16 wide drive (dirt) into Tire Store & (dirt)
0100.80 10' LT - CB AND PAR. EDGE
0100.50 10' RT - CB AND PAR. EDGE
0100 0 line - 4 edge par. & (Par. edge incip. across alley)
0-10 CB. LINE
0-30 & VESTA
B.M. 7.23 22.12

14.89 = SLY B.P
VESTA MAIN

15.1
6.7 25
15.6
6.5
25.5
DINT

15.4
6.7 10
15.6

15.6
6.5

15.4 16.3 16.9 17.3
6.7 5.8 5.2 4.8
7 8 10 20

15.1
6.7 25
15.7
6.4
25.5
DINT

15.6
5.5 10

15.6
5.5

16.5 16.9 18.0 18.7
5.6 5.2 4.1 3.4
6.0 7 10 15

17.3
4.9 25
17.5
4.6 10

17.5
4.6

17.5 18.2 18.1
4.6 3.7 4.0
5.8 6.0 10

17.7
4.4 22
18.0
4.1 10

17.9
4.2
17.9 18.3 18.2
4.2 3.8 3.7
6.5 7 10
4.0 4.0 4.3
10 12 20

17.70
4.72 10
CB AND
17.66
4.46 10
CB

17.34
5.44 6
17.29
4.83 6

17.66 17.97
4.48 10
10 10
4.44 17.66
4.48 17.97

16.37
5.25
EDGE
PAR.

17.63 17.83
4.49 10
10 10
6 CB

16.27 15.80 16.93 16.91 17.41 16.97 16.95
7.35 6.32 5.19 5.71 4.65 5.33 5.17 5.08 5.02 4.76 4.43 4.92 4.40 5.07 4.45 5.25 5.23
100 100 50 50 12.5 12.5 10 10 10 12.5 12.5 3 30 50 50 100 100
CB C CB C CB C CB C CB C CB C CB C CB C CB C

17.04 17.10 17.16 17.69 17.19 17.72 17.05 17.61 17.11 16.89
17.34 17.35 16.68
4.78 4.77 5.44
100 50 100

22.12

1124 (cont.)

LT.

S

RT.

2125 16.4 LT END 2-CAR GAR.

2105 16.3 LT Bdg. 2-Car gar - Conv. Floor

2100

1796 9.2 RT & Pole # PA 3832

1795 16.30 LT END DWELLING

1755 16.35 LT Bdg DWELLING

1750

1743 12.5 LT & Single gar - RT Floor

1722 11.2 LT END House

1704 } 11.2 LT Bdg house
9.4 RT & Pole # PA 3810

T.P. 4.24 19.62 6.74 15.38

14.74
4.88
16.74
Conv. Floor
14.77
4.85
16.3
Conv. Floor

14.3 5.3/15
14.4 5.2/10
14.6 5.0
14.8 4.8/10
15.0 4.6/25

14.92
7.70
16.30
Floor

14.97
7.65
16.35
Floor

14.5 5.1/15
14.6 5.1/10
14.7 4.9
14.6 5.0/10
14.9 4.7/20

14.6
5.0
12.5
RT

14.5 5.1/15
15.71 3.9/11.2
Floor

16.0
7.6
11.2
Floor

19.62
X

ALLEY (CONT.)

LT. ♀ RT.

2195 16.8 LT ♀ Single gar. Con. Flwr. 12.7 apron

15.75
4.54
16.8
Floor

14.83
4.46
12.7
Lip

2193 10.9 RT ♀ Single gar. DIRT Floor

14.6
5.2
10.9
DIRT

2187 12.7 LT. Beg. Con. apron 16.7 Bnk
9.9 LT END 6' Board Fence

15.24
4.55
16.7
Bnk

14.89
4.96
12.7
Lip
Apron

2181 16.6 LT END DRILLING

15.34
4.45
16.6
Floor

2167 10.1 RT ♀ Single gar. DIRT Floor

14.4
5.4
10.1
DIRT

2156 10.2 RT ♀ Single gar. - DIRT Floor

14.4
5.4
10.2
DIRT

2150

14.8
5.0
15

14.4
5.4
10

14.6
5.2

14.6
5.2
10

14.7
5.1
15

2141 16.6 LT Beg. DRILLING

15.33
4.46
16.6
Floor

T.P. 4.20 19.79 4.03 15.59

19.79
X

2138 9.95 LT Beg 6' Board Fence

19.62
X

Alky (cont)

LT.

Σ

RT.

4100 8.4 RT Pile # PA 3864
3+89 10.5 LT Beg. Con. Pav. yd.
3+83 10.5 LT Beg. of Picket Fence
10.2 LT Single 9 ft. Con. Floor 8.3 to Apron (12' long)

17.07 17.07
2.72 2.77
7 10.5
10.5
3.27 3.44 16.35
10.2 16.52 8.3
Floor 4P

3+72 10.4 LT END Con. Pav. in Yard

15.81 15.85
3.92 3.94
17.0 10.4
CONC. 4P

3+66 17.0 LT END Dwelling 10.35 to Lip Con. Pav.

15.01 15.01
3.88 3.92
17.0 10.35
Floor 4P

3+50 10.2 RT Beg 10' wire Fence
10.15 RT. END Board Fence

4.3 15.5 4.3 15.3 4.6 15.2 4.4 15.4
10 10 10 15

3+42 17.0 LT Beg. Dwelling

15.91
3.88
17.0
Floor

3+36 10.15 LT Beg. Con. Pav. in yard
10.05 LT Beg 5' Fence Board
10.05 LT END shed

15.76
4.03 15.70 4.03 14.7
17.0 10.15 70.05
CONC. 4P 6 ft. FTG

3+27 10.05 LT Beg. Shed - Con. Foot
10.05 LT END Fence

14.7
5.1 14.7
10.05 10.35
FTG

3+10 0.10 RT. Sewer Manhole

14.50
5.29
2 in

3+05 9.9 LT Beg 5' Board Fence

3+01 12.7 LT END Apron

15.26 14.84
4.53 4.95
8.6 12.7
8.6 4P

3+00 10.1 RT Beg 6' Board Fence

14.7
5.1 14.7 4.8 15.0 4.7 15.1
10 10 15

2+99 7.0 RT Pile # PA 3850

19.79
1

ALLEY (CONT.)

R

RT.

4462 14.6 LT Beg 2-Car gar. Con. 12.0 to apron

16.03 LT.
4.24 4.25
14.6 12.0
Flor LP

44548 12.2 LT 3.0 Conc walk

16.47
3.85 4.06
17 12.2
walk LIP

4454 (18.0 RT Beg Carting iron Body & Fender Body
Sect. taken here to show how ground drops off toward MAIN ST)

16.10 15.8
4.3 4.5 4.5 4.9 5.5 5.7
10 9 10 14 18
Flor Body
Dirt

4453 12.2 LT END Dwelling

15.4
4.9 12.2
Bot FTG

4450

16.4 16.0
3.9 4.3 4.5 4.9
12 10 10 15

4445 9.95 RT Single gar

15.8
4.5
9.95
Dirt

4438 9.95 RT END 10' WIRE Fence

4418.5 12.1 LT Beg Dwelling
12.1 LT END Conc. Pav. in yd

15.7 16.77
5.1 3.50
12.1 12.1
Bot FTG Conc.

4416 9.15 LT Conc Pav. L's away from Alley
9.65 LT END # Bicket Fence

16.73 16.78
3.37 3.49
15 9.75
conc LIP
conc ATC

T.P. 4.20 20.27 372 16.07

20.27

4100

16.86 16.84 16.3
2.93 2.95 3.5
15 10.5 10
conc LIP
conc

19.79

Alky (CONT)

LT.

E

RT.

5430.5 16.2 LT, END 1944.

5421 13.6 LT END APRON.

5414 16.2 LT E 10' DRIVEWAY

5405 16.2 LT Beg Sewer Mch. Bldg. 13.2
Conc. Floor
(owner says does not use as drive-way etc.)

5404.5 10.4 RT Beg TEXACO Bldg

5404 8.8 RT Beg Conc. GUTT. alongside TEXACO Bldg

5401 13.2 LT Beg. Conc. APRON
8.2 RT E AL PA 5880

5400

4478 19.0 RT. END CONCR. Bldg

4475 17.6 LT END GAR. 12.2 to apron

15.81
4.40 4.53
16.2 13.6
Apron

16.77 15.97 15.75
7.00 7.35 7.52
16.2 16.2 13.6
Floor Apron Lip

16.77 15.95 15.51
4.00 4.32 4.46
16.2 16.2 13.2
Floor on Apron Lip
conc.

14.72 14.16 14.32
6.11 5.95
8.8 10.4
LIP CONC. AGAINST
Bldg

15.99 15.90
4.28 4.37
16.2 12.8
LIP

15.7 15.5
4.6 4.8
15 10
5.0 5.3 5.7 6.5
7 10 2.5

15.9 15.6
4.1 4.5
15 10
5.0 5.3 5.5 6.2 14.1 14.0
7 10 19.0 6.3
Dirt Floor 2.5

15.91 15.94
4.36 4.33
14.6 12.2
Floor Lip

20.27

Alley (cont.)

6404

Ben Edge Conc. walk across alley

T.P

5.84

17.36

8.75 11.52

6400.53

10.35 RT END TEXACO Bldg

5795

5176

12.8 LT END RIDG

5470

9.2 RT END Conc. gutter Along Bld.
(Temporary Asph. gutter cont. to 5489)

5468

12.8 LT FOR PIER

5453

12.8 LT Sq. Drilling - Sets on Conc. Piers
Piers 15" high

5450

5735

LT.

Q

RT.

11.76
5.60
10
WALK
AT CO

11.50
5.80

11.71
5.65
10
WALK
AT CO

17.36
1

12.70
8.07
10
11.03
END

12.0
8.3
10
11.7
END

11.8
8.5
10
11.7
END

11.9
8.4
10
11.88
END

15.3
5.0
14
BANK

12.0
8.3
10
8

11.0
8.3
10

11.9
8.4
10
6.7
11.7
END

15.3
5.0
12.8
31.7

14.0
5.5
10

13.1
6.6
9

12.5
6.2
10

15.6
6.7
10

14.7
6.1
10

13.59
6.68
10.4
13.59
Cup.

15.70
4.5
12.8
TP PIER

15.75
4.52
12.8
TP PIER

15.6
4.7
15

15.5
5.5
10

14.8
5.5
10

14.5
5.8
10

14.7
5.6
9

13.97
6.30
9.2
10.4

14.06
6.2
10.4

15.5
4.8
15

15.1
5.2
10

15.0
5.3
10

15.2
5.1
9

14.08
6.17
9.2
10.4

14.15
6.12
10.4
on Conc.
Against
Bldg

20 27
1

Alley (cont.)

LT.

E

RT.

CHK.

(6.23 14.92-14.89-5'6") B.P. MAIN (VESTA)

T.P. 5.64 21.15 3.85 15.51

T.P. 6.57 19.36 4.57 12.79

CHK.

= 10.54 - NW B.P. MAIN (WOODEN) gone - new pt.

6+30.53 L. WOODEN

5.82 11.54 6.14 11.27 6.14 11.22 6.14 10.93 100

6+10.53 - CB LINE - Note: Pav here no good

12.58 11.84 12.16 11.93 11.00 11.25 11.25 11.43 11.32 11.29 11.68 10.16 11.32 10.51
4.78 5.52 5.26 5.73 5.46 6.11 6.11 5.93 6.04 6.07 5.68 6.5 6.04 6.85
100 100 30 50 10 10 10 10 10 10 10 10 10 10 10 10
CB C CB C CB C (Pav.) CB CB CB CB
12.00 12.37 11.98 11.45 11.25
5.36 5.77 5.58
20 10 10
on Edge WALK 10 Trce
11.67 11.45 11.67
5.69 5.91 5.69
10 10 10
WALK WALK WALK
at CB at CB at CB

6+07.53 CB, FC. Starts here to show main CB & WALK on LEFT Broken spalled (one on KY Pav. 5'6")

6+07 end 3' walk

17.36

CROSS SECTION BASELINE ARBOR DRIVE FROM
INGALLS TO 1B15 W.O. 31881

8-12-53-

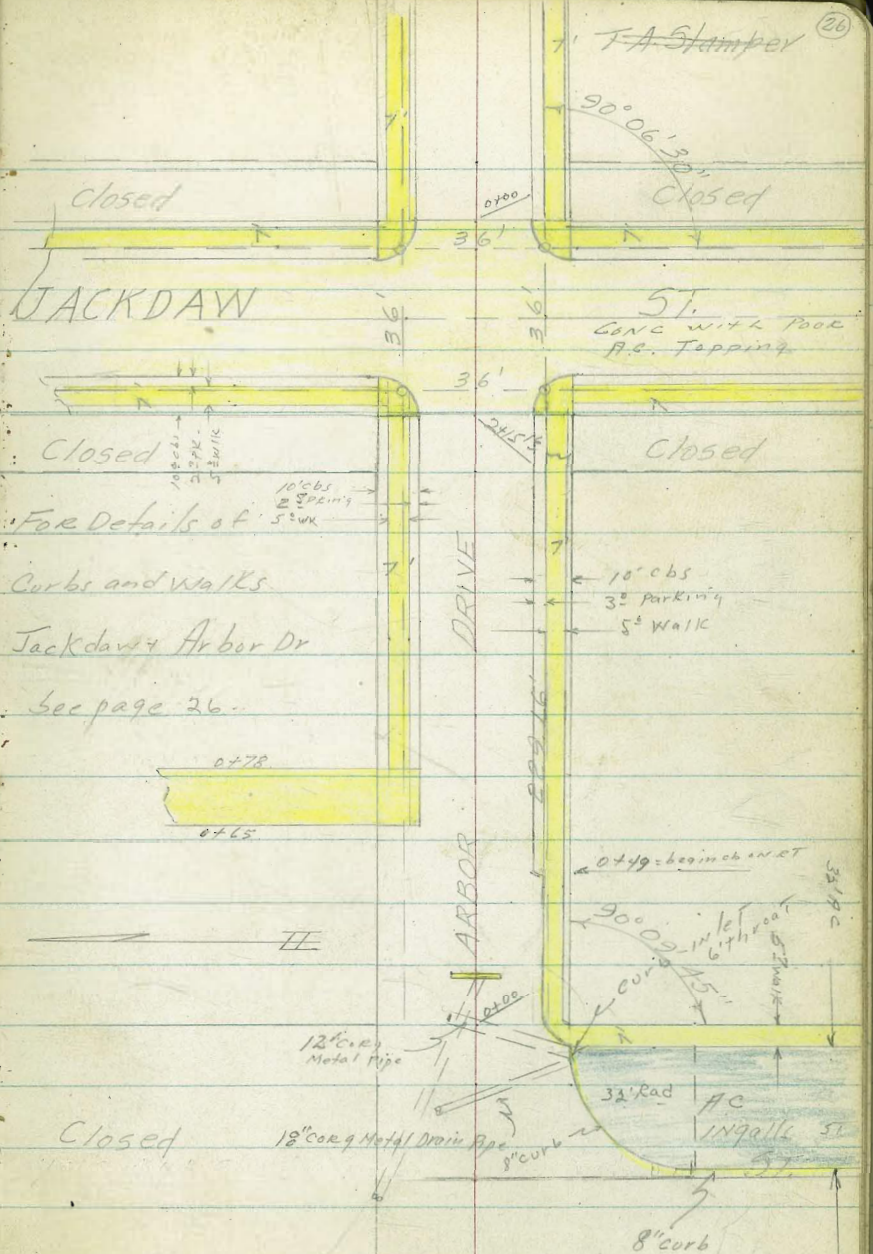
C. Allen

D. Sisson

C. Powell

Ref. TP Sheets 462, 465-

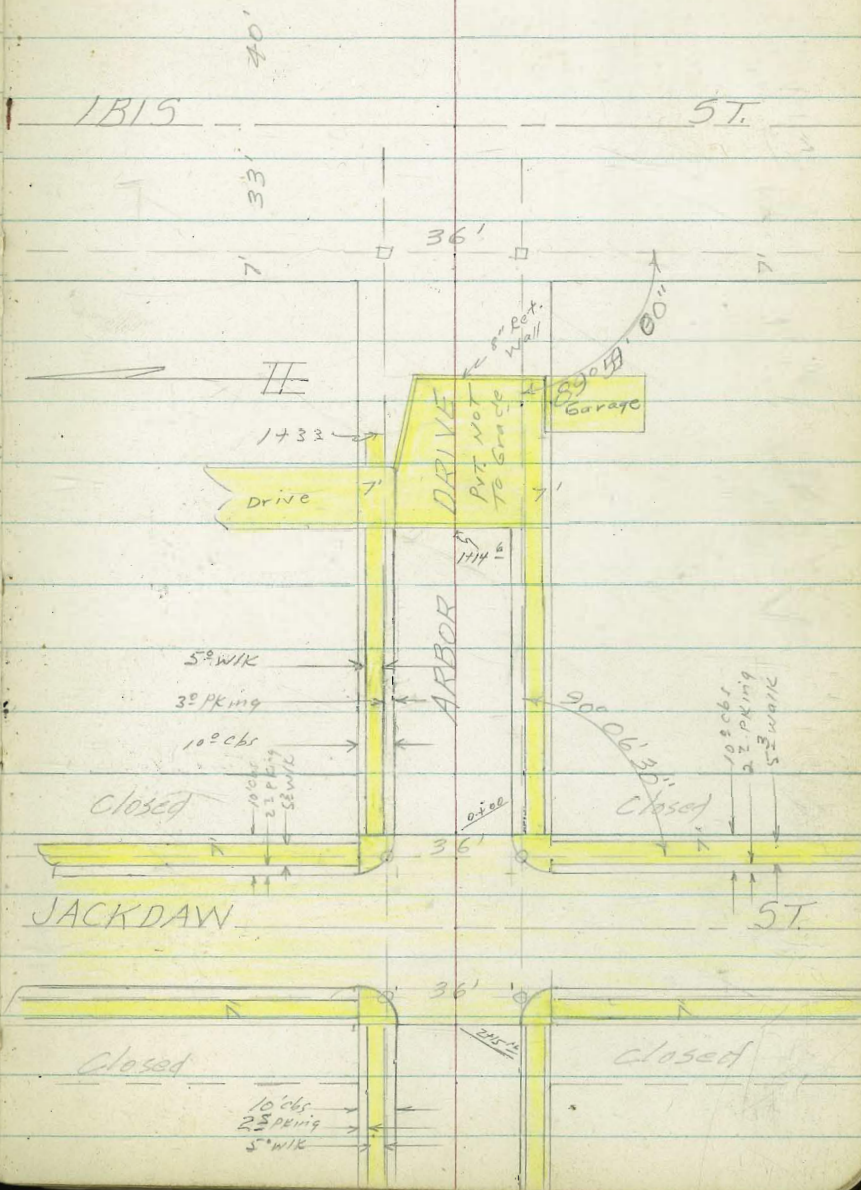
Soil sample taken 5' left of Arbor Dr.
and 50' East of East line
Ingalls.



BASELINE LAYOUT CONT'D.

25' 25'

27



CROSS SECTIONS ARBOR DRIVE;
 INGALLS TO IBIS W.O. 31881

Lt. 1/4

E

Rt. 1/4

45° LT = E 24" Euc Tree
 33° LT = E 30" Euc Tree

0+00 = Fly Line Ingalls ST

243.25	241.55	240.65	240.75	241.94	242.08	243.85
24.5	26.3	27.1	17.0	58.1	56.7	39.0
50	25	17		18 NYedge EDW WALK	25 ON WALK	7.5 ON WALK

242.94	242.69	244.3	245.37
48.1	40.6	31.2	23.8
75.0 90T	75.0 26	125.0 90T	125.0 26

0-05 L = Fly Curb Line Ingalls

261.03	261.94	262.00	262.44
67.2	58.1	57.4	49.1
25.0 NYend curb 90T	25.0 TOP CB	5.0 90T	5.0 CB

0-09 - 25° Rt = 6' throat to two pipes to canyon

261.09	262.05
6.6	5.7
25.0 90T Throat	25.0 TOP CB

0-21 L = 2 A.C. Paving Ingalls ST to south

40° LT = E 14" Euc Tree

237.75	236.75	241.55	242.77	261.41	261.18
34.0	21.0	26.3	54.8	5.34	35.7
50	25		29.5 Top curb Face	29.5 90T	100

TP	5.89	267.75	11.82	262.16
B.M.	0.95	273.98		273.03

267.75 T

S.W. B.P. Lockdown & Arbor Drive

LT = N14

Arbok Dr.

RT = S14 29

0446 - 25° LT = Clump Cactus.

0436 - 7° RT = 8" gum tree -

Top Canyon.

Water to bottom of canyon

12" Cong Metal pipe under street to East Takes

0435 - ON 8" wide by 6' Long Gravity headwall.

0433 - 16° LT = 14" Pepper tree -

TP2 - 6.42 272.77 1.40 266.35

272.77 \uparrow

262.57
92
50
82
Top Canyon

266.37
65
25
265.77
700
18
265.87
69
180
265.87
690
180
266.05
672
230
266.05
230
266.05
230

0413 - 1° LT = 18" Euc tree.

255.85
119
50

248.95
18.8
25

250.25
17.5
10

254.75
130

263.75
4.5
15

263.83
392
180
edge
walk

264.06
369
230
edge
walk

265.27
253
230
Tip Wall

0402 - 5° LT = END 12"

19
IE
Cong pipe

267.75 \times

X-sec Arbor Dr - Ingalls St to
Ibis St.

0+95-15³ Rt = 10' wide conc Drive

Curb + side walk

0+78-14² LT = end Driveway + Begin Normal

be designed to meet this edge Drive
Normal + if curb is to be extended westerly - should
0+65-14² LT = begin Driveway - Driveway is

0+50

TP₃ 5.86 274.89 3.74 269.03

0+49-18³ Rt = begin Curb

LT = N14

Rt = S14

30

268.74	268.56	268.46	267.77
5' 8 ¹ / ₂	6' 0 ³ / ₄	6' 1 ³ / ₄	6' 8 ² / ₄
33 ³ / ₄	22 ³ / ₄	18 ³ / ₄	14 ³ / ₄
Drive	side edge walk	side edge walk	Lip Drive

266.79	266.77	266.60	265.85
7' 8	7' 8 ² / ₄	7' 9 ¹ / ₄	8' 7 ⁴ / ₄
25	22 ³ / ₄	17 ³ / ₄	14 ² / ₄
	side edge walk	side edge walk	Lip drive

266.50
8' 0⁹/₄
3¹/₄
Drive

266.18	266.12	266.04	265.54
8' 4 ¹ / ₄	8' 4 ⁷ / ₄	8' 5 ⁵ / ₄	9' 0 ⁵ / ₄
25	21 ² / ₄	16 ² / ₄	14 ⁴ / ₄
Dr.	N14 edge walk	side edge walk	Lip Drive

265.39	265.49	265.89	266.19	265.99	266.44	266.2	266.79
9 ² / ₄	9 ¹ / ₄	8 ⁷ / ₄	8 ¹ / ₄	8' 6	8' 1 ⁵ / ₄	7' 9 ⁷ / ₄	7' 8
5' 0	25	15	8	15 ³ / ₄	15 ³ / ₄	23 ³ / ₄	25
				9' 0 ⁷ / ₄	7' 0 ⁶ / ₄	Back edge walk	

274.59 \uparrow

265.97
6' 0⁰/₄
15³/₄
9' 0⁷/₄
DINT

266.44
6' 1⁵/₄
15³/₄
Top curb

272.77 \uparrow

X-sec Arbor Drive

LT=N/Y

2

et-ely-

31

1450-15⁰ Rt = 8 10' wide CONC Drive

271.15	270.34	270.17	269.69
34	425	442	49
25	225	150	150
N/Y	N/Y	TOP	90T
WIK	WIK	CB	

271.61	273.09
29.00	100
250	250
Drive	Drive

1423-14⁸ LT = 9' wide CONC Drive -

269.54	268.94	268.80	268.12
505	565	579	647
333	233	173	148
br.	N/Y	SYWK	LIP
WIK	WIK		

270.34	270.95	271.04
425	364	355
150	180	230
LIP	N/Y	SYWK
Drive	WIK	

267.89
25

268.71
588
233
SYedge
WIK
25

1400.-15³ Rt = end 3" drain from house thro

267.80	267.81	267.68	267.99
671	678	691	76
223	173	147	142
N/Y	SY	TOP	90T
WIK	WIK	CB	

267.79	268.61	268.61
600	598	598
68	598	598
153	153	183
90T	TOPCB	SYedge
		WIK

374.59. T

X-sec Arbor Dr.

2+25¹⁶ - Wly Curb line Jack Saw ST

Mid point Returns - 10' Radius - L=15.7

Curb

A.C. badly worn -
with CONC and topped with A.C.
Portland Concrete - Jackdaws pave

2+15¹⁶ = Wly Line Jackdaws T. Begin

2+00

TP₃ 5.50 278.22 1.87 272.72

1+75

L T = N14

2 pt = 511^{273.02} - 520 / 462

56	72	57	63	60	55	55	52	52	52
271.61	270.99	272.50	271.90	272.21	272.70	272.52	272.39	273.60	273.60
100	100	25	25	15	15	15	25	100	100
cb	90T	cb	90T	ec	ec	ec	90T	cb	cb

5	5
272.60	271.98
5	5
272.24	272.24
cb	90T

5	5
272.38	273.05
5	5
272.84	273.17
(90T)	(cb)

Return Broken

5	5	5	5	5	5	5	5	5	5
272.78	272.77	272.64	272.55	271.91	272.76	272.27	273.05	273.14	273.22
5	5	5	5	6	5	5	5	5	4
25	22	17	15	15	15	15	15	18	25
cb	N14	WIK	TOP	90T	90T	90T	cb	N14	WIK
	WIK	WIK	DO	DO		PTDC	DO	WIK	cb

5	5	5	6	5	6	5	5	5	4
272.72	272.72	272.47	271.72	272.47	272.72	272.72	273.02	273.20	273.22
25	22	15	15	15	15	15	15	23	25
WIK	N14	TOP	90T	90T	90T	90T	cb	WIK	cb

2 78.22 T

2	3	3	3	3	3	2	2
272.09	271.39	271.31	270.79	271.49	271.29	271.99	272.14
25	32	32	38	25	33	26	24
25	22	TOP	15	15	15	15	23
WIK	N14	cb	90T	90T	90T	cb	WIK

274.59 T

230
sly edge
Work
N14 CONC
Wall

X-sec Arbor Dr.

from yard on N1/4

0456 - 15° LT = end 3" tile drain thru curb

0453 - 15° RT = end 3" tile drain from yard
(thru curb) on S1/4

0450

Edge Portland Concrete

2765¹⁵ back = 0400 ahead = Ely Line
Jackdaw

Mid point curb returns. Rad = 10'. L = 15.7.

2755¹⁶ = Ely curb line Jackdaw

2740.16 = Jackdaw ST

LT = N1/4

RT = S1/4

23

269.78
844
1E

269.96
826
1E
45

271.27	270.97	270.87	270.77	270.47	270.72	270.52	271.04	271.12
70	725	740	800	7	80	750	718	71
25	230	150	150	150	150	150	230	25
	N1/4 WIK	TCP	90T		90T	cb	S1/4 WIK	

272.83	272.50	271.97	272.50	272.71	272.60	272.25	272.99	273.35
539	572	632	572	551	562	597	523	427
25	150	150	75	75	75	150	150	25
BN CNC	OB EC	90T EC				90T EC	cb EC	ONCNC

272.80	271.94	272.38	272.91
572	620	584	531
cb	90T	90T	cb

Return Broken

271.47	270.86	272.50	271.88	271.18	272.76	272.61	272.46	272.01	272.25	272.47
675	726	572	632	602	546	541	582	521	537	480
100	100	250	250	150	150	250	250	100	100	100
OB	90T	cb BC	90T BC			90T BC	70T BC	90T		cb

271.79	272.60	271.60	271.77	272.95	272.08	272.16	272.38	272.70
645	100	552	552	527	514	506	484	452
100	50	25	15	50	15	25	25	100
				SMH R107				

278.22 x

X-sec Harbor Drive

conc inst + continues on =
1+23° 14° Rt. end Regular curb.

15^z LT=end Regular curb + Begin drive

Concrete is professional Job but NOT to grade

1+14⁶ = wly edge begin Portland concrete

TPV 4.14 272.30 10.06 268.16

1+00-

0+72-15° Rt=end conc Drive

0+64-15° LT=^{home Made} 10' CONC DRIVE

0+55-15° Rt=begin conc Drive

LT=Nly

E. Ct-sly. 34

26741
489
148
907
26760
470
148
Top 16

26850
300
25
26867
363
233
26878
374
15
907
edge
drive
26876
374
75
26873
407
75
26893
427
75
26790
440
148
907
26792
438
148
Top
Ct.
26818
412
228
SHWIK
26830
40
25

26962
86
25
26922
900
23
NY
WIK
26902
920
15
Top
Ct.
26862
910
15
907
272.30 X
26917
915
148
907
26902
10
148
907
26855
967
148
Top 16
26892
930
228
SHWIK
26912
91
25

26932
890
15
18°
26998
824
23
27016
806
25
27017
801
25
27034
788
35

27050
772
35
27044
778
25
27045
777
230
27038
782
180
26995
827
150
TIP

26906
836
15
27055
767
180
BRK IN
DRIVE
27079
743
230
DRIVE
27087
740
25
27089
737
25
DRIVE

278.22 X

X-sec Arbor Dr -
Ingalls to Ibis

LT = N14

ct = 514

35

2684
209
240
Top
garage

87 LT = 514 8" CONC Wall
240 Rt = begin 2 car garage
240 Rt = top of end Rubble CONC wall
1439 240 Rt = toe of end Rubble CONC wall
1435 - Behind wall on left begin floral plantings

264.30 263.90 263.70 262.72 262.96 262.92 854.92 263.45 260.46 260.26 260.41
82 84 86 88 640 7 72 915 1184 1184 2089
250 25 92 82 82 10 240 240 240
N14 Wall Top Wall S14 Wall Toe wall gar Top

1433 110 LT = sly end 11" N4 S Lateral
Rubble conc wall

270.00 267.00
230 45
110 110
Top Wall 92

1433 182 LT = sly edge end 5' walk on

269.30 268.26
400 404
23' N14 edge sly end walk 18' sly edge sly end walk

180 Rt = top Rubble CONC Retaining Wall
160 Rt = toe Rubble CONC Retaining Wall
1430 100 LT = begin 8" CONC Wall used as curb

268.25 267.26 265.33 264.66
405 464 693 366
100 Top Wall 100 on pave 160 Toe Wall 180 Top Wall

1427 175 Rt = d 30" Evergreen tree

268.57 268.45 268.42 268.36 268.32 267.42 266.72 264.42 264.10
373 385 388 394 398 488 550 482 448 420
35 25 23 18 15 10 18 25 30
N14 Edge Walk S14 edge Drive

1426 = Brk in grade - 15' LT = end Drive

272,30 x

X-sec Arbor Dr.
Ingalls to Ibis

2° LT = sly end N+S lateral Bubble Conc Wall Tree
1462 = Wly top Canyon - 4° LT = 1/2" Gum

across end conc.
1456 = ground at Ely side 8" Retaining wall

TP5 .0.09 259.11 13.28 259.02

25' high Cyclone guard fence set in top wall.
Wall turns to face East to South
5 1/2 LT = Lin 8" Conc Wall

24° RT = end 2 car garage
across end concrete
1455 = end concrete. Wly side 8" Conc Wall

24° = Wly 2 car garage
1450 = 6 3/4 LT = sly Conc Wall

LT = N14

RT = S14

36

257.41	257.11	257.21	257.21	256.11	255.21	252.91
17	20	11	19	3 10	2 19	6 2
50	25	20	10	10	25	50
Top Wall	Top Wall	Top Wall				
257.41	257.11	257.21	256.61	255.31	253.81	
17	20	17	20	3 10	5 11	
50	25	10	10	25	50	
				along Ely side garage		

259.11 X

257.30	257.20	257.10	257.85	261.27	260.52	
50	15 1/2	15 2	9 1/2	10 03	11 78	
50	25	60	54	54	240	
		grat Top Wly wall	Top Wall	sly edge Wall	garage Floor	
261.94	261.80	261.40	262.51	262.19		
10	26	10	9 7/8	12 1/2		
edge pit	edge pit	edge pit	Top Wall	Top Wall		
257.60	257.50	257.40	264.08	263.18	262.60	261.70
14 1/2	14 8	14 8	8 2/2	9 1/2	9 7/8	10 60
50	25	70	6 1/2	6 1/2	10	11 80
		grat Top Wly wall	Top Wall	sly edge Wall		240 Floor

272.30 X

X-sec Arbor Drive
Inga 1/2 to Ibis

2400-

TP6 0.66 246.85 12.92 246.19

1488- 25° et = d 12" Euc tree.

1480- 25° et = d 14" Euc Tree

1475

1470- 3° et = d 4" Holly Tree.

1470- 25° et = d 10" Euc tree.

1464- 25° et = d 9" Euc tree.

Lateral Rubble concrete wall.

1463- To show ground along fly side

LT = N14

φ

et = 514

37

241.45
51
50

238.85
80
25

237.55
90
25

236.75
101
25

238.85
10
50

246.85 T

248.31
100
50

248.11
110
25

248.31
100
25

247.71
119
25

246.21
129
50

252.91

67
50

252.51
66
25

252.71
64
25

255.71
39
25

254.41
42
25

252.21
69
50

INDEXED
JER
AUG 18 1953

259.11 T

X-sec Arbor Dr
Ingalls to Ibis -

LT = N14

RT = S14 - 38

TP ₁₀	Starting B.M.	3.02	(273.03)	273.01
TP ₉	6.23	276.03	0.95	269.80
TP ₈	12.13	270.75	0.11	258.62
TP ₇	12.54	258.73	0.66	246.19

2+13.99 = W14 Line Ibis ST.

2+10 = on ϕ = 4" Avocado Tree

237.45	231.65	230.30	229.65	228.95	231.75
9.4	15.2	16.5	17.2	17.9	15.1
50	25	246.85	25	50	7.5

CROSS SECTIONS N. & S. ALLEY BLK 27
 H. M. HIGGINS ADD. W.O. 32917

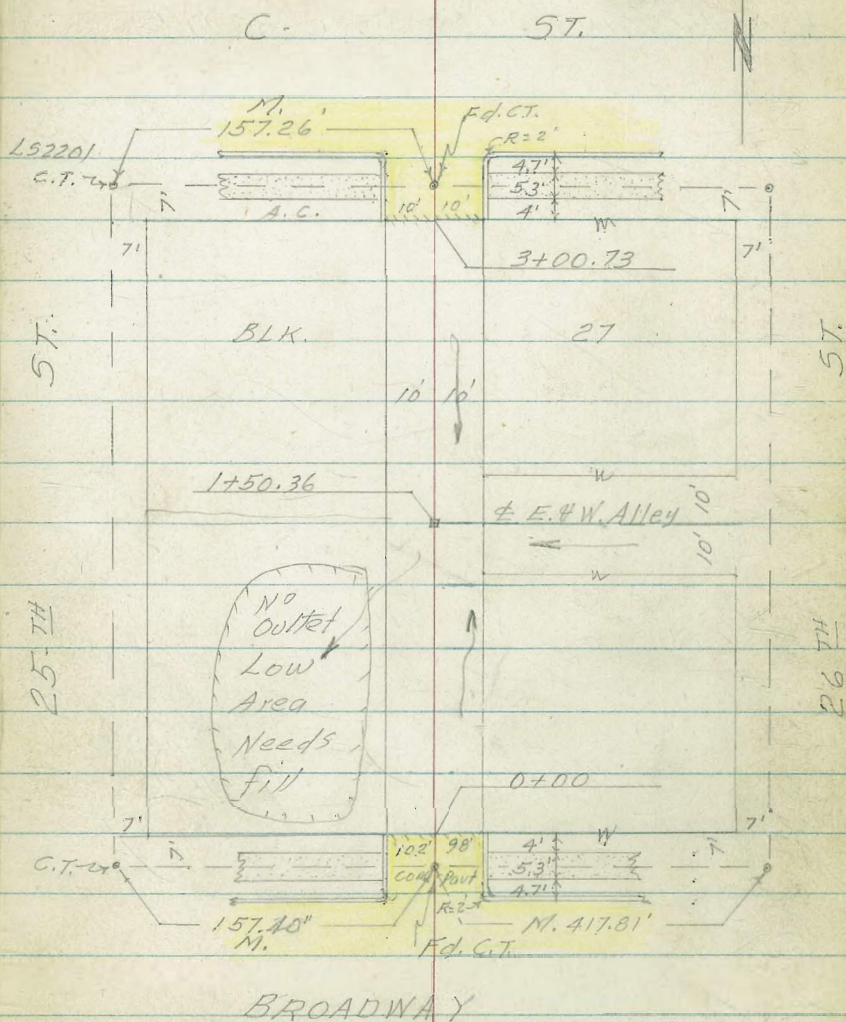
Notes Pg. 40.

INDEXED
 FEB 18 1954

Ref F.B. 1522
 67
 Tie Sheet 108

T.A. Stamped
 2-16-54

37



CROSS SECTIONS N. 5. ALLEY BLK. 27.
H.M. HIGGINS ADD. W.O. 32417

Lt. & Rt.
NOTE: 2-16-54
Sketch Pg. 39

Stampel
Huffman
Nordahl
Sherry

Top Bank Sec.
0+00 Nly Prop Broadway

188.15	188.15	188.40	188.35	188.05	188.18	188.22	188.29	188.55
5.0	5.0	4.75	4.80	5.10	4.97	4.93	4.86	4.6
35	25	10.2	10.2	0	9.8	9.8	10.5	25
		cb	G		G	cb	Top Con Walk	

0-12 E.C. Curb Returns

188.13	188.68	188.62	188.57	188.95
5.02	5.47	5.53	5.64	5.20
10.2	10.2	0	9.8	9.8
cb	G		G	cb

NOTE: No-Outlet for Water
Critical Drainage Water Stands @ N.E.
0-14 } Nly Curbline Broadway Curbline
A.C. Should be Cut down To-West
To let Water out along Gutter

0-14 } Nly Curbline Broadway Curbline
A.C. Should be Cut down To-West
To let Water out along Gutter

188.20	188.62	188.44	188.43	188.59	188.59	188.57	188.55	188.97	188.80	188.20
4.95	5.53	5.09	5.52	5.56	5.56	5.64	5.60	5.18	5.35	4.90
25	25	12	12	10	0	10	12	12	25	25
cb	G	cb	G			G	G	cb	G	cb
		188.03	188.53	188.95	188.50					
		5.12	5.62	5.20	4.65					
		45	45	50	50					
		cb	G	G	cb					
188.85	188.91	188.96	188.04	188.16	188.28	188.40				
5.30	5.24	5.19	5.11	4.99	4.87	4.75				
75	50	25	0	25	50	75				

0-40 & Broadway

+4.17 193.15

193.15

B.M.

188.98

SW BP Broadway & 26-10

Heathley 3/11/54

X-SEC'S ALLEY BLK 27 N. 45.

1+32 - 9² Lt. & Deadman

1+17 - 10⁵ Rt. End Conc. Slab 2' Rock. ^(Garbage Can)

1+17 - 10¹ - Rt. End 4⁵' Board fence

1+14⁵ 10⁵ Rt. & 2' Conc. Walk (Lateral)

1+00
To 0+80

0+55 - 9⁵ Lt. & 10' Wide x 6' High Bean Buses ^{Castor}

0+50

2-16-59

72

Lt.

&

Rt.

185.60
7.55
10.5
CONC.

185.66
7.49
10.5
Top Walk
185.55
7.3
10
186.05
7.1
25
on Walk

182.45
10.7
30
Toe
184.65
11.5
34
Top
185.45
7.7
25
Top
185.55
7.6
10
Top
185.95
7.8
0

181.85
11.3
50
Toe
189.95
12.2
30
Top
186.95
6.2
15
Top
186.35
6.8
10
Bank
184.65
6.5
0
186.95
6.2
10
CONC.
189.42
5.73
17.2
CONC.
187.55
5.60
22
CONC.

193.15

X-5EC'S ALLEY BLK. 27 N. 45.

1+50-0 ^(Pipe Exposed) 6⁵ Lt. & Top 6" C.I. Sewer RUDS E+W.

1+49-9⁶ Lt. & P.P. N° PA1049

1+40³⁶ 5/4 Line E. & W. Alley

1+39-13² Rt. N/4 Edge Conc. Apron 2-Cor Gar.

1+37-13² Rt. Conc. Floor 2-Cor Gar facing E+W Alley

7 4.79 191.64

T.P.

193.15 - 6.30 186.85

2-16-59

43

Lt.

±

Rt.

185.75	185.80
5.89	5.84
16 ⁵	6 ⁵
TOP 6" PIPE	TOP 6" PIPE

182.24	183.54	185.74	185.74	185.84	186.34
9.4	8.1	5.9	5.9	5.8	5.3
50	25	10	0	10	25

186.32	186.31
5.32	5.33
13 ²	23 ²
Apron	Apron

186.45	186.46
5.19	5.18
13 ²	23 ²
Conc Floor	Conc Floor

± 191.64

Set P.K. Ely Side P.P. N° PA-1049-9⁶ Lt. &

X-SEC'S ALLEY BLK 27 N. 4 S.

- 93 Lt. End Conc. Drive
1+68-26° Rt. & Sing Gar. Dir. f. floor

1+61-10± Rt. Begin 4' Woven Wire Fence

1+60³⁶ Nly Line E. & W. Alley

± 75 High Woven Wire Fence & Gate
1+51-9³ Lt. Begin 8" Conc. Ret Wall & Conc.
Drive in Back

1+50³⁶ ± E. & W. Alley line

2-16-54

Lt. ± Rt.

184.19	184.23	184.55	184.83	185.94
7.45	7.41	5.09	4.81	5.7
32	22	10	9	26
A.C.	Toe Conc. Begin A.C.	Top Conc. Drive	Top Wall	Dir. f. floor

184.15	184.21	186.60	186.78	186.14	186.24	186.74
7.49	7.43	5.04	4.86	5.5	5.4	4.9
32	22	10	9	0	10	25
A.C.	Toe Conc. Begin A.C.	Top Conc. Drive	Top Conc. Wall			

184.01	184.10	184.56	184.76	185.29
7.63	7.54	5.08	4.88	6.34
32	22	10	9	9
Top A.C.	Toe Conc. Drive	Top Conc. Drive	Top Conc. Wall	Bot f. floor

183.14	184.24	184.84	185.84	186.24	184.44	184.54	186.74	187.04	187.44
8.5	7.3	6.8	5.8	5.4	5.2	5.1	4.9	4.6	4.2
50	25	10	6	0	10	25	50	75	100

191.64

Lt. E Rt.

X- SEC'S N. 45 ALLEY BLK. 27

2+01.5 - 9⁵/₄ FL. 6" V.C.P. Subterranean
Overflow from
Drain from
Downspouts

186.55
5.09
9³/₄
FL. 8" V.C.P.
(Outlet)

2+00.8 - 9³/₄ Lt. & Outlet 4" L. Drain
" Downspout

186.84
4.80
9³/₄
FL. 4" Drain

2+00

187.04 ✓ 186.84 ✓ 186.04 ✓ 185.54 ✓ 186.34 ✓ 186.84
4.6 5.2 5.6 6.1 5.3 4.8
20 10 0 7 10 25
@ Blk

1+90 - 9⁸/₄ Rt. Begins Lath fence

1+84 - 10³/₄ Rt End 4' Woven Wire fence

(26° et c. Sing Gar. Dirt floor
7⁵/₄ High Woven Wire fence on top)

1+79 - 9⁴/₄ Lt. End 8" Conc. Ret Wall &

✓
186.97 186.84 186.04
4.67 6.80 5.6
9⁴/₄ 9⁴/₄ 26°
Top Wall ft. Dirt floor

↑ 191.64

2-16-54

48

Lt.

E

Rt.

X-SECS. N45. ALLEY BLK. 27

2+42- 8¹ Rt. Begin Wooden Steps to Apt Bldg

2+42- 9³ Rt. End 2' Wide Parallel Conc Walk

2+33- 13² Rt. E 5' Wide Conc. Stoop @ Ent to Bldg

2+30- 89 Lt. E. Guy. & PP. N^o A-1089

T.B.M. 710.38 198.19 3.83 187.81

2+29- 11¹ Lt. E 3' steps To Bldg

2+19- 10⁶ Rt. End 5' Lath fence

2+17- 9³ Rt. Begin 2' Parallel Conc Walk

191.64

188.17

1002

81

Top Bot
Step

1065

9³

Top Walk

189.24

10.25

9³

Top Walk

189.26

10.93

13²

Walk

189.11

10.48

13²

Bldg

floor

level

198.19

Set P.K. Fly Side P.P. N^o A-1089-

191.08

5.56

11¹

Top Bot
Step

5.60

186.04

11¹

Ground

181.81

484

9³

Top Walk

191.64

2-16-54

47

X-SEC'S ALLEY BLK. 27

Lt. & Rt.

2+70 9¹ Lt & 2" C.I. Downspout Drain

191.49
6.70
92
F.L. 2" Pipe

2+50

187.79	187.89	187.99	191.26	191.39	191.39
10.4	10.3	10.2	6.73	6.80	6.80
10	0	8	10	11.2	14.2
@ Blk			Top Wall	Top Wooden Walk	Top Wooden Walk @ Blk

2+49 - 8¹ Rt. End Wooden Steps To Apt Blk

191.40
6.79
82
Top Wooden Landing

2+47 - 9³ Rt. Begin Loose Stone Embankment

187.69	191.39
10.5	6.82
93	93
Ground	Top Stone Wall

2+47 - 82 Lt & Deadman

19819

2-16-54

48

Lt. E Rt.

X-SEC'S ALLEY BLK. 27

2+81 - 10° Rt. End Stucco + Frame Wall To
Bldg Archway

191.79	191.14	191.91
6.4	4.05	3.78
8	8°	10°
Ground	Top Rock Wall	Top End Stucco Wall

2+79 - 10° Lt. 4 2.5' Wide Drain x 0.8' High
Through Conc. Ret Wall for
drainage from Parking Area to West

190.86
?
7.33
10°
outlet 2.5' wide
x 0.8' High drain

2+74 - 10° Lt. Begin 9" Stucco + Frame Wall
To Archway To Bldg.

190.79	191.14	191.37
7.4	4.05	3.82
8	8.5	10
Ground	Top Rock Wall	Top 9" Stucco Wall

2+71 - 10° Lt. Begin 8" Conc. Ret Wall 5' High

188.99 190.29
9.20 7.9
9.2 9.2
ft Ground

198.19

X-SEC'S ALLEY BLK. 27

3+14.73 - Sly - Gutterline "C" - St

3+12.73 - B.C. Curb Ref's.

Sly-Line C - St. Edge Ac. Pavt's End/Cb.
3+00.73 - 10' Lt. End 8" Conc. Ref wall - 2' High

TR. + 11.16 198.97 - 10.38 187.81

2+93 - 8' Rt End Loose Stone Embankment

198.19

2-16-54

Lt. E Rt.

	192.57	193.33	193.79	192.86	193.43	193.20	193.28	193.75	193.57	194.10
6.00	5.64	6.18	6.11	5.94	5.77	5.69	5.22	5.40	4.85	
25	12	12	10	0	10	12	12	25	25	
Gut	G	G				G	G	G	G	
Driveway										

	192.38	192.04	193.14	193.30	193.71
5.59	5.93	5.93	5.67	5.26	
10	10	0	10	10	
G	G		G	G	

	192.05	193.17	192.40	192.44	193.27	193.35	193.67	194.04	194.04	194.47
5.92	5.80	5.57	5.53	5.70	5.62	5.30	4.93	4.89	4.5	
25°	14	14	10	10	0	10	10	14	25	
A.C. Ac. Bk Conc			G	G		G	G	Bk Conc		
Pavt. Walk.								Walk/Bank		

198.97

	193.29	193.74
4.9	4.45	
80	80	
Ground	Top Wall	

198.19

2-16-54

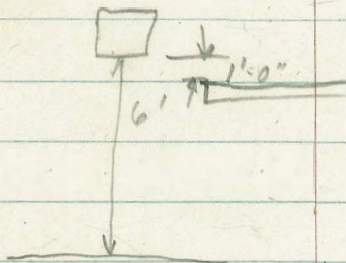
58

X-SECS ALLEY BLK 27

Lt.

+

Rt.



Hadtho 3/11/54

B.M.

- 7.99

190.98

190.96 S.W.B.P. 25-147 C-51.

3+40.73-6 C-51.

192.87	193.31	193.75	194.22	194.66	195.09	195.51
6/0	5.66	5.22	4.75	4.31	3.88	3.46
73	50	25	0	25	50	75

198.97

198.97

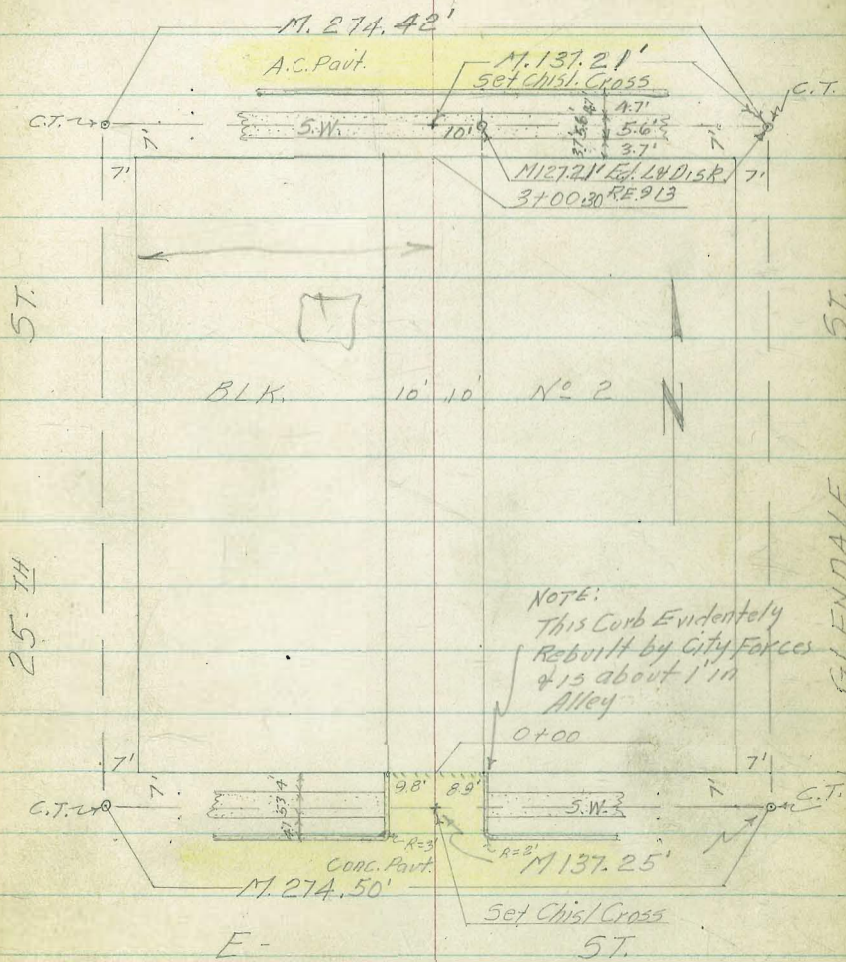
GLENDALE

CROSS SECTIONS ALLEY BLK. 2
BARTLETT EST. CO. SUBDIVISION No. 32417

Notes Pg. 52

INDEXED
JER
FEB 18 1954

BROADWAY



NOTE:
This Curb Evidently
Rebuilt by City Forces
& is about 1" in
Alley

2-17-54

(52)

CROSS SECTIONS ALLEY BLK. 2 BARTLETT.
EST. CO. SUBDIVISION W.D. 32417

NOTE: Lt. Rt.
Sketch P. 51.
Stamper 
Huffman 
Nordahl ϕ
Sherry ϕ

0-11 E.C. Curb Ret. Lt.

170.27 170.41 170.55
4.16 4.82 5.88
9.8 9.8 0
cb G

0-12 E.C. Curb Ret Rt.

170.51 169.77 170.12
5.92 6.66 6.31
0 8.2 8.2
G cb

0-14 Nly Curbline E- St.

173.63 172.85 172.56 171.77 171.52 170.50 169.72 169.47 169.99 167.90
2.80 3.58 3.87 4.66 4.91 5.93 6.71 6.96 6.44 8.53
25 25 13 13 10 0 9.2 11.2 11.2 2.5
cb G cb G G G cb G

0-40 - ϕ E- St.

175.79 173.22 170.58 169.99 165.35
0.64 3.21 5.85 8.44 11.08
50 25 0 25 50
7.93
25
cb

+3.87 176.43

Δ 176.43

T.P. -12.27 172.56

B.M. +0.34 184.83 184.49

NWBR 25-16 ϕ E- Sts.

Radtke
3/11/54

X- SEC'S ALLEY BLK 2

Lt. & Rt.

0+42- 10° Lt. & Side Door 10° Wide To Sing Gar
Entr.

facing South

173.84
4.9
10±
Dirt floor
178.74

0+25- 15° Lt & Sing Gar Dirt floor (faces South)

+6.52 178.74

Sta 0+57- 8° Rt. ✓

T.B.M. Set PK. Tel RN° 412489-H - 421 172.22

0+07- 10° Rt. End 2'x3' High Hedge

173.73
2.7 ✓
13.2
Dirt floor

X X
X Check Top of Curb

0+00 =

173.93	173.33	173.43	172.13	171.77	170.70	170.24	170.73	169.83	169.83	169.93
2.5	0.7	3.0	4.3	4.66	5.73	6.19	5.70	6.6	6.6	7.5
25	25	18	10°	98	0	9°	92	98	10	25
Toe	Top		Ground G			E.P.	Top 8" Wall	Ground		

0-04- 10° Rt & 2' Wide x 3' High Hedge
Begin 8" Conc Ret wall 92 Rt

0-04- Broken Curb on Lt. 98

172.22 171.64 170.18
4.01 4.75 6.25
98 98 92
Cb G Top wall

176.43

176.43

2-17-54

Lt.

Rt.

X-SEC'S ALLEY BLK. 2.

0+71- 10³ Lt. 5' Conc. Walk.

9⁵ Rt. 2 Ft. 8" Parallel Conc. Ret Wall

0+57 ✓ 8⁰ Rt. 4 T.P. N° 412989-H

0+55 ✓ 8⁰ Lt. 4 P.P. N° 913

0+51 ⁵ ✓ 9⁸ Rt. 4 8" Lat. Conc. Ret Wall

0+50

0+49- 10⁵ Lt. (Begin 5' Board Fence) End frame Gas. Blk

0+49- 11⁰ Rt. 4 2' Lateral Conc. Walk

173.89
173.74
4.85 5.00
10³ 10³
on Walk Top Conc. Walk

171.74 ✓ 172.67 169.34
7.0 6.07 9.4
9⁵ 9⁵ 10³
Ground Top Ground
Wall back Ret
Wall

171.90 171.38
7.34 7.36
9¹ 9⁸
Top 8" Top 8"
Parallel Conc. Conc.
Wall Lateral
Ret. Wall

171.24 ✓ 171.52 171.54 171.36 ✓ 170.54 170.10
9.5 5.2 6.9 7.38 8.2 8.64
2⁵ 10 0 9¹ 10² 2⁵
Top 8" Top 8"
Wall Conc
Walk

✓ 171.33 170.89 170.32 170.10
7.41 7.85 8.42 8.64
9¹ 9⁸ 11² 21⁰
Top Wall Top Conc Top on
Step Conc Walk Walk

↑ 170.74

Lt. E Rt.

2-17-54

X-SEC'S ALLEY BLK. 2

0+99-9⁸ Rt. Begin 4-Car Gar Conc. floor

✓
172.92
5.82
9⁸
Conc. floor

0+98-10³ Lt. Begin 5.5' Picket fence

✓
10³ Lt. E 12" Opening Sing Gar
0+91 ✓ 9⁸ Rt. E 14' Wide Conc Sing Gar

✓ 173.79
4.95
10³
Conc. floor
✓ 172.61
6.13
9⁸
Conc. floor

0+83⁵ 9⁵ Rt. End 8" Conc. Ret Wall

✓ 172.14 ✓ 172.99 169.74
6.6 5.75 9.0
9⁵ 9⁵ 10³
Ground Top Ground
 Wall bk. wall

A
0+73⁵ 10³ Lt. Begin Gar + Workshop frame
 on Conc. Foundation
 5' x 9'

174.44 173.24 ✓ 173.99
4.30 5.50 5.3
10³ 10³ 10³
Tarp flg Ground

0+73⁵ 10³ Lt. End 5' Board fence

178.74

X- SEC'S ALLEY BLK 2.

1737³ - 9⁸ Rt. & 3' Conc Walk + Steps

1736 - 9⁸ Rt. End Conc. & Car Gar ✓

1730 - 10² Lt. End 5' Picket fence ✓

1700

Lt.

±

Rt.

(56)

2-17-54

173.19	170.84	172.19
5.55	7.90	8.55
9 ⁸	14 ²	20 ²
Top Step	Bot Step	on Walk

173.17
 5.57
 9⁸
 Car. floor

175.94	174.34	172.94	172.54	172.92
2.8	4.4	5.8	6.2	5.82
25	10	0	9.5	10
			Gar	floor

178.74

X- SEC'S ALLEY BLK 2

2+85- Toe Sec. Ely

182.76	172.25	178.92	✓ 178.25	✓ 178.23	178.18	✓ 178.13	175.83	174.83
1.07	1.58	4.91	5.58	5.60	5.65	5.7	8.0	9.0
31°	31°	235	102	0	63	10	25	50
Conc. Landing	A.C.	Edge A.C.			Edge A.C.			

2+50- Begin A.C. Pavt Parking Area for fire Sta

+7.74 183.83

182.68	181.83	179.68	✓ 179.33	✓ 179.20	177.09	✓ 175.93	173.13	172.23
1.15	2.00	6.15	6.50	6.63	6.76	7.9	10.7	11.1
31°	31°	235	102	0	63	10	18	25
Top Conc Landing	A.C.	A.C.	A.C.	A.C.	Edge A.C.			

2+48 - ✓ 7 @ Rt. & Deadman

Sta 2+20 - 7' Rt.
TBM. Set PK. W/ly Side PP- JPA-978 - 2.65 176.09
Dirt floor

2+31 ✓ 15' Lt. & 10' Wide Sing Gar facing Sly

2+20⁵ ✓ 7' Rt. & PP. N° JPA-978

2+00

178.74	177.94	✓ 176.94	175.84	✓ 174.74	✓ 174.24	173.44	171.34
0.0	0.8	1.8	2.9	4.0	4.5	5.3	7.4
25	12	10	9	0	10	10	25

183.83
13.0
50
0.84
4
Conc. Landing
176.54
2.2
154
Dirt floor
183.83
178.74

X-SECS ALLEY BLK. 2

3+14³ Gutter - Sec.

3+14³ Sky Curbline Broadway

3+04⁰ Back Sidewalk

3+00.30 Sky Line Broadway

+10.07 192.82

T.P.

- 1.08

182.75

N.Y. Edge A.C. Pavt

2+90 - Edge A.C. & Toe Slope W/ly

183.83

Lt. 2-17-54

Rt.

(53)

186.79	186.85	186.90	186.92	187.02	187.09	187.13
6.03	5.97	5.92	5.90	5.80	5.75	5.69
50	25	10	0	10	25	50
G	G	G	G	G	G	G

187.22	187.26	187.32	187.39	187.42	187.47	187.67
5.60	5.56	5.50	5.43	5.40	5.35	5.15
50	25	10	0	10	25	50
cb	cb	cb	cb	cb	cb	cb

187.46	187.51	187.52	187.55	187.59
5.36	5.31	5.30	5.27	5.23
25	10	0	10	25

185.32	184.52	184.52	184.62	184.52
7.5	8.3	8.0	8.2	8.3
25	10	0	10	25

192.82

182.43	178.97	178.44	178.49	178.38	178.53	178.03	178.53
0.4	4.86	5.35	5.34	5.45	5.3	5.8	5.8
31	233	100	0	63	10	25	50
	Edge A.C.			Edge A.C.			

183.83

Lt. E Rt.

X-SEC'S ALLEY BLK 2

2-17-54

Hutke
3/11/54

B.M.

-3.83

188.99

188.98 SWBP Broadway & 26th

Survey

3 + 40.30 E Broadway

189.75	189.86	189.93	189.91	189.06	189.20	189.30
5.07	4.96	4.89	4.85	4.76	4.62	4.52
75	50	25	0	25	50	75

192.82

192.82

LOCATION OF GARAGE ALLEY 2

43
8
74

176.09 ~

1+42 - 16² Lt. End 3-Car Gar

1+08 - 16² Lt. Begin 3-Car Gar

B.M.

176.09

4-27-54

Lt & Rt.

NOTE: Direct Elev. Rod Used
2

176.09

176.29 173.8
16²
conc floor

176.29 173.1
16²
conc floor

(see Pg 58)

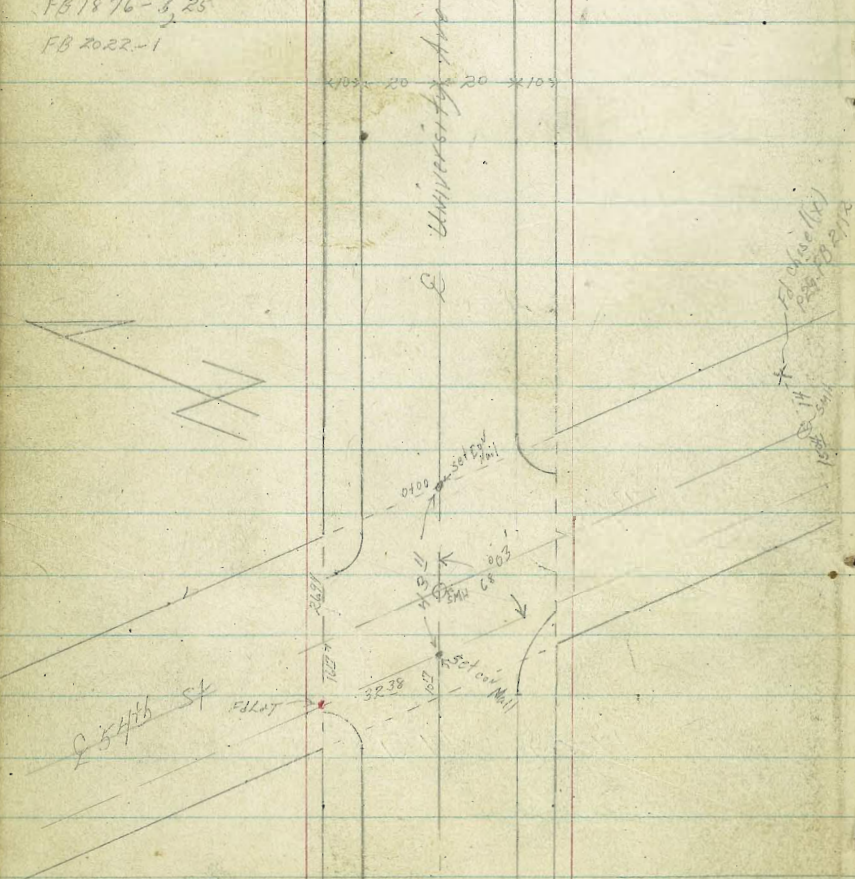
P. Smith
J. Hovey
R. Taylor
B. Fish

cont Bottom
Rt 29.

X Sec
54th St

MINIMUM
HEA
AUG 27 1954

Ref: FB 2112
8/1, 29, 57
File Map Refs 1289
FB 1876-3, 25
FB 2022-1

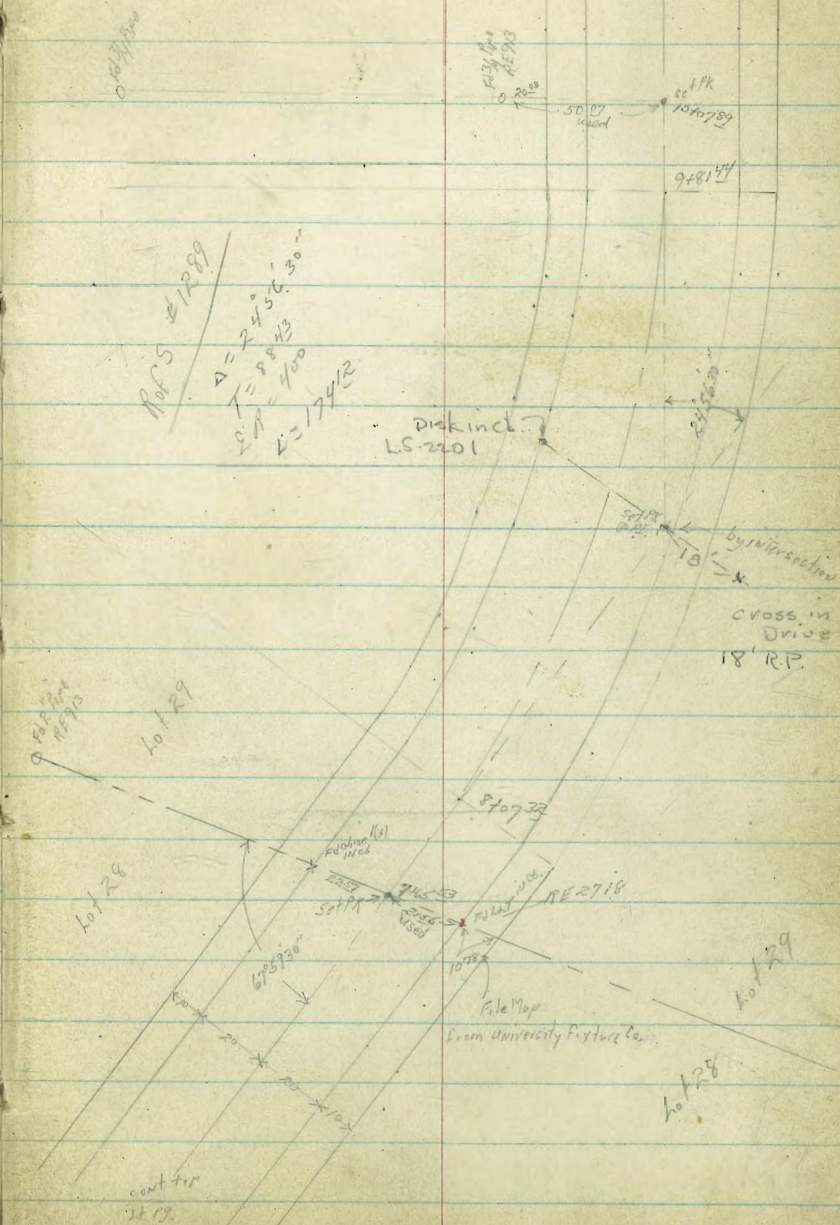


University Ave
to El Cerrito Hts

wo# 22095
8-25-54

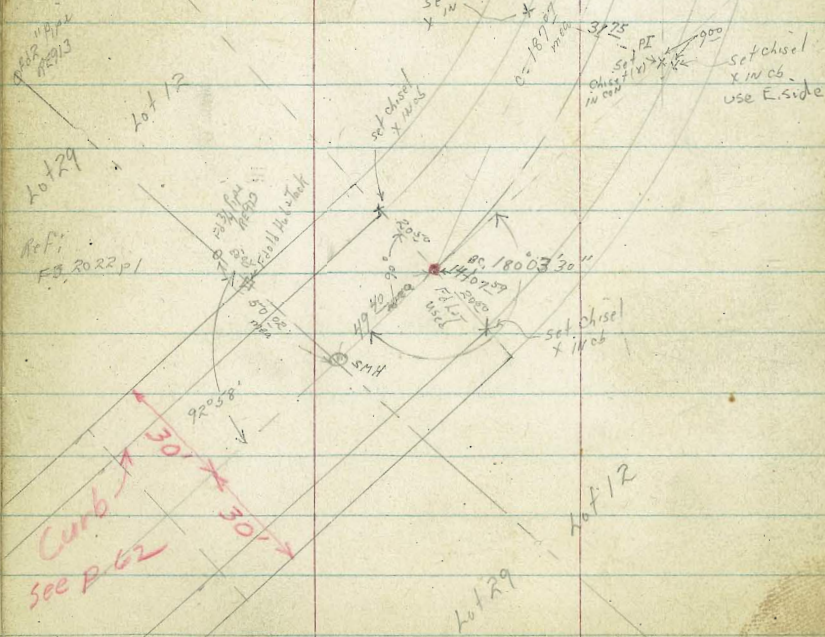
cont Bottom
next 20(11)

62

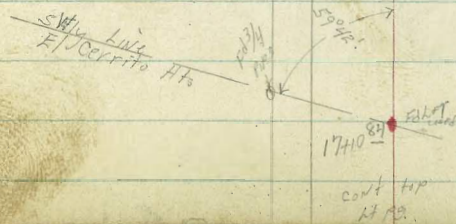
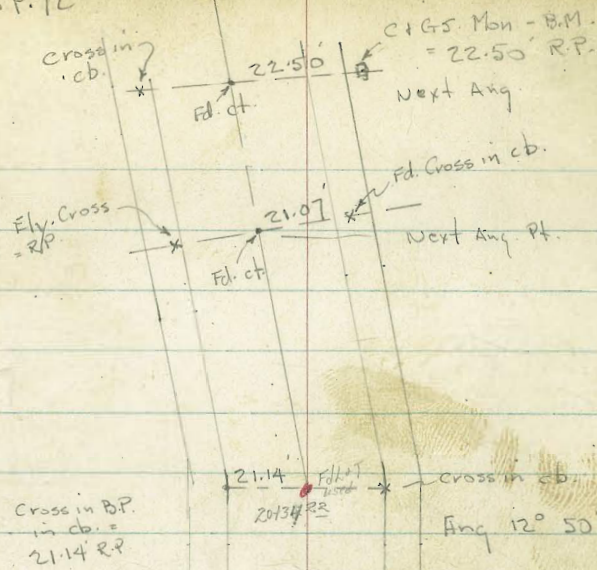


SW Line
El Cerrito Hts.
Ref: FB 1876-3, 25
17410

$\frac{1}{2} \Delta = 13^{\circ} 26' 52''$
 $\Delta = 26^{\circ} 53' 44''$
 $CA = 400.67$
 $C = 187.07$
 $T = 96.13$
 $K = 188$



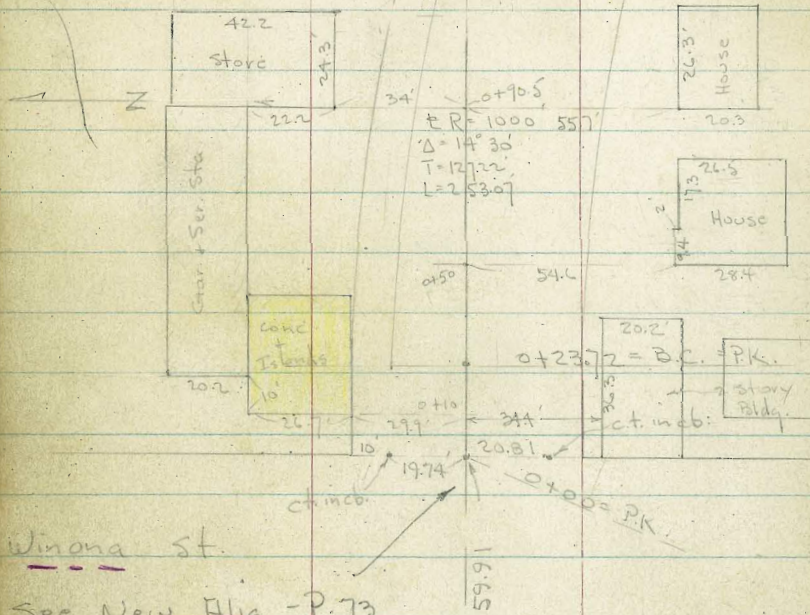
Cont. on P. 72



FD
MEK
OCT 5 1954
1+50.94 = P.F.
300 in cb.

F.B. No. 2177
Osborne 10/4/54
W.O. 22095

See P. 69



See Book 2388
P. 1 For X-Sections

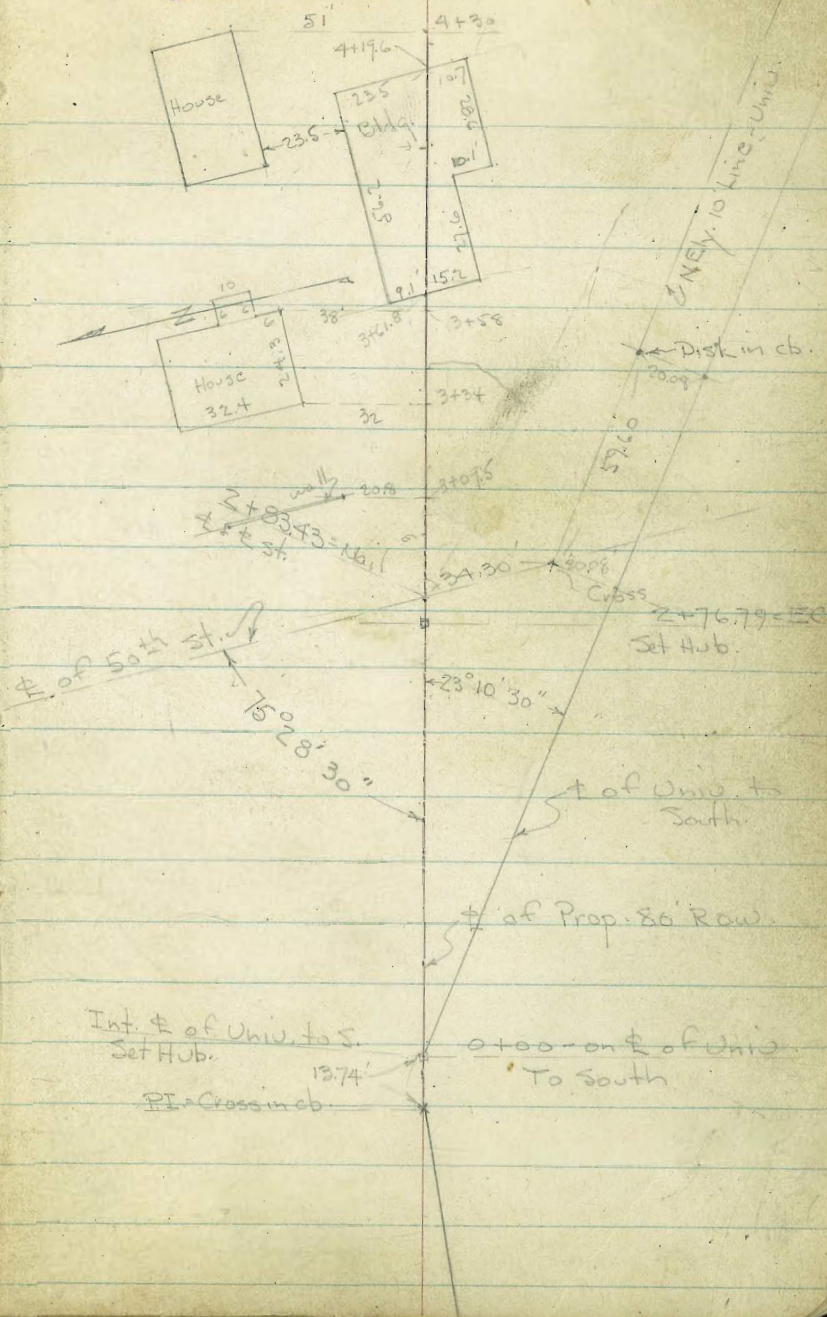
Scale = 1" = 50'

EL. of 49th St

15' 25'
ch. in cb.

See P. 70

64



VOID SEE PG 74

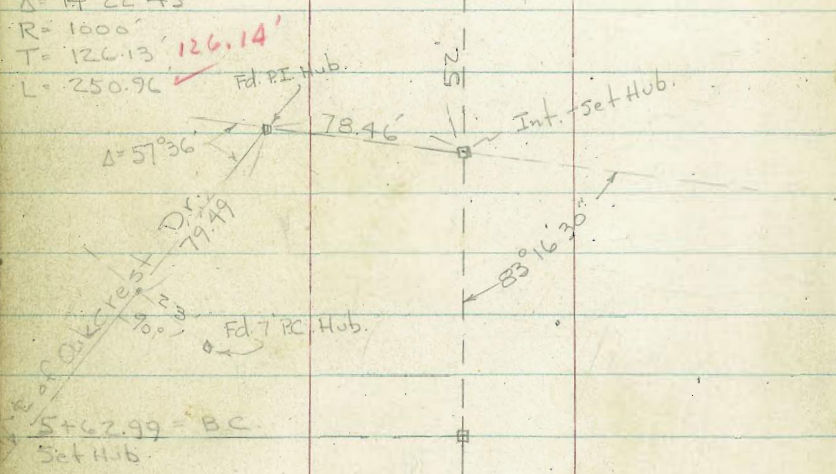
PT = Set Hub.

$\Delta = 14^{\circ} 22' 45''$

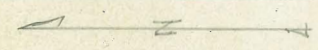
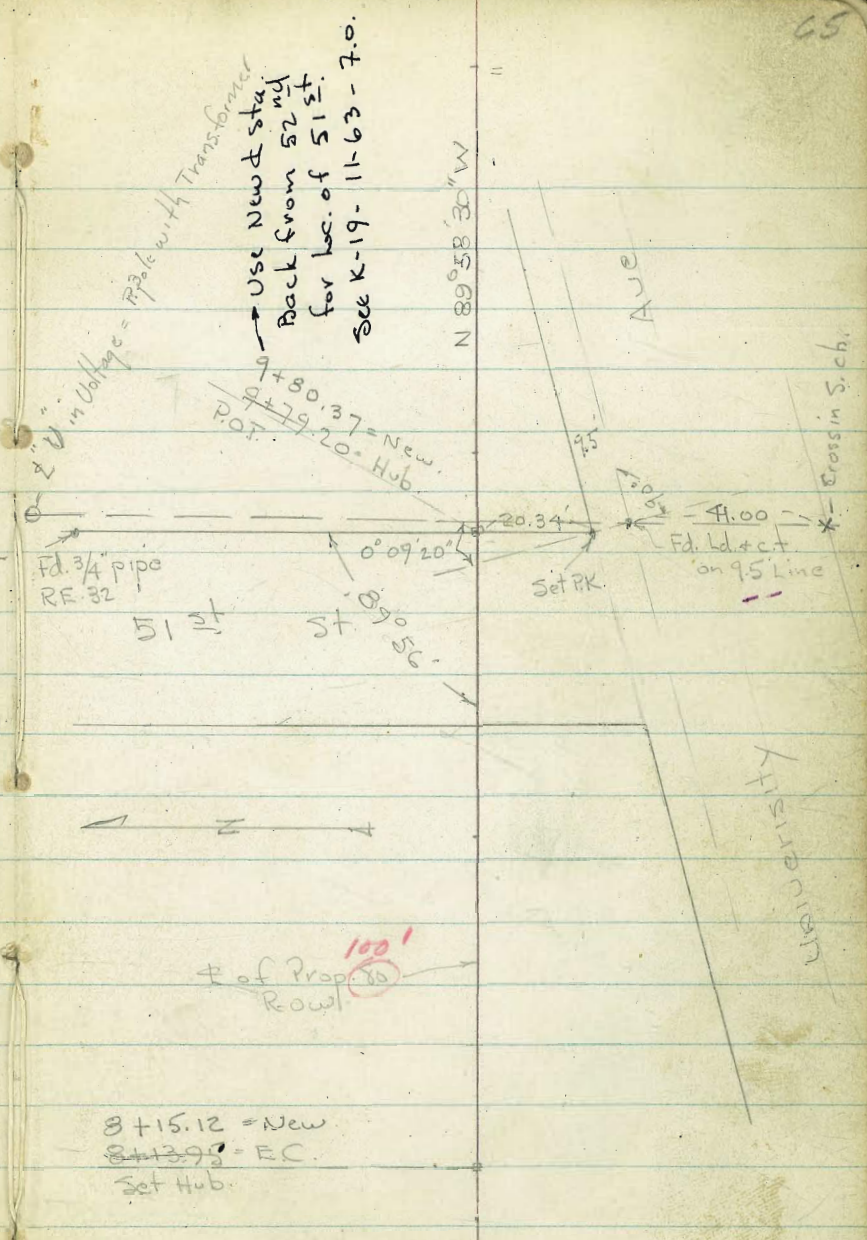
R = 1000'

T = 126.13 **126.14'**

L = 250.9C



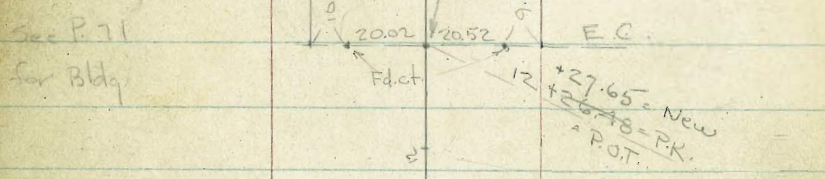
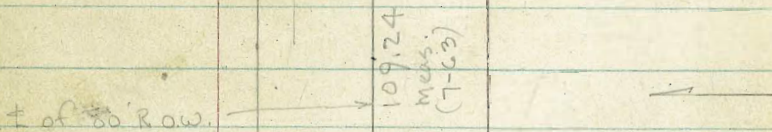
of Prop. 80' Row.



of Prop. 80' Row

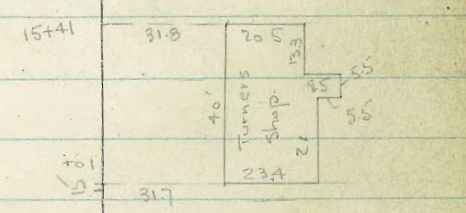
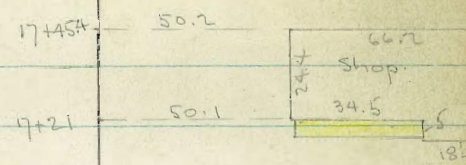
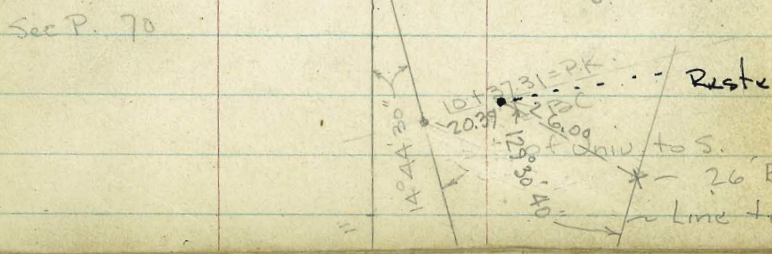
8+15.12 = New
8+1395 - EC
Set Hub.

SEE PG 74 BK



11+75.93 = New.
 11+74.76 = P.K.
 = Int ± of Univ. to S.

10+88.91 = end ± Univ.
 To S.



Restet city Disk - 11-63-70.
 See P. 70

P. To ct. in cb - at P.C. = Cross.
 41 R.P. Cross - 51st - P. 65

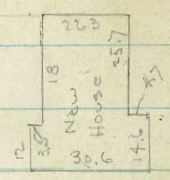
20.75
21+25.58 = PK = P.I.
Δ = Ang. 22° Rt.

New. Cross in cb.
20.50 RP
19+77.02
= P.O.T.
20.50

20.08
Fd. Ld. + ct.
Shiloh Rd.
To Disk
89° 58' 30"

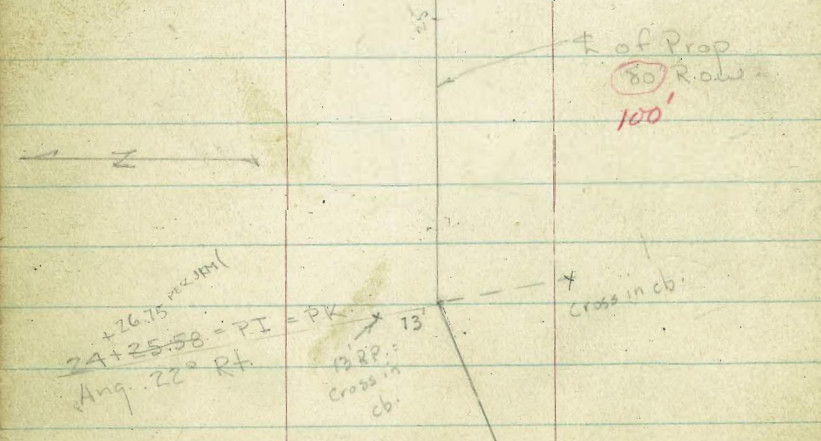
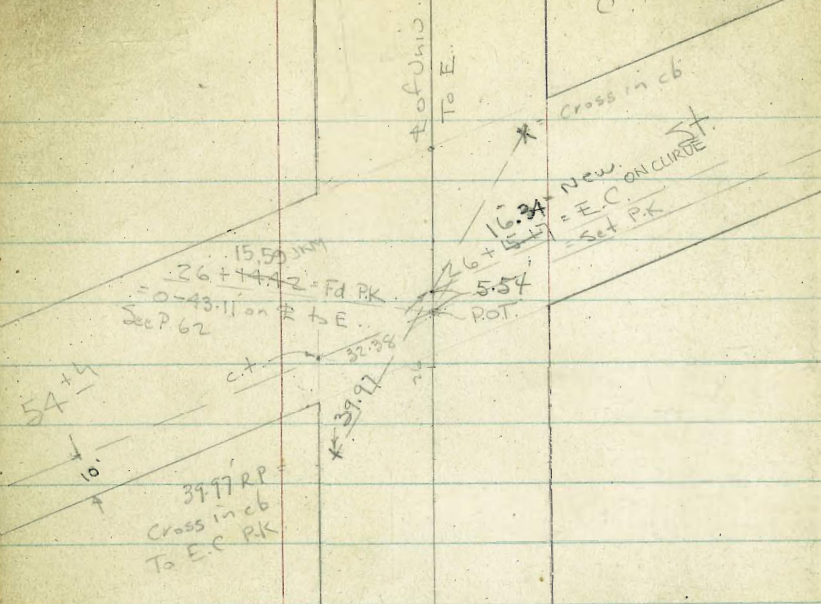
23+48.10
Fd. Ld. + ct.

20.50 RP.
Cross in cb.
22+35
22+37 New.
22+20.75 B.C.
cross in cb.



81.7
78.2

Cont. on P. 75



(see page 67)

$$291.57 = 29 + 07.91 = E.C.$$

$66^{\circ} 21' - 118' = \text{Cross}$ - E. Sill of E. window Pink House

68

22 + 50	$0^{\circ} 36' 15''$
23 -	$1^{\circ} 56' 15''$
+ 50	$3^{\circ} 22' 15''$
24 ~	$4^{\circ} 48' 15''$
+ 50	$6^{\circ} 14'$
25 ~	$7^{\circ} 40'$
+ 50	$9^{\circ} 06'$
26 ~	$10^{\circ} 32'$
+ 16.34 = E.C.	11°

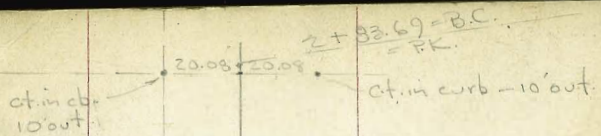
$$A = 22^{\circ}$$

$$E R = 1000'$$

$$T = 194.38$$

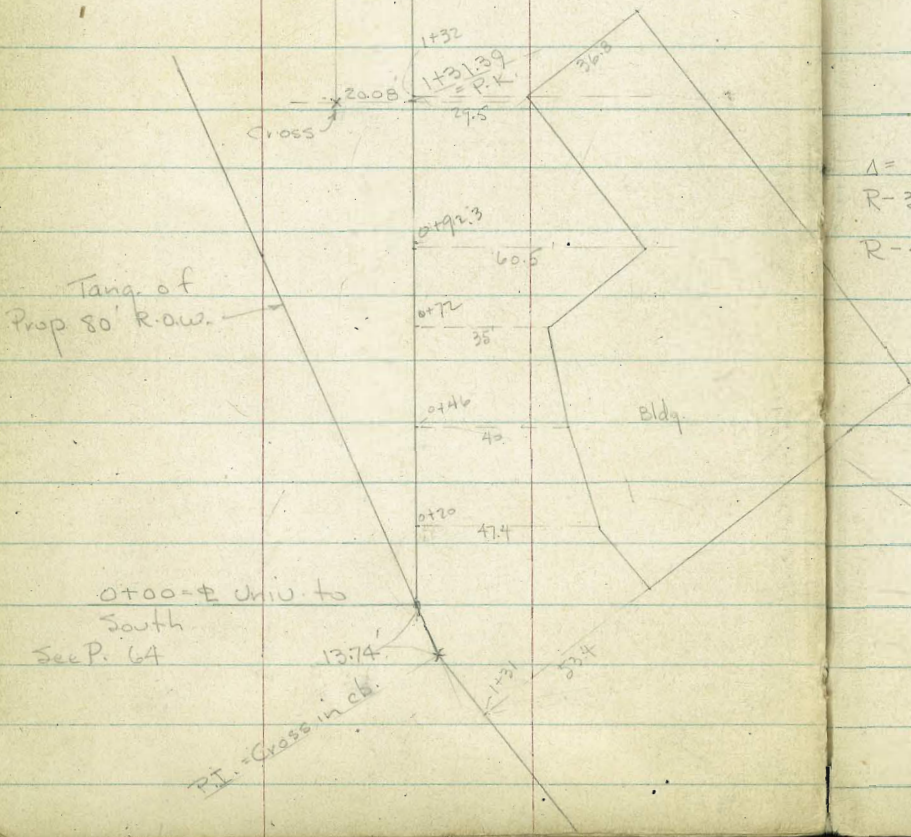
$$L = 383.97'$$

B.C.

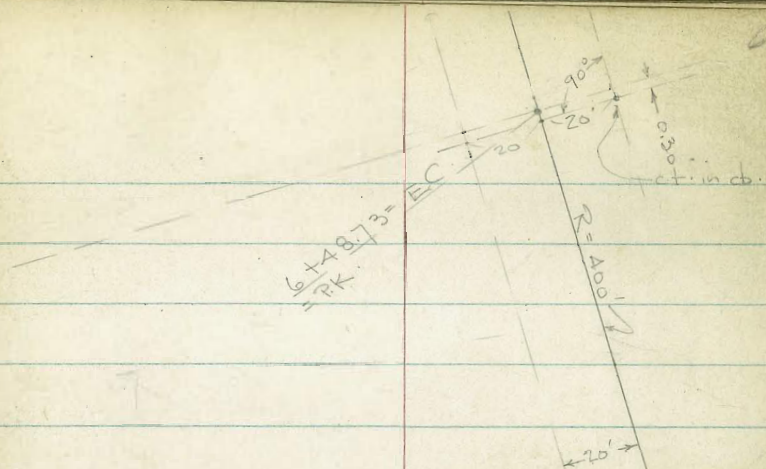


Dist. in
cb.
10' out.

☉ of Univ. to South
(Present alignment)



69



Turned $52^{\circ} 17' 15''$

$$\Delta = 52^{\circ} 17' 15''$$

$$R = 380 - T = 186.52$$

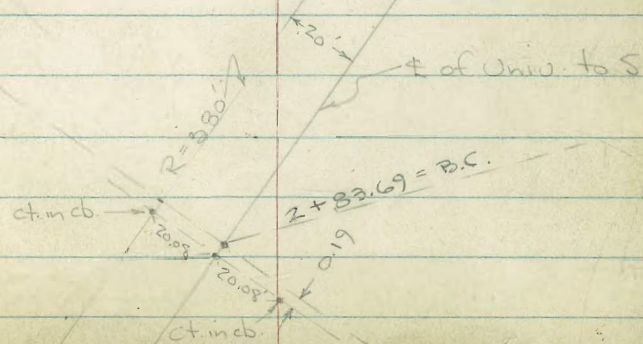
$$R = 400 - T = 196.34$$

$$L = 365.04$$

P.I. = Cross in walk

Cont. Set in House

See P. 71

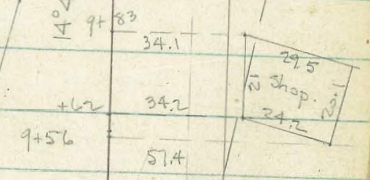


cross in cb
16.50 RP
11+74.76 = ± Row sta. * 16.50
10+88.91 = ± Univ. to South.
= P.K.

See P. 66



± of 80' Row



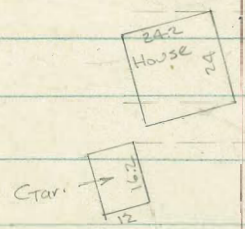
51st St
Top pole
See P. 65
9+79.20
= POT Hub

Use New ± Sta
Back from 52nd
for loc. of 51st

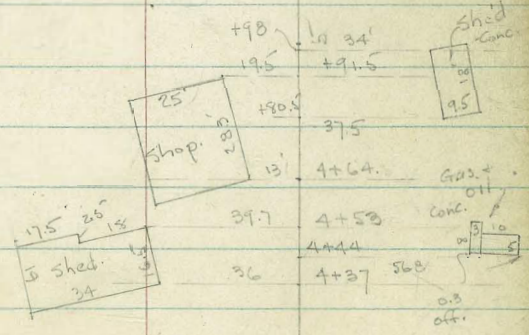
± of Univ
To South

--- Reset City Disk - See P. 66
11-63- 7.0.

Cross = 26 to ct
See P. 66



47.3
11.5
6+59.2
5+48.3
67.9



+98
19.5
+91.5
190.5
37.5
13
4+64.
39.7
4+58
4+44
36
4+37
568

± Row
P. 64

Fd Cross

x

21.50

R.P. Cross
in cb.

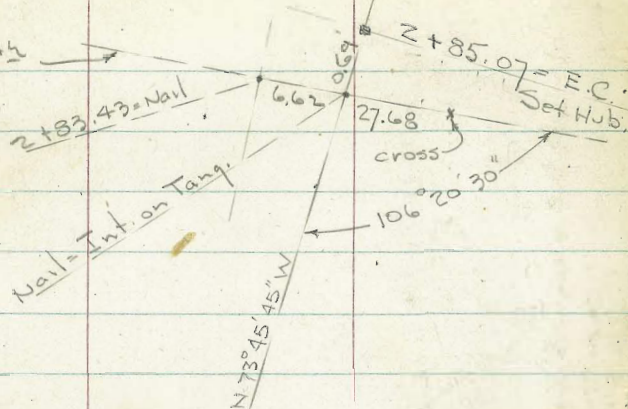
Fd. ct. ↗

Ang Pt. W. of 60th

New Alig. at Beginning.

See P. 64

± of 50th
See P. 64



4+79.15 = B.C.
Set Hub.

2+85.07 = E.C. - 8° 10'

+50 7° 09' 45"

2+00 5° 43' 45"

+50 4° 17' 45"

1+00 2° 51' 45"

+50 1° 26'

0+00 = B.C.

N 83° 54' 15" E

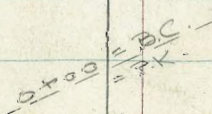
PI
= P.K.

$\Delta = 16^\circ 20'$

$R = 1000'$

$T = 143.51'$

$L = 285.07'$



Same Tang.
P. 64

Winona

Ave

2+85.07 = E.C.

(Pg. 65)

old E.C. = 8+13.95
 P. 65
 NEW EC 8+15.12

7+62.11 = EC
 Set Hub.

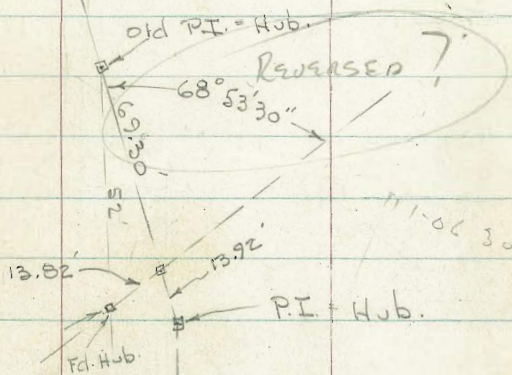
$\Delta = 16^\circ 12' 45''$

$R = 1000'$

$T = 142.43'$

$L = 282.96'$

NEW EC 8+15.12



PI. Hub
 78.46
 # of
 Oakcrest Dr.
 See P. 65

7+62.11 = E.C.	8° 06' 30"
+50	7° 45' 30"
7+00	6° 19' 30"
+50	4° 53' 45"
6+00	3° 27' 45"
+50	2° 01' 45"
5+00	0° 35' 45"

4+79.15 = B.C.

4+79.15 = B.C.

13+29.97 = P.I.

12+78.27

479.15
 142.43
 621.58
 143.51
 478.07

1000.00
 13.82
 13.92
 13.82

40+61.59 = P.C.C.
= Set Hub.

$\Delta = 35^\circ 29' 46''$

$R = 1000$

$T = 320.07$

$L = 619.52$

$Ch = 609.66$

34+42.07 = B.C.
Set P.K.

new ϕ →

Cont. from P. 63

Const Base Line = ϕ to East. \checkmark ok.

old ϕ 12' 10'

New ϕ To west

ϕ Chollas Road (4148-D)

47+54.12 = E.C.
P.K. Hd. + ct. = Ang. old ϕ of Union

$\Delta = 29^\circ 20'$

$R = 1352.69$

$T = 354.03$

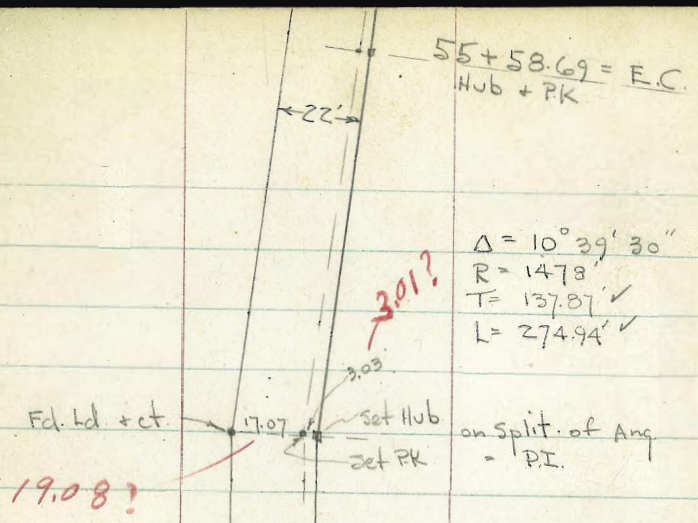
$L = 692.53$

354.03

PI. = Hub. By Sign.

354.03

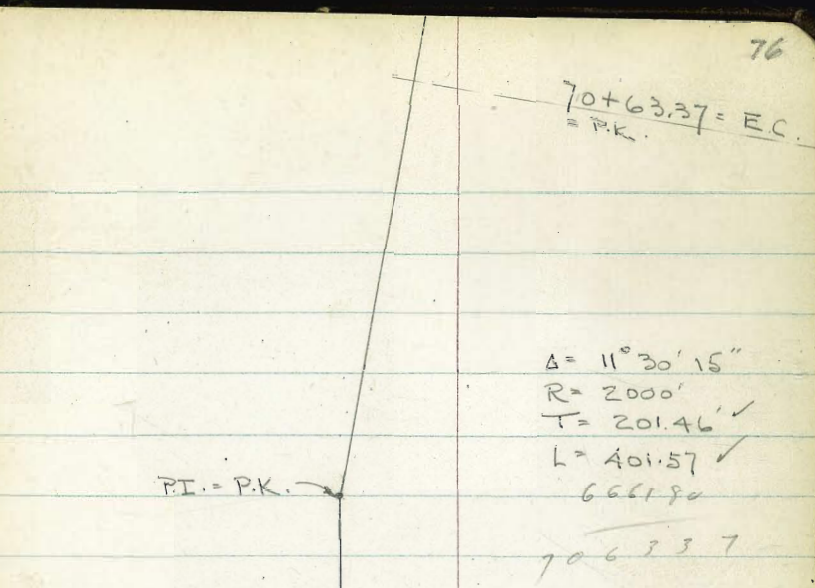
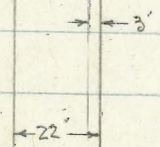
40+61.59 = P.C.C.



old centerline of Univ.
= centerline of Pavement →

52 + 83.75 = B.C.
Set Hub. on centerline + P.K. on
3' offset

← centerline = Const. Base Line



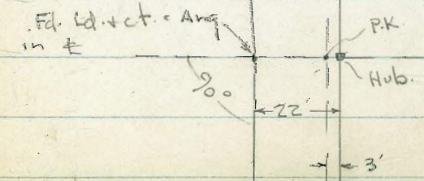
70 + 63.37 = E.C.
= P.K.

Δ = 11° 30' 15"
R = 2000'
T = 201.46'
L = 401.57'

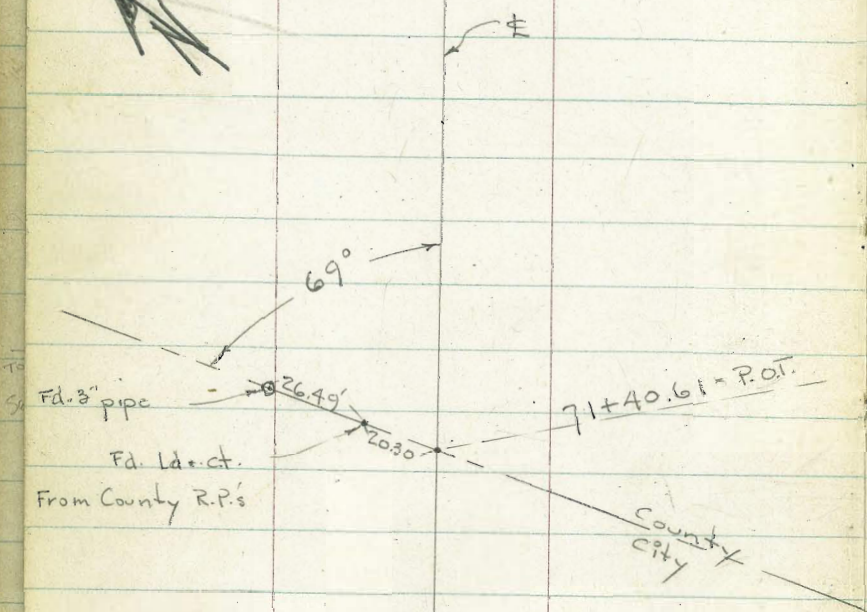
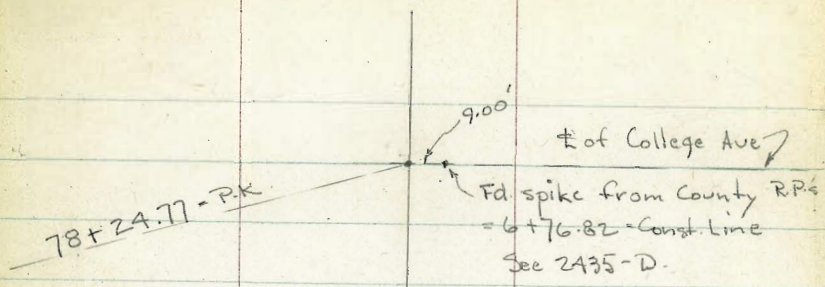
6661.80
706337

P.I. = P.K.

66 + 61.80 = B.C.
= Hub.



65 + 54.02 = P.O.T.



70+63.37 = E.C.

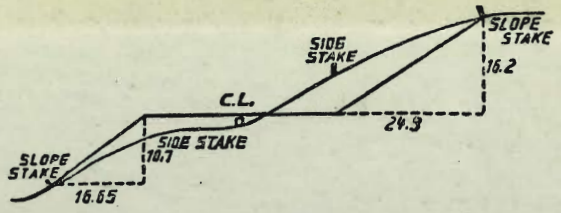
91
27
118

4° 07
 4 41 15
 5 15 45
 5 50
 6 24 30
 6 58 45
 7 33 15 26
 8 07 30 250
 8 42 27
 9 16 15
 9 50 45 28
 10 25
 11 29

20.76
29.75

33.39

184
 4229
 4413



DISTANCES FROM SIDE STAKES FOR CROSS-SECTIONING.
SLOPE 1/2 TO 1. ROADWAY OF ANY WIDTH.

	0	.1	.2	.3	.4	.5	.6	.7	.8	.9	
0	0.00	0.15	0.30	0.45	0.60	0.75	0.90	1.05	1.20	1.35	0
1	1.50	1.65	1.80	1.95	2.10	2.25	2.40	2.55	2.70	2.85	1
2	3.00	3.15	3.30	3.45	3.60	3.75	3.90	4.05	4.20	4.35	2
3	4.50	4.65	4.80	4.95	5.10	5.25	5.40	5.55	5.70	5.85	3
4	6.00	6.15	6.30	6.45	6.60	6.75	6.90	7.05	7.20	7.35	4
5	7.50	7.65	7.80	7.95	8.10	8.25	8.40	8.55	8.70	8.85	5
6	9.00	9.15	9.30	9.45	9.60	9.75	9.90	10.05	10.20	10.35	6
7	10.50	10.65	10.80	10.95	11.10	11.25	11.40	11.55	11.70	11.85	7
8	12.00	12.15	12.30	12.45	12.60	12.75	12.90	13.05	13.20	13.35	8
9	13.50	13.65	13.80	13.95	14.10	14.25	14.40	14.55	14.70	14.85	9
10	15.00	15.15	15.30	15.45	15.60	15.75	15.90	16.05	16.20	16.35	10
11	16.50	16.65	16.80	16.95	17.10	17.25	17.40	17.55	17.70	17.85	11
12	18.00	18.15	18.30	18.45	18.60	18.75	18.90	19.05	19.20	19.35	12
13	19.50	19.65	19.80	19.95	20.10	20.25	20.40	20.55	20.70	20.85	13
14	21.00	21.15	21.30	21.45	21.60	21.75	21.90	22.05	22.20	22.35	14
15	22.50	22.65	22.80	22.95	23.10	23.25	23.40	23.55	23.70	23.85	15
16	24.00	24.15	24.30	24.45	24.60	24.75	24.90	25.05	25.20	25.35	16
17	25.50	25.65	25.80	25.95	26.10	26.25	26.40	26.55	26.70	26.85	17
18	27.00	27.15	27.30	27.45	27.60	27.75	27.90	28.05	28.20	28.35	18
19	28.50	28.65	28.80	28.95	29.10	29.25	29.40	29.55	29.70	29.85	19
20	30.00	30.15	30.30	30.45	30.60	30.75	30.90	31.05	31.20	31.35	20
21	31.50	31.65	31.80	31.95	32.10	32.25	32.40	32.55	32.70	32.85	21
22	33.00	33.15	33.30	33.45	33.60	33.75	33.90	34.05	34.20	34.35	22
23	34.50	34.65	34.80	34.95	35.10	35.25	35.40	35.55	35.70	35.85	23
24	36.00	36.15	36.30	36.45	36.60	36.75	36.90	37.05	37.20	37.35	24
25	37.50	37.65	37.80	37.95	38.10	38.25	38.40	38.55	38.70	38.85	25
26	39.00	39.15	39.30	39.45	39.60	39.75	39.90	40.05	40.20	40.35	26
27	40.50	40.65	40.80	40.95	41.10	41.25	41.40	41.55	41.70	41.85	27
28	42.00	42.15	42.30	42.45	42.60	42.75	42.90	43.05	43.20	43.35	28
29	43.50	43.65	43.80	43.95	44.10	44.25	44.40	44.55	44.70	44.85	29
30	45.00	45.15	45.30	45.45	45.60	45.75	45.90	46.05	46.20	46.35	30
31	46.50	46.65	46.80	46.95	47.10	47.25	47.40	47.55	47.70	47.85	31
32	48.00	48.15	48.30	48.45	48.60	48.75	48.90	49.05	49.20	49.35	32
33	49.50	49.65	49.80	49.95	50.10	50.25	50.40	50.55	50.70	50.85	33
34	51.00	51.15	51.30	51.45	51.60	51.75	51.90	52.05	52.20	52.35	34
35	52.50	52.65	52.80	52.95	53.10	53.25	53.40	53.55	53.70	53.85	35
36	54.00	54.15	54.30	54.45	54.60	54.75	54.90	55.05	55.20	55.35	36
37	55.50	55.65	55.80	55.95	56.10	56.25	56.40	56.55	56.70	56.85	37
38	57.00	57.15	57.30	57.45	57.60	57.75	57.90	58.05	58.20	58.35	38
39	58.50	58.65	58.80	58.95	59.10	59.25	59.40	59.55	59.70	59.85	39
40	60.00	60.15	60.30	60.45	60.60	60.75	60.90	61.05	61.20	61.35	40
41	61.50	61.65	61.80	61.95	62.10	62.25	62.40	62.55	62.70	62.85	41
42	63.00	63.15	63.30	63.45	63.60	63.75	63.90	64.05	64.20	64.35	42
43	64.50	64.65	64.80	64.95	65.10	65.25	65.40	65.55	65.70	65.85	43
44	66.00	66.15	66.30	66.45	66.60	66.75	66.90	67.05	67.20	67.35	44
45	67.50	67.65	67.80	67.95	68.10	68.25	68.40	68.55	68.70	68.85	45
46	69.00	69.15	69.30	69.45	69.60	69.75	69.90	70.05	70.20	70.35	46
47	70.50	70.65	70.80	70.95	71.10	71.20	71.40	71.55	71.70	71.85	47
48	72.00	72.15	72.30	72.45	72.60	72.75	72.90	73.05	73.20	73.35	48
49	73.50	73.65	73.80	73.95	74.10	74.25	74.40	74.55	74.70	74.85	49
50	75.00	75.15	75.30	75.45	75.60	75.75	75.90	76.05	76.20	76.35	50

THE NATIONAL BLANK BOOK COMPANY
 HOLYOKE MASSACHUSETTS
 NEW YORK CHICAGO BOSTON SAN FRANCISCO