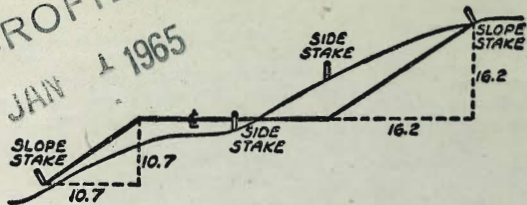


MICROFILMED
 JAN 1 1965



DISTANCES FROM SIDE STAKES FOR CROSS-SECTIONING
 SLOPE 1 TO 1. ROADWAY OF ANY WIDTH

	0	.1	.2	.3	.4	.5	.6	.7	.8	.9	
0	0.00	0.10	0.20	0.30	0.40	0.50	0.60	0.70	0.80	0.90	0
1	1.00	1.10	1.20	1.30	1.40	1.50	1.60	1.70	1.80	1.90	1
2	2.00	2.10	2.20	2.30	2.40	2.50	2.60	2.70	2.80	2.90	2
3	3.00	3.10	3.20	3.30	3.40	3.50	3.60	3.70	3.80	3.90	3
4	4.00	4.10	4.20	4.30	4.40	4.50	4.60	4.70	4.80	4.90	4
5	5.00	5.10	5.20	5.30	5.40	5.50	5.60	5.70	5.80	5.90	5
6	6.00	6.10	6.20	6.30	6.40	6.50	6.60	6.70	6.80	6.90	6
7	7.00	7.10	7.20	7.30	7.40	7.50	7.60	7.70	7.80	7.90	7
8	8.00	8.10	8.20	8.30	8.40	8.50	8.60	8.70	8.80	8.90	8
9	9.00	9.10	9.20	9.30	9.40	9.50	9.60	9.70	9.80	9.90	9
10	10.00	10.10	10.20	10.30	10.40	10.50	10.60	10.70	10.80	10.90	10
11	11.00	11.10	11.20	11.30	11.40	11.50	11.60	11.70	11.80	11.90	11
12	12.00	12.10	12.20	12.30	12.40	12.50	12.60	12.70	12.80	12.90	12
13	13.00	13.10	13.20	13.30	13.40	13.50	13.60	13.70	13.80	13.90	13
14	14.00	14.10	14.20	14.30	14.40	14.50	14.60	14.70	14.80	14.90	14
15	15.00	15.10	15.20	15.30	15.40	15.50	15.60	15.70	15.80	15.90	15
16	16.00	16.10	16.20	16.30	16.40	16.50	16.60	16.70	16.80	16.90	16
17	17.00	17.10	17.20	17.30	17.40	17.50	17.60	17.70	17.80	17.90	17
18	18.00	18.10	18.20	18.30	18.40	18.50	18.60	18.70	18.80	18.90	18
19	19.00	19.10	19.20	19.30	19.40	19.50	19.60	19.70	19.80	19.90	19
20	20.00	20.10	20.20	20.30	20.40	20.50	20.60	20.70	20.80	20.90	20
21	21.00	21.10	21.20	21.30	21.40	21.50	21.60	21.70	21.80	21.90	21
22	22.00	22.10	22.20	22.30	22.40	22.50	22.60	22.70	22.80	22.90	22
23	23.00	23.10	23.20	23.30	23.40	23.50	23.60	23.70	23.80	23.90	23
24	24.00	24.10	24.20	24.30	24.40	24.50	24.60	24.70	24.80	24.90	24
25	25.00	25.10	25.20	25.30	25.40	25.50	25.60	25.70	25.80	25.90	25
26	26.00	26.10	26.20	26.30	26.40	26.50	26.60	26.70	26.80	26.90	26
27	27.00	27.10	27.20	27.30	27.40	27.50	27.60	27.70	27.80	27.90	27
28	28.00	28.10	28.20	28.30	28.40	28.50	28.60	28.70	28.80	28.90	28
29	29.00	29.10	29.20	29.30	29.40	29.50	29.60	29.70	29.80	29.90	29
30	30.00	30.10	30.20	30.30	30.40	30.50	30.60	30.70	30.80	30.90	30
31	31.00	31.10	31.20	31.30	31.40	31.50	31.60	31.70	31.80	31.90	31
32	32.00	32.10	32.20	32.30	32.40	32.50	32.60	32.70	32.80	32.90	32
33	33.00	33.10	33.20	33.30	33.40	33.50	33.60	33.70	33.80	33.90	33
34	34.00	34.10	34.20	34.30	34.40	34.50	34.60	34.70	34.80	34.90	34
35	35.00	35.10	35.20	35.30	35.40	35.50	35.60	35.70	35.80	35.90	35
36	36.00	36.10	36.20	36.30	36.40	36.50	36.60	36.70	36.80	36.90	36
37	37.00	37.10	37.20	37.30	37.40	37.50	37.60	37.70	37.80	37.90	37
38	38.00	38.10	38.20	38.30	38.40	38.50	38.60	38.70	38.80	38.90	38
39	39.00	39.10	39.20	39.30	39.40	39.50	39.60	39.70	39.80	39.90	39
40	40.00	40.10	40.20	40.30	40.40	40.50	40.60	40.70	40.80	40.90	40
41	41.00	41.10	41.20	41.30	41.40	41.50	41.60	41.70	41.80	41.90	41
42	42.00	42.10	42.20	42.30	42.40	42.50	42.60	42.70	42.80	42.90	42
43	43.00	43.10	43.20	43.30	43.40	43.50	43.60	43.70	43.80	43.90	43
44	44.00	44.10	44.20	44.30	44.40	44.50	44.60	44.70	44.80	44.90	44
45	45.00	45.10	45.20	45.30	45.40	45.50	45.60	45.70	45.80	45.90	45
46	46.00	46.10	46.20	46.30	46.40	46.50	46.60	46.70	46.80	46.90	46
47	47.00	47.10	47.20	47.30	47.40	47.50	47.60	47.70	47.80	47.90	47
48	48.00	48.10	48.20	48.30	48.40	48.50	48.60	48.70	48.80	48.90	48
49	49.00	49.10	49.20	49.30	49.40	49.50	49.60	49.70	49.80	49.90	49
50	50.00	50.10	50.20	50.30	50.40	50.50	50.60	50.70	50.80	50.90	50

Distance of slope stake from side or shoulder stake for any width roadway, slope 1 to 1. If ground is nearly level, the cut or fill at side stake is located by the double entry method in left column and top row. The number in body of table in same row and column gives distance from side stake to slope stake. If ground is not level estimate the difference in elevation between the side stake and slope stake, lower target by this amount if cut, elevate if fill. Add this amount to cut or fill and find distance in table. Set up rod at this point, and line of sight should cut target. If it does not make the slight adjustment necessary.

TABLE XIII—CORRECTIONS FOR TANGENTS AND EXTERNALS

These corrections are to be added to the approximate values, found by dividing the tangent, or external, for a 1° curve (Table VIII) by the degree of curve, in order to obtain the true tangents, or externals. Intermediate values may be obtained by interpolation.

FOR TANGENTS ADD

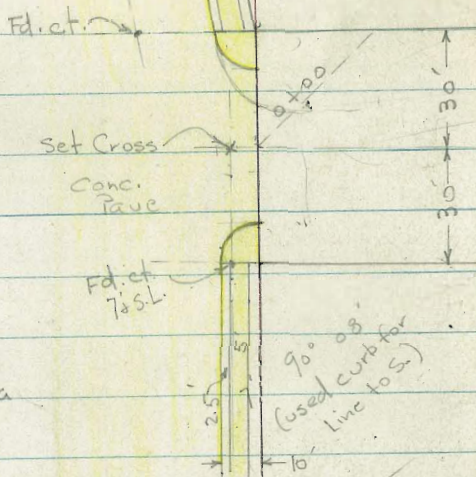
Central Angle	DEGREE OF CURVE													
	5°	10°	15°	20°	25°	30°	35°	40°	45°	50°	55°	60°	65°	70°
10°	.03	.06	.09	.13	.16	.19	.22	.25	.28	.31	.34	.38	.42	.46
15°	.04	.10	.14	.19	.24	.29	.34	.39	.45	.51	.53	.58	.63	.68
20°	.06	.13	.19	.26	.32	.39	.45	.51	.58	.65	.72	.79	.84	.90
25°	.08	.16	.24	.33	.40	.49	.58	.67	.75	.83	.90	.99	1.06	1.14
30°	.10	.19	.29	.39	.49	.59	.69	.79	.89	.99	1.09	1.20	1.29	1.39
35°	.11	.22	.34	.47	.58	.69	.79	.81	.92	1.04	1.29	1.42	1.54	1.66
40°	.13	.26	.40	.53	.67	.80	.93	1.06	1.20	1.34	1.49	1.64	1.79	1.94
45°	.15	.30	.44	.60	.76	.91	1.06	1.21	1.37	1.52	1.70	1.87	2.04	2.21
50°	.17	.34	.51	.68	.85	1.02	1.19	1.36	1.54	1.72	1.91	2.10	2.29	2.48
55°	.19	.38	.57	.76	.95	1.14	1.32	1.52	1.72	1.92	2.14	2.35	2.56	2.77
60°	.21	.42	.63	.84	1.05	1.27	1.49	1.71	1.94	2.17	2.38	2.60	2.83	3.07
65°	.23	.46	.69	.93	1.16	1.40	1.64	1.88	2.13	2.38	2.63	2.88	3.13	3.39
70°	.25	.51	.76	1.02	1.28	1.54	1.80	2.06	2.33	2.60	2.88	3.16	3.44	3.72
75°	.27	.56	.83	1.12	1.40	1.69	1.98	2.27	2.57	2.87	3.16	3.47	3.78	4.09
80°	.30	.61	.91	1.22	1.53	1.84	2.15	2.46	2.78	3.10	3.44	3.78	4.12	4.46
85°	.33	.66	1.00	1.33	1.68	2.02	2.36	2.70	3.05	3.40	3.77	4.14	4.55	4.89
90°	.36	.72	1.09	1.45	1.83	2.20	2.57	2.94	3.32	3.70	4.10	4.50	4.91	5.32
95°	.39	.79	1.19	1.55	2.00	2.40	2.80	3.20	3.61	4.02	4.40	4.85	5.38	5.83
100°	.43	.86	1.30	1.74	2.18	2.62	3.06	3.50	3.95	4.40	4.88	5.37	5.85	6.34
110°	.51	1.03	1.56	2.08	2.61	3.14	3.67	4.21	4.76	5.31	5.86	6.43	7.01	7.60
120°	.62	1.25	1.93	2.52	3.16	3.81	4.45	5.11	5.77	6.44	7.12	7.80	8.50	9.22

FOR EXTERNALS ADD

Central Angle	DEGREE OF CURVE													
	5°	10°	15°	20°	25°	30°	35°	40°	45°	50°	55°	60°	65°	70°
10°	.001	.003	.004	.006	.007	.008	.009	.011	.012	.014	.015	.017	.018	.020
15°	.003	.007	.010	.014	.018	.023	.027	.032	.037	.043	.049	.053	.057	.061
20°	.006	.011	.017	.022	.028	.034	.038	.045	.051	.057	.063	.070	.076	.083
25°	.009	.018	.027	.036	.046	.056	.065	.074	.083	.093	.106	.120	.127	.135
30°	.013	.025	.038	.051	.065	.078	.090	.103	.116	.129	.149	.170	.179	.188
35°	.018	.035	.054	.072	.096	.109	.131	.153	.175	.197	.213	.230	.247	.264
40°	.023	.046	.070	.093	.117	.141	.172	.203	.234	.265	.277	.290	.315	.341
45°	.030	.060	.093	.119	.153	.184	.216	.254	.289	.325	.351	.378	.411	.445
50°	.037	.075	.116	.151	.189	.227	.266	.305	.345	.384	.425	.467	.508	.550
55°	.046	.093	.142	.188	.236	.283	.332	.381	.420	.479	.530	.582	.641	.700
60°	.056	.112	.168	.225	.283	.340	.398	.457	.516	.575	.636	.697	.774	.851
65°	.067	.135	.204	.273	.343	.412	.483	.554	.625	.697	.771	.845	.922	1.01
70°	.080	.159	.240	.321	.403	.485	.568	.652	.735	.819	.906	.994	1.08	1.17
75°	.095	.182	.286	.383	.480	.578	.678	.777	.877	.977	1.07	1.18	1.29	1.39
80°	.110	.220	.332	.445	.558	.671	.787	.903	1.02	1.13	1.25	1.38	1.50	1.62
85°	.128	.259	.391	.524	.657	.790	.926	1.06	1.20	1.34	1.47	1.62	1.76	1.91
90°	.149	.299	.450	.603	.756	.910	1.07	1.22	1.38	1.54	1.70	1.87	2.03	2.20
95°	.174	.350	.522	.706	.885	1.06	1.25	1.43	1.62	1.80	1.99	2.18	2.38	2.58
100°	.200	.401	.604	.809	1.01	1.22	1.43	1.64	1.85	2.06	2.28	2.50	2.73	2.96
110°	.268	.536	.806	1.08	1.35	1.63	1.91	2.20	2.48	2.76	3.05	3.35	3.66	3.96
120°	.360	.721	1.08	1.45	1.82	2.19	2.57	2.95	3.33	3.72	4.11	4.50	4.91	5.32

X-sec Alley Balk 2 Idyllwild 17
 X-sec Pennsylvania at curlaw 1-12
 X-sec Godsall Lane 13
 align sewer - Garden Grove 21
 Prop. Ties MH #7 75rd Nly MKT ST 75.76
 Additional Notes x-sec Godsall Lane 47.
 Notes on drain Nly intersection Penn. Aved Brant 50
 (X) Sec Dudley St Catalina Blvd to Silver Gate Ave 52-59

2



X-Sect. Pennsylvania
 W.O. 25020
 12-5-51
 7.0.
 Idyllwild - Map 998

Curled

22" RC Pipe

Fd. 11/16/76
 Set R.P. et. in edge of porch on E Prod.

See P. 3

See P. 2.
 Fd. old orig. Hub. + ct.

Pennsylvania Ave

Probable loc. of 22" steel pipe Poor Cond.
 Used Data shown on T.P. sheet 445 to est. t. Here

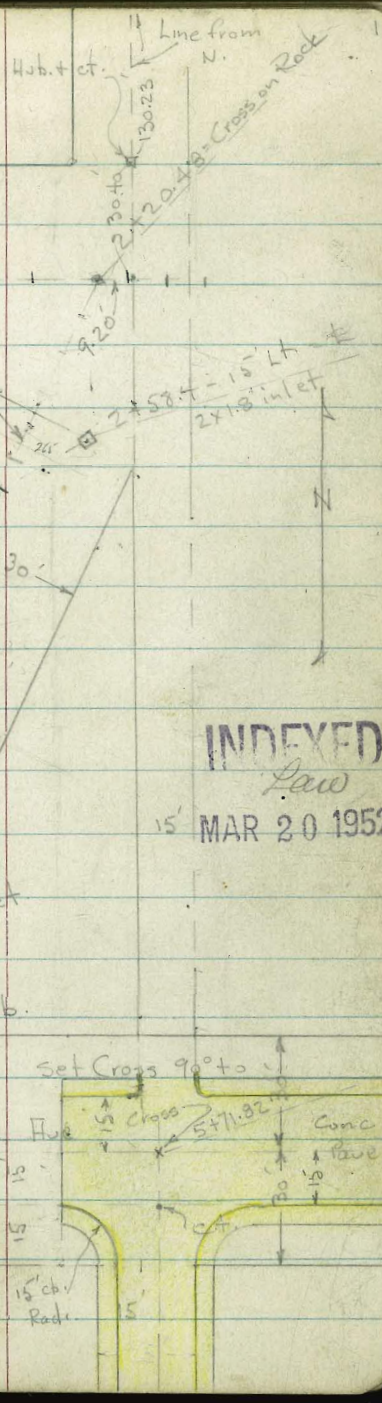
Pennsylvania

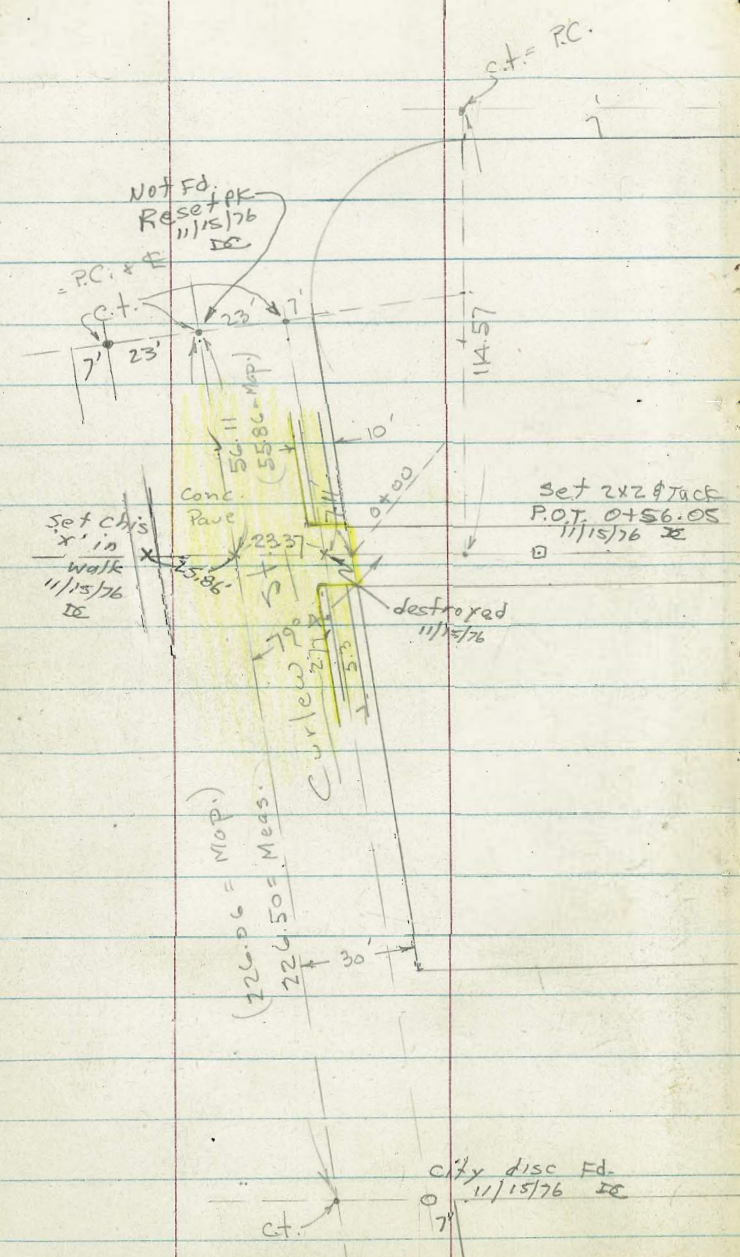
Fd. old Hub.

Pennsylvania Hub

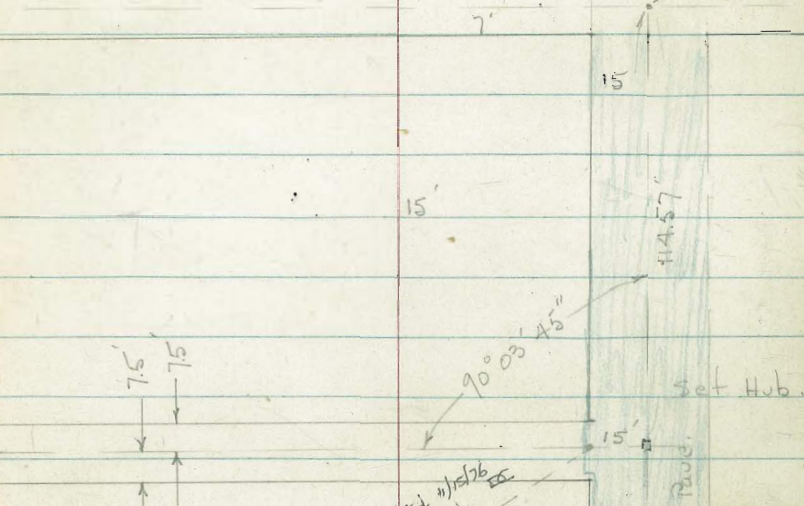
Fd. 3/4" pipe bent over
 15' cbv Radi.
 Godsall Lane

INDEXED
 LAW
 15 MAR 20 1952





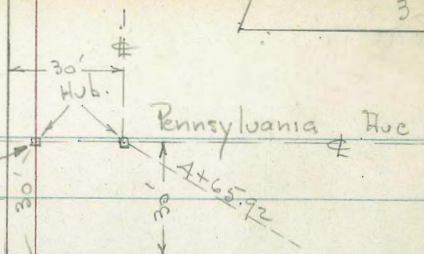
Robinson Ave



INDEXED
Law
 DEC 19 1951
 Reduced 12-19-51
R.H. Dwyer

Sloane Ave

See P. 1
Fd. 11/16/76
Lot 4



Lot 47



El Paso Tract #
Map. 1410

Curlew St.

Goodwill Lane

Brant St.

Not Fd. 11/16/76
2+29.43 = P.O.T. Hub.
set 2x2 #hack
2+42.37 F.O.T.

42

3+10.00 = Hub.
Fd. 11/16/76
53

Fd. 11/16/76 ✓
Fd 3/4 pipes - RE. 2718

Lot 41

X-sect. Pennsylvania Ave from Curlew to Brant - see sketch - P. 1

Lt. Rt.

0+27 = Ang. in sly. of walk

0+20

206.41
7.04
38 =
Conc. walk
of brick
chimney

206.35
7.10
34
sly.
Conc. walk

206.01
7.44
30.2
Wly. of
walk

205.99
7.46
29.2
sly.

6.31
36.6
15.2
13
Porch to
house

207.14
7.11
34 = sly. of
walk

206.34

198.4
16.0
20
197.5

16.4
30
197.1

16.6
40
196.9

30.7 Lt. = end Conc. Gar.

0+17 = 26.1 Lt. = Sly. of end of Steps + Beg. 2' Conc. walk

T.P. 11.94 213.45 35.6 201.51
wood steps

0+06.3 = 20.9 Lt. = end sly. of walk + Beg. Sly. of 3'

0+05.5 = 5.5 Lt. = E of 3.7 x 5' Long. Gar. C. M.H.

0+00 = 2.4 Lt. = Beg. Sly. of 3' Conc. walk

30.1 Lt. = Beg. Conc. wall to Gar.

0+00 = E.L. Curlew + edge of Conc. pave + curbs.

0+01 = 2.1 Rt. = E P. pole # 399

0-10 = W. cb. line

B.M. 10.07 205.07 195.00

8.2 7.62
30.7 =
ground at Gar.
26.1 = Conc.
walk

6.199.00
6.07
20.9 = walk

6.198.56
20.51 = walk

198.47
21.4
30 Top
Car. Ret. cb.

198.25
20.1
20
9.4

197.50
20.1
10
9.4

197.25
7.51
16
9.4

197.01
7.57
20.1
9.4

196.83
8.08
20
9.4

196.56
8.51
20
9.4

196.34
8.73
20
9.4

197.09
7.98
20
9.4

197.17
7.90
20
9.4

197.41
7.66
29.9 = Car.
Ret.

205.07

= S.W. c.t. - Pennsylvania + Curlew.

1+45

2203
+2.5
41

2125
5.3
30

208.2
9.6
22

2097 Lt.
8.1
10

200.8
17.0
3

200.6
17.2
14

200.6
17.2
14

194.8 Rt.
23.0
25

193.8
24.0
30

191.3
26.5
45

1+20

218.7
+0.9
40

2100
7.5
30

207.2
10.6
25

206.8
11.0
6

200.9
16.9
4

200.9
16.9
16

201.1
16.7
12

197.2
20.6
20

193.1
24.7
30

189.1
28.7
45

0+85 - 19.8 Lt. = P. pole # P 387

216.1
1.7
45

215.2
2.6
35

209.7
8.1
30

206.8
11.0
27

201.1
16.7
5

201.4
16.4
11

201.2
16.6
30

197.2
23.6
45

189.0
28.8
45

T.P. 8.93 217.77 46 208.84 =

Nail on Guy Pole - Lt. 479

217.77

0+55 - Rt. = of 18" Pepper

213.9
+0.4
40

2070
6.5
30

206.3
7.2
19

200.0
13.5
7

200.3
13.2
13

200.1
13.4
13

194.4
19.1
30

190.4
28.1
40

0+52 - 19.8 Lt. = end sly. of Conc. slab

206.99
6.46
29 = slab
214.45
+1.00
6.50
30.4 = Conc. slab at Cor.
33.4 ground at House
30.4 = Conc. slab at Cor.

0+51 - 30.4 Lt. = sly. of Conc. wall - from House

0+43 - 21.8 Lt. = Beg. sly. of Rough Conc. Slab.

207.19
6.26
33.1
walk

207.0
6.5
30

206.68
6.9
22

199.3
14.2
10

199.5
14.0
15

199.2
14.3
15

197.9
16.2
30

197.0
16.5
40

213.45

0+40 - 33.1 Lt. = end walk at Cor. of add to House

Note: These sections are from \pm Prod. East from 2+20.48
 Actual \pm Sta. Angles to S.W.

2+37- 21.4' Rt. = \pm Sewer M.A. 15.09 = Rim

2+36- 37' Rt. = SW. Cor. fence

2+30- 12' Rt. = Cor. of Lath fence

2+30- 3' Lt. = Beg. Rock & Conc. Wall along Dr. +58
 45

2+25- 24.1' Rt. = \pm 8" Acacia

2+20 = \pm 13.5' Rt. = edge of C.L. Dr.

2+09- 19.3' Rt. = Beg. Sly. of C.L. Dr.

2+05 3.0' Rt. Begin rthly of Coldlay drive

1+90 32.6' Lt. = \pm 18" Olive tree

1+85

1+80 23.2' Lt. = Begin 4' wire fence (4x4 post)

1+79 2.0' Lt. = \pm 6' pole No # Dead man 6' rth.

1+75 0.2' Lt. = \pm 4" sewer clean out

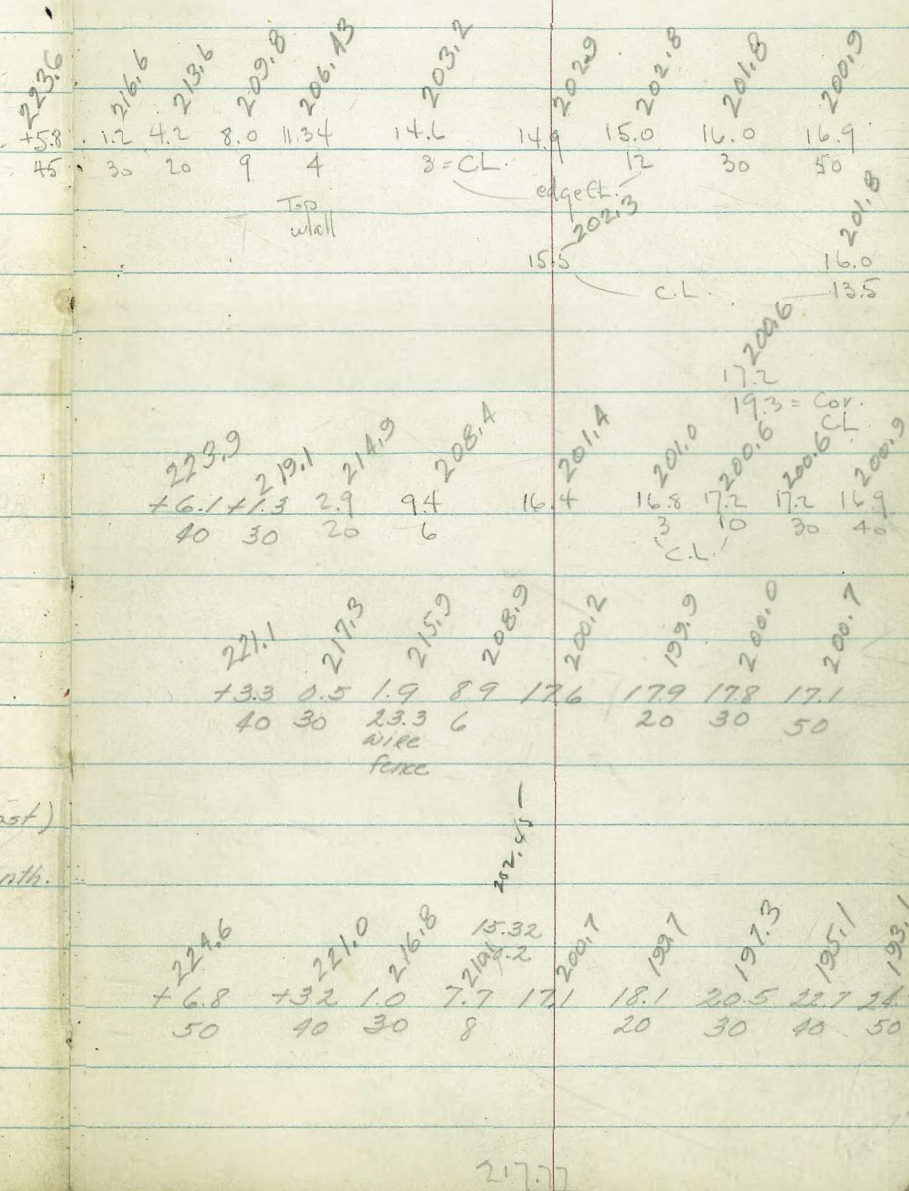
1+70 22.2' Rt. = \pm Power pole # P327

1+58 27.0' Rt. = \pm of 15" pepper tree

Lt.

*

Rt.



3+26-17 H. = Beg. of Row of 8 Euc. Trees

220.6
12.8
40
219.5
0.3
30
213.9
4.4
17
208.0
9.8
12
204.2
13.6
4
CL. Drain
204.5
13.3
205.8
12.0
13
198.0
19.8
30
193.0
24.8
45

3+25

3+17-19.5 H. = ± 18' Euc.
5' cc.

3+09-30.5 Rt. = Beg. Row of 12" Euc. Trees - about Poor Cond.
3+00-6" H. = Beg. of 2' Cold Lay Drain - gutter.

214.3
3.5
40
211.4
6.4
30
206.5
11.3
14
202.2
15.6
11
201.8
16.0
6
± Drain
202.5
15.3
202.6
15.2
10
198.3
19.5
17
192.1
25.7
30
191.1
26.7
40

2+99-24.5 H. = ± 24" Euc. Tree
2+80

Thru lots to inlet of 22" (conc.) Culvert under Curlew
- inlet for 22" steel pipe Culvert - goes

2+58.4-15' H. = ± of 2' x 1.8' Conc. Box + Grate

208.2
9.6
40
206.6
11.2
30
201.0
16.9
13
± dirt gutter
196.62
21.15
I.E. of Pipe
192.14
18.63
15 = Top of grate

2+50

202.0
15.8
40
201.5
16.3
30
200.6
17.2
15
200.6
17.2
200.5
17.3
15
200.5
17.3
30

Req. Stations Continue S.W. from Sta. 2+20.48 =

2+50 = Limit of Sections from ± Prod. E.

2+40-23.8 H. = end wire fence

214.6
3.2
30
209.19
8.58
15.6
Tip of wall
205.5
12.3
14.2
± edge CL.
205.0
12.8
204.2
13.6
10
203.1
14.7
30
203.1
14.7
39
Top
217.77

Set. & M. = nail in Pole Below 7.92 218.99

4+23 - 13' Rt. = ± P. pole # 34

4+22.26 = opp. Prop. Cor. on Lt.

of 10" Conc. culvert.

4+14 - 20.5 Lt. = end of Conc. Drain at of outlet

4+10

4+08 - 14.6 Lt. = Beg. of Rough Conc. Dip Drain
3' wide

4+06 - 18' Rt. = ± 1" Euc.

3+85

3+83 = 18.5 Rt. = ± 1" Euc.

3+67 - 20 Lt. = ± end Row of Trees

T.P. 9.55 226.91 0.41 217.36

3+60

225.9
+ 8.1
44
at Cor.
of House

3+49 - 30' Rt. = end Row of Trees

3+40

Lt. ± Rt. 8

222.4	221.5	218.9	218.8	217.8	217.5	216.9	211.5	209.0
4.5	5.4	8.0	8.1	9.1	9.4	10.0	15.4	17.9
30	27	17	13	10	10	19	30	45
edge	± CL.							
cl.	Drain							

223.3	223.6	217.19	215.8	216.3	216.1	215.8	215.5	207.2	203.9
1.6	3.3	9.72	11.1	10.6	10.5	11.1	11.4	19.7	23.0
40	30	17	12	8	8	10	17	30	45
		± Conc.	± CL.						
		Drain	Drain						
		216.63	215.64						
		10.28	11.27						
		14.6	11.5						
		± Conc.	± CL.						
		end.	Drain						

225.1	223.1	222.9	216.6	211.5	211.8	212.1	211.9	203.9	197.3
1.4	3.4	4.0	10.3	15.4	15.1	14.8	15.0	23.0	29.6
48	30	25	13	5	10	19	30	45	
along				CL.					
House				Drain					

222.6	218.9	216.2	209.3	208.2	226.91	208.6	209.1	209.4	204.2	196.9
+ 4.8	+ 1.1	1.6	8.5	9.6	9.2	8.7	8.4	13.6	20.9	
30	20	9	7	2	10	22	30	45		
		CL.								
		Drain								

221.7	220.3	215.3	211.1	205.9	206.2	207.5	201.2	195.8
+ 6.9	+ 2.5	2.5	6.7	11.9	11.6	10.3	16.6	22.0
45	30	14	12	3	16	30	45	
		CL.						
		Drain						
		217.77						
		edge						
		of CL.						

T.P. 13.12 239.70 7.02 226.58
 5+00 - 24.5' Lt. ^{beg.} Row of Natal Plum Hedge
 4+95.92 - Cont.

Note Rock + Brick terrace on Rt. (check for 10' obscur)
 4+95.92 = opp Prop. Cor. on Lt = old Hub - in sketch
 sta. 4+65.92 = Int. of \pm 's
 Beg. Regular Stations along \pm ' to East, from
 Penn. to East.

to East, showing Rock walls - So. of S.L. of

See Beginning of Godsall Lane Sections for out

4+95.92 = \pm + S.L. of Penn. to East.

234.55
 +0.95
 30
 on brick
 walk

4+91.5 - ^{28'} Rt. = \pm Gray Pole

4+91 = Top of E+W Rock wall

4+90.6 - 25.5 Rt. = \pm 4" Acacia

4+88 = Bottom of Rock wall - (No Mortar)

Lt. \pm Rt. 10

222.4	222.7	222.5	223.5	225.6	226.5	226.1	227.9	228.2	231.5
11.2	10.9	11.1	10.1	8.0	7.1	7.5	5.7	5.4	2.1
30	24	2.1	17	12	14	18	22	23	
		\pm	\pm	\pm = E+W		\pm	Drain	Top Rock	Top Rock

1.6 +1.10 +0.95 +0.8
 28.3 28.3 30 40
 Top Top Top Top
 Brickwall Brick wall

234.43	231.4	229.7	228.5	225.5	225.6	225.5	222.6	219.8	219.3
+0.83	2.2	3.9	5.1	8.1	8.0	8.1	13.0	13.8	14.3
25	25	15	7.5	6.5		4	7	15	26.8 30
Top wall	Top of Brick wall	Top of Brick wall	Top	Toe - Rock		Top Rock wall	Toe Rock		= fence
231.5	230.1	228.6	225.8	225.6	221.0	220.0	219.4	219.1	
2.1	3.5	5.0	7.8	8.0	12.6	13.6	14.2	14.5	
30	20	9	7	Toe	4	15	30	40	
Top wall	Top of Rock	Top of Rock	Top of Rock	Toe Rock Terrace					
228.2	224.8	222.8	221.0	220.2	219.6	219.2			
5.4	8.8	10.8	12.6	13.4	14.0	14.4			
30	15	\pm 12.5	3	15	30	40			

233.60

5+56.82 = W.L. Brant - to S.

233.0	236.69	236.61	235.95	236.15	236.33	236.20	235.98	236.20	236.76	238.25
6.7	3.01	3.09	3.75	3.55	3.37	3.50	3.72	3.50	2.94	1.45
30	20.1	Top	15.1	7.5	7.5	15	18.9	Top	30	walk
	walk		gut.				gut.			

5+46.75 Cont.

232.13	232.8	234.57	234.49	234.02	234.50	237.64	237.53	238.75	239.72
7.4	6.9	5.13	5.21	5.68	5.20	2.06	2.17	0.95	+0.2
39.4	30	20	Top	15	7.5	25.4	30	30	40
at House		Cor. walk	Top	gut.		brick walk	on walk	Top Rock wall	

5+46.75 = Reg. Conc. pave + Comb. cb. + walks

5+40 - Cont.

237.12	237.29	238.93	239.70
22.8	2.41	0.77	0.0
26.1	31	31	40
Top brick walk	walk	Top Rock wall	

5+40

230.6	231.6	231.7	232.8	232.9	232.6	232.9	233.6	233.6	233.3	234.6	234.8	236.8
9.1	8.1	8.0	6.9	6.4	7.1	6.8	6.1	6.1	6.4	5.1	4.9	2.9
39.3	30	25	23	14.5	13	10	12	14	17	21	22	22
along House					CL Drain		Drain	Drain	Drain	Bot	well	Top

5+37 - 22.5 Rt. = Dead man

5+20 Cont.

234.9	236.16	235.89	236.19
4.8	3.54	3.89	3.51
27.2	27.2	30	33.3
Top brick wall	at outside of steps	Brick walk	House

5+20

226.3	226.8	228.8	229.0	228.8	229.2	229.8	230.2	230.0	231.4	231.7	234.6
13.4	12.9	10.9	10.7	10.9	10.5	9.9	9.5	9.7	8.3	8.0	5.1
40	30	23	15	13.5	"	12	14	18	22	23	23
					CL Drain	Drain	Drain	Drain	Bot	Top	

Lt.

♀

Rt.

R.

0.40 253.76

T.P. 15.56 254.16 1.10 238.60

5+65.5 = w. cb. of Alley Ref. on Lt = end.

5+61.82 = w. cb. of Brant to S.

253.70 = S.W. B.P. Albatross + Pennsylvania

233.1	237.84	237.61	237.20	237.49	236.96	237.74
6.6	1.86	2.09	2.50	2.21	2.74	1.96
30	21.1	Topcb. 15			15	30
	end-Top chr + cone	3' Rad.			Cross fut.	
	Pape					
237.39	237.34	236.72	237.04	236.58	237.54	239.16
2.31	2.36	2.98	2.66	3.12	2.16	1.54
20	Top	15.1		15	30 = 30	50
walk	Top	15.1	239.70	Cross fut.	Top	50
					= P.C.I.	50
						Top
						0.82

INDEXED

13

Law
MAR 20 1952

γ-Sect. Godsall Lane - 15' wide. - See
Sketch - P. 3

Lt.

±

1+00 - 5' Rt. = fence

+0.2
150.3
135.7
96.0
7.56.2
6.26.4
310.2
7.517.9
20

201.3

0+85 - 24.5 Rt. = ± Small frame House

26.0

24.5

ground
at House

0+65

225.3
2.0
15220.0
7.3
11219.6
7.7
7.5219.4
7.9218.8
8.5
5214.3
13.0
7.5208.7
18.6
20

0+52 - 1.7 Rt. = E of 3' Conc steps - Rough

218.45

8.85
1.7
top of
steps

215.75

11.55
7.5
steps

210.8

17.22
20 = steps

Reduced & Plotted

2-1-52

H. M. 1/15

0+40

214.7
2.4
15212.4
7.9
11218.9
8.4
7.5217.1
8.2218.7
8.6
5214.1
13.2
7.5211.8
15.55
20

0+15

+ 232.3
5.0
36
Top
Rock
Conc
wall229.2
+1.9
35228.5
+1.2
29226.0
1.3
28225.7
1.6
16219.6
7.7
11219.7
7.9
7.5218.8
7.5218.8
7.5212.3
10.0
7.5215.0
12.3
20

4.3' Rt. = Cont. Rail fence shown on P. 10
0+00 = S.L. of Pennsylvania to East.

225.5
1.8220.1
7.2
15219.8
7.5
7.5220.2
7217.3
8.0
7.5216.6
8.7
15

B.M.

8.31

227.30

218.99 = spike in pole - P. 8

Top
Rock

227.30

Lt.

#

Rt.

3+15 = profile

3+10.00 = end

3+07 - 7.6' Lt. = end Conc. wall

	1997	1997	1996
	17.7	17.7	17.8
	7.5		7.5
	2010	2054	2037
	10.4	12.0	13.7
	15	7.5	7.5
			on H.b.
	212.57		17.8
	3.80		14 = Top.
	7.6		
Top of wall			
	2065		
	10.9		
	7.6		
ground.			
		217.37	

X-Sect. 15' Alley in Block 2 - Idyllwild

Map 998 Sketch - P-2

W.O. 25020 12-18-51 - 7.0.

0+05 - 7.4 Lt. = Reg. Conc. Block wall

T.P. 12.01 244.57 0.23 232.56

Set. B.M. on Cross - Alley & Line 6.87 226.02

0+02 - 7' Rt. = 24" Euc. Tree in bank

0+01 - 2' of Riser to 6" Sewer.

15.07 E. of E.L. - Note - Returns are out of position

0+00 = E.L. of Curlew - edge of Conc. pave + curbs

Reduced & Plotted

H. Mills

0-10 = E. cb. Line of Curlew

T.P. 12.13 232.89 0.23 220.76

T.P. 13.33 220.99 0.45 207.66

B.M. 13.11 208.11 195.00

= Subj. ct. Pennsylvania + Curlew.

Lt. Rt.

232.9	238.29	236.6	234.5	233.8	230.2
6.7	6.28	8.0	10.1	10.8	13.8
15	7.4	7.4		7.5	15

Top wall

244.57

INDEXED

Daw

MAR 20 1952

227.65

5.24 = Top of pipe

227.87	227.37	226.36	225.77	225.87
5.02	5.52	6.53	7.12	7.02
8.4	8.4	edge of Conc.	7.1	7.1 = Top end cb.

220.33	222.58	222.86	226.94	225.77	225.08	225.77	222.21	222.94
2.56	3.31	5.03	5.95	6.92	7.81	7.12	10.68	9.95
Top	30	Top	7.5	7.5	7.5	Top	30	Top
	gut.	2 Rad.	gut.		gut.	2 Rad.	gut.	Top

232.89

Like on P. 12
 Check B.M. - checks High 2.32 270.04 = 269.97
 T.P. 8.68 272.36 3.20 263.68 =
 Set B.M. = spike in Pole Below 4.57 262.31
 2+78.42 = ± Brant. Rough pave
 2+67- 7.9' Rt. = ± P. pole # 3762
 2+65- 10' Rt. = ± 36" Palm.
 2+64- 7.7' Rt. = ± of 15" Dia. Conc. flowerpot.
 2+63.42 = u.L. Brant. - 8.4' Rt. = end fence
 T.P. 5.36 266.88 3.62 261.52
 2+61- 8.2' Lt. = ± of 3' Conc. apron along Row of Gar. - also edge of stairs
 2+60- Beg. Cold Lay pave
 2+39.5- 8.1' Lt. = end slab
 2+35- 6' Rt. = end Row of shrubs.
 2+31- 7.9' Lt. = Beg. 3.2' Conc. slab along House
 2+15- 7.4' Rt. = end Board + Beg. lattice fence
 (2+00 - 7.6' Rt. = Beg. Board fence
 2+21- 5.8' Rt. = Beg. Row of shrubs.

NE B.P. Front + Robinson Rt. 20
 c.t. ± Brant + S. Line Robinson
 262.03 262.31 261.77 261.60 261.38 260.81 260.05
 3.85 4.57 5.11 5.28 5.50 5.07 6.93
 60 30 7.5 7.5 30 50
 262.88 261.86 261.66 261.70 261.7 262.65
 4.01 5.02 5.22 5.18 5.2 4.23
 60 7.5 7 7.5 50 1.7 = top of conc.
 sky. C.L.
 266.88
 262.11 3.03 8.2 = conc.
 262.09 3.05 3.7 8.1 = ground
 262.17 5.1 262.03 261.2 260.8 261.0 261.2
 2.95 3.11 3.9 7.5 4.3 4.1 3.9
 11.1 8 7.5 15
 Conc. at House
 262.02 3.12 3.21 7.9 = Cor. conc.
 11.1 conc. 262.6 261.3 261.7 260.0 259.7
 4.5 4.8 5.2 5.1 5.4
 15 7.5 265.14 7.5 +5

Cont'd From Page 21

HILLTOP

Lt

Rt

22

1+56^L Top of Roll Curb

519

157.77

1+53^E Edge AC Walk

517

1+41^E 12^E Rt to center 12" Olive tree

1+00

158.89

160.1

161.0

6.1

4.9

4.0

10

10

0+50

157.9

159.5

160.9

7.1

5.5

4.1

10

10

0+07 2' Lt to Deadman

158.3

154.38

158.92

0+00 { EXISTING M.H. U.S.G. HOUSING PROJECT
WEST OF 45TH ST AND SOUTH OF HILLTOP
SEE SKETCH PAGE 21

5.7

10.58

6.04

GRD.

INVERT

RIM

164.96

T.P. 5.30 164.96 T 12.00 159.66

T.P. 6.77 171.66 319 164.89

T.P. 4.24 168.08 479 163.84

B.M. 9.78 168.63 158.85 NWBP

Marked $\frac{E}{S}$ 45TH

Cont'd From Page 22.

Lt

R

R 23

T.P.

12.25

✓
(175.73π)

148

✓
(163.48)

3+18.68

Q HILLTOP AND Q 45TH STREETS

1.48

A.C.

3+00

163.00

1.96

A.C.

2+50

161.59

3.37

A.C.

2+00

160.90

4.56

A.C.

1+68³⁸

ANGLE POINT RIGHT 71° 43.2'

Q HILLTOP WEST OF 45TH STREET

157.82

5.14

A.C.

1+57¹

Gutter of Roll Curb

157.47

5.49

✓
(164.96π)

✓
(164.96π)

Contd From Page 23

Lt

F

R7

24

6+00

176.95 ✓

7.43
A.C.

5+50

175.83 ✓

8.55
A.C.

T.P.

8.83

184.38 T ✓

0.18

175.55 T ✓

184.38 T ✓

5+00

173.91 ✓

1.12
A.C.

4+50

171.09 ✓

4.64
A.C.

4+00

167.64 ✓

8.09
A.C.

3+50

164.74 ✓

10.99
A.C.

175.73 T ✓

175.73 T ✓

9+50

0.92
AC ✓

9+00

182.24
2.14
AC ✓

8+50

180.89
3.49
AC ✓

8+00

179.95
4.13
AC ✓

7+50

179.06
5.32
AC ✓

7+00

178.25
6.13
AC ✓

6+50

177.61
6.77
AC ✓

<184.38 T> ✓

<184.38 T> ✓

Cont'd From Page 25

Lt

Q

Rt 26

12+00

187.97 ✓
4.96
AC.

11+50

188.68 ✓
6.25
AC.

11+00

187.37 ✓
7.56
AC.

10+50

186.05 ✓
8.88
AC.

10+00

184.74 ✓
10.19
AC.

T.P. 10.84 {194.93 T} 0.29 {184.09 T} PK Nail

{194.93 T}

9+73.85 Q HILLTOP AND Q 46TH N STREETS

184.09 ✓
0.29
AC.

{184.38 T}

{184.38 T}

Cont'd From Page 26
46th STREET

Lt

Q

Rt

27

1700

183.5 ✓
11.4

H

0+50

183.0 ✓
11.9

g

4
PS

0+12 Edge AC Paving

183.78 ✓
11.5
A.C.

0+00 Q HILLTOP AND Q 46th STREETS

184.09 ✓
10.84
A.C.

12+91.53 Q HILLTOP AND Q COTTON STREETS

192.33 ✓
2.60
A.C.

12+50

191.36 ✓
3.57
A.C.

19493π

19493π

Cont'd From Page 27

28

4+00

185.5 ✓
3.4

3+50

186.2 ✓
2.7

3+00

186.2 ✓
2.7

2+50

186.1 ✓
2.8

T.P.

2.43 $\langle 188.92 \pi \rangle$ 8.44 $\langle 186.49 \rangle$

$\langle 188.92 \pi \rangle$

Higher

2+00

185.6 ✓
9.3

1+50

184.5 ✓
10.4

$\langle 194.93 \pi \rangle$

$\langle 194.93 \pi \rangle$

7+00

172.6
✓
113

6+50

176.7
✓
12.26+20.20 £ 46TH AND £ "C" STREET176.9
✓
12.5

6+00

176.2
✓
12.7

5+50

176.7
✓
12.2

5+00

179.6
✓
9.3

4+50

183.4
✓
5.5

188.92 ✓

188.92 ✓

Cont'd From Page 29

30

10+00

185.6 ✓
8.9

9+50

184.2 ✓
10.3

9+00

182.6 ✓
11.9

T.P.

12.94 $\left\langle \begin{array}{c} \downarrow \\ 194.50 \downarrow \end{array} \right\rangle$ 7.36 $\left\langle \begin{array}{c} \downarrow \\ 181.56 \downarrow \end{array} \right\rangle$

$\left\langle \begin{array}{c} \downarrow \\ 194.50 \downarrow \end{array} \right\rangle$

Higher

8+50

181.5 ✓
7.4

8+00

180.5 ✓
8.4

7+50

177.1 ✓
9.8

$\left\langle \begin{array}{c} \downarrow \\ 188.92 \downarrow \end{array} \right\rangle$

$\left\langle \begin{array}{c} \downarrow \\ 188.92 \downarrow \end{array} \right\rangle$

Cont'd From Page 30

T.P.

2.03

$\langle 183.59 \text{ N} \rangle$ 12.94 $\langle 181.56 \rangle$

¢

195.2 ✓

13+09.81 C 46TH/₁₁₁ AND C "A" STREET -

+0.7

12+50

192.7 ✓

1.8

12+00

191.5 ✓

3.0

11+50

190.5 ✓

4.0

11+00

188.8 ✓

5.7

10+50

186.9 ✓

7.6

$\langle 194.50 \text{ N} \rangle$

$\langle 194.50 \text{ N} \rangle$

Cont'd From Page 31

"C" STREET

Q

2+50

181.4 ✓
2.2

2+00

180.2 ✓
3.4

1+50

Higher

178.9 ✓
4.7

Higher

1+00

178.2 ✓
5.4

0+50

177.7 ✓
5.9

0+00 Q "C" STREET AND Q 46TH STREET

176.4 ✓
7.2

<183.59π>

<183.59π>

Cont'd From Page 32

£

33

T.P. 8.92 $\langle 201.82 \uparrow \rangle$ 0.51 $\langle 192.90 \uparrow \rangle$

T.P. 10.81 $\langle 193.41 \uparrow \rangle$ 0.99 $\langle 182.60 \uparrow \rangle$

3717.20 £ "C" STREET AND £ COTTON STREET

3700

$\langle 183.59 \uparrow \rangle$

$\langle 183.59 \uparrow \rangle$

$\sqrt{182.8}$

0.8

$\sqrt{182.5}$

1.1

Cont'd From Page 33

COTTON STREET

34

2400 117' Rt to House (connected to 47th) ^{whoops}

192.5
192.5
1.3

2
1st
Floor

1450

186.4
5.4

1400

145.1
6.7

0450

193.7
8.1

0412 Edge A.C. Paving

192.04
9.78
A.C.

0400 ∇ COTTON AND ∇ HILLTOP

192.32
9.50
A.C.

$\left[201.82 \pi \right] \nabla$

$\left[201.82 \pi \right] \nabla$

Cont'd From Page 34

♀

T.P.

352 $\left\langle \begin{matrix} \times \\ 193.95 \pi \end{matrix} \right\rangle$ 1139 $\left\langle \begin{matrix} \swarrow \\ 190.43 \end{matrix} \right\rangle$

4+50

190.4 ✓
11.4

4+00

193.7 ✓
8.1

3+75

50 ft to House

194.9 ✓
6.9
50
Floor

3+50

Highway

196.1 ✓
5.7

3+00

50 ft to House

197.3 ✓
4.5
50
Floor

2+50

198.0 ✓
3.8

$\left\langle \begin{matrix} \swarrow \\ 201.82 \pi \end{matrix} \right\rangle$

$\left\langle \begin{matrix} \swarrow \\ 201.82 \pi \end{matrix} \right\rangle$

7+00

184.8
9.2 ✓

6+50

183.2
10.8 ✓

6+20.16 Q COTTON AND Q "C" STREET

182.9
11.1 ✓

6+00

182.8
11.2 ✓

5+50

182.9
10.1 ✓

5+00

186.9
7.1 ✓

4+50

128' Rt to House

189.2 ✓
4.8
128
Floor

193.95 π

193.95 π

10+00

194.3 ✓
7.2

9+50

192.6 ✓
8.8

9+00

190.8 ✓
10.6

T.P.

12.29

<201.44 T>

480

<189.15 T>

<201.44 T>

H. J. J.

8+50

189.1 ✓
4.9

8+00

184.7 ✓
9.3
100 ✗

182.2 ✓
6.3

7+50

186.3 ✓
7.7

<193.95 T>

<193.95 T>

13+09.81 ♀ COTTON AND ♀ "A" STREETS

206.8
2.1

12+50 60' to House

204.2 ✓
4.7
60
Floor

214.8
4.1

12+00

202.9 ✓
6.0

T.P. 7.69 <208.93 > 0.20 <201.24 >

<206.93 >

Higher

11+50

200.7 ✓
0.7

11+00

194.4 ✓
7.0
100

198.5 ✓
2.9

10+50

196.4 ✓
5.0

<201.44 > ✓

<201.44 > ✓

Check

8.88

$$\left\langle \begin{array}{l} 158.88 \\ \hline \end{array} \right\rangle = 158.85$$

Starting BM

T.P.

2.99

$$\left\langle \begin{array}{l} 167.76 \\ \hline \end{array} \right\rangle$$

7.10

$$\left\langle \begin{array}{l} 164.77 \\ \hline \end{array} \right\rangle$$

T.P.

3.04

$$\left\langle \begin{array}{l} 171.87 \\ \hline \end{array} \right\rangle$$

15.33

$$\left\langle \begin{array}{l} 168.83 \\ \hline \end{array} \right\rangle$$

T.P.

0.58

$$\left\langle \begin{array}{l} 184.16 \\ \hline \end{array} \right\rangle$$

14.75

$$\left\langle \begin{array}{l} 189.59 \\ \hline \end{array} \right\rangle$$

T.P.

2.13

$$\left\langle \begin{array}{l} 198.33 \\ \hline \end{array} \right\rangle$$

12.73

$$\left\langle \begin{array}{l} 196.20 \\ \hline \end{array} \right\rangle$$

$$\left\langle \begin{array}{l} 208.93 \\ \hline \end{array} \right\rangle$$

Alignment of existing Gov. Sewer in
 Chollas View Housing Project -
 W of 21082
 3-31-53
 C. Allen, D. Sisson, C. Powell

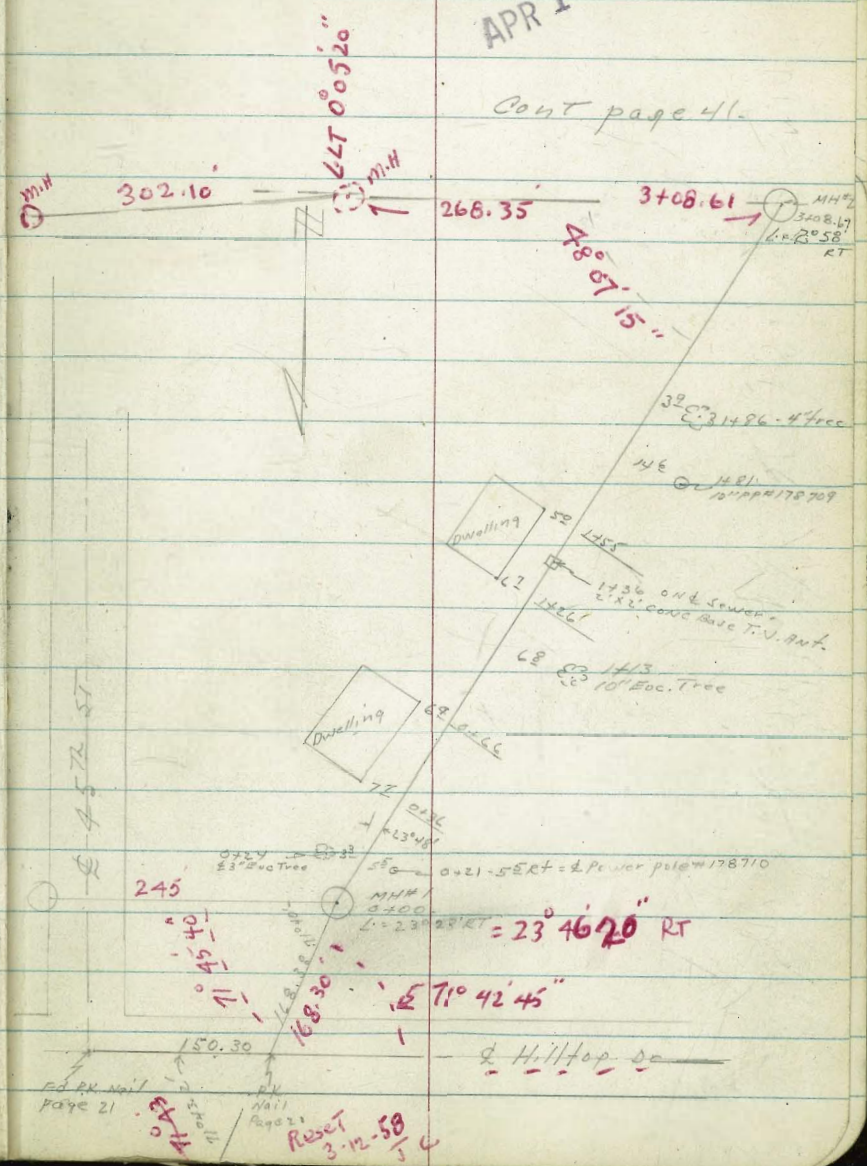
Note: Red-Line DATA: 3-12-58
 J.C.

INDEXED
 APR 1 1953

All dwellings near line are of similar
 type - 29'5" in Nly Sly direction + 24'5" Ely Wly

Cont page 41.

SEE ALSO PAGE 21



3+08.61 - EXIST MH#2 - L = 2°58' RT

1+86 - 3⁹ RT = 4" tree

C 1+81 - 14⁶ RT = 10" PP # 178709

1+55 - 6⁰ LT = S.W. Cor Dwelling

T 1+86 - on & sewer = 2'x2' Conic. Base for T.V. Ant.

1+26 - 6⁷ LT = NW Cor Dwelling

T 1+13 - 6⁸ RT = 10" Euc. Tree

0+ 6⁴ LT = S.W. Cor Dwelling

T 0+36 - 7⁷ LT = NW Cor Dwelling

0+24 - 3³ LT = 3" Euc. Tree

T 0+21 - 5⁵ RT = Power pole # 178710

0+00 = EXIST M.H. L = 23°48'

Ed. PK. Nail
 Page 21

Reset
 3-12-58
 J.C.

Chollas View Survey cont

4461 - 10² LT S.W. Cor Dwelling

4444.75 - MH#3 - P.O.T. (Existing)

4435 - 24² LT = N.W. Cor Dwelling

4430 - 5² LT = 2" I.P. clothes line pole

4405 - 10² LT = S.W. Cor Dwelling

3489 - 6² LT = 2'x2' Conc. Base for T.V. ANT

3480 - 25² LT = N.W. Cor Dwelling

3475 - 6² LT = 2" I.P. clothes line pole

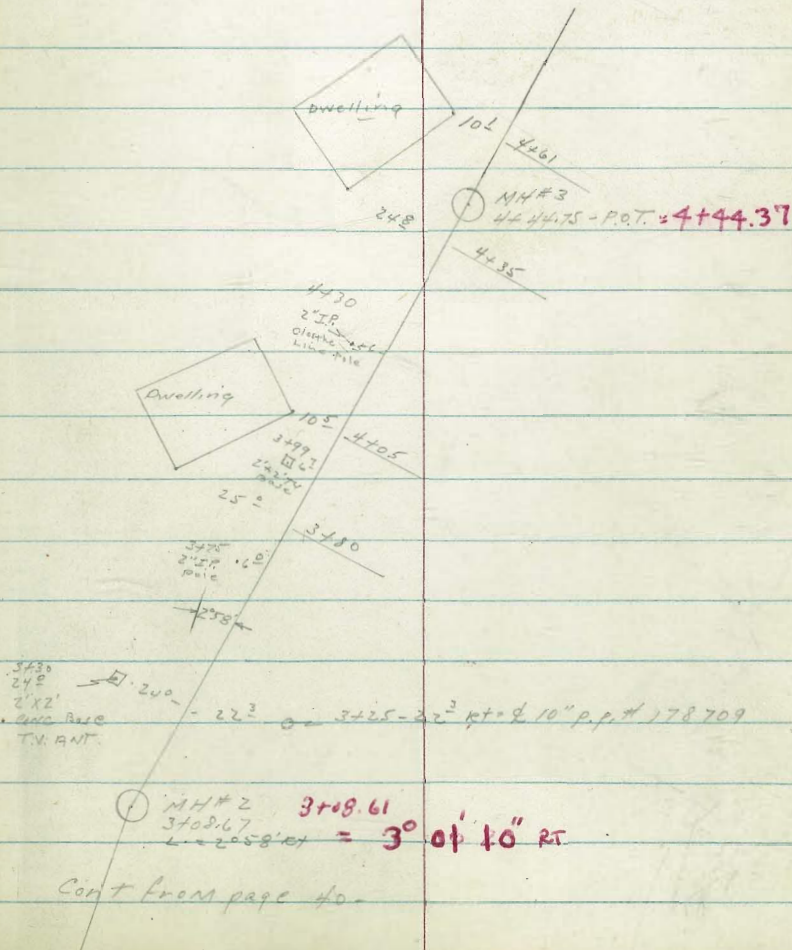
3430 - 24² LT = 2'x2' Conc. Base for T.V. ANT

3425

3425 - 22² RT = 10" pp # 178709

3408.67 - MH#2 C. 2°58' RT (Existing)

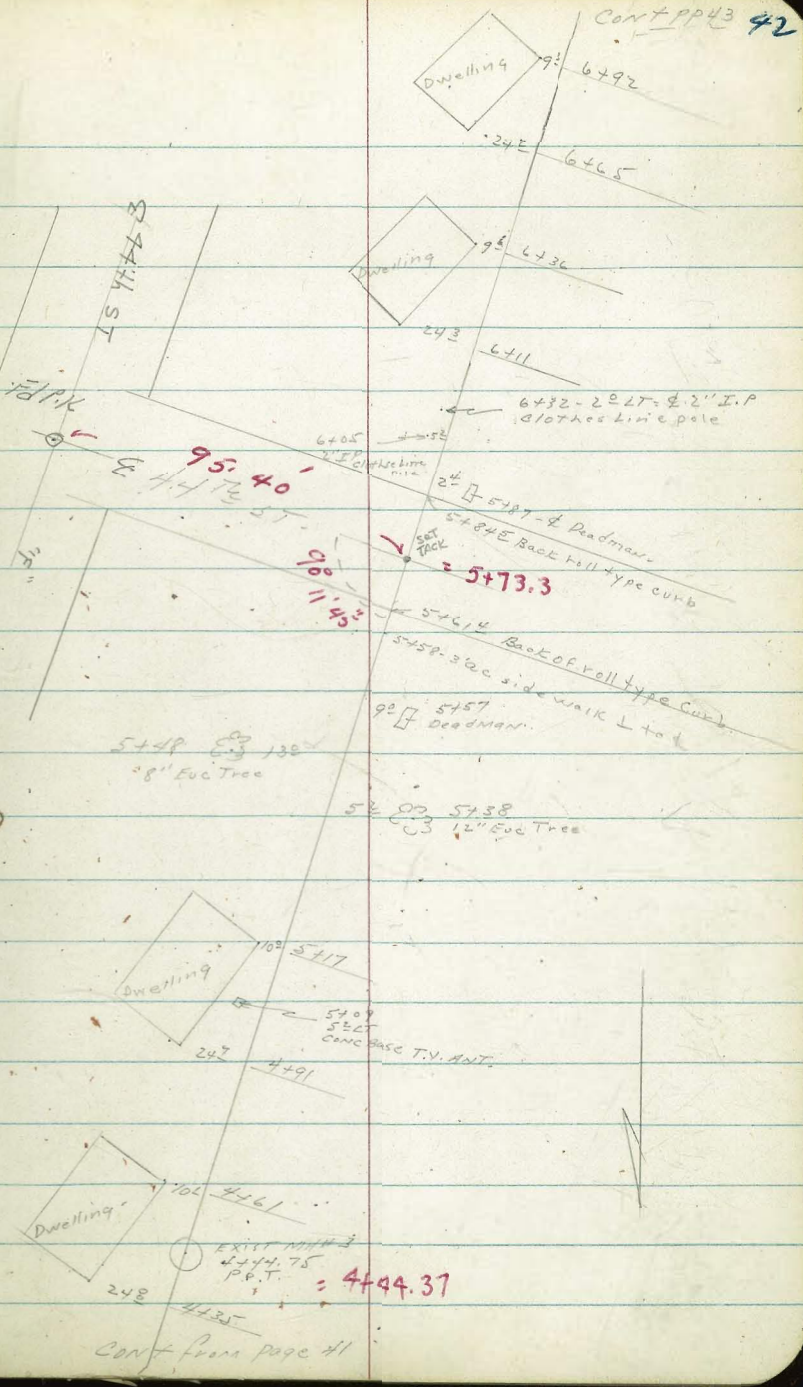
Cont Page 42



Chollas View Sewer Cont

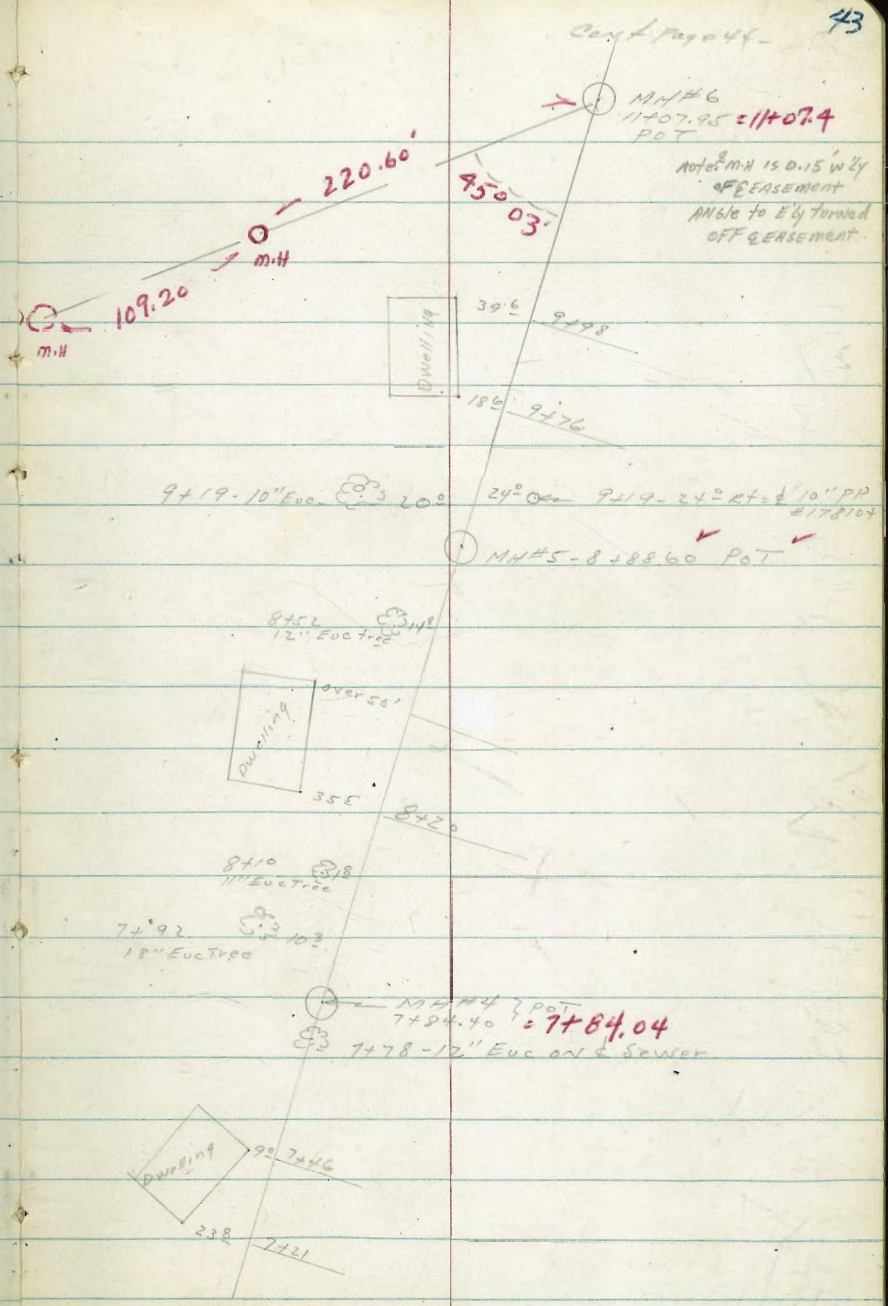
- 6492 - 9³ LT = SW cor Dwelling
- 6465 - 24² LT = NW cor Dwelling
- 6436 - 9⁶ LT = SW cor Dwelling
- 6411 - 24³ LT = NW cor Dwelling
- 6432 - 2⁰ LT = 2" I.P. clothes line pole
- 6405 - 5² LT = 2" I.P. clothes line pole
- 5487 - 2⁴ LT = Deadman
- 5484⁵ = back roll type curb
- 5461² = back roll type curb
- 5458 = 3' ac side walk perpendicular to
- 5457 - 9⁰ RT = Deadman
- 5448 - 13⁰ LT = 8" Euc tree
- 5438 - 5² RT = 12" Euc tree
- 5417 - 10⁰ LT = SW cor Dwelling
- 5409 - 5² LT = 2'x2' conc base for T.V. Ant
- 4491 - 24² LT = N.W. cor Dwelling
- 4461 - 10² LT = S.W. cor Dwelling
- 4444.75 = MH# 3 - POT (Existing)
- 4435 - 24⁸ LT = NW cor Dwelling

Cont from page 41



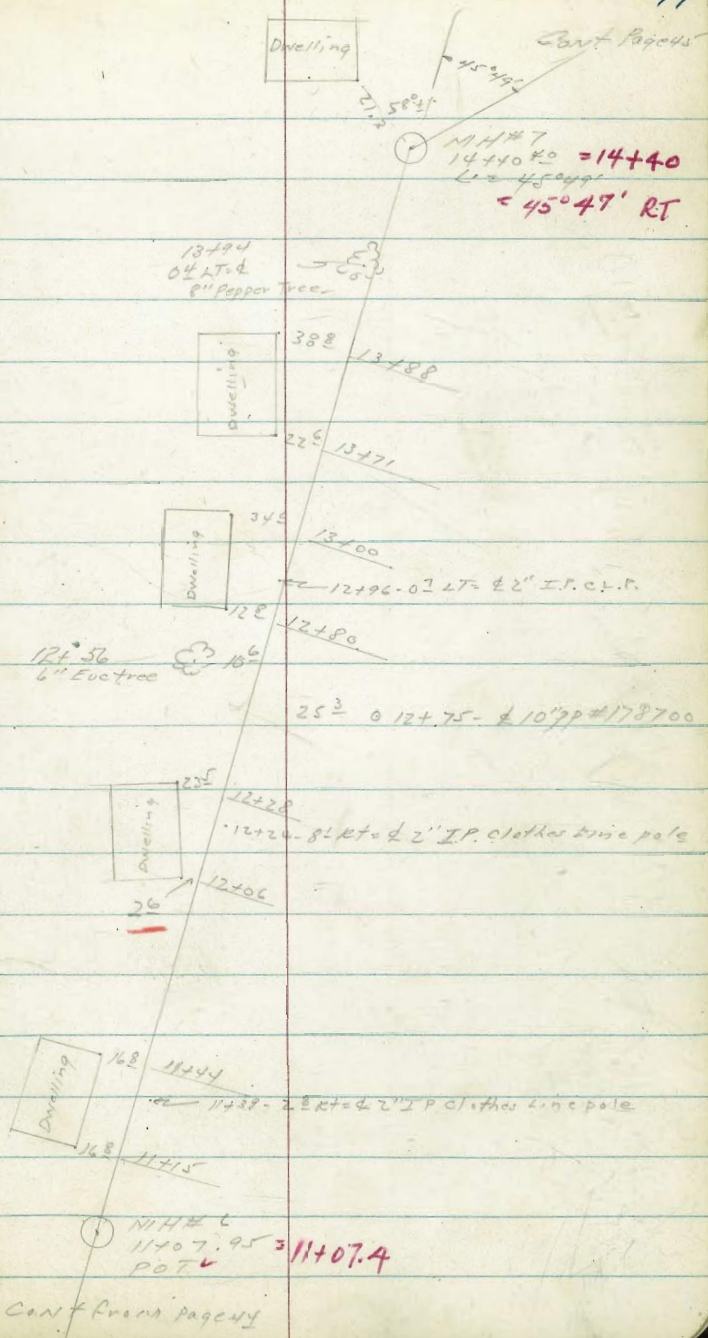
Cont from page 41

- 11407.95 - Existing MH# 6
- 9498 - 39° LT = SW COR Dwelling
- 9476 - 18° LT = NW COR Dwelling
- 9419 - 20° LT = ϕ 10" Euc tree
- 9419 - 24° RT = ϕ 10" PP # 178104
- 8488.60 - MH# 5 - POT (Existing)
- 8452 - 14° LT = ϕ 12" Euc tree
- S.W. COR of Dwelling over 50' OUT
- 8420 - 35° LT = NW COR Dwelling
- 8410 - 1° LT = ϕ 11" Euc tree
- 7492 - 10° LT = ϕ 18" Euc tree
- 7484.40 = MH# 4 - POT (Existing)
- 7478 - ON ϕ - 12" Euc Tree
- 7446 - 9° LT = S.W. COR Dwelling
- 7421 - 23° LT = NW COR Dwelling



Cont from page 42

14440⁴⁰ = EXISTING M.H.#7 L. 45°49' RT
 13494 - 0⁴ LT = 8" pepper tree
 13488 - 38⁸ LT = S.W. COR Dwelling
 13471 - 22⁶ LT = NW COR Dwelling
 13400 - 34⁰ LT = SW COR Dwelling
 12496 - 0⁷ LT = 2" I.P. CLP.
 12480 - 12⁸ LT = NW COR Dwelling
 12456 - 10⁶ LT = 6" Euc tree
 12475 - 25³ RT = 10" PP # 178700
 12428 - 23⁵ LT = SW COR Dwelling
 12424 - 8² RT = 2" I.P. CLP.
 12406 - 2⁶ LT = NW COR Dwelling
 11444 - 16⁰ LT = S.W. COR. Dwelling
 11439 - 2⁸ RT = 2" I.P. clothes line pole
 11415 - 16⁸ LT = NW COR Dwelling
 11407.95. EXIST M.H.#6 - POT



Cont Front page 4

Market

43rd ST

Fd city Eng's mon
ST

90°
10'

136.90'

92.57'

LT = 90° 57' 10"

CITY OF S.D. SMH #7
15781.00 = 15780.54

center m.h. lays
0.32' wly E 93.14'

(See Page 46 For Prop. Ties
to M.H.#7)

45° 47' RT
45.49'

M.H.#7
14740.40 = 14740
L = 45° 49' RT
= 45° 47' RT

approx 43rd + 96' ± N. of N. Line Market
15781.00 City of S.D. SMH #7.

14785. 7' LT = 10" pp #178699.

14740.40 = EXIST M.H.#7 L = 45° 49' RT

Cont From
Page 44

SHILTOP

① Fl 2" Pipe
city Disc

1/4 Line Morrison's
MASCENE PK

FD 24 I.R. (Clay Lignite)
32.60'

FD 2' I.R. S 2334
(Hit by 202EA)
not out for
AS Run out for
Chollas #2
(see P945) 46

E DENBY ST

E 57th ST

open

M.H.

176.90'

89° 58' 15"

Angle turned from E.M.H.
M.H. #7 (see P945)
E.M.H. 233' W of E ST.

97.0'

96.88'

1104

FD 121 FD 1672-65

FD 1000
80
44
1947

40

E MARKET

ST

CLARK

Additional X-sec Notes on Godsall
 Lane. Taken for the purpose of extending
 sections shown to 50' on right (with).
 See sketch page 3 - orig Notes page 13

INDEXED
 JER
 DEC 23 1953

LT: Ely

Godsall

RT: wily 47

OT 60

OT 52-1² RT 2 3' conc steps - See page 13

OT 40

OT 20

OT 000 Sly line Penn.

BM 468 223.67

218.99

Spike in pole # 349 - Page 8.

1996

1982

240
44

249
50

219³

4³
75

219²

44

219⁴

42

215¹

85

205²

178

203⁰

205

3 75 27 43

219⁰

46
75

219¹

45

219²

43

213¹

105

211³

123

206⁵

17

204⁵

19

5 75 23 38 50

219²

44
75

219⁴

40

219⁸

38

216²

72

210⁰

116

208²

152

4 75 30 50

219⁸

38
75

210¹

35

220¹

35

219²

44

219⁰

46

217²

57

212⁶

110

4 6 75 25 50

223.67 x

X-sec Godsall Lane cont.

LT = eLy ♀ RT = wLy 48

Starting BMI -

TP1 4.68 218.99

1+20

222 ⁵	222 ⁵	222 ⁵	220 ⁵	209 ⁸	204 ⁵
0 ⁸	1	10	30	13 ⁸	19 ¹
7 ⁵	4	7 ⁵	2 ⁵	50	

1+00

200 ⁸	196 ⁹
22 ⁸	26 ⁷
28	50

221 ⁹	221 ¹	210 ¹	217 ⁵	215 ⁹	212 ²	209 ⁴
2 ⁶	2 ⁵	2 ⁶	6 ⁵	7 ⁷	11 ³	14 ⁵
7 ⁵	3	7 ⁵	11	14	20	

211 ²	202 ⁴	201 ³	200 ⁷
12 ³	21 ⁴	22 ³	22 ⁹⁰
19	21	24 ⁵	24 ⁵
ground at Ely Frame House			FLOOR

House below is 16⁴ N+S

0+85-24⁵ RT = ♀ Frame house

0+80-24⁵ RT = eLy side Frame house

220 ²	220 ⁹	219 ⁵	215 ⁴	214 ⁴	211 ³
3 ⁶	3 ⁶	3 ⁷	8 ⁵	9 ⁴	12 ³
7 ⁵	40	7 ⁵	12	15	

223.67 π

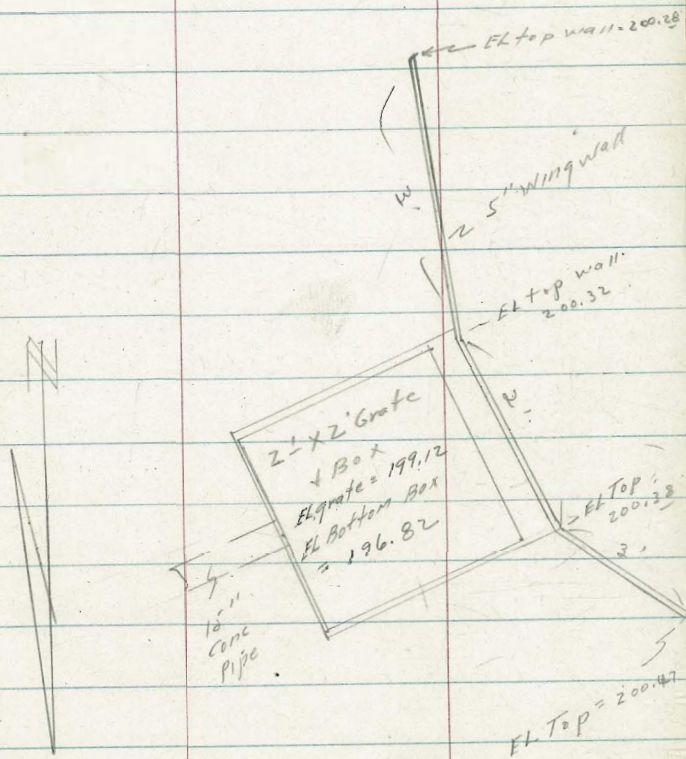
Lo
Ch
st
To
at
+P
W
12
C.
D.
J.
Ret
TP
File
L

Detail of inlet in intersection

Penn. Ave + Brant Ave.

See page 49.

See page 51



Levels for Proposed drain
Change in Intersection
Penn Ave + Brant Ave (Nly)

TP₁ (Start B.M.) 2.93 208.84

0+53.88 = 2" x 2" RW hub - end of line

For levels in catch basin see detail pages 50

0+33 $\frac{1}{2}$ intersects sly edge A.C. Drive

0+20.5 - 6° LT = $\frac{1}{2}$ 8" yellow acacia tree

0+14 - 6° RT = sly edge A.C. Drive

0+14 $\frac{1}{2}$ crosses picket fence

0+8° 4° LT = $\frac{1}{2}$ sewer Manhole

0+00 = intersection 15" Conc pipe + Fly Line Brant

0-14 sly edge A.C. Drive

B.M. 2.93 211.77 208.84

LT = 514

$\frac{1}{2}$

RT = Nly - 5'

200 $\frac{1}{2}$

11 $\frac{1}{2}$

201 $\frac{03}{1074}$

202 $\frac{80}{-}$

8 $\frac{97}{-}$

203 $\frac{51}{-}$

1833

1 E

202 $\frac{70}{-}$

907

Rim

203 $\frac{3}{-}$

8 $\frac{4}{-}$

DIRT

204 $\frac{17}{-}$

760

A.C.

211.77

Nail in guy pole - LT sta 1+79 page 51

D. Smith
J. Rorer
B. Fish

Cross Sec Dudley St

Catalina to Silver Gate

Wot# 32047
3-9-54

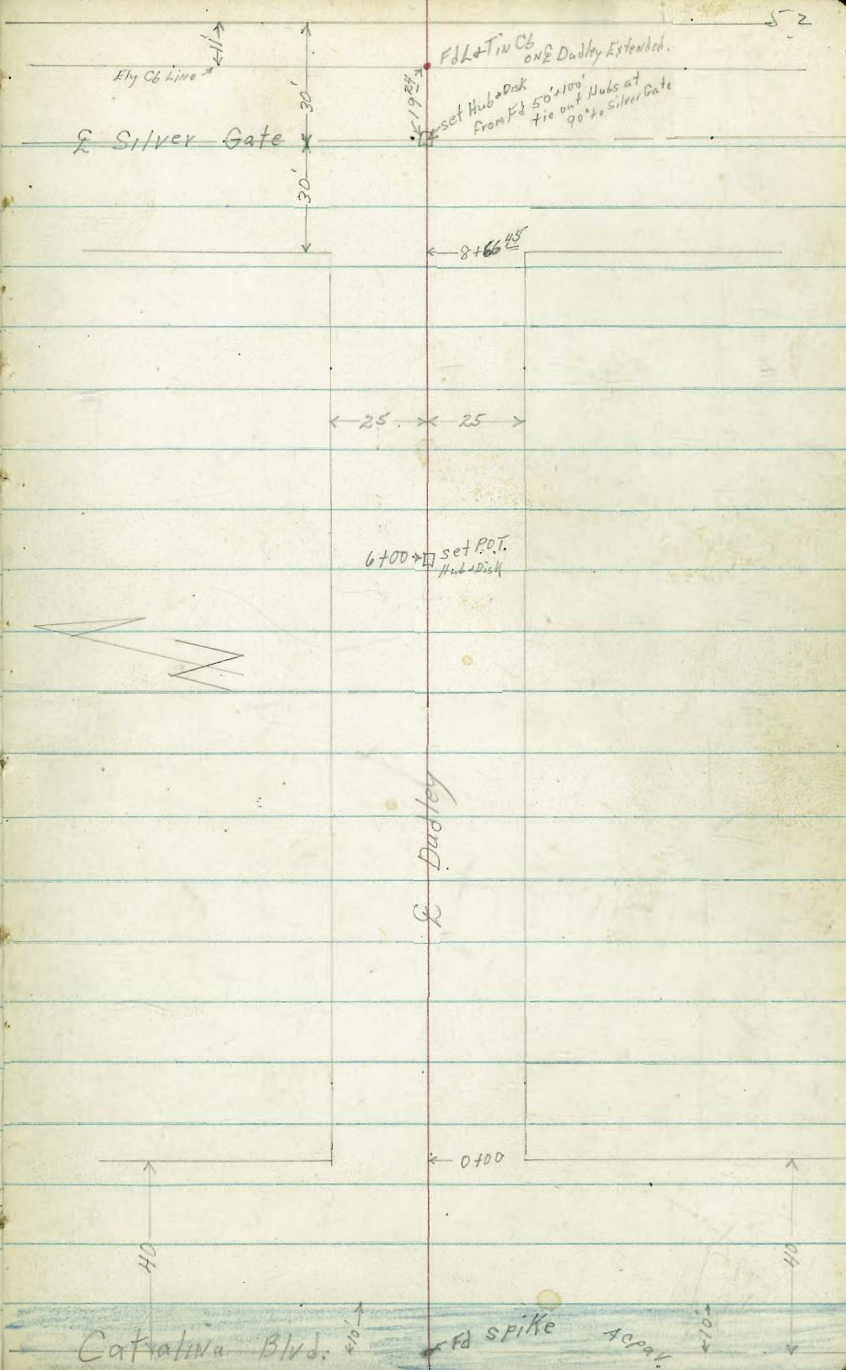
INDEXED

MAR 11 1954

Note: took soil sample at 4400 on E. Dudley

! please show const BM on plan as

the original BM is in poor cbs,



0+25

Lt = Nly

$\begin{matrix} 273.1 \\ 5.5 \\ 25 \end{matrix}$
 $\begin{matrix} 274.6 \\ 6.0 \\ 15 \end{matrix}$
 $\begin{matrix} 275.7 \\ 4.2 \\ 15 \end{matrix}$
 $\begin{matrix} 277.1 \\ 4.2 \\ 25 \end{matrix}$
 $\begin{matrix} 277.4 \\ 3.2 \\ 25 \end{matrix}$
 $\begin{matrix} 277.8 \\ 2.8 \\ 28 \end{matrix}$
 $\begin{matrix} 278.3 \\ 2.3 \\ 40 \end{matrix}$

53

0+14 22° Lt Begin shub planting

$\begin{matrix} 271.0 \\ 9.6 \\ 90 \end{matrix}$
 $\begin{matrix} 272.3 \\ 8.3 \\ 50 \end{matrix}$
 $\begin{matrix} 273.1 \\ 7.5 \\ 25 \end{matrix}$
 $\begin{matrix} 272.5 \\ 8.1 \\ 14 \end{matrix}$
 $\begin{matrix} 273.4 \\ 7.2 \\ 14 \end{matrix}$
 $\begin{matrix} 273.4 \\ 7.2 \\ 25 \end{matrix}$
 $\begin{matrix} 274.7 \\ 5.9 \\ 25 \end{matrix}$
 $\begin{matrix} 275.4 \\ 5.2 \\ 27 \end{matrix}$
 $\begin{matrix} 276 \\ 4.0 \\ 50 \end{matrix}$

0+00 Ely Line Catalina

0-11

Reduced 3-22-57
J.C.

$\begin{matrix} 270.3 \\ 10.3 \\ 100 \end{matrix}$
 $\begin{matrix} 271.5 \\ 9.1 \\ 50 \end{matrix}$
 $\begin{matrix} 271.8 \\ 8.8 \\ 25 \end{matrix}$
 $\begin{matrix} 272.1 \\ 8.5 \\ 25 \end{matrix}$
 $\begin{matrix} 272.9 \\ 7.7 \\ 25 \end{matrix}$
 $\begin{matrix} 274.0 \\ 6.6 \\ 50 \end{matrix}$
 $\begin{matrix} 275.8 \\ 4.8 \\ 100 \end{matrix}$

0-30 Ely edge A.C. pav.

$\begin{matrix} 270.39 \\ 10.24 \\ 100 \end{matrix}$
 $\begin{matrix} 271.32 \\ 9.31 \\ 50 \end{matrix}$
 $\begin{matrix} 271.87 \\ 8.76 \\ 25 \end{matrix}$
 $\begin{matrix} 272.44 \\ 8.19 \\ 25 \end{matrix}$
 $\begin{matrix} 273.4 \\ 7.49 \\ 25 \end{matrix}$
 $\begin{matrix} 273.87 \\ 6.76 \\ 50 \end{matrix}$
 $\begin{matrix} 275.26 \\ 5.07 \\ 100 \end{matrix}$

0-40 E existing 20' wide A.C. pav Catalina

$\begin{matrix} 270.43 \\ 10.20 \\ 100 \end{matrix}$
 $\begin{matrix} 271.45 \\ 9.18 \\ 50 \end{matrix}$
 $\begin{matrix} 271.99 \\ 8.64 \\ 25 \end{matrix}$
 $\begin{matrix} 272.59 \\ 8.04 \\ 25 \end{matrix}$
 $\begin{matrix} 273.27 \\ 7.36 \\ 25 \end{matrix}$
 $\begin{matrix} 274.00 \\ 6.63 \\ 50 \end{matrix}$
 $\begin{matrix} 275.65 \\ 4.88 \\ 100 \end{matrix}$

TP₅ BM const 2⁶¹ 280⁶³ 9⁷¹ 278²² Nail in Guy Pole Sta 0737 18/81

TP₄ 1²⁵ 287⁷³ 12³⁸ 286⁴⁸

TP₃ 2³⁷ 298⁸⁶ 13²⁷ 294⁴⁹

TP₂ 2⁰² 309⁷⁶ 0²⁰ 307⁷⁴

TP₁ const BM 12²² 307⁹⁴ 9⁵⁵ 295²² Lt Ely 06 Silver Gate & Dudley Ex extended Ely

BM 12²² 304⁷⁷

292²⁰ BP in Ely of Silver Gate & Charles St extended

280⁶³

1730 25° Lt & trunks 15' high hedge
 1718 30° Lt & 34" cypress tree
 1703 40° Lt & double garage con floor only

1700

0799 25° Rt & 10' con drive

0790 22° Rt & end geraniums

TP6 11⁰⁸ 290⁷² 099 279⁶⁴

0775

0771 28° Rt & 35' brick & con walk

0767 24° Lt & 3' con walk

0760 21° Rt & intermittent geraniums

0750

0748 26° Rt & 15' loose brick & then con drive

0739 22° Lt end shrub planting

0737 18° Rt & 12" Guy Pole

Lt = Nly

⊗

Rt = Sly

54

280.47
 10²⁵
 40°
 Floor

280.4	280.4	279.7	280.4	281.0	280.4	280.8	281.8
10 ³⁰	10 ³⁰	11 ⁰	10 ³	9 ⁷	9 ²	9 ²	8 ²
25	20	15	9		12	15	25

281.80
 282.85
 283.71

822
 753
 701
 33
 403
 drive

280.60
 278.4
 278.4
 279.8
 278.7
 279.4
 279.1
 279.2
 280.0
 280.3
 280.4

20	22	22	28	12	12	15	14	05	03	102
35	25	19	16	9		12	15	19	25	35

290⁷²

279.3
 271.35
 271.1
 276.8
 276.2
 276.9
 277.5
 277.6
 278.4
 279.0

35	38	38	44	37	31	30	22	16
35	25	18	16	9		13	21	25

027
 180
 wlk

062
 25
 wlk

1018
 30
 wlk

279.69
 280.01
 280.81

174	092	058
262	342	402
loose	con	floor
brick	edge	

280⁶³

Lt = Nly

Q

Rt = Sly

55

3750

294.6	294.6	297.1	296.7	296.7	297.1	297.4	297.2	297.6	298.0
7 ⁶	7 ⁶	5 ¹	5 ⁵	5 ⁵	5 ¹	4 ⁸	5 ⁰	4 ⁶	4 ²
35	27	25	22	12	8	14	25	35	

3700

293.2	293.6	293.1	293.6	294.1	294.3	294.0	294.7	295.2	297.0	297.1
9 ⁰	8 ⁶	9 ¹	8 ⁶	8 ¹	7 ²	8 ²	7 ⁵	7 ⁰	5 ³	5 ¹
35	25	23	12	11	16	18	25	30	35	

2792 27⁵ Lt & 4' brick + con walk

293.9
9⁴
37²
walk

2765 25³ Lt begin 4' high con block 8" wall

291.9
292.22
9⁴
37²
walk

291.20
13⁰⁰
55⁶
Floor

2754 55⁶ Lt & double garage con floor only

290.0	289.5	290.1	290.7	290.8	290.4	291.2	291.6	292.2
12 ²	12 ²	12 ¹	11 ⁵	11 ⁴	11 ⁸	11 ⁰	10 ⁶	10 ⁹
25	21	18	11	16	18	25	35	

TP7

11⁹⁸ 302²⁰ 0⁵⁰ 290²²

2700 24³ Lt & 3' con walk

30220

286.46	286.49	286.1	286.1	289.4	289.4	286.9	287.5	288.2	289.2
4 ²⁶	4 ²³	4 ⁶	4 ¹	3 ³	3 ³	3 ⁸	3 ²	2 ⁵	1 ¹
35	24 ³	18	11	8	16	19	25	35	

1750

283.4	283.3	283.2	282.7	283.6	284.1	284.0	283.6	284.2	284.6	285.5
7 ³	7 ⁴	7 ⁵	8 ⁰	7 ²	6 ⁶	6 ²	7 ¹	6 ⁵	6 ¹	5 ²
35	25	19	14	7	9	16	19	25	35	

29072

5414 25° LT & 3' con wall

5411 20° RT & 30" Eucalyptus tree

5400

4485 17° RT & 10" A.C. drive

4466 24° LT Begin 4' high 6" con block wall

4450

TP8 10⁸² 311¹⁹ 183 300³⁷

4400

3494 12° RT & 8" Acacia trees

3485 24° LT & 10" con drive

3474 24° RT & 11" A.C. drive

3465 25° LT end 4' con block 8" wall

LT = Nly

RT = Sly

56

305.75
305.77
544
548
35
25
w/4

304.8
304.8
304.6
304.7
304.6
305.3
305.5
64
64
66
65
66
52
52
35
25
12
10
25
35

304.73
304.66
304.73
64
65
64
175
25
35
1.100

306.28
302.7
303.1
42
85
81
242
249
249
Top Footing 9d

302.0
301.9
301.9
302.1
302.4
303.0
303.2
92
93
93
91
88
82
80
35
25
12
12
25
35

311¹⁹

299.3
299.5
299.4
299.7
299.6
300.2
300.8
301.1
22
27
28
25
26
29
14
12
35
12
25
35

298.89
321
331
342
242
drive

299.60
300.23

260
243
342
drive

299.39
294.1
297.7
281
81
45
255
255
255
Top Footing 9d

302³⁰

Lt = Nly

♀

Rt = Sly

58

7482 19² Rt & 2' brick + con walk

7475

7450

7425

7417 24² Lt Begin 4' high 6" con wall

7417 20⁶ Rt & 3' Brick loose walk

TR9 0⁴³ 311⁵⁸ 0⁰⁴ 311¹⁵ top wall 7417 20⁶ Lt

7400

6475 19⁶ Lt & 8' con apron

6467 22⁰ Rt end jointing

305.1 304.9 304.9 304.0 303.13 303.66
 65 62 62 75 80 75 72
 35 25 6 17 19 25
 198 25
 wlk

306.3 306.0 306.1 305.2 304.9 305.2 304.9
 53 56 55 64 62 64 62
 35 25 6 17 25 35

307.3 307.0 307.0 306.2 305.9 306.2 306.2
 43 46 46 54 52 54 54
 35 25 6 17 25 35

311.5 306.5 307.4
 043 51 43
 243 243 243
 top footing 90

306.8 306.6 306.44
 480 500 514
 205 25 35
 wlk

π 311⁵⁸

307.6 307.8 308.0 307.3 307.0 306.9 307.1 307.2 306.9
 36 34 32 32 42 43 41 40 43
 35 25 7 5 12 19 25 35

308.9 308.63 308.38 308.1 307.7 307.6 308.1 308.2 308.4
 250 251 281 31 35 36 31 310 28
 307 floor 20 con 196 con 12 12 19 25 35

π 311¹⁹

BM starting
p 53

903

292⁶⁹

292⁷⁰

9715⁴⁵ Ely. cb line Silver Gate

8496⁴⁵ 2 Silver Gate

8781

8466⁴⁵ 24 1/2 ft. end 4' high 6" con wall
wly Silver Gate

TP₁₀ 3²⁶ 301⁷² 13¹² 298⁴⁶

8750

8725

8700

Lt-Nly

29680	29533	29539	29449	29477	29520	29444	29488	29399	29445
5 ⁹²	6 ²⁴	6 ³³	6 ³⁸	7 ⁰	6 ⁵²	7 ³	6 ⁸⁴	7 ⁸	7 ²¹
50	50	25	25	25	25	25	25	50	50
06	Sut	06	24	24	06	Sut	06	24	06

29644	2963	2959	2956	2949
5 ³	5 ⁴	5 ⁸	6 ¹	6 ⁸
	25		25	50

2968	2965	2963	2963	2963	2963	2961	2956
4 ²	5 ³	5 ⁴	5 ⁴	5 ⁴	5 ⁶	5 ⁶	6 ¹
50	25	12		12	25		50

2997	2984	2997	2996	2972	2970	2971	2986	2987	2985
2 ⁰	3 ³	2 ⁰	2 ¹	4 ⁵	4 ⁷	4 ⁶	3 ¹	3 ⁰	3 ³
50	242	247	8	5		17	20	25	50
	Partly	96							

301⁷²

301	300.5	300.4	298.9	298.6	298.3	299.9	300.0
10 ⁵	11 ²	11 ²	12 ¹	13 ⁰	13 ³	11 ⁷	11 ⁶
35	25	6	4		18	20	25

302.6	302.3	302.3	300.9	300.7	300.3	301.3	301.2
9 ⁰	9 ³	9 ³	10 ⁷	10 ⁹	11 ³	10 ³	10 ⁴
35	25	6	3		18	20	25

303.9	303.7	302.8	302.6	302.5	302.1	302.7	302.6
7 ⁷	7 ²	7 ⁰	9 ⁰	9 ¹	9 ⁵	8 ²	9 ⁰
35	25	6	3		18	19	25

31⁵⁸

INDEXED
HER
DEC 9 1954

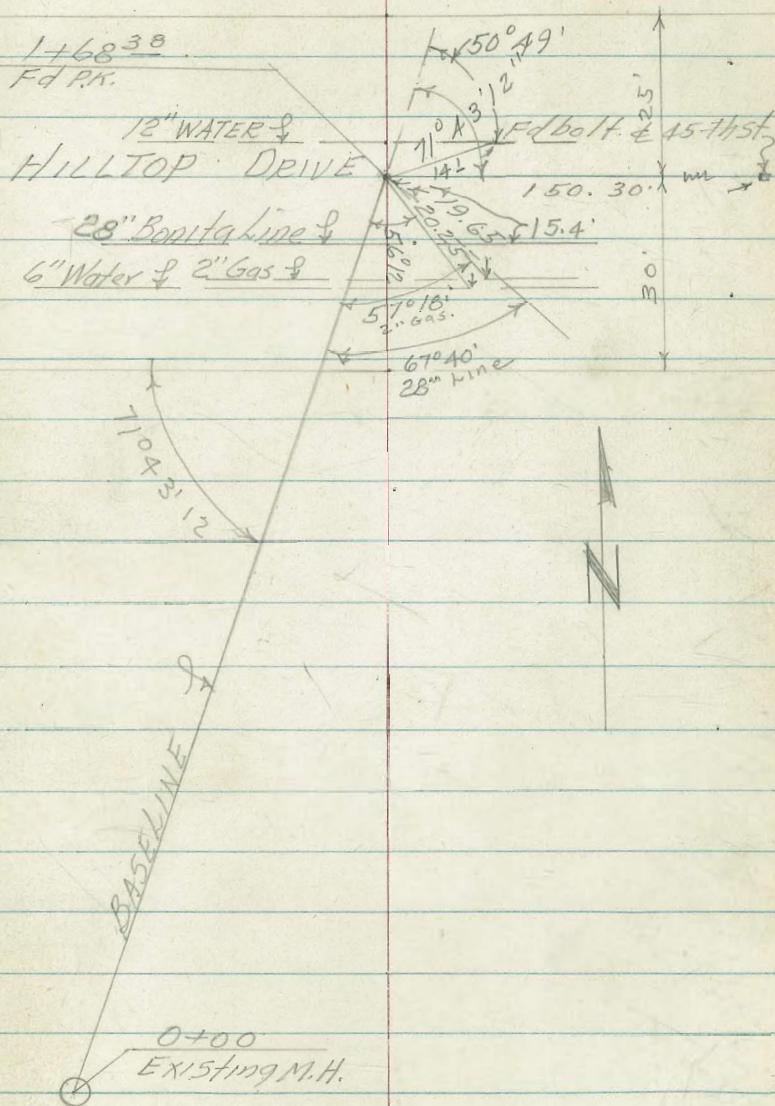
ELEVATIONS OF EXISTING WATER
MAINS & GAS MAIN W.O. 32240
HILLTOP DRIVE

NOTE: See Sketch Pg 21

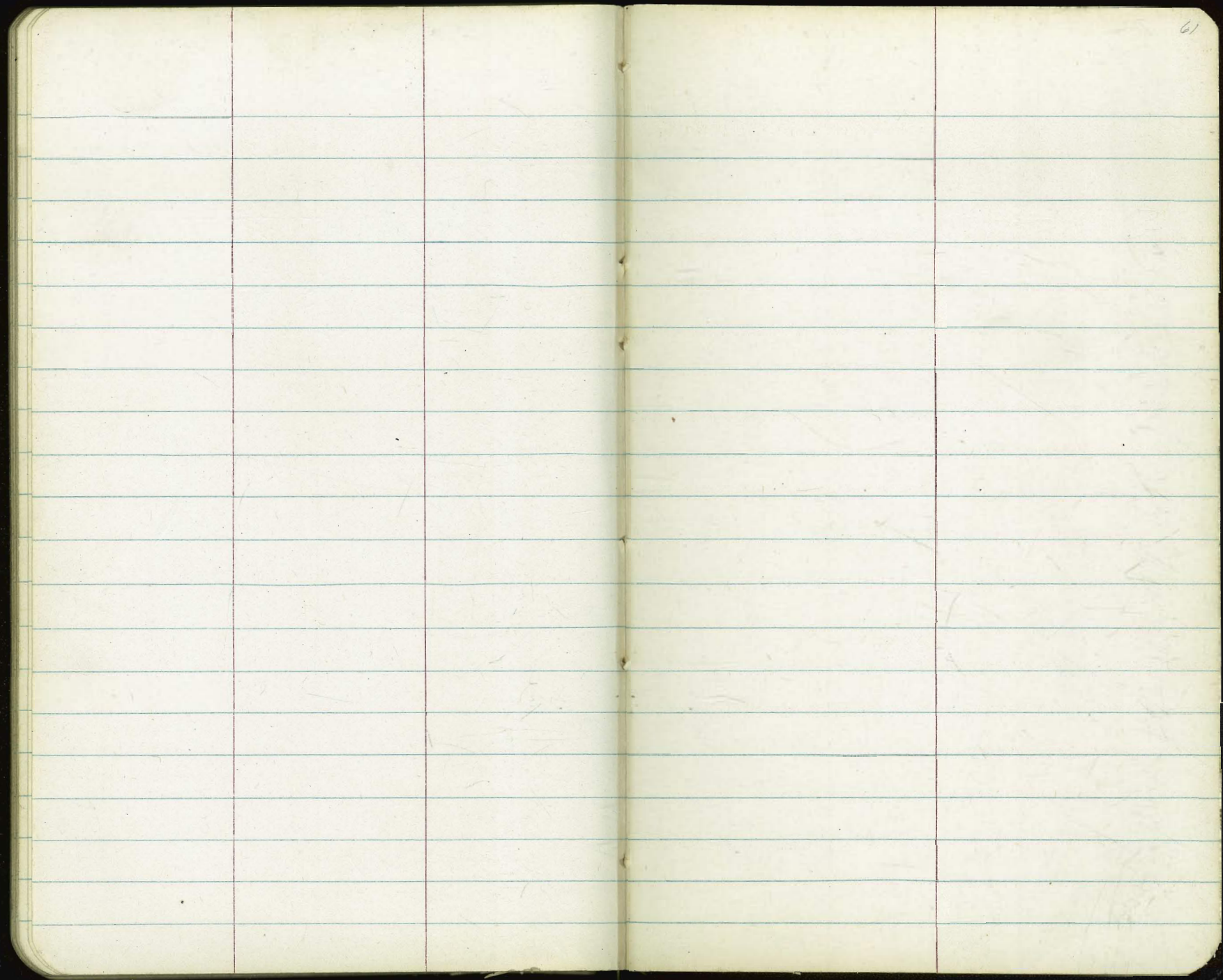
Top 28" Bonita Line	154.49
Top 2" Gas	158.14
Top 6" Water	157.12
Top 12" Water	156.41
T.B.M.	158.92

12-08-54
Ref DWG 10524-L

Stamped
Huffman 60
Nordahl
Elmore



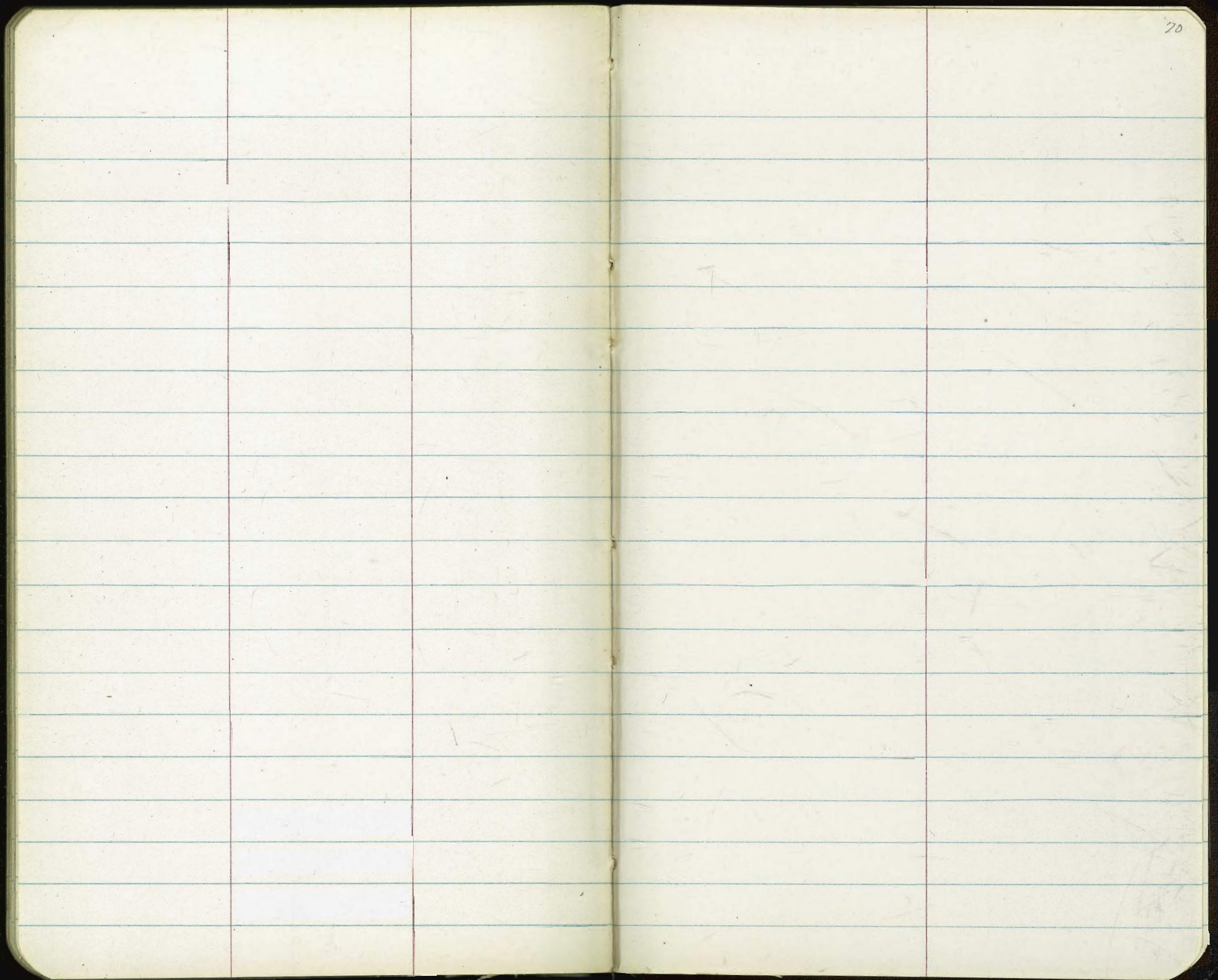
Top Nly Rim Existing Sewer M.H. (see Pg. 22)

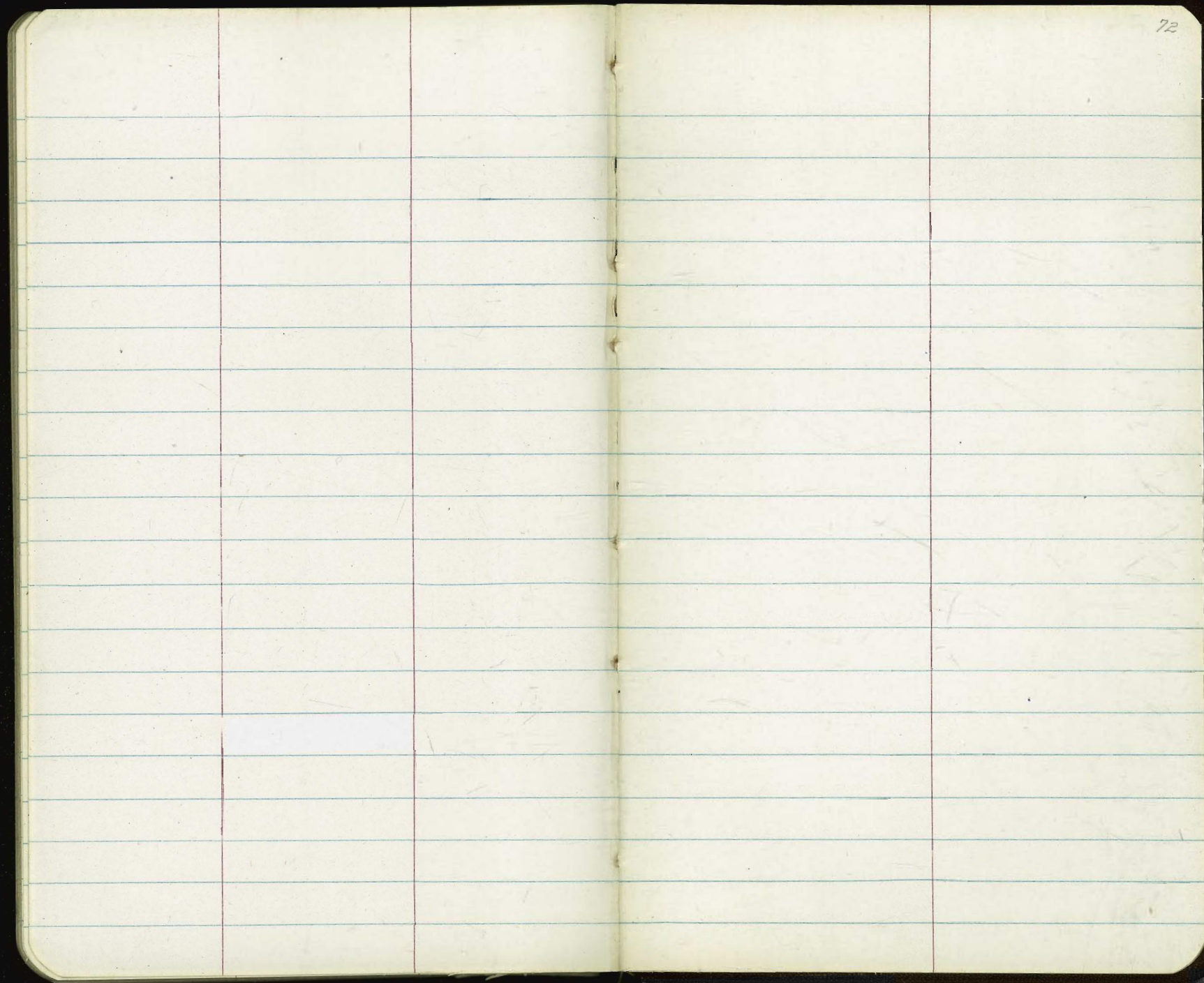


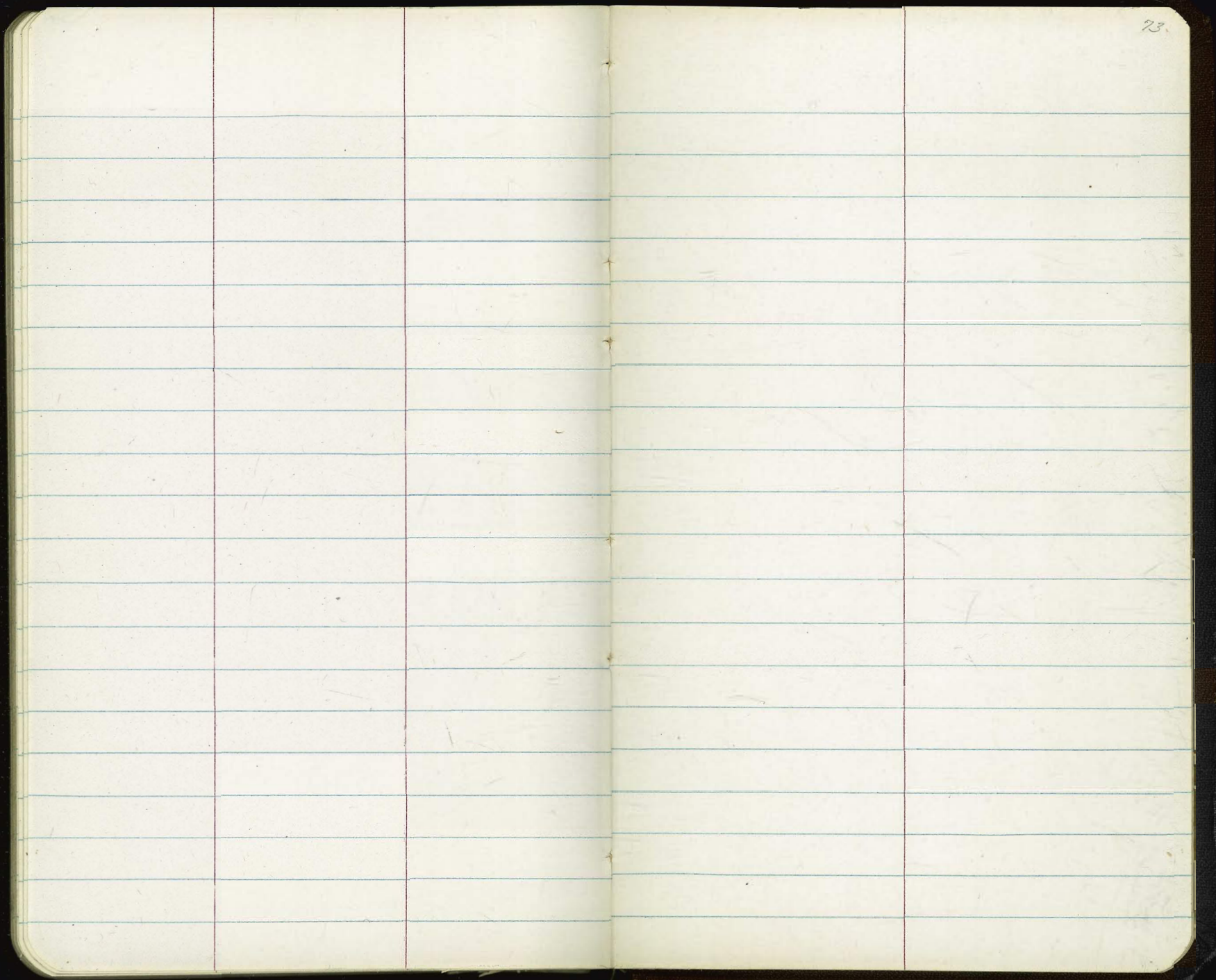
61

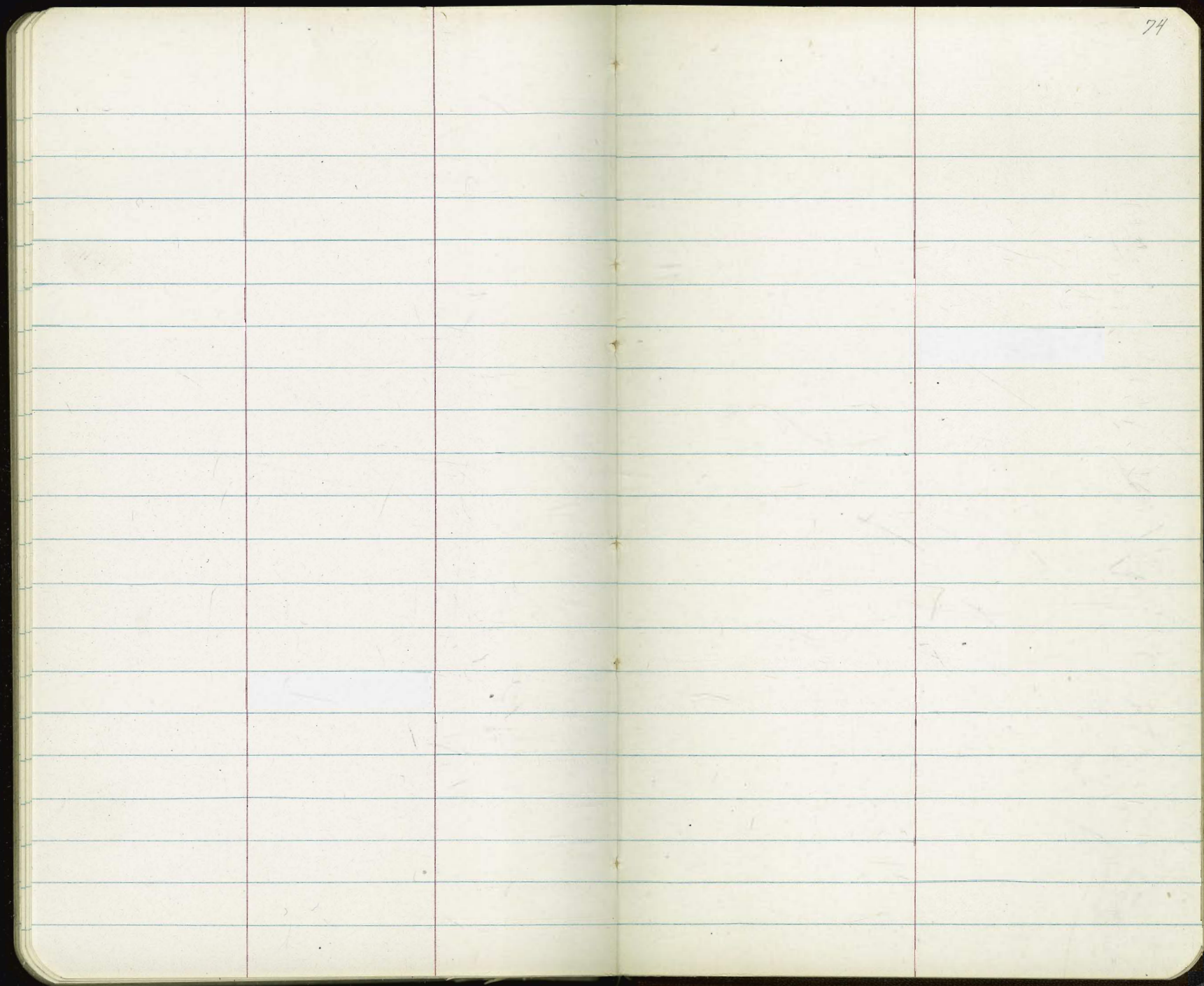
The image shows an open notebook with two facing pages. Both pages are cream-colored and feature light blue horizontal ruling. The notebook is bound in the center, with visible stitching or staples. The pages are mostly blank, with a few small dark spots or smudges. In the top right corner of the right page, the number '66' is handwritten in dark ink. The notebook is set against a dark, possibly black, background.

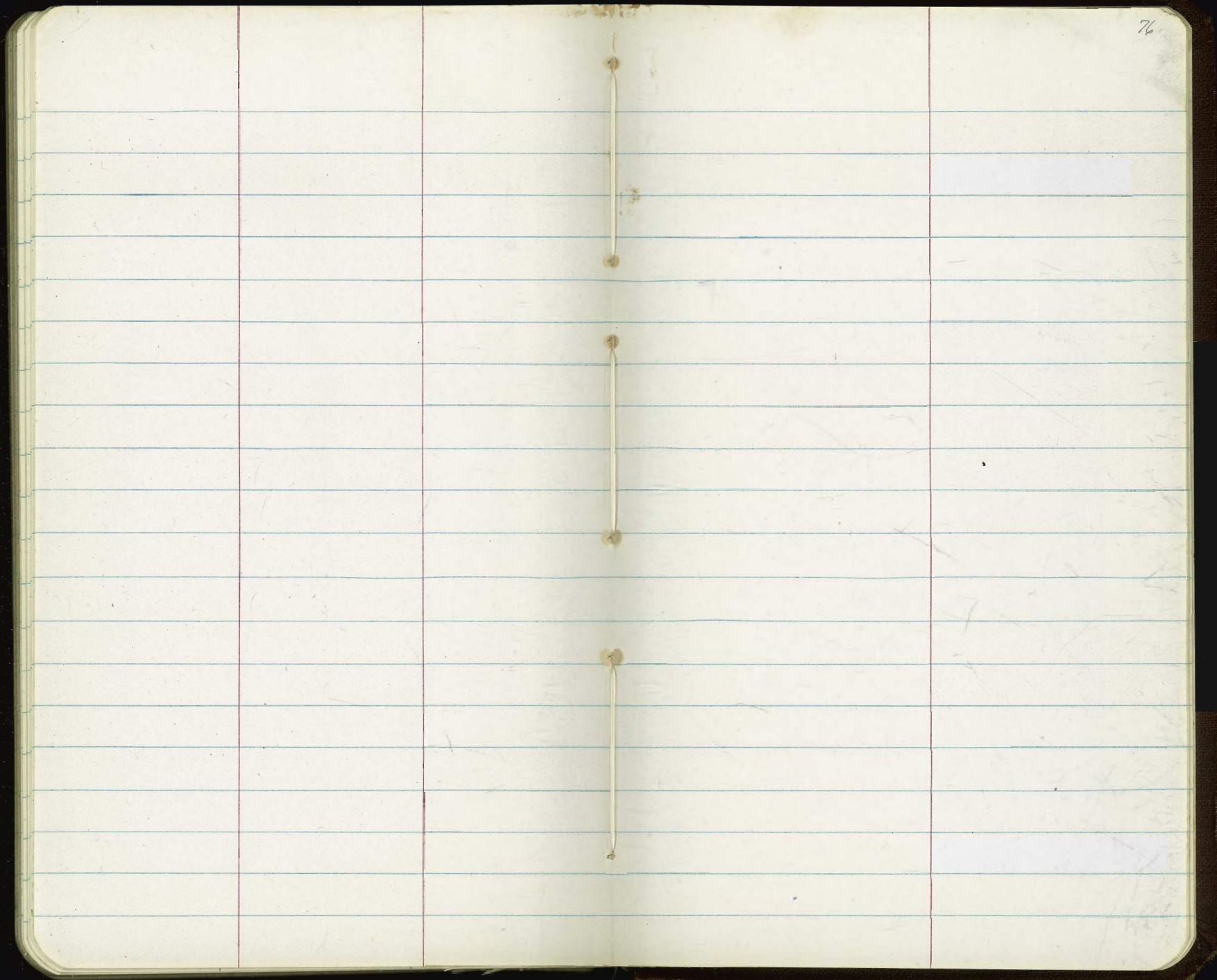
An open notebook with two blank, lined pages. The pages are cream-colored with light blue horizontal ruling. The notebook has a dark cover visible around the edges. The pages are otherwise empty of any text or markings.

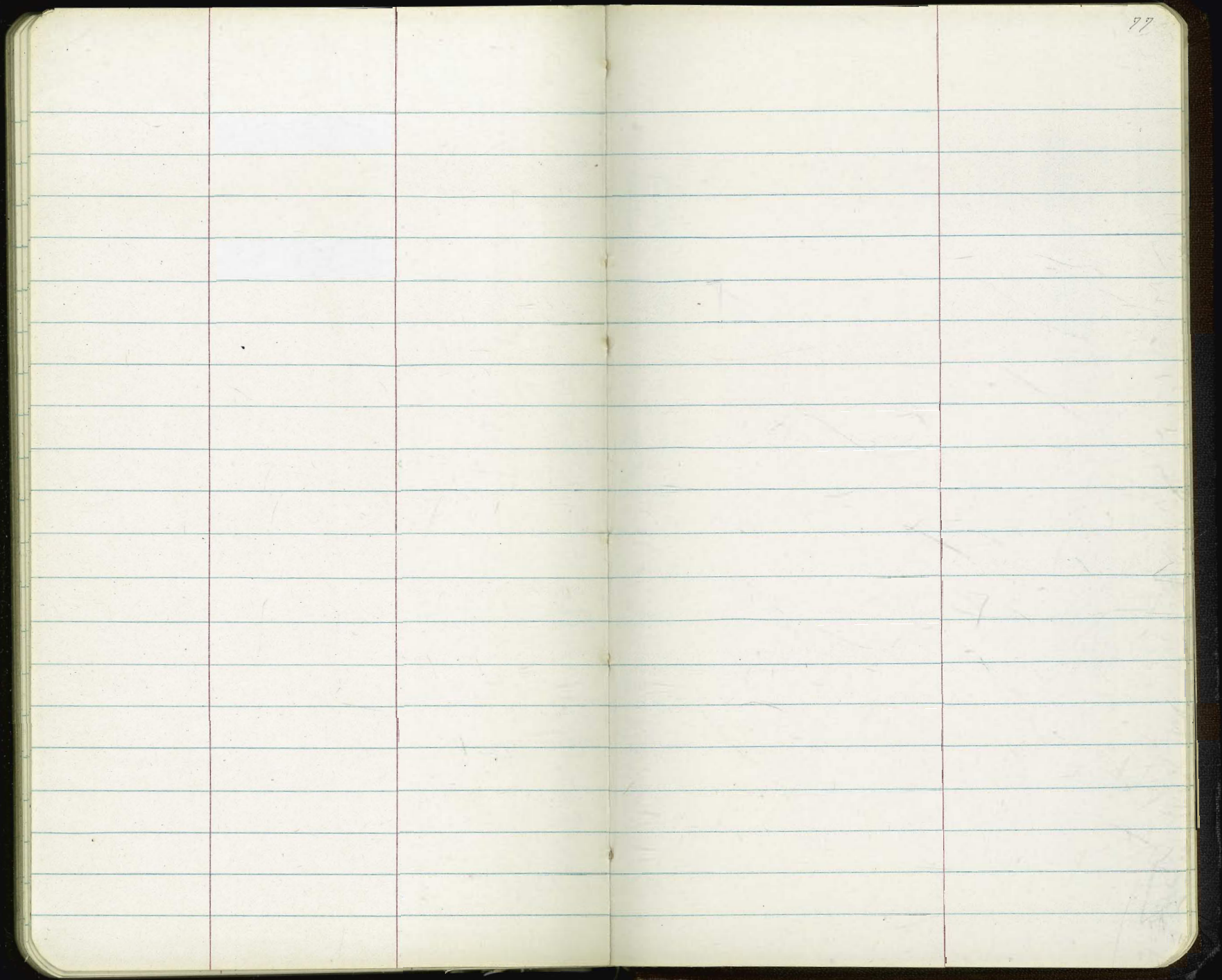




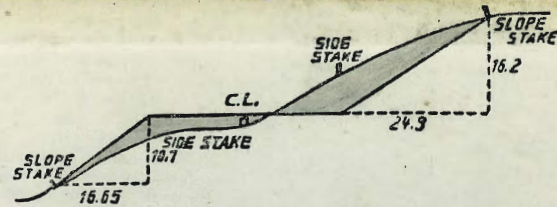








The image shows an open notebook with two facing pages. Both pages are cream-colored and feature light blue horizontal ruling. Each page is divided into three vertical columns by two faint red lines. The left page is completely blank. The right page has the number '79' handwritten in the top right corner. The notebook is bound in the center, and a dark, possibly black, cover is visible around the perimeter of the pages.



DISTANCES FROM SIDE STAKES FOR CROSS-SECTIONING.

SLOPE 1 1/2 TO 1. ROADWAY OF ANY WIDTH.

	0	.1	.2	.3	.4	.5	.6	.7	.8	.9	
0	0.00	0.15	0.30	0.45	0.60	0.75	0.90	1.05	1.20	1.35	0
1	1.50	1.65	1.80	1.95	2.10	2.25	2.40	2.55	2.70	2.85	1
2	3.00	3.15	3.30	3.45	3.60	3.75	3.90	4.05	4.20	4.35	2
3	4.50	4.65	4.80	4.95	5.10	5.25	5.40	5.55	5.70	5.85	3
4	6.00	6.15	6.30	6.45	6.60	6.75	6.90	7.05	7.20	7.35	4
5	7.50	7.65	7.80	7.95	8.10	8.25	8.40	8.55	8.70	8.85	5
6	9.00	9.15	9.30	9.45	9.60	9.75	9.90	10.05	10.20	10.35	6
7	10.50	10.65	10.80	10.95	11.10	11.25	11.40	11.55	11.70	11.85	7
8	12.00	12.15	12.30	12.45	12.60	12.75	12.90	13.05	13.20	13.35	8
9	13.50	13.65	13.80	13.95	14.10	14.25	14.40	14.55	14.70	14.85	9
10	15.00	15.15	15.30	15.45	15.60	15.75	15.90	16.05	16.20	16.35	10
11	16.50	16.65	16.80	16.95	17.10	17.25	17.40	17.55	17.70	17.85	11
12	18.00	18.15	18.30	18.45	18.60	18.75	18.90	19.05	19.20	19.35	12
13	19.50	19.65	19.80	19.95	20.10	20.25	20.40	20.55	20.70	20.85	13
14	21.00	21.15	21.30	21.45	21.60	21.75	21.90	22.05	22.20	22.35	14
15	22.50	22.65	22.80	22.95	23.10	23.25	23.40	23.55	23.70	23.85	15
16	24.00	24.15	24.30	24.45	24.60	24.75	24.90	25.05	25.20	25.35	16
17	25.50	25.65	25.80	25.95	26.10	26.25	26.40	26.55	26.70	26.85	17
18	27.00	27.15	27.30	27.45	27.60	27.75	27.90	28.05	28.20	28.35	18
19	28.50	28.65	28.80	28.95	29.10	29.25	29.40	29.55	29.70	29.85	19
20	30.00	30.15	30.30	30.45	30.60	30.75	30.90	31.05	31.20	31.35	20
21	31.50	31.65	31.80	31.95	32.10	32.25	32.40	32.55	32.70	32.85	21
22	33.00	33.15	33.30	33.45	33.60	33.75	33.90	34.05	34.20	34.35	22
23	34.50	34.65	34.80	34.95	35.10	35.25	35.40	35.55	35.70	35.85	23
24	36.00	36.15	36.30	36.45	36.60	36.75	36.90	37.05	37.20	37.35	24
25	37.50	37.65	37.80	37.95	38.10	38.25	38.40	38.55	38.70	38.85	25
26	39.00	39.15	39.30	39.45	39.60	39.75	39.90	40.05	40.20	40.35	26
27	40.50	40.65	40.80	40.95	41.10	41.25	41.40	41.55	41.70	41.85	27
28	42.00	42.15	42.30	42.45	42.60	42.75	42.90	43.05	43.20	43.35	28
29	43.50	43.65	43.80	43.95	44.10	44.25	44.40	44.55	44.70	44.85	29
30	45.00	45.15	45.30	45.45	45.60	45.75	45.90	46.05	46.20	46.35	30
31	46.50	46.65	46.80	46.95	47.10	47.25	47.40	47.55	47.70	47.85	31
32	48.00	48.15	48.30	48.45	48.60	48.75	48.90	49.05	49.20	49.35	32
33	49.50	49.65	49.80	49.95	50.10	50.25	50.40	50.55	50.70	50.85	33
34	51.00	51.15	51.30	51.45	51.60	51.75	51.90	52.05	52.20	52.35	34
35	52.50	52.65	52.80	52.95	53.10	53.25	53.40	53.55	53.70	53.85	35
36	54.00	54.15	54.30	54.45	54.60	54.75	54.90	55.05	55.20	55.35	36
37	55.50	55.65	55.80	55.95	56.10	56.25	56.40	56.55	56.70	56.85	37
38	57.00	57.15	57.30	57.45	57.60	57.75	57.90	58.05	58.20	58.35	38
39	58.50	58.65	58.80	58.95	59.10	59.25	59.40	59.55	59.70	59.85	39
40	60.00	60.15	60.30	60.45	60.60	60.75	60.90	61.05	61.20	61.35	40
41	61.50	61.65	61.80	61.95	62.10	62.25	62.40	62.55	62.70	62.85	41
42	63.00	63.15	63.30	63.45	63.60	63.75	63.90	64.05	64.20	64.35	42
43	64.50	64.65	64.80	64.95	65.10	65.25	65.40	65.55	65.70	65.85	43
44	66.00	66.15	66.30	66.45	66.60	66.75	66.90	67.05	67.20	67.35	44
45	67.50	67.65	67.80	67.95	68.10	68.25	68.40	68.55	68.70	68.85	45
46	69.00	69.15	69.30	69.45	69.60	69.75	69.90	70.05	70.20	70.35	46
47	70.50	70.65	70.80	70.95	71.10	71.25	71.40	71.55	71.70	71.85	47
48	72.00	72.15	72.30	72.45	72.60	72.75	72.90	73.05	73.20	73.35	48
49	73.50	73.65	73.80	73.95	74.10	74.25	74.40	74.55	74.70	74.85	49
50	75.00	75.15	75.30	75.45	75.60	75.75	75.90	76.05	76.20	76.35	50

THE NATIONAL BLANK BOOK COMPANY

HOLYOKE



MASSACHUSETTS

NEW YORK

CHICAGO

BOSTON

SAN FRANCISCO