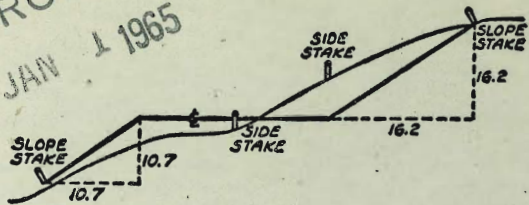


MICROFILMED

JAN 1 1965



X-SECT.

DISTANCES FROM SIDE STAKES FOR CROSS-SECTIONING
SLOPE 1 TO 1. ROADWAY OF ANY WIDTH

	0	.1	.2	.3	.4	.5	.6	.7	.8	9	
0	0.00	0.10	0.20	0.30	0.40	0.50	0.60	0.70	0.80	0.90	0
1	1.00	1.10	1.20	1.30	1.40	1.50	1.60	1.70	1.80	1.90	1
2	2.00	2.10	2.20	2.30	2.40	2.50	2.60	2.70	2.80	2.90	2
3	3.00	3.10	3.20	3.30	3.40	3.50	3.60	3.70	3.80	3.90	3
4	4.00	4.10	4.20	4.30	4.40	4.50	4.60	4.70	4.80	4.90	4
5	5.00	5.10	5.20	5.30	5.40	5.50	5.60	5.70	5.80	5.90	5
6	6.00	6.10	6.20	6.30	6.40	6.50	6.60	6.70	6.80	6.90	6
7	7.00	7.10	7.20	7.30	7.40	7.50	7.60	7.70	7.80	7.90	7
8	8.00	8.10	8.20	8.30	8.40	8.50	8.60	8.70	8.80	8.90	8
9	9.00	9.10	9.20	9.30	9.40	9.50	9.60	9.70	9.80	9.90	9
10	10.00	10.10	10.20	10.30	10.40	10.50	10.60	10.70	10.80	10.90	10
11	11.00	11.10	11.20	11.30	11.40	11.50	11.60	11.70	11.80	11.90	11
12	12.00	12.10	12.20	12.30	12.40	12.50	12.60	12.70	12.80	12.90	12
13	13.00	13.10	13.20	13.30	13.40	13.50	13.60	13.70	13.80	13.90	13
14	14.00	14.10	14.20	14.30	14.40	14.50	14.60	14.70	14.80	14.90	14
15	15.00	15.10	15.20	15.30	15.40	15.50	15.60	15.70	15.80	15.90	15
16	16.00	16.10	16.20	16.30	16.40	16.50	16.60	16.70	16.80	16.90	16
17	17.00	17.10	17.20	17.30	17.40	17.50	17.60	17.70	17.80	17.90	17
18	18.00	18.10	18.20	18.30	18.40	18.50	18.60	18.70	18.80	18.90	18
19	19.00	19.10	19.20	19.30	19.40	19.50	19.60	19.70	19.80	19.90	19
20	20.00	20.10	20.20	20.30	20.40	20.50	20.60	20.70	20.80	20.90	20
21	21.00	21.10	21.20	21.30	21.40	21.50	21.60	21.70	21.80	21.90	21
22	22.00	22.10	22.20	22.30	22.40	22.50	22.60	22.70	22.80	22.90	22
23	23.00	23.10	23.20	23.30	23.40	23.50	23.60	23.70	23.80	23.90	23
24	24.00	24.10	24.20	24.30	24.40	24.50	24.60	24.70	24.80	24.90	24
25	25.00	25.10	25.20	25.30	25.40	25.50	25.60	25.70	25.80	25.90	25
26	26.00	26.10	26.20	26.30	26.40	26.50	26.60	26.70	26.80	26.90	26
27	27.00	27.10	27.20	27.30	27.40	27.50	27.60	27.70	27.80	27.90	27
28	28.00	28.10	28.20	28.30	28.40	28.50	28.60	28.70	28.80	28.90	28
29	29.00	29.10	29.20	29.30	29.40	29.50	29.60	29.70	29.80	29.90	29
30	30.00	30.10	30.20	30.30	30.40	30.50	30.60	30.70	30.80	30.90	30
31	31.00	31.10	31.20	31.30	31.40	31.50	31.60	31.70	31.80	31.90	31
32	32.00	32.10	32.20	32.30	32.40	32.50	32.60	32.70	32.80	32.90	32
33	33.00	33.10	33.20	33.30	33.40	33.50	33.60	33.70	33.80	33.90	33
34	34.00	34.10	34.20	34.30	34.40	34.50	34.60	34.70	34.80	34.90	34
35	35.00	35.10	35.20	35.30	35.40	35.50	35.60	35.70	35.80	35.90	35
36	36.00	36.10	36.20	36.30	36.40	36.50	36.60	36.70	36.80	36.90	36
37	37.00	37.10	37.20	37.30	37.40	37.50	37.60	37.70	37.80	37.90	37
38	38.00	38.10	38.20	38.30	38.40	38.50	38.60	38.70	38.80	38.90	38
39	39.00	39.10	39.20	39.30	39.40	39.50	39.60	39.70	39.80	39.90	39
40	40.00	40.10	40.20	40.30	40.40	40.50	40.60	40.70	40.80	40.90	40
41	41.00	41.10	41.20	41.30	41.40	41.50	41.60	41.70	41.80	41.90	41
42	42.00	42.10	42.20	42.30	42.40	42.50	42.60	42.70	42.80	42.90	42
43	43.00	43.10	43.20	43.30	43.40	43.50	43.60	43.70	43.80	43.90	43
44	44.00	44.10	44.20	44.30	44.40	44.50	44.60	44.70	44.80	44.90	44
45	45.00	45.10	45.20	45.30	45.40	45.50	45.60	45.70	45.80	45.90	45
46	46.00	46.10	46.20	46.30	46.40	46.50	46.60	46.70	46.80	46.90	46
47	47.00	47.10	47.20	47.30	47.40	47.50	47.60	47.70	47.80	47.90	47
48	48.00	48.10	48.20	48.30	48.40	48.50	48.60	48.70	48.80	48.90	48
49	49.00	49.10	49.20	49.30	49.40	49.50	49.60	49.70	49.80	49.90	49
50	50.00	50.10	50.20	50.30	50.40	50.50	50.60	50.70	50.80	50.90	50

Distance of slope stake from side or shoulder stake for any width roadway, slope 1 to 1. If ground is nearly level, the cut or fill at side stake is located by the double entry method in left column and top row. The number in body of table in same row and column gives distance from side stake to slope stake. If ground is not level estimate the difference in elevation between the side stake and slope stake, lower target by this amount if cut, elevate if fill. Add this amount to cut or fill and find distance in table. Set up rod at this point, and line of sight should cut target. If it does not make the slight adjustment necessary.

$$\begin{array}{r} 4 + 32.35 = 22^{\circ} 56' \text{ Lt.} \\ 3 + 75.70 \\ \hline 56.65 \end{array}$$

$$\begin{array}{r} 5 + 53.76 = 44^{\circ} 32' \text{ Lt.} \\ 4 + 32.35 \\ \hline 21.41 \end{array}$$

$$6 + 79.04 = \text{Cross on Iron}$$

DIRECTIONS FOR USE OF TABLES

TABLE No. XIV

**IMPROVED TABLES
AND
INFORMATION**

TABLE No. VIII

To find Tangent and Distance for curve of any other degree divide by degree of curve and add correction found in column of corrections. Degree of curve when a given L can be found by dividing tangent (or eccentricity) opposite L by given tangent (or eccentricity).
The distance from a point on the tangent to the curve is very nearly the square of the tangent length divided by twice the radius.

TABLE XIII—CORRECTIONS FOR TANGENTS AND EXTERNALS

These corrections are to be added to the approximate values, found by dividing the tangent, or external, for a 1° curve (Table VIII) by the degree of curve, in order to obtain the true tangents, or externals. Intermediate values may be obtained by interpolation.

FOR TANGENTS ADD

Central Angle	DEGREE OF CURVE													
	5°	10°	15°	20°	25°	30°	35°	40°	45°	50°	55°	60°	65°	70°
10°	.03	.06	.09	.13	.16	.19	.22	.25	.28	.31	.34	.38	.42	.46
15°	.04	.10	.14	.19	.24	.29	.34	.39	.45	.51	.53	.58	.63	.68
20°	.06	.13	.19	.26	.32	.39	.45	.51	.58	.65	.72	.79	.84	.90
25°	.08	.16	.24	.33	.40	.49	.58	.67	.75	.83	.90	.99	1.06	1.14
30°	.10	.19	.29	.39	.49	.59	.69	.79	.89	.99	1.09	1.20	1.29	1.39
35°	.11	.22	.34	.47	.58	.69	.79	.89	1.01	1.12	1.23	1.34	1.44	1.54
40°	.13	.26	.40	.53	.67	.80	.93	1.06	1.20	1.34	1.49	1.64	1.79	1.94
45°	.15	.30	.44	.60	.76	.91	1.06	1.21	1.37	1.52	1.70	1.87	2.04	2.21
50°	.17	.34	.51	.68	.85	1.02	1.19	1.36	1.54	1.72	1.91	2.10	2.29	2.48
55°	.19	.38	.57	.76	.95	1.14	1.32	1.52	1.72	1.92	2.14	2.35	2.56	2.77
60°	.21	.42	.63	.84	1.05	1.27	1.49	1.71	1.94	2.17	2.38	2.60	2.83	3.07
65°	.23	.46	.69	.93	1.16	1.40	1.64	1.88	2.13	2.38	2.63	2.88	3.13	3.39
70°	.25	.51	.76	1.02	1.28	1.54	1.80	2.06	2.33	2.60	2.88	3.16	3.44	3.72
75°	.27	.56	.83	1.12	1.40	1.69	1.98	2.27	2.57	2.87	3.16	3.47	3.78	4.09
80°	.30	.61	.91	1.22	1.53	1.84	2.15	2.46	2.78	3.10	3.44	3.78	4.12	4.46
85°	.33	.66	1.00	1.33	1.68	2.02	2.36	2.70	3.05	3.40	3.77	4.14	4.55	4.89
90°	.36	.72	1.09	1.45	1.83	2.20	2.57	2.94	3.32	3.70	4.10	4.50	4.91	5.32
95°	.39	.79	1.19	1.55	2.00	2.40	2.80	3.20	3.61	4.02	4.40	4.98	5.38	5.83
100°	.43	.86	1.30	1.74	2.18	2.62	3.06	3.50	3.95	4.40	4.88	5.37	5.85	6.34
110°	.51	1.03	1.56	2.08	2.61	3.14	3.67	4.21	4.76	5.31	5.86	6.43	7.01	7.60
120°	.62	1.25	1.93	2.52	3.16	3.81	4.45	5.11	5.77	6.44	7.12	7.80	8.50	9.22

FOR EXTERNALS ADD

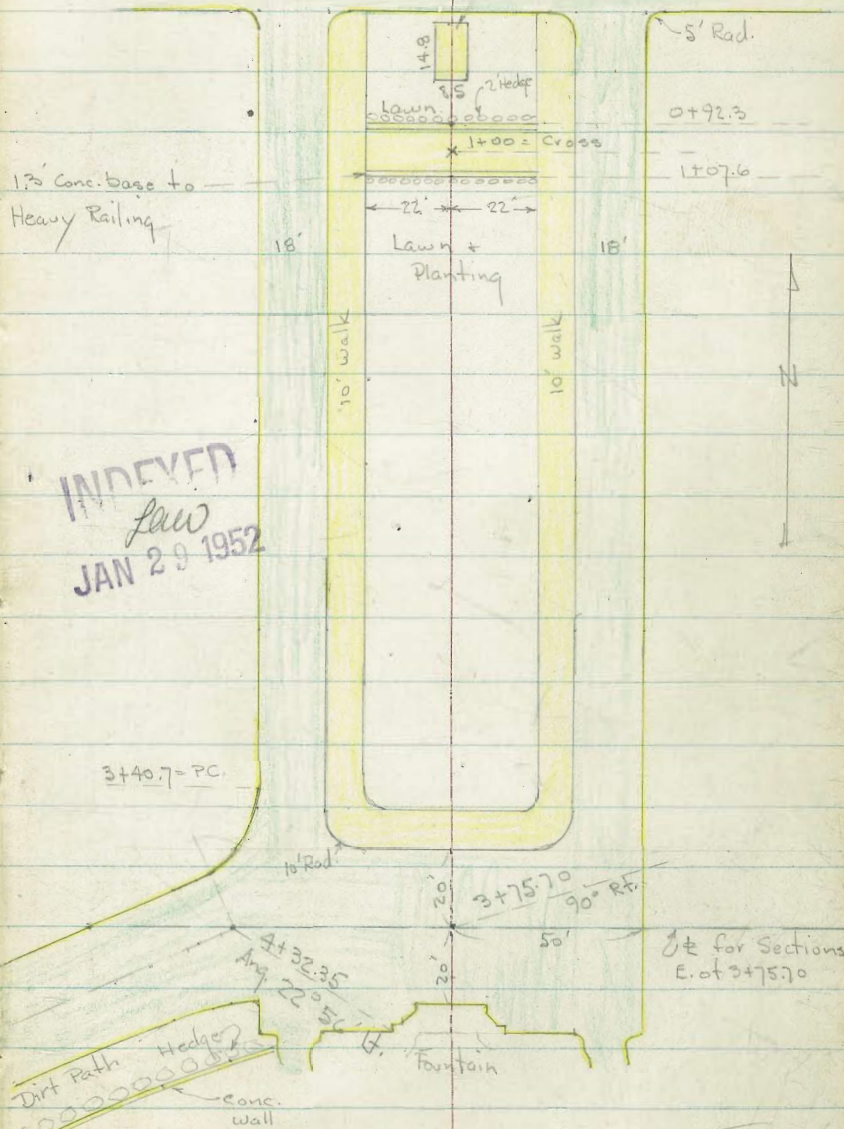
Central Angle	DEGREE OF CURVE													
	5°	10°	15°	20°	25°	30°	35°	40°	45°	50°	55°	60°	65°	70°
10°	.001	.003	.004	.006	.007	.008	.009	.011	.012	.014	.015	.017	.018	.020
15°	.003	.007	.010	.014	.018	.023	.027	.029	.032	.035	.039	.043	.047	.051
20°	.006	.011	.017	.022	.028	.034	.038	.045	.051	.057	.063	.070	.076	.083
25°	.009	.018	.027	.036	.046	.056	.065	.074	.083	.093	.106	.120	.127	.135
30°	.013	.025	.038	.051	.065	.078	.090	.103	.116	.129	.149	.170	.179	.188
35°	.018	.035	.054	.072	.086	.109	.131	.153	.175	.197	.213	.230	.247	.264
40°	.023	.046	.070	.093	.117	.141	.172	.203	.234	.265	.277	.290	.315	.341
45°	.030	.060	.093	.119	.153	.184	.216	.254	.289	.325	.351	.378	.411	.445
50°	.037	.075	.116	.151	.189	.227	.266	.305	.345	.384	.425	.467	.508	.550
55°	.046	.093	.142	.188	.236	.283	.332	.381	.420	.479	.530	.582	.641	.700
60°	.056	.112	.168	.225	.283	.340	.398	.457	.516	.575	.636	.697	.774	.851
65°	.067	.135	.204	.273	.343	.412	.483	.554	.625	.697	.771	.845	.922	1.01
70°	.080	.159	.240	.321	.403	.485	.568	.652	.735	.819	.906	.994	1.08	1.17
75°	.095	.182	.266	.353	.440	.528	.617	.707	.797	.887	1.07	1.18	1.29	1.39
80°	.110	.220	.332	.445	.558	.671	.787	.903	1.02	1.13	1.25	1.38	1.50	1.62
85°	.128	.259	.391	.524	.657	.790	.926	1.06	1.20	1.34	1.47	1.62	1.76	1.91
90°	.149	.299	.450	.603	.756	.910	1.07	1.22	1.38	1.54	1.70	1.87	2.03	2.20
95°	.174	.350	.522	.706	.985	1.06	1.25	1.43	1.62	1.80	1.99	2.18	2.38	2.58
100°	.200	.401	.604	.809	1.01	1.22	1.43	1.64	1.85	2.06	2.28	2.50	2.73	2.96
110°	.268	.536	.806	1.08	1.35	1.63	1.91	2.20	2.48	2.76	3.05	3.35	3.66	3.96
120°	.360	.721	1.08	1.45	1.82	2.19	2.57	2.95	3.33	3.72	4.11	4.50	4.91	5.32

Widening
Survey - Road - Laurel to Ballou Pk and Boul Pg.
Organ Parking Lot 1-12
X-sec 37th - Logan to Oceanview 13-31
X-sec Newton - 43d SW Southcrest Pk to 32-36
X-sec Alley BIR 61 - Park Villas 39-44
X-sec 33rd Grape to Fir. 45-53
X-sec Byron - SCOTT ST to MHTL 54-61

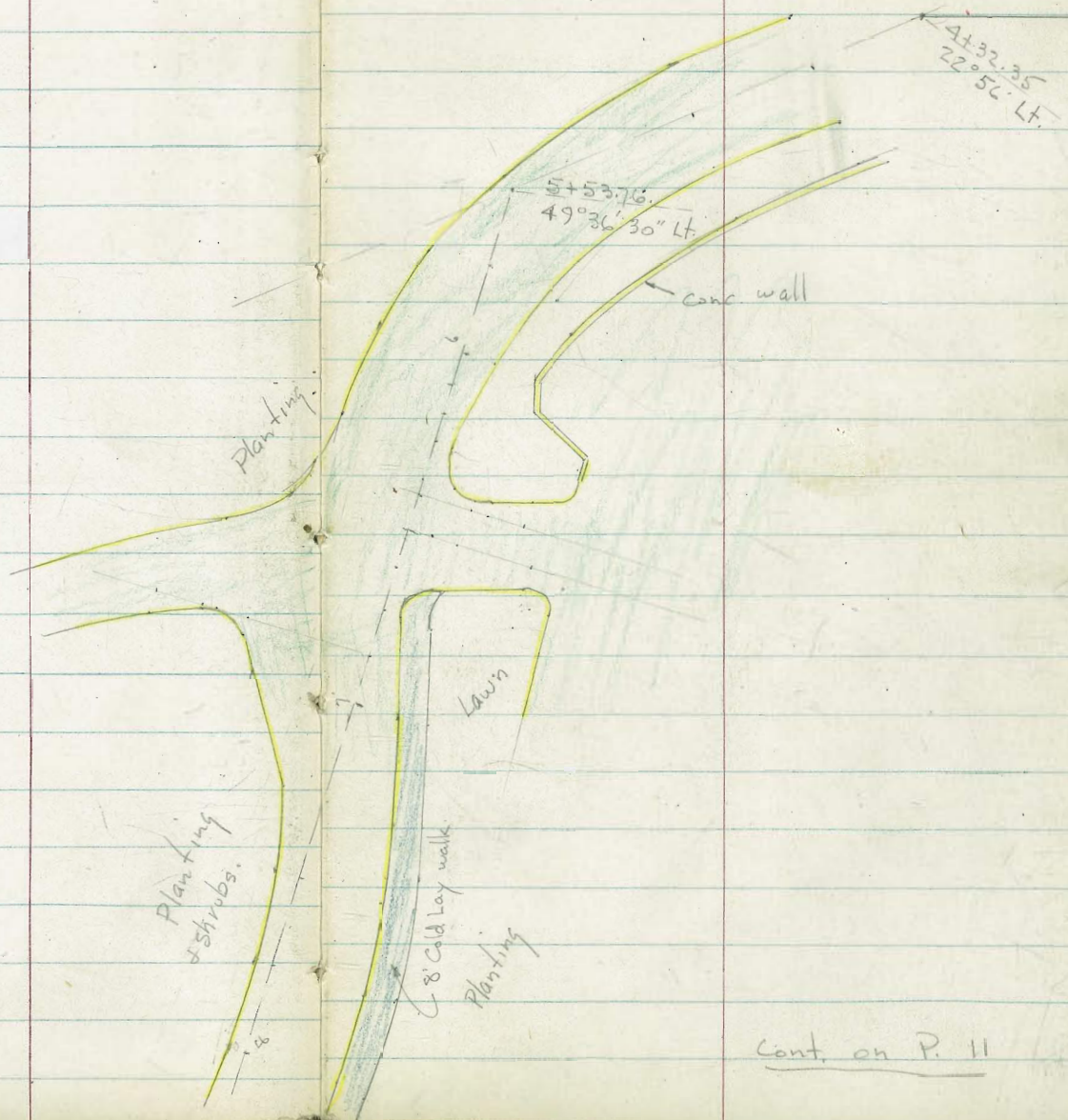
Plaza De Panama

AC. pave

Conc. Base of Statue



INDEXED
Law
JAN 29 1952



Cont. on P. 11

Lt. # Rt.

X- Sect. Roadways from Plaza de Panama to Bowl Parking Lot.

5954 - 1-28-52 - 7.0.
W.O. 20914

Cont.

65.33 64.84 64.80 63.84 63.64 64.07
Top 50.2 41 41 50 Top
gut.

0+93.5 = Nly. of Conc. Crosswalk

64.70 65.11 65.23 65.10 64.92 64.61 64.54 64.31 63.83
gut. 32 22 16 16 22 32 gut.
Top

0+69 - Cont.

65.34 64.86 64.77 63.80 63.65 64.10
Top 50 41 41 50.1 Top
gut.

0+69 = P.C. of 5 Rad. Returns

64.65 65.13 65.07 65.1 65.00 64.89 64.7 64.46 64.39 63.92
gut. 32 21.9 16 4.2 4.2 16 21.9 32 gut.
Top walk walk Top
Edge of Base to Statue

0+64 = S. cb. of Plaza

64.95 64.68 65.00 64.60 64.26 64.72 64.06 63.96 64.10 63.91 63.69
50 32 Top 27 16 16 16 27 32 50
P.C. 1st Rad. gut. gut. gut. Top gut. gut. Top
64.15

0+50

64.98 64.76 64.29 63.90 63.70
50 32 32 50
200' fig. not shown.

B.M. = Top of F.H. - N.E. Cor. 268.74
at Laurel Plaza

Actual Elev. Shown

Lt.

Rt.

4

Cont.

62.31	61.84	62.16	62.08	61.69	62.17
Top.	50 gut.	41	41	50 gut.	Top

2+00

61.85	62.30	62.38	62.5	62.5	62.5	62.40	62.29	61.81
gut.	32 Top	22	16		16	22.1	32 Top	gut.

Cont.

62.41	62.93	62.17	62.13	62.77	62.29
	50 gut.	41	41	50 gut.	Top

1+70

62.92	63.40	63.48	63.6	63.6	63.5	63.38	63.35	62.86
gut.	32 Top	22	16		16	22.1	32 Top	gut.

Cont.

64.53	64.00	64.21	63.81	63.58	64.08
Top	50.1 gut.	41	41	50 gut.	Top

1+40

63.99	64.49	64.51	64.6	64.5	64.4	64.30	64.24	63.70
gut.	32 Top	22	16		16	22	32 Top	gut.

Cont.

64.98	64.44	64.56	63.78	63.65	64.17
Top	50.1 gut.	41	41	50 gut.	Top.

1+25

64.41	64.95	64.99	64.9	64.8	64.6	64.46	64.28	63.79
gut.	32 Top	22 walk	16		16	22 walk	32 Top	gut.

Cont.

65.30	64.79	64.74	63.80	63.62	64.07
Top	50.1 gut.	41	41	50.1 gut.	Top.

1+06.4 = Slip of Cross walk

64.64	65.08	65.23	65.21	64.91	64.66	64.51	64.33	63.88
gut.	32 Top	22	16		16	22	32 Top	gut.

Cont.

56.68	56.19	56.53	56.33	56.47	56.13	56.62
Top	50 gut.	41	32	41	56.2 gut.	Top

3+55.7 = curb face

56.26	56.25	56.73	56.23	56.72	56.75	56.23	56.79	56.23	56.78	56.28
32 gut.	gut.	22 Top PE.	gut.	16 Top	Top	gut.	16 Top	gut.	22 Top PE.	gut.

Cont.

57.04	56.55	56.88	56.81	56.60	57.03
Top	50 gut.	41	41	50 gut.	Top

3+45.7 = Nly. of 10' Conc. walk

56.66	57.12	57.25	57.36	57.35	57.38	57.26	57.16	56.76
gut.	32 Top	22	16 walk	16	16	22	32 Top	gut.

Cont.

58.73	58.24	58.48	58.45	58.19	58.70
	50 gut.	41	41	50 gut.	Top

3+00

58.21	58.71	58.88	58.9	58.9	58.9	58.84	58.69	58.21
gut.	32 Top	22.1	16	16	22	32 Top	gut.	

Cont.

60.48	60.01	60.29	60.21	59.99	60.42
Top	50 gut.	41	41	50 gut.	Top

2+50

60.04	60.52	60.55	60.7	60.6	60.7	60.60	60.51	60.02
gut.	32 Top	22	16	16	22.1	32 Top	gut.	

Lt.

C

Rt.

3+84.7

55.28	54.95	55.65
Top = cor. cb.	20 gut	

(same as those below)

50' W. = 3+75.70 = Ang. Pt. - Sect. 90° to E to W.

55.30	54.91	55.62
Top	20 = S. gut	on PK

20' = N. = 3+55.7 Sect.

41' W. 20' Lt. = cb.

55.30	54.92	55.63
Top = cor. cb.	20 gut	

34' W.

55.30	54.99	54.93	55.63
Top	27.5 gut	20	

19' W. - 24' Lt. = E 2' x 1.3' Inlet + Grate

54.53	51.84
24 Top grate	24 = I.E.

18' W.

55.33	54.65	54.97	55.56
Top	27.5 gut	20	

9' W.

54.81	55.15	55.81
27.5	20	

1' W. of curb - 24.5' Lt. = E 2' x 1.3' inlet + grate

54.66	52.23
24.5 Top Grate	24.5 = I.E.

face of Ely. curb. - See sketch for loc. of curbs.

54.71	55.07	54.93	55.30	56.02	55.57
gut.	27.5 Top = end cb.	gut.	20 = S Top	Top	gut.

50' E. of 3+75.70 = face of N.+S. curb. = Beg. Extra Sections - E is Produced E.

E is E Prod. E.

23.2
16.8
6.4

Lt.

±

Rt.

7

4+70 - 19.4' Rt. = ± 14" Palm.

4+65

4+55 - 15.3' Lt. = cb.

4+46 - 19.6' Rt. = ± 18" Palm

4+45 - 16.8' Lt. = cb.

4+41 - 15' Rt. = cb. = P.C.

4+36 - 27.6' Rt. = ± Lt. std.

4+32.35 - 90° to forward Tang. - 15.3' Rt. = cb.

4+32.35 = Ang. Pt. - Sect. 90° to Back Tang.

4+25.7 = cb. to N.

4+24.7 = 24.5' Lt. = ± 2' x 1.3' Grate

4+16.7

4+07.7 = cb. line to N.

4+06 = 24.6' Lt. = ± 2' x 1.3' Inlet + Grate

3+91.7 = Sect. along 16' Back Line Prod. S.

55.4	55.13	54.60	54.93	55.19	55.78	56.4
29.5 = wall	Top	16.8 gut.		15 gut.	Top	30 Lawn

55.4	55.32	54.82	55.16	55.42	56.11	56.60
34.7 along Conc. wall	Top	19.8 gut.	10		19.4 gut.	Top

54.62	55.08	54.94	55.36	55.55
gut.	Top	gut.	19.2 = Top cb. 1' Rad.	

54.58	51.93
grate	24.5 = I.E.

54.74	54.99	55.76
27.5	20	

55.36	54.60	54.88	55.64
Top	27.5 gut.	20	

54.57	51.83
grate	24.6 = I.E.

55.35	54.87	54.98	55.68
Top	27.5 gut.	20	

6+36 - 8.8 Lt. = cb.

6+30 - 5.3 Lt. = cb. b

6+34 - 24.5 Lt. = ± F.H.

6+25 - 28.5 Rt. = ± Lt. Std.

6+17 - 40 Lt. = Ang in Wall

6+14 - 26.6 Lt. = ± 24" Olive

6+08 - 23.3 Lt. = Ang. in wall

6+01 - 20.8 Lt. = Ang. in wall

6+00

5+95 - 20.2 Lt. = ± 12" Olive

5+85 - 25.8 Lt. = ± 12" olive

5+75

5+60 - 11.4 Rt. = ± Lt. stand.

5+53.76 = Ang. Pt. Sect. 90° to Back Tang.

5+42 - 13.3 Rt. = ± 36" Palm

5+25

5+17 - 18.1 Rt. = ± 12" Palm

5+00 - 17.5 Rt. = ± Light stand.

4+95 - 14.9 Lt. + 15' Rt. = cb. = P.C.

4+89 - 19.3 Rt. = ± 14" Palm

Lt.

±

Rt.

8

54.02
gut.

54.46 53.87 53.35
37.8 53 9.4
Top Top gut.

54.5 53.86 53.36 53.27 53.15 52.92 53.47 51.5
25 Top 4.5 12 26 26 35
gut. gut. Top

55.1 54.03 53.49 53.46 53.37 53.15 53.73 52.0
21.1 Top 8 10 23.4 20
wall gut. gut. Top

54.27 53.71 53.71 53.56 54.09 52.4
Top 17.7 15 25
gut. gut. Top

55.2 54.28 53.74 53.92 53.98 53.98 53.49 53.8
42.5 Top 27.1 13 4.5 15
wall gut. gut. Top

55.3 54.57 54.06 54.24 54.29 54.40 54.95 55.0
35.1 Top 18.5 9 12.3 20
wall gut. gut. Top

55.3 54.77 54.30 54.56 54.75 55.28 55.6
30.4 Top 15 14.9 30
wall gut. gut. Top

48' Rt. = ± Lt. std.
6+90- 34.7 Rt. = curb.

6+86- 43' Rt. = cb. → 17' out along cb. = 60 Rt.
See sketch.

6+75

54.4 53.83 53.78 53.04 52.94 52.58 52.50 52.36
30 15.2 edge of Top 5.2 15 30 45
walk gut.

6+65

54.2 53.68 53.66 53.04 52.95 52.82 52.63 51.83 52.21
30 14.3 edge of Top 9.2 15 30 53.5 Top
cold laywalk gut.

6+63.6 - 12.6 Lt. = P.C. of cb. to Dr.

53.68 53.13
Top 12.6
gut.

6+63- 24' Lt. = ± Lt. std.

6+61- 21.8' Lt. & 47.1' Rt. = cb.

53.92 53.35 52.03 52.35
on Dr. Top 21.8 47.1
gut. Top

6+53- 45.2 Lt. = cb. on Dr.

54.47 53.97
Top 45.2 = gut.

6+50 - Thru Dr. on Lt.

54.14 53.92 53.60 53.24 52.78 52.39 52.54 52.8
50 30 10 15 32.4 Top 40
gut. in Dr.

6+40 = Thru Dr. on Lt.

54.20 53.94 53.24 53.05 52.93 52.56 53.21 52.4
50 30 10 12 27.8 Top 45.5
gut. along Bldg.

6+38- 15' Lt. = cb. on Dr.

53.92 53.30
Top 15
gut.

Cont. on P. 12

9+00

8+66 = P.C. of cb. on Lt.

8+59.03 = Ang. Pt. - Sect. on split

8+48-30 Lt. = \pm Lt. std.

8+30

8+12-12.5 Rt. = \pm 3' Diam. Large Vase 7 High

8+00

7+75

7+62-36.4 Lt. = \pm Lt. std.

7+50

7+42-16 Rt. = \pm 40" Euc.

7+39-31 Lt. = \pm 16" Tree

7+28-18 Rt. = \pm 15" Pine tree

7+27.5

7+04-22 Lt. = \pm 18" Magnolia tree

7+00

54.6
to

Lt.

Rt

10

50.04	50.03	49.62	49.70	49.46	49.83	50.0	50.1
23.1	Top	15		10.5	Top	22	30
walk		gut.		gut.			

3' more to Top of Bank.	51.01	50.94	50.46	50.71	50.52	50.85	51.0
	23.1	Top	15		12.7	Top	22
	walk		gut.		gut.		

51.17	51.07	50.60	50.98	50.55	50.93	51.0	51.0
23.6	Top	15.4		13.6	Top	22	30
		gut.		gut.			

51.45	51.48	51.10	51.39	51.43	51.13	51.51	51.6	51.5
30.5	Top	22.4	12		8	Top	15	30
walk		gut.			gut.			

51.98	52.02	51.58	51.96	51.79	51.59	52.00	52.1	52.2
33.5	Top	25.3	12		4.7	Top	12	25
walk		gut.			gut.			

52.40	52.39	52.02	52.35	52.20	52.06	52.43	52.7	52.6
33.5	Top	25.3	12		4.8	Top	12	25
walk		gut.			gut.			

52.99	52.94	52.96	52.47	52.72	52.71	52.57	53.19	53.2
40	31	28	12		7	Top	30	
walk to organ	walk	Top	gut.		gut.			

53.7	53.58	53.57	52.72	52.94	53.02	52.83	53.81	54.1
40	27.5	Top	19.4	10		12.6	Top	30
	walk		gut.			gut.		

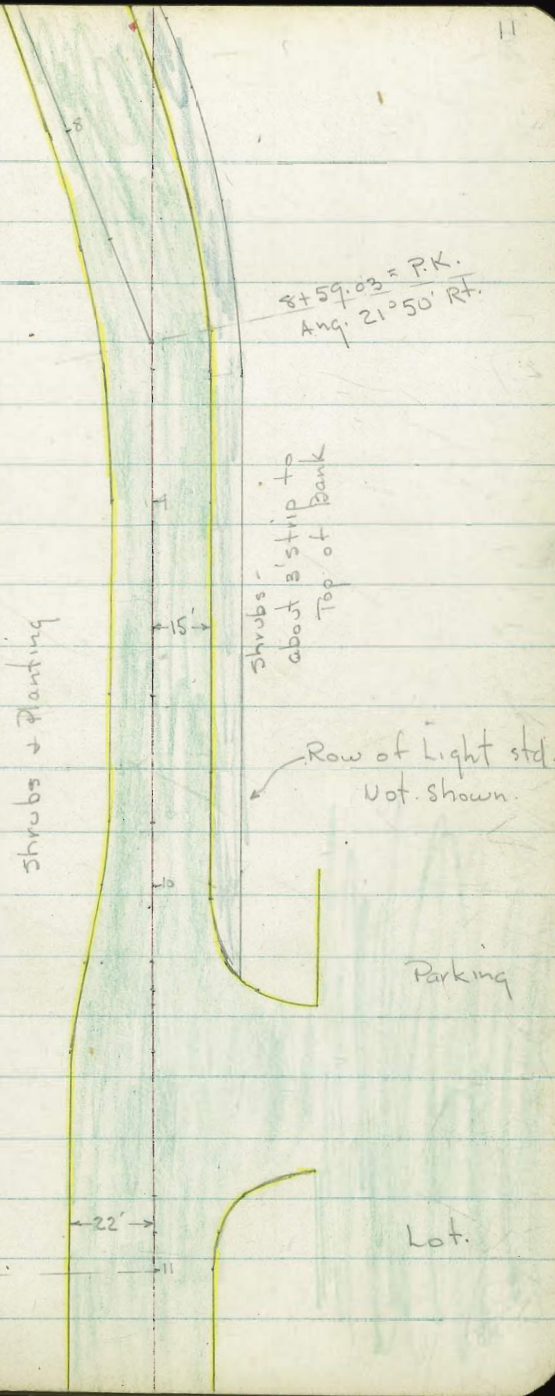
54.00	54.00	53.13	53.21	53.08	52.93	53.93	53.2
20.8	Top	12.8		15	28.8	Top	50
walk		gut.			gut.		

11+00.94

21° 50'

Cont. from P. 2

11



11+00.94 = P.C. on Lt. = end.

10+74

10+50

10+43 - 21.7 Rt. = E.C. of cb.

10+31

10+20 - 19.6 Lt. = cb. on Ret.

10+03.5 - 15' Lt. = P.C. of cb.

10+00

9+83 - 11' Rt. = P.C. of cb. on Rt. = Beg. Reqr. New cb.

9+57 - 17.7 Rt. = \pm \emptyset Vase - 7' High

9+50

9+30 = \pm of 11' Conc. walk from cb. to steps to parking lot.

9+28 - 8.4' Lt. = \pm 2.5' x 2.5' Elect. M.H.

Cont. from P. 10

Lt.

\pm

Rt.

12

42.62	42.39	41.73	41.66	41.52	41.55	42.21	42.2
23	Top	15		10	22	Top	30
walk		gut.			gut.		

43.92	43.43	42.80	42.78	42.88	42.80	42.68	43.10	43.2
Top	41.1	25	15		10	21.9	Top	30
end db.	gut.					gut.		

43.80	43.57	43.64	43.88	43.83	43.67	43.96	44.0
45	30	15		10	21.7	Top	30
Dr. to hot.					gut.		

43.82	44.22
gut. 21.7	Top

44.23	43.71	44.12	44.47	44.65	44.58	44.31	44.79	44.6	45.2
Top	42.6	27	15		10	19.7	Top	22	30
	gut.					gut.			

45.50	45.00
Top	19.6 = gut.

46.29	46.18	45.74	45.93	45.64	46.13	46.5	47.4
23	Top	14.9		13.2	Top	22	30
walk		gut.		gut.			

48.43	48.34	47.73	47.79	47.48	47.85	48.4	48.6
23.3	Top	15		10.8	Top	22	30
walk		gut.		gut.			

wo # 31988

6-27-52

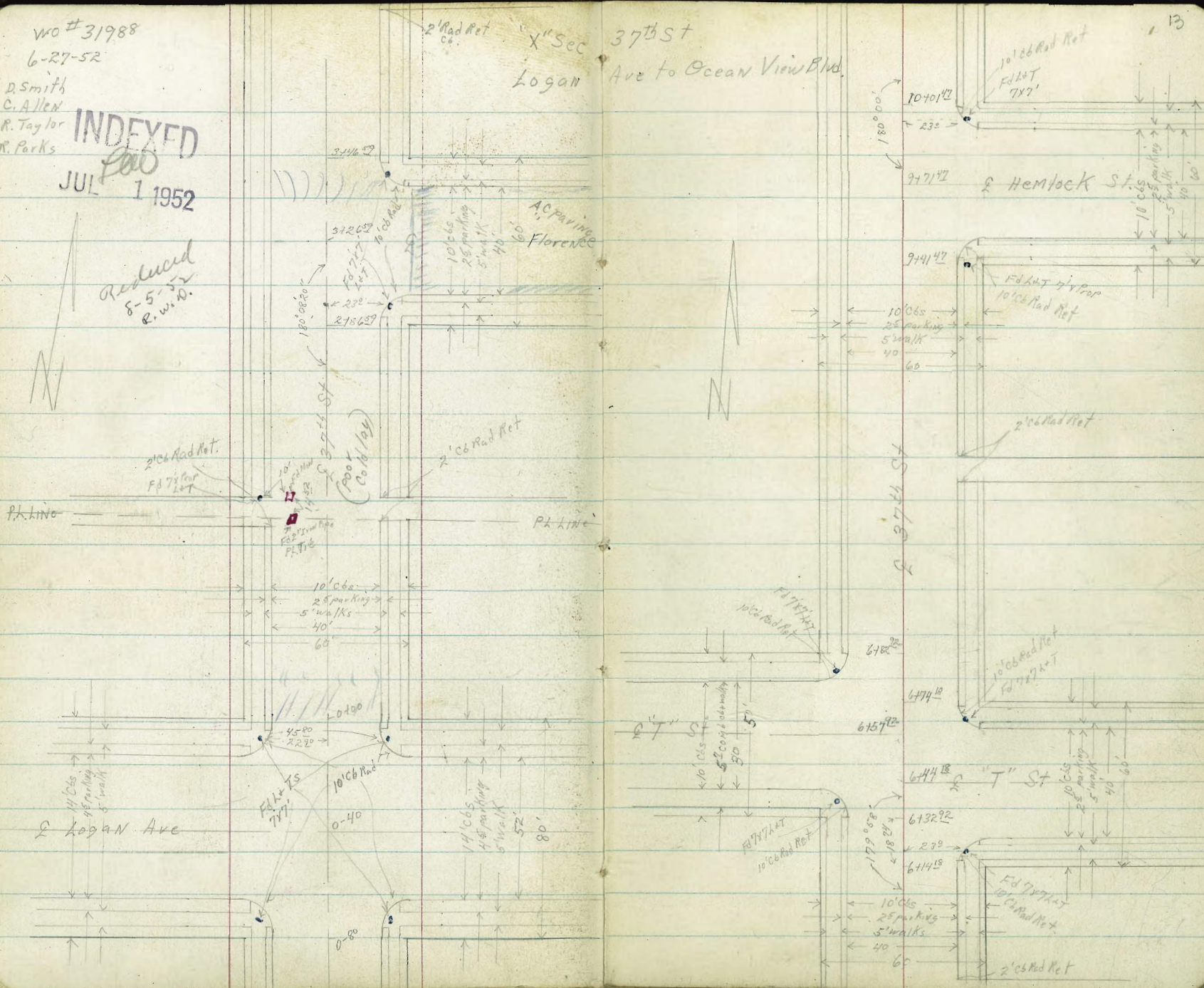
D. Smith
C. Allen
R. Taylor
R. Parks

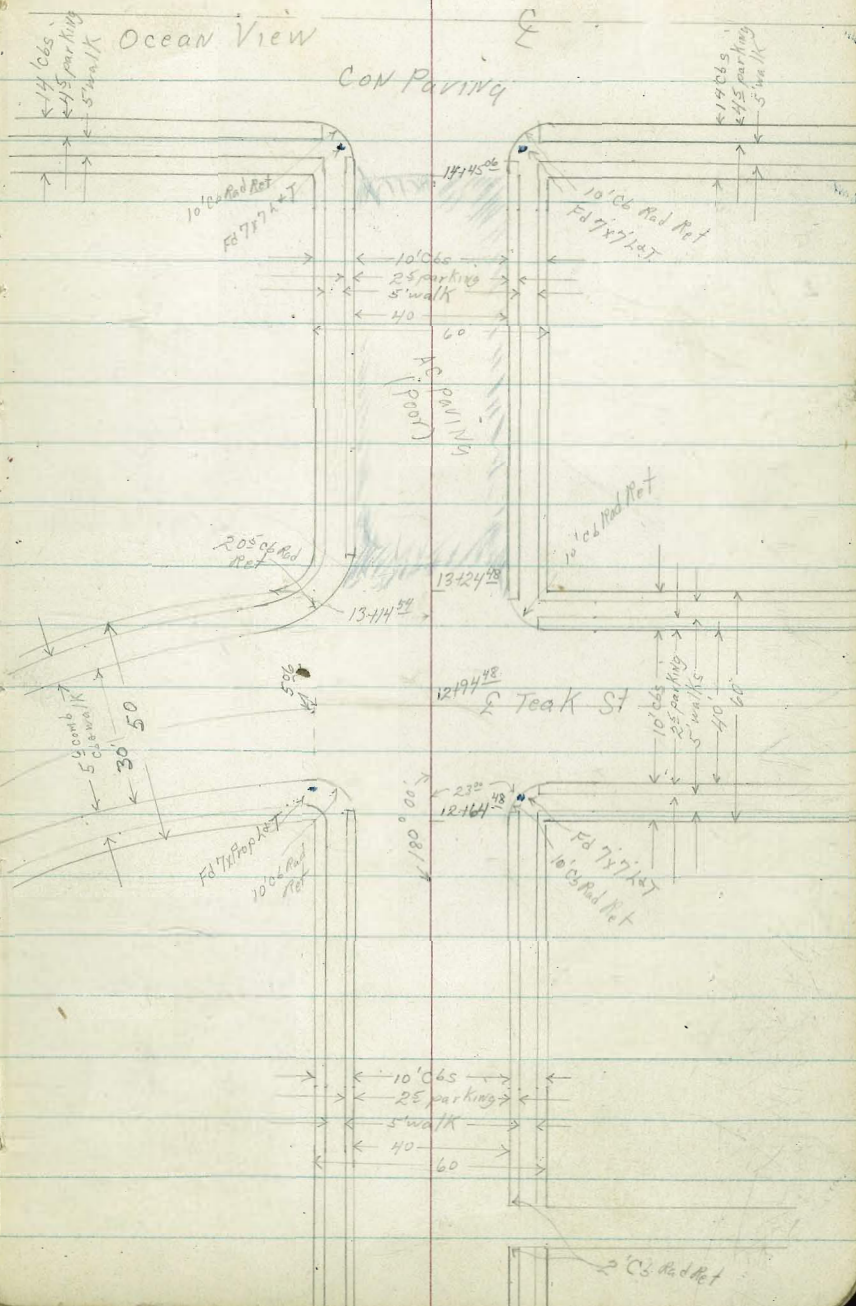
INDEXED

JUL 1 1952

Reduced
8-5-52
R.W.D.

X¹ Sec 37th St
Logan Ave to Ocean View Blvd.





Cross Section 37th St Logan Ave to Ocean View Blvd mo# 31988 15

Lt=West 56.20 9.44
 Rt=East 7.88 57.46

Mid Pt Returns

0-14 Nly cb Line Logan Begin poor condition Colldge

53.13 52.2 56.25 54.8 55.2 55.9 56.2 55.5 56.7 57.0 57.75 60.7 61.61
 12.21 13.1 9.09 10.5 10.1 9.4 9.1 9.8 8.6 8.3 7.59 4.6 3.23
 80 80 30 30 20 10 10 20 30 30 80 80 80
 cb cb EC cb 10 20 30 30 80 80
 cb cb

0-40 E Logan

52.5 55.0 55.4 55.9 56.3 56.8 57.1 57.6 60.9
 12.2 10.3 9.2 9.4 9.0 8.5 8.2 7.2 4.4
 80 30 20 10 10 20 30 30 80

0-66 Sly cb Line Logan

57.90 57.3 55.26 54.1 54.7 55.5 56.1 56.4 56.5 56.8 57.02 60.2 61.07
 13.44 14.0 9.28 11.2 10.6 9.8 9.2 8.2 8.8 8.5 8.22 5.1 4.27
 80 80 30 30 20 10 10 20 30 30 80 80 80
 cb EC cb 10 20 30 30 80 80
 cb cb

Mid Pt. Returns

55.35
 9.29
 80

56.72
 8.42
 80

0-76 B.C. Returns

55.49
 9.25
 20
 BC
 cb

56.96
 8.36
 20
 BC
 cb

0-80 Sly Logan Ave

55.6 55.62 55.41 55.1 55.4 56.0 56.2 56.4 56.95 57.16 57.1
 9.2 9.22 9.23 10.2 9.2 9.3 9.4 8.2 8.39 8.18 8.2
 30 275 202 202 10 10 20 20 20 275 30
 wik cb wik

BM

8.36

65.34

56.98 SEBP Logan
 37.3

π 65.34

Lt=West

Rt=East

16

1446 Sly Line Alley on East

3 ⁵	3 ⁸	3 ²	2 ⁶	2 ⁶	1 ²	1 ²	1 ⁵
30	20	10	10	20	20	30	30
					cb	cb	cb
					mid ret.		end

1442 Sly Line Alley on West

3 ²	2 ⁸	3 ⁴	4 ²	3 ⁵	2 ²	2 ⁸	2 ⁶	1 ⁸	1 ⁸
30	30	19	19	10	10	20	20	20	27
94	cb	cb	cb	cb	cb	cb	cb	cb	wik
	end	mid ret.							wik

1400

4 ⁵	4 ⁸	6 ⁰	5 ²	4 ⁶	4 ⁵	4 ³	3 ⁵	3 ⁴
27	19	19	10	10	10	20	20	27
wik	cb	cb	cb	cb	cb	cb	cb	wik

0468 20' Lt End Broken cb

59.09
6.25
19

0450

0448 20' Lt Begin Broken out cb

6 ⁷	7 ⁴	7 ⁴	6 ⁵	6 ⁴	6 ⁴	5 ⁵	5 ⁴
27	20	10	10	10	20	20	27
wik					cb	cb	wik

0400 Nly Logan Ave

8 ⁶	8 ²	9 ¹	9 ⁶	8 ⁵	8 ⁵	8 ¹	7 ⁶	7 ⁴
27	20	20	10	10	20	20	27	27
wik	cb	cb	cb	cb	cb	cb	cb	wik

0-04 BC of Returns

57.25
9.05
20

65.34

57.55
7.29
20

Lt=West

Rt=East

17

2110

66.29	66.01	65.4	65.7	66.2	66.3	66.2	67.02	66.7.27
748	776	84	82	76	75	75	638	650
275	198	198	10	10	20	20	275	275
WIK	66				66		WIK	

2128 20° Lt & 14' drive

65.76	65.49	65.07
80	828	80
240	225	20
WIK		LIP

2100 20° Rt & 8' drive

64.95	65.62
80	80
20	20
LIP	WIK

1490

64.37	64.07	63.1	63.8	64.4	64.4	64.4	65.6	65.37
940	920	102	100	94	94	94	86	820
275	192	192	10	10	203	203	275	275
WIK	65				66		WIK	

TP. 8⁸⁹ 73⁷⁷ 0⁴⁶ 64⁸⁸

73⁷⁷

1472 20° Lt & 10' drive

63.57	62.81
177	253
225	20
WIK	LIP

1462 Nly Both East & West Alleys

63.25	62.5	62.93	62.0	62.6	62.3	62.3	63.5	64.16	64.0	64.38
200	28	24	33	22	20	20	18	18	13	026
30	30	20	20	10	10	20	20	20	30	30
end		Mid Ret.					Mid Ret.			end

1452 E Alley to West & SMH

62.0	61.7	62.2	62.15	62.9	62.7	63.5
33	36	34	29	24	26	18
30	20	10	10	10	20	30

65³⁴

Lt = West

Rt = East

18

TP₂ 6.01 75 51 x 427 69⁵⁰

NE 70' x 7'
Florence
37th

3746⁵⁹ Nly Florence St End Cold bay poor condition

68.65
512 536 600 67.8
275 198 198 10
with 66

68.6
51 42 430 405
10 20 20 275
with 30

Mid Pt Ret

48 427
3ut 68

3736⁵⁹ 20' x 14' drive
Nly cb Line Florence

68.54
523 532 521 60 67.8
275 225 192 197 10
with 66

68.5
513 59 48 421 427
10 20 30 30
with 40 3ut 45 75
3ut 20 20 3ut 20

69.58 71.03 71.74
224 203

3716⁵⁹ E Florence St

68.46 68.26 67.5 67.9
531 551 63 52
275 198 198 10
with 66

68.2
56 54 51 421 234
10 20 30 80
with 10 20 30 10

30' x 14' Begin AC Paving
2796⁵⁹ Sly cb Line Florence St

68.23 68.04 67.2 67.4
554 523 66 64
275 198 198 10
with 66

68.9 68.1 68.3 68.38 69.01 70.70 71.31
52 52 55 529 426 307 246
10 20 30 30 40 80
with 10 20 30 30 3ut 3ut 3ut 3ut

Mid Pt Ret

68.93
55 484
3ut 68

2786⁵⁹ Sly Florence St

68.12 67.89 67.0 67.2 67.7
566 522 68 66 61
275 192 192 10
with 66

67.8 68.2 68.84 69.10
60 55 423 462
10 192 192 275
with 10 20 20 20

4+81 = $\frac{1}{2}$ alley to east

4+78 - $\frac{3}{4}$ Line alley on east

4+70 - 20° LT = $\frac{1}{2}$ 13° Conc. drive

4+50

4+17 - 20° LT $\frac{1}{2}$ 13° wide conc drive

4+00

3+75

Lt. West

69.32	69.14	68.55	69.2
619	627	710	633
275	198	198	102
WIK	Cb	G	

69.30	68.6	69.2
621	69	613
275	198	102
	Cb	G

69.15	68.57
636	694
225	198
WIK	LIP

69.21	69.01	68.4	69.0
630	658	71	65
275	198	198	10
WIK	Cb	GUT.	

68.88	68.63	68.28
653	683	723
242	225	198
Brk	Brk at walk	Lip

68.88	68.72	68.2	68.6
663	679	73	69
275	198	198	10
WIK	Cb	G	

68.74	68.56	68.0	68.4
675	685	72	71
275	198	198	10
WIK	Cb	G	

Rt. East

69.8	69.9	69.8	70.3	72.5
57	57	57	53	20
10	20	30	40	
	Sut. drive			

69.7	69.8	69.6	72.4	70.33	70.3
57	57	57	70.11	57	52
100	204	G	50	50	52
			M.D. Return curve	50	G

69.6	69.6	69.4	69.95	70.12
59	59	61	516	539
10	20	10	208	275
	G		Cb	WIK

69.0	69.1	69.0	69.70	69.81
615	64	64	581	564
10	202	G	202	275
			Cb	WIK

68.6	68.8	68.9	69.55	69.74
615	615	65	525	527
102	102	102	208	275
			Cb	WIK

75.51

Mid point on S.E. Return

6+14¹⁸ sly Prop. line 'T' street to east

6+14R-20' LT = 3' wide Broken Curb

5+70

5+41 20° LT = opening for drive - parking NOT paved

5+35

4+90 - Nly Line alley to east - 20° LT = 8⁵' wd. dr.

LT=West

RT=East

20

71.05
4.26

Mid point
Top cb.

549	567	61	54	42	42	45	42
275	202	202	10	10	20	20	275
	cb	G			G	cb	WIK
70.02	69.84	69.4	70.1	70.6	70.8	70.6	71.00

573	589	61	56	51	52	54	420	425
275	192	192	10	10	20	20	203	275
WIK	cb	G			G	cb	WIK	
69.78	69.62	69.1	69.9	70.4	70.3	70.1	70.61	70.76

620	669.57
225	197
WIK	L.P.S
	paved

520	60	61	58	55	55	56	51	493
275	192	192	10	10	20	20	20	275
WIK	cb	G			G	cb	WIK	
69.61	69.42	68.9	69.7	70.0	70.1	69.9	70.39	70.58

623	671	620	57	56	53	52	51	51
225	192	10	10	20	20	20	30	27
WIK	L.P.			G	cb	G	cb	50
	drive							
69.28	68.74	69.3	69.8	69.9	69.7	70.23	70.4	70.38

75.51

6464¹⁸ No. Curb line 'T' st. to east.

LT = West				RT = east			
5 ¹ / ₂	5 ¹ / ₂	5 ⁰ / ₁₀	4 ⁷ / ₁₀	4 ³ / ₁₀	4 ³ / ₁₀	4 ⁵ / ₁₀	5 ⁵ / ₁₀
30	20	10	10	20	30 ²	30 ²	70
					EC	EC	EC

6457⁹² S. 'T' st. to West

6 ¹ / ₁₀	5 ² / ₁₀	5 ¹ / ₁₀	4 ⁷ / ₁₀	4 ⁴ / ₁₀	4 ² / ₁₀	3 ⁰ / ₁₀
70	30	20	10	10	20	30

6444¹⁸ S. 'T' st. to east

6 ² / ₁₀	5 ² / ₁₀	5 ² / ₁₀	4 ⁷ / ₁₀	4 ⁴ / ₁₀	4 ¹ / ₁₀	3 ⁶ / ₁₀	1 ⁵ / ₁₀
30	20	10	10	20 ²	30 ²	70	

6442⁹² Sly Curb line 'T' st. to West

6 ⁷ / ₁₀	7 ² / ₁₀	5 ⁶ / ₁₀	6 ⁴ / ₁₀	5 ² / ₁₀	5 ² / ₁₀	4 ⁰ / ₁₀	4 ⁴ / ₁₀	4 ⁵ / ₁₀	3 ⁶ / ₁₀
70 ²	70 ²	30 ²	30 ²	20	10	100	20	30	
CB	GUT	CB	GUT	EC					

Mid point S.W. Return

5¹/₁₀
Mid point
Top Curb

6432⁹² Sly Profile 'T' st. to West

5 ¹ / ₁₀	5 ¹ / ₁₀	6 ⁰ / ₁₀	5 ¹ / ₁₀	4 ⁹ / ₁₀	4 ⁵ / ₁₀	4 ⁴ / ₁₀	4 ⁵ / ₁₀
27 ⁵	20 ²	20 ²	10	10	20 ²	30	
W/K	CB	G	BC				

6424¹⁸ So. Curb line 'T' st. to east

5 ² / ₁₀	5 ⁶ / ₁₀	6 ⁰ / ₁₀	5 ⁵ / ₁₀	4 ⁹ / ₁₀	4 ⁶ / ₁₀	4 ⁷ / ₁₀	4 ⁴ / ₁₀	4 ⁵ / ₁₀	2 ¹ / ₁₀	1 ⁴ / ₁₀
27 ⁵	20 ²	20 ²	10	10	20	30 ²	30 ²	70 ²	70 ²	70 ²
W/K	CB	G				EC	EC	CB	CB	CB

(75⁵/₁₀) T

LT = West RT = east 22

7+70 - 20° LT = 10' Wide broken curb (for dirt Dr)

7+20 - 20° RT = 11' Wide conc drive

6+82.92 No. prop Line T'ist to West

Midpoint NW Return

6+74.10 No. prop Line T'ist. to east

6+72.92 No. curb line T' street to west

Midpoint N.E. curb return

71.66	71.47	71.5	71.2	71.6	71.9	71.80	71.89	71.05
285	304	40	33	29	25	22	162	146
275	302	202	10	2	10	202	225	275
WIK	cb	G				LIP	WIK	

71.24	71.11	71.5	71.0	71.4	71.5	71.5	71.33	71.53
427	440	50	45	41	40	40	318	298
275	200	202	10	10	10	202	202	275
WIK	C	G				G	cb	WIK

71.06
445
Midpoint
Return

70.2	70.8	71.1	71.3	71.4	71.01	71.19
53	42	47	42	43	300	332
20	10	10	10	202	202	275
				G	cb	WIK
				BC	BC	

69.74	69.2	70.89	70.0	70.2	70.7	71.1	71.2	71.3	71.96
577	63	462	55	53	48	43	42	355	355
70	70	30	30	20	10	10	202	202	202
		cb	cb				C	cb	cb
		EC	cc						

71.95
355
Top
curb

{ 75.5 } T

8+70 - 20' RT = \$10' wide ^{conc} driveway

8+55

8+17 - No. Line alley to east

8+08 \$ alley to east. \$ sewer M.H.

7+99 5/4 Alley to east

7+70

TP₃ 1R²⁴ <868±> 0.93 74.58"

LT = West

RT = east 23

79.30
75.2
20.0
TIP

80.09
67.3
22.5
WIK

78.08	77.90	77.4	78.1	78.4	78.4	78.7	79.41	79.59
87.4	89.2	9.4	8.7	8.4	8.1	7.41	7.23	
27.5 WIK	20.0 Cb	20.0 GUT.	10	10.0	20.0 GUT	20.0 Cb.	27.5 WIK	

76.50	76.39	75.7	76.6	76.9	77.0	77.0	77.86	78.1	78.08	80.0
10.32	10.43	11.1	10.3	9.9	9.8	9.0	8.96	8.7	8.74	6.2
27.5 WIK	20.0 Cb	20.0 G	10	10	20	20 G	Midpt Ret.	30 G	30 Cb	50

76.16	76.02	75.3	76.1	76.59	76.6	76.4	77.6	77.6
10.66	10.20	11.5	10.2	10.23	10.2	10.2	9.2	7.2
27.5 WIK	20.0 Cb	20.0 G	10.0	10.0 R.M. M.H.	10	20	30	50.0

75.85	75.63	74.9	75.6	76.1	76.3	76.4	77.06	77.24	77.6
10.27	11.9	11.2	11.2	10.2	10.5	20.4	9.76	9.5	9.5
27.5 WIK	20.0 Cb	20.0 G	10	10	10	20.0 G	Midpt G.B.	30 Cb	30 GUT.

74.71	74.55	73.9	74.5	74.8	74.8	75.2	75.84	76.05
12.1	12.27	12.2	12.2	12.0	12.0	11.5	11.00	10.77
27.5 WIK	20.0 Cb	20.0 G	10.0	10.0	10.0	20.0 G	20.0 Cb	27.5 WIK

<86 82> X

<75 51> X

LT = West

RT = east 24

9471 47 20' LT = \$ 12' wide conc drive

81.73	81.61	82.08	82.5-	83.0	83.1	83.2	83.5	85.1
409	421	470	413	3	37	30	30	17
275	225	200	10	100	20	30	30	80
WIK	WIK	LIP						

9451 47 50 curb line Hemlock to east

81.95	81.70	81.0	81.5	82.3	82.4	82.1	82.3	83.11	84.0	84.74
487	512	518	510	41	42	47	45	57	52	58
275	200	200	10	10	20	30	30	30	80	80
WIK	cb	G				G	EC	EC	G	cb

Mid point S.E. Return Hemlock + 37 72

83.06
6076
TOP
cb

9441 47 - 50 prop line Hemlock to east

81.58	81.42	80.7	81.5	81.9	81.9	81.8	82.92	83.25
524	540	61	513	42	42	50	590	547
275	200	200	10	10	20	20	20	275
WIK	cb	G			G	bc	bc	WIK

9400

79.99	79.99	79.1	79.8	80.3	80.3	80.2	81.11	81.38
683	703	77	70	65	65	65	571	544
275	cb	200	10	10	200	200	200	275
WIK		G			G	G	cb	WIK

8474 - 20' LT = \$ 13' wide conc. drive

78.70	78.08
812	874
225	200
WIK	LIP

{ 86 82 } T

10+50

LT = West				RT = East			
85.71 10	85.52 130	85.0 10	85.3 10	85.7 10	85.6 20L 6	86.30 0.52 Cb	86.48 0.34 WIK
275 WIK	ob	G					

10+41. 20' LT & 9' wide Cone drive

85.30 152	84.72 210
225 WIK	200 Lip

10+36 - 20° RT = 13' wide drive

85.04 170	85.66 16
200 Lip	225 WIK

10+28. 20° LT = 10' wide drive way

84.78 204	84.00 282
225 WIK	200 Lip

10+01 LT No. prop line Hemlock to east

83.50 302	83.66 316	83.1 32	83.8 30	84.2 25	84.1 27	83.8 20	83.99 20L Cb	84.18 264 WIK
275 WIK	200 Cb	200 G	10		10	20L G	20L Cb	

Mid point N.E. Return

83.94 200
Midpt Top cb

9+91 LT No curb line Hemlock to east

83.36 846	83.22 260	82.7 41	83.4 32	83.7 3	83.8 30	83.5 30L Cc	83.94 200 Cb	84.7 21 G	85.73 100 Cb
275	200 Cb	200 G	100		10	20	20 Cc	20 G	80 Cb

<86.82> X

11436 ϕ Line alley + Sewer M.H. $\left\{ \begin{array}{l} 20^\circ \text{ LT} = \\ \& 10' \text{ wide conc. drive} \end{array} \right.$

11437 50' Line alley to east

11414 - 20° RT $\&$ 10' unseable drive opening

11400

10483-19° RT $\&$ 18' wide conc drive

10475

TRJ 419 $\langle 90 \ 45 \rangle$ 0.56 86.26

LT = West

RT = East 26

86.12	86.00	85.55	85.9	86.61	86.6	86.9	87.5	89.9
433	445	490	46	384	39	35	30	06
275	225	200	10	RTT	10'	20	30	80
WIK	WIK	LIP		MH				

86.38	86.16	85.8	86.2	86.6	86.8	87.1	87.81	87.8	88.00	89.8
407	429	47	43	39	32	34	264	27	245	07
275	200	200	10	39	10'	10	cb	30'	30'	80'
WIK	cb	G			G		Mid	G	cb	80'
							Point			
							Ret			

87.25
320
LIP

86.76	86.54	86.0	86.4	86.6	87.0	87.1	87.76	87.85
369	391	45	41	29	25	24	269	240
275	200	200	10	10	200	G	200	275
WIK	cb	G					cb	WIK

86.86
359
193
LIP

87.39
286
225
WIK

86.78	86.26	85.7	86.0	86.2	86.5	86.5	87.31	87.45
397	419	48	45	43	40	40	314	300
275	200	200	10	10	200	G	200	275
WIK	cb	G					cb	WIK

$\langle 90 \ 45 \rangle$ T

$\langle 86 \ 82 \rangle$ T

LT = West

RT = east 27

12435

80.76	80.62	80.2	80.6	81.2	81.2	81.2	82.12	82.35
959	983	10 ¹³	99	93	95	93	833	810
275	182	182	10		10	200	201	275
WIK	cb	G				G	cb	WIK

12400

83.01	82.81	82.1	82.6	82.1	83.4	83.3	84.28	84.35
744	764	84	79	74	71	72	617	600
275	200	200	10		10	200	200	275
WIK	cb	G				G	cb	WIK

11475

84.57	84.32	83.6	84.0	84.4	84.8	84.8	85.75	85.98
594	613	69	65	61	57	52	470	445
275	200	200	100		10	200	200	275
WIK	cb	G				G	cb	WIK

11454 - 20° LT = 9' wide conc drive

85.43	84.87
502	558
225	200
WIK	LIP

11453 - 20° RT & 11' wide conc drive

86.30	87.00
415	345
200	225
LIP	WIK

11445 = No Line alley to east

85.84	85.65	85.3	85.6	86.2	86.3	86.6	87.30	87.4	87.51	90.0
461	480	522	49	43	42	39	311	31	294	05
275	200	200	10		10	20	MID Point	30	30	80
WIK	cb	G					Ret	cb	cb	

(9045) X

1/3 NW Return

13+04.48 Nly Curb line to West

12+94.48 & Teak to east

12+89.48 & Teak to west

12+74.48 Sly Curb line Teak

TP₅ 3.53 (82.98) 11⁰⁰
Mid point Returns

12+64.48. S. Line Teak

LT = West

RT = east 28

77.86
512
wy 1/3 cb
ret.

78.56	77.99	77.5	77.3	77.3	77.7	78.0	78.2	78.5	78.9
42	42	55	57	57	5	50	48	45	41
75	40	40	30	20	10		10	20	30
cb	cb	cb	EC	EC					

78.0	78.3	78.4	78.5	78.7	79.0	79.5	80.4
50	42	46	45	43	40	38	36
30	20	10	10	10	20	30	80

78.44	78.3	78.5	78.6	78.7	79.0	79.2	79.3
46	47	45	44	43	40	38	33
80	30	20	10	10	20	30	80

78.73	78.0	78.90	78.7	78.8	79.1	79.4	79.5	79.6	79.8	80.42	80.17	80.10
42.5	50	40.8	43	42	39	36	35	34	32	27.6	21	10.12
90	80	30	30	20	10	10	20	30	30	30	80	80
cb	cb	cb	cb	cb	cb	cb	cb	cb	cb	cb	cb	cb

(82.98) 11⁰⁰ 79.45
Mid pt. SW Ret.
Mid pt. SE Ret.

79.4	79.9	79.0	79.4	79.8	79.9	79.9	80.49	80.73
11	11	11	11	10	10	10	9	9
27	30	30	10	10	20	20	15	15
wik	cb	cb	bc	bc	cb	cb	wik	wik

(90.45) *

LT = West

RT = east 29

<72.74>

TP₆ 2.77 <72.74> 13.01 69.97

13+24⁴⁸ Nly line Teak to east

5	5	6	6	6	5	4	4	4
36	31	03	44	81	98	30	79	28
77.62	77.31	76.03	76.44	76.81	76.98	77.30	78.79	78.28
275	199	199	10	10	20.2	20.2	275	275
WIK	cb	G	10	10	G	cb	WIK	WIK
	bc	bc			bc	bc		

13+17⁴⁸ begin Rough A.C. paving

Mid point N.E. Return

78.93
405
Mid Pt
N.E. Ret

2/3 point NW Return

77.64
5
31
2/3 Ret
cb

13+14⁴⁸ No. curb line to east. also Nly line Teak to West

6	5	5	5	5	4	3	1	1
2	9	4	2	0	4	98	18	17
76.8	77.1	77.6	77.8	78.0	78.6	79.00	81.2	81.81
20	10	10	20	20	30	30	80	80
					G	cb	G	cb
					bc	bc		

<82.98>

LT - West RT - East 30

14459⁰⁶ Sly Corb line ocean view Blvd

57.10	56.45	59.90	59.25	59.53	59.80	60.00	60.10	60.21	60.33	60.98	61.88	62.57
15.64	16.29	12.84	13.29	13.19	12.94	1.2	7.4	12.64	12.53	12.41	11.76	10.51
80	30	30	30	20	10		10	20	30	30	80	
cb	cb	G	EC						G	EC	cb	G

Midpoint Returns

60.39	59.53	60.22	60.96
12.35	13.21	12.52	11.78
Cur b.	Mid pt	Mid pt	Mid pt
on walk	S.W. Ret	GUTTER	SECT
back cb.	GUTTER	SECT	Cur b.

14449⁰⁶ } Begin 5' broken out Corb S.W. Return
 } Begin 5' broken out Corb on S.E. Return

60.34	59.74	60.22	60.91
12.40	12.00	12.52	11.83
200	200	200	200
cb	G		

14445⁰⁶ Begin Cape. pare. sly line Ocean view

60.58	60.48	59.84	60.42	60.63	60.58	60.22	60.91	61.18
12.16	12.26	12.90	12.32	12.11	12.16	12.52	11.83	11.56
275	201	201	10	10	201	201	201	275
WIK.	cb	G			G	cb	cb	WIK

14405

66.30	66.13	65.19	65.77	65.71	66.09	65.87	66.99	67.17
644	661	757	697	703	655	627	575	557
275	200	200	10	10	200	200	200	275
WIK	cb	G			G	G	cb	WIK

13465

71.92	71.74	71.02	71.48	71.61	71.96	71.98	71.95	73.13
082	100	172	126	13	078	076	109	103
275	201	201	10	10	201	201	201	275
WIK	cb	G			G	G	cb	WIK

< 72 74 >

Soil samples taken & int, 37th & T

also Teak, Sts.

SEBP S'n Hemlock
BM 37th st 531 82⁸³ 82⁸²

TP₂ 425 88¹⁴ 042 83³⁹

TP₇ 1214 83⁸¹ 107 71⁶⁷

BM 941 63³³ -014 N9
SE Top Fire Hyd
6347
Ocean View
37th

1449905 & Oceanview Blvd

57.05	57.84	60.13	60.41	60.68	60.96	62.46
15.69	12.20	12.1	12.33	12.06	11.78	10.28
80	20	10	20	20	300	800

(72 74) T

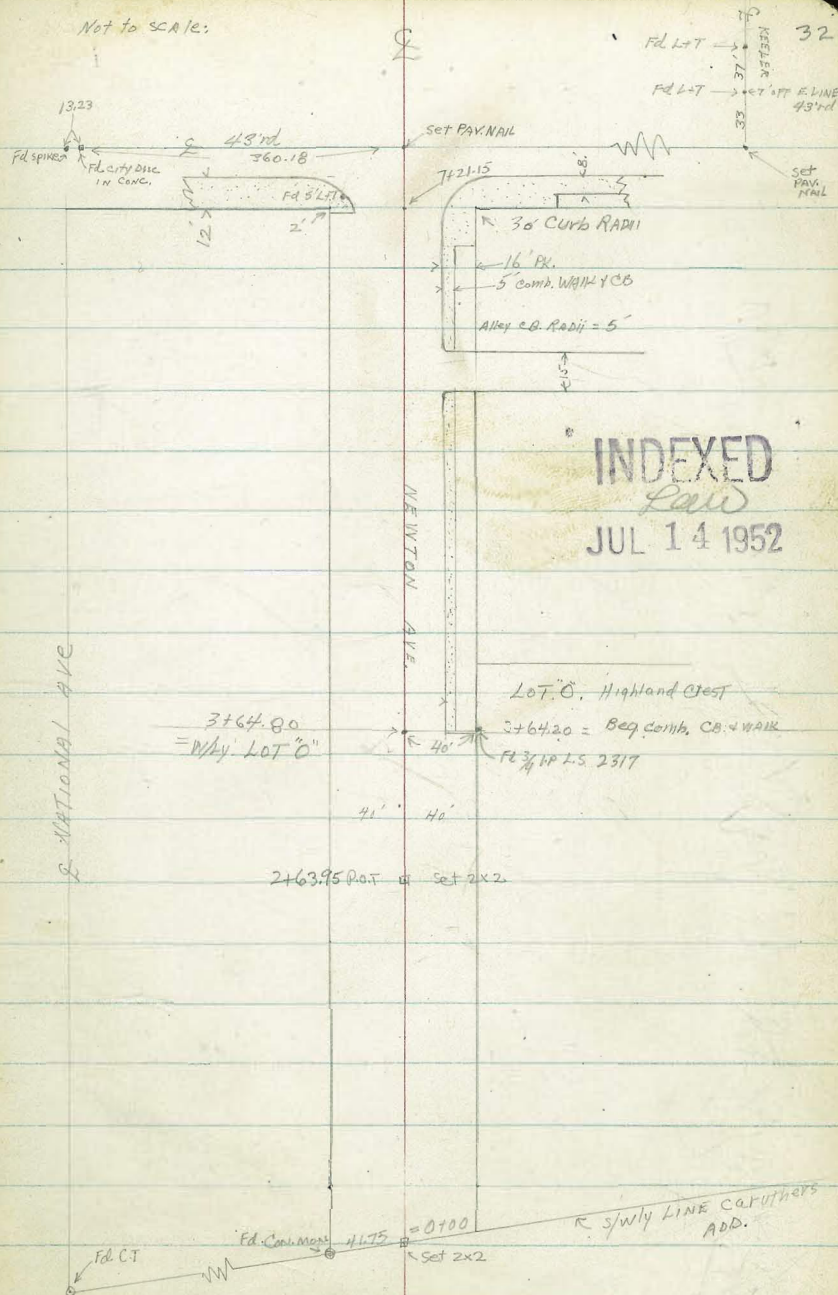
Clark 7-10-52
 Shepard W.O. 32133
 Bruner
 Bryson

X-SECT. NEWTON; S/WLY LINE
 CARUTHERS ADD. to 43rd

DATA: F.B. 1615 Pg 15
 MAP # 1968 sheet 1

Notes: Pg. 33

Not to scale:



X-SECT. NEWTON, S/wly LINE

CARUTHERS ADD. to 43rd ST

1+32 40' LT END Conc Slab
 1+22 40' LT DRIVE APRON, 64.2' DW, 68.4' Garage
 1+03 37.8 AT & Pile P417

1+00

0+88

38.3 FT E Deadman

0+69

38.8 LT Top in slab to 41.6 AT

0+61

38.8 LT Top Conc. Slab

0+50

0+00 = S/wly Line Caruthers ADD. (sect 1 & Newton)

0-50

T.P. 1.62 36.38 11.57 34.76
 T.P. 1.01 46.33 11.22 43.32
 T.P. 0.97 56.54 10.90 55.51
 B.M. = 0.89 66.47 65.58 N/F B.P. 43rd & NEWTON

LT BT
 34.36 34.00 34.98
 2.07 2.38 1.40
 68.4 64.2 40
 34.38 33.62 33.6 33.4 32.6 32.5
 2.00 2.76 2.8 3.1 3.8 3.9
 50 40.2 40 40 40 50
 Conc Edge Slab DWT
 30.88 30.20
 6.00 6.18
 48.4 38.8
 Conc
 30.03 30.00
 6.35 6.22
 40 38.8
 27.3 28.8 29.2 28.8 28.0 27.8
 7.1 7.6 7.2 7.6 8.4 8.6
 56 53 40 40 40 50
 26.5 25.9 23.90 20.8 20.3
 7.9 10.5 12.48 15.6 16.1
 50 40 40.8 40 50
 23.3 22.8 21.7 22.1 19.1 18.4
 13.1 13.6 14.7 14.3 17.3 18.0
 50 40 7 40 50

36.38

LT R RT

2+05 52.5 LT & DRIVE

2+59 40 LT & 2' WALK

2+58 40.3 LT END CONC. RET. WALL

2+54 33.6 RT & Pole (P4241)

54.08
5.26
60
DRIVE

54.01
5.43
52.5
21P
DRIVE

54.26
5.18
40.3
TRAV

53.33
6.1
40.3
FOOT
WALL

54.00
5.44
50

53.44
6.00
40

2+40

33.40
6.94
50
BANK

52.04
7.20
40
TP STEP

50.2
9.2

49.3
10.1
14.8
BANK

59.1
1.3
20
TP

38.4
1.0
40

57.8
1.6
50

2+39 38.4' LT & 3' wide STAIRS (3)

32.04
7.40
40
TP 2nd STEP

51.61
7.83
38.4
TP

50.94
8.50
38.4
FOOT

2+20 40 LT Beg CONC RET. WALL

52.80
8.64
40
TP
WALL

49.8
9.6
40
FOOT
WALL

T.P. 11.74 59.44 ✓ 0.65 47.70 ✓

59.44

2+00

49.6
7.12
50
TP

48.0
0.3
40
TP

45.6
2.7
35
TP

45.0
3.4

43.2
5.2
20

45.4
3.0
22

45.4
3.0
40

43.8
4.6
50

1+50

42.4
5.9
50
TP
BANK

40.6
7.8
40

38.8
1.6
35
TP
BANK

38.4
10.0

35.2
13.1
40

34.6
13.8
50

1+40

35.2
13.1
50

35.6
12.1
40

37.4
11.0

34.6
13.8
40

33.2
15.1
50

T.P. 12.28 48.33 ✓ 0.31 36.07 ✓

48.33

3464.80 = SWLY. Line Lot "D" According to L.S. 2317 (No Data Available)
 3464.20 Req 5' Concr. Walk @ 238 RT.
 30.8 LT @ 8' Drive

LT. E RT.
 58.30
 38.99 58.51 57.89 57.6 57.8 57.6 57.74 57.83 64.2 63.6
 6.15 6.57 7.27 7.5 7.3 7.5 7.40 7.31 4.9 1.5
 50 40 30.8 12 12 12 2.38 2.9 4.0 5.0
 conc conc Lip TP TP RTK Walk
 Flush with dirt

3456 39.6 LT END Ret WALL

59.39 58.5
 5.75 6.6
 39.6 39.6
 TP FOOT
 59.5 59.5 58.0 56.9 56.6 61.1 62.6 63.6
 5.6 5.8 7.1 8.2 8.5 4.0 2.5 1.5
 50 42 40 TP TP 40 50

3440

T.P. 8.28 65.14 2.58 56.86

3439 30' LT @ 3' Walk

58.12 57.79
 1.32 1.65
 40 30
 RTK Lip

3420 39.6 LT Req Concr Ret WALL

58.74 56.8
 0.60 2.6
 39.6 39.6
 Top Foot

3415 41.6 LT @ DRIVE

57.54 57.31 57.02
 2.13 2.42
 50 41.6
 conc Lip

3409 40' LT END WALL

57.5 56.5
 1.90 2.9
 40 40
 TP FOOT WALL

3400

59.5 57.4 66.2 55.3 54.3 59.4 61.4 61.0
 1.9 2.0 3.2 4.1 5.1 0.0 +2.0 +1.6
 50 42 40 41 14 19 40 50
 TP TP

2492 34 LT @ 3' WALK

55.51 55.49
 3.93 3.95
 40 34
 conc Lip

2491 Req. Broken oil-pav. + Cold. Luv. EXTENDS FROM THIS STA. TO 43' AND ON N. HALF NEUTRAL, REGULARY (NOT WORTH) SPAVING.

2475

57.4 57.3 54.7 53.7 52.8 61.2 61.4 60.9
 2.0 2.1 4.7 5.7 6.6 +1.8 +2 +1.5
 50 42 40 5.7 16 20 40 50
 Toe TP

2471 39.4' LT Req Concr. Ret WALL

57.19 53.8
 2.25 5.6
 39.4 39.4
 TP FOOT WALL

59.44

LT.

E

RT.

5720

40' LT Beg 3' Conc Brick Wall.

63.43
2.40
40
TP59.77
6.34
40
Foot

5719

27 ITC Pole # 530089-H

5700

60.1
5.7
5060.3
5.5
4060.3
5.5
1260.1
5.7
1259.5
6.3
1259.1
6.7
23.8
G. DIST59.65
6.8
23.8
TRCB59.75
6.8
28.8
WIK60.1
6.8
40

4750

60.7
5.1
5060.7
5.1
4359
5.9
4059.6
6.2
1259.5
6.3
1259.0
6.8
1259.1
7.3
23.8
G59.01
6.8
23.8
TP
CD59.09
6.7
28.8
WIK59.4
6.7
40

4728

30.6 LT & 8' drive, 65.4 Floor gar.

61.09
4.74
Floor60.14
5.66
40
Conc59.28
6.55
30.6
LIP

4722

39.00 LT END Cobble Wall

60.72
5.11
39
TP60.13
6.8
39
Foot

T.P

5.46

65.83

4.77

60.37

65.83

4700

60.6
4.8
5060.7
4.4
4259.0
6.1
4060.7
6.4
1260.7
6.4
1260.4
7.4
23.8
Gut.60.7
7.4
23.8
TP
WIK60.1
6.4
40
Toe62.5
6.6
46
TP62.3
6.6
30

3784

32.5 LT & 8' drive, 53 to Floor gar.

60.50
7.64
53
Floor58.56
6.46
40
Conc58.62
6.52
32.5
LIP

3781

E.M.H

58.59
6.75
R.M

3772

70' LT Beg Cobble wall

60.68
4.46
40
TP58.4
6.7
40
Foot

65.14

LT

E

PRT

6426.15 Alley BC

6421.15 E. Alley Line

6406.15 W. Alley Line

6401.15 Alley BC

6400

T.P. 6.69 68.81 3.71 62.12

5491 40 LT Beg. Plumbing Supply Alley. (3 passages on west end)

5480 7' of App. undedicated Alley or drive on LT (20' wide)

5470 40 LT END WALL

5450

5442 40 LT & 3' Walk

63.14

5.67
23.85
RC
TE, CB.

62.79 62.6 62.3 63.0 62.9 62.4 62.1 62.5 63.05 62.7 63.11
6.92 6.2 6.5 5.8 5.9 6.4 6.7 6.3 5.76 6.1 5.76
40 40 24 12 12 12 24 29 29 40 40
LIP DIRT TP CB END

62.73 62.6 61.8 61.5 62.3 61.9 61.8 62.0 62.2 62.1 62.34
6.08 6.2 7.0 6.3 6.5 6.9 7.0 6.8 6.59 6.6 6.47
40 40 24 12 12 12 24 29 29 40 40
LIP DIRT TP CB END

62.12 62.11 61.6 62.3 62.2 61.8 61.93 61.92 61.94 62.2
6.09 6.0 7.2 6.5 6.6 7.0 7.2 6.88 6.85 6.6
40 40 24 12 12 12 23.8 23.8 23.8 40
LIP DIRT TP CB BK WALK

68.81

62.71 61.2
3.12 7.6
40 40
Floor Footing

61.2 61.2
4.6 7.6
100 210

63.51 59.83
2.52 6.00
40 40
TP Footing

60.1 60.5 61.0 61.0 60.3 60.0 60.11 60.12 60.3
3.7 5.3 4.8 7.8 5.5 5.8 5.42 5.35 5.0
50 40 12 12 23.8 23.8 23.8 40
G CO. WALK

60.6 60.07
5.67 5.76
50 40
WALK LIP

65.93

LT E RT

Check: 4.75 65.61 - 65.58 = N/E BP 43rd + NEWTON

7461.15

E 43rd

63.96

6.40

100

65.15

5.21

50

66.59

3.77

67.94

2.62

30

68.89

1.49

100

7433.15

W. CB line 43rd

64.08

6.28

100

65.49

6.87

100

65.26

5.10

54

64.66

5.70

54

65.20

5.76

24

65.82

4.54

66.31

4.05

24

66.86

3.50

54

67.40

2.96

100

67.81

2.55

100

68.39

1.97

100

T.P. 4.77

70.36 3.22 65.59

70.36

7421.15

W.L. 43rd (Edge Pav.)

A.C.

65.59

3.22

29.95

64.99

3.82

29.95

65.11

3.70

24

65.61

3.20

12

66.04

2.77

66.24

2.67

12

66.38

2.43

24

66.56

2.25

6

67.04

1.71

100

7419.15

OPP END CB RT. LT. 29.40

65.57

3.22

40

65.60

3.21

29.44

7403.15

OPP CB BC RT.

64.5

4.3

50

64.6

4.2

40

64.4

4.4

24

65.4

3.4

12

65.6

3.2

12

65.5

3.3

12

65.5

2.3

907

66.80

2.31

CB

66.31

2.80

40

6476

LT 9 Pole No number

6475

39.5 LT Deadman

40 LT END plumbing, 849

63.20

5.6

40

62.45

6.36

40

6450

63.21

5.6

40

63.0

5.8

40

62.8

6.0

24.5

63.8

5.0

12

63.8

5.0

12

63.4

5.4

12

63.1

5.7

23.85

64.04

4.77

CB

64.14

4.67

28.85

64.4

4.1

40

68.81

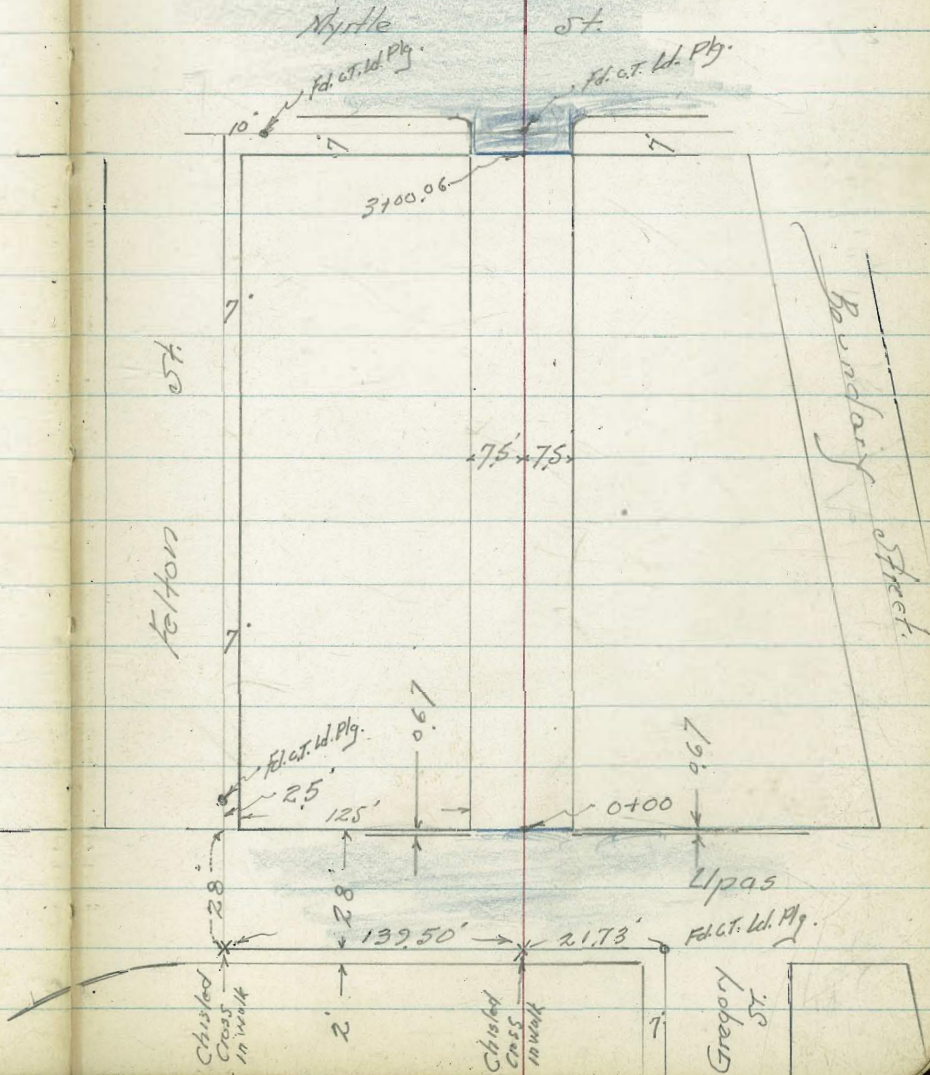
Cross Section Alley Blk. 61
 ~ Park Villas ~
 Between Felton And Boundary
 From Upas to Myrtle St.

Walker
 Pope
 R. Sission
 7-26-52

MO 25010

INDEXED
 Law
 JUL 28 1952

39



Alley Bk. 61. Park Villas

Lt.

R.

Rt.

40

on Rt.

0+64.5 = South edge Single Garage Concr. Floor

7.98 7.71
8 11.5 Conc.
Toe Apron Floor

0+62.5 = End Tile Wall = Beg. 10.5' Curb

9.6
8.4
Bottom Footing

0+50

4.27 9.1 2.3 9.1 8.45
8.4 7.5 318.88 7.5 7.8
Top Wall Top Walk

TR 9.42 318.88 2.98 309.46

0+26.5 7.5' Lt = 2' Elec. Pole A 340.5

0+15.5 = Beg. 2' Concr. Walk Parallel to Alley

3.96
8.0
= West side Walk

0+01 = Beg. Concr. Tile Wall Steps up

4.33 5.2 5.4 5.3 5.9
8.4 8.4 7.5 12.5
Bottom of Footing

0 - 0.67 = Curb Line

4.36 4.87 4.75 5.36 5.59 5.81 5.21 5.85 5.49
2.5 2.5 2.5 7.5 7.5 7.5 2.5 2.5
cb. Gut. cb. cb.

0 - 12.15 = ^{Roadway} 2' 4pas St section on Parking

5.26 5.53 5.73
10 10
312.44

0.09 312.44 312.35

BM
N.W. B.P. 4pas & Felton

Alley Blk. 61 - Park Villas

Lt.

E

FF.

41

1750

5.2	5.0	5.1	4.7	4.4
14	7.5		7.5	13

1747 N end Garage

4.79	5.17
14	10
Conc. Floor	Toe Apron

1729 = South edge Dble Garage

4.80	5.44
14	10
Conc. Floor	Toe Apron

1700 6.5' Lt. Eilee Polo # 3A 3433

6.7

6.6	8.0	6.6	5.49
7.5	12	10	10 Conc.
	Footing		Floor
	Bottom		House
			Under
			Const.

0799 = End Wall on Lt

7.5	7.7
8.6	8.6
Top wall	Bottom
	Footing

0784 = Pole Anchor 7' Lt.

0773 N edge Garage

3.6	8.8	8.1	8.7	7.85	7.55
8.4	8.4	7.5		8	11.5
Top	Footing		318.88	Toe Apron	Conc.
	Bottom.				Floor.

Alley Blk 61

2+50 = L Single Garage on Lt. Conc. Floor

3.46 3.68 3.3 3.1
13.6 8.6 7.5
Conc. Floor Toe Apron

2+47 N end Dble Garage on Rt

2.87 2.79
7.0 13.1
Toe Apron Conc. Floor

Seg. Dble Garage on Rt

2+30 = L Single Car Garage on Lt.

3.88 2.82 2.77
13.5 9.9 13.0 Conc.
Conc. Floor Toe Apron Floor

2+21.5 = End Wall on Rt

3.8
11.1
Bottom Footing

2+01.5 = Beg. Conc. Tile Wall on Rt

4.0 + 2.2
11.1 11.1
Bottom Footing Top Wall

2+00 = L. File Pole PA # 3467 6.5 Lt.

4.3 3.5 3.9 3.4 3.4
12 7.5 7.5 12

1+63 = L Single Garage

4.49 4.70
13.5 8.8
Conc. Floor Toe Apron 318.88

42

3+00.06 = Shine Myrtle St

579	590	698	579	563
75	75		74	74
cb.	Ent.		Ent.	Top 6

High
Req. 4" Conc. T/O Wall

2+90.5 = End 4" Conc. Wall

	4.75	107	62
	7.5	7.5	7.5
321.15	4" Wall	Top Wall	Footings
	7.9		

T.P. 5.73 321.15 346 315.42

Not Parallel
To Alley

2+90 = End 8" Conc. Wall on Lt

3.6	2.43
7.6	7.6
Bottom Footing	Top Wall

2+85

3.1	2.8	2.8	2.5
7.5		7.3	7.5

2+62 = Req. 4" Conc. Wall on Rt

3.46	2.66
6.9	6.9
Bottom Footing	Top Wall

2+58 = Req. 8" Conc. Wall on Lt

318.88

2.55	3.95	
8.3	8.3	
Top Wall	Footings	318.88

Alley BK 61

Lt.

L

Rt.

44

Chk. Starting B.M.

4.25

0.01
312.35
312.36

TP.

146

316.61

6.00

315.15

315.08 = Rec.

N.E. B.P.

Myrtle & Fulton

3+40

L

Myrtle

5.35

5.10

4.91
25

3+20

5.69

25

5.55

5.25

25

3+10.06 = South Corb Myrtle St

321.15

6.01

cb

25

Aut.

ES. Rd.

6.11

cb

25

Aut.

ES. Rd.

5.90

cb

25

Aut.

ES. Rd.

6.29

cb

25

Aut.

ES. Rd.

6.11

cb

25

Aut.

ES. Rd.

6.15

cb

25

Aut.

ES. Rd.

5.81

cb

25

Aut.

ES. Rd.

6.08

cb

25

Aut.

ES. Rd.

5.65

cb

25

Aut.

ES. Rd.

321.15

X-sec 33rd ST - Grape to Fir

WO # 32181

4-14-53

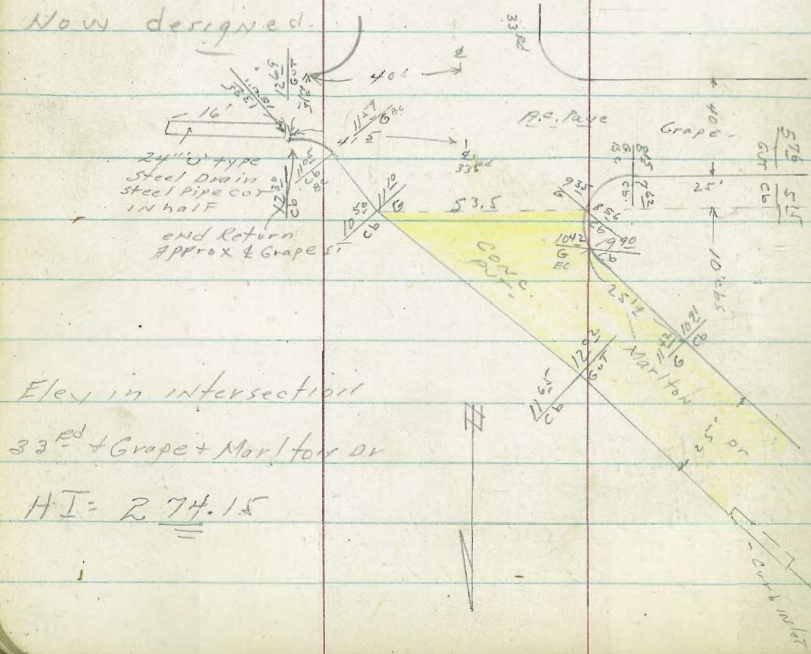
C. Allen

D. Sisson

Powell.

Ref. TPIR, FB 1657-58-

Most of water in intersection
of Grape + 33rd would flow N1/4 on
Marlton Drive as intersection is
Now designed:



Elev in intersection
33rd + Grape + Marlton Dr

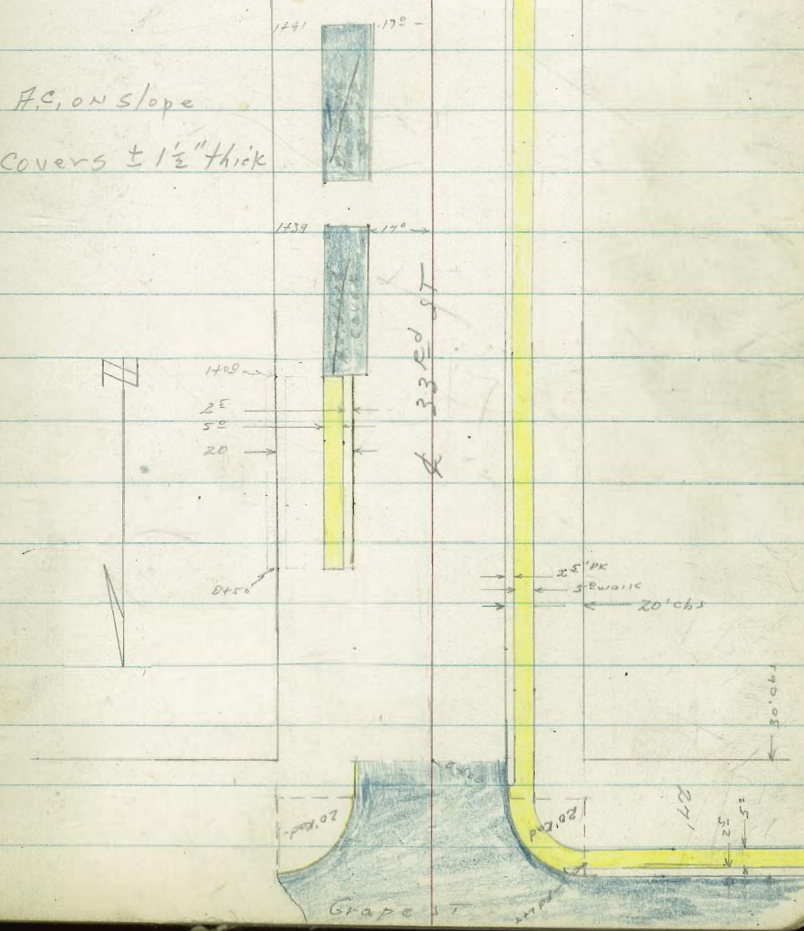
HI = 274.15

INDEXED
LAW
APR 15 1953

Fir ST

Soil Sample
To Lab.

P.C. on slope
Covers ± 1 1/2" thick



45

27'

27'

53'

FD 2" x 2" RW
+ city pipe
18" deep

2+86

1491

17°

1439

17°

33rd ST

1409

25'

52'

20'

25' PK
SEWAGE
20' cbs

700.08

271'

52'

Grape ST

X-sec 33rd St. Grape to Fir.

Mid point Returns - $\left\{ \begin{array}{l} L=32^{\circ} \text{ SW COR} \\ L=32^{\circ} \text{ SE COR} \end{array} \right.$

LT=ely
 $\frac{264.02}{10 \text{ } ^{\circ} 13}$
 Curb GUT

$\frac{263.27}{10 \text{ } ^{\circ} 86}$
 GUT CB

0-30- Sly Curb line Grape

261.1	263.11	262.37	263.50	264.26	265.97	266.06	266.07	266.45	269.43	270.19
13'	11'	11'78	10'5	9'89	8'78	8'09	8'08	7'30	4'2	3'96
65	40	40	20	20	40	40	50	50	100	100
rim	cb	GUT	GUT	GUT	GUT	cb	cb	GUT	GUT	cb
CANYON	13c	bc			bc	bc				

0-50 = Pavement on Grape ST

0-50 = Pavement Grape
 North side Grape
 30' curbs south side Grape + 10' curbs on

Grape = 40' Roadway

BM 8.13 274.15 266.02

LT, W.L., 33rd + Sly 27' line Grape

274.15

270.05
 $\frac{265.10}{905}$
 GUT CB

265.90
 $\frac{270.86}{329}$
 100 125 150 175

261.45
 $\frac{1270}{40 \text{ } ^{\circ} 2}$
 edge AC
 POC
 COND.

263.28
 $\frac{1087}{20}$

264.26
 $\frac{989}{20}$

264.99
 $\frac{916}{20}$

265.59
 $\frac{856}{40}$

266.19
 $\frac{796}{50}$

0+94 = 20[±] Rt = 1/2' CONC Drive

0+75

0+50 = 20[±] LT = begin curb + Walk } 2.5 Parking } 5[±] Walk

0+25

TR 5.36 270.54 8.97 265.18

33rd St. roughly Paved w/ Cold lay - Little Value

0+00 = sly / line Grape

0-10 = FC. curb Returns

LT = 0.14

Rt = 1/2' - 1/2'

44	427	437	47	37	200	268.37	270.00
40	275 BKWK.	20 [±] cb	20 [±] GOT		20 [±] GOT	20 [±] cb	275 BKWK WK
77	53	50	52	4	37	307	
75	40	30	20		60 [±]	20 [±]	
266.1	266.27	266.17	265.8	266.8	266.8	267.47	266.54
429	47	47	266.17	266.7	266.7	266.37	266.54
20 [±]	20 [±] GOT	20 [±] GOT	266.17	266.7	266.7	266.37	266.54
267.46	268.24	268.28	267.46	268.24	268.28	267.46	268.24
308	230	226	308	230	226	308	230
20 [±] LIP	24 [±] BKWK IN DRIVE	275 BKWK WIK	20 [±] LIP	24 [±] BKWK IN DRIVE	275 BKWK WIK	20 [±] LIP	24 [±] BKWK IN DRIVE

136	95	990	962	846	836	756	756
75	40	20 [±] cb	20 [±] GOT		20 [±] GOT	20 [±] cb	272 BKWK WALK
264.6	264.7	265.15	264.53	265.65	265.79	266.59	266.59
936	990	990	962	883	862	786	786
20 [±] cb	20 [±] GOT	20 [±] GOT	20 [±] GOT	20 [±] GOT	20 [±] GOT	20 [±] cb	20 [±] cb
264.79	264.25	265.33	265.53	266.29	266.29	266.29	266.29

274.15

1445-17° LT = $\phi 10^{\frac{5}{8}}$ CONC Drive

1439-27° LT = Wly end 8" wide Retaining wall (conc)

1439-17° LT = SW COR AC slope cover

1425

1419-196 LT = $\phi 3"$ v.c. pipe drain from yard

1400-17° LT = NW COR AC Pave slope cover

0+95-20° LT = $\phi 10^{\frac{5}{8}}$ Conc Drive via

Station	Grade	Notes	Height	Width	Material
1445	17°	LT = $\phi 10^{\frac{5}{8}}$ CONC Drive	263.80	674	Dr
1439	27°	LT = Wly end 8" wide Retaining wall (conc)	263.78	676	Dr
1439	17°	LT = SW COR AC slope cover	262.64	790	Dr
1439	17°	LT = SW COR AC slope cover	263.21	733	Lip
1425			264.58	40	Top Foot Wall
1425			263.5	40	Gr
1425			263.8	40	Gr
1425			264.2	275	Top Wall
1425			263.2	275	Foot
1425			263.9	275	Gr
1425			263.5	170	SW COR AC
1425			265.2	513	Gr
1425			264.2	56	Gr
1425			264.2	56	Gr
1425			264.4	64	Gr
1425			265.5	510	Gr
1425			266.2	43	Gr
1425			267.08	346	Gr
1425			265.5	40	edge AC slope
1425			265.5	27	Gr
1425			265.5	23	Gr
1425			265.5	17	Gr
1425			266.3	20	Gut
1425			266.2	20	cb
1419	196	LT = $\phi 3"$ v.c. pipe drain from yard	264.4	613	IE
1400	17°	LT = NW COR AC Pave slope cover	266.1	44	Gr
1400	17°	LT = NW COR AC Pave slope cover	266.04	450	Gr
1400	17°	LT = NW COR AC Pave slope cover	266.03	451	Gr
1400	17°	LT = NW COR AC Pave slope cover	265.71	463	Gr
1400	17°	LT = NW COR AC Pave slope cover	265.5	50	Gut
1400	17°	LT = NW COR AC Pave slope cover	265.3	52	NW COR AC
1400	17°	LT = NW COR AC Pave slope cover	266.3	42	Gr
1400	17°	LT = NW COR AC Pave slope cover	267.2	33	Gut
1400	17°	LT = NW COR AC Pave slope cover	267.91	263	cb
1400	17°	LT = NW COR AC Pave slope cover	268.16	238	Brk Walk
0+95	20°	LT = $\phi 10^{\frac{5}{8}}$ Conc Drive via	266.12	442	Drive
0+95	20°	LT = $\phi 10^{\frac{5}{8}}$ Conc Drive via	266.28	426	Brk
0+95	20°	LT = $\phi 10^{\frac{5}{8}}$ Conc Drive via	266.15	439	Brk
0+95	20°	LT = $\phi 10^{\frac{5}{8}}$ Conc Drive via	265.57	497	Lip

270-54

1497. 17° LT = 8' CONC Driveway.

110.4	10.86	10.87	11.16
40	275	225	17.8
PT	BK	BK	LIP

1491- } 28° LT = WLY END 8" CONC Block Wall - 12' high
Wall - 28° LT END 2 brick high Perpendicular To line

857	10.6	10.5	857	10.7	10.14
40	40	40	28°	28°	28°
Top	Foot	Gr	Top	Foot	Gr

27° LT = S.E. COR AC slope COVER
1491- 17° LT = S.W. COR AC slope COVER

1450 - 28° LT = begin 2 brick high Wall with conc Footing 1' wide Footing

81	80.3	84	85	87	96
40	283	283	275	225	17
Top	Gr	Gr	Gr	Gr	Gr
Wall					

1475

1456 - 20° RT = 11' CONC Drive

81	80.3	84	85	87	96
40	283	283	275	225	17
Top	Gr	Gr	Gr	Gr	Gr
Wall					

1454. 18° LT = 4" VC pipe drain from yard
Hand Made

See Above for Brick Wall + conc footing

1450 - 17° LT = N.W. COR AC slope COVER
27° LT = N.E. COR AC slope COVER

62	69	71	76	6.3	5.6	48.3	470
40	275	225	179	6.3	5.6	48.3	275
	NECOR		NW COR				WK
	AC		AC				

270.54

RT = WLY 49

R+31-16³ LT = begin 12° wide Conc Drive on steep Gr

28° LT = wly end 4' Conc Wall perpendicular to R
 R+31 28° LT = end 4' wide Conc Retaining Wall.

R+28-20² Rt begin 11° Conc Drive on steep Grass

R+25

TP₂ 1.36 258.82 13.08 257.46

R+00-28° LT = begin 4' wide ^{CONC} Retaining Wall

LT = ely

Rt = wly-

58

	199	2140	222	304	320
	40	275	225	20	163
	Dr	Dr	Dr	Dr	Dr
	257.03	256.7	256.2	256.25	256.4
	179	21	19	187	26
	40	40	40	28°	28°
	Top Wall	Foot	Gr	Top	Foot
				Gr	Gr

Lateral wall same

	257.2	257.4	256.2	257.9	257.44	258.25	258.21
	15	17	27	18	138	057	061
	40	28°	17	20°	50°	55°	57°
				Gut	LIP	BK	BK IN
						INDL	Dr
							257.25

258.82 *

	112 ³	115	114	11 ³	117	10 ⁸	99	9 ⁰⁻³	893
	28°	28°	28°	275	17	20°	20°	20°	272
	Top Wall	Foot	Gr	Gr		Gut	cb		BK
				Gr Wall					WK

270.54 *

R+75

5253.5	LT=el	8250.5	251.2	257.2	253.5
2		13	16	70	17
40	28	27	15	20.5	20.5
				60T	CP

Some size wall going perpendicular to R

R+52. 29⁵ LT=begin 4" Conc Retaining Wall-

254.59	254.60	254.4	254.5
393	422	47	4
40	295	295	39
Top Gr	Top Wall	Foot	Gr

R+50. 27⁵ LT=begin Loose Rock wall- No Monitor

254.2	254.2	254.6	254.2
39	45	54	4
40	27	24	16

R+49. 20⁵ Rt=end 10' Conc Drive on steep Grade

255.42	255.83	255.4	259.13
340	299	288	40
20.5	240	275	40
LIP	Brk		

R+43. 16³ LT=end 12' Conc Drive - steep grade

256.74	255.63	255.17	254.98	254.59
208	319	365	384	425
40	275	225	200	163
Dr	Dr	Dr	Dr	LIP

R+39. 20⁵ Rt=begin 10' Conc Drive on steep Grade

256.29	256.96	256.91	259.13
253	186	191	40
20.5	255	300	40
LIP	Brk	Dr	Dr

R+39. 20⁵ Rt=end 11' Conc Drive on steep Grade

256.29	256.96	256.91	256.91
253	186	191	191
20.5	255	300	400
LIP	Brk	Dr	Dr

258.82 x

27⁵ also BC IN Loose Rock wall.
 3405- 28⁵ LT= BC IN 4" Conc Retaining Wall.

3402- 38⁵ LT= 3" Evergreen tree.

3400.14- North Line Fir

impossible to exactly meet Skyedge Drive.

2498⁵- 20² Rt= end 12⁵ Wide Conc Drive

2486- 20² Rt= begin 12⁵ Wide Conc Drive

Note Drive Way Above.

2486= 20² Rt= end curb + walk on Right

opening in 4" wall in loose rock wall
 2476- 30⁰ LT= 4' Conc steps w/ 4 Risers

LT= e14
 2910.5
 727
 288
 Top
 wall.

250.4
 8¹
 288
 Foot

250.8
 8⁰
 288
 Br

Rt= w/4 52

2424
 67
 40

2512
 76
 285

2482
 101
 275

2489
 108
 20

2485
 10
 3

2419 2
 96
 20

2419 5
 92
 26

2514 4
 70
 35

2518 8
 70
 40

2515 5
 73
 50

24822
 985
 LIP
 202

24912
 965
 240
 BK

24922
 910
 310
 Br

25235
 646
 365
 40

24953
 829
 202
 LIP

25045
 837
 25
 Dr
 BK

25047
 835
 275

25240
 642
 365
 BK
 Dr

25263
 617
 40
 Dr

2502
 86
 GOT
 202

25082
 800
 202

25080
 802
 228
 WK
 FRNT

25087
 795
 272
 WIK
 BACK

253.57
 525
 40

253.13
 569
 330
 Toprick

251.69
 713
 300
 Bottom Cr

251.2
 76
 300
 Riser

258.82

LT = ely

⊕

rt = wly

53

TP₁ Starting BM

5.38

< 260.027
266.03

Starting BM

TP₃

12.91 271.41

0.32

258.50

Side Shot

11.88

246.941

Not in pole
3471-225 AT. 2487704H

3476 = Approx Rim of Canyon. No where to go but down.

245.8	245.0	244.2	245.3	244.2
13 ⁰	13 ⁸	14 ¹	13 ⁵	14 ¹
40	20		20	40

3471-225 LT = ⊕ 18" power pole # 48770481

Perpendicular to ⊕

30° RT = Ely 35' high conc black wall

3440 } ⊕ First to East - closed to west

244.2	246.2	247.0	246.3	246.4	247.0	247.8	247.3	247.8
14 ¹	12 ⁴	11 ⁸	11 ⁹	12 ¹	11 ⁸	11 ⁰	11 ²	11 ⁰
150	100	50	40		22	30 [±] 6'	30 [±] FOOT	40

3410 - 34° LT = Ely EC. Retaining walls

248.0	247.9	247.5	247.5	248.2	251.8	251.5
10 ⁸	10 ⁹	11 ³	11 ²	10 ⁶	7 ³	7 ³
40	34 ²	22		20	34	40

3409.

250.2	250.5	248.0	247.5	247.2	248.3	251.5	251.5
7 ⁹	8 ²	10 ⁸	11 ²	11 ¹	10 ⁵	7 ²	7 ²
40	31 ²	30 ²	22		20	34	40

Wly Side Rock Wall

258.82

X-sec Byron St. Scott St
 to Mean High Tide Line
 W0# 61041

6-18-53

C. Allen

D. Sisson

C Powell

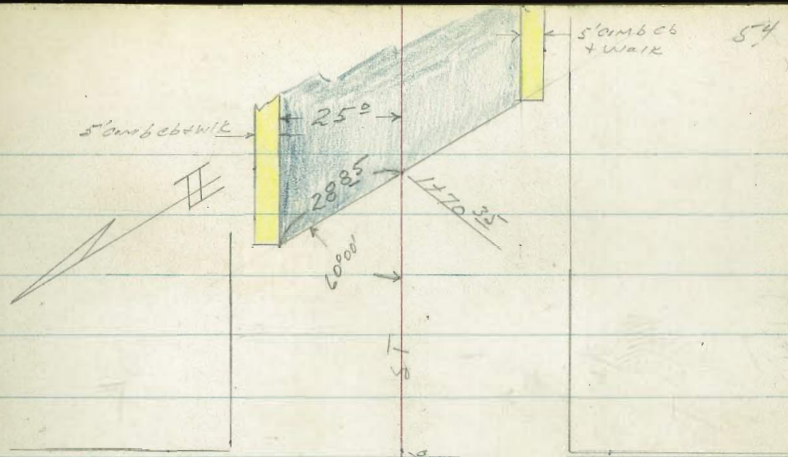
Ref T.P. Sheet 709-

Weather - Rain + Damp -

INDEXED
 JUN 19 1953

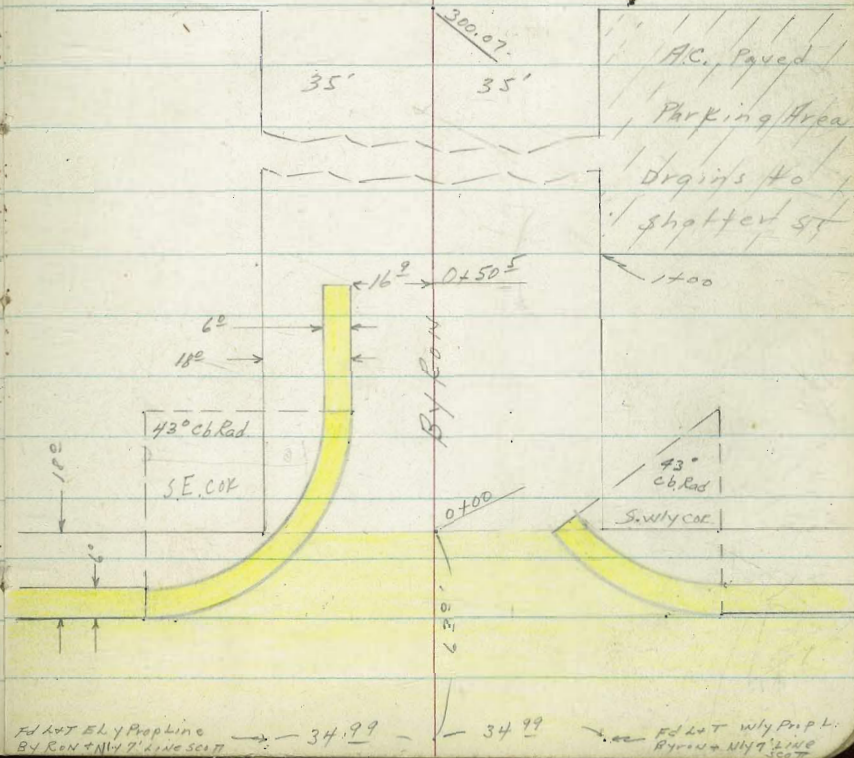
port. CONC =

A.C. Pave



SHAFTER 70

10 ft x 4 ft
 New ST.
 4' Hub tack
 4' Hub TK
 7' x 7' Line



FLAT W/ly Prop L.
 BYRON + NY 9' LINE SCOTT

FLAT W/ly Prop L.
 BYRON + NY 9' LINE SCOTT

X-sec Byron St - Scott St +
 A.C. Pavé Near Mean High tide line

LT = N14

Rt = S14 - 55
 BYRON.

EC = BYRON ST

GUTTER cb.
 5' 6.25
 DIRT

4/5

5' 6.42
 DIRT

3/5

6' 0.62

2/5

6' 2.72

1/5

6' 2.84

B.C. = SCOTT ST

6' 1.8
 GUTTER CURB

S. ELY CURB. SCOTT + BYRON STS.
 L = 69° 5' parts - 13" each
 Curb Returns

Note - Direct Elevation Rd. used for X-secs.

TP₃ 2.89 7.62

TP₂ 7.59 10.51 3.05 2.92

TP₁ 5.01 5.97 7.29 0.96

BM- 5.50 8.25 2.75
 SW BP Garrison + Risegrans

LT = Ely

By cin

Rt = wly. 55

640	582	670	608	767	707	794	738
135 cb	135 90T	85 cb	85 90T	85 90T	85 cb	135 90TT	135 cb

0-18 = sly Curb line SCOTT

679	618	642	650	670	657	651	718	655
600 cb BC	600 90T BC	35	25	25	35	90T cb	60 90T BC	60 cb BC

0-35 = S SCOTT ST

645	671	690	694	705	707	705	750	807
135	85	35	25	MANHOLE RIM	25	35	85	135

90T T & R . Curb
Curb ends on sly line
SCOTT ST Produced.

2/3	621	676
-----	-----	-----

1/2	633	693
-----	-----	-----

BC = SCOTT ST	655	718
	90T & R	cb

S. wly Curb Return

L = 39 5
3 PARTS - 13 1/2 each

LT = ELY

BYRON
ST

Rt = Wly. 57

25³ Rt = $\frac{1}{2}$ 10" power pole # JP 2883
0+50 - also sly edge walk on Wly.

57 66⁹ 57
35⁰ 50⁰ 50⁰
ground WIK ground

47 60³ 58 64⁵
25³ 15³ 35⁰
Edge WALK ground Edge WALK

Drains Part of Apt House into Street
0+47⁵ - 25³ Rt = $\frac{1}{2}$ 5' wide Conc Walk -

60³ 63⁰ 64⁸
25³ 35 50
WALK WIK WIK

garage
0+45 - 25³ Rt = end Conc Apron + Drive for 4 car

61² 65⁹ 76¹
25³ 35 50²
Apron Prop Floor

0+25 - 16⁹ LT = E.C. curb return -

62⁵ 5¹ 54 55 63¹ 66⁹ 76⁵
16⁹ 16⁹ 15 25³ 35 50²
cb EC 90T Edge Apron SW Apron Floor

For 4 car garage
0+10 - 25³ Rt = begin Conc Apron + Drive

66³ 70¹ 76⁷
25³ 35⁰ 50²
Apron Floor

Rough Cold lay to 0+13 - No Valve
Portland Conc. P.T.

0+00 = Sly Line SCOTT ST + Sly edge

66² 60² 62⁸ 64⁰ 63⁰ 61⁰ 66⁷ 68³
25² 25⁰ 12⁵ 12⁵ 25⁰ 25⁰ 31²
cb 90T PUT cb Back Edge WALK

Behind below Curb is A.C. Parking
Area that goes through the Block
and Drains to Shafter St.

1+00-35° RT = begin 6" wide Conc curb-1

0+93⁵ 24⁶ RT = 4' wide Conc Walk to Drive

0+91⁵ 24⁶ RT = end Conc Apron + Drive for ^{garage} car

0+90-33° LT = 4' wide Conc Walk

0+62-35° LT = 4' wide Conc Walk

0+56-24³ RT = begin Conc Apron + Drive to ^{4 car garage}

0+50⁵ 16⁹ LT = end 6" curb + ^{side walk}

LT = E14

Byron
ST

rt = Wly. 58

4 ¹	4 ⁰	3 ⁵	3 ²	3 ²	4 ⁶	4 ⁷	4 ⁹	4 ⁷	4 ⁹
35	21	19	18	25	35	35	35	35	50
							666	76	50

4 ⁷⁶	5 ¹⁸	5 ⁶²
WIK	WIK	WIK
24°	35°	50

4 ⁸¹	5 ²⁷	5 ⁷³
24 ⁶	35°	50°
ON APRON	ON CONC	FLOOR

5 ¹⁴	4 ⁹⁶	4 ⁶⁰
45°	35°	33°
WIK	WIK	WIK

5 ⁴⁷	5 ⁴²
45°	35°
WALK	WALK

5 ⁵⁰	5 ⁷⁴	5 ⁸²
24 ⁹	35°	50°
Apron	ON DRIVE	gar FLOOR

5 ⁹⁸	5 ⁸⁵	4 ⁶
22°	16°	16°
Back edge Walk	Top cb	DIRT PUTT

Shafter St
6" Curb continues wly along Nly Line

3+00⁰⁷ = Nly Line Shafter St. 35° Rt = end 6" Curb

Rt 50 24° Rt = ϕ 12" power pole # JP 2825

2+00 - 35° Rt = 6" curb

1+81 - 46° LT = ϕ House - Floor Low -

Curb - Some Drainage out -

1+50 - 35° Rt = ϕ 24" wide Drive way opening in

1+30 - 24° Rt = ϕ Dead Man.

1+07 - 36° LT = ϕ 3' Conc Walk

1+03 - 24° Rt = ϕ 12" Power Pole # B 2863

LT = E-1

ϕ
ByRON
ST

Rt = Wly - 26⁵⁹
18-0 251 150
gr Topob AC.

18 24 218
100 100 100
gr Top AC. Pav

2 ⁰	15	16	17	15	19	234	193	205
50	100	50	35			35° gr	35° Top AC	673 220' Drive to shaftck

2 ⁴	2 ³	17	17	2 ¹	25	307	279	289
50	35	20		18	35° gr	35° Top AC	35° AC	50

2 ⁰	2 ⁰	2 ⁰	27	2 ²	25	33	368	344	370
50	35	30	27		18	35° gr	35° cb	35° AC	50

261
46
ON Floor

3 ⁰	3 ⁴	3 ³	29	2 ²	31	38	395	416
50	35	21	19		18	35° ground	35° LIP Drive	50 AC

422 419
462 362
Walk Walk

LT=EH

4
B/KAN
ST

RT=WHY-

60

1+35

16	19	21	12	14	13	18	27	27
50	35	23	22		19	20	35	50

1+00-

16	17	17	14	2	12	16	19	27
50	35	23	22		19	20	35	50

0+50

16	18	16	10	3	12	19	22	25
50	35	24	23		19	20	35	50

0+20- 31² RT=ϕ Fire Hydrant-

0+14- 23⁶ RT=ϕ 10" power pole # JP2791.

0+00 = Sky Line Shutter ST

13	13	10	16	08	16	18	24	21
150	100	50	35	22	35	50	100	150

Behngys to Hat box Dept

3+59-34⁵ RT=ϕ 4² X 4⁰ Drain inlet

-349 ±	092
345	345
I.F.	grate

3+35⁰⁷ = ϕ Shutter ST.

14	14	12	13	2	13	16	15	13
150	100	50	35		35	50	100	150

LT = E14

Byron ST

RT = W14 -

61

TP-Starting BM: 5.68 <2.75> 2.76 ✓

TP 7.88 8.44 7.34 0.56

TP 2.20 7.90 7.80 5.70

TP 7.65 13.50 Elev. from Direct Elev Rod Below 5.85

13' self Reading Rod used to turn Back to BM.

TP- elevation = 5.85

1483 25° sec taken 90° to L. 90°00' RT = Begin 5' Combination Curb + Walk

178 116 137 148 132 126 185
25° 25° 125 125 25° 25°
Cb 90T Cb

To show edge Ac.
This section taken on Diagonal.
L = 60° see sketch.

1470.35 - Byron intersects Ac Paving

170 114 133 148 145 126 185
288° 288° 144 144 288° 288°
Cb 90T Ac 90T Cb

24
35

Section taken 90° to L

1457-25° AT = Begin Combination 5' Cb + Walk

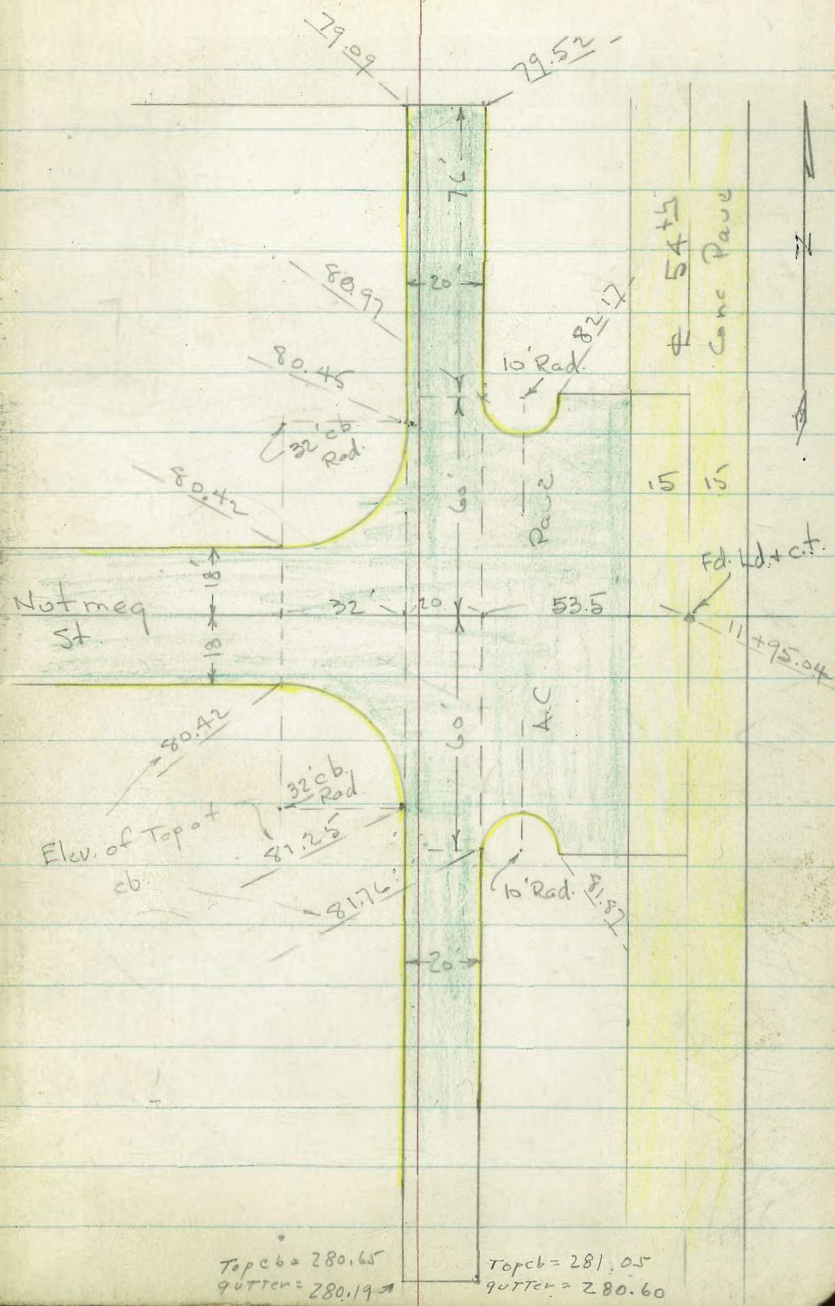
24 179 170 114 15 13 17 24
35° 30° 25° 25° 19 20 30T
Edge Cb 90T Walk

Check levels on curb - Returns at
54th + Notmeq.

Elev. of Top of cb. shown on sketch

200' fig. Not shown

See P. 63 for B-M



Lt # Rt.

Levels of 54th st. from Laurel
to Olive

7566 8-3-53 7.0

w.o. 25020

6~

78.70

5+60.95 = City Disk = # Blacton

78.35

+50

78.24

5~

77.90

4+79.27 = Disk = Sub. Line - P.E. 1534

77.69

+50

77.58

4~

77.22

+50

76.92

3~

76.36

+50

75.46

2~

74.16

+50

72.69

1+00

71.16

0+50

69.64

0+00 = City Disk - # 54th Laurel? and about # of

68.25

B.M. = B.P. in E side of Conc. - 54th on SL. Blacton 277.89

on Disk

200' fig. Not Noted

Actual Elev. Shown

± 54th Cont.

T.P. = spike in SW. Pole - Nutmeg. 282.25

10 + 85.5 - 40.2 Rt. = ± 9 Conc. Dr.

10 + 50

10 + 08 35.8' Rt. = ± 12' Conc. Dr.

10 + 01.13 = Disk = Sub. Line

10 + 00

+ 87 - 35.9' Rt. = ± 8' Conc. Dr.

+ 50

9 + 40 - 34.8' Rt. = ± 8' Conc. Dr.

9 ~

8 + 56 - 39.4' Rt. = ± 8' Conc. Dr.

8 + 50

8 + 07 - 39.4' Rt. = ± 8' Conc. Dr.

8 ~

7 + 54 - 40' Rt. = ± 8' Conc. Dr.

7 + 50

7 + 38 - 40' Rt. = ± 8' Conc. Dr.

7 ~

6 + 58 - 40' Rt. = ± 8' Conc. Dr.

6 + 50

Lt.

±

Rt.

Ly

83.14

40.2

81.27

81.82

35.8 = Dr.

81.00

81.71

35.9 = Dr.

80.58

81.17

34.8 = Dr.

80.25

80.56

39.4 = Dr.

80.01

80.05

39.4 = Dr.

79.77

79.96

40 = Dr.

79.36

79.67

40 = Dr.

79.08

79.11

40 = Dr.

78.99

54th Cont.

Lt.

✱

Rt

65

15 + 75.84 = City Disk = NL Olive ?

74.41

+50

75.13

15~

76.69

+50

78.28

14~

79.91

+50

81.13

13 + 31.03 = Disk - RE. 1534 = Sub. Line

81.39

13~

81.74

+50

82.11

12~

82.00

11 + 95.04 = Ld + car = ~~✱~~ Nutmeg - See P. 62

82.02

+50

81.77

11 + 00

81.59

X-sec West 1/2 of 54th Street from
Nly line Olive to Nly line Krenning
Street.

Wo # 21149.

8-10-53

C. Allen

D. Sisson

C. Powell.

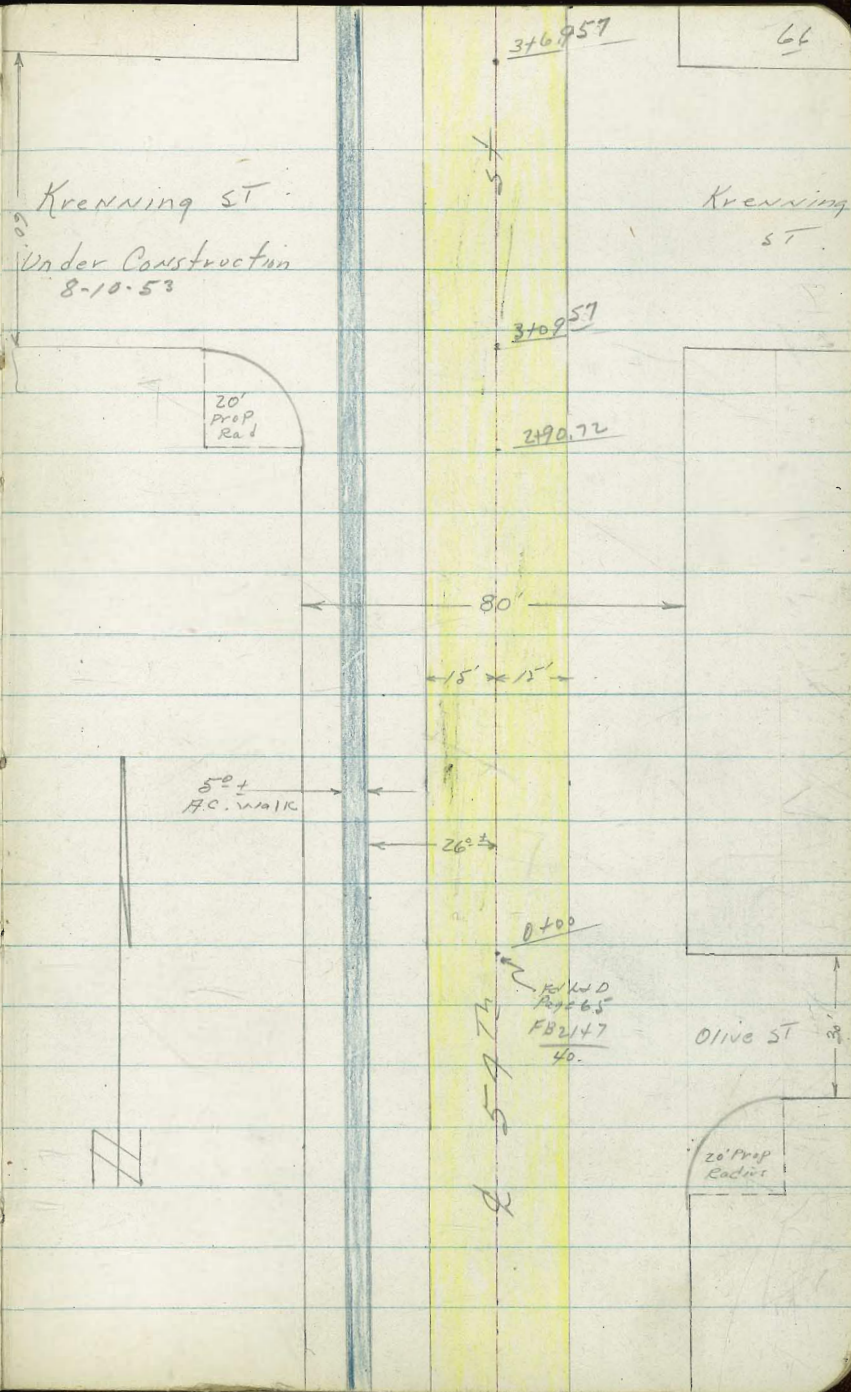
Ref. Page 62.

FB 2147-Page 40-

UNfile Map of Hazelwood Hts #1

Dwg # 5027-B.

Stationing derived from FB 2147-40
and 5027-B - questionable



0+74- 24 1/2 LT = 2 Water Meter

cypress hedge

0+74-49° LT = Fly end 4' wide 49' high East & West

0+50-88° LT = 2 Frame house

0+25

38 273.1
80
35 273.4
60

LT = W 1/4 46 272.26
24 1/2
ON CUT OFF
CAP
2 54 1/2 et = ely. 67

272.67
42 1/2 38 273.1
88° 60
Fluk
273.15
372 364 4 1/2
31 26 23
edge AC
WALK
272.5
44 1/2 272.72
400 272.87

296 273.91
31 26
edge AC
WALK
287 279.00
23 273.8
35 273.4
32 15°
EP
273.47
340 273.64
3 23

35 273.3
80
34 273.5
60

0+00 = Nly line Olive ST

30 273.9
42
1 1/2 275.0
38
2 1/2 274.76
31
Wly edge
AC WALK

274.73
2 1/4 27
26 23
ely edge
AC WALK
279.6
27 274.2
22
274.74
263 18°
Edge
Pave
274.91
246

0-32 1/2 - 24 1/2 LT = 2 Power pole (12") #170660

276.87

B.M. 2.46 276.87

274.41

LT + Disk 2 54 1/2 + Nly line Olive Page 65

X-sec w. 1/2 54th Olive St to Kenning St

LT = w 1/4

54th et cetera 68

1450

86	86	78	694	699	76	718	705
80	60	40	31	26	23	15°	
			edges AC			EP	
			WALK				

1425

75	75	617	613	67	640	627
80	60	31	26	23	15°	
		edges AC			EP	
		WALK				

1400-

60	59	500	501	59	565	556
80	60	31	26	23	15°	
		edges AC			EP	
		WALK				

0+79- 25° LT = 2 Water Meter (Stub does NOT service)

272.40
4 39
25°
ON COTAGE

272.0
4 9
80

272.8
4 1
60

Stationing from FB
0+77" = SkyLine Fire station site

401	395	42	52	495	486
31	26	24	23	15°	
edges AC				EP	
WALK					

276.87 x

X-sec w. 1/2 597th Olive to Krenning

LT = w 1/4

54

ct = 1/4

7°

~~88~~ 761.8
~~80~~
~~82~~ 762.1
~~60~~
~~75~~ 763.1
~~43~~
~~44~~ 766.2
~~35~~

Stationing from FB 2147-40 + 5027-B.
2+90.72 90° to Prop BC on West

266.18 440 434 44 53 508 476
 303 25 23 22 15 EP
 Edges AC
 Walk

2+75

261.7 82 80 762.6
 80 60 48 36 75 263.1 266.8

266.61 397 387 40 50 460 431
 31 26 25 23 15 EP
 Edges AC
 Walk

261.5 91 79 762.7
 80 60 55 37 76 263.0 266.9

2+50

266.99 364 346 34 43 380 357
 31 26 25 23 15 EP
 Edges AC
 Walk

270.58 x

X-sec w. 1/2 59th St. Olive to Krenning

LT = wly

54th St. to cly - 71

261.6 262.3 263.2
9[±] 8[±] 7[±]
80 60 34

3+6.9⁵⁷ = wly Line Krenning ST

269.0 269.15 269.38 263.9 263.79 264.08
6[±] 6[±] 6[±] 6[±] 6[±] 6[±]
33 30 25 21 15[±] 50
edges AC EP

3+39⁵⁷ 2 Krenning ST

261.3 262.7 263.1 263.9
9[±] 8[±] 7[±] 6[±]
80 60 35 34

264.44 264.78 264.8 264.3 264.38 264.44
6[±] 5[±] 5[±] 6[±] 6[±] 6[±]
30 25 24 21 15[±] 14
edges AC EP Walk

261.7 262.3 263.3 265.3
8[±] 8[±] 7[±] 5[±]
80 60 37 34

Stationing From FB 2147-40 + 5027-B

Krenning St to wly Now under const

3+09⁵⁷ (P) wly Line Krenning ST

265.61 265.74 265.8 264.7 265.08 265.24
4 27 4 8 4 5 5 5 5
30 35 23 22 15[±] 34
edges AC EP Walk

270.58

X-sec Wly $\frac{1}{2}$ 54th St - Nly line Olive
To Nly line Krenning St

LT = Wly

$\frac{1}{2}$ 54th St - Olive 72

TP₃ starting BM 2.33 <274.41>
274.40

TP₂ 8.65 276.73 2.50 268.08

3⁵ throat

33° } Rt. of 3⁵ x 2² grate on box type inlet
4+69° 33° } LT = of 15' type A-2 inlet

263.88
670 15-52 762
33° 33° 33°
Top IE grate
cb

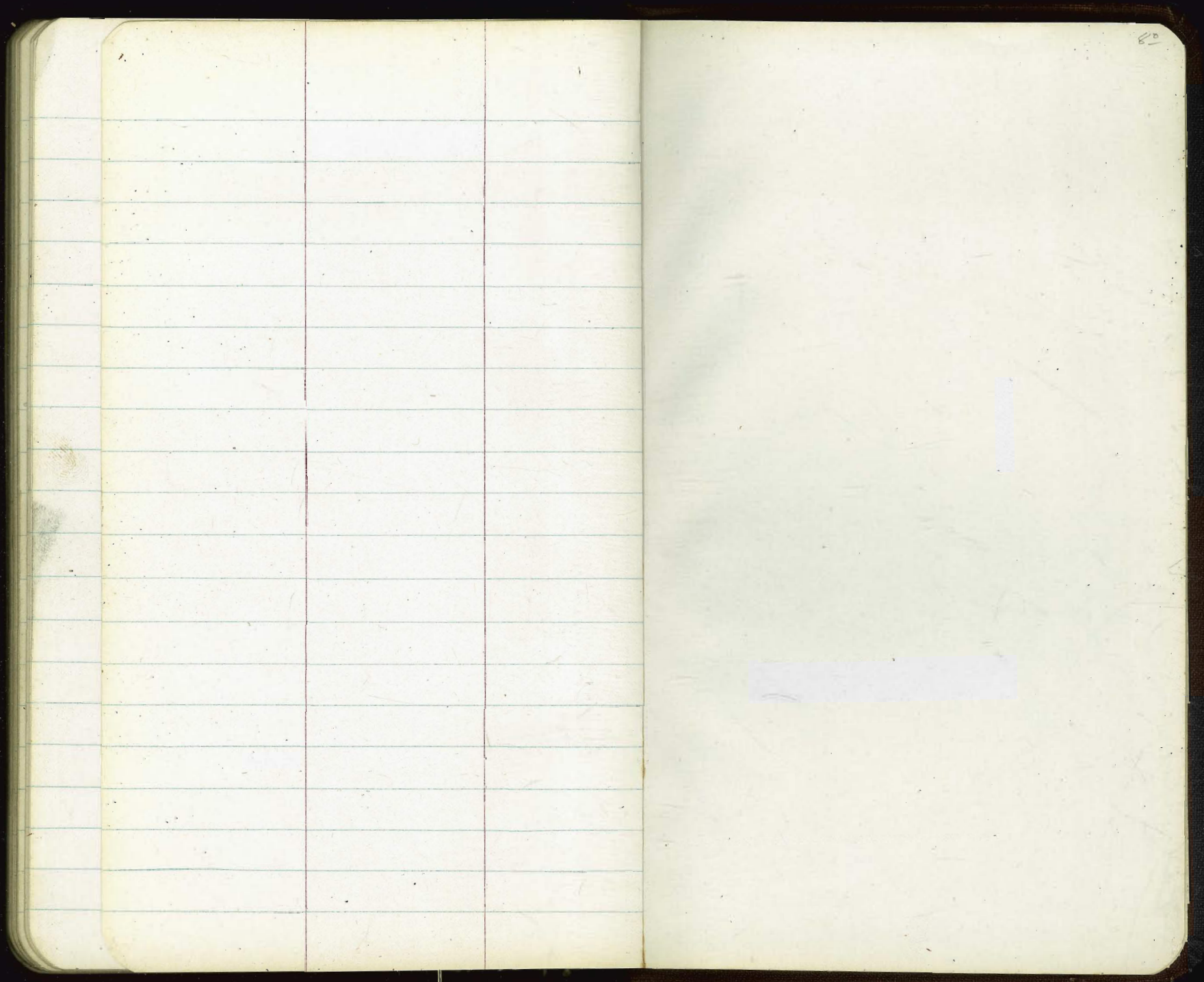
267.96
762 Mud+ 672
33° 33° 33°
grate IE Top
cb

4+2.3- 30⁹ LT = of 12" power pole # 170658-

INDEXED

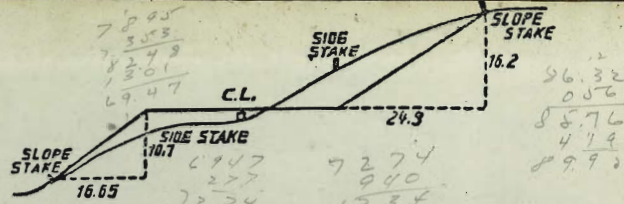
JCR
AUG 11 1953

270.58
π



315.08 NE. R. Myrtle Hill

7.97 = SW. 7' ct.



DISTANCES FROM SIDE STAKES FOR CROSS-SECTIONING.

SLOPE 1/4 TO 1. ROADWAY OF ANY WIDTH.

	0	.1	.2	.3	.4	.5	.6	.7	.8	.9	
0	0.00	0.15	0.30	0.45	0.60	0.75	0.90	1.05	1.20	1.35	0
1	1.50	1.65	1.80	1.95	2.10	2.25	2.40	2.55	2.70	2.85	1
2	3.00	3.15	3.30	3.45	3.60	3.75	3.90	4.05	4.20	4.35	2
3	4.50	4.65	4.80	4.95	5.10	5.25	5.40	5.55	5.70	5.85	3
4	6.00	6.15	6.30	6.45	6.60	6.75	6.90	7.05	7.20	7.35	4
5	7.50	7.65	7.80	7.95	8.10	8.25	8.40	8.55	8.70	8.85	5
6	9.00	9.15	9.30	9.45	9.60	9.75	9.90	10.05	10.20	10.35	6
7	10.50	10.65	10.80	10.95	11.10	11.25	11.40	11.55	11.70	11.85	7
8	12.00	12.15	12.30	12.45	12.60	12.75	12.90	13.05	13.20	13.35	8
9	13.50	13.65	13.80	13.95	14.10	14.25	14.40	14.55	14.70	14.85	9
10	15.00	15.15	15.30	15.45	15.60	15.75	15.90	16.05	16.20	16.35	10
11	16.50	16.65	16.80	16.95	17.10	17.25	17.40	17.55	17.70	17.85	11
12	18.00	18.15	18.30	18.45	18.60	18.75	18.90	19.05	19.20	19.35	12
13	19.50	19.65	19.80	19.95	20.10	20.25	20.40	20.55	20.70	20.85	13
14	21.00	21.15	21.30	21.45	21.60	21.75	21.90	22.05	22.20	22.35	14
15	22.50	22.65	22.80	22.95	23.10	23.25	23.40	23.55	23.70	23.85	15
16	24.00	24.15	24.30	24.45	24.60	24.75	24.90	25.05	25.20	25.35	16
17	25.50	25.65	25.80	25.95	26.10	26.25	26.40	26.55	26.70	26.85	17
18	27.00	27.15	27.30	27.45	27.60	27.75	27.90	28.05	28.20	28.35	18
19	28.50	28.65	28.80	28.95	29.10	29.25	29.40	29.55	29.70	29.85	19
20	30.00	30.15	30.30	30.45	30.60	30.75	30.90	31.05	31.20	31.35	20
21	31.50	31.65	31.80	31.95	32.10	32.25	32.40	32.55	32.70	32.85	21
22	33.00	33.15	33.30	33.45	33.60	33.75	33.90	34.05	34.20	34.35	22
23	34.50	34.65	34.80	34.95	35.10	35.25	35.40	35.55	35.70	35.85	23
24	36.00	36.15	36.30	36.45	36.60	36.75	36.90	37.05	37.20	37.35	24
25	37.50	37.65	37.80	37.95	38.10	38.25	38.40	38.55	38.70	38.85	25
26	39.00	39.15	39.30	39.45	39.60	39.75	39.90	40.05	40.20	40.35	26
27	40.50	40.65	40.80	40.95	41.10	41.25	41.40	41.55	41.70	41.85	27
28	42.00	42.15	42.30	42.45	42.60	42.75	42.90	43.05	43.20	43.35	28
29	43.50	43.65	43.80	43.95	44.10	44.25	44.40	44.55	44.70	44.85	29
30	45.00	45.15	45.30	45.45	45.60	45.75	45.90	46.05	46.20	46.35	30
31	46.50	46.65	46.80	46.95	47.10	47.25	47.40	47.55	47.70	47.85	31
32	48.00	48.15	48.30	48.45	48.60	48.75	48.90	49.05	49.20	49.35	32
33	49.50	49.65	49.80	49.95	50.10	50.25	50.40	50.55	50.70	50.85	33
34	51.00	51.15	51.30	51.45	51.60	51.75	51.90	52.05	52.20	52.35	34
35	52.50	52.65	52.80	52.95	53.10	53.25	53.40	53.55	53.70	53.85	35
36	54.00	54.15	54.30	54.45	54.60	54.75	54.90	55.05	55.20	55.35	36
37	55.50	55.65	55.80	55.95	56.10	56.25	56.40	56.55	56.70	56.85	37
38	57.00	57.15	57.30	57.45	57.60	57.75	57.90	58.05	58.20	58.35	38
39	58.50	58.65	58.80	58.95	59.10	59.25	59.40	59.55	59.70	59.85	39
40	60.00	60.15	60.30	60.45	60.60	60.75	60.90	61.05	61.20	61.35	40
41	61.50	61.65	61.80	61.95	62.10	62.25	62.40	62.55	62.70	62.85	41
42	63.00	63.15	63.30	63.45	63.60	63.75	63.90	64.05	64.20	64.35	42
43	64.50	64.65	64.80	64.95	65.10	65.25	65.40	65.55	65.70	65.85	43
44	66.00	66.15	66.30	66.45	66.60	66.75	66.90	67.05	67.20	67.35	44
45	67.50	67.65	67.80	67.95	68.10	68.25	68.40	68.55	68.70	68.85	45
46	69.00	69.15	69.30	69.45	69.60	69.75	69.90	70.05	70.20	70.35	46
47	70.50	70.65	70.80	70.95	71.10	71.20	71.40	71.55	71.70	71.85	47
48	72.00	72.15	72.30	72.45	72.60	72.75	72.90	73.05	73.20	73.35	48
49	73.50	73.65	73.80	73.95	74.10	74.25	74.40	74.55	74.70	74.85	49
50	75.00	75.15	75.30	75.45	75.60	75.75	75.90	76.05	76.20	76.35	50

THE NATIONAL BLANK BOOK COMPANY
 HOLYOKE MASSACHUSETTS
 NEW YORK CHICAGO BOSTON SAN FRANCISCO

75.01
 0.98
 142.08