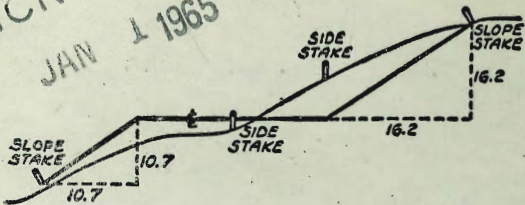






MICROFILMED  
 JAN 1 1965



DISTANCES FROM SIDE STAKES FOR CROSS-SECTIONING  
 SLOPE 1 TO 1. ROADWAY OF ANY WIDTH

	0	.1	.2	.3	.4	.5	.6	.7	.8	.9	
0	0.00	0.10	0.20	0.30	0.40	0.50	0.60	0.70	0.80	0.90	0
1	1.00	1.10	1.20	1.30	1.40	1.50	1.60	1.70	1.80	1.90	1
2	2.00	2.10	2.20	2.30	2.40	2.50	2.60	2.70	2.80	2.90	2
3	3.00	3.10	3.20	3.30	3.40	3.50	3.60	3.70	3.80	3.90	3
4	4.00	4.10	4.20	4.30	4.40	4.50	4.60	4.70	4.80	4.90	4
5	5.00	5.10	5.20	5.30	5.40	5.50	5.60	5.70	5.80	5.90	5
6	6.00	6.10	6.20	6.30	6.40	6.50	6.60	6.70	6.80	6.90	6
7	7.00	7.10	7.20	7.30	7.40	7.50	7.60	7.70	7.80	7.90	7
8	8.00	8.10	8.20	8.30	8.40	8.50	8.60	8.70	8.80	8.90	8
9	9.00	9.10	9.20	9.30	9.40	9.50	9.60	9.70	9.80	9.90	9
10	10.00	10.10	10.20	10.30	10.40	10.50	10.60	10.70	10.80	10.90	10
11	11.00	11.10	11.20	11.30	11.40	11.50	11.60	11.70	11.80	11.90	11
12	12.00	12.10	12.20	12.30	12.40	12.50	12.60	12.70	12.80	12.90	12
13	13.00	13.10	13.20	13.30	13.40	13.50	13.60	13.70	13.80	13.90	13
14	14.00	14.10	14.20	14.30	14.40	14.50	14.60	14.70	14.80	14.90	14
15	15.00	15.10	15.20	15.30	15.40	15.50	15.60	15.70	15.80	15.90	15
16	16.00	16.10	16.20	16.30	16.40	16.50	16.60	16.70	16.80	16.90	16
17	17.00	17.10	17.20	17.30	17.40	17.50	17.60	17.70	17.80	17.90	17
18	18.00	18.10	18.20	18.30	18.40	18.50	18.60	18.70	18.80	18.90	18
19	19.00	19.10	19.20	19.30	19.40	19.50	19.60	19.70	19.80	19.90	19
20	20.00	20.10	20.20	20.30	20.40	20.50	20.60	20.70	20.80	20.90	20
21	21.00	21.10	21.20	21.30	21.40	21.50	21.60	21.70	21.80	21.90	21
22	22.00	22.10	22.20	22.30	22.40	22.50	22.60	22.70	22.80	22.90	22
23	23.00	23.10	23.20	23.30	23.40	23.50	23.60	23.70	23.80	23.90	23
24	24.00	24.10	24.20	24.30	24.40	24.50	24.60	24.70	24.80	24.90	24
25	25.00	25.10	25.20	25.30	25.40	25.50	25.60	25.70	25.80	25.90	25
26	26.00	26.10	26.20	26.30	26.40	26.50	26.60	26.70	26.80	26.90	26
27	27.00	27.10	27.20	27.30	27.40	27.50	27.60	27.70	27.80	27.90	27
28	28.00	28.10	28.20	28.30	28.40	28.50	28.60	28.70	28.80	28.90	28
29	29.00	29.10	29.20	29.30	29.40	29.50	29.60	29.70	29.80	29.90	29
30	30.00	30.10	30.20	30.30	30.40	30.50	30.60	30.70	30.80	30.90	30
31	31.00	31.10	31.20	31.30	31.40	31.50	31.60	31.70	31.80	31.90	31
32	32.00	32.10	32.20	32.30	32.40	32.50	32.60	32.70	32.80	32.90	32
33	33.00	33.10	33.20	33.30	33.40	33.50	33.60	33.70	33.80	33.90	33
34	34.00	34.10	34.20	34.30	34.40	34.50	34.60	34.70	34.80	34.90	34
35	35.00	35.10	35.20	35.30	35.40	35.50	35.60	35.70	35.80	35.90	35
36	36.00	36.10	36.20	36.30	36.40	36.50	36.60	36.70	36.80	36.90	36
37	37.00	37.10	37.20	37.30	37.40	37.50	37.60	37.70	37.80	37.90	37
38	38.00	38.10	38.20	38.30	38.40	38.50	38.60	38.70	38.80	38.90	38
39	39.00	39.10	39.20	39.30	39.40	39.50	39.60	39.70	39.80	39.90	39
40	40.00	40.10	40.20	40.30	40.40	40.50	40.60	40.70	40.80	40.90	40
41	41.00	41.10	41.20	41.30	41.40	41.50	41.60	41.70	41.80	41.90	41
42	42.00	42.10	42.20	42.30	42.40	42.50	42.60	42.70	42.80	42.90	42
43	43.00	43.10	43.20	43.30	43.40	43.50	43.60	43.70	43.80	43.90	43
44	44.00	44.10	44.20	44.30	44.40	44.50	44.60	44.70	44.80	44.90	44
45	45.00	45.10	45.20	45.30	45.40	45.50	45.60	45.70	45.80	45.90	45
46	46.00	46.10	46.20	46.30	46.40	46.50	46.60	46.70	46.80	46.90	46
47	47.00	47.10	47.20	47.30	47.40	47.50	47.60	47.70	47.80	47.90	47
48	48.00	48.10	48.20	48.30	48.40	48.50	48.60	48.70	48.80	48.90	48
49	49.00	49.10	49.20	49.30	49.40	49.50	49.60	49.70	49.80	49.90	49
50	50.00	50.10	50.20	50.30	50.40	50.50	50.60	50.70	50.80	50.90	50

Distance of slope stake from side or shoulder stake for any width roadway, slope 1 to 1. If ground is nearly level, the cut or fill at side stake is located by the double entry method in left column and top row. The number in body of table in same row and column gives distance from side stake to slope stake. If ground is not level estimate the difference in elevation between the side stake and slope stake, lower target by this amount if cut, elevate if fill. Add this amount to cut or fill and find distance in table. Set up rod at this point, and line of sight should cut target. If it does not make the slight adjustment necessary.



TABLE XIII—CORRECTIONS FOR TANGENTS AND EXTERNALS

These corrections are to be added to the approximate values, found by dividing the tangent, or external, for a 1° curve (Table VIII) by the degree of curve, in order to obtain the true tangents, or externals. Intermediate values may be obtained by interpolation.

FOR TANGENTS ADD

Central Angle	DEGREE OF CURVE													
	5°	10°	15°	20°	25°	30°	35°	40°	45°	50°	55°	60°	65°	70°
10°	.03	.06	.09	.13	.16	.19	.22	.25	.28	.31	.34	.38	.42	.46
15°	.04	.10	.14	.19	.24	.29	.34	.39	.45	.51	.53	.58	.63	.68
20°	.06	.13	.19	.26	.32	.39	.45	.51	.58	.65	.72	.79	.84	.90
25°	.08	.16	.24	.33	.40	.49	.58	.67	.75	.83	.90	.99	1.06	1.14
30°	.10	.19	.29	.39	.49	.59	.69	.79	.89	.99	1.09	1.20	1.29	1.39
35°	.11	.22	.34	.47	.58	.69	.79	.81	.92	1.04	1.29	1.42	1.54	1.66
40°	.13	.26	.40	.53	.67	.80	.93	1.06	1.20	1.34	1.49	1.64	1.79	1.94
45°	.15	.30	.44	.60	.76	.91	1.06	1.21	1.37	1.52	1.70	1.87	2.04	2.21
50°	.17	.34	.51	.68	.85	1.02	1.19	1.36	1.54	1.72	1.91	2.10	2.29	2.48
55°	.19	.38	.57	.76	.95	1.14	1.32	1.52	1.72	1.92	2.14	2.35	2.56	2.77
60°	.21	.42	.63	.84	1.05	1.27	1.49	1.71	1.94	2.17	2.38	2.60	2.83	3.07
65°	.23	.46	.69	.93	1.16	1.40	1.64	1.88	2.13	2.38	2.63	2.88	3.13	3.39
70°	.25	.51	.76	1.02	1.28	1.54	1.80	2.06	2.33	2.60	2.88	3.16	3.44	3.72
75°	.27	.56	.83	1.12	1.40	1.69	1.98	2.27	2.57	2.87	3.16	3.47	3.78	4.09
80°	.30	.61	.91	1.22	1.53	1.84	2.15	2.46	2.78	3.10	3.44	3.78	4.12	4.46
85°	.33	.66	1.00	1.33	1.68	2.02	2.36	2.70	3.05	3.40	3.77	4.14	4.55	4.89
90°	.36	.72	1.09	1.45	1.83	2.20	2.57	2.94	3.32	3.70	4.10	4.50	4.91	5.32
95°	.39	.79	1.19	1.55	2.00	2.40	2.80	3.20	3.61	4.02	4.40	4.98	5.38	5.83
100°	.43	.86	1.30	1.74	2.18	2.62	3.06	3.50	3.95	4.40	4.88	5.37	5.85	6.34
110°	.51	1.03	1.56	2.08	2.61	3.14	3.67	4.21	4.76	5.31	5.86	6.43	7.01	7.60
120°	.62	1.25	1.93	2.52	3.16	3.81	4.45	5.11	5.77	6.44	7.12	7.80	8.50	9.22

FOR EXTERNALS ADD

Central Angle	DEGREE OF CURVE													
	5°	10°	15°	20°	25°	30°	35°	40°	45°	50°	55°	60°	65°	70°
10°	.001	.003	.004	.006	.007	.008	.009	.011	.012	.014	.015	.017	.018	.020
15°	.003	.007	.010	.014	.018	.023	.027	.029	.032	.035	.039	.043	.047	.051
20°	.006	.011	.017	.022	.028	.034	.038	.045	.051	.057	.063	.070	.076	.083
25°	.009	.018	.027	.036	.046	.056	.065	.074	.083	.093	.106	.120	.127	.135
30°	.013	.025	.038	.051	.065	.078	.090	.103	.116	.129	.149	.170	.179	.188
35°	.018	.035	.054	.072	.086	.109	.131	.153	.175	.197	.213	.230	.247	.264
40°	.023	.046	.070	.093	.117	.141	.172	.203	.234	.265	.277	.290	.315	.341
45°	.030	.060	.093	.119	.153	.184	.216	.254	.289	.325	.351	.378	.411	.445
50°	.037	.075	.116	.151	.189	.227	.266	.305	.345	.384	.425	.467	.508	.550
55°	.046	.093	.142	.188	.236	.283	.332	.381	.420	.479	.530	.582	.641	.700
60°	.056	.112	.168	.225	.283	.340	.398	.457	.516	.575	.636	.697	.774	.851
65°	.067	.135	.204	.273	.343	.412	.483	.554	.625	.697	.771	.845	.922	1.01
70°	.080	.159	.240	.321	.403	.485	.568	.652	.735	.819	.906	.994	1.08	1.17
75°	.095	.182	.266	.353	.440	.528	.618	.707	.797	.887	1.07	1.18	1.29	1.39
80°	.110	.220	.332	.445	.558	.671	.787	.903	1.02	1.13	1.25	1.38	1.50	1.62
85°	.128	.259	.391	.524	.657	.790	.926	1.06	1.20	1.34	1.47	1.62	1.76	1.91
90°	.149	.299	.450	.603	.756	.910	1.07	1.22	1.38	1.54	1.70	1.87	2.03	2.20
95°	.174	.350	.522	.706	.885	1.06	1.25	1.43	1.62	1.80	1.99	2.18	2.38	2.58
100°	.200	.401	.604	.809	1.01	1.22	1.43	1.64	1.85	2.06	2.28	2.50	2.73	2.96
110°	.268	.536	.806	1.08	1.35	1.63	1.91	2.20	2.48	2.76	3.05	3.35	3.66	3.96
120°	.360	.721	1.08	1.45	1.82	2.19	2.57	2.95	3.33	3.72	4.11	4.50	4.91	5.32

INDEX

Pg  
2-8

Alley Blk 4, Pac. Beach Vista  
 X-Sec Alley Blk 51 - City Hts. 9-10  
 X-Sec " Blks 95 & 97 E.W. Morse's 11-22  
 X-Sec Alley Blk 116 - Morena sub Div 24-27.  
 X-SECT. ALLEY BLK 6 CLIFTONS ADDIT. - CITY HTS 28



1  
All right - P.M. Beach Vista 2-8



Alley BIK. 4 Pac. Beach Vista

Sketch - page 8

Sammermeyer

Boyer  
Altman

4-4-52  
WD 25020

INDEXED  
Low  
APR. 7 1952

T.P. 7.71 143.85 1.42 136.14

0+50

1372  
1386  
1359  
136.0  
136.6  
1370  
+ 1.6 + 1.0 1.7 1.6 1.0 0.6  
20 14 75 75 10  
1346.5  
1347

0+26<sup>e</sup> - 8<sup>e</sup> Rt. = end conc. ramp.

2.91  
8<sup>e</sup>  
Ramp  
1346.6  
1347  
2.90  
floor

0+15 - 8<sup>e</sup> Rt. = start conc. ramp to Gar.

conc. floor.

1342.1  
3.35  
8<sup>e</sup>  
Ramp  
1346.6  
2.90  
Gar. floor

0+10 11<sup>e</sup> End conc. wall

1329  
47  
11<sup>e</sup>  
B.W.  
1335  
1338  
11<sup>e</sup>

B.W. = base of wall

0+00 11<sup>e</sup> Lt. = start 3' high conc. wall

1326  
1.1 5.0 4.1 4.3 5.1 5.2 3.5 3.7  
11<sup>e</sup> 11<sup>e</sup> 7<sup>e</sup> 7<sup>e</sup> 13 15  
B.W.

0-19 = Fly edge A.C. Pave. on Mission Blvd.

13454  
3.02 5.20 5.51 5.94 8.10  
57<sup>e</sup> 7<sup>e</sup> 7<sup>e</sup> 7<sup>e</sup> 57<sup>e</sup>  
13205  
137.56  
13162  
13446

5.41 137.56 1.31 132.15

Set B.M. on # Nail at Sta. 0-20  
E. line Mission Blvd  
S.E. Mon. S. 7' line Archer

10.18 133.46 - 123.28



3+00

141.3	140.9	140.9	140.6	140.4
2.6	3.0	3.0	3.3	3.5
10	7.5		7.5	10

\* 2+50 7<sup>1</sup> Lt. end 5' high wall  
 Conc. block

1381.5	1381.7	1381.8	1381.8	1381.4	1381.9	1381.3
5.4	4.2	4.1	4.1	4.5	6.0	6.6
7.2	7.2	7.5		7.5	12	20
B.W.						

2+12 7<sup>5</sup> Lt. thru Conc. wall  
 = 13' wide conc drive

1381.81  
 2.04  
 7.5  
 drive

also start conc. block wall 5' high  
 2+00 7<sup>5</sup> Lt. = End Conc. block wall

135.2	139.4	139.2	139.2	139.4	137.4	137.4
8.7	4.5	4.7	4.7	4.5	6.1	6.5
7.5	7.5	7.5		7.5	12	20
B.W.						

1+89- 7<sup>8</sup> Lt. wall  
 = 12' wide opening thru

1381.75  
 4.90  
 7.8  
 in conc footing

1+50

1376  
 6.3  
 7.5  
 137.6  
 6.3  
 137.7  
 6.2  
 7.5

1+00 9<sup>2</sup> Lt. = start Conc. wall 7<sup>5</sup> high

136.3	137.7	137.1	137.3	136.8	136.5
7.6	6.2	6.8	6.6	7.1	7.4
9.2	9.2	7.5		7.5	10
B.W.					

143.85







T.P. on 1/2 P.O.T. 8+49<sup>24</sup>

6.77 164.33 1.52 157.56  
West front Conc. Floor.  
8+48<sup>24</sup> 8<sup>7</sup> Rt. = N. Wly. Cor. double Cor.

8

8+00

157.5  
1.5  
15  
157.3  
1.8  
75  
156.6  
2.5  
156.2  
2.9  
75

157.7  
1.4  
82  
Ond.  
157.49  
1.59  
18  
2 down way  
on floor

7+50

156.5  
2.6  
75  
155.7  
3.4  
155.1  
4.0  
75

B.M. Nail in pole H  
8' Rt. sta 7+22<sup>t</sup>

3.32 155.76

155.4  
3.7  
20  
155.2  
3.9  
10  
154.6  
4.5  
75  
153.7  
5.4  
153.3  
5.8  
75  
153.0  
6.1  
10  
152.8  
6.3  
20

7+00

6+75 8<sup>2</sup> Rt. = 6' wide N+S. wall  
Conc. Block

152.8  
7.3  
82  
G.  
149.9  
9.2  
82  
B.W.  
152.7  
6.4  
82  
T.W.

6+50

153.4  
5.7  
75  
152.3  
6.8  
152.3  
6.8  
6  
149.7  
7.4  
75  
149.6  
9.5  
10

159.08



T.P. 5.81 168.36 1.78 162.55

10450

162.7  
1.6 2.0 2.2  
75 75

10400

160.7 160.5 160.8 159.7 153.8  
3.6 3.8 3.5 4.6 10.5  
75 75 14 25  
T.B. W

9491 11<sup>2</sup> Lt. = end house  
in front of door.

160.79 160.52 160.2

9487 8<sup>2</sup> Lt. = start 2<sup>5</sup> wide conc. slab

3.54 3.81 4.1  
113 82 88

9473 11<sup>2</sup> Lt. = start frame house doorway slab

159.4 159.0 158.7 156.0 151.7  
4.9 5.3 5.6 8.3 12.6  
75 75 16 26  
T.B. W

9450 W =  $\phi$  wash  
T.B. = top of bank at wash

159.5  
158.8  
115  
floor

9435 11<sup>5</sup> Lt. =  $\phi$  double Cav. dirt floor

9400 35' Mt. = Nly bank of wash

158.0 157.7 157.3 152.1  
6.3 6.6 7.0 7.2  
75 75 35

8450

158.0 157.6 157.5 6.8  
6.3 6.7 75

164.33



168.59  $\frac{1662}{64}$

SW. 7' Mon. Cass  
& Van Nuy 5.53 168.60

11+9<sup>+</sup> =  $\pm$  Cass

T.P. 6.94 174.13 1.17 167.19

11+37

11+27 = Cross  $\pm$  Wash

11+19 = wly Cass.

11+00 20' Rx. = B.C. Lt. on  $\pm$  Wash

10+80

10+62 - 12<sup>2</sup> Lt. =  $\phi$  Sky side Frame House

Approx. 25' x 25'

169.3 170.8 169.4

4.8 3.3 4.7

50 50

174.13

169.4 160.1 160.9

8.0 8.3 7.5

75 75

160.9 160.4 160.1 168.4

7.5 8.0 8.3 0.0

40 W 20 40

163.7 160.4 160.1 162.2 157.8 168.4

4.7 8.0 8.3 8.2 8.6 0.0

50 75 75 75 11 55

W

1616 1605 1600 154.9

6.8 7.9 8.4 9.5

75 75 20

162.3 162.9 162.6 164.8 157.3

5.1 5.5 5.8 7.6 11.1

75 75 15 21

7.8 W

163.1

5.3

12<sup>2</sup>

Ord. at house

168.36







• Add. Sections in Alley - Blk - 51 - City Hs.

See B. 1735 - P. 24 - + B. 1864 - P. 41

Also Late check probably in 1864

These Sections only over Newly Dumped dirt in Alley from Wightman st. Paving.

See Sketch - 1735 - Fd. Recent Sta Nails in.

0+75

39.3 39.0 39.3 41.0  
10 5 10

0+50

Plotted  
4/29/52  
H. Mills

39.9 40.3 40.2 42.3  
10 5 10

0+31

40.6 41.1 41.9 43.4  
10 9 10

0+15 - New Dirt

41.0 41.7 42.1 43.8  
10 9 10

0+00 = N.L. Wightman = edge of C pave

41.63 41.38 41.37 41.81 42.38  
Top 10 10 Top  
cb. gut. gut.

0-14 - Shows New Pave - Part of Ret. gone on

40.06 41.39 40.87 41.26 41.55 42.23  
30 10 10 10 30  
Pave Top gut. Pave

B.M.

336.62 N.W.

B.P. 41st + Wightman  
Actual Elev. shown.

Lt.

E

Rt.

9

INDEXED  
Law  
MAY 7 1952



Lt.

±

Rt.

10

2+75 - should be same as last sections

2+63 = old ground.

42.2 40.6 38.5 36.0  
10 10 20 = New fill

2+534 - 3' Rt. = ± St. Drain M.H.

41.32 = Top.  
3

2+50

40.1 38.7 39.2 38.7 36.2  
10 5 10 20

2+25

37.3 40.0 37.9 35.4  
10 10 20  
By fence

2+00 = on Rough Dumped piles

35.9 39.4 39.8 38.1 36.4  
25 = Top 10 10 20

1+70

31.6 32.9 36.3 36.5 36.7 37.2  
15 10 4 10 15

1+50

31.0 33.5 36.4 36.6 36.7  
14 10 5 10

1+00

37.4 38.0 37.6 37.6 39.0  
10 7 5 10







Alley BLK 95

TP, 6<sup>44</sup> 200<sup>30</sup> 4<sup>32</sup> 193<sup>86</sup>

0752 9° Lt SW cor garage dirt floor

0750

0739 8° Rt E 16" Power Pole # PA 3010

0734 7° Rt Begin con apron before Bldg used as house

0736 9° Rt End bath picket fence

0734 8° Rt E 4" Pepper tree

0717 8° Rt E Dead man

0700 10° Rt Begin 6' bath fence

0700 end con paving with Fresh cold lay top

0-10 Elyob 30th St

BM 360 19868

19508  
S.R.P. 1  
30th +  
Broadway

Lt - North

Rt - South

12

194.0

42

92  
apron

194.4

194.0

193.6

193.64

193.78

42

5-L

5-04

420

25

10

73

98

apron

floor

193.55

193.72

5-13

426

75

92

apron

floor

193.48

193.23

192.73

192.82

520

5-45

5-23

5-86

94

94

92

92

193.79

193.26

193.28

192.79

192.56

192.27

192.77

191.30

190.79

429

5-42

5-40

5-89

6-L

6-41

5-91

8-28

7-29

30

30

10

10

10

10

10

30

30

5-1

5-1

5-1

5-1

5-1

5-1

5-1

5-1

19868



1750

1730 9<sup>E</sup> Lt End fence Begin garage dirt floor

1725 9<sup>E</sup> Rt NW cor Bldg

1725 9<sup>0</sup> Rt End fence on top con base

1708 8<sup>E</sup> Rt Begin 5' fence, on top of con base

1705 8<sup>2</sup> Rt End cor apron

1700

0779 7<sup>2</sup> Rt 9<sup>2</sup> Rt Bldg jogs Deck

0771 9<sup>5</sup> Lt Begin 4' picket fence

0771 9<sup>6</sup> Lt SE cor garage

Lt=North

195.3  
5<sup>0</sup>  
10

94.7  
5<sup>6</sup>  
10

Rt=South  
194.9  
5<sup>4</sup>  
10

13

195.2

5<sup>2</sup>  
9<sup>2</sup>  
Floor

194.3

194.58

195.1

5<sup>2</sup>  
Floor

6<sup>0</sup>  
9<sup>0</sup>  
Footing Top

194.2

194.77

6<sup>1</sup>  
8<sup>5</sup>  
Footing Top

193.94

6<sup>36</sup>  
8<sup>2</sup>

194.6

194.5

194.0

193.96

194.04

5<sup>2</sup>  
8<sup>5</sup>

5<sup>8</sup>  
10

6<sup>3</sup>  
8<sup>2</sup>

6<sup>34</sup>  
10

193.82

194.00

6<sup>48</sup>

7<sup>2</sup>

apron

6<sup>30</sup>

7<sup>2</sup>

floor

200.30



3700 P.O.T.  
TP<sub>2</sub>

12'

196<sup>39</sup>

562

194<sup>68</sup>

3700 9<sup>1</sup> RT end garages cov Floor + apron

2770 9<sup>1</sup> RT Begin 3 garages cov Floor + apron

2770 9<sup>2</sup> RT End Fence

2762 9<sup>2</sup> RT 14' Power Pole # JPA 3042

2750

2760 9<sup>5</sup> LT End 4' Board Fence

1787 9<sup>2</sup> RT Begin 6' Board Fence

1763 9<sup>2</sup> RT NE cor Bldg.

1761 9<sup>8</sup> LT end garage Begin 4' Board Fence

1754 8<sup>4</sup> RT 14' Power Pole # none

LT = North

2

RT = South

14

195.6

195.2

195.1

195.16

195.17

42  
25

51  
10

52  
15

54  
9L  
apron

53  
10  
Floor

195.27

195.30

503  
9L  
apron

500  
92  
Floor

196.0

195.8

195.6

195.8

43  
25

48  
10

42  
10

45  
10

196.5

195.7

195.3

195.4

194.5

38  
25

46  
10

50  
10

42  
10

50  
25

200<sup>30</sup>



TP3      244      186 <sup>86</sup>      1192      184 <sup>42</sup>

4450

4405 10<sup>2</sup> Rt E single garage dirt floor

4400 9<sup>2</sup> Rt E deckman

3486 11<sup>2</sup> Lt E double garage con floor + apron

3471 9<sup>2</sup> Rt E 16" Power Pole # PA 3060

3457 9<sup>2</sup> Rt E garage con floor + apron

3450

3443 E SMH

185.3      185.4      185.2  
 11<sup>L</sup>      11<sup>e</sup>      11<sup>R</sup>  
 10      10      10

189.4  
 7<sup>e</sup>  
 10<sup>R</sup>  
 Floor

189.91      190.2      189.4  
 6<sup>e</sup>      6<sup>R</sup>      7<sup>e</sup>  
 10      10

192.25      191.97  
 4<sup>L</sup>      4<sup>R</sup>  
 15<sup>e</sup>      11<sup>L</sup>  
 Floor      Apron

194.12      194.40  
 2<sup>22</sup>      1<sup>22</sup>  
 9<sup>e</sup>      10<sup>e</sup>  
 Apron      Floor

194.5      194.6      194.3      194.4  
 12      18      2<sup>L</sup>      2<sup>R</sup>  
 20      10      10

2<sup>14</sup>  
 rim

T 196 <sup>32</sup>



Lt=North

E

Rt=South

76

5492 82 Rt E 14" Power Pole PA 3098

92 Rt E 8" Pepper tree

5491 82 Rt E 8" Pepper tree

5481 84 Rt E 6" Pepper tree

5475

5473 82 Rt E 5" Pepper Tree

5467 90 Rt E Dead man

TP4 036 176.08 1114 175.72

5450

5425

5400

4492 85 Rt E Power Pole # P33278T

4484 142 Rt E single garage dirt floor

4470 112 Lt E single garage con floor + apron

163.6	166.6	167.8	168.7	169.0
125	95	83	74	72
15	10		10	20

171.8	174.1	175.8	176.08	176.1	176.3
152	122	112	108	105	
15	10		10	15	

176.5	177.8	180.2	180.0	179.7
104	94	62	62	72
20	10		10	20

179.0	180.5	182.9	182.8	182.6	182.3
72	64	40	42	43	46
14	10	4		10	25

184.34	184.23	183.8
252	263	32
140	114	143
floor	apron	
		186.86



Lt=North

S

Rt=South

19

BM starting

3<sup>58</sup>195<sup>06</sup>195<sup>08</sup>TP<sub>9</sub>5<sup>31</sup>198<sup>64</sup>6<sup>22</sup>193<sup>33</sup>TP<sub>9</sub>12<sup>01</sup>200<sup>25</sup>0<sup>70</sup>188<sup>24</sup>TP<sub>7</sub>112<sup>20</sup>188<sup>94</sup>0<sup>43</sup>176<sup>24</sup>TP<sub>6</sub>13<sup>21</sup>176<sup>67</sup>0<sup>16</sup>163<sup>76</sup>

9° RT &amp; 12' RT &amp; 10' RT # P 80854T

6+40<sup>71</sup> E Line 31<sup>54</sup> ST6+20<sup>71</sup> W Line 31<sup>54</sup> ST

6+06 9° RT &amp; deadman

6+00 9° RT &amp; 8" Pepper Tree

TP<sub>5</sub>0<sup>25</sup>163<sup>62</sup>12<sup>71</sup>163<sup>37</sup>

146.12  
148.8  
150.0  
153.1  
156.6  
17<sup>5</sup> 14<sup>2</sup> 13<sup>6</sup> 10<sup>5</sup> 7<sup>0</sup>  
20 10 10 35

151.3  
153.7  
154.9  
155.87  
157.42  
160.3  
12<sup>3</sup> 9<sup>2</sup> 8<sup>2</sup> 7<sup>25</sup> 6<sup>3</sup> 3<sup>3</sup>  
25 109 446 10 25

154.8  
158.1  
160.1  
161.1  
162.8  
163.6  
8<sup>8</sup> 5<sup>5</sup> 3<sup>5</sup> 2<sup>5</sup> 0<sup>5</sup> 0<sup>0</sup>  
15 10 8 10 25

T 163<sup>62</sup>



Alley BIK 97

Lt=North

⊕

Rt=South

18

1+12-9<sup>2</sup> RT = £ 1" Peach Tree.

1+00-10<sup>2</sup> RT begin 6" cone wall.

0+75

0+50

0+30

0+05-11<sup>4</sup> RT & single car garage dirt floor

0+00 - Fly Line 30<sup>th</sup> ST

0-10 Fly curb 30<sup>th</sup> ST

TP<sub>2</sub> 3.17 165.25 12<sup>06</sup> 162<sup>64</sup>

TP<sub>1</sub> 0<sup>12</sup> 174<sup>67</sup> 13<sup>30</sup> 174<sup>55</sup>

BM 0<sup>22</sup> 187<sup>85</sup> 187<sup>63</sup> NWBP 30<sup>th</sup> ST

160.0	159.3	158.1	156.2	155.58	158.62	159.3
58	65	72	96	102 <sup>00</sup>	76	105
20	10		10	10 <sup>2</sup> Footing	10 <sup>2</sup> Topwall	15

159.6	159.1	158.8	154.8	150.7
62	62	20	110	150
20	10		10	15

159.9	159.8	157.1	154.9	150.9
59	60	87	102	142
15	10		10	15

159.8	159.9	159.5	159.6	158.7	155.1
60	52	62	6.2	71	10
20	10		80	10	15

162.28	161.68	160.55	160.20	159.77	159.8
350	4.10	523	458	601	11.4
50	50	102	102	70.1	dirt floor
		GUT	GUT	592	592
		160.33	159.86	159.49	159.26
		5.45	592	629	6.52
		10	10	6.10	6.10
		Topcb.	GUT	10.0	13.0
				GUT	12.0
					Topcb.
					50
					50
					159.20

163.78 A



2450 - 6<sup>o</sup> RT & 10" Tel pole #A.3036

2404 - 9<sup>o</sup> RT - end 5' high Lath fence

TP<sub>3</sub> 4.16 164.727 5.22 - 160.56

2400

1496 - 10<sup>o</sup> LT & Single Garage Dirt Floor

1450

1449 - 7<sup>o</sup> RT & Power Pole (over) # PA 3020

1434 - 9<sup>o</sup> RT begin 5' high Lath fence

1434 - 9<sup>o</sup> RT - End Cone Wall

Lt = North

Rt = South

19

162.5	162.3	161.6	161.0	160.5	160.0
$\frac{22}{10}$	$\frac{24}{4}$	$\frac{31}{4}$	$\frac{32}{10}$	$\frac{42}{10}$	$\frac{42}{15}$

164.727 T

161.2	160.9	160.2
$\frac{46}{10}$	$\frac{42}{10}$	$\frac{56}{10}$

161.2  
 $\frac{46}{10}$   
 Dirt floor

161.7	160.8	160.0	159.4	158.8
$\frac{42}{20}$	$\frac{50}{10}$	$\frac{58}{10}$	$\frac{64}{10}$	$\frac{70}{15}$

157.1	159.00
$\frac{82}{93}$	$\frac{678}{93}$
Foot.	Top

165.78 T



Lt=North

RT=South

20

4400

160.7	160.2	159.4	158.8	158.5	157.0
$\frac{40}{15}$	$\frac{45}{10}$	$\frac{53}{5}$	$\frac{59}{5}$	$\frac{62}{10}$	$\frac{72}{20}$

159.6	161.43
$\frac{51}{11}$	$\frac{329}{110}$
Foot.	Top.

3475-11<sup>o</sup> RT=end 6" Conc Wall-

2'x2" RW Hub Pat.

3450. 9<sup>3</sup> RT & 9" power pole #A3030

163.9	161.6	161.5	161.3	161.0	156.7
$\frac{08}{10}$	$\frac{32}{3}$	$\frac{357}{Hub}$	$\frac{34}{\&cd.}$	$\frac{32}{10}$	$\frac{80}{1R}$

161.12

360  
Rim

3430 - & Manhole

159.6	161.33
$\frac{51}{11}$	$\frac{339}{112}$
Footring	Topwall

3404-11<sup>o</sup> RT begin 6" Conc Wall - 6' board fence in<sup>Top</sup>

162.9	161.3	159.8	159.3
$\frac{20}{100}$	$\frac{34}{10}$	$\frac{49}{10}$	$\frac{54}{15}$

3400

164.72 T



5700 - 8<sup>6</sup> @ 8" Tel pole #A3080

4495 - 29<sup>4</sup> LT = @ single Car Garage - Dirt Floor

4461 - 28<sup>2</sup> LT = @ single Garage conc floor

4454 - 10<sup>0</sup> RT = @ 8" Tree stump

4450

4440 - 8<sup>3</sup> RT @ 4' Conc sidewalk entrance

4439 - 28<sup>0</sup> = LT = @ single garage, Conc. floor

4425

NO APRON

4412 - 28<sup>2</sup> LT = @ single Garage Conc floor

LT=North

RT=South

21

156.4	155.8	155.1	155.1	155.1	153.1
8 <sup>3</sup>	8 <sup>2</sup>	9 <sup>6</sup>	9 <sup>6</sup>	9 <sup>6</sup>	11 <sup>6</sup>
20	10	10	15	18	

157.1

76

29<sup>4</sup>

Dirt Floor

158.66

606

28<sup>2</sup>

Floor

(conc)

157.0	156.2	155.4	155.0
7 <sup>2</sup>	8 <sup>5</sup>	9 <sup>3</sup>	9 <sup>2</sup>
15	10 <sup>2</sup>		10 <sup>0</sup>

154.52	154.90
10 <sup>20</sup>	9 <sup>82</sup>
8 <sup>3</sup>	10 <sup>8</sup>
Walk	Floor

159.2	157.8	157.1	159.90	156.3	155.6	151.9
5 <sup>5</sup>	6 <sup>9</sup>	7 <sup>6</sup>	482	8 <sup>4</sup>	9 <sup>1</sup>	12 <sup>8</sup>
20	10	8 <sup>0</sup>	78 <sup>2</sup>		5 <sup>0</sup>	10 <sup>0</sup>
			FLOOR			
			161.28			
			344			
			282			
			FLOOR			

164.72 X



6+10<sup>08</sup> Westerly Curb line 31<sup>ST</sup> ST - 3' wide Conc. pot.

147.93	147.13	147.54	146.75	146.73	146.54	146.43	146.36	147.17	144.77	145.6
766	846	805	884	886	925	916	923	842	1082	928
50	50	125	125	10	Conc	105	125	125	50	170
Top	Conc	Top	Conc	Conc	Conc	Conc	Conc	Top	Conc	Top
cb.	GUT	cb	GUT	GUT	GUT	GUT	GUT	cb	GUT	cb

6+00<sup>08</sup> Westerly Line 31<sup>ST</sup> ST

147.13	147.6	147.48	147.4
786	80	816	82
102	92	15	
Top	Top	Top	
cb	Curb	Curb	

5+98

15 <sup>11</sup>	151.3	148.5	148.0	148.1	150.5	150.5
4 <sup>4</sup>	4 <sup>3</sup>	7 <sup>1</sup>	7 <sup>6</sup>	7 <sup>5</sup>	5 <sup>1</sup>	5 <sup>1</sup>
15	10	7		6	10	15

TP4 - 3<sup>39</sup> (155.59) 12.52 - 152.20

5+60

155.2	155.0	154.8	153.1	155.59	153.2	153.4	154.1	153.9
95	92	92	116	115	113	106	108	108
15	10	8	5		6	10	20	

5+30

156.7	156.1	155.2	155.7	154.8
82	86	95	90	92
15	10	10	20	

5+09-11<sup>L</sup> LT = Single Car. Conc. Apron + Floor

157.27	156.50
745	822
162	112
FLOOR	APRON

164.72 T



BM-starting-PP-18.			0.40	187.65
TP <sub>7</sub>	12.56	188.05	0.05	175.49
TP <sub>6</sub>	8.80	175.54	0.18	166.74
TP <sub>5</sub>	11.38	166.92	0.05	155.54

NW 51-30<sup>th</sup> E  
(187.65)

x



X-sec Alley B1K 116 - Morena Sub. Div.

WO# 25020

2-20-53

Allen

Sisson

Powell

Schelin

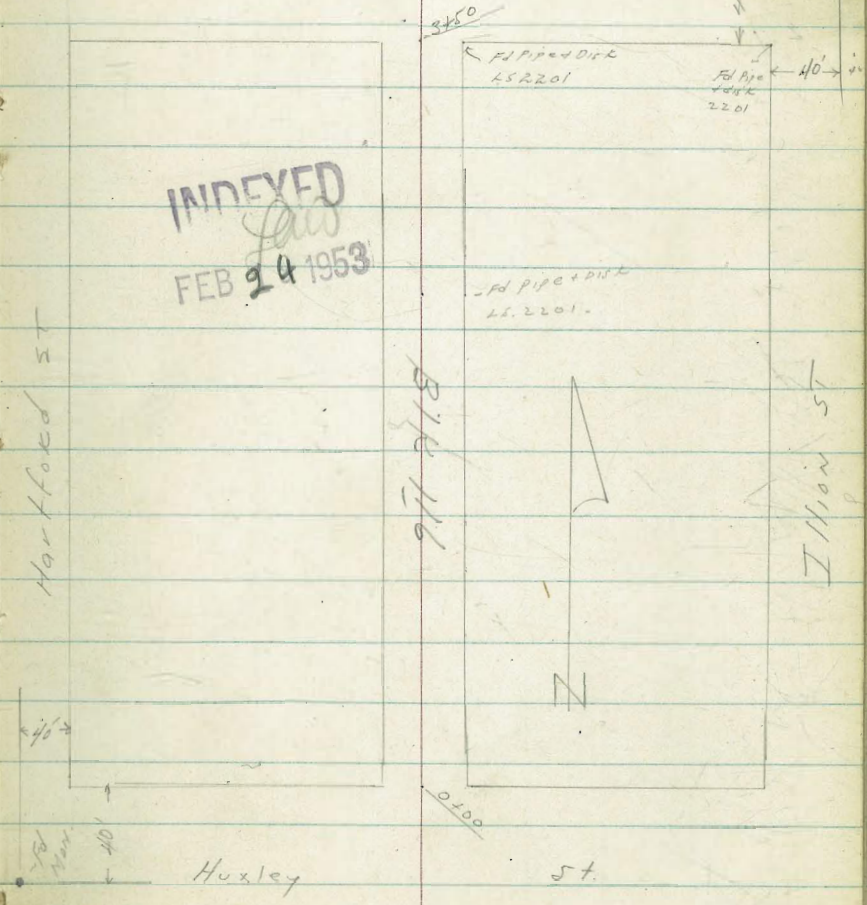
Grismer St.

Note: Area North of this  
alley vastly changed  
by Clairmont Drive

Ref. Morena Sub Div Map # 809

TP sheet 1175

INDEXED  
FEB 24 1953





1+25

1+00

0+75

0+50

0+00 - Nly line Huxley

0-40 = E Huxley

TP, 9.80-198.40 -12.80 188.60

BM 1.37 201.40

Station	Dist	1946.1	1947	1942	1939	1913
1+25	20	196.1	194.7	194.2	193.9	191.3
1+00	50	196.8	192.8	191.7	190.5	183.1
0+75	30	193.8	190.5	189.1	187.1	183.8
0+50	50	195.9	189.4	187.9	186.1	176.4
0+00 - Nly line Huxley	50	193.9	187.9	185.4	183.9	177.1
0-40 = E Huxley	45	191.8	187.9	185.4	183.9	177.1
	20	186.3	183.7	181.4	179.9	175.4
	10	142	142	170	180	230

Top Corners

198.40 x

200.03 - -

BP-Ely Curb. 35' ± North of N'ly Return Huxley + claimant court

Deep Canyon on East all the way



3+67. & intersects cut bank for street

3+60 - 11' Rt. & 10" power pole # 4551

3+50 = sky line Granger st

3+48. 10' Rt. & Deadman.

3+00

2+50

R+00

TP<sub>2</sub> 10.05 201.38 9.07 191.33

1+50

Lt = W 1/4

151.7  
91  
30

192.4  
90  
20  
Toe  
slope

196.9  
45  
15

Rt = E 1/4  
177.5  
39  
10

26  
196.8  
46  
50

190.2  
11 1/2  
50

191.2  
10 1/2  
25  
Toe  
slope

196.2  
5 1/2  
10  
Top  
slope

196.3  
51

196.3  
51  
10

194.6  
6 1/2  
50

193.3  
8 1/2  
50

193.6  
7 1/2  
10

194.0  
7 1/2

194.0  
7 1/2  
10

192.4  
9 1/2  
50

193.9  
7 1/2  
50

191.6  
9 1/2  
10

191.4  
10 1/2

191.1  
10 1/2  
10

189.2  
12 1/2  
50

194.7  
6 1/2  
50

192.1  
9 1/2  
10

191.3  
10 1/2

190.2  
11 1/2  
10

186.4  
15 1/2  
50

201.38

197.6  
0 1/2  
50

194.7  
3 1/2  
10

193.0  
4 1/2

192.6  
5 1/2  
10

186.4  
12 1/2  
50

198.40



Lt = wly

Rt = sly

27

Clairmont Drive, also referred to as  
Huxley St.

TP<sub>3</sub> - Start BM. (200.03)  
1.36 200.02

4+67 - Clairmont Dr.  
& alley intersects sly curb line

3+90 - & Grosner St. Area Graded

3+75 - Toe of slope - cut bank

	193.51	194.45	195.03	195.70	196.68
787	693	634	560	470	
250 Topcb	10 Topcb	10 Topcb	10 Topcb	21-2 Topcb	
	192.3	192.8	193.3	194.4	
702	91	86	81	70	
40	10		10	40	
	192.2	192.7	193.1	193.7	
97	92	87	83	77	
30	10		10	30	

201.38



Clark  
Shepherd  
Bruner  
Owens  
W.O. 25020  
3-6-53

X-SECT. ALLEY BIK 6  
CLIFTONS ADDIT. - CITY MTS  
QUINCE TO REDWOOD

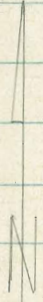
DATA: T.P. -32  
F.B. 1811  
MAP 1337

PLANT  
TP-32  
Elev 2100

Sketch not to scale:

Notes Pg 29.

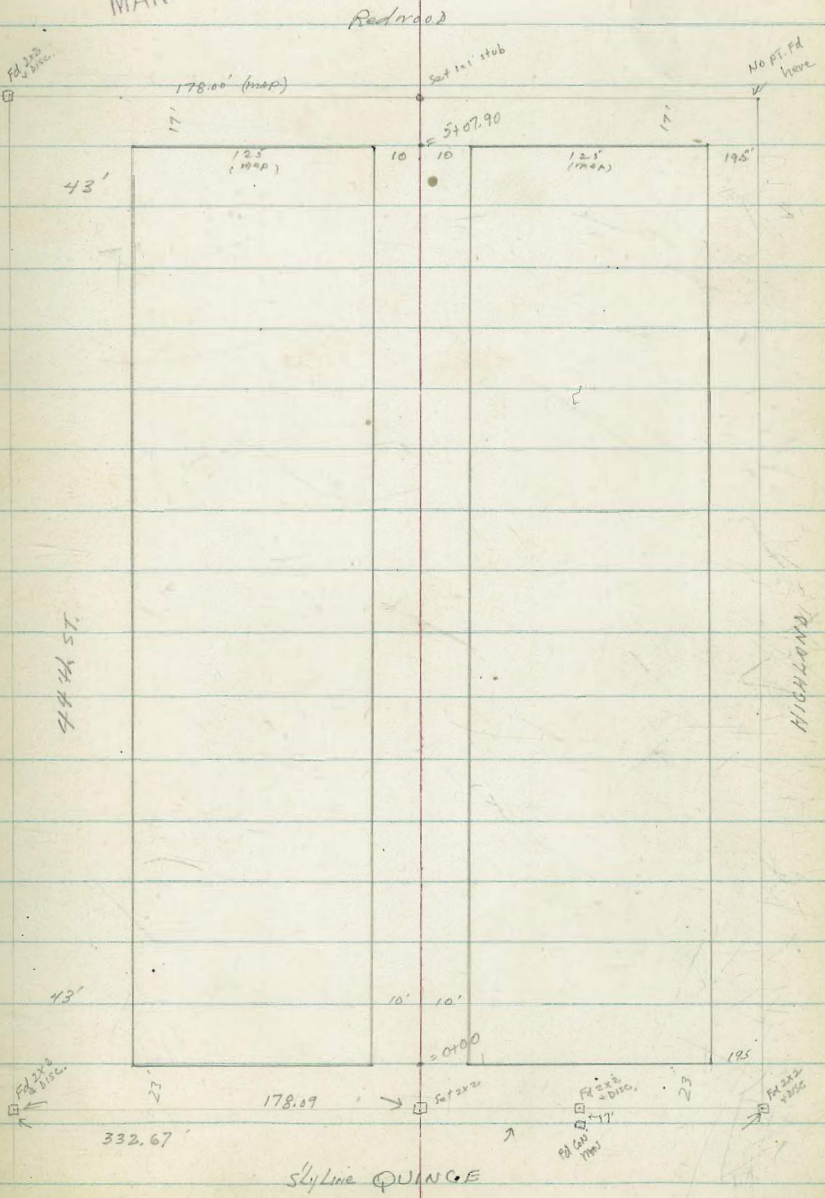
Elev 2100 Fairmount



INDEXED  
MAR 10 1953

Note: MAP DIST used in  
SPLITTING BIK along S'ly LINE  
Redwood for grass-ops.

28





X-SECT ALLEY BIK 6 CLIFTONS

ADDIT. - City HTS.

QUINCE to Redwood

LT.

CP

RT

1406	99	LT Bay 2' high	Rock + Grout Wall - Retaining
1400			
0+85	8.5	LT & Pole	A-30.17
0+67	9.97	RT & 2' Con Walk	
	8.0	LT & Deadman	
T.P.	11.06	300.19	0.90 289.13
0+50			
0+25			
T.P.	12.02	290.03	0.19 278.01
0+01	9.8	RT Bay 8'	Board Fence
0+00			Wly Line Quince
0-03			Bik
0-20			Quince (Rough Graded; For Pipe-Line only) see F.B. 1811-31
B.M.	1233	278.20	265.87 = Mon 5+41.30 F.P. 1811-34

288.7	288.9				
3.7	2.5				
9.9	9.9				
289.6	288.7				
2.8	3.7				
25	10				
287.3	287.3				
5.1	5.1				
286.6	286.6				
10.1	10.1				
282.77	282.77				
9.58	9.58				
9.97	9.97				
280.19	280.19				
280.1	280.1				
(292.35)	(292.35)				
2.5	2.5				
9.95	9.95				
279.7	279.7				
2.2	2.2				
25	25				
275.7	275.7				
6.5	6.5				
25	25				
274.3	274.3				
2.0	2.0				
271.8	271.8				
2.2	2.2				
10	10				
280.0	280.0				
14.0	14.0				
25	25				
268.2	268.2				
3.0	3.0				
25	25				
273.2	273.2				
270.03	270.03				
280.1	280.1				
274.9	274.9				
7.9	7.9				
271.9	271.9				
7.3	7.3				
9.90	9.90				
275.7	275.7				
6.5	6.5				
25	25				
270.03	270.03				
(282.19)	(282.19)				
253.4	253.4				
17.0	17.0				
5.0	5.0				
251.9	251.9				
18.5	18.5				
5.0	5.0				
253.8	253.8				
16.6	16.6				
25	25				
259.1	259.1				
11.3	11.3				
10	10				
257.5	257.5				
12.9	12.9				
254.7	254.7				
9.2	9.2				
264.7	264.7				
1.5	1.5				
268.9	268.9				
9.0	9.0				
25	25				
261.4	261.4				
0.00	0.00				
5.0	5.0				
270.36	270.36				
7.6	7.6				
5.0	5.0				
262.8	262.8				
8.1	8.1				
5.0	5.0				
278.20	278.20				
(270.36)	(270.36)				

Note:  
 Chk on B.M. S.E. B.P.  
 Quince + Fairmount Shows the true elev. of Con. Mon  
 to be 258.03 (see Pg. 32) Clark.







ALLEY BIK 6 (CONT.)

LT                      E                      RT

cont next pg

4450

5.0 298.3  
25  
6.5 276.8  
10  
7.8 295.5  
10  
10 293.3  
10  
1.35 289.8  
25

4441

9.5 LT Pole # A-3085

4439

9.5 LT Pole # 589490-H

T.P.

6.94 311.17 5.50 304.23

4400

1.3 300.6  
50  
2.7 297.2  
25  
6.3 295.6  
10  
9.4 311.17  
10  
292.5  
10  
(303.33)  
290.1  
11.8 288.1  
10  
13.8 281.0  
25  
20.7  
50

3475

9.7 LT Pole # A-3075

3456

10.7 LT Pole # 589491-H

T.P.

7.87 309.73 4.22 301.86

3450

B&K

0.8 297.4  
25  
2.7 295.5  
10  
5.3 309.73  
10  
292.9  
10  
7.2 291.0  
10  
293.8  
10  
293.5  
25  
8.8 289.4  
25

3430

Shoulder E

306.08

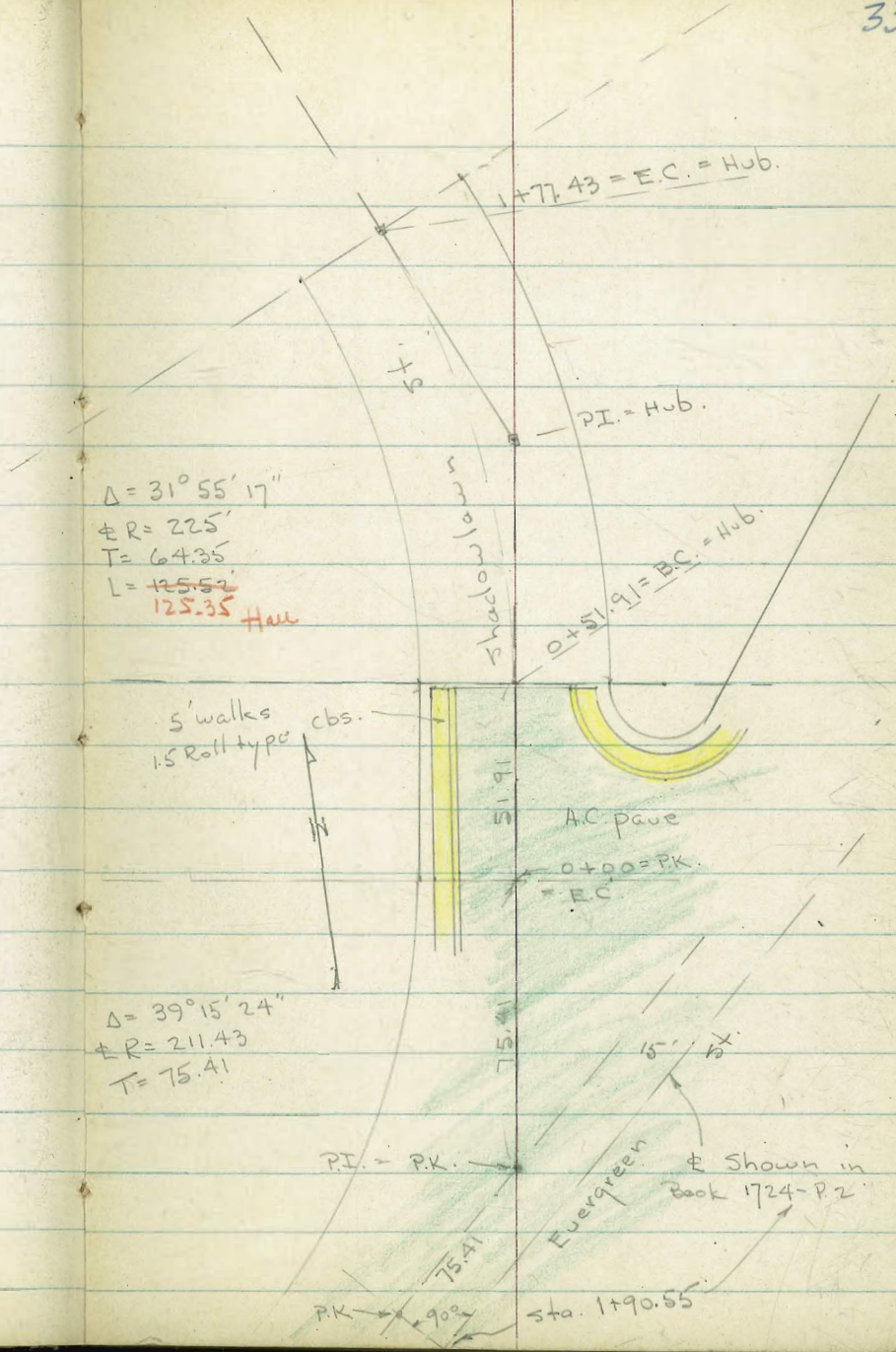






$\Delta = 31^{\circ} 55' 17''$   
 $\pm R = 225'$   
 $T = 64.25$   
 $L = 125.52$   
 $125.35$  *Half*

$\Delta = 39^{\circ} 15' 24''$   
 $\pm R = 211.43$   
 $T = 75.41$





INDEXED

Law

APR 3 1953

Shadowlawn St.  
R 5491.33 = Hub

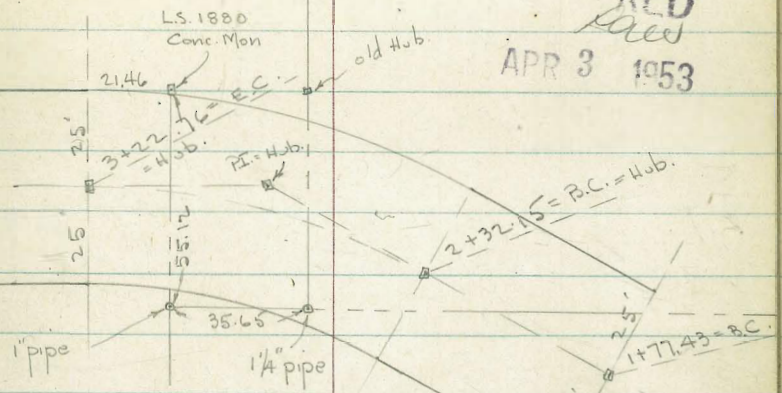
78° 58' 30"

25'

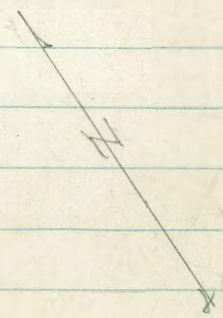
st

wing

2+40.94 = Hub



$\Delta = 29^\circ 40'$   
 $\pm R = 175 - L = 90.61'$   
 $T = 46.34$





Lt.

±

Rt.

7-Sect. Shadowlawn - from Evergreen  
to Wing.

# 6953

4-2-53-

7.0

W.O. 25020

Sketch - P-33+34

INDEXED

APR 3 1953

1+77.43 = E.C.

32.5	28.9	26.9	27.3	32.5	40.8
40	25		15	25	40

1+35.59 - - Set <sup>on Lt.</sup> B.M. = spike in pole 38.35

37.4	39.2	42.2	47.2	56.0	58.6
45	25		10	25	35

Top

0+85 - Sect. Radial

42.3	49.1	56.6	56.8	56.6	59.0
55	25	10		15	25

0+50 = end pav. rchs + walk

56.21	56.39	56.10	56.28	55.83	56.13	56.33
22	17	15.5		14.5	16	21
walk		edge		edge	walk	

0+27 - sly. of Conc: got. on Ref.

57.67	57.76	57.57	57.76	58.13	58.56	58.84
21.7	16.7	15.3		25	39.5	Top
walk		edge			Most sly. of got.	

0+00 = E.C.

58.55	58.72	58.53	58.90	59.10
21.2	16.2	14.7		25
walk		edge		

0-20 (on Tang.)

59.36	59.31	58.98	59.26	58.96
20.9	15.9	14.4		25
walk		edge		

0-40 (on Tang.)

59.55	59.42	59.15	59.31	59.06
21.5	16.5	15.1		25
walk		edge Gnc.		

B.M. = S.W.B.P. Evergreen  
+ Ly Hon

61.16

Actual Elev. Shown



Lt.

±

Rt.

5+35

06.4  
25

06.1

06.9  
25

07.2  
40

5+01.33 = ± Wing at ± <sup>to Shadowlawn</sup> Sect. at 90°

05.0  
25

05.17  
at Hub.

05.7  
25

05.8  
40

Set BM. = N.W. top of Inlet - opp. <sup>100' at.</sup> 4+50 04.03

4+70

04.5  
25

02.5  
± wash

02.2  
25

02.4  
40

4+35

03.2  
40  
± wash

04.7  
25

04.3

03.8  
25

03.6  
40

4+00

06.0  
40

07.1  
25

06.6

06.2  
25

05.6  
40

3+60

10.1  
40

10.1  
25

09.9

08.9  
25

09.2  
40

Set BM on Mon. - 3+00 Rt. 15.35

3+22.76 = E.C.

21.7  
40

16.7  
25

13.7  
20

13.4

12.5  
25

12.3  
40

2+77.45 - Mid. point of curve - Sect. Rad.

29.3  
40

21.3  
25

19.3  
15

17.9

18.0  
25

18.6  
40

2+32.15 = B.C.

32.2  
40

24.8  
25

22.7  
20

21.6

22.7  
25

24.3  
40



X-Sect. Wing. Shadowlawn to 250'S.

W.O. 25020 - Sketch - P. - 34

Lt.

±

Rt.

INDEXED

APR 3 1953

set B.M. on pipe at Lt.

11.22

2+40.94 = opp. Ang. pt. on Lt. = end.

11.2	11.3	12.71	15.3	16.7
40	25	on tub.	25	40

2+00

10.2	11.2	13.2	15.9	16.7
40	25		25	40

1+50

08.6	09.7	11.1	12.8	14.3
40	25		25	40

1+00

06.4	07.1	08.7	09.9	11.5
40	25		25	40

0+60

05.0	05.6	06.2	07.9	13.0
40	25		25	40

0+25 - for S.L.

04.0	05.0	06.4
25		

0+00 = ± Shadowlawn

02.7	03.2	05.2	05.9
25	2510		25

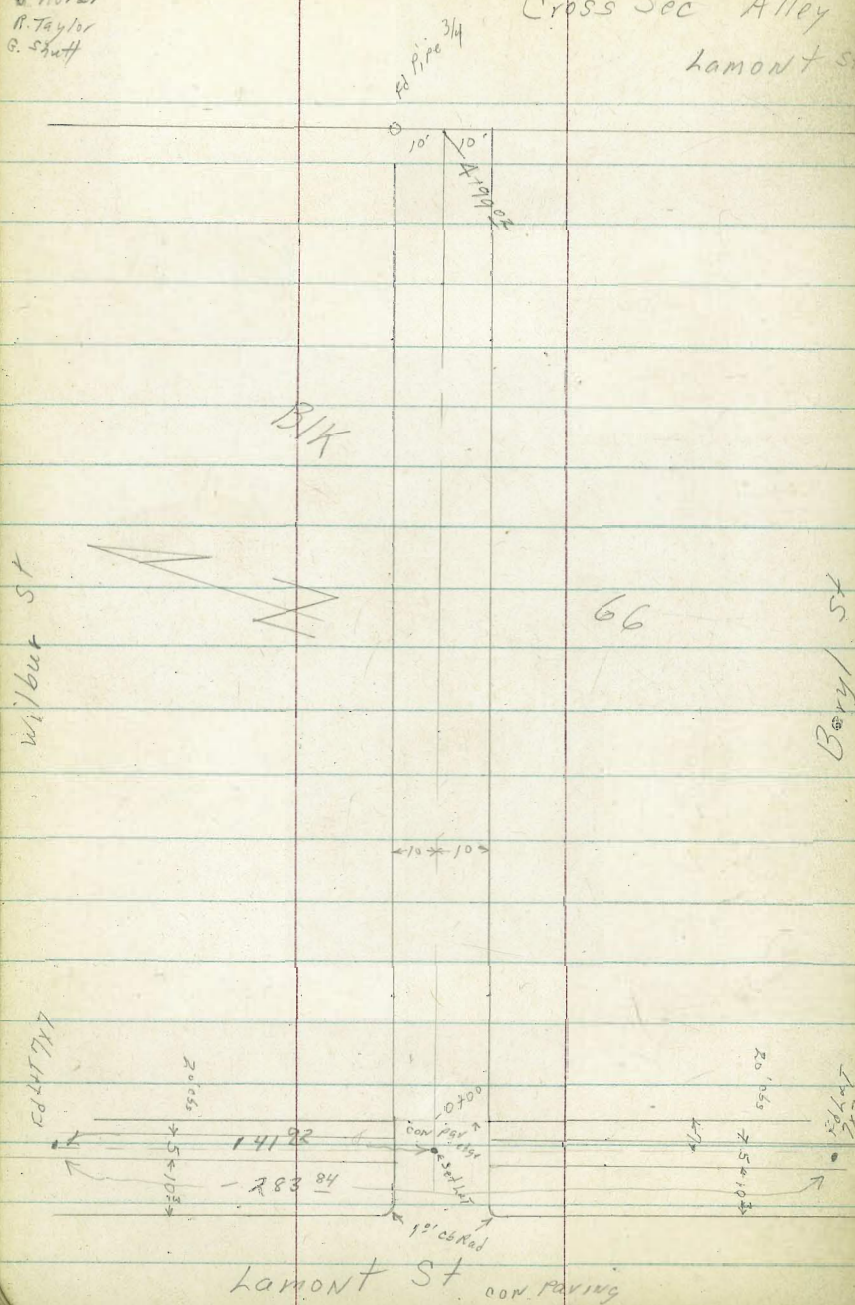


D. Smith  
J. Korer  
R. Taylor  
G. Staff

Cross Sec Alley BIK 66 Pacific Beach  
Lamont St to End Blunt Wilbur & Beryl

wo 25020 38  
5/29/53

INDEXED  
file  
JUN 1 1953





Lt. North

Rt. South

1+50

6.6	7.3	7.4	7.8	8.5
22	10		10	25
172.4	171.7	171.6	171.2	170.5

1+20 9<sup>2</sup> RT End 5 car garage conc. floor & apron

4.9	6.4	6.3	6.3	6.30	6.03
21	10		10	10 <sup>2</sup> apron	140 floor
174.1	172.6	172.7	172.7	172.73	173.00

1+00

0+60 10<sup>3</sup> RT Begin 5 car garage conc floor & apron  
10<sup>2</sup> RT End Conc. Wall

6.11	5.90
10 <sup>3</sup> apron	140 floor
172.92	173.13

0+30

1.2	5.4	5.7	6.0	7.9	7.7
15	10		10	11	25
177.8	173.6	173.3	173.0	171.1	171.3

0+48 9<sup>2</sup> RT & 6" power pole #1910

0+17 9<sup>5</sup> RT & Dead end  
10<sup>2</sup> RT Begin 10" con wall

0+00 Ely Lamour + end cb & con paving

1.5	3.82	4.45	5.40	5.89	5.79	4.48	8.4	7.4
15	9 <sup>2</sup> cb	9 <sup>2</sup> gut		10 <sup>2</sup> gut	10 <sup>2</sup> cb	Top wall 10 <sup>2</sup>	Footings 11 <sup>2</sup>	25
177.5	175.21	174.58	173.63	173.14	173.34	174.55	170.6	171.6
178.29	177.60	174.91	174.19	173.26	172.34	173.00	168.77	168.50
0.74	1.43	4.12	4.94	5.77	6.69	6.03	10.26	9.53
50	59	10	10	10	10	50	50	
6	gut	cb	gut	gut	cb	gut	cb	

0-20' Ely cb line Lamour +

T.P.	13.31	173.49	179.03
BM	0.74	186.80	186.06

FB 13<sup>24</sup> 2028  
SE 77<sup>24</sup> 27  
Wilbur Lamour

179.03



4476 8.4 RT 28" power pole # JPA 1998

4.50 102 RT End 12" Masonry wall

4+00

102 RT. Begin 12" masonry wall  
103 Lt. End 6" Block wall

3+50

103 Lt Begin 6" Block wall  
8.6 RT 6" power pole # 1978

3+00

T.P<sub>2</sub> 8.84 170.19 5.77 175.96  $\pi$

2+50

2+00

9.0 RT 6" power pole # 1948

	172.1	170.2	171.2	170.5	169.6	168.8	167.0	167.3
	4.7	6.1	6.8	7.1	9.0	8.7		
	25	10	10	10	10	10	25	
	3.5	5.8	4.8	5.5	6.4	7.2	9.0	8.6
	25	10	10	5	10	10	10	25
	172.7	170.4	171.3	170.7	170.4	168.8	167.9	167.5
	3.3	5.6	4.7	5.3	5.6	7.2	8.1	8.5
	25	10	10	4	10	11	25	
	171.9	170.7	170.0	169.4	167.4			
	4.1	5.3	6.0	6.6	8.6			
	25	10	10	25				
	171.5	170.6	175.96 $\pi$	169.3	167.4			
	7.5	8.4	9.0	9.7	11.6			
	25	10	10	25				
	171.5	170.8	170.7	169.8	168.8			
	7.5	8.2	8.3	9.2	10.6			
	25	10	10	25				

179.03  $\pi$



BM <sup>7x7 L&T</sup> SE <sup>W. 1st</sup> cor. Lemon + 4.06 186.06

T.P. 4 0.38 183.63 649 190.12

T.P. 3 5.26 170.70 1331 184.01  $\pi$

4+99 02 End alley

4+98 8.0RT Deadman

170.9  
5.1 6.6 7.1 7.9 9.1  
25 10 10 25

175.96  $\pi$







X-sec San Diego ST-

0-16- = wly edge Rough Cold Lay.

449.07	449.00	448.99	449.04	448.73	448.39	447.74
476	483	484	472	510	544	609
100	50	285		285	50	100

0-25-  $\phi$  67<sup>th</sup> (Alice)

449.43	449.32	449.29	449.24	449.10	448.86	448.25
440	451	454	459	473	497	558
109	50	285		285	50	100

0-34- Fly edge Rough Cold lay pave 67<sup>th</sup>

449.	448.97	448.87	448.84	448.61	448.33	447.89
449	496	496	499	522	550	594
104	50	285		285	50	100

449.43  
450  
106.5  
cb

448.70  
513  
106.5  
907

106<sup>5</sup> LT- wly end of Fly Curb Mohawk (in arc)

60<sup>5</sup> LT: wly end Fly Curb Mohawk (in arc)

0-50- Fly Line 67<sup>th</sup> (Alice)

448.59	448.31	448.23	449.4	448.8	448.8	447.9
524	552	490	40	40	50	59
835	605	605	285		285	50
cb	907	cb				100

453.83

TP, 4.70 453.83 7.47 449.13

BM. 2.90 456.60 453.70

+ -

S.W. 13P EL COTON + 67<sup>th</sup>



X-sec San Diego 5

LT = 514

RT = 114. 44

0+7R-29<sup>2</sup> LT = 2 Single gar. Conc Apron + Floor

446.67	446.31
399	413
40 <sup>2</sup>	298
Floor	Apron (Drive)

TP. 499 450.66 8.16 445.67

450.66 X

0+63 26.3 LT E 12" tree

446.9	446.5	446.9	446.2	446.8
619	73	69	76	70
285	18	16	285	

0+50 25.0 LT E Pole # 72565

0+30 25.0 RT E 12" Tree

448.5	448.2	447.6	448.4	448.6	448.5
53	56	62	54	52	53
50	285	19		285	50

See - 4454B

0+10 - to have sections along opening

Trees, Poles, shrubs etc NOT shown.

448.8	448.6	447.6	448.8	448.90	448.7
50	52	62	510	493	51
50	285	19		285 ON WALK	50

0+00 = Wly 67<sup>TR</sup> (Alice)

D-01.2 - 27<sup>3</sup> RT = 4" wide CONC WALK

493  
27<sup>3</sup>  
WALK

453.83



x-sec S.D. st.

LT=514

RT=NY 45

good gate-

1458 - Dirt Drive on RT-

443.6  
71

1450 - 28° RT = sly side 12" square  
POST  
Conc Block

447.4	446.9	445.4	445.6	444.7	443.4	441.5
3 <sup>3</sup>	3 <sup>8</sup>	5 <sup>3</sup>	0 <sup>2</sup>	6 <sup>0</sup>	7 <sup>10</sup>	9 <sup>2</sup>
50	285	16		17	285	50

1139 256' LT of 16" tree

446.0	445.7	445.7	442.7	443.8	443.4
4 <sup>2</sup>	5 <sup>0</sup>	0 <sup>5</sup>	8 <sup>0</sup>	6 <sup>9</sup>	7 <sup>13</sup>
50	285		238 I.E. Pipe	285	50

1425 - 23° RT = 18" Corq sheet Metal pipe Drain

1123 24.6 LT of 12" tree

443.5	443.5	443.5	443.5	443.5	443.5
-------	-------	-------	-------	-------	-------

1407 - 16° } Drains South to North on dia.  
LT = 18" Corq sheet Metal Drain  
24.1 RT of 3' wide Stairway + 2 1/2' x 3' wood Platform  
Wooden AT BASE

445.31	445.44
7 <sup>2</sup>	
I.E. Drain	

1404 - 29° RT = end 3 car garage - Conc Floor + Apron

446.1	445.5	444.6	445.4	445.5	445.2	445.3	445.4
4 <sup>6</sup>	5 <sup>2</sup>	6 <sup>1</sup>	5 <sup>3</sup>	0 <sup>2</sup>	5 <sup>25</sup>	299	522
285	19	18	15 <sup>2</sup>		Apron	316	Floor

1400.

445.44	445.53
5 <sup>22</sup>	0 <sup>1</sup>
304	22 <sup>10</sup>
Apron	Floor

0483 - 30° RT = begin 3 car gar. Conc Apron

445.44	445.53
5 <sup>22</sup>	0 <sup>1</sup>
304	22 <sup>10</sup>
Apron	Floor

450.66 x



X-See San Diego ST.

LT=514

2

RT=N14-

46

2+48 27.6 RT E Pole #584813-11

445.8

445.7

445.3

444.6

2+42<sup>5</sup> = E Bowman Lane to sky-

49  
28.5

5.0

5.2  
28.5

6.1  
40

2+36 26.7 RT E 3" tree

446.7

445.7

445.2

445.1

2+23<sup>5</sup> = Fly Line Bowman Lane

40  
28.5

5.0

5.5  
28.5

5.6  
40

2+00 26.7 RT E 3" Tree

447.2

447.8

445.7

445.4

444.0

3.5  
50

3.9  
28.5

4.8

5.2  
28.5

6.6  
40  
yard

1+91-28<sup>5</sup> RT = E <sup>opening in wall</sup> 3<sup>5</sup> wide Flagstone walk

444.96

5.70  
28.5  
WIK

444.56  
444.1  
444.0

6.10  
39.5  
WIK

1+79 26.5 RT E 3" tree

443.7

1+64-28<sup>5</sup> RT = Begin 2<sup>5</sup> high Conc Block wall-

7.10

28.5  
95

443.2

7.5  
28.5  
FOOTING

450.66 ±



X-sec San Diego ST

2+80-

2+76

27.0' LTR Deadman

2+72-28<sup>2</sup> Rf= begin 1<sup>5</sup> high Conc BIK Wall

2+64-28<sup>4</sup> Rf= 2 15<sup>5</sup> wide Conc Drive way

TP<sub>3</sub>

3.79

450.20

4.25

Nail in pole SW COR  
S.P. ST + Deadman.  
446.41 #P172566

450.20 X

2+61<sup>5</sup> - Wly Line Bowman Lane.

2+54

23.7 LTR Rte P-172566

2+49-28<sup>5</sup> Rf= end 2<sup>5</sup> high Conc BIK Wall.

9.5HT 4.6 40	LT=54 9.5HT 4.6 28.5	1.5HT 5.1	R= Wly- 5.5HT 5.7 28.5	2.2HT 4.4 4.7 6.0 40	47
--------------------	-------------------------------	--------------	---------------------------------	----------------------------------	----

5.5HT 5.7 28.5	4.4 4.7 6.0 28.2 9.1 Footling	2.2HT 4.4 4.7 6.0 15.4 12.9 6 28.4 Drive	5.6 9.1 Footling
----------------------	--	--	------------------------

4.6HT

4.6  
28.5

4.5HT

4.5HT  
5.7  
28.5

4.4HT  
4.4  
6.0  
40

4.5HT

5.7  
28.5  
6.1

4.4HT  
4.4  
6.0  
28.5  
Footling

450.66 X



TP4

3.79

TP3, Page 47

446.41

431.5

Wash running sly to nly-

4400- E S.D. ST extended intersects narrow

187

434.0

134.5

434.7

433.0

431.9

Termination

3470- Wly end San Diego ST (Mohawk)

157  
40

162  
285

154

172  
285

182

438.1

438.1

438.0

438.2

437.4

3450

121  
40

121  
285

122

120  
285

1200  
50

441.2

441.5

442.1

441.5

3425

90  
285

87

80  
285

87  
40

3411- 28' pt end 1' high conc BIK wall-

445

444.4

443.7

443.5

67

443.0

72

3400-

57  
35

500  
285

65

288  
292

443.7

65

285

288  
Footing

443.6

616

40

450, 20x



X-sec. Bowman Lane  
See sketch Page 42

0+60-14<sup>5</sup> LT = 2 3' conc walk

0+50

0+47-13<sup>5</sup> RT = 2 12' conc Apron on E. 660m Drive

0+24-14<sup>8</sup> RT = 2 2<sup>5</sup> conc walk

0+00 = Sky Line San Diego St. (Mahavrk)

BM. 5.57

451.98

TP4, Page 47,  
446.41

LT = E14

447.66  
4 32  
19  
WK

447.5

4 15  
19

446

5 4  
19

441.45

4 53  
14 5  
WK

Bowman

446.6

5 4

445.8

451.98

Et = wly 49

446.8

5 2  
19 40

446.1

446.75

5 23  
13 5  
Apron

4 46.90

5 08  
15 9  
Ribbon

4 46.85

5 13 5 70  
19 19 19 19  
Dr Dr

4 46.28

4 46.52

5 46  
14 8  
walk

4 46.56

5 42  
24 8  
walk

4 46

6 0  
19





X-sec Bowman Lane

LT=0.14

Rt=0.14

50

TP.2 - Start BM Page 43. 2.67 (453.70) 453.68

449.0

448.7

447.9

446.8

446.7

TP, 6.19 456.35 1.82 450.16

1450 = sly termination of Bowman Lane

30  
50

3<sup>3</sup>  
19

42

52  
19

5<sup>3</sup>  
30

448.40

448.53

448.57

1417. 18° LT = 2.5' wide Conc Walk

35.8

34.5

34.1

28°  
WIK

19  
WIK

18°  
WIK

446.87

446.74

446.43

1411- 15<sup>3</sup> RT = 7' wide Conc Drive

5<sup>11</sup>  
15<sup>3</sup>  
Drive

524  
19°  
Dr

555  
25<sup>3</sup>  
Dr

448.3

448.1

447.3

1400

37  
50

39  
19

47

54  
19

70  
50

Draings to canyon wly of Bowman Lane

446.92

446.94

2 - 15' strips  
D+97- 14' RT = 6' R. blow drive 6' wide

507  
14  
Drive

554  
24  
Dr

446.82

446.91

D+77- 14<sup>4</sup> RT = 4' Conc Walk

516  
14  
WIK

507  
19°  
WIK

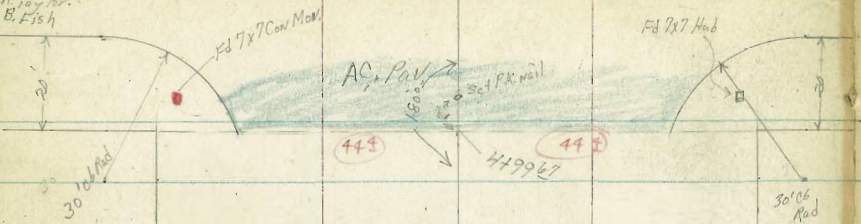
451.98



D. Smith  
J. Rorer  
H. Taylor  
B. Fish

DAWES

ST



EVERTS  
Ed Con Man  
Everts  
N 7' Ground

Set stub  
Sint. ST

W<sup>t</sup> 32291  
8/23/53

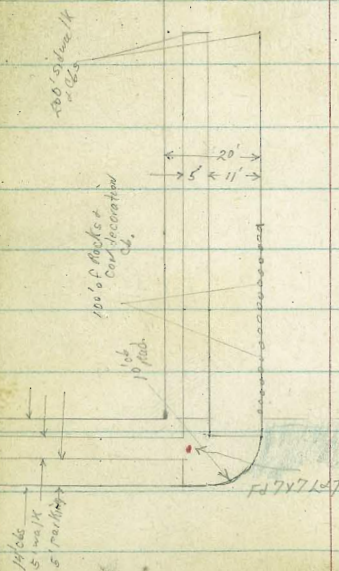
44987



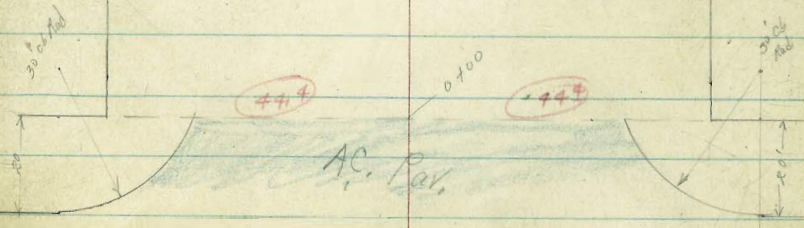
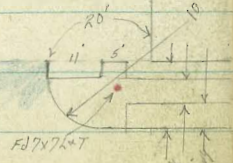
2 GRAND AVE



2 GRAND AVE



0700 425



14' dia  
5' dia  
5' dia

CASS

ST

DAWES

ST



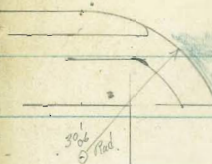
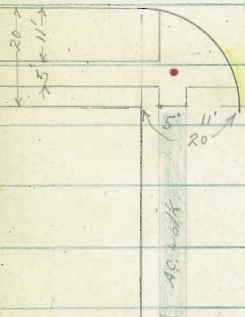
FANUEL

St

GRESHAM

St

53



445

445

Ed Sub  
385 Rad

W  
N  
E  
S  
E GRAND AVE

W  
N  
E  
S  
E GRAND AVE

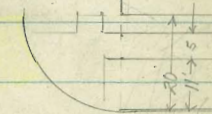
0400

Ed 777 Con Man

425

0400  
425

Con Pav



EVERTS

180°  
Set Sub  
INT  
St

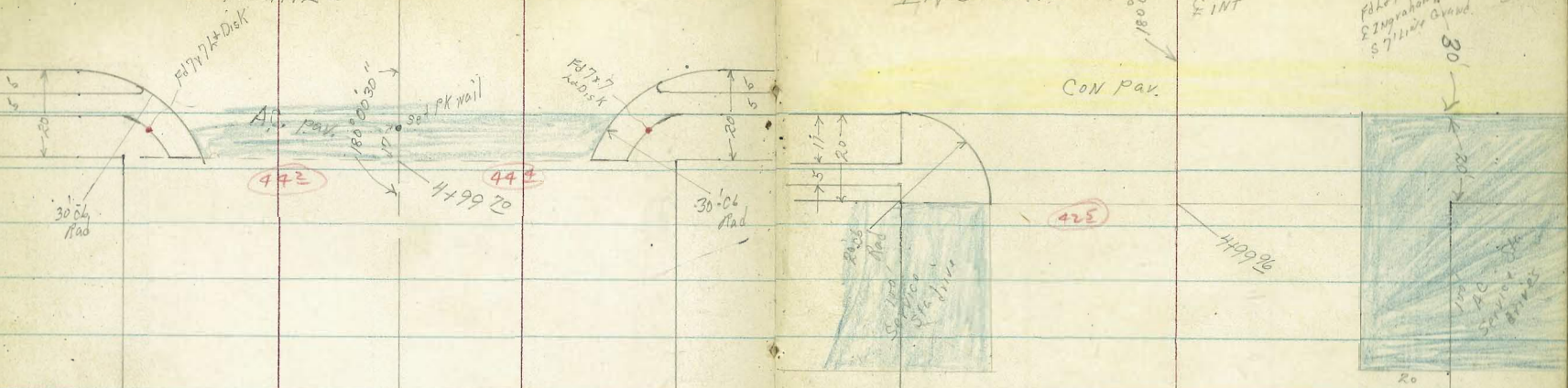
FANUEL

St



HAINES ST

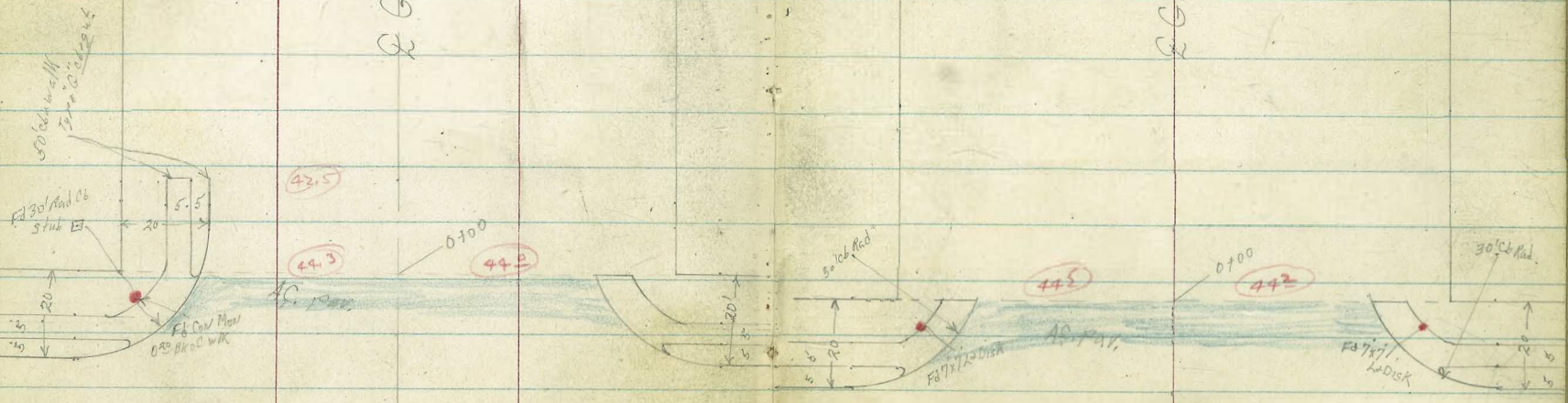
INGRAHAM



GRAND AVE



GRAND AVE



GRESHAM

180° set PK nail 2 ft

HAINES ST

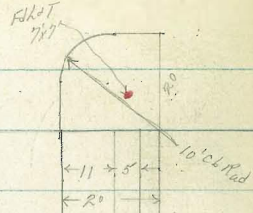
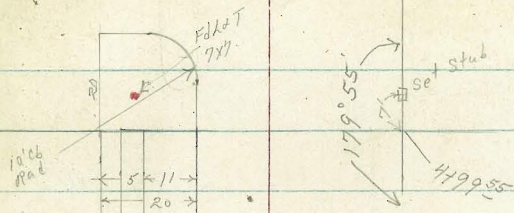
HAINES

ST



JEWELL

ST



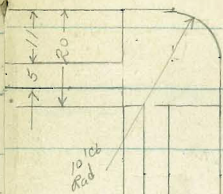
425

GRAND AVE

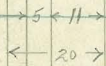
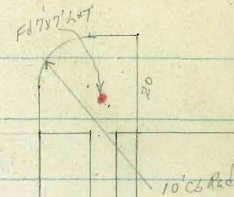
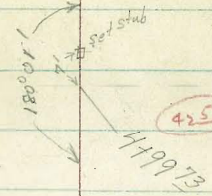


KENDALL

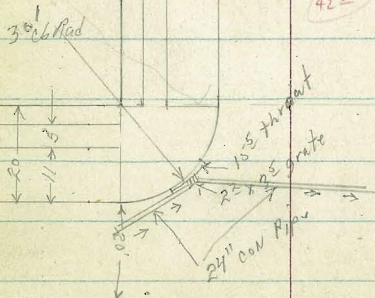
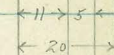
ST



425



GRAND AVE



425

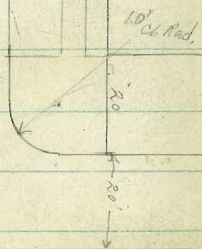
425

0+100

CON. Pav. 180' 0" 50"

180' 0" 50"

INGRAHAM



180' 0" 50"

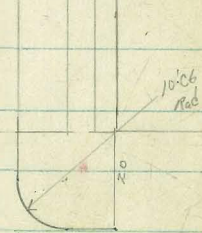


425

0+100 425

JEWELL

ST



50







cont. p 51  
G237/51

0+00

MORRELL

3' Bkwn  
SMH  
down

calc. H/mpt  
5686

40-40<sup>98</sup>

set Hub

77<sup>032</sup>  
mea

54229  
calc.

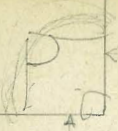
125'

Alfred Morrell

560

BAH BOA  
to  
EIN  
7/1/1901

7/1/1901



125'

0+00

200<sup>92</sup>  
mea

set Hub

88<sup>52</sup>  
mea

set Stud

5550

100' 01' 30"

51006

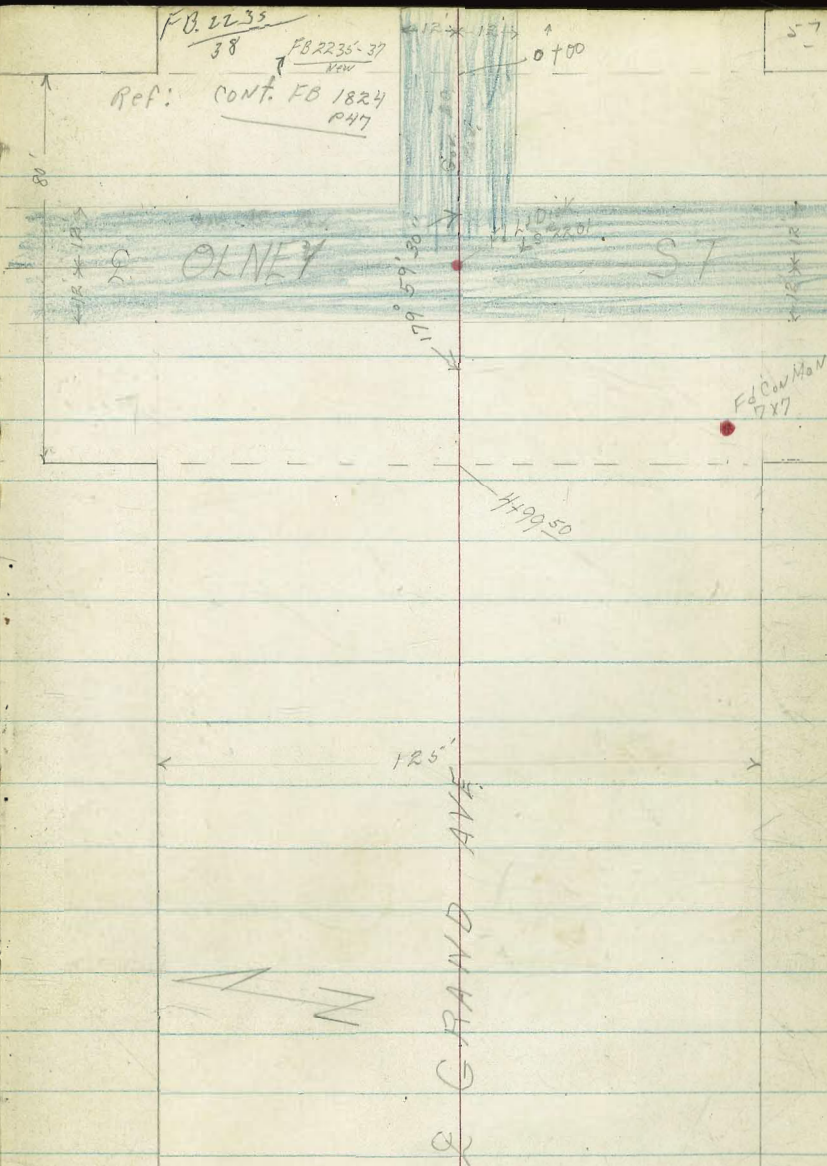
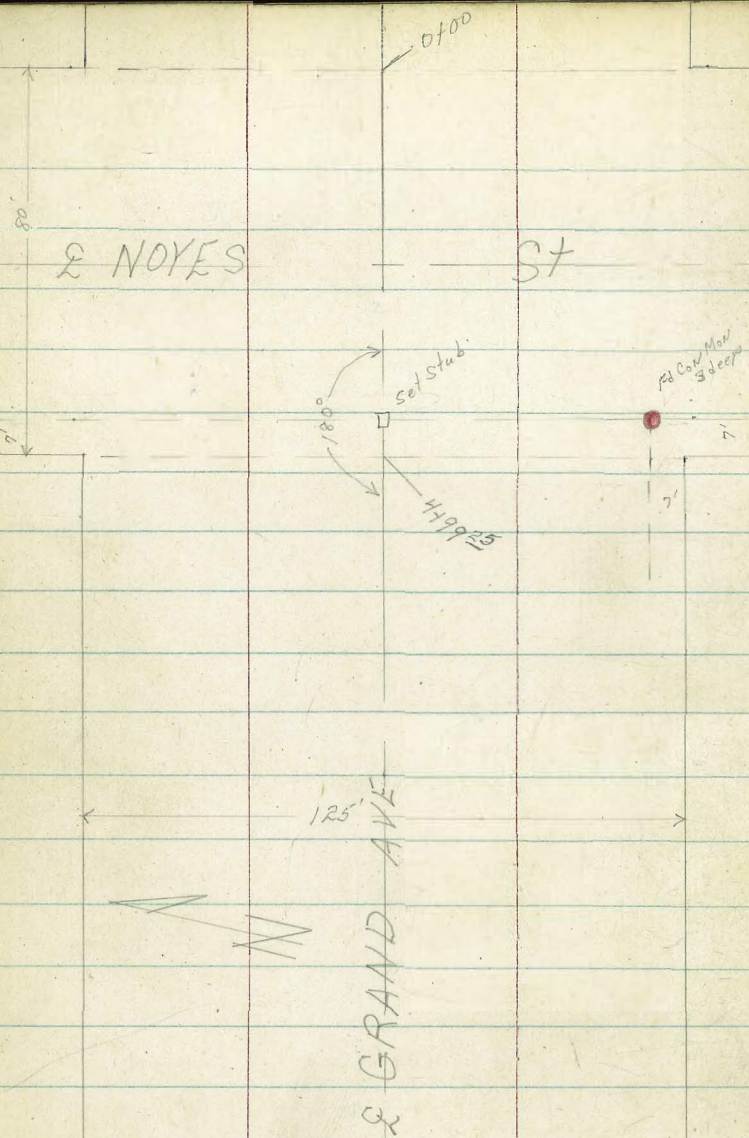
Mon 20th  
Fess & Dick  
3/16/97  
Mott  
& Thomas

2 GRAND AVE

58

200







D. Smith  
 J. Rorer  
 R. Taylor  
 Fish

"X" Sec GRAND AVE CASS to OLNEY

Lt-Nly

WOT# 32291  
 8/26/53  
 RT-Sly  
 460  
 642  
 Floor

58

0+75 64<sup>2</sup> RT & garage con floor

0+50

1706 1701 1761 1658 168 168 1658 164 161 165 1646  
 320 345 345 43 43 43 42 50 46 46  
 625 38 425 425 21 21 28 425 625  
 W/K cl gut

0+00 Ely Cass St edge pavlment obs RT

1716 1730 1721 1704 1637 1656 1652 1618 1544 1625 1630 1630 1630 1630 1630  
 325 326 325 402 469 450 454 488 542 481 476 426 426 426  
 620 583 535 425 425 21 21 425 425 335 583 583  
 W/K W/K cl gut cl gut W/K cl W/K cl

Mid Pt Returns 10' cl Rod

1708 1637 1505 1622  
 328 462 561 484  
 cl gut gut cl

0-14 Ely Cl line Cass

1630 1620 1598 1577 1543 1541 1618  
 426 486 508 539 563 561 488  
 425 21 21 425 525 525 525  
 1721 1713 1643 1703 1639 1704  
 328 323 463 403 467 402  
 1125 1122 625 625 525 525  
 gut cl gut cl cl cl  
 1536 1600 1478 1549  
 520 500 625 507  
 625 625 1125 1125  
 gut cl gut cl

0-40 E Cass

1705 1698 76 1657 1643 1618 1606 1587 1528  
 321 425 420 422 463 488 500 519 528  
 1125 625 425 21 21 425 625 1125

TP, BM

390 2106 249 1716

NET'LYT  
 Cass  
 Grad.  
 NET'LYT  
 Bayard  
 Grad.

BM

790 1965 1125

7 2106



2136 62<sup>5</sup> Lt ♀ 1<sup>5</sup> cow walk

2116 62<sup>5</sup> Lt ♀ 3<sup>1</sup> cow walk

T<sub>2</sub> 5<sup>9</sup> 25<sup>02</sup> 19<sup>5</sup> 19<sup>11</sup>

2100 Lt end cb + wlk

1455 58<sup>7</sup> Rt ♀ 7<sup>7</sup> cow drive

1450

1407 42<sup>5</sup> Lt ♀ 10<sup>0</sup> cow drive

1406

Lt = Nly

♀

Rt = Sly

59

20102 1999  
5<sup>00</sup> 5<sup>03</sup>  
62<sup>5</sup> wlk 62<sup>5</sup>

1979 1976  
5<sup>23</sup> 5<sup>26</sup>  
62<sup>5</sup> wlk 62<sup>5</sup>

25<sup>02</sup>

1916	1942	1931	1911	1917	183	183	171	171	179	181
15	164	175	185	34	28	28	41	34	38	30
62 <sup>5</sup>	58 <sup>5</sup> w/k end	59 <sup>5</sup> w/k end	42 <sup>5</sup> cb end	42 <sup>5</sup> cb end	21	21	23	28	42 <sup>5</sup>	62 <sup>5</sup>

1767 1764  
339 342  
582 62<sup>5</sup>  
drive drive

1912	1893	1860	174	176	176	146	172	173	174
19	213	246	37	35	35	45	38	38	37
62 <sup>5</sup>	58 <sup>5</sup> w/k	42 <sup>5</sup> cb	42 <sup>5</sup> cb end	21	21	21	30	42 <sup>5</sup>	62 <sup>5</sup>

1838 1751 1712  
268 350 37  
533 42<sup>5</sup> 42<sup>5</sup>  
w/k 10<sup>0</sup> 9<sup>11</sup>  
21

185	1842	1803	1706	172	171	164	171	171	170
26	267	303	40	38	41	42	40	40	41
62 <sup>5</sup>	58 <sup>5</sup> w/k	42 <sup>5</sup> cb	42 <sup>5</sup> cb end	21	21	21	36	42 <sup>5</sup>	62 <sup>5</sup>

2106



Lt-Nly

at-Sly

60

3175 74<sup>3</sup> Lt & 3<sup>o</sup> cov walk

2144  
355 327  
842 742  
w/k

3154 56<sup>o</sup> Lt Begin 3<sup>o</sup> high picket fence

3152 62<sup>5</sup> Lt & 2<sup>5</sup> cov walk

1949  
553 563  
625 725  
w/k

3150 62<sup>3</sup> Lt & 3<sup>o</sup> cov walk

2112 2096 207 194 200 199 189 193 194 194  
320 406 43 56 50 51 61 52 56 56  
722 622 43 38 21 23 29 422 622  
w/k

3148 62<sup>5</sup> Lt & 2<sup>5</sup> cov walk

1928  
574 589  
625 725  
w/k

3100 62<sup>5</sup> Lt & 6<sup>3</sup> cov walk

2066 2055 202 188 194  
436 447 48 62 56 194 182 190 189  
722 622 44 41 21 56 68 60 61  
w/k 23 422 622

2188 62<sup>5</sup> Lt & 2<sup>5</sup> cov walk

1887 1889  
615 613  
622 722  
w/k

2158 62<sup>5</sup> Lt & 3<sup>o</sup> cov walk

202 2023  
482 479  
722 622  
w/k

2151 62<sup>5</sup> Lt & 2<sup>5</sup> cov walk

1879 1867  
623 635  
625 725  
w/k

2150

202 196 181 190 188 176 182 180 188 187  
48 51 62 60 62 71 68 70 62 63  
622 44 40 21 23 28 40 48 622

2139 62<sup>5</sup> Lt & 1<sup>5</sup> cov walk

2013 2003  
489 499  
722 622  
w/k

T 2502



5739<sup>67</sup> E Dawes St

Lt. Nly 2299 2298 2297 2211 2226 2226 2191 2134 2091 2066 1968  
 203 254 265 221 276 276 311 368 411 436 531  
 1225 725 625 425 21 21 425 625 725 1225

5719<sup>67</sup> Wly C6 Line Dawes St

2274 2227 2209 2181 2153 2142 2212 2214 2176 2109 2034 2000 2059 1909 1911  
 228 225 223 321 329 328 290 288 324 323 468 502 443 528 521  
 1225 1225 725 725 625 425 21 21 425 625 725 725 1225 1225 1225

4799<sup>67</sup> Wly Dawes St begin pav N+66

2214 2222 2166 2191 2192 2155 2050 2113 208  
 26 280 326 311 310 317 452 389 43  
 625 443 444 21 21 444 444 625  
 96 947 947 947 947 947 947 947

4750 58° At end 3' picket fence

2210 2210 2015 2112 2112 2018 2012 2013 2011  
 30 30 45 38 38 48 48 47 49  
 625 425 36 21 15 30 35 625

4748 625 R+E 3° con walk

2029 2006  
 423 496  
 625 725  
 w/k

4715 47° L+E 12" Cypress tree

2220 2217 2221  
 223 285 281  
 725 625 575  
 w/k

4714 57° L+E 4° con walk

1979 1966  
 523 536  
 625 725  
 w/k

4709 625 R+E 4° con walk

216 212 198 205 206  
 34 38 53 45 44  
 625 43 37 21

1979 2011 198  
 56 49 52  
 25 30 625

3792 625 R+E 4° con walk

1979 1966  
 523 536  
 625 725  
 w/k

8502



Lt = Nly  
 2540 2530  
 427 487  
 723 623  
 wlk

RT = Sly

62

1475 62<sup>3</sup> Lt & 2<sup>2</sup> con walk

1450

248 249 248 249 246 242 246 242 243  
 54 53 64 63 66 70 76 70 62  
 625 44 30 20 15 33 40 625

1444 62<sup>5</sup> RT & 9<sup>0</sup> con drive way

2310 2315  
 707 702  
 625 725  
 drive

1400 62<sup>3</sup> Lt & 3<sup>0</sup> con walk

2448 2439 243 245 243 243  
 560 528 52 61 62 62  
 723 623 44 35 20 21 32 40 625

0470 37<sup>0</sup> Lt end plants geraniums

0450

239 235 230 228 226 223 220 223 225  
 63 62 73 72 76 72 82 72 72  
 625 40 30 21 21 32 40 625

TP<sub>3</sub> BM 6<sup>22</sup> 30<sup>17</sup> 10<sup>1</sup> 23<sup>15</sup>

SPRING 41/10  
 N.E. COR.  
 5029663 T  
 Amos Ground

2376 2379 30<sup>17</sup>  
 126 123  
 723 625  
 wlk

0430 62<sup>5</sup> Lt & 3<sup>0</sup> con walk

0413 37<sup>0</sup> Lt L in plants

0400 44<sup>0</sup> Lt begin plants geraniums

0400 Ely Dawes St edge pav. A.C. end obs

2222 2219 2228 2216 2263 2230 2116 2129 2116  
 18 203 214 236 39 222 328 323 34  
 625 442 442 21 21 442 444 625  
 66 947 947 947 947 947 947 947

545967 Ely C6 Line Dawes St

2254 2253 2209 2240 2242 2222 2252 2242 2206 2228 2283 2096 2109 1958 2114  
 148 119 123 163 160 150 160 126 364 419 456 323 544 488  
 1225 1225 725 725 625 725 21 21 425 625 725 725 1225 1225  
 66 947 86 947 625 725 21 21 425 625 725 725 1225 1225  
 66 947 86 947 625 725 21 21 425 625 725 725 1225 1225

2502



Lt. Nly

Q

RT = S14  
 25.7  
 4.27  
 62.5

25.85  
 4.32  
 72.5

3175 62° RT & 3° con walk

3150

27.2 26.9 25.6 26.2 26.0 25.7 24.7 25.2 25.4  
 3.0 3.3 4.6 4.0 4.2 4.5 5.5 5.0 4.8  
 62.5 38 25 18 15 33 50 62.5

3106 59° RT & 11° con drive

24.88  
 5.23  
 59.6

24.95  
 5.22  
 62.5

24.84  
 5.33  
 72.5

3100

26.5 26.4 25.0 25.5 25.4 25.1 24.3 24.9 24.6  
 3.2 3.3 5.2 4.7 4.8 5.1 5.2 5.3 5.6  
 62.5 40 27 20 15 32 30 62.5

2190 51° RT & 30" Eucalyptus tree

2175 51° RT & 3° con walk

24.24  
 5.23  
 57.2

24.16  
 6.01  
 62.5

24.01  
 6.16  
 72.5

2151 78° RT & 3° con walk

23.57  
 6.60  
 78.5

23.42  
 6.70  
 88.5

2150 62° LT & 2° con walk

26.24 26.08 25.9 25.1 24.5 24.6 24.9 24.5 23.8 24.4 24.1  
 3.23 4.09 4.3 5.1 5.2 5.6 5.3 5.2 6.4 5.8 6.1  
 72.5 62.1 50 36 28 20 15 30 42 62.5

2150 55° RT end 3° picket fence

2115 62° LT & 3° con walk

25.72  
 4.45  
 72.5

25.68  
 4.99  
 62.5

2110 62° LT & 3° con walk

25.68  
 4.49  
 72.5

25.61  
 4.56  
 62.5

2100 56° RT Begin 3° picket fence

25.6 25.4 24.4 24.2 24.2 23.7 23.1 24.3 23.7  
 4.6 4.8 5.8 6.0 6.0 6.5 7.1 5.2 6.5  
 62.5 50 30 20 15 30 45 62.5

T 30 17



5439<sup>87</sup> E Everts ST

LT=NH<sub>y</sub>      ♀      RT=Sty      67

29.7	28.8	28.2	27.7	28.3	28.1	27.3	27.5	27.4
48	52	63	68	68	64	72	70	74
1125	625	40	25	15	31	625	1125	

5423

28.9	28.0	27.7	27.6	28.0	27.8	27.0	27.4	27.0	26.8	26.6
56	65	68	68	65	67	75	74	72	74	76
1125	625	36	18	15	30	40	50	625	1125	

5415 62<sup>5</sup> RT & 8" Popl #4398

29.9	30.6	29.7	29.1	28.8	27.5	27.5	27.9	27.7	26.7	27.2	27.1	26.8
46	32	48	54	52	72	70	66	68	72	73	72	72
1125	73	625	575	39	32	17	15	32	40	625	1125	

4499<sup>87</sup> Wly Everts ST

29.5	29.2	28.3	27.2	27.5	27.6	27.5	26.5	26.9	26.9	26.5
52	53	62	73	72	62	72	82	76	76	80
1125	625	36	29	18		15	31	30	625	1125

TP4 BM

6<sup>90</sup> 34<sup>54</sup>

253 27<sup>64</sup>

nail in pole SW cor #4398 Everts, Grand

7 34<sup>54</sup>

4465 48° RT & 20" Eucalyptus tree

4450 62<sup>5</sup> RT & 3" con walk

4438 50° LT & 18" Pepper tree

4415 51° RT & 48" Eucalyptus tree

4401 62<sup>5</sup> RT & 2" con walk

26.5	27.7	26.7	27.2	27.0	26.6	26.1	26.5	26.45	26.51
17	25	35	32	32	36	44	32	322	366
625	33	26	18		15	33	30	625	725

w14

26.19 26.27  
328 320  
625 725  
w14

4400

28.1	27.4	26.3	26.7	26.6	26.3	25.2	25.8	26.0
22	28	32	35	36	39	50	41	42
625	38	26	19		15	30	40	625

7 30<sup>17</sup>



LT-Nly

2

RT-Sly

4

1402 62<sup>S</sup> RT & R<sup>S</sup> con walk

32.83  
12  
62<sup>S</sup> WIK  
72<sup>S</sup>  
33.20  
134  
72<sup>S</sup>

1400

39.5 31.5 30.1 29.5 29.9 29.8 29.7 29.1 30.0 30.8 31.9 33.1  
0° 3° 4.1 5° 4.6 4.2 4.8 5.4 4.5 3.2 2.6 1.4  
72° 62° 34 25 15 15 30 33 32 62° 74

0197 74<sup>E</sup> RT & R<sup>S</sup> con walk

33.24 33.36  
130 118  
74<sup>E</sup> WIK  
808 30 25 74

0463 47<sup>E</sup> LT & 18" Eucalaptus tree

31.55 33.04  
229 150  
62<sup>S</sup> DRIVE  
72<sup>S</sup>

0459 62<sup>S</sup> RT & 10° con drive

34.2 32.3 31.1 29.5 28.9 29.1 29.3 29.1 28.4 29.1 29.8 31.0 32.0  
0° 2° 3.4 5° 5.6 5.4 5.2 5.4 6.1 5.4 4.2 3.5 2.5  
72° 62° 58 28 24 14 15 30 33 50 62° 72°

0450

0402 73<sup>S</sup> RT & 3° con walk

31.82 32.00  
272 254  
73<sup>S</sup> WIK  
833

0400 Fly Events St

32.5 30.7 30.2 28.8 28.2 28.4 28.7 28.6 27.7 28.4 29.4 30.2 31.0  
2° 3° 4.3 5.2 6.3 6.1 5.8 5.2 6.8 6.1 5.4 4.3 3°  
70 62° 60 28 25 15 15 30 35 50 62° 74

5467

32.1 32.0 30.2 28.8 28.1 28.3 28.6 28.5 27.6 29.8 31.5 31.1  
2.4 2.5 4.3 5.2 6.4 6.2 5.2 6.0 6.2 4.7 3.0 3.4  
112° 70 62° 30 25 15 15 30 62° 82 112°

5455

29.2 28.4 28.0 28.1 28.5 28.3 27.4 27.8 28.1 27.7  
5.3 6.1 6.5 6.4 6.0 6.2 7.1 6.2 6.4 6.5  
112° 62° 30 15 15 30 40 62° 112°

34.54



2450

2430 63° RT & 3° con walk

2410 63° RT & 7° con strip drive 2° ea

2400

1497 62° RT & 6° con walk

1461 62° RT & 3° con walk

TP<sub>3</sub>

6<sup>29</sup>

39<sup>22</sup>

161

32<sup>23</sup>

1450 RT 62°  
TP<sub>1</sub> RT 62°

1455 62° LT 2° con drive

1450

1438 62° RT & 5° con walk

1413 47° & 20" Eucalyptus

(7)

LT = Nly

♀

RT = Sly

66

362	339	325	317	310	313	317
3°	5°	6°	7°	8°	7°	7°
71	62°	44	27	25	15	

316	310	328	333	344
7°	8°	6°	5°	4°
15	33	50	62°	73

3285  
3474  
637 448  
63° 73°  
WIK

3261 3403  
661 519  
63° 73°  
drive

353	329	320	315	308	309	312
3°	6°	7°	7°	8°	8°	8°
71	62°	44	28	24	15	

309	302	308	322	321	336
8°	9°	8°	7°	6°	5°
15	32	35	50	62°	73

3339 3283  
583 539  
62° 72°  
WIK

3288 3326  
634 596  
62° 72°  
WIK

7 39<sup>22</sup>

3358 3240  
096 244  
72° 62°  
drive

339	320	311	302	303	305	305	297	310	330	334
4°	5°	3°	4°	4°	4°	4°	4°	3°	1°	1°
62°	40	21	10		15	31	40	62°	73	

3298 3344  
156 110  
62° 72°

3454



4109 62<sup>5</sup> Lt & 8<sup>5</sup> con drive  
61<sup>2</sup> Rt & 10<sup>5</sup> con drive

4100

3197 62<sup>5</sup> Lt & 3<sup>5</sup> con stops & walk

3188 46<sup>5</sup> Lt & 30" Eucalyptus tree

3163 46<sup>5</sup> Lt & 40" Eucalyptus tree

3158 50<sup>5</sup> Rt & 30" Eucalyptus tree

3150

3138 57<sup>5</sup> Rt & 30" Eucalyptus tree

3132 62<sup>5</sup> Rt & 2<sup>5</sup> con walk

3125 63<sup>5</sup> Lt & 24<sup>5</sup> con walk

3113 57<sup>5</sup> Rt & 30" Eucalyptus tree

3107 62<sup>5</sup> Rt & 7<sup>5</sup> con drive

3100

2198 62<sup>5</sup> Rt & 3<sup>5</sup> con walk

2161 62<sup>5</sup> Rt & 3<sup>5</sup> con walk

Lt = Nly

37.13 35.80  
209 342  
72<sup>5</sup> drive 62<sup>5</sup>

269 257 346 346 338 329 326 335 333 370 333 329 326  
23 35 46 46 54 63 56 52 52 62 52 63 66  
15 625 57 44 35 30 15 15 34 40 625 73

37.39 37.24 35.64  
188 198 358  
75 w/k 65 625  
70 w/k 61 544

374 358 341 338 333 325 328 321  
18 34 51 54 52 62 64 64  
68 625 57 46 32 27 15 64 327 322 336 328 318  
15 33 45 625 73

3683 3580  
239 342  
78<sup>5</sup> w/k 63<sup>5</sup>

3388 3384  
534 538  
625 725

3372 3371  
530 531  
625 725  
drive

363 334 334 328 322 315 320 323  
22 58 58 64 72 72 72 62  
73 625 47 32 27 26 15

322 317 335 337 326  
70 75 52 55 56  
15 38 50 625 73

3377 3405  
545 517  
625 725  
w/k

3369 3372  
553 550  
625 725  
w/k

3922

Rt = Sly 47  
3336 3335 3318  
588 587 604  
61 625 725  
drive



5719<sup>64</sup> Wly c6 line Faniel

Mid Pt Returns

4799<sup>64</sup> Wly Faniel St edge Con pav & cbs

TP<sub>6</sub> BM 5<sup>79</sup> 40<sup>74</sup> 42<sup>7</sup> 34<sup>95</sup>

4772 59<sup>2</sup> L+E R° con brick walk

4761 48° L+E 36" Eucalyptus tree

4760 61° R+E 10° con drive

4750

4738 62° L+E 3° con walk

4738 46° L+E 30" Eucalyptus tree

4713 50° L+E 30" Eucalyptus tree

Faniel Grand  
SW 1/4  
L+E  
Faniel  
Grand

Lt-Nly

Q

Pt-5/4

68

3672	3608	3595	3530	3510	3516	3574	3555	3494	3418	3477	3283	3744
402	466	479	544	564	513	500	519	580	656	597	721	730
1125	1125	625	625	425	21	21	425	625	625	625	1125	1125
21	21	21	21	21	21	21	21	21	21	21	21	21

3519	3503	3464	3515
505	521	610	539
21	21	21	21

3672	3518	3501	3537	3476	3530	3543	3533	3479	3542	3521	3514	349
45	476	423	537	598	544	531	541	525	532	553	560	528
625	565	535	425	425	21	21	425	425	535	535	385	625
21	21	21	21	21	21	21	21	21	21	21	21	21

3700	3639	3610
222	283	313
725	625	597

3368	3322	3389
559	550	539
612	625	725

366	357	352	376	343	341	334	332	335	340
26	35	42	56	42	51	52	60	57	57
70	625	42	34	20	15	34	50	625	73

3678	3606
244	317
725	625

3922



0+87 50° Lt & 60" Cypress tree

0+56 43° Rt & 7° ribbon drive 1<sup>st</sup> ca

0+50

0+40 50° Lt & 48" Cypress tree

0+15 61° Lt & 1<sup>st</sup> cov walk

0+05 49° Lt & 24" Cypress tree

TP<sub>7</sub> = TP<sub>6</sub> 8° 43° 57° 34°

0+00 Fly Fanuel St edge cov pav end cbs

Mid Pt Returns

5+59<sup>64</sup> Fly Cb line Fanuel St

5+39<sup>64</sup> & Fanuel St

Lt-Nly Q Rt-Sly

69

3515 3550 3667  
789 752 635  
725 625 432  
drive

368 371 365 368 370 370 363 371 357  
62 52 65 62 60 60 62 52 43  
625 45 58 20 15 35 45 625

3672 3690 3690  
630 63 613  
725 625 615  
w/k

π 4302

363 3665 3657 3638 3577 3631 3650 3634 3577 3603 3623 3618 361  
44 49 47 436 497 443 424 410 497 42 45 456 45  
625 585 535 425 425 21 21 425 425 535 585 625  
w/k w/k c6 w/k w/k  
end end end out end end

3631 3570  
443 504  
c6 out

3554 3617  
520 457  
out c6

3725 3659 3605 3580 3558 3608 3618 3596 3557 3516 3576 3717 371  
349 415 429 494 516 466 456 476 517 538 428 697 637  
1125 1125 625 625 425 21 21 425 625 625 1125 1125  
c6 out c6 out out 21 21 425 625 625 94 c6 94 c6

3672 3577 3537 3565 3598 3516 3539 3504 3725  
405 497 537 489 476 508 535 570 622  
1125 625 425 21 21 425 625 1125

π 4074



TP 94° 49° 349 395

2154 62° RT & 8° con drive

2150

2141 47° LT & 16" Eucalyptus tree

2133 63° LT & 2° con walk

2100

1197 59° LT & 3° con walk

1176 59° LT & 1" con. block wall L to line.

1157 58° LT & 3° con walk

1150

1133 44° RT & 4° con walk

1115 48° RT & 40" Eucalyptus tree

1100

0195° 60° LT & 2° con walk

Lt-Nly

♀

Rt-Sly

70

38.86 38.81  
46 42  
625 725  
drive

40.6 40.4 39.8 39.7 39.9 39.7 39.0 39.6 39.0  
22 26 32 33 31 33 42 34 42  
625 44 36 18 20 36 50 625

40.32 40.30  
270 272  
73 63  
walk

39.8 39.4 39.0 39.3 39.2 38.9 38.2 38.6 38.6  
32 36 42 37 38 41 48 44 44  
625 42 34 15 20 38 40 625

39.86 39.86 39.88  
36 36 34  
725 625 595  
walk

38.34 38.32 38.33  
42 42 42  
725 625 585  
walk

38.0 38.2 37.9 38.6 38.5 38.1 37.4 38.2 37.9  
52 48 51 44 45 42 56 48 51  
625 37 28 11 20 37 47 625

38.05 37.62 37.17  
427 510 585  
44 625 725  
walk

37.4 37.7 37.4 37.7 37.7 37.5 36.7 37.2 36.1  
56 53 56 53 53 55 63 58 69  
625 38 28 15 20 36 48 625

37.38 37.55 37.6  
54 54 54  
725 625 602  
walk

T 43 02



4150

4145 58° RT Bog in R<sup>s</sup> Picket fence

4141 48° LT & 36" Eucalyptus tree

4135 60° RT & 20° con drive

4100

3197 47° RT & 8" Palm tree

3190 47° LT & 24" Eucalyptus tree

3189 60° RT & 3" con walk

3180 47° RT & 12" Palm tree

3164 49° LT & 18" Cypress

3150

3140 60° RT & 8° con drive

3100

2190 47° LT & 18" Eucalyptus tree

2178 62° RT & 4° con walk

2171 62° RT & 5° con walk

LT-Nly

£

RT-Sly

71

440	436	421	420	419	417	417	426	424
5°	54	62	70	71	73	73	64	66
625	42	40	25	20	40	45	625	

4205	4193	4160
622	722	722
605	625	725
drive		

427	422	415	418	419	418	410	416	413
63	58	75	72	71	73	82	74	72
625	42	39	25		25	40	45	625

4113	4114	4133
722	722	722
60	625	725
walk		

426	424	409	413	415	411	405	409	404
64	66	81	72	75	72	85	82	86
625	44	37	20		25	37	42	625

4021	4018	4012
82	82	890
60	625	725
drive		

415	410	401	406	406	404	394	397	395
75	82	82	82	84	86	96	93	95
625	40	38	15	25	37	42	625	

4019	4012
82	80
625	625
walk	

71902



0400 Fly Gresham St edge AC, parent obs RT

Lt. Nly      RT-Sly      72

45.5	44.35	44.14	43.63	43.67	43.54	43.27	42.83	43.32	43.43	43.3
35	467	488	529	538	548	575	619	520	559	57
625	526	472	472	21	21	440	440	522	625	
	wk	cc	cut			cut	cc	wk	cc	

5459<sup>69</sup> Fly Cb Line Gresham St

44.44	42.96	44.07	42.56	41.50	43.30	41.6	42.97	42.76	42.63	42.53	42.21	42.19
458	506	425	546	588	522	587	605	626	639	649	681	633
1225	1225	1225	1225	1225	1225	21	21	425	625	725	725	725
	cut	cc	cut							cut	cc	cc

5439<sup>69</sup> Gresham St

44.0	43.58	43.48	43.20	42.99	42.79	42.65	42.47	42.34	42.21	41.3
500	544	554	582	604	623	637	655	668	681	720
1225	725	625	425	21	21	425	625	625	725	1225

5419<sup>69</sup> wly Cb Line Gresham St

43.39	42.92	43.05	42.57	42.57	42.42	42.0	42.03	41.89	41.65	41.58	41.2	41.1
563	610	597	648	645	660	688	702	716	739	752	780	730
1225	1225	1225	1225	625	425	21	21	425	625	725	725	725
	cc	cut	cc	cut						cut	cc	cc

4199<sup>69</sup> wly Gresham St. edge AC, parent end obs

42.1	41.1	41.1	42.05	42.37	42.34	42.18	42.0	41.52	41.98	42.08	42.4
42	42	590	607	665	668	684	700	750	704	694	66
625	55	525	448	442	21	21	442	442	522	625	
		wk	cc	cut				cut	cc	wk	

4174 59° RT 015 con walk

4173 59° RT end 2<sup>5</sup> picket fence

4167 49° RT 0 con walk

41.11	41.15	41.13
471	487	489
725	625	495
	wk	

T 49 02



1750

1741 63<sup>5</sup> RT ♀ 3<sup>0</sup> con walk

1738 63<sup>8</sup> LT ♀ 1<sup>5</sup> con walk

1732 63<sup>8</sup> LT ♀ 3<sup>0</sup> con walk

1700

TP8 BM

10<sup>15</sup>

54<sup>RR</sup>

5<sup>55</sup>

43<sup>41</sup>

on 1/11 Mon  
NE cor  
Graham  
Grand

0760 62<sup>5</sup> LT ♀ 3<sup>0</sup> con walk

0758 62<sup>5</sup> RT ♀ 3<sup>0</sup> con walk

0750 42<sup>5</sup> LT end obs + walk

0750 62<sup>5</sup> RT ♀ 3<sup>0</sup> con walk

0741 42<sup>4</sup> LT ♀ 18<sup>0</sup> con driveway

0715 62<sup>5</sup> RT ♀ 3<sup>0</sup> con walk

LT-Nly

48.7	48.2	48.3	47.6	47.5
55	60	59	66	62
62.5	44	30	20	

RT-Sly 73

47.1	46.9	47.3	47.1
71	73	62	71
30	43	45	62.5

47.15	47.07
70.7	71.1
63.5	73.5

w/k

48.78	48.53
544	569
732	638

w/k

48.73	48.75
549	547
738	632

w/k

47.6	47.3	46.5	46.3	46.2	46.0	45.8	46.5	46.4	47.9
66	62	72	72	80	82	84	72	78	103
62.5	45	41	20		20	40	43	62.5	73

T 54<sup>RR</sup>

46.5	46.44
250	256
725	625

w/k

43.84	43.85
518	517
625	725

w/k

46.9

26  
625

46.1	45.24	45.18	45.13	44.63	44.75	44.7	44.4	44.3	43.9	44.5	43.78	43.83
22	328	324	389	429	427	42	46	42	51	45	524	519
55	525	475	428	423	402	20	20	40	45	625	725	725
wk	wk	wk	wk	end	end	end				wk	wk	wk

45.02

420	452	461
473	425	425
wk	wk	wk

43.74	43.81
528	521
625	725

w/k

4902



Lt. Nly

Rt. Sly

74

3197 61° Lt & 7° con drive

55.94 54.60 54.19  
201 285 326  
71 622 41  
drive

3191 49° Lt & 20" Eucalyptus tree

3190 51° Rt & 14" Palm tree

3150

540 520 520.  
511 506 507 507 501 50.9 512 513  
32 41 51 63 68 62 62 73 65 62 61  
73 622 58 30 20 20 33 50 622 73

319 6 31 57 45 308 514

3126  
3514  
North. 200

↑ 5745

3117 62° Rt & 72" clump of Cypress trees (4)

3100

521 516 514 506 499 501 50.0 49.8 49.2 49.5 49.8 49.6  
15 21 28 36 43 42 42 44 50 42 41 46  
68 622 60 38 25 15 20 36 40 622 73

2176 59° Lt & 12' con walk & steps

5023 5017 5098  
122 205 324  
725 622 592  
Top 501  
5100  
414

2150

5016 504 499 493 493 492 489 483 489 494  
36 38 43 42 42 50 53 52 53 48  
73 622 42 34 20 20 37 40 622

2137 50° Rt & 36" Eucalyptus tree

5039 5033 5011  
323 327 411  
725 622 592  
drive

2108 59° Lt & 9° con drive

2100

5000 484 484 485 483 482 476 477 480  
42 48 58 52 52 60 66 65 62  
622 45 34 15 20 37 39 622

1190 63° Rt & 8° con drive

4758 4727  
664 625  
63 73  
drive

1190 52° Lt & 40" Eucalyptus tree

↑ 5422



Lt = Nly      ♀ RT = Sly

0+00 Fly Haines St edge AC. pav. end obs

56.2	55.07	54.98	54.51	54.72	54.91	54.72	54.20	54.94	55.12	55.09
37	502	511	520	537	518	537	539	518	497	50
625	522	445	445	21	21	442	442	522	625	
	wk	cb	cut			cut	cb	cut	wk	
		end				end				

4+5970 Fly C6 line Haines

56.52	55.90	55.31	54.72	54.45	54.14	54.43	54.59	54.42	54.09	54.52	54.55	55.2	54.93	55.1
357	419	478	537	554	528	566	550	567	600	557	524	497	516	448
1225	1225	725	725	625	425	21	21	425	625	725	725	1225	1225	
cb	cut	cb	cut					cut	cb	cut	cb	cut	cb	

4+3970 ♀ Haines

56.28	54.87	54.53	54.00	54.18	54.31	54.21	53.99	54.52	54.72	55.07
381	522	555	629	571	528	588	60	557	537	508
1225	725	625	425	21	21	425	625	725	725	1225

4+1970 Wly C6 line Haines St

56.32	55.70	54.95	54.34	54.16	53.79	54.05	54.20	54.13	53.76	54.00	54.00	54.47	54.88	54.8
377	439	514	525	523	630	644	589	576	633	609	609	562	581	531
1225	1225	725	725	625	425	21	21	425	625	725	725	1225	1225	
cb	cut	cb	cut					cut	cb	cut	cb	cut	cb	

717 1/2 Dist NW cor Haines + Grave

TP<sub>10</sub> BM

5<sup>65</sup> 60<sup>09</sup> 301 5444

71 60<sup>09</sup>

4+9970 Wly Haines edge AC. begin. cl

55.5	54.18	54.06	53.47	53.78	54.04	53.87	53.53	54.22	54.30	54.2
12	327	339	378	367	341	358	328	323	313	32
625	522	442	442	21	21	442	442	522	625	
	wk	cb	cut			cut	cb	cut	wk	

4+61 53° RT & 45" Eucalypetus tree

525	529	526	527	523	526	525	519	520	525	534
02	25	38	42	51	48	42	55	44	41	40
73	625	55	20	17		20	38	50	625	73

4+53

4+37 52° RT & 12" Eucalypetus tree

4+15 50° LT & 20" Eucalypetus tree

4+00 52° RT & 6" clump plant Bush

55.3	53.9	53.1	51.9	51.4	51.5	51.5	50.8	52.4	52.6	52.8
24	35	43	55	60	52	52	66	50	48	46
68	625	57	35	20		20	37	47	625	73

71 57<sup>40</sup>



1750

1737 47° L+E 36" Eucalypetus tree

1717 62° R+E 4' con steps & walk

1712 48° R+E 18" Pepper tree

1708 62° L+E 8° con drive

1700

0795 62° L+E 8° con drive

0787 47° L+E 30" Eucalypetus tree

0768 62° L+E 3° con walk

0762 48° L+E 30" Eucalypetus tree

0750

0744 62° L+E 8° con drive

0737 47° L+E 30" Eucalypetus tree

0736 62° R+E 4' con steps & walk

0716 62° L+E 4° con walk

0710 47° L+E 14" Eucalypetus tree

L=Nly

R=Sly

76

57.5	57.3	55.5	55.8
26	28	46	43
62°	50	30	15

55.9	55.6	54.9	54.3	54.4
42	45	52	38	37
20	38	44	62°	

56.83	60.46
326	40.37
62°	68°
30°	70°
54°	56°

57.48	57.17
26	28
72°	62°
drive	

56.7	56.0	54.9	55.2
34	41	52	42
62°	45	37	20

55.2	55.0	54.4	54.1	56.0
42	51	52	42	41
20	40	44	62°	

57.07	56.67
32°	32°
72°	62°
drive	

57.0	56.62
30	37
72°	62°
wk	

56.5	55.7	54.7	54.8
36	42	51	53
62°	45	37	20

54.8	54.6	54.2	55.6	55.8
53	55	52	45	43
20	40	45	62°	

56.80	56.44
32°	36°
72°	62°
drive	

56.12	58.47	58.59
37	162	130
62°	662	762
30°	70°	54°

56.73	56.46
36	363
72°	62°
wk	

T 60°



LT=Nly

RT=Sly

77

3+00

57.3 57.3 56.7 56.8  
58 58 62 63  
62 33 20 20

2+80 62° RT 3° con steps walk

58.93 57.20  
47 40.80  
67 692  
647 Top  
Step Step

2+80 43° LT 8" (3) in clump each Eucalaptus trees

2+72 42° LT 6" Eucalaptus tree

2+50

58.5 57.5 56.5 56.5 56.6 56.2 55.4 57.6 57.8  
46 55 66 66 65 62 72 55 53  
30 37 20 20 38 45 62

2+47 62° LT 5° con walk

2+37 62° RT 4° con steps + walk

2+06 62° LT 2° con walk

59.95 59.31  
315 329  
723 623  
w/k  
59.42 59.17  
368 323  
723 623  
w/k

57.65 62.34  
545 676  
623 672  
647 Top  
Step Step

2+00

1+63 62° RT 4° con walk + steps

1+63 47° RT 8" Pepper tree

TP<sub>11</sub> 635 6310 334 5625

58.6 57.6 56.2 56.2 56.4 56.0 55.2 56.8 56.9  
45 55 62 62 62 71 72 63 63  
62 30 33 20 20 38 45 62

56.92 57.79  
615 131  
623 492  
647 Top  
Step Step

1+55 49° LT 9° con drive

58.50 58.45 58.31 57.29  
159 164 128 280  
723 623 56 49  
drive

6310

6009



42° N1E 4x4" stop sign  
 449976 Wly Ingraham cnd chov Lt.

4750

4700 42° N1E begin AC, drive (parking) oil sta.

3775 62° N1E begin drive parking AC, oil sta.

3765 48° N1E 10" Eucalyptus tree

3761 46° N1E 20" Eucalyptus tree

3740 48° N1E 18" Eucalyptus tree

3735 47° N1E 18" Eucalyptus tree

3712

3710 48° N1E 48" Eucalyptus tree

47-Nly 78  
 5714 5296 5655 5558 5556 5554 551 549 549 5477 5526  
 62° 42° 42° 35 20 8° 8° 8° 8° 7°  
 AC, end out AC, AC

5728 567 561 561 556 551 551 5599  
 5° 64 7° 7° 7° 8° 8° 7°  
 62° 40 20 20 38 42° 62°  
 AC AC AC AC

5752 569 566 567 561 554 5562 5628  
 558 6° 6° 6° 7° 7° 7° 6°  
 62° 40 20 40 42° 62°  
 AC AC

580 5769 5710 5710 567 569 562 566 564 569  
 51 54 6° 61 64 6° 62 7° 62 6°  
 73 62° 45 40 20 20 39 30 62°  
 AC

603 604 609 575 567 570 562 557 573 570  
 28 27 23 56 64 61 62 74 58 61  
 73 62° 45 38 20 20 40 30 62°

603 600 610 571 565 569 563 578 580 572  
 28 31 21 60 66 62 68 73 57 52  
 73 62° 42 34 20 20 38 47 62°

628 599 589 577 5670 568 563 560 570 575  
 0° 3° 43 52 64 6° 68 74 61 56  
 73 62° 48 38 20 20 37 35 62°

7 630



Lt = Nly

2

Rt = Sly

79

Note Cross sections cont F.B. RR 35-13

TP<sub>12</sub> B.M.

8<sup>38</sup>

54<sup>72</sup>

L+T  
S Ingramham  
South 7<sup>1</sup>/<sub>2</sub> line  
Granb



$$\begin{array}{r} 232.15 \\ 177.43 \\ \hline 54.72 \end{array}$$

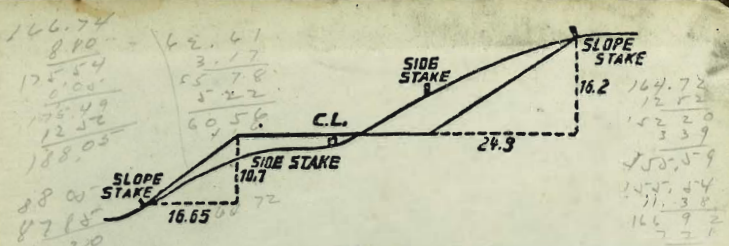
$$\begin{array}{r} 96.61 \\ 45.30 \\ 32.15 \\ \hline 77.45 \end{array}$$

No

TP.2



168.59 - 166  
 170.87 Bench book



**DISTANCES FROM SIDE STAKES FOR CROSS-SECTIONING.**

SLOPE 1 1/2 TO 1. ROADWAY OF ANY WIDTH.

	0	.1	.2	.3	.4	.5	.6	.7	.8	.9	
0	0.00	0.15	0.30	0.45	0.60	0.75	0.90	1.05	1.20	1.35	0
1	1.50	1.65	1.80	1.95	2.10	2.25	2.40	2.55	2.70	2.85	1
2	3.00	3.15	3.30	3.45	3.60	3.75	3.90	4.05	4.20	4.35	2
3	4.50	4.65	4.80	4.95	5.10	5.25	5.40	5.55	5.70	5.85	3
4	6.00	6.15	6.30	6.45	6.60	6.75	6.90	7.05	7.20	7.35	4
5	7.50	7.65	7.80	7.95	8.10	8.25	8.40	8.55	8.70	8.85	5
6	9.00	9.15	9.30	9.45	9.60	9.75	9.90	10.05	10.20	10.35	6
7	10.50	10.65	10.80	10.95	11.10	11.25	11.40	11.55	11.70	11.85	7
8	12.00	12.15	12.30	12.45	12.60	12.75	12.90	13.05	13.20	13.35	8
9	13.50	13.65	13.80	13.95	14.10	14.25	14.40	14.55	14.70	14.85	9
10	15.00	15.15	15.30	15.45	15.60	15.75	15.90	16.05	16.20	16.35	10
11	16.50	16.65	16.80	16.95	17.10	17.25	17.40	17.55	17.70	17.85	11
12	18.00	18.15	18.30	18.45	18.60	18.75	18.90	19.05	19.20	19.35	12
13	19.50	19.65	19.80	19.95	20.10	20.25	20.40	20.55	20.70	20.85	13
14	21.00	21.15	21.30	21.45	21.60	21.75	21.90	22.05	22.20	22.35	14
15	22.50	22.65	22.80	22.95	23.10	23.25	23.40	23.55	23.70	23.85	15
16	24.00	24.15	24.30	24.45	24.60	24.75	24.90	25.05	25.20	25.35	16
17	25.50	25.65	25.80	25.95	26.10	26.25	26.40	26.55	26.70	26.85	17
18	27.00	27.15	27.30	27.45	27.60	27.75	27.90	28.05	28.20	28.35	18
19	28.50	28.65	28.80	28.95	29.10	29.25	29.40	29.55	29.70	29.85	19
20	30.00	30.15	30.30	30.45	30.60	30.75	30.90	31.05	31.20	31.35	20
21	31.50	31.65	31.80	31.95	32.10	32.25	32.40	32.55	32.70	32.85	21
22	33.00	33.15	33.30	33.45	33.60	33.75	33.90	34.05	34.20	34.35	22
23	34.50	34.65	34.80	34.95	35.10	35.25	35.40	35.55	35.70	35.85	23
24	36.00	36.15	36.30	36.45	36.60	36.75	36.90	37.05	37.20	37.35	24
25	37.50	37.65	37.80	37.95	38.10	38.25	38.40	38.55	38.70	38.85	25
26	39.00	39.15	39.30	39.45	39.60	39.75	39.90	40.05	40.20	40.35	26
27	40.50	40.65	40.80	40.95	41.10	41.25	41.40	41.55	41.70	41.85	27
28	42.00	42.15	42.30	42.45	42.60	42.75	42.90	43.05	43.20	43.35	28
29	43.50	43.65	43.80	43.95	44.10	44.25	44.40	44.55	44.70	44.85	29
30	45.00	45.15	45.30	45.45	45.60	45.75	45.90	46.05	46.20	46.35	30
31	46.50	46.65	46.80	46.95	47.10	47.25	47.40	47.55	47.70	47.85	31
32	48.00	48.15	48.30	48.45	48.60	48.75	48.90	49.05	49.20	49.35	32
33	49.50	49.65	49.80	49.95	50.10	50.25	50.40	50.55	50.70	50.85	33
34	51.00	51.15	51.30	51.45	51.60	51.75	51.90	52.05	52.20	52.35	34
35	52.50	52.65	52.80	52.95	53.10	53.25	53.40	53.55	53.70	53.85	35
36	54.00	54.15	54.30	54.45	54.60	54.75	54.90	55.05	55.20	55.35	36
37	55.50	55.65	55.80	55.95	56.10	56.25	56.40	56.55	56.70	56.85	37
38	57.00	57.15	57.30	57.45	57.60	57.75	57.90	58.05	58.20	58.35	38
39	58.50	58.65	58.80	58.95	59.10	59.25	59.40	59.55	59.70	59.85	39
40	60.00	60.15	60.30	60.45	60.60	60.75	60.90	61.05	61.20	61.35	40
41	61.50	61.65	61.80	61.95	62.10	62.25	62.40	62.55	62.70	62.85	41
42	63.00	63.15	63.30	63.45	63.60	63.75	63.90	64.05	64.20	64.35	42
43	64.50	64.65	64.80	64.95	65.10	65.25	65.40	65.55	65.70	65.85	43
44	66.00	66.15	66.30	66.45	66.60	66.75	66.90	67.05	67.20	67.35	44
45	67.50	67.65	67.80	67.95	68.10	68.25	68.40	68.55	68.70	68.85	45
46	69.00	69.15	69.30	69.45	69.60	69.75	69.90	70.05	70.20	70.35	46
47	70.50	70.65	70.80	70.95	71.10	71.25	71.40	71.55	71.70	71.85	47
48	72.00	72.15	72.30	72.45	72.60	72.75	72.90	73.05	73.20	73.35	48
49	73.50	73.65	73.80	73.95	74.10	74.25	74.40	74.55	74.70	74.85	49
50	75.00	75.15	75.30	75.45	75.60	75.75	75.90	76.05	76.20	76.35	50

THE NATIONAL BLANK BOOK COMPANY  
 HOLYOKE MASSACHUSETTS  
 NEW YORK CHICAGO BOSTON SAN FRANCISCO