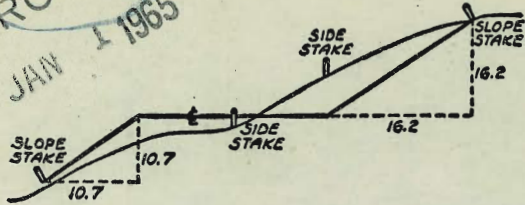




MICROFILMED  
 JAN 1 1965



DISTANCES FROM SIDE STAKES FOR CROSS-SECTIONING  
 SLOPE 1 TO 1. ROADWAY OF ANY WIDTH

	0	.1	.2	.3	.4	.5	.6	.7	.8	9	
0	0.00	0.10	0.20	0.30	0.40	0.50	0.60	0.70	0.80	0.90	0
1	1.00	1.10	1.20	1.30	1.40	1.50	1.60	1.70	1.80	1.90	1
2	2.00	2.10	2.20	2.30	2.40	2.50	2.60	2.70	2.80	2.90	2
3	3.00	3.10	3.20	3.30	3.40	3.50	3.60	3.70	3.80	3.90	3
4	4.00	4.10	4.20	4.30	4.40	4.50	4.60	4.70	4.80	4.90	4
5	5.00	5.10	5.20	5.30	5.40	5.50	5.60	5.70	5.80	5.90	5
6	6.00	6.10	6.20	6.30	6.40	6.50	6.60	6.70	6.80	6.90	6
7	7.00	7.10	7.20	7.30	7.40	7.50	7.60	7.70	7.80	7.90	7
8	8.00	8.10	8.20	8.30	8.40	8.50	8.60	8.70	8.80	8.90	8
9	9.00	9.10	9.20	9.30	9.40	9.50	9.60	9.70	9.80	9.90	9
10	10.00	10.10	10.20	10.30	10.40	10.50	10.60	10.70	10.80	10.90	10
11	11.00	11.10	11.20	11.30	11.40	11.50	11.60	11.70	11.80	11.90	11
12	12.00	12.10	12.20	12.30	12.40	12.50	12.60	12.70	12.80	12.90	12
13	13.00	13.10	13.20	13.30	13.40	13.50	13.60	13.70	13.80	13.90	13
14	14.00	14.10	14.20	14.30	14.40	14.50	14.60	14.70	14.80	14.90	14
15	15.00	15.10	15.20	15.30	15.40	15.50	15.60	15.70	15.80	15.90	15
16	16.00	16.10	16.20	16.30	16.40	16.50	16.60	16.70	16.80	16.90	16
17	17.00	17.10	17.20	17.30	17.40	17.50	17.60	17.70	17.80	17.90	17
18	18.00	18.10	18.20	18.30	18.40	18.50	18.60	18.70	18.80	18.90	18
19	19.00	19.10	19.20	19.30	19.40	19.50	19.60	19.70	19.80	19.90	19
20	20.00	20.10	20.20	20.30	20.40	20.50	20.60	20.70	20.80	20.90	20
21	21.00	21.10	21.20	21.30	21.40	21.50	21.60	21.70	21.80	21.90	21
22	22.00	22.10	22.20	22.30	22.40	22.50	22.60	22.70	22.80	22.90	22
23	23.00	23.10	23.20	23.30	23.40	23.50	23.60	23.70	23.80	23.90	23
24	24.00	24.10	24.20	24.30	24.40	24.50	24.60	24.70	24.80	24.90	24
25	25.00	25.10	25.20	25.30	25.40	25.50	25.60	25.70	25.80	25.90	25
26	26.00	26.10	26.20	26.30	26.40	26.50	26.60	26.70	26.80	26.90	26
27	27.00	27.10	27.20	27.30	27.40	27.50	27.60	27.70	27.80	27.90	27
28	28.00	28.10	28.20	28.30	28.40	28.50	28.60	28.70	28.80	28.90	28
29	29.00	29.10	29.20	29.30	29.40	29.50	29.60	29.70	29.80	29.90	29
30	30.00	30.10	30.20	30.30	30.40	30.50	30.60	30.70	30.80	30.90	30
31	31.00	31.10	31.20	31.30	31.40	31.50	31.60	31.70	31.80	31.90	31
32	32.00	32.10	32.20	32.30	32.40	32.50	32.60	32.70	32.80	32.90	32
33	33.00	33.10	33.20	33.30	33.40	33.50	33.60	33.70	33.80	33.90	33
34	34.00	34.10	34.20	34.30	34.40	34.50	34.60	34.70	34.80	34.90	34
35	35.00	35.10	35.20	35.30	35.40	35.50	35.60	35.70	35.80	35.90	35
36	36.00	36.10	36.20	36.30	36.40	36.50	36.60	36.70	36.80	36.90	36
37	37.00	37.10	37.20	37.30	37.40	37.50	37.60	37.70	37.80	37.90	37
38	38.00	38.10	38.20	38.30	38.40	38.50	38.60	38.70	38.80	38.90	38
39	39.00	39.10	39.20	39.30	39.40	39.50	39.60	39.70	39.80	39.90	39
40	40.00	40.10	40.20	40.30	40.40	40.50	40.60	40.70	40.80	40.90	40
41	41.00	41.10	41.20	41.30	41.40	41.50	41.60	41.70	41.80	41.90	41
42	42.00	42.10	42.20	42.30	42.40	42.50	42.60	42.70	42.80	42.90	42
43	43.00	43.10	43.20	43.30	43.40	43.50	43.60	43.70	43.80	43.90	43
44	44.00	44.10	44.20	44.30	44.40	44.50	44.60	44.70	44.80	44.90	44
45	45.00	45.10	45.20	45.30	45.40	45.50	45.60	45.70	45.80	45.90	45
46	46.00	46.10	46.20	46.30	46.40	46.50	46.60	46.70	46.80	46.90	46
47	47.00	47.10	47.20	47.30	47.40	47.50	47.60	47.70	47.80	47.90	47
48	48.00	48.10	48.20	48.30	48.40	48.50	48.60	48.70	48.80	48.90	48
49	49.00	49.10	49.20	49.30	49.40	49.50	49.60	49.70	49.80	49.90	49
50	50.00	50.10	50.20	50.30	50.40	50.50	50.60	50.70	50.80	50.90	50

Distance of slope stake from side or shoulder stake for any width roadway, slope 1 to 1. If ground is nearly level, the out or fill at side stake is located by the double entry method in left column and top row. The number in body of table in same row and column gives distance from side stake to slope stake. If ground is not level estimate the difference in elevation between the side stake and slope stake, lower target by this amount if cut, elevate if fill. Add this amount to cut or fill and find distance in table. Set up rod at this point, and line of sight should cut target. If it does not make the slight adjustment necessary.

				1	PAGES
West from 1/4 Cor. Sec. 33 + 34 T. 16 S	R. 2 W	S. B. M.			2-7
N. Wly. line Home Ave. thru S 1/2	Sec 33 - T 16 S	R 2 W.	S. B. M.		8-13
Ely. line S 1/2 Sec. 33, T 16 S - R 2 W.	S. B. M.				14-18
X- Sec Monte Vista Belvedere to Washburne					19-22
X- SEC. MONTE VISTA & BELVERDERE TO N. PROP. FERN GLEN	10-14-52				27-30
X Sec. Alley, Block 13, La Jolla Park					38-43
Drainage survey for above job					44-48
Second "	"	"	"	"	49-53
Third "	"	"	"	"	54

From 1/4 Cor. Sec. 33+34 T16S R2W  
S.B.M.

Running West.

= Nly. line Wadsworth Olive Grove

Feb-1952

Sommarmeyer  
Be99  
R Sissen  
W. Altman

Mon. denotes Conc. Mem. + brass plate with cross)

4+39.80 - Set 1/2 + disk P.O.T.

sec - Roll # 7569

T.P. Boo 21  
24.

F.R.# 1247

1435

1554

1563

1582

2+37.03 Set 1/2 + disk P.O.T.

1383

1654

1710

1834

Maps

283

747

1175

1337

R of S.

# 2043

22.03

O to o

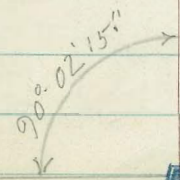
Fd. 1/4 Cor. Sec. 33+34



FILED  
MAR 20 1952



Sec. 33



Sec. 34

11 + 73.65 = 21.75 Lt. = Fd 1" pipe. plyg + tack.

90°

— Z —

10 + 07.88 = set 1/2 + disk. P.O.T.

8 + 27.84 = set 1/2 + disk P.O.T.

7 + 26.97 = set 1/2 + disk P.O.T.

6 + 97.84 = set 1/2 + disk - P.O.T.

16+30<sup>00</sup> = set Mon. P.O.T.

14+53.62 = set  $\frac{1}{2}$  + disk P.O.T.  
14+50 = 1 set Mon. - P.O.T.

13+25.24 = set  $\frac{1}{2}$  + disk P.O.T.  
13+22.87 = 9<sup>15</sup> RT Fd.  $\frac{3}{4}$ " pipe . RE. #2318

90°

18+46.67 = Set  $\frac{1}{2}$  + disk. P.O.T.

18+37.50 = Set Mon. P.O.T.

17+87.50 - 17.73 Lt = Fd. old  $\frac{1}{2}$  + tack.

16+37.07 = Set  $\frac{1}{2}$  + disk. P.O.T.

See P. 7 for detail.

26+33.09 = Ctr. Sec. 33. =  $400^{\circ}-09'-22\frac{1}{2}''$  Rt.

25+93.09 = set. Mon.

25+59.85 = set.  $\frac{1}{2}$  + disk. P.o.t.

25+09.77 = set.  $\frac{1}{2}$  + disk P.o.t.



and N.W. ly line Home Ave. T.P. 21-P 90.  
Sly line Quine Produced from west  
23+93.79 - 20.12' Lt. = fd. Catic, Mon. 2

90°

26+33.09 = Ctr. Sec. 33. =  $400^{\circ}-09'-22\frac{1}{2}''$  Rt.

25+93.09 = set. Mon.

25+59.85 = set.  $\frac{1}{2}$  + disk. P.o.t.



Establish Ctr. Sec. 33

T16S R2W.

Sommermeier  
Beqq.  
R. Sisson  
Wotman

Wly 7' line A7<sup>th</sup>

5.82

17'

Detail of establishment of  
ctr. Sec. 33 as shown on P. 6

Bungalow Park Add. Map 1175

T.P. Book 21-P82

Sly line Quince

323'

Wly. 22' line Euclid T.P. 21-82

Wly. line Euclid produced

17'

1.70

3.70

3.76

sec. 33

Nail

2643209

Set ctr. of  
sec. 33.

(TP-3616)

N.Wly. line Home Ave.

From Sly line Sec. 33 Northeastly

□ = set. 1/2 + disk

○ = set. stub + tack.

23'



13' South of Highland

23' offset line

INDEXED  
MAR 20 1952

0+62.16 (T.P. 20+62.15)

{ + N.Wly. line Home Ave.  
Purchase (= Sly line Sec. 33.)  
Ed. city disk = Nly line Hortons }

1 B  
23'



Hanna Ave

23'

9

11+50

23' offset 1170

8+28.41 (T.P. = 8+28.33)

6+47.52 (6+47.45 = T.P.)

6+05.93 (T.P. 6+05.87) = set Mon.

13' south of  
Laurel.  
Chapaine

90°

23'

Home Ave

18+00 - 23'

10

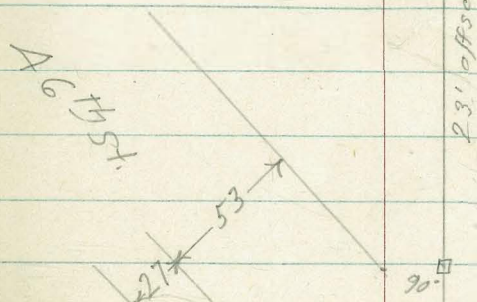
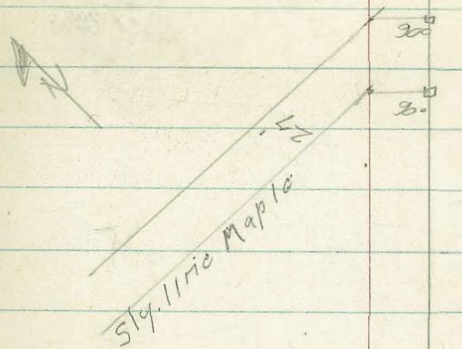
17+22.54 (T.P. = 17+22.38)

16+87.04 (T.P. = 16+86.88)

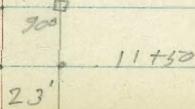
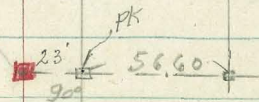
13+14.54 (T.P. = 13+14.41)

12+32.90 (T.P. = 12+32.78)

11+91.30 (T.P. = 11+91.19)



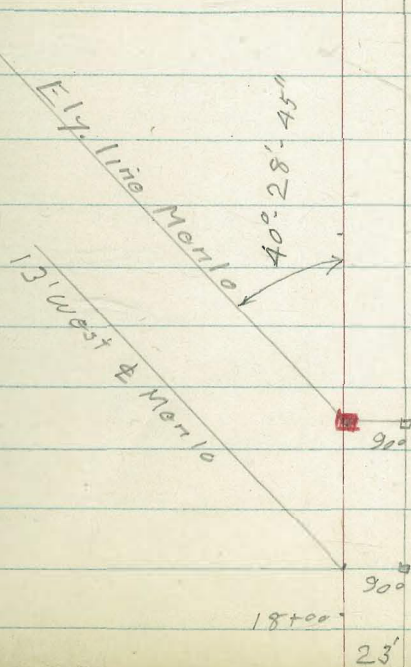
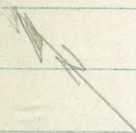
Additional  
Ties  
p. 25



Home Ave

11

24+00



18+99.91 (T.P. = 18+99.73)

18+18.27 (T.P. = 18+18.10)

Home Ave

12

30+00.32 (T.P. = 30+00.07) set  $\frac{1}{2}$  p.o.t.

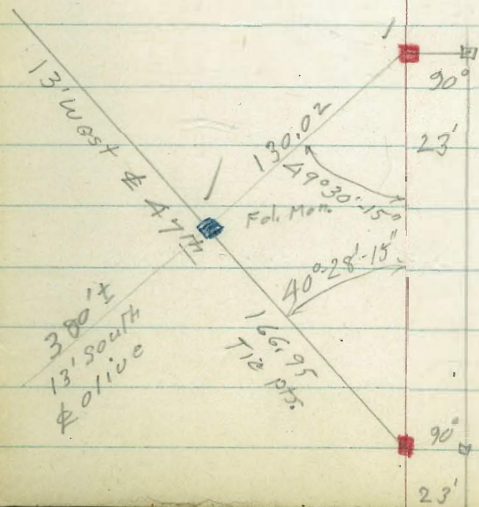
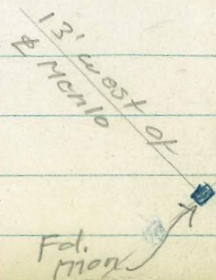
Home Ave. Pavc.

29+65.07 (T.P. = 29+64.82) Nail Ely edge

26+91.85 - (T.P. 26+91.60) - Fd. old  $\frac{1}{2}$  0104 East  
of line.  
26+60.45 (T.P. = 26+60.20) { 0.02 East of line  
Fd. old  $\frac{1}{2}$  + tack

26+03.92 (T.P. 26+03.67) Fd.  $\frac{1}{2}$  + tack.  
Replaced with Mon.

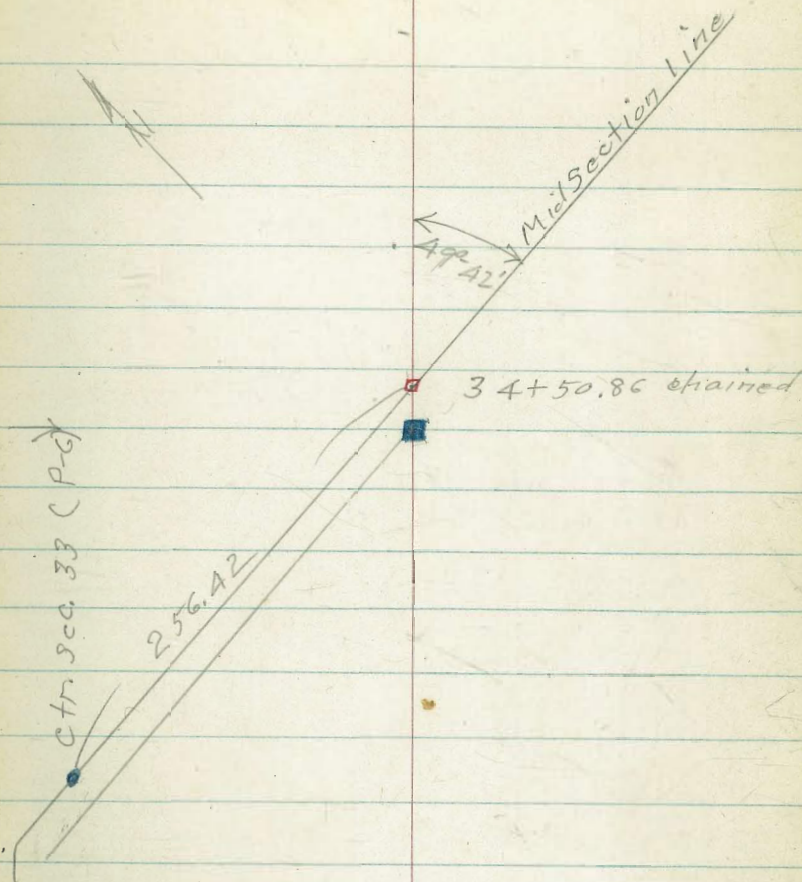
24+03.64 (T.P. = 23+03.41)



Home Ave.

13

(see P-G) S. line Quince. + N. Wly. line Home  
34+24.48 (T.P. = 34+24.23) Fd. Conc. Mon.  
See T.P. Book 21 - P. 90



30+79.10 (T.P. = 30+78.85) P.O.T. stub.

Ely, 11me Sec. 33 T16S - R2W  
SBM.

14

640

INDEXED  
*See*  
APR 7 1952

1+72.38 set.  $\frac{1}{2}$  P.O.T.

0+00  
Fd. 2" pipe - R.E. 1534



Ely. line Sec. 33

11+50

15

8+75.95- Fd. Pipe R.E. 1534 P.O.T.

6+00

Ely line Sec. 33

17+33.92 = Fd. Pipe - RE 1534 = P.O.T.

16+06.65 = Fd. Pipe RE. 1534 = P.O.T.

14+59.65 = Set  $\frac{1}{2}$  P.O.T.

14+54.85 Fd. Pipe RE 1534 = P.O.T.

13+39.78 = Set  $\frac{1}{2}$  P.O.T.

16

11+50

Ely line Sec. 33

17

23+00

22+06.88 = Fd. pipe R.E. 1534  
0.10 East of line

⊙

19+84.72 Fd. Pipe - R.E. 1534 = P.O.T.

⊙

17+33.92

Ely. line Sec. 33

18

26+47.65  
19 84.12  
66.29

Sec. 33 + Sec. 34.

26+47.65 = Fd. Conc. Mon. =  $\frac{1}{4}$  Coy.

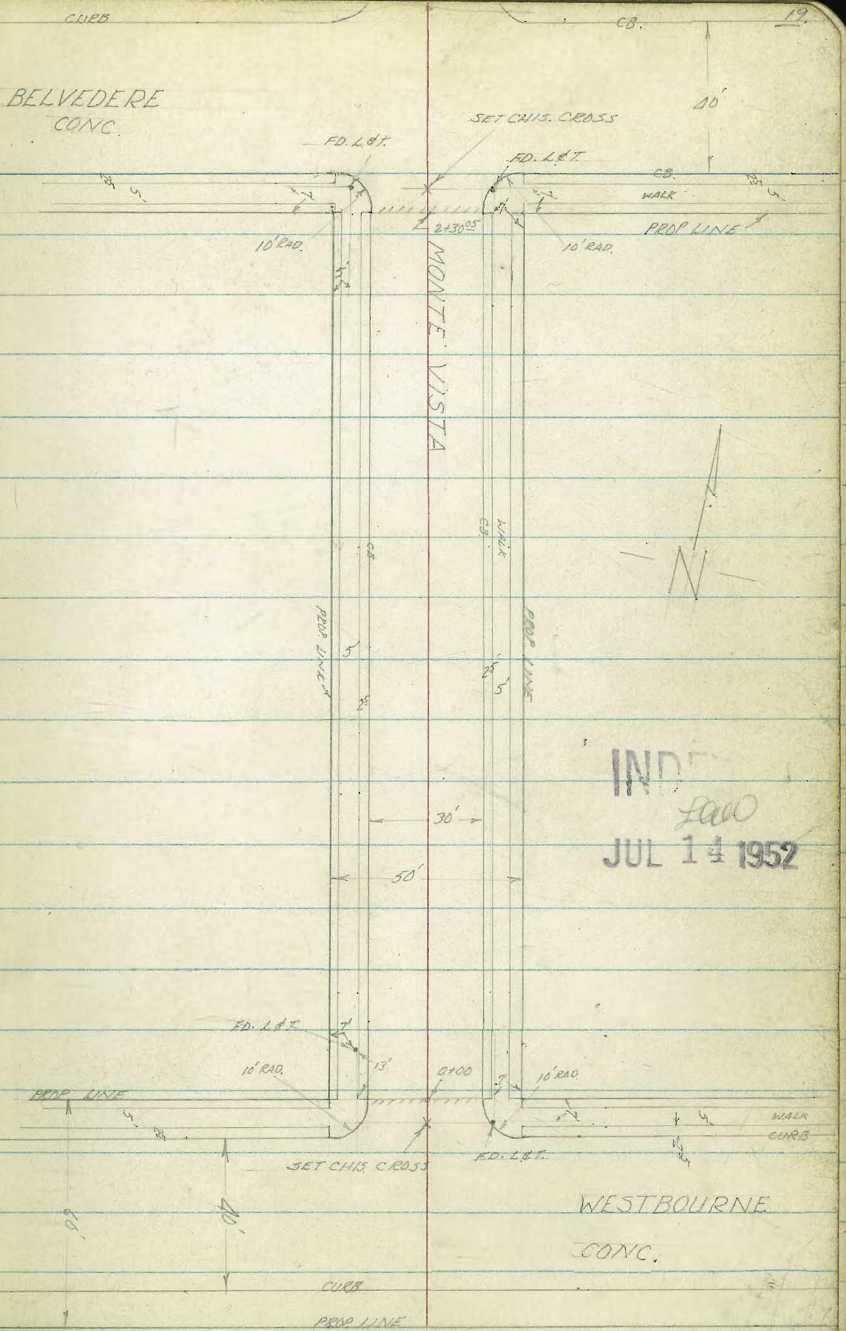
↑  
6+00 P.-2

23+00

X-SEC. MONTE VISTA, BELVEDERE TO  
WESTBOURNE

COTA  
MOORE  
FULLEN  
7-11-52  
W.O.# 32029

Richard M  
F. Quinn  
10-22-52



H20

LT		RT
631	62,2	62,6
15 CB.	15 GUT	15 GUT
63,40	62,7	63,2
5,71	6,4	5,9
15 CB.	15 GUT	15 GUT
63,40	62,7	63,2
5,71	6,4	5,9
15 CB.	15 GUT	15 GUT

0+80

63,40	62,7	63,2
5,71	6,4	5,9
15 CB.	15 GUT	15 GUT
63,40	62,7	63,2
5,71	6,4	5,9
15 CB.	15 GUT	15 GUT

0+40

64,04	63,5	64,0
5,07	5,1	5,3
15 CB.	15 GUT	15 GUT
64,04	63,5	64,0
5,07	5,1	5,3
15 CB.	15 GUT	15 GUT

0+00 NORTH PROP LINE WESTBOURNE (END CONC.)

64,73	64,25	64,78
4,38	4,86	4,33
15 CB.	15 GUT	15 GUT
64,73	64,25	64,78
4,38	4,86	4,33
15 CB.	15 GUT	15 GUT

0-10 NORTH CURB LINE WESTBOURNE

62,49	61,96	63,47	63,31	64,11	63,97	65,10	64,17	65,34	65,35	65,93	66,88	67,48
6,62	7,15	5,24	5,80	4,0	5,4	ND	4,84	3,77	3,76	3,18	2,23	1,13
100 CB.	100 GUT	50 CB.	50 GUT	25 CB.	25 GUT	ND	25 GUT	25 CB.	50 GUT	50 CB.	100 GUT	100 CB.

0-30 & WESTBOURNE

62,49	64,04	65,12	66,06	67,49
6,46	5,07	3,99	3,05	1,62
100	50		50	100

B.M.

957 69.11 H.I.

59.52 S.W.B.P. BELVEDERE  
& MONTE VISTA

69.11 H.I.

2+40 SOUTH CURB LINE BELVEDERE

TP 4.80 64.26 H.I. 9.65 59.46

2+30<sup>05</sup> SOUTH PROP. LINE BELVEDERE (BEGIN CONC.)

14.80

14.60

14.50

69.11 H.I.

LT.

£

RT.

4.98	5.61	4.75	5.01	5.29	5.06	4.24	4.55	3.89
50 CB.	50 GUT	25 CB.	25 GUT		25 GUT.	25 CB.	50 GUT	50 CB.
59.28	58.65	59.51	58.85	58.97	59.20	60.02	59.71	60.37
6.06	5.45					2.96	5.12	
100 GUT.	100 CB.					100 CB.	100 GUT	
								60.64
								61.30

64.26 H.I.

9.51	10.06	9.65	9.82	9.15
15 CB.	15 GUT		15 GUT.	15 CB.
59.60	59.05	59.46	59.25	59.96

7.60	8.5	7.8	8.0	7.10
15 CB.	15 GUT		15 GUT.	15 CB.
61.51	60.5	61.3	61.1	62.0

6.83	7.1	6.9	7.5	6.38
15 CB.	15 GUT.		15 GUT.	15 CB.
62.28	61.5	62.2	61.6	62.73
7.00	7.9	7.2	7.5	6.54
15 CB.	15 GUT.		15 GUT.	15 CB.
62.11	61.21	61.9	61.6	62.57

69.11 H.I.

LT.                      \$                      RT.

CHECK B.M.

474 59.57 = 59.57 SW

✓  
B.P. BELVEDERE & MONTE VISTA

7460 \$ BELVEDERE

58.30  
596  
100

59.75  
551  
50

59.19  
507

59.87  
439  
50

60.79  
347  
100

64.26 HI

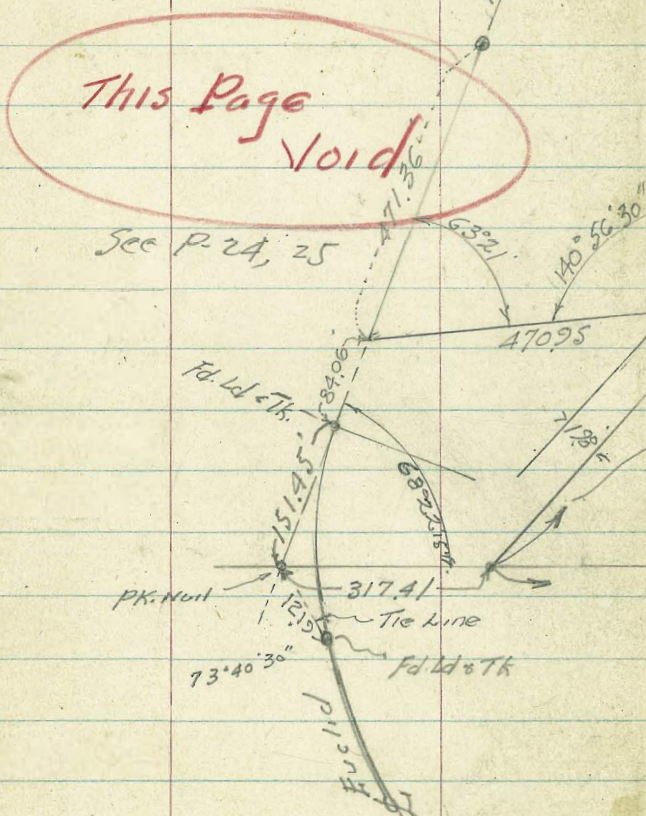
64.26 HI



WADSWORTH OLIVE GROVE

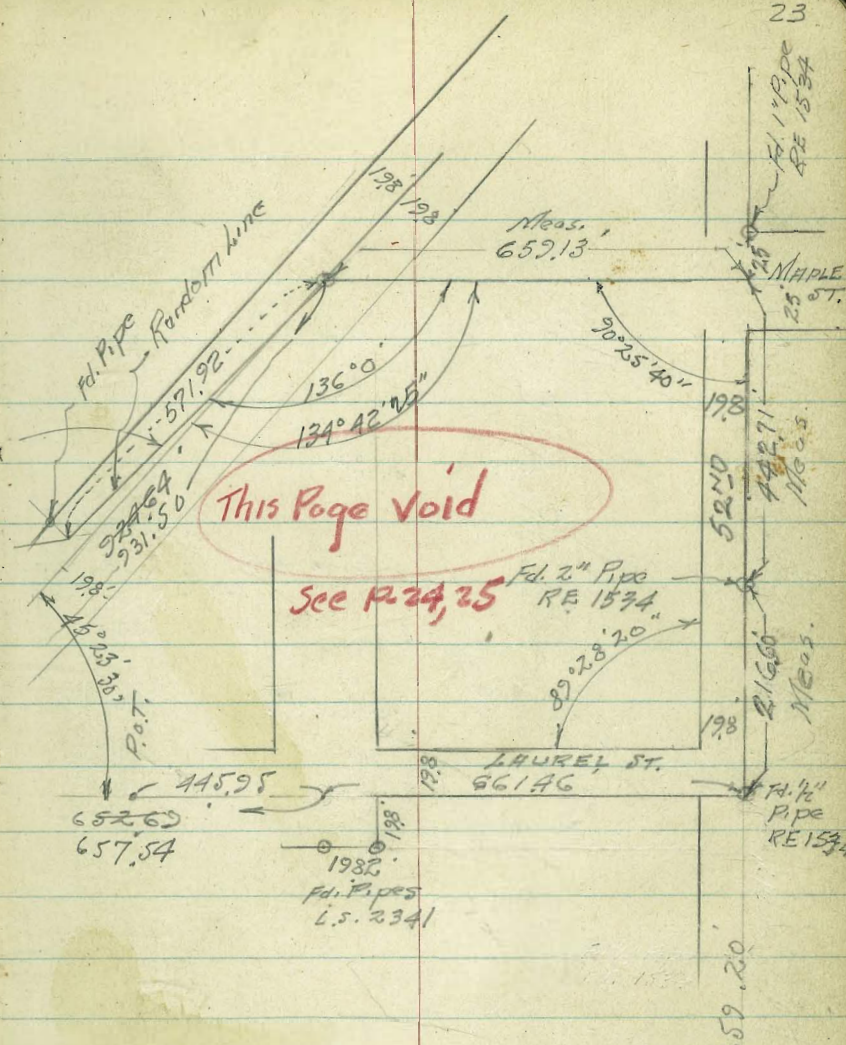
Ties

Walker  
Pope  
Huffman  
Taylor  
7-16-52



This Page Void

See P. 24, 25



This Page Void

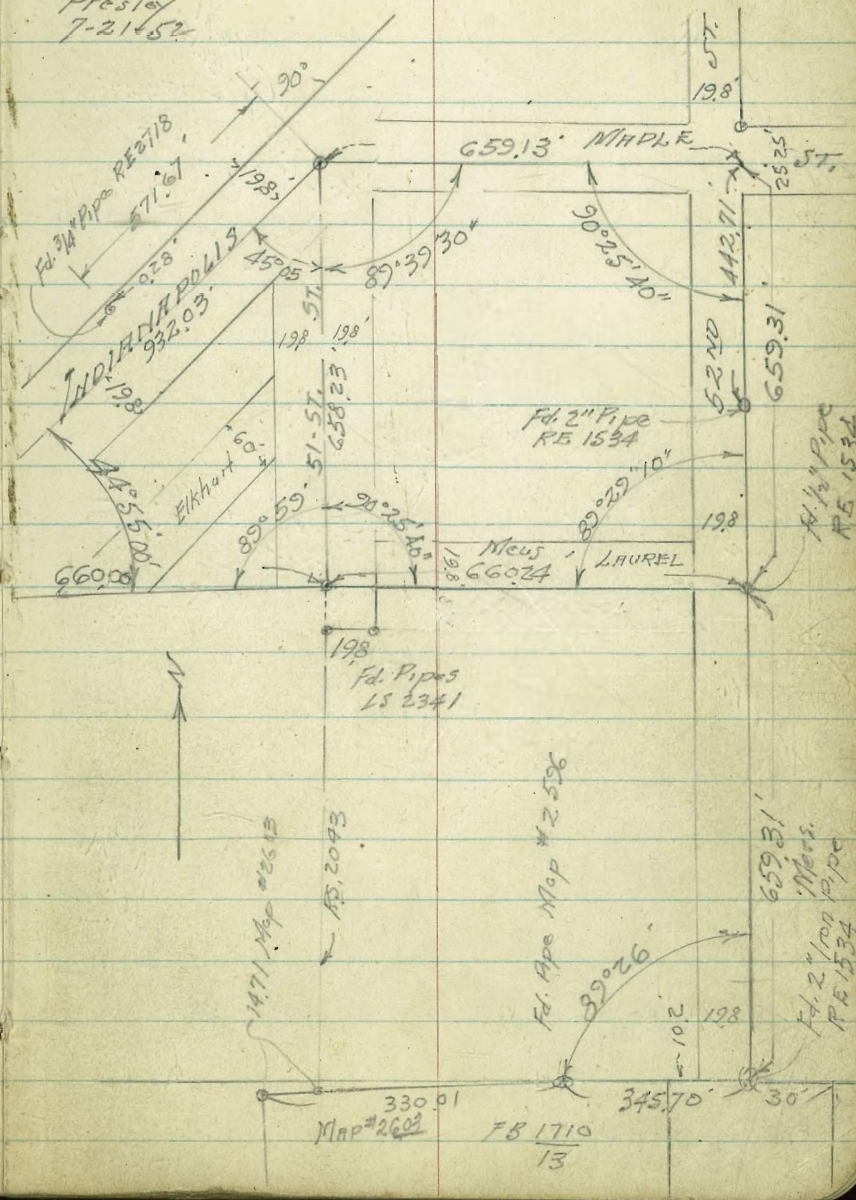
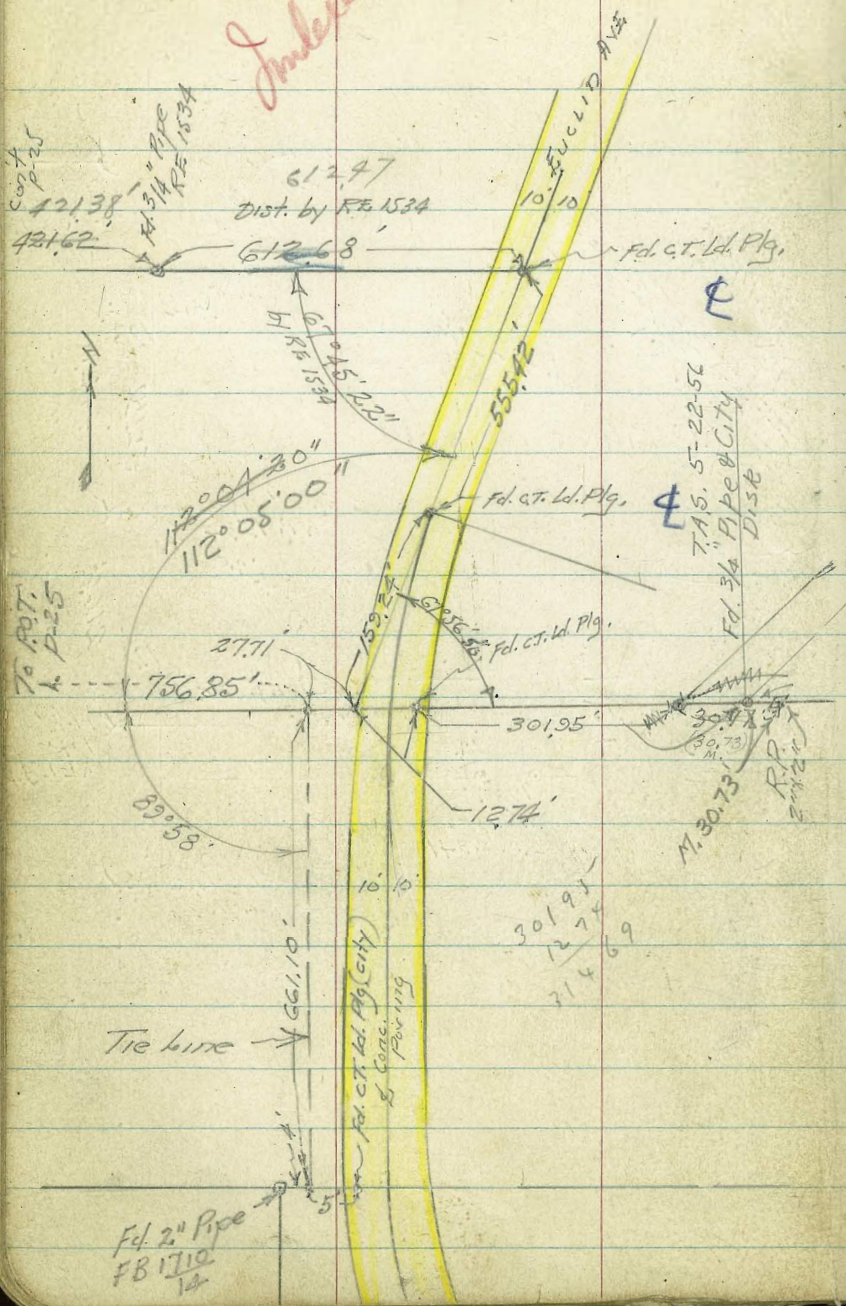
See P. 24, 25

30° 30'

*Indexed*

WADSWORTH OLIVE GROVE 24

Walker  
Pope  
Huffman  
Presley  
7-21-52



Fd. 2" Pipe  
FB 1710  
12

330.01  
Map #2609  
FB 1710  
13

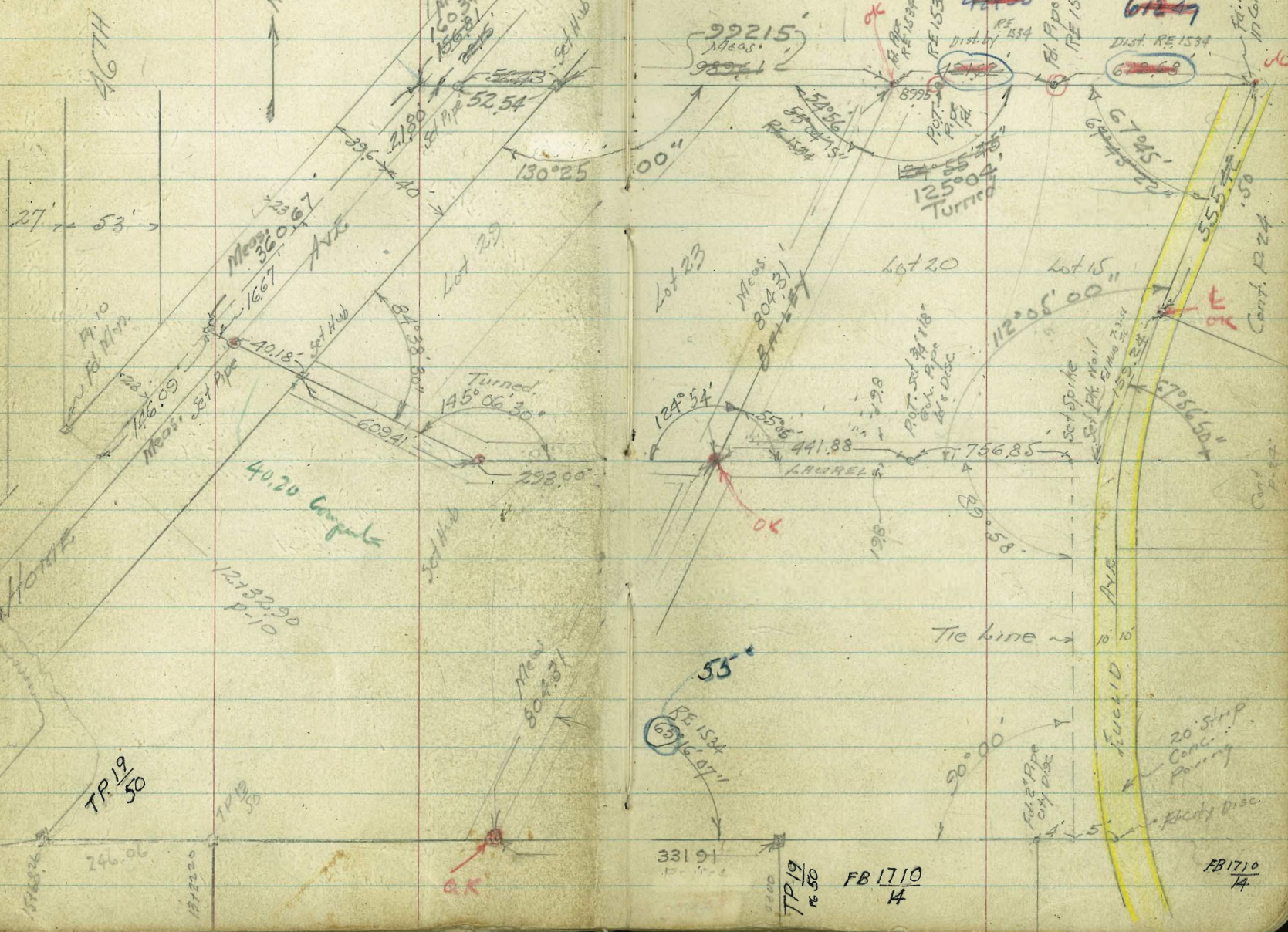
659.31  
New  
Map  
FB 1534

Walker  
Pape  
Huffman  
Pipes  
7-21-52

18+99.91 = Fd. Conc. Mon.  
Pape 11

WADSWORTH OLIVE GROVE 25

NOTES



TP 19  
re 50

331.91

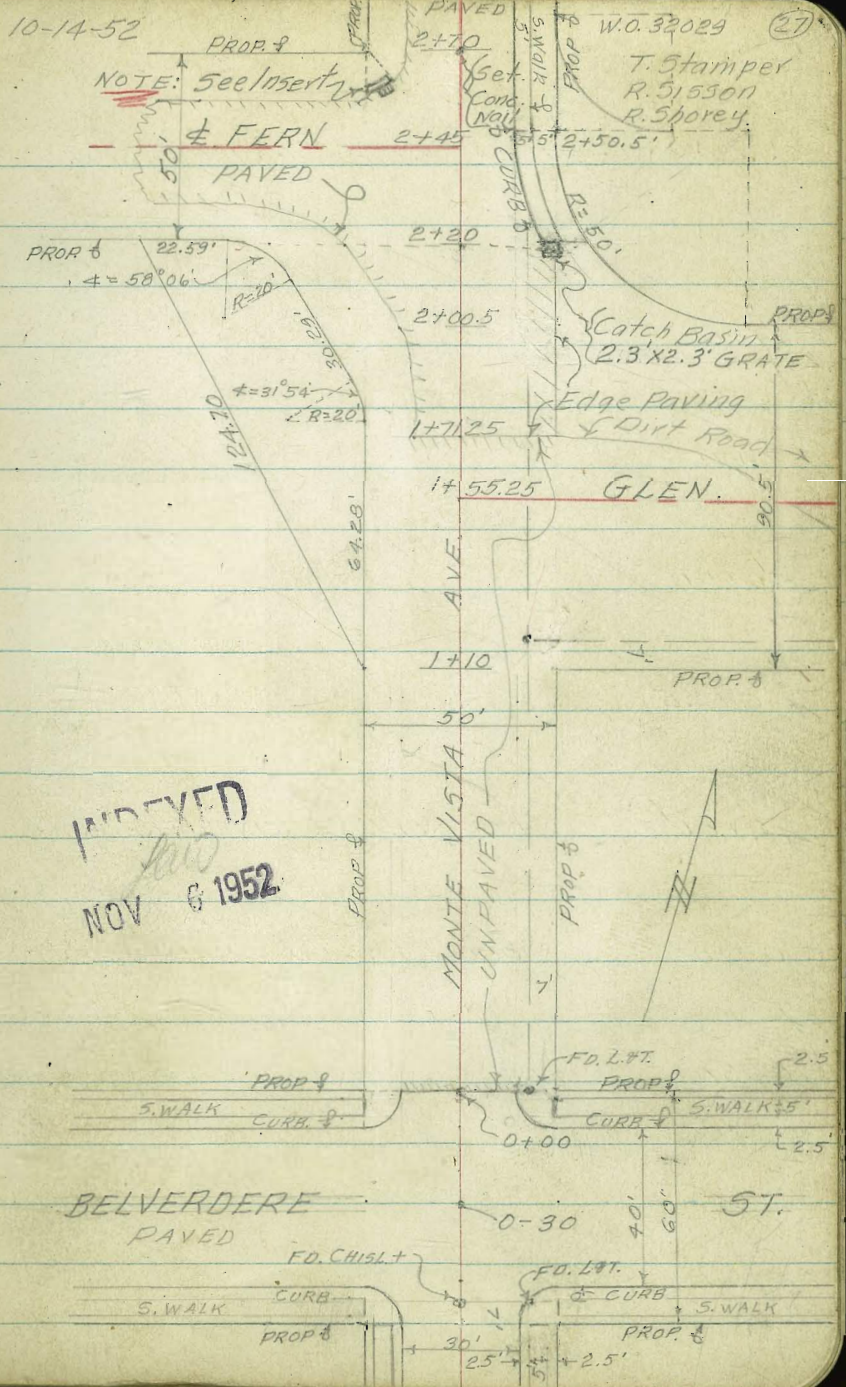
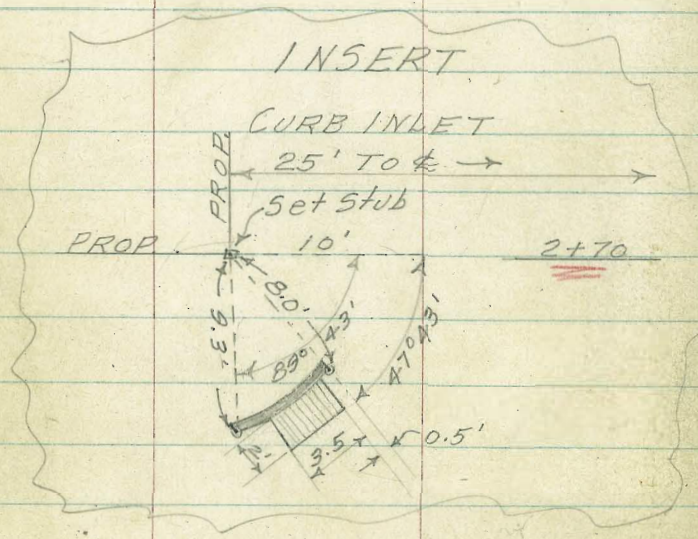
TP 19  
re 50

FB 1710  
H

FB 1710  
H



CROSS SECTIONS; MONTE VISTA FROM  
 & BELVERDERE TO NORTH LINE OF FERN GLEN



INDEXED  
 NOV 6 1952

W.O. 32029 (27)  
 T. Stamper  
 R. Sisson  
 R. Shorey

10-14-52

(28)

## MONTE VISTA CROSS SECTIONS CONTD.

Lt.                      †                      Rt

NOTE: These Sections taken with a direct

Reading Rod  
 Numerators Denote Elevations  
 Denominators Indicate Distances out

1+00

56.2	55.6	55.2	55.0		55.2	55.2	55.9	56.6	57.4
25	18	15	14			12	15	18	25

0+75

57.6	57.2	56.9	56.3	56.5		56.6	57.7	58.8
25	17	15	12			12	17	25

0+50

58.4	58.1	57.5		57.6	57.7	58.3	59.0	59.6
25	15	12			12	15	20	25

0+25

58.6	58.6	58.3	58.11	58.5	59.0	59.2	59.8
25	15	12		12	15	18	25

0+00

NORTH PROPLINE BELVERDERE (END CONCL)

58.75	58.50	58.00	58.42	59.40	58.91	59.17
25	15	15		15	15	25
s. Walk	cb	Gut		Gut	cb.	s. Walk

0-10

NORTH CURBLINE BELVERDERE

58.25	57.68	58.35	57.89	58.05	58.41	58.98	58.82	59.35
50	50	25	25		25	25	50	50
cb	Gut	cb	Gut		Gut	cb	Gut	cb

0-30

‡ BELVERDERE

58.70	58.93	59.15	59.90
50	25		50

0+30

B.M.

59.52 (See Pg. 20)

MONTE VISTA CROSS SECTIONS CONTD

10-14-52

Lt.

±

Rt.

29

2+45

± FERN GLEN - WEST

46.24 46.50 46.85 47.51 48.01 48.28 48.36 48.9  
50 25 15 16 16 20 25  
Gut. Cb

E.E  
Walk

2+30

46.37 47.06 47.31 47.97 48.22 48.60 48.76  
50 25 15 18 22 25  
Gut.

± Side DR. Way  
Walk N. Edge

2+20

SOUTH PROP. LINE FERN GLEN - WEST

49.2 47.6 47.11 47.67 48.47 48.76 48.58  
45 32 30 15 15 24.8  
E.Pav. ± Inlet

Top  
Gut

2+00.5

NORTH PROP. LINE FERN GLEN - EAST

52.2 51.2 49.2 48.58 49.51 49.58 49.7  
29 22 17 16 15 25  
Edge Pav. Edge Pav.

1+90.5

52.5 51.9 50.2 49.4 50.10 50.1 50.20 52.2  
25 22 15 14 15 37  
Edge Pav. Edge Pav.

1+71.25

SOUTH EDGE PAVING

NOTE: Paving is Very rough & Needs Resurfacing  
53.3 52.9 50.80 51.10 51.20 51.9 52.1 53.3  
25 19 12 12 21 25 39  
Edge Pav. Edge Pav.

1+55.25 ± FERN GLEN - EAST (UNIMPROVED)

53.8 53.8 51.70 51.90 51.90 52.4 53.1 53.8  
25 20 12 12 13 17 25

1+20

54.5 54.1 53.8 54.00 54.10 54.6 55.9 56.5  
25 16 14 12 13 19 25

1+10 SOUTH PROP. LINE FERN GLEN - EAST

56.4 56.1 54.9 54.20 54.60 54.60 56.0 57.1  
25 20 15 12 12 17 25  
Edge

MONTE VISTA CROSS SECTIONS CONTD.

10-14-52

Lt.

±

Rt.

(30)

3+20 SOUTH END OF CURB SEC.

2+62 ± GRATE AT GUTTER

TOP OF	46.95	46.66	47.45
Grate	15	15	
45.64	cb.	Gut.	
21.4			

2+60

S. COV TOP  
Curb Inlet  
46.67  
2.5

2+64

TOP N.E. COV  
Curb Inlet  
46.75  
20.0

2+70

NORTH PROFLINE FERN GLEN-WEST

E. Pav.								TOP R. Wall
47.0	46.21	46.67	47.10	47.37	47.67	48.14	48.29	50.0
17	15	12	7		15	15	20	20
					Gut.	cb.		

46.4	46.8	51.2	51.2	49.9
25	23	25	24	23

TOP R. Wall  
Toe

2+60

45.78	45.75	46.49	47.41	47.71	48.17	48.26	50.61
50	25	15		15	15	20	20
				Gut	cb.		

Shoulder  
TOP Rock  
E. Edge Wall  
S. Walk

TOP R. Wall Gr.  
50.00 51.15 51.3  
23 23 25



Survey North Line, NE 1/4 Sec. 33

Walker  
Pope  
Pillon  
Brettman  
T 16 S, R 2 W, S 8 N,  
on Random Line  
Cont. P-33

19+87.44 = Δ Lt. 35°22'15" Set chisel cross in gutters

19+82.63 = POT. Fd. Ct. W. Pk. 125' Lt.

19+18.88 Ahd. } Equations  
19+28.88 = back } Δ 20° Lt.

19+18.88 = Δ 90° Rt.

Fd. city Mon 885' Rt.

15+73.23 = POT.

13+49.14 = Int. of line produced from South

13+47.31 = POT. Fd. 1" Pipe RE #4191 = 2.11 Rt.

7+14.07 = POT. Fd. city Hub & Disc. 2.89 Rt.

Record Survey Map #553

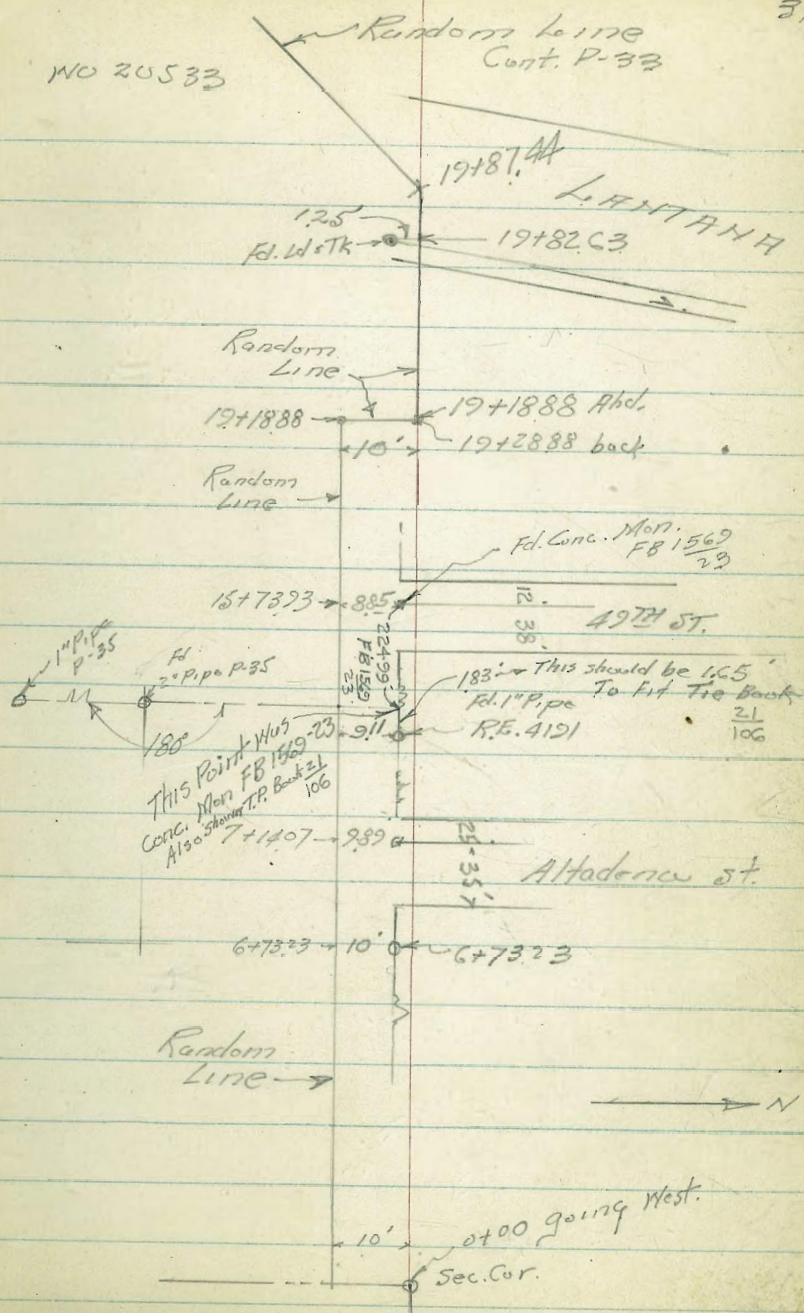
6+73.23 = POT. Fd. 2" Pipe set in Conc. 10' Rt.

4+10.07 = POT. Fd. 3/4" Pipe RE 4500 10.04 Rt.

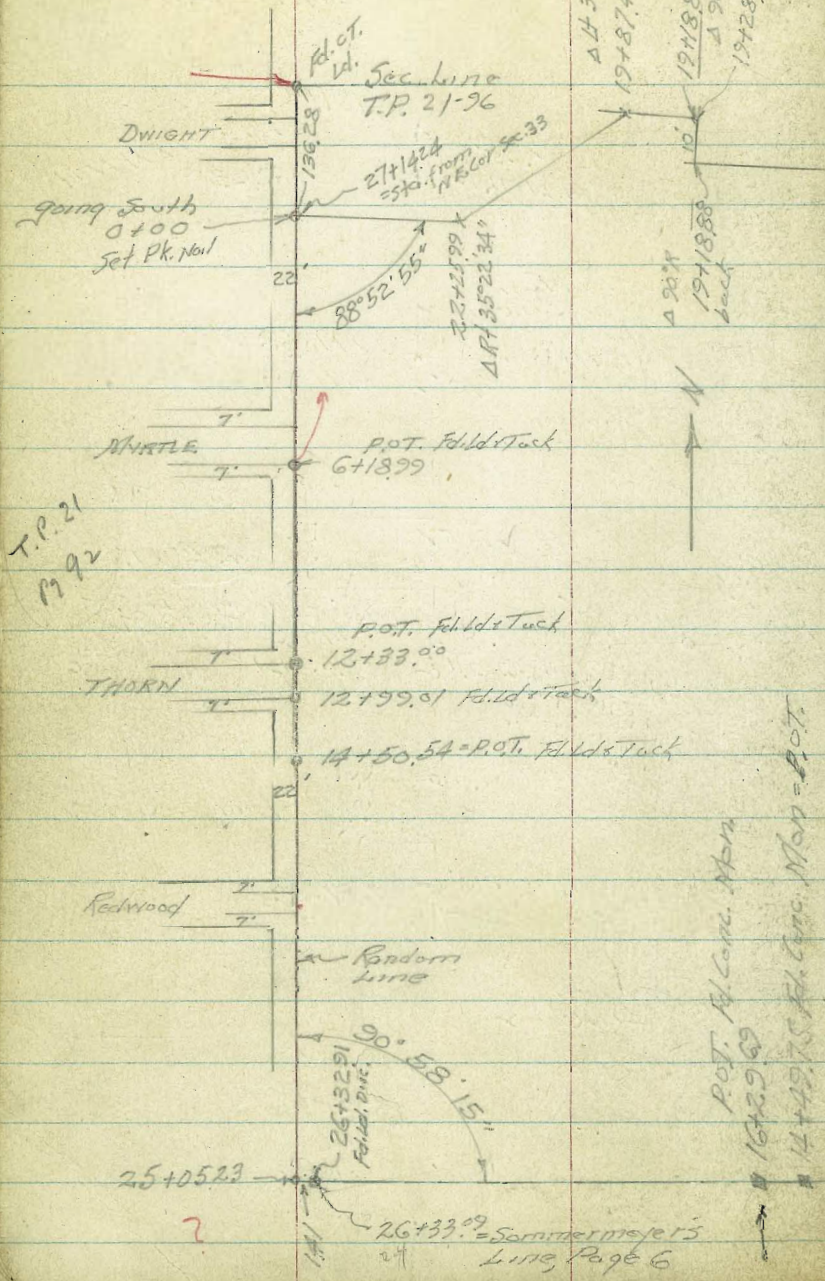
Sketch

0+00 = opp. NE Cor Sec. 33 - P-32

NO 20533

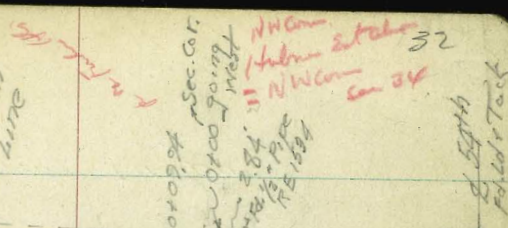
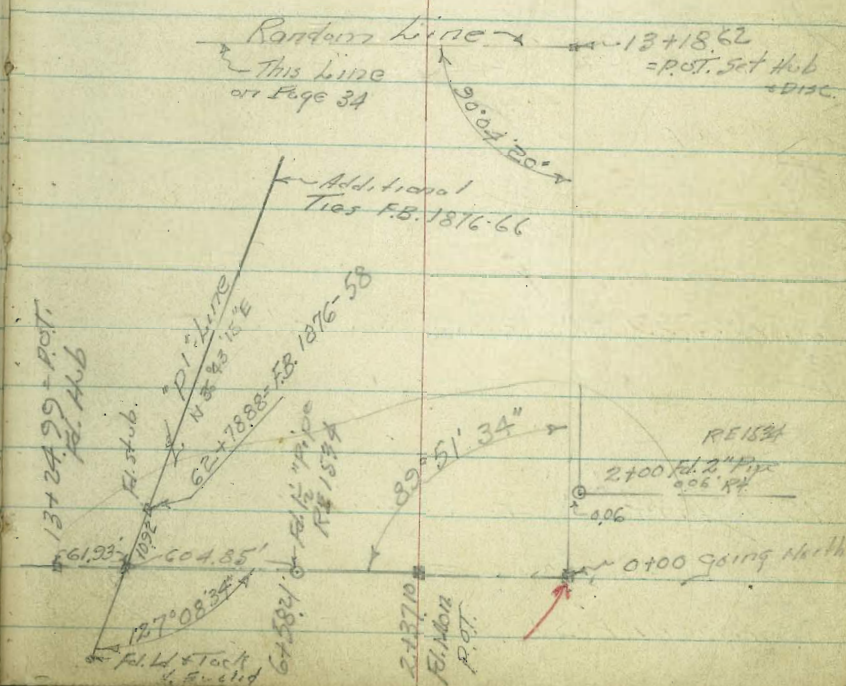


SURVEY N.E. 1/4, SEC. 33



T.P. 21  
M 92

N.E. 1/4 SEC. 33



P.O.T. Fld. Conc. Mon  
16+29.63  
14+49.75 Fld. Conc. Mon = P.O.T.

Random Line  
Random Line  
62+73.23 Fld. & Pipe  
62+584 Fld. & Tack  
2+2770 Fld. Mon P.O.T.

Survey of line NE 1/4 Sec 33

33

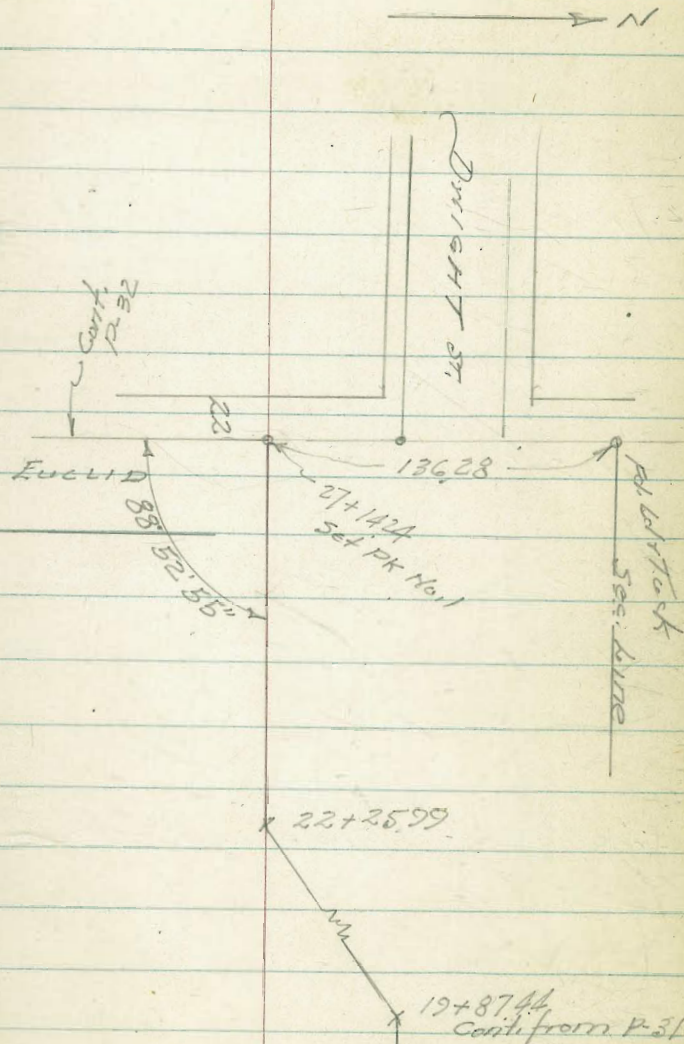
Random line

27+14.24

22+25.99 -  $\Delta$  Pt.  $35^{\circ}22'34''$

19+87.44 -  $\Delta$  Lt.  $35^{\circ}22'15''$

Cont. from p. 31



22+25.99

19+87.44  
Cont. from p. 31

SURVEY South Line, NE 1/4 of NE 1/4  
 Sec. 33, T-16S, R-2W, S.B.M.,  
 Running West on Random Line

$13 + 30.65 = \text{Int. } 1/4 \text{ } 1/4 \text{ Line}$

$12 + 05.41 = \text{Ahead.}$

$12 + 20.41 = \Delta \text{ Lt } 90^\circ$

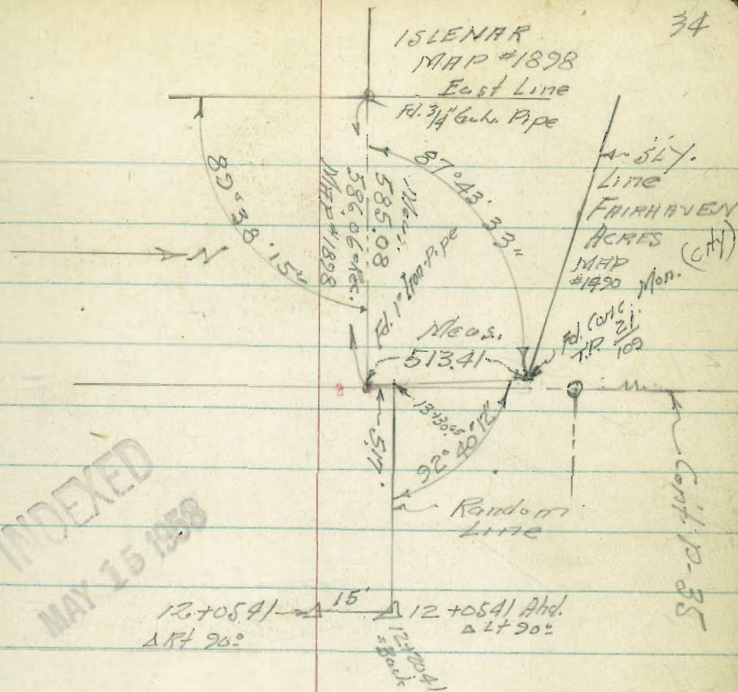
$12 + 05.41 = \Delta \text{ Rt } 90^\circ$

$10 + 59.86 = \text{Fd. } 1\frac{1}{2}'' \text{ Pipe, RE } \#913 = 9.60' \text{ Rt}$

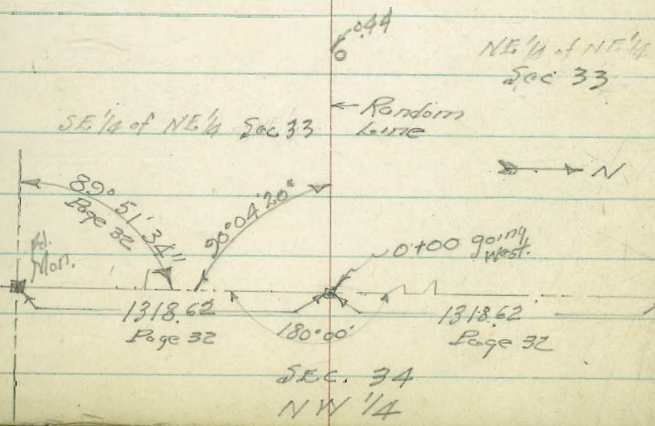
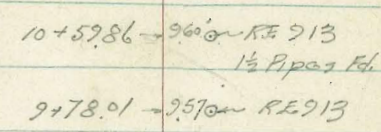
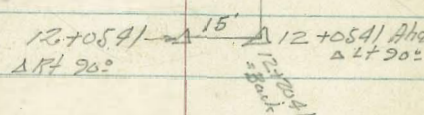
$9 + 78.01 \text{ Fd. } 1\frac{1}{2}'' \text{ Pipe, RE } \#913 = 9.57' \text{ Rt}$

$4 + 10.72 \text{ Fd. } 1\frac{1}{2}'' \text{ Pipe } \& \text{ Mid. Rack} = 0.44' \text{ Rt}$

0 + 00

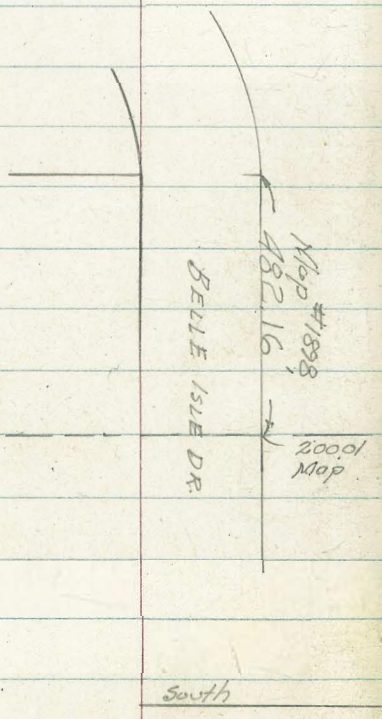


INDEXED  
 MAY 15 1988



H.F. 14 Sec. 33

Cont.



Map #1898  
482.16

1/2" Gal. Iron Pipe  
Map #1898

Factory Map #1-109

89°38'15"

585.08  
P-34  
Meas

Factory Map

514 Line  
For Overhead Wires  
Map #1490

4974 ST.

65.59

1800

65.47

Random Line  
P-31

Rec. Survey  
Map #553

1/2" Iron Pipe  
Set in Conc.

183  
1/2" Pipe  
RE 4191

13409.14 P-31

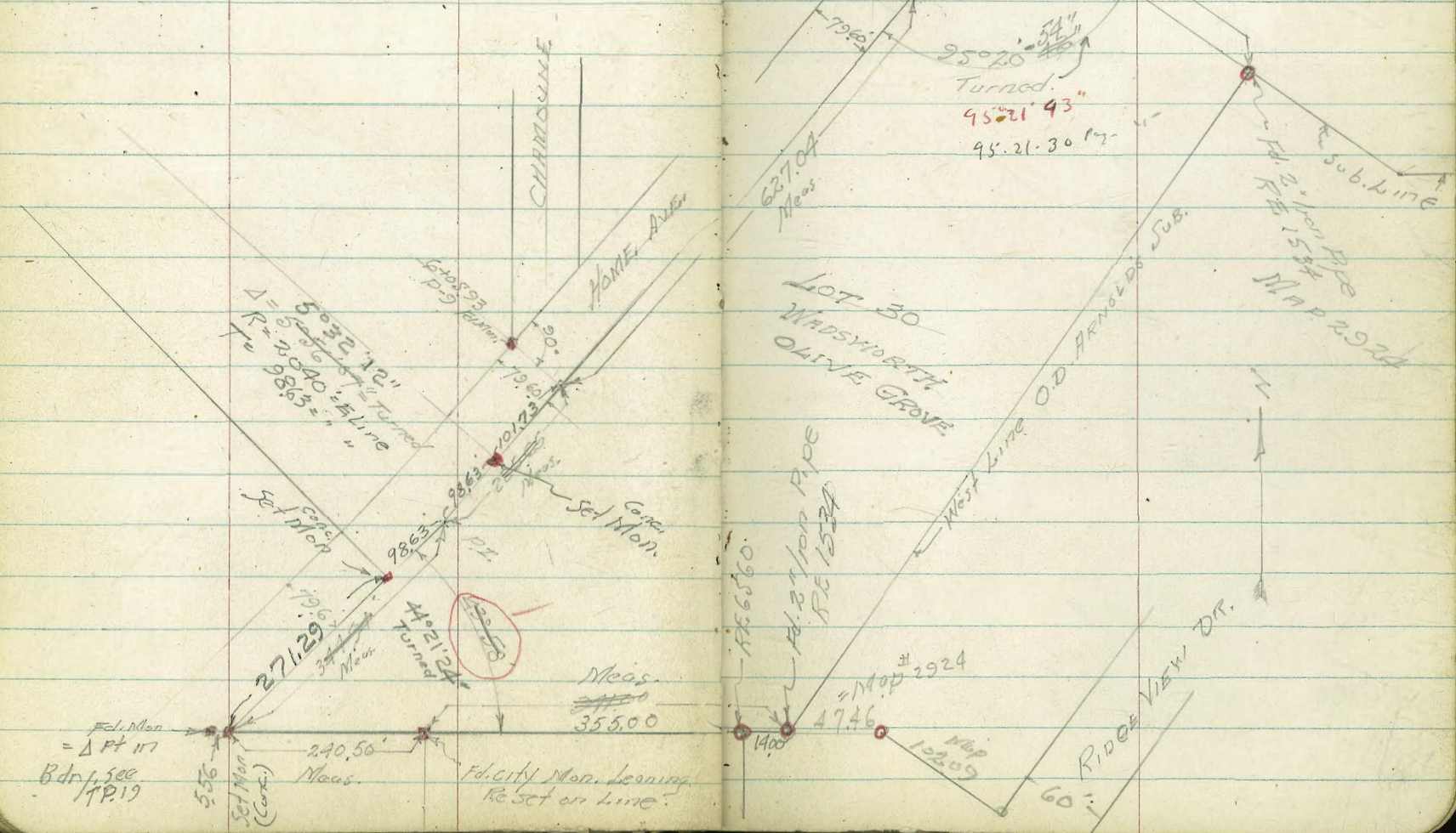
1/2" Pipe  
P-32





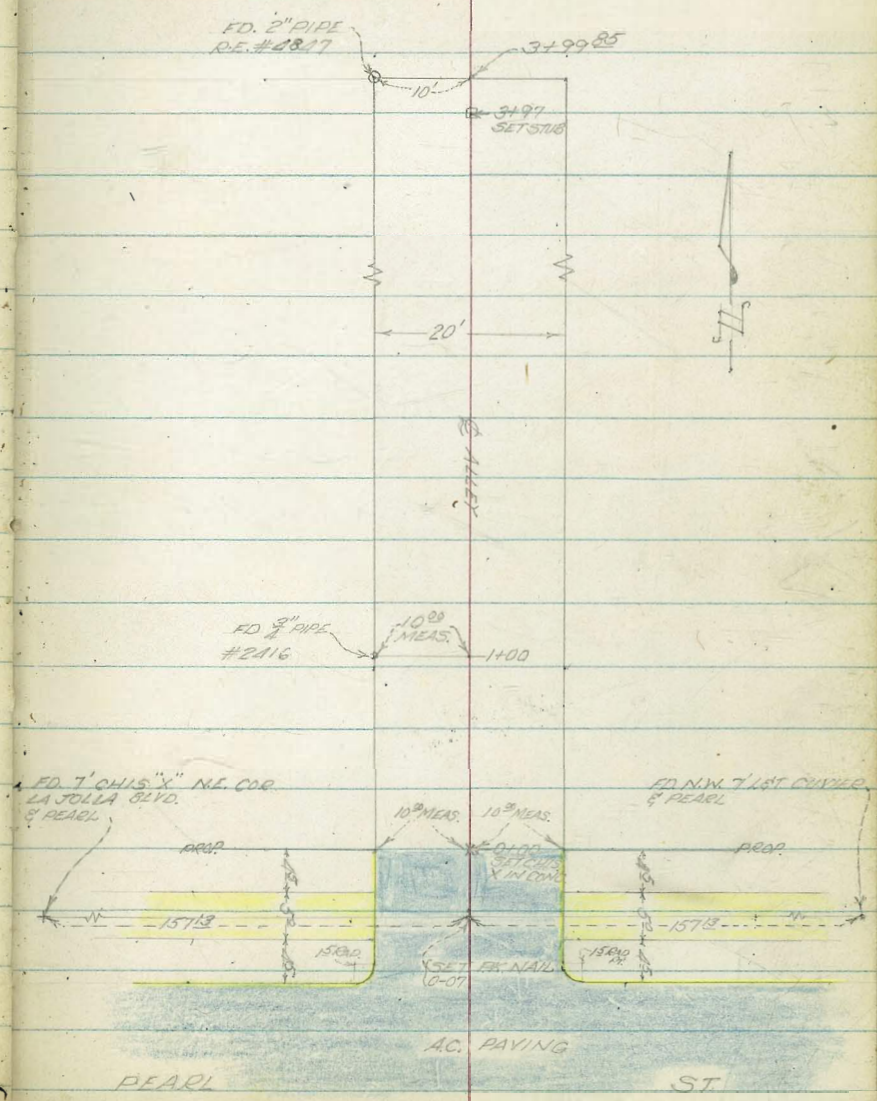
SURVEY East LINE HOME AVE  
 10 LOT 30 - WADSWORTH OLIVE - GROVE

Walker Per Superior Court Case.  
 Pope  
 Stroman  
 Olson  
 2-18-54



1-SEC. ALLEY BLK. 13, LA JOLLA PARK  
NORTH OF PEARL

COTA  
MORALEZ  
POWELL  
W.O.# 32075  
7-8-51



SKETCH

PEARL

ST



LT.

♀

RT.

0150

70.7 70.7 70.6 71.1 71.7  
 42 46 47 42 36  
 15 10 10 25

0119 9<sup>5</sup> RT. BEGIN 3<sup>0</sup> HIGH OLD LATH FENCE

0130<sup>5</sup> 10<sup>0</sup> LT. BEGIN 6<sup>0</sup> HIGH BOARD FENCE

T.P. 384 75.31 H.I. 601 71.27

75.31 H.I.

0100 NLY LINE PEARL

70.4 71.55 71.48 71.40 71.88 72.19 72.98  
 71 5.88 600 608 560 529 45  
 59 10 10 10 10 10 30  
 CS. GUT CS. GUT CS. GUT CS.

0-14 NLY CURB LINE PEARL

69.40 68.92 71.06 70.66 71.14 71.67 72.08 73.21 73.67  
 808 852 447 482 434 581 510 427 381  
 51 51 115 115 110 115 50 50  
 CS. GUT CS. GUT CS. GUT CS. GUT CS.  
 15 RAD. RET. 15 RAD. RET.

0-10 ♀ PEARL ST

69.03 70.12 72.33 74.53 75.63  
 8.25 734 5.15 2.95 1.85  
 75 50 30 75

T.P. 6.16 77.48 H.I. 10.02 71.32 PK. NAIL  
 20-07

77.48 H.I.

B.M. 021 81.34 81.06 SE. BR  
 CURB &  
 PEARL

1450

68.8	69.3	70.0	70.0	70.4	71.0
6.5	6.0	5.8	5.3	4.9	4.3
15	10	7		10	25

01420 } 10<sup>0</sup> LT. BEGIN 5<sup>0</sup> HIGH CHAIN LINK FENCE  
 7<sup>1</sup> LT. END 3<sup>5</sup> HIGH LATH FENCE

T14105 8<sup>5</sup> LT. BEGIN 3<sup>5</sup> HIGH LATH FENCE

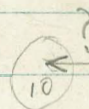
01400 10<sup>0</sup> LT. END 6<sup>0</sup> HIGH BOARD FENCE

69.5	70.0	70.5	70.7	71.3
5.8	5.3	4.8	4.6	4.0
21	10		10	25

0189 11<sup>0</sup> RT. Q DOUBLE GAR.

70.8  
~~7.5~~  
 11<sup>0</sup>  
 DIST. FLOOR

0181- 10<sup>0</sup> LT. Q OF 11<sup>0</sup> WIDE DRIVEWAY (GATE) A.C.



70.51  
 1.80 GOES DOWN SLIGHTLY  
 10  
 A.C.

01725 8<sup>0</sup> LT. TO CENTER PP # PA 7515

T1 0157 10<sup>5</sup> RT. END LATH FENCE

75.31 H.I.

75.31 H.I.

3400

BEGIN

- 10' LT. CONC. RAMP TO 4 GARAGES
- 10' RT. END CHAIN LINK FENCE
- 10' LT. END CHAIN LINK FENCE

Low Point

2450

2426 10° LT. TO 12° DRIVE OPENING IN FENCE

2412 8° LT. TO CENTER RR# PA 7541

- 10° LT. BEGIN 5° HIGH CHAIN LINK FENCE
- 10° LT. END CONC. DRIVE FOR DOUBLE GAR.

1498 10° RT. BEGIN 6° HIGH CHAIN LINK FENCE

1497 9° RT. TO CENTER RR# 582/264

- 10° LT. BEGIN CONC. DRIVE FOR DOUBLE GAR.
- 10° LT. END 5° HIGH CHAIN LINK FENCE

75.31 H.I.

67.57  
7.74  
16.4  
FLOOR  
GAR.  
CONC.

67.47  
7.84  
10.4  
CONC.  
RAMP

67.6  
7.7

67.7  
7.6  
10

68.6  
6.7  
25

67.0  
8.3  
20

67.70  
7.61  
16.7  
CONC.  
DRIVE

67.61  
7.70  
10  
CONC.  
DRIVE

68.1  
7.2

68.3  
7.0  
10

69.5  
5.8  
25

67.5  
7.8  
20  
DIET

68.1  
7.2  
10  
DIET

68.6  
6.7  
25

68.89  
6.42  
18.3

69.28  
6.03  
10  
CONC.  
DR.

69.2  
6.1

69.5  
5.8  
10

69.7  
5.6  
20

69.17  
6.14  
18.3  
CONC.

69.50  
5.81  
10  
CONC.

75.31 H.I.

3499<sup>3</sup> 4"x4" WOOD POST ON ALLEY &

3497 R.O.T. STUB

3465 10° RT. BEGIN CONC. SLAB FOR TENNIS COURT

3464 9° RT. TO CENTER P.P.# A 7560

3461 8.5° LT. TO DEAD MAN FOR POLE

3457 10° LT. BEGIN 4° HIGH PICKET FENCE

3450 { 8.5° LT. TO CENTER P.P.# 9392 & H  
10° RT. END SHED

3440 10° RT. BEGIN SHED

3424<sup>5</sup> 10.4° LT. END CONC. RAMP TO GARAGES

75.31 H.I.

WT.      \$      RT.

67.52  
7.79 = 67.52 ELEV.

68.77  
6.54  
10  
CONC.

65.6	66.1	66.9	67.6	67.8	68.2
9.7	9.2	8.4	7.7	7.5	7.1
20	11	10		10	20.

67.61	67.59
7.70	7.72
10.4	10.4
CONC FLOOR	CONC.

75.31 H.I.

LT.

¢

RT.

CHECK B.M.

0.90 81.07 = 81.06

I.P.

10.74 81.97 408 71.23

SEE PAGE 44 FOR DRAIN SURVEY  
& FOR DETAIL ON END OF ALLEY

3499.85 { BEGIN 6" HIGH WOOD FENCE ON ¢ (GOING WEST)  
NORTH END OF ALLEY

75.31 H.I.

66.7

66.7

67.5

68.0

68.40

8.6

8.6

7.8

7.3

6.91

→ LEVEL

26

10

10

10.1

DIRT

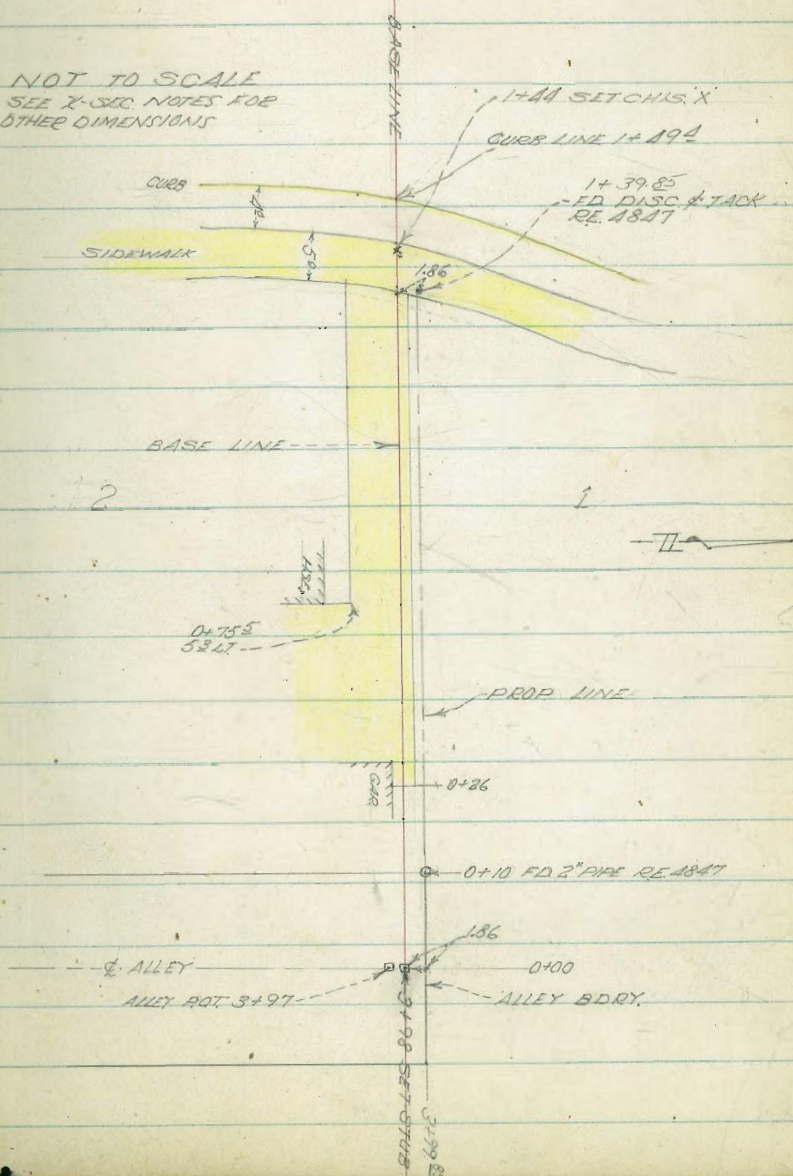
CONC.

SLAB.

75.31 H.I.

COTA  
MOGALIZ  
DOWELL  
1-9-57  
N.O. # 32075

NOT TO SCALE  
SEE X-SEC. NOTES FOR  
OTHER DIMENSIONS



0426 BEGIN CONC. AT 15 LT. & 18 RT.

04253, 22 RT. END CONC. SLAB. (S.W. COR.)

0418 19 LT. BEGIN GARAGE (N.E. CORNER)

TP 3.39 70.91 H.I. 5.03 57.52

0410 WEST LINE OF ALLEY

24 RT. BEGIN CONC. SLAB (S.E. COR.)  
1.85 RT. START 52 HIGH WOOD FENCE  
12 RT. TO 4" X 4" POST IN GROUND  
0400 3498 ON & ALLEY (SEE SKETCH)

BM. 5.03 72.55 H.I. 67.52 SLAB 3497 ON & ALLEY  
SEE PG. 42

LT.

BASE LINE

RT.

66.53

438  
15

66.53

438  
18

66.70

421  
22  
CONC.

70.91 H.I.

67.0

55  
10

66.8

58  
3

66.8

58

66.80

575  
21  
CONC.

66.80

575  
15  
CONC.

67.53

502

67.5

50  
185  
CONC.

67.04

557  
21  
CONC.

67.04

557  
15  
CONC.

NORTH END OF ALLEY

72.55 H.I.

1400

0490 2<sup>d</sup> RT. START HYBLSONS HEDGE

0483 2<sup>d</sup> RT. END 5<sup>d</sup> HIGH WOOD FENCE

0475<sup>5</sup> } 5<sup>d</sup> LT. & 1<sup>6</sup> RT. TO EDGES OF CONC.  
8<sup>d</sup> RT. BEGIN HOUSE (N.E. COR.)

0458 } 5<sup>d</sup> HIGH FENCE JOGS FROM 1<sup>3</sup> RT. TO 2<sup>d</sup> RT.  
1<sup>6</sup> RT. BEGIN 4" HIGH, 4" WIDE CURB.

0458

0448, 5<sup>5</sup> RT. TO SOUTH EDGE 5<sup>d</sup> DIAM. PALM.

0431, 1<sup>6</sup> LT. END GARAGE N.W. COR.

70.91 H.1.

LT.

63.11

7.80  
5.3  
CONC. EDGE

63.11

7.80

63.10

7.81  
1.6  
SLAB

RT.

63.43

7.88  
1.6  
CS.

63.3

7.6  
1.0

46

65.51

5.10  
1.0  
CONC.

65.58

5.33

65.58

5.33  
1.6  
CONC. EDGE

65.7

5.8  
1.5

66.52

4.39  
1.5  
CONC. EDGE

66.52

4.39  
1.8  
CONC. EDGE

70.91 H.1.



1495

1470

1449<sup>A</sup> FLY CURB LINE LA JOLLA BLVD.  
CURB LINE IS ON CURVE, SECTIONS  
TAKEN ALONG CURVE  
55 FT. @ 30 RT. TO EDGES OF DRIVE  
WAY

1445 BASE LINE CROSSSES WEST EDGE OF SIDE  
WALK ON EAST SIDE LA JOLLA BLVD.

1439<sup>85</sup> 186 RT. TO TACK WITH DISC. RE. #4847

1439<sup>5</sup> BASE LINE CROSSSES EAST EDGE SIDEWALK  
ON EAST SIDE LA JOLLA BLVD.

1439 15 RT. END 4" CB.

T.P. 335 15.98 H.1 8.78 12.13

LT.

RT.

47

BASE LINE

59.58  
61.0

61.53

61.36

60.61

59.76

59.38

4.45  
75

4.62  
50

5.37

6.22  
50

6.60  
75

62.53

62.18

61.40

61.03

60.58

60.14

60.40

59.33

59.63

5.45  
100  
CB.

3.80  
100  
SUT

4.58  
50  
CB.

4.95  
50  
SUT

5.40  
50  
IN DRIVE  
WAY

5.84  
50  
SUT

5.58  
50  
CB.

6.65  
100  
SUT

6.35  
100  
CB.

60.98  
5100

61.12  
4.86

61.14

61.47

4.84  
15  
CB.

4.57  
15  
CB.

65.98 H.1.

WT.

BASE LINE

RT. 48

CHECK. GAIR 3471 (ALLEY) 353 67.57 = 67.52

TP 8.21 70.8A 335 62.43

2411

65.98 H.I.

58.67	58.22	58.82	58.29	58.54	58.23	58.06	58.23	57.83	58.11
7.31	7.76	7.16	7.69	7.11	7.75	7.92	7.75	8.15	7.87
CB.	GUT.	CB.	GUT.	CB	GUT.	GUT.	CB.	GUT.	CB.

65.98 H.I.

Roberts  
Cata  
Moore  
Macedez  
7-27-54  
W.O. # 32075

Survey For Proposed Storm Drain  
Off of Alley Block 13, La Jolla Park

See page 38

INDEXED  
JUL 28 1954

49



Ravina  
Street  
closed

ANGLE P.P.T.  
Set St. 6  
1+00.00

Existing  
Storm Drain

Existing M.H.  
2+05.30

37

36

35

34

33

32

31

30

29

3+98.85

Ed. St. 6  
3+97.00

Set St. 6  
0+00 at 90° to 3+97

Block 13

20' Alley

0+32 { 2<sup>1</sup> Lt begin lattice fence  
2<sup>2</sup> Lt End shed

0+25

67.2  
3.9

0+23 2<sup>3</sup> Rt to near edge bamboo clump

0+22 { 2<sup>6</sup> Lt begin shed  
2<sup>0</sup> Lt End fence

0+12 1<sup>6</sup> Rt to near edge bamboo clump

0+03.5 1<sup>4</sup> Rt to near edge clump of bamboo

0+02.8 2<sup>2</sup> Lt begin wood fence

0+02 Line crosses fence

0+00 = 3+97.00 8<sup>2</sup> Rt to corner Tennis court

67.1  
3.4

TBN

3.57

71.09  $\pi$

67.5<sup>2</sup>

POT stub

3+97 see

page 42

71.09  $\pi$

0+84.5 2<sup>3</sup> Rt to near edge 20' palm tree.

0+82.5 1<sup>8</sup> Lt end lattice fence begin wire fence.

0+82 2<sup>5</sup> Rt to near edge bamboo

0+75

0+73 1<sup>7</sup> Rt to near edge bamboo

0+63 2<sup>3</sup> Rt to near edge bamboo

0+53 2<sup>1</sup> Rt to near edge bamboo clump.

0+50 { 2<sup>1</sup> Lt to fence  
8<sup>0</sup> Rt to conc. tennis court

0+43 3<sup>3</sup> Rt to near edge bamboo

0+33 1<sup>6</sup> Rt to near edge clump of bamboo.

66.0  
5166.8  
43

- 1+30 10<sup>3</sup> Lt to fence
- 1+21 1<sup>2</sup> Rt to dead man
- 1+17.5 7<sup>2</sup> Lt to center MH
- 1+08 4<sup>2</sup> Rt to near edge 6" Willow tree.
- 1+07 5<sup>1</sup> Rt to near edge P. Pole # A7598
- 1+05 1<sup>2</sup> Rt to near edge bamboo clump.
- 1+03.5 4<sup>2</sup> Rt to near edge 8" Acacia tree.

T.P. 1.12 66.15π 6.06 65.03 <sup>on 4 ft. stub</sup> 1400.00

1+00.00 ANGE POINT RIGHT  
1<sup>2</sup> Lt to fence

0+93 2<sup>2</sup> Rt to near edge bamboo clump.

0+91 8<sup>0</sup> Rt End conc. tennis courts.

71.09π

65.0  
1.2

65.0  
1.1

71.09π

check

3.25 67.51 = 67.52

T.P.

5.73 70.76 1.12 65.03

2+03.30 Existing M.H.

1+75

1+67

1+515 3<sup>rd</sup> photo near edge 30" palm tree

1+50

66.15 A

43.32	53.28
22.83	12.87
INVERT	RIM

52.9  
15.3

53.6  
12.6

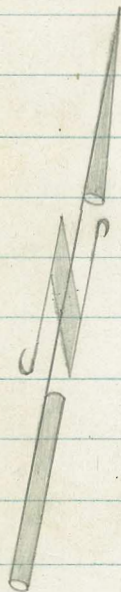
62.3  
39

66.15 A

Roberts  
Cota  
Moore  
Morales  
8-30-54  
W.O. 32075

Survey For Proposed Storm Drain for  
Alley Block 13, La Jolla Park

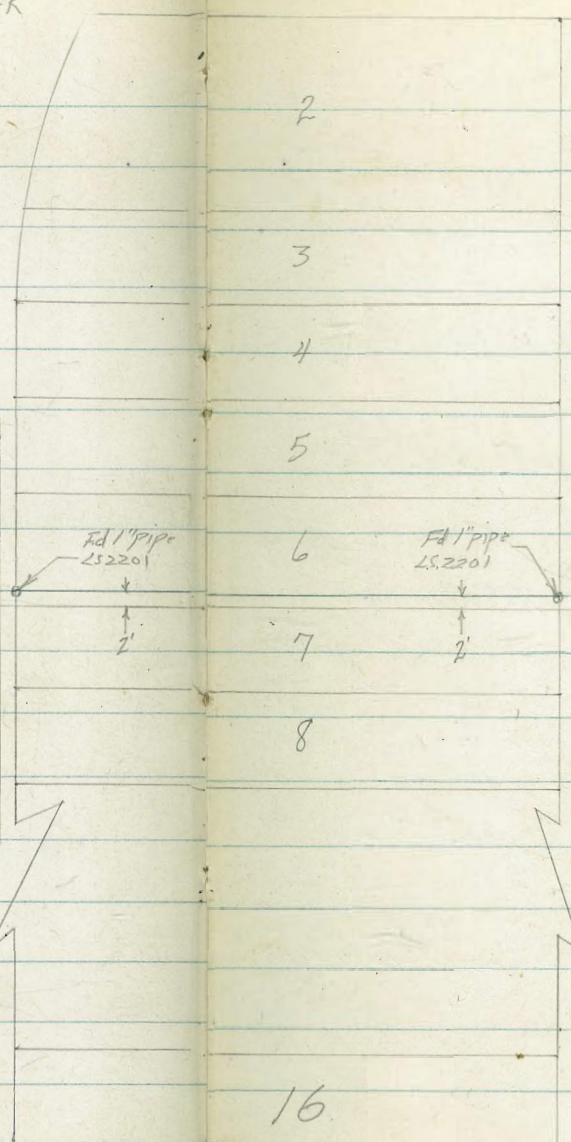
INDEXED  
JER  
SEP 1 1954



1463.96  
equals  
Curb Face  
Set Chisel  
Cross

La Jolla

Blvd.



2  
3  
4  
5  
6  
7  
8

16

Pearl

Ed St. 6 3497.00  
See FB2188 pg 38

0700 For Proposed Drain  
equals  
Alley Sta. 2178.02  
Set Stub

Ed Alley

Block 13  
LA JOLLA PARK

Ed Chisel Cross  
0700 See FB2188 pg 38

Street



0+50

66.3  
7.0  
10

66.4  
69.75  
2 1

65.8  
77

65.6

65.8  
7.5  
2<sup>2</sup>  
GRD Fdn.

0+42 6° Rt End Building conc. slab begins.

0+25 3<sup>3</sup> Lt to N. E. 6" Palm Tree

66.9  
64  
10

68

66.6

66.4  
69  
2<sup>2</sup>  
GRD

67.2  
6.1  
2<sup>2</sup>  
TOP  
Fdn.

0+19.5 0.816 begin wood rail on edge Park, Lt.

0+17.6 1<sup>8</sup> Rt end chain link fence.

0+16.5 { 6<sup>2</sup> Rt to Building  
2<sup>1</sup> Rt End conc. Apron  
2<sup>2</sup> Rt begin wood fence on conc. foundation.

0+12.6 1<sup>2</sup> Lt to Near Edge 6" Palm

0+10.4 { 2<sup>1</sup> Rt begin conc. Apron,  
E crosses chain link fence - 12 Rt to corner  
of this fence.

67.8  
55  
10

67.6  
57

67.6  
57  
2<sup>1</sup>  
conc

0+00 E Alley

68.1  
52

TBM 574 73.26 A

POT stub  
67.52 E Alley Sta. 3+97 See pg 42 this FB.

73.26 A

1+43 2<sup>E</sup> Lt to N.E. 6" Dead Tree

1+25

64.6	64.6	64.3	64.1	
8.7	8.7	9.0	9.2	same
10	5		2	

1+23 { 2<sup>2</sup> Rt wood fence on conc. fdr. ends and Eugenia hedge begins.  
6<sup>0</sup> Rt End bldg. with walk. Walk continues to street walk.

1+00

65.3	65.2	64.8	64.7	64.8	65.2	
8.0	8.1	8.5	8.6	8.5	8.1	GPD
10	5	3		2 <sup>2</sup>	2 <sup>2</sup>	Lower
				GPD	TOP	Fdn

0+92.4 6<sup>0</sup> Rt begin bldg. with 2<sup>0</sup> conc. walk on E side.

0+83.4 9<sup>0</sup> Rt End bldg. 2<sup>0</sup> conc. walk angles to back of next bldg.

0+75

0+63.5 1<sup>0</sup> Lt End of wood rail.

65.7	65.6	65.2	65.3	65.8	
7.6	7.7	8.1	8.0	7.5	GPD
10	3		2 <sup>2</sup>	2 <sup>2</sup>	Lower
			GPD	TOP	Fdn

0+53 { 9<sup>0</sup> Rt begin bldg. with 2<sup>0</sup> conc. walk on E side. & parallel to E.  
6<sup>0</sup> Rt End conc. slab.

7326A

7326A

checked back flat.

1+63.96 East Curb Line curb face.

1+61.7 2<sup>3</sup> Lt to N.E. 13" Hibiscus bush.

1+59.40 West Edge of walk

1+54.40 { 2<sup>3</sup> Rt End Hedge  
East Edge walk 4<sup>1</sup> Rt to 2<sup>o</sup> wide walk

1+50

73.26A

63.50	63.09	63.77 <sup>m</sup>	62.90	62.63	62.94	62.27	62.51
9.76	10.17	9.93	10.36	10.63	10.32	11.03	10.69
25 cb	25 gut	Curb	Gutter	25 gt	25 cl	50 gt	50 cl

63.50	63.38	63.20
9.76	9.88	10.06
10		10

63.58	63.48	63.34
9.68	9.78	9.92
10		10

64.1	64.0	63.6	63.6
9.2	9.3	9.7	9.7
10	5		2

73.26A



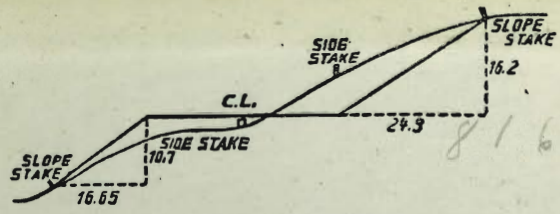




84° 39' 06"  
 95° 20' 54"  
 70 00 00

742

12.87  
 996  
 2283



DISTANCES FROM SIDE STAKES FOR CROSS-SECTIONING.  
 SLOPE 1 1/2 TO 1. ROADWAY OF ANY WIDTH.

	0	.1	.2	.3	.4	.5	.6	.7	.8	.9	
0	0.00	0.15	0.30	0.45	0.60	0.75	0.90	1.05	1.20	1.35	0
1	1.50	1.65	1.80	1.95	2.10	2.25	2.40	2.55	2.70	2.85	1
2	3.00	3.15	3.30	3.45	3.60	3.75	3.90	4.05	4.20	4.35	2
3	4.50	4.65	4.80	4.95	5.10	5.25	5.40	5.55	5.70	5.85	3
4	6.00	6.15	6.30	6.45	6.60	6.75	6.90	7.05	7.20	7.35	4
5	7.50	7.65	7.80	7.95	8.10	8.25	8.40	8.55	8.70	8.85	5
6	9.00	9.15	9.30	9.45	9.60	9.75	9.90	10.05	10.20	10.35	6
7	10.50	10.65	10.80	10.95	11.10	11.25	11.40	11.55	11.70	11.85	7
8	12.00	12.15	12.30	12.45	12.60	12.75	12.90	13.05	13.20	13.35	8
9	13.50	13.65	13.80	13.95	14.10	14.25	14.40	14.55	14.70	14.85	9
10	15.00	15.15	15.30	15.45	15.60	15.75	15.90	16.05	16.20	16.35	10
11	16.50	16.65	16.80	16.95	17.10	17.25	17.40	17.55	17.70	17.85	11
12	18.00	18.15	18.30	18.45	18.60	18.75	18.90	19.05	19.20	19.35	12
13	19.50	19.65	19.80	19.95	20.10	20.25	20.40	20.55	20.70	20.85	13
14	21.00	21.15	21.30	21.45	21.60	21.75	21.90	22.05	22.20	22.35	14
15	22.50	22.65	22.80	22.95	23.10	23.25	23.40	23.55	23.70	23.85	15
16	24.00	24.15	24.30	24.45	24.60	24.75	24.90	25.05	25.20	25.35	16
17	25.50	25.65	25.80	25.95	26.10	26.25	26.40	26.55	26.70	26.85	17
18	27.00	27.15	27.30	27.45	27.60	27.75	27.90	28.05	28.20	28.35	18
19	28.50	28.65	28.80	28.95	29.10	29.25	29.40	29.55	29.70	29.85	19
20	30.00	30.15	30.30	30.45	30.60	30.75	30.90	31.05	31.20	31.35	20
21	31.50	31.65	31.80	31.95	32.10	32.25	32.40	32.55	32.70	32.85	21
22	33.00	33.15	33.30	33.45	33.60	33.75	33.90	34.05	34.20	34.35	22
23	34.50	34.65	34.80	34.95	35.10	35.25	35.40	35.55	35.70	35.85	23
24	36.00	36.15	36.30	36.45	36.60	36.75	36.90	37.05	37.20	37.35	24
25	37.50	37.65	37.80	37.95	38.10	38.25	38.40	38.55	38.70	38.85	25
26	39.00	39.15	39.30	39.45	39.60	39.75	39.90	40.05	40.20	40.35	26
27	40.50	40.65	40.80	40.95	41.10	41.25	41.40	41.55	41.70	41.85	27
28	42.00	42.15	42.30	42.45	42.60	42.75	42.90	43.05	43.20	43.35	28
29	43.50	43.65	43.80	43.95	44.10	44.25	44.40	44.55	44.70	44.85	29
30	45.00	45.15	45.30	45.45	45.60	45.75	45.90	46.05	46.20	46.35	30
31	46.50	46.65	46.80	46.95	47.10	47.25	47.40	47.55	47.70	47.85	31
32	48.00	48.15	48.30	48.45	48.60	48.75	48.90	49.05	49.20	49.35	32
33	49.50	49.65	49.80	49.95	50.10	50.25	50.40	50.55	50.70	50.85	33
34	51.00	51.15	51.30	51.45	51.60	51.75	51.90	52.05	52.20	52.35	34
35	52.50	52.65	52.80	52.95	53.10	53.25	53.40	53.55	53.70	53.85	35
36	54.00	54.15	54.30	54.45	54.60	54.75	54.90	55.05	55.20	55.35	36
37	55.50	55.65	55.80	55.95	56.10	56.25	56.40	56.55	56.70	56.85	37
38	57.00	57.15	57.30	57.45	57.60	57.75	57.90	58.05	58.20	58.35	38
39	58.50	58.65	58.80	58.95	59.10	59.25	59.40	59.55	59.70	59.85	39
40	60.00	60.15	60.30	60.45	60.60	60.75	60.90	61.05	61.20	61.35	40
41	61.50	61.65	61.80	61.95	62.10	62.25	62.40	62.55	62.70	62.85	41
42	63.00	63.15	63.30	63.45	63.60	63.75	63.90	64.05	64.20	64.35	42
43	64.50	64.65	64.80	64.95	65.10	65.25	65.40	65.55	65.70	65.85	43
44	66.00	66.15	66.30	66.45	66.60	66.75	66.90	67.05	67.20	67.35	44
45	67.50	67.65	67.80	67.95	68.10	68.25	68.40	68.55	68.70	68.85	45
46	69.00	69.15	69.30	69.45	69.60	69.75	69.90	70.05	70.20	70.35	46
47	70.50	70.65	70.80	70.95	71.10	71.25	71.40	71.55	71.70	71.85	47
48	72.00	72.15	72.30	72.45	72.60	72.75	72.90	73.05	73.20	73.35	48
49	73.50	73.65	73.80	73.95	74.10	74.25	74.40	74.55	74.70	74.85	49
50	75.00	75.15	75.30	75.45	75.60	75.75	75.90	76.05	76.20	76.35	50

THE NATIONAL BLANK BOOK COMPANY  
 HOLYOKE MASSACHUSETTS  
 NEW YORK CHICAGO BOSTON SAN FRANCISCO