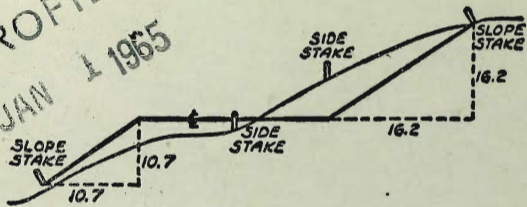


MICROFILMED
 JAN 1 1965



1911-ACT X-SECT.

DISTANCES FROM SIDE STAKES FOR CROSS-SECTIONING
 SLOPE 1 TO 1. ROADWAY OF ANY WIDTH

	0	.1	.2	.3	.4	.5	.6	.7	.8	.9	
0	0.00	0.10	0.20	0.30	0.40	0.50	0.60	0.70	0.80	0.90	0
1	1.00	1.10	1.20	1.30	1.40	1.50	1.60	1.70	1.80	1.90	1
2	2.00	2.10	2.20	2.30	2.40	2.50	2.60	2.70	2.80	2.90	2
3	3.00	3.10	3.20	3.30	3.40	3.50	3.60	3.70	3.80	3.90	3
4	4.00	4.10	4.20	4.30	4.40	4.50	4.60	4.70	4.80	4.90	4
5	5.00	5.10	5.20	5.30	5.40	5.50	5.60	5.70	5.80	5.90	5
6	6.00	6.10	6.20	6.30	6.40	6.50	6.60	6.70	6.80	6.90	6
7	7.00	7.10	7.20	7.30	7.40	7.50	7.60	7.70	7.80	7.90	7
8	8.00	8.10	8.20	8.30	8.40	8.50	8.60	8.70	8.80	8.90	8
9	9.00	9.10	9.20	9.30	9.40	9.50	9.60	9.70	9.80	9.90	9
10	10.00	10.10	10.20	10.30	10.40	10.50	10.60	10.70	10.80	10.90	10
11	11.00	11.10	11.20	11.30	11.40	11.50	11.60	11.70	11.80	11.90	11
12	12.00	12.10	12.20	12.30	12.40	12.50	12.60	12.70	12.80	12.90	12
13	13.00	13.10	13.20	13.30	13.40	13.50	13.60	13.70	13.80	13.90	13
14	14.00	14.10	14.20	14.30	14.40	14.50	14.60	14.70	14.80	14.90	14
15	15.00	15.10	15.20	15.30	15.40	15.50	15.60	15.70	15.80	15.90	15
16	16.00	16.10	16.20	16.30	16.40	16.50	16.60	16.70	16.80	16.90	16
17	17.00	17.10	17.20	17.30	17.40	17.50	17.60	17.70	17.80	17.90	17
18	18.00	18.10	18.20	18.30	18.40	18.50	18.60	18.70	18.80	18.90	18
19	19.00	19.10	19.20	19.30	19.40	19.50	19.60	19.70	19.80	19.90	19
20	20.00	20.10	20.20	20.30	20.40	20.50	20.60	20.70	20.80	20.90	20
21	21.00	21.10	21.20	21.30	21.40	21.50	21.60	21.70	21.80	21.90	21
22	22.00	22.10	22.20	22.30	22.40	22.50	22.60	22.70	22.80	22.90	22
23	23.00	23.10	23.20	23.30	23.40	23.50	23.60	23.70	23.80	23.90	23
24	24.00	24.10	24.20	24.30	24.40	24.50	24.60	24.70	24.80	24.90	24
25	25.00	25.10	25.20	25.30	25.40	25.50	25.60	25.70	25.80	25.90	25
26	26.00	26.10	26.20	26.30	26.40	26.50	26.60	26.70	26.80	26.90	26
27	27.00	27.10	27.20	27.30	27.40	27.50	27.60	27.70	27.80	27.90	27
28	28.00	28.10	28.20	28.30	28.40	28.50	28.60	28.70	28.80	28.90	28
29	29.00	29.10	29.20	29.30	29.40	29.50	29.60	29.70	29.80	29.90	29
30	30.00	30.10	30.20	30.30	30.40	30.50	30.60	30.70	30.80	30.90	30
31	31.00	31.10	31.20	31.30	31.40	31.50	31.60	31.70	31.80	31.90	31
32	32.00	32.10	32.20	32.30	32.40	32.50	32.60	32.70	32.80	32.90	32
33	33.00	33.10	33.20	33.30	33.40	33.50	33.60	33.70	33.80	33.90	33
34	34.00	34.10	34.20	34.30	34.40	34.50	34.60	34.70	34.80	34.90	34
35	35.00	35.10	35.20	35.30	35.40	35.50	35.60	35.70	35.80	35.90	35
36	36.00	36.10	36.20	36.30	36.40	36.50	36.60	36.70	36.80	36.90	36
37	37.00	37.10	37.20	37.30	37.40	37.50	37.60	37.70	37.80	37.90	37
38	38.00	38.10	38.20	38.30	38.40	38.50	38.60	38.70	38.80	38.90	38
39	39.00	39.10	39.20	39.30	39.40	39.50	39.60	39.70	39.80	39.90	39
40	40.00	40.10	40.20	40.30	40.40	40.50	40.60	40.70	40.80	40.90	40
41	41.00	41.10	41.20	41.30	41.40	41.50	41.60	41.70	41.80	41.90	41
42	42.00	42.10	42.20	42.30	42.40	42.50	42.60	42.70	42.80	42.90	42
43	43.00	43.10	43.20	43.30	43.40	43.50	43.60	43.70	43.80	43.90	43
44	44.00	44.10	44.20	44.30	44.40	44.50	44.60	44.70	44.80	44.90	44
45	45.00	45.10	45.20	45.30	45.40	45.50	45.60	45.70	45.80	45.90	45
46	46.00	46.10	46.20	46.30	46.40	46.50	46.60	46.70	46.80	46.90	46
47	47.00	47.10	47.20	47.30	47.40	47.50	47.60	47.70	47.80	47.90	47
48	48.00	48.10	48.20	48.30	48.40	48.50	48.60	48.70	48.80	48.90	48
49	49.00	49.10	49.20	49.30	49.40	49.50	49.60	49.70	49.80	49.90	49
50	50.00	50.10	50.20	50.30	50.40	50.50	50.60	50.70	50.80	50.90	50

Distance of slope stake from side or shoulder stake for any width roadway, slope 1 to 1. If ground is nearly level, the cut or fill at side stake is located by the double entry method in left column and top row. The number in body of table in same row and column gives distance from side stake to slope stake. If ground is not level estimate the difference in elevation between the side stake and slope stake, lower target by this amount if cut, elevate if fill. Add this amount to cut or fill and find distance in table. Set up rod at this point, and line of sight should cut target. If it does not make the slight adjustment necessary.

TABLE XIII—CORRECTIONS FOR TANGENTS AND EXTERNALS

These corrections are to be added to the approximate values, found by dividing the tangent, or external, for a 1° curve (Table VIII) by the degree of curve, in order to obtain the true tangents, or externals. Intermediate values may be obtained by interpolation.

FOR TANGENTS ADD

Central Angle	DEGREE OF CURVE													
	5°	10°	15°	20°	25°	30°	35°	40°	45°	50°	55°	60°	65°	70°
10°	.03	.06	.09	.13	.16	.19	.22	.25	.28	.31	.34	.38	.42	.46
15°	.04	.10	.14	.19	.24	.29	.34	.39	.45	.51	.53	.58	.63	.68
20°	.06	.13	.19	.26	.32	.39	.45	.51	.58	.65	.72	.79	.84	.90
25°	.08	.16	.24	.33	.40	.49	.58	.67	.75	.83	.90	.99	1.06	1.14
30°	.10	.19	.29	.39	.49	.59	.69	.79	.89	.99	1.09	1.20	1.29	1.39
35°	.11	.22	.34	.47	.58	.69	.79	.81	.92	1.04	1.29	1.42	1.54	1.68
40°	.13	.26	.40	.53	.67	.80	.93	1.06	1.20	1.34	1.49	1.64	1.79	1.94
45°	.15	.30	.44	.60	.76	.91	1.06	1.21	1.37	1.52	1.70	1.87	2.04	2.21
50°	.17	.34	.51	.68	.85	1.02	1.19	1.36	1.54	1.72	1.91	2.10	2.29	2.48
55°	.19	.38	.57	.76	.95	1.14	1.32	1.52	1.72	1.92	2.14	2.35	2.56	2.77
60°	.21	.42	.63	.84	1.05	1.27	1.49	1.71	1.94	2.17	2.38	2.60	2.83	3.07
65°	.23	.46	.69	.93	1.16	1.40	1.64	1.88	2.13	2.38	2.63	2.88	3.13	3.39
70°	.25	.51	.76	1.02	1.28	1.54	1.80	2.06	2.33	2.60	2.88	3.16	3.44	3.72
75°	.27	.56	.83	1.12	1.40	1.69	1.98	2.27	2.57	2.87	3.16	3.47	3.78	4.09
80°	.30	.61	.91	1.22	1.53	1.84	2.15	2.46	2.78	3.10	3.44	3.78	4.12	4.46
85°	.33	.66	1.00	1.33	1.68	2.02	2.36	2.70	3.05	3.40	3.77	4.14	4.55	4.89
90°	.36	.72	1.09	1.45	1.83	2.20	2.57	2.94	3.32	3.70	4.10	4.50	4.91	5.32
95°	.39	.79	1.19	1.55	2.00	2.40	2.80	3.20	3.61	4.02	4.40	4.85	5.38	5.83
100°	.43	.86	1.30	1.74	2.18	2.62	3.06	3.50	3.95	4.40	4.88	5.37	5.85	6.34
110°	.51	1.03	1.56	2.08	2.61	3.14	3.67	4.21	4.76	5.31	5.86	6.43	7.01	7.60
120°	.62	1.25	1.93	2.52	3.16	3.81	4.45	5.11	5.77	6.44	7.12	7.80	8.50	9.22

FOR EXTERNALS ADD

Central Angle	DEGREE OF CURVE													
	5°	10°	15°	20°	25°	30°	35°	40°	45°	50°	55°	60°	65°	70°
10°	.001	.003	.004	.006	.007	.008	.009	.011	.012	.014	.015	.017	.018	.020
15°	.003	.007	.010	.014	.018	.023	.027	.029	.032	.035	.039	.043	.047	.051
20°	.006	.011	.017	.022	.028	.034	.038	.045	.051	.057	.063	.070	.076	.083
25°	.009	.018	.027	.036	.046	.056	.065	.074	.083	.093	.106	.120	.127	.135
30°	.013	.025	.038	.051	.065	.078	.090	.103	.116	.129	.149	.170	.179	.188
35°	.018	.035	.054	.072	.086	.109	.131	.153	.175	.197	.213	.230	.247	.264
40°	.023	.046	.070	.093	.117	.141	.172	.203	.234	.265	.277	.290	.315	.341
45°	.030	.060	.093	.119	.153	.184	.216	.254	.289	.325	.351	.378	.411	.445
50°	.037	.075	.116	.151	.189	.227	.266	.305	.345	.384	.425	.467	.508	.550
55°	.046	.093	.142	.188	.236	.283	.332	.381	.420	.479	.530	.582	.641	.700
60°	.056	.112	.168	.225	.283	.340	.398	.457	.516	.575	.636	.697	.774	.851
65°	.067	.135	.204	.273	.343	.412	.483	.554	.625	.697	.771	.845	.922	1.01
70°	.080	.159	.240	.321	.403	.485	.568	.652	.735	.819	.906	.994	1.08	1.17
75°	.095	.182	.266	.353	.440	.528	.618	.707	.797	.877	1.07	1.18	1.29	1.39
80°	.110	.220	.332	.445	.558	.671	.787	.903	1.02	1.13	1.25	1.38	1.50	1.62
85°	.128	.259	.391	.524	.657	.790	.926	1.06	1.20	1.34	1.47	1.62	1.76	1.91
90°	.149	.299	.450	.603	.756	.910	1.07	1.22	1.38	1.54	1.70	1.87	2.03	2.20
95°	.174	.350	.522	.706	.885	1.06	1.25	1.43	1.62	1.80	1.99	2.18	2.38	2.58
100°	.200	.401	.604	.809	1.01	1.22	1.43	1.64	1.85	2.06	2.28	2.50	2.73	2.96
110°	.268	.536	.806	1.08	1.35	1.63	1.91	2.20	2.48	2.76	3.05	3.35	3.66	3.96
120°	.360	.721	1.08	1.45	1.82	2.19	2.57	2.95	3.33	3.72	4.11	4.50	4.91	5.32

INDEX

Profile & Line prop. Sewer 44th & Hilltop Pg 135
 X-Sec - Norwood @ Chamone & Turnaround Chamone 7
 X-SECT. 55th ST. Montezuma Rd to N. College Pl. 10
 Wells St. Tonyson to Bernice 18-36
 Ethel Bridge E 26th St.
 X Sec "H" Alleys Bk 35 Parish + hominis 58

D. Smith
C. Allen
R. Taylor

Profile & Alignment
44th & Hilltop

Proposed Sewer

WO# 20006

2-20-52

Ref FB 1475-44
FB 1394-59

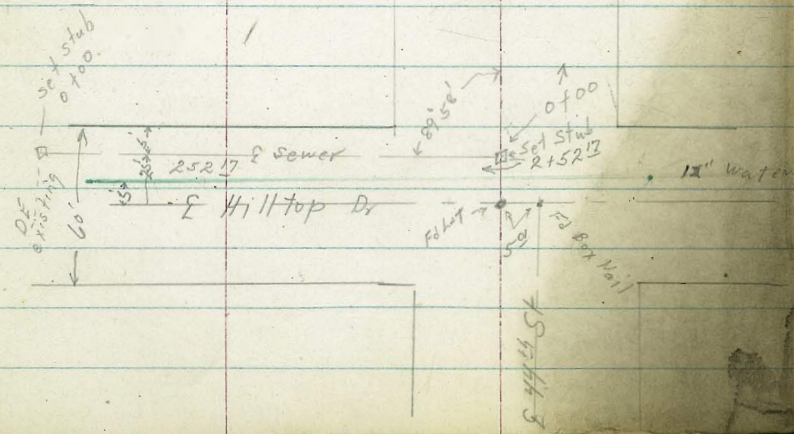
INDEXED
Law
FEB 21 1952

13+30

25' Rd to Property
9+39

44th St

44th St



C-C ST

6x10' app.

Lt. North ♀ Rt. South

Lt. West ♀ Rt. East 2

2720 49³ Lt E House

3³²

Floor
492

2730

70³ 1⁰ 1⁸
10 10

2700

5⁴ 5² 5²
10 10

2700

1⁸ 2⁰ 2⁹
10 10

1460 83³ Lt E House

529

Floor
833

1750

4² 4³ 4⁶
10 10

1750

5⁸ 5⁶ 5²
10 10

1700

5⁷ 5² 6⁰
10 10

1460

5² 5⁸ 5²
10 10

0750

5⁸ 6² 6⁶
10 10

0750

5⁴ 5³ 5²
10 10

0700

5³ 5⁶ 6⁹
5 20

0700 N

2752 12EA

6⁷ 6⁴ 6¹
10 10

TP

11²⁶

171³³

0⁸⁶

159⁵⁷

SWBP 4222

BM

7⁴⁹

160⁴³

152²⁴

Hilltop

TP₂

6²⁵

177³³

0²⁵

170⁵⁸

SWBP 4414 Hilltop

Lt West 2 Rt = East

5700

10² 10^L 10^L
10 10

T₁₃

11⁸⁴

187⁹⁹

11⁸

176¹⁵

4750

1² 0^E 0²
10 10

4700

2⁵ 2³ 2³
10 10

3750

3⁴ 3^L 3^L
10 10

3700

4² 4^L 3²
10 10

2787 48³ Lt & House

2⁹
Floor
483

2750 67² Lt & House

5¹³ 4^L 4^L 4⁵
Floor 10 10
67

π 177³³

Lt West 2 Rt = East 3

7758 72² Rt & House

7758 86³ Lt & House

8²¹
Floor
86²

6²⁴
Floor
72²

7750

7² 7⁹ 7^L
10 10

7700

9² 9³ 9^L
10 10

T₁₄

10⁴⁷

198²⁷

0³²

187⁶⁰

6750

2⁴ 2² 1²
10 10

6700

5² 5⁵ 5²
10 10

5750

8² 8^L 7²
10 10

π 187⁹⁹

Lt-West 9 Rt-East

Lt-West 4 Rt-East

10750

72 7⁶ 7⁶
10 10

12756

9² 10³ 9²
10 10

10400

10² 6⁴ 5⁸ 5²
50 10 10

12700

7² 7² 6⁶
10 10

9750

5² 4⁶ 4⁶
10 10

maybe used for residence
11760 124⁶ LtE garage

1277
Floor
124⁶

9700

4² 4² 4³
10 10

11750

4² 4⁸ 4⁴
10 10

8755 45³ LtE House

497
Floor
453

11712 96⁶ LtE House

8⁸⁸
Floor
96⁶

8750

5² 5⁵ 5²
10 10

TP₅

3⁰¹

18872

12³⁶

185⁷¹

8706

6² 6⁶ 6⁵
10 10

11700

11² 11³ 10⁶
10 10

X 19807

π 19807

At West. S At East

5

BM Starting

852

✓ 192²⁰

✓ 15294

TP₁₀ 1⁰⁵

161⁴²

13⁴³

160³⁷

TP₉ 0⁴⁸

173⁵⁰

12³⁶

173⁰²

TP₈ 0²⁴

185³⁸

12²⁰

184⁶⁴

TP₇ 0¹⁵

197³⁴

3³⁷

197¹⁹

TP₆ 12³⁴

200⁵⁶

0²⁰

187⁸²

134³⁰

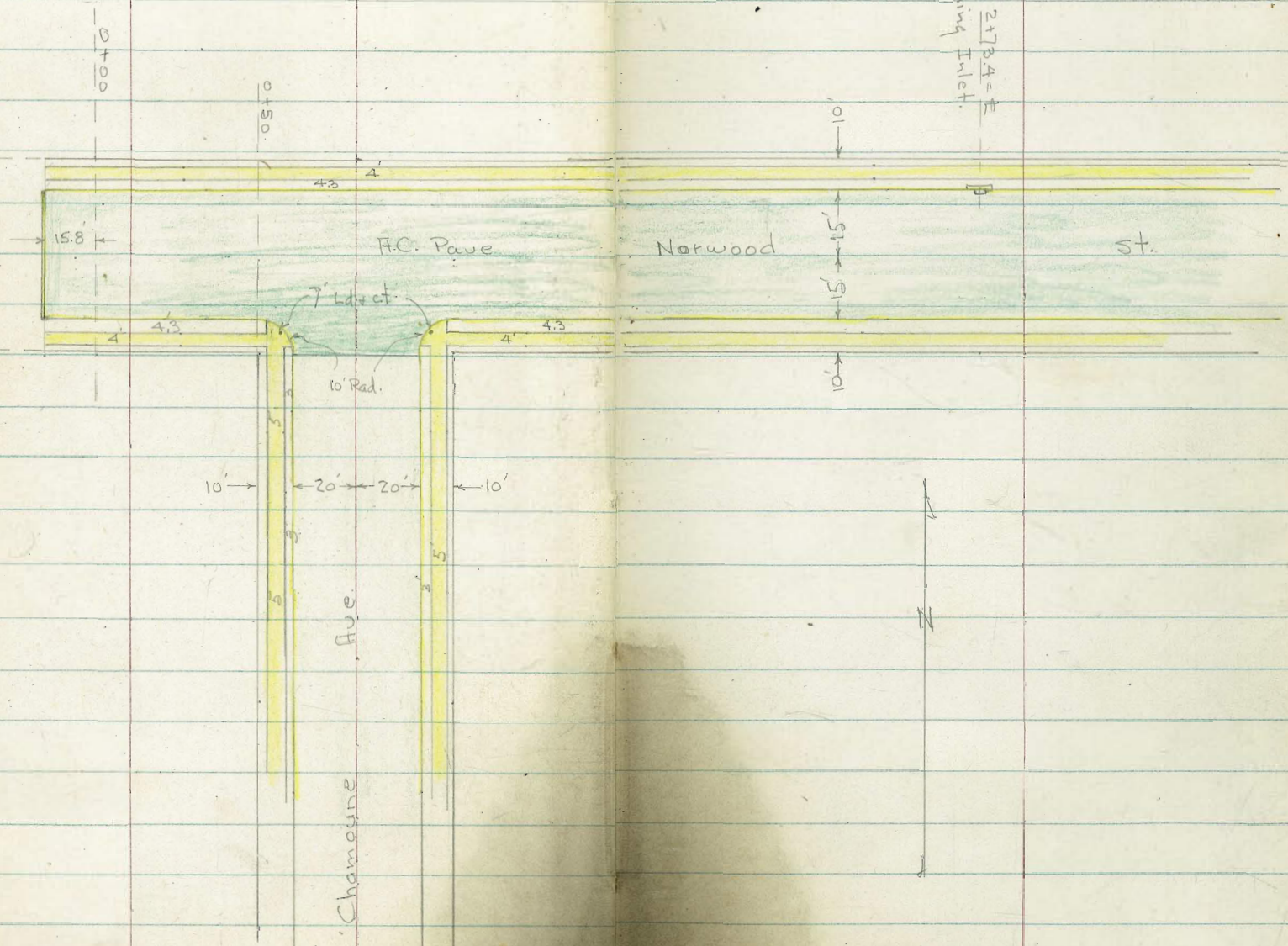
21² 22¹
10 10

21³
10

134⁰⁰

15⁰ 14³ 14⁵
10 10

π 188⁷²



X-Sect. Norwood at Chamounc for

Prop. Turnaround. - sketch - P. 6

3-7-52 7.0.

w.o.

0+57 = Ely. of walk

53.21 53.46 53.62
25 55 75

0+52 = Wly. of 5' walk on Chamounc

53.27 53.55 53.73
25 55 75

0+51.6 = end N. cb. at Dr. (conc.)

51.81 52.24
gut. 15 = Top.

0+50 = W.L. Chamounc

51.9 52.33 52.26 51.85 52.50 52.70 53.11 53.28 53.33 53.7 54.3
25 23.3 walk Top 15 gut. 15 Top 23.3 walk 25 55 75

0+47 = 16.8 Rt. = P. pole # P4525

0+32.2 = 17 Rt. = Deadman

0+25

52.6 52.75 52.67 52.27 52.90 52.95 53.42 52.65 52.6 54.5
25 23.3 walk Top 15 gut. 15 gut. Top 23.3 walk 25 60

0+00

53.1 53.14 53.03 52.66 53.27 53.36 53.80 53.98 54.0 54.7
25 23.3 walk Top 15 gut. 15 gut. Top 23.3 walk 25 75

0-15.8 = end obs. + Pav.

53.34 52.90 53.32 53.65 53.45 53.96 53.56 54.27
23.3 edge walk gut. 15 Top gut. 15 Top gut. 23.3 edge walk

B.M. = S.W.B.P. - Norwood + Chamounc 353.12

300' figure Not shown

Actual Elev. Shown

INDEXED
Law
MAR 11 1952

Lt.

#

Rt.

1+38.6-16.7 Rt. = # P. pole # P4555

1+35

50.89 50.46 51.23 51.48 51.99 52.13
Top 15 15 23.3
Top gut Top walk

1+10 = PC. 10' Rad. Ret. on Rt.

51.30 50.89 51.60 51.94 52.52 52.60 52.7
Top 15 15 23.3 25
Top gut Top walk

1+08

52.68 53.09 53.45
25 55 75
walk

1+03 = wly. of 5' walk along Chamoune

52.66 53.11 53.36
25 55 75
walk

1+02-29 Rt. = # Deadman + 4.5' Rt. = # Tel. pole # P1725 T

1+00 - Cont.

52.5 53.04 52.8 53.30
55 55 75 75
gut Top gut Top

1+00 = E. cb.

51.2 51.60 51.45 51.05 51.74 52.01 52.20 52.70
25 23.3 15 15 25 25
walk Top gut Top = PC.
edge A.C.

0+80 = # Chamoune

51.9 51.92 51.79 51.39 51.97 52.25 52.52 52.9 53.3
25 23.3 15 15 15 25 55 75
walk Top gut on Sewer MH edge AC.

0+68.6-6.2 Lt. = # 25x25 Cast MH.

51.88
6.2
Top MH

0+63 = Fly of Dr.

52.03 51.65
Top 15 = gut

0+60 - Cont.

52.14 52.21 52.16 51.70 52.8 53.41 52.9 53.63
25 23.3 19.3 15 = in 55 75 75
on Dr. walk walk Dr. gut Top gut Top

0+60 = W. cb. of Chamoune

52.33 52.56 52.64 53.10
15 25 25
gut Top AC.
edge of Paul's Rad.

Lt.

±

Rt.

7.

3+00

49.58 48.91 49.30
Top 15' gut.49.32 49.93
15' gut. Top

2+73.4 = ± of 10' opening Inlet on N.

49.54 48.52 49.19
Top cb. 15' gut. Top grate49.50 50.03
15' gut. Top

2+40

49.54 48.88 49.60
Top 15' gut.49.90 50.38
15' gut. Top

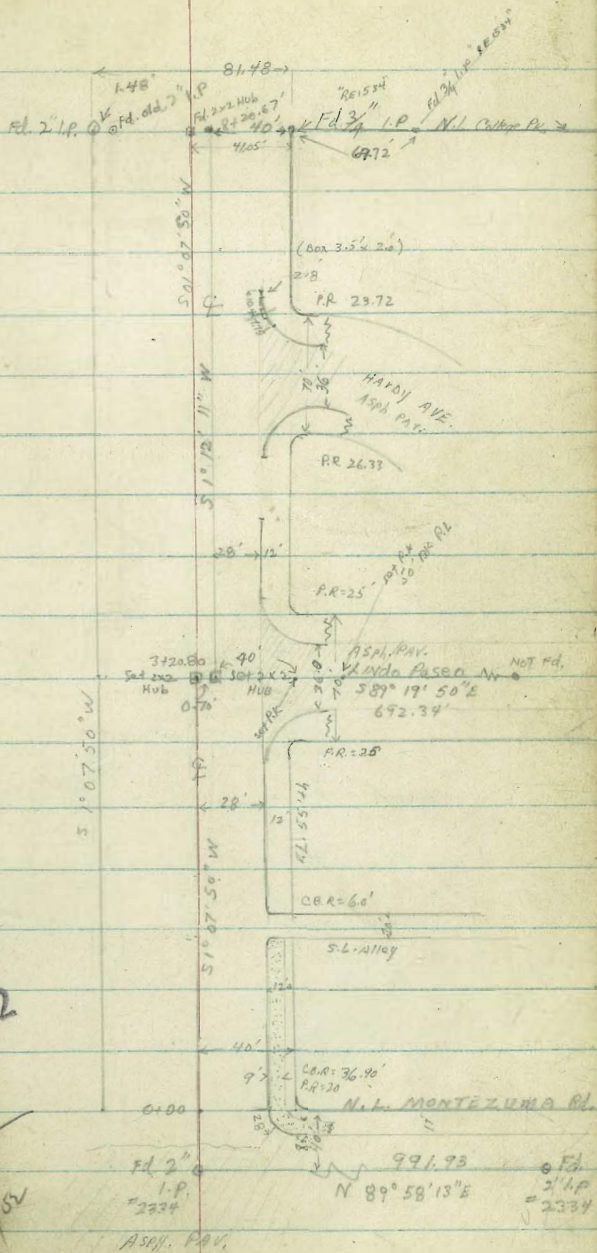
2+10

49.80 49.28 50.01
Top 15' gut.50.25 50.74
15' gut. Top

1+65

50.42 50.00 50.78
Top 15' gut.50.95 51.50
15' gut. Top

Clark 5-29-52 X-SECT. 55th ST.
 Shephard W.O. 32136
 Bruner
 MONTEZUMA Rd. to My LINE College PK.



INDEXED
Sally
 JUN 4 1952

Reduced
 BLC
 6/5/52

X-SECT 55+4. MONTEZUMA to N.L. College Pk.

1+00

452.2
40 44 5.0 4.3
47 40 22
5.0 4.45 4.29
28 28 37
C CB 8. WALK

0+50

452.2
5.0 5.0 5.5 4.7
47 40 22
4.7 4.7 4.7 4.7
5.4 4.7 4.7 4.7
28 28 28 28
C CB CB CB

0+25

40.7 LT. Cg 8' Steel Wire Fence

0+19.90 C.A. RT.

452.5
13.4 6.2 3.9 6.0 5.1
56 47 40 22
5.6 5.12 4.92
28 28 37
C CB CR WALK

0+00 N.L. MONT.

451.0
10.6 7.1 6.7 6.7 5.6
56 47 40 22
5.5 5.6 4.65 4.31
28 35.5 35.5 45.5
C CB CR 8L WALK

0-05

38 RT. RND. Pav

0-17

N.C.B.L. MONT.

451.0
12.8 8.2 6.2 5.4 5.1
100 40 23 28 40
4.54 4.72 3.45 3.12 2.45
C.B. CR C G 30

0-21

Edge Pav

444.83
2.33 5.6 6.2 7.6 7.6
100 40 40 40 40
3.04 3.04 3.04 3.04 3.04
C.B. CR C G 30

0-50 = S. MONT.

Asphalt Pav

441.6
12.01 8.36 6.27 4.44 4.44
100 40 40 40 40
2.61 2.61 2.61 2.61 2.61
C.B. CR C G 30

C.22

457.16

450.94 Elev. 2 1/2

55+4 + 10' N S. Montezuma F.B. 1834 p.65

2485.8 S.L. LINDO PASO (Insects V. to Lindo Paso)

2461 28' RT. Bay ASPHALT PAV.

2460 CB BC RT. 29.5' RTE Pole #377199

2450 29' RT DeadMAN

T.P. 2.86 454.81 5.21 451.95

2400

1464 Alley BC

1460 N.L. Alley

1440 S.L. Alley END 9' WALK on RT.

1434 CB BC Alley RT

40.9
39 40.9 44.9 47
43 40 21

40.1
40.9
3.9
40.1
40.60
40.1
40
40

449.54
527 550 503
28 35.8 35.8
28
449.99 450.49
4.82 4.32
28 28
450.01 450.55
4.80 4.26
28 28
28 28
28 28

454.81
452.5
4.4 4.5 5.2
43 40 22
4.7

452.5
3.7 4.0 4.6
43 40 22
4.1

451.7
5.5 4.93 4.6
28 28 40
452.3
4.9 4.36 4.2
28 28 40
452.0

453.2
4.0
4.8 4.6 4.02
28 34 34 28
CB P.I. C CB CB ENA

452.6
4.6 4.02 2.87
34 34 40
452.5
4.7 4.7 3.85 3.72
28 34 34 40
CB P.I. Alley CB ENA

453.6
3.6 4.2 4.6
43 40 22
4.0
453.2
4.7 4.7 3.78
28 28 37
C CB ENA

452.5
4.7 4.7 3.78
28 28 37
452.4
4.7 4.7 3.78
28 28 37
452.3
4.7 4.7 3.78
28 28 37
452.2
4.7 4.7 3.78
28 28 37
452.1
4.7 4.7 3.78
28 28 37
452.0
4.7 4.7 3.78
28 28 37
451.9
4.7 4.7 3.78
28 28 37
451.8
4.7 4.7 3.78
28 28 37
451.7
4.7 4.7 3.78
28 28 37
451.6
4.7 4.7 3.78
28 28 37
451.5
4.7 4.7 3.78
28 28 37
451.4
4.7 4.7 3.78
28 28 37
451.3
4.7 4.7 3.78
28 28 37
451.2
4.7 4.7 3.78
28 28 37
451.1
4.7 4.7 3.78
28 28 37
451.0
4.7 4.7 3.78
28 28 37
450.9
4.7 4.7 3.78
28 28 37
450.8
4.7 4.7 3.78
28 28 37
450.7
4.7 4.7 3.78
28 28 37
450.6
4.7 4.7 3.78
28 28 37
450.5
4.7 4.7 3.78
28 28 37
450.4
4.7 4.7 3.78
28 28 37
450.3
4.7 4.7 3.78
28 28 37
450.2
4.7 4.7 3.78
28 28 37
450.1
4.7 4.7 3.78
28 28 37

457.16

4156.2

28' TEND C.B.

4154

29' RT & Pole # 377197

4150

T.P.

2.93

448.04

9.70

445.11

4100

3181 C.B. BC AT

23' RT to 8'10" x 13' mixture ASPHALT & aggregate
& 13' CONC. DR.

3155.8 N. L. PASCO

LINDO

3138.8

N. C.B. L. LINDO PASCO

3120.80

E. LINDO PASCO

3102.8

S. C.B. L. LINDO PASCO

445.5 445.7 445.6 445.1 445.2 445.6 445.2 445.4

2.5 2.3 2.4 2.9 2.8 3.4 2.80 1.6
42 40 22 21 28 28 28 40
G CB CB CB

448.04

447.5 447.6 447.5 447.0 447.7 447.6 447.4 447.3

7.0 7.2 7.3 7.9 8.1 8.8 8.07 7.5
42 40 20 19 28 28 28 40
G CB CB CB

447.2 447.1 447.6 447.7 447.32 447.3

7.6 8.04 8.16 8.10 7.49 7.18
23 28 28 28 28 40
ASPH. G LIP ASP. MIX ASP. MIX

447.0 447.0 447.6 447.2 447.9 447.39 447.39 447.89

5.8 5.9 6.2 6.6 7.0 7.42 7.42 6.82
42 40 20 19 28 28 28 40
AVL Edge CB

447.8 447.5 447.6 447.2 447.5 447.16 447.64 447.83

5.0 5.3 6.2 6.6 6.81 6.86 6.65 6.17 6.30 5.88
43 40 21 19 28.2 40 70.7 70.7 100 100
BHL Edge CB G CB

447.9 447.8 447.1 447.6 447.5 447.76 447.17

4.9 5.0 5.7 6.2 6.16 6.04 6.03 5.64
42 40 21 29.0 40 50 100
Edge AVL

447.2 447.2 447.4 447.6 447.9 447.11 447.25 447.08 447.35

4.6 4.6 5.7 5.2 5.63 5.87 5.90 5.53 5.73 5.46
43 40 21 28.6 40 70.2 100 100 100
Edge AVL CB BC CB G CB

454.81

6+31.3

N. B. LINE HARDY

6+29.5

40' LT END PAVED DRIVE

6+25

3' LT E.M.H.

6+11.6

E HARDY

6+0.5

41' LT to 24' gate in 8' Steel Fence.
40' LT Beg. Asph. Pav. (24.5 Drive)

5+95.3

S. C. L. HARDY

5+54.6

28.1 RT. Beg Asph. Pav

5+51.6

C.B. BC RT.
HARDY

5+00

442.2
 439.5
 442.5
 442.4
 440.6
 440.5
 440.2
 439.8
 439.97
 440.26
 440.66
 3.8
 8.5
 5.5
 5.6
 7.2
 7.5
 7.8
 8.16
 8.07
 7.28
 7.38
 5.5
 4.5
 4.1
 4.0
 1.8
 1.7
 2.81
 4.0
 6.9
 6.9
 Pav
 Edge
 C.B.C
 C

5.39
 4.0
 4.6
 5.9
 7.37
 3
 RIM
 442.60
 441.8
 441.4
 5.44
 6.2
 6.6
 7.4
 40
 18
 17
 440.6
 440.5
 440.39
 440.74
 440.57
 7.76
 7.65
 7.36
 7.17
 28.1
 40
 11
 100
 Pav.
 Edge
 Pav.

442.60
 5.44
 4.0
 Pav.
 442.5
 442.5
 442.5
 441.5
 441.0
 5.5
 5.5
 6.0
 6.5
 43
 40
 19
 17
 7.0
 440.16
 440.77
 440.41
 441.16
 7.38
 7.27
 7.13
 6.88
 28.2
 40
 71.4
 71.4
 Edge
 Pav.
 C.B.C
 C

442.60
 5.44
 4.0
 Pav.
 442.5
 442.5
 442.5
 441.5
 441.0
 5.5
 5.5
 6.0
 6.5
 43
 40
 19
 17
 7.0
 440.16
 440.77
 440.41
 441.16
 7.38
 7.27
 7.13
 6.88
 28.2
 40
 71.4
 71.4
 Edge
 Pav.
 C.B.C
 C

443.9
 442.5
 442.9
 442.3
 442.0
 441.46
 6.56
 28.1
 Pav.
 441.6
 5.72
 5.1
 4.1
 4.2
 5.1
 5.7
 6.0
 28.1
 28.1
 40
 C.
 Pav.
 T.C.B
 441.7
 441.3
 441.7
 443.7
 443.7
 443.2
 441.7
 445.2
 3.3
 3.3
 3.7
 4.3
 4.3
 4.8
 3.3
 2.8
 4.2
 4.0
 1.9
 1.8
 2.7
 3.1
 4.0

448.04

7+28

26.7 RT E H CONC WALK

7+00

6+88

29' RT E Deadman

6+73

29' RT E Pole

377198

6+71.7

28.15 RT END CB RT

6+68.4

N END CB INLET

6+63

N END Box

6+61.3

E Box

6+65

28.1 RT Reg. 3.5 DRAIN Box + END PAV

6+50

440.0
80
41

440.0
80
70

439.9
86
17

439.4
86
15

439.3
87

439.9
81
27

440.1
79
29

440.4
76
40

439.4
8.20
26.7
conc
G10

440.15
7.86
40
G10

439.92
8.12
28.15
TP CO

439.13
8.91
28.15
Elev. inlet
TP CO

439.96
8.09
28.15
TP CO

439.22
8.27
27.3
TP Box

436.22
11.78
28.1
Flo. LINE
Box

442.0
440.5
440.1
440.4
440.0

6.0
47

7.2
41

7.3
40

7.6
18

8.0
17

439.4
8.2

439.22
8.83
28.1

439.40
8.64
28.1

439.50
8.54
34

440.24
7.30
34
CO

448.04

CHK: 7.04 450.92 = 450.94 EAC 2" I.P. Q 557A 10N Q Montezuma

T.P. 10.50 457.96 0.58 447.46

8425 41' LT FND 8' Steel Wire Fence

8420.67 N.L. College PK #3

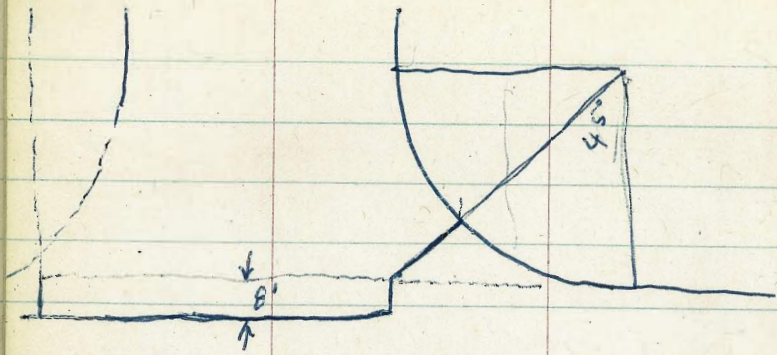
8400

7475

7450

44.5	43.5	43.1	43.2	43.5
3.5	9.4	8.9	8.8	9.2
55	42	40		40
Elev. Athletic Field	Bot Ditch			
43.2	43.2	43.2	43.2	43.5
8.8	8.8	8.9	9.0	9.0
41	40	13	13	26
				28
				40
43.3	43.3	43.3	43.5	43.9
9.7	8.7	8.7	8.7	9.2
42	41	40	16	14
43.4	43.4	43.4	43.5	43.9
8.6	8.6	8.6	9.0	8.9
41	40	16	14	8.9
				9.0
				8.5
				28
				40
				43.7
				43.7

448.04



WELLS ST.
Bernice to Tennyson

4-20-51
W.O.# 32179

Sommermeier
Berg
oltman
Schelin

T.P. Book 26 p 41

#1 B.M. = S.W. Mon. Wells + Tennyson EL. 106.92

B.M.#2 = N.W. Mon. " + Alicia EL. = 124.72

B.M.#3 = spike P.K. Ely. 7' wells } EL. = 151.99
 + Atascadero }

B.M.#4 = NE. 7' L+T. Wells + Bernice EL. = 168.17

■ denotes Fd. Conc. Mon
● " " " L+T

Soil sample taken
10' west of ♀ Wells
200' south sly line Alicia

INDEXED

APR 23 1953

18

Levels Page 31

ALICIA

ALICIA

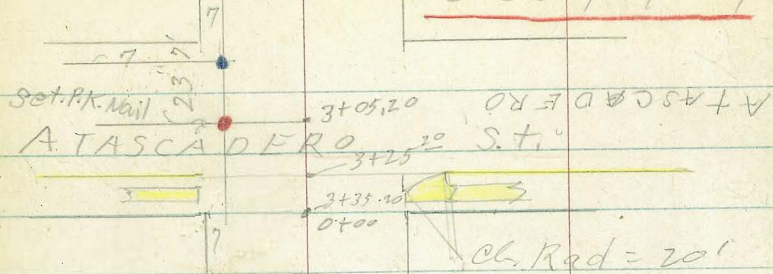
0400

2475.03

TENNYSON

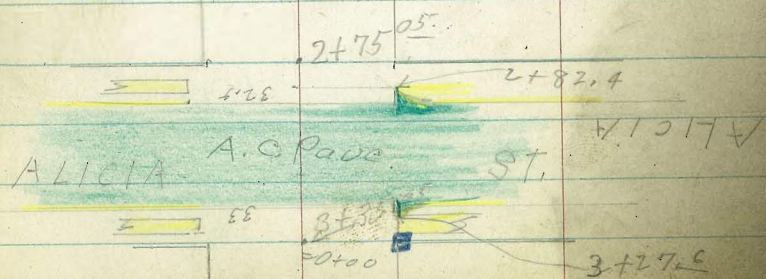
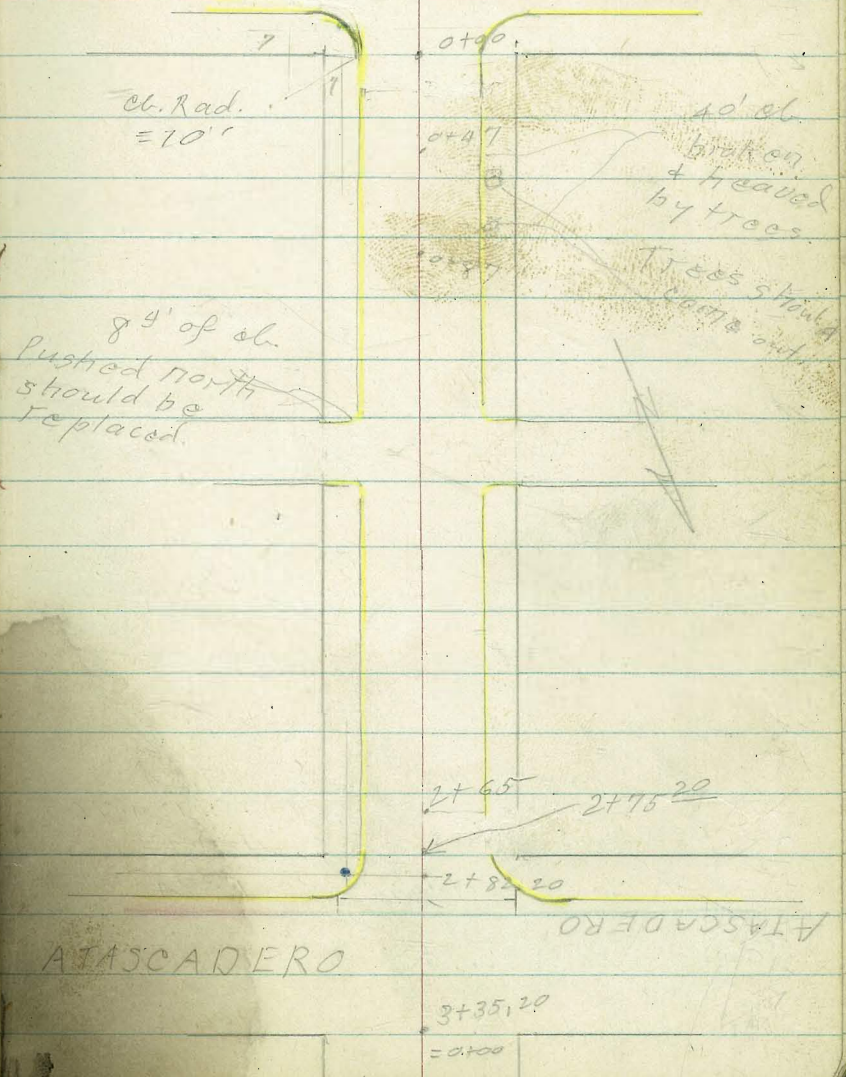
TENNYSON

Levels - page 27



Levels - page 20

BERNICE



ATASCADERO

Wells

Sketch - Page 19-RT.

30' Lt. = }
30' Rt. = } B.C. 10' Rad. cl. Rot

0-10 = Nly cl. line Bernice Dr.

0-30 = E Bernice Dr. A.C. Paue.

Set. B.M. 3.62 171.81 5.32 S.B. 168.19
171.77 5.34 168.17

T.P. 9.95 173.51 0.45 163.56
Set. B.M. 12.02 164.01 4.69 S.B. 152.02
4.72 151.99

T.P. 11.28 156.71 1.69 145.43

T.P. 12.28 147.12 0.25 134.84

Set. B.M. 10.37 135.09 2.19 S.B. 124.76
2.23 124.72

For B.M. Correction See P. 3A

9.56 126.95 1.17 117.39

B.M.#1 11.64 118.56 106.92

160.46
11.35
80
00

170.27
1154
90
00

157.93 145.45 164.88 165.73 166.91 167.48 167.66 168.13 169.63
11.98 6.36 6.93 6.08 4.90 4.33 4.15 3.68 2.18
80 30 30 20 20 20 30 30 90
0 0 0 0 0 0 0 0 0

159.81 164.65 165.30 166.55 167.67 168.15 171.81
12.00 7.18 6.51 5.26 4.20 3.66 0.73
80 30 20 20 30 90
171.81

Set. B.M.#4 N.E. 7' Lt. Wells + Bernice Dr.

Set. B.M.#3
P.K. Nail E. Atascadero. Ely. 7' Wells.

Set. B.M.#2 N.W. conc Mon. Wells + Alicia

S.W. Conc. Mon. Wells + Terryson

Wells

B.M. #4 171.70 168.19
 T.P. 3.51 171.68 3.62 168.17

to eliminate hump.
 should be taken out & lowered.
 27' Lt. = Ctr. 25 sq. ft. of walk
 should come out.

0+58- } 21' Lt. = 2' (8 trunk) acacia

0+50

line by 2 trees,
 broken & pushed out of

0+47- } 20' Lt. = start 40' of cl.

0+25

20' Lt. } = E.C. 10' Rad. Cl. Rot.
 20' Rt. }

0+00 = Nly line Bernice
 = end A.C. Pave.

169.4
2.40 3.2 3.1 2.6 1.87
20 20 20 20
cl cl

169.34
2.47
20
End good cl.

168.47 167.5 168.0 168.5 169.28
3.34 4.3 3.8 3.3 2.53
20 20 20 20
cl cl

166.99 166.34 167.41 167.75 168.43
4.82 5.17 4.40 4.06 3.38
20 20 C C
cl C 20 20

171.81

Wells

① 2+27⁵ } 20' RT } = B.C. 2⁵' cl. Return.
 20' LT }

1+20

1+00

0+90- 20' RT. = end drive

start good curb.

0+87- 20' LT. and broken curb

should come out.

0+84 21⁵' LT. = 8" Eucalyptus tree

0+76- 20' RT. = start conc. drive

0+75

168.21
3.49
20
cl. B.C.

167.12
4.5
20
cl. B.C.

167.1
4.6

167.5
4.2
20
cl. B.C.

168.24
3.46
20
cl. B.C.

168.63
3.07
20
cl.

167.6
4.1
20
cl.

167.6
4.1

167.9
3.8
20
cl.

168.62
3.08
20
cl.

169.33
2.37
20
cl.

168.4
3.3
cl
20

168.4
3.3

168.9
2.8
20
cl.

169.5
2.20
20
cl.

169.13
2.57
20
cl.

169.69
2.01
20
cl.

169.04
2.66
20
drive

169.73
1.97
20
cl.

168.9
2.8
20
cl.

168.9
2.8

169.4
2.3
20
cl.

170.04
1.66
20
cl.

171.70

Wells.

23

2+00

162.28	161.1	161.1	160.7	161.74
9.42	10.6	10.6	11.0	9.96
20	20		20	20
cl.				cl.

1+70

165.02	164.0	163.7	164.0	164.8
6.68	7.7	8.0	7.7	6.90
20	20		20	20
cl.				cl.

1+47⁵ 20' RT } = E.C. 25' Rad. cl.

166.8	165.7	165.7	165.9	166.8
4.90	6.0	6.0	5.8	4.90
20	20		20	20
cl.				cl.

1+45 { 30' RT } start existing cl.
30' LT }
22⁵ RT } = B.C. 25' Rad. cl. Rot
22⁵ LT }

169.28	167.10	166.9	166.2	166.1	166.7	167.04	167.31	
4.42	4.60	4.8	5.5	5.6	5.6	5.0	4.66	4.39
30	22 ⁵	22 ⁵	20		20	22 ⁵	22 ⁵	30
cl.	cl.					cl.	cl.	cl.
Ord.								Ord.

30' LT. = end existing cl.

1+30 { 22⁵ LT. = E.C. alley cl.

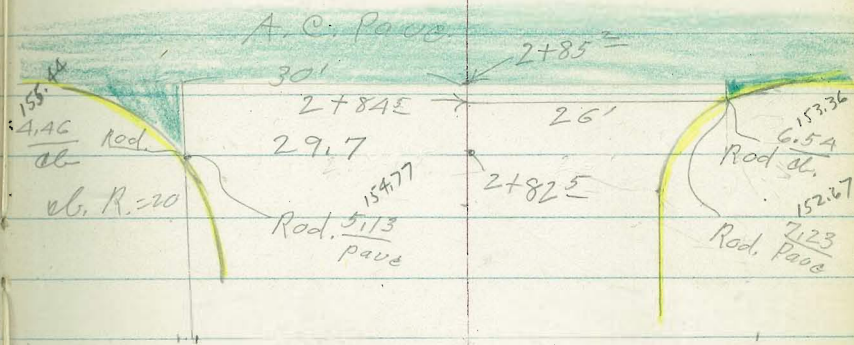
171.4	168.33	167.2	167.0	167.3	167.6	166.7
0.3	3.37	4.5	4.7	4.4	4.1	5.0
60	30	22 ⁵		22 ⁵	30	50
	cl. end			Ord.		

= start alley curb to come out.

1+29⁵ 21⁶ RT = end good curb

168.16	169.34	169.42
3.54	3.36	3.28
21 ⁵	24	29
cl.	N.W. cor.	N.E. cor.
	walk	walk

171.70



Rad. cl. Ret.
 23' Lt. = start cl. or 20'
 2+75²⁰ = Sly line Alacadero
 10' Rt. = B.C. 10' Rad. Cl. Ret.

155.69	155.7	154.8	154.4	153.5	154.07
4.21	4.20	5.1	5.5	6.4	5.83
2.42	2.3	2.0		2.0	2.0
Ely. edge walk	cl.				cl. B.C.

2+67- 22' Lt. = pole # 1998 16" Diam

2+65 20' Lt. = end curb

156.54	156.5	156.52	155.5	155.2	154.4	155.18
3.36	3.4	3.38	4.4	4.7	5.5	4.72
2.41	2.1	2.0	2.0		2.0	2.0
Ely. edge walk		cl.				cl.

2+30

0.50 159.90 159.40
 159.88 12.30 159.38

159.6	158.6	158.3	157.9	157.77
0.30	1.3	1.6	2.0	1.13
2.0	2.0		2.0	2.0
cl.				cl.

159.90

3+25² (levels page 26)

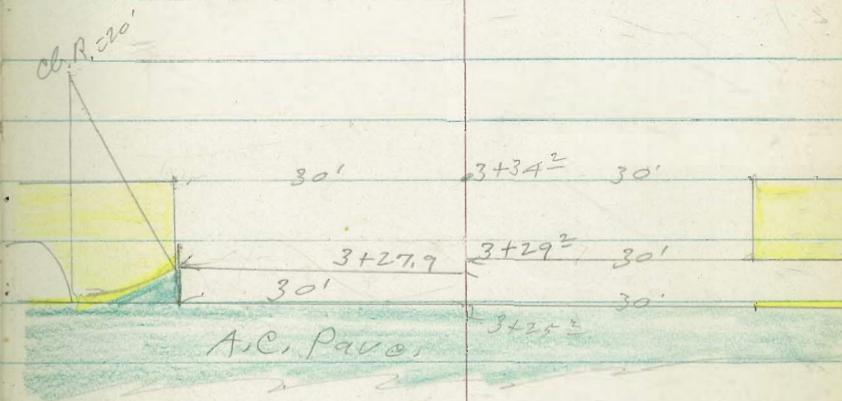
3+05.20 = ~~?~~ Atascadero

40' Lt = E.C. 20' Rad. cb. Ret.

30' Rt = E.C. 10' Rad. cb. Ret.

= sty. cb. line Atascadero

2+85² = start A.C. Pave.



155.84	154.94	154.54	154.07	153.03	152.19	151.16	149.4
4.06	4.96	5.36	5.83	6.87	7.71	8.30	10.50
70	40	30	20		20	30	60

156.36	155.8	155.24	152.47	153.15	150.03	150.12
3.54	4.10	4.26	7.43	6.75	9.87	9.28
70	70	40	30	30	60	60
cb	G	cb	G	cb	G	cb

154.95	154.66	154.4	154.15	153.82	153.44	152.94	152.68
4.95	5.24	5.50	5.75	6.08	6.46	6.96	7.22
40	30	20	10		10	20	26

159.90
~~159.88~~

T.P.

Chok B.M. #3

7.89 151.99 ✓

= a + 00 (sketch Page 19-Lt.)

3+35^z = Nly line Atascadero

30' RT = N. E. cor. walk

3+34^z 30' Lt = N. W. Cor walk3+29^z - 30' RT = S. W. Cor. walk

walk - see Page 25

also end of cb. + S. E. Cor.

3+27^z 30' Lt = end pave.

40' Lt = B. C. 20' Rad. Ch. Rot.

30' Lt = A. in pave.

30' RT = wly end curb.

= Nly ob. line Atascadero.

3+25^z = End A. c. pave.

152.8	153.7	152.2	151.1	149.9	150.6
6.1	6.2	7.7	8.8	10.0	9.3
40	30	28		20	30

154.32	152.3	151.1	150.3	150.82
5.58	7.6	8.8	9.6	9.08
30	26		20	30
end				end +
+ walk				walk

150.69
9.21
30
walk

154.13	153.5
5.77	6.40
30	30
cb	cb

156.03	155.38	154.74	150.62	148.16	148.67
3.87	4.52	5.16	9.28	11.74	11.23
70	70	40	30	60	60
cb	cb	cb	cb	cb	cb

154.12	153.65	153.2	152.78	152.25	151.6	150.8	150.06
5.78	6.25	6.70	7.12	7.65	8.30	9.10	9.84
40	30	20	10		10	20	30
cb							cb

159.90

Wells
Sketch page 19-left

1+28 22' Lt. = 1' Diam pole # 2024

1+10

149.3 141.6 140.3 139.5 141.1 141.4
 5.5 8.2 9.5 10.3 8.7 8.4
 30 24 20 28 30

1+05^E 30⁸ Rt. = end conc. drive

147.4 147.1 144.6 141.8 140.6 139.9 141.9 142.6 142.57
 2.4 2.7 5.2 8.0 9.2 9.9 7.9 7.2 7.18
 50 40 30 24 20 25 30 30⁸
 (on brick) drive

1+00

0+95- 28⁷ Lt. = 6" Eucalyptus tree out
 in conc. drive to come

0+94 25' Rt. = Ctr. 250 sq. ft. brick

147.8 147.4 144.7 142.0 141.1 140.5 142.8
 2.0 2.4 5.1 7.8 8.7 9.3 7.0
 50 40 30 24 17 30
 on brick

0+84- 30⁹ Rt. = start Conc. drive

T.P. 2.28 149.75 147.47 147.45

149.75 143.16 143.31
 6.59 6.44
 30⁹ 58
 Apron Gov.
 floor

0+50

150.0 151.7 148.0 146.0 144.8 146.2
 7.9 8.2 11.9 13.9 15.1 13.7
 40 34 30 20 30

0+15

0+08- 22' Rt. = 9" pole # 450779H

153.3 153.3 151.1 149.3 147.9 148.6
 6.0 6.6 8.8 10.6 12.0 11.3
 48 30 29 18 30

159.90

Wells

2+00

136.6 133.7 132.9 132.7 131.8 132.7 132.8 130.5 130.0
 3.7 6.6 7.4 7.6 8.5 7.6 7.5 9.8 9.9
 30 20 18 18 22 30 40 50

1+99

4' = end conc. ^{drive} apron

136.68 136.24
 3.60 4.04
 30 28
 drive

1+82 28' 4' = start conc. drive

139.42 137.35 137.07
 0.86 2.93 3.21
 41 30 28
 Bars drive
 Floor

1+75

138.0 134.9 134.7 133.7 134.2 132.8 132.6
 2.3 5.4 5.6 6.6 6.1 6.5 6.7
 30 18 16 18 30 40

T.P. 2.25 140.28 138.03 140.26 11.72 138.04 140.28

1+54- 21' RA = 9" pole # A50 778 H

1+45

144.6 140.8 137.5 137.5 136.7 137.9 134.8
 5.2 9.0 12.3 12.3 13.1 14.9 15.0
 60 30 16 19 30 60

1+30

141.2 139.2 138.8 137.8 138.4
 8.6 10.6 11.0 12.0 11.4
 30 20 20 30

149.75

Wells,

29

2+76 = 30⁵ Lt. = S.E. Cor. Conc. walk
30⁵ Lt. = end wall.
32⁵ Rt. = S.W. Cor. conc walk

126.1	126.81	126.8	126.3	126.6	126.2	127.0	126.4	126.2
5.0	4.32	4.13	4.18	4.5	4.9	4.1	4.7	4.93
30 ⁵	30 ⁵	21	20		18	19	30	32 ⁵
B.W.	End.							walk
	+ walk							

2+75⁰⁵ = sly, Alicia Drive

2+74

129.9	128.4	126.5	126.6	126.3	127.3	126.7
1.2	2.7	4.0	4.5	4.8	3.8	4.4
30	21	20		18	20	30

2+73 22' Lt. = 18" pole # 2048

2+66 - 30⁷ Lt. = start Conc. block wall

132.6	129.6	130.6
+ 1.5	1.5	0.5
30 ⁷	30 ⁷	30
T.W.	B.W.	End

T.P.	2.59	131.13	11.74	128.54	128.52	131.13
------	------	--------	-------	--------	--------	--------

2+50

132.1	129.3	128.8	128.0	128.6	128.7
8.2	11.0	11.5	12.3	11.7	11.6
30	18		18	19	30

2+25 21. Rt. = ^{Conc. apron.} 8' wide level

129.82	129.88
10.46	10.40
21	35
Apron.	Cor.
	Floor

2+15

134.8	132.0	131.3	130.8	130.1
5.5	8.3	9.0	9.5	10.2
30	18		15	30

140.28

33' RT = wly end curb.
 40' Lt = B.C. 20' Rad. cl. Ret.
 30' Lt = L in Pavc

3+25⁰⁵ = E Alicia

40' Lt = E.C. 20' Rad. cl. Ret.
 30' Lt = L in Pavc
 2+85 = sly. cl. line Alicia

Rot.
 start curve. 20' Rad cl.
 2+82⁴ 30' Lt = start A.C. Pavc.

127.68	127.03	123.99	120.89	121.49
3.45	4.10	7.14	10.24	9.64
70	70	33	60	60
cl	G	cl	G	cl

125.72	125.15	124.65	124.63	124.53	123.97	123.55	123.14
5.41	5.98	6.48	6.50	6.60	7.16	7.58	7.73
40	40	30	20		20	30	33
cl	G						G

Along curve of Alicia

127.66	126.13	125.81	125.53	125.37	124.96	124.79	121.98
3.47	5.00	5.32	5.60	5.76	6.17	6.34	9.15
70	40	30	20		20	30	60
							E Alicia

128.33	127.77	125.97	122.73	121.38
2.80	3.36	5.16	8.40	7.75
70	70	32.5	60	60
cl	G	cl	G	cl

Along curve of Alicia

126.86	126.28	126.01	125.98	125.86	125.65	125.46	125.4
4.27	4.85	5.12	5.15	5.27	5.48	5.67	5.73
40	40	30	20		20	30	32.5
cl	G						G

126.26	126.04
4.87	5.09
30	30
cl	G

Wells

0+79 21' Rt. = end conc. apron

116.59
9.70 8.80 8.00
21 30 30
drive
Bas.
Floor

0+84 20' Rt. = start conc. Drive

117.37
8.72 8.36 8.00
20 30 30
drive

0+50

122.5 121.9 119.8 120.4 119.0 119.7 120.2
3.6 4.2 6.3 5.7 7.1 6.4 5.9
30 26 24 16 20 30

0+13-21 = Rt. = 9" pole # 493508 H
1.33 126.09 6.37 124.72 BM. #2

126.09

= 0+00 (Sketch - Page 18)

3+35⁰⁵ = Nly. line Alicia

126.2 125.7 123.5 123.9 123.4 123.7
4.9 5.4 7.5 7.2 7.7 7.4
30 27 25 16 30

3+34 33' Rt. = N.W. cor. walk
30' Lt. = N.E. cor. walk

125.1
5.90
30
N.E. cor

123.85
7.28
33
N.W. cor

3+27 = end curb
30' Lt. = end A.C. Pavc.

125.05 124.46
6.08 6.67
30 30
CL C

B.M. #2

6.37 124.74

124.72

131.13

Wells
 Pole # 493507H 115.21 114.00
 T.P. Nail 1.21 115.17 12.09 113.96

1+62 - 28' RT = dead man
 { 30° Lt = start conc. wall
 1+57 - { 30° Lt = end conc. drive

114.8 113.8 114.64 114.5 112.5 113.1 113.4
 11.3 12.3 11.45 11.6 13.6 13.0 12.7
 30° 30° 30° 30° 17 18 30
 T.W. B.W.

1+49 30° Lt = start conc. drive
 1+43 - 21' RT = 10" pole # 493507H
 fence
 1+42 - 31' RT = start chain link
 1+41 - 30 RT = end board fence

119.09 115.02 115.0 113.4 113.5
 7.00 11.07 11.1 12.7 12.6
 55 30° 30 17
 Bon
 Floor

1+30

120.4 116.1 114.9 114.9 113.9 114.5 114.7
 5.7 10.0 11.2 11.2 12.2 11.6 11.4
 75 30 19 16 18 30

1+27

117.5 115.3 115.1 114.1 114.7 114.9
 8.6 10.8 11.0 12.0 11.4 11.2
 30 19 16 18 30

box
 conduit. 14 18" x 18" Conc.
 14" pole # 2076
 1+23 - { 22⁹ Lt = pole + down conduit

1+00 29⁹ RT = start board fence

121.1 119.0 118.1 116.3 116.9 115.9 117.1
 7.0 7.1 8.0 7.8 9.2 10.2 9.0
 60 30 24 20 16 30

126.09

Wells

See page 34

Time out for bench check

.04 in 300' is too much.

Cont. P-35

-checked level. - level is O.K.

T.P. ~~412~~ ~~7~~ 8.29 106.92
106.88

106.92 B.M. #1

Retaining curb
29^E RT = start 1" high conc.
+ = silv. cor. House

2+10 } 32^E RT = end fence

2+15 30^E RT = Face of wall

2+13 - 29^o RT = L. in fence
link fence

1+97 29^E RT = start chain

1+94 21^E RT = end conc. drive

113.21 109.7 110.5 109.2 108.9 108.1 109.0 109.2
20 5.5 4.7 60 6.3 7.1 6.2 6.0
30^E 30^E 30 16 18 21 30
T.W. B.W.

110.01 110.9
5.20 4.31
21^E 30

1+82 21^E RT = start conc. drive

112.7 111.0 111.2 110.27 110.94 110.36
2.5 4.2 4.0 4.94 4.27 4.85
30 18 21^E 30 36^E
drive car
plan

1+78

1+77 31^E RT = end chain link
fence

1+74 23 L^o = dead man

112.9 111.2 111.3 110.6 111.6 111.6
2.3 4.0 3.9 4.6 3.6 3.6
30 18 17 19 30

115.21

B.M. check

This checks. Error was in first turn. π in notes corrected.

B.M.#1 10.18 106.92

2.80 117.10 12.30 114.30

B.M.#2 1.84 126.60 7.45 124.76

1.50 132.21 12.33 130.71

1.04 143.04 11.98 142.00

B.M.#3 1.96 153.98 12.55 152.02

1.06 164.57 10.12 163.51

B.M.#4 5.44 173.63 5.28 168.19

168.17 - Page 20

9.97 173.47 0.20 163.50

B.M.#3 11.68 163.70 3.22 152.02

151.99 - Page 20

7.49 155.24 1.62 147.75

12.61 149.37 0.14 136.76

B.M.#2 12.14 136.90 1.62 124.76

124.72 - Page 20

8.95 126.38 0.19 117.43

B.M.#1 10.70 117.62 - 106.92

S.W. Conc. Men. Wallis & Tennyson.

Wells

see sketch - P36

2+76 = S.E. cor. A.C. Pavc
 Lt. = S.E. cor. conc. walk

107.01	106.3	105.89	104.7	105.25
4.06	4.77	5.18	6.4	5.82
30	14.2	pave.	20	20.1
End of walk	pave			top of st.

2+75⁰³ = sly. line Tennyson
 30⁴ Lt = end conc. wall
 20' RT = B.C. 10' Rad. Ob. Rot.

106.8	107.0	106.0	104.8	105.3	105.2
4.3	4.1	5.1	6.3	5.80	5.9
30.4	30		20	20	3.0
B.W.				ob	

2+60

105.5	107.7	106.7	105.7	106.1	106.4
2.6	3.4	4.4	5.4	5.0	4.7
30	24		19	20	30

2+42 - 29² nt. = end 1' high wall.

107.4	107.1
3.7	4.0
29	29 ²
End	B.W.

2+38 - 22⁴ RT = 1' pole # 29490 T

29⁶ RT = face of 1' high wall

22' RT = dead man

2+17 { 30⁵ Lt. = 3' walk thru wall
 4 stops

110.76	110.3	109.5	109.1	108.8	108.0	108.9	109.0	109.3
0.31	0.8	1.6	2.0	2.3	3.1	2.2	2.1	1.8
35 ²	30	18	17		17	23	29 ²	30
Bottom step							B.W.	

A.15 111.07 — 106.92

111.07

Wells

36

REPRODUCED
5-6-53
R. H. MESSIKER

B.M. #1 A115 106.92

3+05⁰³ = ϕ Tennyson

108.45	106.49	106.02	105.7	104.92	104.21	103.9	100.11
2.162	4.58	5.05	5.140	6.15	6.86	7.20	10.196
80	40	30	20		20	30	130

109.0	108.41	107.35	100.25	100.89
2.07	2.65	3.72	10.82	10.18
80	80	40	130	130
cc	B	cc	C	cc

40' Lt. = E.C. 20' Rad. Cl. Ret.

A.C. Pavc.

also = start full width

2+85⁰³ = sly. cl. line Tennyson

2+84 - 7⁴ H. = Ctr. S.D. Gas + Elec. Co.

106.72	106.3	106.02	105.82	105.37	104.61	103.91	104.58
4.35	4.77	5.05	5.25	5.70	6.66	7.16	6.47
.40	30	20	147		20	30	30
G						G	cc

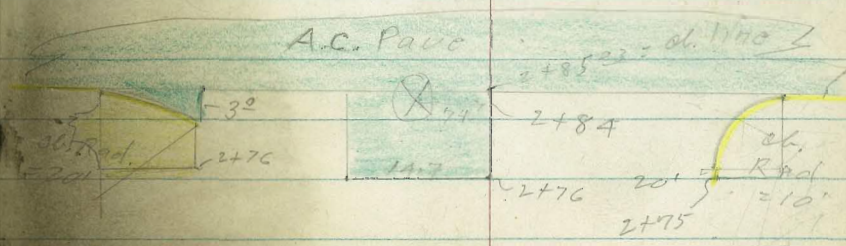
Rad. Ret.

2+82 - 30' Lt. = start curb of 20'

30' Lt. = start A.C. Pavc

106.87	106.23
4.120	4.84
30	30
cc	Pavc
	111.07

2+76.



T.A. Stamper

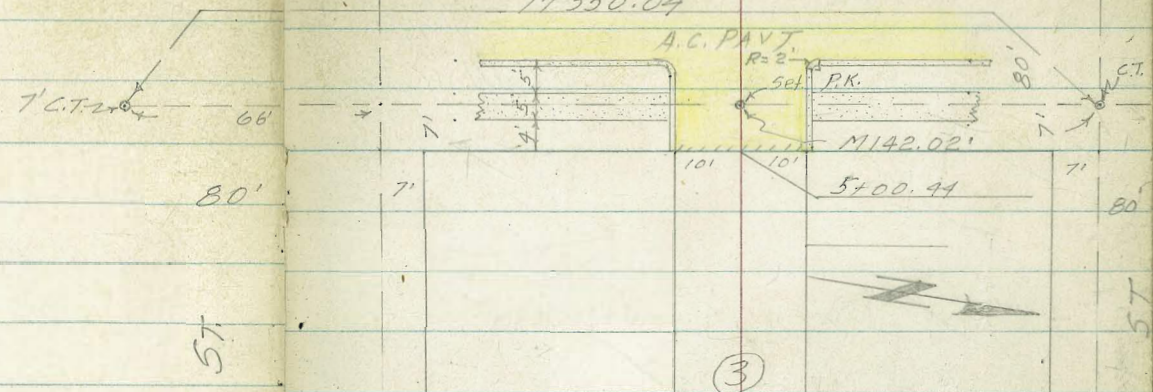
CROSS SECTIONS OF ALLEY BLK 3 OCEAN FRONT
FOR IMPROVEMENTS W.O. 31501

Ref Map 898
Tie Sheets 1763-69

INDEXED
SER
JAN 8, 1954

BAYARD ST.

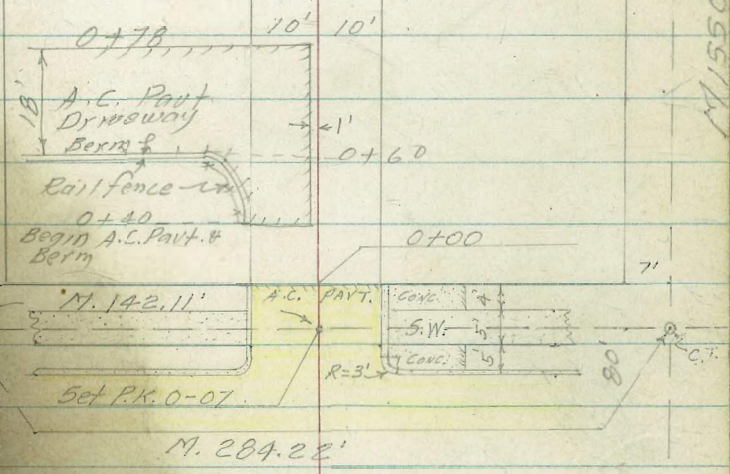
M 350.04'



ST.

(3)

DIAMOND





CASS

ST.

MISSOURI ST.

ALLEY BLK 3 - CONTD

Stamper 
 Hoffman 
 Nordahl ϕ
 Sherry ϕ

NOTE: Direct Elev. Rod Used

Lt E Rt

1-7-54

Fronts on Cass St. N° 4724-26

Begin Conc Blk Bldg 10² Rt.

0+00 Begin 8" Conc Blk Ret Wall 10² Lt.

46.9	47.7	48.10	47.81	47.71	47.58	48.10	48.26	48.63
25	11.3	10.3	10	10	0	10	10	25
	↑	↑	cb	Gut		Gut	cb	
	↑	↑						
	↑		↑		↑			
	↑		↑		↑			
	↑		↑		↑			
	↑		↑		↑			
	↑		↑		↑			

0-11 E.C. Curb Ret.

47.69	47.30	47.52	47.81	48.14
10	10	0	10	10
cb	Gut		Gut	cb

0-14 Wly Curbline Cass St.

47.25	46.80	47.60	47.16	47.27	47.88	47.77	47.83	48.32	48.08	48.52
25	25	13	13	10	0	10	13	13	25	25
cb	Gut	cb	Gut				Gut	cb	Gut	cb

0-40 E Cass St.

46.62	47.22	47.85	48.44	49.02	49.67	50.11
75	50	25	0	25	50	68

B.M.

511.52

511.52 Missouri-Cass

ALLEY BLK 3

Lt. ♣ Rt

0+45⁵ BC 3'-High Rail Fence 9² Lt.

0+45⁵ End Conc. Porch 10² Rt

47.4 48.84
10² 10²
Ground Top
 Porch

TBM Top S.W. Cor Conc. Porch
@ Sta 0+45⁵ 10² Rt. 48.84

0+90 Begin 1' Wide A.C. Beam 8⁵ Lt ♣

47.44 47.28
8⁵ 8⁵
Topbeam Gut

0+40 End 8" Conc. Blk Ret Wall 10² Lt.

46.1 44.77 47.77 47.5
11² 10² 10² 10²
Ground BackWall ftg TopWall Ground

0+38 - 1' Lt. Begin A.C. Pavt.

47.24 47.20
10² 1'
A.C. A.C. Pavt.

0+28 - 10² Lt. Begin Conc Porch To Bldg

47.5 48.81
10² 10²
Ground Top
 Porch

0+03 Begin 3'-High Rail Fence 9² Lt.

ALLEY BLK 3

1+00 10⁵ Rt. Begin 4' Picket fence

End 6'-High Picket fence 10⁵ Lt.

1+00 9° Lt. & PP. No. PA-980

46.0 46.3 46.4 46.6 46.9
25 10 0 10 25

0+78 Begin 6'-High Picket fence 10⁵ Lt.

0+78 End A.C. Pavt.

46.04 46.88 46.85 46.8 46.9 47.3
25 10 10 0 10 25
A.C. A.C. A.C.

0+60 Ely Line A.C. Drive 2-Car Gar

46.17 47.03 47.10 47.1 47.3 47.6
25 10 12 0 10 25
A.C. A.C. A.C.

0+50

46.0 47.0 47.10 47.25 47.25 47.2 47.2 47.6
17 10² 9⁵ 9⁰ 7 0 10 25
Top Top Gut A.C.
Ls 100

LT € RT

ALLEY BLK 3

1+59 - Begin 4-Car Garage ~ 13⁶ ft

46.09 46.01
132 136
floor Apron
conc. conc.

1+53 € 2⁵ Conc. Walk 10⁵ ft.

46.94 46.60
10⁵ 20⁵
€ walk on walk

1+50 End 4' Picket fence 10³ ft

45.4 45.7 45.9 46.1 46.6
25 10 8 10 25

1+35 € 20' - 2-Car Garage ~ 25⁴ ft

45.84 45.62
30⁵ 25⁵
floor Apron
conc. conc.

1+13 - 10⁵ ft. € 3' Walk (conc)

46.5 47.01 47.14
10 10³ 15³
Ground € walk on walk

ALLEY BLK 3

2+02 ± 2⁵ Conc. Walk 11' RT.

45.59 45.75
11' 21'
± Walk on Walk

2+01⁵ 9⁵ Lt. ± PP N° PA-958

2+00

44.5 45.4 45.9 45.3 45.7
25 10 0 10 25

Set P.K. Sta 2+01⁵
TBM. Nly Side PP N° PA-958 46.20

1+95⁵ ± 7' Parallel X 2.2' Conc. Slab Nly Edge 12⁸ Lt.

45.94
12⁸
Conc. Slab.

1+92 End 4-Car Gar 13⁶

46.13 46.07
15² 13⁶
floor Apron
conc. conc.

1+66 ± 2-Car Gar 17' wide 10⁵ RT

46.09 46.61
10⁵ 13⁵
Apron floor
conc. conc.

Lt. & Rt

ALLEY BLK 3

2+65⁵ 8³ Lt. Begin frame Gar Bldg

2+65⁵ 9⁶ Lt. End 6' frame Shed

2+57⁵ 9³ Lt. Begin 6' frame Shed

2+57⁵ 7¹ Lt. End 10' frame Bldg

2+50⁵ Begin Con Slab ^{for} clothesline ~ 10' Rt.

45.19 45.31
10² 17²
Gar @ Bldg

2+50

44.5 44.8 45.1 45.2
7 0 10 25
@ Shed

2+48⁵ & 2⁵ Conk Walk 12² Rt

45.16 45.38
12² 22²
Walk on Walk

2+47⁵ 7⁵ Lt. Begin 10' frame Bldg

Note: Owner says he will move this bldg when notified (colored)

Lt. & Rt

ALLEY BLK 3

3+01 End frame Bldg (shed) 11²4.

& PP 9° Lt. No PA 940

3+00 End Conc. Slab 10¹ Rt

437 44.0 44.4 44.2 44.9 44.88 44.87
25 10 5 0 100 102 172

Ground Conc. Conc. @
Slab Slab Bldg

44.6
25
Ground

2+86. Break Conc. Slab 10° Rt

44.7 45.25 45.50
10° 102 172

Ground Top Conc.
Conc. @ Bldg
Slab

2+85 10° Lt. Begin frame Bldg

2+80⁵ & 9' frame Gar Bldg Dirt floor
9³ Lt.

44.4 44.5
9³
Dirt 0

2+71 - 8⁵ Lt. & 10° frame Gar floor Dirt

44.3 44.6
10° 0
Dirt

ALLEY BLK 3

4+06 ³ Begin 3-Car Gar 10° Lt.

4+05 ± 3' Conc Walk 10° Lt

4+00 8° Lt. ± PP. N° PA. 922

3+50

1-7-54

(25)

Lt.

±

Rt.

42.80	42.67
151	100
floor	Apron
conc	conc

42.76	42.70
200	100
on Walk	± Walk

425	428	428	428	428	434	437
25	10	5	0	4	10	25

433	435	436	434	433	436
25	10	6	0	10	25

ALLEY BLK 3

1-7-54

(46)

Lt. E Rt.

4+52-9^B Rt. Begin Conc. Patio Slab

42.5	42.00	43.13
9 ^B	9 ^B	9 ^B
Ground	ftg	Top Conc.
		Patio

4+50-9^B Rt. Begin 6' R/W fence

42.6	42.4	42.2	42.2	42.6	42.9
25	10	0	3	10	25

4+42³ End-3 CarGar 15^B Lt.

42.82	42.62
15 ^B	10 ^B
floor	Apron
conc	conc

4+35 E 16' Opening 2-CarGar 19^B Rt.

42.38	42.68	42.78
9 ^B	11 ^B	14 ^B
Ac Apron	Ac	Conc floor
	Brent	

ALLEY BLK 3

4+94 End-3 Car Gar 10° Lt.

4218	4199
15°	10°
floor	Apron
conc.	conc.

on Bayard
Begin Conc. Slab to Carport fronts
4+85⁵ End 1-Story Stucco Bldg 10° Rt

4219	4198	4167 ^{1/2}	4211	4232	4243
15°	10°	06	101	128	220
Call on Conc Level	on Conc Ramp		Conc. Slab	Conc. Break	on Conc

Set PK. Nly Side P.P. N° JP-4725
T.B.M. on Alley @ Bayard + Blk 3 41.32

Begin 1-Story Stucco Bldg 92 Lt.
4+65⁵ - 92 Rt. End 6' Plw fence & Conc. Patio

423	4174	4314
92	92	92
Gr.	Fig.	Patio

4+58² Begin Conc. Ramp - 3 Car Gar 10° Lt.

4219	4207
15°	10°
floor	Apron

1-7-53

(17)

Lt. & Rt.

ALLEY BIK 3

1-7-54

(28)

Lt.

±

Rt.

5414.44 Fly Cb. line Bayard St.

3958	4064	3988	3994	4008	4032	4045	4114	4072
25°	12°	12°	10°	0°	10°	12°	12°	25°
Gut	cb	Gut				Gut	cb	Gut

4035
25
cb

4127 4195
Gut cb
50 50

5412.44 B.C. Cb Returns

4061	4008	4015	4046	4113
10°	10°	0°	10°	10°
cb	Gut		Gut	cb

5400.44 ^{ELY EDGE} Fly Line Bayard St.

413	416	4084	4060	4021	4089	4131	4180
25	11	10°	10°	0°	10°	10°	13
		cb	Gut		Gut	cb	on Conc

4203
25
on Conc

4+955 ± 3' Conc Walk 10° Lt.

4201 4194
20° 10°
on Walk ± Walk

1-7-54

ALLEY BLK 3

Lt.

±

Rt

B.M.

37.51 ~

37.50 NWBP Diamond & Bayard

5+40.44 ± Bayard St.

3890	3944	3993	4050	4106	4152	4210
75	50	25	0	25	50	75
			ELY			
			RIO			
			SEWER			
			M.H.			

INSTALLS TO BE INSTALLED

lots

~~(6-7) (11, 12, 20) - ?~~

BLOCK 3

³
BLOCK 4
(1-4) (5-6)

Sta	L	R
0+00	47.71	48.10
0+10	—	47.85
1+25	45.75	46.05
1+35	45.61	45.91
1+45	45.49	45.79
4+40	42.22	42.52
4+50	42.08	42.38
4+100	41.88	42.18
4+70	41.62	41.92
4+80	41.30	41.60
5+00	40.60	40.89

Sta	L	¢	R
0+00	47.29	47.16	47.68
0+50	46.50	46.25	46.80
1+00	45.72	45.47	46.02
1+50	45.01	44.76	45.36
2+00	44.46	44.21	44.76
2+50	43.91	43.66	44.21
3+00	43.35	43.10	43.66
3+50	42.80	42.55	43.10
4+00	42.24	41.99	42.54
4+50	^{3 rows} 41.66	41.41	41.96
4+85.5	40.69	40.46	40.99
5+00	40.18	39.98	40.47

Bottom of Grade
Block 3

Bottom of Grade
Block 4

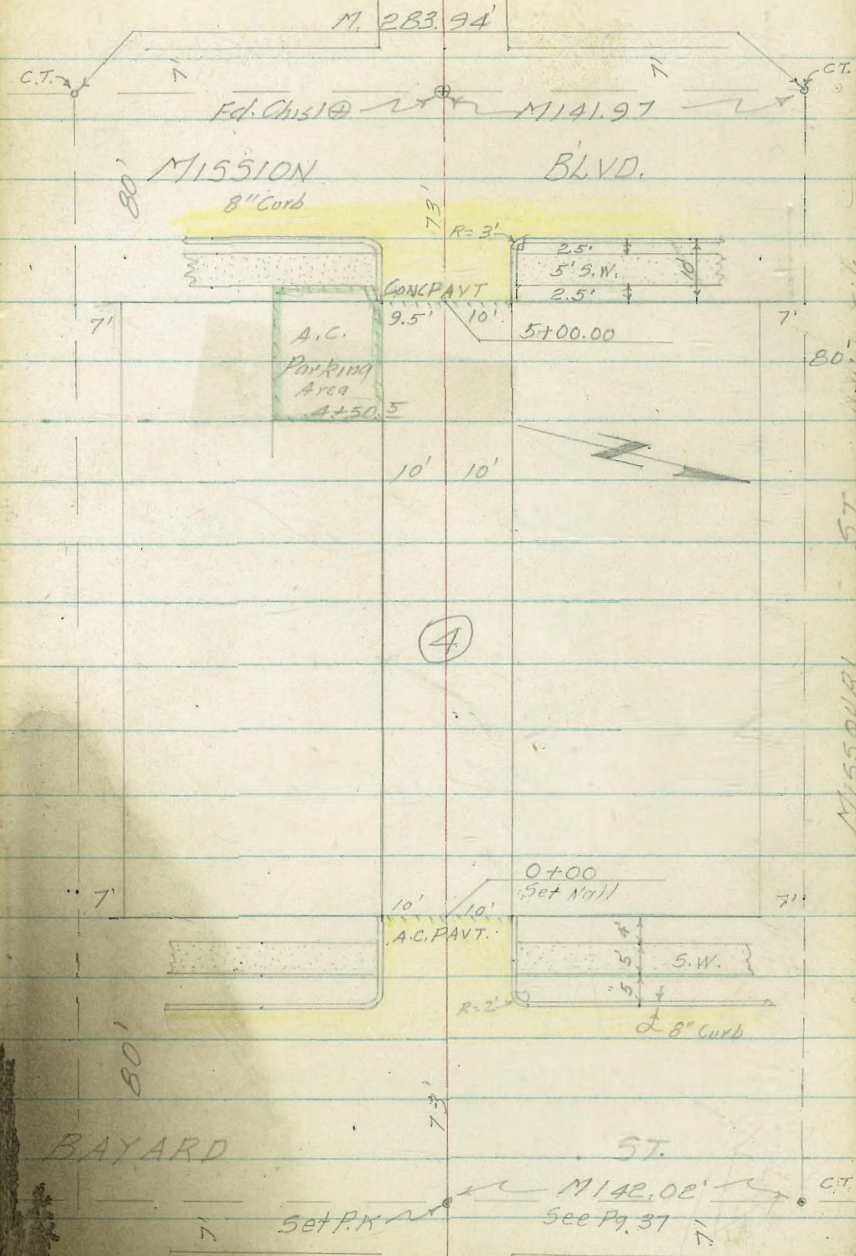
Sta	L	¢	R
0+00	39.79	39.56	39.85
0+50	39.44	39.07	39.50
1+00	39.09	38.72	39.15
1+50	38.75	38.38	38.81
2+00	38.40	38.03	38.46
2+50	38.05	37.68	38.11
3+00	37.70	37.33	37.76
3+50	37.36	36.99	37.42
4+00	37.01	36.64	37.07
4+50	36.62	36.26	36.70
4+80	35.92	35.68	36.25
5+00	35.26	35.13	35.7

base, with
fill

CROSS SECTIONS ALLEY BLKA OCEAN

FRONT. W.O. 31501

INDEXED
Law
MAR 10 1954



CROSS SECTIONS ALLEY BIKA OCEAN
FRONT. W.O. 31501

0+00 Begin 4'-High x 5' Wide Shrubs 11⁵ RT Tot

0+00 Wly Pl. Bayard St.

0-12 E.C.

0-14 Wly

0-40 (50)

B.M.

③	②	①	Invert	5' below Pl.
30.88	30.55	30.23	PL	31.25
37.51	37.18	36.25	Φ across land	32.18
32.31	31.98	31.05		32.51

1-7-54 (51)
Lt. ♂ Rt.
NOTE: Direct EKV Rod
Used
Stamper
Huffman
Nordahl
Sherry

397 - 4034 4021 39.98 4027 4076 40.6
23 10 10 0 10 10 25
Cb Gut Gut Cb

4015 39.70 39.77 4000 4063
10 10 0 10 10
Cb Gut Gut Cb

39.22 4014 39.52 39.58 39.73 39.96 4003 4068 40.29 40.91
25 12 12 10 0 10 12 12 25 25
Gut Cb Gut Gut Cb Gut Cb

39.84
25
Cb

N.W. BR Diamond & Bayard

FOR JUDGE OF TR
MUNICIPAL COURT
DEPARTMENT NO.

CROSS ST

FRONT

CARR BEBBS

(Incumbent)
CHARLES B. WINCK

0+00 Bay

0+00 W

FOR COUNCILMAN
DISTRICT NO. 2
(UNEXPIRED TERM)

To vote for a candidate or
for a candidate for that office
All marks, e
"No."
"or after the word
"No." or after the word
election and obtain another.

0-12 E.C. Cb. Ret's

0-14 Wly Curbline Bayard St.

0-40 (See 5+1 5+40.44 Pg. 49)

B. M.

37.50

N.W. BR. Diamond & Bayard

OCEAN

ERT Tot

1-7-54

Lt.

¢

Rt.

(51)

NOTE: Direct Elev Rod
Used

Stamper
Huffman
Nordahl
Sherry

397	4034	4021	3998	4027	4076	40.6
25	10	10	0	10	10	25
	cb	cut		cut	cb	

4015	3970	3977	4000	4063
10	10	0	10	10
cb	cut		cut	cb

3922	4014	3952	3958	3973	3996	4003	4068	4029	4091
25	12	12	10	0	10	12	12	25	25
cut	cb	cut				cut	cb	cut	cb

3980
25
cb

ALLEY BLK 4 - CONTD

1-7-54

(52)

L. & Rt

1+15-117 L & 2-Car Gar 16' Wide

40.38	40.20
112	98
floor	Apron

1+03-112 L & 2' Conc. Walk

39.75	39.95
212	112
onwalk.	to walk

1+00-8⁵ L & P.P. N^o PA-880

39.5	39.7	40.2	39.9	39.9	40.1	40.5
25	10	8	5	0	10	25

0+50

39.5	40.1	40.3	40.6	40.7
25	10	0	10	25

0+47 - End 4' High x 5' Wide Shrubbery 13² ft
To &

ALLEY BLK 4 - CONTD

Begin 5' Woven Wire fence 10' RT.
2+00 - 8" H. & P.P. No. SPA-854

1+50

1+37 - 11" H. & 17' - 2-Car Gar

1+25 $\frac{5}{2}$ - 9" H. & 3' Conc Walk

1-7-54

(33)

Lt & Rt

38.6	38.8	39.1	39.2	39.4
25	10	0	10	25

38.7	39.1	39.3	39.5	40.1	40.0
25	10	0	10	16	25

39.86	39.68
11"	9"

floor A' Prom

40.00	40.05
12"	9"

concrete & walk

ALLEY BLK 4 - CONTD

Lt. C Rt.

2+50 - Begin 5' Board fence 10° Rt.
 10³ Rt. End 5' Woven Wire fence.

38.2	38.5	38.7	39.0	39.2
25	10	0	10	25

Set PKN 19 Side PP. No PA-830
 TBM. Sta 3+00 39.33

2+46 - 12° Lt. End 2' Conc Walk

38.94	38.90
14	12°
Walk @	± Walk
Blk	

2+28 - Begin 2' Conc Walk 12° Lt.
 End 2⁵ Conc Walk 11⁵ Lt.

38.87	38.86	38.87
14°	12°	11 ⁵
Walk @	To P	To P
Blk	Walk	Walk

2+01 - 11⁵ Lt. Begin 2⁵ Conc Walk Parallel

38.80	38.92
21 ⁵	11 ⁵
8' Wide on walk on walk back to Blk	

ALLEY BLK 4 - CON

3+12 Begin 4-Cor Gar 14' Lt.

38.38 38.21
14 12 1/2
floor Apron

3+09⁵ 12 1/4 Begin Cor. Apron To 4-Cor Gar

38.21
12 1/2
Apron

3+00-10¹ Begin 6'-lath fence 4.5' long

8 1/2 Lt. & PPN^o PA-830

3+00-10⁵ Rt End 5' Board fence

38.1 38.2 38.6 38.9 38.6 38.8
25 10 8 0 10 25

2+90 20^o Lt. & 16' Cor Slab fixture Gar
Location

38.65
20
& top
Cor. Slab

1-7-54

Lt. & Rt.

(55)

ALLEY BLK 4- CONTD

1-7-59

(36)

Lt.

±

Rt.

3+50

37.9 38.1 38.1 38.1 38.3
25 10 0 10 25

3+49³ - End Conc Apron To A-Car Gar 12² Lt.

38.20
12³
conc Apron

3+47 - End A-Car Gar 14⁵ Lt.

38.40 38.22
14⁵ 12³
floor Apron

3+36 - 25° Rt. ± 10' Sing Gar Dirt floor

38.6
25²
Dirt floor

ALLEY BLK 4 - CONTD

1-7-54-

(55)

Lt. & RY

4+00

-37.3 37.8 37.8 37.8 38.1
25 10 0 10 25

3+99 9³ Lt. & PPN² PA-808

3+98 10² Lt. End Conc Slab

38.32 38.21
17² 10²
Conc Conc
Slab @
Bldg

3+64⁵ 10² Lt. Begm Conc Slab To Sluce Bldg

38.27 38.15
17² 10²
Conc @ Conc Slab
Bldg

3+60 - 17² Lt. & 9' Sluc Gas

38.32 38.16
17² 8²
Floor Open

ALLEY BLK 4 - CONTD

9² Lt. Begin A.C. Covered Parking Lot.
 4+50⁵ 9² Lt. 5⁵ High Lateral R/W fence

1-7-54
 Lt. ± Rt.

37.02 37.30
 19² 9²
 A.C. A.C.

4+50

37.1 37.3 37.4 37.4 38.2
 25 10 0 10 25

4+30-15⁴ Lt. End 3-Car Gar

37.57
 15⁴
 Cool
 floor

4+09-16⁰ Lt. Begin 3-Car Gar

37.62
 16⁰
 Cool
 floor

ALLEY BLK 4

B.M.

30.90

5+40 & Mission Blvd

Set P.K. Ely Side R.P.N.C. P-4729 on Sly

T.B.M. Side Alley opposite Alley Blk 4 & Mission Blvd 35.91

5+10 - Ely Curbline Mission Blvd

5+07 - B.C. Ch. Ref's.

5+00 - Ely Line Mission Blvd Edge Conc Pavt

4+80 - 99th Break in AC Parking Lot

1-7-54
S.W. BP. Diamond & Mission Blvd

(50)

30.92

Lt.

±

Rt.

33.71	34.47	35.20	35.94	36.67	37.40	38.13
75	50	25	0	25	50	75

34.53	35.57	34.98	35.05	35.37	35.69	35.78	36.41	36.11
25	125	125	10	0	10	13	13	25
Gut.	Ch	Gut	Gut		Gut	Ch	Gut	

35.14	36.66
25	25
Ch	Ch

35.66	35.23	35.35	35.84	36.35
95	95	0	102	102
Ch	Gut		Gut	Ch

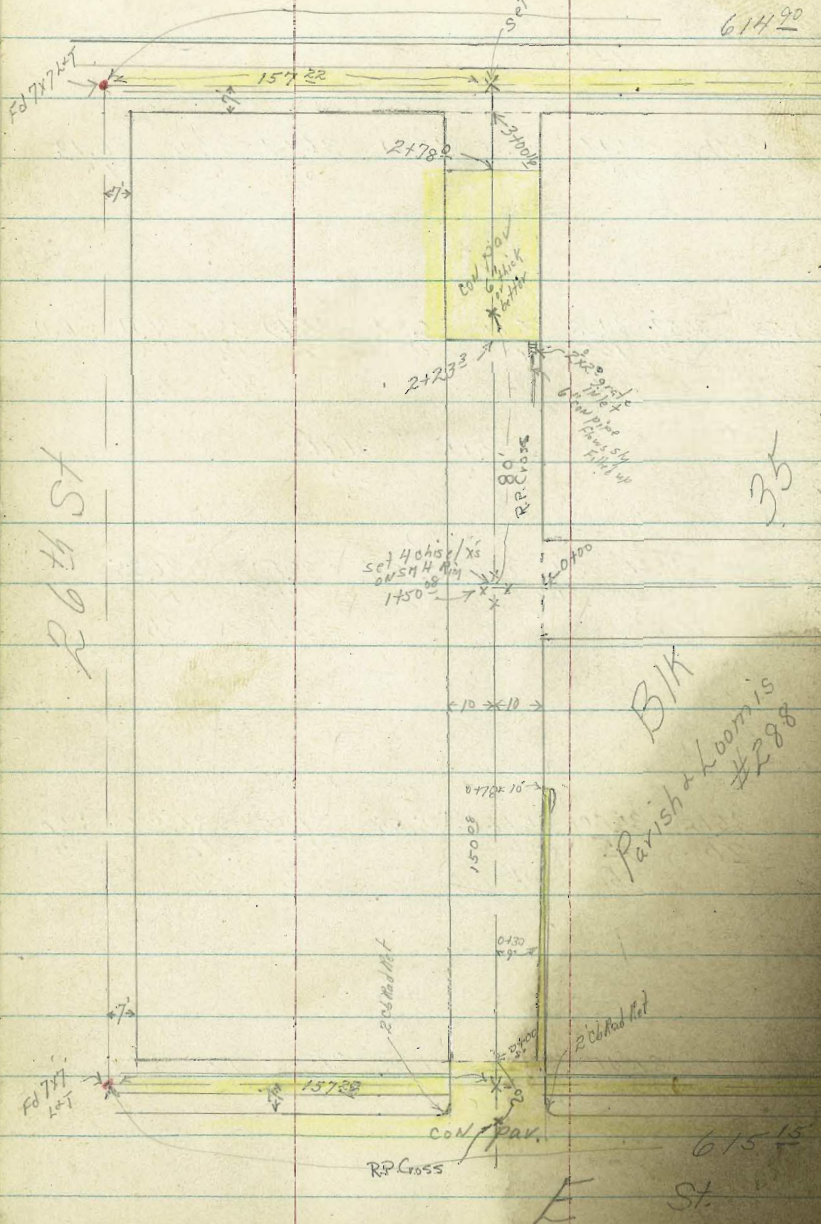
35.68	35.80	35.68	35.55	36.15	36.37	37.0
20	95	95	0	102	102	25
	Ch	Gut		Gut	Ch	

36.40	36.55	36.8	36.8	37.5	38.0
192	92	0	10	13	25
A.C.	A.C.				

D. Smith
 J. Rorer
 R. Taylor
 B. Fish

Broadway

614 90



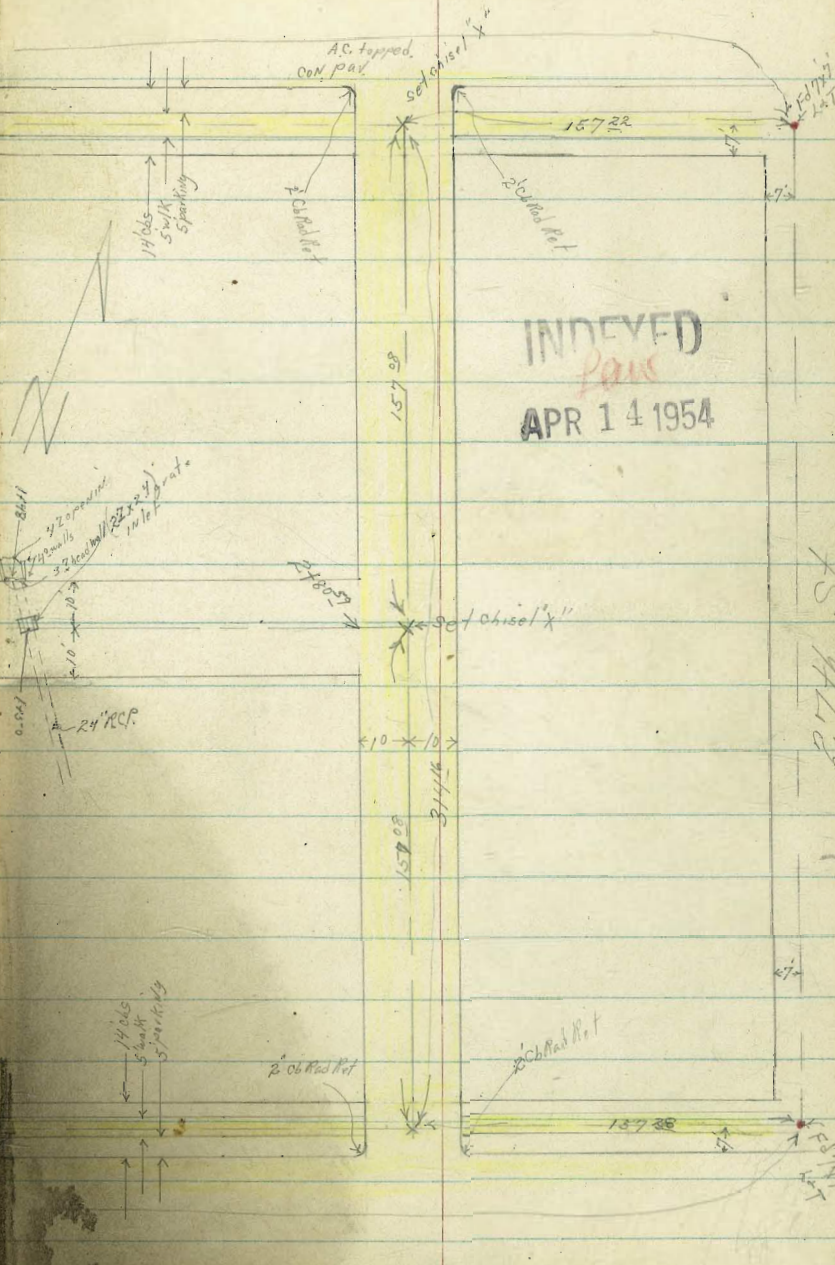
R 6th St

BIK
 Parish & Loomis
 #288

E St

615 15

X Sec Alleys BIK 35 Parish & Loomis Watt 32416 58
 1/6/54



INDEXED
 PAID
 APR 14 1954

R 6th St

X Sec Wly N+S Alley BIK 35 Parish Loomis

0+50

0+49 14' RT SW cor House

0+49 12' RT end 6" cor wall

0+42 9' LT E 10" Tel Pole # JPA 919

0+29 10' LT end 6" cor wall

11' RT begin 6" cor wall

0+29 11' RT NW cor House

0+25

11' RT SW cor House

0+07 10' RT end 6" cor wall side same as start

0+00 8' RT Begin 2' cor gutter // to Live

0+00 9' LT Begin cor Retaining wall 6" thick

0+00 10' RT Begin cor Retaining wall

0+00 Nly E St edge cor par + ed end.

0-14 Nly Cb line "E" St

TP₂ 807 174²⁶ 1109 166¹²

TP 036 177²⁸ 1281 176⁹²

BM 025 189²³ 188²⁸

SW B.P.
Brent

Lt = Wly

48	66	81	86	89	90
15	10	7		10	14

59

169 ¹	166 ²				
5 ²	7 ⁴				
10 ⁰	10 ⁰				
top wall	footing				
169 ²	167 ²				
5 ⁰	5 ¹	6 ⁵	7 ⁴	8 ³	9 ⁰
12	10 ⁵	10	8		10

169 ²	169 ²	167 ²	168 ⁴³	167 ⁹⁴	166 ⁷¹	165 ⁵⁶	165 ⁶⁰	164 ⁷	161 ⁴	163 ⁰
5 ¹	5 ¹¹	6 ⁶	5 ⁸	6 ³⁰	7 ⁵¹	8 ²⁰	8 ⁶²	9 ⁶		
15	99	99	10	10	10	10	10	15		
top wall	footing		26	94		94	26			
170 ³²	169 ⁵⁷	168 ⁵⁴	167 ²⁹	167 ⁵⁷	166 ⁰⁷	164 ⁶⁰	164 ³⁴	165 ⁰¹	161 ⁴	163 ⁰

3 ⁰¹	4 ⁶⁹	5 ⁷²	6 ⁴⁷	6 ⁷⁸	7 ¹⁷	9 ⁶⁶	9 ⁹²	9 ²⁵	12 ⁸⁵	11 ⁶⁸
25	25	12	12	10		10	12	12	25	25
cb	gut	20	gut				gut	20	gut	cb

174²⁶

Lt-Wly 2 RT=Fly

1445 10³ Lt 2 8' wide cor ribbon drive 2^o ea

359
103

1440 sly Line NW Alley

1654 1685 1677 1677 1661
28 37 45 50 61
15 10 6 10

1438 9^t Lt E 12" to 1/2 # JPA 949

1684 1671 1665 1662 1652 1642
38 53 56 60 65 73
10 6 10 13 16

1425

1414 14^o RT NW cor House

1682 1678 1664 1662 1658 1651
33 44 58 60 64 65
15 10 6 10 13

1400 9^o Lt Begin 4' picket fence

0490 13^o RT SW cor House

1687 1687 1662 1660 1654 1652 1635
35 43 59 60 68 69 82
18 10 6 10 14 15

1652

648
138
Floor

0475

0473 } 10^o RT end 2' wide cor gutter 2' thick

0473 } 13^o NW cor House

047

1652 1659 1639
103 138
Floor House

0460 12⁴ & 6⁵ cor slab

613 1675 1684
124 cor 449 388
102 top hat top

0457 10^o Lt 2 4' wide cor steps

TP3

6²¹ 172¹⁷ 8³⁰ 165⁹⁶

172¹⁷

2+22° 6⁵ RT & 2' X 2' inlet with 6" con pipe flows S/E

2+17 9⁶ RT Begin 4' high baffled wall con

2+18 10° LTR single garage con floor apron

2+00

1+79 10° RT = NW cor con parking area

1+75

1+63 22° LTR double garage con floor

1+64 9° RT SW cor con parking area

1+60 Nly E-W Alley

1+50° E E-W Alley & SMH.

Lt = Wly

RT = Ely
167 5-12 grate 65 167 5-86 166 2
5-1 4' 87 90 163 =
96 96 101 101
94 wall 94 footing

168.2 167.2
334 423
164 100
Floor apron
171.5 169.5 168.2 168.2 168.2 167.8 167.2 164.2 164.1
13 27 35 39 35 44 42 80 81
20 10 8 4 7 9 10 15

169.2 169.0 168.2 168.2 169.0 168.1 167.2 165.2 165.2
25 32 35 36 32 41 42 64 65
15 10 8 3 6 8 9 100
170.2 con

197
223
Floor
169.3 168.2 168.2 168.4 168.2 167.0 165.8 165.2
29 35 37 42 40 52 64 92
15 10 8 3 8 10

168.2 168.2 167.5 166.0
35 42 45 62
10 6 10
SMH

172.17

LT-Wly

♀

RT - Fly

62

Nail in Pole
2442
#JPA 995

TP4

1135

18059

293

16924

171

171

171

169

169

167

2492 96 RT end wall

2487 82 LT E (2) dead end

2483 96 RT to full height cov wall

169
104

169
05

169
02

168
36

168
32

163
52

26
10

23
7

28
9

34
95

38
10

86
10

82
10

2478 end cov paving in alley

168
68

168
355
10

168
393
96

168
384
96

169
92
10

2471 103 LT E single garage cov floor

349
103
Floor

2465 1025 LT SE cor apt bldg

168
53

2465 161 LT end 4 garages cov floor & apron

358
16L
Floor

246293 LT E 14" tal pole # JPA 995

168
16

168
16

167
16

167
16

162
16

2450

355
16L
Floor

401
10

445
96

443
96

94
18

24233 161 LT Begin 4 garages cov floors & apron

168
16

167
16

167
16

167
16

163
16

24233 Begin cov paving 6" or over thick

350
16L
Floor

457
10

504
96

506
96

82
10

172
17

Edw Alley Blk 35 Parish Loomis

Lt = Wly
= Nly
10° 161°
10° 161°
9° 162°
9° 162°
9° 162°
8° 162°
9° 162°
7° 163°

0+25
0+13 10° RT& deadman
0+12

161°
163.2
166°
165.16
165.57
165.9
166°
166°
10° 7' 5.28
103 103 103 103
footing 9d. top wall corner

103 Lt Begin 6" con retaining wall
0+11 103 Lt SE cor con parking Area
0+00 11° Lt = SW cor con parking slab

5.89 5.7 5.5 5.4
11 10 10

BM
Took off TP4 p 62 2²³ 171⁴⁷ 169²⁴
1.71 47

TP5 366 176⁹³ = TP, p 59

3+14 Sly cb Live Broadway

178²² 178⁵⁸ 177⁰⁵ 177³⁸ 176²² 176²⁵ 176⁰¹ 175⁶⁰ 174⁹² 174⁵⁰
237 201 354 321 387 434 454 499 562 609
25 25 10 10 06 944 10 10 25 25
out cb 944 cb 944 944

3+04 Sly side walk

177⁵⁸ 176²³
301 367 436
10 10

3+00¹⁶ Sly Broadway 10° Lt NE cor apt

176² 177⁵³ 176² 175¹ 170⁸ 175²
39 306 32 55 62 69
90 88 85 10 15
2d con

180⁵⁹

EdW Alley BIK 35 Parish Rooms

Lt = Nly

9

RT = Sly

64

1413 9² RT E single garage dirt floor

14255

1459
86
92
Floor

TP₂ 6⁹³ 154⁵² 1303 147⁵⁹

154⁵²

1401 9² Lt end Board fence

147² 147² 147² 147² 147² 148² 148²

1400

13⁶ 13⁰ 13² 13⁰ 13⁰ 12³ 12³
15 10 7 5 10 15

0476 9² Lt Begin 6' Board fence

153² 153² 152² 152² 152² 152² 151²

0475

7² 7³ 7⁸ 8² 8⁶ 8⁶ 8⁴ 8⁸
15 10 9 8 4 10 20

0458 27⁰ Lt E single garage con floor & apron

153² 151² 156² 156² 157²
29² 27²
Floor apron

0454 10⁰ Lt end con wall

7² 5⁵ 4⁰⁴
10⁰ 10⁰ 10⁰
Footing wall wall
156² 150² 156² 156² 156² 155²

0450

3² 4⁰ 3³ 3⁸ 4² 4²
10 5 5 10 15
158² 158²

0439 8⁶ Lt E 4' con wall

167 168
10 86
wall

0427 9² RT E 16" pipe # PA 2630

TP₁ 14⁰ 160⁶² 12²⁵ 159²²

160⁶²

10⁶ L+E single garage cov floor + apron
R+12 (8² RT to walk which steps

10⁶ L+E single garage cov floor + apron
R+03 (8⁵ M walk which steps

1+95 9⁸ L+E 6" wide cov walk dipped E to drain yard

1+86 8⁴ L+E single garage cov floor + apron

1+64 8⁷ Begin 3' cov cov walk N to line

1+50 1⁰ L+E 2⁴ x 2² grate inlet

1+32

1+27 8⁶ R+E 14" PP. 1/2 # PAR 642

1+15

L+E
150 150 150 149 149 149 148 148 147 147 147
3⁸⁵ 4⁴⁵ 4⁴ 5¹ 5¹ 5¹ 5⁶² 3⁵⁰ 5⁶⁴ 3⁵⁷
13⁵ 10⁵ 10 4 4 8 5⁶² 8² 10 10
Floor apron low top low top

149 148 148 148 148 148 148 148 148 148 148
5¹⁹ 5⁵⁸ 5⁴ 6¹ 6⁰ 6²² 5⁹⁸ 6¹⁹ 5²⁵
18⁵ 10⁵ 10 8 8 8 8 10 10
Floor apron low top low top

148 148 147 147 147 146 146 146 147
6²¹ 6⁴⁷ 6⁵³ 7⁴⁶ 7⁵⁵ 7⁸ 7⁵³ 7⁵⁸ 7⁵⁴
15 10 9 11 8 8 8 10 12
Floor apron

145 145 145 145 145 145 145 145
9³ 9² 9¹ 9²⁵ 9²² 9¹⁶
15 10 10 8² 10 12
cov walk cov walk

141 145 145 144 141 145 144
13²⁵ 9⁰³ 9² 9⁶⁴ 13³⁰ 9² 9⁶
10² 10² 10² 10² 10² 10² 10²
Headwall grate

145 145 145 145 145 145 144
9⁰ 8⁹ 9³ 9³ 9² 9¹ 10³
15 10 6 7 10 15

146 146 145 145
8² 8⁴ 8⁸ 8⁸
20 10 10 10

154⁵²

2476 7° RT & deadman

2465

2461 9° RT end fence begin shed wood floor

2461 6° RT & 10" pole PA 2672

2455 8° RT begin 4' lath fence

2454 4° RT & 20" cow walk

2451 8° RT walk which steps

194 11° double garage dirt floor

2442 5° RT walk which steps

TP3 11° 1642° 17° 152°

2427 7° RT walk which steps

2423 10° RT & single garage wood floor apron

LT = N/L
1625
1615
1621
1618
1615
1618

15920
1572
1582
1571
1592
1595
1571

50
54
58
55
54
52
51

15
10
7
5
3
5
9

15620
15620
15720
15520
15520
15720
15720
15720
15720
15720
15720
15720

8°
84
90
92
92
924
904
90
922

15
10
7
5
5
8
10
10
10

15720
1545
1542
1532
1532
15366
1532
15472
15367
15282
15282

10°
103
105
108
110
1124
1097
92
113
987

192
10
8
5
64
70
70
10
10

15241
15758
132
106
15452

15452

BM starting pt 59 5⁴¹ 189²³ 188²⁸ SWBP 2614 Broadway

TP₆ 7²⁴ 194⁴⁴ 07²⁰ 187²⁰

TP₅ 12⁵⁵ 187²² 01⁰ 175³⁷

TP₄ 11⁰¹ 175⁴⁷ 02²⁴ 164⁴⁶

2490⁵⁹ E N+S Alley

2483³ B.K

2481⁵ 9¹ RT End shed

2480⁵⁹ Wly of N+S Alley parcel

Reduced 5/29/54

163 ²²	163 ²²	162 ⁴²	161 ²²	160 ²²
07 ²⁴	161	22 ¹	28 ⁴	40 ⁸
25	10		10	25
164 ¹²	163 ¹²	162 ⁵²	162 ⁰²	160 ²⁵
05 ⁸	154	21 ²	26 ⁸	39 ⁵
23	10		10	25
164 ¹²	163 ¹²	163 ⁴²	162 ³⁸	161 ²³
05 ⁸	145	161	23 ³²	22 ¹
25	11	10		85

164²⁰

D. Smith
J. Porer
R. Hamilton

not 2006
11/12/54

Replace back Alley line lot stake

BIK 83 Point Loma Hts

• indicates set lot in Alley or lot line est.

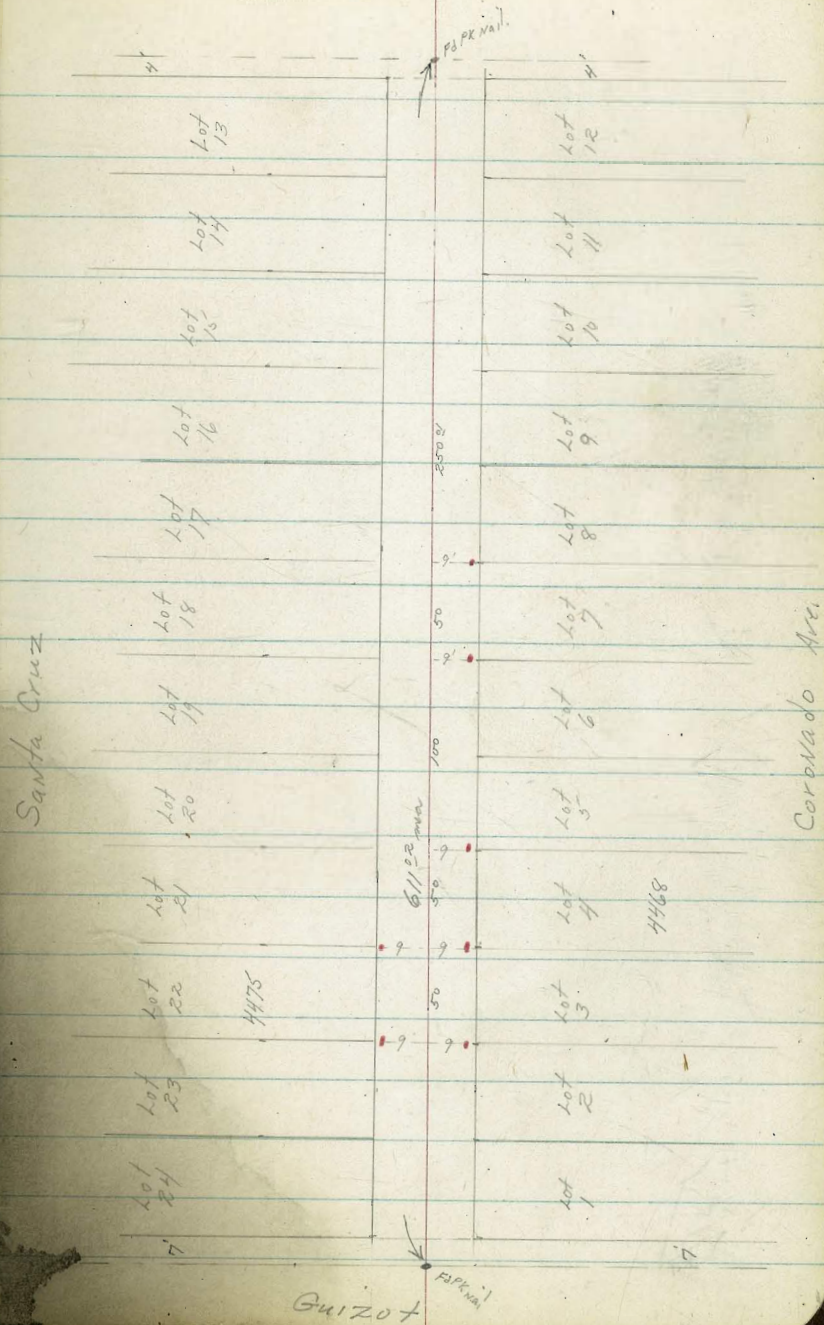
Ref: FB 2163 (X) sec notes

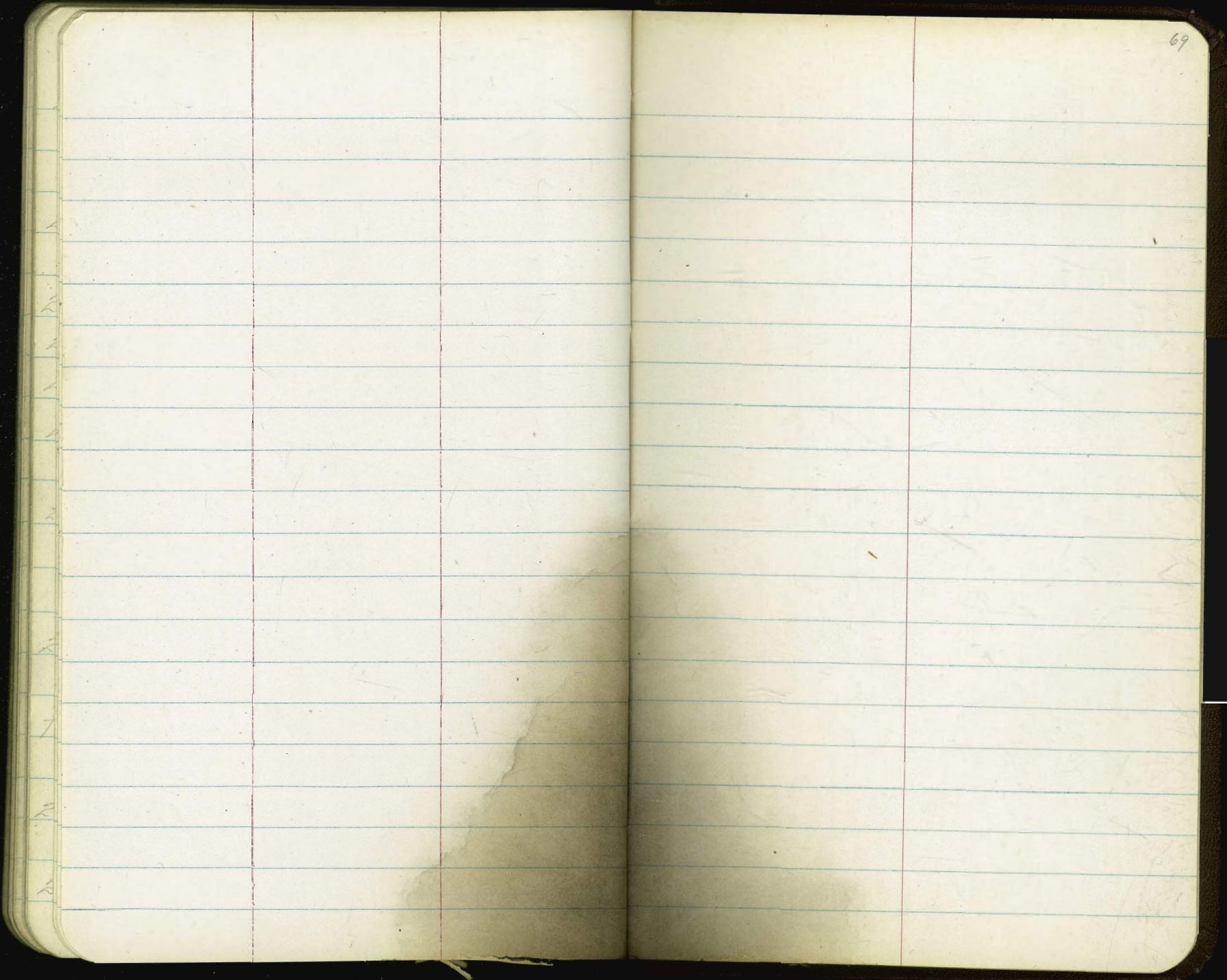
11360-L

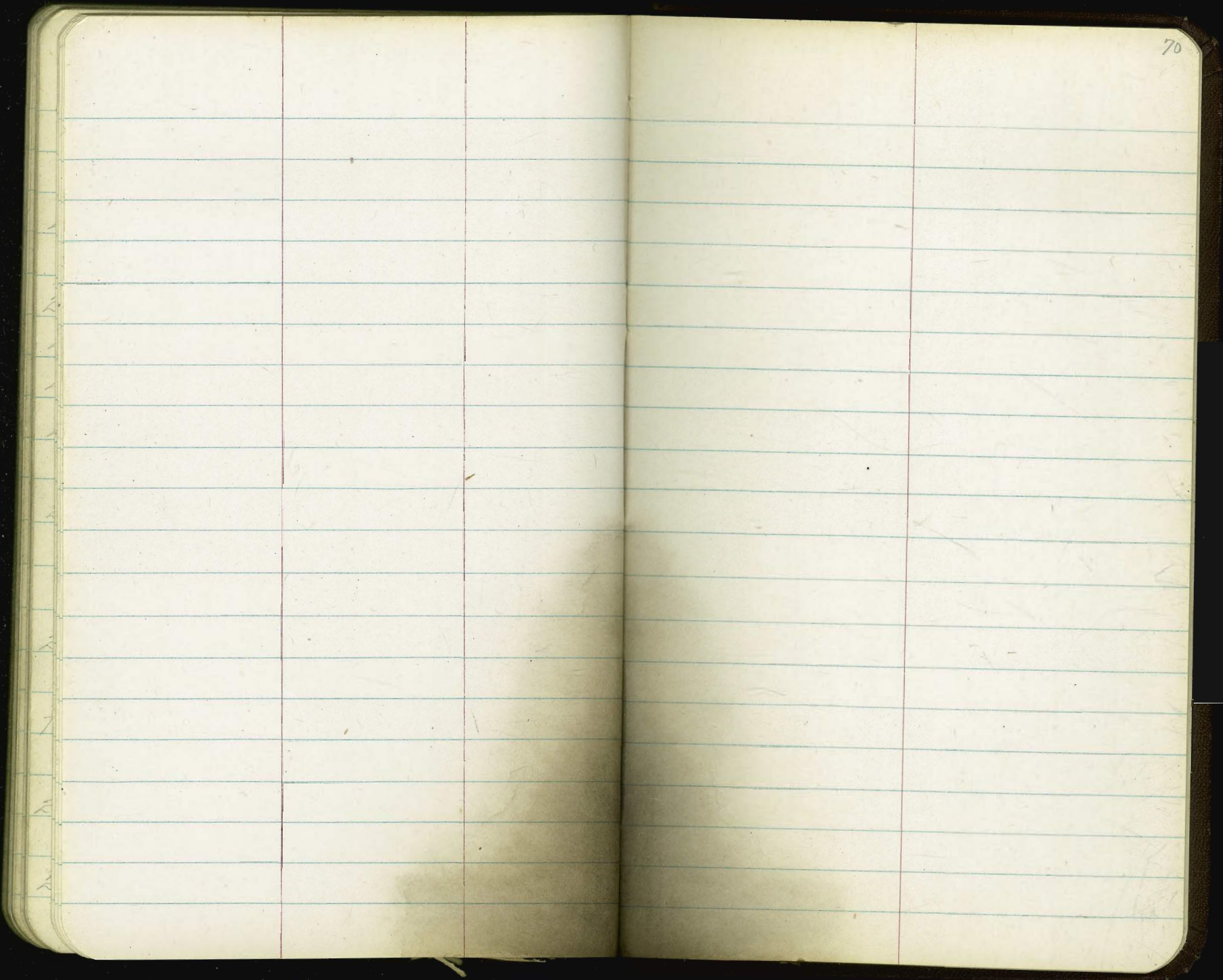
G-313-50 Grades for pav.

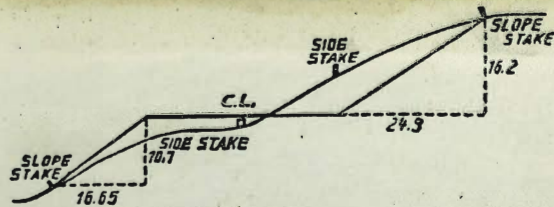
Santa Barbara St

69









DISTANCES FROM SIDE STAKES FOR CROSS-SECTIONING.

SLOPE $1\frac{1}{2}$ TO 1. ROADWAY OF ANY WIDTH.

	0	.1	.2	.3	.4	.5	.6	.7	.8	.9	
0	0.00	0.15	0.30	0.45	0.60	0.75	0.90	1.05	1.20	1.35	0
1	1.50	1.65	1.80	1.95	2.10	2.25	2.40	2.55	2.70	2.85	1
2	3.00	3.15	3.30	3.45	3.60	3.75	3.90	4.05	4.20	4.35	2
3	4.50	4.65	4.80	4.95	5.10	5.25	5.40	5.55	5.70	5.85	3
4	6.00	6.15	6.30	6.45	6.60	6.75	6.90	7.05	7.20	7.35	4
5	7.50	7.65	7.80	7.95	8.10	8.25	8.40	8.55	8.70	8.85	5
6	9.00	9.15	9.30	9.45	9.60	9.75	9.90	10.05	10.20	10.35	6
7	10.50	10.65	10.80	10.95	11.10	11.25	11.40	11.55	11.70	11.85	7
8	12.00	12.15	12.30	12.45	12.60	12.75	12.90	13.05	13.20	13.35	8
9	13.50	13.65	13.80	13.95	14.10	14.25	14.40	14.55	14.70	14.85	9
10	15.00	15.15	15.30	15.45	15.60	15.75	15.90	16.05	16.20	16.35	10
11	16.50	16.65	16.80	16.95	17.10	17.25	17.40	17.55	17.70	17.85	11
12	18.00	18.15	18.30	18.45	18.60	18.75	18.90	19.05	19.20	19.35	12
13	19.50	19.65	19.80	19.95	20.10	20.25	20.40	20.55	20.70	20.85	13
14	21.00	21.15	21.30	21.45	21.60	21.75	21.90	22.05	22.20	22.35	14
15	22.50	22.65	22.80	22.95	23.10	23.25	23.40	23.55	23.70	23.85	15
16	24.00	24.15	24.30	24.45	24.60	24.75	24.90	25.05	25.20	25.35	16
17	25.50	25.65	25.80	25.95	26.10	26.25	26.40	26.55	26.70	26.85	17
18	27.00	27.15	27.30	27.45	27.60	27.75	27.90	28.05	28.20	28.35	18
19	28.50	28.65	28.80	28.95	29.10	29.25	29.40	29.55	29.70	29.85	19
20	30.00	30.15	30.30	30.45	30.60	30.75	30.90	31.05	31.20	31.35	20
21	31.50	31.65	31.80	31.95	32.10	32.25	32.40	32.55	32.70	32.85	21
22	33.00	33.15	33.30	33.45	33.60	33.75	33.90	34.05	34.20	34.35	22
23	34.50	34.65	34.80	34.95	35.10	35.25	35.40	35.55	35.70	35.85	23
24	36.00	36.15	36.30	36.45	36.60	36.75	36.90	37.05	37.20	37.35	24
25	37.50	37.65	37.80	37.95	38.10	38.25	38.40	38.55	38.70	38.85	25
26	39.00	39.15	39.30	39.45	39.60	39.75	39.90	40.05	40.20	40.35	26
27	40.50	40.65	40.80	40.95	41.10	41.25	41.40	41.55	41.70	41.85	27
28	42.00	42.15	42.30	42.45	42.60	42.75	42.90	43.05	43.20	43.35	28
29	43.50	43.65	43.80	43.95	44.10	44.25	44.40	44.55	44.70	44.85	29
30	45.00	45.15	45.30	45.45	45.60	45.75	45.90	46.05	46.20	46.35	30
31	46.50	46.65	46.80	46.95	47.10	47.25	47.40	47.55	47.70	47.85	31
32	48.00	48.15	48.30	48.45	48.60	48.75	48.90	49.05	49.20	49.35	32
33	49.50	49.65	49.80	49.95	50.10	50.25	50.40	50.55	50.70	50.85	33
34	51.00	51.15	51.30	51.45	51.60	51.75	51.90	52.05	52.20	52.35	34
35	52.50	52.65	52.80	52.95	53.10	53.25	53.40	53.55	53.70	53.85	35
36	54.00	54.15	54.30	54.45	54.60	54.75	54.90	55.05	55.20	55.35	36
37	55.50	55.65	55.80	55.95	56.10	56.25	56.40	56.55	56.70	56.85	37
38	57.00	57.15	57.30	57.45	57.60	57.75	57.90	58.05	58.20	58.35	38
39	58.50	58.65	58.80	58.95	59.10	59.25	59.40	59.55	59.70	59.85	39
40	60.00	60.15	60.30	60.45	60.60	60.75	60.90	61.05	61.20	61.35	40
41	61.50	61.65	61.80	61.95	62.10	62.25	62.40	62.55	62.70	62.85	41
42	63.00	63.15	63.30	63.45	63.60	63.75	63.90	64.05	64.20	64.35	42
43	64.50	64.65	64.80	64.95	65.10	65.25	65.40	65.55	65.70	65.85	43
44	66.00	66.15	66.30	66.45	66.60	66.75	66.90	67.05	67.20	67.35	44
45	67.50	67.65	67.80	67.95	68.10	68.25	68.40	68.55	68.70	68.85	45
46	69.00	69.15	69.30	69.45	69.60	69.75	69.90	70.05	70.20	70.35	46
47	70.50	70.65	70.80	70.95	71.10	71.25	71.40	71.55	71.70	71.85	47
48	72.00	72.15	72.30	72.45	72.60	72.75	72.90	73.05	73.20	73.35	48
49	73.50	73.65	73.80	73.95	74.10	74.25	74.40	74.55	74.70	74.85	49
50	75.00	75.15	75.30	75.45	75.60	75.75	75.90	76.05	76.20	76.35	50

11517
849
10697