

DISTANCES FROM SIDE STAKES FOR CROSS-SECTIONING
SLOPE 1 TO 1. ROADWAY OF ANY WIDTH

	0	.1	.2	.3	.4	.5	.6	.7	.8	9	
0	0.00	0.10	0.20	0.30	0.40	0.50	0.60	0.70	0.80	0.90	0
1	1.00	1.10	1.20	1.30	1.40	1.50	1.60	1.70	1.80	1.90	1
2	2.00	2.10	2.20	2.30	2.40	2.50	2.60	2.70	2.80	2.90	2
3	3.00	3.10	3.20	3.30	3.40	3.50	3.60	3.70	3.80	3.90	3
4	4.00	4.10	4.20	4.30	4.40	4.50	4.60	4.70	4.80	4.90	4
5	5.00	5.10	5.20	5.30	5.40	5.50	5.60	5.70	5.80	5.90	5
6	6.00	6.10	6.20	6.30	6.40	6.50	6.60	6.70	6.80	6.90	6
7	7.00	7.10	7.20	7.30	7.40	7.50	7.60	7.70	7.80	7.90	7
8	8.00	8.10	8.20	8.30	8.40	8.50	8.60	8.70	8.80	8.90	8
9	9.00	9.10	9.20	9.30	9.40	9.50	9.60	9.70	9.80	9.90	9
10	10.00	10.10	10.20	10.30	10.40	10.50	10.60	10.70	10.80	10.90	10
11	11.00	11.10	11.20	11.30	11.40	11.50	11.60	11.70	11.80	11.90	11
12	12.00	12.10	12.20	12.30	12.40	12.50	12.60	12.70	12.80	12.90	12
13	13.00	13.10	13.20	13.30	13.40	13.50	13.60	13.70	13.80	13.90	13
14	14.00	14.10	14.20	14.30	14.40	14.50	14.60	14.70	14.80	14.90	14
15	15.00	15.10	15.20	15.30	15.40	15.50	15.60	15.70	15.80	15.90	15
16	16.00	16.10	16.20	16.30	16.40	16.50	16.60	16.70	16.80	16.90	16
17	17.00	17.10	17.20	17.30	17.40	17.50	17.60	17.70	17.80	17.90	17
18	18.00	18.10	18.20	18.30	18.40	18.50	18.60	18.70	18.80	18.90	18
19	19.00	19.10	19.20	19.30	19.40	19.50	19.60	19.70	19.80	19.90	19
20	20.00	20.10	20.20	20.30	20.40	20.50	20.60	20.70	20.80	20.90	20
21	21.00	21.10	21.20	21.30	21.40	21.50	21.60	21.70	21.80	21.90	21
22	22.00	22.10	22.20	22.30	22.40	22.50	22.60	22.70	22.80	22.90	22
23	23.00	23.10	23.20	23.30	23.40	23.50	23.60	23.70	23.80	23.90	23
24	24.00	24.10	24.20	24.30	24.40	24.50	24.60	24.70	24.80	24.90	24
25	25.00	25.10	25.20	25.30	25.40	25.50	25.60	25.70	25.80	25.90	25
26	26.00	26.10	26.20	26.30	26.40	26.50	26.60	26.70	26.80	26.90	26
27	27.00	27.10	27.20	27.30	27.40	27.50	27.60	27.70	27.80	27.90	27
28	28.00	28.10	28.20	28.30	28.40	28.50	28.60	28.70	28.80	28.90	28
29	29.00	29.10	29.20	29.30	29.40	29.50	29.60	29.70	29.80	29.90	29
30	30.00	30.10	30.20	30.30	30.40	30.50	30.60	30.70	30.80	30.90	30
31	31.00	31.10	31.20	31.30	31.40	31.50	31.60	31.70	31.80	31.90	31
32	32.00	32.10	32.20	32.30	32.40	32.50	32.60	32.70	32.80	32.90	32
33	33.00	33.10	33.20	33.30	33.40	33.50	33.60	33.70	33.80	33.90	33
34	34.00	34.10	34.20	34.30	34.40	34.50	34.60	34.70	34.80	34.90	34
35	35.00	35.10	35.20	35.30	35.40	35.50	35.60	35.70	35.80	35.90	35
36	36.00	36.10	36.20	36.30	36.40	36.50	36.60	36.70	36.80	36.90	36
37	37.00	37.10	37.20	37.30	37.40	37.50	37.60	37.70	37.80	37.90	37
38	38.00	38.10	38.20	38.30	38.40	38.50	38.60	38.70	38.80	38.90	38
39	39.00	39.10	39.20	39.30	39.40	39.50	39.60	39.70	39.80	39.90	39
40	40.00	40.10	40.20	40.30	40.40	40.50	40.60	40.70	40.80	40.90	40
41	41.00	41.10	41.20	41.30	41.40	41.50	41.60	41.70	41.80	41.90	41
42	42.00	42.10	42.20	42.30	42.40	42.50	42.60	42.70	42.80	42.90	42
43	43.00	43.10	43.20	43.30	43.40	43.50	43.60	43.70	43.80	43.90	43
44	44.00	44.10	44.20	44.30	44.40	44.50	44.60	44.70	44.80	44.90	44
45	45.00	45.10	45.20	45.30	45.40	45.50	45.60	45.70	45.80	45.90	45
46	46.00	46.10	46.20	46.30	46.40	46.50	46.60	46.70	46.80	46.90	46
47	47.00	47.10	47.20	47.30	47.40	47.50	47.60	47.70	47.80	47.90	47
48	48.00	48.10	48.20	48.30	48.40	48.50	48.60	48.70	48.80	48.90	48
49	49.00	49.10	49.20	49.30	49.40	49.50	49.60	49.70	49.80	49.90	49
50	50.00	50.10	50.20	50.30	50.40	50.50	50.60	50.70	50.80	50.90	50

Distance of slope stake from side or shoulder stake for any width roadway, slope 1 to 1. If ground is nearly level, the cut or fill at side stake is located by the double entry method in left column and top row. The number in body of table in same row and column gives distance from side stake to slope stake. If ground is not level estimate the difference in elevation between the side stake and slope stake, lower target by this amount if cut, elevate if fill. Add this amount to cut or fill and find distance in table. Set up rod at this point, and line of sight should cut target. If it does not make the slight adjustment necessary.

TABLE XIII—CORRECTIONS FOR TANGENTS AND EXTERNALS

These corrections are to be added to the approximate values, found by dividing the tangent, or external, for a 1° curve (Table VIII) by the degree of curve, in order to obtain the true tangents, or externals. Intermediate values may be obtained by interpolation.

FOR TANGENTS ADD

Central Angle	DEGREE OF CURVE													
	5°	10°	15°	20°	25°	30°	35°	40°	45°	50°	55°	60°	65°	70°
10°	.03	.06	.09	.13	.16	.19	.22	.25	.28	.31	.34	.38	.42	.46
15°	.04	.10	.14	.19	.24	.29	.34	.39	.45	.51	.53	.58	.63	.68
20°	.06	.13	.19	.26	.32	.39	.45	.51	.58	.65	.72	.79	.84	.90
25°	.08	.16	.24	.33	.40	.49	.58	.67	.75	.83	.90	.99	1.06	1.14
30°	.10	.19	.29	.39	.49	.59	.69	.79	.89	.99	1.09	1.20	1.29	1.39
35°	.11	.22	.34	.47	.58	.69	.79	.81	.92	1.04	1.29	1.42	1.54	1.66
40°	.13	.26	.40	.53	.67	.80	.93	1.06	1.20	1.34	1.49	1.64	1.79	1.94
45°	.15	.30	.44	.60	.76	.91	1.06	1.21	1.37	1.52	1.70	1.87	2.04	2.21
50°	.17	.34	.51	.68	.85	1.02	1.19	1.36	1.54	1.72	1.91	2.10	2.29	2.48
55°	.19	.38	.57	.76	.95	1.14	1.32	1.52	1.72	1.92	2.14	2.35	2.56	2.77
60°	.21	.42	.63	.84	1.05	1.27	1.49	1.71	1.94	2.17	2.38	2.60	2.83	3.07
65°	.23	.46	.69	.93	1.16	1.40	1.64	1.88	2.13	2.38	2.63	2.88	3.13	3.39
70°	.25	.51	.76	1.02	1.28	1.54	1.80	2.06	2.33	2.60	2.88	3.16	3.44	3.72
75°	.27	.56	.83	1.13	1.40	1.69	1.98	2.27	2.57	2.87	3.16	3.47	3.78	4.09
80°	.30	.61	.91	1.22	1.53	1.84	2.15	2.46	2.78	3.10	3.44	3.78	4.12	4.46
85°	.33	.66	1.00	1.33	1.68	2.02	2.36	2.70	3.05	3.40	3.77	4.14	4.55	4.89
90°	.36	.72	1.09	1.45	1.83	2.20	2.57	2.94	3.32	3.70	4.10	4.50	4.91	5.32
95°	.39	.79	1.19	1.55	2.00	2.40	2.80	3.20	3.61	4.02	4.40	4.98	5.38	5.83
100°	.43	.86	1.30	1.74	2.18	2.62	3.06	3.50	3.95	4.40	4.88	5.37	5.85	6.34
110°	.51	1.03	1.56	2.08	2.61	3.14	3.67	4.21	4.76	5.31	5.86	6.43	7.01	7.60
120°	.62	1.25	1.93	2.52	3.16	3.81	4.45	5.11	5.77	6.44	7.12	7.80	8.50	9.22

FOR EXTERNALS ADD

Central Angle	DEGREE OF CURVE													
	5°	10°	15°	20°	25°	30°	35°	40°	45°	50°	55°	60°	65°	70°
10°	.001	.003	.004	.006	.007	.008	.009	.011	.012	.014	.015	.017	.018	.020
15°	.003	.007	.010	.014	.018	.023	.027	.029	.032	.035	.039	.043	.047	.051
20°	.006	.011	.017	.022	.028	.034	.038	.045	.051	.057	.063	.070	.076	.083
25°	.009	.018	.027	.036	.046	.056	.065	.074	.083	.093	.106	.120	.127	.135
30°	.013	.025	.038	.051	.065	.078	.090	.103	.116	.129	.149	.170	.179	.188
35°	.018	.035	.054	.072	.086	.109	.131	.153	.175	.197	.213	.230	.247	.264
40°	.023	.046	.070	.093	.117	.141	.172	.203	.234	.265	.277	.290	.315	.341
45°	.030	.060	.093	.119	.153	.184	.216	.254	.289	.325	.351	.378	.411	.445
50°	.037	.075	.116	.151	.189	.227	.266	.305	.345	.384	.425	.467	.508	.550
55°	.046	.093	.142	.188	.236	.283	.332	.381	.420	.479	.530	.582	.641	.700
60°	.056	.112	.168	.225	.283	.340	.398	.457	.516	.575	.636	.697	.774	.851
65°	.067	.135	.204	.273	.343	.412	.483	.554	.625	.697	.771	.845	.922	1.01
70°	.080	.159	.240	.321	.403	.485	.568	.652	.735	.819	.906	.994	1.08	1.17
75°	.095	.182	.266	.353	.440	.528	.618	.707	.797	.887	1.07	1.18	1.29	1.39
80°	.110	.220	.332	.445	.558	.671	.787	.903	1.02	1.13	1.25	1.38	1.50	1.62
85°	.128	.259	.391	.524	.657	.790	.926	1.06	1.20	1.34	1.47	1.62	1.76	1.91
90°	.149	.299	.450	.603	.756	.910	1.07	1.22	1.38	1.54	1.70	1.87	2.03	2.20
95°	.174	.350	.522	.706	.885	1.06	1.25	1.43	1.62	1.80	1.99	2.18	2.38	2.58
100°	.200	.401	.604	.809	1.01	1.22	1.43	1.64	1.85	2.06	2.28	2.50	2.73	2.96
110°	.268	.536	.806	1.08	1.35	1.63	1.91	2.20	2.48	2.76	3.05	3.35	3.66	3.96
120°	.360	.721	1.08	1.45	1.82	2.19	2.57	2.95	3.33	3.72	4.11	4.50	4.91	5.32

INDEX

X-sec alleys-Blks 156-7-8-Pacific Bch Pg 1-17
 " AERO DRIVE 18-36
 X-sec-Chicago, Denver, Erie, Lister ST-Morena ^{sub} 37-76
 CHICAGO-Milton to Jellott 38-52
 DENVER-Milton to Jellott 53-64
 ERIE - Lister to Jellott 65-71
 LISTER-Chicago to Erie 72-76

D. Smith
C. Allen
B. Taylor
R. Parks

Cross Sec. Alleys

Blks 156, 157, 158

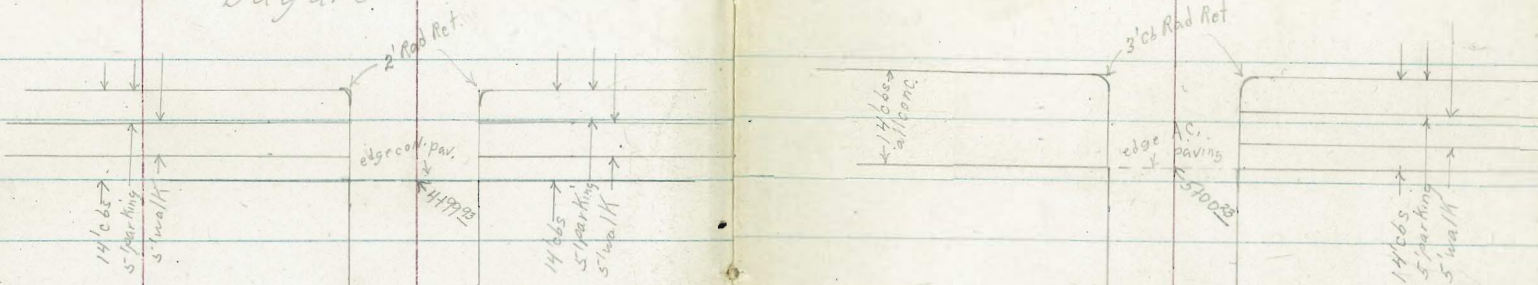
wo# 32089

3-11-52

Bayard St.

Pacific Beach

Cass St.



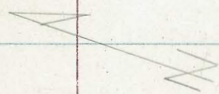
Alicy Blk

156

Blk 157

INDEXED
Lee
MAR 13 1952

Diamond St



Emerald St

Diamond St



Pacific Beach

Emerald St

10' cbs
25' parking
5' sidewalk

edge con. pav.
0700
3' cbs Rad Ret.

14' cbs
5' parking
5' sidewalk

14' cbs
5' parking
5' sidewalk

0700

14' cbs
5' parking
5' sidewalk

Mission Blvd.

Mission Blvd.

Bayard St.

14124

14124

28988

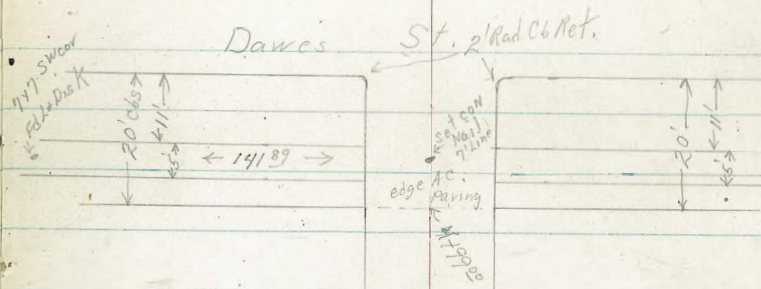
Ed. 717 1/2
5' sidewalk

Ed. 717 1/2
5' sidewalk

Ed. chisel 'x'
2' Rad Ch. Ret.

Ed. 717 1/2
5' sidewalk

Ref FB # 1795-59

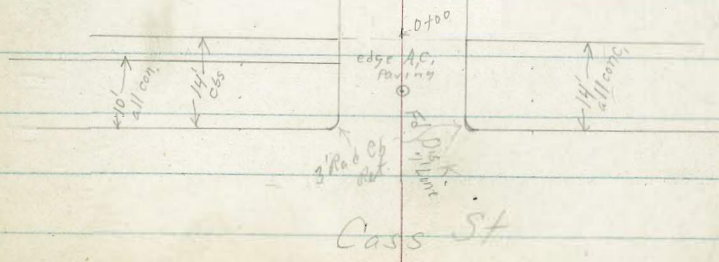


Diamond St.

B/H 15.8

Paci Pac Beach

Emerald St



Cass St

Alley B/K 156

Lt=North

RT=South

3

01
30
44
156
walk

0+76 15° Lt & 3 con walk

0+70

1- 5- 4- 1- 2-
30 29 29 29 28
4- 4- 4- 5- 5-
25 10 10 25

0+47 10° Rt & 4° con walk

47
29
47
100
walk

0+45 10° Rt End Store Bldg

0+40

1- 7- 5- 3-
30 24 29 29
4- 4- 4- 4-
25 10 10

0+00 10° Rt Begin Store Bldg

0+00 Fly Mission Blvd edge con paving

11- 5- 5- 5-
24 28 28 28
5- 5- 5- 5-
92 92 100 100
cb sut cb

0+10 Fly C6 Mission Blvd

88- 85- 89- 89- 85- 82- 82- 82- 82- 82-
4- 4- 5- 5- 5- 6- 6- 6- 6- 6-
60 60 13 13 10 9 10 13 13 20 20
cb sut bc sut bc sut bc

BM

327

3419

30

SWBP
Diamond &
Mission Blvd.

3419

1749 10° Lt & 10' con slab

1742 12° E single garage con floor & apron

1736 12° Lt end 4' picket fence

1727 12° Lt & 4' con walk

TP, 6²⁹ 36¹⁶ 4³² 29⁸⁷

1700 10° Lt Begin 4' picket fence

0799 9° RtE 14" Power Pole # PA810

0792 15° Lt E single garage con floor

0782 15° Lt E single garage con floor

Lt=North 75

Rt=South 4

5¹² 30
13¹
Floor
5¹² 30
12²
apron

5¹⁷ 30
5⁵⁷
12²
walk

31 31 36¹⁶
38 30
32 32 44 4 29¹ 29²
15 10 10 10

19
30
350
15¹
Floor

350
15¹
Floor
34¹⁹

Lt=North

S

Rt=South

5

2752 10³ Lt E 3' con walk

2750

2707 13⁵ Lt E single garage con floor + apron

2701 Rt E 9" Power Pole # PA830

2700

1797 10¹ Lt End 4 garage con floor and apron

1760 10² Lt Begin 4 garages con floor + apron

1750

423
31

10³
walk

8

44
31

15

6

46
31

10

2

5
31

9

5
31

10

9

5
31

25

71

31

44⁵

16⁶
Floor

52

31

46⁴

13⁵
apron

5

31

42

15

3

31

42

10

5
31
30
7

5
31
30
7

5

25

30

31

480

112
Floor

21

31

493

102
apron

30

31

416

112
Floor

93

30

523

100
apron

6

30

54

15

7

30

55

10

1

30

61

10

30

30

62

10

7

29

65

25

36

16

4+50

4+34 9²LT Begin: 4 garages con floor + apron

TP₂ 4³⁵ 38⁰⁶ 24⁸ 33⁶⁸

4+00 9²RT & 8" power pole # P872

3+63 11³RT & double garage con floor + apron

3+50

3+00

2+81 9²RT & 12" power pole 4 JPA 860

LT=North

9

RT=South

6

	35	9	8	8
	34	33	33	33
	32	42	43	43
92		10	15	

46	31
34	34
36	37
122	92
Floor	apron

	38	06		
6	5	6	5	4
33	33	33	33	33
15	10	10	15	

03	21
33	33
313	225
113	172
apron	Floor

6	3	1	1	8
33	33	33	33	32
26	29	31	31	34
25	10	10	20	

7	5	0	7	5
32	32	32	31	31
35	32	42	45	42
15	10	10	25	

36¹⁶

5713²³ Wly cks Bayard St.

4799⁹³ Wly Bayard St edge on paving

4792 11⁵ RT End 4 garages con floor & apron

4775 9⁰ LT E 2⁵ con walk

4774 9⁵ RT E 12" power pole #JPA890

4772 9² LT End 4 garages con floor & apron

4756 11⁶ RT Begin 4 garages con floor & apron

4754 16⁶ RT E 2⁵ con walk

H.L. 38.06

Lt = North

3 ⁸¹	4 ³⁷	4 ⁷⁸	5 ³³	5 ⁴²	5 ⁶⁸	5 ⁸⁶	5 ⁹⁰	5 ³⁹	7 ⁰³	6 ⁴⁷
60	60	12	12	10		10	12	12	60	60
cb	gut	cl	gut				gut	cb	gut	cb

4 ²³	5 ¹²	5 ¹⁵	5 ⁴⁵	5 ³¹
100	100	100	100	100
cb	gut	cb	gut	cb
end		end	end	end

4 ³¹	4 ¹²
115	142
apron	floor

3 ⁶⁸	4 ²⁰	4 ⁵	4 ³
90	6		10
walk			

3 ⁵⁸	3 ⁶⁸
128	92
floor	apron

4 ¹⁸	4 ¹⁰
116	14
apron	floor

4 ²⁰
116
walk

H.L. 38.06

RT = South

3 ⁸¹	4 ³⁷	4 ⁷⁸	5 ³³	5 ⁴²	5 ⁶⁸	5 ⁸⁶	5 ⁹⁰	5 ³⁹	7 ⁰³	6 ⁴⁷
60	60	12	12	10		10	12	12	60	60
cb	gut	cl	gut				gut	cb	gut	cb

4 ²³	5 ¹²	5 ¹⁵	5 ⁴⁵	5 ³¹
100	100	100	100	100
cb	gut	cb	gut	cb
end		end	end	end

4 ³¹	4 ¹²
115	142
apron	floor

3 ⁶⁸	4 ²⁰	4 ⁵	4 ³
90	6		10
walk			

3 ⁵⁸	3 ⁶⁸
128	92
floor	apron

4 ¹⁸	4 ¹⁰
116	14
apron	floor

4 ²⁰
116
walk

H.L. 38.06

Alley OK 157

TP3 6⁴⁸ 41⁸² 2²² 35³⁴

0444 15³ Rt end 4 garages under construction

0443 10⁴ Lt & single garage con floor apron

0425

0420 12⁰ Lt & 3' con walk

0402 15⁰ Rt Begin 4 garages under construction

0400 Fly Bayard St edge con paving

0-14 Fly Cbs Bayard St

Lt=North

Rt=South

8

H.I.- 41.82

10 11
36 97
126 209
12⁰ 10⁴
Floor apron

306 331
153
Floor

2 2 3 5 1
3 3 3 4 1
12 10 5 5 10

12⁰ 26
walk

H.I. 35.06

34	34	58	33	98	32	51	32	32	33	33
68	07	08	02	08	05	07	11	11	11	11
338	399	438	503	508	510	555	558	495	666	1602
60	60	12	12	10		10	12	12	60	60
cb	sat	oc	sat			9ut	cb	sat	sat	cb

1775 7² Lt. End 2 garages can floor & apron

1757 8⁰ Lt. Begin 2 garages can floor & apron

1750

1715 30⁰ Lt & double garage dirt floor

1700

0799 9³ Rt & 9" Power Pole # PA 920

0777 9⁶ Rt & dead man

0758 15⁸ Rt & single garage can floor

0750

Lt = North

Rt = South

9

58	427	460
12 ⁰	72	160
Floor	Apron	
424	460	
12 ⁰	80	
Floor	Apron	

7	8	3
36	36	36
5 ¹	5 ⁰	5 ¹⁵
15	10	10
		25

H. 14182

5-36 E2
30⁰
dirt
floor

6	1	5	2	7	6	5
36	35	35	35	35	35	35
5 ²	5 ⁷	6 ³	6 ⁶	6 ¹	6 ⁰	6 ¹⁰
20	10		5	9	10	25

6¹⁵
15⁸
Floor

3	8	1	0	0	1
36	35	35	35	35	35
5 ³⁵	6 ⁰	6 ²	6 ⁸	6 ⁰	6 ²
20	10	5		10	15

H. 14182

2775 12° Lt E 2³ con walk

2774 9° Rt 89" Power Pole #PA 950

2771 9° Rt E 3 con walk

2769 9° Rt End 4 garages con floor + apron

2750

2740 13° Lt E single garage con floor + apron

2732 9° Rt Begin 4 garages con floor + apron

2700

1799 9° Rt E 12' Power Pole #PA 940

Lt = North

Rt = South

371
38
339
12°
walk

342
9°
walk

380 38 20
9° apron floor

37 37 37 37
37 37 37 37
37 37 37 37
37 37 37 37

38 37 37 37
35 32 45 48
5 10 7 5 9 9° apron floor

28
38
354
17° floor

29
37
453
9° apron floor

61 5- 7
36 36 36
50 50 54 53 55
15 10 10 15

H.I. - 41.82

41.82

4+37 10² L+E double garage con floor & apron

4+17 10² L+E single garage con floor & apron

TP4 4⁸¹ 45⁻³⁵ 12⁸ 40⁵⁴

4+00 9⁵ RT & 9⁴ Power Pole #A980

3+50

3+48 11⁸ L+E 1⁵ con walk

3+12 10² L+E 5⁸ con slab

3+00

H.I. 45.35

H.I. 41.8

Lt. North
= 41
424 485
202 105
floor apron

55
477 78
150 39
floor apron

Rt. South 11

45³⁵
3 3
20 24 10 39 0
10 10 15

0 - 8 - 3 - 4 - 2 -
34 38 35 38 35
28 30 35 34 36
15 10 10 15

72
38
310
113
walk

43
38
339
102
con

38 2 0 9 8
35 35 37 37
34 36 38 32 40
20 10 10 15

41 82

Xt-North

9

Rt-South

12

5414²³ Wly. Ch. Cass St

$\frac{77}{41}$	$\frac{45}{41}$	$\frac{78}{40}$	$\frac{36}{40}$	$\frac{34}{40}$	$\frac{10}{40}$	$\frac{91}{39}$	$\frac{83}{39}$	$\frac{22}{40}$	$\frac{85}{38}$	$\frac{39}{39}$
358	410	457	499	501	525	544	552	523	640	526
60	60	13	13	10		10	13	13	60	60
cb	cut	cb	cut				cut	cb	cut	cb

5400²³ 10' Lt. End Store Bldg

H. 1. 45. 35

$\frac{81}{40}$	$\frac{59}{40}$	$\frac{52}{40}$	$\frac{37}{40}$	$\frac{50}{40}$
454	426	513	428	485
100	100	100	100	100
cb	cut		cut	cb

5400²³ Wly Cass St edge AC parking

4475 10' Lt Begin Store Bldg

$\frac{7}{40}$	$\frac{51}{40}$	$\frac{9}{39}$	$\frac{9}{39}$	$\frac{5}{39}$
42	49	55	52	52
20	10		10	20
		45	35	

4450

Alley BIK:158

1700

0+70 10² Rt End con paving area

TPs 785 5068 252 4283 ✓

0+50 9⁰ Rt & 10" Power Pole # JPA1020

0+36 10¹ Rt End Store Bldg
Begin con paving area

0+33 10³ Lt & 6' con slab

0+30 10³ Lt End Store Bldg

0+00 10² Lt Begin Store Bldg

0+00 Ely Line Cass St edge AC paving

0-14 Ely Cb Cass St.

H.I. 50.68

Lt=North

Rt=South

13

51	51	4	3	1
43	42	42	42	42
72	82	83	82	85
20	10	10	20	17
				42
				85
				103
				con

7	2	3	2	3	3	50	68
42	42	42	42	42	42		
22	30	32	32	34	34		
15	10	7		10			

38	09
42	42
297	326
103	104
con	con

H.I. 45.35

76	62	22	37	40
41	41	41	41	41
357	323	413	398	395
102	102	10	10	
85	94	94	85	

34	74	64	60	97	61	63	51	27	72	38
42	41	41	41	40	40	42	40	41	39	40
301	361	371	433	438	454	472	478	408	563	497
50	50	13	13	10					60	60
86	94	86	94	45	35	10	13	13	94	86
							94	86	94	86

2759 11th Lt Begin 4 garages con floor + apron

2752 11th Lt & 2nd con walk

2750 10th Rt & 1st con walk

2745 15th Lt End 4 garages con floor

2720 9th Rt & Dead man

2705 15th Lt Begin 4 garages con floor

2700 10th Rt Begin 6' Board fence

2700 9th Rt & 9" Power Pole # A1040

1750

Lt = North

Rt = South

17

45-
48
15th
Floor

69
45.
49
11
apron

45-
50
11th
walk

45-
56
15

3-
45
10

9-
44
5th

5-
44
10

5-
44
10th
walk

9-
44
20

59
50
15th
Floor

45-
59
15th
Floor

59
45-
50
15th
Floor

3-
44
15

1-
44
10

9-
43
10

1-
44
10

7-
43
25

6-
43
20

7-
43
10

9-
43
10

7-
42
10

7-
42
10

50.68

H.I. 50.68
(10.7)

4736 15³ Lt & double garage con floor

4700 9² Rt & 10" Power Pole # PA1080

3750

3715 10³ Rt & double garage dirt floor

3700 8² Rt & 12" Power Pole # A1060

2798 11² Lt & 2⁵ con walk

2796 11² Lt End 4 garage con floor apron

2774 10³ Rt End 6' Board Fence

Lt=North

±

Rt=South

15-

172
133
Floor

51	51	0	8	5
47	47	47	45	46
3 ²	3 ³	3 ²	4 ²	4 ²
15	10		10	20
5	5	1	9	7
46	46	46	45	45
4 ²	4 ³	4 ⁶	4 ⁸	5 ⁰
15	10		10	30

H.I. - 50.68 (50.7)

7
45
5⁰
10⁸
Floor dirt

0	7	5	4	7	6
46	45	45	45	45	45
4 ²	5 ⁰	5 ²	5 ³	5 ⁰	5 ²
20	10		5	8	10

7
45

496

11² walk

81
45
72
45

487
153
Floor apron

50.68

BM TP₇ 226 5450 019 5224

NWBP Dawes
&
Diamond.
5206

5719 Wly Cb Dawes St

4799.00 Wly Dawes St edge AC paving

10^o LT
4793 10^o RT End 3 car garages con floor ^{apron}

4764 10^o RT Begin 3 garages con floor & apron

4754 10^o LT Begin 3 garages con floor & apron

10^o RT 2 3' con walk
4752 10^o LT 2 5' con walk

4750

TP₆ 471 5243 226 4772

4748 75^o LT 2 3' con walk

57	49	41	48	35	76	65	41	38	41	20	41	15	41	61	46	89	46
286	348	408	467	475	475	475	475	475	475	475	475	475	475	475	475	475	475
60	60	12	12	10	10	10	10	10	10	10	10	10	10	10	10	10	10
06	Sat	06	Sat	06	Sat	06	Sat	06	Sat	06	Sat	06	Sat	06	Sat	06	Sat

H.1.52.43

48	70	28	48	48	41	81	47	48	00	48	48	48	48	48	48	48	48
373	415	415	415	415	415	415	415	415	415	415	415	415	415	415	415	415	415
152	102	102	102	102	102	102	102	102	102	102	102	102	102	102	102	102	102
Floor	apron	Floor	apron	Floor	apron	Floor	apron	Floor	apron	Floor	apron	Floor	apron	Floor	apron	Floor	apron

52 43
23 48
245 48
152 walk
56 68

BM starting

BM TP₉ 170

TP₈ 188

39²⁵

8⁷⁰

46⁴⁵

9²³

8³²

30⁹²

57⁵⁵

44⁵⁷

✓
30⁹²

SWBP Diamond

Mission Blvd

✓
NWBP Bogard

37⁵⁰
Diamond

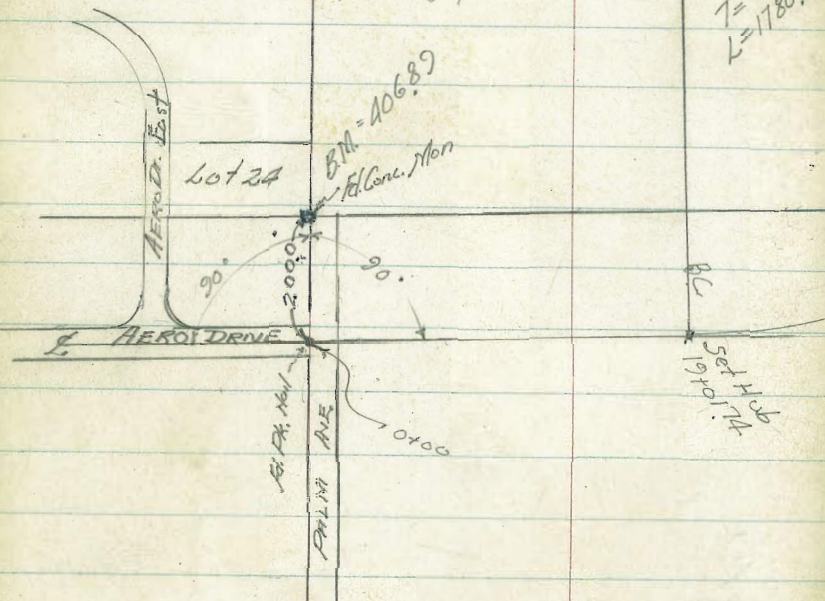
PROPOSED EXTENSION AERO DRIVE

From West Line Palm Ave,
To Skirt Main St. Between
Guava Ave And OLIVE AVE.

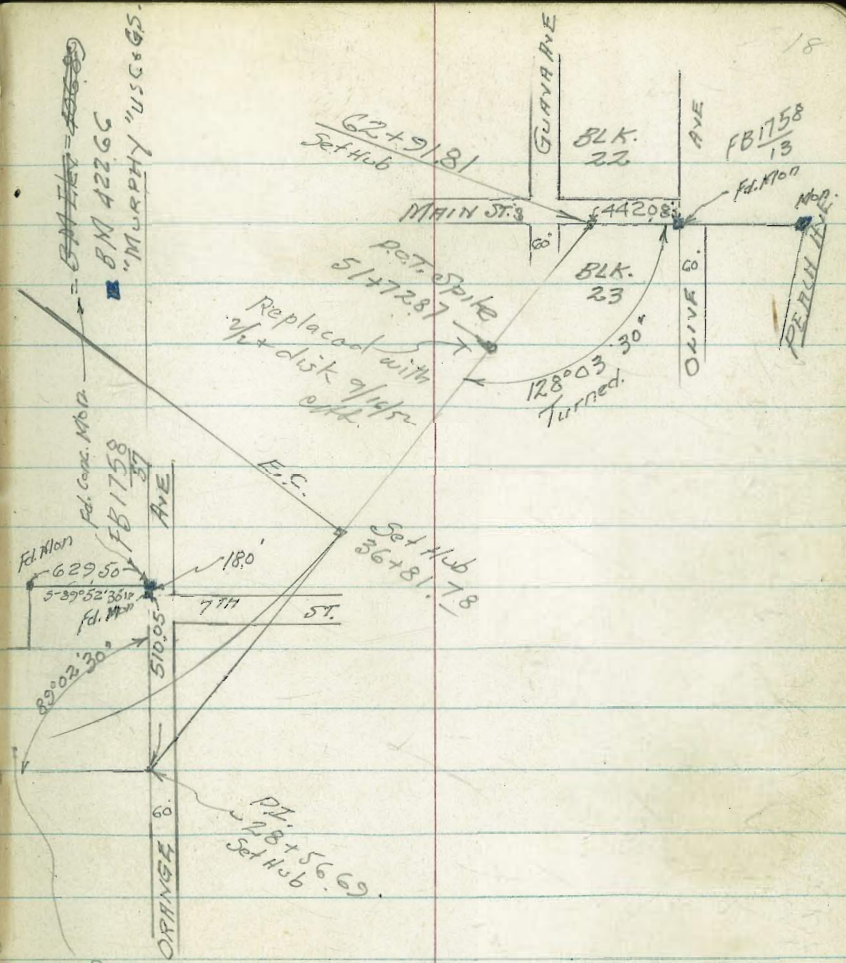
Walker
Hardy
Hoffman
Bredel
9-2-52

Fd. Conc. Mon.
NO. 20006

E.P. denotes edge of oil pave.
W- " bottom of wash



$R=2000$
 $\Delta=51^{\circ}00'$
 $T=959.95$
 $L=1780.64$



See page 34 for culvert.

NOV 17 1952

0-87' 82' Lt. Also wly edge Palm Ave. Pave. E.C. Pave. into Palm Ave

406.03
5.37 5.18 4.90 5.22 5.7 3.9 4.1
82 11
E.P.
also E.C.
406.22
406.50
406.18
405.7
407.5
407.0

0-100'

405.8
5.57 5.23 5.18 4.98 5.38 5.9 4.6 4.8 5.4
100 50 11
E.P.
406.42
406.02
405.5
406.8
406.6
406.0

0-137

405.6
5.8 5.9 5.5 5.72 5.11 5.50 6.0 4.6 5.4
50 40 33 20
E.P.
405.78
406.29
405.90
405.4
406.8
406.0

0-138 33² Lt. under Palm Ave wly end 18" Conc. culvert

6
405.5
407.65
405.2
405.69
406.27
405.90
406.4
406.8
406.0
5.8 5.9 8.75 6.2 5.71 5.13 5.50 6.0 4.6 5.4
50 40 33² 29 19
E.P.
IE.
Pipe
11
E.P.
11
E.P.

0-160' 11' Lt. B.C. Pave. into Palm Ave.

406.83
5.57
11
E.P.

0-200' Paving is 3" thick

405.8
405.6
407.0
404.8
405.59
406.00
405.75
405.4
406.5
406.1
5.6 5.8 7.4 6.6 5.81 5.40 5.65 6.0 4.9 5.3
100 41 33 28 11
E.P.
411.40
E.P.

451 411.40 - 406.89

Conc. Man 200' N. of $\frac{1}{2}$ Aero Drive +
on Wly line Palm Ave. - (P18)

AERO Drive

0+50

406.7
4.7
50
406.9
4.5
50
406.43
4.97
11
E.P.
406.44
4.96
406.5
4.9
406.3
4.1
25
406.4
406.24
5.16
E.P.
11
406.4
5.0
50
406.3

0+35 = end oil pave.

407.7
3.7
50
407.9
3.5
40
406.44
4.96
11
E.P.
406.75
4.65
406.58
4.92
11
E.P.
406.9
5.1
50

0+00 = Wly. line Palm Ave to North

408.2
3.5
50
408.7
3.2
43
406.45
4.7
34
E.P.
406.79
4.61
406.55
4.85
11
E.P.
406.8
4.6
50

0-10

407.4
4.0
65
403.17
8.23
34
I.E.
405.8
5.6
30
406.54
4.86
11
E.P.
406.80
4.60
406.58
4.82
11
E.P.
406.8
4.6
50

0-34' 34' Lt. end 18" conc. culvert

403.8
7.6
43
405.9
5.5
34
406.54
4.86
11
E.P.
406.80
4.60
406.58
4.82
11
E.P.
406.8
4.6
50

0-35

406.02
5.38
82
E.P.
406.42
4.98
11
406.64
4.96
406.41
4.99
11
E.P.
406.0
5.4
24
407.4
4.0
40
407.4
4.0
50

0-66' Lt. B.C. Pave. from Palm Ave

406.80
4.60
406.58
4.82
11
E.P.
406.8
4.6
50

411.40

AERO DRIVE

11+00

	407.5	407.4	409.1	8.6	9.2	9.4
	9.2	9.3	7.6	<u>1.5</u>	<u>1.0</u>	<u>1.3</u>
	50	25		408.5	408.8	409.5
				8.2	7.9	7.2
				25	50	81
						3.0
						8.9
						413.7
						3.0
						9.5
						413.7

T.P. 3

8.09 416.66 6.84 408.57

416.66

10+00

	408.9	408.9	409.1	410.1	413.6	413.6	408.8	408.4
	6.5	6.5	6.3	5.3	1.8	1.8	6.6	7.0
	50	25		28	39	44	62	72

9+70

	410.0	409.2	410.6	409.5	413.6	413.6	409.3	409.0
	5.4	6.2	4.8	5.9	1.8	1.8	6.1	6.1
	50	25		21	31	36	50	60

9+00

	409.5	410.2	409.4	410.3	413.8	413.8	409.2	408.7
	5.9	5.2	6.0	5.1	1.6	1.6	6.2	6.7
	50	25		22	30	33	38	50

8+00

	408.9	408.8	408.8	408.7	409.1	413.8	407.7	407.0
	5.5	6.6	6.7	6.7	6.3	1.6	7.7	8.4
	50	25		25	65	90	111	120

7+00

	409.0	408.7	408.8	408.5	408.6			
	6.4	6.7	6.6	6.9	6.8			
	50	25		25	50			

415.41

AERO DRIVE

17+00

25.4	16.8	12.6	9.0	5.9	4.5	3.8
103	50	25		25	50	75
W.						
591.4	400.9	403.3	408.9	409.5	409.1	407.8

16+00

22.2	12.7	10.3	5.0	4.7	4.1	3.7
94	67	50	10		25	50
W						
400.9	403.6	405.1	406.1	407.3	408.2	409.9

W. denotes bottom of wash

15+00

12.7	10.0	8.5	7.5	6.3	5.4
100	50	25		25	50
400.9	403.6	405.1	406.1	407.3	408.2

14+00

10.8	9.8	9.4	8.9	7.9
50	25		25	50
402.8	403.8	404.2	404.7	405.7

413.63

T.B.M.#1

5.76 413.63 8.79 407.87

Nail in fence post 2^E Rt. of sta. 13+17.5

13+17 = cross barb wire fence

13+00

10.5	11.8	10.9	11.3	11.0
50	25	9	25	50
405.2	404.9	405.9	405.4	405.7

12+00

14.7	10.6	9.8	9.1	9.4
50	25		25	50
406.0	406.1	406.9	407.6	407.3

416.00

AERO DRIVE

21+00

11380.3
50

1379.1
12.9

13.7
50

20+50

4.7
50

387.3

4.6
1379.1

0.4
50

391.97

T.P.#5

1.24

391.97

13.15

390.73

390.5

13.0
100

8.0
50

7.1
403.88

4.5
50

2.2
100

20 ~

T.B.M.#2

3.58

403.88

10.02

400.30

T.B.M.#2 = 1/2 hub

Sta. 19+01

74 = B.C. Lt.

584.0
263
79
w

389.4
20.9
64

382.5
17.8
50

397.9
12.4
25

100.30
10.02
Hub

401.9
8.4
25

403.6
6.7
50

405.4
1.9
75

19+01.74 = B.C. Lt.

393.5
17.3
50

397.9
12.4
25

400.2
10.1

401.9
8.4
25

403.6
6.7
50

19+00

390.3
20.0
90
w

387.1
23.2
70

391.5
18.7
50

395.6
14.7
25

401.3
9.0
3

401.7
8.6

403.5
6.8
25

405.0
5.3
50

407.7
2.6
75

18+00

T.P.#4

8.61

410.32

11.92

401.71

410.32

413.63

Acto Drive

T.P.#8 4.65 408.03 8.13 403.38

26+00

8.4
50
403.1

8.6
402.9

8.0
50
403.5

25+00 = spike P.O.C.

5.3
50
406.2

5.1
406.4

5.5
50
406.0

24+00

6.5
50
405.0

6.6
404.9

7.6
50
403.9

T.P.#7 9.13 411.51 1.08 402.38

23+00

3.7
50
389.8

4.4
399.1

4.5
50
399.0

T.P.#C 12.48 403.46 0.99 390.98

22+00

0.7
50
391.3

2.1
389.9

3.8
50
386.2

21+50

6.9
50
385.1

9.0
383.0

10.6
50
381.4

391.97

403.46

411.51

4

Aero Drive

31+00

408.8
8.4
50

409.8
7.4

409.7
7.5
50

417.18

T.P.#9 10.89 417.18 1.74 406.29

30+00

405.5
2.5
50

405.9
2.1

406.9
50

29+00

404.0
4.0
50

405.1
4.9

405.1
4.9
50

28+50

403.1
4.9
50

403.1
4.9

400.6
7.4
30

398.4
7.6
45

401.4
4.6
75

401.3
6.7
100

28+00

402.6
5.4
50

402.3
7

401.0
7.1
50

27+00

402.9
5.1
50

402.0
6.0

402.2
5.8
50

408.03

AERO DRIVE

27

T.B.M.₃ 4.48 421.61 1.32 417.133.6 + 81 ⁷⁸ = F.C.4.32 417.13
El. $\frac{1}{2}$ on $\frac{1}{2}$ =417.0
4.5
50417.2
4.3416.9
4.6
50

36400

416.9
4.6
50415.6
4.9416.6
4.9
50

35400

416.7
4.8
50416.2
5.3416.3
5.2
50

34400

415.6
5.9
50415.5
6.0415.4
6.1
50421.45T.P.₂ 5.40 421.45 1.13 416.05

33400

413.5
3.7
50413.8
3.4414.2
3.0
50

32400

411.2
6.0
50411.7
5.5412.1
5.1
50417.18

AERO DRIVE

42+00

418.5
7.0
50

418.5
7.0

418.4
7.1
50

41+00

417.8
7.7
50

417.7
7.8

417.6
7.9
50

425.46

T.P.#11 6.42 425.46 2.57 419.04

40+00

417.6
4.0
50

417.6
4.0

417.9
3.7
50

39+00

417.2
4.4
50

417.0
4.6

417.2
4.4
50

38+00

416.5
5.1
50

416.5
5.1

416.5
5.1
50

37+00

~~416.0~~
4.6
50

416.3
4.3

~~416.8~~
4.8
50

421.61

AERO DRIVE

48+00

421.0
7.1
50
421.1
7.0
50
421.6
6.5
50

47+00

428.14

T.P.#12 6.03 428.14 3.95 422.11

46+00

421.1
4.4
50
420.9
4.8
50
420.7
4.8
50
420.0
5.5
50
420.0
5.2
50
419.8
5.7
50

45+00

44+00

43+00

418.9
6.6
50
419.1
6.4
50
419.8
5.7
50
419.2
6.3
50

425.46

AERO DRIVE

54+00

~~423.1~~
8.7
50

~~421.8~~
10.0

~~421.3~~
10.5
50

53+00

~~424.3~~
7.5
50

~~423.3~~
8.5

~~426.8~~
10.0
50

52+00

~~426.8~~
5.0
50

~~426.5~~
5.3

~~424.6~~
7.2
50

4.57 431.82 4.85 427.25

431.82

51+72⁸⁷ T.B.M.#4
on hub 4.85 427.25

51+00

~~425.8~~
5.3
50

~~427.1~~
5.0

~~426.6~~
5.5
50

50+00

~~425.3~~
6.8
50

~~425.6~~
6.5

~~426.5~~
5.6
50

T.P.#13 6.80 432.10 2.84 425.30

432.10

49+00

~~422.2~~
5.9
50

~~422.7~~
5.4

~~423.4~~
4.7
50

428.14

AERO DRIVE

T.R.#16 4.24 420.49 4.53 416.20

60+00

59+00

58+00

T.R.#15 4.05 420.73 10.11 416.68

57+00

56+00

55+00

T.R.#14 3.73 426.79 8.76 423.06
431.82

415.4
5.3
50
4.6
576.1
5.2
50
415.5

5.3
5.3
5.4
50
6.0
414.7
6.5
50
414.2

415.9
4.8
50
416.6
4.1
6.3
50
414.4

420.73

9.4
50
417.4
10.1
416.7
11.2
50
415.6

421.8
5.0
50
420.8
6.0
2.0
50
427.8

422.8
4.0
50
422.6
4.2
5.8
50
421.0

426.79

AERO DRIVE

65+00

4
406.0
11.1

64+00

406.6
10.5

63+00

414.3
2.8
50
411.7
5.2
10.9
50
406.2TBM #5 4.58 417.14 7.88 412.56
± Hub. 62+91.81412.56
7.88
Hub
13.8
50

62+91.81 - along Sly. line Main St.

same station

62+91.81 at 90° to 4

414.1
6.3
50
412.56
7.88
Hub
13.6
50
406.8

62+00

414.3
6.1
50
414.5
5.9
7.3
50
413.1

61+00

415.6
4.8
50
415.8
4.6
420.44
5.6
50
414.8

AERO DRIVE

4

0.08

428.53

EL = 428.53

3.87 428.45

3/4 X 3/4" stub. = sta. 65+00 F.B. 2009
P. 5

T.P. 5.08 432.32 1.55 427.24 <

T.B.M. #4. EL = 427.25 0.01

T.P. 5.73 428.79 3.67 423.06 =

T.P. #14 423.06 ✓

T.P. 10.05 426.73 4.74 416.68 =

T.P. #15 - 416.68 ✓

T.P. 5.22 421.42 4.37 416.20 T.P.

T.P. #16 - 416.20 ✓

8.01 420.57 4.58 412.56 T.B.M. #5

411.7

66+00

5.4

A17.1A

A17.1A

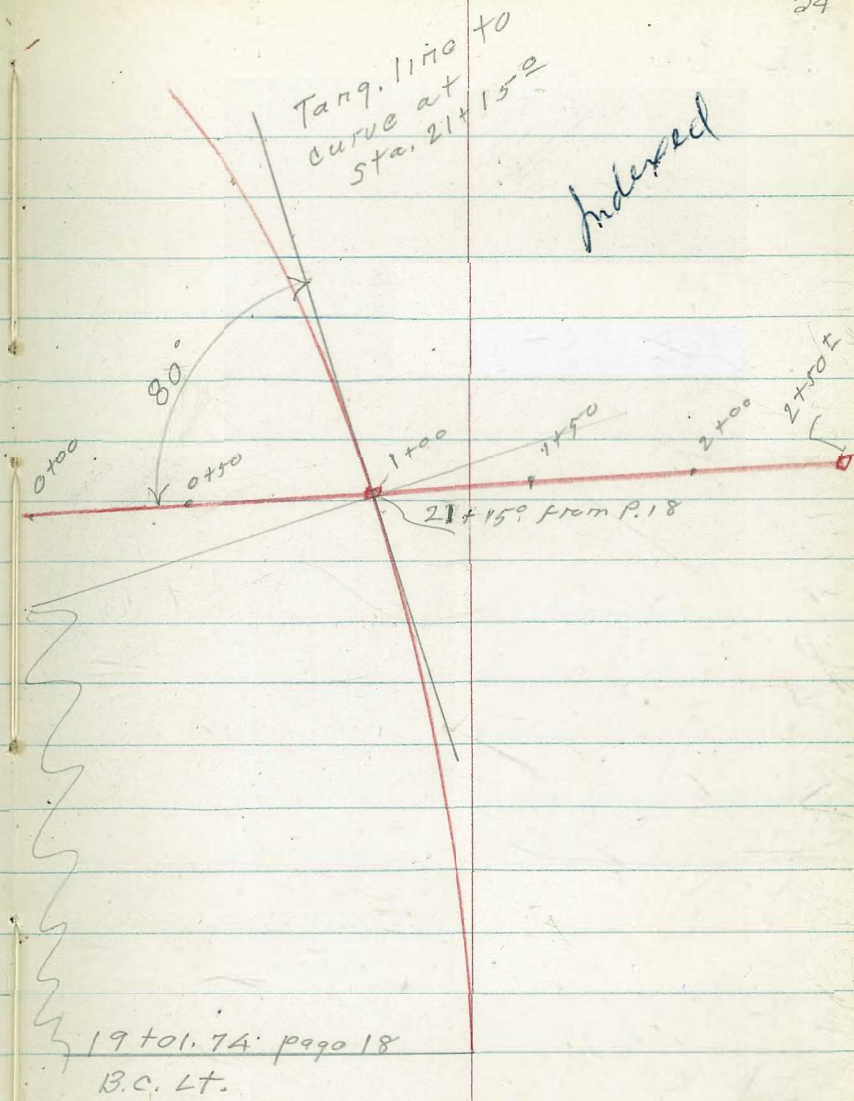
Culvert at Sta. 21+15 - page 18

Aero Drive

9-17-52

34

W - denotes $\frac{1}{2}$ wash



2+50

9.6	376.6		
71			

2+10

11.2	375.0		
66			
W.			
10.1	376.1		
62			

1+94

9.6	378.7		
71			

1+55

10.2	376.0		
55			
W			
9.1	377.1		
47			

1+25

8.7	377.5		
22			

386.22

385.1

+1.1

383.2

382.5

3.7

379.4

8.8

379.2

7.0

W

380.5

5.7

378.1

8.1

12

W

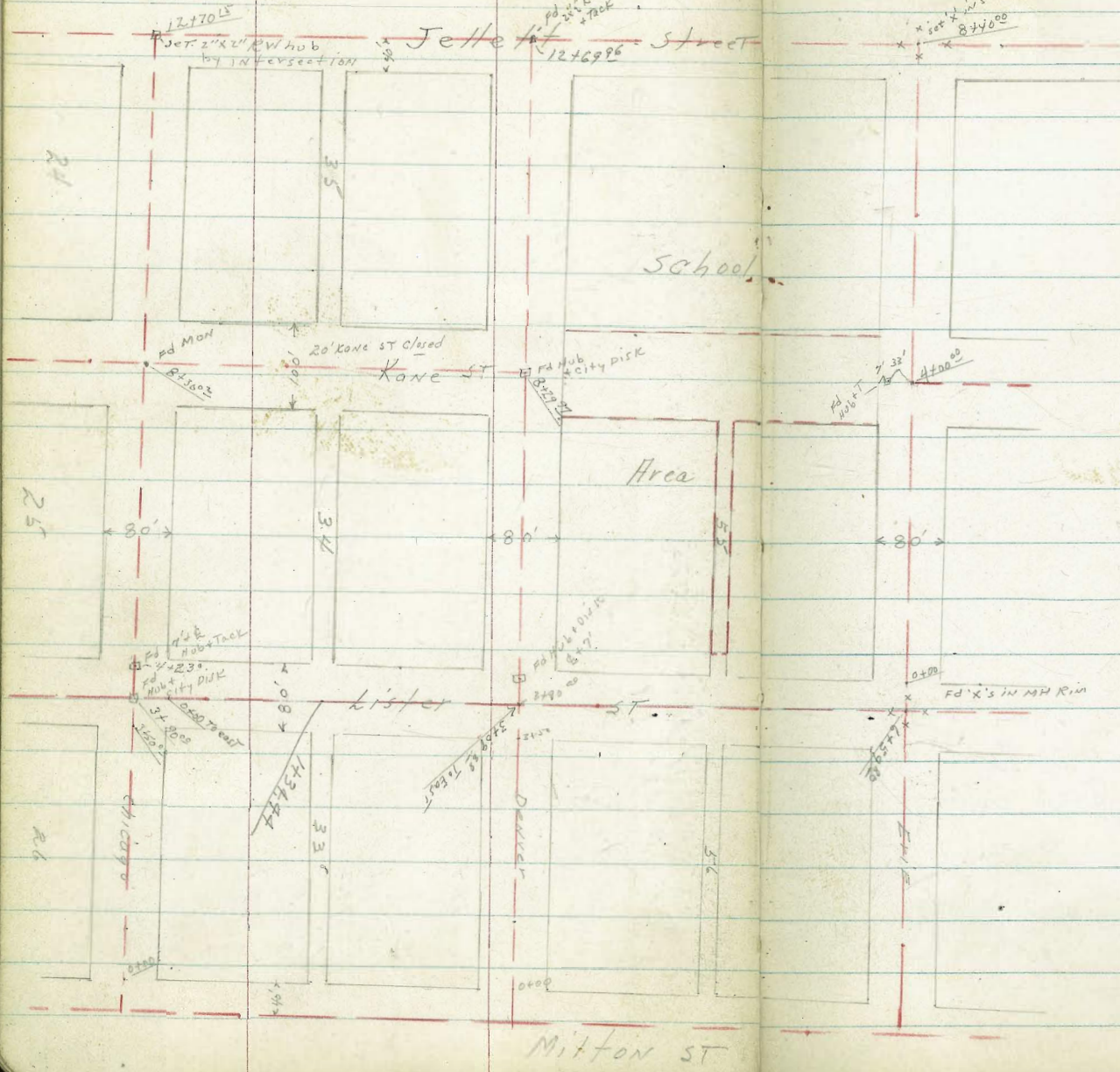
380.7

5.5

23

Wa# 32127-
 2-5-53
 Allen
 Sisson
 Powell
 Schelin

X-sec Chicago - Jelleff to Milton
 " Denver - Jelleff to Milton
 " Eric - Jelleff to Lister
 " Lister - Chicago to Eric



INDEXED
 Feb
 FEB 11 1953

Soil samples:

- #1. & Chicago + Nly line Lister
- #2 - Nly line Lister + & DENVER
- #3 - & Kane and Eric

Ref:

TP 1168, 1167, 1177, 1176
 FB 1502-48

Note - Milton street

from Morena to
 Illion being
 Paved - 2-5-53,
 For Closing of
 Kane St. Morena to
 DENVER. see closing
 Drawing #677

X-Se Chicago - Milton to Jellott

LT = West

Rt = East 28

0+50-18² LT = end 2⁵ high Picket fence
Begin 2⁵ high Woven Wire fence

19.8	21.0	20.6	20.8	21.4	21.9	23.2
60	48	52	50	44	39	26
40	14	.12		17	18	40

0+40-18² Rt = E 7' Wide Ribbon Dr - 2-2' strips

21.48	22.33	22.78
43.5	34.0	30.5
18 ²	22.9	32.4
Dr.	Dr.	Dr.

0+28-16² LT = E 3' Conc Walk

20.61	20.73
52.3	5.10
17.2	16.2
	WK.

0+23-20² Rt = E 3' wide Walk (conc)

22.23	22.78
36.0	30.5
20.4	30.4
WIK	WIK

0+10-24² Rt = E Fire Hyd

20.4	20.6	20.9	22.0	21.0	21.4	21.7	22.5	23.2	24.3
54	52	42	32	42	44	44	32	26	15
60	40	18	12	11		15	16	40	60

0+00 - Nly line Milton and E Chicago

0-02-18² LT = begin 2⁵ high Picket fence

Note - Milton St. Now being Paved

1.09 25.83 8.62 24.74

25.83

0.56 33.36 11.60 32.80

2.37 44.40

S.W. B.P.
Milton + Erie
42.03

Lt=West

Lt=East 39

1440-18⁸ Lt= 7' Wide Conc. dr.

20.90	20.44	21.69
4 ²⁸	4 ⁷⁴	3 ⁴⁹
18 ⁸	22 ²	32 ²
Dr	Brk	Dr
	Dr	

1436-19⁰ Lt= end 2⁵' high Picket fence

TP, 0.44 25.18 1.09 24.74

Fire Hydrant Milton + Chicago

25.18

1400-18⁵ Lt= end woven wire fence
= begin 2⁵' high Picket fence

19.0	19.4	20.4	20.3	20.6	21.2	21.6	22.5	21.8
6 ⁸	6 ⁴	5 ⁴	5 ⁵	5 ²	4 ⁶	4 ²	3 ³	3 ⁰
60	40	18	13		15	16	40	60

00473-18³ Lt= 3' conc walk

20.16	20.53
5 ⁴⁷	5 ³⁰
28 ²	18 ²
WK	WK

00460-17⁹ Lt= 7' Wide Ribbon Drive- 2-2' strips

20.07	20.50	20.47
5 ⁷⁶	5 ³³	5 ³⁶
3 ¹²	2 ¹²	1 ⁷²
Dr	Dr	Dr

00460-18⁰ Lt= 7' Ribbon Drive- 2-2' strips

21.71	22.38	22.72
4 ¹²	3 ⁴⁵	5 ¹¹
18 ⁰	3 ¹⁴	3 ¹⁴
Dr	Dr	Dr

25.83 T

214R-15² Lt = 7' wide ribbon Dr. 2-2' strips

2140-18² Rt = 7' wide ribbon Drive. 2-2' strips

2133-20² Rt = end floral planting

2100-20² Rt = begin floral planting P to line

1491-19³ Rt = 7' wide Ribbon Dr. 2-2' strips

1490-19² Lt = 7' wide Conc Drive

1450

1440-17⁴ Lt = 2-2' wide Ribbon

Lt = West

19.25	19.87	19.86
593	531	532
292	192	152
Dr	Brk	Dr
	Dr	

Rt = east 40

20.26	20.65	21.10
492	453	408
182	212	312
Dr	Brk	

17.9	18.8	19.8	20.4	19.8	20.2	20.9	21.3	22.1
72	83	53	42	53	42	42	38	30
60	40	20	16	13	20	40	60	

20.80	21.03	21.42
438	415	376
193	242	342
Dr	Brk	Dr

19.24	19.80	19.70
524	538	548
312	212	172
Dr	Brk	Dr

19.3	19.9	20.7	19.9	20.3	20.8	21.8
58	52	44	52	48	42	33
40	20	16	13	20	40	

19.58	20.11	20.04
560	501	514
312	212	172
Dr	Brk	Dr

25.18

Lt = West

¢

Rt = East 41

3442 - 36° Rt = ¢ 8" Pine tree

3438 - 24° Rt = ¢ Fire Hyd

3424 - 35° Rt = ¢ 6" Star Pine tree

3403 - 34° Rt = ¢ 8" tree

TP₂

2.74

26.47

1.45

Fire Hyd SE COR
Chicago & 11th St

23.73

26.47 x

3400 - 19' Rt = ¢ 3' wide hedge ⊥ to ¢

2496 - 27° Lt = ¢ 18" Palm tree

2490 - 19° Lt = ¢ 7' wide Cane Drive

2484 - 17° Rt = ¢ 7' wide Ribbon Dr. - 2-2' strips

2450 - 19' Rt = ¢ 3' wide hedge ⊥ to line

17.78	18.5	19.4	19.7	19.3	19.8	20.7	21.6	22.0
74°	66	52	54	58	53	44	35	31
60	40	20	16	12		20	10	60

19.14	19.60
604	558
592	192
Dr	Dr

20.26	20.77	21.32
492	44	386
172	212	312
Dr	Brk Dr.	Dr

18.4	19.7	19.8	20.1	20.6	21.5
62	54	53	50	45	36
40	20	14		20	40

25.18 x

Lt = West

♀

Rt = east

42

4+23 = 29²Rt ♀ 10" power pole - # 600-66

4+10

15.3	17.2	18.1	17.4	18.0	19.3	20.3	21.8	24.4
11 ²	9 ²	8 ²	9 ²	8 ²	7 ²	6 ²	4 ⁶	2 ²
100	40	25	23	20	20	40	100	

4+05

14.8	16.7	18.2	19.4	20.4	21.2	23.4
11 ²	9 ²	8 ²	7 ²	6 ²	5 ²	3 ²
100	40	20	20	40	40	100

3+90²⁰ = ♀ Lister + ♀ Chicago

15.2	17.4	18.2	19.5	20.4	21.4	23.3
11 ²	9 ²	8 ²	6 ²	6 ²	5 ²	3 ²
100	40	20	20	40	40	100

3+80

15.0	17.1	18.1	19.0	20.1	21.1	23.2
11 ⁴	9 ²	8 ²	7 ⁴	6 ²	5 ²	3 ²
100	40	20	20	40	40	100

3+70

16.6	18.2	18.8	18.1	19.5	20.2	20.9	22.4	24.7
9 ²	8 ²	7 ²	8 ²	6 ²	6 ²	5 ²	4 ²	1 ²
100	40	23	21	17	20	40	100	

3+50²⁰ = 5/4 line Lister st

19.8	18.8	19.4	19.4	18.7	19.8	20.4	21.5	22.6	24.6
8 ²	7 ²	7 ²	7 ²	7 ²	6 ²	6 ²	4 ²	3 ²	1 ²
100	40	20	19	15	17	20	40	100	

26.47

Lt = West

Rt = east

43

4485- 40° Rt = 8' Wide Conc Drive

21.80

462

40

Dr

22.28

419

50

Dr

4472- 40° Rt = 8' Wide Conc Drive

21.81

466

40

Dr

22.47

400

50

Dr

4457- 30° Lt = 3" Spruce tree

4450

17.9

85

40

19.2

78

20

19.2

78

19

18.6

78

15

19.4

70

20.6

58

20

21.9

45

40

4441- 40° Rt = 3' Conc Walk

22.37

410

40

Wk

22.82

365

500

Wk

4437- 26° Lt = 3' Wide Conc Walk

18.18

829

26

Wk

18.65

782

26

Wk

4430° N/4 line kister ST- 29° Rt = Deadman

16.4

100

40

18.2

82

40

18.8

76

20

18.9

75

18

18.2

82

15

19.3

74

16

20.0

64

16

20.6

58

18

21.9

45

40

24.0

24

100

26.47x

Lt = West

Rt = East 44

21.89
458
395

22.02
445
495

5793-395 Rt = 3' wide Conc Walk

5780-17° Lt = end 4' wide hedge

5750

18.5	19.4	19.8	19.6	19.9	20.2	21.4
79	70	66	68	65	62	50
40	20	15	13		20	40

5743-40° Rt = 3' wide Conc Walk

21.71
506
40
WK

21.93
454
50
WK

5738-16° Lt = 7' wide ribbon Drive - 2 - 2' strips

Hedge opening for Drive

18.78	19.36	19.52
769	71	695
299	192 BPK Dr	168 Dr

5730-17° Lt = begin 4' wide hedge

5720-14° Lt = 7' wide ribbon Dr - 2 - 2' strips

18.02	18.92	19.24	19.37
845	805	725	710
330 Dr	230 BPK Dr	182 BPK Dr	148 Dr

5700

17.8	18.3	19.4	19.2	19.6	20.5	21.6	22.1
86	81	70	72	68	59	48	43
50	40	15	13		20	40	50

26.47
x

6471 - 22² Rt = £ 7' wide Ribbon - 2-2' strips

6450

6440-14² Lt = £ 10' wide Conc Drive

6438-39² Rt = £ 14" cypress tree.

6424-37² Rt = £ 8' wide Conc Drive

6432-24² Lt = £ 4' wide hedge L to £

TP3 4.00 27.55 2.92 23.55

6420-15² Lt £ 7' wide ribbon Drive - 2-2' strips

6400

Lt = West

£

Rt = east 45

21.99	22.47	23.10
5.56	5.08	4.45
22 ²	27 ²	40
Dr	B-X	Dr

19.6	20.5	20.7	21.8	22.6
7 ²	7 ²	6 ²	5 ²	4 ²
40	20		20	40

19.13	20.50	20.33
84 ²	7 ²	7 ²
40	18 ²	14 ²
Dr	Dr	Dr

22.08	22.55
5.47	5.00
37 ²	40 ²
Dr	

27.55 T

18.73	19.65	20.25	20.11
77 ²	6 ²	6 ²	6 ²
40	28 ²	18 ²	15 ²
Dr	Dr	B-X	Dr

18.8	19.1	20.0	20.1	20.8	21.8	22.0
7 ²	7 ²	6 ²	6 ²	5 ²	4 ²	4 ²
50	40	20		20	40	50

26.47 T

7466-18° Lt= 3' wide Conc Walk

7450-

7444-17° Lt= begin 4' wide Hedge R to line

7440-17° Lt= 7' wide Ribbon Drive - 2-2' strips

7430-19° Lt= 4' wide hedge L to 6

7422-18° Lt= 9' wide Conc Drive

7400

6480-22° Lt= begin row of floral planting

6478-24° Lt= 4' wide hedge L to 6

Lt= West

6

Lt= east 46

21.03	21.15	21.20
652	640	635
40	28° WR	18° WR

21.0	21.2	21.5	21.8	23.0	24.1	24.3
65	63	60	57	45	34	32
40	20		18	22	40	50

20.37	20.73	21.05	20.99
718	682	650	616
40 Dr	32° Dr	22° Dr BRK	17° Dr

20.70	20.88	20.99
685	667	656
40 Prop	28° Dr	18° Dr

20.2	20.5	20.9	20.6	20.9	21.9	22.8	23.5	24.0	24.7
73	70	66	69	66	56	47	40	35	28
50	40	20	14		20	32	34	40	50

27 55

lt = West & et = east 47

8+30⁰² = & Chicago + & Kane st

17.4	19.4	20.3	21.2	22.1	22.9	25.2
105	85	76	62	58	50	27
100	40	20		20	40	100

8+14

16.8	18.8	20.0	21.1	21.9	22.8	24.7
111	91	72	68	60	51	32
100	40	20		20	40	100

8+10

17.2	20.1	20.5	20.7	21.1	21.7	22.3	23.3	25.3
107	78	74	72	68	62	56	46	26
100	40	22	20		18	20	40	100

8+07- 38° lt = & 10" Pole P 3999-

7+93- 20° lt = end 4' high hedge.

7+92- 39° lt = & 15" Pepper tree

7+80⁰² 5/4 line Kane st. (chasing?)

18.2	20.5	21.1	21.3	22.0	23.0	23.9	25.8
92	74	68	66	59	49	40	21
100	40	20		19	23	40	100

TP4

2.65 27.98 2.22

Top F.H. S.E. cor
Kane +
Chicago

25.33

27.98 x

7+70- 24° lt = & Fire Hyd

27.55 x

Lt = West

Rt = east

43

9420-38^L Rt = 9' Wide Conc Drive

9420-17^R Lt = 7' Wide Ribbon Dr. 2-2' strips

9400-38^L Rt = 2.5' wide Conc Walk

8480⁰² - Nly line Kane st. (appears to be closing)

8467-39^E Lt = 24" Pepper tree

8460

8458

8446

21.33	21.81
6 ⁶⁵	6 ¹⁷
27 ⁹	17 ⁹
Dr	Dr

25.55	26.39
24 ³	15 ⁹
38 ⁷	48 ⁷
Dr	Dr

20.4	21.3	21.3	21.0	21.7	22.7	23.4	25.66	26.49
7 ⁵	6 ⁶	6 ⁶	6 ⁹	6 ³	5 ²	4 ⁵	2 ³²	14 ⁹
40	20	16	14		17	20	38 ⁷	48 ⁷
							Wk	Wk

18.3	20.0	21.0	21.3	21.9	22.8	24.2	25.1	26.7
9 ⁶	7 ²	6 ⁹	6 ⁶	6 ⁰	5 ⁴	3 ⁷	2 ⁸	1 ²
100	40	20		16	20	25	40	100

19.8	20.5	21.0	22.0	23.4	25.4	26.5
8 ¹	7 ⁴	6 ⁹	5 ⁹	4 ⁵	2 ⁵	1 ⁴
40	20		20	40	50	100

19.8	20.5	21.0	22.0	23.0	25.8
8 ¹	7 ⁴	6 ⁹	5 ⁹	4 ⁹	2 ¹
40	20		20	40	100

16.8	19.1	19.8	21.0	21.9	23.0	24.6
11 ⁴	8 ⁸	8 ¹	6 ⁹	6 ⁰	4 ⁹	3 ³
100	40	20		20	40	100

27.98

LT = West

℄

RT = east

49

9 TP5 9.46 34.82 2.62 25.36

9

10400

23.1	24.0	24.8	24.8	24.0	24.6	25.1	26.3	26.7
4 ^c	3 ^g	3 ^l	3 ^l	3 ^g	3 ^g	2 ^g	1 ^g	1 ^g
60	40	20	17	14	20	40	50	

34.82 π

9

9+91-41^o RT = ℄ 7' wide Conc Drive

26.13	26.52
1 ^g	1 ^g
4 ^o	5 ^o
Dr	Dr

8 9+81-25^z RT = begin 3' high picket fence9+51-25^z RT = ℄ 3' wide Conc Walk

24.47	25.04
3 ^l	2 ^g
2 ^l	3 ^l
WK	WK

9+50

21.6	21.9	22.4	22.9	23.5	24.5	25.8
6 ^g	6 ^o	5 ^l	5 ^o	4 ^l	3 ^l	2 ^l
60	40	20	50	20	40	60

8 9+44-18^z ℄ = begin 4' wide hedge R to ℄9+39-17^o LT = ℄ 7' wide ribbon drive - 2-2' strips

21.82	22.26
6 ^l	5 ^l
27 ^g	17 ^g
Dr	Dr

8

9+32-17^l LT = ℄ 4' wide hedge L to line

27.98 π

Lt = West

Lt = east. 56

11+32-18² Lt = begin floral planting11+31-40³ Lt = begin 4' high picket fence11+31-24⁵ Lt = end 4' high picket fence

11+25

26.6	27.2	27.9	28.5	28.9
82	76	69	63	59
40	20		20	40

11+00-24⁵ Lt = begin 4' high picket fence

26.1	26.2	26.5	27.0	28.1	29.8	30.0
82	85	83	78	67	50	48
50	40	20		20	40	50

10+86-41⁰ Lt = 8' wide Driveway10+81-24⁵ Lt = end 3' high picket fence10+60-19⁰ Lt = end floral planting

10+50

					19.55	29.90		
					527	492		
					110	512		
					Dr.	Dr.		
24.5	25.5	25.9	25.8	25.4	26.0	27.1	28.6	28.7
103	93	82	90	94	88	77	62	61
60	40	20	15	12		20	40	60

10+31-18⁵ Lt = begin floral planting10+30-18⁰ Lt = 3' wide hedge L to 410+21-20¹ Lt = 7' wide ribbon Drive

2-2' wide stripe

24.77	25.14
1005	968
30	20
Dr	Dr

10+16-18¹ Lt = end 4' wide hedge

54.82 X

Jett oiled roughly - of No Valve

12+70¹⁵ - Jett + Chicago

Lt = West			Rt = east 51			
24.46	26.3	27.2	28.1	29.0	29.9	32.4
10 ³⁶	85	76	67	58	49	24
100	40	20		20	40	100

12+53

24.1	26.1	28.9	27.8	28.8	29.7	33.2
102	87	79	70	60	51	16
100	40	20		20	40	100

12+49

25.1	26.8	27.5	27.1	28.0	29.0	29.7	30.5	32.9
92	82	73	71	68	58	51	43	19
100	40	21	20		20	22	40	100

12+30¹⁵ 5/4 line Jett + ST

40² Lt = end 4' high PICKET fence

25.0	25.8	26.9	27.8	27.9	27.4	28.2	29.6	30.7	32.0	32.8
98	90	79	70	63	74	66	53	44	28	20
100	70	40	20	19	15		20	40	70	100

12+18 - 24² Rt = Fire Hyd

12+00

27.0	28.4	28.6	28.0	28.7	29.9	31.3
78	64	62	63	61	49	35
40	20	16	14		20	40

11+81 - 19² Lt = end Floral Planting

11+75

26.5	27.2	28.2	28.8	30.1	31.3	31.5
93	75	65	60	47	35	33
60	40	20		20	40	50

11+50

27.1	27.1	27.1	28.4	28.1	28.7	29.2	30.5	30.8
72	77	77	64	67	61	56	43	42
100	40	20	13	12		20	40	60

34.82 x

See page 37 for sketch

See page 53 for x-sec Denver - Milton to
Jelle # ST.

SW. BP. Milton + 2110				(42.03)
start. BM		3.24		42.04
TP ₁₀	8.61	<u>45.28</u>	0.24	36.67 DENVER
TP ₉	1.88	36.91	8.47	35.03 FIVE HYD S.E. DENVER KISTEK
TP ₈	2.98	<u>43.50</u>	8.61	40.52 ON HUB & DENVER + KANE
TP ₇	5.20	<u>49.13</u>	3.16	43.93
TP ₆	12.41	<u>47.09</u>	0.14	34.68

34.82 x

X-sec DENVER - Milton to Jellett St.
W0 #32127

Lt = West

Rt = East 53

INDEXED
LOW
FEB 11 1953

0+90-14' LT = 7' Wide Ribbon drive - 2* 2' strips

31.47	32.02	31.99
755	700	703
282	182	145
Dr	B+K Dr	Dr

0+70-18' LT = 3' Conc Walk

31.77	32.11
725	691
285	185
WIK	WK

0+50

31.7	32.4	32.7	33.1	33.7	34.3	34.5
73	66	63	52	53	42	45
40	20	6	13	15	30	40

0+42-30' Rt = 3' Conc Walk

34.53	34.74
448	428
307	407
WK	WK

0+30-29' Rt = 12" acacia tree

0+11-24' Rt = Fire Hyd.

0+00 - Nly line MILTON ST

32.0	32.1	32.7	33.0	32.6	32.5	32.8	34.0	34.7	35.7
90	69	63	60	64	65	62	50	43	33
100	40	20	16	14		11	14	40	100

18' LT = begin 35' high picket fence

0-03-30' Rt = begin woven wire fence
could be changed

0-16 - Due to construction in progress, these sec

29.7	31.4	32.3	31.6	31.9	32.4	32.3	34.1	34.2	34.8
93	76	67	74	74	66	62	49	48	42
100	40	23	20		20	24	30	40	100

Milton under construction

B.M.

2.35

39.02 T

TP, 0 - Page 52
NE R.H. MILTON + DENVER

36.67

39.02 T

1458- 15^d LT- 8' wide Conc Dr

Lt = West

Lt = East 54

31.31 31.69
645 607
254 154
Dr Dr

1451- 23^o Rt = begin Conc Block Curb

33.1 33.28 37.8
46 48
23^o 28^o 42
Curb Top Footing
cb cb

TP, 5.78 37.76 7.04 31.98

37.76 X

1450- 29^o Lt = 4' wide hedge L to R

30.6 30.9 31.7 31.9 32.6 33.9 34.2 34.6
84 82 73 71 64 51 48 44
60 40 20 16 30 40 60

1441- 29^o Rt = 8' wide Conc Drive

34.15 34.54
487 448
296 396
Dr Dr

1410- 16^o Lt = 6^o wide Conc Drive

31.50 31.94
752 708
262 162
Dr Dr

1400

30.4 31.0 31.7 31.2 32.7 34.3 34.4 34.7
86 82 73 78 63 47 46 42
60 40 20 12 30 40 60

30^o Lt = end Woven Wire fence

1400- 18^o Lt = end 3^o high picket fence

39.02 X

R+42-40² Lt = 2 7' wide Conc Drive

R+39-14⁶ Lt = 2 7' wide Conc ribbon Dr - 2 - 2' strips

R+26-33² Lt = 2 6" acacia tree

R+08-32⁴ Lt = 2 6" acacia tree

R+00-24² Rt = 2' wide hedge ⊥ to 2

1494-24² Rt = 2 12' wide Conc Drive

1487-23⁸ Rt = end Conc block curb

1480-37² Lt = 2 3" tree

1478-15² Lt = 2 3' wide Conc Walk

Lt = West

Rt = East 55

33.36	33.60
440	416
402	509
Dr	Dr

30.84	31.26	31.18
692	650	658
28 ²	18 ²	146
Dr	Dr	Dr

30.4	30.8	31.2	31.7	32.6	33.6	33.7
73	69	65	60	51	41	40
50	40	20		20	40	50

33.24	33.46	
452	430	
24 ²	34 ²	
Dr	Dr	
33.1	33.29	32.8
46	442	42
238	238	238
Cr. at	Top	Foot
cb	cb	

31.47	31.92
629	584
25 ²	12 ²
WK	WK

37.76 x

3+27-41° Lt = ϕ 3' wide Conc Walk

3+22-25° Lt = ϕ 5" acacia tree.

3+10-13° Lt = ϕ 7' wide ribbon drive - 2-2' strips

3+03-21° Lt = ϕ 3' wide hedge L to R

3+00

2+68-24° Lt = ϕ Pyracantha shrub.

2+60-14° Lt = ϕ 7' wide ribbon Drive - 2-2' strips

2+59-40° Lt = ϕ 7" wide Conc Drive

2+54-24° Lt = ϕ Pyracantha shrub.

2+50

2+46-34° Lt = ϕ 8" Avocado tree

Lt = WEST

ϕ

Rt = EAST

56

33.46	34.00
430	376
410	510
WK	WK

30.70	31.06	31.06
706	670	670
272	172	132
Dr	Dr	Dr

29.7	30.3	30.7	31.2	30.8	31.4	32.2	32.7	33.3
80	74	70	65	62	63	55	50	44
60	40	20	15	12		20	40	60

30.72	31.27	31.21
704	649	655
272	172	142
Dr	Dr	Dr

32.95	33.26
-------	-------

481	450
402	502
Dr	Dr

29.4	30.2	30.9	31.4	31.0	31.2	32.1	33.0	33.4
83	75	68	63	62	65	56	47	43
60	40	20	15	13		20	40	60

37.76 π

4+05

30.2	30.2	31.6	32.2	33.2	34.3	36.5
108	108	94	88	78	67	45
100	40	20		20	40	100

4+03

29.4	30.8	32.1	32.2	32.8	33.6	35.4
116	102	92	88	82	74	52
100	40	20		20	40	100

3+90⁰⁰ = E Denver + E Lister

29.0	30.7	31.3	32.0	32.9	33.6	36.0
120	103	92	92	81	74	52
100	40	20		20	40	100

3+76

28.6	29.8	29.9	30.8	31.7	32.5	33.3	35.6
124	112	111	102	93	85	72	54
100	40	35	20		20	40	100

3+74

29.2	30.9	30.9	30.8	31.7	32.5	33.7	36.0
118	104	104	102	93	85	73	52
100	40	35	20		20	40	100

TP₂

6.06

41.08

2.74

TP₂ - Page 52 SE P.H.
DENVER +
LISTER

35.02

41.08 X

3+62 - 28° LT = E 3' wide hedge L to E

3+50 = skyline Lister street

3+41 - 24° RT = E Fire Hyd.

30.0	30.7	31.3	31.6	30.8	31.5	32.6	32.7	33.6	34.6
72	72	64	61	68	62	51	52	41	31
80	40	20	14	12		18	20	40	60

37.76 X

5438-17² Lt = ϕ 7' wide ribbon Drive - 2-2' strips

5426-18⁰ Lt = ϕ Shrub.
Garage converted to Bedroom.

5421-17² Lt = ϕ 7' Wide ribbon Drive - 2-2' strips

5417-23⁰ Lt = ϕ end 4' wide hedge.

5400

4492-23⁰ Lt = ϕ begin 4' wide hedge.

4491-17² Lt ϕ 3' wide Cone Walk

4482-19⁰ Lt = ϕ Shrub

4474-28⁰ Lt = ϕ 5' wide Hedge \perp to ϕ .
Garage has been changed to Bedroom.

4470-17⁶ Lt = ϕ 7' Wide Cone Drive

4465

4430⁰⁰ = Nly Lister 2T

Lt = West

ϕ

Rt = East

58

33.76
732
272
Dr

34.23
685
172
Dr

33.60
748
279
Dr

34.30
678
179
Dr

32.8	33.2	33.9	34.3	34.0	34.4	34.4	35.1	34.4	35.3	35.7	36.1	36.4
82	78	71	67	70	66	66	59	66	57	53	43	26
60	40	20	17	15		8	10	13	16	20	40	60

33.79
729
272
Dr

34.36
672
172
Dr

33.18
720
312
Dr

33.80
728
212
Dr

Drainage Ditch
along Ely side of
Graded area made
by pipe through
Block

32.1	33.5	33.9	33.4	33.8	33.8	34.1	33.7	34.4	35.3	36.0
83	75	71	76	72	72	69	73	66	52	50
40	20	16	14		9	10	12	15	20	40

30.1	32.0	32.6	32.1	32.3	32.9	33.2	33.5	33.2	33.8	34.6	34.9	31.9
103	90	84	83	87	81	78	75	78	72	64	61	35
100	40	20	15	13		9	10	13	15	20	40	100

41.08x

LT=West

RT= east 59

TP₃ 11.65 49.66 3.07 38.01

49.66 x

6490-40³ LT= 8' wide Conc Drive

36.10 36.00
528 508
50³ 40³
Dr Dr

6476-40⁴ LT= 8' wide Conc Drive

35.33 35.99
575 513
50⁴ 40⁴
Dr Dr

6450

35.9 36.6 37.1 36.5 37.3 37.3 37.8 37.1 37.0 38.4 39.2
51 42 39 45 37 32 32 39 42 26 18
40 20 15 13 7 8 10 15 20 40

6443-30² RT= 36" cypress tree

6425-21⁵ LT= 11" pine tree

34.5 35.1 35.1 35.7 35.2 34.9 36.1 36.7 36.1 36.8 37.4 38.1 39.0
65 52 53 53 58 51 42 43 42 42 36 22 20
60 40 20 15 12 8 9 12 15 20 40 60

6400

5494-21² LT= 12" pine tree

5494-31³ RT= 36" cypress tree

35.00 35.27
608 581
27³ 17³
Dr Dr

5489-17³ LT= 7' wide ribbon drive - 2-2' strips

5480-20² LT= end 2' wide hedge

33.4 34.4 34.4 35.0 34.5 34.8 35.0 36.0 35.2 35.6 36.2 37.3
74 66 66 60 65 62 60 50 58 54 48 37
40 20 18 16 14 8 10 12 15 20 40

5470

5443-21⁴ LT= begin 2' wide hedge

41.08 x

LT = WEST

2

RT = EAST 60

74892 → TO WEST - Rane Closed to EAST
 5/4 line Rane ST. See Closing Drawing 677

36.1	38.4	39.5	39.8	39.2	40.0	40.4	40.8	40.1	41.3	41.4	42.6
13 ^E	11 ^E	10 ^L	9 ^E	10 ^L	9 ^E	9 ^E	8 ^E	9 ^E	8 ^E	8 ^E	7 ^E
100	40	20	18	17		8	9	13	16	20	40

7471.24^u RT = 2 Fire Hyd
 7450

36.8	37.4	38.3	38.3	38.0	39.1	39.3	39.9	41.1	42.2	42.4	42.1
12 ^E	12 ^E	11 ^E	11 ^E	11 ^E	10 ^E	10 ^E	9 ^E	8 ^E	7 ^E	7 ^E	7 ^E
50	40	20	19	17		12	17	31	40	49	55

37.14
 37.56
 12^E
 12^E
 40^L WK
 30^L WK

7443. 30^L LT & 2^E wide Conc Walk

7425 - Section taken to show stuck pile of DIRT on EAST

36.4	37.6	38.0	37.6	38.4	38.7	39.1	38.7	39.2	40.2	41.6	41.0
13 ^E	12 ^E	11 ^E	12 ^E	11 ^E	10 ^E	10 ^E	10 ^E	10 ^E	9 ^E	5 ^E	8 ^E
40	20	16	13		8	9	12	15	27	39	47

35.90
 36.33
 13^E
 13^E
 50^E WK
 40^E WK

7412-40^E LT = 2 3 wide Conc Walk

40.4
 40.6
 41.6
 9^E
 9^E
 8^E
 46 50 60

7400

35.5	35.9	37.1	37.8	37.3	37.9	38.2	38.9	38.3	38.9	39.8	42.2
14 ^L	12 ^L	12 ^E	11 ^E	12 ^E	11 ^L	10 ^L	11 ^E	10 ^L	9 ^E	9 ^E	7 ^E
60	40	20	14	13		7	8	13	16	34	40

49.66 x

LT = West £ RT = East. 61

8469⁹⁷ = Nly line Kane St to west - closed to East

35.8	41.0	41.7	40.9	42.1	43.0	43.6	46.3
138	85	79	82	75	66	60	33
100	40	19	17		17	20	40

8467- 41^e LT = £ 15" pepper tree

35.6	40.0	40.1	40.3	41.4	42.7	46.1
------	------	------	------	------	------	------

8450

14 ^e	95	95	93	82	69	35	42.11
100	40	31	20		20	40	

8446- 27^e RT = £ 8" conc pipe drain from east

35.3	38.9	39.4	40.3	41.4	42.7	46.1	75.5
------	------	------	------	------	------	------	------

8448

14 ^e	102	102	93	82	69	35
100	40	31	20		20	40

8429⁹⁷ = £ Kane to west + £ Denver.

35.4	38.6	39.3	40.9	41.7	41.0	42.0	42.5	44.7	45.5
14 ^e	110	103	82	79	86	76	71	42.4	
100	40	20		13	16	19	24	33	40

8414.

34.7	38.4	40.4	39.3	40.5	41.1	40.6	41.4	37.9	42.0	42.5
14 ^e	112	92	103	91	85	90	82	112	76	71
100	40	25	23		12	15	17	20	28	40

8412

35.5	38.6	39.8	39.3	40.5	41.1	40.6	41.4	37.9	42.0	42.5
14 ^e	110	98	103	91	85	90	82	112	76	71
100	40	25	23		12	15	17	20	28	40

8407- 29^e LT = £ 10" Power Pole - # P4099.
along Ely side of Graded area

8402- £ Wash coming from East. Drains into ditch

7492- 39^e LT = £ 10" pepper tree

49.66 x

Lt = West

Rt = East 62

10+77- 38³ Lt = 3' wide Conc walk

10+08- 27² Rt = 30" Euc tree

TP4 9.62 54.85 4.43 45.23

10+00- 16² Rt = 12' wide Conc steps + walk to school

9491- 38² Lt = begin 3' high picket fence
38² Lt = end 4' wide + 8' high cypress hedge.

9490- 24² Rt = end 5' wide hedge
38² Lt = 2 brick pillars flanking brick walk.

9460- 34⁶ Lt = 7' wide brick walk.

9450

9444- 29² Lt = 18" acacia tree

9420- 25² Rt = begin 5' wide hedge

9415- 28² Lt = 10" acacia tree

9405- 29² Rt = 24" Euc. tree

9400

8+77- 37² Lt = begin 3' wide + 7' high cypress hedge

42.39 42.43

12⁴⁶ 12⁴²
48³ 38³
WK WK

54.85
11²
41.9 42.9 44.6 44.9 44.6 44.9 45.87 46.95 47.66
72 68 50 42 50 42 389 271 200
60 40 20 17 15 162 181 40
Bottom Top
Riser Riser Walk

43.18

648

346
brick
walk

42.8 43.9 43.8 43.5 44.2 44.5 45.8 46.0 47.0 47.6
68 52 58 61 51 51 38 36 26 22
40 20 18 16 15 17 20 40 60

41.4 42.8 42.1 42.9 43.3 44.3 45.6 46.2 47.9

82 68 75 67 63 53 40 34 12
40 18 17 15 20 30 40 60

49.66 x

Lt = West

Rt = East

63

12+20-24° Rt = $\frac{1}{2}$ Fire Hyd12+12-30° Rt = $\frac{1}{2}$ 8" tree.12+07-40° Lt = $\frac{1}{2}$ 4" pepper tree

12+00

11+86-40° Lt = $\frac{1}{2}$ 9" pepper tree.11+82-28° Rt = $\frac{1}{2}$ 10" Euc tree.

11+75

11+71-40° Lt = $\frac{1}{2}$ 8" Pepper tree11+53-40° Lt = $\frac{1}{2}$ 14" pepper tree.

11+50

11+47-15° Rt = $\frac{1}{2}$ 5' wide Conc steps

11+28-39° Lt = end 3' high picket fence

11+22-15° Rt = $\frac{1}{2}$ 8" Conc pipe drain from East11+06-37°^{27°-cyl} Rt = $\frac{1}{2}$ 36" Euc tree.

11+00

10+85-40° Lt = $\frac{1}{2}$ 12" acacia tree10+56-27° Rt = $\frac{1}{2}$ 12" acacia tree.

10+50

43.4	43.8	45.1	44.8	46.0	47.1	48.2	49.8	50.8
11 $\frac{1}{2}$	11 $\frac{0}{2}$	9 $\frac{2}{2}$	10 $\frac{0}{2}$	8 $\frac{2}{2}$	7 $\frac{2}{2}$	6 $\frac{5}{2}$	5 $\frac{0}{2}$	4 $\frac{0}{2}$
50	40	19	17		15	20	40	50

44.3	46.2	45.9	46.6	47.6	49.0	50.4	51.0
10 $\frac{5}{2}$	8 $\frac{5}{2}$	8 $\frac{2}{2}$	8 $\frac{2}{2}$	7 $\frac{2}{2}$	5 $\frac{8}{2}$	4 $\frac{2}{2}$	3 $\frac{8}{2}$
40	19	17		15	20	40	50

42.8	43.5	46.3	46.0	46.8	47.9	49.0	50.9	51.1
12 $\frac{0}{2}$	11 $\frac{5}{2}$	8 $\frac{5}{2}$	8 $\frac{2}{2}$	8 $\frac{0}{2}$	6 $\frac{9}{2}$	5 $\frac{8}{2}$	4 $\frac{1}{2}$	3 $\frac{2}{2}$
50	40	18	16		15	20	40	50

47.49

735

15°

I.E.

48.27	49.72	49.91
658	613	542
13°2	17°2	27°2
WK	WK	WK

43.3	43.6	44.3	46.1	46.6	47.2	48.3	48.5	49.8	40.2
11 $\frac{5}{2}$	11 $\frac{2}{2}$	10 $\frac{5}{2}$	8 $\frac{2}{2}$	8 $\frac{2}{2}$	7 $\frac{6}{2}$	6 $\frac{5}{2}$	6 $\frac{3}{2}$	5 $\frac{0}{2}$	4 $\frac{6}{2}$
50	40	28	16		14	17	20	40	50

42.6	43.5	46.0	45.6	46.0	46.8	48.3	49.2
12 $\frac{2}{2}$	11 $\frac{3}{2}$	8 $\frac{8}{2}$	9 $\frac{2}{2}$	8 $\frac{8}{2}$	8 $\frac{0}{2}$	6 $\frac{5}{2}$	5 $\frac{6}{2}$
40	23	17	16		18	25	40

54.85

See page 37 for sketch

See page 65 for X-sec Erie St - Lister to Jellott

TP7 - page 52

TP6

11.01 43.92 (43.93)

12+69⁹⁶ - Jellott st roughly oiled - of no value.

39.8	42.5	43.5	44.6	45.8	47.0	50.6
15 ^L	12 ^L	11 ^L	10 ^E	9 ^L	7 ^E	4 ^E
100	40	20		20	40	100

12+51

38.8	41.9	42.2	43.2	44.4	45.3	45.5	46.5	50.1
16 ^L	13 ^E	12 ^L	11 ^L	10 ^E	9 ^L	8 ^L	4 ^E	
100	40	36	20		14	20	40	100

12+49

39.7	42.5	42.8	43.2	44.4	45.5	46.3	47.8	51.2
15 ^E	12 ^L	12 ^L	11 ^L	10 ^E	9 ^L	8 ^E	7 ^L	3 ^L
100	40	36	20		14	20	40	100

12+41.5 } 398 Lt = \$ 18" Euc Tree
 353 Lt = \$ 10" Power pole # 4099

TP5

11.70 54.93 11.62 43.23

12+29⁹⁶ - Sly line Jellott

41.2	43.6	44.2	43.4	45.0	46.2	47.6	49.5	51.8
13 ^E	11 ^L	10 ^E	11 ^L	9 ^E	8 ^E	7 ^E	5 ^E	3 ^E
75	40	25	20		13	20	40	75

54.85

X-sec Eric - Lister to Jellett.
 Wo # 32127.
 Sketch page 37-

INDIVIDUAL
 FEB 11 1953

0+50-31° Rt = £ 8" Olive tree

0+37-29° Lt = £ 10" Cypress

Drive has Apron

0+10-15° Rt = £ 7" wide ribbon drive - 2-2' strips

0+00 - Nly line Lister st

0-28

0-30

0-40 = £ intersection Eric + Lister streets

TP, 8.44 59.69 128

Mail in pole - SW cor
 Lister +
 Eric
 # 3098

BM - 10.50 52.53

S.W. 89 - Milton +
 Eric
 42.03

Lt = West

£

Rt = east 65

50.0	52.2	52.8	51.8	52.7	53.4	55.3	51.9	58.6
9 ⁶	7 ⁴	6 ⁸	7 ⁸	6 ⁹	6 ²	4 ³	1 ²	1 ⁰
40	20	14	11		13	20	40	60

53.03	54.74	55.50
6 ⁶	4 ⁹	4 ⁹
14 ³	23 ⁸	33 ⁸
Dr.	Dr.	Dr.

47.9	49.9	50.7	50.0	51.3	52.3	54.2	56.0	48.9
11 ²	9 ²	8 ²	9 ⁶	8 ³	7 ³	5 ⁴	3 ⁶	0 ²
40	20	15	14		15	20	40	100

47.0	48.4	47.2	48.3	50.7	52.2	54.0	59.3
12 ⁶	11 ²	12 ⁴	11 ³	8 ²	7 ⁴	5 ⁶	0 ³
40	29	25	20		20	40	100

46.4	47.0	47.6	48.3	50.7	52.2	53.4	58.2
13 ²	12 ⁶	12 ⁰	11 ³	8 ²	7 ⁴	6 ²	1 ⁴
40	29	25	20		20	40	100

47.4	48.9	50.8	52.2	53.6	58.7
12 ²	10 ²	8 ²	7 ⁴	6 ²	0 ²
40	20		20	40	100

See X-sec
 Lister for
 DUTS

59.69

Lt = West

⊥

Rt = East 66

Rt 39-15° Rt = ⊥ 7' ribbon drive with Conc Apron

55.73 57.42 58.38
74.5 57.6 48.0
15° 27° 37°
WIV APRON EIV APRON

Rt 00-30° Rt = ⊥ 36" cluster Magnolia tree

51.3 52.4 54.3 54.6 54.1 54.8 55.5 56.2 57.1 59.2 59.4
118 102 88 85 90 83 76 69 60 32 37
60 40 20 14 12 14 15 20 40 50

TP₂ 8.34 13.18 14.85 54.84

63.18 x

1460-15' Rt = ⊥ 7' wide ribbon Drive
10' Apron on Drive

55.19 56.67 57.71
45.0 30.2 12.8
15° 27° 37°
Dr Dr Dr
WIV APRON EIV APRON

1450

51.1 52.3 53.3 54.2 53.5 54.3 55.2 56.0 57.8 58.3
85 73 63 54 61 53 44 36 18 13
60 40 20 13 11 15 20 40 50

1448-26' Rt = ⊥ 4' wide hedge ⊥ to ⊥

58.50 56.8.8 57.67

1441-16° Rt = ⊥ 7' wide Conc drive

41.9 28.1 20.2
16° 28° 38°
Dr Dr Dr

1402-28° Lt = ⊥ 10" Power pole # 3110

50.0 51.3 53.4 53.5 52.6 53.6 54.2 55.4 55.8 58.2 58.9
96 83 62 61 70 60 54 42 38 14 07
60 40 20 14 12 15 17 20 40 60

1400

0491-16° Rt = ⊥ 8' wide Brick Drive with Conc Apron
Mortarless brick

54.14 55.25 58.58
55.5 44.4 11
WIV APRON EIV APRON
16° 22° 40
Brick

59.69 x

Lt = West

2

Rt = East 67

-4400⁰⁰ & intersection Erie and Kane

3+78-29⁸ Rt- & Tele pole # 442798 H

3+62-38⁰ Lt- & 14" pepper tree

3+52-26⁴ Lt- end 3⁵' high Picket fence

3+50⁰⁰ } 28² Lt- & Power pole # 3192
 3/4 line Kane St to East- Kane closed to West

3+42-23⁹ Rt- & Fire Hyd.

3+29-31² Lt- & 3'x3' trash burner

3+10 14⁶ Rt- & 9'x11' conc slab (Abandon Drive)

3+04-38⁵ Rt- & 12" pepper tree

3+01-26² Rt- begin 3⁵' high picket fence

3+00

2+90-14⁵ Rt- & 7' wide ribbon Drive with Conc Apron

2+50-28² Lt- & 10" power pole # 3164

52.7	53.8	55.6	56.4	56.97	58.1	59.6	62.5
10 ⁴	9 ³	7 ⁵	6 ⁷	6 ²¹	5 ⁰	3 ⁵	0 ⁶
80	40	20	14	5/11 2/11	20	40	80

53.4	55.5	55.9	56.4	55.9	56.1	56.6	57.2	59.4	62.5
9 ⁷	7 ⁶	7 ⁴	6 ⁷	7 ²	7 ⁰	6 ⁵	5 ²	3 ⁷	0 ⁶
40	20	17	14	11		16	18	40	80

52.1	53.4	54.9	55.9	55.3	55.3	55.9	57.4	58.9	60.0
11 ⁰	9 ⁷	8 ²	7 ²	7 ⁸	7 ⁸	7 ²	5 ⁷	4 ²	3 ¹
60	40	20	14	11		14	20	40	60

55.80	57.32	58.22	59.06
738	586	426	412
14 ²	30 ²	26 ²	36 ²
WID APRON	MID APRON	E/W APRON	Dr.

51.6	52.7	54.6	55.3	54.7	54.9	55.8	56.7	58.6
11 ⁵	10 ⁴	8 ⁵	7 ⁸	8 ⁴	8 ²	7 ³	6 ⁴	4 ⁵
60	40	20	14	11		14	20	40

63.18 x

5426 - 27² Rt = 4' wide Conc steps + walk

5400 - 26² Rt = begin rubble conc walk - 1⁵ high

TP3 10.96 69.44 4.70 58.48

4475

4450⁰⁰ Wly line Kane to east - Kane closed to west

4438 - 40² Rt = 8" acacia tree

4432 - 42² Lt = 8⁵ wide black top walk to school

4416

4414

Lt = WEST

Rt = East

68

61.74

770

27²
Bottom
Riser

62.34

710

27²
Top
Riser

63.41

603

37²
WK

53.1 57.1 57.9

16³ 12³ 11⁵

40 36 20

58.4 59.9 60.7 60.5 61.9 62.8

110 95 87 89 75 66

20 26¹ 26¹ 40 60
Gr Foot

69.44 T

53.6 56.3 57.7

95 68 54

40 36 20

57.7 58.5 59.8 61.2 62.4

54 46 33 19 07

14 18 40 45

53.5 53.4 55.8 56.8 57.2 57.9 59.3 60.8 62.2

96 92 73 63 52 52 38 23 09

80 40 36 20 14 20 40 60

53.09

100²

53.2 53.8 55.9 57.1 57.4 58.3 60.1 63.1

92 93 72 62 57 48 30 00

80 40 20 15 20 40 80

53.2 53.8 55.9 57.1 57.4 58.3 59.8 62.5

92 93 72 62 57 48 33 06

80 40 20 15 20 40 80

63.18 T

Lt = West						Rt = East		
57.1	57.3	60.5	62.2	61.7	62.3	62.6	66.3	66.6
12 ³	12 ¹	89	72	72	74	68	35	28
80	40	36	19	17		12	40	50

6450

6409- 40° Rt = 8' wide Conc drive

65.26	66.08
41 ⁸	33 ⁶
40 ²	30 ⁰
Dr	Dr

56.54	56.69
12 ⁹⁰	12 ⁷⁵
70	43 ⁰
Drain	Drain

6403 43° Lt = 4' wide black top Flat drain

57.1	59.1	60.4	60.7	60.1	61.0	61.6	62.6	64.4	65.5
12 ³	10 ³	90	87	93	8 [±]	78	68	50	32
43	37	24	18	17		13	20	40	60
Toe slope									

6400

5480- 29° Rt = 2' wide brick steps + walk

63.56	64.34	64.81
58 ⁸	50	46 ³
29 ⁰	31 ⁵	41 ⁵
POTT	TOP	WR
Rise	Rise	

5459- 52⁸ Rt = 8⁵ conc Drive

64.68	66.74
47 ⁶	27 ⁰
52 ⁸	64 ⁸
	Gar floor

5452- 28³ Lt = Power Pole #3204

53.1	58.1	59.0	59.0	59.7	61.2	61.4	61.6	62.5	63.6
16 ³	11 ³	10 [±]	10 [±]	9 [±]	8 [±]	8 ⁰	7 ⁸	62	58
40	36	31	20		20	27 ¹	27 ¹	30	40
						Foot	Gr	Gr	

5450- 27¹ Rt = end conc rubble wall

69.44 X

8400⁰⁰ S14 Line Jellett

Lt = West					Rt = East 70					
61.0	63.6	64.6	64.1		65.0	65.8	67.4	68.9	69.9	73.9
130	104	94	92		90	82	66	51	41	11
100	40	22	20		13	17	32	40	100	

7493-

58.6	58.9	63.0	64.3	63.9	64.9	65.1	67.2	68.8	70.2
154	152	110	92	101	91	83	68	52	38
100	42	37	24	19	12	17	30	40	

TP4 9.33 74.07 4.70

Nail in pole SW
Jellett
Eric

64.74

74.07 X

7490-238 Rt = E Fire Hyd.

67.78 68.60

7484-182 Rt = E 2' Wide Conc Walk

164 08
182 282
WK WK

7480- Lt = N.E.4 Cor black top playground surface

57.92
1152
60

57.74	57.9	61.9	62.2	63.8	63.6	64.2	64.7	66.8	67.0	67.7
1170	115	75	72	56	58	52	43	26	24	12
43	40	39	32	20	18	12	16	20	40	

7401 - 283 Lt = E Power pole #3276

57.82 57.36 58.1 61.6 63.2 62.8 63.4 63.7 65.4 66.8 67.6

7400- 43 Lt = E Edge Black top playground surface

1162	1208	113	78	62	66	60	57	40	26	18
40	43	40	37	19	18	12	20	40	60	

6459-31 Lt = E 8' Wide Conc Drive

65.31 66.38
413 306
312 412
Dr Dr

69.44 X

See page 37 for sketch

See page 72 for X-sec lister - Chicago to Erie

TP₇ - Page 52 (43, 93)

TP ₇	10.63	43.92		
TP ₆	4.45	54.55	11.77	50.10
TP ₅	1.09	61.87	13.29	60.78

SE Fire Hyd. JelleTT
DENUE

JelleTT st roughly oiled - of no value

8+40⁰⁰ - Intersection JelleTT + Erie st

60.9	63.6	64.7	66.1	67.4	68.9	72.9
13 ¹ / ₁₀₀	10 ⁴ / ₄₀	9 ³ / ₂₀	7 ²	6 ⁶ / ₂₀	5 ¹ / ₄₀	1 ⁴ / ₁₀₀

8+20

59.9	63.0	63.2	65.7	67.0	68.7	72.8
7 ⁴ / ₁₀₀	11 ⁰ / ₄₀	9 ⁸ / ₂₀	8 ³	7 ⁰ / ₂₀	5 ³ / ₄₀	1 ² / ₁₀₀

8+11.35⁵ Lt = 10" Power pole # 4149.

74.07 π

1494- 27^c Lt = ♀ 36" Euc ^{live} stump 15' high

1490- 30³ Lt = 2' high Conc Black Wall Lt to ♀

1475

28.6	28.9	28.7	28.7	27.6	28.6	28.4	28.3
43	40	42	42	53	43	45	46
60	40	16		14	15	30	40

1445- 27⁵ Lt = begin 2⁵' high Picket fence

1435- ♀ N+S Alley

26.6	28.1	28.1	27.4	27.4	26.6	27.1	26.9	26.3
63	48	48	55	54	63	58	60	66
100	40	35	16	SMH Rim	13	16	40	100

408 Lt = end 5' high board fence

27³ Lt = ♀ 24" Euc tree

1425- 26³ Lt = end 4' high board fence

1400

26.9	26.9	26.7	26.1	26.3	25.7	26.5	26.5	26.4
60	60	62	68	66	72	64	64	65
60	40	17	15		12	14	40	60

0475- 27⁰ Lt = ♀ 30" Euc tree

0471- 46⁰ Lt = begin 5' high board fence

0450

24.6	24.4	24.3	23.8	23.9	23.5	24.9	25.1
83	85	86	91	92	94	80	78
40	20	16	15		11	20	40

0438- 26³ Rt = begin 4' high board fence

0410- 32⁴ Lt = ♀ Dead Man

0401 16⁵ Rt = ♀ 3' Wide Conc Walk + steps

22.31	22.60	23.00
1059	1030	990
165	172	272
BOTTOM RISE	TOP RISE	

0400 = Fly line Chicago - See X-sec Chicago

For intersection

21.9	21.6	21.4	20.4	21.6	22.6	22.8
110	113	115	115	113	103	104
40	20	16		11	20	40

BM- 9.17 32.90

TP₂ - Page 41 -

R 3.73

32.90

ct-No.

¢

ct-50.

73

3409.88 ¢ Intersection Lister + Denver

33.0	32.5	32.1	31.7	31.5
11 ²	11 ²	12 ¹	12 ⁵	12 ²
40	20		20	40

TP, 12.12 44.20 0.82 32.08

44.20 T

2496.

32.3	31.6	31.6	31.4	31.9	30.9	31.0
0 ⁶	1 ³	1 ³	1 ⁵	2 ⁰	2 ⁰	1 ⁹
40	22	20		20	30	40

2494.

32.8	32.2	31.6	31.4	30.9	31.8	31.9
0 ¹	0 ⁷	1 ³	1 ⁵	2 ⁰	1 ¹	1 ⁰
40	22	20		20	30	40

2483 - 27° ct = ¢ end 2' wide hedge

2469.88 Wly line Denver

32.3	32.2	31.5	31.4	31.0	30.8	29.8	31.0	30.8
0 ⁶	0 ⁷	1 ⁴	1 ⁵	1 ⁹	2 ¹	3 ¹	1 ⁹	2 ¹
60	40	20	16	14		15	17	40

2450

31.5	31.0	30.2	30.7	29.4	30.5	30.3	30.3
1 ⁴	1 ⁹	2 ⁷	2 ⁷	3 ⁵	2 ⁴	2 ⁶	2 ⁶
40	17	13		14	16	30	40

26° ct = ¢ begin 2' wide hedge
 2430-26° ct = end 2' high Picket fence

2400

30.7	30.6	30.4	29.2	28.6	28.3	29.2	28.9	28.9
2 ²	2 ³	2 ⁵	3 ⁷	4 ³	4 ⁶	3 ⁷	4 ⁰	4 ⁰
60	40	18	14		14	16	30	50

32.90 T

4484⁸⁸ - E Alley to South

40.6	40.9	41.0	40.0	40.3	40.4	40.4	38.9
36	33	32	43	39	38	38	53
40	20	15	12		20	40	100

4477-28° Rt = E 32" Euc tree

39.9	38.9	38.9	38.0	38.4	38.4	38.8	38.7
43	53	53	63	58	58	54	55
40	20	15	12		15	20	40

4450

4419 43° Rt = E Single garage - Conc Floor + Apron.

36.66	36.72
754	748
434	462
Apron	Floor

4400

33.4	33.2	36.4	35.3	35.8	36.0	36.8	35.9	36.0
108	112	78	82	84	82	84	83	82
60	40	15	13	7		16	20	40

3449⁸⁸ Ely line Denver St

35.0	34.6	34.3	33.6	33.7	33.5	33.9	33.8	33.7
92	96	92	102	102	107	103	104	102
40	20	17	15		15	17	20	40

3426

33.9	33.3	32.9	32.4	32.8
103	102	113	118	114
40	20		20	40

3424

33.2	32.8	32.9	32.4	32.4
112	114	113	118	118
40	20		20	40

44.20 x

6+19⁸⁰ Wly line Eric ST.

50.1	47.9	47.9	47.1	46.5	47.3	47.0	47.6	47.3	47.0
43	6 [±]	6 [±]	7 [±]	7 [±]	7 [±]	7 [±]	6 [±]	7 [±]	7 [±]
100	40	20	14	12		17	20	40	80

6+00

47.2	46.9	42.6	46.5	45.4	46.1	45.9	46.4	46.3	45.9	45.6
7 [±]	7 [±]	11 [±]	7 [±]	8 [±]	8 [±]	8 [±]	7 [±]	8 [±]	8 [±]	8 [±]
60	40	20	15	11		15	18	20	40	80

5+95- 26Z LT = ϕ 36" Euc tree.

5+75- 40^e Rt. & single Garage - Conc Apron + Floor

45.4	45.3	45.2	44.1	44.8	44.5	44.9	45.1
8 [±]	9 [±]	9 [±]	10 [±]	9 [±]	9 [±]	9 [±]	9 [±]
40	20	15	12		12	16	20

44.8
 44.85
 9[±]
 9[±]
 40
 6[±] Apron Floor
 40^e Apron Floor
 51[±] Floor

5+50 - 40^e Rt = ϕ 3' wide Conc Walk

44.9	43.9	43.9	42.9	43.5	43.3	43.9	43.7	44.04
9 [±]	10 [±]	10 [±]	11 [±]	10 [±]	11 [±]	10 [±]	10 [±]	10 [±]
40	20	15	11		14	20	40	40 ^e WK

5+25

43.2	42.7	42.5	41.8	42.3	42.2	42.6	42.1
11 [±]	11 [±]	11 [±]	12 [±]	12 [±]	12 [±]	11 [±]	12 [±]
40	20	15	11		15	18	40

TP₂ 10.27 54.37 0.10 44.10

54.37 x

4+95- 26⁸ LT = ϕ 42" Euc. tree

44.20

RECEIVED
FEB 17 1953

TP, - Page 65

TP₃

3.13 51.24

6459²⁰: φ Intersection Lister + Erie

51.3	50.8	50.89	50.6	50.4	48.1
30	35	34.8	32	32	55
40	20	50.8 R177	20	40	100

6445

50.0	50.4	48.7	49.1	49.1	49.4	49.6	48.9
42	32	55	52	52	42	42	54
40	35	20		20	27	40	80

6443

50.7	49.4	49.2	49.1	49.1	49.8	50.0	49.2
30	42	51	52	52	45	42	51
40	35	20		20	27	40	80

6434-395 kt = φ 10" power pile #3098.

54.37

Now

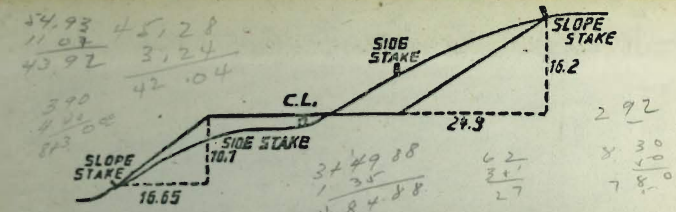
$$\begin{array}{r} 315 \\ 147 \\ \hline 462 \end{array}$$

$$\begin{array}{r} 830 \\ 390 \\ \hline 440 \end{array}$$

$$\begin{array}{r} 516 \\ 398 \\ \hline 118 \end{array}$$

$$\begin{array}{r} 516 \\ 227 \\ \hline 189 \end{array}$$

$$\begin{array}{r} 669 \\ 452 \\ \hline 198 \end{array}$$



DISTANCES FROM SIDE STAKES FOR CROSS-SECTIONING.
 SLOPE 1/2 TO 1. ROADWAY OF ANY WIDTH.

	0	.1	.2	.3	.4	.5	.6	.7	.8	.9	
0	0.00	0.15	0.30	0.45	0.60	0.75	0.90	1.05	1.20	1.35	0
1	1.50	1.65	1.80	1.95	2.10	2.25	2.40	2.55	2.70	2.85	1
2	3.00	3.15	3.30	3.45	3.60	3.75	3.90	4.05	4.20	4.35	2
3	4.50	4.65	4.80	4.95	5.10	5.25	5.40	5.55	5.70	5.85	3
4	6.00	6.15	6.30	6.45	6.60	6.75	6.90	7.05	7.20	7.35	4
5	7.50	7.65	7.80	7.95	8.10	8.25	8.40	8.55	8.70	8.85	5
6	9.00	9.15	9.30	9.45	9.60	9.75	9.90	10.05	10.20	10.35	6
7	10.50	10.65	10.80	10.95	11.10	11.25	11.40	11.55	11.70	11.85	7
8	12.00	12.15	12.30	12.45	12.60	12.75	12.90	13.05	13.20	13.35	8
9	13.50	13.65	13.80	13.95	14.10	14.25	14.40	14.55	14.70	14.85	9
10	15.00	15.15	15.30	15.45	15.60	15.75	15.90	16.05	16.20	16.35	10
11	16.50	16.65	16.80	16.95	17.10	17.25	17.40	17.55	17.70	17.85	11
12	18.00	18.15	18.30	18.45	18.60	18.75	18.90	19.05	19.20	19.35	12
13	19.50	19.65	19.80	19.95	20.10	20.25	20.40	20.55	20.70	20.85	13
14	21.00	21.15	21.30	21.45	21.60	21.75	21.90	22.05	22.20	22.35	14
15	22.50	22.65	22.80	22.95	23.10	23.25	23.40	23.55	23.70	23.85	15
16	24.00	24.15	24.30	24.45	24.60	24.75	24.90	25.05	25.20	25.35	16
17	25.50	25.65	25.80	25.95	26.10	26.25	26.40	26.55	26.70	26.85	17
18	27.00	27.15	27.30	27.45	27.60	27.75	27.90	28.05	28.20	28.35	18
19	28.50	28.65	28.80	28.95	29.10	29.25	29.40	29.55	29.70	29.85	19
20	30.00	30.15	30.30	30.45	30.60	30.75	30.90	31.05	31.20	31.35	20
21	31.50	31.65	31.80	31.95	32.10	32.25	32.40	32.55	32.70	32.85	21
22	33.00	33.15	33.30	33.45	33.60	33.75	33.90	34.05	34.20	34.35	22
23	34.50	34.65	34.80	34.95	35.10	35.25	35.40	35.55	35.70	35.85	23
24	36.00	36.15	36.30	36.45	36.60	36.75	36.90	37.05	37.20	37.35	24
25	37.50	37.65	37.80	37.95	38.10	38.25	38.40	38.55	38.70	38.85	25
26	39.00	39.15	39.30	39.45	39.60	39.75	39.90	40.05	40.20	40.35	26
27	40.50	40.65	40.80	40.95	41.10	41.25	41.40	41.55	41.70	41.85	27
28	42.00	42.15	42.30	42.45	42.60	42.75	42.90	43.05	43.20	43.35	28
29	43.50	43.65	43.80	43.95	44.10	44.25	44.40	44.55	44.70	44.85	29
30	45.00	45.15	45.30	45.45	45.60	45.75	45.90	46.05	46.20	46.35	30
31	46.50	46.65	46.80	46.95	47.10	47.25	47.40	47.55	47.70	47.85	31
32	48.00	48.15	48.30	48.45	48.60	48.75	48.90	49.05	49.20	49.35	32
33	49.50	49.65	49.80	49.95	50.10	50.25	50.40	50.55	50.70	50.85	33
34	51.00	51.15	51.30	51.45	51.60	51.75	51.90	52.05	52.20	52.35	34
35	52.50	52.65	52.80	52.95	53.10	53.25	53.40	53.55	53.70	53.85	35
36	54.00	54.15	54.30	54.45	54.60	54.75	54.90	55.05	55.20	55.35	36
37	55.50	55.65	55.80	55.95	56.10	56.25	56.40	56.55	56.70	56.85	37
38	57.00	57.15	57.30	57.45	57.60	57.75	57.90	58.05	58.20	58.35	38
39	58.50	58.65	58.80	58.95	59.10	59.25	59.40	59.55	59.70	59.85	39
40	60.00	60.15	60.30	60.45	60.60	60.75	60.90	61.05	61.20	61.35	40
41	61.50	61.65	61.80	61.95	62.10	62.25	62.40	62.55	62.70	62.85	41
42	63.00	63.15	63.30	63.45	63.60	63.75	63.90	64.05	64.20	64.35	42
43	64.50	64.65	64.80	64.95	65.10	65.25	65.40	65.55	65.70	65.85	43
44	66.00	66.15	66.30	66.45	66.60	66.75	66.90	67.05	67.20	67.35	44
45	67.50	67.65	67.80	67.95	68.10	68.25	68.40	68.55	68.70	68.85	45
46	69.00	69.15	69.30	69.45	69.60	69.75	69.90	70.05	70.20	70.35	46
47	70.50	70.65	70.80	70.95	71.10	71.20	71.40	71.55	71.70	71.85	47
48	72.00	72.15	72.30	72.45	72.60	72.75	72.90	73.05	73.20	73.35	48
49	73.50	73.65	73.80	73.95	74.10	74.25	74.40	74.55	74.70	74.85	49
50	75.00	75.15	75.30	75.45	75.60	75.75	75.90	76.05	76.20	76.35	50

THE NATIONAL BLANK BOOK COMPANY
 HOLYOKE MASSACHUSETTS
 NEW YORK CHICAGO BOSTON SAN FRANCISCO